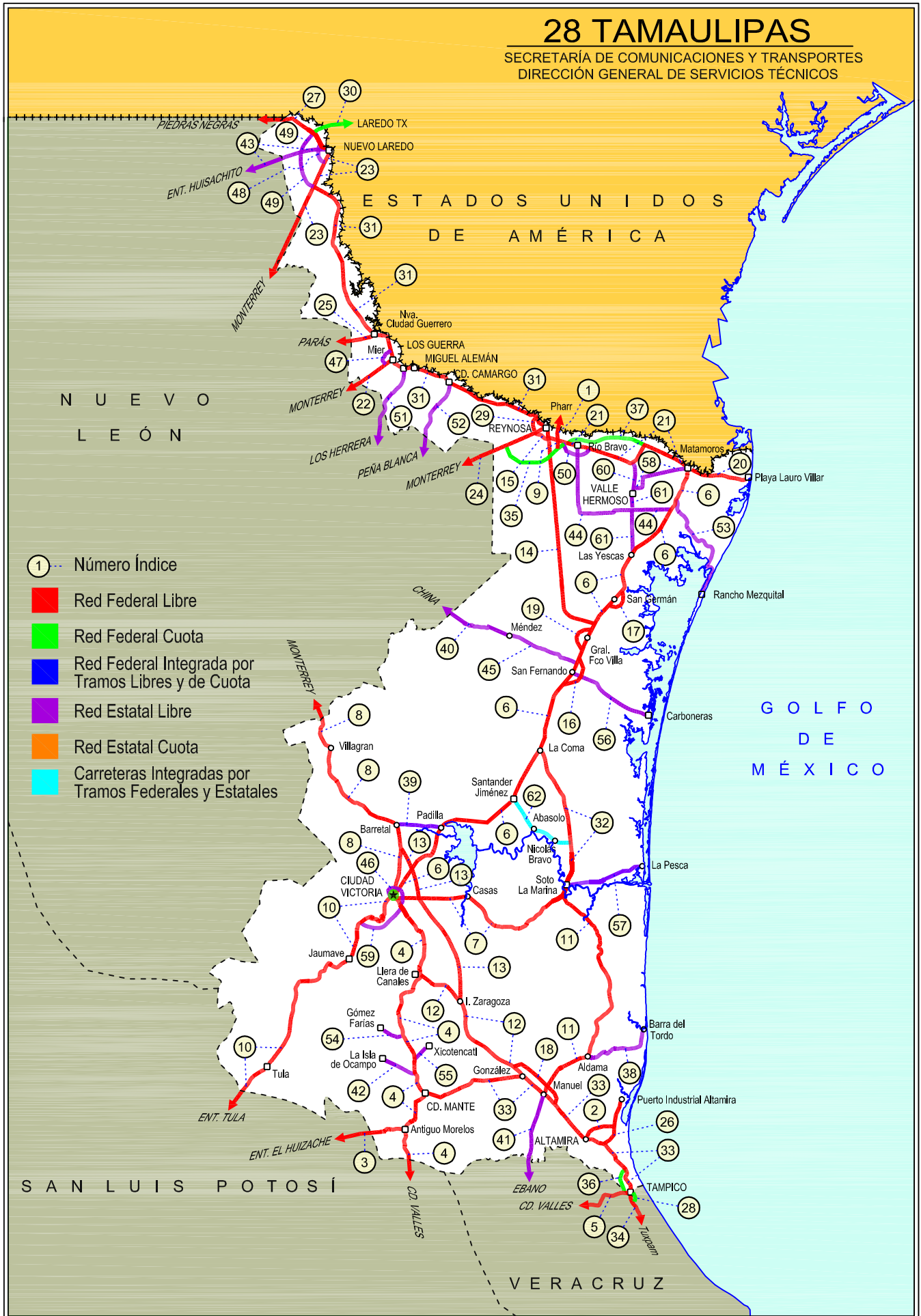


28 TAMAUULIPAS

SECRETARÍA DE COMUNICACIONES Y TRANSPORTES
DIRECCIÓN GENERAL DE SERVICIOS TÉCNICOS





TAMAULIPAS

---RED FEDERAL LIBRE---

1 Acceso a Puente Internacional Reynosa - Pharr	MEX-002
2 Altamira - T. C. (Petrocel -Puerto Industrial Altamira)	MEX-080
3 Antigua Morelos - Ent. El Huizache	MEX-080
4 Cd. Valles - Cd. Victoria	MEX-085
5 Cd. Valles - Tampico	MEX-070
6 Cd. Victoria - Matamoros	MEX-101-180
7 Cd. Victoria - Soto La Marina	MEX-070
8 Ciudad Victoria - Monterrey	MEX-085
9 Corredor Internacional Reynosa	MEX
10 Ent. Tula - Cd. Victoria	MEX-101
11 Estación Manuel - T. C. (Cd. Victoria - Soto La Marina)	MEX-180
12 González - Llera de Canales	MEX-081
13 Ignacio Zaragoza - T. C. (Ciudad Victoria - Monterrey)	MEX-083
14 Las Urracas - T. C. (Matamoros - Reynosa)	MEX-097
15 Libramiento de Reynosa	MEX-REY-010
16 Libramiento de San Fernando	MEX-101-180
17 Libramiento de San Germán	MEX-101
18 Libramiento Estación Manuel - González	MEX-081
19 Libramiento General Francisco Villa	MEX-101-180
20 Matamoros - Playa Lauro Villar	MEX-002
21 Matamoros - Reynosa	MEX-002
22 Monterrey - Mier	MEX-054
23 Monterrey - Nuevo Laredo (Libre)	MEX-085
24 Monterrey - Reynosa (Libre)	MEX-040
25 Paras - Nueva Ciudad Guerrero	MEX-030
26 Petrocel - Puerto Industrial Altamira	MEX-080
27 Piedras Negras - Nuevo Laredo	MEX-002
28 Ramal a Puente Tampico	MEX-180
29 Ramal de Acceso a Puente Anzaldúas	MEX
30 Ramal de Acceso al Puente Internacional Laredo III	MEX
31 Reynosa - Nuevo Laredo	MEX-002
32 Soto La Marina - La Coma	MEX-180
33 Tampico - Cd. Mante	MEX-080
34 Tuxpam - Tampico	MEX-180

---RED FEDERAL DE CUOTA---

35 Libramiento de Reynosa Sur II	MEX-040D
36 Libramiento Poniente de Tampico (Cuota)	MEX-070D
37 Matamoros - Reynosa (Cuota)	MEX-002D

---RED ESTATAL LIBRE---

38 Aldama - Barra El Tordo	TAM
39 Barretal - Nueva Villa de Padilla	TAM-001
40 China - Méndez	NL-TAM
41 Ébano - Estación Manuel	SLP-TAM
42 El Limón - Ocampo	TAM-019
43 Ent. Huisachito - Nuevo Laredo	NL-001-TAM
44 Ent. Las Blancas - Río Bravo	TAM-003
45 La Joya - Méndez	TAM
46 Libramiento de Cd. Victoria	TAM
47 Libramiento de Mier	TAMPS
48 Libramiento de Nuevo Laredo	TAM
49 Libramiento de Nuevo Laredo II	TAM
50 Libramiento de Río Bravo	TAM
51 Los Guerra - Los Herreras	TAM-NL
52 Peña Blanca - Cd. Camargo	NL-TAM
53 Potrero Nuevo - Rancho El Mezquital	TAM
54 Ramal a Gómez Farías	TAM-020
55 Ramal a Xicoténcatl	TAM
56 San Fernando - Carboneras	TAM
57 Soto La Marina - La Pesca	TAM-070
58 T. C. (Valle Hermoso - Empalme) - Matamoros	TAM-005
59 T. C. Libramiento Cd. Victoria - San Antonio	TAM-126
60 Valle Hermoso - Empalme	TAM-004
61 Valle Hermoso - Las Yescas	TAM

---CARRETERAS INTEGRADAS POR TRAMOS FEDERALES Y ESTATALES---

62 Santander Jiménez - Ent. El Ojito	MEX-107-TAM
--------------------------------------	-------------

TAMAULIPAS

1 CARR: Acceso a Puente Internacional Reynosa - Pharr

CLAVE:

RUTA: MEX-002

AÑO: 2018

LUGAR	ESTACION				CLASIFICACION VEHICULAR EN PORCIENTO													COORDENADAS		
	KM	TE	SC	TDPA	M	A	B	C2	C3	T3S2	T3S3	T3S2R4	OTROS	A	B	C	K'	D	LATITUD	LONGITUD
T. C. Matamoros - Reynosa	0.00	3	1	8007	0.7	74.1	1.4	6.6	7.6	5.8	0.8	1.9	1.1	74.8	1.4	23.8	0.069	0.507	26.019110	-98.208315
T. C. Matamoros - Reynosa	0.00	3	2	8221	0.9	71.5	1.6	6.8	8.6	6.4	1.0	2.1	1.1	72.4	1.6	26.0	0.066	0.507	26.019105	-98.208408
Puente Internacional Reynosa - Pharr	3.10																			

2 CARR: Altamira - T. C. (Petrocel -Puerto Industrial Altamira)

CLAVE:

RUTA: MEX-080

AÑO: 2018

LUGAR	ESTACION				CLASIFICACION VEHICULAR EN PORCIENTO													COORDENADAS		
	KM	TE	SC	TDPA	M	A	B	C2	C3	T3S2	T3S3	T3S2R4	OTROS	A	B	C	K'	D	LATITUD	LONGITUD
Altamira	0.00	3	1	11503	1.7	83.5	1.0	6.1	0.9	4.0	2.0	0.3	0.5	85.2	1.0	13.8	0.067	0.527	22.401280	-97.917490
Altamira	0.00	3	2	10338	1.7	81.9	1.1	6.7	0.9	4.6	2.3	0.3	0.5	83.6	1.1	15.3	0.069	0.527	22.401440	-97.917559
T. C. (Petrocel -Puerto Industrial Altamira)	3.10																			

3 CARR: Antigua Morelos - Ent. El Huizache

CLAVE: 00136

RUTA: MEX-080

AÑO: 2018

LUGAR	ESTACION				CLASIFICACION VEHICULAR EN PORCIENTO													COORDENADAS		
	KM	TE	SC	TDPA	M	A	B	C2	C3	T3S2	T3S3	T3S2R4	OTROS	A	B	C	K'	D	LATITUD	LONGITUD
Antigua Morelos	0.00	3	0	2209	5.6	76.6	1.6	9.7	2.2	2.6	1.3	0.3	0.1	82.2	1.6	16.2	0.099	0.506	22.553947	-99.090709
Nuevo Morelos	19.28	1	0	1218	5.6	74.1	2.1	10.2	2.6	3.1	1.8	0.3	0.2	79.7	2.1	18.2	0.093	0.507	22.540907	-99.212253
Lim. Edos. Term. Tamps. Ppia. S. L. P.	25.00																			
El Naranjo	32.00	1	0	4288	3.7	64.4	4.0	6.9	2.0	10.0	2.1	5.8	1.1	68.1	4.0	27.9	0.080	0.508	22.532443	-99.307380
El Naranjo	32.00	3	0	2549	7.8	80.7	1.0	7.7	0.7	1.8	0.2	0.0	0.1	88.5	1.0	10.5	0.077	0.509	22.518097	-99.335651
Cd. del Maíz	86.00	3	0	1566	2.4	70.3	1.8	21.1	1.8	1.7	0.6	0.2	0.1	72.7	1.8	25.5	0.089	0.516	22.417057	-99.625396
T. Der. Tula	141.21	3	0	2562	3.1	38.0	2.2	6.6	4.0	21.3	6.1	17.0	1.7	41.1	2.2	56.7	0.062	0.515	22.738961	-99.980946
T. C. San Luis Potosí - Matehuala (Ent. El Huizache)	198.83	1	0	2988	2.9	44.4	1.9	10.2	3.5	17.9	4.3	13.6	1.3	47.3	1.9	50.8	0.070	0.510	22.929979	-100.450328

4 CARR: Cd. Valles - Cd. Victoria

CLAVE: 00509

RUTA: MEX-085

AÑO: 2018

LUGAR	ESTACION				CLASIFICACION VEHICULAR EN PORCIENTO													COORDENADAS		
	KM	TE	SC	TDPA	M	A	B	C2	C3	T3S2	T3S3	T3S2R4	OTROS	A	B	C	K'	D	LATITUD	LONGITUD
Cd. Valles	0.00	3	0	12678	4.7	79.4	1.4	5.9	0.6	5.8	0.9	0.4	0.9	84.1	1.4	14.5	0.059	0.503	22.007202	-99.004728
Lim. Edos. Term. S. L. P. Ppia. Tamps.	50.40																			
Antigua Morelos	66.90	1	0	2231	3.8	75.2	4.2	9.1	1.8	2.7	0.9	1.9	0.4	79.0	4.2	16.8	0.087	0.504	22.549600	-99.078400
Antigua Morelos	66.90	3	0	3718	3.8	76.0	4.5	8.8	1.4	2.8	0.7	1.7	0.3	79.8	4.5	15.7	0.083	0.504	22.559077	-99.078070
Cd. Mante	98.00	1	0	6072	9.3	76.2	3.0	5.6	1.6	1.6	1.0	0.7	1.0	85.5	3.0	11.5	0.083	0.516	22.711664	-98.989263
T. Izq. Ocampo	110.00	3	0	3514	9.4	77.0	3.8	6.6	0.8	2.0	0.2	0.1	0.1	86.4	3.8	9.8	0.094	0.501	22.838731	-99.024350

TAMAULIPAS

4 CARR: Cd. Valles - Cd. Victoria

CLAVE: 00509

RUTA: MEX-085

AÑO: 2018

LUGAR	ESTACION				CLASIFICACION VEHICULAR EN PORCIENTO													COORDENADAS		
	KM	TE	SC	TDPA	M	A	B	C2	C3	T3S2	T3S3	T3S2R4	OTROS	A	B	C	K'	D	LATITUD	LONGITUD
T. Izq. Gómez Farías	132.84	3	0	1870	7.1	74.5	7.9	7.0	1.3	1.5	0.6	0.1	0.0	81.6	7.9	10.5	0.095	0.502	23.030479	-99.093722
T. Izq. Llera de Canales	170.00	3	0	3553	0.9	83.2	3.9	7.6	1.3	1.8	0.4	0.8	0.1	84.1	3.9	12.0	0.080	0.508	23.310614	-99.016534
T. Der. González	172.50	3	0	2131	1.1	84.6	4.6	6.0	0.9	1.2	0.8	0.8	0.0	85.7	4.6	9.7	0.111	0.505	23.321138	-98.998074
Cd. Victoria	232.00	1	0	2589	1.0	81.3	4.3	7.9	2.6	1.5	0.9	0.4	0.1	82.3	4.3	13.4	0.099	0.520	23.659939	-99.096636

5 CARR: Cd. Valles - Tampico

CLAVE: 00138

RUTA: MEX-070

AÑO: 2018

LUGAR	ESTACION				CLASIFICACION VEHICULAR EN PORCIENTO													COORDENADAS		
	KM	TE	SC	TDPA	M	A	B	C2	C3	T3S2	T3S3	T3S2R4	OTROS	A	B	C	K'	D	LATITUD	LONGITUD
Cd. Valles	0.00	3	0	8373	2.5	76.5	1.3	9.7	3.2	4.3	1.2	0.8	0.5	79.0	1.3	19.7	0.068	0.511	21.975984	-98.958702
T. Der. Santa Elena	15.25	3	0	6900	2.2	75.3	1.9	9.3	2.5	4.9	2.5	1.1	0.3	77.5	1.9	20.6	0.077	0.529	21.962227	-98.874795
Tamuín	29.60	1	0	6217	3.3	74.7	1.9	10.1	2.4	3.9	1.6	1.5	0.6	78.0	1.9	20.1	0.064	0.509	21.997367	-98.781433
Ébano	79.00	1	0	9125	9.9	71.9	1.4	5.3	1.2	6.4	1.8	1.7	0.4	81.8	1.4	16.8	0.064	0.509	22.214224	-98.391891
Ébano	79.00	3	0	5751	3.9	72.7	2.9	8.4	2.0	4.7	1.9	3.0	0.5	76.6	2.9	20.5	0.075	0.501	22.211334	-98.359364
Lim. Edos. Term. S. L. P. Ppia. Ver.	83.57																			
T. Der. Pánuco	103.00	1	0	5703	6.9	68.6	2.2	8.9	1.9	6.3	2.0	2.1	1.1	75.5	2.2	22.3	0.085	0.501	22.155828	-98.154913
T. Der. Pánuco	103.00	3	0	7135	2.1	70.6	3.0	10.4	2.0	6.6	1.9	2.5	0.9	72.7	3.0	24.3	0.085	0.500	22.158785	-98.149224
T. C. Anáhuac - El Prieto	128.40	1	1	6040	1.5	76.9	2.3	10.9	2.2	2.7	1.2	2.0	0.3	78.4	2.3	19.3	0.081	0.509	22.214490	-97.948808
T. C. Anáhuac - El Prieto	128.40	1	2	5817	0.8	76.4	2.5	11.4	2.3	2.8	1.3	2.1	0.4	77.2	2.5	20.3	0.071	0.509	22.214631	-97.948826
T. C. Anáhuac - El Prieto	128.40	3	1	7219	1.4	77.0	2.2	10.5	2.3	2.7	1.3	2.3	0.3	78.4	2.2	19.4	0.081	0.508	22.216076	-97.942146
T. C. Anáhuac - El Prieto	128.40	3	2	6981	0.8	75.8	2.5	11.7	2.4	2.9	1.3	2.3	0.3	76.6	2.5	20.9	0.072	0.508	22.216222	-97.942191
Lim. Edos. Term. Ver. Ppia. Tamps.	133.81																			
Tampico	138.00	1	1	9467	1.4	73.3	1.5	11.4	2.1	4.6	2.2	2.7	0.8	74.7	1.5	23.8	0.073	0.503	22.226910	-97.894078
Tampico	138.00	1	2	9577	1.4	70.4	1.6	12.9	2.4	5.1	2.5	2.8	0.9	71.8	1.6	26.6	0.082	0.503	22.226983	-97.894097

6 CARR: Cd. Victoria - Matamoros

CLAVE: 28139

RUTA: MEX-101-180

AÑO: 2018

LUGAR	ESTACION				CLASIFICACION VEHICULAR EN PORCIENTO													COORDENADAS		
	KM	TE	SC	TDPA	M	A	B	C2	C3	T3S2	T3S3	T3S2R4	OTROS	A	B	C	K'	D	LATITUD	LONGITUD
Cd. Victoria	0.00																			
X. C. Libramiento de Cd. Victoria	5.00	3	1	7683	2.7	86.8	2.2	5.6	0.7	1.1	0.6	0.2	0.1	89.5	2.2	8.3	0.078	0.527	23.767187	-99.112112
X. C. Libramiento de Cd. Victoria	5.00	3	2	8552	2.5	85.7	2.5	6.4	0.7	1.2	0.7	0.2	0.1	88.2	2.5	9.3	0.080	0.527	23.767253	-99.112242
T. Izq. Barretal	46.50	1	0	6891	2.1	61.4	3.2	6.7	3.0	10.3	3.6	8.7	1.0	63.5	3.2	33.3	0.077	0.501	24.039786	-98.903299
T. Der. Las Juntas	80.05	1	0	4251	0.3	56.0	6.0	6.4	3.0	15.8	3.3	8.3	0.9	56.3	6.0	37.7	0.078	0.513	24.111399	-98.606074
Santander Jiménez	97.00	3	0	4165	0.3	53.6	6.8	7.2	3.0	16.1	3.7	8.7	0.6	53.9	6.8	39.3	0.084	0.500	24.237248	-98.476802

TAMAULIPAS

6 CARR: Cd. Victoria - Matamoros

CLAVE: 28139

RUTA: MEX-101-180

AÑO: 2018

LUGAR	ESTACION				CLASIFICACION VEHICULAR EN PORCIENTO													COORDENADAS		
	KM	TE	SC	TDPA	M	A	B	C2	C3	T3S2	T3S3	T3S2R4	OTROS	A	B	C	K'	D	LATITUD	LONGITUD
T. Der. Soto La Marina	129.00	3	1	2458	0.4	58.7	7.0	7.7	2.0	11.1	3.5	9.0	0.6	59.1	7.0	33.9	0.085	0.506	24.483073	-98.338543
T. Der. Soto La Marina	129.00	3	2	2400	0.3	55.2	7.1	8.3	2.4	12.1	3.9	9.9	0.8	55.5	7.1	37.4	0.073	0.506	24.483079	-98.338605
San Fernando	175.00	3	0	2904	1.2	80.7	2.0	10.6	1.5	2.1	0.9	0.8	0.2	81.9	2.0	16.1	0.073	0.515	24.869327	-98.137184
T. Izq. Reynosa	202.00	1	0	7902	0.6	60.4	4.6	9.0	3.1	13.0	3.3	5.1	0.9	61.0	4.6	34.4	0.078	0.505	25.058534	-98.070263
T. Izq. Reynosa	202.00	3	0	4361	0.2	68.5	3.2	9.6	0.7	7.0	2.6	7.2	1.0	68.7	3.2	28.1	0.093	0.524	25.084576	-98.056447
T. Der. Los Vergeles	220.00	1	0	4843	0.2	69.0	3.3	10.0	0.7	6.1	2.7	7.1	0.9	69.2	3.3	27.5	0.088	0.528	25.177362	-97.961536
Santa Teresa	233.00	1	0	4498	0.2	68.1	3.3	10.6	0.6	6.2	2.9	7.1	1.0	68.3	3.3	28.4	0.086	0.530	25.268821	-97.868045
T. Izq. Valle Hermoso	254.50	1	0	5148	0.1	71.0	2.9	10.6	0.5	6.0	2.2	6.1	0.6	71.1	2.9	26.0	0.087	0.523	25.445510	-97.818935
T. Izq. Jarita	286.00	3	1	3050	0.4	80.9	2.2	6.9	0.6	4.2	1.5	2.6	0.7	81.3	2.2	16.5	0.075	0.519	25.667602	-97.600275
T. Izq. Jarita	286.00	3	2	3295	0.4	78.9	2.3	7.9	0.6	4.8	1.6	2.9	0.6	79.3	2.3	18.4	0.079	0.519	25.667652	-97.600354
Matamoros	312.00	1	1	6792	0.9	79.7	1.9	10.9	1.5	3.0	0.8	0.9	0.4	80.6	1.9	17.5	0.082	0.507	25.786546	-97.530626
Matamoros	312.00	1	2	6984	0.8	77.7	2.0	12.1	1.6	3.5	0.9	1.0	0.4	78.5	2.0	19.5	0.075	0.507	25.786587	-97.530738

7 CARR: Cd. Victoria - Soto La Marina

CLAVE: 28009

RUTA: MEX-070

AÑO: 2018

LUGAR	ESTACION				CLASIFICACION VEHICULAR EN PORCIENTO													COORDENADAS		
	KM	TE	SC	TDPA	M	A	B	C2	C3	T3S2	T3S3	T3S2R4	OTROS	A	B	C	K'	D	LATITUD	LONGITUD
Cd. Victoria	0.00	3	1	5626	4.3	80.6	1.4	9.1	1.7	1.3	0.8	0.5	0.3	84.9	1.4	13.7	0.140	0.505	23.718948	-99.091694
Cd. Victoria	0.00	3	2	5741	4.3	83.2	1.4	7.5	1.4	0.8	0.7	0.4	0.3	87.5	1.4	11.1	0.137	0.505	23.719187	-99.091720
Soto La Marina	116.80	1	0	3916	1.6	77.2	3.8	9.6	1.9	3.6	1.2	0.7	0.4	78.8	3.8	17.4	0.085	0.503	23.754726	-98.209169

8 CARR: Ciudad Victoria - Monterrey

CLAVE: 00462

RUTA: MEX-085

AÑO: 2018

LUGAR	ESTACION				CLASIFICACION VEHICULAR EN PORCIENTO													COORDENADAS		
	KM	TE	SC	TDPA	M	A	B	C2	C3	T3S2	T3S3	T3S2R4	OTROS	A	B	C	K'	D	LATITUD	LONGITUD
Cd. Victoria (Central)	0.00	3	1	7104	3.2	85.8	1.1	5.6	0.8	1.6	1.0	0.5	0.4	89.0	1.1	9.9	0.091	0.521	23.778410	-99.136570
Cd. Victoria (Lateral)	0.00	3	1	898	10.9	64.6	0.7	22.0	1.1	0.4	0.2	0.0	0.1	75.5	0.7	23.8	0.097	0.505	23.778410	-99.136458
Cd. Victoria (Central)	0.00	3	2	7731	3.3	86.5	0.9	5.1	0.8	1.7	1.0	0.4	0.3	89.8	0.9	9.3	0.086	0.521	23.778437	-99.136671
Cd. Victoria (Lateral)	0.00	3	2	850	5.3	66.4	1.0	25.6	1.2	0.3	0.1	0.0	0.1	71.7	1.0	27.3	0.088	0.505	23.778450	-99.136745
T. Der. Güemez	19.60	3	0	5235	1.3	84.5	2.5	7.9	1.4	1.5	0.3	0.5	0.1	85.8	2.5	11.7	0.097	0.506	23.915908	-99.112300
T. Izq. Santa Engracia	27.35	3	0	7213	0.5	61.2	5.2	9.8	3.1	8.2	3.0	8.1	0.9	61.7	5.2	33.1	0.087	0.505	23.991336	-99.111099
Barretal	39.00	3	0	6306	1.8	59.2	5.4	8.0	2.4	9.6	2.6	9.8	1.2	61.0	5.4	33.6	0.080	0.536	24.093050	-99.143391
T. Izq. Hidalgo y La Mesa	77.50	1	0	6136	1.8	59.5	5.4	8.0	2.6	9.1	2.6	9.7	1.3	61.3	5.4	33.3	0.087	0.537	24.249368	-99.430437
Villagrán	106.00	1	0	5246	0.6	58.0	4.9	7.4	2.4	10.2	3.7	11.4	1.4	58.6	4.9	36.5	0.100	0.509	24.463342	-99.496633
T. Izq. Villa Mainero	118.00	3	1	2684	0.8	58.6	5.1	6.8	2.3	10.3	3.6	11.5	1.0	59.4	5.1	35.5	0.123	0.506	24.581399	-99.540844

TAMAULIPAS

8 CARR: Ciudad Victoria - Monterrey

CLAVE: 00462

RUTA: MEX-085

AÑO: 2018

LUGAR	ESTACION				CLASIFICACION VEHICULAR EN PORCIENTO														COORDENADAS	
	KM	TE	SC	TDPA	M	A	B	C2	C3	T3S2	T3S3	T3S2R4	OTROS	A	B	C	K'	D	LATITUD	LONGITUD
T. Izq. Villa Mainero	118.00	3	2	2746	0.9	54.2	5.6	7.5	2.7	10.7	4.1	13.2	1.1	55.1	5.6	39.3	0.112	0.506	24.581522	-99.540879
Lim. Edos. Term. Tamps. Ppia. N. L.	126.20																			
Linares	154.00	1	0	7159	1.2	63.9	3.6	5.9	2.2	9.1	2.9	10.0	1.2	65.1	3.6	31.3	0.079	0.509	24.829213	-99.556756
La Laja	171.00	3	1	6561	1.3	66.4	4.1	9.3	1.7	7.0	2.4	7.0	0.8	67.7	4.1	28.2	0.085	0.502	24.917141	-99.686470
La Laja	171.00	3	2	6506	0.9	65.2	4.0	8.8	2.3	7.8	2.3	7.8	0.9	66.1	4.0	29.9	0.073	0.502	24.917126	-99.686570
Montemorelos	205.00	3	1	9830	1.3	76.4	2.4	9.0	1.4	4.1	1.7	3.0	0.7	77.7	2.4	19.9	0.101	0.502	25.204166	-99.910717
Montemorelos	205.00	3	2	9922	0.9	77.4	2.3	8.3	1.5	4.0	1.5	3.4	0.7	78.3	2.3	19.4	0.097	0.502	25.204060	-99.910807
Allende	227.45	3	1	15571	0.6	86.7	1.4	5.2	1.2	2.3	1.0	1.0	0.6	87.3	1.4	11.3	0.089	0.504	25.291111	-100.045471
Allende	227.45	3	2	15800	0.7	84.5	1.5	5.8	1.5	2.8	0.9	2.1	0.2	85.2	1.5	13.3	0.082	0.504	25.290948	-100.045547
El Cercado	249.00	1	1	27721	0.3	91.9	1.0	3.5	0.7	1.2	0.4	0.9	0.1	92.2	1.0	6.8	0.121	0.528	25.351225	-100.088956
El Cercado	249.00	1	2	24822	0.3	91.2	1.0	4.1	0.7	1.3	0.4	0.9	0.1	91.5	1.0	7.5	0.107	0.528	25.351134	-100.089169
T. Der. Las Huertas	257.00	3	1	27248	0.7	88.1	0.8	6.0	0.9	1.7	0.8	0.7	0.3	88.8	0.8	10.4	0.133	0.505	25.467779	-100.173934
T. Der. Las Huertas	257.00	3	2	27766	0.7	87.2	0.9	6.5	0.9	1.8	0.9	0.8	0.3	87.9	0.9	11.2	0.114	0.505	25.467690	-100.174126
T. Izq. el Barro	266.00	3	1	31591	0.5	89.3	0.8	5.5	0.6	1.5	0.9	0.5	0.4	89.8	0.8	9.4	0.118	0.508	25.530534	-100.212806
T. Izq. el Barro	266.00	3	2	32678	0.5	88.3	0.9	6.3	0.8	1.4	0.8	0.7	0.3	88.8	0.9	10.3	0.111	0.508	25.530407	-100.212946
La Estanzuela	274.82	3	1	62103	0.3	88.1	0.5	6.3	0.5	1.4	1.8	0.5	0.6	88.4	0.5	11.1	0.079	0.513	25.589267	-100.259136
La Estanzuela	274.82	3	2	65419	0.4	87.6	0.5	6.4	0.6	1.5	1.9	0.5	0.6	88.0	0.5	11.5	0.066	0.513	25.589185	-100.259291
Monterrey (Baja)	287.00	1	1	21512	0.9	88.2	0.4	4.4	0.1	1.9	3.4	0.3	0.4	89.1	0.4	10.5	0.079	0.505	25.602317	-100.266211
Monterrey (Alta)	287.00	1	1	48008	0.4	91.6	0.3	3.0	0.5	1.6	1.7	0.6	0.3	92.0	0.3	7.7	0.067	0.532	25.602278	-100.266367
Monterrey (Baja)	287.00	1	2	21057	0.7	87.4	0.4	4.9	0.1	2.2	3.6	0.3	0.4	88.1	0.4	11.5	0.074	0.505	25.601269	-100.266115
Monterrey (Alta)	287.00	1	2	51124	0.3	93.2	0.4	2.1	0.5	1.1	1.7	0.5	0.2	93.5	0.4	6.1	0.081	0.532	25.601326	-100.266031

9 CARR: Corredor Internacional Reynosa

CLAVE:

RUTA: MEX

AÑO: 2018

LUGAR	ESTACION				CLASIFICACION VEHICULAR EN PORCIENTO														COORDENADAS	
	KM	TE	SC	TDPA	M	A	B	C2	C3	T3S2	T3S3	T3S2R4	OTROS	A	B	C	K'	D	LATITUD	LONGITUD
T. C. Matamoros - Reynosa	0.00	3	0	1068	1.4	55.6	0.3	4.8	3.0	25.6	1.4	6.7	1.2	57.0	0.3	42.7	0.095	0.505	25.990064	-98.206431
T. Libramiento de Reynosa Sur II	7.48																			

10 CARR: Ent. Tula - Cd. Victoria

CLAVE: 00179

RUTA: MEX-101

AÑO: 2018

LUGAR	ESTACION				CLASIFICACION VEHICULAR EN PORCIENTO														COORDENADAS	
	KM	TE	SC	TDPA	M	A	B	C2	C3	T3S2	T3S3	T3S2R4	OTROS	A	B	C	K'	D	LATITUD	LONGITUD
T. C. Antigua Morelos - El Huizache	0.00	3	0	3602	1.8	40.7	3.6	6.8	3.0	20.5	5.2	17.9	0.5	42.5	3.6	53.9	0.061	0.514	22.738165	-99.967861
Lim. Edos. Term. S. L. P. Ppia. Tamps.	2.40																			

TAMAULIPAS

10 CARR: Ent. Tula - Cd. Victoria

CLAVE: 00179

RUTA: MEX-101

AÑO: 2018

LUGAR	ESTACION				CLASIFICACION VEHICULAR EN PORCIENTO													COORDENADAS		
	KM	TE	SC	TDPA	M	A	B	C2	C3	T3S2	T3S3	T3S2R4	OTROS	A	B	C	K'	D	LATITUD	LONGITUD
T. Der. Tula (1º Acceso)	38.00	1	0	4072	1.4	42.9	4.1	11.3	3.0	18.4	4.7	13.1	1.1	44.3	4.1	51.6	0.069	0.502	22.979900	-99.737500
T. Der. Tula (2º Acceso)	41.95	3	0	3788	1.2	43.7	4.6	11.8	2.8	17.2	5.1	12.6	1.0	44.9	4.6	50.5	0.069	0.516	23.020600	-99.714400
Jaumave	112.68	1	0	5777	2.1	55.8	2.5	7.6	2.1	15.8	3.3	9.7	1.1	57.9	2.5	39.6	0.075	0.501	23.393517	-99.416131
Jaumave	112.68	3	0	5407	2.1	55.7	2.6	7.6	2.1	15.5	3.3	10.1	1.0	57.8	2.6	39.6	0.073	0.507	23.420647	-99.373222
Cd. Victoria	180.00	1	1	3514	14.9	78.7	0.1	5.9	0.3	0.1	0.0	0.0	0.0	93.6	0.1	6.3	0.116	0.523	23.710709	-99.176304
Cd. Victoria	180.00	1	2	3203	13.6	76.7	0.1	9.2	0.3	0.1	0.0	0.0	0.0	90.3	0.1	9.6	0.079	0.523	23.710803	-99.176356

11 CARR: Estación Manuel - T. C. (Cd. Victoria - Soto La Marina)

CLAVE: 28294

RUTA: MEX-180

AÑO: 2018

LUGAR	ESTACION				CLASIFICACION VEHICULAR EN PORCIENTO													COORDENADAS		
	KM	TE	SC	TDPA	M	A	B	C2	C3	T3S2	T3S3	T3S2R4	OTROS	A	B	C	K'	D	LATITUD	LONGITUD
Estación Manuel	0.00	3	0	3256	0.5	74.2	4.8	12.7	2.8	3.9	0.4	0.5	0.2	74.7	4.8	20.5	0.074	0.505	22.761361	-98.310065
T. Der. Aldama	36.00	3	0	3094	3.1	73.9	3.9	12.4	1.0	3.9	1.0	0.6	0.2	77.0	3.9	19.1	0.093	0.517	22.936457	-98.077543
Esperanza	69.00	3	0	1621	2.7	71.0	4.2	13.5	2.3	4.9	0.7	0.6	0.1	73.7	4.2	22.1	0.086	0.501	23.182203	-97.952773
San José de Las Rusias	116.25	3	0	1404	3.2	66.6	5.8	15.4	2.0	4.5	1.8	0.5	0.2	69.8	5.8	24.4	0.101	0.506	23.562707	-98.043265
T. C. (Cd. Victoria - S. La Marina)	145.00	1	0	1957	1.7	78.5	2.6	9.1	1.6	4.1	1.2	0.8	0.4	80.2	2.6	17.2	0.084	0.503	23.726607	-98.218480

12 CARR: González - Llera de Canales

CLAVE: 28578

RUTA: MEX-081

AÑO: 2018

LUGAR	ESTACION				CLASIFICACION VEHICULAR EN PORCIENTO													COORDENADAS		
	KM	TE	SC	TDPA	M	A	B	C2	C3	T3S2	T3S3	T3S2R4	OTROS	A	B	C	K'	D	LATITUD	LONGITUD
González	0.00	3	0	4759	1.1	43.8	3.8	7.1	4.4	16.4	5.7	16.7	1.0	44.9	3.8	51.3	0.072	0.511	22.846757	-98.453940
Estación Ignacio Zaragoza	58.50	1	0	5308	0.5	44.0	5.1	7.0	3.5	16.4	5.1	17.3	1.1	44.5	5.1	50.4	0.071	0.505	23.183659	-98.771712
T. C. Cd. Valles - Cd. Victoria	89.00	1	0	1963	1.6	89.4	0.5	6.8	0.6	0.9	0.1	0.0	0.1	91.0	0.5	8.5	0.093	0.506	23.316236	-98.992186

13 CARR: Ignacio Zaragoza - T. C. (Ciudad Victoria - Monterrey)

CLAVE: 28625

RUTA: MEX-083

AÑO: 2018

LUGAR	ESTACION				CLASIFICACION VEHICULAR EN PORCIENTO													COORDENADAS		
	KM	TE	SC	TDPA	M	A	B	C2	C3	T3S2	T3S3	T3S2R4	OTROS	A	B	C	K'	D	LATITUD	LONGITUD
T. C. González - Llera de Canales	0.00	3	0	4877	0.8	49.6	3.4	5.2	4.0	13.5	5.9	16.6	1.0	50.4	3.4	46.2	0.071	0.509	23.206379	-98.786577
T. C. Ciudad Victoria - Monterrey	94.30	1	0	3428	1.8	41.7	6.5	6.9	2.8	15.6	4.3	18.6	1.8	43.5	6.5	50.0	0.075	0.523	23.954382	-99.098325

TAMAULIPAS

14 CARR: Las Urracas - T. C. (Matamoros - Reynosa)

CLAVE: 28029

RUTA: MEX-097

AÑO: 2018

LUGAR	ESTACION				CLASIFICACION VEHICULAR EN PORCIENTO										COORDENADAS					
	KM	TE	SC	TDPA	M	A	B	C2	C3	T3S2	T3S3	T3S2R4	OTROS	A	B	C	K'	D	LATITUD	LONGITUD
T. C. Cd. Victoria - Matamoros	0.00	3	0	3800	0.4	52.5	6.1	9.6	3.7	17.9	4.5	4.2	1.1	52.9	6.1	41.0	0.088	0.516	25.075028	-98.073042
La Nutria	41.00	1	0	4142	0.4	64.7	4.0	9.1	1.0	13.6	2.2	4.0	1.0	65.1	4.0	30.9	0.084	0.500	25.383255	-98.218574
Santo Domingo	91.50	1	0	4642	0.2	64.7	4.1	10.7	1.3	12.4	2.0	3.7	0.9	64.9	4.1	31.0	0.082	0.501	25.828766	-98.259639
T. C. Matamoros - Reynosa	113.25	1	1	5111	1.9	80.7	2.6	10.1	0.7	2.1	0.9	0.7	0.3	82.6	2.6	14.8	0.080	0.503	25.978436	-98.273825
T. C. Matamoros - Reynosa	113.25	1	2	5055	1.4	80.0	3.1	10.2	0.9	2.3	1.1	0.7	0.3	81.4	3.1	15.5	0.099	0.503	25.978426	-98.273875

15 CARR: Libramiento de Reynosa

CLAVE: 28008

RUTA: MEX-REY-010

AÑO: 2018

LUGAR	ESTACION				CLASIFICACION VEHICULAR EN PORCIENTO										COORDENADAS					
	KM	TE	SC	TDPA	M	A	B	C2	C3	T3S2	T3S3	T3S2R4	OTROS	A	B	C	K'	D	LATITUD	LONGITUD
T. C. Matamoros - Reynosa	0.00	3	1	36757	0.6	85.5	0.8	6.4	1.1	2.9	1.3	0.7	0.7	86.1	0.8	13.1	0.079	0.581	26.043474	-98.296796
T. C. Matamoros - Reynosa	0.00	3	2	26457	0.7	83.3	1.0	7.6	1.2	3.2	1.5	0.8	0.7	84.0	1.0	15.0	0.085	0.581	26.043211	-98.296824
T. C. Monterrey - Reynosa	10.00	1	1	36810	0.5	88.0	0.9	5.1	0.8	2.2	1.5	0.5	0.5	88.5	0.9	10.6	0.073	0.505	26.049023	-98.353533
T. C. Monterrey - Reynosa	10.00	1	2	37575	0.6	86.5	1.0	5.9	0.8	2.4	1.8	0.5	0.5	87.1	1.0	11.9	0.073	0.505	26.048730	-98.353568

16 CARR: Libramiento de San Fernando

CLAVE:

RUTA: MEX-101-180

AÑO: 2018

LUGAR	ESTACION				CLASIFICACION VEHICULAR EN PORCIENTO										COORDENADAS					
	KM	TE	SC	TDPA	M	A	B	C2	C3	T3S2	T3S3	T3S2R4	OTROS	A	B	C	K'	D	LATITUD	LONGITUD
T. C. Cd. Victoria - Matamoros	0.00	3	0	5039	1.0	56.5	3.6	7.6	1.7	14.3	4.5	9.2	1.6	57.5	3.6	38.9	0.083	0.500	24.779939	-98.209146
X C. San Fernando - Carboneras	14.39	1	0	5091	1.0	56.5	3.6	7.9	1.7	14.0	4.5	9.2	1.6	57.5	3.6	38.9	0.080	0.500	24.824372	-98.111073
X C. San Fernando - Carboneras	14.39	3	0	5705	1.1	57.5	3.6	7.5	1.6	13.7	4.5	8.9	1.6	58.6	3.6	37.8	0.083	0.514	24.836639	-98.107907
T. C. Cd. Victoria - Matamoros	26.46	1	0	5717	1.0	56.2	3.6	8.1	1.5	14.3	4.7	9.0	1.6	57.2	3.6	39.2	0.085	0.514	24.934946	-98.108317

17 CARR: Libramiento de San Germán

CLAVE:

RUTA: MEX-101

AÑO: 2018

LUGAR	ESTACION				CLASIFICACION VEHICULAR EN PORCIENTO										COORDENADAS					
	KM	TE	SC	TDPA	M	A	B	C2	C3	T3S2	T3S3	T3S2R4	OTROS	A	B	C	K'	D	LATITUD	LONGITUD
T. C. Cd. Victoria - Matamoros Sur	0.00	3	0	4008	0.2	69.6	3.1	9.9	0.6	6.2	2.7	6.7	1.0	69.8	3.1	27.1	0.092	0.528	25.209154	-97.922178
T. C. Cd. Victoria - Matamoros Norte	4.50																			

TAMAULIPAS

18 CARR: Libramiento Estación Manuel - González

CLAVE: 28002

RUTA: MEX-081

AÑO: 2018

LUGAR	ESTACION				CLASIFICACION VEHICULAR EN PORCIENTO														COORDENADAS	
	KM	TE	SC	TDPA	M	A	B	C2	C3	T3S2	T3S3	T3S2R4	OTROS	A	B	C	K'	D	LATITUD	LONGITUD
T. C. Tampico - Cd. Mante (Sur)	0.00	3	0	5418	0.4	53.1	4.7	6.4	3.3	11.8	7.1	12.3	0.9	53.5	4.7	41.8	0.065	0.523	22.719151	-98.287897
T. C. Tampico - Cd. Mante (Norte)	24.80	1	0	5867	1.0	52.6	4.4	5.0	2.6	13.1	4.5	15.9	0.9	53.6	4.4	42.0	0.062	0.507	22.846899	-98.434188

19 CARR: Libramiento General Francisco Villa

CLAVE:

RUTA: MEX-101-180

AÑO: 2018

LUGAR	ESTACION				CLASIFICACION VEHICULAR EN PORCIENTO														COORDENADAS	
	KM	TE	SC	TDPA	M	A	B	C2	C3	T3S2	T3S3	T3S2R4	OTROS	A	B	C	K'	D	LATITUD	LONGITUD
T. C. Cd. Victoria - Matamoros (Sur)	0.00	3	0	6249	1.0	56.3	3.5	7.4	1.9	14.4	4.9	9.1	1.5	57.3	3.5	39.2	0.073	0.504	25.008492	-98.086405
T. C. Cd. Victoria - Matamoros (Norte)	6.40	1	0	6374	1.0	56.1	3.3	7.6	1.9	14.0	4.8	9.6	1.7	57.1	3.3	39.6	0.074	0.504	25.044662	-98.076635

20 CARR: Matamoros - Playa Lauro Villar

CLAVE: 28078

RUTA: MEX-002

AÑO: 2018

LUGAR	ESTACION				CLASIFICACION VEHICULAR EN PORCIENTO														COORDENADAS	
	KM	TE	SC	TDPA	M	A	B	C2	C3	T3S2	T3S3	T3S2R4	OTROS	A	B	C	K'	D	LATITUD	LONGITUD
Matamoros	0.00	3	1	12946	0.4	90.3	1.2	3.5	0.6	1.9	1.4	0.2	0.5	90.7	1.2	8.1	0.074	0.510	25.836962	-97.434662
Matamoros	0.00	3	2	12427	0.9	89.0	1.4	3.9	0.6	2.0	1.5	0.2	0.5	89.9	1.4	8.7	0.079	0.510	25.837040	-97.434641
Playa Lauro Villar	37.00																			

21 CARR: Matamoros - Reynosa

CLAVE: 28077

RUTA: MEX-002

AÑO: 2018

LUGAR	ESTACION				CLASIFICACION VEHICULAR EN PORCIENTO														COORDENADAS	
	KM	TE	SC	TDPA	M	A	B	C2	C3	T3S2	T3S3	T3S2R4	OTROS	A	B	C	K'	D	LATITUD	LONGITUD
Matamoros	0.00	3	0	13573	0.6	83.4	1.5	6.5	1.2	4.1	1.1	1.0	0.6	84.0	1.5	14.5	0.106	0.517	25.919154	-97.577233
Empalme	38.00	1	0	5377	0.4	76.4	1.1	14.6	1.2	3.5	1.2	1.4	0.2	76.8	1.1	22.1	0.082	0.501	25.923808	-97.784789
T. Der. Nuevo Progreso	57.00	1	0	3497	0.2	73.0	1.6	12.2	2.1	5.4	2.0	3.0	0.5	73.2	1.6	25.2	0.084	0.509	25.947045	-97.961099
Río Bravo	67.00	1	0	6472	0.1	72.3	1.8	13.2	2.1	5.3	1.7	3.0	0.5	72.4	1.8	25.8	0.078	0.509	25.970650	-98.040736
Río Bravo	67.00	3	1	10822	0.6	84.3	1.6	7.5	1.3	2.5	1.1	0.6	0.5	84.9	1.6	13.5	0.087	0.514	25.997582	-98.134903
Río Bravo	67.00	3	2	11462	0.7	82.5	1.8	8.7	1.5	2.6	1.1	0.6	0.5	83.2	1.8	15.0	0.087	0.514	25.997337	-98.134904
T. Izq. Aeropuerto	85.65	3	1	35586	0.6	84.9	1.4	6.8	0.9	2.6	1.8	0.5	0.5	85.5	1.4	13.1	0.080	0.512	26.021754	-98.234269
T. Izq. Aeropuerto	85.65	3	2	33965	0.6	83.2	1.5	7.9	1.0	2.8	2.0	0.5	0.5	83.8	1.5	14.7	0.095	0.512	26.021638	-98.234298
Reynosa	98.00	1	1	36851	0.6	84.8	1.4	6.8	1.0	2.7	1.7	0.5	0.5	85.4	1.4	13.2	0.068	0.509	26.035806	-98.273486
Reynosa	98.00	1	2	38234	0.6	82.7	1.5	8.0	1.1	3.0	2.1	0.5	0.5	83.3	1.5	15.2	0.086	0.509	26.035045	-98.272308

TAMAULIPAS

22 CARR: Monterrey - Mier

CLAVE: 00127

RUTA: MEX-054

AÑO: 2018

LUGAR	ESTACION				CLASIFICACION VEHICULAR EN PORCIENTO										COORDENADAS					
	KM	TE	SC	TDPA	M	A	B	C2	C3	T3S2	T3S3	T3S2R4	OTROS	A	B	C	K'	D	LATITUD	LONGITUD
Monterrey	0.00																			
Apodaca	19.12	1	1	88931	0.3	86.6	0.7	5.0	1.1	2.3	2.3	0.8	0.9	86.9	0.7	12.4	0.057	0.521	25.750573	-100.200027
Apodaca	19.12	1	2	81711	0.3	85.4	0.7	5.8	1.2	2.4	2.5	0.8	0.9	85.7	0.7	13.6	0.059	0.521	25.750635	-100.200194
X. C. Libramiento Noroeste de Monterrey	21.30	3	1	54192	0.5	85.9	0.6	6.3	1.5	2.7	1.5	0.7	0.3	86.4	0.6	13.0	0.065	0.507	25.784633	-100.159983
X. C. Libramiento Noroeste de Monterrey	21.30	3	2	52625	0.7	83.6	0.8	7.2	1.8	3.2	1.6	0.8	0.3	84.3	0.8	14.9	0.067	0.507	25.784781	-100.160051
X. C. Zacatecas - Pesquería	28.15	1	1	15841	1.1	81.9	1.0	9.5	1.6	2.0	1.5	1.0	0.4	83.0	1.0	16.0	0.065	0.503	25.799900	-100.101302
X. C. Zacatecas - Pesquería	28.15	1	2	15672	0.9	80.9	1.1	9.9	1.8	2.3	1.7	1.0	0.4	81.8	1.1	17.1	0.059	0.503	25.799943	-100.101410
X. C. Zacatecas - Pesquería	28.15	3	0	10444	1.2	74.2	1.6	11.5	2.7	4.7	1.2	2.0	0.9	75.4	1.6	23.0	0.084	0.519	25.806833	-100.092985
X. C. Hacienda Guadalupe - Higueras	38.10	1	0	7478	0.6	75.1	1.6	10.2	1.9	6.1	1.2	2.8	0.5	75.7	1.6	22.7	0.082	0.507	25.853402	-100.026460
X. C. Hacienda Guadalupe - Higueras	38.10	3	0	4689	0.9	73.6	1.0	13.3	1.3	3.6	0.7	5.2	0.4	74.5	1.0	24.5	0.084	0.511	25.854715	-100.017398
Dr. González	47.60	1	0	1575	1.0	82.2	1.4	10.5	1.5	2.1	0.4	0.7	0.2	83.2	1.4	15.4	0.097	0.515	25.850663	-99.968584
Dr. González	47.60	3	0	416	8.4	68.9	4.9	15.8	0.7	0.4	0.2	0.7	0.0	77.3	4.9	17.8	0.089	0.513	25.867018	-99.932020
T. Der. Empalme Los Ramones	74.10	1	0	2559	0.6	70.1	1.0	11.0	1.1	3.6	1.3	11.0	0.3	70.7	1.0	28.3	0.109	0.504	25.922650	-99.722154
Cerralvo	95.95	1	0	3859	0.7	68.6	0.9	11.4	1.0	3.8	1.2	12.1	0.3	69.3	0.9	29.8	0.081	0.507	26.069439	-99.626255
Gral. Treviño	115.80	3	0	1677	0.2	55.2	1.9	12.0	1.0	5.9	2.0	21.6	0.2	55.4	1.9	42.7	0.093	0.501	26.232241	-99.470318
Lim. Edos. Term. N. L. Ppia. Tamps.	131.80																			
Mier	156.21	1	0	1434	0.2	54.1	2.2	13.2	1.4	5.9	2.4	20.4	0.2	54.3	2.2	43.5	0.080	0.500	26.426325	-99.164643

23 CARR: Monterrey - Nuevo Laredo (Libre)

CLAVE: 00463

RUTA: MEX-085

AÑO: 2018

LUGAR	ESTACION				CLASIFICACION VEHICULAR EN PORCIENTO										COORDENADAS					
	KM	TE	SC	TDPA	M	A	B	C2	C3	T3S2	T3S3	T3S2R4	OTROS	A	B	C	K'	D	LATITUD	LONGITUD
Monterrey	0.00																			
T. Izq. Gral. Escobedo (Central)	12.10	3	1	37679	0.8	86.3	0.6	3.8	0.6	2.7	3.8	0.4	1.0	87.1	0.6	12.3	0.061	0.511	25.795858	-100.279275
T. Izq. Gral. Escobedo (Lateral)	12.10	3	1	10589	1.1	77.6	0.9	17.2	0.9	1.0	1.0	0.1	0.2	78.7	0.9	20.4	0.088	0.541	25.795835	-100.279152
T. Izq. Gral. Escobedo (Central)	12.10	3	2	39398	0.8	84.9	0.7	4.4	0.8	3.0	3.8	0.6	1.0	85.7	0.7	13.6	0.057	0.511	25.795896	-100.279352
T. Izq. Gral. Escobedo (Lateral)	12.10	3	2	12266	1.2	76.6	1.0	17.7	1.1	1.1	1.0	0.1	0.2	77.8	1.0	21.2	0.076	0.541	25.795934	-100.279483
X. C. Libramiento Noroeste de Monterrey (Central)	16.00	1	1	32342	0.9	83.5	0.7	4.4	0.8	3.5	4.5	0.7	1.0	84.4	0.7	14.9	0.064	0.504	25.824203	-100.262415
X. C. Libramiento Noroeste de Monterrey (Lateral)	16.00	1	1	6914	1.4	72.1	0.8	20.5	1.7	2.3	0.7	0.3	0.2	73.5	0.8	25.7	0.070	0.500	25.824139	-100.262338
X. C. Libramiento Noroeste de Monterrey (Lateral)	16.00	1	2	6919	1.3	67.7	1.0	23.8	1.7	3.2	0.8	0.3	0.2	69.0	1.0	30.0	0.072	0.500	25.824290	-100.262618
X. C. Libramiento Noroeste de Monterrey (Central)	16.00	1	2	30417	0.9	84.1	0.7	4.6	0.9	3.2	4.1	0.7	0.8	85.0	0.7	14.3	0.066	0.504	25.824236	-100.262558
X. C. Libramiento Noroeste de Monterrey	16.00	3	1	42577	2.4	68.0	1.9	7.6	3.2	10.9	3.1	1.9	1.0	70.4	1.9	27.7	0.071	0.502	25.835768	-100.254320
X. C. Libramiento Noroeste de Monterrey	16.00	3	2	42259	2.3	66.2	2.1	8.0	3.5	11.3	3.5	2.0	1.1	68.5	2.1	29.4	0.072	0.502	25.834908	-100.255074
X. C. Santa Rosa - Salinas Victoria	20.19	3	1	35136	2.5	71.8	1.8	7.0	2.7	9.4	2.3	1.8	0.7	74.3	1.8	23.9	0.088	0.503	25.857818	-100.238848
X. C. Santa Rosa - Salinas Victoria	20.19	3	2	34743	2.4	69.6	2.0	7.8	3.0	10.2	2.4	1.8	0.8	72.0	2.0	26.0	0.088	0.503	25.857916	-100.239006

TAMAULIPAS

23 CARR: Monterrey - Nuevo Laredo (Libre)

CLAVE: 00463

RUTA: MEX-085

AÑO: 2018

LUGAR	ESTACION				CLASIFICACION VEHICULAR EN PORCIENTO													COORDENADAS		
	KM	TE	SC	TDPA	M	A	B	C2	C3	T3S2	T3S3	T3S2R4	OTROS	A	B	C	K'	D	LATITUD	LONGITUD
Ciénega de Flores	32.00	1	0	21702	1.7	72.1	1.0	11.5	1.3	10.6	0.7	0.5	0.6	73.8	1.0	25.2	0.076	0.508	25.943949	-100.176859
T. Der. Agualeguas	78.23	3	0	7521	1.0	46.5	2.3	14.4	2.3	29.7	1.3	1.5	1.0	47.5	2.3	50.2	0.064	0.510	26.333144	-100.110815
Sabinas Hidalgo	98.90	3	0	6044	0.8	47.4	2.6	14.1	2.1	29.4	1.1	1.7	0.8	48.2	2.6	49.2	0.061	0.501	26.534394	-100.148587
Vallecillos	124.40	3	0	5311	0.9	39.2	2.6	15.1	2.9	34.6	1.5	2.0	1.2	40.1	2.6	57.3	0.061	0.500	26.661450	-99.983033
T. Izq. Anáhuac	156.80	1	0	4293	0.8	26.3	2.9	10.5	3.5	49.9	2.8	2.7	0.6	27.1	2.9	70.0	0.059	0.508	26.874870	-99.832473
T. Izq. Anáhuac	156.80	3	1	7727	0.3	39.1	4.0	8.2	2.5	41.9	1.7	1.5	0.8	39.4	4.0	56.6	0.065	0.502	26.897267	-99.813000
T. Izq. Anáhuac	156.80	3	2	7776	0.2	32.8	4.2	8.7	2.7	47.0	1.8	1.7	0.9	33.0	4.2	62.8	0.068	0.502	26.893458	-99.815861
Lim. Edos. Term. N. L. Ppia. Tamps.	184.56																			
T. Der. Mier	205.90	1	1	8947	1.1	41.0	3.7	11.1	3.0	35.9	1.4	1.8	1.0	42.1	3.7	54.2	0.061	0.517	27.289398	-99.604601
T. Der. Mier	205.90	1	2	9595	1.1	43.8	3.3	11.1	3.2	33.4	1.4	1.7	1.0	44.9	3.3	51.8	0.063	0.517	27.291968	-99.603337
T. Der. Mier	205.90	3	1	9646	0.6	44.5	3.1	9.6	5.8	32.4	1.4	1.2	1.4	45.1	3.1	51.8	0.070	0.526	27.308056	-99.594628
T. Der. Mier	205.90	3	2	8683	0.3	42.7	3.1	9.7	6.2	34.0	1.4	1.2	1.4	43.0	3.1	53.9	0.075	0.526	27.308105	-99.594750
Nuevo Laredo	228.00	1	1	13072	0.6	65.0	2.3	8.8	3.2	15.6	1.4	1.3	1.8	65.6	2.3	32.1	0.070	0.504	27.388217	-99.551733
Nuevo Laredo	228.00	1	2	13273	0.6	67.4	2.2	8.7	2.8	13.4	1.8	0.9	2.2	68.0	2.2	29.8	0.060	0.504	27.388283	-99.551871

24 CARR: Monterrey - Reynosa (Libre)

CLAVE: 00088

RUTA: MEX-040

AÑO: 2018

LUGAR	ESTACION				CLASIFICACION VEHICULAR EN PORCIENTO													COORDENADAS		
	KM	TE	SC	TDPA	M	A	B	C2	C3	T3S2	T3S3	T3S2R4	OTROS	A	B	C	K'	D	LATITUD	LONGITUD
T. C. Monterrey - Mier	0.00																			
Villa Juárez	19.10	1	1	27465	2.1	87.4	0.3	7.0	0.6	0.8	1.3	0.2	0.3	89.5	0.3	10.2	0.069	0.506	25.652055	-100.108607
Villa Juárez	19.10	1	2	28166	1.6	86.7	0.3	8.0	0.7	0.8	1.4	0.2	0.3	88.3	0.3	11.4	0.073	0.506	25.652166	-100.108562
Villa Juárez	19.10	3	1	13880	1.8	84.8	0.8	7.8	1.1	1.4	1.8	0.2	0.3	86.6	0.8	12.6	0.095	0.504	25.638729	-100.086464
Villa Juárez	19.10	3	2	13666	1.5	84.0	0.9	8.4	1.2	1.5	2.0	0.2	0.3	85.5	0.9	13.6	0.108	0.504	25.638797	-100.086401
Puente Cadereyta	30.50	2	1	2281	1.1	70.9	0.4	4.9	3.7	11.2	2.1	4.9	0.8	72.0	0.4	27.6	0.091	0.500	25.601114	-100.005696
Puente Cadereyta	30.50	2	2	2281	1.1	70.9	0.4	4.9	3.7	11.2	2.1	4.9	0.8	72.0	0.4	27.6	0.091	0.500	25.601114	-100.005696
Refinería de Cadereyta	33.00	3	0	6392	0.7	74.8	1.0	11.4	1.7	7.2	2.0	0.7	0.5	75.5	1.0	23.5	0.081	0.510	25.593751	-99.919150
T. Izq. Los Ramones	68.78	3	0	3241	0.1	65.6	2.1	15.9	1.5	11.3	2.5	0.6	0.4	65.7	2.1	32.2	0.082	0.526	25.620644	-99.625755
Gral. Bravo	125.00	1	0	5436	0.4	75.1	1.1	11.1	1.3	7.2	1.8	1.2	0.8	75.5	1.1	23.4	0.077	0.516	25.776445	-99.189283
Lim. Edos. Term. N. L. Ppia. Tamps.	192.00																			
T. Izq. Díaz Ordáz	192.55	1	1	4741	0.2	66.0	3.2	8.2	1.7	13.6	3.1	2.8	1.2	66.2	3.2	30.6	0.097	0.506	25.970361	-98.586535
T. Izq. Díaz Ordáz	192.55	1	2	4854	0.5	62.2	3.5	8.9	2.0	14.9	3.4	3.3	1.3	62.7	3.5	33.8	0.097	0.506	25.970822	-98.586758
Reynosa	225.00	1	1	21898	0.7	83.3	1.8	7.9	1.2	3.3	0.7	0.9	0.2	84.0	1.8	14.2	0.075	0.549	26.042280	-98.401800
Reynosa	225.00	1	2	17957	0.4	82.9	1.8	8.3	1.2	3.5	0.7	1.0	0.2	83.3	1.8	14.9	0.091	0.549	26.042566	-98.401963

TAMAULIPAS

25 CARR: Paras - Nueva Ciudad Guerrero

CLAVE: 00476

RUTA: MEX-030

AÑO: 2018

LUGAR	ESTACION				CLASIFICACION VEHICULAR EN PORCIENTO													COORDENADAS		
	KM	TE	SC	TDPA	M	A	B	C2	C3	T3S2	T3S3	T3S2R4	OTROS	A	B	C	K'	D	LATITUD	LONGITUD
Paras	0.00	3	0	404	0.4	75.3	0.5	16.8	0.6	1.1	0.9	4.4	0.0	75.7	0.5	23.8	0.092	0.503	26.502027	-99.516124
Lim. Edos. Term. N. L. Ppia. Tamps.	13.10																			
T. C. Reynosa - (T. C. Monterrey - Nuevo Laredo)	32.00	1	0	258	0.0	76.4	0.9	15.6	0.4	1.2	1.1	4.3	0.1	76.4	0.9	22.7	0.116	0.509	26.556661	-99.243491

26 CARR: Petrocel - Puerto Industrial Altamira

CLAVE:

RUTA: MEX-080

AÑO: 2018

LUGAR	ESTACION				CLASIFICACION VEHICULAR EN PORCIENTO													COORDENADAS		
	KM	TE	SC	TDPA	M	A	B	C2	C3	T3S2	T3S3	T3S2R4	OTROS	A	B	C	K'	D	LATITUD	LONGITUD
Petrocel	0.00	3	1	12810	1.4	91.1	0.6	4.1	0.6	0.9	0.8	0.3	0.2	92.5	0.6	6.9	0.068	0.520	22.384545	-97.897910
Petrocel	0.00	3	2	11808	1.4	90.4	0.7	4.6	0.6	1.0	0.8	0.3	0.2	91.8	0.7	7.5	0.068	0.520	22.384634	-97.898040
T. Izq. Altamira	3.80	3	1	8594	1.0	91.6	0.5	3.8	0.5	1.0	0.8	0.5	0.3	92.6	0.5	6.9	0.068	0.501	22.415280	-97.886236
T. Izq. Altamira	3.80	3	2	8622	1.3	91.1	0.5	3.9	0.5	1.1	0.8	0.5	0.3	92.4	0.5	7.1	0.066	0.501	22.415302	-97.886350
Puerto Industrial Altamira	10.60																			

27 CARR: Piedras Negras - Nuevo Laredo

CLAVE: 00503

RUTA: MEX-002

AÑO: 2018

LUGAR	ESTACION				CLASIFICACION VEHICULAR EN PORCIENTO													COORDENADAS		
	KM	TE	SC	TDPA	M	A	B	C2	C3	T3S2	T3S3	T3S2R4	OTROS	A	B	C	K'	D	LATITUD	LONGITUD
T. C. Monclova - Piedras Negras	0.00	3	1	4456	1.3	69.8	1.0	14.8	2.9	7.6	1.1	0.8	0.7	71.1	1.0	27.9	0.080	0.503	28.635136	-100.549136
T. C. Monclova - Piedras Negras	0.00	3	2	4508	1.4	66.4	1.2	16.7	3.3	8.5	1.1	0.8	0.6	67.8	1.2	31.0	0.083	0.503	28.635199	-100.549037
El Saucito	16.90	3	0	1495	1.2	58.0	2.9	18.6	3.3	9.6	0.7	5.2	0.5	59.2	2.9	37.9	0.083	0.508	28.501889	-100.467250
T. Der. Villa Unión	37.00	1	0	1197	1.2	66.9	3.7	7.0	3.7	10.0	0.7	6.1	0.7	68.1	3.7	28.2	0.084	0.506	28.339797	-100.390596
T. Der. Villa Unión	37.00	3	0	1076	0.4	56.0	3.3	15.7	2.9	12.7	1.3	7.3	0.4	56.4	3.3	40.3	0.086	0.512	28.335479	-100.389282
Guerrero	42.00	3	0	974	0.2	58.7	3.4	14.6	3.2	13.1	1.1	5.5	0.2	58.9	3.4	37.7	0.086	0.514	28.308012	-100.366749
Lim. Edos. Term. Coah. Ppia. N. L.	124.40																			
T. C. Monclova - Colombia	134.00	3	0	2832	1.1	62.8	1.4	15.4	3.0	12.2	1.3	2.4	0.4	63.9	1.4	34.7	0.089	0.505	27.687979	-99.777207
Lim. Edos. Term. N. L. Ppia. Tamps.	138.20																			
T. Der. Libramiento de Nuevo Laredo	157.70	1	1	4735	0.8	49.8	1.1	7.5	11.1	26.3	1.4	1.1	0.9	50.6	1.1	48.3	0.090	0.516	27.571789	-99.597277
T. Der. Libramiento de Nuevo Laredo	157.70	1	2	4444	1.1	44.7	1.2	8.6	13.1	27.7	1.5	1.2	0.9	45.8	1.2	53.0	0.085	0.516	27.571904	-99.597272
Nuevo Laredo	175.00	1	1	8205	0.8	54.4	1.8	12.7	8.2	18.8	1.9	0.7	0.7	55.2	1.8	43.0	0.096	0.530	27.544489	-99.576750
Nuevo Laredo	175.00	1	2	9254	1.0	49.1	1.9	14.7	9.2	20.3	2.1	0.8	0.9	50.1	1.9	48.0	0.083	0.530	27.544691	-99.576636

TAMAULIPAS

28 CARR: Ramal a Puente Tampico

CLAVE: 28020

RUTA: MEX-180

AÑO: 2018

LUGAR	ESTACION				CLASIFICACION VEHICULAR EN PORCIENTO													COORDENADAS		
	KM	TE	SC	TDPA	M	A	B	C2	C3	T3S2	T3S3	T3S2R4	OTROS	A	B	C	K'	D	LATITUD	LONGITUD
T. C. Tuxpam - Tampico	186.00	3	1	4617	2.0	74.1	3.9	6.3	2.2	5.8	2.5	2.8	0.4	76.1	3.9	20.0	0.066	0.502	22.195955	-97.825042
T. C. Tuxpam - Tampico	186.00	3	2	4583	2.3	71.6	4.5	6.5	2.5	6.1	2.9	3.2	0.4	73.9	4.5	21.6	0.076	0.502	22.195920	-97.825170
Lim. Edos. Term. Ver. Ppia. Tamps.	193.12																			
Puente Tampico	193.12	1	1	5325	0.8	83.4	4.6	8.0	1.1	0.7	0.5	0.6	0.3	84.2	4.6	11.2	0.097	0.510	22.221631	-97.827058
Puente Tampico	193.12	1	2	5111	0.5	86.3	3.0	7.2	1.0	1.1	0.4	0.3	0.2	86.8	3.0	10.2	0.105	0.510	22.221564	-97.827109
Tampico	194.36																			

29 CARR: Ramal de Acceso a Puente Anzaldúas

CLAVE: 28619

RUTA: MEX

AÑO: 2018

LUGAR	ESTACION				CLASIFICACION VEHICULAR EN PORCIENTO													COORDENADAS		
	KM	TE	SC	TDPA	M	A	B	C2	C3	T3S2	T3S3	T3S2R4	OTROS	A	B	C	K'	D	LATITUD	LONGITUD
T. C. Monterrey - Reynosa	0.00	3	1	7167	0.8	84.8	0.9	7.6	1.5	1.8	0.9	1.2	0.5	85.6	0.9	13.5	0.087	0.509	26.060226	-98.372573
T. C. Monterrey - Reynosa	0.00	3	2	6915	0.8	83.9	1.0	7.8	1.5	2.1	1.0	1.3	0.6	84.7	1.0	14.3	0.092	0.509	26.060218	-98.372658
Puente Anzaldúas	6.20																			

30 CARR: Ramal de Acceso al Puente Internacional Laredo III

CLAVE:

RUTA: MEX

AÑO: 2018

LUGAR	ESTACION				CLASIFICACION VEHICULAR EN PORCIENTO													COORDENADAS		
	KM	TE	SC	TDPA	M	A	B	C2	C3	T3S2	T3S3	T3S2R4	OTROS	A	B	C	K'	D	LATITUD	LONGITUD
T. C. Piedras Negras - Nuevo Laredo	0.00																			
Caseta de Cobro Puente Internacional Nuevo Laredo III	5.20	2	0	4930	0.0	3.7	0.0	8.5	16.8	70.5	0.1	0.0	0.4	3.7	0.0	96.3	0.090	0.500	27.595078	-99.541522

31 CARR: Reynosa - Nuevo Laredo

CLAVE: 28076

RUTA: MEX-002

AÑO: 2018

LUGAR	ESTACION				CLASIFICACION VEHICULAR EN PORCIENTO													COORDENADAS		
	KM	TE	SC	TDPA	M	A	B	C2	C3	T3S2	T3S3	T3S2R4	OTROS	A	B	C	K'	D	LATITUD	LONGITUD
Reynosa	0.00	3	1	4439	0.6	81.5	2.9	9.9	1.0	1.6	0.6	1.8	0.1	82.1	2.9	15.0	0.073	0.506	26.152125	-98.366663
Reynosa	0.00	3	2	4337	0.6	79.8	3.0	10.9	1.0	1.7	0.8	2.1	0.1	80.4	3.0	16.6	0.075	0.506	26.152124	-98.366660
X. C. Los Dos Estados - Gustavo Díaz Ordáz	35.68	3	0	6216	0.2	81.9	1.0	9.0	0.8	3.0	0.7	3.1	0.3	82.1	1.0	16.9	0.071	0.503	26.213073	-98.596952
Cd. Camargo	63.40	3	0	4567	0.2	75.8	1.1	12.6	1.2	4.1	0.8	3.9	0.3	76.0	1.1	22.9	0.076	0.504	26.333385	-98.850530
Los Guerra	92.77	3	0	3195	0.3	70.0	1.8	15.3	1.5	4.6	1.3	4.9	0.3	70.3	1.8	27.9	0.088	0.501	26.392769	-99.101886
Mier	102.35	3	0	739	0.3	62.7	2.8	17.5	3.3	7.0	2.3	4.1	0.0	63.0	2.8	34.2	0.107	0.508	26.451857	-99.152921
T. Der. Nueva Cd. Guerrero (2º Acceso)	122.67	3	0	769	0.1	57.4	1.7	25.0	2.7	6.8	1.9	4.4	0.0	57.5	1.7	40.8	0.101	0.501	26.557718	-99.243925
T. C. Monterrey - Nuevo Laredo	221.08	1	0	646	0.0	54.3	2.4	26.3	3.9	7.8	1.3	3.7	0.3	54.3	2.4	43.3	0.090	0.519	27.299289	-99.590012

TAMAULIPAS

32 CARR: Soto La Marina - La Coma

CLAVE: 28052

RUTA: MEX-180

AÑO: 2018

LUGAR	ESTACION				CLASIFICACION VEHICULAR EN PORCIENTO													COORDENADAS		
	KM	TE	SC	TDPA	M	A	B	C2	C3	T3S2	T3S3	T3S2R4	OTROS	A	B	C	K'	D	LATITUD	LONGITUD
Soto La Marina	0.00	3	0	2507	1.9	73.2	4.2	12.3	1.4	4.7	1.2	0.9	0.2	75.1	4.2	20.7	0.095	0.536	23.783510	-98.196663
La Coma	86.00	1	0	725	0.0	56.0	17.0	9.8	3.3	9.0	2.9	2.0	0.0	56.0	17.0	27.0	0.098	0.524	24.464423	-98.339906

33 CARR: Tampico - Cd. Mante

CLAVE: 28163

RUTA: MEX-080

AÑO: 2018

LUGAR	ESTACION				CLASIFICACION VEHICULAR EN PORCIENTO													COORDENADAS		
	KM	TE	SC	TDPA	M	A	B	C2	C3	T3S2	T3S3	T3S2R4	OTROS	A	B	C	K'	D	LATITUD	LONGITUD
Tampico	0.00																			
T. Der. Cyanaquim	14.79	1	1	37470	1.7	85.3	0.6	5.1	1.0	2.2	2.3	0.9	0.9	87.0	0.6	12.4	0.059	0.518	22.352861	-97.885370
T. Der. Cyanaquim	14.79	1	2	34915	1.1	84.0	0.7	5.9	1.2	2.5	2.7	1.0	0.9	85.1	0.7	14.2	0.067	0.518	22.352740	-97.885527
Altamira	24.00	1	1	28609	2.4	86.7	0.7	5.4	1.0	1.3	1.2	1.0	0.3	89.1	0.7	10.2	0.062	0.511	22.386106	-97.918003
Altamira	24.00	1	2	27346	2.7	85.6	0.8	5.7	1.2	1.3	1.3	1.1	0.3	88.3	0.8	10.9	0.057	0.511	22.385967	-97.918130
Altamira	24.00	3	1	10479	3.2	78.3	1.9	6.6	1.7	3.2	2.1	2.2	0.8	81.5	1.9	16.6	0.086	0.506	22.420712	-97.943685
Altamira	24.00	3	2	10229	2.7	76.8	2.0	7.1	2.0	3.8	2.3	2.4	0.9	79.5	2.0	18.5	0.076	0.506	22.420618	-97.943821
T. Der. Lomas del Real	33.00	3	1	7304	1.2	70.6	2.8	7.4	2.3	5.4	2.8	6.8	0.7	71.8	2.8	25.4	0.075	0.512	22.477105	-98.003625
T. Der. Lomas del Real	33.00	3	2	7671	1.1	68.5	3.0	7.9	2.3	6.1	3.1	7.1	0.9	69.6	3.0	27.4	0.073	0.512	22.476960	-98.003713
Cuauhtémoc	55.80	3	1	4149	0.6	54.3	4.7	6.3	3.5	11.2	4.6	14.0	0.8	54.9	4.7	40.4	0.069	0.504	22.560052	-98.156118
Cuauhtémoc	55.80	3	2	4208	0.4	50.3	5.4	6.6	3.7	13.2	5.4	14.2	0.8	50.7	5.4	43.9	0.070	0.504	22.559965	-98.156206
Estación Manuel	78.12	1	1	3922	1.1	53.0	4.7	9.6	3.0	11.5	4.6	11.7	0.8	54.1	4.7	41.2	0.072	0.502	22.699266	-98.280496
Estación Manuel	78.12	1	2	3953	0.4	49.3	5.4	9.8	3.1	12.6	5.5	13.1	0.8	49.7	5.4	44.9	0.073	0.502	22.699196	-98.280572
González	96.00	3	0	2106	0.5	66.2	3.4	13.2	2.8	3.7	3.6	5.6	1.0	66.7	3.4	29.9	0.082	0.504	22.821631	-98.451413
Magiscatzin	122.50	3	0	1807	1.5	62.2	5.0	11.7	3.8	5.1	4.6	5.4	0.7	63.7	5.0	31.3	0.080	0.508	22.785828	-98.724939
Faja de Oro	143.00	3	0	2462	3.0	65.0	3.2	12.1	3.0	4.1	2.9	5.9	0.8	68.0	3.2	28.8	0.074	0.508	22.723546	-98.871473
T. C. Cd. Valles - Cd. Victoria	155.00	1	0	3274	1.4	80.5	1.4	8.0	1.7	3.1	1.0	2.5	0.4	81.9	1.4	16.7	0.093	0.534	22.724289	-98.948821

34 CARR: Túxpam - Tampico

CLAVE: 00529

RUTA: MEX-180

AÑO: 2018

LUGAR	ESTACION				CLASIFICACION VEHICULAR EN PORCIENTO													COORDENADAS		
	KM	TE	SC	TDPA	M	A	B	C2	C3	T3S2	T3S3	T3S2R4	OTROS	A	B	C	K'	D	LATITUD	LONGITUD
Túxpam	0.00	3	0	6953	4.6	78.4	3.6	9.7	0.6	1.8	0.5	0.5	0.3	83.0	3.6	13.4	0.072	0.505	20.957800	-97.470450
T. Izq. La Lajuela	28.70	1	0	3419	1.5	79.4	3.9	11.0	0.9	1.8	0.6	0.6	0.3	80.9	3.9	15.2	0.091	0.504	21.046300	-97.610150
T. Izq. Tempoal de Sánchez	45.20	1	0	6459	3.6	79.6	2.2	9.7	0.4	3.2	0.5	0.4	0.4	83.2	2.2	14.6	0.071	0.501	21.089948	-97.730690
T. Izq. Tempoal de Sánchez	45.20	3	0	7682	2.2	66.2	4.4	8.0	2.8	8.1	2.9	4.6	0.8	68.4	4.4	27.2	0.070	0.501	21.097062	-97.731319
Cerro Azul	56.66	1	0	10088	2.6	70.5	4.0	8.0	1.5	7.7	2.7	2.8	0.2	73.1	4.0	22.9	0.058	0.504	21.174964	-97.752660
T. Der. Zacamixtle	64.50	1	0	7459	2.1	65.2	5.2	8.0	2.1	8.5	3.4	5.1	0.4	67.3	5.2	27.5	0.060	0.511	21.249446	-97.733008

TAMAULIPAS

34 CARR: Túxpam - Tampico

CLAVE: 00529

RUTA: MEX-180

AÑO: 2018

LUGAR	ESTACION				CLASIFICACION VEHICULAR EN PORCIENTO													COORDENADAS		
	KM	TE	SC	TDPA	M	A	B	C2	C3	T3S2	T3S3	T3S2R4	OTROS	A	B	C	K'	D	LATITUD	LONGITUD
T. Der. Zacamixtle	64.50	3	0	7213	1.8	64.9	5.4	8.9	2.2	7.9	3.5	4.9	0.5	66.7	5.4	27.9	0.063	0.504	21.252675	-97.734224
T. Izq. Naranjos	78.60	1	0	7718	2.1	67.2	3.1	8.6	2.4	8.0	3.1	4.5	1.0	69.3	3.1	27.6	0.066	0.511	21.334320	-97.696364
T. Izq. Naranjos	78.60	3	0	11921	6.8	69.6	1.9	5.9	1.8	7.8	2.4	2.7	1.1	76.4	1.9	21.7	0.057	0.504	21.368878	-97.684923
T. Der. El Añoño	81.50	3	0	3425	3.0	85.9	1.8	3.5	1.2	1.8	1.2	0.7	0.9	88.9	1.8	9.3	0.099	0.581	21.375983	-97.686510
T. Der. Campo Mamey	94.39	3	0	5259	2.8	57.9	7.3	10.1	3.2	8.9	3.5	4.1	2.2	60.7	7.3	32.0	0.078	0.511	21.457307	-97.763307
T. Der. Ozuluama	124.42	1	0	6465	2.9	62.6	6.8	8.1	2.5	8.9	2.9	2.7	2.6	65.5	6.8	27.7	0.065	0.514	21.671455	-97.859902
T. Der. Ozuluama	124.42	3	0	6025	2.1	62.2	5.3	5.9	4.6	9.2	3.7	6.2	0.8	64.3	5.3	30.4	0.062	0.553	21.691005	-97.844713
Tampico Alto	177.80	1	0	6790	2.9	63.8	5.8	8.3	2.6	9.0	3.0	4.2	0.4	66.7	5.8	27.5	0.067	0.508	22.105282	-97.803315
Tampico Alto	177.80	3	0	7481	3.3	67.2	4.6	7.7	2.0	7.6	2.9	4.4	0.3	70.5	4.6	24.9	0.085	0.521	22.117535	-97.804476
Villa Cuauhtémoc	186.85	1	0	7205	1.8	66.8	5.1	7.2	2.4	8.1	3.5	4.8	0.3	68.6	5.1	26.3	0.079	0.505	22.167517	-97.829505
Villa Cuauhtémoc	186.85	3	1	5642	8.2	76.2	1.2	3.1	0.7	7.2	1.1	1.1	1.2	84.4	1.2	14.4	0.060	0.515	22.201209	-97.841314
Villa Cuauhtémoc	186.85	3	2	5317	8.6	73.8	1.1	3.7	0.7	8.0	1.3	1.4	1.4	82.4	1.1	16.5	0.063	0.515	22.201209	-97.841314
Lim. Edos. Term. Ver. Ppia. Tamps.	189.82																			
Tampico	191.43																			

35 CARR: Libramiento de Reynosa Sur II

CLAVE:

RUTA: MEX-040D

AÑO: 2018

LUGAR	ESTACION				CLASIFICACION VEHICULAR EN PORCIENTO													COORDENADAS		
	KM	TE	SC	TDPA	M	A	B	C2	C3	T3S2	T3S3	T3S2R4	OTROS	A	B	C	K'	D	LATITUD	LONGITUD
T. C. Matamoros - Reynosa	0.00	3	1	901	2.0	55.6	0.3	4.4	2.6	26.4	1.2	6.3	1.2	57.6	0.3	42.1	0.091	0.501	26.003808	-98.168948
T. C. Matamoros - Reynosa	0.00	3	2	904	0.8	54.2	0.3	4.8	2.7	28.1	1.1	6.9	1.1	55.0	0.3	44.7	0.098	0.501	26.004055	-98.169032
T. C. Las Urracas - T. C. (Matamoros - Reynosa)	13.70	1	0	2860	0.6	40.5	2.1	2.0	2.0	38.8	2.0	10.9	1.1	41.1	2.1	56.8	0.092	0.503	25.936240	-98.251772
T. C. Las Urracas - T. C. (Matamoros - Reynosa)	13.70	3	0	1054	0.2	34.5	3.3	3.0	4.0	35.9	3.6	14.5	1.0	34.7	3.3	62.0	0.120	0.505	25.926725	-98.287882
T. C. Monterrey - Reynosa	35.80	1	0	1134	0.2	34.2	3.4	2.9	3.9	36.6	3.5	14.3	1.0	34.4	3.4	62.2	0.096	0.502	26.006751	-98.451574

36 CARR: Libramiento Poniente de Tampico (Cuota)

CLAVE: 28051

RUTA: MEX-070D

AÑO: 2018

LUGAR	ESTACION				CLASIFICACION VEHICULAR EN PORCIENTO													COORDENADAS		
	KM	TE	SC	TDPA	M	A	B	C2	C3	T3S2	T3S3	T3S2R4	OTROS	A	B	C	K'	D	LATITUD	LONGITUD
T. C. Tampico - Cd. Mante	0.00	3	0	17299	1.4	73.4	0.9	5.7	3.0	7.9	2.7	3.3	1.7	74.8	0.9	24.3	0.066	0.534	22.335467	-97.882181
Caseta de Cobro Tampico	5.10	2	0	6708	1.0	55.6	2.0	6.2	6.6	12.7	4.4	10.4	1.1	56.6	2.0	41.4	0.074	0.500	22.275330	-97.893426
T. C. Cd. Valles - Tampico	14.20	1	0	9233	0.9	66.6	1.5	7.8	3.4	9.7	4.2	5.0	0.9	67.5	1.5	31.0	0.069	0.508	22.234425	-97.891191

TAMAULIPAS

37 CARR: Matamoros - Reynosa (Cuota)

CLAVE: 28079

RUTA: MEX-002D

AÑO: 2018

LUGAR	ESTACION				CLASIFICACION VEHICULAR EN PORCIENTO													COORDENADAS		
	KM	TE	SC	TDPA	M	A	B	C2	C3	T3S2	T3S3	T3S2R4	OTROS	A	B	C	K'	D	LATITUD	LONGITUD
T. C. Matamoros - Reynosa	0.00	3	1	2047	0.2	72.1	4.3	9.7	2.3	6.8	1.3	2.9	0.4	72.3	4.3	23.4	0.103	0.501	25.996776	-97.752225
T. C. Matamoros - Reynosa	0.00	3	2	2053	0.3	68.7	4.6	11.0	2.5	7.8	1.5	3.2	0.4	69.0	4.6	26.4	0.097	0.501	25.996548	-97.752399
Caseta de Cobro Nuevo Progreso	29.39	2	1	1598	0.2	69.8	5.0	4.4	4.0	11.4	1.1	3.3	0.8	70.0	5.0	25.0	0.101	0.500	26.036283	-97.954508
Caseta de Cobro Nuevo Progreso	29.39	2	2	1598	0.2	69.8	5.0	4.4	4.0	11.4	1.1	3.3	0.8	70.0	5.0	25.0	0.101	0.500	26.036283	-97.954508
T. C. Matamoros - Reynosa	44.60	1	1	3631	0.7	80.0	1.6	6.7	2.5	5.2	0.9	2.1	0.3	80.7	1.6	17.7	0.104	0.536	26.007094	-98.161621
T. C. Matamoros - Reynosa	44.60	1	2	4195	0.8	77.8	1.8	7.5	2.9	5.6	0.9	2.4	0.3	78.6	1.8	19.6	0.100	0.536	26.006844	-98.161524

38 CARR: Aldama - Barra El Tordo

CLAVE: 28620

RUTA: TAM

AÑO: 2018

LUGAR	ESTACION				CLASIFICACION VEHICULAR EN PORCIENTO													COORDENADAS		
	KM	TE	SC	TDPA	M	A	B	C2	C3	T3S2	T3S3	T3S2R4	OTROS	A	B	C	K'	D	LATITUD	LONGITUD
Aldama	0.00	3	0	2178	8.0	77.8	0.3	11.2	0.6	1.7	0.2	0.0	0.2	85.8	0.3	13.9	0.075	0.501	22.916043	-98.064506
Barra El Tordo	20.00																			

39 CARR: Barretal - Nueva Villa de Padilla

CLAVE: 28001

RUTA: TAM-001

AÑO: 2018

LUGAR	ESTACION				CLASIFICACION VEHICULAR EN PORCIENTO													COORDENADAS		
	KM	TE	SC	TDPA	M	A	B	C2	C3	T3S2	T3S3	T3S2R4	OTROS	A	B	C	K'	D	LATITUD	LONGITUD
Barretal	0.00	3	0	3662	2.6	84.9	0.3	7.6	1.0	2.3	0.7	0.2	0.4	87.5	0.3	12.2	0.084	0.504	24.083652	-99.112906
Nueva Villa de Padilla	24.50	1	0	1924	5.3	82.6	1.0	8.8	0.7	1.2	0.3	0.1	0.0	87.9	1.0	11.1	0.076	0.505	24.053160	-98.914520

40 CARR: China - Méndez

CLAVE: 00191

RUTA: NL-TAM

AÑO: 2018

LUGAR	ESTACION				CLASIFICACION VEHICULAR EN PORCIENTO													COORDENADAS		
	KM	TE	SC	TDPA	M	A	B	C2	C3	T3S2	T3S3	T3S2R4	OTROS	A	B	C	K'	D	LATITUD	LONGITUD
China	0.00	3	0	1471	0.6	72.2	1.8	19.6	1.4	1.8	1.6	1.0	0.0	72.8	1.8	25.4	0.076	0.508	25.700253	-99.225782
Lim. Edos. Term. N. L. Ppia. Tamps.	75.00																			
Méndez	100.00																			

41 CARR: Ébano - Estación Manuel

CLAVE: 24624

RUTA: SLP-TAM

AÑO: 2018

LUGAR	ESTACION				CLASIFICACION VEHICULAR EN PORCIENTO													COORDENADAS		
	KM	TE	SC	TDPA	M	A	B	C2	C3	T3S2	T3S3	T3S2R4	OTROS	A	B	C	K'	D	LATITUD	LONGITUD
Ébano	0.00	3	0	2657	19.6	66.0	0.2	9.5	1.1	2.1	0.6	0.7	0.2	85.6	0.2	14.2	0.098	0.500	22.233763	-98.366023
Lim. de Edos. Term. S. L. P. Ppia. Ver.	2.71																			

TAMAULIPAS

41 CARR: Ébano - Estación Manuel

CLAVE: 24624

RUTA: SLP-TAM

AÑO: 2018

LUGAR	ESTACION				CLASIFICACION VEHICULAR EN PORCIENTO													COORDENADAS		
	KM	TE	SC	TDPA	M	A	B	C2	C3	T3S2	T3S3	T3S2R4	OTROS	A	B	C	K'	D	LATITUD	LONGITUD
Lím. de Edos. Term. Ver. Ppia. S. L. P.	3.95																			
Lím. de Edos. Term. S. L. P. Ppia. Ver.	5.00																			
Lím. de Edos. Term. Ver. Ppia. Tamps.	25.00																			
Estación Manuel	65.60																			

42 CARR: El Limón - Ocampo

CLAVE: 28019

RUTA: TAM-019

AÑO: 2018

LUGAR	ESTACION				CLASIFICACION VEHICULAR EN PORCIENTO													COORDENADAS		
	KM	TE	SC	TDPA	M	A	B	C2	C3	T3S2	T3S3	T3S2R4	OTROS	A	B	C	K'	D	LATITUD	LONGITUD
T. C. Cd. Valles - Cd. Victoria	0.00	3	0	2071	10.8	73.3	1.0	8.5	1.8	2.1	0.5	2.0	0.0	84.1	1.0	14.9	0.088	0.503	22.837016	-99.024937
Ocampo	43.00	1	0	1482	11.5	72.9	0.2	10.1	1.8	1.3	1.9	0.1	0.2	84.4	0.2	15.4	0.094	0.500	22.829295	-99.319891

43 CARR: Ent. Huisachito - Nuevo Laredo

CLAVE: 00074

RUTA: NL-001-TAM

AÑO: 2018

LUGAR	ESTACION				CLASIFICACION VEHICULAR EN PORCIENTO													COORDENADAS		
	KM	TE	SC	TDPA	M	A	B	C2	C3	T3S2	T3S3	T3S2R4	OTROS	A	B	C	K'	D	LATITUD	LONGITUD
T. C. Monterrey - Colombia	0.00	3	0	1229	1.0	76.8	1.9	9.9	1.8	5.2	2.6	0.6	0.2	77.8	1.9	20.3	0.124	0.506	27.353940	-99.949956
Lim. Edos. Term. N. L. Ppia. Tamps.	19.00																			
X. C. Libramiento de Nuevo Laredo	47.00	1	0	2082	0.4	77.2	1.4	12.7	2.2	3.6	1.4	0.9	0.2	77.6	1.4	21.0	0.095	0.519	27.478328	-99.634085
Nuevo Laredo	51.00	1	0	13036	1.3	82.3	2.1	6.3	1.2	5.2	0.7	0.2	0.7	83.6	2.1	14.3	0.060	0.517	27.484841	-99.580714

44 CARR: Ent. Las Blancas - Río Bravo

CLAVE: 28003

RUTA: TAM-003

AÑO: 2018

LUGAR	ESTACION				CLASIFICACION VEHICULAR EN PORCIENTO													COORDENADAS		
	KM	TE	SC	TDPA	M	A	B	C2	C3	T3S2	T3S3	T3S2R4	OTROS	A	B	C	K'	D	LATITUD	LONGITUD
T. C. Cd. Victoria - Matamoros	0.00	3	0	3114	0.4	84.2	1.0	11.1	0.5	2.2	0.3	0.1	0.2	84.6	1.0	14.4	0.080	0.509	25.665940	-97.604610
Valle Hermoso	21.00	1	1	2493	2.5	86.6	0.9	8.3	0.2	1.1	0.3	0.0	0.1	89.1	0.9	10.0	0.094	0.504	25.666717	-97.769178
Valle Hermoso	21.00	1	2	2450	0.5	87.3	1.0	9.5	0.2	1.1	0.3	0.0	0.1	87.8	1.0	11.2	0.083	0.504	25.666635	-97.769181
Río Bravo	91.00	1	0	8508	1.6	79.0	0.8	9.2	0.6	6.1	1.2	0.5	1.0	80.6	0.8	18.6	0.074	0.501	25.981681	-98.118748

45 CARR: La Joya - Méndez

CLAVE: 28623

RUTA: TAM

AÑO: 2018

LUGAR	ESTACION				CLASIFICACION VEHICULAR EN PORCIENTO													COORDENADAS		
	KM	TE	SC	TDPA	M	A	B	C2	C3	T3S2	T3S3	T3S2R4	OTROS	A	B	C	K'	D	LATITUD	LONGITUD
T. C. Cd. Victoria - Matamoros	0.00	3	0	680	0.5	64.3	0.9	19.0	4.8	4.3	4.3	1.9	0.0	64.8	0.9	34.3	0.097	0.500	24.930307	-98.113047

TAMAULIPAS

45 CARR: La Joya - Méndez

CLAVE: 28623

RUTA: TAM

AÑO: 2018

LUGAR	ESTACION				CLASIFICACION VEHICULAR EN PORCIENTO													COORDENADAS		
	KM	TE	SC	TDPA	M	A	B	C2	C3	T3S2	T3S3	T3S2R4	OTROS	A	B	C	K'	D	LATITUD	LONGITUD
Méndez	66.00																			

46 CARR: Libramiento de Cd. Victoria

CLAVE: 28282

RUTA: TAM

AÑO: 2018

LUGAR	ESTACION				CLASIFICACION VEHICULAR EN PORCIENTO													COORDENADAS		
	KM	TE	SC	TDPA	M	A	B	C2	C3	T3S2	T3S3	T3S2R4	OTROS	A	B	C	K'	D	LATITUD	LONGITUD
X. C. Ent. Tula - Cd. Victoria	0.00	3	1	6424	5.7	85.3	0.1	7.4	0.2	0.6	0.5	0.1	0.1	91.0	0.1	8.9	0.083	0.535	23.713322	-99.176553
X. C. Ent. Tula - Cd. Victoria	0.00	3	2	5585	8.8	80.8	0.1	8.8	0.2	0.6	0.5	0.1	0.1	89.6	0.1	10.3	0.099	0.535	23.713177	-99.176662
X. C. Cd. Victoria - Matamoros	13.40	1	1	12192	2.5	85.5	0.9	8.7	1.0	0.6	0.5	0.2	0.1	88.0	0.9	11.1	0.091	0.503	23.773217	-99.133810
X. C. Cd. Victoria - Matamoros	13.40	1	2	12359	3.0	88.7	0.7	5.4	1.1	0.5	0.3	0.2	0.1	91.7	0.7	7.6	0.094	0.503	23.773493	-99.133748
X. C. Cd. Victoria - Matamoros	13.40	3	1	10438	3.1	86.3	0.6	7.1	1.2	0.7	0.5	0.4	0.1	89.4	0.6	10.0	0.123	0.535	23.762863	-99.111204
X. C. Cd. Victoria - Matamoros	13.40	3	2	9085	3.4	86.0	0.7	7.1	1.4	0.6	0.3	0.4	0.1	89.4	0.7	9.9	0.110	0.535	23.763125	-99.111083
X. C. Cd. Victoria - Soto La Marina	19.70	1	1	4799	4.6	81.5	1.0	7.7	2.8	1.1	0.4	0.8	0.1	86.1	1.0	12.9	0.104	0.504	23.729273	-99.092802
X. C. Cd. Victoria - Soto La Marina	19.70	1	2	4724	3.4	83.4	1.0	8.2	2.0	0.9	0.4	0.6	0.1	86.8	1.0	12.2	0.103	0.504	23.729272	-99.092724
T. C. Cd. Valles - Cd. Victoria	25.90	1	1	1292	2.1	63.6	5.6	11.9	6.2	5.4	2.5	2.5	0.2	65.7	5.6	28.7	0.087	0.536	23.678295	-99.098477
T. C. Cd. Valles - Cd. Victoria	25.90	1	2	1117	1.9	60.5	6.1	13.0	7.4	5.5	2.7	2.7	0.2	62.4	6.1	31.5	0.116	0.536	23.678278	-99.098167

47 CARR: Libramiento de Mier

CLAVE: 28282

RUTA: TAMPS

AÑO: 2018

LUGAR	ESTACION				CLASIFICACION VEHICULAR EN PORCIENTO													COORDENADAS		
	KM	TE	SC	TDPA	M	A	B	C2	C3	T3S2	T3S3	T3S2R4	OTROS	A	B	C	K'	D	LATITUD	LONGITUD
T. C. Monterrey - Mier	0.00	3	0	606	0.1	54.5	2.7	17.7	5.1	9.1	5.6	4.7	0.5	54.6	2.7	42.7	0.140	0.508	26.428154	-99.163393
T. C. Reynosa - Nuevo Laredo	2.70																			

48 CARR: Libramiento de Nuevo Laredo

CLAVE: 28030

RUTA: TAM

AÑO: 2018

LUGAR	ESTACION				CLASIFICACION VEHICULAR EN PORCIENTO													COORDENADAS		
	KM	TE	SC	TDPA	M	A	B	C2	C3	T3S2	T3S3	T3S2R4	OTROS	A	B	C	K'	D	LATITUD	LONGITUD
T. C. Monterrey - Nuevo Laredo	0.00	3	1	19773	1.1	71.5	1.3	6.9	6.4	9.6	1.9	0.6	0.7	72.6	1.3	26.1	0.062	0.503	27.426204	-99.536965
T. C. Monterrey - Nuevo Laredo	0.00	3	2	19526	1.1	69.9	1.3	7.1	6.6	10.6	2.0	0.7	0.7	71.0	1.3	27.7	0.063	0.503	27.426063	-99.536973
T. C. Piedras Negras - Nuevo Laredo	18.00	1	1	3846	2.5	43.1	1.2	6.4	8.3	34.9	1.6	0.9	1.1	45.6	1.2	53.2	0.131	0.514	27.532313	-99.583052
T. C. Piedras Negras - Nuevo Laredo	18.00	1	2	3636	1.1	42.2	1.2	6.3	9.7	35.7	1.6	0.9	1.3	43.3	1.2	55.5	0.116	0.514	27.531622	-99.582971

TAMAULIPAS

49 CARR: Libramiento de Nuevo Laredo II

CLAVE: 28626

RUTA: TAM

AÑO: 2018

LUGAR	ESTACION				CLASIFICACION VEHICULAR EN PORCIENTO													COORDENADAS		
	KM	TE	SC	TDPA	M	A	B	C2	C3	T3S2	T3S3	T3S2R4	OTROS	A	B	C	K'	D	LATITUD	LONGITUD
T. C. Monterrey - Nuevo Laredo	0.00	3	0	6443	1.1	29.1	1.8	5.3	6.8	50.9	1.8	2.3	0.9	30.2	1.8	68.0	0.070	0.515	27.308323	-99.607245
T. C. Piedras Negras - Nuevo Laredo	32.20	1	1	4644	1.2	30.9	1.0	5.4	10.4	45.9	3.0	1.1	1.1	32.1	1.0	66.9	0.079	0.504	27.563300	-99.595636
T. C. Piedras Negras - Nuevo Laredo	32.20	1	2	4575	1.1	27.2	1.1	6.5	12.0	46.2	3.4	1.2	1.3	28.3	1.1	70.6	0.088	0.504	27.563514	-99.595802

50 CARR: Libramiento de Río Bravo

CLAVE: 28002

RUTA: TAM

AÑO: 2018

LUGAR	ESTACION				CLASIFICACION VEHICULAR EN PORCIENTO													COORDENADAS		
	KM	TE	SC	TDPA	M	A	B	C2	C3	T3S2	T3S3	T3S2R4	OTROS	A	B	C	K'	D	LATITUD	LONGITUD
T. C. Matamoros - Reynosa (1° Acceso)	0.00	3	1	2840	0.4	78.0	1.4	8.9	2.6	5.4	1.4	1.5	0.4	78.4	1.4	20.2	0.091	0.529	25.971743	-98.051249
T. C. Matamoros - Reynosa (1° Acceso)	0.00	3	2	3196	0.3	75.8	1.5	10.1	2.8	5.8	1.6	1.7	0.4	76.1	1.5	22.4	0.115	0.529	25.971604	-98.051233
T. C. Matamoros - Reynosa (2° Acceso)	13.10	1	1	11536	0.4	82.4	1.4	8.7	1.4	3.1	1.0	1.1	0.5	82.8	1.4	15.8	0.080	0.578	25.990327	-98.126848
T. C. Matamoros - Reynosa (2° Acceso)	13.10	1	2	11287	0.5	80.9	1.5	9.3	1.5	3.4	1.1	1.2	0.6	81.4	1.5	17.1	0.089	0.578	25.990274	-98.126918

51 CARR: Los Guerra - Los Herreras

CLAVE: 19031

RUTA: TAM-NL

AÑO: 2018

LUGAR	ESTACION				CLASIFICACION VEHICULAR EN PORCIENTO													COORDENADAS		
	KM	TE	SC	TDPA	M	A	B	C2	C3	T3S2	T3S3	T3S2R4	OTROS	A	B	C	K'	D	LATITUD	LONGITUD
Los Guerra	0.00																			
Los Herreras	73.00	1	0	639	1.8	82.1	0.2	13.7	0.7	1.0	0.5	0.0	0.0	83.9	0.2	15.9	0.099	0.513	25.902599	-99.393636

52 CARR: Peña Blanca - Cd. Camargo

CLAVE: 00102

RUTA: NL-TAM

AÑO: 2018

LUGAR	ESTACION				CLASIFICACION VEHICULAR EN PORCIENTO													COORDENADAS		
	KM	TE	SC	TDPA	M	A	B	C2	C3	T3S2	T3S3	T3S2R4	OTROS	A	B	C	K'	D	LATITUD	LONGITUD
T. C. Monterrey - Reynosa	0.00	3	0	698	0.3	71.1	1.2	19.6	1.2	2.6	3.0	0.4	0.6	71.4	1.2	27.4	0.097	0.501	25.836528	-99.008467
Lim. Edos. Term. N. L. Ppia. Tamps.	30.00																			
Cd. Camargo	65.00	1	0	2305	0.8	77.4	0.7	18.0	1.1	1.7	0.2	0.0	0.1	78.2	0.7	21.1	0.076	0.505	26.304292	-98.834749

53 CARR: Potrero Nuevo - Rancho El Mezquital

CLAVE: 28615

RUTA: TAM

AÑO: 2018

LUGAR	ESTACION				CLASIFICACION VEHICULAR EN PORCIENTO													COORDENADAS		
	KM	TE	SC	TDPA	M	A	B	C2	C3	T3S2	T3S3	T3S2R4	OTROS	A	B	C	K'	D	LATITUD	LONGITUD
T. C. Cd. Victoria - Matamoros	0.00	3	0	1196	0.3	74.4	0.7	10.1	2.2	2.7	2.6	6.8	0.2	74.7	0.7	24.6	0.085	0.502	25.713052	-97.570528
Puerto El Mezquital	66.00																			

TAMAULIPAS

54 CARR: Ramal a Gómez Farías

CLAVE: 28020

RUTA: TAM-020

AÑO: 2018

LUGAR	ESTACION				CLASIFICACION VEHICULAR EN PORCIENTO										COORDENADAS					
	KM	TE	SC	TDPA	M	A	B	C2	C3	T3S2	T3S3	T3S2R4	OTROS	A	B	C	K'	D	LATITUD	LONGITUD
T. C. Cd. Valles - Cd. Victoria	0.00	3	0	1169	10.8	77.7	0.8	9.2	0.8	0.6	0.1	0.0	0.0	88.5	0.8	10.7	0.095	0.503	23.023821	-99.094368
Gómez Farías	11.00	1	0	638	20.3	71.4	0.9	6.2	0.4	0.7	0.1	0.0	0.0	91.7	0.9	7.4	0.102	0.515	23.025136	-99.141899

55 CARR: Ramal a Xicoténcatl

CLAVE: 28619

RUTA: TAM

AÑO: 2018

LUGAR	ESTACION				CLASIFICACION VEHICULAR EN PORCIENTO										COORDENADAS					
	KM	TE	SC	TDPA	M	A	B	C2	C3	T3S2	T3S3	T3S2R4	OTROS	A	B	C	K'	D	LATITUD	LONGITUD
T. C. Cd. Valles - Cd. Victoria	0.00	3	0	1636	11.1	74.1	0.4	5.9	5.6	1.0	1.2	0.2	0.5	85.2	0.4	14.4	0.083	0.508	22.943486	-99.010670
Xicoténcatl	13.00	1	0	4154	13.4	73.0	1.1	4.4	2.1	3.0	0.8	1.8	0.4	86.4	1.1	12.5	0.090	0.508	22.985572	-98.948814

56 CARR: San Fernando - Carboneras

CLAVE: 28618

RUTA: TAM

AÑO: 2018

LUGAR	ESTACION				CLASIFICACION VEHICULAR EN PORCIENTO										COORDENADAS					
	KM	TE	SC	TDPA	M	A	B	C2	C3	T3S2	T3S3	T3S2R4	OTROS	A	B	C	K'	D	LATITUD	LONGITUD
San Fernando	0.00	3	0	2926	1.7	72.9	0.7	17.4	1.1	3.3	1.5	1.0	0.4	74.6	0.7	24.7	0.086	0.515	24.834556	-98.113494
Carboneras	57.00																			

57 CARR: Soto La Marina - La Pesca

CLAVE: 28049

RUTA: TAM-070

AÑO: 2018

LUGAR	ESTACION				CLASIFICACION VEHICULAR EN PORCIENTO										COORDENADAS					
	KM	TE	SC	TDPA	M	A	B	C2	C3	T3S2	T3S3	T3S2R4	OTROS	A	B	C	K'	D	LATITUD	LONGITUD
T. C. Soto La Marina - La Coma	0.00	3	0	1748	1.2	88.0	0.8	6.8	1.7	1.1	0.2	0.2	0.0	89.2	0.8	10.0	0.077	0.508	23.773689	-98.198600
La Pesca	50.00																			

58 CARR: T. C. (Valle Hermoso - Empalme) - Matamoros

CLAVE: 28005

RUTA: TAM-005

AÑO: 2018

LUGAR	ESTACION				CLASIFICACION VEHICULAR EN PORCIENTO										COORDENADAS					
	KM	TE	SC	TDPA	M	A	B	C2	C3	T3S2	T3S3	T3S2R4	OTROS	A	B	C	K'	D	LATITUD	LONGITUD
T. C. Valle Hermoso - Empalme	0.00	3	0	4201	0.5	82.0	0.8	11.8	0.7	2.8	0.5	0.5	0.4	82.5	0.8	16.7	0.075	0.507	25.775075	-97.790918
Anáhuac	2.00	3	0	1579	0.3	82.0	1.5	11.9	1.0	1.5	0.5	1.2	0.1	82.3	1.5	16.2	0.094	0.500	25.775084	-97.765767
Matamoros	33.90	1	1	9881	1.7	92.0	0.7	2.2	0.4	1.2	1.4	0.1	0.3	93.7	0.7	5.6	0.074	0.522	25.864187	-97.577040
Matamoros	33.90	1	2	10781	1.5	91.8	0.7	2.4	0.4	1.3	1.5	0.1	0.3	93.3	0.7	6.0	0.069	0.522	25.864298	-97.577030

TAMAULIPAS

59 CARR: T. C. Libramiento Cd. Victoria - San Antonio

CLAVE:

RUTA: TAM-126

AÑO: 2018

LUGAR	ESTACION				CLASIFICACION VEHICULAR EN PORCIENTO														COORDENADAS	
	KM	TE	SC	TDPA	M	A	B	C2	C3	T3S2	T3S3	T3S2R4	OTROS	A	B	C	K'	D	LATITUD	LONGITUD
T. C. Libramiento Cd. Victoria	0.00	3	0	5680	0.9	49.8	2.5	7.7	3.0	15.9	5.2	13.3	1.7	50.7	2.5	46.8	0.058	0.504	23.659709	-99.113479
San Antonio	37.50	1	0	5072	0.9	46.9	3.0	6.8	2.1	18.2	5.2	15.2	1.7	47.8	3.0	49.2	0.062	0.515	23.586105	-99.320382

60 CARR: Valle Hermoso - Empalme

CLAVE: 28004

RUTA: TAM-004

AÑO: 2018

LUGAR	ESTACION				CLASIFICACION VEHICULAR EN PORCIENTO														COORDENADAS	
	KM	TE	SC	TDPA	M	A	B	C2	C3	T3S2	T3S3	T3S2R4	OTROS	A	B	C	K'	D	LATITUD	LONGITUD
Valle Hermoso	0.00	3	0	6178	0.3	78.3	1.1	11.6	1.3	4.1	1.2	1.4	0.7	78.6	1.1	20.3	0.083	0.506	25.720354	-97.815873
Empalme	28.38	1	0	3486	0.3	79.4	1.1	11.7	1.8	3.9	0.9	0.6	0.3	79.7	1.1	19.2	0.081	0.506	25.877087	-97.795681

61 CARR: Valle Hermoso - Las Yescas

CLAVE: 28614

RUTA: TAM

AÑO: 2018

LUGAR	ESTACION				CLASIFICACION VEHICULAR EN PORCIENTO														COORDENADAS	
	KM	TE	SC	TDPA	M	A	B	C2	C3	T3S2	T3S3	T3S2R4	OTROS	A	B	C	K'	D	LATITUD	LONGITUD
Valle Hermoso	0.00	3	0	5465	0.4	77.7	1.0	11.5	1.0	3.7	1.7	2.2	0.8	78.1	1.0	20.9	0.158	0.513	25.614575	-97.816028
T. C. Cd. Victoria - Matamoros	26.00	1	0	1622	0.2	64.6	1.7	16.3	5.4	3.9	5.7	2.0	0.2	64.8	1.7	33.5	0.092	0.513	25.466180	-97.816213

62 CARR: Santander Jiménez - Ent. El Ojito

CLAVE: 28579

RUTA: MEX-107-TAM

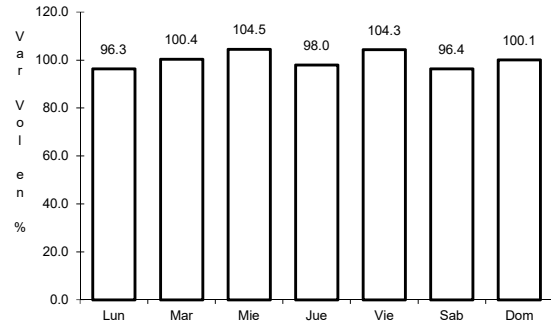
AÑO: 2018

LUGAR	ESTACION				CLASIFICACION VEHICULAR EN PORCIENTO														COORDENADAS	
	KM	TE	SC	TDPA	M	A	B	C2	C3	T3S2	T3S3	T3S2R4	OTROS	A	B	C	K'	D	LATITUD	LONGITUD
T. C. Cd. Victoria - Matamoros	0.00	3	0	1336	0.6	80.2	0.6	13.1	1.6	2.0	0.9	0.8	0.2	80.8	0.6	18.6	0.099	0.509	24.205704	-98.477986
Abasolo	20.00	1	0	2589	2.1	81.7	1.1	7.8	1.8	3.1	1.4	0.4	0.6	83.8	1.1	15.1	0.104	0.505	24.064454	-98.382943
T. C. Soto La Marina - La Coma	58.00	1	0	502	1.6	75.3	1.1	10.9	3.0	3.7	3.3	0.5	0.6	76.9	1.1	22.0	0.114	0.521	23.941750	-98.167442

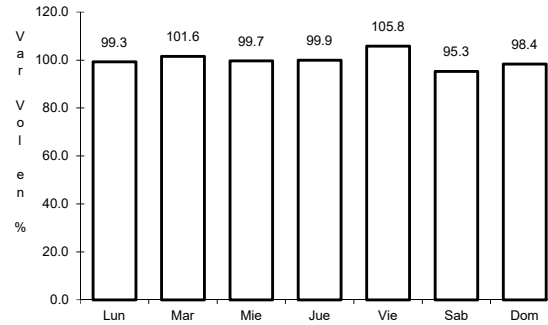
1 CARR: Acceso a Puente Internacional Reynosa - Pharr

CLAVE:

ruta: MEX-002



Km: 0.00 Tipo: 3 Sent: 1

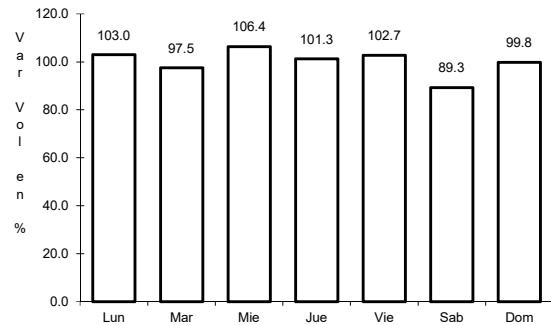


Km: 0.00 Tipo: 3 Sent: 2

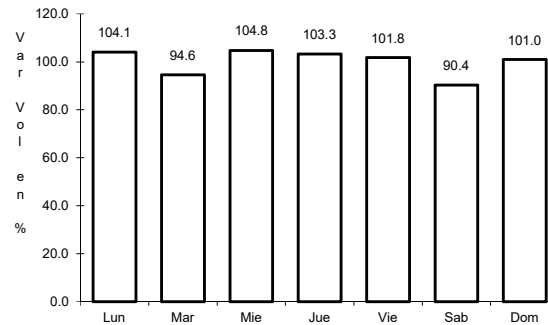
2 CARR: Altamira - T. C. (Petrocel -Puerto Industrial Altamira)

CLAVE:

ruta: MEX-080



Km: 0.00 Tipo: 3 Sent: 1

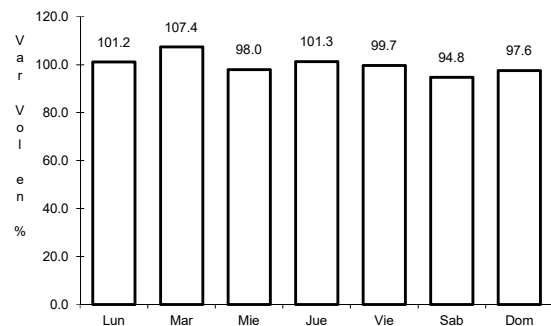


Km: 0.00 Tipo: 3 Sent: 2

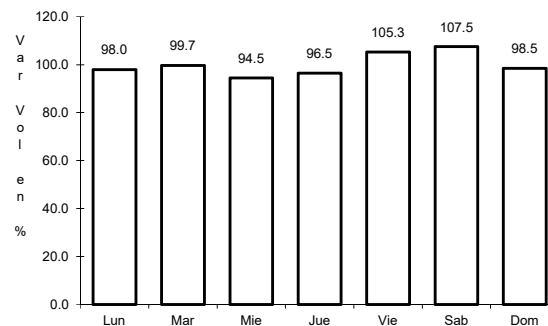
3 CARR: Antigua Morelos - Ent. El Huizache

CLAVE: 00136

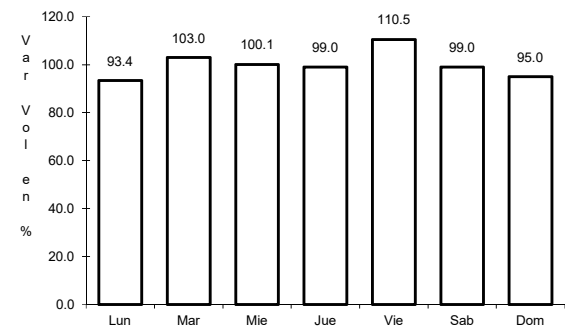
ruta: MEX-080



Km: 0.00 Tipo: 3 Sent: 0



Km: 86.00 Tipo: 3 Sent: 0

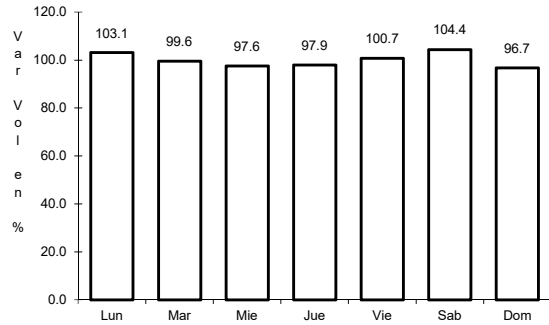


Km: 198.83 Tipo: 1 Sent: 0

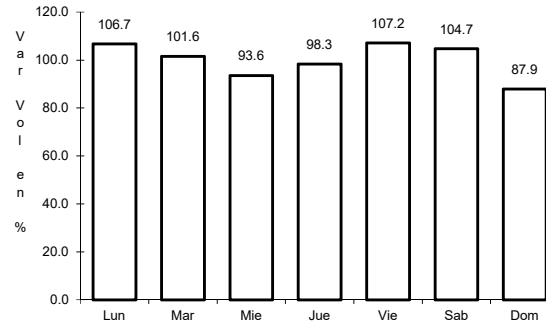
4 CARR: Cd. Valles - Cd. Victoria

CLAVE: 00509

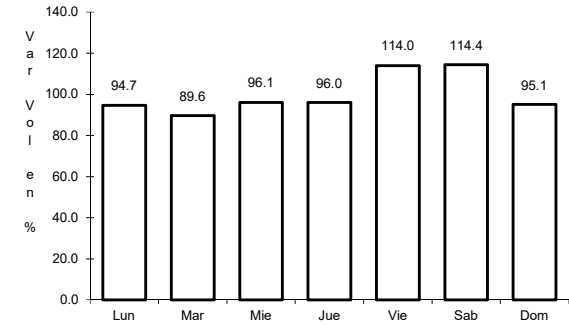
RUTA: MEX-085



Km: 0.00 Tipo: 3 Sent: 0



Km: 110.00 Tipo: 3 Sent: 0

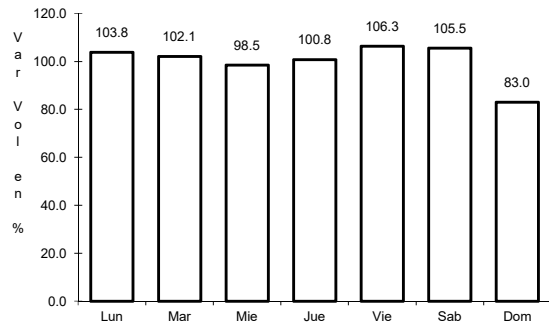


Km: 232.00 Tipo: 1 Sent: 0

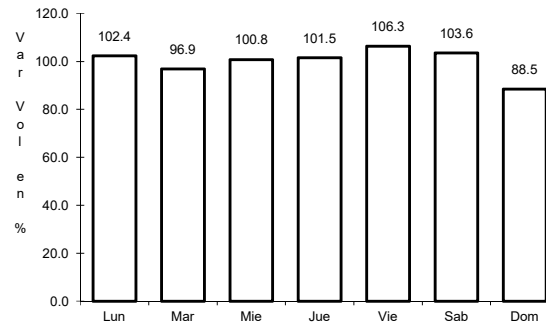
5 CARR: Cd. Valles - Tampico

CLAVE: 00138

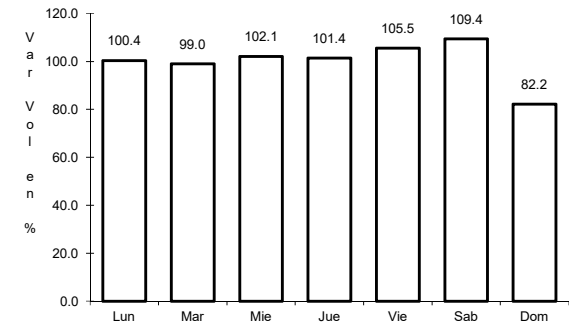
RUTA: MEX-070



Km: 0.00 Tipo: 3 Sent: 0



Km: 138.00 Tipo: 1 Sent: 1

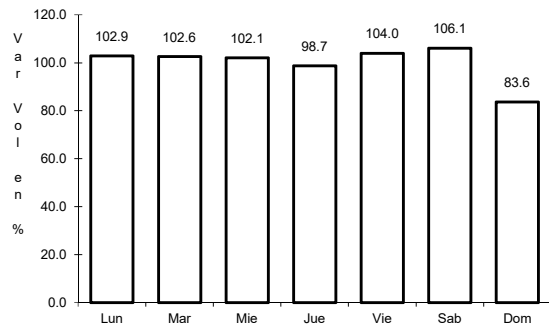


Km: 138.00 Tipo: 1 Sent: 2

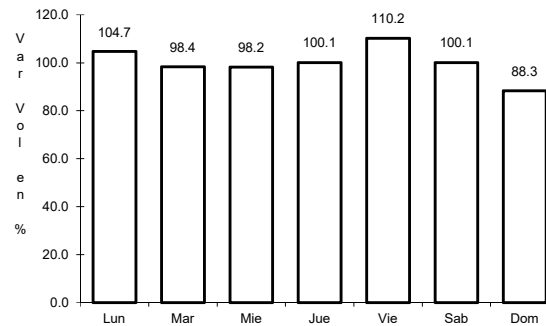
6 CARR: Cd. Victoria - Matamoros

CLAVE: 28139

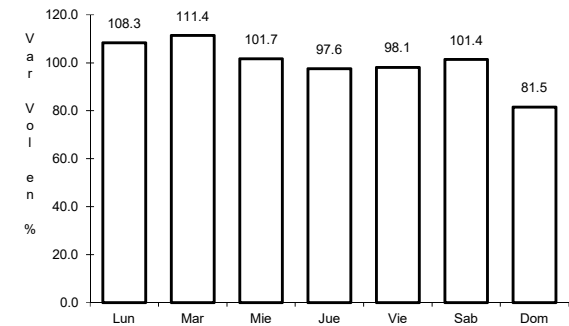
RUTA: MEX-101-180



Km: 5.00 Tipo: 3 Sent: 1



Km: 5.00 Tipo: 3 Sent: 2

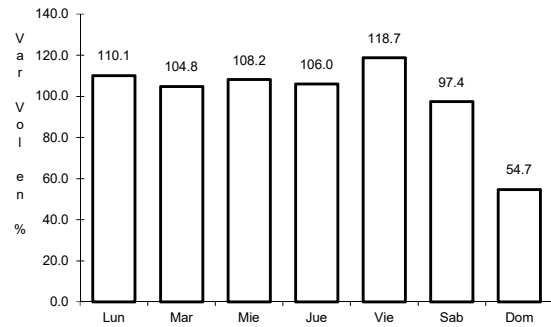


Km: 175.00 Tipo: 3 Sent: 0

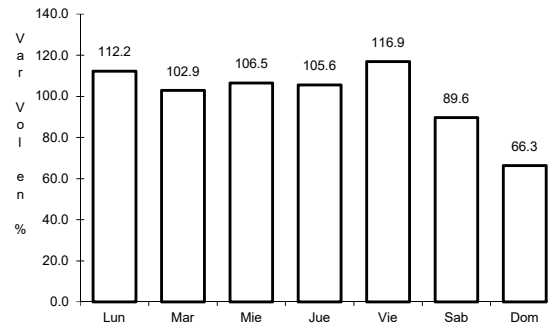
7 CARR: Cd. Victoria - Soto La Marina

CLAVE: 28009

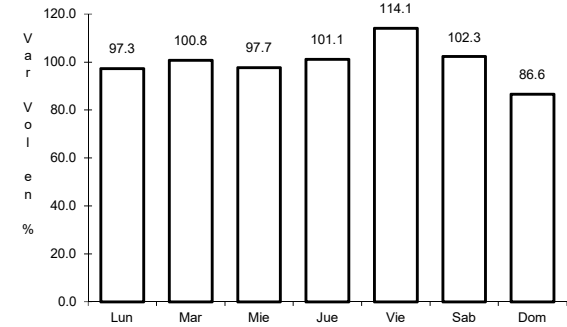
ruta: MEX-070



Km: 0.00 Tipo: 3 Sent: 1



Km: 0.00 Tipo: 3 Sent: 2

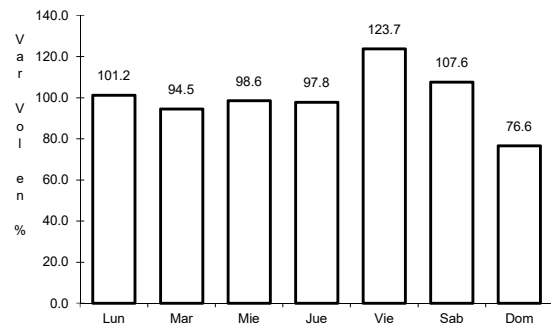


Km: 116.80 Tipo: 1 Sent: 0

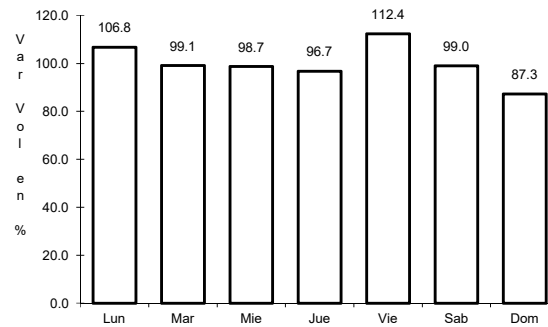
8 CARR: Ciudad Victoria - Monterrey

CLAVE: 00462

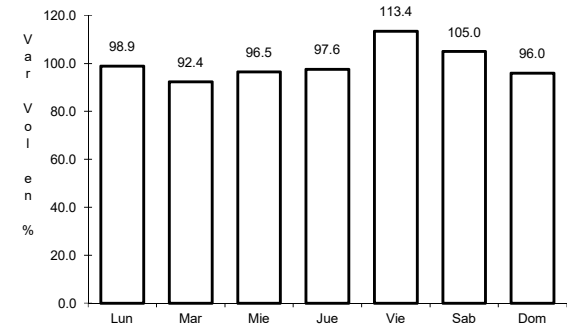
ruta: MEX-085



Km: 0.00 Tipo: 3 Sent: 1



Km: 0.00 Tipo: 3 Sent: 2

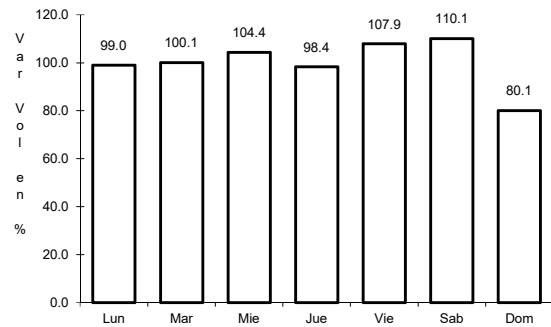


Km: 154.00 Tipo: 1 Sent: 0

9 CARR: Corredor Internacional Reynosa

CLAVE:

ruta: MEX

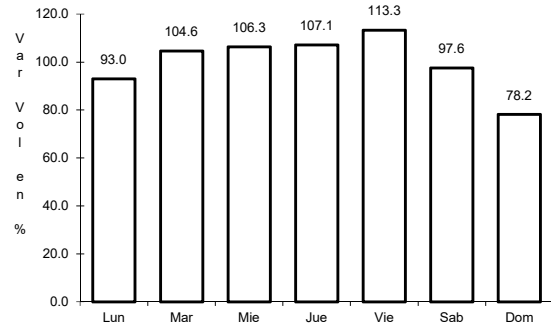


Km: 0.00 Tipo: 3 Sent: 0

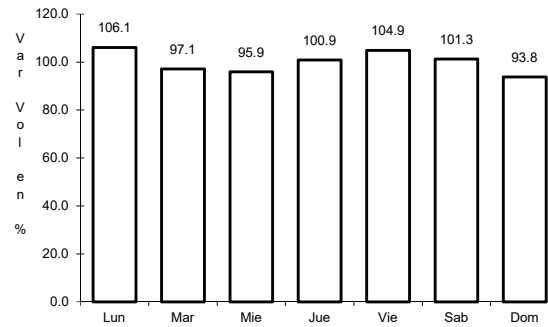
10 CARR: Ent. Tula - Cd. Victoria

CLAVE: 00179

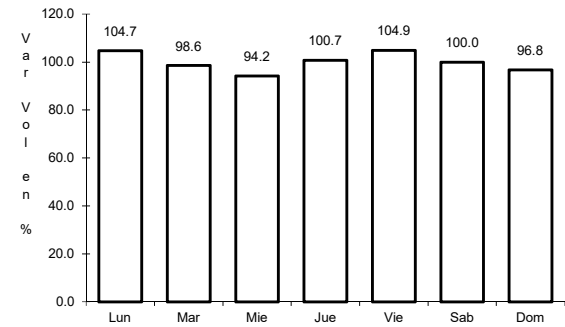
ruta: MEX-101



Km: 0.00 Tipo: 3 Sent: 0



Km: 180.00 Tipo: 1 Sent: 1

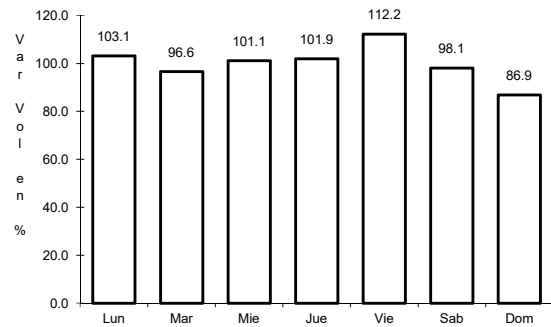


Km: 180.00 Tipo: 1 Sent: 2

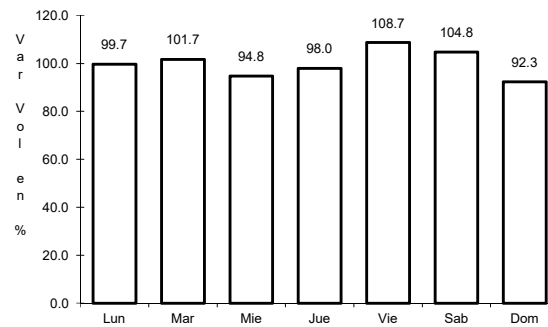
11 CARR: Estación Manuel - T. C. (Cd. Victoria - Soto La Marina)

CLAVE: 28294

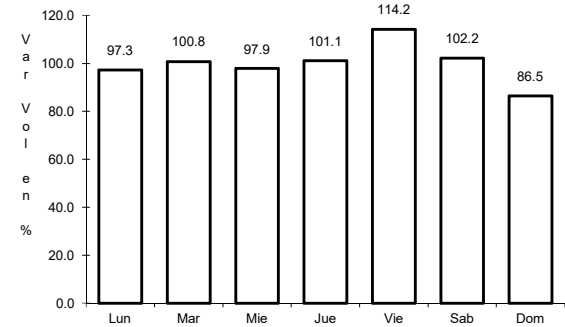
ruta: MEX-180



Km: 36.00 Tipo: 3 Sent: 0



Km: 69.00 Tipo: 3 Sent: 0

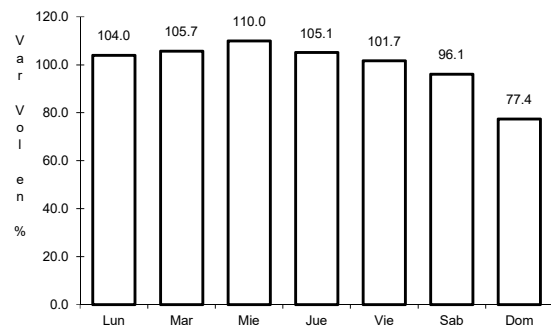


Km: 145.00 Tipo: 1 Sent: 0

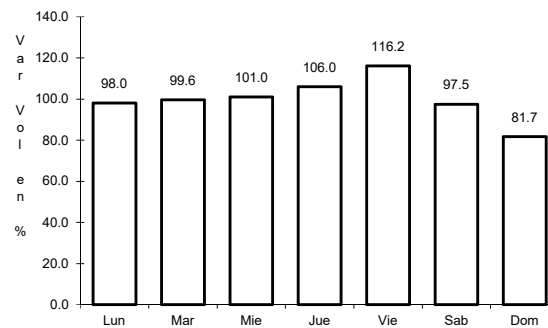
12 CARR: González - Llera de Canales

CLAVE: 28578

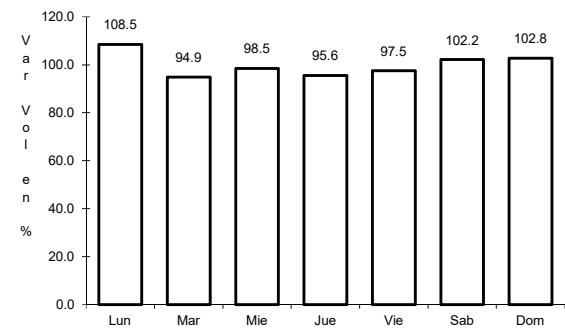
ruta: MEX-081



Km: 0.00 Tipo: 3 Sent: 0



Km: 58.50 Tipo: 1 Sent: 0

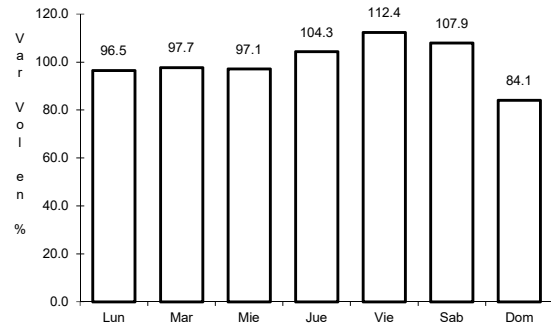


Km: 89.00 Tipo: 1 Sent: 0

13 CARR: Ignacio Zaragoza - T. C. (Ciudad Victoria - Monterrey)

CLAVE: 28625

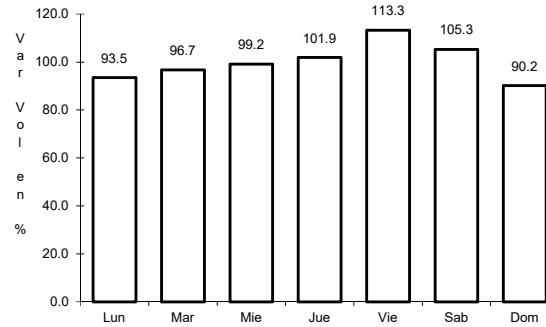
RUTA: MEX-083



Km: 0.00

Tipo: 3

Sent: 0



Km: 94.30

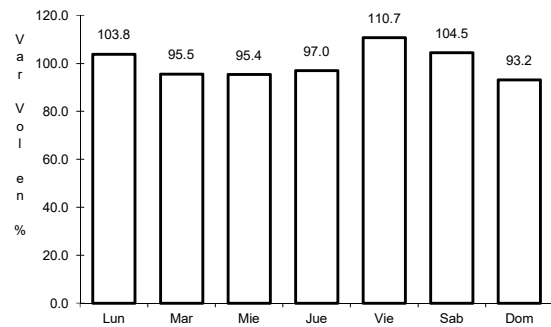
Tipo: 1

Sent: 0

14 CARR: Las Urracas - T. C. (Matamoros - Reynosa)

CLAVE: 28029

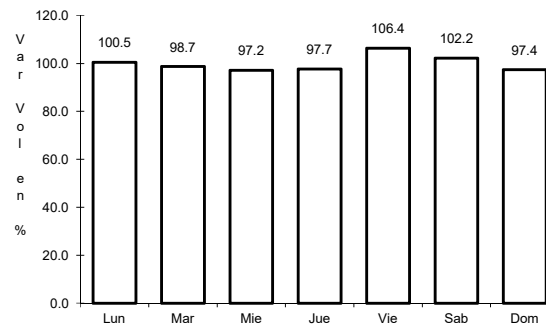
RUTA: MEX-097



Km: 0.00

Tipo: 3

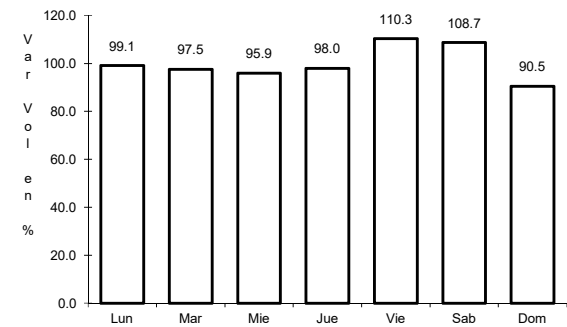
Sent: 0



Km: 113.25

Tipo: 1

Sent: 1



Km: 113.25

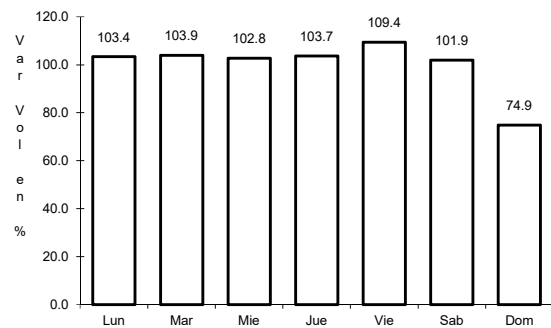
Tipo: 1

Sent: 2

15 CARR: Libramiento de Reynosa

CLAVE: 28008

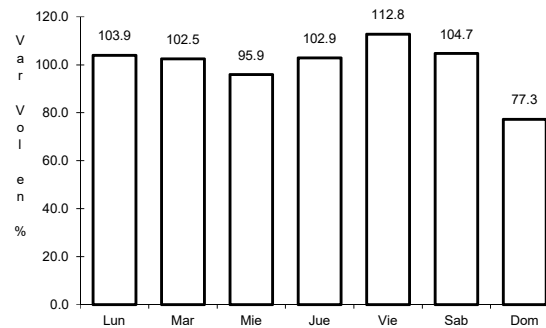
RUTA: MEX-REY-010



Km: 0.00

Tipo: 3

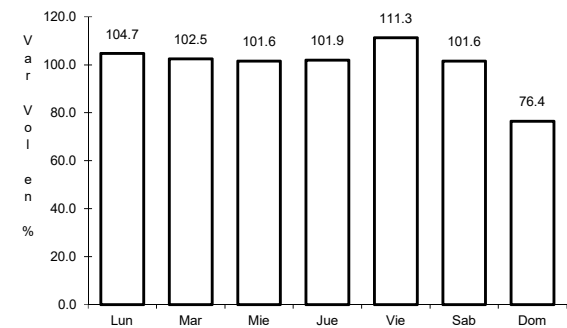
Sent: 1



Km: 0.00

Tipo: 3

Sent: 2



Km: 10.00

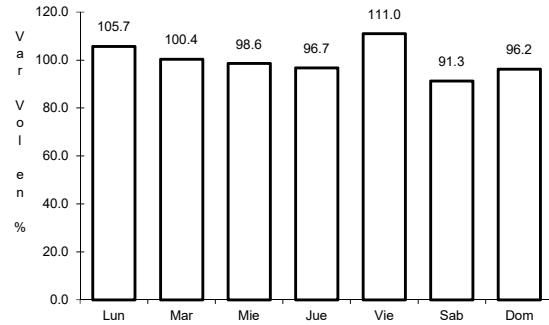
Tipo: 1

Sent: 1

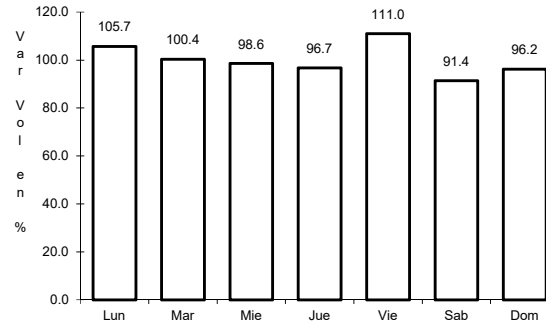
16 CARR: Libramiento de San Fernando

CLAVE:

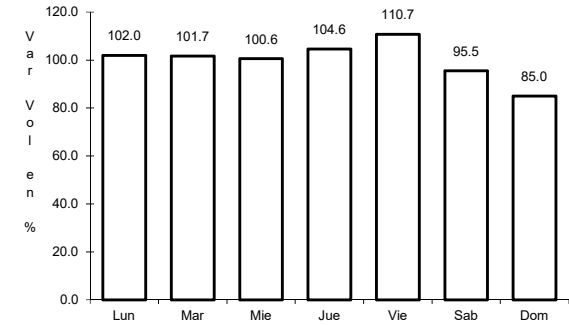
RUTA: MEX-101-180



Km: 0.00 Tipo: 3 Sent: 0



Km: 14.39 Tipo: 1 Sent: 0

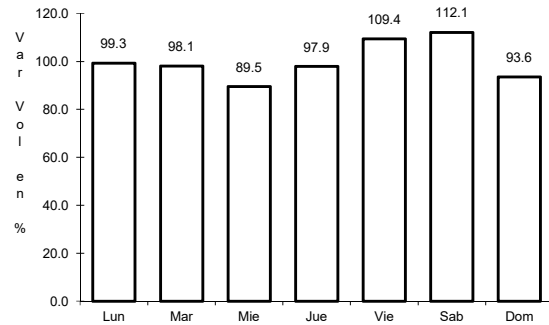


Km: 26.46 Tipo: 1 Sent: 0

17 CARR: Libramiento de San Germán

CLAVE:

RUTA: MEX-101

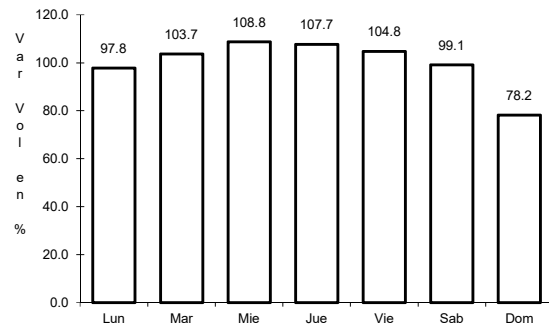


Km: 0.00 Tipo: 3 Sent: 0

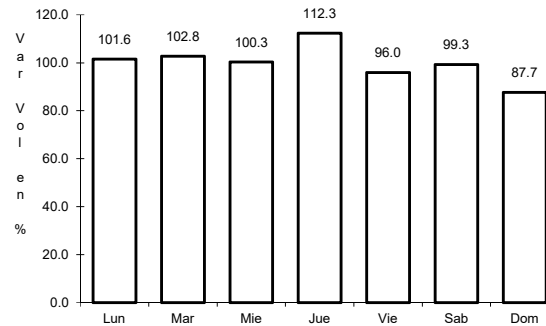
18 CARR: Libramiento Estación Manuel - González

CLAVE: 28002

RUTA: MEX-081



Km: 0.00 Tipo: 3 Sent: 0

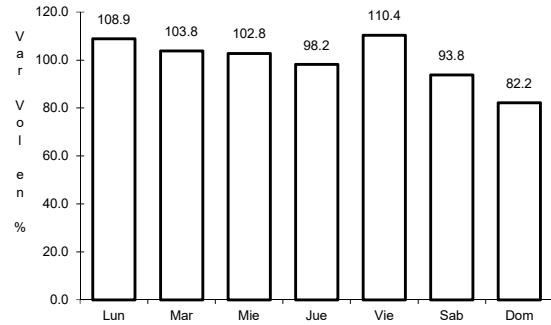


Km: 24.80 Tipo: 1 Sent: 0

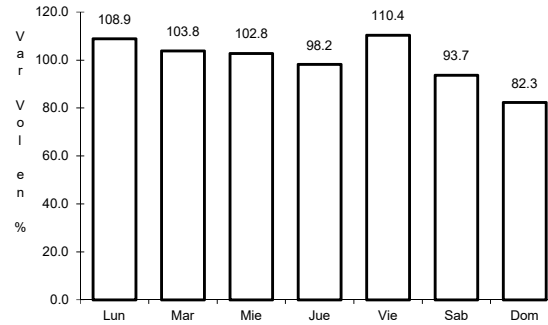
19 CARR: Libramiento General Francisco Villa

CLAVE:

RUTA: MEX-101-180



Km: 0.00 Tipo: 3 Sent: 0

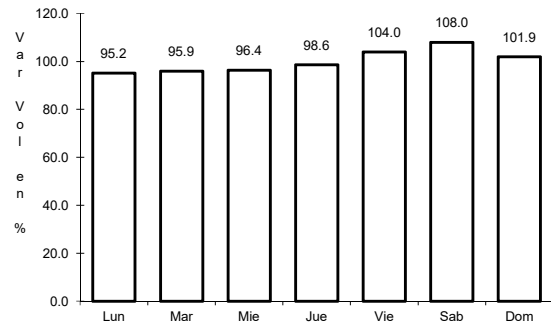


Km: 6.40 Tipo: 1 Sent: 0

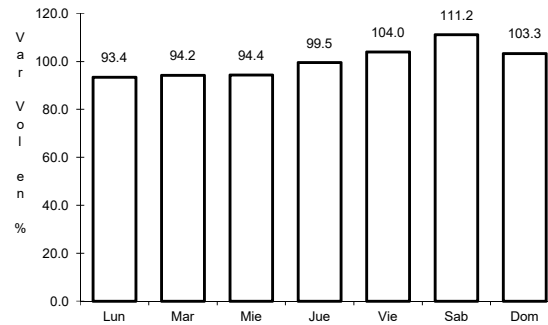
20 CARR: Matamoros - Playa Lauro Villar

CLAVE: 28078

RUTA: MEX-002



Km: 0.00 Tipo: 3 Sent: 1

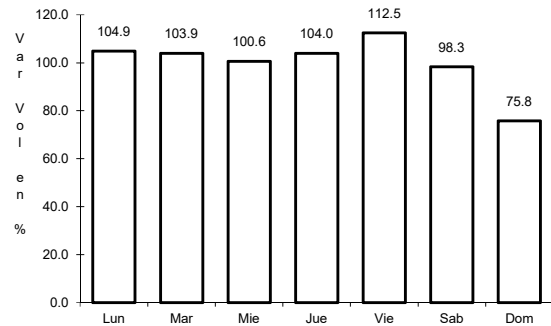


Km: 0.00 Tipo: 3 Sent: 2

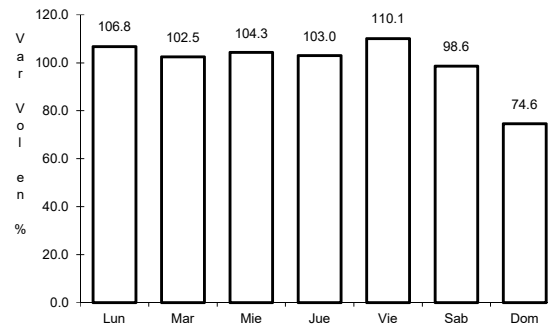
21 CARR: Matamoros - Reynosa

CLAVE: 28077

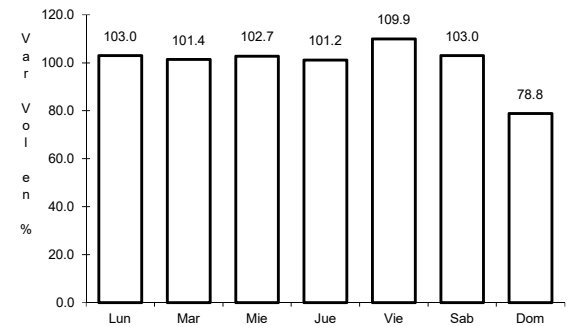
RUTA: MEX-002



Km: 0.00 Tipo: 3 Sent: 0



Km: 98.00 Tipo: 1 Sent: 1

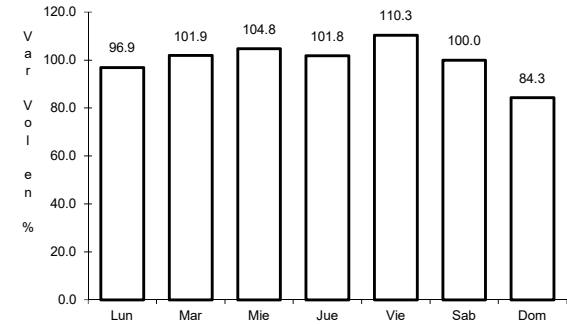
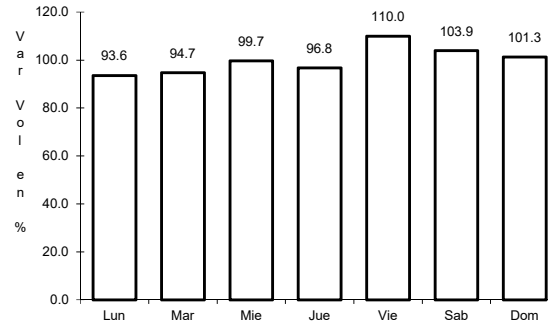
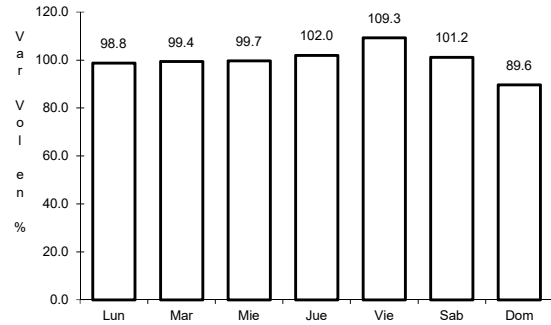


Km: 98.00 Tipo: 1 Sent: 2

22 CARR: Monterrey - Mier

CLAVE: 00127

RUTA: MEX-054



Km: 19.12

Tipo: 1

Sent: 1

Km: 19.12

Tipo: 1

Sent: 2

Km: 156.21

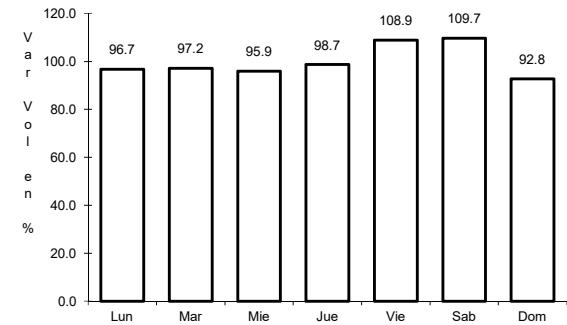
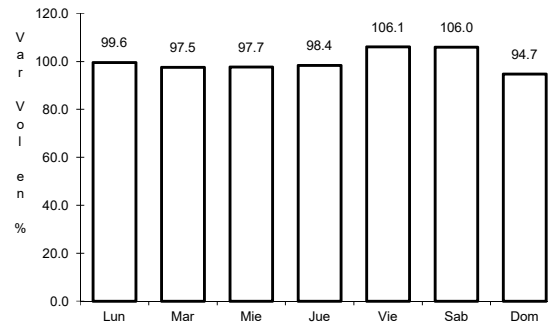
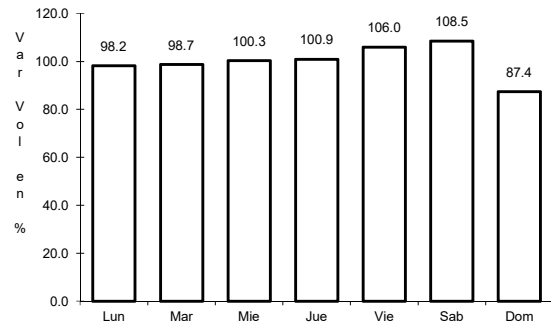
Tipo: 1

Sent: 0

23 CARR: Monterrey - Nuevo Laredo (Libre)

CLAVE: 00463

RUTA: MEX-085



Km: 12.10

Tipo: 3

Sent: 1

Km: 12.10

Tipo: 3

Sent: 2

Km: 124.40

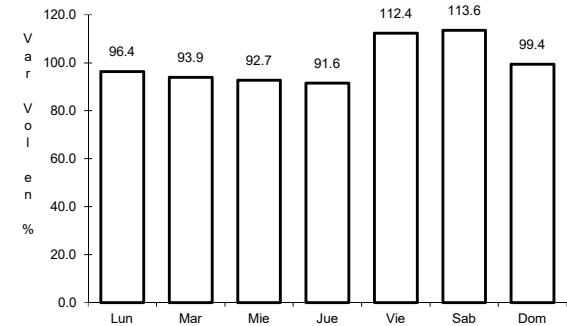
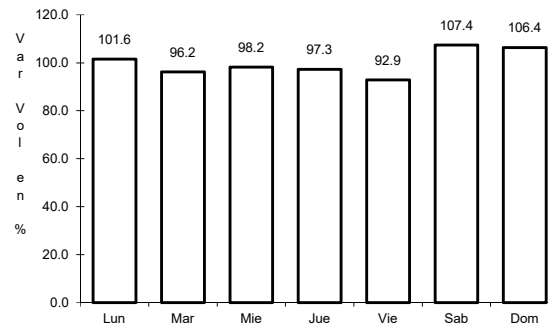
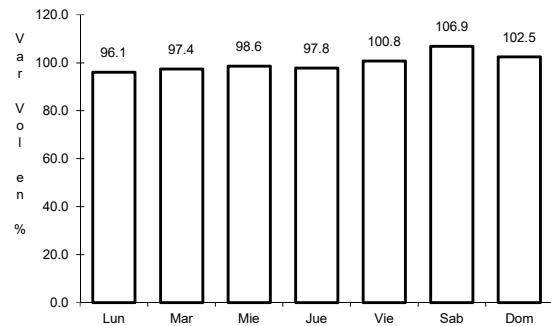
Tipo: 3

Sent: 0

24 CARR: Monterrey - Reynosa (Libre)

CLAVE: 00088

RUTA: MEX-040



Km: 19.10

Tipo: 1

Sent: 1

Km: 19.10

Tipo: 1

Sent: 2

Km: 125.00

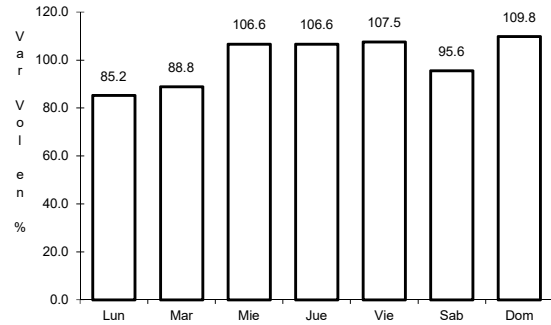
Tipo: 1

Sent: 0

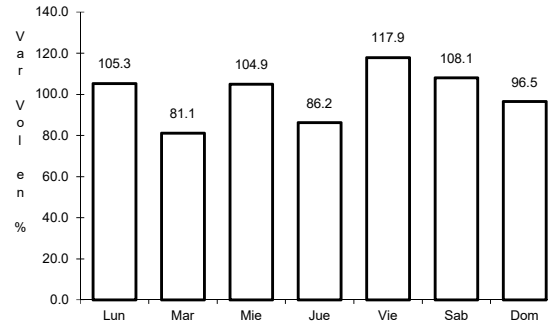
25 CARR: Paras - Nueva Ciudad Guerrero

CLAVE: 00476

ruta: MEX-030



Km: 0.00 Tipo: 3 Sent: 0

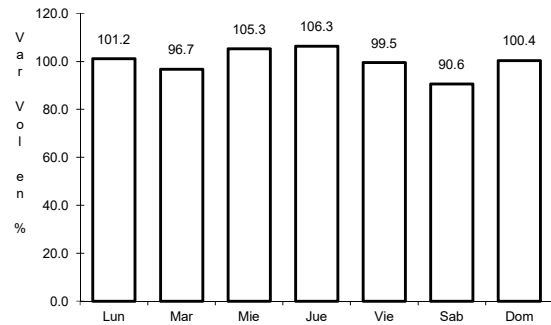


Km: 32.00 Tipo: 1 Sent: 0

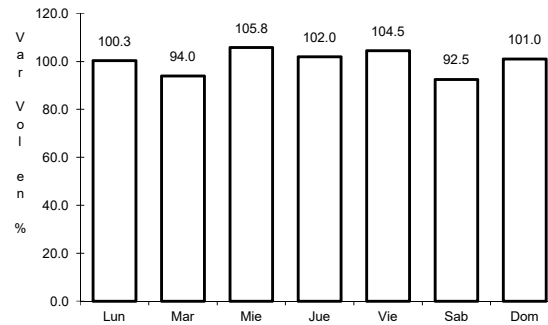
26 CARR: Petrocel - Puerto Industrial Altamira

CLAVE:

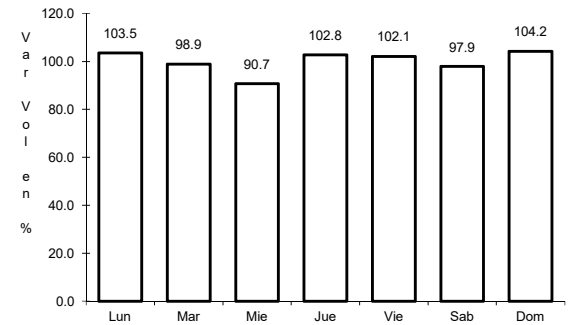
ruta: MEX-080



Km: 0.00 Tipo: 3 Sent: 1



Km: 0.00 Tipo: 3 Sent: 2

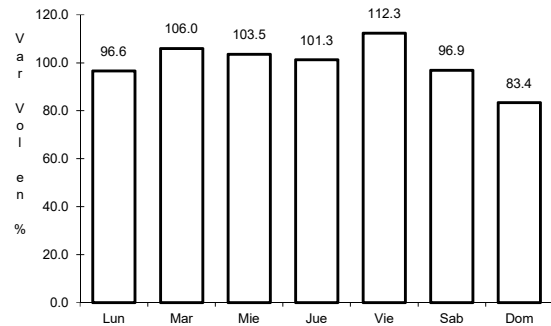


Km: 3.80 Tipo: 3 Sent: 1

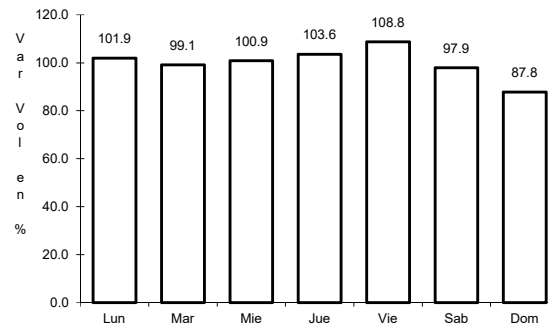
27 CARR: Piedras Negras - Nuevo Laredo

CLAVE: 00503

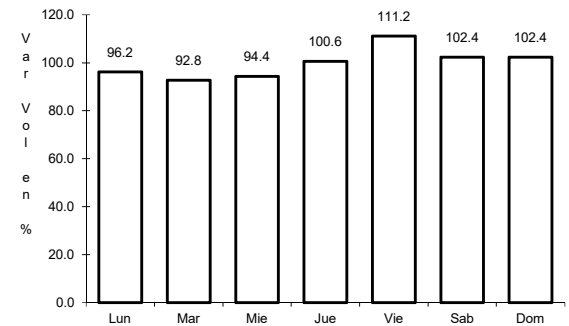
ruta: MEX-002



Km: 0.00 Tipo: 3 Sent: 1



Km: 0.00 Tipo: 3 Sent: 2

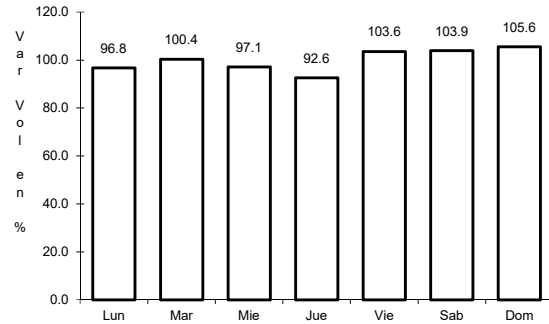


Km: 134.00 Tipo: 3 Sent: 0

28 CARR: Ramal a Puente Tampico

CLAVE: 28020

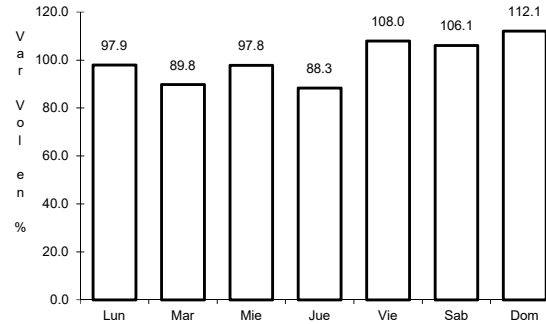
ruta: MEX-180



Km: 186.00

Tipo: 3

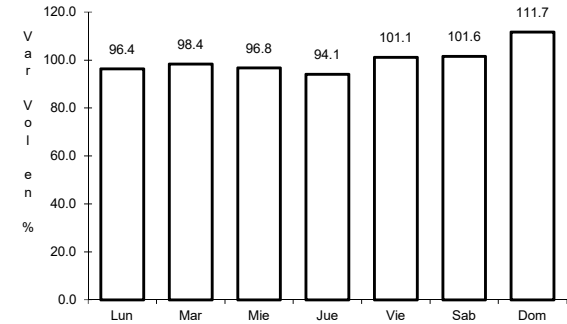
Sent: 1



Km: 186.00

Tipo: 3

Sent: 2



Km: 193.12

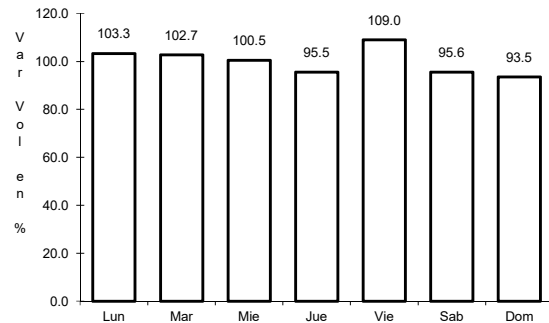
Tipo: 1

Sent: 1

29 CARR: Ramal de Acceso a Puente Anzaldúas

CLAVE: 28619

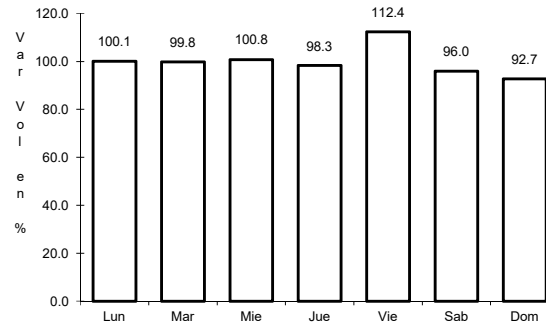
ruta: MEX



Km: 0.00

Tipo: 3

Sent: 1



Km: 0.00

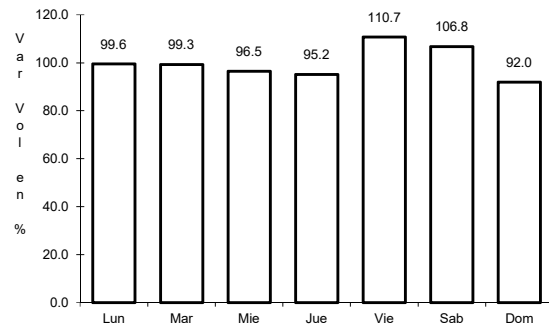
Tipo: 3

Sent: 2

31 CARR: Reynosa - Nuevo Laredo

CLAVE: 28076

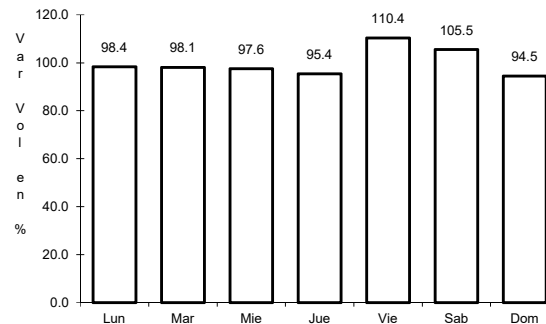
ruta: MEX-002



Km: 0.00

Tipo: 3

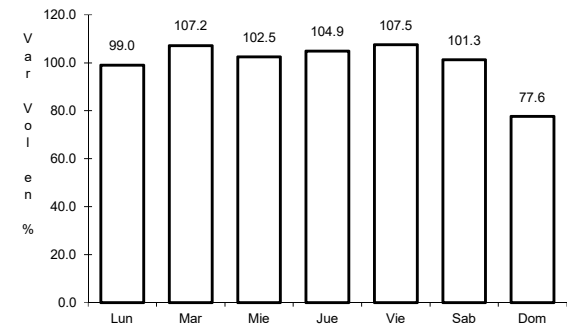
Sent: 1



Km: 0.00

Tipo: 3

Sent: 2



Km: 221.08

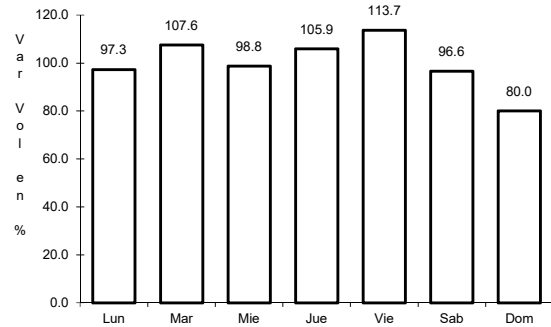
Tipo: 1

Sent: 0

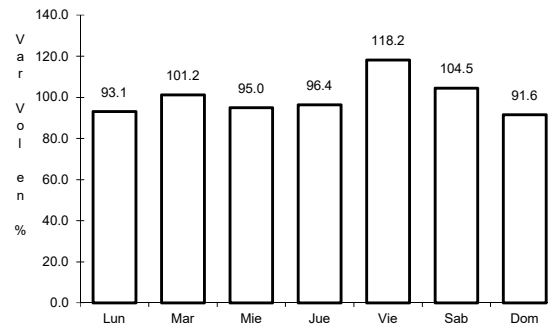
32 CARR: Soto La Marina - La Coma

CLAVE: 28052

ruta: MEX-180



Km: 0.00 Tipo: 3 Sent: 0

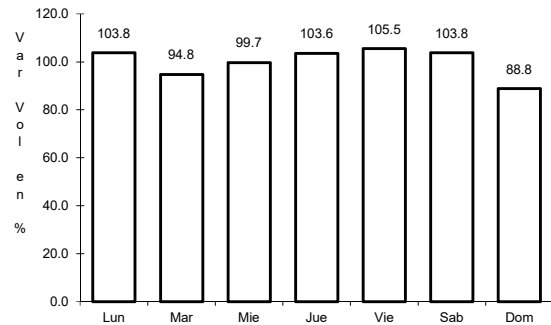


Km: 86.00 Tipo: 1 Sent: 0

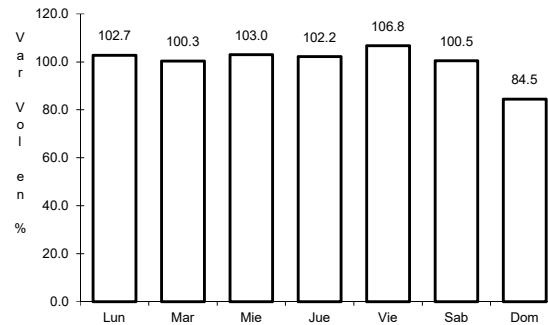
33 CARR: Tampico - Cd. Mante

CLAVE: 28163

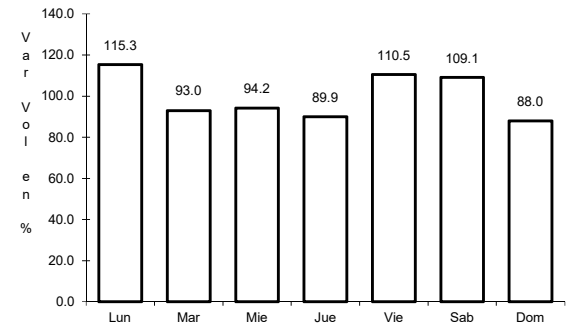
ruta: MEX-080



Km: 14.79 Tipo: 1 Sent: 1



Km: 14.79 Tipo: 1 Sent: 2

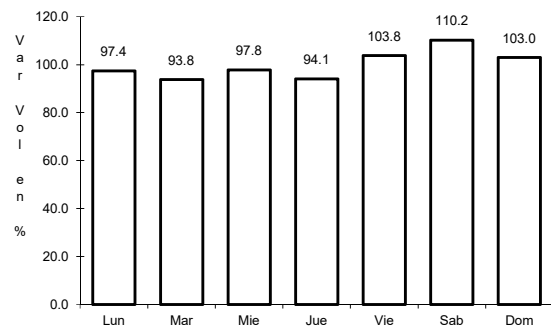


Km: 155.00 Tipo: 1 Sent: 0

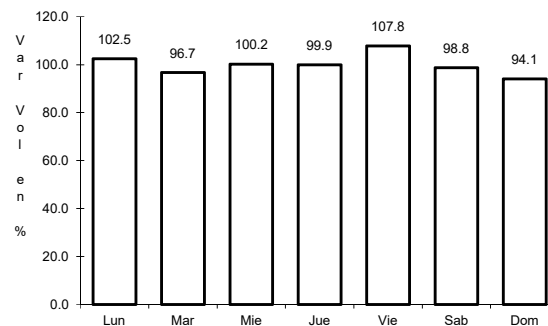
34 CARR: Tuxpam - Tampico

CLAVE: 00529

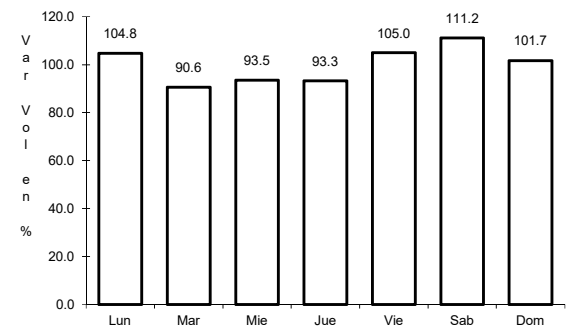
ruta: MEX-180



Km: 0.00 Tipo: 3 Sent: 0



Km: 78.60 Tipo: 1 Sent: 0

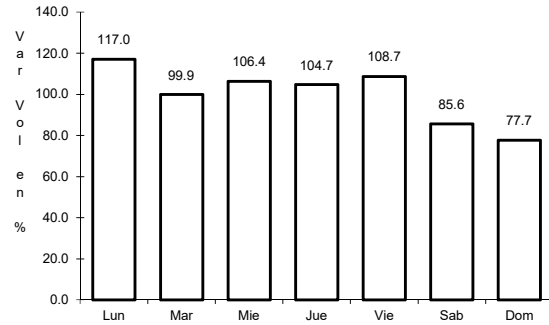


Km: 186.85 Tipo: 3 Sent: 1

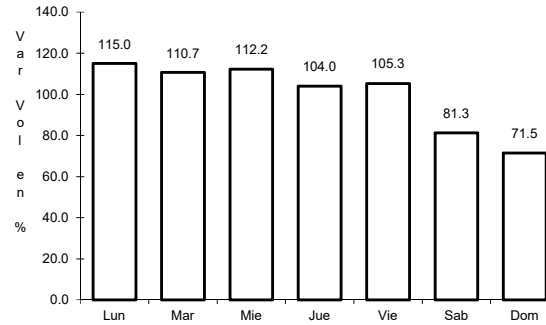
35 CARR: Libramiento de Reynosa Sur II

CLAVE:

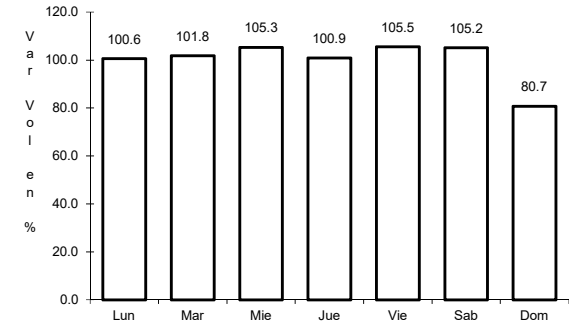
ruta: MEX-040D



Km: 0.00 Tipo: 3 Sent: 1



Km: 0.00 Tipo: 3 Sent: 2

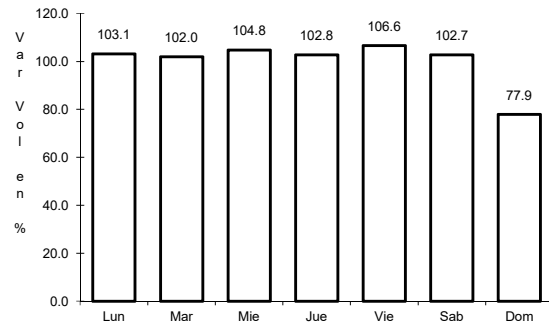


Km: 35.80 Tipo: 1 Sent: 0

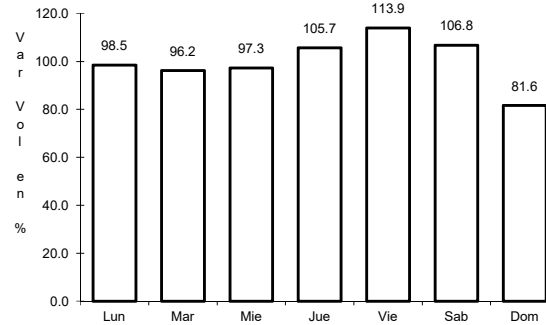
36 CARR: Libramiento Poniente de Tampico (Cuota)

CLAVE: 28051

ruta: MEX-070D



Km: 0.00 Tipo: 3 Sent: 0

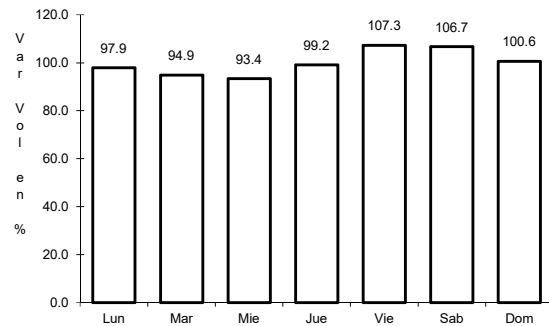


Km: 14.20 Tipo: 1 Sent: 0

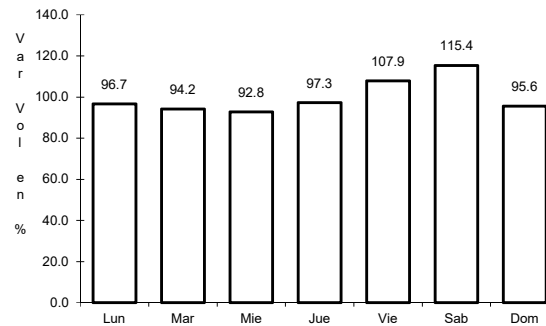
37 CARR: Matamoros - Reynosa (Cuota)

CLAVE: 28079

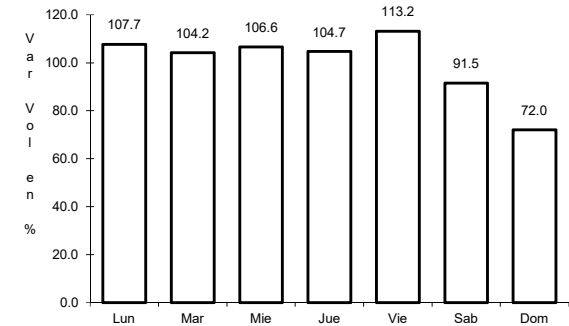
ruta: MEX-002D



Km: 0.00 Tipo: 3 Sent: 1



Km: 0.00 Tipo: 3 Sent: 2

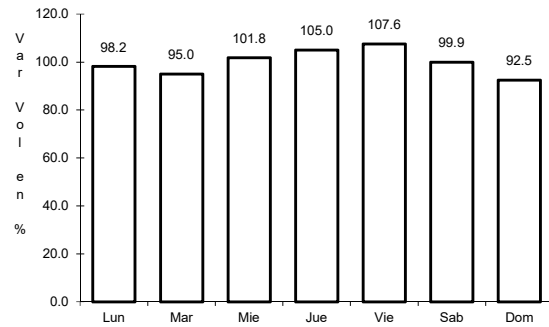


Km: 44.60 Tipo: 1 Sent: 1

38 CARR: Aldama - Barra El Tordo

CLAVE: 28620

ruta: TAM



Km: 0.00

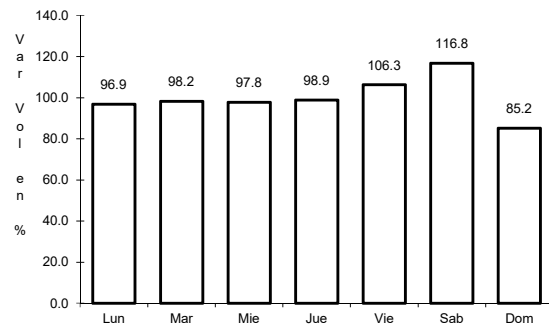
Tipo: 3

Sent: 0

39 CARR: Barretal - Nueva Villa de Padilla

CLAVE: 28001

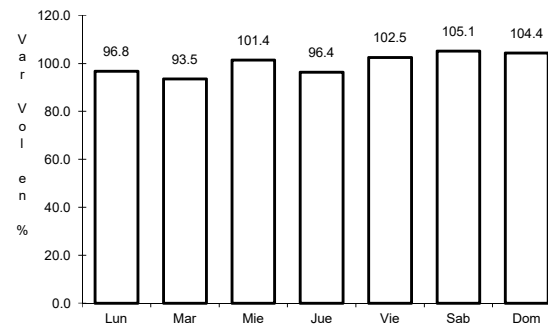
ruta: TAM-001



Km: 0.00

Tipo: 3

Sent: 0



Km: 24.50

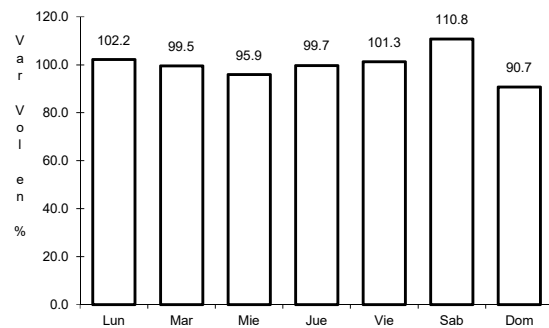
Tipo: 1

Sent: 0

40 CARR: China - Méndez

CLAVE: 00191

ruta: NL-TAM



Km: 0.00

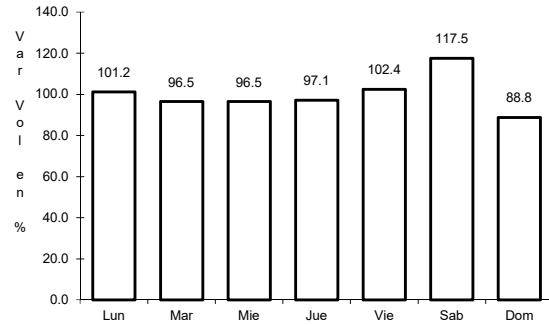
Tipo: 3

Sent: 0

41 CARR: Ébano - Estación Manuel

CLAVE: 24624

RUTA: SLP-TAM



Km: 0.00

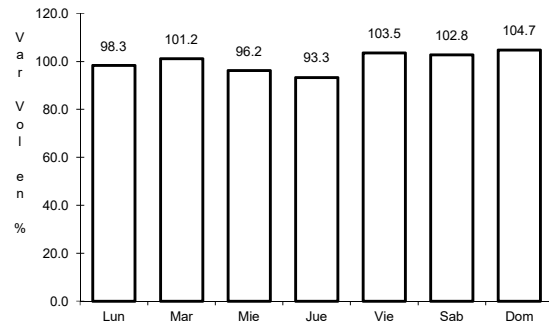
Tipo: 3

Sent: 0

42 CARR: El Limón - Ocampo

CLAVE: 28019

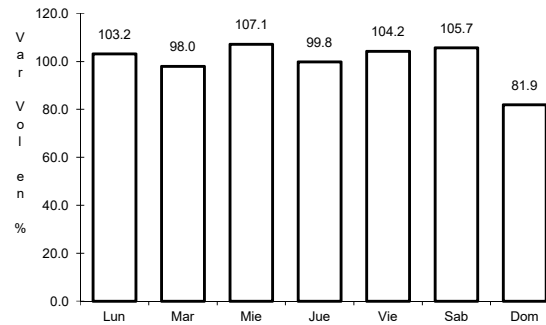
RUTA: TAM-019



Km: 0.00

Tipo: 3

Sent: 0



Km: 43.00

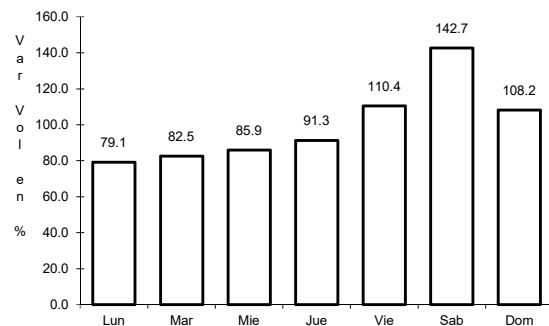
Tipo: 1

Sent: 0

43 CARR: Ent. Huisachito - Nuevo Laredo

CLAVE: 00074

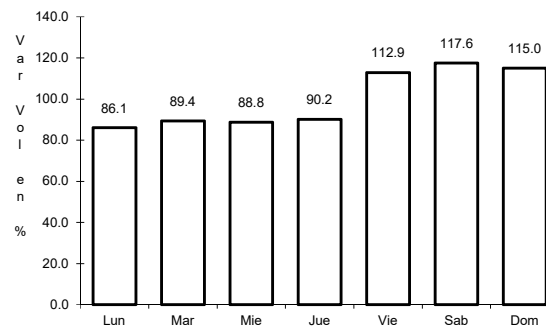
RUTA: NL-001-TAM



Km: 0.00

Tipo: 3

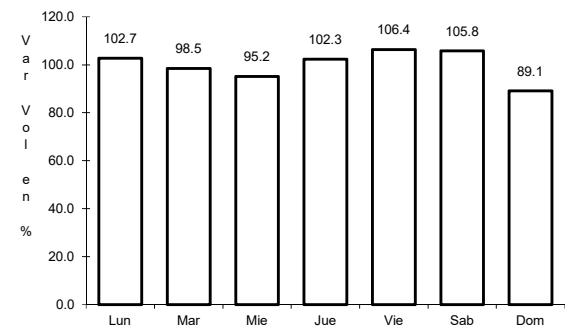
Sent: 0



Km: 47.00

Tipo: 1

Sent: 0



Km: 51.00

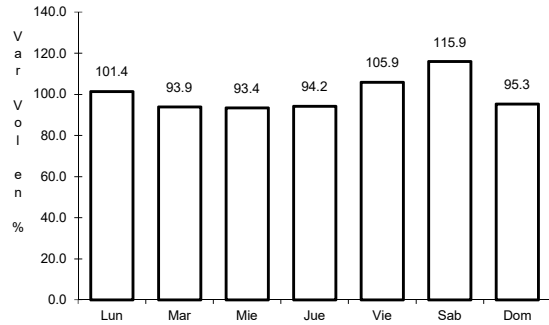
Tipo: 1

Sent: 0

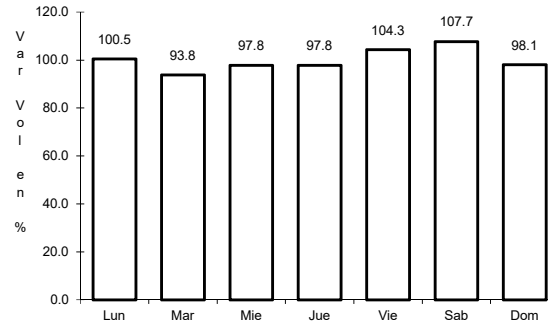
44 CARR: Ent. Las Blancas - Río Bravo

CLAVE: 28003

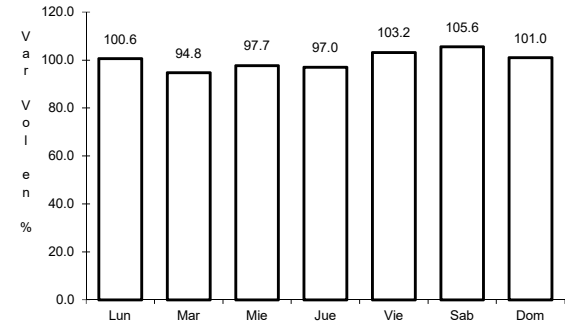
RUTA: TAM-003



Km: 0.00 Tipo: 3 Sent: 0



Km: 21.00 Tipo: 1 Sent: 1

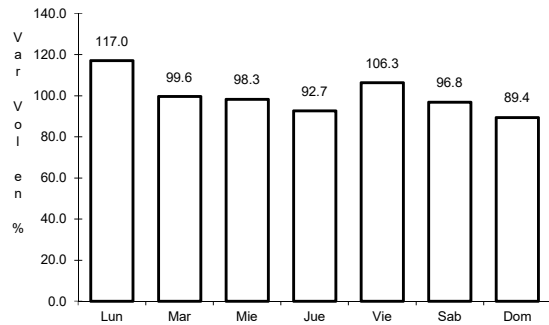


Km: 21.00 Tipo: 1 Sent: 2

45 CARR: La Joya - Méndez

CLAVE: 28623

RUTA: TAM

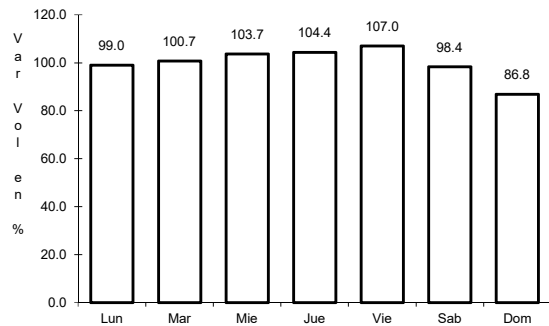


Km: 0.00 Tipo: 3 Sent: 0

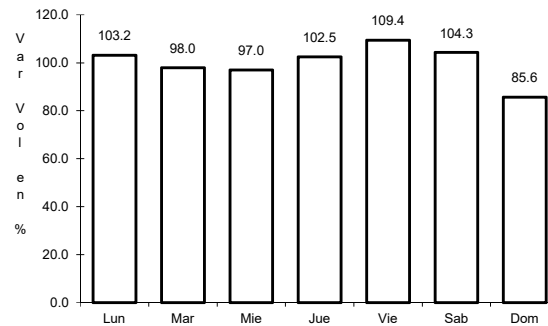
46 CARR: Libramiento de Cd. Victoria

CLAVE: 28282

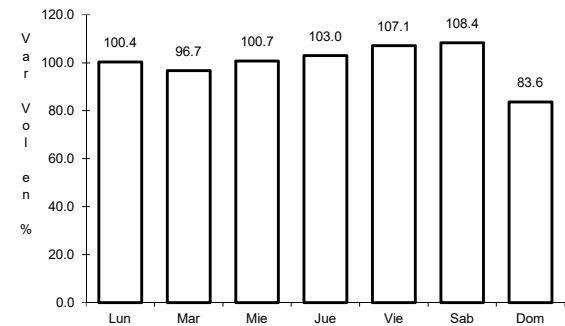
RUTA: TAM



Km: 0.00 Tipo: 3 Sent: 1



Km: 0.00 Tipo: 3 Sent: 2

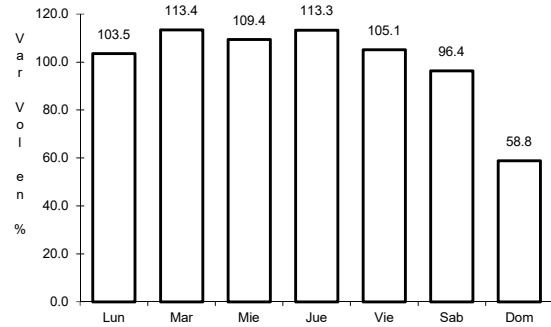


Km: 25.90 Tipo: 1 Sent: 1

47 CARR: Libramiento de Mier

CLAVE: 28282

ruta: TAMPS

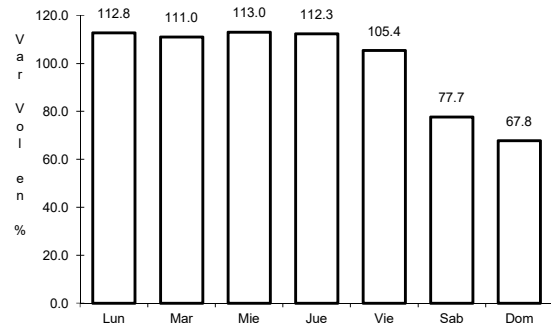


Km: 0.00 Tipo: 3 Sent: 0

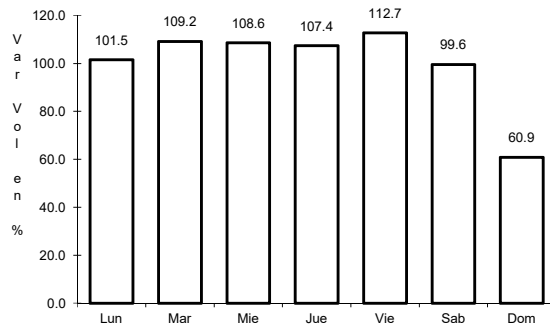
48 CARR: Libramiento de Nuevo Laredo

CLAVE: 28030

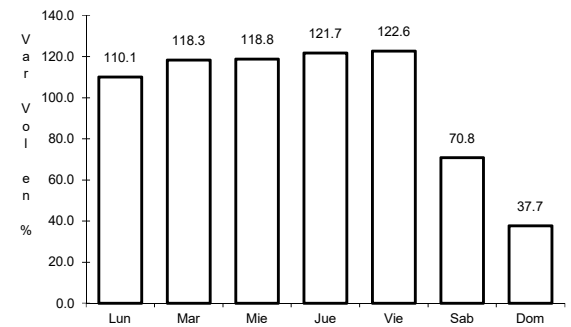
ruta: TAM



Km: 0.00 Tipo: 3 Sent: 1



Km: 0.00 Tipo: 3 Sent: 2

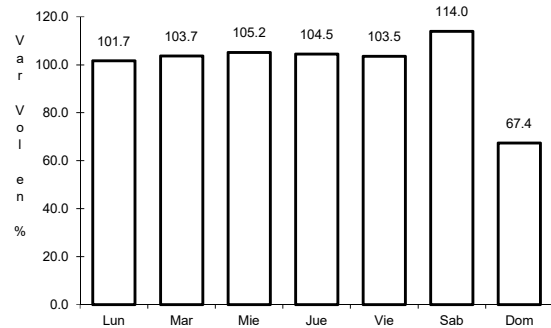


Km: 18.00 Tipo: 1 Sent: 1

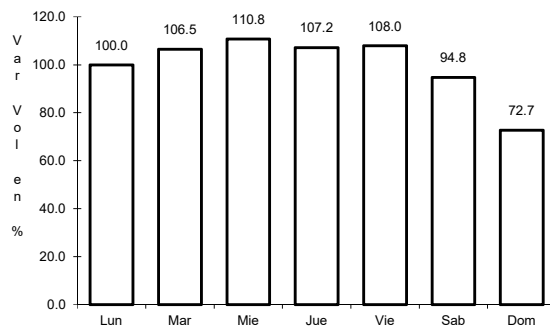
49 CARR: Libramiento de Nuevo Laredo II

CLAVE: 28626

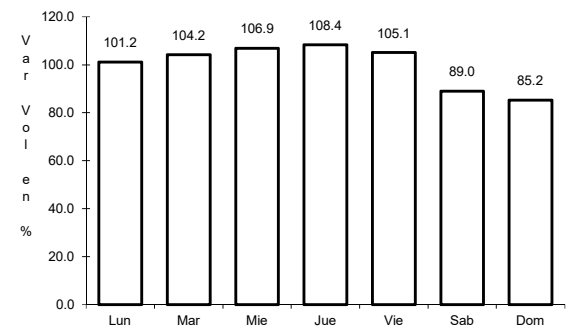
ruta: TAM



Km: 0.00 Tipo: 3 Sent: 0



Km: 32.20 Tipo: 1 Sent: 1

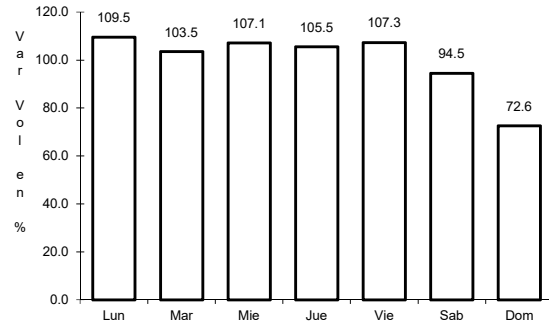


Km: 32.20 Tipo: 1 Sent: 2

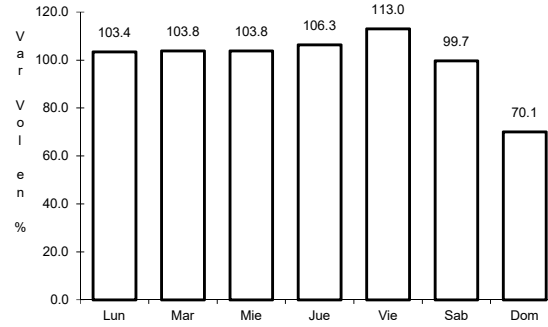
50 CARR: Libramiento de Río Bravo

CLAVE: 28002

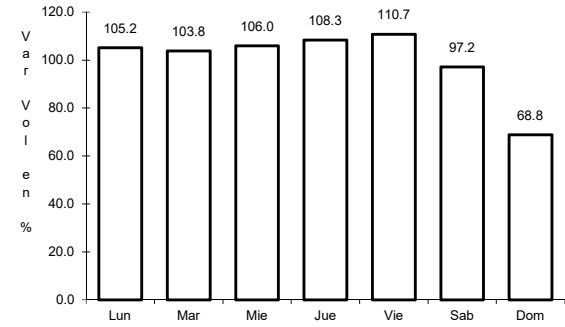
RUTA: TAM



Km: 0.00 Tipo: 3 Sent: 1



Km: 0.00 Tipo: 3 Sent: 2

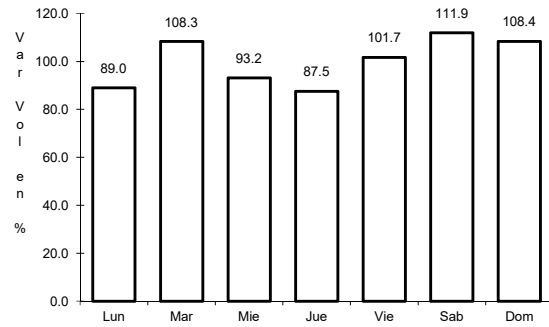


Km: 13.10 Tipo: 1 Sent: 1

51 CARR: Los Guerra - Los Herreras

CLAVE: 19031

RUTA: TAM-NL

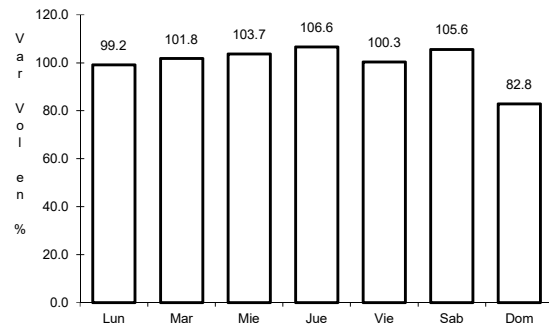


Km: 73.00 Tipo: 1 Sent: 0

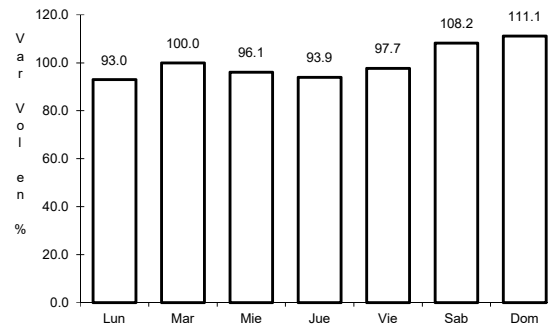
52 CARR: Peña Blanca - Cd. Camargo

CLAVE: 00102

RUTA: NL-TAM



Km: 0.00 Tipo: 3 Sent: 0

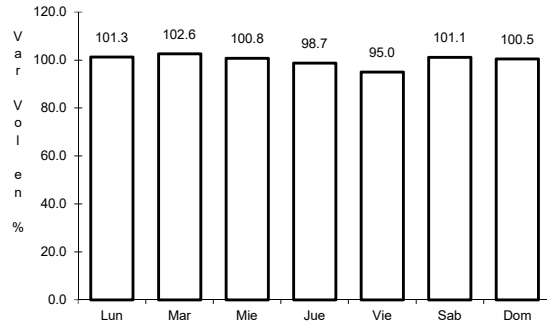


Km: 65.00 Tipo: 1 Sent: 0

53 CARR: Potrero Nuevo - Rancho El Mezquital

CLAVE: 28615

ruta: TAM



Km: 0.00

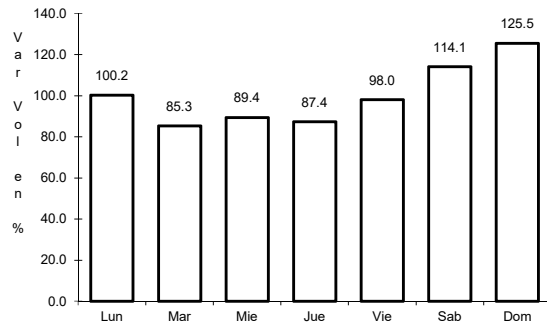
Tipo: 3

Sent: 0

54 CARR: Ramal a Gómez Farías

CLAVE: 28020

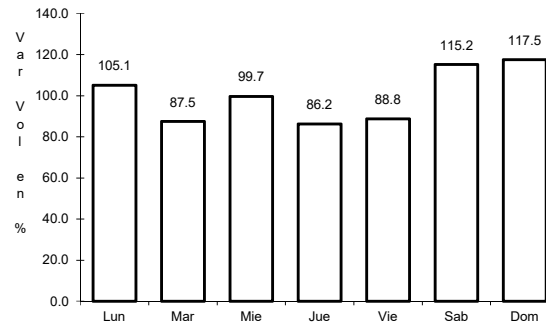
ruta: TAM-020



Km: 0.00

Tipo: 3

Sent: 0



Km: 11.00

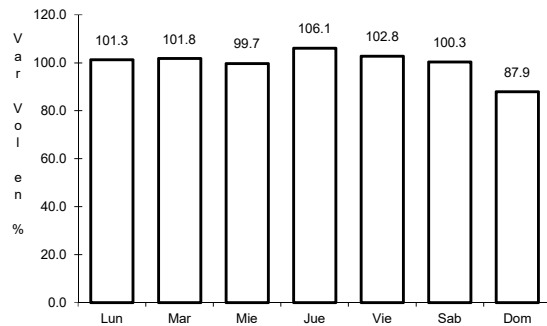
Tipo: 1

Sent: 0

55 CARR: Ramal a Xicotécatl

CLAVE: 28619

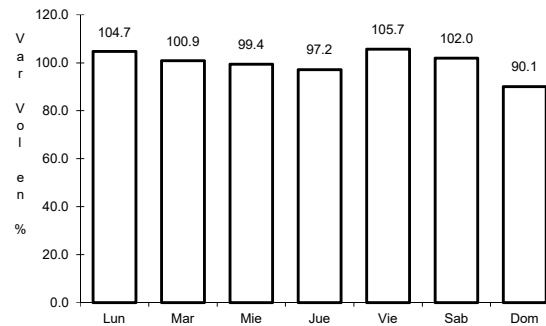
ruta: TAM



Km: 0.00

Tipo: 3

Sent: 0



Km: 13.00

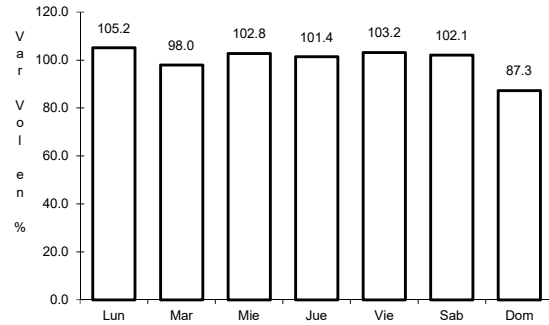
Tipo: 1

Sent: 0

56 CARR: San Fernando - Carboneras

CLAVE: 28618

RUTA: TAM



Km: 0.00

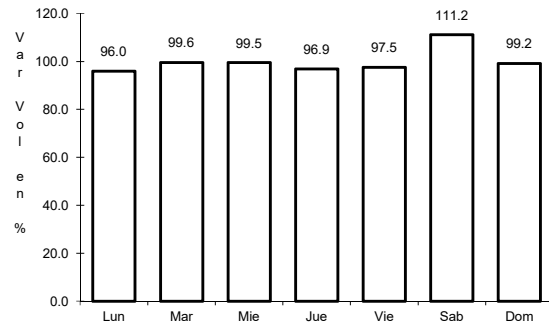
Tipo: 3

Sent: 0

57 CARR: Soto La Marina - La Pesca

CLAVE: 28049

RUTA: TAM-070



Km: 0.00

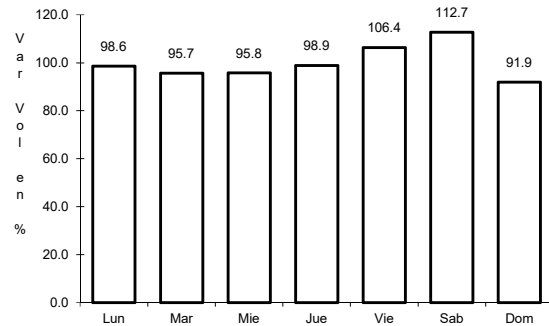
Tipo: 3

Sent: 0

58 CARR: T. C. (Valle Hermoso - Empalme) - Matamoros

CLAVE: 28005

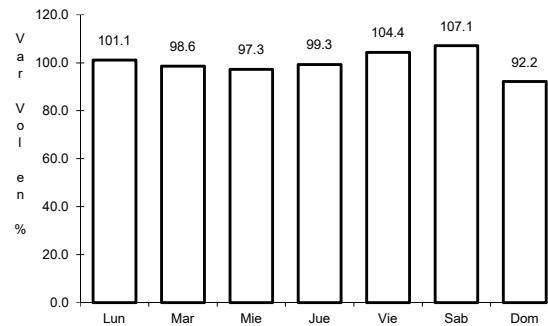
RUTA: TAM-005



Km: 0.00

Tipo: 3

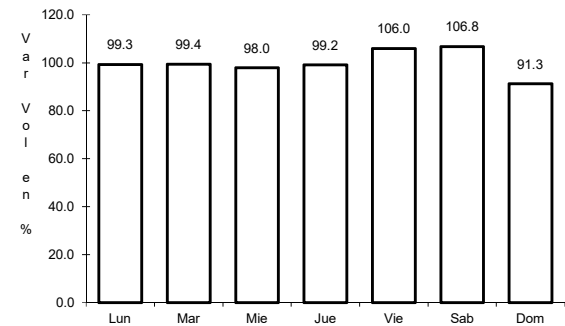
Sent: 0



Km: 33.90

Tipo: 1

Sent: 1



Km: 33.90

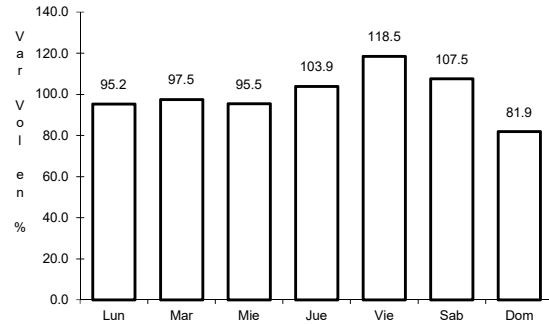
Tipo: 1

Sent: 2

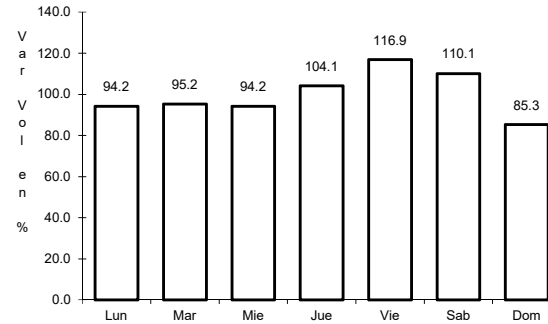
59 CARR: T. C. Libramiento Cd. Victoria - San Antonio

CLAVE:

ruta: TAM-126



Km: 0.00 Tipo: 3 Sent: 0

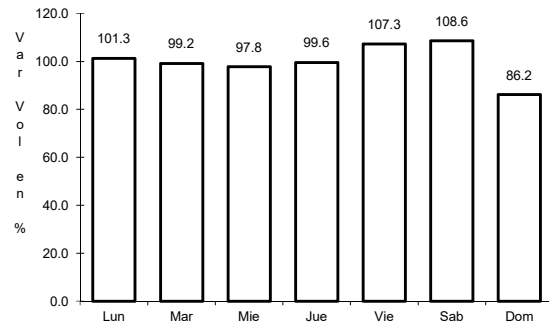


Km: 37.50 Tipo: 1 Sent: 0

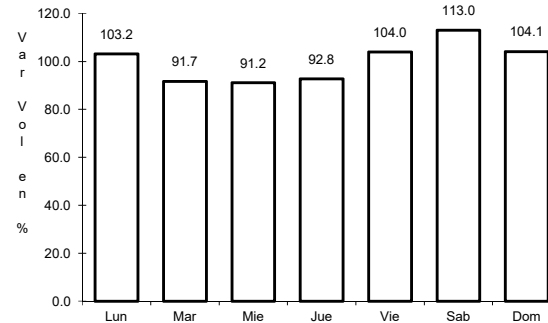
60 CARR: Valle Hermoso - Empalme

CLAVE: 28004

ruta: TAM-004



Km: 0.00 Tipo: 3 Sent: 0

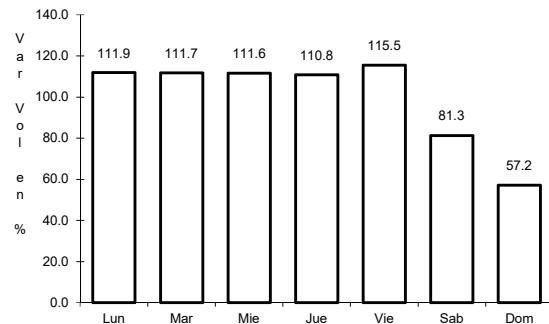


Km: 28.38 Tipo: 1 Sent: 0

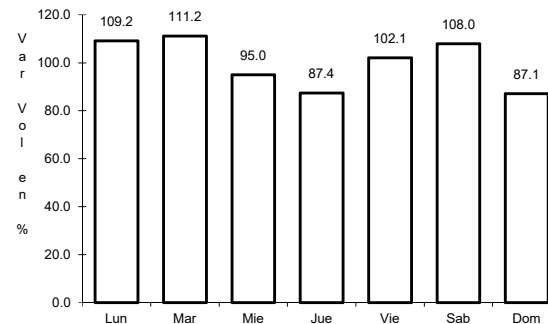
61 CARR: Valle Hermoso - Las Yescas

CLAVE: 28614

ruta: TAM

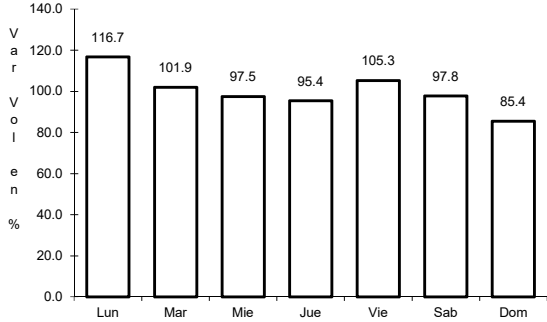


Km: 0.00 Tipo: 3 Sent: 0



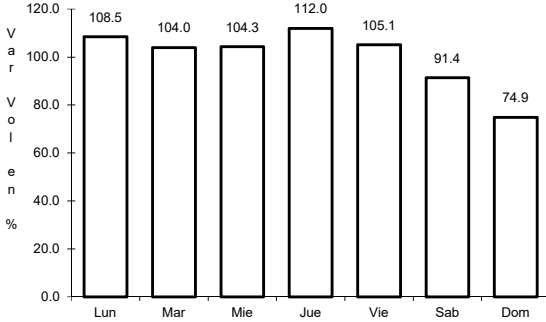
Km: 26.00 Tipo: 1 Sent: 0

62 CARR: Santander Jiménez - Ent. El Ojito



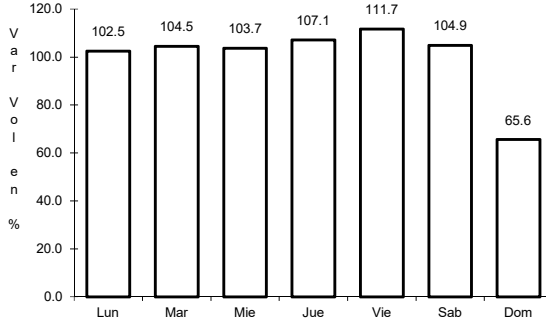
Km: 0.00 Tipo: 3 Sent: 0

CLAVE: 28579



Km: 20.00 Tipo: 1 Sent: 0

RUTA: MEX-107-TAM



Km: 58.00 Tipo: 1 Sent: 0

