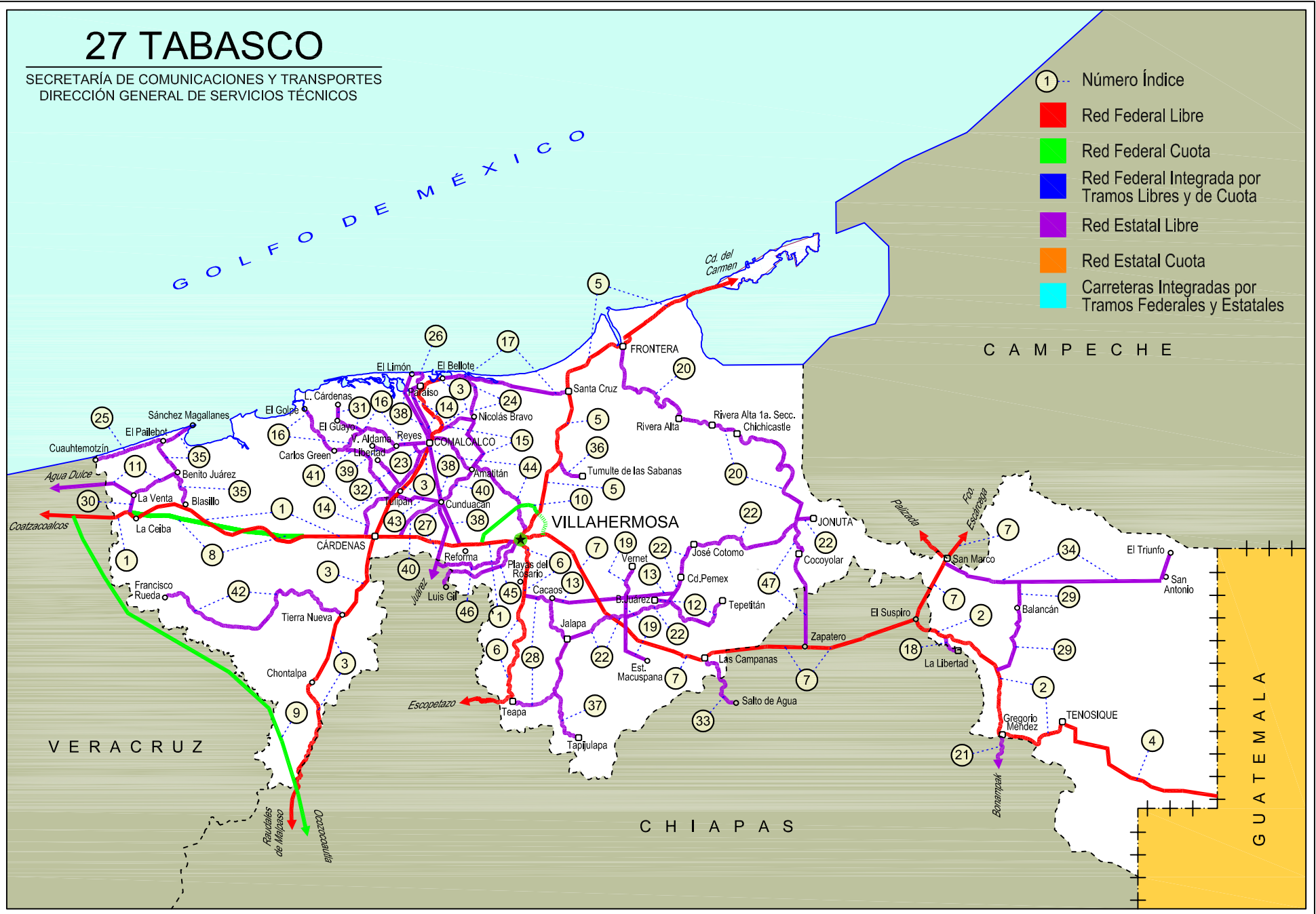
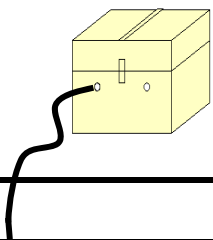


27 TABASCO

SECRETARÍA DE COMUNICACIONES Y TRANSPORTES
DIRECCIÓN GENERAL DE SERVICIOS TÉCNICOS

- ① --- Número Índice
- Red Federal Libre
- Red Federal Cuota
- Red Federal Integrada por Tramos Libres y de Cuota
- Red Estatal Libre
- Red Estatal Cuota
- Carreteras Integradas por Tramos Federales y Estatales





TABASCO

NO. INDICE CARRETERA	RUTA
---RED FEDERAL LIBRE---	
1 Coatzacoalcos - Villahermosa	MEX-180
2 El Suspiro - Tenosique	MEX-203
3 Malpaso - El Bellote	MEX-187
4 Tenosique - El Ceibo	MEX-203
5 Villahermosa - Cd. del Carmen	MEX-180
6 Villahermosa - Escopetazo	MEX-195
7 Villahermosa - Francisco Escárcega	MEX-186
---RED FEDERAL DE CUOTA---	
8 Ent. Agua Dulce - Cárdenas (Cuota)	MEX-180D
9 Las Choapas - Ocozocoautla (Cuota)	MEX-187D
10 Libramiento de Villahermosa (Cuota)	MEX-180D
---RED ESTATAL LIBRE---	
11 Benito Juárez - Agua Dulce	TAB-VER
12 Benito Juárez - Tepetitán	TAB
13 Cacaos - La Granja	TAB
14 Cárdenas - Paraíso	TAB
15 Chichicapa - Ent. La Libertad	TAB
16 Comalcalco - El Golpe	TAB
17 El Bellote - Santa Cruz	TAB
18 Ent. Emiliano Zapata - La Libertad	CHIS-TAB
19 Estación Macuspana - Vernet	TAB-041
20 Frontera - T. C. (Jalapa - Jonuta)	TAB
21 Gregorio Méndez Magaña - Reforma de Ocampo	CHIS
22 Jalapa - Jonuta	TAB
23 Libramiento Sur de Comalcalco	TAB
24 Nicolás Bravo - T. C. (El Bellote - Santa Cruz)	TAB
25 Pailebot - Cuauhtemotzin	TAB
26 Paraíso - El Limón	TAB
27 Paso de Cunduacán - Estación Juárez	TAB-CHIS
28 Playas del Rosario - Teapa	TAB-001
29 Ramal a Balancan	TAB
30 Ramal a La Venta	TAB
31 Ramal a Lázaro Cárdenas	TAB
32 Ramal a Libertad	TAB
33 Ramal a Salto del Agua	TAB-CHIS
34 Ramal a San Antonio	TAB
35 Ramal a Sánchez Magallanes	TAB
36 Ramal a Tamulte de Las Sabanas	TAB
37 Ramal a Tapijulapa	TAB
38 Reforma - Dos Bocas	TAB
39 Reyes Hernández - Villa Aldama	TAB
40 Samaria - Amatitán	TAB
41 T. C. (Cárdenas - Paraíso) - Carlos Green	TAB
42 Tierra Nueva - Francisco Rueda	TAB
43 Tulipán - Cunduacán	TAB
44 Villahermosa - Comalcalco	TAB
45 Villahermosa - Luis Gil Pérez	TAB
46 Villahermosa - T. C. (P. de Cunduacán - Estación Juárez)	TAB
47 Zapatero - T. C. (Jalapa - Jonuta)	CHIS-TAB

TABASCO

1 CARR: Coatzacoalcos - Villahermosa

CLAVE: 00528

RUTA: MEX-180

AÑO: 2018

LUGAR	ESTACION				CLASIFICACION VEHICULAR EN PORCIENTO													COORDENADAS			
	KM	TE	SC	TDPA	M	A	B	C2	C3	T3S2	T3S3	T3S2R4	OTROS	A	B	C	K'	D	LATITUD	LONGITUD	
Coatzacoalcos	0.00																				
Caseta de Cobro Pte. Coatzacoalcos	3.00	1	0	23759	1.5	87.1	2.5	5.6	1.0	0.7	1.0	0.5	0.1	88.6	2.5	8.9	0.078	0.547	18.121506	-94.424627	
X. C. Pajaritos - Nanchital	6.53	1	0	20666	1.8	84.0	2.9	6.5	1.3	0.9	1.2	1.3	0.1	85.8	2.9	11.3	0.076	0.504	18.111082	-94.403535	
X. C. Pajaritos - Nanchital	6.53	3	0	16377	2.3	80.7	3.5	6.9	2.0	1.2	1.4	1.9	0.1	83.0	3.5	13.5	0.093	0.513	18.094350	-94.376550	
T. Der. Puente Antonio Dovalí Jaimes	14.60	1	0	10106	2.7	74.7	4.4	4.1	3.0	4.5	1.8	4.7	0.1	77.4	4.4	18.2	0.070	0.530	18.078119	-94.330618	
T. Der. Puente Antonio Dovalí Jaimes	14.60	3	1	9738	3.1	74.9	4.4	5.0	2.1	5.3	1.9	2.9	0.4	78.0	4.4	17.6	0.064	0.550	18.070716	-94.305002	
T. Der. Puente Antonio Dovalí Jaimes	14.60	3	2	11900	2.8	73.1	4.7	5.6	2.4	5.7	2.1	3.2	0.4	75.9	4.7	19.4	0.058	0.550	18.070881	-94.305068	
T. Der. Las Choapas	36.00	3	1	9269	3.2	67.8	4.0	5.7	2.4	9.2	2.3	4.9	0.5	71.0	4.0	25.0	0.064	0.509	18.052090	-94.122190	
T. Der. Las Choapas	36.00	3	2	8924	3.9	64.2	4.2	6.3	2.5	10.7	2.5	5.2	0.5	68.1	4.2	27.7	0.068	0.509	18.052462	-94.119921	
Lim. Edos. Term. Ver. Ppia. Tab.	41.48																				
T. Izq. Villa La Venta	47.26	3	0	2519	6.8	74.0	2.6	6.4	1.7	6.6	1.3	0.5	0.1	80.8	2.6	16.6	0.072	0.675	18.056154	-94.030387	
T. Izq. Campo Magallanes	65.20	1	0	4132	6.4	68.5	3.3	7.7	2.6	9.2	1.6	0.6	0.1	74.9	3.3	21.8	0.062	0.537	18.076069	-93.884906	
T. Izq. Campo Magallanes	65.20	3	0	5104	4.9	67.6	4.1	9.8	2.1	9.3	1.5	0.5	0.2	72.5	4.1	23.4	0.063	0.502	18.071752	-93.871906	
X. C. Agua Dulce - Cárdenas (Cuota)	78.80	1	0	4999	7.8	69.7	2.4	9.3	2.0	7.1	1.3	0.3	0.1	77.5	2.4	20.1	0.075	0.500	18.033555	-93.817188	
X. C. Agua Dulce - Cárdenas (Cuota)	78.80	3	0	4536	10.2	63.7	3.6	9.1	2.5	8.8	1.6	0.4	0.1	73.9	3.6	22.5	0.078	0.507	18.023860	-93.795171	
Pico de Oro	88.50	1	0	5778	5.6	69.2	3.1	8.0	4.2	8.0	1.3	0.5	0.1	74.8	3.1	22.1	0.064	0.512	18.017664	-93.689771	
Pico de Oro	88.50	3	0	6185	5.2	68.1	3.6	9.1	4.6	7.3	1.5	0.5	0.1	73.3	3.6	23.1	0.067	0.510	18.018788	-93.662788	
X. C. Agua Dulce - Cárdenas (Cuota)	104.00	1	0	8641	4.1	73.8	2.7	9.2	2.7	5.5	1.1	0.8	0.1	77.9	2.7	19.4	0.066	0.500	17.983992	-93.596765	
X. C. Agua Dulce - Cárdenas (Cuota)	104.00	3	1	10326	2.4	62.9	4.1	7.1	3.3	11.8	2.4	5.8	0.2	65.3	4.1	30.6	0.068	0.506	17.998794	-93.535379	
X. C. Agua Dulce - Cárdenas (Cuota)	104.00	3	2	10080	2.6	59.6	4.6	7.3	3.7	13.1	2.6	6.3	0.2	62.2	4.6	33.2	0.064	0.506	17.999083	-93.535400	
Cárdenas	122.10	1	1	17618	4.1	69.0	3.4	9.4	1.9	6.9	1.4	3.6	0.3	73.1	3.4	23.5	0.063	0.517	17.999100	-93.401351	
Cárdenas	122.10	1	2	16429	3.6	66.9	3.9	10.6	2.2	7.2	1.5	3.8	0.3	70.5	3.9	25.6	0.064	0.517	17.999269	-93.401375	
Cárdenas	122.10	3	1	19416	2.6	74.4	3.1	7.6	2.0	5.7	1.4	3.0	0.2	77.0	3.1	19.9	0.075	0.514	17.999074	-93.357069	
Cárdenas	122.10	3	2	20574	3.0	72.0	3.6	8.3	2.2	6.0	1.5	3.2	0.2	75.0	3.6	21.4	0.069	0.514	17.999241	-93.357216	
T. Izq. Samaria	132.50	3	1	20921	2.2	74.8	3.0	6.8	2.4	5.7	1.8	3.1	0.2	77.0	3.0	20.0	0.066	0.523	17.995218	-93.273327	
T. Izq. Samaria	132.50	3	2	19096	1.3	72.4	3.4	7.7	2.9	6.8	1.8	3.5	0.2	73.7	3.4	22.9	0.060	0.523	17.999926	-93.268210	
Cucuyulapa	134.80	1	1	16223	1.6	72.9	3.5	7.0	1.9	7.1	1.8	4.0	0.2	74.5	3.5	22.0	0.065	0.500	17.999004	-93.260091	
Cucuyulapa	134.80	1	2	16198	1.4	70.7	3.9	7.7	2.1	7.8	1.9	4.3	0.2	72.1	3.9	24.0	0.055	0.500	17.999161	-93.260346	
Cucuyulapa	134.80	3	1	15318	1.4	70.4	5.2	8.9	1.8	6.2	1.9	4.0	0.2	71.8	5.2	23.0	0.066	0.513	17.998966	-93.247303	
Cucuyulapa	134.80	3	2	16134	1.4	66.8	5.6	10.5	2.1	6.9	1.9	4.6	0.2	68.2	5.6	26.2	0.055	0.513	17.999180	-93.247315	
T. Der. La Reforma	148.80	1	1	21617	1.2	76.3	2.8	6.8	1.9	5.7	1.6	3.6	0.1	77.5	2.8	19.7	0.076	0.506	17.977622	-93.148777	
T. Der. La Reforma	148.80	1	2	21066	1.7	73.6	3.2	7.7	2.0	6.2	1.7	3.8	0.1	75.3	3.2	21.5	0.065	0.506	17.977799	-93.148714	
T. Der. La Reforma	148.80	3	1	28950	1.6	80.5	2.0	6.9	1.4	4.2	1.0	2.3	0.1	82.1	2.0	15.9	0.065	0.511	17.973731	-93.120831	
T. Der. La Reforma	148.80	3	2	27656	2.0	78.4	2.3	7.7	1.5	4.3	1.1	2.6	0.1	80.4	2.3	17.3	0.060	0.511	17.973938	-93.120834	
Villahermosa	171.15	1	1	32117	1.2	80.9	2.3	7.5	1.4	3.5	1.0	2.0	0.2	82.1	2.3	15.6	0.070	0.503	17.979549	-93.048157	

TABASCO

1 CARR: Coatzacoalcos - Villahermosa

CLAVE: 00528

RUTA: MEX-180

AÑO: 2018

LUGAR	ESTACION				CLASIFICACION VEHICULAR EN PORCIENTO														COORDENADAS	
	KM	TE	SC	TDPA	M	A	B	C2	C3	T3S2	T3S3	T3S2R4	OTROS	A	B	C	K'	D	LATITUD	LONGITUD
Villahermosa	171.15	1	2	32551	1.9	79.0	2.5	7.9	1.5	3.9	1.0	2.1	0.2	80.9	2.5	16.6	0.064	0.503	17.979741	-93.048156

2 CARR: El Suspiro - Tenosique

CLAVE: 00276

RUTA: MEX-203

AÑO: 2018

LUGAR	ESTACION				CLASIFICACION VEHICULAR EN PORCIENTO														COORDENADAS	
	KM	TE	SC	TDPA	M	A	B	C2	C3	T3S2	T3S3	T3S2R4	OTROS	A	B	C	K'	D	LATITUD	LONGITUD
Ent. El Suspiro	0.00	3	0	4859	2.2	79.9	2.0	9.8	1.4	3.0	0.7	0.5	0.5	82.1	2.0	15.9	0.083	0.502	17.749271	-91.813092
Lim. Edos. Term. Chis. Ppia. Tab.	8.00																			
Emiliano Zapata	8.61	3	0	5982	2.8	83.5	1.7	7.2	1.4	2.3	0.5	0.2	0.4	86.3	1.7	12.0	0.085	0.505	17.727723	-91.757525
T. Der. La Libertad	12.10	3	0	4210	4.1	83.1	1.7	7.9	1.3	1.4	0.4	0.1	0.0	87.2	1.7	11.1	0.076	0.501	17.724124	-91.738602
T. Izq. Balancán	32.60	1	0	3263	3.9	82.0	1.8	9.4	1.5	0.9	0.4	0.1	0.0	85.9	1.8	12.3	0.104	0.512	17.636353	-91.603134
T. Izq. Balancán	32.60	3	0	2282	4.7	79.7	1.6	4.9	1.7	1.4	1.1	2.6	2.3	84.4	1.6	14.0	0.092	0.503	17.628780	-91.600145
Estación Zapata	53.00	1	0	2443	3.0	81.0	2.1	4.7	1.4	1.9	1.4	2.3	2.2	84.0	2.1	13.9	0.072	0.504	17.460700	-91.598276
Estación Zapata	53.00	3	0	3136	4.8	82.4	1.6	3.3	1.1	1.4	1.7	1.8	1.9	87.2	1.6	11.2	0.072	0.500	17.456370	-91.594800
Tenosique	75.30																			

3 CARR: Malpaso - El Bellote

CLAVE: 00137

RUTA: MEX-187

AÑO: 2018

LUGAR	ESTACION				CLASIFICACION VEHICULAR EN PORCIENTO														COORDENADAS	
	KM	TE	SC	TDPA	M	A	B	C2	C3	T3S2	T3S3	T3S2R4	OTROS	A	B	C	K'	D	LATITUD	LONGITUD
Presa Malpaso	0.00																			
Lim. Edos. Term. Chis. Ppia. Tab.	43.99																			
Lim. Edos. Term. Tab. Ppia. Chis.	44.59																			
Lim. Edos. Term. Chis. Ppia. Tab.	45.26																			
Lim. Edos. Term. Tab. Ppia. Chis.	45.63																			
Lim. Edos. Term. Chis. Ppia. Tab.	55.04																			
Macabil (La Estrella)	70.12	1	0	3775	10.2	76.0	2.1	8.8	1.0	1.6	0.2	0.0	0.1	86.2	2.1	11.7	0.091	0.509	17.610207	-93.513079
Estación Chontalpa	75.69	1	0	6003	14.5	71.9	1.6	8.1	0.7	2.6	0.3	0.1	0.2	86.4	1.6	12.0	0.080	0.515	17.653773	-93.485553
Estación Chontalpa	75.69	3	0	6525	10.0	71.7	1.4	11.8	1.2	2.8	0.5	0.3	0.3	81.7	1.4	16.9	0.072	0.502	17.684662	-93.473781
T. Izq. Francisco Rueda	90.49	1	0	6642	10.7	76.1	1.7	6.9	0.8	3.0	0.3	0.2	0.3	86.8	1.7	11.5	0.072	0.510	17.786167	-93.440000
T. Izq. Francisco Rueda	90.49	3	0	8983	11.5	73.6	0.9	8.5	0.9	3.1	0.5	0.6	0.4	85.1	0.9	14.0	0.066	0.500	17.793070	-93.431310
Huimanguillo	98.03	1	1	6318	19.2	71.1	0.6	6.0	0.6	1.0	1.0	0.2	0.3	90.3	0.6	9.1	0.082	0.508	17.814336	-93.405920
Huimanguillo	98.03	1	2	6532	18.4	72.4	0.7	6.2	0.6	0.9	0.5	0.2	0.1	90.8	0.7	8.5	0.079	0.508	17.814395	-93.405989
Huimanguillo	98.03	3	1	6714	10.4	78.5	1.0	6.8	0.8	1.2	0.7	0.4	0.2	88.9	1.0	10.1	0.071	0.509	17.853000	-93.397000
Huimanguillo	98.03	3	2	6951	10.1	76.6	1.8	7.4	1.0	1.5	0.7	0.6	0.3	86.7	1.8	11.5	0.072	0.509	17.853006	-93.397089

TABASCO

3 CARR: Malpaso - El Bellote

CLAVE: 00137

RUTA: MEX-187

AÑO: 2018

LUGAR	ESTACION				CLASIFICACION VEHICULAR EN PORCIENTO													COORDENADAS		
	KM	TE	SC	TDPA	M	A	B	C2	C3	T3S2	T3S3	T3S2R4	OTROS	A	B	C	K'	D	LATITUD	LONGITUD
Cárdenas	117.56	1	0	14896	7.3	81.9	1.1	6.1	0.8	1.8	0.6	0.2	0.2	89.2	1.1	9.7	0.070	0.503	17.942483	-93.363176
Cárdenas	117.56	3	0	18673	7.7	83.7	0.9	5.1	0.4	1.1	0.7	0.2	0.2	91.4	0.9	7.7	0.061	0.516	18.016621	-93.368579
Tulipán	134.70	3	0	8862	8.2	75.9	1.0	8.2	0.9	3.7	1.1	0.4	0.6	84.1	1.0	14.9	0.062	0.523	18.125746	-93.291658
T. Der. Cunduacán	141.70	1	0	7154	6.7	78.0	1.5	8.4	0.7	3.3	0.7	0.2	0.5	84.7	1.5	13.8	0.068	0.509	18.140096	-93.271460
T. Der. Cunduacán	141.70	3	0	6423	5.2	79.3	1.7	7.7	1.1	3.6	0.8	0.2	0.4	84.5	1.7	13.8	0.068	0.513	18.142547	-93.269737
T. Der. Jalpa	153.50	1	0	11808	9.2	77.9	1.2	8.5	1.3	1.0	0.7	0.1	0.1	87.1	1.2	11.7	0.067	0.504	18.243000	-93.211000
T. Der. Jalpa	153.50	3	1	11609	7.7	81.8	0.6	7.1	0.4	1.1	0.9	0.1	0.3	89.5	0.6	9.9	0.065	0.514	18.247830	-93.213085
T. Der. Jalpa	153.50	3	2	10978	8.5	79.7	0.7	8.3	0.4	1.1	0.9	0.1	0.3	88.2	0.7	11.1	0.066	0.514	18.247803	-93.213149
Paraíso	176.85	1	1	10783	4.3	87.5	0.3	5.1	0.4	1.2	0.8	0.1	0.3	91.8	0.3	7.9	0.103	0.509	18.371464	-93.218370
Paraíso	176.85	1	2	11158	5.1	86.2	0.6	5.1	0.4	1.3	1.0	0.1	0.2	91.3	0.6	8.1	0.085	0.509	18.371410	-93.218438
Paraíso	176.85	3	1	9596	5.4	87.8	0.1	4.9	0.2	0.8	0.6	0.0	0.2	93.2	0.1	6.7	0.070	0.515	18.407843	-93.199062
Paraíso	176.85	3	2	9038	6.3	87.1	0.2	4.8	0.2	0.6	0.7	0.0	0.1	93.4	0.2	6.4	0.081	0.515	18.407934	-93.199071
Ceiba	182.00	3	0	9684	6.6	83.3	0.3	5.1	0.3	3.5	0.7	0.1	0.1	89.9	0.3	9.8	0.073	0.517	18.420699	-93.170116
El Bellote	185.47																			

4 CARR: Tenosique - El Ceibo

CLAVE:

RUTA: MEX-203

AÑO: 2018

LUGAR	ESTACION				CLASIFICACION VEHICULAR EN PORCIENTO													COORDENADAS		
	KM	TE	SC	TDPA	M	A	B	C2	C3	T3S2	T3S3	T3S2R4	OTROS	A	B	C	K'	D	LATITUD	LONGITUD
Tenosique	0.00	3	0	1175	13.0	77.7	1.6	6.7	0.7	0.2	0.1	0.0	0.0	90.7	1.6	7.7	0.087	0.509	17.431121	-91.390067
El Ceibo	58.00	1	0	532	25.3	62.2	1.9	10.3	0.2	0.0	0.1	0.0	0.0	87.5	1.9	10.6	0.115	0.524	17.264943	-91.004499

5 CARR: Villahermosa - Cd. del Carmen

CLAVE: 00064

RUTA: MEX-180

AÑO: 2018

LUGAR	ESTACION				CLASIFICACION VEHICULAR EN PORCIENTO													COORDENADAS		
	KM	TE	SC	TDPA	M	A	B	C2	C3	T3S2	T3S3	T3S2R4	OTROS	A	B	C	K'	D	LATITUD	LONGITUD
Villahermosa	0.00																			
T. Izq. Cd. Industrial	4.30	3	1	36032	3.0	87.9	0.8	3.3	0.9	1.8	0.9	1.2	0.2	90.9	0.8	8.3	0.078	0.516	18.038002	-92.901343
T. Izq. Cd. Industrial	4.30	3	2	33810	2.0	90.2	0.7	3.0	0.7	1.5	0.8	1.0	0.1	92.2	0.7	7.1	0.062	0.516	18.037063	-92.901621
Macultepec	18.60	1	1	12681	5.1	85.2	1.8	2.6	0.6	3.0	1.0	0.3	0.4	90.3	1.8	7.9	0.067	0.514	18.139796	-92.865074
Macultepec	18.60	1	2	11985	5.3	85.1	1.5	2.3	0.6	3.2	1.1	0.4	0.5	90.4	1.5	8.1	0.070	0.514	18.139852	-92.865172
Macultepec	18.60	3	1	6551	1.5	82.2	3.9	6.3	1.2	3.3	0.6	0.7	0.3	83.7	3.9	12.4	0.061	0.502	18.168742	-92.858179
Macultepec	18.60	3	2	6510	1.6	80.7	4.4	6.8	1.4	3.4	0.7	0.7	0.3	82.3	4.4	13.3	0.062	0.502	18.168997	-92.858155
El Espino	33.20	1	0	8914	1.0	77.5	5.0	6.4	1.5	5.6	1.2	1.0	0.8	78.5	5.0	16.5	0.062	0.502	18.240151	-92.830264
El Espino	33.20	3	0	8718	0.9	76.5	5.0	7.2	1.5	5.9	1.2	1.0	0.8	77.4	5.0	17.6	0.064	0.502	18.256365	-92.831772

TABASCO

5 CARR: Villahermosa - Cd. del Carmen

CLAVE: 00064

RUTA: MEX-180

AÑO: 2018

LUGAR	ESTACION				CLASIFICACION VEHICULAR EN PORCIENTO													COORDENADAS		
	KM	TE	SC	TDPA	M	A	B	C2	C3	T3S2	T3S3	T3S2R4	OTROS	A	B	C	K'	D	LATITUD	LONGITUD
T. Izq. El Bellote	49.67	3	0	9460	1.9	78.0	4.3	6.3	1.1	6.0	0.9	0.9	0.6	79.9	4.3	15.8	0.077	0.519	18.397486	-92.798687
Frontera	74.59	1	0	10218	1.9	77.9	4.3	6.3	1.1	6.1	0.9	0.9	0.6	79.8	4.3	15.9	0.064	0.519	18.513284	-92.658615
Frontera	74.59	3	0	6641	2.3	71.0	6.9	8.3	1.5	7.2	1.1	1.2	0.5	73.3	6.9	19.8	0.065	0.520	18.542253	-92.631910
T. Izq. Escolleras	78.00	3	0	7080	2.2	72.4	6.6	7.7	1.5	6.8	1.1	1.2	0.5	74.6	6.6	18.8	0.066	0.526	18.561377	-92.602855
Puente San Pedro	96.50	3	0	4902	1.5	69.4	7.6	8.1	2.1	7.7	1.4	1.6	0.6	70.9	7.6	21.5	0.076	0.505	18.641517	-92.462877
Lim. Edos. Term. Tab. Ppia. Camp.	99.75																			
Nuevo Campechito	100.00	3	0	4549	1.4	67.9	8.3	8.3	2.1	8.3	1.5	1.6	0.6	69.3	8.3	22.4	0.087	0.501	18.643100	-92.454444
Nuevo Progreso	116.57	1	0	5230	2.6	69.8	4.7	8.8	2.8	8.1	1.1	1.6	0.5	72.4	4.7	22.9	0.070	0.501	18.626566	-92.326449
Puente Zacatal	162.41	1	0	5550	1.0	67.9	8.1	9.1	2.0	8.5	1.3	1.5	0.6	68.9	8.1	23.0	0.071	0.501	18.614954	-91.868853
Puente Zacatal	162.41	2	0	4790	1.3	71.5	8.0	4.7	4.1	7.2	1.0	1.8	0.4	72.8	8.0	19.2	0.077	0.500	18.641814	-92.460301
Cd. del Carmen	167.50																			

6 CARR: Villahermosa - Escopetazo

CLAVE: 00104

RUTA: MEX-195

AÑO: 2018

LUGAR	ESTACION				CLASIFICACION VEHICULAR EN PORCIENTO													COORDENADAS		
	KM	TE	SC	TDPA	M	A	B	C2	C3	T3S2	T3S3	T3S2R4	OTROS	A	B	C	K'	D	LATITUD	LONGITUD
Villahermosa	0.00	3	1	23121	3.0	90.1	0.6	4.9	0.4	0.6	0.3	0.1	0.0	93.1	0.6	6.3	0.084	0.504	17.946553	-92.916608
Villahermosa	0.00	3	2	22779	2.8	91.2	0.4	4.3	0.4	0.5	0.3	0.1	0.0	94.0	0.4	5.6	0.128	0.504	17.946518	-92.916499
Parrilla	10.00	1	1	20214	3.1	90.0	0.7	3.9	0.7	0.9	0.5	0.2	0.0	93.1	0.7	6.2	0.070	0.518	17.913199	-92.923456
Parrilla	10.00	1	2	21745	2.9	88.9	0.9	4.1	1.0	1.1	0.8	0.2	0.1	91.8	0.9	7.3	0.075	0.518	17.913176	-92.923364
Parrilla	10.00	3	1	23161	3.7	90.3	0.3	4.2	0.5	0.7	0.2	0.1	0.0	94.0	0.3	5.7	0.063	0.502	17.890766	-92.923248
Parrilla	10.00	3	2	22938	3.7	89.9	0.3	4.5	0.5	0.7	0.3	0.1	0.0	93.6	0.3	6.1	0.089	0.502	17.890775	-92.923171
T. Izq. Subte. García	20.00	3	0	14972	6.1	78.8	0.6	5.8	1.3	5.2	1.1	0.7	0.4	84.9	0.6	14.5	0.063	0.515	17.825227	-92.929203
La Arena	44.00	1	0	6707	4.4	76.6	1.4	8.8	1.4	4.9	1.0	0.8	0.7	81.0	1.4	17.6	0.085	0.509	17.653198	-92.960168
T. Izq. Teapa	54.80	1	0	11820	7.9	78.6	0.5	5.7	0.7	4.8	0.7	0.3	0.8	86.5	0.5	13.0	0.083	0.515	17.576024	-92.959195
T. Izq. Teapa	54.80	3	0	6884	8.9	77.6	0.8	8.0	0.9	2.7	0.7	0.1	0.3	86.5	0.8	12.7	0.072	0.501	17.568398	-92.959969
Lim. Edos. Term. Tab. Ppia. Chis.	61.42																			
Pichucalco	76.00	1	0	3312	8.6	77.8	1.0	9.6	0.9	1.5	0.5	0.0	0.1	86.4	1.0	12.6	0.072	0.510	17.520345	-93.100900
Pichucalco	76.00	3	0	3249	11.1	81.7	0.3	4.0	0.8	1.3	0.5	0.0	0.3	92.8	0.3	6.9	0.090	0.508	17.492994	-93.103442
Solusuchiapa	112.00	1	0	1817	7.1	82.5	0.6	5.3	1.5	1.7	1.1	0.0	0.2	89.6	0.6	9.8	0.080	0.510	17.428168	-93.038283
Solusuchiapa	112.00	3	0	1570	7.1	83.5	0.8	4.3	1.3	1.6	0.9	0.2	0.3	90.6	0.8	8.6	0.077	0.503	17.416750	-93.030099
Rayón	146.00	1	0	2295	3.3	87.1	0.3	5.4	0.6	2.1	0.6	0.1	0.5	90.4	0.3	9.3	0.075	0.514	17.203120	-93.012359
Jitotol	197.79	1	0	2016	2.1	91.4	0.2	4.1	0.6	1.2	0.3	0.0	0.1	93.5	0.2	6.3	0.086	0.501	17.073941	-92.864885
Bochil	211.00	1	0	4799	2.9	89.2	0.3	3.2	0.6	2.6	0.6	0.1	0.5	92.1	0.3	7.6	0.091	0.505	16.989059	-92.879577
Ixtapa	247.00	1	0	3831	2.2	89.1	0.3	4.1	0.9	2.4	0.6	0.1	0.3	91.3	0.3	8.4	0.071	0.501	16.815449	-92.908017

TABASCO

6 CARR: Villahermosa - Escopetazo

CLAVE: 00104

RUTA: MEX-195

AÑO: 2018

LUGAR	ESTACION				CLASIFICACION VEHICULAR EN PORCIENTO														COORDENADAS	
	KM	TE	SC	TDPA	M	A	B	C2	C3	T3S2	T3S3	T3S2R4	OTROS	A	B	C	K'	D	LATITUD	LONGITUD
Escopetazo	259.00	1	0	3681	1.3	90.4	0.6	3.2	1.5	1.8	0.8	0.1	0.3	91.7	0.6	7.7	0.070	0.502	16.757193	-92.936591

7 CARR: Villahermosa - Francisco Escárcega

CLAVE: 00092

RUTA: MEX-186

AÑO: 2018

LUGAR	ESTACION				CLASIFICACION VEHICULAR EN PORCIENTO														COORDENADAS	
	KM	TE	SC	TDPA	M	A	B	C2	C3	T3S2	T3S3	T3S2R4	OTROS	A	B	C	K'	D	LATITUD	LONGITUD
Villahermosa	0.00	3	1	17905	3.3	85.2	1.1	4.1	1.1	2.5	0.7	1.9	0.1	88.5	1.1	10.4	0.068	0.512	18.001028	-92.890761
Villahermosa	0.00	3	2	18751	2.1	85.2	1.3	5.2	1.1	2.5	0.7	1.8	0.1	87.3	1.3	11.4	0.073	0.512	18.001155	-92.890733
T. Izq. Aeropuerto (Alta)	12.00	1	1	15422	2.1	81.3	1.7	6.7	1.0	3.2	1.4	1.9	0.7	83.4	1.7	14.9	0.069	0.513	17.983779	-92.827823
T. Izq. Aeropuerto (Baja)	12.00	1	1	1461	15.6	72.1	1.1	5.7	1.5	2.7	0.5	0.6	0.2	87.7	1.1	11.2	0.077	0.542	17.983828	-92.828028
T. Izq. Aeropuerto (Alta)	12.00	1	2	14657	2.3	80.3	1.7	7.5	1.0	3.0	1.4	2.0	0.8	82.6	1.7	15.7	0.066	0.513	17.983585	-92.827313
T. Izq. Aeropuerto (Baja)	12.00	1	2	1234	13.0	73.2	1.3	6.3	1.7	3.0	0.6	0.7	0.2	86.2	1.3	12.5	0.083	0.542	17.983721	-92.827270
Puente Grijalva	17.60	2	1	7565	1.8	78.5	4.7	3.5	2.2	4.7	1.2	3.1	0.3	80.3	4.7	15.0	0.079	0.500	17.947602	-92.785235
Puente Grijalva	17.60	2	2	7565	1.8	78.5	4.7	3.5	2.2	4.7	1.2	3.1	0.3	80.3	4.7	15.0	0.079	0.500	17.947602	-92.785235
X. C. Cacaos - La Granja	32.46	1	1	9761	1.4	77.4	2.7	6.8	1.4	4.8	1.3	3.9	0.3	78.8	2.7	18.5	0.078	0.500	17.828733	-92.717376
X. C. Cacaos - La Granja	32.46	1	2	9760	1.4	76.9	2.7	7.4	1.4	5.0	1.2	3.7	0.3	78.3	2.7	19.0	0.092	0.500	17.828839	-92.717096
X. C. Cacaos - La Granja	32.46	3	1	6958	2.0	74.5	3.2	7.7	1.7	4.9	1.3	4.3	0.4	76.5	3.2	20.3	0.074	0.503	17.816276	-92.710252
X. C. Cacaos - La Granja	32.46	3	2	7036	2.0	75.0	2.9	7.3	2.0	4.7	1.3	4.3	0.5	77.0	2.9	20.1	0.095	0.503	17.816324	-92.710173
X. C. Jalapa - Jonuta	40.00	3	1	7295	2.4	75.0	3.1	6.9	1.6	4.7	1.5	4.3	0.5	77.4	3.1	19.5	0.071	0.520	17.775953	-92.674973
X. C. Jalapa - Jonuta	40.00	3	2	7915	2.4	76.5	3.0	6.9	1.6	4.2	1.3	3.8	0.3	78.9	3.0	18.1	0.094	0.520	17.776009	-92.674917
T. Izq. Macuspana	46.20	1	1	7723	2.2	74.3	2.9	7.2	2.8	4.7	1.7	3.8	0.4	76.5	2.9	20.6	0.067	0.517	17.742931	-92.632613
T. Izq. Macuspana	46.20	1	2	7224	2.2	71.0	3.2	8.5	3.2	6.1	1.9	3.5	0.4	73.2	3.2	23.6	0.068	0.517	17.743016	-92.632556
T. Izq. Macuspana	46.20	3	1	6504	3.9	70.0	2.2	8.3	2.9	5.9	2.1	4.1	0.6	73.9	2.2	23.9	0.063	0.510	17.735287	-92.622844
T. Izq. Macuspana	46.20	3	2	6769	3.6	67.6	2.4	9.8	3.3	6.5	2.2	3.9	0.7	71.2	2.4	26.4	0.090	0.510	17.735357	-92.622766
X. C. Estación Macuspana - Vernet	54.30	1	0	10144	3.1	68.6	2.7	12.0	2.4	6.8	1.9	2.1	0.4	71.7	2.7	25.6	0.080	0.523	17.711379	-92.578960
T. Der. Chivalito (Est. Pino Suárez)	70.00	1	0	11518	2.4	74.8	2.0	6.1	2.1	5.7	1.4	5.1	0.4	77.2	2.0	20.8	0.081	0.537	17.669145	-92.442167
T. Der. Chivalito (Est. Pino Suárez)	70.00	3	1	3988	3.3	63.2	4.6	8.1	2.0	8.3	1.7	8.2	0.6	66.5	4.6	28.9	0.072	0.520	17.665823	-92.431402
T. Der. Chivalito (Est. Pino Suárez)	70.00	3	2	4316	2.8	61.8	5.2	8.8	2.3	8.9	1.7	7.9	0.6	64.6	5.2	30.2	0.079	0.520	17.665870	-92.431387
T. Der. Estación Zopo	71.00	1	0	8265	3.0	63.5	4.1	7.8	2.5	9.0	1.8	8.0	0.3	66.5	4.1	29.4	0.072	0.512	17.671241	-92.416830
T. Der. Estación Zopo	71.00	3	1	4362	2.4	69.2	4.1	6.7	2.2	7.0	1.7	6.3	0.4	71.6	4.1	24.3	0.067	0.505	17.680102	-92.403113
T. Der. Estación Zopo	71.00	3	2	4273	2.2	63.8	5.2	8.1	2.5	8.6	1.9	7.3	0.4	66.0	5.2	28.8	0.083	0.505	17.680138	-92.403161
Lim. Edos. Term. Tab. Ppia. Chis.	76.90																			
T. Izq. Bonanza	88.00	1	0	8015	2.8	65.1	3.6	9.8	2.1	8.9	2.0	4.9	0.8	67.9	3.6	28.5	0.078	0.522	17.698247	-92.267933
T. Izq. Jonuta	101.00	1	0	6505	1.8	63.0	3.5	10.2	2.2	9.3	1.9	7.4	0.7	64.8	3.5	31.7	0.082	0.511	17.697882	-92.135387
T. Izq. Jonuta	101.00	3	0	7652	1.7	67.4	4.2	7.8	3.3	8.4	1.9	4.7	0.6	69.1	4.2	26.7	0.070	0.502	17.697549	-92.121832

TABASCO

7 CARR: Villahermosa - Francisco Escárcega

CLAVE: 00092

RUTA: MEX-186

AÑO: 2018

LUGAR	ESTACION				CLASIFICACION VEHICULAR EN PORCIENTO													COORDENADAS		
	KM	TE	SC	TDPA	M	A	B	C2	C3	T3S2	T3S3	T3S2R4	OTROS	A	B	C	K'	D	LATITUD	LONGITUD
X. C. Catazajá - Palenque	114.00	1	0	7750	2.3	69.0	3.4	6.7	1.6	9.7	1.4	5.3	0.6	71.3	3.4	25.3	0.107	0.529	17.707807	-92.024265
X. C. Catazajá - Palenque	114.00	3	0	6363	1.9	66.0	3.4	6.4	2.4	9.5	1.7	8.4	0.3	67.9	3.4	28.7	0.086	0.504	17.715068	-92.001802
T. Der. Emiliano Zapata	134.70	1	0	6877	1.4	62.6	4.6	7.5	1.9	10.9	1.5	8.8	0.8	64.0	4.6	31.4	0.079	0.519	17.771036	-91.836126
T. Der. Emiliano Zapata	134.70	3	0	4836	2.0	60.6	4.4	7.1	2.3	11.2	2.4	8.9	1.1	62.6	4.4	33.0	0.058	0.510	17.784949	-91.822232
Lim. Edos. Term. Chis. Ppia. Tab.	140.70																			
Puente Usumacinta	145.20	2	0	4369	2.9	56.3	4.6	4.7	4.5	13.5	2.0	10.5	1.0	59.2	4.6	36.2	0.079	0.500	17.859905	-91.783654
T. Izq. Palizada	154.05	1	0	4057	2.5	52.3	5.8	7.2	2.3	13.9	3.1	11.9	1.0	54.8	5.8	39.4	0.062	0.508	17.937705	-91.737378
T. Izq. Palizada	154.05	3	0	3412	1.7	56.8	5.9	7.8	2.6	10.7	3.2	10.0	1.3	58.5	5.9	35.6	0.077	0.526	17.946491	-91.729919
Lim. Edos. Term. Tab. Ppia. Camp.	154.60																			
T. Der. Candelaria	233.40	1	0	3885	2.7	48.3	5.1	7.6	2.8	15.8	3.0	14.1	0.6	51.0	5.1	43.9	0.065	0.502	18.373074	-91.201755
T. Der. Felipe Ángeles	253.00	1	0	3938	3.7	50.9	5.5	8.6	2.4	12.7	2.8	12.3	1.1	54.6	5.5	39.9	0.067	0.524	18.504011	-91.106451
T. Izq. Sabancuy	274.10	1	0	4701	3.9	59.8	4.6	7.8	2.2	12.4	2.7	5.7	0.9	63.7	4.6	31.7	0.072	0.501	18.629556	-90.987576
Francisco Escárcega	297.04	1	0	7170	2.2	63.6	3.8	9.0	1.7	10.6	2.2	6.1	0.8	65.8	3.8	30.4	0.071	0.512	18.610029	-90.776006

8 CARR: Ent. Agua Dulce - Cárdenas (Cuota)

CLAVE: 00010

RUTA: MEX-180D

AÑO: 2018

LUGAR	ESTACION				CLASIFICACION VEHICULAR EN PORCIENTO													COORDENADAS		
	KM	TE	SC	TDPA	M	A	B	C2	C3	T3S2	T3S3	T3S2R4	OTROS	A	B	C	K'	D	LATITUD	LONGITUD
Ent. La Ceiba	45.00																			
T. C. Coatzacoalcos - Villahermosa	69.50	1	1	4863	1.5	48.0	7.3	7.7	3.4	16.9	4.0	10.4	0.8	49.5	7.3	43.2	0.070	0.511	18.032496	-93.824198
T. C. Coatzacoalcos - Villahermosa	69.50	1	2	4648	1.6	52.8	5.5	4.5	4.1	16.9	3.2	10.2	1.2	54.4	5.5	40.1	0.065	0.511	18.032741	-93.824117
Caseta de Cobro La Venta	69.50	2	1	4228	0.3	47.4	6.3	4.1	6.2	19.0	3.5	11.9	1.3	47.7	6.3	46.0	0.081	0.500	18.030572	-93.812914
Caseta de Cobro La Venta	69.50	2	2	4228	0.3	47.4	6.3	4.1	6.2	19.0	3.5	11.9	1.3	47.7	6.3	46.0	0.081	0.500	18.030572	-93.812914
T. C. Coatzacoalcos - Villahermosa	69.50	3	1	4225	1.2	53.4	6.0	6.1	3.4	15.5	3.7	9.7	1.0	54.6	6.0	39.4	0.085	0.502	18.029283	-93.806717
T. C. Coatzacoalcos - Villahermosa	69.50	3	2	4195	0.9	51.7	7.2	7.4	3.2	16.1	3.1	9.6	0.8	52.6	7.2	40.2	0.082	0.502	18.029633	-93.806650
Ent. Chontalpa	99.11																			

9 CARR: Las Choapas - Ocozocoautla (Cuota)

CLAVE: 00077

RUTA: MEX-187D

AÑO: 2018

LUGAR	ESTACION				CLASIFICACION VEHICULAR EN PORCIENTO													COORDENADAS		
	KM	TE	SC	TDPA	M	A	B	C2	C3	T3S2	T3S3	T3S2R4	OTROS	A	B	C	K'	D	LATITUD	LONGITUD
T. C. Coatzacoalcos - Villahermosa	0.00	3	0	4297	1.2	56.1	6.0	7.0	5.3	12.2	2.8	8.5	0.9	57.3	6.0	36.7	0.061	0.514	18.063483	-94.246694
Caseta de Cobro Las Choapas	16.80	1	0	3637	1.3	47.9	7.4	7.0	6.6	15.8	2.8	10.5	0.7	49.2	7.4	43.4	0.069	0.516	17.950450	-94.175135
Caseta de Cobro Las Choapas	16.80	3	0	2925	1.0	39.8	10.8	7.7	4.9	18.9	3.7	12.5	0.7	40.8	10.8	48.4	0.072	0.520	17.935725	-94.167789
Lim. Edos. Term. Ver. Ppia. Tab.	96.68																			

TABASCO

9 CARR: Las Choapas - Ocozocoautla (Cuota)

CLAVE: 00077

RUTA: MEX-187D

AÑO: 2018

LUGAR	ESTACION				CLASIFICACION VEHICULAR EN PORCIENTO														COORDENADAS	
	KM	TE	SC	TDPA	M	A	B	C2	C3	T3S2	T3S3	T3S2R4	OTROS	A	B	C	K'	D	LATITUD	LONGITUD
Caseta de Cobro Malpasito	112.70	1	0	2689	1.8	40.7	9.5	6.6	5.2	19.6	3.1	12.9	0.6	42.5	9.5	48.0	0.080	0.528	17.352367	-93.587833
Caseta de Cobro Malpasito	112.70	2	0	2191	0.4	35.8	9.8	4.8	8.6	20.8	3.3	14.9	1.6	36.2	9.8	54.0	0.072	0.500	17.349070	-93.586472
Lim. Edos. Term. Tab. Ppia. Chis.	113.70																			
T. Izq. Malpaso	123.79	1	0	4594	1.4	57.6	8.0	11.1	3.9	9.2	3.1	4.8	0.9	59.0	8.0	33.0	0.061	0.528	17.261031	-93.570026
Caseta de Cobro Ocozocoautla	182.50	1	0	4898	1.4	62.0	6.0	11.1	3.3	7.8	1.9	5.6	0.9	63.4	6.0	30.6	0.071	0.501	16.871455	-93.414378
Caseta de Cobro Ocozocoautla	182.50	2	0	4440	0.4	57.9	7.0	5.2	6.7	11.8	1.9	8.2	0.9	58.3	7.0	34.7	0.072	0.500	16.863183	-93.406856
T. C. Tapanatepec - Tuxtla Gutiérrez	197.50	1	0	5528	1.2	61.7	5.9	8.5	3.4	10.4	2.1	6.0	0.8	62.9	5.9	31.2	0.070	0.528	16.772584	-93.318631

10 CARR: Libramiento de Villahermosa (Cuota)

CLAVE:

RUTA: MEX-180D

AÑO: 2018

LUGAR	ESTACION				CLASIFICACION VEHICULAR EN PORCIENTO														COORDENADAS	
	KM	TE	SC	TDPA	M	A	B	C2	C3	T3S2	T3S3	T3S2R4	OTROS	A	B	C	K'	D	LATITUD	LONGITUD
T. C. Coatzacoalcos - Villahermosa	0.00																			
Caseta de Cobro Nacajuca	16.00	2	1	1827	0.3	35.6	0.9	7.0	8.1	25.7	4.3	16.4	1.7	35.9	0.9	63.2	0.090	0.500	18.076079	-92.930568
Caseta de Cobro Nacajuca	16.00	2	2	1827	0.3	35.6	0.9	7.0	8.1	25.7	4.3	16.4	1.7	35.9	0.9	63.2	0.090	0.500	18.076079	-92.930568
T. C. Villahermosa - Cd. Del Carmen	21.70																			

11 CARR: Benito Juárez - Agua Dulce

CLAVE: 00202

RUTA: TAB-VER

AÑO: 2018

LUGAR	ESTACION				CLASIFICACION VEHICULAR EN PORCIENTO														COORDENADAS	
	KM	TE	SC	TDPA	M	A	B	C2	C3	T3S2	T3S3	T3S2R4	OTROS	A	B	C	K'	D	LATITUD	LONGITUD
Benito Juárez	0.00	3	0	1320	14.8	75.4	0.4	7.2	0.4	1.5	0.1	0.1	0.1	90.2	0.4	9.4	0.083	0.500	18.166579	-93.920175
La Venta	16.80	1	0	1535	18.3	75.1	0.2	5.0	0.3	0.8	0.2	0.1	0.0	93.4	0.2	6.4	0.084	0.500	18.115451	-94.033535
Lim. Edos. Term. Tab. Ppia. Ver.	23.78																			
Agua Dulce	33.00																			

12 CARR: Benito Juárez - Tepetitán

CLAVE: 27204

RUTA: TAB

AÑO: 2018

LUGAR	ESTACION				CLASIFICACION VEHICULAR EN PORCIENTO														COORDENADAS	
	KM	TE	SC	TDPA	M	A	B	C2	C3	T3S2	T3S3	T3S2R4	OTROS	A	B	C	K'	D	LATITUD	LONGITUD
Benito Juárez	0.00																			
X. C. Jalapa - Jonuta	1.50	3	0	3882	16.4	76.3	0.1	3.6	0.2	2.7	0.3	0.0	0.4	92.7	0.1	7.2	0.077	0.511	17.823962	-92.513317
Límbano Blandín	18.50	1	0	1318	27.6	67.0	0.2	3.3	0.2	1.2	0.3	0.0	0.2	94.6	0.2	5.2	0.080	0.508	17.755516	-92.416555
Límbano Blandín	18.50	3	0	1081	25.3	67.4	0.4	4.7	0.6	1.2	0.3	0.0	0.1	92.7	0.4	6.9	0.071	0.502	17.760277	-92.405869
Tepetitán	20.00	1	0	1211	28.6	65.7	0.2	4.0	0.5	0.8	0.2	0.0	0.0	94.3	0.2	5.5	0.078	0.511	17.814123	-92.377028

TABASCO

13 CARR: Cacaos - La Granja

CLAVE: 27002

RUTA: TAB

AÑO: 2018

LUGAR	ESTACION				CLASIFICACION VEHICULAR EN PORCIENTO													COORDENADAS		
	KM	TE	SC	TDPA	M	A	B	C2	C3	T3S2	T3S3	T3S2R4	OTROS	A	B	C	K'	D	LATITUD	LONGITUD
Cacaos	0.00	3	0	2426	15.3	78.3	0.3	3.8	0.3	1.4	0.4	0.1	0.1	93.6	0.3	6.1	0.077	0.506	17.830487	-92.852753
X. C. Villahermosa - Francisco Escárcega	16.00	3	0	4922	6.4	80.7	1.5	7.1	0.6	2.4	0.9	0.1	0.3	87.1	1.5	11.4	0.069	0.506	17.828104	-92.714935
T. C. Jalapa - Jonuta	39.00	1	0	6208	5.9	84.4	0.2	5.4	0.3	2.7	0.7	0.1	0.3	90.3	0.2	9.5	0.069	0.505	17.845992	-92.503047

14 CARR: Cárdenas - Paraíso

CLAVE: 27117

RUTA: TAB

AÑO: 2018

LUGAR	ESTACION				CLASIFICACION VEHICULAR EN PORCIENTO													COORDENADAS		
	KM	TE	SC	TDPA	M	A	B	C2	C3	T3S2	T3S3	T3S2R4	OTROS	A	B	C	K'	D	LATITUD	LONGITUD
T. C. Coatzacoalcos - Villahermosa	0.00	3	0	7066	14.3	75.9	0.2	1.7	0.1	4.9	1.8	0.5	0.6	90.2	0.2	9.6	0.066	0.506	18.001975	-93.385585
T. Izq. El Golpe	22.00	1	0	1433	20.9	69.6	0.6	4.1	0.8	2.9	1.0	0.0	0.1	90.5	0.6	8.9	0.086	0.514	18.112007	-93.308363
T. Izq. El Golpe	22.00	3	0	1918	24.3	68.7	0.1	3.8	0.1	1.8	0.6	0.1	0.5	93.0	0.1	6.9	0.071	0.511	18.116044	-93.303947
Comalcalco	37.00	3	0	4301	26.7	61.9	0.1	8.0	0.1	2.5	0.3	0.1	0.3	88.6	0.1	11.3	0.066	0.501	18.296384	-93.214240
Paraíso	52.00	1	0	6478	18.5	61.7	0.4	9.5	1.5	4.7	2.6	0.4	0.7	80.2	0.4	19.4	0.084	0.508	18.375915	-93.232196

15 CARR: Chichicapa - Ent. La Libertad

CLAVE: 27100

RUTA: TAB

AÑO: 2018

LUGAR	ESTACION				CLASIFICACION VEHICULAR EN PORCIENTO													COORDENADAS		
	KM	TE	SC	TDPA	M	A	B	C2	C3	T3S2	T3S3	T3S2R4	OTROS	A	B	C	K'	D	LATITUD	LONGITUD
Chichicapa	0.00	3	0	3304	22.8	68.2	0.1	5.9	0.1	2.2	0.4	0.0	0.3	91.0	0.1	8.9	0.080	0.509	18.273733	-93.182097
Nicolás Bravo	10.00	3	0	4497	16.8	73.2	0.2	5.3	0.2	2.9	0.7	0.2	0.5	90.0	0.2	9.8	0.077	0.501	18.292251	-93.157955
Ent. La Libertad	18.00	1	0	5304	17.0	64.3	0.5	9.7	1.4	4.3	1.9	0.3	0.6	81.3	0.5	18.2	0.097	0.511	18.317670	-93.170383

16 CARR: Comalcalco - El Golpe

CLAVE: 27102

RUTA: TAB

AÑO: 2018

LUGAR	ESTACION				CLASIFICACION VEHICULAR EN PORCIENTO													COORDENADAS		
	KM	TE	SC	TDPA	M	A	B	C2	C3	T3S2	T3S3	T3S2R4	OTROS	A	B	C	K'	D	LATITUD	LONGITUD
Comalcalco	0.00	3	0	19902	28.5	63.4	0.4	4.7	0.1	1.2	1.3	0.1	0.3	91.9	0.4	7.7	0.074	0.504	18.253480	-93.234362
Libramiento de Comalcalco	2.60	3	0	9408	19.8	63.1	0.4	8.4	0.3	6.0	1.2	0.4	0.4	82.9	0.4	16.7	0.066	0.521	18.249634	-93.242320
T. Izq. Villa Aldama	9.40	1	0	6990	23.1	65.7	0.3	5.5	0.3	3.8	0.6	0.1	0.6	88.8	0.3	10.9	0.082	0.506	18.253863	-93.302495
T. Izq. Villa Aldama	9.40	3	0	6548	21.5	69.9	0.4	6.5	0.4	0.8	0.4	0.0	0.1	91.4	0.4	8.2	0.070	0.517	18.264025	-93.315305
Tecolutilla	15.00	1	0	5298	27.1	62.2	0.2	6.3	0.1	3.0	0.6	0.1	0.4	89.3	0.2	10.5	0.061	0.537	18.271167	-93.314833
Tecolutilla	15.00	3	0	6660	25.1	61.6	0.4	4.6	0.1	5.7	1.4	0.4	0.7	86.7	0.4	12.9	0.076	0.529	18.287167	-93.344667
T. Der. Lazáro Cárdenas	20.00	3	0	2338	38.1	53.4	0.7	5.4	0.2	1.6	0.5	0.0	0.1	91.5	0.7	7.8	0.078	0.501	18.279831	-93.382380
Carlos Green	33.00	3	0	3701	49.7	43.9	0.1	2.7	0.0	2.4	0.7	0.1	0.4	93.6	0.1	6.3	0.078	0.507	18.232470	-93.457831
El Golpe	51.60	1	0	674	48.1	42.9	1.0	6.6	0.1	0.8	0.4	0.0	0.1	91.0	1.0	8.0	0.089	0.523	18.332570	-93.534727

TABASCO

17 CARR: El Bellote - Santa Cruz

CLAVE: 27105

RUTA: TAB

AÑO: 2018

LUGAR	ESTACION				CLASIFICACION VEHICULAR EN PORCIENTO													COORDENADAS		
	KM	TE	SC	TDPA	M	A	B	C2	C3	T3S2	T3S3	T3S2R4	OTROS	A	B	C	K'	D	LATITUD	LONGITUD
Bellote	0.00	3	0	6389	6.6	84.4	0.2	4.3	0.4	3.2	0.4	0.1	0.4	91.0	0.2	8.8	0.079	0.511	18.426264	-93.118716
T. Der. Chichicapa	8.00	3	0	3791	9.2	80.0	0.9	5.4	0.4	3.5	0.4	0.1	0.1	89.2	0.9	9.9	0.078	0.504	18.423392	-93.070795
Ignacio Allende	35.00	1	0	4719	8.6	82.3	0.5	4.1	0.5	3.3	0.3	0.1	0.3	90.9	0.5	8.6	0.081	0.504	18.384437	-92.855452
Ignacio Allende	35.00	3	0	3950	8.6	78.3	1.2	6.7	0.8	3.4	0.6	0.2	0.2	86.9	1.2	11.9	0.083	0.501	18.382672	-92.830650
Santa Cruz	40.00	1	0	4082	5.8	84.6	0.4	4.6	0.6	3.2	0.4	0.1	0.3	90.4	0.4	9.2	0.079	0.502	18.386027	-92.808228

18 CARR: Ent. Emiliano Zapata - La Libertad

CLAVE: 00062

RUTA: CHIS-TAB

AÑO: 2018

LUGAR	ESTACION				CLASIFICACION VEHICULAR EN PORCIENTO													COORDENADAS		
	KM	TE	SC	TDPA	M	A	B	C2	C3	T3S2	T3S3	T3S2R4	OTROS	A	B	C	K'	D	LATITUD	LONGITUD
T. C. El Suspiro - Tenosique	0.00	3	0	1789	9.8	84.9	0.2	4.1	0.7	0.2	0.1	0.0	0.0	94.7	0.2	5.1	0.079	0.509	17.721121	-91.744530
Lim. Edos. Term. Tab. Ppia. Chis.	8.00																			
La Libertad	10.00	1	0	1620	7.2	82.3	0.3	8.2	0.3	1.5	0.2	0.0	0.0	89.5	0.3	10.2	0.080	0.520	17.690564	-91.722352

19 CARR: Estación Macuspana - Vernet

CLAVE: 27091

RUTA: TAB-041

AÑO: 2018

LUGAR	ESTACION				CLASIFICACION VEHICULAR EN PORCIENTO													COORDENADAS		
	KM	TE	SC	TDPA	M	A	B	C2	C3	T3S2	T3S3	T3S2R4	OTROS	A	B	C	K'	D	LATITUD	LONGITUD
Estación Macuspana	0.00																			
X. C. Villahermosa - Francisco Escárcega	11.00	1	0	2127	24.0	60.2	0.2	9.4	3.4	1.3	0.8	0.3	0.4	84.2	0.2	15.6	0.059	0.501	17.710103	-92.568634
X. C. Villahermosa - Francisco Escárcega	11.00	3	0	1513	20.1	69.0	0.2	5.8	2.0	1.7	0.5	0.3	0.4	89.1	0.2	10.7	0.090	0.556	17.704228	-92.570042
Belem	20.50	1	1	5611	18.0	78.1	0.1	2.4	0.2	0.6	0.5	0.0	0.1	96.1	0.1	3.8	0.071	0.505	17.775376	-92.607315
Belem	20.50	1	2	5494	15.8	79.4	0.1	3.0	0.1	0.9	0.6	0.0	0.1	95.2	0.1	4.7	0.072	0.505	17.775331	-92.607375
Belem	20.50	3	0	3011	12.2	80.2	0.4	4.6	0.4	1.6	0.4	0.1	0.1	92.4	0.4	7.2	0.064	0.514	17.802335	-92.606146
X. C. Cacaos - La Granja	25.50	3	0	1351	11.5	81.3	0.3	5.0	0.3	1.2	0.3	0.0	0.1	92.8	0.3	6.9	0.085	0.511	17.842254	-92.607685
Vernet	32.50	1	0	583	23.8	73.3	0.3	2.1	0.0	0.5	0.0	0.0	0.0	97.1	0.3	2.6	0.096	0.500	17.916822	-92.598366

20 CARR: Frontera - T. C. (Jalapa - Jonuta)

CLAVE: 27081

RUTA: TAB

AÑO: 2018

LUGAR	ESTACION				CLASIFICACION VEHICULAR EN PORCIENTO													COORDENADAS		
	KM	TE	SC	TDPA	M	A	B	C2	C3	T3S2	T3S3	T3S2R4	OTROS	A	B	C	K'	D	LATITUD	LONGITUD
Frontera	0.00																			
X. C. Villahermosa - Cd. del Carmen	1.00	3	0	1496	34.6	60.5	0.2	3.2	0.3	1.0	0.1	0.0	0.1	95.1	0.2	4.7	0.083	0.501	18.505732	-92.650538
T. C. Jalapa - Jonuta	123.00	1	0	473	6.5	84.3	0.0	8.5	0.4	0.1	0.2	0.0	0.0	90.8	0.0	9.2	0.082	0.520	18.102030	-92.170096

TABASCO

21 CARR: Gregorio Méndez Magaña - Reforma de Ocampo

CLAVE: 00103

RUTA: CHIS

AÑO: 2018

LUGAR	ESTACION				CLASIFICACION VEHICULAR EN PORCIENTO													COORDENADAS		
	KM	TE	SC	TDPA	M	A	B	C2	C3	T3S2	T3S3	T3S2R4	OTROS	A	B	C	K'	D	LATITUD	LONGITUD
Gregorio Méndez Magaña	0.00	3	0	948	22.9	63.6	0.4	8.7	3.5	0.7	0.2	0.0	0.0	86.5	0.4	13.1	0.089	0.502	17.446863	-91.596073
Lim. Edos. Term. Tab. Ppia. Chis.	3.00																			
T. C. Benemérito de Las Américas - Palenque	21.00	1	0	2566	16.0	76.9	0.1	4.3	0.9	1.6	0.2	0.0	0.0	92.9	0.1	7.0	0.078	0.504	17.323802	-91.692250
Reforma de Ocampo	22.00																			

22 CARR: Jalapa - Jonuta

CLAVE: 27107

RUTA: TAB

AÑO: 2018

LUGAR	ESTACION				CLASIFICACION VEHICULAR EN PORCIENTO													COORDENADAS		
	KM	TE	SC	TDPA	M	A	B	C2	C3	T3S2	T3S3	T3S2R4	OTROS	A	B	C	K'	D	LATITUD	LONGITUD
Jalapa	0.00	3	0	3415	21.2	71.2	0.2	3.8	0.6	2.4	0.3	0.1	0.2	92.4	0.2	7.4	0.079	0.520	17.721993	-92.805621
X. C. Villahermosa - Francisco Escárcega	15.00	1	0	2487	12.0	80.2	0.3	5.7	0.8	0.5	0.3	0.1	0.1	92.2	0.3	7.5	0.071	0.513	17.782886	-92.690879
X. C. Villahermosa - Francisco Escárcega	15.00	3	0	1605	15.7	75.3	0.3	4.9	1.2	1.9	0.4	0.2	0.1	91.0	0.3	8.7	0.105	0.503	17.781394	-92.681059
Belem	24.00	1	0	1024	34.0	59.5	0.2	5.2	0.1	0.9	0.1	0.0	0.0	93.5	0.2	6.3	0.079	0.503	17.781775	-92.619720
T. Izq. Cacaos	39.00	1	0	4063	8.8	83.4	0.2	3.8	0.3	2.9	0.3	0.0	0.3	92.2	0.2	7.6	0.097	0.500	17.843608	-92.502162
Cd. PEMEX	43.00	1	1	7243	6.4	87.3	0.1	2.8	0.1	1.3	1.5	0.1	0.4	93.7	0.1	6.2	0.094	0.500	17.879177	-92.484679
Cd. PEMEX	43.00	1	2	7254	5.3	86.8	0.1	3.9	0.1	1.8	1.4	0.1	0.5	92.1	0.1	7.8	0.078	0.500	17.879261	-92.484739
Cd. PEMEX	43.00	3	0	4020	10.6	81.8	0.2	4.3	0.4	2.2	0.3	0.0	0.2	92.4	0.2	7.4	0.087	0.500	17.897659	-92.482850
Jonuta	97.50	1	0	2317	9.3	85.1	0.2	4.4	0.8	0.1	0.1	0.0	0.0	94.4	0.2	5.4	0.071	0.505	18.101846	-92.161413

23 CARR: Libramiento Sur de Comalcalco

CLAVE:

RUTA: TAB

AÑO: 2018

LUGAR	ESTACION				CLASIFICACION VEHICULAR EN PORCIENTO													COORDENADAS		
	KM	TE	SC	TDPA	M	A	B	C2	C3	T3S2	T3S3	T3S2R4	OTROS	A	B	C	K'	D	LATITUD	LONGITUD
T. C. Malpaso - El Bellote	0.00	3	0	6281	8.7	79.1	0.5	8.1	1.5	1.2	0.7	0.1	0.1	87.8	0.5	11.7	0.094	0.513	18.228167	-93.212667
T. C. Comalcalco - El Golpe	4.40																			

24 CARR: Nicolás Bravo - T. C. (El Bellote - Santa Cruz)

CLAVE: 27010

RUTA: TAB

AÑO: 2018

LUGAR	ESTACION				CLASIFICACION VEHICULAR EN PORCIENTO													COORDENADAS		
	KM	TE	SC	TDPA	M	A	B	C2	C3	T3S2	T3S3	T3S2R4	OTROS	A	B	C	K'	D	LATITUD	LONGITUD
Nicolás Bravo	0.00	3	0	2224	23.6	69.8	0.2	3.4	0.1	1.9	0.6	0.1	0.3	93.4	0.2	6.4	0.085	0.504	18.298269	-93.132114
T. C. Bellote - Santa Cruz	22.00	1	0	928	19.0	77.5	0.1	2.4	0.0	0.9	0.0	0.0	0.1	96.5	0.1	3.4	0.086	0.517	18.425095	-93.076143

TABASCO

25 CARR: Pailebot - Cuauhtemotzin

CLAVE: 27112

RUTA: TAB

AÑO: 2018

LUGAR	ESTACION				CLASIFICACION VEHICULAR EN PORCIENTO										COORDENADAS					
	KM	TE	SC	TDPA	M	A	B	C2	C3	T3S2	T3S3	T3S2R4	OTROS	A	B	C	K'	D	LATITUD	LONGITUD
Pailebot	0.00	3	0	827	41.7	51.8	0.4	5.5	0.5	0.1	0.0	0.0	0.0	93.5	0.4	6.1	0.098	0.510	18.257555	-93.952845
Cuauhtemotzin	23.00	1	0	670	49.3	47.6	0.0	2.0	0.1	1.0	0.0	0.0	0.0	96.9	0.0	3.1	0.094	0.506	18.205604	-94.120341

26 CARR: Paraíso - El Limón

CLAVE: 27108

RUTA: TAB

AÑO: 2018

LUGAR	ESTACION				CLASIFICACION VEHICULAR EN PORCIENTO										COORDENADAS					
	KM	TE	SC	TDPA	M	A	B	C2	C3	T3S2	T3S3	T3S2R4	OTROS	A	B	C	K'	D	LATITUD	LONGITUD
Paraíso	0.00	3	0	8852	11.7	74.9	1.4	3.0	0.7	5.6	1.3	0.8	0.6	86.6	1.4	12.0	0.080	0.526	18.397281	-93.219553
Limón	6.00	1	0	10700	12.7	71.8	0.9	4.1	0.4	7.5	1.3	0.6	0.7	84.5	0.9	14.6	0.065	0.511	18.403339	-93.216346

27 CARR: Paso de Cunduacán - Estación Juárez

CLAVE: 00588

RUTA: TAB-CHIS

AÑO: 2018

LUGAR	ESTACION				CLASIFICACION VEHICULAR EN PORCIENTO										COORDENADAS					
	KM	TE	SC	TDPA	M	A	B	C2	C3	T3S2	T3S3	T3S2R4	OTROS	A	B	C	K'	D	LATITUD	LONGITUD
Paso de Cunduacán	0.00	3	0	9881	2.7	82.0	0.4	7.5	0.8	4.1	1.3	0.6	0.6	84.7	0.4	14.9	0.094	0.508	17.960167	-93.138167
Lim. Edos. Term. Tab. Ppia. Chis.	9.00																			
Santa Teresa 2º Secc.	18.00	3	0	2375	7.2	82.9	0.5	6.4	1.0	1.5	0.5	0.0	0.0	90.1	0.5	9.4	0.083	0.536	17.765787	-93.169016
Estación Juárez	57.80	1	0	3094	10.5	80.1	0.4	6.1	0.8	1.7	0.4	0.0	0.0	90.6	0.4	9.0	0.072	0.501	17.618624	-93.168109

28 CARR: Playas del Rosario - Teapa

CLAVE: 27203

RUTA: TAB-001

AÑO: 2018

LUGAR	ESTACION				CLASIFICACION VEHICULAR EN PORCIENTO										COORDENADAS					
	KM	TE	SC	TDPA	M	A	B	C2	C3	T3S2	T3S3	T3S2R4	OTROS	A	B	C	K'	D	LATITUD	LONGITUD
T. C. Villahermosa - Escopetazo	0.00	3	1	4842	5.9	90.0	0.1	2.7	0.4	0.5	0.3	0.1	0.0	95.9	0.1	4.0	0.073	0.504	17.839840	-92.924051
T. C. Villahermosa - Escopetazo	0.00	3	2	4766	5.4	89.3	0.2	3.7	0.5	0.4	0.4	0.1	0.0	94.7	0.2	5.1	0.075	0.504	17.839896	-92.924045
Revolución Mexicana	1.20	3	0	7876	3.8	87.7	0.2	4.9	0.5	2.2	0.5	0.1	0.1	91.5	0.2	8.3	0.070	0.500	17.837124	-92.913138
Cacaos	7.00	1	0	7036	4.7	86.3	0.2	4.5	0.6	2.5	0.9	0.1	0.2	91.0	0.2	8.8	0.072	0.505	17.826053	-92.858459
Cacaos	7.00	3	0	5158	4.9	87.1	0.4	3.6	0.7	2.4	0.5	0.2	0.2	92.0	0.4	7.6	0.071	0.502	17.825322	-92.854575
Jalapa	23.00	1	0	5560	7.5	85.1	0.3	3.2	0.4	2.4	0.4	0.2	0.5	92.6	0.3	7.1	0.074	0.513	17.730707	-92.815828
Jalapa	23.00	3	0	4974	11.7	78.0	0.3	5.4	0.9	2.8	0.4	0.1	0.4	89.7	0.3	10.0	0.064	0.506	17.708162	-92.808266
T. Izq. Tacotalpa	39.00	1	0	4700	11.8	76.8	0.3	6.2	0.7	2.9	0.9	0.1	0.3	88.6	0.3	11.1	0.076	0.503	17.595036	-92.833180
T. Izq. Tacotalpa	39.00	3	1	3439	17.3	79.4	0.1	1.9	0.4	0.4	0.4	0.0	0.1	96.7	0.1	3.2	0.090	0.500	17.592286	-92.834755
T. Izq. Tacotalpa	39.00	3	2	3440	16.5	79.8	0.1	2.3	0.5	0.4	0.3	0.0	0.1	96.3	0.1	3.6	0.090	0.500	17.592217	-92.834700
Teapa	54.00	1	0	2423	11.1	82.0	0.2	4.7	0.1	1.6	0.1	0.0	0.2	93.1	0.2	6.7	0.093	0.503	17.550521	-92.944287

TABASCO

29 CARR: Ramal a Balancán

CLAVE: 27078

RUTA: TAB

AÑO: 2018

LUGAR	ESTACION				CLASIFICACION VEHICULAR EN PORCIENTO										COORDENADAS					
	KM	TE	SC	TDPA	M	A	B	C2	C3	T3S2	T3S3	T3S2R4	OTROS	A	B	C	K'	D	LATITUD	LONGITUD
T. C. El Suspiro - Tenosique	0.00	3	0	1736	3.3	85.4	1.6	7.9	0.8	0.6	0.3	0.0	0.1	88.7	1.6	9.7	0.166	0.502	17.632766	-91.600718
Balancán	24.00	1	0	3456	10.8	82.4	0.4	5.1	0.8	0.2	0.2	0.0	0.1	93.2	0.4	6.4	0.091	0.501	17.831805	-91.531087

30 CARR: Ramal a La Venta

CLAVE: 27078

RUTA: TAB

AÑO: 2018

LUGAR	ESTACION				CLASIFICACION VEHICULAR EN PORCIENTO										COORDENADAS					
	KM	TE	SC	TDPA	M	A	B	C2	C3	T3S2	T3S3	T3S2R4	OTROS	A	B	C	K'	D	LATITUD	LONGITUD
T. C. Coatzacoalcos - Villahermosa	0.00	3	0	5197	12.2	77.5	3.5	5.9	0.5	0.2	0.1	0.0	0.1	89.7	3.5	6.8	0.064	0.510	18.065613	-94.042490
La Venta	4.25																			

31 CARR: Ramal a Lázaro Cárdenas

CLAVE: 27208

RUTA: TAB

AÑO: 2018

LUGAR	ESTACION				CLASIFICACION VEHICULAR EN PORCIENTO										COORDENADAS					
	KM	TE	SC	TDPA	M	A	B	C2	C3	T3S2	T3S3	T3S2R4	OTROS	A	B	C	K'	D	LATITUD	LONGITUD
T. C. Comalcalco - El Golpe	0.00	3	0	2111	37.3	55.3	0.3	4.3	0.4	1.4	0.6	0.0	0.4	92.6	0.3	7.1	0.083	0.502	18.286475	-93.383811
Lázaro Cárdenas	14.00	1	0	1885	48.0	47.3	0.3	1.9	0.0	1.5	0.6	0.1	0.3	95.3	0.3	4.4	0.105	0.516	18.319663	-93.435418

32 CARR: Ramal a Libertad

CLAVE: 27205

RUTA: TAB

AÑO: 2018

LUGAR	ESTACION				CLASIFICACION VEHICULAR EN PORCIENTO										COORDENADAS					
	KM	TE	SC	TDPA	M	A	B	C2	C3	T3S2	T3S3	T3S2R4	OTROS	A	B	C	K'	D	LATITUD	LONGITUD
T. C. Cárdenas - Paraiso	0.00	3	0	3301	17.5	76.1	0.2	4.3	0.1	1.5	0.2	0.0	0.1	93.6	0.2	6.2	0.075	0.503	18.115254	-93.307957
Libertad	10.00	1	0	2431	32.9	62.2	0.2	2.5	0.2	1.7	0.2	0.0	0.1	95.1	0.2	4.7	0.091	0.523	18.176061	-93.361469

33 CARR: Ramal a Salto del Agua

CLAVE: 00069

RUTA: TAB-CHIS

AÑO: 2018

LUGAR	ESTACION				CLASIFICACION VEHICULAR EN PORCIENTO										COORDENADAS					
	KM	TE	SC	TDPA	M	A	B	C2	C3	T3S2	T3S3	T3S2R4	OTROS	A	B	C	K'	D	LATITUD	LONGITUD
T. C. Villahermosa - Francisco Escárcega	0.00	3	0	1616	6.0	71.8	1.0	4.5	4.1	4.8	3.2	4.4	0.2	77.8	1.0	21.2	0.125	0.508	17.665591	-92.436140
Lim. Edos. Term. Tab. Ppia. Chis.	12.00																			
Salto del Agua	17.00	1	0	1768	10.5	80.3	0.7	5.9	1.1	1.1	0.4	0.0	0.0	90.8	0.7	8.5	0.095	0.524	17.559632	-92.354172

TABASCO

34 CARR: Ramal a San Antonio

CLAVE: 27003

RUTA: TAB

AÑO: 2018

LUGAR	ESTACION				CLASIFICACION VEHICULAR EN PORCIENTO													COORDENADAS		
	KM	TE	SC	TDPA	M	A	B	C2	C3	T3S2	T3S3	T3S2R4	OTROS	A	B	C	K'	D	LATITUD	LONGITUD
T. C. Villahermosa - Francisco Escárcega	0.00	3	0	772	14.0	71.3	2.9	8.8	1.5	0.9	0.4	0.1	0.1	85.3	2.9	11.8	0.097	0.560	17.928553	-91.743480
T. Der. Balancán	24.00	1	0	1155	17.4	70.8	1.7	8.4	0.8	0.6	0.1	0.1	0.1	88.2	1.7	10.1	0.112	0.542	17.871981	-91.532674
T. Der. Balancán	24.00	3	0	2070	5.8	80.3	0.7	10.7	0.5	1.6	0.2	0.1	0.1	86.1	0.7	13.2	0.084	0.547	17.871937	-91.525956
El Triunfo	72.00																			

35 CARR: Ramal a Sánchez Magallanes

CLAVE: 27016

RUTA: TAB

AÑO: 2018

LUGAR	ESTACION				CLASIFICACION VEHICULAR EN PORCIENTO													COORDENADAS		
	KM	TE	SC	TDPA	M	A	B	C2	C3	T3S2	T3S3	T3S2R4	OTROS	A	B	C	K'	D	LATITUD	LONGITUD
T. C. Coatzacoalcos - Villahermosa	0.00	3	0	1804	18.4	69.4	0.6	6.9	0.9	2.7	0.6	0.2	0.3	87.8	0.6	11.6	0.089	0.513	18.074929	-93.877984
Campo Magallanes	13.00	1	0	1734	18.3	70.5	0.3	6.5	1.1	2.4	0.5	0.2	0.2	88.8	0.3	10.9	0.080	0.502	18.164547	-93.904941
Campo Magallanes	13.00	3	0	3736	12.4	76.1	0.3	5.3	0.6	3.6	1.0	0.3	0.4	88.5	0.3	11.2	0.071	0.506	18.174131	-93.905643
Sánchez Magallanes	33.00	1	0	1387	16.4	73.2	0.6	8.0	0.5	1.2	0.1	0.0	0.0	89.6	0.6	9.8	0.101	0.507	18.276226	-93.892515

36 CARR: Ramal a Tamulte de Las Sabanas

CLAVE: 27080

RUTA: TAB

AÑO: 2018

LUGAR	ESTACION				CLASIFICACION VEHICULAR EN PORCIENTO													COORDENADAS		
	KM	TE	SC	TDPA	M	A	B	C2	C3	T3S2	T3S3	T3S2R4	OTROS	A	B	C	K'	D	LATITUD	LONGITUD
T. C. Villahermosa - Cd. del Carmen	0.00	3	0	2935	6.2	87.7	0.5	2.9	0.4	1.8	0.2	0.0	0.3	93.9	0.5	5.6	0.073	0.503	18.200084	-92.824268
Tamulte de Las Sabanas	7.00																			

37 CARR: Ramal a Tapijulapa

CLAVE: 27200

RUTA: TAB

AÑO: 2018

LUGAR	ESTACION				CLASIFICACION VEHICULAR EN PORCIENTO													COORDENADAS		
	KM	TE	SC	TDPA	M	A	B	C2	C3	T3S2	T3S3	T3S2R4	OTROS	A	B	C	K'	D	LATITUD	LONGITUD
T. C. Playas del Rosario - Teapa	0.00	3	0	3690	10.0	81.0	0.9	3.5	0.4	2.6	1.0	0.3	0.3	91.0	0.9	8.1	0.099	0.534	17.573646	-92.834767
Tapijulapa	20.00	1	0	2004	9.3	83.3	0.3	5.4	0.2	1.2	0.2	0.0	0.1	92.6	0.3	7.1	0.094	0.515	17.458266	-92.786009

38 CARR: Reforma - Dos Bocas

CLAVE: 27200

RUTA: TAB

AÑO: 2018

LUGAR	ESTACION				CLASIFICACION VEHICULAR EN PORCIENTO													COORDENADAS		
	KM	TE	SC	TDPA	M	A	B	C2	C3	T3S2	T3S3	T3S2R4	OTROS	A	B	C	K'	D	LATITUD	LONGITUD
Reforma	0.00	3	1	9967	2.0	86.9	0.7	6.8	0.7	1.5	0.8	0.2	0.4	88.9	0.7	10.4	0.075	0.538	17.977862	-93.128040
Reforma	0.00	3	2	11597	1.9	86.1	0.8	7.2	0.8	1.7	0.9	0.2	0.4	88.0	0.8	11.2	0.084	0.538	17.977897	-93.128196
Dos Bocas	53.00	1	1	3929	8.7	74.2	0.3	11.4	0.8	2.1	2.1	0.2	0.2	82.9	0.3	16.8	0.128	0.503	18.422209	-93.207407

TABASCO

38 CARR: Reforma - Dos Bocas

CLAVE: 27200

RUTA: TAB

AÑO: 2018

LUGAR	ESTACION				CLASIFICACION VEHICULAR EN PORCIENTO														COORDENADAS	
	KM	TE	SC	TDPA	M	A	B	C2	C3	T3S2	T3S3	T3S2R4	OTROS	A	B	C	K'	D	LATITUD	LONGITUD
Dos Bocas	53.00	1	2	3880	8.5	75.2	0.2	10.6	0.8	2.2	2.0	0.2	0.3	83.7	0.2	16.1	0.104	0.503	18.422203	-93.207523

39 CARR: Reyes Hernández - Villa Aldama

CLAVE: 27119

RUTA: TAB

AÑO: 2018

LUGAR	ESTACION				CLASIFICACION VEHICULAR EN PORCIENTO														COORDENADAS	
	KM	TE	SC	TDPA	M	A	B	C2	C3	T3S2	T3S3	T3S2R4	OTROS	A	B	C	K'	D	LATITUD	LONGITUD
Reyes Hernández	0.00	3	0	4780	19.2	70.1	1.1	5.8	0.2	2.8	0.4	0.1	0.3	89.3	1.1	9.6	0.081	0.502	18.241390	-93.277692
T. C. (Cárdenas - Paraíso) - Carlos Green	9.00	1	0	4679	20.5	70.6	0.3	5.4	0.2	2.2	0.4	0.1	0.3	91.1	0.3	8.6	0.069	0.501	18.239696	-93.343129

40 CARR: Samaria - Amatitán

CLAVE: 27114

RUTA: TAB

AÑO: 2018

LUGAR	ESTACION				CLASIFICACION VEHICULAR EN PORCIENTO														COORDENADAS	
	KM	TE	SC	TDPA	M	A	B	C2	C3	T3S2	T3S3	T3S2R4	OTROS	A	B	C	K'	D	LATITUD	LONGITUD
T. C. Coatzacoalcos - Villahermosa	0.00	3	0	2328	8.3	82.4	0.3	6.7	0.2	1.6	0.3	0.1	0.1	90.7	0.3	9.0	0.088	0.513	18.004401	-93.274246
Cunduacán	17.00	1	0	8474	17.5	73.2	1.0	2.0	0.2	4.6	0.5	0.6	0.4	90.7	1.0	8.3	0.071	0.501	18.054609	-93.190584
Cunduacán	17.00	3	0	4415	23.7	71.3	1.2	0.9	0.1	1.4	0.6	0.5	0.3	95.0	1.2	3.8	0.077	0.538	18.083106	-93.168667
Amatitán	31.40	1	0	6867	20.0	71.8	1.7	1.5	0.9	1.6	0.6	1.2	0.7	91.8	1.7	6.5	0.060	0.509	18.174377	-93.086180

41 CARR: T. C. (Cárdenas - Paraíso) - Carlos Green

CLAVE: 27111

RUTA: TAB

AÑO: 2018

LUGAR	ESTACION				CLASIFICACION VEHICULAR EN PORCIENTO														COORDENADAS	
	KM	TE	SC	TDPA	M	A	B	C2	C3	T3S2	T3S3	T3S2R4	OTROS	A	B	C	K'	D	LATITUD	LONGITUD
T. C. Cárdenas - Paraíso	0.00	3	0	349	25.6	65.3	0.2	8.1	0.3	0.5	0.0	0.0	0.0	90.9	0.2	8.9	0.092	0.502	18.108484	-93.321600
T. Der. Reyes Hernández	21.50	3	0	1264	51.8	40.7	0.3	4.9	0.2	1.4	0.5	0.0	0.2	92.5	0.3	7.2	0.084	0.532	18.180887	-93.396656
Carlos Green	30.70	1	0	2017	50.0	40.7	0.3	6.7	0.1	1.8	0.3	0.0	0.1	90.7	0.3	9.0	0.074	0.505	18.233344	-93.445906

42 CARR: Tierra Nueva - Francisco Rueda

CLAVE: 27110

RUTA: TAB

AÑO: 2018

LUGAR	ESTACION				CLASIFICACION VEHICULAR EN PORCIENTO														COORDENADAS	
	KM	TE	SC	TDPA	M	A	B	C2	C3	T3S2	T3S3	T3S2R4	OTROS	A	B	C	K'	D	LATITUD	LONGITUD
Tierra Nueva	0.00	3	0	3168	28.1	62.8	0.4	3.8	0.7	2.0	0.4	1.5	0.3	90.9	0.4	8.7	0.073	0.503	17.793696	-93.444832
Ocuapan	14.00	3	0	1116	44.4	45.4	0.3	6.5	0.5	1.4	0.4	1.0	0.1	89.8	0.3	9.9	0.091	0.509	17.835036	-93.514721
T. Izq. Encomendadero	31.00	1	0	1229	32.9	56.7	0.3	6.0	1.8	1.0	0.5	0.7	0.1	89.6	0.3	10.1	0.100	0.502	17.800635	-93.623521
T. Izq. Encomendadero	31.00	3	0	1102	24.1	60.1	0.8	7.5	3.5	2.2	0.9	0.6	0.3	84.2	0.8	15.0	0.132	0.527	17.783351	-93.634524
Francisco Rueda	71.00	1	0	679	36.2	54.1	1.0	6.5	1.1	0.7	0.2	0.1	0.1	90.3	1.0	8.7	0.100	0.503	17.835719	-93.926900

TABASCO

43 CARR: Tulipán - Conduacán

CLAVE: 27115

RUTA: TAB

AÑO: 2018

LUGAR	ESTACION				CLASIFICACION VEHICULAR EN PORCIENTO										COORDENADAS					
	KM	TE	SC	TDPA	M	A	B	C2	C3	T3S2	T3S3	T3S2R4	OTROS	A	B	C	K'	D	LATITUD	LONGITUD
T. C. Malpaso - El Bellote	0.00	3	0	5612	22.0	70.1	0.1	1.9	0.6	3.4	1.0	0.2	0.7	92.1	0.1	7.8	0.074	0.505	18.112036	-93.288929
T. Der. Mote	14.00	1	0	3770	15.2	80.9	0.1	2.1	0.0	1.4	0.2	0.0	0.1	96.1	0.1	3.8	0.079	0.504	18.064463	-93.214713
Conduacán	15.00	1	0	5076	19.6	76.0	0.1	2.2	0.0	1.6	0.2	0.0	0.3	95.6	0.1	4.3	0.083	0.502	18.057204	-93.200605

44 CARR: Villahermosa - Comalcalco

CLAVE: 27021

RUTA: TAB

AÑO: 2018

LUGAR	ESTACION				CLASIFICACION VEHICULAR EN PORCIENTO										COORDENADAS					
	KM	TE	SC	TDPA	M	A	B	C2	C3	T3S2	T3S3	T3S2R4	OTROS	A	B	C	K'	D	LATITUD	LONGITUD
T. C. Villahermosa - Cd. del Carmen	0.00	3	1	13418	2.0	91.4	0.1	2.4	0.1	1.2	2.5	0.1	0.2	93.4	0.1	6.5	0.107	0.504	18.035045	-92.930604
T. C. Villahermosa - Cd. del Carmen	0.00	3	2	13610	2.5	90.8	0.1	2.5	0.1	1.4	2.4	0.1	0.1	93.3	0.1	6.6	0.108	0.504	18.035015	-92.930710
Saloya	13.00	1	0	16311	5.0	88.5	0.2	3.0	1.5	0.7	0.8	0.1	0.2	93.5	0.2	6.3	0.080	0.510	18.090627	-92.939875
Saloya	13.00	3	0	14323	4.8	86.6	0.1	2.2	0.2	4.2	1.1	0.4	0.4	91.4	0.1	8.5	0.065	0.517	18.101341	-92.950506
Nacajuca	21.00	1	0	12892	7.9	83.0	0.1	2.6	0.3	4.6	0.7	0.2	0.6	90.9	0.1	9.0	0.071	0.515	18.152813	-93.011220
Nacajuca	21.00	3	1	8114	14.8	80.9	0.1	2.2	0.2	1.0	0.6	0.0	0.2	95.7	0.1	4.2	0.072	0.500	18.178104	-93.027958
Nacajuca	21.00	3	2	8120	14.6	80.9	0.1	2.2	0.2	1.1	0.7	0.0	0.2	95.5	0.1	4.4	0.068	0.500	18.178036	-93.027951
Jalpa de Méndez	27.00	3	0	7053	12.8	79.9	0.1	2.1	0.2	3.8	0.4	0.1	0.6	92.7	0.1	7.2	0.085	0.510	18.179410	-93.084876
Cupilco	40.00	1	0	5116	11.1	82.1	0.1	2.8	0.2	2.6	0.6	0.1	0.4	93.2	0.1	6.7	0.074	0.533	18.235139	-93.123365
Cupilco	40.00	3	0	5941	7.1	84.5	0.2	3.8	0.2	2.6	0.9	0.1	0.6	91.6	0.2	8.2	0.075	0.509	18.248428	-93.131140
Chichicapa	46.50	1	0	5973	12.9	78.6	0.2	4.5	0.2	2.6	0.5	0.1	0.4	91.5	0.2	8.3	0.080	0.503	18.262098	-93.173043
T. C. Malpaso - El Bellote	50.70	1	0	10259	6.0	76.0	0.4	7.8	1.2	6.1	1.1	0.3	1.1	82.0	0.4	17.6	0.071	0.524	18.247846	-93.202486

45 CARR: Villahermosa - Luis Gil Pérez

CLAVE: 27206

RUTA: TAB

AÑO: 2018

LUGAR	ESTACION				CLASIFICACION VEHICULAR EN PORCIENTO										COORDENADAS					
	KM	TE	SC	TDPA	M	A	B	C2	C3	T3S2	T3S3	T3S2R4	OTROS	A	B	C	K'	D	LATITUD	LONGITUD
Villahermosa	0.00	3	0	11614	7.7	82.8	0.1	2.7	0.3	5.5	0.5	0.1	0.3	90.5	0.1	9.4	0.077	0.500	17.943455	-92.978544
Luis Gil Pérez	22.00	1	0	4851	8.9	83.4	0.2	3.6	0.1	2.0	1.2	0.2	0.4	92.3	0.2	7.5	0.076	0.505	17.887971	-93.068051

46 CARR: Villahermosa - T. C. (P. de Conduacán - Estación Juárez)

CLAVE: 27106

RUTA: TAB

AÑO: 2018

LUGAR	ESTACION				CLASIFICACION VEHICULAR EN PORCIENTO										COORDENADAS					
	KM	TE	SC	TDPA	M	A	B	C2	C3	T3S2	T3S3	T3S2R4	OTROS	A	B	C	K'	D	LATITUD	LONGITUD
Villahermosa	0.00	3	0	15644	4.9	89.0	0.1	3.3	0.2	1.4	0.4	0.3	0.4	93.9	0.1	6.0	0.060	0.502	17.959778	-92.981501
San Joaquín	4.00	3	0	8180	7.4	82.7	0.2	4.9	0.3	3.1	0.6	0.2	0.6	90.1	0.2	9.7	0.059	0.504	17.929672	-92.984310
T. Izq. Luis Gil Pérez	19.00	3	0	5875	15.3	75.1	0.2	3.8	0.1	3.4	1.2	0.2	0.7	90.4	0.2	9.4	0.078	0.518	17.894773	-93.064815

TABASCO

46 CARR: Villahermosa - T. C. (P. de Cunduacán - Estación Juárez)

CLAVE: 27106

RUTA: TAB

AÑO: 2018

LUGAR	ESTACION				CLASIFICACION VEHICULAR EN PORCIENTO														COORDENADAS	
	KM	TE	SC	TDPA	M	A	B	C2	C3	T3S2	T3S3	T3S2R4	OTROS	A	B	C	K'	D	LATITUD	LONGITUD
T. C. Paso de Cunduacán - Estación Juárez	25.20	1	0	5044	11.6	74.2	0.2	5.6	0.2	5.1	1.8	0.5	0.8	85.8	0.2	14.0	0.087	0.522	17.908166	-93.125973

47 CARR: Zapatero - T. C. (Jalapa - Jonuta)

CLAVE: 00061

RUTA: CHIS-TAB

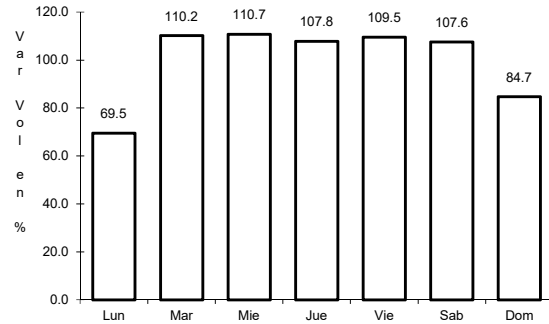
AÑO: 2018

LUGAR	ESTACION				CLASIFICACION VEHICULAR EN PORCIENTO														COORDENADAS	
	KM	TE	SC	TDPA	M	A	B	C2	C3	T3S2	T3S3	T3S2R4	OTROS	A	B	C	K'	D	LATITUD	LONGITUD
T. C. Villahermosa - Francisco Escárcega	0.00	3	0	1544	11.6	80.9	0.3	4.8	0.7	1.4	0.2	0.0	0.1	92.5	0.3	7.2	0.080	0.505	17.699082	-92.131896
Lim. Edos. Term. Chis. Ppia. Tab.	16.00																			
T. C. Jalapa - Jonuta	41.00	1	0	1429	10.6	84.7	0.2	3.3	0.3	0.7	0.2	0.0	0.0	95.3	0.2	4.5	0.096	0.540	18.030846	-92.157767

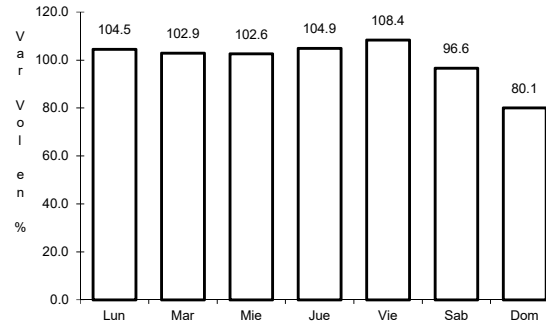
1 CARR: Coatzacoalcos - Villahermosa

CLAVE: 00528

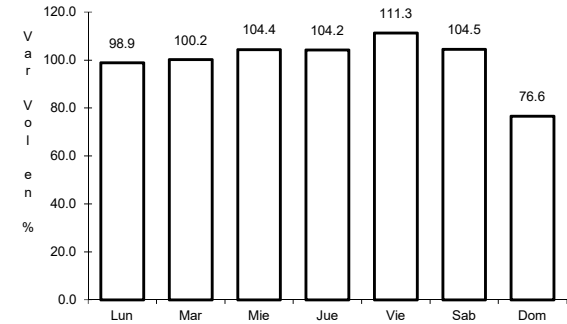
RUTA: MEX-180



Km: 3.00 Tipo: 1 Sent: 0



Km: 171.15 Tipo: 1 Sent: 1

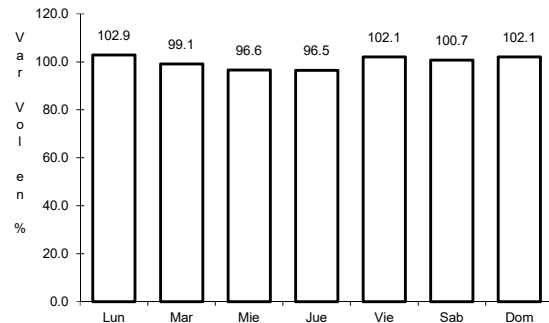


Km: 171.15 Tipo: 1 Sent: 2

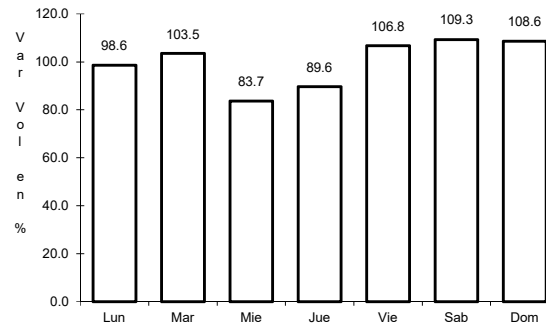
2 CARR: El Suspiro - Tenosique

CLAVE: 00276

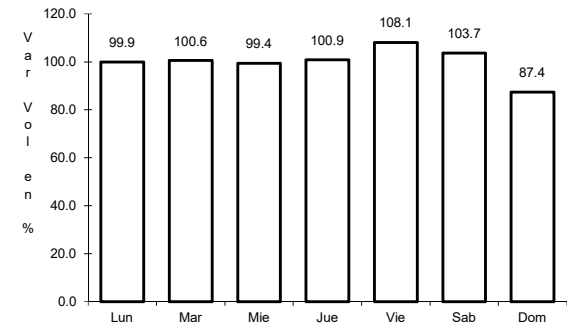
RUTA: MEX-203



Km: 0.00 Tipo: 3 Sent: 0



Km: 32.60 Tipo: 1 Sent: 0

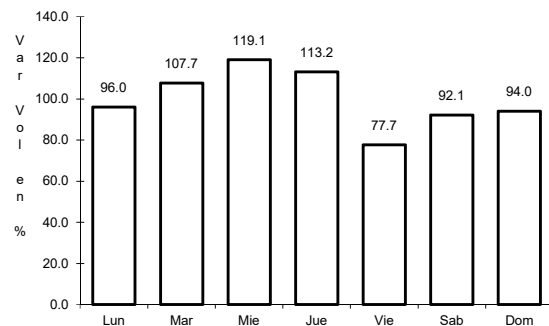


Km: 53.00 Tipo: 3 Sent: 0

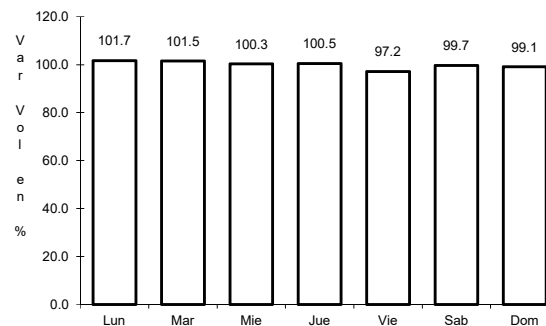
3 CARR: Malpaso - El Bellote

CLAVE: 00137

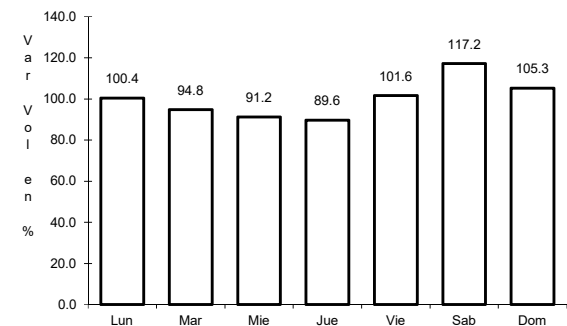
RUTA: MEX-187



Km: 70.12 Tipo: 1 Sent: 0



Km: 134.70 Tipo: 3 Sent: 0

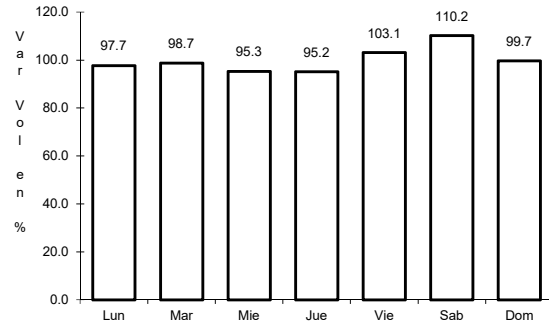


Km: 182.00 Tipo: 3 Sent: 0

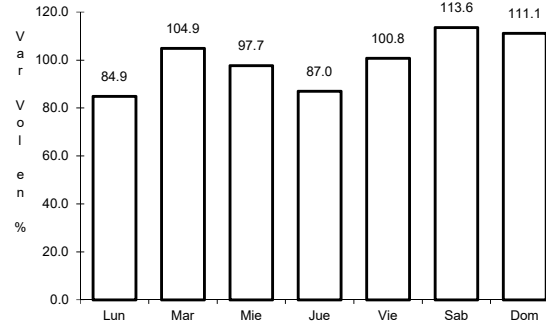
4 CARR: Tenosique - El Ceibo

CLAVE:

ruta: MEX-203



Km: 0.00 Tipo: 3 Sent: 0

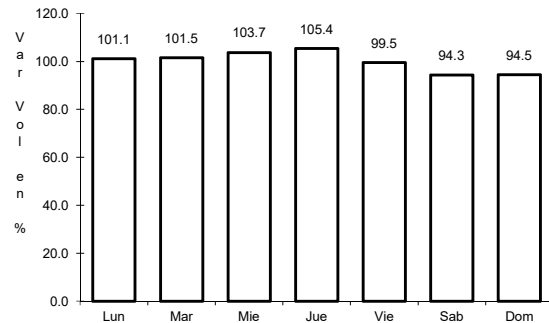


Km: 58.00 Tipo: 1 Sent: 0

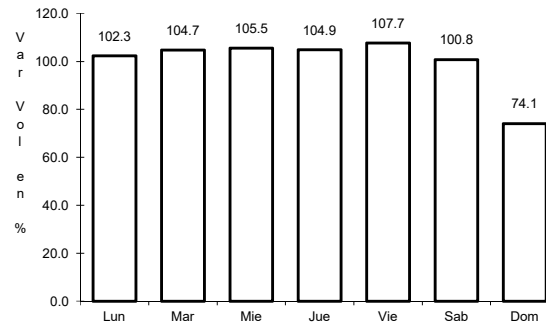
5 CARR: Villahermosa - Cd. del Carmen

CLAVE: 00064

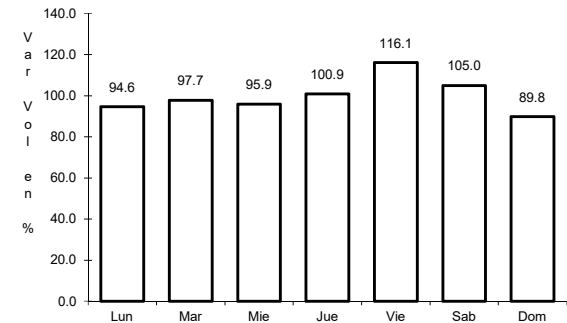
ruta: MEX-180



Km: 4.30 Tipo: 3 Sent: 1



Km: 4.30 Tipo: 3 Sent: 2

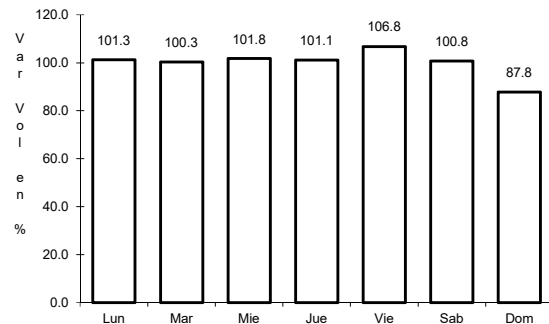


Km: 162.41 Tipo: 1 Sent: 0

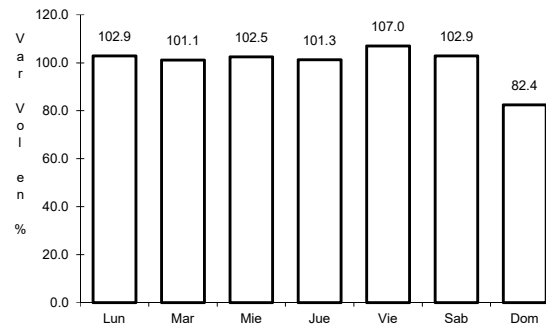
6 CARR: Villahermosa - Escopetazo

CLAVE: 00104

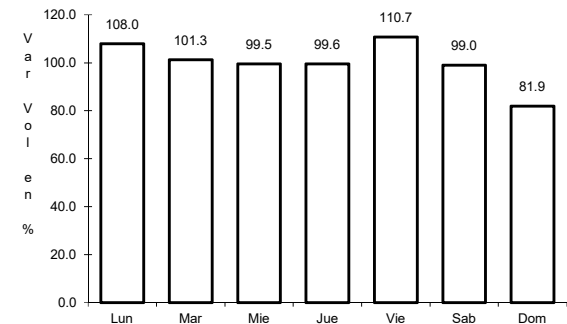
ruta: MEX-195



Km: 0.00 Tipo: 3 Sent: 1



Km: 0.00 Tipo: 3 Sent: 2

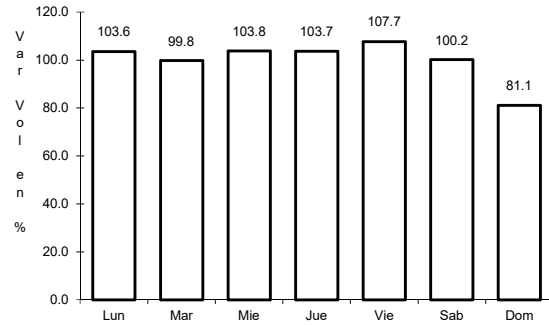


Km: 259.00 Tipo: 1 Sent: 0

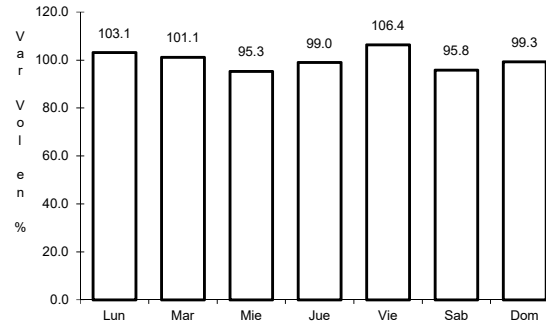
7 CARR: Villahermosa - Francisco Escárcega

CLAVE: 00092

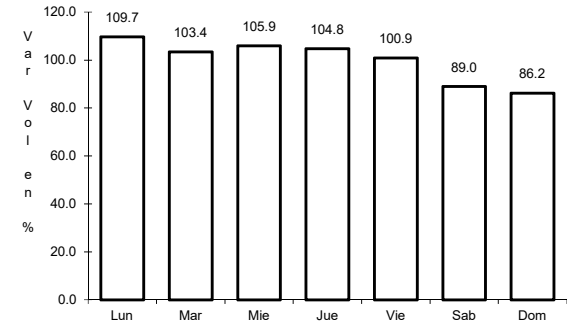
ruta: MEX-186



Km: 0.00 Tipo: 3 Sent: 1



Km: 0.00 Tipo: 3 Sent: 2

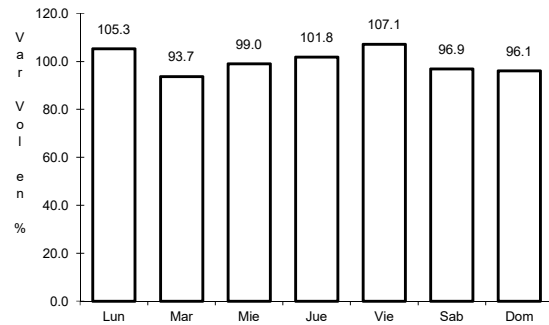


Km: 297.04 Tipo: 1 Sent: 0

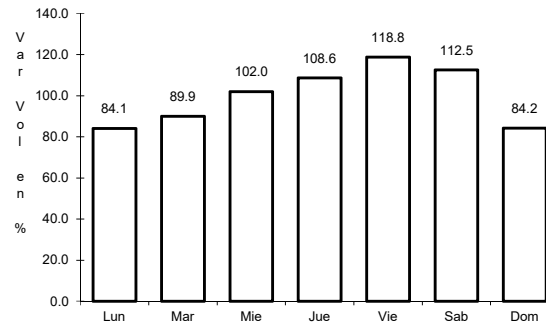
8 CARR: Ent. Agua Dulce - Cárdenas (Cuota)

CLAVE: 00010

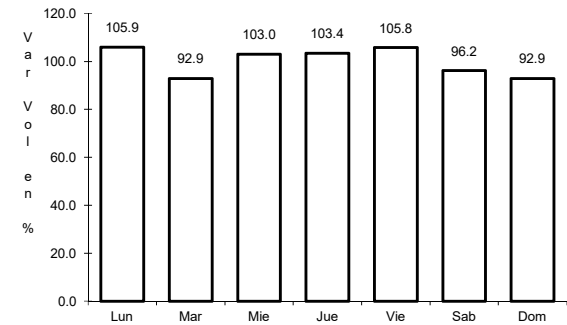
ruta: MEX-180D



Km: 69.50 Tipo: 1 Sent: 1



Km: 69.50 Tipo: 1 Sent: 2

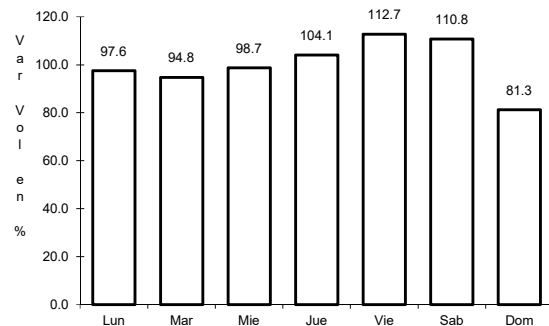


Km: 69.50 Tipo: 3 Sent: 1

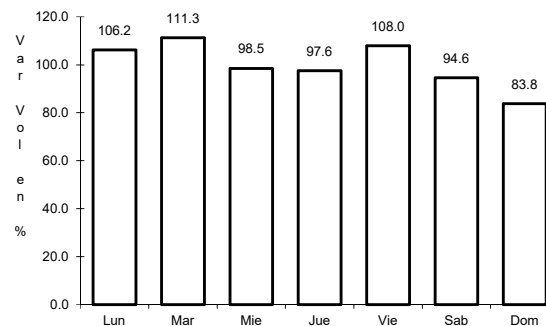
9 CARR: Las Choapas - Ocozocoautla (Cuota)

CLAVE: 00077

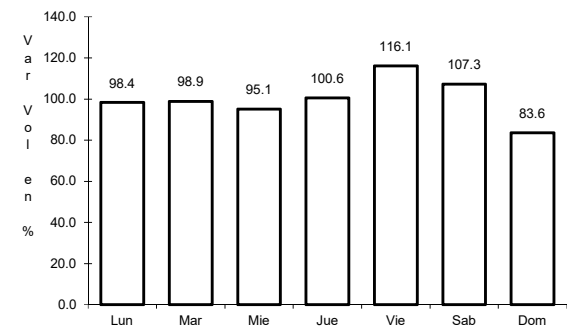
ruta: MEX-187D



Km: 0.00 Tipo: 3 Sent: 0



Km: 123.79 Tipo: 1 Sent: 0

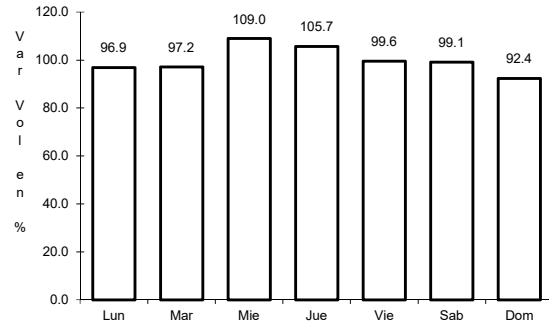


Km: 197.50 Tipo: 1 Sent: 0

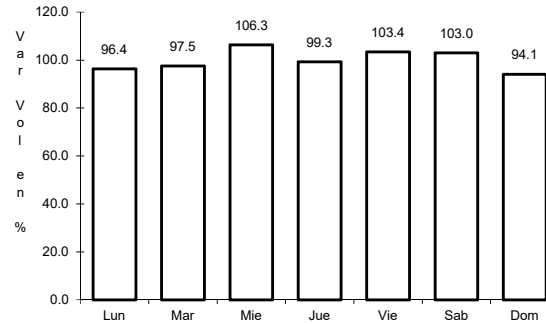
11 CARR: Benito Juárez - Agua Dulce

CLAVE: 00202

RUTA: TAB-VER



Km: 0.00 Tipo: 3 Sent: 0

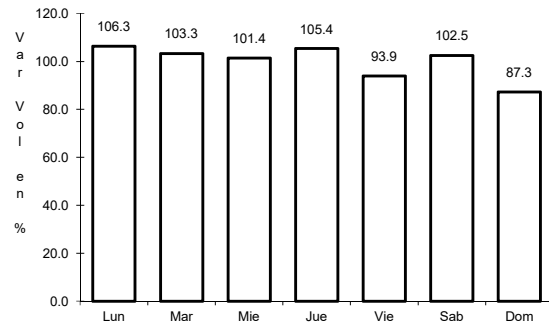


Km: 16.80 Tipo: 1 Sent: 0

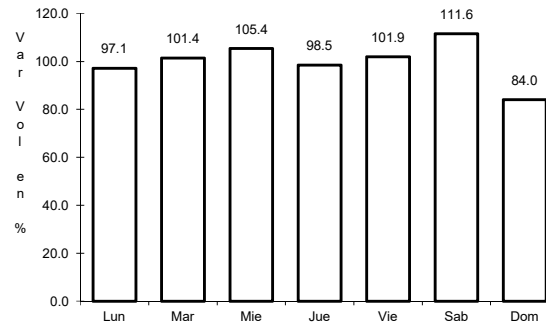
12 CARR: Benito Juárez - Tepetitán

CLAVE: 27204

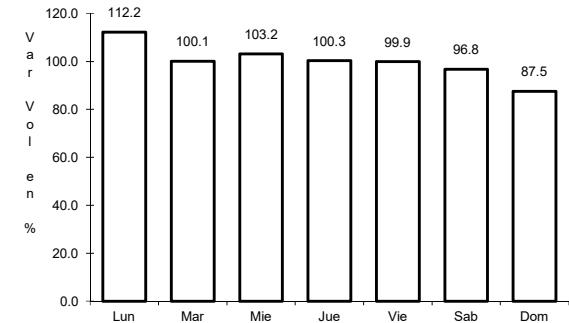
RUTA: TAB



Km: 1.50 Tipo: 3 Sent: 0



Km: 18.50 Tipo: 1 Sent: 0

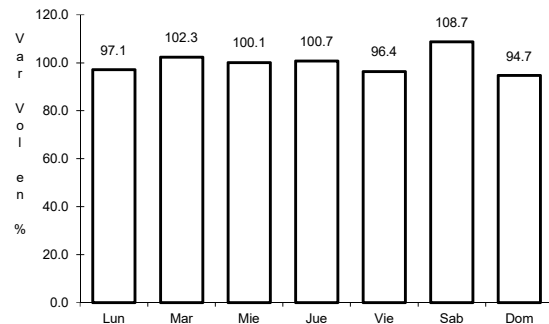


Km: 20.00 Tipo: 1 Sent: 0

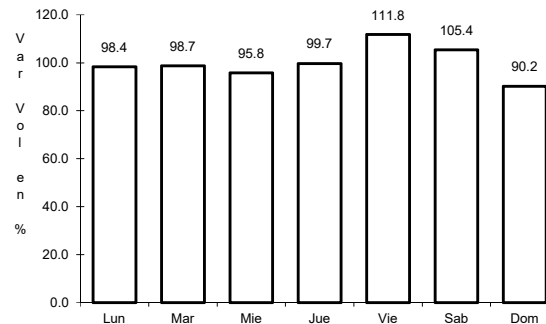
13 CARR: Cacaos - La Granja

CLAVE: 27002

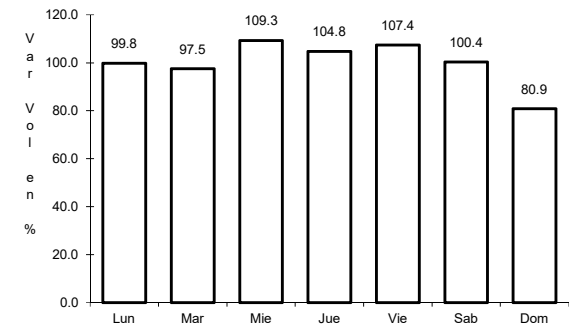
RUTA: TAB



Km: 0.00 Tipo: 3 Sent: 0



Km: 16.00 Tipo: 3 Sent: 0

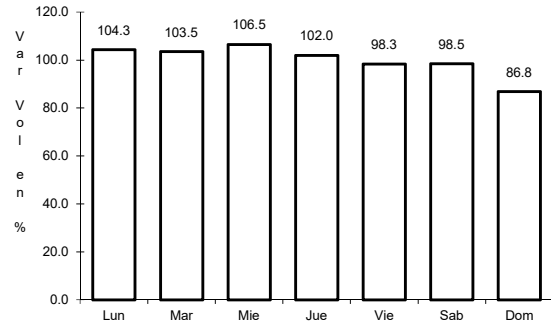


Km: 39.00 Tipo: 1 Sent: 0

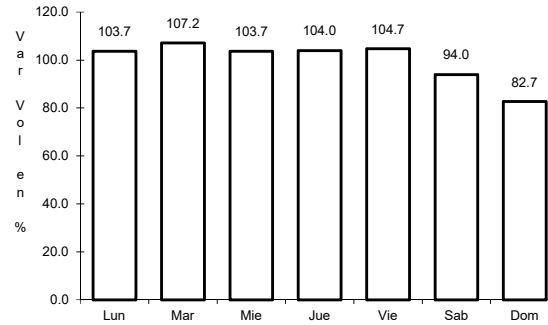
14 CARR: Cárdenas - Paraíso

CLAVE: 27117

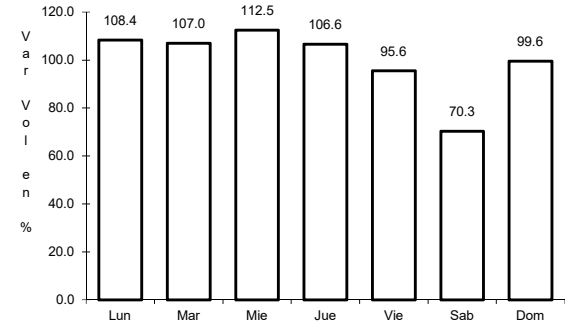
RUTA: TAB



Km: 0.00 Tipo: 3 Sent: 0



Km: 22.00 Tipo: 1 Sent: 0

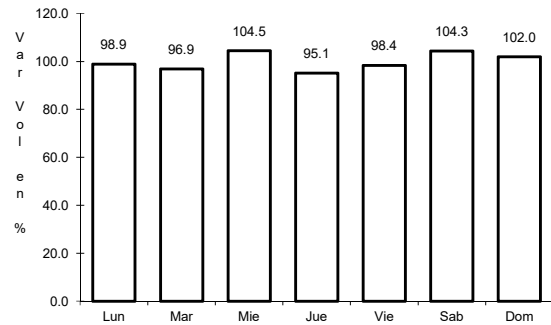


Km: 52.00 Tipo: 1 Sent: 0

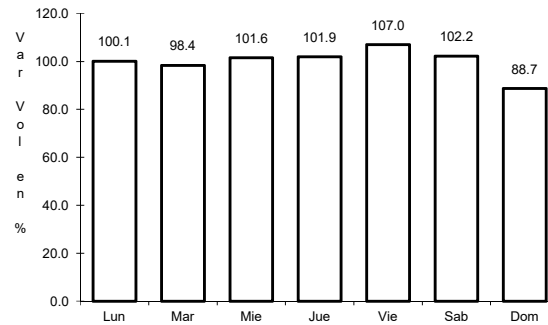
15 CARR: Chichicapa - Ent. La Libertad

CLAVE: 27100

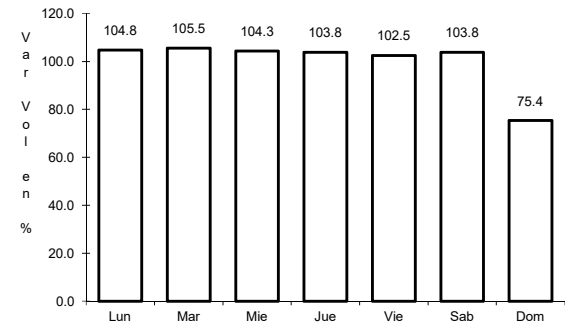
RUTA: TAB



Km: 0.00 Tipo: 3 Sent: 0



Km: 10.00 Tipo: 3 Sent: 0

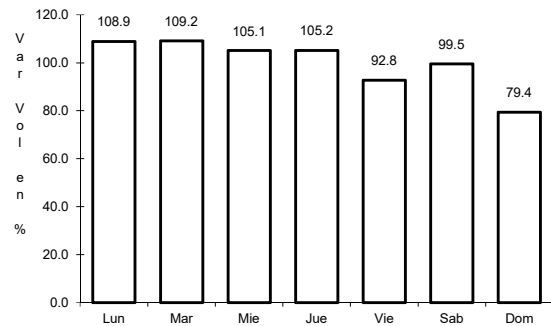


Km: 18.00 Tipo: 1 Sent: 0

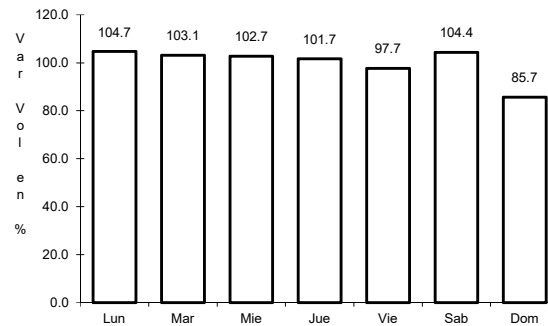
16 CARR: Comalcalco - El Golpe

CLAVE: 27102

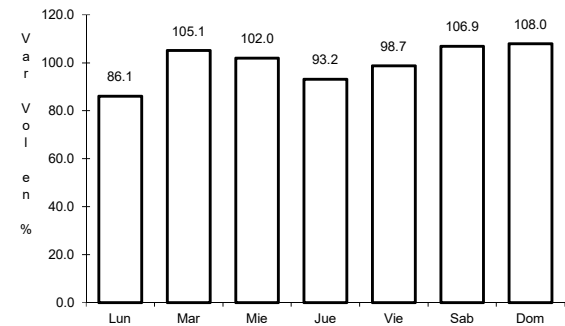
RUTA: TAB



Km: 0.00 Tipo: 3 Sent: 0



Km: 15.00 Tipo: 1 Sent: 0

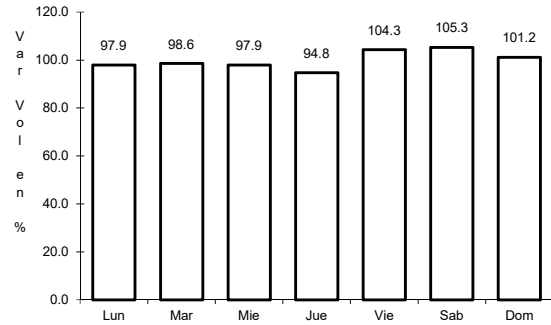


Km: 51.60 Tipo: 1 Sent: 0

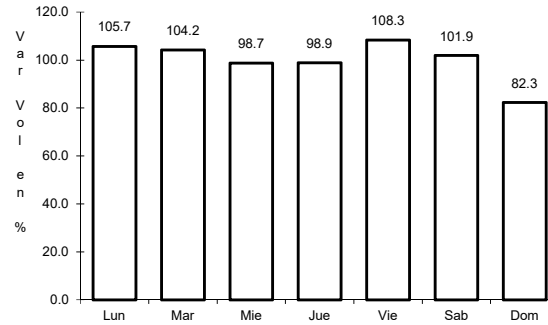
17 CARR: El Bellote - Santa Cruz

CLAVE: 27105

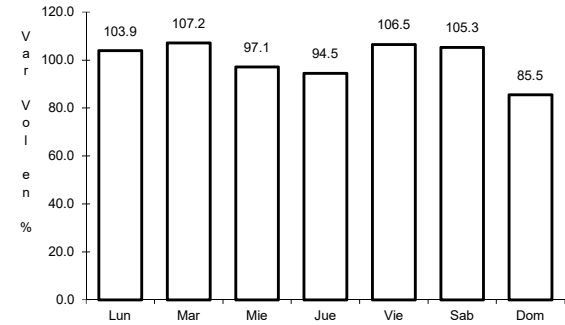
RUTA: TAB



Km: 0.00 Tipo: 3 Sent: 0



Km: 35.00 Tipo: 1 Sent: 0

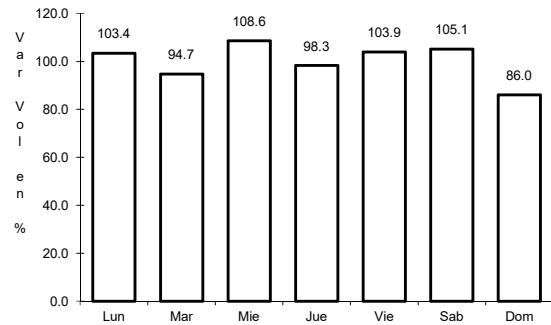


Km: 40.00 Tipo: 1 Sent: 0

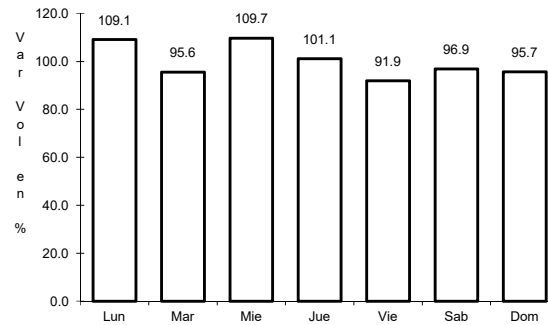
18 CARR: Ent. Emiliano Zapata - La Libertad

CLAVE: 00062

RUTA: CHIS-TAB



Km: 0.00 Tipo: 3 Sent: 0

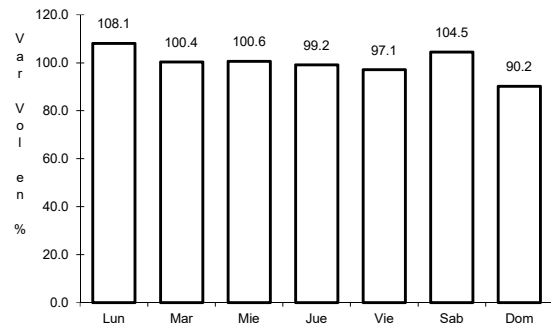


Km: 10.00 Tipo: 1 Sent: 0

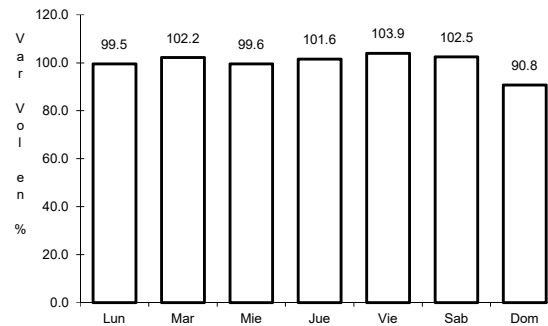
19 CARR: Estación Macuspana - Vernet

CLAVE: 27091

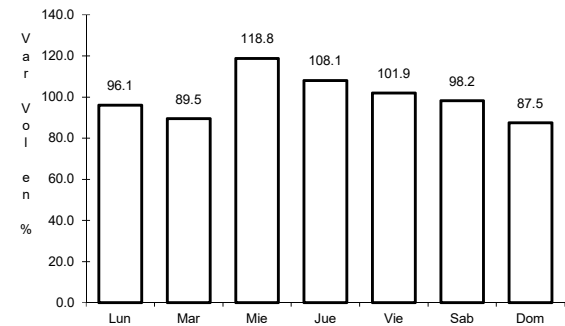
RUTA: TAB-041



Km: 11.00 Tipo: 1 Sent: 0



Km: 20.50 Tipo: 3 Sent: 0

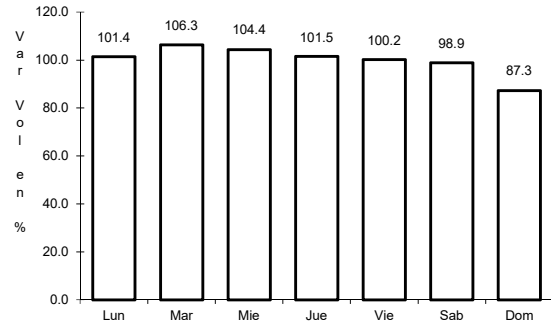


Km: 32.50 Tipo: 1 Sent: 0

20 CARR: Frontera - T. C. (Jalapa - Jonuta)

CLAVE: 27081

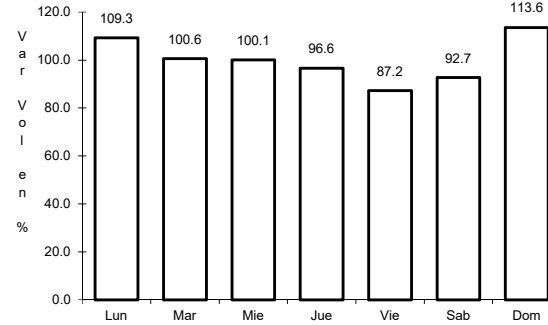
RUTA: TAB



Km: 1.00

Tipo: 3

Sent: 0



Km: 123.00

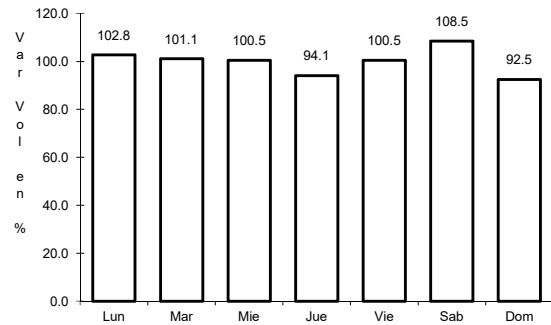
Tipo: 1

Sent: 0

21 CARR: Gregorio Méndez Magaña - Reforma de Ocampo

CLAVE: 00103

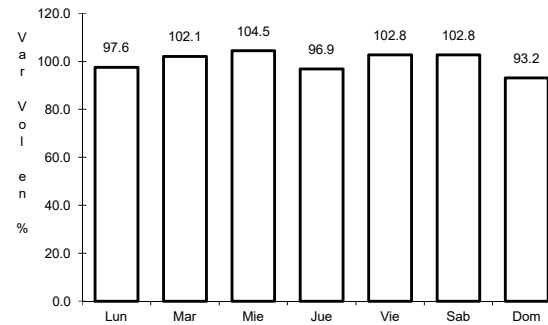
RUTA: CHIS



Km: 0.00

Tipo: 3

Sent: 0



Km: 21.00

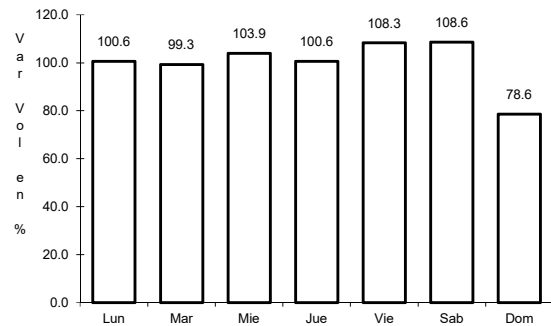
Tipo: 1

Sent: 0

22 CARR: Jalapa - Jonuta

CLAVE: 27107

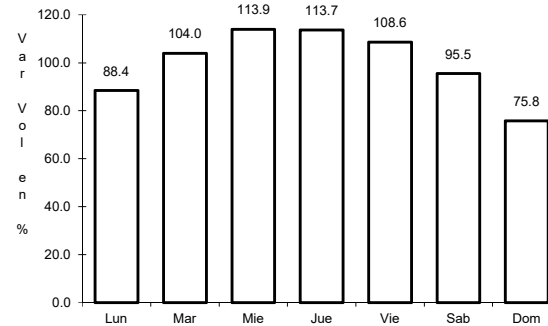
RUTA: TAB



Km: 0.00

Tipo: 3

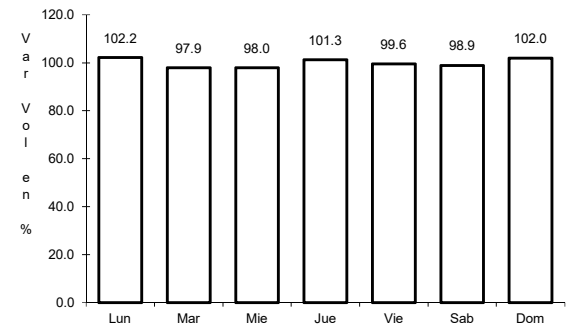
Sent: 0



Km: 39.00

Tipo: 1

Sent: 0



Km: 97.50

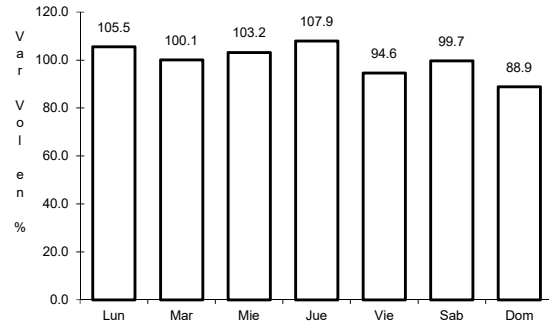
Tipo: 1

Sent: 0

23 CARR: Libramiento Sur de Comalcalco

CLAVE:

RUTA: TAB

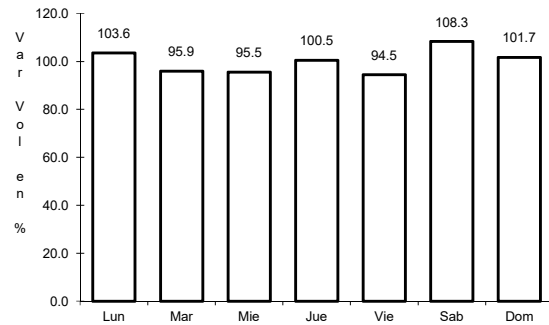


Km: 0.00 Tipo: 3 Sent: 0

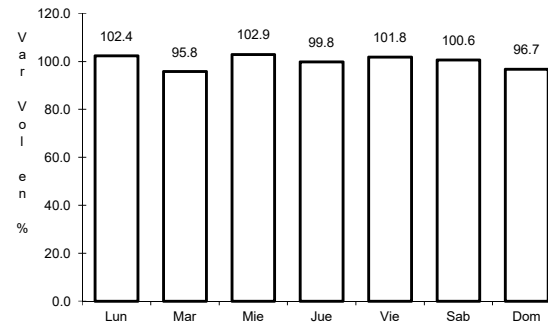
24 CARR: Nicolás Bravo - T. C. (El Bellote - Santa Cruz)

CLAVE: 27010

RUTA: TAB



Km: 0.00 Tipo: 3 Sent: 0

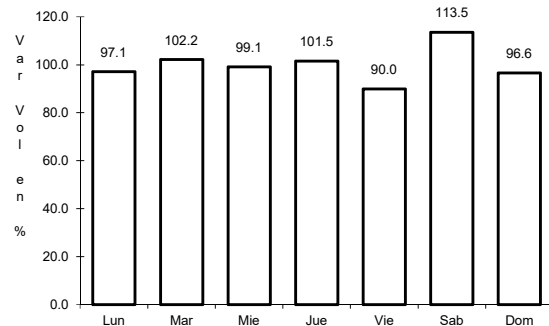


Km: 22.00 Tipo: 1 Sent: 0

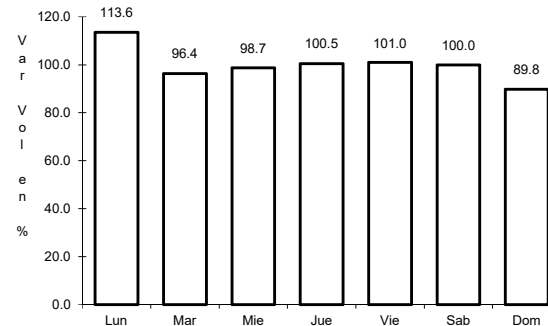
25 CARR: Pailebot - Cuauhtemotzin

CLAVE: 27112

RUTA: TAB



Km: 0.00 Tipo: 3 Sent: 0

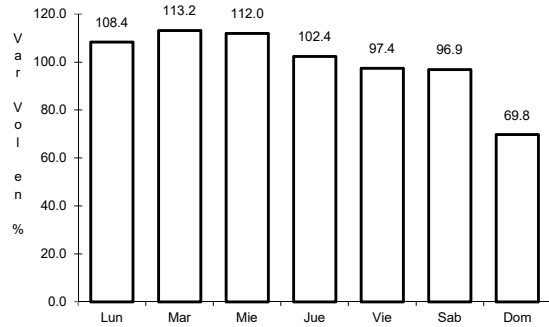


Km: 23.00 Tipo: 1 Sent: 0

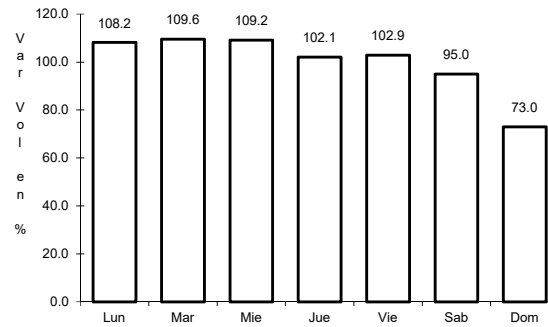
26 CARR: Paraíso - El Limón

CLAVE: 27108

ruta: TAB



Km: 0.00 Tipo: 3 Sent: 0

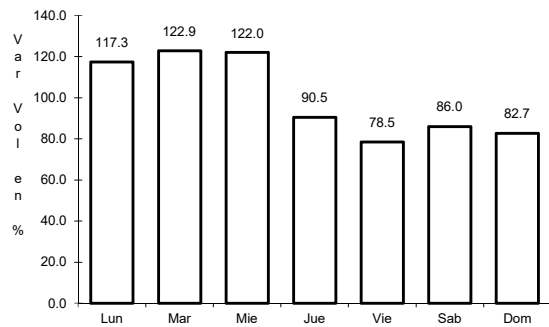


Km: 6.00 Tipo: 1 Sent: 0

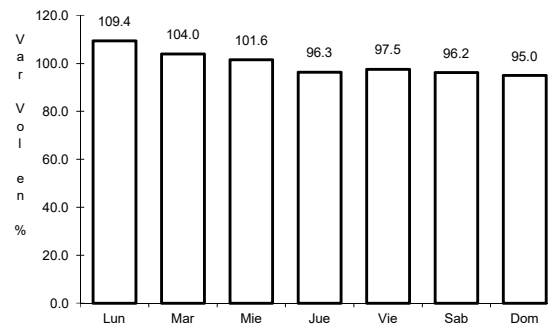
27 CARR: Paso de Cunduacán - Estación Juárez

CLAVE: 00588

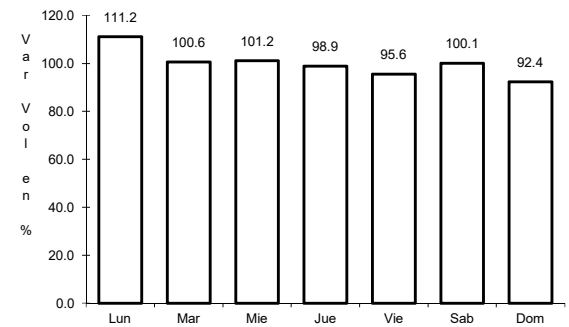
ruta: TAB-CHIS



Km: 0.00 Tipo: 3 Sent: 0



Km: 18.00 Tipo: 3 Sent: 0

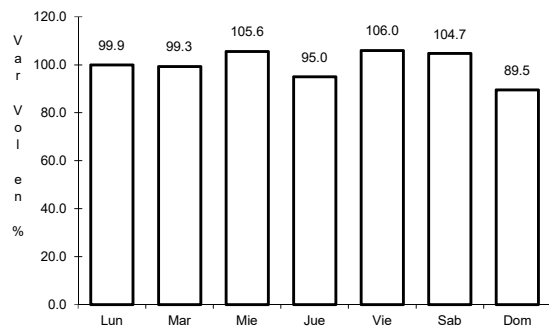


Km: 57.80 Tipo: 1 Sent: 0

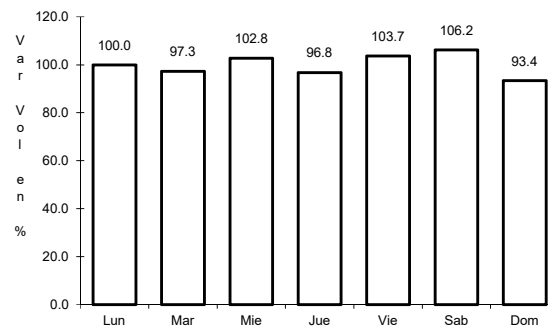
28 CARR: Playas del Rosario - Teapa

CLAVE: 27203

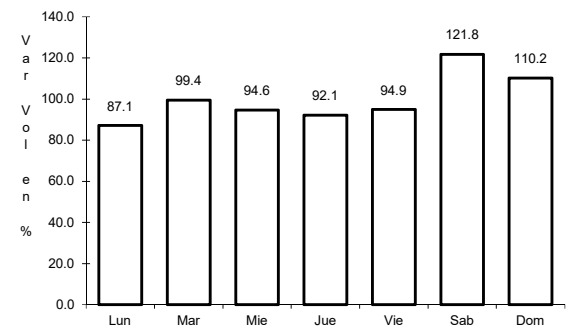
ruta: TAB-001



Km: 0.00 Tipo: 3 Sent: 1



Km: 0.00 Tipo: 3 Sent: 2

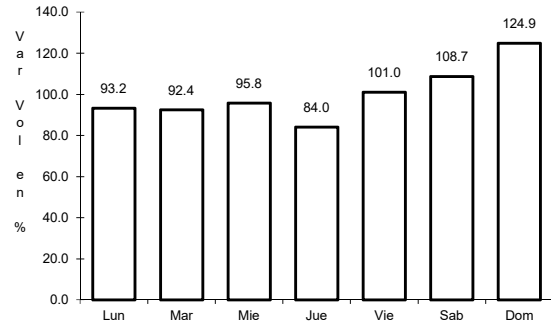


Km: 54.00 Tipo: 1 Sent: 0

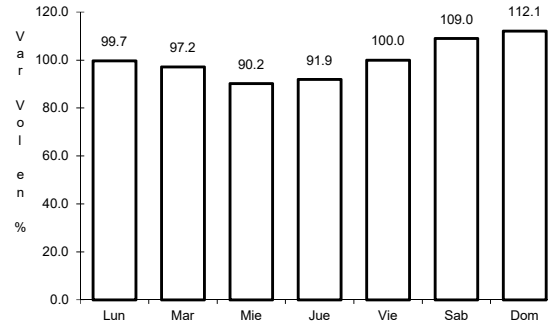
29 CARR: Ramal a Balancan

CLAVE: 27078

ruta: TAB



Km: 0.00 Tipo: 3 Sent: 0

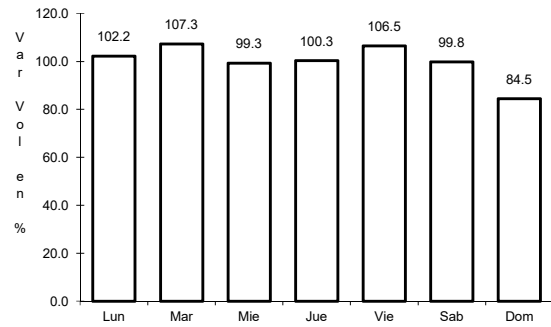


Km: 24.00 Tipo: 1 Sent: 0

30 CARR: Ramal a La Venta

CLAVE: 27078

ruta: TAB

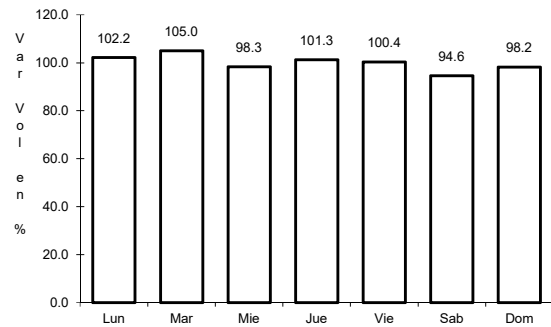


Km: 0.00 Tipo: 3 Sent: 0

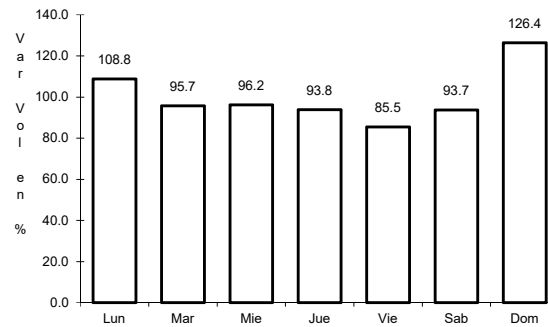
31 CARR: Ramal a Lázaro Cárdenas

CLAVE: 27208

ruta: TAB



Km: 0.00 Tipo: 3 Sent: 0

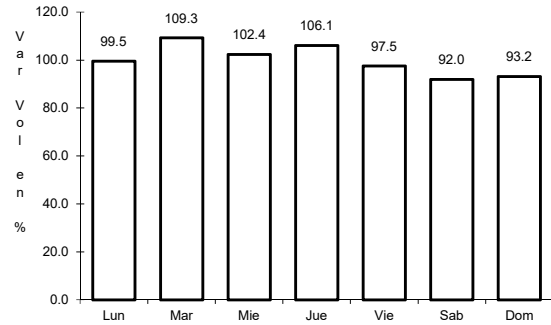


Km: 14.00 Tipo: 1 Sent: 0

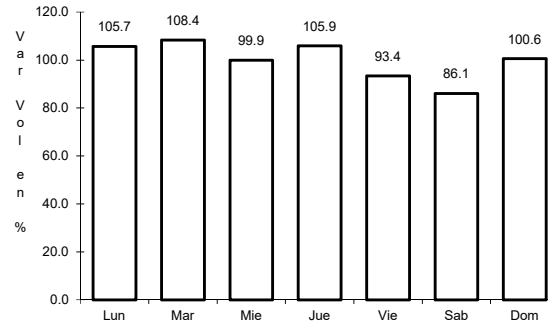
32 CARR: Ramal a Libertad

CLAVE: 27205

RUTA: TAB



Km: 0.00 Tipo: 3 Sent: 0

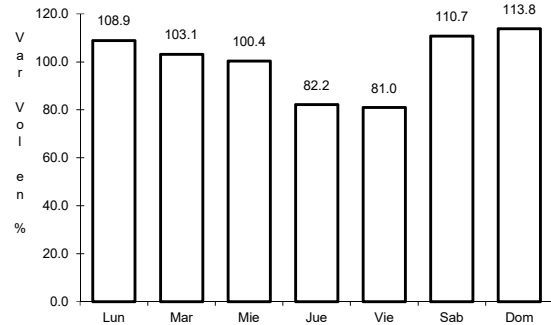


Km: 10.00 Tipo: 1 Sent: 0

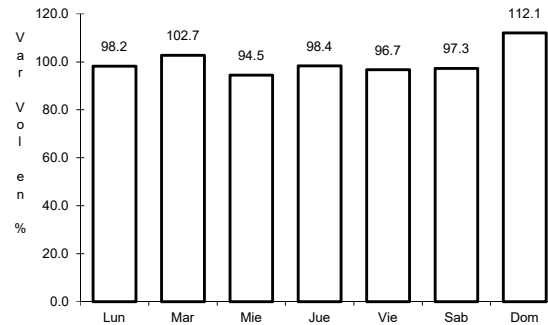
33 CARR: Ramal a Salto del Agua

CLAVE: 00069

RUTA: TAB-CHIS



Km: 0.00 Tipo: 3 Sent: 0

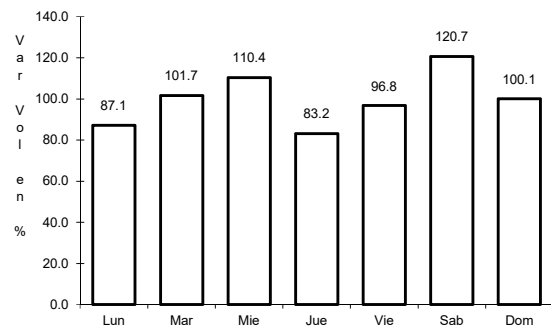


Km: 17.00 Tipo: 1 Sent: 0

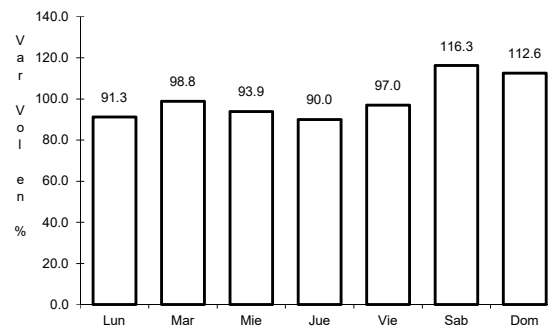
34 CARR: Ramal a San Antonio

CLAVE: 27003

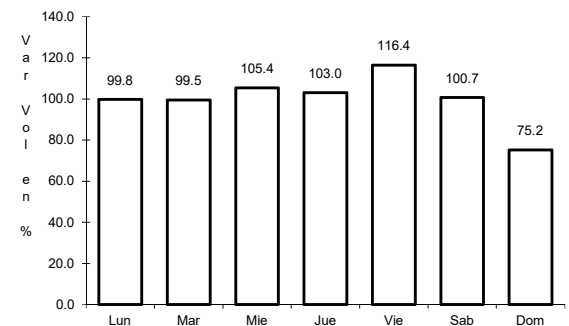
RUTA: TAB



Km: 0.00 Tipo: 3 Sent: 0



Km: 24.00 Tipo: 1 Sent: 0

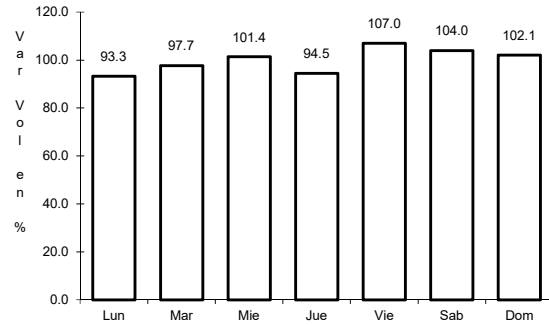


Km: 24.00 Tipo: 3 Sent: 0

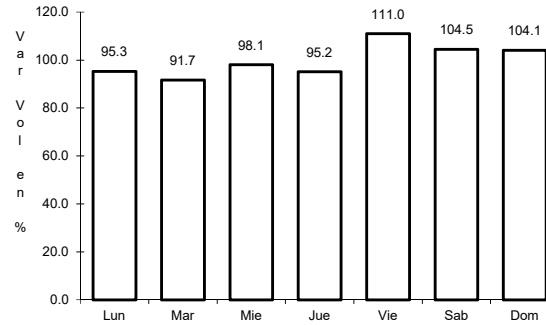
35 CARR: Ramal a Sánchez Magallanes

CLAVE: 27016

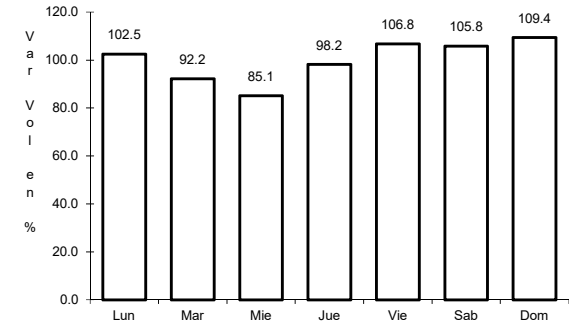
ruta: TAB



Km: 0.00 Tipo: 3 Sent: 0



Km: 13.00 Tipo: 1 Sent: 0

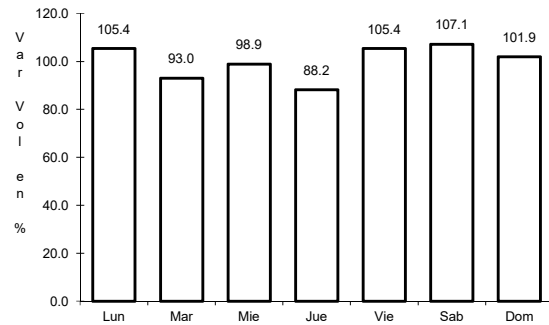


Km: 33.00 Tipo: 1 Sent: 0

36 CARR: Ramal a Tamulte de Las Sabanas

CLAVE: 27080

ruta: TAB

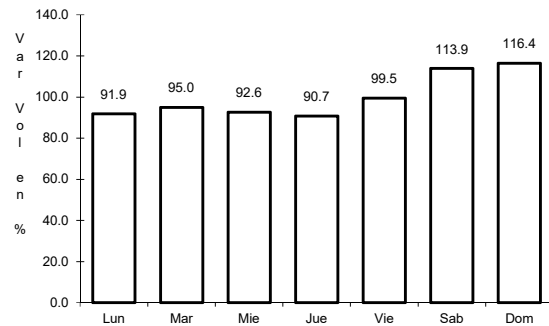


Km: 0.00 Tipo: 3 Sent: 0

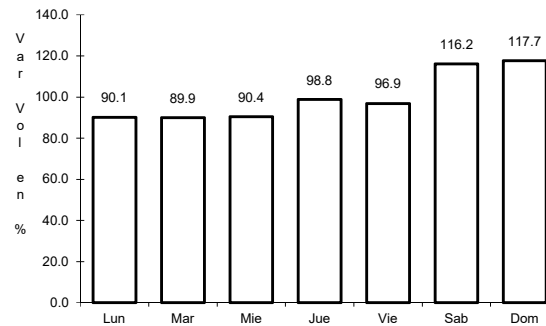
37 CARR: Ramal a Tapijulapa

CLAVE: 27200

ruta: TAB



Km: 0.00 Tipo: 3 Sent: 0

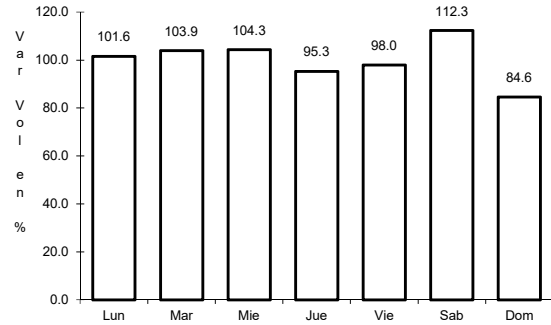


Km: 20.00 Tipo: 1 Sent: 0

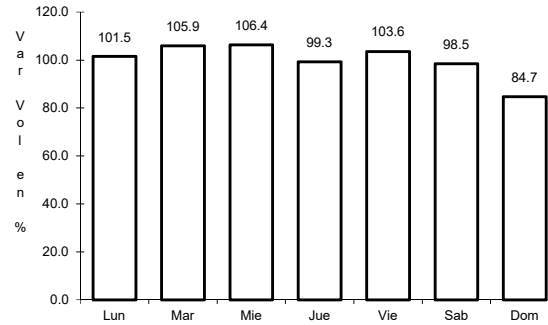
38 CARR: Reforma - Dos Bocas

CLAVE: 27200

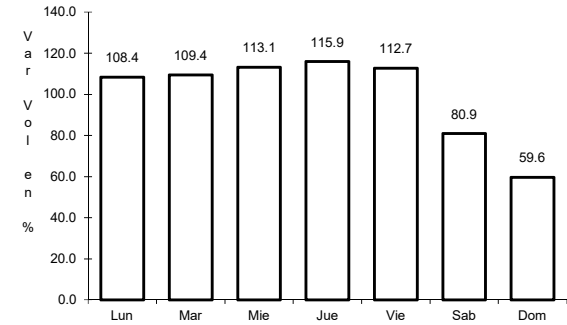
RUTA: TAB



Km: 0.00 Tipo: 3 Sent: 1



Km: 0.00 Tipo: 3 Sent: 2

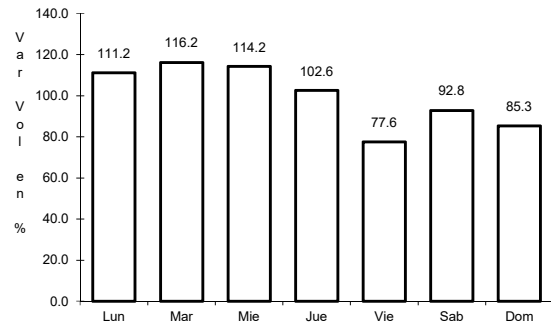


Km: 53.00 Tipo: 1 Sent: 1

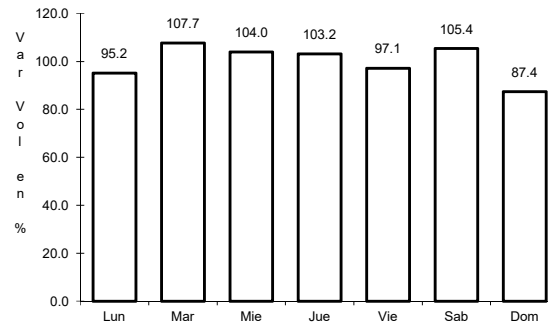
39 CARR: Reyes Hernández - Villa Aldama

CLAVE: 27119

RUTA: TAB



Km: 0.00 Tipo: 3 Sent: 0

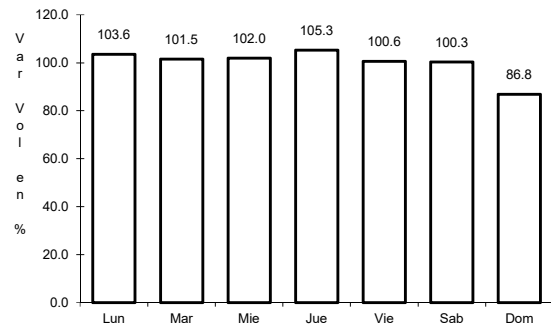


Km: 9.00 Tipo: 1 Sent: 0

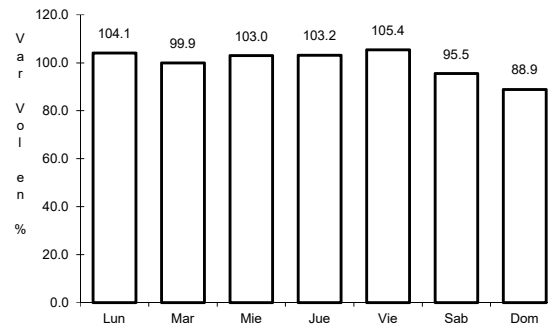
40 CARR: Samaria - Amatitán

CLAVE: 27114

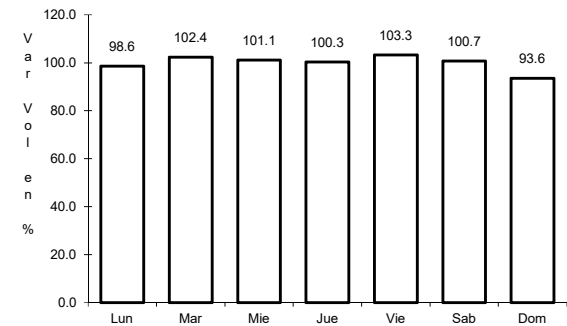
RUTA: TAB



Km: 0.00 Tipo: 3 Sent: 0



Km: 17.00 Tipo: 1 Sent: 0

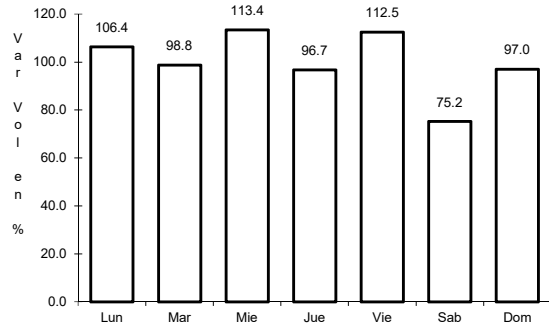


Km: 31.40 Tipo: 1 Sent: 0

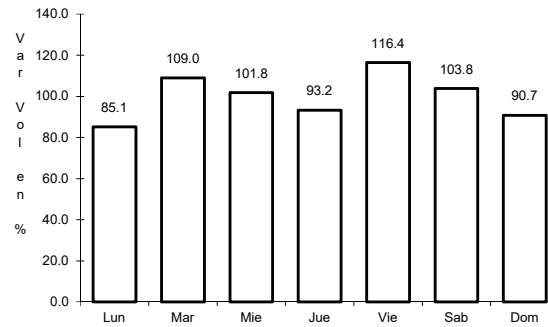
41 CARR: T. C. (Cárdenas - Paraíso) - Carlos Green

CLAVE: 27111

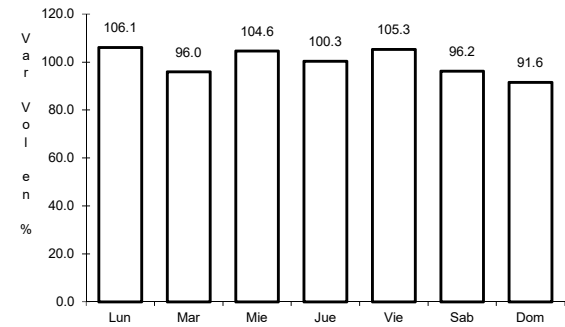
RUTA: TAB



Km: 0.00 Tipo: 3 Sent: 0



Km: 21.50 Tipo: 3 Sent: 0

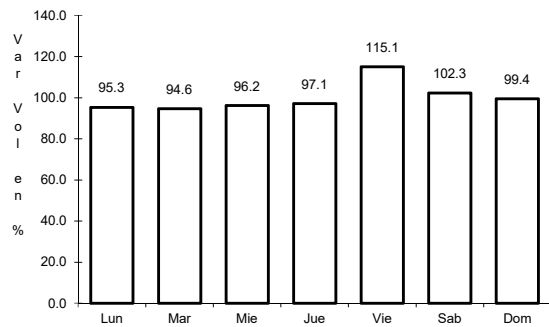


Km: 30.70 Tipo: 1 Sent: 0

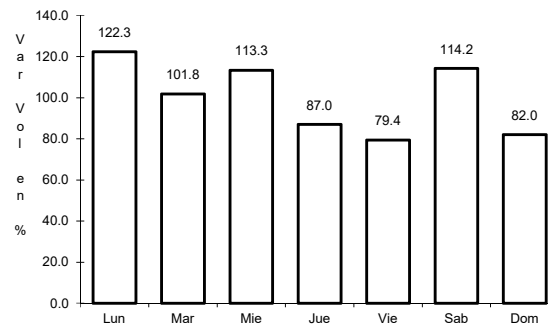
42 CARR: Tierra Nueva - Francisco Rueda

CLAVE: 27110

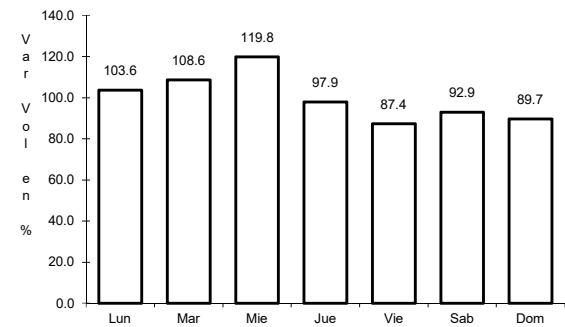
RUTA: TAB



Km: 0.00 Tipo: 3 Sent: 0



Km: 31.00 Tipo: 1 Sent: 0

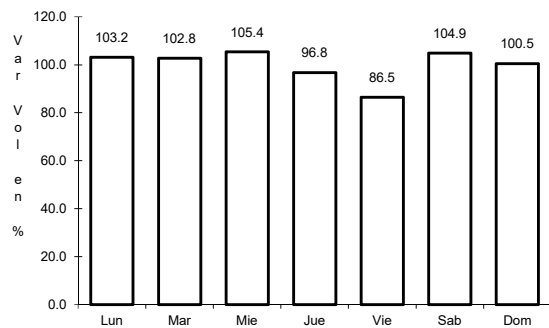


Km: 71.00 Tipo: 1 Sent: 0

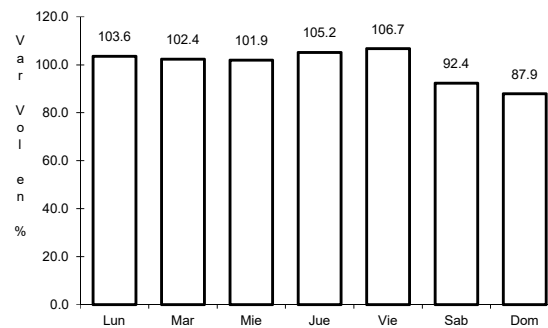
43 CARR: Tulipán - Cunduacán

CLAVE: 27115

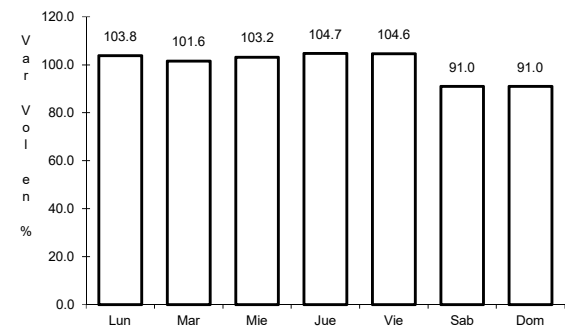
RUTA: TAB



Km: 0.00 Tipo: 3 Sent: 0



Km: 14.00 Tipo: 1 Sent: 0

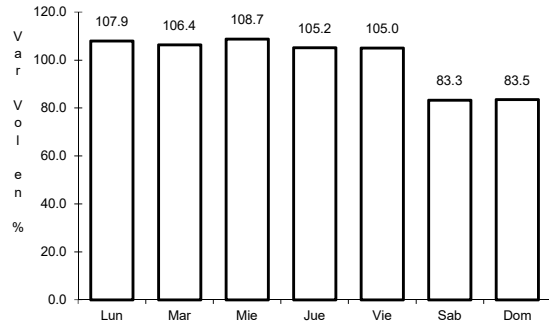


Km: 15.00 Tipo: 1 Sent: 0

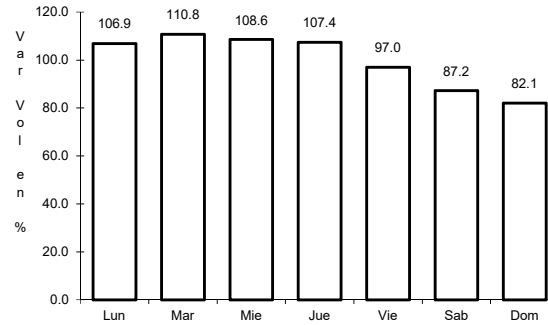
44 CARR: Villahermosa - Comalcalco

CLAVE: 27021

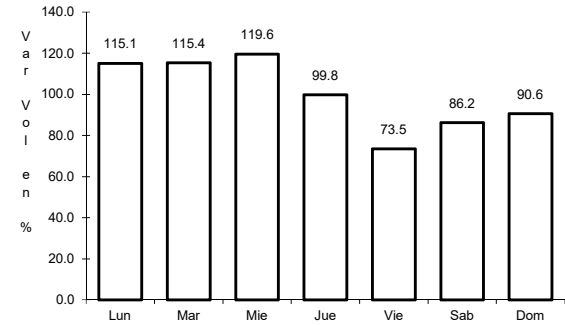
RUTA: TAB



Km: 0.00 Tipo: 3 Sent: 1



Km: 0.00 Tipo: 3 Sent: 2

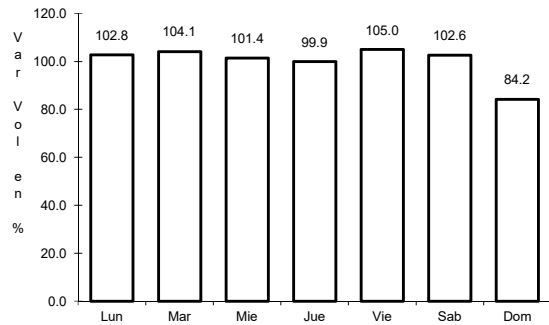


Km: 50.70 Tipo: 1 Sent: 0

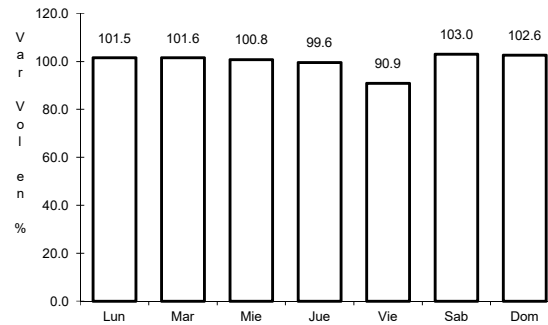
45 CARR: Villahermosa - Luis Gil Pérez

CLAVE: 27206

RUTA: TAB



Km: 0.00 Tipo: 3 Sent: 0

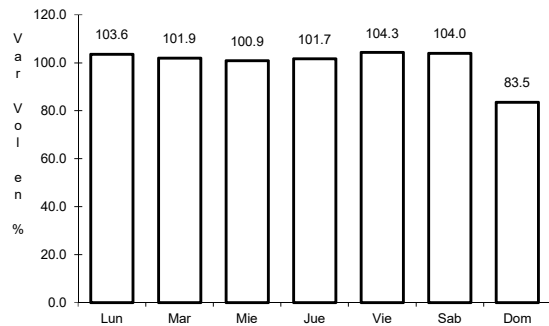


Km: 22.00 Tipo: 1 Sent: 0

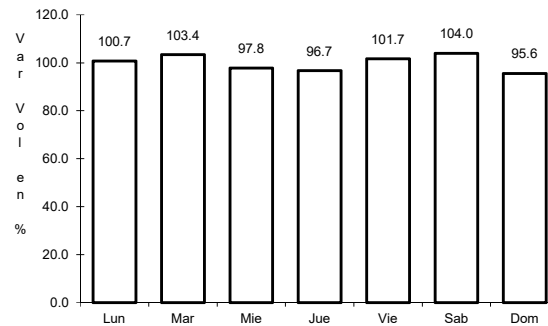
46 CARR: Villahermosa - T. C. (P. de Cunduacán - Estación Juárez)

CLAVE: 27106

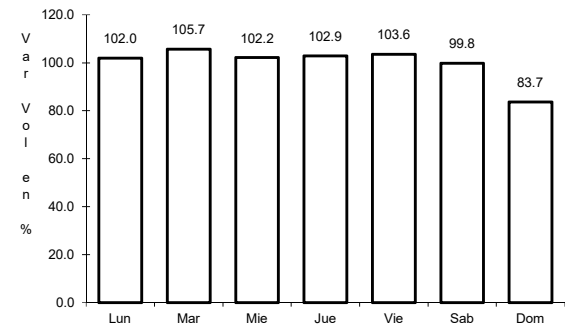
RUTA: TAB



Km: 0.00 Tipo: 3 Sent: 0



Km: 19.00 Tipo: 3 Sent: 0

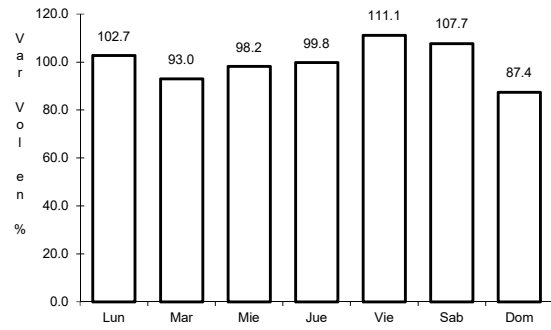


Km: 25.20 Tipo: 1 Sent: 0

47 CARR: Zapatero - T. C. (Jalapa - Jonuta)

CLAVE: 00061

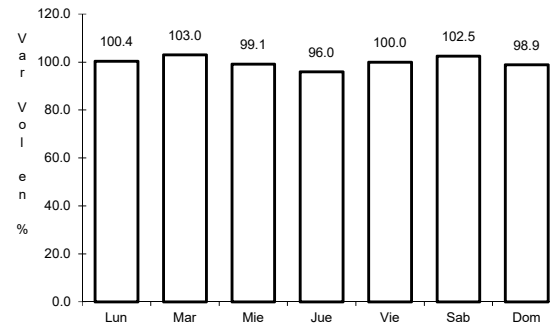
RUTA: CHIS-TAB



Km: 0.00

Tipo: 3

Sent: 0



Km: 41.00

Tipo: 1

Sent: 0