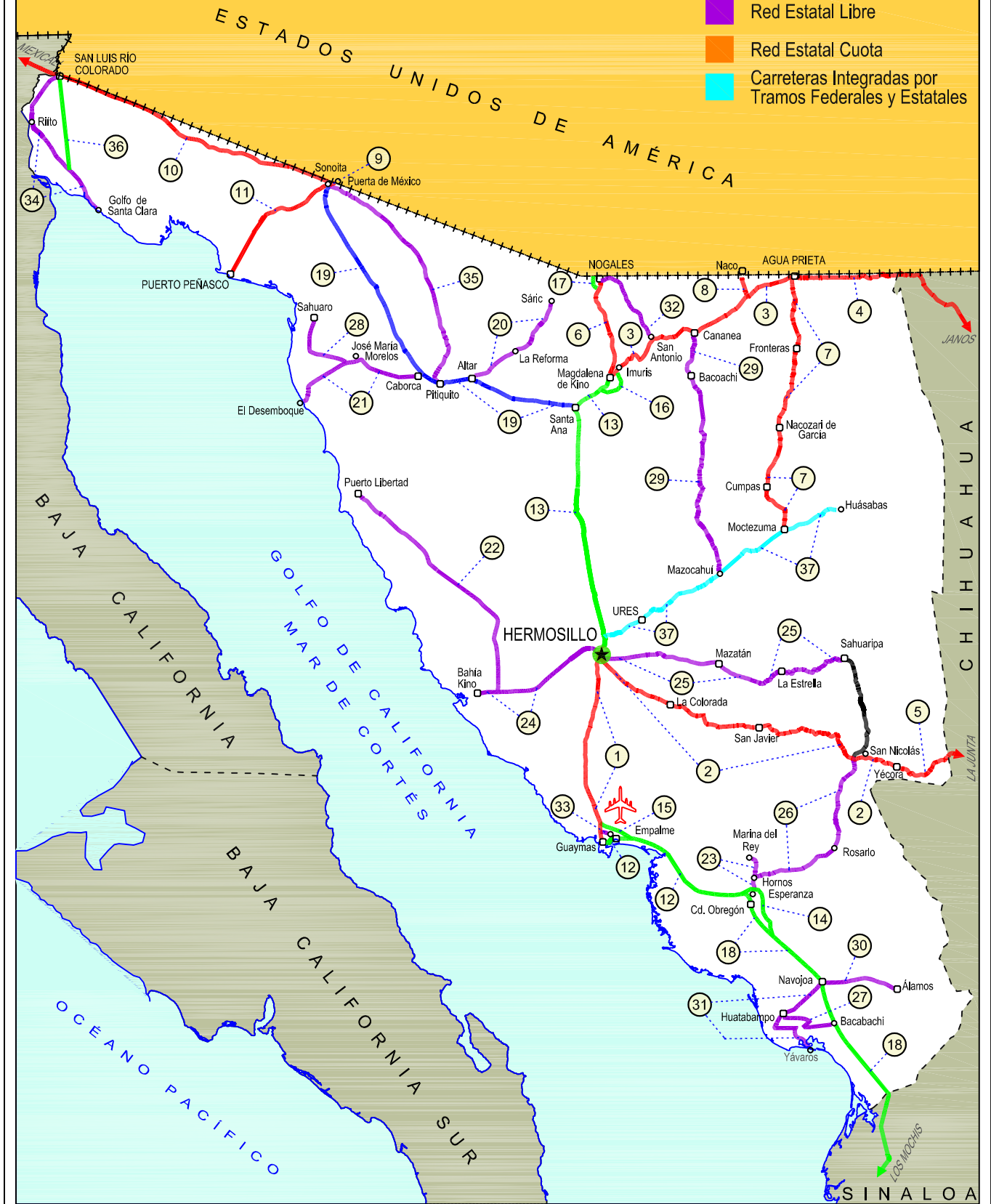


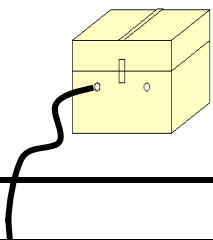
# 26 SONORA

SECRETARÍA DE COMUNICACIONES Y TRANSPORTES  
DIRECCIÓN GENERAL DE SERVICIOS TÉCNICOS

- ① --- Número Índice
- Red Federal Libre
- Red Federal Cuota
- Red Federal Integrada por Tramos Libres y de Cuota
- Red Estatal Libre
- Red Estatal Cuota
- Carreteras Integradas por Tramos Federales y Estatales







SONORA

NO. INDICE CARRETERA	RUTA
---RED FEDERAL LIBRE---	
1 Guaymas - Hermosillo	MEX-015
2 Hermosillo - Yécora	MEX-016
3 Imuris - Agua Prieta	MEX-002
4 Janos - Agua Prieta	MEX-002
5 La Junta - Yécora	MEX-016
6 Magdalena de Kino - Nogales	MEX-015
7 Moctezuma - Agua Prieta	MEX-017
8 Ramal a Naco	MEX-002
9 Ramal a Puerta de México	MEX-002
10 Sonoita - Mexicali	MEX-002
11 Sonoita - Puerto Peñasco	MEX-002
---RED FEDERAL DE CUOTA---	
12 Cd. Obregón - Guaymas (Cuota)	MEX-015D
13 Hermosillo - Magdalena de Kino (Cuota)	MEX-015D
14 Libramiento de Ciudad Obregón (Cuota)	MEX-015D
15 Libramiento de Empalme - Guaymas (Cuota)	MEX-015D
16 Libramiento de Magdalena de Kino (Cuota)	MEX-015D
17 Libramiento de Nogales (Cuota)	MEX-15D
18 Los Mochis - Cd. Obregón (Cuota)	MEX-015D
---RED FEDERAL INTEGRADA POR TRAMOS LIBRES Y DE CUOTA---	
19 Santa Ana - Sonoita	MEX-002D-MEX
---RED ESTATAL LIBRE---	
20 Altar - Sáric	SON-064
21 Caborca - El Desemboque	SON-037
22 Calle 36 Norte - Puerto de La Libertad	SON-029
23 Esperanza - Presa Álvaro Obregón	SON-117
24 Hermosillo - Bahía Kino	SON-100
25 Hermosillo - Sahuaripa	SON-020
26 Hornos - San Nicolás	SON-012
27 Huatabampo - Bacabachi	SON-176
28 La Alameda - El Sahuaro	SON-037
29 Mazocahui - Cananea	SON-118
30 Navojoa - Álamos	SON-013
31 Navojoa - Yavaros	SON-056
32 Nogales - San Antonio	SON
33 Ramal a Aeropuerto de Guaymas	SON
34 San Luis Río Colorado - Golfo de Santa Clara	SON-040
35 Sonoita - Pitiquito	SON
---RED ESTATAL DE CUOTA---	
36 San Luis Río Colorado - Golfo de Santa Clara (Cuota)	SON-D
---CARRETERAS INTEGRADAS POR TRAMOS FEDERALES Y ESTATALES---	
37 T. C. (Hermosillo - Nogales) - Huásabas	MEX-014-SON

SONORA

1 CARR: Guaymas - Hermosillo

CLAVE: 26444

RUTA: MEX-015

AÑO: 2018

LUGAR	ESTACION				CLASIFICACION VEHICULAR EN PORCIENTO										COORDENADAS					
	KM	TE	SC	TDPA	M	A	B	C2	C3	T3S2	T3S3	T3S2R4	OTROS	A	B	C	K'	D	LATITUD	LONGITUD
T. Der. Libramiento de Guaymas	107.70	3	0	8607	1.6	79.7	4.1	10.8	1.1	1.7	0.3	0.6	0.1	81.3	4.1	14.6	0.079	0.510	27.951997	-110.756266
Empalme	115.02	1	0	7648	1.8	81.6	3.4	10.2	1.0	1.2	0.2	0.5	0.1	83.4	3.4	13.2	0.111	0.501	27.952477	-110.808100
Empalme	115.02	3	1	11186	2.2	85.8	1.9	7.9	0.6	1.0	0.2	0.3	0.1	88.0	1.9	10.1	0.082	0.507	27.955695	-110.831337
Empalme	115.02	3	2	11514	2.2	84.7	2.2	8.7	0.6	1.0	0.2	0.3	0.1	86.9	2.2	10.9	0.077	0.507	27.955591	-110.831332
T. Izq. San Carlos	133.00	1	1	8539	1.2	86.8	1.0	7.9	0.9	1.0	0.4	0.6	0.2	88.0	1.0	11.0	0.140	0.527	27.978568	-110.938850
T. Izq. San Carlos	133.00	1	2	7665	1.0	85.5	1.2	9.0	0.9	1.1	0.4	0.7	0.2	86.5	1.2	12.3	0.189	0.527	27.978554	-110.939009
T. Izq. San Carlos	133.00	3	1	4950	0.6	81.9	1.8	10.5	1.4	1.9	0.6	1.1	0.2	82.5	1.8	15.7	0.114	0.530	27.995261	-110.938999
T. Izq. San Carlos	133.00	3	2	4394	1.2	79.6	1.8	11.7	1.5	2.1	0.6	1.3	0.2	80.8	1.8	17.4	0.164	0.530	27.995313	-110.939119
T. Izq. Bahía Kino	171.30	1	1	5278	2.5	75.6	2.6	6.4	1.6	6.7	1.0	3.1	0.5	78.1	2.6	19.3	0.124	0.546	28.297931	-111.041362
T. Izq. Bahía Kino	171.30	1	2	6354	1.7	74.1	2.7	7.3	1.9	7.3	1.1	3.4	0.5	75.8	2.7	21.5	0.144	0.546	28.297817	-111.041681
T. Izq. Bahía Kino	171.30	3	1	6818	2.6	75.5	2.6	6.8	1.6	6.3	1.0	3.1	0.5	78.1	2.6	19.3	0.076	0.537	28.338345	-111.042216
T. Izq. Bahía Kino	171.30	3	2	5875	2.5	72.8	3.0	7.3	1.7	7.7	1.1	3.4	0.5	75.3	3.0	21.7	0.075	0.537	28.338345	-111.042495
Hermosillo	251.00	1	1	7918	2.4	76.3	2.5	6.5	1.5	6.5	0.9	3.0	0.4	78.7	2.5	18.8	0.143	0.542	29.005228	-110.966196
Hermosillo	251.00	1	2	9354	1.7	74.2	2.9	7.1	1.8	7.3	1.1	3.5	0.4	75.9	2.9	21.2	0.119	0.542	29.005302	-110.966358

2 CARR: Hermosillo - Yécora

CLAVE: 26251

RUTA: MEX-016

AÑO: 2018

LUGAR	ESTACION				CLASIFICACION VEHICULAR EN PORCIENTO										COORDENADAS					
	KM	TE	SC	TDPA	M	A	B	C2	C3	T3S2	T3S3	T3S2R4	OTROS	A	B	C	K'	D	LATITUD	LONGITUD
T. C. Cd. Obregón - Hermosillo	0.00																			
T. Izq. Sahuaripa	4.00	3	1	1239	2.1	58.9	2.0	21.3	3.1	5.6	4.2	2.2	0.6	61.0	2.0	37.0	0.101	0.508	29.000980	-110.908178
T. Izq. Sahuaripa	4.00	3	2	1279	2.2	59.9	2.0	20.4	3.8	4.7	4.3	1.9	0.8	62.1	2.0	35.9	0.097	0.508	29.001052	-110.908075
La Colorada	47.00	3	0	679	0.6	55.6	2.8	23.4	3.9	6.4	5.4	1.5	0.4	56.2	2.8	41.0	0.099	0.515	28.809505	-110.575648
Tecoripa	138.00	3	0	678	3.1	45.2	0.8	35.7	6.6	4.9	2.9	0.1	0.7	48.3	0.8	50.9	0.084	0.512	28.621977	-109.949420
Yécora	250.60																			

3 CARR: Imuris - Agua Prieta

CLAVE: 26079

RUTA: MEX-002

AÑO: 2018

LUGAR	ESTACION				CLASIFICACION VEHICULAR EN PORCIENTO										COORDENADAS					
	KM	TE	SC	TDPA	M	A	B	C2	C3	T3S2	T3S3	T3S2R4	OTROS	A	B	C	K'	D	LATITUD	LONGITUD
Imuris	0.00	3	0	3689	1.1	50.0	3.5	11.1	2.6	19.6	4.2	7.0	0.9	51.1	3.5	45.4	0.065	0.508	30.812814	-110.822435
T. Der. Cananea	80.93	1	0	4078	2.9	55.9	3.4	12.5	2.5	14.3	3.2	4.3	1.0	58.8	3.4	37.8	0.067	0.515	31.012843	-110.320354
T. Der. Cananea	80.93	3	1	2817	0.4	64.0	2.4	11.2	1.6	12.8	2.6	4.5	0.5	64.4	2.4	33.2	0.072	0.502	31.016049	-110.233661
T. Der. Cananea	80.93	3	2	2843	0.3	65.4	2.7	7.9	1.5	13.3	3.7	4.8	0.4	65.7	2.7	31.6	0.067	0.502	31.016159	-110.233798
Agua Prieta	164.67	1	1	2222	0.3	58.1	3.3	11.3	1.3	15.7	4.1	5.6	0.3	58.4	3.3	38.3	0.074	0.507	31.309539	-109.597748

SONORA

3 CARR: Imuris - Agua Prieta

CLAVE: 26079

RUTA: MEX-002

AÑO: 2018

LUGAR	ESTACION				CLASIFICACION VEHICULAR EN PORCIENTO														COORDENADAS	
	KM	TE	SC	TDPA	M	A	B	C2	C3	T3S2	T3S3	T3S2R4	OTROS	A	B	C	K'	D	LATITUD	LONGITUD
Agua Prieta	164.67	1	2	2157	0.3	59.5	3.2	11.6	1.5	15.2	3.0	5.3	0.4	59.8	3.2	37.0	0.086	0.507	31.309738	-109.597827

4 CARR: Janos - Agua Prieta

CLAVE: 00220

RUTA: MEX-002

AÑO: 2018

LUGAR	ESTACION				CLASIFICACION VEHICULAR EN PORCIENTO														COORDENADAS	
	KM	TE	SC	TDPA	M	A	B	C2	C3	T3S2	T3S3	T3S2R4	OTROS	A	B	C	K'	D	LATITUD	LONGITUD
T. C. Cd. Juárez - Janos	0.00	3	0	3793	2.6	54.7	2.8	12.9	2.5	15.3	3.6	5.0	0.6	57.3	2.8	39.9	0.073	0.514	30.889802	-108.212008
Los Mimbres	56.00	3	0	2685	2.0	50.2	2.7	21.8	2.6	12.9	3.5	3.5	0.8	52.2	2.7	45.1	0.080	0.509	31.243583	-108.579541
Lim. Edos. Term. Chih. Ppia. Son.	78.00																			
Agua Prieta	160.00	1	0	2980	4.7	45.1	3.5	11.6	2.9	19.2	5.7	6.5	0.8	49.8	3.5	46.7	0.057	0.514	31.321136	-109.510517

5 CARR: La Junta - Yécora

CLAVE: 00065

RUTA: MEX-016

AÑO: 2018

LUGAR	ESTACION				CLASIFICACION VEHICULAR EN PORCIENTO														COORDENADAS	
	KM	TE	SC	TDPA	M	A	B	C2	C3	T3S2	T3S3	T3S2R4	OTROS	A	B	C	K'	D	LATITUD	LONGITUD
T. C. Chihuahua - Madera	0.00	3	0	3490	1.2	72.3	2.6	16.9	2.0	3.0	1.4	0.2	0.4	73.5	2.6	23.9	0.069	0.506	28.471634	-107.320484
T. Izq. San Juanito	16.00	1	0	2527	1.3	67.3	2.9	19.8	2.4	3.9	1.7	0.2	0.5	68.6	2.9	28.5	0.076	0.515	28.388213	-107.439226
T. Izq. San Juanito	16.00	3	0	1225	0.8	66.3	1.0	20.8	3.2	5.1	2.0	0.1	0.7	67.1	1.0	31.9	0.078	0.536	28.390772	-107.441796
Tomochi	70.00	3	0	1402	1.9	62.0	1.1	25.6	2.5	5.1	1.6	0.0	0.2	63.9	1.1	35.0	0.068	0.502	28.354429	-107.856726
Lim. Edos. Term. Chih. Ppia. Son.	190.00																			
Yécora	253.00	1	0	428	3.2	56.5	2.6	28.4	2.8	4.3	2.0	0.0	0.2	59.7	2.6	37.7	0.100	0.506	28.368591	-108.917083

6 CARR: Magdalena de Kino - Nogales

CLAVE: 26444

RUTA: MEX-015

AÑO: 2018

LUGAR	ESTACION				CLASIFICACION VEHICULAR EN PORCIENTO														COORDENADAS	
	KM	TE	SC	TDPA	M	A	B	C2	C3	T3S2	T3S3	T3S2R4	OTROS	A	B	C	K'	D	LATITUD	LONGITUD
Magdalena de Kino	181.30	3	1	3756	1.0	82.6	1.1	10.5	0.9	2.6	0.6	0.5	0.2	83.6	1.1	15.3	0.070	0.503	30.649477	-110.944153
Magdalena de Kino	181.30	3	2	3805	1.2	81.2	1.0	11.6	0.9	2.8	0.7	0.5	0.1	82.4	1.0	16.6	0.076	0.503	30.649604	-110.944114
Imuris	209.00	1	1	8428	1.2	65.2	2.1	10.4	1.8	11.0	1.6	6.2	0.5	66.4	2.1	31.5	0.072	0.501	30.766861	-110.855044
Imuris	209.00	1	2	8466	0.4	61.8	2.3	11.2	2.1	13.0	1.7	7.0	0.5	62.2	2.3	35.5	0.082	0.501	30.766822	-110.855109
T. Der. Agua Prieta	209.50	3	1	5809	0.4	68.8	1.9	11.0	1.8	10.0	1.2	4.5	0.4	69.2	1.9	28.9	0.077	0.519	30.794853	-110.850267
T. Der. Agua Prieta	209.50	3	2	6257	0.6	65.6	2.0	12.1	2.1	10.7	1.3	5.2	0.4	66.2	2.0	31.8	0.091	0.519	30.794860	-110.850347
T. Izq. Sáric	255.90	1	1	10279	0.7	75.0	2.4	7.9	3.7	7.0	0.3	2.8	0.2	75.7	2.4	21.9	0.071	0.513	31.177029	-110.968370
T. Izq. Sáric	255.90	1	2	10842	0.8	72.6	2.7	8.8	4.4	7.1	0.3	3.1	0.2	73.4	2.7	23.9	0.076	0.513	31.177006	-110.968396
T. Izq. Sáric	255.90	3	1	11310	0.8	75.1	2.4	9.0	3.4	6.5	0.4	2.2	0.2	75.9	2.4	21.7	0.071	0.514	31.193169	-110.972972

SONORA

6 CARR: Magdalena de Kino - Nogales

CLAVE: 26444

RUTA: MEX-015

AÑO: 2018

LUGAR	ESTACION				CLASIFICACION VEHICULAR EN PORCIENTO												COORDENADAS			
	KM	TE	SC	TDPA	M	A	B	C2	C3	T3S2	T3S3	T3S2R4	OTROS	A	B	C	K'	D	LATITUD	LONGITUD
T. Izq. Sáric	255.90	3	2	11948	1.0	71.7	2.7	10.0	3.7	7.9	0.4	2.4	0.2	72.7	2.7	24.6	0.073	0.514	31.193173	-110.973109
T. Izq. Libramiento de Nogales (Cuota)	261.00	3	1	16194	0.5	82.8	2.8	8.7	1.9	2.8	0.1	0.2	0.2	83.3	2.8	13.9	0.068	0.548	31.248147	-110.957162
T. Izq. Libramiento de Nogales (Cuota)	261.00	3	2	13353	0.9	80.6	3.2	9.5	2.2	3.1	0.1	0.2	0.2	81.5	3.2	15.3	0.078	0.548	31.244759	-110.959576
T. Izq. Periférico Luis Donaldo Colosio	267.00	1	1	26799	0.6	89.3	1.6	6.0	1.0	1.0	0.3	0.1	0.1	89.9	1.6	8.5	0.088	0.519	31.274509	-110.941620
T. Izq. Periférico Luis Donaldo Colosio	267.00	1	2	28883	0.5	88.2	1.8	7.0	1.0	1.0	0.3	0.1	0.1	88.7	1.8	9.5	0.072	0.519	31.276186	-110.941486
Nogales	272.70	1	1	15551	0.7	92.3	1.4	4.3	0.4	0.3	0.4	0.1	0.1	93.0	1.4	5.6	0.130	0.509	31.283051	-110.938067
Nogales	272.70	1	2	16154	0.9	91.6	1.7	4.6	0.4	0.3	0.3	0.1	0.1	92.5	1.7	5.8	0.095	0.509	31.282787	-110.938404

7 CARR: Moctezuma - Agua Prieta

CLAVE: 26027

RUTA: MEX-017

AÑO: 2018

LUGAR	ESTACION				CLASIFICACION VEHICULAR EN PORCIENTO												COORDENADAS			
	KM	TE	SC	TDPA	M	A	B	C2	C3	T3S2	T3S3	T3S2R4	OTROS	A	B	C	K'	D	LATITUD	LONGITUD
Moctezuma	0.00	3	0	1735	0.7	75.2	1.7	16.9	1.8	1.6	1.0	0.9	0.2	75.9	1.7	22.4	0.070	0.515	29.826339	-109.676509
Nacozeni de García	81.00	3	0	2006	0.5	73.7	1.5	19.4	1.5	1.5	0.6	1.1	0.2	74.2	1.5	24.3	0.080	0.519	30.387725	-109.693478
Turicachi	111.00	1	0	1778	0.8	69.1	1.2	21.3	1.8	2.0	1.4	1.8	0.6	69.9	1.2	28.9	0.078	0.512	30.654077	-109.596180
T. C. Imuris - Agua Prieta	197.60	1	0	3986	2.8	75.9	2.0	14.5	1.4	1.4	1.0	0.8	0.2	78.7	2.0	19.3	0.081	0.504	31.309263	-109.581855

8 CARR: Ramal a Naco

CLAVE: 26579

RUTA: MEX-002

AÑO: 2018

LUGAR	ESTACION				CLASIFICACION VEHICULAR EN PORCIENTO												COORDENADAS			
	KM	TE	SC	TDPA	M	A	B	C2	C3	T3S2	T3S3	T3S2R4	OTROS	A	B	C	K'	D	LATITUD	LONGITUD
T. C. Imuris - Agua Prieta	0.00	3	0	1313	0.4	81.3	2.2	14.0	1.0	1.0	0.1	0.0	0.0	81.7	2.2	16.1	0.109	0.509	31.210761	-109.909295
Naco	14.00																			

9 CARR: Ramal a Puerta de México

CLAVE: 26577

RUTA: MEX-002

AÑO: 2018

LUGAR	ESTACION				CLASIFICACION VEHICULAR EN PORCIENTO												COORDENADAS			
	KM	TE	SC	TDPA	M	A	B	C2	C3	T3S2	T3S3	T3S2R4	OTROS	A	B	C	K'	D	LATITUD	LONGITUD
T. C. Sonoita - Mexicali	0.00	3	0	11400	0.8	88.9	0.1	9.5	0.4	0.1	0.1	0.1	0.0	89.7	0.1	10.2	0.067	0.508	31.870420	-112.830247
Frontera E.U.A	3.30																			

SONORA

10 CARR: Sonoita - Mexicali

CLAVE: 00081

RUTA: MEX-002

AÑO: 2018

LUGAR	ESTACION				CLASIFICACION VEHICULAR EN PORCIENTO										COORDENADAS					
	KM	TE	SC	TDPA	M	A	B	C2	C3	T3S2	T3S3	T3S2R4	OTROS	A	B	C	K'	D	LATITUD	LONGITUD
Sonoita	0.00	3	0	4156	2.0	45.6	6.8	8.0	2.2	23.0	3.3	8.7	0.4	47.6	6.8	45.6	0.059	0.527	31.886658	-112.858450
Los Vidrios	58.75	3	0	3862	4.6	42.2	6.9	6.7	3.3	25.8	4.3	5.7	0.5	46.8	6.9	46.3	0.066	0.526	32.027448	-113.423715
San Luis Río Colorado	191.80	1	0	4258	4.4	48.5	4.9	7.6	3.2	20.9	3.2	6.9	0.4	52.9	4.9	42.2	0.067	0.521	32.452725	-114.680632
San Luis Río Colorado	191.80	3	1	9702	1.0	81.8	1.1	8.4	0.9	4.6	0.9	1.2	0.1	82.8	1.1	16.1	0.076	0.502	32.488226	-114.796996
San Luis Río Colorado	191.80	3	2	9787	0.9	80.3	1.1	8.9	0.9	5.7	0.9	1.2	0.1	81.2	1.1	17.7	0.079	0.502	32.488079	-114.797045
Lim. Edos. Term. Son. Ppia. B.C.	203.69																			
X. C. Mexicali - Algodones	206.78	1	1	10322	0.8	80.8	1.0	10.2	0.7	4.6	0.8	1.0	0.1	81.6	1.0	17.4	0.076	0.501	32.498437	-114.831078
X. C. Mexicali - Algodones	206.78	1	2	10300	0.8	79.3	1.1	10.4	0.9	5.3	0.9	1.2	0.1	80.1	1.1	18.8	0.080	0.501	32.498424	-114.831316
X. C. Mexicali - Algodones	206.78	3	1	9647	0.6	78.0	2.0	9.2	0.7	6.2	1.1	2.1	0.1	78.6	2.0	19.4	0.070	0.504	32.509231	-114.867189
X. C. Mexicali - Algodones	206.78	3	2	9810	0.6	76.4	2.3	9.8	0.8	7.0	0.8	2.2	0.1	77.0	2.3	20.7	0.067	0.504	32.509150	-114.867219
T. Izq. Ejido Hermosillo	214.80	3	1	7442	0.5	77.9	2.2	8.2	0.8	6.7	1.1	2.4	0.2	78.4	2.2	19.4	0.077	0.500	32.527448	-114.928455
T. Izq. Ejido Hermosillo	214.80	3	2	7439	0.5	75.6	2.4	9.0	1.0	7.5	1.2	2.6	0.2	76.1	2.4	21.5	0.082	0.500	32.527354	-114.928533
Ejido Monterrey	228.63	3	1	11062	0.3	78.9	1.9	8.5	0.9	6.4	1.0	1.8	0.3	79.2	1.9	18.9	0.066	0.501	32.552042	-115.087579
Ejido Monterrey	228.63	3	2	11087	0.4	76.8	2.1	9.8	0.9	6.6	1.0	2.1	0.3	77.2	2.1	20.7	0.071	0.501	32.551865	-115.087555
X. C. Mexicali - Algodones	256.47	1	1	14111	0.6	82.2	1.3	9.3	0.8	4.2	0.8	0.7	0.1	82.8	1.3	15.9	0.074	0.501	32.565197	-115.325751
X. C. Mexicali - Algodones	256.47	1	2	14059	0.5	81.5	1.5	9.7	0.8	4.2	0.9	0.8	0.1	82.0	1.5	16.5	0.076	0.501	32.565055	-115.325756
T. C. Mexicali - San Felipe	265.12																			

11 CARR: Sonoita - Puerto Peñasco

CLAVE: 26232

RUTA: MEX-002

AÑO: 2018

LUGAR	ESTACION				CLASIFICACION VEHICULAR EN PORCIENTO										COORDENADAS					
	KM	TE	SC	TDPA	M	A	B	C2	C3	T3S2	T3S3	T3S2R4	OTROS	A	B	C	K'	D	LATITUD	LONGITUD
Sonoita	0.00	3	0	1933	0.6	81.0	0.6	12.8	3.0	1.3	0.2	0.4	0.1	81.6	0.6	17.8	0.094	0.501	31.862279	-112.877240
Puerto Peñasco	100.40																			

12 CARR: Cd. Obregón - Guaymas (Cuota)

CLAVE: 26444

RUTA: MEX-015D

AÑO: 2018

LUGAR	ESTACION				CLASIFICACION VEHICULAR EN PORCIENTO										COORDENADAS					
	KM	TE	SC	TDPA	M	A	B	C2	C3	T3S2	T3S3	T3S2R4	OTROS	A	B	C	K'	D	LATITUD	LONGITUD
Cd. Obregón	0.00																			
Esperanza	7.96	1	1	9356	4.2	73.8	3.0	7.4	1.5	5.8	1.5	2.3	0.5	78.0	3.0	19.0	0.083	0.504	27.563382	-109.927264
Esperanza	7.96	1	2	9491	3.2	72.4	3.2	8.2	1.7	6.5	1.7	2.6	0.5	75.6	3.2	21.2	0.074	0.504	27.563387	-109.927156
Esperanza	7.96	3	1	5106	2.3	56.9	5.9	8.5	2.5	14.7	2.2	6.6	0.4	59.2	5.9	34.9	0.072	0.510	27.596447	-109.931604
Esperanza	7.96	3	2	4909	1.9	58.5	6.0	8.2	2.3	14.7	1.7	6.3	0.4	60.4	6.0	33.6	0.074	0.510	27.596424	-109.931637
Caseta de Cobro Esperanza	10.70	2	1	1994	0.2	41.9	8.6	4.6	3.4	26.2	2.5	11.3	1.3	42.1	8.6	49.3	0.086	0.500	27.603754	-109.939057



SONORA

12 CARR: Cd. Obregón - Guaymas (Cuota)

CLAVE: 26444

RUTA: MEX-015D

AÑO: 2018

LUGAR	ESTACION				CLASIFICACION VEHICULAR EN PORCIENTO														COORDENADAS	
	KM	TE	SC	TDPA	M	A	B	C2	C3	T3S2	T3S3	T3S2R4	OTROS	A	B	C	K'	D	LATITUD	LONGITUD
Caseta de Cobro Esperanza	10.70	2	2	1994	0.2	41.9	8.6	4.6	3.4	26.2	2.5	11.3	1.3	42.1	8.6	49.3	0.086	0.500	27.603754	-109.939057
T. Der. Estación Corral	13.80	1	1	4423	2.1	46.7	6.4	15.1	3.2	15.8	2.4	8.1	0.2	48.8	6.4	44.8	0.066	0.545	27.611513	-109.946922
T. Der. Estación Corral	13.80	1	2	5290	0.4	58.0	6.4	9.0	1.8	15.7	1.7	6.8	0.2	58.4	6.4	35.2	0.075	0.545	27.611419	-109.947061
T. Der. Estación Corral	13.80	3	1	4115	2.4	60.4	6.1	8.1	2.1	12.9	1.5	6.2	0.3	62.8	6.1	31.1	0.077	0.541	27.618536	-109.963287
T. Der. Estación Corral	13.80	3	2	4848	0.6	58.7	6.4	8.6	2.2	14.3	1.7	7.2	0.3	59.3	6.4	34.3	0.087	0.541	27.618379	-109.963183
T. Izq. Bécum	25.46	1	1	4054	0.8	59.7	6.3	8.2	1.6	14.4	1.6	7.1	0.3	60.5	6.3	33.2	0.072	0.535	27.601521	-110.062257
T. Izq. Bécum	25.46	1	2	4666	0.4	56.1	7.3	9.5	1.7	15.5	1.6	7.6	0.3	56.5	7.3	36.2	0.079	0.535	27.601361	-110.062200
T. Izq. Bécum	25.46	3	1	5666	2.4	70.4	4.1	7.2	1.5	8.9	1.0	4.0	0.5	72.8	4.1	23.1	0.105	0.523	27.611838	-110.166431
T. Izq. Bécum	25.46	3	2	6219	1.9	68.4	4.4	7.6	1.7	10.0	1.2	4.3	0.5	70.3	4.4	25.3	0.116	0.523	27.611517	-110.166527
Vícam	47.28	3	1	5582	2.4	69.9	4.0	7.3	1.5	9.7	1.0	3.7	0.5	72.3	4.0	23.7	0.106	0.530	27.645692	-110.303393
Vícam	47.28	3	2	6299	1.9	67.5	4.6	8.0	1.7	10.3	1.2	4.3	0.5	69.4	4.6	26.0	0.118	0.530	27.645567	-110.303414
T. Izq. Pótam	57.40	1	1	5440	3.0	66.0	4.7	8.6	2.0	9.5	1.7	3.9	0.6	69.0	4.7	26.3	0.100	0.530	27.697343	-110.365966
T. Izq. Pótam	57.40	1	2	6135	2.7	67.0	4.4	8.7	1.9	9.7	1.1	4.1	0.4	69.7	4.4	25.9	0.109	0.530	27.697274	-110.366097
T. Izq. Pótam	57.40	3	1	4668	2.6	64.2	5.6	8.9	2.0	10.2	1.6	4.5	0.4	66.8	5.6	27.6	0.112	0.533	27.702015	-110.369218
T. Izq. Pótam	57.40	3	2	5321	2.6	69.5	4.0	6.0	1.9	10.1	1.2	4.3	0.4	72.1	4.0	23.9	0.120	0.533	27.701966	-110.369309
T. Der. Libramiento de Guaymas	107.70	1	1	6747	2.5	73.8	2.9	4.8	2.1	8.3	1.3	3.8	0.5	76.3	2.9	20.8	0.096	0.520	27.951256	-110.729132
T. Der. Libramiento de Guaymas	107.70	1	2	7303	1.3	68.5	4.5	9.9	2.1	8.6	0.9	3.9	0.3	69.8	4.5	25.7	0.101	0.520	27.950967	-110.729095

13 CARR: Hermosillo - Magdalena de Kino (Cuota)

CLAVE: 26444

RUTA: MEX-015D

AÑO: 2018

LUGAR	ESTACION				CLASIFICACION VEHICULAR EN PORCIENTO														COORDENADAS	
	KM	TE	SC	TDPA	M	A	B	C2	C3	T3S2	T3S3	T3S2R4	OTROS	A	B	C	K'	D	LATITUD	LONGITUD
Hermosillo	0.00	3	1	16240	0.9	79.0	1.8	9.1	1.2	4.9	0.8	2.0	0.3	79.9	1.8	18.3	0.107	0.509	29.115951	-110.912228
Hermosillo	0.00	3	2	16831	1.0	76.9	2.1	9.6	1.4	5.4	0.9	2.4	0.3	77.9	2.1	20.0	0.083	0.509	29.115961	-110.912436
T. Der. Ures	8.60	1	1	14467	0.9	76.9	2.4	9.3	1.5	5.2	1.1	2.3	0.4	77.8	2.4	19.8	0.077	0.517	29.149711	-110.909523
T. Der. Ures	8.60	1	2	13489	0.8	75.6	2.3	10.0	1.2	6.2	0.8	2.9	0.2	76.4	2.3	21.3	0.092	0.517	29.149702	-110.909707
T. Der. Ures	8.60	3	1	9249	0.8	73.3	2.7	9.8	1.3	6.9	1.5	3.3	0.4	74.1	2.7	23.2	0.115	0.513	29.173612	-110.916198
T. Der. Ures	8.60	3	2	8768	0.8	73.4	3.0	9.1	1.2	7.2	1.4	3.4	0.5	74.2	3.0	22.8	0.137	0.513	29.173550	-110.916327
Caseta de Cobro Hermosillo	15.20	2	1	5655	0.2	64.6	4.3	3.3	1.9	15.8	1.6	7.5	0.8	64.8	4.3	30.9	0.086	0.500	29.220685	-110.930258
Caseta de Cobro Hermosillo	15.20	2	2	5655	0.2	64.6	4.3	3.3	1.9	15.8	1.6	7.5	0.8	64.8	4.3	30.9	0.086	0.500	29.220685	-110.930258
T. Der. Pesqueira	32.39	3	1	5511	0.8	60.9	4.1	10.1	1.4	13.4	2.0	6.8	0.5	61.7	4.1	34.2	0.089	0.507	29.374830	-110.973082
T. Der. Pesqueira	32.39	3	2	5362	1.0	59.6	4.3	10.1	3.1	13.2	2.1	5.2	1.4	60.6	4.3	35.1	0.092	0.507	29.374764	-110.973278
T. Der. Carbó	68.90	1	1	5756	0.7	64.2	3.9	8.8	1.4	12.6	2.0	5.8	0.6	64.9	3.9	31.2	0.091	0.527	29.674639	-111.040212
T. Der. Carbó	68.90	1	2	5163	0.5	59.0	4.5	9.9	1.4	15.2	2.2	6.7	0.6	59.5	4.5	36.0	0.101	0.527	29.674528	-111.040588
T. Der. Carbó	68.90	3	1	5510	0.9	64.8	4.0	7.6	1.6	12.5	2.1	5.8	0.7	65.7	4.0	30.3	0.086	0.524	29.692306	-111.044194

SONORA

13 CARR: Hermosillo - Magdalena de Kino (Cuota)

CLAVE: 26444

RUTA: MEX-015D

AÑO: 2018

LUGAR	ESTACION				CLASIFICACION VEHICULAR EN PORCIENTO													COORDENADAS		
	KM	TE	SC	TDPA	M	A	B	C2	C3	T3S2	T3S3	T3S2R4	OTROS	A	B	C	K'	D	LATITUD	LONGITUD
T. Der. Carbó	68.90	3	2	5002	0.5	57.5	5.0	9.6	1.5	15.8	1.9	7.7	0.5	58.0	5.0	37.0	0.098	0.524	29.692236	-111.044545
T. Izq. Benjamín Hill	125.40	1	1	5463	0.7	62.6	3.6	8.5	1.5	13.6	2.0	7.2	0.3	63.3	3.6	33.1	0.062	0.508	30.160927	-111.097169
T. Izq. Benjamín Hill	125.40	1	2	5290	0.9	58.9	3.9	9.4	1.8	15.3	2.0	7.5	0.3	59.8	3.9	36.3	0.068	0.508	30.160959	-111.097492
T. Izq. Benjamín Hill	125.40	3	1	5990	0.7	63.1	3.9	8.1	1.5	13.6	1.9	6.9	0.3	63.8	3.9	32.3	0.071	0.508	30.179011	-111.097270
T. Izq. Benjamín Hill	125.40	3	2	5803	0.9	58.0	3.9	9.1	1.7	16.2	2.1	7.8	0.3	58.9	3.9	37.2	0.078	0.508	30.179063	-111.097584
Santa Ana	167.27	1	1	9047	1.5	69.4	2.9	8.8	1.6	9.4	1.8	3.8	0.8	70.9	2.9	26.2	0.068	0.506	30.534638	-111.116583
Santa Ana	167.27	1	2	8844	1.3	66.9	3.2	9.2	1.7	10.6	1.9	4.2	1.0	68.2	3.2	28.6	0.075	0.506	30.534673	-111.116713
Santa Ana	167.27	3	1	6332	1.5	69.8	3.0	10.5	1.7	8.1	1.6	2.9	0.9	71.3	3.0	25.7	0.067	0.506	30.556768	-111.099702
Santa Ana	167.27	3	2	6191	1.3	66.5	3.3	12.2	1.8	8.8	1.9	3.3	0.9	67.8	3.3	28.9	0.076	0.506	30.558268	-111.100683
Magdalena de Kino	181.30	1	1	3426	1.7	81.8	1.3	10.5	1.5	2.0	0.7	0.4	0.1	83.5	1.3	15.2	0.096	0.505	30.621482	-110.981544
Magdalena de Kino	181.30	1	2	3500	1.6	80.3	1.4	11.9	1.5	2.1	0.7	0.4	0.1	81.9	1.4	16.7	0.110	0.505	30.621706	-110.981496

14 CARR: Libramiento de Ciudad Obregón (Cuota)

CLAVE:

RUTA: MEX-015D

AÑO: 2018

LUGAR	ESTACION				CLASIFICACION VEHICULAR EN PORCIENTO													COORDENADAS		
	KM	TE	SC	TDPA	M	A	B	C2	C3	T3S2	T3S3	T3S2R4	OTROS	A	B	C	K'	D	LATITUD	LONGITUD
T. C. Los Mochis - Cd. Obregón (Cuota)	0.00																			
Caseta de Cobro Esperanza-Hornos	31.00	2	0	917	0.2	65.6	6.0	2.1	1.9	13.1	1.6	8.8	0.7	65.8	6.0	28.2	0.090	0.500	27.604518	-109.898767
T. C. Cd. Obregón - Guaymas (Cuota)	35.00																			

15 CARR: Libramiento de Empalme - Guaymas (Cuota)

CLAVE: 26256

RUTA: MEX-015D

AÑO: 2018

LUGAR	ESTACION				CLASIFICACION VEHICULAR EN PORCIENTO													COORDENADAS		
	KM	TE	SC	TDPA	M	A	B	C2	C3	T3S2	T3S3	T3S2R4	OTROS	A	B	C	K'	D	LATITUD	LONGITUD
T. C. Cd. Obregón - Hermosillo (Sur)	0.00	3	1	3480	0.8	57.8	4.5	6.5	2.3	17.0	2.4	8.4	0.3	58.6	4.5	36.9	0.089	0.545	27.964071	-110.762232
T. C. Cd. Obregón - Hermosillo (Sur)	0.00	3	2	4174	0.7	61.8	4.3	8.2	2.1	14.5	1.2	7.0	0.2	62.5	4.3	33.2	0.114	0.545	27.963862	-110.762467
T. C. Cd. Obregón - Hermosillo (Norte)	21.50	1	1	3823	0.5	55.3	5.0	8.3	2.0	18.1	2.5	7.9	0.4	55.8	5.0	39.2	0.093	0.518	28.037581	-110.929336
T. C. Cd. Obregón - Hermosillo (Norte)	21.50	1	2	3556	0.5	52.0	5.1	9.2	2.2	20.0	2.8	7.8	0.4	52.5	5.1	42.4	0.078	0.518	28.037380	-110.929388

16 CARR: Libramiento de Magdalena de Kino (Cuota)

CLAVE:

RUTA: MEX-015D

AÑO: 2018

LUGAR	ESTACION				CLASIFICACION VEHICULAR EN PORCIENTO													COORDENADAS		
	KM	TE	SC	TDPA	M	A	B	C2	C3	T3S2	T3S3	T3S2R4	OTROS	A	B	C	K'	D	LATITUD	LONGITUD
T. C. Hermosillo - Nogales (Sur)	181.30	3	1	4570	0.4	53.8	2.7	9.9	1.8	18.1	1.9	11.0	0.4	54.2	2.7	43.1	0.086	0.535	30.612531	-110.956012
T. C. Hermosillo - Nogales (Sur)	181.30	3	2	3977	0.7	48.9	2.9	11.0	2.2	19.9	2.0	12.0	0.4	49.6	2.9	47.5	0.071	0.535	30.612222	-110.956811

SONORA

16 CARR: Libramiento de Magdalena de Kino (Cuota)

CLAVE:

RUTA: MEX-015D

AÑO: 2018

LUGAR	ESTACION				CLASIFICACION VEHICULAR EN PORCIENTO													COORDENADAS		
	KM	TE	SC	TDPA	M	A	B	C2	C3	T3S2	T3S3	T3S2R4	OTROS	A	B	C	K'	D	LATITUD	LONGITUD
T. C. Hermosillo - Nogales (Norte)	193.00	1	1	4490	0.3	55.7	2.9	10.0	1.2	16.7	2.1	10.7	0.4	56.0	2.9	41.1	0.088	0.533	30.658613	-110.930034
T. C. Hermosillo - Nogales (Norte)	193.00	1	2	3932	0.6	51.2	2.7	11.7	1.8	19.1	1.9	10.5	0.5	51.8	2.7	45.5	0.076	0.533	30.658479	-110.931086

17 CARR: Libramiento de Nogales (Cuota)

CLAVE: 26100

RUTA: MEX-15D

AÑO: 2018

LUGAR	ESTACION				CLASIFICACION VEHICULAR EN PORCIENTO													COORDENADAS		
	KM	TE	SC	TDPA	M	A	B	C2	C3	T3S2	T3S3	T3S2R4	OTROS	A	B	C	K'	D	LATITUD	LONGITUD
T. C. Hermosillo - Nogales	0.00	3	1	3045	1.3	49.2	1.0	7.0	7.5	32.3	0.4	0.9	0.4	50.5	1.0	48.5	0.108	0.539	31.235658	-110.968618
T. C. Hermosillo - Nogales	0.00	3	2	3566	0.9	47.0	1.0	7.6	8.1	33.6	0.4	1.0	0.4	47.9	1.0	51.1	0.102	0.539	31.235610	-110.968725
Caseta de Cobro Nogales	4.50	2	1	890	0.1	60.1	0.5	3.8	0.9	34.0	0.0	0.0	0.6	60.2	0.5	39.3	0.184	0.500	31.247675	-110.972370
Caseta de Cobro Nogales	4.50	2	2	890	0.1	60.1	0.5	3.8	0.9	34.0	0.0	0.0	0.6	60.2	0.5	39.3	0.184	0.500	31.247675	-110.972370
Frontera E.U.A.	12.50	1	1	1869	0.6	42.1	1.0	7.5	2.7	45.6	0.0	0.0	0.5	42.7	1.0	56.3	0.137	0.532	31.285396	-110.979579
Frontera E.U.A.	12.50	1	2	2122	0.4	37.0	1.0	8.5	2.6	49.9	0.0	0.0	0.6	37.4	1.0	61.6	0.147	0.532	31.285388	-110.979746

18 CARR: Los Mochis - Cd. Obregón (Cuota)

CLAVE: 26444

RUTA: MEX-015D

AÑO: 2018

LUGAR	ESTACION				CLASIFICACION VEHICULAR EN PORCIENTO													COORDENADAS		
	KM	TE	SC	TDPA	M	A	B	C2	C3	T3S2	T3S3	T3S2R4	OTROS	A	B	C	K'	D	LATITUD	LONGITUD
T. C. Topolobampo - Choix	0.00	3	1	9631	2.9	68.0	3.8	9.8	2.3	8.1	1.3	3.6	0.2	70.9	3.8	25.3	0.106	0.519	25.836384	-108.975501
T. C. Topolobampo - Choix	0.00	3	2	10373	3.1	71.0	3.2	8.8	2.1	6.7	1.9	2.5	0.7	74.1	3.2	22.7	0.130	0.519	25.836302	-108.975683
T. Izq. Ahome	17.13	3	1	9616	3.7	69.2	3.6	9.1	2.0	7.3	1.4	3.3	0.4	72.9	3.6	23.5	0.081	0.513	25.945417	-109.053306
T. Izq. Ahome	17.13	3	2	10133	3.3	66.8	3.8	9.8	2.2	8.5	1.6	3.6	0.4	70.1	3.8	26.1	0.098	0.513	25.945399	-109.053447
T. Izq. Coahuibampo	19.00	1	1	8747	5.5	65.5	4.4	8.6	2.1	7.8	1.5	4.3	0.3	71.0	4.4	24.6	0.073	0.510	25.952912	-109.054698
T. Izq. Coahuibampo	19.00	1	2	9110	6.0	62.3	4.6	9.6	2.3	8.7	1.6	4.6	0.3	68.3	4.6	27.1	0.093	0.510	25.952924	-109.054876
T. Izq. Coahuibampo	19.00	3	1	7039	4.0	66.5	4.5	8.6	2.1	8.4	1.6	3.8	0.5	70.5	4.5	25.0	0.083	0.506	25.965568	-109.048974
T. Izq. Coahuibampo	19.00	3	2	7198	3.6	64.2	4.7	9.6	2.4	9.2	1.8	4.0	0.5	67.8	4.7	27.5	0.109	0.506	25.965707	-109.049074
Poblado Chico	50.00	3	1	4990	2.7	61.4	5.2	6.8	2.1	12.6	3.8	4.7	0.7	64.1	5.2	30.7	0.075	0.514	26.225413	-109.055080
Poblado Chico	50.00	3	2	5274	2.6	58.0	6.0	8.0	2.3	13.1	4.2	5.0	0.8	60.6	6.0	33.4	0.082	0.514	26.225348	-109.055279
T. Der. El Fuerte	54.80	1	1	5024	2.6	62.5	5.4	7.8	2.0	11.5	2.2	5.4	0.6	65.1	5.4	29.5	0.083	0.514	26.261500	-109.044821
T. Der. El Fuerte	54.80	1	2	5312	2.4	59.3	6.5	8.3	2.1	12.7	2.4	5.7	0.6	61.7	6.5	31.8	0.077	0.514	26.261543	-109.044986
T. Der. El Fuerte	54.80	3	1	5065	2.3	59.8	6.0	7.5	2.3	13.9	2.2	5.2	0.8	62.1	6.0	31.9	0.069	0.504	26.276182	-109.040644
T. Der. El Fuerte	54.80	3	2	5153	2.4	56.0	6.9	7.6	2.6	15.3	2.5	5.9	0.8	58.4	6.9	34.7	0.079	0.504	26.276075	-109.040869
Lim. Edos. Term. Sin. Ppia. Son.	69.80																			
T. Izq. Huatabampo	128.50	1	1	3607	3.7	52.8	7.8	8.8	2.6	14.6	3.2	5.9	0.6	56.5	7.8	35.7	0.088	0.504	26.803217	-109.347910
T. Izq. Huatabampo	128.50	1	2	3667	3.9	47.7	9.2	9.4	2.7	15.9	3.8	6.8	0.6	51.6	9.2	39.2	0.073	0.504	26.803177	-109.348225

SONORA

18 CARR: Los Mochis - Cd. Obregón (Cuota)

CLAVE: 26444

RUTA: MEX-015D

AÑO: 2018

LUGAR	ESTACION				CLASIFICACION VEHICULAR EN PORCIENTO													COORDENADAS		
	KM	TE	SC	TDPA	M	A	B	C2	C3	T3S2	T3S3	T3S2R4	OTROS	A	B	C	K'	D	LATITUD	LONGITUD
Caseta de Cobro Estacion Don (La Jaula)	129.90	2	1	2299	0.2	42.5	8.1	4.3	3.3	25.8	2.9	11.3	1.6	42.7	8.1	49.2	0.086	0.500	26.849735	-109.373267
Caseta de Cobro Estacion Don (La Jaula)	129.90	2	2	2299	0.2	42.5	8.1	4.3	3.3	25.8	2.9	11.3	1.6	42.7	8.1	49.2	0.086	0.500	26.849735	-109.373267
Navojoa	155.00	1	1	6580	3.3	60.8	6.6	9.2	2.5	10.8	2.0	4.4	0.4	64.1	6.6	29.3	0.086	0.510	27.029368	-109.434996
Navojoa	155.00	1	2	6861	3.4	57.1	7.1	9.9	2.8	12.3	2.1	4.9	0.4	60.5	7.1	32.4	0.103	0.510	27.029464	-109.435278
Navojoa	155.00	3	1	8805	2.7	64.8	5.4	7.7	1.9	10.2	1.5	5.6	0.2	67.5	5.4	27.1	0.071	0.502	27.104487	-109.447904
Navojoa	155.00	3	2	8724	2.6	61.7	5.7	9.1	2.1	10.8	1.7	6.1	0.2	64.3	5.7	30.0	0.080	0.502	27.104475	-109.447995
T. Izq. Villa Juárez	167.25	3	1	6769	1.6	61.6	5.5	7.8	1.8	13.0	1.7	6.7	0.3	63.2	5.5	31.3	0.065	0.502	27.156604	-109.508954
T. Izq. Villa Juárez	167.25	3	2	6701	1.5	58.5	6.0	8.6	2.0	14.1	1.8	7.1	0.4	60.0	6.0	34.0	0.070	0.502	27.156335	-109.509216
Caseta de Cobro Fundición	195.80	2	1	2902	0.3	50.8	7.6	4.1	3.0	21.2	2.3	9.3	1.4	51.1	7.6	41.3	0.086	0.500	27.320494	-109.719697
Caseta de Cobro Fundición	195.80	2	2	2902	0.3	50.8	7.6	4.1	3.0	21.2	2.3	9.3	1.4	51.1	7.6	41.3	0.086	0.500	27.320494	-109.719697
T. Der. Fundición	196.30	1	1	5355	1.2	65.0	5.3	8.0	1.7	11.8	1.9	4.8	0.3	66.2	5.3	28.5	0.082	0.570	27.312801	-109.709679
T. Der. Fundición	196.30	1	2	5913	0.6	61.9	6.1	8.7	2.0	12.9	2.0	5.5	0.3	62.5	6.1	31.4	0.105	0.570	27.312526	-109.709946
Cd. Obregón	222.70	1	1	10144	2.2	69.6	4.2	8.3	1.9	8.8	1.9	2.9	0.2	71.8	4.2	24.0	0.082	0.535	27.460978	-109.901091
Cd. Obregón	222.70	1	2	11658	1.8	72.2	3.5	7.9	1.7	7.7	2.3	2.7	0.2	74.0	3.5	22.5	0.073	0.535	27.460821	-109.901226

19 CARR: Santa Ana - Sonoita

CLAVE: 26080

RUTA: MEX-002D-MEX

AÑO: 2018

LUGAR	ESTACION				CLASIFICACION VEHICULAR EN PORCIENTO													COORDENADAS		
	KM	TE	SC	TDPA	M	A	B	C2	C3	T3S2	T3S3	T3S2R4	OTROS	A	B	C	K'	D	LATITUD	LONGITUD
Santa Ana	0.00	3	0	10046	1.4	69.8	3.5	11.5	2.6	7.1	1.3	2.0	0.8	71.2	3.5	25.3	0.065	0.529	30.549068	-111.119297
El Ocuca	31.55	1	1	2323	1.0	50.5	6.5	9.7	1.8	19.5	3.8	6.6	0.6	51.5	6.5	42.0	0.077	0.518	30.585665	-111.428898
El Ocuca	31.55	1	2	2499	1.7	54.0	5.4	8.8	2.0	18.0	3.4	6.1	0.6	55.7	5.4	38.9	0.072	0.518	30.585550	-111.428436
El Ocuca	31.55	3	1	2545	0.7	46.4	7.0	9.5	1.9	22.3	3.7	7.9	0.6	47.1	7.0	45.9	0.060	0.512	30.585583	-111.441081
El Ocuca	31.55	3	2	2673	0.7	51.9	6.5	9.6	1.6	19.6	3.5	6.0	0.6	52.6	6.5	40.9	0.063	0.512	30.585437	-111.440813
Altar	72.80	1	1	4861	1.3	66.1	3.8	9.4	1.0	11.3	2.6	3.9	0.6	67.4	3.8	28.8	0.064	0.507	30.710612	-111.830508
Altar	72.80	1	2	4732	0.8	71.4	3.2	6.9	1.1	10.1	3.0	2.9	0.6	72.2	3.2	24.6	0.061	0.507	30.710524	-111.830595
Altar	72.80	3	1	3807	0.4	63.1	4.4	6.7	1.3	15.5	2.6	5.7	0.3	63.5	4.4	32.1	0.063	0.505	30.712576	-111.858385
Altar	72.80	3	2	3736	0.7	58.0	4.7	10.3	1.3	16.9	1.8	5.9	0.4	58.7	4.7	36.6	0.070	0.505	30.712497	-111.858356
T. Izq. Estación Pitiquito	94.28	1	1	4099	0.8	58.3	4.8	10.8	1.3	15.5	2.6	5.6	0.3	59.1	4.8	36.1	0.064	0.501	30.688939	-112.031413
T. Izq. Estación Pitiquito	94.28	1	2	4091	0.5	58.4	4.7	11.7	1.4	16.0	1.6	5.3	0.4	58.9	4.7	36.4	0.064	0.501	30.688824	-112.031369
Caborca	103.83	1	0	11678	1.6	69.7	3.0	10.2	1.2	9.4	1.4	3.2	0.3	71.3	3.0	25.7	0.062	0.501	30.709058	-112.125993
Cozón	180.30	1	0	4212	1.1	47.1	6.5	8.7	2.6	21.0	3.4	8.2	1.4	48.2	6.5	45.3	0.061	0.517	31.283811	-112.535023
Sonoita	253.70	1	0	3771	1.2	48.7	6.4	7.0	2.5	22.9	3.1	7.4	0.8	49.9	6.4	43.7	0.059	0.513	31.846975	-112.858855

SONORA

20 CARR: Altar - Sáric

CLAVE: 26233

RUTA: SON-064

AÑO: 2018

LUGAR	ESTACION				CLASIFICACION VEHICULAR EN PORCIENTO													COORDENADAS		
	KM	TE	SC	TDPA	M	A	B	C2	C3	T3S2	T3S3	T3S2R4	OTROS	A	B	C	K'	D	LATITUD	LONGITUD
T. C. Santa Ana - Sonoita	0.00	3	0	1213	0.8	84.0	0.2	12.9	1.3	0.8	0.0	0.0	0.0	84.8	0.2	15.0	0.088	0.521	30.722349	-111.831106
Sáric	68.00	1	0	415	0.5	72.9	0.4	24.8	1.4	0.0	0.0	0.0	0.0	73.4	0.4	26.2	0.111	0.523	31.096977	-111.390784

21 CARR: Caborca - El Desemboque

CLAVE: 26225

RUTA: SON-037

AÑO: 2018

LUGAR	ESTACION				CLASIFICACION VEHICULAR EN PORCIENTO													COORDENADAS		
	KM	TE	SC	TDPA	M	A	B	C2	C3	T3S2	T3S3	T3S2R4	OTROS	A	B	C	K'	D	LATITUD	LONGITUD
Caborca	0.00	3	0	7702	1.4	77.7	1.0	15.6	2.1	1.3	0.5	0.3	0.1	79.1	1.0	19.9	0.081	0.507	30.708496	-112.182401
T. Der. Productora Nal. de Semillas	4.20	3	0	5593	1.0	80.2	1.3	14.0	1.5	1.1	0.4	0.4	0.1	81.2	1.3	17.5	0.079	0.513	30.704191	-112.205127
T. Izq. Ramal El Deseo	6.90	3	0	4867	1.0	77.2	1.6	16.1	1.7	1.4	0.4	0.5	0.1	78.2	1.6	20.2	0.073	0.517	30.702463	-112.214255
T. Der. El Sahuaro	61.20	3	0	1295	1.2	81.0	1.6	13.8	1.2	0.9	0.1	0.2	0.0	82.2	1.6	16.2	0.082	0.501	30.801001	-112.720228
El Desemboque	102.30																			

22 CARR: Calle 36 Norte - Puerto de La Libertad

CLAVE: 26117

RUTA: SON-029

AÑO: 2018

LUGAR	ESTACION				CLASIFICACION VEHICULAR EN PORCIENTO													COORDENADAS		
	KM	TE	SC	TDPA	M	A	B	C2	C3	T3S2	T3S3	T3S2R4	OTROS	A	B	C	K'	D	LATITUD	LONGITUD
T. C. Hermosillo - Bahía Kino	0.00	3	0	353	4.8	65.6	1.4	19.0	3.7	3.8	0.9	0.6	0.2	70.4	1.4	28.2	0.091	0.543	28.941003	-111.716479
Casas Grandes	45.00	3	0	358	3.9	61.2	1.9	24.4	2.8	4.4	0.7	0.7	0.0	65.1	1.9	33.0	0.106	0.504	29.187395	-111.722577
Puerto de La Libertad	156.00																			

23 CARR: Esperanza - Presa Álvaro Obregón

CLAVE: 26242

RUTA: SON-117

AÑO: 2018

LUGAR	ESTACION				CLASIFICACION VEHICULAR EN PORCIENTO													COORDENADAS		
	KM	TE	SC	TDPA	M	A	B	C2	C3	T3S2	T3S3	T3S2R4	OTROS	A	B	C	K'	D	LATITUD	LONGITUD
Esperanza	0.00	3	0	5252	3.2	72.2	1.2	11.2	2.7	3.4	5.1	0.6	0.4	75.4	1.2	23.4	0.142	0.502	27.588000	-109.914708
T. Der. Los Hornos	17.00	3	0	1053	4.0	86.8	0.3	7.5	1.3	0.0	0.0	0.0	0.1	90.8	0.3	8.9	0.335	0.532	27.720827	-109.897525
Presa Álvaro Obregón	32.00																			

24 CARR: Hermosillo - Bahía Kino

CLAVE: 26109

RUTA: SON-100

AÑO: 2018

LUGAR	ESTACION				CLASIFICACION VEHICULAR EN PORCIENTO													COORDENADAS		
	KM	TE	SC	TDPA	M	A	B	C2	C3	T3S2	T3S3	T3S2R4	OTROS	A	B	C	K'	D	LATITUD	LONGITUD
Hermosillo	0.00	3	1	23405	0.8	80.7	0.8	11.9	2.4	2.1	0.4	0.8	0.1	81.5	0.8	17.7	0.084	0.507	29.094939	-111.012234
Hermosillo	0.00	3	2	22790	0.9	77.7	0.9	14.1	2.6	2.3	0.4	1.0	0.1	78.6	0.9	20.5	0.086	0.507	29.094816	-111.012227

SONORA

24 CARR: Hermosillo - Bahía Kino

CLAVE: 26109

RUTA: SON-100

AÑO: 2018

LUGAR	ESTACION				CLASIFICACION VEHICULAR EN PORCIENTO													COORDENADAS		
	KM	TE	SC	TDPA	M	A	B	C2	C3	T3S2	T3S3	T3S2R4	OTROS	A	B	C	K'	D	LATITUD	LONGITUD
T. Der. Aeropuerto	11.00	1	1	12265	1.2	85.2	0.4	7.9	2.2	1.6	0.6	0.6	0.3	86.4	0.4	13.2	0.094	0.520	29.090362	-111.045125
T. Der. Aeropuerto	11.00	1	2	13297	1.0	84.0	0.4	8.8	2.4	1.9	0.6	0.6	0.3	85.0	0.4	14.6	0.099	0.520	29.090238	-111.045088
T. Der. Aeropuerto	11.00	3	1	8084	1.1	80.5	0.5	10.7	3.4	2.3	0.5	0.7	0.3	81.6	0.5	17.9	0.141	0.516	29.088219	-111.053644
T. Der. Aeropuerto	11.00	3	2	8610	0.9	81.4	0.3	11.0	3.2	2.0	0.4	0.6	0.2	82.3	0.3	17.4	0.121	0.516	29.088096	-111.053582
T. Izq. Calle 4 Sur	53.00	3	0	6985	1.1	80.5	0.8	12.0	2.8	1.9	0.4	0.4	0.1	81.6	0.8	17.6	0.100	0.512	28.839460	-111.394841
El Triunfo	55.50	1	0	7586	1.1	78.4	1.0	13.7	3.1	1.8	0.4	0.4	0.1	79.5	1.0	19.5	0.091	0.502	28.839598	-111.426597
T. Der. Calle 36	84.40	1	0	3212	0.7	82.7	0.6	12.8	1.8	1.0	0.2	0.2	0.0	83.4	0.6	16.0	0.164	0.511	28.831314	-111.706207
T. Der. Calle 36	84.40	3	0	2854	0.7	83.5	0.7	12.2	1.8	1.0	0.1	0.0	0.0	84.2	0.7	15.1	0.191	0.520	28.831052	-111.730558
Bahía Kino	106.50	1	0	2830	0.8	84.4	0.6	11.6	1.6	0.9	0.1	0.0	0.0	85.2	0.6	14.2	0.197	0.516	28.828505	-111.928092

25 CARR: Hermosillo - Sahuaripa

CLAVE: 26230

RUTA: SON-020

AÑO: 2018

LUGAR	ESTACION				CLASIFICACION VEHICULAR EN PORCIENTO													COORDENADAS		
	KM	TE	SC	TDPA	M	A	B	C2	C3	T3S2	T3S3	T3S2R4	OTROS	A	B	C	K'	D	LATITUD	LONGITUD
T. C. Libramiento de Hermosillo	0.00	3	1	1823	1.8	67.1	1.3	19.5	3.8	2.0	2.5	1.8	0.2	68.9	1.3	29.8	0.113	0.500	29.030678	-110.883463
T. C. Libramiento de Hermosillo	0.00	3	2	1819	1.3	68.5	1.3	19.2	2.8	2.3	2.4	2.0	0.2	69.8	1.3	28.9	0.100	0.500	29.030737	-110.883468
Mazatán	88.00	1	0	947	0.4	73.4	1.3	21.2	1.9	1.4	0.4	0.0	0.0	73.8	1.3	24.9	0.073	0.500	29.005576	-110.152660
Mazatán	88.00	3	0	754	0.9	79.0	0.5	17.1	1.8	0.4	0.3	0.0	0.0	79.9	0.5	19.6	0.084	0.504	28.997568	-110.136304
Sahuaripa	199.00																			

26 CARR: Hornos - San Nicolás

CLAVE: 26243

RUTA: SON-012

AÑO: 2018

LUGAR	ESTACION				CLASIFICACION VEHICULAR EN PORCIENTO													COORDENADAS		
	KM	TE	SC	TDPA	M	A	B	C2	C3	T3S2	T3S3	T3S2R4	OTROS	A	B	C	K'	D	LATITUD	LONGITUD
Hornos	0.00	3	0	1439	2.6	48.8	0.9	12.2	3.4	5.7	25.2	1.0	0.2	51.4	0.9	47.7	0.087	0.512	27.720319	-109.890859
Rosario	58.00	1	0	1232	3.1	48.3	1.0	13.5	2.4	4.6	26.3	0.3	0.5	51.4	1.0	47.6	0.102	0.537	27.842180	-109.384211
San Nicolás	137.20																			

27 CARR: Huatabampo - Bacabachi

CLAVE: 26237

RUTA: SON-176

AÑO: 2018

LUGAR	ESTACION				CLASIFICACION VEHICULAR EN PORCIENTO													COORDENADAS		
	KM	TE	SC	TDPA	M	A	B	C2	C3	T3S2	T3S3	T3S2R4	OTROS	A	B	C	K'	D	LATITUD	LONGITUD
Huatabampo	0.00	3	0	1957	9.1	62.1	2.4	13.3	5.8	5.3	1.3	0.5	0.2	71.2	2.4	26.4	0.090	0.531	26.825276	-109.601870
T. C. Los Mochis - Cd. Obregón (Cuota)	29.00	1	0	1292	10.0	56.2	3.3	15.4	5.0	7.5	2.0	0.4	0.2	66.2	3.3	30.5	0.088	0.523	26.838732	-109.369623

SONORA

28 CARR: La Alameda - El Sahuaro

CLAVE: 26234

RUTA: SON-037

AÑO: 2018

LUGAR	ESTACION				CLASIFICACION VEHICULAR EN PORCIENTO										COORDENADAS					
	KM	TE	SC	TDPA	M	A	B	C2	C3	T3S2	T3S3	T3S2R4	OTROS	A	B	C	K'	D	LATITUD	LONGITUD
T. C. Caborca - El Desemboque	0.00	3	0	3427	1.0	72.2	2.5	19.2	3.0	1.1	0.5	0.5	0.0	73.2	2.5	24.3	0.079	0.505	30.819766	-112.740732
Estación El Sahuaro	47.00	1	0	1494	0.3	58.3	3.8	26.0	5.1	4.6	1.0	0.9	0.0	58.6	3.8	37.6	0.082	0.500	31.036955	-112.945718

29 CARR: Mazocahui - Cananea

CLAVE: 26118

RUTA: SON-118

AÑO: 2018

LUGAR	ESTACION				CLASIFICACION VEHICULAR EN PORCIENTO										COORDENADAS					
	KM	TE	SC	TDPA	M	A	B	C2	C3	T3S2	T3S3	T3S2R4	OTROS	A	B	C	K'	D	LATITUD	LONGITUD
T. C. Hermosillo - Moctezuma	0.00	3	0	1211	0.8	77.6	0.8	16.4	2.4	1.1	0.9	0.0	0.0	78.4	0.8	20.8	0.097	0.514	29.547042	-110.121325
Baviácora	15.20	3	0	1811	0.6	79.3	1.1	16.7	1.1	0.7	0.5	0.0	0.0	79.9	1.1	19.0	0.079	0.501	29.726634	-110.166415
Arizpe	98.00	1	0	372	2.7	72.9	1.5	18.4	2.4	1.3	0.8	0.0	0.0	75.6	1.5	22.9	0.089	0.507	30.329649	-110.181373
T. C. Imuris - Agua Prieta	204.00	1	0	2832	1.8	69.9	1.8	15.8	7.6	1.0	0.7	0.6	0.8	71.7	1.8	26.5	0.094	0.505	30.986324	-110.256754

30 CARR: Navojoa - Álamos

CLAVE: 26240

RUTA: SON-013

AÑO: 2018

LUGAR	ESTACION				CLASIFICACION VEHICULAR EN PORCIENTO										COORDENADAS					
	KM	TE	SC	TDPA	M	A	B	C2	C3	T3S2	T3S3	T3S2R4	OTROS	A	B	C	K'	D	LATITUD	LONGITUD
Navojoa	0.00	3	0	4026	7.8	71.6	1.7	14.1	2.9	0.8	0.3	0.8	0.0	79.4	1.7	18.9	0.081	0.504	27.074130	-109.407075
Álamos	52.80	1	0	2436	4.8	78.5	1.5	13.4	1.4	0.4	0.0	0.0	0.0	83.3	1.5	15.2	0.086	0.510	27.042814	-108.973956

31 CARR: Navojoa - Yavaros

CLAVE: 26229

RUTA: SON-056

AÑO: 2018

LUGAR	ESTACION				CLASIFICACION VEHICULAR EN PORCIENTO										COORDENADAS					
	KM	TE	SC	TDPA	M	A	B	C2	C3	T3S2	T3S3	T3S2R4	OTROS	A	B	C	K'	D	LATITUD	LONGITUD
Navojoa	0.00	3	1	4755	5.8	78.2	2.4	9.2	2.4	1.2	0.6	0.1	0.1	84.0	2.4	13.6	0.077	0.536	27.040526	-109.466626
Navojoa	0.00	3	2	5500	6.8	76.4	2.7	9.4	2.8	1.2	0.5	0.1	0.1	83.2	2.7	14.1	0.076	0.536	27.040449	-109.466565
Yavaros	55.00	1	0	1914	9.7	75.8	3.1	8.3	2.2	0.5	0.2	0.0	0.2	85.5	3.1	11.4	0.127	0.506	26.706044	-109.545104

32 CARR: Nogales - San Antonio

CLAVE: 26110

RUTA: SON

AÑO: 2018

LUGAR	ESTACION				CLASIFICACION VEHICULAR EN PORCIENTO										COORDENADAS					
	KM	TE	SC	TDPA	M	A	B	C2	C3	T3S2	T3S3	T3S2R4	OTROS	A	B	C	K'	D	LATITUD	LONGITUD
Nogales	0.00																			
San Antonio	58.00	1	0	357	0.3	80.7	0.7	17.4	0.8	0.1	0.0	0.0	0.0	81.0	0.7	18.3	0.090	0.520	31.002456	-110.598205

SONORA

33 CARR: Ramal a Aeropuerto de Guaymas

CLAVE: 26568

RUTA: SON

AÑO: 2018

LUGAR	ESTACION				CLASIFICACION VEHICULAR EN PORCIENTO													COORDENADAS		
	KM	TE	SC	TDPA	M	A	B	C2	C3	T3S2	T3S3	T3S2R4	OTROS	A	B	C	K'	D	LATITUD	LONGITUD
T. C. Cd. Obregón - Hermosillo	0.00	3	1	6009	2.9	83.3	0.8	8.1	1.2	1.7	0.7	0.9	0.4	86.2	0.8	13.0	0.077	0.524	27.952905	-110.930155
T. C. Cd. Obregón - Hermosillo	0.00	3	2	6617	2.8	82.8	1.0	8.2	1.4	1.7	0.7	1.0	0.4	85.6	1.0	13.4	0.066	0.524	27.952958	-110.930242
Aeropuerto de Guaymas	3.00	3	0	5836	3.9	79.7	1.4	8.6	1.1	1.2	1.6	1.9	0.6	83.6	1.4	15.0	0.065	0.530	27.977913	-110.915161

34 CARR: San Luis Río Colorado - Golfo de Santa Clara

CLAVE: 26226

RUTA: SON-040

AÑO: 2018

LUGAR	ESTACION				CLASIFICACION VEHICULAR EN PORCIENTO													COORDENADAS		
	KM	TE	SC	TDPA	M	A	B	C2	C3	T3S2	T3S3	T3S2R4	OTROS	A	B	C	K'	D	LATITUD	LONGITUD
San Luis Río Colorado	0.00	3	1	2573	0.7	83.5	0.5	12.7	0.6	1.4	0.5	0.1	0.0	84.2	0.5	15.3	0.081	0.510	32.438771	-114.848807
San Luis Río Colorado	0.00	3	2	2680	0.7	80.8	0.6	14.4	1.2	1.5	0.7	0.1	0.0	81.5	0.6	17.9	0.079	0.510	32.438088	-114.849506
T. Izq. Lagunitas	25.50	3	0	6153	0.7	82.2	0.5	13.3	1.1	1.5	0.7	0.0	0.0	82.9	0.5	16.6	0.074	0.502	32.316662	-114.952434
Golfo de Santa Clara	114.30	1	0	2410	3.4	75.5	4.2	10.4	2.8	1.4	1.9	0.4	0.0	78.9	4.2	16.9	0.122	0.511	31.706722	-114.524055

35 CARR: Sonoita - Pitiquito

CLAVE: 26022

RUTA: SON

AÑO: 2018

LUGAR	ESTACION				CLASIFICACION VEHICULAR EN PORCIENTO													COORDENADAS		
	KM	TE	SC	TDPA	M	A	B	C2	C3	T3S2	T3S3	T3S2R4	OTROS	A	B	C	K'	D	LATITUD	LONGITUD
Sonoita	0.00	3	0	1108	0.4	84.8	0.1	13.3	1.1	0.3	0.0	0.0	0.0	85.2	0.1	14.7	0.099	0.503	31.851946	-112.821010
Pitiquito	170.00	1	0	594	4.1	54.2	2.6	23.4	2.2	12.3	0.4	0.5	0.3	58.3	2.6	39.1	0.103	0.503	30.726269	-112.093196

36 CARR: San Luis Río Colorado - Golfo de Santa Clara (Cuota)

CLAVE:

RUTA: SON-D

AÑO: 2018

LUGAR	ESTACION				CLASIFICACION VEHICULAR EN PORCIENTO													COORDENADAS		
	KM	TE	SC	TDPA	M	A	B	C2	C3	T3S2	T3S3	T3S2R4	OTROS	A	B	C	K'	D	LATITUD	LONGITUD
Libramiento de San Luis Río Colorado	0.00																			
Caseta de Cobro Estación Doctor	0.50	2	0	653	0.4	93.2	0.4	1.4	0.7	1.9	0.5	1.3	0.2	93.6	0.4	6.0	0.090	0.500	32.375135	-114.760664
Golfo de Santa Clara	44.60																			

37 CARR: T. C. (Hermosillo - Nogales) - Huásabas

CLAVE: 26231

RUTA: MEX-014-SON

AÑO: 2018

LUGAR	ESTACION				CLASIFICACION VEHICULAR EN PORCIENTO													COORDENADAS		
	KM	TE	SC	TDPA	M	A	B	C2	C3	T3S2	T3S3	T3S2R4	OTROS	A	B	C	K'	D	LATITUD	LONGITUD
T. C. Hermosillo - Nogales	0.00	3	1	8457	1.0	80.7	1.6	13.1	1.2	1.4	0.4	0.4	0.2	81.7	1.6	16.7	0.092	0.515	29.169788	-110.901562
T. C. Hermosillo - Nogales	0.00	3	2	8966	0.8	84.5	1.2	10.2	1.2	1.2	0.4	0.4	0.1	85.3	1.2	13.5	0.099	0.515	29.169855	-110.901656
Ures	62.00	3	0	2189	1.4	79.8	1.3	12.0	1.6	2.2	0.9	0.5	0.3	81.2	1.3	17.5	0.101	0.504	29.428560	-110.375083



SONORA

37 CARR: T.C. (Hermosillo - Nogales) - Huásabas

CLAVE: 26231

RUTA: MEX-014-SON

AÑO: 2018

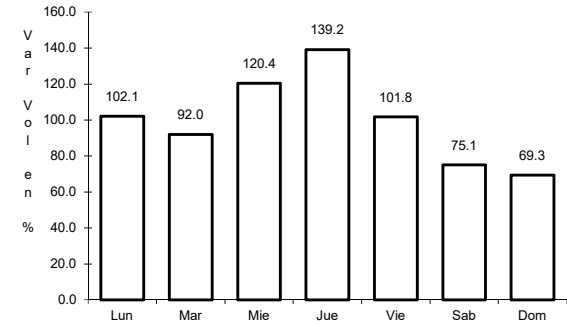
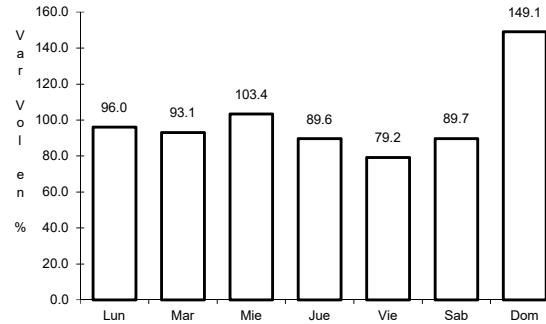
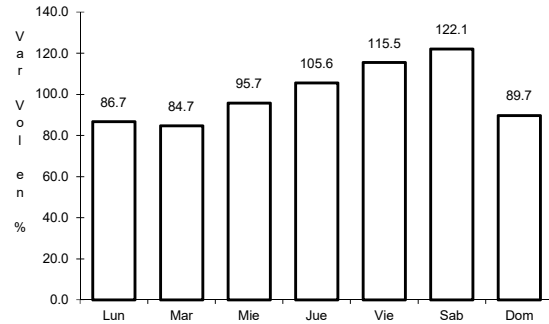
L U G A R	E S T A C I O N				C L A S I F I C A C I O N V E H I C U L A R E N P O R C I E N T O										C O O R D E N A D A S					
	KM	TE	SC	TDPA	M	A	B	C2	C3	T3S2	T3S3	T3S2R4	OTROS	A	B	C	K'	D	LATITUD	LONGITUD
Mazocahui	97.50	3	0	1025	1.2	72.8	2.0	15.1	2.6	3.5	2.0	0.5	0.3	74.0	2.0	24.0	0.093	0.523	29.544184	-110.119126
Moctezuma	165.00	1	0	1109	1.0	72.6	1.4	14.9	2.2	3.9	2.3	0.9	0.8	73.6	1.4	25.0	0.097	0.510	29.799739	-109.690480
Moctezuma	165.00	3	0	1475	1.3	77.4	0.7	16.2	1.6	1.5	0.9	0.0	0.4	78.7	0.7	20.6	0.102	0.515	29.800873	-109.666836
Huásabas	212.50	1	0	538	0.3	66.2	1.9	22.4	1.8	3.4	2.9	0.0	1.1	66.5	1.9	31.6	0.097	0.573	29.917913	-109.307852



1 CARR: Guaymas - Hermosillo

CLAVE: 26444

RUTA: MEX-015



Km: 107.70      Tipo: 3      Sent: 0

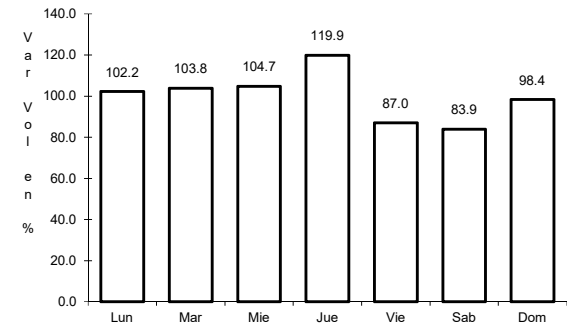
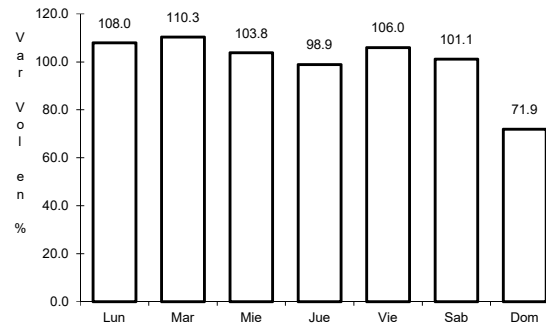
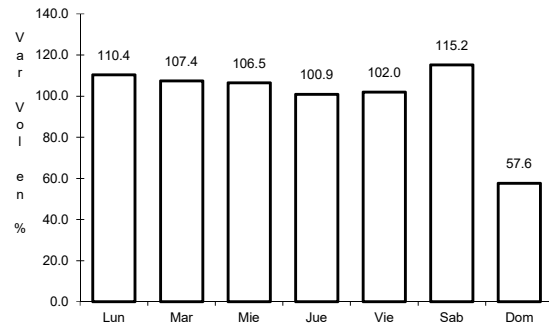
Km: 251.00      Tipo: 1      Sent: 1

Km: 251.00      Tipo: 1      Sent: 2

2 CARR: Hermosillo - Yécora

CLAVE: 26251

RUTA: MEX-016



Km: 4.00      Tipo: 3      Sent: 1

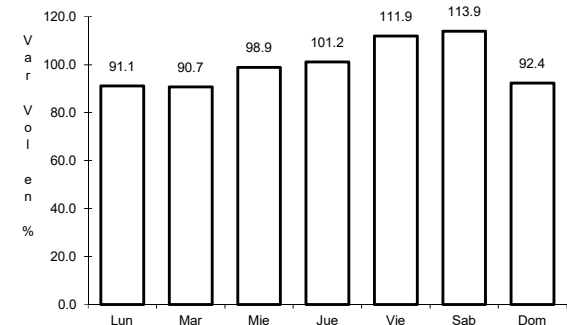
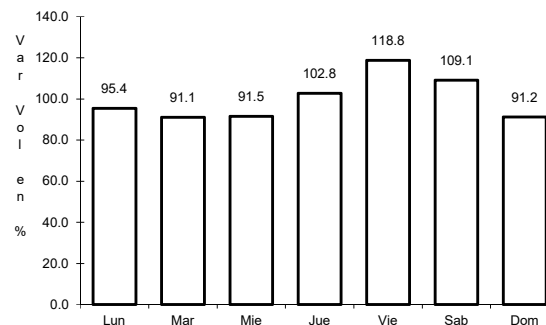
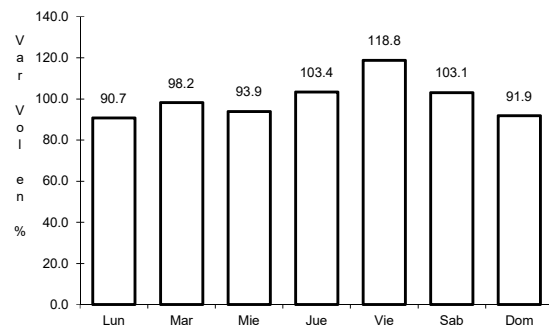
Km: 4.00      Tipo: 3      Sent: 2

Km: 138.00      Tipo: 3      Sent: 0

3 CARR: Imuris - Agua Prieta

CLAVE: 26079

RUTA: MEX-002



Km: 0.00      Tipo: 3      Sent: 0

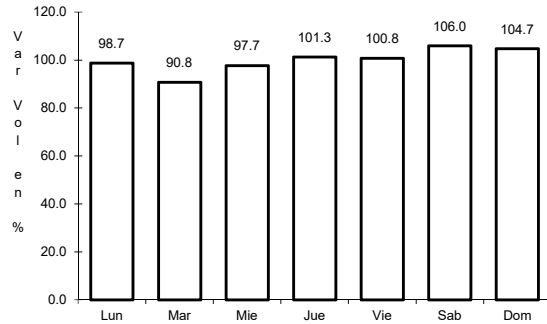
Km: 164.67      Tipo: 1      Sent: 1

Km: 164.67      Tipo: 1      Sent: 2

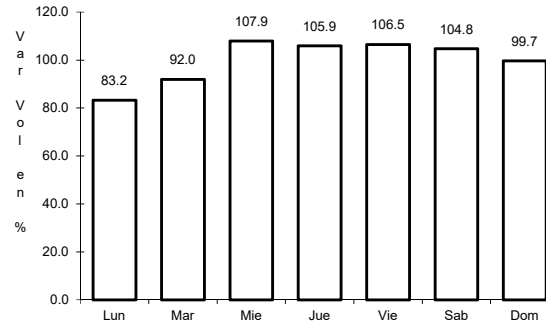
4 CARR: Janos - Agua Prieta

CLAVE: 00220

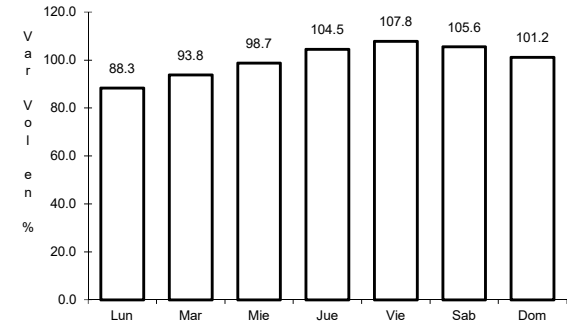
ruta: MEX-002



Km: 0.00 Tipo: 3 Sent: 0



Km: 56.00 Tipo: 3 Sent: 0

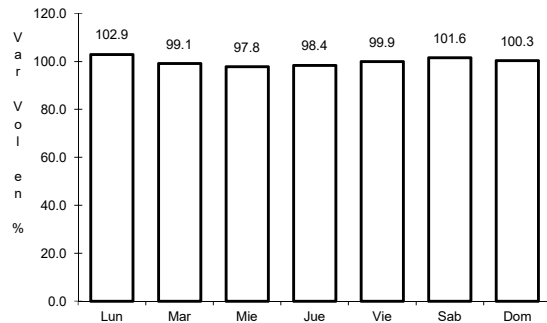


Km: 160.00 Tipo: 1 Sent: 0

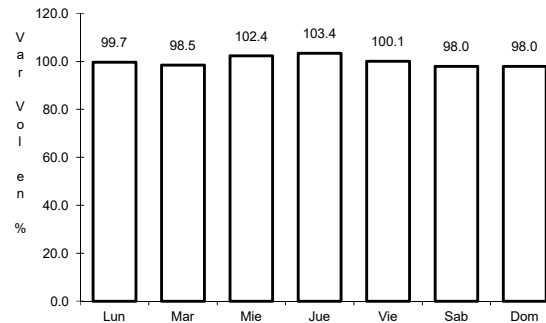
5 CARR: La Junta - Yécora

CLAVE: 00065

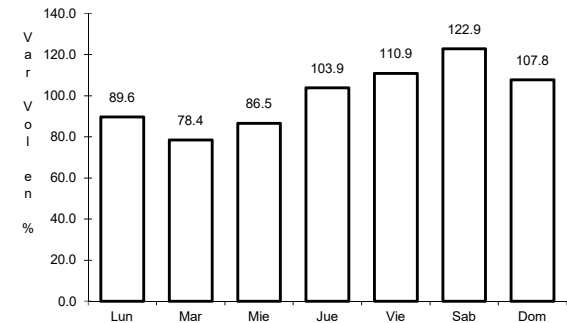
ruta: MEX-016



Km: 0.00 Tipo: 3 Sent: 0



Km: 70.00 Tipo: 3 Sent: 0

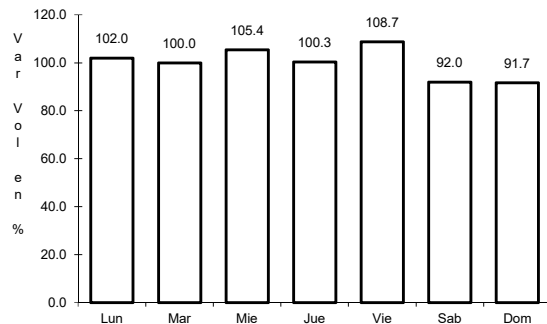


Km: 253.00 Tipo: 1 Sent: 0

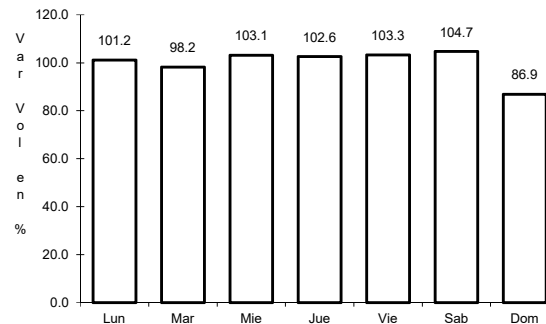
6 CARR: Magdalena de Kino - Nogales

CLAVE: 26444

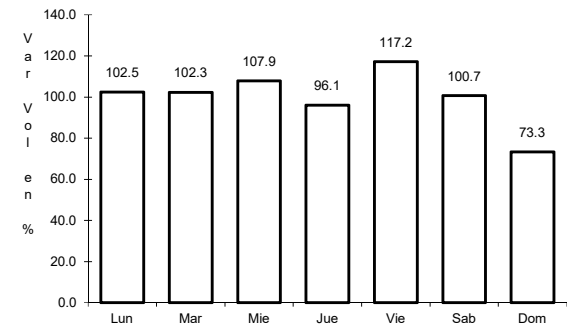
ruta: MEX-015



Km: 181.30 Tipo: 3 Sent: 1



Km: 181.30 Tipo: 3 Sent: 2

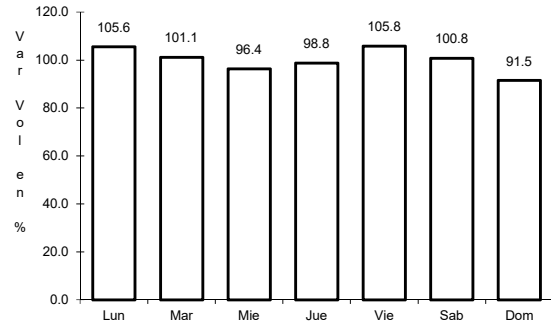


Km: 272.70 Tipo: 1 Sent: 1

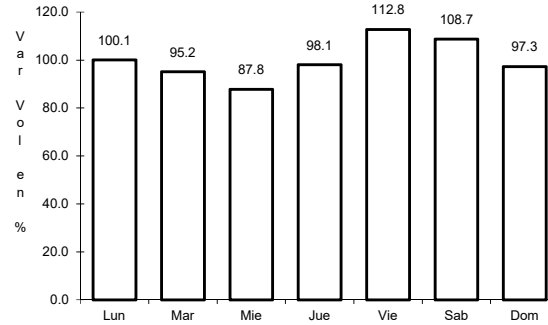
7 CARR: Moctezuma - Agua Prieta

CLAVE: 26027

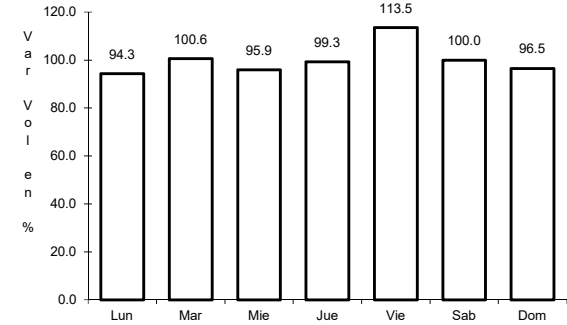
ruta: MEX-017



Km: 0.00      Tipo: 3      Sent: 0



Km: 81.00      Tipo: 3      Sent: 0

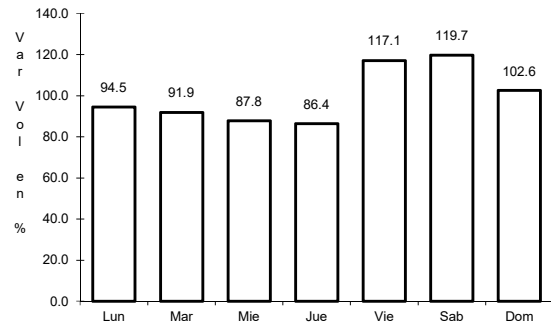


Km: 197.60      Tipo: 1      Sent: 0

8 CARR: Ramal a Naco

CLAVE: 26579

ruta: MEX-002

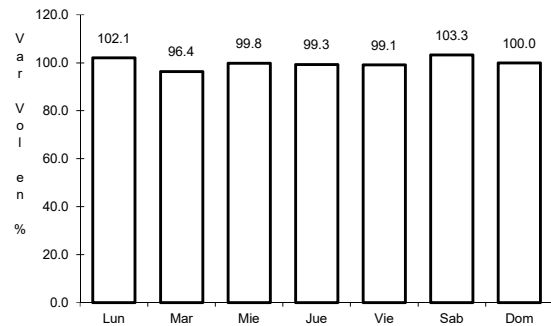


Km: 0.00      Tipo: 3      Sent: 0

9 CARR: Ramal a Puerta de México

CLAVE: 26577

ruta: MEX-002

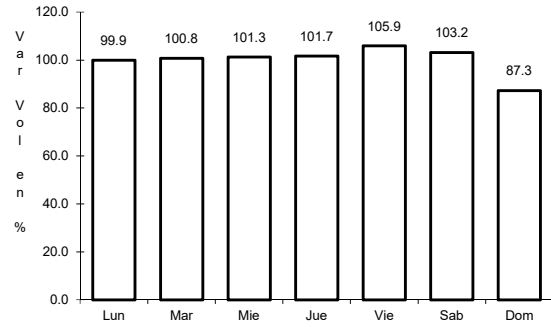


Km: 0.00      Tipo: 3      Sent: 0

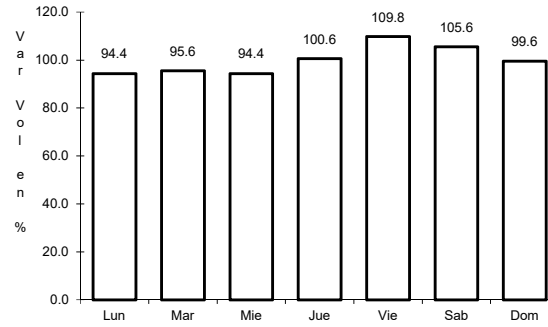
10 CARR: Sonoita - Mexicali

CLAVE: 00081

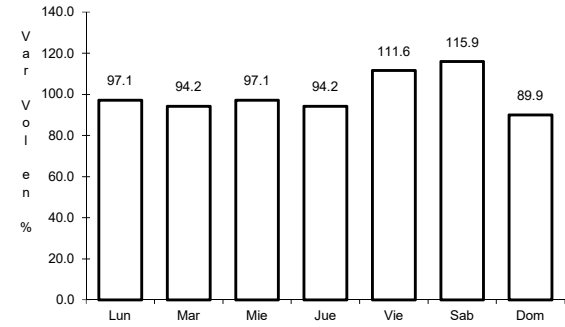
RUTA: MEX-002



Km: 0.00      Tipo: 3      Sent: 0



Km: 256.47      Tipo: 1      Sent: 1

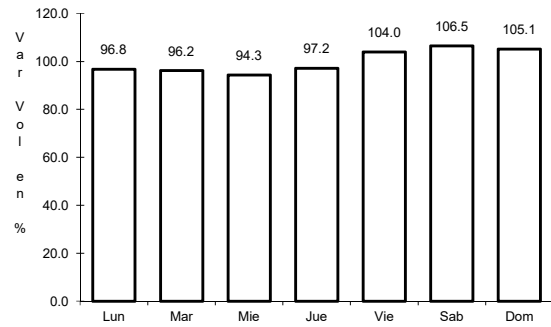


Km: 256.47      Tipo: 1      Sent: 2

11 CARR: Sonoita - Puerto Peñasco

CLAVE: 26232

RUTA: MEX-002

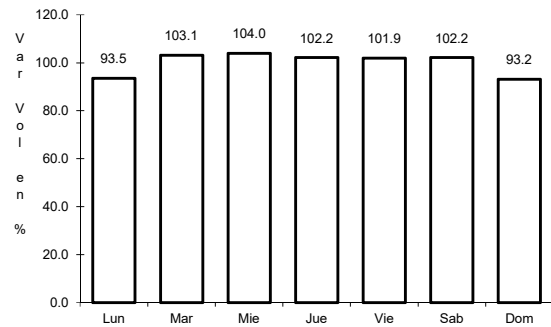


Km: 0.00      Tipo: 3      Sent: 0

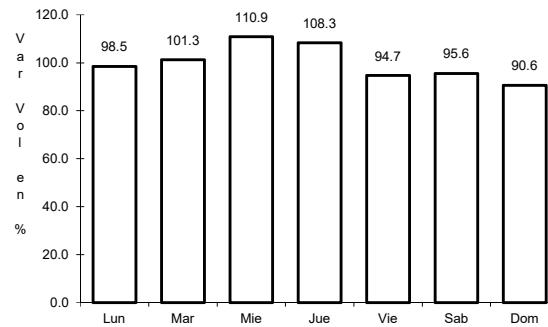
12 CARR: Cd. Obregón - Guaymas (Cuota)

CLAVE: 26444

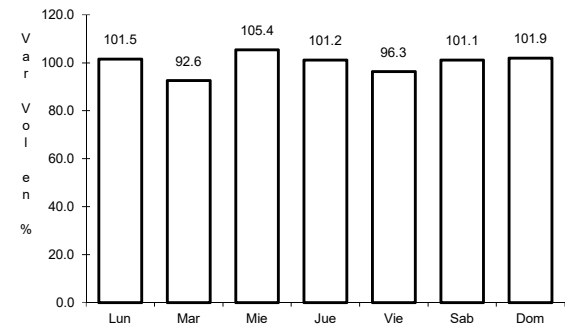
RUTA: MEX-015D



Km: 7.96      Tipo: 1      Sent: 1



Km: 7.96      Tipo: 1      Sent: 2

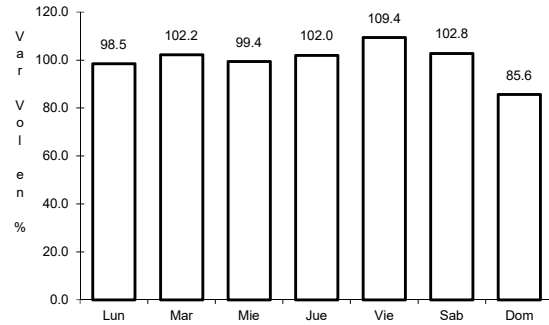


Km: 107.70      Tipo: 1      Sent: 1

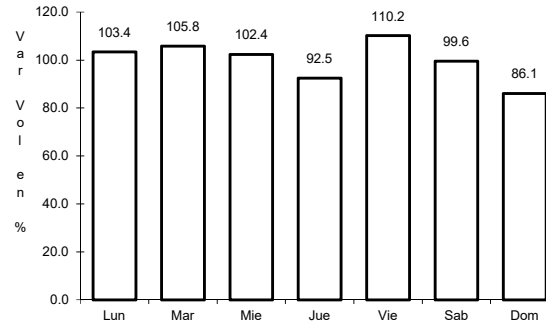
13 CARR: Hermosillo - Magdalena de Kino (Cuota)

CLAVE: 26444

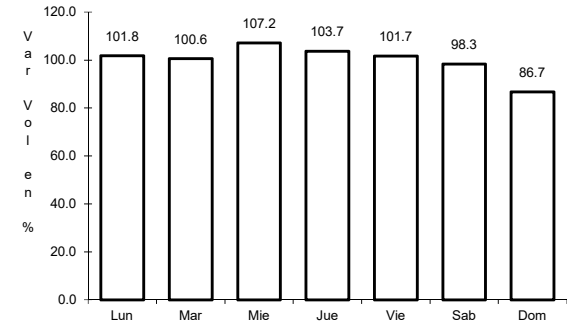
ruta: MEX-015D



Km: 0.00      Tipo: 3      Sent: 1



Km: 0.00      Tipo: 3      Sent: 2

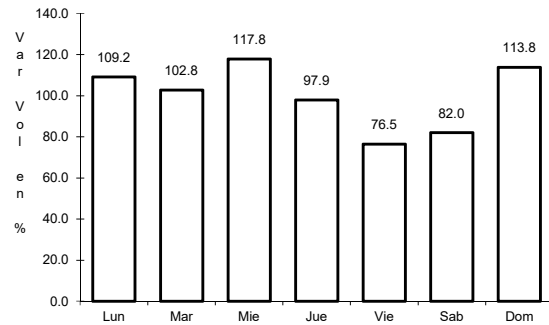


Km: 181.30      Tipo: 1      Sent: 1

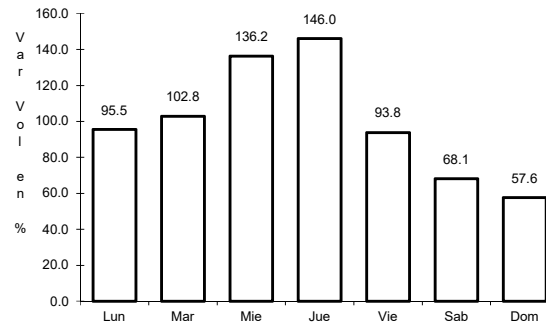
15 CARR: Libramiento de Empalme - Guaymas (Cuota)

CLAVE: 26256

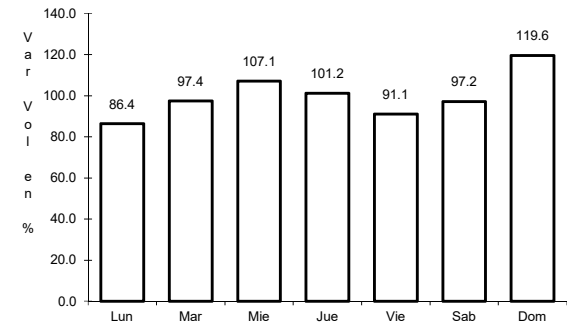
ruta: MEX-015D



Km: 0.00      Tipo: 3      Sent: 1



Km: 0.00      Tipo: 3      Sent: 2

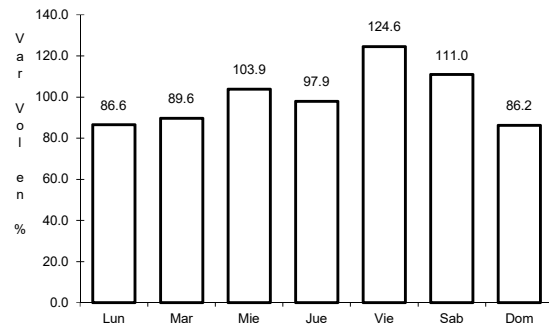


Km: 21.50      Tipo: 1      Sent: 1

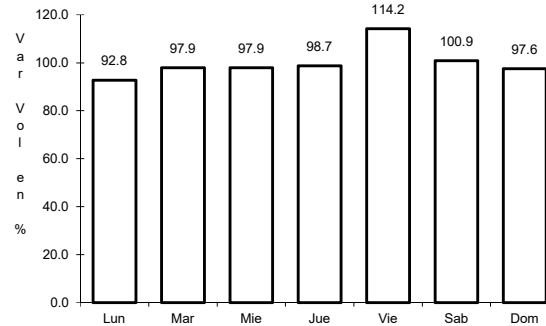
16 CARR: Libramiento de Magdalena de Kino (Cuota)

CLAVE:

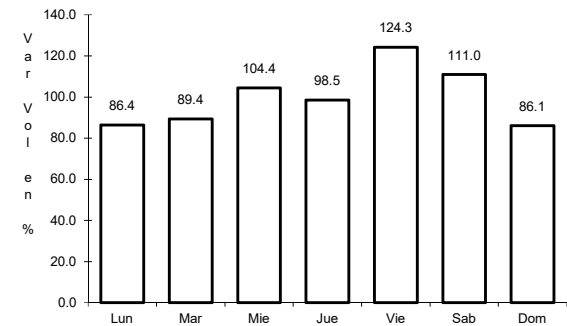
ruta: MEX-015D



Km: 181.30      Tipo: 3      Sent: 1



Km: 181.30      Tipo: 3      Sent: 2

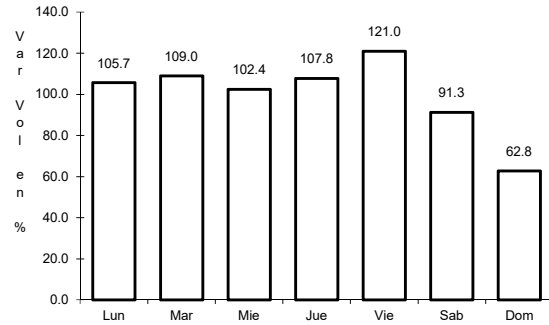


Km: 193.00      Tipo: 1      Sent: 1

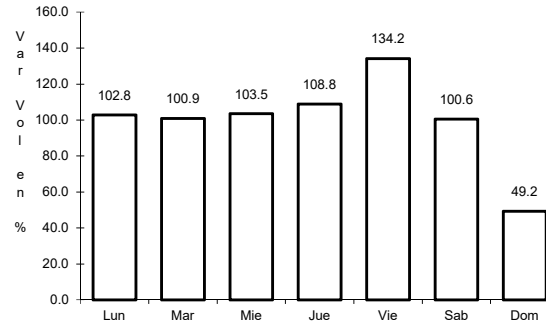
17 CARR: Libramiento de Nogales (Cuota)

CLAVE: 26100

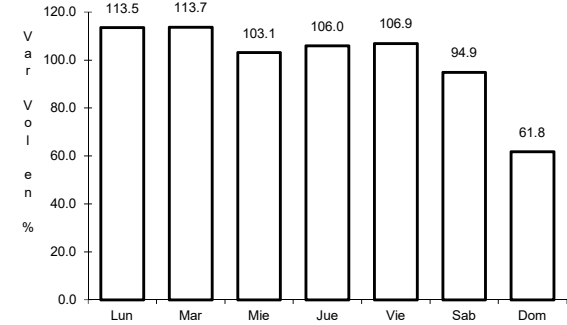
ruta: MEX-15D



Km: 0.00 Tipo: 3 Sent: 1



Km: 0.00 Tipo: 3 Sent: 2

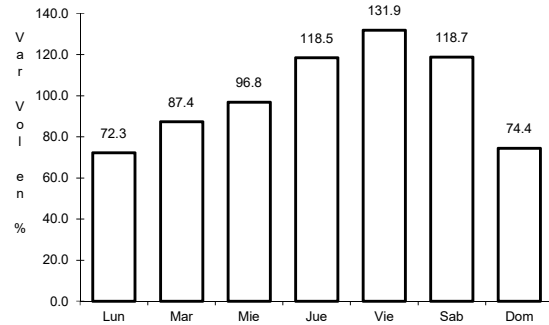


Km: 12.50 Tipo: 1 Sent: 1

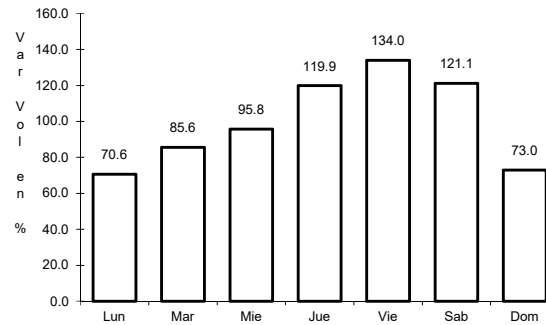
18 CARR: Los Mochis - Cd. Obregón (Cuota)

CLAVE: 26444

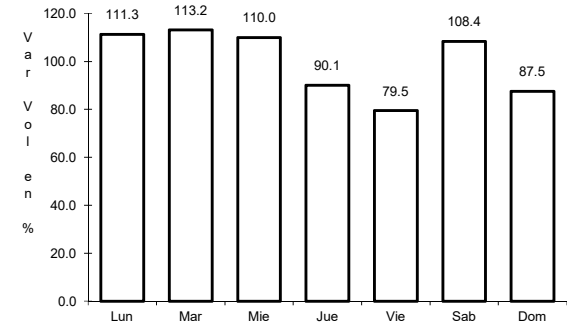
ruta: MEX-015D



Km: 0.00 Tipo: 3 Sent: 1



Km: 0.00 Tipo: 3 Sent: 2

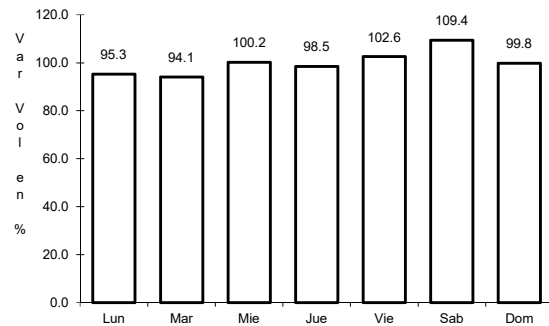


Km: 222.70 Tipo: 1 Sent: 1

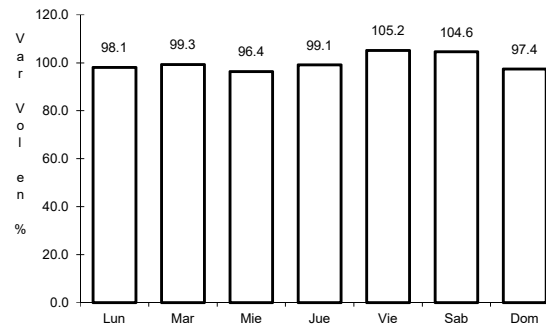
19 CARR: Santa Ana - Sonoita

CLAVE: 26080

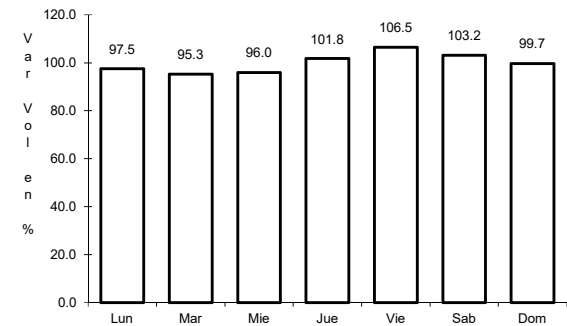
ruta: MEX-002D-MEX



Km: 0.00 Tipo: 3 Sent: 0



Km: 103.83 Tipo: 1 Sent: 0



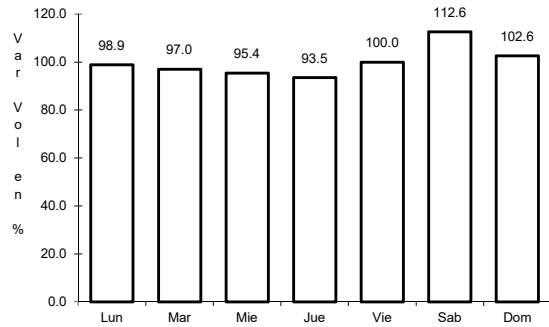
Km: 253.70 Tipo: 1 Sent: 0



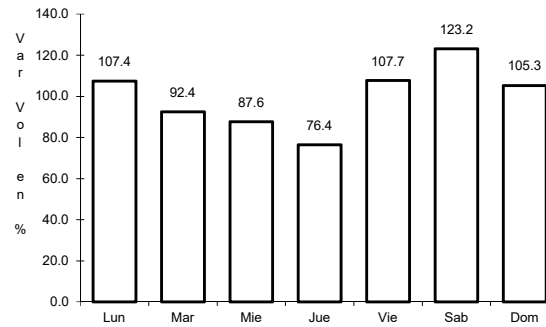
20 CARR: Altar - Sáric

CLAVE: 26233

RUTA: SON-064



Km: 0.00      Tipo: 3      Sent: 0

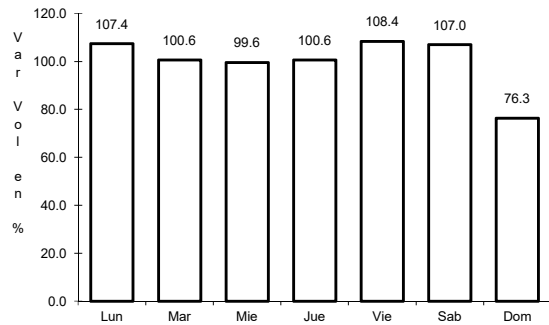


Km: 68.00      Tipo: 1      Sent: 0

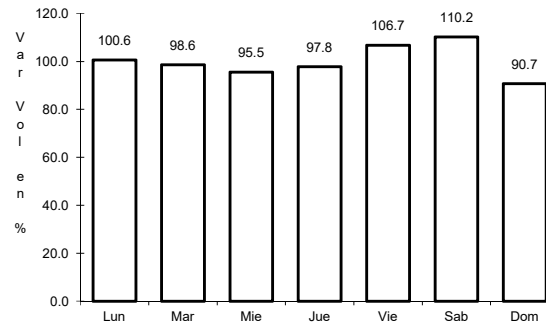
21 CARR: Caborca - El Desemboque

CLAVE: 26225

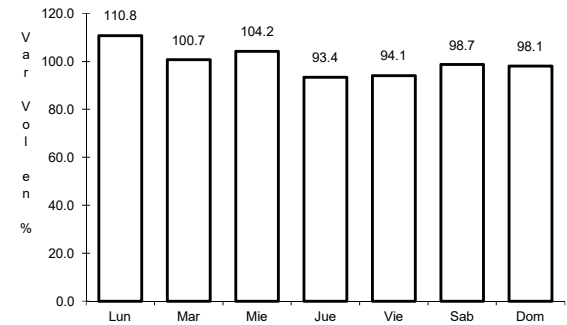
RUTA: SON-037



Km: 0.00      Tipo: 3      Sent: 0



Km: 6.90      Tipo: 3      Sent: 0

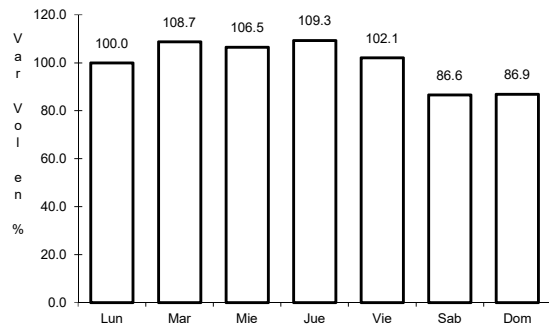


Km: 61.20      Tipo: 3      Sent: 0

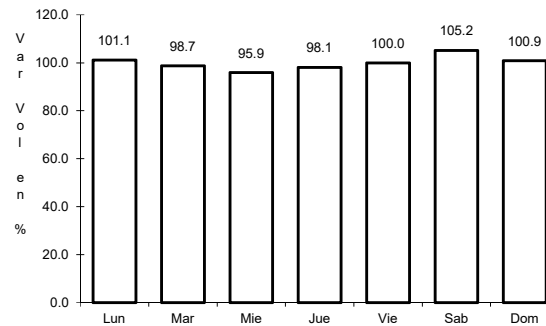
22 CARR: Calle 36 Norte - Puerto de La Libertad

CLAVE: 26117

RUTA: SON-029



Km: 0.00      Tipo: 3      Sent: 0

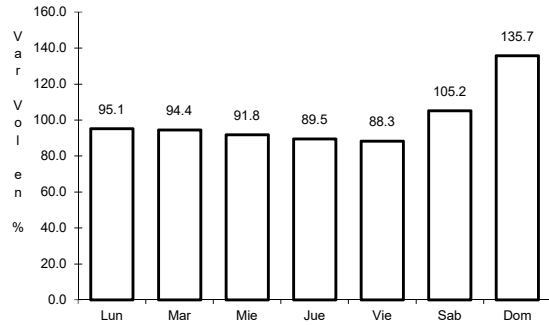


Km: 45.00      Tipo: 3      Sent: 0

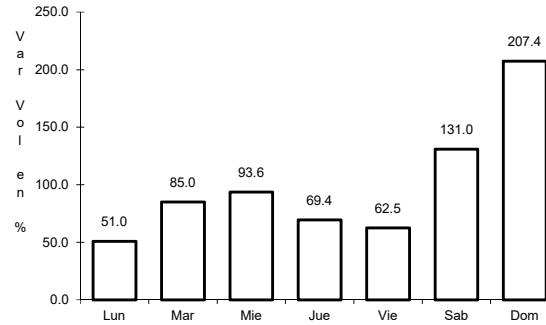
23 CARR: Esperanza - Presa Álvaro Obregón

CLAVE: 26242

ruta: SON-117



Km: 0.00      Tipo: 3      Sent: 0

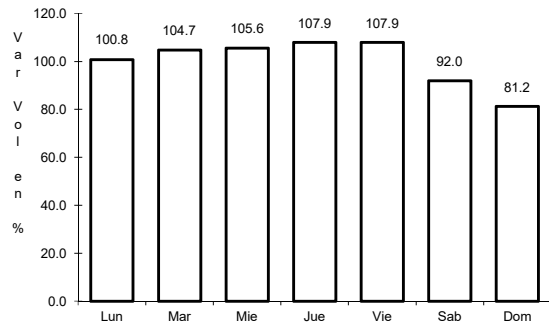


Km: 17.00      Tipo: 3      Sent: 0

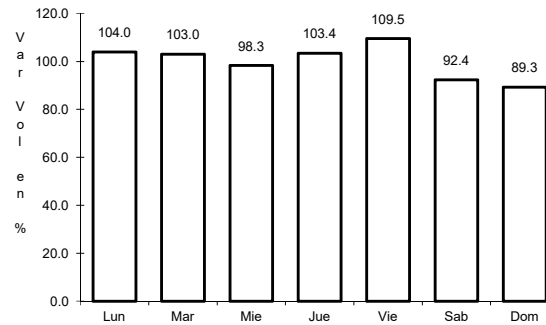
24 CARR: Hermosillo - Bahía Kino

CLAVE: 26109

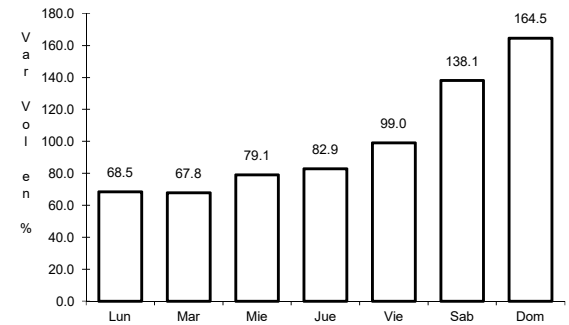
ruta: SON-100



Km: 0.00      Tipo: 3      Sent: 1



Km: 0.00      Tipo: 3      Sent: 2

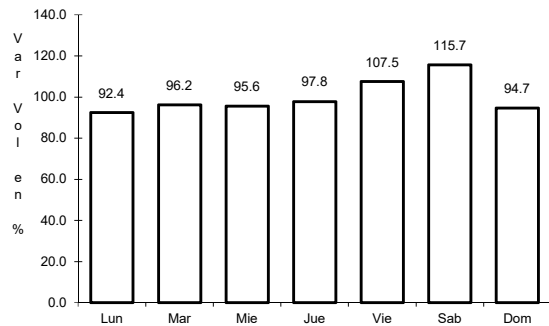


Km: 106.50      Tipo: 1      Sent: 0

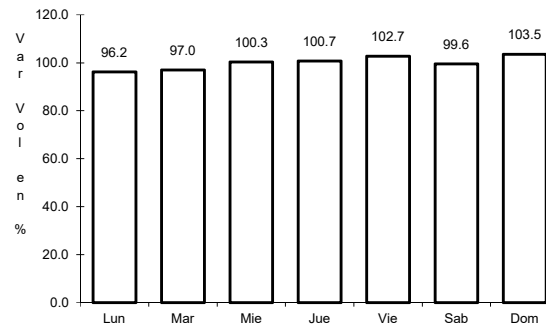
25 CARR: Hermosillo - Sahuaripa

CLAVE: 26230

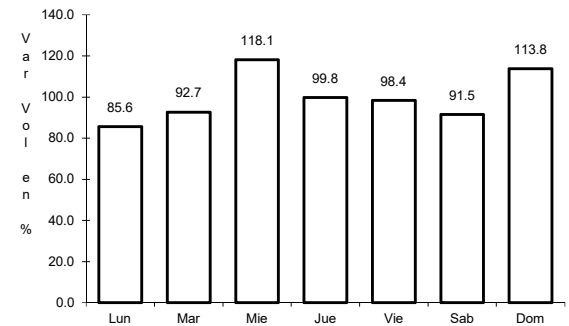
ruta: SON-020



Km: 0.00      Tipo: 3      Sent: 1



Km: 0.00      Tipo: 3      Sent: 2

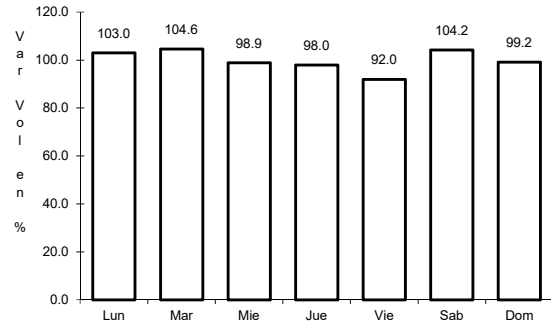


Km: 88.00      Tipo: 3      Sent: 0

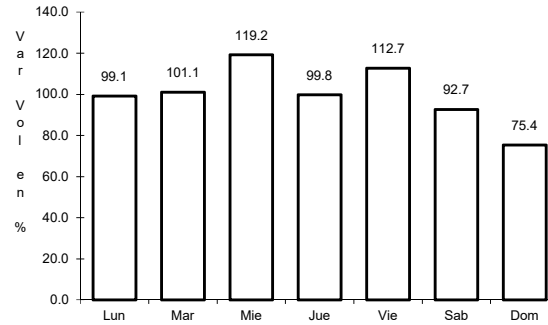
26 CARR: Hornos - San Nicolás

CLAVE: 26243

ruta: SON-012



Km: 0.00      Tipo: 3      Sent: 0

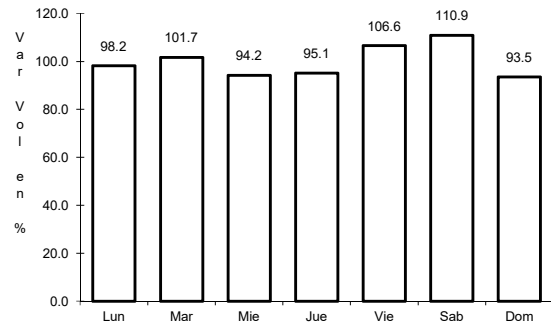


Km: 58.00      Tipo: 1      Sent: 0

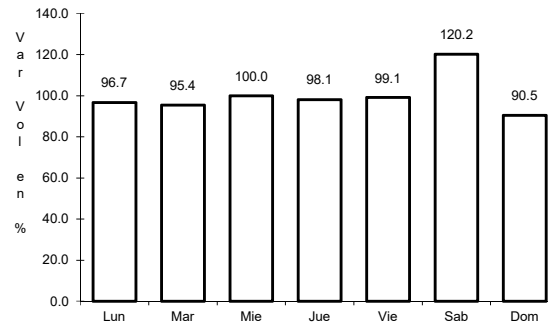
27 CARR: Huatabampo - Bacabachi

CLAVE: 26237

ruta: SON-176



Km: 0.00      Tipo: 3      Sent: 0

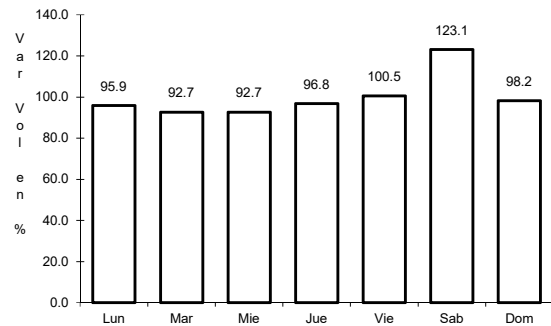


Km: 29.00      Tipo: 1      Sent: 0

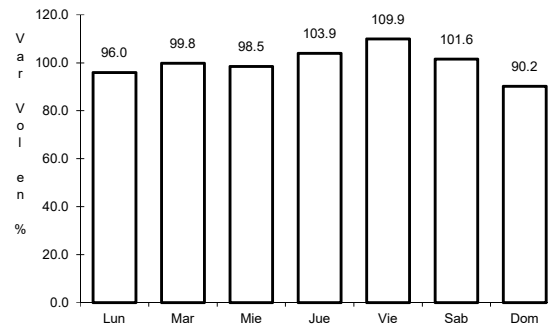
28 CARR: La Alameda - El Sahuaro

CLAVE: 26234

ruta: SON-037



Km: 0.00      Tipo: 3      Sent: 0

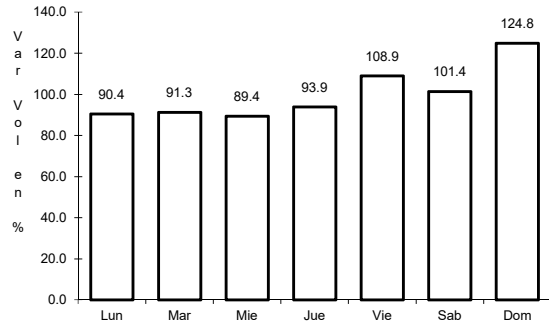


Km: 47.00      Tipo: 1      Sent: 0

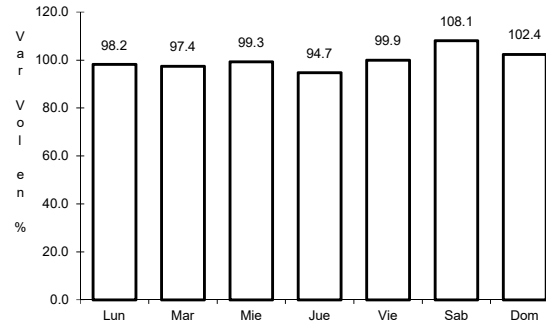
29 CARR: Mazocahui - Cananea

CLAVE: 26118

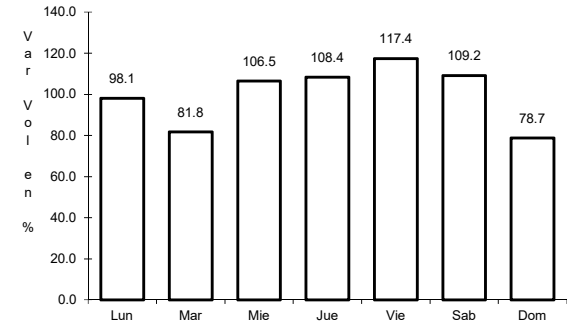
ruta: SON-118



Km: 0.00      Tipo: 3      Sent: 0



Km: 98.00      Tipo: 1      Sent: 0

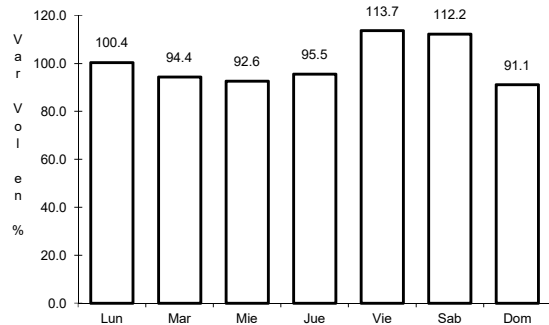


Km: 204.00      Tipo: 1      Sent: 0

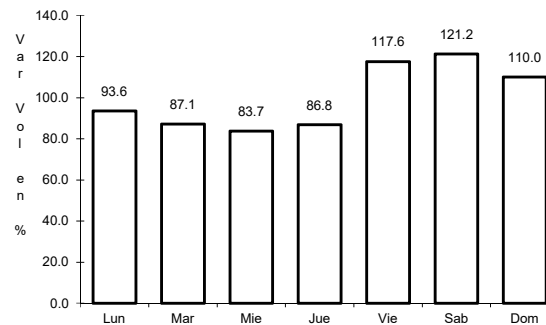
30 CARR: Navojoa - Álamos

CLAVE: 26240

ruta: SON-013



Km: 0.00      Tipo: 3      Sent: 0

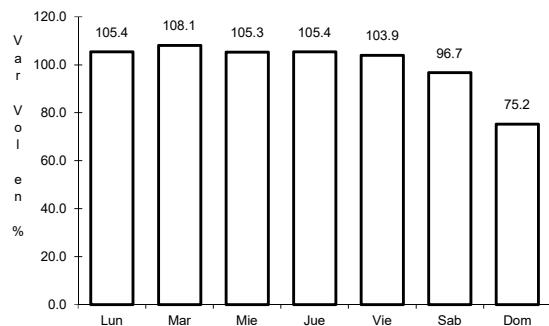


Km: 52.80      Tipo: 1      Sent: 0

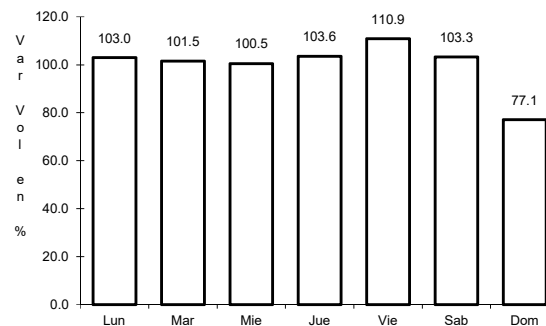
31 CARR: Navojoa - Yavaros

CLAVE: 26229

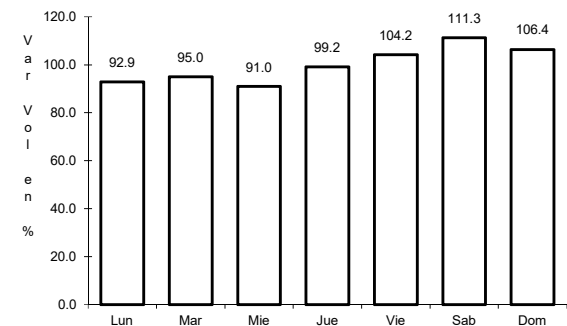
ruta: SON-056



Km: 0.00      Tipo: 3      Sent: 1



Km: 0.00      Tipo: 3      Sent: 2

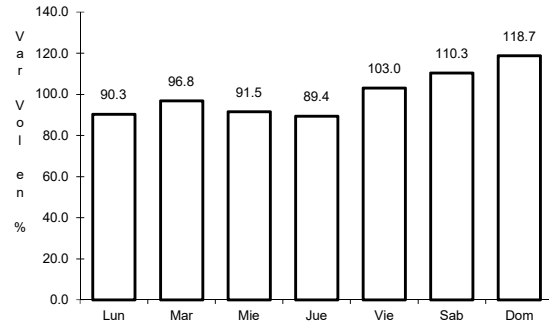


Km: 55.00      Tipo: 1      Sent: 0

32 CARR: Nogales - San Antonio

CLAVE: 26110

ruta: SON



Km: 58.00

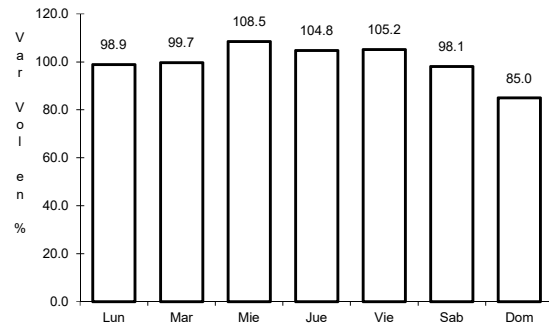
Tipo: 1

Sent: 0

33 CARR: Ramal a Aeropuerto de Guaymas

CLAVE: 26568

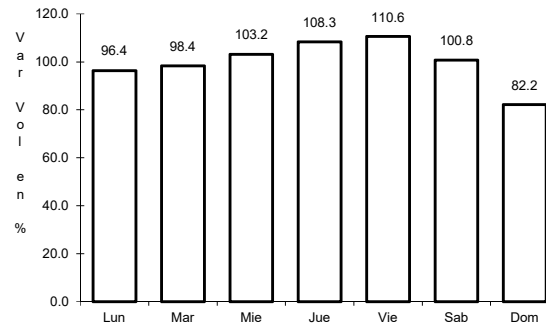
ruta: SON



Km: 0.00

Tipo: 3

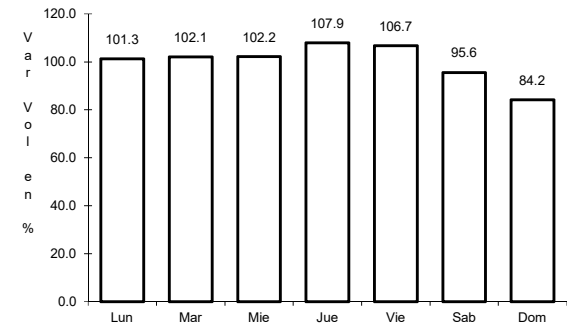
Sent: 1



Km: 0.00

Tipo: 3

Sent: 2



Km: 3.00

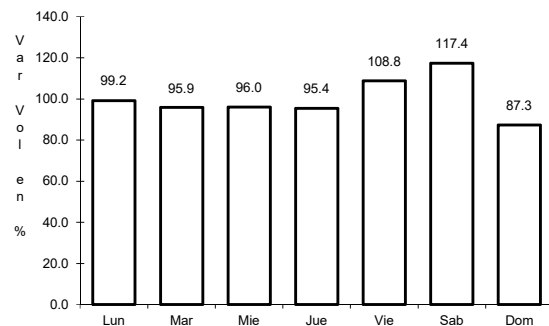
Tipo: 3

Sent: 0

34 CARR: San Luis Río Colorado - Golfo de Santa Clara

CLAVE: 26226

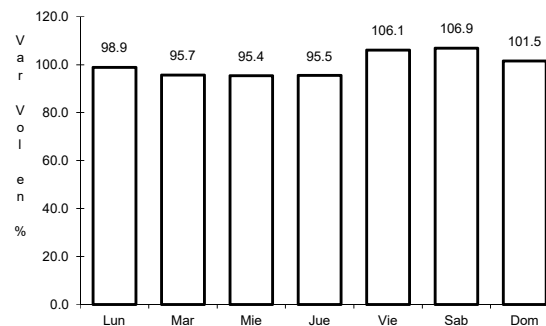
ruta: SON-040



Km: 0.00

Tipo: 3

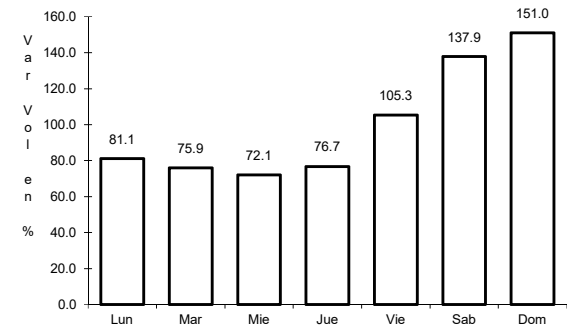
Sent: 1



Km: 0.00

Tipo: 3

Sent: 2



Km: 114.30

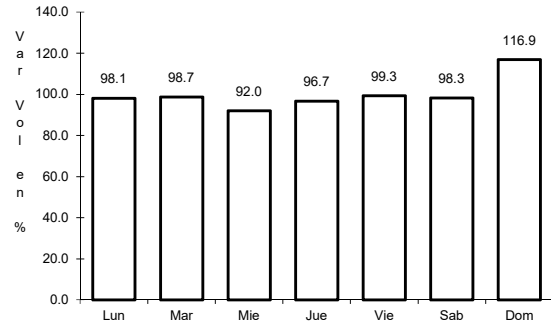
Tipo: 1

Sent: 0

35 CARR: Sonoita - Pitiquito

CLAVE: 26022

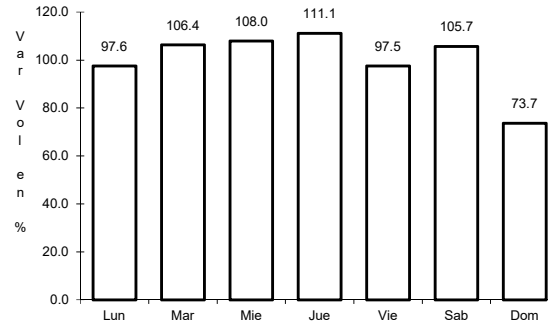
RUTA: SON



Km: 0.00

Tipo: 3

Sent: 0



Km: 170.00

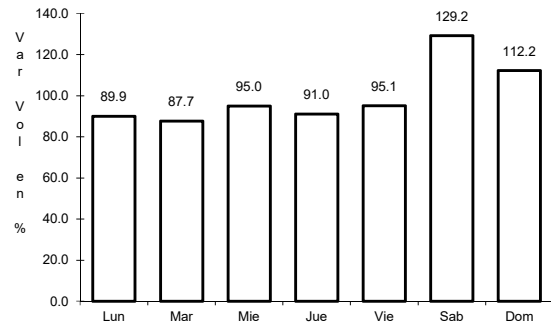
Tipo: 1

Sent: 0

37 CARR: T. C. (Hermosillo - Nogales) - Huásabas

CLAVE: 26231

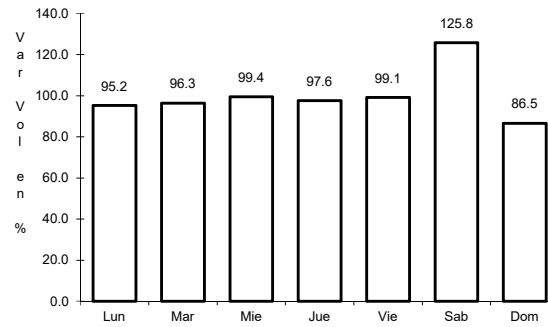
RUTA: MEX-014-SON



Km: 0.00

Tipo: 3

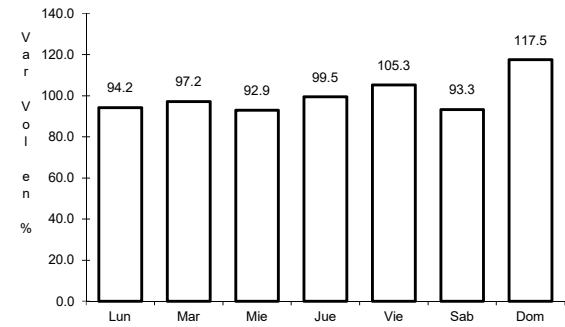
Sent: 1



Km: 0.00

Tipo: 3

Sent: 2



Km: 212.50

Tipo: 1

Sent: 0