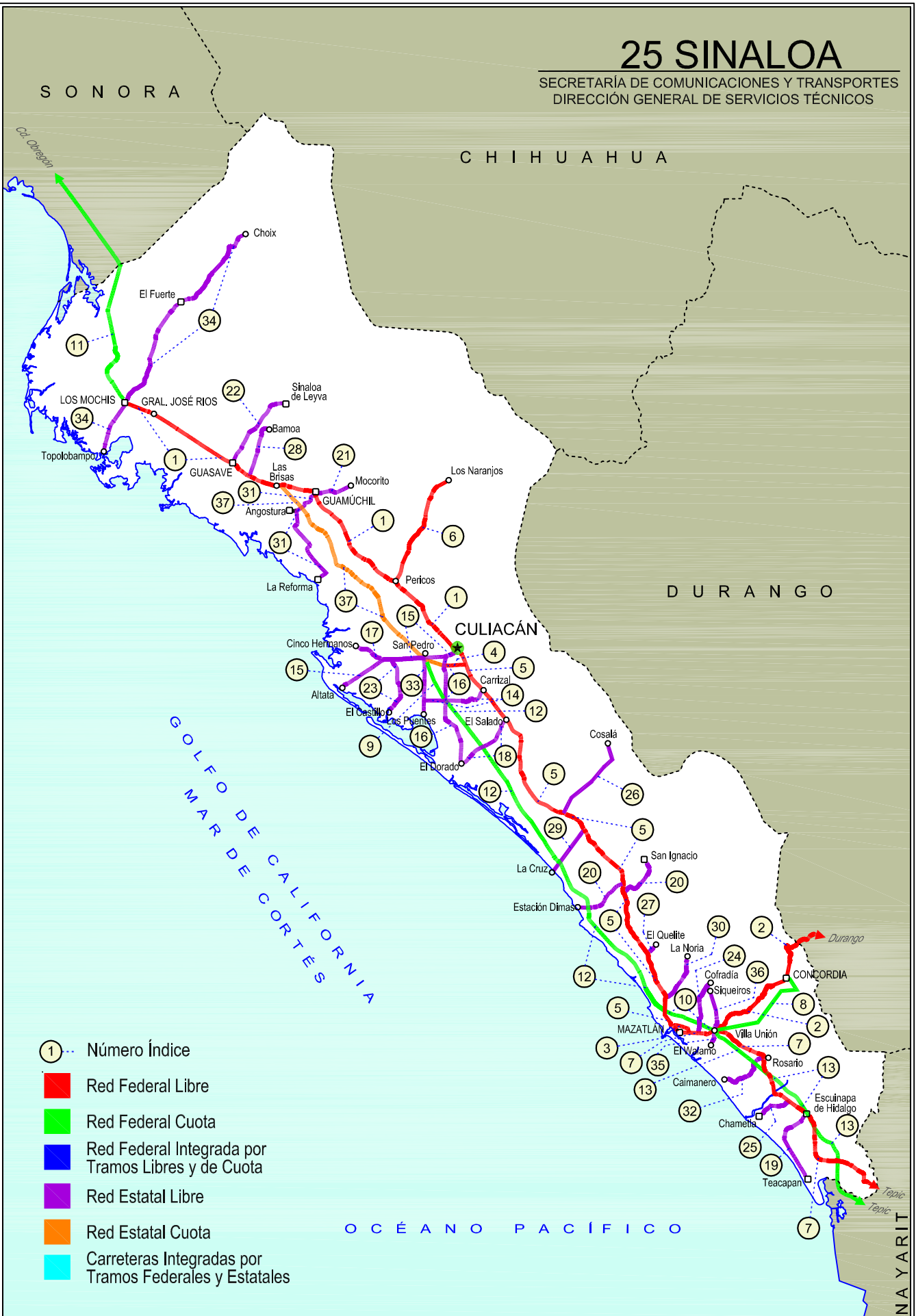


25 SINALOA

SECRETARÍA DE COMUNICACIONES Y TRANSPORTES
DIRECCIÓN GENERAL DE SERVICIOS TÉCNICOS





SINALOA

NO. INDICE CARRETERA	RUTA
---RED FEDERAL LIBRE---	
1 Culiacán - Los Mochis	MEX-015
2 Durango - Villa Unión	MEX-040
3 Libramiento de Mazatlán	MEX
4 Libramiento Sur de Culiacán	MEX-015
5 Mazatlán - Culiacán	MEX-015
6 Pericos - Los Naranjos	MEX-024
7 Tepic - Mazatlán	MEX-015
---RED FEDERAL DE CUOTA---	
8 Durango - Mazatlán (Cuota)	MEX-040D
9 Libramiento de Culiacán (Cuota)	MEX-015D
10 Libramiento de Mazatlán (Cuota)	MEX-015D
11 Los Mochis - Cd. Obregón (Cuota)	MEX-015D
12 Mazatlán - Culiacán (Cuota)	MEX-015D
13 Tepic - Villa Unión (cuota)	MEX-015D
---RED ESTATAL LIBRE---	
14 Carrizal - Campo Aníbal	SIN-019
15 Culiacán - Altata	SIN-030
16 Culiacán - El Dorado	SIN-005
17 El Limoncito - Cinco Hermanos	SIN-016
18 El Salado - El Dorado	SIN-010
19 Escuinapa de Hidalgo - Teacapan	SIN-001
20 Estación Dimas - San Ignacio	SIN-006
21 Guamuchil - Mocerito	SIN-021
22 Guasave - Sinaloa de Leyva	SIN-023
23 Navolato - El Castillo	SIN-004
24 Pozole - Cofradía	SIN-080
25 Ramal a Chametla	SIN-002
26 Ramal a Cosalá	SIN-008
27 Ramal a El Quelite	SIN-060
28 Ramal a Estación Bamoa	SIN-022
29 Ramal a La Cruz	SIN
30 Ramal a La Noria	SIN
31 Ramal a La Reforma	SIN-004
32 Rosario - Caimanero	SIN-003
33 San Pedro - Campo Aníbal	SIN
34 Topolobampo - Choix	SIN-023
35 Villa Unión - El Walamo	SIN-081
36 Villa Unión - Siqueiros	SIN-063
---RED ESTATAL DE CUOTA---	
37 Culiacán - Las Brisas (Cuota)	SIN-001D

SINALOA

1 CARR: Culiacán - Los Mochis

CLAVE: 25502

RUTA: MEX-015

AÑO: 2018

LUGAR	ESTACION				CLASIFICACION VEHICULAR EN PORCIENTO										COORDENADAS					
	KM	TE	SC	TDPA	M	A	B	C2	C3	T3S2	T3S3	T3S2R4	OTROS	A	B	C	K'	D	LATITUD	LONGITUD
Culiacán	0.00																			
T. Der. Los Monzones	4.00	1	1	10070	1.4	88.2	0.8	5.2	1.6	2.0	0.5	0.2	0.1	89.6	0.8	9.6	0.083	0.502	24.837472	-107.436258
T. Der. Los Monzones	4.00	1	2	10140	1.4	87.7	1.1	5.5	1.6	1.9	0.5	0.2	0.1	89.1	1.1	9.8	0.097	0.502	24.837408	-107.436380
Caseta de Cobro Puente Culiacán	22.00	2	1	3706	0.9	85.3	4.1	3.5	1.7	3.5	0.7	0.1	0.2	86.2	4.1	9.7	0.084	0.500	24.948949	-107.545695
Caseta de Cobro Puente Culiacán	22.00	2	2	3706	0.9	85.3	4.1	3.5	1.7	3.5	0.7	0.1	0.2	86.2	4.1	9.7	0.084	0.500	24.948949	-107.545695
T. Der. Presa López Mateos	27.20	3	0	7505	2.6	81.7	2.8	7.8	1.5	2.5	0.8	0.2	0.1	84.3	2.8	12.9	0.110	0.504	24.994087	-107.570959
X. C. Pericos - Los Naranjos	43.60	3	0	5895	1.7	82.7	2.4	7.6	1.8	2.9	0.7	0.1	0.1	84.4	2.4	13.2	0.106	0.513	25.093893	-107.698140
Guamuchil	104.70	1	0	7995	4.9	80.5	2.4	7.2	1.4	2.8	0.6	0.1	0.1	85.4	2.4	12.2	0.095	0.521	25.427379	-108.057588
Guamuchil	104.70	3	1	10369	4.5	80.0	2.3	8.2	1.7	2.4	0.6	0.2	0.1	84.5	2.3	13.2	0.076	0.503	25.470107	-108.099445
Guamuchil	104.70	3	2	10266	4.2	79.0	2.6	8.6	2.0	2.5	0.8	0.2	0.1	83.2	2.6	14.2	0.070	0.503	25.469973	-108.099451
T. Izq. Aut. Culiacán - Las Brisas	121.20	1	0	8316	1.4	81.3	3.9	7.5	1.6	3.1	0.6	0.4	0.2	82.7	3.9	13.4	0.096	0.539	25.489540	-108.227296
T. Izq. Aut. Culiacán - Las Brisas	121.20	3	1	7325	1.1	73.0	4.2	7.9	1.6	7.2	1.1	3.3	0.6	74.1	4.2	21.7	0.079	0.533	25.488051	-108.241597
T. Izq. Aut. Culiacán - Las Brisas	121.20	3	2	8377	0.9	71.4	4.9	8.0	1.6	8.0	1.2	3.4	0.6	72.3	4.9	22.8	0.108	0.533	25.487995	-108.241108
T. Der. Estación Bamoa	133.17	3	1	7240	3.2	65.0	5.2	7.6	3.9	9.8	1.6	2.7	1.0	68.2	5.2	26.6	0.085	0.510	25.527170	-108.379976
T. Der. Estación Bamoa	133.17	3	2	6961	1.6	66.1	4.8	7.2	2.8	10.9	2.0	3.7	0.9	67.7	4.8	27.5	0.110	0.510	25.527094	-108.380017
Caseta de Cobro Puente Sinaloa	136.00	2	1	5511	0.3	62.2	6.9	4.4	4.0	14.8	1.7	4.9	0.8	62.5	6.9	30.6	0.084	0.500	25.512854	-108.347613
Caseta de Cobro Puente Sinaloa	136.00	2	2	5511	0.3	62.2	6.9	4.4	4.0	14.8	1.7	4.9	0.8	62.5	6.9	30.6	0.084	0.500	25.512854	-108.347613
Guasave	146.28	3	1	13777	2.3	77.0	3.4	4.8	2.1	6.0	1.2	2.8	0.4	79.3	3.4	17.3	0.070	0.504	25.590357	-108.493738
Guasave	146.28	3	2	13579	2.0	75.1	3.6	5.2	2.5	7.0	1.3	2.9	0.4	77.1	3.6	19.3	0.067	0.504	25.590277	-108.493781
T. Izq. Los Mochis (1º Acceso)	201.97	1	1	16727	1.4	71.3	3.2	9.2	3.4	6.9	1.4	2.9	0.3	72.7	3.2	24.1	0.068	0.502	25.806878	-108.955800
T. Izq. Los Mochis (1º Acceso)	201.97	1	2	16873	1.9	68.7	3.5	9.5	3.6	7.8	1.5	3.2	0.3	70.6	3.5	25.9	0.066	0.502	25.806841	-108.955877
T. Izq. Los Mochis (1º Acceso)	201.97	3	1	14694	1.8	71.3	3.2	9.2	3.2	7.0	1.4	2.6	0.3	73.1	3.2	23.7	0.090	0.502	25.819527	-108.963351
T. Izq. Los Mochis (1º Acceso)	201.97	3	2	14789	2.2	67.7	3.5	9.9	3.7	8.0	1.5	3.2	0.3	69.9	3.5	26.6	0.081	0.502	25.819498	-108.963432
T. C. Topolobampo - Choix	205.21																			

2 CARR: Durango - Villa Unión

CLAVE: 0083

RUTA: MEX-040

AÑO: 2018

LUGAR	ESTACION				CLASIFICACION VEHICULAR EN PORCIENTO										COORDENADAS					
	KM	TE	SC	TDPA	M	A	B	C2	C3	T3S2	T3S3	T3S2R4	OTROS	A	B	C	K'	D	LATITUD	LONGITUD
Durango	0.00	3	0	4324	1.2	75.0	2.1	14.4	3.8	2.1	1.2	0.0	0.2	76.2	2.1	21.7	0.067	0.549	23.995222	-104.732512
T. Der. Pino	22.86	3	0	2486	2.2	64.9	3.4	18.6	4.9	3.6	2.0	0.0	0.4	67.1	3.4	29.5	0.072	0.513	23.967114	-104.820594
T. Izq. Estación Navíos	58.42	3	0	2080	2.0	66.2	3.7	17.9	4.9	3.2	1.7	0.0	0.4	68.2	3.7	28.1	0.072	0.525	23.895114	-105.054102
Llano Grande	77.23	1	0	2429	3.5	67.9	2.7	12.2	6.3	4.3	2.7	0.0	0.4	71.4	2.7	25.9	0.080	0.510	23.866644	-105.199104
El Salto	99.76	3	0	2165	3.0	75.8	1.3	16.3	1.5	1.3	0.6	0.0	0.2	78.8	1.3	19.9	0.087	0.515	23.784356	-105.376077
La Ciudad	145.50	1	0	831	5.4	72.4	2.5	14.9	1.6	2.4	0.8	0.0	0.0	77.8	2.5	19.7	0.077	0.505	23.731534	-105.676924

SINALOA

2 CARR: Durango - Villa Unión

CLAVE: 0083

RUTA: MEX-040

AÑO: 2018

LUGAR	ESTACION				CLASIFICACION VEHICULAR EN PORCIENTO													COORDENADAS			
	KM	TE	SC	TDPA	M	A	B	C2	C3	T3S2	T3S3	T3S2R4	OTROS	A	B	C	K'	D	LATITUD	LONGITUD	
La Ciudad	145.50	3	0	421	11.6	63.3	2.4	17.0	1.9	2.6	1.2	0.0	0.0	74.9	2.4	22.7	0.121	0.524	23.727350	-105.691531	
Lim. Edos. Term. Dgo. Ppia. Sin.	198.50																				
T. C. Tepic - Mazatlán	294.40	1	0	3454	4.1	71.2	5.8	11.0	3.0	3.5	1.1	0.1	0.2	75.3	5.8	18.9	0.130	0.510	23.204700	-106.197887	

3 CARR: Libramiento de Mazatlán

CLAVE: 25604

RUTA: MEX

AÑO: 2018

LUGAR	ESTACION				CLASIFICACION VEHICULAR EN PORCIENTO													COORDENADAS		
	KM	TE	SC	TDPA	M	A	B	C2	C3	T3S2	T3S3	T3S2R4	OTROS	A	B	C	K'	D	LATITUD	LONGITUD
T. C. Tepic - Mazatlán	0.00	3	1	35866	5.4	81.6	1.6	7.7	1.4	1.5	0.4	0.3	0.1	87.0	1.6	11.4	0.058	0.519	23.235701	-106.389784
T. C. Tepic - Mazatlán	0.00	3	2	38712	7.1	78.4	1.8	8.8	1.5	1.6	0.4	0.3	0.1	85.5	1.8	12.7	0.064	0.519	23.235808	-106.389929
T. C. Mazatlán - Culiacán	5.40	1	1	26944	5.4	80.7	1.9	8.7	1.3	1.3	0.4	0.2	0.1	86.1	1.9	12.0	0.061	0.516	23.261233	-106.410935
T. C. Mazatlán - Culiacán	5.40	1	2	25262	7.1	79.0	1.5	8.4	1.5	1.7	0.4	0.3	0.1	86.1	1.5	12.4	0.067	0.516	23.261137	-106.411036

4 CARR: Libramiento Sur de Culiacán

CLAVE: 25500

RUTA: MEX-015

AÑO: 2018

LUGAR	ESTACION				CLASIFICACION VEHICULAR EN PORCIENTO													COORDENADAS		
	KM	TE	SC	TDPA	M	A	B	C2	C3	T3S2	T3S3	T3S2R4	OTROS	A	B	C	K'	D	LATITUD	LONGITUD
T. C. Mazatlán - Culiacán	0.00	3	1	14347	2.0	85.4	0.6	6.6	2.0	2.3	0.6	0.4	0.1	87.4	0.6	12.0	0.078	0.515	24.752215	-107.363439
T. C. Mazatlán - Culiacán	0.00	3	2	13507	2.4	84.6	0.7	6.1	2.4	2.6	0.6	0.5	0.1	87.0	0.7	12.3	0.077	0.515	24.752054	-107.363281
T. C. Culiacán - El Dorado	8.90	1	1	16271	2.6	83.1	0.8	5.6	3.4	3.3	0.5	0.6	0.1	85.7	0.8	13.5	0.077	0.501	24.743109	-107.442848
T. C. Culiacán - El Dorado	8.90	1	2	16220	2.6	82.3	0.7	5.2	4.2	3.5	0.7	0.7	0.1	84.9	0.7	14.4	0.072	0.501	24.742990	-107.442822

5 CARR: Mazatlán - Culiacán

CLAVE: 25501

RUTA: MEX-015

AÑO: 2018

LUGAR	ESTACION				CLASIFICACION VEHICULAR EN PORCIENTO													COORDENADAS			
	KM	TE	SC	TDPA	M	A	B	C2	C3	T3S2	T3S3	T3S2R4	OTROS	A	B	C	K'	D	LATITUD	LONGITUD	
Mazatlán	0.00																				
T. Der. Libramiento de Mazatlán	6.40	1	1	19530	4.4	86.9	1.4	6.0	0.5	0.4	0.3	0.1	0.0	91.3	1.4	7.3	0.109	0.529	23.260209	-106.417808	
T. Der. Libramiento de Mazatlán	6.40	1	2	21974	6.4	84.0	1.6	6.7	0.5	0.4	0.3	0.1	0.0	90.4	1.6	8.0	0.097	0.529	23.260453	-106.417896	
T. Der. La Noria	10.92	1	0	6137	5.4	75.3	2.2	9.6	2.2	4.0	1.1	0.1	0.1	80.7	2.2	17.1	0.074	0.500	23.343515	-106.414564	
T. Der. La Noria	10.92	3	0	4599	5.5	73.1	2.7	8.7	2.9	5.6	1.2	0.1	0.2	78.6	2.7	18.7	0.079	0.506	23.358143	-106.417087	
T. Izq. Playa Los Cerritos	11.08	3	0	4385	4.9	72.2	3.0	9.6	2.8	6.0	1.3	0.0	0.2	77.1	3.0	19.9	0.080	0.501	23.362450	-106.420082	
T. Der. El Quelite	33.00	1	0	3751	6.0	71.4	3.0	10.8	2.4	5.3	1.0	0.0	0.1	77.4	3.0	19.6	0.078	0.514	23.530505	-106.503172	
T. Der. El Quelite	33.00	3	0	2756	4.3	72.0	4.3	8.3	2.7	6.8	1.5	0.0	0.1	76.3	4.3	19.4	0.076	0.502	23.532942	-106.505278	
X. C. Estación Dimas - San Ignacio	66.77	1	0	2665	2.7	69.5	4.0	9.6	3.8	8.7	1.7	0.0	0.0	72.2	4.0	23.8	0.081	0.505	23.785621	-106.608426	

SINALOA

5 CARR: Mazatlán - Culiacán

CLAVE: 25501

RUTA: MEX-015

AÑO: 2018

LUGAR	ESTACION				CLASIFICACION VEHICULAR EN PORCIENTO										COORDENADAS					
	KM	TE	SC	TDPA	M	A	B	C2	C3	T3S2	T3S3	T3S2R4	OTROS	A	B	C	K'	D	LATITUD	LONGITUD
X. C. Estación Dimas - San Ignacio	66.77	3	0	3175	3.5	69.9	3.6	9.4	3.9	8.2	1.4	0.0	0.1	73.4	3.6	23.0	0.079	0.501	23.795913	-106.612707
T. Izq. Estación Dimas	73.96	3	0	2691	2.8	68.2	3.9	9.4	4.2	9.6	1.8	0.0	0.1	71.0	3.9	25.1	0.081	0.501	23.840829	-106.614253
T. Der. Elota	91.92	3	0	2501	2.4	67.0	4.1	10.3	4.4	9.8	1.9	0.0	0.1	69.4	4.1	26.5	0.076	0.509	23.965813	-106.723825
T. Izq. La Cruz	105.21	3	0	3610	4.3	75.8	2.4	6.1	4.0	6.5	0.7	0.0	0.2	80.1	2.4	17.5	0.080	0.510	24.057869	-106.798542
El Salado	175.24	1	0	5986	4.8	78.9	2.1	8.2	1.9	3.3	0.7	0.0	0.1	83.7	2.1	14.2	0.094	0.523	24.502899	-107.156859
El Salado	175.24	3	0	6404	2.0	81.7	1.4	8.0	2.3	3.7	0.8	0.0	0.1	83.7	1.4	14.9	0.100	0.506	24.514181	-107.166332
T. Izq. Libramiento de Culiacán	210.40	1	1	9012	1.6	84.5	1.0	7.2	2.3	2.8	0.5	0.0	0.1	86.1	1.0	12.9	0.084	0.502	24.748370	-107.354330
T. Izq. Libramiento de Culiacán	210.40	1	2	9070	1.5	85.9	0.8	6.3	2.1	2.6	0.7	0.0	0.1	87.4	0.8	11.8	0.076	0.502	24.748344	-107.354460
Culiacán	215.30																			

6 CARR: Pericos - Los Naranjos

CLAVE: 25598

RUTA: MEX-024

AÑO: 2018

LUGAR	ESTACION				CLASIFICACION VEHICULAR EN PORCIENTO										COORDENADAS					
	KM	TE	SC	TDPA	M	A	B	C2	C3	T3S2	T3S3	T3S2R4	OTROS	A	B	C	K'	D	LATITUD	LONGITUD
Pericos	0.00	3	0	3301	7.1	78.8	0.9	9.0	2.6	0.9	0.1	0.5	0.1	85.9	0.9	13.2	0.078	0.500	25.097836	-107.682576
Badiraguato	37.50	1	0	2530	5.7	84.5	1.0	6.9	1.0	0.3	0.3	0.1	0.2	90.2	1.0	8.8	0.076	0.534	25.348191	-107.558933
Naranjos	66.00																			

7 CARR: Tepic - Mazatlán

CLAVE: 00499

RUTA: MEX-015

AÑO: 2018

LUGAR	ESTACION				CLASIFICACION VEHICULAR EN PORCIENTO										COORDENADAS					
	KM	TE	SC	TDPA	M	A	B	C2	C3	T3S2	T3S3	T3S2R4	OTROS	A	B	C	K'	D	LATITUD	LONGITUD
Tepic (Baja)	0.00	3	1	9218	8.7	81.9	0.1	7.4	0.1	0.5	1.1	0.0	0.2	90.6	0.1	9.3	0.068	0.502	21.511868	-104.905618
Tepic (Alta)	0.00	3	1	11713	2.5	92.4	0.0	0.8	0.0	1.2	2.6	0.3	0.2	94.9	0.0	5.1	0.073	0.500	21.511799	-104.905698
Tepic (Baja)	0.00	3	2	9150	7.0	85.2	0.1	5.4	0.1	0.5	1.3	0.1	0.3	92.2	0.1	7.7	0.059	0.502	21.511606	-104.905641
Tepic (Alta)	0.00	3	2	13129	2.6	91.9	0.0	1.0	0.0	1.3	2.8	0.2	0.2	94.5	0.0	5.5	0.061	0.500	21.511664	-104.905583
T. Izq. Libramiento de Tepic (Alta)	2.56	1	1	8701	5.1	92.3	0.1	1.9	0.0	0.1	0.4	0.0	0.1	97.4	0.1	2.5	0.076	0.516	21.520981	-104.921343
T. Izq. Libramiento de Tepic (Baja)	2.56	1	1	10084	5.9	83.1	0.4	9.2	0.6	0.3	0.4	0.0	0.1	89.0	0.4	10.6	0.067	0.533	21.521025	-104.921344
T. Izq. Libramiento de Tepic (Alta)	2.56	1	2	9580	4.1	93.0	0.1	2.2	0.0	0.1	0.4	0.0	0.1	97.1	0.1	2.8	0.080	0.516	21.520784	-104.921236
T. Izq. Libramiento de Tepic (Baja)	2.56	1	2	9576	7.3	80.2	0.6	10.5	0.8	0.3	0.2	0.0	0.1	87.5	0.6	11.9	0.063	0.533	21.520719	-104.921275
T. Izq. Aut. Tepic - Ent. San Blas (Cuota)	3.70	3	0	9143	7.7	74.7	2.0	8.7	2.5	3.0	1.1	0.0	0.3	82.4	2.0	15.6	0.057	0.545	21.538514	-104.933961
Los Otates	19.80	3	0	4730	3.1	68.1	3.5	8.1	6.3	7.7	2.6	0.1	0.5	71.2	3.5	25.3	0.068	0.541	21.639992	-104.972604
T. Izq. Jumatán	28.52	1	0	4810	3.3	71.3	3.0	7.6	4.8	7.0	2.6	0.1	0.3	74.6	3.0	22.4	0.062	0.524	21.669610	-105.021688
T. Izq. Jumatán	28.52	3	1	7873	1.7	66.4	5.2	7.1	3.8	10.5	2.2	2.0	1.1	68.1	5.2	26.7	0.072	0.536	21.668109	-105.029568
T. Izq. Jumatán	28.52	3	2	9102	1.1	62.8	5.8	8.3	4.4	11.7	2.4	2.2	1.3	63.9	5.8	30.3	0.079	0.536	21.667962	-105.029549

SINALOA

7 CARR: Tepic - Mazatlán

CLAVE: 00499

RUTA: MEX-015

AÑO: 2018

LUGAR	ESTACION				CLASIFICACION VEHICULAR EN PORCIENTO													COORDENADAS		
	KM	TE	SC	TDPA	M	A	B	C2	C3	T3S2	T3S3	T3S2R4	OTROS	A	B	C	K'	D	LATITUD	LONGITUD
T. Izq. San Blas	33.54	1	1	7002	2.1	60.8	7.4	11.1	2.8	9.7	2.2	3.2	0.7	62.9	7.4	29.7	0.076	0.501	21.679347	-105.042338
T. Izq. San Blas	33.54	1	2	7038	1.7	57.8	7.5	11.7	3.0	11.3	2.5	3.7	0.8	59.5	7.5	33.0	0.105	0.501	21.679160	-105.042500
T. Izq. San Blas	33.54	3	1	8143	2.3	61.2	5.3	7.7	4.4	12.6	2.2	3.8	0.5	63.5	5.3	31.2	0.056	0.506	21.700530	-105.053411
T. Izq. San Blas	33.54	3	2	7959	1.1	58.0	6.4	8.6	5.0	13.6	2.4	4.2	0.7	59.1	6.4	34.5	0.079	0.506	21.700478	-105.053551
T. Izq. Villa Hidalgo	48.12	1	0	8153	2.3	75.2	2.1	7.8	3.3	5.8	2.5	0.5	0.5	77.5	2.1	20.4	0.060	0.513	21.806574	-105.102574
T. Izq. Villa Hidalgo	48.12	3	0	7954	7.4	65.5	3.3	9.6	4.5	7.3	2.1	0.1	0.2	72.9	3.3	23.8	0.066	0.508	21.808804	-105.103413
T. Izq. Santiago Ixcuintla	56.42	1	0	7846	4.2	69.4	4.5	10.0	3.3	6.2	2.1	0.1	0.2	73.6	4.5	21.9	0.075	0.501	21.852995	-105.150960
T. Izq. Santiago Ixcuintla	56.42	3	0	7073	3.3	71.3	3.1	7.5	4.7	7.5	2.4	0.1	0.1	74.6	3.1	22.3	0.069	0.502	21.859729	-105.155822
T. Izq. Tuxpan	70.60	1	0	8750	4.7	69.3	3.6	10.5	3.2	6.4	2.0	0.1	0.2	74.0	3.6	22.4	0.066	0.501	21.944087	-105.216431
T. Izq. Tuxpan	70.60	3	0	9034	8.8	65.0	3.7	10.4	3.8	6.3	1.8	0.1	0.1	73.8	3.7	22.5	0.059	0.512	21.955437	-105.221530
T. Der. Rosamorada	90.70	3	0	5175	7.7	58.1	5.5	9.0	4.4	12.1	2.9	0.1	0.2	65.8	5.5	28.7	0.060	0.505	22.124542	-105.219541
Tierra Generosa	110.40	1	0	4095	2.2	52.3	7.2	9.7	6.9	17.3	4.2	0.1	0.1	54.5	7.2	38.3	0.052	0.502	22.293438	-105.272928
T. Der. Acaponeta	136.52	1	0	8580	8.4	69.0	2.8	9.3	2.4	6.2	1.6	0.1	0.2	77.4	2.8	19.8	0.066	0.534	22.482371	-105.384618
T. Der. Acaponeta	136.52	3	0	5158	6.9	60.2	4.3	9.2	4.6	11.7	2.8	0.1	0.2	67.1	4.3	28.6	0.076	0.503	22.493695	-105.384247
Lim. Edos. Term. Nay. Ppia. Sin.	144.60																			
Escuinapa de Hidalgo	200.00	1	0	4866	13.5	62.3	3.3	8.4	4.6	5.2	1.7	0.7	0.3	75.8	3.3	20.9	0.063	0.501	22.832603	-105.760716
Escuinapa de Hidalgo	200.00	3	0	5137	4.3	67.9	4.8	9.1	4.4	7.5	1.7	0.1	0.2	72.2	4.8	23.0	0.074	0.511	22.847015	-105.791942
Rosario	221.71	1	0	8071	10.9	70.1	2.9	11.3	2.0	1.8	0.9	0.0	0.1	81.0	2.9	16.1	0.073	0.507	22.997015	-105.851649
Rosario	221.71	3	0	5812	5.3	75.1	2.2	8.5	3.3	4.4	1.1	0.0	0.1	80.4	2.2	17.4	0.073	0.503	23.003237	-105.868439
X. C. Durango - Mazatlán (Cuota)	265.20	1	0	4906	3.0	74.2	3.5	8.8	3.1	5.3	1.2	0.4	0.5	77.2	3.5	19.3	0.077	0.506	23.189947	-106.175582
T. Der. Durango	267.99	1	0	4601	3.7	72.8	3.3	9.2	3.1	5.4	1.5	0.5	0.5	76.5	3.3	20.2	0.078	0.513	23.189427	-106.203895
T. Der. Durango	267.99	3	1	9375	8.3	75.8	2.1	5.8	1.7	2.2	2.1	0.7	1.3	84.1	2.1	13.8	0.081	0.539	23.189327	-106.209875
T. Der. Durango	267.99	3	2	9210	8.8	70.3	2.8	7.9	2.6	3.9	1.6	1.2	0.9	79.1	2.8	18.1	0.076	0.539	23.189216	-106.209871
Villa Unión	269.52	3	1	10785	7.9	73.6	2.6	8.4	3.1	2.6	0.7	0.7	0.4	81.5	2.6	15.9	0.084	0.501	23.190251	-106.222010
Villa Unión	269.52	3	2	10738	7.2	74.8	2.6	8.2	2.4	2.8	0.7	1.0	0.3	82.0	2.6	15.4	0.087	0.501	23.190296	-106.222332
T. Der. Libramiento de Mazatlán	288.87	1	1	20065	4.7	80.2	1.8	8.5	1.5	1.8	0.6	0.7	0.2	84.9	1.8	13.3	0.074	0.513	23.226143	-106.384037
T. Der. Libramiento de Mazatlán	288.87	1	2	19050	3.7	79.6	1.9	9.7	1.6	2.1	0.6	0.7	0.1	83.3	1.9	14.8	0.076	0.513	23.226087	-106.384124
Mazatlán	292.00																			

8 CARR: Durango - Mazatlán (Cuota)

CLAVE: 00084

RUTA: MEX-040D

AÑO: 2018

LUGAR	ESTACION				CLASIFICACION VEHICULAR EN PORCIENTO													COORDENADAS		
	KM	TE	SC	TDPA	M	A	B	C2	C3	T3S2	T3S3	T3S2R4	OTROS	A	B	C	K'	D	LATITUD	LONGITUD
Libramiento de Durango	20.50	3	0	2771	1.9	66.6	5.0	13.1	3.6	4.8	2.0	1.2	1.8	68.5	5.0	26.5	0.078	0.562	24.005857	-104.731896
Caseta de Cobro Durango	22.20	2	0	2884	0.9	72.1	4.1	2.4	2.4	9.6	1.3	6.4	0.8	73.0	4.1	22.9	0.108	0.500	24.005080	-104.734540

SINALOA

8 CARR: Durango - Mazatlán (Cuota)

CLAVE: 00084

RUTA: MEX-040D

AÑO: 2018

LUGAR	ESTACION				CLASIFICACION VEHICULAR EN PORCIENTO										COORDENADAS					
	KM	TE	SC	TDPA	M	A	B	C2	C3	T3S2	T3S3	T3S2R4	OTROS	A	B	C	K'	D	LATITUD	LONGITUD
Ent. Otinapa	44.50	1	0	2578	2.1	66.0	5.0	14.0	3.6	4.6	1.8	1.0	1.9	68.1	5.0	26.9	0.074	0.504	23.982275	-104.941437
Caseta de Cobro Llano Grande	78.10	2	0	2614	1.0	65.8	6.0	2.7	3.7	11.0	1.5	7.3	1.0	66.8	6.0	27.2	0.108	0.500	23.864514	-105.233202
Lim. Edos. Term. Dgo. Ppia. Sin.	157.40																			
Concordia	188.35	3	0	2331	2.2	59.0	8.3	13.4	4.1	7.7	2.4	1.2	1.7	61.2	8.3	30.5	0.099	0.516	23.251755	-106.058642
Villa Unión	208.35	1	0	2228	2.2	61.0	7.8	11.8	4.4	8.0	2.4	1.1	1.3	63.2	7.8	29.0	0.070	0.531	23.198960	-106.168928

9 CARR: Libramiento de Culiacán (Cuota)

CLAVE:

RUTA: MEX-015D

AÑO: 2018

LUGAR	ESTACION				CLASIFICACION VEHICULAR EN PORCIENTO										COORDENADAS					
	KM	TE	SC	TDPA	M	A	B	C2	C3	T3S2	T3S3	T3S2R4	OTROS	A	B	C	K'	D	LATITUD	LONGITUD
T. C. Mazatlán - Culiacán (Cuota)	181.80																			
Caseta de Cobro San Pedro	197.10	2	1	1515	0.2	39.7	2.9	3.5	4.8	32.8	4.9	9.3	1.9	39.9	2.9	57.2	0.101	0.500	24.693361	-107.525419
Caseta de Cobro San Pedro	197.10	2	2	1515	0.2	39.7	2.9	3.5	4.8	32.8	4.9	9.3	1.9	39.9	2.9	57.2	0.101	0.500	24.693361	-107.525419
T. C. Culiacán - Las Brisas (Cuota)	203.30	1	1	1411	1.5	34.4	5.8	8.1	3.1	30.9	4.7	10.5	1.0	35.9	5.8	58.3	0.079	0.505	24.731202	-107.553338
T. C. Culiacán - Las Brisas (Cuota)	203.30	1	2	1441	1.4	30.1	6.1	6.7	2.9	33.9	6.3	11.3	1.3	31.5	6.1	62.4	0.072	0.505	24.731018	-107.553591

10 CARR: Libramiento de Mazatlán (Cuota)

CLAVE:

RUTA: MEX-015D

AÑO: 2018

LUGAR	ESTACION				CLASIFICACION VEHICULAR EN PORCIENTO										COORDENADAS					
	KM	TE	SC	TDPA	M	A	B	C2	C3	T3S2	T3S3	T3S2R4	OTROS	A	B	C	K'	D	LATITUD	LONGITUD
Villa Unión (Ent. Caleritas)	0.00	3	1	2844	3.2	41.4	9.3	9.4	2.8	21.6	4.5	7.1	0.7	44.6	9.3	46.1	0.059	0.501	23.201377	-106.213897
Villa Unión (Ent. Caleritas)	0.00	3	2	2834	0.9	39.4	8.9	7.8	3.4	26.3	4.3	8.3	0.7	40.3	8.9	50.8	0.057	0.501	23.201284	-106.213913
Caseta de Cobro El Vainillo	6.00	2	1	2613	0.7	48.3	6.6	3.1	4.0	24.9	3.4	7.8	1.2	49.0	6.6	44.4	0.090	0.500	23.216186	-106.260339
Caseta de Cobro El Vainillo	6.00	2	2	2613	0.7	48.3	6.6	3.1	4.0	24.9	3.4	7.8	1.2	49.0	6.6	44.4	0.090	0.500	23.216186	-106.260339
T. C. Mazatlán - Culiacán	28.60	1	1	2463	1.7	37.1	8.5	7.4	2.4	28.6	4.2	9.5	0.6	38.8	8.5	52.7	0.072	0.521	23.305202	-106.390458
T. C. Mazatlán - Culiacán	28.60	1	2	2262	1.1	39.6	8.2	6.3	2.3	28.2	4.0	9.7	0.6	40.7	8.2	51.1	0.084	0.521	23.305067	-106.390486
T. C. Mazatlán - Culiacán	28.60	3	1	2085	2.0	38.6	5.2	8.0	4.1	26.9	4.4	10.1	0.7	40.6	5.2	54.2	0.076	0.508	23.308002	-106.410786
T. C. Mazatlán - Culiacán	28.60	3	2	2021	2.0	39.3	5.2	7.8	4.9	26.8	4.4	8.8	0.8	41.3	5.2	53.5	0.077	0.508	23.307924	-106.410754

11 CARR: Los Mochis - Cd. Obregón (Cuota)

CLAVE: 26444

RUTA: MEX-015D

AÑO: 2018

LUGAR	ESTACION				CLASIFICACION VEHICULAR EN PORCIENTO										COORDENADAS					
	KM	TE	SC	TDPA	M	A	B	C2	C3	T3S2	T3S3	T3S2R4	OTROS	A	B	C	K'	D	LATITUD	LONGITUD
T. C. Topolobampo - Choix	0.00	3	1	9631	2.9	68.0	3.8	9.8	2.3	8.1	1.3	3.6	0.2	70.9	3.8	25.3	0.106	0.519	25.836384	-108.975501
T. C. Topolobampo - Choix	0.00	3	2	10373	3.1	71.0	3.2	8.8	2.1	6.7	1.9	2.5	0.7	74.1	3.2	22.7	0.130	0.519	25.836302	-108.975683

SINALOA

11 CARR: Los Mochis - Cd. Obregón (Cuota)

CLAVE: 26444

RUTA: MEX-015D

AÑO: 2018

LUGAR	ESTACION				CLASIFICACION VEHICULAR EN PORCIENTO													COORDENADAS		
	KM	TE	SC	TDPA	M	A	B	C2	C3	T3S2	T3S3	T3S2R4	OTROS	A	B	C	K'	D	LATITUD	LONGITUD
T. Izq. Ahome	17.13	3	1	9616	3.7	69.2	3.6	9.1	2.0	7.3	1.4	3.3	0.4	72.9	3.6	23.5	0.081	0.513	25.945417	-109.053306
T. Izq. Ahome	17.13	3	2	10133	3.3	66.8	3.8	9.8	2.2	8.5	1.6	3.6	0.4	70.1	3.8	26.1	0.098	0.513	25.945399	-109.053447
T. Izq. Coahuibampo	19.00	1	1	8747	5.5	65.5	4.4	8.6	2.1	7.8	1.5	4.3	0.3	71.0	4.4	24.6	0.073	0.510	25.952912	-109.054698
T. Izq. Coahuibampo	19.00	1	2	9110	6.0	62.3	4.6	9.6	2.3	8.7	1.6	4.6	0.3	68.3	4.6	27.1	0.093	0.510	25.952924	-109.054876
T. Izq. Coahuibampo	19.00	3	1	7039	4.0	66.5	4.5	8.6	2.1	8.4	1.6	3.8	0.5	70.5	4.5	25.0	0.083	0.506	25.965568	-109.048974
T. Izq. Coahuibampo	19.00	3	2	7198	3.6	64.2	4.7	9.6	2.4	9.2	1.8	4.0	0.5	67.8	4.7	27.5	0.109	0.506	25.965707	-109.049074
Poblado Chico	50.00	3	1	4990	2.7	61.4	5.2	6.8	2.1	12.6	3.8	4.7	0.7	64.1	5.2	30.7	0.075	0.514	26.225413	-109.055080
Poblado Chico	50.00	3	2	5274	2.6	58.0	6.0	8.0	2.3	13.1	4.2	5.0	0.8	60.6	6.0	33.4	0.082	0.514	26.225348	-109.055279
T. Der. El Fuerte	54.80	1	1	5024	2.6	62.5	5.4	7.8	2.0	11.5	2.2	5.4	0.6	65.1	5.4	29.5	0.083	0.514	26.261500	-109.044821
T. Der. El Fuerte	54.80	1	2	5312	2.4	59.3	6.5	8.3	2.1	12.7	2.4	5.7	0.6	61.7	6.5	31.8	0.077	0.514	26.261543	-109.044986
T. Der. El Fuerte	54.80	3	1	5065	2.3	59.8	6.0	7.5	2.3	13.9	2.2	5.2	0.8	62.1	6.0	31.9	0.069	0.504	26.276182	-109.040644
T. Der. El Fuerte	54.80	3	2	5153	2.4	56.0	6.9	7.6	2.6	15.3	2.5	5.9	0.8	58.4	6.9	34.7	0.079	0.504	26.276075	-109.040869
Lim. Edos. Term. Sin. Ppia. Son.	69.80																			
T. Izq. Huatabampo	128.50	1	1	3607	3.7	52.8	7.8	8.8	2.6	14.6	3.2	5.9	0.6	56.5	7.8	35.7	0.088	0.504	26.803217	-109.347910
T. Izq. Huatabampo	128.50	1	2	3667	3.9	47.7	9.2	9.4	2.7	15.9	3.8	6.8	0.6	51.6	9.2	39.2	0.073	0.504	26.803177	-109.348225
Caseta de Cobro Estacion Don (La Jaula)	129.90	2	1	2299	0.2	42.5	8.1	4.3	3.3	25.8	2.9	11.3	1.6	42.7	8.1	49.2	0.086	0.500	26.849735	-109.373267
Caseta de Cobro Estacion Don (La Jaula)	129.90	2	2	2299	0.2	42.5	8.1	4.3	3.3	25.8	2.9	11.3	1.6	42.7	8.1	49.2	0.086	0.500	26.849735	-109.373267
Navojoa	155.00	1	1	6580	3.3	60.8	6.6	9.2	2.5	10.8	2.0	4.4	0.4	64.1	6.6	29.3	0.086	0.510	27.029368	-109.434996
Navojoa	155.00	1	2	6861	3.4	57.1	7.1	9.9	2.8	12.3	2.1	4.9	0.4	60.5	7.1	32.4	0.103	0.510	27.029464	-109.435278
Navojoa	155.00	3	1	8805	2.7	64.8	5.4	7.7	1.9	10.2	1.5	5.6	0.2	67.5	5.4	27.1	0.071	0.502	27.104487	-109.447904
Navojoa	155.00	3	2	8724	2.6	61.7	5.7	9.1	2.1	10.8	1.7	6.1	0.2	64.3	5.7	30.0	0.080	0.502	27.104475	-109.447995
T. Izq. Villa Juárez	167.25	3	1	6769	1.6	61.6	5.5	7.8	1.8	13.0	1.7	6.7	0.3	63.2	5.5	31.3	0.065	0.502	27.156604	-109.508954
T. Izq. Villa Juárez	167.25	3	2	6701	1.5	58.5	6.0	8.6	2.0	14.1	1.8	7.1	0.4	60.0	6.0	34.0	0.070	0.502	27.156335	-109.509216
Caseta de Cobro Fundición	195.80	2	1	2902	0.3	50.8	7.6	4.1	3.0	21.2	2.3	9.3	1.4	51.1	7.6	41.3	0.086	0.500	27.320494	-109.719697
Caseta de Cobro Fundición	195.80	2	2	2902	0.3	50.8	7.6	4.1	3.0	21.2	2.3	9.3	1.4	51.1	7.6	41.3	0.086	0.500	27.320494	-109.719697
T. Der. Fundición	196.30	1	1	5355	1.2	65.0	5.3	8.0	1.7	11.8	1.9	4.8	0.3	66.2	5.3	28.5	0.082	0.570	27.312801	-109.709679
T. Der. Fundición	196.30	1	2	5913	0.6	61.9	6.1	8.7	2.0	12.9	2.0	5.5	0.3	62.5	6.1	31.4	0.105	0.570	27.312526	-109.709946
Cd. Obregón	222.70	1	1	10144	2.2	69.6	4.2	8.3	1.9	8.8	1.9	2.9	0.2	71.8	4.2	24.0	0.082	0.535	27.460978	-109.901091
Cd. Obregón	222.70	1	2	11658	1.8	72.2	3.5	7.9	1.7	7.7	2.3	2.7	0.2	74.0	3.5	22.5	0.073	0.535	27.460821	-109.901226

12 CARR: Mazatlán - Culiacán (Cuota)

CLAVE: 25045

RUTA: MEX-015D

AÑO: 2018

LUGAR	ESTACION				CLASIFICACION VEHICULAR EN PORCIENTO													COORDENADAS		
	KM	TE	SC	TDPA	M	A	B	C2	C3	T3S2	T3S3	T3S2R4	OTROS	A	B	C	K'	D	LATITUD	LONGITUD
Ent. Venadillo	0.00	3	1	4334	2.9	46.2	8.9	9.0	3.3	19.9	2.9	6.4	0.5	49.1	8.9	42.0	0.074	0.500	23.313268	-106.429945

SINALOA

12 CARR: Mazatlán - Culiacán (Cuota)

CLAVE: 25045

RUTA: MEX-015D

AÑO: 2018

LUGAR	ESTACION				CLASIFICACION VEHICULAR EN PORCIENTO										COORDENADAS					
	KM	TE	SC	TDPA	M	A	B	C2	C3	T3S2	T3S3	T3S2R4	OTROS	A	B	C	K'	D	LATITUD	LONGITUD
Ent. Venadillo	0.00	3	2	4338	2.8	50.2	6.1	6.2	4.2	19.8	3.7	6.2	0.8	53.0	6.1	40.9	0.083	0.500	23.313207	-106.430006
Caseta de Cobro Mármol	25.15	3	1	4318	2.3	50.5	6.0	6.3	4.2	19.9	3.9	6.1	0.8	52.8	6.0	41.2	0.083	0.539	23.482140	-106.581797
Caseta de Cobro Mármol	25.15	3	2	3690	2.2	43.6	8.6	6.5	4.3	23.3	3.8	7.0	0.7	45.8	8.6	45.6	0.080	0.539	23.482081	-106.581893
Caseta de Cobro Costa Rica	187.80	3	1	4646	2.8	47.0	8.1	6.9	3.0	21.1	3.5	6.8	0.8	49.8	8.1	42.1	0.077	0.500	24.583286	-107.440411
Caseta de Cobro Costa Rica	187.80	3	2	4650	3.1	49.4	7.8	6.5	3.2	19.0	3.9	6.4	0.7	52.5	7.8	39.7	0.061	0.500	24.583107	-107.440623
T. C. Culiacán - El Dorado	190.26																			

13 CARR: Tepic - Villa Unión (cuota)

CLAVE: 00500

RUTA: MEX-015D

AÑO: 2018

LUGAR	ESTACION				CLASIFICACION VEHICULAR EN PORCIENTO										COORDENADAS					
	KM	TE	SC	TDPA	M	A	B	C2	C3	T3S2	T3S3	T3S2R4	OTROS	A	B	C	K'	D	LATITUD	LONGITUD
Tepic	0.00																			
Caseta de Cobro Trapichillo	8.65	1	1	6866	2.3	77.3	3.7	8.7	1.7	3.9	0.8	1.4	0.2	79.6	3.7	16.7	0.135	0.506	21.555081	-104.959996
Caseta de Cobro Trapichillo	8.65	1	2	6703	2.3	76.0	4.1	8.3	2.2	4.5	1.1	1.4	0.1	78.3	4.1	17.6	0.151	0.506	21.554969	-104.960024
Caseta de Cobro Trapichillo	8.65	2	1	5753	0.7	62.0	6.8	3.4	5.4	13.2	1.8	5.8	0.9	62.7	6.8	30.5	0.098	0.500	21.571789	-104.987394
Caseta de Cobro Trapichillo	8.65	2	2	5753	0.7	62.0	6.8	3.4	5.4	13.2	1.8	5.8	0.9	62.7	6.8	30.5	0.098	0.500	21.571789	-104.987394
T. C. Tepic - Mazatlán	21.00	1	1	6056	1.7	60.0	6.4	9.7	3.0	12.0	2.0	4.5	0.7	61.7	6.4	31.9	0.075	0.504	21.663388	-105.027571
T. C. Tepic - Mazatlán	21.00	1	2	6143	2.1	61.6	5.6	11.2	3.4	10.3	2.3	2.9	0.6	63.7	5.6	30.7	0.088	0.504	21.663415	-105.027694
T. C. Tepic - Mazatlán (Crucero de San Blas)	24.50	3	0	7066	2.0	69.0	4.5	9.8	2.5	6.8	2.6	2.1	0.7	71.0	4.5	24.5	0.062	0.522	21.714530	-105.060450
Est. Ruiz	54.90	1	0	5929	2.3	49.0	6.8	10.6	4.9	15.5	3.1	7.1	0.7	51.3	6.8	41.9	0.068	0.504	21.947688	-105.112493
Est. Ruiz	54.90	3	0	3963	1.9	46.2	7.8	11.6	4.9	14.5	3.5	8.8	0.8	48.1	7.8	44.1	0.074	0.522	21.961879	-105.123194
Rosamorada	73.50	1	0	4137	2.2	47.5	9.2	9.2	4.0	16.9	2.6	7.4	1.0	49.7	9.2	41.1	0.087	0.508	22.084759	-105.210973
Rosamorada	73.50	3	0	4289	2.2	49.1	8.5	7.2	3.5	17.8	2.2	8.4	1.1	51.3	8.5	40.2	0.093	0.502	22.092334	-105.220594
Acajoneta	120.20	1	0	5296	2.8	42.7	8.4	6.7	3.7	22.2	2.6	9.8	1.1	45.5	8.4	46.1	0.058	0.524	22.450543	-105.420898
Caseta de Cobro Acajoneta	120.20	2	0	4224	0.3	38.5	7.0	3.2	6.3	26.1	2.5	14.5	1.6	38.8	7.0	54.2	0.081	0.500	22.454065	-105.418726
Acajoneta	120.20	3	0	3639	1.4	50.8	9.7	7.2	4.2	14.9	2.7	8.0	1.1	52.2	9.7	38.1	0.064	0.504	22.458581	-105.430536
Lim. Edos. Term. Nay. Ppia. Sin.	132.80																			
Escuinapa de Hidalgo	208.60	1	1	2577	2.0	39.0	8.7	5.6	3.6	25.5	4.4	10.3	0.9	41.0	8.7	50.3	0.092	0.532	22.841615	-105.739726
Escuinapa de Hidalgo	208.60	1	2	2268	1.8	30.9	9.5	5.8	4.1	30.7	5.0	11.3	0.9	32.7	9.5	57.8	0.082	0.532	22.841556	-105.739817
Escuinapa de Hidalgo	208.60	3	0	3750	1.6	41.9	8.8	5.9	3.9	24.7	3.6	9.0	0.6	43.5	8.8	47.7	0.066	0.518	22.859690	-105.755136
Rosario	220.68	1	0	4618	1.9	44.3	9.2	8.3	3.5	21.1	3.5	7.2	1.0	46.2	9.2	44.6	0.078	0.547	22.977136	-105.868758
Caseta de Cobro Rosario	220.68	2	0	5064	0.7	37.2	7.0	3.4	5.4	29.1	3.6	11.8	1.8	37.9	7.0	55.1	0.081	0.500	22.984690	-105.878103
Rosario	220.68	3	1	3140	2.3	43.8	9.8	7.7	2.4	22.2	4.2	7.0	0.6	46.1	9.8	44.1	0.072	0.504	22.993116	-105.887597
Rosario	220.68	3	2	3094	1.8	38.7	8.8	5.4	3.8	26.1	4.0	10.7	0.7	40.5	8.8	50.7	0.064	0.504	22.993143	-105.887723
X. C. Durango - Villa Unión (Cuota)	240.90	1	0	5634	2.5	39.9	9.4	6.9	3.2	23.7	3.4	9.9	1.1	42.4	9.4	48.2	0.067	0.503	23.185946	-106.174157

SINALOA

13 CARR: Tepic - Villa Unión (cuota)

CLAVE: 00500

RUTA: MEX-015D

AÑO: 2018

LUGAR	ESTACION				CLASIFICACION VEHICULAR EN PORCIENTO													COORDENADAS		
	KM	TE	SC	TDPA	M	A	B	C2	C3	T3S2	T3S3	T3S2R4	OTROS	A	B	C	K'	D	LATITUD	LONGITUD
X. C. Durango - Villa Unión (Cuota)	240.90	3	1	4396	3.6	46.6	9.2	6.9	3.7	17.9	3.4	7.0	1.7	50.2	9.2	40.6	0.060	0.507	23.194728	-106.191332
X. C. Durango - Villa Unión (Cuota)	240.90	3	2	4523	1.8	46.0	9.4	7.4	3.0	19.0	4.7	7.3	1.4	47.8	9.4	42.8	0.065	0.507	23.194465	-106.191423

14 CARR: Carrizal - Campo Aníbal

CLAVE: 25585

RUTA: SIN-019

AÑO: 2018

LUGAR	ESTACION				CLASIFICACION VEHICULAR EN PORCIENTO													COORDENADAS		
	KM	TE	SC	TDPA	M	A	B	C2	C3	T3S2	T3S3	T3S2R4	OTROS	A	B	C	K'	D	LATITUD	LONGITUD
T. C. Mazatlán - Culiacán	0.00	3	0	1981	9.6	77.9	0.5	8.3	2.8	0.7	0.1	0.1	0.0	87.5	0.5	12.0	0.081	0.512	24.635853	-107.273247
X. C. Culiacán - El Dorado	29.20	1	0	11065	9.7	78.3	0.5	7.8	2.9	0.6	0.1	0.1	0.0	88.0	0.5	11.5	0.074	0.531	24.590351	-107.439586
X. C. Culiacán - El Dorado	29.20	3	0	1813	5.9	68.7	4.7	11.4	4.6	2.8	1.1	0.8	0.0	74.6	4.7	20.7	0.098	0.513	24.599456	-107.477165
T. C. San Pedro - Campo Aníbal	32.00	1	0	1716	12.0	64.7	5.8	12.8	2.6	1.5	0.4	0.2	0.0	76.7	5.8	17.5	0.104	0.535	24.590245	-107.541796

15 CARR: Culiacán - Altata

CLAVE: 25013

RUTA: SIN-030

AÑO: 2018

LUGAR	ESTACION				CLASIFICACION VEHICULAR EN PORCIENTO													COORDENADAS		
	KM	TE	SC	TDPA	M	A	B	C2	C3	T3S2	T3S3	T3S2R4	OTROS	A	B	C	K'	D	LATITUD	LONGITUD
Culiacán	0.00																			
T. Izq. El Dorado	6.20	1	1	29359	3.2	89.5	0.4	4.4	0.4	1.2	0.7	0.1	0.1	92.7	0.4	6.9	0.061	0.521	24.781230	-107.435701
T. Izq. El Dorado	6.20	1	2	31871	2.3	90.5	0.3	4.7	0.5	0.7	0.8	0.1	0.1	92.8	0.3	6.9	0.065	0.521	24.780867	-107.435967
T. Izq. El Dorado	6.20	3	1	35563	2.2	87.3	0.3	7.5	1.1	0.9	0.4	0.2	0.1	89.5	0.3	10.2	0.063	0.543	24.775558	-107.450106
T. Izq. El Dorado	6.20	3	2	42224	2.5	86.3	0.3	7.4	1.4	1.3	0.4	0.3	0.1	88.8	0.3	10.9	0.067	0.543	24.775617	-107.449475
T. Izq. Aeropuerto	8.70	3	1	24948	2.7	87.0	0.4	6.4	1.5	1.3	0.3	0.3	0.1	89.7	0.4	9.9	0.075	0.513	24.775116	-107.474596
T. Izq. Aeropuerto	8.70	3	2	26273	2.9	86.3	0.4	6.6	1.5	1.4	0.5	0.3	0.1	89.2	0.4	10.4	0.074	0.513	24.775011	-107.474708
Navolato	32.40	1	1	9984	4.1	87.4	0.8	5.7	1.1	0.6	0.2	0.1	0.0	91.5	0.8	7.7	0.120	0.531	24.755973	-107.687179
Navolato	32.40	1	2	8818	4.6	83.9	1.0	8.3	1.2	0.6	0.2	0.1	0.1	88.5	1.0	10.5	0.173	0.531	24.755881	-107.687180
Navolato	32.40	3	1	7116	5.1	86.7	0.6	5.1	1.3	0.8	0.3	0.1	0.0	91.8	0.6	7.6	0.143	0.532	24.755667	-107.702561
Navolato	32.40	3	2	8097	5.3	84.6	1.2	6.7	1.3	0.6	0.2	0.1	0.0	89.9	1.2	8.9	0.189	0.532	24.755535	-107.702548
T. Der. 5 Hermanos	38.20	3	1	4008	3.4	85.6	1.1	7.6	1.3	0.6	0.3	0.1	0.0	89.0	1.1	9.9	0.219	0.500	24.751634	-107.743578
T. Der. 5 Hermanos	38.20	3	2	4001	3.2	86.1	1.0	7.5	1.3	0.6	0.2	0.1	0.0	89.3	1.0	9.7	0.296	0.500	24.751557	-107.743523
Altata	67.00	1	1	2586	4.8	86.6	0.2	7.3	1.1	0.0	0.0	0.0	0.0	91.4	0.2	8.4	0.294	0.544	24.646314	-107.919117
Altata	67.00	1	2	2171	6.2	83.3	0.2	9.1	1.2	0.0	0.0	0.0	0.0	89.5	0.2	10.3	0.175	0.544	24.646236	-107.919105

SINALOA

16 CARR: Culiacán - El Dorado

CLAVE: 25044

RUTA: SIN-005

AÑO: 2018

LUGAR	ESTACION				CLASIFICACION VEHICULAR EN PORCIENTO										COORDENADAS					
	KM	TE	SC	TDPA	M	A	B	C2	C3	T3S2	T3S3	T3S2R4	OTROS	A	B	C	K'	D	LATITUD	LONGITUD
T. C. Culiacán - Altata	0.00	3	1	28816	1.9	86.0	2.3	4.9	1.7	1.9	0.8	0.4	0.1	87.9	2.3	9.8	0.071	0.547	24.768568	-107.447231
T. C. Culiacán - Altata	0.00	3	2	23869	0.9	86.1	2.3	5.1	1.7	2.4	0.9	0.5	0.1	87.0	2.3	10.7	0.094	0.547	24.768543	-107.447141
T. C. Libramiento Sur de Culiacán	3.60	3	1	20883	3.1	76.8	2.6	10.0	2.1	3.2	1.0	1.0	0.2	79.9	2.6	17.5	0.110	0.505	24.740237	-107.453937
T. C. Libramiento Sur de Culiacán	3.60	3	2	21271	2.8	78.8	1.9	9.4	2.2	3.0	0.6	1.1	0.2	81.6	1.9	16.5	0.088	0.505	24.740243	-107.454040
X. C. Carrizal - Campo Aníbal	21.35	1	1	9517	3.2	76.7	3.6	6.5	2.0	5.4	0.5	2.0	0.1	79.9	3.6	16.5	0.069	0.505	24.601862	-107.444644
X. C. Carrizal - Campo Aníbal	21.35	1	2	9341	3.7	76.0	3.7	6.3	1.9	5.7	0.7	1.9	0.1	79.7	3.7	16.6	0.075	0.505	24.601887	-107.444526
X. C. Carrizal - Campo Aníbal	21.35	3	0	8850	6.1	79.4	1.7	6.7	2.7	2.2	0.4	0.7	0.1	85.5	1.7	12.8	0.069	0.506	24.580208	-107.444603
El Dorado	55.00	1	1	4337	11.1	76.6	1.2	7.8	2.2	0.7	0.2	0.1	0.1	87.7	1.2	11.1	0.079	0.505	24.341602	-107.370671
El Dorado	55.00	1	2	4429	10.0	79.5	0.9	6.1	2.2	0.9	0.2	0.1	0.1	89.5	0.9	9.6	0.086	0.505	24.341606	-107.370615

17 CARR: El Limoncito - Cinco Hermanos

CLAVE: 25016

RUTA: SIN-016

AÑO: 2018

LUGAR	ESTACION				CLASIFICACION VEHICULAR EN PORCIENTO										COORDENADAS					
	KM	TE	SC	TDPA	M	A	B	C2	C3	T3S2	T3S3	T3S2R4	OTROS	A	B	C	K'	D	LATITUD	LONGITUD
T. C. Culiacán - Altata	0.00	3	0	3434	12.9	72.6	2.6	8.9	2.5	0.4	0.1	0.0	0.0	85.5	2.6	11.9	0.076	0.501	24.758995	-107.739311
Cinco Hermanos	16.00	1	0	1063	17.7	64.7	2.3	10.3	4.5	0.4	0.1	0.0	0.0	82.4	2.3	15.3	0.072	0.501	24.809076	-107.856926

18 CARR: El Salado - El Dorado

CLAVE: 25010

RUTA: SIN-010

AÑO: 2018

LUGAR	ESTACION				CLASIFICACION VEHICULAR EN PORCIENTO										COORDENADAS					
	KM	TE	SC	TDPA	M	A	B	C2	C3	T3S2	T3S3	T3S2R4	OTROS	A	B	C	K'	D	LATITUD	LONGITUD
T. C. Mazatlán - Culiacán	0.00	3	0	2388	5.0	84.0	0.4	8.2	1.4	0.6	0.4	0.0	0.0	89.0	0.4	10.6	0.084	0.513	24.505075	-107.167803
El Dorado	31.00	1	0	3786	3.5	85.2	0.6	8.2	1.8	0.4	0.3	0.0	0.0	88.7	0.6	10.7	0.069	0.525	24.333841	-107.345171

19 CARR: Escuinapa de Hidalgo - Teacapan

CLAVE: 25001

RUTA: SIN-001

AÑO: 2018

LUGAR	ESTACION				CLASIFICACION VEHICULAR EN PORCIENTO										COORDENADAS					
	KM	TE	SC	TDPA	M	A	B	C2	C3	T3S2	T3S3	T3S2R4	OTROS	A	B	C	K'	D	LATITUD	LONGITUD
Escuinapa de Hidalgo	0.00	3	0	4624	12.7	70.7	3.6	11.4	1.6	0.0	0.0	0.0	0.0	83.4	3.6	13.0	0.082	0.569	22.816347	-105.795481
Teacapan	41.00	1	0	2408	17.8	69.6	2.3	9.4	0.8	0.1	0.0	0.0	0.0	87.4	2.3	10.3	0.103	0.515	22.548834	-105.741605

SINALOA

20 CARR: Estación Dimas - San Ignacio

CLAVE: 25007

RUTA: SIN-006

AÑO: 2018

LUGAR	ESTACION				CLASIFICACION VEHICULAR EN PORCIENTO										COORDENADAS					
	KM	TE	SC	TDPA	M	A	B	C2	C3	T3S2	T3S3	T3S2R4	OTROS	A	B	C	K'	D	LATITUD	LONGITUD
Dimas	0.00																			
X. C. Mazatlán - Culiacán	23.15	1	0	966	7.3	82.8	0.6	6.8	1.6	0.8	0.1	0.0	0.0	90.1	0.6	9.3	0.081	0.515	23.838225	-106.617303
X. C. Mazatlán - Culiacán	23.15	3	0	2111	7.2	84.1	0.7	7.2	0.7	0.1	0.0	0.0	0.0	91.3	0.7	8.0	0.081	0.510	23.790849	-106.609223
San Ignacio	56.00	1	0	1381	11.7	78.3	0.6	8.7	0.6	0.1	0.0	0.0	0.0	90.0	0.6	9.4	0.073	0.501	23.925067	-106.429309

21 CARR: Guamuchil - Mocorito

CLAVE: 25021

RUTA: SIN-021

AÑO: 2018

LUGAR	ESTACION				CLASIFICACION VEHICULAR EN PORCIENTO										COORDENADAS					
	KM	TE	SC	TDPA	M	A	B	C2	C3	T3S2	T3S3	T3S2R4	OTROS	A	B	C	K'	D	LATITUD	LONGITUD
Guamuchil	0.00	3	0	7709	6.8	80.7	0.4	10.0	1.8	0.2	0.1	0.0	0.0	87.5	0.4	12.1	0.063	0.502	25.458163	-108.056456
Mocorito	17.00	1	0	7068	7.7	80.7	0.5	9.0	1.8	0.2	0.1	0.0	0.0	88.4	0.5	11.1	0.063	0.505	25.471983	-107.944261

22 CARR: Guasave - Sinaloa de Leyva

CLAVE: 25023

RUTA: SIN-023

AÑO: 2018

LUGAR	ESTACION				CLASIFICACION VEHICULAR EN PORCIENTO										COORDENADAS					
	KM	TE	SC	TDPA	M	A	B	C2	C3	T3S2	T3S3	T3S2R4	OTROS	A	B	C	K'	D	LATITUD	LONGITUD
Guasave	0.00																			
X. C. Culiacán - Los Mochis	1.15	3	1	5449	12.4	79.8	0.3	5.7	0.7	0.4	0.1	0.1	0.5	92.2	0.3	7.5	0.084	0.501	25.593586	-108.456715
X. C. Culiacán - Los Mochis	1.15	3	2	5437	11.7	79.9	0.2	6.1	0.6	0.5	0.1	0.2	0.7	91.6	0.2	8.2	0.077	0.501	25.593638	-108.456807
Sinaloa de Leyva	74.50	1	1	1923	11.3	80.6	0.2	6.7	0.8	0.3	0.1	0.0	0.0	91.9	0.2	7.9	0.075	0.504	25.829571	-108.234123
Sinaloa de Leyva	74.50	1	2	1892	11.2	80.5	0.4	6.6	1.1	0.1	0.1	0.0	0.0	91.7	0.4	7.9	0.079	0.504	25.829635	-108.234120

23 CARR: Navolato - El Castillo

CLAVE: 25004

RUTA: SIN-004

AÑO: 2018

LUGAR	ESTACION				CLASIFICACION VEHICULAR EN PORCIENTO										COORDENADAS					
	KM	TE	SC	TDPA	M	A	B	C2	C3	T3S2	T3S3	T3S2R4	OTROS	A	B	C	K'	D	LATITUD	LONGITUD
Navolato	0.00	3	0	5708	8.4	78.0	2.8	5.7	1.7	0.9	0.6	0.9	1.0	86.4	2.8	10.8	0.073	0.502	24.739203	-107.685446
El Castillo	29.00	1	0	1110	10.4	55.0	7.5	9.5	4.0	2.1	1.6	1.0	8.9	65.4	7.5	27.1	0.075	0.507	24.551631	-107.701828

24 CARR: Pozole - Cofradía

CLAVE: 25080

RUTA: SIN-080

AÑO: 2018

LUGAR	ESTACION				CLASIFICACION VEHICULAR EN PORCIENTO										COORDENADAS					
	KM	TE	SC	TDPA	M	A	B	C2	C3	T3S2	T3S3	T3S2R4	OTROS	A	B	C	K'	D	LATITUD	LONGITUD
T. C. Tepic - Mazatlán	0.00	3	0	3125	12.8	74.4	1.1	5.8	2.5	0.7	1.9	0.1	0.7	87.2	1.1	11.7	0.128	0.533	23.196150	-106.260214
Cofradía	9.10	1	0	864	24.1	64.7	1.6	8.0	1.2	0.0	0.3	0.0	0.1	88.8	1.6	9.6	0.140	0.508	23.325197	-106.255650

SINALOA

25 CARR: Ramal a Chametla

CLAVE: 25002

RUTA: SIN-002

AÑO: 2018

LUGAR	ESTACION				CLASIFICACION VEHICULAR EN PORCIENTO													COORDENADAS		
	KM	TE	SC	TDPA	M	A	B	C2	C3	T3S2	T3S3	T3S2R4	OTROS	A	B	C	K'	D	LATITUD	LONGITUD
T. C. Tepic - Mazatlán	0.00	3	0	2340	13.5	71.2	3.2	10.7	1.4	0.0	0.0	0.0	0.0	84.7	3.2	12.1	0.087	0.509	22.931473	-105.835054
Chametla	15.00	1	0	1077	12.5	76.4	2.0	8.6	0.5	0.0	0.0	0.0	0.0	88.9	2.0	9.1	0.087	0.518	22.882854	-105.952005

26 CARR: Ramal a Cosalá

CLAVE: 25008

RUTA: SIN-008

AÑO: 2018

LUGAR	ESTACION				CLASIFICACION VEHICULAR EN PORCIENTO													COORDENADAS		
	KM	TE	SC	TDPA	M	A	B	C2	C3	T3S2	T3S3	T3S2R4	OTROS	A	B	C	K'	D	LATITUD	LONGITUD
T. C. Mazatlán - Culiacán	0.00	3	0	1649	7.2	69.9	2.2	8.1	4.4	2.4	1.5	2.4	1.9	77.1	2.2	20.7	0.075	0.503	24.072455	-106.798126
Cosalá	53.00	1	0	1603	11.5	67.8	2.7	7.7	3.7	2.4	1.0	0.0	3.2	79.3	2.7	18.0	0.080	0.501	24.407301	-106.713591

27 CARR: Ramal a El Quelite

CLAVE: 25060

RUTA: SIN-060

AÑO: 2018

LUGAR	ESTACION				CLASIFICACION VEHICULAR EN PORCIENTO													COORDENADAS		
	KM	TE	SC	TDPA	M	A	B	C2	C3	T3S2	T3S3	T3S2R4	OTROS	A	B	C	K'	D	LATITUD	LONGITUD
T. C. Mazatlán - Culiacán	0.00	3	0	1342	10.6	69.2	1.1	13.7	1.0	0.8	1.1	1.0	1.5	79.8	1.1	19.1	0.163	0.515	23.531880	-106.500859
El Quelite	6.00	1	0	1216	17.6	67.5	0.7	8.4	1.0	1.3	1.3	0.8	1.4	85.1	0.7	14.2	0.165	0.505	23.547967	-106.477463

28 CARR: Ramal a Estación Bamoa

CLAVE: 25022

RUTA: SIN-022

AÑO: 2018

LUGAR	ESTACION				CLASIFICACION VEHICULAR EN PORCIENTO													COORDENADAS		
	KM	TE	SC	TDPA	M	A	B	C2	C3	T3S2	T3S3	T3S2R4	OTROS	A	B	C	K'	D	LATITUD	LONGITUD
T. C. Culiacán - Los Mochis	0.00	3	0	3685	4.8	76.1	3.6	6.3	2.7	2.3	1.5	1.3	1.4	80.9	3.6	15.5	0.071	0.523	25.524560	-108.350627
Estación Bamoa	22.50	1	0	2110	9.6	67.2	5.4	5.0	3.3	2.5	2.2	2.5	2.3	76.8	5.4	17.8	0.091	0.502	25.682564	-108.311805

29 CARR: Ramal a La Cruz

CLAVE: 25043

RUTA: SIN

AÑO: 2018

LUGAR	ESTACION				CLASIFICACION VEHICULAR EN PORCIENTO													COORDENADAS		
	KM	TE	SC	TDPA	M	A	B	C2	C3	T3S2	T3S3	T3S2R4	OTROS	A	B	C	K'	D	LATITUD	LONGITUD
T. C. Mazatlán - Culiacán	0.00	3	0	2402	7.7	75.8	3.7	6.8	2.3	1.2	0.6	1.0	0.9	83.5	3.7	12.8	0.080	0.515	24.050528	-106.799507
La Cruz	18.00	1	0	3901	10.0	75.1	2.3	5.9	2.6	1.3	1.0	0.5	1.3	85.1	2.3	12.6	0.072	0.527	23.941832	-106.872692

SINALOA

30 CARR: Ramal a La Noria

CLAVE: 25592

RUTA: SIN

AÑO: 2018

LUGAR	ESTACION				CLASIFICACION VEHICULAR EN PORCIENTO										COORDENADAS					
	KM	TE	SC	TDPA	M	A	B	C2	C3	T3S2	T3S3	T3S2R4	OTROS	A	B	C	K'	D	LATITUD	LONGITUD
T. C. Mazatlán - Culiacán	0.00	3	0	1526	14.1	70.5	0.7	10.3	1.0	0.7	0.6	1.0	1.1	84.6	0.7	14.7	0.131	0.503	23.350509	-106.406929
La Noria	25.50	1	0	575	14.3	62.0	2.3	10.3	2.2	2.3	2.5	2.0	2.1	76.3	2.3	21.4	0.176	0.502	23.500086	-106.322208

31 CARR: Ramal a La Reforma

CLAVE: 25041

RUTA: SIN-004

AÑO: 2018

LUGAR	ESTACION				CLASIFICACION VEHICULAR EN PORCIENTO										COORDENADAS					
	KM	TE	SC	TDPA	M	A	B	C2	C3	T3S2	T3S3	T3S2R4	OTROS	A	B	C	K'	D	LATITUD	LONGITUD
T. C. Culiacán - Los Mochis	0.00	3	0	9857	6.2	80.2	1.4	10.2	1.5	0.2	0.1	0.1	0.1	86.4	1.4	12.2	0.075	0.518	25.445980	-108.085283
T. Der. La Angostura	14.00	3	0	2838	5.2	79.1	0.9	8.1	5.2	0.9	0.4	0.1	0.1	84.3	0.9	14.8	0.081	0.536	25.366144	-108.142770
La Reforma	60.00	1	0	3501	8.1	74.5	3.8	6.4	1.2	2.3	1.3	0.2	2.2	82.6	3.8	13.6	0.086	0.505	25.085468	-108.049431

32 CARR: Rosario - Caimanero

CLAVE: 25003

RUTA: SIN-003

AÑO: 2018

LUGAR	ESTACION				CLASIFICACION VEHICULAR EN PORCIENTO										COORDENADAS					
	KM	TE	SC	TDPA	M	A	B	C2	C3	T3S2	T3S3	T3S2R4	OTROS	A	B	C	K'	D	LATITUD	LONGITUD
Rosario	0.00	3	0	2792	13.0	73.9	1.2	9.4	1.6	0.4	0.3	0.1	0.1	86.9	1.2	11.9	0.086	0.503	22.980980	-105.878485
Caimanero	30.00	1	0	1236	16.5	67.6	3.2	9.3	2.5	0.6	0.3	0.0	0.0	84.1	3.2	12.7	0.080	0.503	22.882153	-106.062953

33 CARR: San Pedro - Campo Aníbal

CLAVE: 25600

RUTA: SIN

AÑO: 2018

LUGAR	ESTACION				CLASIFICACION VEHICULAR EN PORCIENTO										COORDENADAS					
	KM	TE	SC	TDPA	M	A	B	C2	C3	T3S2	T3S3	T3S2R4	OTROS	A	B	C	K'	D	LATITUD	LONGITUD
T. C. Culiacán - Altata	0.00	3	0	4873	2.0	82.9	3.4	3.5	2.4	1.6	1.1	1.4	1.7	84.9	3.4	11.7	0.071	0.518	24.759329	-107.544730
Campo Aníbal	24.50	1	0	1197	16.9	63.8	3.8	13.3	0.8	1.3	0.1	0.0	0.0	80.7	3.8	15.5	0.115	0.503	24.555413	-107.543342
Los Puentes	26.50																			

34 CARR: Topolobampo - Choix

CLAVE: 25032

RUTA: SIN-023

AÑO: 2018

LUGAR	ESTACION				CLASIFICACION VEHICULAR EN PORCIENTO										COORDENADAS					
	KM	TE	SC	TDPA	M	A	B	C2	C3	T3S2	T3S3	T3S2R4	OTROS	A	B	C	K'	D	LATITUD	LONGITUD
Topolobampo	0.00	3	1	4207	2.0	80.7	1.5	6.7	4.8	2.5	0.9	0.8	0.1	82.7	1.5	15.8	0.116	0.529	25.612014	-109.057448
Topolobampo	0.00	3	2	4729	3.3	81.2	1.4	6.5	3.9	2.0	0.9	0.7	0.1	84.5	1.4	14.1	0.132	0.529	25.612004	-109.057564
Los Mochis	24.00	1	1	9697	3.6	87.8	0.6	6.0	0.9	0.5	0.4	0.1	0.1	91.4	0.6	8.0	0.120	0.524	25.759358	-108.998399
Los Mochis	24.00	1	2	8814	3.9	86.8	0.8	6.4	0.8	0.6	0.5	0.1	0.1	90.7	0.8	8.5	0.084	0.524	25.759387	-108.998478
X. C. Los Mochis - Cd. Obregón (Cuota)	29.00	1	1	8426	3.4	87.1	1.0	6.1	1.1	0.8	0.4	0.0	0.1	90.5	1.0	8.5	0.089	0.567	25.819577	-108.974027

SINALOA

34 CARR: Topolobampo - Choix

CLAVE: 25032

RUTA: SIN-023

AÑO: 2018

LUGAR	ESTACION				CLASIFICACION VEHICULAR EN PORCIENTO										COORDENADAS					
	KM	TE	SC	TDPA	M	A	B	C2	C3	T3S2	T3S3	T3S2R4	OTROS	A	B	C	K'	D	LATITUD	LONGITUD
X. C. Los Mochis - Cd. Obregón (Cuota)	29.00	1	2	11052	1.5	90.0	0.8	6.0	0.6	0.7	0.3	0.0	0.1	91.5	0.8	7.7	0.076	0.567	25.819624	-108.974109
X. C. Los Mochis - Cd. Obregón (Cuota)	29.00	3	1	8564	2.8	80.6	2.2	9.8	2.4	1.0	0.9	0.1	0.2	83.4	2.2	14.4	0.074	0.511	25.842014	-108.964431
X. C. Los Mochis - Cd. Obregón (Cuota)	29.00	3	2	8960	3.0	81.1	2.0	9.4	2.7	1.1	0.6	0.1	0.0	84.1	2.0	13.9	0.077	0.511	25.842035	-108.964531
San Blas	65.00	1	1	3183	4.9	77.1	4.6	11.0	1.6	0.5	0.3	0.0	0.0	82.0	4.6	13.4	0.102	0.511	26.063005	-108.778487
San Blas	65.00	1	2	3053	4.8	80.0	2.5	10.3	1.5	0.5	0.3	0.0	0.1	84.8	2.5	12.7	0.100	0.511	26.063081	-108.778563
San Blas	65.00	3	1	2035	5.2	73.7	4.3	13.2	2.3	0.7	0.4	0.1	0.1	78.9	4.3	16.8	0.077	0.507	26.137180	-108.736953
San Blas	65.00	3	2	1981	7.5	73.3	4.2	11.9	1.9	0.7	0.4	0.1	0.0	80.8	4.2	15.0	0.094	0.507	26.137206	-108.737038
El Fuerte	107.70	1	1	2540	6.9	78.2	1.7	11.2	1.3	0.5	0.2	0.0	0.0	85.1	1.7	13.2	0.096	0.507	26.390335	-108.629035
El Fuerte	107.70	1	2	2474	7.0	76.4	2.1	12.4	1.3	0.5	0.2	0.1	0.0	83.4	2.1	14.5	0.103	0.507	26.390314	-108.629137
El Fuerte	107.70	3	0	3115	9.3	71.0	3.4	14.0	1.3	0.6	0.2	0.1	0.1	80.3	3.4	16.3	0.060	0.502	26.421695	-108.606736
Choix	159.00	1	0	2905	7.5	70.8	5.1	14.7	1.4	0.4	0.1	0.0	0.0	78.3	5.1	16.6	0.089	0.512	26.667947	-108.346354

35 CARR: Villa Unión - El Walamo

CLAVE: 25081

RUTA: SIN-081

AÑO: 2018

LUGAR	ESTACION				CLASIFICACION VEHICULAR EN PORCIENTO										COORDENADAS					
	KM	TE	SC	TDPA	M	A	B	C2	C3	T3S2	T3S3	T3S2R4	OTROS	A	B	C	K'	D	LATITUD	LONGITUD
Villa Unión	0.00	3	0	3690	20.0	67.8	1.6	7.5	0.6	0.7	0.5	0.5	0.8	87.8	1.6	10.6	0.088	0.507	23.168571	-106.220762
El Walamo	7.00	1	0	3345	20.0	61.2	2.8	11.5	1.7	1.0	0.6	0.5	0.7	81.2	2.8	16.0	0.088	0.506	23.143702	-106.238460

36 CARR: Villa Unión - Siqueiros

CLAVE: 25063

RUTA: SIN-063

AÑO: 2018

LUGAR	ESTACION				CLASIFICACION VEHICULAR EN PORCIENTO										COORDENADAS					
	KM	TE	SC	TDPA	M	A	B	C2	C3	T3S2	T3S3	T3S2R4	OTROS	A	B	C	K'	D	LATITUD	LONGITUD
Villa Unión	0.00	3	0	3152	12.2	72.3	2.2	7.7	2.5	0.7	0.7	0.7	1.0	84.5	2.2	13.3	0.078	0.509	23.206495	-106.206795
Siqueiros	11.00	1	0	1003	24.7	54.9	4.0	8.8	1.1	1.5	1.6	1.2	2.2	79.6	4.0	16.4	0.110	0.521	23.329722	-106.236512

37 CARR: Culiacán - Las Brisas (Cuota)

CLAVE: 25503

RUTA: SIN-001D

AÑO: 2018

LUGAR	ESTACION				CLASIFICACION VEHICULAR EN PORCIENTO										COORDENADAS					
	KM	TE	SC	TDPA	M	A	B	C2	C3	T3S2	T3S3	T3S2R4	OTROS	A	B	C	K'	D	LATITUD	LONGITUD
T. C. Culiacán - El Dorado	0.00																			
Caseta de Cobro Culiacán	1.50	3	1	2877	1.2	69.1	5.2	6.9	2.9	8.8	0.9	4.7	0.3	70.3	5.2	24.5	0.087	0.532	24.752159	-107.490977
Caseta de Cobro Culiacán	1.50	3	2	3271	1.7	71.2	4.9	7.0	3.6	6.4	1.1	3.7	0.4	72.9	4.9	22.2	0.085	0.532	24.752083	-107.490995
X. C. Culiacán - Altata	14.70	3	1	4043	1.0	65.7	6.9	5.2	2.5	9.6	2.5	5.6	1.0	66.7	6.9	26.4	0.070	0.502	24.772462	-107.582751
X. C. Culiacán - Altata	14.70	3	2	4076	3.6	60.1	8.3	5.6	2.8	9.7	2.9	6.0	1.0	63.7	8.3	28.0	0.126	0.502	24.772424	-107.582853

SINALOA

37 CARR: Culiacán - Las Brisas (Cuota)

CLAVE: 25503

RUTA: SIN-001D

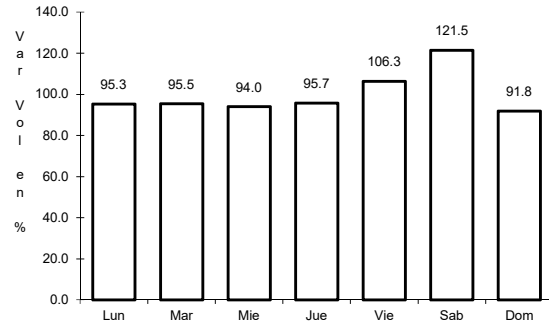
AÑO: 2018

L U G A R	E S T A C I O N				C L A S I F I C A C I O N V E H I C U L A R E N P O R C I E N T O										C O O R D E N A D A S					
	KM	TE	SC	TDPA	M	A	B	C2	C3	T3S2	T3S3	T3S2R4	OTROS	A	B	C	K'	D	LATITUD	LONGITUD
X. C. Ramal a La Reforma	110.00	1	1	3810	1.2	48.8	8.4	7.7	2.6	19.0	3.3	8.2	0.8	50.0	8.4	41.6	0.073	0.503	25.391135	-108.125709
X. C. Ramal a La Reforma	110.00	1	2	3851	1.2	44.3	8.5	8.3	2.8	22.2	3.7	8.1	0.9	45.5	8.5	46.0	0.065	0.503	25.391086	-108.125771
T. C. Culiacán - Los Mochis	125.70	1	1	4032	2.7	53.1	6.6	8.7	2.5	15.1	3.3	6.7	1.3	55.8	6.6	37.6	0.073	0.513	25.481067	-108.224793
T. C. Culiacán - Los Mochis	125.70	1	2	3830	1.2	47.1	6.9	10.0	3.3	18.5	3.2	8.8	1.0	48.3	6.9	44.8	0.064	0.513	25.480972	-108.224818

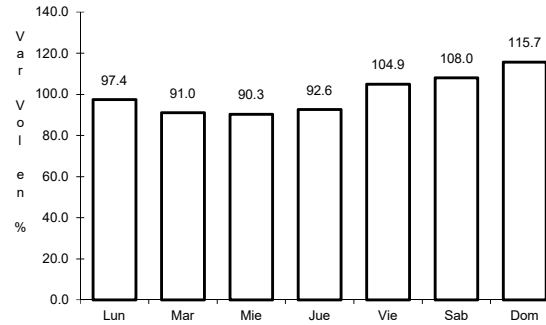
1 CARR: Culiacán - Los Mochis

CLAVE: 25502

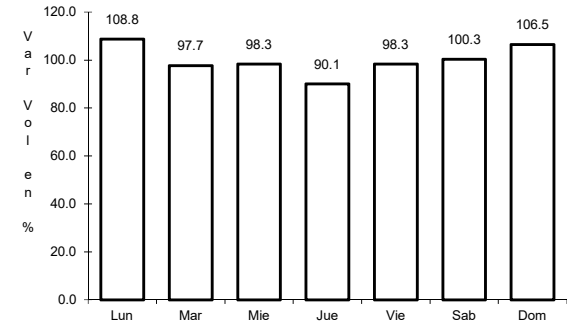
RUTA: MEX-015



Km: 4.00 Tipo: 1 Sent: 1



Km: 4.00 Tipo: 1 Sent: 2

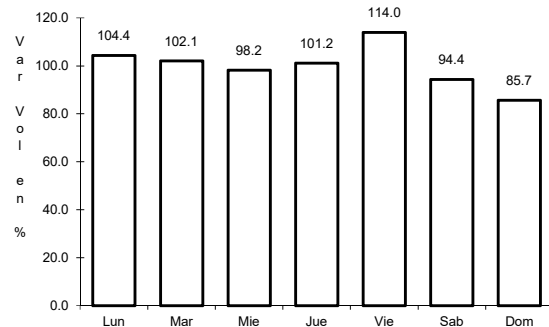


Km: 104.70 Tipo: 1 Sent: 0

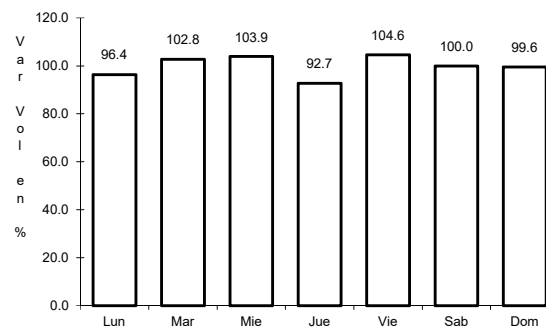
2 CARR: Durango - Villa Unión

CLAVE: 0083

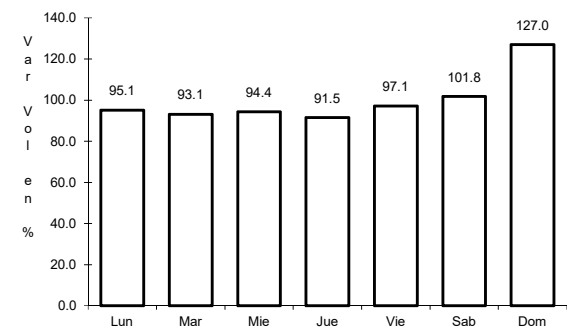
RUTA: MEX-040



Km: 0.00 Tipo: 3 Sent: 0



Km: 145.50 Tipo: 1 Sent: 0

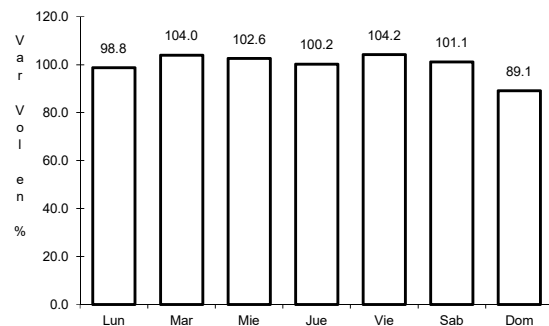


Km: 294.40 Tipo: 1 Sent: 0

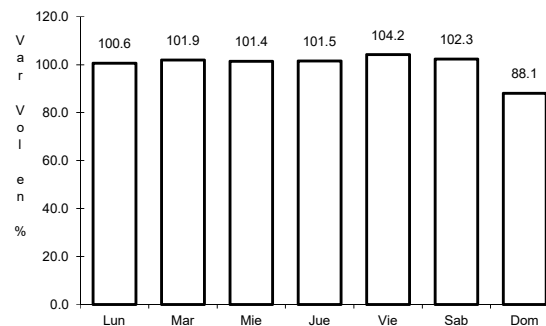
3 CARR: Libramiento de Mazatlán

CLAVE: 25604

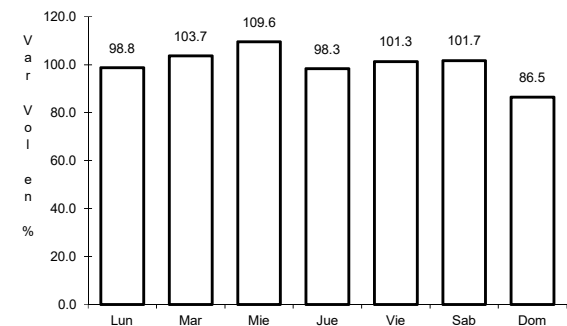
RUTA: MEX



Km: 0.00 Tipo: 3 Sent: 1



Km: 0.00 Tipo: 3 Sent: 2

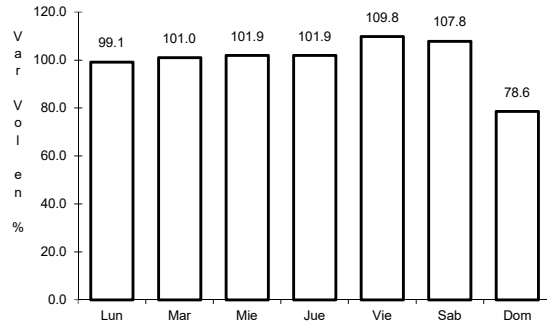


Km: 5.40 Tipo: 1 Sent: 1

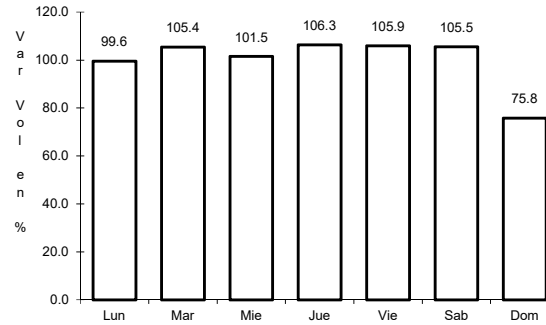
4 CARR: Libramiento Sur de Culiacán

CLAVE: 25500

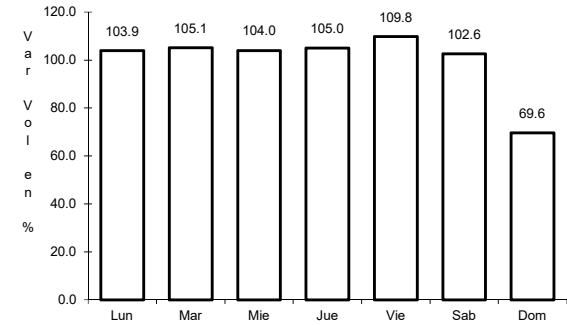
ruta: MEX-015



Km: 0.00 Tipo: 3 Sent: 1



Km: 0.00 Tipo: 3 Sent: 2

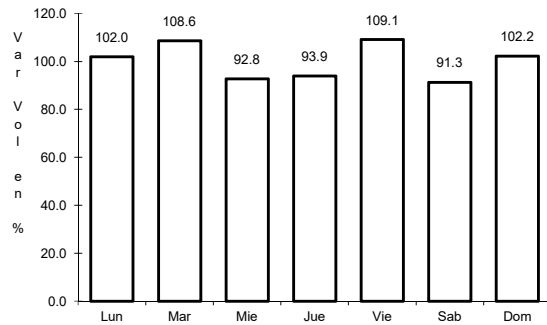


Km: 8.90 Tipo: 1 Sent: 1

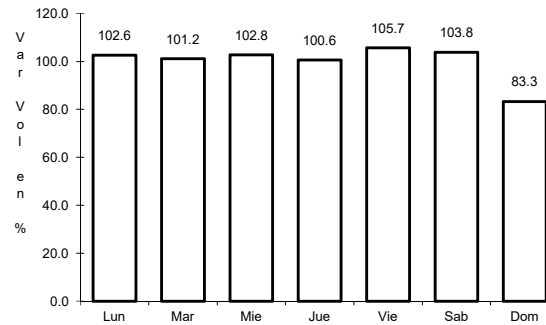
5 CARR: Mazatlán - Culiacán

CLAVE: 25501

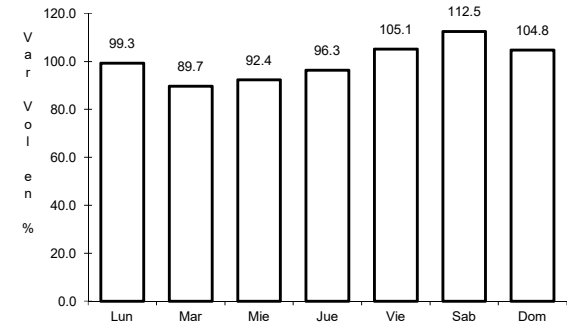
ruta: MEX-015



Km: 6.40 Tipo: 1 Sent: 1



Km: 6.40 Tipo: 1 Sent: 2

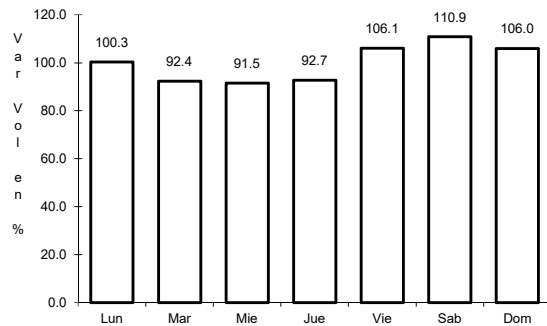


Km: 105.21 Tipo: 3 Sent: 0

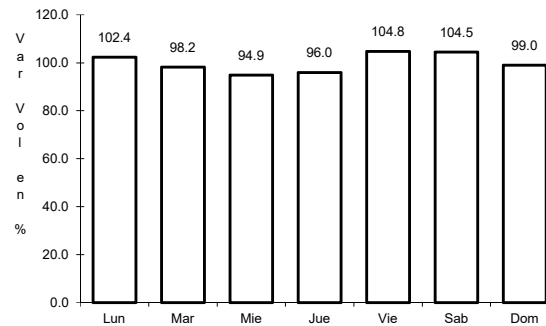
6 CARR: Pericos - Los Naranjos

CLAVE: 25598

ruta: MEX-024



Km: 0.00 Tipo: 3 Sent: 0

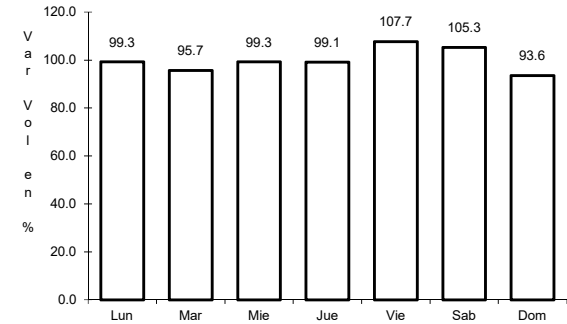
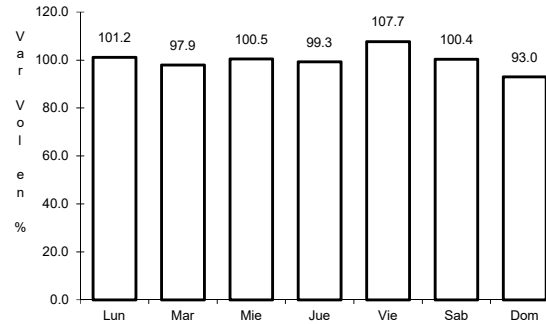
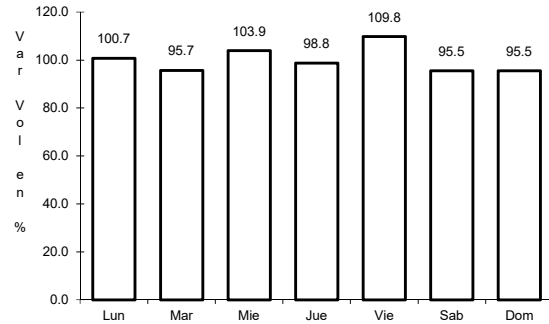


Km: 37.50 Tipo: 1 Sent: 0

7 CARR: Tepic - Mazatlán

CLAVE: 00499

ruta: MEX-015



Km: 136.52 Tipo: 1 Sent: 0

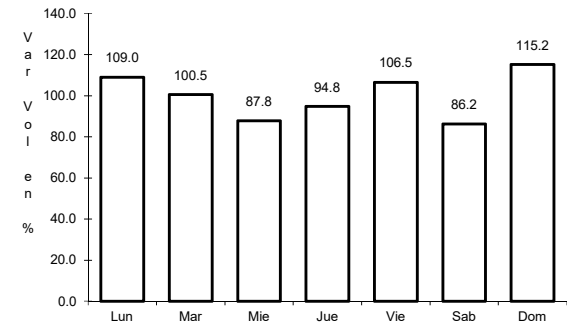
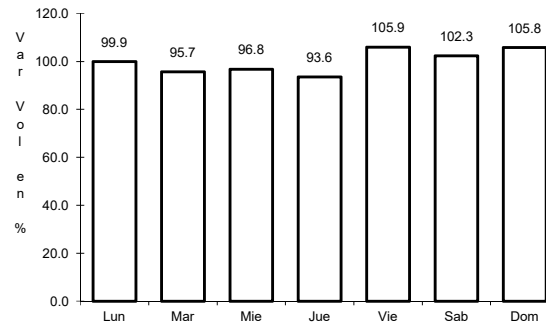
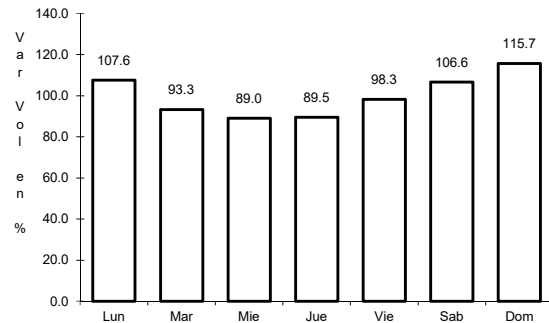
Km: 288.87 Tipo: 1 Sent: 1

Km: 288.87 Tipo: 1 Sent: 2

8 CARR: Durango - Mazatlán (Cuota)

CLAVE: 00084

ruta: MEX-040D



Km: 20.50 Tipo: 3 Sent: 0

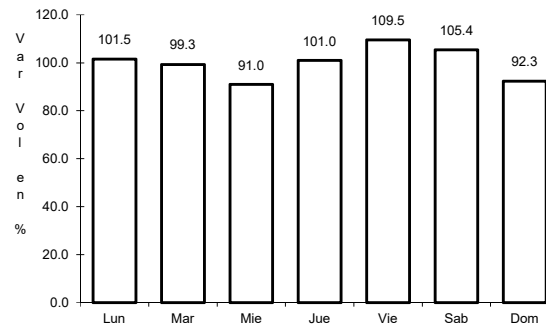
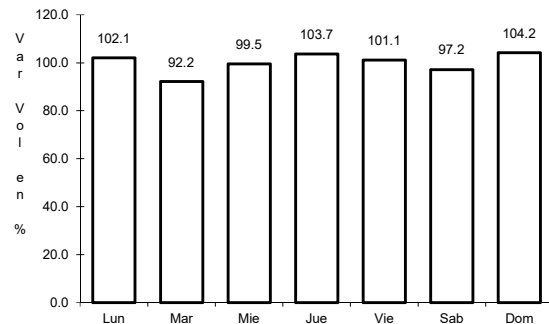
Km: 44.50 Tipo: 1 Sent: 0

Km: 208.35 Tipo: 1 Sent: 0

9 CARR: Libramiento de Culiacán (Cuota)

CLAVE:

ruta: MEX-015D



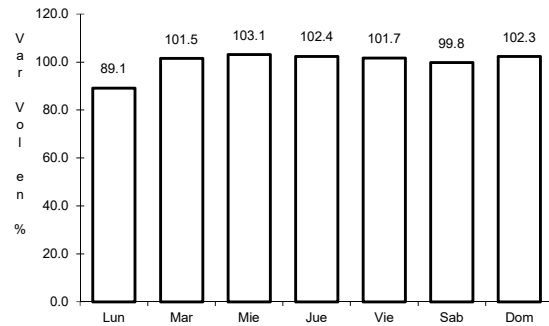
Km: 203.30 Tipo: 1 Sent: 1

Km: 203.30 Tipo: 1 Sent: 2

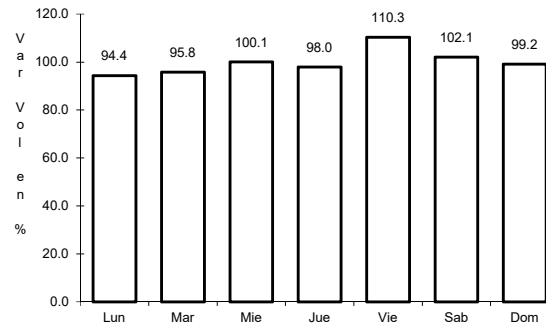
10 CARR: Libramiento de Mazatlán (Cuota)

CLAVE:

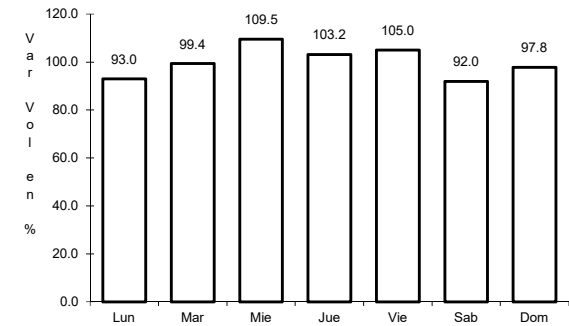
ruta: MEX-015D



Km: 0.00 Tipo: 3 Sent: 1



Km: 0.00 Tipo: 3 Sent: 2

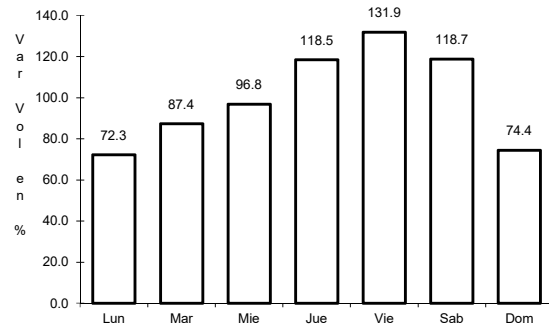


Km: 28.60 Tipo: 3 Sent: 1

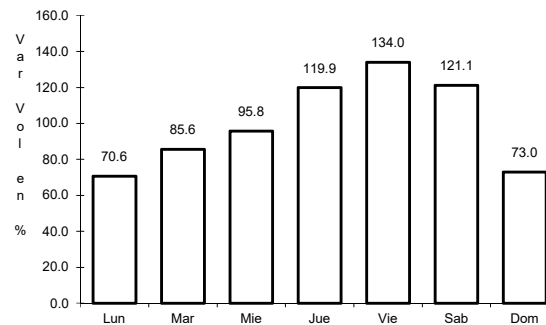
11 CARR: Los Mochis - Cd. Obregón (Cuota)

CLAVE: 26444

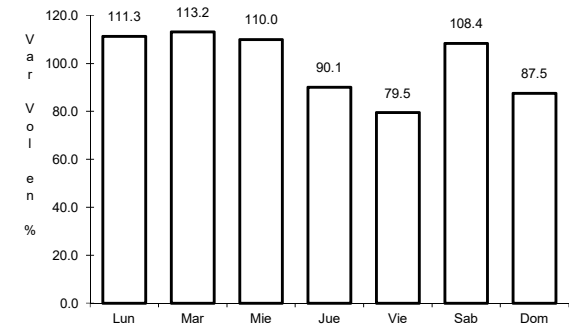
ruta: MEX-015D



Km: 0.00 Tipo: 3 Sent: 1



Km: 0.00 Tipo: 3 Sent: 2

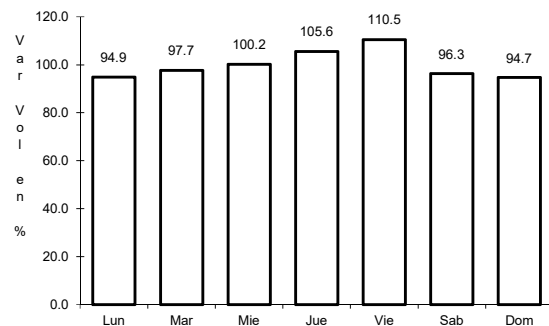


Km: 222.70 Tipo: 1 Sent: 1

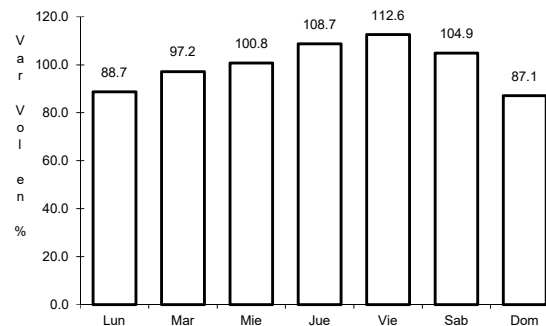
12 CARR: Mazatlán - Culiacán (Cuota)

CLAVE: 25045

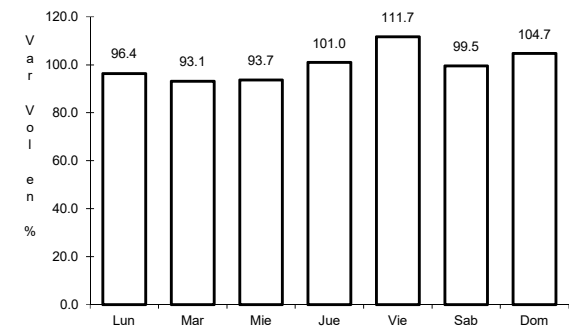
ruta: MEX-015D



Km: 0.00 Tipo: 3 Sent: 1



Km: 0.00 Tipo: 3 Sent: 2

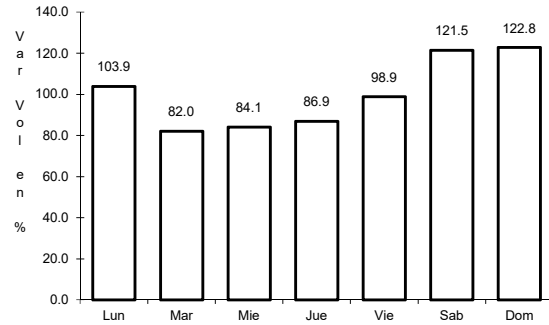


Km: 187.80 Tipo: 3 Sent: 1

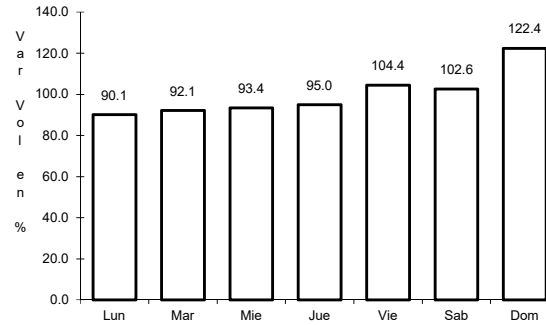
13 CARR: Tepic - Villa Unión (cuota)

CLAVE: 00500

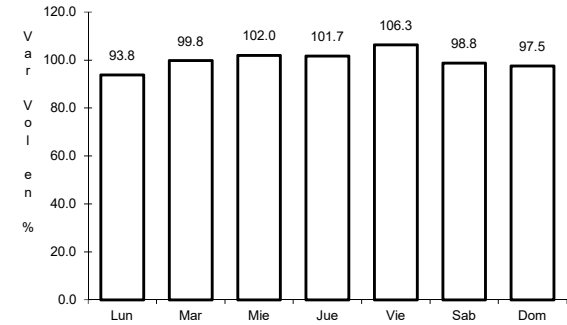
RUTA: MEX-015D



Km: 8.65 Tipo: 1 Sent: 1



Km: 8.65 Tipo: 1 Sent: 2

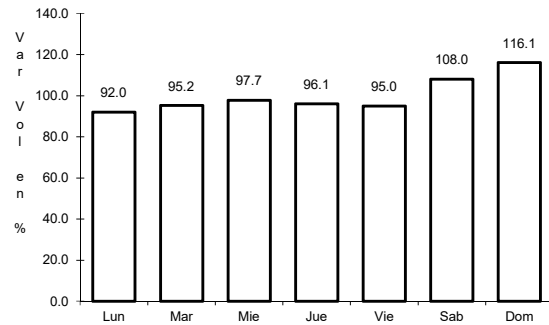


Km: 240.90 Tipo: 1 Sent: 0

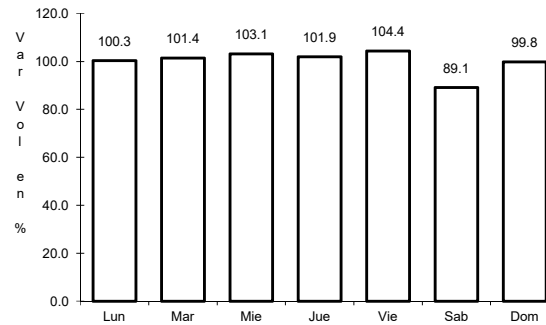
14 CARR: Carrizal - Campo Aníbal

CLAVE: 25585

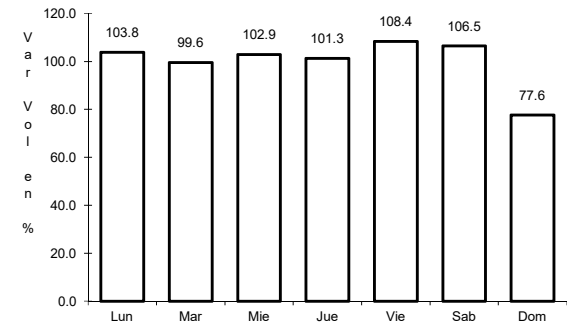
RUTA: SIN-019



Km: 0.00 Tipo: 3 Sent: 0



Km: 29.20 Tipo: 1 Sent: 0

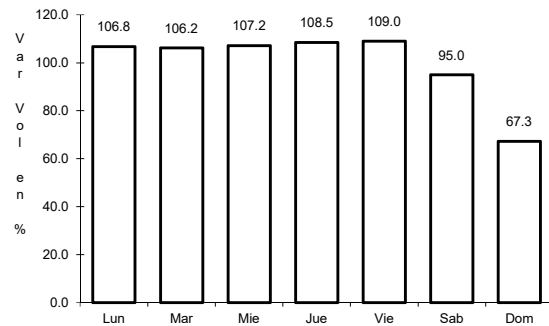


Km: 32.00 Tipo: 1 Sent: 0

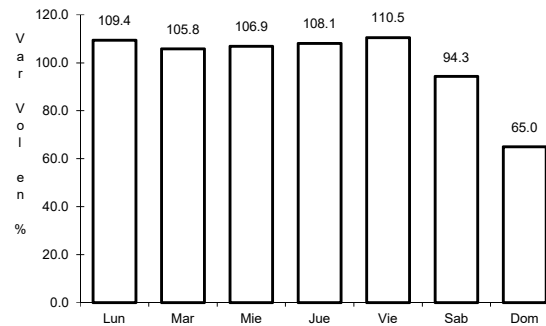
15 CARR: Culiacán - Altata

CLAVE: 25013

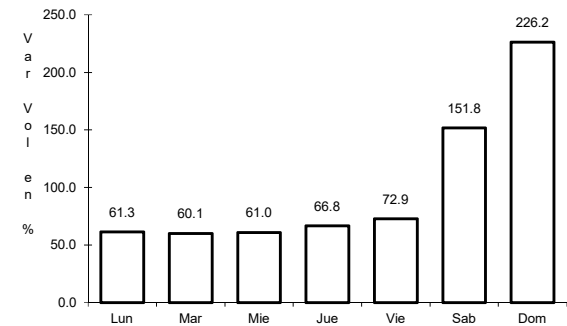
RUTA: SIN-030



Km: 6.20 Tipo: 1 Sent: 1



Km: 6.20 Tipo: 1 Sent: 2

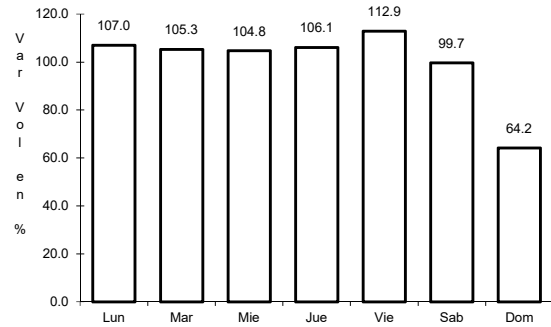


Km: 67.00 Tipo: 1 Sent: 1

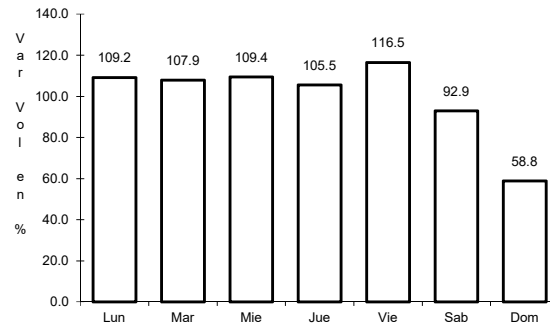
16 CARR: Culiacán - El Dorado

CLAVE: 25044

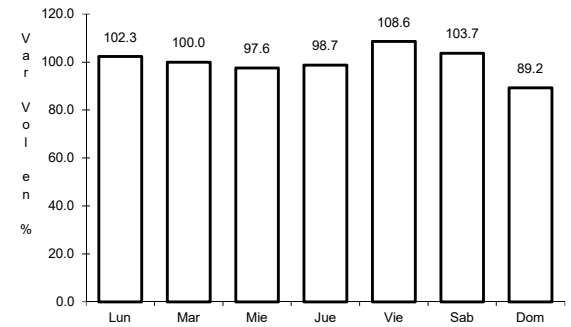
ruta: SIN-005



Km: 0.00 Tipo: 3 Sent: 1



Km: 0.00 Tipo: 3 Sent: 2

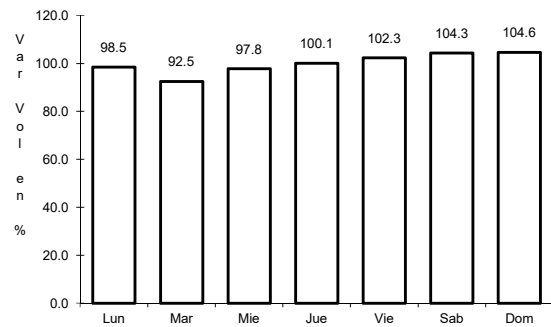


Km: 21.35 Tipo: 3 Sent: 0

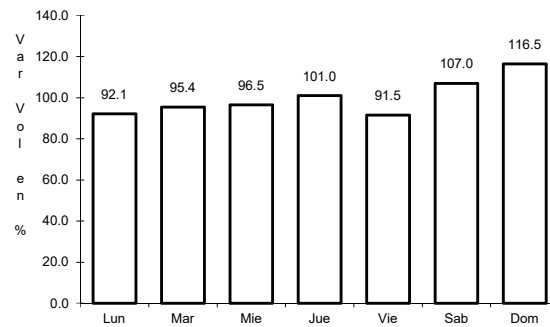
17 CARR: El Limoncito - Cinco Hermanos

CLAVE: 25016

ruta: SIN-016



Km: 0.00 Tipo: 3 Sent: 0

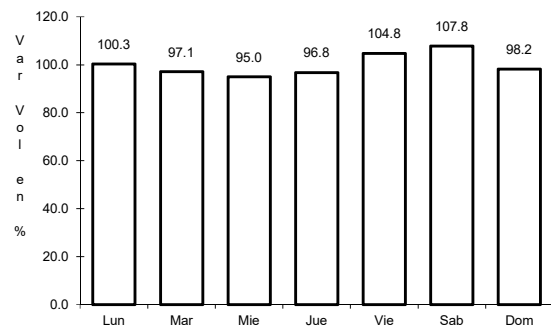


Km: 16.00 Tipo: 1 Sent: 0

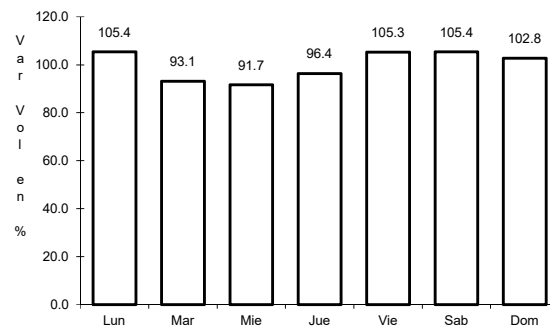
18 CARR: El Salado - El Dorado

CLAVE: 25010

ruta: SIN-010



Km: 0.00 Tipo: 3 Sent: 0

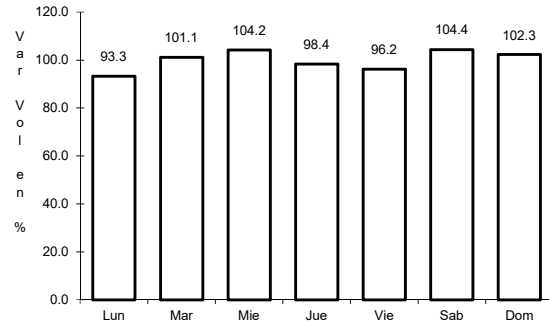


Km: 31.00 Tipo: 1 Sent: 0

19 CARR: Escuinapa de Hidalgo - Teacapan

CLAVE: 25001

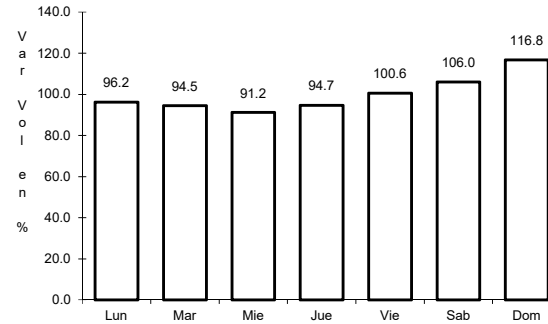
ruta: SIN-001



Km: 0.00

Tipo: 3

Sent: 0



Km: 41.00

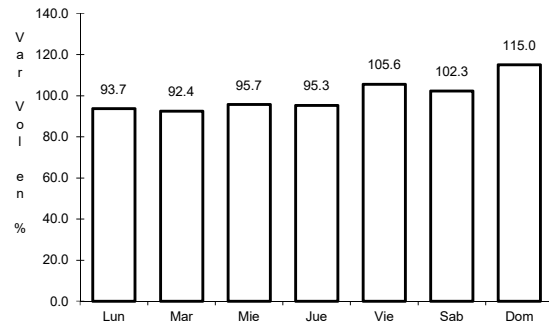
Tipo: 1

Sent: 0

20 CARR: Estación Dimas - San Ignacio

CLAVE: 25007

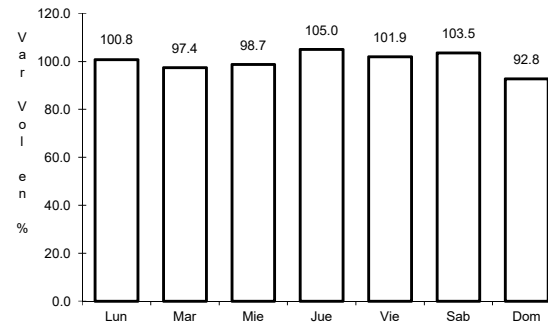
ruta: SIN-006



Km: 23.15

Tipo: 1

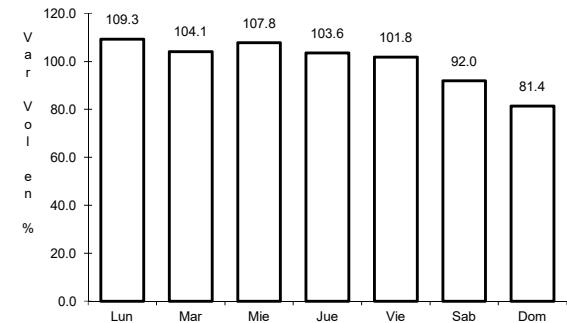
Sent: 0



Km: 23.15

Tipo: 3

Sent: 0



Km: 56.00

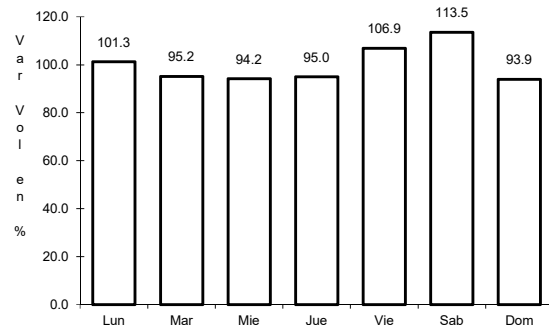
Tipo: 1

Sent: 0

21 CARR: Guamuchil - Mocoquito

CLAVE: 25021

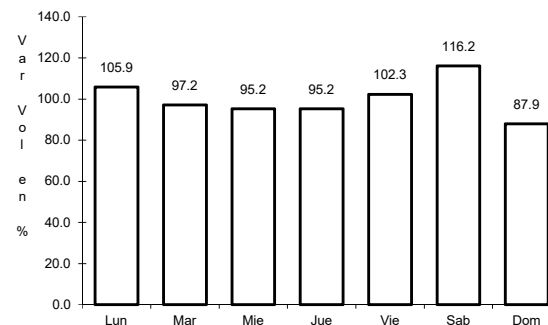
ruta: SIN-021



Km: 0.00

Tipo: 3

Sent: 0



Km: 17.00

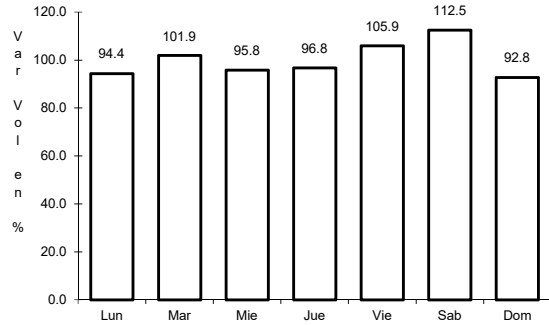
Tipo: 1

Sent: 0

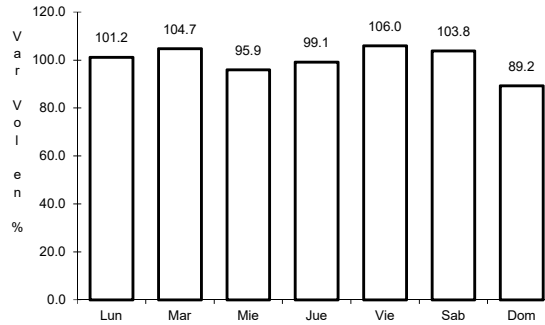
22 CARR: Guasave - Sinaloa de Leyva

CLAVE: 25023

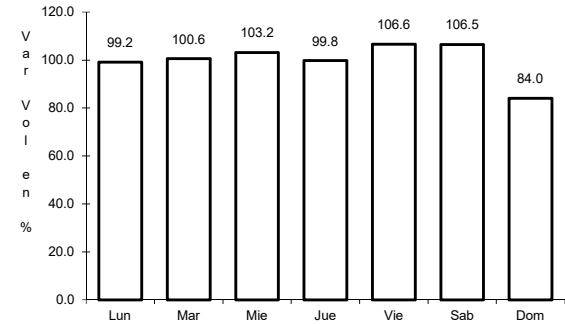
ruta: SIN-023



Km: 1.15 Tipo: 3 Sent: 1



Km: 1.15 Tipo: 3 Sent: 2

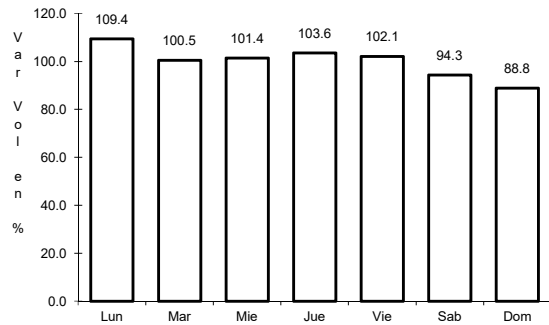


Km: 74.50 Tipo: 1 Sent: 1

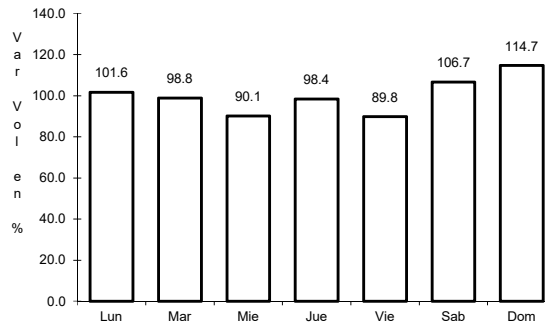
23 CARR: Navolato - El Castillo

CLAVE: 25004

ruta: SIN-004



Km: 0.00 Tipo: 3 Sent: 0

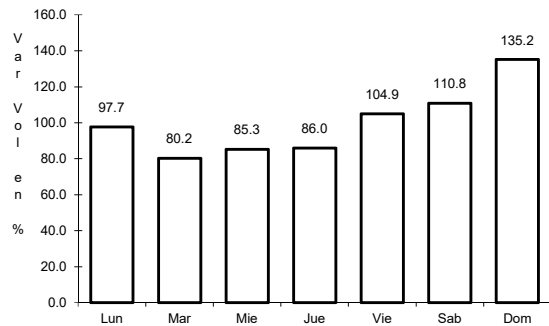


Km: 29.00 Tipo: 1 Sent: 0

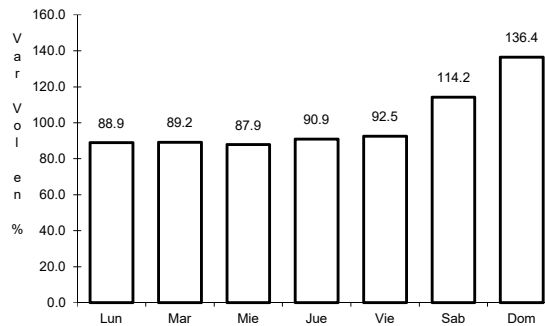
24 CARR: Pozole - Cofradía

CLAVE: 25080

ruta: SIN-080



Km: 0.00 Tipo: 3 Sent: 0

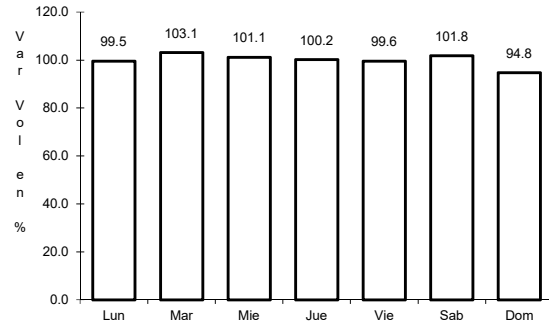


Km: 9.10 Tipo: 1 Sent: 0

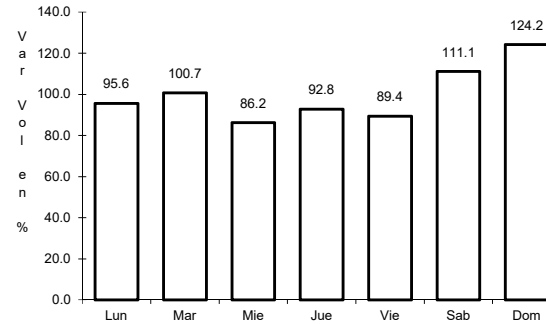
25 CARR: Ramal a Chametla

CLAVE: 25002

ruta: SIN-002



Km: 0.00 Tipo: 3 Sent: 0

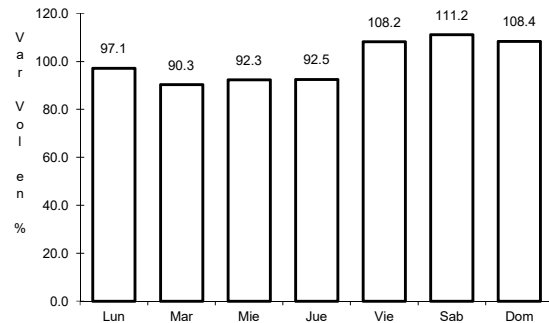


Km: 15.00 Tipo: 1 Sent: 0

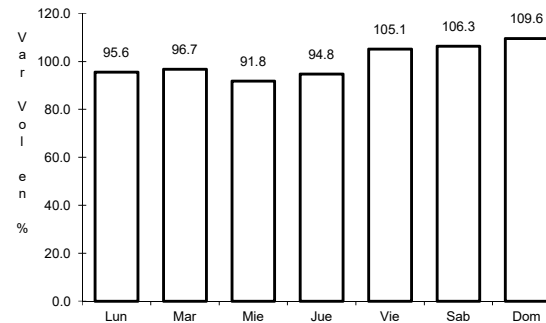
26 CARR: Ramal a Cosalá

CLAVE: 25008

ruta: SIN-008



Km: 0.00 Tipo: 3 Sent: 0

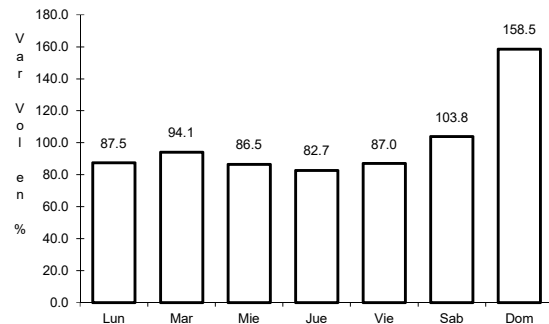


Km: 53.00 Tipo: 1 Sent: 0

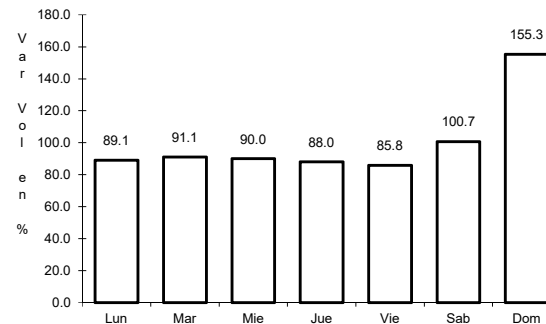
27 CARR: Ramal a El Quelite

CLAVE: 25060

ruta: SIN-060



Km: 0.00 Tipo: 3 Sent: 0

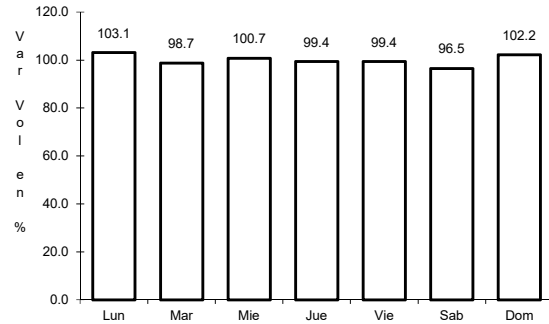


Km: 6.00 Tipo: 1 Sent: 0

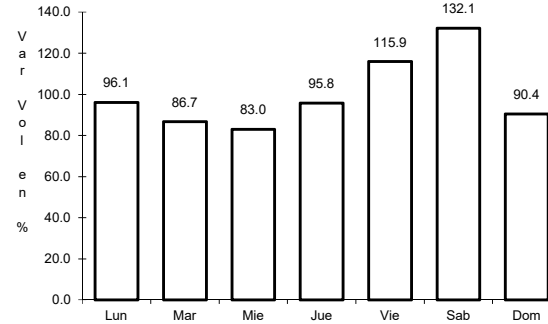
28 CARR: Ramal a Estación Bamoa

CLAVE: 25022

ruta: SIN-022



Km: 0.00 Tipo: 3 Sent: 0

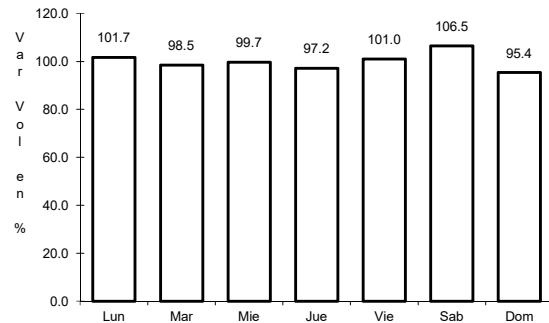


Km: 22.50 Tipo: 1 Sent: 0

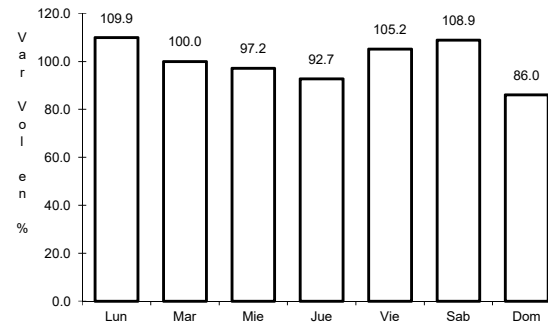
29 CARR: Ramal a La Cruz

CLAVE: 25043

ruta: SIN



Km: 0.00 Tipo: 3 Sent: 0

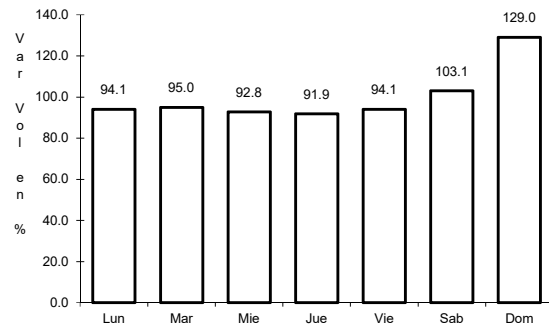


Km: 18.00 Tipo: 1 Sent: 0

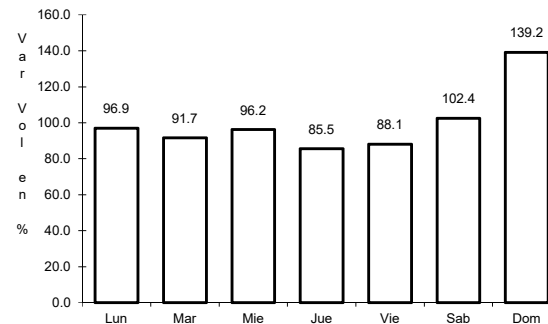
30 CARR: Ramal a La Noria

CLAVE: 25592

ruta: SIN



Km: 0.00 Tipo: 3 Sent: 0

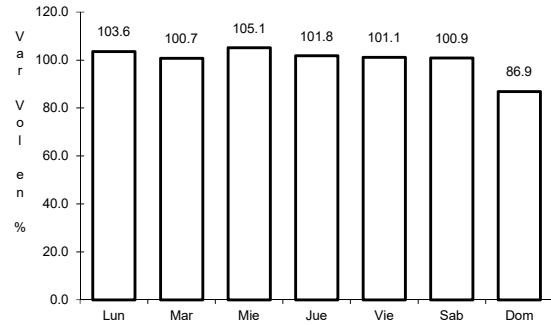


Km: 25.50 Tipo: 1 Sent: 0

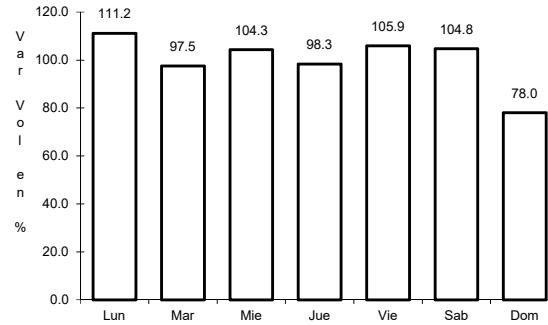
31 CARR: Ramal a La Reforma

CLAVE: 25041

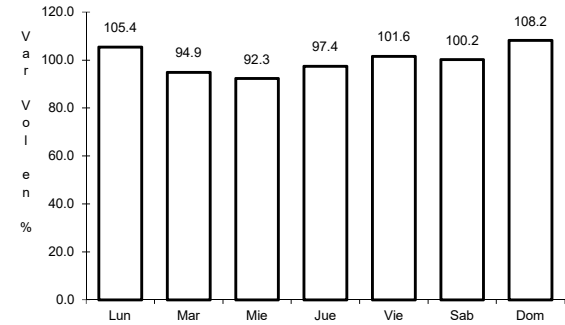
ruta: SIN-004



Km: 0.00 Tipo: 3 Sent: 0



Km: 14.00 Tipo: 3 Sent: 0

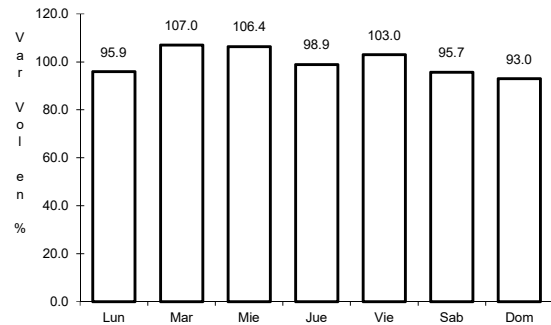


Km: 60.00 Tipo: 1 Sent: 0

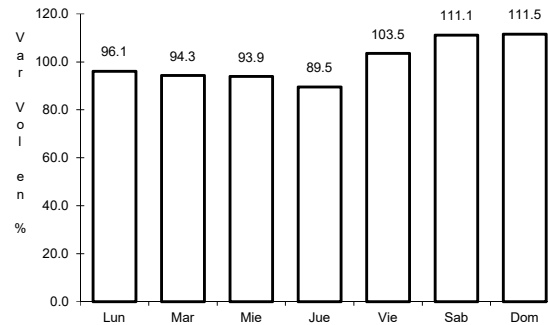
32 CARR: Rosario - Caimanero

CLAVE: 25003

ruta: SIN-003



Km: 0.00 Tipo: 3 Sent: 0

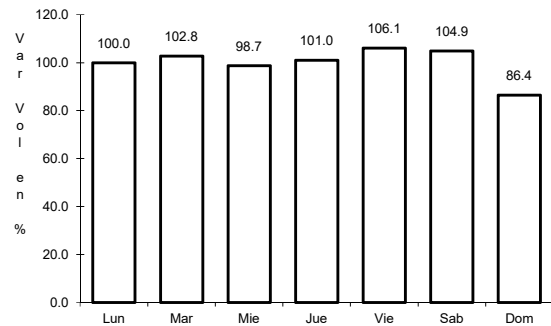


Km: 30.00 Tipo: 1 Sent: 0

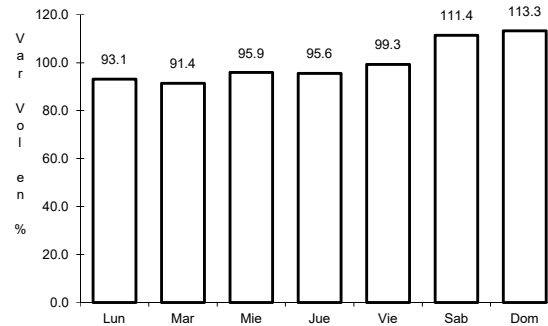
33 CARR: San Pedro - Campo Aníbal

CLAVE: 25600

ruta: SIN



Km: 0.00 Tipo: 3 Sent: 0

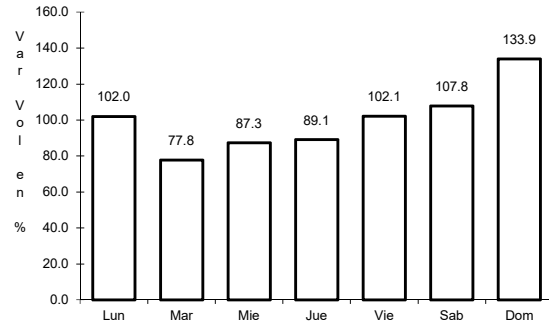


Km: 24.50 Tipo: 1 Sent: 0

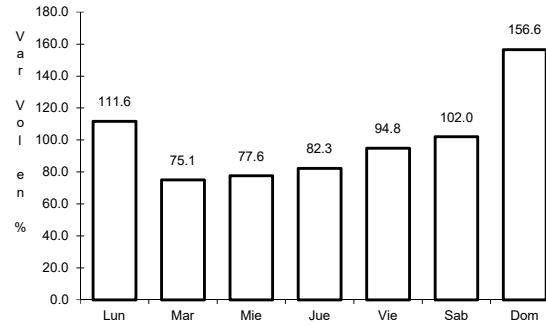
34 CARR: Topolobampo - Choix

CLAVE: 25032

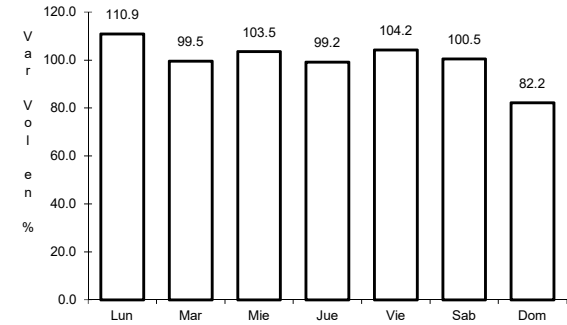
RUTA: SIN-023



Km: 0.00 Tipo: 3 Sent: 1



Km: 0.00 Tipo: 3 Sent: 2

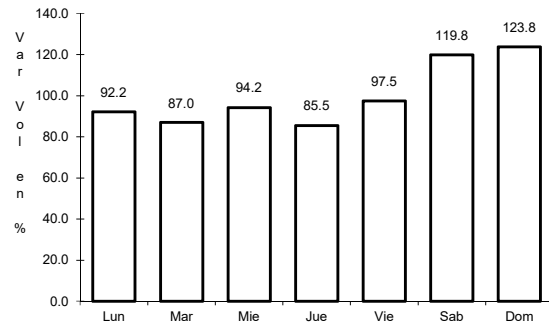


Km: 159.00 Tipo: 1 Sent: 0

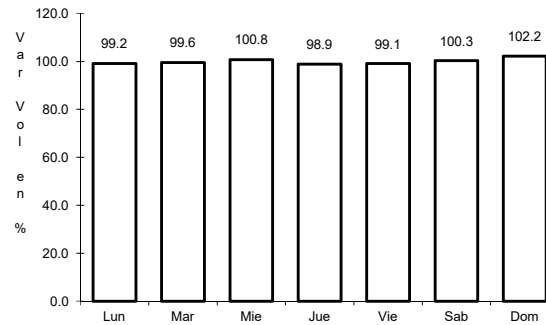
35 CARR: Villa Unión - El Walamo

CLAVE: 25081

RUTA: SIN-081



Km: 0.00 Tipo: 3 Sent: 0

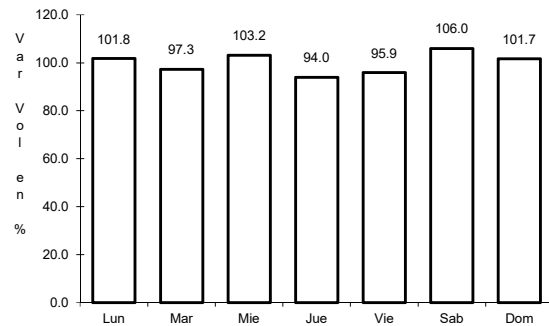


Km: 7.00 Tipo: 1 Sent: 0

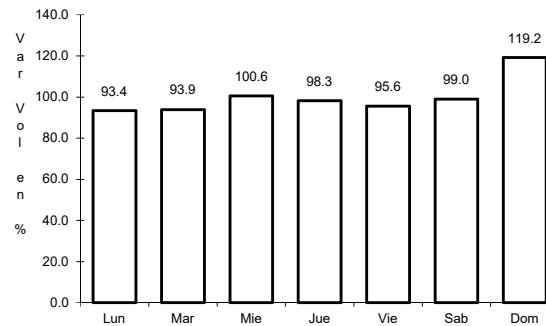
36 CARR: Villa Unión - Siqueiros

CLAVE: 25063

RUTA: SIN-063

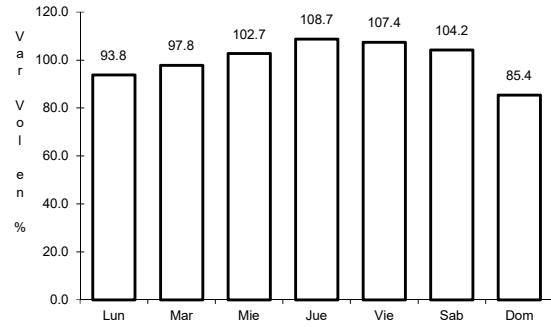


Km: 0.00 Tipo: 3 Sent: 0



Km: 11.00 Tipo: 1 Sent: 0

37 CARR: Culiacán - Las Brisas (Cuota)

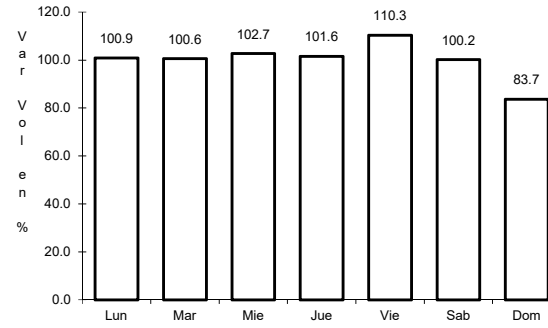


Km: 1.50

Tipo: 3

Sent: 1

CLAVE: 25503

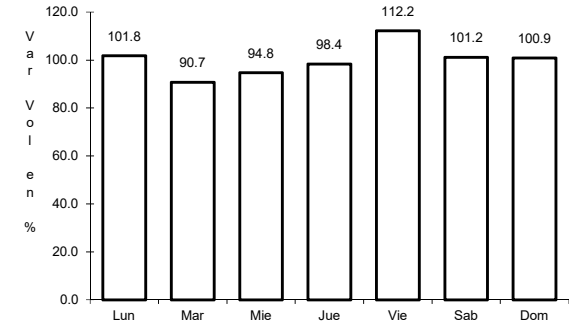


Km: 1.50

Tipo: 3

Sent: 2

RUTA: SIN-001D



Km: 125.70

Tipo: 1

Sent: 1

