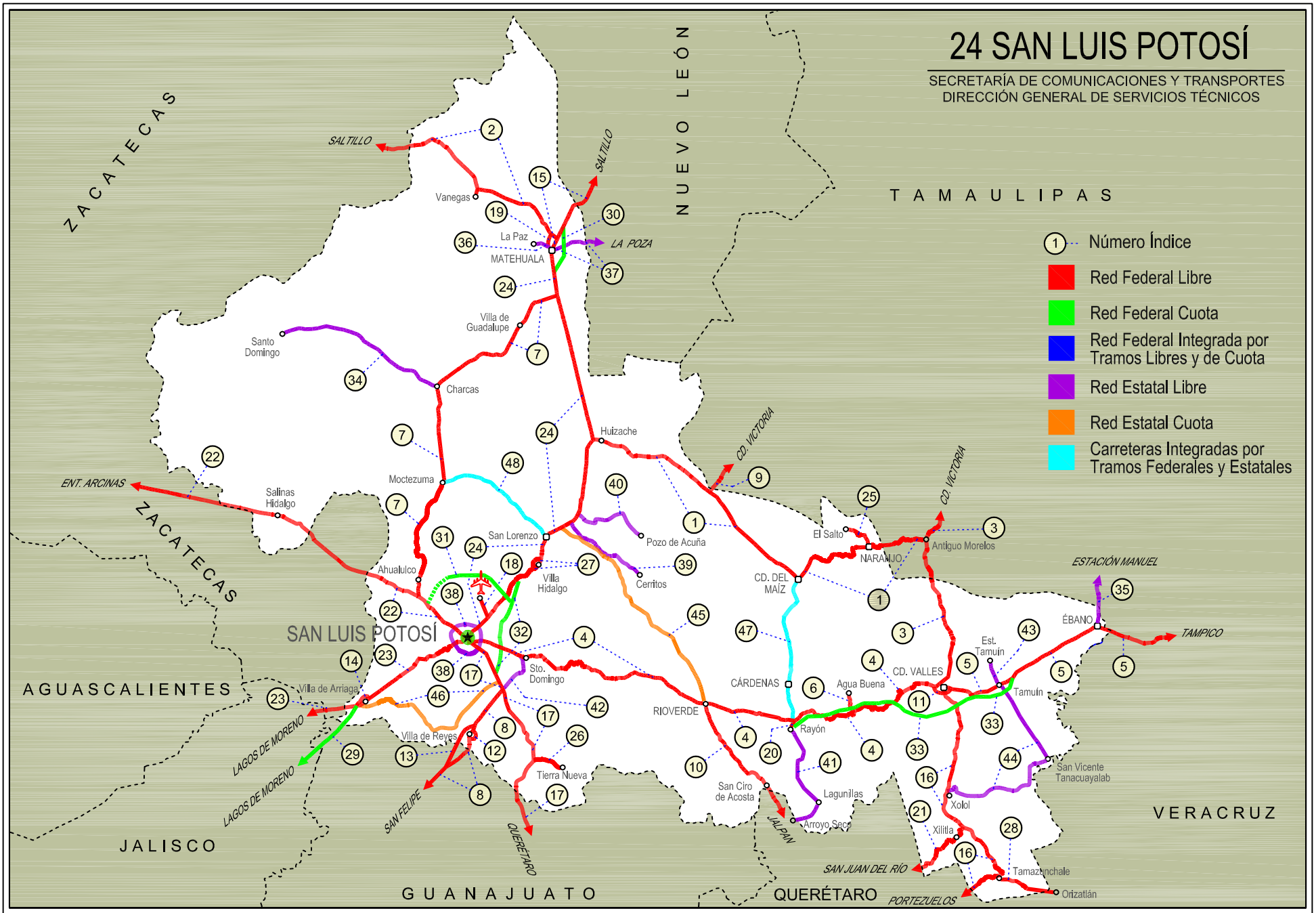


24 SAN LUIS POTOSÍ

SECRETARÍA DE COMUNICACIONES Y TRANSPORTES
DIRECCIÓN GENERAL DE SERVICIOS TÉCNICOS





SAN LUIS POTOSI

---RED FEDERAL LIBRE---

1 Antiguo Morelos - Ent. El Huizache	MEX-080
2 Carbonera - T. C. (Ent. Morelos - Saltillo)	MEX-062
3 Cd. Valles - Cd. Victoria	MEX-085
4 Cd. Valles - San Luis Potosí	MEX-070
5 Cd. Valles - Tampico	MEX-070
6 El Clarín - Agua Buena	MEX-070
7 Ent. Ahualulco - Ent. La Bonita	MEX-063
8 Ent. de Zaragoza - San Felipe	MEX-037
9 Ent. Tula - Cd. Victoria	MEX-101
10 Jalpan de Serra - Rioverde	MEX-069
11 Libramiento de Cd. Valles	MEX-070
12 Libramiento de Villa de Reyes	MEX-037
13 Libramiento de Villa de Reyes (Poniente)	MEX-037
14 Libramiento Villa de Arriaga	MEX-080
15 Matehuala - Ent. Puerto México	MEX-057
16 Portezuelo - Cd. Valles	MEX-085
17 Querétaro - San Luis Potosí	MEX-057
18 Ramal a Aeropuerto de S. L. P.	MEX-057
19 Ramal a Ojo de Agua	MEX-062
20 Ramal a Rayón	MEX-070
21 San Juan del Río - Xilitla	MEX-120
22 San Luis Potosí - Ent. Arcinas	MEX-049
23 San Luis Potosí - Lagos de Moreno	MEX-070-080
24 San Luis Potosí - Matehuala	MEX-057
25 T. C. (Ent. El Huizache- Ant. Morelos)-El Salto	MEX-080
26 T. C. (Qro - S.L.P.) - Tierra Nueva	MEX-057
27 T. C. (S.L.P. - Matehuala) - Villa Hidalgo	MEX-057
28 Tamazunchale - San Felipe Orizatlán	MEX-085

---RED FEDERAL DE CUOTA---

29 Lagos de Moreno - Villa de Arriaga (Cuota)	MEX-080D
30 Libramiento de Matehuala (Cuota)	MEX-057D
31 Libramiento Norponiente de San Luis Potosí (Cuota)	MEX-057D
32 Libramiento Oriente de San Luis Potosí (Cuota)	MEX-057D
33 Rayón - Ent. Tamuín (Cuota)	MEX-070D

---RED ESTATAL LIBRE---

34 Charcas - Villa Santo Domingo	SLP-017
35 Ébano - Estación Manuel	SLP-TAM
36 Matehuala - La Paz	SLP-020
37 Matehuala - La Poza	SLP-029-NL-061
38 Periférico de San Luis Potosí	SLP-032
39 Ramal a Cerritos	SLP-007
40 Ramal a Pozo de Acuña	SLP-009
41 Rayón - Arroyo Seco	SLP-011
42 Santo Domingo - Cerro Gordo	SLP-022
43 Tamuín - Estación F.F.C.C. Tamuín	SLP-040
44 Tamuín - Xolol	SLP-014

---RED ESTATAL DE CUOTA---

45 Cerritos - Rioverde (Cuota)	SLP-D
46 San Luis Potosí - Villa de Arriaga (Cuota)	SLP-D

---CARRETERAS INTEGRADAS POR TRAMOS FEDERALES Y ESTATALES---

47 Rayón - Cd. del Maíz	MEX-070-SLP-005
48 San Lorenzo - Moctezuma	MEX-063-SLP-012

SAN LUIS POTOSI

1 CARR: Antiguo Morelos - Ent. El Huizache

CLAVE: 00136

RUTA: MEX-080

AÑO: 2018

LUGAR	ESTACION				CLASIFICACION VEHICULAR EN PORCIENTO										COORDENADAS					
	KM	TE	SC	TDPA	M	A	B	C2	C3	T3S2	T3S3	T3S2R4	OTROS	A	B	C	K'	D	LATITUD	LONGITUD
Antiguo Morelos	0.00	3	0	2209	5.6	76.6	1.6	9.7	2.2	2.6	1.3	0.3	0.1	82.2	1.6	16.2	0.099	0.506	22.553947	-99.090709
Nuevo Morelos	19.28	1	0	1218	5.6	74.1	2.1	10.2	2.6	3.1	1.8	0.3	0.2	79.7	2.1	18.2	0.093	0.507	22.540907	-99.212253
Lim. Edos. Term. Tamps. Ppia. S. L. P.	25.00																			
El Naranjo	32.00	1	0	4288	3.7	64.4	4.0	6.9	2.0	10.0	2.1	5.8	1.1	68.1	4.0	27.9	0.080	0.508	22.532443	-99.307380
El Naranjo	32.00	3	0	2549	7.8	80.7	1.0	7.7	0.7	1.8	0.2	0.0	0.1	88.5	1.0	10.5	0.077	0.509	22.518097	-99.335651
Cd. del Maíz	86.00	3	0	1566	2.4	70.3	1.8	21.1	1.8	1.7	0.6	0.2	0.1	72.7	1.8	25.5	0.089	0.516	22.417057	-99.625396
T. Der. Tula	141.21	3	0	2562	3.1	38.0	2.2	6.6	4.0	21.3	6.1	17.0	1.7	41.1	2.2	56.7	0.062	0.515	22.738961	-99.980946
T. C. San Luis Potosí - Matehuala (Ent. El Huizache)	198.83	1	0	2988	2.9	44.4	1.9	10.2	3.5	17.9	4.3	13.6	1.3	47.3	1.9	50.8	0.070	0.510	22.929979	-100.450328

2 CARR: Carbonera - T. C. (Ent. Morelos - Saltillo)

CLAVE: 00218

RUTA: MEX-062

AÑO: 2018

LUGAR	ESTACION				CLASIFICACION VEHICULAR EN PORCIENTO										COORDENADAS					
	KM	TE	SC	TDPA	M	A	B	C2	C3	T3S2	T3S3	T3S2R4	OTROS	A	B	C	K'	D	LATITUD	LONGITUD
Carbonera	0.00	3	0	3295	10.0	73.4	1.0	9.8	1.9	2.2	0.6	1.0	0.1	83.4	1.0	15.6	0.081	0.517	23.702410	-100.625821
Cedral	18.00	1	0	4002	7.0	75.4	0.7	12.4	1.1	2.4	0.3	0.5	0.2	82.4	0.7	16.9	0.101	0.512	23.800748	-100.703663
Cedral	18.00	3	0	3786	9.1	75.3	0.7	9.2	1.7	2.6	0.7	0.5	0.2	84.4	0.7	14.9	0.070	0.517	23.829298	-100.738709
Lim. Edos. Term. S. L. P. Ppia. Zac.	79.20																			
T. C. Ent. Morelos - Saltillo	112.00	1	0	1301	2.1	78.8	1.4	13.7	1.9	1.8	0.2	0.1	0.0	80.9	1.4	17.7	0.069	0.542	24.157517	-101.494042

3 CARR: Cd. Valles - Cd. Victoria

CLAVE: 00509

RUTA: MEX-085

AÑO: 2018

LUGAR	ESTACION				CLASIFICACION VEHICULAR EN PORCIENTO										COORDENADAS					
	KM	TE	SC	TDPA	M	A	B	C2	C3	T3S2	T3S3	T3S2R4	OTROS	A	B	C	K'	D	LATITUD	LONGITUD
Cd. Valles	0.00	3	0	12678	4.7	79.4	1.4	5.9	0.6	5.8	0.9	0.4	0.9	84.1	1.4	14.5	0.059	0.503	22.007202	-99.004728
Lim. Edos. Term. S. L. P. Ppia. Tamps.	50.40																			
Antiguo Morelos	66.90	1	0	2231	3.8	75.2	4.2	9.1	1.8	2.7	0.9	1.9	0.4	79.0	4.2	16.8	0.087	0.504	22.549600	-99.078400
Antiguo Morelos	66.90	3	0	3718	3.8	76.0	4.5	8.8	1.4	2.8	0.7	1.7	0.3	79.8	4.5	15.7	0.083	0.504	22.559077	-99.078070
Cd. Mante	98.00	1	0	6072	9.3	76.2	3.0	5.6	1.6	1.6	1.0	0.7	1.0	85.5	3.0	11.5	0.083	0.516	22.711664	-98.989263
T. Izq. Ocampo	110.00	3	0	3514	9.4	77.0	3.8	6.6	0.8	2.0	0.2	0.1	0.1	86.4	3.8	9.8	0.094	0.501	22.838731	-99.024350
T. Izq. Gómez Farías	132.84	3	0	1870	7.1	74.5	7.9	7.0	1.3	1.5	0.6	0.1	0.0	81.6	7.9	10.5	0.095	0.502	23.030479	-99.093722
T. Izq. Llera de Canales	170.00	3	0	3553	0.9	83.2	3.9	7.6	1.3	1.8	0.4	0.8	0.1	84.1	3.9	12.0	0.080	0.508	23.310614	-99.016534
T. Der. González	172.50	3	0	2131	1.1	84.6	4.6	6.0	0.9	1.2	0.8	0.8	0.0	85.7	4.6	9.7	0.111	0.505	23.321138	-98.998074
Cd. Victoria	232.00	1	0	2589	1.0	81.3	4.3	7.9	2.6	1.5	0.9	0.4	0.1	82.3	4.3	13.4	0.099	0.520	23.659939	-99.096636

SAN LUIS POTOSI

4 CARR: Cd. Valles - San Luis Potosi

CLAVE: 24135

RUTA: MEX-070

AÑO: 2018

LUGAR	ESTACION				CLASIFICACION VEHICULAR EN PORCIENTO										COORDENADAS					
	KM	TE	SC	TDPA	M	A	B	C2	C3	T3S2	T3S3	T3S2R4	OTROS	A	B	C	K'	D	LATITUD	LONGITUD
Cd. Valles	0.00	3	1	4616	5.4	80.9	1.9	6.7	1.4	1.7	1.1	0.6	0.3	86.3	1.9	11.8	0.091	0.518	21.990606	-99.046621
Cd. Valles	0.00	3	2	4967	4.5	81.7	1.9	6.7	1.4	1.7	1.0	0.7	0.4	86.2	1.9	11.9	0.077	0.518	21.990489	-99.046649
T. Der. Damián Carmona	31.25	3	0	2076	4.1	78.7	1.3	10.3	2.0	2.4	0.8	0.1	0.3	82.8	1.3	15.9	0.084	0.508	21.925357	-99.228550
T. Der. Canoas	75.40	1	0	1728	2.0	84.4	0.5	7.0	1.5	2.3	1.4	0.3	0.6	86.4	0.5	13.1	0.082	0.516	21.874013	-99.496127
X. C. Cárdenas - Rayón	93.00	1	0	3019	2.1	78.4	0.5	12.9	1.7	3.0	1.1	0.2	0.1	80.5	0.5	19.0	0.082	0.502	21.852578	-99.625934
X. C. Cárdenas - Rayón	93.00	3	0	7366	0.6	77.4	3.2	8.5	1.7	5.0	1.5	1.3	0.8	78.0	3.2	18.8	0.077	0.507	21.858955	-99.654501
Río Verde	133.76	1	1	10013	7.5	81.1	1.0	5.4	0.7	1.4	2.2	0.2	0.5	88.6	1.0	10.4	0.069	0.504	21.922674	-99.983917
Río Verde	133.76	1	2	9855	7.6	79.4	1.2	7.2	0.8	1.1	2.1	0.2	0.4	87.0	1.2	11.8	0.076	0.504	21.922556	-99.983924
Río Verde	133.76	3	1	10967	7.0	80.5	0.4	8.7	0.8	1.3	0.9	0.1	0.3	87.5	0.4	12.1	0.079	0.506	21.934835	-100.024284
Río Verde	133.76	3	2	11249	7.5	80.9	0.4	7.9	0.7	1.4	0.9	0.1	0.2	88.4	0.4	11.2	0.078	0.506	21.934705	-100.024358
T. Der. Guaxcama	161.04	3	0	3369	0.9	80.7	1.2	8.6	3.0	3.2	1.6	0.1	0.7	81.6	1.2	17.2	0.108	0.525	22.041460	-100.274667
T. Izq. Zaragoza	239.50	1	0	4517	1.3	76.4	1.8	10.5	3.9	3.7	1.9	0.1	0.4	77.7	1.8	20.5	0.088	0.509	22.098573	-100.742683
T. Izq. Zaragoza	239.50	3	0	7717	1.5	75.7	1.0	13.3	2.4	3.6	1.4	0.6	0.5	77.2	1.0	21.8	0.077	0.517	22.101224	-100.750242
X. Lib. Ote. de San Luis Potosí	255.00	1	0	9172	2.4	67.6	7.3	10.4	4.3	4.9	2.0	0.5	0.6	70.0	7.3	22.7	0.069	0.501	22.126910	-100.821981
X. Periférico de San Luis Potosí	257.44	1	1	25831	2.4	88.1	0.4	6.4	1.2	0.8	0.7	0.0	0.0	90.5	0.4	9.1	0.082	0.525	22.154396	-100.898738
X. Periférico de San Luis Potosí	257.44	1	2	28564	1.5	89.1	0.3	6.2	1.3	0.9	0.7	0.0	0.0	90.6	0.3	9.1	0.078	0.525	22.154292	-100.898759
San Luis Potosí	261.94																			

5 CARR: Cd. Valles - Tampico

CLAVE: 00138

RUTA: MEX-070

AÑO: 2018

LUGAR	ESTACION				CLASIFICACION VEHICULAR EN PORCIENTO										COORDENADAS					
	KM	TE	SC	TDPA	M	A	B	C2	C3	T3S2	T3S3	T3S2R4	OTROS	A	B	C	K'	D	LATITUD	LONGITUD
Cd. Valles	0.00	3	0	8373	2.5	76.5	1.3	9.7	3.2	4.3	1.2	0.8	0.5	79.0	1.3	19.7	0.068	0.511	21.975984	-98.958702
T. Der. Santa Elena	15.25	3	0	6900	2.2	75.3	1.9	9.3	2.5	4.9	2.5	1.1	0.3	77.5	1.9	20.6	0.077	0.529	21.962227	-98.874795
Tamuín	29.60	1	0	6217	3.3	74.7	1.9	10.1	2.4	3.9	1.6	1.5	0.6	78.0	1.9	20.1	0.064	0.509	21.997367	-98.781433
Ébano	79.00	1	0	9125	9.9	71.9	1.4	5.3	1.2	6.4	1.8	1.7	0.4	81.8	1.4	16.8	0.064	0.509	22.214224	-98.391891
Ébano	79.00	3	0	5751	3.9	72.7	2.9	8.4	2.0	4.7	1.9	3.0	0.5	76.6	2.9	20.5	0.075	0.501	22.211334	-98.359364
Lim. Edos. Term. S. L. P. Ppia. Ver.	83.57																			
T. Der. Pánuco	103.00	1	0	5703	6.9	68.6	2.2	8.9	1.9	6.3	2.0	2.1	1.1	75.5	2.2	22.3	0.085	0.501	22.155828	-98.154913
T. Der. Pánuco	103.00	3	0	7135	2.1	70.6	3.0	10.4	2.0	6.6	1.9	2.5	0.9	72.7	3.0	24.3	0.085	0.500	22.158785	-98.149224
T. C. Anáhuac - El Prieto	128.40	1	1	6040	1.5	76.9	2.3	10.9	2.2	2.7	1.2	2.0	0.3	78.4	2.3	19.3	0.081	0.509	22.214490	-97.948808
T. C. Anáhuac - El Prieto	128.40	1	2	5817	0.8	76.4	2.5	11.4	2.3	2.8	1.3	2.1	0.4	77.2	2.5	20.3	0.071	0.509	22.214631	-97.948826
T. C. Anáhuac - El Prieto	128.40	3	1	7219	1.4	77.0	2.2	10.5	2.3	2.7	1.3	2.3	0.3	78.4	2.2	19.4	0.081	0.508	22.216076	-97.942146
T. C. Anáhuac - El Prieto	128.40	3	2	6981	0.8	75.8	2.5	11.7	2.4	2.9	1.3	2.3	0.3	76.6	2.5	20.9	0.072	0.508	22.216222	-97.942191
Lim. Edos. Term. Ver. Ppia. Tamps.	133.81																			

SAN LUIS POTOSI

5 CARR: Cd. Valles - Tampico

CLAVE: 00138

RUTA: MEX-070

AÑO: 2018

LUGAR	ESTACION				CLASIFICACION VEHICULAR EN PORCIENTO													COORDENADAS		
	KM	TE	SC	TDPA	M	A	B	C2	C3	T3S2	T3S3	T3S2R4	OTROS	A	B	C	K'	D	LATITUD	LONGITUD
Tampico	138.00	1	1	9467	1.4	73.3	1.5	11.4	2.1	4.6	2.2	2.7	0.8	74.7	1.5	23.8	0.073	0.503	22.226910	-97.894078
Tampico	138.00	1	2	9577	1.4	70.4	1.6	12.9	2.4	5.1	2.5	2.8	0.9	71.8	1.6	26.6	0.082	0.503	22.226983	-97.894097

6 CARR: El Clarin - Agua Buena

CLAVE: 24283

RUTA: MEX-070

AÑO: 2018

LUGAR	ESTACION				CLASIFICACION VEHICULAR EN PORCIENTO													COORDENADAS		
	KM	TE	SC	TDPA	M	A	B	C2	C3	T3S2	T3S3	T3S2R4	OTROS	A	B	C	K'	D	LATITUD	LONGITUD
T. C. Cd. Valles - San Luis Potosi	0.00	3	0	1237	4.7	76.7	1.6	15.8	0.2	0.7	0.2	0.0	0.1	81.4	1.6	17.0	0.095	0.510	21.891976	-99.382539
Agua Buena	11.23	1	0	3968	13.9	73.2	1.1	8.7	0.4	2.2	0.4	0.0	0.1	87.1	1.1	11.8	0.085	0.514	21.950981	-99.391512

7 CARR: Ent. Ahualulco - Ent. La Bonita

CLAVE: 24258

RUTA: MEX-063

AÑO: 2018

LUGAR	ESTACION				CLASIFICACION VEHICULAR EN PORCIENTO													COORDENADAS		
	KM	TE	SC	TDPA	M	A	B	C2	C3	T3S2	T3S3	T3S2R4	OTROS	A	B	C	K'	D	LATITUD	LONGITUD
T. C. San Luis Potosi - Ent. Arcinas	0.00	3	0	5382	2.8	79.6	1.5	12.3	0.8	2.3	0.3	0.1	0.3	82.4	1.5	16.1	0.077	0.501	22.321591	-101.165293
Ahualulco	11.00	3	0	5102	5.0	74.8	1.4	15.4	0.6	2.1	0.4	0.1	0.2	79.8	1.4	18.8	0.085	0.502	22.414381	-101.158427
Moctezuma	59.00	1	0	2398	6.2	70.7	1.4	19.0	0.8	1.1	0.5	0.1	0.2	76.9	1.4	21.7	0.097	0.512	22.733930	-101.085638
Charcas	100.00	1	0	2445	8.3	71.8	3.0	14.6	1.0	0.5	0.3	0.3	0.2	80.1	3.0	16.9	0.089	0.517	23.109462	-101.103081
Charcas	100.00	3	0	1538	11.6	69.4	2.5	14.1	0.8	1.1	0.1	0.3	0.1	81.0	2.5	16.5	0.092	0.520	23.130820	-101.099991
T. C. San Luis Potosi - Matehuala	169.90	1	0	1455	6.8	67.8	1.6	21.3	1.3	1.0	0.2	0.0	0.0	74.6	1.6	23.8	0.091	0.506	23.482051	-100.619461

8 CARR: Ent. de Zaragoza - San Felipe

CLAVE: 00240

RUTA: MEX-037

AÑO: 2018

LUGAR	ESTACION				CLASIFICACION VEHICULAR EN PORCIENTO													COORDENADAS		
	KM	TE	SC	TDPA	M	A	B	C2	C3	T3S2	T3S3	T3S2R4	OTROS	A	B	C	K'	D	LATITUD	LONGITUD
T. C. Querétaro - San Luis Potosi	0.00	3	0	12368	0.7	60.7	6.0	11.7	2.8	13.1	2.5	1.5	1.0	61.4	6.0	32.6	0.069	0.500	21.961536	-100.822338
Lim. Edos. Term. S. L. P. Ppia. Gto.	32.00																			
San Felipe	72.00	1	0	7457	2.0	55.5	2.9	12.2	2.7	19.6	2.6	1.5	1.0	57.5	2.9	39.6	0.072	0.505	21.481209	-101.153779

9 CARR: Ent. Tula - Cd. Victoria

CLAVE: 00179

RUTA: MEX-101

AÑO: 2018

LUGAR	ESTACION				CLASIFICACION VEHICULAR EN PORCIENTO													COORDENADAS		
	KM	TE	SC	TDPA	M	A	B	C2	C3	T3S2	T3S3	T3S2R4	OTROS	A	B	C	K'	D	LATITUD	LONGITUD
T. C. Antigua Morelos - El Huizache	0.00	3	0	3602	1.8	40.7	3.6	6.8	3.0	20.5	5.2	17.9	0.5	42.5	3.6	53.9	0.061	0.514	22.738165	-99.967861
Lim. Edos. Term. S. L. P. Ppia. Tamps.	2.40																			

SAN LUIS POTOSI

9 CARR: Ent. Tula - Cd. Victoria

CLAVE: 00179

RUTA: MEX-101

AÑO: 2018

LUGAR	ESTACION				CLASIFICACION VEHICULAR EN PORCIENTO														COORDENADAS	
	KM	TE	SC	TDPA	M	A	B	C2	C3	T3S2	T3S3	T3S2R4	OTROS	A	B	C	K'	D	LATITUD	LONGITUD
T. Der. Tula (1º Acceso)	38.00	1	0	4072	1.4	42.9	4.1	11.3	3.0	18.4	4.7	13.1	1.1	44.3	4.1	51.6	0.069	0.502	22.979900	-99.737500
T. Der. Tula (2º Acceso)	41.95	3	0	3788	1.2	43.7	4.6	11.8	2.8	17.2	5.1	12.6	1.0	44.9	4.6	50.5	0.069	0.516	23.020600	-99.714400
Jaumave	112.68	1	0	5777	2.1	55.8	2.5	7.6	2.1	15.8	3.3	9.7	1.1	57.9	2.5	39.6	0.075	0.501	23.393517	-99.416131
Jaumave	112.68	3	0	5407	2.1	55.7	2.6	7.6	2.1	15.5	3.3	10.1	1.0	57.8	2.6	39.6	0.073	0.507	23.420647	-99.373222
Cd. Victoria	180.00	1	1	3514	14.9	78.7	0.1	5.9	0.3	0.1	0.0	0.0	0.0	93.6	0.1	6.3	0.116	0.523	23.710709	-99.176304
Cd. Victoria	180.00	1	2	3203	13.6	76.7	0.1	9.2	0.3	0.1	0.0	0.0	0.0	90.3	0.1	9.6	0.079	0.523	23.710803	-99.176356

10 CARR: Jalpan de Serra - Rioverde

CLAVE: 00265

RUTA: MEX-069

AÑO: 2018

LUGAR	ESTACION				CLASIFICACION VEHICULAR EN PORCIENTO														COORDENADAS	
	KM	TE	SC	TDPA	M	A	B	C2	C3	T3S2	T3S3	T3S2R4	OTROS	A	B	C	K'	D	LATITUD	LONGITUD
Jalpan de Serra	0.00	3	0	5947	1.3	85.6	0.3	8.3	0.5	3.0	0.5	0.1	0.4	86.9	0.3	12.8	0.072	0.501	21.242135	-99.483206
T. Izq. Conca	35.01	1	0	2460	2.0	85.4	0.5	9.0	0.8	1.9	0.3	0.0	0.1	87.4	0.5	12.1	0.088	0.502	21.444810	-99.626920
Arroyo Seco	48.60	1	0	1777	1.9	80.0	0.6	14.6	1.0	1.6	0.2	0.0	0.1	81.9	0.6	17.5	0.075	0.509	21.538355	-99.684640
Lim. Edos. Term. Qro. Ppia. S. L. P.	52.27																			
San Ciro de Acosta	69.42	1	0	2174	6.8	76.5	0.6	13.2	0.7	1.4	0.5	0.1	0.2	83.3	0.6	16.1	0.079	0.502	21.648034	-99.808580
San Ciro de Acosta	69.42	3	0	3039	4.4	80.8	0.4	11.0	0.8	2.0	0.3	0.1	0.2	85.2	0.4	14.4	0.079	0.507	21.661994	-99.827629
Rioverde	105.43	1	0	7810	2.8	78.8	0.2	14.6	0.6	2.3	0.4	0.1	0.2	81.6	0.2	18.2	0.075	0.522	21.882079	-99.975830

11 CARR: Libramiento de Cd. Valles

CLAVE: 24205

RUTA: MEX-070

AÑO: 2018

LUGAR	ESTACION				CLASIFICACION VEHICULAR EN PORCIENTO														COORDENADAS	
	KM	TE	SC	TDPA	M	A	B	C2	C3	T3S2	T3S3	T3S2R4	OTROS	A	B	C	K'	D	LATITUD	LONGITUD
T. C. Cd. Valles - San Luis Potosi	0.00	3	0	8478	3.3	75.5	3.6	8.7	2.3	4.3	1.1	0.7	0.5	78.8	3.6	17.6	0.064	0.540	21.984256	-99.034702
T. C. Cd. Valles - Tampico	11.54	1	0	3274	3.1	67.4	3.5	9.5	6.9	5.1	2.2	1.8	0.5	70.5	3.5	26.0	0.068	0.513	21.974294	-98.966524

12 CARR: Libramiento de Villa de Reyes

CLAVE: 24010

RUTA: MEX-037

AÑO: 2018

LUGAR	ESTACION				CLASIFICACION VEHICULAR EN PORCIENTO														COORDENADAS	
	KM	TE	SC	TDPA	M	A	B	C2	C3	T3S2	T3S3	T3S2R4	OTROS	A	B	C	K'	D	LATITUD	LONGITUD
T. C. Ent. Zaragoza - San Felipe	0.00	3	0	5238	4.4	70.7	1.4	16.3	1.2	4.6	0.8	0.4	0.2	75.1	1.4	23.5	0.081	0.526	21.808229	-100.927938
T. C. Villa de Reyes - Bledos	3.10																			

SAN LUIS POTOSI

13 CARR: Libramiento de Villa de Reyes (Poniente)

CLAVE:

RUTA: MEX-037

AÑO: 2018

LUGAR	ESTACION				CLASIFICACION VEHICULAR EN PORCIENTO													COORDENADAS			
	KM	TE	SC	TDPA	M	A	B	C2	C3	T3S2	T3S3	T3S2R4	OTROS	A	B	C	K'	D	LATITUD	LONGITUD	
T. C. Ent. Zaragoza - San Felipe Sur	125.60																				
Lim. Edos. Term. Gto. Ppia. S. L. P.	132.90																				
T. C. Ent. Zaragoza - San Felipe Norte	143.64	1	0	6517	1.3	45.9	3.7	13.1	3.3	25.0	3.4	2.9	1.4	47.2	3.7	49.1	0.063	0.501	21.821109	-100.937827	

14 CARR: Libramiento Villa de Arriaga

CLAVE: 24009

RUTA: MEX-080

AÑO: 2018

LUGAR	ESTACION				CLASIFICACION VEHICULAR EN PORCIENTO													COORDENADAS			
	KM	TE	SC	TDPA	M	A	B	C2	C3	T3S2	T3S3	T3S2R4	OTROS	A	B	C	K'	D	LATITUD	LONGITUD	
T. C. San Luis Potosí - Lagos de Moreno (Poniente)	0.00	3	0	4614	0.6	63.2	3.5	6.3	3.4	12.7	3.3	5.9	1.1	63.8	3.5	32.7	0.066	0.550	21.923960	-101.371085	
T. C. San Luis Potosí - Lagos de Moreno (Oriente)	5.00																				

15 CARR: Matehuala - Ent. Puerto México

CLAVE: 00405

RUTA: MEX-057

AÑO: 2018

LUGAR	ESTACION				CLASIFICACION VEHICULAR EN PORCIENTO													COORDENADAS		
	KM	TE	SC	TDPA	M	A	B	C2	C3	T3S2	T3S3	T3S2R4	OTROS	A	B	C	K'	D	LATITUD	LONGITUD
Matehuala	0.00	3	1	7611	5.2	68.4	2.0	10.4	1.5	8.5	2.3	1.2	0.5	73.6	2.0	24.4	0.072	0.513	23.671733	-100.630649
Matehuala	0.00	3	2	7211	5.1	66.0	2.1	11.1	1.7	9.5	2.7	1.2	0.6	71.1	2.1	26.8	0.061	0.513	23.671804	-100.630814
T. Izq. Cedral	8.47	1	1	4592	12.9	50.0	3.4	16.8	3.5	9.9	2.3	1.0	0.2	62.9	3.4	33.7	0.078	0.504	23.692383	-100.620383
T. Izq. Cedral	8.47	1	2	4667	11.7	55.9	3.0	12.2	2.4	11.0	2.5	1.1	0.2	67.6	3.0	29.4	0.079	0.504	23.692491	-100.620654
T. Izq. Cedral	8.47	3	1	2555	4.3	47.7	4.9	14.1	1.8	20.1	4.2	2.0	0.9	52.0	4.9	43.1	0.077	0.522	23.698864	-100.617174
T. Izq. Cedral	8.47	3	2	2336	1.2	46.1	5.7	15.9	2.0	21.2	4.6	2.4	0.9	47.3	5.7	47.0	0.074	0.522	23.698990	-100.617444
Lim. Edos. Term. S. L. P. Ppia. N. L.	24.64																			
Santa Ana	59.65	1	1	7975	1.5	38.9	6.7	7.4	2.3	34.9	3.2	4.7	0.4	40.4	6.7	52.9	0.070	0.501	24.077393	-100.387565
Santa Ana	59.65	1	2	8022	1.0	37.9	6.9	7.7	2.4	35.1	3.4	5.1	0.5	38.9	6.9	54.2	0.062	0.501	24.077498	-100.387863
T. Der. Linares	128.99	3	1	8435	1.0	40.7	6.1	6.3	2.1	34.4	3.5	5.2	0.7	41.7	6.1	52.2	0.063	0.505	24.681135	-100.300470
T. Der. Linares	128.99	3	2	8606	0.6	38.7	5.9	6.7	2.5	36.2	3.5	5.2	0.7	39.3	5.9	54.8	0.063	0.505	24.681079	-100.300767
San Rafael	177.18	1	1	7606	1.1	40.4	5.0	7.2	2.3	35.2	3.5	4.9	0.4	41.5	5.0	53.5	0.075	0.508	25.020216	-100.541982
San Rafael	177.18	1	2	7851	0.6	34.7	5.7	8.1	2.6	38.1	3.9	5.9	0.4	35.3	5.7	59.0	0.065	0.508	25.019972	-100.542149
Ent. Puerto México	205.97																			

16 CARR: Portezuelo - Cd. Valles

CLAVE: 00023

RUTA: MEX-085

AÑO: 2018

LUGAR	ESTACION				CLASIFICACION VEHICULAR EN PORCIENTO													COORDENADAS		
	KM	TE	SC	TDPA	M	A	B	C2	C3	T3S2	T3S3	T3S2R4	OTROS	A	B	C	K'	D	LATITUD	LONGITUD
Portezuelo	0.00	3	0	6387	1.1	84.4	0.9	8.3	0.8	3.3	0.7	0.1	0.4	85.5	0.9	13.6	0.076	0.520	20.488200	-99.298442

SAN LUIS POTOSI

16 CARR: Portezuelo - Cd. Valles

CLAVE: 00023

RUTA: MEX-085

AÑO: 2018

LUGAR	ESTACION				CLASIFICACION VEHICULAR EN PORCIENTO										COORDENADAS					
	KM	TE	SC	TDPA	M	A	B	C2	C3	T3S2	T3S3	T3S2R4	OTROS	A	B	C	K'	D	LATITUD	LONGITUD
T. Der. Tasquillo (2° Acceso)	10.50	1	0	4498	3.2	83.7	0.8	6.6	1.2	2.5	1.3	0.1	0.6	86.9	0.8	12.3	0.080	0.520	20.539779	-99.316831
T. Izq. Zimapán (1° Acceso)	32.00	1	0	5458	2.7	84.0	0.7	6.6	0.9	3.4	1.2	0.1	0.4	86.7	0.7	12.6	0.078	0.502	20.699286	-99.333238
T. Izq. Zimapán (1° Acceso)	32.00	3	0	2307	1.7	86.1	1.2	6.6	1.5	1.7	1.0	0.0	0.2	87.8	1.2	11.0	0.073	0.521	20.705976	-99.336127
La Estancia	41.00	3	0	2016	1.1	86.3	1.2	7.3	1.3	1.5	0.9	0.1	0.3	87.4	1.2	11.4	0.084	0.513	20.777627	-99.310167
Trancas	51.00	3	0	1482	0.5	83.2	1.6	9.4	1.7	1.7	1.5	0.0	0.4	83.7	1.6	14.7	0.088	0.507	20.805377	-99.258744
Jacala	98.60	3	0	2309	1.8	84.3	1.0	9.8	0.9	1.5	0.4	0.0	0.3	86.1	1.0	12.9	0.083	0.505	21.003026	-99.184886
Zacate Grande	143.10	1	0	1067	2.9	84.5	2.0	6.8	1.8	1.1	0.7	0.0	0.2	87.4	2.0	10.6	0.081	0.501	21.112818	-99.004853
T. Izq. Pisaflares	154.00	3	0	1947	4.1	86.6	1.2	5.3	1.2	1.2	0.3	0.0	0.1	90.7	1.2	8.1	0.087	0.508	21.153697	-98.945052
Lim. Edos. Term. Hgo. Ppia. S. L. P.	168.63																			
Tamazunchale	192.80	1	0	6202	18.5	68.2	1.5	6.7	0.7	3.2	0.6	0.1	0.5	86.7	1.5	11.8	0.075	0.504	21.262129	-98.800487
T. Izq. Xilitla	228.75	1	0	5636	6.9	77.1	1.5	9.0	1.7	2.8	0.5	0.1	0.4	84.0	1.5	14.5	0.088	0.500	21.441863	-98.924684
T. Izq. Xilitla	228.75	3	0	4972	6.0	76.5	1.7	9.4	2.1	3.1	0.7	0.1	0.4	82.5	1.7	15.8	0.097	0.500	21.447558	-98.930114
T. Izq. Aquismón	252.50	1	0	6241	4.2	75.8	1.8	10.3	2.4	3.8	1.0	0.2	0.5	80.0	1.8	18.2	0.073	0.521	21.622061	-98.987326
Agua Hedionda	265.00	1	0	5216	3.5	77.2	1.8	9.9	2.9	3.1	0.9	0.2	0.5	80.7	1.8	17.5	0.085	0.505	21.726927	-98.963892
Cd. Valles	300.00	1	0	10939	3.5	75.7	2.0	9.0	2.2	5.5	1.0	0.2	0.9	79.2	2.0	18.8	0.079	0.506	21.958571	-98.998976

17 CARR: Querétaro - San Luis Potosi

CLAVE: 00165

RUTA: MEX-057

AÑO: 2018

LUGAR	ESTACION				CLASIFICACION VEHICULAR EN PORCIENTO										COORDENADAS					
	KM	TE	SC	TDPA	M	A	B	C2	C3	T3S2	T3S3	T3S2R4	OTROS	A	B	C	K'	D	LATITUD	LONGITUD
Querétaro	0.00																			
T. Der. Libramiento de Querétaro	6.28	3	1	47102	0.8	91.0	1.0	3.7	0.6	1.6	1.0	0.1	0.2	91.8	1.0	7.2	0.076	0.503	20.636583	-100.428725
T. Der. Libramiento de Querétaro	6.28	3	2	47603	0.8	90.2	1.1	4.1	0.7	1.7	1.1	0.1	0.2	91.0	1.1	7.9	0.073	0.503	20.636534	-100.428827
T. Izq. Juriquilla	15.63	3	1	32713	1.0	83.6	1.3	7.3	2.2	3.1	1.2	0.1	0.2	84.6	1.3	14.1	0.066	0.500	20.720102	-100.439016
T. Izq. Juriquilla	15.63	3	2	32682	1.5	81.2	1.5	8.4	2.6	3.2	1.3	0.1	0.2	82.7	1.5	15.8	0.070	0.500	20.713755	-100.438469
T. Izq. San Miguel de Allende	28.53	1	1	29367	0.5	80.4	1.8	9.8	1.7	3.7	1.0	0.8	0.3	80.9	1.8	17.3	0.129	0.512	20.809170	-100.448829
T. Izq. San Miguel de Allende	28.53	1	2	28034	0.3	78.7	1.9	10.9	1.8	4.1	1.2	0.8	0.3	79.0	1.9	19.1	0.101	0.512	20.809165	-100.448998
T. Izq. San Miguel de Allende	28.53	3	1	20953	0.4	45.5	3.5	8.9	3.0	29.0	2.5	6.9	0.3	45.9	3.5	50.6	0.084	0.513	20.846364	-100.434443
T. Izq. San Miguel de Allende	28.53	3	2	22028	0.4	38.4	3.9	10.6	3.4	32.8	2.7	7.5	0.3	38.8	3.9	57.3	0.093	0.513	20.840299	-100.437769
Lim. Edos. Term. Qro. Ppia. Gto.	36.70																			
X. C. San José Iturbide - El Arenal	46.83	1	1	21512	0.8	49.3	3.7	8.2	2.7	25.6	2.2	7.2	0.3	50.1	3.7	46.2	0.070	0.523	20.967178	-100.428544
X. C. San José Iturbide - El Arenal	46.83	1	2	19631	0.3	43.0	4.1	9.1	3.1	29.8	2.5	7.8	0.3	43.3	4.1	52.6	0.083	0.523	20.967131	-100.428717
X. C. Ent. San Miguel de Allende - Dr. Mora	61.93	1	1	16573	0.8	46.7	4.5	8.3	4.4	26.6	3.3	5.0	0.4	47.5	4.5	48.0	0.063	0.529	21.064616	-100.497858
X. C. Ent. San Miguel de Allende - Dr. Mora	61.93	1	2	14783	0.9	40.0	4.5	9.7	5.1	29.7	3.9	5.8	0.4	40.9	4.5	54.6	0.063	0.529	21.074150	-100.509354
X. C. San Luis de La Paz - Guanajuato	86.68	1	1	14431	0.8	49.7	4.6	7.5	2.9	26.4	2.4	5.3	0.4	50.5	4.6	44.9	0.067	0.511	21.270252	-100.589415

SAN LUIS POTOSI

17 CARR: Querétaro - San Luis Potosí

CLAVE: 00165

RUTA: MEX-057

AÑO: 2018

LUGAR	ESTACION				CLASIFICACION VEHICULAR EN PORCIENTO										COORDENADAS					
	KM	TE	SC	TDPA	M	A	B	C2	C3	T3S2	T3S3	T3S2R4	OTROS	A	B	C	K'	D	LATITUD	LONGITUD
X. C. San Luis de La Paz - Guanajuato	86.68	1	2	15055	0.7	44.0	4.9	7.8	3.1	30.2	2.7	6.2	0.4	44.7	4.9	50.4	0.069	0.511	21.270236	-100.589589
T. Izq. San Diego de La Unión	119.07	3	1	12123	0.9	48.3	5.3	7.5	2.9	24.6	4.4	5.5	0.6	49.2	5.3	45.5	0.054	0.503	21.539752	-100.746562
T. Izq. San Diego de La Unión	119.07	3	2	12264	1.2	47.9	5.8	7.5	2.9	23.7	4.4	5.9	0.7	49.1	5.8	45.1	0.058	0.503	21.539690	-100.746747
Lim. Edos. Term. Gto. Ppia. S. L. P.	124.74																			
T. Izq. Santa María del Río	155.88	3	1	13368	1.7	51.4	4.9	8.7	2.3	22.1	3.4	4.6	0.9	53.1	4.9	42.0	0.063	0.509	21.819790	-100.728029
T. Izq. Santa María del Río	155.88	3	2	13862	1.5	47.5	5.6	9.7	2.7	23.3	3.8	4.9	1.0	49.0	5.6	45.4	0.068	0.509	21.820842	-100.729532
T. Izq. Villa de Reyes	176.35	1	1	14557	0.8	39.6	5.7	8.8	3.3	33.1	3.5	4.5	0.7	40.4	5.7	53.9	0.070	0.517	21.961194	-100.811651
T. Izq. Villa de Reyes	176.35	1	2	15560	1.1	34.2	6.4	9.4	3.6	35.9	3.7	4.9	0.8	35.3	6.4	58.3	0.059	0.517	21.961115	-100.811816
T. Izq. Villa de Reyes	176.35	3	1	24970	0.6	35.1	3.9	9.6	4.2	37.9	4.0	4.3	0.4	35.7	3.9	60.4	0.077	0.508	21.979135	-100.821357
T. Izq. Villa de Reyes	176.35	3	2	24147	0.5	31.6	4.2	9.9	4.3	39.8	4.2	5.1	0.4	32.1	4.2	63.7	0.065	0.508	21.979071	-100.821551
X. C. Libramiento de San Luis Potosí	184.80	1	1	29897	0.7	65.5	2.5	8.2	2.8	14.7	2.4	2.8	0.4	66.2	2.5	31.3	0.095	0.500	22.024604	-100.846047
X. C. Libramiento de San Luis Potosí	184.80	1	2	29908	0.7	63.5	2.9	8.4	3.0	15.2	2.6	3.3	0.4	64.2	2.9	32.9	0.098	0.500	22.024521	-100.846216
X. Periférico de San Luis Potosí (Lateral)	197.50	1	1	16819	2.4	72.5	1.9	11.6	2.8	3.9	2.8	1.1	1.0	74.9	1.9	23.2	0.105	0.519	22.121871	-100.912605
X. Periférico de San Luis Potosí (Central)	197.50	1	1	36692	0.6	87.0	0.3	1.5	1.9	3.0	4.1	1.0	0.6	87.6	0.3	12.1	0.071	0.520	22.121756	-100.912696
X. Periférico de San Luis Potosí (Central)	197.50	1	2	40341	0.6	85.8	0.3	1.8	2.0	3.1	4.7	1.1	0.6	86.4	0.3	13.3	0.069	0.520	22.121602	-100.912780
X. Periférico de San Luis Potosí (Lateral)	197.50	1	2	15562	3.1	69.0	2.1	12.4	3.3	4.6	3.2	1.3	1.0	72.1	2.1	25.8	0.103	0.519	22.121330	-100.913035
San Luis Potosí	201.66																			

18 CARR: Ramal a Aeropuerto de S. L. P.

CLAVE: 24206

RUTA: MEX-057

AÑO: 2018

LUGAR	ESTACION				CLASIFICACION VEHICULAR EN PORCIENTO										COORDENADAS					
	KM	TE	SC	TDPA	M	A	B	C2	C3	T3S2	T3S3	T3S2R4	OTROS	A	B	C	K'	D	LATITUD	LONGITUD
T. C. San Luis Potosí - Matehuala	0.00	3	0	6242	3.4	82.6	0.2	7.7	2.0	2.6	0.5	0.8	0.2	86.0	0.2	13.8	0.075	0.502	22.222735	-100.913171
Aeropuerto de S. L. P.	6.00																			

19 CARR: Ramal a Ojo de Agua

CLAVE: 24023

RUTA: MEX-062

AÑO: 2018

LUGAR	ESTACION				CLASIFICACION VEHICULAR EN PORCIENTO										COORDENADAS					
	KM	TE	SC	TDPA	M	A	B	C2	C3	T3S2	T3S3	T3S2R4	OTROS	A	B	C	K'	D	LATITUD	LONGITUD
T. C. Ent. Carbonera - Ent. San Tiburcio	0.00	3	0	2811	5.2	80.7	0.4	11.6	0.2	1.7	0.1	0.1	0.0	85.9	0.4	13.7	0.083	0.529	23.718141	-100.650892
Ojo de Agua	6.23																			

SAN LUIS POTOSI

20 CARR: Ramal a Rayón

CLAVE: 24626

RUTA: MEX-070

AÑO: 2018

LUGAR	ESTACION				CLASIFICACION VEHICULAR EN PORCIENTO										COORDENADAS						
	KM	TE	SC	TDPA	M	A	B	C2	C3	T3S2	T3S3	T3S2R4	OTROS	A	B	C	K'	D	LATITUD	LONGITUD	
T. C. (Cd. Valles - San Luis Potosí)	0.00																				
Rayón	1.50	1	0	4343	4.5	78.3	1.2	12.6	0.5	2.6	0.3	0.0	0.0	82.8	1.2	16.0	0.076	0.502	21.847749	-99.629939	

21 CARR: San Juan del Río - Xilitla

CLAVE: 00183

RUTA: MEX-120

AÑO: 2018

LUGAR	ESTACION				CLASIFICACION VEHICULAR EN PORCIENTO										COORDENADAS						
	KM	TE	SC	TDPA	M	A	B	C2	C3	T3S2	T3S3	T3S2R4	OTROS	A	B	C	K'	D	LATITUD	LONGITUD	
San Juan del Río	0.00																				
T. Der. Libramiento de San Juan del Río	5.20	3	1	13975	1.4	86.4	1.0	5.4	1.2	2.5	1.3	0.3	0.5	87.8	1.0	11.2	0.087	0.503	20.428738	-99.973127	
T. Der. Libramiento de San Juan del Río	5.20	3	2	13813	1.5	86.7	1.0	5.1	1.2	2.4	1.3	0.3	0.5	88.2	1.0	10.8	0.081	0.503	20.428824	-99.973225	
T. Der. Tequisquiapan	19.80	1	1	10739	1.4	86.0	1.7	7.5	1.2	1.1	0.6	0.3	0.2	87.4	1.7	10.9	0.085	0.504	20.513164	-99.905764	
T. Der. Tequisquiapan	19.80	1	2	10554	1.5	85.9	1.6	7.4	1.1	1.2	0.8	0.2	0.3	87.4	1.6	11.0	0.085	0.504	20.513262	-99.905836	
T. Der. Tequisquiapan	19.80	3	1	9238	1.3	84.3	1.5	7.4	1.9	1.7	1.2	0.4	0.3	85.6	1.5	12.9	0.087	0.511	20.540504	-99.901457	
T. Der. Tequisquiapan	19.80	3	2	9656	0.9	85.6	1.3	7.1	1.8	1.7	1.1	0.3	0.2	86.5	1.3	12.2	0.084	0.511	20.540491	-99.901561	
Ezequiel Montes	36.50	1	1	7411	1.4	81.5	2.1	8.0	2.8	2.4	1.0	0.4	0.4	82.9	2.1	15.0	0.084	0.503	20.644866	-99.905615	
Ezequiel Montes	36.50	1	2	7337	1.9	82.3	1.9	7.3	2.7	2.1	1.1	0.3	0.4	84.2	1.9	13.9	0.089	0.503	20.644904	-99.905726	
Ezequiel Montes	36.50	3	1	6555	1.8	86.6	1.1	7.6	1.2	0.9	0.6	0.0	0.2	88.4	1.1	10.5	0.085	0.511	20.677871	-99.890550	
Ezequiel Montes	36.50	3	2	6264	2.4	86.6	1.1	7.0	1.3	0.8	0.6	0.0	0.2	89.0	1.1	9.9	0.090	0.511	20.677929	-99.890661	
Cadereyta	47.90	3	0	10225	0.9	79.2	1.1	10.2	2.4	3.8	1.5	0.3	0.6	80.1	1.1	18.8	0.080	0.507	20.701198	-99.810269	
Vizarrón de Montes	73.50	3	0	3496	0.8	72.8	0.9	12.6	5.4	1.7	4.9	0.3	0.6	73.6	0.9	25.5	0.080	0.505	20.847372	-99.713336	
T. Der. San Joaquín	79.50	3	0	1450	1.7	80.4	1.2	12.1	2.1	1.3	1.0	0.0	0.2	82.1	1.2	16.7	0.090	0.520	20.885205	-99.707360	
T. Izq. Higuerillas	89.10	3	0	1954	1.4	77.8	2.2	14.6	1.7	1.2	1.0	0.0	0.1	79.2	2.2	18.6	0.104	0.514	20.949662	-99.749208	
T. Izq. Peñamiller	103.00	3	0	1624	0.4	81.7	2.6	10.8	2.0	1.9	0.4	0.0	0.2	82.1	2.6	15.3	0.109	0.506	21.039067	-99.739552	
Pinal de Amoles	140.00	3	0	2169	0.8	86.5	1.0	8.1	1.1	1.4	0.8	0.0	0.3	87.3	1.0	11.7	0.086	0.503	21.138282	-99.620154	
Jalpan de Serra	179.30	3	0	7143	1.5	85.3	0.2	7.8	0.6	3.6	0.4	0.1	0.5	86.8	0.2	13.0	0.075	0.504	21.208678	-99.453661	
Landa de Matamoros	201.60	3	0	3027	2.0	85.1	0.9	9.3	0.7	1.4	0.4	0.0	0.2	87.1	0.9	12.0	0.076	0.519	21.186974	-99.311541	
El Lobo	236.40	3	0	1041	1.9	83.9	2.3	6.1	2.2	2.0	0.7	0.0	0.9	85.8	2.3	11.9	0.096	0.513	21.291848	-99.115201	
Lim. Edos. Term. Qro. Ppia. S. L. P.	238.33																				
Xilitla	266.40	1	0	2299	7.5	79.3	0.8	8.8	1.0	1.8	0.5	0.1	0.2	86.8	0.8	12.4	0.110	0.504	21.379173	-99.000984	
T. C. Portezuelo - Cd. Valles	276.98	1	0	3611	5.6	81.7	1.3	7.8	1.2	1.8	0.4	0.0	0.2	87.3	1.3	11.4	0.090	0.501	21.443123	-98.929481	

SAN LUIS POTOSI

22 CARR: San Luis Potosí - Ent. Arcinas

CLAVE: 00134

RUTA: MEX-049

AÑO: 2018

LUGAR	ESTACION				CLASIFICACION VEHICULAR EN PORCIENTO													COORDENADAS			
	KM	TE	SC	TDPA	M	A	B	C2	C3	T3S2	T3S3	T3S2R4	OTROS	A	B	C	K'	D	LATITUD	LONGITUD	
T. C. San Luis Potosí - Matehuala	0.00																				
T. Izq. Periférico de San Luis Potosí	9.35	3	1	11406	6.4	78.0	0.9	8.4	1.3	2.1	1.4	1.0	0.5	84.4	0.9	14.7	0.092	0.500	22.206318	-101.031314	
T. Izq. Periférico de San Luis Potosí	9.35	3	2	11412	6.2	78.1	1.1	8.4	1.2	2.2	1.3	1.1	0.4	84.3	1.1	14.6	0.085	0.500	22.206233	-101.031402	
Mexquitic	22.50	1	1	7643	4.7	69.0	2.6	9.5	2.1	6.3	1.9	3.1	0.8	73.7	2.6	23.7	0.099	0.500	22.249477	-101.105499	
Mexquitic	22.50	1	2	7632	4.7	71.1	2.4	5.9	1.7	7.3	2.5	3.7	0.7	75.8	2.4	21.8	0.104	0.500	22.249335	-101.105576	
T. Der. Charcas	30.90	1	1	6719	1.7	70.6	2.6	7.1	2.4	8.1	2.7	4.0	0.8	72.3	2.6	25.1	0.081	0.504	22.311212	-101.159804	
T. Der. Charcas	30.90	1	2	6601	1.8	69.0	2.6	7.4	2.5	8.7	2.8	4.4	0.8	70.8	2.6	26.6	0.085	0.504	22.311109	-101.159911	
Lim. Edos. Term. S. L. P. Ppia. Zac.	55.13																				
Lim. Edos. Term. Zac. Ppia. S. L. P.	89.30																				
T. Der. Salinas	99.00	1	1	4173	1.7	49.7	6.2	12.1	3.5	14.8	3.5	7.7	0.8	51.4	6.2	42.4	0.069	0.511	22.604466	-101.709293	
T. Der. Salinas	99.00	1	2	4000	1.4	54.4	5.0	11.0	3.1	13.5	3.6	7.3	0.7	55.8	5.0	39.2	0.066	0.511	22.604341	-101.709384	
T. Der. Salinas	99.00	3	1	3995	0.7	58.4	5.5	8.6	3.2	13.1	3.0	6.8	0.7	59.1	5.5	35.4	0.070	0.513	22.620414	-101.746543	
T. Der. Salinas	99.00	3	2	4206	0.7	56.3	5.9	9.4	3.3	13.3	3.3	7.0	0.8	57.0	5.9	37.1	0.066	0.513	22.620234	-101.746574	
Lim. Edos. Term. S. L. P. Ppia. Zac.	122.47																				
T. Izq. Pánfilo Natera	139.00	1	1	3498	0.8	54.0	5.4	10.2	2.4	14.5	3.5	8.5	0.7	54.8	5.4	39.8	0.066	0.506	22.679277	-102.099028	
T. Izq. Pánfilo Natera	139.00	1	2	3421	2.4	53.9	5.0	11.3	2.3	12.8	3.8	7.5	1.0	56.3	5.0	38.7	0.072	0.506	22.679085	-102.099075	
Ent. Arcinas	162.98	1	1	3939	0.4	63.3	3.4	5.4	3.0	13.3	3.0	7.5	0.7	63.7	3.4	32.9	0.065	0.504	22.720006	-102.325491	
Ent. Arcinas	162.98	1	2	3873	0.9	64.8	3.3	7.8	2.4	9.5	3.9	5.4	2.0	65.7	3.3	31.0	0.076	0.504	22.719829	-102.325539	

23 CARR: San Luis Potosí - Lagos de Moreno

CLAVE: 00133

RUTA: MEX-070-080

AÑO: 2018

LUGAR	ESTACION				CLASIFICACION VEHICULAR EN PORCIENTO													COORDENADAS		
	KM	TE	SC	TDPA	M	A	B	C2	C3	T3S2	T3S3	T3S2R4	OTROS	A	B	C	K'	D	LATITUD	LONGITUD
San Luis Potosí	0.00	3	1	16823	1.3	93.2	0.1	3.1	0.1	0.6	1.4	0.1	0.1	94.5	0.1	5.4	0.088	0.504	22.134768	-101.029506
San Luis Potosí	0.00	3	2	17118	1.7	92.5	0.1	3.4	0.1	0.6	1.4	0.1	0.1	94.2	0.1	5.7	0.078	0.504	22.134671	-101.029445
X. Periférico de San Luis Potosí	8.41	3	0	11310	2.6	79.4	1.1	6.7	2.4	5.0	1.4	0.4	1.0	82.0	1.1	16.9	0.067	0.501	22.128260	-101.045423
El Tepetate	41.90	1	0	6495	5.8	62.2	2.7	7.8	3.1	12.4	4.1	0.9	1.0	68.0	2.7	29.3	0.080	0.501	22.022563	-101.228670
El Tepetate	41.90	3	0	6666	0.6	65.3	3.9	11.3	4.3	9.5	3.2	1.2	0.7	65.9	3.9	30.2	0.087	0.508	22.006108	-101.251499
Villa de Arriaga	61.90	3	0	4275	1.9	64.1	3.3	9.5	3.2	9.5	4.3	3.3	0.9	66.0	3.3	30.7	0.077	0.504	21.896145	-101.414461
Lim. Edos. Term. S. L. P. Ppia. Zac.	70.23																			
Lim. Edos. Term. Zac. Ppia. Jal.	82.94																			
Ojuelos de Jalisco	83.20	1	0	6465	1.3	70.5	2.4	9.2	3.3	7.0	2.7	2.7	0.9	71.8	2.4	25.8	0.078	0.533	21.875682	-101.571553
Ojuelos de Jalisco	83.20	3	0	3003	2.4	65.2	3.6	7.6	3.6	9.6	5.0	2.6	0.4	67.6	3.6	28.8	0.073	0.500	21.852319	-101.594143
X. C. Lagos de Moreno - San Luis Potosí (Cuota)	140.00	1	0	3520	4.5	63.0	2.0	12.7	3.7	7.0	3.8	2.8	0.5	67.5	2.0	30.5	0.083	0.502	21.448984	-101.804872
X. C. León - Aguascalientes	146.90	1	1	5532	5.4	61.3	2.4	9.0	3.6	10.0	2.5	5.3	0.5	66.7	2.4	30.9	0.092	0.526	21.375807	-101.894270

SAN LUIS POTOSI

23 CARR: San Luis Potosi - Lagos de Moreno

CLAVE: 00133

RUTA: MEX-070-080

AÑO: 2018

LUGAR	ESTACION				CLASIFICACION VEHICULAR EN PORCIENTO														COORDENADAS	
	KM	TE	SC	TDPA	M	A	B	C2	C3	T3S2	T3S3	T3S2R4	OTROS	A	B	C	K'	D	LATITUD	LONGITUD
X. C. León - Aguascalientes	146.90	1	2	4979	3.0	66.0	2.0	10.7	3.1	7.0	2.4	5.4	0.4	69.0	2.0	29.0	0.105	0.526	21.375732	-101.894196
Lagos de Moreno	150.00																			

24 CARR: San Luis Potosi - Matehuala

CLAVE: 24508

RUTA: MEX-057

AÑO: 2018

LUGAR	ESTACION				CLASIFICACION VEHICULAR EN PORCIENTO														COORDENADAS	
	KM	TE	SC	TDPA	M	A	B	C2	C3	T3S2	T3S3	T3S2R4	OTROS	A	B	C	K'	D	LATITUD	LONGITUD
San Luis Potosi	0.00																			
X. Periférico de San Luis Potosi	7.36	3	1	15434	0.8	73.4	4.5	7.3	2.5	6.6	2.4	1.6	0.9	74.2	4.5	21.3	0.089	0.500	22.207235	-100.919918
X. Periférico de San Luis Potosi	7.36	3	2	15425	0.7	71.4	5.1	8.0	2.8	6.8	2.5	1.7	1.0	72.1	5.1	22.8	0.078	0.500	22.207290	-100.919998
Ventura (X. Nuevo Libramiento de SLP)	33.20	3	1	14989	0.4	33.9	4.8	7.9	3.7	38.3	3.3	6.9	0.8	34.3	4.8	60.9	0.083	0.500	22.344523	-100.796538
Ventura (X. Nuevo Libramiento de SLP)	33.20	3	2	15017	0.3	29.5	5.6	8.8	3.9	39.4	3.6	7.9	1.0	29.8	5.6	64.6	0.082	0.500	22.336164	-100.798715
T. Der. Villa Hidalgo	45.94	1	1	15961	0.5	41.0	4.1	6.0	3.5	33.7	4.6	6.1	0.5	41.5	4.1	54.4	0.084	0.500	22.414364	-100.722134
T. Der. Villa Hidalgo	45.94	1	2	15932	0.4	35.4	4.3	6.8	3.7	36.8	5.0	7.1	0.5	35.8	4.3	59.9	0.076	0.500	22.414474	-100.722264
T. Izq. Villa Arista	61.35	1	1	14995	0.4	36.8	4.8	7.5	3.0	35.8	4.5	6.6	0.6	37.2	4.8	58.0	0.084	0.503	22.560127	-100.646716
T. Izq. Villa Arista	61.35	1	2	14790	0.3	29.4	5.5	8.1	3.3	41.1	4.7	7.0	0.6	29.7	5.5	64.8	0.080	0.503	22.560169	-100.646799
T. Der. Guadalcázar	75.70	1	1	12505	0.4	38.1	3.9	7.7	2.6	34.5	4.7	7.4	0.7	38.5	3.9	57.6	0.082	0.503	22.633446	-100.523205
T. Der. Guadalcázar	75.70	1	2	12663	0.3	34.1	4.3	8.4	2.6	36.6	5.1	7.9	0.7	34.4	4.3	61.3	0.076	0.503	22.633510	-100.523378
T. Der. Guadalcázar	75.70	3	1	10273	0.4	36.9	4.2	7.1	2.7	35.6	4.3	7.9	0.9	37.3	4.2	58.5	0.083	0.500	22.644000	-100.516245
T. Der. Guadalcázar	75.70	3	2	10274	0.3	30.3	4.8	7.5	2.8	40.1	4.8	8.4	1.0	30.6	4.8	64.6	0.078	0.500	22.644088	-100.516407
T. Der. Cd. del Maiz	109.62	3	1	8788	1.2	34.9	4.4	7.6	3.1	38.6	4.2	5.0	1.0	36.1	4.4	59.5	0.054	0.503	22.937067	-100.460395
T. Der. Cd. del Maiz	109.62	3	2	8694	0.8	32.5	4.9	7.9	2.6	40.8	4.3	5.8	0.4	33.3	4.9	61.8	0.061	0.503	22.937025	-100.460581
La Bonita	171.40	1	1	9576	1.1	30.2	4.1	7.4	2.1	42.1	4.4	8.0	0.6	31.3	4.1	64.6	0.052	0.503	23.476657	-100.612682
La Bonita	171.40	1	2	9466	0.5	23.6	4.5	8.6	2.5	46.3	4.8	8.5	0.7	24.1	4.5	71.4	0.059	0.503	23.476597	-100.612870
Matehuala	187.39	1	1	10173	1.1	30.7	4.4	8.7	3.7	38.8	4.7	6.8	1.1	31.8	4.4	63.8	0.054	0.503	23.572958	-100.630861
Matehuala	187.39	1	2	10314	1.2	31.2	4.0	8.0	4.1	37.8	5.3	7.4	1.0	32.4	4.0	63.6	0.062	0.503	23.572921	-100.631189

25 CARR: T. C. (Ent. El Huizache- Ant. Morelos)-El Salto

CLAVE: 24204

RUTA: MEX-080

AÑO: 2018

LUGAR	ESTACION				CLASIFICACION VEHICULAR EN PORCIENTO														COORDENADAS	
	KM	TE	SC	TDPA	M	A	B	C2	C3	T3S2	T3S3	T3S2R4	OTROS	A	B	C	K'	D	LATITUD	LONGITUD
T. C. El Huizache - Ant. Morelos	0.00	3	0	2883	3.7	84.8	0.1	7.6	1.2	1.7	0.3	0.4	0.2	88.5	0.1	11.4	0.082	0.516	22.535096	-99.307353
Salto del Agua	12.00																			

SAN LUIS POTOSI

26 CARR: T. C. (Qro - S.L.P.) - Tierra Nueva

CLAVE: 24203

RUTA: MEX-057

AÑO: 2018

LUGAR	ESTACION				CLASIFICACION VEHICULAR EN PORCIENTO													COORDENADAS		
	KM	TE	SC	TDPA	M	A	B	C2	C3	T3S2	T3S3	T3S2R4	OTROS	A	B	C	K'	D	LATITUD	LONGITUD
T. C. Querétaro - San Luis Potosí	0.00	3	0	1826	1.6	78.9	0.6	12.5	3.4	1.4	1.5	0.0	0.1	80.5	0.6	18.9	0.087	0.504	21.694425	-100.681155
Tierra Nueva	13.10																			

27 CARR: T. C. (S.L.P. - Matehuala) - Villa Hidalgo

CLAVE: 24619

RUTA: MEX-057

AÑO: 2018

LUGAR	ESTACION				CLASIFICACION VEHICULAR EN PORCIENTO													COORDENADAS		
	KM	TE	SC	TDPA	M	A	B	C2	C3	T3S2	T3S3	T3S2R4	OTROS	A	B	C	K'	D	LATITUD	LONGITUD
Paso por Villa Hidalgo (Sur)	0.00	3	0	2130	1.4	72.4	1.4	13.6	1.6	5.3	1.9	1.5	0.9	73.8	1.4	24.8	0.088	0.502	22.431565	-100.703017
Paso por Villa Hidalgo (Norte)	10.20	1	0	2053	1.9	72.1	1.5	15.5	1.6	3.9	1.7	1.3	0.5	74.0	1.5	24.5	0.091	0.510	22.497271	-100.665693

28 CARR: Tamazunchale - San Felipe Orizatlán

CLAVE: 00609

RUTA: MEX-085

AÑO: 2018

LUGAR	ESTACION				CLASIFICACION VEHICULAR EN PORCIENTO													COORDENADAS		
	KM	TE	SC	TDPA	M	A	B	C2	C3	T3S2	T3S3	T3S2R4	OTROS	A	B	C	K'	D	LATITUD	LONGITUD
T. C. Portezuelo - Cd. Valles	0.00	3	0	10074	16.4	66.8	0.5	7.5	0.3	5.6	1.1	0.4	1.4	83.2	0.5	16.3	0.073	0.514	21.250196	-98.767037
Lim. Edos. Term. S. L. P. Ppia. Hgo.	18.50																			
San Felipe Orizatlán	27.10	1	0	2484	17.3	71.3	0.9	7.1	0.8	1.8	0.6	0.0	0.2	88.6	0.9	10.5	0.083	0.505	21.170073	-98.617452

29 CARR: Lagos de Moreno - Villa de Arriaga (Cuota)

CLAVE:

RUTA: MEX-080D

AÑO: 2018

LUGAR	ESTACION				CLASIFICACION VEHICULAR EN PORCIENTO													COORDENADAS		
	KM	TE	SC	TDPA	M	A	B	C2	C3	T3S2	T3S3	T3S2R4	OTROS	A	B	C	K'	D	LATITUD	LONGITUD
X. C. San Luis Potosí - Lagos de Moreno	12.10	3	0	4760	1.7	44.2	4.3	5.4	2.7	24.5	3.4	12.8	1.0	45.9	4.3	49.8	0.070	0.501	21.448680	-101.812900
Lim. Edos. Term. Jal. Ppia. Gto.	46.30																			
Lim. Edos. Term. Gto. Ppia. SLP.	68.63																			
X. C. San Luis Potosí - Villa de Arriaga (Cuota)	78.00	1	0	4653	1.2	47.7	4.0	5.9	2.5	23.6	3.4	10.8	0.9	48.9	4.0	47.1	0.063	0.506	21.891347	-101.406290

30 CARR: Libramiento de Matehuala (Cuota)

CLAVE: 24205

RUTA: MEX-057D

AÑO: 2018

LUGAR	ESTACION				CLASIFICACION VEHICULAR EN PORCIENTO													COORDENADAS		
	KM	TE	SC	TDPA	M	A	B	C2	C3	T3S2	T3S3	T3S2R4	OTROS	A	B	C	K'	D	LATITUD	LONGITUD
T. C. San Luis Potosí - Matehuala	0.00	3	1	6253	1.4	36.7	4.1	5.3	3.3	39.5	3.3	5.7	0.7	38.1	4.1	57.8	0.071	0.538	23.602147	-100.622747
T. C. San Luis Potosí - Matehuala	0.00	3	2	7286	0.9	28.8	4.5	6.1	3.8	44.9	3.8	6.5	0.7	29.7	4.5	65.8	0.063	0.538	23.602338	-100.622973
Caseta de Cobro Matehuala	7.00	2	1	6318	0.1	28.4	2.3	5.9	3.5	47.2	3.9	7.6	1.1	28.5	2.3	69.2	0.073	0.500	23.664125	-100.607230
Caseta de Cobro Matehuala	7.00	2	2	6318	0.1	28.4	2.3	5.9	3.5	47.2	3.9	7.6	1.1	28.5	2.3	69.2	0.073	0.500	23.664125	-100.607230

SAN LUIS POTOSI

30 CARR: Libramiento de Matehuala (Cuota)

CLAVE: 24205

RUTA: MEX-057D

AÑO: 2018

LUGAR	ESTACION				CLASIFICACION VEHICULAR EN PORCIENTO														COORDENADAS	
	KM	TE	SC	TDPA	M	A	B	C2	C3	T3S2	T3S3	T3S2R4	OTROS	A	B	C	K'	D	LATITUD	LONGITUD
T. C. Matehuala - Ent. Puerto México	14.20	1	1	6232	0.6	38.7	2.9	5.9	3.2	38.6	3.7	5.8	0.6	39.3	2.9	57.8	0.077	0.513	23.694407	-100.611581
T. C. Matehuala - Ent. Puerto México	14.20	1	2	6573	0.3	29.8	3.3	5.8	3.5	46.0	4.0	6.6	0.7	30.1	3.3	66.6	0.070	0.513	23.694387	-100.611881

31 CARR: Libramiento Norponiente de San Luis Potosí (Cuota)

CLAVE:

RUTA: MEX-057D

AÑO: 2018

LUGAR	ESTACION				CLASIFICACION VEHICULAR EN PORCIENTO														COORDENADAS	
	KM	TE	SC	TDPA	M	A	B	C2	C3	T3S2	T3S3	T3S2R4	OTROS	A	B	C	K'	D	LATITUD	LONGITUD
T. Libramiento Oriente de San Luis Potosí (Cuota)	0.00																			
X. C. San Luis Potosí - Matehuala	5.60	1	0	3306	9.3	47.7	6.5	17.2	3.6	8.1	2.8	3.3	1.5	57.0	6.5	36.5	0.072	0.516	22.256763	-100.858716
X. C. San Luis Potosí - Matehuala	5.60	3	0	4723	2.6	32.7	5.3	6.0	4.5	25.4	6.9	14.9	1.7	35.3	5.3	59.4	0.058	0.511	22.266818	-100.871147
Caseta de Cobro Vicente Rangel Lozano	17.40	2	0	3827	0.5	49.6	1.3	3.7	4.0	20.8	5.1	13.5	1.5	50.1	1.3	48.6	0.067	0.500	22.299904	-100.971154
T. C. San Luis Potosí - Ent. Arcinas	31.20	1	0	4627	2.6	32.7	5.1	6.0	4.5	25.4	6.8	15.1	1.8	35.3	5.1	59.6	0.061	0.511	22.226629	-101.049411
T. C. San Luis Potosí - Ent. Arcinas	31.50																			

32 CARR: Libramiento Oriente de San Luis Potosí (Cuota)

CLAVE: 24009

RUTA: MEX-057D

AÑO: 2018

LUGAR	ESTACION				CLASIFICACION VEHICULAR EN PORCIENTO														COORDENADAS	
	KM	TE	SC	TDPA	M	A	B	C2	C3	T3S2	T3S3	T3S2R4	OTROS	A	B	C	K'	D	LATITUD	LONGITUD
T. C. Querétaro - San Luis Potosí	0.00																			
X. C. Cd. Valles - San Luis Potosí	11.20	1	1	8550	1.3	34.4	5.1	7.5	2.9	35.0	5.0	6.8	2.0	35.7	5.1	59.2	0.077	0.512	22.118479	-100.826011
X. C. Cd. Valles - San Luis Potosí	11.20	1	2	8971	1.7	32.9	5.0	8.1	4.4	36.5	4.6	5.0	1.8	34.6	5.0	60.4	0.066	0.512	22.118511	-100.826195
Caseta de Cobro San Nicolás de Los Jassos	11.22	2	1	8869	0.1	26.3	2.7	5.9	4.1	46.2	4.4	9.0	1.3	26.4	2.7	70.9	0.067	0.500	22.129780	-100.825002
Caseta de Cobro San Nicolás de Los Jassos	11.22	2	2	8869	0.1	26.3	2.7	5.9	4.1	46.2	4.4	9.0	1.3	26.4	2.7	70.9	0.067	0.500	22.129780	-100.825002
T. C. San Luis Potosí - Matehuala	33.76	1	1	8287	1.4	37.2	4.8	5.7	3.0	34.0	6.5	5.4	2.0	38.6	4.8	56.6	0.067	0.505	22.320750	-100.802602
T. C. San Luis Potosí - Matehuala	33.76	1	2	8465	1.4	32.3	3.7	5.9	3.1	38.3	7.0	6.0	2.3	33.7	3.7	62.6	0.061	0.505	22.320793	-100.802775

33 CARR: Rayón - Ent. Tamuín (Cuota)

CLAVE:

RUTA: MEX-070D

AÑO: 2018

LUGAR	ESTACION				CLASIFICACION VEHICULAR EN PORCIENTO														COORDENADAS	
	KM	TE	SC	TDPA	M	A	B	C2	C3	T3S2	T3S3	T3S2R4	OTROS	A	B	C	K'	D	LATITUD	LONGITUD
Rayón	0.00																			
Vicente Guerrero	19.70	1	0	2988	2.1	68.5	5.9	7.5	2.2	7.0	2.3	4.0	0.5	70.6	5.9	23.5	0.084	0.509	21.865793	-99.498866
Vicente Guerrero	19.70	3	0	2861	0.4	66.4	7.4	8.3	2.7	8.1	2.7	3.5	0.5	66.8	7.4	25.8	0.082	0.501	21.863935	-99.478176
La Pitahaya	68.58	1	0	3484	0.9	77.1	4.7	4.7	2.2	5.7	1.9	2.2	0.6	78.0	4.7	17.3	0.091	0.506	22.004507	-99.131484
T. C. Cd. Valles - Tampico	120.00																			

SAN LUIS POTOSI

34 CARR: Charcas - Villa Santo Domingo

CLAVE: 24624

RUTA: SLP-017

AÑO: 2018

LUGAR	ESTACION				CLASIFICACION VEHICULAR EN PORCIENTO														COORDENADAS	
	KM	TE	SC	TDPA	M	A	B	C2	C3	T3S2	T3S3	T3S2R4	OTROS	A	B	C	K'	D	LATITUD	LONGITUD
Charcas	0.00	3	0	1913	24.7	59.2	3.1	9.6	1.9	1.0	0.3	0.1	0.1	83.9	3.1	13.0	0.128	0.513	23.138545	-101.132329
Villa Santo Domingo	75.00																			

35 CARR: Ébano - Estación Manuel

CLAVE: 24624

RUTA: SLP-TAM

AÑO: 2018

LUGAR	ESTACION				CLASIFICACION VEHICULAR EN PORCIENTO														COORDENADAS	
	KM	TE	SC	TDPA	M	A	B	C2	C3	T3S2	T3S3	T3S2R4	OTROS	A	B	C	K'	D	LATITUD	LONGITUD
Ébano	0.00	3	0	2657	19.6	66.0	0.2	9.5	1.1	2.1	0.6	0.7	0.2	85.6	0.2	14.2	0.098	0.500	22.233763	-98.366023
Lím. de Edos. Term. S. L. P. Ppia. Ver.	2.71																			
Lím. de Edos. Term. Ver. Ppia. S. L. P.	3.95																			
Lím. de Edos. Term. S. L. P. Ppia. Ver.	5.00																			
Lím. de Edos. Term. Ver. Ppia. Tamps.	25.00																			
Estación Manuel	65.60																			

36 CARR: Matehuala - La Paz

CLAVE: 24621

RUTA: SLP-020

AÑO: 2018

LUGAR	ESTACION				CLASIFICACION VEHICULAR EN PORCIENTO														COORDENADAS	
	KM	TE	SC	TDPA	M	A	B	C2	C3	T3S2	T3S3	T3S2R4	OTROS	A	B	C	K'	D	LATITUD	LONGITUD
Matehuala	0.00	3	1	2716	17.5	72.6	0.1	8.4	0.6	0.4	0.2	0.1	0.1	90.1	0.1	9.8	0.070	0.520	23.670050	-100.654091
Matehuala	0.00	3	2	2944	21.4	68.1	0.1	9.2	0.6	0.3	0.1	0.1	0.1	89.5	0.1	10.4	0.073	0.520	23.670044	-100.654174
La Paz	8.00	1	1	2462	26.0	66.2	0.5	6.1	0.5	0.5	0.1	0.1	0.0	92.2	0.5	7.3	0.097	0.500	23.680198	-100.701071
La Paz	8.00	1	2	2458	24.3	67.6	0.5	6.5	0.5	0.4	0.1	0.1	0.0	91.9	0.5	7.6	0.080	0.500	23.680123	-100.701056

37 CARR: Matehuala - La Poza

CLAVE: 00086

RUTA: SLP-029-NL-061

AÑO: 2018

LUGAR	ESTACION				CLASIFICACION VEHICULAR EN PORCIENTO														COORDENADAS	
	KM	TE	SC	TDPA	M	A	B	C2	C3	T3S2	T3S3	T3S2R4	OTROS	A	B	C	K'	D	LATITUD	LONGITUD
Matehuala	0.00	3	0	4515	8.9	70.1	1.3	13.5	3.0	2.1	0.6	0.3	0.2	79.0	1.3	19.7	0.080	0.512	23.665782	-100.602279
Lim. Edos. Term. S. L. P. Ppia. N. L.	19.70																			
Lim. Edos. Term. N. L. Ppia. S. L. P.	19.90																			
Lim. Edos. Term. S. L. P. Ppia. N. L.	21.53																			
Doctor Arroyo	49.00	1	0	4191	3.7	76.7	1.0	13.4	2.6	1.8	0.3	0.4	0.1	80.4	1.0	18.6	0.074	0.503	23.686848	-100.211924
La Ascención	131.00	1	0	897	2.9	79.1	2.6	12.2	1.4	1.8	0.0	0.0	0.0	82.0	2.6	15.4	0.078	0.520	24.321681	-99.905821

SAN LUIS POTOSI

38 CARR: Periférico de San Luis Potosí

CLAVE: 24618

RUTA: SLP-032

AÑO: 2018

LUGAR	ESTACION				CLASIFICACION VEHICULAR EN PORCIENTO										COORDENADAS					
	KM	TE	SC	TDPA	M	A	B	C2	C3	T3S2	T3S3	T3S2R4	OTROS	A	B	C	K'	D	LATITUD	LONGITUD
T. C. San Luis Potosí - Ent. Arcinas	0.00																			
X. C. Querétaro - San Luis Potosí (Lateral)	22.00	3	1	7768	6.9	80.1	0.3	9.9	0.5	0.9	1.1	0.1	0.2	87.0	0.3	12.7	0.065	0.504	22.134066	-100.917009
X. C. Querétaro - San Luis Potosí (Central)	22.00	3	1	17843	3.7	79.0	0.8	6.6	2.0	3.2	2.7	0.9	1.1	82.7	0.8	16.5	0.067	0.503	22.134064	-100.917110
X. C. Querétaro - San Luis Potosí (Central)	22.00	3	2	18041	3.1	78.2	0.9	7.0	2.0	3.5	3.0	1.1	1.2	81.3	0.9	17.8	0.059	0.503	22.134066	-100.917207
X. C. Querétaro - San Luis Potosí (Lateral)	22.00	3	2	7889	5.7	81.3	0.3	9.7	0.5	1.0	1.1	0.1	0.3	87.0	0.3	12.7	0.079	0.504	22.134079	-100.917293
X. C. San Luis Potosí - Cd. Valles	25.00	3	1	16403	3.6	76.4	0.8	8.3	2.1	3.7	3.0	0.9	1.2	80.0	0.8	19.2	0.081	0.541	22.166478	-100.915132
X. C. San Luis Potosí - Cd. Valles	25.00	3	2	19321	4.3	77.8	0.8	7.4	1.8	3.1	2.9	0.8	1.1	82.1	0.8	17.1	0.094	0.541	22.166458	-100.915267
X. C. San Luis Potosí - Matehuala	30.70	1	1	15943	3.6	81.2	0.7	6.1	2.0	3.0	1.9	0.8	0.7	84.8	0.7	14.5	0.072	0.518	22.201269	-100.921771
X. C. San Luis Potosí - Matehuala	30.70	1	2	17135	3.0	80.8	0.8	6.5	2.1	3.2	1.9	0.9	0.8	83.8	0.8	15.4	0.068	0.518	22.201233	-100.921891
T. C. San Luis Potosí - Ent. Arcinas	44.80																			

39 CARR: Ramal a Cerritos

CLAVE: 24615

RUTA: SLP-007

AÑO: 2018

LUGAR	ESTACION				CLASIFICACION VEHICULAR EN PORCIENTO										COORDENADAS					
	KM	TE	SC	TDPA	M	A	B	C2	C3	T3S2	T3S3	T3S2R4	OTROS	A	B	C	K'	D	LATITUD	LONGITUD
T. C. San Luis Potosí - Matehuala	0.00	3	0	474	3.1	71.4	1.9	12.7	1.5	4.9	3.7	0.0	0.8	74.5	1.9	23.6	0.108	0.533	22.612257	-100.547013
Cerritos	37.00																			

40 CARR: Ramal a Pozo de Acuña

CLAVE: 24626

RUTA: SLP-009

AÑO: 2018

LUGAR	ESTACION				CLASIFICACION VEHICULAR EN PORCIENTO										COORDENADAS					
	KM	TE	SC	TDPA	M	A	B	C2	C3	T3S2	T3S3	T3S2R4	OTROS	A	B	C	K'	D	LATITUD	LONGITUD
T. C. San Luis Potosí - Matehuala	0.00	3	0	457	2.2	79.9	0.5	16.3	1.1	0.0	0.0	0.0	0.0	82.1	0.5	17.4	0.092	0.501	22.641375	-100.514523
Pozo de Acuña	37.90																			

41 CARR: Rayón - Arroyo Seco

CLAVE: 24008

RUTA: SLP-011

AÑO: 2018

LUGAR	ESTACION				CLASIFICACION VEHICULAR EN PORCIENTO										COORDENADAS					
	KM	TE	SC	TDPA	M	A	B	C2	C3	T3S2	T3S3	T3S2R4	OTROS	A	B	C	K'	D	LATITUD	LONGITUD
Rayón	0.00	3	0	1281	5.8	72.8	0.4	16.8	1.4	1.8	0.8	0.0	0.2	78.6	0.4	21.0	0.098	0.516	21.848263	-99.626962
Lagunillas	36.00	1	0	351	4.6	73.8	0.0	18.6	1.7	0.8	0.5	0.0	0.0	78.4	0.0	21.6	0.117	0.500	21.594587	-99.565005
Lim. De Edos. Term. S.L.P. Ppia Qro.	51.00																			
Arroyo Seco	57.00	1	0	587	6.6	72.7	0.0	18.8	1.4	0.5	0.0	0.0	0.0	79.3	0.0	20.7	0.099	0.506	21.553865	-99.681312

SAN LUIS POTOSI

42 CARR: Santo Domingo - Cerro Gordo

CLAVE: 24614

RUTA: SLP-022

AÑO: 2018

LUGAR	ESTACION				CLASIFICACION VEHICULAR EN PORCIENTO														COORDENADAS	
	KM	TE	SC	TDPA	M	A	B	C2	C3	T3S2	T3S3	T3S2R4	OTROS	A	B	C	K'	D	LATITUD	LONGITUD
T. C. Cd. Valles - San Luis Potosí	0.00	3	0	4028	1.7	74.5	0.8	12.4	1.6	5.6	2.1	0.4	0.9	76.2	0.8	23.0	0.082	0.516	22.098778	-100.745318
T. C. Querétaro - San Luis Potosí	19.00	1	0	4014	2.9	68.8	0.8	12.1	3.5	4.9	6.2	0.6	0.2	71.7	0.8	27.5	0.072	0.507	21.976387	-100.818292

43 CARR: Tamuín - Estación F.F.C.C. Tamuín

CLAVE: 24022

RUTA: SLP-040

AÑO: 2018

LUGAR	ESTACION				CLASIFICACION VEHICULAR EN PORCIENTO														COORDENADAS	
	KM	TE	SC	TDPA	M	A	B	C2	C3	T3S2	T3S3	T3S2R4	OTROS	A	B	C	K'	D	LATITUD	LONGITUD
Tamuín	0.00	3	0	6540	13.6	72.3	0.4	5.7	1.1	4.8	0.9	0.3	0.9	85.9	0.4	13.7	0.082	0.502	22.009673	-98.782510
Estación F.F.C.C. Tamuín	10.00	1	0	1465	33.1	59.9	0.3	4.1	0.3	1.8	0.4	0.0	0.1	93.0	0.3	6.7	0.092	0.504	22.077645	-98.810812

44 CARR: Tamuín - Xolol

CLAVE: 24027

RUTA: SLP-014

AÑO: 2018

LUGAR	ESTACION				CLASIFICACION VEHICULAR EN PORCIENTO														COORDENADAS	
	KM	TE	SC	TDPA	M	A	B	C2	C3	T3S2	T3S3	T3S2R4	OTROS	A	B	C	K'	D	LATITUD	LONGITUD
Tamuín	0.00	3	0	3695	11.6	68.6	0.7	9.7	2.7	3.9	1.3	1.1	0.4	80.2	0.7	19.1	0.087	0.516	21.998466	-98.763160
San Vicente Tancuayalab	37.62																			
Xolol	97.00																			

45 CARR: Cerritos - Rioverde (Cuota)

CLAVE: 00138

RUTA: SLP-D

AÑO: 2018

LUGAR	ESTACION				CLASIFICACION VEHICULAR EN PORCIENTO														COORDENADAS	
	KM	TE	SC	TDPA	M	A	B	C2	C3	T3S2	T3S3	T3S2R4	OTROS	A	B	C	K'	D	LATITUD	LONGITUD
Cerritos	0.00	3	0	4962	0.5	65.1	6.9	7.9	1.7	7.4	4.7	5.1	0.7	65.6	6.9	27.5	0.082	0.509	22.586995	-100.583222
Villa Juárez	58.00	3	0	3360	0.1	72.5	6.0	9.0	1.9	5.7	1.9	2.5	0.4	72.6	6.0	21.4	0.110	0.516	22.318713	-100.285192
Río Verde	103.00	1	0	5268	1.6	72.0	4.4	10.9	2.2	5.2	1.4	1.9	0.4	73.6	4.4	22.0	0.086	0.512	21.928868	-99.957472

46 CARR: San Luis Potosí - Villa de Arriaga (Cuota)

CLAVE: 24209

RUTA: SLP-D

AÑO: 2018

LUGAR	ESTACION				CLASIFICACION VEHICULAR EN PORCIENTO														COORDENADAS	
	KM	TE	SC	TDPA	M	A	B	C2	C3	T3S2	T3S3	T3S2R4	OTROS	A	B	C	K'	D	LATITUD	LONGITUD
T. C. Querétaro - San Luis Potosí	0.00	3	0	10007	1.9	60.0	2.4	10.4	4.8	13.6	1.8	4.0	1.1	61.9	2.4	35.7	0.108	0.521	22.008719	-100.847013
Villa de Arriaga	77.00	1	0	2981	1.8	38.8	5.7	7.6	2.9	27.2	3.7	11.5	0.8	40.6	5.7	53.7	0.062	0.519	21.892709	-101.387607

SAN LUIS POTOSI

47 CARR: Rayón - Cd. del Maíz

CLAVE: 24206

RUTA: MEX-070-SLP-005

AÑO: 2018

LUGAR	ESTACION				CLASIFICACION VEHICULAR EN PORCIENTO													COORDENADAS		
	KM	TE	SC	TDPA	M	A	B	C2	C3	T3S2	T3S3	T3S2R4	OTROS	A	B	C	K'	D	LATITUD	LONGITUD
T. C. (Cd. Valles - San Luis Potosí)	0.00																			
Cárdenas	15.80	1	0	3247	2.1	80.7	0.7	13.2	1.1	1.5	0.5	0.1	0.1	82.8	0.7	16.5	0.083	0.500	21.982567	-99.647552
Cd. del Maíz	55.70	1	0	930	3.0	80.0	1.0	15.5	0.4	0.0	0.1	0.0	0.0	83.0	1.0	16.0	0.102	0.505	22.393930	-99.611818

48 CARR: San Lorenzo - Moctezuma

CLAVE: 24016

RUTA: MEX-063-SLP-012

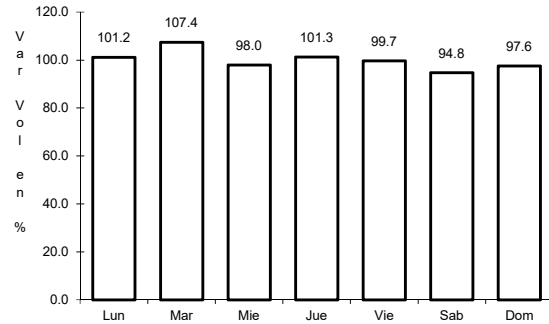
AÑO: 2018

LUGAR	ESTACION				CLASIFICACION VEHICULAR EN PORCIENTO													COORDENADAS		
	KM	TE	SC	TDPA	M	A	B	C2	C3	T3S2	T3S3	T3S2R4	OTROS	A	B	C	K'	D	LATITUD	LONGITUD
T. C. San Luis Potosí - Matehuala	0.00	3	0	1650	3.9	68.1	2.2	17.4	1.7	4.3	1.6	0.6	0.2	72.0	2.2	25.8	0.088	0.502	22.573028	-100.644554
Moctezuma	54.00	1	0	1704	7.5	73.3	0.4	15.7	1.2	1.2	0.4	0.2	0.1	80.8	0.4	18.8	0.092	0.531	22.758270	-101.065739

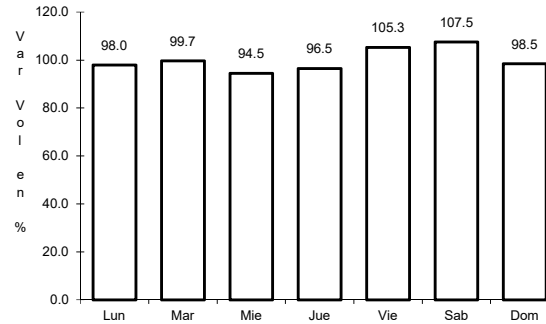
1 CARR: Antiguo Morelos - Ent. El Huizache

CLAVE: 00136

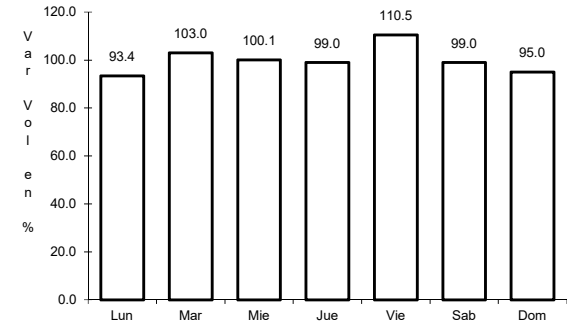
ruta: MEX-080



Km: 0.00 Tipo: 3 Sent: 0



Km: 86.00 Tipo: 3 Sent: 0

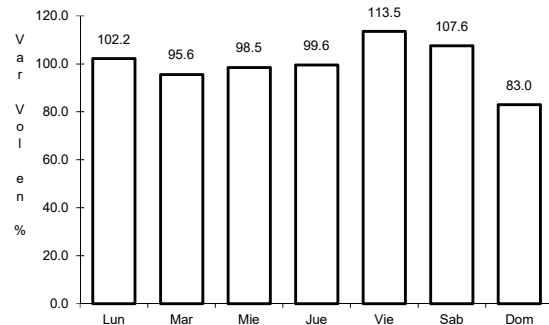


Km: 198.83 Tipo: 1 Sent: 0

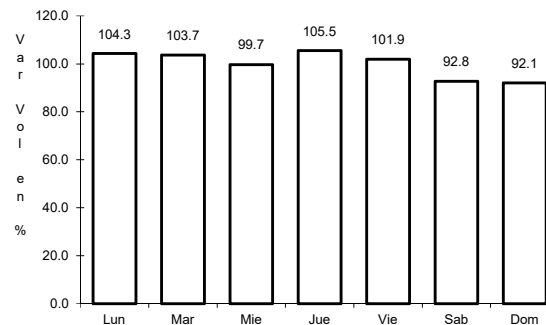
2 CARR: Carbonera - T. C. (Ent. Morelos - Saltillo)

CLAVE: 00218

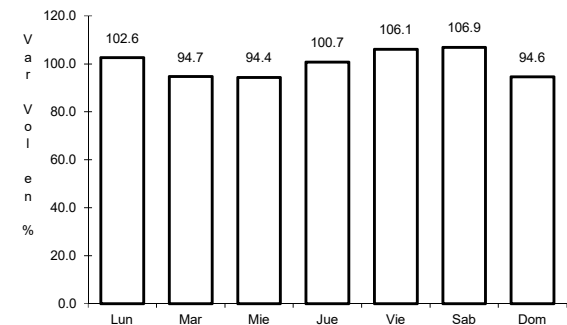
ruta: MEX-062



Km: 0.00 Tipo: 3 Sent: 0



Km: 18.00 Tipo: 1 Sent: 0

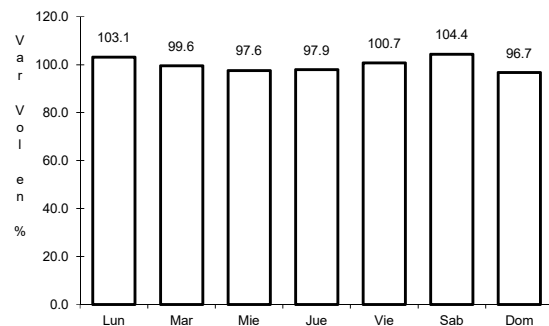


Km: 112.00 Tipo: 1 Sent: 0

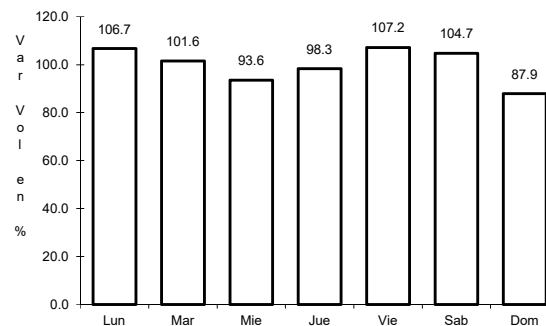
3 CARR: Cd. Valles - Cd. Victoria

CLAVE: 00509

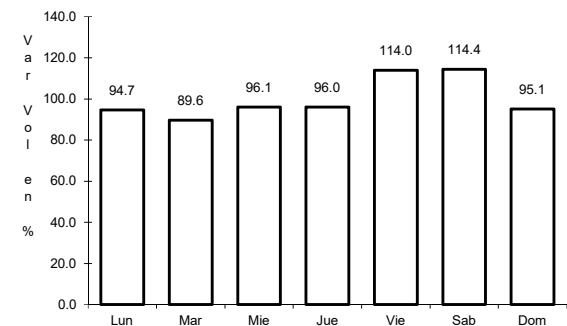
ruta: MEX-085



Km: 0.00 Tipo: 3 Sent: 0



Km: 110.00 Tipo: 3 Sent: 0

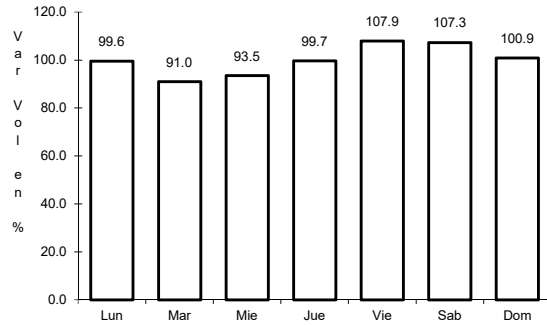


Km: 232.00 Tipo: 1 Sent: 0

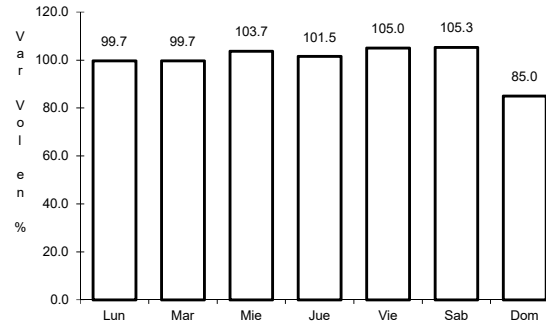
4 CARR: Cd. Valles - San Luis Potosí

CLAVE: 24135

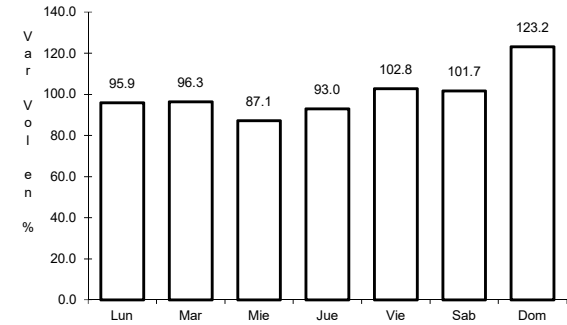
RUTA: MEX-070



Km: 0.00 Tipo: 3 Sent: 1



Km: 0.00 Tipo: 3 Sent: 2

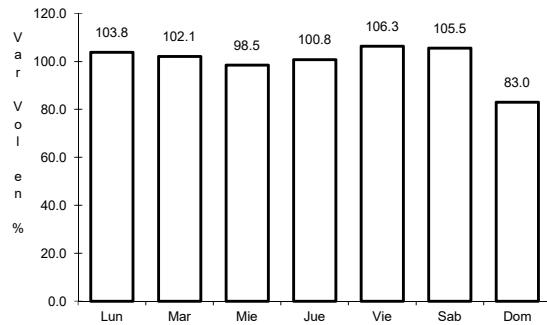


Km: 161.04 Tipo: 3 Sent: 0

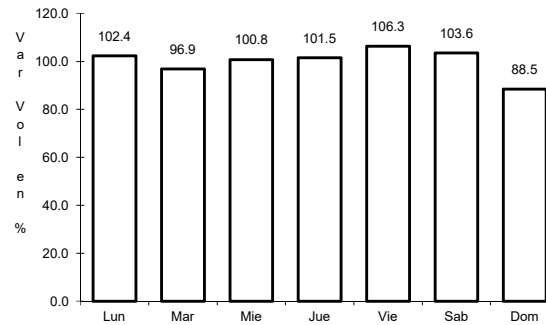
5 CARR: Cd. Valles - Tampico

CLAVE: 00138

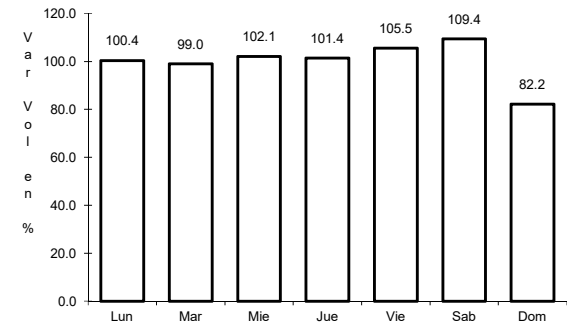
RUTA: MEX-070



Km: 0.00 Tipo: 3 Sent: 0



Km: 138.00 Tipo: 1 Sent: 1

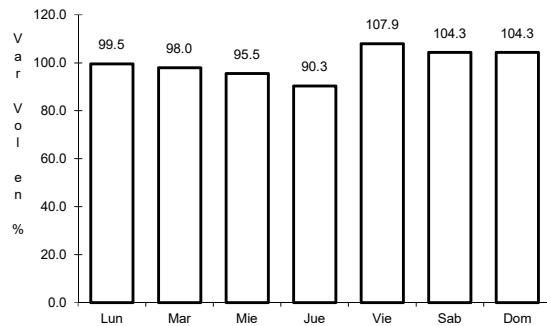


Km: 138.00 Tipo: 1 Sent: 2

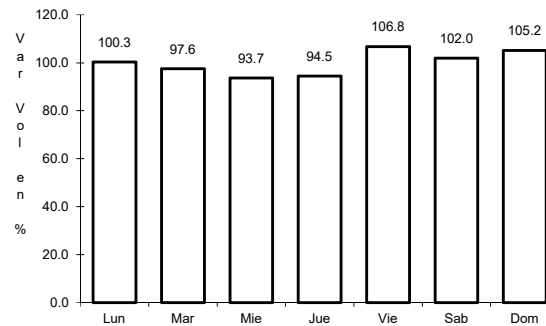
6 CARR: El Clarín - Agua Buena

CLAVE: 24283

RUTA: MEX-070



Km: 0.00 Tipo: 3 Sent: 0

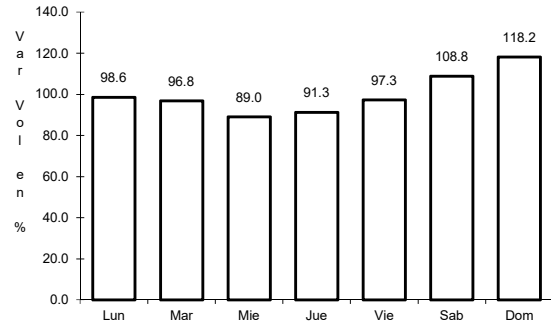


Km: 11.23 Tipo: 1 Sent: 0

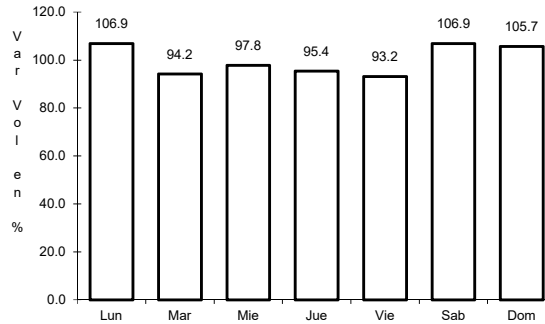
7 CARR: Ent. Ahualulco - Ent. La Bonita

CLAVE: 24258

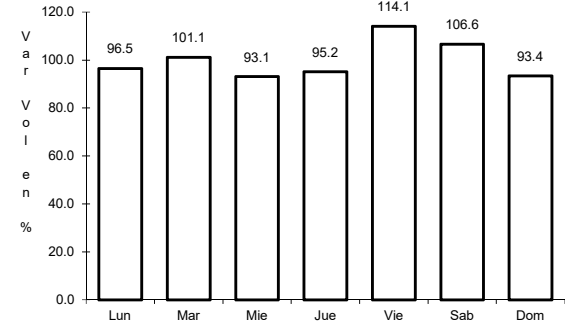
ruta: MEX-063



Km: 0.00 Tipo: 3 Sent: 0



Km: 59.00 Tipo: 1 Sent: 0

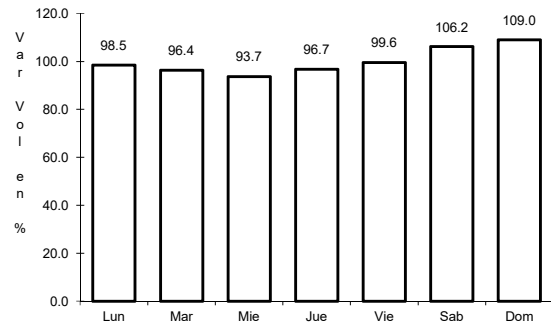


Km: 169.90 Tipo: 1 Sent: 0

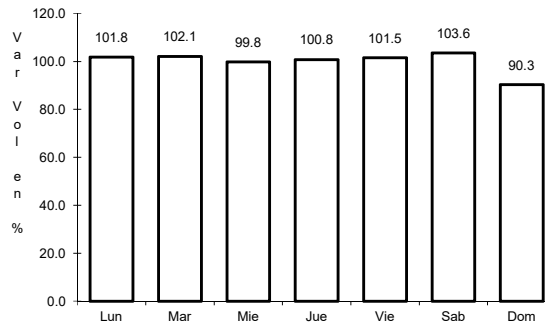
8 CARR: Ent. de Zaragoza - San Felipe

CLAVE: 00240

ruta: MEX-037



Km: 0.00 Tipo: 3 Sent: 0

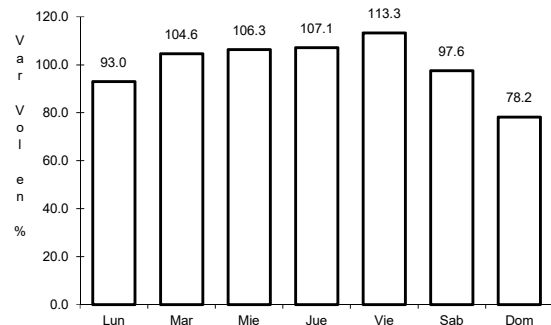


Km: 72.00 Tipo: 1 Sent: 0

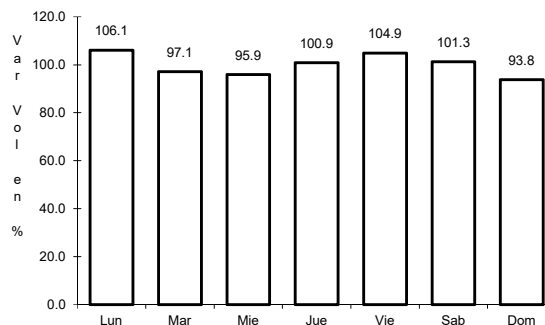
9 CARR: Ent. Tula - Cd. Victoria

CLAVE: 00179

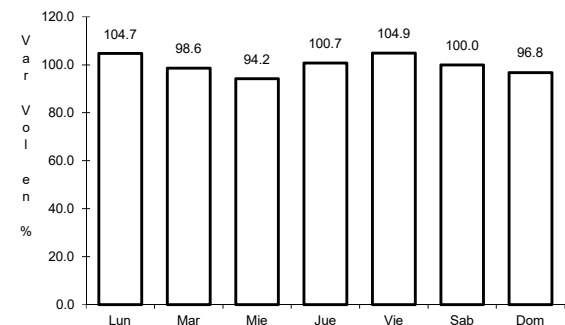
ruta: MEX-101



Km: 0.00 Tipo: 3 Sent: 0



Km: 180.00 Tipo: 1 Sent: 1

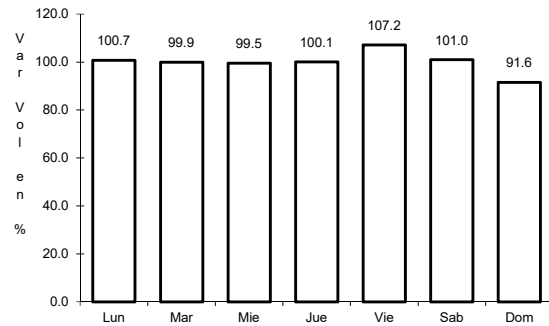


Km: 180.00 Tipo: 1 Sent: 2

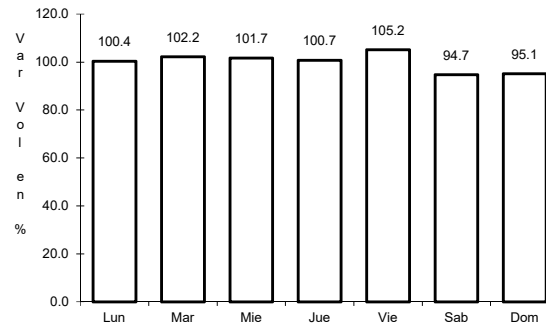
10 CARR: Jalpan de Serra - Rioverde

CLAVE: 00265

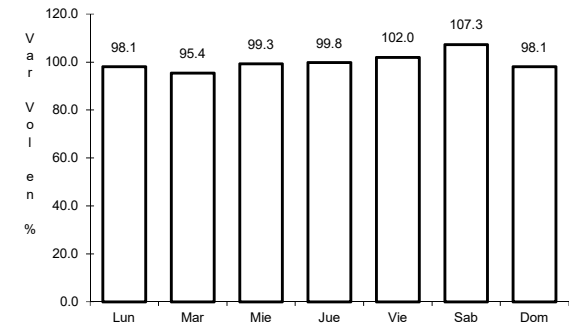
RUTA: MEX-069



Km: 0.00 Tipo: 3 Sent: 0



Km: 48.60 Tipo: 1 Sent: 0

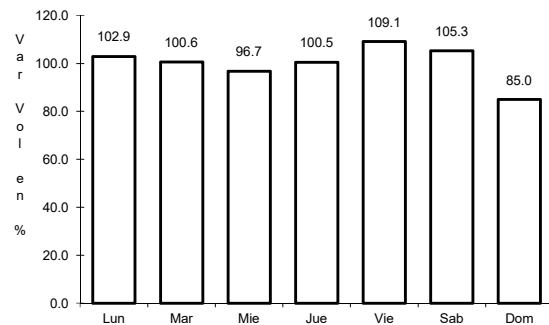


Km: 105.43 Tipo: 1 Sent: 0

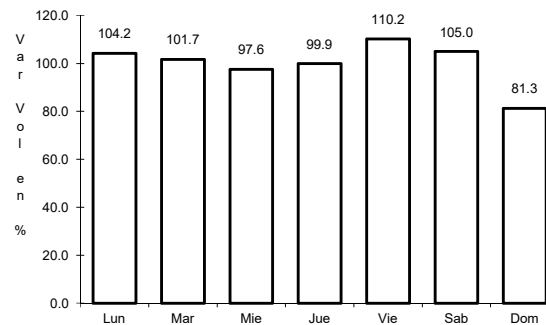
11 CARR: Libramiento de Cd. Valles

CLAVE: 24205

RUTA: MEX-070



Km: 0.00 Tipo: 3 Sent: 0

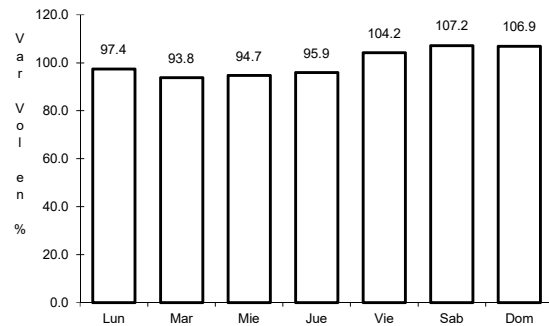


Km: 11.54 Tipo: 1 Sent: 0

12 CARR: Libramiento de Villa de Reyes

CLAVE: 24010

RUTA: MEX-037

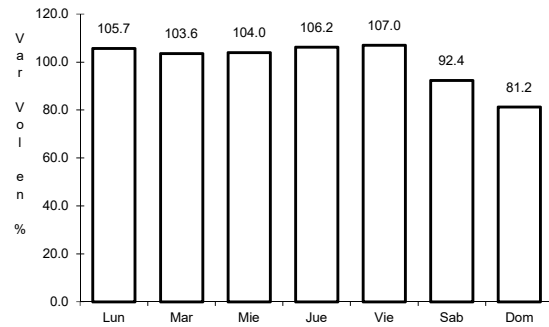


Km: 0.00 Tipo: 3 Sent: 0

13 CARR: Libramiento de Villa de Reyes (Poniente)

CLAVE:

RUTA: MEX-037



Km: 143.64

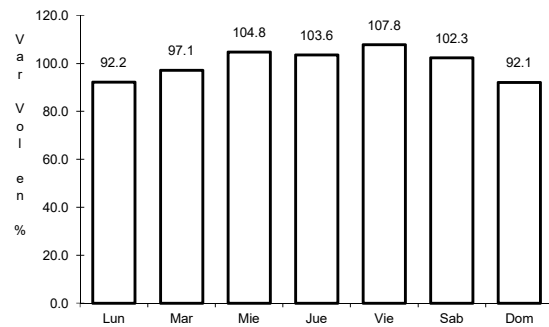
Tipo: 1

Sent: 0

14 CARR: Libramiento Villa de Arriaga

CLAVE: 24009

RUTA: MEX-080



Km: 0.00

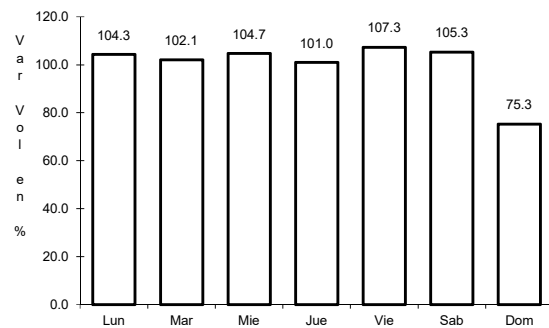
Tipo: 3

Sent: 0

15 CARR: Matchuala - Ent. Puerto México

CLAVE: 00405

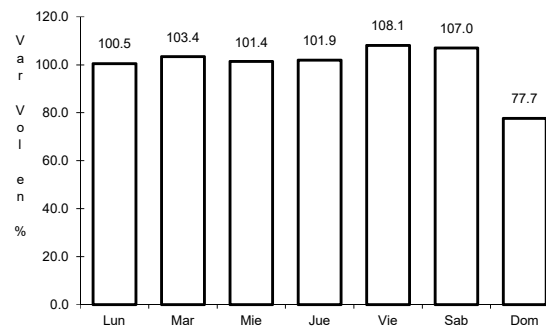
RUTA: MEX-057



Km: 0.00

Tipo: 3

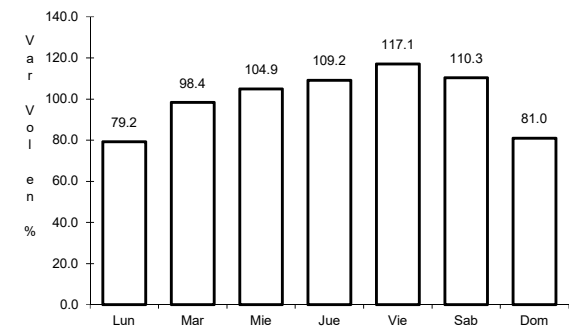
Sent: 1



Km: 0.00

Tipo: 3

Sent: 2



Km: 177.18

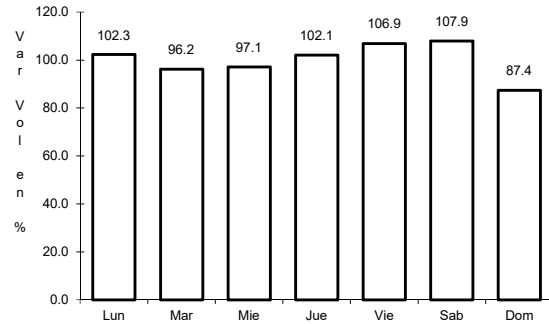
Tipo: 1

Sent: 1

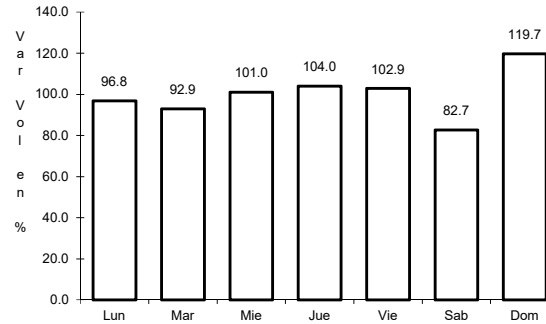
16 CARR: Portezuelo - Cd. Valles

CLAVE: 00023

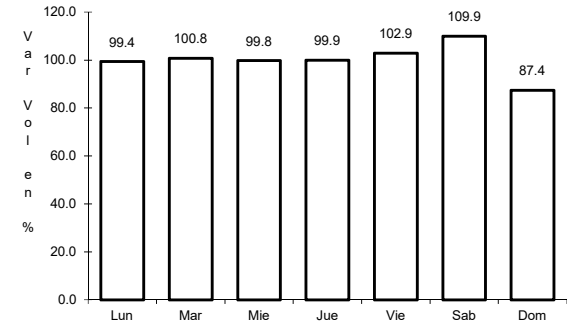
RUTA: MEX-085



Km: 0.00 Tipo: 3 Sent: 0



Km: 154.00 Tipo: 3 Sent: 0

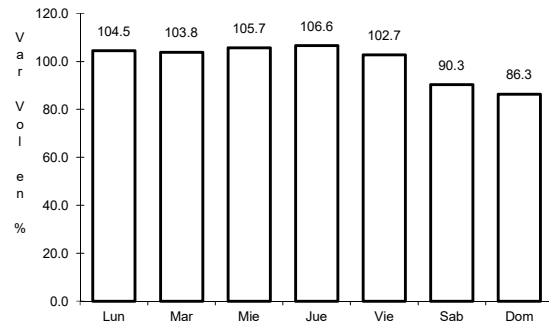


Km: 300.00 Tipo: 1 Sent: 0

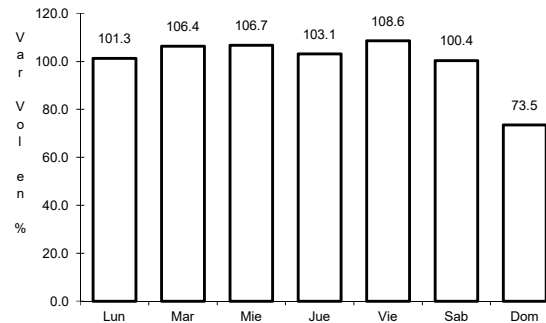
17 CARR: Querétaro - San Luis Potosí

CLAVE: 00165

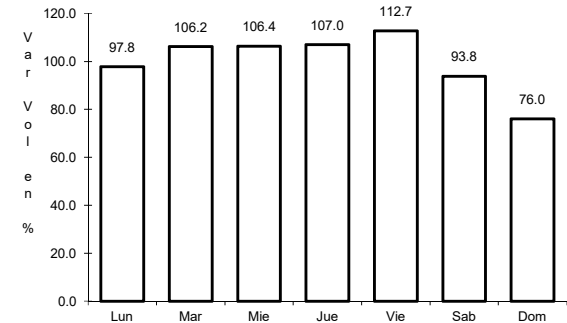
RUTA: MEX-057



Km: 6.28 Tipo: 3 Sent: 1



Km: 6.28 Tipo: 3 Sent: 2

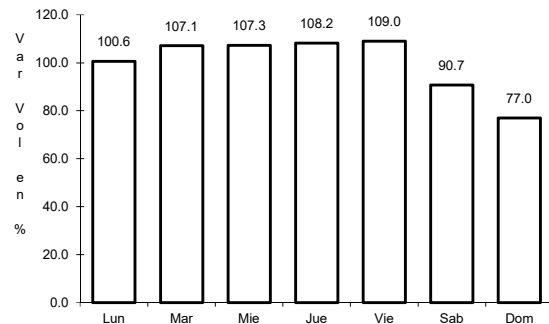


Km: 184.80 Tipo: 1 Sent: 1

18 CARR: Ramal a Aeropuerto de S. L. P.

CLAVE: 24206

RUTA: MEX-057

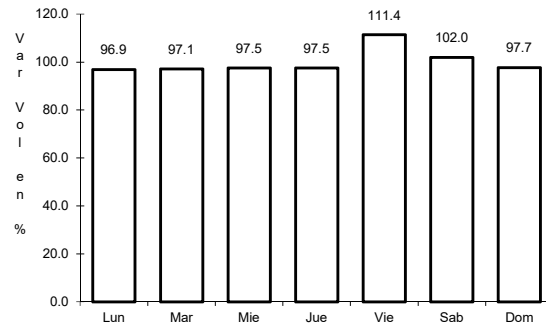


Km: 0.00 Tipo: 3 Sent: 0

19 CARR: Ramal a Ojo de Agua

CLAVE: 24023

ruta: MEX-062



Km: 0.00

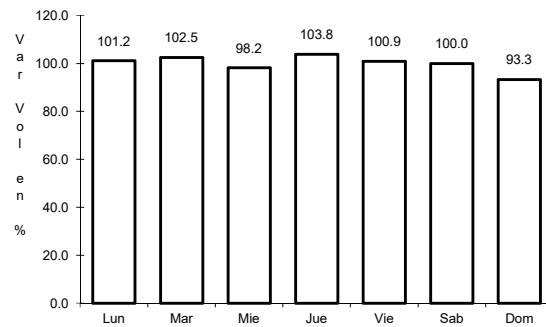
Tipo: 3

Sent: 0

20 CARR: Ramal a Rayón

CLAVE: 24626

ruta: MEX-070



Km: 1.50

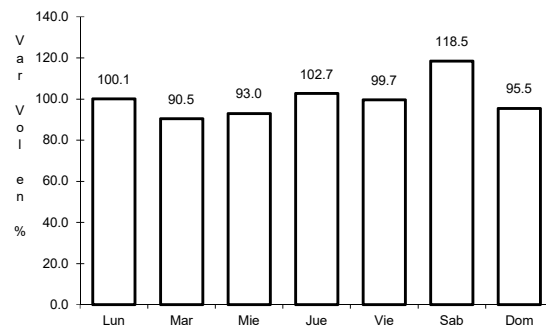
Tipo: 1

Sent: 0

21 CARR: San Juan del Río - Xilitla

CLAVE: 00183

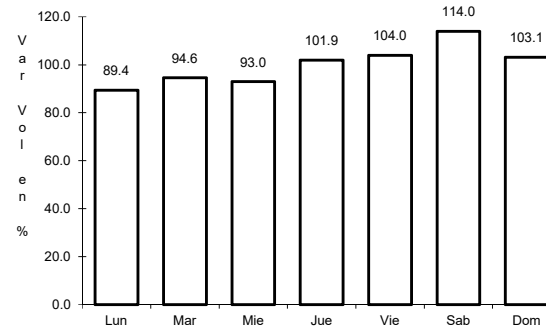
ruta: MEX-120



Km: 5.20

Tipo: 3

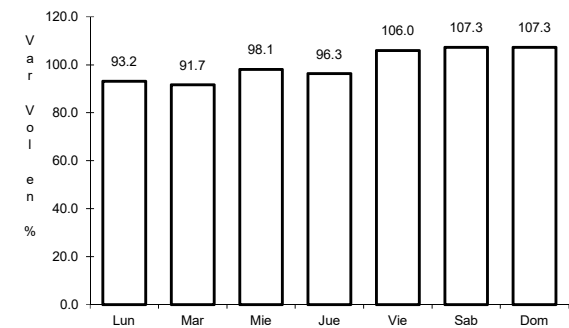
Sent: 1



Km: 5.20

Tipo: 3

Sent: 2



Km: 276.98

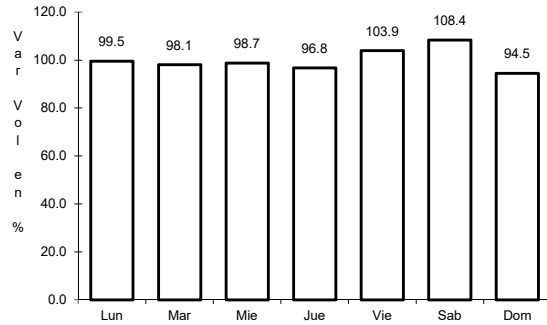
Tipo: 1

Sent: 0

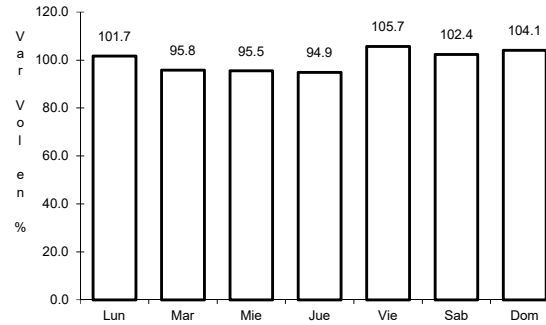
22 CARR: San Luis Potosí - Ent. Arcinas

CLAVE: 00134

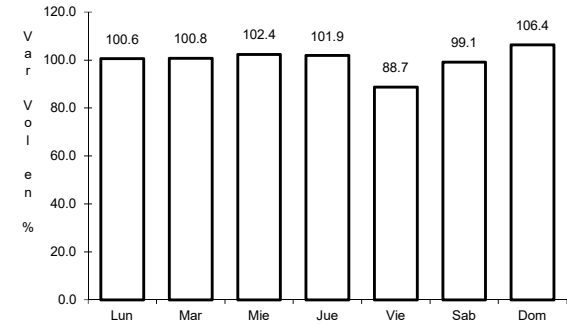
ruta: MEX-049



Km: 9.35 Tipo: 3 Sent: 1



Km: 9.35 Tipo: 3 Sent: 2

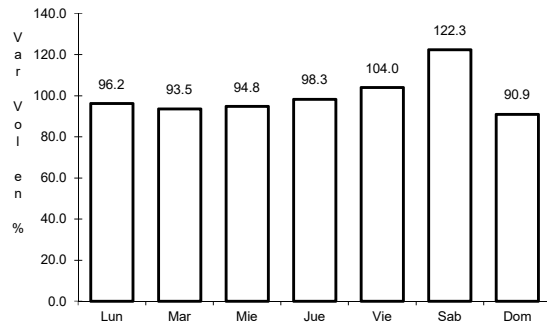


Km: 162.98 Tipo: 1 Sent: 1

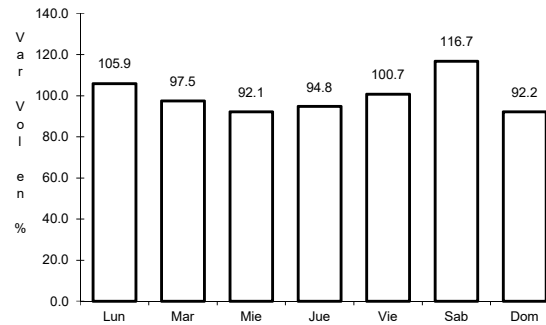
23 CARR: San Luis Potosí - Lagos de Moreno

CLAVE: 00133

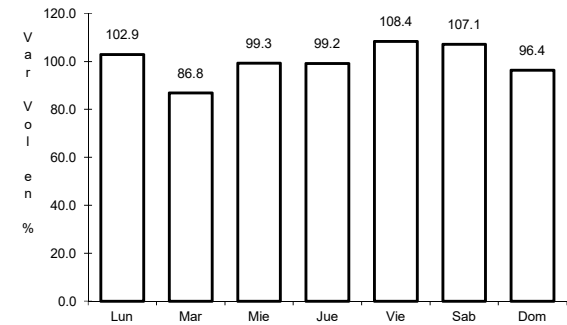
ruta: MEX-070-080



Km: 0.00 Tipo: 3 Sent: 1



Km: 0.00 Tipo: 3 Sent: 2

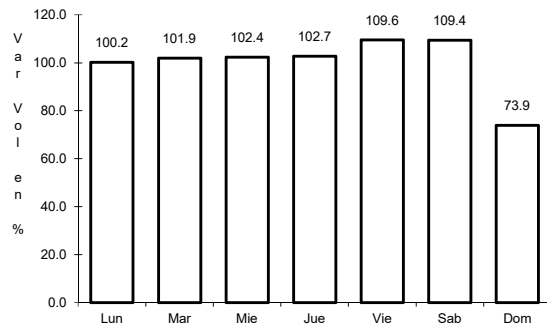


Km: 61.90 Tipo: 3 Sent: 0

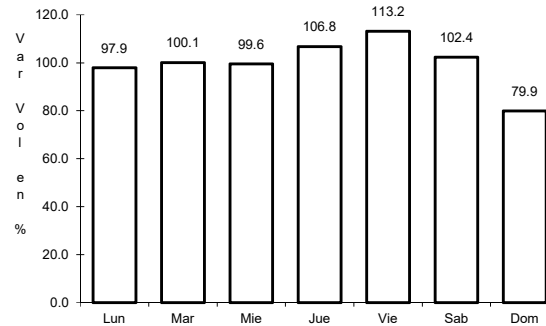
24 CARR: San Luis Potosí - Matchuala

CLAVE: 24508

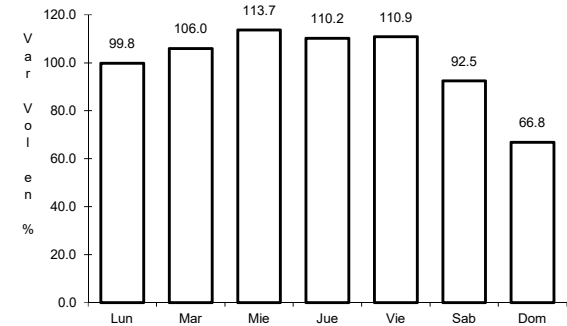
ruta: MEX-057



Km: 7.36 Tipo: 3 Sent: 1



Km: 7.36 Tipo: 3 Sent: 2

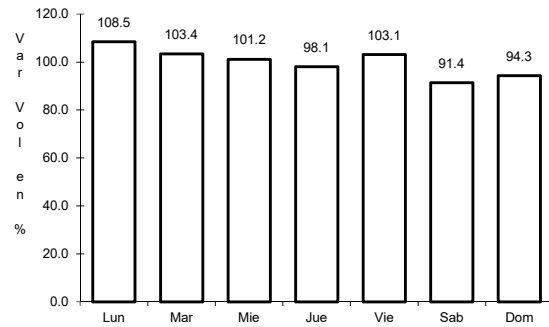


Km: 187.39 Tipo: 1 Sent: 1

25 CARR: T. C. (Ent. El Huizache- Ant. Morelos)-El Salto

CLAVE: 24204

ruta: MEX-080



Km: 0.00

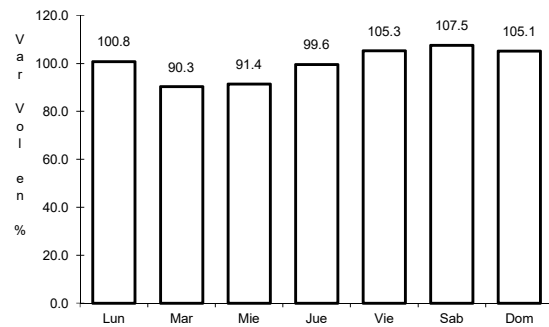
Tipo: 3

Sent: 0

26 CARR: T. C. (Qro - S.L.P.) - Tierra Nueva

CLAVE: 24203

ruta: MEX-057



Km: 0.00

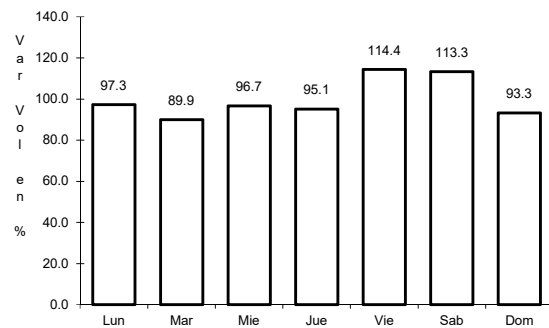
Tipo: 3

Sent: 0

27 CARR: T. C. (S.L.P. - Matchuala) - Villa Hidalgo

CLAVE: 24619

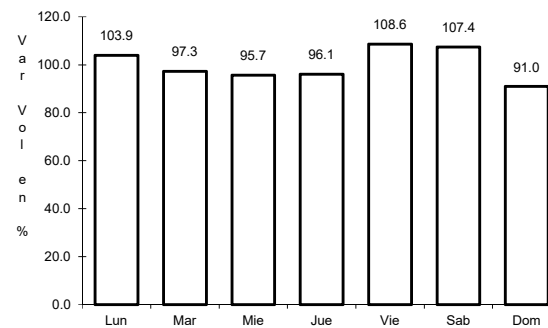
ruta: MEX-057



Km: 0.00

Tipo: 3

Sent: 0



Km: 10.20

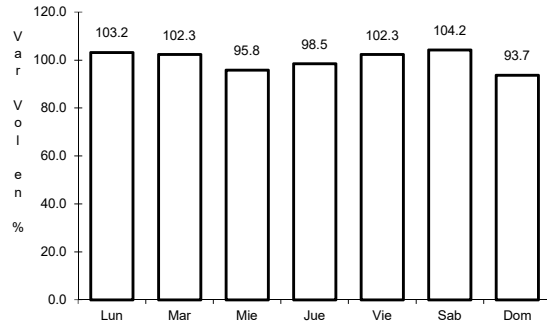
Tipo: 1

Sent: 0

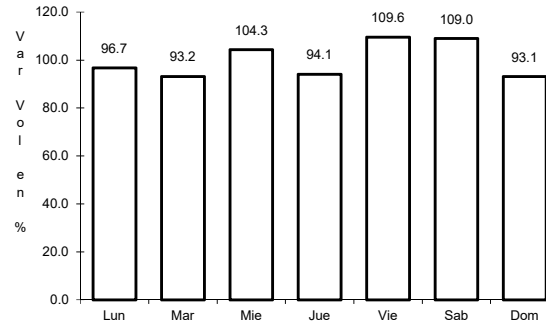
28 CARR: Tamazunchale - San Felipe Orizatlán

CLAVE: 00609

ruta: MEX-085



Km: 0.00 Tipo: 3 Sent: 0

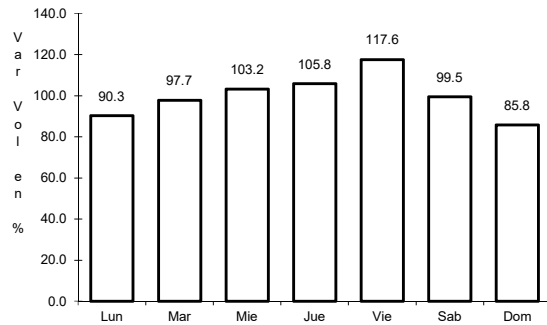


Km: 27.10 Tipo: 1 Sent: 0

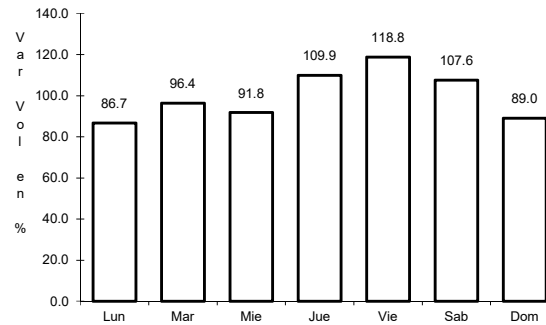
29 CARR: Lagos de Moreno - Villa de Arriaga (Cuota)

CLAVE:

ruta: MEX-080D



Km: 12.10 Tipo: 3 Sent: 0

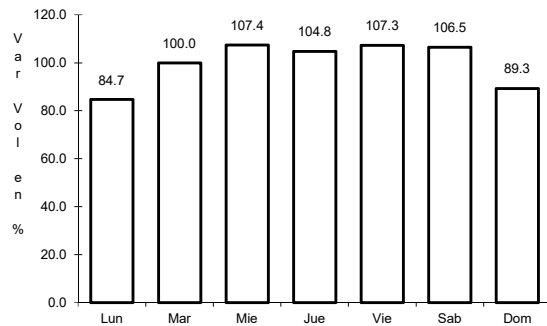


Km: 78.00 Tipo: 1 Sent: 0

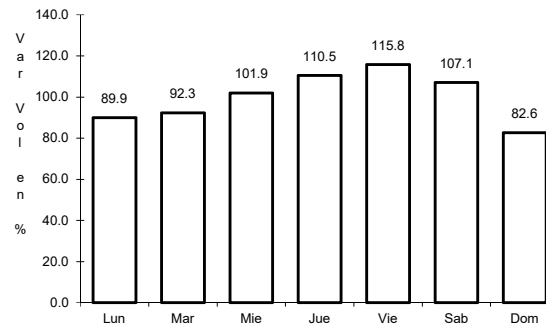
30 CARR: Libramiento de Matchuala (Cuota)

CLAVE: 24205

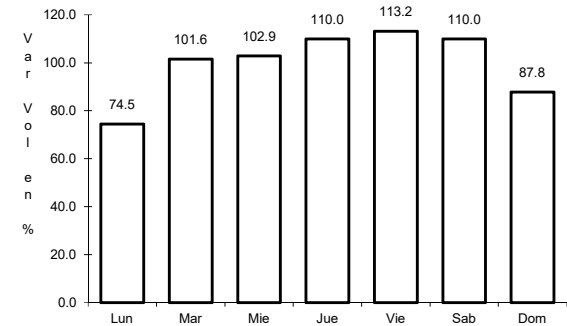
ruta: MEX-057D



Km: 0.00 Tipo: 3 Sent: 1



Km: 0.00 Tipo: 3 Sent: 2

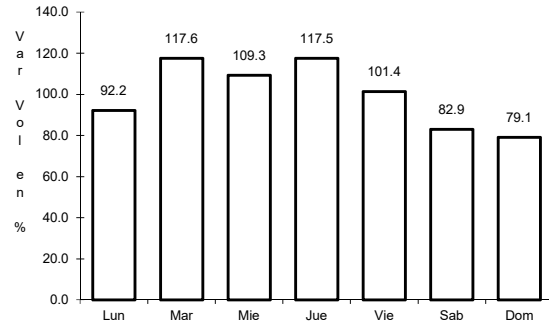


Km: 14.20 Tipo: 1 Sent: 1

31 CARR: Libramiento Norponiente de San Luis Potosí (Cuota)

CLAVE:

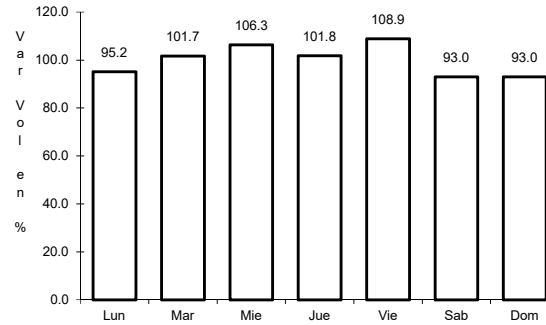
RUTA: MEX-057D



Km: 5.60

Tipo: 1

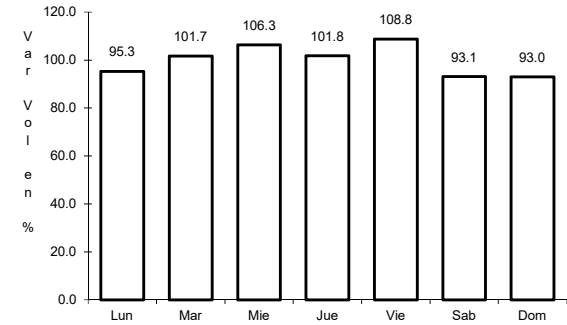
Sent: 0



Km: 5.60

Tipo: 3

Sent: 0



Km: 31.20

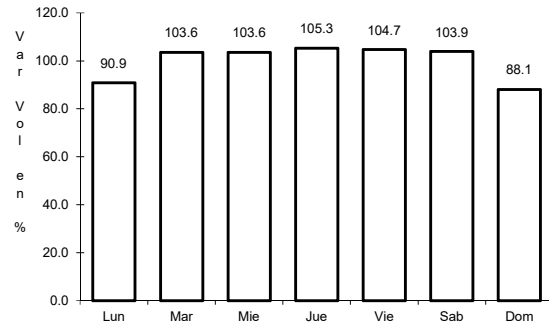
Tipo: 1

Sent: 0

32 CARR: Libramiento Oriente de San Luis Potosí (Cuota)

CLAVE: 24009

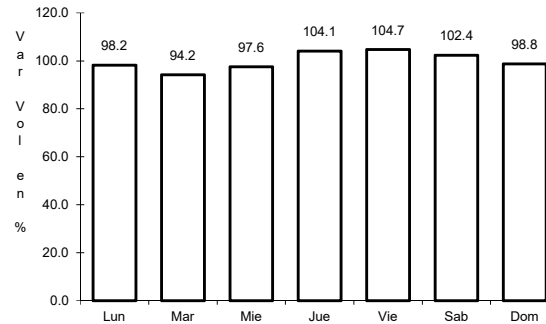
RUTA: MEX-057D



Km: 11.20

Tipo: 1

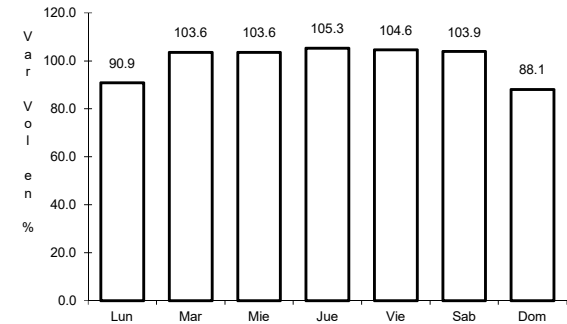
Sent: 1



Km: 11.20

Tipo: 1

Sent: 2



Km: 33.76

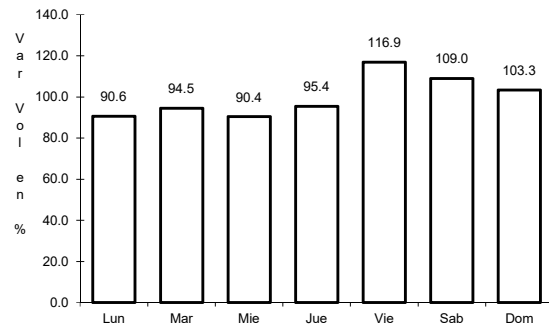
Tipo: 1

Sent: 1

33 CARR: Rayón - Ent. Tamuín (Cuota)

CLAVE:

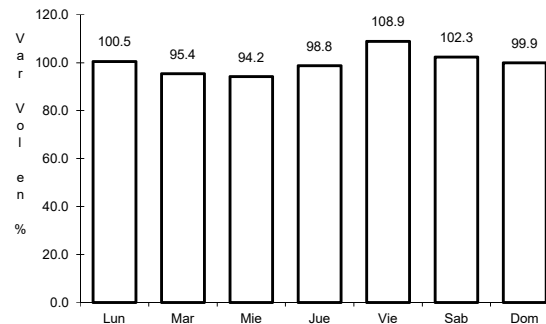
RUTA: MEX-070D



Km: 19.70

Tipo: 1

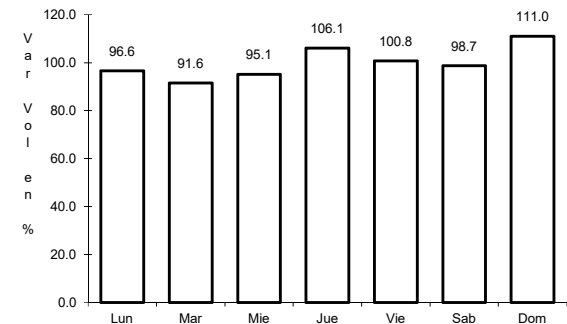
Sent: 0



Km: 19.70

Tipo: 3

Sent: 0



Km: 68.58

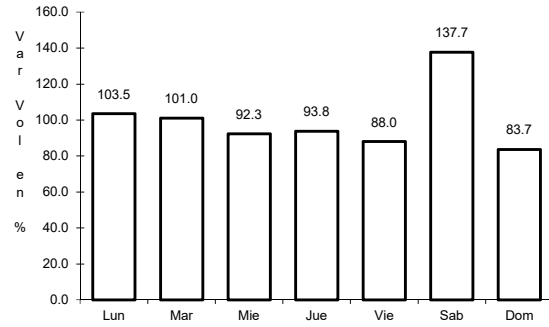
Tipo: 1

Sent: 0

34 CARR: Charcas - Villa Santo Domingo

CLAVE: 24624

RUTA: SLP-017



Km: 0.00

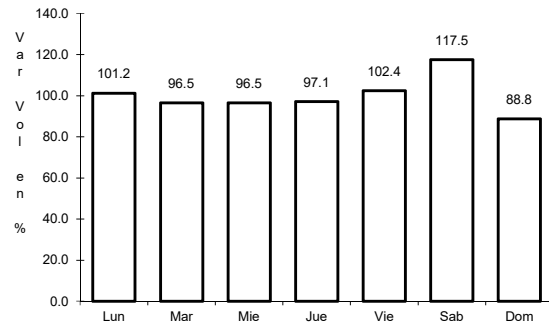
Tipo: 3

Sent: 0

35 CARR: Ébano - Estación Manuel

CLAVE: 24624

RUTA: SLP-TAM



Km: 0.00

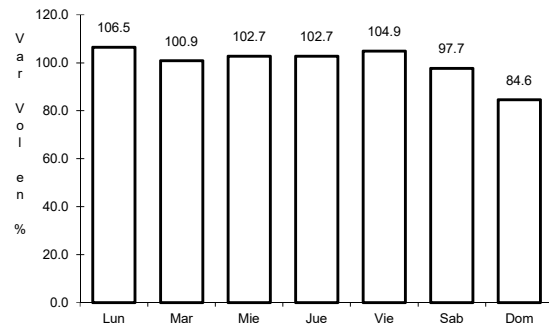
Tipo: 3

Sent: 0

36 CARR: Matchuala - La Paz

CLAVE: 24621

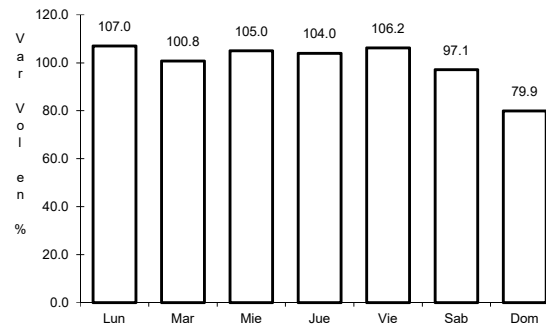
RUTA: SLP-020



Km: 0.00

Tipo: 3

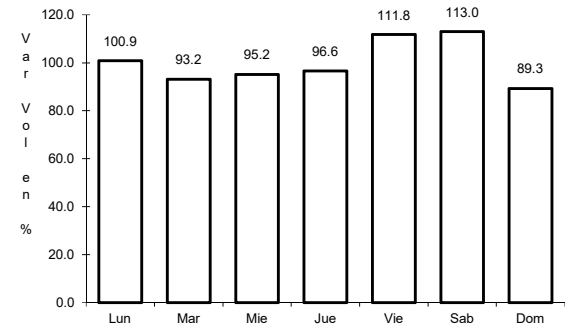
Sent: 1



Km: 0.00

Tipo: 3

Sent: 2



Km: 8.00

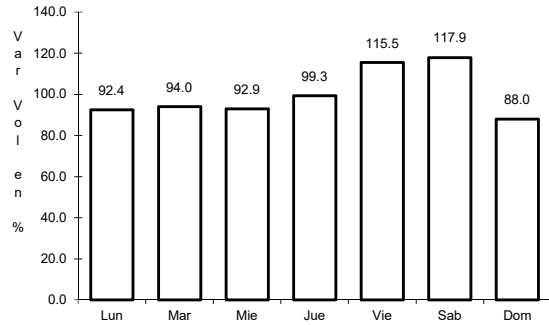
Tipo: 1

Sent: 1

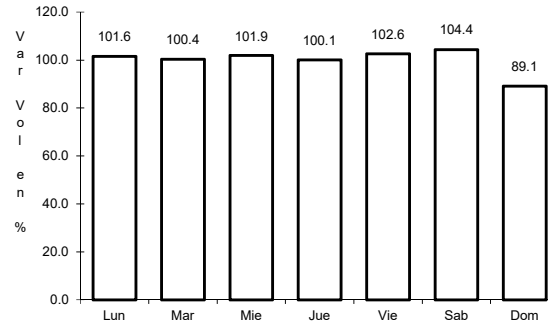
37 CARR: Matchuala - La Poza

CLAVE: 00086

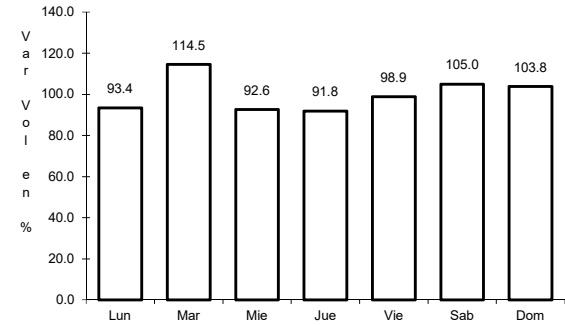
RUTA: SLP-029-NL-061



Km: 0.00 Tipo: 3 Sent: 0



Km: 49.00 Tipo: 1 Sent: 0

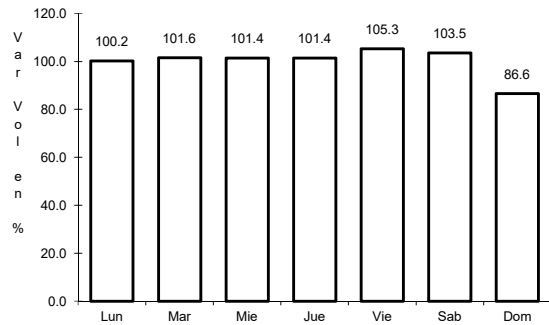


Km: 131.00 Tipo: 1 Sent: 0

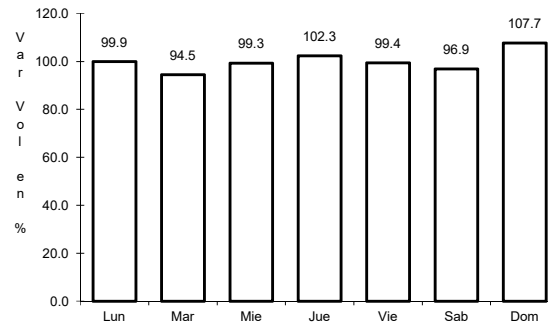
38 CARR: Periférico de San Luis Potosí

CLAVE: 24618

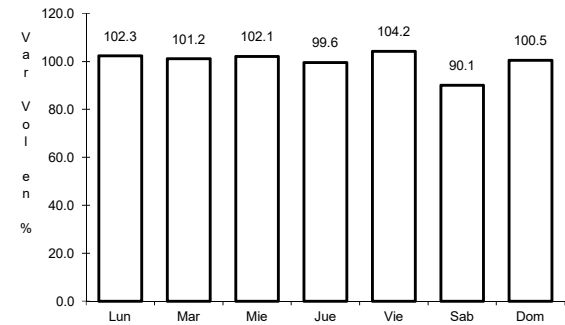
RUTA: SLP-032



Km: 22.00 Tipo: 3 Sent: 1



Km: 22.00 Tipo: 3 Sent: 2

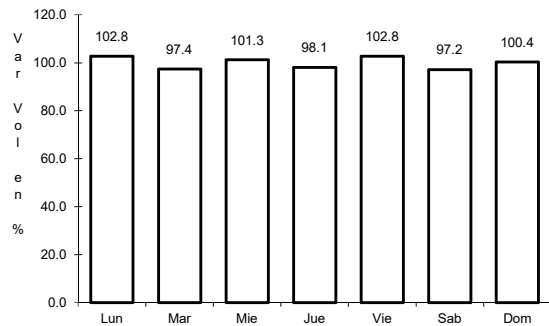


Km: 30.70 Tipo: 1 Sent: 1

39 CARR: Ramal a Cerritos

CLAVE: 24615

RUTA: SLP-007

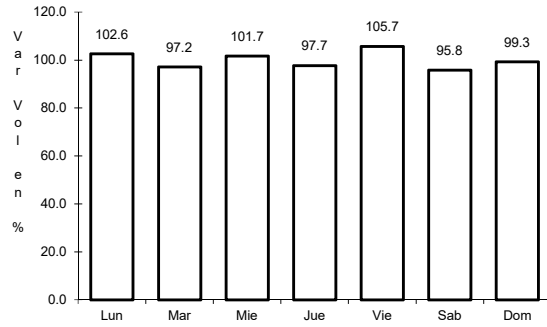


Km: 0.00 Tipo: 3 Sent: 0

40 CARR: Ramal a Pozo de Acuña

CLAVE: 24626

ruta: SLP-009

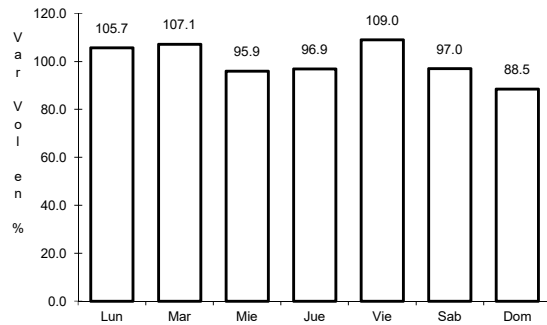


Km: 0.00 Tipo: 3 Sent: 0

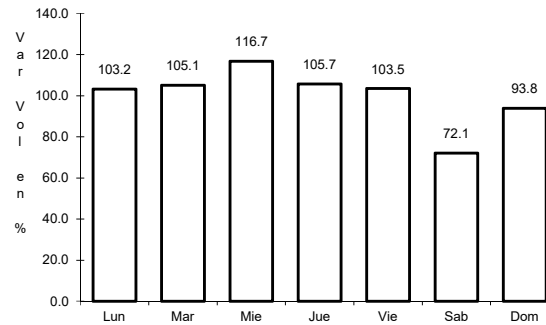
41 CARR: Rayón - Arroyo Seco

CLAVE: 24008

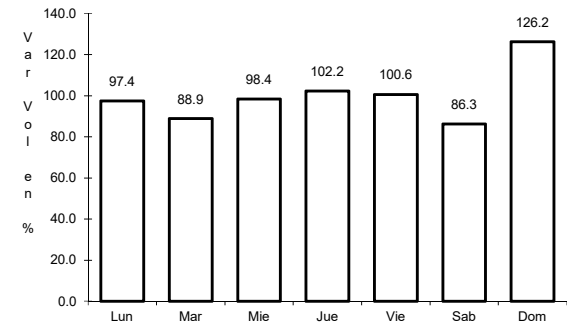
ruta: SLP-011



Km: 0.00 Tipo: 3 Sent: 0



Km: 36.00 Tipo: 1 Sent: 0

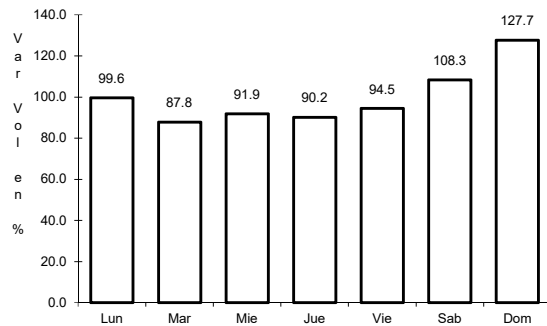


Km: 57.00 Tipo: 1 Sent: 0

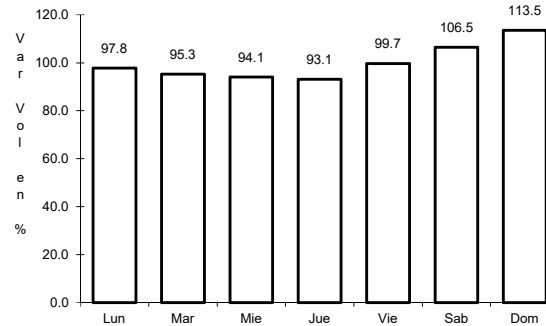
42 CARR: Santo Domingo - Cerro Gordo

CLAVE: 24614

ruta: SLP-022



Km: 0.00 Tipo: 3 Sent: 0

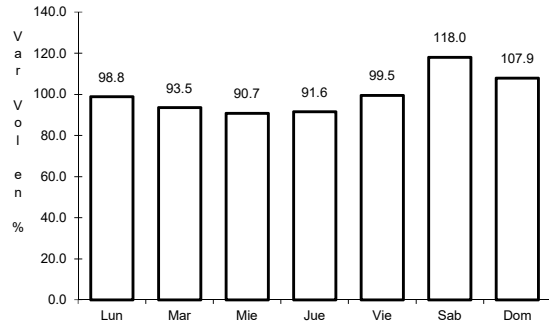


Km: 19.00 Tipo: 1 Sent: 0

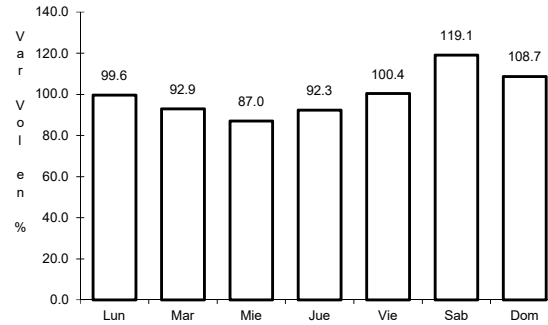
43 CARR: Tamuín - Estación F.F.C.C. Tamuín

CLAVE: 24022

RUTA: SLP-040



Km: 0.00 Tipo: 3 Sent: 0

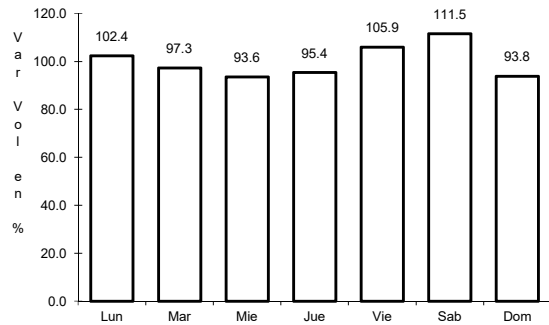


Km: 10.00 Tipo: 1 Sent: 0

44 CARR: Tamuín - Xolol

CLAVE: 24027

RUTA: SLP-014

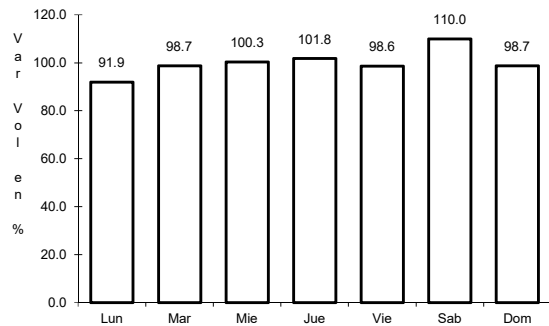


Km: 0.00 Tipo: 3 Sent: 0

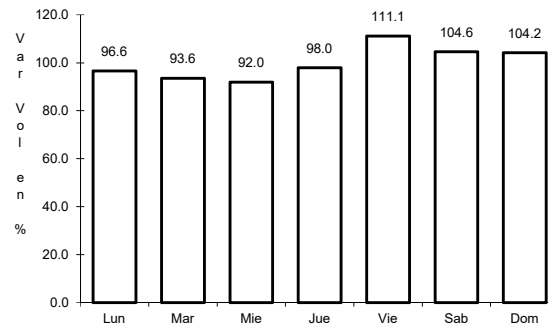
45 CARR: Cerritos - Rioverde (Cuota)

CLAVE: 00138

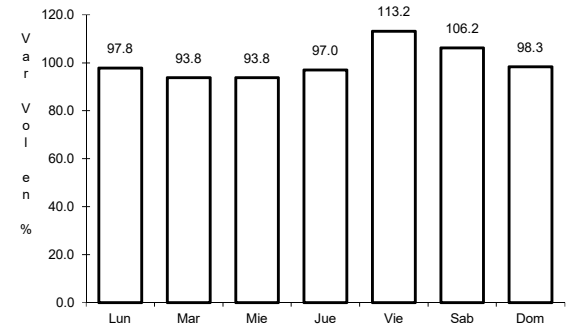
RUTA: SLP-D



Km: 0.00 Tipo: 3 Sent: 0



Km: 58.00 Tipo: 3 Sent: 0

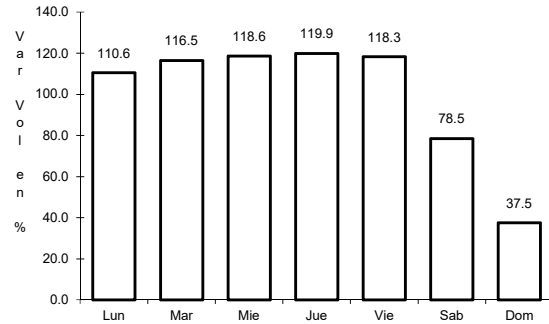


Km: 103.00 Tipo: 1 Sent: 0

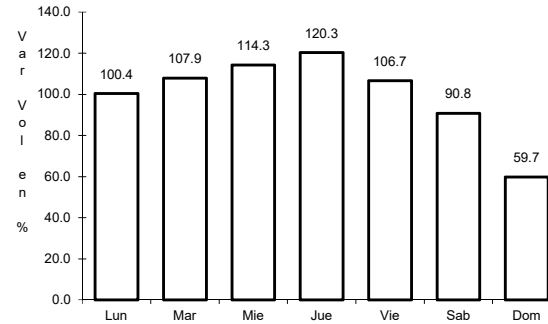
46 CARR: San Luis Potosí - Villa de Arriaga (Cuota)

CLAVE: 24209

RUTA: SLP-D



Km: 0.00 Tipo: 3 Sent: 0

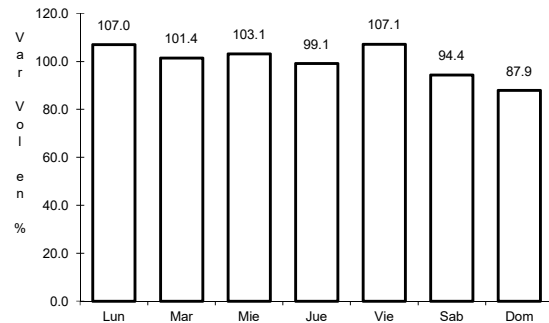


Km: 77.00 Tipo: 1 Sent: 0

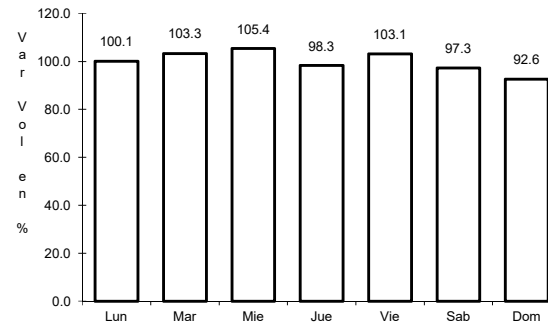
47 CARR: Rayón - Cd. del Maíz

CLAVE: 24206

RUTA: MEX-070-SLP-005



Km: 15.80 Tipo: 1 Sent: 0

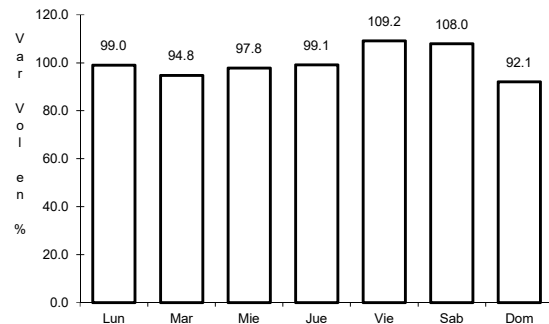


Km: 55.70 Tipo: 1 Sent: 0

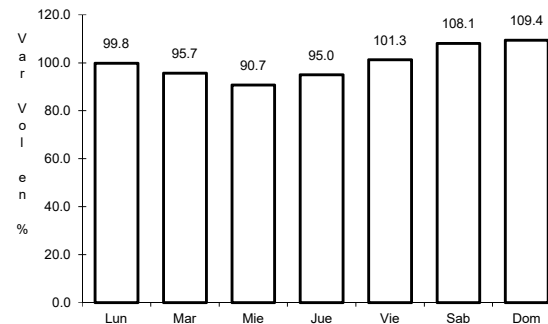
48 CARR: San Lorenzo - Moctezuma

CLAVE: 24016

RUTA: MEX-063-SLP-012



Km: 0.00 Tipo: 3 Sent: 0



Km: 54.00 Tipo: 1 Sent: 0