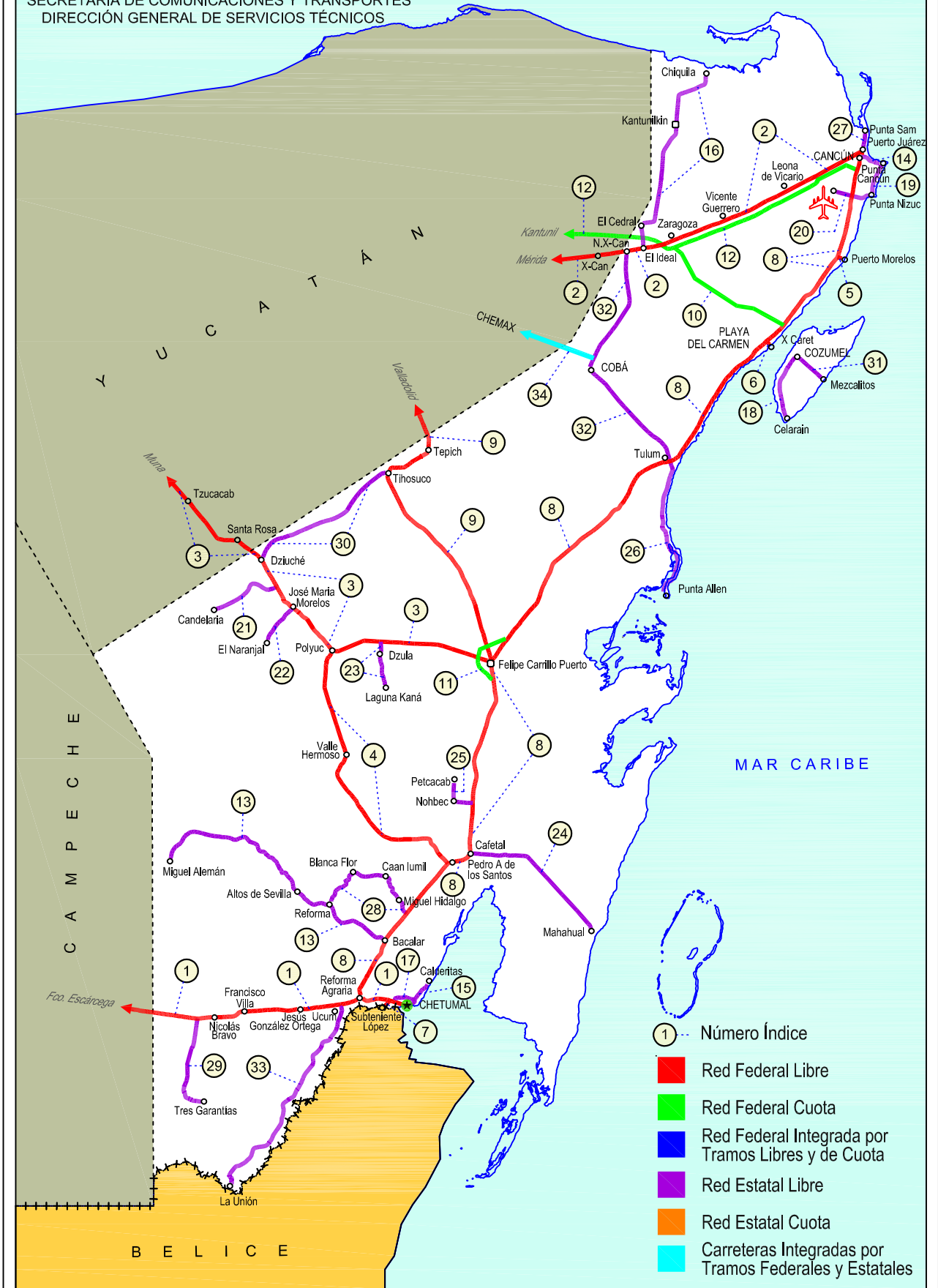


23 QUINTANA ROO

SECRETARÍA DE COMUNICACIONES Y TRANSPORTES
DIRECCIÓN GENERAL DE SERVICIOS TÉCNICOS





QUINTANA ROO

NO. INDICE CARRETERA	RUTA
---RED FEDERAL LIBRE---	
1 Francisco Escárcega - Chetumal	MEX-186
2 Mérida - Puerto Juárez	MEX-180
3 Muna - Felipe Carrillo Puerto	MEX-184
4 Polyuc - T. C. (Reforma Agraria - Puerto Juárez)	MEX-293
5 Ramal a Puerto Morelos	MEX
6 Ramal a Punta Piedra	MEX
7 Ramal a Subteniente López	MEX-186
8 Reforma Agraria - Puerto Juárez	MEX-307
9 Valladolid - Felipe Carrillo Puerto	MEX-295
---RED FEDERAL DE CUOTA---	
10 El Cedral - Playa del Carmen (Cuota)	MEX-180D
11 Libramiento de Felipe Carrillo Puerto (Cuota)	MEX-307D
12 Mérida - Cancún (Cuota)	MEX-180D
---RED ESTATAL LIBRE---	
13 Bacalar - Miguel Alemán	QR
14 Cancún - Punta Cancún	QR
15 Chetumal - Calderitas	QR-004
16 El Ideal - Chiquila	QR-005
17 Libramiento de Chetumal	QR
18 Perimetral Cozumel	QR
19 Punta Nizuc - Cancún	QR
20 Ramal a Aeropuerto Cancún	QR
21 Ramal a Candelaria	QR
22 Ramal a El Naranjal	QR
23 Ramal a Laguna de Kaná	QR
24 Ramal a Mahahual	QR
25 Ramal a Petcacab	QR-018
26 Ramal a Punta Allen	QR-015
27 Ramal a Punta Sam	QR
28 Ramal a Reforma	QR-016
29 Ramal a Tres Garantías	QR
30 Tihosuco - Dziuche	QR
31 Transversal de Cozumel	QR
32 Tulum - Nuevo X-Can	QR
33 Ucum - Unión	QR
---CARRETERAS INTEGRADAS POR TRAMOS FEDERALES Y ESTATALES---	
34 Chemax - Cobá	YUC-MEX-180

QUINTANA ROO

1 CARR: Francisco Escárcega - Chetumal

CLAVE: 00093

RUTA: MEX-186

AÑO: 2018

LUGAR	ESTACION				CLASIFICACION VEHICULAR EN PORCIENTO										COORDENADAS					
	KM	TE	SC	TDPA	M	A	B	C2	C3	T3S2	T3S3	T3S2R4	OTROS	A	B	C	K'	D	LATITUD	LONGITUD
Francisco Escárcega	0.00	3	0	3385	9.8	64.1	4.2	7.0	1.5	5.8	1.1	6.1	0.4	73.9	4.2	21.9	0.073	0.521	18.604158	-90.718173
Adolfo López Mateos	41.50	1	0	2506	8.7	63.8	4.3	6.2	2.2	6.6	1.3	5.8	1.1	72.5	4.3	23.2	0.074	0.532	18.639905	-90.307327
T. Der. Silvituc	55.70	1	0	2489	5.8	69.6	2.4	7.0	2.1	4.0	2.0	6.5	0.6	75.4	2.4	22.2	0.067	0.522	18.651211	-90.277296
T. Der. Silvituc	55.70	3	0	2134	6.4	58.9	6.1	8.6	2.3	7.3	2.5	7.1	0.8	65.3	6.1	28.6	0.067	0.511	18.648062	-90.252646
Conhuás	100.00	1	0	2242	7.7	61.8	6.7	8.0	1.6	5.1	2.0	6.4	0.7	69.5	6.7	23.8	0.081	0.522	18.539926	-89.910344
Xpujil	155.73	1	0	2828	6.8	65.4	3.0	8.2	2.6	6.2	1.6	5.3	0.9	72.2	3.0	24.8	0.069	0.547	18.509272	-89.409150
Lim. Edos. Term. Camp. Ppia. Qroo.	179.90																			
Nicolás Bravo	206.01	1	0	3128	6.2	71.3	3.7	6.5	0.9	5.5	1.5	4.0	0.4	77.5	3.7	18.8	0.085	0.502	18.458474	-88.940896
Nicolás Bravo	206.01	3	0	3516	9.4	63.6	3.9	7.0	1.3	7.4	1.5	5.4	0.5	73.0	3.9	23.1	0.066	0.527	18.459102	-88.920562
T. Izq. Morocoy	214.90	1	0	3081	5.9	69.2	4.0	8.8	1.2	4.9	1.0	4.4	0.6	75.1	4.0	20.9	0.072	0.584	18.478730	-88.818210
T. Izq. Morocoy	214.90	3	0	2948	6.4	59.6	4.8	12.6	1.7	6.5	1.1	6.8	0.5	66.0	4.8	29.2	0.069	0.509	18.478837	-88.814719
T. Der. Unión	247.50	1	0	4860	8.7	66.7	2.9	8.8	2.6	5.2	1.0	3.4	0.7	75.4	2.9	21.7	0.074	0.526	18.504224	-88.532884
T. Der. Unión	247.50	3	0	7694	5.4	77.2	2.1	5.4	1.0	5.2	0.8	2.4	0.5	82.6	2.1	15.3	0.069	0.505	18.508197	-88.509467
T. Izq. Fpe. Carrillo Puerto	255.15	1	0	7651	4.8	78.3	2.0	4.8	1.9	4.3	0.9	2.5	0.5	83.1	2.0	14.9	0.073	0.512	18.523760	-88.473466
T. Der. Subteniente López	268.57	1	1	8268	4.1	88.0	1.0	4.6	0.8	0.7	0.3	0.3	0.2	92.1	1.0	6.9	0.081	0.504	18.516635	-88.377970
T. Der. Subteniente López	268.57	1	2	8387	4.2	87.3	1.1	5.1	0.7	0.7	0.4	0.3	0.2	91.5	1.1	7.4	0.102	0.504	18.516745	-88.377938
T. Izq. Av. Insurgentes	270.00	1	1	13046	5.8	86.8	0.8	3.9	0.6	1.0	0.6	0.3	0.2	92.6	0.8	6.6	0.076	0.503	18.513372	-88.363098
T. Izq. Av. Insurgentes	270.00	1	2	12896	5.6	86.7	1.0	4.1	0.6	1.0	0.6	0.2	0.2	92.3	1.0	6.7	0.082	0.503	18.513495	-88.363072
T. Izq. Av. Insurgentes	270.00	3	1	5665	3.1	89.2	0.5	6.3	0.4	0.2	0.1	0.1	0.1	92.3	0.5	7.2	0.068	0.504	18.510508	-88.354016
T. Izq. Av. Insurgentes	270.00	3	2	5578	4.0	88.7	0.5	5.7	0.4	0.4	0.1	0.1	0.1	92.7	0.5	6.8	0.075	0.504	18.510630	-88.353943
Chetumal	277.36	1	1	7736	5.5	88.9	0.4	4.3	0.2	0.4	0.1	0.1	0.1	94.4	0.4	5.2	0.091	0.501	18.501572	-88.320674
Chetumal	277.36	1	2	7767	5.7	89.2	0.3	4.0	0.2	0.5	0.1	0.0	0.0	94.9	0.3	4.8	0.090	0.501	18.501675	-88.320632

2 CARR: Mérida - Puerto Juárez

CLAVE: 00067

RUTA: MEX-180

AÑO: 2018

LUGAR	ESTACION				CLASIFICACION VEHICULAR EN PORCIENTO										COORDENADAS					
	KM	TE	SC	TDPA	M	A	B	C2	C3	T3S2	T3S3	T3S2R4	OTROS	A	B	C	K'	D	LATITUD	LONGITUD
Mérida	0.00																			
X. Periférico de Mérida	5.60	1	1	12885	8.9	83.0	0.6	4.1	0.3	1.8	1.0	0.2	0.1	91.9	0.6	7.5	0.067	0.502	20.957594	-89.572463
X. Periférico de Mérida	5.60	1	2	13008	9.1	82.9	0.7	4.0	0.3	1.8	0.9	0.2	0.1	92.0	0.7	7.3	0.068	0.502	20.957683	-89.572449
X. Periférico de Mérida	5.60	3	1	15914	5.7	80.8	1.2	4.5	1.1	2.7	2.5	1.1	0.4	86.5	1.2	12.3	0.076	0.514	20.954940	-89.566197
X. Periférico de Mérida	5.60	3	2	15067	6.3	81.1	0.9	4.4	1.2	2.6	1.9	1.2	0.4	87.4	0.9	11.7	0.066	0.514	20.955208	-89.566482
Teya	13.00	1	1	10808	3.8	82.2	1.6	5.8	1.4	2.3	1.1	1.6	0.2	86.0	1.6	12.4	0.093	0.510	20.938071	-89.537220
Teya	13.00	1	2	10367	3.4	81.3	1.8	6.4	1.5	2.5	1.2	1.7	0.2	84.7	1.8	13.5	0.088	0.510	20.938185	-89.537175
T. Der. Seyé	28.79	1	1	5966	2.6	80.8	2.5	6.4	1.9	2.4	0.7	2.5	0.2	83.4	2.5	14.1	0.066	0.508	20.894851	-89.389690

QUINTANA ROO

2 CARR: Mérida - Puerto Juárez

CLAVE: 00067

RUTA: MEX-180

AÑO: 2018

LUGAR	ESTACION				CLASIFICACION VEHICULAR EN PORCIENTO														COORDENADAS	
	KM	TE	SC	TDPA	M	A	B	C2	C3	T3S2	T3S3	T3S2R4	OTROS	A	B	C	K'	D	LATITUD	LONGITUD
T. Der. Seyé	28.79	1	2	6161	3.3	80.7	2.3	6.6	1.7	2.2	0.6	2.4	0.2	84.0	2.3	13.7	0.093	0.508	20.894944	-89.389626
T. Der. Seyé	28.79	3	1	5488	1.0	81.1	3.3	7.0	1.8	2.4	0.7	2.6	0.1	82.1	3.3	14.6	0.079	0.512	20.891938	-89.371317
T. Der. Seyé	28.79	3	2	5240	1.0	80.6	3.2	7.2	1.9	2.7	0.6	2.7	0.1	81.6	3.2	15.2	0.091	0.512	20.892040	-89.371326
Tahmek	42.00	1	1	5457	1.2	82.8	3.0	5.9	1.8	2.4	0.8	2.0	0.1	84.0	3.0	13.0	0.080	0.502	20.876046	-89.279041
Tahmek	42.00	1	2	5420	0.7	84.3	2.5	5.7	1.7	2.4	0.7	1.9	0.1	85.0	2.5	12.5	0.092	0.502	20.876155	-89.279029
T. Izq. Hochtún (1º Acceso)	46.65	1	0	2514	14.5	66.6	6.3	7.8	3.2	0.8	0.4	0.4	0.0	81.1	6.3	12.6	0.068	0.517	20.867467	-89.214138
T. Izq. Hochtún (2º Acceso)	48.62	1	0	1137	9.2	72.9	1.4	9.9	2.8	2.3	1.0	0.5	0.0	82.1	1.4	16.5	0.087	0.508	20.858561	-89.201872
T. Izq. Hochtún (2º Acceso)	48.62	3	0	2276	16.4	70.6	2.7	7.2	0.9	1.8	0.3	0.1	0.0	87.0	2.7	10.3	0.080	0.518	20.854008	-89.195694
Kantunil	67.28	3	0	2905	4.0	78.0	3.6	7.8	3.6	2.3	0.3	0.3	0.1	82.0	3.6	14.4	0.075	0.542	20.791310	-89.019414
Libre Unión	92.91	1	0	2623	5.1	74.5	3.8	9.1	3.9	1.9	0.7	0.9	0.1	79.6	3.8	16.6	0.088	0.520	20.707907	-88.813433
Libre Unión	92.91	3	0	2462	3.6	75.9	4.1	9.9	3.4	1.6	0.9	0.5	0.1	79.5	4.1	16.4	0.084	0.523	20.706852	-88.801283
Piste	116.30	3	0	6829	5.4	79.9	2.6	6.9	1.4	2.4	0.9	0.3	0.2	85.3	2.6	12.1	0.080	0.531	20.690621	-88.579280
1er. Acceso a Zona Arqueológica de Chichen-Itzá	117.90	3	0	5633	9.3	73.4	3.7	8.5	2.0	1.8	0.7	0.4	0.2	82.7	3.7	13.6	0.078	0.500	20.688764	-88.570386
2do. Acceso a Zona Arqueológica de Chichen-Itzá	121.10	3	0	5744	6.5	77.4	3.2	7.3	1.9	2.5	0.8	0.2	0.2	83.9	3.2	12.9	0.082	0.511	20.667454	-88.554557
T. Der. Chankom	127.00	1	0	4324	3.6	75.9	4.2	11.4	2.5	1.7	0.3	0.3	0.1	79.5	4.2	16.3	0.081	0.503	20.643945	-88.494276
T. Der. Chankom	127.00	3	0	3922	3.6	80.1	3.4	6.6	2.9	1.5	1.2	0.6	0.1	83.7	3.4	12.9	0.081	0.507	20.640267	-88.482672
Valladolid	160.68	1	0	6411	14.9	77.1	1.4	5.5	0.6	0.4	0.1	0.0	0.0	92.0	1.4	6.6	0.069	0.529	20.682641	-88.233735
Valladolid	160.68	3	0	6871	14.3	77.6	1.0	4.3	0.6	1.9	0.1	0.2	0.0	91.9	1.0	7.1	0.081	0.531	20.694932	-88.164276
T. Der. Coba	187.80	1	0	6302	2.1	81.6	2.1	10.1	1.5	1.2	0.5	0.9	0.0	83.7	2.1	14.2	0.084	0.547	20.659487	-87.960958
T. Der. Chemax	189.79	1	0	4450	4.0	84.6	1.5	4.9	1.9	2.4	0.4	0.2	0.1	88.6	1.5	9.9	0.091	0.533	20.657899	-87.951566
T. Der. Chemax	189.79	3	0	3398	5.6	81.3	2.7	6.8	1.8	1.1	0.3	0.3	0.1	86.9	2.7	10.4	0.083	0.521	20.664992	-87.924923
X-Can	225.00	3	0	2704	2.0	82.2	2.8	8.4	1.8	1.7	0.5	0.5	0.1	84.2	2.8	13.0	0.102	0.527	20.860593	-87.655802
Lim. Edos. Term. Yuc. Ppia. Q. R.	230.40																			
Nuevo X-Can	231.90	3	0	3003	2.3	84.2	2.1	6.6	1.8	1.9	0.6	0.4	0.1	86.5	2.1	11.4	0.106	0.515	20.871598	-87.591067
Zaragoza	239.00	1	0	4268	1.8	86.8	2.0	6.0	1.4	1.2	0.4	0.3	0.1	88.6	2.0	9.4	0.071	0.508	20.881203	-87.534181
Vicente Guerrero	261.00	1	0	3092	2.1	82.5	2.7	7.6	2.1	2.0	0.5	0.4	0.1	84.6	2.7	12.7	0.100	0.501	20.940788	-87.331979
Leona Vicario	275.50	1	0	5354	2.4	85.2	1.9	5.9	1.5	1.9	0.5	0.4	0.3	87.6	1.9	10.5	0.084	0.513	20.981102	-87.222578
Leona Vicario	275.50	3	0	5942	3.3	83.8	1.5	7.5	1.3	1.4	0.5	0.5	0.2	87.1	1.5	11.4	0.078	0.511	20.993232	-87.189286
T. Der. Aeropuerto	302.50	1	0	7233	2.1	83.5	1.1	7.1	1.5	2.6	1.2	0.7	0.2	85.6	1.1	13.3	0.077	0.509	21.096193	-86.983479
T. Der. Aeropuerto	302.50	3	1	4822	3.2	81.8	1.8	7.4	1.8	1.5	1.0	1.3	0.2	85.0	1.8	13.2	0.116	0.510	21.103135	-86.969298
T. Der. Aeropuerto	302.50	3	2	4626	2.8	81.0	1.9	8.1	1.9	1.8	0.8	1.5	0.2	83.8	1.9	14.3	0.134	0.510	21.103297	-86.969378
T. Der. Alfredo V. Bonfil	310.00	1	1	23134	4.8	81.0	0.2	3.0	0.3	4.6	3.9	1.1	1.1	85.8	0.2	14.0	0.056	0.507	21.138315	-86.898707
T. Der. Alfredo V. Bonfil	310.00	1	2	23746	4.8	79.6	0.2	3.4	0.3	5.2	4.2	1.2	1.1	84.4	0.2	15.4	0.056	0.507	21.138444	-86.898797
Puerto Juárez	321.41																			

QUINTANA ROO

3 CARR: Muna - Felipe Carrillo Puerto

CLAVE: 00148

RUTA: MEX-184

AÑO: 2018

LUGAR	ESTACION				CLASIFICACION VEHICULAR EN PORCIENTO										COORDENADAS					
	KM	TE	SC	TDPA	M	A	B	C2	C3	T3S2	T3S3	T3S2R4	OTROS	A	B	C	K'	D	LATITUD	LONGITUD
Muna	0.00	3	0	3894	10.4	73.5	1.1	9.5	1.5	2.5	0.8	0.4	0.3	83.9	1.1	15.0	0.068	0.512	20.474398	-89.694377
Ticul	19.10	1	0	3615	8.3	77.2	0.9	9.6	1.2	1.9	0.4	0.4	0.1	85.5	0.9	13.6	0.083	0.506	20.406437	-89.573253
Ticul	19.10	3	0	6645	35.4	52.5	0.5	7.0	0.6	2.9	0.5	0.2	0.4	87.9	0.5	11.6	0.075	0.508	20.372761	-89.517034
Oxkutzcab	40.50	3	0	6086	27.7	61.9	0.7	5.6	0.7	2.5	0.4	0.2	0.3	89.6	0.7	9.7	0.078	0.502	20.281829	-89.374849
Tekax	53.90	3	0	3557	27.6	63.9	0.3	5.2	0.5	2.1	0.3	0.0	0.1	91.5	0.3	8.2	0.072	0.511	20.188246	-89.267838
Tzucacab	86.60	1	0	1896	25.8	63.7	0.4	7.9	0.8	1.2	0.2	0.0	0.0	89.5	0.4	10.1	0.073	0.502	20.078492	-89.062326
Tzucacab	86.60	3	0	1434	29.1	62.3	0.3	6.5	0.6	0.9	0.2	0.1	0.0	91.4	0.3	8.3	0.080	0.505	20.062736	-89.036353
Santa Rosa	109.60	3	0	2095	5.8	74.4	1.9	8.5	2.7	2.5	1.4	2.7	0.1	80.2	1.9	17.9	0.064	0.510	19.947575	-88.880554
Lim. Edos. Term. Yuc. Ppia. Q. R.	117.00																			
Dziuche	118.00	1	0	2301	4.2	74.0	3.3	9.8	2.3	2.1	0.9	3.3	0.1	78.2	3.3	18.5	0.080	0.508	19.905588	-88.819782
Dziuche	118.00	3	0	2984	5.0	78.0	2.6	7.8	1.8	1.6	0.7	2.4	0.1	83.0	2.6	14.4	0.075	0.507	19.888435	-88.803582
José María Morelos	138.60	1	0	3840	8.8	79.8	1.5	6.0	1.4	0.9	0.5	1.0	0.1	88.6	1.5	9.9	0.081	0.519	19.764608	-88.725213
José María Morelos	138.60	3	0	3068	9.1	75.6	2.0	8.4	1.5	1.2	0.7	1.4	0.1	84.7	2.0	13.3	0.069	0.526	19.736853	-88.692076
Polyuc	161.94	1	0	2571	6.8	76.3	2.0	7.7	2.3	2.1	1.0	1.7	0.1	83.1	2.0	14.9	0.068	0.504	19.611768	-88.571782
Polyuc	161.94	3	0	1327	8.9	78.4	0.7	7.9	1.5	1.4	0.5	0.6	0.1	87.3	0.7	12.0	0.083	0.503	19.609485	-88.556426
T. Der. Dzúlá	178.11	3	0	1306	6.3	80.6	1.3	8.0	1.6	0.9	0.3	1.0	0.0	86.9	1.3	11.8	0.080	0.552	19.643472	-88.405909
Felipe Carrillo Puerto	216.97	1	0	5610	19.8	71.0	0.6	3.4	0.5	3.7	0.5	0.1	0.4	90.8	0.6	8.6	0.075	0.508	19.584634	-88.058438

4 CARR: Polyuc - T. C. (Reforma Agraria - Puerto Juárez)

CLAVE: 23014

RUTA: MEX-293

AÑO: 2018

LUGAR	ESTACION				CLASIFICACION VEHICULAR EN PORCIENTO										COORDENADAS					
	KM	TE	SC	TDPA	M	A	B	C2	C3	T3S2	T3S3	T3S2R4	OTROS	A	B	C	K'	D	LATITUD	LONGITUD
Polyuc	0.00	3	0	2597	6.1	77.8	2.6	7.5	1.8	1.2	0.7	2.1	0.2	83.9	2.6	13.5	0.072	0.507	19.607853	-88.571679
T. Der. Ramonal	24.00	1	0	1455	4.3	77.1	2.6	7.7	2.1	2.2	1.3	2.2	0.5	81.4	2.6	16.0	0.090	0.516	19.400455	-88.565058
T. Der. Ramonal	24.00	3	0	1565	3.2	76.2	3.2	8.4	2.4	2.4	1.2	2.9	0.1	79.4	3.2	17.4	0.086	0.502	19.397006	-88.563991
T. Izq. Santa María Poniente	35.00	1	0	1722	4.1	73.4	2.7	9.6	3.1	2.6	1.5	2.8	0.2	77.5	2.7	19.8	0.072	0.526	19.341971	-88.547362
T. Izq. Santa María Poniente	35.00	3	0	1627	8.0	75.6	0.9	4.1	5.2	1.7	1.5	2.6	0.4	83.6	0.9	15.5	0.086	0.509	19.336212	-88.545642
Valle Hermoso	50.00	3	0	1527	11.8	69.1	3.2	7.8	2.4	1.8	1.0	2.7	0.2	80.9	3.2	15.9	0.087	0.510	19.180683	-88.523212
T. Izq. Chacchoben	93.50	1	0	1813	6.1	73.9	3.3	9.5	1.8	1.8	1.2	2.2	0.2	80.0	3.3	16.7	0.083	0.557	18.983000	-88.218858
T. Izq. Chacchoben	93.50	3	0	1617	5.2	74.7	3.2	9.2	2.0	1.9	0.9	2.8	0.1	79.9	3.2	16.9	0.083	0.525	18.968756	-88.205707
T. C. Reforma Agraria - Puerto Juárez	99.00	1	0	1565	3.6	81.0	2.0	5.7	1.9	2.3	1.1	2.3	0.1	84.6	2.0	13.4	0.097	0.502	18.950561	-88.188767

QUINTANA ROO

5 CARR: Ramal a Puerto Morelos

CLAVE: 23569

RUTA: MEX

AÑO: 2018

LUGAR	ESTACION				CLASIFICACION VEHICULAR EN PORCIENTO														COORDENADAS	
	KM	TE	SC	TDPA	M	A	B	C2	C3	T3S2	T3S3	T3S2R4	OTROS	A	B	C	K'	D	LATITUD	LONGITUD
T. C. Reforma Agraria - Puerto Juárez	0.00	3	0	13310	4.4	82.8	0.5	6.0	0.5	5.1	0.3	0.1	0.3	87.2	0.5	12.3	0.074	0.503	20.854422	-86.893658
Puerto Morelos	2.20																			

6 CARR: Ramal a Punta Piedra

CLAVE: 23575

RUTA: MEX

AÑO: 2018

LUGAR	ESTACION				CLASIFICACION VEHICULAR EN PORCIENTO														COORDENADAS	
	KM	TE	SC	TDPA	M	A	B	C2	C3	T3S2	T3S3	T3S2R4	OTROS	A	B	C	K'	D	LATITUD	LONGITUD
T. C. Reforma Agraria - Puerto Juárez	0.00	3	1	9043	9.9	79.6	0.8	3.9	0.5	1.4	2.8	0.5	0.6	89.5	0.8	9.7	0.069	0.518	20.625995	-87.080989
T. C. Reforma Agraria - Puerto Juárez	0.00	3	2	9724	6.3	82.6	0.8	4.1	0.5	1.5	3.0	0.5	0.7	88.9	0.8	10.3	0.061	0.518	20.626078	-87.080950
Punta Piedra (Playa del Carmen)	1.50																			

7 CARR: Ramal a Subteniente López

CLAVE: 23567

RUTA: MEX-186

AÑO: 2018

LUGAR	ESTACION				CLASIFICACION VEHICULAR EN PORCIENTO														COORDENADAS	
	KM	TE	SC	TDPA	M	A	B	C2	C3	T3S2	T3S3	T3S2R4	OTROS	A	B	C	K'	D	LATITUD	LONGITUD
T. C. Francisco Escárcega - Chetumal	0.00	3	1	4517	7.8	86.9	0.2	3.6	0.6	0.4	0.1	0.3	0.1	94.7	0.2	5.1	0.069	0.511	18.512218	-88.376455
T. C. Francisco Escárcega - Chetumal	0.00	3	2	4315	8.8	85.5	0.2	4.1	0.5	0.4	0.1	0.3	0.1	94.3	0.2	5.5	0.071	0.511	18.512157	-88.376402
Subteniente López	3.00																			

8 CARR: Reforma Agraria - Puerto Juárez

CLAVE: 23132

RUTA: MEX-307

AÑO: 2018

LUGAR	ESTACION				CLASIFICACION VEHICULAR EN PORCIENTO														COORDENADAS	
	KM	TE	SC	TDPA	M	A	B	C2	C3	T3S2	T3S3	T3S2R4	OTROS	A	B	C	K'	D	LATITUD	LONGITUD
T. C. Francisco Escárcega - Chetumal	0.00	3	1	5917	3.3	82.3	2.0	7.1	0.9	1.8	0.6	1.6	0.4	85.6	2.0	12.4	0.080	0.542	18.534921	-88.467268
T. C. Francisco Escárcega - Chetumal	0.00	3	2	5007	2.6	82.4	2.1	7.2	1.0	2.0	0.7	1.7	0.3	85.0	2.1	12.9	0.090	0.542	18.534935	-88.467358
Bacalar	19.15	1	1	5238	2.8	81.9	2.4	6.9	1.0	2.2	0.7	1.9	0.2	84.7	2.4	12.9	0.087	0.513	18.661402	-88.403663
Bacalar	19.15	1	2	4982	2.4	81.7	2.3	7.2	1.0	2.4	0.7	2.1	0.2	84.1	2.3	13.6	0.078	0.513	18.661475	-88.403768
Bacalar	19.15	3	0	7897	2.3	77.5	2.7	7.5	1.3	4.0	1.2	2.7	0.8	79.8	2.7	17.5	0.063	0.515	18.695164	-88.388322
T. Izq. Reforma	22.24	3	0	6768	2.1	78.4	2.7	7.6	1.1	4.0	1.0	2.6	0.5	80.5	2.7	16.8	0.071	0.507	18.706958	-88.384480
Buenavista	46.90	1	0	5276	1.2	76.6	4.1	7.4	1.3	4.4	1.0	3.7	0.3	77.8	4.1	18.1	0.074	0.502	18.883169	-88.242984
Buenavista	46.90	3	0	5579	1.8	74.6	4.0	8.4	1.5	4.7	0.9	3.6	0.5	76.4	4.0	19.6	0.078	0.506	18.890834	-88.236361
T. Izq. Lazáro Cárdenas	56.30	1	0	4996	1.4	75.5	4.1	8.1	1.5	4.3	1.0	3.7	0.4	76.9	4.1	19.0	0.068	0.507	18.942640	-88.188686
T. Izq. Lazáro Cárdenas	56.30	3	0	4842	2.0	77.5	3.8	6.8	1.4	4.3	0.8	3.1	0.3	79.5	3.8	16.7	0.067	0.528	18.949580	-88.181913
T. Izq. Chacchoben	70.80	1	0	4308	4.0	73.3	4.3	7.6	1.0	4.8	0.9	3.7	0.4	77.3	4.3	18.4	0.067	0.514	19.009107	-88.111267
T. Izq. Chacchoben	70.80	3	0	3843	3.3	70.9	4.5	9.4	1.4	5.0	1.0	4.2	0.3	74.2	4.5	21.3	0.073	0.514	19.038364	-88.109906

QUINTANA ROO

8 CARR: Reforma Agraria - Puerto Juárez

CLAVE: 23132

RUTA: MEX-307

AÑO: 2018

LUGAR	ESTACION				CLASIFICACION VEHICULAR EN PORCIENTO													COORDENADAS		
	KM	TE	SC	TDPA	M	A	B	C2	C3	T3S2	T3S3	T3S2R4	OTROS	A	B	C	K'	D	LATITUD	LONGITUD
T. Izq. Noh-Bec	81.94	1	0	3810	1.9	71.7	5.6	8.5	1.4	4.8	1.0	4.8	0.3	73.6	5.6	20.8	0.067	0.512	19.131361	-88.105402
T. Izq. Noh-Bec	81.94	3	0	4115	2.6	71.6	6.3	8.4	1.1	4.7	0.8	4.2	0.3	74.2	6.3	19.5	0.076	0.504	19.144670	-88.104817
Felipe Carrillo Puerto	132.00	1	0	4259	3.3	76.9	3.6	7.0	1.2	3.9	0.7	3.2	0.2	80.2	3.6	16.2	0.072	0.530	19.555776	-88.043229
Felipe Carrillo Puerto	132.00	3	0	3363	1.5	74.1	5.5	9.5	1.1	3.8	0.7	3.6	0.2	75.6	5.5	18.9	0.095	0.517	19.605852	-88.026891
Tulum Pueblo	227.00	1	0	6100	1.7	78.7	3.3	9.0	1.1	3.3	0.5	2.2	0.2	80.4	3.3	16.3	0.076	0.503	20.203895	-87.485390
Tulum Pueblo	227.00	3	1	10142	8.0	87.8	0.1	2.4	0.2	0.6	0.6	0.1	0.2	95.8	0.1	4.1	0.071	0.551	20.209592	-87.467470
Tulum Pueblo	227.00	3	2	8252	9.5	85.9	0.2	2.8	0.2	0.5	0.6	0.1	0.2	95.4	0.2	4.4	0.070	0.551	20.209677	-87.467505
T. Izq. Cobá	229.19	1	1	10892	5.2	89.6	0.6	3.0	0.2	0.4	0.7	0.1	0.2	94.8	0.6	4.6	0.077	0.521	20.213438	-87.455406
T. Izq. Cobá	229.19	1	2	10016	5.3	89.1	0.6	3.0	0.2	0.6	0.9	0.1	0.2	94.4	0.6	5.0	0.075	0.521	20.213527	-87.455449
T. Izq. Cobá	229.19	3	1	9958	2.5	87.5	1.3	4.8	0.9	1.3	0.7	0.6	0.4	90.0	1.3	8.7	0.080	0.506	20.215356	-87.449387
T. Izq. Cobá	229.19	3	2	10186	2.6	86.8	1.4	5.3	0.9	1.3	0.7	0.6	0.4	89.4	1.4	9.2	0.087	0.506	20.215497	-87.449441
X. C. Tulum - Aeropuerto	231.19	1	1	9700	1.3	87.2	1.7	5.9	0.9	1.3	0.5	0.8	0.4	88.5	1.7	9.8	0.081	0.509	20.217581	-87.442454
X. C. Tulum - Aeropuerto	231.19	1	2	9351	1.7	85.6	2.0	5.9	1.0	1.8	0.8	0.8	0.4	87.3	2.0	10.7	0.084	0.509	20.217718	-87.442493
X. C. Tulum - Aeropuerto	231.19	3	1	9019	1.2	85.6	2.2	6.7	1.0	1.5	0.6	1.0	0.2	86.8	2.2	11.0	0.085	0.505	20.220208	-87.434702
X. C. Tulum - Aeropuerto	231.19	3	2	8844	1.0	83.6	2.6	7.8	1.1	1.8	0.8	1.1	0.2	84.6	2.6	12.8	0.086	0.505	20.220279	-87.434786
T. Der. Xel-Ha	244.80	1	1	9022	0.9	87.3	2.1	5.9	0.9	1.3	0.4	1.0	0.2	88.2	2.1	9.7	0.090	0.502	20.313338	-87.368498
T. Der. Xel-Ha	244.80	1	2	9090	0.9	86.4	2.2	6.5	1.0	1.3	0.4	1.1	0.2	87.3	2.2	10.5	0.086	0.502	20.313387	-87.368623
T. Der. Xel-Ha	244.80	3	1	9206	0.5	86.7	2.2	6.8	1.0	1.3	0.4	0.9	0.2	87.2	2.2	10.6	0.101	0.520	20.330936	-87.358312
T. Der. Xel-Ha	244.80	3	2	9973	0.8	86.6	2.3	6.7	0.9	1.3	0.3	1.0	0.1	87.4	2.3	10.3	0.084	0.520	20.330958	-87.358435
T. Der. Akumal	254.44	1	1	10378	0.9	87.5	2.2	6.1	0.8	1.2	0.3	0.8	0.2	88.4	2.2	9.4	0.099	0.509	20.395234	-87.321541
T. Der. Akumal	254.44	1	2	10752	0.9	86.9	2.3	6.3	1.0	1.2	0.3	0.9	0.2	87.8	2.3	9.9	0.090	0.509	20.395309	-87.321712
Playa del Carmen	289.70	1	1	24493	2.0	85.5	2.1	8.2	0.8	0.6	0.3	0.4	0.1	87.5	2.1	10.4	0.095	0.503	20.609394	-87.105231
Playa del Carmen	289.70	1	2	24243	2.4	84.2	2.1	8.9	0.8	0.7	0.4	0.4	0.1	86.6	2.1	11.3	0.095	0.503	20.609552	-87.105350
Playa del Carmen	289.70	3	1	31636	3.1	84.1	1.8	9.5	0.5	0.4	0.3	0.2	0.1	87.2	1.8	11.0	0.073	0.504	20.661552	-87.057565
Playa del Carmen	289.70	3	2	31148	3.2	84.2	1.5	9.6	0.5	0.4	0.3	0.2	0.1	87.4	1.5	11.1	0.074	0.504	20.661662	-87.057718
T. Der. Puerto Morelos	321.48	1	1	23022	0.6	79.3	1.9	16.5	0.6	0.5	0.2	0.3	0.1	79.9	1.9	18.2	0.080	0.504	20.832390	-86.914291
T. Der. Puerto Morelos	321.48	1	2	23359	0.7	79.3	2.4	15.7	0.6	0.6	0.2	0.4	0.1	80.0	2.4	17.6	0.084	0.504	20.832435	-86.914536
T. Der. Puerto Morelos	321.48	3	1	26966	0.9	87.2	1.9	8.3	0.6	0.5	0.2	0.3	0.1	88.1	1.9	10.0	0.075	0.514	20.867537	-86.892791
T. Der. Puerto Morelos	321.48	3	2	28531	1.1	78.9	2.2	16.0	0.6	0.6	0.2	0.3	0.1	80.0	2.2	17.8	0.075	0.514	20.867071	-86.893230
T. Izq. Aeropuerto Cancún	341.50	1	1	28885	0.9	86.3	2.6	8.7	0.6	0.5	0.2	0.2	0.0	87.2	2.6	10.2	0.074	0.505	21.023067	-86.853565
T. Izq. Aeropuerto Cancún	341.50	1	2	29443	1.1	85.1	2.7	9.7	0.6	0.5	0.1	0.2	0.0	86.2	2.7	11.1	0.073	0.505	21.023017	-86.853713
T. Izq. Aeropuerto Cancún	341.50	3	1	32785	1.9	85.1	2.2	9.0	0.3	0.7	0.7	0.1	0.0	87.0	2.2	10.8	0.077	0.513	21.040991	-86.849905
T. Izq. Aeropuerto Cancún	341.50	3	2	34568	1.3	83.7	2.5	10.6	0.3	0.7	0.8	0.1	0.0	85.0	2.5	12.5	0.086	0.513	21.040405	-86.850122
T. Izq. Alfredo V. Bonfil	348.22	1	1	33999	1.6	87.4	1.8	7.8	0.4	0.5	0.4	0.1	0.0	89.0	1.8	9.2	0.096	0.501	21.081301	-86.843627
T. Izq. Alfredo V. Bonfil	348.22	1	2	33803	1.9	86.4	2.0	8.3	0.4	0.5	0.4	0.1	0.0	88.3	2.0	9.7	0.108	0.501	21.081313	-86.843736

QUINTANA ROO

8 CARR: Reforma Agraria - Puerto Juárez

CLAVE: 23132

RUTA: MEX-307

AÑO: 2018

LUGAR	ESTACION				CLASIFICACION VEHICULAR EN PORCIENTO										COORDENADAS					
	KM	TE	SC	TDPA	M	A	B	C2	C3	T3S2	T3S3	T3S2R4	OTROS	A	B	C	K'	D	LATITUD	LONGITUD
Cancún	355.48	1	1	35412	2.2	90.0	1.7	4.2	0.3	0.3	1.0	0.3	0.0	92.2	1.7	6.1	0.062	0.513	21.107354	-86.839500
Cancún	355.48	1	2	37307	2.1	89.7	1.8	4.4	0.3	0.3	1.1	0.3	0.0	91.8	1.8	6.4	0.071	0.513	21.107385	-86.839625
T. C. Mérida - Puerto Juárez	357.48																			

9 CARR: Valladolid - Felipe Carrillo Puerto

CLAVE: 00010

RUTA: MEX-295

AÑO: 2018

LUGAR	ESTACION				CLASIFICACION VEHICULAR EN PORCIENTO										COORDENADAS					
	KM	TE	SC	TDPA	M	A	B	C2	C3	T3S2	T3S3	T3S2R4	OTROS	A	B	C	K'	D	LATITUD	LONGITUD
Valladolid	0.00	3	0	5471	21.5	73.7	0.3	2.1	0.1	1.9	0.2	0.1	0.1	95.2	0.3	4.5	0.084	0.518	20.672930	-88.204631
Chichimilá	6.90	3	0	2299	11.9	82.4	0.4	3.2	0.6	1.2	0.1	0.1	0.1	94.3	0.4	5.3	0.076	0.501	20.620587	-88.235735
Tekom	12.05	3	0	1534	11.1	79.8	3.1	5.1	0.5	0.4	0.0	0.0	0.0	90.9	3.1	6.0	0.077	0.510	20.590893	-88.265367
Tixcacalcupul	19.80	3	0	943	12.7	78.8	0.5	6.2	0.8	0.7	0.2	0.1	0.0	91.5	0.5	8.0	0.087	0.502	20.519940	-88.270818
Lim. Edos. Term. Yuc. Ppia. Q. R.	46.00																			
Tepich	51.40	1	0	714	11.2	78.2	0.4	8.2	0.5	1.0	0.4	0.1	0.0	89.4	0.4	10.2	0.108	0.507	20.249275	-88.255217
Tihosuco	65.00	1	0	848	8.8	80.3	1.1	7.9	0.7	0.8	0.3	0.1	0.0	89.1	1.1	9.8	0.087	0.506	20.193180	-88.359837
Tihosuco	65.00	3	0	1014	10.0	79.2	1.3	7.9	0.6	0.6	0.2	0.1	0.1	89.2	1.3	9.5	0.077	0.522	20.190165	-88.387081
T. Izq. San Felipe Berriozábal	99.00	1	0	599	6.7	81.7	1.0	7.7	1.5	0.8	0.3	0.3	0.0	88.4	1.0	10.6	0.093	0.507	19.962690	-88.241886
T. Izq. San Felipe Berriozábal	99.00	3	0	660	5.7	83.0	1.4	7.5	1.3	0.4	0.4	0.3	0.0	88.7	1.4	9.9	0.094	0.507	19.961450	-88.240635
Señor	116.50	1	0	879	4.9	83.6	1.5	7.7	0.7	0.9	0.4	0.3	0.0	88.5	1.5	10.0	0.090	0.502	19.853057	-88.145024
Señor	116.50	3	0	1307	7.0	82.6	1.4	7.2	0.6	0.6	0.4	0.2	0.0	89.6	1.4	9.0	0.075	0.511	19.831117	-88.130877
Felipe Carrillo Puerto	147.70	1	0	1511	5.8	82.9	1.3	8.8	0.5	0.4	0.2	0.1	0.0	88.7	1.3	10.0	0.084	0.506	19.603282	-88.053813

10 CARR: El Cedral - Playa del Carmen (Cuota)

CLAVE:

RUTA: MEX-180D

AÑO: 2018

LUGAR	ESTACION				CLASIFICACION VEHICULAR EN PORCIENTO										COORDENADAS					
	KM	TE	SC	TDPA	M	A	B	C2	C3	T3S2	T3S3	T3S2R4	OTROS	A	B	C	K'	D	LATITUD	LONGITUD
El Cedral	0.00																			
X. C. Mérida - Cancún (Cuota)	10.05	1	0	1469	5.7	82.2	0.9	7.3	1.9	0.7	0.5	0.7	0.1	87.9	0.9	11.2	0.079	0.511	20.908383	-87.446349
X. C. Mérida - Cancún (Cuota)	10.05	3	0	1715	5.7	82.5	0.7	7.8	1.5	0.9	0.3	0.5	0.1	88.2	0.7	11.1	0.080	0.510	20.883529	-87.426188
Playa del Carmen	51.90																			

QUINTANA ROO

11 CARR: Libramiento de Felipe Carrillo Puerto (Cuota)

CLAVE:

RUTA: MEX-307D

AÑO: 2018

LUGAR	ESTACION				CLASIFICACION VEHICULAR EN PORCIENTO													COORDENADAS		
	KM	TE	SC	TDPA	M	A	B	C2	C3	T3S2	T3S3	T3S2R4	OTROS	A	B	C	K'	D	LATITUD	LONGITUD
T. C. Reforma Agraria - Puerto Juárez Sur	0.00																			
Caseta de Cobro Felipe Carrillo Puerto	6.10	2	0	633	0.5	69.7	4.7	3.0	2.9	9.4	1.9	7.1	0.8	70.2	4.7	25.1	0.090	0.500	19.590397	-88.071289
T. C. Reforma Agraria - Puerto Juárez Norte	14.00																			

12 CARR: Mérida - Cancún (Cuota)

CLAVE: 00071

RUTA: MEX-180D

AÑO: 2018

LUGAR	ESTACION				CLASIFICACION VEHICULAR EN PORCIENTO													COORDENADAS		
	KM	TE	SC	TDPA	M	A	B	C2	C3	T3S2	T3S3	T3S2R4	OTROS	A	B	C	K'	D	LATITUD	LONGITUD
T. C. Mérida - Puerto Juárez	0.00																			
Caseta de Cobro Piste	51.00	1	1	2071	0.4	72.5	3.3	10.4	1.4	3.4	1.4	7.0	0.2	72.9	3.3	23.8	0.077	0.504	20.733720	-88.605136
Caseta de Cobro Piste	51.00	1	2	2042	0.8	69.1	3.5	11.6	1.5	3.9	1.4	8.0	0.2	69.9	3.5	26.6	0.098	0.504	20.733891	-88.604791
Caseta de Cobro X-Can	155.00	1	1	1355	0.6	75.7	6.2	6.3	0.8	3.0	0.5	6.8	0.1	76.3	6.2	17.5	0.125	0.528	20.877077	-87.632106
Caseta de Cobro X-Can	155.00	1	2	1514	1.0	75.2	5.8	6.4	1.0	3.0	0.7	6.8	0.1	76.2	5.8	18.0	0.155	0.528	20.877380	-87.631840
Lim. Edos. Term. Yuc. Ppia. Q. R.	160.00																			
T. C. Mérida - Puerto Juárez	292.00	1	1	1481	3.7	67.7	8.0	7.2	1.2	3.3	1.0	7.5	0.4	71.4	8.0	20.6	0.089	0.526	21.095768	-86.979054
T. C. Mérida - Puerto Juárez	292.00	1	2	1646	3.5	69.5	7.5	6.4	1.2	3.2	1.0	7.3	0.4	73.0	7.5	19.5	0.074	0.526	21.095867	-86.979526
T. C. Reforma Agraria - Puerto Juárez	308.10	1	0	14889	3.8	81.5	1.7	8.2	1.7	1.2	0.5	1.2	0.2	85.3	1.7	13.0	0.097	0.523	21.021643	-86.860494

13 CARR: Bacalar - Miguel Alemán

CLAVE: 20030

RUTA: QR

AÑO: 2018

LUGAR	ESTACION				CLASIFICACION VEHICULAR EN PORCIENTO													COORDENADAS		
	KM	TE	SC	TDPA	M	A	B	C2	C3	T3S2	T3S3	T3S2R4	OTROS	A	B	C	K'	D	LATITUD	LONGITUD
T. C. (Reforma Agraria - Puerto Juárez)	0.00																			
Reforma	21.00	3	0	948	20.3	68.9	0.7	7.7	0.9	1.2	0.3	0.0	0.0	89.2	0.7	10.1	0.096	0.503	18.813044	-88.581234
Altos de Sevilla	31.00	1	0	649	13.7	75.3	0.6	7.5	1.0	1.4	0.5	0.0	0.0	89.0	0.6	10.4	0.086	0.506	18.849026	-88.675736
Altos de Sevilla	31.00	3	0	535	22.4	67.0	0.9	8.5	0.7	0.4	0.1	0.0	0.0	89.4	0.9	9.7	0.097	0.500	18.854835	-88.677449
Miguel Alemán	110.00																			

14 CARR: Cancún - Punta Cancún

CLAVE: 23581

RUTA: QR

AÑO: 2018

LUGAR	ESTACION				CLASIFICACION VEHICULAR EN PORCIENTO													COORDENADAS		
	KM	TE	SC	TDPA	M	A	B	C2	C3	T3S2	T3S3	T3S2R4	OTROS	A	B	C	K'	D	LATITUD	LONGITUD
Cancún	0.00	3	1	25023	3.8	86.2	0.5	9.2	0.1	0.0	0.2	0.0	0.0	90.0	0.5	9.5	0.103	0.507	21.158129	-86.811042
Cancún	0.00	3	2	24370	3.1	86.6	0.5	9.5	0.1	0.0	0.2	0.0	0.0	89.7	0.5	9.8	0.088	0.507	21.157990	-86.810837
T. Der. Colibrí	7.00	1	1	25717	3.3	84.1	0.6	11.7	0.1	0.0	0.2	0.0	0.0	87.4	0.6	12.0	0.077	0.534	21.136383	-86.765757

QUINTANA ROO

14 CARR: Cancún - Punta Cancún

CLAVE: 23581

RUTA: QR

AÑO: 2018

LUGAR	ESTACION				CLASIFICACION VEHICULAR EN PORCIENTO										COORDENADAS					
	KM	TE	SC	TDPA	M	A	B	C2	C3	T3S2	T3S3	T3S2R4	OTROS	A	B	C	K'	D	LATITUD	LONGITUD
T. Der. Colibrí	7.00	1	2	22443	3.5	83.1	0.6	12.5	0.1	0.0	0.2	0.0	0.0	86.6	0.6	12.8	0.062	0.534	21.136496	-86.765690
Punta Cancún	8.00	1	1	23726	3.6	82.1	0.5	13.5	0.2	0.0	0.1	0.0	0.0	85.7	0.5	13.8	0.071	0.501	21.134686	-86.756273
Punta Cancún	8.00	1	2	23650	3.8	81.1	0.6	14.2	0.2	0.0	0.1	0.0	0.0	84.9	0.6	14.5	0.068	0.501	21.134783	-86.756269

15 CARR: Chetumal - Calderitas

CLAVE: 23004

RUTA: QR-004

AÑO: 2018

LUGAR	ESTACION				CLASIFICACION VEHICULAR EN PORCIENTO										COORDENADAS					
	KM	TE	SC	TDPA	M	A	B	C2	C3	T3S2	T3S3	T3S2R4	OTROS	A	B	C	K'	D	LATITUD	LONGITUD
Chetumal	0.00	3	1	14015	12.3	84.7	0.1	2.4	0.2	0.1	0.2	0.0	0.0	97.0	0.1	2.9	0.069	0.506	18.534346	-88.277095
Chetumal	0.00	3	2	14359	15.8	81.2	0.2	2.4	0.1	0.1	0.2	0.0	0.0	97.0	0.2	2.8	0.084	0.506	18.534397	-88.277180
Calderitas	9.00	1	1	3082	12.0	85.5	0.0	2.3	0.2	0.0	0.0	0.0	0.0	97.5	0.0	2.5	0.094	0.514	18.553710	-88.257656
Calderitas	9.00	1	2	2915	12.0	85.4	0.0	2.5	0.1	0.0	0.0	0.0	0.0	97.4	0.0	2.6	0.078	0.514	18.553796	-88.257653

16 CARR: El Ideal - Chiquila

CLAVE: 23005

RUTA: QR-005

AÑO: 2018

LUGAR	ESTACION				CLASIFICACION VEHICULAR EN PORCIENTO										COORDENADAS					
	KM	TE	SC	TDPA	M	A	B	C2	C3	T3S2	T3S3	T3S2R4	OTROS	A	B	C	K'	D	LATITUD	LONGITUD
T. C. Mérida - Puerto Juárez	0.00	3	0	1160	4.1	89.3	0.8	4.6	0.7	0.5	0.0	0.0	0.0	93.4	0.8	5.8	0.080	0.527	20.897150	-87.547032
Kantunilkin	31.20	1	0	2736	5.9	85.5	1.1	6.4	0.7	0.4	0.0	0.0	0.0	91.4	1.1	7.5	0.076	0.513	21.082036	-87.488729
Kantunilkin	31.20	3	0	2447	14.9	76.3	1.0	6.8	0.7	0.3	0.0	0.0	0.0	91.2	1.0	7.8	0.094	0.527	21.117218	-87.484563
Chiquila	75.60	1	0	1707	12.1	79.3	1.0	6.6	0.8	0.2	0.0	0.0	0.0	91.4	1.0	7.6	0.100	0.506	21.418363	-87.337618

17 CARR: Libramiento de Chetumal

CLAVE: 23130

RUTA: QR

AÑO: 2018

LUGAR	ESTACION				CLASIFICACION VEHICULAR EN PORCIENTO										COORDENADAS					
	KM	TE	SC	TDPA	M	A	B	C2	C3	T3S2	T3S3	T3S2R4	OTROS	A	B	C	K'	D	LATITUD	LONGITUD
T. C. Francisco Escárcega - Chetumal	0.00	3	1	7958	1.0	89.8	1.5	6.5	0.6	0.4	0.1	0.1	0.0	90.8	1.5	7.7	0.075	0.551	18.517398	-88.345838
T. C. Francisco Escárcega - Chetumal	0.00	3	2	9767	1.4	91.1	1.1	4.9	0.7	0.5	0.1	0.2	0.0	92.5	1.1	6.4	0.084	0.551	18.517617	-88.345785
T. C. Chetumal - Calderitas	5.00																			

18 CARR: Perimetral Cozumel

CLAVE: 00148

RUTA: QR

AÑO: 2018

LUGAR	ESTACION				CLASIFICACION VEHICULAR EN PORCIENTO										COORDENADAS					
	KM	TE	SC	TDPA	M	A	B	C2	C3	T3S2	T3S3	T3S2R4	OTROS	A	B	C	K'	D	LATITUD	LONGITUD
Cozumel	0.00	3	0	13228	24.3	67.8	0.3	7.1	0.3	0.1	0.1	0.0	0.0	92.1	0.3	7.6	0.109	0.501	20.466069	-86.976590

QUINTANA ROO

18 CARR: Perimetral Cozumel

CLAVE: 00148

RUTA: QR

AÑO: 2018

LUGAR	ESTACION				CLASIFICACION VEHICULAR EN PORCIENTO										COORDENADAS					
	KM	TE	SC	TDPA	M	A	B	C2	C3	T3S2	T3S3	T3S2R4	OTROS	A	B	C	K'	D	LATITUD	LONGITUD
El Cedral	13.40	1	1	1694	12.7	78.3	0.3	8.4	0.3	0.0	0.0	0.0	0.0	91.0	0.3	8.7	0.097	0.500	20.386175	-87.018439
El Cedral	13.40	1	2	1691	11.3	79.4	0.4	8.6	0.3	0.0	0.0	0.0	0.0	90.7	0.4	8.9	0.108	0.500	20.386181	-87.018399
El Cedral	13.40	3	1	522	21.3	73.4	0.5	4.7	0.1	0.0	0.0	0.0	0.0	94.7	0.5	4.8	0.236	0.546	20.362933	-87.018095
El Cedral	13.40	3	2	626	18.9	76.0	0.4	4.7	0.0	0.0	0.0	0.0	0.0	94.9	0.4	4.7	0.212	0.546	20.362954	-87.017975
Celarain	25.00	1	0	994	16.9	79.3	0.3	3.5	0.0	0.0	0.0	0.0	0.0	96.2	0.3	3.5	0.188	0.509	20.294284	-86.965243

19 CARR: Punta Nizuc - Cancún

CLAVE: 23014

RUTA: QR

AÑO: 2018

LUGAR	ESTACION				CLASIFICACION VEHICULAR EN PORCIENTO										COORDENADAS					
	KM	TE	SC	TDPA	M	A	B	C2	C3	T3S2	T3S3	T3S2R4	OTROS	A	B	C	K'	D	LATITUD	LONGITUD
Punta Nizuc	0.00	3	1	13330	0.7	85.1	1.3	10.9	0.6	0.6	0.8	0.0	0.0	85.8	1.3	12.9	0.084	0.505	21.043250	-86.782936
Punta Nizuc	0.00	3	2	13077	0.7	83.8	1.6	11.9	0.6	0.7	0.7	0.0	0.0	84.5	1.6	13.9	0.074	0.505	21.043201	-86.783065
Punta Cancún	12.40																			

20 CARR: Ramal a Aeropuerto Cancún

CLAVE: 23574

RUTA: QR

AÑO: 2018

LUGAR	ESTACION				CLASIFICACION VEHICULAR EN PORCIENTO										COORDENADAS					
	KM	TE	SC	TDPA	M	A	B	C2	C3	T3S2	T3S3	T3S2R4	OTROS	A	B	C	K'	D	LATITUD	LONGITUD
T. C. Reforma Agraria - Puerto Juárez	0.00	3	1	20098	0.7	89.7	0.4	6.9	0.1	0.4	1.6	0.1	0.1	90.4	0.4	9.2	0.079	0.519	21.035546	-86.857309
T. C. Reforma Agraria - Puerto Juárez	0.00	3	2	18613	0.7	89.8	0.4	6.6	0.1	0.5	1.6	0.1	0.2	90.5	0.4	9.1	0.083	0.519	21.035471	-86.857374
Aeropuerto Cancún	2.00	1	1	16873	0.6	90.4	0.6	6.3	0.1	0.5	1.0	0.4	0.1	91.0	0.6	8.4	0.071	0.505	21.040039	-86.864354
Aeropuerto Cancún	2.00	1	2	16554	0.7	89.7	0.7	6.9	0.1	0.4	1.0	0.4	0.1	90.4	0.7	8.9	0.075	0.505	21.039849	-86.864361

21 CARR: Ramal a Candelaria

CLAVE: 23027

RUTA: QR

AÑO: 2018

LUGAR	ESTACION				CLASIFICACION VEHICULAR EN PORCIENTO										COORDENADAS					
	KM	TE	SC	TDPA	M	A	B	C2	C3	T3S2	T3S3	T3S2R4	OTROS	A	B	C	K'	D	LATITUD	LONGITUD
T. C. Muna - Felipe Carrillo Puerto	0.00	3	0	1493	24.8	68.9	0.3	4.3	0.3	1.2	0.1	0.0	0.1	93.7	0.3	6.0	0.076	0.511	19.806754	-88.757633
Candelaria	15.30																			

22 CARR: Ramal a El Naranjal

CLAVE: 23579

RUTA: QR

AÑO: 2018

LUGAR	ESTACION				CLASIFICACION VEHICULAR EN PORCIENTO										COORDENADAS					
	KM	TE	SC	TDPA	M	A	B	C2	C3	T3S2	T3S3	T3S2R4	OTROS	A	B	C	K'	D	LATITUD	LONGITUD
José María Morelos	0.00	3	0	914	40.1	53.6	0.4	4.5	0.5	0.4	0.5	0.0	0.0	93.7	0.4	5.9	0.102	0.513	19.734530	-88.717155

QUINTANA ROO

22 CARR: Ramal a El Naranjal

CLAVE: 23579

RUTA: QR

AÑO: 2018

LUGAR	ESTACION	CLASIFICACION VEHICULAR EN PORCIENTO														COORDENADAS					
		KM	TE	SC	TDPA	M	A	B	C2	C3	T3S2	T3S3	T3S2R4	OTROS	A	B	C	K'	D	LATITUD	LONGITUD
El Naranjal	16.00																				

23 CARR: Ramal a Laguna de Kaná

CLAVE: 23213

RUTA: QR

AÑO: 2018

LUGAR	ESTACION	CLASIFICACION VEHICULAR EN PORCIENTO														COORDENADAS					
		KM	TE	SC	TDPA	M	A	B	C2	C3	T3S2	T3S3	T3S2R4	OTROS	A	B	C	K'	D	LATITUD	LONGITUD
T. C. Muna - Felipe Carrillo Puerto	0.00	3	0	446	23.8	65.6	1.2	7.5	1.2	0.5	0.2	0.0	0.0	89.4	1.2	9.4	0.110	0.504	19.642714	-88.411678	
Laguna de Kaná	12.20																				

24 CARR: Ramal a Mahahual

CLAVE: 23583

RUTA: QR

AÑO: 2018

LUGAR	ESTACION	CLASIFICACION VEHICULAR EN PORCIENTO														COORDENADAS					
		KM	TE	SC	TDPA	M	A	B	C2	C3	T3S2	T3S3	T3S2R4	OTROS	A	B	C	K'	D	LATITUD	LONGITUD
T. C. Reforma Agraria - Puerto Juárez	0.00	3	0	1239	6.2	85.8	1.4	5.1	0.4	0.9	0.0	0.0	0.2	92.0	1.4	6.6	0.098	0.511	18.979977	-88.109696	
Mahahual	60.09																				

25 CARR: Ramal a Petcacab

CLAVE: 23018

RUTA: QR-018

AÑO: 2018

LUGAR	ESTACION	CLASIFICACION VEHICULAR EN PORCIENTO														COORDENADAS					
		KM	TE	SC	TDPA	M	A	B	C2	C3	T3S2	T3S3	T3S2R4	OTROS	A	B	C	K'	D	LATITUD	LONGITUD
T. C. Reforma Agraria - Puerto Juárez	0.00	3	0	767	16.9	74.1	0.8	5.8	0.6	0.5	0.3	0.9	0.1	91.0	0.8	8.2	0.125	0.518	19.135429	-88.106499	
Petcacab	37.00																				

26 CARR: Ramal a Punta Allen

CLAVE: 23015

RUTA: QR-015

AÑO: 2018

LUGAR	ESTACION	CLASIFICACION VEHICULAR EN PORCIENTO														COORDENADAS					
		KM	TE	SC	TDPA	M	A	B	C2	C3	T3S2	T3S3	T3S2R4	OTROS	A	B	C	K'	D	LATITUD	LONGITUD
T. C. Reforma Agraria - Puerto Juárez	0.00	3	0	12781	7.4	87.9	0.1	3.7	0.2	0.2	0.3	0.1	0.1	95.3	0.1	4.6	0.099	0.523	20.205526	-87.450177	
Beh-Ha	10.20	1	0	1151	7.0	84.4	0.2	7.9	0.1	0.1	0.2	0.0	0.1	91.4	0.2	8.4	0.107	0.507	20.128715	-87.465436	
Punta Allen	57.00																				

QUINTANA ROO

27 CARR: Ramal a Punta Sam

CLAVE: 23582

RUTA: QR

AÑO: 2018

LUGAR	ESTACION				CLASIFICACION VEHICULAR EN PORCIENTO														COORDENADAS	
	KM	TE	SC	TDPA	M	A	B	C2	C3	T3S2	T3S3	T3S2R4	OTROS	A	B	C	K'	D	LATITUD	LONGITUD
Puerto Juárez	0.00	3	0	7186	4.0	86.2	0.1	3.4	0.1	5.1	0.4	0.1	0.6	90.2	0.1	9.7	0.071	0.500	21.189390	-86.807229
Punta Sam	5.00	1	0	2212	5.6	89.3	0.3	2.3	0.1	2.1	0.1	0.1	0.1	94.9	0.3	4.8	0.085	0.536	21.216742	-86.802337

28 CARR: Ramal a Reforma

CLAVE: 23016

RUTA: QR-016

AÑO: 2018

LUGAR	ESTACION				CLASIFICACION VEHICULAR EN PORCIENTO														COORDENADAS	
	KM	TE	SC	TDPA	M	A	B	C2	C3	T3S2	T3S3	T3S2R4	OTROS	A	B	C	K'	D	LATITUD	LONGITUD
T. C. Reforma Agraria - Puerto Juárez	0.00	3	0	1713	17.1	74.0	0.6	7.2	0.5	0.2	0.2	0.2	0.0	91.1	0.6	8.3	0.093	0.503	18.705193	-88.388272
Reforma	44.00																			

29 CARR: Ramal a Tres Garantías

CLAVE: 23585

RUTA: QR

AÑO: 2018

LUGAR	ESTACION				CLASIFICACION VEHICULAR EN PORCIENTO														COORDENADAS	
	KM	TE	SC	TDPA	M	A	B	C2	C3	T3S2	T3S3	T3S2R4	OTROS	A	B	C	K'	D	LATITUD	LONGITUD
T. C. Francisco Escárcega - Chetumal	0.00	3	0	175	18.8	71.3	0.1	9.1	0.1	0.5	0.1	0.0	0.0	90.1	0.1	9.8	0.131	0.502	18.456249	-89.000887
Tres Garantías	30.00																			

30 CARR: Tihosuco - Dziuche

CLAVE: 23576

RUTA: QR

AÑO: 2018

LUGAR	ESTACION				CLASIFICACION VEHICULAR EN PORCIENTO														COORDENADAS	
	KM	TE	SC	TDPA	M	A	B	C2	C3	T3S2	T3S3	T3S2R4	OTROS	A	B	C	K'	D	LATITUD	LONGITUD
T. C. Valladolid - Felipe Carrillo Puerto	0.00	3	0	454	11.4	82.9	0.4	4.3	0.7	0.3	0.0	0.0	0.0	94.3	0.4	5.3	0.084	0.517	20.176744	-88.397475
Dziuche	60.50	1	0	998	26.3	68.0	0.6	4.4	0.6	0.1	0.0	0.0	0.0	94.3	0.6	5.1	0.097	0.503	19.913698	-88.808093

31 CARR: Transversal de Cozumel

CLAVE: 23577

RUTA: QR

AÑO: 2018

LUGAR	ESTACION				CLASIFICACION VEHICULAR EN PORCIENTO														COORDENADAS	
	KM	TE	SC	TDPA	M	A	B	C2	C3	T3S2	T3S3	T3S2R4	OTROS	A	B	C	K'	D	LATITUD	LONGITUD
Cozumel	0.00	3	1	3454	40.2	55.2	0.2	2.0	0.6	0.9	0.5	0.2	0.2	95.4	0.2	4.4	0.103	0.513	20.480561	-86.912203
Cozumel	0.00	3	2	3276	42.6	52.6	0.2	2.5	0.5	0.8	0.4	0.2	0.2	95.2	0.2	4.6	0.106	0.513	20.480612	-86.912156
Mezcalitos	14.00																			

QUINTANA ROO

32 CARR: Tulum - Nuevo X-Can

CLAVE: 23570

RUTA: QR

AÑO: 2018

LUGAR	ESTACION				CLASIFICACION VEHICULAR EN PORCIENTO														COORDENADAS	
	KM	TE	SC	TDPA	M	A	B	C2	C3	T3S2	T3S3	T3S2R4	OTROS	A	B	C	K'	D	LATITUD	LONGITUD
T. C. Reforma Agraria - Puerto Juárez	0.00	3	1	5171	6.8	76.4	1.8	8.7	1.2	2.2	0.9	1.3	0.7	83.2	1.8	15.0	0.101	0.543	20.216330	-87.454070
T. C. Reforma Agraria - Puerto Juárez	0.00	3	2	4355	5.7	75.7	2.0	9.5	1.4	2.4	1.0	1.4	0.9	81.4	2.0	16.6	0.086	0.543	20.216323	-87.454116
T. Izq. Ruinas Cobá	42.95	1	0	4622	2.6	85.1	2.1	6.1	0.9	1.5	0.6	1.0	0.1	87.7	2.1	10.2	0.117	0.510	20.502754	-87.713742
T. Izq. Ruinas Cobá	42.95	3	0	496	5.1	81.8	1.3	10.6	0.3	0.4	0.4	0.1	0.0	86.9	1.3	11.8	0.095	0.503	20.510236	-87.716961
Lim. Edos. Term. Q. Roo. Ppia. Yuc.	49.42																			
Lim. Edos. Term. Yuc. Ppia. Q. Roo.	64.97																			
Nuevo X-Can	87.40	1	0	473	2.8	88.7	0.4	7.5	0.5	0.0	0.1	0.0	0.0	91.5	0.4	8.1	0.074	0.503	20.856851	-87.600937

33 CARR: Ucum - Unión

CLAVE: 23571

RUTA: QR

AÑO: 2018

LUGAR	ESTACION				CLASIFICACION VEHICULAR EN PORCIENTO														COORDENADAS	
	KM	TE	SC	TDPA	M	A	B	C2	C3	T3S2	T3S3	T3S2R4	OTROS	A	B	C	K'	D	LATITUD	LONGITUD
Ucum	0.00	3	0	3795	11.4	75.7	0.8	5.3	3.3	1.8	0.6	1.0	0.1	87.1	0.8	12.1	0.095	0.501	18.473351	-88.517799
T. Der. Ingenio Álvaro Obregón	31.00	1	0	1405	10.6	77.0	0.5	5.9	2.0	0.8	1.0	2.0	0.2	87.6	0.5	11.9	0.085	0.507	18.250556	-88.649724
T. Der. Ingenio Álvaro Obregón	31.00	3	0	2229	19.3	69.7	0.8	5.3	3.7	0.8	0.2	0.1	0.1	89.0	0.8	10.2	0.083	0.503	18.245378	-88.652363
T. Der. U. A. Galeras	75.00	1	0	190	12.2	69.5	1.0	15.6	0.9	0.6	0.2	0.0	0.0	81.7	1.0	17.3	0.121	0.543	17.990068	-88.847516
T. Der. U. A. Galeras	75.00	3	0	192	15.0	71.6	0.8	12.2	0.2	0.1	0.0	0.0	0.1	86.6	0.8	12.6	0.089	0.512	17.987227	-88.855653
Unión	88.00	1	0	516	20.5	68.6	0.3	9.1	0.3	1.0	0.1	0.0	0.1	89.1	0.3	10.6	0.122	0.510	17.907688	-88.881546

34 CARR: Chemax - Cobá

CLAVE:

RUTA: YUC-MEX-180

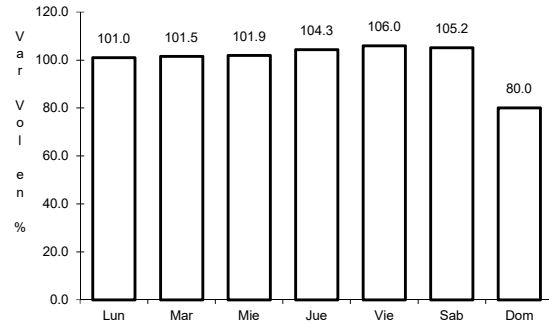
AÑO: 2018

LUGAR	ESTACION				CLASIFICACION VEHICULAR EN PORCIENTO														COORDENADAS	
	KM	TE	SC	TDPA	M	A	B	C2	C3	T3S2	T3S3	T3S2R4	OTROS	A	B	C	K'	D	LATITUD	LONGITUD
Chemax	0.00	3	0	4604	1.6	88.1	1.6	3.2	2.3	1.5	0.5	1.0	0.2	89.7	1.6	8.7	0.101	0.516	20.656720	-87.954421
Lim. Edos. Term. Yucatán Ppia. Q Roo.	25.00																			
Cobá	30.90	1	0	3971	2.0	86.1	2.2	4.1	1.9	1.7	0.6	1.3	0.1	88.1	2.2	9.7	0.094	0.504	20.508859	-87.719968

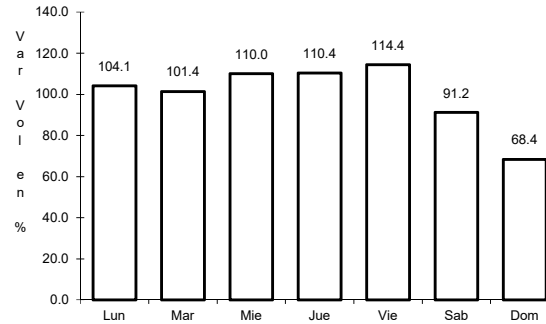
1 CARR: Francisco Escárcega - Chetumal

CLAVE: 00093

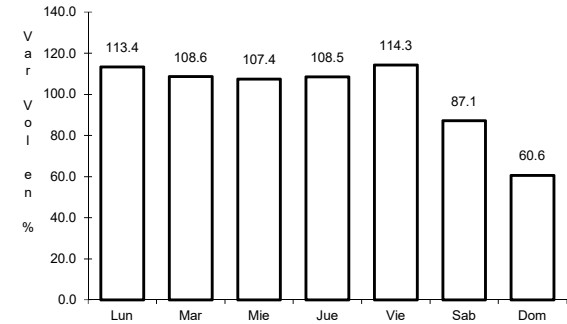
RUTA: MEX-186



Km: 0.00 Tipo: 3 Sent: 0



Km: 277.36 Tipo: 1 Sent: 1

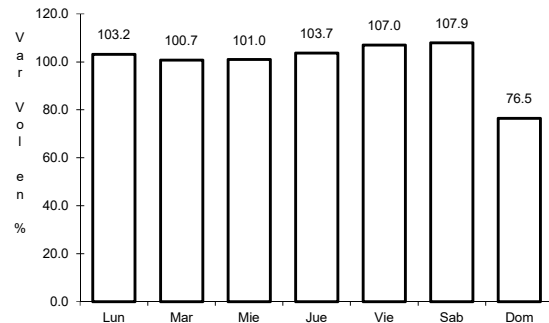


Km: 277.36 Tipo: 1 Sent: 2

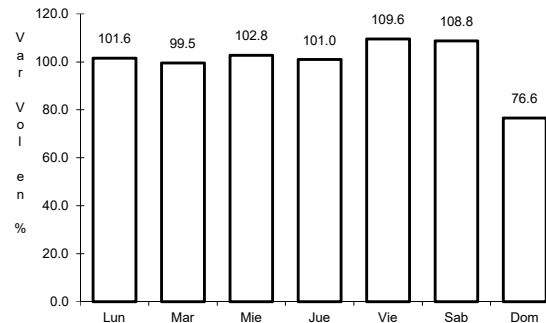
2 CARR: Mérida - Puerto Juárez

CLAVE: 00067

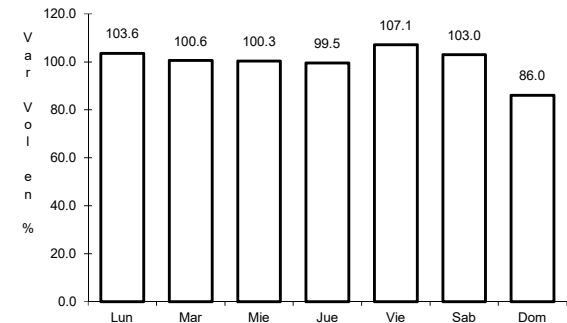
RUTA: MEX-180



Km: 5.60 Tipo: 1 Sent: 1



Km: 5.60 Tipo: 1 Sent: 2

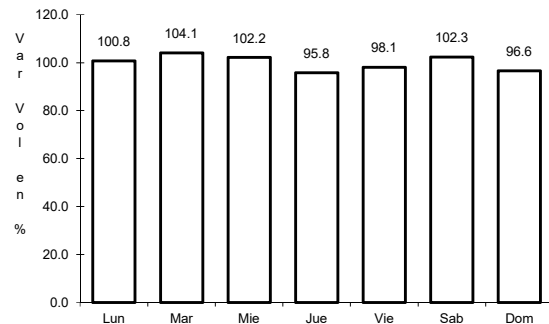


Km: 160.68 Tipo: 1 Sent: 0

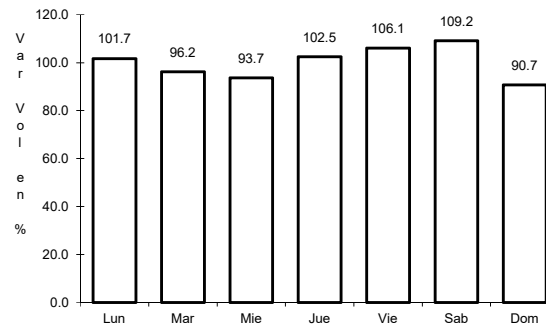
3 CARR: Muna - Felipe Carrillo Puerto

CLAVE: 00148

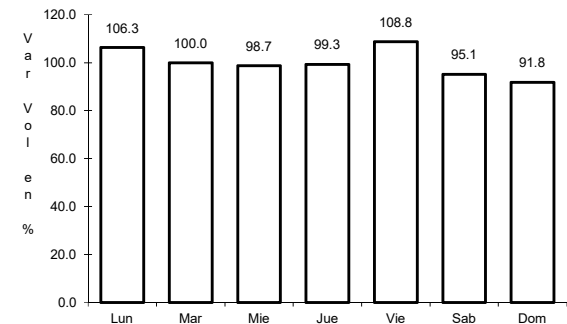
RUTA: MEX-184



Km: 0.00 Tipo: 3 Sent: 0



Km: 109.60 Tipo: 3 Sent: 0

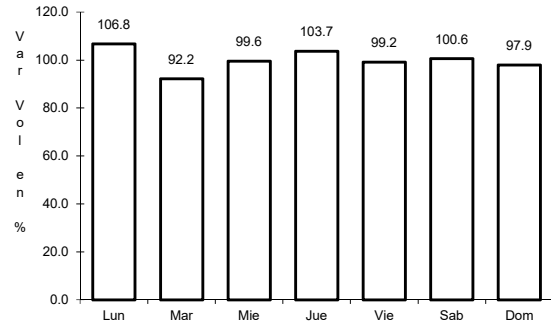


Km: 216.97 Tipo: 1 Sent: 0

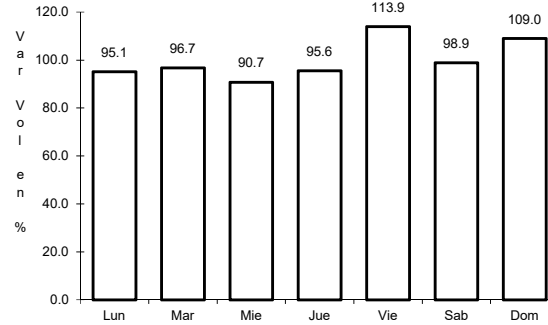
4 CARR: Polyuc - T. C. (Reforma Agraria - Puerto Juárez)

CLAVE: 23014

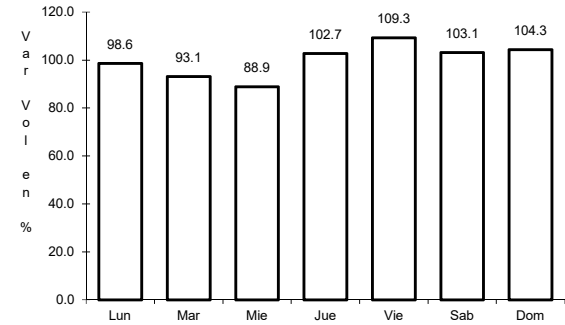
ruta: MEX-293



Km: 0.00 Tipo: 3 Sent: 0



Km: 50.00 Tipo: 3 Sent: 0

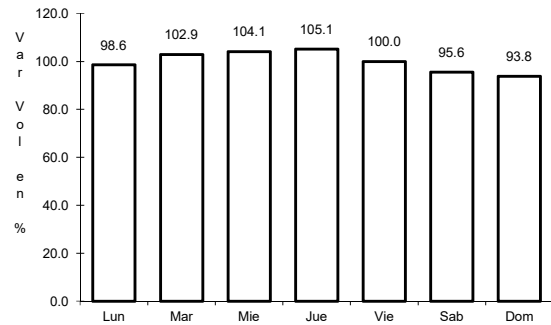


Km: 99.00 Tipo: 1 Sent: 0

5 CARR: Ramal a Puerto Morelos

CLAVE: 23569

ruta: MEX

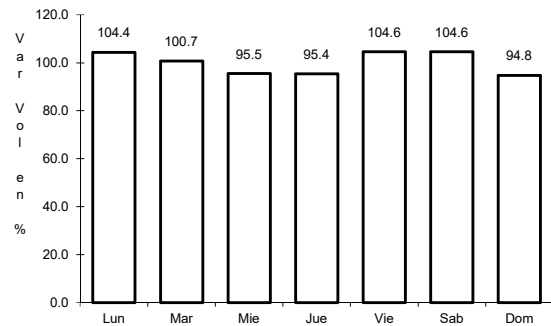


Km: 0.00 Tipo: 3 Sent: 0

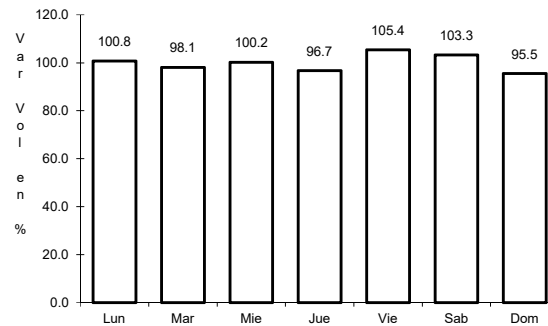
6 CARR: Ramal a Punta Piedra

CLAVE: 23575

ruta: MEX



Km: 0.00 Tipo: 3 Sent: 1

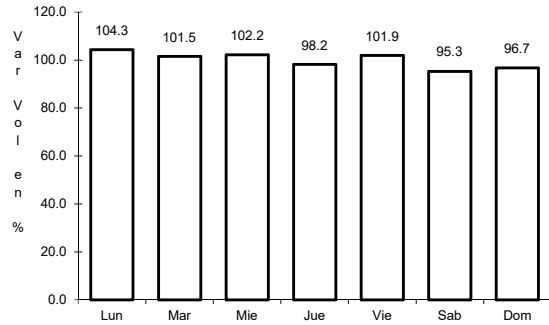


Km: 0.00 Tipo: 3 Sent: 2

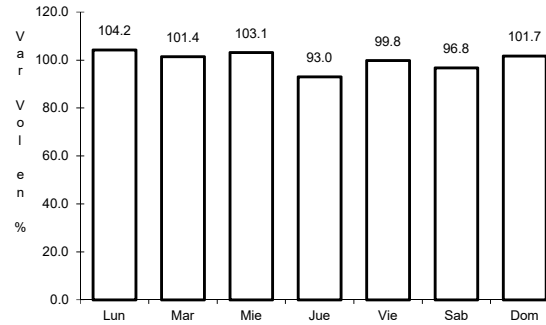
7 CARR: Ramal a Subteniente López

CLAVE: 23567

ruta: MEX-186



Km: 0.00 Tipo: 3 Sent: 1

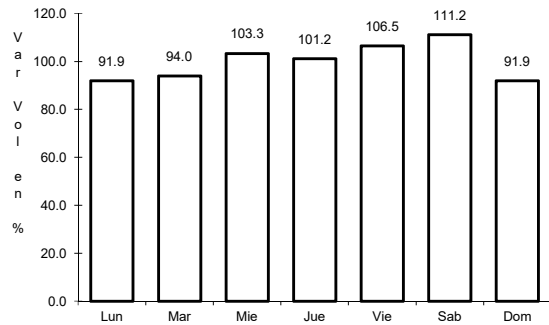


Km: 0.00 Tipo: 3 Sent: 2

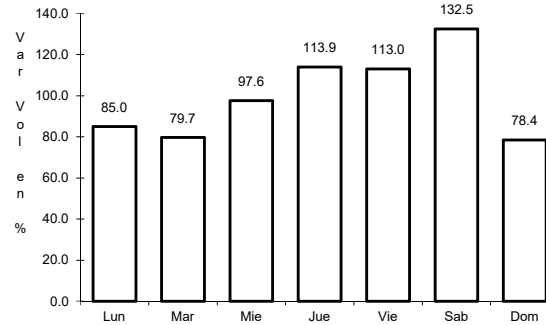
8 CARR: Reforma Agraria - Puerto Juárez

CLAVE: 23132

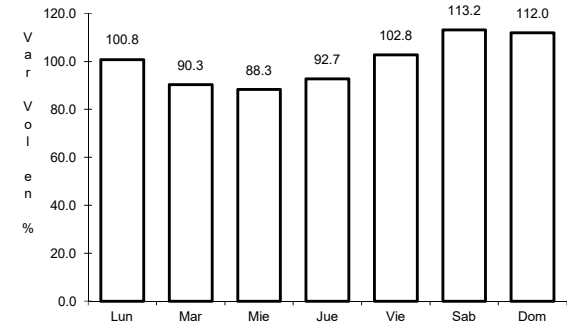
ruta: MEX-307



Km: 0.00 Tipo: 3 Sent: 1



Km: 0.00 Tipo: 3 Sent: 2

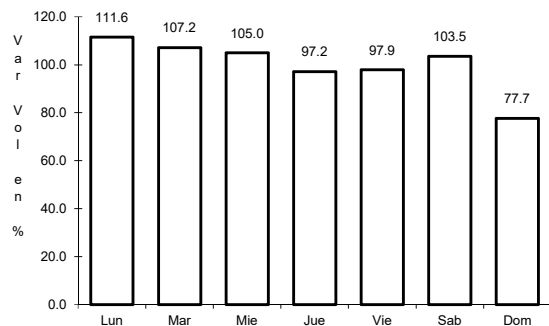


Km: 132.00 Tipo: 3 Sent: 0

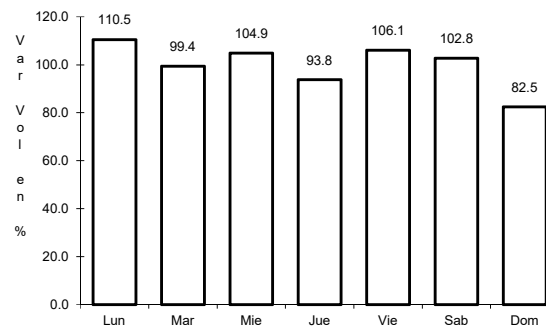
9 CARR: Valladolid - Felipe Carrillo Puerto

CLAVE: 00010

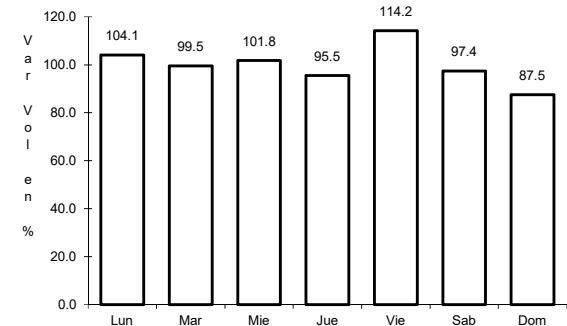
ruta: MEX-295



Km: 0.00 Tipo: 3 Sent: 0



Km: 99.00 Tipo: 1 Sent: 0

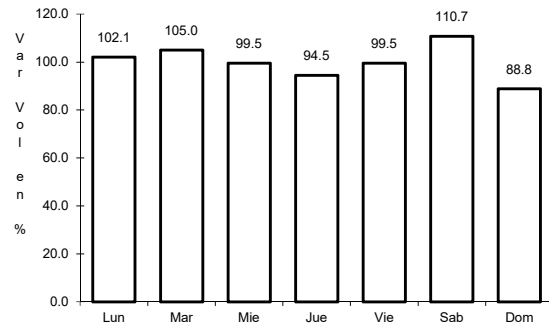


Km: 147.70 Tipo: 1 Sent: 0

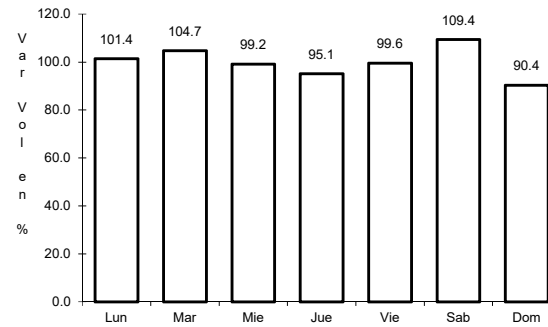
10 CARR: El Cedral - Playa del Carmen (Cuota)

CLAVE:

ruta: MEX-180D



Km: 10.05 Tipo: 1 Sent: 0

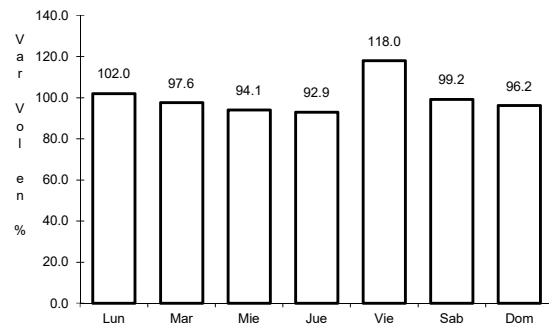


Km: 10.05 Tipo: 3 Sent: 0

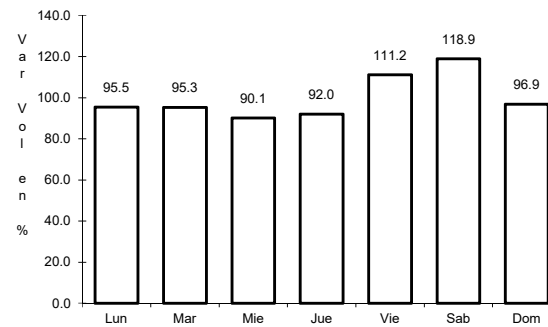
12 CARR: Mérida - Cancún (Cuota)

CLAVE: 00071

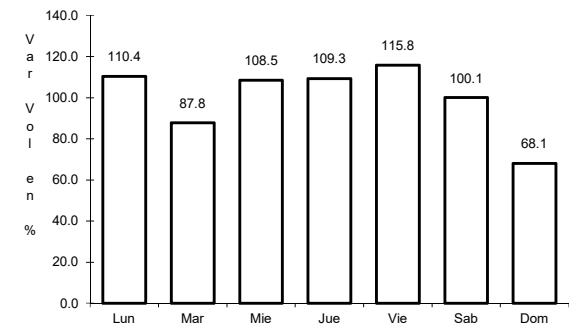
ruta: MEX-180D



Km: 51.00 Tipo: 1 Sent: 1



Km: 51.00 Tipo: 1 Sent: 2

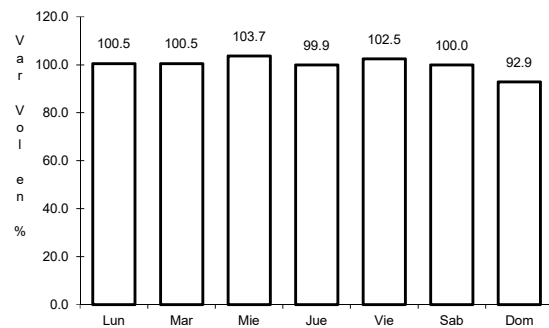


Km: 308.10 Tipo: 1 Sent: 0

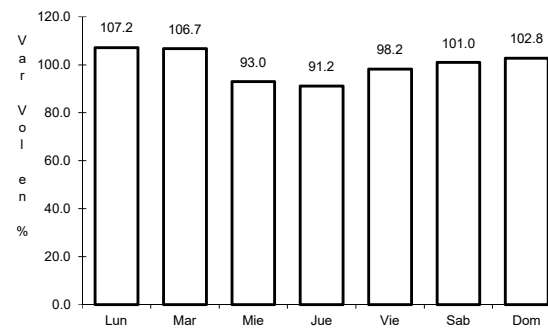
13 CARR: Bacalar - Miguel Alemán

CLAVE: 20030

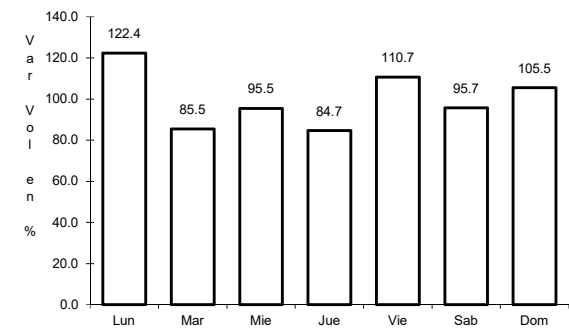
ruta: QR



Km: 21.00 Tipo: 3 Sent: 0



Km: 31.00 Tipo: 1 Sent: 0

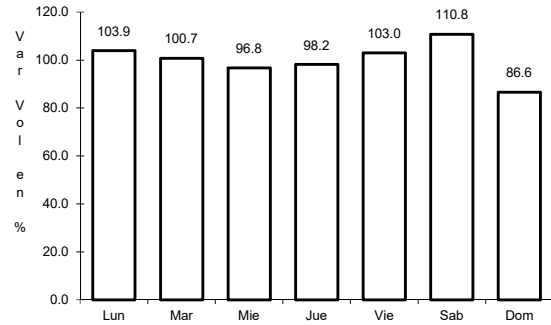


Km: 31.00 Tipo: 3 Sent: 0

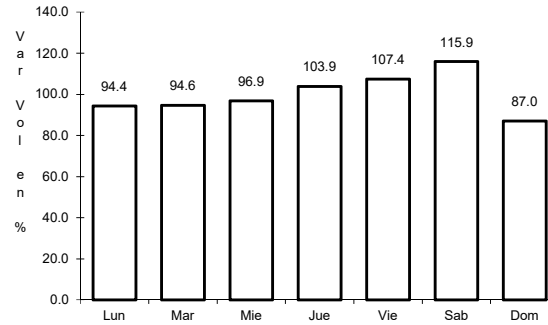
14 CARR: Cancún - Punta Cancún

CLAVE: 23581

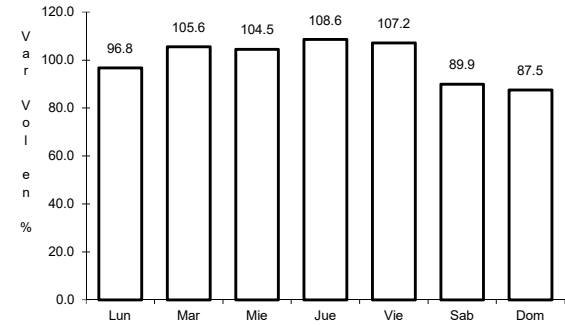
RUTA: QR



Km: 0.00 Tipo: 3 Sent: 1



Km: 0.00 Tipo: 3 Sent: 2

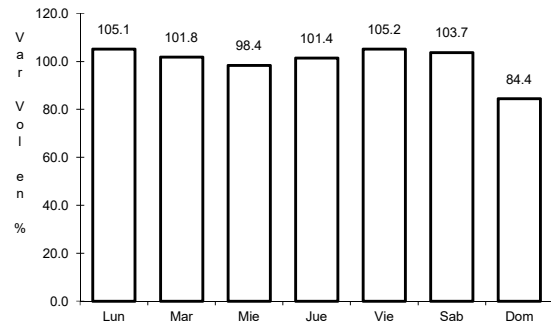


Km: 8.00 Tipo: 1 Sent: 1

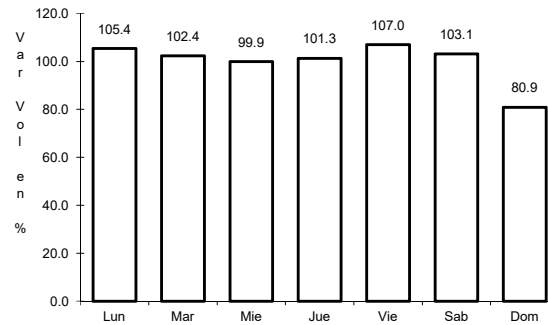
15 CARR: Chetumal - Calderitas

CLAVE: 23004

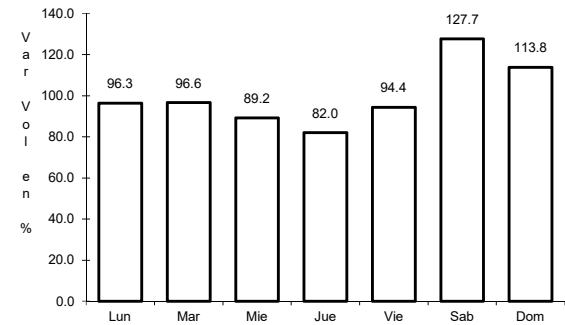
RUTA: QR-004



Km: 0.00 Tipo: 3 Sent: 1



Km: 0.00 Tipo: 3 Sent: 2

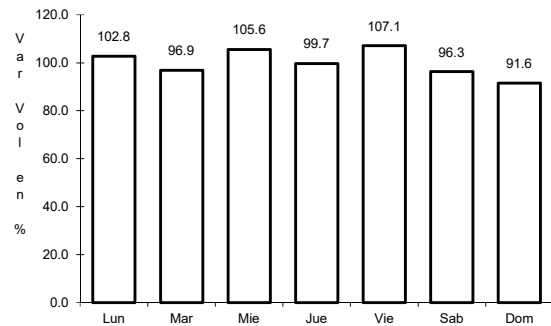


Km: 9.00 Tipo: 1 Sent: 1

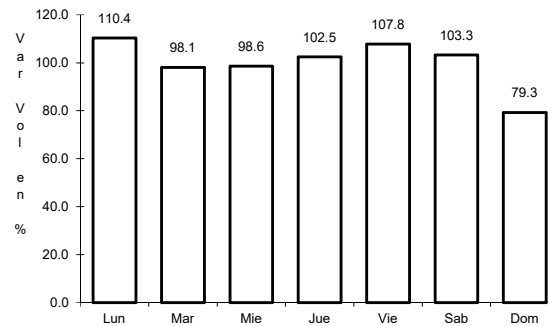
16 CARR: El Ideal - Chiquila

CLAVE: 23005

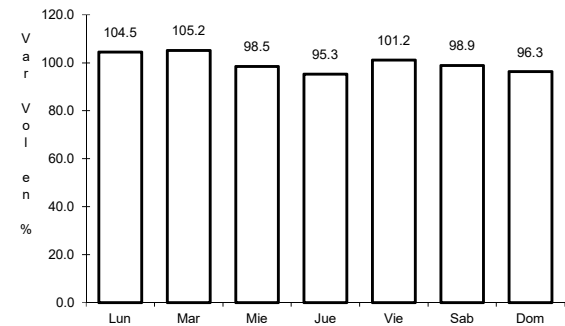
RUTA: QR-005



Km: 0.00 Tipo: 3 Sent: 0



Km: 31.20 Tipo: 1 Sent: 0

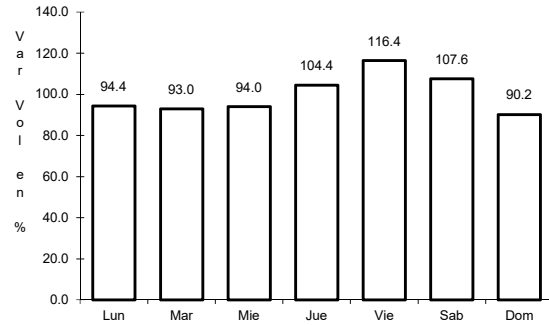


Km: 75.60 Tipo: 1 Sent: 0

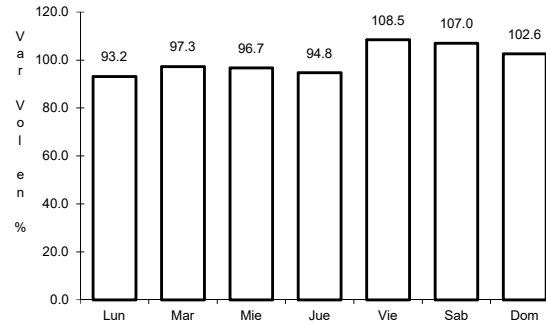
17 CARR: Libramiento de Chetumal

CLAVE: 23130

RUTA: QR



Km: 0.00 Tipo: 3 Sent: 1

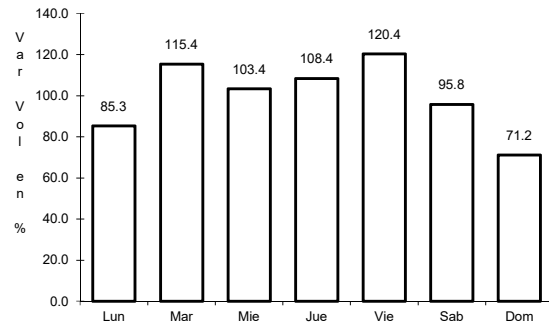


Km: 0.00 Tipo: 3 Sent: 2

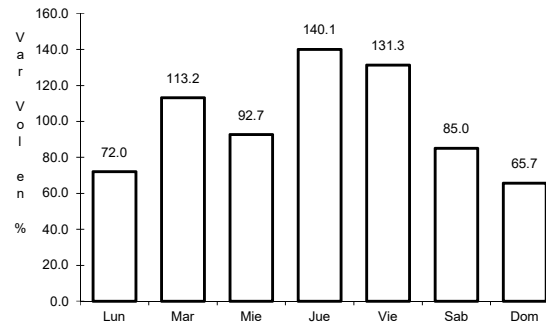
18 CARR: Perimetral Cozumel

CLAVE: 00148

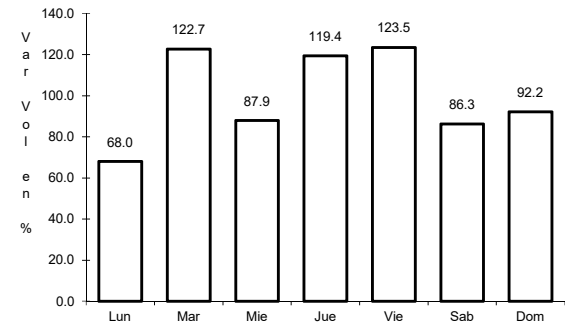
RUTA: QR



Km: 0.00 Tipo: 3 Sent: 0



Km: 13.40 Tipo: 3 Sent: 1

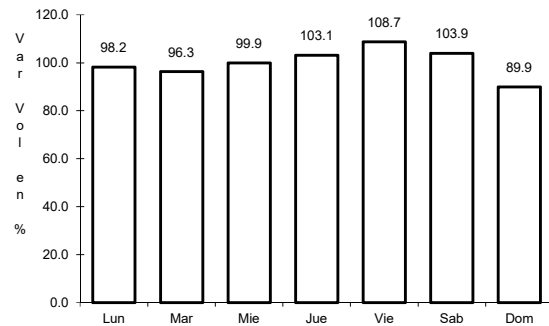


Km: 13.40 Tipo: 3 Sent: 2

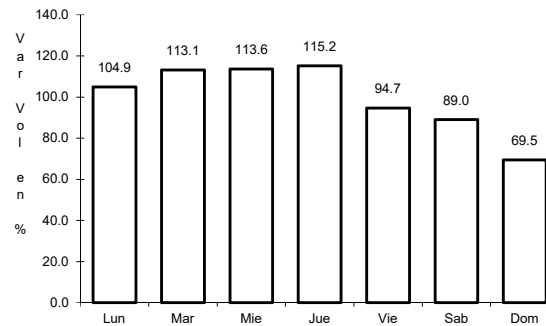
19 CARR: Punta Nizuc - Cancún

CLAVE: 23014

RUTA: QR



Km: 0.00 Tipo: 3 Sent: 1

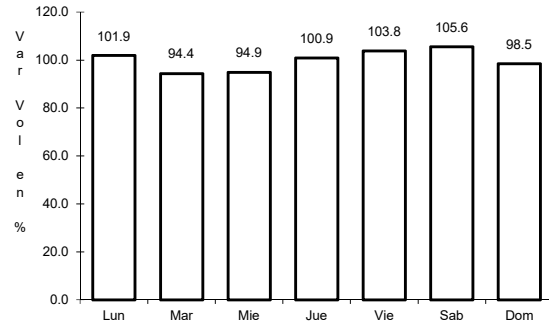


Km: 0.00 Tipo: 3 Sent: 2

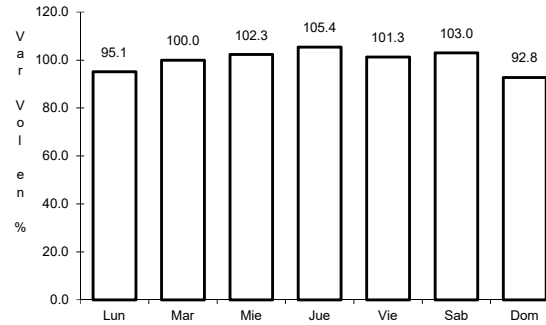
20 CARR: Ramal a Aeropuerto Cancún

CLAVE: 23574

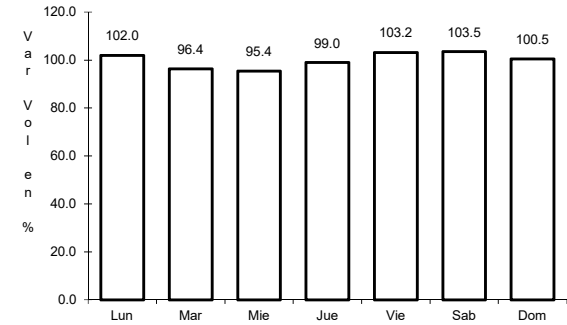
ruta: QR



Km: 0.00 Tipo: 3 Sent: 1



Km: 0.00 Tipo: 3 Sent: 2

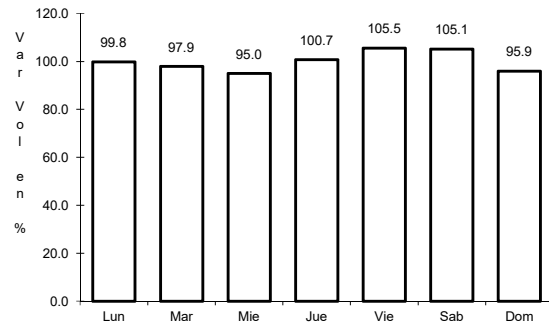


Km: 2.00 Tipo: 1 Sent: 1

21 CARR: Ramal a Candelaria

CLAVE: 23027

ruta: QR

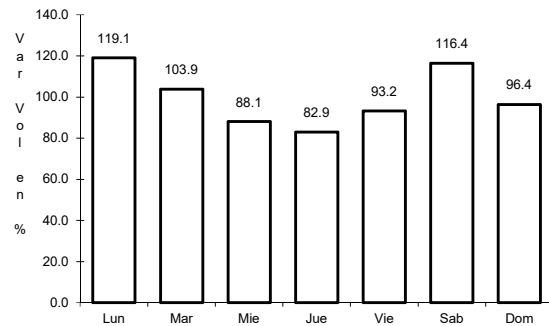


Km: 0.00 Tipo: 3 Sent: 0

22 CARR: Ramal a El Naranjal

CLAVE: 23579

ruta: QR

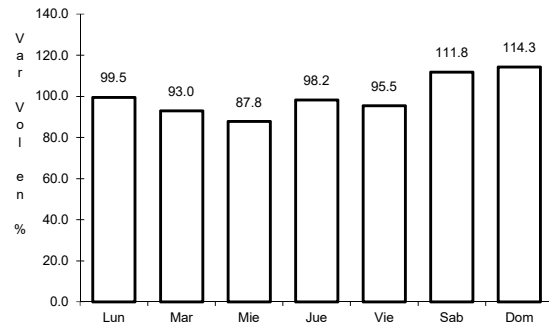


Km: 0.00 Tipo: 3 Sent: 0

23 CARR: Ramal a Laguna de Kaná

CLAVE: 23213

RUTA: QR



Km: 0.00

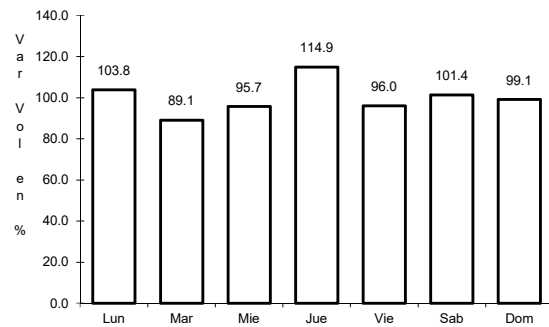
Tipo: 3

Sent: 0

24 CARR: Ramal a Mahahual

CLAVE: 23583

RUTA: QR



Km: 0.00

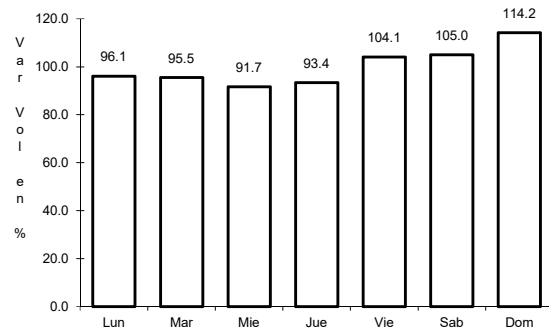
Tipo: 3

Sent: 0

25 CARR: Ramal a Petcacab

CLAVE: 23018

RUTA: QR-018



Km: 0.00

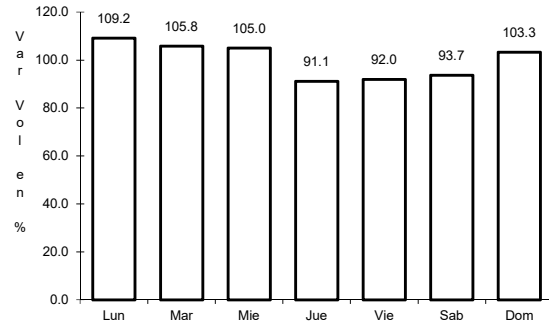
Tipo: 3

Sent: 0

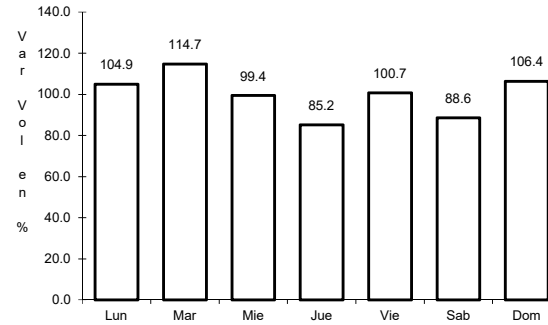
26 CARR: Ramal a Punta Allen

CLAVE: 23015

RUTA: QR-015



Km: 0.00 Tipo: 3 Sent: 0

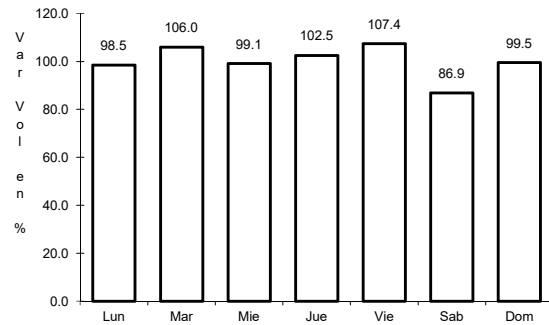


Km: 10.20 Tipo: 1 Sent: 0

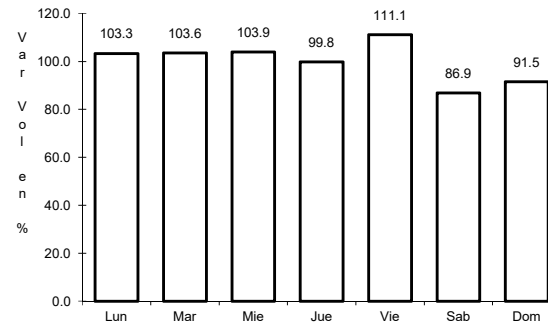
27 CARR: Ramal a Punta Sam

CLAVE: 23582

RUTA: QR



Km: 0.00 Tipo: 3 Sent: 0

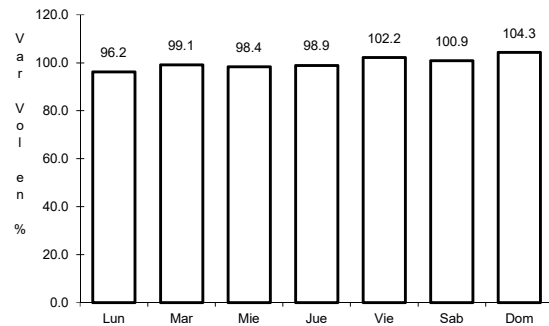


Km: 5.00 Tipo: 1 Sent: 0

28 CARR: Ramal a Reforma

CLAVE: 23016

RUTA: QR-016

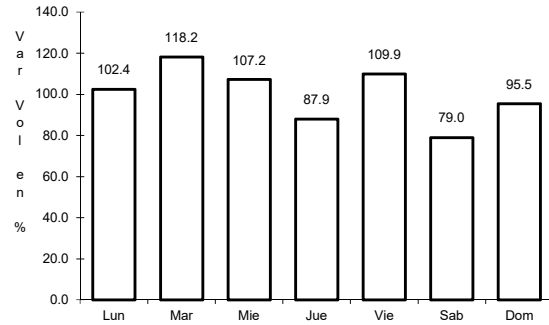


Km: 0.00 Tipo: 3 Sent: 0

29 CARR: Ramal a Tres Garantías

CLAVE: 23585

ruta: QR



Km: 0.00

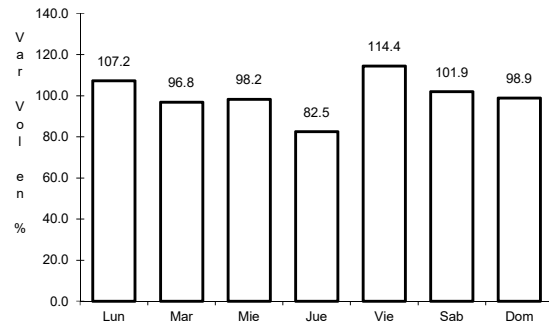
Tipo: 3

Sent: 0

30 CARR: Tihosuco - Dziuche

CLAVE: 23576

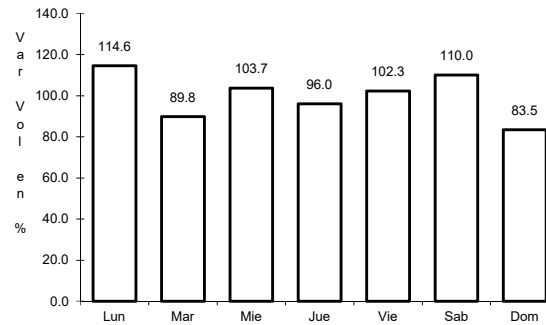
ruta: QR



Km: 0.00

Tipo: 3

Sent: 0



Km: 60.50

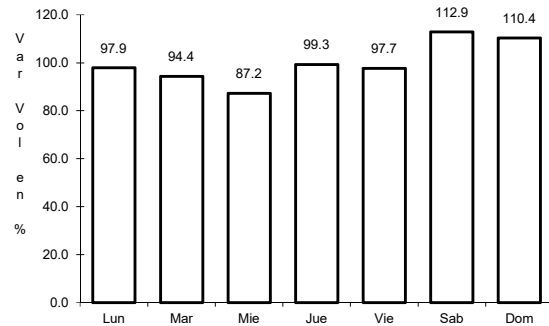
Tipo: 1

Sent: 0

31 CARR: Transversal de Cozumel

CLAVE: 23577

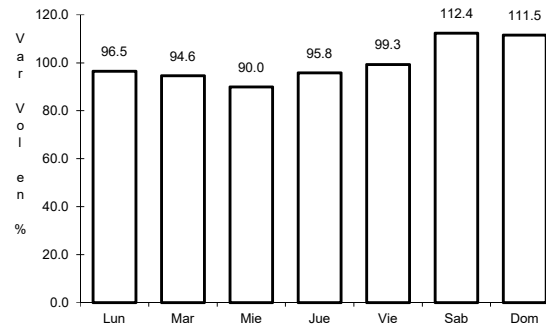
ruta: QR



Km: 0.00

Tipo: 3

Sent: 1



Km: 0.00

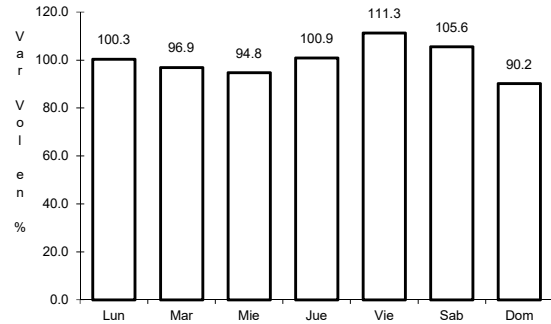
Tipo: 3

Sent: 2

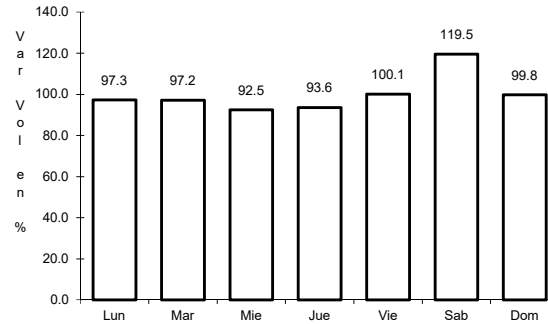
32 CARR: Tulum - Nuevo X-Can

CLAVE: 23570

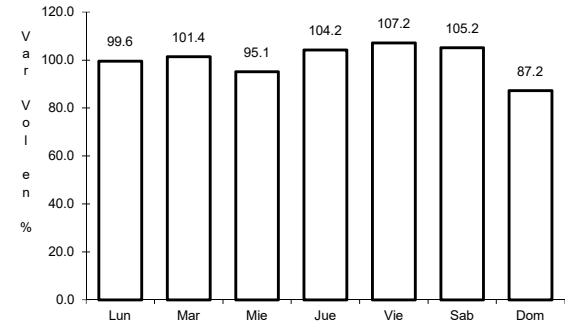
RUTA: QR



Km: 0.00 Tipo: 3 Sent: 1



Km: 42.95 Tipo: 1 Sent: 0

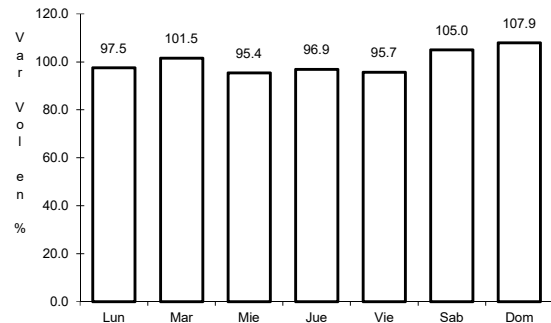


Km: 87.40 Tipo: 1 Sent: 0

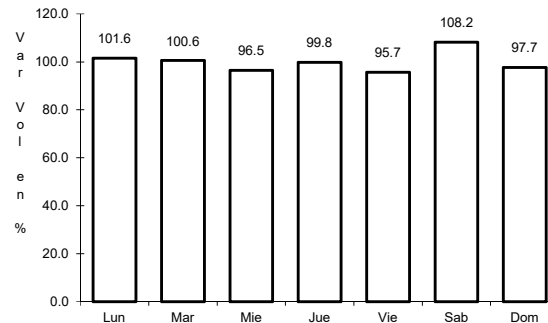
33 CARR: Ucum - Unión

CLAVE: 23571

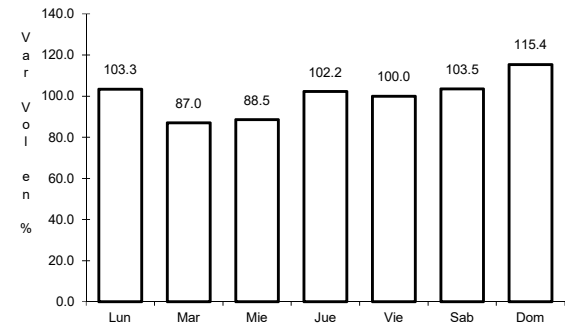
RUTA: QR



Km: 0.00 Tipo: 3 Sent: 0



Km: 31.00 Tipo: 3 Sent: 0

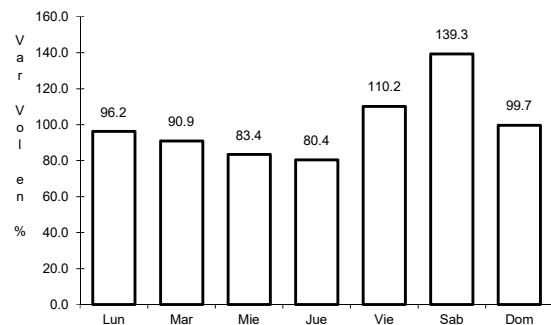


Km: 88.00 Tipo: 1 Sent: 0

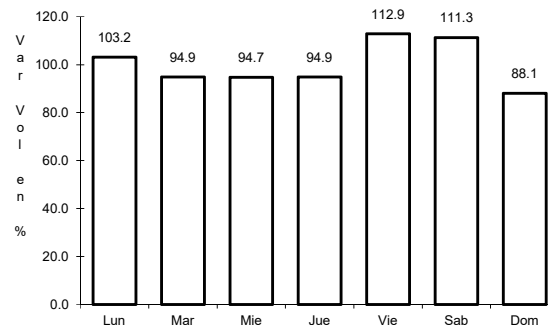
34 CARR: Chemax - Cobá

CLAVE:

RUTA: YUC-MEX-180



Km: 0.00 Tipo: 3 Sent: 0



Km: 30.90 Tipo: 1 Sent: 0

