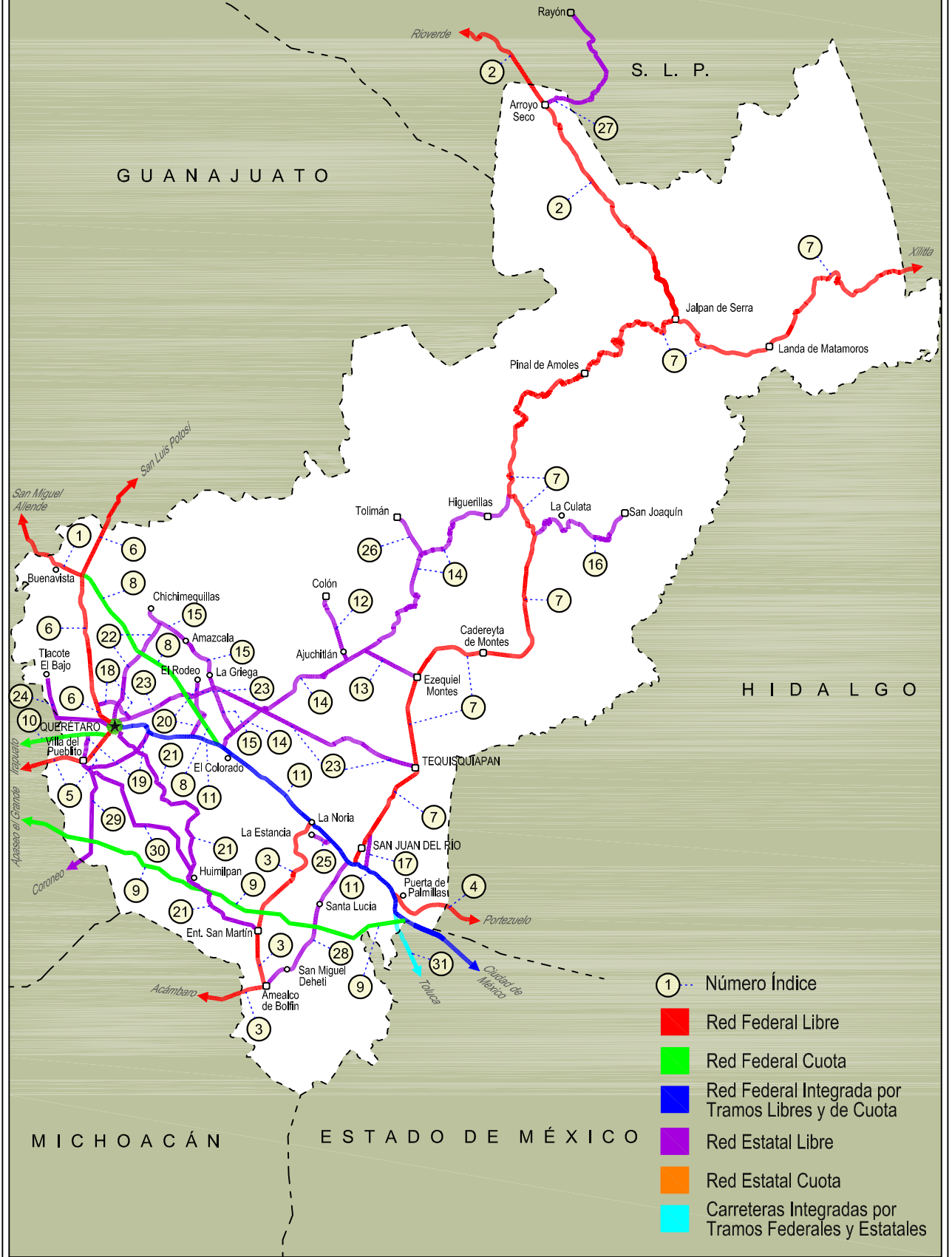
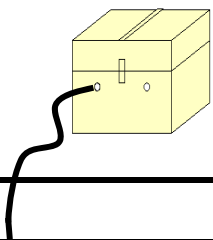


# 22 QUERÉTARO

SECRETARÍA DE COMUNICACIONES Y TRANSPORTES  
DIRECCIÓN GENERAL DE SERVICIOS TÉCNICOS







QUERETARO

NO. INDICE CARRETERA	RUTA
---RED FEDERAL LIBRE---	
1 Ent. Buenavista - San Miguel de Allende	MEX-057
2 Jalpan de Serra - Rioverde	MEX-069
3 La Noria - Acámbaro	MEX-120
4 Portezuelo - Palmillas	MEX-045
5 Querétaro - Irapuato (Libre)	MEX-045
6 Querétaro - San Luis Potosí	MEX-057
7 San Juan del Río - Xilitla	MEX-120
---RED FEDERAL DE CUOTA---	
8 Libramiento Nororiente de Querétaro (Cuota)	MEX-057D
9 Palmillas - Apaseo el Grande (Cuota)	MEX-045D
10 Querétaro - Irapuato (Cuota)	MEX-045D
---RED FEDERAL INTEGRADA POR TRAMOS LIBRES Y DE CUOTA---	
11 México - Querétaro (Cuota)	MEX-057-MEX-057D
---RED ESTATAL LIBRE---	
12 Ajuchitlán - Colón	QRO-005
13 Ajuchitlán - Ezequiel Montes	QRO-005
14 El Colorado - Higuierillas	QRO-004
15 Hacienda Paraíso - Chichimequillas	QRO-001
16 La Culata - San Joaquín	QRO-021
17 Libramiento de San Juan del Río	QRO
18 Libramiento Norte de Querétaro	QRO
19 Libramiento Surponiente de Querétaro	QRO
20 Peña Colorada - El Rodeo	QRO
21 Querétaro - Ent. San Martín	QRO
22 Querétaro - Estación Chichimequillas	QRO
23 Querétaro - Tequisquiapan	QRO
24 Querétaro - Tlacote El Bajo	QRO
25 Ramal a La Estancia	QRO
26 Ramal a Tolimán	QRO
27 Rayón - Arroyo Seco	SLP-011
28 San Juan del Río - Amealco	QRO
29 T. C. (Villa del Pueblito - Huimilpan) - Coroneo	QRO-GTO
30 Villa del Pueblito - Huimilpan	QRO
---CARRETERAS INTEGRADAS POR TRAMOS FEDERALES Y ESTATALES---	
31 Toluca - Palmillas	EM(D)-MEX-055

QUERETARO

1 CARR: Ent. Buenavista - San Miguel de Allende

CLAVE: 00111

RUTA: MEX-057

AÑO: 2018

LUGAR	ESTACION				CLASIFICACION VEHICULAR EN PORCIENTO													COORDENADAS		
	KM	TE	SC	TDPA	M	A	B	C2	C3	T3S2	T3S3	T3S2R4	OTROS	A	B	C	K'	D	LATITUD	LONGITUD
T. C. Querétaro - San Luis Potosí	0.00	3	0	16311	0.8	85.6	1.0	5.4	0.9	4.5	0.7	0.3	0.8	86.4	1.0	12.6	0.078	0.518	20.821329	-100.454874
Lim. Edos. Term. Qro. Ppia. Gto.	7.91																			
T. Izq. Guadalupe	12.00	1	0	11037	1.0	84.6	1.1	6.8	1.3	3.7	0.8	0.2	0.5	85.6	1.1	13.3	0.090	0.504	20.882323	-100.567974
San Miguel de Allende	35.11	1	0	11047	1.0	85.1	1.3	5.9	1.8	3.0	0.8	0.6	0.5	86.1	1.3	12.6	0.095	0.503	20.901956	-100.705908

2 CARR: Jalpan de Serra - Rioverde

CLAVE: 00265

RUTA: MEX-069

AÑO: 2018

LUGAR	ESTACION				CLASIFICACION VEHICULAR EN PORCIENTO													COORDENADAS		
	KM	TE	SC	TDPA	M	A	B	C2	C3	T3S2	T3S3	T3S2R4	OTROS	A	B	C	K'	D	LATITUD	LONGITUD
Jalpan de Serra	0.00	3	0	5947	1.3	85.6	0.3	8.3	0.5	3.0	0.5	0.1	0.4	86.9	0.3	12.8	0.072	0.501	21.242135	-99.483206
T. Izq. Conca	35.01	1	0	2460	2.0	85.4	0.5	9.0	0.8	1.9	0.3	0.0	0.1	87.4	0.5	12.1	0.088	0.502	21.444810	-99.626920
Arroyo Seco	48.60	1	0	1777	1.9	80.0	0.6	14.6	1.0	1.6	0.2	0.0	0.1	81.9	0.6	17.5	0.075	0.509	21.538355	-99.684640
Lim. Edos. Term. Qro. Ppia. S. L. P.	52.27																			
San Ciro de Acosta	69.42	1	0	2174	6.8	76.5	0.6	13.2	0.7	1.4	0.5	0.1	0.2	83.3	0.6	16.1	0.079	0.502	21.648034	-99.808580
San Ciro de Acosta	69.42	3	0	3039	4.4	80.8	0.4	11.0	0.8	2.0	0.3	0.1	0.2	85.2	0.4	14.4	0.079	0.507	21.661994	-99.827629
Rioverde	105.43	1	0	7810	2.8	78.8	0.2	14.6	0.6	2.3	0.4	0.1	0.2	81.6	0.2	18.2	0.075	0.522	21.882079	-99.975830

3 CARR: La Noria - Acámbaro

CLAVE: 00131

RUTA: MEX-120

AÑO: 2018

LUGAR	ESTACION				CLASIFICACION VEHICULAR EN PORCIENTO													COORDENADAS		
	KM	TE	SC	TDPA	M	A	B	C2	C3	T3S2	T3S3	T3S2R4	OTROS	A	B	C	K'	D	LATITUD	LONGITUD
La Noria	0.00	3	0	9205	1.2	79.4	1.0	10.8	1.3	4.3	1.0	0.4	0.6	80.6	1.0	18.4	0.081	0.502	20.438653	-100.074073
Amealco	34.66	1	0	5527	1.2	81.0	1.7	9.5	1.3	3.4	1.1	0.4	0.4	82.2	1.7	16.1	0.098	0.508	20.199551	-100.150068
Amealco	34.66	3	0	5400	1.3	85.9	0.8	6.8	0.8	2.8	1.0	0.3	0.3	87.2	0.8	12.0	0.115	0.500	20.186370	-100.159850
Lim. Edos. Term. Qro. Ppia. Mich.	39.15																			
Lim. Edos. Term. Mich. Ppia. Gto.	55.90																			
Coroneo	59.35	3	0	2171	2.9	82.1	2.2	8.9	0.9	1.4	1.2	0.3	0.1	85.0	2.2	12.8	0.084	0.543	20.194964	-100.375990
Jerécuaro	79.70	3	0	2851	3.7	82.7	1.2	9.6	0.7	1.3	0.6	0.1	0.1	86.4	1.2	12.4	0.081	0.503	20.144216	-100.539495
Acámbaro	111.12	1	0	7357	4.8	79.2	0.6	9.7	1.1	3.2	0.9	0.1	0.4	84.0	0.6	15.4	0.071	0.505	20.048657	-100.702917

4 CARR: Portezuelo - Palmillas

CLAVE: 00194

RUTA: MEX-045

AÑO: 2018

LUGAR	ESTACION				CLASIFICACION VEHICULAR EN PORCIENTO													COORDENADAS		
	KM	TE	SC	TDPA	M	A	B	C2	C3	T3S2	T3S3	T3S2R4	OTROS	A	B	C	K'	D	LATITUD	LONGITUD
Portezuelo	0.00	3	1	4871	1.6	72.8	3.2	9.1	2.5	6.3	2.9	1.1	0.5	74.4	3.2	22.4	0.075	0.509	20.486406	-99.301281

QUERETARO

4 CARR: Portezuelo - Palmillas

CLAVE: 00194

RUTA: MEX-045

AÑO: 2018

LUGAR	ESTACION				CLASIFICACION VEHICULAR EN PORCIENTO														COORDENADAS	
	KM	TE	SC	TDPA	M	A	B	C2	C3	T3S2	T3S3	T3S2R4	OTROS	A	B	C	K'	D	LATITUD	LONGITUD
Portezuelo	0.00	3	2	4694	1.9	71.8	3.0	10.3	2.5	6.3	2.7	1.1	0.4	73.7	3.0	23.3	0.070	0.509	20.486315	-99.301279
Jonacapa	29.41	3	0	5980	1.2	69.0	4.6	7.6	3.3	9.0	2.9	1.5	0.9	70.2	4.6	25.2	0.061	0.500	20.435222	-99.536726
Huichapan	45.10	1	0	8858	0.5	69.9	4.4	7.5	3.3	9.0	2.9	1.6	0.9	70.4	4.4	25.2	0.072	0.512	20.391348	-99.639748
T. Izq. Nopala	56.15	1	0	8600	1.0	69.3	5.0	7.2	2.8	7.5	3.5	2.5	1.2	70.3	5.0	24.7	0.090	0.520	20.318820	-99.712511
Lim. Edos. Term. Hgo. Ppia. Qro.	71.40																			
Palmillas	80.00	1	1	4188	0.4	77.5	4.1	9.3	3.8	1.9	1.1	1.1	0.8	77.9	4.1	18.0	0.064	0.515	20.324648	-99.930595
Palmillas	80.00	1	2	4448	0.4	76.7	3.8	10.2	3.9	2.0	1.2	0.9	0.9	77.1	3.8	19.1	0.067	0.515	20.324648	-99.930595

5 CARR: Querétaro - Irapuato (Libre)

CLAVE: 00154

RUTA: MEX-045

AÑO: 2018

LUGAR	ESTACION				CLASIFICACION VEHICULAR EN PORCIENTO														COORDENADAS	
	KM	TE	SC	TDPA	M	A	B	C2	C3	T3S2	T3S3	T3S2R4	OTROS	A	B	C	K'	D	LATITUD	LONGITUD
Querétaro Poniente	0.00	3	1	57451	0.5	87.3	0.1	5.0	0.3	3.5	2.4	0.3	0.6	87.8	0.1	12.1	0.072	0.507	20.552904	-100.422198
Querétaro Poniente	0.00	3	2	59078	0.5	86.0	0.1	5.2	0.3	4.1	2.7	0.3	0.8	86.5	0.1	13.4	0.070	0.507	20.552822	-100.422078
T. Der. Villa del Pueblito	6.67	3	1	20914	0.9	92.6	0.2	4.5	1.0	0.6	0.2	0.0	0.0	93.5	0.2	6.3	0.085	0.510	20.533440	-100.448407
T. Der. Villa del Pueblito	6.67	3	2	21775	1.0	91.8	0.2	5.1	1.1	0.6	0.2	0.0	0.0	92.8	0.2	7.0	0.091	0.510	20.533366	-100.448422
Los Ángeles	12.60	3	1	21437	1.0	76.4	3.3	9.8	2.1	5.4	1.3	0.5	0.2	77.4	3.3	19.3	0.078	0.505	20.533483	-100.501433
Los Ángeles	12.60	3	2	21894	0.6	75.5	3.5	10.6	2.1	5.7	1.3	0.5	0.2	76.1	3.5	20.4	0.069	0.505	20.533405	-100.501403
Lim. Edos. Term. Qro. Ppia. Gto.	13.49																			
T. Izq. Apaseo El Alto	28.37	3	1	17998	0.6	77.6	1.7	7.6	3.2	6.7	1.6	0.7	0.3	78.2	1.7	20.1	0.075	0.501	20.467172	-100.635780
T. Izq. Apaseo El Alto	28.37	3	2	18041	1.1	76.1	2.0	7.7	3.3	7.1	1.7	0.7	0.3	77.2	2.0	20.8	0.077	0.501	20.467124	-100.635840
T. Der. Apaseo El Grande	40.11	3	1	19751	1.3	78.0	2.2	7.4	2.6	6.0	1.4	0.8	0.3	79.3	2.2	18.5	0.078	0.504	20.534942	-100.707063
T. Der. Apaseo El Grande	40.11	3	2	19460	1.2	76.1	2.4	8.2	2.9	6.5	1.5	0.9	0.3	77.3	2.4	20.3	0.079	0.504	20.534861	-100.707044
T. Izq. Libramiento de Celaya Ote.	49.90	1	1	20994	0.9	81.2	1.8	7.4	2.2	4.7	1.0	0.4	0.4	82.1	1.8	16.1	0.080	0.501	20.520254	-100.753275
T. Izq. Libramiento de Celaya Ote.	49.90	1	2	20938	0.9	79.0	2.0	8.7	2.4	5.1	1.1	0.4	0.4	79.9	2.0	18.1	0.058	0.501	20.520179	-100.753242
T. Izq. Libramiento de Celaya Pte.	55.61	3	1	27534	0.5	87.1	1.6	4.8	1.2	3.0	1.1	0.2	0.5	87.6	1.6	10.8	0.069	0.510	20.516473	-100.879629
T. Izq. Libramiento de Celaya Pte.	55.61	3	2	26496	0.7	85.8	1.8	5.3	1.3	3.2	1.2	0.2	0.5	86.5	1.8	11.7	0.071	0.510	20.516393	-100.879617
T. Izq. Cortazar	67.50	3	1	26124	0.8	78.6	2.1	7.5	2.2	6.0	1.6	0.7	0.5	79.4	2.1	18.5	0.076	0.502	20.510306	-100.966170
T. Izq. Cortazar	67.50	3	2	26343	0.7	76.3	2.3	8.7	2.4	6.6	1.8	0.7	0.5	77.0	2.3	20.7	0.095	0.502	20.510237	-100.966155
T. Izq. Libramiento de Salamanca	93.80	1	1	20348	1.5	71.8	3.1	11.5	2.6	6.3	1.8	1.1	0.3	73.3	3.1	23.6	0.081	0.501	20.551439	-101.146026
T. Izq. Libramiento de Salamanca	93.80	1	2	20429	1.6	68.2	3.7	13.0	3.0	6.9	2.1	1.2	0.3	69.8	3.7	26.5	0.074	0.501	20.551372	-101.146061
Irapuato	113.70	1	1	16672	2.7	84.5	2.6	5.9	1.3	1.2	1.0	0.5	0.3	87.2	2.6	10.2	0.080	0.508	20.657965	-101.302928
Irapuato	113.70	1	2	16125	2.4	84.9	2.4	5.8	1.2	1.4	1.1	0.4	0.4	87.3	2.4	10.3	0.078	0.508	20.657890	-101.303022

QUERETARO

6 CARR: Querétaro - San Luis Potosí

CLAVE: 00165

RUTA: MEX-057

AÑO: 2018

LUGAR	ESTACION				CLASIFICACION VEHICULAR EN PORCIENTO														COORDENADAS		
	KM	TE	SC	TDPA	M	A	B	C2	C3	T3S2	T3S3	T3S2R4	OTROS	A	B	C	K'	D	LATITUD	LONGITUD	
Querétaro	0.00																				
T. Der. Libramiento de Querétaro	6.28	3	1	47102	0.8	91.0	1.0	3.7	0.6	1.6	1.0	0.1	0.2	91.8	1.0	7.2	0.076	0.503	20.636583	-100.428725	
T. Der. Libramiento de Querétaro	6.28	3	2	47603	0.8	90.2	1.1	4.1	0.7	1.7	1.1	0.1	0.2	91.0	1.1	7.9	0.073	0.503	20.636534	-100.428827	
T. Izq. Juriquilla	15.63	3	1	32713	1.0	83.6	1.3	7.3	2.2	3.1	1.2	0.1	0.2	84.6	1.3	14.1	0.066	0.500	20.720102	-100.439016	
T. Izq. Juriquilla	15.63	3	2	32682	1.5	81.2	1.5	8.4	2.6	3.2	1.3	0.1	0.2	82.7	1.5	15.8	0.070	0.500	20.713755	-100.438469	
T. Izq. San Miguel de Allende	28.53	1	1	29367	0.5	80.4	1.8	9.8	1.7	3.7	1.0	0.8	0.3	80.9	1.8	17.3	0.129	0.512	20.809170	-100.448829	
T. Izq. San Miguel de Allende	28.53	1	2	28034	0.3	78.7	1.9	10.9	1.8	4.1	1.2	0.8	0.3	79.0	1.9	19.1	0.101	0.512	20.809165	-100.448998	
T. Izq. San Miguel de Allende	28.53	3	1	20953	0.4	45.5	3.5	8.9	3.0	29.0	2.5	6.9	0.3	45.9	3.5	50.6	0.084	0.513	20.846364	-100.434443	
T. Izq. San Miguel de Allende	28.53	3	2	22028	0.4	38.4	3.9	10.6	3.4	32.8	2.7	7.5	0.3	38.8	3.9	57.3	0.093	0.513	20.840299	-100.437769	
Lim. Edos. Term. Qro. Ppia. Gto.	36.70																				
X. C. San José Iturbide - El Arenal	46.83	1	1	21512	0.8	49.3	3.7	8.2	2.7	25.6	2.2	7.2	0.3	50.1	3.7	46.2	0.070	0.523	20.967178	-100.428544	
X. C. San José Iturbide - El Arenal	46.83	1	2	19631	0.3	43.0	4.1	9.1	3.1	29.8	2.5	7.8	0.3	43.3	4.1	52.6	0.083	0.523	20.967131	-100.428717	
X. C. Ent. San Miguel de Allende - Dr. Mora	61.93	1	1	16573	0.8	46.7	4.5	8.3	4.4	26.6	3.3	5.0	0.4	47.5	4.5	48.0	0.063	0.529	21.064616	-100.497858	
X. C. Ent. San Miguel de Allende - Dr. Mora	61.93	1	2	14783	0.9	40.0	4.5	9.7	5.1	29.7	3.9	5.8	0.4	40.9	4.5	54.6	0.063	0.529	21.074150	-100.509354	
X. C. San Luis de La Paz - Guanajuato	86.68	1	1	14431	0.8	49.7	4.6	7.5	2.9	26.4	2.4	5.3	0.4	50.5	4.6	44.9	0.067	0.511	21.270252	-100.589415	
X. C. San Luis de La Paz - Guanajuato	86.68	1	2	15055	0.7	44.0	4.9	7.8	3.1	30.2	2.7	6.2	0.4	44.7	4.9	50.4	0.069	0.511	21.270236	-100.589589	
T. Izq. San Diego de La Unión	119.07	3	1	12123	0.9	48.3	5.3	7.5	2.9	24.6	4.4	5.5	0.6	49.2	5.3	45.5	0.054	0.503	21.539752	-100.746562	
T. Izq. San Diego de La Unión	119.07	3	2	12264	1.2	47.9	5.8	7.5	2.9	23.7	4.4	5.9	0.7	49.1	5.8	45.1	0.058	0.503	21.539690	-100.746747	
Lim. Edos. Term. Gto. Ppia. S. L. P.	124.74																				
T. Izq. Santa María del Río	155.88	3	1	13368	1.7	51.4	4.9	8.7	2.3	22.1	3.4	4.6	0.9	53.1	4.9	42.0	0.063	0.509	21.819790	-100.728029	
T. Izq. Santa María del Río	155.88	3	2	13862	1.5	47.5	5.6	9.7	2.7	23.3	3.8	4.9	1.0	49.0	5.6	45.4	0.068	0.509	21.820842	-100.729532	
T. Izq. Villa de Reyes	176.35	1	1	14557	0.8	39.6	5.7	8.8	3.3	33.1	3.5	4.5	0.7	40.4	5.7	53.9	0.070	0.517	21.961194	-100.811651	
T. Izq. Villa de Reyes	176.35	1	2	15560	1.1	34.2	6.4	9.4	3.6	35.9	3.7	4.9	0.8	35.3	6.4	58.3	0.059	0.517	21.961115	-100.811816	
T. Izq. Villa de Reyes	176.35	3	1	24970	0.6	35.1	3.9	9.6	4.2	37.9	4.0	4.3	0.4	35.7	3.9	60.4	0.077	0.508	21.979135	-100.821357	
T. Izq. Villa de Reyes	176.35	3	2	24147	0.5	31.6	4.2	9.9	4.3	39.8	4.2	5.1	0.4	32.1	4.2	63.7	0.065	0.508	21.979071	-100.821551	
X. C. Libramiento de San Luis Potosí	184.80	1	1	29897	0.7	65.5	2.5	8.2	2.8	14.7	2.4	2.8	0.4	66.2	2.5	31.3	0.095	0.500	22.024604	-100.846047	
X. C. Libramiento de San Luis Potosí	184.80	1	2	29908	0.7	63.5	2.9	8.4	3.0	15.2	2.6	3.3	0.4	64.2	2.9	32.9	0.098	0.500	22.024521	-100.846216	
X. Periférico de San Luis Potosí (Central)	197.50	1	1	36692	0.6	87.0	0.3	1.5	1.9	3.0	4.1	1.0	0.6	87.6	0.3	12.1	0.071	0.520	22.121756	-100.912696	
X. Periférico de San Luis Potosí (Lateral)	197.50	1	1	16819	2.4	72.5	1.9	11.6	2.8	3.9	2.8	1.1	1.0	74.9	1.9	23.2	0.105	0.519	22.121871	-100.912605	
X. Periférico de San Luis Potosí (Central)	197.50	1	2	40341	0.6	85.8	0.3	1.8	2.0	3.1	4.7	1.1	0.6	86.4	0.3	13.3	0.069	0.520	22.121602	-100.912780	
X. Periférico de San Luis Potosí (Lateral)	197.50	1	2	15562	3.1	69.0	2.1	12.4	3.3	4.6	3.2	1.3	1.0	72.1	2.1	25.8	0.103	0.519	22.121330	-100.913035	
San Luis Potosí	201.66																				

QUERETARO

7 CARR: San Juan del Río - Xilitla

CLAVE: 00183

RUTA: MEX-120

AÑO: 2018

LUGAR	ESTACION				CLASIFICACION VEHICULAR EN PORCIENTO										COORDENADAS					
	KM	TE	SC	TDPA	M	A	B	C2	C3	T3S2	T3S3	T3S2R4	OTROS	A	B	C	K'	D	LATITUD	LONGITUD
San Juan del Río	0.00																			
T. Der. Libramiento de San Juan del Río	5.20	3	1	13975	1.4	86.4	1.0	5.4	1.2	2.5	1.3	0.3	0.5	87.8	1.0	11.2	0.087	0.503	20.428738	-99.973127
T. Der. Libramiento de San Juan del Río	5.20	3	2	13813	1.5	86.7	1.0	5.1	1.2	2.4	1.3	0.3	0.5	88.2	1.0	10.8	0.081	0.503	20.428824	-99.973225
T. Der. Tequisquiapan	19.80	1	1	10739	1.4	86.0	1.7	7.5	1.2	1.1	0.6	0.3	0.2	87.4	1.7	10.9	0.085	0.504	20.513164	-99.905764
T. Der. Tequisquiapan	19.80	1	2	10554	1.5	85.9	1.6	7.4	1.1	1.2	0.8	0.2	0.3	87.4	1.6	11.0	0.085	0.504	20.513262	-99.905836
T. Der. Tequisquiapan	19.80	3	1	9238	1.3	84.3	1.5	7.4	1.9	1.7	1.2	0.4	0.3	85.6	1.5	12.9	0.087	0.511	20.540504	-99.901457
T. Der. Tequisquiapan	19.80	3	2	9656	0.9	85.6	1.3	7.1	1.8	1.7	1.1	0.3	0.2	86.5	1.3	12.2	0.084	0.511	20.540491	-99.901561
Ezequiel Montes	36.50	1	1	7411	1.4	81.5	2.1	8.0	2.8	2.4	1.0	0.4	0.4	82.9	2.1	15.0	0.084	0.503	20.644866	-99.905615
Ezequiel Montes	36.50	1	2	7337	1.9	82.3	1.9	7.3	2.7	2.1	1.1	0.3	0.4	84.2	1.9	13.9	0.089	0.503	20.644904	-99.905726
Ezequiel Montes	36.50	3	1	6555	1.8	86.6	1.1	7.6	1.2	0.9	0.6	0.0	0.2	88.4	1.1	10.5	0.085	0.511	20.677871	-99.890550
Ezequiel Montes	36.50	3	2	6264	2.4	86.6	1.1	7.0	1.3	0.8	0.6	0.0	0.2	89.0	1.1	9.9	0.090	0.511	20.677929	-99.890661
Cadereyta	47.90	3	0	10225	0.9	79.2	1.1	10.2	2.4	3.8	1.5	0.3	0.6	80.1	1.1	18.8	0.080	0.507	20.701198	-99.810269
Vizarrón de Montes	73.50	3	0	3496	0.8	72.8	0.9	12.6	5.4	1.7	4.9	0.3	0.6	73.6	0.9	25.5	0.080	0.505	20.847372	-99.713336
T. Der. San Joaquín	79.50	3	0	1450	1.7	80.4	1.2	12.1	2.1	1.3	1.0	0.0	0.2	82.1	1.2	16.7	0.090	0.520	20.885205	-99.707360
T. Izq. Higuierillas	89.10	3	0	1954	1.4	77.8	2.2	14.6	1.7	1.2	1.0	0.0	0.1	79.2	2.2	18.6	0.104	0.514	20.949662	-99.749208
T. Izq. Peñamiller	103.00	3	0	1624	0.4	81.7	2.6	10.8	2.0	1.9	0.4	0.0	0.2	82.1	2.6	15.3	0.109	0.506	21.039067	-99.739552
Pinal de Amoles	140.00	3	0	2169	0.8	86.5	1.0	8.1	1.1	1.4	0.8	0.0	0.3	87.3	1.0	11.7	0.086	0.503	21.138282	-99.620154
Jalpan de Serra	179.30	3	0	7143	1.5	85.3	0.2	7.8	0.6	3.6	0.4	0.1	0.5	86.8	0.2	13.0	0.075	0.504	21.208678	-99.453661
Landa de Matamoros	201.60	3	0	3027	2.0	85.1	0.9	9.3	0.7	1.4	0.4	0.0	0.2	87.1	0.9	12.0	0.076	0.519	21.186974	-99.311541
El Lobo	236.40	3	0	1041	1.9	83.9	2.3	6.1	2.2	2.0	0.7	0.0	0.9	85.8	2.3	11.9	0.096	0.513	21.291848	-99.115201
Lim. Edos. Term. Qro. Ppia. S. L. P.	238.33																			
Xilitla	266.40	1	0	2299	7.5	79.3	0.8	8.8	1.0	1.8	0.5	0.1	0.2	86.8	0.8	12.4	0.110	0.504	21.379173	-99.000984
T. C. Portezuelo - Cd. Valles	276.98	1	0	3611	5.6	81.7	1.3	7.8	1.2	1.8	0.4	0.0	0.2	87.3	1.3	11.4	0.090	0.501	21.443123	-98.929481

8 CARR: Libramiento Nororiente de Querétaro (Cuota)

CLAVE: 22266

RUTA: MEX-057D

AÑO: 2018

LUGAR	ESTACION				CLASIFICACION VEHICULAR EN PORCIENTO										COORDENADAS					
	KM	TE	SC	TDPA	M	A	B	C2	C3	T3S2	T3S3	T3S2R4	OTROS	A	B	C	K'	D	LATITUD	LONGITUD
T. C. México - Querétaro	0.00	3	1	8982	1.2	49.3	4.9	7.0	3.0	24.2	4.3	5.3	0.8	50.5	4.9	44.6	0.069	0.510	20.570895	-100.234450
T. C. México - Querétaro	0.00	3	2	9335	1.2	43.5	5.5	7.6	3.3	26.9	4.9	6.3	0.8	44.7	5.5	49.8	0.069	0.510	20.570814	-100.234616
Caseta de Cobro Chichimequillas	20.32	2	1	8984	0.2	40.7	3.3	4.6	7.2	31.4	3.6	6.2	2.8	40.9	3.3	55.8	0.066	0.500	20.705589	-100.343736
Caseta de Cobro Chichimequillas	20.32	2	2	8984	0.2	40.7	3.3	4.6	7.2	31.4	3.6	6.2	2.8	40.9	3.3	55.8	0.066	0.500	20.705589	-100.343736
T. C. Querétaro - San Luis Potosí	37.50	1	1	8789	0.9	49.1	4.4	6.7	3.2	25.0	4.7	5.4	0.6	50.0	4.4	45.6	0.069	0.501	20.815559	-100.445651
T. C. Querétaro - San Luis Potosí	37.50	1	2	8742	1.1	44.6	4.6	7.2	3.7	27.5	4.9	5.7	0.7	45.7	4.6	49.7	0.062	0.501	20.815470	-100.445705



QUERETARO

9 CARR: Palmillas - Apaseo el Grande (Cuota)

CLAVE:

RUTA: MEX-045D

AÑO: 2018

LUGAR	ESTACION				CLASIFICACION VEHICULAR EN PORCIENTO													COORDENADAS		
	KM	TE	SC	TDPA	M	A	B	C2	C3	T3S2	T3S3	T3S2R4	OTROS	A	B	C	K'	D	LATITUD	LONGITUD
T. C. México - Querétaro (Cuota)	0.00																			
Ent. Palmillas	4.00	3	1	6128	0.9	57.4	9.0	6.5	3.5	14.8	3.0	4.1	0.8	58.3	9.0	32.7	0.069	0.520	20.291703	-99.941358
Ent. Palmillas	4.00	3	2	6626	1.0	55.5	9.2	7.2	4.0	15.6	2.7	4.2	0.6	56.5	9.2	34.3	0.083	0.520	20.291589	-99.941318
Lim. Edos. Term. Qro. Ppia. Gto.	67.00																			
T. C. Querétaro - Irapuato (Cuota)	86.90																			

10 CARR: Querétaro - Irapuato (Cuota)

CLAVE: 00423

RUTA: MEX-045D

AÑO: 2018

LUGAR	ESTACION				CLASIFICACION VEHICULAR EN PORCIENTO													COORDENADAS		
	KM	TE	SC	TDPA	M	A	B	C2	C3	T3S2	T3S3	T3S2R4	OTROS	A	B	C	K'	D	LATITUD	LONGITUD
Querétaro	0.00	3	1	19863	0.7	66.4	6.9	7.1	5.3	6.8	2.6	3.6	0.6	67.1	6.9	26.0	0.078	0.515	20.576626	-100.420412
Querétaro	0.00	3	2	18743	0.7	62.1	7.5	8.5	6.2	7.7	2.8	3.9	0.6	62.8	7.5	29.7	0.081	0.515	20.576525	-100.420417
Caseta de Cobro Querétaro	7.00	2	1	7328	0.2	64.5	5.7	3.5	5.7	14.4	1.3	4.0	0.7	64.7	5.7	29.6	0.079	0.500	20.572203	-100.472827
Caseta de Cobro Querétaro	7.00	2	2	7328	0.2	64.5	5.7	3.5	5.7	14.4	1.3	4.0	0.7	64.7	5.7	29.6	0.079	0.500	20.572203	-100.472827
Lim. Edos. Term. Qro. Ppia. Gto.	8.97																			
X. C. Celaya - Dolores Hidalgo	44.10	1	1	17343	0.7	69.9	4.9	7.6	2.9	7.2	1.8	4.4	0.6	70.6	4.9	24.5	0.073	0.503	20.556891	-100.811167
X. C. Celaya - Dolores Hidalgo	44.10	1	2	17158	0.8	66.6	5.6	8.1	3.4	8.2	1.9	4.8	0.6	67.4	5.6	27.0	0.075	0.503	20.556728	-100.811197
T. Izq. Salamanca	81.54	1	1	8668	0.7	70.0	5.6	6.8	3.1	7.5	1.5	4.4	0.4	70.7	5.6	23.7	0.074	0.503	20.592941	-101.152804
T. Izq. Salamanca	81.54	1	2	8570	0.8	67.3	6.4	7.8	3.4	7.7	1.6	4.6	0.4	68.1	6.4	25.5	0.075	0.503	20.592777	-101.152834
T. Izq. Salamanca	81.54	3	1	8666	0.5	67.2	5.1	8.2	3.1	9.3	1.7	4.3	0.6	67.7	5.1	27.2	0.069	0.517	20.600688	-101.191887
T. Izq. Salamanca	81.54	3	2	9289	0.6	63.9	5.9	8.7	3.7	10.1	2.0	4.6	0.5	64.5	5.9	29.6	0.096	0.517	20.600521	-101.191921
Caseta de Cobro Salamanca	83.25	2	1	5836	0.2	59.4	5.1	4.8	6.6	15.5	1.7	6.0	0.7	59.6	5.1	35.3	0.079	0.500	20.598482	-101.180975
Caseta de Cobro Salamanca	83.25	2	2	5836	0.2	59.4	5.1	4.8	6.6	15.5	1.7	6.0	0.7	59.6	5.1	35.3	0.079	0.500	20.598482	-101.180975
T. Der. Libramiento de Irapuato	96.30	1	1	9167	0.6	66.7	5.3	8.3	3.4	9.1	1.7	4.4	0.5	67.3	5.3	27.4	0.065	0.517	20.648652	-101.279400
T. Der. Libramiento de Irapuato	96.30	1	2	9825	0.6	64.2	5.6	8.7	3.5	10.5	1.7	4.7	0.5	64.8	5.6	29.6	0.090	0.517	20.648511	-101.279492
T. Der. Libramiento de Irapuato	96.30	3	1	18982	0.8	69.7	3.3	9.3	3.6	8.1	2.3	2.2	0.7	70.5	3.3	26.2	0.065	0.501	20.654757	-101.292965
T. Der. Libramiento de Irapuato	96.30	3	2	19030	1.0	67.0	3.7	10.0	4.2	8.4	2.5	2.4	0.8	68.0	3.7	28.3	0.076	0.501	20.654623	-101.292935
T. C. Irapuato - Zapotlanejo	104.70																			

11 CARR: México - Querétaro (Cuota)

CLAVE: 00411

RUTA: MEX-057-MEX-057D

AÑO: 2018

LUGAR	ESTACION				CLASIFICACION VEHICULAR EN PORCIENTO													COORDENADAS		
	KM	TE	SC	TDPA	M	A	B	C2	C3	T3S2	T3S3	T3S2R4	OTROS	A	B	C	K'	D	LATITUD	LONGITUD
México	0.00																			
Lim. Edos. Term. CDMX Ppia. Méx.	11.30																			

QUERETARO

11 CARR: México - Querétaro (Cuota)

CLAVE: 00411

RUTA: MEX-057-MEX-057D

AÑO: 2018

LUGAR	ESTACION				CLASIFICACION VEHICULAR EN PORCIENTO										COORDENADAS					
	KM	TE	SC	TDPA	M	A	B	C2	C3	T3S2	T3S3	T3S2R4	OTROS	A	B	C	K'	D	LATITUD	LONGITUD
Caseta de Cobro Tepetzotlán	43.01	2	1	29039	0.4	70.8	4.9	3.4	6.5	10.6	0.7	2.2	0.5	71.2	4.9	23.9	0.077	0.500	19.715361	-99.207448
Caseta de Cobro Tepetzotlán	43.01	2	2	29039	0.4	70.8	4.9	3.4	6.5	10.6	0.7	2.2	0.5	71.2	4.9	23.9	0.077	0.500	19.715361	-99.207448
Ent. Jorobas	56.18	1	1	32902	1.7	69.5	5.7	4.2	4.6	10.5	0.9	2.3	0.6	71.2	5.7	23.1	0.058	0.504	19.811585	-99.238604
Ent. Jorobas	56.18	1	2	33457	1.9	66.0	6.3	4.5	5.0	12.3	1.0	2.4	0.6	67.9	6.3	25.8	0.070	0.504	19.806545	-99.236522
Ent. Jorobas	56.18	3	1	31045	1.3	66.0	5.4	4.3	6.4	12.7	0.7	2.3	0.9	67.3	5.4	27.3	0.063	0.506	19.830980	-99.262040
Ent. Jorobas	56.18	3	2	30280	1.2	63.5	5.9	4.4	6.7	14.2	0.7	2.5	0.9	64.7	5.9	29.4	0.068	0.506	19.837164	-99.274036
Lim. Edos. Term. Méx. Ppia. Hgo.	59.85																			
T. Der. Tepeji del Río	69.36	1	1	33652	1.1	70.0	4.9	3.7	5.0	11.3	0.9	2.4	0.7	71.1	4.9	24.0	0.064	0.506	19.862975	-99.313440
T. Der. Tepeji del Río	69.36	1	2	32843	1.1	67.3	5.1	4.1	5.0	12.9	1.0	2.8	0.7	68.4	5.1	26.5	0.068	0.506	19.874607	-99.340292
T. Der. Tepeji del Río	69.36	3	1	33780	1.0	72.5	3.6	2.9	4.7	11.8	0.6	2.1	0.8	73.5	3.6	22.9	0.061	0.517	19.914373	-99.362067
T. Der. Tepeji del Río	69.36	3	2	36087	0.9	69.9	4.0	3.3	5.2	12.9	0.6	2.4	0.8	70.8	4.0	25.2	0.065	0.517	19.920814	-99.370502
T. Izq. Jilotepec	83.75	1	1	31965	1.2	69.5	4.7	3.5	5.2	12.0	0.9	2.4	0.6	70.7	4.7	24.6	0.069	0.503	19.976602	-99.436076
T. Izq. Jilotepec	83.75	1	2	31550	1.2	67.1	5.2	3.9	5.4	12.8	1.0	2.7	0.7	68.3	5.2	26.5	0.065	0.503	19.975601	-99.437310
T. Izq. Jilotepec	83.75	3	1	26144	2.3	66.1	5.6	3.7	4.3	13.7	1.1	2.6	0.6	68.4	5.6	26.0	0.076	0.506	19.985876	-99.444380
T. Izq. Jilotepec	83.75	3	2	25522	1.9	63.0	6.1	3.9	5.0	15.3	1.2	2.9	0.7	64.9	6.1	29.0	0.071	0.506	19.985631	-99.444388
Lim. Edos. Term. Hgo. Ppia. Méx.	86.00																			
X. C. Jilotepec - Maravillas	107.00	1	1	30695	1.3	65.2	4.2	3.1	4.7	15.6	1.8	3.5	0.6	66.5	4.2	29.3	0.066	0.507	20.080729	-99.619449
X. C. Jilotepec - Maravillas	107.00	1	2	29842	1.2	61.6	4.7	3.5	5.7	17.0	1.9	3.8	0.6	62.8	4.7	32.5	0.068	0.507	20.082406	-99.624755
X. C. Jilotepec - Maravillas	107.00	3	1	31321	1.3	65.5	3.4	3.6	5.3	15.0	1.8	3.3	0.8	66.8	3.4	29.8	0.066	0.508	20.082424	-99.635826
X. C. Jilotepec - Maravillas	107.00	3	2	30371	1.0	63.7	4.1	3.8	5.7	15.3	2.0	3.5	0.9	64.7	4.1	31.2	0.068	0.508	20.082382	-99.634630
T. Izq. Aculco	125.00	1	1	31414	1.3	63.3	3.9	3.3	5.6	16.2	1.9	3.8	0.7	64.6	3.9	31.5	0.066	0.508	20.097498	-99.692882
T. Izq. Aculco	125.00	1	2	30455	0.9	61.4	4.4	3.7	5.7	17.0	2.0	4.0	0.9	62.3	4.4	33.3	0.067	0.508	20.091885	-99.687289
T. Izq. Aculco	125.00	3	1	28838	1.3	64.4	4.1	3.2	5.3	15.3	1.9	3.6	0.9	65.7	4.1	30.2	0.066	0.508	20.109953	-99.707214
T. Izq. Aculco	125.00	3	2	27958	1.0	62.8	4.6	3.5	5.4	16.0	2.1	3.7	0.9	63.8	4.6	31.6	0.068	0.508	20.108566	-99.704323
Lim. Edos. Term. Méx. Ppia. Qro.	145.50																			
Caseta de Cobro Palmillas	145.80	2	1	21643	0.3	57.5	4.5	4.9	6.2	19.7	1.8	4.4	0.7	57.8	4.5	37.7	0.077	0.500	20.296112	-99.929069
Caseta de Cobro Palmillas	145.80	2	2	21643	0.3	57.5	4.5	4.9	6.2	19.7	1.8	4.4	0.7	57.8	4.5	37.7	0.077	0.500	20.296112	-99.929069
T. Izq. Toluca	148.50	1	1	25868	1.1	54.6	4.2	5.3	7.1	20.6	1.6	4.9	0.6	55.7	4.2	40.1	0.061	0.510	20.287457	-99.913512
T. Izq. Toluca	148.50	1	2	26924	1.4	52.3	4.8	5.6	7.2	21.4	1.7	4.9	0.7	53.7	4.8	41.5	0.054	0.510	20.286143	-99.911987
T. Izq. Toluca	148.50	3	1	38953	1.3	56.2	4.1	4.8	7.0	19.8	1.7	4.4	0.7	57.5	4.1	38.4	0.057	0.500	20.306620	-99.934504
T. Izq. Toluca	148.50	3	2	38967	1.1	53.0	4.5	5.6	7.9	20.5	1.8	4.9	0.7	54.1	4.5	41.4	0.063	0.500	20.306883	-99.935004
T. Der. Poniente San Juan del Río	164.10	3	1	34644	1.0	65.1	3.7	4.1	6.1	14.5	1.9	2.8	0.8	66.1	3.7	30.2	0.075	0.502	20.373007	-99.992375
T. Der. Poniente San Juan del Río	164.10	3	2	34955	0.9	62.2	3.9	4.3	6.4	15.9	2.2	3.2	1.0	63.1	3.9	33.0	0.072	0.502	20.373516	-99.994167
T. Izq. Acámbaro	170.45	3	1	45903	1.0	74.2	3.9	2.9	5.2	8.7	1.6	1.6	0.9	75.2	3.9	20.9	0.077	0.502	20.447311	-100.078766
T. Izq. Acámbaro	170.45	3	2	46360	0.9	71.1	4.6	3.4	5.6	10.0	1.7	1.8	0.9	72.0	4.6	23.4	0.072	0.502	20.449792	-100.082240

QUERETARO

11 CARR: México - Querétaro (Cuota)

CLAVE: 00411

RUTA: MEX-057-MEX-057D

AÑO: 2018

LUGAR	ESTACION				CLASIFICACION VEHICULAR EN PORCIENTO										COORDENADAS					
	KM	TE	SC	TDPA	M	A	B	C2	C3	T3S2	T3S3	T3S2R4	OTROS	A	B	C	K'	D	LATITUD	LONGITUD
T. Der. Libramiento de Querétaro a San Luis Potosí	207.00	1	1	64373	0.9	80.7	2.4	2.6	4.2	5.3	2.2	0.9	0.8	81.6	2.4	16.0	0.073	0.501	20.573161	-100.323269
T. Der. Libramiento de Querétaro a San Luis Potosí	207.00	1	2	64688	0.7	78.9	2.5	2.9	4.6	5.9	2.5	1.1	0.9	79.6	2.5	17.9	0.081	0.501	20.574483	-100.331021
T. Der. Libramiento de Querétaro a San Luis Potosí	207.00	3	1	71029	0.9	84.6	2.2	2.1	3.5	4.0	1.7	0.4	0.6	85.5	2.2	12.3	0.071	0.503	20.578266	-100.380363
T. Der. Libramiento de Querétaro a San Luis Potosí	207.00	3	2	70057	0.7	83.4	2.4	2.3	3.9	4.5	1.8	0.4	0.6	84.1	2.4	13.5	0.089	0.503	20.578145	-100.380335
Querétaro	211.60																			

12 CARR: Ajuchitlán - Colón

CLAVE: 22010

RUTA: QRO-005

AÑO: 2018

LUGAR	ESTACION				CLASIFICACION VEHICULAR EN PORCIENTO										COORDENADAS					
	KM	TE	SC	TDPA	M	A	B	C2	C3	T3S2	T3S3	T3S2R4	OTROS	A	B	C	K'	D	LATITUD	LONGITUD
T. C. El Colorado - Higuierillas	0.00	3	1	4137	0.7	85.8	1.8	6.9	0.5	2.7	0.7	0.3	0.6	86.5	1.8	11.7	0.081	0.514	20.693639	-100.015883
T. C. El Colorado - Higuierillas	0.00	3	2	4373	1.2	82.9	2.2	8.0	0.7	3.1	0.9	0.3	0.7	84.1	2.2	13.7	0.094	0.514	20.693610	-100.015961
Colón	14.00	1	1	4027	1.2	89.3	0.8	7.6	0.4	0.5	0.1	0.1	0.0	90.5	0.8	8.7	0.095	0.502	20.763025	-100.045486
Colón	14.00	1	2	4063	1.3	88.7	0.8	8.1	0.4	0.5	0.1	0.1	0.0	90.0	0.8	9.2	0.105	0.502	20.762982	-100.045567

13 CARR: Ajuchitlán - Ezequiel Montes

CLAVE: 22005

RUTA: QRO-005

AÑO: 2018

LUGAR	ESTACION				CLASIFICACION VEHICULAR EN PORCIENTO										COORDENADAS					
	KM	TE	SC	TDPA	M	A	B	C2	C3	T3S2	T3S3	T3S2R4	OTROS	A	B	C	K'	D	LATITUD	LONGITUD
T. C. El Colorado - Higuierillas	0.00	3	1	7496	0.7	83.4	0.7	8.7	2.0	2.5	1.2	0.4	0.4	84.1	0.7	15.2	0.095	0.513	20.703249	-99.977553
T. C. El Colorado - Higuierillas	0.00	3	2	7118	0.8	81.8	0.7	9.4	2.2	2.8	1.5	0.4	0.4	82.6	0.7	16.7	0.089	0.513	20.703315	-99.977513
Ezequiel Montes	10.60	1	0	10811	1.5	82.0	0.3	8.6	0.9	5.2	0.7	0.2	0.6	83.5	0.3	16.2	0.083	0.509	20.669846	-99.909210

14 CARR: El Colorado - Higuierillas

CLAVE: 22004

RUTA: QRO-004

AÑO: 2018

LUGAR	ESTACION				CLASIFICACION VEHICULAR EN PORCIENTO										COORDENADAS					
	KM	TE	SC	TDPA	M	A	B	C2	C3	T3S2	T3S3	T3S2R4	OTROS	A	B	C	K'	D	LATITUD	LONGITUD
T. C. México - Querétaro (Cuota)	0.00	3	1	24058	1.3	78.6	1.1	9.4	3.4	3.3	1.1	1.3	0.5	79.9	1.1	19.0	0.090	0.523	20.574065	-100.206667
T. C. México - Querétaro (Cuota)	0.00	3	2	21927	1.3	76.7	1.3	10.3	3.8	3.7	1.1	1.3	0.5	78.0	1.3	20.7	0.067	0.523	20.574140	-100.206750
T. Izq. Chichimequillas	3.80	3	1	17064	1.3	82.8	1.1	6.8	2.4	2.4	1.8	0.9	0.5	84.1	1.1	14.8	0.086	0.523	20.606479	-100.165257
T. Izq. Chichimequillas	3.80	3	2	15568	1.4	80.7	1.3	7.7	2.6	2.9	1.9	1.0	0.5	82.1	1.3	16.6	0.068	0.523	20.606554	-100.165317
X. C. Querétaro - Tequisquiapan	9.10	3	1	8815	1.3	82.5	1.0	8.4	1.7	2.2	1.9	0.5	0.5	83.8	1.0	15.2	0.101	0.523	20.618416	-100.138590
X. C. Querétaro - Tequisquiapan	9.10	3	2	8039	1.5	81.0	1.2	9.1	1.8	2.5	1.8	0.6	0.5	82.5	1.2	16.3	0.075	0.523	20.618488	-100.138635
T. Der. Ezequiel Montes	31.90	1	1	8117	1.0	82.7	0.8	8.9	1.8	2.0	1.9	0.4	0.5	83.7	0.8	15.5	0.109	0.505	20.702247	-99.992846
T. Der. Ezequiel Montes	31.90	1	2	7961	1.0	80.8	0.9	10.0	2.1	2.0	2.3	0.4	0.5	81.8	0.9	17.3	0.105	0.505	20.702350	-99.992910

QUERETARO

14 CARR: El Colorado - Higuierillas

CLAVE: 22004

RUTA: QRO-004

AÑO: 2018

LUGAR	ESTACION				CLASIFICACION VEHICULAR EN PORCIENTO													COORDENADAS		
	KM	TE	SC	TDPA	M	A	B	C2	C3	T3S2	T3S3	T3S2R4	OTROS	A	B	C	K'	D	LATITUD	LONGITUD
T. Der. Ezequiel Montes	31.90	3	1	4815	1.4	85.1	1.2	7.5	1.5	1.1	1.5	0.4	0.3	86.5	1.2	12.3	0.085	0.523	20.710319	-99.978209
T. Der. Ezequiel Montes	31.90	3	2	4393	1.6	83.2	1.4	8.4	1.7	1.1	1.7	0.5	0.4	84.8	1.4	13.8	0.067	0.523	20.710420	-99.978276
T. Izq. San Pablo Tolimán	57.00	3	0	1369	1.2	88.2	1.0	6.5	1.6	1.0	0.4	0.0	0.1	89.4	1.0	9.6	0.065	0.522	20.855816	-99.886698
T. C. San Juan del Río - Xilitla	81.90	1	0	1387	1.1	88.0	1.0	7.1	1.9	0.6	0.2	0.0	0.1	89.1	1.0	9.9	0.074	0.508	20.941145	-99.750176

15 CARR: Hacienda Paraíso - Chichimequillas

CLAVE: 22001

RUTA: QRO-001

AÑO: 2018

LUGAR	ESTACION				CLASIFICACION VEHICULAR EN PORCIENTO													COORDENADAS		
	KM	TE	SC	TDPA	M	A	B	C2	C3	T3S2	T3S3	T3S2R4	OTROS	A	B	C	K'	D	LATITUD	LONGITUD
Hacienda Paraíso	0.00	3	1	6046	0.7	74.1	1.6	10.4	3.8	6.3	1.4	1.0	0.7	74.8	1.6	23.6	0.096	0.529	20.585983	-100.203255
Hacienda Paraíso	0.00	3	2	5388	0.8	72.1	1.7	11.2	4.1	6.8	1.6	1.0	0.7	72.9	1.7	25.4	0.094	0.529	20.585949	-100.203336
T. Der. Navajas	7.90	3	0	12225	1.0	75.6	1.6	10.1	2.4	6.4	1.3	0.5	1.1	76.6	1.6	21.8	0.081	0.501	20.646293	-100.232591
La Griega	10.35	3	0	8511	1.0	76.2	1.5	13.0	2.0	4.4	1.1	0.3	0.5	77.2	1.5	21.3	0.079	0.513	20.677778	-100.239856
Amazcala	15.45	3	0	8088	1.4	76.5	1.4	11.9	2.3	3.7	1.6	0.5	0.7	77.9	1.4	20.7	0.076	0.501	20.714414	-100.272771
Chichimequillas	26.61																			

16 CARR: La Culata - San Joaquín

CLAVE: 22021

RUTA: QRO-021

AÑO: 2018

LUGAR	ESTACION				CLASIFICACION VEHICULAR EN PORCIENTO													COORDENADAS		
	KM	TE	SC	TDPA	M	A	B	C2	C3	T3S2	T3S3	T3S2R4	OTROS	A	B	C	K'	D	LATITUD	LONGITUD
La Culata	0.00	3	0	1531	0.9	75.1	0.9	11.1	2.6	4.4	3.6	0.6	0.8	76.0	0.9	23.1	0.079	0.506	20.886842	-99.702271
San Joaquín	31.80	1	0	2237	0.7	85.6	0.3	10.3	0.2	2.3	0.3	0.0	0.3	86.3	0.3	13.4	0.090	0.501	20.893990	-99.577510

17 CARR: Libramiento de San Juan del Río

CLAVE: 22266

RUTA: QRO

AÑO: 2018

LUGAR	ESTACION				CLASIFICACION VEHICULAR EN PORCIENTO													COORDENADAS		
	KM	TE	SC	TDPA	M	A	B	C2	C3	T3S2	T3S3	T3S2R4	OTROS	A	B	C	K'	D	LATITUD	LONGITUD
T. C. México - Querétaro (Después del F.F.C.C.)	0.00	3	1	19029	1.2	85.3	0.7	4.7	1.0	2.9	2.3	1.1	0.8	86.5	0.7	12.8	0.074	0.506	20.378751	-99.985706
T. C. México - Querétaro (Después del F.F.C.C.)	0.00	3	2	18553	1.2	83.7	0.8	4.9	1.4	3.5	2.9	0.8	0.8	84.9	0.8	14.3	0.070	0.506	20.378768	-99.985870
T. C. San Juan del Río - Xilitla	5.05	1	1	16763	1.3	84.7	0.8	5.2	1.2	2.8	2.4	0.9	0.7	86.0	0.8	13.2	0.074	0.508	20.413167	-99.981242
T. C. San Juan del Río - Xilitla	5.05	1	2	16220	1.2	83.1	0.9	5.8	1.2	3.3	2.7	1.0	0.8	84.3	0.9	14.8	0.077	0.508	20.413201	-99.981404

QUERETARO

18 CARR: Libramiento Norte de Querétaro

CLAVE: 22500

RUTA: QRO

AÑO: 2018

LUGAR	ESTACION				CLASIFICACION VEHICULAR EN PORCIENTO													COORDENADAS		
	KM	TE	SC	TDPA	M	A	B	C2	C3	T3S2	T3S3	T3S2R4	OTROS	A	B	C	K'	D	LATITUD	LONGITUD
T. C. Querétaro - San Luis Potosí	0.00	3	1	67103	0.8	97.4	0.5	1.3	0.0	0.0	0.0	0.0	0.0	98.2	0.5	1.3	0.074	0.527	20.620429	-100.413880
T. C. Querétaro - San Luis Potosí	0.00	3	2	74740	0.8	97.6	0.5	1.1	0.0	0.0	0.0	0.0	0.0	98.4	0.5	1.1	0.077	0.527	20.620573	-100.413854
T. C. México - Querétaro	8.00	1	1	42939	0.8	97.6	0.6	1.0	0.0	0.0	0.0	0.0	0.0	98.4	0.6	1.0	0.074	0.527	20.584917	-100.362553
T. C. México - Querétaro	8.00	1	2	47835	0.8	97.6	0.6	1.0	0.0	0.0	0.0	0.0	0.0	98.4	0.6	1.0	0.077	0.527	20.584988	-100.362405
T. C. México - Querétaro	8.00	3	1	23261	0.6	92.8	0.2	3.8	0.9	0.5	1.0	0.1	0.1	93.4	0.2	6.4	0.095	0.519	20.567613	-100.357748
T. C. México - Querétaro	8.00	3	2	21583	0.6	92.3	0.2	4.2	1.0	0.5	1.0	0.1	0.1	92.9	0.2	6.9	0.127	0.519	20.567757	-100.357369
T.C. Libramiento Surponiente de Querétaro	12.00																			

19 CARR: Libramiento Surponiente de Querétaro

CLAVE: 22501

RUTA: QRO

AÑO: 2018

LUGAR	ESTACION				CLASIFICACION VEHICULAR EN PORCIENTO													COORDENADAS		
	KM	TE	SC	TDPA	M	A	B	C2	C3	T3S2	T3S3	T3S2R4	OTROS	A	B	C	K'	D	LATITUD	LONGITUD
X. C. Querétaro - Ent. San Martín	0.00	3	1	26557	1.2	90.5	0.3	4.2	0.7	1.1	1.6	0.1	0.3	91.7	0.3	8.0	0.106	0.515	20.551252	-100.372141
X. C. Querétaro - Ent. San Martín	0.00	3	2	24980	1.1	91.7	0.2	3.6	0.6	1.0	1.5	0.1	0.2	92.8	0.2	7.0	0.119	0.515	20.551147	-100.372089
T. Der. a Candiles	4.20	1	1	24917	0.8	93.1	0.2	2.7	0.6	0.8	1.5	0.1	0.2	93.9	0.2	5.9	0.105	0.520	20.537411	-100.394398
T. Der. a Candiles	4.20	1	2	23029	0.9	92.2	0.2	3.3	0.7	0.9	1.5	0.1	0.2	93.1	0.2	6.7	0.106	0.520	20.537286	-100.394376
T. Izq. a Santa Bárbara (1º acceso)	5.00	1	1	16254	0.9	91.1	0.2	4.1	0.7	1.0	1.6	0.1	0.3	92.0	0.2	7.8	0.119	0.515	20.533933	-100.398728
T. Izq. a Santa Bárbara (1º acceso)	5.00	1	2	15279	0.8	90.7	0.2	4.5	0.7	1.0	1.7	0.1	0.3	91.5	0.2	8.3	0.129	0.515	20.533835	-100.398623
T. Izq. a Santa Bárbara (2º acceso)	7.30	3	1	13734	1.2	91.5	0.2	4.1	1.2	0.8	0.7	0.1	0.2	92.7	0.2	7.1	0.103	0.523	20.526095	-100.423047
T. Izq. a Santa Bárbara (2º acceso)	7.30	3	2	12530	1.0	91.2	0.2	4.4	1.2	0.9	0.8	0.1	0.2	92.2	0.2	7.6	0.115	0.523	20.525985	-100.422999
T. C. Villa del Pueblito - Huimilpan	9.40	3	1	12831	1.2	90.5	1.2	4.2	1.1	0.8	0.7	0.1	0.2	91.7	1.2	7.1	0.102	0.523	20.529751	-100.445484
T. C. Villa del Pueblito - Huimilpan	9.40	3	2	11690	1.0	90.0	1.3	4.4	1.3	0.9	0.8	0.1	0.2	91.0	1.3	7.7	0.114	0.523	20.529647	-100.445529
T. Izq. a La Negreta	10.10	3	1	12052	1.8	88.7	1.4	4.0	1.2	1.4	1.0	0.1	0.4	90.5	1.4	8.1	0.090	0.509	20.528551	-100.455925
T. Izq. a La Negreta	10.10	3	2	11626	1.9	88.1	1.6	4.1	1.3	1.4	1.1	0.1	0.4	90.0	1.6	8.4	0.116	0.509	20.528471	-100.455895
Querétaro - Irapuato	15.00	1	1	7657	1.8	86.2	1.4	6.4	1.5	1.3	0.9	0.1	0.4	88.0	1.4	10.6	0.090	0.502	20.533354	-100.479797
Querétaro - Irapuato	15.00	1	2	7590	1.5	86.3	1.5	6.5	1.6	1.3	0.9	0.1	0.3	87.8	1.5	10.7	0.122	0.502	20.533399	-100.479897
T. C. Querétaro - Irapuato (Cuota)	18.60	1	1	18777	1.3	81.1	1.2	6.3	2.9	4.7	1.4	0.8	0.3	82.4	1.2	16.4	0.098	0.519	20.555844	-100.482059
T. C. Querétaro - Irapuato (Cuota)	18.60	1	2	17388	1.2	81.6	1.2	5.9	2.6	4.9	1.5	0.8	0.3	82.8	1.2	16.0	0.120	0.519	20.555837	-100.482174
T. C. Querétaro - Irapuato (Cuota)	18.60	3	1	19630	0.9	86.3	0.7	5.3	1.8	2.8	1.0	0.9	0.3	87.2	0.7	12.1	0.099	0.522	20.577722	-100.483083
T. C. Querétaro - Irapuato (Cuota)	18.60	3	2	17968	1.2	83.9	1.0	5.7	2.1	3.5	1.2	1.1	0.3	85.1	1.0	13.9	0.133	0.522	20.577680	-100.483151
T. Der. a Las Adjuntas	21.00	3	1	20993	1.2	86.7	0.7	4.6	1.5	2.8	1.2	0.9	0.4	87.9	0.7	11.4	0.100	0.520	20.598670	-100.490381
T. Der. a Las Adjuntas	21.00	3	2	19358	1.3	85.6	0.9	4.9	1.6	2.9	1.3	1.1	0.4	86.9	0.9	12.2	0.143	0.520	20.598664	-100.490518
T. Der. a Tlacote el Bajo	27.70	1	1	19771	1.0	87.3	1.0	4.1	1.8	2.5	1.0	0.9	0.4	88.3	1.0	10.7	0.130	0.514	20.641667	-100.500655
T. Der. a Tlacote el Bajo	27.70	1	2	18696	1.1	86.7	1.0	4.1	1.8	3.0	1.0	1.1	0.2	87.8	1.0	11.2	0.103	0.514	20.641668	-100.500766
T. Der. a Tlacote el Bajo	27.70	3	1	9454	1.6	78.0	1.6	7.4	3.1	4.7	1.4	1.8	0.4	79.6	1.6	18.8	0.164	0.521	20.651257	-100.504801

QUERETARO

19 CARR: Libramiento Surponiente de Querétaro

CLAVE: 22501

RUTA: QRO

AÑO: 2018

LUGAR	ESTACION				CLASIFICACION VEHICULAR EN PORCIENTO														COORDENADAS	
	KM	TE	SC	TDPA	M	A	B	C2	C3	T3S2	T3S3	T3S2R4	OTROS	A	B	C	K'	D	LATITUD	LONGITUD
T. Der. a Tlacote el Bajo	27.70	3	2	8690	1.5	78.4	1.5	6.5	3.2	4.9	1.5	2.1	0.4	79.9	1.5	18.6	0.176	0.521	20.651173	-100.504848
Obrajuelos (El Zapote)	29.70	3	1	8633	1.0	77.5	2.1	7.5	2.7	5.5	1.2	2.2	0.3	78.5	2.1	19.4	0.181	0.521	20.661900	-100.515493
Obrajuelos (El Zapote)	29.70	3	2	7929	0.8	76.1	1.9	8.2	3.0	5.9	1.3	2.5	0.3	76.9	1.9	21.2	0.153	0.521	20.661970	-100.515554
Santo Niño de Praga	31.20	3	1	8486	0.8	79.9	0.7	5.8	2.7	5.9	1.4	2.3	0.5	80.7	0.7	18.6	0.177	0.510	20.670690	-100.508389
Santo Niño de Praga	31.20	3	2	8143	0.9	78.5	0.9	7.0	2.6	5.8	1.2	2.6	0.5	79.4	0.9	19.7	0.150	0.510	20.670727	-100.508496
X. C. juriquilla - Mompani	34.00	3	1	6974	0.9	74.7	1.3	8.5	2.3	7.3	1.6	2.9	0.5	75.6	1.3	23.1	0.199	0.517	20.690378	-100.496962
X. C. juriquilla - Mompani	34.00	3	2	6525	0.9	73.4	2.0	8.4	2.4	6.7	2.1	3.3	0.8	74.3	2.0	23.7	0.159	0.517	20.690454	-100.497012
T. Der. a El Nabo	36.30	3	1	7443	0.9	75.1	1.9	7.8	2.6	7.0	1.4	2.9	0.4	76.0	1.9	22.1	0.176	0.518	20.702955	-100.479243
T. Der. a El Nabo	36.30	3	2	6919	0.9	74.0	2.2	8.6	2.6	6.8	1.4	3.0	0.5	74.9	2.2	22.9	0.153	0.518	20.703037	-100.479380
Pie de Gallo	44.10	1	1	9026	0.9	79.2	1.8	7.3	2.0	5.1	1.2	2.1	0.4	80.1	1.8	18.1	0.164	0.515	20.747608	-100.458021
Pie de Gallo	44.10	1	2	8513	0.9	75.6	2.5	8.4	2.3	6.0	1.4	2.5	0.4	76.5	2.5	21.0	0.134	0.515	20.747656	-100.458143
Pie de Gallo	44.10	3	1	9455	0.6	77.1	2.6	7.5	2.3	5.7	1.2	2.3	0.7	77.7	2.6	19.7	0.173	0.516	20.755984	-100.449253
Pie de Gallo	44.10	3	2	8877	0.7	77.1	2.9	6.6	2.5	5.6	1.4	2.5	0.7	77.8	2.9	19.3	0.160	0.516	20.756069	-100.449268
T. C. Querétaro - San Luis Potosi	45.70																			

20 CARR: Peña Colorada - El Rodeo

CLAVE: 22002

RUTA: QRO

AÑO: 2018

LUGAR	ESTACION				CLASIFICACION VEHICULAR EN PORCIENTO														COORDENADAS	
	KM	TE	SC	TDPA	M	A	B	C2	C3	T3S2	T3S3	T3S2R4	OTROS	A	B	C	K'	D	LATITUD	LONGITUD
T. C. México - Querétaro	0.00	3	0	14444	1.2	79.8	0.4	8.0	1.6	5.8	1.9	0.4	0.9	81.0	0.4	18.6	0.084	0.505	20.586043	-100.250112
X. C. Querétaro - Tequisquiapan	9.00	1	0	13773	1.4	75.9	0.7	10.2	1.8	7.6	1.2	0.4	0.8	77.3	0.7	22.0	0.067	0.506	20.634441	-100.260222
El Rodeo	11.00	1	0	1824	4.6	82.8	0.8	9.3	0.8	1.2	0.3	0.0	0.2	87.4	0.8	11.8	0.076	0.506	20.659314	-100.258917

21 CARR: Querétaro - Ent. San Martín

CLAVE: 22067

RUTA: QRO

AÑO: 2018

LUGAR	ESTACION				CLASIFICACION VEHICULAR EN PORCIENTO														COORDENADAS	
	KM	TE	SC	TDPA	M	A	B	C2	C3	T3S2	T3S3	T3S2R4	OTROS	A	B	C	K'	D	LATITUD	LONGITUD
T. C. México - Querétaro	0.00	3	1	9606	0.4	95.1	0.4	3.7	0.4	0.0	0.0	0.0	0.0	95.5	0.4	4.1	0.092	0.518	20.559142	-100.369815
T. C. México - Querétaro	0.00	3	2	10308	0.4	94.7	0.4	4.1	0.4	0.0	0.0	0.0	0.0	95.1	0.4	4.5	0.096	0.518	20.559525	-100.369678
Lagunillas	18.70	1	0	4254	0.8	87.1	0.3	8.7	1.1	1.6	0.4	0.0	0.0	87.9	0.3	11.8	0.085	0.505	20.468600	-100.295672
T. Der. Huimilpan	32.70	1	0	3992	0.9	86.3	0.7	9.4	0.7	1.8	0.2	0.0	0.0	87.2	0.7	12.1	0.090	0.504	20.393924	-100.268944
Ent. San Martín	53.00	1	0	1643	0.9	86.4	0.4	9.6	0.8	1.2	0.7	0.0	0.0	87.3	0.4	12.3	0.099	0.507	20.278165	-100.157926

QUERETARO

22 CARR: Querétaro - Estación Chichimequillas

CLAVE: 22270

RUTA: QRO

AÑO: 2018

LUGAR	ESTACION				CLASIFICACION VEHICULAR EN PORCIENTO													COORDENADAS		
	KM	TE	SC	TDPA	M	A	B	C2	C3	T3S2	T3S3	T3S2R4	OTROS	A	B	C	K'	D	LATITUD	LONGITUD
T. C. Libramiento de Querétaro	0.00	3	1	14488	1.9	88.0	0.5	7.5	0.4	0.3	1.2	0.1	0.1	89.9	0.5	9.6	0.076	0.518	20.625668	-100.387070
T. C. Libramiento de Querétaro	0.00	3	2	13488	1.7	87.7	0.5	8.1	0.3	0.3	1.2	0.1	0.1	89.4	0.5	10.1	0.078	0.518	20.625749	-100.387099
X. C. Hacienda Paraiso - Chichimequillas	18.00	1	0	7850	1.1	82.0	1.0	8.2	1.3	4.7	0.6	0.4	0.7	83.1	1.0	15.9	0.083	0.509	20.749381	-100.323365
Estación Chichimequillas	19.20																			

23 CARR: Querétaro - Tequisquiapan

CLAVE: 22502

RUTA: QRO

AÑO: 2018

LUGAR	ESTACION				CLASIFICACION VEHICULAR EN PORCIENTO													COORDENADAS		
	KM	TE	SC	TDPA	M	A	B	C2	C3	T3S2	T3S3	T3S2R4	OTROS	A	B	C	K'	D	LATITUD	LONGITUD
Querétaro	0.00	3	1	7608	0.8	83.7	0.5	8.4	1.6	3.7	0.7	0.2	0.4	84.5	0.5	15.0	0.094	0.505	20.600097	-100.361465
Querétaro	0.00	3	2	7468	0.8	83.8	0.5	8.4	1.3	3.8	0.9	0.2	0.3	84.6	0.5	14.9	0.125	0.505	20.600111	-100.361341
X. C. Peña Colorada - El Rodeo	14.00	1	1	6515	1.7	79.2	0.2	9.1	1.4	6.6	1.0	0.3	0.5	80.9	0.2	18.9	0.072	0.515	20.634799	-100.264336
X. C. Peña Colorada - El Rodeo	14.00	1	2	6910	1.7	81.0	0.2	9.1	1.4	5.0	0.9	0.2	0.5	82.7	0.2	17.1	0.077	0.515	20.634799	-100.264336
T. Izq. La Griega	16.60	3	0	7653	1.3	83.0	0.6	6.7	1.5	4.8	0.9	0.3	0.9	84.3	0.6	15.1	0.089	0.511	20.642667	-100.225168
X. C. El Colorado - Higuerrillas	25.70	1	1	6369	0.7	86.8	0.6	7.8	1.4	1.6	0.8	0.1	0.2	87.5	0.6	11.9	0.137	0.519	20.615785	-100.161567
X. C. El Colorado - Higuerrillas	25.70	1	2	6877	0.7	87.5	0.6	7.5	1.3	1.4	0.7	0.1	0.2	88.2	0.6	11.2	0.104	0.519	20.615868	-100.161498
X. C. San Juan del Río - Xilitla	56.90	1	0	9278	1.7	80.5	0.9	10.5	1.0	3.9	0.7	0.2	0.6	82.2	0.9	16.9	0.084	0.506	20.528709	-99.908637
Tequisquiapan	57.40	1	0	10285	2.7	82.3	0.4	5.5	0.7	6.6	0.7	0.2	0.9	85.0	0.4	14.6	0.071	0.508	20.533118	-99.897604

24 CARR: Querétaro - Tlacote El Bajo

CLAVE: 22069

RUTA: QRO

AÑO: 2018

LUGAR	ESTACION				CLASIFICACION VEHICULAR EN PORCIENTO													COORDENADAS		
	KM	TE	SC	TDPA	M	A	B	C2	C3	T3S2	T3S3	T3S2R4	OTROS	A	B	C	K'	D	LATITUD	LONGITUD
Querétaro	0.00	3	1	15019	1.7	89.1	1.4	4.4	0.5	1.0	1.4	0.2	0.3	90.8	1.4	7.8	0.082	0.531	20.589736	-100.437310
Querétaro	0.00	3	2	13266	1.5	88.4	1.6	4.9	0.5	1.2	1.4	0.2	0.3	89.9	1.6	8.5	0.102	0.531	20.589597	-100.437329
Tlacote El Bajo	18.00																			

25 CARR: Ramal a La Estancia

CLAVE: 22504

RUTA: QRO

AÑO: 2018

LUGAR	ESTACION				CLASIFICACION VEHICULAR EN PORCIENTO													COORDENADAS		
	KM	TE	SC	TDPA	M	A	B	C2	C3	T3S2	T3S3	T3S2R4	OTROS	A	B	C	K'	D	LATITUD	LONGITUD
T. C. México - Querétaro (Cuota)	0.00	3	0	5568	2.7	85.7	0.1	6.6	0.4	3.2	0.6	0.1	0.6	88.4	0.1	11.5	0.106	0.500	20.424851	-100.063060
La Estancia	3.00																			

QUERETARO

26 CARR: Ramal a Tolimán

CLAVE: 22265

RUTA: QRO

AÑO: 2018

LUGAR	ESTACION				CLASIFICACION VEHICULAR EN PORCIENTO										COORDENADAS					
	KM	TE	SC	TDPA	M	A	B	C2	C3	T3S2	T3S3	T3S2R4	OTROS	A	B	C	K'	D	LATITUD	LONGITUD
T. C. El Colorado - Higuierillas	0.00	3	0	3606	4.2	83.6	0.3	7.7	0.8	2.4	0.4	0.2	0.4	87.8	0.3	11.9	0.077	0.514	20.859164	-99.895040
Tolimán	7.00	1	0	3803	3.8	84.2	0.1	8.7	0.4	2.3	0.2	0.0	0.3	88.0	0.1	11.9	0.072	0.502	20.894901	-99.918025

27 CARR: Rayón - Arroyo Seco

CLAVE: 24008

RUTA: SLP-011

AÑO: 2018

LUGAR	ESTACION				CLASIFICACION VEHICULAR EN PORCIENTO										COORDENADAS					
	KM	TE	SC	TDPA	M	A	B	C2	C3	T3S2	T3S3	T3S2R4	OTROS	A	B	C	K'	D	LATITUD	LONGITUD
Rayón	0.00	3	0	1281	5.8	72.8	0.4	16.8	1.4	1.8	0.8	0.0	0.2	78.6	0.4	21.0	0.098	0.516	21.848263	-99.626962
Lagunillas	36.00	1	0	351	4.6	73.8	0.0	18.6	1.7	0.8	0.5	0.0	0.0	78.4	0.0	21.6	0.117	0.500	21.594587	-99.565005
Lim. De Edos. Term. S.L.P. Ppia Qro.	51.00																			
Arroyo Seco	57.00	1	0	587	6.6	72.7	0.0	18.8	1.4	0.5	0.0	0.0	0.0	79.3	0.0	20.7	0.099	0.506	21.553865	-99.681312

28 CARR: San Juan del Río - Amealco

CLAVE: 22011

RUTA: QRO

AÑO: 2018

LUGAR	ESTACION				CLASIFICACION VEHICULAR EN PORCIENTO										COORDENADAS					
	KM	TE	SC	TDPA	M	A	B	C2	C3	T3S2	T3S3	T3S2R4	OTROS	A	B	C	K'	D	LATITUD	LONGITUD
T. C. México - Querétaro	0.00	3	0	10907	1.8	82.3	0.7	9.2	0.5	4.3	0.5	0.1	0.6	84.1	0.7	15.2	0.076	0.510	20.376551	-100.016313
Amealco	28.00	1	0	4808	0.8	88.5	0.8	7.0	0.4	1.7	0.4	0.2	0.2	89.3	0.8	9.9	0.078	0.502	20.200884	-100.133469

29 CARR: T. C. (Villa del Pueblito - Huimilpan) - Coroneo

CLAVE: 00155

RUTA: QRO-GTO

AÑO: 2018

LUGAR	ESTACION				CLASIFICACION VEHICULAR EN PORCIENTO										COORDENADAS					
	KM	TE	SC	TDPA	M	A	B	C2	C3	T3S2	T3S3	T3S2R4	OTROS	A	B	C	K'	D	LATITUD	LONGITUD
T. C. Villa del Pueblito - Huimilpan	0.00	3	0	7848	1.7	80.4	1.6	9.2	1.9	3.0	1.6	0.3	0.3	82.1	1.6	16.3	0.088	0.507	20.515755	-100.428184
Lim. Edos. Term. Qro. Ppia. Gto.	20.00																			
Coroneo	45.20	1	0	3407	1.6	86.3	0.2	9.4	0.3	1.7	0.3	0.0	0.2	87.9	0.2	11.9	0.130	0.501	20.214003	-100.366630

30 CARR: Villa del Pueblito - Huimilpan

CLAVE: 22503

RUTA: QRO

AÑO: 2018

LUGAR	ESTACION				CLASIFICACION VEHICULAR EN PORCIENTO										COORDENADAS					
	KM	TE	SC	TDPA	M	A	B	C2	C3	T3S2	T3S3	T3S2R4	OTROS	A	B	C	K'	D	LATITUD	LONGITUD
T. C. Querétaro - Irapuato (Libre)	0.00	3	1	18398	1.6	88.1	0.5	6.2	0.8	1.1	1.3	0.1	0.3	89.7	0.5	9.8	0.069	0.503	20.530079	-100.441454
T. C. Querétaro - Irapuato (Libre)	0.00	3	2	18624	1.7	88.8	0.5	5.9	0.8	0.9	1.1	0.1	0.2	90.5	0.5	9.0	0.076	0.503	20.530106	-100.441296
Huimilpan	27.00	1	0	1817	1.4	85.7	0.2	10.4	0.5	1.3	0.4	0.0	0.1	87.1	0.2	12.7	0.118	0.505	20.379561	-100.278800



QUERETARO

31 CARR: Toluca - Palmillas

CLAVE: 00496

RUTA: EM(D)-MEX-055

AÑO: 2018

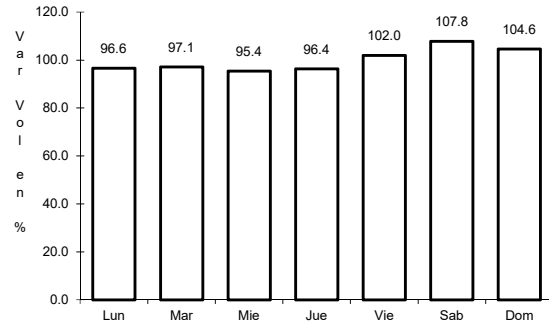
LUGAR	ESTACION				CLASIFICACION VEHICULAR EN PORCIENTO										COORDENADAS					
	KM	TE	SC	TDPA	M	A	B	C2	C3	T3S2	T3S3	T3S2R4	OTROS	A	B	C	K'	D	LATITUD	LONGITUD
Toluca	0.00																			
T. Izq. Calixtlahuaca de Rayón (Alta)	7.21	3	1	21286	0.4	94.7	0.5	3.3	0.3	0.3	0.1	0.1	95.1	0.5	4.4	0.083	0.503	19.339955	-99.670546	
T. Izq. Calixtlahuaca de Rayón (Baja)	7.21	3	1	12435	1.1	75.7	3.3	9.9	3.3	3.1	1.6	1.5	0.5	76.8	3.3	19.9	0.065	0.514	19.340280	-99.669941
T. Izq. Calixtlahuaca de Rayón (Alta)	7.21	3	2	21045	0.3	94.2	0.5	3.9	0.3	0.3	0.1	0.1	94.5	0.5	5.0	0.081	0.503	19.339816	-99.670794	
T. Izq. Calixtlahuaca de Rayón (Baja)	7.21	3	2	13143	1.0	74.2	3.7	9.4	3.6	3.8	2.1	1.7	0.5	75.2	3.7	21.1	0.065	0.514	19.339972	-99.671129
X. C. Lib. Nororiente de Toluca (Cuota)	14.21	1	1	26104	0.5	81.4	3.5	7.5	1.1	3.4	1.7	0.8	0.1	81.9	3.5	14.6	0.062	0.501	19.382389	-99.704943
X. C. Lib. Nororiente de Toluca (Cuota)	14.21	1	2	26229	0.5	79.5	3.6	8.1	1.2	3.9	2.1	1.0	0.1	80.0	3.6	16.4	0.067	0.501	19.378503	-99.702617
El Dorado	16.00	1	1	32874	0.5	82.8	3.9	5.4	1.9	3.7	0.9	0.7	0.2	83.3	3.9	12.8	0.074	0.515	19.402653	-99.713600
El Dorado	16.00	1	2	30917	0.5	80.5	3.8	6.9	2.0	4.3	1.0	0.8	0.2	81.0	3.8	15.2	0.078	0.515	19.401620	-99.713486
Ixtlahuaca de Rayón	35.58	1	1	20998	0.6	79.3	3.6	6.3	1.7	5.4	1.5	0.8	0.8	79.9	3.6	16.5	0.083	0.514	19.551170	-99.755856
Ixtlahuaca de Rayón	35.58	1	2	22235	0.5	79.6	3.3	6.9	1.5	4.3	2.2	0.8	0.9	80.1	3.3	16.6	0.073	0.514	19.547868	-99.753732
Ixtlahuaca de Rayón	35.58	3	1	20911	0.6	80.8	3.2	5.3	1.7	4.6	2.0	0.9	0.9	81.4	3.2	15.4	0.069	0.501	19.585562	-99.765558
Ixtlahuaca de Rayón	35.58	3	2	20832	0.8	78.0	3.1	7.5	1.4	5.4	2.0	0.9	0.9	78.8	3.1	18.1	0.076	0.501	19.584590	-99.769440
Pastejé	45.20	1	1	17553	0.6	78.2	2.8	7.0	1.6	5.9	2.2	0.9	0.8	78.8	2.8	18.4	0.086	0.508	19.644900	-99.784287
Pastejé	45.20	1	2	17004	0.7	77.8	2.9	6.9	1.6	6.1	2.2	0.9	0.9	78.5	2.9	18.6	0.082	0.508	19.644664	-99.784654
Atlacomulco	65.00	1	1	17323	1.0	81.2	2.5	4.8	1.1	5.3	2.4	0.8	0.9	82.2	2.5	15.3	0.076	0.512	19.778815	-99.863142
Atlacomulco	65.00	1	2	16504	0.9	79.6	2.4	5.3	1.2	6.1	2.7	0.9	0.9	80.5	2.4	17.1	0.086	0.512	19.778782	-99.863285
Atlacomulco	65.00	3	1	16428	1.8	78.1	2.7	5.9	1.5	6.0	2.1	1.0	0.9	79.9	2.7	17.4	0.082	0.522	19.812552	-99.871599
Atlacomulco	65.00	3	2	17954	1.8	78.4	2.5	5.9	1.5	5.5	2.3	0.8	1.3	80.2	2.5	17.3	0.082	0.522	19.812550	-99.871698
Acambay	85.64	3	0	11262	0.2	82.7	2.4	7.2	2.2	3.1	1.3	0.7	0.2	82.9	2.4	14.7	0.066	0.501	19.964167	-99.852209
T. Der. Aculco de Espinoza	104.43	3	1	4622	0.2	83.8	2.3	6.6	2.1	2.9	1.2	0.6	0.3	84.0	2.3	13.7	0.069	0.502	20.092216	-99.862276
T. Der. Aculco de Espinoza	104.43	3	2	4576	0.2	82.1	2.3	7.6	2.3	3.3	1.3	0.6	0.3	82.3	2.3	15.4	0.061	0.502	20.092238	-99.862369
T. Der. Polotitlán	122.73	1	1	5064	0.6	69.0	4.1	10.2	3.3	9.7	1.8	0.9	0.4	69.6	4.1	26.3	0.068	0.513	20.225329	-99.898829
T. Der. Polotitlán	122.73	1	2	5334	0.6	67.0	4.6	11.3	3.6	9.8	1.8	0.9	0.4	67.6	4.6	27.8	0.081	0.513	20.225265	-99.898887
Lim. Edos. Term. Méx. Ppia. Qro.	128.10																			
T. C. México - Querétaro	131.52	1	1	6299	0.4	73.8	3.7	7.3	2.1	9.3	1.7	0.9	0.8	74.2	3.7	22.1	0.073	0.509	20.283378	-99.931493
T. C. México - Querétaro	131.52	1	2	6081	0.5	71.0	4.2	7.6	2.3	10.4	1.9	1.1	1.0	71.5	4.2	24.3	0.070	0.509	20.283376	-99.931584



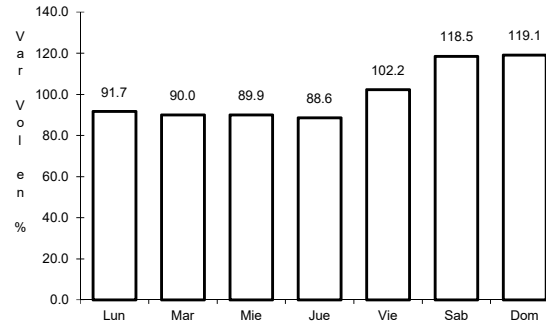
1 CARR: Ent. Buenavista - San Miguel de Allende

CLAVE: 00111

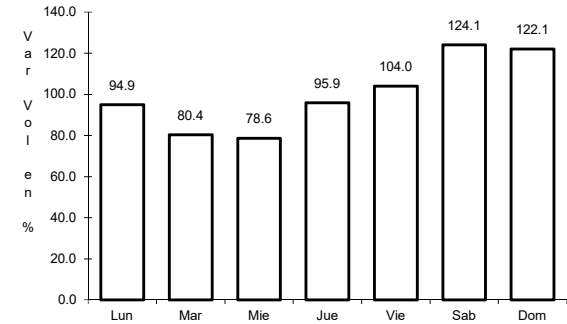
RUTA: MEX-057



Km: 0.00      Tipo: 3      Sent: 0



Km: 12.00      Tipo: 1      Sent: 0

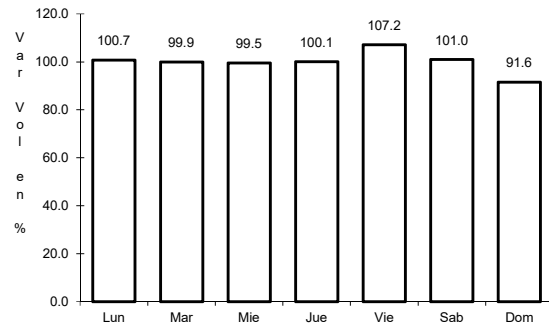


Km: 35.11      Tipo: 1      Sent: 0

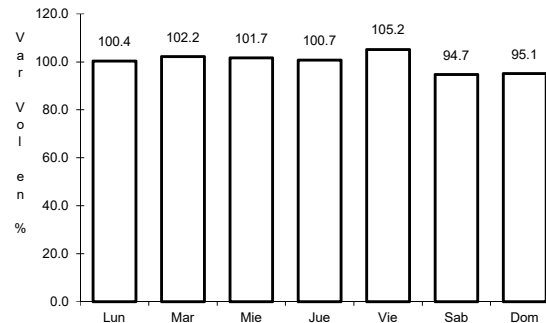
2 CARR: Jalpan de Serra - Rioverde

CLAVE: 00265

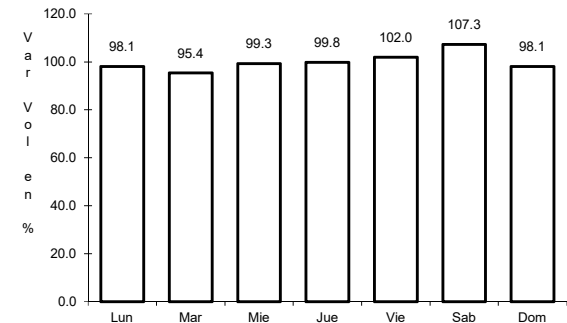
RUTA: MEX-069



Km: 0.00      Tipo: 3      Sent: 0



Km: 48.60      Tipo: 1      Sent: 0

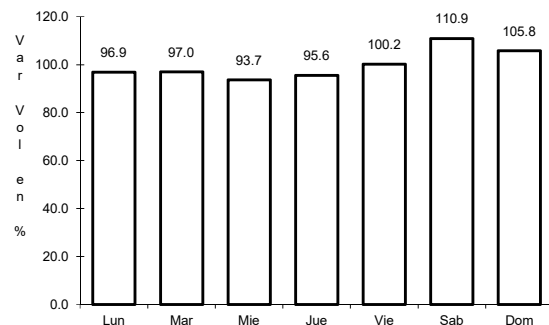


Km: 105.43      Tipo: 1      Sent: 0

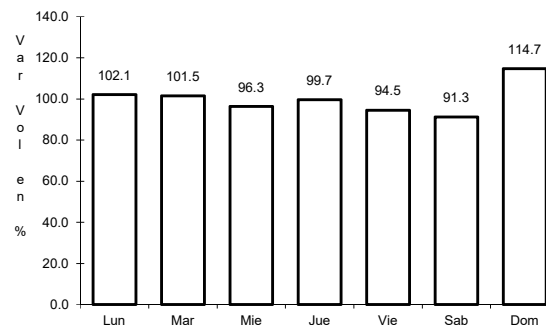
3 CARR: La Noria - Acámbaro

CLAVE: 00131

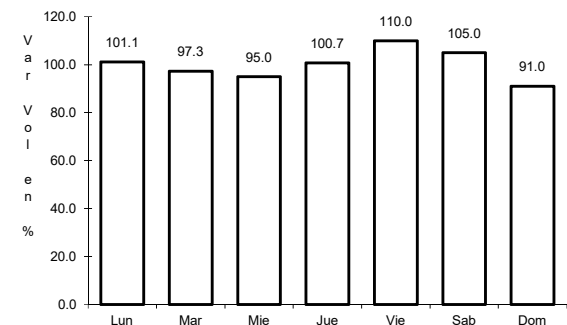
RUTA: MEX-120



Km: 0.00      Tipo: 3      Sent: 0



Km: 59.35      Tipo: 3      Sent: 0

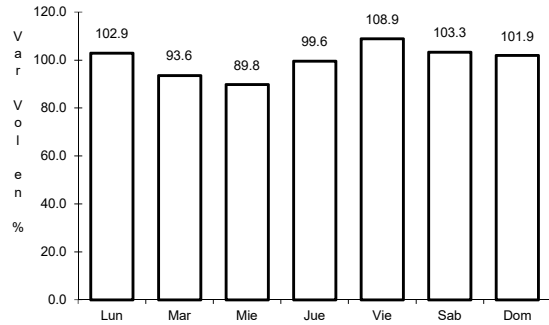


Km: 111.12      Tipo: 1      Sent: 0

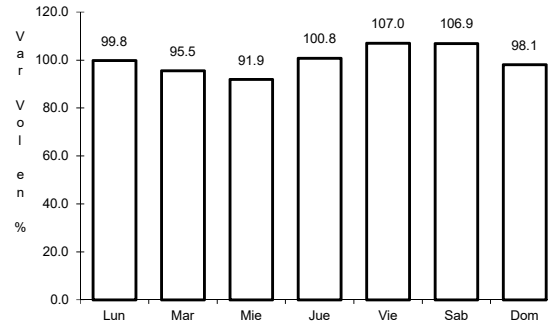
4 CARR: Portezuelo - Palmillas

CLAVE: 00194

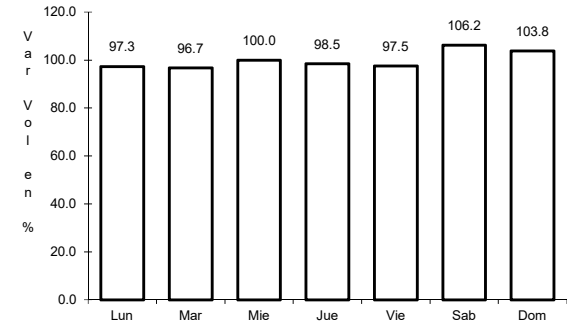
ruta: MEX-045



Km: 0.00      Tipo: 3      Sent: 1



Km: 0.00      Tipo: 3      Sent: 2

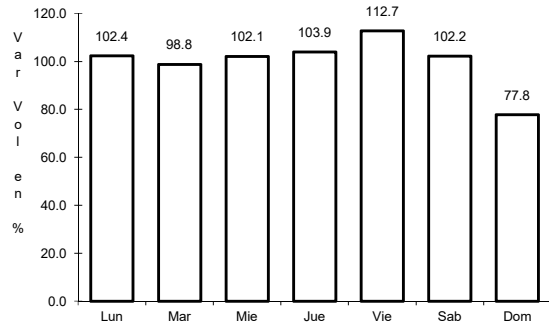


Km: 80.00      Tipo: 1      Sent: 1

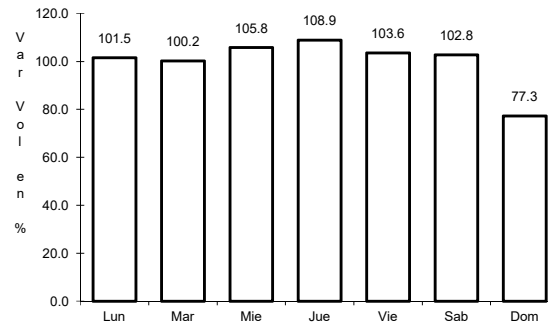
5 CARR: Querétaro - Irapuato (Libre)

CLAVE: 00154

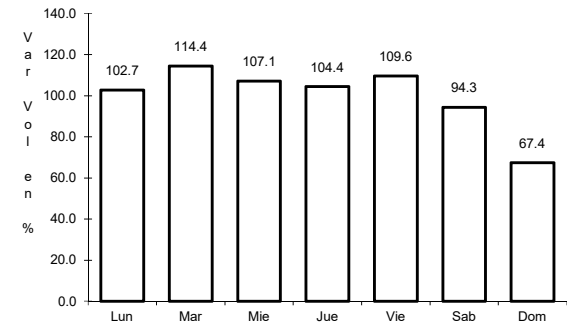
ruta: MEX-045



Km: 0.00      Tipo: 3      Sent: 1



Km: 0.00      Tipo: 3      Sent: 2

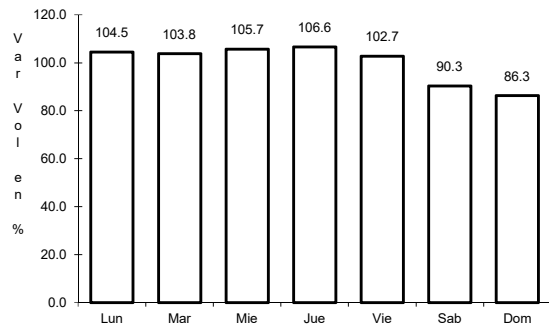


Km: 113.70      Tipo: 1      Sent: 1

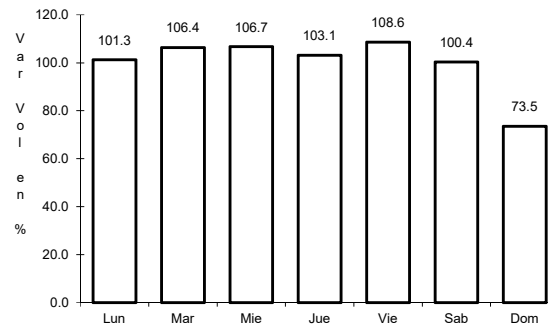
6 CARR: Querétaro - San Luis Potosí

CLAVE: 00165

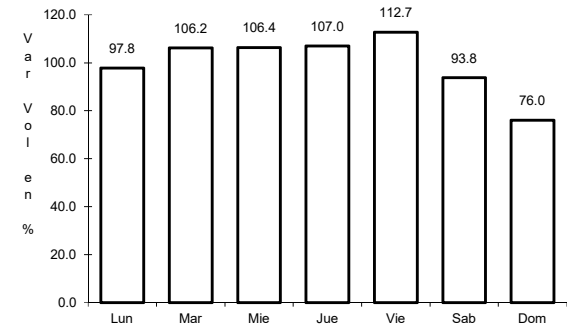
ruta: MEX-057



Km: 6.28      Tipo: 3      Sent: 1



Km: 6.28      Tipo: 3      Sent: 2

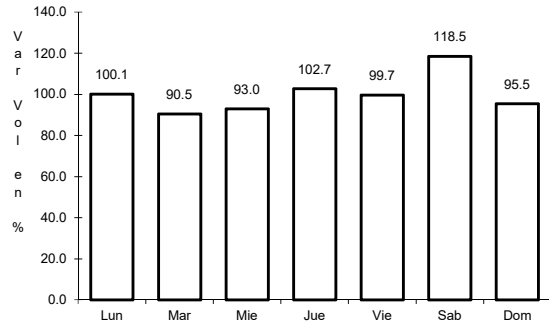


Km: 184.80      Tipo: 1      Sent: 1

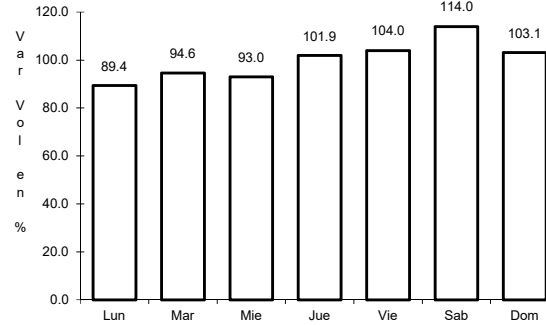
7 CARR: San Juan del Río - Xilitla

CLAVE: 00183

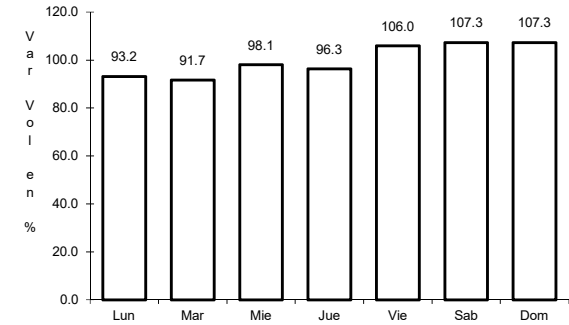
ruta: MEX-120



Km: 5.20 Tipo: 3 Sent: 1



Km: 5.20 Tipo: 3 Sent: 2

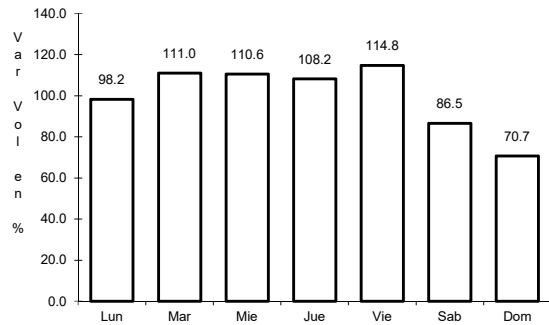


Km: 276.98 Tipo: 1 Sent: 0

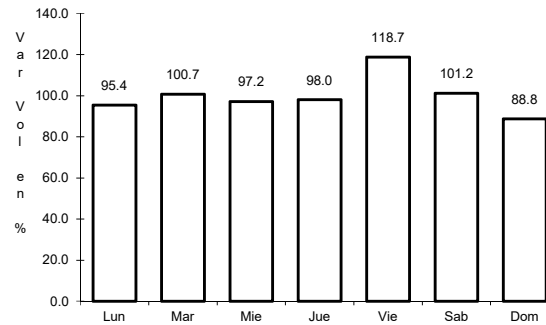
8 CARR: Libramiento Nororiente de Querétaro (Cuota)

CLAVE: 22266

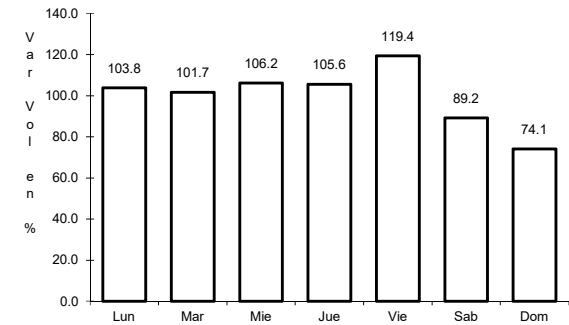
ruta: MEX-057D



Km: 0.00 Tipo: 3 Sent: 1



Km: 0.00 Tipo: 3 Sent: 2

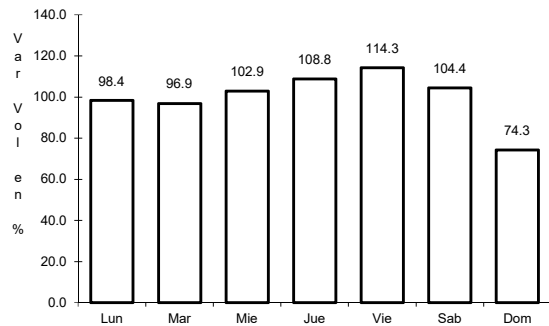


Km: 37.50 Tipo: 1 Sent: 1

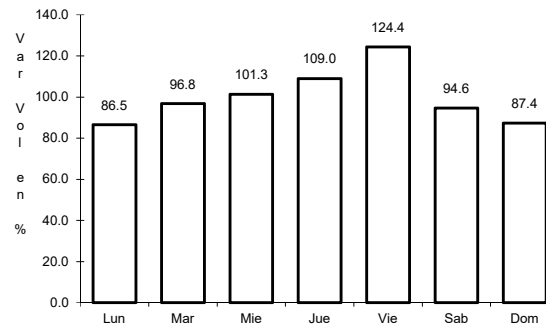
9 CARR: Palmillas - Apaseo el Grande (Cuota)

CLAVE:

ruta: MEX-045D



Km: 4.00 Tipo: 3 Sent: 1

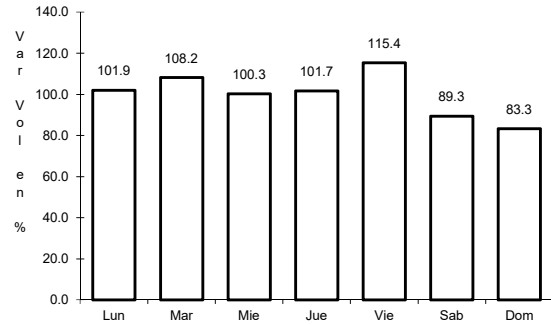


Km: 4.00 Tipo: 3 Sent: 2

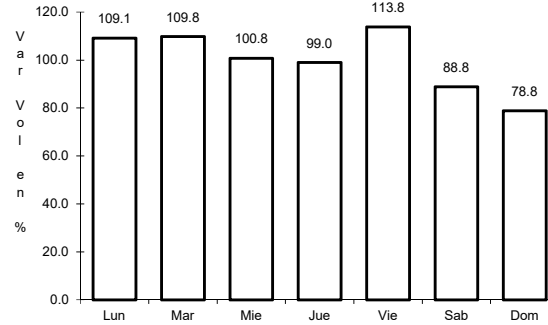
10 CARR: Querétaro - Irapuato (Cuota)

CLAVE: 00423

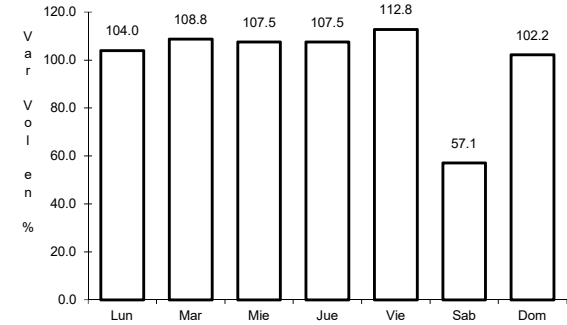
RUTA: MEX-045D



Km: 0.00      Tipo: 3      Sent: 1



Km: 0.00      Tipo: 3      Sent: 2

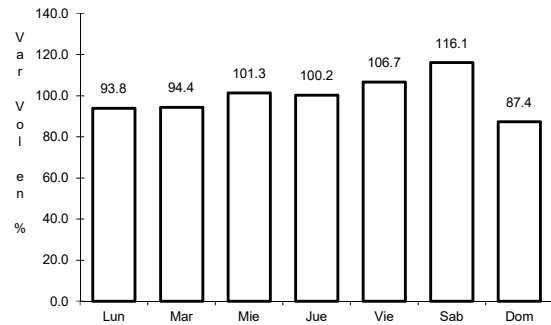


Km: 96.30      Tipo: 3      Sent: 1

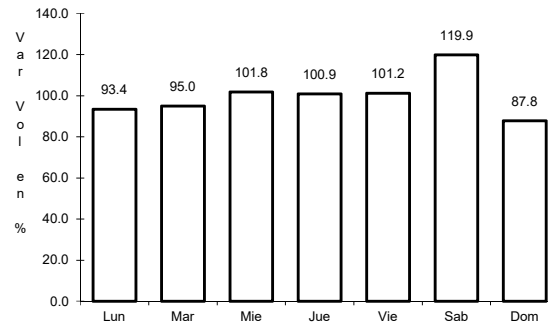
11 CARR: México - Querétaro (Cuota)

CLAVE: 00411

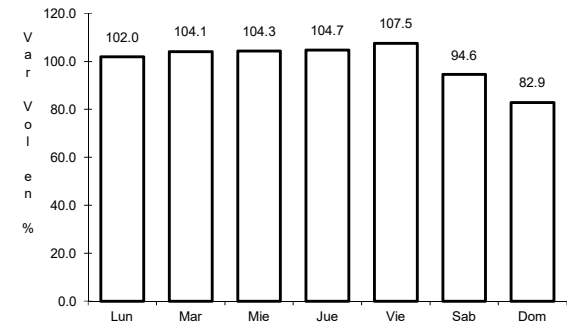
RUTA: MEX-057-MEX-057D



Km: 56.18      Tipo: 1      Sent: 1



Km: 56.18      Tipo: 1      Sent: 2

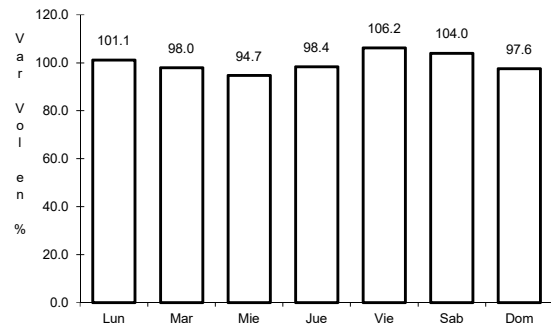


Km: 207.00      Tipo: 3      Sent: 1

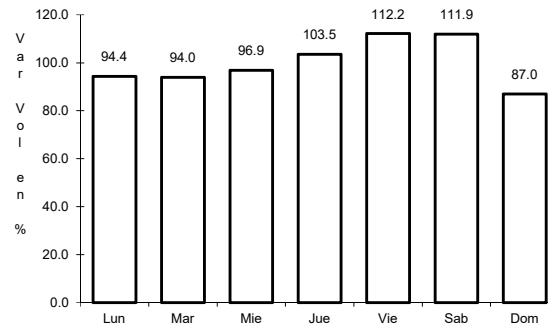
12 CARR: Ajuchitlán - Colón

CLAVE: 22010

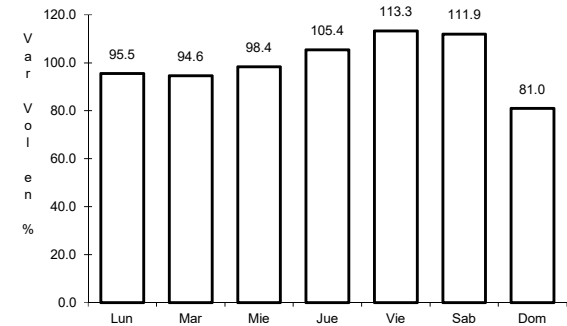
RUTA: QRO-005



Km: 0.00      Tipo: 3      Sent: 1



Km: 14.00      Tipo: 1      Sent: 1

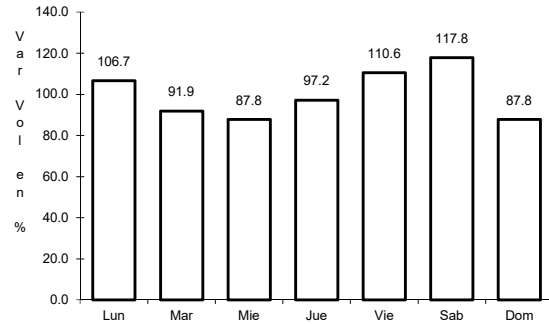


Km: 14.00      Tipo: 1      Sent: 2

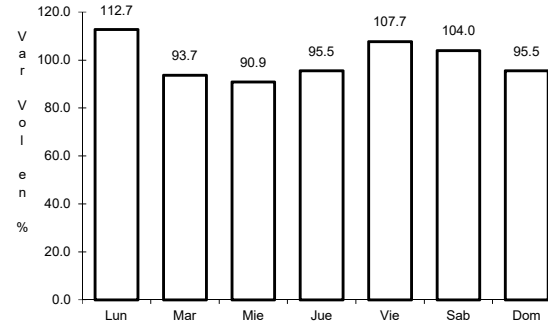
13 CARR: Ajuchitlán - Ezequiel Montes

CLAVE: 22005

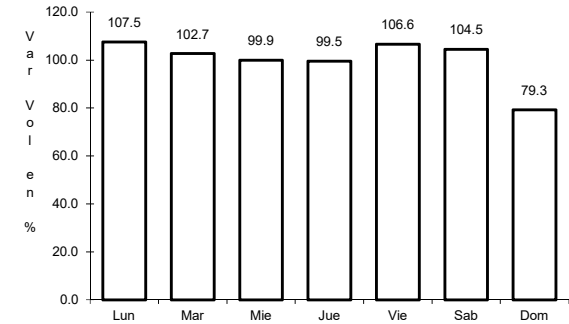
RUTA: QRO-005



Km: 0.00      Tipo: 3      Sent: 1



Km: 0.00      Tipo: 3      Sent: 2

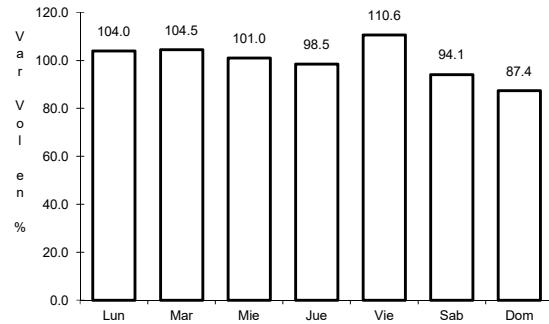


Km: 10.60      Tipo: 1      Sent: 0

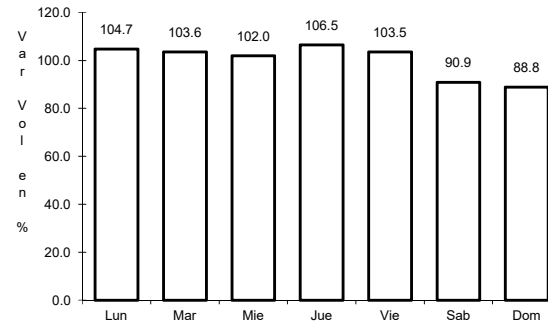
14 CARR: El Colorado - Higueraillas

CLAVE: 22004

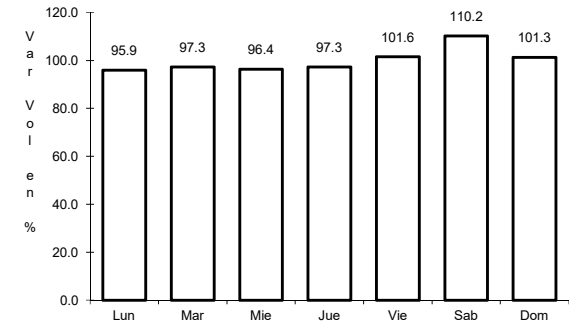
RUTA: QRO-004



Km: 0.00      Tipo: 3      Sent: 1



Km: 0.00      Tipo: 3      Sent: 2

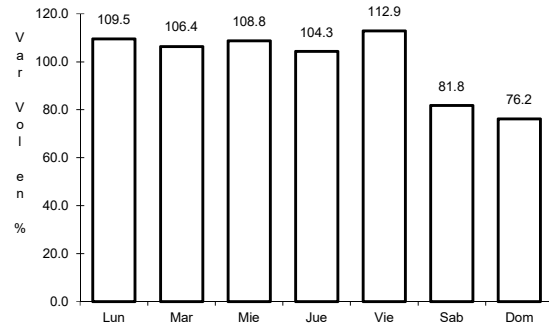


Km: 81.90      Tipo: 1      Sent: 0

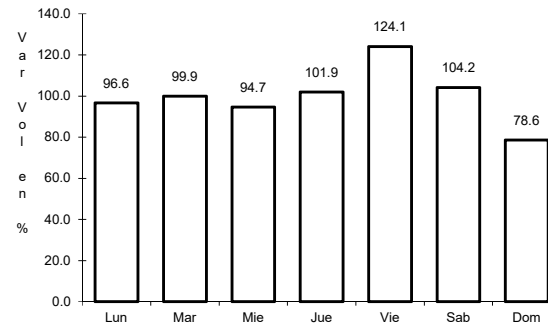
15 CARR: Hacienda Paraíso - Chichimequillas

CLAVE: 22001

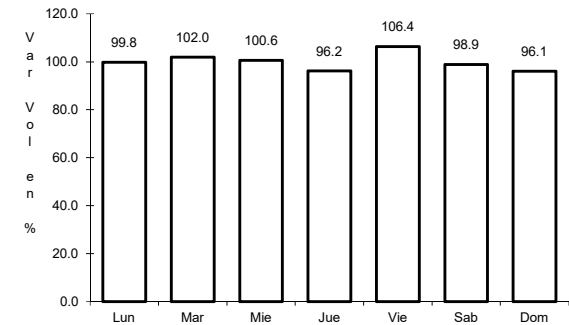
RUTA: QRO-001



Km: 0.00      Tipo: 3      Sent: 1



Km: 0.00      Tipo: 3      Sent: 2

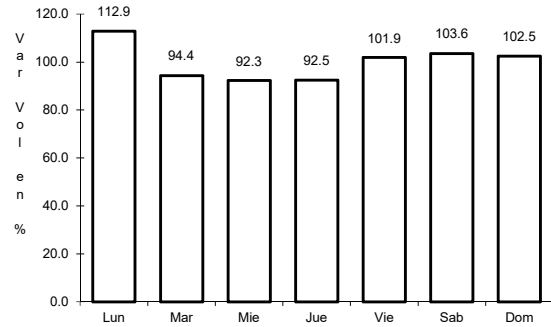


Km: 15.45      Tipo: 3      Sent: 0

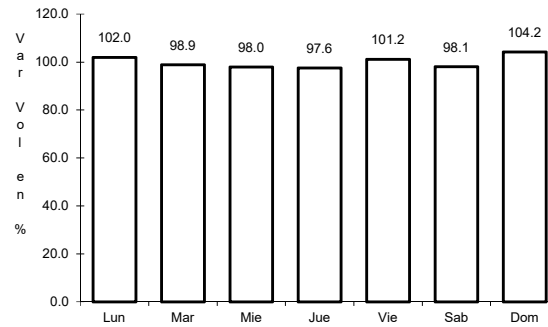
16 CARR: La Culata - San Joaquín

CLAVE: 22021

RUTA: QRO-021



Km: 0.00      Tipo: 3      Sent: 0

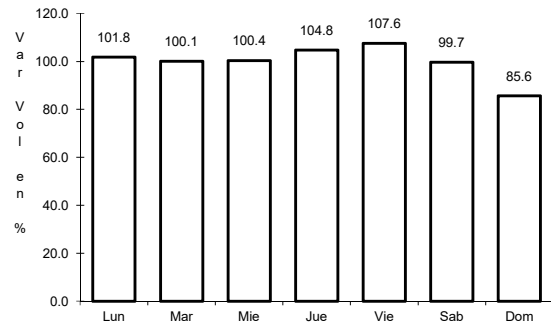


Km: 31.80      Tipo: 1      Sent: 0

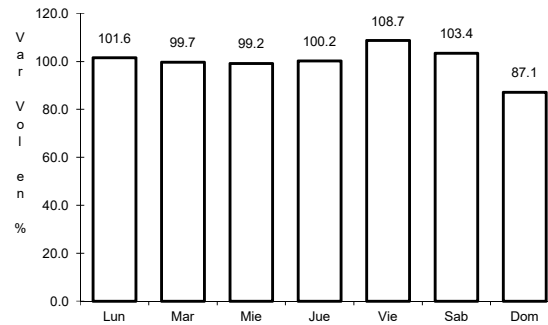
17 CARR: Libramiento de San Juan del Río

CLAVE: 22266

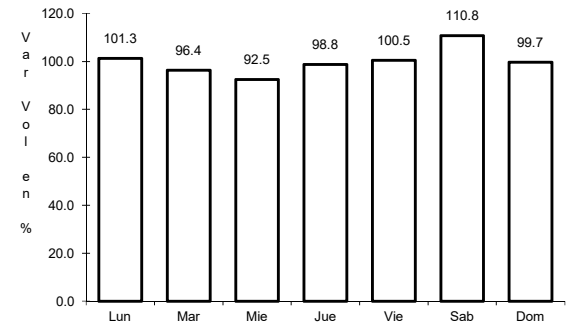
RUTA: QRO



Km: 0.00      Tipo: 3      Sent: 1



Km: 0.00      Tipo: 3      Sent: 2

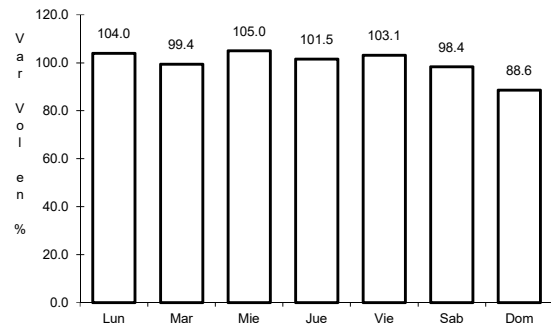


Km: 5.05      Tipo: 1      Sent: 1

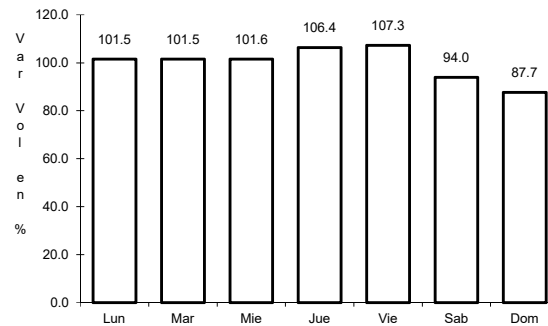
18 CARR: Libramiento Norte de Querétaro

CLAVE: 22500

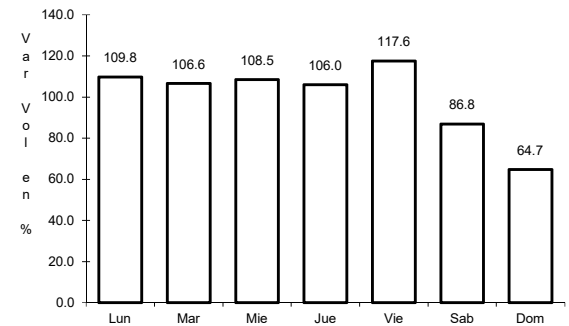
RUTA: QRO



Km: 0.00      Tipo: 3      Sent: 1



Km: 0.00      Tipo: 3      Sent: 2



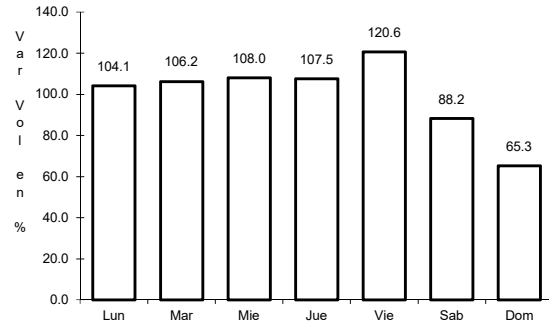
Km: 8.00      Tipo: 3      Sent: 1



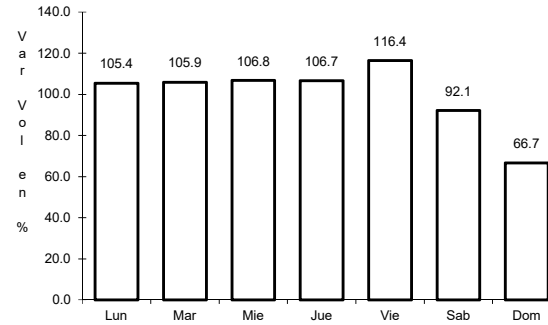
19 CARR: Libramiento Surponiente de Querétaro

CLAVE: 22501

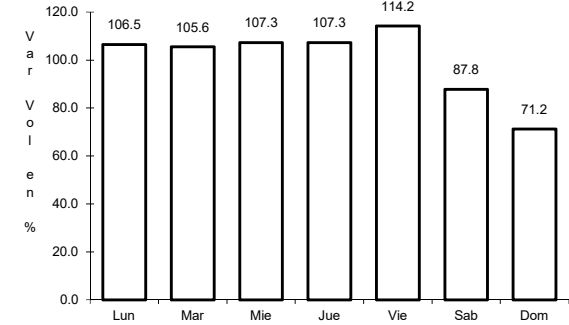
RUTA: QRO



Km: 0.00      Tipo: 3      Sent: 1



Km: 0.00      Tipo: 3      Sent: 2

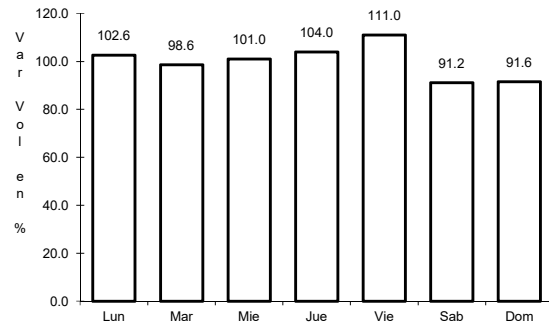


Km: 44.10      Tipo: 3      Sent: 1

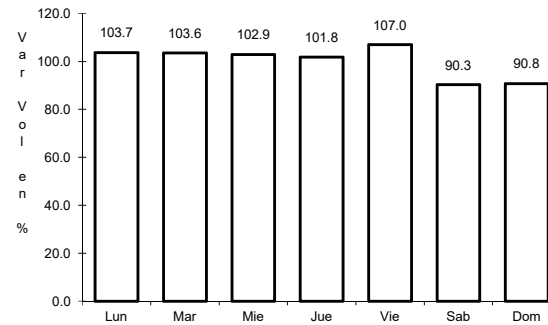
20 CARR: Peña Colorada - El Rodeo

CLAVE: 22002

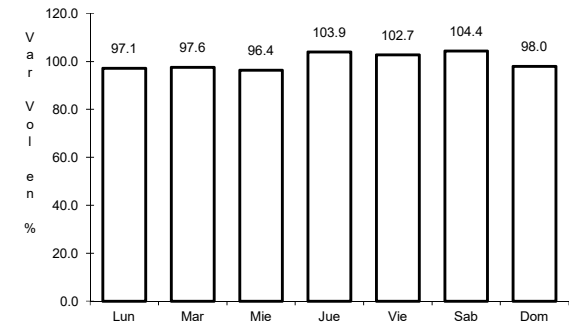
RUTA: QRO



Km: 0.00      Tipo: 3      Sent: 0



Km: 9.00      Tipo: 1      Sent: 0

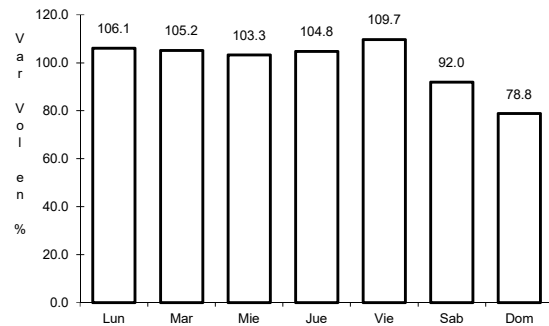


Km: 11.00      Tipo: 1      Sent: 0

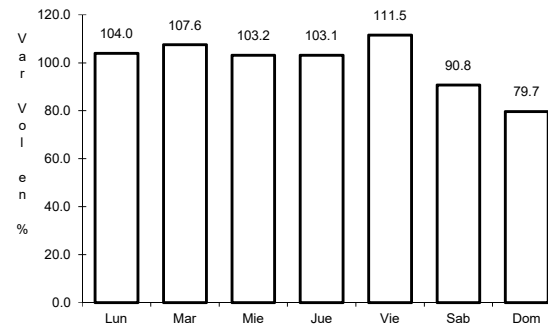
21 CARR: Querétaro - Ent. San Martín

CLAVE: 22067

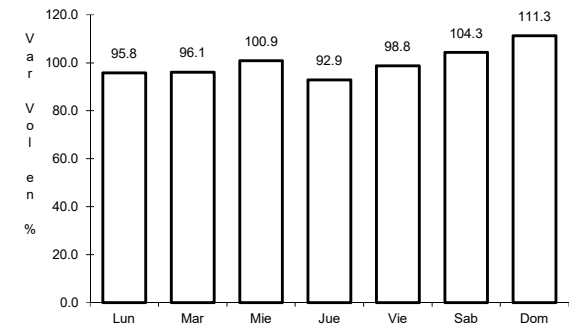
RUTA: QRO



Km: 0.00      Tipo: 3      Sent: 1



Km: 0.00      Tipo: 3      Sent: 2

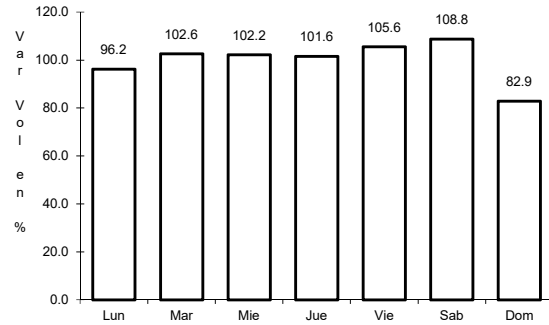


Km: 53.00      Tipo: 1      Sent: 0

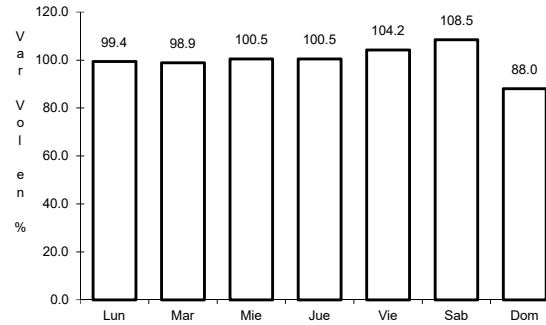
22 CARR: Querétaro - Estación Chichimequillas

CLAVE: 22270

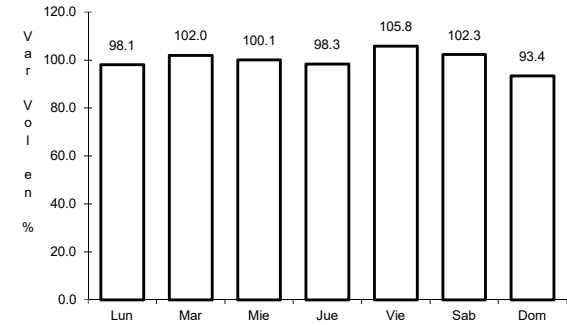
RUTA: QRO



Km: 0.00      Tipo: 3      Sent: 1



Km: 0.00      Tipo: 3      Sent: 2

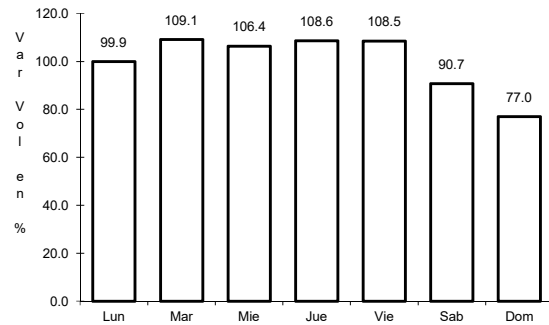


Km: 18.00      Tipo: 1      Sent: 0

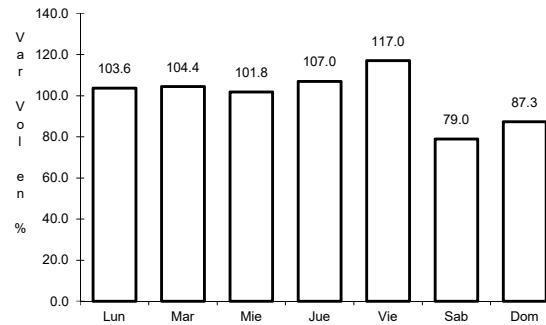
23 CARR: Querétaro - Tequisquiapan

CLAVE: 22502

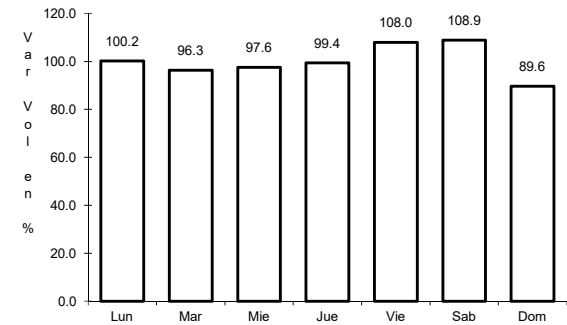
RUTA: QRO



Km: 0.00      Tipo: 3      Sent: 1



Km: 0.00      Tipo: 3      Sent: 2

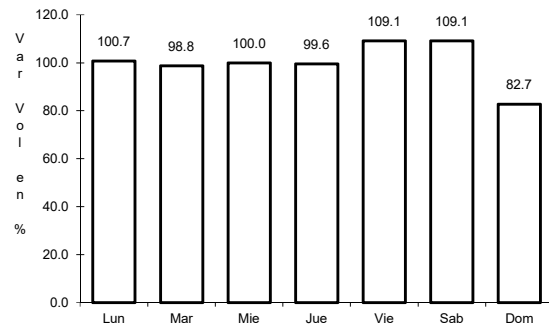


Km: 57.40      Tipo: 1      Sent: 0

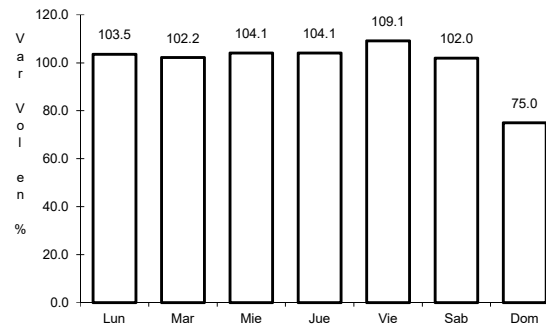
24 CARR: Querétaro - Tlacote El Bajo

CLAVE: 22069

RUTA: QRO



Km: 0.00      Tipo: 3      Sent: 1

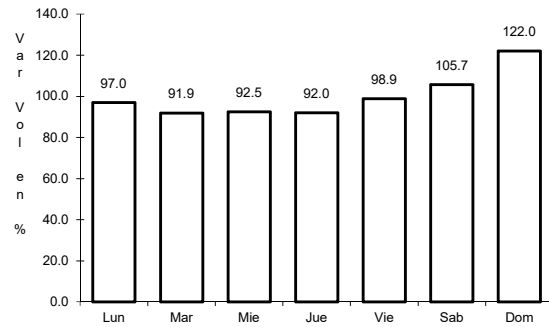


Km: 0.00      Tipo: 3      Sent: 2

25 CARR: Ramal a La Estancia

CLAVE: 22504

ruta: QRO

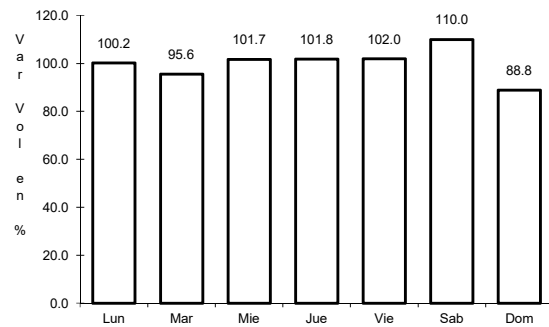


Km: 0.00      Tipo: 3      Sent: 0

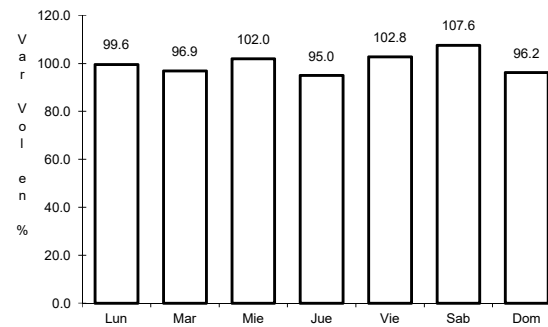
26 CARR: Ramal a Tolimán

CLAVE: 22265

ruta: QRO



Km: 0.00      Tipo: 3      Sent: 0

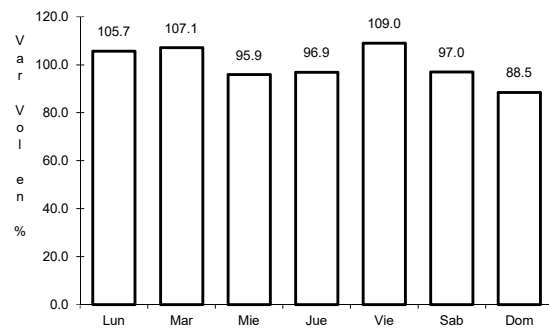


Km: 7.00      Tipo: 1      Sent: 0

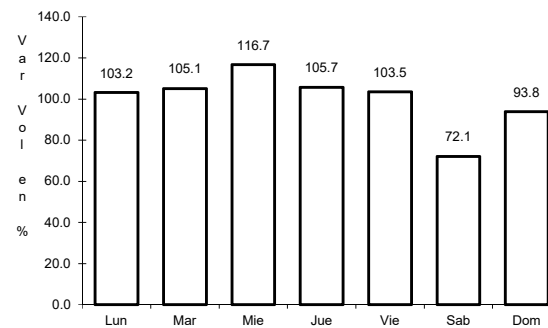
27 CARR: Rayón - Arroyo Seco

CLAVE: 24008

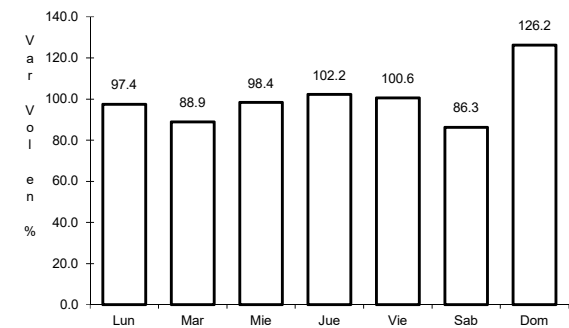
ruta: SLP-011



Km: 0.00      Tipo: 3      Sent: 0



Km: 36.00      Tipo: 1      Sent: 0

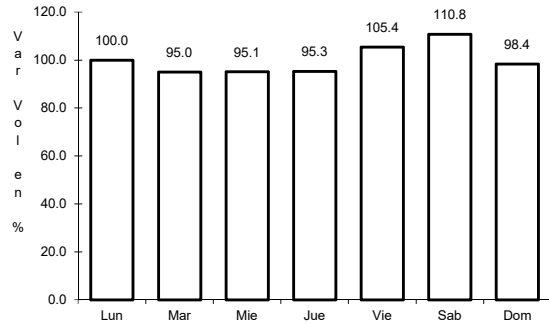


Km: 57.00      Tipo: 1      Sent: 0

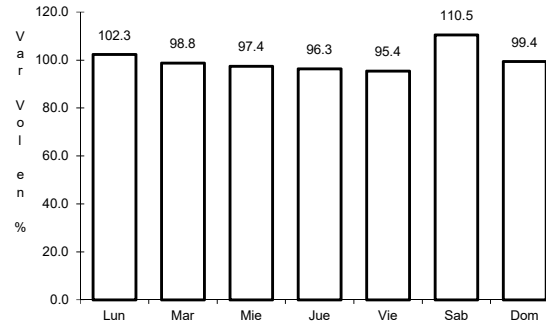
28 CARR: San Juan del Río - Amealco

CLAVE: 22011

RUTA: QRO



Km: 0.00      Tipo: 3      Sent: 0

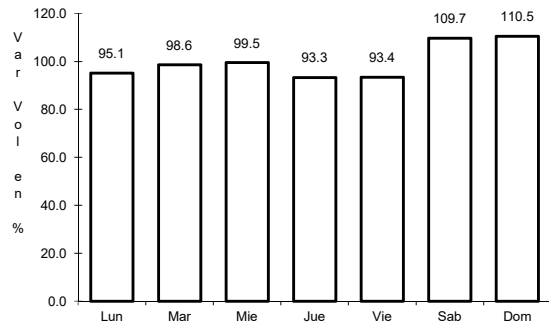


Km: 28.00      Tipo: 1      Sent: 0

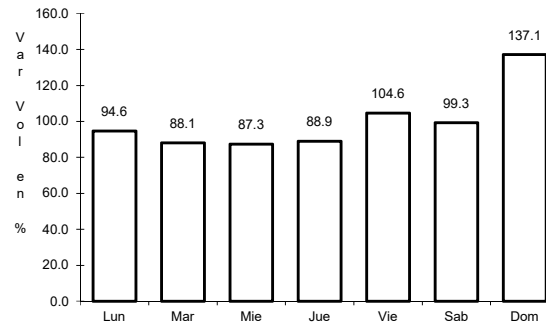
29 CARR: T. C. (Villa del Pueblito - Huimilpan) - Coroneo

CLAVE: 00155

RUTA: QRO-GTO



Km: 0.00      Tipo: 3      Sent: 0

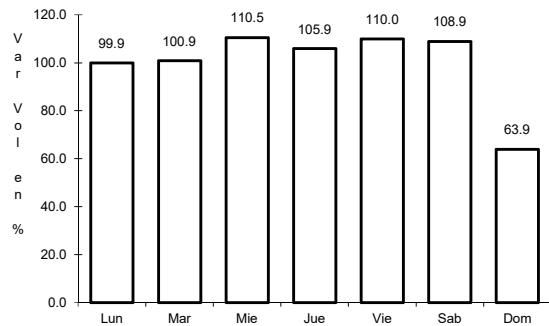


Km: 45.20      Tipo: 1      Sent: 0

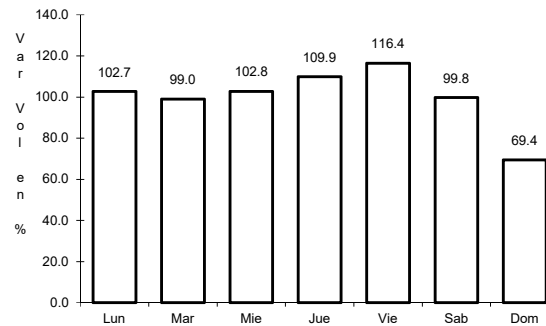
30 CARR: Villa del Pueblito - Huimilpan

CLAVE: 22503

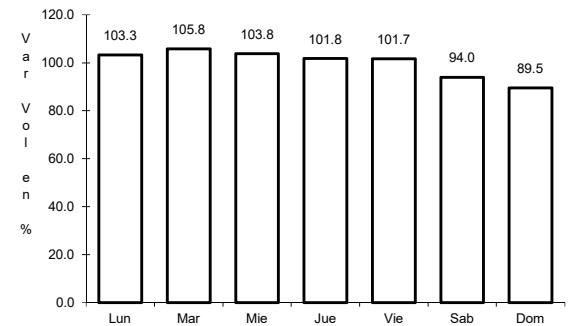
RUTA: QRO



Km: 0.00      Tipo: 3      Sent: 1

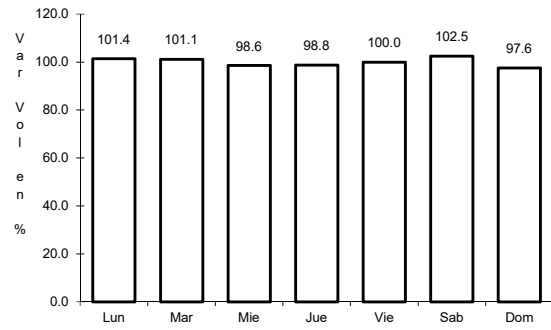


Km: 0.00      Tipo: 3      Sent: 2



Km: 27.00      Tipo: 1      Sent: 0

31 CARR: Toluca - Palmillas

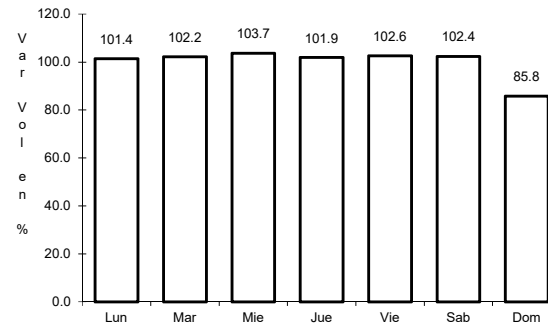


Km: 14.21

Tipo: 1

Sent: 1

CLAVE: 00496

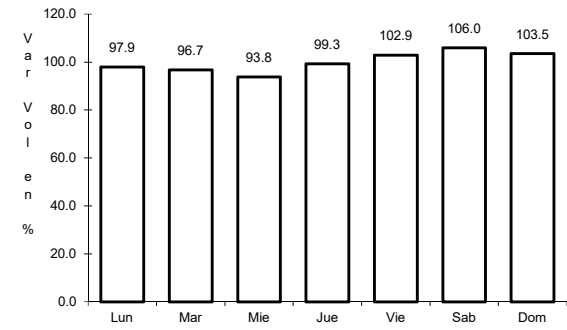


Km: 14.21

Tipo: 1

Sent: 2

RUTA: EM(D)-MEX-055



Km: 85.64

Tipo: 3

Sent: 0

