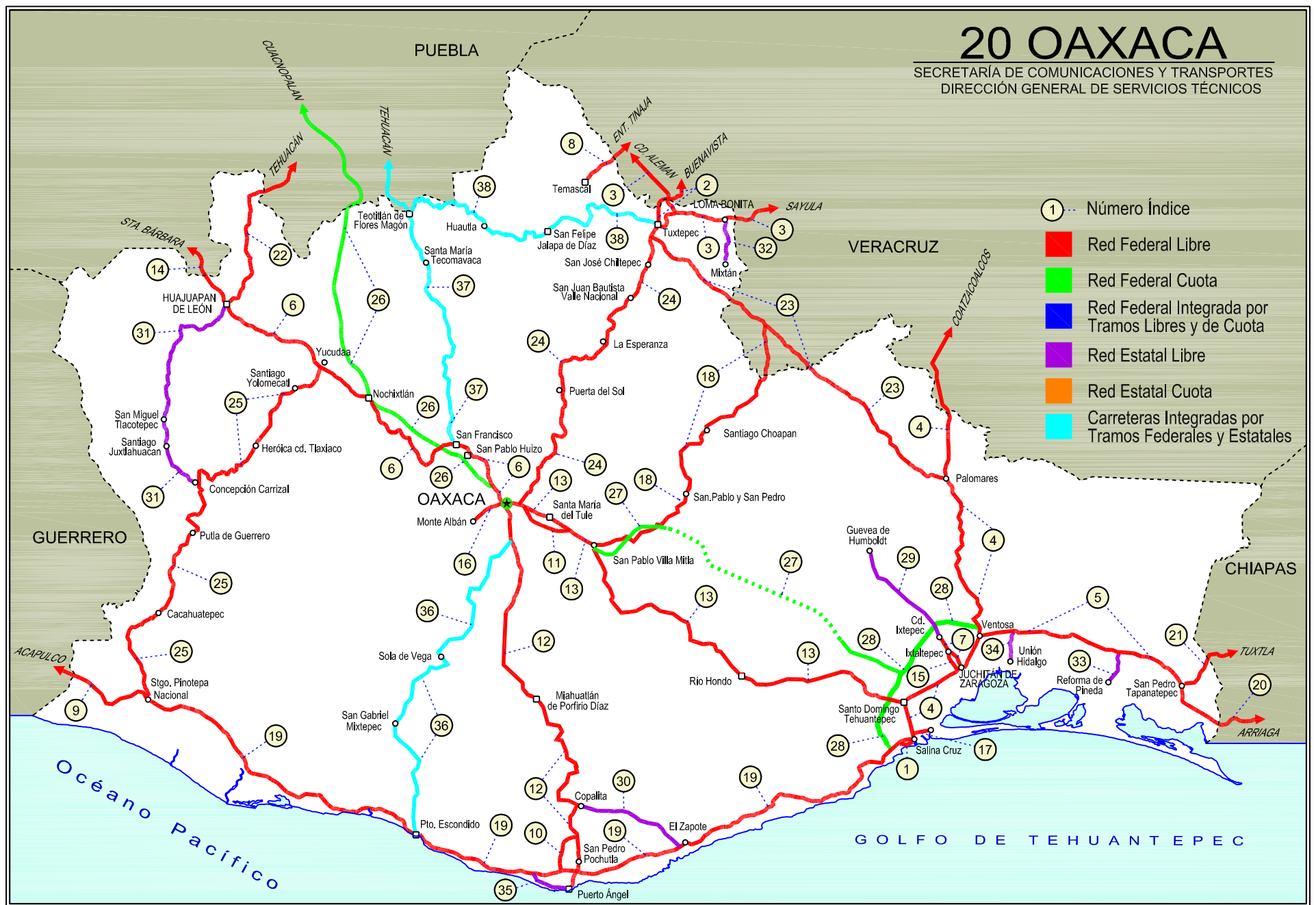
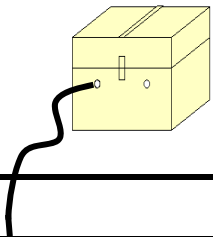


20 OAXACA

SECRETARÍA DE COMUNICACIONES Y TRANSPORTES
DIRECCIÓN GENERAL DE SERVICIOS TÉCNICOS

- ① - Número Índice
- Red Federal Libre
- Red Federal Cuota
- Red Federal Integrada por Tramos Libres y de Cuota
- Red Estatal Libre
- Red Estatal Cuota
- Carreteras Integradas por Tramos Federales y Estatales





OAXACA

---RED FEDERAL LIBRE---

1 Acceso al Puerto Salina Cruz	MEX-090
2 Buenavista - Tuxtepec	MEX-175
3 Cd. Alemán - Sayula	MEX-145
4 Coatzacoalcos - Salina Cruz	MEX-185
5 Ent. La Ventosa - San Pedro Tapanatepec	MEX-190
6 Huajuapán de León - Oaxaca	MEX-190
7 Juchitán - Ixtepec	MEX-185
8 La Granja - Temascal	MEX-145
9 Las Cruces - Pinotepa Nacional	MEX-200
10 Libramiento de Pochutla	MEX-200
11 Libramiento de Santa María del Tule	MEX-190
12 Oaxaca - Puerto Ángel	MEX-175
13 Oaxaca - Tehuantepec	MEX-190
14 Puebla - Huajuapán de León	MEX-190
15 Ramal a Asunción Ixtaltepec	MEX-185
16 Ramal a Monte Albán	MEX
17 Ramal a Refinería Pemex (Refinería del Pacífico)	MEX
18 San Pablo Villa de Mitla - T. C. (Tuxtepec - Palomares)	MEX-179
19 Santiago Pinotepa Nacional - Salina Cruz	MEX-200
20 Tapanatepec - Talismán	MEX-200
21 Tapanatepec - Tuxtla Gutiérrez	MEX-190
22 Tehuacán - Huajuapán de León	MEX-125
23 Tuxtepec - Ent. Palomares	MEX-147
24 Tuxtepec - T. C. (Oaxaca - Tehuantepec)	MEX-175
25 Yucudaa - Santiago Pinotepa Nacional	MEX-125

---RED FEDERAL DE CUOTA---

26 Cuacnopalan - Oaxaca (Cuota)	MEX-135D
27 Mitla - Tehuantepec (Cuota)	MEX-190D
28 Salina Cruz - La Ventosa (Cuota)	MEX-185D

---RED ESTATAL LIBRE---

29 Cd. Ixtepec - Guevea de Humboldt	OAX
30 El Zapote - Copalita	OAX
31 Huajuapán de León - El Carrizal	OAX
32 Loma Bonita - Mixtán	OAX
33 Ramal a Reforma de Pineda	OAX
34 Ramal a Unión Hidalgo	OAX
35 San Antonio - Puerto Ángel	OAX

---CARRETERAS INTEGRADAS POR TRAMOS FEDERALES Y ESTATALES---

36 T. C. (Oaxaca - Puerto Ángel) - Puerto Escondido	MEX-OAX-161
37 Tehuacán - Huitzo	PUE-MEX-135
38 Teotitlán de Flores Magón - Tuxtepec	OAX-PUE-MEX-182

OAXACA

1 CARR: Acceso al Puerto Salina Cruz

CLAVE:

RUTA: MEX-090

AÑO: 2018

LUGAR	ESTACION				CLASIFICACION VEHICULAR EN PORCIENTO														COORDENADAS	
	KM	TE	SC	TDPA	M	A	B	C2	C3	T3S2	T3S3	T3S2R4	OTROS	A	B	C	K'	D	LATITUD	LONGITUD
T. C. Santiago Pinotepa Nacional - Salina Cruz	0.00	3	0	2240	3.3	88.0	1.8	4.4	0.6	1.3	0.2	0.4	0.0	91.3	1.8	6.9	0.067	0.503	16.179982	-95.222580
Salina Cruz	3.80																			

2 CARR: Buenavista - Tuxtepec

CLAVE: 00624

RUTA: MEX-175

AÑO: 2018

LUGAR	ESTACION				CLASIFICACION VEHICULAR EN PORCIENTO														COORDENADAS	
	KM	TE	SC	TDPA	M	A	B	C2	C3	T3S2	T3S3	T3S2R4	OTROS	A	B	C	K'	D	LATITUD	LONGITUD
T. C. Paso del Toro - Acayucan	0.00	3	0	1343	5.9	75.9	1.3	10.5	3.7	2.1	0.5	0.1	0.0	81.8	1.3	16.9	0.089	0.500	18.713097	-95.638308
Puente Tlacotalpan	1.55	2	0	1434	5.9	79.1	5.6	3.4	4.7	0.8	0.3	0.1	0.1	85.0	5.6	9.4	0.085	0.500	18.704579	-95.641360
Tlacotalpan	18.00	1	0	1705	12.4	68.8	1.1	10.4	4.6	2.1	0.4	0.1	0.1	81.2	1.1	17.7	0.084	0.503	18.614808	-95.644974
Tlacotalpan	18.00	3	0	2052	14.5	71.5	1.0	11.4	0.3	0.9	0.2	0.1	0.1	86.0	1.0	13.0	0.082	0.502	18.616426	-95.680579
Carlos A. Carrillo	56.00	1	0	4325	18.8	70.2	0.7	5.3	0.3	3.1	1.2	0.2	0.2	89.0	0.7	10.3	0.074	0.521	18.380274	-95.742868
Cosamaloapan	60.00	1	0	11923	18.6	67.8	0.9	5.9	0.3	4.8	0.8	0.2	0.7	86.4	0.9	12.7	0.073	0.500	18.365875	-95.775608
Cosamaloapan	60.00	3	0	7774	9.6	79.2	1.6	4.9	0.6	3.1	0.5	0.2	0.3	88.8	1.6	9.6	0.075	0.511	18.353246	-95.805805
T. C. La Tinaja - Santa Cruz	107.00	1	0	3710	5.8	78.6	1.3	8.3	1.6	2.8	0.5	0.9	0.2	84.4	1.3	14.3	0.081	0.502	18.168733	-96.088350
T. C. Cd. Alemán - Sayula	108.92	1	0	3606	5.2	76.7	0.9	11.8	1.0	3.3	0.4	0.4	0.3	81.9	0.9	17.2	0.075	0.513	18.168450	-96.096950
T. C. Cd. Alemán - Sayula	108.92	3	0	6921	2.6	74.4	3.0	10.0	2.2	3.8	0.7	2.9	0.4	77.0	3.0	20.0	0.079	0.544	18.169083	-96.104417
Lim. Edos. Term. Ver. Ppia. Oax.	115.00																			
Puente Caracol	117.20	2	0	6595	6.3	70.1	9.0	4.1	3.0	2.0	0.4	5.0	0.1	76.4	9.0	14.6	0.085	0.500	18.133084	-96.136714
Tuxtepec	121.25	1	1	5094	11.0	65.7	0.8	6.4	2.0	4.9	1.0	4.6	3.6	76.7	0.8	22.5	0.064	0.502	18.112029	-96.134650
Tuxtepec	121.25	1	2	5045	8.8	65.9	0.8	7.5	2.0	5.1	1.2	5.1	3.6	74.7	0.8	24.5	0.066	0.502	18.114156	-96.134334

3 CARR: Cd. Alemán - Sayula

CLAVE: 00301

RUTA: MEX-145

AÑO: 2018

LUGAR	ESTACION				CLASIFICACION VEHICULAR EN PORCIENTO														COORDENADAS	
	KM	TE	SC	TDPA	M	A	B	C2	C3	T3S2	T3S3	T3S2R4	OTROS	A	B	C	K'	D	LATITUD	LONGITUD
Cd. Alemán	0.00	3	0	7175	6.6	65.8	4.5	7.7	3.4	6.5	1.2	3.7	0.6	72.4	4.5	23.1	0.068	0.506	18.181817	-96.094067
Lim. Edos. Term. Ver. Ppia. Oax.	2.80																			
Puente Papaloapan	3.50	2	0	2136	7.1	57.4	3.6	9.6	9.3	10.3	0.8	1.5	0.4	64.5	3.6	31.9	0.076	0.500	18.159601	-96.096694
T. Izq. Loma Bonita	30.00	1	0	4652	8.6	67.6	1.5	7.2	3.6	5.6	1.1	2.7	2.1	76.2	1.5	22.3	0.064	0.527	18.094375	-95.881623
Lim. Edos. Term. Oax. Ppia. Ver.	34.40																			
T. Der. Villa Azueta	41.50	1	0	4229	4.2	57.5	3.6	10.8	4.3	13.9	2.3	2.8	0.6	61.7	3.6	34.7	0.070	0.542	18.091399	-95.780774
T. Izq. Tesechoacán	56.70	1	0	4261	2.0	51.2	5.5	10.3	6.5	17.2	2.6	4.1	0.6	53.2	5.5	41.3	0.059	0.545	18.128753	-95.656811
X. C. Santiago Tuxtla - Playa Vicente	71.40	1	0	4810	2.1	56.1	4.0	11.2	6.5	14.7	1.9	2.9	0.6	58.2	4.0	37.8	0.067	0.526	18.069129	-95.535497
San Juan Evangelista	118.35	1	0	4922	2.0	57.9	4.1	9.2	4.8	15.6	2.5	3.1	0.8	59.9	4.1	36.0	0.063	0.524	17.912594	-95.137576

OAXACA

3 CARR: Cd. Alemán - Sayula

CLAVE: 00301

RUTA: MEX-145

AÑO: 2018

LUGAR	ESTACION				CLASIFICACION VEHICULAR EN PORCIENTO														COORDENADAS	
	KM	TE	SC	TDPA	M	A	B	C2	C3	T3S2	T3S3	T3S2R4	OTROS	A	B	C	K'	D	LATITUD	LONGITUD
Sayula de Alemán	136.40	1	0	6685	2.2	65.5	2.7	7.5	3.7	12.7	2.6	2.4	0.7	67.7	2.7	29.6	0.066	0.522	17.887496	-94.964966

4 CARR: Coatzacoalcos - Salina Cruz

CLAVE: 00147

RUTA: MEX-185

AÑO: 2018

LUGAR	ESTACION				CLASIFICACION VEHICULAR EN PORCIENTO														COORDENADAS	
	KM	TE	SC	TDPA	M	A	B	C2	C3	T3S2	T3S3	T3S2R4	OTROS	A	B	C	K'	D	LATITUD	LONGITUD
Coatzacoalcos	0.00	3	1	11653	1.4	86.7	2.2	4.6	1.5	1.4	1.0	1.0	0.2	88.1	2.2	9.7	0.081	0.504	18.086671	-94.467405
Coatzacoalcos	0.00	3	2	11829	1.2	86.1	2.4	4.8	1.7	1.5	1.0	1.1	0.2	87.3	2.4	10.3	0.078	0.504	18.086297	-94.466913
T. C. Nuevo Teapa - Cosoleacaque	21.00	1	1	12459	1.6	82.3	2.8	7.8	1.1	1.7	1.4	0.8	0.5	83.9	2.8	13.3	0.068	0.510	18.021801	-94.542732
T. C. Nuevo Teapa - Cosoleacaque	21.00	1	2	11989	1.3	81.4	3.3	8.8	0.9	1.6	1.5	0.7	0.5	82.7	3.3	14.0	0.065	0.510	18.025443	-94.535601
Minatitlán	21.60	3	1	18414	1.9	86.8	0.9	5.5	0.4	1.3	2.3	0.5	0.4	88.7	0.9	10.4	0.071	0.529	17.998334	-94.588162
Minatitlán	21.60	3	2	16409	1.6	87.7	0.7	4.0	0.4	1.4	3.0	0.7	0.5	89.3	0.7	10.0	0.064	0.529	17.998227	-94.588238
Cosoleacaque	31.50	1	0	25022	4.2	83.1	1.2	8.7	0.7	1.0	0.7	0.3	0.1	87.3	1.2	11.5	0.062	0.509	18.006444	-94.621523
Jáltipan de Morelos	38.60	3	0	9109	4.8	75.2	2.2	7.5	1.0	6.2	1.4	1.0	0.7	80.0	2.2	17.8	0.064	0.509	17.959503	-94.716435
Acayucan	59.60	1	0	10099	2.6	74.0	2.5	9.8	2.2	5.7	1.3	1.2	0.7	76.6	2.5	20.9	0.067	0.509	17.956691	-94.836986
Sayula de Alemán	71.00	1	1	8903	3.7	78.3	1.8	4.9	1.7	4.9	2.4	2.1	0.2	82.0	1.8	16.2	0.073	0.513	17.896825	-94.949742
Sayula de Alemán	71.00	1	2	8465	3.3	77.4	2.1	5.5	1.7	5.2	2.5	2.1	0.2	80.7	2.1	17.2	0.066	0.513	17.896765	-94.949625
Sayula de Alemán	71.00	3	0	8810	4.6	72.2	3.0	4.8	1.9	7.8	2.3	3.1	0.3	76.8	3.0	20.2	0.063	0.502	17.876017	-94.966045
Campo Nuevo	94.50	3	0	5681	5.8	58.6	4.5	6.9	3.1	11.2	3.6	5.2	1.1	64.4	4.5	31.1	0.061	0.510	17.700026	-95.073333
T. Izq. Jesús Carranza	126.80	1	0	5087	2.6	65.6	4.4	6.1	2.2	10.3	3.1	5.1	0.6	68.2	4.4	27.4	0.066	0.532	17.439496	-95.078208
T. Izq. Jesús Carranza	126.80	3	0	4902	4.5	58.7	6.2	6.3	3.0	10.8	2.6	7.3	0.6	63.2	6.2	30.6	0.058	0.524	17.430225	-95.076149
Lim. Edos. Term. Ver. Ppia. Oax.	139.90																			
T. Der. Tuxtepec	166.20	1	0	4905	7.2	58.3	5.9	6.7	2.8	9.2	2.3	7.1	0.5	65.5	5.9	28.6	0.068	0.513	17.146846	-95.064253
T. Der. Tuxtepec	166.20	3	0	5838	7.3	65.5	5.4	6.0	2.7	6.0	2.1	4.4	0.6	72.8	5.4	21.8	0.067	0.508	17.131783	-95.059952
T. Der. Estación Mogoñe	182.15	1	0	6382	5.8	68.4	5.1	6.3	2.5	5.3	1.9	3.9	0.8	74.2	5.1	20.7	0.069	0.523	17.012619	-95.010068
T. Der. Matías Romero	196.00	1	0	9471	8.0	71.0	2.7	4.3	1.4	7.1	1.6	2.8	1.1	79.0	2.7	18.3	0.069	0.510	16.884042	-95.019466
T. Der. Barrio de La Soledad	203.05	1	0	7742	3.9	72.8	2.8	5.9	1.8	6.7	2.0	3.2	0.9	76.7	2.8	20.5	0.069	0.503	16.817832	-95.033540
T. Der. Barrio de La Soledad	203.05	3	0	6455	4.7	65.4	4.3	7.8	2.5	7.2	3.3	4.0	0.8	70.1	4.3	25.6	0.077	0.513	16.812882	-95.032608
T. C. La Ventosa - Salina Cruz (Cuota)	236.00	1	0	5784	2.0	63.3	4.8	9.2	2.6	8.2	4.1	5.3	0.5	65.3	4.8	29.9	0.079	0.518	16.596949	-94.945426
T. C. La Ventosa - Salina Cruz (Cuota)	236.00	3	0	3476	2.6	70.6	4.9	13.1	4.7	1.7	1.7	0.6	0.1	73.2	4.9	21.9	0.091	0.507	16.576425	-94.944997
T. Izq. San Pedro Tapanatepec (2º Acceso)	241.70	1	0	3600	2.6	69.5	5.0	13.5	4.9	1.9	1.8	0.7	0.1	72.1	5.0	22.9	0.069	0.526	16.558474	-94.948337
T. Izq. San Pedro Tapanatepec (2º Acceso)	241.70	3	0	8515	2.4	81.1	3.1	8.7	2.5	1.0	0.9	0.2	0.1	83.5	3.1	13.4	0.074	0.519	16.545397	-94.952011
Juchitán de Zaragoza	255.55	1	0	10332	5.1	80.9	2.5	7.5	1.9	1.0	0.9	0.1	0.1	86.0	2.5	11.5	0.082	0.513	16.454547	-95.001866
Juchitán de Zaragoza	255.55	3	1	9523	7.3	83.8	1.4	5.6	0.8	0.5	0.5	0.0	0.1	91.1	1.4	7.5	0.093	0.504	16.437484	-95.032302
Juchitán de Zaragoza	255.55	3	2	9677	6.7	84.8	1.2	5.2	0.8	0.5	0.7	0.0	0.1	91.5	1.2	7.3	0.085	0.504	16.437428	-95.032206

OAXACA

4 CARR: Coatzacoalcos - Salina Cruz

CLAVE: 00147

RUTA: MEX-185

AÑO: 2018

LUGAR	ESTACION				CLASIFICACION VEHICULAR EN PORCIENTO										COORDENADAS					
	KM	TE	SC	TDPA	M	A	B	C2	C3	T3S2	T3S3	T3S2R4	OTROS	A	B	C	K'	D	LATITUD	LONGITUD
Santo Domingo Tehuantepec	283.95	1	1	4595	3.1	81.9	2.9	8.9	1.5	1.0	0.7	0.0	0.0	85.0	2.9	12.1	0.075	0.502	16.347324	-95.209442
Santo Domingo Tehuantepec	283.95	1	2	4628	3.4	80.5	3.1	9.4	1.5	0.7	1.3	0.0	0.1	83.9	3.1	13.0	0.070	0.502	16.347415	-95.209183
Santo Domingo Tehuantepec	283.95	3	1	11686	3.4	87.6	0.8	3.6	0.5	1.5	1.4	0.7	0.5	91.0	0.8	8.2	0.065	0.504	16.313670	-95.237193
Santo Domingo Tehuantepec	283.95	3	2	11867	3.4	86.5	1.0	4.1	0.5	1.6	1.6	0.8	0.5	89.9	1.0	9.1	0.068	0.504	16.313816	-95.237124
Salina Cruz	302.35	1	1	12582	2.8	86.9	0.8	5.2	0.7	1.0	1.3	0.9	0.4	89.7	0.8	9.5	0.066	0.506	16.237122	-95.213351
Salina Cruz	302.35	1	2	12878	2.6	86.2	0.9	5.6	0.7	1.1	1.5	1.0	0.4	88.8	0.9	10.3	0.063	0.506	16.237120	-95.213266

5 CARR: Ent. La Ventosa - San Pedro Tapanatepec

CLAVE: 20059

RUTA: MEX-190

AÑO: 2018

LUGAR	ESTACION				CLASIFICACION VEHICULAR EN PORCIENTO										COORDENADAS					
	KM	TE	SC	TDPA	M	A	B	C2	C3	T3S2	T3S3	T3S2R4	OTROS	A	B	C	K'	D	LATITUD	LONGITUD
La Ventosa	0.00	3	0	3987	2.9	84.9	2.6	6.3	1.1	1.1	0.6	0.3	0.2	87.8	2.6	9.6	0.080	0.514	16.550301	-94.944151
T. C. La Ventosa - Salina Cruz (Cuota)	7.20	3	0	6109	1.2	73.8	3.1	8.1	1.6	5.7	2.1	3.7	0.7	75.0	3.1	21.9	0.074	0.503	16.571642	-94.883954
T. Izq. Niltpec	38.01	3	0	3899	1.8	61.5	4.7	5.9	3.6	10.7	3.9	7.4	0.5	63.3	4.7	32.0	0.064	0.513	16.554493	-94.600401
Santo Domingo Zanatepec	68.25	3	0	4560	6.5	57.6	4.6	9.1	3.5	8.7	3.7	5.5	0.8	64.1	4.6	31.3	0.068	0.521	16.476447	-94.342725
San Pedro Tapanatepec	91.80	1	0	2076	7.5	72.0	4.2	12.7	1.7	1.0	0.5	0.2	0.2	79.5	4.2	16.3	0.071	0.502	16.384284	-94.201018

6 CARR: Huajuapán de León - Oaxaca

CLAVE: 20056

RUTA: MEX-190

AÑO: 2018

LUGAR	ESTACION				CLASIFICACION VEHICULAR EN PORCIENTO										COORDENADAS					
	KM	TE	SC	TDPA	M	A	B	C2	C3	T3S2	T3S3	T3S2R4	OTROS	A	B	C	K'	D	LATITUD	LONGITUD
Hujuapán de León	0.00																			
T. Izq. Tehuacán	1.35	1	0	14949	4.0	80.6	0.3	3.7	0.3	8.8	1.0	0.5	0.8	84.6	0.3	15.1	0.054	0.511	17.813315	-97.765899
T. Izq. Tehuacán	1.35	3	0	11161	6.3	80.1	0.3	6.0	0.4	5.6	0.4	0.1	0.8	86.4	0.3	13.3	0.070	0.534	17.810819	-97.760149
Tamazulapán	38.61	1	0	2985	2.3	77.9	1.1	13.0	1.3	2.2	1.4	0.5	0.3	80.2	1.1	18.7	0.069	0.501	17.686273	-97.585306
Tamazulapán	38.61	3	0	3995	3.1	80.9	0.9	10.5	1.0	2.6	0.5	0.1	0.4	84.0	0.9	15.1	0.074	0.502	17.671523	-97.562438
T. Izq. Santiago Tejuapán	49.62	3	0	2936	1.6	79.6	2.3	11.8	1.5	2.0	0.8	0.1	0.3	81.2	2.3	16.5	0.070	0.503	17.655700	-97.471556
T. Der. Tlaxiaco	61.43	3	0	3411	1.3	76.2	1.1	15.7	1.2	2.8	0.9	0.2	0.6	77.5	1.1	21.4	0.074	0.501	17.575440	-97.421177
Asunción Nochixtlán	90.40	1	0	6942	2.7	83.7	0.5	8.5	1.0	2.3	0.8	0.2	0.3	86.4	0.5	13.1	0.079	0.506	17.465524	-97.261129
T. Izq. Tehuacán	161.73	1	0	824	4.5	88.2	0.2	4.4	1.1	0.5	0.2	0.9	0.0	92.7	0.2	7.1	0.074	0.505	17.285512	-96.910518
T. Izq. Tehuacán	161.73	3	0	6364	6.3	86.4	0.2	3.4	0.5	2.2	0.5	0.2	0.3	92.7	0.2	7.1	0.071	0.504	17.284618	-96.899901
T. Der. Tlaltinango	170.29	1	0	7757	5.4	90.3	0.1	1.7	0.7	1.6	0.2	0.0	0.0	95.7	0.1	4.2	0.072	0.501	17.245722	-96.847596
T. Der. Tlaltinango	170.29	3	0	8406	5.0	90.6	0.1	1.7	0.9	1.3	0.3	0.1	0.0	95.6	0.1	4.3	0.065	0.505	17.244510	-96.844574
T. Der. Nazareno Etla	179.23	3	1	16076	5.3	90.4	0.1	2.7	0.6	0.4	0.4	0.1	0.0	95.7	0.1	4.2	0.081	0.520	17.167450	-96.788009
T. Der. Nazareno Etla	179.23	3	2	14828	2.4	92.9	0.1	3.1	0.6	0.4	0.4	0.1	0.0	95.3	0.1	4.6	0.070	0.520	17.167479	-96.787875

OAXACA

6 CARR: Huajuapán de León - Oaxaca

CLAVE: 20056

RUTA: MEX-190

AÑO: 2018

LUGAR	ESTACION				CLASIFICACION VEHICULAR EN PORCIENTO													COORDENADAS		
	KM	TE	SC	TDPA	M	A	B	C2	C3	T3S2	T3S3	T3S2R4	OTROS	A	B	C	K'	D	LATITUD	LONGITUD
T. Aut. Cuacnopalan - Oaxaca	181.80	3	1	28044	5.6	87.1	0.7	2.3	1.6	0.8	1.3	0.4	0.2	92.7	0.7	6.6	0.069	0.515	17.142693	-96.777757
T. Aut. Cuacnopalan - Oaxaca	181.80	3	2	26367	4.8	87.3	0.8	2.6	1.6	0.9	1.4	0.4	0.2	92.1	0.8	7.1	0.061	0.515	17.142625	-96.777639
Oaxaca	190.60	1	1	32702	4.5	86.8	0.8	6.0	0.2	0.5	0.9	0.1	0.2	91.3	0.8	7.9	0.069	0.507	17.096264	-96.749599
Oaxaca	190.60	1	2	33635	3.9	86.9	0.8	6.4	0.2	0.5	1.0	0.1	0.2	90.8	0.8	8.4	0.079	0.507	17.096331	-96.749465

7 CARR: Juchitán - Ixtepec

CLAVE: 20359

RUTA: MEX-185

AÑO: 2018

LUGAR	ESTACION				CLASIFICACION VEHICULAR EN PORCIENTO													COORDENADAS		
	KM	TE	SC	TDPA	M	A	B	C2	C3	T3S2	T3S3	T3S2R4	OTROS	A	B	C	K'	D	LATITUD	LONGITUD
Juchitán de Zaragoza	0.00																			
X. C. Coatzacoalcos - Salina Cruz	0.15	3	1	8037	4.4	88.0	0.9	6.3	0.2	0.1	0.1	0.0	0.0	92.4	0.9	6.7	0.077	0.513	16.453395	-95.027407
X. C. Coatzacoalcos - Salina Cruz	0.15	3	2	8476	7.3	85.0	0.7	6.4	0.3	0.2	0.1	0.0	0.0	92.3	0.7	7.0	0.088	0.513	16.453361	-95.027532
Asunción Ixtaltepec	7.40	1	1	3956	9.5	81.3	0.7	7.5	0.7	0.1	0.2	0.0	0.0	90.8	0.7	8.5	0.072	0.501	16.503768	-95.052935
Asunción Ixtaltepec	7.40	1	2	3967	9.9	81.1	0.6	7.3	0.8	0.1	0.1	0.0	0.1	91.0	0.6	8.4	0.078	0.501	16.501724	-95.055514
Asunción Ixtaltepec	7.40	3	1	5386	7.3	86.4	0.3	4.8	0.4	0.4	0.3	0.0	0.1	93.7	0.3	6.0	0.084	0.504	16.510985	-95.066122
Asunción Ixtaltepec	7.40	3	2	5293	7.7	86.4	0.3	4.4	0.4	0.4	0.3	0.0	0.1	94.1	0.3	5.6	0.078	0.504	16.510944	-95.066262
Ixtepec	16.00	1	1	4442	7.4	84.2	1.1	6.8	0.1	0.3	0.1	0.0	0.0	91.6	1.1	7.3	0.069	0.501	16.536018	-95.079484
Ixtepec	16.00	1	2	4427	8.3	82.5	1.2	7.5	0.1	0.3	0.1	0.0	0.0	90.8	1.2	8.0	0.073	0.501	16.535942	-95.079608

8 CARR: La Granja - Temascal

CLAVE: 00275

RUTA: MEX-145

AÑO: 2018

LUGAR	ESTACION				CLASIFICACION VEHICULAR EN PORCIENTO													COORDENADAS		
	KM	TE	SC	TDPA	M	A	B	C2	C3	T3S2	T3S3	T3S2R4	OTROS	A	B	C	K'	D	LATITUD	LONGITUD
T. C. La Tinaja - Santa Cruz	0.00	3	0	3970	20.4	66.0	0.8	5.4	2.4	3.2	1.1	0.2	0.5	86.4	0.8	12.8	0.073	0.515	18.352767	-96.261941
Lim. Edos. Term. Ver. Ppia. Oax.	5.00																			
Temascal	23.00	1	0	3873	27.1	63.4	0.1	6.1	0.4	2.4	0.2	0.1	0.2	90.5	0.1	9.4	0.085	0.504	18.253396	-96.394605

9 CARR: Las Cruces - Pinotepa Nacional

CLAVE: 00073

RUTA: MEX-200

AÑO: 2018

LUGAR	ESTACION				CLASIFICACION VEHICULAR EN PORCIENTO													COORDENADAS		
	KM	TE	SC	TDPA	M	A	B	C2	C3	T3S2	T3S3	T3S2R4	OTROS	A	B	C	K'	D	LATITUD	LONGITUD
T. C. Chilpancingo - Acapulco	0.00	3	1	19165	5.5	89.5	0.3	2.0	0.7	0.6	0.6	0.2	0.6	95.0	0.3	4.7	0.065	0.523	16.885694	-99.834091
T. C. Chilpancingo - Acapulco	0.00	3	2	17493	4.3	89.4	0.5	3.0	0.6	0.6	0.8	0.2	0.6	93.7	0.5	5.8	0.067	0.523	16.885818	-99.834093
T. Der. Puerto Marqués	4.62	1	1	19731	4.5	89.4	0.3	3.7	0.5	0.6	0.6	0.2	0.2	93.9	0.3	5.8	0.077	0.502	16.867784	-99.811136
T. Der. Puerto Marqués	4.62	1	2	19877	4.6	88.5	0.5	4.3	0.6	0.6	0.6	0.2	0.1	93.1	0.5	6.4	0.069	0.502	16.867810	-99.811002

OAXACA

9 CARR: Las Cruces - Pinotepa Nacional

CLAVE: 00073

RUTA: MEX-200

AÑO: 2018

LUGAR	ESTACION				CLASIFICACION VEHICULAR EN PORCIENTO										COORDENADAS					
	KM	TE	SC	TDPA	M	A	B	C2	C3	T3S2	T3S3	T3S2R4	OTROS	A	B	C	K'	D	LATITUD	LONGITUD
T. Der. Puerto Marqués	4.62	3	0	16044	5.2	87.4	0.7	4.3	1.1	0.6	0.5	0.1	0.1	92.6	0.7	6.7	0.068	0.510	16.852316	-99.798394
X. C. Puerto Marqués - La Venta (Cuota)	11.70	1	1	4265	5.2	84.8	1.3	5.4	1.0	1.1	0.7	0.3	0.2	90.0	1.3	8.7	0.075	0.509	16.831169	-99.771680
X. C. Puerto Marqués - La Venta (Cuota)	11.70	1	2	4111	5.0	84.4	1.1	5.5	1.3	1.3	0.8	0.5	0.1	89.4	1.1	9.5	0.077	0.509	16.831259	-99.771679
X. C. Puerto Marqués - La Venta (Cuota)	11.70	3	1	5309	4.7	83.7	1.8	6.1	1.5	1.1	0.9	0.1	0.1	88.4	1.8	9.8	0.063	0.501	16.830367	-99.754887
X. C. Puerto Marqués - La Venta (Cuota)	11.70	3	2	5329	4.8	83.8	1.7	6.2	1.3	1.3	0.7	0.1	0.1	88.6	1.7	9.7	0.064	0.501	16.830458	-99.754884
San Marcos	58.90	1	0	6078	3.1	82.8	1.6	7.2	1.6	2.6	0.9	0.1	0.1	85.9	1.6	12.5	0.065	0.501	16.779713	-99.410983
Nexpa	84.96	3	0	5212	2.6	82.6	1.9	7.0	1.8	2.8	1.0	0.2	0.1	85.2	1.9	12.9	0.070	0.510	16.780062	-99.199825
T. Izq. Copala (1º Acceso)	117.50	1	0	6953	3.2	83.9	1.8	7.7	1.1	1.4	0.7	0.1	0.1	87.1	1.8	11.1	0.073	0.508	16.611618	-98.995049
T. Izq. Copala (1º Acceso)	117.50	3	0	6391	2.0	84.5	1.6	7.4	1.8	1.9	0.6	0.1	0.1	86.5	1.6	11.9	0.072	0.502	16.603441	-98.966388
T. Izq. Ometepec	175.88	1	0	5309	3.1	82.1	1.8	8.3	2.0	1.9	0.6	0.1	0.1	85.2	1.8	13.0	0.068	0.503	16.655323	-98.503100
Cuajinicuilapa	200.60	3	0	2781	3.9	81.6	1.7	8.0	2.0	2.0	0.6	0.1	0.1	85.5	1.7	12.8	0.059	0.516	16.462082	-98.393086
Lim. Edos. Term. Gro. Ppia. Oax.	207.80																			
T. Izq. San Pedro Orizaba	215.00	3	0	2243	3.1	78.1	2.9	6.7	3.5	3.7	1.3	0.4	0.3	81.2	2.9	15.9	0.067	0.504	16.441556	-98.339402
T. Izq. Tlaxiaco	245.47	1	0	3652	5.3	76.8	2.2	7.8	1.9	3.8	1.2	0.5	0.5	82.1	2.2	15.7	0.078	0.507	16.379217	-98.093922
T. Izq. Tlaxiaco	245.47	3	0	6924	5.0	77.7	2.1	6.4	1.7	3.9	2.0	0.6	0.6	82.7	2.1	15.2	0.062	0.518	16.376662	-98.091936
Pinotepa Nacional	252.50																			

10 CARR: Libramiento de Pochutla

CLAVE:

RUTA: MEX-200

AÑO: 2018

LUGAR	ESTACION				CLASIFICACION VEHICULAR EN PORCIENTO										COORDENADAS					
	KM	TE	SC	TDPA	M	A	B	C2	C3	T3S2	T3S3	T3S2R4	OTROS	A	B	C	K'	D	LATITUD	LONGITUD
T. C. Santiago Pinotepa Nacional - Salina Cruz	0.00	3	0	938	19.1	71.2	1.3	5.3	1.0	1.3	0.5	0.2	0.1	90.3	1.3	8.4	0.091	0.519	15.735623	-96.481001
Pio Macaya	2.40	1	0	938	18.1	71.0	0.8	6.6	1.4	1.2	0.6	0.0	0.3	89.1	0.8	10.1	0.079	0.516	15.747729	-96.477722
Pio Macaya	2.40	3	0	737	21.4	66.4	1.5	8.0	2.1	0.5	0.1	0.0	0.0	87.8	1.5	10.7	0.090	0.516	15.755533	-96.475968
T. C. Oaxaca - Puerto Ángel	5.20	1	0	737	13.4	72.9	1.5	8.7	2.2	0.8	0.4	0.0	0.1	86.3	1.5	12.2	0.077	0.530	15.762412	-96.466118

11 CARR: Libramiento de Santa María del Tule

CLAVE:

RUTA: MEX-190

AÑO: 2018

LUGAR	ESTACION				CLASIFICACION VEHICULAR EN PORCIENTO										COORDENADAS					
	KM	TE	SC	TDPA	M	A	B	C2	C3	T3S2	T3S3	T3S2R4	OTROS	A	B	C	K'	D	LATITUD	LONGITUD
T. C. Oaxaca - Tehuantepec (Poniente)	0.00	3	0	17728	1.2	85.2	0.9	5.7	1.1	3.8	0.8	0.5	0.8	86.4	0.9	12.7	0.071	0.512	17.052209	-96.657767
T. C. Oaxaca - Tehuantepec (Oriente)	5.80	1	0	17470	2.0	86.1	0.8	4.6	0.8	3.3	1.0	0.5	0.9	88.1	0.8	11.1	0.069	0.506	17.036718	-96.625002

OAXACA

12 CARR: Oaxaca - Puerto Ángel

CLAVE: 20091

RUTA: MEX-175

AÑO: 2018

LUGAR	ESTACION				CLASIFICACION VEHICULAR EN PORCIENTO										COORDENADAS					
	KM	TE	SC	TDPA	M	A	B	C2	C3	T3S2	T3S3	T3S2R4	OTROS	A	B	C	K'	D	LATITUD	LONGITUD
Oaxaca	0.00	3	1	35397	7.4	85.5	0.2	4.7	0.4	0.5	1.1	0.1	0.1	92.9	0.2	6.9	0.069	0.531	17.032460	-96.713208
Oaxaca	0.00	3	2	31277	7.0	85.4	0.3	4.8	0.4	0.7	1.1	0.1	0.2	92.4	0.3	7.3	0.067	0.531	17.032498	-96.713118
T. Der. Aeropuerto	10.46	1	1	25709	4.4	88.9	0.3	5.1	0.6	0.3	0.4	0.0	0.0	93.3	0.3	6.4	0.081	0.523	17.008754	-96.712886
T. Der. Aeropuerto	10.46	1	2	28199	5.5	87.2	0.3	5.8	0.5	0.3	0.4	0.0	0.0	92.7	0.3	7.0	0.072	0.523	17.008809	-96.712765
T. Der. Puerto Escondido	19.07	1	1	15756	4.4	86.9	0.3	6.9	0.8	0.3	0.4	0.0	0.0	91.3	0.3	8.4	0.091	0.500	16.933223	-96.704318
T. Der. Puerto Escondido	19.07	1	2	15750	5.0	85.0	0.4	8.2	0.8	0.3	0.3	0.0	0.0	90.0	0.4	9.6	0.088	0.500	16.933246	-96.704176
T. Der. Puerto Escondido	19.07	3	0	14811	4.6	77.4	0.3	7.1	0.8	7.5	1.2	0.7	0.4	82.0	0.3	17.7	0.067	0.510	16.927187	-96.702540
Ocotlán	35.67	3	0	7644	1.5	91.4	0.1	6.8	0.2	0.0	0.0	0.0	0.0	92.9	0.1	7.0	0.062	0.502	16.764103	-96.677548
Ejutla de Crespo	64.04	1	0	6232	1.6	86.8	0.4	8.3	1.5	1.2	0.2	0.0	0.0	88.4	0.4	11.2	0.071	0.505	16.604807	-96.738118
Ejutla de Crespo	64.04	3	0	4452	2.2	82.6	0.4	12.1	2.1	0.4	0.2	0.0	0.0	84.8	0.4	14.8	0.077	0.514	16.516037	-96.736404
Miahuatlán de Porfirio Díaz	100.64	3	0	4248	1.9	87.2	0.7	8.5	1.3	0.2	0.2	0.0	0.0	89.1	0.7	10.2	0.068	0.501	16.285317	-96.583989
San Miguel Suchixtepec	144.00	1	0	1730	1.9	81.9	1.1	12.2	1.4	1.3	0.2	0.0	0.0	83.8	1.1	15.1	0.064	0.523	16.103218	-96.471844
Candelaria Loxicha	195.00	1	0	1655	2.4	85.2	1.1	9.4	1.0	0.7	0.2	0.0	0.0	87.6	1.1	11.3	0.059	0.503	15.931838	-96.485251
San Pedro Pochutla	238.00	1	0	4696	7.6	87.0	0.3	4.4	0.4	0.1	0.2	0.0	0.0	94.6	0.3	5.1	0.071	0.503	15.764290	-96.463713
Puerto Ángel	245.40	1	0	3638	13.0	83.1	0.1	3.0	0.1	0.1	0.6	0.0	0.0	96.1	0.1	3.8	0.084	0.516	15.676118	-96.481851

13 CARR: Oaxaca - Tehuantepec

CLAVE: 20057

RUTA: MEX-190

AÑO: 2018

LUGAR	ESTACION				CLASIFICACION VEHICULAR EN PORCIENTO										COORDENADAS					
	KM	TE	SC	TDPA	M	A	B	C2	C3	T3S2	T3S3	T3S2R4	OTROS	A	B	C	K'	D	LATITUD	LONGITUD
Oaxaca	0.00	3	1	22652	4.1	88.8	0.3	3.7	0.2	0.9	1.8	0.1	0.1	92.9	0.3	6.8	0.062	0.545	17.067476	-96.686950
Oaxaca	0.00	3	2	27155	4.4	87.7	0.3	4.0	0.2	1.0	2.2	0.1	0.1	92.1	0.3	7.6	0.071	0.545	17.067634	-96.686858
T. Izq. Guelatao	8.69	3	1	17974	3.5	89.3	0.3	2.6	0.3	1.3	2.2	0.2	0.3	92.8	0.3	6.9	0.069	0.543	17.063870	-96.674820
T. Izq. Guelatao	8.69	3	2	21373	4.2	88.0	0.3	3.0	0.3	1.0	2.7	0.2	0.3	92.2	0.3	7.5	0.081	0.543	17.064000	-96.674667
Libramiento Santa María el Tule	12.00	1	1	19294	3.9	88.6	0.5	2.9	0.4	1.4	2.1	0.1	0.1	92.5	0.5	7.0	0.068	0.535	17.062103	-96.668876
Libramiento Santa María el Tule	12.00	1	2	16796	3.8	87.8	0.5	3.4	0.4	1.6	2.3	0.1	0.1	91.6	0.5	7.9	0.065	0.535	17.062254	-96.668829
Santa María El Tule	13.90	1	1	7948	6.0	90.2	0.1	2.6	0.1	0.6	0.4	0.0	0.0	96.2	0.1	3.7	0.077	0.516	17.048667	-96.641833
Santa María El Tule	13.90	1	2	7446	5.2	90.6	0.1	3.0	0.1	0.6	0.4	0.0	0.0	95.8	0.1	4.1	0.094	0.516	17.048833	-96.641833
Santa María El Tule	13.90	3	0	4761	5.5	88.8	0.1	3.9	0.2	1.3	0.2	0.0	0.0	94.3	0.1	5.6	0.074	0.510	17.043167	-96.629000
T. Izq. Teotitlán del Valle	26.50	1	0	14788	2.3	89.1	1.0	6.2	0.8	0.2	0.4	0.0	0.0	91.4	1.0	7.6	0.077	0.509	16.998333	-96.531000
T. Izq. Teotitlán del Valle	26.50	3	0	15671	2.5	88.5	0.8	6.4	0.8	0.3	0.4	0.2	0.1	91.0	0.8	8.2	0.075	0.504	16.993167	-96.523000
T. Der. Tlacolula	33.64	1	0	14760	3.4	83.0	1.0	6.3	0.7	4.3	0.5	0.2	0.6	86.4	1.0	12.6	0.070	0.531	16.970368	-96.488971
T. Der. Tlacolula	33.64	3	1	5130	1.8	85.6	1.4	8.6	1.0	0.7	0.4	0.3	0.2	87.4	1.4	11.2	0.078	0.504	16.948167	-96.460000
T. Der. Tlacolula	33.64	3	2	5222	1.4	86.8	1.6	7.9	0.8	0.5	0.7	0.2	0.1	88.2	1.6	10.2	0.067	0.504	16.948235	-96.459937
T. Izq. Villa de Mitla	42.66	1	0	8664	1.4	84.2	1.4	7.9	1.1	2.9	0.6	0.2	0.3	85.6	1.4	13.0	0.074	0.510	16.921667	-96.407000

OAXACA

13 CARR: Oaxaca - Tehuantepec

CLAVE: 20057

RUTA: MEX-190

AÑO: 2018

LUGAR	ESTACION				CLASIFICACION VEHICULAR EN PORCIENTO										COORDENADAS					
	KM	TE	SC	TDPA	M	A	B	C2	C3	T3S2	T3S3	T3S2R4	OTROS	A	B	C	K'	D	LATITUD	LONGITUD
T. Izq. Villa de Mitla	42.66	3	0	4867	1.4	83.6	2.4	7.0	1.3	2.6	0.8	0.5	0.4	85.0	2.4	12.6	0.070	0.501	16.912500	-96.397732
San Pedro Totolapan	81.00	1	0	3044	3.7	74.7	4.4	10.0	2.4	2.5	1.2	0.8	0.3	78.4	4.4	17.2	0.063	0.508	16.672181	-96.306577
T. Izq. Nejapa de Madero	127.00	1	0	2471	3.8	76.2	5.0	8.5	2.1	2.2	1.1	0.8	0.3	80.0	5.0	15.0	0.082	0.505	16.621603	-96.037779
La Reforma	184.62	1	0	1984	3.7	74.7	4.4	10.0	2.4	2.5	1.2	0.8	0.3	78.4	4.4	17.2	0.097	0.508	16.399462	-95.767480
La Reforma	184.62	3	0	2005	1.0	76.2	6.6	7.9	2.3	2.3	1.9	1.6	0.2	77.2	6.6	16.2	0.076	0.522	16.398655	-95.760535
T. Der. Magdalena Tequisistlán	206.66	1	0	3006	4.8	77.9	4.1	7.2	1.4	2.6	1.1	0.7	0.2	82.7	4.1	13.2	0.069	0.502	16.414099	-95.596218
T. Izq. Jalapa de Márquez	224.60	3	0	3551	1.9	79.8	3.6	9.9	1.3	1.9	0.9	0.6	0.1	81.7	3.6	14.7	0.077	0.501	16.427098	-95.425314
X. C. La Ventosa - Salina Cruz (Cuota)	246.18	1	0	3654	1.2	80.8	3.2	10.1	1.3	1.9	0.8	0.6	0.1	82.0	3.2	14.8	0.077	0.502	16.334219	-95.284212
X. C. La Ventosa - Salina Cruz (Cuota)	246.18	3	0	5488	3.5	78.8	1.9	7.1	1.2	2.8	0.7	3.7	0.3	82.3	1.9	15.8	0.069	0.503	16.331257	-95.271970
Tehuantepec	250.60	1	0	6668	3.6	79.7	1.7	6.3	1.0	3.7	0.8	2.7	0.5	83.3	1.7	15.0	0.075	0.507	16.328667	-95.261167

14 CARR: Puebla - Huajuapán de León

CLAVE: 00049

RUTA: MEX-190

AÑO: 2018

LUGAR	ESTACION				CLASIFICACION VEHICULAR EN PORCIENTO										COORDENADAS					
	KM	TE	SC	TDPA	M	A	B	C2	C3	T3S2	T3S3	T3S2R4	OTROS	A	B	C	K'	D	LATITUD	LONGITUD
Puebla	0.00	3	1	24794	1.5	91.4	0.3	4.2	1.2	0.4	0.7	0.2	0.1	92.9	0.3	6.8	0.073	0.512	19.033157	-98.263437
Puebla	0.00	3	2	25996	2.1	90.3	0.3	4.6	1.2	0.4	0.8	0.2	0.1	92.4	0.3	7.3	0.064	0.512	19.033293	-98.263802
Atlixco	29.88	1	0	24591	4.0	83.6	0.7	7.7	1.3	1.0	0.8	0.8	0.1	87.6	0.7	11.7	0.060	0.501	18.930090	-98.407654
Atlixco	29.88	3	1	8741	3.3	83.3	1.0	6.6	1.5	1.9	1.2	0.7	0.5	86.6	1.0	12.4	0.077	0.502	18.867743	-98.440100
Atlixco	29.88	3	2	8824	3.5	82.3	1.2	7.1	1.4	2.0	1.3	0.7	0.5	85.8	1.2	13.0	0.084	0.502	18.867752	-98.440104
Tepeojuma	51.90	1	1	5529	2.2	80.9	1.6	8.2	1.9	2.1	1.2	1.5	0.4	83.1	1.6	15.3	0.080	0.504	18.729840	-98.448934
Tepeojuma	51.90	1	2	5441	2.4	79.4	1.7	8.9	2.1	2.2	1.3	1.6	0.4	81.8	1.7	16.5	0.090	0.504	18.729868	-98.449135
Izúcar de Matamoros	67.00	1	0	12650	4.2	76.8	1.3	7.4	1.7	5.0	1.4	1.4	0.8	81.0	1.3	17.7	0.067	0.504	18.631410	-98.469273
T. Der. Cuautla	70.00	3	0	9652	8.6	76.0	1.7	6.6	1.2	4.1	0.9	0.4	0.5	84.6	1.7	13.7	0.066	0.507	18.581494	-98.451407
Tehuiztingo	113.30	1	0	6081	3.9	82.3	2.5	4.3	1.1	3.8	1.1	0.5	0.5	86.2	2.5	11.3	0.086	0.518	18.338193	-98.282735
Acatlán de Osorio	154.20	1	0	8283	2.6	85.0	1.1	4.6	0.5	4.6	0.6	0.2	0.8	87.6	1.1	11.3	0.071	0.502	18.188865	-98.054661
Chila	192.30	3	0	2335	2.3	79.7	2.8	10.1	1.8	2.3	0.6	0.1	0.3	82.0	2.8	15.2	0.083	0.504	17.967095	-97.864266
Lim. Edos. Term. Pue. Ppia. Oax.	200.30																			
T. Izq. Las Palmas	202.10	1	0	2294	2.4	83.6	2.4	5.6	2.5	2.2	0.6	0.5	0.2	86.0	2.4	11.6	0.074	0.506	17.882244	-97.836574
Huajuapán de León	219.30	1	0	4077	4.3	83.7	2.3	5.5	1.0	2.4	0.5	0.1	0.2	88.0	2.3	9.7	0.072	0.504	17.836361	-97.790782

OAXACA

15 CARR: Ramal a Asunción Ixtaltepec

CLAVE: 20624

RUTA: MEX-185

AÑO: 2018

LUGAR	ESTACION				CLASIFICACION VEHICULAR EN PORCIENTO													COORDENADAS		
	KM	TE	SC	TDPA	M	A	B	C2	C3	T3S2	T3S3	T3S2R4	OTROS	A	B	C	K'	D	LATITUD	LONGITUD
T. C. Coatzacoalcos - Salina Cruz	0.00	3	0	3011	14.6	75.6	0.7	4.8	0.6	2.3	0.4	0.3	0.7	90.2	0.7	9.1	0.078	0.519	16.443154	-95.034355
Asunción Ixtaltepec	9.70	1	0	3709	11.0	78.7	2.9	4.3	0.5	1.6	0.4	0.1	0.5	89.7	2.9	7.4	0.078	0.517	16.492584	-95.064065

16 CARR: Ramal a Monte Albán

CLAVE:

RUTA: MEX

AÑO: 2018

LUGAR	ESTACION				CLASIFICACION VEHICULAR EN PORCIENTO													COORDENADAS			
	KM	TE	SC	TDPA	M	A	B	C2	C3	T3S2	T3S3	T3S2R4	OTROS	A	B	C	K'	D	LATITUD	LONGITUD	
T. C. Oaxaca - Tehuantepec	0.00																				
Chimalpopoca	1.80	3	0	14058	9.9	80.6	0.1	4.0	0.5	1.7	0.9	1.4	0.9	90.5	0.1	9.4	0.059	0.505	17.073398	-96.760813	
T. Der. San Pedro Ixtlahuaca	2.75	3	0	1991	14.4	79.4	0.6	4.2	0.2	1.0	0.1	0.0	0.1	93.8	0.6	5.6	0.089	0.519	17.071178	-96.765589	
Monte Albán	8.00																				

17 CARR: Ramal a Refinería Pemex (Refinería del Pacifico)

CLAVE:

RUTA: MEX

AÑO: 2018

LUGAR	ESTACION				CLASIFICACION VEHICULAR EN PORCIENTO													COORDENADAS			
	KM	TE	SC	TDPA	M	A	B	C2	C3	T3S2	T3S3	T3S2R4	OTROS	A	B	C	K'	D	LATITUD	LONGITUD	
T. C. Coatzacoalcos - Salina Cruz	0.00	3	1	5042	2.6	77.6	2.6	11.7	0.9	1.7	1.0	1.6	0.3	80.2	2.6	17.2	0.089	0.533	16.221000	-95.202917	
T. C. Coatzacoalcos - Salina Cruz	0.00	3	2	5765	2.9	76.5	2.0	12.8	0.9	1.9	1.1	1.6	0.3	79.4	2.0	18.6	0.104	0.533	16.221131	-95.202871	
Refinería de Pemex	3.00																				

18 CARR: San Pablo Villa de Mitla - T. C. (Tuxtepec - Palomares)

CLAVE: 00106

RUTA: MEX-179

AÑO: 2018

LUGAR	ESTACION				CLASIFICACION VEHICULAR EN PORCIENTO													COORDENADAS			
	KM	TE	SC	TDPA	M	A	B	C2	C3	T3S2	T3S3	T3S2R4	OTROS	A	B	C	K'	D	LATITUD	LONGITUD	
T. C. Oaxaca - Tehuantepec	0.00	3	0	4172	2.3	85.7	0.7	8.7	0.4	1.7	0.3	0.0	0.2	88.0	0.7	11.3	0.083	0.503	16.918039	-96.391356	
San Pedro y San Pablo Ayutla	55.00	1	0	1637	2.0	88.5	0.2	5.3	1.0	2.2	0.5	0.1	0.2	90.5	0.2	9.3	0.098	0.516	17.016851	-96.082233	
T. Der. Zacatepec	90.00	1	0	474	1.8	88.3	0.4	8.1	0.8	0.5	0.0	0.0	0.1	90.1	0.4	9.5	0.095	0.501	17.147883	-96.033833	
Lim. Edos. Term. Oax. Ppia. Ver.	217.70																				
T. C. Tuxtepec - Ent. Palomares	238.70	1	0	1131	7.7	70.4	4.8	5.2	3.7	2.4	1.3	0.2	4.3	78.1	4.8	17.1	0.091	0.506	17.690188	-95.735448	

19 CARR: Santiago Pinotepa Nacional - Salina Cruz

CLAVE: 20074

RUTA: MEX-200

AÑO: 2018

LUGAR	ESTACION				CLASIFICACION VEHICULAR EN PORCIENTO													COORDENADAS		
	KM	TE	SC	TDPA	M	A	B	C2	C3	T3S2	T3S3	T3S2R4	OTROS	A	B	C	K'	D	LATITUD	LONGITUD
Santiago Pinotepa Nacional	0.00	3	0	4916	7.5	79.5	1.6	5.4	1.1	3.3	0.9	0.2	0.5	87.0	1.6	11.4	0.076	0.514	16.329064	-98.022751

OAXACA

19 CARR: Santiago Pinotepe Nacional - Salina Cruz

CLAVE: 20074

RUTA: MEX-200

AÑO: 2018

LUGAR	ESTACION				CLASIFICACION VEHICULAR EN PORCIENTO													COORDENADAS		
	KM	TE	SC	TDPA	M	A	B	C2	C3	T3S2	T3S3	T3S2R4	OTROS	A	B	C	K'	D	LATITUD	LONGITUD
San Andrés Huaxpaltepec	18.07	3	0	3823	10.6	80.0	0.2	2.4	1.9	2.5	0.8	1.4	0.2	90.6	0.2	9.2	0.068	0.505	16.324114	-97.904603
San José del Progreso	59.51	1	0	3714	8.5	84.2	0.3	2.2	1.9	1.3	0.7	0.6	0.3	92.7	0.3	7.0	0.066	0.507	16.107905	-97.707887
T. Izq. Tututepec	65.85	3	0	5464	7.8	85.4	0.1	1.6	1.3	1.3	0.6	1.4	0.5	93.2	0.1	6.7	0.064	0.506	16.075848	-97.627747
T. Izq. Bajos de Chila	131.94	1	0	4412	11.1	81.0	0.9	2.2	1.1	1.3	0.6	1.3	0.5	92.1	0.9	7.0	0.087	0.530	15.914286	-97.123452
T. Izq. Aeropuerto	137.40	1	0	6734	10.5	82.1	1.1	2.0	0.9	0.8	0.5	1.5	0.6	92.6	1.1	6.3	0.069	0.526	15.873310	-97.095357
Puerto Escondido	141.54	1	1	6624	12.1	79.5	0.6	5.2	0.7	0.6	0.4	0.7	0.2	91.6	0.6	7.8	0.066	0.533	15.869038	-97.084283
Puerto Escondido	141.54	1	2	5812	10.2	80.8	0.6	5.9	0.4	1.0	0.5	0.5	0.1	91.0	0.6	8.4	0.063	0.533	15.869136	-97.084249
Puerto Escondido	141.54	3	1	9718	15.3	76.7	0.5	4.5	0.6	1.3	0.7	0.3	0.1	92.0	0.5	7.5	0.057	0.520	15.853601	-97.053511
Puerto Escondido	141.54	3	2	10511	13.7	79.4	0.4	3.7	0.3	1.5	0.8	0.1	0.1	93.1	0.4	6.5	0.056	0.520	15.853655	-97.053446
T. Der. Mazunte	198.87	1	0	4894	8.6	78.2	2.3	7.3	0.9	1.4	1.0	0.1	0.2	86.8	2.3	10.9	0.069	0.501	15.716312	-96.585276
T. Der. Mazunte	198.87	3	0	6532	10.1	74.4	2.2	8.3	0.6	3.0	0.8	0.3	0.3	84.5	2.2	13.3	0.070	0.533	15.716580	-96.582020
T. Izq. Sta. María Tonameca	202.93	3	0	6093	10.2	78.1	1.8	5.7	0.6	2.6	0.7	0.1	0.2	88.3	1.8	9.9	0.073	0.501	15.729935	-96.537485
T. Libramiento de Pochutla	209.15	1	0	6932	10.3	80.9	1.5	5.0	0.5	0.9	0.7	0.1	0.1	91.2	1.5	7.3	0.071	0.500	15.731621	-96.482059
X. C. Oaxaca - Puerto Ángel	209.95	1	0	7514	10.9	80.9	1.3	5.0	0.5	0.8	0.5	0.0	0.1	91.8	1.3	6.9	0.065	0.511	15.730763	-96.476519
X. C. Oaxaca - Puerto Ángel	209.95	3	0	5677	14.2	74.7	1.7	7.2	0.4	1.0	0.7	0.0	0.1	88.9	1.7	9.4	0.065	0.511	15.729340	-96.471835
T. Der. Cuatunalco	226.00	1	0	3677	6.2	75.5	3.0	10.6	1.0	1.8	1.4	0.1	0.4	81.7	3.0	15.3	0.073	0.511	15.732895	-96.351616
T. Der. Cuatunalco	226.00	3	0	3466	6.8	75.8	3.1	8.9	0.9	2.7	1.3	0.2	0.3	82.6	3.1	14.3	0.073	0.504	15.734912	-96.339295
T. C. El Zapote - Copalita	236.00	1	0	5192	9.2	76.9	2.2	8.3	0.7	1.4	1.0	0.1	0.2	86.1	2.2	11.7	0.067	0.520	15.761669	-96.274013
T. C. El Zapote - Copalita	236.00	3	0	7935	6.9	81.8	1.5	6.7	0.5	1.7	0.6	0.1	0.2	88.7	1.5	9.8	0.073	0.504	15.763392	-96.270907
T. Izq. Aeropuerto	237.68	3	0	7810	7.2	80.6	1.7	7.8	0.7	0.9	0.8	0.2	0.1	87.8	1.7	10.5	0.079	0.515	15.770299	-96.252163
T. Der. Santa Cruz Huatulco	250.00	1	0	8931	7.6	80.7	1.4	7.6	0.5	1.3	0.6	0.1	0.2	88.3	1.4	10.3	0.078	0.509	15.781297	-96.162487
T. Der. Santa Cruz Huatulco	250.00	3	0	3006	8.1	71.6	2.7	11.4	0.9	3.1	1.6	0.3	0.3	79.7	2.7	17.6	0.075	0.532	15.783292	-96.155717
T. Der. Tangolunda	263.00	1	0	1835	7.6	67.0	5.0	11.7	1.3	4.2	2.6	0.3	0.3	74.6	5.0	20.4	0.074	0.514	15.818322	-96.068809
T. C. La Ventosa - Salina Cruz (Cuota)	380.00	1	0	2848	3.2	81.6	2.6	6.7	1.1	2.6	1.8	0.2	0.2	84.8	2.6	12.6	0.074	0.513	16.145474	-95.290662
T. C. La Ventosa - Salina Cruz (Cuota)	380.00	3	0	2648	3.7	84.0	1.9	7.2	0.7	1.3	0.9	0.2	0.1	87.7	1.9	10.4	0.074	0.505	16.156483	-95.277278
Salina Cruz	394.00																			

20 CARR: Tapanatepec - Talismán

CLAVE: 00075

RUTA: MEX-200

AÑO: 2018

LUGAR	ESTACION				CLASIFICACION VEHICULAR EN PORCIENTO													COORDENADAS		
	KM	TE	SC	TDPA	M	A	B	C2	C3	T3S2	T3S3	T3S2R4	OTROS	A	B	C	K'	D	LATITUD	LONGITUD
Tapanatepec	0.00	3	0	5763	5.5	67.6	2.5	8.7	3.0	6.5	1.9	4.0	0.3	73.1	2.5	24.4	0.073	0.505	16.344104	-94.190524
Lim. Edos. Term. Oax. Ppia. Chis.	25.90																			
T. Der. Emiliano Zapata	26.20	1	0	3758	3.8	60.2	4.0	8.6	2.8	10.2	3.0	7.1	0.3	64.0	4.0	32.0	0.071	0.539	16.216916	-94.051382
T. Der. Emiliano Zapata	26.20	3	0	4289	4.1	65.8	3.1	8.1	2.4	8.0	2.6	5.5	0.4	69.9	3.1	27.0	0.071	0.537	16.214591	-94.037712

OAXACA

20 CARR: Tapanatepec - Talismán

CLAVE: 00075

RUTA: MEX-200

AÑO: 2018

LUGAR	ESTACION				CLASIFICACION VEHICULAR EN PORCIENTO													COORDENADAS		
	KM	TE	SC	TDPA	M	A	B	C2	C3	T3S2	T3S3	T3S2R4	OTROS	A	B	C	K'	D	LATITUD	LONGITUD
Arriaga	45.00	1	0	5993	6.1	69.0	2.3	7.3	2.3	6.7	1.7	4.2	0.4	75.1	2.3	22.6	0.071	0.524	16.221911	-93.936634
Arriaga	45.00	3	1	3989	8.1	78.2	3.1	8.2	0.7	1.0	0.4	0.2	0.1	86.3	3.1	10.6	0.072	0.507	16.237034	-93.882945
Arriaga	45.00	3	2	4106	7.5	78.9	2.9	7.9	0.8	1.2	0.4	0.2	0.2	86.4	2.9	10.7	0.070	0.507	16.237048	-93.882840
X. C. Arriaga- Ocozocoautla (Cuota)	47.00	3	1	4811	5.9	76.3	3.1	7.4	1.9	2.6	0.8	1.8	0.2	82.2	3.1	14.7	0.074	0.502	16.232960	-93.876808
X. C. Arriaga- Ocozocoautla (Cuota)	47.00	3	2	4858	5.6	76.7	3.1	7.5	1.8	2.7	0.8	1.7	0.1	82.3	3.1	14.6	0.088	0.502	16.233284	-93.877110
T. Der. Libramiento de Arriaga	49.50	1	1	4115	4.6	74.0	3.8	8.8	1.6	3.8	1.0	2.2	0.2	78.6	3.8	17.6	0.077	0.507	16.222447	-93.867303
T. Der. Libramiento de Arriaga	49.50	1	2	4002	4.6	74.4	3.7	8.9	1.3	3.4	1.1	2.4	0.2	79.0	3.7	17.3	0.098	0.507	16.222496	-93.867155
T. Der. Libramiento de Arriaga	49.50	3	1	4491	3.5	73.2	3.0	7.7	1.9	6.1	1.3	3.0	0.3	76.7	3.0	20.3	0.075	0.500	16.208624	-93.855786
T. Der. Libramiento de Arriaga	49.50	3	2	4485	3.9	70.4	3.8	9.2	2.0	6.4	1.1	3.0	0.2	74.3	3.8	21.9	0.102	0.500	16.208974	-93.855903
Tonalá	68.80	1	1	5785	5.0	71.5	2.6	9.3	2.0	5.6	1.0	2.7	0.3	76.5	2.6	20.9	0.058	0.517	16.117159	-93.790272
Tonalá	68.80	1	2	5402	4.8	71.2	2.6	9.4	2.1	5.8	1.0	2.8	0.3	76.0	2.6	21.4	0.083	0.517	16.117224	-93.790150
T. Der. Puerto Arista	73.00	1	1	3010	3.8	70.6	3.4	8.0	2.2	7.0	1.2	3.5	0.3	74.4	3.4	22.2	0.069	0.500	16.059972	-93.741886
T. Der. Puerto Arista	73.00	1	2	3003	4.4	69.8	3.5	8.1	2.2	7.0	1.2	3.5	0.3	74.2	3.5	22.3	0.118	0.500	16.060026	-93.741837
T. Der. Puerto Arista	73.00	3	1	3237	4.3	68.5	4.0	7.0	2.3	8.4	1.3	4.0	0.2	72.8	4.0	23.2	0.086	0.509	16.056082	-93.735000
T. Der. Puerto Arista	73.00	3	2	3119	4.7	66.8	4.3	7.6	2.5	8.6	1.3	4.0	0.2	71.5	4.3	24.2	0.088	0.509	16.056341	-93.735135
T. Der. Tres Picos	100.40	1	1	2913	3.8	68.2	4.2	6.9	2.6	8.1	1.6	4.3	0.3	72.0	4.2	23.8	0.068	0.524	15.916068	-93.544164
T. Der. Tres Picos	100.40	1	2	2641	4.2	63.6	5.2	8.2	2.8	9.5	1.6	4.6	0.3	67.8	5.2	27.0	0.079	0.524	15.916175	-93.544062
T. Der. Tres Picos	100.40	3	1	2965	2.9	65.9	5.2	8.2	2.7	8.0	2.1	4.5	0.5	68.8	5.2	26.0	0.060	0.527	15.906316	-93.523329
T. Der. Tres Picos	100.40	3	2	2666	3.5	64.0	5.2	9.0	2.7	8.3	2.1	4.7	0.5	67.5	5.2	27.3	0.066	0.527	15.906549	-93.523567
T. Der. Los Patos	114.75	1	1	2732	2.9	63.3	5.5	8.2	2.6	10.3	1.7	5.2	0.3	66.2	5.5	28.3	0.069	0.531	15.841279	-93.437836
T. Der. Los Patos	114.75	1	2	2414	3.5	58.8	6.6	9.4	3.1	11.1	1.7	5.5	0.3	62.3	6.6	31.1	0.100	0.531	15.841335	-93.437447
T. Der. Los Patos	114.75	3	1	2545	2.3	64.5	4.9	7.7	2.7	10.7	1.6	5.3	0.3	66.8	4.9	28.3	0.077	0.529	15.815989	-93.416557
T. Der. Los Patos	114.75	3	2	2264	2.2	61.2	6.1	9.1	3.1	11.1	1.5	5.4	0.3	63.4	6.1	30.5	0.100	0.529	15.816246	-93.416260
T. Der. San Isidro	125.00	1	1	2743	4.3	62.3	4.8	9.4	2.4	10.0	1.9	4.5	0.4	66.6	4.8	28.6	0.068	0.520	15.779639	-93.364594
T. Der. San Isidro	125.00	1	2	2529	4.1	59.9	5.6	9.3	3.2	11.1	1.7	4.7	0.4	64.0	5.6	30.4	0.078	0.520	15.781629	-93.364750
T. Der. San Isidro	125.00	3	1	2896	4.2	63.6	4.8	8.1	2.5	9.9	1.6	5.0	0.3	67.8	4.8	27.4	0.077	0.529	15.777885	-93.358332
T. Der. San Isidro	125.00	3	2	2579	4.7	62.4	5.3	8.8	2.9	9.3	1.8	4.4	0.4	67.1	5.3	27.6	0.095	0.529	15.778012	-93.358010
Pijijapan	144.45	1	1	5335	10.5	67.6	2.9	7.4	1.6	5.8	1.0	2.9	0.3	78.1	2.9	19.0	0.065	0.537	15.698409	-93.212061
Pijijapan	144.45	1	2	4597	10.7	65.1	3.5	8.4	1.9	6.2	1.0	2.9	0.3	75.8	3.5	20.7	0.079	0.537	15.699832	-93.212851
T. Der. Mapastepec	188.85	3	1	4031	12.7	63.5	3.7	8.3	1.3	6.3	1.0	3.0	0.2	76.2	3.7	20.1	0.078	0.512	15.453835	-92.879008
T. Der. Mapastepec	188.85	3	2	3835	13.8	61.2	4.0	8.3	1.9	6.5	1.1	3.0	0.2	75.0	4.0	21.0	0.081	0.512	15.454144	-92.878565
T. Der. Estación Soconusco	213.30	1	1	3902	10.2	65.5	3.6	8.1	1.9	6.4	1.1	3.0	0.2	75.7	3.6	20.7	0.077	0.513	15.338073	-92.711327
T. Der. Estación Soconusco	213.30	1	2	3699	10.3	65.9	3.5	8.1	1.8	6.2	1.1	2.9	0.2	76.2	3.5	20.3	0.079	0.513	15.359610	-92.715689
T. Der. Estación Soconusco	213.30	3	1	4233	11.2	64.8	3.4	8.1	1.8	6.4	1.2	2.9	0.2	76.0	3.4	20.6	0.085	0.506	15.336426	-92.709374
T. Der. Estación Soconusco	213.30	3	2	4341	12.0	64.6	2.6	8.1	2.1	6.2	1.0	3.1	0.3	76.6	2.6	20.8	0.071	0.506	15.349593	-92.692013

OAXACA

20 CARR: Tapanatepec - Talismán

CLAVE: 00075

RUTA: MEX-200

AÑO: 2018

LUGAR	ESTACION				CLASIFICACION VEHICULAR EN PORCIENTO														COORDENADAS	
	KM	TE	SC	TDPA	M	A	B	C2	C3	T3S2	T3S3	T3S2R4	OTROS	A	B	C	K'	D	LATITUD	LONGITUD
Huixtla	250.50	1	1	4934	6.0	74.2	2.4	6.5	1.8	5.7	1.0	2.2	0.2	80.2	2.4	17.4	0.075	0.523	15.159286	-92.511322
Huixtla	250.50	1	2	4508	4.2	74.7	2.6	6.7	1.9	6.1	0.9	2.5	0.4	78.9	2.6	18.5	0.075	0.523	15.159367	-92.511126
Huixtla	250.50	3	1	8630	10.9	75.2	1.8	5.9	1.4	3.0	0.4	1.3	0.1	86.1	1.8	12.1	0.075	0.511	15.133933	-92.445835
Huixtla	250.50	3	2	8261	11.8	75.0	1.8	5.4	1.4	2.9	0.4	1.2	0.1	86.8	1.8	11.4	0.074	0.511	15.133983	-92.445765
T. Izq. Hamburgo	262.70	3	1	6411	5.7	77.7	2.2	6.1	1.8	4.0	0.6	1.7	0.2	83.4	2.2	14.4	0.080	0.501	15.105673	-92.431291
T. Izq. Hamburgo	262.70	3	2	6380	6.3	77.0	2.4	6.8	1.7	3.6	0.6	1.4	0.2	83.3	2.4	14.3	0.078	0.501	15.105676	-92.431129
T. Izq. Huehuetán	273.70	1	1	7190	8.8	75.2	1.8	6.8	1.7	3.4	0.7	1.4	0.2	84.0	1.8	14.2	0.077	0.517	15.015032	-92.402626
T. Izq. Huehuetán	273.70	1	2	6719	9.4	73.8	2.4	7.2	1.7	3.5	0.5	1.3	0.2	83.2	2.4	14.4	0.075	0.517	15.015032	-92.402534
T. Izq. Huehuetán	273.70	3	1	7352	8.3	76.0	2.2	7.5	1.3	3.0	0.4	1.1	0.2	84.3	2.2	13.5	0.075	0.502	14.992595	-92.402444
T. Izq. Huehuetán	273.70	3	2	7280	8.9	74.9	2.4	7.2	1.5	3.2	0.4	1.3	0.2	83.8	2.4	13.8	0.073	0.502	14.992609	-92.402367
Tapachula	292.25	1	1	10361	2.9	83.2	1.4	5.4	1.2	3.0	1.0	1.3	0.6	86.1	1.4	12.5	0.071	0.518	14.911261	-92.335596
Tapachula	292.25	1	2	9652	3.1	81.6	1.5	6.3	1.4	3.3	1.0	1.2	0.6	84.7	1.5	13.8	0.082	0.518	14.911462	-92.335662
T. Der. Cd. Hidalgo	302.75	1	1	11030	3.3	86.7	0.8	6.7	0.4	1.5	0.2	0.4	0.0	90.0	0.8	9.2	0.085	0.510	14.912776	-92.196331
T. Der. Cd. Hidalgo	302.75	1	2	10603	2.8	90.1	0.4	4.2	0.4	1.5	0.2	0.4	0.0	92.9	0.4	6.7	0.078	0.510	14.912726	-92.196285
Tuxtla Chico	307.00	1	0	12463	6.9	88.1	0.3	4.2	0.2	0.1	0.2	0.0	0.0	95.0	0.3	4.7	0.077	0.516	14.930542	-92.165343
Talismán	310.77	1	0	2323	35.9	60.6	0.7	2.6	0.0	0.1	0.1	0.0	0.0	96.5	0.7	2.8	0.116	0.571	14.961057	-92.150706

21 CARR: Tapanatepec - Tuxtla Gutiérrez

CLAVE: 00060

RUTA: MEX-190

AÑO: 2018

LUGAR	ESTACION				CLASIFICACION VEHICULAR EN PORCIENTO														COORDENADAS		
	KM	TE	SC	TDPA	M	A	B	C2	C3	T3S2	T3S3	T3S2R4	OTROS	A	B	C	K'	D	LATITUD	LONGITUD	
Tapanatepec	0.00	3	0	2320	8.6	77.4	3.2	6.9	2.3	1.3	0.2	0.1	0.0	86.0	3.2	10.8	0.081	0.526	16.371136	-94.184517	
Lim. Edos. Term. Oax. Ppia. Chis.	17.90																				
Rizo de Oro	26.60	1	0	781	2.7	73.2	3.6	9.8	3.2	2.9	4.2	0.3	0.1	75.9	3.6	20.5	0.082	0.506	16.475798	-94.087872	
T. Der. Arriaga	56.80	1	0	2220	6.3	77.5	1.3	9.5	1.6	1.9	1.7	0.1	0.1	83.8	1.3	14.9	0.087	0.506	16.570047	-93.847967	
T. Der. Arriaga	56.80	3	0	3657	4.1	79.2	1.6	8.7	2.1	2.2	1.9	0.1	0.1	83.3	1.6	15.1	0.072	0.506	16.574196	-93.841379	
T. Der. Jiquipilas	82.00	1	0	7539	5.4	79.8	1.2	7.2	1.1	3.7	0.9	0.2	0.5	85.2	1.2	13.6	0.072	0.502	16.687947	-93.667027	
T. Der. Jiquipilas	82.00	3	0	5906	3.7	81.6	1.5	8.6	1.5	1.7	1.1	0.1	0.2	85.3	1.5	13.2	0.083	0.505	16.688033	-93.660508	
Ocozocoautla	123.29	1	0	4304	5.2	80.5	0.8	7.9	1.9	2.5	0.9	0.1	0.2	85.7	0.8	13.5	0.086	0.515	16.772319	-93.391740	
Ocozocoautla	123.29	3	0	5075	6.1	78.4	0.3	11.0	0.2	3.0	0.4	0.1	0.5	84.5	0.3	15.2	0.070	0.524	16.757789	-93.362496	
T. Izq. Aeropuerto	132.70	1	0	5024	5.9	80.2	0.2	11.0	0.2	1.9	0.3	0.0	0.3	86.1	0.2	13.7	0.080	0.541	16.753321	-93.349865	
T. Izq. Berriozábal (1º Acceso)	136.40	1	1	9775	1.2	78.8	2.7	9.3	1.8	2.8	1.4	1.7	0.3	80.0	2.7	17.3	0.068	0.514	16.767820	-93.292674	
T. Izq. Berriozábal (1º Acceso)	136.40	1	2	10344	1.5	77.8	3.4	9.7	1.5	3.1	1.1	1.5	0.4	79.3	3.4	17.3	0.071	0.514	16.767898	-93.292669	
T. Izq. Berriozábal (1º Acceso)	136.40	3	1	10908	1.5	83.3	1.9	6.5	1.5	2.6	1.1	1.2	0.4	84.8	1.9	13.3	0.091	0.501	16.769026	-93.279687	
T. Izq. Berriozábal (1º Acceso)	136.40	3	2	10972	1.6	82.3	2.0	6.8	1.6	2.8	1.1	1.3	0.5	83.9	2.0	14.1	0.076	0.501	16.769133	-93.279681	

OAXACA

21 CARR: Tapanatepec - Tuxtla Gutiérrez

CLAVE: 00060

RUTA: MEX-190

AÑO: 2018

LUGAR	ESTACION				CLASIFICACION VEHICULAR EN PORCIENTO												COORDENADAS			
	KM	TE	SC	TDPA	M	A	B	C2	C3	T3S2	T3S3	T3S2R4	OTROS	A	B	C	K'	D	LATITUD	LONGITUD
T. Izq. San Fernando	151.70	1	1	16044	2.0	83.8	1.2	5.9	0.9	2.0	2.7	0.8	0.7	85.8	1.2	13.0	0.068	0.512	16.770861	-93.197555
T. Izq. San Fernando	151.70	1	2	16854	2.0	83.2	1.2	6.5	0.9	2.2	2.4	0.8	0.8	85.2	1.2	13.6	0.071	0.512	16.770939	-93.197496
Tuxtla Gutiérrez	159.00	1	1	13326	2.5	84.2	0.8	6.8	1.1	1.8	1.7	0.5	0.6	86.7	0.8	12.5	0.066	0.507	16.767428	-93.192651
Tuxtla Gutiérrez	159.00	1	2	13685	2.3	83.5	0.9	7.0	1.2	2.0	1.9	0.5	0.7	85.8	0.9	13.3	0.063	0.507	16.767562	-93.192572

22 CARR: Tehuacán - Huajuapán de León

CLAVE: 00211

RUTA: MEX-125

AÑO: 2018

LUGAR	ESTACION				CLASIFICACION VEHICULAR EN PORCIENTO												COORDENADAS			
	KM	TE	SC	TDPA	M	A	B	C2	C3	T3S2	T3S3	T3S2R4	OTROS	A	B	C	K'	D	LATITUD	LONGITUD
Tehuacán	0.00	3	1	7852	9.2	77.9	0.1	5.5	3.3	1.3	1.0	1.3	0.4	87.1	0.1	12.8	0.078	0.531	18.436830	-97.401456
Tehuacán	0.00	3	2	8082	9.6	77.0	0.1	5.7	3.3	1.4	1.1	1.4	0.4	86.6	0.1	13.3	0.065	0.531	18.436738	-97.401377
Zapotitlán Salinas	28.00	1	0	2663	5.1	73.8	1.3	12.1	2.4	3.0	1.1	0.7	0.5	78.9	1.3	19.8	0.077	0.502	18.334049	-97.461092
Lim. Edos. Term. Pue. Ppia. Oax.	55.80																			
Santiago Chazumba	63.02	1	0	1413	2.9	76.3	0.3	5.3	4.3	4.2	2.3	2.5	1.9	79.2	0.3	20.5	0.071	0.507	18.200751	-97.673236
Santiago Chazumba	63.02	3	0	2064	6.9	73.1	1.4	9.1	2.3	3.9	2.2	0.7	0.4	80.0	1.4	18.6	0.117	0.510	18.181289	-97.681184
T. Izq. Santa María Camotlán	103.13	1	0	2090	3.0	76.1	1.6	10.1	2.3	4.0	1.9	0.6	0.4	79.1	1.6	19.3	0.096	0.531	17.907562	-97.687550
T. C. Huajuapán de León - Oaxaca	119.40	1	0	9955	6.7	81.2	0.4	4.5	0.6	4.7	0.9	0.3	0.7	87.9	0.4	11.7	0.064	0.501	17.821488	-97.759026

23 CARR: Tuxtepec - Ent. Palomares

CLAVE: 00180

RUTA: MEX-147

AÑO: 2018

LUGAR	ESTACION				CLASIFICACION VEHICULAR EN PORCIENTO												COORDENADAS			
	KM	TE	SC	TDPA	M	A	B	C2	C3	T3S2	T3S3	T3S2R4	OTROS	A	B	C	K'	D	LATITUD	LONGITUD
T. C. Tuxtepec - Oaxaca	0.00	3	0	4621	9.7	72.0	1.6	9.4	2.8	2.8	1.0	0.3	0.4	81.7	1.6	16.7	0.074	0.512	18.038267	-96.161420
X. C. El Rodeo - Reforma	15.20	3	0	2714	8.3	75.1	1.9	8.1	2.9	2.8	0.6	0.1	0.2	83.4	1.9	14.7	0.081	0.512	17.950237	-96.069686
Lim. Edos. Term. Oax. Ppia. Ver.	40.00																			
X. C. Playa Vicente - El Tomate	48.16	1	0	2193	4.0	74.5	4.9	4.8	3.2	2.9	1.8	1.5	2.4	78.5	4.9	16.6	0.079	0.513	17.783668	-95.833002
X. C. Playa Vicente - El Tomate	48.16	3	0	3010	2.8	82.1	3.4	3.4	1.4	2.6	1.7	0.7	1.9	84.9	3.4	11.7	0.076	0.518	17.781729	-95.827812
T. Der. Xochiapa	65.00	3	0	1812	5.1	75.9	4.3	4.2	2.5	2.3	2.4	0.7	2.6	81.0	4.3	14.7	0.080	0.500	17.699000	-95.726833
T. Izq. San Juan Evangelista	81.20	1	0	1575	9.7	67.2	5.4	5.6	3.1	3.6	2.5	1.7	1.2	76.9	5.4	17.7	0.084	0.518	17.617224	-95.638538
Lim. Edos. Term. Ver. Ppia. Oax.	87.00																			
María Lombardo de Caso	110.50	1	0	3437	12.5	77.6	0.4	7.9	0.9	0.4	0.2	0.1	0.0	90.1	0.4	9.5	0.079	0.504	17.454170	-95.437524
T. C. Coatzacoalcos - Salina Cruz	175.00	1	0	1967	13.2	78.7	0.5	5.6	0.6	0.7	0.5	0.1	0.1	91.9	0.5	7.6	0.091	0.509	17.138074	-95.075258

OAXACA

24 CARR: Tuxtepec - T. C. (Oaxaca - Tehuantepec)

CLAVE: 20090

RUTA: MEX-175

AÑO: 2018

LUGAR	ESTACION				CLASIFICACION VEHICULAR EN PORCIENTO										COORDENADAS					
	KM	TE	SC	TDPA	M	A	B	C2	C3	T3S2	T3S3	T3S2R4	OTROS	A	B	C	K'	D	LATITUD	LONGITUD
Tuxtepec	0.00	3	1	8350	13.9	72.9	0.8	9.5	1.0	1.2	0.3	0.3	0.1	86.8	0.8	12.4	0.065	0.519	18.052551	-96.154273
Tuxtepec	0.00	3	2	7752	15.6	70.1	0.8	10.0	1.1	1.4	0.4	0.4	0.2	85.7	0.8	13.5	0.066	0.519	18.052492	-96.154179
T. Izq. Palomares	5.75	3	0	5931	15.2	71.9	0.2	8.5	1.0	1.2	0.3	1.3	0.4	87.1	0.2	12.7	0.072	0.500	18.034452	-96.164631
San José Chiltepec	17.93	3	0	3829	14.4	70.2	0.2	7.7	6.0	0.7	0.1	0.6	0.1	84.6	0.2	15.2	0.068	0.503	17.943172	-96.173069
Valle Nacional	47.07	1	0	3608	7.6	82.3	0.7	6.4	0.8	1.9	0.1	0.0	0.2	89.9	0.7	9.4	0.067	0.530	17.779052	-96.293366
Valle Nacional	47.07	3	0	2881	8.3	84.9	0.6	4.1	0.4	1.4	0.2	0.0	0.1	93.2	0.6	6.2	0.067	0.500	17.767395	-96.310967
La Esperanza	79.85	3	0	565	1.2	83.4	3.0	11.0	0.9	0.5	0.0	0.0	0.0	84.6	3.0	12.4	0.078	0.500	17.626688	-96.367576
Puerta del Sol	125.00	3	0	649	1.2	82.1	1.8	13.0	1.3	0.5	0.1	0.0	0.0	83.3	1.8	14.9	0.097	0.504	17.529194	-96.511706
T. Der. Ixtepeji	181.39	3	0	1935	2.7	85.8	1.0	7.6	1.5	1.0	0.3	0.0	0.1	88.5	1.0	10.5	0.095	0.515	17.238681	-96.562726
T. Izq. Yuvila	193.67	1	0	2182	2.5	86.3	0.9	7.2	1.1	1.3	0.5	0.0	0.2	88.8	0.9	10.3	0.093	0.502	17.175909	-96.605616
T. C. Oaxaca - Tehuantepec	212.70	1	1	6901	7.0	86.5	0.1	4.8	0.4	0.7	0.5	0.0	0.0	93.5	0.1	6.4	0.082	0.512	17.067748	-96.676817
T. C. Oaxaca - Tehuantepec	212.70	1	2	6591	6.3	86.4	0.1	5.6	0.4	0.7	0.5	0.0	0.0	92.7	0.1	7.2	0.085	0.512	17.067647	-96.676730

25 CARR: Yucudaa - Santiago Pinotepa Nacional

CLAVE: 20030

RUTA: MEX-125

AÑO: 2018

LUGAR	ESTACION				CLASIFICACION VEHICULAR EN PORCIENTO										COORDENADAS					
	KM	TE	SC	TDPA	M	A	B	C2	C3	T3S2	T3S3	T3S2R4	OTROS	A	B	C	K'	D	LATITUD	LONGITUD
T. C. Huajuapán de León - Oaxaca	0.00	3	0	3060	1.7	74.1	2.4	15.2	1.8	2.4	1.4	0.4	0.6	75.8	2.4	21.8	0.070	0.507	17.564614	-97.426439
Yolomécatl	24.40	3	0	2683	2.7	75.2	2.4	12.5	2.5	3.1	1.2	0.1	0.3	77.9	2.4	19.7	0.061	0.501	17.458765	-97.575195
Tlaxiaco	57.00	3	0	3852	3.9	85.9	0.3	5.2	0.9	2.8	0.5	0.2	0.3	89.8	0.3	9.9	0.077	0.501	17.236244	-97.699860
T. Der. Santiago Juxcatlán	104.00	1	0	867	3.4	78.1	2.0	10.1	2.8	2.5	0.5	0.1	0.5	81.5	2.0	16.5	0.072	0.501	17.152070	-97.889953
Putla de Guerrero	145.00	1	0	2934	13.2	73.3	0.8	8.0	1.5	2.3	0.4	0.1	0.4	86.5	0.8	12.7	0.064	0.502	17.040664	-97.905698
Cacahuatpec	229.00	1	0	1498	6.8	78.9	1.5	7.8	2.1	1.4	1.2	0.1	0.2	85.7	1.5	12.8	0.069	0.507	16.625836	-98.141414
T. C. Las Cruces - Pinotepa Nacional	268.00	1	0	3945	9.2	82.0	0.7	4.7	0.6	2.0	0.6	0.0	0.2	91.2	0.7	8.1	0.069	0.501	16.378761	-98.091629

26 CARR: Cuacnopalan - Oaxaca (Cuota)

CLAVE: 00109

RUTA: MEX-135D

AÑO: 2018

LUGAR	ESTACION				CLASIFICACION VEHICULAR EN PORCIENTO										COORDENADAS					
	KM	TE	SC	TDPA	M	A	B	C2	C3	T3S2	T3S3	T3S2R4	OTROS	A	B	C	K'	D	LATITUD	LONGITUD
T. C. Puebla - Córdoba (Cuota)	0.00	3	0	10755	0.4	69.5	6.5	9.9	2.6	6.5	1.5	2.3	0.8	69.9	6.5	23.6	0.071	0.506	18.819738	-97.491149
T. Der. Cuacnopalan	1.80	3	0	10563	0.5	70.6	5.7	8.6	3.1	6.5	1.7	2.6	0.7	71.1	5.7	23.2	0.070	0.504	18.809744	-97.490511
Caseta de Cobro Tehuacán	40.00	2	0	10623	0.4	72.4	7.1	4.6	5.3	5.7	1.0	2.9	0.6	72.8	7.1	20.1	0.083	0.500	18.487088	-97.456196
Caseta de Cobro Tehuacán	40.00	3	0	6164	0.7	66.7	8.6	8.7	3.4	6.3	1.7	2.8	1.1	67.4	8.6	24.0	0.062	0.541	18.483283	-97.456583
X. C. Tehuacán - Huajuapán de León	48.00	3	0	6072	0.9	69.6	7.4	9.6	2.6	5.2	1.4	2.8	0.5	70.5	7.4	22.1	0.066	0.503	18.421863	-97.412140
T. Izq. San Gabriel Chilac	61.00	3	0	4820	0.6	67.9	8.8	4.5	6.3	5.2	1.4	3.9	1.4	68.5	8.8	22.7	0.078	0.503	18.323375	-97.367547

OAXACA

26 CARR: Cuacnopalan - Oaxaca (Cuota)

CLAVE: 00109

RUTA: MEX-135D

AÑO: 2018

LUGAR	ESTACION				CLASIFICACION VEHICULAR EN PORCIENTO										COORDENADAS					
	KM	TE	SC	TDPA	M	A	B	C2	C3	T3S2	T3S3	T3S2R4	OTROS	A	B	C	K'	D	LATITUD	LONGITUD
Caseta de Cobro Miahuatlán	71.42	2	0	4998	0.6	68.3	8.9	4.6	6.5	5.4	1.1	3.9	0.7	68.9	8.9	22.2	0.083	0.500	18.264632	-97.315617
Lim. Edos. Term. Pue. Ppia. Oax.	83.50																			
Caseta de Cobro Coixtlahuaca	141.30	2	0	4143	0.6	66.3	9.5	4.5	6.8	6.0	1.1	4.5	0.7	66.9	9.5	23.6	0.083	0.500	17.726021	-97.353781
T. Izq. Asunción Nochistlán	175.50	1	0	4828	0.7	65.6	9.3	9.5	3.6	5.3	1.7	3.4	0.9	66.3	9.3	24.4	0.069	0.504	17.466856	-97.249545
T. Izq. Asunción Nochistlán	175.50	3	0	6261	0.8	69.2	5.5	7.8	5.4	4.4	1.5	4.4	1.0	70.0	5.5	24.5	0.062	0.512	17.457370	-97.242847
Caseta de Cobro Huitzo	220.00	2	0	5807	0.7	76.1	6.3	4.1	4.6	4.0	0.7	3.0	0.5	76.8	6.3	16.9	0.083	0.500	17.275031	-96.915296
T. C. Huajuapán de León - Oaxaca	242.70	1	1	4100	3.3	74.9	2.8	7.2	3.2	3.0	0.9	2.5	2.2	78.2	2.8	19.0	0.080	0.525	17.147345	-96.784786
T. C. Huajuapán de León - Oaxaca	242.70	1	2	3706	2.4	73.2	2.4	8.3	3.6	3.6	1.1	2.7	2.7	75.6	2.4	22.0	0.071	0.525	17.147441	-96.784784

27 CARR: Mitla - Tehuantepec (Cuota)

CLAVE:

RUTA: MEX-190D

AÑO: 2018

LUGAR	ESTACION				CLASIFICACION VEHICULAR EN PORCIENTO										COORDENADAS					
	KM	TE	SC	TDPA	M	A	B	C2	C3	T3S2	T3S3	T3S2R4	OTROS	A	B	C	K'	D	LATITUD	LONGITUD
Ent. C. Oaxaca - Tehuantepec	43.00	3	0	1265	1.2	89.2	0.4	7.0	1.3	0.5	0.4	0.0	0.0	90.4	0.4	9.2	0.080	0.510	16.913716	-96.394273
Ent. Mitla	50.90	1	0	1380	0.8	90.9	0.3	6.1	1.1	0.6	0.2	0.0	0.0	91.7	0.3	8.0	0.109	0.512	16.918951	-96.332772
Ent. Mitla	50.90	3	0	1683	0.6	92.8	0.3	4.9	0.7	0.4	0.3	0.0	0.0	93.4	0.3	6.3	0.093	0.521	16.927000	-96.322833
Ent. Hierve el Agua	62.10	1	0	1510	0.9	87.1	0.5	9.1	1.1	0.8	0.4	0.0	0.1	88.0	0.5	11.5	0.079	0.521	16.927186	-96.259910
Ent. Hierve el Agua	62.10	3	0	1671	0.9	86.8	0.6	9.7	1.3	0.4	0.2	0.0	0.1	87.7	0.6	11.7	0.062	0.513	16.922739	-96.254430
Ent. Sta. María Albarradas	71.00	1	0	1473	0.9	88.0	0.4	8.3	1.3	0.9	0.2	0.0	0.0	88.9	0.4	10.7	0.058	0.503	16.954956	-96.201439

28 CARR: Salina Cruz - La Ventosa (Cuota)

CLAVE: 00275

RUTA: MEX-185D

AÑO: 2018

LUGAR	ESTACION				CLASIFICACION VEHICULAR EN PORCIENTO										COORDENADAS					
	KM	TE	SC	TDPA	M	A	B	C2	C3	T3S2	T3S3	T3S2R4	OTROS	A	B	C	K'	D	LATITUD	LONGITUD
T. C. Santiago Pinotepa Nacional - Salina Cruz	0.00																			
Caseta de Cobro Tehuantepec	1.89	2	0	907	2.1	77.5	4.0	3.4	3.7	4.9	2.7	1.2	0.5	79.6	4.0	16.4	0.082	0.500	16.162185	-95.289280
X. C. Oaxaca - Tehuantepec	23.19	1	0	1302	3.4	73.8	3.1	9.7	1.4	4.6	2.8	1.0	0.2	77.2	3.1	19.7	0.079	0.515	16.328508	-95.279578
X. C. Oaxaca - Tehuantepec	23.19	3	0	3165	3.3	73.2	1.6	6.0	2.2	3.6	2.0	7.7	0.4	76.5	1.6	21.9	0.075	0.500	16.339547	-95.275871
Caseta de Cobro Ixtepec	47.49	2	0	1326	0.6	56.7	3.2	4.0	5.2	6.7	4.0	17.9	1.7	57.3	3.2	39.5	0.082	0.500	16.561479	-95.134267
T. C. Coatzacoalcos - Salina Cruz	75.39	1	0	1857	2.2	64.3	3.5	6.3	3.5	5.5	2.3	11.9	0.5	66.5	3.5	30.0	0.074	0.506	16.586319	-94.952065

OAXACA

29 CARR: Cd. Ixtepec - Guevea de Humboldt

CLAVE: 00301

RUTA: OAX

AÑO: 2018

LUGAR	ESTACION				CLASIFICACION VEHICULAR EN PORCIENTO											COORDENADAS				
	KM	TE	SC	TDPA	M	A	B	C2	C3	T3S2	T3S3	T3S2R4	OTROS	A	B	C	K'	D	LATITUD	LONGITUD
Ciudad Ixtepec	0.00																			
T. C. La Ventosa - Salina Cruz (Cuota)	4.00	1	1	2186	6.8	86.9	0.3	5.1	0.3	0.3	0.2	0.0	0.1	93.7	0.3	6.0	0.087	0.503	16.560532	-95.126018
T. C. La Ventosa - Salina Cruz (Cuota)	4.00	1	2	2159	6.2	87.1	0.3	5.7	0.3	0.3	0.1	0.0	0.0	93.3	0.3	6.4	0.098	0.503	16.560447	-95.126052
T. C. La Ventosa - Salina Cruz (Cuota)	4.00	3	0	2421	8.7	84.3	0.2	5.7	0.3	0.4	0.1	0.3	0.0	93.0	0.2	6.8	0.090	0.502	16.564106	-95.141307
Guevea de Humboldt	57.05																			

30 CARR: El Zapote - Copalita

CLAVE: 00109

RUTA: OAX

AÑO: 2018

LUGAR	ESTACION				CLASIFICACION VEHICULAR EN PORCIENTO											COORDENADAS				
	KM	TE	SC	TDPA	M	A	B	C2	C3	T3S2	T3S3	T3S2R4	OTROS	A	B	C	K'	D	LATITUD	LONGITUD
T. C. Santiago Pinotepa Nacional - Salina Cruz	0.00	3	1	2317	11.4	79.0	0.4	8.4	0.6	0.1	0.1	0.0	0.0	90.4	0.4	9.2	0.085	0.509	15.763959	-96.272699
T. C. Santiago Pinotepa Nacional - Salina Cruz	0.00	3	2	2406	11.7	78.1	0.5	8.8	0.5	0.1	0.1	0.0	0.2	89.8	0.5	9.7	0.084	0.509	15.763932	-96.272749
Copalita	43.04																			

31 CARR: Huajuapán de León - El Carrizal

CLAVE: 00109

RUTA: OAX

AÑO: 2018

LUGAR	ESTACION				CLASIFICACION VEHICULAR EN PORCIENTO											COORDENADAS				
	KM	TE	SC	TDPA	M	A	B	C2	C3	T3S2	T3S3	T3S2R4	OTROS	A	B	C	K'	D	LATITUD	LONGITUD
Huajuapán de León	0.00	3	0	2265	3.1	85.0	0.9	5.3	1.4	2.3	0.9	0.6	0.5	88.1	0.9	11.0	0.072	0.502	17.777138	-97.789820
San Miguel Tlacotepec	83.60	1	0	1655	2.2	85.2	1.3	5.9	1.6	2.1	0.9	0.4	0.4	87.4	1.3	11.3	0.082	0.505	17.461278	-98.004794
Santiago Juxtlahuaca	100.00	1	0	6945	4.0	85.2	0.4	5.2	0.7	3.3	0.5	0.3	0.4	89.2	0.4	10.4	0.077	0.515	17.347242	-98.014956
Putla	130.00	1	0	759	3.0	84.4	1.0	8.1	1.7	1.6	0.2	0.0	0.0	87.4	1.0	11.6	0.092	0.502	17.154755	-97.893879
El Carrizal	131.30																			

32 CARR: Loma Bonita - Mixtán

CLAVE: 20043

RUTA: OAX

AÑO: 2018

LUGAR	ESTACION				CLASIFICACION VEHICULAR EN PORCIENTO											COORDENADAS				
	KM	TE	SC	TDPA	M	A	B	C2	C3	T3S2	T3S3	T3S2R4	OTROS	A	B	C	K'	D	LATITUD	LONGITUD
Loma Bonita	0.00																			
X. C. Cd. Alemán - Sayula	1.00	1	1	5411	17.1	69.8	1.3	8.6	0.6	1.3	1.0	0.1	0.2	86.9	1.3	11.8	0.066	0.503	18.097623	-95.877273
X. C. Cd. Alemán - Sayula	1.00	1	2	5488	18.9	67.8	1.2	8.7	0.7	1.3	1.0	0.1	0.3	86.7	1.2	12.1	0.070	0.503	18.097610	-95.877335
X. C. Cd. Alemán - Sayula	1.00	3	0	2407	24.9	61.0	0.8	11.5	0.7	0.2	0.5	0.1	0.3	85.9	0.8	13.3	0.078	0.516	18.094938	-95.876379
T. Izq. Aeropuerto	12.00	3	0	752	16.6	67.4	0.8	13.2	1.2	0.5	0.3	0.0	0.0	84.0	0.8	15.2	0.082	0.501	18.014767	-95.869161
Mixtán	27.00																			

OAXACA

33 CARR: Ramal a Reforma de Pineda

CLAVE: 20010

RUTA: OAX

AÑO: 2018

LUGAR	ESTACION				CLASIFICACION VEHICULAR EN PORCIENTO														COORDENADAS	
	KM	TE	SC	TDPA	M	A	B	C2	C3	T3S2	T3S3	T3S2R4	OTROS	A	B	C	K'	D	LATITUD	LONGITUD
T. C. La Ventosa - San Pedro Tapanatepec	0.00	3	0	1601	7.5	74.5	5.1	6.6	2.0	1.1	1.0	1.0	1.2	82.0	5.1	12.9	0.089	0.507	16.491970	-94.427659
Reforma de Pineda	12.00																			

34 CARR: Ramal a Unión Hidalgo

CLAVE: 20044

RUTA: OAX

AÑO: 2018

LUGAR	ESTACION				CLASIFICACION VEHICULAR EN PORCIENTO														COORDENADAS	
	KM	TE	SC	TDPA	M	A	B	C2	C3	T3S2	T3S3	T3S2R4	OTROS	A	B	C	K'	D	LATITUD	LONGITUD
T. C. La Ventosa - San Pedro Tapanatepec	0.00	3	1	1588	10.7	85.0	0.6	2.2	0.4	0.7	0.3	0.0	0.1	95.7	0.6	3.7	0.081	0.538	16.574284	-94.816390
T. C. La Ventosa - San Pedro Tapanatepec	0.00	3	2	1365	11.8	84.1	0.2	2.5	0.5	0.5	0.3	0.0	0.1	95.9	0.2	3.9	0.091	0.538	16.574279	-94.816320
Unión Hidalgo	12.00	1	0	1308	16.4	74.1	1.2	5.1	1.1	1.1	0.4	0.1	0.5	90.5	1.2	8.3	0.099	0.501	16.489512	-94.832480

35 CARR: San Antonio - Puerto Angel

CLAVE:

RUTA: OAX

AÑO: 2018

LUGAR	ESTACION				CLASIFICACION VEHICULAR EN PORCIENTO														COORDENADAS	
	KM	TE	SC	TDPA	M	A	B	C2	C3	T3S2	T3S3	T3S2R4	OTROS	A	B	C	K'	D	LATITUD	LONGITUD
T. C. Santiago Pinotepa Nacional - Salina Cruz	0.00	3	0	2448	17.9	78.0	0.1	3.8	0.1	0.0	0.1	0.0	0.0	95.9	0.1	4.0	0.099	0.502	15.710978	-96.580322
Mazunte	7.30	1	0	2003	28.7	65.8	0.2	4.7	0.1	0.2	0.1	0.1	0.1	94.5	0.2	5.3	0.082	0.502	15.671290	-96.558932
Mazunte	7.30	3	0	1735	29.0	65.8	0.0	5.0	0.1	0.0	0.1	0.0	0.0	94.8	0.0	5.2	0.090	0.502	15.667100	-96.540148
Puerto Ángel	15.90																			

36 CARR: T. C. (Oaxaca - Puerto Ángel) - Puerto Escondido

CLAVE: 20009

RUTA: MEX-OAX-161

AÑO: 2018

LUGAR	ESTACION				CLASIFICACION VEHICULAR EN PORCIENTO														COORDENADAS	
	KM	TE	SC	TDPA	M	A	B	C2	C3	T3S2	T3S3	T3S2R4	OTROS	A	B	C	K'	D	LATITUD	LONGITUD
T. C. Oaxaca - Puerto Ángel	0.00	3	1	8816	4.3	87.5	0.4	5.8	0.7	0.7	0.4	0.1	0.1	91.8	0.4	7.8	0.125	0.506	16.925189	-96.707530
T. C. Oaxaca - Puerto Ángel	0.00	3	2	8621	3.9	87.2	0.4	6.4	0.7	0.8	0.4	0.1	0.1	91.1	0.4	8.5	0.094	0.506	16.925118	-96.707448
T. Izq. San Pablo Huixtepec	16.80	1	0	8580	6.0	80.2	0.5	7.4	1.5	3.6	0.4	0.1	0.3	86.2	0.5	13.3	0.068	0.505	16.838157	-96.788349
T. Izq. San Pablo Huixtepec	16.80	3	0	8344	6.3	79.3	0.5	7.5	1.7	3.8	0.4	0.2	0.3	85.6	0.5	13.9	0.066	0.507	16.828699	-96.788832
T. Der. El Trapiche	30.00	1	0	4425	2.8	81.2	1.1	7.9	3.2	2.4	0.7	0.2	0.5	84.0	1.1	14.9	0.074	0.508	16.761365	-96.856494
T. Der. El Trapiche	30.00	3	0	4800	4.3	84.4	0.5	4.7	2.4	2.4	0.8	0.2	0.3	88.7	0.5	10.8	0.069	0.502	16.759784	-96.859960
T. Der. Cofradía San Pedro	53.00	3	0	1968	3.1	76.2	2.5	11.8	2.2	2.5	1.2	0.2	0.3	79.3	2.5	18.2	0.079	0.506	16.598603	-96.889901
Sola de Vega	78.40	3	0	1761	5.4	76.1	3.1	10.6	2.2	1.7	0.6	0.1	0.2	81.5	3.1	15.4	0.077	0.503	16.509498	-96.983606
T. Der. Yalotepec	134.50	1	0	1287	1.9	75.5	3.2	11.7	3.8	2.1	1.2	0.2	0.4	77.4	3.2	19.4	0.075	0.533	16.273285	-97.146262
San Gabriel Mixtepec	208.00	1	0	1654	15.3	74.0	0.8	6.1	1.4	1.4	0.2	0.6	0.2	89.3	0.8	9.9	0.084	0.511	16.093465	-97.075352
Puerto Escondido	248.00	1	0	4803	14.5	76.6	0.3	5.1	0.3	2.4	0.4	0.1	0.3	91.1	0.3	8.6	0.074	0.500	15.894087	-97.076817

OAXACA

37 CARR: Tehuacán - Huitzo

CLAVE: 00211

RUTA: PUE-MEX-135

AÑO: 2018

LUGAR	ESTACION				CLASIFICACION VEHICULAR EN PORCIENTO										COORDENADAS					
	KM	TE	SC	TDPA	M	A	B	C2	C3	T3S2	T3S3	T3S2R4	OTROS	A	B	C	K'	D	LATITUD	LONGITUD
Tehuacán	0.00	3	0	8254	6.6	83.3	0.3	1.9	0.7	5.1	0.9	0.3	0.9	89.9	0.3	9.8	0.077	0.536	18.449998	-97.370613
T. Der. San Gabriel Chilac	14.40	1	0	8191	9.4	76.0	1.3	5.2	1.0	3.4	1.4	0.8	1.5	85.4	1.3	13.3	0.066	0.513	18.406958	-97.330392
San Sebastián Zinacatepec	23.00	3	0	6600	6.0	77.0	2.2	4.8	1.9	3.1	1.9	0.5	2.6	83.0	2.2	14.8	0.060	0.518	18.325614	-97.229902
Lim. Edos. Term. Pue. Ppia. Oax.	60.90																			
Teotitlán del Camino	63.15	3	0	2717	9.2	84.4	0.3	4.3	0.4	0.8	0.2	0.4	0.0	93.6	0.3	6.1	0.068	0.504	18.119156	-97.073612
Santa María Tecomavaca	88.34	1	0	1262	5.5	85.9	0.7	5.5	0.8	0.9	0.2	0.5	0.0	91.4	0.7	7.9	0.090	0.521	17.955250	-97.025097
Santa María Tecomavaca	88.34	3	0	1076	7.9	83.8	0.7	5.2	0.8	0.6	0.3	0.7	0.0	91.7	0.7	7.6	0.075	0.502	17.948652	-97.021469
T. Izq. Cuicatlán	118.80	1	0	1477	7.1	84.5	0.6	6.0	0.5	0.7	0.2	0.4	0.0	91.6	0.6	7.8	0.079	0.519	17.794016	-96.960163
T. Izq. Nacaltepec	169.84	1	0	734	8.3	84.1	0.4	5.4	0.7	0.5	0.1	0.5	0.0	92.4	0.4	7.2	0.091	0.520	17.505704	-96.933110
T. C. Huajuapán de León - Oaxaca	202.70	1	0	6905	5.7	89.0	0.2	3.1	0.5	0.4	0.7	0.4	0.0	94.7	0.2	5.1	0.073	0.511	17.286653	-96.903459

38 CARR: Teotitlán de Flores Magón - Tuxtepec

CLAVE: 00108

RUTA: OAX-PUE-MEX-182

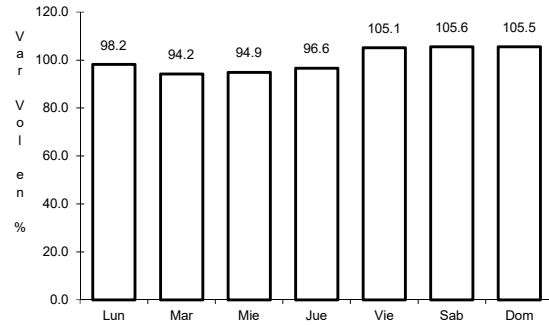
AÑO: 2018

LUGAR	ESTACION				CLASIFICACION VEHICULAR EN PORCIENTO										COORDENADAS					
	KM	TE	SC	TDPA	M	A	B	C2	C3	T3S2	T3S3	T3S2R4	OTROS	A	B	C	K'	D	LATITUD	LONGITUD
Teotitlán del Camino	0.00	3	0	1020	1.9	79.6	3.8	9.3	2.8	1.6	0.8	0.0	0.2	81.5	3.8	14.7	0.075	0.503	18.130841	-97.064156
Lim. Edos. Term. Oax. Ppia. Pue.	2.00																			
Lim. Edos. Term. Pue. Ppia. Oax.	10.00																			
Huautla	65.00	1	0	1542	4.1	85.1	0.4	6.7	1.0	1.3	0.3	0.9	0.2	89.2	0.4	10.4	0.065	0.509	18.125557	-96.846118
San Felipe Jalapa de Díaz	140.00	3	0	3974	3.3	86.4	0.4	6.3	1.0	1.3	0.3	0.9	0.1	89.7	0.4	9.9	0.076	0.508	18.082012	-96.522287
Tuxtepec	185.00	1	0	5300	2.6	85.3	0.4	8.8	0.5	1.3	0.2	0.7	0.2	87.9	0.4	11.7	0.065	0.502	18.089452	-96.170443

1 CARR: Acceso al Puerto Salina Cruz

CLAVE:

ruta: MEX-090

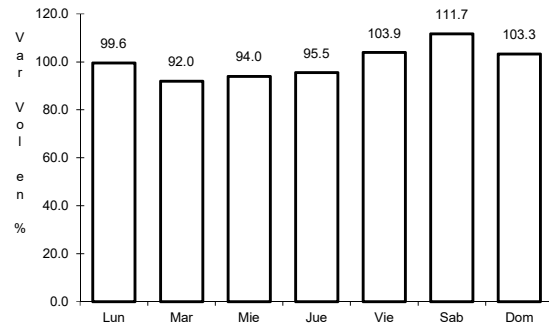


Km: 0.00 Tipo: 3 Sent: 0

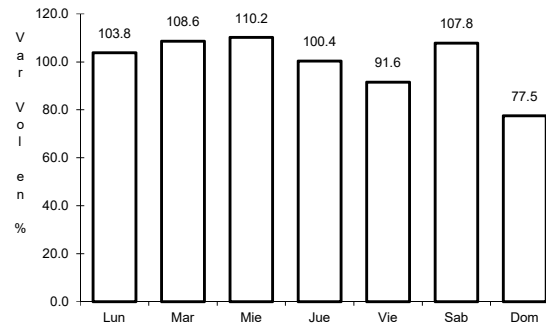
2 CARR: Buenavista - Tuxtepec

CLAVE: 00624

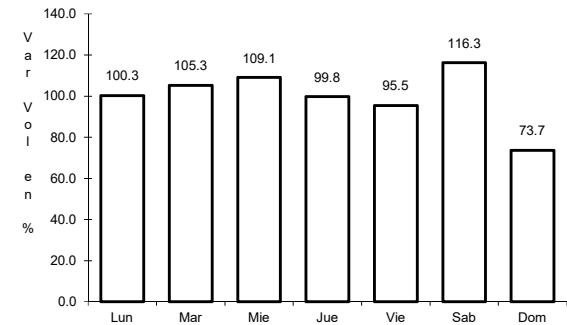
ruta: MEX-175



Km: 0.00 Tipo: 3 Sent: 0



Km: 121.25 Tipo: 1 Sent: 1

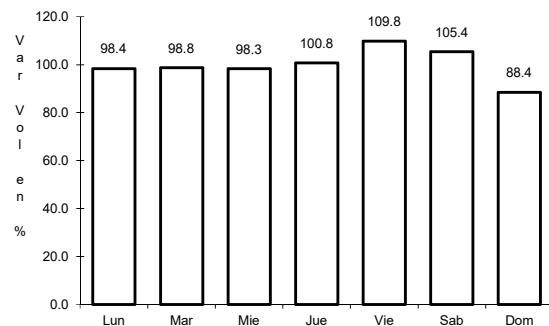


Km: 121.25 Tipo: 1 Sent: 2

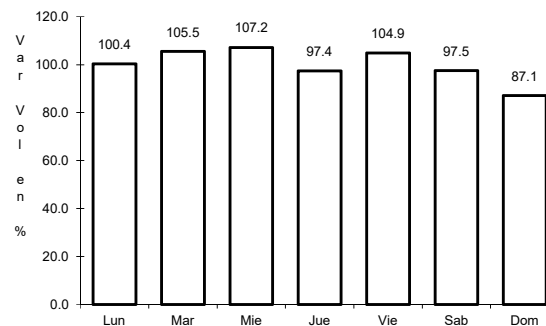
3 CARR: Cd. Alemán - Sayula

CLAVE: 00301

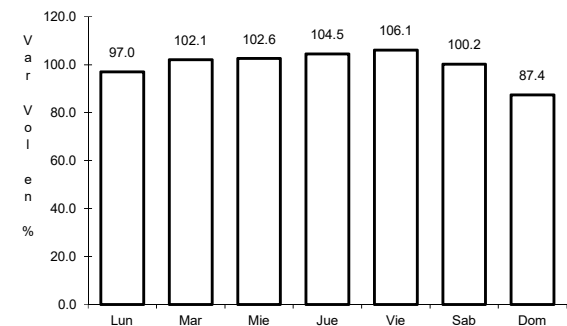
ruta: MEX-145



Km: 0.00 Tipo: 3 Sent: 0



Km: 71.40 Tipo: 1 Sent: 0

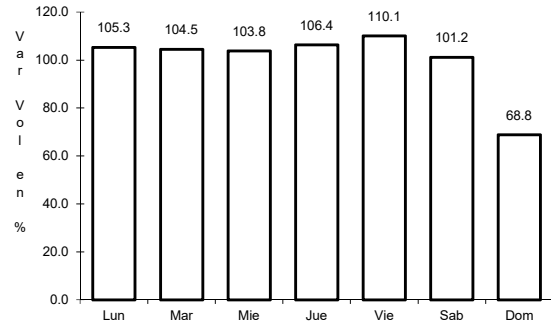


Km: 136.40 Tipo: 1 Sent: 0

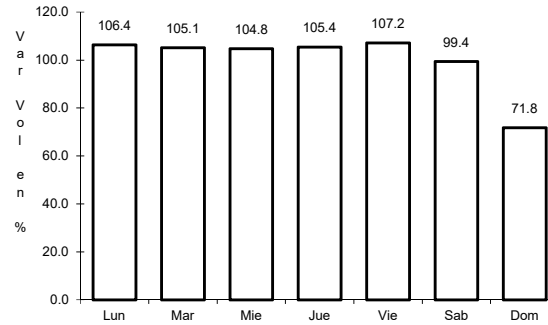
4 CARR: Coatzacoalcos - Salina Cruz

CLAVE: 00147

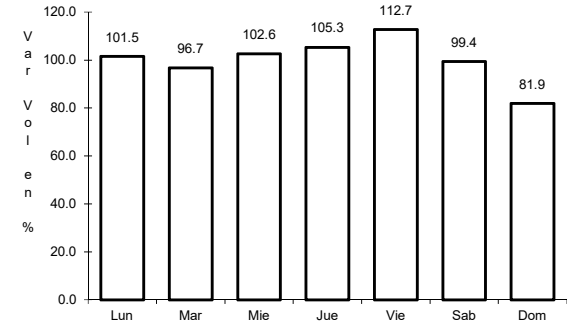
RUTA: MEX-185



Km: 0.00 Tipo: 3 Sent: 1



Km: 0.00 Tipo: 3 Sent: 2

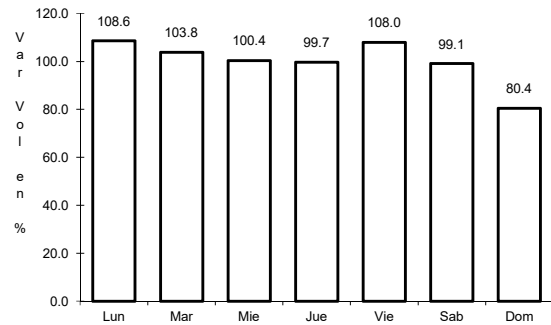


Km: 241.70 Tipo: 1 Sent: 0

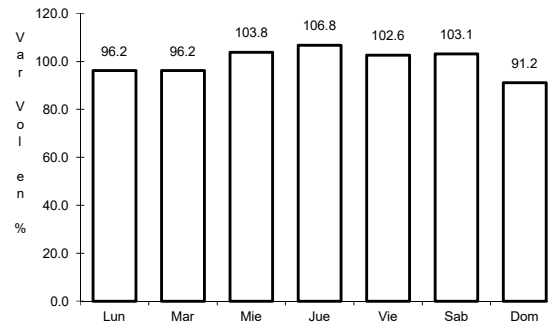
5 CARR: Ent. La Ventosa - San Pedro Tapanatepec

CLAVE: 20059

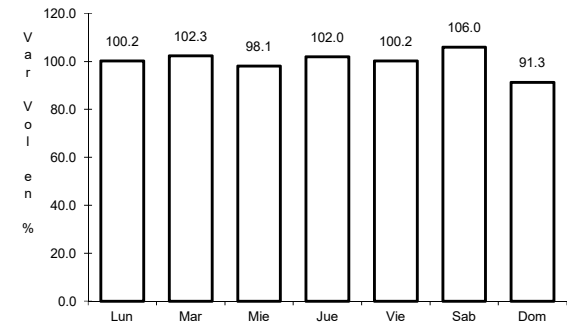
RUTA: MEX-190



Km: 0.00 Tipo: 3 Sent: 0



Km: 38.01 Tipo: 3 Sent: 0

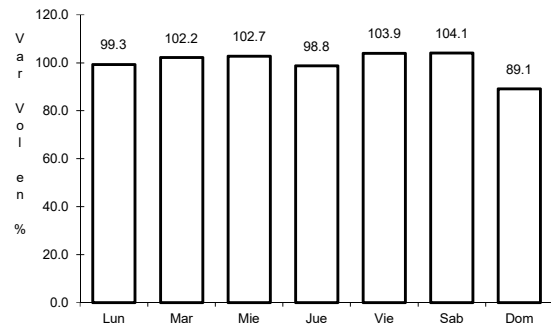


Km: 91.80 Tipo: 1 Sent: 0

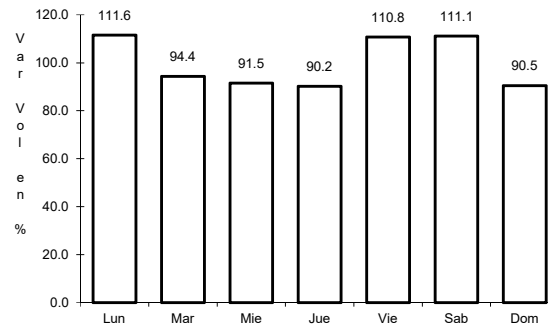
6 CARR: Huajuapán de León - Oaxaca

CLAVE: 20056

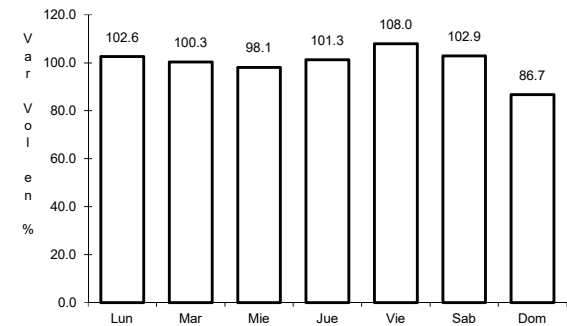
RUTA: MEX-190



Km: 1.35 Tipo: 1 Sent: 0



Km: 190.60 Tipo: 1 Sent: 1

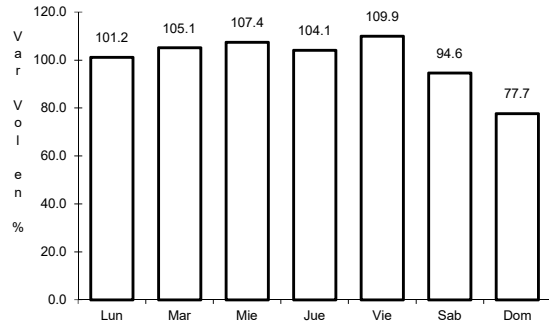


Km: 190.60 Tipo: 1 Sent: 2

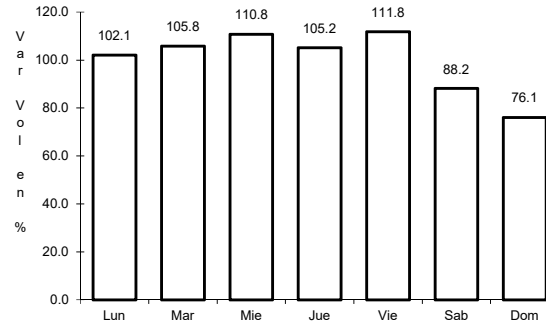
7 CARR: Juchitán - Ixtepec

CLAVE: 20359

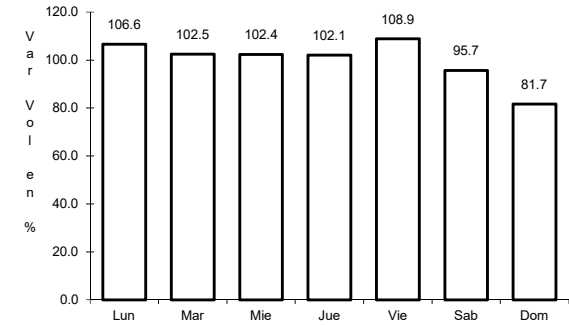
ruta: MEX-185



Km: 0.15 Tipo: 3 Sent: 1



Km: 0.15 Tipo: 3 Sent: 2

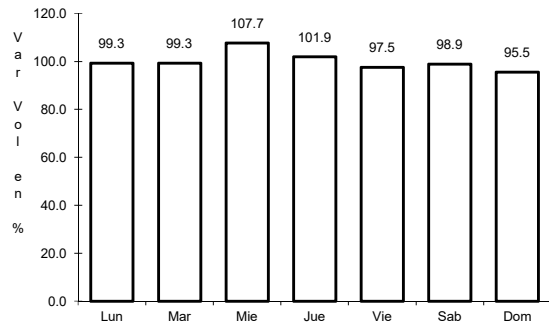


Km: 16.00 Tipo: 1 Sent: 1

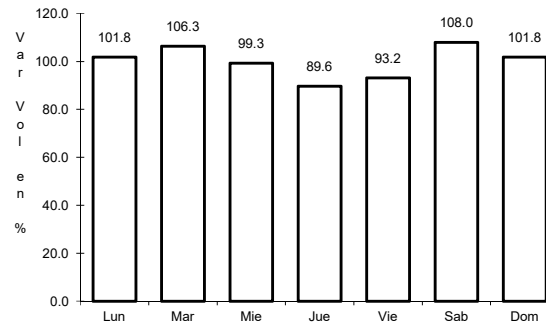
8 CARR: La Granja - Temascal

CLAVE: 00275

ruta: MEX-145



Km: 0.00 Tipo: 3 Sent: 0

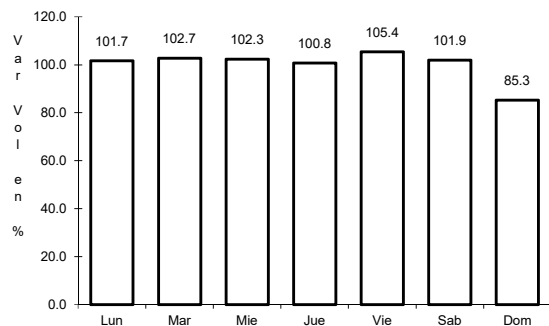


Km: 23.00 Tipo: 1 Sent: 0

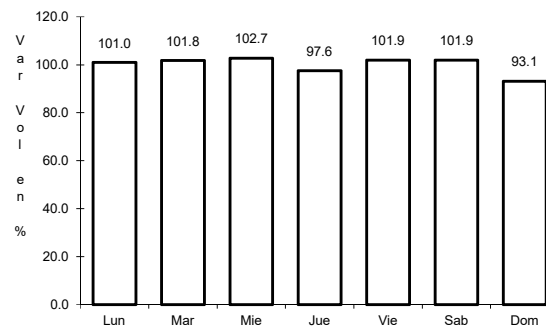
9 CARR: Las Cruces - Pinotepa Nacional

CLAVE: 00073

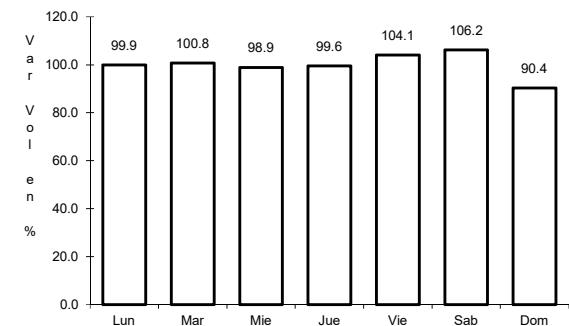
ruta: MEX-200



Km: 0.00 Tipo: 3 Sent: 1



Km: 0.00 Tipo: 3 Sent: 2

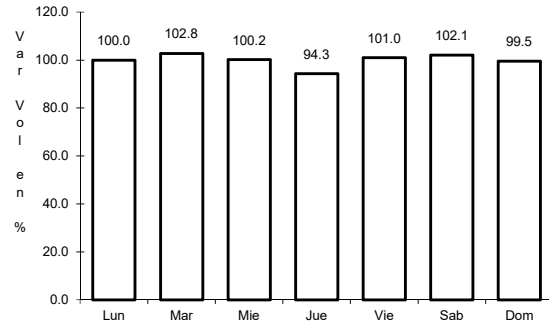


Km: 245.47 Tipo: 3 Sent: 0

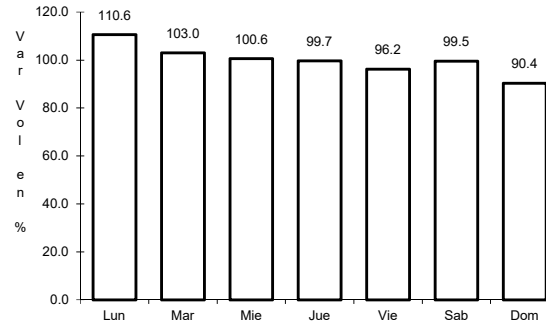
10 CARR: Libramiento de Pochutla

CLAVE:

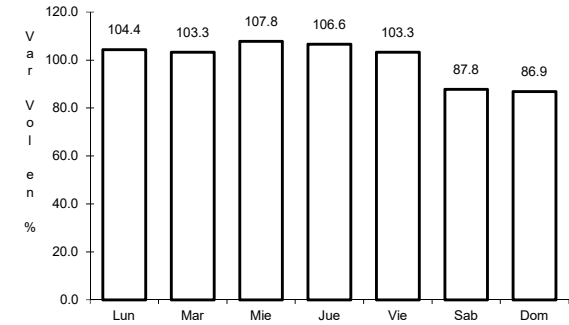
RUTA: MEX-200



Km: 0.00 Tipo: 3 Sent: 0



Km: 2.40 Tipo: 1 Sent: 0

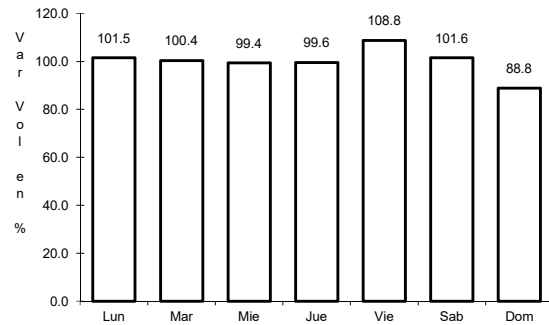


Km: 5.20 Tipo: 1 Sent: 0

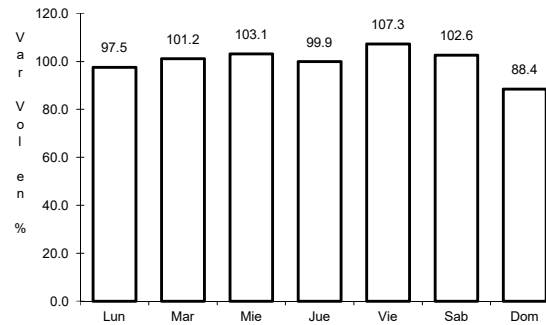
11 CARR: Libramiento de Santa María del Tule

CLAVE:

RUTA: MEX-190



Km: 0.00 Tipo: 3 Sent: 0

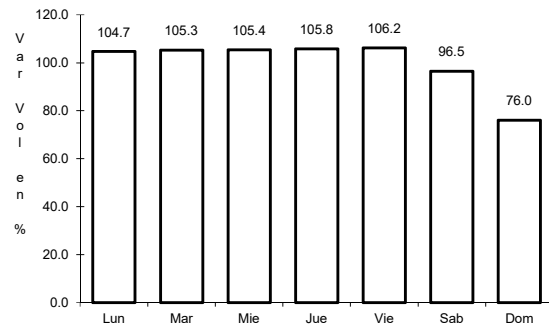


Km: 5.80 Tipo: 1 Sent: 0

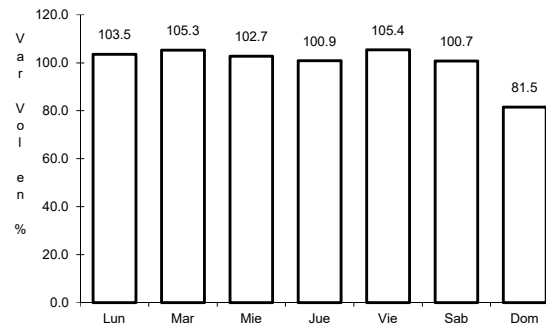
12 CARR: Oaxaca - Puerto Ángel

CLAVE: 20091

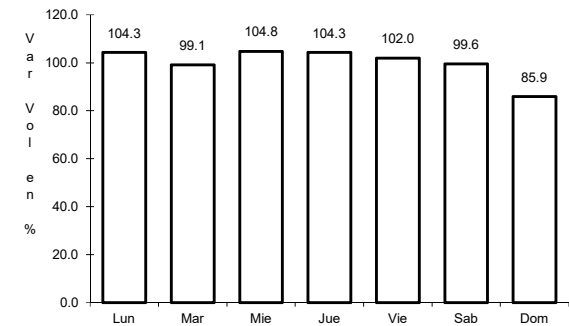
RUTA: MEX-175



Km: 0.00 Tipo: 3 Sent: 1



Km: 0.00 Tipo: 3 Sent: 2

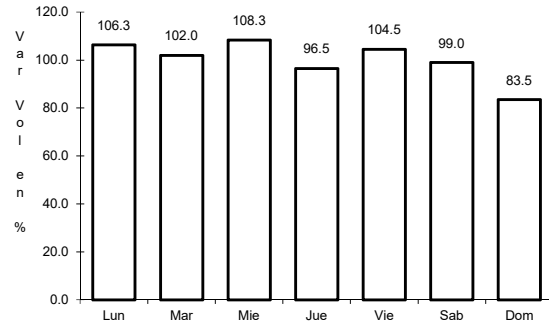


Km: 245.40 Tipo: 1 Sent: 0

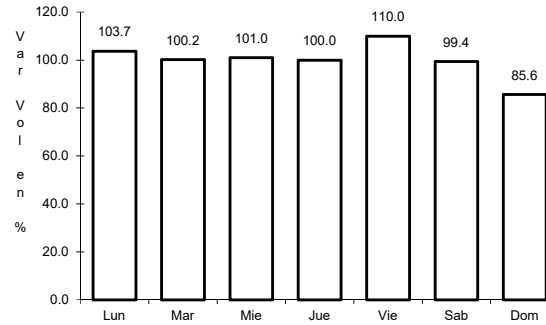
13 CARR: Oaxaca - Tehuantepec

CLAVE: 20057

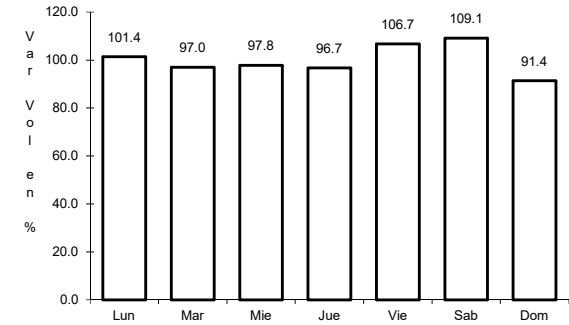
ruta: MEX-190



Km: 0.00 Tipo: 3 Sent: 1



Km: 0.00 Tipo: 3 Sent: 2

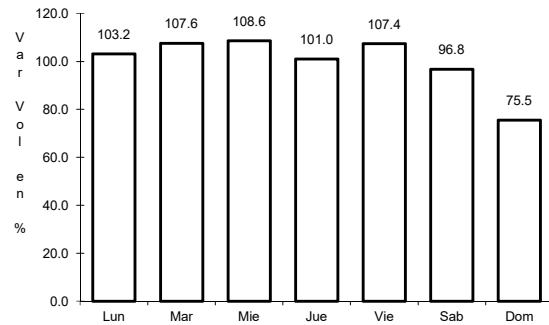


Km: 250.60 Tipo: 1 Sent: 0

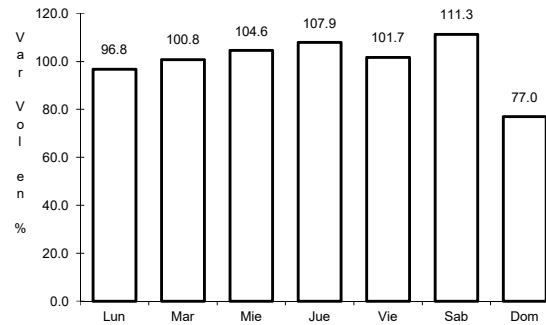
14 CARR: Puebla - Huajuapán de León

CLAVE: 00049

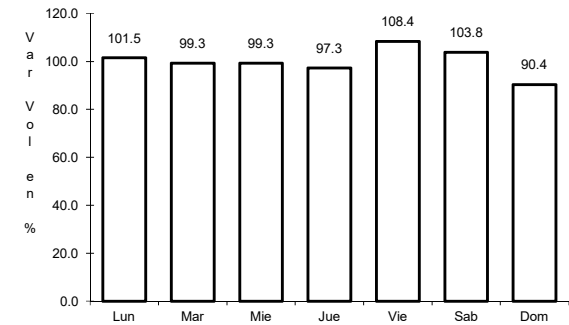
ruta: MEX-190



Km: 0.00 Tipo: 3 Sent: 1



Km: 0.00 Tipo: 3 Sent: 2

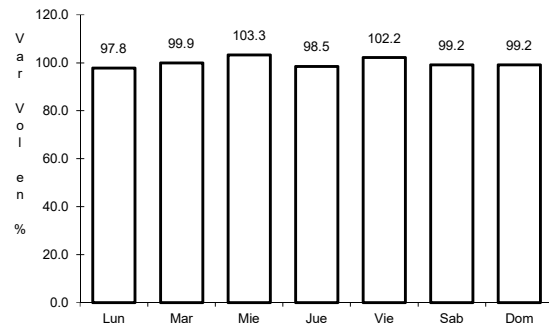


Km: 219.30 Tipo: 1 Sent: 0

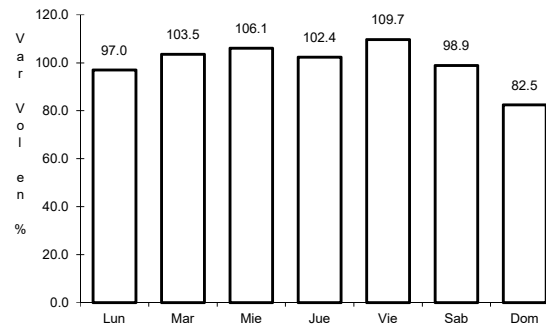
15 CARR: Ramal a Asunción Ixtaltepec

CLAVE: 20624

ruta: MEX-185



Km: 0.00 Tipo: 3 Sent: 0

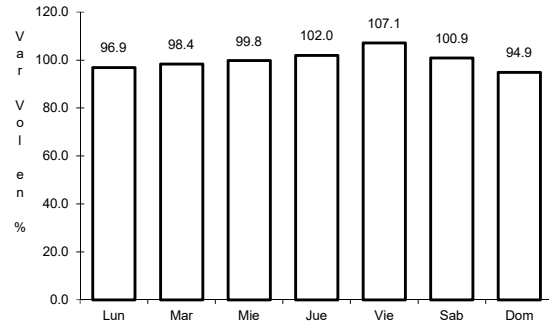


Km: 9.70 Tipo: 1 Sent: 0

16 CARR: Ramal a Monte Albán

CLAVE:

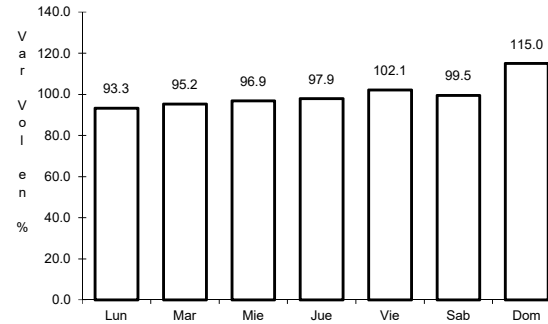
RUTA: MEX



Km: 1.80

Tipo: 3

Sent: 0



Km: 2.75

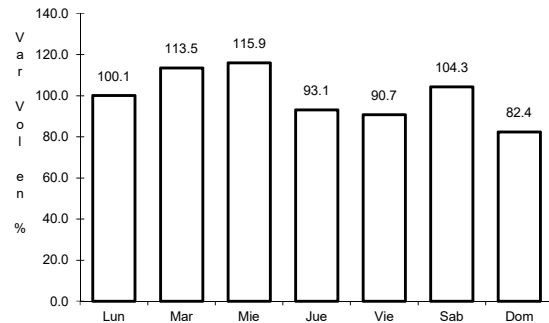
Tipo: 3

Sent: 0

17 CARR: Ramal a Refinería Pemex (Refinería del Pacifico)

CLAVE:

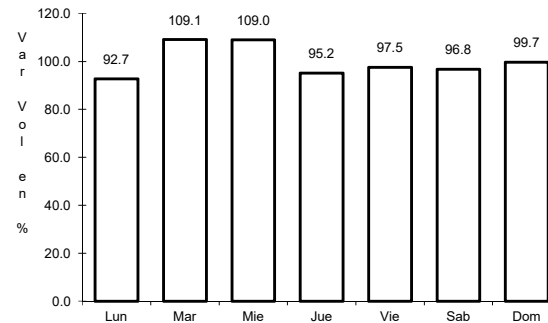
RUTA: MEX



Km: 0.00

Tipo: 3

Sent: 1



Km: 0.00

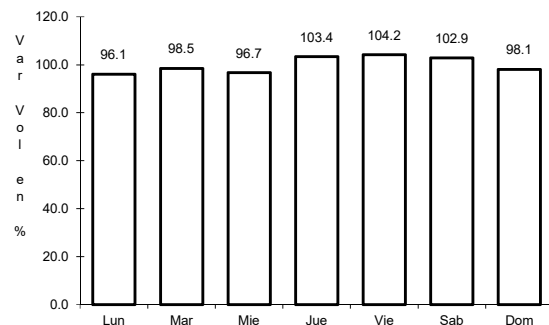
Tipo: 3

Sent: 2

18 CARR: San Pablo Villa de Mitla - T. C. (Tuxtepec - Palomares)

CLAVE: 00106

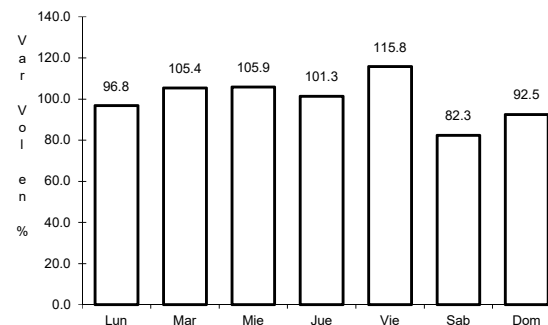
RUTA: MEX-179



Km: 0.00

Tipo: 3

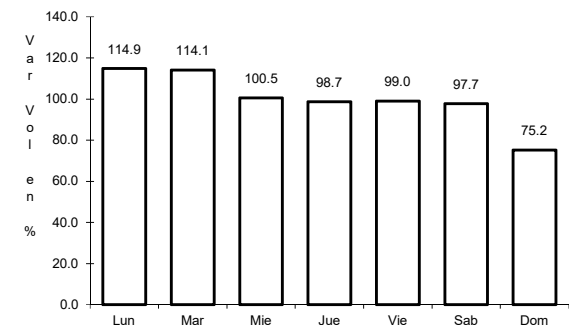
Sent: 0



Km: 90.00

Tipo: 1

Sent: 0



Km: 238.70

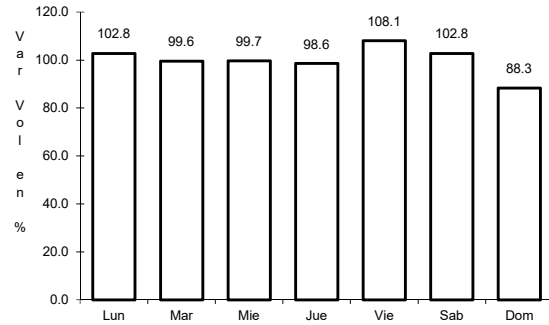
Tipo: 1

Sent: 0

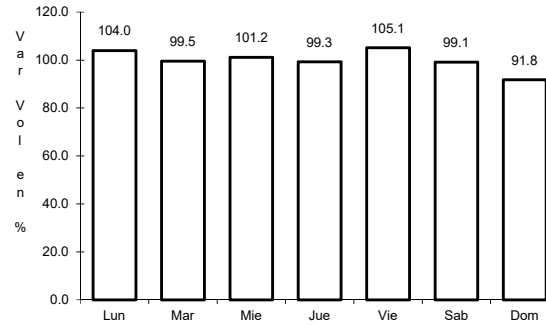
19 CARR: Santiago Pinotepa Nacional - Salina Cruz

CLAVE: 20074

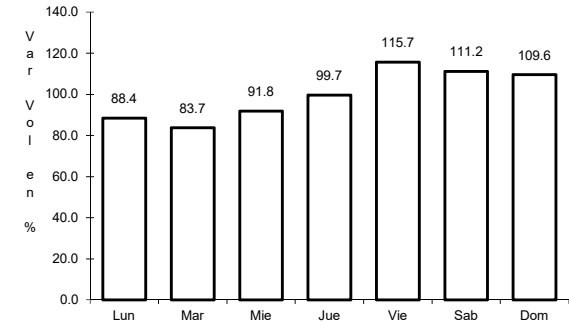
ruta: MEX-200



Km: 0.00 Tipo: 3 Sent: 0



Km: 209.95 Tipo: 1 Sent: 0

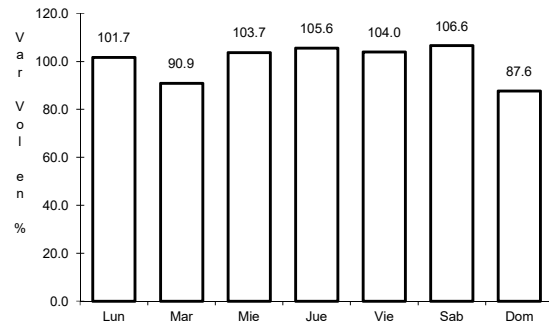


Km: 380.00 Tipo: 3 Sent: 0

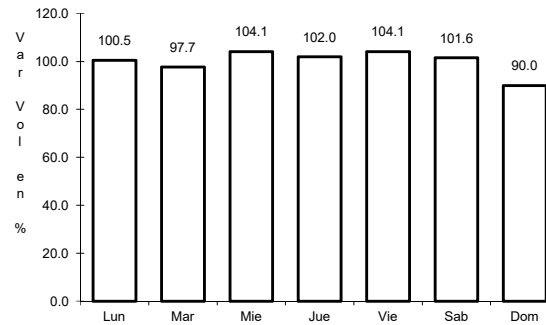
20 CARR: Tapanatepec - Talismán

CLAVE: 00075

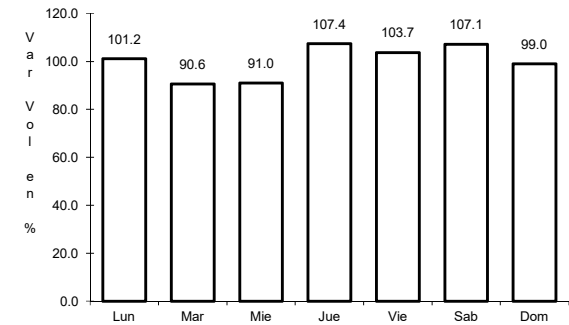
ruta: MEX-200



Km: 0.00 Tipo: 3 Sent: 0



Km: 45.00 Tipo: 1 Sent: 0

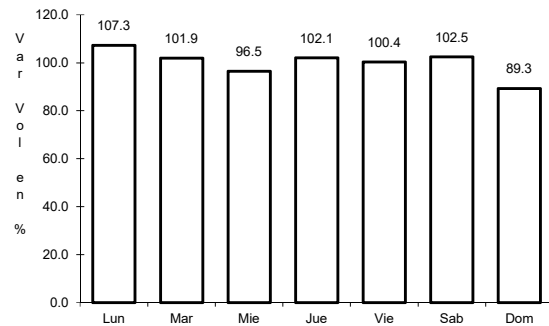


Km: 310.77 Tipo: 1 Sent: 0

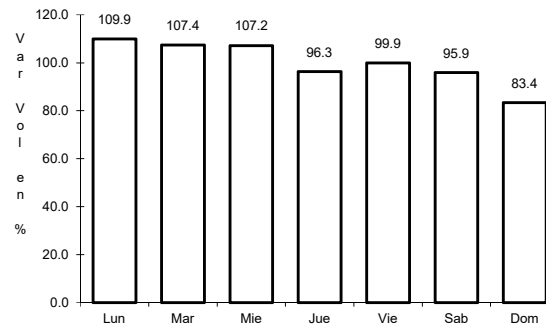
21 CARR: Tapanatepec - Tuxtla Gutiérrez

CLAVE: 00060

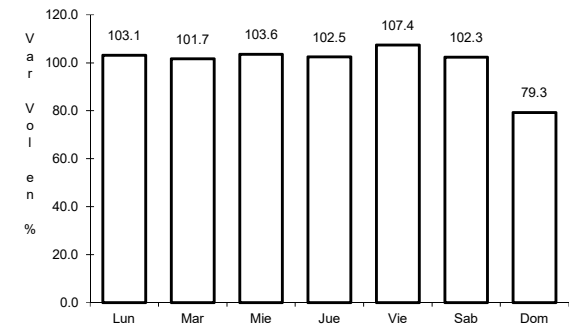
ruta: MEX-190



Km: 0.00 Tipo: 3 Sent: 0



Km: 159.00 Tipo: 1 Sent: 1

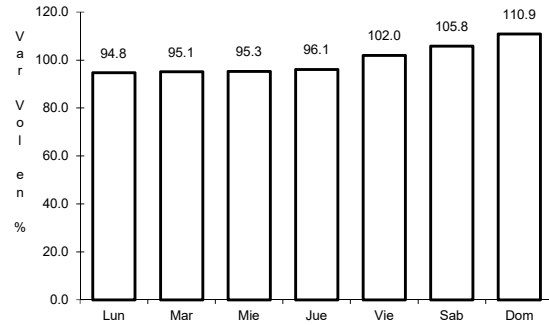


Km: 159.00 Tipo: 1 Sent: 2

22 CARR: Tehuacán - Huajuapán de León

CLAVE: 00211

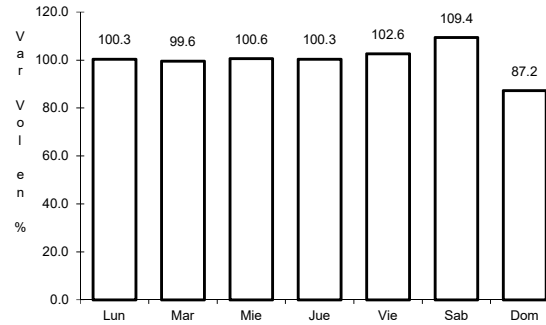
ruta: MEX-125



Km: 0.00

Tipo: 3

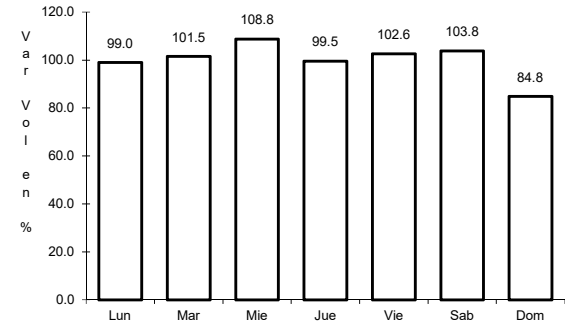
Sent: 1



Km: 0.00

Tipo: 3

Sent: 2



Km: 119.40

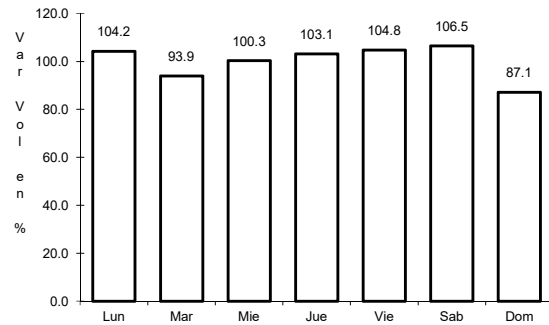
Tipo: 1

Sent: 0

23 CARR: Tuxtepec - Ent. Palomares

CLAVE: 00180

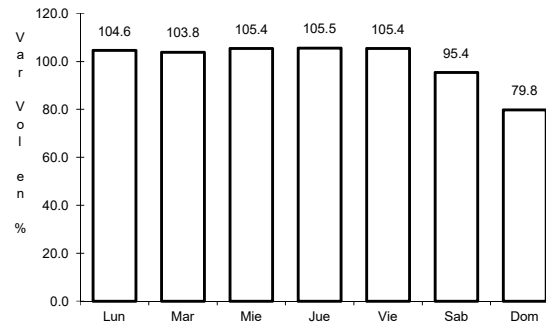
ruta: MEX-147



Km: 0.00

Tipo: 3

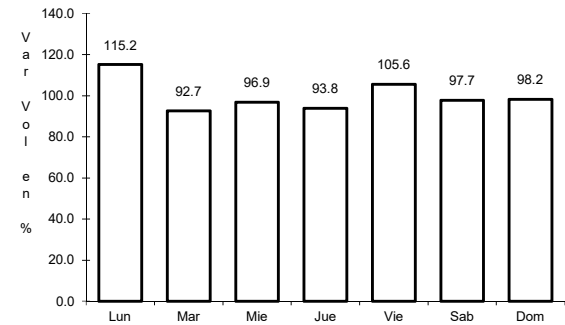
Sent: 0



Km: 81.20

Tipo: 1

Sent: 0



Km: 175.00

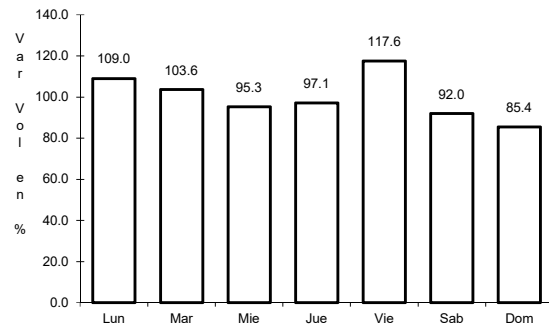
Tipo: 1

Sent: 0

24 CARR: Tuxtepec - T. C. (Oaxaca - Tehuantepec)

CLAVE: 20090

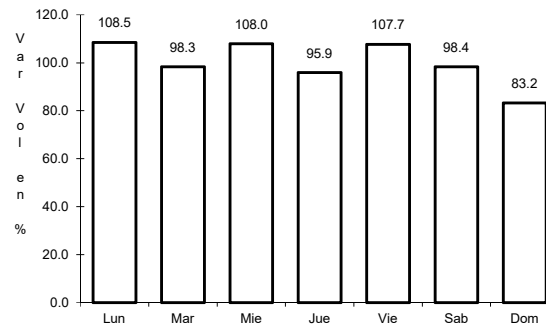
ruta: MEX-175



Km: 0.00

Tipo: 3

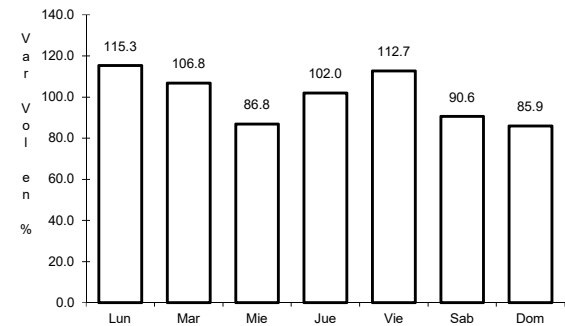
Sent: 1



Km: 0.00

Tipo: 3

Sent: 2



Km: 125.00

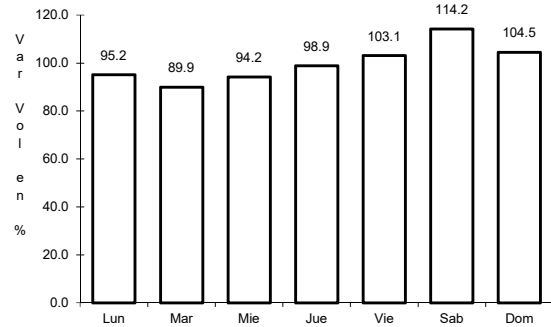
Tipo: 3

Sent: 0

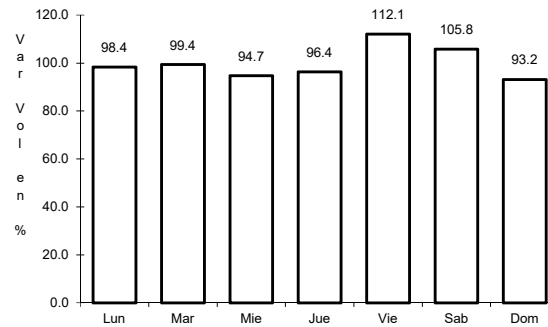
25 CARR: Yucudaa - Santiago Pinotepa Nacional

CLAVE: 20030

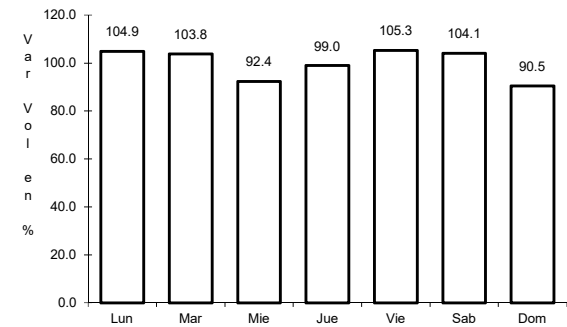
RUTA: MEX-125



Km: 0.00 Tipo: 3 Sent: 0



Km: 104.00 Tipo: 1 Sent: 0

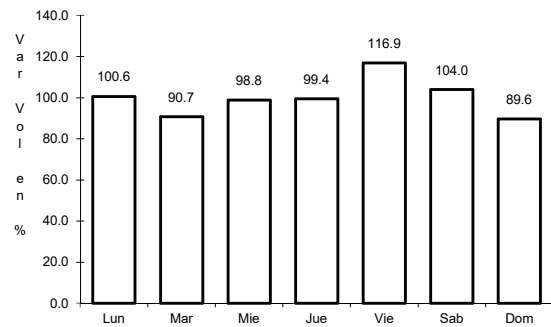


Km: 268.00 Tipo: 1 Sent: 0

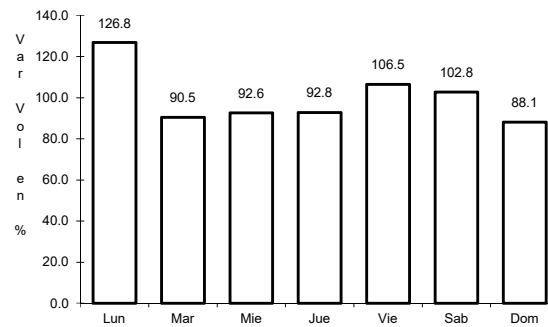
26 CARR: Cuacnopalan - Oaxaca (Cuota)

CLAVE: 00109

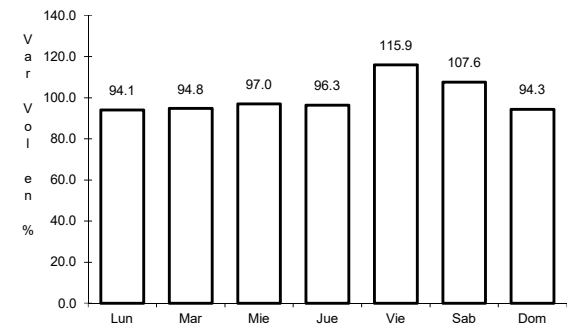
RUTA: MEX-135D



Km: 0.00 Tipo: 3 Sent: 0



Km: 242.70 Tipo: 1 Sent: 1

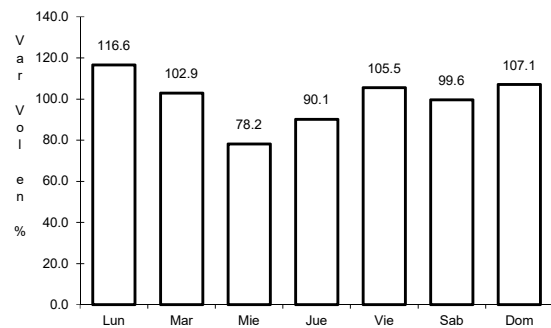


Km: 242.70 Tipo: 1 Sent: 2

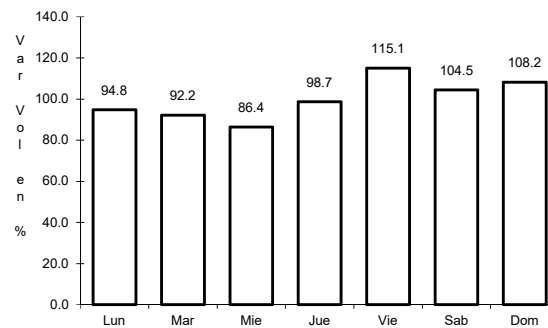
27 CARR: Mitla - Tehuantepec (Cuota)

CLAVE:

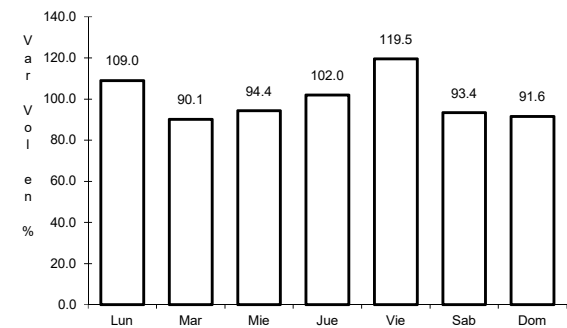
RUTA: MEX-190D



Km: 43.00 Tipo: 3 Sent: 0



Km: 50.90 Tipo: 3 Sent: 0

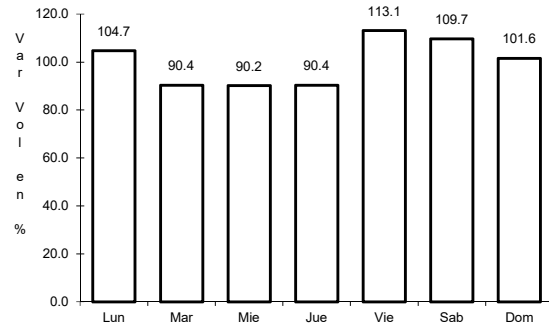


Km: 71.00 Tipo: 1 Sent: 0

28 CARR: Salina Cruz - La Ventosa (Cuota)

CLAVE: 00275

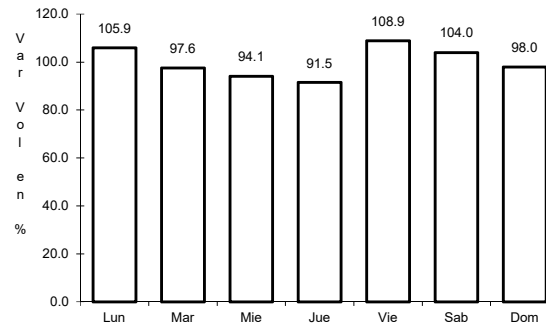
ruta: MEX-185D



Km: 23.19

Tipo: 1

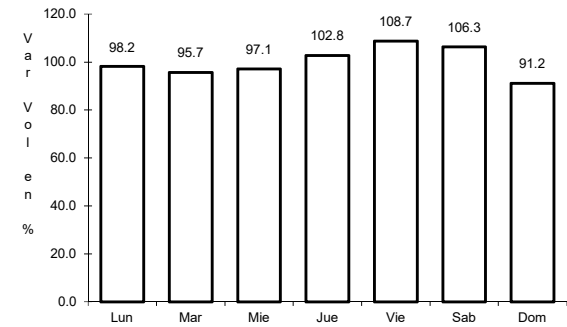
Sent: 0



Km: 23.19

Tipo: 3

Sent: 0



Km: 75.39

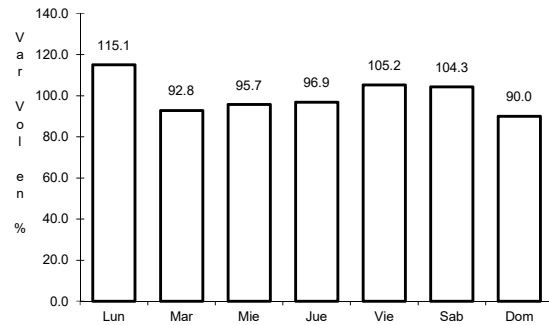
Tipo: 1

Sent: 0

29 CARR: Cd. Ixtepec - Guevea de Humboldt

CLAVE: 00301

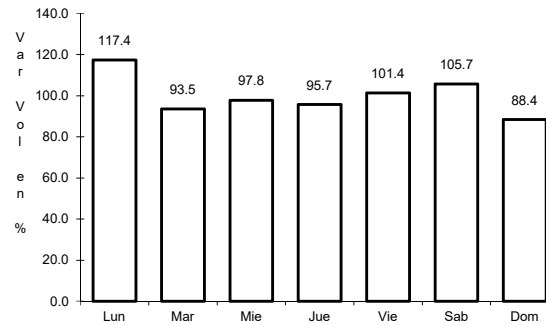
ruta: OAX



Km: 4.00

Tipo: 1

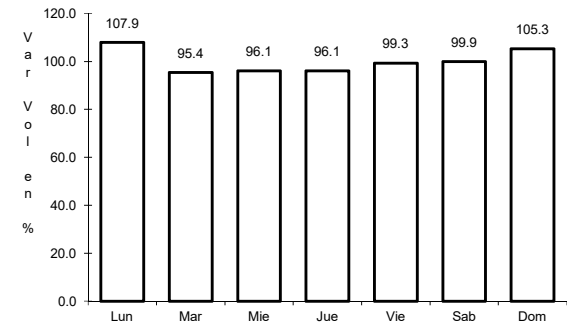
Sent: 1



Km: 4.00

Tipo: 1

Sent: 2



Km: 4.00

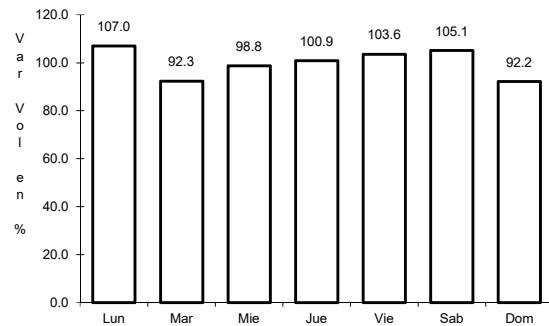
Tipo: 3

Sent: 0

30 CARR: El Zapote - Copalita

CLAVE: 00109

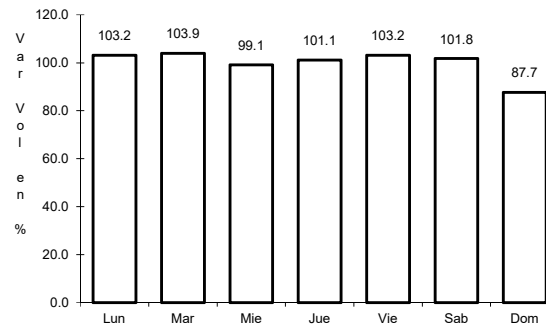
ruta: OAX



Km: 0.00

Tipo: 3

Sent: 1



Km: 0.00

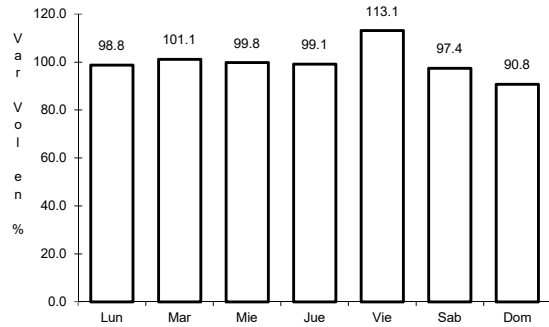
Tipo: 3

Sent: 2

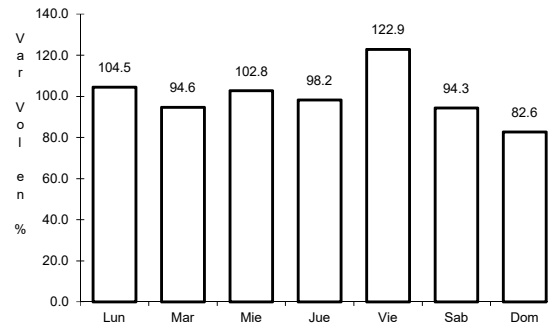
31 CARR: Huajuapán de León - El Carrizal

CLAVE: 00109

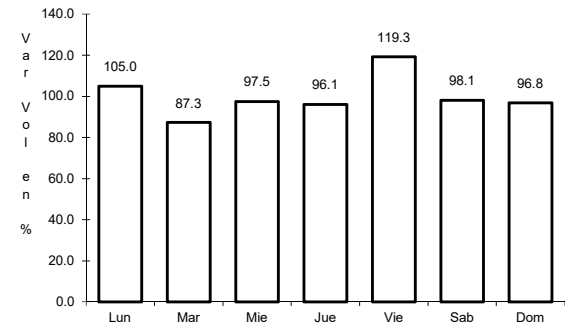
RUTA: OAX



Km: 0.00 Tipo: 3 Sent: 0



Km: 83.60 Tipo: 1 Sent: 0

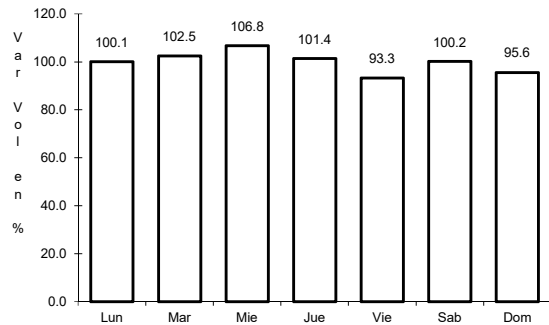


Km: 130.00 Tipo: 1 Sent: 0

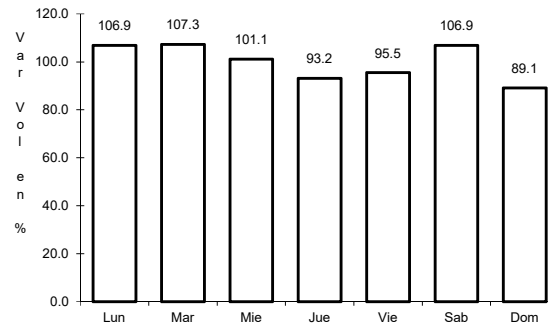
32 CARR: Loma Bonita - Mixtán

CLAVE: 20043

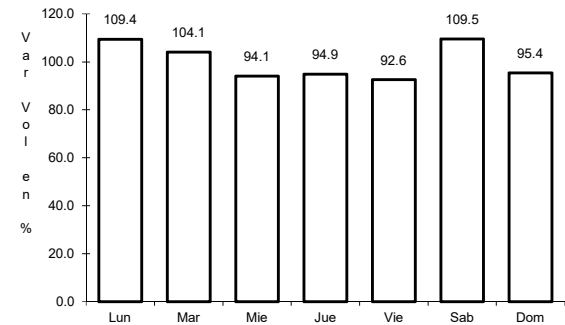
RUTA: OAX



Km: 1.00 Tipo: 1 Sent: 1



Km: 1.00 Tipo: 1 Sent: 2

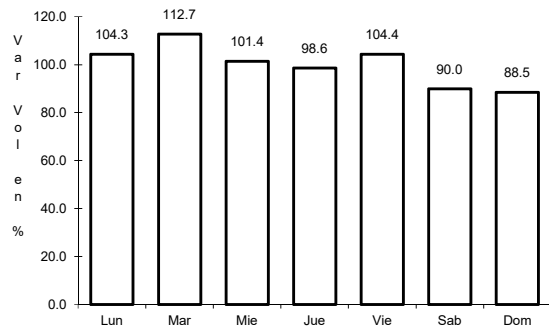


Km: 12.00 Tipo: 3 Sent: 0

33 CARR: Ramal a Reforma de Pineda

CLAVE: 20010

RUTA: OAX

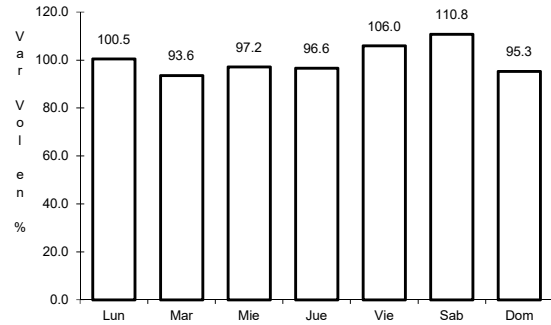


Km: 0.00 Tipo: 3 Sent: 0

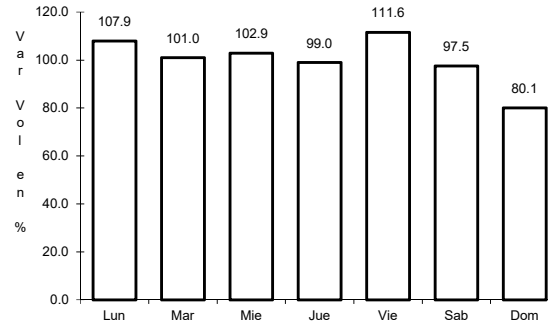
34 CARR: Ramal a Unión Hidalgo

CLAVE: 20044

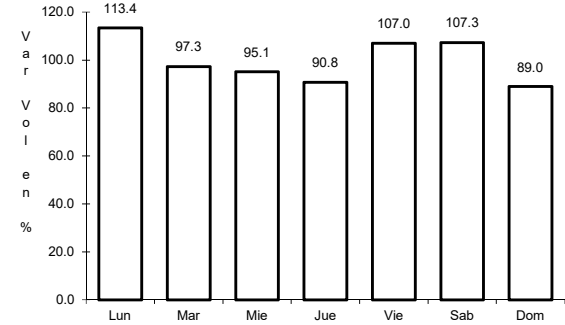
RUTA: OAX



Km: 0.00 Tipo: 3 Sent: 1



Km: 0.00 Tipo: 3 Sent: 2

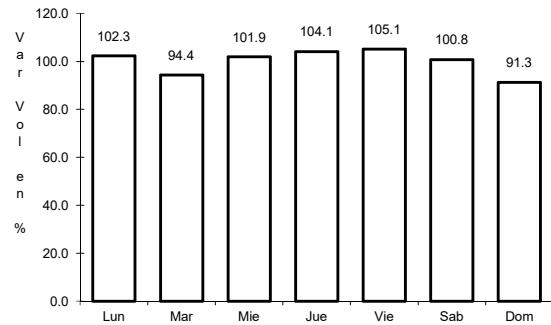


Km: 12.00 Tipo: 1 Sent: 0

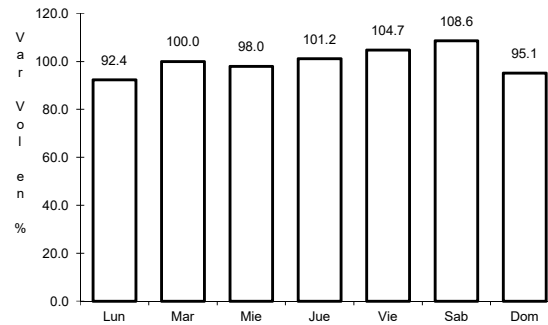
35 CARR: San Antonio - Puerto Angel

CLAVE:

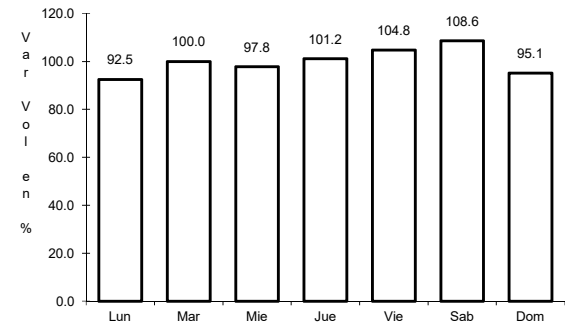
RUTA: OAX



Km: 0.00 Tipo: 3 Sent: 0



Km: 7.30 Tipo: 1 Sent: 0

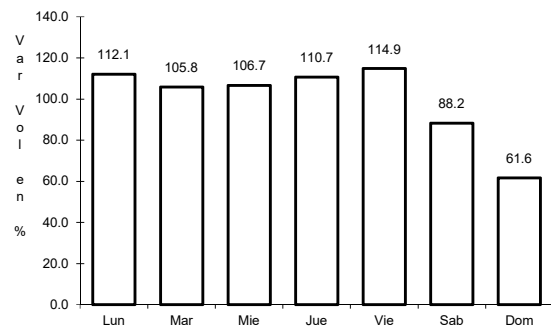


Km: 7.30 Tipo: 3 Sent: 0

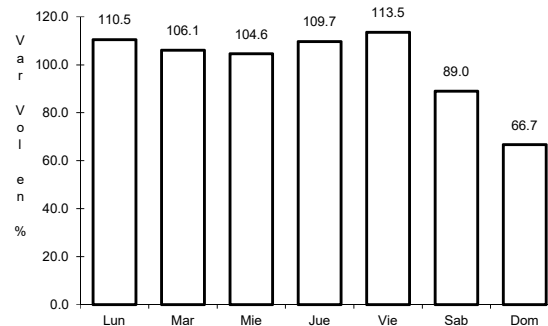
36 CARR: T. C. (Oaxaca - Puerto Ángel) - Puerto Escondido

CLAVE: 20009

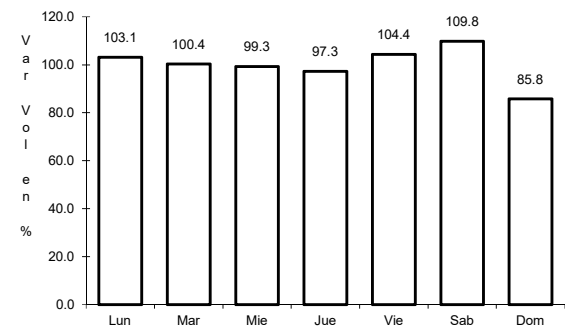
RUTA: MEX-OAX-161



Km: 0.00 Tipo: 3 Sent: 1



Km: 0.00 Tipo: 3 Sent: 2

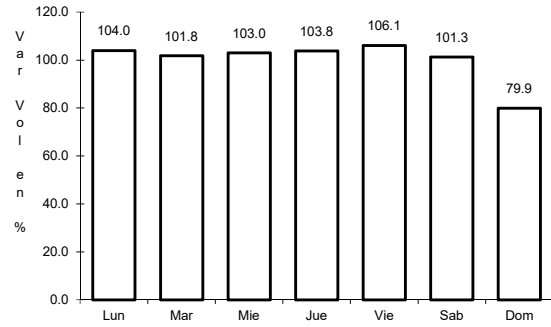


Km: 248.00 Tipo: 1 Sent: 0

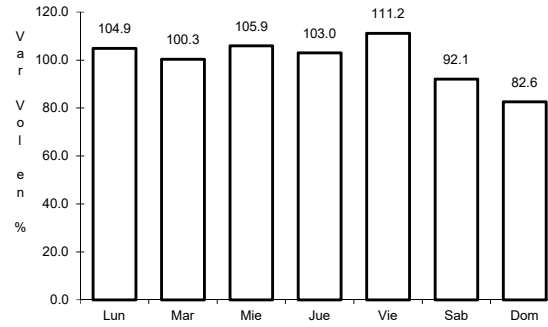
37 CARR: Tehuacán - Huitzo

CLAVE: 00211

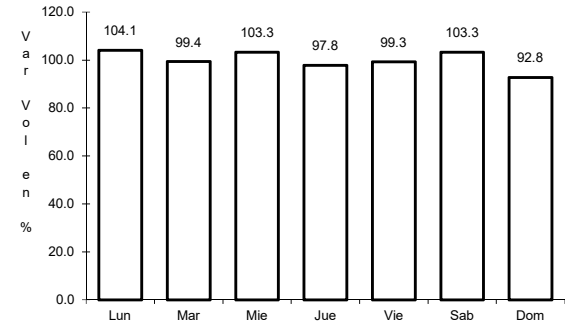
ruta: PUE-MEX-135



Km: 0.00 Tipo: 3 Sent: 0



Km: 118.80 Tipo: 1 Sent: 0

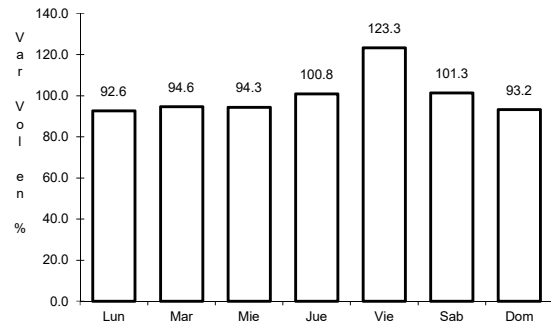


Km: 202.70 Tipo: 1 Sent: 0

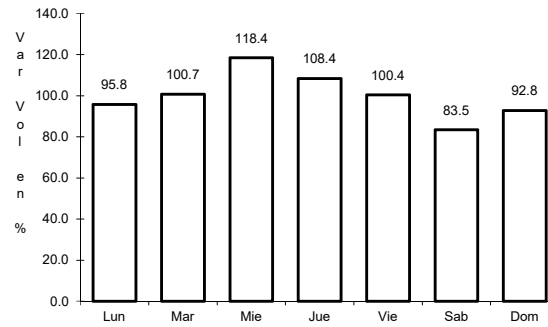
38 CARR: Teotitlán de Flores Magón - Tuxtepec

CLAVE: 00108

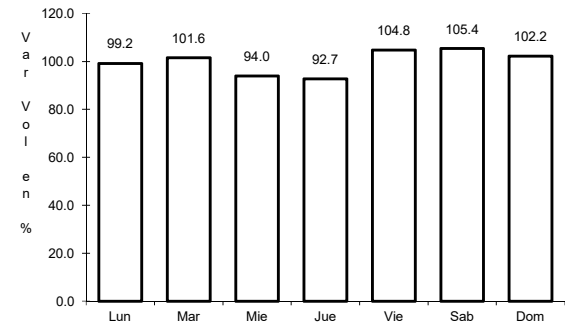
ruta: OAX-PUE-MEX-182



Km: 0.00 Tipo: 3 Sent: 0



Km: 65.00 Tipo: 1 Sent: 0



Km: 185.00 Tipo: 1 Sent: 0

