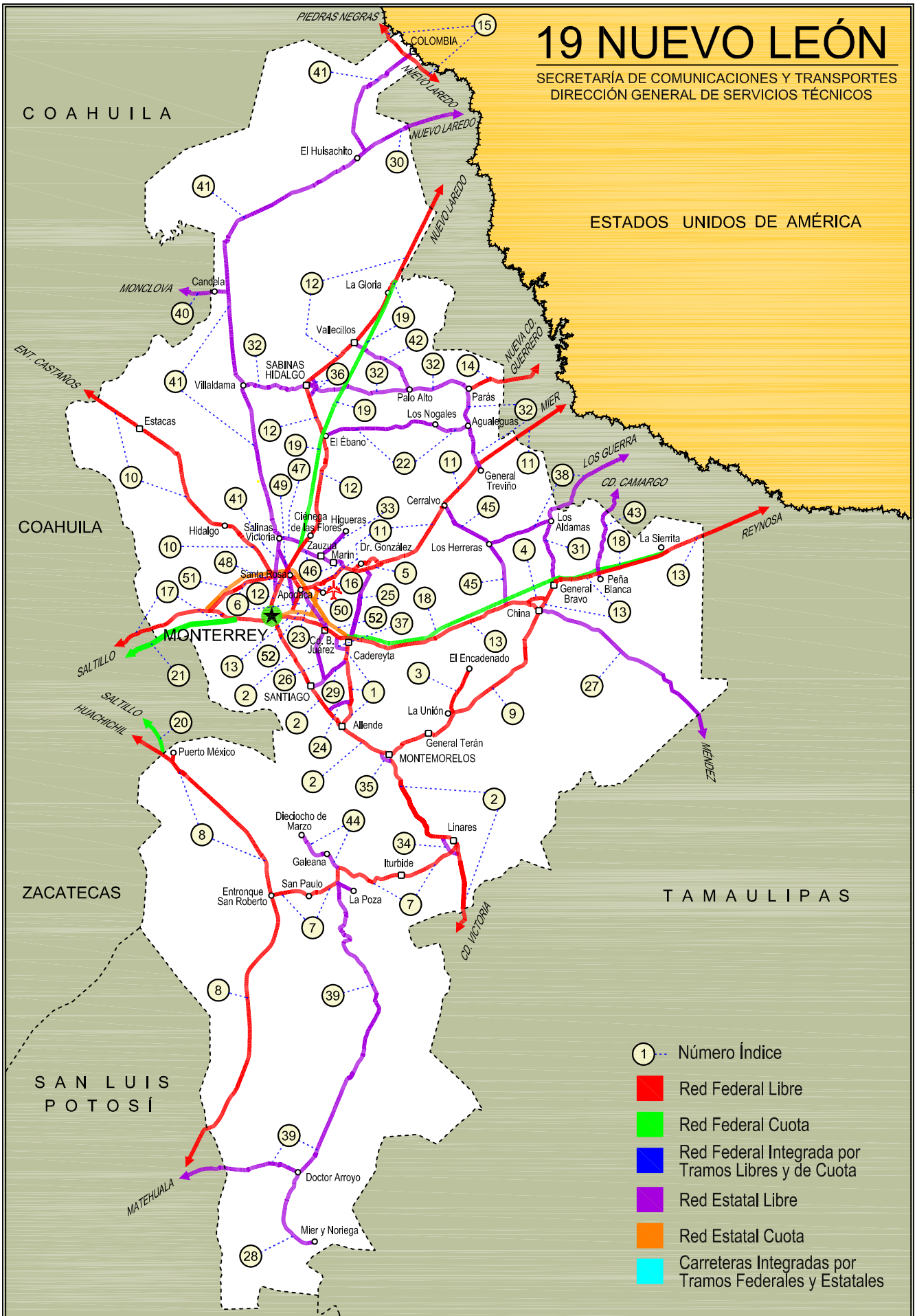


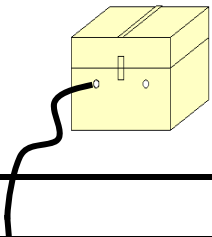
# 19 NUEVO LEÓN

SECRETARÍA DE COMUNICACIONES Y TRANSPORTES  
DIRECCIÓN GENERAL DE SERVICIOS TÉCNICOS



- ① Número Índice
- Red Federal Libre
- Red Federal Cuota
- Red Federal Integrada por Tramos Libres y de Cuota
- Red Estatal Libre
- Red Estatal Cuota
- Carreteras Integradas por Tramos Federales y Estatales





NUEVO LEON

## ---RED FEDERAL LIBRE---

1	Cadereyta de Jiménez - Allende	MEX-009
2	Ciudad Victoria - Monterrey	MEX-085
3	La Unión - El Encadenado	MEX
4	Libramiento de China	MEX-040
5	Libramiento de Dr. González	MEX-054
6	Libramiento Noroeste de Monterrey	MEX-040
7	Linares - Ent. San Roberto	MEX-058
8	Matehuala - Ent. Puerto México	MEX-057
9	Montemorelos - China	MEX-035
10	Monterrey - Castaños	MEX-053
11	Monterrey - Mier	MEX-054
12	Monterrey - Nuevo Laredo (Libre)	MEX-085
13	Monterrey - Reynosa (Libre)	MEX-040
14	Paras - Nueva Ciudad Guerrero	MEX-030
15	Piedras Negras - Nuevo Laredo	MEX-002
16	Ramal a Aeropuerto Mariano Escobedo	MEX-054
17	Saltillo - Monterrey	MEX-040

## ---RED FEDERAL DE CUOTA---

18	Cadereyta - Reynosa (Cuota)	MEX-040D
19	Monterrey - Nuevo Laredo (Cuota)	MEX-085D
20	Puerto México - La Carbonera (Cuota)	MEX-057D
21	Saltillo - Monterrey (Cuota)	MEX-040D

## ---RED ESTATAL LIBRE---

22	Agualeguas - El Ébano	NL-023
23	Apodaca - Villa Juárez	NL
24	Atongo - Lazarillos	NL
25	Cadereyta de Jiménez - Doctor González	NL
26	Cd. Benito Juárez - Villa de Santiago	NL
27	China - Méndez	NL-TAM
28	Doctor Arroyo - Mier y Noriega	NL-088
29	Ent. Hacienda del Cielo - T. Der. Cadereyta	NL
30	Ent. Huisachito - Nuevo Laredo	NL-001-TAM
31	Gral. Bravo - Los Aldamas	NL-030
32	Gral. Treviño - Villaldama	NL-003
33	Hacienda Guadalupe - Higuera	NL-006
34	Libramiento de Linares	NL
35	Libramiento de Montemorelos	NL
36	Libramiento de Sabinas Hidalgo	NL
37	Libramiento Poniente de Cadereyta	NL
38	Los Guerra - Los Herreras	TAM-NL
39	Matehuala - La Poza	SLP-029-NL-061
40	Monclova - Estación Candela	COA-030-NL
41	Monterrey - Colombia	NL-001
42	Palo Alto - Vallecillos	NL
43	Peña Blanca - Cd. Camargo	NL-TAM
44	Ramal a 18 de Marzo	NL
45	Ramal a Cerralvo	NL-013
46	Ramal a Marín	NL
47	Salinas Victoria - Ciénega de Flores	NL
48	Santa Rosa - Mezquital	NL
49	Santa Rosa - Salinas Victoria	NL

## ---RED ESTATAL DE CUOTA---

50	Aeropuerto de Monterrey (Cuota)	NL-D
51	Anillo Periférico de Monterrey (Cuota)	NL-D
52	Monterrey - Cadereyta (Cuota)	NL-D

NUEVO LEON

1 CARR: Cadereyta de Jiménez - Allende

CLAVE: 19009

RUTA: MEX-009

AÑO: 2018

LUGAR	ESTACION				CLASIFICACION VEHICULAR EN PORCIENTO										COORDENADAS					
	KM	TE	SC	TDPA	M	A	B	C2	C3	T3S2	T3S3	T3S2R4	OTROS	A	B	C	K'	D	LATITUD	LONGITUD
Cadereyta de Jiménez	0.00	3	1	6085	1.9	79.8	0.6	8.7	1.5	3.3	1.4	2.3	0.5	81.7	0.6	17.7	0.138	0.501	25.557634	-100.005978
Cadereyta de Jiménez	0.00	3	2	6103	1.8	77.9	0.6	9.7	1.6	3.9	1.4	2.6	0.5	79.7	0.6	19.7	0.184	0.501	25.557628	-100.005924
T. der. Huajuquito	7.30	3	0	8747	1.1	76.9	0.5	7.4	2.2	6.2	1.9	3.0	0.8	78.0	0.5	21.5	0.099	0.503	25.516851	-100.006789
T. Izq. Atongo	26.80	1	0	7562	1.1	69.6	1.2	9.0	3.1	7.5	2.3	5.3	0.9	70.7	1.2	28.1	0.068	0.506	25.368988	-99.986577
Allende	37.00	1	1	8043	2.4	76.3	0.6	7.5	3.1	5.1	1.3	3.0	0.7	78.7	0.6	20.7	0.104	0.500	25.292469	-100.013093
Allende	37.00	1	2	8039	2.1	73.7	0.7	9.0	3.5	5.6	1.5	3.2	0.7	75.8	0.7	23.5	0.091	0.500	25.292426	-100.013026

2 CARR: Ciudad Victoria - Monterrey

CLAVE: 00462

RUTA: MEX-085

AÑO: 2018

LUGAR	ESTACION				CLASIFICACION VEHICULAR EN PORCIENTO										COORDENADAS					
	KM	TE	SC	TDPA	M	A	B	C2	C3	T3S2	T3S3	T3S2R4	OTROS	A	B	C	K'	D	LATITUD	LONGITUD
Cd. Victoria (Central)	0.00	3	1	7104	3.2	85.8	1.1	5.6	0.8	1.6	1.0	0.5	0.4	89.0	1.1	9.9	0.091	0.521	23.778410	-99.136570
Cd. Victoria (Lateral)	0.00	3	1	898	10.9	64.6	0.7	22.0	1.1	0.4	0.2	0.0	0.1	75.5	0.7	23.8	0.097	0.505	23.778410	-99.136458
Cd. Victoria (Central)	0.00	3	2	7731	3.3	86.5	0.9	5.1	0.8	1.7	1.0	0.4	0.3	89.8	0.9	9.3	0.086	0.521	23.778437	-99.136671
Cd. Victoria (Lateral)	0.00	3	2	850	5.3	66.4	1.0	25.6	1.2	0.3	0.1	0.0	0.1	71.7	1.0	27.3	0.088	0.505	23.778450	-99.136745
T. Der. Güemez	19.60	3	0	5235	1.3	84.5	2.5	7.9	1.4	1.5	0.3	0.5	0.1	85.8	2.5	11.7	0.097	0.506	23.915908	-99.112300
T. Izq. Santa Engracia	27.35	3	0	7213	0.5	61.2	5.2	9.8	3.1	8.2	3.0	8.1	0.9	61.7	5.2	33.1	0.087	0.505	23.991336	-99.111099
Barretal	39.00	3	0	6306	1.8	59.2	5.4	8.0	2.4	9.6	2.6	9.8	1.2	61.0	5.4	33.6	0.080	0.536	24.093050	-99.143391
T. Izq. Hidalgo y La Mesa	77.50	1	0	6136	1.8	59.5	5.4	8.0	2.6	9.1	2.6	9.7	1.3	61.3	5.4	33.3	0.087	0.537	24.249368	-99.430437
Villagrán	106.00	1	0	5246	0.6	58.0	4.9	7.4	2.4	10.2	3.7	11.4	1.4	58.6	4.9	36.5	0.100	0.509	24.463342	-99.496633
T. Izq. Villa Mainero	118.00	3	1	2684	0.8	58.6	5.1	6.8	2.3	10.3	3.6	11.5	1.0	59.4	5.1	35.5	0.123	0.506	24.581399	-99.540844
T. Izq. Villa Mainero	118.00	3	2	2746	0.9	54.2	5.6	7.5	2.7	10.7	4.1	13.2	1.1	55.1	5.6	39.3	0.112	0.506	24.581522	-99.540879
Lim. Edos. Term. Tamps. Ppia. N. L.	126.20																			
Linares	154.00	1	0	7159	1.2	63.9	3.6	5.9	2.2	9.1	2.9	10.0	1.2	65.1	3.6	31.3	0.079	0.509	24.829213	-99.556756
La Laja	171.00	3	1	6561	1.3	66.4	4.1	9.3	1.7	7.0	2.4	7.0	0.8	67.7	4.1	28.2	0.085	0.502	24.917141	-99.686470
La Laja	171.00	3	2	6506	0.9	65.2	4.0	8.8	2.3	7.8	2.3	7.8	0.9	66.1	4.0	29.9	0.073	0.502	24.917126	-99.686570
Montemorelos	205.00	3	1	9830	1.3	76.4	2.4	9.0	1.4	4.1	1.7	3.0	0.7	77.7	2.4	19.9	0.101	0.502	25.204166	-99.910717
Montemorelos	205.00	3	2	9922	0.9	77.4	2.3	8.3	1.5	4.0	1.5	3.4	0.7	78.3	2.3	19.4	0.097	0.502	25.204060	-99.910807
Allende	227.45	3	1	15571	0.6	86.7	1.4	5.2	1.2	2.3	1.0	1.0	0.6	87.3	1.4	11.3	0.089	0.504	25.291111	-100.045471
Allende	227.45	3	2	15800	0.7	84.5	1.5	5.8	1.5	2.8	0.9	2.1	0.2	85.2	1.5	13.3	0.082	0.504	25.290948	-100.045547
El Cercado	249.00	1	1	27721	0.3	91.9	1.0	3.5	0.7	1.2	0.4	0.9	0.1	92.2	1.0	6.8	0.121	0.528	25.351225	-100.088956
El Cercado	249.00	1	2	24822	0.3	91.2	1.0	4.1	0.7	1.3	0.4	0.9	0.1	91.5	1.0	7.5	0.107	0.528	25.351134	-100.089169
T. Der. Las Huertas	257.00	3	1	27248	0.7	88.1	0.8	6.0	0.9	1.7	0.8	0.7	0.3	88.8	0.8	10.4	0.133	0.505	25.467779	-100.173934
T. Der. Las Huertas	257.00	3	2	27766	0.7	87.2	0.9	6.5	0.9	1.8	0.9	0.8	0.3	87.9	0.9	11.2	0.114	0.505	25.467690	-100.174126
T. Izq. el Barro	266.00	3	1	31591	0.5	89.3	0.8	5.5	0.6	1.5	0.9	0.5	0.4	89.8	0.8	9.4	0.118	0.508	25.530534	-100.212806

NUEVO LEON

2 CARR: Ciudad Victoria - Monterrey

CLAVE: 00462

RUTA: MEX-085

AÑO: 2018

LUGAR	ESTACION				CLASIFICACION VEHICULAR EN PORCIENTO													COORDENADAS		
	KM	TE	SC	TDPA	M	A	B	C2	C3	T3S2	T3S3	T3S2R4	OTROS	A	B	C	K'	D	LATITUD	LONGITUD
T. Izq. el Barro	266.00	3	2	32678	0.5	88.3	0.9	6.3	0.8	1.4	0.8	0.7	0.3	88.8	0.9	10.3	0.111	0.508	25.530407	-100.212946
La Estanzuela	274.82	3	1	62103	0.3	88.1	0.5	6.3	0.5	1.4	1.8	0.5	0.6	88.4	0.5	11.1	0.079	0.513	25.589267	-100.259136
La Estanzuela	274.82	3	2	65419	0.4	87.6	0.5	6.4	0.6	1.5	1.9	0.5	0.6	88.0	0.5	11.5	0.066	0.513	25.589185	-100.259291
Monterrey (Alta)	287.00	1	1	48008	0.4	91.6	0.3	3.0	0.5	1.6	1.7	0.6	0.3	92.0	0.3	7.7	0.067	0.532	25.602278	-100.266367
Monterrey (Baja)	287.00	1	1	21512	0.9	88.2	0.4	4.4	0.1	1.9	3.4	0.3	0.4	89.1	0.4	10.5	0.079	0.505	25.602317	-100.266211
Monterrey (Alta)	287.00	1	2	51124	0.3	93.2	0.4	2.1	0.5	1.1	1.7	0.5	0.2	93.5	0.4	6.1	0.081	0.532	25.601326	-100.266031
Monterrey (Baja)	287.00	1	2	21057	0.7	87.4	0.4	4.9	0.1	2.2	3.6	0.3	0.4	88.1	0.4	11.5	0.074	0.505	25.601269	-100.266115

3 CARR: La Unión - El Encadenado

CLAVE:

RUTA: MEX

AÑO: 2018

LUGAR	ESTACION				CLASIFICACION VEHICULAR EN PORCIENTO													COORDENADAS		
	KM	TE	SC	TDPA	M	A	B	C2	C3	T3S2	T3S3	T3S2R4	OTROS	A	B	C	K'	D	LATITUD	LONGITUD
La Unión	0.00	3	0	715	23.1	67.0	0.3	8.6	0.3	0.4	0.3	0.0	0.0	90.1	0.3	9.6	0.106	0.506	25.340432	-99.579664
El Encadenado	10.00	1	0	264	13.5	68.3	0.3	16.3	1.3	0.1	0.1	0.1	0.0	81.8	0.3	17.9	0.095	0.504	25.403815	-99.538842

4 CARR: Libramiento de China

CLAVE:

RUTA: MEX-040

AÑO: 2018

LUGAR	ESTACION				CLASIFICACION VEHICULAR EN PORCIENTO													COORDENADAS		
	KM	TE	SC	TDPA	M	A	B	C2	C3	T3S2	T3S3	T3S2R4	OTROS	A	B	C	K'	D	LATITUD	LONGITUD
T. C. Monterrey - Reynosa (Poniente)	0.00	3	0	3130	0.3	64.5	2.2	13.9	1.8	12.1	3.2	1.6	0.4	64.8	2.2	33.0	0.075	0.521	25.710603	-99.246118
T. C. Monterrey - Reynosa (Oriente)	2.41	1	0	2840	0.4	62.2	3.0	14.5	2.1	12.2	3.6	1.6	0.4	62.6	3.0	34.4	0.074	0.511	25.710205	-99.232139

5 CARR: Libramiento de Dr. González

CLAVE: 00127

RUTA: MEX-054

AÑO: 2018

LUGAR	ESTACION				CLASIFICACION VEHICULAR EN PORCIENTO													COORDENADAS		
	KM	TE	SC	TDPA	M	A	B	C2	C3	T3S2	T3S3	T3S2R4	OTROS	A	B	C	K'	D	LATITUD	LONGITUD
T. C. Monterrey - Mier Oeste	0.00	3	0	2624	0.3	72.6	0.6	10.0	1.5	3.8	1.3	9.5	0.4	72.9	0.6	26.5	0.102	0.503	25.848429	-99.967062
T. C. Monterrey - Mier Este	10.90	1	0	2163	0.4	66.8	0.6	12.6	1.5	4.6	1.0	12.2	0.3	67.2	0.6	32.2	0.111	0.502	25.869770	-99.875567

6 CARR: Libramiento Noroeste de Monterrey

CLAVE: 19085

RUTA: MEX-040

AÑO: 2018

LUGAR	ESTACION				CLASIFICACION VEHICULAR EN PORCIENTO													COORDENADAS		
	KM	TE	SC	TDPA	M	A	B	C2	C3	T3S2	T3S3	T3S2R4	OTROS	A	B	C	K'	D	LATITUD	LONGITUD
T. C. Saltillo - Monterrey	0.00	3	1	13343	1.2	50.3	1.2	7.4	3.0	27.5	4.2	3.4	1.8	51.5	1.2	47.3	0.073	0.563	25.706985	-100.552043
T. C. Saltillo - Monterrey	0.00	3	2	12436	1.3	41.1	1.3	7.9	3.3	33.6	5.1	4.2	2.2	42.4	1.3	56.3	0.118	0.563	25.707036	-100.552119

NUEVO LEON

6 CARR: Libramiento Noroeste de Monterrey

CLAVE: 19085

RUTA: MEX-040

AÑO: 2018

LUGAR	ESTACION				CLASIFICACION VEHICULAR EN PORCIENTO													COORDENADAS		
	KM	TE	SC	TDPA	M	A	B	C2	C3	T3S2	T3S3	T3S2R4	OTROS	A	B	C	K'	D	LATITUD	LONGITUD
X. C. Monterrey - Castaños	31.00	1	1	33027	1.4	66.4	1.0	8.3	3.9	13.2	3.3	1.7	0.8	67.8	1.0	31.2	0.076	0.500	25.824066	-100.305726
X. C. Monterrey - Castaños	31.00	1	2	33079	1.2	62.7	1.2	8.9	4.3	15.1	3.9	1.9	0.8	63.9	1.2	34.9	0.092	0.500	25.824168	-100.305743
Apodaca	41.50	1	1	20780	0.6	84.8	0.3	7.4	1.2	1.8	3.0	0.3	0.6	85.4	0.3	14.3	0.071	0.550	25.792146	-100.197420
Apodaca	41.50	1	2	17010	0.7	82.8	0.3	8.0	1.4	2.1	3.5	0.4	0.8	83.5	0.3	16.2	0.087	0.550	25.792189	-100.197365
T. C. Monterrey - Reynosa	48.00	1	1	38967	1.0	89.3	0.7	5.5	0.9	1.1	1.0	0.2	0.3	90.3	0.7	9.0	0.053	0.523	25.668725	-100.172132
T. C. Monterrey - Reynosa	48.00	1	2	42769	0.9	89.1	0.8	5.3	0.8	1.4	1.2	0.2	0.3	90.0	0.8	9.2	0.048	0.523	25.668655	-100.172004

7 CARR: Linares - Ent. San Roberto

CLAVE: 19031

RUTA: MEX-058

AÑO: 2018

LUGAR	ESTACION				CLASIFICACION VEHICULAR EN PORCIENTO													COORDENADAS		
	KM	TE	SC	TDPA	M	A	B	C2	C3	T3S2	T3S3	T3S2R4	OTROS	A	B	C	K'	D	LATITUD	LONGITUD
Linares	0.00	3	0	7499	6.3	77.6	1.0	9.0	0.9	4.3	0.6	0.2	0.1	83.9	1.0	15.1	0.075	0.504	24.846830	-99.572219
Iturbide	44.00	1	0	1537	3.8	72.4	3.9	10.2	3.7	3.2	2.5	0.2	0.1	76.2	3.9	19.9	0.083	0.512	24.724419	-99.892909
T. Izq. Doctor Arroyo	66.00	1	0	3097	1.8	77.7	2.1	12.3	2.7	2.4	1.0	0.0	0.0	79.5	2.1	18.4	0.070	0.500	24.728898	-100.038906
T. C. Matehuala - Ent. Huachichil	98.00	1	0	1381	1.2	67.7	3.1	18.0	3.0	4.6	1.4	0.9	0.1	68.9	3.1	28.0	0.086	0.518	24.675887	-100.294867

8 CARR: Matehuala - Ent. Puerto México

CLAVE: 00405

RUTA: MEX-057

AÑO: 2018

LUGAR	ESTACION				CLASIFICACION VEHICULAR EN PORCIENTO													COORDENADAS		
	KM	TE	SC	TDPA	M	A	B	C2	C3	T3S2	T3S3	T3S2R4	OTROS	A	B	C	K'	D	LATITUD	LONGITUD
Matehuala	0.00	3	1	7611	5.2	68.4	2.0	10.4	1.5	8.5	2.3	1.2	0.5	73.6	2.0	24.4	0.072	0.513	23.671733	-100.630649
Matehuala	0.00	3	2	7211	5.1	66.0	2.1	11.1	1.7	9.5	2.7	1.2	0.6	71.1	2.1	26.8	0.061	0.513	23.671804	-100.630814
T. Izq. Cedral	8.47	1	1	4592	12.9	50.0	3.4	16.8	3.5	9.9	2.3	1.0	0.2	62.9	3.4	33.7	0.078	0.504	23.692383	-100.620383
T. Izq. Cedral	8.47	1	2	4667	11.7	55.9	3.0	12.2	2.4	11.0	2.5	1.1	0.2	67.6	3.0	29.4	0.079	0.504	23.692491	-100.620654
T. Izq. Cedral	8.47	3	1	2555	4.3	47.7	4.9	14.1	1.8	20.1	4.2	2.0	0.9	52.0	4.9	43.1	0.077	0.522	23.698864	-100.617174
T. Izq. Cedral	8.47	3	2	2336	1.2	46.1	5.7	15.9	2.0	21.2	4.6	2.4	0.9	47.3	5.7	47.0	0.074	0.522	23.698990	-100.617444
Lim. Edos. Term. S. L. P. Ppia. N. L.	24.64																			
Santa Ana	59.65	1	1	7975	1.5	38.9	6.7	7.4	2.3	34.9	3.2	4.7	0.4	40.4	6.7	52.9	0.070	0.501	24.077393	-100.387565
Santa Ana	59.65	1	2	8022	1.0	37.9	6.9	7.7	2.4	35.1	3.4	5.1	0.5	38.9	6.9	54.2	0.062	0.501	24.077498	-100.387863
T. Der. Linares	128.99	3	1	8435	1.0	40.7	6.1	6.3	2.1	34.4	3.5	5.2	0.7	41.7	6.1	52.2	0.063	0.505	24.681135	-100.300470
T. Der. Linares	128.99	3	2	8606	0.6	38.7	5.9	6.7	2.5	36.2	3.5	5.2	0.7	39.3	5.9	54.8	0.063	0.505	24.681079	-100.300767
San Rafael	177.18	1	1	7606	1.1	40.4	5.0	7.2	2.3	35.2	3.5	4.9	0.4	41.5	5.0	53.5	0.075	0.508	25.020216	-100.541982
San Rafael	177.18	1	2	7851	0.6	34.7	5.7	8.1	2.6	38.1	3.9	5.9	0.4	35.3	5.7	59.0	0.065	0.508	25.019972	-100.542149
Ent. Puerto México	205.97																			

NUEVO LEON

9 CARR: Montemorelos - China

CLAVE: 19280

RUTA: MEX-035

AÑO: 2018

LUGAR	ESTACION				CLASIFICACION VEHICULAR EN PORCIENTO													COORDENADAS		
	KM	TE	SC	TDPA	M	A	B	C2	C3	T3S2	T3S3	T3S2R4	OTROS	A	B	C	K'	D	LATITUD	LONGITUD
Montemorelos	0.00	3	0	9693	4.9	77.9	0.7	8.6	1.2	5.0	0.8	0.3	0.6	82.8	0.7	16.5	0.076	0.538	25.193878	-99.812865
Gral. Terán	17.60	3	0	2529	1.8	81.9	0.8	9.5	0.9	2.7	1.3	0.4	0.7	83.7	0.8	15.5	0.085	0.531	25.251662	-99.653605
China	93.00	1	0	1656	1.4	70.0	1.6	19.0	1.9	3.4	0.6	1.7	0.4	71.4	1.6	27.0	0.118	0.506	25.688830	-99.243686

10 CARR: Monterrey - Castaños

CLAVE: 00128

RUTA: MEX-053

AÑO: 2018

LUGAR	ESTACION				CLASIFICACION VEHICULAR EN PORCIENTO													COORDENADAS		
	KM	TE	SC	TDPA	M	A	B	C2	C3	T3S2	T3S3	T3S2R4	OTROS	A	B	C	K'	D	LATITUD	LONGITUD
T. C. Monterrey - Nuevo Laredo	0.00	3	0	22014	1.5	80.0	0.6	10.6	2.3	2.1	1.9	0.6	0.4	81.5	0.6	17.9	0.078	0.544	25.805237	-100.278866
X. C. Libramiento Noroeste de Monterrey	3.46	3	1	14149	2.3	72.6	1.9	9.4	3.6	5.4	2.8	1.6	0.4	74.9	1.9	23.2	0.096	0.520	25.830333	-100.306067
X. C. Libramiento Noroeste de Monterrey	3.46	3	2	15341	2.1	70.1	2.1	10.6	3.9	6.2	3.0	1.6	0.4	72.2	2.1	25.7	0.077	0.520	25.830287	-100.306149
T. Der. Villa del Carmen	13.80	1	1	9302	0.6	75.5	1.1	10.0	2.6	4.9	3.1	1.7	0.5	76.1	1.1	22.8	0.087	0.503	25.896397	-100.351928
T. Der. Villa del Carmen	13.80	1	2	9400	0.8	71.8	1.3	11.5	2.9	5.9	3.5	1.7	0.6	72.6	1.3	26.1	0.072	0.503	25.896364	-100.351994
T. Izq. Hidalgo	24.78	1	0	14454	1.0	74.1	1.1	10.1	2.1	5.4	3.7	2.1	0.4	75.1	1.1	23.8	0.076	0.504	25.955729	-100.424222
T. Izq. Hidalgo	24.78	3	0	7658	2.0	67.9	2.3	10.1	2.8	7.2	3.6	3.1	1.0	69.9	2.3	27.8	0.074	0.549	25.991278	-100.457888
T. Izq. Mina	34.75	1	0	9054	1.7	67.9	1.7	10.6	2.3	7.7	4.8	2.8	0.5	69.6	1.7	28.7	0.071	0.515	26.000506	-100.512735
T. Izq. Espinazo	91.90	1	0	4448	0.4	54.7	2.6	9.7	3.5	12.4	8.1	7.5	1.1	55.1	2.6	42.3	0.065	0.517	26.360315	-100.874867
T. Izq. Espinazo	91.90	3	0	3967	0.3	57.8	2.4	8.4	2.8	11.7	9.6	6.0	1.0	58.1	2.4	39.5	0.090	0.501	26.367364	-100.886613
Lim. Edos. Term. N. L. Ppia. Coah.	115.90																			
T. C. Saltillo - Monclova	155.90	1	1	2345	0.8	56.3	2.8	10.3	2.6	11.0	8.4	7.1	0.7	57.1	2.8	40.1	0.078	0.514	26.692126	-101.382725
T. C. Saltillo - Monclova	155.90	1	2	2483	0.2	60.6	2.2	8.5	2.6	10.9	7.3	7.3	0.4	60.8	2.2	37.0	0.093	0.514	26.692103	-101.382773

11 CARR: Monterrey - Mier

CLAVE: 00127

RUTA: MEX-054

AÑO: 2018

LUGAR	ESTACION				CLASIFICACION VEHICULAR EN PORCIENTO													COORDENADAS		
	KM	TE	SC	TDPA	M	A	B	C2	C3	T3S2	T3S3	T3S2R4	OTROS	A	B	C	K'	D	LATITUD	LONGITUD
Monterrey	0.00																			
Apodaca	19.12	1	1	88931	0.3	86.6	0.7	5.0	1.1	2.3	2.3	0.8	0.9	86.9	0.7	12.4	0.057	0.521	25.750573	-100.200027
Apodaca	19.12	1	2	81711	0.3	85.4	0.7	5.8	1.2	2.4	2.5	0.8	0.9	85.7	0.7	13.6	0.059	0.521	25.750635	-100.200194
X. C. Libramiento Noroeste de Monterrey	21.30	3	1	54192	0.5	85.9	0.6	6.3	1.5	2.7	1.5	0.7	0.3	86.4	0.6	13.0	0.065	0.507	25.784633	-100.159983
X. C. Libramiento Noroeste de Monterrey	21.30	3	2	52625	0.7	83.6	0.8	7.2	1.8	3.2	1.6	0.8	0.3	84.3	0.8	14.9	0.067	0.507	25.784781	-100.160051
X. C. Zacatecas - Pesquería	28.15	1	1	15841	1.1	81.9	1.0	9.5	1.6	2.0	1.5	1.0	0.4	83.0	1.0	16.0	0.065	0.503	25.799900	-100.101302
X. C. Zacatecas - Pesquería	28.15	1	2	15672	0.9	80.9	1.1	9.9	1.8	2.3	1.7	1.0	0.4	81.8	1.1	17.1	0.059	0.503	25.799943	-100.101410
X. C. Zacatecas - Pesquería	28.15	3	0	10444	1.2	74.2	1.6	11.5	2.7	4.7	1.2	2.0	0.9	75.4	1.6	23.0	0.084	0.519	25.806833	-100.092985
X. C. Hacienda Guadalupe - Higuera	38.10	1	0	7478	0.6	75.1	1.6	10.2	1.9	6.1	1.2	2.8	0.5	75.7	1.6	22.7	0.082	0.507	25.853402	-100.026460



NUEVO LEON

11 CARR: Monterrey - Mier

CLAVE: 00127

RUTA: MEX-054

AÑO: 2018

LUGAR	ESTACION				CLASIFICACION VEHICULAR EN PORCIENTO										COORDENADAS					
	KM	TE	SC	TDPA	M	A	B	C2	C3	T3S2	T3S3	T3S2R4	OTROS	A	B	C	K'	D	LATITUD	LONGITUD
X. C. Hacienda Guadalupe - Higueras	38.10	3	0	4689	0.9	73.6	1.0	13.3	1.3	3.6	0.7	5.2	0.4	74.5	1.0	24.5	0.084	0.511	25.854715	-100.017398
Dr. González	47.60	1	0	1575	1.0	82.2	1.4	10.5	1.5	2.1	0.4	0.7	0.2	83.2	1.4	15.4	0.097	0.515	25.850663	-99.968584
Dr. González	47.60	3	0	416	8.4	68.9	4.9	15.8	0.7	0.4	0.2	0.7	0.0	77.3	4.9	17.8	0.089	0.513	25.867018	-99.932020
T. Der. Empalme Los Ramones	74.10	1	0	2559	0.6	70.1	1.0	11.0	1.1	3.6	1.3	11.0	0.3	70.7	1.0	28.3	0.109	0.504	25.922650	-99.722154
Cerralvo	95.95	1	0	3859	0.7	68.6	0.9	11.4	1.0	3.8	1.2	12.1	0.3	69.3	0.9	29.8	0.081	0.507	26.069439	-99.626255
Gral. Treviño	115.80	3	0	1677	0.2	55.2	1.9	12.0	1.0	5.9	2.0	21.6	0.2	55.4	1.9	42.7	0.093	0.501	26.232241	-99.470318
Lim. Edos. Term. N. L. Ppia. Tamps.	131.80																			
Mier	156.21	1	0	1434	0.2	54.1	2.2	13.2	1.4	5.9	2.4	20.4	0.2	54.3	2.2	43.5	0.080	0.500	26.426325	-99.164643

12 CARR: Monterrey - Nuevo Laredo (Libre)

CLAVE: 00463

RUTA: MEX-085

AÑO: 2018

LUGAR	ESTACION				CLASIFICACION VEHICULAR EN PORCIENTO										COORDENADAS					
	KM	TE	SC	TDPA	M	A	B	C2	C3	T3S2	T3S3	T3S2R4	OTROS	A	B	C	K'	D	LATITUD	LONGITUD
Monterrey	0.00																			
T. Izq. Gral. Escobedo (Central)	12.10	3	1	37679	0.8	86.3	0.6	3.8	0.6	2.7	3.8	0.4	1.0	87.1	0.6	12.3	0.061	0.511	25.795858	-100.279275
T. Izq. Gral. Escobedo (Lateral)	12.10	3	1	10589	1.1	77.6	0.9	17.2	0.9	1.0	1.0	0.1	0.2	78.7	0.9	20.4	0.088	0.541	25.795835	-100.279152
T. Izq. Gral. Escobedo (Lateral)	12.10	3	2	12266	1.2	76.6	1.0	17.7	1.1	1.1	1.0	0.1	0.2	77.8	1.0	21.2	0.076	0.541	25.795934	-100.279483
T. Izq. Gral. Escobedo (Central)	12.10	3	2	39398	0.8	84.9	0.7	4.4	0.8	3.0	3.8	0.6	1.0	85.7	0.7	13.6	0.057	0.511	25.795896	-100.279352
X. C. Libramiento Noroeste de Monterrey (Lateral)	16.00	1	1	6914	1.4	72.1	0.8	20.5	1.7	2.3	0.7	0.3	0.2	73.5	0.8	25.7	0.070	0.500	25.824139	-100.262338
X. C. Libramiento Noroeste de Monterrey (Central)	16.00	1	1	32342	0.9	83.5	0.7	4.4	0.8	3.5	4.5	0.7	1.0	84.4	0.7	14.9	0.064	0.504	25.824203	-100.262415
X. C. Libramiento Noroeste de Monterrey (Lateral)	16.00	1	2	6919	1.3	67.7	1.0	23.8	1.7	3.2	0.8	0.3	0.2	69.0	1.0	30.0	0.072	0.500	25.824290	-100.262618
X. C. Libramiento Noroeste de Monterrey (Central)	16.00	1	2	30417	0.9	84.1	0.7	4.6	0.9	3.2	4.1	0.7	0.8	85.0	0.7	14.3	0.066	0.504	25.824236	-100.262558
X. C. Libramiento Noroeste de Monterrey	16.00	3	1	42577	2.4	68.0	1.9	7.6	3.2	10.9	3.1	1.9	1.0	70.4	1.9	27.7	0.071	0.502	25.835768	-100.254320
X. C. Libramiento Noroeste de Monterrey	16.00	3	2	42259	2.3	66.2	2.1	8.0	3.5	11.3	3.5	2.0	1.1	68.5	2.1	29.4	0.072	0.502	25.834908	-100.255074
X. C. Santa Rosa - Salinas Victoria	20.19	3	1	35136	2.5	71.8	1.8	7.0	2.7	9.4	2.3	1.8	0.7	74.3	1.8	23.9	0.088	0.503	25.857818	-100.238848
X. C. Santa Rosa - Salinas Victoria	20.19	3	2	34743	2.4	69.6	2.0	7.8	3.0	10.2	2.4	1.8	0.8	72.0	2.0	26.0	0.088	0.503	25.857916	-100.239006
Ciénega de Flores	32.00	1	0	21702	1.7	72.1	1.0	11.5	1.3	10.6	0.7	0.5	0.6	73.8	1.0	25.2	0.076	0.508	25.943949	-100.176859
T. Der. Agualeguas	78.23	3	0	7521	1.0	46.5	2.3	14.4	2.3	29.7	1.3	1.5	1.0	47.5	2.3	50.2	0.064	0.510	26.333144	-100.110815
Sabinas Hidalgo	98.90	3	0	6044	0.8	47.4	2.6	14.1	2.1	29.4	1.1	1.7	0.8	48.2	2.6	49.2	0.061	0.501	26.534394	-100.148587
Vallecillos	124.40	3	0	5311	0.9	39.2	2.6	15.1	2.9	34.6	1.5	2.0	1.2	40.1	2.6	57.3	0.061	0.500	26.661450	-99.983033
T. Izq. Anáhuac	156.80	1	0	4293	0.8	26.3	2.9	10.5	3.5	49.9	2.8	2.7	0.6	27.1	2.9	70.0	0.059	0.508	26.874870	-99.832473
T. Izq. Anáhuac	156.80	3	1	7727	0.3	39.1	4.0	8.2	2.5	41.9	1.7	1.5	0.8	39.4	4.0	56.6	0.065	0.502	26.897267	-99.813000
T. Izq. Anáhuac	156.80	3	2	7776	0.2	32.8	4.2	8.7	2.7	47.0	1.8	1.7	0.9	33.0	4.2	62.8	0.068	0.502	26.893458	-99.815861
Lim. Edos. Term. N. L. Ppia. Tamps.	184.56																			
T. Der. Mier	205.90	1	1	8947	1.1	41.0	3.7	11.1	3.0	35.9	1.4	1.8	1.0	42.1	3.7	54.2	0.061	0.517	27.289398	-99.604601

NUEVO LEON

12 CARR: Monterrey - Nuevo Laredo (Libre)

CLAVE: 00463

RUTA: MEX-085

AÑO: 2018

LUGAR	ESTACION				CLASIFICACION VEHICULAR EN PORCIENTO													COORDENADAS		
	KM	TE	SC	TDPA	M	A	B	C2	C3	T3S2	T3S3	T3S2R4	OTROS	A	B	C	K'	D	LATITUD	LONGITUD
T. Der. Mier	205.90	1	2	9595	1.1	43.8	3.3	11.1	3.2	33.4	1.4	1.7	1.0	44.9	3.3	51.8	0.063	0.517	27.291968	-99.603337
T. Der. Mier	205.90	3	1	9646	0.6	44.5	3.1	9.6	5.8	32.4	1.4	1.2	1.4	45.1	3.1	51.8	0.070	0.526	27.308056	-99.594628
T. Der. Mier	205.90	3	2	8683	0.3	42.7	3.1	9.7	6.2	34.0	1.4	1.2	1.4	43.0	3.1	53.9	0.075	0.526	27.308105	-99.594750
Nuevo Laredo	228.00	1	1	13072	0.6	65.0	2.3	8.8	3.2	15.6	1.4	1.3	1.8	65.6	2.3	32.1	0.070	0.504	27.388217	-99.551733
Nuevo Laredo	228.00	1	2	13273	0.6	67.4	2.2	8.7	2.8	13.4	1.8	0.9	2.2	68.0	2.2	29.8	0.060	0.504	27.388283	-99.551871

13 CARR: Monterrey - Reynosa (Libre)

CLAVE: 00088

RUTA: MEX-040

AÑO: 2018

LUGAR	ESTACION				CLASIFICACION VEHICULAR EN PORCIENTO													COORDENADAS		
	KM	TE	SC	TDPA	M	A	B	C2	C3	T3S2	T3S3	T3S2R4	OTROS	A	B	C	K'	D	LATITUD	LONGITUD
T. C. Monterrey - Mier	0.00																			
Villa Juárez	19.10	1	1	27465	2.1	87.4	0.3	7.0	0.6	0.8	1.3	0.2	0.3	89.5	0.3	10.2	0.069	0.506	25.652055	-100.108607
Villa Juárez	19.10	1	2	28166	1.6	86.7	0.3	8.0	0.7	0.8	1.4	0.2	0.3	88.3	0.3	11.4	0.073	0.506	25.652166	-100.108562
Villa Juárez	19.10	3	1	13880	1.8	84.8	0.8	7.8	1.1	1.4	1.8	0.2	0.3	86.6	0.8	12.6	0.095	0.504	25.638729	-100.086464
Villa Juárez	19.10	3	2	13666	1.5	84.0	0.9	8.4	1.2	1.5	2.0	0.2	0.3	85.5	0.9	13.6	0.108	0.504	25.638797	-100.086401
Puente Cadereyta	30.50	2	1	2281	1.1	70.9	0.4	4.9	3.7	11.2	2.1	4.9	0.8	72.0	0.4	27.6	0.091	0.500	25.601114	-100.005696
Puente Cadereyta	30.50	2	2	2281	1.1	70.9	0.4	4.9	3.7	11.2	2.1	4.9	0.8	72.0	0.4	27.6	0.091	0.500	25.601114	-100.005696
Refinería de Cadereyta	33.00	3	0	6392	0.7	74.8	1.0	11.4	1.7	7.2	2.0	0.7	0.5	75.5	1.0	23.5	0.081	0.510	25.593751	-99.919150
T. Izq. Los Ramones	68.78	3	0	3241	0.1	65.6	2.1	15.9	1.5	11.3	2.5	0.6	0.4	65.7	2.1	32.2	0.082	0.526	25.620644	-99.625755
Gral. Bravo	125.00	1	0	5436	0.4	75.1	1.1	11.1	1.3	7.2	1.8	1.2	0.8	75.5	1.1	23.4	0.077	0.516	25.776445	-99.189283
Lim. Edos. Term. N. L. Ppia. Tamps.	192.00																			
T. Izq. Díaz Ordáz	192.55	1	1	4741	0.2	66.0	3.2	8.2	1.7	13.6	3.1	2.8	1.2	66.2	3.2	30.6	0.097	0.506	25.970361	-98.586535
T. Izq. Díaz Ordáz	192.55	1	2	4854	0.5	62.2	3.5	8.9	2.0	14.9	3.4	3.3	1.3	62.7	3.5	33.8	0.097	0.506	25.970822	-98.586758
Reynosa	225.00	1	1	21898	0.7	83.3	1.8	7.9	1.2	3.3	0.7	0.9	0.2	84.0	1.8	14.2	0.075	0.549	26.042280	-98.401800
Reynosa	225.00	1	2	17957	0.4	82.9	1.8	8.3	1.2	3.5	0.7	1.0	0.2	83.3	1.8	14.9	0.091	0.549	26.042566	-98.401963

14 CARR: Paras - Nueva Ciudad Guerrero

CLAVE: 00476

RUTA: MEX-030

AÑO: 2018

LUGAR	ESTACION				CLASIFICACION VEHICULAR EN PORCIENTO													COORDENADAS		
	KM	TE	SC	TDPA	M	A	B	C2	C3	T3S2	T3S3	T3S2R4	OTROS	A	B	C	K'	D	LATITUD	LONGITUD
Paras	0.00	3	0	404	0.4	75.3	0.5	16.8	0.6	1.1	0.9	4.4	0.0	75.7	0.5	23.8	0.092	0.503	26.502027	-99.516124
Lim. Edos. Term. N. L. Ppia. Tamps.	13.10																			
T. C. Reynosa - (T. C. Monterrey - Nuevo Laredo)	32.00	1	0	258	0.0	76.4	0.9	15.6	0.4	1.2	1.1	4.3	0.1	76.4	0.9	22.7	0.116	0.509	26.556661	-99.243491

NUEVO LEON

15 CARR: Piedras Negras - Nuevo Laredo

CLAVE: 00503

RUTA: MEX-002

AÑO: 2018

LUGAR	ESTACION				CLASIFICACION VEHICULAR EN PORCIENTO													COORDENADAS		
	KM	TE	SC	TDPA	M	A	B	C2	C3	T3S2	T3S3	T3S2R4	OTROS	A	B	C	K'	D	LATITUD	LONGITUD
T. C. Monclova - Piedras Negras	0.00	3	1	4456	1.3	69.8	1.0	14.8	2.9	7.6	1.1	0.8	0.7	71.1	1.0	27.9	0.080	0.503	28.635136	-100.549136
T. C. Monclova - Piedras Negras	0.00	3	2	4508	1.4	66.4	1.2	16.7	3.3	8.5	1.1	0.8	0.6	67.8	1.2	31.0	0.083	0.503	28.635199	-100.549037
El Saucito	16.90	3	0	1495	1.2	58.0	2.9	18.6	3.3	9.6	0.7	5.2	0.5	59.2	2.9	37.9	0.083	0.508	28.501889	-100.467250
T. Der. Villa Unión	37.00	1	0	1197	1.2	66.9	3.7	7.0	3.7	10.0	0.7	6.1	0.7	68.1	3.7	28.2	0.084	0.506	28.339797	-100.390596
T. Der. Villa Unión	37.00	3	0	1076	0.4	56.0	3.3	15.7	2.9	12.7	1.3	7.3	0.4	56.4	3.3	40.3	0.086	0.512	28.335479	-100.389282
Guerrero	42.00	3	0	974	0.2	58.7	3.4	14.6	3.2	13.1	1.1	5.5	0.2	58.9	3.4	37.7	0.086	0.514	28.308012	-100.366749
Lim. Edos. Term. Coah. Ppia. N. L.	124.40																			
T. C. Monclova - Colombia	134.00	3	0	2832	1.1	62.8	1.4	15.4	3.0	12.2	1.3	2.4	0.4	63.9	1.4	34.7	0.089	0.505	27.687979	-99.777207
Lim. Edos. Term. N. L. Ppia. Tamps.	138.20																			
T. Der. Libramiento de Nuevo Laredo	157.70	1	1	4735	0.8	49.8	1.1	7.5	11.1	26.3	1.4	1.1	0.9	50.6	1.1	48.3	0.090	0.516	27.571789	-99.597277
T. Der. Libramiento de Nuevo Laredo	157.70	1	2	4444	1.1	44.7	1.2	8.6	13.1	27.7	1.5	1.2	0.9	45.8	1.2	53.0	0.085	0.516	27.571904	-99.597272
Nuevo Laredo	175.00	1	1	8205	0.8	54.4	1.8	12.7	8.2	18.8	1.9	0.7	0.7	55.2	1.8	43.0	0.096	0.530	27.544489	-99.576750
Nuevo Laredo	175.00	1	2	9254	1.0	49.1	1.9	14.7	9.2	20.3	2.1	0.8	0.9	50.1	1.9	48.0	0.083	0.530	27.544691	-99.576636

16 CARR: Ramal a Aeropuerto Mariano Escobedo

CLAVE: 19510

RUTA: MEX-054

AÑO: 2018

LUGAR	ESTACION				CLASIFICACION VEHICULAR EN PORCIENTO													COORDENADAS		
	KM	TE	SC	TDPA	M	A	B	C2	C3	T3S2	T3S3	T3S2R4	OTROS	A	B	C	K'	D	LATITUD	LONGITUD
T. C. Monterrey - Cd. Mier	0.00	3	1	23325	0.4	89.4	0.6	4.3	1.2	2.9	0.3	0.8	0.1	89.8	0.6	9.6	0.070	0.512	25.788077	-100.138245
T. C. Monterrey - Cd. Mier	0.00	3	2	22228	0.4	88.1	0.7	5.2	1.3	3.0	0.4	0.8	0.1	88.5	0.7	10.8	0.065	0.512	25.788224	-100.138126
Aeropuerto	2.40																			

17 CARR: Saltillo - Monterrey

CLAVE: 00087

RUTA: MEX-040

AÑO: 2018

LUGAR	ESTACION				CLASIFICACION VEHICULAR EN PORCIENTO													COORDENADAS		
	KM	TE	SC	TDPA	M	A	B	C2	C3	T3S2	T3S3	T3S2R4	OTROS	A	B	C	K'	D	LATITUD	LONGITUD
T. C. Saltillo - Arteaga	0.00																			
T. Izq. Zinacamex	4.25	3	1	58236	0.5	86.8	0.8	5.7	0.8	1.7	2.9	0.5	0.3	87.3	0.8	11.9	0.053	0.509	25.483428	-100.971803
T. Izq. Zinacamex	4.25	3	2	56134	0.4	85.4	0.9	6.2	0.9	2.0	3.4	0.5	0.3	85.8	0.9	13.3	0.064	0.509	25.481087	-100.973134
Ramos Arizpe	11.30	1	1	43365	0.5	86.6	0.8	6.4	0.9	1.6	2.8	0.1	0.3	87.1	0.8	12.1	0.072	0.505	25.516071	-100.957397
Ramos Arizpe	11.30	1	2	44263	0.4	84.8	0.9	7.5	1.1	1.9	3.0	0.1	0.3	85.2	0.9	13.9	0.086	0.505	25.516159	-100.957577
T. Der. Aeropuerto	13.00	3	1	28094	0.5	86.0	0.8	6.7	0.9	1.7	2.4	0.5	0.5	86.5	0.8	12.7	0.084	0.503	25.554367	-100.927690
T. Der. Aeropuerto	13.00	3	2	28468	0.4	84.4	0.8	7.7	1.0	1.9	2.8	0.5	0.5	84.8	0.8	14.4	0.096	0.503	25.554489	-100.927826
T. Der. Libramiento J.L.P.	16.00	3	1	30898	0.5	85.1	0.8	7.3	1.0	1.8	2.5	0.5	0.5	85.6	0.8	13.6	0.063	0.505	25.566069	-100.914119
T. Der. Libramiento J.L.P.	16.00	3	2	31487	0.4	84.1	0.8	7.8	1.0	2.0	2.9	0.5	0.5	84.5	0.8	14.7	0.073	0.505	25.566587	-100.913877

NUEVO LEON

17 CARR: Saltillo - Monterrey

CLAVE: 00087

RUTA: MEX-040

AÑO: 2018

LUGAR	ESTACION				CLASIFICACION VEHICULAR EN PORCIENTO													COORDENADAS		
	KM	TE	SC	TDPA	M	A	B	C2	C3	T3S2	T3S3	T3S2R4	OTROS	A	B	C	K'	D	LATITUD	LONGITUD
Ojo Caliente	26.30	1	1	21060	0.8	58.9	3.1	9.0	2.3	20.8	2.1	2.8	0.2	59.7	3.1	37.2	0.069	0.534	25.611746	-100.841425
Ojo Caliente	26.30	1	2	24120	0.8	59.4	3.2	8.9	2.5	20.0	2.4	2.5	0.3	60.2	3.2	36.6	0.063	0.534	25.612974	-100.846146
Lim. Edos. Term. Coah. Ppia. N. L.	33.00																			
T. Izq. Libramiento Noroeste de Monterrey	54.00	1	1	20156	0.7	52.7	3.6	8.6	2.7	24.4	2.9	3.3	1.1	53.4	3.6	43.0	0.079	0.539	25.698318	-100.562319
T. Izq. Libramiento Noroeste de Monterrey	54.00	1	2	23587	0.5	49.4	3.9	9.0	2.8	26.1	3.2	3.9	1.2	49.9	3.9	46.2	0.075	0.539	25.698678	-100.562811
T. Der. Santa Catarina (1° Acceso)	62.46	1	1	33594	1.1	82.7	1.6	8.0	1.4	3.1	1.1	0.6	0.4	83.8	1.6	14.6	0.090	0.539	25.687243	-100.494983
T. Der. Santa Catarina (1° Acceso)	62.46	1	2	39313	0.9	82.6	1.4	9.2	1.2	2.7	1.1	0.5	0.4	83.5	1.4	15.1	0.078	0.539	25.687090	-100.494038
Ppia. Monterrey	79.20	1	1	68896	1.1	84.4	0.7	5.6	1.4	2.7	2.5	0.6	1.0	85.5	0.7	13.8	0.081	0.538	25.674377	-100.426507
Ppia. Monterrey	79.20	1	2	80301	0.9	83.2	0.9	5.2	1.4	3.3	3.6	0.4	1.1	84.1	0.9	15.0	0.076	0.538	25.674541	-100.426479

18 CARR: Cadereyta - Reynosa (Cuota)

CLAVE: 19002

RUTA: MEX-040D

AÑO: 2018

LUGAR	ESTACION				CLASIFICACION VEHICULAR EN PORCIENTO													COORDENADAS		
	KM	TE	SC	TDPA	M	A	B	C2	C3	T3S2	T3S3	T3S2R4	OTROS	A	B	C	K'	D	LATITUD	LONGITUD
Cadereyta de Jiménez	34.99																			
Caseta de Cobro General Bravo	120.00	2	1	2321	0.1	57.2	6.1	4.2	1.5	20.3	1.9	7.8	0.9	57.3	6.1	36.6	0.096	0.500	25.813517	-99.169575
Caseta de Cobro General Bravo	120.00	2	2	2321	0.1	57.2	6.1	4.2	1.5	20.3	1.9	7.8	0.9	57.3	6.1	36.6	0.096	0.500	25.813517	-99.169575
T. C. Monterrey - Reynosa (Libre)	167.00																			

19 CARR: Monterrey - Nuevo Laredo (Cuota)

CLAVE: 19086

RUTA: MEX-085D

AÑO: 2018

LUGAR	ESTACION				CLASIFICACION VEHICULAR EN PORCIENTO													COORDENADAS		
	KM	TE	SC	TDPA	M	A	B	C2	C3	T3S2	T3S3	T3S2R4	OTROS	A	B	C	K'	D	LATITUD	LONGITUD
T. C. Monterrey - Nuevo Laredo	0.00	3	1	16374	0.9	58.8	2.5	7.5	3.4	22.3	2.5	1.7	0.4	59.7	2.5	37.8	0.088	0.528	25.890595	-100.221642
T. C. Monterrey - Nuevo Laredo	0.00	3	2	14610	0.9	57.5	2.5	9.0	3.4	22.2	2.4	1.7	0.4	58.4	2.5	39.1	0.062	0.528	25.890552	-100.221940
Caseta de Cobro Sabinas	74.00	2	1	6501	0.1	39.2	3.9	2.9	0.9	49.3	1.5	1.5	0.7	39.3	3.9	56.8	0.091	0.500	26.512100	-100.007195
Caseta de Cobro Sabinas	74.00	2	2	6501	0.1	39.2	3.9	2.9	0.9	49.3	1.5	1.5	0.7	39.3	3.9	56.8	0.091	0.500	26.512100	-100.007195
T. C. Monterrey - Nuevo Laredo (Libre)	120.50	1	1	6744	1.0	50.4	3.7	6.4	2.1	31.9	2.1	1.8	0.6	51.4	3.7	44.9	0.080	0.518	26.879567	-99.822367
T. C. Monterrey - Nuevo Laredo (Libre)	120.50	1	2	6287	1.2	42.0	4.1	6.5	2.2	39.3	2.3	1.8	0.6	43.2	4.1	52.7	0.059	0.518	26.879659	-99.822681

20 CARR: Puerto México - La Carbonera (Cuota)

CLAVE: 00115

RUTA: MEX-057D

AÑO: 2018

LUGAR	ESTACION				CLASIFICACION VEHICULAR EN PORCIENTO													COORDENADAS	
	KM	TE	SC	TDPA	M	A	B	C2	C3	T3S2	T3S3	T3S2R4	OTROS	A	B	C	K'	D	LATITUD

Ent. Puerto México

202.00

NUEVO LEON

20 CARR: Puerto México - La Carbonera (Cuota)

CLAVE: 00115

RUTA: MEX-057D

AÑO: 2018

LUGAR	ESTACION				CLASIFICACION VEHICULAR EN PORCIENTO													COORDENADAS		
	KM	TE	SC	TDPA	M	A	B	C2	C3	T3S2	T3S3	T3S2R4	OTROS	A	B	C	K'	D	LATITUD	LONGITUD
Caseta de Cobro Los Chorros	203.64	2	1	7219	0.1	35.2	4.6	4.0	2.1	40.7	4.6	6.9	1.8	35.3	4.6	60.1	0.076	0.500	25.186696	-100.731988
Caseta de Cobro Los Chorros	203.64	2	2	7219	0.1	35.2	4.6	4.0	2.1	40.7	4.6	6.9	1.8	35.3	4.6	60.1	0.076	0.500	25.186696	-100.731988
Lim. Edos. Term. N. L. Ppia. Coah.	204.07																			
Lim. Edos. Term. Coah. Ppia. N. L.	204.50																			
Lim. Edos. Term. N. L. Ppia. Coah.	205.76																			
T. Der. San Antonio de Las Alazanas	224.94	1	1	8404	2.3	44.7	4.6	8.2	2.2	27.2	4.1	5.2	1.5	47.0	4.6	48.4	0.059	0.520	25.341953	-100.794616
T. Der. San Antonio de Las Alazanas	224.94	1	2	9121	1.5	40.2	4.8	9.3	2.4	29.5	4.6	6.0	1.7	41.7	4.8	53.5	0.063	0.520	25.342104	-100.794715
T. Der. San Antonio de Las Alazanas	224.94	3	1	7704	2.1	50.3	3.8	8.7	1.9	22.9	4.0	4.6	1.7	52.4	3.8	43.8	0.071	0.523	25.351274	-100.794343
T. Der. San Antonio de Las Alazanas	224.94	3	2	8443	1.8	44.9	4.0	9.5	2.0	26.0	4.7	5.1	2.0	46.7	4.0	49.3	0.073	0.523	25.350975	-100.794461
Los Lirios	228.30	3	1	10282	1.5	49.5	4.0	9.3	2.1	25.2	3.6	3.8	1.0	51.0	4.0	45.0	0.110	0.511	25.406936	-100.800658
Los Lirios	228.30	3	2	9831	1.5	45.4	4.4	10.2	2.3	26.7	4.0	4.3	1.2	46.9	4.4	48.7	0.092	0.511	25.406928	-100.800754
Ent. La Carbonera	235.60																			

21 CARR: Saltillo - Monterrey (Cuota)

CLAVE: 00087

RUTA: MEX-040D

AÑO: 2018

LUGAR	ESTACION				CLASIFICACION VEHICULAR EN PORCIENTO													COORDENADAS		
	KM	TE	SC	TDPA	M	A	B	C2	C3	T3S2	T3S3	T3S2R4	OTROS	A	B	C	K'	D	LATITUD	LONGITUD
Ojo Caliente	46.21	3	1	3699	1.0	53.9	4.3	6.9	3.5	19.2	4.2	6.2	0.8	54.9	4.3	40.8	0.068	0.525	25.617073	-100.906702
Ojo Caliente	46.21	3	2	4094	2.3	47.9	4.6	7.7	3.8	20.7	4.9	7.2	0.9	50.2	4.6	45.2	0.061	0.525	25.617132	-100.906769
Lim. Edos. Term. Coah. Ppia. N. L.	61.08																			
T. Izq. Anillo Periférico de Monterrey (Cuota)	82.00	1	1	8784	1.6	73.6	4.8	6.5	1.6	6.6	1.7	2.7	0.9	75.2	4.8	20.0	0.072	0.523	25.697895	-100.600151
T. Izq. Anillo Periférico de Monterrey (Cuota)	82.00	1	2	8006	1.8	71.3	5.6	7.1	1.6	7.0	1.9	2.7	1.0	73.1	5.6	21.3	0.083	0.523	25.698059	-100.600599
T. Izq. Anillo Periférico de Monterrey (Cuota)	82.00	3	1	4617	0.8	92.0	2.0	4.7	0.2	0.2	0.1	0.0	0.0	92.8	2.0	5.2	0.080	0.521	25.691946	-100.561941
T. Izq. Anillo Periférico de Monterrey (Cuota)	82.00	3	2	4245	0.8	91.1	2.1	5.3	0.4	0.2	0.1	0.0	0.0	91.9	2.1	6.0	0.090	0.521	25.692046	-100.561885
Morones Prieto	96.10																			

22 CARR: Agualeguas - El Ébano

CLAVE: 19004

RUTA: NL-023

AÑO: 2018

LUGAR	ESTACION				CLASIFICACION VEHICULAR EN PORCIENTO													COORDENADAS		
	KM	TE	SC	TDPA	M	A	B	C2	C3	T3S2	T3S3	T3S2R4	OTROS	A	B	C	K'	D	LATITUD	LONGITUD
Agualeguas	0.00	3	0	500	0.4	82.9	0.5	14.5	0.5	0.6	0.1	0.5	0.0	83.3	0.5	16.2	0.124	0.511	26.300358	-99.554151
T. C. Monterrey - Nuevo Laredo	54.00	1	0	854	2.3	64.3	2.4	12.6	3.0	11.8	1.6	1.6	0.4	66.6	2.4	31.0	0.118	0.527	26.330197	-100.108484

NUEVO LEON

23 CARR: Apodaca - Villa Juárez

CLAVE: 00087

RUTA: NL

AÑO: 2018

LUGAR	ESTACION				CLASIFICACION VEHICULAR EN PORCIENTO													COORDENADAS		
	KM	TE	SC	TDPA	M	A	B	C2	C3	T3S2	T3S3	T3S2R4	OTROS	A	B	C	K'	D	LATITUD	LONGITUD
T. C. Monterrey - Cd. Mier	0.00	3	0	19274	1.1	77.6	0.3	16.6	1.8	1.5	0.7	0.2	0.2	78.7	0.3	21.0	0.069	0.529	25.774413	-100.181461
T. Der. Santa Mónica	5.00	1	1	16512	1.2	83.6	0.6	7.7	1.0	2.1	2.9	0.4	0.5	84.8	0.6	14.6	0.065	0.538	25.744123	-100.160466
T. Der. Santa Mónica	5.00	1	2	19224	1.2	82.1	0.7	8.4	1.1	2.4	3.1	0.4	0.6	83.3	0.7	16.0	0.063	0.538	25.744143	-100.160356
T. Der. Santa Mónica	5.00	3	1	14651	1.4	84.1	0.4	8.2	1.2	1.8	2.1	0.3	0.5	85.5	0.4	14.1	0.053	0.501	25.739366	-100.157091
T. Der. Santa Mónica	5.00	3	2	14591	1.4	83.2	0.4	8.5	1.3	1.9	2.5	0.3	0.5	84.6	0.4	15.0	0.054	0.501	25.739435	-100.157017
T. Izq. Aeropuerto	8.60	1	1	11097	1.5	79.4	0.4	12.7	1.9	2.3	1.2	0.4	0.2	80.9	0.4	18.7	0.057	0.519	25.726344	-100.143776
T. Izq. Aeropuerto	8.60	1	2	10299	1.2	77.3	0.3	14.7	2.1	2.5	1.3	0.4	0.2	78.5	0.3	21.2	0.056	0.519	25.726399	-100.143696
T. Izq. Aeropuerto	8.60	3	0	12795	0.8	72.2	0.7	17.7	3.0	3.5	1.2	0.6	0.3	73.0	0.7	26.3	0.074	0.547	25.712168	-100.135689
T. Der. Dulces Nombres	10.40	1	0	15747	1.4	74.8	0.6	14.8	2.2	3.3	2.2	0.4	0.3	76.2	0.6	23.2	0.071	0.512	25.702662	-100.132414
T. Der. Dulces Nombres	10.40	3	0	19566	1.4	79.6	0.8	11.1	1.8	2.8	1.6	0.5	0.4	81.0	0.8	18.2	0.079	0.501	25.694814	-100.126170
Villa Juárez	16.00	1	1	13502	1.7	79.9	0.7	11.9	1.6	1.9	1.4	0.4	0.5	81.6	0.7	17.7	0.062	0.543	25.656613	-100.079820
Villa Juárez	16.00	1	2	11353	1.7	78.6	0.7	12.4	1.9	2.2	1.6	0.4	0.5	80.3	0.7	19.0	0.058	0.543	25.656540	-100.079708

24 CARR: Atongo - Lazarillos

CLAVE:

RUTA: NL

AÑO: 2018

LUGAR	ESTACION				CLASIFICACION VEHICULAR EN PORCIENTO													COORDENADAS		
	KM	TE	SC	TDPA	M	A	B	C2	C3	T3S2	T3S3	T3S2R4	OTROS	A	B	C	K'	D	LATITUD	LONGITUD
Atongo	0.00	3	0	541	4.1	89.2	0.0	5.5	0.5	0.7	0.0	0.0	0.0	93.3	0.0	6.7	0.096	0.531	25.347042	-100.001394
Lazarillos	7.78	1	0	2488	3.2	81.6	0.1	7.4	5.1	1.8	0.5	0.1	0.2	84.8	0.1	15.1	0.102	0.509	25.311728	-100.041896

25 CARR: Cadereyta de Jiménez - Doctor González

CLAVE: 19473

RUTA: NL

AÑO: 2018

LUGAR	ESTACION				CLASIFICACION VEHICULAR EN PORCIENTO													COORDENADAS		
	KM	TE	SC	TDPA	M	A	B	C2	C3	T3S2	T3S3	T3S2R4	OTROS	A	B	C	K'	D	LATITUD	LONGITUD
T. C. Monterrey - Reynosa	0.00	3	0	732	2.8	52.8	3.3	12.7	4.5	10.8	5.1	8.0	0.0	55.6	3.3	41.1	0.071	0.525	25.596930	-99.938604
X. C. Pesquería - Santa María Floreña	18.00	3	0	520	0.8	32.5	0.4	8.7	7.0	8.8	1.5	40.3	0.0	33.3	0.4	66.3	0.094	0.520	25.748894	-99.913793
Doctor González	30.00	1	0	388	7.1	77.6	0.1	13.5	0.7	0.8	0.2	0.0	0.0	84.7	0.1	15.2	0.116	0.504	25.856760	-99.936324

26 CARR: Cd. Benito Juárez - Villa de Santiago

CLAVE: 00087

RUTA: NL

AÑO: 2018

LUGAR	ESTACION				CLASIFICACION VEHICULAR EN PORCIENTO													COORDENADAS		
	KM	TE	SC	TDPA	M	A	B	C2	C3	T3S2	T3S3	T3S2R4	OTROS	A	B	C	K'	D	LATITUD	LONGITUD
Cd. Benito Juárez	0.00	3	0	23428	1.4	88.0	0.2	7.0	1.0	0.7	1.1	0.4	0.2	89.4	0.2	10.4	0.061	0.502	25.621401	-100.104999
Arboledas de San Roque	4.70	3	0	5290	1.1	86.9	0.2	8.3	0.6	2.0	0.5	0.1	0.3	88.0	0.2	11.8	0.160	0.534	25.595141	-100.119941
T. Izq. Cadereyta de Jiménez	23.00	3	0	4049	2.9	82.4	0.2	9.8	1.7	2.2	0.7	0.0	0.1	85.3	0.2	14.5	0.135	0.504	25.466898	-100.096195

NUEVO LEON

26 CARR : Cd. Benito Juárez - Villa de Santiago

CLAVE: 00087

RUTA: NL

AÑO : 2018

LUGAR	ESTACION				CLASIFICACION VEHICULAR EN PORCIENTO														COORDENADAS	
	KM	TE	SC	TDPA	M	A	B	C2	C3	T3S2	T3S3	T3S2R4	OTROS	A	B	C	K'	D	LATITUD	LONGITUD
T. C. Cd. Victoria - Monterrey	39.00	1	0	6712	3.2	84.7	0.2	5.7	1.5	2.9	1.0	0.3	0.5	87.9	0.2	11.9	0.109	0.500	25.451873	-100.161259

27 CARR : China - Méndez

CLAVE: 00191

RUTA: NL-TAM

AÑO : 2018

LUGAR	ESTACION				CLASIFICACION VEHICULAR EN PORCIENTO														COORDENADAS	
	KM	TE	SC	TDPA	M	A	B	C2	C3	T3S2	T3S3	T3S2R4	OTROS	A	B	C	K'	D	LATITUD	LONGITUD
China	0.00	3	0	1471	0.6	72.2	1.8	19.6	1.4	1.8	1.6	1.0	0.0	72.8	1.8	25.4	0.076	0.508	25.700253	-99.225782
Lim. Edos. Term. N. L. Ppia. Tamps.	75.00																			
Méndez	100.00																			

28 CARR : Doctor Arroyo - Mier y Noriega

CLAVE: 19088

RUTA: NL-088

AÑO : 2018

LUGAR	ESTACION				CLASIFICACION VEHICULAR EN PORCIENTO														COORDENADAS	
	KM	TE	SC	TDPA	M	A	B	C2	C3	T3S2	T3S3	T3S2R4	OTROS	A	B	C	K'	D	LATITUD	LONGITUD
Doctor Arroyo	0.00	3	0	1817	5.9	79.3	3.7	7.9	1.5	1.2	0.5	0.0	0.0	85.2	3.7	11.1	0.079	0.506	23.653900	-100.188387
Mier y Noriega	31.00																			

29 CARR : Ent. Hacienda del Cielo - T. Der. Cadereyta

CLAVE:

RUTA: NL

AÑO : 2018

LUGAR	ESTACION				CLASIFICACION VEHICULAR EN PORCIENTO														COORDENADAS	
	KM	TE	SC	TDPA	M	A	B	C2	C3	T3S2	T3S3	T3S2R4	OTROS	A	B	C	K'	D	LATITUD	LONGITUD
Hacienda del Cielo	0.00	3	0	1703	6.1	79.8	0.4	8.7	1.4	2.5	0.9	0.0	0.2	85.9	0.4	13.7	0.072	0.502	25.521340	-100.014279
T. Der. Benito Juárez	11.50	1	0	1835	4.0	89.4	0.0	3.1	0.5	1.5	0.7	0.3	0.5	93.4	0.0	6.6	0.063	0.502	25.468652	-100.091983

30 CARR : Ent. Huisachito - Nuevo Laredo

CLAVE: 00074

RUTA: NL-001-TAM

AÑO : 2018

LUGAR	ESTACION				CLASIFICACION VEHICULAR EN PORCIENTO														COORDENADAS	
	KM	TE	SC	TDPA	M	A	B	C2	C3	T3S2	T3S3	T3S2R4	OTROS	A	B	C	K'	D	LATITUD	LONGITUD
T. C. Monterrey - Colombia	0.00	3	0	1229	1.0	76.8	1.9	9.9	1.8	5.2	2.6	0.6	0.2	77.8	1.9	20.3	0.124	0.506	27.353940	-99.949956
Lim. Edos. Term. N. L. Ppia. Tamps.	19.00																			
X. C. Libramiento de Nuevo Laredo	47.00	1	0	2082	0.4	77.2	1.4	12.7	2.2	3.6	1.4	0.9	0.2	77.6	1.4	21.0	0.095	0.519	27.478328	-99.634085
Nuevo Laredo	51.00	1	0	13036	1.3	82.3	2.1	6.3	1.2	5.2	0.7	0.2	0.7	83.6	2.1	14.3	0.060	0.517	27.484841	-99.580714

NUEVO LEON

31 CARR: Gral. Bravo - Los Aldamas

CLAVE: 19030

RUTA: NL-030

AÑO: 2018

LUGAR	ESTACION				CLASIFICACION VEHICULAR EN PORCIENTO														COORDENADAS	
	KM	TE	SC	TDPA	M	A	B	C2	C3	T3S2	T3S3	T3S2R4	OTROS	A	B	C	K'	D	LATITUD	LONGITUD
Gral. Bravo	0.00	3	0	1312	0.5	78.1	0.4	18.0	1.0	1.3	0.5	0.0	0.2	78.6	0.4	21.0	0.098	0.507	25.816914	-99.171971
Los Aldamas	31.00																			

32 CARR: Gral. Treviño - Villaldama

CLAVE: 19003

RUTA: NL-003

AÑO: 2018

LUGAR	ESTACION				CLASIFICACION VEHICULAR EN PORCIENTO														COORDENADAS	
	KM	TE	SC	TDPA	M	A	B	C2	C3	T3S2	T3S3	T3S2R4	OTROS	A	B	C	K'	D	LATITUD	LONGITUD
Gral. Treviño	0.00	3	0	886	0.9	81.1	0.6	13.0	0.8	1.2	0.1	2.1	0.2	82.0	0.6	17.4	0.080	0.508	26.240910	-99.491261
Agualeguas	13.00	3	0	770	1.0	79.1	0.8	16.1	0.7	0.7	0.0	1.5	0.1	80.1	0.8	19.1	0.092	0.520	26.321760	-99.537344
Paras	34.00	3	0	293	0.8	69.6	0.3	22.9	0.6	0.9	0.5	4.4	0.0	70.4	0.3	29.3	0.123	0.503	26.505655	-99.532754
El Álamo	62.00	1	0	596	5.1	74.5	1.1	14.8	0.6	1.4	0.9	1.5	0.1	79.6	1.1	19.3	0.104	0.514	26.490502	-99.771322
Villaldama	134.00	1	0	1584	2.8	85.4	0.9	9.0	0.4	1.1	0.3	0.0	0.1	88.2	0.9	10.9	0.109	0.504	26.504305	-100.413178

33 CARR: Hacienda Guadalupe - Higuera

CLAVE: 19006

RUTA: NL-006

AÑO: 2018

LUGAR	ESTACION				CLASIFICACION VEHICULAR EN PORCIENTO														COORDENADAS	
	KM	TE	SC	TDPA	M	A	B	C2	C3	T3S2	T3S3	T3S2R4	OTROS	A	B	C	K'	D	LATITUD	LONGITUD
Hacienda Guadalupe	0.00																			
Marin	3.00	1	1	3516	2.9	77.1	1.6	9.9	2.1	4.3	0.6	1.2	0.3	80.0	1.6	18.4	0.088	0.509	25.860772	-100.024177
Marin	3.00	1	2	3648	2.5	80.9	1.6	6.0	2.1	4.4	0.8	1.3	0.4	83.4	1.6	15.0	0.076	0.509	25.860754	-100.024340
Higuera	15.00																			

34 CARR: Libramiento de Linares

CLAVE: 19506

RUTA: NL

AÑO: 2018

LUGAR	ESTACION				CLASIFICACION VEHICULAR EN PORCIENTO														COORDENADAS	
	KM	TE	SC	TDPA	M	A	B	C2	C3	T3S2	T3S3	T3S2R4	OTROS	A	B	C	K'	D	LATITUD	LONGITUD
T. C. Cd. Victoria - Monterrey (1° Acceso)	0.00	3	0	10860	4.4	67.2	2.0	8.3	1.9	7.2	2.3	6.0	0.7	71.6	2.0	26.4	0.070	0.510	24.844419	-99.565209
T. C. Linares - Ent. San Roberto	2.00	3	0	10744	3.0	66.1	2.4	8.4	2.2	8.6	2.3	6.0	1.0	69.1	2.4	28.5	0.068	0.507	24.854019	-99.577448
T. C. Cd. Victoria - Monterrey (2° Acceso)	6.50																			

35 CARR: Libramiento de Montemorelos

CLAVE: 19492

RUTA: NL

AÑO: 2018

LUGAR	ESTACION				CLASIFICACION VEHICULAR EN PORCIENTO														COORDENADAS	
	KM	TE	SC	TDPA	M	A	B	C2	C3	T3S2	T3S3	T3S2R4	OTROS	A	B	C	K'	D	LATITUD	LONGITUD
T. C. Cd. Victoria - Monterrey (1° Acceso)	0.00	3	1	5757	0.9	68.3	4.1	8.5	2.1	6.7	2.0	6.9	0.5	69.2	4.1	26.7	0.108	0.504	25.129345	-99.812920



NUEVO LEON

35 CARR: Libramiento de Montemorelos

CLAVE: 19492

RUTA: NL

AÑO: 2018

LUGAR	ESTACION				CLASIFICACION VEHICULAR EN PORCIENTO														COORDENADAS	
	KM	TE	SC	TDPA	M	A	B	C2	C3	T3S2	T3S3	T3S2R4	OTROS	A	B	C	K'	D	LATITUD	LONGITUD
T. C. Cd. Victoria - Monterrey (1° Acceso)	0.00	3	2	5657	0.9	64.0	4.7	9.7	2.1	7.8	1.9	8.3	0.6	64.9	4.7	30.4	0.080	0.504	25.129255	-99.813081
T. C. Cd. Victoria - Monterrey (2° Acceso)	3.70																			

36 CARR: Libramiento de Sabinas Hidalgo

CLAVE: 19492

RUTA: NL

AÑO: 2018

LUGAR	ESTACION				CLASIFICACION VEHICULAR EN PORCIENTO														COORDENADAS	
	KM	TE	SC	TDPA	M	A	B	C2	C3	T3S2	T3S3	T3S2R4	OTROS	A	B	C	K'	D	LATITUD	LONGITUD
T. C. Monterrey - Nuevo Laredo (Sur)	0.00	3	0	4965	1.1	34.2	2.9	13.1	4.0	36.2	5.6	1.8	1.1	35.3	2.9	61.8	0.054	0.542	26.463984	-100.163312
T. C. Monterrey - Nuevo Laredo (Norte)	9.20	1	0	3249	0.6	25.3	2.6	13.2	3.4	49.9	2.0	2.0	1.0	25.9	2.6	71.5	0.070	0.505	26.524805	-100.151520

37 CARR: Libramiento Poniente de Cadereyta

CLAVE: 19085

RUTA: NL

AÑO: 2018

LUGAR	ESTACION				CLASIFICACION VEHICULAR EN PORCIENTO														COORDENADAS	
	KM	TE	SC	TDPA	M	A	B	C2	C3	T3S2	T3S3	T3S2R4	OTROS	A	B	C	K'	D	LATITUD	LONGITUD
T. C. Monterrey - Reynosa ( Libre)	0.00	3	0	17130	2.4	77.7	0.6	6.9	1.5	6.8	1.5	1.3	1.3	80.1	0.6	19.3	0.059	0.512	25.591702	-100.028022
T. C. Cadereyta - Allende	6.00																			

38 CARR: Los Guerra - Los Herreras

CLAVE: 19031

RUTA: TAM-NL

AÑO: 2018

LUGAR	ESTACION				CLASIFICACION VEHICULAR EN PORCIENTO														COORDENADAS	
	KM	TE	SC	TDPA	M	A	B	C2	C3	T3S2	T3S3	T3S2R4	OTROS	A	B	C	K'	D	LATITUD	LONGITUD
Los Guerra	0.00																			
Los Herreras	73.00	1	0	639	1.8	82.1	0.2	13.7	0.7	1.0	0.5	0.0	0.0	83.9	0.2	15.9	0.099	0.513	25.902599	-99.393636

39 CARR: Matehuala - La Poza

CLAVE: 00086

RUTA: SLP-029-NL-061

AÑO: 2018

LUGAR	ESTACION				CLASIFICACION VEHICULAR EN PORCIENTO														COORDENADAS	
	KM	TE	SC	TDPA	M	A	B	C2	C3	T3S2	T3S3	T3S2R4	OTROS	A	B	C	K'	D	LATITUD	LONGITUD
Matehuala	0.00	3	0	4515	8.9	70.1	1.3	13.5	3.0	2.1	0.6	0.3	0.2	79.0	1.3	19.7	0.080	0.512	23.665782	-100.602279
Lim. Edos. Term. S. L. P. Ppia. N. L.	19.70																			
Lim. Edos. Term. N. L. Ppia. S. L. P.	19.90																			
Lim. Edos. Term. S. L. P. Ppia. N. L.	21.53																			
Doctor Arroyo	49.00	1	0	4191	3.7	76.7	1.0	13.4	2.6	1.8	0.3	0.4	0.1	80.4	1.0	18.6	0.074	0.503	23.686848	-100.211924
La Ascención	131.00	1	0	897	2.9	79.1	2.6	12.2	1.4	1.8	0.0	0.0	0.0	82.0	2.6	15.4	0.078	0.520	24.321681	-99.905821

NUEVO LEON

40 CARR: Monclova - Estación Candela

CLAVE: 00501

RUTA: COA-030-NL

AÑO: 2018

LUGAR	ESTACION				CLASIFICACION VEHICULAR EN PORCIENTO										COORDENADAS					
	KM	TE	SC	TDPA	M	A	B	C2	C3	T3S2	T3S3	T3S2R4	OTROS	A	B	C	K'	D	LATITUD	LONGITUD
T. C. Monclova - Piedras Negras	0.00																			
T. Izq. Libramiento de Monclova	5.10	1	1	2472	3.4	78.0	0.8	14.9	1.2	1.2	0.4	0.0	0.1	81.4	0.8	17.8	0.091	0.503	26.930474	-101.387411
T. Izq. Libramiento de Monclova	5.10	1	2	2503	3.1	76.0	0.9	16.9	1.2	1.3	0.4	0.0	0.2	79.1	0.9	20.0	0.100	0.503	26.930540	-101.387505
Lim. Edos. Term. Coah. Ppia. N. L.	118.00																			
T. C. Monterrey - Colombia	125.50	1	0	536	0.2	69.1	2.6	17.6	1.1	8.3	0.3	0.7	0.1	69.3	2.6	28.1	0.170	0.523	26.838217	-100.495000

41 CARR: Monterrey - Colombia

CLAVE: 19001

RUTA: NL-001

AÑO: 2018

LUGAR	ESTACION				CLASIFICACION VEHICULAR EN PORCIENTO										COORDENADAS					
	KM	TE	SC	TDPA	M	A	B	C2	C3	T3S2	T3S3	T3S2R4	OTROS	A	B	C	K'	D	LATITUD	LONGITUD
T. C. Monterrey - Nuevo Laredo	0.00	3	1	29013	1.0	84.3	0.3	7.9	1.8	2.4	1.7	0.3	0.3	85.3	0.3	14.4	0.068	0.584	25.774720	-100.292067
T. C. Monterrey - Nuevo Laredo	0.00	3	2	20652	1.1	83.3	0.3	8.2	2.1	2.5	1.9	0.3	0.3	84.4	0.3	15.3	0.075	0.584	25.779745	-100.292230
X. C. Libramiento Noroeste de Monterrey	7.30	3	1	13480	1.3	71.2	0.9	11.0	4.7	6.7	2.3	1.1	0.8	72.5	0.9	26.6	0.093	0.501	25.835506	-100.295283
X. C. Libramiento Noroeste de Monterrey	7.30	3	2	13507	1.3	68.8	1.0	11.6	5.1	7.6	2.5	1.2	0.9	70.1	1.0	28.9	0.080	0.501	25.835521	-100.295405
T. Izq. Salinas Victoria (1º Acceso)	20.50	3	0	9537	1.4	74.6	0.9	10.6	2.1	6.2	1.6	1.8	0.8	76.0	0.9	23.1	0.083	0.500	25.955850	-100.279627
Villa Aldama	86.50	3	0	2572	0.6	73.2	1.8	14.6	0.9	2.6	2.3	3.7	0.3	73.8	1.8	24.4	0.092	0.515	26.511115	-100.432174
T. Izq. Bustamante	92.25	3	0	1472	0.5	64.0	2.1	17.2	1.4	3.7	4.2	6.4	0.5	64.5	2.1	33.4	0.073	0.501	26.549507	-100.459479
T. Izq. Candela	124.04	1	0	1275	0.1	66.7	2.3	15.0	1.5	4.0	3.3	7.0	0.1	66.8	2.3	30.9	0.070	0.515	26.835500	-100.492783
Lampazos de Naranjo	164.00	1	0	2070	0.7	67.9	1.6	14.0	1.7	4.9	3.5	5.2	0.5	68.6	1.6	29.8	0.069	0.507	27.009428	-100.510389
Anáhuac	195.00	1	0	2203	0.4	66.5	1.6	17.3	1.0	4.4	2.1	6.4	0.3	66.9	1.6	31.5	0.110	0.513	27.222283	-100.157583
Huizache	212.70	3	0	2097	0.2	67.4	1.2	16.4	0.9	6.0	3.6	3.7	0.6	67.6	1.2	31.2	0.090	0.519	27.350980	-99.953819
Colombia	263.00	1	1	421	1.3	44.9	1.2	13.8	3.2	24.2	2.9	7.9	0.6	46.2	1.2	52.6	0.124	0.510	27.688502	-99.781351
Colombia	263.00	1	2	404	0.4	37.5	1.3	16.0	3.5	27.7	3.1	9.9	0.6	37.9	1.3	60.8	0.144	0.510	27.688520	-99.781365

42 CARR: Palo Alto - Vallecillos

CLAVE: 19036

RUTA: NL

AÑO: 2018

LUGAR	ESTACION				CLASIFICACION VEHICULAR EN PORCIENTO										COORDENADAS					
	KM	TE	SC	TDPA	M	A	B	C2	C3	T3S2	T3S3	T3S2R4	OTROS	A	B	C	K'	D	LATITUD	LONGITUD
T. C. Gral. Treviño - Villa Aldama	0.00	3	0	178	7.2	65.4	0.8	21.8	0.5	0.9	0.1	3.3	0.0	72.6	0.8	26.6	0.163	0.519	26.497341	-99.761079
Vallecillos	43.00	1	0	175	8.7	65.5	0.3	19.6	0.3	0.9	0.1	4.6	0.0	74.2	0.3	25.5	0.154	0.520	26.658596	-99.981892

NUEVO LEON

43 CARR: Peña Blanca - Cd. Camargo

CLAVE: 00102

RUTA: NL-TAM

AÑO: 2018

LUGAR	ESTACION				CLASIFICACION VEHICULAR EN PORCIENTO														COORDENADAS	
	KM	TE	SC	TDPA	M	A	B	C2	C3	T3S2	T3S3	T3S2R4	OTROS	A	B	C	K'	D	LATITUD	LONGITUD
T. C. Monterrey - Reynosa	0.00	3	0	698	0.3	71.1	1.2	19.6	1.2	2.6	3.0	0.4	0.6	71.4	1.2	27.4	0.097	0.501	25.836528	-99.008467
Lim. Edos. Term. N. L. Ppia. Tamps.	30.00																			
Cd. Camargo	65.00	1	0	2305	0.8	77.4	0.7	18.0	1.1	1.7	0.2	0.0	0.1	78.2	0.7	21.1	0.076	0.505	26.304292	-98.834749

44 CARR: Ramal a 18 de Marzo

CLAVE: 19475

RUTA: NL

AÑO: 2018

LUGAR	ESTACION				CLASIFICACION VEHICULAR EN PORCIENTO														COORDENADAS	
	KM	TE	SC	TDPA	M	A	B	C2	C3	T3S2	T3S3	T3S2R4	OTROS	A	B	C	K'	D	LATITUD	LONGITUD
T. C. Linares - Ent. San Roberto	0.00	3	0	3252	1.4	84.4	1.2	9.9	1.2	1.4	0.4	0.0	0.1	85.8	1.2	13.0	0.080	0.509	24.777342	-100.041737
18 de Marzo	14.00																			

45 CARR: Ramal a Cerralvo

CLAVE: 19013

RUTA: NL-013

AÑO: 2018

LUGAR	ESTACION				CLASIFICACION VEHICULAR EN PORCIENTO														COORDENADAS	
	KM	TE	SC	TDPA	M	A	B	C2	C3	T3S2	T3S3	T3S2R4	OTROS	A	B	C	K'	D	LATITUD	LONGITUD
T. C. Monterrey - Reynosa	0.00	3	0	569	0.2	70.1	0.8	15.8	1.4	2.5	2.1	6.6	0.5	70.3	0.8	28.9	0.109	0.528	25.735410	-99.371941
Los Herrera	21.00	3	0	571	0.2	70.2	0.8	15.0	1.4	2.8	2.4	6.6	0.6	70.4	0.8	28.8	0.093	0.528	25.920841	-99.421076
Cerralvo	58.00	1	0	2160	1.0	81.6	0.2	12.4	0.6	1.5	0.6	2.0	0.1	82.6	0.2	17.2	0.088	0.503	26.081055	-99.604725

46 CARR: Ramal a Marín

CLAVE: 19007

RUTA: NL

AÑO: 2018

LUGAR	ESTACION				CLASIFICACION VEHICULAR EN PORCIENTO														COORDENADAS	
	KM	TE	SC	TDPA	M	A	B	C2	C3	T3S2	T3S3	T3S2R4	OTROS	A	B	C	K'	D	LATITUD	LONGITUD
T. C. Monterrey - Nuevo Laredo	0.00	3	0	31196	1.5	80.1	0.7	11.4	2.0	1.7	1.2	0.7	0.7	81.6	0.7	17.7	0.062	0.519	25.916251	-100.194427
Marín	10.00																			

47 CARR: Salinas Victoria - Ciénega de Flores

CLAVE: 19007

RUTA: NL

AÑO: 2018

LUGAR	ESTACION				CLASIFICACION VEHICULAR EN PORCIENTO														COORDENADAS	
	KM	TE	SC	TDPA	M	A	B	C2	C3	T3S2	T3S3	T3S2R4	OTROS	A	B	C	K'	D	LATITUD	LONGITUD
Salinas Victoria	0.00	3	0	5876	1.6	60.7	3.9	12.3	5.3	12.5	2.0	1.3	0.4	62.3	3.9	33.8	0.096	0.520	25.952905	-100.273872
T. C. Monterrey - Nuevo Laredo (Cuota)	6.00	1	0	5723	1.7	65.9	2.2	9.9	5.7	10.2	2.3	1.9	0.2	67.6	2.2	30.2	0.078	0.504	25.941922	-100.229184
Ciénega de Flores	10.00																			

NUEVO LEON

48 CARR: Santa Rosa - Mezquital

CLAVE: 00087

RUTA: NL

AÑO: 2018

LUGAR	ESTACION				CLASIFICACION VEHICULAR EN PORCIENTO														COORDENADAS	
	KM	TE	SC	TDPA	M	A	B	C2	C3	T3S2	T3S3	T3S2R4	OTROS	A	B	C	K'	D	LATITUD	LONGITUD
X. C. Libramiento Noroeste de Monterrey	0.00	3	1	11816	1.0	75.5	0.8	5.9	3.1	9.0	3.3	1.1	0.3	76.5	0.8	22.7	0.067	0.502	25.813741	-100.222661
X. C. Libramiento Noroeste de Monterrey Mezquital	0.00 9.00	3	2	11916	1.0	75.0	0.9	5.5	3.0	9.4	3.7	1.1	0.4	76.0	0.9	23.1	0.089	0.502	25.813731	-100.222550

49 CARR: Santa Rosa - Salinas Victoria

CLAVE: 19037

RUTA: NL

AÑO: 2018

LUGAR	ESTACION				CLASIFICACION VEHICULAR EN PORCIENTO														COORDENADAS	
	KM	TE	SC	TDPA	M	A	B	C2	C3	T3S2	T3S3	T3S2R4	OTROS	A	B	C	K'	D	LATITUD	LONGITUD
Ent. Salinas Victoria	0.00	3	0	20755	1.5	74.2	1.1	8.4	2.5	8.6	2.2	1.2	0.3	75.7	1.1	23.2	0.059	0.533	25.874935	-100.252176
Salinas Victoria	13.85	1	1	4990	1.9	83.4	1.2	11.0	1.4	0.7	0.3	0.0	0.1	85.3	1.2	13.5	0.081	0.513	25.951073	-100.288566
Salinas Victoria	13.85	1	2	4735	2.3	81.6	1.3	12.5	1.2	0.7	0.3	0.0	0.1	83.9	1.3	14.8	0.076	0.513	25.951061	-100.288625

50 CARR: Aeropuerto de Monterrey (Cuota)

CLAVE:

RUTA: NL-D

AÑO: 2018

LUGAR	ESTACION				CLASIFICACION VEHICULAR EN PORCIENTO														COORDENADAS	
	KM	TE	SC	TDPA	M	A	B	C2	C3	T3S2	T3S3	T3S2R4	OTROS	A	B	C	K'	D	LATITUD	LONGITUD
T. C. Monterrey - Cadereyta (Cuota)	0.00																			
T. C. Apodaca - Villa Juarez	3.10	3	1	12538	0.9	84.0	0.7	4.2	1.7	4.8	1.7	1.2	0.8	84.9	0.7	14.4	0.123	0.512	25.719203	-100.135649
T. C. Apodaca - Villa Juarez	3.10	3	2	13138	0.9	84.9	0.7	3.7	1.5	4.6	1.7	1.1	0.9	85.8	0.7	13.5	0.121	0.512	25.719223	-100.135802
Aeropuerto Mariano Escobedo	10.50																			

51 CARR: Anillo Periférico de Monterrey (Cuota)

CLAVE: 19004

RUTA: NL-D

AÑO: 2018

LUGAR	ESTACION				CLASIFICACION VEHICULAR EN PORCIENTO														COORDENADAS	
	KM	TE	SC	TDPA	M	A	B	C2	C3	T3S2	T3S3	T3S2R4	OTROS	A	B	C	K'	D	LATITUD	LONGITUD
T. C. Saltillo - Monterrey	0.00	3	1	4150	0.6	50.2	3.4	8.0	2.3	25.1	2.8	5.8	1.8	50.8	3.4	45.8	0.082	0.547	25.711030	-100.557202
T. C. Saltillo - Monterrey	0.00	3	2	5010	0.8	50.7	3.3	8.9	2.5	25.6	2.9	4.8	0.5	51.5	3.3	45.2	0.082	0.547	25.711214	-100.557385
X. C. Monterrey - Nuevo Laredo (Libre)	37.70	1	1	4711	0.7	63.5	2.2	9.1	6.1	12.1	2.6	2.8	0.9	64.2	2.2	33.6	0.079	0.547	25.840552	-100.258179
X. C. Monterrey - Nuevo Laredo (Libre)	37.70	1	2	5691	0.9	61.0	2.3	9.5	6.4	12.9	2.9	3.1	1.0	61.9	2.3	35.8	0.077	0.547	25.840910	-100.257633
X. C. Monterrey - Mier	49.30	1	1	6067	1.0	48.4	2.6	6.7	6.0	23.9	4.2	6.2	1.0	49.4	2.6	48.0	0.119	0.513	25.794688	-100.174006
X. C. Monterrey - Mier	49.30	1	2	6393	1.2	51.5	2.1	7.6	5.6	21.1	4.3	5.4	1.2	52.7	2.1	45.2	0.106	0.513	25.794820	-100.173761
T. C. Monterrey - Cadereyta	66.80																			

NUEVO LEON

52 CARR: Monterrey - Cadereyta (Cuota)

CLAVE: 19281

RUTA: NL-D

AÑO: 2018

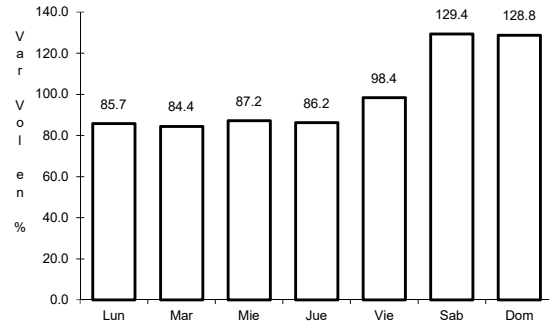
L U G A R	E S T A C I O N				C L A S I F I C A C I O N V E H I C U L A R E N P O R C I E N T O										C O O R D E N A D A S					
	KM	TE	SC	TDPA	M	A	B	C2	C3	T3S2	T3S3	T3S2R4	OTROS	A	B	C	K'	D	LATITUD	LONGITUD
T. Av. Bonifacio Salinas	3.05																			
T. Izq. Apodaca (Aeropuerto)	12.50	1	1	11798	0.3	90.7	1.2	5.4	0.6	1.0	0.5	0.2	0.1	91.0	1.2	7.8	0.100	0.503	25.692348	-100.162150
T. Izq. Apodaca (Aeropuerto)	12.50	1	2	11665	0.4	90.0	1.3	5.7	0.7	1.1	0.5	0.2	0.1	90.4	1.3	8.3	0.080	0.503	25.692579	-100.162117
T. Der. Cadereyta	33.10																			



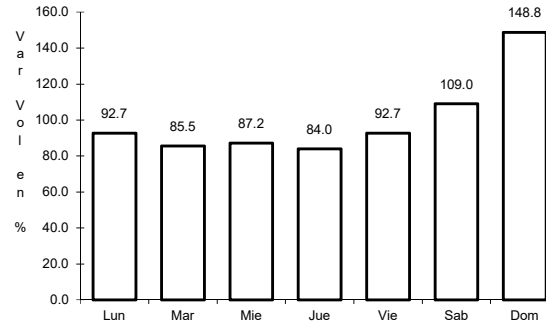
1 CARR: Cadereyta de Jiménez - Allende

CLAVE: 19009

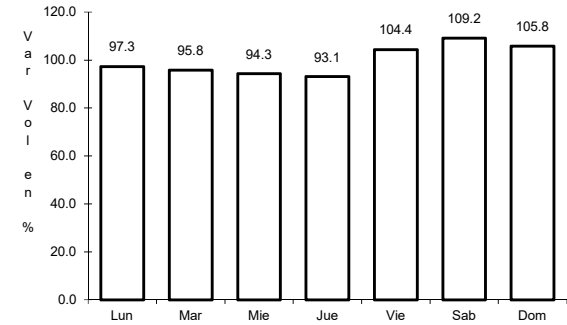
RUTA: MEX-009



Km: 0.00      Tipo: 3      Sent: 1



Km: 0.00      Tipo: 3      Sent: 2

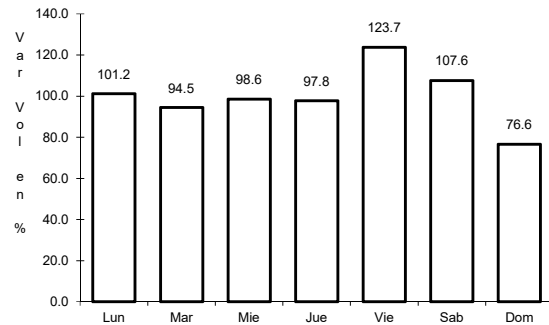


Km: 26.80      Tipo: 1      Sent: 0

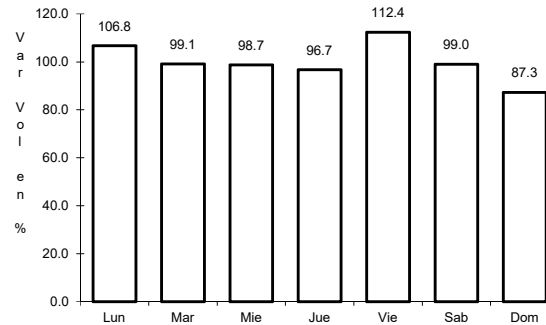
2 CARR: Ciudad Victoria - Monterrey

CLAVE: 00462

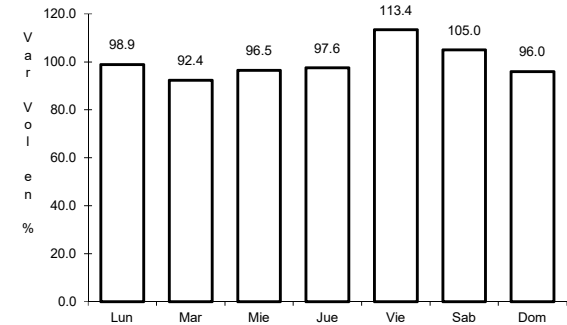
RUTA: MEX-085



Km: 0.00      Tipo: 3      Sent: 1



Km: 0.00      Tipo: 3      Sent: 2

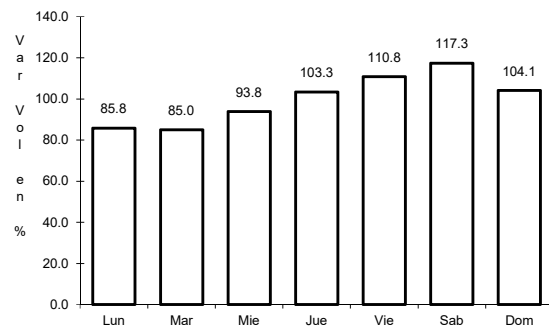


Km: 154.00      Tipo: 1      Sent: 0

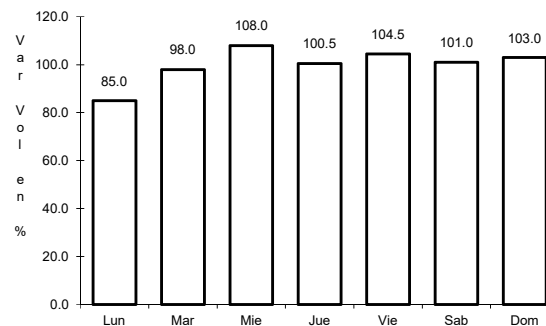
3 CARR: La Unión - El Encadenado

CLAVE:

RUTA: MEX



Km: 0.00      Tipo: 3      Sent: 0

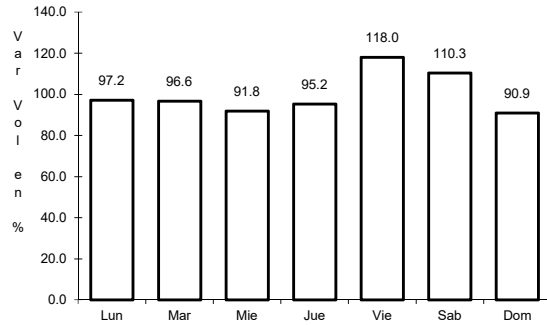


Km: 10.00      Tipo: 1      Sent: 0

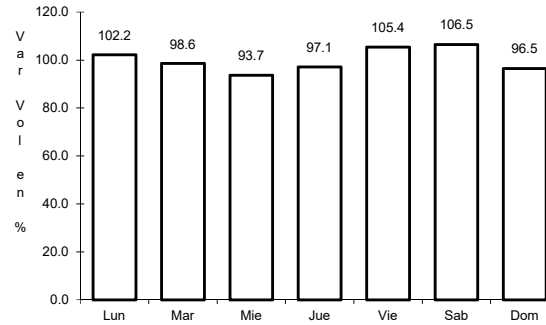
4 CARR: Libramiento de China

CLAVE:

ruta: MEX-040



Km: 0.00                      Tipo: 3                      Sent: 0

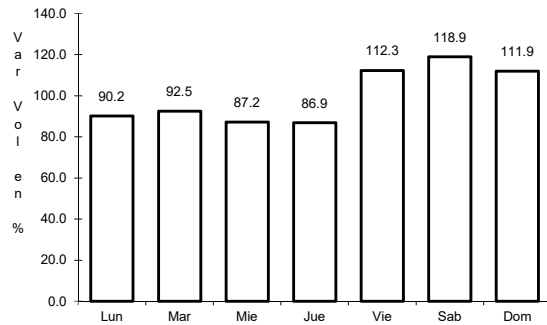


Km: 2.41                      Tipo: 1                      Sent: 0

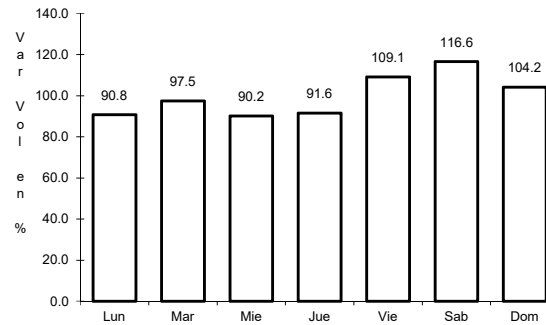
5 CARR: Libramiento de Dr. González

CLAVE: 00127

ruta: MEX-054



Km: 0.00                      Tipo: 3                      Sent: 0

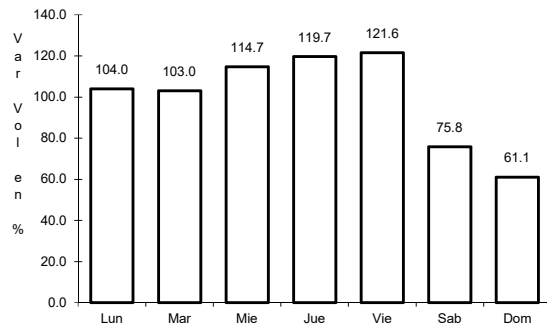


Km: 10.90                      Tipo: 1                      Sent: 0

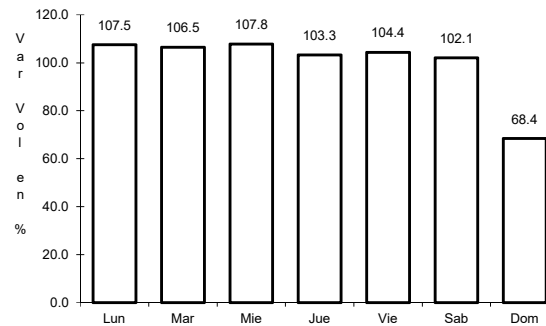
6 CARR: Libramiento Noroeste de Monterrey

CLAVE: 19085

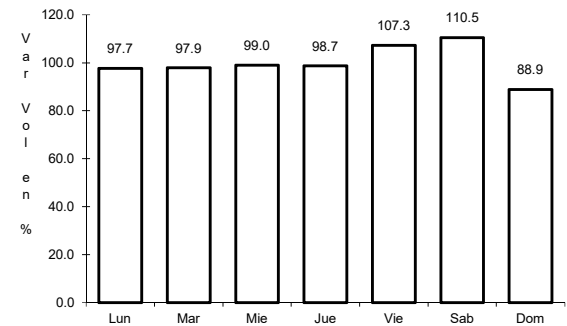
ruta: MEX-040



Km: 0.00                      Tipo: 3                      Sent: 1



Km: 0.00                      Tipo: 3                      Sent: 2



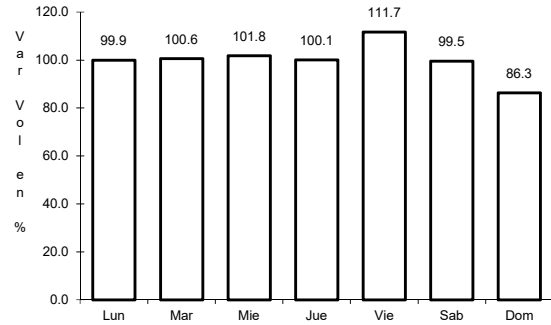
Km: 48.00                      Tipo: 1                      Sent: 1



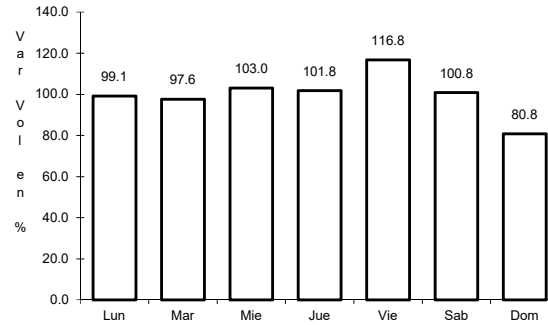
7 CARR: Linares - Ent. San Roberto

CLAVE: 19031

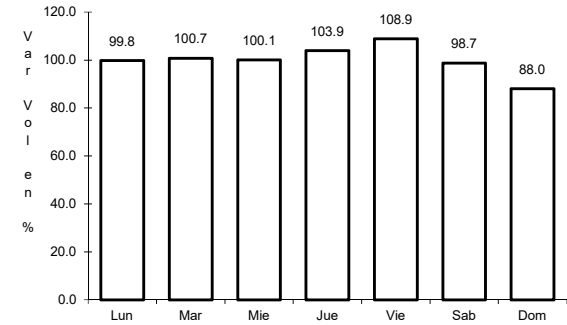
ruta: MEX-058



Km: 0.00      Tipo: 3      Sent: 0



Km: 66.00      Tipo: 1      Sent: 0

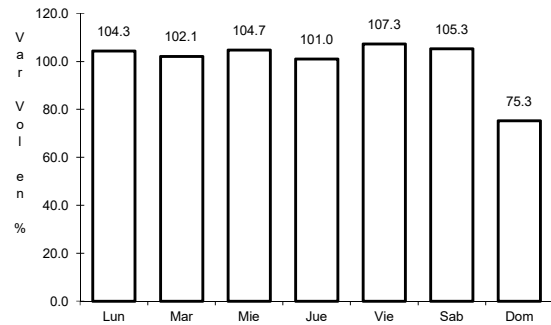


Km: 98.00      Tipo: 1      Sent: 0

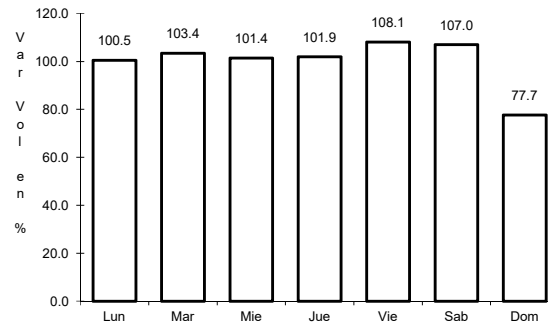
8 CARR: Matehuala - Ent. Puerto México

CLAVE: 00405

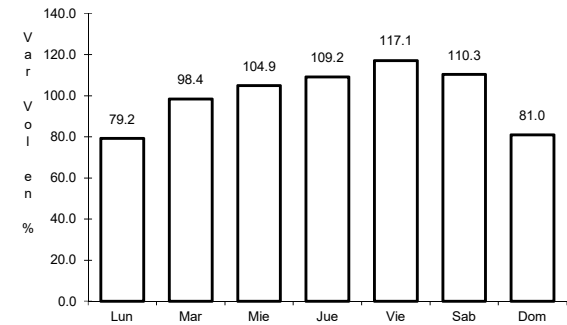
ruta: MEX-057



Km: 0.00      Tipo: 3      Sent: 1



Km: 0.00      Tipo: 3      Sent: 2

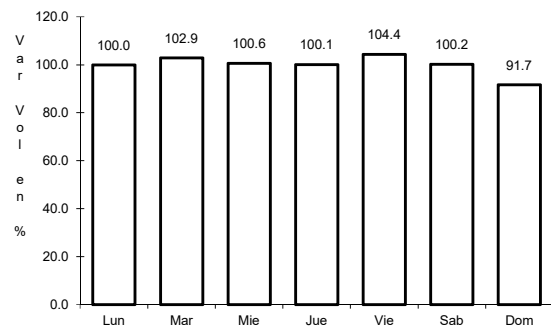


Km: 177.18      Tipo: 1      Sent: 1

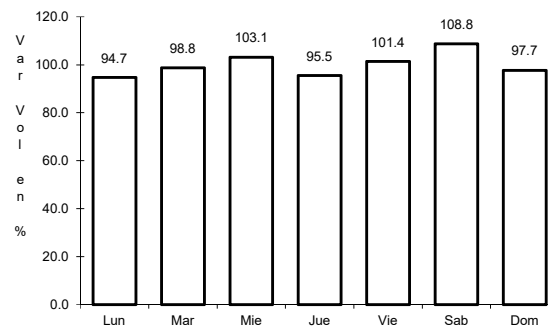
9 CARR: Montemorelos - China

CLAVE: 19280

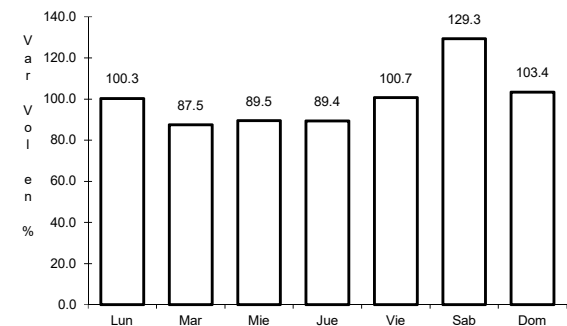
ruta: MEX-035



Km: 0.00      Tipo: 3      Sent: 0



Km: 17.60      Tipo: 3      Sent: 0

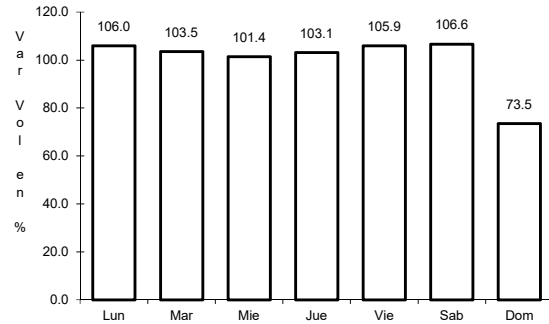


Km: 93.00      Tipo: 1      Sent: 0

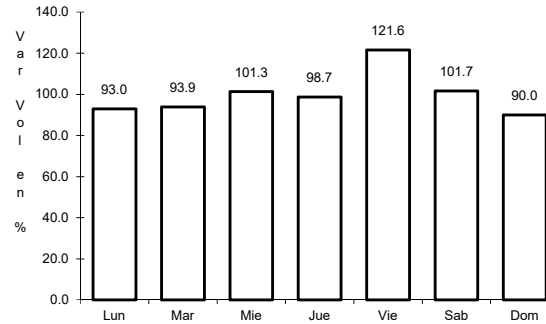
10 CARR: Monterrey - Castaños

CLAVE: 00128

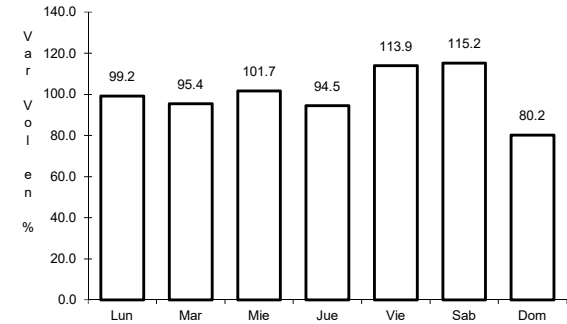
ruta: MEX-053



Km: 0.00      Tipo: 3      Sent: 0



Km: 155.90      Tipo: 1      Sent: 1

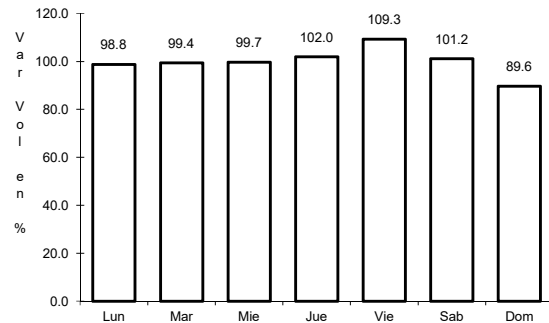


Km: 155.90      Tipo: 1      Sent: 2

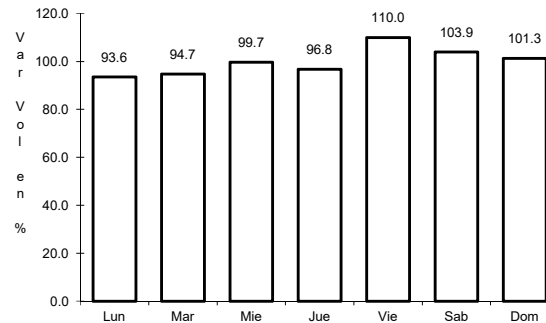
11 CARR: Monterrey - Mier

CLAVE: 00127

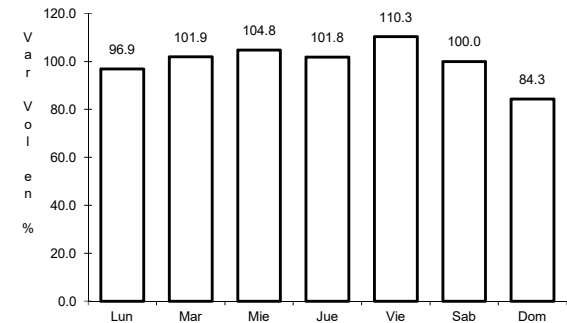
ruta: MEX-054



Km: 19.12      Tipo: 1      Sent: 1



Km: 19.12      Tipo: 1      Sent: 2

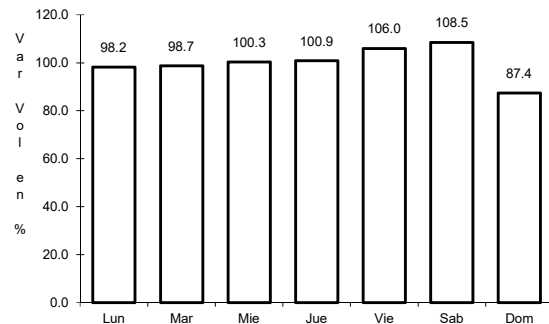


Km: 156.21      Tipo: 1      Sent: 0

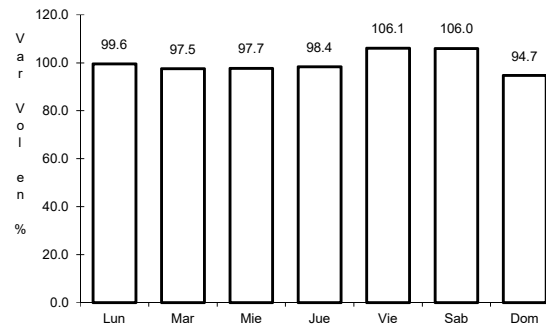
12 CARR: Monterrey - Nuevo Laredo (Libre)

CLAVE: 00463

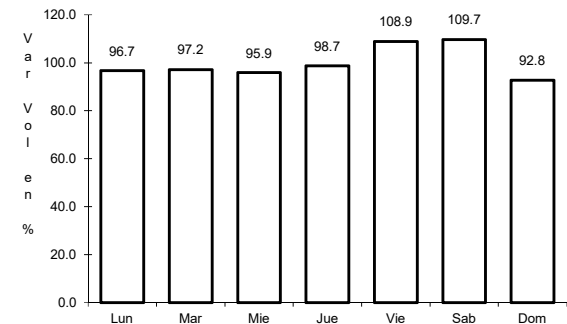
ruta: MEX-085



Km: 12.10      Tipo: 3      Sent: 1



Km: 12.10      Tipo: 3      Sent: 2

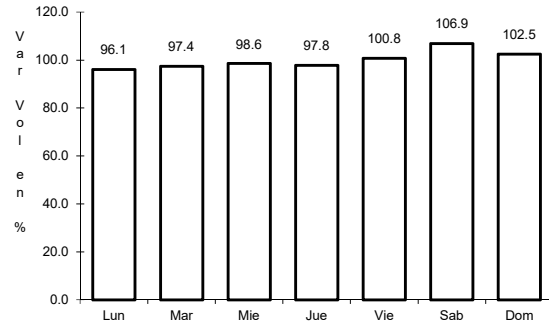


Km: 124.40      Tipo: 3      Sent: 0

13 CARR: Monterrey - Reynosa (Libre)

CLAVE: 00088

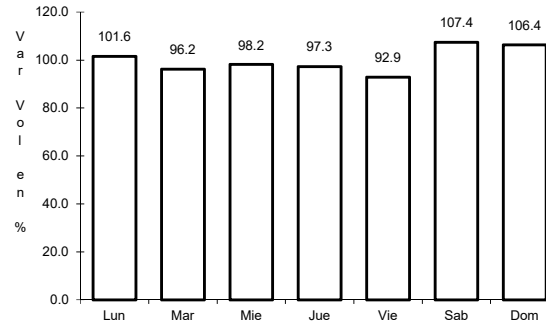
ruta: MEX-040



Km: 19.10

Tipo: 1

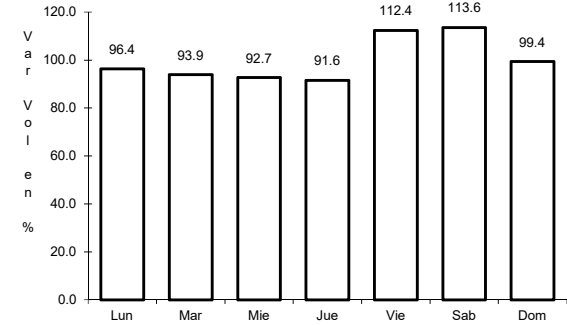
Sent: 1



Km: 19.10

Tipo: 1

Sent: 2



Km: 125.00

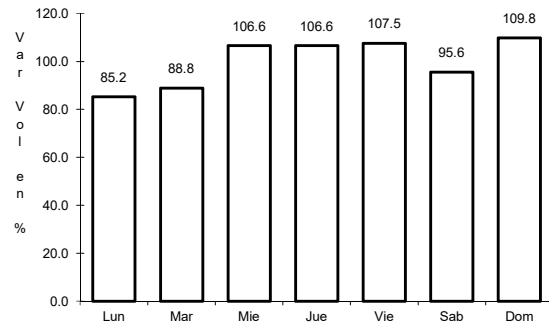
Tipo: 1

Sent: 0

14 CARR: Paras - Nueva Ciudad Guerrero

CLAVE: 00476

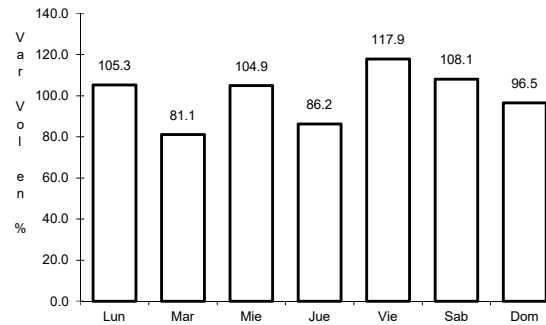
ruta: MEX-030



Km: 0.00

Tipo: 3

Sent: 0



Km: 32.00

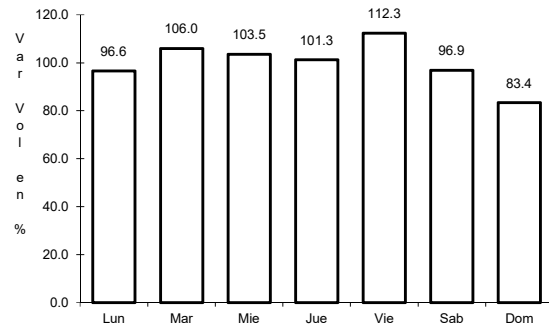
Tipo: 1

Sent: 0

15 CARR: Piedras Negras - Nuevo Laredo

CLAVE: 00503

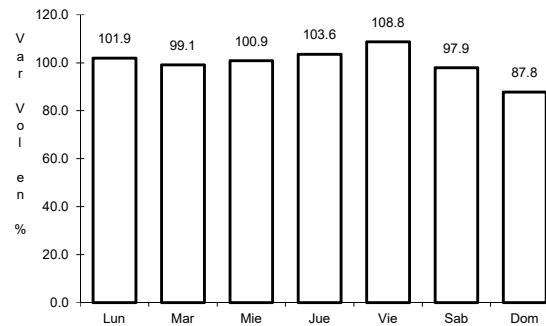
ruta: MEX-002



Km: 0.00

Tipo: 3

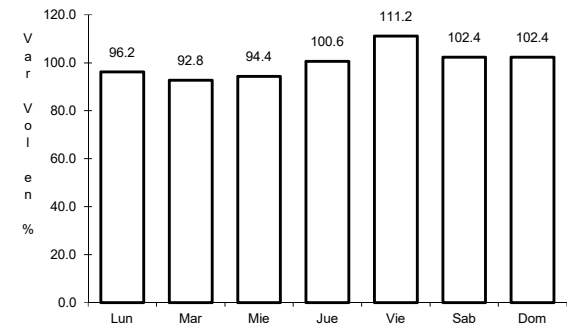
Sent: 1



Km: 0.00

Tipo: 3

Sent: 2



Km: 134.00

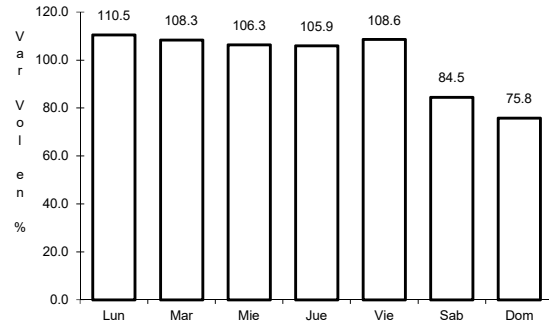
Tipo: 3

Sent: 0

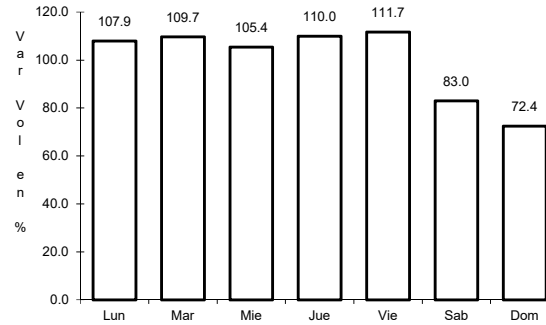
16 CARR: Ramal a Aeropuerto Mariano Escobedo

CLAVE: 19510

RUTA: MEX-054



Km: 0.00      Tipo: 3      Sent: 1

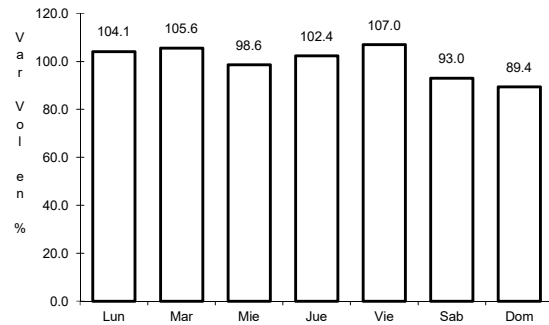


Km: 0.00      Tipo: 3      Sent: 2

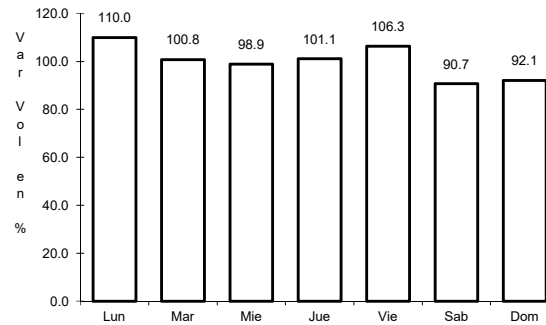
17 CARR: Saltillo - Monterrey

CLAVE: 00087

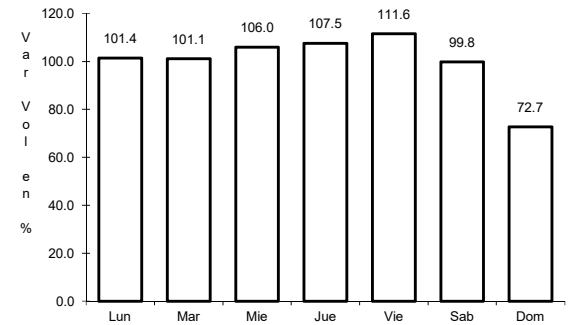
RUTA: MEX-040



Km: 4.25      Tipo: 3      Sent: 1



Km: 4.25      Tipo: 3      Sent: 2

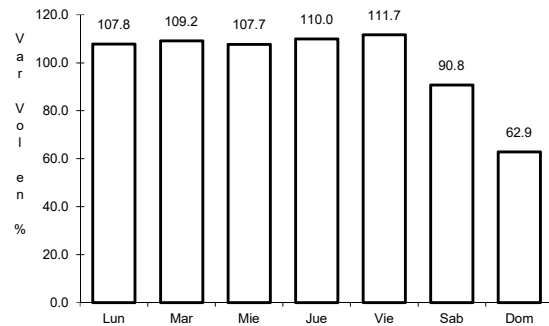


Km: 79.20      Tipo: 1      Sent: 1

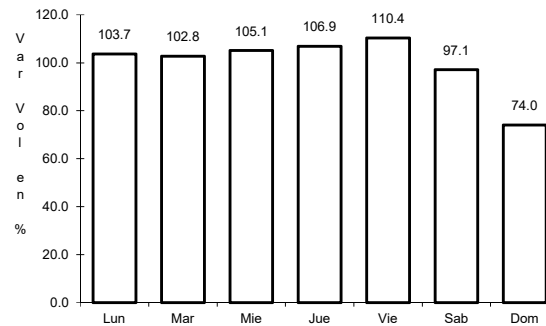
19 CARR: Monterrey - Nuevo Laredo (Cuota)

CLAVE: 19086

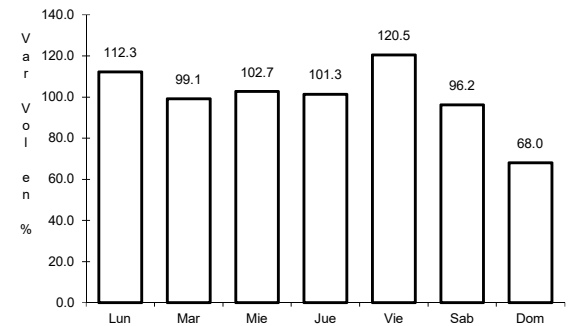
RUTA: MEX-085D



Km: 0.00      Tipo: 3      Sent: 1



Km: 0.00      Tipo: 3      Sent: 2

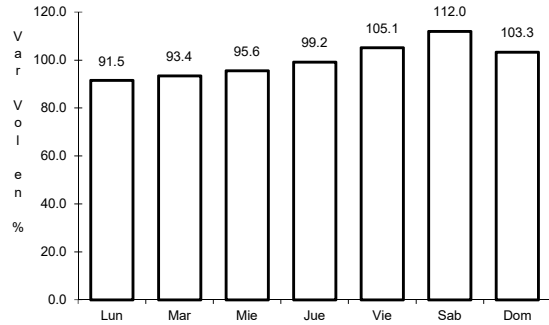


Km: 120.50      Tipo: 1      Sent: 1

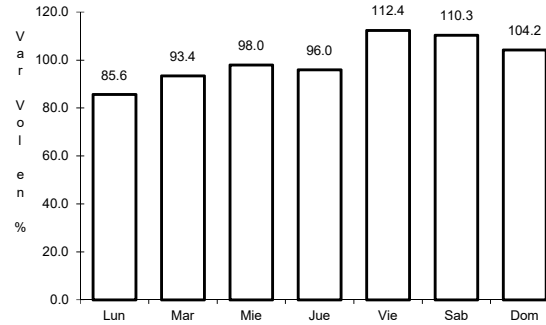
20 CARR: Puerto México - La Carbonera (Cuota)

CLAVE: 00115

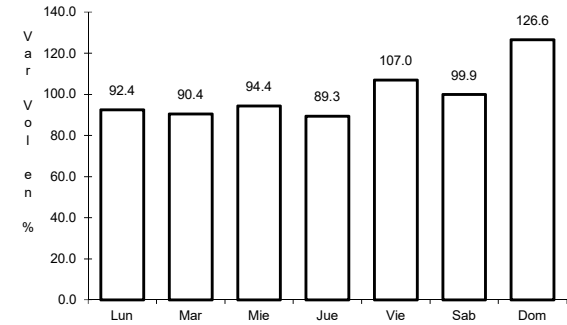
ruta: MEX-057D



Km: 224.94      Tipo: 1      Sent: 1



Km: 224.94      Tipo: 1      Sent: 2

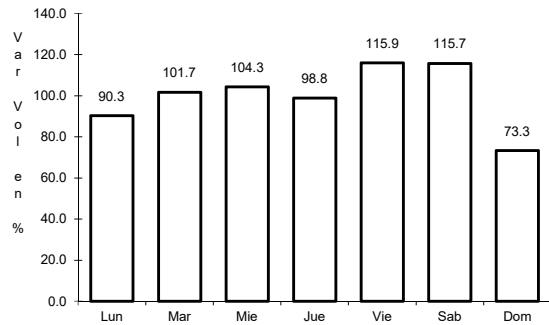


Km: 228.30      Tipo: 3      Sent: 1

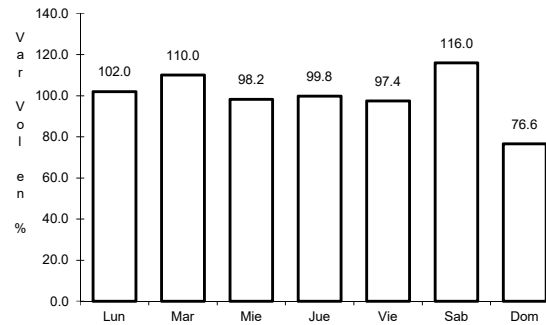
21 CARR: Saltillo - Monterrey (Cuota)

CLAVE: 00087

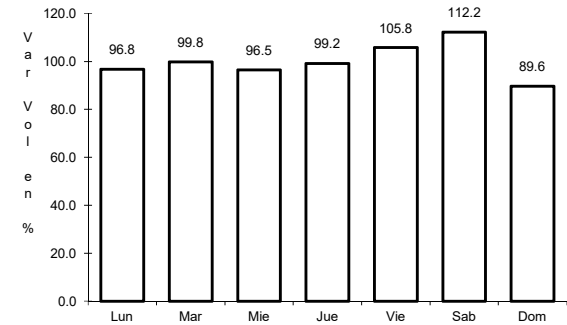
ruta: MEX-040D



Km: 46.21      Tipo: 3      Sent: 1



Km: 46.21      Tipo: 3      Sent: 2

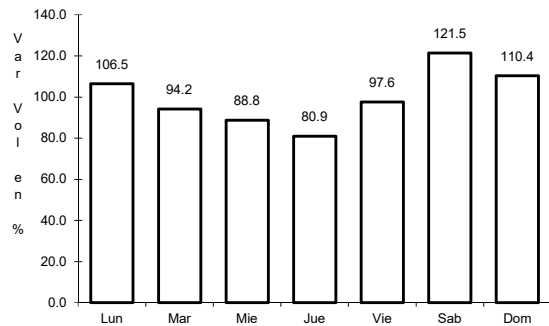


Km: 82.00      Tipo: 3      Sent: 1

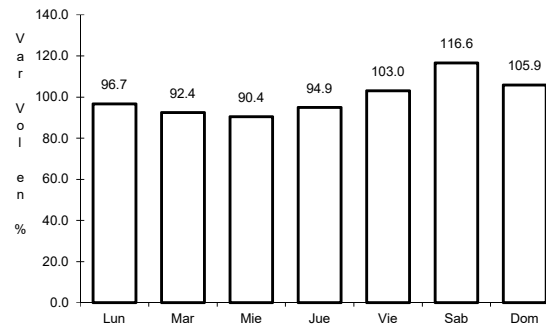
22 CARR: Agualeguas - El Ébano

CLAVE: 19004

ruta: NL-023



Km: 0.00      Tipo: 3      Sent: 0

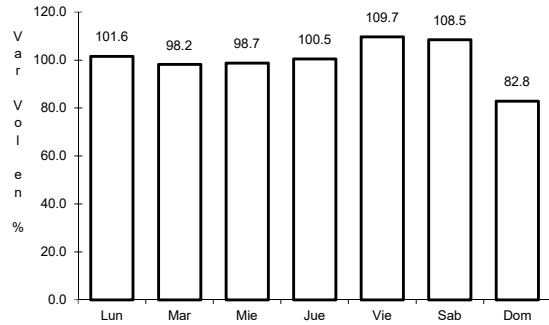


Km: 54.00      Tipo: 1      Sent: 0

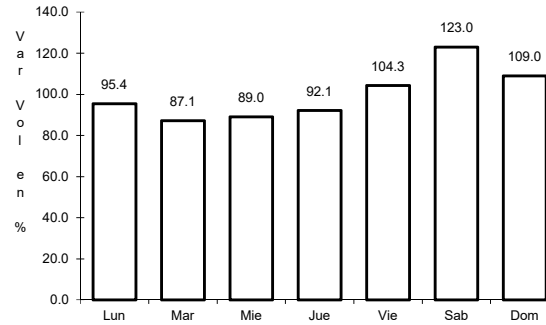
23 CARR: Apodaca - Villa Juárez

CLAVE: 00087

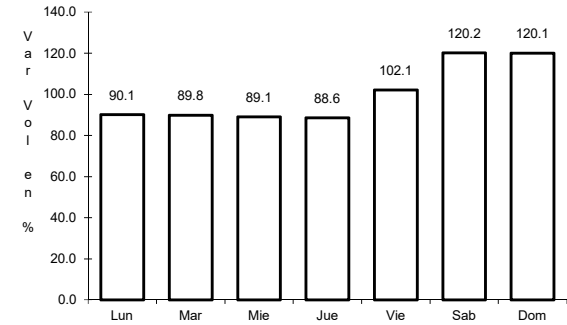
RUTA: NL



Km: 0.00      Tipo: 3      Sent: 0



Km: 16.00      Tipo: 1      Sent: 1

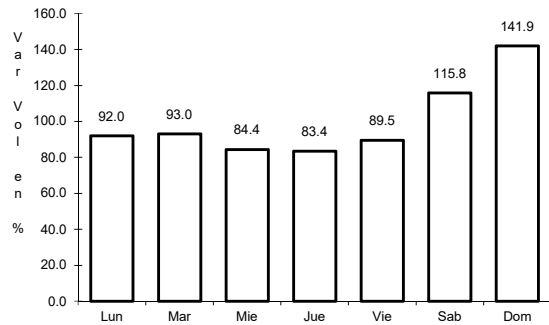


Km: 16.00      Tipo: 1      Sent: 2

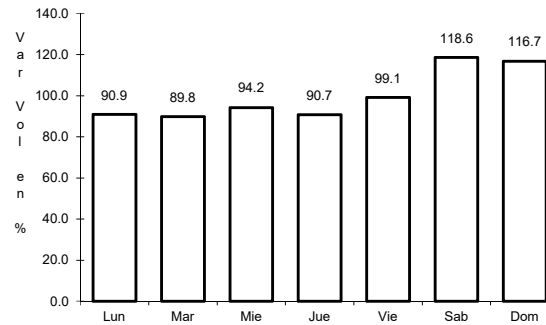
24 CARR: Atongo - Lazarillos

CLAVE:

RUTA: NL



Km: 0.00      Tipo: 3      Sent: 0

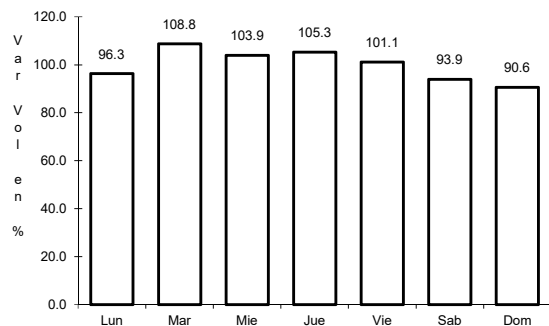


Km: 7.78      Tipo: 1      Sent: 0

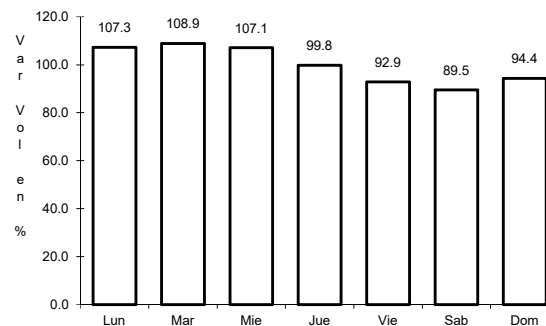
25 CARR: Cadereyta de Jiménez - Doctor González

CLAVE: 19473

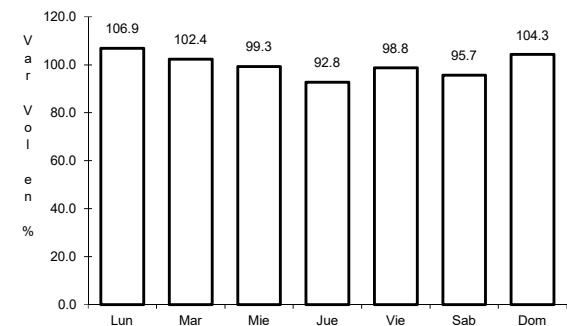
RUTA: NL



Km: 0.00      Tipo: 3      Sent: 0



Km: 18.00      Tipo: 3      Sent: 0

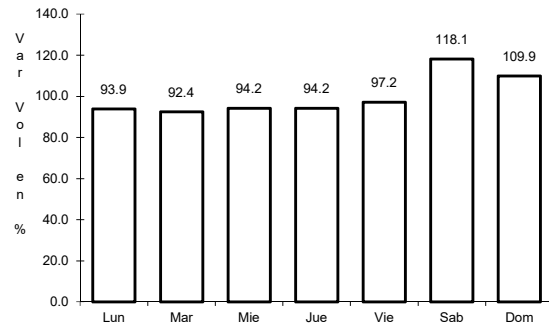


Km: 30.00      Tipo: 1      Sent: 0

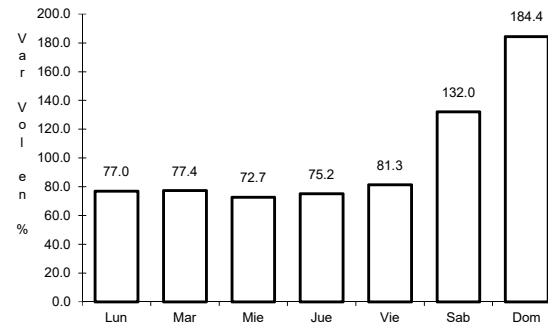
26 CARR: Cd. Benito Juárez - Villa de Santiago

CLAVE: 00087

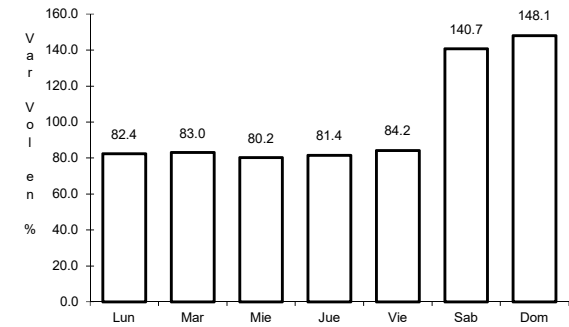
RUTA: NL



Km: 0.00      Tipo: 3      Sent: 0



Km: 23.00      Tipo: 3      Sent: 0

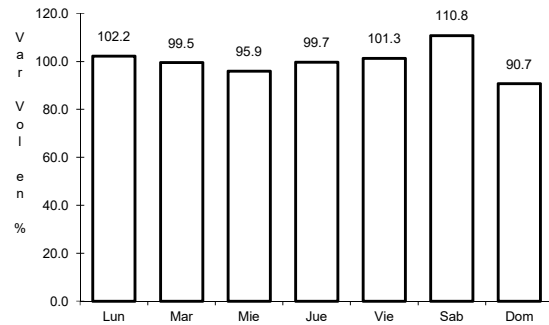


Km: 39.00      Tipo: 1      Sent: 0

27 CARR: China - Méndez

CLAVE: 00191

RUTA: NL-TAM

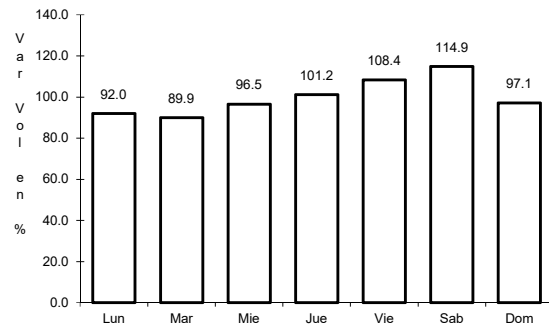


Km: 0.00      Tipo: 3      Sent: 0

28 CARR: Doctor Arroyo - Mier y Noriega

CLAVE: 19088

RUTA: NL-088

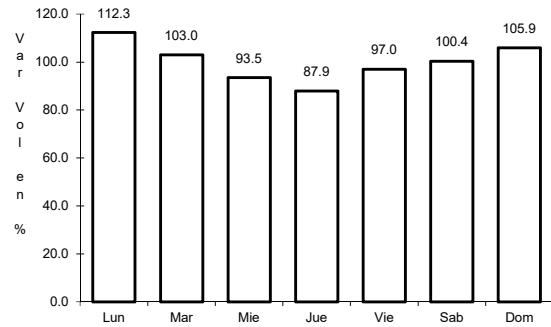


Km: 0.00      Tipo: 3      Sent: 0

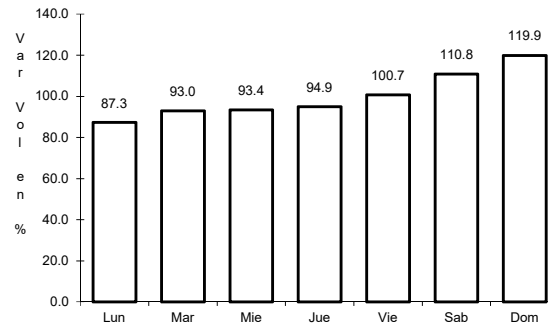
29 CARR: Ent. Hacienda del Cielo - T. Der. Cadereyta

CLAVE:

RUTA: NL



Km: 0.00      Tipo: 3      Sent: 0

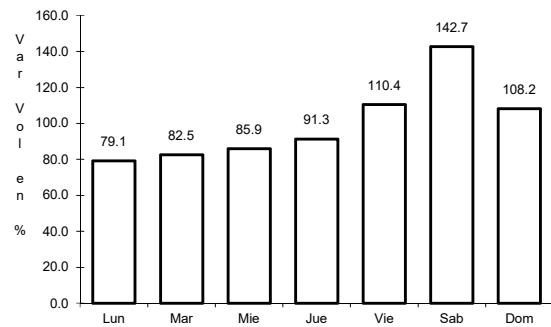


Km: 11.50      Tipo: 1      Sent: 0

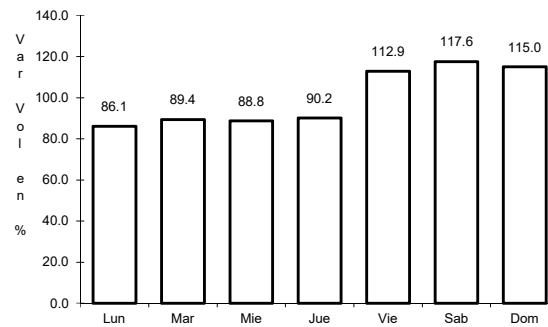
30 CARR: Ent. Huisachito - Nuevo Laredo

CLAVE: 00074

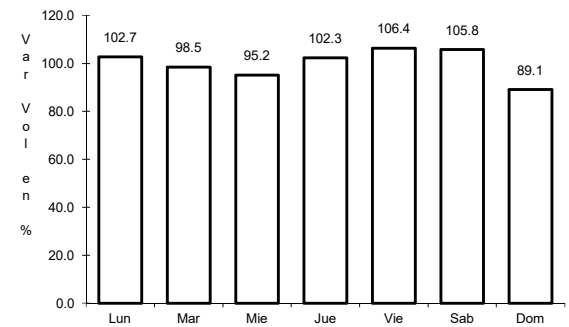
RUTA: NL-001-TAM



Km: 0.00      Tipo: 3      Sent: 0



Km: 47.00      Tipo: 1      Sent: 0

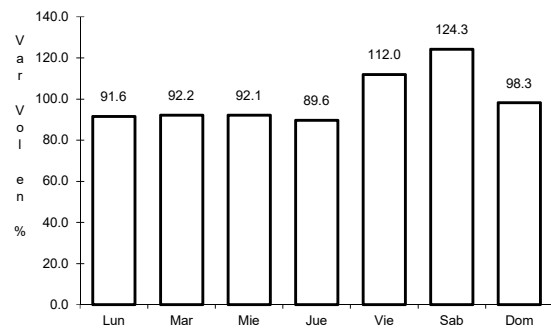


Km: 51.00      Tipo: 1      Sent: 0

31 CARR: Gral. Bravo - Los Aldamas

CLAVE: 19030

RUTA: NL-030



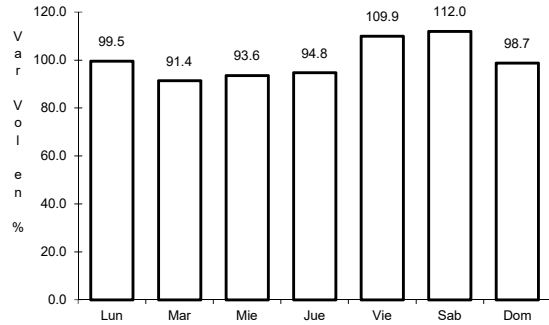
Km: 0.00      Tipo: 3      Sent: 0



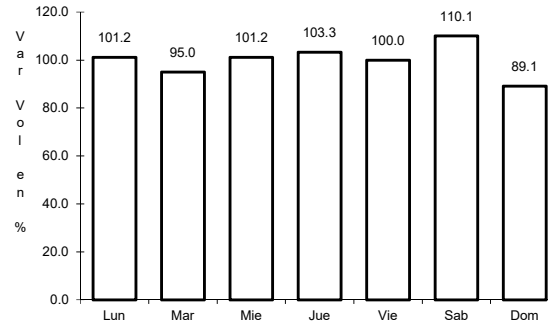
32 CARR: Gral. Treviño - Villaldama

CLAVE: 19003

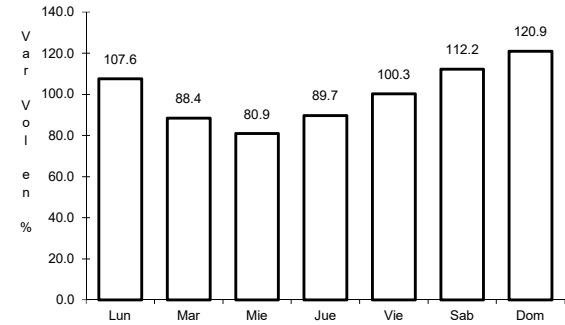
ruta: NL-003



Km: 0.00      Tipo: 3      Sent: 0



Km: 62.00      Tipo: 1      Sent: 0

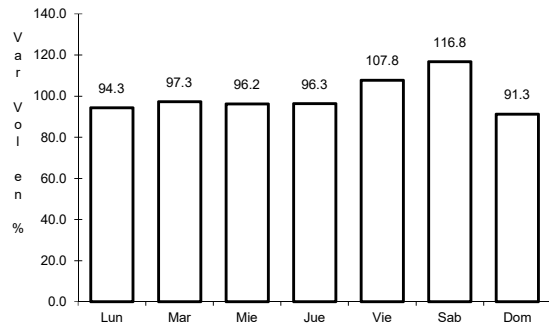


Km: 134.00      Tipo: 1      Sent: 0

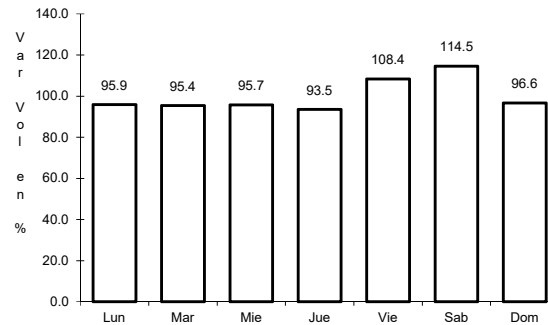
33 CARR: Hacienda Guadalupe - Higuera

CLAVE: 19006

ruta: NL-006



Km: 3.00      Tipo: 1      Sent: 1

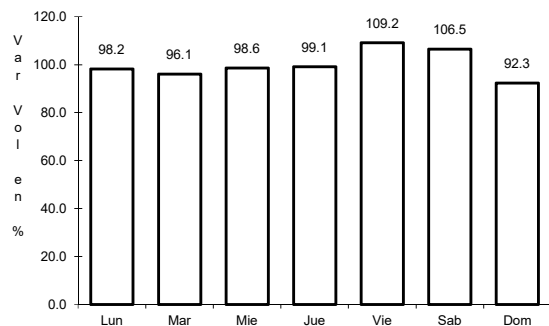


Km: 3.00      Tipo: 1      Sent: 2

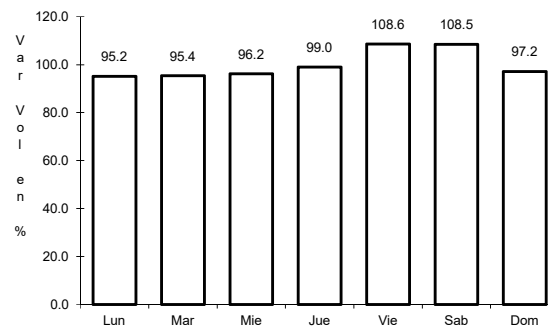
34 CARR: Libramiento de Linares

CLAVE: 19506

ruta: NL



Km: 0.00      Tipo: 3      Sent: 0

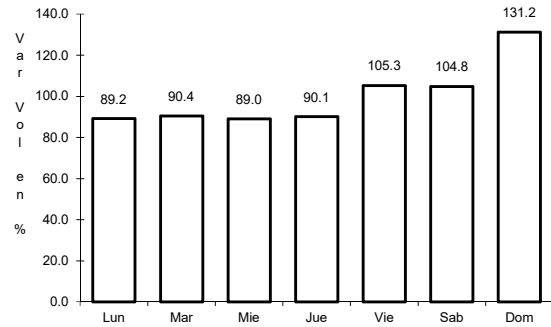


Km: 2.00      Tipo: 3      Sent: 0

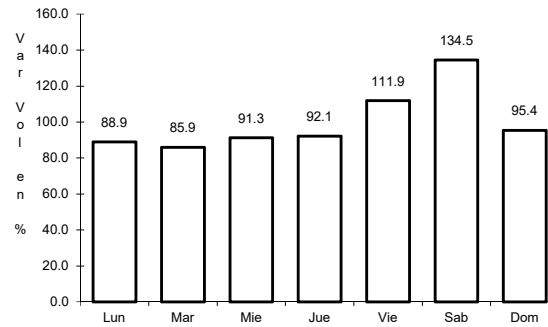
35 CARR: Libramiento de Montemorelos

CLAVE: 19492

RUTA: NL



Km: 0.00      Tipo: 3      Sent: 1

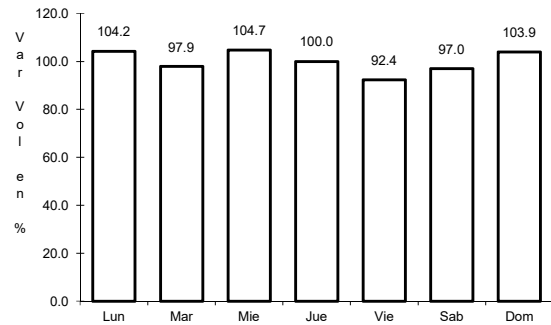


Km: 0.00      Tipo: 3      Sent: 2

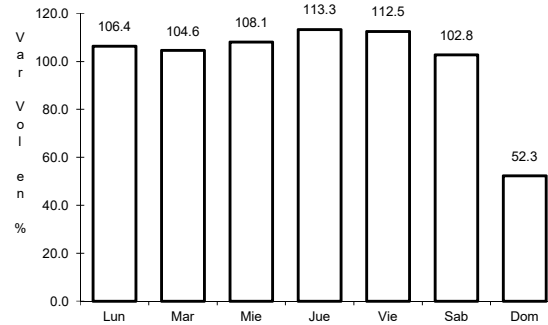
36 CARR: Libramiento de Sabinas Hidalgo

CLAVE: 19492

RUTA: NL



Km: 0.00      Tipo: 3      Sent: 0

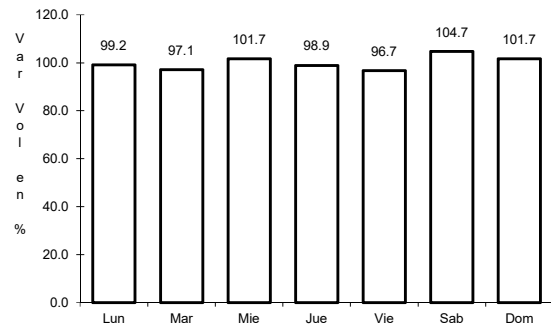


Km: 9.20      Tipo: 1      Sent: 0

37 CARR: Libramiento Poniente de Cadereyta

CLAVE: 19085

RUTA: NL

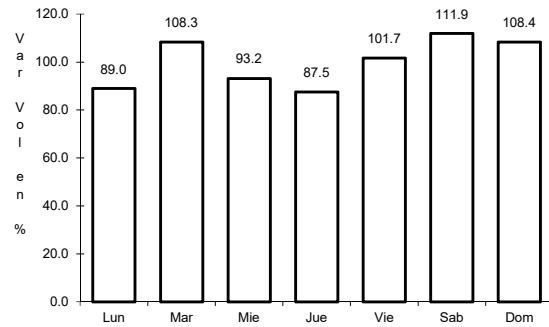


Km: 0.00      Tipo: 3      Sent: 0

38 CARR: Los Guerra - Los Herreras

CLAVE: 19031

ruta: TAM-NL



Km: 73.00

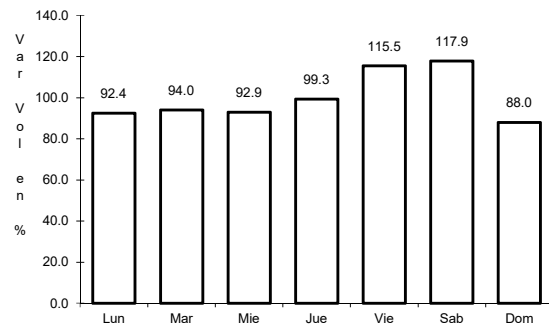
Tipo: 1

Sent: 0

39 CARR: Matchuala - La Poza

CLAVE: 00086

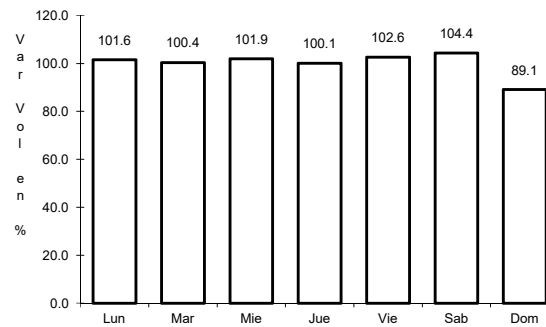
ruta: SLP-029-NL-061



Km: 0.00

Tipo: 3

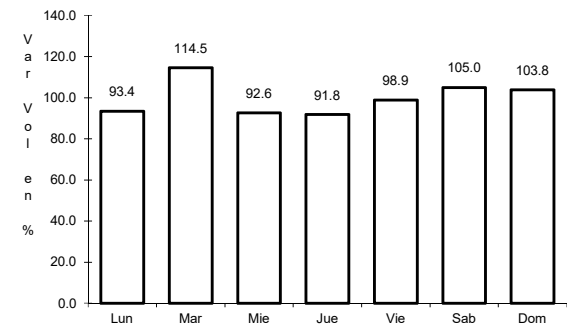
Sent: 0



Km: 49.00

Tipo: 1

Sent: 0



Km: 131.00

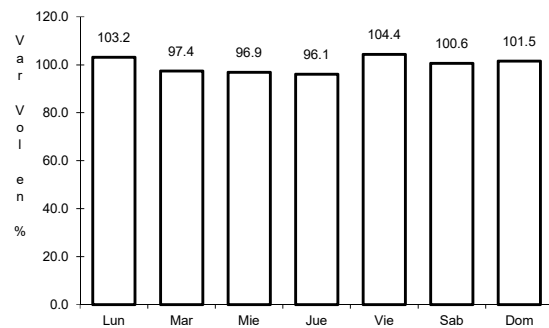
Tipo: 1

Sent: 0

40 CARR: Monclova - Estación Candela

CLAVE: 00501

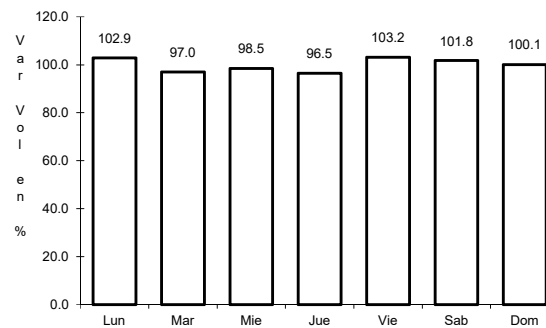
ruta: COA-030-NL



Km: 5.10

Tipo: 1

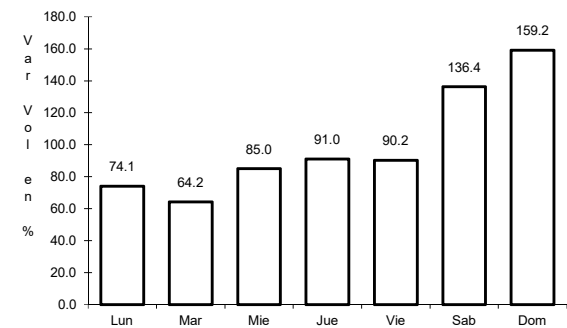
Sent: 1



Km: 5.10

Tipo: 1

Sent: 2



Km: 125.50

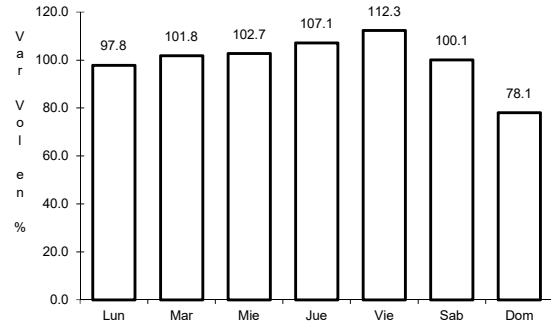
Tipo: 1

Sent: 0

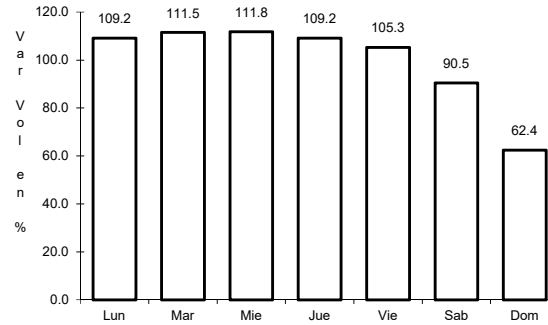
41 CARR: Monterrey - Colombia

CLAVE: 19001

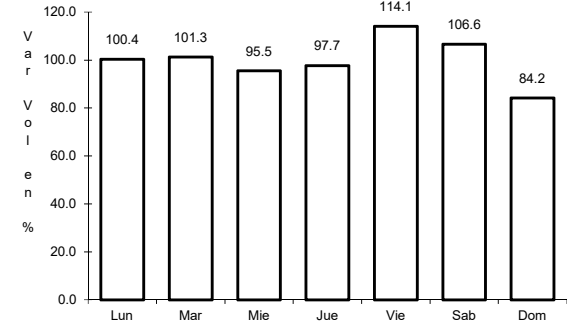
RUTA: NL-001



Km: 0.00      Tipo: 3      Sent: 1



Km: 0.00      Tipo: 3      Sent: 2

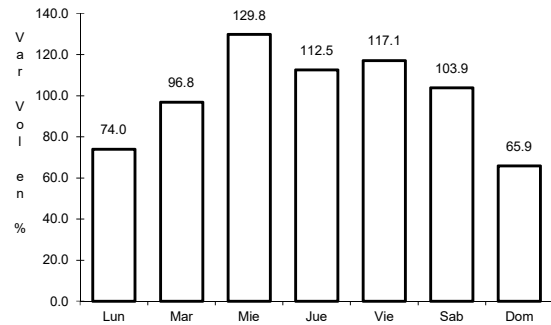


Km: 124.04      Tipo: 1      Sent: 0

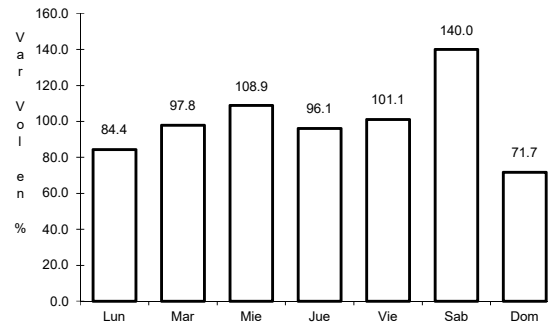
42 CARR: Palo Alto - Vallecillos

CLAVE: 19036

RUTA: NL



Km: 0.00      Tipo: 3      Sent: 0

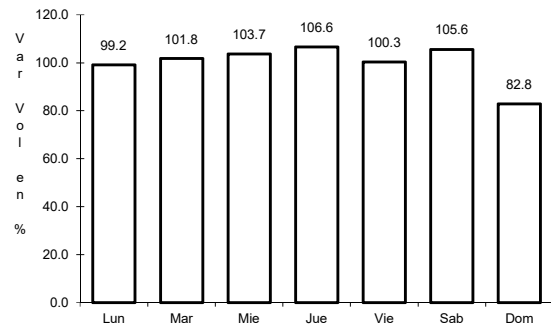


Km: 43.00      Tipo: 1      Sent: 0

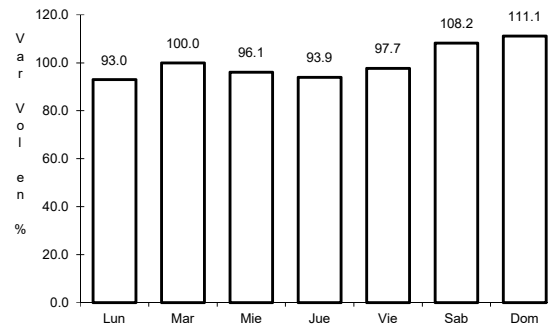
43 CARR: Peña Blanca - Cd. Camargo

CLAVE: 00102

RUTA: NL-TAM



Km: 0.00      Tipo: 3      Sent: 0

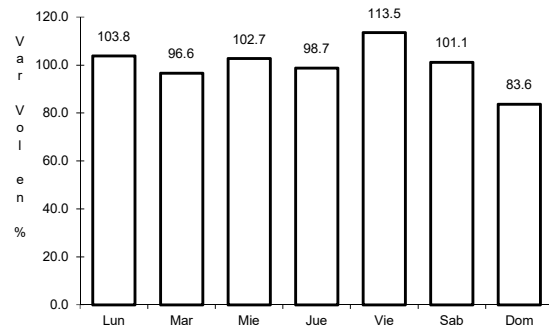


Km: 65.00      Tipo: 1      Sent: 0

44 CARR: Ramal a 18 de Marzo

CLAVE: 19475

RUTA: NL



Km: 0.00

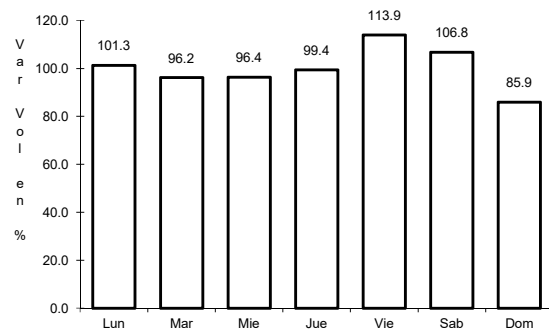
Tipo: 3

Sent: 0

45 CARR: Ramal a Cerralvo

CLAVE: 19013

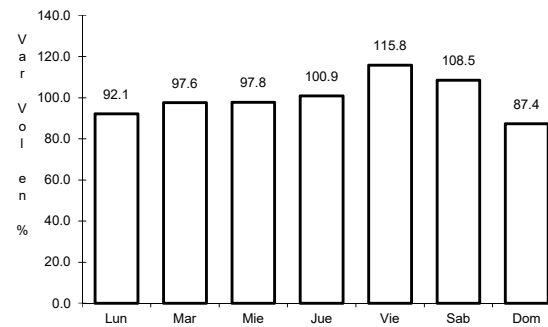
RUTA: NL-013



Km: 0.00

Tipo: 3

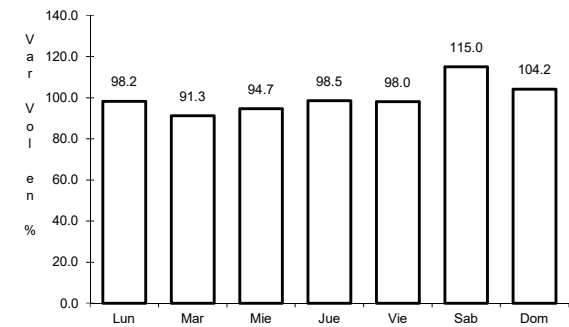
Sent: 0



Km: 21.00

Tipo: 3

Sent: 0



Km: 58.00

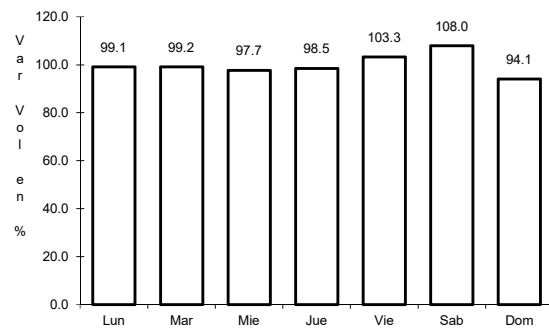
Tipo: 1

Sent: 0

46 CARR: Ramal a Marín

CLAVE: 19007

RUTA: NL



Km: 0.00

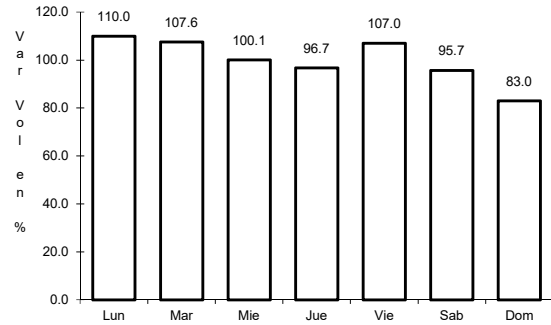
Tipo: 3

Sent: 0

47 CARR: Salinas Victoria - Ciénega de Flores

CLAVE: 19007

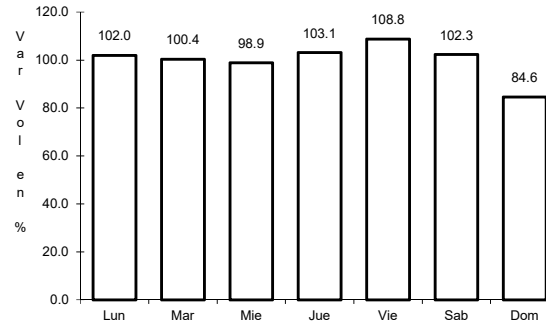
RUTA: NL



Km: 0.00

Tipo: 3

Sent: 0



Km: 6.00

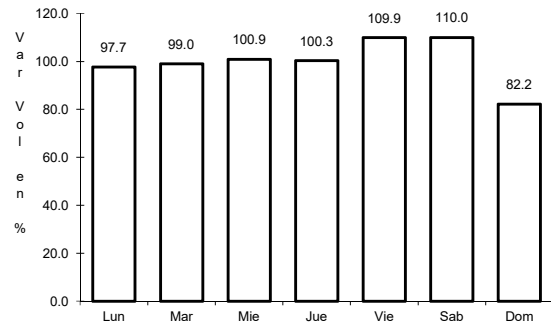
Tipo: 1

Sent: 0

48 CARR: Santa Rosa - Mezquital

CLAVE: 00087

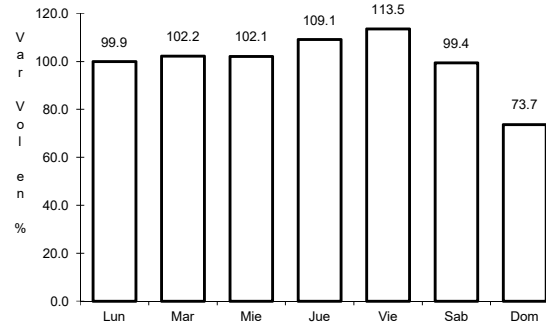
RUTA: NL



Km: 0.00

Tipo: 3

Sent: 1



Km: 0.00

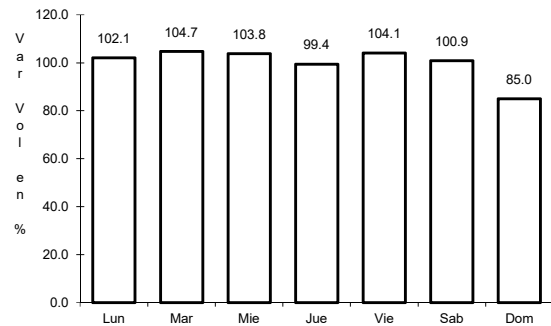
Tipo: 3

Sent: 2

49 CARR: Santa Rosa - Salinas Victoria

CLAVE: 19037

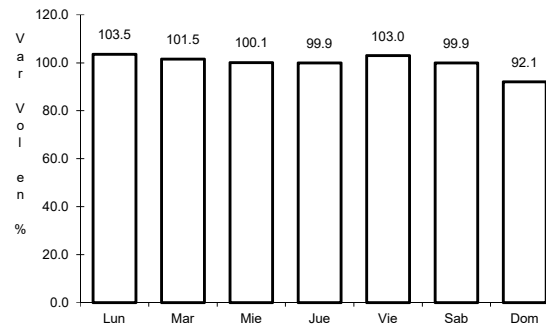
RUTA: NL



Km: 0.00

Tipo: 3

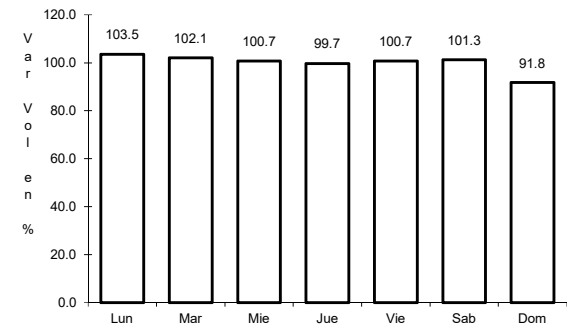
Sent: 0



Km: 13.85

Tipo: 1

Sent: 1



Km: 13.85

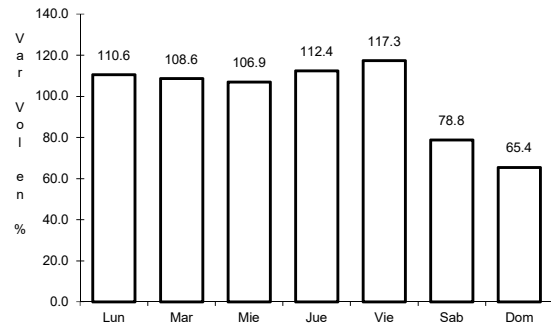
Tipo: 1

Sent: 2

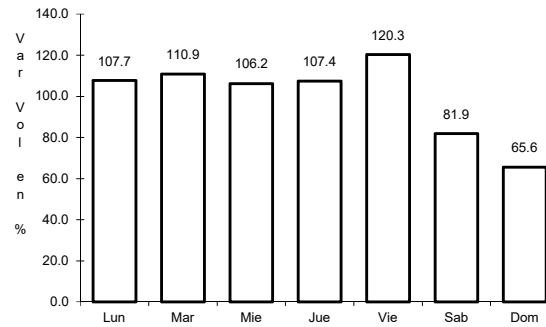
50 CARR: Aeropuerto de Monterrey (Cuota)

CLAVE:

RUTA: NL-D



Km: 3.10      Tipo: 3      Sent: 1

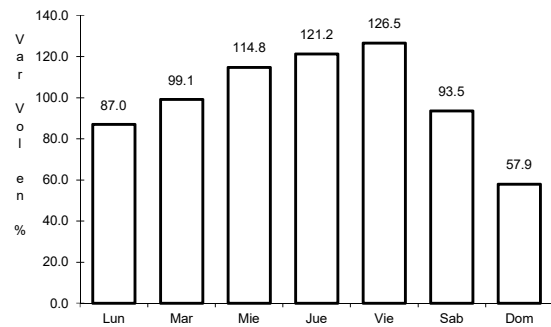


Km: 3.10      Tipo: 3      Sent: 2

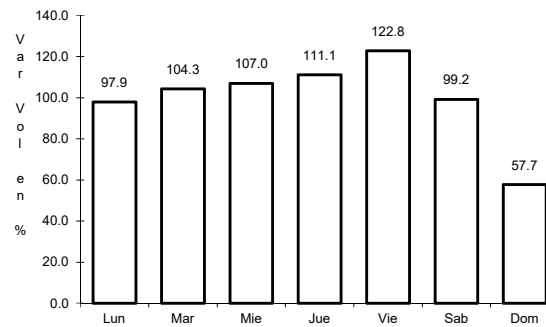
51 CARR: Anillo Periférico de Monterrey (Cuota)

CLAVE: 19004

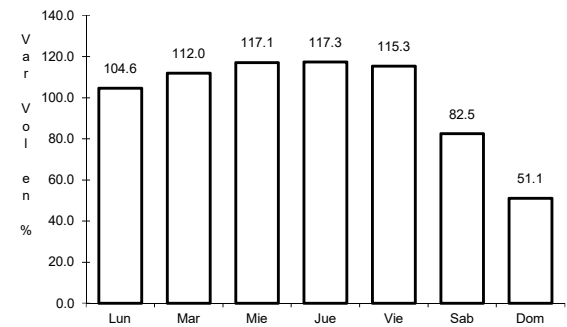
RUTA: NL-D



Km: 0.00      Tipo: 3      Sent: 1



Km: 0.00      Tipo: 3      Sent: 2

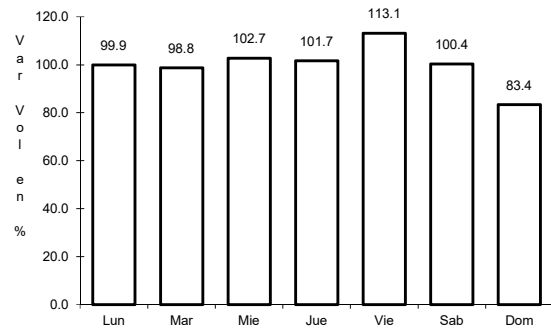


Km: 49.30      Tipo: 1      Sent: 1

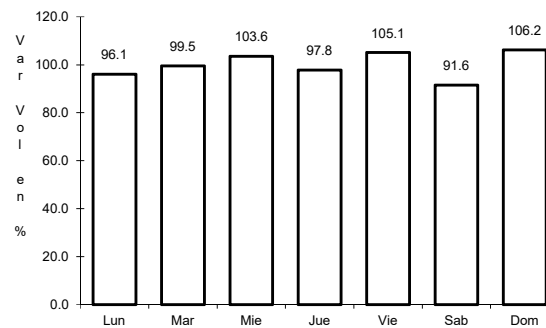
52 CARR: Monterrey - Cadereyta (Cuota)

CLAVE: 19281

RUTA: NL-D



Km: 12.50      Tipo: 1      Sent: 1



Km: 12.50      Tipo: 1      Sent: 2

