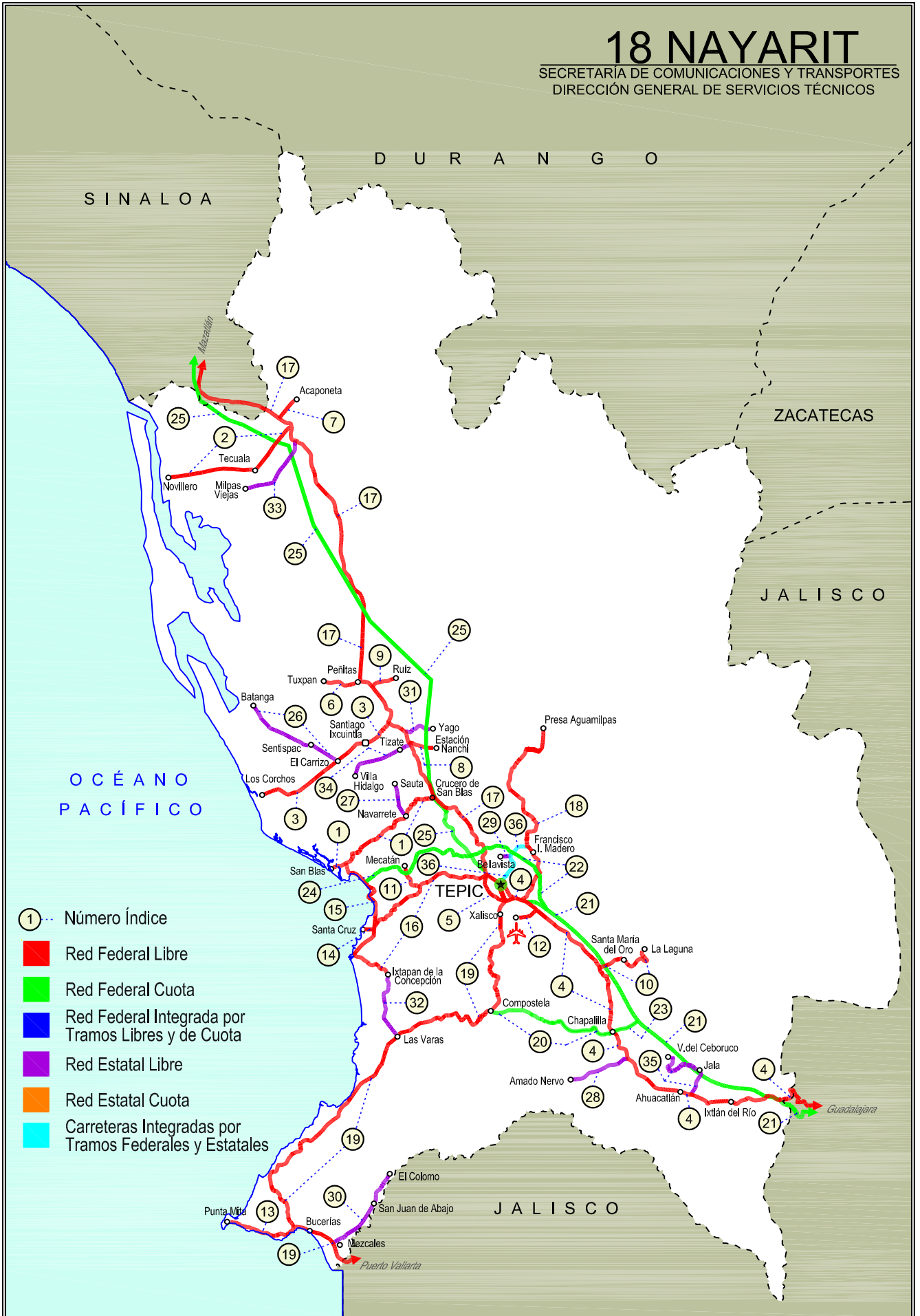


18 NAYARIT

SECRETARÍA DE COMUNICACIONES Y TRANSPORTES
DIRECCIÓN GENERAL DE SERVICIOS TÉCNICOS



- ① Número Índice
- Red Federal Libre
- Red Federal Cuota
- Red Federal Integrada por Tramos Libres y de Cuota
- Red Estatal Libre
- Red Estatal Cuota
- Carreteras Integradas por Tramos Federales y Estatales



NAYARIT

---RED FEDERAL LIBRE---

1	Crucero de San Blas - San Blas	MEX-015
2	Ent. Acaponeta - El Novillero	MEX-015
3	Ent. Santiago Ixcuintla - Playa Los Corchos	MEX-015
4	Guadalajara - Tepic	MEX-015
5	Libramiento de Tepic	MEX-015
6	Peñitas - Tuxpan	MEX-015
7	Ramal a Acaponeta	MEX-015
8	Ramal a Estación Nanchi	MEX-015
9	Ramal a Estación Ruiz	MEX-015
10	Ramal a La Laguna de Santa María	MEX-015
11	Ramal a Mecatán	MEX-015
12	Ramal a Nuevo Aeropuerto de Tepic	MEX-015
13	Ramal a Punta Mita	MEX-200
14	Ramal a Santa Cruz	MEX-015
15	Santa Cruz - San Blas	MEX-015
16	Tepic - Ixtapan de La Concepción	MEX-015
17	Tepic - Mazatlán	MEX-015
18	Tepic - Presa Aguamilpa	MEX-015
19	Tepic - Puerto Vallarta	MEX-200

---RED FEDERAL DE CUOTA---

20	Chapalilla - Compostela (Cuota)	MEX-068D
21	Guadalajara - Tepic (Cuota)	MEX-015D
22	Libramiento de Tepic (Cuota)	MEX-015D
23	Ramal a Tequepexpan	MEX-015D
24	Tepic - San Blas (Cuota)	MEX-D
25	Tepic - Villa Unión (cuota)	MEX-015D

---RED ESTATAL LIBRE---

26	El Carrizo - La Batanga	NAY-078
27	Navarrete - Sauta	NAY-013
28	Ramal a Amado Nervo	NAY
29	Ramal a Bellavista	NAY-059
30	Ramal a El Colomo	NAY
31	Ramal a Estación Yago	NAY
32	Ramal a Ixtapan de La Concepción	NAY
33	Ramal a Milpas Viejas	NAY
34	Ramal a Villa Hidalgo	NAY
35	Ramal a Volcán del Ceboruco	NAY

---CARRETERAS INTEGRADAS POR TRAMOS FEDERALES Y ESTATALES---

36	Tepic - Francisco I. Madero	NAY-MEX
----	-----------------------------	---------

NAYARIT

1 CARR: Crucero de San Blas - San Blas

CLAVE: 18229

RUTA: MEX-015

AÑO: 2018

LUGAR	ESTACION				CLASIFICACION VEHICULAR EN PORCIENTO													COORDENADAS		
	KM	TE	SC	TDPA	M	A	B	C2	C3	T3S2	T3S3	T3S2R4	OTROS	A	B	C	K'	D	LATITUD	LONGITUD
T. C. Tepic - Mazatlán	0.00	3	0	1465	7.5	78.5	1.0	9.6	3.1	0.2	0.1	0.0	0.0	86.0	1.0	13.0	0.097	0.511	21.691364	-105.055122
Navarrete	11.00	3	0	1829	19.9	68.0	1.0	9.8	1.2	0.1	0.0	0.0	0.0	87.9	1.0	11.1	0.093	0.522	21.646509	-105.124695
San Blas	36.00	1	0	5384	15.7	74.8	0.5	7.6	0.4	0.4	0.3	0.1	0.2	90.5	0.5	9.0	0.138	0.502	21.544554	-105.270411

2 CARR: Ent. Acaponeta - El Novillero

CLAVE: 18023

RUTA: MEX-015

AÑO: 2018

LUGAR	ESTACION				CLASIFICACION VEHICULAR EN PORCIENTO													COORDENADAS		
	KM	TE	SC	TDPA	M	A	B	C2	C3	T3S2	T3S3	T3S2R4	OTROS	A	B	C	K'	D	LATITUD	LONGITUD
T. C. Tepic - Mazatlán	0.00	3	0	4622	18.2	63.7	2.4	14.3	0.7	0.2	0.2	0.2	0.1	81.9	2.4	15.7	0.085	0.501	22.486373	-105.385443
Tecuala	13.00	1	0	5832	18.8	65.3	1.6	13.3	0.8	0.1	0.1	0.0	0.0	84.1	1.6	14.3	0.071	0.519	22.419409	-105.444153
Tecuala	13.00	3	0	5473	22.9	66.9	0.3	9.5	0.2	0.1	0.1	0.0	0.0	89.8	0.3	9.9	0.065	0.516	22.399503	-105.486890
El Novillero	36.00	1	0	1890	17.2	76.1	0.6	5.6	0.5	0.0	0.0	0.0	0.0	93.3	0.6	6.1	0.092	0.601	22.382748	-105.657577

3 CARR: Ent. Santiago Ixcuintla - Playa Los Corchos

CLAVE: 18016

RUTA: MEX-015

AÑO: 2018

LUGAR	ESTACION				CLASIFICACION VEHICULAR EN PORCIENTO													COORDENADAS		
	KM	TE	SC	TDPA	M	A	B	C2	C3	T3S2	T3S3	T3S2R4	OTROS	A	B	C	K'	D	LATITUD	LONGITUD
T. C. Tepic - Mazatlán	0.00	3	1	3067	7.3	81.3	1.2	8.2	1.2	0.5	0.2	0.1	0.0	88.6	1.2	10.2	0.067	0.511	21.846803	-105.159730
T. C. Tepic - Mazatlán	0.00	3	2	2932	5.1	83.9	1.2	7.5	1.4	0.5	0.2	0.1	0.1	89.0	1.2	9.8	0.075	0.511	21.846679	-105.159719
Santiago Ixcuintla	8.00	1	1	4795	15.1	79.5	0.5	3.2	1.0	0.4	0.2	0.1	0.0	94.6	0.5	4.9	0.065	0.502	21.822838	-105.183929
Santiago Ixcuintla	8.00	1	2	4837	14.9	79.9	0.6	2.8	1.1	0.5	0.2	0.0	0.0	94.8	0.6	4.6	0.059	0.502	21.822721	-105.183869
Santiago Ixcuintla	8.00	3	0	10009	18.5	74.5	0.4	5.7	0.6	0.1	0.2	0.0	0.0	93.0	0.4	6.6	0.069	0.511	21.809095	-105.222996
T. Der. Mexcaltitán	17.00	1	0	7153	18.7	72.9	0.5	6.2	0.7	0.3	0.5	0.1	0.1	91.6	0.5	7.9	0.082	0.507	21.774050	-105.270347
T. Der. Mexcaltitán	17.00	3	0	3915	15.2	76.0	0.4	7.2	1.0	0.1	0.1	0.0	0.0	91.2	0.4	8.4	0.109	0.505	21.770429	-105.275230
Playa Los Corchos	39.00	1	0	1171	18.8	74.3	0.1	6.5	0.3	0.0	0.0	0.0	0.0	93.1	0.1	6.8	0.225	0.508	21.697404	-105.449210

4 CARR: Guadalajara - Tepic

CLAVE: 00031

RUTA: MEX-015

AÑO: 2018

LUGAR	ESTACION				CLASIFICACION VEHICULAR EN PORCIENTO													COORDENADAS		
	KM	TE	SC	TDPA	M	A	B	C2	C3	T3S2	T3S3	T3S2R4	OTROS	A	B	C	K'	D	LATITUD	LONGITUD
Guadalajara	0.00																			
T. Der. Base Aérea No. 2	8.30	3	1	35047	1.4	78.9	2.4	9.0	1.9	4.1	1.2	0.9	0.2	80.3	2.4	17.3	0.081	0.508	20.713053	-103.469800
T. Der. Base Aérea No. 2	8.30	3	2	36176	1.3	78.9	2.6	8.1	2.0	4.3	1.5	1.0	0.3	80.2	2.6	17.2	0.080	0.508	20.712941	-103.469959
T. Izq. La Primavera	20.50	1	1	23888	1.7	72.6	3.3	8.5	2.7	6.6	2.6	1.9	0.1	74.3	3.3	22.4	0.100	0.502	20.727859	-103.550913
T. Izq. La Primavera	20.50	1	2	24113	1.4	73.0	2.0	8.1	3.4	6.8	3.2	2.0	0.1	74.4	2.0	23.6	0.099	0.502	20.727728	-103.550955

NAYARIT

4 CARR: Guadalajara - Tepic

CLAVE: 00031

RUTA: MEX-015

AÑO: 2018

LUGAR	ESTACION				CLASIFICACION VEHICULAR EN PORCIENTO										COORDENADAS					
	KM	TE	SC	TDPA	M	A	B	C2	C3	T3S2	T3S3	T3S2R4	OTROS	A	B	C	K'	D	LATITUD	LONGITUD
El Arenal	36.20	1	1	7585	2.4	79.7	1.6	9.2	2.3	3.4	1.2	0.1	0.1	82.1	1.6	16.3	0.087	0.502	20.771733	-103.684154
El Arenal	36.20	1	2	7635	2.6	77.5	1.7	10.4	2.7	3.6	1.3	0.1	0.1	80.1	1.7	18.2	0.069	0.502	20.771683	-103.684223
Tequila	57.50	3	0	7941	4.5	72.5	2.1	10.3	2.4	6.2	1.4	0.1	0.5	77.0	2.1	20.9	0.067	0.515	20.896763	-103.836448
Magdalena	76.80	3	0	5433	4.3	75.5	1.6	9.6	2.1	4.9	1.3	0.2	0.5	79.8	1.6	18.6	0.081	0.521	20.921587	-103.995769
Lim. Edos. Term. Jal. Ppia. Nay.	123.09																			
Ixtlán del Río	138.84	1	0	3750	1.3	75.5	3.6	10.4	2.5	5.6	1.1	0.0	0.0	76.8	3.6	19.6	0.051	0.518	21.033394	-104.348524
Ixtlán del Río	138.84	3	0	9455	2.0	72.0	4.2	10.6	3.2	6.1	1.8	0.0	0.1	74.0	4.2	21.8	0.081	0.518	21.037139	-104.392222
Ahuacatlán	152.00	1	0	8548	2.9	69.7	4.5	13.2	3.2	4.6	1.7	0.0	0.2	72.6	4.5	22.9	0.066	0.532	21.052430	-104.472829
Ahuacatlán	152.00	3	0	7729	3.7	70.3	2.6	11.1	5.7	5.2	1.2	0.0	0.2	74.0	2.6	23.4	0.080	0.522	21.059437	-104.500038
T. Izq. Amado Nervo	167.32	1	0	5893	2.7	68.9	3.4	12.8	4.6	5.8	1.5	0.0	0.3	71.6	3.4	25.0	0.064	0.525	21.129061	-104.601626
T. Izq. Compostela	175.50	1	0	9616	3.7	68.4	4.5	9.4	4.5	7.6	1.7	0.0	0.2	72.1	4.5	23.4	0.057	0.503	21.189983	-104.637860
T. Izq. Compostela	175.50	3	0	5889	3.4	64.2	3.5	10.5	7.1	8.5	2.5	0.0	0.3	67.6	3.5	28.9	0.044	0.518	21.197833	-104.645778
T. Der. Santa María del Oro	196.00	1	0	4977	2.2	67.3	3.1	8.8	6.6	8.8	2.7	0.0	0.5	69.5	3.1	27.4	0.064	0.532	21.324412	-104.669749
T. Der. Santa María del Oro	196.00	3	0	6282	2.5	70.9	3.3	9.6	5.8	5.9	1.8	0.0	0.2	73.4	3.3	23.3	0.076	0.505	21.334780	-104.676943
T. Izq. Aeropuerto de Tepic	215.68	1	0	11884	4.0	74.4	1.8	7.3	5.7	4.1	1.6	0.4	0.7	78.4	1.8	19.8	0.064	0.517	21.446139	-104.810714
San Cayetano	215.90	3	1	8526	4.5	79.8	1.2	7.7	3.4	2.2	0.9	0.1	0.2	84.3	1.2	14.5	0.079	0.534	21.458701	-104.826019
San Cayetano	215.90	3	2	8565	4.5	79.7	1.1	7.4	4.0	2.2	0.9	0.1	0.1	84.2	1.1	14.7	0.081	0.534	21.458467	-104.825892
T. Izq. Libramiento de Tepic (Central)	219.10	1	1	14894	2.8	76.8	3.3	6.3	3.8	4.4	1.3	0.8	0.5	79.6	3.3	17.1	0.070	0.535	21.467798	-104.840761
T. Izq. Libramiento de Tepic (Lateral)	219.10	1	1	1815	2.1	79.5	1.4	9.3	3.1	2.1	1.2	0.7	0.6	81.6	1.4	17.0	0.076	0.682	21.467917	-104.840694
T. Izq. Libramiento de Tepic (Central)	219.10	1	2	12920	2.9	75.3	3.4	6.9	3.9	4.7	1.5	0.9	0.5	78.2	3.4	18.4	0.077	0.535	21.467737	-104.840790
T. Izq. Libramiento de Tepic (Lateral)	219.10	1	2	4518	4.3	75.8	1.5	10.3	3.3	2.4	1.1	0.7	0.6	80.1	1.5	18.4	0.067	0.682	21.467634	-104.840845
T. Izq. Libramiento de Tepic	219.10	3	1	20810	4.3	83.1	1.6	5.1	2.9	1.3	1.1	0.3	0.3	87.4	1.6	11.0	0.069	0.518	21.470187	-104.847602
T. Izq. Libramiento de Tepic	219.10	3	2	22358	3.8	82.0	1.9	5.7	3.4	1.4	1.2	0.3	0.3	85.8	1.9	12.3	0.074	0.518	21.470107	-104.847644
Tepic (Central)	224.80	1	1	21224	5.1	76.7	2.1	8.2	2.1	2.2	2.2	1.3	0.1	81.8	2.1	16.1	0.061	0.521	21.472173	-104.853329
Tepic (Lateral)	224.80	1	1	9771	5.2	79.7	1.5	3.4	2.2	3.6	2.6	0.9	0.9	84.9	1.5	13.6	0.066	0.549	21.472259	-104.853286
Tepic (Lateral)	224.80	1	2	8012	6.5	76.7	1.7	3.7	2.5	4.1	2.9	0.9	1.0	83.2	1.7	15.1	0.059	0.549	21.472015	-104.853316
Tepic (Central)	224.80	1	2	19541	4.2	76.3	2.2	8.5	2.4	2.6	2.3	1.4	0.1	80.5	2.2	17.3	0.058	0.521	21.472106	-104.853361

5 CARR: Libramiento de Tepic

CLAVE: 18232

RUTA: MEX-015

AÑO: 2018

LUGAR	ESTACION				CLASIFICACION VEHICULAR EN PORCIENTO										COORDENADAS					
	KM	TE	SC	TDPA	M	A	B	C2	C3	T3S2	T3S3	T3S2R4	OTROS	A	B	C	K'	D	LATITUD	LONGITUD
T. C. Guadalajara - Tepic	0.00																			
X. C. Tepic - Puerto Vallarta	5.00	1	1	31166	4.1	83.5	1.4	4.7	2.6	0.7	1.4	0.8	0.8	87.6	1.4	11.0	0.072	0.510	21.467782	-104.883641
X. C. Tepic - Puerto Vallarta	5.00	1	2	29958	3.8	82.0	1.6	5.3	3.0	0.9	1.5	0.9	1.0	85.8	1.6	12.6	0.058	0.510	21.467521	-104.883776

NAYARIT

5 CARR: Libramiento de Tepic

CLAVE: 18232

RUTA: MEX-015

AÑO: 2018

LUGAR	ESTACION				CLASIFICACION VEHICULAR EN PORCIENTO										COORDENADAS					
	KM	TE	SC	TDPA	M	A	B	C2	C3	T3S2	T3S3	T3S2R4	OTROS	A	B	C	K'	D	LATITUD	LONGITUD
T. C. Tepic - Mazatlán	18.80	1	1	16312	4.6	80.3	2.3	6.1	2.3	2.9	0.8	0.6	0.1	84.9	2.3	12.8	0.062	0.501	21.517888	-104.925120
T. C. Tepic - Mazatlán	18.80	1	2	16396	3.4	78.7	2.9	7.5	2.1	3.4	1.1	0.7	0.2	82.1	2.9	15.0	0.079	0.501	21.518096	-104.925378

6 CARR: Peñitas - Tuxpan

CLAVE: 18019

RUTA: MEX-015

AÑO: 2018

LUGAR	ESTACION				CLASIFICACION VEHICULAR EN PORCIENTO										COORDENADAS					
	KM	TE	SC	TDPA	M	A	B	C2	C3	T3S2	T3S3	T3S2R4	OTROS	A	B	C	K'	D	LATITUD	LONGITUD
Peñitas	0.00	3	0	7320	15.3	73.7	1.1	8.8	0.8	0.2	0.1	0.0	0.0	89.0	1.1	9.9	0.071	0.502	21.942244	-105.227780
Tuxpan	9.00	1	0	8144	16.7	75.8	0.5	6.5	0.3	0.1	0.1	0.0	0.0	92.5	0.5	7.0	0.084	0.527	21.942635	-105.277972

7 CARR: Ramal a Acaponeta

CLAVE: 18038

RUTA: MEX-015

AÑO: 2018

LUGAR	ESTACION				CLASIFICACION VEHICULAR EN PORCIENTO										COORDENADAS					
	KM	TE	SC	TDPA	M	A	B	C2	C3	T3S2	T3S3	T3S2R4	OTROS	A	B	C	K'	D	LATITUD	LONGITUD
T. C. Tepic - Mazatlán	0.00	3	1	6533	14.5	77.0	0.4	6.9	0.7	0.3	0.1	0.1	0.0	91.5	0.4	8.1	0.082	0.517	22.489603	-105.381014
T. C. Tepic - Mazatlán	0.00	3	2	6995	14.9	76.0	0.4	7.4	0.8	0.3	0.1	0.1	0.0	90.9	0.4	8.7	0.087	0.517	22.489801	-105.381092
Acaponeta	3.00																			

8 CARR: Ramal a Estación Nanchi

CLAVE: 18068

RUTA: MEX-015

AÑO: 2018

LUGAR	ESTACION				CLASIFICACION VEHICULAR EN PORCIENTO										COORDENADAS					
	KM	TE	SC	TDPA	M	A	B	C2	C3	T3S2	T3S3	T3S2R4	OTROS	A	B	C	K'	D	LATITUD	LONGITUD
T. C. Tepic - Mazatlán	0.00	3	0	1002	17.6	71.5	0.6	8.6	1.1	0.5	0.1	0.0	0.0	89.1	0.6	10.3	0.078	0.503	21.810401	-105.098341
Estación Nanchi	5.00																			

9 CARR: Ramal a Estación Ruíz

CLAVE: 18026

RUTA: MEX-015

AÑO: 2018

LUGAR	ESTACION				CLASIFICACION VEHICULAR EN PORCIENTO										COORDENADAS					
	KM	TE	SC	TDPA	M	A	B	C2	C3	T3S2	T3S3	T3S2R4	OTROS	A	B	C	K'	D	LATITUD	LONGITUD
T. C. Tepic - Mazatlán	0.00	3	0	4898	9.0	78.6	0.5	9.8	1.8	0.2	0.1	0.0	0.0	87.6	0.5	11.9	0.081	0.502	21.935250	-105.190114
Estación Ruíz	5.50	1	0	5777	9.0	80.1	0.3	8.8	1.0	0.6	0.1	0.0	0.1	89.1	0.3	10.6	0.077	0.520	21.943087	-105.168353

NAYARIT

10 CARR: Ramal a La Laguna de Santa María

CLAVE: 18005

RUTA: MEX-015

AÑO: 2018

LUGAR	ESTACION				CLASIFICACION VEHICULAR EN PORCIENTO										COORDENADAS					
	KM	TE	SC	TDPA	M	A	B	C2	C3	T3S2	T3S3	T3S2R4	OTROS	A	B	C	K'	D	LATITUD	LONGITUD
T. C. Guadalajara - Tepic	0.00	3	0	3386	2.8	79.2	1.5	11.0	4.0	0.8	0.4	0.1	0.2	82.0	1.5	16.5	0.079	0.507	21.326889	-104.668611
Santa María del Oro	11.50	1	1	2184	7.0	82.7	0.3	8.1	1.0	0.3	0.2	0.1	0.3	89.7	0.3	10.0	0.102	0.512	21.326306	-104.594889
Santa María del Oro	11.50	1	2	2078	7.3	81.9	0.3	8.6	1.0	0.3	0.2	0.1	0.3	89.2	0.3	10.5	0.090	0.512	21.326356	-104.594919
Laguna de Santa María	20.00	1	0	905	9.3	83.6	0.2	6.2	0.3	0.3	0.1	0.0	0.0	92.9	0.2	6.9	0.274	0.509	21.360260	-104.570600

11 CARR: Ramal a Mecatán

CLAVE: 18010

RUTA: MEX-015

AÑO: 2018

LUGAR	ESTACION				CLASIFICACION VEHICULAR EN PORCIENTO										COORDENADAS					
	KM	TE	SC	TDPA	M	A	B	C2	C3	T3S2	T3S3	T3S2R4	OTROS	A	B	C	K'	D	LATITUD	LONGITUD
T. C. (Tepic - Mazatlán) - Ixtapan de La Concepción	0.00	3	0	1169	7.2	80.2	0.1	10.2	1.2	1.0	0.1	0.0	0.0	87.4	0.1	12.5	0.054	0.507	21.500249	-105.084709
Mecatán	9.00																			

12 CARR: Ramal a Nuevo Aeropuerto de Tepic

CLAVE: 18012

RUTA: MEX-015

AÑO: 2018

LUGAR	ESTACION				CLASIFICACION VEHICULAR EN PORCIENTO										COORDENADAS					
	KM	TE	SC	TDPA	M	A	B	C2	C3	T3S2	T3S3	T3S2R4	OTROS	A	B	C	K'	D	LATITUD	LONGITUD
T. C. Guadalajara - Tepic	0.00	3	0	5037	4.9	84.1	0.7	7.6	2.4	0.3	0.0	0.0	0.0	89.0	0.7	10.3	0.076	0.545	21.445974	-104.818563
Aeropuerto de Tepic	5.00																			

13 CARR: Ramal a Punta Mita

CLAVE: 18020

RUTA: MEX-200

AÑO: 2018

LUGAR	ESTACION				CLASIFICACION VEHICULAR EN PORCIENTO										COORDENADAS					
	KM	TE	SC	TDPA	M	A	B	C2	C3	T3S2	T3S3	T3S2R4	OTROS	A	B	C	K'	D	LATITUD	LONGITUD
T. C. Tepic - Puerto Vallarta	0.00	3	0	18876	5.5	85.3	0.6	8.0	0.4	0.1	0.1	0.0	0.0	90.8	0.6	8.6	0.065	0.516	20.758375	-105.375436
San Ignacio	9.00	3	0	6358	5.4	79.7	2.2	11.8	0.8	0.0	0.1	0.0	0.0	85.1	2.2	12.7	0.090	0.507	20.758218	-105.463450
Punta Mita	18.00																			

14 CARR: Ramal a Santa Cruz

CLAVE: 18030

RUTA: MEX-015

AÑO: 2018

LUGAR	ESTACION				CLASIFICACION VEHICULAR EN PORCIENTO										COORDENADAS					
	KM	TE	SC	TDPA	M	A	B	C2	C3	T3S2	T3S3	T3S2R4	OTROS	A	B	C	K'	D	LATITUD	LONGITUD
T. C. Tepic - Ixtapan de La Concepción	0.00																			
Santa Cruz	1.30	1	0	2692	18.7	72.9	0.1	8.2	0.1	0.0	0.0	0.0	0.0	91.6	0.1	8.3	0.104	0.550	21.433231	-105.190583

NAYARIT

15 CARR: Santa Cruz - San Blas

CLAVE: 18230

RUTA: MEX-015

AÑO: 2018

LUGAR	ESTACION				CLASIFICACION VEHICULAR EN PORCIENTO										COORDENADAS					
	KM	TE	SC	TDPA	M	A	B	C2	C3	T3S2	T3S3	T3S2R4	OTROS	A	B	C	K'	D	LATITUD	LONGITUD
Santa Cruz	0.00	3	0	3651	9.6	76.6	0.5	12.6	0.4	0.3	0.0	0.0	0.0	86.2	0.5	13.3	0.068	0.526	21.436061	-105.186706
Playa Los Cocos	3.90	1	0	4057	14.5	76.7	0.5	7.0	0.4	0.6	0.2	0.1	0.0	91.2	0.5	8.3	0.098	0.503	21.462259	-105.187842
Aticama	5.00	3	0	4215	15.1	77.1	0.3	6.4	0.5	0.4	0.2	0.0	0.0	92.2	0.3	7.5	0.132	0.504	21.487843	-105.191389
T. C. Crucero San Blas - San Blas	17.00	1	0	4871	14.9	77.6	0.3	6.3	0.4	0.3	0.2	0.0	0.0	92.5	0.3	7.2	0.158	0.527	21.537454	-105.249166

16 CARR: Tepic - Ixtapan de La Concepción

CLAVE: 18028

RUTA: MEX-015

AÑO: 2018

LUGAR	ESTACION				CLASIFICACION VEHICULAR EN PORCIENTO										COORDENADAS					
	KM	TE	SC	TDPA	M	A	B	C2	C3	T3S2	T3S3	T3S2R4	OTROS	A	B	C	K'	D	LATITUD	LONGITUD
T. C. Tepic - Mazatlán	0.00	3	0	12930	7.8	83.2	0.4	6.9	0.6	0.5	0.3	0.1	0.2	91.0	0.4	8.6	0.090	0.513	21.521490	-104.932235
T. Der. Mecatán	19.00	1	0	1219	5.5	83.2	0.3	8.2	1.8	0.6	0.2	0.0	0.2	88.7	0.3	11.0	0.087	0.508	21.500988	-105.081635
T. Der. Mecatán	19.00	3	0	2567	7.4	80.2	0.3	10.4	1.2	0.4	0.1	0.0	0.0	87.6	0.3	12.1	0.062	0.505	21.497719	-105.082896
Jalcocotán	27.00	1	0	2757	10.1	78.7	0.2	8.8	0.9	1.0	0.2	0.0	0.1	88.8	0.2	11.0	0.057	0.514	21.483876	-105.090475
T. Der. Santa Cruz	50.00	3	0	3077	18.5	68.4	0.5	8.7	0.7	2.4	0.4	0.1	0.3	86.9	0.5	12.6	0.085	0.501	21.423435	-105.183671
Ixtapan de La Concepción	77.42	1	0	1811	16.3	74.1	0.7	7.1	0.7	0.7	0.3	0.0	0.1	90.4	0.7	8.9	0.091	0.502	21.313095	-105.155271

17 CARR: Tepic - Mazatlán

CLAVE: 00499

RUTA: MEX-015

AÑO: 2018

LUGAR	ESTACION				CLASIFICACION VEHICULAR EN PORCIENTO										COORDENADAS					
	KM	TE	SC	TDPA	M	A	B	C2	C3	T3S2	T3S3	T3S2R4	OTROS	A	B	C	K'	D	LATITUD	LONGITUD
Tepic (Alta)	0.00	3	1	11713	2.5	92.4	0.0	0.8	0.0	1.2	2.6	0.3	0.2	94.9	0.0	5.1	0.073	0.500	21.511799	-104.905698
Tepic (Baja)	0.00	3	1	9218	8.7	81.9	0.1	7.4	0.1	0.5	1.1	0.0	0.2	90.6	0.1	9.3	0.068	0.502	21.511868	-104.905618
Tepic (Alta)	0.00	3	2	13129	2.6	91.9	0.0	1.0	0.0	1.3	2.8	0.2	0.2	94.5	0.0	5.5	0.061	0.500	21.511664	-104.905583
Tepic (Baja)	0.00	3	2	9150	7.0	85.2	0.1	5.4	0.1	0.5	1.3	0.1	0.3	92.2	0.1	7.7	0.059	0.502	21.511606	-104.905641
T. Izq. Libramiento de Tepic (Alta)	2.56	1	1	8701	5.1	92.3	0.1	1.9	0.0	0.1	0.4	0.0	0.1	97.4	0.1	2.5	0.076	0.516	21.520981	-104.921343
T. Izq. Libramiento de Tepic (Baja)	2.56	1	1	10084	5.9	83.1	0.4	9.2	0.6	0.3	0.4	0.0	0.1	89.0	0.4	10.6	0.067	0.533	21.521025	-104.921344
T. Izq. Libramiento de Tepic (Alta)	2.56	1	2	9580	4.1	93.0	0.1	2.2	0.0	0.1	0.4	0.0	0.1	97.1	0.1	2.8	0.080	0.516	21.520784	-104.921236
T. Izq. Libramiento de Tepic (Baja)	2.56	1	2	9576	7.3	80.2	0.6	10.5	0.8	0.3	0.2	0.0	0.1	87.5	0.6	11.9	0.063	0.533	21.520719	-104.921275
T. Izq. Aut. Tepic - Ent. San Blas (Cuota)	3.70	3	0	9143	7.7	74.7	2.0	8.7	2.5	3.0	1.1	0.0	0.3	82.4	2.0	15.6	0.057	0.545	21.538514	-104.933961
Los Otates	19.80	3	0	4730	3.1	68.1	3.5	8.1	6.3	7.7	2.6	0.1	0.5	71.2	3.5	25.3	0.068	0.541	21.639992	-104.972604
T. Izq. Jumatán	28.52	1	0	4810	3.3	71.3	3.0	7.6	4.8	7.0	2.6	0.1	0.3	74.6	3.0	22.4	0.062	0.524	21.669610	-105.021688
T. Izq. Jumatán	28.52	3	1	7873	1.7	66.4	5.2	7.1	3.8	10.5	2.2	2.0	1.1	68.1	5.2	26.7	0.072	0.536	21.668109	-105.029568
T. Izq. Jumatán	28.52	3	2	9102	1.1	62.8	5.8	8.3	4.4	11.7	2.4	2.2	1.3	63.9	5.8	30.3	0.079	0.536	21.667962	-105.029549
T. Izq. San Blas	33.54	1	1	7002	2.1	60.8	7.4	11.1	2.8	9.7	2.2	3.2	0.7	62.9	7.4	29.7	0.076	0.501	21.679347	-105.042338
T. Izq. San Blas	33.54	1	2	7038	1.7	57.8	7.5	11.7	3.0	11.3	2.5	3.7	0.8	59.5	7.5	33.0	0.105	0.501	21.679160	-105.042500

NAYARIT

17 CARR: Tepic - Mazatlán

CLAVE: 00499

RUTA: MEX-015

AÑO: 2018

LUGAR	ESTACION				CLASIFICACION VEHICULAR EN PORCIENTO										COORDENADAS					
	KM	TE	SC	TDPA	M	A	B	C2	C3	T3S2	T3S3	T3S2R4	OTROS	A	B	C	K'	D	LATITUD	LONGITUD
T. Izq. San Blas	33.54	3	1	8143	2.3	61.2	5.3	7.7	4.4	12.6	2.2	3.8	0.5	63.5	5.3	31.2	0.056	0.506	21.700530	-105.053411
T. Izq. San Blas	33.54	3	2	7959	1.1	58.0	6.4	8.6	5.0	13.6	2.4	4.2	0.7	59.1	6.4	34.5	0.079	0.506	21.700478	-105.053551
T. Izq. Villa Hidalgo	48.12	1	0	8153	2.3	75.2	2.1	7.8	3.3	5.8	2.5	0.5	0.5	77.5	2.1	20.4	0.060	0.513	21.806574	-105.102574
T. Izq. Villa Hidalgo	48.12	3	0	7954	7.4	65.5	3.3	9.6	4.5	7.3	2.1	0.1	0.2	72.9	3.3	23.8	0.066	0.508	21.808804	-105.103413
T. Izq. Santiago Ixcuintla	56.42	1	0	7846	4.2	69.4	4.5	10.0	3.3	6.2	2.1	0.1	0.2	73.6	4.5	21.9	0.075	0.501	21.852995	-105.150960
T. Izq. Santiago Ixcuintla	56.42	3	0	7073	3.3	71.3	3.1	7.5	4.7	7.5	2.4	0.1	0.1	74.6	3.1	22.3	0.069	0.502	21.859729	-105.155822
T. Izq. Tuxpan	70.60	1	0	8750	4.7	69.3	3.6	10.5	3.2	6.4	2.0	0.1	0.2	74.0	3.6	22.4	0.066	0.501	21.944087	-105.216431
T. Izq. Tuxpan	70.60	3	0	9034	8.8	65.0	3.7	10.4	3.8	6.3	1.8	0.1	0.1	73.8	3.7	22.5	0.059	0.512	21.955437	-105.221530
T. Der. Rosamorada	90.70	3	0	5175	7.7	58.1	5.5	9.0	4.4	12.1	2.9	0.1	0.2	65.8	5.5	28.7	0.060	0.505	22.124542	-105.219541
Tierra Generosa	110.40	1	0	4095	2.2	52.3	7.2	9.7	6.9	17.3	4.2	0.1	0.1	54.5	7.2	38.3	0.052	0.502	22.293438	-105.272928
T. Der. Acaponeta	136.52	1	0	8580	8.4	69.0	2.8	9.3	2.4	6.2	1.6	0.1	0.2	77.4	2.8	19.8	0.066	0.534	22.482371	-105.384618
T. Der. Acaponeta	136.52	3	0	5158	6.9	60.2	4.3	9.2	4.6	11.7	2.8	0.1	0.2	67.1	4.3	28.6	0.076	0.503	22.493695	-105.384247
Lim. Edos. Term. Nay. Ppia. Sin.	144.60																			
Escuinapa de Hidalgo	200.00	1	0	4866	13.5	62.3	3.3	8.4	4.6	5.2	1.7	0.7	0.3	75.8	3.3	20.9	0.063	0.501	22.832603	-105.760716
Escuinapa de Hidalgo	200.00	3	0	5137	4.3	67.9	4.8	9.1	4.4	7.5	1.7	0.1	0.2	72.2	4.8	23.0	0.074	0.511	22.847015	-105.791942
Rosario	221.71	1	0	8071	10.9	70.1	2.9	11.3	2.0	1.8	0.9	0.0	0.1	81.0	2.9	16.1	0.073	0.507	22.997015	-105.851649
Rosario	221.71	3	0	5812	5.3	75.1	2.2	8.5	3.3	4.4	1.1	0.0	0.1	80.4	2.2	17.4	0.073	0.503	23.003237	-105.868439
X. C. Durango - Mazatlán (Cuota)	265.20	1	0	4906	3.0	74.2	3.5	8.8	3.1	5.3	1.2	0.4	0.5	77.2	3.5	19.3	0.077	0.506	23.189947	-106.175582
T. Der. Durango	267.99	1	0	4601	3.7	72.8	3.3	9.2	3.1	5.4	1.5	0.5	0.5	76.5	3.3	20.2	0.078	0.513	23.189427	-106.203895
T. Der. Durango	267.99	3	1	9375	8.3	75.8	2.1	5.8	1.7	2.2	2.1	0.7	1.3	84.1	2.1	13.8	0.081	0.539	23.189327	-106.209875
T. Der. Durango	267.99	3	2	9210	8.8	70.3	2.8	7.9	2.6	3.9	1.6	1.2	0.9	79.1	2.8	18.1	0.076	0.539	23.189216	-106.209871
Villa Unión	269.52	3	1	10785	7.9	73.6	2.6	8.4	3.1	2.6	0.7	0.7	0.4	81.5	2.6	15.9	0.084	0.501	23.190251	-106.222010
Villa Unión	269.52	3	2	10738	7.2	74.8	2.6	8.2	2.4	2.8	0.7	1.0	0.3	82.0	2.6	15.4	0.087	0.501	23.190296	-106.222332
T. Der. Libramiento de Mazatlán	288.87	1	1	20065	4.7	80.2	1.8	8.5	1.5	1.8	0.6	0.7	0.2	84.9	1.8	13.3	0.074	0.513	23.226143	-106.384037
T. Der. Libramiento de Mazatlán	288.87	1	2	19050	3.7	79.6	1.9	9.7	1.6	2.1	0.6	0.7	0.1	83.3	1.9	14.8	0.076	0.513	23.226087	-106.384124
Mazatlán	292.00																			

18 CARR: Tepic - Presa Aguamilpa

CLAVE: 18029

RUTA: MEX-015

AÑO: 2018

LUGAR	ESTACION				CLASIFICACION VEHICULAR EN PORCIENTO										COORDENADAS					
	KM	TE	SC	TDPA	M	A	B	C2	C3	T3S2	T3S3	T3S2R4	OTROS	A	B	C	K'	D	LATITUD	LONGITUD
T. C. Guadalajara - Tepic	0.00	3	1	14136	7.0	81.2	0.4	8.1	2.0	0.5	0.5	0.2	0.1	88.2	0.4	11.4	0.085	0.535	21.475250	-104.847611
T. C. Guadalajara - Tepic	0.00	3	2	12298	6.7	81.0	0.3	7.8	2.3	0.8	0.7	0.3	0.1	87.7	0.3	12.0	0.100	0.535	21.475294	-104.847757
X. C. Tepic - Fco. I. Madero	17.50	3	0	2006	6.5	64.6	4.0	8.0	13.2	1.9	1.4	0.2	0.2	71.1	4.0	24.9	0.085	0.522	21.594328	-104.841888
Presa Aguamilpa	54.00	1	0	406	5.4	84.4	0.9	8.2	1.1	0.0	0.0	0.0	0.0	89.8	0.9	9.3	0.106	0.510	21.813000	-104.836318

NAYARIT

19 CARR: Tepic - Puerto Vallarta

CLAVE: 00068

RUTA: MEX-200

AÑO: 2018

LUGAR	ESTACION				CLASIFICACION VEHICULAR EN PORCIENTO										COORDENADAS					
	KM	TE	SC	TDPA	M	A	B	C2	C3	T3S2	T3S3	T3S2R4	OTROS	A	B	C	K'	D	LATITUD	LONGITUD
Tepic	0.00	3	1	20834	5.7	86.2	0.2	5.5	0.6	0.6	1.1	0.0	0.1	91.9	0.2	7.9	0.071	0.525	21.490250	-104.895202
Tepic	0.00	3	2	23021	5.9	87.3	0.1	4.5	0.3	0.8	1.0	0.0	0.1	93.2	0.1	6.7	0.071	0.525	21.490772	-104.895243
Limite de Zona Urbana Tepic	1.80	3	1	18706	3.6	87.5	0.3	4.2	0.5	1.6	2.0	0.2	0.1	91.1	0.3	8.6	0.052	0.555	21.474724	-104.890078
Limite de Zona Urbana Tepic	1.80	3	2	23331	2.5	88.8	0.3	5.2	0.4	1.3	1.3	0.1	0.1	91.3	0.3	8.4	0.070	0.555	21.474694	-104.890167
X. C. Libramiento De Tepic (Baja)	3.90	3	1	6849	19.6	54.1	0.9	17.6	5.1	1.4	1.2	0.0	0.1	73.7	0.9	25.4	0.071	0.548	21.465234	-104.888976
X. C. Libramiento De Tepic (Alta)	3.90	3	1	21696	0.6	94.2	0.0	2.2	0.0	0.2	2.7	0.0	0.1	94.8	0.0	5.2	0.069	0.519	21.465038	-104.889345
X. C. Libramiento De Tepic (Alta)	3.90	3	2	20069	0.4	94.5	0.0	2.2	0.0	0.2	2.6	0.0	0.1	94.9	0.0	5.1	0.075	0.519	21.464996	-104.889289
X. C. Libramiento De Tepic (Baja)	3.90	3	2	8295	18.5	62.5	0.6	11.7	3.7	1.6	1.3	0.0	0.1	81.0	0.6	18.4	0.087	0.548	21.465426	-104.889189
Jalisco	7.15	3	0	15870	4.2	82.4	0.6	9.2	2.6	0.5	0.5	0.0	0.0	86.6	0.6	12.8	0.076	0.509	21.434783	-104.899783
T. Izq. Emiliano Zapata	18.40	3	0	6785	1.2	80.2	2.1	9.4	2.9	2.8	1.4	0.0	0.0	81.4	2.1	16.5	0.062	0.504	21.361000	-104.918602
T. Izq. Compostela (1º Acceso)	35.80	1	0	6287	4.9	81.5	1.9	8.4	1.5	1.2	0.5	0.0	0.1	86.4	1.9	11.7	0.089	0.523	21.263775	-104.902330
T. Izq. Compostela (1º Acceso)	35.80	3	0	5638	3.4	79.3	1.5	11.9	2.0	1.1	0.7	0.0	0.1	82.7	1.5	15.8	0.079	0.509	21.248242	-104.903283
Las Varas	71.30	1	0	14352	4.5	76.4	4.6	7.4	2.2	2.9	1.8	0.1	0.1	80.9	4.6	14.5	0.043	0.537	21.186815	-105.124095
Las Varas	71.30	3	0	15461	3.5	80.6	2.8	8.4	1.2	2.3	0.9	0.2	0.1	84.1	2.8	13.1	0.068	0.513	21.174355	-105.144949
T. Der. Rincón de Guayabitos	94.50	1	1	11864	6.2	82.4	1.9	5.8	0.7	1.4	1.3	0.2	0.1	88.6	1.9	9.5	0.072	0.510	21.032165	-105.253864
T. Der. Rincón de Guayabitos	94.50	1	2	12345	6.6	81.3	2.2	7.2	0.6	1.3	0.6	0.1	0.1	87.9	2.2	9.9	0.079	0.510	21.032109	-105.253833
T. Der. Rincón de Guayabitos	94.50	3	0	16400	4.0	82.9	3.2	5.8	1.0	2.0	0.9	0.1	0.1	86.9	3.2	9.9	0.065	0.525	21.018341	-105.269375
T. Der. Sayulita	122.91	1	0	13052	2.9	80.6	4.2	8.6	1.2	1.3	0.9	0.1	0.2	83.5	4.2	12.3	0.067	0.504	20.866783	-105.426355
T. Der. Sayulita	122.91	3	0	15922	4.2	81.7	3.2	7.5	1.2	1.0	0.9	0.2	0.1	85.9	3.2	10.9	0.061	0.506	20.853854	-105.424608
T. Der. Cruz de Juanacaxtle	137.30	3	1	9699	3.6	85.9	2.0	5.4	0.8	1.6	0.5	0.1	0.1	89.5	2.0	8.5	0.076	0.500	20.764583	-105.366978
T. Der. Cruz de Juanacaxtle	137.30	3	2	9692	3.7	84.8	2.3	5.6	0.9	1.9	0.6	0.1	0.1	88.5	2.3	9.2	0.082	0.500	20.764670	-105.367027
Bucerías	140.81	3	1	18173	3.0	87.1	2.2	4.9	0.8	1.0	0.8	0.1	0.1	90.1	2.2	7.7	0.082	0.545	20.748056	-105.315375
Bucerías	140.81	3	2	15188	2.7	87.2	1.5	5.1	1.0	1.2	1.1	0.1	0.1	89.9	1.5	8.6	0.082	0.545	20.748247	-105.315300
Lim. Edos. Term. Nay. Ppia. Jal.	152.60																			
T. Der. Aeropuerto Díaz Ordáz	158.37	1	1	26913	2.0	91.9	1.9	4.1	0.1	0.0	0.0	0.0	0.0	93.9	1.9	4.2	0.093	0.551	20.683330	-105.241376
T. Der. Aeropuerto Díaz Ordáz	158.37	1	2	26335	1.5	91.8	2.2	4.4	0.1	0.0	0.0	0.0	0.0	93.3	2.2	4.5	0.077	0.551	20.683243	-105.241295
T. Der. Aeropuerto Díaz Ordáz (Baja)	158.37	3	1	13365	2.0	80.2	6.5	10.6	0.5	0.0	0.0	0.0	0.2	82.2	6.5	11.3	0.078	0.503	20.670330	-105.249417
T. Der. Aeropuerto Díaz Ordáz (Alta)	158.37	3	1	16676	2.2	97.8	0.0	0.0	0.0	0.0	0.0	0.0	0.0	100.0	0.0	0.0	0.080	0.507	20.670368	-105.249325
T. Der. Aeropuerto Díaz Ordáz (Alta)	158.37	3	2	16232	1.6	98.4	0.0	0.0	0.0	0.0	0.0	0.0	0.0	100.0	0.0	0.0	0.068	0.507	20.670396	-105.249253
T. Der. Aeropuerto Díaz Ordáz (Baja)	158.37	3	2	13520	2.9	77.0	6.8	12.6	0.5	0.0	0.0	0.0	0.2	79.9	6.8	13.3	0.081	0.503	20.670434	-105.249160
Puerto Vallarta	166.88																			

NAYARIT

20 CARR: Chapalilla - Compostela (Cuota)

CLAVE: 18004

RUTA: MEX-068D

AÑO: 2018

LUGAR	ESTACION				CLASIFICACION VEHICULAR EN PORCIENTO										COORDENADAS					
	KM	TE	SC	TDPA	M	A	B	C2	C3	T3S2	T3S3	T3S2R4	OTROS	A	B	C	K'	D	LATITUD	LONGITUD
T. C. Guadalajara - Tepic	0.00	3	0	2912	2.4	73.9	2.2	8.2	4.5	5.5	1.7	0.9	0.7	76.3	2.2	21.5	0.076	0.502	21.190306	-104.643204
Caseta de Cobro Compostela	31.50	2	0	5853	1.1	80.8	8.2	3.0	2.4	2.5	0.6	1.1	0.3	81.9	8.2	9.9	0.114	0.500	21.229532	-104.887408
T. Der. Compostela	36.50	1	0	5431	2.1	76.7	2.8	9.2	2.4	4.4	1.3	0.5	0.6	78.8	2.8	18.4	0.084	0.513	21.228356	-104.897549
T. C. Tepic - Puerto Vallarta	38.00	1	0	5999	3.6	77.6	4.4	8.7	1.8	2.3	0.8	0.5	0.3	81.2	4.4	14.4	0.102	0.553	21.230891	-104.918617

21 CARR: Guadalajara - Tepic (Cuota)

CLAVE: 00033

RUTA: MEX-015D

AÑO: 2018

LUGAR	ESTACION				CLASIFICACION VEHICULAR EN PORCIENTO										COORDENADAS					
	KM	TE	SC	TDPA	M	A	B	C2	C3	T3S2	T3S3	T3S2R4	OTROS	A	B	C	K'	D	LATITUD	LONGITUD
T. C. Guadalajara - Tepic (Libre)	0.00	3	1	6563	0.9	69.6	6.8	8.6	1.9	7.7	1.5	2.6	0.4	70.5	6.8	22.7	0.080	0.543	20.738226	-103.582211
T. C. Guadalajara - Tepic (Libre)	0.00	3	2	7802	1.0	65.7	7.9	9.7	2.1	9.0	1.5	2.7	0.4	66.7	7.9	25.4	0.094	0.543	20.738180	-103.582286
Caseta de Cobro Arenal	10.96	2	1	6499	0.5	62.2	8.8	3.4	4.9	13.5	1.9	3.8	1.0	62.7	8.8	28.5	0.092	0.500	20.778775	-103.662396
Caseta de Cobro Arenal	10.96	2	2	6499	0.5	62.2	8.8	3.4	4.9	13.5	1.9	3.8	1.0	62.7	8.8	28.5	0.092	0.500	20.778775	-103.662396
T. Der. Magdalena	45.00	1	1	5162	0.8	65.6	8.1	5.6	2.7	10.8	2.1	3.7	0.6	66.4	8.1	25.5	0.120	0.568	20.900807	-103.958679
T. Der. Magdalena	45.00	1	2	6787	0.5	63.3	8.7	6.2	3.2	11.6	2.2	3.7	0.6	63.8	8.7	27.5	0.127	0.568	20.900731	-103.958744
T. Der. Magdalena	45.00	3	1	5369	0.8	67.0	7.8	5.8	3.0	9.3	2.1	3.6	0.6	67.8	7.8	24.4	0.120	0.562	20.903042	-103.989316
T. Der. Magdalena	45.00	3	2	6882	0.5	64.8	8.6	6.3	3.1	10.0	2.1	3.8	0.8	65.3	8.6	26.1	0.130	0.562	20.902943	-103.989461
Caseta de Cobro Plan de Barrancas	69.34	2	1	6330	0.5	61.1	10.7	2.9	4.0	13.8	2.1	3.9	1.0	61.6	10.7	27.7	0.092	0.500	21.005434	-104.144062
Caseta de Cobro Plan de Barrancas	69.34	2	2	6330	0.5	61.1	10.7	2.9	4.0	13.8	2.1	3.9	1.0	61.6	10.7	27.7	0.092	0.500	21.005434	-104.144062
Lim. Edos. Term. Jal. Ppia. Nay.	84.60																			
Caseta de Cobro Santa Ma. del Oro	145.32	3	1	5470	0.8	53.4	9.4	7.7	3.5	16.4	1.7	6.5	0.6	54.2	9.4	36.4	0.067	0.508	21.348107	-104.679367
Caseta de Cobro Santa Ma. del Oro	145.32	3	2	5288	0.8	54.9	8.3	4.8	4.5	16.8	2.4	6.9	0.6	55.7	8.3	36.0	0.077	0.508	21.348041	-104.679515
T. C. Guadalajara - Tepic (Libre)	168.62																			

22 CARR: Libramiento de Tepic (Cuota)

CLAVE:

RUTA: MEX-015D

AÑO: 2018

LUGAR	ESTACION				CLASIFICACION VEHICULAR EN PORCIENTO										COORDENADAS					
	KM	TE	SC	TDPA	M	A	B	C2	C3	T3S2	T3S3	T3S2R4	OTROS	A	B	C	K'	D	LATITUD	LONGITUD
T. C. Guadalajara - Tepic	0.00																			
T. C. Guadalajara - Tepic (Cuota)	0.70	3	0	3123	4.9	52.4	6.1	10.5	2.4	14.4	2.5	5.1	1.7	57.3	6.1	36.6	0.084	0.546	21.456971	-104.805547
Caseta de Cobro La Cantera	7.70	2	0	2577	0.5	40.8	4.3	3.7	5.9	29.4	2.9	10.5	2.0	41.3	4.3	54.4	0.090	0.500	21.498477	-104.813387
T. C. Tepic - Villa Unión (Cuota)	29.47	1	0	3899	3.1	52.6	5.6	7.3	3.1	17.9	2.4	6.9	1.1	55.7	5.6	38.7	0.095	0.509	21.566099	-104.958115

NAYARIT

23 CARR: Ramal a Tequepexpan

CLAVE: 00068

RUTA: MEX-015D

AÑO: 2018

LUGAR	ESTACION				CLASIFICACION VEHICULAR EN PORCIENTO													COORDENADAS		
	KM	TE	SC	TDPA	M	A	B	C2	C3	T3S2	T3S3	T3S2R4	OTROS	A	B	C	K'	D	LATITUD	LONGITUD
Chapalilla	0.00	3	0	2442	0.8	71.0	4.9	10.7	3.2	6.2	1.6	0.9	0.7	71.8	4.9	23.3	0.066	0.518	21.180833	-104.627861
T. C. Guadalajara - Tepic (Cuota)	9.40	1	0	2776	1.2	70.7	9.3	8.8	2.3	5.2	1.2	0.9	0.4	71.9	9.3	18.8	0.082	0.512	21.205516	-104.593993

24 CARR: Tepic - San Blas (Cuota)

CLAVE:

RUTA: MEX-D

AÑO: 2018

LUGAR	ESTACION				CLASIFICACION VEHICULAR EN PORCIENTO													COORDENADAS		
	KM	TE	SC	TDPA	M	A	B	C2	C3	T3S2	T3S3	T3S2R4	OTROS	A	B	C	K'	D	LATITUD	LONGITUD
T. C Tepic - Villa Unión (Cuota)	0.00	3	0	4417	3.1	88.8	0.2	6.7	0.8	0.4	0.0	0.0	0.0	91.9	0.2	7.9	0.205	0.505	21.558605	-104.980609
El Camalote (T. C. Sta. Cruz - San Blas)	31.00	1	0	3590	2.5	90.1	0.2	6.0	0.8	0.3	0.1	0.0	0.0	92.6	0.2	7.2	0.241	0.501	21.511865	-105.194470

25 CARR: Tepic - Villa Unión (cuota)

CLAVE: 00500

RUTA: MEX-015D

AÑO: 2018

LUGAR	ESTACION				CLASIFICACION VEHICULAR EN PORCIENTO													COORDENADAS		
	KM	TE	SC	TDPA	M	A	B	C2	C3	T3S2	T3S3	T3S2R4	OTROS	A	B	C	K'	D	LATITUD	LONGITUD
Tepic	0.00																			
Caseta de Cobro Trapichillo	8.65	1	1	6866	2.3	77.3	3.7	8.7	1.7	3.9	0.8	1.4	0.2	79.6	3.7	16.7	0.135	0.506	21.555081	-104.959996
Caseta de Cobro Trapichillo	8.65	1	2	6703	2.3	76.0	4.1	8.3	2.2	4.5	1.1	1.4	0.1	78.3	4.1	17.6	0.151	0.506	21.554969	-104.960024
Caseta de Cobro Trapichillo	8.65	2	1	5753	0.7	62.0	6.8	3.4	5.4	13.2	1.8	5.8	0.9	62.7	6.8	30.5	0.098	0.500	21.571789	-104.987394
Caseta de Cobro Trapichillo	8.65	2	2	5753	0.7	62.0	6.8	3.4	5.4	13.2	1.8	5.8	0.9	62.7	6.8	30.5	0.098	0.500	21.571789	-104.987394
T. C. Tepic - Mazatlán	21.00	1	1	6056	1.7	60.0	6.4	9.7	3.0	12.0	2.0	4.5	0.7	61.7	6.4	31.9	0.075	0.504	21.663388	-105.027571
T. C. Tepic - Mazatlán	21.00	1	2	6143	2.1	61.6	5.6	11.2	3.4	10.3	2.3	2.9	0.6	63.7	5.6	30.7	0.088	0.504	21.663415	-105.027694
T. C. Tepic - Mazatlán (Cruce de San Blas)	24.50	3	0	7066	2.0	69.0	4.5	9.8	2.5	6.8	2.6	2.1	0.7	71.0	4.5	24.5	0.062	0.522	21.714530	-105.060450
Est. Ruiz	54.90	1	0	5929	2.3	49.0	6.8	10.6	4.9	15.5	3.1	7.1	0.7	51.3	6.8	41.9	0.068	0.504	21.947688	-105.112493
Est. Ruiz	54.90	3	0	3963	1.9	46.2	7.8	11.6	4.9	14.5	3.5	8.8	0.8	48.1	7.8	44.1	0.074	0.522	21.961879	-105.123194
Rosamorada	73.50	1	0	4137	2.2	47.5	9.2	9.2	4.0	16.9	2.6	7.4	1.0	49.7	9.2	41.1	0.087	0.508	22.084759	-105.210973
Rosamorada	73.50	3	0	4289	2.2	49.1	8.5	7.2	3.5	17.8	2.2	8.4	1.1	51.3	8.5	40.2	0.093	0.502	22.092334	-105.220594
Acaponeta	120.20	1	0	5296	2.8	42.7	8.4	6.7	3.7	22.2	2.6	9.8	1.1	45.5	8.4	46.1	0.058	0.524	22.450543	-105.420898
Caseta de Cobro Acaponeta	120.20	2	0	4224	0.3	38.5	7.0	3.2	6.3	26.1	2.5	14.5	1.6	38.8	7.0	54.2	0.081	0.500	22.454065	-105.418726
Acaponeta	120.20	3	0	3639	1.4	50.8	9.7	7.2	4.2	14.9	2.7	8.0	1.1	52.2	9.7	38.1	0.064	0.504	22.458581	-105.430536
Lim. Edos. Term. Nay. Ppia. Sin.	132.80																			
Escuinapa de Hidalgo	208.60	1	1	2577	2.0	39.0	8.7	5.6	3.6	25.5	4.4	10.3	0.9	41.0	8.7	50.3	0.092	0.532	22.841615	-105.739726
Escuinapa de Hidalgo	208.60	1	2	2268	1.8	30.9	9.5	5.8	4.1	30.7	5.0	11.3	0.9	32.7	9.5	57.8	0.082	0.532	22.841556	-105.739817
Escuinapa de Hidalgo	208.60	3	0	3750	1.6	41.9	8.8	5.9	3.9	24.7	3.6	9.0	0.6	43.5	8.8	47.7	0.066	0.518	22.859690	-105.755136
Rosario	220.68	1	0	4618	1.9	44.3	9.2	8.3	3.5	21.1	3.5	7.2	1.0	46.2	9.2	44.6	0.078	0.547	22.977136	-105.868758
Caseta de Cobro Rosario	220.68	2	0	5064	0.7	37.2	7.0	3.4	5.4	29.1	3.6	11.8	1.8	37.9	7.0	55.1	0.081	0.500	22.984690	-105.878103

NAYARIT

25 CARR: Tepic - Villa Unión (cuota)

CLAVE: 00500

RUTA: MEX-015D

AÑO: 2018

LUGAR	ESTACION				CLASIFICACION VEHICULAR EN PORCIENTO													COORDENADAS		
	KM	TE	SC	TDPA	M	A	B	C2	C3	T3S2	T3S3	T3S2R4	OTROS	A	B	C	K'	D	LATITUD	LONGITUD
Rosario	220.68	3	1	3140	2.3	43.8	9.8	7.7	2.4	22.2	4.2	7.0	0.6	46.1	9.8	44.1	0.072	0.504	22.993116	-105.887597
Rosario	220.68	3	2	3094	1.8	38.7	8.8	5.4	3.8	26.1	4.0	10.7	0.7	40.5	8.8	50.7	0.064	0.504	22.993143	-105.887723
X. C. Durango - Villa Unión (Cuota)	240.90	1	0	5634	2.5	39.9	9.4	6.9	3.2	23.7	3.4	9.9	1.1	42.4	9.4	48.2	0.067	0.503	23.185946	-106.174157
X. C. Durango - Villa Unión (Cuota)	240.90	3	1	4396	3.6	46.6	9.2	6.9	3.7	17.9	3.4	7.0	1.7	50.2	9.2	40.6	0.060	0.507	23.194728	-106.191332
X. C. Durango - Villa Unión (Cuota)	240.90	3	2	4523	1.8	46.0	9.4	7.4	3.0	19.0	4.7	7.3	1.4	47.8	9.4	42.8	0.065	0.507	23.194465	-106.191423

26 CARR: El Carrizo - La Batanga

CLAVE: 18107

RUTA: NAY-078

AÑO: 2018

LUGAR	ESTACION				CLASIFICACION VEHICULAR EN PORCIENTO													COORDENADAS		
	KM	TE	SC	TDPA	M	A	B	C2	C3	T3S2	T3S3	T3S2R4	OTROS	A	B	C	K'	D	LATITUD	LONGITUD
T. C. Ent. Santiago Ixcuintla - Playa Los Corchos	0.00	3	0	2911	21.0	71.0	0.4	6.7	0.7	0.1	0.1	0.0	0.0	92.0	0.4	7.6	0.092	0.503	21.774786	-105.277454
Sentispac	9.00	1	0	2353	25.5	67.4	0.3	6.0	0.7	0.1	0.0	0.0	0.0	92.9	0.3	6.8	0.079	0.504	21.808893	-105.341443
La Batanga	25.00	1	0	198	3.9	91.6	0.4	3.6	0.2	0.0	0.0	0.0	0.3	95.5	0.4	4.1	0.121	0.506	21.883652	-105.459695

27 CARR: Navarrete - Sauta

CLAVE: 18013

RUTA: NAY-013

AÑO: 2018

LUGAR	ESTACION				CLASIFICACION VEHICULAR EN PORCIENTO													COORDENADAS		
	KM	TE	SC	TDPA	M	A	B	C2	C3	T3S2	T3S3	T3S2R4	OTROS	A	B	C	K'	D	LATITUD	LONGITUD
T. C. Crucero San Blas - San Blas	0.00	3	0	1338	28.9	64.6	0.6	4.9	0.9	0.1	0.0	0.0	0.0	93.5	0.6	5.9	0.083	0.504	21.655520	-105.119659
Sauta	7.00	1	0	2972	44.6	49.0	0.6	5.0	0.7	0.1	0.0	0.0	0.0	93.6	0.6	5.8	0.057	0.502	21.710678	-105.137029

28 CARR: Ramal a Amado Nervo

CLAVE: 18011

RUTA: NAY

AÑO: 2018

LUGAR	ESTACION				CLASIFICACION VEHICULAR EN PORCIENTO													COORDENADAS		
	KM	TE	SC	TDPA	M	A	B	C2	C3	T3S2	T3S3	T3S2R4	OTROS	A	B	C	K'	D	LATITUD	LONGITUD
T. C. Guadalajara - Tepic	0.00	3	0	1178	4.9	77.5	0.2	11.7	4.5	0.9	0.2	0.0	0.1	82.4	0.2	17.4	0.083	0.503	21.128000	-104.610278
Amado Nervo	15.00																			

29 CARR: Ramal a Bellavista

CLAVE: 18059

RUTA: NAY-059

AÑO: 2018

LUGAR	ESTACION				CLASIFICACION VEHICULAR EN PORCIENTO													COORDENADAS		
	KM	TE	SC	TDPA	M	A	B	C2	C3	T3S2	T3S3	T3S2R4	OTROS	A	B	C	K'	D	LATITUD	LONGITUD
T. C. Tepic - Francisco I. Madero	0.00	3	0	2774	8.1	81.3	0.3	9.1	1.2	0.0	0.0	0.0	0.0	89.4	0.3	10.3	0.073	0.505	21.565043	-104.878820
Bellavista	1.30																			

NAYARIT

30 CARR: Ramal a El Colomo

CLAVE: 18014

RUTA: NAY

AÑO: 2018

LUGAR	ESTACION				CLASIFICACION VEHICULAR EN PORCIENTO													COORDENADAS		
	KM	TE	SC	TDPA	M	A	B	C2	C3	T3S2	T3S3	T3S2R4	OTROS	A	B	C	K'	D	LATITUD	LONGITUD
T. C. Tepic - Puerto Vallarta	0.00																			
San Vicente	3.00	1	1	15519	7.2	83.9	1.0	4.8	0.5	0.6	1.3	0.2	0.5	91.1	1.0	7.9	0.096	0.531	20.740549	-105.264257
San Vicente	3.00	1	2	13708	7.2	83.4	1.0	5.1	0.5	0.6	1.5	0.2	0.5	90.6	1.0	8.4	0.092	0.531	20.740618	-105.264286
El Colomo	21.00																			

31 CARR: Ramal a Estación Yago

CLAVE: 18224

RUTA: NAY

AÑO: 2018

LUGAR	ESTACION				CLASIFICACION VEHICULAR EN PORCIENTO													COORDENADAS		
	KM	TE	SC	TDPA	M	A	B	C2	C3	T3S2	T3S3	T3S2R4	OTROS	A	B	C	K'	D	LATITUD	LONGITUD
T. C. Tepic - Mazatlán	0.00	3	0	2221	10.3	77.5	1.4	6.7	2.7	0.8	0.1	0.2	0.3	87.8	1.4	10.8	0.079	0.515	21.834257	-105.112287
Estacion Yago	7.00																			

32 CARR: Ramal a Ixtapan de La Concepción

CLAVE: 18233

RUTA: NAY

AÑO: 2018

LUGAR	ESTACION				CLASIFICACION VEHICULAR EN PORCIENTO													COORDENADAS		
	KM	TE	SC	TDPA	M	A	B	C2	C3	T3S2	T3S3	T3S2R4	OTROS	A	B	C	K'	D	LATITUD	LONGITUD
T. C. Tepic - Puerto Vallarta (Las Varas)	0.00	3	0	5200	13.5	75.4	0.5	9.1	0.7	0.5	0.3	0.0	0.0	88.9	0.5	10.6	0.069	0.503	21.189389	-105.145781
Ixtapan de La Concepción	20.00	1	0	1971	12.9	71.3	0.6	12.7	1.3	0.6	0.4	0.0	0.2	84.2	0.6	15.2	0.109	0.500	21.300238	-105.157356

33 CARR: Ramal a Milpas Viejas

CLAVE: 18007

RUTA: NAY

AÑO: 2018

LUGAR	ESTACION				CLASIFICACION VEHICULAR EN PORCIENTO													COORDENADAS		
	KM	TE	SC	TDPA	M	A	B	C2	C3	T3S2	T3S3	T3S2R4	OTROS	A	B	C	K'	D	LATITUD	LONGITUD
T. C. Tepic - Mazatlán	0.00	3	0	1956	13.9	75.2	0.4	9.1	0.7	0.4	0.3	0.0	0.0	89.1	0.4	10.5	0.082	0.525	22.453357	-105.360845
Milpas Viejas	17.00																			

34 CARR: Ramal a Villa Hidalgo

CLAVE: 18031

RUTA: NAY

AÑO: 2018

LUGAR	ESTACION				CLASIFICACION VEHICULAR EN PORCIENTO													COORDENADAS		
	KM	TE	SC	TDPA	M	A	B	C2	C3	T3S2	T3S3	T3S2R4	OTROS	A	B	C	K'	D	LATITUD	LONGITUD
T. C. Tepic - Mazatlán	0.00	3	0	3372	14.7	66.8	2.0	12.8	2.0	1.1	0.6	0.0	0.0	81.5	2.0	16.5	0.071	0.539	21.805571	-105.108285
Villa Hidalgo	16.00	1	0	5178	19.1	66.9	0.9	11.3	0.9	0.5	0.3	0.0	0.1	86.0	0.9	13.1	0.093	0.546	21.754491	-105.227826

NAYARIT

35 CARR: Ramal a Volcán del Ceboruco

CLAVE: 18003

RUTA: NAY

AÑO: 2018

LUGAR	ESTACION				CLASIFICACION VEHICULAR EN PORCIENTO														COORDENADAS	
	KM	TE	SC	TDPA	M	A	B	C2	C3	T3S2	T3S3	T3S2R4	OTROS	A	B	C	K'	D	LATITUD	LONGITUD
T. C. Guadalajara - Tepic	0.00	3	0	5288	2.8	69.7	4.2	14.5	3.0	3.5	1.9	0.2	0.2	72.5	4.2	23.3	0.063	0.512	21.052361	-104.459139
Volcán Ceboruco	25.00																			

36 CARR: Tepic - Francisco I. Madero

CLAVE: 18009

RUTA: NAY-MEX

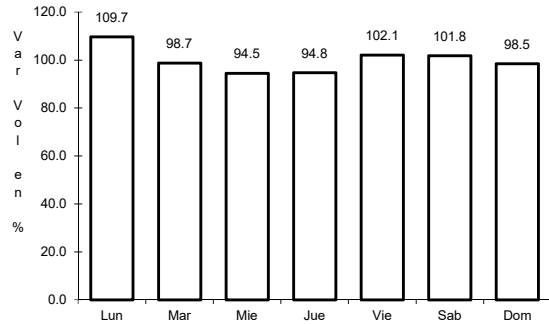
AÑO: 2018

LUGAR	ESTACION				CLASIFICACION VEHICULAR EN PORCIENTO														COORDENADAS	
	KM	TE	SC	TDPA	M	A	B	C2	C3	T3S2	T3S3	T3S2R4	OTROS	A	B	C	K'	D	LATITUD	LONGITUD
Tepic	0.00	3	0	7541	7.9	84.3	0.2	5.4	1.8	0.1	0.1	0.1	0.1	92.2	0.2	7.6	0.080	0.500	21.544142	-104.864321
Bellavista	9.00	3	0	4758	8.4	82.7	0.5	5.8	2.0	0.2	0.2	0.1	0.1	91.1	0.5	8.4	0.077	0.500	21.569872	-104.871189
Francisco I. Madero	16.00																			

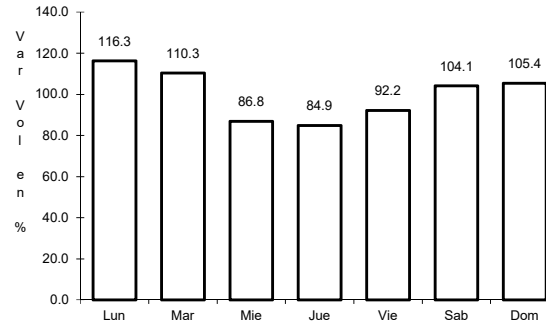
1 CARR: Crucero de San Blas - San Blas

CLAVE: 18229

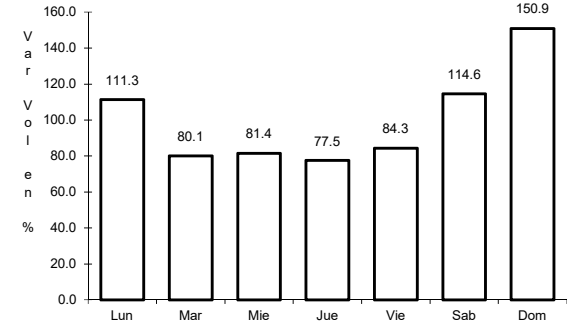
RUTA: MEX-015



Km: 0.00 Tipo: 3 Sent: 0



Km: 11.00 Tipo: 3 Sent: 0

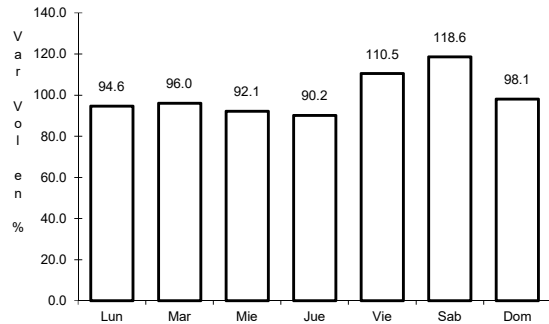


Km: 36.00 Tipo: 1 Sent: 0

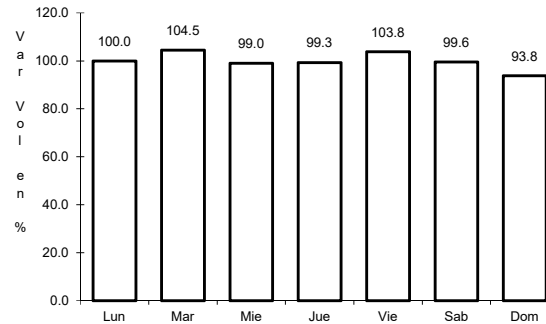
2 CARR: Ent. Acaponeta - El Novillero

CLAVE: 18023

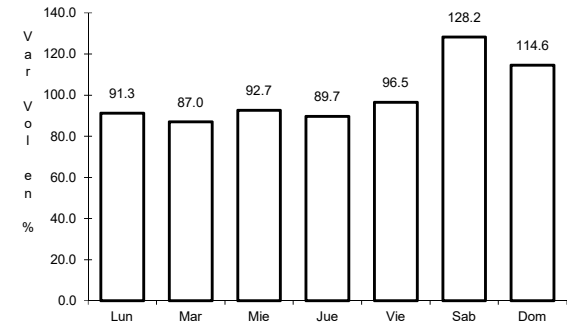
RUTA: MEX-015



Km: 0.00 Tipo: 3 Sent: 0



Km: 13.00 Tipo: 1 Sent: 0

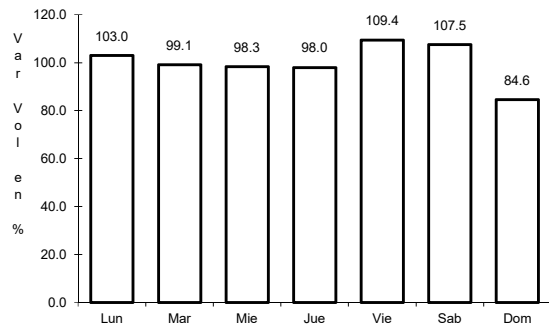


Km: 36.00 Tipo: 1 Sent: 0

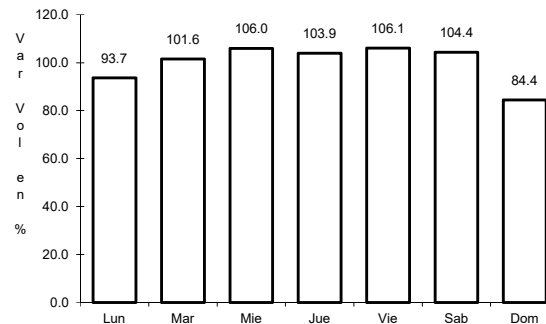
3 CARR: Ent. Santiago Ixcuintla - Playa Los Corchos

CLAVE: 18016

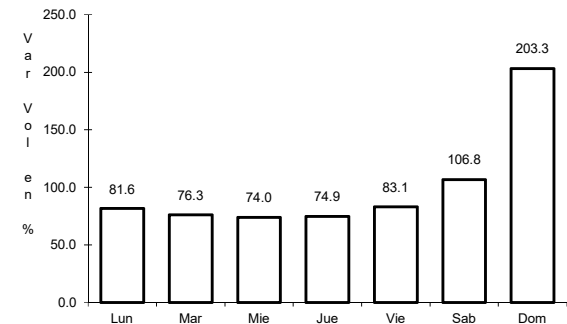
RUTA: MEX-015



Km: 0.00 Tipo: 3 Sent: 1



Km: 0.00 Tipo: 3 Sent: 2

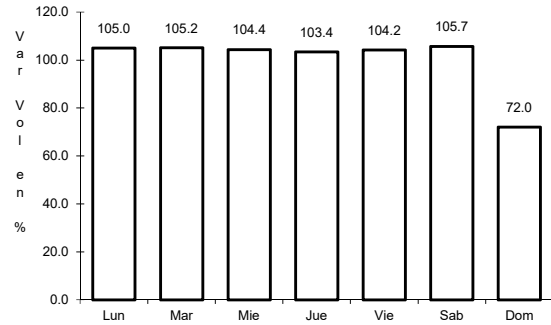


Km: 39.00 Tipo: 1 Sent: 0

4 CARR: Guadalajara - Tepic

CLAVE: 00031

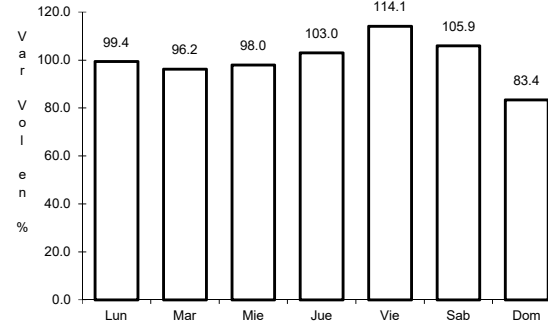
ruta: MEX-015



Km: 8.30

Tipo: 3

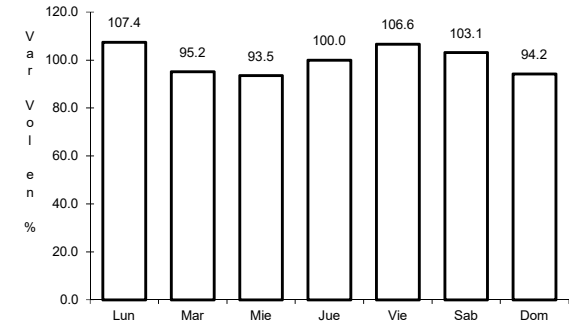
Sent: 1



Km: 8.30

Tipo: 3

Sent: 2



Km: 138.84

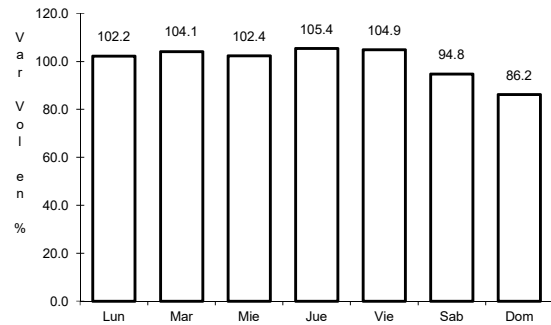
Tipo: 1

Sent: 0

5 CARR: Libramiento de Tepic

CLAVE: 18232

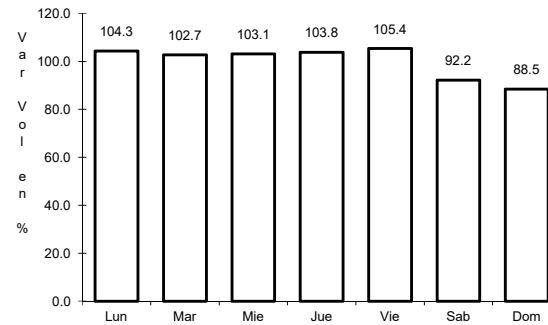
ruta: MEX-015



Km: 5.00

Tipo: 1

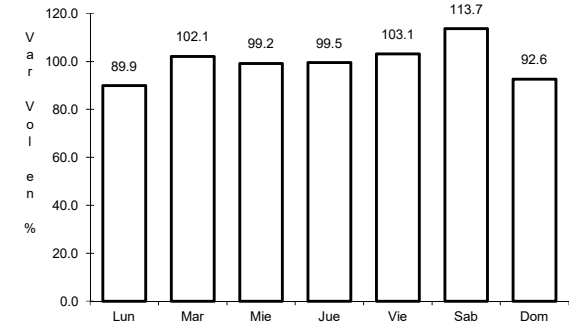
Sent: 1



Km: 5.00

Tipo: 1

Sent: 2



Km: 18.80

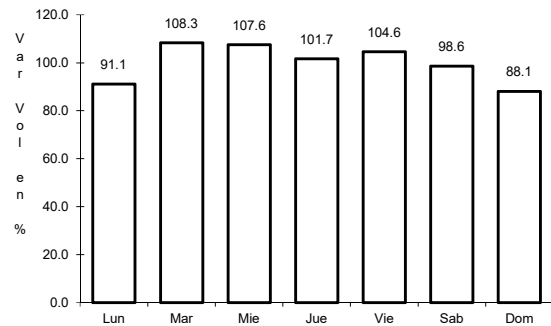
Tipo: 1

Sent: 1

6 CARR: Peñitas - Tuxpan

CLAVE: 18019

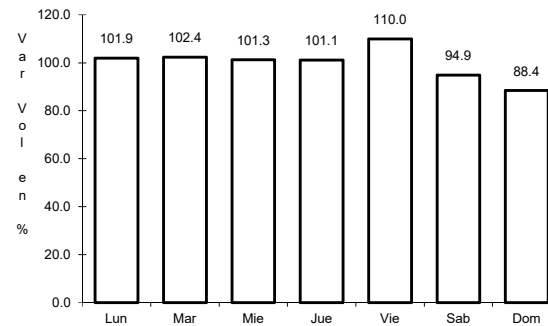
ruta: MEX-015



Km: 0.00

Tipo: 3

Sent: 0



Km: 9.00

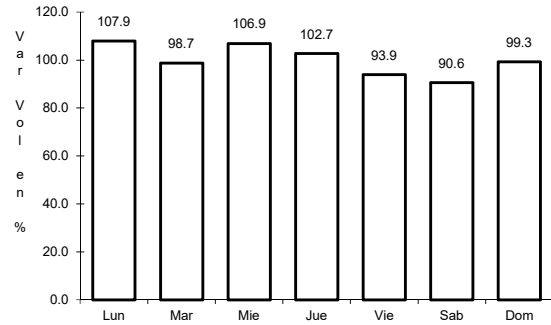
Tipo: 1

Sent: 0

7 CARR: Ramal a Acaponeta

CLAVE: 18038

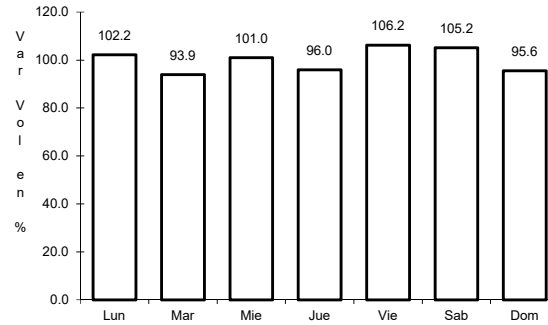
ruta: MEX-015



Km: 0.00

Tipo: 3

Sent: 1



Km: 0.00

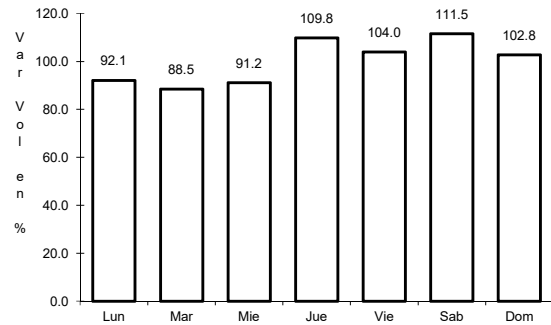
Tipo: 3

Sent: 2

8 CARR: Ramal a Estación Nanchi

CLAVE: 18068

ruta: MEX-015



Km: 0.00

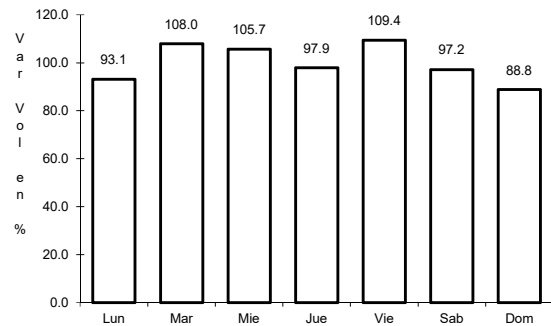
Tipo: 3

Sent: 0

9 CARR: Ramal a Estación Ruíz

CLAVE: 18026

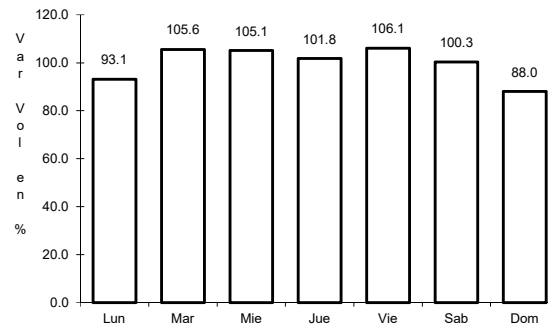
ruta: MEX-015



Km: 0.00

Tipo: 3

Sent: 0



Km: 5.50

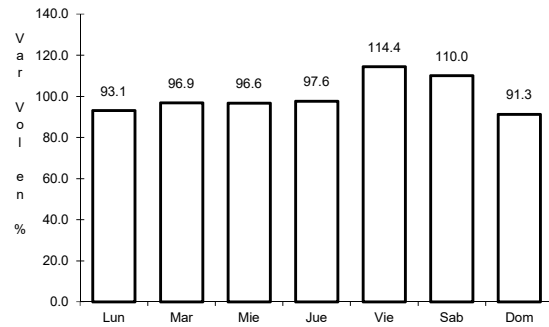
Tipo: 1

Sent: 0

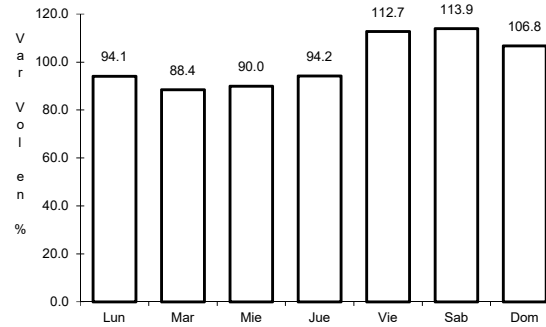
10 CARR: Ramal a La Laguna de Santa María

CLAVE: 18005

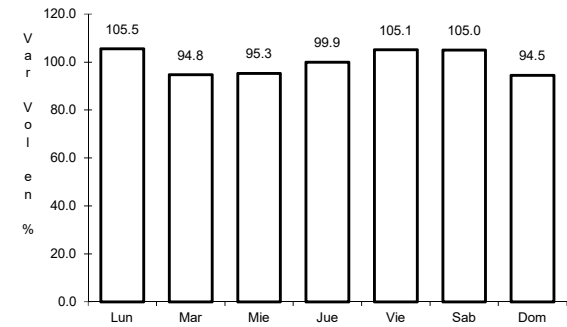
ruta: MEX-015



Km: 0.00 Tipo: 3 Sent: 0



Km: 11.50 Tipo: 1 Sent: 1

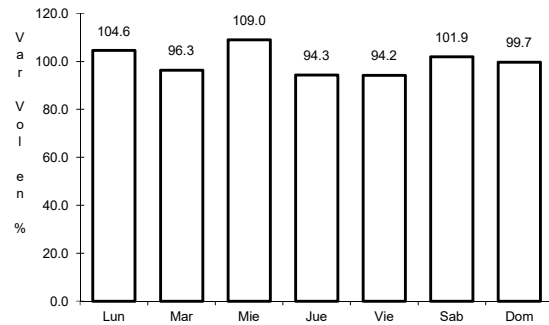


Km: 11.50 Tipo: 1 Sent: 2

11 CARR: Ramal a Mecatán

CLAVE: 18010

ruta: MEX-015

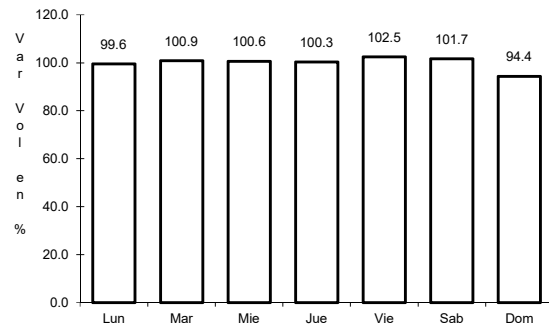


Km: 0.00 Tipo: 3 Sent: 0

12 CARR: Ramal a Nuevo Aeropuerto de Tepic

CLAVE: 18012

ruta: MEX-015

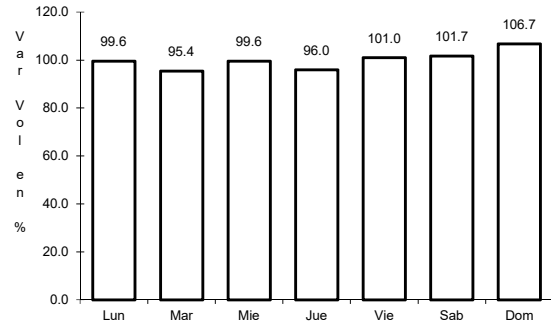


Km: 0.00 Tipo: 3 Sent: 0

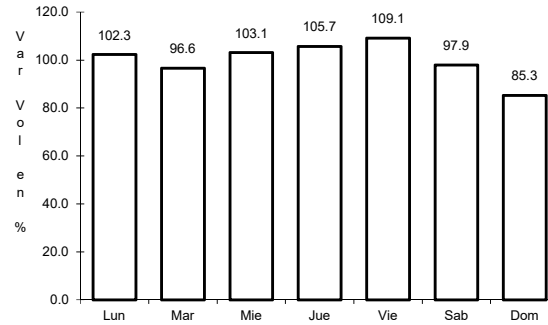
13 CARR: Ramal a Punta Mita

CLAVE: 18020

ruta: MEX-200



Km: 0.00 Tipo: 3 Sent: 0

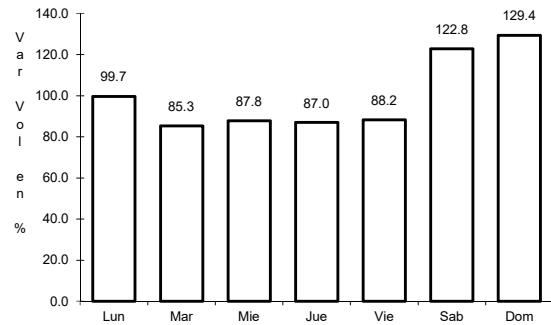


Km: 9.00 Tipo: 3 Sent: 0

14 CARR: Ramal a Santa Cruz

CLAVE: 18030

ruta: MEX-015

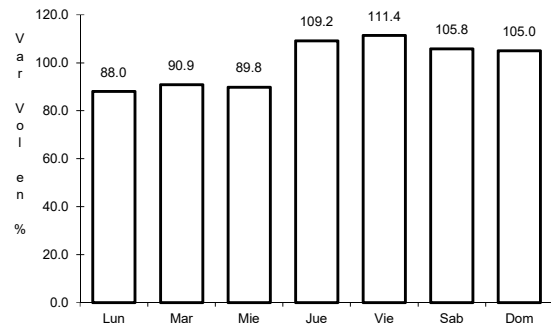


Km: 1.30 Tipo: 1 Sent: 0

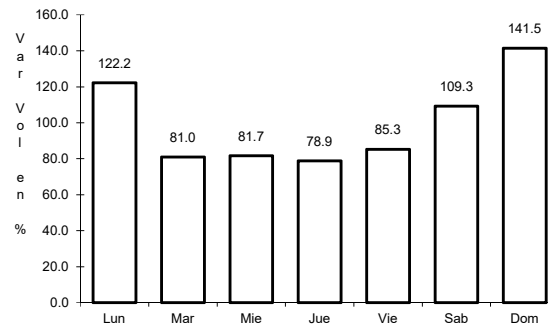
15 CARR: Santa Cruz - San Blas

CLAVE: 18230

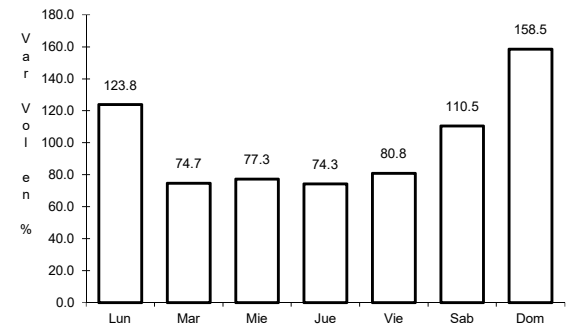
ruta: MEX-015



Km: 0.00 Tipo: 3 Sent: 0



Km: 5.00 Tipo: 3 Sent: 0

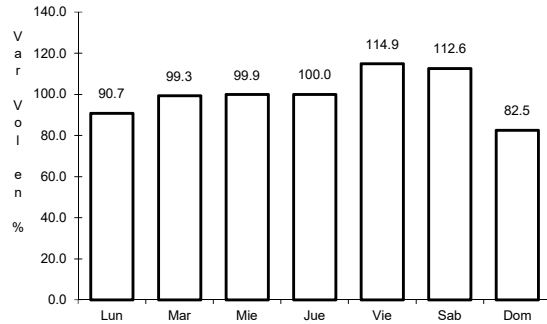


Km: 17.00 Tipo: 1 Sent: 0

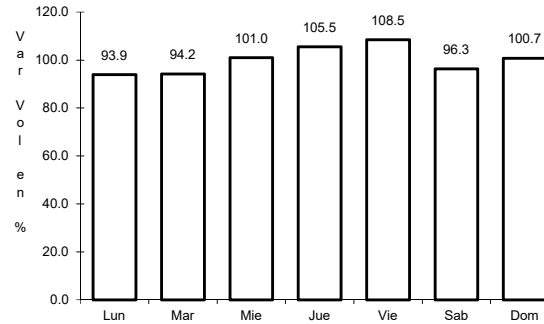
16 CARR: Tepic - Ixtapan de La Concepción

CLAVE: 18028

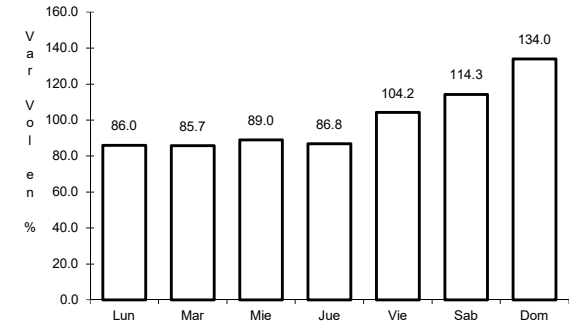
ruta: MEX-015



Km: 0.00 Tipo: 3 Sent: 0



Km: 27.00 Tipo: 1 Sent: 0

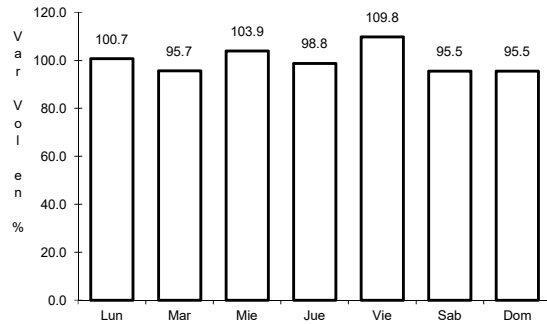


Km: 77.42 Tipo: 1 Sent: 0

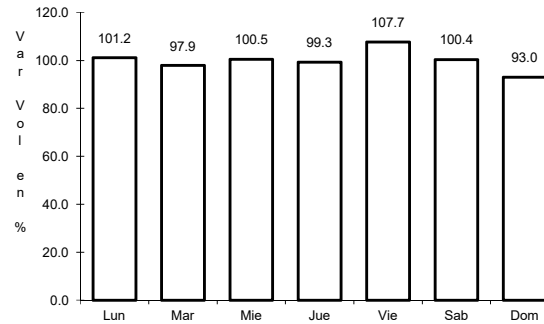
17 CARR: Tepic - Mazatlán

CLAVE: 00499

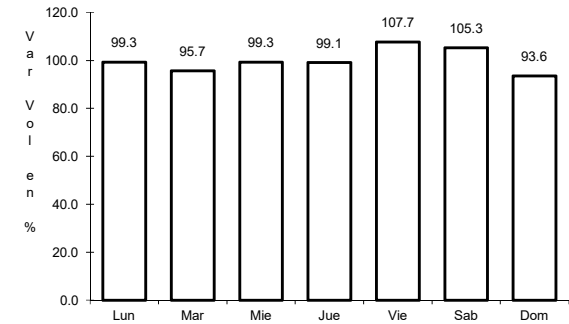
ruta: MEX-015



Km: 136.52 Tipo: 1 Sent: 0



Km: 288.87 Tipo: 1 Sent: 1

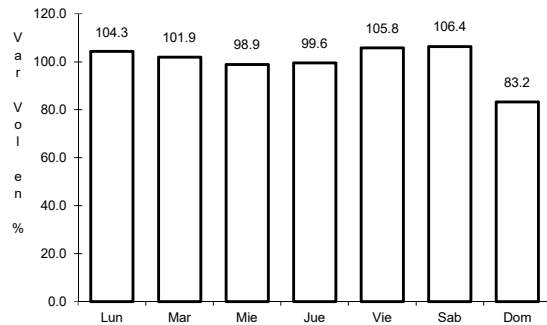


Km: 288.87 Tipo: 1 Sent: 2

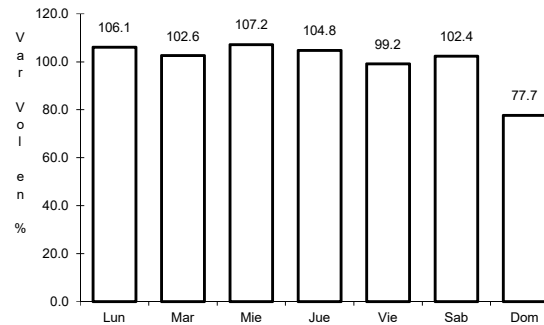
18 CARR: Tepic - Presa Aguamilpa

CLAVE: 18029

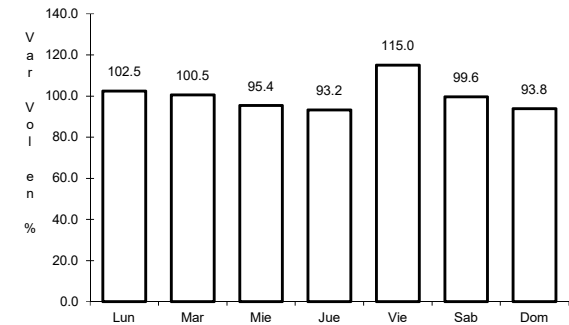
ruta: MEX-015



Km: 0.00 Tipo: 3 Sent: 1



Km: 0.00 Tipo: 3 Sent: 2

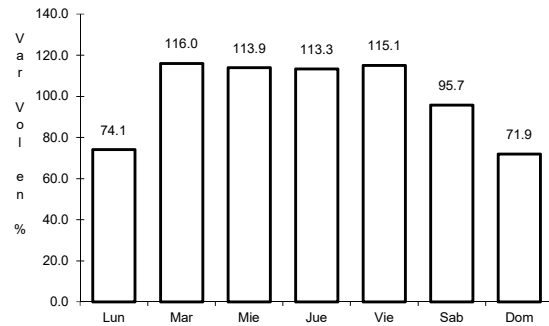


Km: 54.00 Tipo: 1 Sent: 0

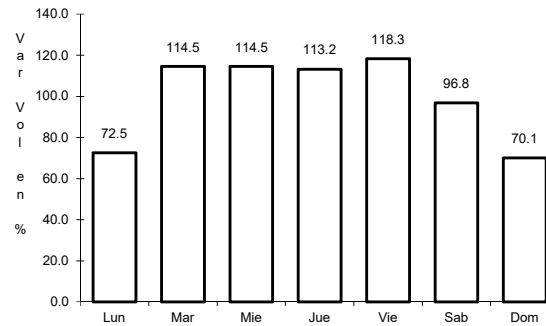
19 CARR: Tepic - Puerto Vallarta

CLAVE: 00068

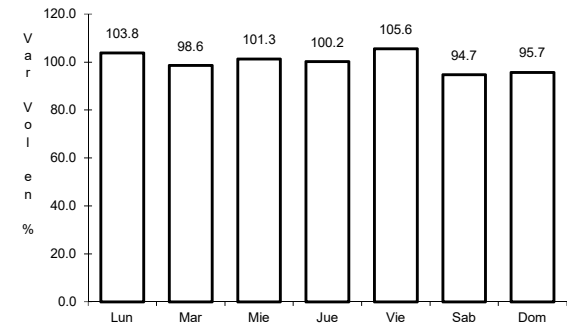
ruta: MEX-200



Km: 0.00 Tipo: 3 Sent: 1



Km: 0.00 Tipo: 3 Sent: 2

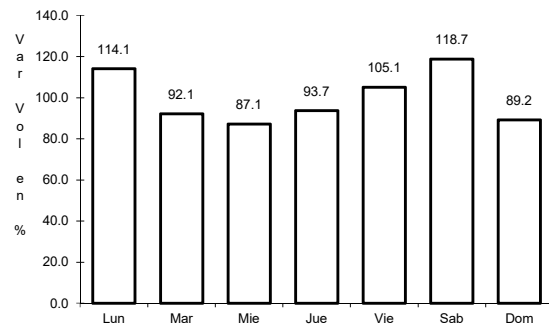


Km: 71.30 Tipo: 1 Sent: 0

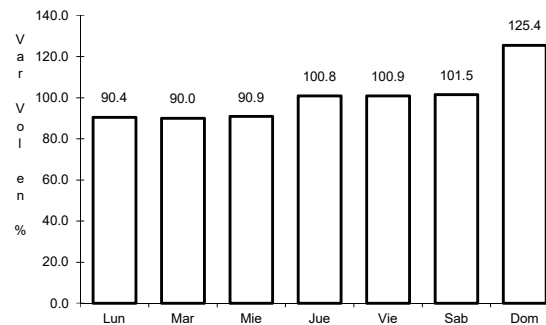
20 CARR: Chapalilla - Compostela (Cuota)

CLAVE: 18004

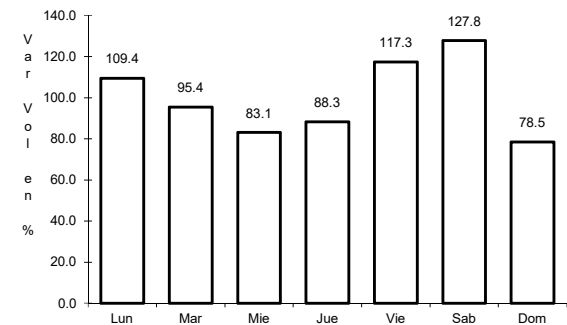
ruta: MEX-068D



Km: 0.00 Tipo: 3 Sent: 0



Km: 36.50 Tipo: 1 Sent: 0

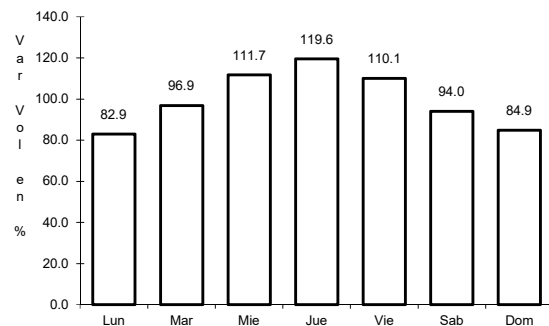


Km: 38.00 Tipo: 1 Sent: 0

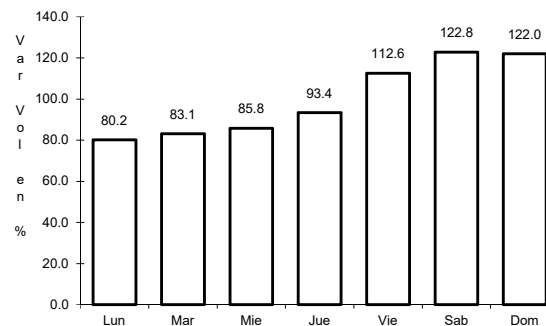
21 CARR: Guadalajara - Tepic (Cuota)

CLAVE: 00033

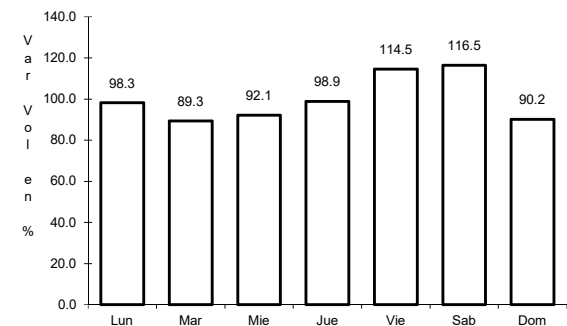
ruta: MEX-015D



Km: 0.00 Tipo: 3 Sent: 1



Km: 0.00 Tipo: 3 Sent: 2

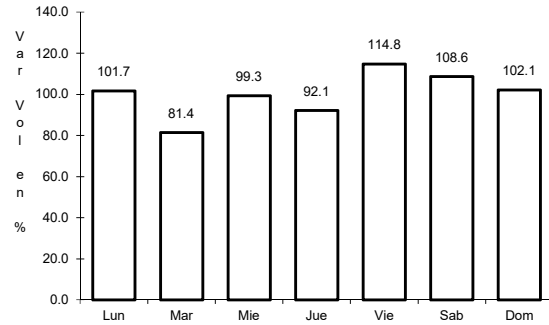


Km: 145.32 Tipo: 3 Sent: 1

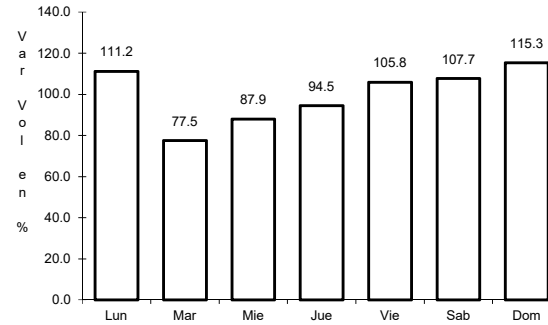
22 CARR: Libramiento de Tepic (Cuota)

CLAVE:

RUTA: MEX-015D



Km: 0.70 Tipo: 3 Sent: 0

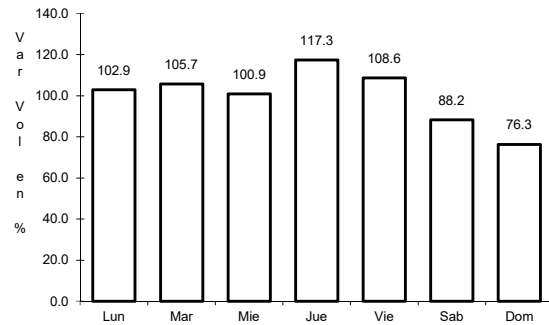


Km: 29.47 Tipo: 1 Sent: 0

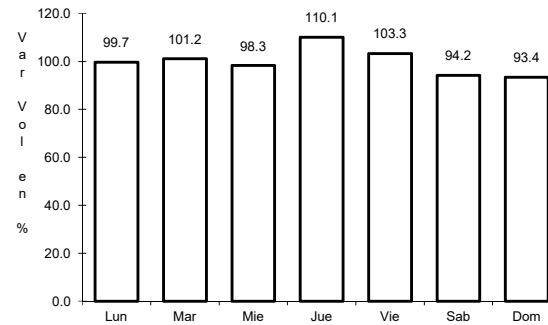
23 CARR: Ramal a Tequexpan

CLAVE: 00068

RUTA: MEX-015D



Km: 0.00 Tipo: 3 Sent: 0

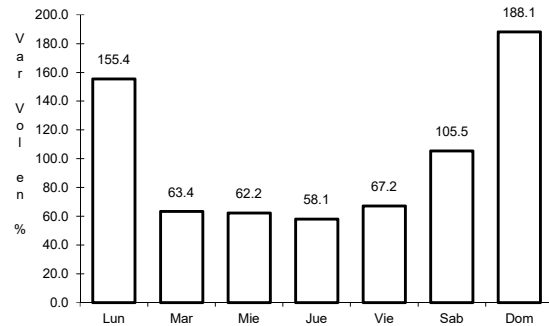


Km: 9.40 Tipo: 1 Sent: 0

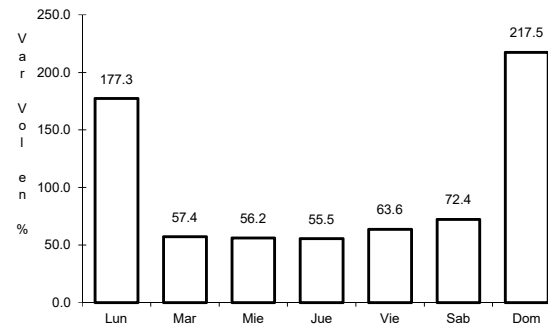
24 CARR: Tepic - San Blas (Cuota)

CLAVE:

RUTA: MEX-D



Km: 0.00 Tipo: 3 Sent: 0

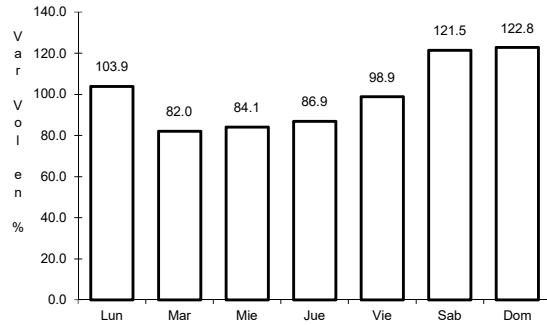


Km: 31.00 Tipo: 1 Sent: 0

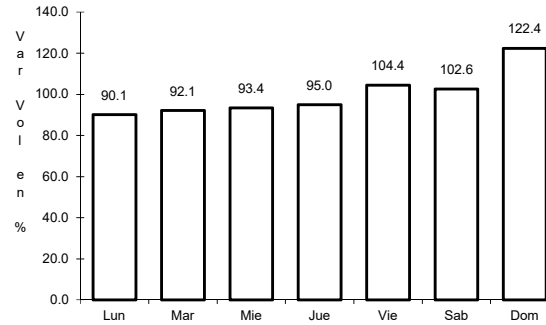
25 CARR: Tepic - Villa Unión (cuota)

CLAVE: 00500

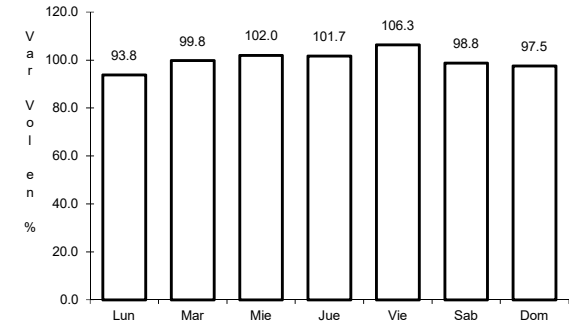
ruta: MEX-015D



Km: 8.65 Tipo: 1 Sent: 1



Km: 8.65 Tipo: 1 Sent: 2

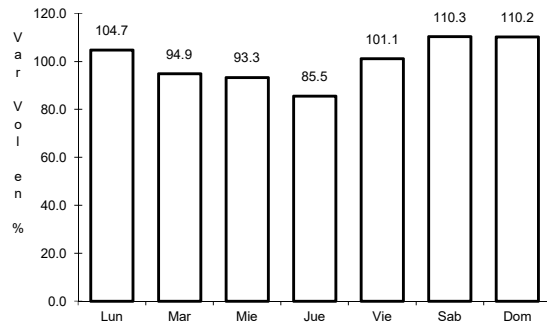


Km: 240.90 Tipo: 1 Sent: 0

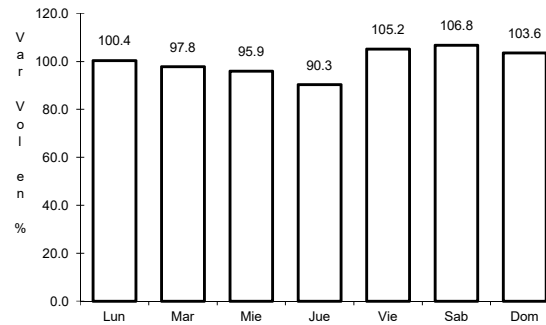
26 CARR: El Carrizo - La Batanga

CLAVE: 18107

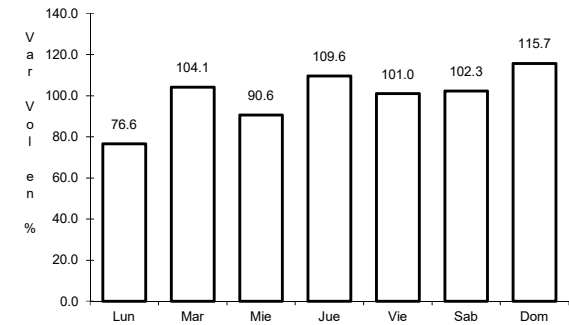
ruta: NAY-078



Km: 0.00 Tipo: 3 Sent: 0



Km: 9.00 Tipo: 1 Sent: 0

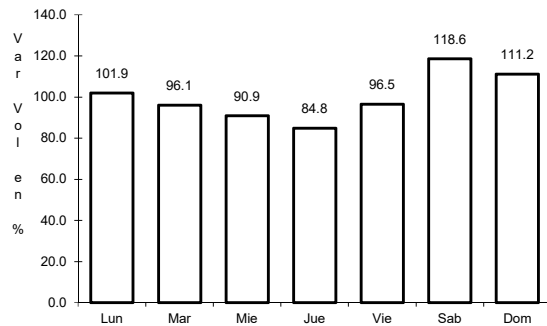


Km: 25.00 Tipo: 1 Sent: 0

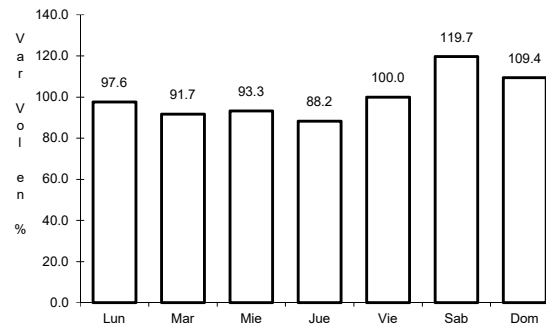
27 CARR: Navarrete - Sauta

CLAVE: 18013

ruta: NAY-013



Km: 0.00 Tipo: 3 Sent: 0

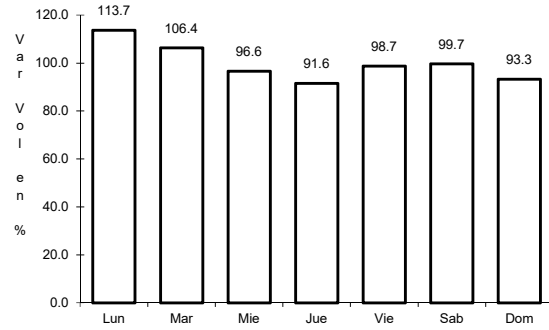


Km: 7.00 Tipo: 1 Sent: 0

28 CARR: Ramal a Amado Nervo

CLAVE: 18011

RUTA: NAY



Km: 0.00

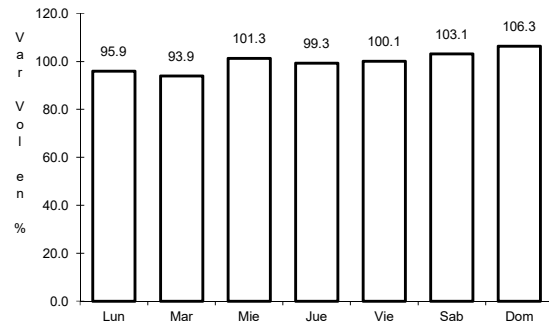
Tipo: 3

Sent: 0

29 CARR: Ramal a Bellavista

CLAVE: 18059

RUTA: NAY-059



Km: 0.00

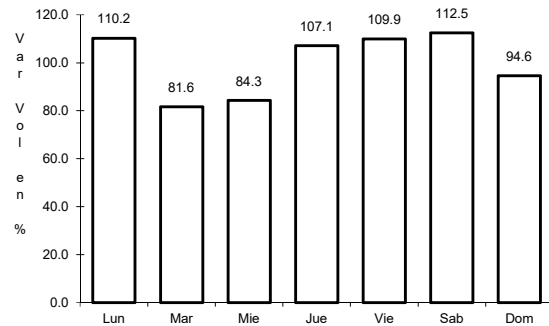
Tipo: 3

Sent: 0

30 CARR: Ramal a El Colomo

CLAVE: 18014

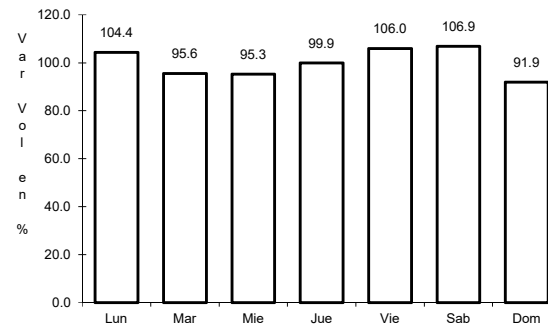
RUTA: NAY



Km: 3.00

Tipo: 1

Sent: 1



Km: 3.00

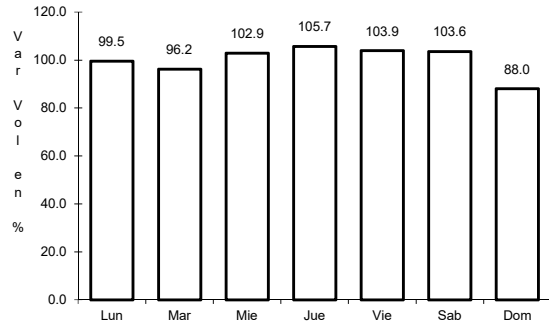
Tipo: 1

Sent: 2

31 CARR: Ramal a Estación Yago

CLAVE: 18224

RUTA: NAY



Km: 0.00

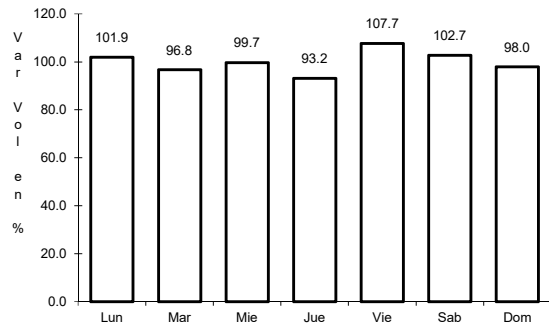
Tipo: 3

Sent: 0

32 CARR: Ramal a Ixtapán de La Concepción

CLAVE: 18233

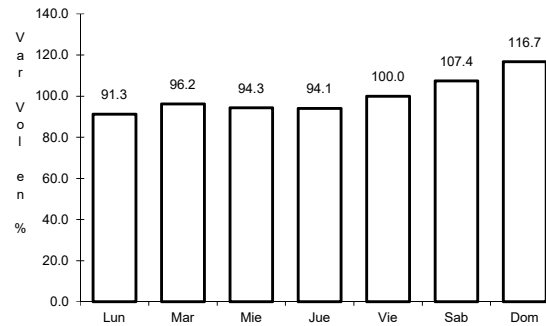
RUTA: NAY



Km: 0.00

Tipo: 3

Sent: 0



Km: 20.00

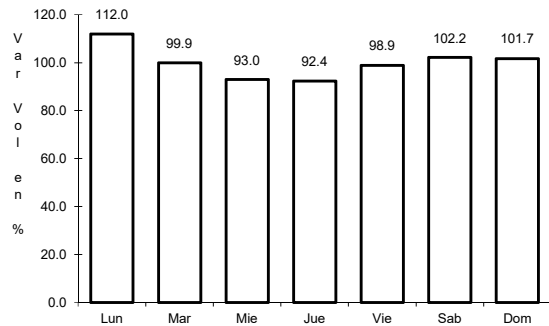
Tipo: 1

Sent: 0

33 CARR: Ramal a Milpas Viejas

CLAVE: 18007

RUTA: NAY



Km: 0.00

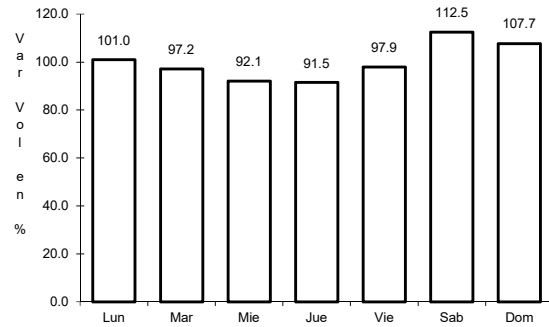
Tipo: 3

Sent: 0

34 CARR: Ramal a Villa Hidalgo

CLAVE: 18031

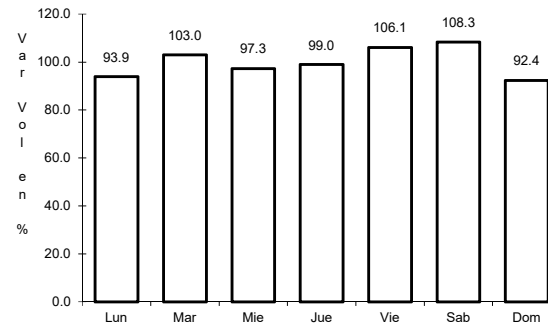
ruta: NAY



Km: 0.00

Tipo: 3

Sent: 0



Km: 16.00

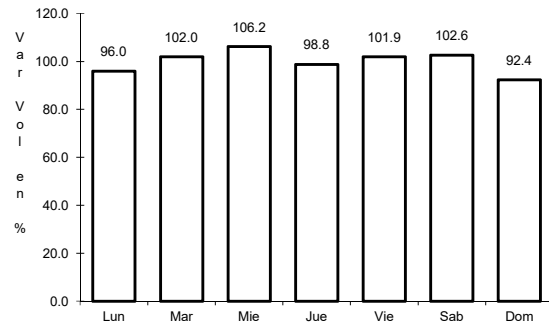
Tipo: 1

Sent: 0

35 CARR: Ramal a Volcán del Ceboruco

CLAVE: 18003

ruta: NAY



Km: 0.00

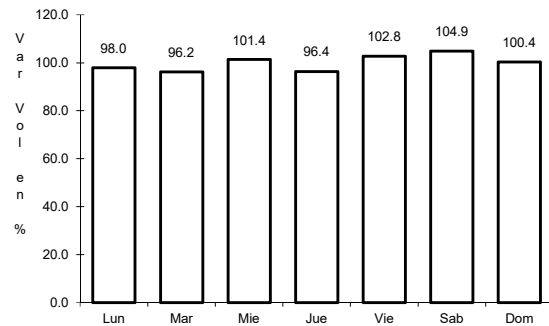
Tipo: 3

Sent: 0

36 CARR: Tepic - Francisco I. Madero

CLAVE: 18009

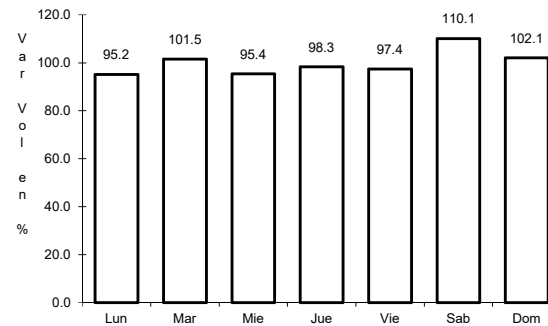
ruta: NAY-MEX



Km: 0.00

Tipo: 3

Sent: 0



Km: 9.00

Tipo: 3

Sent: 0