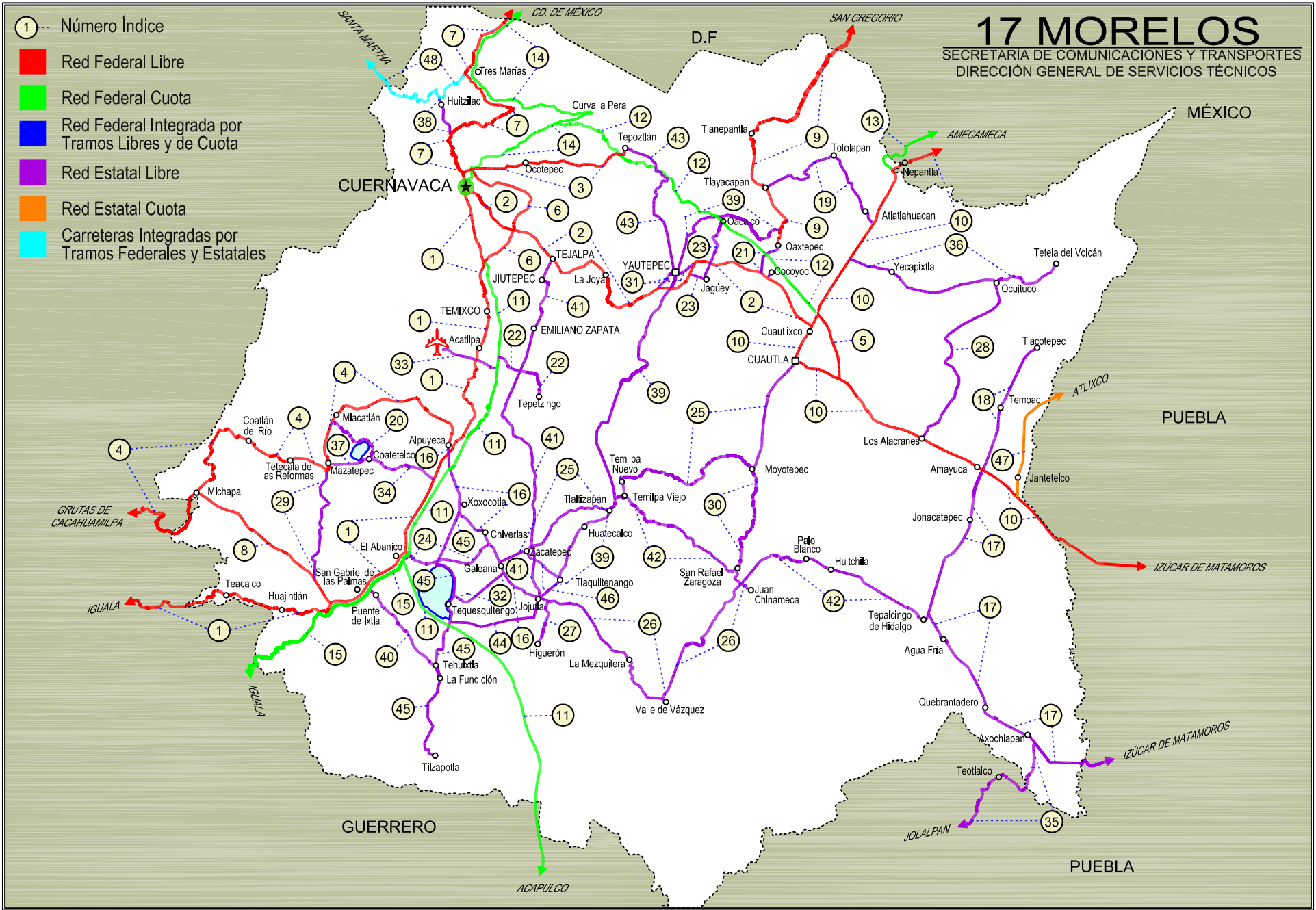


17 MORELOS

SECRETARÍA DE COMUNICACIONES Y TRANSPORTES
DIRECCIÓN GENERAL DE SERVICIOS TÉCNICOS

- ① --- Número Índice
- Red Federal Libre
- Red Federal Cuota
- Red Federal Integrada por Tramos Libres y de Cuota
- Red Estatal Libre
- Red Estatal Cuota
- Carreteras Integradas por Tramos Federales y Estatales





MORELOS

---RED FEDERAL LIBRE---

1 Cuernavaca - Chilpancingo	MEX-095
2 Cuernavaca - Cuautlaxco	MEX-138
3 Cuernavaca - Tepoztlán	MEX-162
4 Ent. Alpuyecá - Grutas de Cacahuamilpa	MEX-166
5 Libramiento de Cuautla	MEX-160
6 Libramiento de Cuernavaca	MEX-095
7 México - Cuernavaca (Libre)	MEX-095
8 Ramal a Michapa	MEX-166
9 San Gregorio - Oaxtepec	MEX-113
10 Santa Bárbara - Izúcar de Matamoros	MEX-115-160

---RED FEDERAL DE CUOTA---

11 Cuernavaca - Acapulco (Cuota)	MEX-095D
12 La Pera - Cuautla (Cuota)	MEX-160D
13 Libramiento Amecameca - Nepantla (Cuota)	MEX-115D
14 México - Cuernavaca (Cuota)	MEX-095D
15 Puente de Ixtla - Iguala (Cuota)	MEX-091D

---RED ESTATAL LIBRE---

16 Alpuyecá - Jojutla	MOR-021
17 Amayuca - Izúcar de Matamoros	MOR-031-PUE
18 Amayuca - Tlacotepec	MOR-017
19 Atlatlahucan - Tlayacapan	MOR-002
20 Coatetelco - Miacatlán	MOR
21 Cocoyoc - Oaxtepec	MOR
22 Ent. C. (Cuernavaca - Acapulco Cuota) - Tepetzingo	MOR
23 Ent. C. (Cuernavaca - Cuautlaxco) - Oacalco	MOR
24 Ent. Chiverías - Ent. El Abanico	MOR
25 Galeana - Cuautla	MOR-004
26 Jojutla - Chinameca	MOR
27 Jojutla - El Higuérón	MOR-039
28 Los Alacranes - Ocuituco	MOR
29 Mazatepec - T. C. Ramal a Michapa	MOR
30 Moyotepec - San Rafael	MOR
31 Paso por Yautepec	MOR
32 Pilares - T. C. (Xoxocotla - Tilzapotla)	MOR-008
33 Ramal a Aeropuerto de Cuernavaca	MOR
34 Ramal a Coatetelco	MOR
35 Ramal a Jolalpan	MOR-PUE
36 Ramal a Tetela del Volcán	MOR-010
37 T. C. (Coatetelco - Miacatlán) - Mazatepec	MOR
38 T. C. (México - Cuernavaca (Libre)) - Huitzilac	MOR
39 T. C. (San Gregorio - Oaxtepec) - Jojutla	MOR-002
40 Tehuixtla - Puente de Ixtla	MOR
41 Tejalpa - Jojutla	MOR-014
42 Temilpa - Tepalcingo	MOR-009
43 Tepoztlán - Yautepec	MOR-013
44 Tequesquitengo - Jojutla	MOR
45 Xoxocotla - Tilzapotla	MOR-006
46 Zacatepec - Tlaquiltenango	MOR

---RED ESTATAL DE CUOTA---

47 Atlixco - Jantetelco (Cuota)	PUE-D
---------------------------------	-------

---CARRETERAS INTEGRADAS POR TRAMOS FEDERALES Y ESTATALES---

48 Tres Marías - Santa Martha	MEX-106-EM
-------------------------------	------------

MORELOS

1 CARR: Cuernavaca - Chilpancingo

CLAVE: 00042

RUTA: MEX-095

AÑO: 2018

LUGAR	ESTACION				CLASIFICACION VEHICULAR EN PORCIENTO										COORDENADAS					
	KM	TE	SC	TDPA	M	A	B	C2	C3	T3S2	T3S3	T3S2R4	OTROS	A	B	C	K'	D	LATITUD	LONGITUD
Cuernavaca	0.00																			
T. Izq. Chipitlán	4.85	1	1	19409	1.4	84.8	4.2	8.9	0.2	0.0	0.0	0.0	0.5	86.2	4.2	9.6	0.061	0.509	18.893753	-99.228535
T. Izq. Chipitlán	4.85	1	2	18750	1.3	83.4	4.7	9.9	0.2	0.0	0.0	0.0	0.5	84.7	4.7	10.6	0.065	0.509	18.893775	-99.228441
T. Izq. Chipitlán	4.85	3	1	9606	6.3	78.4	6.0	6.5	0.2	0.9	1.2	0.3	0.2	84.7	6.0	9.3	0.100	0.556	18.882243	-99.229647
T. Izq. Chipitlán	4.85	3	2	12050	5.5	78.0	6.1	7.3	0.2	1.0	1.4	0.3	0.2	83.5	6.1	10.4	0.081	0.556	18.882256	-99.229577
Temixco	9.80	1	1	10011	6.4	78.9	5.9	6.9	0.2	0.5	0.9	0.2	0.1	85.3	5.9	8.8	0.093	0.551	18.865573	-99.225973
Temixco	9.80	1	2	12284	5.5	78.8	6.2	7.4	0.2	0.6	1.0	0.2	0.1	84.3	6.2	9.5	0.078	0.551	18.865609	-99.225928
Temixco	9.80	3	1	18697	3.8	81.5	5.2	7.7	0.2	0.7	0.6	0.1	0.2	85.3	5.2	9.5	0.077	0.541	18.835118	-99.226011
Temixco	9.80	3	2	15895	4.7	78.6	6.0	8.7	0.2	0.7	0.8	0.1	0.2	83.3	6.0	10.7	0.069	0.541	18.835122	-99.225930
Acatlpa	12.43	1	1	15027	3.9	83.9	3.9	6.8	0.2	0.3	0.7	0.1	0.2	87.8	3.9	8.3	0.097	0.540	18.830111	-99.227436
Acatlpa	12.43	1	2	12780	4.8	81.4	4.7	7.6	0.2	0.3	0.7	0.1	0.2	86.2	4.7	9.1	0.088	0.540	18.830060	-99.227320
Acatlpa	12.43	3	1	12386	5.6	82.0	4.1	6.8	0.2	0.3	0.6	0.1	0.3	87.6	4.1	8.3	0.059	0.521	18.824837	-99.230181
Acatlpa	12.43	3	2	13481	7.1	79.0	4.5	7.9	0.2	0.3	0.6	0.1	0.3	86.1	4.5	9.4	0.060	0.521	18.824803	-99.230100
T. Izq. Emiliano Zapata	13.50	1	1	11296	5.6	82.7	3.6	5.8	0.2	0.8	0.6	0.2	0.5	88.3	3.6	8.1	0.066	0.521	18.822782	-99.231267
T. Izq. Emiliano Zapata	13.50	1	2	12294	7.2	80.2	3.8	6.4	0.2	0.8	0.7	0.2	0.5	87.4	3.8	8.8	0.068	0.521	18.822738	-99.231189
T. Izq. Emiliano Zapata	13.50	3	1	11090	3.8	87.3	2.8	4.3	0.5	0.4	0.5	0.2	0.2	91.1	2.8	6.1	0.096	0.520	18.817483	-99.233136
T. Izq. Emiliano Zapata	13.50	3	2	12010	5.5	84.5	3.3	4.9	0.5	0.4	0.5	0.2	0.2	90.0	3.3	6.7	0.091	0.520	18.817495	-99.233027
T. Izq. Xochitepec	16.05	1	1	7411	4.0	88.0	3.1	3.2	0.5	0.4	0.5	0.2	0.1	92.0	3.1	4.9	0.064	0.506	18.802094	-99.237558
T. Izq. Xochitepec	16.05	1	2	7601	5.0	86.6	3.2	3.5	0.5	0.4	0.5	0.2	0.1	91.6	3.2	5.2	0.070	0.506	18.802124	-99.237461
T. Izq. Xochitepec	16.05	3	1	5617	6.2	82.4	4.0	5.6	0.6	0.6	0.3	0.2	0.1	88.6	4.0	7.4	0.079	0.507	18.797234	-99.240939
T. Izq. Xochitepec	16.05	3	2	5766	5.8	81.5	4.4	6.5	0.6	0.6	0.3	0.2	0.1	87.3	4.4	8.3	0.133	0.507	18.797164	-99.240923
X. C. Alpuyecá - Jojutla	24.15	1	1	8953	6.0	82.2	4.0	5.3	0.5	0.9	0.9	0.1	0.1	88.2	4.0	7.8	0.075	0.505	18.739331	-99.255329
X. C. Alpuyecá - Jojutla	24.15	1	2	9122	5.9	81.1	4.4	5.8	0.7	1.0	0.9	0.1	0.1	87.0	4.4	8.6	0.106	0.505	18.739314	-99.255264
X. C. Alpuyecá - Jojutla	24.15	3	0	9738	4.2	83.9	2.4	6.2	1.4	1.2	0.5	0.1	0.1	88.1	2.4	9.5	0.096	0.504	18.730059	-99.264752
T. Der. Coatetelco	28.00	3	0	5976	4.1	83.3	2.4	5.9	2.0	1.6	0.4	0.2	0.1	87.4	2.4	10.2	0.068	0.507	18.710187	-99.273704
T. Der. Michapa	44.36	1	0	8713	2.5	83.8	2.3	4.8	1.3	3.6	1.0	0.1	0.6	86.3	2.3	11.4	0.065	0.511	18.612017	-99.355760
T. Izq. Cuernavaca - Iguala (Cuota)	46.93	1	0	6064	3.2	85.4	1.9	4.1	0.8	3.1	1.0	0.1	0.4	88.6	1.9	9.5	0.080	0.504	18.604799	-99.377236
T. Izq. Cuernavaca - Iguala (Cuota)	46.93	3	0	6385	3.8	86.1	3.0	3.8	0.2	2.0	0.5	0.1	0.5	89.9	3.0	7.1	0.054	0.507	18.603264	-99.381682
Huajintla	52.00	3	0	4166	4.5	88.0	1.0	3.7	0.2	1.4	0.4	0.1	0.7	92.5	1.0	6.5	0.066	0.538	18.612829	-99.430603
Lim. Edos. Term. Mor. Ppia. Gro.	57.10																			
T. Der. Ixtapan de La Sal (Axixintla)	63.47	1	0	2105	7.8	81.5	0.5	6.4	1.7	1.5	0.5	0.0	0.1	89.3	0.5	10.2	0.075	0.514	18.608541	-99.502700
Taxco	89.90	3	0	6904	4.1	86.6	0.4	3.9	0.4	2.5	1.2	0.2	0.7	90.7	0.4	8.9	0.067	0.505	18.534860	-99.609379
Iguala	119.63	1	0	7405	5.4	84.5	0.4	4.9	0.4	3.5	0.4	0.2	0.3	89.9	0.4	9.7	0.076	0.506	18.377617	-99.529197
T. Izq. Puente de Ixtla	123.98	3	0	17139	3.5	84.4	1.4	6.5	1.8	1.3	0.8	0.1	0.2	87.9	1.4	10.7	0.068	0.503	18.317298	-99.500164
T. Der. Sabana Grande	144.95	1	0	6741	1.4	81.2	2.7	5.8	3.5	3.5	1.3	0.2	0.4	82.6	2.7	14.7	0.066	0.507	18.176269	-99.551615

MORELOS

1 CARR: Cuernavaca - Chilpancingo

CLAVE: 00042

RUTA: MEX-095

AÑO: 2018

LUGAR	ESTACION				CLASIFICACION VEHICULAR EN PORCIENTO										COORDENADAS					
	KM	TE	SC	TDPA	M	A	B	C2	C3	T3S2	T3S3	T3S2R4	OTROS	A	B	C	K'	D	LATITUD	LONGITUD
T. Der. Tecucontitlán	146.78	1	0	6720	1.7	80.3	2.7	6.8	3.7	3.0	1.3	0.2	0.3	82.0	2.7	15.3	0.072	0.503	18.130747	-99.555735
T. Der. Mezcala	173.14	1	0	5905	2.0	75.8	3.6	8.6	4.3	3.6	1.6	0.2	0.3	77.8	3.6	18.6	0.071	0.501	17.934640	-99.589567
T. Der. Filo de Caballo	189.89	3	0	5126	1.0	78.6	4.2	7.9	4.1	3.2	0.5	0.1	0.4	79.6	4.2	16.2	0.073	0.504	17.794774	-99.566958
Chilpancingo	223.70	1	1	21257	2.7	84.0	2.6	6.5	1.5	1.3	0.7	0.5	0.2	86.7	2.6	10.7	0.067	0.511	17.582066	-99.515231
Chilpancingo	223.70	1	2	22230	3.5	81.8	2.7	7.6	1.5	1.4	0.8	0.5	0.2	85.3	2.7	12.0	0.069	0.511	17.582089	-99.515089

2 CARR: Cuernavaca - Cuautlixco

CLAVE: 17199

RUTA: MEX-138

AÑO: 2018

LUGAR	ESTACION				CLASIFICACION VEHICULAR EN PORCIENTO										COORDENADAS					
	KM	TE	SC	TDPA	M	A	B	C2	C3	T3S2	T3S3	T3S2R4	OTROS	A	B	C	K'	D	LATITUD	LONGITUD
Cuernavaca	0.00																			
T. Izq. Civac Poniente	7.78	1	1	43585	1.6	86.3	2.4	3.5	0.5	1.6	2.8	0.6	0.7	87.9	2.4	9.7	0.064	0.531	18.913099	-99.183049
T. Izq. Civac Poniente	7.78	1	2	38520	2.9	83.8	3.0	3.9	0.5	1.7	2.8	0.7	0.7	86.7	3.0	10.3	0.067	0.531	18.913212	-99.182907
T. Izq. Civac Poniente	7.78	3	1	31876	3.0	85.4	2.8	3.1	0.6	1.9	2.7	0.1	0.4	88.4	2.8	8.8	0.070	0.512	18.901491	-99.173374
T. Izq. Civac Poniente	7.78	3	2	33498	1.7	85.8	3.0	3.3	0.5	2.1	3.1	0.1	0.4	87.5	3.0	9.5	0.064	0.512	18.901621	-99.173240
X. C. Tejalpa - Jojutla	9.70	3	1	28994	3.8	87.3	1.7	4.6	0.7	0.6	0.9	0.2	0.2	91.1	1.7	7.2	0.062	0.513	18.885328	-99.157420
X. C. Tejalpa - Jojutla	9.70	3	2	27473	4.1	86.3	1.7	5.1	0.7	0.7	1.0	0.2	0.2	90.4	1.7	7.9	0.062	0.513	18.885489	-99.157433
La Joya	16.50	1	1	20159	3.3	88.3	2.3	4.6	0.5	0.5	0.4	0.1	0.0	91.6	2.3	6.1	0.071	0.514	18.893080	-99.130790
La Joya	16.50	1	2	21322	3.6	87.2	2.6	5.1	0.5	0.5	0.4	0.1	0.0	90.8	2.6	6.6	0.076	0.514	18.893181	-99.130719
La Joya	16.50	3	1	13439	4.0	88.7	1.1	4.1	1.1	0.6	0.3	0.1	0.0	92.7	1.1	6.2	0.076	0.512	18.882017	-99.121709
La Joya	16.50	3	2	12815	2.6	89.2	1.2	4.7	1.2	0.7	0.3	0.1	0.0	91.8	1.2	7.0	0.068	0.512	18.882120	-99.121621
T. Izq. Yautepec (1º Acceso)	24.75	1	1	13348	3.6	86.4	1.2	6.3	1.2	0.9	0.3	0.1	0.0	90.0	1.2	8.8	0.070	0.510	18.868641	-99.083576
T. Izq. Yautepec (1º Acceso)	24.75	1	2	13879	4.1	84.6	1.1	7.7	1.2	0.9	0.3	0.1	0.0	88.7	1.1	10.2	0.067	0.510	18.868756	-99.083639
X. C. (San Gregorio - Oaxtepec) - Jojutla	27.10	1	1	13755	5.9	85.6	1.2	4.9	1.0	0.9	0.4	0.1	0.0	91.5	1.2	7.3	0.074	0.509	18.870973	-99.070864
X. C. (San Gregorio - Oaxtepec) - Jojutla	27.10	1	2	13246	8.7	81.9	1.3	5.5	1.1	1.0	0.4	0.1	0.0	90.6	1.3	8.1	0.062	0.509	18.871124	-99.070834
X. C. (San Gregorio - Oaxtepec) - Jojutla	27.10	3	1	14072	4.7	86.0	1.2	4.9	1.1	1.0	0.8	0.1	0.2	90.7	1.2	8.1	0.072	0.514	18.872798	-99.058897
X. C. (San Gregorio - Oaxtepec) - Jojutla	27.10	3	2	13305	6.4	82.9	1.3	5.8	1.3	1.1	0.9	0.1	0.2	89.3	1.3	9.4	0.072	0.514	18.872923	-99.059029
Tabachines	31.50	1	1	13305	4.6	85.5	0.9	5.4	1.6	0.9	0.8	0.1	0.2	90.1	0.9	9.0	0.072	0.502	18.892878	-99.041279
Tabachines	31.50	1	2	13421	6.4	82.7	1.0	5.7	1.8	1.1	1.0	0.1	0.2	89.1	1.0	9.9	0.073	0.502	18.892941	-99.041454
Tabachines	31.50	3	1	13973	6.3	83.8	1.0	5.2	1.6	0.9	0.9	0.1	0.2	90.1	1.0	8.9	0.076	0.502	18.894926	-99.034106
Tabachines	31.50	3	2	14075	6.5	83.6	1.0	5.4	1.3	1.2	0.7	0.2	0.1	90.1	1.0	8.9	0.082	0.502	18.895004	-99.034080
T. Izq. Oaxtepec	36.11	3	1	9399	9.0	86.3	0.4	3.8	0.3	0.1	0.1	0.0	0.0	95.3	0.4	4.3	0.075	0.504	18.884839	-98.985439
T. Izq. Oaxtepec	36.11	3	2	9533	9.0	86.0	0.4	4.1	0.3	0.1	0.1	0.0	0.0	95.0	0.4	4.6	0.065	0.504	18.884869	-98.985419
T. C. Santa Bárbara - Izúcar de Matamoros	43.15	1	1	11549	9.4	87.1	0.2	2.1	0.4	0.3	0.3	0.1	0.1	96.5	0.2	3.3	0.072	0.503	18.841641	-98.943560
T. C. Santa Bárbara - Izúcar de Matamoros	43.15	1	2	11402	9.1	87.7	0.2	2.1	0.4	0.2	0.2	0.1	0.0	96.8	0.2	3.0	0.073	0.503	18.841732	-98.943513

MORELOS

3 CARR: Cuernavaca - Tepoztlán

CLAVE: 17198

RUTA: MEX-162

AÑO: 2018

LUGAR	ESTACION				CLASIFICACION VEHICULAR EN PORCIENTO										COORDENADAS					
	KM	TE	SC	TDPA	M	A	B	C2	C3	T3S2	T3S3	T3S2R4	OTROS	A	B	C	K'	D	LATITUD	LONGITUD
T. C. México - Cuernavaca (Libre)	0.00																			
Ocotepc	2.83	1	1	10958	5.0	90.8	0.1	3.1	0.2	0.4	0.4	0.0	0.0	95.8	0.1	4.1	0.080	0.514	18.966935	-99.232923
Ocotepc	2.83	1	2	11605	4.4	91.0	0.1	3.5	0.2	0.4	0.4	0.0	0.0	95.4	0.1	4.5	0.071	0.514	18.967035	-99.232955
Ahuatepec	4.16	3	0	9234	3.4	83.3	0.1	7.1	0.4	4.4	0.6	0.1	0.6	86.7	0.1	13.2	0.077	0.524	18.975023	-99.172337
X. C. La Pera - Cuautla (Cuota)	16.34	1	0	8988	3.6	83.9	0.0	5.8	0.4	5.0	0.5	0.1	0.7	87.5	0.0	12.5	0.099	0.504	18.981154	-99.113304
Tepoztlán	18.20	1	0	13229	4.8	90.2	0.1	3.8	0.2	0.3	0.5	0.0	0.1	95.0	0.1	4.9	0.080	0.507	18.980783	-99.104013

4 CARR: Ent. Alpuyecá - Grutas de Cacahuamilpa

CLAVE: 00421

RUTA: MEX-166

AÑO: 2018

LUGAR	ESTACION				CLASIFICACION VEHICULAR EN PORCIENTO										COORDENADAS					
	KM	TE	SC	TDPA	M	A	B	C2	C3	T3S2	T3S3	T3S2R4	OTROS	A	B	C	K'	D	LATITUD	LONGITUD
T. C. Cuernavaca - Chilpancingo	0.00	3	0	7847	5.4	83.2	1.3	8.4	1.2	0.3	0.2	0.0	0.0	88.6	1.3	10.1	0.078	0.504	18.748714	-99.257422
T. Der. Zona Arq. de Xochicalco	8.40	3	1	3542	5.3	87.1	0.9	4.8	1.2	0.4	0.2	0.1	0.0	92.4	0.9	6.7	0.076	0.503	18.777877	-99.304925
T. Der. Zona Arq. de Xochicalco	8.40	3	2	3580	5.7	86.5	0.9	5.2	1.4	0.2	0.1	0.0	0.0	92.2	0.9	6.9	0.089	0.503	18.777785	-99.304945
Miacatlán	14.95	3	1	6844	9.0	87.4	0.3	2.9	0.2	0.1	0.1	0.0	0.0	96.4	0.3	3.3	0.068	0.502	18.752438	-99.364891
Miacatlán	14.95	3	2	6802	9.1	88.0	0.3	2.4	0.1	0.0	0.1	0.0	0.0	97.1	0.3	2.6	0.067	0.502	18.752397	-99.364810
Mazatepec	18.28	3	0	9765	4.3	91.1	0.6	3.6	0.1	0.1	0.2	0.0	0.0	95.4	0.6	4.0	0.084	0.500	18.721089	-99.364897
Tetecala	25.05	3	0	7412	7.2	89.1	0.6	2.6	0.2	0.1	0.2	0.0	0.0	96.3	0.6	3.1	0.070	0.503	18.728881	-99.405091
Coatlán del Río	29.80	3	0	4172	3.7	92.3	0.3	3.4	0.2	0.1	0.0	0.0	0.0	96.0	0.3	3.7	0.073	0.572	18.749002	-99.442921
Michapa	41.26	1	0	2866	9.1	82.6	0.6	3.1	0.8	1.9	1.9	0.0	0.0	91.7	0.6	7.7	0.068	0.503	18.708394	-99.473693
Lim. Edos. Term. Mor. Ppia. Gro.	42.40																			
T. C. Toluca - Axixintla	48.65																			

5 CARR: Libramiento de Cuautla

CLAVE: 17309

RUTA: MEX-160

AÑO: 2018

LUGAR	ESTACION				CLASIFICACION VEHICULAR EN PORCIENTO										COORDENADAS					
	KM	TE	SC	TDPA	M	A	B	C2	C3	T3S2	T3S3	T3S2R4	OTROS	A	B	C	K'	D	LATITUD	LONGITUD
T. C. Santa Bárbara - Izúcar de Matamoros (Norte)	0.00	3	1	18212	5.2	84.3	0.9	5.6	1.6	1.2	0.5	0.5	0.2	89.5	0.9	9.6	0.095	0.503	18.847928	-98.932898
T. C. Santa Bárbara - Izúcar de Matamoros (Norte)	0.00	3	2	17988	3.9	84.7	1.0	6.1	1.7	1.4	0.5	0.5	0.2	88.6	1.0	10.4	0.096	0.503	18.847996	-98.932823
T. C. Santa Bárbara - Izúcar de Matamoros (Sur)	4.00																			

MORELOS

6 CARR: Libramiento de Cuernavaca

CLAVE: 17400

RUTA: MEX-095

AÑO: 2018

LUGAR	ESTACION				CLASIFICACION VEHICULAR EN PORCIENTO										COORDENADAS					
	KM	TE	SC	TDPA	M	A	B	C2	C3	T3S2	T3S3	T3S2R4	OTROS	A	B	C	K'	D	LATITUD	LONGITUD
T. C. México - Cuernavaca (Cuota)	0.00																			
T. Izq. Xicapan (Central)	1.30	1	1	10798	1.2	82.8	3.4	7.7	1.0	1.9	0.8	1.1	0.1	84.0	3.4	12.6	0.138	0.517	18.962438	-99.232540
T. Izq. Xicapan (Lateral)	1.30	1	1	38088	2.3	89.7	1.3	4.0	0.7	1.1	0.3	0.4	0.2	92.0	1.3	6.7	0.079	0.512	18.962386	-99.232575
T. Izq. Xicapan (Lateral)	1.30	1	2	39983	2.0	89.4	1.5	4.3	0.7	1.2	0.3	0.4	0.2	91.4	1.5	7.1	0.084	0.512	18.962563	-99.232454
T. Izq. Xicapan (Central)	1.30	1	2	11541	1.1	81.0	3.7	8.8	1.0	2.2	0.9	1.2	0.1	82.1	3.7	14.2	0.160	0.517	18.962513	-99.232485
T. Izq. Xicapan (Central)	1.30	3	1	11497	1.2	85.8	3.5	4.7	1.0	1.9	0.8	1.0	0.1	87.0	3.5	9.5	0.125	0.503	18.958425	-99.225485
T. Izq. Xicapan (Lateral)	1.30	3	1	43683	1.5	88.3	2.1	3.9	0.9	2.0	0.5	0.7	0.1	89.8	2.1	8.1	0.075	0.502	18.958364	-99.225526
T. Izq. Xicapan (Lateral)	1.30	3	2	44105	1.5	87.1	2.3	4.4	1.0	2.3	0.5	0.8	0.1	88.6	2.3	9.1	0.076	0.502	18.958576	-99.225408
T. Izq. Xicapan (Central)	1.30	3	2	11656	1.1	84.2	4.0	5.3	1.1	2.1	0.9	1.2	0.1	85.3	4.0	10.7	0.157	0.503	18.958517	-99.225448
T. Izq. Villas del Lago (Central)	8.40	1	1	11702	1.3	85.9	3.5	4.2	1.2	2.1	0.7	1.0	0.1	87.2	3.5	9.3	0.124	0.503	18.937759	-99.191789
T. Izq. Villas del Lago (Lateral)	8.40	1	1	47083	1.2	88.3	2.2	4.3	0.8	1.9	0.6	0.6	0.1	89.5	2.2	8.3	0.085	0.503	18.937813	-99.191819
T. Izq. Villas del Lago (Lateral)	8.40	1	2	46459	1.4	86.9	2.4	5.0	1.0	1.9	0.7	0.6	0.1	88.3	2.4	9.3	0.081	0.503	18.937629	-99.191693
T. Izq. Villas del Lago (Central)	8.40	1	2	11849	1.1	84.3	4.1	4.7	1.4	2.3	0.8	1.2	0.1	85.4	4.1	10.5	0.157	0.503	18.937694	-99.191740
T. Izq. Villas del Lago (Central)	8.40	3	1	11508	1.3	85.4	3.7	4.7	1.1	2.0	0.7	1.0	0.1	86.7	3.7	9.6	0.124	0.501	18.934518	-99.197665
T. Izq. Villas del Lago (Lateral)	8.40	3	1	46525	1.2	89.3	1.6	3.3	1.3	1.4	1.3	0.4	0.2	90.5	1.6	7.9	0.071	0.506	18.934584	-99.197715
T. Izq. Villas del Lago (Central)	8.40	3	2	11554	1.2	84.0	4.5	5.0	1.3	2.2	0.7	1.0	0.1	85.2	4.5	10.3	0.142	0.501	18.934461	-99.197624
T. Izq. Villas del Lago (Lateral)	8.40	3	2	45387	1.8	87.3	1.9	4.0	1.4	1.6	1.4	0.4	0.2	89.1	1.9	9.0	0.066	0.506	18.934396	-99.197585
X. C. Cuernavaca - Cuautlixco (Central)	10.54	1	1	11546	1.3	85.4	3.7	4.7	1.2	2.1	0.6	0.9	0.1	86.7	3.7	9.6	0.121	0.500	18.924612	-99.202737
X. C. Cuernavaca - Cuautlixco (Lateral)	10.54	1	1	44010	1.2	89.5	1.5	3.3	1.3	1.4	1.2	0.4	0.2	90.7	1.5	7.8	0.068	0.507	18.924606	-99.202809
X. C. Cuernavaca - Cuautlixco (Central)	10.54	1	2	11559	1.1	84.5	4.3	5.0	1.2	2.1	0.7	1.0	0.1	85.6	4.3	10.1	0.147	0.500	18.924619	-99.202678
X. C. Cuernavaca - Cuautlixco (Lateral)	10.54	1	2	42719	1.8	88.0	1.7	3.6	1.4	1.6	1.3	0.4	0.2	89.8	1.7	8.5	0.066	0.507	18.924622	-99.202588
X. C. Cuernavaca - Cuautlixco (Central)	10.54	3	1	11558	1.3	86.1	3.5	4.4	1.1	1.9	0.7	0.9	0.1	87.4	3.5	9.1	0.126	0.511	18.915227	-99.205748
X. C. Cuernavaca - Cuautlixco (Lateral)	10.54	3	1	43168	1.0	91.0	1.1	4.6	0.6	0.7	0.6	0.3	0.1	92.0	1.1	6.9	0.072	0.506	18.915249	-99.205793
X. C. Cuernavaca - Cuautlixco (Lateral)	10.54	3	2	44251	1.2	89.8	1.1	5.5	0.7	0.7	0.6	0.3	0.1	91.0	1.1	7.9	0.069	0.506	18.915147	-99.205574
X. C. Cuernavaca - Cuautlixco (Central)	10.54	3	2	11080	1.0	84.9	3.8	5.1	1.1	2.2	0.8	1.0	0.1	85.9	3.8	10.3	0.152	0.511	18.915183	-99.205658
T. Der. Av. Morelos	14.70	1	1	62613	2.2	89.6	1.4	4.4	0.7	0.7	0.6	0.3	0.1	91.8	1.4	6.8	0.073	0.504	18.897279	-99.226068
T. Der. Av. Morelos	14.70	1	2	61550	2.6	88.7	1.5	4.6	0.7	0.8	0.7	0.3	0.1	91.3	1.5	7.2	0.080	0.504	18.897235	-99.226025

7 CARR: México - Cuernavaca (Libre)

CLAVE: 00040

RUTA: MEX-095

AÑO: 2018

LUGAR	ESTACION				CLASIFICACION VEHICULAR EN PORCIENTO										COORDENADAS					
	KM	TE	SC	TDPA	M	A	B	C2	C3	T3S2	T3S3	T3S2R4	OTROS	A	B	C	K'	D	LATITUD	LONGITUD
México	0.00																			
T., Izq. San Miguel Xicalco	25.50	1	0	26887	2.9	83.5	5.2	4.7	1.4	1.0	1.3	0.0	0.0	86.4	5.2	8.4	0.061	0.500	19.235966	-99.158195
T., Izq. San Miguel Xicalco	25.50	3	0	24459	2.8	84.3	4.4	6.5	1.1	0.4	0.5	0.0	0.0	87.1	4.4	8.5	0.064	0.514	19.233579	-99.156466

MORELOS

7 CARR: México - Cuernavaca (Libre)

CLAVE: 00040

RUTA: MEX-095

AÑO: 2018

LUGAR	ESTACION				CLASIFICACION VEHICULAR EN PORCIENTO										COORDENADAS					
	KM	TE	SC	TDPA	M	A	B	C2	C3	T3S2	T3S3	T3S2R4	OTROS	A	B	C	K'	D	LATITUD	LONGITUD
T. Izq. San Miguel Topilejo	28.78	1	1	10611	2.6	87.6	3.0	4.7	1.0	0.6	0.5	0.0	0.0	90.2	3.0	6.8	0.081	0.518	19.213855	-99.151673
T. Izq. San Miguel Topilejo	28.78	1	2	11396	3.4	87.2	2.8	4.5	1.1	0.6	0.4	0.0	0.0	90.6	2.8	6.6	0.090	0.518	19.213817	-99.151665
T. Izq. San Miguel Topilejo	28.78	3	0	9140	3.1	88.7	1.6	5.1	1.0	0.4	0.1	0.0	0.0	91.8	1.6	6.6	0.102	0.511	19.204565	-99.156808
Parres El Guarda	39.50	1	0	8672	1.8	90.3	1.8	4.5	1.0	0.4	0.2	0.0	0.0	92.1	1.8	6.1	0.097	0.532	19.139423	-99.170251
Parres El Guarda	39.50	3	0	7313	3.1	89.3	1.8	5.0	0.5	0.2	0.1	0.0	0.0	92.4	1.8	5.8	0.127	0.515	19.127283	-99.181799
Lim. Edos. Term. CDMX Ppia. Mor.	45.44																			
T. Der. Zempoala	51.40	1	0	8148	4.0	86.9	3.1	4.9	0.5	0.4	0.2	0.0	0.0	90.9	3.1	6.0	0.117	0.502	19.057493	-99.242001
T. Der. Zempoala	51.40	3	0	6301	2.7	87.5	3.6	5.3	0.5	0.2	0.2	0.0	0.0	90.2	3.6	6.2	0.088	0.512	19.041995	-99.233044
T. Izq. Coajomulco	57.12	3	0	5472	3.2	87.9	3.6	4.4	0.6	0.1	0.2	0.0	0.0	91.1	3.6	5.3	0.090	0.512	19.027108	-99.207183
T. Der. Huitzilac	64.20	1	0	8400	3.0	87.0	4.9	3.7	0.5	0.3	0.6	0.0	0.0	90.0	4.9	5.1	0.078	0.511	19.002747	-99.257424
T. Der. Huitzilac	64.20	3	0	14155	1.9	89.8	4.7	2.6	0.8	0.1	0.1	0.0	0.0	91.7	4.7	3.6	0.080	0.509	18.995641	-99.260771
T. Izq. Tepoztlán	71.36	1	0	26392	2.7	88.3	4.1	4.5	0.2	0.1	0.1	0.0	0.0	91.0	4.1	4.9	0.065	0.503	18.970750	-99.249579
T. Izq. Tepoztlán	71.36	3	1	20138	2.1	88.8	4.5	4.4	0.2	0.0	0.0	0.0	0.0	90.9	4.5	4.6	0.069	0.513	18.960516	-99.246184
T. Izq. Tepoztlán	71.36	3	2	21213	1.8	90.8	3.8	3.4	0.2	0.0	0.0	0.0	0.0	92.6	3.8	3.6	0.067	0.513	18.960518	-99.246136
Cuernavaca	75.42																			

8 CARR: Ramal a Michapa

CLAVE: 17303

RUTA: MEX-166

AÑO: 2018

LUGAR	ESTACION				CLASIFICACION VEHICULAR EN PORCIENTO										COORDENADAS					
	KM	TE	SC	TDPA	M	A	B	C2	C3	T3S2	T3S3	T3S2R4	OTROS	A	B	C	K'	D	LATITUD	LONGITUD
T. C. Cuernavaca - Chilpancingo	0.00	3	0	5300	2.8	79.9	2.1	9.1	1.3	2.4	1.9	0.2	0.3	82.7	2.1	15.2	0.073	0.543	18.612903	-99.364486
Michapa	16.22	1	0	4214	3.5	85.0	3.0	5.5	0.8	1.2	1.0	0.0	0.0	88.5	3.0	8.5	0.094	0.513	18.701524	-99.477264

9 CARR: San Gregorio - Oaxtepec

CLAVE: 00901

RUTA: MEX-113

AÑO: 2018

LUGAR	ESTACION				CLASIFICACION VEHICULAR EN PORCIENTO										COORDENADAS					
	KM	TE	SC	TDPA	M	A	B	C2	C3	T3S2	T3S3	T3S2R4	OTROS	A	B	C	K'	D	LATITUD	LONGITUD
San Gregorio	0.00	3	0	18025	5.0	84.1	1.3	8.0	0.3	0.3	0.8	0.1	0.1	89.1	1.3	9.6	0.057	0.507	19.237114	-99.054382
X. C. Milpa Alta - San Lorenzo Tlacoyucan	9.00	3	0	7937	2.4	87.1	1.9	5.8	0.8	0.5	0.6	0.3	0.6	89.5	1.9	8.6	0.079	0.508	19.180698	-99.029623
Lim. Edos. Term. CDMX Ppia. Méx.	18.80																			
Lim. Edos. Term. Méx. Ppia. Mor.	28.50																			
T. Der. San Felipe Neri	33.80	1	0	4523	2.3	86.7	1.3	7.9	1.1	0.4	0.3	0.0	0.0	89.0	1.3	9.7	0.127	0.505	19.046014	-98.935993
T. Der. Tlalnepantla	40.50	3	0	5256	3.5	87.1	0.3	8.4	0.3	0.2	0.2	0.0	0.0	90.6	0.3	9.1	0.100	0.502	19.004101	-98.990090
Tlayacapan	48.50	3	0	12714	4.9	89.0	0.3	4.5	0.3	0.4	0.6	0.0	0.0	93.9	0.3	5.8	0.069	0.507	18.940617	-98.974922
T. Der. Yauatepec	53.00	1	0	11641	8.3	84.8	0.4	5.2	0.4	0.2	0.6	0.0	0.1	93.1	0.4	6.5	0.106	0.502	18.922043	-98.968954

MORELOS

9 CARR: San Gregorio - Oaxtepec

CLAVE: 00901

RUTA: MEX-113

AÑO: 2018

LUGAR	ESTACION				CLASIFICACION VEHICULAR EN PORCIENTO										COORDENADAS					
	KM	TE	SC	TDPA	M	A	B	C2	C3	T3S2	T3S3	T3S2R4	OTROS	A	B	C	K'	D	LATITUD	LONGITUD
T. Der. Yautepec	53.00	3	1	7943	9.1	83.8	0.4	5.2	0.5	0.4	0.5	0.0	0.1	92.9	0.4	6.7	0.082	0.516	18.916087	-98.969997
T. Der. Yautepec	53.00	3	2	7457	9.0	83.2	0.4	5.9	0.5	0.4	0.5	0.0	0.1	92.2	0.4	7.4	0.095	0.516	18.916115	-98.970037
Oaxtepec	56.00																			

10 CARR: Santa Bárbara - Izúcar de Matamoros

CLAVE: 00451

RUTA: MEX-115-160

AÑO: 2018

LUGAR	ESTACION				CLASIFICACION VEHICULAR EN PORCIENTO										COORDENADAS					
	KM	TE	SC	TDPA	M	A	B	C2	C3	T3S2	T3S3	T3S2R4	OTROS	A	B	C	K'	D	LATITUD	LONGITUD
T. C. México - Puebla (Libre)	0.00	3	1	23377	3.5	87.6	0.5	6.2	0.8	0.7	0.5	0.1	0.1	91.1	0.5	8.4	0.062	0.533	19.310900	-98.896290
T. C. México - Puebla (Libre)	0.00	3	2	20514	3.0	87.9	0.5	6.4	0.8	0.7	0.5	0.1	0.1	90.9	0.5	8.6	0.065	0.533	19.311041	-98.896264
X. C. México - Puebla (Cuota)	3.61	1	1	27138	2.6	89.8	0.4	5.4	0.6	0.6	0.4	0.1	0.1	92.4	0.4	7.2	0.070	0.521	19.302609	-98.885741
X. C. México - Puebla (Cuota)	3.61	1	2	24994	2.9	89.2	0.4	5.6	0.7	0.6	0.4	0.1	0.1	92.1	0.4	7.5	0.070	0.521	19.302628	-98.885620
X. C. México - Puebla (Cuota)	3.61	3	1	38984	2.8	83.1	0.9	7.8	1.3	2.0	1.3	0.4	0.4	85.9	0.9	13.2	0.072	0.508	19.285603	-98.880420
X. C. México - Puebla (Cuota)	3.61	3	2	37743	2.9	84.2	0.8	6.7	1.3	2.0	1.3	0.4	0.4	87.1	0.8	12.1	0.082	0.508	19.285591	-98.880291
Chalco (Central)	8.00	3	1	20220	2.0	86.2	0.7	6.9	1.2	1.6	0.8	0.4	0.2	88.2	0.7	11.1	0.083	0.516	19.246112	-98.867093
Chalco (Lateral)	8.00	3	1	13734	2.0	83.8	0.8	7.0	1.2	3.7	0.7	0.4	0.4	85.8	0.8	13.4	0.070	0.511	19.245982	-98.867130
Chalco (Lateral)	8.00	3	2	14355	2.2	84.9	0.7	7.0	1.2	2.5	0.7	0.4	0.4	87.1	0.7	12.2	0.085	0.511	19.246286	-98.867036
Chalco (Central)	8.00	3	2	18387	2.3	86.0	0.7	6.8	1.2	1.6	0.8	0.4	0.2	88.3	0.7	11.0	0.122	0.516	19.246185	-98.867063
T. Der. Juchitepec	12.46	3	1	20838	2.0	86.1	0.9	6.8	1.3	1.7	0.6	0.5	0.1	88.1	0.9	11.0	0.085	0.500	19.232197	-98.845124
T. Der. Juchitepec	12.46	3	2	20866	1.8	87.1	0.8	6.8	1.2	1.4	0.5	0.3	0.1	88.9	0.8	10.3	0.125	0.500	19.232113	-98.844883
Tlalmanalco	20.51	3	0	8119	2.6	90.8	0.2	5.4	0.5	0.3	0.2	0.0	0.0	93.4	0.2	6.4	0.077	0.502	19.198991	-98.799443
Amecameca de Juárez	28.00	1	1	7388	2.9	88.1	0.3	7.5	0.4	0.5	0.2	0.0	0.1	91.0	0.3	8.7	0.088	0.504	19.142026	-98.773651
Amecameca de Juárez	28.00	1	2	7273	2.3	88.2	0.4	8.2	0.5	0.3	0.1	0.0	0.0	90.5	0.4	9.1	0.087	0.504	19.142048	-98.773550
Amecameca de Juárez	28.00	3	1	10253	2.6	81.0	1.2	12.4	1.2	0.7	0.4	0.4	0.1	83.6	1.2	15.2	0.082	0.502	19.107930	-98.778216
Amecameca de Juárez	28.00	3	2	10336	2.9	79.4	1.3	13.5	1.3	0.7	0.4	0.4	0.1	82.3	1.3	16.4	0.079	0.502	19.107904	-98.778156
T. Izq. Ozumba (1º Acceso)	38.81	1	0	20464	2.9	80.2	1.8	11.5	1.7	0.7	0.7	0.5	0.0	83.1	1.8	15.1	0.067	0.504	19.058483	-98.786810
T. Izq. Ozumba (1º Acceso)	38.81	3	0	16647	2.3	82.0	1.6	10.7	1.6	0.6	0.5	0.6	0.1	84.3	1.6	14.1	0.081	0.509	19.048668	-98.792710
Tepetlixpa	42.29	3	0	11605	2.5	82.0	1.5	10.2	1.7	0.9	0.4	0.7	0.1	84.5	1.5	14.0	0.067	0.517	19.019551	-98.824522
Lim. Edos. Term. Méx. Ppia. Mor.	51.70																			
T. Der. Atlatlahucan	58.95	1	1	8462	5.1	75.5	2.6	9.5	3.0	2.1	1.2	0.7	0.3	80.6	2.6	16.8	0.096	0.503	18.929505	-98.887081
T. Der. Atlatlahucan	58.95	1	2	8371	5.2	75.7	2.4	9.6	2.6	2.3	1.2	0.7	0.3	80.9	2.4	16.7	0.127	0.503	18.929461	-98.886981
T. Izq. Tetela del Volcán	62.99	1	1	11119	4.7	77.3	2.5	9.5	2.1	2.2	0.8	0.7	0.2	82.0	2.5	15.5	0.087	0.502	18.900057	-98.906857
T. Izq. Tetela del Volcán	62.99	1	2	11196	4.6	77.4	2.6	9.5	2.0	2.1	0.9	0.6	0.3	82.0	2.6	15.4	0.109	0.502	18.900021	-98.906780
T. Izq. Tetela del Volcán	62.99	3	1	14609	4.6	84.2	1.3	5.3	1.6	1.7	0.7	0.3	0.3	88.8	1.3	9.9	0.081	0.510	18.895767	-98.909722
T. Izq. Tetela del Volcán	62.99	3	2	14031	4.4	82.0	1.3	6.8	1.7	2.0	1.0	0.5	0.3	86.4	1.3	12.3	0.105	0.510	18.895776	-98.909601

MORELOS

10 CARR: Santa Bárbara - Izúcar de Matamoros

CLAVE: 00451

RUTA: MEX-115-160

AÑO: 2018

LUGAR	ESTACION				CLASIFICACION VEHICULAR EN PORCIENTO													COORDENADAS		
	KM	TE	SC	TDPA	M	A	B	C2	C3	T3S2	T3S3	T3S2R4	OTROS	A	B	C	K'	D	LATITUD	LONGITUD
T. Izq. Libramiento de Cuautla (1º Acceso)	67.00	1	1	18543	5.0	84.5	1.3	4.9	1.5	1.5	0.7	0.5	0.1	89.5	1.3	9.2	0.076	0.506	18.878866	-98.921072
T. Izq. Libramiento de Cuautla (1º Acceso)	67.00	1	2	19011	5.0	82.9	1.5	6.4	1.5	1.5	0.6	0.5	0.1	87.9	1.5	10.6	0.078	0.506	18.878838	-98.920990
T. Der. La Pera	68.90	1	1	26137	1.9	89.2	0.8	4.8	1.8	0.6	0.6	0.2	0.1	91.1	0.8	8.1	0.075	0.505	18.857318	-98.935225
T. Der. La Pera	68.90	1	2	25593	2.7	87.4	0.8	5.6	1.8	0.7	0.7	0.2	0.1	90.1	0.8	9.1	0.072	0.505	18.857273	-98.935147
T. Izq. Libramiento de Cuautla (2º Acceso)	77.05	3	1	19007	4.8	81.8	1.9	6.5	2.1	1.6	0.5	0.7	0.1	86.6	1.9	11.5	0.076	0.514	18.790831	-98.909224
T. Izq. Libramiento de Cuautla (2º Acceso)	77.05	3	2	17955	5.7	80.6	1.9	6.7	2.1	1.6	0.5	0.8	0.1	86.3	1.9	11.8	0.069	0.514	18.793407	-98.911955
T. Der. Tlayecac	85.06	1	1	14803	3.2	81.6	2.4	7.5	2.0	1.6	0.6	1.0	0.1	84.8	2.4	12.8	0.074	0.503	18.770294	-98.893157
T. Der. Tlayecac	85.06	1	2	14972	3.8	81.0	2.6	7.2	2.1	1.6	0.7	0.9	0.1	84.8	2.6	12.6	0.062	0.503	18.770783	-98.893612
T. Der. Tlayecac	85.06	3	1	13584	3.4	81.9	2.4	7.2	1.9	1.6	0.6	0.9	0.1	85.3	2.4	12.3	0.080	0.502	18.761754	-98.884214
T. Der. Tlayecac	85.06	3	2	13485	3.1	82.4	2.1	6.9	1.8	1.7	0.8	1.1	0.1	85.5	2.1	12.4	0.070	0.502	18.761828	-98.884175
T. Izq. Amayuca	91.36	1	1	11716	2.3	82.6	3.4	5.9	2.2	1.7	0.6	1.1	0.2	84.9	3.4	11.7	0.068	0.511	18.734862	-98.819833
T. Izq. Amayuca	91.36	1	2	12238	2.3	83.1	3.4	5.6	2.0	1.6	0.7	1.1	0.2	85.4	3.4	11.2	0.069	0.511	18.734948	-98.819792
T. Izq. Amayuca	91.36	3	1	6838	2.1	78.3	3.5	6.9	3.2	2.8	1.4	1.6	0.2	80.4	3.5	16.1	0.082	0.513	18.712066	-98.782811
T. Izq. Amayuca	91.36	3	2	7204	1.7	78.3	3.2	7.5	3.3	2.7	1.4	1.6	0.3	80.0	3.2	16.8	0.070	0.513	18.712122	-98.782759
T. C. Atlixco - Jantetelco (Cuota)	94.70	3	1	2852	1.6	77.7	4.1	7.7	2.8	3.0	1.5	1.4	0.2	79.3	4.1	16.6	0.083	0.516	18.700190	-98.765206
T. C. Atlixco - Jantetelco (Cuota)	94.70	3	2	2678	1.3	75.7	3.8	8.6	3.5	3.0	1.8	2.1	0.2	77.0	3.8	19.2	0.076	0.516	18.700261	-98.765151
T. Der. Tenango	102.96	1	1	2902	2.1	76.3	4.3	7.8	3.1	2.9	1.7	1.6	0.2	78.4	4.3	17.3	0.080	0.530	18.671124	-98.735003
T. Der. Tenango	102.96	1	2	2569	2.2	72.7	4.6	10.2	3.2	3.3	1.7	1.8	0.3	74.9	4.6	20.5	0.070	0.530	18.671149	-98.734964
T. Der. Tenango	102.96	3	0	4917	1.8	73.4	3.8	7.5	3.9	3.8	2.8	2.5	0.5	75.2	3.8	21.0	0.071	0.505	18.664333	-98.726973
Lim. Edos. Term. Mor. Ppia. Pue.	103.23																			
X. C. Amayuca - Izúcar de Matamoros	134.99	1	1	5273	13.4	75.6	1.6	4.1	1.3	1.8	1.2	0.7	0.3	89.0	1.6	9.4	0.080	0.502	18.604856	-98.484848
X. C. Amayuca - Izúcar de Matamoros	134.99	1	2	5229	12.9	75.5	1.7	5.1	1.3	1.7	0.9	0.8	0.1	88.4	1.7	9.9	0.095	0.502	18.604930	-98.484778
X. C. Amayuca - Izúcar de Matamoros	134.99	3	1	7640	14.6	74.0	1.2	5.7	1.5	1.5	0.9	0.3	0.3	88.6	1.2	10.2	0.080	0.526	18.595069	-98.476682
X. C. Amayuca - Izúcar de Matamoros	134.99	3	2	8486	12.9	76.8	1.1	4.7	1.5	1.6	0.8	0.3	0.3	89.7	1.1	9.2	0.083	0.526	18.595074	-98.476675
T. C. Puebla - Huajuapán de León	138.14																			

11 CARR: Cuernavaca - Acapulco (Cuota)

CLAVE: 00045

RUTA: MEX-095D

AÑO: 2018

LUGAR	ESTACION				CLASIFICACION VEHICULAR EN PORCIENTO													COORDENADAS		
	KM	TE	SC	TDPA	M	A	B	C2	C3	T3S2	T3S3	T3S2R4	OTROS	A	B	C	K'	D	LATITUD	LONGITUD
Cuernavaca	0.00	3	1	48870	2.2	89.6	1.6	4.3	0.6	0.7	0.5	0.4	0.1	91.8	1.6	6.6	0.074	0.502	18.874167	-99.226591
Cuernavaca	0.00	3	2	49340	1.9	88.9	1.7	4.9	0.7	0.9	0.5	0.4	0.1	90.8	1.7	7.5	0.067	0.502	18.875299	-99.227121
T. Izq. Burgos	3.35	1	1	47192	2.9	88.3	1.6	4.9	0.6	0.7	0.5	0.4	0.1	91.2	1.6	7.2	0.077	0.508	18.862882	-99.221127
T. Izq. Burgos	3.35	1	2	45729	1.9	88.5	1.9	5.1	0.7	0.9	0.5	0.4	0.1	90.4	1.9	7.7	0.071	0.508	18.862806	-99.221034
T. Izq. Burgos	3.35	3	1	38546	1.6	87.9	2.1	5.0	1.1	1.2	0.5	0.5	0.1	89.5	2.1	8.4	0.084	0.504	18.856337	-99.220783

MORELOS

11 CARR: Cuernavaca - Acapulco (Cuota)

CLAVE: 00045

RUTA: MEX-095D

AÑO: 2018

LUGAR	ESTACION				CLASIFICACION VEHICULAR EN PORCIENTO										COORDENADAS					
	KM	TE	SC	TDPA	M	A	B	C2	C3	T3S2	T3S3	T3S2R4	OTROS	A	B	C	K'	D	LATITUD	LONGITUD
T. Izq. Burgos	3.35	3	2	37860	1.6	87.9	2.1	5.0	1.1	1.2	0.5	0.5	0.1	89.5	2.1	8.4	0.068	0.504	18.855675	-99.220670
T. Der. Acatlipa	4.70	1	1	40683	1.5	88.2	2.0	5.0	1.0	1.2	0.5	0.5	0.1	89.7	2.0	8.3	0.083	0.526	18.851159	-99.220320
T. Der. Acatlipa	4.70	1	2	36663	1.5	88.2	2.0	5.0	1.0	1.2	0.5	0.5	0.1	89.7	2.0	8.3	0.073	0.526	18.850353	-99.220003
T. Der. Acatlipa	4.70	3	1	30298	1.5	87.8	2.1	5.2	1.0	1.3	0.5	0.5	0.1	89.3	2.1	8.6	0.090	0.503	18.844290	-99.218308
T. Der. Acatlipa	4.70	3	2	29878	1.6	87.2	2.2	5.4	1.1	1.4	0.5	0.5	0.1	88.8	2.2	9.0	0.072	0.503	18.844813	-99.218343
T. Izq. Miguel Hidalgo	5.85	3	1	26654	1.7	86.6	2.3	5.4	1.1	1.7	0.6	0.5	0.1	88.3	2.3	9.4	0.064	0.513	18.830507	-99.217903
T. Izq. Miguel Hidalgo	5.85	3	2	25283	1.8	86.4	2.3	5.4	1.1	1.7	0.6	0.6	0.1	88.2	2.3	9.5	0.065	0.513	18.830447	-99.217831
T. Der. Aeropuerto Cuernavaca	9.83	1	1	29270	2.5	84.7	2.7	5.7	1.3	1.7	0.7	0.6	0.1	87.2	2.7	10.1	0.073	0.511	18.816208	-99.219219
T. Der. Aeropuerto Cuernavaca	9.83	1	2	27966	2.5	83.7	3.0	6.0	1.5	1.7	0.8	0.7	0.1	86.2	3.0	10.8	0.068	0.511	18.811820	-99.219538
T. Der. Aeropuerto Cuernavaca	9.83	3	1	16579	2.1	80.1	5.9	6.7	1.7	1.7	0.9	0.8	0.1	82.2	5.9	11.9	0.099	0.502	18.796185	-99.221059
T. Der. Aeropuerto Cuernavaca	9.83	3	2	16721	2.4	80.2	5.3	6.7	1.8	1.9	0.8	0.8	0.1	82.6	5.3	12.1	0.125	0.502	18.796184	-99.220965
T. Izq. Club de Golf Santa Fe	17.48	1	1	15622	2.0	80.2	5.4	6.9	1.7	1.9	0.9	0.9	0.1	82.2	5.4	12.4	0.083	0.536	18.746639	-99.246307
T. Izq. Club de Golf Santa Fe	17.48	1	2	18031	2.1	79.8	5.5	7.2	1.6	1.8	0.9	0.9	0.2	81.9	5.5	12.6	0.114	0.536	18.746601	-99.246227
Caseta de Cobro Alpuyeca	19.80	1	1	14919	1.8	79.5	5.6	7.2	1.6	2.0	1.2	0.9	0.2	81.3	5.6	13.1	0.072	0.504	18.724822	-99.257970
Caseta de Cobro Alpuyeca	19.80	1	2	14678	1.7	79.7	5.6	7.2	1.6	2.0	1.1	0.9	0.2	81.4	5.6	13.0	0.069	0.504	18.724736	-99.257911
Caseta de Cobro Alpuyeca	19.80	3	1	10837	1.0	78.5	5.0	6.6	2.3	3.6	1.5	1.1	0.4	79.5	5.0	15.5	0.072	0.531	18.717026	-99.266053
Caseta de Cobro Alpuyeca	19.80	3	2	12259	0.7	78.8	5.0	6.6	2.3	3.6	1.5	1.1	0.4	79.5	5.0	15.5	0.073	0.531	18.716965	-99.265921
Caseta de Cobro Ing. Francisco Velasco Durán	23.10	2	1	7695	1.2	81.1	6.6	2.5	3.1	2.6	0.9	1.5	0.5	82.3	6.6	11.1	0.111	0.500	18.698498	-99.278028
Caseta de Cobro Ing. Francisco Velasco Durán	23.10	2	2	7695	1.2	81.1	6.6	2.5	3.1	2.6	0.9	1.5	0.5	82.3	6.6	11.1	0.111	0.500	18.698498	-99.278028
Lim. Edos. Term. Mor. Ppia. Gro.	53.30																			
Caseta de Cobro Paso Morelos	82.94	1	1	3985	1.3	75.7	8.0	6.5	1.2	3.2	1.3	2.3	0.5	77.0	8.0	15.0	0.108	0.501	18.243962	-99.213568
Caseta de Cobro Paso Morelos	82.94	1	2	3975	1.2	77.6	7.0	5.7	1.3	3.7	0.8	2.2	0.5	78.8	7.0	14.2	0.179	0.501	18.243964	-99.213415
Caseta de Cobro Paso Morelos	82.94	2	1	4250	0.9	81.7	6.7	2.3	2.0	3.0	0.7	2.1	0.6	82.6	6.7	10.7	0.111	0.500	18.231462	-99.215446
Caseta de Cobro Paso Morelos	82.94	2	2	4250	0.9	81.7	6.7	2.3	2.0	3.0	0.7	2.1	0.6	82.6	6.7	10.7	0.111	0.500	18.231462	-99.215446
Caseta de Cobro Palo Blanco	193.90	1	1	5608	1.2	76.6	7.4	7.1	1.8	3.1	1.0	1.4	0.4	77.8	7.4	14.8	0.083	0.525	17.427066	-99.470893
Caseta de Cobro Palo Blanco	193.90	1	2	6206	1.0	77.4	7.3	6.6	1.8	3.1	1.0	1.4	0.4	78.4	7.3	14.3	0.129	0.525	17.427153	-99.470825
Caseta de Cobro Palo Blanco	193.90	2	1	5270	0.9	81.6	6.7	2.5	2.6	2.9	0.9	1.5	0.4	82.5	6.7	10.8	0.097	0.500	17.423983	-99.466911
Caseta de Cobro Palo Blanco	193.90	2	2	5270	0.9	81.6	6.7	2.5	2.6	2.9	0.9	1.5	0.4	82.5	6.7	10.8	0.097	0.500	17.423983	-99.466911
X. C. Chilpancingo - Acapulco (Tierra Colorada)	226.20	1	1	6377	1.0	77.7	7.2	6.3	1.8	3.1	1.0	1.5	0.4	78.7	7.2	14.1	0.079	0.502	17.180348	-99.552262
X. C. Chilpancingo - Acapulco (Tierra Colorada)	226.20	1	2	6326	1.0	77.5	7.3	6.3	1.8	3.1	1.0	1.6	0.4	78.5	7.3	14.2	0.115	0.502	17.180349	-99.552150
Caseta de Cobro La Venta	269.95	1	1	5965	1.0	77.8	7.3	5.9	1.8	3.1	1.0	1.7	0.4	78.8	7.3	13.9	0.113	0.515	16.929395	-99.796628
Caseta de Cobro La Venta	269.95	1	2	5623	1.0	77.7	7.4	5.8	1.8	3.2	1.0	1.7	0.4	78.7	7.4	13.9	0.143	0.515	16.929290	-99.796634
Caseta de Cobro La Venta	269.95	2	1	5016	0.9	81.4	6.9	2.4	2.5	3.1	0.8	1.6	0.4	82.3	6.9	10.8	0.097	0.500	16.928232	-99.801857
Caseta de Cobro La Venta	269.95	2	2	5016	0.9	81.4	6.9	2.4	2.5	3.1	0.8	1.6	0.4	82.3	6.9	10.8	0.097	0.500	16.928232	-99.801857
T. C. Chilpancingo - Acapulco (Ent. La Venta)	271.50	1	1	5946	1.4	77.8	6.2	6.7	1.9	3.1	1.2	1.3	0.4	79.2	6.2	14.6	0.059	0.504	16.924738	-99.809008

MORELOS

11 CARR: Cuernavaca - Acapulco (Cuota)

CLAVE: 00045

RUTA: MEX-095D

AÑO: 2018

LUGAR	ESTACION				CLASIFICACION VEHICULAR EN PORCIENTO														COORDENADAS	
	KM	TE	SC	TDPA	M	A	B	C2	C3	T3S2	T3S3	T3S2R4	OTROS	A	B	C	K'	D	LATITUD	LONGITUD
T. C. Chilpancingo - Acapulco (Ent. La Venta)	271.50	1	2	6040	1.6	77.5	6.1	7.0	1.7	3.2	1.1	1.4	0.4	79.1	6.1	14.8	0.086	0.504	16.924656	-99.808961

12 CARR: La Pera - Cuautla (Cuota)

CLAVE: 17161

RUTA: MEX-160D

AÑO: 2018

LUGAR	ESTACION				CLASIFICACION VEHICULAR EN PORCIENTO														COORDENADAS	
	KM	TE	SC	TDPA	M	A	B	C2	C3	T3S2	T3S3	T3S2R4	OTROS	A	B	C	K'	D	LATITUD	LONGITUD
La Pera	0.00	3	0	13255	1.0	82.4	4.3	5.9	1.2	2.3	1.1	1.3	0.5	83.4	4.3	12.3	0.088	0.509	19.008914	-99.161373
Tepoztlán	7.96	1	0	13113	1.0	82.5	4.0	6.2	1.1	2.3	1.1	1.3	0.5	83.5	4.0	12.5	0.088	0.508	18.992666	-99.120784
Caseta de Cobro Tepoztlán	7.96	2	0	14229	1.4	86.0	4.4	1.8	1.7	2.4	0.6	1.4	0.3	87.4	4.4	8.2	0.085	0.500	18.986765	-99.112493
Tepoztlán	7.96	3	0	13403	1.8	82.2	4.4	4.9	1.4	2.3	1.2	1.2	0.6	84.0	4.4	11.6	0.091	0.531	18.979441	-99.103379
T. Der. Amatlán	13.40	1	0	11997	2.6	78.4	4.8	6.8	2.0	2.3	1.3	1.3	0.5	81.0	4.8	14.2	0.102	0.510	18.970832	-99.076761
T. Der. Amatlán	13.40	3	0	13184	2.4	79.2	4.9	6.7	1.6	2.3	1.1	1.3	0.5	81.6	4.9	13.5	0.096	0.503	18.964482	-99.066462
Caseta de Cobro Oacalco	21.21	1	0	13054	2.4	80.7	4.9	6.2	1.2	2.2	0.8	1.2	0.4	83.1	4.9	12.0	0.099	0.510	18.935716	-99.032457
Caseta de Cobro Oacalco	21.21	2	0	13935	1.4	85.1	3.9	2.3	2.5	2.5	0.6	1.4	0.3	86.5	3.9	9.6	0.085	0.500	18.931082	-99.025645
Caseta de Cobro Oacalco	21.21	3	0	13910	1.6	81.6	4.1	7.0	1.2	2.3	0.7	1.2	0.3	83.2	4.1	12.7	0.105	0.504	18.927050	-99.021183
X. C. Cocoyoc - Oaxtepec (Lateral)	27.00	3	1	14919	4.3	86.0	1.8	4.9	1.2	1.2	0.4	0.2	0.0	90.3	1.8	7.9	0.075	0.547	18.898445	-98.979464
X. C. Cocoyoc - Oaxtepec (Central)	27.00	3	1	19034	0.7	85.7	2.3	5.6	1.8	1.6	1.2	0.8	0.3	86.4	2.3	11.3	0.079	0.508	18.898577	-98.979283
X. C. Cocoyoc - Oaxtepec (Central)	27.00	3	2	19058	0.6	84.5	2.5	6.0	2.0	1.9	1.4	0.8	0.3	85.1	2.5	12.4	0.078	0.508	18.898515	-98.979374
X. C. Cocoyoc - Oaxtepec (Lateral)	27.00	3	2	12352	5.4	83.9	2.3	5.2	1.2	1.2	0.5	0.2	0.1	89.3	2.3	8.4	0.076	0.547	18.898639	-98.979181
T. C. Santa Bárbara - Izúcar de Matamoros (Central)	34.16	1	1	17443	2.1	86.1	2.2	5.4	1.2	1.6	0.6	0.7	0.1	88.2	2.2	9.6	0.072	0.518	18.858227	-98.943623
T. C. Santa Bárbara - Izúcar de Matamoros (Lateral)	34.16	1	1	5698	8.8	84.1	1.6	3.8	0.6	0.6	0.3	0.1	0.1	92.9	1.6	5.5	0.068	0.544	18.858153	-98.943740
T. C. Santa Bárbara - Izúcar de Matamoros (Central)	34.16	1	2	20599	2.4	84.8	2.4	5.9	1.4	1.6	0.6	0.8	0.1	87.2	2.4	10.4	0.069	0.518	18.854353	-98.939834
T. C. Santa Bárbara - Izúcar de Matamoros (Lateral)	34.16	1	2	4785	9.3	82.6	2.0	4.3	0.7	0.6	0.3	0.1	0.1	91.9	2.0	6.1	0.067	0.544	18.854458	-98.939721

13 CARR: Libramiento Amecameca - Nepantla (Cuota)

CLAVE:

RUTA: MEX-115D

AÑO: 2018

LUGAR	ESTACION				CLASIFICACION VEHICULAR EN PORCIENTO														COORDENADAS	
	KM	TE	SC	TDPA	M	A	B	C2	C3	T3S2	T3S3	T3S2R4	OTROS	A	B	C	K'	D	LATITUD	LONGITUD
T. C. Santa Bárbara - Izúcar de Matamoros (Norte)	28.60	3	1	3929	1.3	81.0	2.3	4.2	3.1	5.1	1.3	1.3	0.4	82.3	2.3	15.4	0.115	0.529	19.104866	-98.789433
T. C. Santa Bárbara - Izúcar de Matamoros (Norte)	28.60	3	2	3505	1.3	76.7	2.9	7.1	3.2	5.1	1.9	1.2	0.6	78.0	2.9	19.1	0.178	0.529	19.104804	-98.789280
Caseta de Cobro Tepetlixpa	38.60	2	1	4135	1.3	80.9	2.1	3.2	3.9	5.4	1.3	1.4	0.5	82.2	2.1	15.7	0.101	0.500	19.046112	-98.828394
Caseta de Cobro Tepetlixpa	38.60	2	2	4135	1.3	80.9	2.1	3.2	3.9	5.4	1.3	1.4	0.5	82.2	2.1	15.7	0.101	0.500	19.046112	-98.828394
Lim. Edos. Term. Méx. Ppia. Mor.	48.10																			
T. C. Santa Bárbara - Izúcar de Matamoros (Sur)	51.80	3	1	3980	1.2	76.9	3.3	8.1	2.6	5.0	1.3	1.2	0.4	78.1	3.3	18.6	0.120	0.507	18.974883	-98.876404
T. C. Santa Bárbara - Izúcar de Matamoros (Sur)	51.80	3	2	4091	1.2	76.6	2.8	7.9	3.0	5.1	1.7	1.2	0.5	77.8	2.8	19.4	0.186	0.507	18.974948	-98.876347

MORELOS

14 CARR: México - Cuernavaca (Cuota)

CLAVE: 00041

RUTA: MEX-095D

AÑO: 2018

LUGAR	ESTACION				CLASIFICACION VEHICULAR EN PORCIENTO										COORDENADAS					
	KM	TE	SC	TDPA	M	A	B	C2	C3	T3S2	T3S3	T3S2R4	OTROS	A	B	C	K'	D	LATITUD	LONGITUD
México	0.00																			
T. C. México - Cuernavaca (Libre)	18.65	3	1	32888	1.7	86.9	2.9	4.9	0.7	1.6	0.6	0.5	0.2	88.6	2.9	8.5	0.066	0.544	19.266138	-99.165163
T. C. México - Cuernavaca (Libre)	18.65	3	2	34080	2.0	85.3	3.2	5.7	0.7	1.6	0.8	0.5	0.2	87.3	3.2	9.5	0.074	0.544	19.266811	-99.164720
Caseta de Cobro Tlalpan	23.36	2	1	14080	1.5	83.4	5.9	2.5	2.3	2.6	0.6	0.9	0.3	84.9	5.9	9.2	0.145	0.500	19.242519	-99.148716
Caseta de Cobro Tlalpan	23.36	2	2	14080	1.5	83.4	5.9	2.5	2.3	2.6	0.6	0.9	0.3	84.9	5.9	9.2	0.145	0.500	19.242519	-99.148716
Lim. Edos. Term. CDMX Ppia. Mor.	47.09																			
Tres Marías	53.00	1	1	21735	0.6	84.9	5.4	4.5	1.3	1.8	0.6	0.7	0.2	85.5	5.4	9.1	0.137	0.505	19.077405	-99.233529
Tres Marías	53.00	1	2	21276	0.8	83.5	5.7	5.0	1.4	2.1	0.6	0.7	0.2	84.3	5.7	10.0	0.147	0.505	19.079165	-99.232729
Tres Marías	53.00	3	1	21223	0.7	86.4	4.2	4.1	0.9	1.8	0.8	0.8	0.3	87.1	4.2	8.7	0.152	0.509	19.043102	-99.233333
Tres Marías	53.00	3	2	21987	0.9	84.7	4.8	4.5	1.1	2.0	0.8	0.9	0.3	85.6	4.8	9.6	0.159	0.509	19.044798	-99.234759
T. Izq. Cuautla	70.50	1	1	21627	0.7	87.2	4.1	4.1	0.8	1.7	0.7	0.6	0.1	87.9	4.1	8.0	0.153	0.512	19.013071	-99.164058
T. Izq. Cuautla	70.50	1	2	22730	0.8	85.3	4.9	4.7	1.0	1.8	0.7	0.7	0.1	86.1	4.9	9.0	0.152	0.512	19.014111	-99.157913
T. Izq. A Glorieta La Paloma	79.26	1	1	22813	1.7	84.2	3.7	4.7	1.3	2.4	0.7	1.1	0.2	85.9	3.7	10.4	0.095	0.553	18.984261	-99.212831
T. Izq. A Glorieta La Paloma	79.26	1	2	18436	0.8	83.2	4.2	5.5	1.4	2.8	0.8	1.1	0.2	84.0	4.2	11.8	0.073	0.553	18.982157	-99.219510
Libramiento de Cuernavaca	79.30	1	1	19662	1.1	85.1	2.9	5.4	1.0	2.4	0.8	1.0	0.3	86.2	2.9	10.9	0.090	0.686	18.969474	-99.238642
Libramiento de Cuernavaca	79.30	1	2	42976	1.4	84.2	3.1	5.6	1.0	2.5	0.9	1.0	0.3	85.6	3.1	11.3	0.076	0.686	18.969537	-99.238601
T. C. México - Cuernavaca (Libre)	80.26																			

15 CARR: Puente de Ixtla - Iguala (Cuota)

CLAVE: 00043

RUTA: MEX-091D

AÑO: 2018

LUGAR	ESTACION				CLASIFICACION VEHICULAR EN PORCIENTO										COORDENADAS					
	KM	TE	SC	TDPA	M	A	B	C2	C3	T3S2	T3S3	T3S2R4	OTROS	A	B	C	K'	D	LATITUD	LONGITUD
T. C. Cuernavaca - Acapulco (Cuota)	0.00																			
T. Izq. Puente de Ixtla	2.00	3	0	10388	2.4	77.1	5.9	7.2	2.8	2.3	1.1	1.0	0.2	79.5	5.9	14.6	0.067	0.511	18.627109	-99.328488
T. Der. Amacuzac	9.63	3	0	12836	3.1	81.1	4.4	6.1	2.5	0.6	1.2	0.7	0.3	84.2	4.4	11.4	0.060	0.526	18.597093	-99.376322
Lim. Edos. Term. Mor. Ppia. Gro.	18.20																			
T. Izq. Buenavista	33.58	3	0	6377	0.9	68.8	6.7	9.1	5.0	4.4	3.0	1.5	0.6	69.7	6.7	23.6	0.064	0.515	18.458023	-99.434318
Caseta de Cobro Iguala	59.14	2	0	4232	0.6	70.9	7.0	4.5	7.7	3.9	2.8	1.6	1.0	71.5	7.0	21.5	0.076	0.500	18.336191	-99.508296
T. Der. Iguala	59.50	1	0	5130	0.7	69.9	7.0	8.3	4.8	5.0	2.5	1.5	0.3	70.6	7.0	22.4	0.068	0.503	18.343573	-99.511578
T. C. Cuernavaca - Chilpancingo	62.80																			

MORELOS

16 CARR: Alpuyec a - Jojutla

CLAVE: 17021

RUTA: MOR-021

AÑO: 2018

LUGAR	ESTACION				CLASIFICACION VEHICULAR EN PORCIENTO										COORDENADAS					
	KM	TE	SC	TDPA	M	A	B	C2	C3	T3S2	T3S3	T3S2R4	OTROS	A	B	C	K'	D	LATITUD	LONGITUD
T. C. Cuernavaca - Chilpancingo	0.00																			
X. C. Cuernavaca - Iguala (Cuota)	2.20	1	0	12464	5.7	85.1	1.1	5.5	1.1	0.6	0.6	0.2	0.1	90.8	1.1	8.1	0.096	0.507	18.731711	-99.262189
Xoxocotla	7.70	1	1	7355	7.8	83.1	1.8	4.6	0.7	0.9	0.7	0.3	0.1	90.9	1.8	7.3	0.106	0.510	18.702855	-99.250284
Xoxocotla	7.70	1	2	7052	9.7	80.1	2.0	4.9	0.8	1.1	0.9	0.4	0.1	89.8	2.0	8.2	0.080	0.510	18.702872	-99.250247
T. Izq. Zacatepec	11.94	1	1	9416	7.1	85.4	1.5	4.5	1.0	0.2	0.2	0.1	0.0	92.5	1.5	6.0	0.072	0.504	18.649051	-99.216905
T. Izq. Zacatepec	11.94	1	2	9282	7.7	84.1	1.7	5.1	1.1	0.1	0.1	0.1	0.0	91.8	1.7	6.5	0.069	0.504	18.649051	-99.216812
Jojutla	17.15	1	1	11459	6.9	87.7	1.0	2.8	0.5	0.3	0.4	0.2	0.2	94.6	1.0	4.4	0.066	0.504	18.629150	-99.206856
Jojutla	17.15	1	2	11256	8.1	86.1	1.2	3.1	0.5	0.3	0.3	0.2	0.2	94.2	1.2	4.6	0.076	0.504	18.629205	-99.206746

17 CARR: Amayuca - Izúcar de Matamoros

CLAVE: 00030

RUTA: MOR-031-PUE

AÑO: 2018

LUGAR	ESTACION				CLASIFICACION VEHICULAR EN PORCIENTO										COORDENADAS					
	KM	TE	SC	TDPA	M	A	B	C2	C3	T3S2	T3S3	T3S2R4	OTROS	A	B	C	K'	D	LATITUD	LONGITUD
Amayuca	0.00																			
X. C. Santa Bárbara - Izúcar de Matamoros	0.66	3	1	8964	8.5	81.7	1.3	6.3	0.9	0.5	0.3	0.3	0.2	90.2	1.3	8.5	0.073	0.506	18.713809	-98.796852
X. C. Santa Bárbara - Izúcar de Matamoros	0.66	3	2	8747	8.2	83.5	0.7	5.7	0.9	0.4	0.3	0.1	0.2	91.7	0.7	7.6	0.073	0.506	18.713777	-98.796766
Jonacatepec	3.84	3	1	4509	6.9	81.6	1.0	7.4	1.5	0.5	0.4	0.6	0.1	88.5	1.0	10.5	0.081	0.500	18.672361	-98.805243
Jonacatepec	3.84	3	2	4507	7.1	83.5	0.5	5.9	1.5	0.4	0.5	0.5	0.1	90.6	0.5	8.9	0.080	0.500	18.672327	-98.805168
T. Der. Tepalcingo	14.50	3	1	3260	7.7	82.1	2.5	3.7	1.3	0.8	0.6	1.0	0.3	89.8	2.5	7.7	0.069	0.525	18.589114	-98.833408
T. Der. Tepalcingo	14.50	3	2	2944	8.4	82.3	3.0	1.6	1.5	0.9	0.8	0.9	0.6	90.7	3.0	6.3	0.072	0.525	18.589133	-98.833310
Axochiapan	29.50	1	0	7300	13.4	74.9	1.4	7.3	1.3	0.5	0.6	0.4	0.2	88.3	1.4	10.3	0.071	0.503	18.512147	-98.777477
Axochiapan	29.50	3	1	3099	20.6	72.0	0.7	4.6	0.8	0.6	0.3	0.2	0.2	92.6	0.7	6.7	0.084	0.507	18.494200	-98.748439
Axochiapan	29.50	3	2	3190	20.3	71.6	0.7	5.1	0.9	0.6	0.4	0.2	0.2	91.9	0.7	7.4	0.083	0.507	18.494260	-98.748348
Lim. Edos. Term. Mor. Ppia. Pue.	36.85																			
Barranca Del Muerto	38.40	3	0	3233	9.4	69.9	0.9	8.6	5.6	2.2	1.3	1.7	0.4	79.3	0.9	19.8	0.080	0.506	18.476516	-98.690947
T. Der. Chietla	53.00	1	0	5610	14.3	74.0	1.2	4.8	1.0	2.6	1.0	0.9	0.2	88.3	1.2	10.5	0.083	0.522	18.525802	-98.590149
X. C. Santa Bárbara - Izúcar de Matamoros	67.50	1	0	9304	16.5	67.5	1.5	6.5	1.0	3.8	1.5	0.7	1.0	84.0	1.5	14.5	0.074	0.502	18.593529	-98.495827
X. C. Santa Bárbara - Izúcar de Matamoros	67.50	3	1	12038	11.4	78.6	0.5	3.2	0.8	1.9	2.3	0.8	0.5	90.0	0.5	9.5	0.075	0.509	18.601054	-98.474194
X. C. Santa Bárbara - Izúcar de Matamoros	67.50	3	2	12477	11.1	78.0	0.6	3.6	0.8	2.0	2.5	0.8	0.6	89.1	0.6	10.3	0.064	0.509	18.601120	-98.474212
Izúcar de Matamoros	69.00																			

MORELOS

18 CARR: Amayuca - Tlacotepec

CLAVE: 17020

RUTA: MOR-017

AÑO: 2018

LUGAR	ESTACION				CLASIFICACION VEHICULAR EN PORCIENTO										COORDENADAS					
	KM	TE	SC	TDPA	M	A	B	C2	C3	T3S2	T3S3	T3S2R4	OTROS	A	B	C	K'	D	LATITUD	LONGITUD
Amayuca	0.00	3	0	9585	8.5	86.8	0.2	3.7	0.2	0.3	0.3	0.0	0.0	95.3	0.2	4.5	0.065	0.506	18.725006	-98.791284
Temoac	5.50	3	0	5702	9.6	87.9	0.1	2.0	0.1	0.2	0.1	0.0	0.0	97.5	0.1	2.4	0.090	0.503	18.777167	-98.775547
Zacualpan de Amilpas	7.50	1	0	7358	10.8	84.9	0.2	3.5	0.2	0.2	0.2	0.0	0.0	95.7	0.2	4.1	0.067	0.509	18.787128	-98.770178
Tlacotepec	12.00	1	0	4548	12.0	83.9	0.2	3.6	0.1	0.1	0.1	0.0	0.0	95.9	0.2	3.9	0.071	0.508	18.808122	-98.759259

19 CARR: Atlatlahucan - Tlayacapan

CLAVE: 17301

RUTA: MOR-002

AÑO: 2018

LUGAR	ESTACION				CLASIFICACION VEHICULAR EN PORCIENTO										COORDENADAS					
	KM	TE	SC	TDPA	M	A	B	C2	C3	T3S2	T3S3	T3S2R4	OTROS	A	B	C	K'	D	LATITUD	LONGITUD
T. C. Santa Bárbara - Izúcar de Matamoros	0.00																			
Atlatlahucan	1.50	1	1	5205	7.7	86.1	0.2	4.7	0.7	0.2	0.2	0.1	0.1	93.8	0.2	6.0	0.236	0.517	18.930428	-98.889329
Atlatlahucan	1.50	1	2	4869	9.0	83.6	0.3	5.6	0.9	0.2	0.2	0.1	0.1	92.6	0.3	7.1	0.072	0.517	18.930403	-98.889396
Totolapan	7.00	1	0	3478	5.9	83.2	0.3	6.0	0.5	3.1	0.4	0.1	0.5	89.1	0.3	10.6	0.110	0.512	18.977269	-98.914505
Tlayacapan	15.50	1	0	5187	7.4	89.0	0.3	2.2	0.5	0.5	0.1	0.0	0.0	96.4	0.3	3.3	0.075	0.507	18.961628	-98.973412

20 CARR: Coatetelco - Miacatlán

CLAVE:

RUTA: MOR

AÑO: 2018

LUGAR	ESTACION				CLASIFICACION VEHICULAR EN PORCIENTO										COORDENADAS					
	KM	TE	SC	TDPA	M	A	B	C2	C3	T3S2	T3S3	T3S2R4	OTROS	A	B	C	K'	D	LATITUD	LONGITUD
Coatetelco	0.00	3	0	2929	6.3	85.6	0.2	3.5	0.3	2.5	0.7	0.3	0.6	91.9	0.2	7.9	0.116	0.504	18.736899	-99.326656
Miacatlán	6.00																			

21 CARR: Cocoyoc - Oaxtepec

CLAVE: 17001

RUTA: MOR

AÑO: 2018

LUGAR	ESTACION				CLASIFICACION VEHICULAR EN PORCIENTO										COORDENADAS					
	KM	TE	SC	TDPA	M	A	B	C2	C3	T3S2	T3S3	T3S2R4	OTROS	A	B	C	K'	D	LATITUD	LONGITUD
Cocoyoc	0.00	3	1	14106	2.6	89.4	0.9	3.1	0.9	1.5	1.1	0.2	0.3	92.0	0.9	7.1	0.059	0.506	18.885779	-98.985684
Cocoyoc	0.00	3	2	13785	5.7	85.3	0.9	3.7	1.0	1.8	1.1	0.2	0.3	91.0	0.9	8.1	0.070	0.506	18.888456	-98.989334
X. C. La Pera - Cuautla (Cuota)	2.50	1	1	12882	5.8	85.4	0.8	4.6	1.9	0.9	0.5	0.0	0.1	91.2	0.8	8.0	0.074	0.509	18.897287	-98.983879
X. C. La Pera - Cuautla (Cuota)	2.50	1	2	12426	6.4	84.1	0.9	4.9	2.2	0.9	0.5	0.0	0.1	90.5	0.9	8.6	0.073	0.509	18.897962	-98.985261
Oaxtepec	3.92	1	0	22438	6.2	87.7	0.6	3.9	0.5	0.4	0.5	0.1	0.1	93.9	0.6	5.5	0.059	0.519	18.902871	-98.976910

MORELOS

22 CARR: Ent. C. (Cuernavaca - Acapulco Cuota) - Tepetzingo

CLAVE: 00421

RUTA: MOR

AÑO: 2018

LUGAR	ESTACION				CLASIFICACION VEHICULAR EN PORCIENTO													COORDENADAS		
	KM	TE	SC	TDPA	M	A	B	C2	C3	T3S2	T3S3	T3S2R4	OTROS	A	B	C	K'	D	LATITUD	LONGITUD
T. C. (Cuernavaca - Acapulco Cuota)	0.00	3	0	4067	12.6	72.0	1.9	8.1	0.4	3.2	0.6	0.5	0.7	84.6	1.9	13.5	0.080	0.512	18.813851	-99.218360
Tepetzingo	5.50	1	0	3057	13.6	78.3	0.9	6.0	0.5	0.1	0.3	0.1	0.2	91.9	0.9	7.2	0.090	0.503	18.790445	-99.180082

23 CARR: Ent. C. (Cuernavaca - Cuautlixco) - Oacalco

CLAVE: 00421

RUTA: MOR

AÑO: 2018

LUGAR	ESTACION				CLASIFICACION VEHICULAR EN PORCIENTO													COORDENADAS		
	KM	TE	SC	TDPA	M	A	B	C2	C3	T3S2	T3S3	T3S2R4	OTROS	A	B	C	K'	D	LATITUD	LONGITUD
T. C. (Cuernavaca - Cuautlixco)	0.00	3	0	1374	20.2	69.9	0.4	5.3	2.5	0.9	0.5	0.0	0.3	90.1	0.4	9.5	0.076	0.524	18.876036	-99.051966
Oacalco	10.00	1	0	3971	13.7	80.5	0.2	4.6	0.7	0.2	0.1	0.0	0.0	94.2	0.2	5.6	0.078	0.502	18.915848	-99.030883

24 CARR: Ent. Chiverías - Ent. El Abanico

CLAVE: 17302

RUTA: MOR

AÑO: 2018

LUGAR	ESTACION				CLASIFICACION VEHICULAR EN PORCIENTO													COORDENADAS		
	KM	TE	SC	TDPA	M	A	B	C2	C3	T3S2	T3S3	T3S2R4	OTROS	A	B	C	K'	D	LATITUD	LONGITUD
T. C. Alpuyecá - Jojutla	0.00	3	0	4525	2.9	90.5	1.2	3.6	1.2	0.2	0.2	0.1	0.1	93.4	1.2	5.4	0.078	0.502	18.659143	-99.225336
X. C. Xoxocotla - Tizapotala	5.56	3	0	4991	8.3	84.5	0.7	5.0	1.2	0.1	0.2	0.0	0.0	92.8	0.7	6.5	0.083	0.506	18.645313	-99.269322
T. C. Cuernavaca - Acapulco (Cuota)	14.50	1	0	4821	5.7	87.8	0.4	4.7	1.0	0.1	0.2	0.0	0.1	93.5	0.4	6.1	0.081	0.531	18.649436	-99.292058

25 CARR: Galeana - Cuautla

CLAVE: 17004

RUTA: MOR-004

AÑO: 2018

LUGAR	ESTACION				CLASIFICACION VEHICULAR EN PORCIENTO													COORDENADAS		
	KM	TE	SC	TDPA	M	A	B	C2	C3	T3S2	T3S3	T3S2R4	OTROS	A	B	C	K'	D	LATITUD	LONGITUD
Galeana	0.00	3	1	10496	6.1	84.8	1.1	7.4	0.5	0.0	0.1	0.0	0.0	90.9	1.1	8.0	0.076	0.501	18.648035	-99.202356
Galeana	0.00	3	2	10553	7.7	82.6	1.3	7.8	0.5	0.0	0.1	0.0	0.0	90.3	1.3	8.4	0.074	0.501	18.648108	-99.202412
Zacatepec	4.00	3	0	6599	6.9	84.4	0.6	6.1	2.0	0.0	0.0	0.0	0.0	91.3	0.6	8.1	0.070	0.509	18.658635	-99.183202
Tlaltizapán	13.10	3	0	3760	9.5	79.4	1.0	6.6	3.5	0.0	0.0	0.0	0.0	88.9	1.0	10.1	0.092	0.507	18.698407	-99.112178
T. Der. Chinameca	16.06	3	0	1243	11.1	79.8	0.4	6.5	2.2	0.0	0.0	0.0	0.0	90.9	0.4	8.7	0.097	0.504	18.707626	-99.106984
Moyotepec	34.00	1	0	658	7.6	76.2	0.3	5.8	10.1	0.0	0.0	0.0	0.0	83.8	0.3	15.9	0.094	0.579	18.727361	-99.001301
Villa de Ayala	38.62	1	0	10538	10.8	85.5	1.2	2.1	0.3	0.1	0.0	0.0	0.0	96.3	1.2	2.5	0.077	0.509	18.759309	-98.984406
T. Izq. Anenecuilco	40.50	1	1	6464	11.7	85.1	0.2	2.4	0.4	0.1	0.1	0.0	0.0	96.8	0.2	3.0	0.092	0.509	18.783503	-98.980051
T. Izq. Anenecuilco	40.50	1	2	6687	12.0	84.5	0.2	2.7	0.4	0.1	0.1	0.0	0.0	96.5	0.2	3.3	0.094	0.509	18.783487	-98.980073
Cuautla	46.00	1	1	9101	11.1	86.1	0.2	1.9	0.5	0.1	0.1	0.0	0.0	97.2	0.2	2.6	0.080	0.508	18.799757	-98.967486
Cuautla	46.00	1	2	9385	11.2	85.7	0.2	2.2	0.5	0.1	0.1	0.0	0.0	96.9	0.2	2.9	0.078	0.508	18.799804	-98.967542

MORELOS

26 CARR: Jojutla - Chinameca

CLAVE: 17310

RUTA: MOR

AÑO: 2018

LUGAR	ESTACION				CLASIFICACION VEHICULAR EN PORCIENTO										COORDENADAS					
	KM	TE	SC	TDPA	M	A	B	C2	C3	T3S2	T3S3	T3S2R4	OTROS	A	B	C	K'	D	LATITUD	LONGITUD
Jojutla	0.00	3	0	2826	12.0	76.8	0.3	7.7	3.1	0.1	0.0	0.0	0.0	88.8	0.3	10.9	0.070	0.513	18.610770	-99.164736
T. C. Temilpa - Tepalcingo	32.00	1	0	1450	6.9	83.9	0.2	8.1	0.8	0.1	0.0	0.0	0.0	90.8	0.2	9.0	0.072	0.511	18.623698	-99.006678
Chinameca	34.00																			

27 CARR: Jojutla - El Higuero

CLAVE: 17039

RUTA: MOR-039

AÑO: 2018

LUGAR	ESTACION				CLASIFICACION VEHICULAR EN PORCIENTO										COORDENADAS					
	KM	TE	SC	TDPA	M	A	B	C2	C3	T3S2	T3S3	T3S2R4	OTROS	A	B	C	K'	D	LATITUD	LONGITUD
Jojutla	0.00	3	0	9180	9.6	86.9	0.1	3.1	0.2	0.0	0.1	0.0	0.0	96.5	0.1	3.4	0.057	0.513	18.607122	-99.174448
El Higuero	4.50	1	0	5965	9.6	86.5	0.1	3.4	0.1	0.1	0.2	0.0	0.0	96.1	0.1	3.8	0.064	0.503	18.584457	-99.177665

28 CARR: Los Alacranes - Ocuituco

CLAVE:

RUTA: MOR

AÑO: 2018

LUGAR	ESTACION				CLASIFICACION VEHICULAR EN PORCIENTO										COORDENADAS					
	KM	TE	SC	TDPA	M	A	B	C2	C3	T3S2	T3S3	T3S2R4	OTROS	A	B	C	K'	D	LATITUD	LONGITUD
Los Alacranes	0.00	3	0	1550	6.3	88.7	0.2	4.3	0.3	0.1	0.1	0.0	0.0	95.0	0.2	4.8	0.143	0.511	18.745938	-98.839589
Ocuituco	19.00	1	0	1449	3.6	89.3	0.1	4.4	0.2	1.9	0.2	0.0	0.3	92.9	0.1	7.0	0.081	0.504	18.865007	-98.781104

29 CARR: Mazatepec - T. C. Ramal a Michapa

CLAVE:

RUTA: MOR

AÑO: 2018

LUGAR	ESTACION				CLASIFICACION VEHICULAR EN PORCIENTO										COORDENADAS					
	KM	TE	SC	TDPA	M	A	B	C2	C3	T3S2	T3S3	T3S2R4	OTROS	A	B	C	K'	D	LATITUD	LONGITUD
Mazatepec	0.00	3	0	924	8.8	86.9	0.1	4.1	0.1	0.0	0.0	0.0	0.0	95.7	0.1	4.2	0.089	0.506	18.722393	-99.370534
T. C. Ramal a Michapa	12.00	1	0	1470	3.7	89.7	0.1	6.1	0.4	0.0	0.0	0.0	0.0	93.4	0.1	6.5	0.068	0.511	18.634333	-99.378333

30 CARR: Moyotepec - San Rafael

CLAVE: 17306

RUTA: MOR

AÑO: 2018

LUGAR	ESTACION				CLASIFICACION VEHICULAR EN PORCIENTO										COORDENADAS					
	KM	TE	SC	TDPA	M	A	B	C2	C3	T3S2	T3S3	T3S2R4	OTROS	A	B	C	K'	D	LATITUD	LONGITUD
T. C. Galeana - Cuautla	0.00	3	0	2833	8.1	85.2	0.1	3.4	0.5	2.1	0.3	0.1	0.2	93.3	0.1	6.6	0.090	0.505	18.715569	-98.990348
T. C. Temilpa - Tepalcingo	7.50	1	0	2417	9.0	83.8	0.3	4.1	0.5	1.8	0.2	0.0	0.3	92.8	0.3	6.9	0.091	0.502	18.646034	-99.004387

MORELOS

31 CARR: Paso por Yautepec

CLAVE: 17025

RUTA: MOR

AÑO: 2018

LUGAR	ESTACION				CLASIFICACION VEHICULAR EN PORCIENTO													COORDENADAS		
	KM	TE	SC	TDPA	M	A	B	C2	C3	T3S2	T3S3	T3S2R4	OTROS	A	B	C	K'	D	LATITUD	LONGITUD
T. C. Cuernavaca - Cuautlixco (Poniente)	0.00	3	1	8714	8.6	84.6	0.3	4.5	0.2	0.8	0.8	0.0	0.2	93.2	0.3	6.5	0.063	0.511	18.871308	-99.078722
T. C. Cuernavaca - Cuautlixco (Poniente)	0.00	3	2	8342	8.1	84.8	0.3	4.7	0.2	0.9	0.8	0.0	0.2	92.9	0.3	6.8	0.064	0.511	18.871385	-99.078801
T. C. Cuernavaca - Cuautlixco (Oriente)	5.50	1	1	5955	6.0	88.3	0.2	4.7	0.3	0.1	0.2	0.1	0.1	94.3	0.2	5.5	0.108	0.504	18.896852	-99.040902
T. C. Cuernavaca - Cuautlixco (Oriente)	5.50	1	2	5860	7.7	86.3	0.2	5.0	0.3	0.1	0.2	0.1	0.1	94.0	0.2	5.8	0.078	0.504	18.896868	-99.040919

32 CARR: Pilares - T. C. (Xoxocotla - Tilzapotla)

CLAVE: 17008

RUTA: MOR-008

AÑO: 2018

LUGAR	ESTACION				CLASIFICACION VEHICULAR EN PORCIENTO													COORDENADAS		
	KM	TE	SC	TDPA	M	A	B	C2	C3	T3S2	T3S3	T3S2R4	OTROS	A	B	C	K'	D	LATITUD	LONGITUD
Pilares	0.00	3	0	11788	1.7	92.8	0.2	4.2	0.5	0.2	0.2	0.1	0.1	94.5	0.2	5.3	0.074	0.505	18.632957	-99.214076
T. C. Xoxocotla - Tilzapotla	6.50	1	0	3551	1.5	92.5	0.4	4.1	0.4	0.3	0.3	0.3	0.2	94.0	0.4	5.6	0.065	0.509	18.614418	-99.257001

33 CARR: Ramal a Aeropuerto de Cuernavaca

CLAVE: 17250

RUTA: MOR

AÑO: 2018

LUGAR	ESTACION				CLASIFICACION VEHICULAR EN PORCIENTO													COORDENADAS		
	KM	TE	SC	TDPA	M	A	B	C2	C3	T3S2	T3S3	T3S2R4	OTROS	A	B	C	K'	D	LATITUD	LONGITUD
T. C. Cuernavaca - Chilpancingo	0.00	3	0	4819	7.9	87.3	0.1	4.2	0.3	0.1	0.1	0.0	0.0	95.2	0.1	4.7	0.113	0.500	18.803796	-99.225166
Aeropuerto de Cuernavaca	5.64																			

34 CARR: Ramal a Coatetelco

CLAVE: 17304

RUTA: MOR

AÑO: 2018

LUGAR	ESTACION				CLASIFICACION VEHICULAR EN PORCIENTO													COORDENADAS		
	KM	TE	SC	TDPA	M	A	B	C2	C3	T3S2	T3S3	T3S2R4	OTROS	A	B	C	K'	D	LATITUD	LONGITUD
T. C. Cuernavaca - Chilpancingo	0.00	3	0	3911	4.3	87.8	0.2	6.2	0.4	0.8	0.1	0.0	0.2	92.1	0.2	7.7	0.072	0.503	18.713995	-99.273365
Coatetelco	7.00																			

35 CARR: Ramal a Jolalpan

CLAVE: 00143

RUTA: MOR-PUE

AÑO: 2018

LUGAR	ESTACION				CLASIFICACION VEHICULAR EN PORCIENTO													COORDENADAS		
	KM	TE	SC	TDPA	M	A	B	C2	C3	T3S2	T3S3	T3S2R4	OTROS	A	B	C	K'	D	LATITUD	LONGITUD
Axochiapan	0.00	3	0	2929	11.1	75.3	0.9	10.1	1.2	0.5	0.5	0.3	0.1	86.4	0.9	12.7	0.080	0.527	18.480932	-98.748175
Lim. Edos. Term. Mor. Ppia. Pue.	4.00																			
Jolalpan	24.00																			

MORELOS

36 CARR: Ramal a Tetela del Volcán

CLAVE: 17010

RUTA: MOR-010

AÑO: 2018

LUGAR	ESTACION				CLASIFICACION VEHICULAR EN PORCIENTO										COORDENADAS					
	KM	TE	SC	TDPA	M	A	B	C2	C3	T3S2	T3S3	T3S2R4	OTROS	A	B	C	K'	D	LATITUD	LONGITUD
T. C. Santa Bárbara - Izúcar de Matamoros	0.00	3	1	8174	5.3	85.1	1.7	4.5	0.6	1.1	0.8	0.4	0.5	90.4	1.7	7.9	0.083	0.529	18.896088	-98.905673
T. C. Santa Bárbara - Izúcar de Matamoros	0.00	3	2	7273	3.9	85.6	1.8	5.0	0.7	1.2	0.9	0.4	0.5	89.5	1.8	8.7	0.078	0.529	18.896156	-98.905632
Yecapixtla	5.50	3	0	7620	0.3	91.3	2.0	4.4	0.5	0.4	0.5	0.3	0.3	91.6	2.0	6.4	0.067	0.504	18.870912	-98.849935
Ocuituco	15.00	1	0	5366	5.7	85.1	1.7	4.9	0.5	1.0	0.5	0.2	0.4	90.8	1.7	7.5	0.060	0.510	18.879103	-98.778883
Tetela del Volcán	22.00	1	0	6714	6.6	86.4	0.3	6.0	0.3	0.2	0.2	0.0	0.0	93.0	0.3	6.7	0.066	0.513	18.880558	-98.742291

37 CARR: T. C. (Coatetelco - Miacatlán) - Mazatepec

CLAVE:

RUTA: MOR

AÑO: 2018

LUGAR	ESTACION				CLASIFICACION VEHICULAR EN PORCIENTO										COORDENADAS						
	KM	TE	SC	TDPA	M	A	B	C2	C3	T3S2	T3S3	T3S2R4	OTROS	A	B	C	K'	D	LATITUD	LONGITUD	
T. C. Coatetelco - Miacatlán	0.00																				
Mazatepec	4.14	1	0	4525	6.2	88.9	0.2	4.5	0.2	0.0	0.0	0.0	0.0	95.1	0.2	4.7	0.063	0.508	18.725724	-99.351809	

38 CARR: T. C. (México - Cuernavaca (Libre)) - Huitzilac

CLAVE: 00451

RUTA: MOR

AÑO: 2018

LUGAR	ESTACION				CLASIFICACION VEHICULAR EN PORCIENTO										COORDENADAS					
	KM	TE	SC	TDPA	M	A	B	C2	C3	T3S2	T3S3	T3S2R4	OTROS	A	B	C	K'	D	LATITUD	LONGITUD
T. C. México - Cuernavaca (Libre)	0.00	3	0	6837	1.8	91.9	1.1	4.7	0.5	0.0	0.0	0.0	0.0	93.7	1.1	5.2	0.074	0.502	19.002765	-99.258975
Huitzilac	4.00	1	0	6172	2.1	91.0	1.0	5.5	0.4	0.0	0.0	0.0	0.0	93.1	1.0	5.9	0.064	0.513	19.021659	-99.266273

39 CARR: T. C. (San Gregorio - Oaxtepec) - Jojutla

CLAVE: 17002

RUTA: MOR-002

AÑO: 2018

LUGAR	ESTACION				CLASIFICACION VEHICULAR EN PORCIENTO										COORDENADAS					
	KM	TE	SC	TDPA	M	A	B	C2	C3	T3S2	T3S3	T3S2R4	OTROS	A	B	C	K'	D	LATITUD	LONGITUD
T. C. San Gregorio - Oaxtepec	0.00	3	0	5944	7.2	83.0	0.2	9.0	0.3	0.2	0.1	0.0	0.0	90.2	0.2	9.6	0.102	0.563	18.921603	-98.972212
X. C. La Pera - Cuautla (Cuota)	7.50	3	0	7690	8.7	81.4	1.3	4.9	0.4	1.8	1.0	0.2	0.3	90.1	1.3	8.6	0.077	0.501	18.928492	-99.025533
Yautepec	14.00	1	0	7892	7.4	86.5	1.8	2.3	0.2	1.4	0.4	0.0	0.0	93.9	1.8	4.3	0.075	0.513	18.903784	-99.051573
Yautepec	14.00	3	0	9920	7.1	87.3	0.7	2.5	0.9	0.8	0.7	0.0	0.0	94.4	0.7	4.9	0.076	0.533	18.868649	-99.069100
Tucumán	32.30	1	0	2850	4.3	91.1	0.2	3.6	0.2	0.4	0.2	0.0	0.0	95.4	0.2	4.4	0.070	0.542	18.770094	-99.116463
X. C. Galeana - Cuautla	40.50	3	0	6946	5.7	85.6	0.5	4.0	0.2	3.3	0.2	0.0	0.5	91.3	0.5	8.2	0.064	0.501	18.678141	-99.131751
Tlaquiltenango	50.50	1	0	7309	5.1	87.5	0.4	3.6	0.2	2.9	0.1	0.0	0.2	92.6	0.4	7.0	0.066	0.501	18.646859	-99.156253
Jojutla	53.50	1	0	15091	7.8	85.5	0.2	3.5	0.1	2.7	0.0	0.0	0.2	93.3	0.2	6.5	0.064	0.507	18.620701	-99.171869

MORELOS

40 CARR: Tehuixtla - Puente de Ixtla

CLAVE: 17307

RUTA: MOR

AÑO: 2018

LUGAR	ESTACION				CLASIFICACION VEHICULAR EN PORCIENTO													COORDENADAS		
	KM	TE	SC	TDPA	M	A	B	C2	C3	T3S2	T3S3	T3S2R4	OTROS	A	B	C	K'	D	LATITUD	LONGITUD
Tehuixtla	0.00	3	0	2598	12.0	81.7	0.3	4.8	0.7	0.1	0.2	0.1	0.1	93.7	0.3	6.0	0.079	0.504	18.564710	-99.278253
Puente de Ixtla	9.60	1	0	5660	11.2	85.0	0.1	3.5	0.1	0.0	0.1	0.0	0.0	96.2	0.1	3.7	0.090	0.580	18.615076	-99.313791
T. C. Cuernavaca - Chilpancingo	10.60																			

41 CARR: Tejalpa - Jojutla

CLAVE: 17014

RUTA: MOR-014

AÑO: 2018

LUGAR	ESTACION				CLASIFICACION VEHICULAR EN PORCIENTO													COORDENADAS		
	KM	TE	SC	TDPA	M	A	B	C2	C3	T3S2	T3S3	T3S2R4	OTROS	A	B	C	K'	D	LATITUD	LONGITUD
T. C. Cuernavaca - Cuautlixco	0.00																			
Jiutepec	1.97	3	0	9739	11.6	76.6	1.2	9.3	0.5	0.2	0.4	0.1	0.1	88.2	1.2	10.6	0.080	0.506	18.872463	-99.172764
Emiliano Zapata	7.00	3	1	7673	10.7	80.1	0.9	6.4	0.7	0.5	0.5	0.1	0.1	90.8	0.9	8.3	0.077	0.533	18.812419	-99.192875
Emiliano Zapata	7.00	3	2	6727	10.3	79.7	1.0	7.0	0.8	0.5	0.5	0.1	0.1	90.0	1.0	9.0	0.080	0.533	18.812458	-99.192941
T. Izq. Chiconcuac	14.50	1	1	9424	6.0	87.1	0.7	3.9	1.0	0.5	0.6	0.1	0.1	93.1	0.7	6.2	0.077	0.516	18.784764	-99.205832
T. Izq. Chiconcuac	14.50	1	2	10027	8.3	84.2	0.7	4.4	1.1	0.5	0.6	0.1	0.1	92.5	0.7	6.8	0.071	0.516	18.784744	-99.205778
T. Izq. Chiconcuac	14.50	3	1	7823	5.8	86.5	0.2	4.0	1.1	1.3	0.9	0.1	0.1	92.3	0.2	7.5	0.080	0.515	18.779525	-99.208238
T. Izq. Chiconcuac	14.50	3	2	7356	8.3	83.4	0.2	4.2	1.2	1.4	1.1	0.1	0.1	91.7	0.2	8.1	0.082	0.515	18.779496	-99.208169
X. C. Zacatepec - Tlaquiltenango	32.90	1	0	10060	10.3	80.1	0.8	6.4	1.7	0.3	0.4	0.0	0.0	90.4	0.8	8.8	0.070	0.514	18.649835	-99.184320
Jojutla	35.00	1	0	12023	9.6	81.7	0.6	5.8	1.6	0.2	0.4	0.0	0.1	91.3	0.6	8.1	0.076	0.502	18.627661	-99.184708

42 CARR: Temilpa - Tepalcingo

CLAVE: 17009

RUTA: MOR-009

AÑO: 2018

LUGAR	ESTACION				CLASIFICACION VEHICULAR EN PORCIENTO													COORDENADAS		
	KM	TE	SC	TDPA	M	A	B	C2	C3	T3S2	T3S3	T3S2R4	OTROS	A	B	C	K'	D	LATITUD	LONGITUD
T. C. Galeana - Cuautla	0.00	3	0	2035	7.1	79.1	0.8	6.5	3.3	1.2	1.8	0.0	0.2	86.2	0.8	13.0	0.117	0.510	18.694457	-99.101090
Tepalcingo	40.50	1	0	3426	10.8	77.8	0.2	6.8	2.4	0.8	1.1	0.0	0.1	88.6	0.2	11.2	0.074	0.513	18.604793	-98.854097

43 CARR: Tepoztlán - Yauatepec

CLAVE: 17013

RUTA: MOR-013

AÑO: 2018

LUGAR	ESTACION				CLASIFICACION VEHICULAR EN PORCIENTO													COORDENADAS		
	KM	TE	SC	TDPA	M	A	B	C2	C3	T3S2	T3S3	T3S2R4	OTROS	A	B	C	K'	D	LATITUD	LONGITUD
Tepoztlán	0.00	3	0	11688	8.6	84.8	0.1	6.1	0.1	0.1	0.2	0.0	0.0	93.4	0.1	6.5	0.074	0.503	18.980682	-99.086134
Yauatepec	14.82	1	0	6354	16.2	74.4	0.2	8.2	0.6	0.1	0.1	0.1	0.1	90.6	0.2	9.2	0.070	0.560	18.902090	-99.064025

MORELOS

44 CARR: Tequesquitengo - Jojutla

CLAVE: 17013

RUTA: MOR

AÑO: 2018

LUGAR	ESTACION				CLASIFICACION VEHICULAR EN PORCIENTO													COORDENADAS		
	KM	TE	SC	TDPA	M	A	B	C2	C3	T3S2	T3S3	T3S2R4	OTROS	A	B	C	K'	D	LATITUD	LONGITUD
T. C. Xoxocotla - Tilzapotla	0.00	3	1	2921	6.9	87.5	0.3	3.9	1.1	0.1	0.1	0.1	0.0	94.4	0.3	5.3	0.080	0.523	18.595941	-99.254688
T. C. Xoxocotla - Tilzapotla	0.00	3	2	2669	7.5	86.2	0.2	4.6	1.1	0.1	0.1	0.2	0.0	93.7	0.2	6.1	0.080	0.523	18.596137	-99.255614
Jojutla	9.50																			

45 CARR: Xoxocotla - Tilzapotla

CLAVE: 17005

RUTA: MOR-006

AÑO: 2018

LUGAR	ESTACION				CLASIFICACION VEHICULAR EN PORCIENTO													COORDENADAS		
	KM	TE	SC	TDPA	M	A	B	C2	C3	T3S2	T3S3	T3S2R4	OTROS	A	B	C	K'	D	LATITUD	LONGITUD
Xoxocotla	0.00	3	1	4176	13.7	82.3	0.6	1.9	0.7	0.4	0.2	0.1	0.1	96.0	0.6	3.4	0.103	0.505	18.680223	-99.252208
Xoxocotla	0.00	3	2	4086	14.2	81.1	0.5	3.1	0.6	0.4	0.1	0.0	0.0	95.3	0.5	4.2	0.093	0.505	18.680200	-99.252098
Tehuixtla	19.50	1	0	6945	10.9	84.1	0.5	3.5	0.6	0.2	0.2	0.0	0.0	95.0	0.5	4.5	0.077	0.528	18.568567	-99.269138
Tehuixtla	19.50	3	0	4841	10.6	84.0	0.3	3.9	0.7	0.2	0.2	0.0	0.1	94.6	0.3	5.1	0.077	0.503	18.549721	-99.267130
Tilzapotla	29.50	1	0	3149	9.6	86.1	0.4	3.3	0.4	0.0	0.2	0.0	0.0	95.7	0.4	3.9	0.071	0.530	18.494304	-99.278103

46 CARR: Zacatepec - Tlaquiltenango

CLAVE: 17300

RUTA: MOR

AÑO: 2018

LUGAR	ESTACION				CLASIFICACION VEHICULAR EN PORCIENTO													COORDENADAS		
	KM	TE	SC	TDPA	M	A	B	C2	C3	T3S2	T3S3	T3S2R4	OTROS	A	B	C	K'	D	LATITUD	LONGITUD
Zacatepec	0.00	3	0	9359	11.9	81.8	0.2	4.6	0.9	0.2	0.3	0.0	0.1	93.7	0.2	6.1	0.071	0.516	18.647288	-99.186273
Tlaquiltenango	4.08	1	0	6071	13.2	81.0	0.2	4.2	1.0	0.1	0.3	0.0	0.0	94.2	0.2	5.6	0.089	0.528	18.642639	-99.176948

47 CARR: Atlixco - Jantetelco (Cuota)

CLAVE: 00430

RUTA: PUE-D

AÑO: 2018

LUGAR	ESTACION				CLASIFICACION VEHICULAR EN PORCIENTO													COORDENADAS		
	KM	TE	SC	TDPA	M	A	B	C2	C3	T3S2	T3S3	T3S2R4	OTROS	A	B	C	K'	D	LATITUD	LONGITUD
T. C. Puebla - Izúcar de Matamoros	0.00	3	0	6479	0.8	81.2	2.6	6.8	2.4	2.9	1.2	1.6	0.5	82.0	2.6	15.4	0.072	0.500	18.942040	-98.397459
Lim. Edos. Term. Pue. Ppia. Mor.	48.60																			
T. C. Santa Bárbara - Izúcar de Matamoros	54.90	1	0	6346	1.1	75.9	3.8	8.5	3.0	4.4	1.2	1.6	0.5	77.0	3.8	19.2	0.082	0.516	18.705974	-98.767507

48 CARR: Tres Marías - Santa Martha

CLAVE: 00172

RUTA: MEX-106-EM

AÑO: 2018

LUGAR	ESTACION				CLASIFICACION VEHICULAR EN PORCIENTO													COORDENADAS		
	KM	TE	SC	TDPA	M	A	B	C2	C3	T3S2	T3S3	T3S2R4	OTROS	A	B	C	K'	D	LATITUD	LONGITUD
Tres Marías	0.00	3	0	6880	1.9	87.7	1.6	5.0	0.8	0.4	0.7	0.6	1.3	89.6	1.6	8.8	0.080	0.509	19.049084	-99.248506
Laguna de Zempoala	14.00																			

MORELOS

48 CARR: Tres Marias - Santa Martha

CLAVE: 00172

RUTA: MEX-106-EM

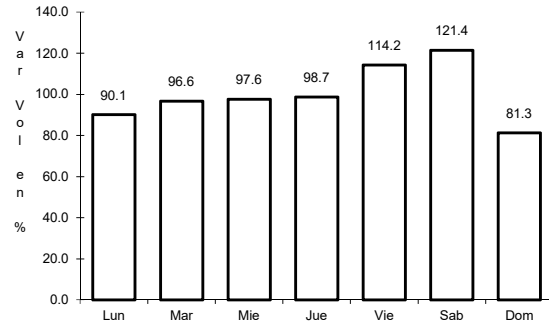
AÑO: 2018

L U G A R	E S T A C I O N				C L A S I F I C A C I O N V E H I C U L A R E N P O R C I E N T O											C O O R D E N A D A S				
	KM	TE	SC	TDPA	M	A	B	C2	C3	T3S2	T3S3	T3S2R4	OTROS	A	B	C	K'	D	LATITUD	LONGITUD
Lim. Edos. Term. Mor. Ppia. Méx.	14.50																			
Santa Martha	28.35	1	0	3695	2.6	86.1	1.1	8.3	0.9	0.0	0.0	0.0	1.0	88.7	1.1	10.2	0.134	0.506	19.061873	-99.379839

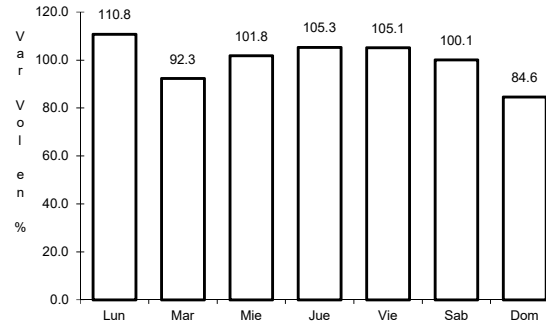
1 CARR: Cuernavaca - Chilpancingo

CLAVE: 00042

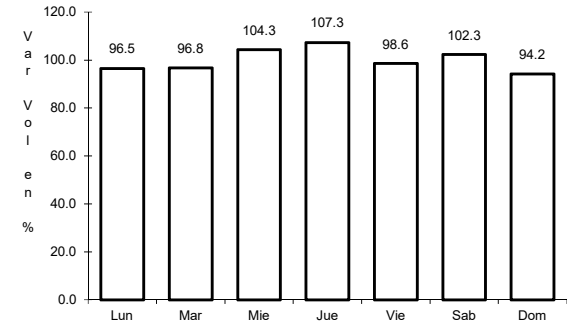
RUTA: MEX-095



Km: 9.80 Tipo: 1 Sent: 1



Km: 9.80 Tipo: 1 Sent: 2

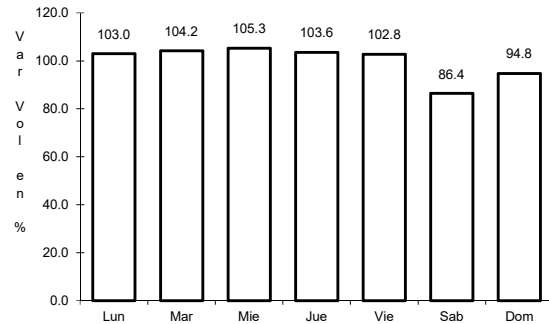


Km: 119.63 Tipo: 1 Sent: 0

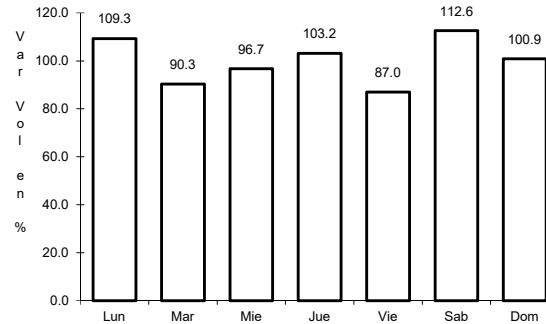
2 CARR: Cuernavaca - Cuautlixco

CLAVE: 17199

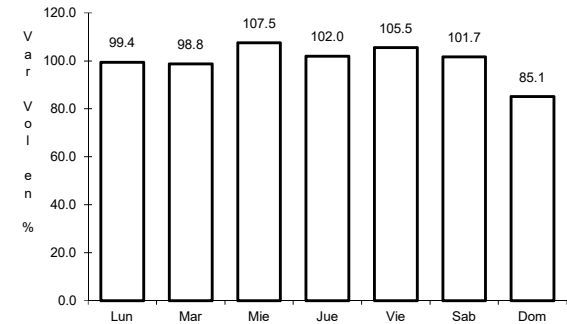
RUTA: MEX-138



Km: 7.78 Tipo: 1 Sent: 1



Km: 7.78 Tipo: 1 Sent: 2

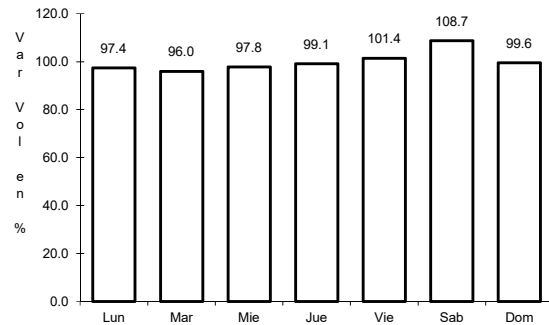


Km: 43.15 Tipo: 1 Sent: 1

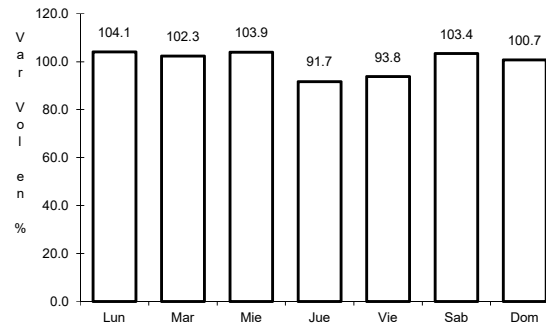
3 CARR: Cuernavaca - Tepoztlán

CLAVE: 17198

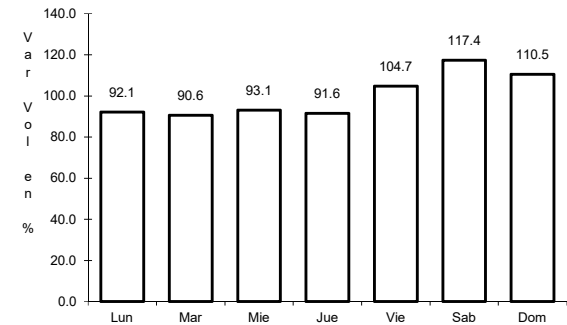
RUTA: MEX-162



Km: 2.83 Tipo: 1 Sent: 1



Km: 2.83 Tipo: 1 Sent: 2

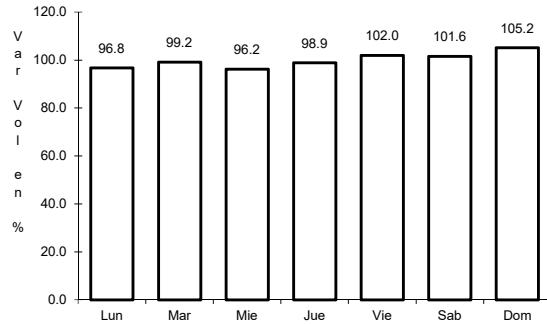


Km: 18.20 Tipo: 1 Sent: 0

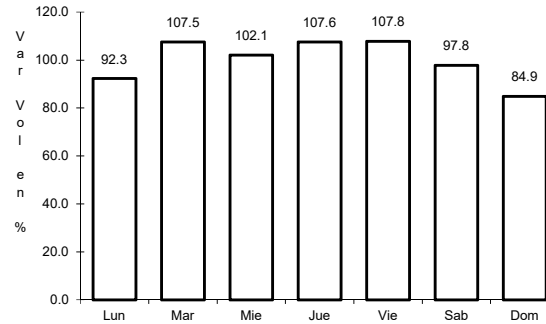
4 CARR: Ent. Alpuyecá - Grutas de Cacahuamilpa

CLAVE: 00421

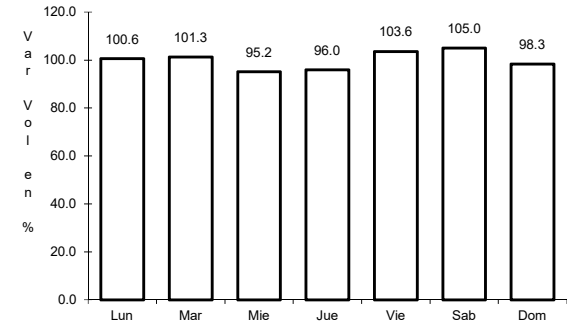
ruta: MEX-166



Km: 0.00 Tipo: 3 Sent: 0



Km: 18.28 Tipo: 3 Sent: 0

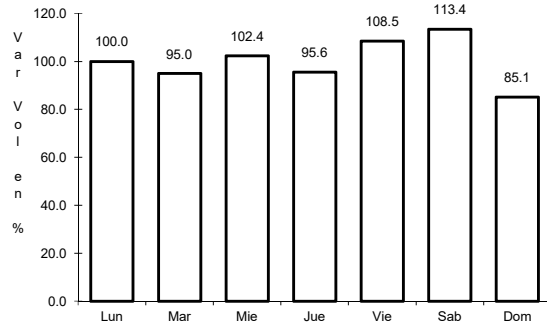


Km: 41.26 Tipo: 1 Sent: 0

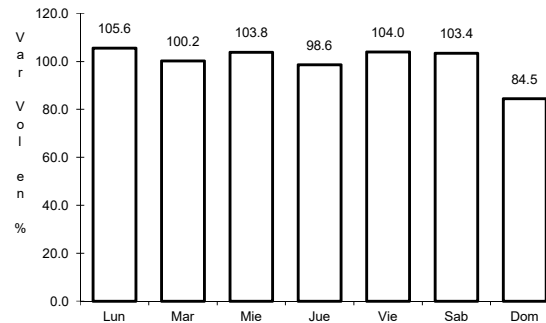
5 CARR: Libramiento de Cuautla

CLAVE: 17309

ruta: MEX-160



Km: 0.00 Tipo: 3 Sent: 1

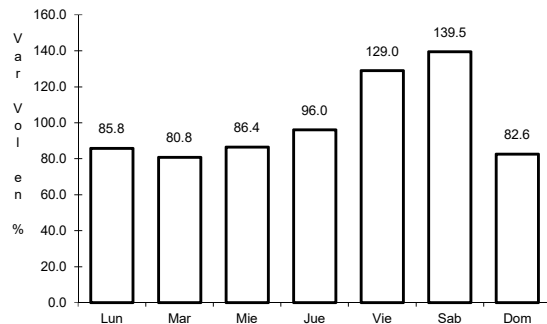


Km: 0.00 Tipo: 3 Sent: 2

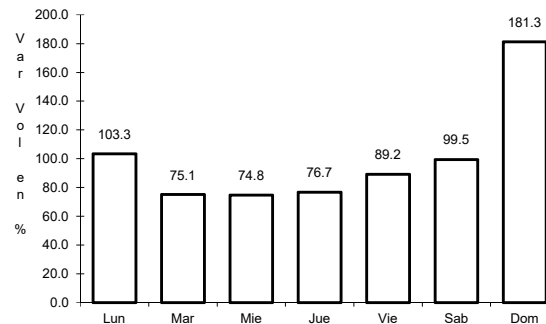
6 CARR: Libramiento de Cuernavaca

CLAVE: 17400

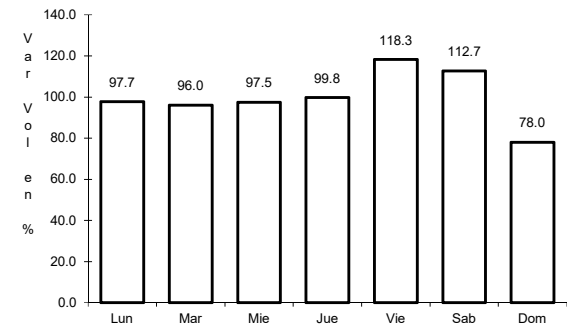
ruta: MEX-095



Km: 1.30 Tipo: 1 Sent: 1



Km: 1.30 Tipo: 1 Sent: 2

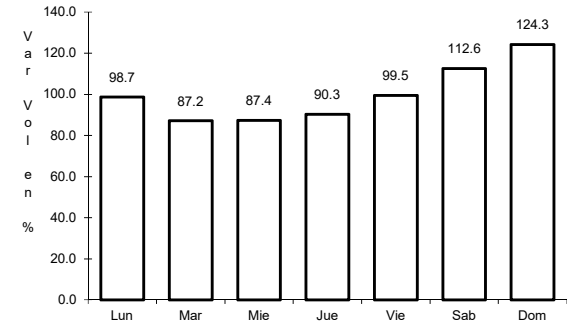
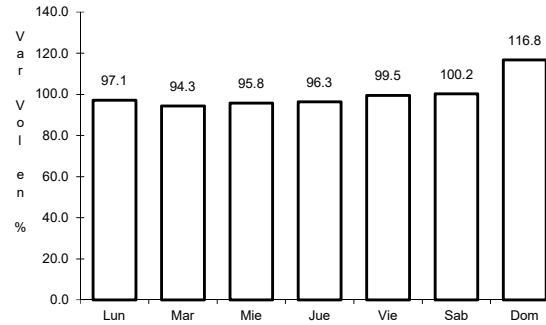
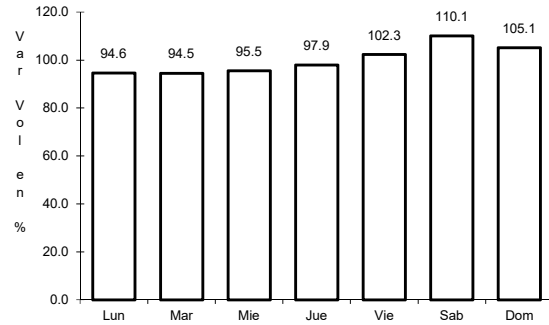


Km: 14.70 Tipo: 1 Sent: 1

7 CARR: México - Cuernavaca (Libre)

CLAVE: 00040

ruta: MEX-095



Km: 28.78 Tipo: 1 Sent: 1

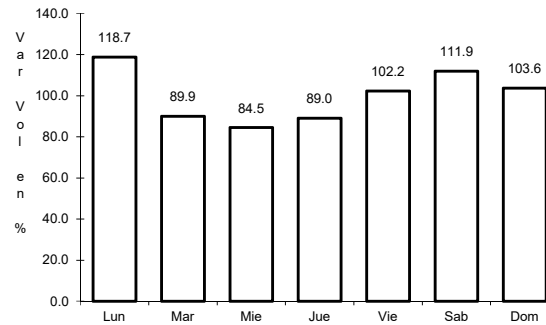
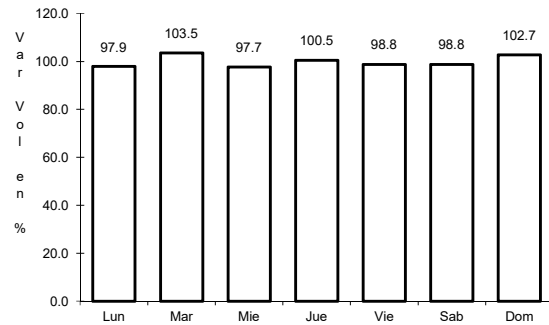
Km: 28.78 Tipo: 1 Sent: 2

Km: 51.40 Tipo: 3 Sent: 0

8 CARR: Ramal a Michapa

CLAVE: 17303

ruta: MEX-166



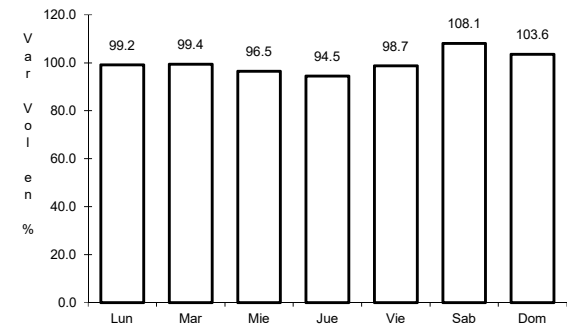
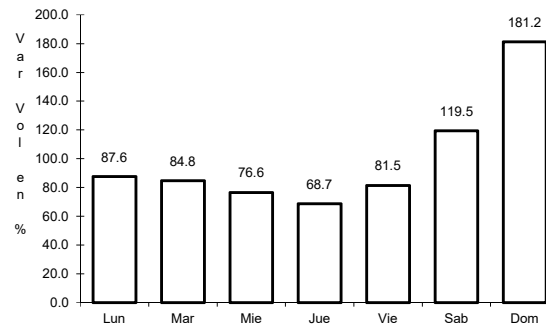
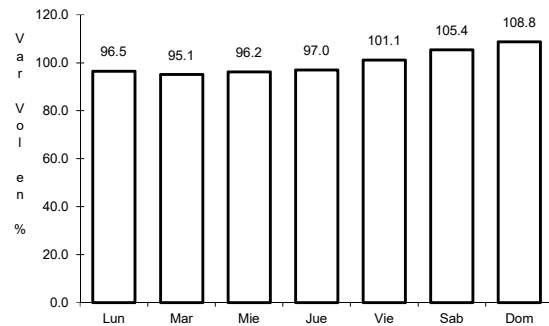
Km: 0.00 Tipo: 3 Sent: 0

Km: 16.22 Tipo: 1 Sent: 0

9 CARR: San Gregorio - Oaxtepec

CLAVE: 00901

ruta: MEX-113



Km: 0.00 Tipo: 3 Sent: 0

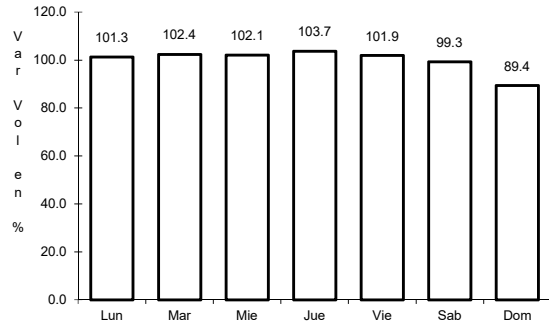
Km: 33.80 Tipo: 1 Sent: 0

Km: 53.00 Tipo: 3 Sent: 1

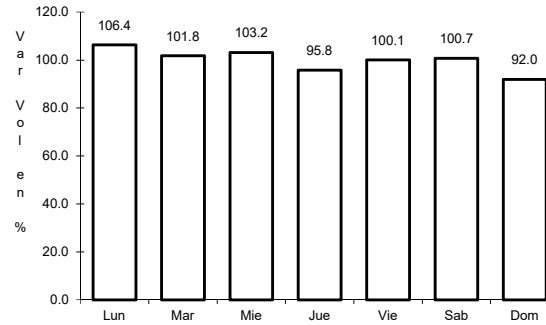
10 CARR: Santa Bárbara - Izúcar de Matamoros

CLAVE: 00451

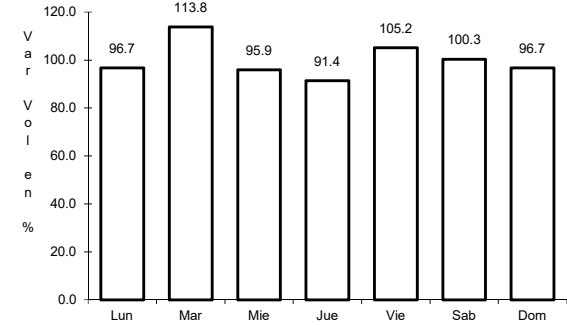
ruta: MEX-115-160



Km: 0.00 Tipo: 3 Sent: 1



Km: 0.00 Tipo: 3 Sent: 2

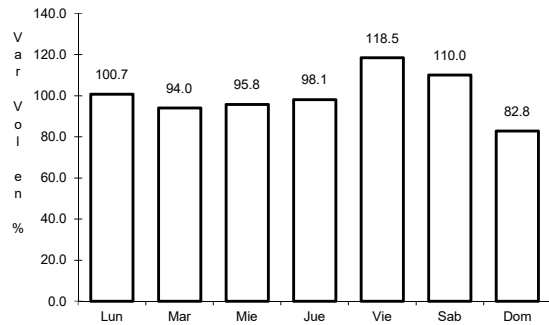


Km: 38.81 Tipo: 3 Sent: 0

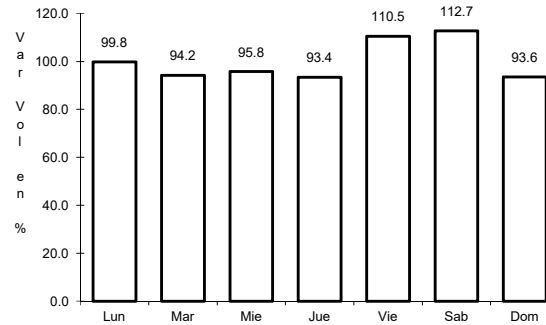
11 CARR: Cuernavaca - Acapulco (Cuota)

CLAVE: 00045

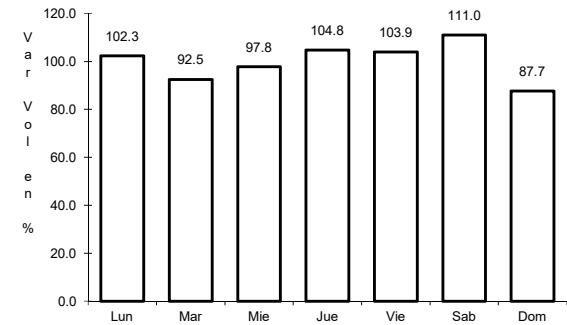
ruta: MEX-095D



Km: 0.00 Tipo: 3 Sent: 1



Km: 0.00 Tipo: 3 Sent: 2

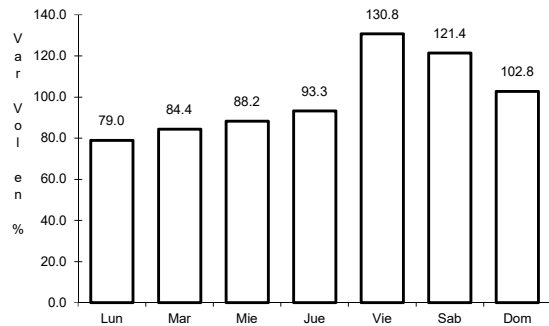


Km: 271.50 Tipo: 1 Sent: 1

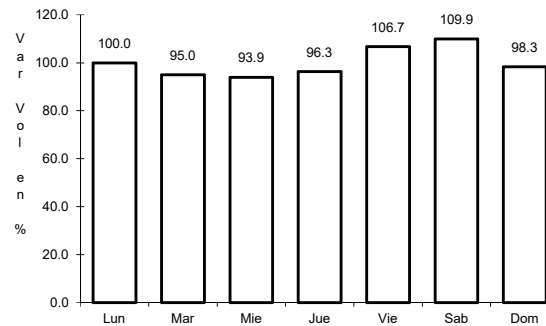
12 CARR: La Pera - Cuautla (Cuota)

CLAVE: 17161

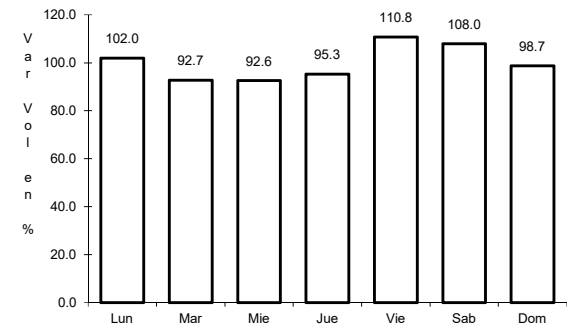
ruta: MEX-160D



Km: 0.00 Tipo: 3 Sent: 0



Km: 34.16 Tipo: 1 Sent: 1

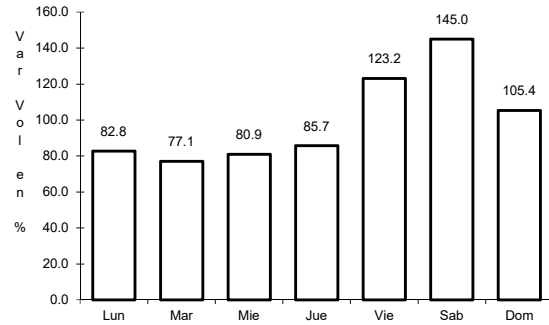


Km: 34.16 Tipo: 1 Sent: 2

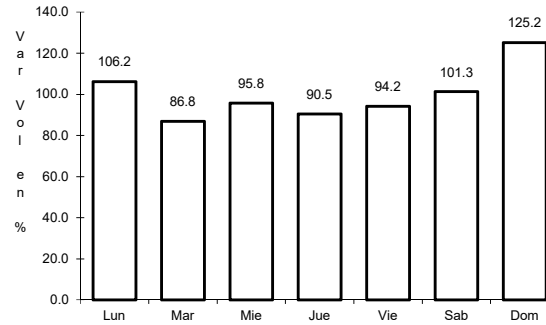
13 CARR: Libramiento Amecameca - Nepantla (Cuota)

CLAVE:

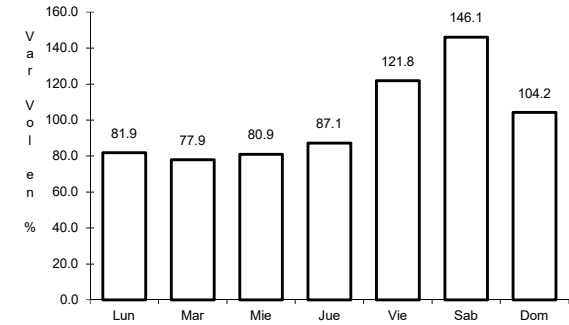
ruta: MEX-115D



Km: 28.60 Tipo: 3 Sent: 1



Km: 28.60 Tipo: 3 Sent: 2

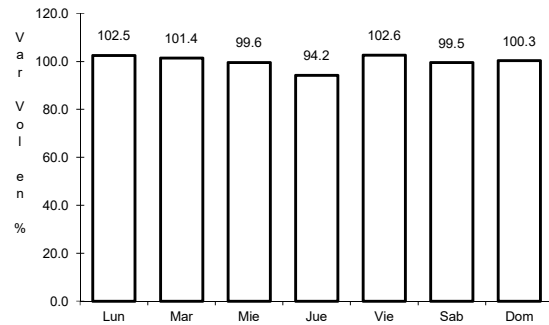


Km: 51.80 Tipo: 3 Sent: 1

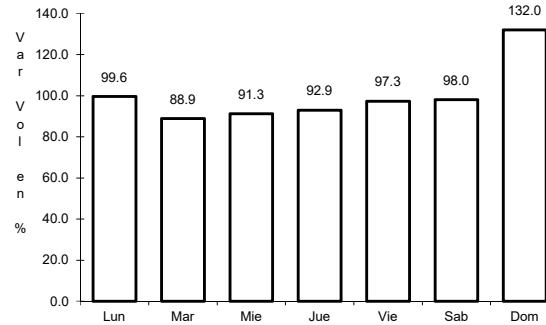
14 CARR: México - Cuernavaca (Cuota)

CLAVE: 00041

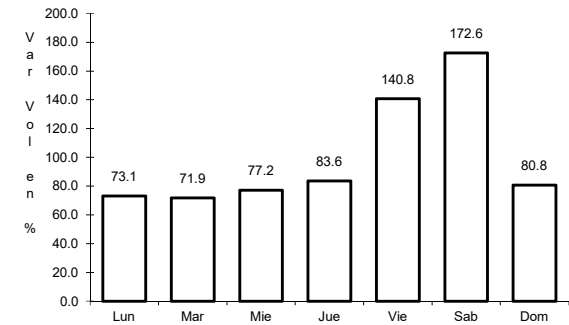
ruta: MEX-095D



Km: 18.65 Tipo: 3 Sent: 1



Km: 18.65 Tipo: 3 Sent: 2

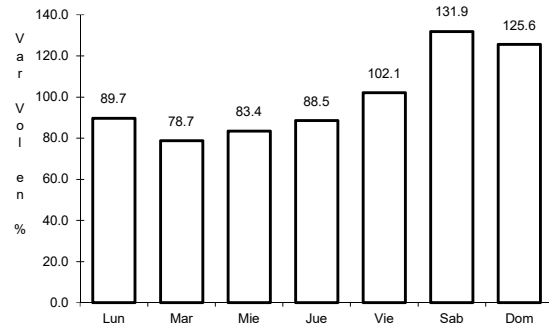


Km: 70.50 Tipo: 1 Sent: 1

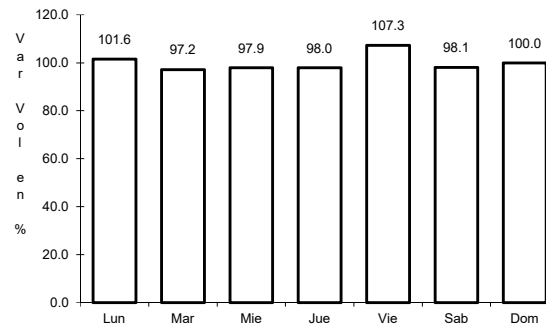
15 CARR: Puente de Ixtla - Iguala (Cuota)

CLAVE: 00043

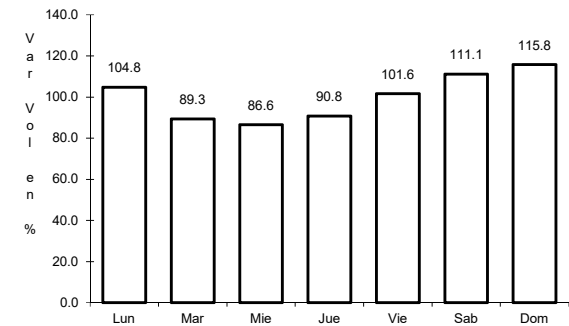
ruta: MEX-091D



Km: 2.00 Tipo: 3 Sent: 0



Km: 33.58 Tipo: 3 Sent: 0

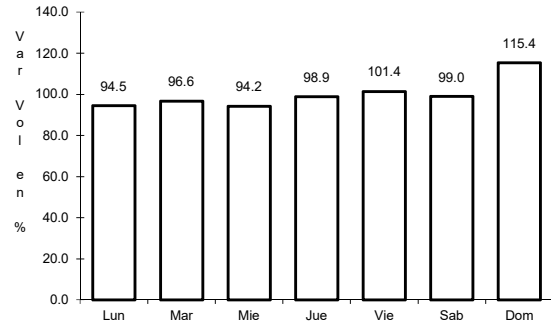


Km: 59.50 Tipo: 1 Sent: 0

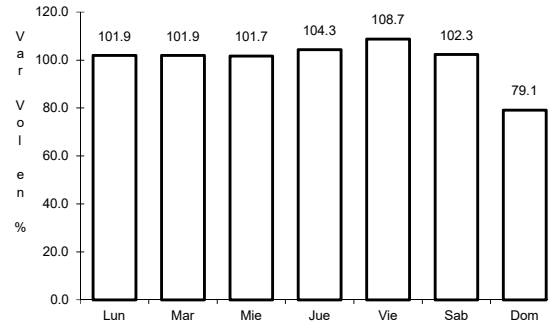
16 CARR: Alpuyecá - Jojutla

CLAVE: 17021

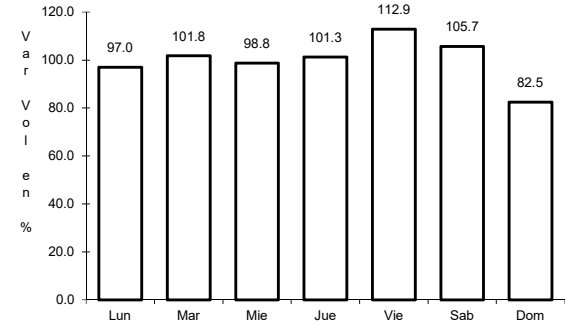
RUTA: MOR-021



Km: 2.20 Tipo: 1 Sent: 0



Km: 17.15 Tipo: 1 Sent: 1

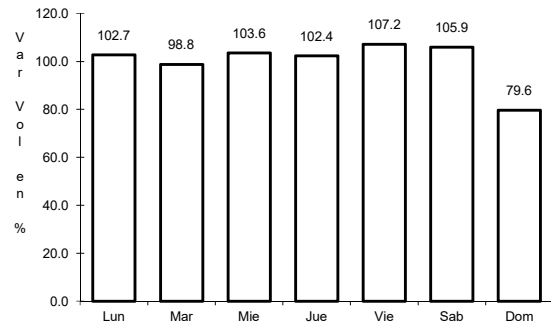


Km: 17.15 Tipo: 1 Sent: 2

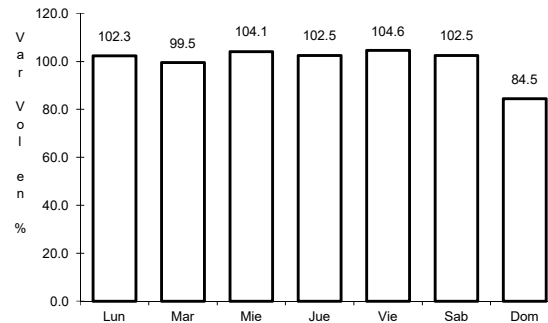
17 CARR: Amayuca - Izúcar de Matamoros

CLAVE: 00030

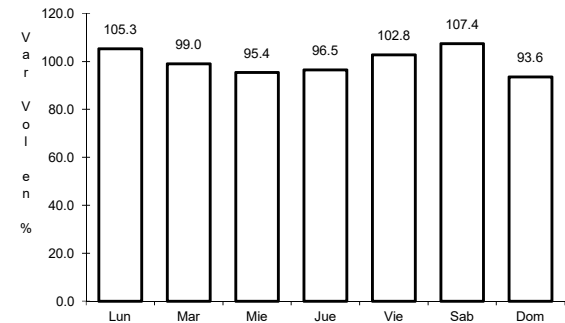
RUTA: MOR-031-PUE



Km: 0.66 Tipo: 3 Sent: 1



Km: 0.66 Tipo: 3 Sent: 2

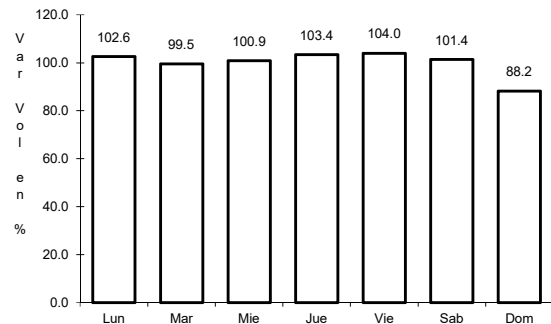


Km: 38.40 Tipo: 3 Sent: 0

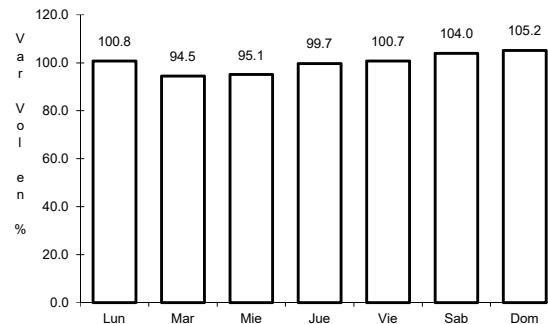
18 CARR: Amayuca - Tlacotepec

CLAVE: 17020

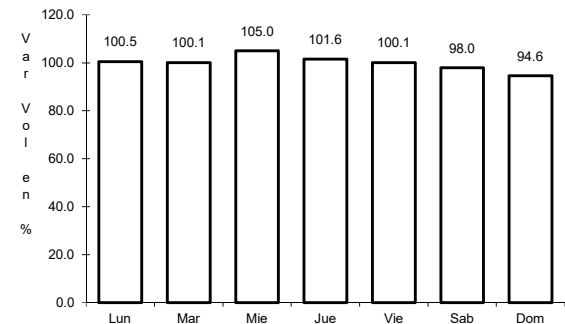
RUTA: MOR-017



Km: 0.00 Tipo: 3 Sent: 0



Km: 5.50 Tipo: 3 Sent: 0

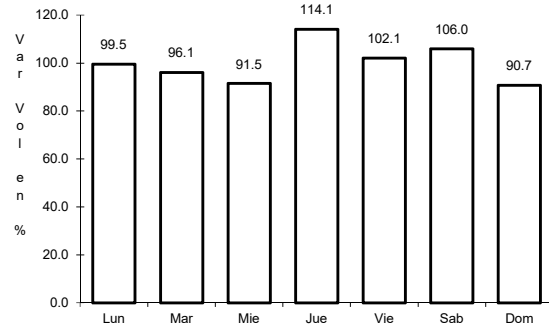


Km: 12.00 Tipo: 1 Sent: 0

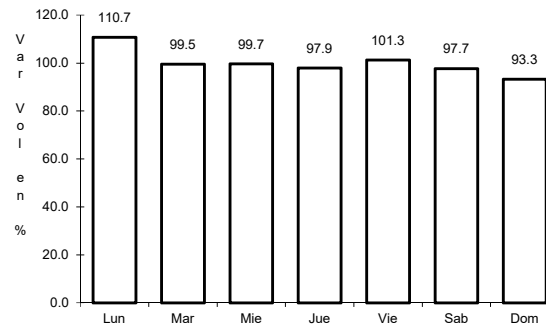
19 CARR: Atlatlahun - Tlayacapan

CLAVE: 17301

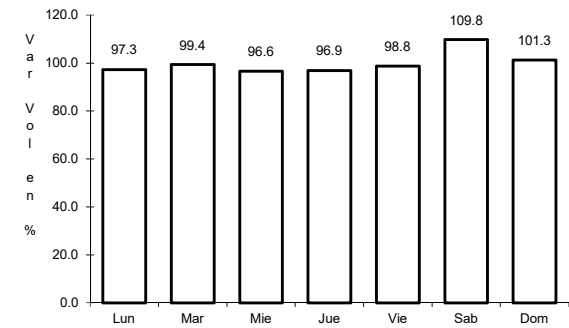
RUTA: MOR-002



Km: 1.50 Tipo: 1 Sent: 1



Km: 1.50 Tipo: 1 Sent: 2

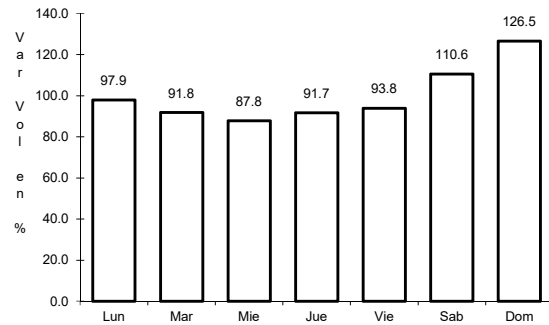


Km: 15.50 Tipo: 1 Sent: 0

20 CARR: Coatetelco - Miacatlán

CLAVE:

RUTA: MOR

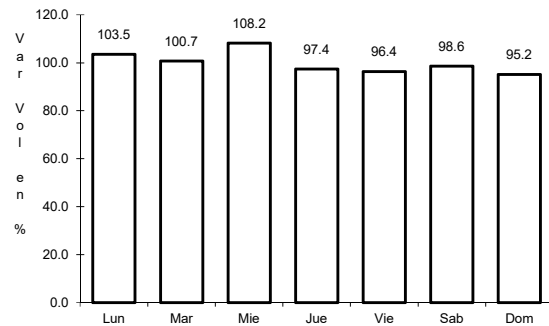


Km: 0.00 Tipo: 3 Sent: 0

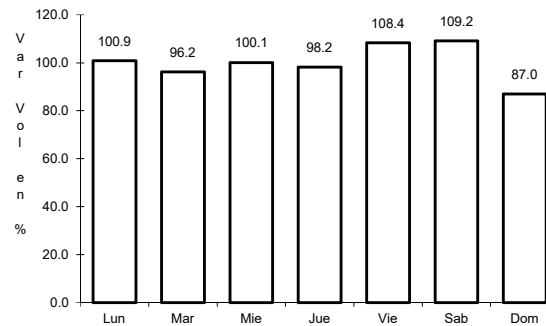
21 CARR: Cocoyoc - Oaxtepec

CLAVE: 17001

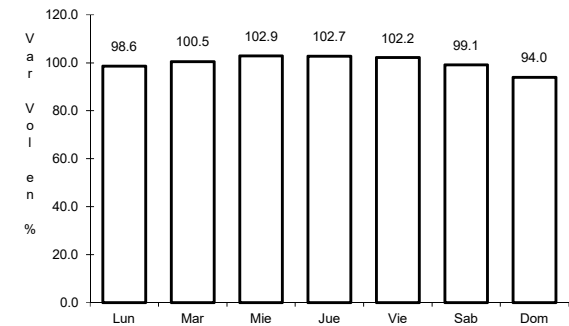
RUTA: MOR



Km: 0.00 Tipo: 3 Sent: 1



Km: 0.00 Tipo: 3 Sent: 2

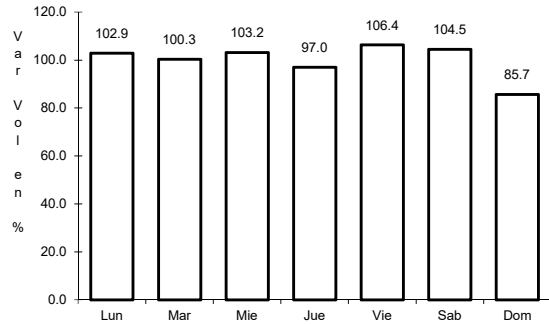


Km: 3.92 Tipo: 1 Sent: 0

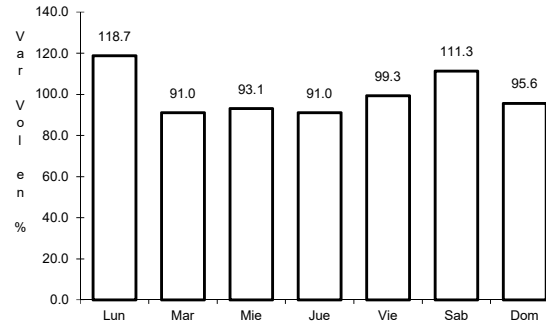
22 CARR: Ent. C. (Cuernavaca - Acapulco Cuota) - Tepetzingo

CLAVE: 00421

RUTA: MOR



Km: 0.00 Tipo: 3 Sent: 0

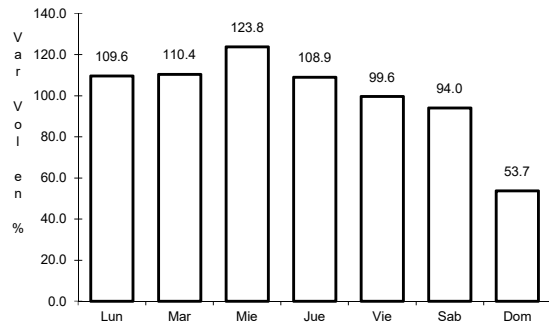


Km: 5.50 Tipo: 1 Sent: 0

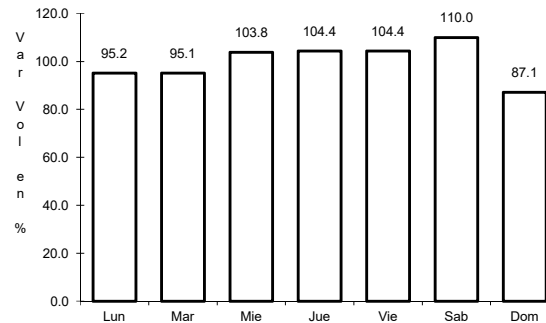
23 CARR: Ent. C. (Cuernavaca - Cuautlixco) - Oacalco

CLAVE: 00421

RUTA: MOR



Km: 0.00 Tipo: 3 Sent: 0

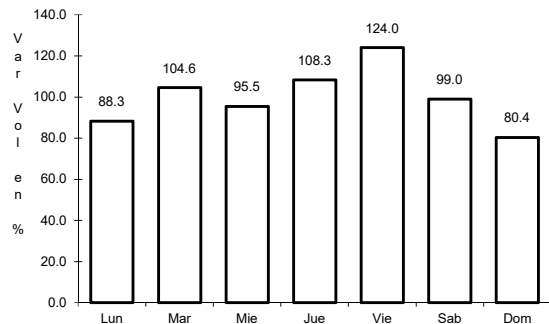


Km: 10.00 Tipo: 1 Sent: 0

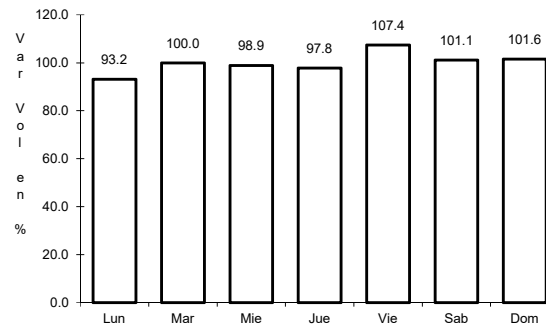
24 CARR: Ent. Chiverías - Ent. El Abanico

CLAVE: 17302

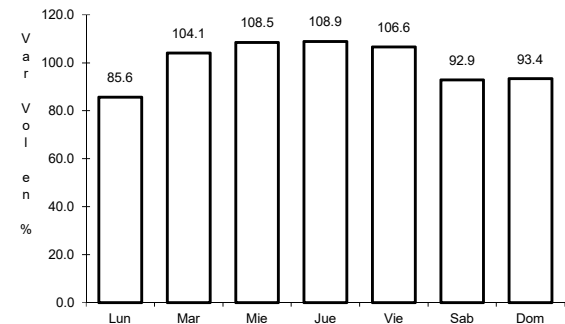
RUTA: MOR



Km: 0.00 Tipo: 3 Sent: 0



Km: 5.56 Tipo: 3 Sent: 0

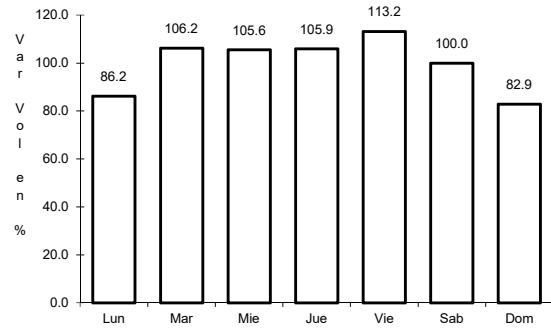


Km: 14.50 Tipo: 1 Sent: 0

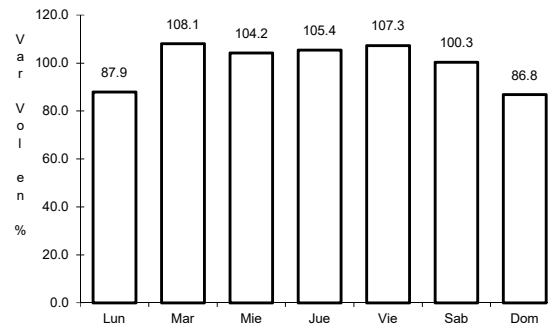
25 CARR: Galeana - Cuautla

CLAVE: 17004

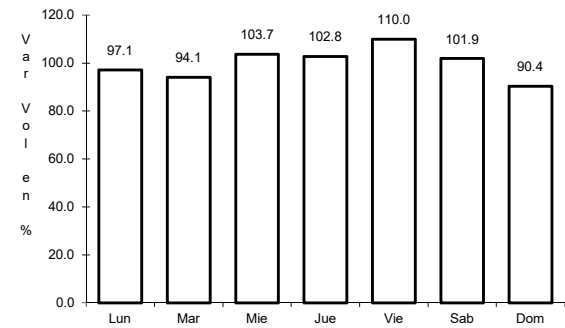
RUTA: MOR-004



Km: 0.00 Tipo: 3 Sent: 1



Km: 0.00 Tipo: 3 Sent: 2

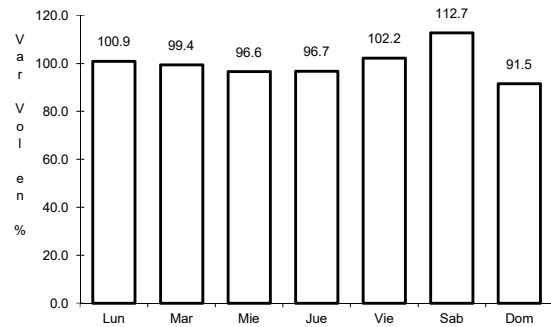


Km: 40.50 Tipo: 1 Sent: 1

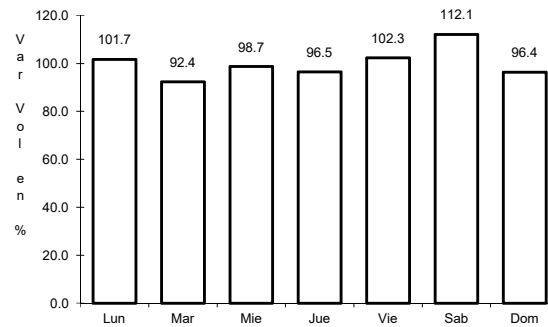
26 CARR: Jojutla - Chinameca

CLAVE: 17310

RUTA: MOR



Km: 0.00 Tipo: 3 Sent: 0

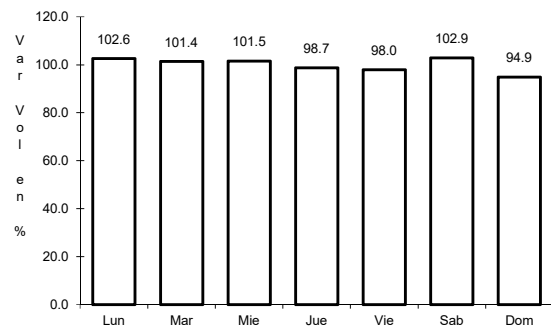


Km: 32.00 Tipo: 1 Sent: 0

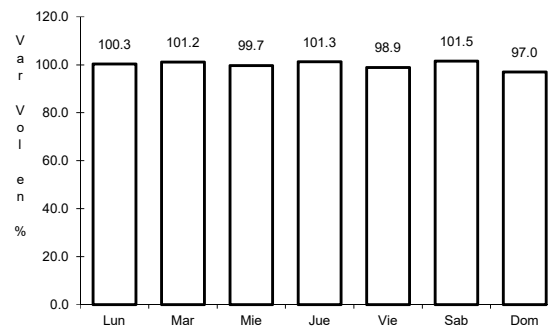
27 CARR: Jojutla - El Higuero

CLAVE: 17039

RUTA: MOR-039



Km: 0.00 Tipo: 3 Sent: 0

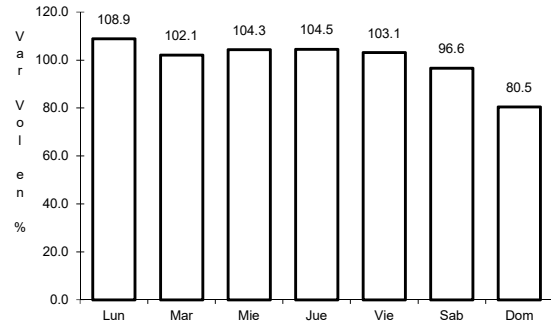


Km: 4.50 Tipo: 1 Sent: 0

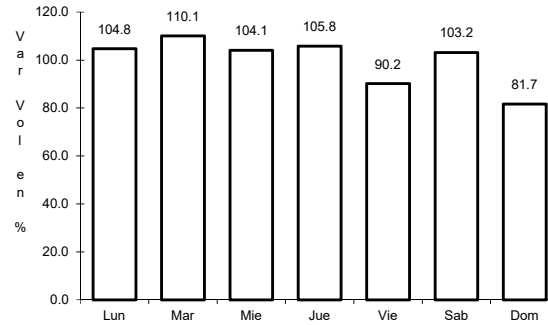
28 CARR: Los Alacranes - Ocuituco

CLAVE:

RUTA: MOR



Km: 0.00 Tipo: 3 Sent: 0

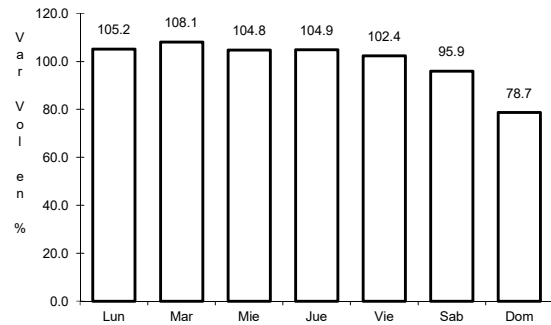


Km: 19.00 Tipo: 1 Sent: 0

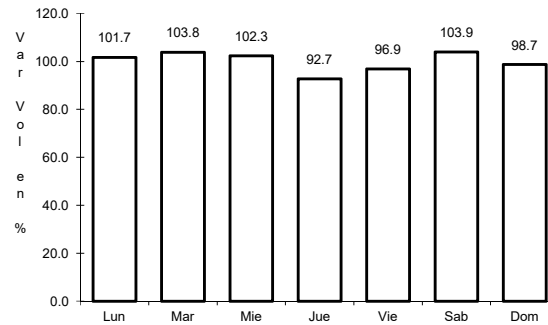
29 CARR: Mazatepec - T. C. Ramal a Michapa

CLAVE:

RUTA: MOR



Km: 0.00 Tipo: 3 Sent: 0

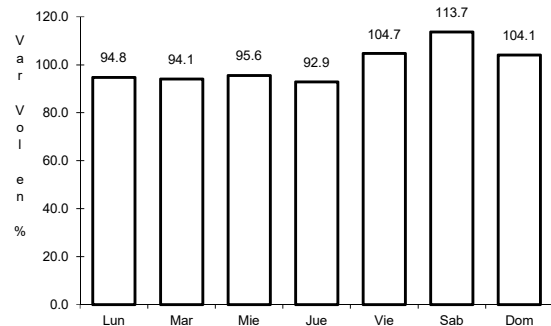


Km: 12.00 Tipo: 1 Sent: 0

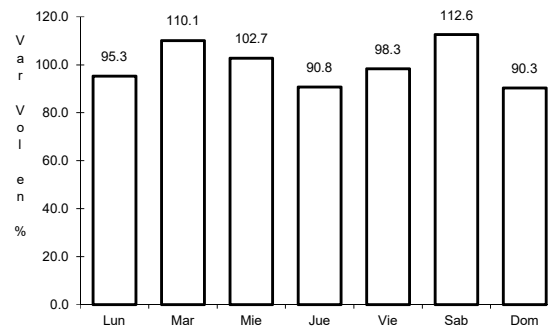
30 CARR: Moyotepec - San Rafael

CLAVE: 17306

RUTA: MOR



Km: 0.00 Tipo: 3 Sent: 0

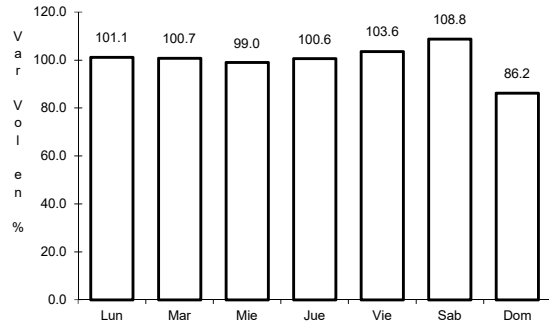


Km: 7.50 Tipo: 1 Sent: 0

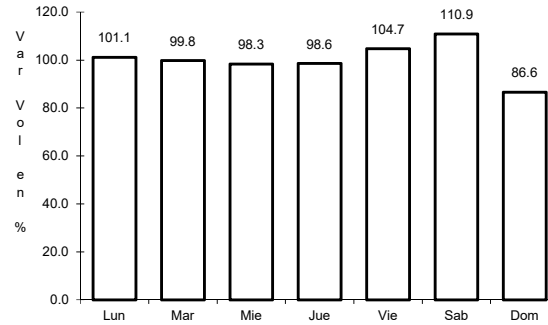
31 CARR: Paso por Yautepec

CLAVE: 17025

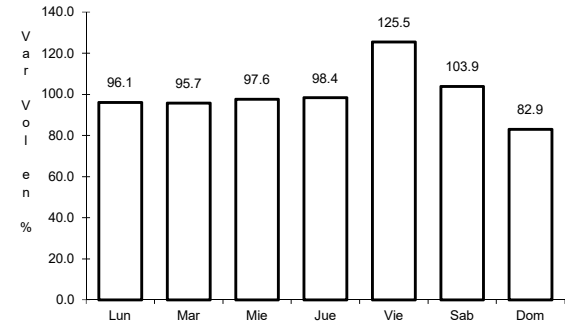
ruta: MOR



Km: 0.00 Tipo: 3 Sent: 1



Km: 0.00 Tipo: 3 Sent: 2

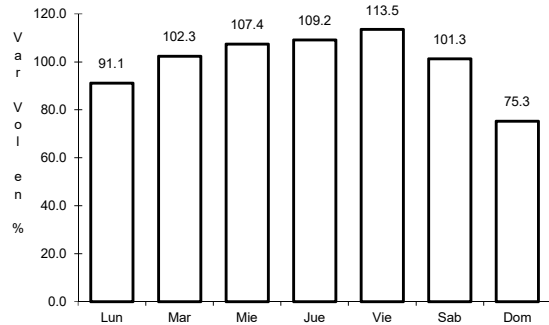


Km: 5.50 Tipo: 1 Sent: 1

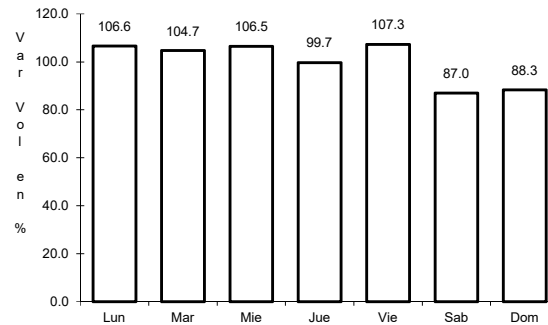
32 CARR: Pilares - T. C. (Xoxocotla - Tilzapotla)

CLAVE: 17008

ruta: MOR-008



Km: 0.00 Tipo: 3 Sent: 0

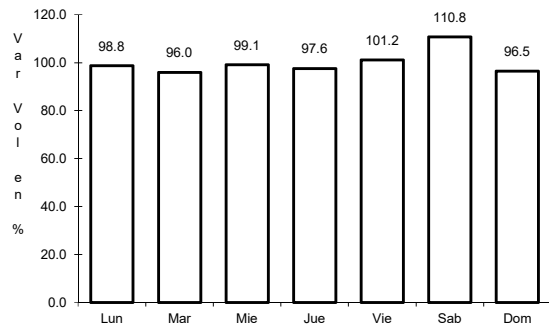


Km: 6.50 Tipo: 1 Sent: 0

33 CARR: Ramal a Aeropuerto de Cuernavaca

CLAVE: 17250

ruta: MOR

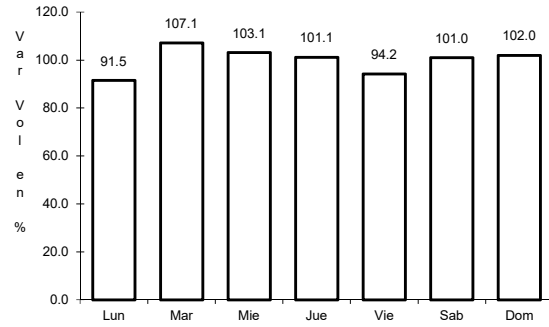


Km: 0.00 Tipo: 3 Sent: 0

34 CARR: Ramal a Coatetelco

CLAVE: 17304

ruta: MOR



Km: 0.00

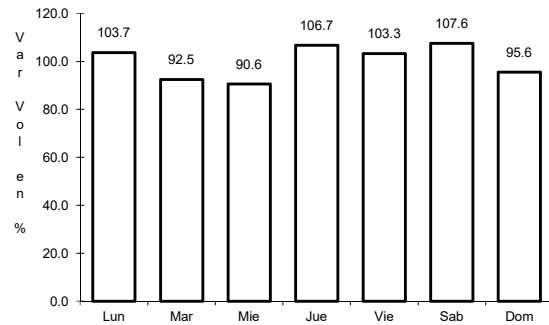
Tipo: 3

Sent: 0

35 CARR: Ramal a Jolalpan

CLAVE: 00143

ruta: MOR-PUE



Km: 0.00

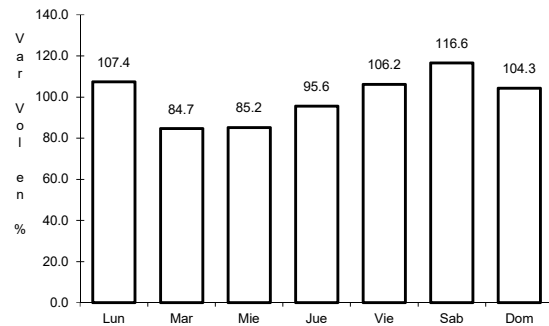
Tipo: 3

Sent: 0

36 CARR: Ramal a Tetela del Volcán

CLAVE: 17010

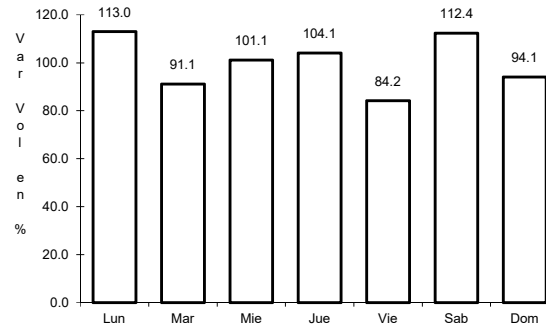
ruta: MOR-010



Km: 0.00

Tipo: 3

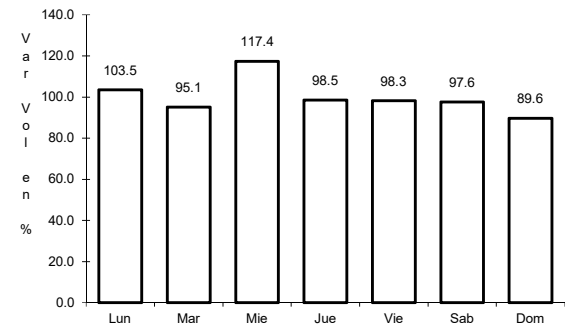
Sent: 1



Km: 0.00

Tipo: 3

Sent: 2



Km: 22.00

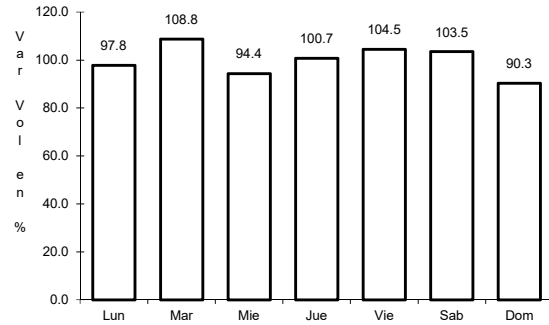
Tipo: 1

Sent: 0

37 CARR: T. C. (Coatetelco - Miacatlán) - Mazatepec

CLAVE:

RUTA: MOR



Km: 4.14

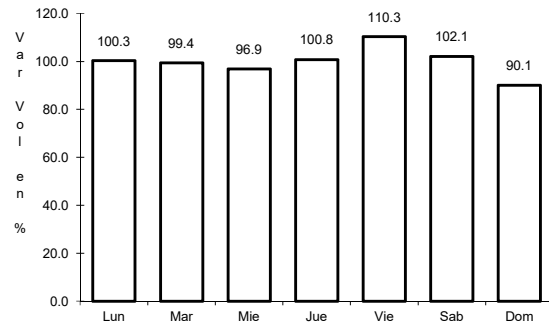
Tipo: 1

Sent: 0

38 CARR: T. C. (México - Cuernavaca (Libre)) - Huitzilac

CLAVE: 00451

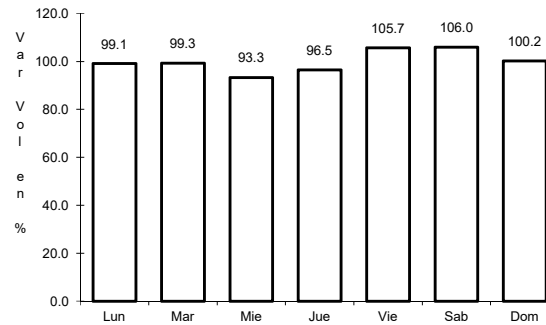
RUTA: MOR



Km: 0.00

Tipo: 3

Sent: 0



Km: 4.00

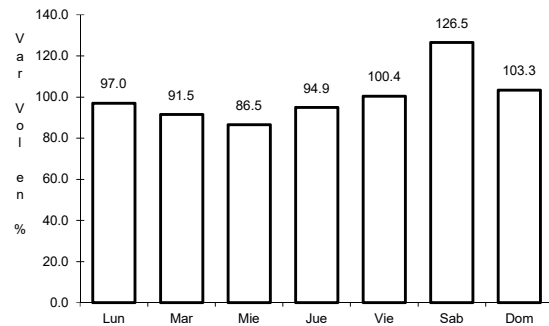
Tipo: 1

Sent: 0

39 CARR: T. C. (San Gregorio - Oaxtepec) - Jojutla

CLAVE: 17002

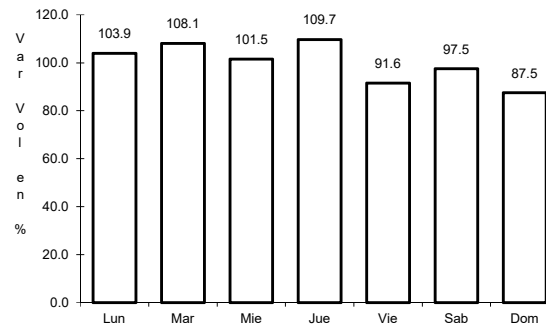
RUTA: MOR-002



Km: 0.00

Tipo: 3

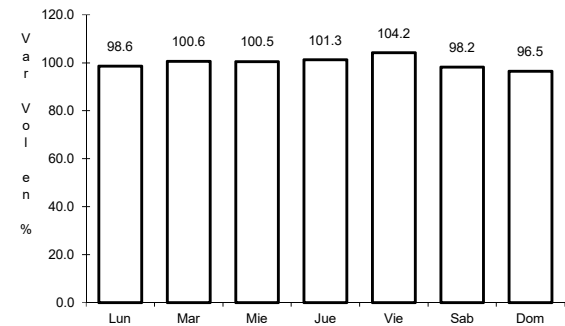
Sent: 0



Km: 32.30

Tipo: 1

Sent: 0



Km: 53.50

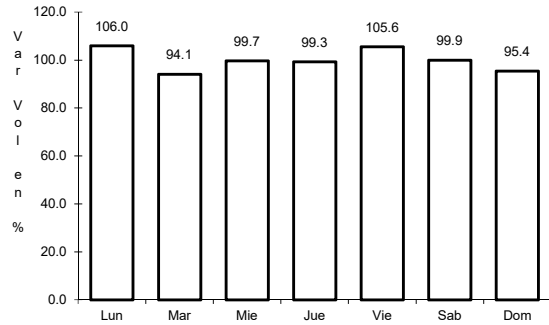
Tipo: 1

Sent: 0

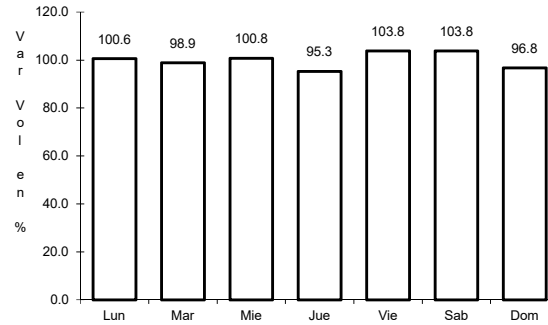
40 CARR: Tehuixtla - Puente de Ixtla

CLAVE: 17307

RUTA: MOR



Km: 0.00 Tipo: 3 Sent: 0

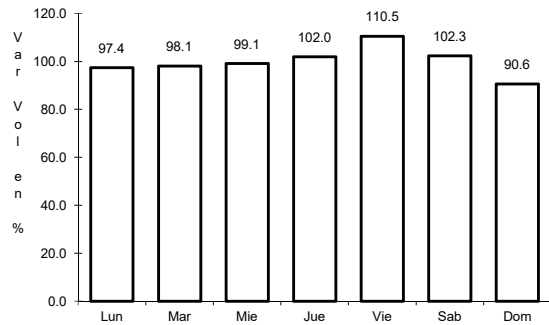


Km: 9.60 Tipo: 1 Sent: 0

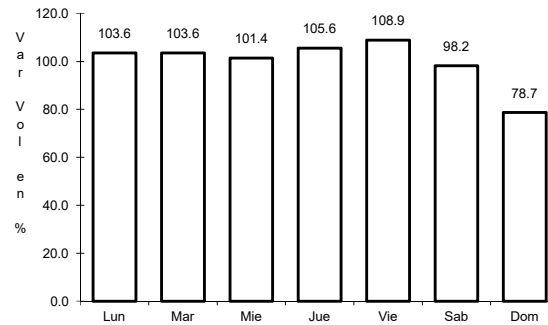
41 CARR: Tejalpa - Jojutla

CLAVE: 17014

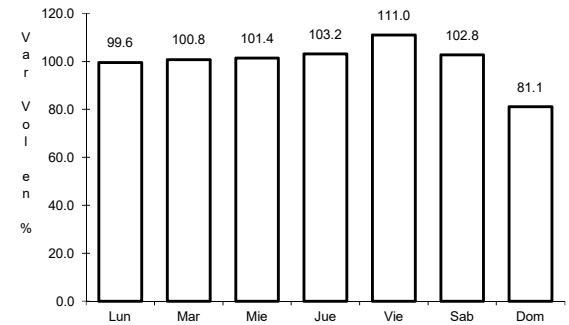
RUTA: MOR-014



Km: 1.97 Tipo: 3 Sent: 0



Km: 32.90 Tipo: 1 Sent: 0

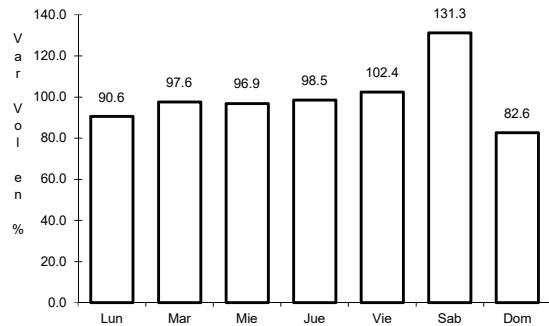


Km: 35.00 Tipo: 1 Sent: 0

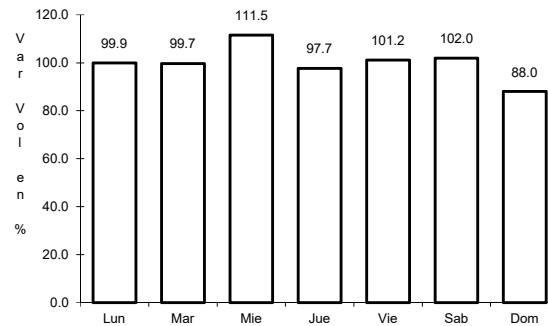
42 CARR: Temilpa - Tepalcingo

CLAVE: 17009

RUTA: MOR-009



Km: 0.00 Tipo: 3 Sent: 0

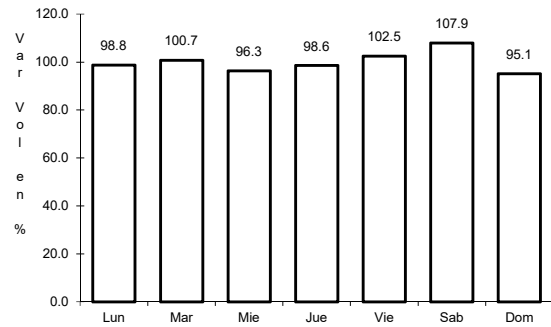


Km: 40.50 Tipo: 1 Sent: 0

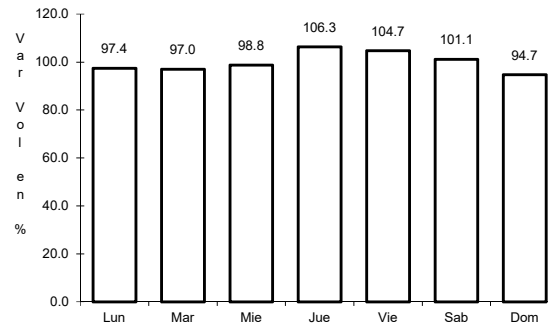
43 CARR: Tepoztlán - Yau-tepec

CLAVE: 17013

RUTA: MOR-013



Km: 0.00 Tipo: 3 Sent: 0

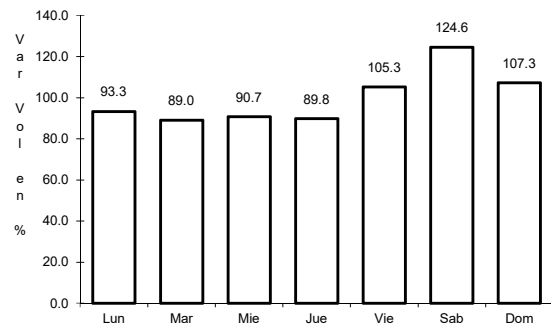


Km: 14.82 Tipo: 1 Sent: 0

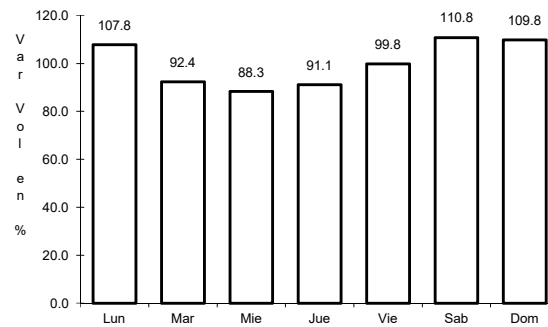
44 CARR: Tequesquitengo - Jojutla

CLAVE: 17013

RUTA: MOR



Km: 0.00 Tipo: 3 Sent: 1

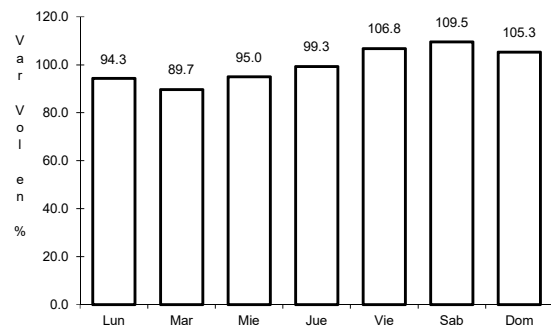


Km: 0.00 Tipo: 3 Sent: 2

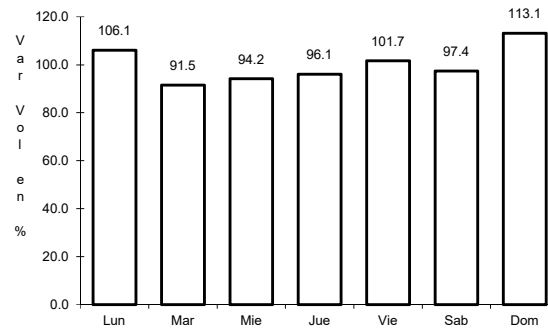
45 CARR: Xoxocotla - Tilzapotla

CLAVE: 17005

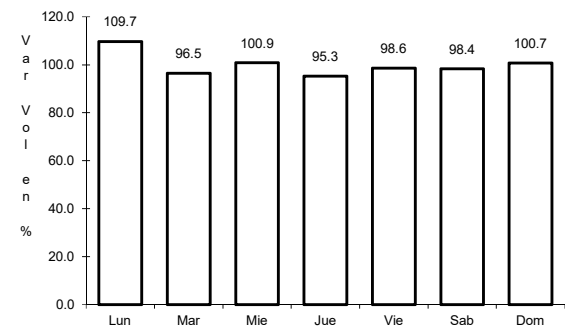
RUTA: MOR-006



Km: 0.00 Tipo: 3 Sent: 1



Km: 0.00 Tipo: 3 Sent: 2

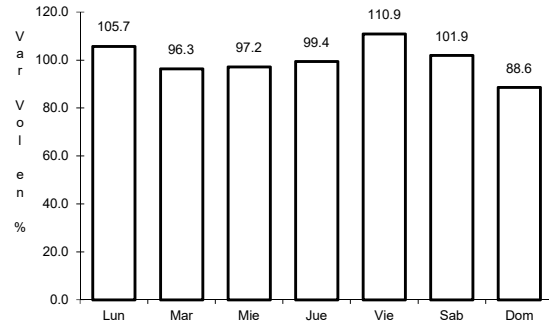


Km: 29.50 Tipo: 1 Sent: 0

46 CARR: Zacatepec - Tlaquiltenango

CLAVE: 17300

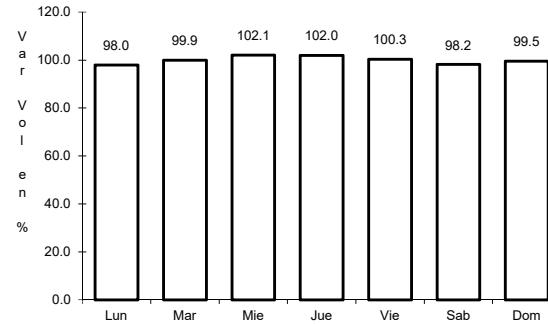
RUTA: MOR



Km: 0.00

Tipo: 3

Sent: 0



Km: 4.08

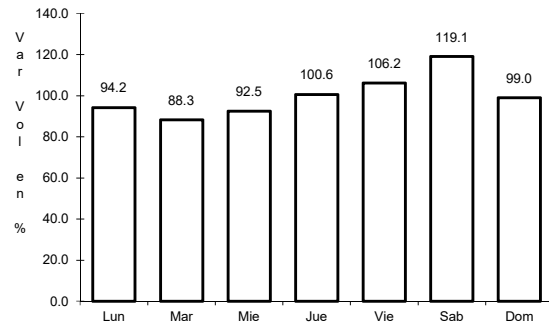
Tipo: 1

Sent: 0

47 CARR: Atlixco - Jantetelco (Cuota)

CLAVE: 00430

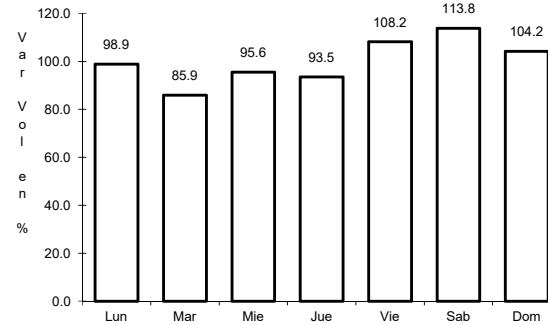
RUTA: PUE-D



Km: 0.00

Tipo: 3

Sent: 0



Km: 54.90

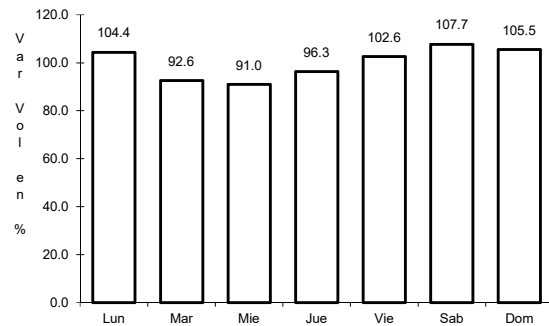
Tipo: 1

Sent: 0

48 CARR: Tres Marías - Santa Martha

CLAVE: 00172

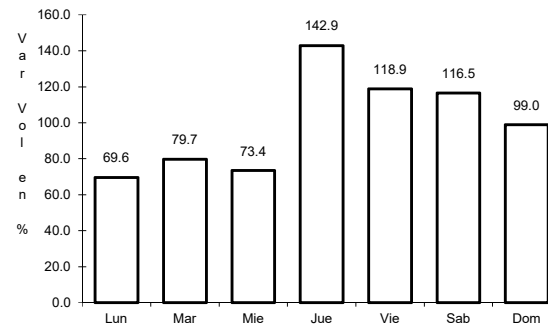
RUTA: MEX-106-EM



Km: 0.00

Tipo: 3

Sent: 0



Km: 28.35

Tipo: 1

Sent: 0