



HIDALGO

NO. INDICE CARRETERA	RUTA
---RED FEDERAL LIBRE---	
1 Álamo - Huejutla de Reyes	MEX-127
2 Apizaco - Tejocotal	MEX-119
3 Ent. Colonia - Portezuelo	MEX-085
4 Ent. Jorobas - Tula	MEX-087
5 México - Pachuca (Libre)	MEX-085
6 Pachuca - Cd. Sahagún	MEX
7 Pachuca - Tempoal	MEX-105
8 Pachuca - Tuxpam	MEX-130
9 Portezuelo - Cd. Valles	MEX-085
10 Portezuelo - Palmillas	MEX-045
11 Tamazunchale - San Felipe Orizatlán	MEX-085
12 Venta de Carpio - T. C. (Pachuca - Tuxpam)	MEX-132
---RED FEDERAL DE CUOTA---	
13 Ent. Tulancingo - Venta Grande (Cuota)	MEX-132D
14 Libramiento Norte de la Ciudad de México (Cuota)	MEX-M40D
15 México - Pachuca (Cuota)	MEX-085D
16 Tejocotal - Nuevo Necaxa (Cuota)	MEX-132D
17 Tlaxco - Tejocotal (Cuota)	MEX-119D
---RED FEDERAL INTEGRADA POR TRAMOS LIBRES Y DE CUOTA---	
18 México - Querétaro (Cuota)	MEX-057-MEX-057D
---RED ESTATAL LIBRE---	
19 Actopan - Progreso	HGO
20 El Saucillo - Amealco	HGO-103
21 Ent. Emiliano Zapata - Cd. Sahagún	HGO
22 Ent. Tepeji del Río - Tlahuelilpan	HGO-017
23 Ent. Tolman - Cd. Sahagún	EM-009-HGO
24 Francisco I. Madero - Tula de Allende	HGO
25 Huichapan - Tecozautla	HGO-030
26 Jilotepec - Maravillas	EM-HGO
27 Libramiento de Atotonilco El Grande	HGO
28 Lolotla - Atlapexco	HGO
29 Los Reyes - El Tephé	EM-HGO
30 Otumba - Tizayuca	EM-HGO
31 Ramal a El Chico	HGO
32 Ramal a Pachuca	HGO
33 San Alejo - Huayacocotla	HGO-051-VER-113
34 San Felipe Orizatlán - Huejutla de Reyes	HGO
35 Santo Domingo - T. C. (México - Querétaro)	EM-011-HGO
36 T. C. (Los Reyes - El Tephé) - Tizayuca	EM-HGO
37 Tepeji del Río - T.C. (México - Querétaro)	HGO
38 Tlahuelilpan - San Agustín Tlaxiaca	HGO
---CARRETERAS INTEGRADAS POR TRAMOS FEDERALES Y ESTATALES---	
39 Calpulalpan - El Ocote	MEX-HGO

HIDALGO

1 CARR: Álamo - Huejutla de Reyes

CLAVE: 00116

RUTA: MEX-127

AÑO: 2018

LUGAR	ESTACION				CLASIFICACION VEHICULAR EN PORCIENTO										COORDENADAS					
	KM	TE	SC	TDPA	M	A	B	C2	C3	T3S2	T3S3	T3S2R4	OTROS	A	B	C	K'	D	LATITUD	LONGITUD
T. C. Tihuatlán - Potrero del Llano	0.00	3	0	4204	13.8	70.9	0.2	8.3	1.5	4.0	0.8	0.1	0.4	84.7	0.2	15.1	0.069	0.503	20.942267	-97.706567
Benito Juárez	73.00	1	0	1967	7.1	86.4	0.2	3.5	0.4	1.9	0.3	0.0	0.2	93.5	0.2	6.3	0.104	0.504	20.882449	-98.198441
T. Der. Chicontepec de Tejada	78.00	3	0	1046	5.8	85.5	0.3	6.3	0.5	1.2	0.4	0.0	0.0	91.3	0.3	8.4	0.110	0.507	20.924406	-98.222505
Lim. Edos. Term. Ver. Ppia. Hgo.	78.70																			
T. C. Pachuca - Tempoal (Huejutla de Reyes)	110.00																			

2 CARR: Apizaco - Tejocotal

CLAVE: 00430

RUTA: MEX-119

AÑO: 2018

LUGAR	ESTACION				CLASIFICACION VEHICULAR EN PORCIENTO										COORDENADAS					
	KM	TE	SC	TDPA	M	A	B	C2	C3	T3S2	T3S3	T3S2R4	OTROS	A	B	C	K'	D	LATITUD	LONGITUD
Apizaco	0.00	3	1	12098	1.1	87.4	1.1	5.1	1.1	1.9	1.3	0.5	0.5	88.5	1.1	10.4	0.076	0.508	19.428410	-98.135818
Apizaco	0.00	3	2	12494	1.3	86.1	1.2	5.5	1.1	2.2	1.5	0.5	0.6	87.4	1.2	11.4	0.076	0.508	19.428438	-98.135874
T. Der. Tetla	6.60	3	0	19478	0.9	83.8	2.3	6.9	1.3	2.6	1.1	0.7	0.4	84.7	2.3	13.0	0.074	0.501	19.473381	-98.112579
T. Izq. Atlangatepec	12.15	1	0	14806	0.9	83.7	2.5	7.0	1.3	2.5	1.0	0.7	0.4	84.6	2.5	12.9	0.097	0.501	19.506436	-98.117082
Tlaxco	23.91	1	0	9099	1.1	78.9	2.1	9.2	1.7	4.2	1.4	0.6	0.8	80.0	2.1	17.9	0.090	0.606	19.582725	-98.130630
Tlaxco	23.91	3	0	5304	1.7	79.8	1.1	8.7	1.7	4.2	1.8	0.4	0.6	81.5	1.1	17.4	0.088	0.509	19.626435	-98.124693
Lim. Edos. Term. Tlax. Ppia. Pue.	34.45																			
T. Der. Tetela de Ocampo	52.20	1	0	6970	2.6	80.2	0.6	7.8	1.2	5.1	1.4	0.4	0.7	82.8	0.6	16.6	0.081	0.506	19.800385	-98.026804
Zacatlán	71.25	1	0	10013	3.0	82.1	1.0	5.6	0.5	4.8	1.4	0.5	1.1	85.1	1.0	13.9	0.072	0.515	19.918496	-97.959144
Lim. Edos. Term. Pue. Ppia. Hgo.	110.45																			
T. C. Pachuca - Tuxpam	113.15	1	0	8887	1.8	82.1	1.9	10.4	1.1	1.1	0.9	0.5	0.2	83.9	1.9	14.2	0.072	0.513	20.123284	-98.128825

3 CARR: Ent. Colonia - Portezuelo

CLAVE: 13257

RUTA: MEX-085

AÑO: 2018

LUGAR	ESTACION				CLASIFICACION VEHICULAR EN PORCIENTO										COORDENADAS					
	KM	TE	SC	TDPA	M	A	B	C2	C3	T3S2	T3S3	T3S2R4	OTROS	A	B	C	K'	D	LATITUD	LONGITUD
Ent. Colonia	0.00	3	1	28738	1.3	92.0	0.5	3.3	0.7	1.0	0.7	0.2	0.3	93.3	0.5	6.2	0.097	0.503	20.061559	-98.787284
Ent. Colonia	0.00	3	2	29138	1.1	90.9	0.7	4.8	0.6	0.8	0.6	0.2	0.3	92.0	0.7	7.3	0.080	0.503	20.061507	-98.787414
T. Der. Pachuca	8.34	3	1	17200	0.5	86.6	1.3	7.7	1.2	1.6	0.8	0.3	0.0	87.1	1.3	11.6	0.098	0.503	20.127363	-98.837158
T. Der. Pachuca	8.34	3	2	16985	0.7	85.5	1.2	8.2	1.4	1.7	1.0	0.3	0.0	86.2	1.2	12.6	0.106	0.503	20.127283	-98.837223
Actopan	34.13	1	1	14288	1.7	83.7	1.8	9.1	1.2	1.7	0.4	0.3	0.1	85.4	1.8	12.8	0.071	0.501	20.249969	-98.932481
Actopan	34.13	1	2	14230	1.4	83.2	2.1	9.6	1.2	1.7	0.4	0.3	0.1	84.6	2.1	13.3	0.074	0.501	20.249919	-98.932556
Actopan	34.13	3	1	9258	2.1	82.8	1.9	7.8	1.2	2.3	1.1	0.5	0.3	84.9	1.9	13.2	0.100	0.508	20.290533	-98.975826
Actopan	34.13	3	2	9551	2.0	80.4	2.2	9.3	1.4	2.6	1.3	0.5	0.3	82.4	2.2	15.4	0.077	0.508	20.290475	-98.975885
T. Izq. Tula	68.20	1	1	7951	2.2	81.9	2.0	8.0	1.3	2.8	1.1	0.4	0.3	84.1	2.0	13.9	0.082	0.507	20.435426	-99.156752

HIDALGO

3 CARR: Ent. Colonia - Portezuelo

CLAVE: 13257

RUTA: MEX-085

AÑO: 2018

LUGAR	ESTACION				CLASIFICACION VEHICULAR EN PORCIENTO										COORDENADAS					
	KM	TE	SC	TDPA	M	A	B	C2	C3	T3S2	T3S3	T3S2R4	OTROS	A	B	C	K'	D	LATITUD	LONGITUD
T. Izq. Tula	68.20	1	2	7733	2.1	81.0	1.9	8.4	1.4	2.8	1.4	0.6	0.4	83.1	1.9	15.0	0.066	0.507	20.435315	-99.156824
Ixmiquilpan	75.20	1	1	13760	3.6	82.0	1.1	7.0	1.0	2.7	1.6	0.5	0.5	85.6	1.1	13.3	0.069	0.520	20.466881	-99.200105
Ixmiquilpan	75.20	1	2	14902	3.3	84.2	1.0	6.2	0.9	2.2	1.4	0.4	0.4	87.5	1.0	11.5	0.062	0.520	20.466767	-99.200170
Ixmiquilpan	75.20	3	1	9132	3.8	80.4	1.0	8.2	1.2	3.3	1.3	0.4	0.4	84.2	1.0	14.8	0.083	0.505	20.479533	-99.248620
Ixmiquilpan	75.20	3	2	8960	3.6	79.5	1.1	8.4	1.4	3.5	1.6	0.5	0.4	83.1	1.1	15.8	0.072	0.505	20.479445	-99.248644
Portezuelo	82.00																			

4 CARR: Ent. Jorobas - Tula

CLAVE: 00159

RUTA: MEX-087

AÑO: 2018

LUGAR	ESTACION				CLASIFICACION VEHICULAR EN PORCIENTO										COORDENADAS					
	KM	TE	SC	TDPA	M	A	B	C2	C3	T3S2	T3S3	T3S2R4	OTROS	A	B	C	K'	D	LATITUD	LONGITUD
T. C. México - Querétaro (Cuota)	0.00	3	1	14802	2.9	81.4	1.3	6.1	1.9	3.3	1.6	0.8	0.7	84.3	1.3	14.4	0.081	0.518	19.834201	-99.243682
T. C. México - Querétaro (Cuota)	0.00	3	2	13764	2.4	79.6	1.4	6.9	2.1	3.9	1.9	1.0	0.8	82.0	1.4	16.6	0.079	0.518	19.834235	-99.243761
Lim. Edos. Term. Méx. Ppia. Hgo.	5.90																			
T. Der. Atotonilco	21.50	1	1	7730	1.1	82.9	1.2	5.9	2.5	3.1	2.0	0.7	0.6	84.0	1.2	14.8	0.083	0.512	20.015636	-99.247429
T. Der. Atotonilco	21.50	1	2	8103	1.4	80.9	1.2	6.6	2.7	3.6	2.2	0.8	0.6	82.3	1.2	16.5	0.087	0.512	20.015636	-99.247541
Tula de Allende	37.70	1	1	15424	1.7	84.0	1.7	4.8	2.7	2.0	1.8	1.0	0.3	85.7	1.7	12.6	0.105	0.517	20.059773	-99.288111
Tula de Allende	37.70	1	2	16522	1.6	85.3	1.5	4.2	2.4	2.1	1.7	0.9	0.3	86.9	1.5	11.6	0.092	0.517	20.059665	-99.288070

5 CARR: México - Pachuca (Libre)

CLAVE: 00431

RUTA: MEX-085

AÑO: 2018

LUGAR	ESTACION				CLASIFICACION VEHICULAR EN PORCIENTO										COORDENADAS					
	KM	TE	SC	TDPA	M	A	B	C2	C3	T3S2	T3S3	T3S2R4	OTROS	A	B	C	K'	D	LATITUD	LONGITUD
México	0.00																			
Lim. Edos. Term. CDMX Ppia. Méx.	9.89																			
T. Der. Pirámides	26.93	1	1	15443	2.9	84.0	1.0	4.0	0.8	5.3	1.1	0.5	0.4	86.9	1.0	12.1	0.054	0.500	19.616663	-99.011776
T. Der. Pirámides	26.93	1	2	15474	2.8	82.8	1.1	4.6	0.9	5.7	1.1	0.5	0.5	85.6	1.1	13.3	0.054	0.500	19.616789	-99.011830
Venta de Carpio	27.00	3	1	25409	3.3	87.7	0.3	4.8	0.9	1.5	1.2	0.0	0.3	91.0	0.3	8.7	0.058	0.510	19.627105	-99.002541
Venta de Carpio	27.00	3	2	24434	3.3	86.7	0.3	5.3	1.0	1.7	1.4	0.0	0.3	90.0	0.3	9.7	0.056	0.510	19.627134	-99.002676
T. Der. Aut. México - Pachuca (Cuota)	37.52	1	1	30247	1.4	93.0	0.3	3.9	0.6	0.5	0.3	0.0	0.0	94.4	0.3	5.3	0.073	0.503	19.703877	-98.978575
T. Der. Aut. México - Pachuca (Cuota)	37.52	1	2	30618	2.0	92.0	0.3	4.3	0.6	0.5	0.3	0.0	0.0	94.0	0.3	5.7	0.073	0.503	19.703911	-98.978668
T. Izq. Zumpango	44.68	1	1	18838	3.3	84.4	0.9	7.8	1.1	1.0	1.1	0.1	0.3	87.7	0.9	11.4	0.059	0.504	19.760472	-98.973571
T. Izq. Zumpango	44.68	1	2	18559	3.2	82.6	1.1	9.0	1.2	1.2	1.3	0.1	0.3	85.8	1.1	13.1	0.057	0.504	19.760469	-98.973644
T. Izq. Zumpango	44.68	3	1	11250	1.9	83.5	1.4	9.3	1.7	1.3	0.7	0.1	0.1	85.4	1.4	13.2	0.073	0.517	19.770369	-98.973203
T. Izq. Zumpango	44.68	3	2	10525	2.6	81.2	1.4	10.3	1.9	1.5	0.9	0.1	0.1	83.8	1.4	14.8	0.075	0.517	19.770370	-98.973247

HIDALGO

5 CARR: México - Pachuca (Libre)

CLAVE: 00431

RUTA: MEX-085

AÑO: 2018

LUGAR	ESTACION				CLASIFICACION VEHICULAR EN PORCIENTO												COORDENADAS			
	KM	TE	SC	TDPA	M	A	B	C2	C3	T3S2	T3S3	T3S2R4	OTROS	A	B	C	K'	D	LATITUD	LONGITUD
Lim. Edos. Term. Méx. Ppia. Hgo.	49.30																			
Tizayuca	52.50	3	1	13977	2.8	84.4	2.0	6.0	1.5	1.1	1.7	0.2	0.3	87.2	2.0	10.8	0.082	0.520	19.862132	-98.964388
Tizayuca	52.50	3	2	15171	3.0	82.3	2.2	7.2	1.6	1.3	1.9	0.2	0.3	85.3	2.2	12.5	0.089	0.520	19.862208	-98.964451
T. C. México - Tizayuca (Cuota)	61.00	3	1	25927	1.1	85.3	3.0	6.0	1.5	1.8	0.8	0.4	0.1	86.4	3.0	10.6	0.061	0.513	19.898258	-98.928426
T. C. México - Tizayuca (Cuota)	61.00	3	2	27276	1.1	86.1	3.1	5.2	1.5	1.6	0.9	0.4	0.1	87.2	3.1	9.7	0.061	0.513	19.898387	-98.928543
X. C. Arco Norte de La Ciudad de México	64.20	1	1	25514	0.9	85.3	3.0	6.2	1.5	2.1	0.5	0.4	0.1	86.2	3.0	10.8	0.062	0.504	19.924552	-98.899128
X. C. Arco Norte de La Ciudad de México	64.20	1	2	25115	1.0	83.8	3.3	7.1	1.5	2.3	0.5	0.4	0.1	84.8	3.3	11.9	0.061	0.504	19.919575	-98.904843
X. C. Arco Norte de La Ciudad de México	64.20	3	1	27788	0.9	86.3	3.8	5.6	0.9	1.4	0.6	0.3	0.2	87.2	3.8	9.0	0.062	0.508	19.929675	-98.892529
X. C. Arco Norte de La Ciudad de México	64.20	3	2	26962	0.9	85.2	4.1	6.2	1.0	1.5	0.6	0.3	0.2	86.1	4.1	9.8	0.064	0.508	19.929833	-98.892799
Ent. Colonia	83.97	1	1	44724	1.0	88.4	3.0	5.3	0.5	1.2	0.4	0.1	0.1	89.4	3.0	7.6	0.088	0.540	20.045077	-98.792192
Ent. Colonia	83.97	1	2	38083	1.0	87.1	3.5	6.0	0.5	1.3	0.4	0.1	0.1	88.1	3.5	8.4	0.082	0.540	20.045206	-98.792420
X. C. Libramiento de Pachuca	86.50	1	1	36146	1.1	88.0	3.1	4.2	0.7	1.3	1.1	0.3	0.2	89.1	3.1	7.8	0.065	0.504	20.096954	-98.767100
X. C. Libramiento de Pachuca	86.50	1	2	36739	1.0	87.2	3.4	4.6	0.7	1.4	1.2	0.3	0.2	88.2	3.4	8.4	0.053	0.504	20.097085	-98.767200
Pachuca	94.00																			

6 CARR: Pachuca - Cd. Sahagún

CLAVE: 13088

RUTA: MEX

AÑO: 2018

LUGAR	ESTACION				CLASIFICACION VEHICULAR EN PORCIENTO												COORDENADAS			
	KM	TE	SC	TDPA	M	A	B	C2	C3	T3S2	T3S3	T3S2R4	OTROS	A	B	C	K'	D	LATITUD	LONGITUD
Pachuca	0.00	3	1	26629	1.3	90.0	0.8	4.0	1.0	1.3	1.2	0.2	0.2	91.3	0.8	7.9	0.074	0.502	20.071877	-98.744749
Pachuca	0.00	3	2	26850	1.0	89.3	0.9	4.4	1.1	1.5	1.4	0.2	0.2	90.3	0.9	8.8	0.084	0.502	20.071904	-98.744568
T. Der. Palma Gorda	11.00	1	1	24258	1.1	88.9	1.0	5.6	1.1	1.1	1.0	0.1	0.1	90.0	1.0	9.0	0.080	0.512	20.046596	-98.736698
T. Der. Palma Gorda	11.00	1	2	25449	1.0	87.7	1.0	6.7	1.1	1.2	1.1	0.1	0.1	88.7	1.0	10.3	0.079	0.512	20.046655	-98.736581
X. C. Venta de Carpio - Tulancingo	29.40	1	1	9582	0.8	86.1	1.4	6.2	1.6	2.3	1.2	0.3	0.1	86.9	1.4	11.7	0.095	0.503	19.883709	-98.666106
X. C. Venta de Carpio - Tulancingo	29.40	1	2	9698	0.6	84.7	1.5	7.2	1.8	2.6	1.2	0.3	0.1	85.3	1.5	13.2	0.087	0.503	19.884771	-98.666340
X. C. Venta de Carpio - Tulancingo	29.40	3	1	7719	0.7	86.6	1.9	6.0	1.3	2.2	0.8	0.3	0.2	87.3	1.9	10.8	0.082	0.501	19.861825	-98.658025
X. C. Venta de Carpio - Tulancingo	29.40	3	2	7675	0.8	85.4	2.2	6.4	1.3	2.5	1.0	0.3	0.1	86.2	2.2	11.6	0.082	0.501	19.861855	-98.657957
Cd. Sahagún	44.70																			

7 CARR: Pachuca - Tempoal

CLAVE: 00113

RUTA: MEX-105

AÑO: 2018

LUGAR	ESTACION				CLASIFICACION VEHICULAR EN PORCIENTO												COORDENADAS			
	KM	TE	SC	TDPA	M	A	B	C2	C3	T3S2	T3S3	T3S2R4	OTROS	A	B	C	K'	D	LATITUD	LONGITUD
Pachuca	0.00	3	0	5140	1.4	95.1	0.0	1.4	0.0	1.8	0.1	0.0	0.2	96.5	0.0	3.5	0.076	0.523	20.130500	-98.716167
T. Der. Omitlán de Juárez (1º Acceso)	18.20	1	0	13859	0.8	91.4	1.1	4.6	0.9	0.4	0.6	0.0	0.2	92.2	1.1	6.7	0.075	0.520	20.160167	-98.654333

HIDALGO

7 CARR: Pachuca - Tempoal

CLAVE: 00113

RUTA: MEX-105

AÑO: 2018

LUGAR	ESTACION				CLASIFICACION VEHICULAR EN PORCIENTO										COORDENADAS					
	KM	TE	SC	TDPA	M	A	B	C2	C3	T3S2	T3S3	T3S2R4	OTROS	A	B	C	K'	D	LATITUD	LONGITUD
Atotonilco El Grande	33.85	3	1	5927	0.7	90.5	1.1	5.2	1.0	0.7	0.7	0.0	0.1	91.2	1.1	7.7	0.089	0.510	20.302167	-98.681333
Atotonilco El Grande	33.85	3	2	5687	1.1	89.3	1.2	5.7	1.0	0.9	0.7	0.0	0.1	90.4	1.2	8.4	0.091	0.510	20.302099	-98.681429
T. Izq. Metztlán	63.70	1	0	5741	0.6	86.5	1.3	5.6	1.1	2.9	1.2	0.1	0.7	87.1	1.3	11.6	0.086	0.522	20.467617	-98.673363
T. Izq. Metztlán	63.70	3	0	4878	0.4	85.9	1.5	6.8	1.3	2.6	0.7	0.1	0.7	86.3	1.5	12.2	0.083	0.502	20.470309	-98.668304
Metzquitlán	75.00	1	0	5436	0.8	87.7	1.4	5.2	1.0	2.5	0.9	0.1	0.4	88.5	1.4	10.1	0.090	0.517	20.528926	-98.642674
T. Izq. Zacualtipán	96.50	1	0	8308	2.3	85.2	0.8	5.3	0.7	4.1	0.8	0.2	0.6	87.5	0.8	11.7	0.076	0.501	20.647667	-98.643000
T. Izq. Zacualtipán	96.50	3	0	8305	2.4	82.7	1.3	6.2	0.9	4.2	1.0	0.4	0.9	85.1	1.3	13.6	0.073	0.504	20.657024	-98.654823
X. C. Molango - Xochicoatlán	129.80	1	0	3779	1.7	84.2	2.1	5.8	1.5	2.7	1.2	0.2	0.6	85.9	2.1	12.0	0.076	0.514	20.787182	-98.721591
X. C. Molango - Xochicoatlán	129.80	3	0	3460	2.1	86.1	2.0	4.8	1.1	2.4	0.9	0.1	0.5	88.2	2.0	9.8	0.086	0.512	20.793918	-98.725982
T. Izq. Tepehuacán de Guerrero	157.70	1	0	2477	1.7	83.0	2.7	5.5	2.5	2.7	1.2	0.2	0.5	84.7	2.7	12.6	0.069	0.514	20.965009	-98.682329
Tehuacán	199.20	1	0	2496	4.7	81.1	2.0	5.2	2.0	2.5	1.5	0.3	0.7	85.8	2.0	12.2	0.078	0.504	21.054850	-98.511950
T. Izq. Huejutla (1° Acceso)	214.60	1	0	10637	3.3	85.3	0.4	3.3	0.4	4.4	1.5	0.4	1.0	88.6	0.4	11.0	0.076	0.506	21.123205	-98.418756
T. Izq. Huejutla (1° Acceso)	214.60	3	0	8322	4.6	80.4	1.0	4.8	0.9	5.4	1.1	0.4	1.4	85.0	1.0	14.0	0.076	0.504	21.128490	-98.408083
Lim. Edos. Term. Hgo. Ppia. Ver.	217.20																			
T. C. Alazán - Canoas	260.68	1	0	2293	3.8	78.4	1.6	8.5	1.9	2.5	1.9	0.9	0.5	82.2	1.6	16.2	0.082	0.539	21.491978	-98.357063

8 CARR: Pachuca - Tuxpam

CLAVE: 00608

RUTA: MEX-130

AÑO: 2018

LUGAR	ESTACION				CLASIFICACION VEHICULAR EN PORCIENTO										COORDENADAS					
	KM	TE	SC	TDPA	M	A	B	C2	C3	T3S2	T3S3	T3S2R4	OTROS	A	B	C	K'	D	LATITUD	LONGITUD
Pachuca	0.00																			
X. C. Libramiento de Pachuca	2.60	3	1	24388	0.9	95.1	0.2	2.9	0.1	0.4	0.3	0.0	0.1	96.0	0.2	3.8	0.086	0.508	20.087484	-98.713582
X. C. Libramiento de Pachuca	2.60	3	2	25224	0.9	94.8	0.2	3.0	0.1	0.5	0.4	0.0	0.1	95.7	0.2	4.1	0.085	0.508	20.087484	-98.713407
T. Izq. Pachuquilla (1° Acceso)	7.00	1	1	18922	1.4	91.6	0.6	4.5	0.6	0.6	0.5	0.1	0.1	93.0	0.6	6.4	0.072	0.507	20.077222	-98.709311
T. Izq. Pachuquilla (1° Acceso)	7.00	1	2	18379	1.4	90.9	0.6	5.0	0.7	0.6	0.6	0.1	0.1	92.3	0.6	7.1	0.083	0.507	20.077335	-98.709170
T. Izq. Pachuquilla (2° Acceso)	10.50	1	1	10637	0.5	90.2	0.6	6.2	0.7	0.8	0.6	0.2	0.2	90.7	0.6	8.7	0.074	0.508	20.066571	-98.674826
T. Izq. Pachuquilla (2° Acceso)	10.50	1	2	10962	0.3	90.8	0.7	6.1	0.7	0.8	0.4	0.1	0.1	91.1	0.7	8.2	0.072	0.508	20.066683	-98.674844
T. Der. Cd. Sahagún	16.59	1	1	8776	0.4	92.4	0.7	4.1	0.8	0.7	0.5	0.2	0.2	92.8	0.7	6.5	0.090	0.525	20.056796	-98.626053
T. Der. Cd. Sahagún	16.59	1	2	9706	0.8	91.9	0.4	4.4	0.8	0.8	0.5	0.2	0.2	92.7	0.4	6.9	0.071	0.525	20.056832	-98.625964
T. C. Venta de Carpio - Tulancingo	36.45	1	1	9707	0.7	90.0	0.7	5.4	1.0	1.1	0.8	0.2	0.1	90.7	0.7	8.6	0.066	0.514	20.056188	-98.461168
T. C. Venta de Carpio - Tulancingo	36.45	1	2	9190	0.6	91.0	0.8	4.7	1.0	0.9	0.7	0.2	0.1	91.6	0.8	7.6	0.070	0.514	20.056333	-98.461167
T. C. Venta de Carpio - Tulancingo	36.45	3	1	16123	1.1	87.0	2.2	5.7	1.2	1.7	0.7	0.2	0.2	88.1	2.2	9.7	0.100	0.512	20.063664	-98.437985
T. C. Venta de Carpio - Tulancingo	36.45	3	2	15372	1.1	85.9	2.4	6.3	1.3	1.8	0.8	0.2	0.2	87.0	2.4	10.6	0.074	0.512	20.063443	-98.438863
T. Izq. Libramiento de Tulancingo	59.33	3	1	7988	1.1	87.3	0.4	6.2	1.4	1.3	1.4	0.5	0.4	88.4	0.4	11.2	0.077	0.511	20.151833	-98.285000
T. Izq. Libramiento de Tulancingo	59.33	3	2	8353	1.0	86.3	0.4	7.3	1.5	1.3	1.4	0.5	0.3	87.3	0.4	12.3	0.077	0.511	20.151849	-98.285023

HIDALGO

8 CARR: Pachuca - Tuxpam

CLAVE: 00608

RUTA: MEX-130

AÑO: 2018

LUGAR	ESTACION				CLASIFICACION VEHICULAR EN PORCIENTO													COORDENADAS		
	KM	TE	SC	TDPA	M	A	B	C2	C3	T3S2	T3S3	T3S2R4	OTROS	A	B	C	K'	D	LATITUD	LONGITUD
T. Izq. Huayacocotla	60.16	3	0	12896	1.3	85.0	3.6	7.1	0.9	0.9	0.4	0.6	0.2	86.3	3.6	10.1	0.066	0.501	20.157400	-98.279195
Lim. Edos. Term. Hgo. Ppia. Pue.	83.18																			
T. Der. Huauchinango (1º Acceso)	94.00	1	0	5225	2.3	80.3	1.3	10.3	0.8	3.2	0.9	0.3	0.6	82.6	1.3	16.1	0.073	0.507	20.168959	-98.074372
T. Der. Huauchinango (2º Acceso)	100.00	3	0	7553	1.8	77.4	2.6	11.3	0.8	3.5	1.4	0.5	0.7	79.2	2.6	18.2	0.068	0.521	20.192637	-98.036079
Villa Ávila Camacho	141.75	1	0	2808	3.5	73.9	2.2	15.2	1.0	2.1	1.1	0.3	0.7	77.4	2.2	20.4	0.082	0.530	20.380107	-97.885249
Villa Ávila Camacho	141.75	3	0	7876	1.3	69.0	5.1	10.9	2.9	6.1	2.3	1.7	0.7	70.3	5.1	24.6	0.069	0.500	20.395528	-97.871983
Piedras Negras	158.70	1	0	4288	0.9	68.8	2.8	12.1	4.1	5.5	3.4	2.1	0.3	69.7	2.8	27.5	0.063	0.501	20.438381	-97.763420
T. Izq. Venustiano Carranza	174.10	3	0	4947	1.2	70.1	2.3	15.0	3.2	4.7	2.3	0.9	0.3	71.3	2.3	26.4	0.064	0.511	20.484805	-97.633833
Lim. Edos. Term. Pue. Ppia. Ver.	180.00																			
T. Der. Poza Rica	197.00	1	0	16821	1.0	78.0	2.3	4.4	1.1	8.6	2.7	1.0	0.9	79.0	2.3	18.7	0.065	0.503	20.519082	-97.493073
T. Der. Poza Rica	197.00	3	0	19127	1.0	78.2	2.1	4.4	1.1	8.6	2.7	1.0	0.9	79.2	2.1	18.7	0.057	0.504	20.560759	-97.476854
Tihuatlán	217.00	1	0	12131	1.1	96.2	0.1	0.4	0.2	0.9	0.4	0.3	0.4	97.3	0.1	2.6	0.078	0.507	20.699097	-97.527945
Tihuatlán	217.00	3	0	3018	3.4	78.1	0.4	12.1	1.0	2.7	1.6	0.4	0.3	81.5	0.4	18.1	0.067	0.508	20.721386	-97.526872
T. C. Tihuatlán - Tuxpam (Cuota)	232.50	1	0	2084	8.1	75.1	1.0	8.6	1.4	3.2	1.9	0.4	0.3	83.2	1.0	15.8	0.087	0.500	20.811324	-97.475824

9 CARR: Portezuelo - Cd. Valles

CLAVE: 00023

RUTA: MEX-085

AÑO: 2018

LUGAR	ESTACION				CLASIFICACION VEHICULAR EN PORCIENTO													COORDENADAS		
	KM	TE	SC	TDPA	M	A	B	C2	C3	T3S2	T3S3	T3S2R4	OTROS	A	B	C	K'	D	LATITUD	LONGITUD
Portezuelo	0.00	3	0	6387	1.1	84.4	0.9	8.3	0.8	3.3	0.7	0.1	0.4	85.5	0.9	13.6	0.076	0.520	20.488200	-99.298442
T. Der. Tasquillo (2º Acceso)	10.50	1	0	4498	3.2	83.7	0.8	6.6	1.2	2.5	1.3	0.1	0.6	86.9	0.8	12.3	0.080	0.520	20.539779	-99.316831
T. Izq. Zimapán (1º Acceso)	32.00	1	0	5458	2.7	84.0	0.7	6.6	0.9	3.4	1.2	0.1	0.4	86.7	0.7	12.6	0.078	0.502	20.699286	-99.333238
T. Izq. Zimapán (1º Acceso)	32.00	3	0	2307	1.7	86.1	1.2	6.6	1.5	1.7	1.0	0.0	0.2	87.8	1.2	11.0	0.073	0.521	20.705976	-99.336127
La Estancia	41.00	3	0	2016	1.1	86.3	1.2	7.3	1.3	1.5	0.9	0.1	0.3	87.4	1.2	11.4	0.084	0.513	20.777627	-99.310167
Trancas	51.00	3	0	1482	0.5	83.2	1.6	9.4	1.7	1.7	1.5	0.0	0.4	83.7	1.6	14.7	0.088	0.507	20.805377	-99.258744
Jacala	98.60	3	0	2309	1.8	84.3	1.0	9.8	0.9	1.5	0.4	0.0	0.3	86.1	1.0	12.9	0.083	0.505	21.003026	-99.184886
Zacate Grande	143.10	1	0	1067	2.9	84.5	2.0	6.8	1.8	1.1	0.7	0.0	0.2	87.4	2.0	10.6	0.081	0.501	21.112818	-99.004853
T. Izq. Pisaflares	154.00	3	0	1947	4.1	86.6	1.2	5.3	1.2	1.2	0.3	0.0	0.1	90.7	1.2	8.1	0.087	0.508	21.153697	-98.945052
Lim. Edos. Term. Hgo. Ppia. S. L. P.	168.63																			
Tamazunchale	192.80	1	0	6202	18.5	68.2	1.5	6.7	0.7	3.2	0.6	0.1	0.5	86.7	1.5	11.8	0.075	0.504	21.262129	-98.800487
T. Izq. Xilitla	228.75	1	0	5636	6.9	77.1	1.5	9.0	1.7	2.8	0.5	0.1	0.4	84.0	1.5	14.5	0.088	0.500	21.441863	-98.924684
T. Izq. Xilitla	228.75	3	0	4972	6.0	76.5	1.7	9.4	2.1	3.1	0.7	0.1	0.4	82.5	1.7	15.8	0.097	0.500	21.447558	-98.930114
T. Izq. Aquismón	252.50	1	0	6241	4.2	75.8	1.8	10.3	2.4	3.8	1.0	0.2	0.5	80.0	1.8	18.2	0.073	0.521	21.622061	-98.987326
Agua Hedionda	265.00	1	0	5216	3.5	77.2	1.8	9.9	2.9	3.1	0.9	0.2	0.5	80.7	1.8	17.5	0.085	0.505	21.726927	-98.963892
Cd. Valles	300.00	1	0	10939	3.5	75.7	2.0	9.0	2.2	5.5	1.0	0.2	0.9	79.2	2.0	18.8	0.079	0.506	21.958571	-98.998976

HIDALGO

10 CARR: Portezuelo - Palmillas

CLAVE: 00194

RUTA: MEX-045

AÑO: 2018

LUGAR	ESTACION				CLASIFICACION VEHICULAR EN PORCIENTO										COORDENADAS					
	KM	TE	SC	TDPA	M	A	B	C2	C3	T3S2	T3S3	T3S2R4	OTROS	A	B	C	K'	D	LATITUD	LONGITUD
Portezuelo	0.00	3	1	4871	1.6	72.8	3.2	9.1	2.5	6.3	2.9	1.1	0.5	74.4	3.2	22.4	0.075	0.509	20.486406	-99.301281
Portezuelo	0.00	3	2	4694	1.9	71.8	3.0	10.3	2.5	6.3	2.7	1.1	0.4	73.7	3.0	23.3	0.070	0.509	20.486315	-99.301279
Jonacapa	29.41	3	0	5980	1.2	69.0	4.6	7.6	3.3	9.0	2.9	1.5	0.9	70.2	4.6	25.2	0.061	0.500	20.435222	-99.536726
Huichapan	45.10	1	0	8858	0.5	69.9	4.4	7.5	3.3	9.0	2.9	1.6	0.9	70.4	4.4	25.2	0.072	0.512	20.391348	-99.639748
T. Izq. Nopala	56.15	1	0	8600	1.0	69.3	5.0	7.2	2.8	7.5	3.5	2.5	1.2	70.3	5.0	24.7	0.090	0.520	20.318820	-99.712511
Lim. Edos. Term. Hgo. Ppia. Qro.	71.40																			
Palmillas	80.00	1	1	4188	0.4	77.5	4.1	9.3	3.8	1.9	1.1	1.1	0.8	77.9	4.1	18.0	0.064	0.515	20.324648	-99.930595
Palmillas	80.00	1	2	4448	0.4	76.7	3.8	10.2	3.9	2.0	1.2	0.9	0.9	77.1	3.8	19.1	0.067	0.515	20.324648	-99.930595

11 CARR: Tamazunchale - San Felipe Orizatlán

CLAVE: 00609

RUTA: MEX-085

AÑO: 2018

LUGAR	ESTACION				CLASIFICACION VEHICULAR EN PORCIENTO										COORDENADAS					
	KM	TE	SC	TDPA	M	A	B	C2	C3	T3S2	T3S3	T3S2R4	OTROS	A	B	C	K'	D	LATITUD	LONGITUD
T. C. Portezuelo - Cd. Valles	0.00	3	0	10074	16.4	66.8	0.5	7.5	0.3	5.6	1.1	0.4	1.4	83.2	0.5	16.3	0.073	0.514	21.250196	-98.767037
Lim. Edos. Term. S. L. P. Ppia. Hgo.	18.50																			
San Felipe Orizatlán	27.10	1	0	2484	17.3	71.3	0.9	7.1	0.8	1.8	0.6	0.0	0.2	88.6	0.9	10.5	0.083	0.505	21.170073	-98.617452

12 CARR: Venta de Carpio - T. C. (Pachuca - Tuxpam)

CLAVE: 00455

RUTA: MEX-132

AÑO: 2018

LUGAR	ESTACION				CLASIFICACION VEHICULAR EN PORCIENTO										COORDENADAS					
	KM	TE	SC	TDPA	M	A	B	C2	C3	T3S2	T3S3	T3S2R4	OTROS	A	B	C	K'	D	LATITUD	LONGITUD
T. C. México - Pachuca (Libre)	0.00																			
T. Der. Texcoco	6.42	3	1	12578	3.8	85.6	0.5	5.4	1.6	1.9	0.9	0.1	0.2	89.4	0.5	10.1	0.066	0.505	19.610742	-98.946408
T. Der. Texcoco	6.42	3	2	12814	3.4	86.4	0.5	5.3	1.5	1.6	0.9	0.2	0.2	89.8	0.5	9.7	0.081	0.505	19.610814	-98.946397
Tepexpan	7.57	3	1	10108	5.5	84.0	0.4	5.3	2.1	1.2	1.1	0.1	0.3	89.5	0.4	10.1	0.077	0.510	19.619992	-98.934967
Tepexpan	7.57	3	2	9710	5.9	83.7	0.4	5.0	1.9	1.6	1.1	0.1	0.3	89.6	0.4	10.0	0.084	0.510	19.620020	-98.935058
Acolman	12.42	1	0	12927	3.9	84.1	0.8	4.4	1.3	3.7	1.0	0.2	0.6	88.0	0.8	11.2	0.060	0.505	19.632792	-98.917802
Teotihuacán	20.70	3	0	20517	4.3	88.0	0.8	5.4	0.1	0.5	0.8	0.0	0.1	92.3	0.8	6.9	0.067	0.509	19.681635	-98.863271
T. Der. Otumba	31.79	1	0	14852	2.0	78.2	1.3	9.5	1.1	5.8	1.0	0.6	0.5	80.2	1.3	18.5	0.076	0.507	19.717493	-98.803628
T. Der. Otumba	31.79	3	0	9153	0.9	82.2	1.2	8.3	1.3	4.0	0.9	0.5	0.7	83.1	1.2	15.7	0.063	0.530	19.722172	-98.789325
X. C. Tizayuca - Otumba	37.85	1	1	12775	0.6	74.6	3.8	9.6	2.4	5.1	1.8	1.5	0.6	75.2	3.8	21.0	0.096	0.502	19.744645	-98.763416
X. C. Tizayuca - Otumba	37.85	1	2	12650	0.5	76.3	3.4	8.5	2.5	4.3	2.6	1.3	0.6	76.8	3.4	19.8	0.117	0.502	19.744721	-98.763511
X. C. Tizayuca - Otumba	37.85	3	1	10590	1.0	75.7	3.6	8.3	2.7	4.5	2.2	1.4	0.6	76.7	3.6	19.7	0.064	0.526	19.757940	-98.751545
X. C. Tizayuca - Otumba	37.85	3	2	9562	1.2	76.1	3.2	7.5	2.5	4.9	2.3	1.6	0.7	77.3	3.2	19.5	0.091	0.526	19.758012	-98.751651
X. C. Arco Norte de La Ciudad de México	48.00	1	1	11514	0.7	76.3	3.4	6.8	3.3	5.4	1.8	1.8	0.5	77.0	3.4	19.6	0.093	0.502	19.827674	-98.705639

HIDALGO

12 CARR: Venta de Carpio - T. C. (Pachuca - Tuxpam)

CLAVE: 00455

RUTA: MEX-132

AÑO: 2018

LUGAR	ESTACION				CLASIFICACION VEHICULAR EN PORCIENTO										COORDENADAS					
	KM	TE	SC	TDPA	M	A	B	C2	C3	T3S2	T3S3	T3S2R4	OTROS	A	B	C	K'	D	LATITUD	LONGITUD
X. C. Arco Norte de La Ciudad de México	48.00	1	2	11421	0.6	75.8	3.6	8.2	2.8	4.7	2.3	1.6	0.4	76.4	3.6	20.0	0.140	0.502	19.827757	-98.705740
X. C. Arco Norte de La Ciudad de México	48.00	3	1	11956	0.8	79.7	3.7	6.6	2.1	3.7	1.8	1.0	0.6	80.5	3.7	15.8	0.113	0.538	19.841346	-98.691288
X. C. Arco Norte de La Ciudad de México	48.00	3	2	10268	0.8	78.5	2.6	7.2	2.7	3.8	2.3	1.4	0.7	79.3	2.6	18.1	0.070	0.538	19.841420	-98.691382
Lim. Edos. Term. Méx. Ppia. Hgo.	51.00																			
X. C. Pachuca - Cd. Sahagún	54.00	3	1	10558	0.8	79.9	2.6	7.1	3.0	3.2	1.7	1.3	0.4	80.7	2.6	16.7	0.079	0.510	19.880668	-98.659857
X. C. Pachuca - Cd. Sahagún	54.00	3	2	10157	0.9	75.4	3.8	7.5	3.6	4.1	2.6	1.7	0.4	76.3	3.8	19.9	0.097	0.510	19.880744	-98.659929
X. C. Calpulalpan - El Ocote	64.17	1	1	9560	0.7	83.0	1.7	6.1	2.8	2.7	1.4	1.2	0.4	83.7	1.7	14.6	0.077	0.503	19.918231	-98.585404
X. C. Calpulalpan - El Ocote	64.17	1	2	9437	0.3	82.2	1.9	6.5	2.9	3.1	1.4	1.3	0.4	82.5	1.9	15.6	0.100	0.503	19.918319	-98.585501
X. C. Calpulalpan - El Ocote	64.17	3	1	8605	1.0	75.0	2.6	9.8	3.4	4.3	1.6	1.8	0.5	76.0	2.6	21.4	0.104	0.507	19.930678	-98.567681
X. C. Calpulalpan - El Ocote	64.17	3	2	8839	0.6	78.3	2.6	7.1	3.8	3.6	2.1	1.5	0.4	78.9	2.6	18.5	0.150	0.507	19.930770	-98.567755
T. C. Pachuca - Tuxpam	84.08	1	1	10588	0.8	80.1	3.7	5.6	2.9	3.1	1.8	1.2	0.8	80.9	3.7	15.4	0.092	0.516	20.052121	-98.459794
T. C. Pachuca - Tuxpam	84.08	1	2	11300	1.2	81.2	3.4	5.1	2.7	3.1	1.6	1.1	0.6	82.4	3.4	14.2	0.097	0.516	20.052202	-98.459870

13 CARR: Ent. Tulancingo - Venta Grande (Cuota)

CLAVE: 00026

RUTA: MEX-132D

AÑO: 2018

LUGAR	ESTACION				CLASIFICACION VEHICULAR EN PORCIENTO										COORDENADAS					
	KM	TE	SC	TDPA	M	A	B	C2	C3	T3S2	T3S3	T3S2R4	OTROS	A	B	C	K'	D	LATITUD	LONGITUD
T. C. Pachuca - Tuxpam	0.00																			
T. Izq. Acatlán	7.80	1	0	12381	1.6	71.2	5.4	9.8	2.5	4.9	1.9	1.9	0.8	72.8	5.4	21.8	0.088	0.511	20.105946	-98.405183
T. Izq. Acatlán	7.80	3	0	10567	2.0	71.6	5.4	9.1	2.8	4.6	1.9	1.9	0.7	73.6	5.4	21.0	0.089	0.517	20.110581	-98.394138
Caseta de Cobro San Alejo (Tejocotal)	21.80	1	0	11102	1.6	75.8	6.0	9.2	2.5	2.4	1.3	0.9	0.3	77.4	6.0	16.6	0.108	0.519	20.149006	-98.294308
Caseta de Cobro San Alejo (Tejocotal)	21.80	2	0	8165	0.6	72.7	6.2	4.1	4.4	5.9	2.0	3.5	0.6	73.3	6.2	20.5	0.115	0.500	20.147472	-98.285748
T. C. Tlaxco - Tejocotal (Cuota)	39.60	1	0	9688	1.2	72.2	6.2	9.5	2.8	3.4	1.8	2.6	0.3	73.4	6.2	20.4	0.099	0.516	20.141450	-98.136668

14 CARR: Libramiento Norte de la Ciudad de México (Cuota)

CLAVE: 0902

RUTA: MEX-M40D

AÑO: 2018

LUGAR	ESTACION				CLASIFICACION VEHICULAR EN PORCIENTO										COORDENADAS					
	KM	TE	SC	TDPA	M	A	B	C2	C3	T3S2	T3S3	T3S2R4	OTROS	A	B	C	K'	D	LATITUD	LONGITUD
T. C. Toluca - Palmillas	0.00																			
X. C. Toluca - Palmillas	12.90	1	1	3555	0.7	60.5	4.6	6.2	3.9	14.2	2.7	6.2	1.0	61.2	4.6	34.2	0.103	0.510	19.918614	-99.850318
X. C. Toluca - Palmillas	12.90	1	2	3701	1.0	54.6	4.8	7.0	4.5	16.8	3.1	7.2	1.0	55.6	4.8	39.6	0.091	0.510	19.918634	-99.850365
X. C. Toluca - Palmillas	12.90	3	1	3443	0.7	57.9	8.2	6.6	3.3	14.0	2.8	5.6	0.9	58.6	8.2	33.2	0.099	0.508	19.922863	-99.835770
X. C. Toluca - Palmillas	12.90	3	2	3555	1.1	53.6	8.5	7.4	3.7	15.0	3.1	6.6	1.0	54.7	8.5	36.8	0.085	0.508	19.922924	-99.835758
C. P. Jilotepec	48.70	1	1	3869	0.7	61.1	6.9	5.2	3.7	13.2	2.4	5.8	1.0	61.8	6.9	31.3	0.090	0.539	19.969222	-99.537867
C. P. Jilotepec	48.70	1	2	3311	1.1	48.9	8.7	9.9	3.6	16.6	3.5	6.5	1.2	50.0	8.7	41.3	0.076	0.539	19.969340	-99.538015

HIDALGO

14 CARR: Libramiento Norte de la Ciudad de México (Cuota)

CLAVE: 0902

RUTA: MEX-M40D

AÑO: 2018

LUGAR	ESTACION				CLASIFICACION VEHICULAR EN PORCIENTO														COORDENADAS	
	KM	TE	SC	TDPA	M	A	B	C2	C3	T3S2	T3S3	T3S2R4	OTROS	A	B	C	K'	D	LATITUD	LONGITUD
C. P. Jilotepec	48.70	3	1	4987	0.6	63.1	5.2	6.6	3.3	13.9	2.5	4.0	0.8	63.7	5.2	31.1	0.098	0.515	19.978360	-99.526018
C. P. Jilotepec	48.70	3	2	4692	1.2	59.3	5.4	7.4	3.6	15.0	2.8	4.4	0.9	60.5	5.4	34.1	0.079	0.515	19.978503	-99.525984
X. C. México - Querétaro	54.00	3	1	8257	0.7	57.0	3.1	6.9	4.1	17.3	3.9	6.1	0.9	57.7	3.1	39.2	0.094	0.515	20.004214	-99.481856
X. C. México - Querétaro	54.00	3	2	8774	1.0	52.1	3.5	7.5	4.7	19.1	4.3	6.9	0.9	53.1	3.5	43.4	0.086	0.515	20.002940	-99.483856
Caseta de Cobro Querétaro	55.00	3	1	8418	0.3	55.3	2.2	5.1	6.1	18.1	4.1	7.2	1.6	55.6	2.2	42.2	0.067	0.500	19.998714	-99.487788
Caseta de Cobro Querétaro	55.00	3	2	8418	0.3	55.3	2.2	5.1	6.1	18.1	4.1	7.2	1.6	55.6	2.2	42.2	0.067	0.500	19.998714	-99.487788
Lim. Edos. Term. Méx. Ppia. Hgo.	60.72																			
X. C. Ent. Tepeji del Río - Tlahuelilpan	79.00	1	1	7644	1.2	54.8	5.2	8.0	3.3	15.4	4.4	6.9	0.8	56.0	5.2	38.8	0.086	0.502	20.088484	-99.316066
X. C. Ent. Tepeji del Río - Tlahuelilpan	79.00	1	2	7704	1.0	50.5	6.1	9.1	3.7	16.8	4.5	7.4	0.9	51.5	6.1	42.4	0.087	0.502	20.088142	-99.317260
X. C. Ent. Tepeji del Río - Tlahuelilpan	79.00	3	1	8468	0.7	61.9	3.7	5.5	3.5	14.6	3.5	5.8	0.8	62.6	3.7	33.7	0.080	0.502	20.097214	-99.276999
X. C. Ent. Tepeji del Río - Tlahuelilpan	79.00	3	2	8406	1.2	58.5	4.1	6.1	4.0	15.4	3.7	6.0	1.0	59.7	4.1	36.2	0.080	0.502	20.097355	-99.276873
X. C. Los Reyes - El Tephé	86.40	1	1	8301	0.7	62.9	3.5	5.8	3.3	13.7	3.6	5.7	0.8	63.6	3.5	32.9	0.079	0.502	20.071908	-99.231150
X. C. Los Reyes - El Tephé	86.40	1	2	8242	1.2	57.7	4.0	6.6	3.6	16.1	3.9	6.0	0.9	58.9	4.0	37.1	0.080	0.502	20.072044	-99.231045
X. C. Los Reyes - El Tephé	86.40	3	1	8893	0.7	61.3	3.5	5.9	3.5	14.9	3.7	5.7	0.8	62.0	3.5	34.5	0.090	0.519	20.062765	-99.205737
X. C. Los Reyes - El Tephé	86.40	3	2	8237	1.4	57.4	3.9	6.7	3.7	15.3	4.0	6.7	0.9	58.8	3.9	37.3	0.078	0.519	20.062915	-99.205682
Lim. Edos. Term. Hgo. Ppia. Méx.	95.75																			
X. C. (Los Reyes - El Tephé) - Tianguistongo	108.60	1	1	8759	1.1	54.1	6.0	8.7	2.9	16.0	3.8	6.5	0.9	55.2	6.0	38.8	0.075	0.503	19.958402	-99.067527
X. C. (Los Reyes - El Tephé) - Tianguistongo	108.60	1	2	8858	1.0	55.8	5.3	7.9	3.0	16.1	3.6	6.5	0.8	56.8	5.3	37.9	0.080	0.503	19.958559	-99.067509
X. C. (Los Reyes - El Tephé) - Tianguistongo	108.60	3	1	8938	1.2	56.9	5.4	8.0	2.7	15.2	3.5	6.4	0.7	58.1	5.4	36.5	0.077	0.513	19.957701	-99.037626
X. C. (Los Reyes - El Tephé) - Tianguistongo	108.60	3	2	9427	1.0	52.4	6.1	9.0	3.1	16.9	3.7	7.0	0.8	53.4	6.1	40.5	0.082	0.513	19.957866	-99.037706
Lim. Edos. Term. Méx. Ppia. Hgo.	115.89																			
X. C. México - Pachuca	127.30	1	1	8908	1.3	62.4	5.5	7.0	3.0	9.2	3.8	7.0	0.8	63.7	5.5	30.8	0.077	0.507	19.934138	-98.923175
X. C. México - Pachuca	127.30	1	2	9146	1.0	59.6	6.1	7.9	3.3	10.0	4.1	7.2	0.8	60.6	6.1	33.3	0.081	0.507	19.934324	-98.923167
X. C. México - Pachuca	127.30	3	1	8167	1.1	53.9	5.2	6.9	3.2	16.6	4.4	7.8	0.9	55.0	5.2	39.8	0.076	0.507	19.926244	-98.876790
X. C. México - Pachuca	127.30	3	2	7930	0.9	49.4	5.8	7.8	3.5	17.8	4.9	8.9	1.0	50.3	5.8	43.9	0.080	0.507	19.926405	-98.876754
Lim. Edos. Term. Hgo. Ppia. Méx.	143.98																			
X. C. Venta de Carpio - T. C. (Pachuca - Tulancingo)	151.11	1	1	7908	1.2	52.8	5.4	7.5	3.5	17.4	3.8	7.5	0.9	54.0	5.4	40.6	0.077	0.500	19.838972	-98.706972
X. C. Venta de Carpio - T. C. (Pachuca - Tulancingo)	151.11	1	2	7914	0.9	49.1	5.8	8.0	3.8	18.7	4.3	8.4	1.0	50.0	5.8	44.2	0.079	0.500	19.839089	-98.706849
X. C. Venta de Carpio - T. C. (Pachuca - Tulancingo)	151.11	3	1	8143	1.0	54.3	5.1	7.5	3.6	16.4	3.9	7.4	0.8	55.3	5.1	39.6	0.076	0.502	19.826892	-98.691783
X. C. Venta de Carpio - T. C. (Pachuca - Tulancingo)	151.11	3	2	8066	0.9	50.3	5.7	8.3	3.9	17.6	4.2	8.2	0.9	51.2	5.7	43.1	0.085	0.502	19.827020	-98.691690
X. C. Ent. Tolman - Cd. Sahagún	162.55	1	1	7907	1.1	54.1	5.0	7.4	3.4	16.7	3.9	7.5	0.9	55.2	5.0	39.8	0.077	0.500	19.764503	-98.634268
X. C. Ent. Tolman - Cd. Sahagún	162.55	1	2	7908	0.9	49.0	5.6	8.2	3.9	19.2	4.2	8.1	0.9	49.9	5.6	44.5	0.084	0.500	19.764593	-98.634129
X. C. Ent. Tolman - Cd. Sahagún	162.55	3	1	8318	0.9	57.0	5.1	6.6	3.3	15.4	3.8	7.0	0.9	57.9	5.1	37.0	0.076	0.500	19.749726	-98.625870
X. C. Ent. Tolman - Cd. Sahagún	162.55	3	2	8318	0.9	51.1	5.5	7.5	3.7	17.9	4.5	8.0	0.9	52.0	5.5	42.5	0.084	0.500	19.749801	-98.625722
Lim. Edos. Term. Méx. Ppia. Hgo.	166.53																			

HIDALGO

14 CARR: Libramiento Norte de la Ciudad de México (Cuota)

CLAVE: 0902

RUTA: MEX-M40D

AÑO: 2018

LUGAR	ESTACION				CLASIFICACION VEHICULAR EN PORCIENTO										COORDENADAS					
	KM	TE	SC	TDPA	M	A	B	C2	C3	T3S2	T3S3	T3S2R4	OTROS	A	B	C	K'	D	LATITUD	LONGITUD
X. C. Calpulallpan - El Ocote	180.39	1	1	8569	0.8	54.8	5.0	7.0	3.3	17.1	3.8	7.4	0.8	55.6	5.0	39.4	0.079	0.501	19.624624	-98.552426
X. C. Calpulallpan - El Ocote	180.39	1	2	8531	0.9	50.6	5.4	7.7	3.9	18.6	4.2	7.8	0.9	51.5	5.4	43.1	0.080	0.501	19.624729	-98.552294
X. C. Calpulallpan - El Ocote	180.39	3	1	8522	0.9	55.7	4.7	7.0	3.4	17.1	3.5	6.9	0.8	56.6	4.7	38.7	0.083	0.502	19.610567	-98.540476
X. C. Calpulallpan - El Ocote	180.39	3	2	8470	0.8	50.8	5.3	7.4	3.8	19.0	4.0	7.9	1.0	51.6	5.3	43.1	0.083	0.502	19.610655	-98.540337
Lim. Edos. Term. Hgo. Ppia. Tlax.	180.98																			
X. C. Los Reyes - Zacatepec	196.70	1	1	8523	0.8	57.7	3.9	6.1	3.6	15.6	3.9	6.5	1.9	58.5	3.9	37.6	0.076	0.512	19.520014	-98.472714
X. C. Los Reyes - Zacatepec	196.70	1	2	8117	0.9	53.6	4.2	6.2	3.8	17.6	4.2	7.5	2.0	54.5	4.2	41.3	0.078	0.512	19.520043	-98.472623
X. C. Los Reyes - Zacatepec	196.70	3	1	7073	1.5	57.4	4.7	7.6	3.2	14.3	3.8	5.6	1.9	58.9	4.7	36.4	0.079	0.500	19.503166	-98.465644
X. C. Los Reyes - Zacatepec	196.70	3	2	7070	1.0	53.9	4.9	7.8	3.4	16.0	4.2	6.7	2.1	54.9	4.9	40.2	0.069	0.500	19.503166	-98.465524
X. C. San Martín Texmelucan - Tlaxcala - El Molinito	220.95	1	1	7007	1.1	57.6	4.3	5.9	3.3	16.1	3.7	6.2	1.8	58.7	4.3	37.0	0.077	0.512	19.309769	-98.408332
X. C. San Martín Texmelucan - Tlaxcala - El Molinito	220.95	1	2	7355	1.0	52.8	5.0	6.6	3.6	18.4	4.2	6.4	2.0	53.8	5.0	41.2	0.073	0.512	19.309759	-98.408242
X. C. San Martín Texmelucan - Tlaxcala - El Molinito	220.95	3	1	9606	0.8	62.2	5.7	5.9	2.8	12.9	3.1	5.1	1.5	63.0	5.7	31.3	0.076	0.506	19.287908	-98.410757
X. C. San Martín Texmelucan - Tlaxcala - El Molinito	220.95	3	2	9372	0.8	58.5	6.2	6.3	3.1	14.8	3.2	5.4	1.7	59.3	6.2	34.5	0.071	0.506	19.287943	-98.410637
Caseta de Cobro San Martín Texmelucan	222.00	1	1	7917	0.3	53.7	2.3	5.9	5.9	19.9	3.2	7.5	1.3	54.0	2.3	43.7	0.067	0.500	19.301809	-98.409588
Caseta de Cobro San Martín Texmelucan	222.00	1	2	7917	0.3	53.7	2.3	5.9	5.9	19.9	3.2	7.5	1.3	54.0	2.3	43.7	0.067	0.500	19.301809	-98.409588
T. C. San Martín Texmelucan - Ocotoxco (Cuota)	222.44																			
T. C. México - Puebla (Cuota)	226.73	1	1	9360	0.8	60.9	5.9	6.2	3.0	13.5	3.1	5.1	1.5	61.7	5.9	32.4	0.076	0.515	19.269749	-98.420403
T. C. México - Puebla (Cuota)	226.73	1	2	8803	0.9	58.0	6.1	6.6	3.2	14.3	3.5	5.5	1.9	58.9	6.1	35.0	0.076	0.515	19.269674	-98.420306

15 CARR: México - Pachuca (Cuota)

CLAVE: 00432

RUTA: MEX-085D

AÑO: 2018

LUGAR	ESTACION				CLASIFICACION VEHICULAR EN PORCIENTO										COORDENADAS					
	KM	TE	SC	TDPA	M	A	B	C2	C3	T3S2	T3S3	T3S2R4	OTROS	A	B	C	K'	D	LATITUD	LONGITUD
T. C. México - Pachuca (Libre)	0.00																			
Lim. Edos. Term. CDMX Ppia. Méx.	9.86																			
Caseta de Cobro Ojo de Agua	25.00	2	1	32304	1.0	86.4	5.3	1.5	3.9	1.3	0.2	0.3	0.1	87.4	5.3	7.3	0.081	0.500	19.618737	-99.029315
Caseta de Cobro Ojo de Agua	25.00	2	2	32304	1.0	86.4	5.3	1.5	3.9	1.3	0.2	0.3	0.1	87.4	5.3	7.3	0.081	0.500	19.618737	-99.029315
Caseta de Cobro Ojo de Agua	25.00	3	1	31407	1.3	85.0	2.2	7.7	1.3	1.7	0.3	0.4	0.1	86.3	2.2	11.5	0.086	0.516	19.630101	-99.023419
Caseta de Cobro Ojo de Agua	25.00	3	2	29491	1.5	83.3	2.6	8.5	1.4	1.9	0.3	0.4	0.1	84.8	2.6	12.6	0.094	0.516	19.630664	-99.023293
T. Izq. Tecámac	35.62	3	1	28088	1.6	84.6	2.2	7.2	1.5	2.1	0.3	0.4	0.1	86.2	2.2	11.6	0.073	0.503	19.708404	-98.966257
T. Izq. Tecámac	35.62	3	2	28402	1.4	83.4	2.5	8.0	1.7	2.2	0.3	0.4	0.1	84.8	2.5	12.7	0.078	0.503	19.710735	-98.964927
Lim. Edos. Term. Méx. Ppia. Hgo.	49.60																			
X. C. Otumba - Tizayuca	53.45	1	1	26240	1.4	86.0	2.3	6.1	1.3	1.9	0.4	0.5	0.1	87.4	2.3	10.3	0.078	0.512	19.829320	-98.950168
X. C. Otumba - Tizayuca	53.45	1	2	24975	1.6	83.8	2.6	7.1	1.6	2.3	0.4	0.5	0.1	85.4	2.6	12.0	0.084	0.512	19.828626	-98.950032
T. C. México - Pachuca (Libre)	60.50	1	1	22086	1.2	84.7	2.7	5.8	1.8	2.5	0.6	0.5	0.2	85.9	2.7	11.4	0.077	0.531	19.884118	-98.937468

HIDALGO

15 CARR: México - Pachuca (Cuota)

CLAVE: 00432

RUTA: MEX-085D

AÑO: 2018

LUGAR	ESTACION				CLASIFICACION VEHICULAR EN PORCIENTO														COORDENADAS	
	KM	TE	SC	TDPA	M	A	B	C2	C3	T3S2	T3S3	T3S2R4	OTROS	A	B	C	K'	D	LATITUD	LONGITUD
T. C. México - Pachuca (Libre)	60.50	1	2	19489	1.8	81.6	2.6	8.4	1.8	2.5	0.5	0.6	0.2	83.4	2.6	14.0	0.092	0.531	19.880121	-98.937931

16 CARR: Tejocotal - Nuevo Necaxa (Cuota)

CLAVE: 00211

RUTA: MEX-132D

AÑO: 2018

LUGAR	ESTACION				CLASIFICACION VEHICULAR EN PORCIENTO														COORDENADAS	
	KM	TE	SC	TDPA	M	A	B	C2	C3	T3S2	T3S3	T3S2R4	OTROS	A	B	C	K'	D	LATITUD	LONGITUD
T. C. Tlaxco - Tejocotal (Cuota)	0.00	3	0	10393	1.6	72.8	5.8	9.1	2.8	3.9	1.7	1.9	0.4	74.4	5.8	19.8	0.086	0.515	20.135889	-98.113890
Lim. Edos. Term. Hgo. Ppia. Pue.	2.10																			
Caseta de Cobro Nuevo Necaxa	17.00	1	1	3518	1.4	74.3	4.5	6.4	2.9	4.7	2.3	2.6	0.9	75.7	4.5	19.8	0.060	0.501	20.168909	-98.026817
Caseta de Cobro Nuevo Necaxa	17.00	1	2	3501	1.6	71.9	4.8	7.0	3.2	5.3	2.5	2.6	1.1	73.5	4.8	21.7	0.070	0.501	20.168890	-98.026851
Caseta de Cobro Nuevo Necaxa	17.00	2	0	1493	0.2	79.4	1.7	5.9	5.2	2.7	2.2	2.1	0.6	79.6	1.7	18.7	0.092	0.500	20.186559	-98.029829
T. C. Pachuca - Túxpam	18.70																			

17 CARR: Tlaxco - Tejocotal (Cuota)

CLAVE: 00209

RUTA: MEX-119D

AÑO: 2018

LUGAR	ESTACION				CLASIFICACION VEHICULAR EN PORCIENTO														COORDENADAS	
	KM	TE	SC	TDPA	M	A	B	C2	C3	T3S2	T3S3	T3S2R4	OTROS	A	B	C	K'	D	LATITUD	LONGITUD
T.C. Apan - Tlaxco	23.00	3	0	4156	0.8	82.2	4.3	7.3	1.4	2.0	0.9	0.8	0.3	83.0	4.3	12.7	0.101	0.512	19.614961	-98.157070
Lim. Edos. Term. Tlax. Ppia. Pue.	30.70																			
Ent. Chignahuapan	56.20	3	0	2814	1.3	76.8	4.7	9.0	2.5	2.2	1.3	1.9	0.3	78.1	4.7	17.2	0.097	0.504	19.877562	-98.061828
Lim. Edos. Term. Pue. Ppia. Hgo.	84.80																			
T. C. Apizaco - Tejocotal	85.60																			

18 CARR: México - Querétaro (Cuota)

CLAVE: 00411

RUTA: MEX-057-MEX-057D

AÑO: 2018

LUGAR	ESTACION				CLASIFICACION VEHICULAR EN PORCIENTO														COORDENADAS	
	KM	TE	SC	TDPA	M	A	B	C2	C3	T3S2	T3S3	T3S2R4	OTROS	A	B	C	K'	D	LATITUD	LONGITUD
México	0.00																			
Lim. Edos. Term. CDMX Ppia. Méx.	11.30																			
Caseta de Cobro Tepozotlán	43.01	2	1	29039	0.4	70.8	4.9	3.4	6.5	10.6	0.7	2.2	0.5	71.2	4.9	23.9	0.077	0.500	19.715361	-99.207448
Caseta de Cobro Tepozotlán	43.01	2	2	29039	0.4	70.8	4.9	3.4	6.5	10.6	0.7	2.2	0.5	71.2	4.9	23.9	0.077	0.500	19.715361	-99.207448
Ent. Jorobas	56.18	1	1	32902	1.7	69.5	5.7	4.2	4.6	10.5	0.9	2.3	0.6	71.2	5.7	23.1	0.058	0.504	19.811585	-99.238604
Ent. Jorobas	56.18	1	2	33457	1.9	66.0	6.3	4.5	5.0	12.3	1.0	2.4	0.6	67.9	6.3	25.8	0.070	0.504	19.806545	-99.236522
Ent. Jorobas	56.18	3	1	31045	1.3	66.0	5.4	4.3	6.4	12.7	0.7	2.3	0.9	67.3	5.4	27.3	0.063	0.506	19.830980	-99.262040
Ent. Jorobas	56.18	3	2	30280	1.2	63.5	5.9	4.4	6.7	14.2	0.7	2.5	0.9	64.7	5.9	29.4	0.068	0.506	19.837164	-99.274036

HIDALGO

18 CARR: México - Querétaro (Cuota)

CLAVE: 00411

RUTA: MEX-057-MEX-057D

AÑO: 2018

LUGAR	ESTACION				CLASIFICACION VEHICULAR EN PORCIENTO										COORDENADAS					
	KM	TE	SC	TDPA	M	A	B	C2	C3	T3S2	T3S3	T3S2R4	OTROS	A	B	C	K'	D	LATITUD	LONGITUD
Lim. Edos. Term. Méx. Ppia. Hgo.	59.85																			
T. Der. Tepeji del Río	69.36	1	1	33652	1.1	70.0	4.9	3.7	5.0	11.3	0.9	2.4	0.7	71.1	4.9	24.0	0.064	0.506	19.862975	-99.313440
T. Der. Tepeji del Río	69.36	1	2	32843	1.1	67.3	5.1	4.1	5.0	12.9	1.0	2.8	0.7	68.4	5.1	26.5	0.068	0.506	19.874607	-99.340292
T. Der. Tepeji del Río	69.36	3	1	33780	1.0	72.5	3.6	2.9	4.7	11.8	0.6	2.1	0.8	73.5	3.6	22.9	0.061	0.517	19.914373	-99.362067
T. Der. Tepeji del Río	69.36	3	2	36087	0.9	69.9	4.0	3.3	5.2	12.9	0.6	2.4	0.8	70.8	4.0	25.2	0.065	0.517	19.920814	-99.370502
T. Izq. Jilotepec	83.75	1	1	31965	1.2	69.5	4.7	3.5	5.2	12.0	0.9	2.4	0.6	70.7	4.7	24.6	0.069	0.503	19.976602	-99.436076
T. Izq. Jilotepec	83.75	1	2	31550	1.2	67.1	5.2	3.9	5.4	12.8	1.0	2.7	0.7	68.3	5.2	26.5	0.065	0.503	19.975601	-99.437310
T. Izq. Jilotepec	83.75	3	1	26144	2.3	66.1	5.6	3.7	4.3	13.7	1.1	2.6	0.6	68.4	5.6	26.0	0.076	0.506	19.985876	-99.444380
T. Izq. Jilotepec	83.75	3	2	25522	1.9	63.0	6.1	3.9	5.0	15.3	1.2	2.9	0.7	64.9	6.1	29.0	0.071	0.506	19.985631	-99.444388
Lim. Edos. Term. Hgo. Ppia. Méx.	86.00																			
X. C. Jilotepec - Maravillas	107.00	1	1	30695	1.3	65.2	4.2	3.1	4.7	15.6	1.8	3.5	0.6	66.5	4.2	29.3	0.066	0.507	20.080729	-99.619449
X. C. Jilotepec - Maravillas	107.00	1	2	29842	1.2	61.6	4.7	3.5	5.7	17.0	1.9	3.8	0.6	62.8	4.7	32.5	0.068	0.507	20.082406	-99.624755
X. C. Jilotepec - Maravillas	107.00	3	1	31321	1.3	65.5	3.4	3.6	5.3	15.0	1.8	3.3	0.8	66.8	3.4	29.8	0.066	0.508	20.082424	-99.635826
X. C. Jilotepec - Maravillas	107.00	3	2	30371	1.0	63.7	4.1	3.8	5.7	15.3	2.0	3.5	0.9	64.7	4.1	31.2	0.068	0.508	20.082382	-99.634630
T. Izq. Aculco	125.00	1	1	31414	1.3	63.3	3.9	3.3	5.6	16.2	1.9	3.8	0.7	64.6	3.9	31.5	0.066	0.508	20.097498	-99.692882
T. Izq. Aculco	125.00	1	2	30455	0.9	61.4	4.4	3.7	5.7	17.0	2.0	4.0	0.9	62.3	4.4	33.3	0.067	0.508	20.091885	-99.687289
T. Izq. Aculco	125.00	3	1	28838	1.3	64.4	4.1	3.2	5.3	15.3	1.9	3.6	0.9	65.7	4.1	30.2	0.066	0.508	20.109953	-99.707214
T. Izq. Aculco	125.00	3	2	27958	1.0	62.8	4.6	3.5	5.4	16.0	2.1	3.7	0.9	63.8	4.6	31.6	0.068	0.508	20.108566	-99.704323
Lim. Edos. Term. Méx. Ppia. Qro.	145.50																			
Caseta de Cobro Palmillas	145.80	2	1	21643	0.3	57.5	4.5	4.9	6.2	19.7	1.8	4.4	0.7	57.8	4.5	37.7	0.077	0.500	20.296112	-99.929069
Caseta de Cobro Palmillas	145.80	2	2	21643	0.3	57.5	4.5	4.9	6.2	19.7	1.8	4.4	0.7	57.8	4.5	37.7	0.077	0.500	20.296112	-99.929069
T. Izq. Toluca	148.50	1	1	25868	1.1	54.6	4.2	5.3	7.1	20.6	1.6	4.9	0.6	55.7	4.2	40.1	0.061	0.510	20.287457	-99.913512
T. Izq. Toluca	148.50	1	2	26924	1.4	52.3	4.8	5.6	7.2	21.4	1.7	4.9	0.7	53.7	4.8	41.5	0.054	0.510	20.286143	-99.911987
T. Izq. Toluca	148.50	3	1	38953	1.3	56.2	4.1	4.8	7.0	19.8	1.7	4.4	0.7	57.5	4.1	38.4	0.057	0.500	20.306620	-99.934504
T. Izq. Toluca	148.50	3	2	38967	1.1	53.0	4.5	5.6	7.9	20.5	1.8	4.9	0.7	54.1	4.5	41.4	0.063	0.500	20.306883	-99.935004
T. Der. Poniente San Juan del Río	164.10	3	1	34644	1.0	65.1	3.7	4.1	6.1	14.5	1.9	2.8	0.8	66.1	3.7	30.2	0.075	0.502	20.373007	-99.992375
T. Der. Poniente San Juan del Río	164.10	3	2	34955	0.9	62.2	3.9	4.3	6.4	15.9	2.2	3.2	1.0	63.1	3.9	33.0	0.072	0.502	20.373516	-99.994167
T. Izq. Acámbaro	170.45	3	1	45903	1.0	74.2	3.9	2.9	5.2	8.7	1.6	1.6	0.9	75.2	3.9	20.9	0.077	0.502	20.447311	-100.078766
T. Izq. Acámbaro	170.45	3	2	46360	0.9	71.1	4.6	3.4	5.6	10.0	1.7	1.8	0.9	72.0	4.6	23.4	0.072	0.502	20.449792	-100.082240
T. Der. Libramiento de Querétaro a San Luis Potosí	207.00	1	1	64373	0.9	80.7	2.4	2.6	4.2	5.3	2.2	0.9	0.8	81.6	2.4	16.0	0.073	0.501	20.573161	-100.323269
T. Der. Libramiento de Querétaro a San Luis Potosí	207.00	1	2	64688	0.7	78.9	2.5	2.9	4.6	5.9	2.5	1.1	0.9	79.6	2.5	17.9	0.081	0.501	20.574483	-100.331021
T. Der. Libramiento de Querétaro a San Luis Potosí	207.00	3	1	71029	0.9	84.6	2.2	2.1	3.5	4.0	1.7	0.4	0.6	85.5	2.2	12.3	0.071	0.503	20.578266	-100.380363
T. Der. Libramiento de Querétaro a San Luis Potosí	207.00	3	2	70057	0.7	83.4	2.4	2.3	3.9	4.5	1.8	0.4	0.6	84.1	2.4	13.5	0.089	0.503	20.578145	-100.380335
Querétaro	211.60																			

HIDALGO

19 CARR: Actopan - Progreso

CLAVE: 13038

RUTA: HGO

AÑO: 2018

LUGAR	ESTACION				CLASIFICACION VEHICULAR EN PORCIENTO													COORDENADAS		
	KM	TE	SC	TDPA	M	A	B	C2	C3	T3S2	T3S3	T3S2R4	OTROS	A	B	C	K'	D	LATITUD	LONGITUD
Actopan	0.00	3	1	8181	3.7	85.1	0.7	8.5	0.6	0.6	0.6	0.1	0.1	88.8	0.7	10.5	0.089	0.503	20.266123	-98.955742
Actopan	0.00	3	2	8088	3.3	84.9	0.9	8.8	0.6	0.6	0.7	0.1	0.1	88.2	0.9	10.9	0.083	0.503	20.266065	-98.955696
Progreso	23.90	1	1	6481	3.0	85.7	2.6	6.3	1.0	0.6	0.4	0.1	0.3	88.7	2.6	8.7	0.075	0.502	20.245257	-99.175966
Progreso	23.90	1	2	6544	3.2	84.6	2.9	6.9	1.1	0.6	0.4	0.1	0.2	87.8	2.9	9.3	0.079	0.502	20.245132	-99.175919

20 CARR: El Saucillo - Amealco

CLAVE: 13103

RUTA: HGO-103

AÑO: 2018

LUGAR	ESTACION				CLASIFICACION VEHICULAR EN PORCIENTO													COORDENADAS		
	KM	TE	SC	TDPA	M	A	B	C2	C3	T3S2	T3S3	T3S2R4	OTROS	A	B	C	K'	D	LATITUD	LONGITUD
T. C. Portezuelo - Palmillas	0.00	3	0	4359	1.7	81.9	3.3	8.5	1.8	1.3	0.8	0.3	0.4	83.6	3.3	13.1	0.092	0.516	20.313452	-99.715624
Nopala	11.00	1	1	2228	2.1	83.2	2.7	6.9	1.5	1.5	1.2	0.4	0.5	85.3	2.7	12.0	0.092	0.503	20.254190	-99.653380
Nopala	11.00	1	2	2251	2.0	82.7	2.7	7.0	1.5	1.7	1.4	0.5	0.5	84.7	2.7	12.6	0.088	0.503	20.254275	-99.653378
Nopala	11.00	3	0	4774	1.1	81.4	2.7	7.7	1.8	2.6	1.5	0.5	0.7	82.5	2.7	14.8	0.101	0.504	20.245561	-99.636179
Amealco	21.40	1	0	2380	1.5	83.6	2.1	6.2	1.4	1.9	1.8	0.7	0.8	85.1	2.1	12.8	0.084	0.506	20.239121	-99.561379

21 CARR: Ent. Emiliano Zapata - Cd. Sahagún

CLAVE: 13255

RUTA: HGO

AÑO: 2018

LUGAR	ESTACION				CLASIFICACION VEHICULAR EN PORCIENTO													COORDENADAS		
	KM	TE	SC	TDPA	M	A	B	C2	C3	T3S2	T3S3	T3S2R4	OTROS	A	B	C	K'	D	LATITUD	LONGITUD
T. C. Calpulalpan - El Ocote	0.00																			
Emiliano Zapata	2.70	1	1	4484	1.2	76.3	1.8	7.3	3.1	5.6	2.5	1.4	0.8	77.5	1.8	20.7	0.070	0.514	19.641672	-98.537157
Emiliano Zapata	2.70	1	2	4236	1.8	73.9	1.9	8.0	3.2	6.1	2.8	1.5	0.8	75.7	1.9	22.4	0.075	0.514	19.641570	-98.537278
T. Izq. Otumba	14.00	1	1	5354	1.4	81.6	1.7	7.2	1.6	3.5	1.7	0.5	0.8	83.0	1.7	15.3	0.077	0.505	19.743794	-98.584373
T. Izq. Otumba	14.00	1	2	5250	1.8	79.4	1.7	8.0	1.8	3.9	2.1	0.5	0.8	81.2	1.7	17.1	0.082	0.505	19.743725	-98.584415
Cd. Sahagún	17.98	1	1	7297	1.2	85.7	1.0	6.1	1.2	2.5	1.2	0.6	0.5	86.9	1.0	12.1	0.092	0.505	19.757438	-98.588175
Cd. Sahagún	17.98	1	2	7144	1.1	85.3	1.0	6.2	1.3	2.7	1.3	0.6	0.5	86.4	1.0	12.6	0.083	0.505	19.757442	-98.588254

22 CARR: Ent. Tepeji del Río - Tlahuelilpan

CLAVE: 13017

RUTA: HGO-017

AÑO: 2018

LUGAR	ESTACION				CLASIFICACION VEHICULAR EN PORCIENTO													COORDENADAS		
	KM	TE	SC	TDPA	M	A	B	C2	C3	T3S2	T3S3	T3S2R4	OTROS	A	B	C	K'	D	LATITUD	LONGITUD
T. C. México - Querétaro (Cuota)	0.00																			
T. Izq. Tepeji del Río	3.00	3	1	7115	2.3	85.1	1.0	7.5	0.7	1.1	1.3	0.8	0.2	87.4	1.0	11.6	0.073	0.505	19.942970	-99.339453
T. Izq. Tepeji del Río	3.00	3	2	7271	1.9	84.5	1.0	8.1	0.7	1.1	1.5	1.0	0.2	86.4	1.0	12.6	0.071	0.505	19.942964	-99.339539
Tula de Allende	18.00	1	0	14704	3.3	83.0	1.1	5.6	1.0	3.8	1.3	0.6	0.3	86.3	1.1	12.6	0.081	0.508	20.046798	-99.340363

HIDALGO

22 CARR: Ent. Tepeji del Río - Tlahuelilpan

CLAVE: 13017

RUTA: HGO-017

AÑO: 2018

LUGAR	ESTACION				CLASIFICACION VEHICULAR EN PORCIENTO												COORDENADAS			
	KM	TE	SC	TDPA	M	A	B	C2	C3	T3S2	T3S3	T3S2R4	OTROS	A	B	C	K'	D	LATITUD	LONGITUD
X. C. Arco Norte de La Ciudad de México	19.40	1	1	11031	1.3	83.3	1.9	5.1	2.5	3.1	1.5	0.8	0.5	84.6	1.9	13.5	0.096	0.507	20.096699	-99.287325
X. C. Arco Norte de La Ciudad de México	19.40	1	2	11348	1.4	84.7	1.7	4.5	2.3	2.7	1.4	0.8	0.5	86.1	1.7	12.2	0.084	0.507	20.096798	-99.287396
Tlahuelilpan	32.00	1	1	7833	2.8	84.2	1.0	8.8	1.2	1.0	0.6	0.2	0.2	87.0	1.0	12.0	0.081	0.508	20.116247	-99.259544
Tlahuelilpan	32.00	1	2	8073	2.8	84.4	1.0	8.4	1.3	1.1	0.6	0.2	0.2	87.2	1.0	11.8	0.083	0.508	20.116338	-99.259628

23 CARR: Ent. Tolman - Cd. Sahagún

CLAVE: 00119

RUTA: EM-009-HGO

AÑO: 2018

LUGAR	ESTACION				CLASIFICACION VEHICULAR EN PORCIENTO												COORDENADAS			
	KM	TE	SC	TDPA	M	A	B	C2	C3	T3S2	T3S3	T3S2R4	OTROS	A	B	C	K'	D	LATITUD	LONGITUD
T. C. Venta de Carpio - Tulancingo	0.00	3	0	14683	2.1	87.1	0.8	7.0	1.0	1.1	0.8	0.0	0.1	89.2	0.8	10.0	0.077	0.517	19.714510	-98.791123
Otumba	5.00	3	0	5929	1.8	82.1	1.7	12.1	1.0	0.8	0.4	0.0	0.1	83.9	1.7	14.4	0.072	0.518	19.710447	-98.743254
T. Der. Jaltepec	21.00	3	0	4411	1.8	79.5	1.7	12.7	1.7	1.5	0.9	0.1	0.1	81.3	1.7	17.0	0.061	0.507	19.749550	-98.653405
Lim. Edos. Term. Méx. Ppia. Hgo.	25.00																			
Cd. Sahagún	32.00	1	0	7497	2.2	84.4	2.2	6.9	1.9	1.5	0.7	0.1	0.1	86.6	2.2	11.2	0.081	0.553	19.754416	-98.593138

24 CARR: Francisco I. Madero - Tula de Allende

CLAVE: 13043

RUTA: HGO

AÑO: 2018

LUGAR	ESTACION				CLASIFICACION VEHICULAR EN PORCIENTO												COORDENADAS			
	KM	TE	SC	TDPA	M	A	B	C2	C3	T3S2	T3S3	T3S2R4	OTROS	A	B	C	K'	D	LATITUD	LONGITUD
T. C. Portezuelo - Palmillas	0.00	3	0	4529	3.7	81.9	2.1	7.1	0.8	3.3	0.5	0.1	0.5	85.6	2.1	12.3	0.076	0.509	20.444203	-99.361670
Gral. Pedro María Anaya	38.20	1	0	5010	3.9	84.5	0.3	6.2	1.2	2.3	1.0	0.2	0.4	88.4	0.3	11.3	0.070	0.501	20.161873	-99.364048
T. C. (México - Querétaro) - Tlahuelilpan de Ocampo	52.70	1	0	9490	1.5	86.0	0.6	5.9	1.6	2.1	1.3	0.4	0.6	87.5	0.6	11.9	0.103	0.514	20.066777	-99.330319

25 CARR: Huichapan - Tecozautla

CLAVE: 13030

RUTA: HGO-030

AÑO: 2018

LUGAR	ESTACION				CLASIFICACION VEHICULAR EN PORCIENTO												COORDENADAS			
	KM	TE	SC	TDPA	M	A	B	C2	C3	T3S2	T3S3	T3S2R4	OTROS	A	B	C	K'	D	LATITUD	LONGITUD
Huichapan	0.00	3	0	6279	0.8	87.2	1.5	6.4	1.3	1.8	0.8	0.1	0.1	88.0	1.5	10.5	0.080	0.506	20.383689	-99.659788
Tecozautla	30.85																			

26 CARR: Jilotepec - Maravillas

CLAVE: 00015

RUTA: EM-HGO

AÑO: 2018

LUGAR	ESTACION				CLASIFICACION VEHICULAR EN PORCIENTO												COORDENADAS			
	KM	TE	SC	TDPA	M	A	B	C2	C3	T3S2	T3S3	T3S2R4	OTROS	A	B	C	K'	D	LATITUD	LONGITUD
Jilotepec	0.00	3	0	8590	2.0	84.8	2.2	5.7	0.5	3.5	0.5	0.1	0.7	86.8	2.2	11.0	0.081	0.529	19.954206	-99.551005

HIDALGO

26 CARR: Jilotepec - Maravillas

CLAVE: 00015

RUTA: EM-HGO

AÑO: 2018

LUGAR	ESTACION				CLASIFICACION VEHICULAR EN PORCIENTO													COORDENADAS		
	KM	TE	SC	TDPA	M	A	B	C2	C3	T3S2	T3S3	T3S2R4	OTROS	A	B	C	K'	D	LATITUD	LONGITUD
X. C. México - Querétaro (Cuota)	21.30	1	0	2935	2.0	83.8	2.5	8.3	1.1	1.0	0.8	0.3	0.2	85.8	2.5	11.7	0.088	0.515	20.080091	-99.632279
X. C. México - Querétaro (Cuota)	21.30	3	0	4019	2.3	83.7	2.0	9.9	1.0	0.4	0.4	0.1	0.2	86.0	2.0	12.0	0.088	0.536	20.091466	-99.626787
Acazuchitlán	29.00	1	0	2784	1.8	82.6	1.7	10.1	0.9	1.5	0.5	0.5	0.4	84.4	1.7	13.9	0.096	0.504	20.139208	-99.602518
Lim. Edos. Term. Méx. Ppia. Hgo.	29.30																			
Maravillas	36.40	1	0	1793	1.9	82.8	3.3	8.1	1.3	1.4	0.5	0.4	0.3	84.7	3.3	12.0	0.117	0.501	20.197709	-99.584332
T. C. El Saucillo - Amealco	40.00	1	0	3016	1.7	80.0	4.6	10.3	0.8	1.5	0.5	0.3	0.3	81.7	4.6	13.7	0.109	0.530	20.232065	-99.594702

27 CARR: Libramiento de Atotonilco El Grande

CLAVE: 13238

RUTA: HGO

AÑO: 2018

LUGAR	ESTACION				CLASIFICACION VEHICULAR EN PORCIENTO													COORDENADAS		
	KM	TE	SC	TDPA	M	A	B	C2	C3	T3S2	T3S3	T3S2R4	OTROS	A	B	C	K'	D	LATITUD	LONGITUD
T. C. Pachuca - Tempoal (1er. Acceso)	0.00	3	1	3761	0.7	85.7	1.5	7.3	1.9	1.4	1.4	0.0	0.1	86.4	1.5	12.1	0.090	0.524	20.273135	-98.646881
T. C. Pachuca - Tempoal (1er. Acceso)	0.00	3	2	4140	0.7	85.6	1.3	8.1	1.7	1.2	1.3	0.0	0.1	86.3	1.3	12.4	0.072	0.524	20.273115	-98.646982
T. C. Pachuca - Tempoal (2do. Acceso)	6.30	1	1	4183	1.3	85.3	1.6	8.6	1.6	0.8	0.8	0.0	0.0	86.6	1.6	11.8	0.083	0.506	20.296579	-98.671311
T. C. Pachuca - Tempoal (2do. Acceso)	6.30	1	2	4083	0.9	85.6	1.6	8.6	1.5	0.9	0.8	0.0	0.1	86.5	1.6	11.9	0.075	0.506	20.296484	-98.671323

28 CARR: Lolotla - Atlapexco

CLAVE: 13238

RUTA: HGO

AÑO: 2018

LUGAR	ESTACION				CLASIFICACION VEHICULAR EN PORCIENTO													COORDENADAS		
	KM	TE	SC	TDPA	M	A	B	C2	C3	T3S2	T3S3	T3S2R4	OTROS	A	B	C	K'	D	LATITUD	LONGITUD
T. C. Pachuca - Tempoal	0.00	3	0	1197	4.7	89.2	0.9	3.4	0.2	1.2	0.4	0.0	0.0	93.9	0.9	5.2	0.097	0.507	20.875491	-98.703341
Atlapexco	68.00	1	0	3096	11.2	83.4	0.2	2.5	0.3	2.0	0.2	0.1	0.1	94.6	0.2	5.2	0.088	0.502	21.015073	-98.352693
T. C. Álamo - Huejutla de Reyes	69.80																			

29 CARR: Los Reyes - El Tephé

CLAVE: 00021

RUTA: EM-HGO

AÑO: 2018

LUGAR	ESTACION				CLASIFICACION VEHICULAR EN PORCIENTO													COORDENADAS		
	KM	TE	SC	TDPA	M	A	B	C2	C3	T3S2	T3S3	T3S2R4	OTROS	A	B	C	K'	D	LATITUD	LONGITUD
T. C. México - Pachuca (Libre)	0.00																			
Los Reyes	1.35	3	1	9301	2.9	88.3	0.2	7.3	0.6	0.5	0.2	0.0	0.0	91.2	0.2	8.6	0.064	0.503	19.768996	-98.994636
Los Reyes	1.35	3	2	9395	2.9	87.7	0.2	7.9	0.6	0.5	0.2	0.0	0.0	90.6	0.2	9.2	0.063	0.503	19.768912	-98.994663
Zumpango	15.35	1	1	14657	3.9	89.0	0.2	5.4	0.6	0.5	0.3	0.0	0.1	92.9	0.2	6.9	0.079	0.500	19.792436	-99.074146
Zumpango	15.35	1	2	14659	3.7	88.6	0.2	6.0	0.6	0.5	0.3	0.0	0.1	92.3	0.2	7.5	0.076	0.500	19.792330	-99.074174
Zumpango	15.35	3	0	20043	2.0	80.0	2.7	9.2	2.1	1.1	2.0	0.4	0.5	82.0	2.7	15.3	0.068	0.504	19.821545	-99.115332
Tequixquiac	29.00	1	0	11597	3.1	78.6	2.1	10.1	1.5	1.8	1.7	0.5	0.6	81.7	2.1	16.2	0.070	0.509	19.893774	-99.139449

HIDALGO

29 CARR: Los Reyes - El Tephé

CLAVE: 00021

RUTA: EM-HGO

AÑO: 2018

LUGAR	ESTACION				CLASIFICACION VEHICULAR EN PORCIENTO										COORDENADAS					
	KM	TE	SC	TDPA	M	A	B	C2	C3	T3S2	T3S3	T3S2R4	OTROS	A	B	C	K'	D	LATITUD	LONGITUD
Apaxco	39.00	3	1	4920	1.1	77.9	2.4	12.7	2.4	2.1	1.0	0.2	0.2	79.0	2.4	18.6	0.066	0.519	19.984592	-99.180039
Apaxco	39.00	3	2	4565	1.4	75.2	2.7	14.3	2.6	2.3	1.1	0.2	0.2	76.6	2.7	20.7	0.068	0.519	19.984540	-99.180095
Lim. Edos. Term. Méx. Ppia. Hgo.	40.00																			
T. Izq. Atotonilco (1° Acceso)	42.00	1	0	7490	3.0	74.1	2.6	13.8	2.3	3.2	0.4	0.4	0.2	77.1	2.6	20.3	0.069	0.502	19.995968	-99.186932
X. C. Arco Norte de La Ciudad de México	50.00	3	1	6397	3.6	84.2	1.8	6.5	0.8	1.7	0.8	0.2	0.4	87.8	1.8	10.4	0.083	0.502	20.069697	-99.220606
X. C. Arco Norte de La Ciudad de México	50.00	3	2	6352	5.0	81.9	1.9	6.7	1.0	1.8	1.1	0.2	0.4	86.9	1.9	11.2	0.081	0.502	20.069676	-99.220699
Tlaxcoapan	52.00	3	0	8699	6.9	79.9	2.7	8.2	0.8	0.9	0.3	0.2	0.1	86.8	2.7	10.5	0.066	0.528	20.109104	-99.222138
Tlahuelilpan	60.00	3	1	9927	3.8	83.2	2.7	6.6	1.4	1.0	0.9	0.2	0.2	87.0	2.7	10.3	0.075	0.506	20.150031	-99.234154
Tlahuelilpan	60.00	3	2	9674	2.9	82.8	2.9	7.5	1.5	1.1	0.9	0.2	0.2	85.7	2.9	11.4	0.073	0.506	20.150051	-99.234239
Progreso	72.00	1	1	12078	3.8	84.4	2.5	5.2	1.1	1.5	0.8	0.2	0.5	88.2	2.5	9.3	0.069	0.519	20.236762	-99.195583
Progreso	72.00	1	2	11207	3.8	83.0	2.9	5.8	1.1	1.7	1.0	0.2	0.5	86.8	2.9	10.3	0.065	0.519	20.236826	-99.195625
El Tephé	97.00	1	0	7683	4.6	81.1	2.6	6.7	1.0	2.5	0.8	0.3	0.4	85.7	2.6	11.7	0.081	0.502	20.431011	-99.171331

30 CARR: Otumba - Tizayuca

CLAVE: 00012

RUTA: EM-HGO

AÑO: 2018

LUGAR	ESTACION				CLASIFICACION VEHICULAR EN PORCIENTO										COORDENADAS					
	KM	TE	SC	TDPA	M	A	B	C2	C3	T3S2	T3S3	T3S2R4	OTROS	A	B	C	K'	D	LATITUD	LONGITUD
Otumba	0.00	3	0	4955	5.0	88.2	0.1	3.1	0.1	2.9	0.2	0.0	0.4	93.2	0.1	6.7	0.091	0.505	19.713359	-98.758039
X. C. Venta de Carpio - Tulancingo	6.00	3	1	2619	2.0	85.6	0.3	6.8	1.2	3.2	0.9	0.0	0.0	87.6	0.3	12.1	0.151	0.503	19.760097	-98.759428
X. C. Venta de Carpio - Tulancingo	6.00	3	2	2649	2.1	86.9	0.2	5.6	1.1	1.3	2.8	0.0	0.0	89.0	0.2	10.8	0.118	0.503	19.755589	-98.756798
Temascalapa	26.50	3	1	3709	3.7	88.4	0.2	6.0	1.2	0.3	0.1	0.0	0.1	92.1	0.2	7.7	0.074	0.507	19.830249	-98.913828
Temascalapa	26.50	3	2	3818	3.0	88.8	0.2	6.3	1.2	0.3	0.1	0.0	0.1	91.8	0.2	8.0	0.082	0.507	19.830249	-98.913828
Lim. Edos. Term. Méx. Ppia. Hgo.	29.00																			
Tizayuca	37.10	1	1	10088	3.8	89.3	0.4	4.3	0.7	0.9	0.4	0.1	0.1	93.1	0.4	6.5	0.067	0.530	19.839293	-98.967542
Tizayuca	37.10	1	2	8947	4.2	88.1	0.4	4.8	0.8	1.1	0.4	0.1	0.1	92.3	0.4	7.3	0.069	0.530	19.839190	-98.967580

31 CARR: Ramal a El Chico

CLAVE: 13256

RUTA: HGO

AÑO: 2018

LUGAR	ESTACION				CLASIFICACION VEHICULAR EN PORCIENTO										COORDENADAS					
	KM	TE	SC	TDPA	M	A	B	C2	C3	T3S2	T3S3	T3S2R4	OTROS	A	B	C	K'	D	LATITUD	LONGITUD
T. C. Pachuca - Tempoal	0.00	3	0	2822	2.1	90.5	0.2	2.8	0.3	2.2	0.7	0.4	0.8	92.6	0.2	7.2	0.091	0.501	20.139143	-98.724954
Mineral El Chico	21.00	1	0	1258	2.3	91.2	0.2	5.5	0.3	0.4	0.1	0.0	0.0	93.5	0.2	6.3	0.154	0.515	20.209777	-98.728177

HIDALGO

32 CARR: Ramal a Pachuca

CLAVE: 13254

RUTA: HGO

AÑO: 2018

LUGAR	ESTACION				CLASIFICACION VEHICULAR EN PORCIENTO													COORDENADAS		
	KM	TE	SC	TDPA	M	A	B	C2	C3	T3S2	T3S3	T3S2R4	OTROS	A	B	C	K'	D	LATITUD	LONGITUD
T. C. Colonia - Portezuelo	0.00	3	1	14777	0.5	89.1	1.9	7.2	0.8	0.3	0.2	0.0	0.0	89.6	1.9	8.5	0.106	0.502	20.121109	-98.820284
T. C. Colonia - Portezuelo	0.00	3	2	14898	0.6	89.7	1.9	6.5	0.8	0.3	0.2	0.0	0.0	90.3	1.9	7.8	0.084	0.502	20.121242	-98.820357
Pachuca	10.00																			

33 CARR: San Alejo - Huayacocotla

CLAVE: 00132

RUTA: HGO-051-VER-113

AÑO: 2018

LUGAR	ESTACION				CLASIFICACION VEHICULAR EN PORCIENTO													COORDENADAS		
	KM	TE	SC	TDPA	M	A	B	C2	C3	T3S2	T3S3	T3S2R4	OTROS	A	B	C	K'	D	LATITUD	LONGITUD
T. C. Pachuca - Tuxpam	0.00	3	0	5963	2.2	87.9	1.3	7.0	0.9	0.3	0.2	0.1	0.1	90.1	1.3	8.6	0.080	0.507	20.154204	-98.287368
Metepec	11.80	3	0	3225	4.0	79.2	3.8	11.4	0.9	0.3	0.2	0.1	0.1	83.2	3.8	13.0	0.087	0.502	20.243477	-98.331267
Agua Blanca	29.48	3	0	3589	2.3	87.6	1.1	6.6	1.0	0.9	0.2	0.2	0.1	89.9	1.1	9.0	0.094	0.520	20.353611	-98.360872
Lim. Edos. Term. Hgo. Ppia. Ver.	36.48																			
Huayacocotla	66.00	1	0	3132	6.0	82.5	0.9	5.9	0.6	3.1	0.2	0.3	0.5	88.5	0.9	10.6	0.079	0.509	20.528332	-98.493864

34 CARR: San Felipe Orizatlán - Huejutla de Reyes

CLAVE: 13258

RUTA: HGO

AÑO: 2018

LUGAR	ESTACION				CLASIFICACION VEHICULAR EN PORCIENTO													COORDENADAS		
	KM	TE	SC	TDPA	M	A	B	C2	C3	T3S2	T3S3	T3S2R4	OTROS	A	B	C	K'	D	LATITUD	LONGITUD
San Felipe Orizatlán	0.00	3	0	3916	12.2	75.8	0.8	6.3	1.3	2.7	0.5	0.0	0.4	88.0	0.8	11.2	0.075	0.501	21.171967	-98.591167
Huejutla de Reyes	25.00	1	0	3142	11.2	84.1	0.1	2.1	0.0	2.2	0.1	0.0	0.2	95.3	0.1	4.6	0.079	0.513	21.125566	-98.468661

35 CARR: Santo Domingo - T. C. (México - Querétaro)

CLAVE: 00433

RUTA: EM-011-HGO

AÑO: 2018

LUGAR	ESTACION				CLASIFICACION VEHICULAR EN PORCIENTO													COORDENADAS		
	KM	TE	SC	TDPA	M	A	B	C2	C3	T3S2	T3S3	T3S2R4	OTROS	A	B	C	K'	D	LATITUD	LONGITUD
T. C. Toluca - Palmillas	0.00	3	0	8574	0.6	85.7	1.7	5.5	0.6	3.7	1.0	0.4	0.8	86.3	1.7	12.0	0.083	0.508	19.634177	-99.758175
X. C. Los Reyes - Ixtlahuaca	6.11	3	0	8300	1.1	82.3	0.9	8.3	0.5	4.5	1.2	0.7	0.5	83.4	0.9	15.7	0.072	0.511	19.657601	-99.725605
X. C. Villa del Carbón - Atlacomulco	23.94	3	1	2635	0.9	77.9	2.9	6.1	2.2	5.1	2.1	1.8	1.0	78.8	2.9	18.3	0.086	0.504	19.786740	-99.702171
X. C. Villa del Carbón - Atlacomulco	23.94	3	2	2683	1.4	74.8	3.0	7.2	2.3	6.0	2.2	2.0	1.1	76.2	3.0	20.8	0.070	0.504	19.786748	-99.702322
T. Der. Chapa de Mota	42.70	1	0	9529	0.5	77.2	2.0	11.1	1.1	5.1	1.5	0.5	1.0	77.7	2.0	20.3	0.070	0.502	19.924758	-99.584650
Lim. Edos. Term. Méx. Ppia. Hgo.	63.34																			
T. C. México - Querétaro (Cuota)	65.84	1	1	4802	0.6	82.9	1.7	7.6	1.8	3.1	1.2	0.6	0.5	83.5	1.7	14.8	0.099	0.515	19.971132	-99.451214
T. C. México - Querétaro (Cuota)	65.84	1	2	4522	0.6	81.4	1.8	8.2	1.9	3.6	1.4	0.6	0.5	82.0	1.8	16.2	0.090	0.515	19.971193	-99.451237

HIDALGO

36 CARR: T. C. (Los Reyes - El Tephé) - Tizayuca

CLAVE: 00014

RUTA: EM-HGO

AÑO: 2018

LUGAR	ESTACION				CLASIFICACION VEHICULAR EN PORCIENTO													COORDENADAS		
	KM	TE	SC	TDPA	M	A	B	C2	C3	T3S2	T3S3	T3S2R4	OTROS	A	B	C	K'	D	LATITUD	LONGITUD
T. C. Los Reyes - El Tephé	0.00	3	0	7132	7.4	80.2	0.2	4.0	1.0	5.2	0.8	0.5	0.7	87.6	0.2	12.2	0.072	0.502	19.783747	-99.026020
Lim. Edos. Term. Méx. Ppia. Hgo.	6.50																			
Tizayuca	8.00	1	0	8827	7.7	77.9	0.4	4.6	0.5	6.7	1.0	0.5	0.7	85.6	0.4	14.0	0.077	0.502	19.825504	-98.990997

37 CARR: Tepeji del Río - T.C. (México - Querétaro)

CLAVE: 13104

RUTA: HGO

AÑO: 2018

LUGAR	ESTACION				CLASIFICACION VEHICULAR EN PORCIENTO													COORDENADAS		
	KM	TE	SC	TDPA	M	A	B	C2	C3	T3S2	T3S3	T3S2R4	OTROS	A	B	C	K'	D	LATITUD	LONGITUD
T. C. Ent. Tepeji del Río - Tlahuelilpan de Ocampo	0.00	3	0	6223	1.1	80.3	0.6	10.4	1.5	3.6	1.4	0.8	0.3	81.4	0.6	18.0	0.081	0.512	19.943314	-99.341326
T. C. México - Querétaro	12.40	1	0	3807	3.3	73.1	3.0	15.4	1.1	1.7	1.1	0.7	0.6	76.4	3.0	20.6	0.085	0.505	19.977395	-99.435683

38 CARR: Tlahuelilpan - San Agustín Tlaxiaca

CLAVE: 13435

RUTA: HGO

AÑO: 2018

LUGAR	ESTACION				CLASIFICACION VEHICULAR EN PORCIENTO													COORDENADAS		
	KM	TE	SC	TDPA	M	A	B	C2	C3	T3S2	T3S3	T3S2R4	OTROS	A	B	C	K'	D	LATITUD	LONGITUD
Tlahuelilpan	0.00	3	0	3121	11.6	83.3	0.2	4.6	0.3	0.0	0.0	0.0	0.0	94.9	0.2	4.9	0.076	0.504	20.136778	-99.226323
Ignacio Zaragoza	25.50	3	0	3586	1.8	88.0	1.8	7.4	0.8	0.1	0.1	0.0	0.0	89.8	1.8	8.4	0.090	0.508	20.131034	-98.995984
T. C. (La Colonia - Portezuelo)	48.00	1	0	5835	1.5	90.9	1.4	5.1	0.8	0.2	0.1	0.0	0.0	92.4	1.4	6.2	0.082	0.508	20.119000	-98.901673

39 CARR: Calpulalpan - El Ocote

CLAVE: 00054

RUTA: MEX-HGO

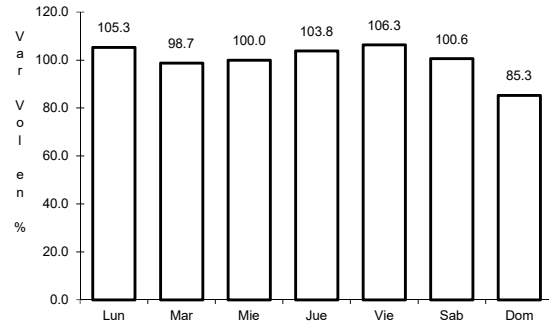
AÑO: 2018

LUGAR	ESTACION				CLASIFICACION VEHICULAR EN PORCIENTO													COORDENADAS		
	KM	TE	SC	TDPA	M	A	B	C2	C3	T3S2	T3S3	T3S2R4	OTROS	A	B	C	K'	D	LATITUD	LONGITUD
Calpulalpan	0.00	3	0	9311	0.9	74.5	1.9	7.9	2.2	8.2	1.9	1.7	0.8	75.4	1.9	22.7	0.062	0.511	19.594335	-98.573756
X. C. Arco Norte de La Ciudad de México	4.00	3	0	8716	1.9	78.7	2.2	6.6	2.4	6.6	1.0	0.2	0.4	80.6	2.2	17.2	0.084	0.559	19.626981	-98.542015
Lim. Edos. Term. Tlax. Ppia. Hgo.	5.00																			
Apan	19.58	3	1	4775	1.5	90.6	0.3	5.8	0.6	0.6	0.3	0.1	0.2	92.1	0.3	7.6	0.073	0.514	19.728601	-98.470960
Apan	19.58	3	2	5050	1.5	89.5	0.6	6.9	0.5	0.4	0.3	0.1	0.2	91.0	0.6	8.4	0.066	0.514	19.728527	-98.471047
Tepeapulco	34.92	3	0	4336	1.2	85.1	0.6	8.2	1.4	2.5	0.5	0.2	0.3	86.3	0.6	13.1	0.098	0.505	19.800537	-98.561821
X. C. Venta de Carpio - Tulancingo	51.18	1	1	1613	1.1	83.5	0.8	10.9	2.7	0.6	0.4	0.0	0.0	84.6	0.8	14.6	0.078	0.511	19.918427	-98.576377
X. C. Venta de Carpio - Tulancingo	51.18	1	2	1547	1.2	81.2	1.0	12.6	3.0	0.6	0.4	0.0	0.0	82.4	1.0	16.6	0.085	0.511	19.918427	-98.576377
X. C. Venta de Carpio - Tulancingo	51.18	3	0	2134	2.9	83.2	0.7	10.2	1.2	1.2	0.4	0.0	0.2	86.1	0.7	13.2	0.083	0.524	19.927394	-98.582748
El Ocote	70.44	1	1	1777	1.4	90.3	0.3	5.4	1.1	0.9	0.5	0.0	0.1	91.7	0.3	8.0	0.091	0.503	20.041073	-98.621543
El Ocote	70.44	1	2	1795	0.7	90.4	0.3	5.9	1.3	1.0	0.4	0.0	0.0	91.1	0.3	8.6	0.097	0.503	20.041143	-98.621648

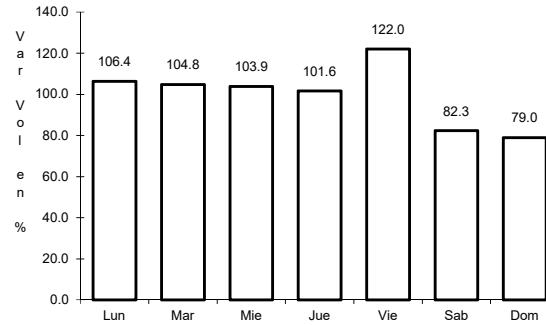
1 CARR: Álamo - Huejutla de Reyes

CLAVE: 00116

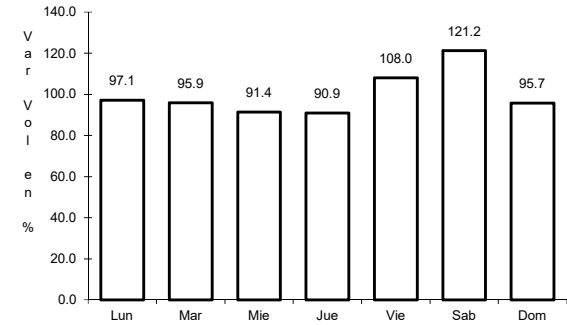
RUTA: MEX-127



Km: 0.00 Tipo: 3 Sent: 0



Km: 73.00 Tipo: 1 Sent: 0

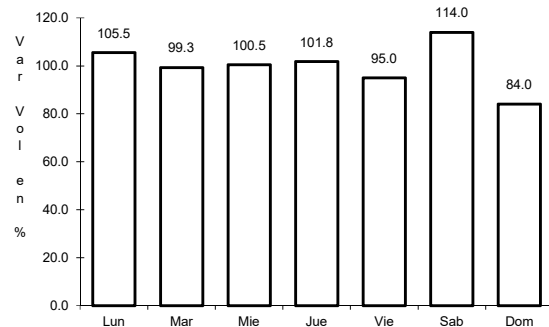


Km: 78.00 Tipo: 3 Sent: 0

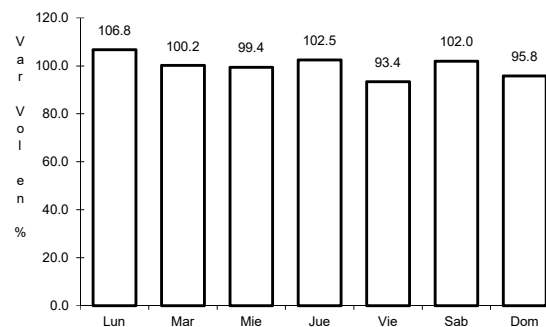
2 CARR: Apizaco - Tejocotal

CLAVE: 00430

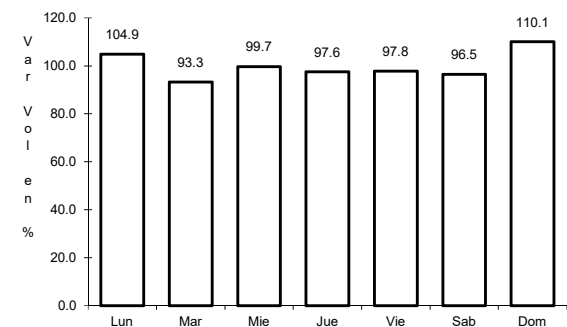
RUTA: MEX-119



Km: 0.00 Tipo: 3 Sent: 1



Km: 0.00 Tipo: 3 Sent: 2

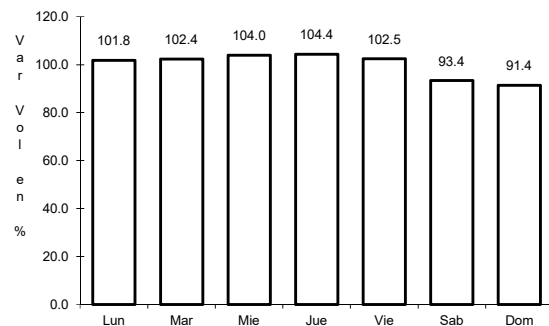


Km: 113.15 Tipo: 1 Sent: 0

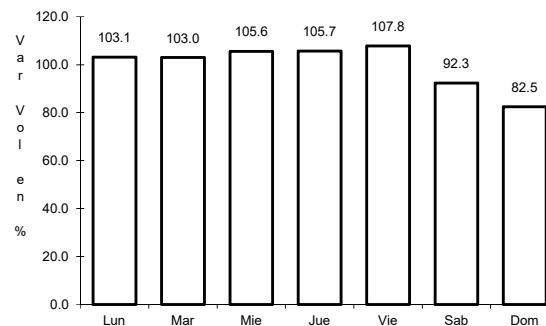
3 CARR: Ent. Colonia - Portezuelo

CLAVE: 13257

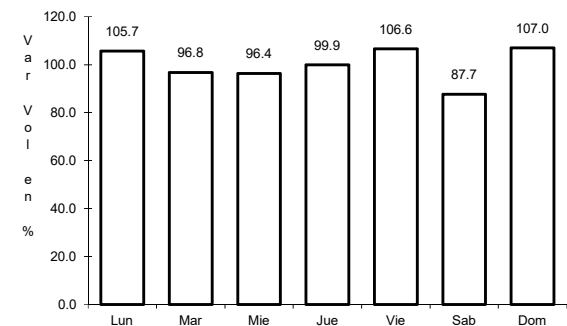
RUTA: MEX-085



Km: 0.00 Tipo: 3 Sent: 1



Km: 0.00 Tipo: 3 Sent: 2

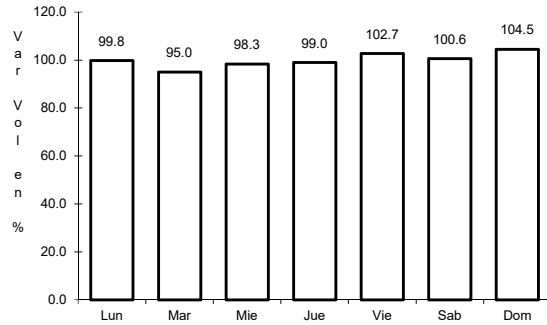


Km: 75.20 Tipo: 3 Sent: 1

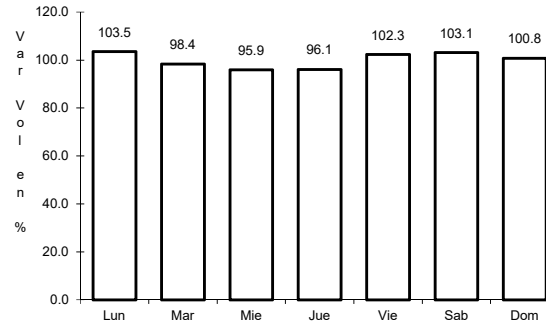
4 CARR: Ent. Jorobas - Tula

CLAVE: 00159

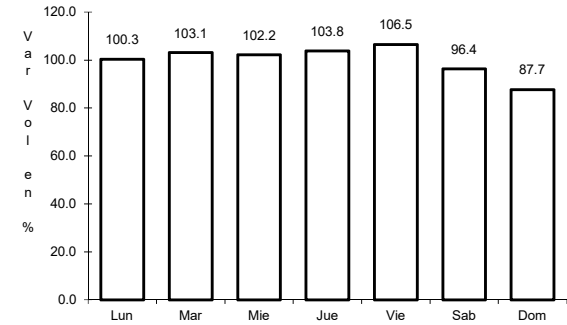
RUTA: MEX-087



Km: 0.00 Tipo: 3 Sent: 1



Km: 0.00 Tipo: 3 Sent: 2

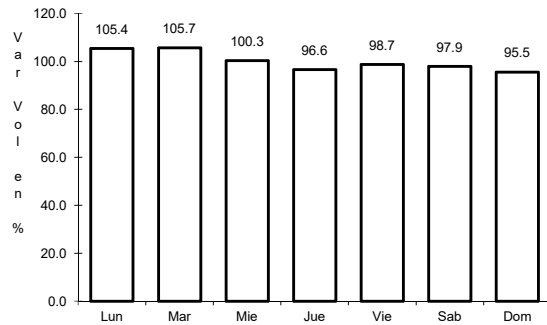


Km: 37.70 Tipo: 1 Sent: 1

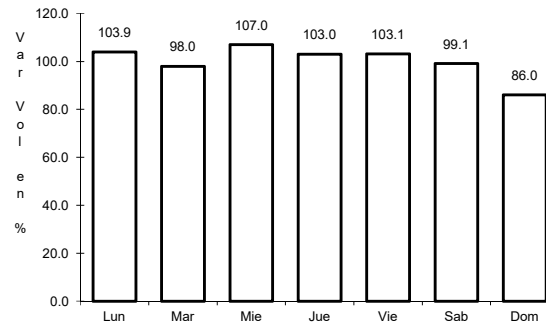
5 CARR: México - Pachuca (Libre)

CLAVE: 00431

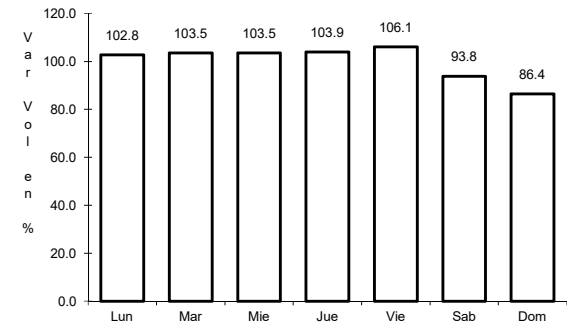
RUTA: MEX-085



Km: 26.93 Tipo: 1 Sent: 1



Km: 86.50 Tipo: 1 Sent: 1

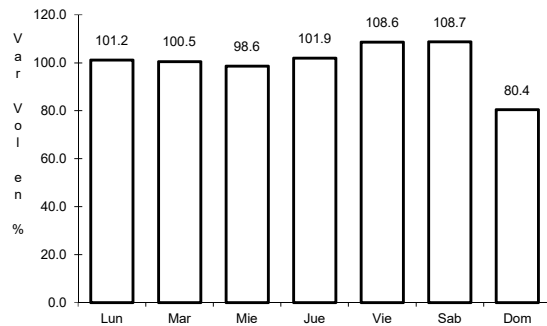


Km: 86.50 Tipo: 1 Sent: 2

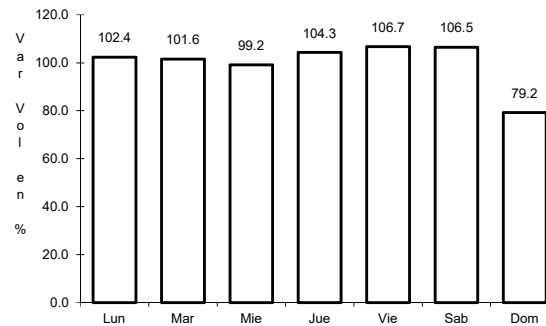
6 CARR: Pachuca - Cd. Sahagún

CLAVE: 13088

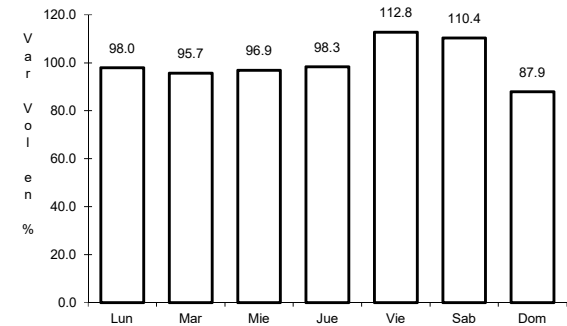
RUTA: MEX



Km: 0.00 Tipo: 3 Sent: 1



Km: 0.00 Tipo: 3 Sent: 2

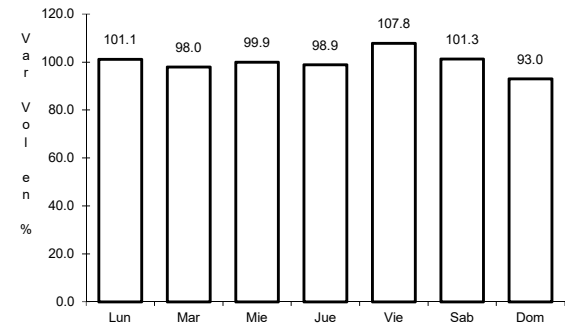
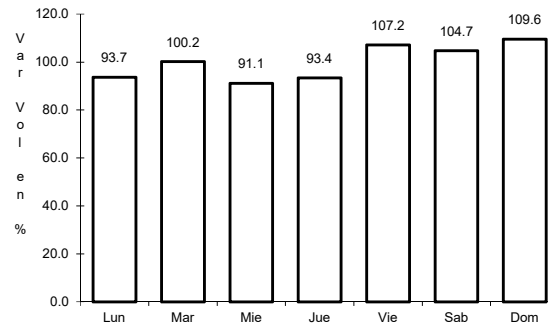
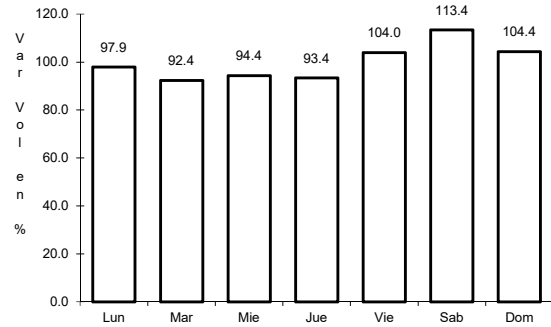


Km: 29.40 Tipo: 3 Sent: 1

7 CARR: Pachuca - Tempoal

CLAVE: 00113

RUTA: MEX-105



Km: 0.00 Tipo: 3 Sent: 0

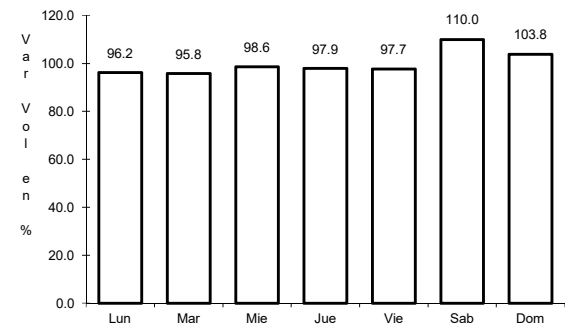
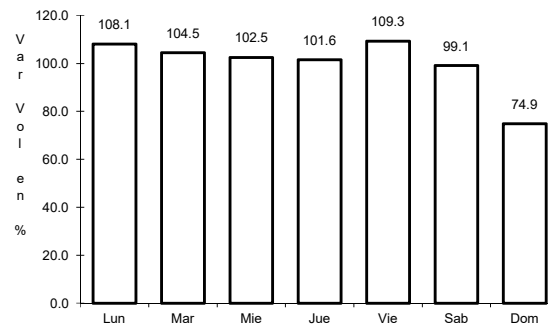
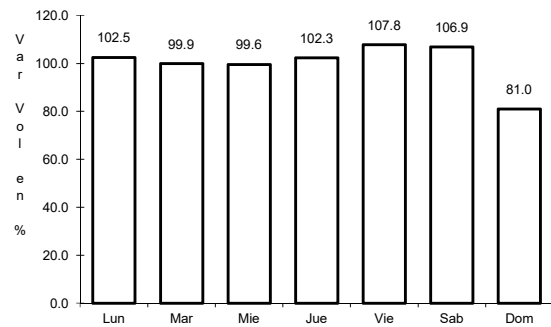
Km: 129.80 Tipo: 1 Sent: 0

Km: 260.68 Tipo: 1 Sent: 0

8 CARR: Pachuca - Tuxpam

CLAVE: 00608

RUTA: MEX-130



Km: 2.60 Tipo: 3 Sent: 1

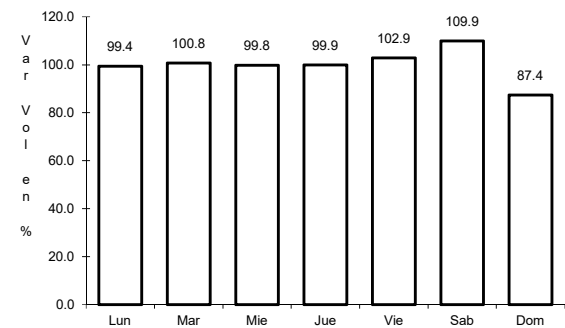
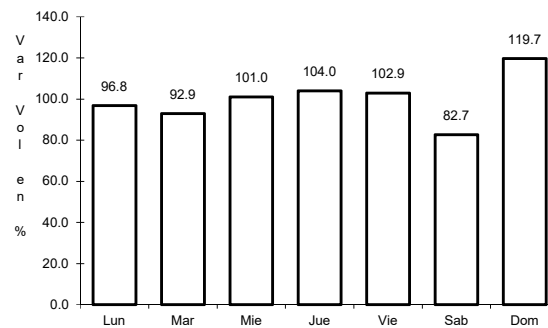
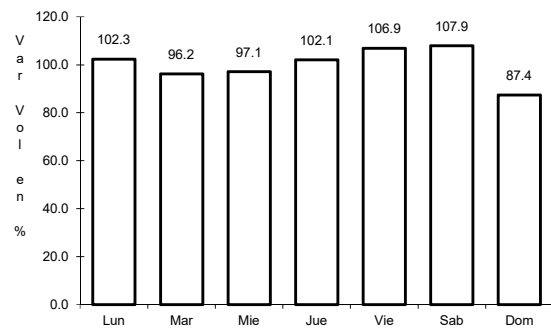
Km: 2.60 Tipo: 3 Sent: 2

Km: 141.75 Tipo: 1 Sent: 0

9 CARR: Portezuelo - Cd. Valles

CLAVE: 00023

RUTA: MEX-085



Km: 0.00 Tipo: 3 Sent: 0

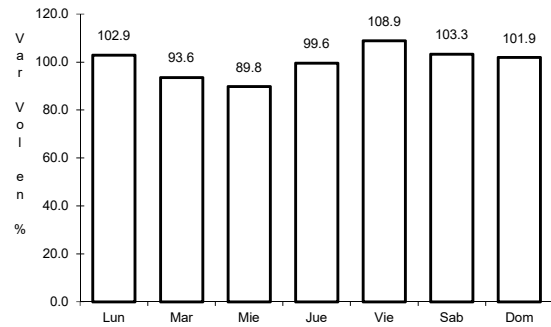
Km: 154.00 Tipo: 3 Sent: 0

Km: 300.00 Tipo: 1 Sent: 0

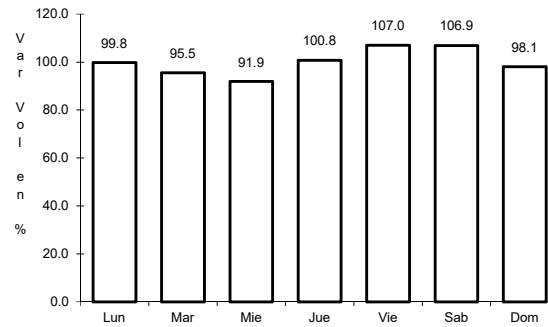
10 CARR: Portezuelo - Palmillas

CLAVE: 00194

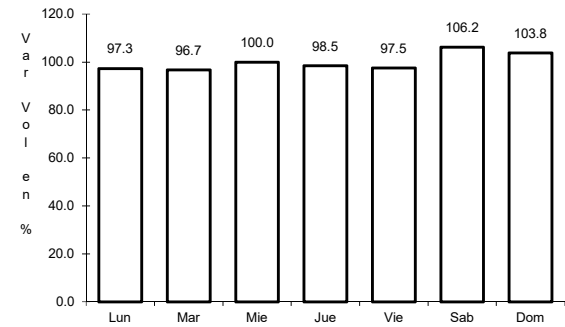
ruta: MEX-045



Km: 0.00 Tipo: 3 Sent: 1



Km: 0.00 Tipo: 3 Sent: 2

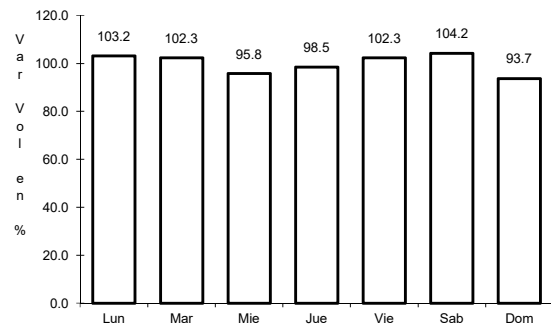


Km: 80.00 Tipo: 1 Sent: 1

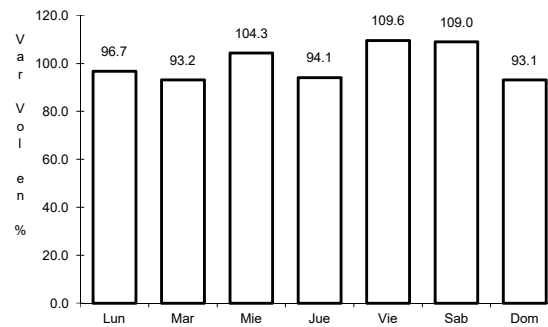
11 CARR: Tamazunchale - San Felipe Orizatlán

CLAVE: 00609

ruta: MEX-085



Km: 0.00 Tipo: 3 Sent: 0

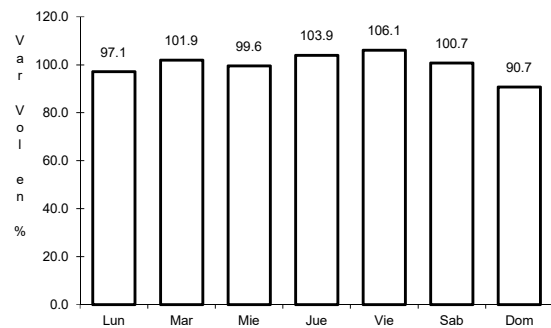


Km: 27.10 Tipo: 1 Sent: 0

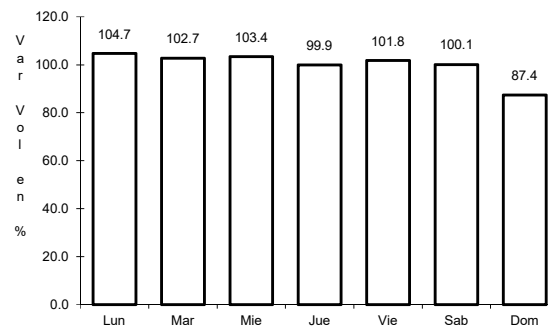
12 CARR: Venta de Carpio - T. C. (Pachuca - Tuxpam)

CLAVE: 00455

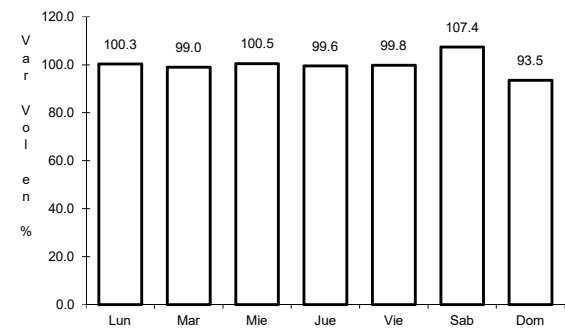
ruta: MEX-132



Km: 6.42 Tipo: 3 Sent: 1



Km: 6.42 Tipo: 3 Sent: 2

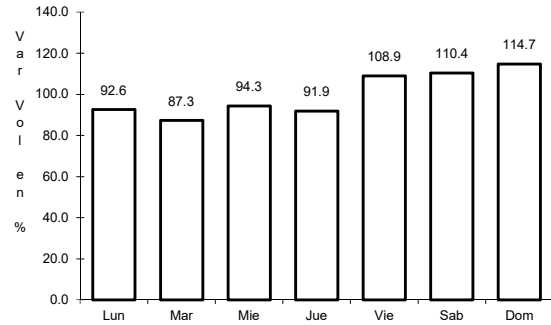


Km: 31.79 Tipo: 3 Sent: 0

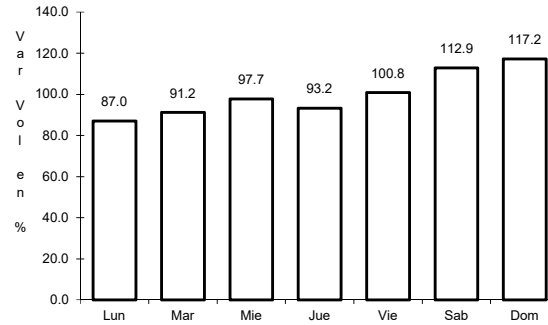
13 CARR: Ent. Tulancingo - Venta Grande (Cuota)

CLAVE: 00026

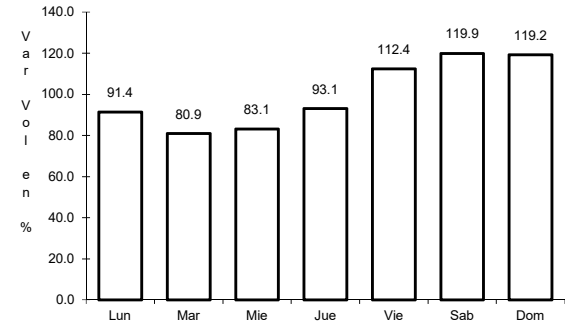
ruta: MEX-132D



Km: 7.80 Tipo: 1 Sent: 0



Km: 21.80 Tipo: 1 Sent: 0

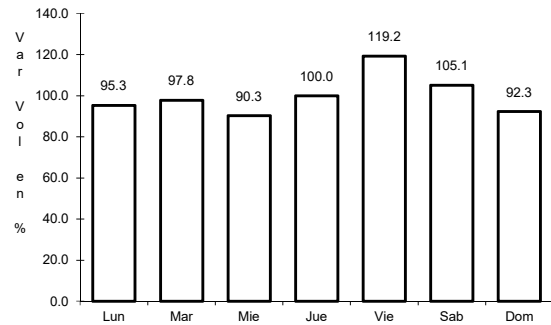


Km: 39.60 Tipo: 1 Sent: 0

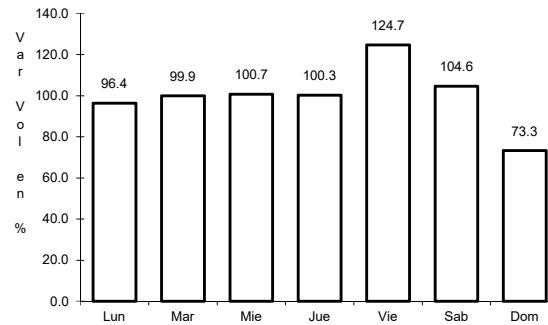
14 CARR: Libramiento Norte de la Ciudad de México (Cuota)

CLAVE: 0902

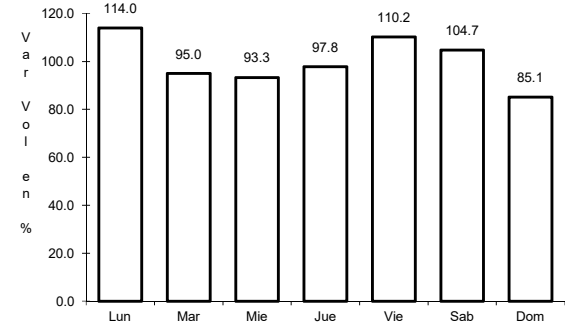
ruta: MEX-M40D



Km: 12.90 Tipo: 1 Sent: 1



Km: 12.90 Tipo: 1 Sent: 2

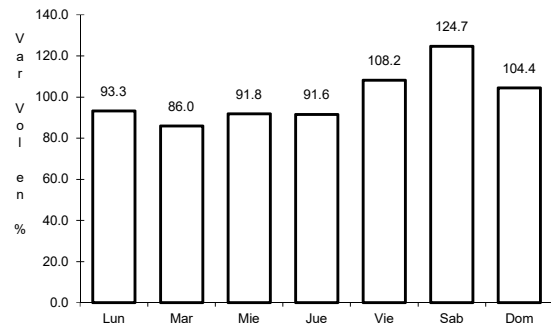


Km: 226.73 Tipo: 1 Sent: 1

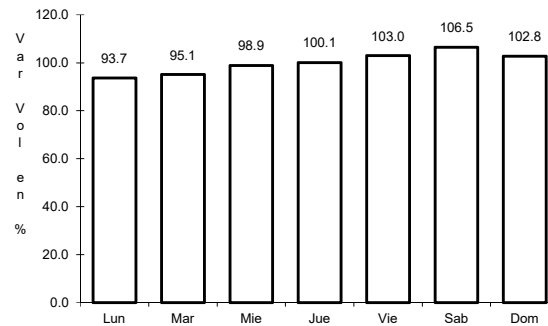
15 CARR: México - Pachuca (Cuota)

CLAVE: 00432

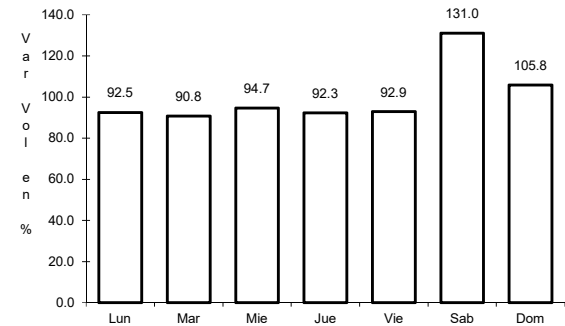
ruta: MEX-085D



Km: 25.00 Tipo: 3 Sent: 1



Km: 25.00 Tipo: 3 Sent: 2

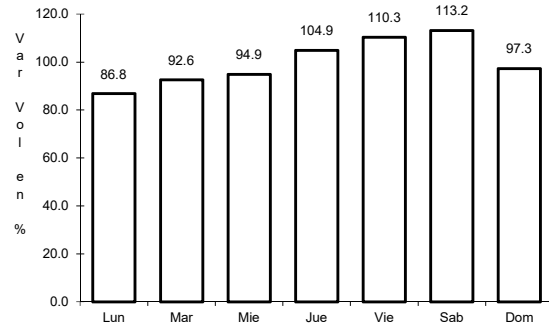


Km: 60.50 Tipo: 1 Sent: 1

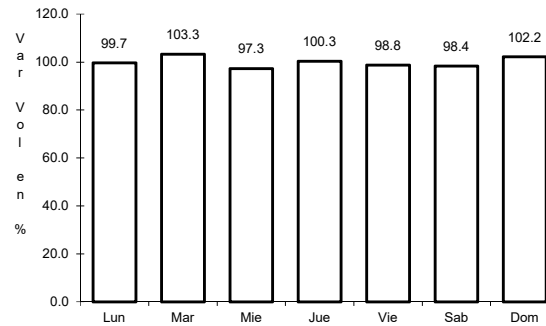
16 CARR: Tejocotal - Nuevo Necaxa (Cuota)

CLAVE: 00211

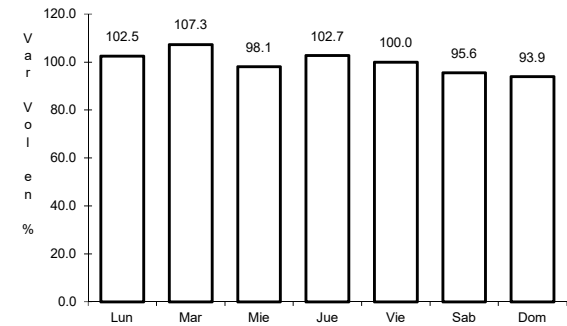
RUTA: MEX-132D



Km: 0.00 Tipo: 3 Sent: 0



Km: 17.00 Tipo: 1 Sent: 1

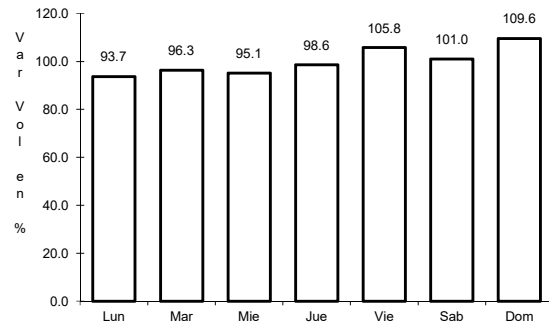


Km: 17.00 Tipo: 1 Sent: 2

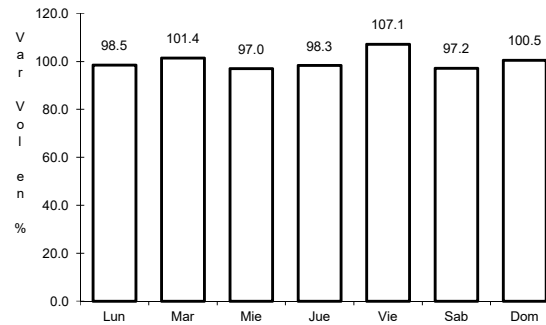
17 CARR: Tlaxco - Tejocotal (Cuota)

CLAVE: 00209

RUTA: MEX-119D



Km: 23.00 Tipo: 3 Sent: 0

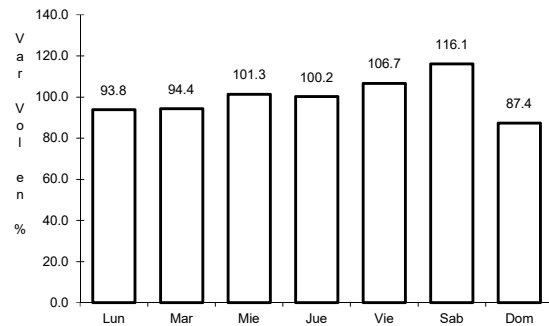


Km: 56.20 Tipo: 3 Sent: 0

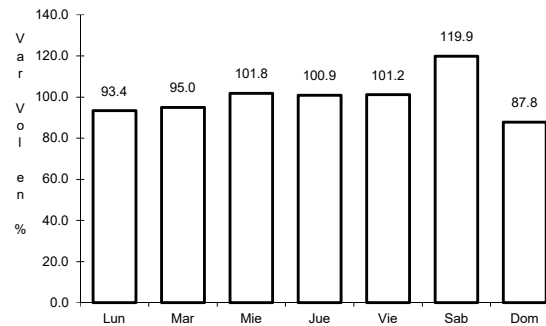
18 CARR: México - Querétaro (Cuota)

CLAVE: 00411

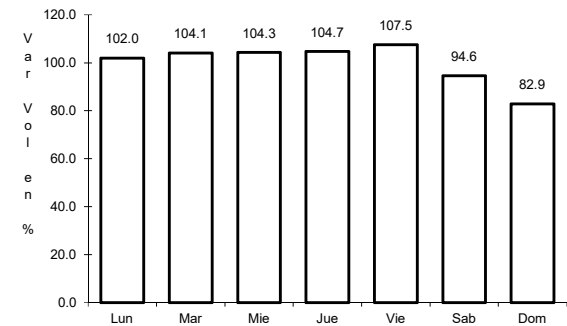
RUTA: MEX-057-MEX-057D



Km: 56.18 Tipo: 1 Sent: 1



Km: 56.18 Tipo: 1 Sent: 2

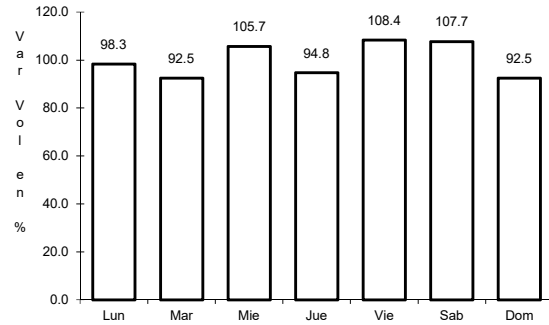


Km: 207.00 Tipo: 3 Sent: 1

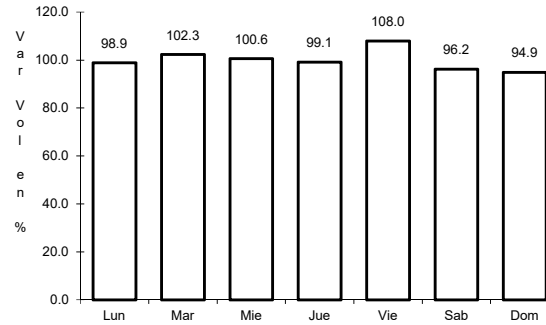
19 CARR: Actopan - Progreso

CLAVE: 13038

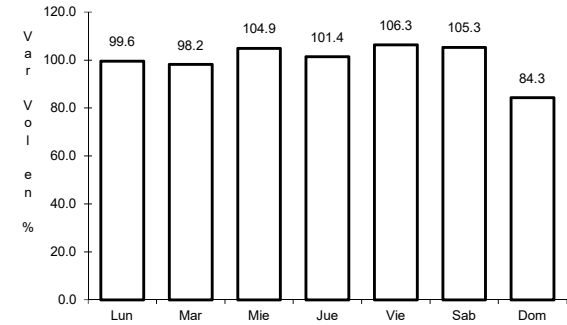
RUTA: HGO



Km: 0.00 Tipo: 3 Sent: 1



Km: 0.00 Tipo: 3 Sent: 2

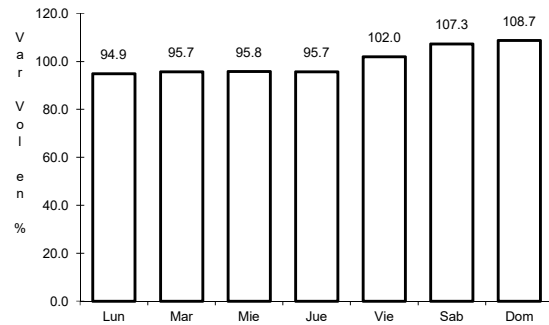


Km: 23.90 Tipo: 1 Sent: 1

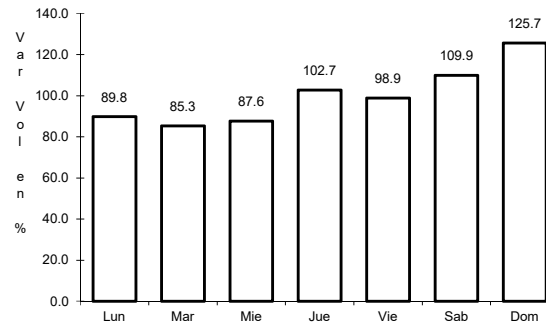
20 CARR: El Saucillo - Amealco

CLAVE: 13103

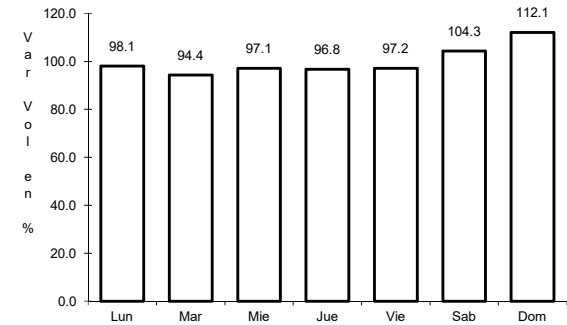
RUTA: HGO-103



Km: 0.00 Tipo: 3 Sent: 0



Km: 11.00 Tipo: 3 Sent: 0

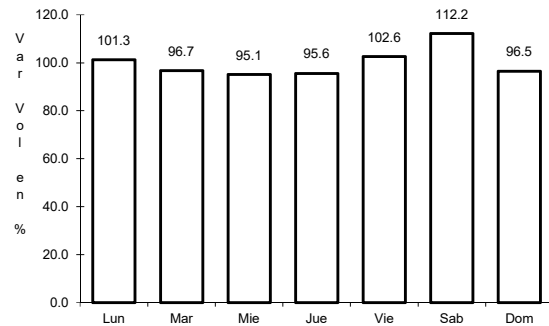


Km: 21.40 Tipo: 1 Sent: 0

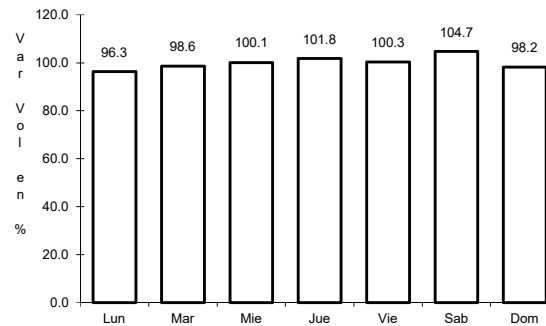
21 CARR: Ent. Emiliano Zapata - Cd. Sahagún

CLAVE: 13255

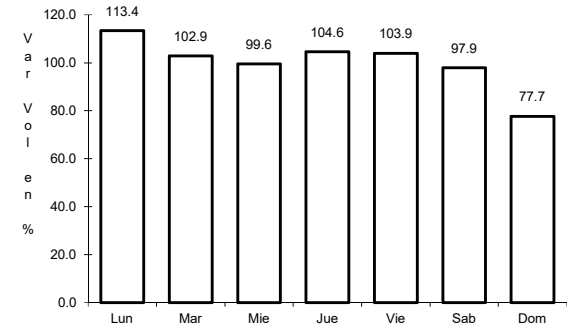
RUTA: HGO



Km: 2.70 Tipo: 1 Sent: 1



Km: 2.70 Tipo: 1 Sent: 2

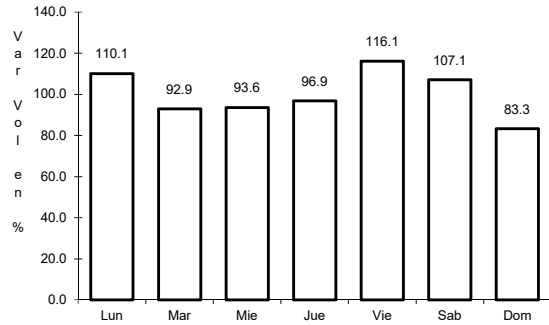


Km: 17.98 Tipo: 1 Sent: 1

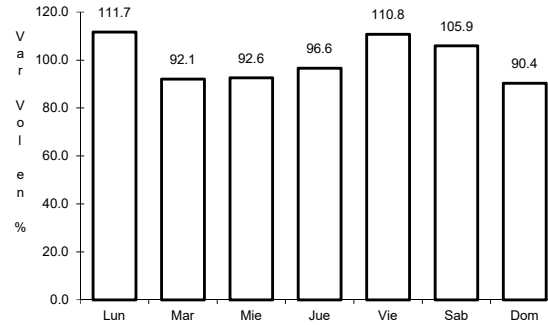
22 CARR: Ent. Tepeji del Río - Tlahuelilpan

CLAVE: 13017

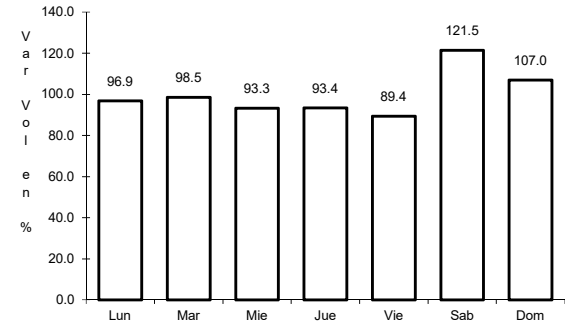
RUTA: HGO-017



Km: 3.00 Tipo: 3 Sent: 1



Km: 3.00 Tipo: 3 Sent: 2

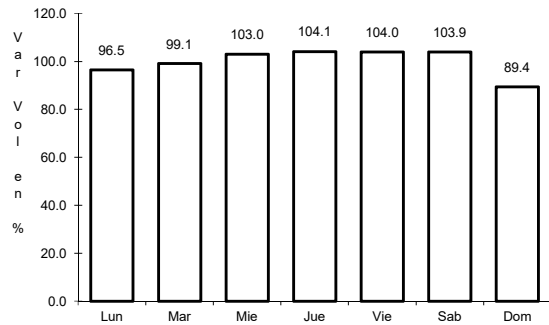


Km: 18.00 Tipo: 1 Sent: 0

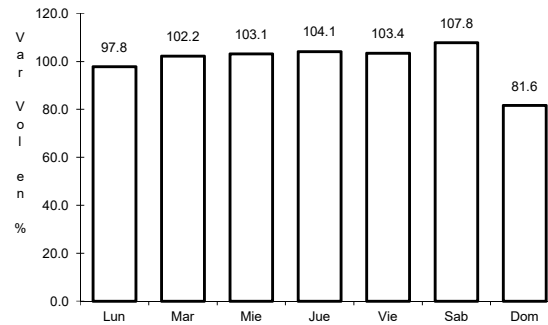
23 CARR: Ent. Tolman - Cd. Sahagún

CLAVE: 00119

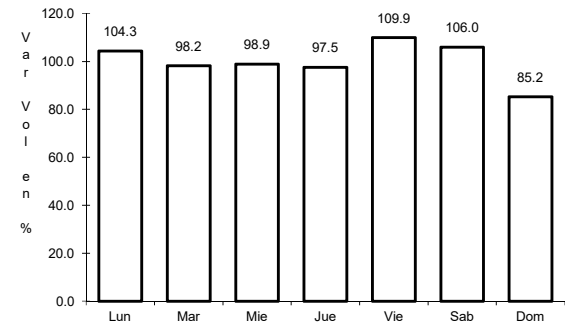
RUTA: EM-009-HGO



Km: 0.00 Tipo: 3 Sent: 0



Km: 21.00 Tipo: 3 Sent: 0

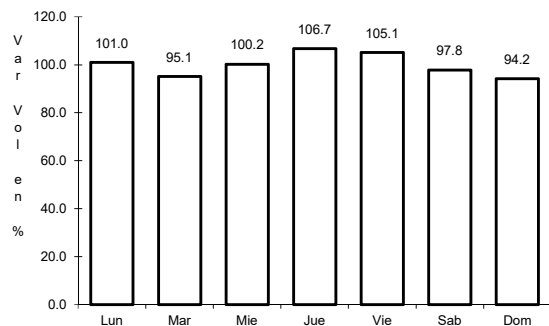


Km: 32.00 Tipo: 1 Sent: 0

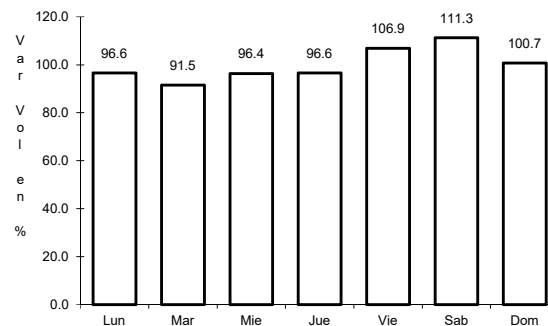
24 CARR: Francisco I. Madero - Tula de Allende

CLAVE: 13043

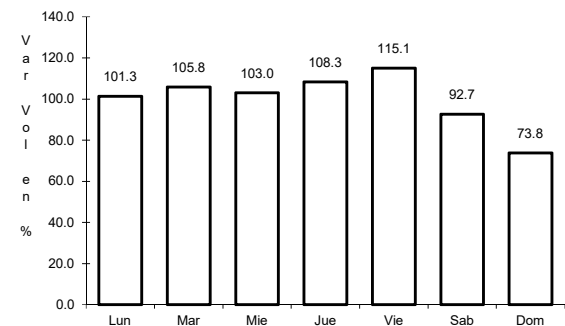
RUTA: HGO



Km: 0.00 Tipo: 3 Sent: 0



Km: 38.20 Tipo: 1 Sent: 0

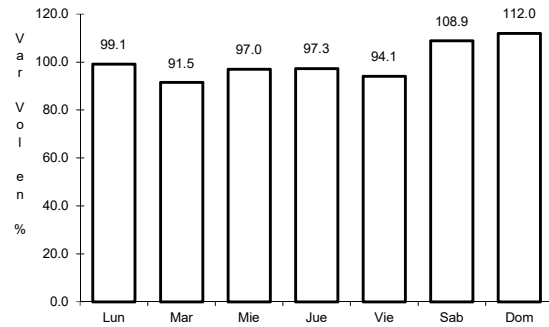


Km: 52.70 Tipo: 1 Sent: 0

25 CARR: Huichapan - Tecozautla

CLAVE: 13030

ruta: HGO-030



Km: 0.00

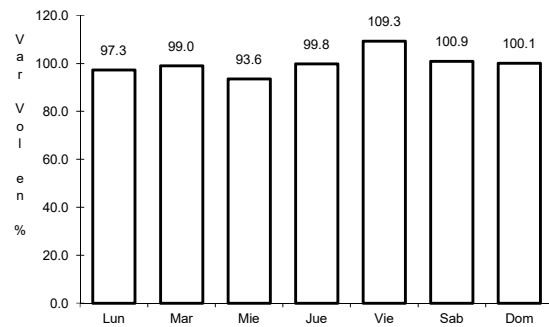
Tipo: 3

Sent: 0

26 CARR: Jilotepec - Maravillas

CLAVE: 00015

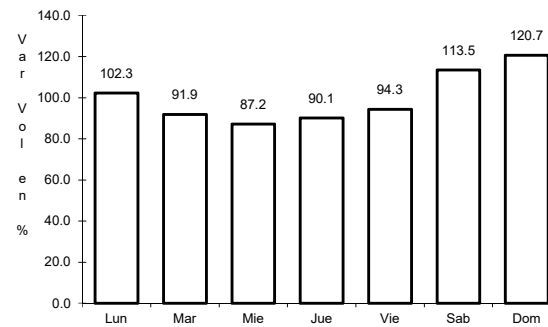
ruta: EM-HGO



Km: 0.00

Tipo: 3

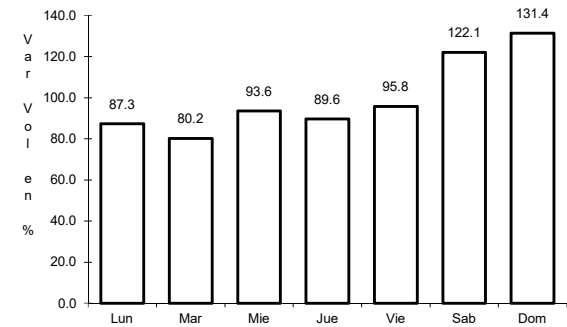
Sent: 0



Km: 21.30

Tipo: 1

Sent: 0



Km: 40.00

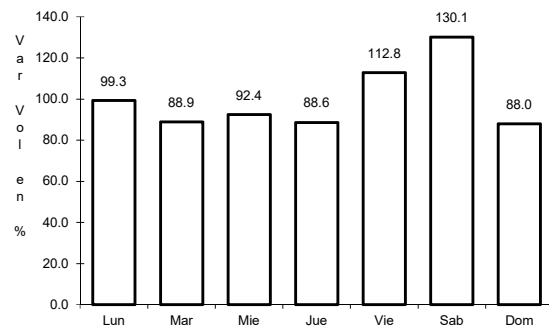
Tipo: 1

Sent: 0

27 CARR: Libramiento de Atotonilco El Grande

CLAVE: 13238

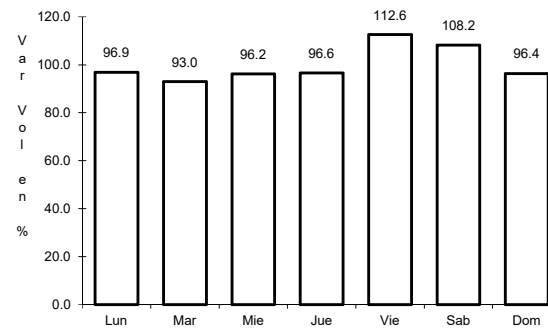
ruta: HGO



Km: 0.00

Tipo: 3

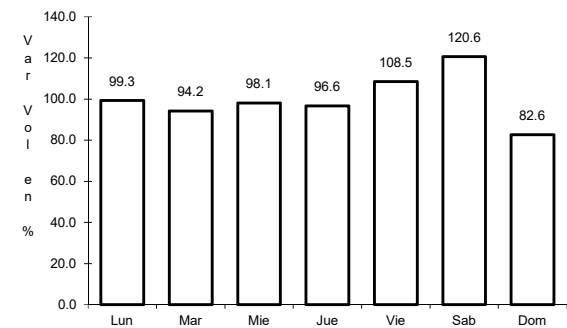
Sent: 1



Km: 0.00

Tipo: 3

Sent: 2



Km: 6.30

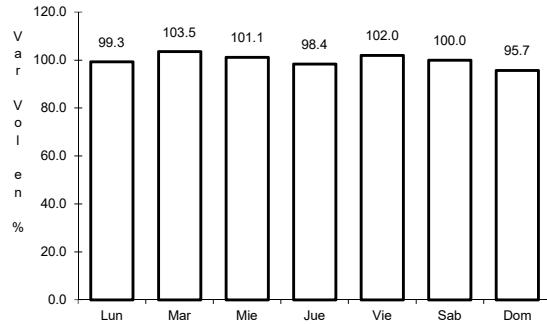
Tipo: 1

Sent: 1

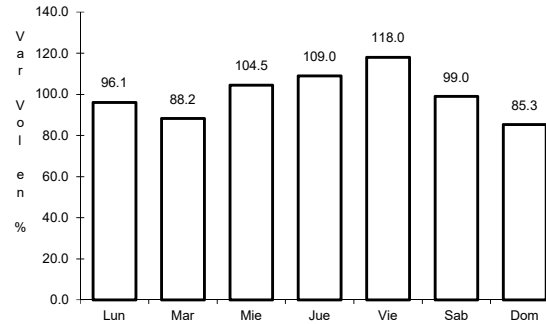
28 CARR: Lolotla - Atlapexco

CLAVE: 13238

RUTA: HGO



Km: 0.00 Tipo: 3 Sent: 0

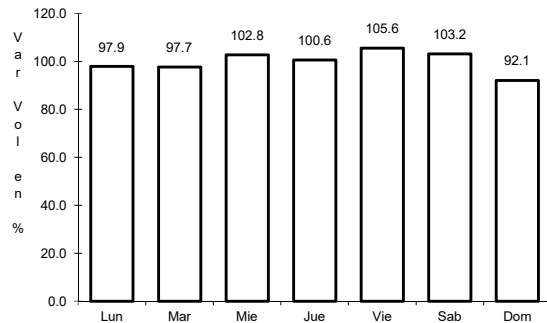


Km: 68.00 Tipo: 1 Sent: 0

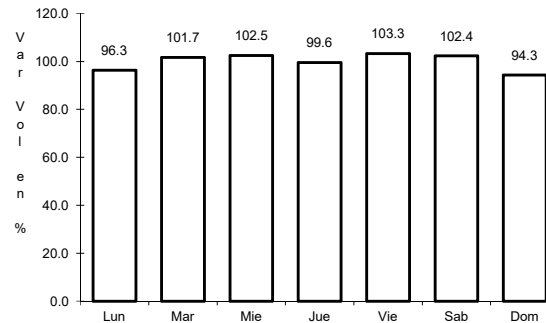
29 CARR: Los Reyes - El Tephé

CLAVE: 00021

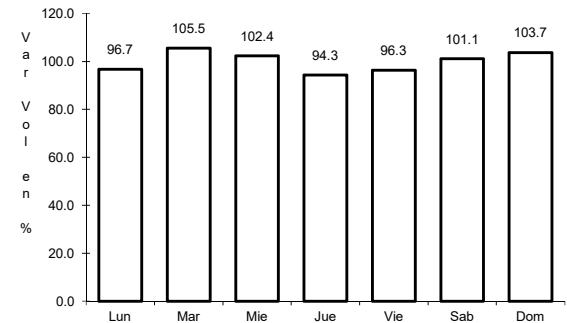
RUTA: EM-HGO



Km: 1.35 Tipo: 3 Sent: 1



Km: 1.35 Tipo: 3 Sent: 2

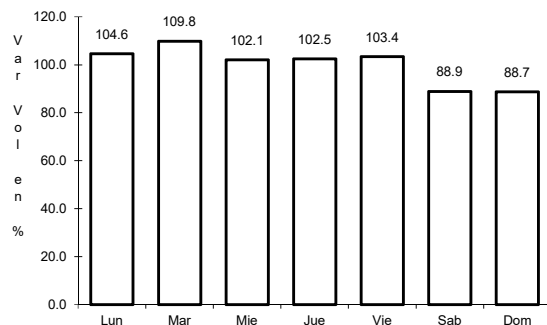


Km: 42.00 Tipo: 1 Sent: 0

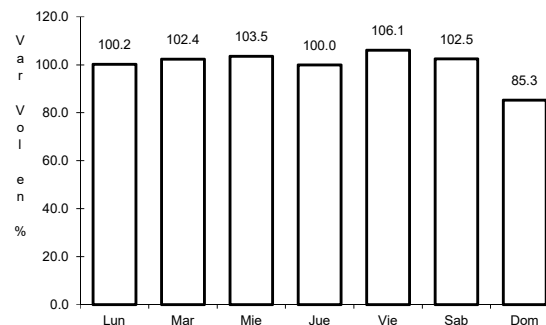
30 CARR: Otumba - Tizayuca

CLAVE: 00012

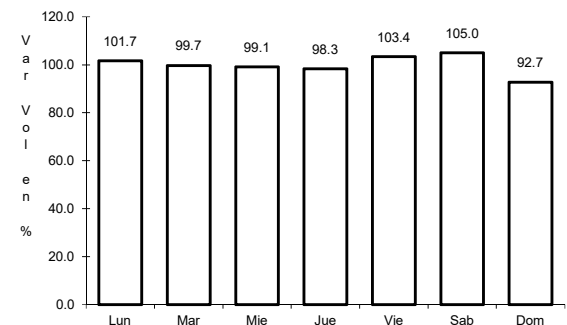
RUTA: EM-HGO



Km: 0.00 Tipo: 3 Sent: 0



Km: 37.10 Tipo: 1 Sent: 1

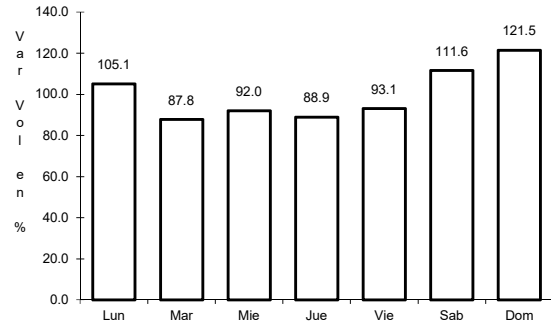


Km: 37.10 Tipo: 1 Sent: 2

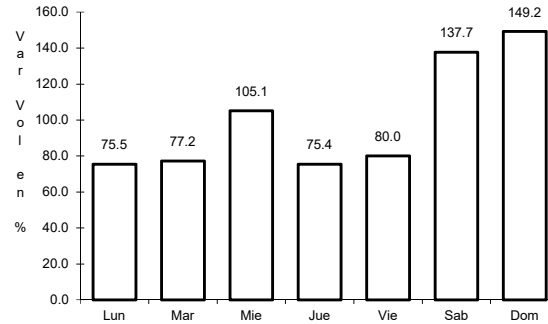
31 CARR: Ramal a El Chico

CLAVE: 13256

RUTA: HGO



Km: 0.00 Tipo: 3 Sent: 0

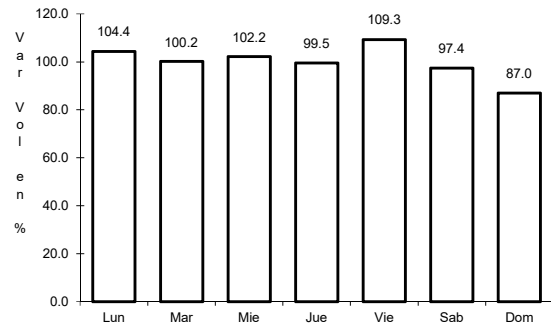


Km: 21.00 Tipo: 1 Sent: 0

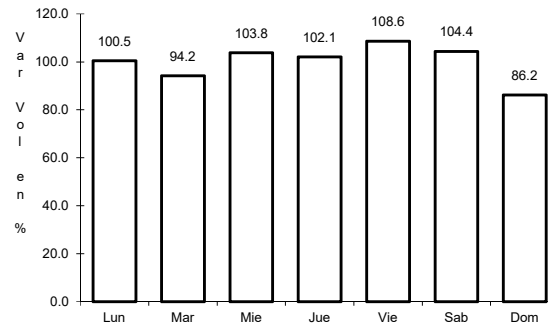
32 CARR: Ramal a Pachuca

CLAVE: 13254

RUTA: HGO



Km: 0.00 Tipo: 3 Sent: 1

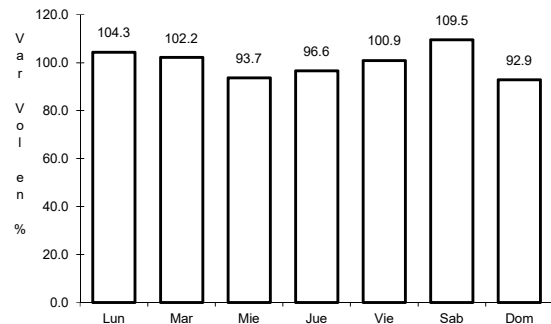


Km: 0.00 Tipo: 3 Sent: 2

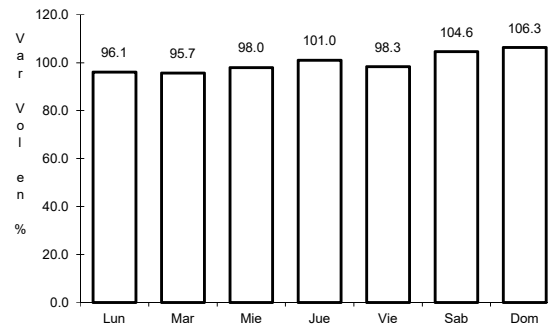
33 CARR: San Alejo - Huayacocotla

CLAVE: 00132

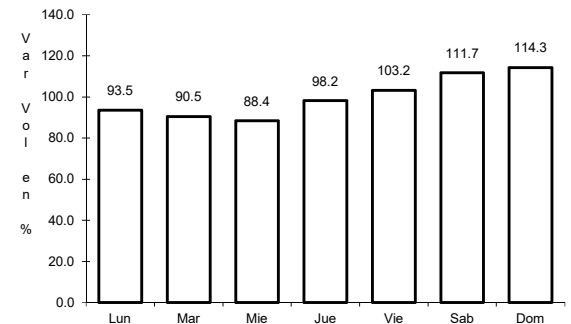
RUTA: HGO-051-VER-113



Km: 0.00 Tipo: 3 Sent: 0



Km: 29.48 Tipo: 3 Sent: 0

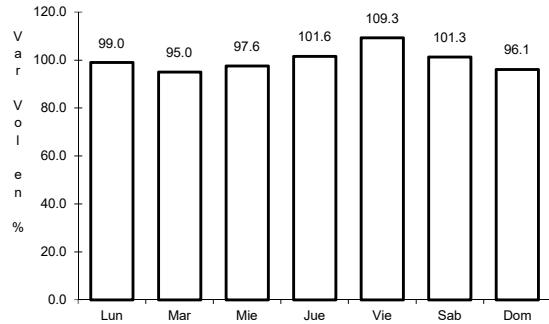


Km: 66.00 Tipo: 1 Sent: 0

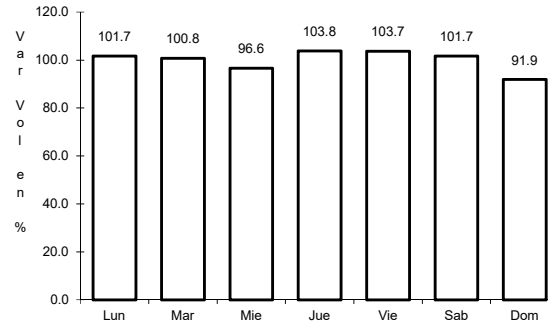
34 CARR: San Felipe Orizatlán - Huejutla de Reyes

CLAVE: 13258

ruta: HGO



Km: 0.00 Tipo: 3 Sent: 0

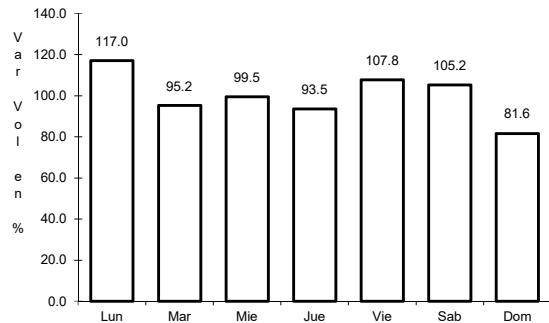


Km: 25.00 Tipo: 1 Sent: 0

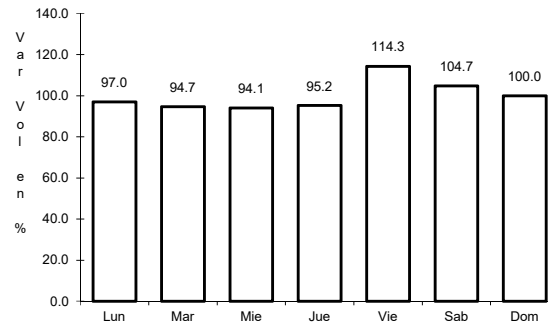
35 CARR: Santo Domingo - T. C. (México - Querétaro)

CLAVE: 00433

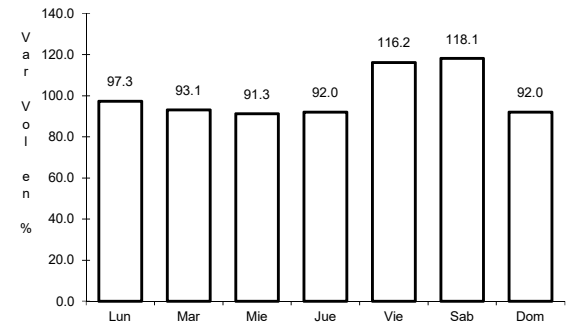
ruta: EM-011-HGO



Km: 0.00 Tipo: 3 Sent: 0



Km: 65.84 Tipo: 1 Sent: 1

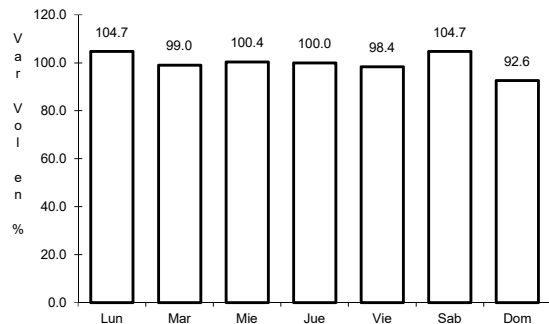


Km: 65.84 Tipo: 1 Sent: 2

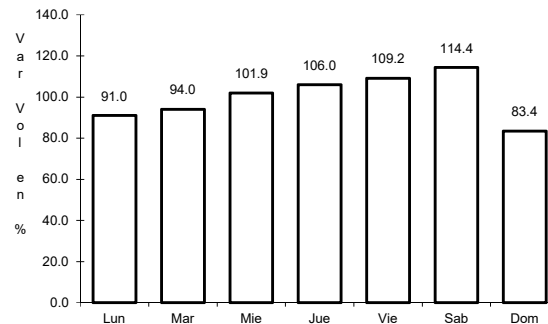
36 CARR: T. C. (Los Reyes - El Tephé) - Tizayuca

CLAVE: 00014

ruta: EM-HGO



Km: 0.00 Tipo: 3 Sent: 0

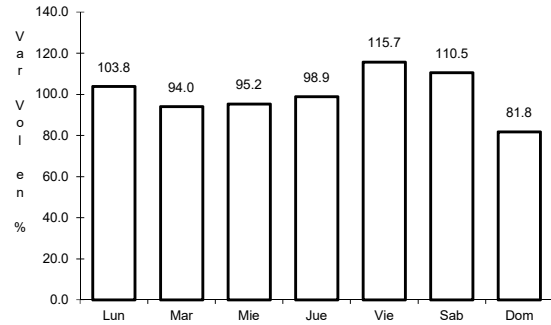


Km: 8.00 Tipo: 1 Sent: 0

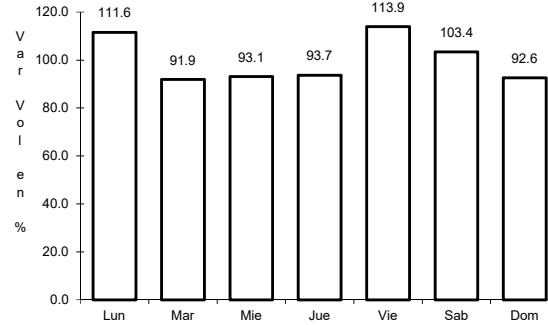
37 CARR: Tepeji del Río - T.C. (México - Querétaro)

CLAVE: 13104

RUTA: HGO



Km: 0.00 Tipo: 3 Sent: 0

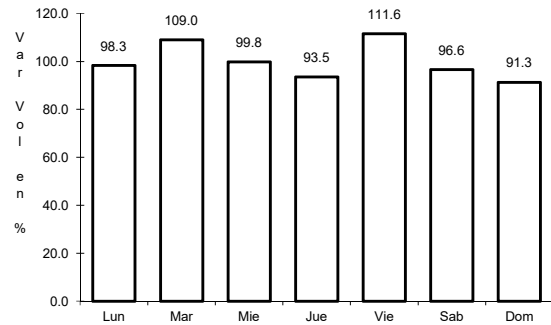


Km: 12.40 Tipo: 1 Sent: 0

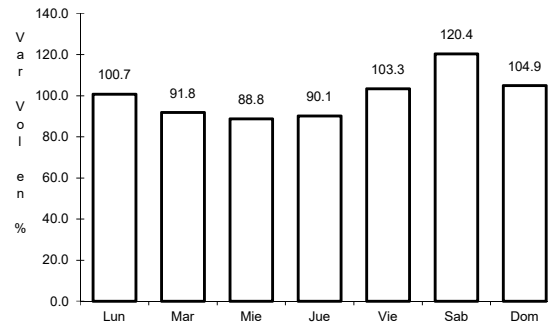
38 CARR: Tlahuelilpan - San Agustín Tlaxiaca

CLAVE: 13435

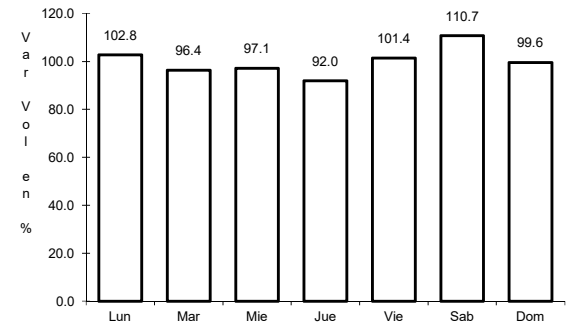
RUTA: HGO



Km: 0.00 Tipo: 3 Sent: 0



Km: 25.50 Tipo: 3 Sent: 0

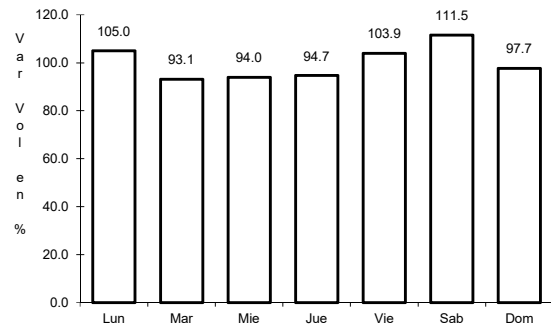


Km: 48.00 Tipo: 1 Sent: 0

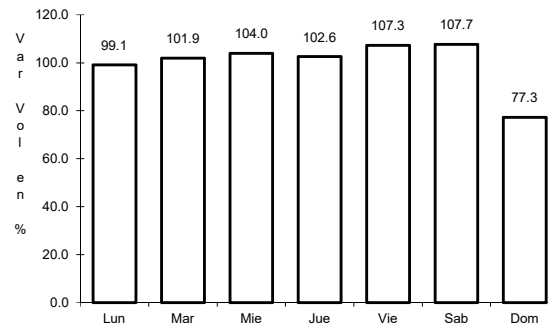
39 CARR: Calpulalpan - El Ocote

CLAVE: 00054

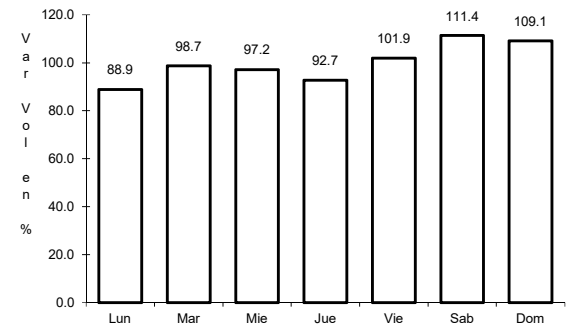
RUTA: MEX-HGO



Km: 0.00 Tipo: 3 Sent: 0



Km: 34.92 Tipo: 3 Sent: 0



Km: 70.44 Tipo: 1 Sent: 1

