

GUERRERO

---RED FEDERAL LIBRE---

1 Acapulco - Zihuatanejo	MEX-200
2 Cd. Altamirano - T. C. (Zihuatanejo - La Mira)	MEX-134
3 Chilpancingo - Acapulco	MEX-095
4 Chilpancingo - Chichihualco	MEX-095
5 Chilpancingo - Jilotepec	MEX-093
6 Cuernavaca - Chilpancingo	MEX-095
7 Ent. Alpuyecá - Grutas de Cacahuamilpa	MEX-166
8 Iguala - Cd. Altamirano	MEX-051
9 La Sabana - Puerto Marqués	MEX-200
10 Las Cruces - Pinotepa Nacional	MEX-200
11 Libramiento Norte de Acapulco	MEX-095
12 Milpillas - T. C. (Acapulco - Zihuatanejo)	MEX-196
13 Ramal a Aeropuerto Zihuatanejo	MEX-200
14 Ramal a La Unión	MEX-200
15 San Juan de Los Llanos - Ometepec	MEX-200
16 Tierra Colorada - Cruz Grande	MEX-198
17 Toluca - Cd. Altamirano	MEX-134
18 Zihuatanejo - La Mira	MEX-200

---RED FEDERAL DE CUOTA---

19 Cuernavaca - Acapulco (Cuota)	MEX-095D
20 Libramiento de Técpan (Cuota)	MEX-200D
21 Nueva Italia - Lázaro Cárdenas (Cuota)	MEX-037D
22 Puente de Ixtla - Iguala (Cuota)	MEX-091D
23 Rancho Viejo - Taxco (Cuota)	MEX-092D
24 Zacapalco - Rancho Viejo (Cuota)	MEX-092D

---RED ESTATAL LIBRE---

25 Acapulco - Aeropuerto Acapulco	GRO
26 Ent. Potrero - Lomas de Chapultepec	GRO
27 Las Petaquillas - Quechultenango	GRO
28 Pie de La Cuesta - Barra de Coyuca	GRO
29 Ramal a Cocula	GRO
30 T. C. (Iguala - Chilpancingo) - Atenango del Río	GRO-001
31 Taxco - Ixcateopan	GRO
32 Teloloapan - Apaxtla de Castrejón	GRO
33 Tlapa de Comonfort - Marquelia	GRO

---RED ESTATAL DE CUOTA---

34 Puerto Marqués - La Venta (Cuota)	GRO-D
--------------------------------------	-------

---CARRETERAS INTEGRADAS POR TRAMOS FEDERALES Y ESTATALES---

35 Toluca - Axixintla	EM-MEX-055
-----------------------	------------

GUERRERO

1 CARR: Acapulco - Zihuatanejo

CLAVE: 12072

RUTA: MEX-200

AÑO: 2018

LUGAR	ESTACION				CLASIFICACION VEHICULAR EN PORCIENTO										COORDENADAS					
	KM	TE	SC	TDPA	M	A	B	C2	C3	T3S2	T3S3	T3S2R4	OTROS	A	B	C	K'	D	LATITUD	LONGITUD
Acapulco	0.00																			
T. Izq. Pie de La Cuesta	10.37	1	0	20663	6.4	86.8	0.5	5.3	0.4	0.3	0.2	0.0	0.1	93.2	0.5	6.3	0.074	0.516	16.893775	-99.957769
T. Izq. Pie de La Cuesta	10.37	3	0	17143	6.1	86.0	0.9	5.5	0.5	0.5	0.4	0.0	0.1	92.1	0.9	7.0	0.074	0.513	16.902390	-99.962012
T. Der. Libramiento de Acapulco	21.37	3	0	9715	3.9	84.2	2.1	7.0	1.3	0.8	0.6	0.0	0.1	88.1	2.1	9.8	0.062	0.511	16.960997	-99.982092
Coyuca de Benítez	33.60	3	0	8433	6.6	82.1	2.2	6.3	1.3	0.8	0.6	0.0	0.1	88.7	2.2	9.1	0.076	0.500	17.010452	-100.099505
T. Der. Atoyac de Álvarez	77.85	3	0	12725	12.5	77.6	1.7	5.8	1.1	0.6	0.6	0.0	0.1	90.1	1.7	8.2	0.060	0.504	17.156332	-100.441302
T. C. Libramiento de Técpan (Cuota)	102.00	1	0	8582	5.6	80.7	2.7	6.9	1.6	1.2	0.9	0.1	0.3	86.3	2.7	11.0	0.060	0.516	17.190476	-100.615718
Técpan de Galeana	103.60	1	0	5832	9.6	80.7	2.6	5.8	0.7	0.2	0.3	0.0	0.1	90.3	2.6	7.1	0.080	0.504	17.201124	-100.626672
Técpan de Galeana	103.60	3	0	12237	8.4	82.8	1.5	5.2	0.7	0.4	0.4	0.3	0.3	91.2	1.5	7.3	0.072	0.573	17.233490	-100.633111
T. C. Libramiento de Técpan (Cuota)	110.20	3	0	8103	8.3	76.5	3.1	8.1	1.9	1.0	0.7	0.1	0.3	84.8	3.1	12.1	0.067	0.504	17.205259	-100.659115
Papanao	162.25	1	0	3850	8.2	71.3	5.4	7.5	2.4	2.2	1.8	0.6	0.6	79.5	5.4	15.1	0.074	0.500	17.318881	-101.044786
Petatán	206.30	1	0	5511	9.4	76.7	2.6	6.8	1.2	1.3	1.1	0.3	0.6	86.1	2.6	11.3	0.091	0.502	17.527665	-101.261060
Zihuatanejo	242.90	1	1	9361	2.5	86.9	1.5	6.1	0.8	0.8	0.6	0.5	0.3	89.4	1.5	9.1	0.079	0.510	17.646623	-101.517311
Zihuatanejo	242.90	1	2	9757	2.9	85.9	1.5	6.5	0.9	0.8	0.6	0.5	0.4	88.8	1.5	9.7	0.076	0.510	17.646502	-101.517324

2 CARR: Cd. Altamirano - T. C. (Zihuatanejo - La Mira)

CLAVE: 12422

RUTA: MEX-134

AÑO: 2018

LUGAR	ESTACION				CLASIFICACION VEHICULAR EN PORCIENTO										COORDENADAS					
	KM	TE	SC	TDPA	M	A	B	C2	C3	T3S2	T3S3	T3S2R4	OTROS	A	B	C	K'	D	LATITUD	LONGITUD
Cd. Altamirano	0.00	3	1	9005	8.2	86.8	0.2	2.6	0.2	0.9	0.6	0.2	0.3	95.0	0.2	4.8	0.070	0.502	18.333146	-100.689131
Cd. Altamirano	0.00	3	2	8938	8.1	86.5	0.2	2.9	0.2	0.9	0.7	0.2	0.3	94.6	0.2	5.2	0.070	0.502	18.333072	-100.689065
T. Der. Zirándaro	15.00	3	0	2558	3.6	87.2	0.4	5.2	0.5	1.8	0.4	0.4	0.5	90.8	0.4	8.8	0.073	0.507	18.318613	-100.785154
T. C. Zihuatanejo - La Mira	187.36	1	0	1110	5.3	78.6	0.6	10.3	2.5	1.7	1.0	0.0	0.0	83.9	0.6	15.5	0.074	0.518	17.735797	-101.595490

3 CARR: Chilpancingo - Acapulco

CLAVE: 12045

RUTA: MEX-095

AÑO: 2018

LUGAR	ESTACION				CLASIFICACION VEHICULAR EN PORCIENTO										COORDENADAS					
	KM	TE	SC	TDPA	M	A	B	C2	C3	T3S2	T3S3	T3S2R4	OTROS	A	B	C	K'	D	LATITUD	LONGITUD
Chilpancingo	0.00																			
T. C. Cuernavaca - Acapulco (Cuota) Central	4.20	1	1	17166	2.3	87.1	1.8	3.2	1.1	2.4	1.3	0.5	0.3	89.4	1.8	8.8	0.080	0.505	17.521387	-99.485059
T. C. Cuernavaca - Acapulco (Cuota) Lateral	4.20	1	1	12811	4.0	92.0	0.1	2.3	0.2	0.5	0.7	0.1	0.1	96.0	0.1	3.9	0.084	0.518	17.521331	-99.485130
T. C. Cuernavaca - Acapulco (Cuota) Lateral	4.20	1	2	13779	3.1	92.7	0.1	2.4	0.2	0.5	0.8	0.1	0.1	95.8	0.1	4.1	0.083	0.518	17.521486	-99.484914
T. C. Cuernavaca - Acapulco (Cuota) Central	4.20	1	2	16853	2.6	84.7	2.5	5.9	0.8	1.7	1.1	0.4	0.3	87.3	2.5	10.2	0.083	0.505	17.521421	-99.485010
T. C. Cuernavaca - Acapulco (Cuota)	4.20	3	1	16620	4.1	86.0	0.5	5.2	0.8	1.3	1.6	0.2	0.3	90.1	0.5	9.4	0.071	0.504	17.511578	-99.478612
T. C. Cuernavaca - Acapulco (Cuota)	4.20	3	2	16858	3.1	87.4	0.4	5.1	0.7	1.3	1.6	0.2	0.2	90.5	0.4	9.1	0.068	0.504	17.511650	-99.478536

GUERRERO

3 CARR: Chilpancingo - Acapulco

CLAVE: 12045

RUTA: MEX-095

AÑO: 2018

LUGAR	ESTACION				CLASIFICACION VEHICULAR EN PORCIENTO													COORDENADAS		
	KM	TE	SC	TDPA	M	A	B	C2	C3	T3S2	T3S3	T3S2R4	OTROS	A	B	C	K'	D	LATITUD	LONGITUD
Petaquillas	12.01	1	1	10562	3.0	88.8	0.4	4.1	0.7	1.5	1.3	0.1	0.1	91.8	0.4	7.8	0.075	0.508	17.492143	-99.463418
Petaquillas	12.01	1	2	10228	3.0	88.7	0.4	4.2	0.7	1.5	1.3	0.1	0.1	91.7	0.4	7.9	0.075	0.508	17.492210	-99.463327
Petaquillas	12.01	3	0	8509	3.6	87.7	0.4	4.1	1.2	1.8	1.0	0.1	0.1	91.3	0.4	8.3	0.067	0.507	17.478474	-99.458206
El Ocotito	50.68	1	0	7395	3.6	87.2	0.7	4.2	1.5	1.8	0.8	0.1	0.1	90.8	0.7	8.5	0.063	0.503	17.252998	-99.507643
El Ocotito	50.68	3	0	5564	4.3	85.6	1.1	4.0	2.1	1.8	0.9	0.1	0.1	89.9	1.1	9.0	0.071	0.501	17.231322	-99.521027
T. Izq. Tierra Colorada Inicia	61.18	1	0	4642	4.5	83.1	1.6	5.3	2.3	1.8	1.0	0.2	0.2	87.6	1.6	10.8	0.072	0.500	17.175956	-99.519703
T. Izq. Tierra Colorada Termina	65.14	3	0	4613	3.6	84.6	1.3	5.9	2.5	1.2	0.7	0.1	0.1	88.2	1.3	10.5	0.083	0.505	17.171540	-99.543719
X. C. Cuernavaca - Acapulco (Cuota)	70.10	3	0	3214	3.8	86.4	1.2	5.5	1.8	0.7	0.5	0.0	0.1	90.2	1.2	8.6	0.086	0.501	17.177635	-99.562608
T. Der. Pablo Galeana	88.15	3	0	2890	3.6	85.5	1.5	5.2	2.1	1.4	0.6	0.0	0.1	89.1	1.5	9.4	0.081	0.504	17.119392	-99.695962
T. Der. Libramiento Norte de Acapulco	112.80	1	0	11330	2.8	91.7	0.5	3.5	0.9	0.3	0.2	0.0	0.1	94.5	0.5	5.0	0.060	0.513	16.983888	-99.810771
T. Der. Libramiento Norte de Acapulco	112.80	3	0	13284	1.6	88.7	0.9	5.6	0.8	1.1	0.9	0.1	0.3	90.3	0.9	8.8	0.066	0.507	16.970412	-99.810857
Acapulco	132.67																			

4 CARR: Chilpancingo - Chichihualco

CLAVE: 12426

RUTA: MEX-095

AÑO: 2018

LUGAR	ESTACION				CLASIFICACION VEHICULAR EN PORCIENTO													COORDENADAS		
	KM	TE	SC	TDPA	M	A	B	C2	C3	T3S2	T3S3	T3S2R4	OTROS	A	B	C	K'	D	LATITUD	LONGITUD
T. C. Cuernavaca - Chilpancingo	0.00	3	0	4006	5.2	75.7	0.1	11.2	2.3	3.2	1.4	0.2	0.7	80.9	0.1	19.0	0.074	0.523	17.590912	-99.518458
T. Der. El Palmar	15.10	1	0	1526	4.5	88.5	0.1	4.8	0.7	1.1	0.2	0.0	0.1	93.0	0.1	6.9	0.075	0.502	17.643328	-99.602941
Chichihualco	26.30	1	0	1418	9.4	84.7	0.0	3.9	0.5	1.1	0.2	0.0	0.2	94.1	0.0	5.9	0.077	0.511	17.646347	-99.667458

5 CARR: Chilpancingo - Jilotepec

CLAVE: 12002

RUTA: MEX-093

AÑO: 2018

LUGAR	ESTACION				CLASIFICACION VEHICULAR EN PORCIENTO													COORDENADAS		
	KM	TE	SC	TDPA	M	A	B	C2	C3	T3S2	T3S3	T3S2R4	OTROS	A	B	C	K'	D	LATITUD	LONGITUD
Chilpancingo	0.00	3	0	5975	4.7	89.6	0.1	0.7	1.1	1.2	1.2	1.2	0.2	94.3	0.1	5.6	0.063	0.513	17.539981	-99.476764
T. Der. Tixtla de Guerrero	16.30	3	0	7594	11.5	80.8	0.2	2.4	0.3	3.1	1.1	0.1	0.5	92.3	0.2	7.5	0.079	0.505	17.579442	-99.391989
T. Izq. Almolonga	28.20	3	0	4271	2.1	87.2	0.8	5.4	1.1	2.0	0.8	0.3	0.3	89.3	0.8	9.9	0.074	0.511	17.603548	-99.309194
Chilapa de Álvarez	53.62	3	0	6754	9.3	79.8	0.2	4.3	0.5	4.0	0.9	0.3	0.7	89.1	0.2	10.7	0.065	0.507	17.597069	-99.146274
Tlapa de Comonfort	178.50	1	0	4767	5.4	83.4	0.2	5.8	0.8	2.7	0.9	0.2	0.6	88.8	0.2	11.0	0.066	0.504	17.541723	-98.628609
Huamuxtitlán	200.63	1	0	5304	9.5	77.4	1.6	5.2	1.3	3.4	1.1	0.2	0.3	86.9	1.6	11.5	0.063	0.502	17.792433	-98.561846
Xochihuehuatlán	216.80	1	0	1984	3.5	72.9	4.2	12.7	1.3	3.5	1.5	0.3	0.1	76.4	4.2	19.4	0.071	0.513	17.901645	-98.496986
Jilotepec	235.00	1	0	2129	2.6	76.4	3.7	10.2	1.9	3.5	1.4	0.2	0.1	79.0	3.7	17.3	0.077	0.509	17.960091	-98.480594

GUERRERO

6 CARR: Cuernavaca - Chilpancingo

CLAVE: 00042

RUTA: MEX-095

AÑO: 2018

LUGAR	ESTACION				CLASIFICACION VEHICULAR EN PORCIENTO										COORDENADAS					
	KM	TE	SC	TDPA	M	A	B	C2	C3	T3S2	T3S3	T3S2R4	OTROS	A	B	C	K'	D	LATITUD	LONGITUD
Cuernavaca	0.00																			
T. Izq. Chipitlán	4.85	1	1	19409	1.4	84.8	4.2	8.9	0.2	0.0	0.0	0.0	0.5	86.2	4.2	9.6	0.061	0.509	18.893753	-99.228535
T. Izq. Chipitlán	4.85	1	2	18750	1.3	83.4	4.7	9.9	0.2	0.0	0.0	0.0	0.5	84.7	4.7	10.6	0.065	0.509	18.893775	-99.228441
T. Izq. Chipitlán	4.85	3	1	9606	6.3	78.4	6.0	6.5	0.2	0.9	1.2	0.3	0.2	84.7	6.0	9.3	0.100	0.556	18.882243	-99.229647
T. Izq. Chipitlán	4.85	3	2	12050	5.5	78.0	6.1	7.3	0.2	1.0	1.4	0.3	0.2	83.5	6.1	10.4	0.081	0.556	18.882256	-99.229577
Temixco	9.80	1	1	10011	6.4	78.9	5.9	6.9	0.2	0.5	0.9	0.2	0.1	85.3	5.9	8.8	0.093	0.551	18.865573	-99.225973
Temixco	9.80	1	2	12284	5.5	78.8	6.2	7.4	0.2	0.6	1.0	0.2	0.1	84.3	6.2	9.5	0.078	0.551	18.865609	-99.225928
Temixco	9.80	3	1	18697	3.8	81.5	5.2	7.7	0.2	0.7	0.6	0.1	0.2	85.3	5.2	9.5	0.077	0.541	18.835118	-99.226011
Temixco	9.80	3	2	15895	4.7	78.6	6.0	8.7	0.2	0.7	0.8	0.1	0.2	83.3	6.0	10.7	0.069	0.541	18.835122	-99.225930
Acatlpa	12.43	1	1	15027	3.9	83.9	3.9	6.8	0.2	0.3	0.7	0.1	0.2	87.8	3.9	8.3	0.097	0.540	18.830111	-99.227436
Acatlpa	12.43	1	2	12780	4.8	81.4	4.7	7.6	0.2	0.3	0.7	0.1	0.2	86.2	4.7	9.1	0.088	0.540	18.830060	-99.227320
Acatlpa	12.43	3	1	12386	5.6	82.0	4.1	6.8	0.2	0.3	0.6	0.1	0.3	87.6	4.1	8.3	0.059	0.521	18.824837	-99.230181
Acatlpa	12.43	3	2	13481	7.1	79.0	4.5	7.9	0.2	0.3	0.6	0.1	0.3	86.1	4.5	9.4	0.060	0.521	18.824803	-99.230100
T. Izq. Emiliano Zapata	13.50	1	1	11296	5.6	82.7	3.6	5.8	0.2	0.8	0.6	0.2	0.5	88.3	3.6	8.1	0.066	0.521	18.822782	-99.231267
T. Izq. Emiliano Zapata	13.50	1	2	12294	7.2	80.2	3.8	6.4	0.2	0.8	0.7	0.2	0.5	87.4	3.8	8.8	0.068	0.521	18.822738	-99.231189
T. Izq. Emiliano Zapata	13.50	3	1	11090	3.8	87.3	2.8	4.3	0.5	0.4	0.5	0.2	0.2	91.1	2.8	6.1	0.096	0.520	18.817483	-99.233136
T. Izq. Emiliano Zapata	13.50	3	2	12010	5.5	84.5	3.3	4.9	0.5	0.4	0.5	0.2	0.2	90.0	3.3	6.7	0.091	0.520	18.817495	-99.233027
T. Izq. Xochitepec	16.05	1	1	7411	4.0	88.0	3.1	3.2	0.5	0.4	0.5	0.2	0.1	92.0	3.1	4.9	0.064	0.506	18.802094	-99.237558
T. Izq. Xochitepec	16.05	1	2	7601	5.0	86.6	3.2	3.5	0.5	0.4	0.5	0.2	0.1	91.6	3.2	5.2	0.070	0.506	18.802124	-99.237461
T. Izq. Xochitepec	16.05	3	1	5617	6.2	82.4	4.0	5.6	0.6	0.6	0.3	0.2	0.1	88.6	4.0	7.4	0.079	0.507	18.797234	-99.240939
T. Izq. Xochitepec	16.05	3	2	5766	5.8	81.5	4.4	6.5	0.6	0.6	0.3	0.2	0.1	87.3	4.4	8.3	0.133	0.507	18.797164	-99.240923
X. C. Alpuyecá - Jojutla	24.15	1	1	8953	6.0	82.2	4.0	5.3	0.5	0.9	0.9	0.1	0.1	88.2	4.0	7.8	0.075	0.505	18.739331	-99.255329
X. C. Alpuyecá - Jojutla	24.15	1	2	9122	5.9	81.1	4.4	5.8	0.7	1.0	0.9	0.1	0.1	87.0	4.4	8.6	0.106	0.505	18.739314	-99.255264
X. C. Alpuyecá - Jojutla	24.15	3	0	9738	4.2	83.9	2.4	6.2	1.4	1.2	0.5	0.1	0.1	88.1	2.4	9.5	0.096	0.504	18.730059	-99.264752
T. Der. Coatetelco	28.00	3	0	5976	4.1	83.3	2.4	5.9	2.0	1.6	0.4	0.2	0.1	87.4	2.4	10.2	0.068	0.507	18.710187	-99.273704
T. Der. Michapa	44.36	1	0	8713	2.5	83.8	2.3	4.8	1.3	3.6	1.0	0.1	0.6	86.3	2.3	11.4	0.065	0.511	18.612017	-99.355760
T. Izq. Cuernavaca - Iguala (Cuota)	46.93	1	0	6064	3.2	85.4	1.9	4.1	0.8	3.1	1.0	0.1	0.4	88.6	1.9	9.5	0.080	0.504	18.604799	-99.377236
T. Izq. Cuernavaca - Iguala (Cuota)	46.93	3	0	6385	3.8	86.1	3.0	3.8	0.2	2.0	0.5	0.1	0.5	89.9	3.0	7.1	0.054	0.507	18.603264	-99.381682
Huajintla	52.00	3	0	4166	4.5	88.0	1.0	3.7	0.2	1.4	0.4	0.1	0.7	92.5	1.0	6.5	0.066	0.538	18.612829	-99.430603
Lim. Edos. Term. Mor. Ppia. Gro.	57.10																			
T. Der. Ixtapan de La Sal (Axixintla)	63.47	1	0	2105	7.8	81.5	0.5	6.4	1.7	1.5	0.5	0.0	0.1	89.3	0.5	10.2	0.075	0.514	18.608541	-99.502700
Taxco	89.90	3	0	6904	4.1	86.6	0.4	3.9	0.4	2.5	1.2	0.2	0.7	90.7	0.4	8.9	0.067	0.505	18.534860	-99.609379
Iguala	119.63	1	0	7405	5.4	84.5	0.4	4.9	0.4	3.5	0.4	0.2	0.3	89.9	0.4	9.7	0.076	0.506	18.377617	-99.529197
T. Izq. Puente de Ixtla	123.98	3	0	17139	3.5	84.4	1.4	6.5	1.8	1.3	0.8	0.1	0.2	87.9	1.4	10.7	0.068	0.503	18.317298	-99.500164
T. Der. Sabana Grande	144.95	1	0	6741	1.4	81.2	2.7	5.8	3.5	3.5	1.3	0.2	0.4	82.6	2.7	14.7	0.066	0.507	18.176269	-99.551615

GUERRERO

6 CARR: Cuernavaca - Chilpancingo

CLAVE: 00042

RUTA: MEX-095

AÑO: 2018

LUGAR	ESTACION				CLASIFICACION VEHICULAR EN PORCIENTO													COORDENADAS		
	KM	TE	SC	TDPA	M	A	B	C2	C3	T3S2	T3S3	T3S2R4	OTROS	A	B	C	K'	D	LATITUD	LONGITUD
T. Der. Tecucontitlán	146.78	1	0	6720	1.7	80.3	2.7	6.8	3.7	3.0	1.3	0.2	0.3	82.0	2.7	15.3	0.072	0.503	18.130747	-99.555735
T. Der. Mezcala	173.14	1	0	5905	2.0	75.8	3.6	8.6	4.3	3.6	1.6	0.2	0.3	77.8	3.6	18.6	0.071	0.501	17.934640	-99.589567
T. Der. Filo de Caballo	189.89	3	0	5126	1.0	78.6	4.2	7.9	4.1	3.2	0.5	0.1	0.4	79.6	4.2	16.2	0.073	0.504	17.794774	-99.566958
Chilpancingo	223.70	1	1	21257	2.7	84.0	2.6	6.5	1.5	1.3	0.7	0.5	0.2	86.7	2.6	10.7	0.067	0.511	17.582066	-99.515231
Chilpancingo	223.70	1	2	22230	3.5	81.8	2.7	7.6	1.5	1.4	0.8	0.5	0.2	85.3	2.7	12.0	0.069	0.511	17.582089	-99.515089

7 CARR: Ent. Alpuyecá - Grutas de Cacahuamilpa

CLAVE: 00421

RUTA: MEX-166

AÑO: 2018

LUGAR	ESTACION				CLASIFICACION VEHICULAR EN PORCIENTO													COORDENADAS		
	KM	TE	SC	TDPA	M	A	B	C2	C3	T3S2	T3S3	T3S2R4	OTROS	A	B	C	K'	D	LATITUD	LONGITUD
T. C. Cuernavaca - Chilpancingo	0.00	3	0	7847	5.4	83.2	1.3	8.4	1.2	0.3	0.2	0.0	0.0	88.6	1.3	10.1	0.078	0.504	18.748714	-99.257422
T. Der. Zona Arq. de Xochicalco	8.40	3	1	3542	5.3	87.1	0.9	4.8	1.2	0.4	0.2	0.1	0.0	92.4	0.9	6.7	0.076	0.503	18.777877	-99.304925
T. Der. Zona Arq. de Xochicalco	8.40	3	2	3580	5.7	86.5	0.9	5.2	1.4	0.2	0.1	0.0	0.0	92.2	0.9	6.9	0.089	0.503	18.777785	-99.304945
Miacatlán	14.95	3	1	6844	9.0	87.4	0.3	2.9	0.2	0.1	0.1	0.0	0.0	96.4	0.3	3.3	0.068	0.502	18.752438	-99.364891
Miacatlán	14.95	3	2	6802	9.1	88.0	0.3	2.4	0.1	0.0	0.1	0.0	0.0	97.1	0.3	2.6	0.067	0.502	18.752397	-99.364810
Mazatepec	18.28	3	0	9765	4.3	91.1	0.6	3.6	0.1	0.1	0.2	0.0	0.0	95.4	0.6	4.0	0.084	0.500	18.721089	-99.364897
Tetecala	25.05	3	0	7412	7.2	89.1	0.6	2.6	0.2	0.1	0.2	0.0	0.0	96.3	0.6	3.1	0.070	0.503	18.728881	-99.405091
Coatlán del Río	29.80	3	0	4172	3.7	92.3	0.3	3.4	0.2	0.1	0.0	0.0	0.0	96.0	0.3	3.7	0.073	0.572	18.749002	-99.442921
Michapa	41.26	1	0	2866	9.1	82.6	0.6	3.1	0.8	1.9	1.9	0.0	0.0	91.7	0.6	7.7	0.068	0.503	18.708394	-99.473693
Lim. Edos. Term. Mor. Ppia. Gro.	42.40																			
T. C. Toluca - Axixintla	48.65																			

8 CARR: Iguala - Cd. Altamirano

CLAVE: 12195

RUTA: MEX-051

AÑO: 2018

LUGAR	ESTACION				CLASIFICACION VEHICULAR EN PORCIENTO													COORDENADAS		
	KM	TE	SC	TDPA	M	A	B	C2	C3	T3S2	T3S3	T3S2R4	OTROS	A	B	C	K'	D	LATITUD	LONGITUD
Iguala	0.00																			
T. Izq. Cocula	9.40	1	0	7200	4.2	81.0	1.3	8.1	0.9	3.4	0.6	0.1	0.4	85.2	1.3	13.5	0.073	0.509	18.326306	-99.597439
T. Izq. Cocula	9.40	3	0	3857	2.1	83.4	2.3	6.3	1.5	2.8	1.1	0.1	0.4	85.5	2.3	12.2	0.071	0.502	18.322290	-99.608283
T. Izq. Teloloapan	63.99	1	0	3828	3.1	82.4	1.9	7.4	1.2	2.9	0.7	0.1	0.3	85.5	1.9	12.6	0.084	0.505	18.354182	-99.847564
T. Izq. Almoloya	116.60	1	0	1321	3.2	75.7	5.1	8.3	1.9	4.0	1.1	0.6	0.1	78.9	5.1	16.0	0.070	0.516	18.375438	-100.172761
T. Izq. Arcelia	131.98	3	0	5537	18.3	71.2	1.3	5.4	0.5	2.6	0.5	0.0	0.2	89.5	1.3	9.2	0.074	0.542	18.322605	-100.298225
Cd. Altamirano	184.55	1	1	8749	13.4	81.3	0.5	2.2	0.2	1.3	0.8	0.0	0.3	94.7	0.5	4.8	0.093	0.510	18.347764	-100.658406
Cd. Altamirano	184.55	1	2	8392	13.9	80.5	0.4	2.4	0.2	1.5	0.8	0.0	0.3	94.4	0.4	5.2	0.084	0.510	18.347672	-100.658465

GUERRERO

9 CARR: La Sabana - Puerto Marqués

CLAVE: 12291

RUTA: MEX-200

AÑO: 2018

LUGAR	ESTACION				CLASIFICACION VEHICULAR EN PORCIENTO										COORDENADAS					
	KM	TE	SC	TDPA	M	A	B	C2	C3	T3S2	T3S3	T3S2R4	OTROS	A	B	C	K'	D	LATITUD	LONGITUD
T. C. Las Cruces - Pinotepa Nacional	0.00	3	1	16103	3.8	90.2	0.6	3.9	0.5	0.6	0.2	0.1	0.1	94.0	0.6	5.4	0.073	0.514	16.849703	-99.811401
T. C. Las Cruces - Pinotepa Nacional	0.00	3	2	15225	3.8	89.7	0.7	4.3	0.6	0.4	0.3	0.1	0.1	93.5	0.7	5.8	0.064	0.514	16.849701	-99.811290
X. C. Acapulco - Aeropuerto Acapulco	7.20	1	1	19116	3.9	91.3	0.3	3.4	0.3	0.3	0.3	0.1	0.1	95.2	0.3	4.5	0.097	0.505	16.808922	-99.820912
X. C. Acapulco - Aeropuerto Acapulco	7.20	1	2	18708	3.9	90.8	0.3	3.7	0.4	0.3	0.4	0.1	0.1	94.7	0.3	5.0	0.087	0.505	16.808821	-99.820833
Puerto Marqués	8.70																			

10 CARR: Las Cruces - Pinotepa Nacional

CLAVE: 00073

RUTA: MEX-200

AÑO: 2018

LUGAR	ESTACION				CLASIFICACION VEHICULAR EN PORCIENTO										COORDENADAS					
	KM	TE	SC	TDPA	M	A	B	C2	C3	T3S2	T3S3	T3S2R4	OTROS	A	B	C	K'	D	LATITUD	LONGITUD
T. C. Chilpancingo - Acapulco	0.00	3	1	19165	5.5	89.5	0.3	2.0	0.7	0.6	0.6	0.2	0.6	95.0	0.3	4.7	0.065	0.523	16.885694	-99.834091
T. C. Chilpancingo - Acapulco	0.00	3	2	17493	4.3	89.4	0.5	3.0	0.6	0.6	0.8	0.2	0.6	93.7	0.5	5.8	0.067	0.523	16.885818	-99.834093
T. Der. Puerto Marqués	4.62	1	1	19731	4.5	89.4	0.3	3.7	0.5	0.6	0.6	0.2	0.2	93.9	0.3	5.8	0.077	0.502	16.867784	-99.811136
T. Der. Puerto Marqués	4.62	1	2	19877	4.6	88.5	0.5	4.3	0.6	0.6	0.6	0.2	0.1	93.1	0.5	6.4	0.069	0.502	16.867810	-99.811002
T. Der. Puerto Marqués	4.62	3	0	16044	5.2	87.4	0.7	4.3	1.1	0.6	0.5	0.1	0.1	92.6	0.7	6.7	0.068	0.510	16.852316	-99.798394
X. C. Puerto Marqués - La Venta (Cuota)	11.70	1	1	4265	5.2	84.8	1.3	5.4	1.0	1.1	0.7	0.3	0.2	90.0	1.3	8.7	0.075	0.509	16.831169	-99.771680
X. C. Puerto Marqués - La Venta (Cuota)	11.70	1	2	4111	5.0	84.4	1.1	5.5	1.3	1.3	0.8	0.5	0.1	89.4	1.1	9.5	0.077	0.509	16.831259	-99.771679
X. C. Puerto Marqués - La Venta (Cuota)	11.70	3	1	5309	4.7	83.7	1.8	6.1	1.5	1.1	0.9	0.1	0.1	88.4	1.8	9.8	0.063	0.501	16.830367	-99.754887
X. C. Puerto Marqués - La Venta (Cuota)	11.70	3	2	5329	4.8	83.8	1.7	6.2	1.3	1.3	0.7	0.1	0.1	88.6	1.7	9.7	0.064	0.501	16.830458	-99.754884
San Marcos	58.90	1	0	6078	3.1	82.8	1.6	7.2	1.6	2.6	0.9	0.1	0.1	85.9	1.6	12.5	0.065	0.501	16.779713	-99.410983
Nexpa	84.96	3	0	5212	2.6	82.6	1.9	7.0	1.8	2.8	1.0	0.2	0.1	85.2	1.9	12.9	0.070	0.510	16.780062	-99.199825
T. Izq. Copala (1º Acceso)	117.50	1	0	6953	3.2	83.9	1.8	7.7	1.1	1.4	0.7	0.1	0.1	87.1	1.8	11.1	0.073	0.508	16.611618	-98.995049
T. Izq. Copala (1º Acceso)	117.50	3	0	6391	2.0	84.5	1.6	7.4	1.8	1.9	0.6	0.1	0.1	86.5	1.6	11.9	0.072	0.502	16.603441	-98.966388
T. Izq. Ometepec	175.88	1	0	5309	3.1	82.1	1.8	8.3	2.0	1.9	0.6	0.1	0.1	85.2	1.8	13.0	0.068	0.503	16.655323	-98.503100
Cuajinicuilapa	200.60	3	0	2781	3.9	81.6	1.7	8.0	2.0	2.0	0.6	0.1	0.1	85.5	1.7	12.8	0.059	0.516	16.462082	-98.393086
Lim. Edos. Term. Gro. Ppia. Oax.	207.80																			
T. Izq. San Pedro Orizaba	215.00	3	0	2243	3.1	78.1	2.9	6.7	3.5	3.7	1.3	0.4	0.3	81.2	2.9	15.9	0.067	0.504	16.441556	-98.339402
T. Izq. Tlaxiaco	245.47	1	0	3652	5.3	76.8	2.2	7.8	1.9	3.8	1.2	0.5	0.5	82.1	2.2	15.7	0.078	0.507	16.379217	-98.093922
T. Izq. Tlaxiaco	245.47	3	0	6924	5.0	77.7	2.1	6.4	1.7	3.9	2.0	0.6	0.6	82.7	2.1	15.2	0.062	0.518	16.376662	-98.091936
Pinotepa Nacional	252.50																			

GUERRERO

11 CARR: Libramiento Norte de Acapulco

CLAVE: 12421

RUTA: MEX-095

AÑO: 2018

LUGAR	ESTACION				CLASIFICACION VEHICULAR EN PORCIENTO										COORDENADAS					
	KM	TE	SC	TDPA	M	A	B	C2	C3	T3S2	T3S3	T3S2R4	OTROS	A	B	C	K'	D	LATITUD	LONGITUD
T. C. Chilpancingo - Acapulco	0.00	3	0	5192	2.6	73.1	2.7	14.8	3.3	2.1	1.2	0.2	0.0	75.7	2.7	21.6	0.063	0.503	16.982208	-99.820482
T. Der. Pelillo	6.40	3	0	4260	2.1	76.3	2.6	11.6	4.1	2.2	1.0	0.1	0.0	78.4	2.6	19.0	0.080	0.534	16.978997	-99.867376
T. C. Acapulco - Zihuatanejo	21.10	1	0	5756	1.5	85.8	2.0	6.5	1.9	1.4	0.9	0.0	0.0	87.3	2.0	10.7	0.060	0.500	16.964975	-99.973172

12 CARR: Milpillas - T. C. (Acapulco - Zihuatanejo)

CLAVE: 12012

RUTA: MEX-196

AÑO: 2018

LUGAR	ESTACION				CLASIFICACION VEHICULAR EN PORCIENTO										COORDENADAS					
	KM	TE	SC	TDPA	M	A	B	C2	C3	T3S2	T3S3	T3S2R4	OTROS	A	B	C	K'	D	LATITUD	LONGITUD
T. C. Cuernavaca - Chilpancingo	0.00	3	0	1394	1.8	81.5	0.6	12.2	2.4	0.8	0.5	0.0	0.2	83.3	0.6	16.1	0.077	0.519	17.799426	-99.566634
Los Morros	45.07	1	0	1117	1.8	83.9	0.3	9.5	3.1	0.8	0.6	0.0	0.0	85.7	0.3	14.0	0.071	0.548	17.694009	-99.802723
Atoyac de Álvarez	233.50	1	0	1311	2.1	89.5	0.2	6.3	1.0	0.7	0.0	0.0	0.2	91.6	0.2	8.2	0.075	0.507	17.217489	-100.425366
T. C. Acapulco - Zihuatanejo	237.00	1	1	6140	0.2	94.4	0.3	3.9	0.4	0.5	0.2	0.0	0.1	94.6	0.3	5.1	0.064	0.501	17.167425	-100.434295
T. C. Acapulco - Zihuatanejo	237.00	1	2	6127	0.2	93.8	0.3	4.4	0.4	0.6	0.2	0.0	0.1	94.0	0.3	5.7	0.066	0.501	17.167433	-100.434176

13 CARR: Ramal a Aeropuerto Zihuatanejo

CLAVE: 12423

RUTA: MEX-200

AÑO: 2018

LUGAR	ESTACION				CLASIFICACION VEHICULAR EN PORCIENTO										COORDENADAS					
	KM	TE	SC	TDPA	M	A	B	C2	C3	T3S2	T3S3	T3S2R4	OTROS	A	B	C	K'	D	LATITUD	LONGITUD
T. C. Acapulco - Zihuatanejo	0.00	3	0	4413	5.5	85.4	2.2	3.9	0.5	0.8	0.6	0.4	0.7	90.9	2.2	6.9	0.062	0.518	17.618083	-101.462783
Aeropuerto	2.00																			

14 CARR: Ramal a La Unión

CLAVE:

RUTA: MEX-200

AÑO: 2018

LUGAR	ESTACION				CLASIFICACION VEHICULAR EN PORCIENTO										COORDENADAS					
	KM	TE	SC	TDPA	M	A	B	C2	C3	T3S2	T3S3	T3S2R4	OTROS	A	B	C	K'	D	LATITUD	LONGITUD
T. C. Zihuatanejo - La Mira	0.00	3	0	2438	3.4	79.9	3.0	8.6	1.3	1.1	0.8	0.6	1.3	83.3	3.0	13.7	0.084	0.500	17.948617	-101.820973
La Unión	6.10																			

15 CARR: San Juan de Los Llanos - Ometepec

CLAVE: 12011

RUTA: MEX-200

AÑO: 2018

LUGAR	ESTACION				CLASIFICACION VEHICULAR EN PORCIENTO										COORDENADAS					
	KM	TE	SC	TDPA	M	A	B	C2	C3	T3S2	T3S3	T3S2R4	OTROS	A	B	C	K'	D	LATITUD	LONGITUD
T. C. Las Cruces - Pinotepa Nacional	0.00	3	0	6132	3.2	87.1	0.7	5.2	0.7	2.1	0.7	0.1	0.2	90.3	0.7	9.0	0.076	0.518	16.661143	-98.497696
Ometepec	15.94	1	1	3931	6.7	86.3	0.5	5.2	0.5	0.5	0.2	0.0	0.1	93.0	0.5	6.5	0.066	0.521	16.687589	-98.437364
Ometepec	15.94	1	2	4267	6.3	86.4	0.4	5.4	0.6	0.6	0.2	0.0	0.1	92.7	0.4	6.9	0.075	0.521	16.687645	-98.437403

GUERRERO

16 CARR: Tierra Colorada - Cruz Grande

CLAVE: 12420

RUTA: MEX-198

AÑO: 2018

LUGAR	ESTACION				CLASIFICACION VEHICULAR EN PORCIENTO										COORDENADAS					
	KM	TE	SC	TDPA	M	A	B	C2	C3	T3S2	T3S3	T3S2R4	OTROS	A	B	C	K'	D	LATITUD	LONGITUD
Tierra Colorada	0.00	3	0	2578	4.2	80.1	1.6	7.7	3.0	2.0	0.9	0.1	0.4	84.3	1.6	14.1	0.080	0.503	17.149641	-99.530746
Tecoanapa	61.00	1	0	3281	4.2	82.2	1.4	7.4	1.8	2.2	0.5	0.1	0.2	86.4	1.4	12.2	0.085	0.523	16.985758	-99.265175
Ayutla de Los Libres	82.00	1	0	4987	4.1	84.7	1.2	6.0	1.1	2.1	0.5	0.1	0.2	88.8	1.2	10.0	0.074	0.507	16.978186	-99.111904
Ayutla de Los Libres	82.00	3	0	4374	4.8	83.3	1.3	6.0	1.5	2.3	0.4	0.1	0.3	88.1	1.3	10.6	0.069	0.504	16.947212	-99.104307
Cruz Grande	113.80	1	0	2400	6.2	82.2	1.6	7.4	1.8	0.5	0.2	0.0	0.1	88.4	1.6	10.0	0.077	0.503	16.737699	-99.130816
T. C. Las Cruces - Pinotepa Nacional	114.80																			

17 CARR: Toluca - Cd. Altamirano

CLAVE: 00020

RUTA: MEX-134

AÑO: 2018

LUGAR	ESTACION				CLASIFICACION VEHICULAR EN PORCIENTO										COORDENADAS					
	KM	TE	SC	TDPA	M	A	B	C2	C3	T3S2	T3S3	T3S2R4	OTROS	A	B	C	K'	D	LATITUD	LONGITUD
T. C. Toluca - Axixintla	0.00																			
T. Izq. Capultitlán	1.78	3	1	19567	1.4	92.4	0.4	4.0	0.8	0.5	0.3	0.1	0.1	93.8	0.4	5.8	0.084	0.510	19.256624	-99.669245
T. Izq. Capultitlán	1.78	3	2	20359	1.5	91.6	0.5	4.6	0.7	0.5	0.4	0.1	0.1	93.1	0.5	6.4	0.082	0.510	19.256392	-99.669220
T. Der. Zinacatepec	10.21	3	1	15963	0.5	89.5	1.7	5.1	0.7	1.3	1.0	0.0	0.2	90.0	1.7	8.3	0.073	0.500	19.251881	-99.747704
T. Der. Zinacatepec	10.21	3	2	15963	0.6	88.5	1.5	6.2	0.9	1.1	1.0	0.0	0.2	89.1	1.5	9.4	0.078	0.500	19.251808	-99.747697
T. Izq. Sultepec	18.72	3	0	7532	2.3	81.4	1.9	9.0	1.7	2.2	1.2	0.1	0.2	83.7	1.9	14.4	0.074	0.500	19.210428	-99.813667
T. Der. Valle de Bravo	52.00	3	0	5711	1.6	82.2	1.9	9.0	1.7	2.2	1.1	0.1	0.2	83.8	1.9	14.3	0.104	0.501	19.143745	-99.920951
Temascaltepec	68.76	1	0	5563	0.9	85.6	1.1	5.8	1.3	3.0	1.5	0.2	0.6	86.5	1.1	12.4	0.137	0.535	19.048462	-100.046553
Temascaltepec	68.76	3	0	5275	1.6	86.0	1.5	5.7	1.7	1.9	1.2	0.1	0.3	87.6	1.5	10.9	0.134	0.543	19.041290	-100.047834
T. Izq. San Diego Cuentla	84.34	3	0	5786	2.4	89.1	0.8	6.7	0.4	0.5	0.1	0.0	0.0	91.5	0.8	7.7	0.101	0.546	18.964502	-100.084206
Tejupilco de Hidalgo	100.76	1	0	6267	2.8	87.1	1.2	6.8	0.8	0.9	0.3	0.0	0.1	89.9	1.2	8.9	0.119	0.545	18.923413	-100.147285
Tejupilco de Hidalgo	100.76	3	0	5294	5.7	83.0	1.2	6.8	0.9	1.5	0.8	0.0	0.1	88.7	1.2	10.1	0.108	0.546	18.900646	-100.168814
Cuadrilla de López	113.20	3	0	2835	3.1	83.1	1.8	6.2	1.4	2.7	1.1	0.1	0.5	86.2	1.8	12.0	0.134	0.566	18.873939	-100.227880
T. Izq. Bejucos	147.57	1	0	1603	5.0	75.6	3.7	6.9	2.1	4.8	1.7	0.1	0.1	80.6	3.7	15.7	0.168	0.562	18.784723	-100.421233
Lim. Edos. Term. Méx. Ppia. Gro.	148.00																			
Cutzamala	196.00	1	0	3112	5.1	81.2	1.8	5.1	1.3	3.9	1.1	0.1	0.4	86.3	1.8	11.9	0.088	0.500	18.478870	-100.582233
Lim. Edos. Term. Gro. Ppia. Mich.	201.00																			
Lim. Edos. Term. Mich. Ppia. Gro.	210.30																			
Cd. Altamirano	216.00	1	0	4234	3.9	82.0	1.5	6.5	1.1	3.7	1.0	0.1	0.2	85.9	1.5	12.6	0.080	0.533	18.381802	-100.670393

GUERRERO

18 CARR: Zihuatanejo - La Mira

CLAVE: 00121

RUTA: MEX-200

AÑO: 2018

LUGAR	ESTACION				CLASIFICACION VEHICULAR EN PORCIENTO										COORDENADAS					
	KM	TE	SC	TDPA	M	A	B	C2	C3	T3S2	T3S3	T3S2R4	OTROS	A	B	C	K'	D	LATITUD	LONGITUD
Zihuatanejo	0.00	3	1	16516	5.1	83.7	1.3	8.4	0.6	0.5	0.4	0.0	0.0	88.8	1.3	9.9	0.076	0.504	17.659225	-101.560914
Zihuatanejo	0.00	3	2	16248	4.8	82.1	1.5	10.1	0.6	0.5	0.4	0.0	0.0	86.9	1.5	11.6	0.073	0.504	17.659109	-101.560970
T. Izq. Ixtapa Zihuatanejo	8.00	3	0	7926	6.3	78.5	0.2	10.6	1.3	2.9	0.2	0.0	0.0	84.8	0.2	15.0	0.068	0.507	17.680332	-101.603789
T. Der. Cd. Altamirano	16.30	1	0	3677	6.5	71.9	1.1	16.3	1.3	1.5	1.4	0.0	0.0	78.4	1.1	20.5	0.071	0.532	17.726347	-101.602947
T. Der. Cd. Altamirano	16.30	3	0	3670	3.5	77.7	0.4	15.7	0.8	1.4	0.5	0.0	0.0	81.2	0.4	18.4	0.075	0.506	17.733095	-101.614870
T. Der. La Unión	52.00	3	0	4234	1.8	83.1	0.3	9.6	1.6	2.3	1.3	0.0	0.0	84.9	0.3	14.8	0.085	0.511	17.941961	-101.836176
Zacatula	93.50	1	0	2764	4.9	88.5	0.5	5.1	0.6	0.2	0.2	0.0	0.0	93.4	0.5	6.1	0.077	0.502	18.006268	-102.176037
Lim. Edos. Term. Gro. Ppia. Mich.	102.30																			
La Villita	103.80	3	0	2025	10.6	84.2	0.6	4.0	0.4	0.1	0.1	0.0	0.0	94.8	0.6	4.6	0.080	0.502	18.044216	-102.188473
Guacamayas	107.00	1	0	2735	8.8	87.0	0.2	2.9	0.7	0.2	0.1	0.0	0.1	95.8	0.2	4.0	0.067	0.508	18.029765	-102.200374
T. Izq. Lazáro Cárdenas	110.85	1	1	17126	7.8	88.1	0.4	2.7	0.9	0.1	0.0	0.0	0.0	95.9	0.4	3.7	0.066	0.505	18.000924	-102.221681
T. Izq. Lazáro Cárdenas	110.85	1	2	16780	7.6	88.2	0.4	2.9	0.8	0.1	0.0	0.0	0.0	95.8	0.4	3.8	0.062	0.505	18.000860	-102.221510
La Mira	123.60	1	0	12444	2.6	89.0	1.0	5.5	1.4	0.3	0.2	0.0	0.0	91.6	1.0	7.4	0.062	0.513	18.031085	-102.319460

19 CARR: Cuernavaca - Acapulco (Cuota)

CLAVE: 00045

RUTA: MEX-095D

AÑO: 2018

LUGAR	ESTACION				CLASIFICACION VEHICULAR EN PORCIENTO										COORDENADAS					
	KM	TE	SC	TDPA	M	A	B	C2	C3	T3S2	T3S3	T3S2R4	OTROS	A	B	C	K'	D	LATITUD	LONGITUD
Cuernavaca	0.00	3	1	48870	2.2	89.6	1.6	4.3	0.6	0.7	0.5	0.4	0.1	91.8	1.6	6.6	0.074	0.502	18.874167	-99.226591
Cuernavaca	0.00	3	2	49340	1.9	88.9	1.7	4.9	0.7	0.9	0.5	0.4	0.1	90.8	1.7	7.5	0.067	0.502	18.875299	-99.227121
T. Izq. Burgos	3.35	1	1	47192	2.9	88.3	1.6	4.9	0.6	0.7	0.5	0.4	0.1	91.2	1.6	7.2	0.077	0.508	18.862882	-99.221127
T. Izq. Burgos	3.35	1	2	45729	1.9	88.5	1.9	5.1	0.7	0.9	0.5	0.4	0.1	90.4	1.9	7.7	0.071	0.508	18.862806	-99.221034
T. Izq. Burgos	3.35	3	1	38546	1.6	87.9	2.1	5.0	1.1	1.2	0.5	0.5	0.1	89.5	2.1	8.4	0.084	0.504	18.856337	-99.220783
T. Izq. Burgos	3.35	3	2	37860	1.6	87.9	2.1	5.0	1.1	1.2	0.5	0.5	0.1	89.5	2.1	8.4	0.068	0.504	18.855675	-99.220670
T. Der. Acatlipa	4.70	1	1	40683	1.5	88.2	2.0	5.0	1.0	1.2	0.5	0.5	0.1	89.7	2.0	8.3	0.083	0.526	18.851159	-99.220320
T. Der. Acatlipa	4.70	1	2	36663	1.5	88.2	2.0	5.0	1.0	1.2	0.5	0.5	0.1	89.7	2.0	8.3	0.073	0.526	18.850353	-99.220003
T. Der. Acatlipa	4.70	3	1	30298	1.5	87.8	2.1	5.2	1.0	1.3	0.5	0.5	0.1	89.3	2.1	8.6	0.090	0.503	18.844290	-99.218308
T. Der. Acatlipa	4.70	3	2	29878	1.6	87.2	2.2	5.4	1.1	1.4	0.5	0.5	0.1	88.8	2.2	9.0	0.072	0.503	18.844813	-99.218343
T. Izq. Miguel Hidalgo	5.85	3	1	26654	1.7	86.6	2.3	5.4	1.1	1.7	0.6	0.5	0.1	88.3	2.3	9.4	0.064	0.513	18.830507	-99.217903
T. Izq. Miguel Hidalgo	5.85	3	2	25283	1.8	86.4	2.3	5.4	1.1	1.7	0.6	0.6	0.1	88.2	2.3	9.5	0.065	0.513	18.830447	-99.217831
T. Der. Aeropuerto Cuernavaca	9.83	1	1	29270	2.5	84.7	2.7	5.7	1.3	1.7	0.7	0.6	0.1	87.2	2.7	10.1	0.073	0.511	18.816208	-99.219219
T. Der. Aeropuerto Cuernavaca	9.83	1	2	27966	2.5	83.7	3.0	6.0	1.5	1.7	0.8	0.7	0.1	86.2	3.0	10.8	0.068	0.511	18.811820	-99.219538
T. Der. Aeropuerto Cuernavaca	9.83	3	1	16579	2.1	80.1	5.9	6.7	1.7	1.7	0.9	0.8	0.1	82.2	5.9	11.9	0.099	0.502	18.796185	-99.221059
T. Der. Aeropuerto Cuernavaca	9.83	3	2	16721	2.4	80.2	5.3	6.7	1.8	1.9	0.8	0.8	0.1	82.6	5.3	12.1	0.125	0.502	18.796184	-99.220965
T. Izq. Club de Golf Santa Fe	17.48	1	1	15622	2.0	80.2	5.4	6.9	1.7	1.9	0.9	0.9	0.1	82.2	5.4	12.4	0.083	0.536	18.746639	-99.246307

GUERRERO

19 CARR: Cuernavaca - Acapulco (Cuota)

CLAVE: 00045

RUTA: MEX-095D

AÑO: 2018

LUGAR	ESTACION				CLASIFICACION VEHICULAR EN PORCIENTO										COORDENADAS					
	KM	TE	SC	TDPA	M	A	B	C2	C3	T3S2	T3S3	T3S2R4	OTROS	A	B	C	K'	D	LATITUD	LONGITUD
T. Izq. Club de Golf Santa Fe	17.48	1	2	18031	2.1	79.8	5.5	7.2	1.6	1.8	0.9	0.9	0.2	81.9	5.5	12.6	0.114	0.536	18.746601	-99.246227
Caseta de Cobro Alpuyeca	19.80	1	1	14919	1.8	79.5	5.6	7.2	1.6	2.0	1.2	0.9	0.2	81.3	5.6	13.1	0.072	0.504	18.724822	-99.257970
Caseta de Cobro Alpuyeca	19.80	1	2	14678	1.7	79.7	5.6	7.2	1.6	2.0	1.1	0.9	0.2	81.4	5.6	13.0	0.069	0.504	18.724736	-99.257911
Caseta de Cobro Alpuyeca	19.80	3	1	10837	1.0	78.5	5.0	6.6	2.3	3.6	1.5	1.1	0.4	79.5	5.0	15.5	0.072	0.531	18.717026	-99.266053
Caseta de Cobro Alpuyeca	19.80	3	2	12259	0.7	78.8	5.0	6.6	2.3	3.6	1.5	1.1	0.4	79.5	5.0	15.5	0.073	0.531	18.716965	-99.265921
Caseta de Cobro Ing. Francisco Velasco Durán	23.10	2	1	7695	1.2	81.1	6.6	2.5	3.1	2.6	0.9	1.5	0.5	82.3	6.6	11.1	0.111	0.500	18.698498	-99.278028
Caseta de Cobro Ing. Francisco Velasco Durán	23.10	2	2	7695	1.2	81.1	6.6	2.5	3.1	2.6	0.9	1.5	0.5	82.3	6.6	11.1	0.111	0.500	18.698498	-99.278028
Lim. Edos. Term. Mor. Ppia. Gro.	53.30																			
Caseta de Cobro Paso Morelos	82.94	1	1	3985	1.3	75.7	8.0	6.5	1.2	3.2	1.3	2.3	0.5	77.0	8.0	15.0	0.108	0.501	18.243962	-99.213568
Caseta de Cobro Paso Morelos	82.94	1	2	3975	1.2	77.6	7.0	5.7	1.3	3.7	0.8	2.2	0.5	78.8	7.0	14.2	0.179	0.501	18.243964	-99.213415
Caseta de Cobro Paso Morelos	82.94	2	1	4250	0.9	81.7	6.7	2.3	2.0	3.0	0.7	2.1	0.6	82.6	6.7	10.7	0.111	0.500	18.231462	-99.215446
Caseta de Cobro Paso Morelos	82.94	2	2	4250	0.9	81.7	6.7	2.3	2.0	3.0	0.7	2.1	0.6	82.6	6.7	10.7	0.111	0.500	18.231462	-99.215446
Caseta de Cobro Palo Blanco	193.90	1	1	5608	1.2	76.6	7.4	7.1	1.8	3.1	1.0	1.4	0.4	77.8	7.4	14.8	0.083	0.525	17.427066	-99.470893
Caseta de Cobro Palo Blanco	193.90	1	2	6206	1.0	77.4	7.3	6.6	1.8	3.1	1.0	1.4	0.4	78.4	7.3	14.3	0.129	0.525	17.427153	-99.470825
Caseta de Cobro Palo Blanco	193.90	2	1	5270	0.9	81.6	6.7	2.5	2.6	2.9	0.9	1.5	0.4	82.5	6.7	10.8	0.097	0.500	17.423983	-99.466911
Caseta de Cobro Palo Blanco	193.90	2	2	5270	0.9	81.6	6.7	2.5	2.6	2.9	0.9	1.5	0.4	82.5	6.7	10.8	0.097	0.500	17.423983	-99.466911
X. C. Chilpancingo - Acapulco (Tierra Colorada)	226.20	1	1	6377	1.0	77.7	7.2	6.3	1.8	3.1	1.0	1.5	0.4	78.7	7.2	14.1	0.079	0.502	17.180348	-99.552262
X. C. Chilpancingo - Acapulco (Tierra Colorada)	226.20	1	2	6326	1.0	77.5	7.3	6.3	1.8	3.1	1.0	1.6	0.4	78.5	7.3	14.2	0.115	0.502	17.180349	-99.552150
Caseta de Cobro La Venta	269.95	1	1	5965	1.0	77.8	7.3	5.9	1.8	3.1	1.0	1.7	0.4	78.8	7.3	13.9	0.113	0.515	16.929395	-99.796628
Caseta de Cobro La Venta	269.95	1	2	5623	1.0	77.7	7.4	5.8	1.8	3.2	1.0	1.7	0.4	78.7	7.4	13.9	0.143	0.515	16.929290	-99.796634
Caseta de Cobro La Venta	269.95	2	1	5016	0.9	81.4	6.9	2.4	2.5	3.1	0.8	1.6	0.4	82.3	6.9	10.8	0.097	0.500	16.928232	-99.801857
Caseta de Cobro La Venta	269.95	2	2	5016	0.9	81.4	6.9	2.4	2.5	3.1	0.8	1.6	0.4	82.3	6.9	10.8	0.097	0.500	16.928232	-99.801857
T. C. Chilpancingo - Acapulco (Ent. La Venta)	271.50	1	1	5946	1.4	77.8	6.2	6.7	1.9	3.1	1.2	1.3	0.4	79.2	6.2	14.6	0.059	0.504	16.924738	-99.809008
T. C. Chilpancingo - Acapulco (Ent. La Venta)	271.50	1	2	6040	1.6	77.5	6.1	7.0	1.7	3.2	1.1	1.4	0.4	79.1	6.1	14.8	0.086	0.504	16.924656	-99.808961

20 CARR: Libramiento de Tépán (Cuota)

CLAVE: 00073

RUTA: MEX-200D

AÑO: 2018

LUGAR	ESTACION				CLASIFICACION VEHICULAR EN PORCIENTO										COORDENADAS					
	KM	TE	SC	TDPA	M	A	B	C2	C3	T3S2	T3S3	T3S2R4	OTROS	A	B	C	K'	D	LATITUD	LONGITUD
T. C. Acapulco - Zihuatanejo (Oriente)	0.00	3	0	2075	7.9	72.4	3.7	7.3	3.8	2.8	1.8	0.2	0.1	80.3	3.7	16.0	0.085	0.502	17.202916	-100.644560
Caseta de Cobro Tépán	2.60	2	0	1678	2.0	80.2	2.3	4.2	5.4	3.0	2.2	0.2	0.5	82.2	2.3	15.5	0.102	0.500	17.197071	-100.626751
T. C. Acapulco - Zihuatanejo (Poniente)	4.40																			

GUERRERO

21 CARR: Nueva Italia - Lázaro Cárdenas (Cuota)

CLAVE: 00032

RUTA: MEX-037D

AÑO: 2018

LUGAR	ESTACION				CLASIFICACION VEHICULAR EN PORCIENTO										COORDENADAS					
	KM	TE	SC	TDPA	M	A	B	C2	C3	T3S2	T3S3	T3S2R4	OTROS	A	B	C	K'	D	LATITUD	LONGITUD
T. Der. Apatzingán	153.90	3	0	5971	2.2	67.1	4.8	7.5	1.8	4.1	3.2	8.4	0.9	69.3	4.8	25.9	0.072	0.510	18.983547	-102.088612
Caseta de Cobro Las Cañas	211.40	2	0	4306	0.4	64.1	4.5	2.6	3.2	6.5	3.3	12.9	2.5	64.5	4.5	31.0	0.078	0.500	18.554183	-101.970404
Lim. Edos. Term. Mich. Ppia. Gro.	252.25																			
Caseta de Cobro Feliciano	282.00	2	0	2941	0.7	81.3	5.0	3.3	4.2	2.9	1.5	0.6	0.5	82.0	5.0	13.0	0.078	0.500	18.004090	-101.961847
X. C. Zihuatanejo - La Mira	282.37	1	0	4748	0.9	61.4	6.0	7.3	3.9	6.4	3.5	9.7	0.9	62.3	6.0	31.7	0.084	0.509	18.020167	-101.955972
X. C. Zihuatanejo - La Mira	282.37	3	0	4137	2.2	60.2	5.2	8.1	3.3	5.8	3.1	10.2	1.9	62.4	5.2	32.4	0.083	0.503	17.990833	-101.970278
Lim. Edos. Term. Gro. Ppia. Mich.	307.00																			
Lázaro Cárdenas	311.30																			

22 CARR: Puente de Ixtla - Iguala (Cuota)

CLAVE: 00043

RUTA: MEX-091D

AÑO: 2018

LUGAR	ESTACION				CLASIFICACION VEHICULAR EN PORCIENTO										COORDENADAS					
	KM	TE	SC	TDPA	M	A	B	C2	C3	T3S2	T3S3	T3S2R4	OTROS	A	B	C	K'	D	LATITUD	LONGITUD
T. C. Cuernavaca - Acapulco (Cuota)	0.00																			
T. Izq. Puente de Ixtla	2.00	3	0	10388	2.4	77.1	5.9	7.2	2.8	2.3	1.1	1.0	0.2	79.5	5.9	14.6	0.067	0.511	18.627109	-99.328488
T. Der. Amacuzac	9.63	3	0	12836	3.1	81.1	4.4	6.1	2.5	0.6	1.2	0.7	0.3	84.2	4.4	11.4	0.060	0.526	18.597093	-99.376322
Lim. Edos. Term. Mor. Ppia. Gro.	18.20																			
T. Izq. Buenavista	33.58	3	0	6377	0.9	68.8	6.7	9.1	5.0	4.4	3.0	1.5	0.6	69.7	6.7	23.6	0.064	0.515	18.458023	-99.434318
Caseta de Cobro Iguala	59.14	2	0	4232	0.6	70.9	7.0	4.5	7.7	3.9	2.8	1.6	1.0	71.5	7.0	21.5	0.076	0.500	18.336191	-99.508296
T. Der. Iguala	59.50	1	0	5130	0.7	69.9	7.0	8.3	4.8	5.0	2.5	1.5	0.3	70.6	7.0	22.4	0.068	0.503	18.343573	-99.511578
T. C. Cuernavaca - Chilpancingo	62.80																			

23 CARR: Rancho Viejo - Taxco (Cuota)

CLAVE: 12010

RUTA: MEX-092D

AÑO: 2018

LUGAR	ESTACION				CLASIFICACION VEHICULAR EN PORCIENTO										COORDENADAS					
	KM	TE	SC	TDPA	M	A	B	C2	C3	T3S2	T3S3	T3S2R4	OTROS	A	B	C	K'	D	LATITUD	LONGITUD
X. C. Cuernavaca - Chilpancingo	0.00																			
Caseta de Cobro Taxco	0.62	2	0	2545	3.4	89.7	4.5	1.6	0.3	0.3	0.1	0.0	0.1	93.1	4.5	2.4	0.111	0.500	18.588609	-99.559993
T. C. Cuernavaca - Chilpancingo	8.10	1	0	3834	3.3	86.8	4.3	4.0	0.4	0.7	0.3	0.0	0.2	90.1	4.3	5.6	0.084	0.527	18.569114	-99.589683

24 CARR: Zacapalco - Rancho Viejo (Cuota)

CLAVE: 12010

RUTA: MEX-092D

AÑO: 2018

LUGAR	ESTACION				CLASIFICACION VEHICULAR EN PORCIENTO										COORDENADAS					
	KM	TE	SC	TDPA	M	A	B	C2	C3	T3S2	T3S3	T3S2R4	OTROS	A	B	C	K'	D	LATITUD	LONGITUD
T. C. Puente de Ixtla - Iguala (Cuota)	0.00																			

GUERRERO

24 CARR: Zacapalco - Rancho Viejo (Cuota)

CLAVE: 12010

RUTA: MEX-092D

AÑO: 2018

LUGAR	ESTACION				CLASIFICACION VEHICULAR EN PORCIENTO										COORDENADAS					
	KM	TE	SC	TDPA	M	A	B	C2	C3	T3S2	T3S3	T3S2R4	OTROS	A	B	C	K'	D	LATITUD	LONGITUD
Caseta de Cobro Zacapalco	0.50	2	0	1646	2.4	87.8	5.1	2.3	1.6	0.3	0.3	0.0	0.2	90.2	5.1	4.7	0.131	0.500	18.537999	-99.447424
X. C. Cuernavaca - Chilpancingo	17.20	1	0	2084	2.2	80.2	4.9	10.3	1.2	0.7	0.3	0.0	0.2	82.4	4.9	12.7	0.107	0.506	18.585427	-99.547355

25 CARR: Acapulco - Aeropuerto Acapulco

CLAVE: 12292

RUTA: GRO

AÑO: 2018

LUGAR	ESTACION				CLASIFICACION VEHICULAR EN PORCIENTO										COORDENADAS					
	KM	TE	SC	TDPA	M	A	B	C2	C3	T3S2	T3S3	T3S2R4	OTROS	A	B	C	K'	D	LATITUD	LONGITUD
Acapulco	0.00																			
Puerto Marqués	8.70	1	1	18373	3.4	92.2	0.8	2.8	0.3	0.2	0.2	0.1	0.0	95.6	0.8	3.6	0.067	0.502	16.806965	-99.833296
Puerto Marqués	8.70	1	2	18201	3.4	92.2	0.8	2.8	0.3	0.2	0.2	0.1	0.0	95.6	0.8	3.6	0.065	0.502	16.807062	-99.833271
Puerto Marqués	8.70	3	1	27118	3.3	91.3	0.8	3.1	0.3	0.7	0.5	0.0	0.0	94.6	0.8	4.6	0.065	0.506	16.800343	-99.819330
Puerto Marqués	8.70	3	2	27826	2.7	92.6	0.5	2.7	0.5	0.5	0.5	0.0	0.0	95.3	0.5	4.2	0.064	0.506	16.800457	-99.819259
T. Der. Los Amates	14.90	3	1	3937	3.5	90.9	0.3	4.4	0.6	0.2	0.0	0.0	0.1	94.4	0.3	5.3	0.076	0.519	16.767353	-99.766861
T. Der. Los Amates	14.90	3	2	3648	3.3	90.7	0.2	5.1	0.4	0.2	0.0	0.0	0.1	94.0	0.2	5.8	0.078	0.519	16.767504	-99.766786
Aeropuerto	16.20																			

26 CARR: Ent. Potrero - Lomas de Chapultepec

CLAVE: 12293

RUTA: GRO

AÑO: 2018

LUGAR	ESTACION				CLASIFICACION VEHICULAR EN PORCIENTO										COORDENADAS					
	KM	TE	SC	TDPA	M	A	B	C2	C3	T3S2	T3S3	T3S2R4	OTROS	A	B	C	K'	D	LATITUD	LONGITUD
T. C. Acapulco - Aeropuerto Acapulco	0.00	3	1	8190	4.4	89.5	0.4	3.4	1.5	0.6	0.2	0.0	0.0	93.9	0.4	5.7	0.110	0.507	16.766737	-99.776609
T. C. Acapulco - Aeropuerto Acapulco	0.00	3	2	7979	4.9	88.7	0.4	3.7	1.7	0.4	0.2	0.0	0.0	93.6	0.4	6.0	0.097	0.507	16.766635	-99.776488
T. C. Las Cruces - Pinotepa Nacional	29.00																			

27 CARR: Las Petaquillas - Quechultenango

CLAVE:

RUTA: GRO

AÑO: 2018

LUGAR	ESTACION				CLASIFICACION VEHICULAR EN PORCIENTO										COORDENADAS					
	KM	TE	SC	TDPA	M	A	B	C2	C3	T3S2	T3S3	T3S2R4	OTROS	A	B	C	K'	D	LATITUD	LONGITUD
Las Petaquillas	0.00	3	0	4208	4.6	87.6	0.1	6.7	0.5	0.2	0.3	0.0	0.0	92.2	0.1	7.7	0.067	0.506	17.483175	-99.442927
Quechultenango	26.60																			

GUERRERO

28 CARR: Pie de La Cuesta - Barra de Coyuca

CLAVE: 12427

RUTA: GRO

AÑO: 2018

LUGAR	ESTACION				CLASIFICACION VEHICULAR EN PORCIENTO										COORDENADAS					
	KM	TE	SC	TDPA	M	A	B	C2	C3	T3S2	T3S3	T3S2R4	OTROS	A	B	C	K'	D	LATITUD	LONGITUD
T. C. Acapulco - Zihuatanejo	0.00	3	0	6683	10.4	81.9	0.4	7.0	0.2	0.0	0.1	0.0	0.0	92.3	0.4	7.3	0.081	0.512	16.902209	-99.972920
Barra de Coyuca	16.50	1	0	1398	10.7	84.7	0.4	4.2	0.0	0.0	0.0	0.0	0.0	95.4	0.4	4.2	0.097	0.512	16.944939	-100.088343

29 CARR: Ramal a Cocula

CLAVE: 12082

RUTA: GRO

AÑO: 2018

LUGAR	ESTACION				CLASIFICACION VEHICULAR EN PORCIENTO										COORDENADAS						
	KM	TE	SC	TDPA	M	A	B	C2	C3	T3S2	T3S3	T3S2R4	OTROS	A	B	C	K'	D	LATITUD	LONGITUD	
T. C. Iguala - Ciudad Altamirano	0.00	3	0	4522	8.3	80.1	0.2	7.4	0.6	2.6	0.4	0.0	0.4	88.4	0.2	11.4	0.070	0.504	18.314086	-99.608846	
Cocula	13.00																				

30 CARR: T. C. (Iguala - Chilpancingo) - Atenango del Río

CLAVE: 12001

RUTA: GRO-001

AÑO: 2018

LUGAR	ESTACION				CLASIFICACION VEHICULAR EN PORCIENTO										COORDENADAS					
	KM	TE	SC	TDPA	M	A	B	C2	C3	T3S2	T3S3	T3S2R4	OTROS	A	B	C	K'	D	LATITUD	LONGITUD
T. C. Cuernavaca - Chilpancingo	0.00	3	0	7698	5.7	85.6	0.9	5.3	0.7	1.6	0.2	0.0	0.0	91.3	0.9	7.8	0.064	0.507	18.291248	-99.506086
T. Der. Pololcingo	11.20	1	0	4079	5.4	84.8	0.3	6.2	0.4	2.2	0.3	0.1	0.3	90.2	0.3	9.5	0.084	0.508	18.304442	-99.425332
T. Der. Pololcingo	11.20	3	0	3724	5.4	86.2	0.2	5.4	0.5	1.6	0.3	0.1	0.3	91.6	0.2	8.2	0.082	0.505	18.306599	-99.420570
Huitzuco	22.00	3	0	2759	7.6	79.7	0.6	9.1	0.8	1.6	0.3	0.1	0.2	87.3	0.6	12.1	0.081	0.508	18.295513	-99.315353
Atenango del Río	62.00	1	0	1689	8.9	80.7	0.2	8.5	0.3	1.2	0.1	0.0	0.1	89.6	0.2	10.2	0.076	0.500	18.117158	-99.113588

31 CARR: Taxco - Ixcateopan

CLAVE: 12083

RUTA: GRO

AÑO: 2018

LUGAR	ESTACION				CLASIFICACION VEHICULAR EN PORCIENTO										COORDENADAS					
	KM	TE	SC	TDPA	M	A	B	C2	C3	T3S2	T3S3	T3S2R4	OTROS	A	B	C	K'	D	LATITUD	LONGITUD
Taxco	0.00	3	0	3536	12.9	82.1	0.0	1.5	0.1	2.5	0.4	0.1	0.4	95.0	0.0	5.0	0.072	0.507	18.552992	-99.618900
Ixcateopan	36.00	1	0	334	4.2	90.4	0.1	4.1	0.8	0.3	0.0	0.0	0.1	94.6	0.1	5.3	0.093	0.504	18.504835	-99.782313

32 CARR: Teloloapan - Apaxtla de Castrejón

CLAVE: 12081

RUTA: GRO

AÑO: 2018

LUGAR	ESTACION				CLASIFICACION VEHICULAR EN PORCIENTO										COORDENADAS						
	KM	TE	SC	TDPA	M	A	B	C2	C3	T3S2	T3S3	T3S2R4	OTROS	A	B	C	K'	D	LATITUD	LONGITUD	
T. C. Iguala - Ciudad Altamirano	0.00	3	0	5493	2.5	87.7	0.3	8.6	0.2	0.6	0.1	0.0	0.0	90.2	0.3	9.5	0.072	0.543	18.349350	-99.860644	
Apaxtla de Castrejón	34.00																				

GUERRERO

33 CARR: Tlapa de Comonfort - Marquelia

CLAVE:

RUTA: GRO

AÑO: 2018

LUGAR	ESTACION				CLASIFICACION VEHICULAR EN PORCIENTO													COORDENADAS		
	KM	TE	SC	TDPA	M	A	B	C2	C3	T3S2	T3S3	T3S2R4	OTROS	A	B	C	K'	D	LATITUD	LONGITUD
Tlapa de Comonfort	0.00	3	0	2845	4.5	85.1	0.1	6.5	0.4	2.1	0.8	0.1	0.4	89.6	0.1	10.3	0.074	0.506	17.526853	-98.598845
Marquelia	163.00	1	0	3127	6.7	86.2	0.8	4.3	0.8	0.6	0.4	0.0	0.2	92.9	0.8	6.3	0.075	0.506	16.589649	-98.817076

34 CARR: Puerto Marqués - La Venta (Cuota)

CLAVE: 00043

RUTA: GRO-D

AÑO: 2018

LUGAR	ESTACION				CLASIFICACION VEHICULAR EN PORCIENTO													COORDENADAS		
	KM	TE	SC	TDPA	M	A	B	C2	C3	T3S2	T3S3	T3S2R4	OTROS	A	B	C	K'	D	LATITUD	LONGITUD
Puerto Marqués	0.00																			
X. C. Las Cruces - Pinotepa Nacional	6.33	1	1	2340	2.8	89.0	1.3	5.0	0.4	1.1	0.1	0.3	0.0	91.8	1.3	6.9	0.127	0.501	16.823739	-99.763632
X. C. Las Cruces - Pinotepa Nacional	6.33	1	2	2327	3.2	88.9	1.3	4.3	0.5	1.0	0.3	0.3	0.2	92.1	1.3	6.6	0.094	0.501	16.823962	-99.763854
X. C. Las Cruces - Pinotepa Nacional	6.33	3	1	2575	0.7	82.5	2.6	10.0	1.0	1.5	0.6	0.8	0.3	83.2	2.6	14.2	0.111	0.517	16.832890	-99.758932
X. C. Las Cruces - Pinotepa Nacional	6.33	3	2	2754	0.9	85.9	2.0	6.7	1.1	1.7	0.7	0.8	0.2	86.8	2.0	11.2	0.130	0.517	16.832928	-99.759205
La Venta	20.80																			

35 CARR: Toluca - Axixintla

CLAVE: 00122

RUTA: EM-MEX-055

AÑO: 2018

LUGAR	ESTACION				CLASIFICACION VEHICULAR EN PORCIENTO													COORDENADAS		
	KM	TE	SC	TDPA	M	A	B	C2	C3	T3S2	T3S3	T3S2R4	OTROS	A	B	C	K'	D	LATITUD	LONGITUD
Toluca	0.00																			
T. Izq. Metepec	4.74	1	1	50943	0.6	91.7	0.3	4.1	0.7	1.2	1.0	0.1	0.3	92.3	0.3	7.4	0.079	0.540	19.242480	-99.601824
T. Izq. Metepec	4.74	1	2	43416	0.6	90.7	0.3	4.9	0.7	1.3	1.1	0.1	0.3	91.3	0.3	8.4	0.064	0.540	19.239118	-99.599159
Mexicalcingo	8.80	1	1	44731	0.8	91.0	0.7	4.6	1.1	1.0	0.6	0.1	0.1	91.8	0.7	7.5	0.093	0.508	19.222599	-99.593209
Mexicalcingo	8.80	1	2	43345	0.7	90.6	0.7	4.8	1.1	1.2	0.7	0.1	0.1	91.3	0.7	8.0	0.086	0.508	19.222638	-99.593053
Mexicalcingo	8.80	3	1	39174	0.7	91.0	1.0	5.1	0.9	0.8	0.4	0.0	0.1	91.7	1.0	7.3	0.075	0.500	19.200561	-99.585119
Mexicalcingo	8.80	3	2	39154	1.0	92.8	0.5	4.0	0.7	0.6	0.4	0.0	0.0	93.8	0.5	5.7	0.070	0.500	19.201252	-99.585158
T. Der. Calimaya	12.70	3	1	31162	1.0	90.4	0.7	5.4	1.1	0.8	0.4	0.1	0.1	91.4	0.7	7.9	0.078	0.513	19.180654	-99.577702
T. Der. Calimaya	12.70	3	2	29551	2.6	87.9	0.7	6.0	1.2	1.0	0.4	0.1	0.1	90.5	0.7	8.8	0.092	0.513	19.180783	-99.577592
Santa María Rayón	17.60	3	1	21807	1.0	87.6	1.1	7.5	1.2	1.0	0.4	0.1	0.1	88.6	1.1	10.3	0.084	0.519	19.146794	-99.585934
Santa María Rayón	17.60	3	2	20198	1.1	85.5	1.7	9.0	1.3	0.8	0.4	0.1	0.1	86.6	1.7	11.7	0.081	0.519	19.146320	-99.586150
Tenango de Arista	23.00	1	1	15990	2.0	86.6	1.4	7.5	0.9	0.9	0.5	0.1	0.1	88.6	1.4	10.0	0.095	0.508	19.117420	-99.590457
Tenango de Arista	23.00	1	2	16535	1.7	88.6	1.2	5.7	1.1	1.0	0.5	0.1	0.1	90.3	1.2	8.5	0.086	0.508	19.117489	-99.590280
San Bartolomé Atlatlahuaca	28.12	1	0	16789	2.9	87.0	1.1	6.9	0.5	0.7	0.7	0.1	0.1	89.9	1.1	9.0	0.076	0.508	19.077636	-99.598617
San Bartolomé Atlatlahuaca	28.12	3	0	13393	0.7	84.1	0.7	4.9	0.7	6.3	1.3	0.4	0.9	84.8	0.7	14.5	0.060	0.506	19.063037	-99.603096
T. Izq. Joquicingo de León Guzmán	35.70	1	0	14660	1.1	83.4	1.2	6.0	0.7	5.7	1.1	0.2	0.6	84.5	1.2	14.3	0.064	0.501	19.030404	-99.565933
T. Izq. Joquicingo de León Guzmán	35.70	3	0	14010	0.5	87.2	1.4	7.8	0.6	1.2	0.9	0.1	0.3	87.7	1.4	10.9	0.081	0.522	19.022518	-99.560967

GUERRERO

35 CARR: Toluca - Axixintla

CLAVE: 00122

RUTA: EM-MEX-055

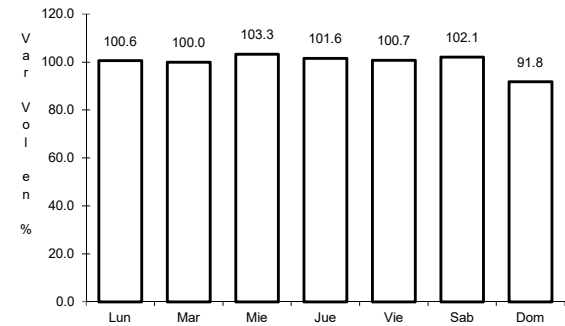
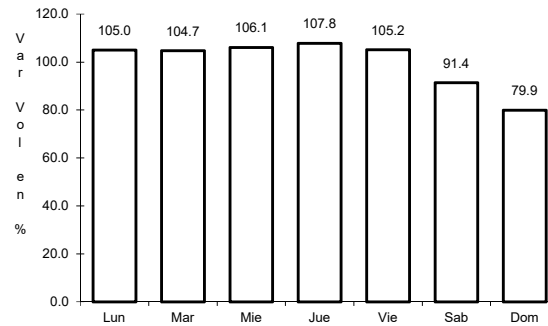
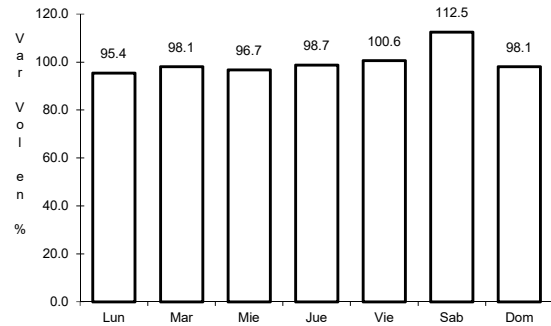
AÑO: 2018

L U G A R	E S T A C I O N				C L A S I F I C A C I O N V E H I C U L A R E N P O R C I E N T O										C O O R D E N A D A S					
	KM	TE	SC	TDPA	M	A	B	C2	C3	T3S2	T3S3	T3S2R4	OTROS	A	B	C	K'	D	LATITUD	LONGITUD
Tenancingo	44.80	3	0	14578	2.8	81.5	0.8	8.7	2.1	3.2	0.3	0.3	0.3	84.3	0.8	14.9	0.066	0.537	18.965695	-99.605231
T. Izq. Villa Guerrero	56.84	3	0	7340	1.4	86.0	0.3	7.6	0.4	3.2	0.3	0.2	0.6	87.4	0.3	12.3	0.085	0.535	18.965195	-99.644740
Ixtapan de La Sal	80.00	1	1	3165	2.5	88.4	1.7	5.7	0.5	0.6	0.4	0.1	0.1	90.9	1.7	7.4	0.127	0.518	18.853919	-99.672445
Ixtapan de La Sal	80.00	1	2	3399	2.8	86.9	1.8	6.7	0.6	0.6	0.4	0.1	0.1	89.7	1.8	8.5	0.156	0.518	18.853929	-99.672411
Ixtapan de La Sal	80.00	3	1	10431	4.1	90.4	1.3	2.7	0.3	0.4	0.7	0.0	0.1	94.5	1.3	4.2	0.107	0.502	18.830997	-99.667954
Ixtapan de La Sal	80.00	3	2	10335	3.7	90.5	1.4	2.8	0.3	0.4	0.8	0.0	0.1	94.2	1.4	4.4	0.099	0.502	18.830997	-99.667866
Tonatico	86.20	3	0	7009	2.6	89.9	1.3	4.6	0.4	0.3	0.6	0.1	0.2	92.5	1.3	6.2	0.086	0.519	18.801218	-99.658823
Lim. Edos. Term. Méx. Ppia. Gro.	98.50																			
Cacahuamilpa	120.30	1	0	2464	2.6	85.2	2.9	5.9	0.9	1.4	0.8	0.1	0.2	87.8	2.9	9.3	0.119	0.503	18.685128	-99.514815
T. C. Cuernavaca - Chilpancingo	125.30	1	0	1406	3.5	82.5	4.1	7.5	0.8	1.0	0.5	0.0	0.1	86.0	4.1	9.9	0.120	0.502	18.617029	-99.507442

1 CARR: Acapulco - Zihuatanejo

CLAVE: 12072

RUTA: MEX-200



Km: 10.37 Tipo: 1 Sent: 0

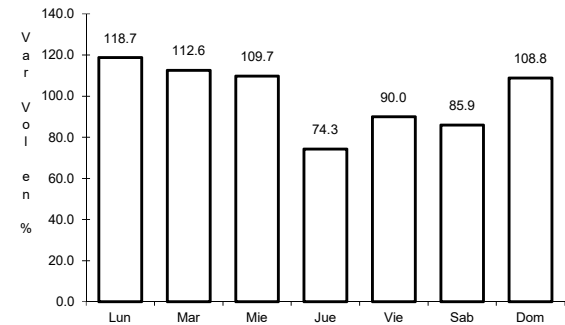
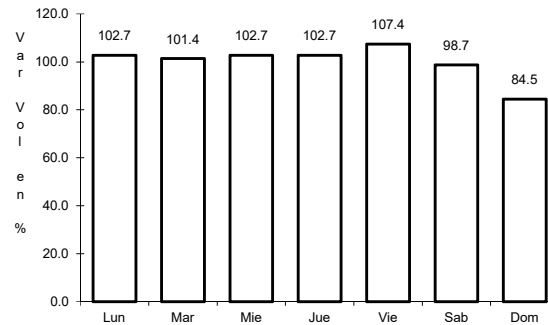
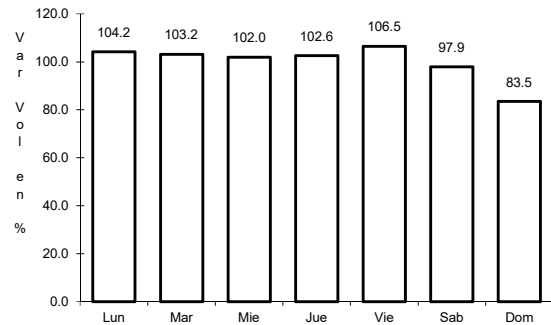
Km: 242.90 Tipo: 1 Sent: 1

Km: 242.90 Tipo: 1 Sent: 2

2 CARR: Cd. Altamirano - T. C. (Zihuatanejo - La Mira)

CLAVE: 12422

RUTA: MEX-134



Km: 0.00 Tipo: 3 Sent: 1

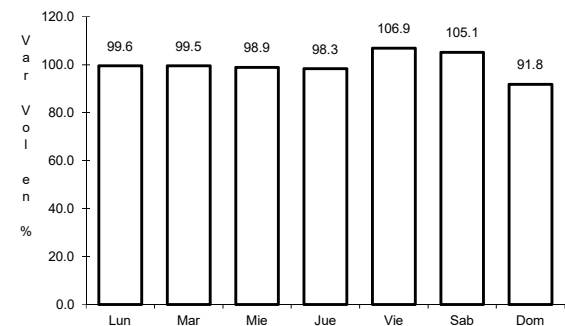
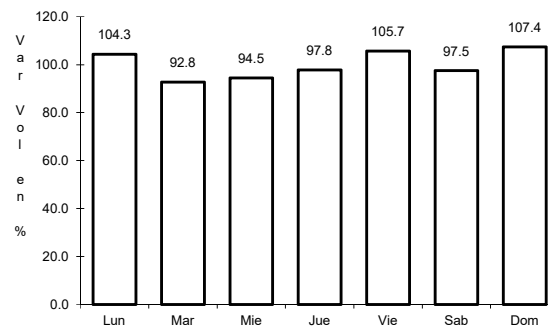
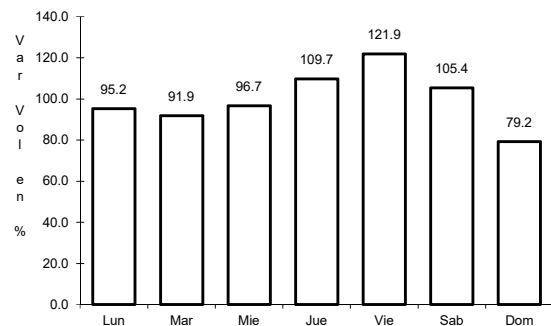
Km: 0.00 Tipo: 3 Sent: 2

Km: 187.36 Tipo: 1 Sent: 0

3 CARR: Chilpancingo - Acapulco

CLAVE: 12045

RUTA: MEX-095



Km: 4.20 Tipo: 1 Sent: 1

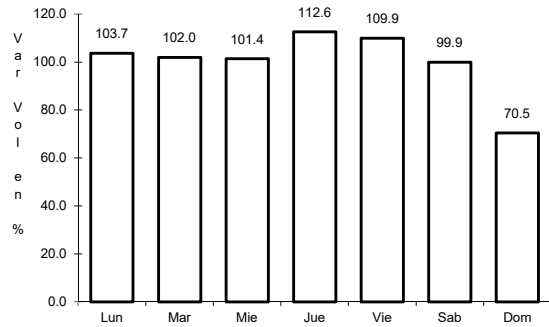
Km: 4.20 Tipo: 1 Sent: 2

Km: 112.80 Tipo: 3 Sent: 0

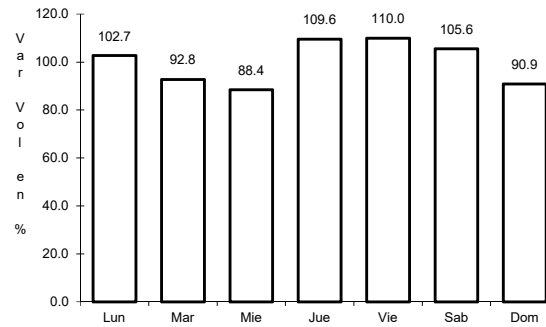
4 CARR: Chilpancingo - Chichihualco

CLAVE: 12426

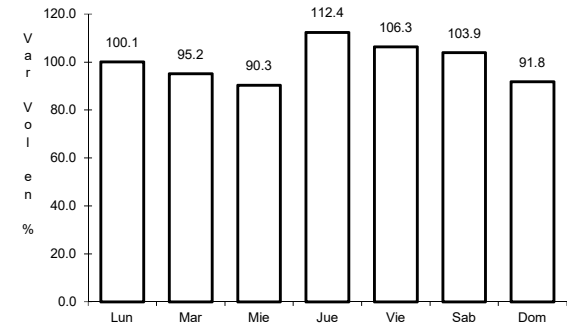
RUTA: MEX-095



Km: 0.00 Tipo: 3 Sent: 0



Km: 15.10 Tipo: 1 Sent: 0

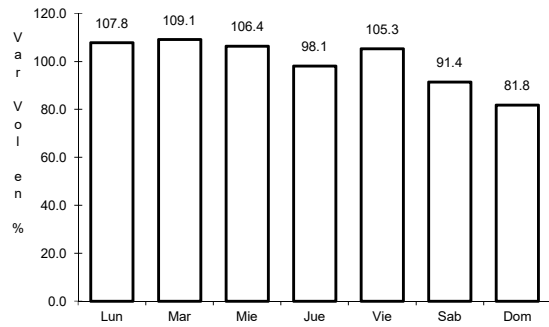


Km: 26.30 Tipo: 1 Sent: 0

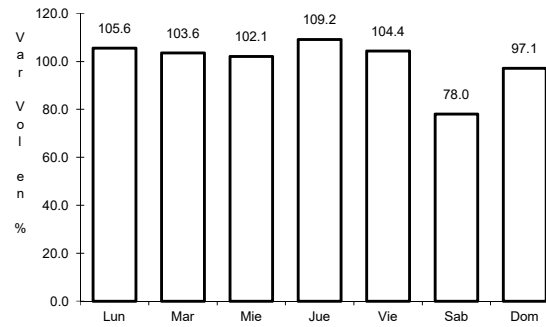
5 CARR: Chilpancingo - Jilotepec

CLAVE: 12002

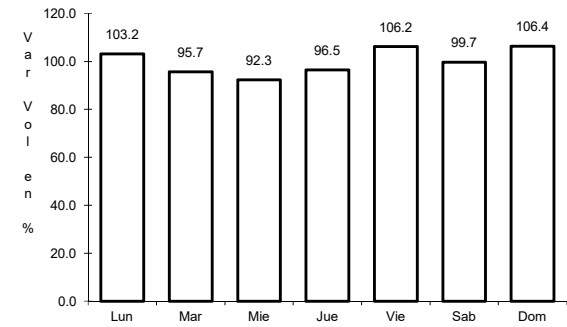
RUTA: MEX-093



Km: 0.00 Tipo: 3 Sent: 0



Km: 53.62 Tipo: 3 Sent: 0

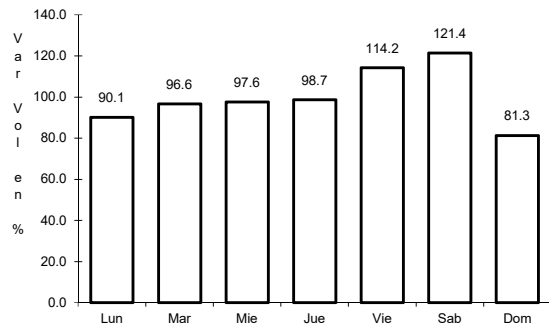


Km: 235.00 Tipo: 1 Sent: 0

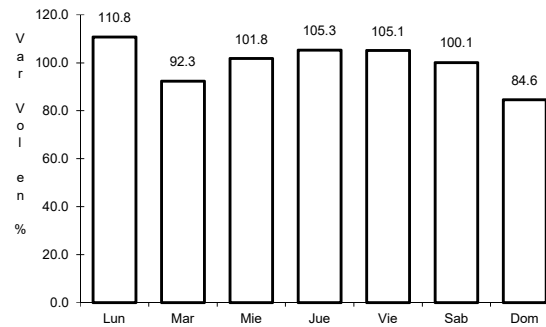
6 CARR: Cuernavaca - Chilpancingo

CLAVE: 00042

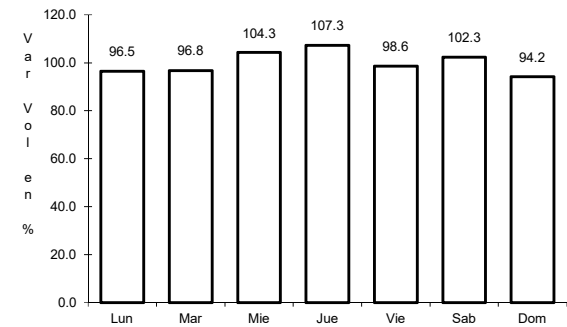
RUTA: MEX-095



Km: 9.80 Tipo: 1 Sent: 1



Km: 9.80 Tipo: 1 Sent: 2

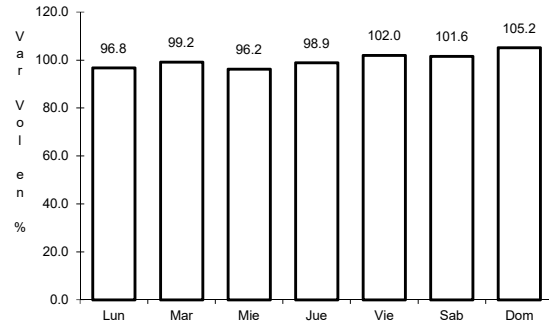


Km: 119.63 Tipo: 1 Sent: 0

7 CARR: Ent. Alpuyecá - Grutas de Cacahuamilpa

CLAVE: 00421

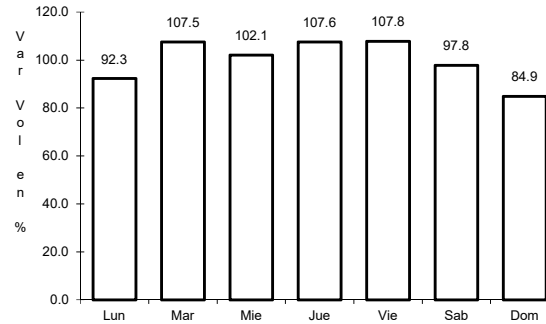
RUTA: MEX-166



Km: 0.00

Tipo: 3

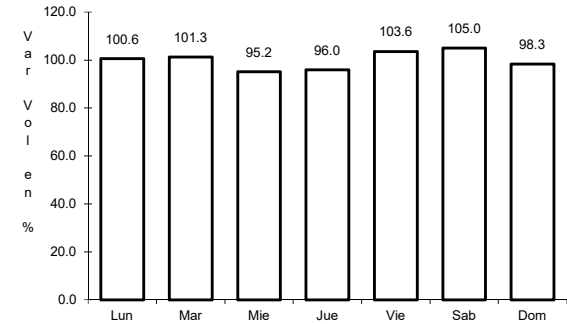
Sent: 0



Km: 18.28

Tipo: 3

Sent: 0



Km: 41.26

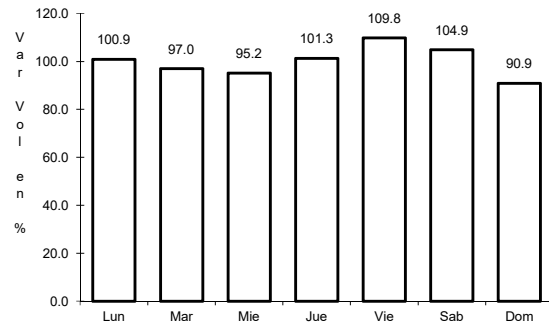
Tipo: 1

Sent: 0

8 CARR: Iguala - Cd. Altamirano

CLAVE: 12195

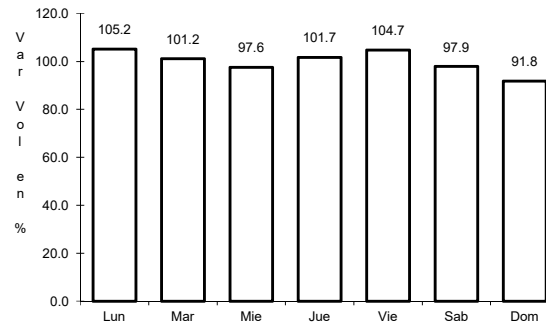
RUTA: MEX-051



Km: 9.40

Tipo: 1

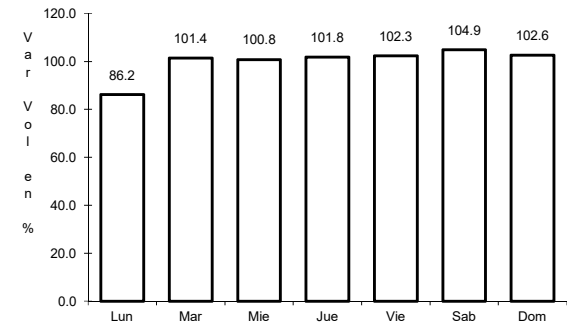
Sent: 0



Km: 184.55

Tipo: 1

Sent: 1



Km: 184.55

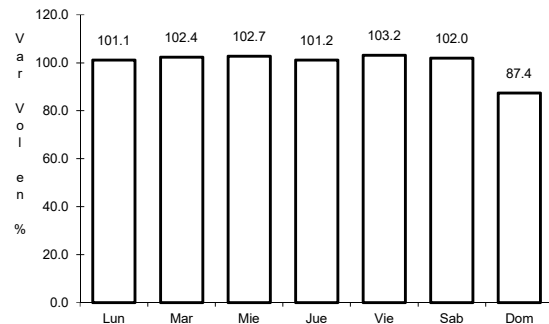
Tipo: 1

Sent: 2

9 CARR: La Sabana - Puerto Marqués

CLAVE: 12291

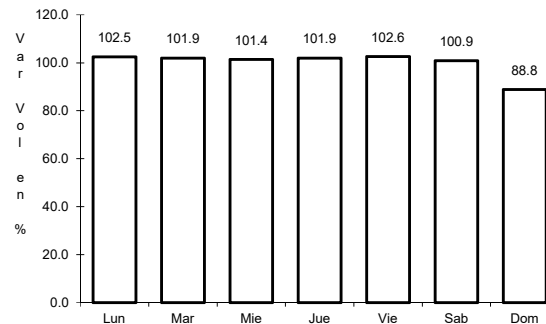
RUTA: MEX-200



Km: 0.00

Tipo: 3

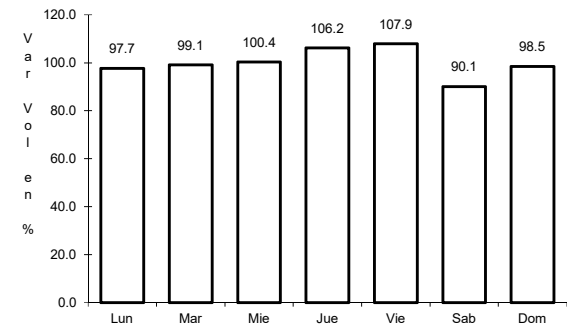
Sent: 1



Km: 0.00

Tipo: 3

Sent: 2



Km: 7.20

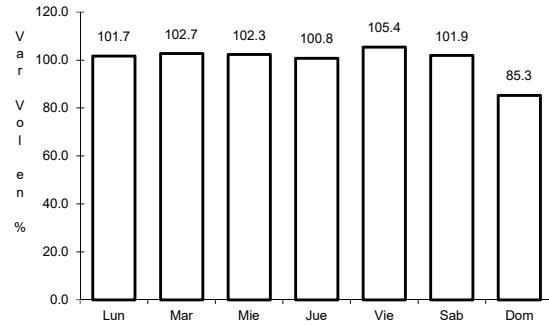
Tipo: 1

Sent: 1

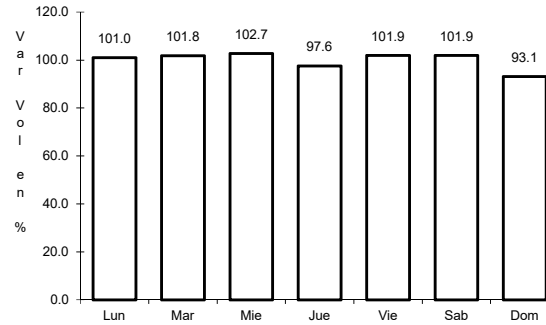
10 CARR: Las Cruces - Pinotepa Nacional

CLAVE: 00073

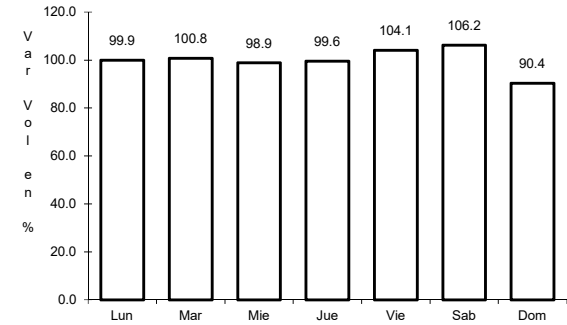
ruta: MEX-200



Km: 0.00 Tipo: 3 Sent: 1



Km: 0.00 Tipo: 3 Sent: 2

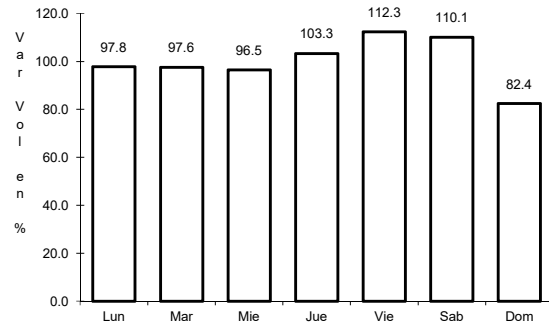


Km: 245.47 Tipo: 3 Sent: 0

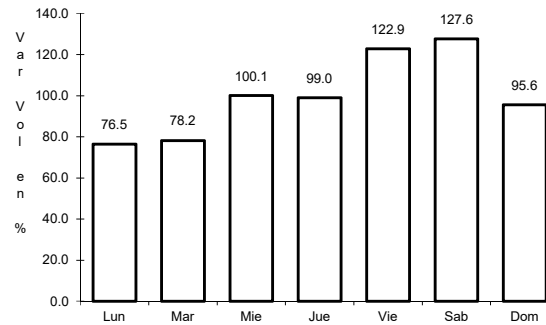
11 CARR: Libramiento Norte de Acapulco

CLAVE: 12421

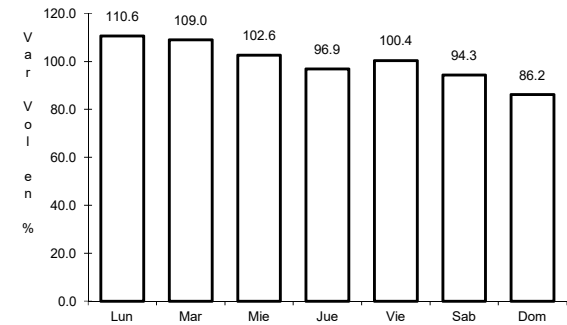
ruta: MEX-095



Km: 0.00 Tipo: 3 Sent: 0



Km: 6.40 Tipo: 3 Sent: 0

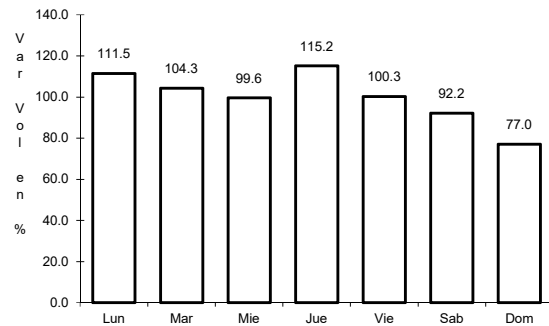


Km: 21.10 Tipo: 1 Sent: 0

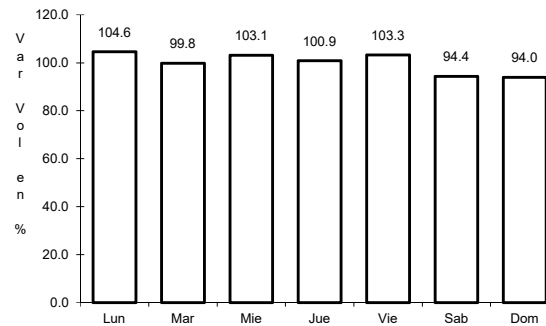
12 CARR: Milpillas - T. C. (Acapulco - Zihuatanejo)

CLAVE: 12012

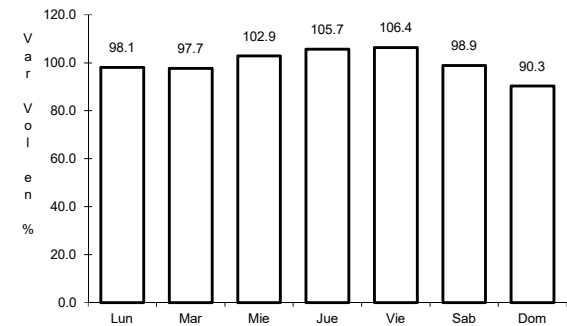
ruta: MEX-196



Km: 0.00 Tipo: 3 Sent: 0



Km: 237.00 Tipo: 1 Sent: 1

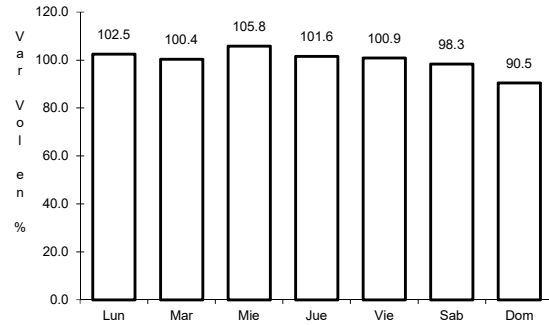


Km: 237.00 Tipo: 1 Sent: 2

13 CARR: Ramal a Aeropuerto Zihuatanejo

CLAVE: 12423

ruta: MEX-200



Km: 0.00

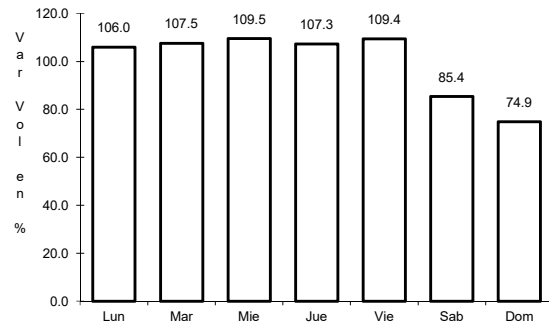
Tipo: 3

Sent: 0

14 CARR: Ramal a La Unión

CLAVE:

ruta: MEX-200



Km: 0.00

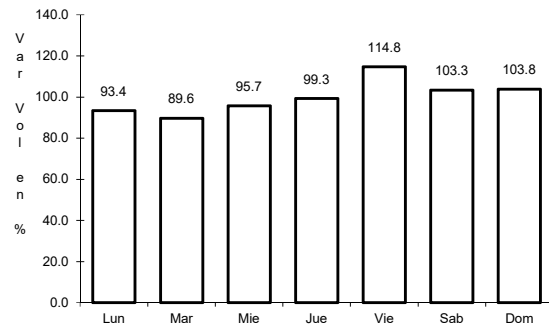
Tipo: 3

Sent: 0

15 CARR: San Juan de Los Llanos - Ometepec

CLAVE: 12011

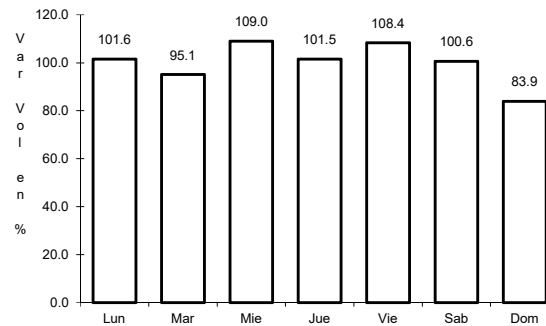
ruta: MEX-200



Km: 0.00

Tipo: 3

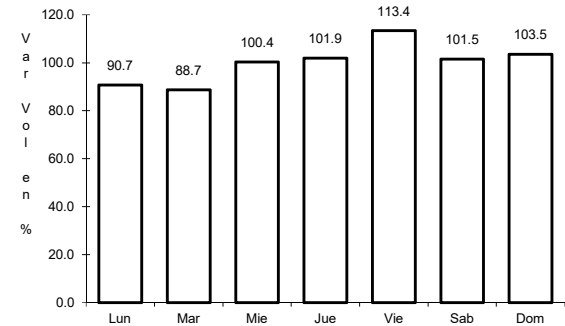
Sent: 0



Km: 15.94

Tipo: 1

Sent: 1



Km: 15.94

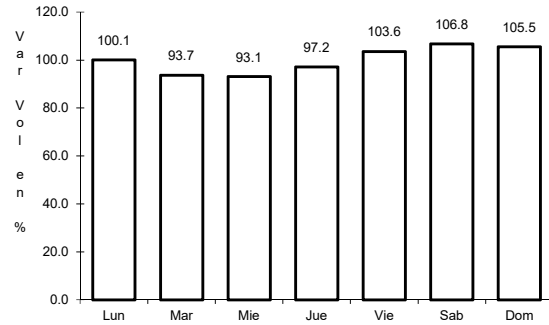
Tipo: 1

Sent: 2

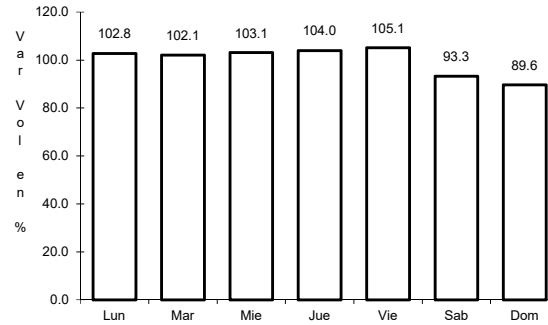
16 CARR: Tierra Colorada - Cruz Grande

CLAVE: 12420

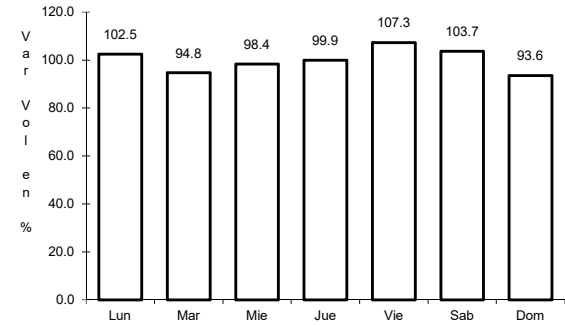
RUTA: MEX-198



Km: 0.00 Tipo: 3 Sent: 0



Km: 61.00 Tipo: 1 Sent: 0

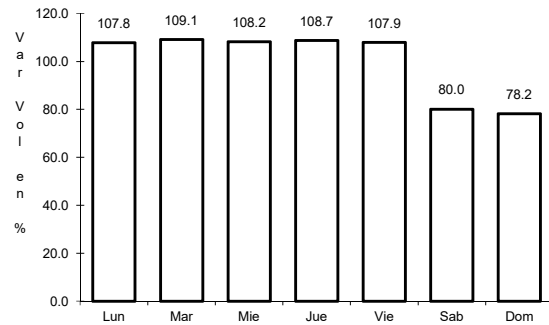


Km: 113.80 Tipo: 1 Sent: 0

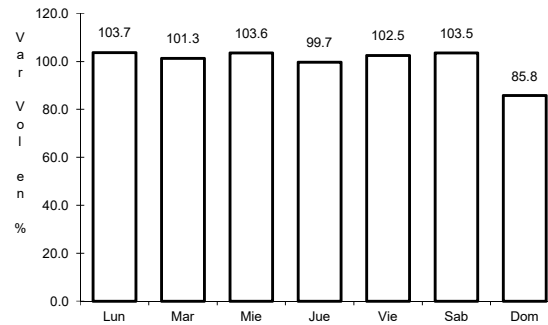
17 CARR: Toluca - Cd. Altamirano

CLAVE: 00020

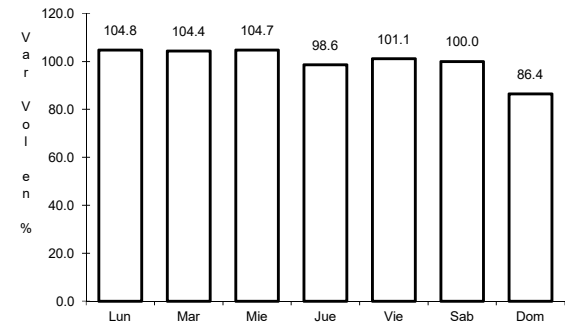
RUTA: MEX-134



Km: 1.78 Tipo: 3 Sent: 1



Km: 1.78 Tipo: 3 Sent: 2

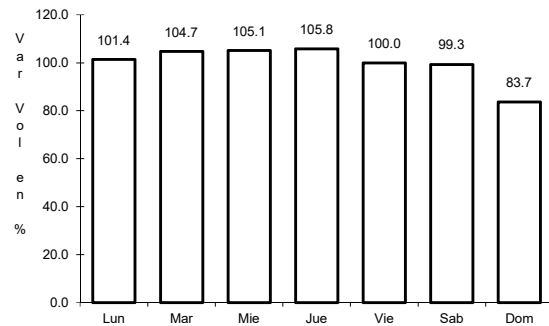


Km: 216.00 Tipo: 1 Sent: 0

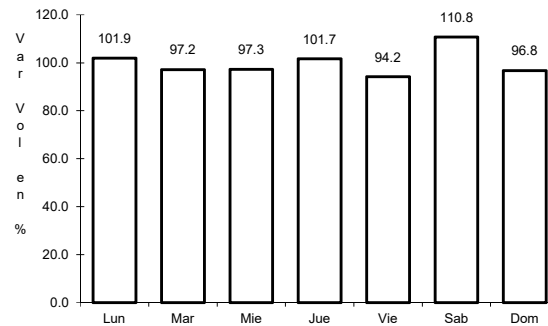
18 CARR: Zihuatanejo - La Mira

CLAVE: 00121

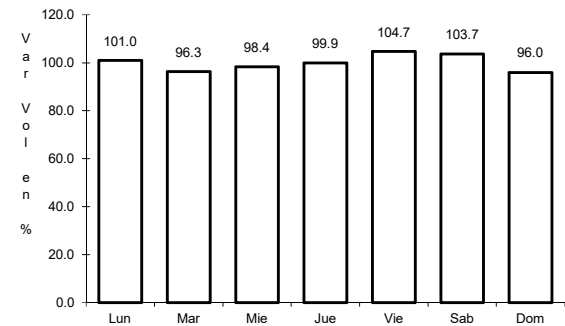
RUTA: MEX-200



Km: 0.00 Tipo: 3 Sent: 1



Km: 0.00 Tipo: 3 Sent: 2

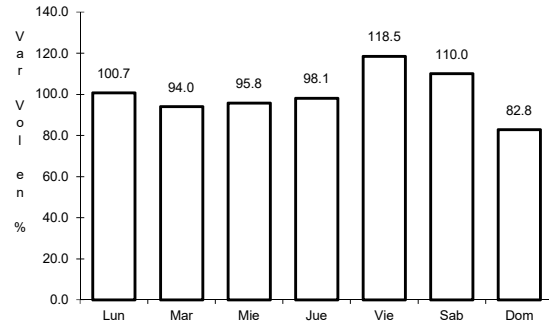


Km: 123.60 Tipo: 1 Sent: 0

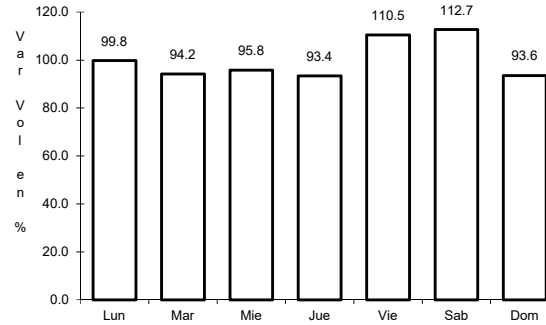
19 CARR: Cuernavaca - Acapulco (Cuota)

CLAVE: 00045

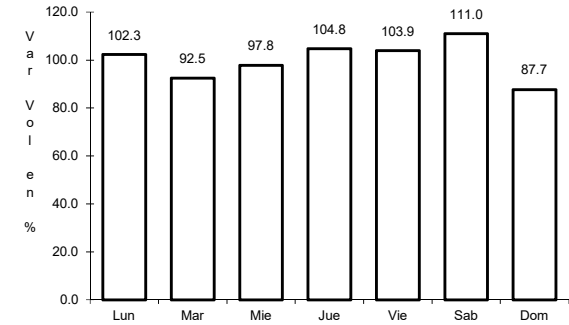
ruta: MEX-095D



Km: 0.00 Tipo: 3 Sent: 1



Km: 0.00 Tipo: 3 Sent: 2

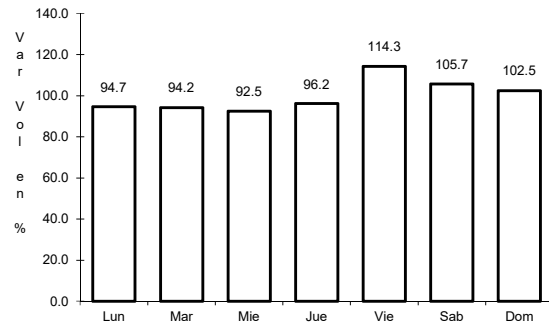


Km: 271.50 Tipo: 1 Sent: 1

20 CARR: Libramiento de Técpan (Cuota)

CLAVE: 00073

ruta: MEX-200D

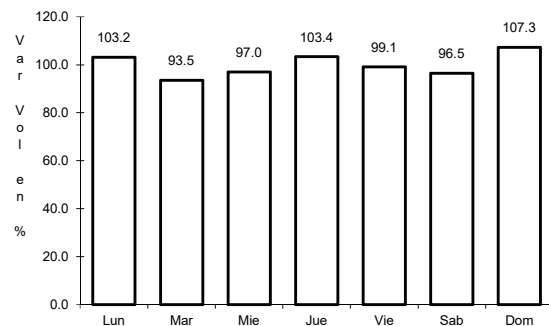


Km: 0.00 Tipo: 3 Sent: 0

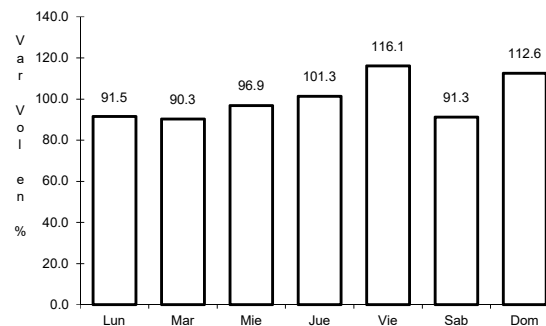
21 CARR: Nueva Italia - Lázaro Cárdenas (Cuota)

CLAVE: 00032

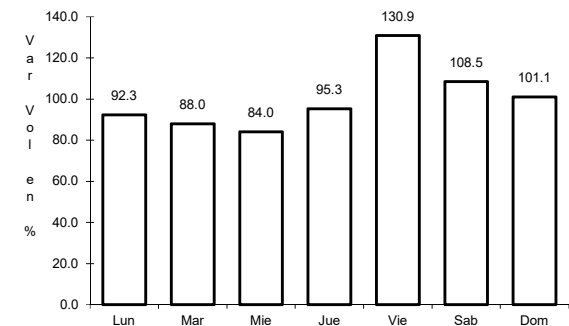
ruta: MEX-037D



Km: 153.90 Tipo: 3 Sent: 0



Km: 282.37 Tipo: 1 Sent: 0

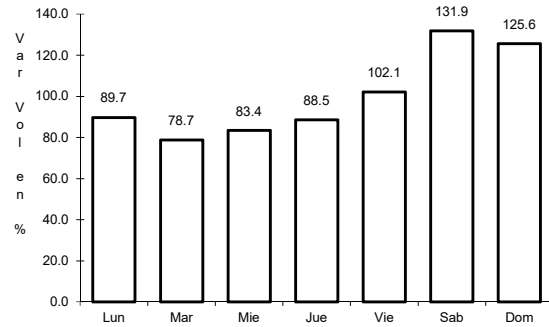


Km: 282.37 Tipo: 3 Sent: 0

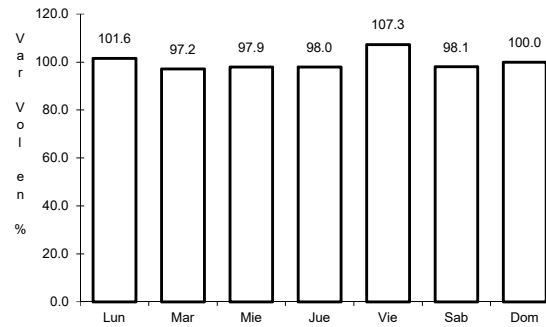
22 CARR: Puente de Ixtla - Iguala (Cuota)

CLAVE: 00043

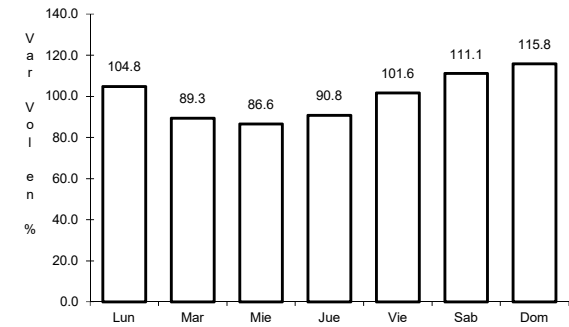
RUTA: MEX-091D



Km: 2.00 Tipo: 3 Sent: 0



Km: 33.58 Tipo: 3 Sent: 0

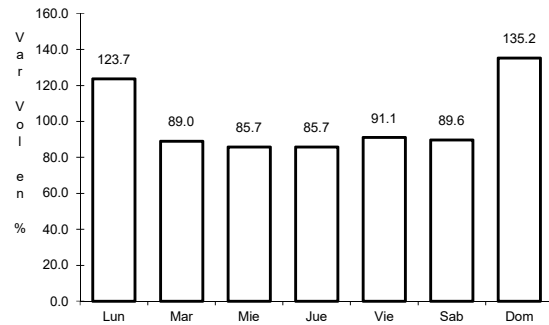


Km: 59.50 Tipo: 1 Sent: 0

23 CARR: Rancho Viejo - Taxco (Cuota)

CLAVE: 12010

RUTA: MEX-092D

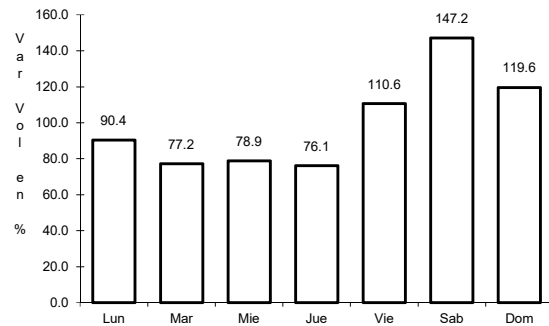


Km: 8.10 Tipo: 1 Sent: 0

24 CARR: Zacapalco - Rancho Viejo (Cuota)

CLAVE: 12010

RUTA: MEX-092D

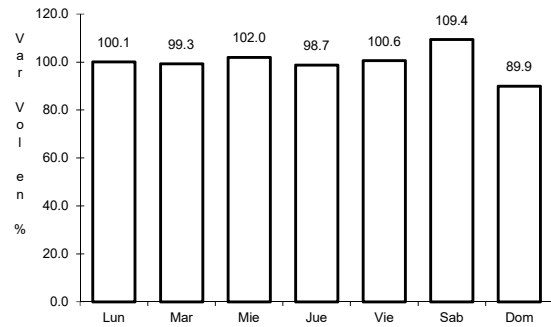


Km: 17.20 Tipo: 1 Sent: 0

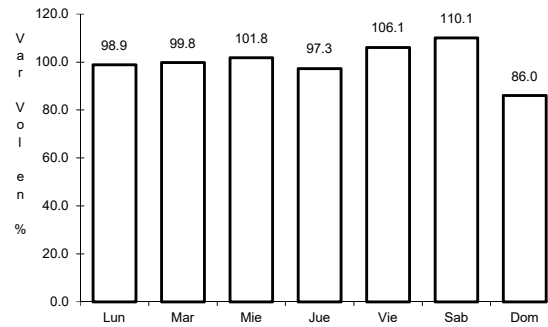
25 CARR: Acapulco - Aeropuerto Acapulco

CLAVE: 12292

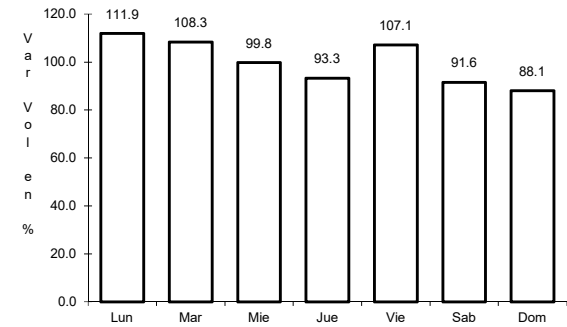
RUTA: GRO



Km: 8.70 Tipo: 1 Sent: 1



Km: 8.70 Tipo: 1 Sent: 2

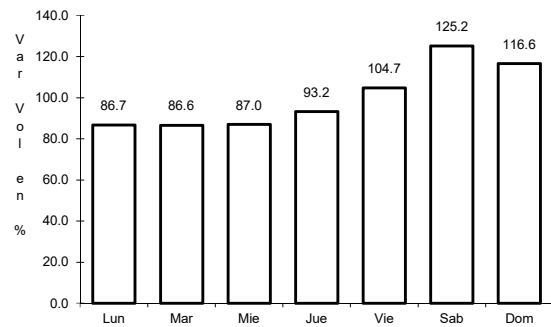


Km: 14.90 Tipo: 3 Sent: 1

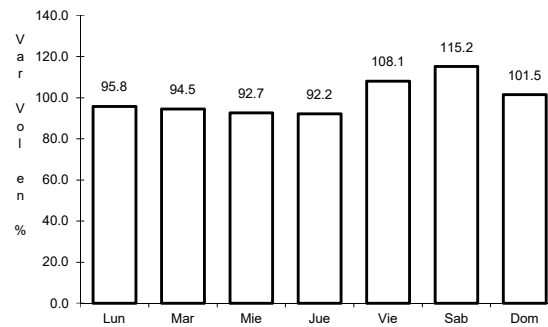
26 CARR: Ent. Potrero - Lomas de Chapultepec

CLAVE: 12293

RUTA: GRO



Km: 0.00 Tipo: 3 Sent: 1

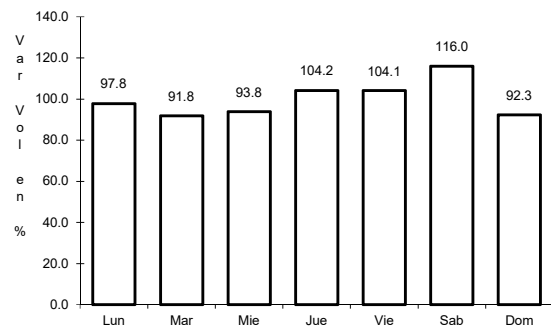


Km: 0.00 Tipo: 3 Sent: 2

27 CARR: Las Petaquillas - Quechultenango

CLAVE:

RUTA: GRO

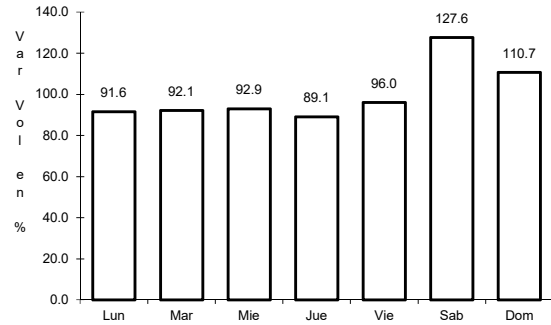


Km: 0.00 Tipo: 3 Sent: 0

28 CARR: Pie de La Cuesta - Barra de Coyuca

CLAVE: 12427

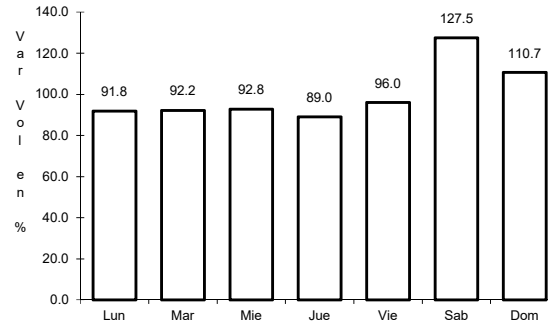
RUTA: GRO



Km: 0.00

Tipo: 3

Sent: 0



Km: 16.50

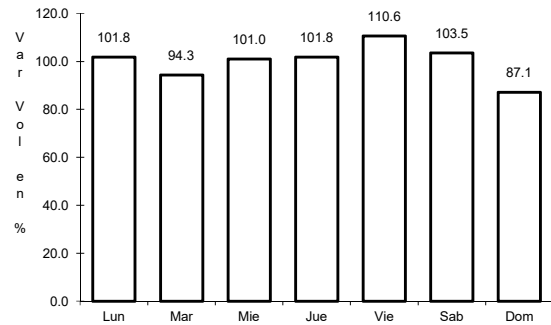
Tipo: 1

Sent: 0

29 CARR: Ramal a Cocula

CLAVE: 12082

RUTA: GRO



Km: 0.00

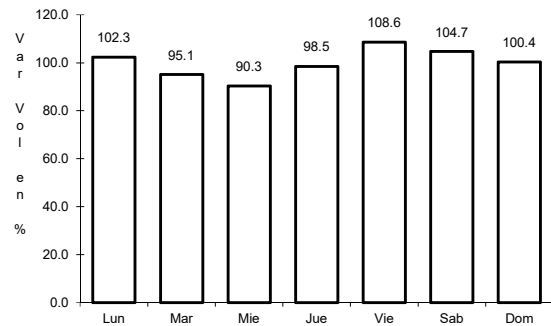
Tipo: 3

Sent: 0

30 CARR: T. C. (Iguala - Chilpancingo) - Atenango del Río

CLAVE: 12001

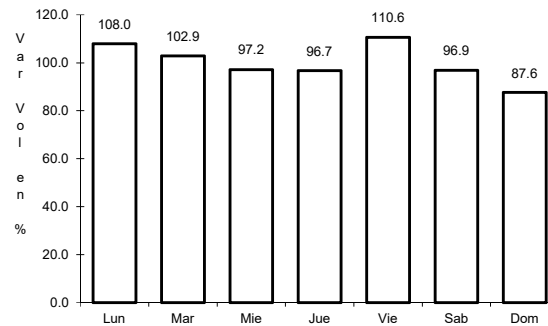
RUTA: GRO-001



Km: 0.00

Tipo: 3

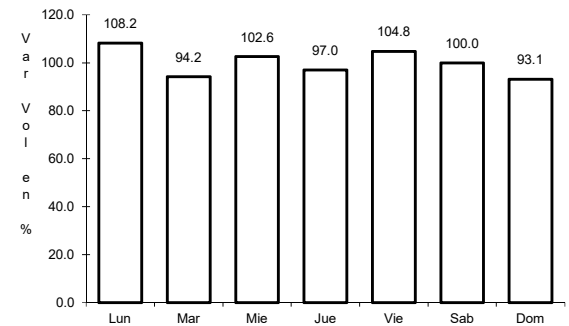
Sent: 0



Km: 22.00

Tipo: 3

Sent: 0



Km: 62.00

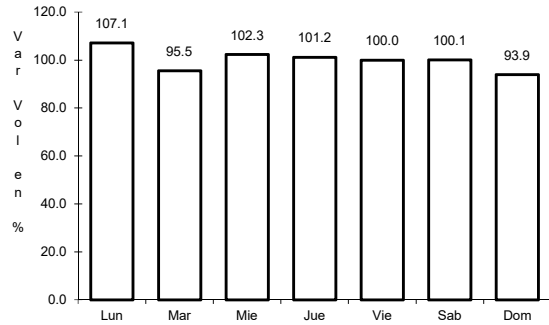
Tipo: 1

Sent: 0

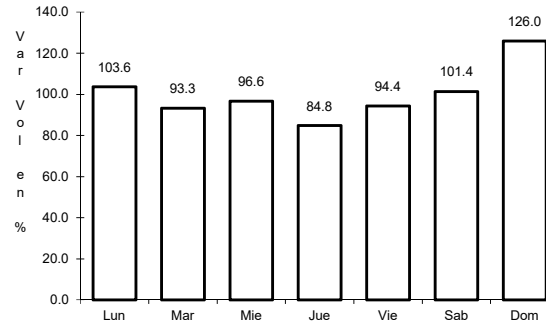
31 CARR: Taxco - Ixcateopan

CLAVE: 12083

RUTA: GRO



Km: 0.00 Tipo: 3 Sent: 0

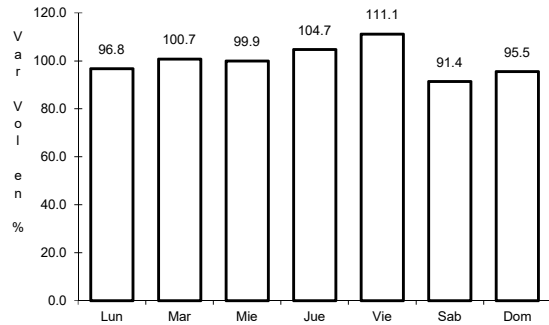


Km: 36.00 Tipo: 1 Sent: 0

32 CARR: Teloloapan - Apaxtla de Castrejón

CLAVE: 12081

RUTA: GRO

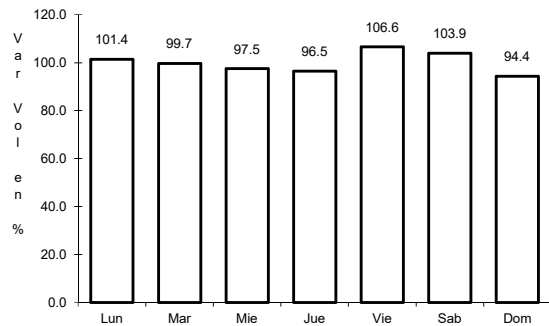


Km: 0.00 Tipo: 3 Sent: 0

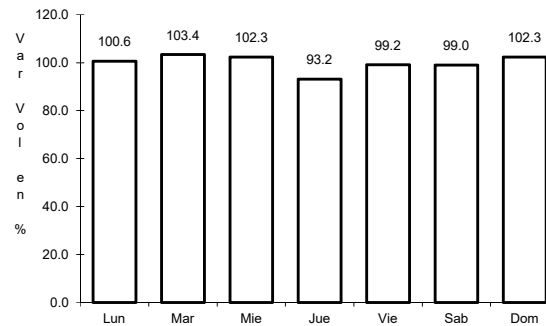
33 CARR: Tlapa de Comonfort - Marquelia

CLAVE:

RUTA: GRO



Km: 0.00 Tipo: 3 Sent: 0

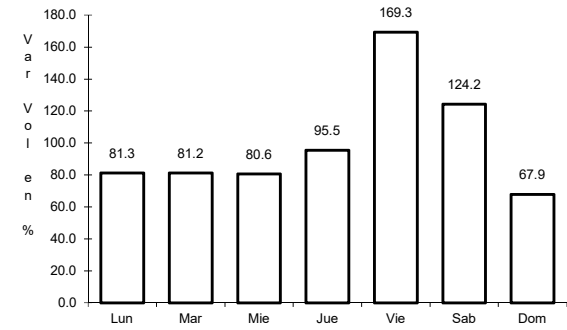
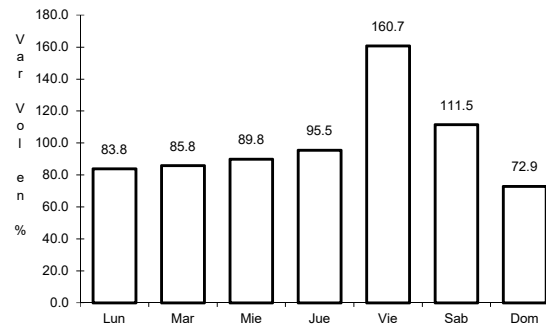
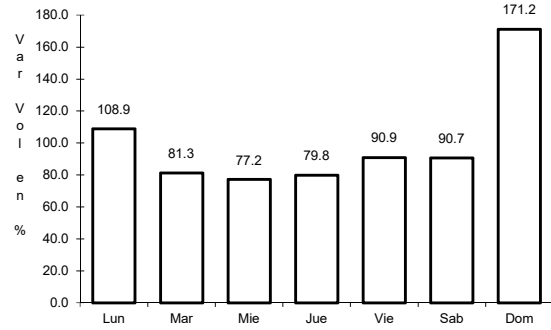


Km: 163.00 Tipo: 1 Sent: 0

34 CARR: Puerto Marqués - La Venta (Cuota)

CLAVE: 00043

RUTA: GRO-D



Km: 6.33

Tipo: 1

Sent: 1

Km: 6.33

Tipo: 1

Sent: 2

Km: 6.33

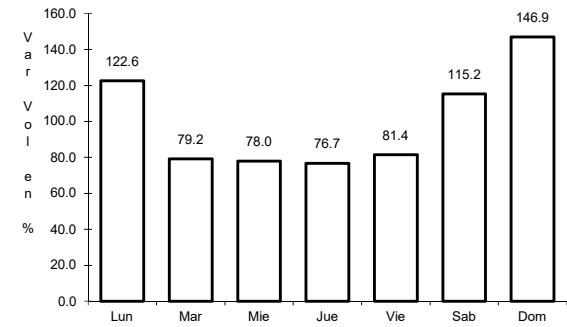
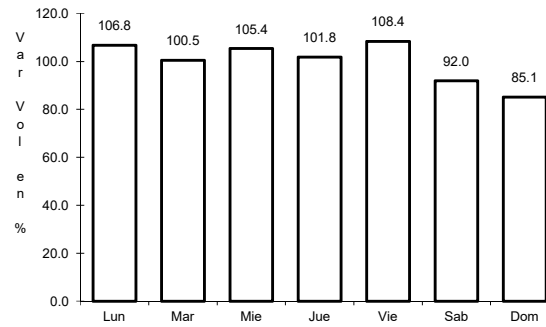
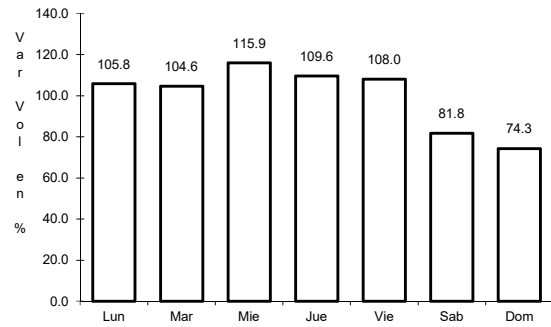
Tipo: 3

Sent: 1

35 CARR: Toluca - Axixintla

CLAVE: 00122

RUTA: EM-MEX-055



Km: 4.74

Tipo: 1

Sent: 1

Km: 4.74

Tipo: 1

Sent: 2

Km: 125.30

Tipo: 1

Sent: 0