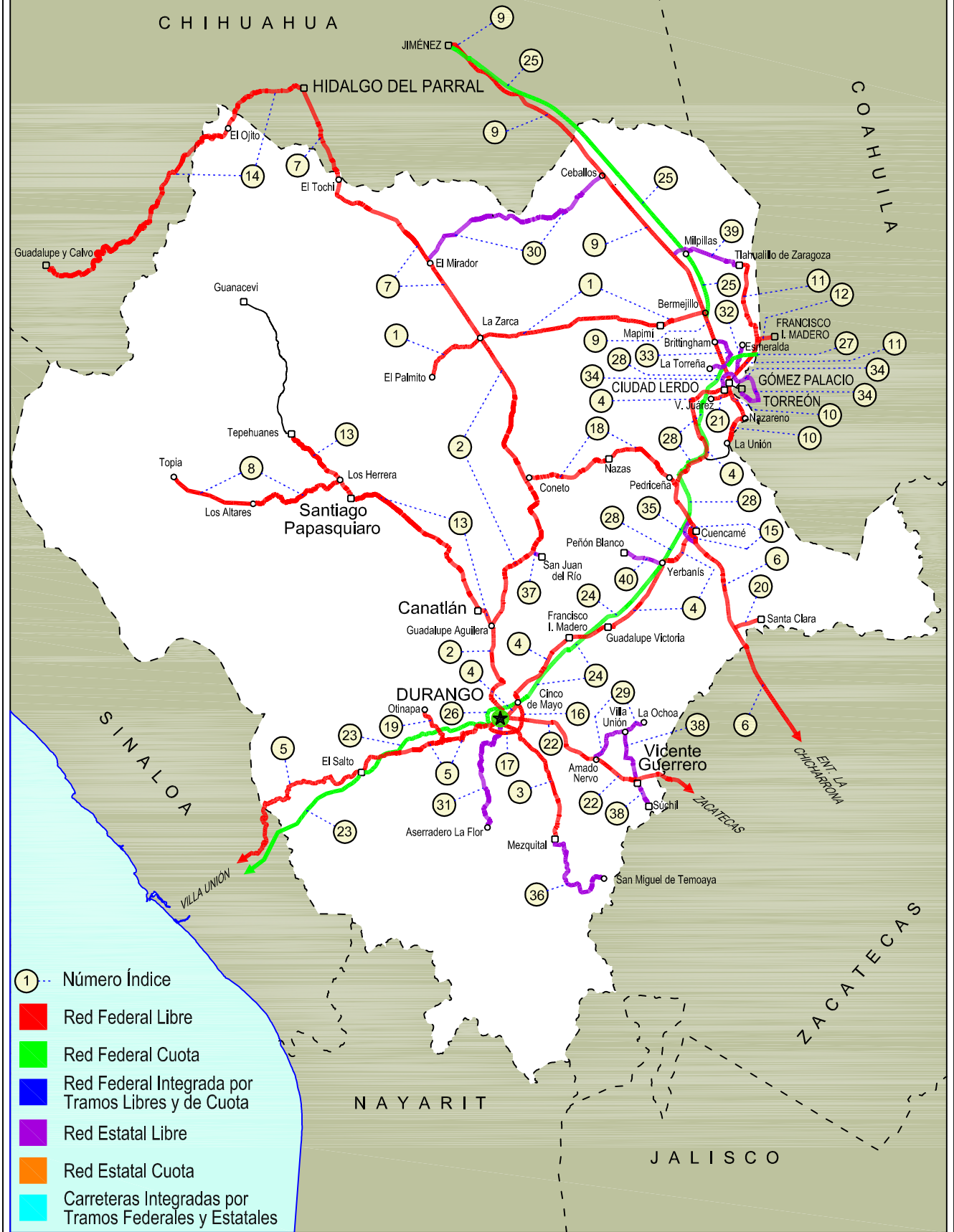


# 10 DURANGO

SECRETARÍA DE COMUNICACIONES Y TRANSPORTES  
DIRECCIÓN GENERAL DE SERVICIOS TÉCNICOS







DURANGO

## ---RED FEDERAL LIBRE---

1 Bermejillo - El Palmito	MEX-030
2 Durango - Ent. La Zarca	MEX-045
3 Durango - Mezquital	MEX-023
4 Durango - Torreón	MEX-040
5 Durango - Villa Unión	MEX-040
6 Ent. La Chicharrona - Cuencamé	MEX-049
7 Ent. La Zarca - Hidalgo del Parral	MEX-045
8 Ent. Los Herrera - Topia	MEX-036
9 Gómez Palacio - Jiménez	MEX-049
10 Gómez Palacio - La Unión	MEX-040
11 Gómez Palacio - Tlahualillo	MEX-040
12 Gregorio García - Francisco I. Madero	MEX-040
13 Guadalupe Aguilera - Tepehuanes	MEX-023
14 Hidalgo del Parral - Guadalupe y Calvo	MEX-024
15 Libramiento Cuencamé	MEX
16 Libramiento Oriente de Durango	MEX-045
17 Libramiento Sur de Durango	MEX-045
18 Pedriceña - Ent. Rodeo	MEX-034
19 Ramal a Otinapa	MEX
20 Ramal a Santa Clara	MEX-049
21 Ramal a Villa Juárez	MEX-040
22 Zacatecas - Durango	MEX-045

## ---RED FEDERAL DE CUOTA---

23 Durango - Mazatlán (Cuota)	MEX-040D
24 Durango - Yerbanis (Cuota)	MEX-040D
25 Gómez Palacio - Corralitos (Cuota)	MEX-049D
26 Libramiento de Durango (Cuota)	MEX-040D
27 Libramiento Norte de Torreón (Cuota)	MEX-040D
28 Yerbanis - Gómez Palicio (Cuota)	MEX-040D

## ---RED ESTATAL LIBRE---

29 Amado Nervo - La Ochoa	DGO-542
30 Ceballos - El Mirador	DGO-044
31 Durango - Aserradero La Flor	DGO-115
32 Jabonoso - Esmeralda	DGO-363
33 La Torreña - Brittingham	DGO-325
34 Libramiento de Torreón	COA
35 Libramiento Exterior Cuencamé	DGO
36 Mezquital - San Miguel de Temoaya	DGO
37 Ramal a San Juan del Río	DGO-290
38 Súchil - Villa Unión	DGO-241
39 Tlahualillo de Zaragoza - T.C. Gómez Palacio - Jiménez	DGO
40 Yerbanis - Peñón Blanco	DGO-316

DURANGO

1 CARR: Bermejillo - El Palmito

CLAVE: 10105

RUTA: MEX-030

AÑO: 2018

LUGAR	ESTACION				CLASIFICACION VEHICULAR EN PORCIENTO										COORDENADAS					
	KM	TE	SC	TDPA	M	A	B	C2	C3	T3S2	T3S3	T3S2R4	OTROS	A	B	C	K'	D	LATITUD	LONGITUD
Bermejillo	0.00	3	0	2149	1.3	72.3	1.2	15.6	3.2	4.7	1.2	0.3	0.2	73.6	1.2	25.2	0.089	0.502	25.892170	-103.632102
Santo Domingo	86.00	1	0	456	0.7	70.5	1.4	14.8	5.9	3.6	2.7	0.0	0.4	71.2	1.4	27.4	0.088	0.504	25.814565	-104.440178
Santo Domingo	86.00	3	0	348	0.6	63.1	2.3	23.3	5.1	3.4	1.8	0.0	0.4	63.7	2.3	34.0	0.089	0.507	25.813481	-104.448278
Ent. La Zarca	120.00	1	0	617	1.3	65.2	1.5	22.7	4.5	2.9	1.7	0.0	0.2	66.5	1.5	32.0	0.083	0.516	25.784313	-104.759166
Ent. La Zarca	120.00	3	0	174	0.9	70.6	1.2	23.8	2.8	0.7	0.0	0.0	0.0	71.5	1.2	27.3	0.115	0.507	25.781778	-104.765255
El Palmito	160.00	1	0	264	0.3	66.0	1.2	30.5	1.9	0.1	0.0	0.0	0.0	66.3	1.2	32.5	0.076	0.504	25.615468	-105.003102

2 CARR: Durango - Ent. La Zarca

CLAVE: 10016

RUTA: MEX-045

AÑO: 2018

LUGAR	ESTACION				CLASIFICACION VEHICULAR EN PORCIENTO										COORDENADAS					
	KM	TE	SC	TDPA	M	A	B	C2	C3	T3S2	T3S3	T3S2R4	OTROS	A	B	C	K'	D	LATITUD	LONGITUD
Durango	0.00	3	1	18061	2.4	90.6	0.4	2.1	0.4	2.0	1.7	0.2	0.2	93.0	0.4	6.6	0.069	0.525	24.041705	-104.658009
Durango	0.00	3	2	17947	2.4	90.3	0.4	2.3	0.4	2.0	1.8	0.2	0.2	92.7	0.4	6.9	0.072	0.525	24.041571	-104.658162
Caseta Fiscal Zona Industrial	5.30	1	1	9383	2.5	85.4	1.1	7.9	1.6	0.9	0.5	0.1	0.0	87.9	1.1	11.0	0.098	0.517	24.048320	-104.658174
Caseta Fiscal Zona Industrial	5.30	1	2	8774	2.1	83.8	1.3	9.4	1.8	1.0	0.5	0.1	0.0	85.9	1.3	12.8	0.092	0.517	24.048316	-104.658348
Caseta Fiscal Zona Industrial	5.30	3	1	8481	1.6	84.8	1.3	9.1	1.5	1.1	0.5	0.1	0.0	86.4	1.3	12.3	0.079	0.505	24.059066	-104.656220
Caseta Fiscal Zona Industrial	5.30	3	2	8322	1.7	83.2	1.5	10.3	1.6	1.1	0.5	0.1	0.0	84.9	1.5	13.6	0.079	0.505	24.059120	-104.656426
X. Periférico de Durango	6.20	3	1	6270	1.6	82.8	1.3	10.9	1.3	1.2	0.7	0.1	0.1	84.4	1.3	14.3	0.092	0.505	24.079670	-104.668445
X. Periférico de Durango	6.20	3	2	6404	1.3	81.7	1.4	11.9	1.5	1.3	0.7	0.1	0.1	83.0	1.4	15.6	0.086	0.505	24.079615	-104.668524
T. Der. San José del Molino	28.00	1	0	564	6.8	68.7	6.4	15.7	1.0	0.8	0.6	0.0	0.0	75.5	6.4	18.1	0.129	0.512	24.206581	-104.661128
T. Izq. Canatlán	55.25	1	0	5618	1.5	77.0	2.4	12.4	1.6	3.1	1.6	0.2	0.2	78.5	2.4	19.1	0.094	0.500	24.431285	-104.698814
T. Izq. Canatlán	55.25	3	0	2725	1.9	76.0	2.3	15.4	1.7	1.7	0.8	0.1	0.1	77.9	2.3	19.8	0.078	0.516	24.445791	-104.699135
T. Der. San Juan del Río	105.81	1	0	2259	1.9	75.0	2.9	14.8	2.1	2.1	1.0	0.1	0.1	76.9	2.9	20.2	0.078	0.508	24.791440	-104.505506
T. Der. San Juan del Río	105.81	3	0	2177	1.3	69.5	2.9	20.4	2.7	2.0	1.0	0.2	0.0	70.8	2.9	26.3	0.073	0.509	24.801412	-104.498397
T. Der. Nazas	155.50	3	0	2750	1.7	75.4	2.2	17.7	1.3	1.0	0.6	0.0	0.1	77.1	2.2	20.7	0.087	0.504	25.131209	-104.540769
T. Der. Rodeo	160.70	1	0	3618	1.4	78.2	2.6	13.9	1.4	1.4	0.9	0.1	0.1	79.6	2.6	17.8	0.068	0.503	25.158080	-104.550706
T. Izq. Abasolo	178.00	3	0	1290	1.6	75.5	3.7	14.0	1.4	2.4	1.3	0.1	0.0	77.1	3.7	19.2	0.087	0.529	25.309912	-104.639957
Ent. La Zarca	239.50	1	0	901	1.7	65.8	5.4	17.2	2.7	4.6	1.9	0.3	0.4	67.5	5.4	27.1	0.073	0.537	25.772445	-104.755891

3 CARR: Durango - Mezquital

CLAVE: 10423

RUTA: MEX-023

AÑO: 2018

LUGAR	ESTACION				CLASIFICACION VEHICULAR EN PORCIENTO										COORDENADAS					
	KM	TE	SC	TDPA	M	A	B	C2	C3	T3S2	T3S3	T3S2R4	OTROS	A	B	C	K'	D	LATITUD	LONGITUD
Durango	0.00	3	1	7358	3.5	85.0	0.8	9.1	1.0	0.3	0.3	0.0	0.0	88.5	0.8	10.7	0.103	0.513	23.994370	-104.632649
Durango	0.00	3	2	7749	3.4	84.1	0.7	10.6	0.8	0.2	0.2	0.0	0.0	87.5	0.7	11.8	0.087	0.513	23.994511	-104.632668

DURANGO

3 CARR: Durango - Mezquital

CLAVE: 10423

RUTA: MEX-023

AÑO: 2018

LUGAR	ESTACION				CLASIFICACION VEHICULAR EN PORCIENTO										COORDENADAS					
	KM	TE	SC	TDPA	M	A	B	C2	C3	T3S2	T3S3	T3S2R4	OTROS	A	B	C	K'	D	LATITUD	LONGITUD
Gabino Santillán	8.00	3	1	3727	5.3	80.8	0.5	9.9	2.2	0.6	0.5	0.1	0.1	86.1	0.5	13.4	0.091	0.506	23.980670	-104.591847
Gabino Santillán	8.00	3	2	3641	3.6	80.2	0.5	12.1	2.2	0.6	0.6	0.1	0.1	83.8	0.5	15.7	0.098	0.506	23.980778	-104.591801
T. Izq. Monte Morelos	13.00	3	0	3960	6.4	72.9	0.6	16.4	2.7	0.8	0.2	0.0	0.0	79.3	0.6	20.1	0.102	0.506	23.949218	-104.562392
Pino Suarez	24.20	3	0	2272	3.2	73.3	0.5	21.4	1.2	0.3	0.1	0.0	0.0	76.5	0.5	23.0	0.099	0.505	23.872100	-104.481100
Mezquital	82.00	1	1	1265	5.8	75.1	0.4	17.5	1.0	0.1	0.1	0.0	0.0	80.9	0.4	18.7	0.082	0.501	23.485447	-104.385694
Mezquital	82.00	1	2	1262	6.1	71.4	0.4	20.7	1.1	0.2	0.0	0.0	0.1	77.5	0.4	22.1	0.082	0.501	23.485427	-104.385611

4 CARR: Durango - Torreón

CLAVE: 10085

RUTA: MEX-040

AÑO: 2018

LUGAR	ESTACION				CLASIFICACION VEHICULAR EN PORCIENTO										COORDENADAS					
	KM	TE	SC	TDPA	M	A	B	C2	C3	T3S2	T3S3	T3S2R4	OTROS	A	B	C	K'	D	LATITUD	LONGITUD
Durango	0.00	3	1	10650	2.7	86.1	1.4	6.9	1.1	1.1	0.5	0.1	0.1	88.8	1.4	9.8	0.072	0.526	24.076069	-104.591502
Durango	0.00	3	2	9597	2.4	87.5	1.2	5.6	1.3	1.1	0.6	0.1	0.2	89.9	1.2	8.9	0.079	0.526	24.076356	-104.591471
T. Der. Cd. de Los Niños	7.70	3	1	7448	1.8	82.9	1.9	9.5	1.3	1.6	0.7	0.2	0.1	84.7	1.9	13.4	0.079	0.515	24.082553	-104.585925
T. Der. Cd. de Los Niños	7.70	3	2	7918	1.7	83.7	1.7	9.2	1.3	1.5	0.6	0.2	0.1	85.4	1.7	12.9	0.076	0.515	24.082648	-104.586062
X. Periférico de Durango	9.00	1	1	8026	2.1	81.2	2.0	10.3	1.4	1.8	0.8	0.3	0.1	83.3	2.0	14.7	0.074	0.503	24.088312	-104.580968
X. Periférico de Durango	9.00	1	2	8109	1.6	82.0	2.0	10.2	1.3	1.7	0.8	0.3	0.1	83.6	2.0	14.4	0.071	0.503	24.088428	-104.581107
T. Der. Aeropuerto	9.42	1	1	8019	2.3	81.8	2.1	8.3	1.6	2.2	1.2	0.4	0.1	84.1	2.1	13.8	0.076	0.520	24.092409	-104.577473
T. Der. Aeropuerto	9.42	1	2	8679	2.8	79.8	2.1	10.2	1.9	1.8	1.0	0.3	0.1	82.6	2.1	15.3	0.078	0.520	24.092542	-104.577623
T. Der. Aeropuerto	9.42	3	1	4468	2.7	81.1	1.6	9.6	1.6	1.7	1.3	0.2	0.2	83.8	1.6	14.6	0.074	0.503	24.099539	-104.575698
T. Der. Aeropuerto	9.42	3	2	4419	2.6	82.0	1.5	8.1	2.1	2.0	1.3	0.2	0.2	84.6	1.5	13.9	0.075	0.503	24.099561	-104.575799
La Calera	10.85	3	0	5486	2.8	72.3	2.7	15.7	1.9	2.5	1.5	0.3	0.3	75.1	2.7	22.2	0.071	0.523	24.110805	-104.571812
Abraham González	27.10	3	0	4433	1.4	67.5	3.3	15.0	5.4	4.0	2.2	0.8	0.4	68.9	3.3	27.8	0.073	0.502	24.206385	-104.515073
Francisco I. Madero	56.30	1	0	4159	1.3	68.2	3.1	13.4	3.4	5.5	3.6	1.1	0.4	69.5	3.1	27.4	0.078	0.510	24.392359	-104.330991
Francisco I. Madero	56.30	3	0	4277	1.1	73.0	3.2	13.8	2.2	3.6	1.9	0.8	0.4	74.1	3.2	22.7	0.072	0.504	24.405103	-104.305659
Guadalupe Victoria	77.50	1	0	5045	2.2	71.9	2.9	13.5	1.9	4.7	2.3	0.3	0.3	74.1	2.9	23.0	0.080	0.503	24.446801	-104.139696
Guadalupe Victoria	77.50	3	0	6487	1.4	73.4	2.2	16.5	1.7	2.5	1.7	0.4	0.2	74.8	2.2	23.0	0.078	0.503	24.461980	-104.087829
T. Der. Ignacio Allende	90.13	1	0	4572	2.1	67.0	2.9	16.3	2.7	5.4	2.6	0.7	0.3	69.1	2.9	28.0	0.067	0.540	24.496007	-104.026391
T. Der. Ignacio Allende	90.13	3	0	3344	1.3	61.9	4.1	16.2	5.2	6.8	3.1	0.7	0.7	63.2	4.1	32.7	0.072	0.526	24.506275	-104.011803
T. Izq. Peñón Blanco	120.90	1	0	2330	1.4	55.6	5.7	12.6	6.6	9.5	6.7	1.3	0.6	57.0	5.7	37.3	0.078	0.509	24.732624	-103.843594
T. Izq. Peñón Blanco	120.90	3	0	2027	1.6	51.5	6.4	12.5	8.0	10.6	7.2	1.7	0.5	53.1	6.4	40.5	0.074	0.505	24.744805	-103.836579
Cuencamé	144.30	1	0	2145	2.0	51.3	5.2	12.3	6.5	14.5	5.8	1.9	0.5	53.3	5.2	41.5	0.076	0.511	24.861202	-103.701448
Cuencamé	144.30	3	0	7792	3.4	47.4	5.6	11.4	4.7	16.4	4.9	5.3	0.9	50.8	5.6	43.6	0.063	0.509	24.909523	-103.704752
T. Izq. Nazas	171.61	1	0	4692	1.4	56.9	3.5	11.5	4.5	15.0	4.0	2.6	0.6	58.3	3.5	38.2	0.054	0.511	25.086144	-103.771169
T. Izq. Nazas	171.61	3	0	6588	1.9	59.3	2.8	10.5	3.4	14.2	4.7	2.4	0.8	61.2	2.8	36.0	0.056	0.521	25.092340	-103.769622

DURANGO

4 CARR: Durango - Torreón

CLAVE: 10085

RUTA: MEX-040

AÑO: 2018

LUGAR	ESTACION				CLASIFICACION VEHICULAR EN PORCIENTO										COORDENADAS					
	KM	TE	SC	TDPA	M	A	B	C2	C3	T3S2	T3S3	T3S2R4	OTROS	A	B	C	K'	D	LATITUD	LONGITUD
T. Der. Villa Juárez	194.40	3	0	5495	1.2	59.8	3.1	9.2	4.0	14.6	4.7	2.4	1.0	61.0	3.1	35.9	0.072	0.514	25.225908	-103.628508
León Guzmán	229.58	3	0	8460	2.6	69.0	1.8	12.6	3.2	6.8	2.6	1.1	0.3	71.6	1.8	26.6	0.081	0.514	25.512439	-103.646991
Cd. Lerdo	244.80	1	1	7355	2.7	77.1	1.3	9.6	1.6	4.0	1.3	2.2	0.2	79.8	1.3	18.9	0.170	0.510	25.511887	-103.542416
Cd. Lerdo	244.80	1	2	7655	2.5	75.9	1.4	10.5	1.6	4.3	1.4	2.2	0.2	78.4	1.4	20.2	0.133	0.510	25.512004	-103.542419
T. Izq. Gómez Palacio	248.90	3	1	10097	3.2	90.7	0.3	4.0	0.7	0.5	0.4	0.1	0.1	93.9	0.3	5.8	0.087	0.541	25.556638	-103.480471
T. Izq. Gómez Palacio	248.90	3	2	8560	4.2	88.8	0.5	4.8	0.7	0.4	0.4	0.1	0.1	93.0	0.5	6.5	0.085	0.541	25.556680	-103.480641
Lim. Edos. Term. Dgo. Ppia. Coah.	251.00																			
Torreón	255.80	1	1	22342	3.4	88.7	0.3	5.5	0.2	0.5	1.2	0.0	0.2	92.1	0.3	7.6	0.075	0.501	25.547779	-103.471410
Torreón	255.80	1	2	22444	3.0	86.7	0.4	7.1	0.2	0.7	1.6	0.0	0.3	89.7	0.4	9.9	0.078	0.501	25.547867	-103.471256

5 CARR: Durango - Villa Unión

CLAVE: 0083

RUTA: MEX-040

AÑO: 2018

LUGAR	ESTACION				CLASIFICACION VEHICULAR EN PORCIENTO										COORDENADAS					
	KM	TE	SC	TDPA	M	A	B	C2	C3	T3S2	T3S3	T3S2R4	OTROS	A	B	C	K'	D	LATITUD	LONGITUD
Durango	0.00	3	0	4324	1.2	75.0	2.1	14.4	3.8	2.1	1.2	0.0	0.2	76.2	2.1	21.7	0.067	0.549	23.995222	-104.732512
T. Der. Pino	22.86	3	0	2486	2.2	64.9	3.4	18.6	4.9	3.6	2.0	0.0	0.4	67.1	3.4	29.5	0.072	0.513	23.967114	-104.820594
T. Izq. Estación Navíos	58.42	3	0	2080	2.0	66.2	3.7	17.9	4.9	3.2	1.7	0.0	0.4	68.2	3.7	28.1	0.072	0.525	23.895114	-105.054102
Llano Grande	77.23	1	0	2429	3.5	67.9	2.7	12.2	6.3	4.3	2.7	0.0	0.4	71.4	2.7	25.9	0.080	0.510	23.866644	-105.199104
El Salto	99.76	3	0	2165	3.0	75.8	1.3	16.3	1.5	1.3	0.6	0.0	0.2	78.8	1.3	19.9	0.087	0.515	23.784356	-105.376077
La Ciudad	145.50	1	0	831	5.4	72.4	2.5	14.9	1.6	2.4	0.8	0.0	0.0	77.8	2.5	19.7	0.077	0.505	23.731534	-105.676924
La Ciudad	145.50	3	0	421	11.6	63.3	2.4	17.0	1.9	2.6	1.2	0.0	0.0	74.9	2.4	22.7	0.121	0.524	23.727350	-105.691531
Lim. Edos. Term. Dgo. Ppia. Sin.	198.50																			
T. C. Tepic - Mazatlán	294.40	1	0	3454	4.1	71.2	5.8	11.0	3.0	3.5	1.1	0.1	0.2	75.3	5.8	18.9	0.130	0.510	23.204700	-106.197887

6 CARR: Ent. La Chicharrona - Cuencamé

CLAVE: 00152

RUTA: MEX-049

AÑO: 2018

LUGAR	ESTACION				CLASIFICACION VEHICULAR EN PORCIENTO										COORDENADAS					
	KM	TE	SC	TDPA	M	A	B	C2	C3	T3S2	T3S3	T3S2R4	OTROS	A	B	C	K'	D	LATITUD	LONGITUD
Ent. La Chicharrona	0.00	3	1	4483	0.6	61.4	4.4	9.7	2.2	12.7	3.6	4.5	0.9	62.0	4.4	33.6	0.080	0.509	23.305440	-102.958694
Ent. La Chicharrona	0.00	3	2	4642	0.7	58.7	4.6	10.2	2.3	13.8	3.7	5.0	1.0	59.4	4.6	36.0	0.082	0.509	23.305432	-102.958887
T. Der. Cañitas de Felipe Pescador	25.86	1	1	4051	0.6	56.6	5.2	9.2	2.2	15.6	3.9	5.5	1.2	57.2	5.2	37.6	0.067	0.508	23.506228	-102.959452
T. Der. Cañitas de Felipe Pescador	25.86	1	2	4174	0.5	54.9	5.0	8.9	2.2	17.1	4.7	5.2	1.5	55.4	5.0	39.6	0.063	0.508	23.506222	-102.959668
Río Grande	60.00	1	0	7309	0.9	54.6	5.5	9.0	2.3	16.6	4.2	5.9	1.0	55.5	5.5	39.0	0.070	0.505	23.791484	-103.016245
Río Grande	60.00	3	0	6757	2.1	52.1	5.5	12.6	2.8	15.7	3.0	5.1	1.1	54.2	5.5	40.3	0.073	0.506	23.879187	-103.094356
T. Der. Nieves	78.00	3	0	6853	0.6	44.8	6.5	10.3	2.8	20.3	5.9	7.4	1.4	45.4	6.5	48.1	0.068	0.502	23.924567	-103.160568

DURANGO

6 CARR: Ent. La Chicharrona - Cuencamé

CLAVE: 00152

RUTA: MEX-049

AÑO: 2018

LUGAR	ESTACION				CLASIFICACION VEHICULAR EN PORCIENTO													COORDENADAS		
	KM	TE	SC	TDPA	M	A	B	C2	C3	T3S2	T3S3	T3S2R4	OTROS	A	B	C	K'	D	LATITUD	LONGITUD
X. C. Juan Aldama - Miguel Auza	124.50	1	0	6900	2.6	50.8	5.5	10.7	3.5	16.5	3.6	5.4	1.4	53.4	5.5	41.1	0.065	0.518	24.272325	-103.400200
X. C. Juan Aldama - Miguel Auza	124.50	3	0	5969	0.4	46.4	7.6	10.0	2.7	18.9	4.9	7.5	1.6	46.8	7.6	45.6	0.068	0.513	24.286880	-103.406249
Lim. Edos. Term. Zac. Ppia. Dgo.	134.30																			
T. Der. Santa Clara	144.00	1	0	4681	2.5	39.3	6.5	9.2	3.2	23.9	5.2	8.8	1.4	41.8	6.5	51.7	0.071	0.520	24.432805	-103.484213
T. Der. Santa Clara	144.00	3	0	5161	1.6	34.9	7.1	9.1	3.3	26.6	5.9	10.1	1.4	36.5	7.1	56.4	0.057	0.512	24.445102	-103.492271
Cuencamé	199.10	1	0	1201	4.5	75.2	2.3	12.7	1.4	2.0	0.9	0.7	0.3	79.7	2.3	18.0	0.130	0.501	24.853207	-103.693636

7 CARR: Ent. La Zarca - Hidalgo del Parral

CLAVE: 00488

RUTA: MEX-045

AÑO: 2018

LUGAR	ESTACION				CLASIFICACION VEHICULAR EN PORCIENTO													COORDENADAS		
	KM	TE	SC	TDPA	M	A	B	C2	C3	T3S2	T3S3	T3S2R4	OTROS	A	B	C	K'	D	LATITUD	LONGITUD
Ent. La Zarca	0.00	3	0	1045	1.1	66.0	5.1	14.2	3.5	6.7	2.9	0.3	0.2	67.1	5.1	27.8	0.084	0.503	25.785529	-104.765524
T. Der. Ceballos	47.85	1	0	779	1.8	72.7	4.6	15.2	1.9	2.0	1.6	0.1	0.1	74.5	4.6	20.9	0.163	0.516	26.139809	-105.028701
T. Der. Ceballos	47.85	3	0	1285	0.9	77.2	3.3	13.0	2.0	2.4	1.1	0.1	0.0	78.1	3.3	18.6	0.111	0.549	26.144219	-105.032006
T. Izq. Canutillo	92.35	3	0	1172	1.9	73.0	4.0	15.5	2.1	2.1	1.3	0.1	0.0	74.9	4.0	21.1	0.108	0.510	26.389567	-105.353913
Las Nieves	97.60	3	0	1774	1.2	73.1	3.5	15.8	2.1	2.3	1.7	0.1	0.2	74.3	3.5	22.2	0.073	0.515	26.400072	-105.405717
T. Izq. Ocampo	109.22	3	0	1288	0.9	71.3	4.4	15.9	2.5	2.7	1.7	0.3	0.3	72.2	4.4	23.4	0.095	0.517	26.442541	-105.494177
Lim. Edos. Term. Dgo. Ppia. Chih.	122.89																			
Matamoros	148.00	1	0	1247	1.1	72.5	4.0	16.5	2.1	2.2	1.3	0.2	0.1	73.6	4.0	22.4	0.112	0.516	26.750980	-105.580989
Hidalgo del Parral	171.00	1	0	3579	1.5	78.8	1.8	14.3	1.5	1.1	0.9	0.1	0.0	80.3	1.8	17.9	0.085	0.524	26.917729	-105.639926

8 CARR: Ent. Los Herrera - Topia

CLAVE: 10090

RUTA: MEX-036

AÑO: 2018

LUGAR	ESTACION				CLASIFICACION VEHICULAR EN PORCIENTO													COORDENADAS		
	KM	TE	SC	TDPA	M	A	B	C2	C3	T3S2	T3S3	T3S2R4	OTROS	A	B	C	K'	D	LATITUD	LONGITUD
T. C. Guadalupe Aguilera - Tepehuanes	0.00	3	0	616	1.2	52.0	1.9	26.3	7.1	7.0	4.4	0.0	0.1	53.2	1.9	44.9	0.086	0.501	25.121085	-105.483123
Los Altares	80.00	1	0	484	4.4	55.5	1.7	26.1	5.8	3.9	2.4	0.0	0.2	59.9	1.7	38.4	0.103	0.541	25.016538	-105.902323
Topia	229.00																			

9 CARR: Gómez Palacio - Jiménez

CLAVE: 00006

RUTA: MEX-049

AÑO: 2018

LUGAR	ESTACION				CLASIFICACION VEHICULAR EN PORCIENTO													COORDENADAS		
	KM	TE	SC	TDPA	M	A	B	C2	C3	T3S2	T3S3	T3S2R4	OTROS	A	B	C	K'	D	LATITUD	LONGITUD
Gómez Palacio	0.00	3	1	15020	4.2	72.5	2.8	7.7	2.6	6.1	2.0	1.6	0.5	76.7	2.8	20.5	0.078	0.502	25.613260	-103.512991
Gómez Palacio	0.00	3	2	15127	3.4	71.0	2.9	8.9	2.9	6.5	2.2	1.7	0.5	74.4	2.9	22.7	0.063	0.502	25.613654	-103.513258



DURANGO

9 CARR: Gómez Palacio - Jiménez

CLAVE: 00006

RUTA: MEX-049

AÑO: 2018

LUGAR	ESTACION				CLASIFICACION VEHICULAR EN PORCIENTO													COORDENADAS		
	KM	TE	SC	TDPA	M	A	B	C2	C3	T3S2	T3S3	T3S2R4	OTROS	A	B	C	K'	D	LATITUD	LONGITUD
X. C. La Torreña - Brittingham	10.96	1	1	10495	4.7	65.7	2.0	7.4	2.7	10.4	3.4	2.7	1.0	70.4	2.0	27.6	0.076	0.548	25.638037	-103.522940
X. C. La Torreña - Brittingham	10.96	1	2	11574	3.5	68.0	2.4	8.7	2.4	9.6	2.6	2.3	0.5	71.5	2.4	26.1	0.071	0.548	25.638003	-103.523074
T. Izq. Dinamita	26.27	1	1	6569	2.4	57.7	3.8	10.2	2.4	15.3	4.0	3.9	0.3	60.1	3.8	36.1	0.083	0.500	25.751510	-103.568046
T. Izq. Dinamita	26.27	1	2	6574	2.3	60.6	3.5	10.1	2.3	14.2	3.3	3.1	0.6	62.9	3.5	33.6	0.074	0.500	25.751442	-103.568241
Bermejillo	39.30	1	0	8277	4.1	66.2	1.7	12.1	2.8	9.3	2.7	0.7	0.4	70.3	1.7	28.0	0.056	0.504	25.874643	-103.616501
T. Izq. Ent. La Zarca	40.89	3	0	3486	2.1	44.8	2.4	11.3	4.7	24.2	7.4	2.4	0.7	46.9	2.4	50.7	0.048	0.501	25.901509	-103.627698
Yermo	107.95	1	0	2640	3.7	45.7	3.0	11.3	4.8	23.4	5.3	2.2	0.6	49.4	3.0	47.6	0.059	0.500	26.384898	-104.000054
Yermo	107.95	3	0	3114	9.1	49.3	3.0	13.8	4.2	14.8	3.8	1.5	0.5	58.4	3.0	38.6	0.055	0.519	26.397250	-104.011537
Ceballos	127.20	1	0	2626	2.1	42.9	3.2	11.9	3.7	26.4	6.5	2.6	0.7	45.0	3.2	51.8	0.054	0.508	26.516945	-104.120595
Ceballos	127.20	3	0	3196	6.2	48.9	3.1	14.4	3.6	16.7	4.9	1.0	1.2	55.1	3.1	41.8	0.050	0.527	26.536616	-104.138998
Lim. Edos. Term. Dgo. Ppia. Chih.	146.15																			
Estación Escalón	160.89	3	0	2323	6.5	43.9	3.1	9.6	3.3	22.1	7.4	3.1	1.0	50.4	3.1	46.5	0.065	0.501	26.761025	-104.346525
Jiménez	223.00	1	1	3604	1.6	43.2	6.5	9.2	2.1	23.8	6.0	6.5	1.1	44.8	6.5	48.7	0.082	0.531	27.117647	-104.890906
Jiménez	223.00	1	2	4077	2.2	49.9	5.8	9.8	2.0	19.5	4.7	4.3	1.8	52.1	5.8	42.1	0.064	0.531	27.117545	-104.890945

10 CARR: Gómez Palacio - La Unión

CLAVE: 10009

RUTA: MEX-040

AÑO: 2018

LUGAR	ESTACION				CLASIFICACION VEHICULAR EN PORCIENTO													COORDENADAS		
	KM	TE	SC	TDPA	M	A	B	C2	C3	T3S2	T3S3	T3S2R4	OTROS	A	B	C	K'	D	LATITUD	LONGITUD
Gómez Palacio	0.00	3	0	6103	7.5	82.7	0.9	3.0	0.6	1.3	1.0	0.4	2.6	90.2	0.9	8.9	0.072	0.511	25.530001	-103.494693
X. C. Torreón - Villa Juárez	4.30	3	0	5250	2.8	76.4	0.8	9.8	0.9	2.2	2.2	1.1	3.8	79.2	0.8	20.0	0.069	0.509	25.517399	-103.487205
Nazareno	20.90	1	0	2799	6.0	76.5	1.0	14.1	1.6	0.4	0.2	0.1	0.1	82.5	1.0	16.5	0.046	0.543	25.421539	-103.428731
Nazareno	20.90	3	0	1945	3.8	58.5	4.1	5.8	1.8	6.8	6.9	2.9	9.4	62.3	4.1	33.6	0.059	0.513	25.397889	-103.439531
La Unión	42.20	1	0	591	9.0	36.8	7.0	10.2	4.1	8.2	2.5	0.8	21.4	45.8	7.0	47.2	0.073	0.501	25.292453	-103.511254

11 CARR: Gómez Palacio - Tlahualillo

CLAVE: 10005

RUTA: MEX-040

AÑO: 2018

LUGAR	ESTACION				CLASIFICACION VEHICULAR EN PORCIENTO													COORDENADAS		
	KM	TE	SC	TDPA	M	A	B	C2	C3	T3S2	T3S3	T3S2R4	OTROS	A	B	C	K'	D	LATITUD	LONGITUD
T. C. Gómez Palacio - Jiménez	0.00																			
T. Izq. Esmeralda	5.60	1	0	13563	6.3	78.6	1.3	8.5	0.7	1.3	0.9	0.4	2.0	84.9	1.3	13.8	0.080	0.518	25.608185	-103.463965
T. Izq. Esmeralda	5.60	3	0	10926	4.8	79.1	0.5	8.7	0.8	1.6	1.3	0.5	2.7	83.9	0.5	15.6	0.072	0.512	25.614171	-103.457642
Gregorio García	26.00	3	0	6002	1.5	76.0	1.0	12.6	1.0	2.0	1.5	0.8	3.6	77.5	1.0	21.5	0.074	0.505	25.751632	-103.349851
T. Izq. Esmeralda	31.44	1	0	7690	1.5	81.4	1.3	6.5	1.0	2.1	1.8	0.9	3.5	82.9	1.3	15.8	0.055	0.522	25.757200	-103.352014
San Francisco	48.90	1	0	2537	8.8	74.5	0.7	10.3	3.9	1.2	0.3	0.2	0.1	83.3	0.7	16.0	0.085	0.504	25.929059	-103.416784

DURANGO

11 CARR: Gómez Palacio - Tlahualillo

CLAVE: 10005

RUTA: MEX-040

AÑO: 2018

LUGAR	ESTACION				CLASIFICACION VEHICULAR EN PORCIENTO										COORDENADAS					
	KM	TE	SC	TDPA	M	A	B	C2	C3	T3S2	T3S3	T3S2R4	OTROS	A	B	C	K'	D	LATITUD	LONGITUD
San Francisco	48.90	3	0	1806	4.9	71.7	1.3	6.0	3.9	2.3	1.6	1.1	7.2	76.6	1.3	22.1	0.060	0.510	25.952007	-103.423749
Tlahualillo	72.90	1	0	2452	6.4	77.1	0.7	13.0	1.1	0.8	0.2	0.4	0.3	83.5	0.7	15.8	0.071	0.500	26.109551	-103.423722

12 CARR: Gregorio García - Francisco I. Madero

CLAVE: 00110

RUTA: MEX-040

AÑO: 2018

LUGAR	ESTACION				CLASIFICACION VEHICULAR EN PORCIENTO										COORDENADAS					
	KM	TE	SC	TDPA	M	A	B	C2	C3	T3S2	T3S3	T3S2R4	OTROS	A	B	C	K'	D	LATITUD	LONGITUD
T. C. Gómez Palacio - Tlahualillo	0.00																			
Lim. Edos. Term. Dgo. Ppia. Coah.	3.60																			
Francisco I. Madero	9.60	1	0	7819	3.2	81.5	0.5	11.0	1.4	1.2	0.5	0.5	0.2	84.7	0.5	14.8	0.074	0.516	25.772708	-103.288760

13 CARR: Guadalupe Aguilera - Tepehuanes

CLAVE: 10220

RUTA: MEX-023

AÑO: 2018

LUGAR	ESTACION				CLASIFICACION VEHICULAR EN PORCIENTO										COORDENADAS					
	KM	TE	SC	TDPA	M	A	B	C2	C3	T3S2	T3S3	T3S2R4	OTROS	A	B	C	K'	D	LATITUD	LONGITUD
Guadalupe Aguilera	0.00	3	1	2976	1.9	75.9	1.8	16.6	1.0	1.4	1.2	0.1	0.1	77.8	1.8	20.4	0.087	0.502	24.467374	-104.714522
Guadalupe Aguilera	0.00	3	2	2956	1.9	73.2	1.8	18.7	1.2	1.6	1.4	0.1	0.1	75.1	1.8	23.1	0.089	0.502	24.468297	-104.714962
Canatlán	14.00	3	0	3194	1.1	73.6	3.0	13.9	1.7	3.3	2.8	0.3	0.3	74.7	3.0	22.3	0.082	0.505	24.540548	-104.776322
La Soledad	45.80	3	0	3082	1.2	72.9	3.8	14.2	2.6	2.6	2.3	0.3	0.1	74.1	3.8	22.1	0.077	0.508	24.773330	-104.933179
T. Der. Coneto de Comonfort	51.60	1	0	3212	2.1	70.5	3.3	18.1	2.2	1.8	1.4	0.3	0.3	72.6	3.3	24.1	0.079	0.502	24.803183	-104.924301
José María Morelos	90.20	1	0	2721	0.8	71.6	3.2	16.6	2.4	2.7	2.3	0.3	0.1	72.4	3.2	24.4	0.079	0.503	25.008213	-105.203267
Santiago Papasquiaro	117.00	3	0	4650	2.0	72.6	1.1	16.9	3.8	2.1	1.3	0.1	0.1	74.6	1.1	24.3	0.076	0.505	25.078393	-105.431278
Las Herreras	133.00	3	0	1258	1.3	76.6	2.6	13.8	3.7	1.0	1.0	0.0	0.0	77.9	2.6	19.5	0.090	0.500	25.159359	-105.509100
Tepehuanes	169.00	1	0	1632	2.2	71.6	2.6	19.9	2.4	0.7	0.5	0.0	0.1	73.8	2.6	23.6	0.085	0.503	25.322352	-105.714523

14 CARR: Hidalgo del Parral - Guadalupe y Calvo

CLAVE: 00802

RUTA: MEX-024

AÑO: 2018

LUGAR	ESTACION				CLASIFICACION VEHICULAR EN PORCIENTO										COORDENADAS					
	KM	TE	SC	TDPA	M	A	B	C2	C3	T3S2	T3S3	T3S2R4	OTROS	A	B	C	K'	D	LATITUD	LONGITUD
T. C. Hidalgo del Parral - Santa Bárbara	0.00	3	0	2824	1.6	71.4	1.2	17.3	4.2	2.3	1.7	0.0	0.3	73.0	1.2	25.8	0.073	0.505	26.915180	-105.763413
T. Der. Guacho chic	35.00	1	0	864	1.3	58.1	2.1	21.8	8.6	4.3	2.1	0.0	1.7	59.4	2.1	38.5	0.075	0.503	26.815932	-106.014953
T. Der. Guacho chic	35.00	3	0	902	2.3	64.8	1.4	22.2	4.9	2.0	1.2	0.0	1.2	67.1	1.4	31.5	0.099	0.515	26.808716	-106.016624
Lim. Edos. Term. Chih. Ppia. Dgo	38.00																			
Lim. Edos. Term. Dgo. Ppia. Chih.	57.00																			
El Vergel	110.00	1	0	943	1.6	66.7	1.4	22.2	4.7	1.8	0.9	0.0	0.7	68.3	1.4	30.3	0.090	0.525	26.490592	-106.367368

DURANGO

14 CARR: Hidalgo del Parral - Guadalupe y Calvo

CLAVE: 00802

RUTA: MEX-024

AÑO: 2018

LUGAR	ESTACION				CLASIFICACION VEHICULAR EN PORCIENTO														COORDENADAS	
	KM	TE	SC	TDPA	M	A	B	C2	C3	T3S2	T3S3	T3S2R4	OTROS	A	B	C	K'	D	LATITUD	LONGITUD
Puerto Sabinal	212.00	1	0	674	1.7	67.1	1.3	21.8	4.8	1.7	0.9	0.0	0.7	68.8	1.3	29.9	0.126	0.514	26.068775	-106.778028
Guadalupe y Calvo	234.00																			

15 CARR: Libramiento Cuencamé

CLAVE: 10006

RUTA: MEX

AÑO: 2018

LUGAR	ESTACION				CLASIFICACION VEHICULAR EN PORCIENTO														COORDENADAS	
	KM	TE	SC	TDPA	M	A	B	C2	C3	T3S2	T3S3	T3S2R4	OTROS	A	B	C	K'	D	LATITUD	LONGITUD
T. C. La Chicharrona - Cuencamé	0.00	3	1	1105	1.5	70.2	2.0	12.1	4.3	3.2	5.3	0.8	0.6	71.7	2.0	26.3	0.075	0.590	24.864114	-103.699960
T. C. La Chicharrona - Cuencamé	0.00	3	2	1587	3.7	78.0	1.6	11.3	2.3	1.3	1.0	0.3	0.5	81.7	1.6	16.7	0.070	0.590	24.864091	-103.700047
T. C. Durango - Torreón	2.60	1	1	878	3.9	64.0	4.1	12.4	5.6	3.3	4.2	0.8	1.7	67.9	4.1	28.0	0.073	0.526	24.880962	-103.700304
T. C. Durango - Torreón	2.60	1	2	973	2.7	68.8	3.9	15.2	4.0	2.5	1.6	0.6	0.7	71.5	3.9	24.6	0.078	0.526	24.880994	-103.700396

16 CARR: Libramiento Oriente de Durango

CLAVE:

RUTA: MEX-045

AÑO: 2018

LUGAR	ESTACION				CLASIFICACION VEHICULAR EN PORCIENTO														COORDENADAS	
	KM	TE	SC	TDPA	M	A	B	C2	C3	T3S2	T3S3	T3S2R4	OTROS	A	B	C	K'	D	LATITUD	LONGITUD
T. C. Zacatecas - Durango	0.00	3	1	2418	2.9	75.6	1.4	9.9	2.1	3.7	2.5	1.1	0.8	78.5	1.4	20.1	0.072	0.511	24.025432	-104.518912
T. C. Zacatecas - Durango	0.00	3	2	2526	2.0	74.0	1.6	11.1	2.4	3.9	2.7	1.3	1.0	76.0	1.6	22.4	0.072	0.511	24.025445	-104.518963
T. C. Durango - Ent. La Zarca	10.50	1	1	3052	2.6	66.0	2.4	19.2	1.9	3.5	2.3	1.7	0.4	68.6	2.4	29.0	0.068	0.550	24.088940	-104.566456
T. C. Durango - Ent. La Zarca	10.50	1	2	2503	0.3	73.7	1.7	14.4	2.7	3.8	1.5	1.3	0.6	74.0	1.7	24.3	0.076	0.550	24.087725	-104.565434

17 CARR: Libramiento Sur de Durango

CLAVE:

RUTA: MEX-045

AÑO: 2018

LUGAR	ESTACION				CLASIFICACION VEHICULAR EN PORCIENTO														COORDENADAS	
	KM	TE	SC	TDPA	M	A	B	C2	C3	T3S2	T3S3	T3S2R4	OTROS	A	B	C	K'	D	LATITUD	LONGITUD
T. C. Zacatecas - Durango	0.00	3	0	3118	6.5	72.4	1.0	14.6	4.3	0.7	0.3	0.2	0.0	78.9	1.0	20.1	0.079	0.507	24.007678	-104.529174
T. C. Durango - Mezquital	8.45	1	0	2775	6.2	73.2	1.3	12.0	5.7	0.6	0.5	0.2	0.3	79.4	1.3	19.3	0.082	0.513	23.970716	-104.569777
T. C. Durango - Mezquital	8.45	3	0	1343	7.4	68.5	1.3	13.6	6.8	1.3	0.8	0.1	0.2	75.9	1.3	22.8	0.082	0.504	23.965841	-104.578581
T. C. Durango - Aserradero La Flor	19.50	1	0	943	5.4	70.1	1.3	13.6	7.0	1.5	1.0	0.1	0.0	75.5	1.3	23.2	0.107	0.504	23.952606	-104.662094
T. C. Durango - Aserradero La Flor	19.50	3	0	1346	7.7	62.9	2.8	16.5	6.8	2.1	0.7	0.1	0.4	70.6	2.8	26.6	0.067	0.537	23.952905	-104.671191
T. C. Durango - Villa Unión	27.70	1	0	1699	2.2	68.4	2.8	16.2	6.8	2.1	1.1	0.1	0.3	70.6	2.8	26.6	0.098	0.504	23.990030	-104.718865

DURANGO

18 CARR: Pedriceña - Ent. Rodeo

CLAVE: 10002

RUTA: MEX-034

AÑO: 2018

LUGAR	ESTACION				CLASIFICACION VEHICULAR EN PORCIENTO										COORDENADAS					
	KM	TE	SC	TDPA	M	A	B	C2	C3	T3S2	T3S3	T3S2R4	OTROS	A	B	C	K'	D	LATITUD	LONGITUD
T. C. Cuencamé - Torreón	0.00	3	0	2714	1.9	77.2	0.9	14.8	2.4	1.4	0.9	0.2	0.3	79.1	0.9	20.0	0.076	0.505	25.091564	-103.773415
Nazas	45.00	1	0	2434	4.7	73.9	0.8	16.9	2.0	0.9	0.6	0.1	0.1	78.6	0.8	20.6	0.081	0.512	25.235524	-104.100251
Nazas	45.00	3	0	1002	5.6	72.5	0.6	16.8	2.4	1.1	1.0	0.0	0.0	78.1	0.6	21.3	0.092	0.521	25.217511	-104.125654
T. C. (Durango - Ent. La Zarca)-Ent. Rodeo	98.00	1	0	738	2.6	73.0	0.9	19.8	2.1	0.9	0.6	0.0	0.1	75.6	0.9	23.5	0.091	0.502	25.129519	-104.536622

19 CARR: Ramal a Otinapa

CLAVE: 10002

RUTA: MEX

AÑO: 2018

LUGAR	ESTACION				CLASIFICACION VEHICULAR EN PORCIENTO										COORDENADAS						
	KM	TE	SC	TDPA	M	A	B	C2	C3	T3S2	T3S3	T3S2R4	OTROS	A	B	C	K'	D	LATITUD	LONGITUD	
T. C. Durango - Villa Unión	0.00	3	0	245	3.3	67.5	3.4	18.0	2.9	1.5	1.0	0.6	1.8	70.8	3.4	25.8	0.131	0.516	23.928026	-104.941068	
Otinapa	19.65																				

20 CARR: Ramal a Santa Clara

CLAVE: 10287

RUTA: MEX-049

AÑO: 2018

LUGAR	ESTACION				CLASIFICACION VEHICULAR EN PORCIENTO										COORDENADAS						
	KM	TE	SC	TDPA	M	A	B	C2	C3	T3S2	T3S3	T3S2R4	OTROS	A	B	C	K'	D	LATITUD	LONGITUD	
T. C. Ent. La Chicharrona - Cuencamé	0.00	3	0	906	2.0	72.3	2.4	16.2	1.5	2.4	1.3	1.5	0.4	74.3	2.4	23.3	0.094	0.509	24.440364	-103.486335	
Santa Clara	14.00																				

21 CARR: Ramal a Villa Juárez

CLAVE: 10287

RUTA: MEX-040

AÑO: 2018

LUGAR	ESTACION				CLASIFICACION VEHICULAR EN PORCIENTO										COORDENADAS						
	KM	TE	SC	TDPA	M	A	B	C2	C3	T3S2	T3S3	T3S2R4	OTROS	A	B	C	K'	D	LATITUD	LONGITUD	
T. C. Gómez Palacio - La Unión	0.00	3	1	2483	8.0	81.9	0.4	8.7	0.6	0.2	0.2	0.0	0.0	89.9	0.4	9.7	0.123	0.510	25.517840	-103.494289	
T. C. Gómez Palacio - La Unión	0.00	3	2	2384	6.9	83.1	0.3	8.8	0.6	0.2	0.1	0.0	0.0	90.0	0.3	9.7	0.111	0.510	25.517740	-103.494235	
Villa Juárez	13.00																				

22 CARR: Zacatecas - Durango

CLAVE: 00544

RUTA: MEX-045

AÑO: 2018

LUGAR	ESTACION				CLASIFICACION VEHICULAR EN PORCIENTO										COORDENADAS						
	KM	TE	SC	TDPA	M	A	B	C2	C3	T3S2	T3S3	T3S2R4	OTROS	A	B	C	K'	D	LATITUD	LONGITUD	
Zacatecas	0.00																				
T. Izq. Guadalajara	6.40	3	1	14225	0.6	82.6	2.7	6.2	1.1	3.4	1.6	1.1	0.7	83.2	2.7	14.1	0.089	0.507	22.782526	-102.627244	
T. Izq. Guadalajara	6.40	3	2	13827	0.6	83.2	1.8	5.9	1.1	3.7	1.8	1.1	0.8	83.8	1.8	14.4	0.083	0.507	22.782569	-102.627327	
T. Der. Saltillo (T. Morelos)	15.00	3	1	12931	0.7	76.7	3.1	7.1	1.1	5.4	2.2	2.4	1.3	77.4	3.1	19.5	0.093	0.501	22.869707	-102.632014	

DURANGO

22 CARR: Zacatecas - Durango

CLAVE: 00544

RUTA: MEX-045

AÑO: 2018

LUGAR	ESTACION				CLASIFICACION VEHICULAR EN PORCIENTO													COORDENADAS		
	KM	TE	SC	TDPA	M	A	B	C2	C3	T3S2	T3S3	T3S2R4	OTROS	A	B	C	K'	D	LATITUD	LONGITUD
T. Der. Saltillo (T. Morelos)	15.00	3	2	12900	0.5	76.6	3.1	8.1	1.1	5.1	2.1	2.2	1.2	77.1	3.1	19.8	0.094	0.501	22.874449	-102.653572
Víctor Rosales	28.00	1	1	11872	0.8	76.9	2.2	6.5	1.4	6.0	2.3	2.8	1.1	77.7	2.2	20.1	0.077	0.505	22.928971	-102.684599
Víctor Rosales	28.00	1	2	12106	0.8	74.4	2.4	7.0	1.6	6.6	2.5	3.3	1.4	75.2	2.4	22.4	0.091	0.505	22.928819	-102.684866
T. Der. Facultad de Veterinaria	32.30	1	1	7520	0.5	68.6	4.8	7.5	1.9	10.0	2.5	3.2	1.0	69.1	4.8	26.1	0.079	0.518	22.970379	-102.718899
T. Der. Facultad de Veterinaria	32.30	1	2	6995	0.5	68.3	4.2	7.5	2.1	10.2	3.0	3.2	1.0	68.8	4.2	27.0	0.098	0.518	22.970338	-102.718988
Gral. Enrique Estrada	34.60	3	1	9615	0.8	74.3	3.0	7.9	1.9	7.0	2.2	2.3	0.6	75.1	3.0	21.9	0.078	0.510	23.012135	-102.751665
Gral. Enrique Estrada	34.60	3	2	10009	1.2	71.0	3.3	8.7	2.2	7.9	2.5	2.5	0.7	72.2	3.3	24.5	0.089	0.510	23.011989	-102.751932
Fresnillo	58.50	1	1	8371	1.9	82.5	2.7	7.6	1.7	2.0	1.0	0.3	0.3	84.4	2.7	12.9	0.079	0.508	23.159913	-102.852102
Fresnillo	58.50	1	2	8111	1.0	80.7	3.2	9.0	2.0	2.3	1.1	0.3	0.4	81.7	3.2	15.1	0.083	0.508	23.159867	-102.852201
Ent. La Chicharrona	74.30	1	1	8129	0.7	63.6	5.5	11.2	2.2	9.7	2.9	3.5	0.7	64.3	5.5	30.2	0.073	0.510	23.290334	-102.952755
Ent. La Chicharrona	74.30	1	2	7824	0.7	60.0	6.3	12.6	2.3	10.7	3.0	3.7	0.7	60.7	6.3	33.0	0.078	0.510	23.290168	-102.952982
Ent. La Chicharrona	74.30	3	0	6709	1.8	66.1	3.8	20.0	2.2	3.3	1.8	0.9	0.1	67.9	3.8	28.3	0.061	0.506	23.307666	-102.964613
T. Der. Sain Alto	121.00	3	0	4425	1.7	68.8	4.9	13.4	2.7	4.5	2.0	1.3	0.7	70.5	4.9	24.6	0.067	0.506	23.580701	-103.273849
T. Izq. Sombrerete (2º Acceso)	161.50	3	0	6376	1.5	74.1	3.2	11.3	1.7	4.9	1.6	1.0	0.7	75.6	3.2	21.2	0.071	0.502	23.646696	-103.651463
Lim. Edos. Term. Zac. Ppia. Dgo.	190.08																			
X. C. Súchil - Villa Unión	206.98	1	0	3618	2.1	66.1	6.7	14.8	2.5	4.3	2.3	1.1	0.1	68.2	6.7	25.1	0.074	0.506	23.750085	-103.963269
X. C. Súchil - Villa Unión	206.98	3	0	5977	3.8	71.5	4.3	13.6	1.7	2.8	1.5	0.7	0.1	75.3	4.3	20.4	0.074	0.505	23.744289	-104.000125
T. Izq. Graceros	210.00	1	0	5259	1.2	74.3	4.2	10.4	1.7	4.2	2.2	1.2	0.6	75.5	4.2	20.3	0.074	0.502	23.747330	-104.026581
Amado Nervo	231.51	1	0	4479	1.3	71.2	4.8	13.1	2.5	3.7	2.3	0.8	0.3	72.5	4.8	22.7	0.078	0.501	23.839260	-104.180425
Amado Nervo	231.51	3	0	6248	2.2	75.0	3.5	13.1	1.7	2.4	1.4	0.4	0.3	77.2	3.5	19.3	0.080	0.509	23.844374	-104.197014
Nombre de Dios	236.80	1	0	2954	3.8	74.0	3.4	17.5	0.8	0.2	0.2	0.1	0.0	77.8	3.4	18.8	0.080	0.540	23.843783	-104.223871
Nombre de Dios	236.80	3	0	3856	4.2	80.3	2.7	11.8	0.7	0.2	0.1	0.0	0.0	84.5	2.7	12.8	0.098	0.502	23.854380	-104.251940
T. Der. Constancia	240.60	3	0	6095	1.6	75.5	4.0	11.5	2.0	2.8	1.6	0.7	0.3	77.1	4.0	18.9	0.073	0.505	23.872149	-104.269022
T. Der. Tuitán	250.80	3	0	5306	1.0	76.6	4.1	11.7	1.7	2.9	1.2	0.6	0.2	77.6	4.1	18.3	0.091	0.509	23.922879	-104.337256
T. Der. Independencia y Libertad	261.70	1	0	6253	0.8	77.0	3.8	10.5	2.0	3.3	1.7	0.7	0.2	77.8	3.8	18.4	0.086	0.503	23.994199	-104.374538
T. Der. Independencia y Libertad	261.70	3	1	3538	1.3	76.5	4.1	11.7	1.5	2.7	1.4	0.5	0.3	77.8	4.1	18.1	0.122	0.511	24.012259	-104.400466
T. Der. Independencia y Libertad	261.70	3	2	3391	1.0	81.3	4.6	5.6	2.0	2.7	1.9	0.7	0.2	82.3	4.6	13.1	0.091	0.511	24.012168	-104.400467
T. Izq. Parras de La Fuente	276.60	1	1	4433	0.9	79.7	3.0	10.1	1.5	2.5	1.5	0.7	0.1	80.6	3.0	16.4	0.088	0.500	24.019168	-104.506517
T. Izq. Parras de La Fuente	276.60	1	2	4433	0.7	81.5	2.8	8.4	1.8	2.7	1.3	0.7	0.1	82.2	2.8	15.0	0.112	0.500	24.019055	-104.506532
T. Izq. Parras de La Fuente	276.60	3	1	4466	2.2	78.7	2.6	12.0	1.3	1.9	0.6	0.6	0.1	80.9	2.6	16.5	0.092	0.506	24.021299	-104.526584
T. Izq. Parras de La Fuente	276.60	3	2	4358	2.3	80.3	2.3	10.8	1.3	1.7	0.6	0.6	0.1	82.6	2.3	15.1	0.089	0.506	24.021166	-104.526614
Durango	287.30	1	1	5937	3.1	79.3	1.8	12.6	1.3	1.1	0.3	0.4	0.1	82.4	1.8	15.8	0.085	0.507	24.026345	-104.574466
Durango	287.30	1	2	5770	3.1	79.8	1.6	12.5	1.2	1.0	0.3	0.4	0.1	82.9	1.6	15.5	0.086	0.507	24.026247	-104.574489

DURANGO

23 CARR: Durango - Mazatlán (Cuota)

CLAVE: 00084

RUTA: MEX-040D

AÑO: 2018

LUGAR	ESTACION				CLASIFICACION VEHICULAR EN PORCIENTO										COORDENADAS					
	KM	TE	SC	TDPA	M	A	B	C2	C3	T3S2	T3S3	T3S2R4	OTROS	A	B	C	K'	D	LATITUD	LONGITUD
Libramiento de Durango	20.50	3	0	2771	1.9	66.6	5.0	13.1	3.6	4.8	2.0	1.2	1.8	68.5	5.0	26.5	0.078	0.562	24.005857	-104.731896
Caseta de Cobro Durango	22.20	2	0	2884	0.9	72.1	4.1	2.4	2.4	9.6	1.3	6.4	0.8	73.0	4.1	22.9	0.108	0.500	24.005080	-104.734540
Ent. Otinapa	44.50	1	0	2578	2.1	66.0	5.0	14.0	3.6	4.6	1.8	1.0	1.9	68.1	5.0	26.9	0.074	0.504	23.982275	-104.941437
Caseta de Cobro Llano Grande	78.10	2	0	2614	1.0	65.8	6.0	2.7	3.7	11.0	1.5	7.3	1.0	66.8	6.0	27.2	0.108	0.500	23.864514	-105.233202
Lim. Edos. Term. Dgo. Ppia. Sin.	157.40																			
Concordia	188.35	3	0	2331	2.2	59.0	8.3	13.4	4.1	7.7	2.4	1.2	1.7	61.2	8.3	30.5	0.099	0.516	23.251755	-106.058642
Villa Unión	208.35	1	0	2228	2.2	61.0	7.8	11.8	4.4	8.0	2.4	1.1	1.3	63.2	7.8	29.0	0.070	0.531	23.198960	-106.168928

24 CARR: Durango - Yerbanís (Cuota)

CLAVE: 10003

RUTA: MEX-040D

AÑO: 2018

LUGAR	ESTACION				CLASIFICACION VEHICULAR EN PORCIENTO										COORDENADAS					
	KM	TE	SC	TDPA	M	A	B	C2	C3	T3S2	T3S3	T3S2R4	OTROS	A	B	C	K'	D	LATITUD	LONGITUD
T. C. Durango - Torreón	0.00																			
T. Der. Aeropuerto	5.30	1	1	4166	0.7	76.0	3.1	9.9	3.4	3.7	1.8	1.3	0.1	76.7	3.1	20.2	0.081	0.505	24.124202	-104.540297
T. Der. Aeropuerto	5.30	1	2	4088	0.7	77.5	3.1	8.8	3.2	3.8	1.4	1.2	0.3	78.2	3.1	18.7	0.077	0.505	24.124316	-104.540451
Caseta de Cobro Durango	5.50	2	1	1438	1.1	68.5	6.1	4.3	2.5	9.9	2.2	4.5	0.9	69.6	6.1	24.3	0.117	0.500	24.131646	-104.534037
Caseta de Cobro Durango	5.50	2	2	1438	1.1	68.5	6.1	4.3	2.5	9.9	2.2	4.5	0.9	69.6	6.1	24.3	0.117	0.500	24.131646	-104.534037
Caseta de Cobro Yerbanís	112.19	2	1	1180	1.3	64.7	6.4	4.6	2.8	11.4	2.3	5.5	1.0	66.0	6.4	27.6	0.117	0.500	24.730819	-103.861843
Caseta de Cobro Yerbanís	112.19	2	2	1180	1.3	64.7	6.4	4.6	2.8	11.4	2.3	5.5	1.0	66.0	6.4	27.6	0.117	0.500	24.730819	-103.861843
Ent. Yerbanís	118.00																			

25 CARR: Gómez Palacio - Corralitos (Cuota)

CLAVE: 00016

RUTA: MEX-049D

AÑO: 2018

LUGAR	ESTACION				CLASIFICACION VEHICULAR EN PORCIENTO										COORDENADAS					
	KM	TE	SC	TDPA	M	A	B	C2	C3	T3S2	T3S3	T3S2R4	OTROS	A	B	C	K'	D	LATITUD	LONGITUD
T. C. Gómez Palacio - Jiménez (Libre)	38.00																			
T. Izq. Bermejillo	40.10	1	1	2050	1.0	36.9	8.7	8.5	2.6	26.4	5.6	9.7	0.6	37.9	8.7	53.4	0.063	0.503	25.877443	-103.612389
T. Izq. Bermejillo	40.10	1	2	2027	0.9	37.8	8.4	8.6	2.2	26.5	6.1	8.5	1.0	38.7	8.4	52.9	0.067	0.503	25.877467	-103.612584
T. Izq. Bermejillo	40.10	3	1	2008	1.1	40.4	8.3	8.6	2.3	24.1	5.6	8.8	0.8	41.5	8.3	50.2	0.067	0.506	25.896643	-103.611796
T. Izq. Bermejillo	40.10	3	2	2053	0.9	38.2	8.3	8.4	2.2	26.0	6.5	8.8	0.7	39.1	8.3	52.6	0.065	0.506	25.896578	-103.612052
Caseta de Cobro Bermejillo	44.16	2	1	1954	0.2	36.7	8.5	5.8	1.8	29.1	6.1	9.9	1.9	36.9	8.5	54.6	0.079	0.500	25.923705	-103.622079
Caseta de Cobro Bermejillo	44.16	2	2	1954	0.2	36.7	8.5	5.8	1.8	29.1	6.1	9.9	1.9	36.9	8.5	54.6	0.079	0.500	25.923705	-103.622079
Caseta de Cobro Ceballos	128.80	2	1	1907	0.2	36.6	8.6	5.7	1.7	29.0	6.2	10.1	1.9	36.8	8.6	54.6	0.079	0.500	26.586801	-104.057535
Caseta de Cobro Ceballos	128.80	2	2	1907	0.2	36.6	8.6	5.7	1.7	29.0	6.2	10.1	1.9	36.8	8.6	54.6	0.079	0.500	26.586801	-104.057535
Lim. Edos. Term. Dgo. Ppia. Chih.	158.00																			

DURANGO

25 CARR: Gómez Palacio - Corralitos (Cuota)

CLAVE: 00016

RUTA: MEX-049D

AÑO: 2018

LUGAR	ESTACION				CLASIFICACION VEHICULAR EN PORCIENTO														COORDENADAS	
	KM	TE	SC	TDPA	M	A	B	C2	C3	T3S2	T3S3	T3S2R4	OTROS	A	B	C	K'	D	LATITUD	LONGITUD
T. C. Gómez Palacio - Jiménez (Libre)	226.50	1	1	1898	1.5	50.0	7.7	8.3	1.8	19.4	4.0	5.8	1.5	51.5	7.7	40.8	0.094	0.525	27.093530	-104.857443
T. C. Gómez Palacio - Jiménez (Libre)	226.50	1	2	2101	1.4	45.6	8.5	9.3	2.0	21.4	4.4	5.9	1.5	47.0	8.5	44.5	0.093	0.525	27.093423	-104.857772

26 CARR: Libramiento de Durango (Cuota)

CLAVE: 10006

RUTA: MEX-040D

AÑO: 2018

LUGAR	ESTACION				CLASIFICACION VEHICULAR EN PORCIENTO														COORDENADAS	
	KM	TE	SC	TDPA	M	A	B	C2	C3	T3S2	T3S3	T3S2R4	OTROS	A	B	C	K'	D	LATITUD	LONGITUD
T. C. Durango - Torreón	0.00	3	0	4259	1.4	64.4	2.7	15.0	3.2	7.5	2.6	2.8	0.4	65.8	2.7	31.5	0.060	0.511	24.092854	-104.586255
T. C. Durango - Villa Unión (Cuota)	21.60	1	0	3336	2.5	61.8	4.7	12.8	6.4	6.5	2.9	0.8	1.6	64.3	4.7	31.0	0.085	0.566	24.018494	-104.726981

27 CARR: Libramiento Norte de Torreón (Cuota)

CLAVE:

RUTA: MEX-040D

AÑO: 2018

LUGAR	ESTACION				CLASIFICACION VEHICULAR EN PORCIENTO														COORDENADAS	
	KM	TE	SC	TDPA	M	A	B	C2	C3	T3S2	T3S3	T3S2R4	OTROS	A	B	C	K'	D	LATITUD	LONGITUD
X. C. Gómez Palacio - Jiménez	0.00	3	0	2974	1.9	48.7	3.2	7.6	3.2	19.9	5.4	8.6	1.5	50.6	3.2	46.2	0.073	0.510	25.633771	-103.505449
Lim. Edos. Term. Dgo. Ppia. Coah.	15.60																			
X. C. La Cuchilla - Torreón	17.36	1	0	2878	1.5	45.3	3.6	8.1	3.7	19.4	6.4	10.8	1.2	46.8	3.6	49.6	0.071	0.511	25.660530	-103.388514
X. C. La Cuchilla - Torreón	17.36	3	0	2992	2.8	50.4	3.4	8.1	3.2	16.8	5.2	8.7	1.4	53.2	3.4	43.4	0.071	0.502	25.647721	-103.353667
X. C. Torreón - Saltillo	40.70	1	0	2921	1.9	50.7	3.3	8.3	3.1	17.7	5.0	8.7	1.3	52.6	3.3	44.1	0.067	0.512	25.547717	-103.227241

28 CARR: Yerbanis - Gómez Palicio (Cuota)

CLAVE: 10003

RUTA: MEX-040D

AÑO: 2018

LUGAR	ESTACION				CLASIFICACION VEHICULAR EN PORCIENTO														COORDENADAS	
	KM	TE	SC	TDPA	M	A	B	C2	C3	T3S2	T3S3	T3S2R4	OTROS	A	B	C	K'	D	LATITUD	LONGITUD
Ent. Yerbanis	118.00																			
Caseta de Cobro Cuencamé	143.22	2	1	1172	1.0	64.8	7.5	4.4	2.8	10.8	2.3	5.5	0.9	65.8	7.5	26.7	0.089	0.500	24.981714	-103.735206
Caseta de Cobro Cuencamé	143.22	2	2	1172	1.0	64.8	7.5	4.4	2.8	10.8	2.3	5.5	0.9	65.8	7.5	26.7	0.089	0.500	24.981714	-103.735206
X. C. Cuencamé - Torreón	180.00	1	1	2696	0.6	52.2	8.5	8.6	2.0	15.5	3.7	8.3	0.6	52.8	8.5	38.7	0.099	0.504	25.129053	-103.752960
X. C. Cuencamé - Torreón	180.00	1	2	2738	0.7	45.3	9.9	9.5	2.2	18.2	3.9	9.6	0.7	46.0	9.9	44.1	0.083	0.504	25.129027	-103.753044
X. C. Cuencamé - Torreón	180.00	3	1	2965	0.6	52.4	8.3	7.9	2.2	15.8	3.9	8.4	0.5	53.0	8.3	38.7	0.101	0.504	25.145979	-103.753339
X. C. Cuencamé - Torreón	180.00	3	2	2922	0.5	51.3	8.5	9.2	1.9	16.6	3.2	8.2	0.6	51.8	8.5	39.7	0.080	0.504	25.146050	-103.753377
Caseta de Cobro León Guzmán	212.71	1	1	3022	0.5	53.2	8.0	8.3	2.0	16.2	3.2	7.8	0.8	53.7	8.0	38.3	0.103	0.503	25.511094	-103.640009
Caseta de Cobro León Guzmán	212.71	1	2	2982	0.5	48.9	8.6	8.6	2.2	17.9	3.7	8.9	0.7	49.4	8.6	42.0	0.084	0.503	25.511089	-103.640082
Caseta de Cobro León Guzmán	212.71	2	1	1932	0.5	47.2	9.6	3.8	3.4	21.1	4.2	8.5	1.7	47.7	9.6	42.7	0.089	0.500	25.520645	-103.639471
Caseta de Cobro León Guzmán	212.71	2	2	1932	0.5	47.2	9.6	3.8	3.4	21.1	4.2	8.5	1.7	47.7	9.6	42.7	0.089	0.500	25.520645	-103.639471

DURANGO

28 CARR: Yerbanis - Gómez Palicio (Cuota)

CLAVE: 10003

RUTA: MEX-040D

AÑO: 2018

LUGAR	ESTACION				CLASIFICACION VEHICULAR EN PORCIENTO													COORDENADAS		
	KM	TE	SC	TDPA	M	A	B	C2	C3	T3S2	T3S3	T3S2R4	OTROS	A	B	C	K'	D	LATITUD	LONGITUD
Caseta de Cobro León Guzmán	212.71	3	1	2186	0.6	54.0	8.1	7.6	2.1	15.4	3.5	8.0	0.7	54.6	8.1	37.3	0.116	0.503	25.537991	-103.638277
Caseta de Cobro León Guzmán	212.71	3	2	2157	0.5	49.5	9.0	8.1	2.3	17.2	3.8	8.8	0.8	50.0	9.0	41.0	0.094	0.503	25.538008	-103.638665
T. C. Gómez Palacio - Jiménez	220.00																			

29 CARR: Amado Nervo - La Ochoa

CLAVE: 10012

RUTA: DGO-542

AÑO: 2018

LUGAR	ESTACION				CLASIFICACION VEHICULAR EN PORCIENTO													COORDENADAS		
	KM	TE	SC	TDPA	M	A	B	C2	C3	T3S2	T3S3	T3S2R4	OTROS	A	B	C	K'	D	LATITUD	LONGITUD
Amado Nervo	0.00	3	0	2370	7.0	78.1	1.4	12.2	1.0	0.2	0.1	0.0	0.0	85.1	1.4	13.5	0.059	0.503	23.853546	-104.172721
Villa Unión	25.00	1	0	3855	8.6	80.0	0.7	9.6	0.3	0.3	0.3	0.1	0.1	88.6	0.7	10.7	0.090	0.521	23.958998	-104.055807
La Ochoa	42.00	1	0	465	10.9	70.1	0.8	17.4	0.8	0.0	0.0	0.0	0.0	81.0	0.8	18.2	0.108	0.504	24.019865	-103.926190

30 CARR: Ceballos - El Mirador

CLAVE: 10417

RUTA: DGO-044

AÑO: 2018

LUGAR	ESTACION				CLASIFICACION VEHICULAR EN PORCIENTO													COORDENADAS		
	KM	TE	SC	TDPA	M	A	B	C2	C3	T3S2	T3S3	T3S2R4	OTROS	A	B	C	K'	D	LATITUD	LONGITUD
Ceballos	0.00	3	0	677	3.5	70.3	0.7	20.3	2.4	1.7	0.3	0.5	0.3	73.8	0.7	25.5	0.086	0.552	26.528989	-104.135528
T. C. Ent. La Zarca - Hidalgo del Parral	113.50	1	0	242	0.4	73.9	0.1	21.4	3.9	0.3	0.0	0.0	0.0	74.3	0.1	25.6	0.095	0.511	26.143765	-105.025798

31 CARR: Durango - Aserradero La Flor

CLAVE: 10422

RUTA: DGO-115

AÑO: 2018

LUGAR	ESTACION				CLASIFICACION VEHICULAR EN PORCIENTO													COORDENADAS		
	KM	TE	SC	TDPA	M	A	B	C2	C3	T3S2	T3S3	T3S2R4	OTROS	A	B	C	K'	D	LATITUD	LONGITUD
Durango	0.00	3	1	10177	5.7	83.1	0.4	9.0	0.5	0.8	0.5	0.0	0.0	88.8	0.4	10.8	0.077	0.527	23.984033	-104.664459
Durango	0.00	3	2	11328	3.9	85.8	0.3	8.3	0.5	0.7	0.5	0.0	0.0	89.7	0.3	10.0	0.082	0.527	23.984325	-104.664359
T. Der. Presa Guadalupe Victoria	4.00	3	1	6678	7.8	83.8	0.2	7.2	0.5	0.3	0.2	0.0	0.0	91.6	0.2	8.2	0.083	0.505	23.975856	-104.664642
T. Der. Presa Guadalupe Victoria	4.00	3	2	6544	5.6	85.6	0.2	7.8	0.5	0.2	0.1	0.0	0.0	91.2	0.2	8.6	0.080	0.505	23.975839	-104.664578
Periférico Sur de Durango	8.00	3	0	510	14.9	58.5	1.1	20.1	3.0	1.8	0.4	0.0	0.2	73.4	1.1	25.5	0.112	0.522	23.947584	-104.673852
La Casita	39.00	1	0	160	5.0	42.0	3.8	33.4	9.9	4.9	0.8	0.0	0.2	47.0	3.8	49.2	0.106	0.539	23.754195	-104.756964
Aserradero La Flor	72.00																			



DURANGO

32 CARR: Jabonoso - Esmeralda

CLAVE: 10004

RUTA: DGO-363

AÑO: 2018

LUGAR	ESTACION				CLASIFICACION VEHICULAR EN PORCIENTO													COORDENADAS		
	KM	TE	SC	TDPA	M	A	B	C2	C3	T3S2	T3S3	T3S2R4	OTROS	A	B	C	K'	D	LATITUD	LONGITUD
Jabonoso	0.00	3	0	3775	12.7	69.9	0.5	8.8	1.9	1.6	0.9	0.9	2.8	82.6	0.5	16.9	0.074	0.500	25.644511	-103.457144
T. Izq. Chimal	10.00	3	0	4816	19.9	66.7	0.4	7.6	1.4	0.8	0.6	0.4	2.2	86.6	0.4	13.0	0.061	0.520	25.699190	-103.442309
Esmeralda	16.30	1	0	2714	20.2	70.9	0.6	1.9	1.7	0.9	0.7	0.5	2.6	91.1	0.6	8.3	0.075	0.530	25.730414	-103.433694

33 CARR: La Torreña - Brittingham

CLAVE: 10010

RUTA: DGO-325

AÑO: 2018

LUGAR	ESTACION				CLASIFICACION VEHICULAR EN PORCIENTO													COORDENADAS		
	KM	TE	SC	TDPA	M	A	B	C2	C3	T3S2	T3S3	T3S2R4	OTROS	A	B	C	K'	D	LATITUD	LONGITUD
La Torreña	0.00	3	0	2337	22.1	55.5	1.5	3.9	2.7	4.2	3.0	1.2	5.9	77.6	1.5	20.9	0.079	0.506	25.639005	-103.580086
X. C. Gómez Palacio - Jiménez	7.00	1	0	4028	12.1	71.9	1.3	3.0	1.0	2.8	2.0	1.0	4.9	84.0	1.3	14.7	0.062	0.529	25.638842	-103.534400
X. C. Gómez Palacio - Jiménez	7.00	3	0	2505	4.4	79.9	3.4	3.7	1.5	1.8	1.3	2.1	1.9	84.3	3.4	12.3	0.070	0.513	25.641313	-103.520134
Chimal	16.00	1	0	2606	26.6	57.0	1.0	3.6	2.0	2.2	1.2	1.0	5.4	83.6	1.0	15.4	0.063	0.506	25.690909	-103.490659
Chimal	16.00	3	0	1481	14.5	56.4	1.5	2.1	3.1	3.5	4.2	1.7	13.0	70.9	1.5	27.6	0.061	0.525	25.697137	-103.490607
Brittingham	33.00	1	0	1524	7.1	69.8	1.3	7.4	1.3	2.0	1.3	2.0	7.8	76.9	1.3	21.8	0.064	0.525	25.775172	-103.571361

34 CARR: Libramiento de Torreón

CLAVE: 05516

RUTA: COA

AÑO: 2018

LUGAR	ESTACION				CLASIFICACION VEHICULAR EN PORCIENTO													COORDENADAS		
	KM	TE	SC	TDPA	M	A	B	C2	C3	T3S2	T3S3	T3S2R4	OTROS	A	B	C	K'	D	LATITUD	LONGITUD
X. C. Saltillo - Torreón	0.00	3	1	41935	1.7	83.9	1.5	5.5	2.2	1.9	2.3	0.6	0.4	85.6	1.5	12.9	0.081	0.543	25.538984	-103.370561
X. C. Saltillo - Torreón	0.00	3	2	40595	1.9	82.4	1.8	5.7	2.2	2.4	2.6	0.6	0.4	84.3	1.8	13.9	0.077	0.543	25.538980	-103.370986
T. C. La Cuchilla - Torreón (Alta)	7.30	1	1	17964	2.6	83.5	0.6	6.0	2.0	3.0	1.2	0.7	0.4	86.1	0.6	13.3	0.105	0.513	25.582271	-103.402497
T. C. La Cuchilla - Torreón (Baja)	7.30	1	1	22889	1.8	83.0	0.8	4.3	0.7	3.9	2.9	1.8	0.8	84.8	0.8	14.4	0.090	0.518	25.582408	-103.402380
T. C. La Cuchilla - Torreón (Baja)	7.30	1	2	21268	1.3	81.4	0.8	3.9	0.8	4.9	3.8	2.0	1.1	82.7	0.8	16.5	0.075	0.518	25.582021	-103.402639
T. C. La Cuchilla - Torreón (Alta)	7.30	1	2	13776	3.4	81.5	0.7	6.2	2.3	3.3	1.4	0.8	0.4	84.9	0.7	14.4	0.104	0.513	25.582178	-103.402528
Lim. Edos. Term. Coah. Ppia. Dgo.	11.80																			
T. C. Durango - Torreón	28.60																			

35 CARR: Libramiento Exterior Cuencamé

CLAVE: 10006

RUTA: DGO

AÑO: 2018

LUGAR	ESTACION				CLASIFICACION VEHICULAR EN PORCIENTO													COORDENADAS		
	KM	TE	SC	TDPA	M	A	B	C2	C3	T3S2	T3S3	T3S2R4	OTROS	A	B	C	K'	D	LATITUD	LONGITUD
Ent. La Chicharrona - Cuencamé	0.00	3	0	4805	3.4	35.3	6.7	7.7	5.0	25.2	5.8	9.5	1.4	38.7	6.7	54.6	0.059	0.502	24.842135	-103.693946
T. C. Durango - Torreón	8.40																			

DURANGO

36 CARR: Mezquital - San Miguel de Temoaya

CLAVE: 10006

RUTA: DGO

AÑO: 2018

LUGAR	ESTACION				CLASIFICACION VEHICULAR EN PORCIENTO										COORDENADAS					
	KM	TE	SC	TDPA	M	A	B	C2	C3	T3S2	T3S3	T3S2R4	OTROS	A	B	C	K'	D	LATITUD	LONGITUD
T. C. Durango - Mezquital	0.00	3	0	395	3.3	58.9	0.4	33.6	2.3	0.9	0.6	0.0	0.0	62.2	0.4	37.4	0.111	0.514	23.497648	-104.390625
San Miguel de Temoaya	48.00	1	0	245	2.8	54.7	0.7	37.7	2.8	0.6	0.7	0.0	0.0	57.5	0.7	41.8	0.122	0.508	23.304279	-104.507276

37 CARR: Ramal a San Juan del Río

CLAVE: 10001

RUTA: DGO-290

AÑO: 2018

LUGAR	ESTACION				CLASIFICACION VEHICULAR EN PORCIENTO										COORDENADAS					
	KM	TE	SC	TDPA	M	A	B	C2	C3	T3S2	T3S3	T3S2R4	OTROS	A	B	C	K'	D	LATITUD	LONGITUD
T. C. Durango - Ent. La Zarca	0.00	3	0	3345	1.0	80.0	4.3	10.3	1.8	0.9	0.5	0.4	0.8	81.0	4.3	14.7	0.079	0.523	24.793049	-104.490442
San Juan del Río	5.00	1	1	2114	2.1	79.0	3.3	7.8	2.1	1.6	1.5	0.6	2.0	81.1	3.3	15.6	0.083	0.506	24.785922	-104.474056
San Juan del Río	5.00	1	2	2065	1.9	76.5	3.5	8.4	1.8	2.4	2.0	0.4	3.1	78.4	3.5	18.1	0.084	0.506	24.786017	-104.473999

38 CARR: Súchil - Villa Unión

CLAVE: 10419

RUTA: DGO-241

AÑO: 2018

LUGAR	ESTACION				CLASIFICACION VEHICULAR EN PORCIENTO										COORDENADAS					
	KM	TE	SC	TDPA	M	A	B	C2	C3	T3S2	T3S3	T3S2R4	OTROS	A	B	C	K'	D	LATITUD	LONGITUD
Súchil	0.00	3	1	1464	4.1	80.3	1.2	13.4	0.6	0.2	0.2	0.0	0.0	84.4	1.2	14.4	0.098	0.513	23.629852	-103.924001
Súchil	0.00	3	2	1391	4.3	78.3	1.4	14.7	0.7	0.3	0.3	0.0	0.0	82.6	1.4	16.0	0.088	0.513	23.629740	-103.924098
Vicente Guerrero	13.40	1	0	2356	2.6	79.7	1.7	14.7	0.9	0.3	0.1	0.0	0.0	82.3	1.7	16.0	0.081	0.504	23.711474	-103.970119
X. C. Zacatecas - Durango	14.50	1	1	5223	4.1	83.4	1.2	10.4	0.6	0.2	0.1	0.0	0.0	87.5	1.2	11.3	0.088	0.506	23.741606	-103.984715
X. C. Zacatecas - Durango	14.50	1	2	5343	4.7	80.9	1.3	12.2	0.6	0.2	0.1	0.0	0.0	85.6	1.3	13.1	0.080	0.506	23.740926	-103.984603
X. C. Zacatecas - Durango	14.50	3	0	2969	4.3	82.6	0.9	10.8	0.9	0.4	0.1	0.0	0.0	86.9	0.9	12.2	0.078	0.501	23.746147	-103.987482
Villa Unión	41.40	1	0	2269	6.1	78.8	0.8	12.7	0.9	0.4	0.2	0.1	0.0	84.9	0.8	14.3	0.089	0.513	23.959957	-104.049573

39 CARR: Tlahualillo de Zaragoza - T.C. Gómez Palacio - Jiménez

CLAVE: 10419

RUTA: DGO

AÑO: 2018

LUGAR	ESTACION				CLASIFICACION VEHICULAR EN PORCIENTO										COORDENADAS					
	KM	TE	SC	TDPA	M	A	B	C2	C3	T3S2	T3S3	T3S2R4	OTROS	A	B	C	K'	D	LATITUD	LONGITUD
Tlahualillo	0.00	3	0	801	10.6	71.3	0.8	12.7	1.2	1.3	1.0	0.9	0.2	81.9	0.8	17.3	0.107	0.520	26.119738	-103.448870
T. C. Gómez Palacio - Jiménez	37.00	1	0	132	6.3	55.0	4.4	16.5	3.9	6.8	3.3	1.6	2.2	61.3	4.4	34.3	0.121	0.545	26.155910	-103.776377

40 CARR: Yerbanis - Peñón Blanco

CLAVE: 10032

RUTA: DGO-316

AÑO: 2018

LUGAR	ESTACION				CLASIFICACION VEHICULAR EN PORCIENTO										COORDENADAS					
	KM	TE	SC	TDPA	M	A	B	C2	C3	T3S2	T3S3	T3S2R4	OTROS	A	B	C	K'	D	LATITUD	LONGITUD
Yerbanis	0.00	3	0	1218	3.3	61.0	8.2	13.2	6.9	3.1	2.2	0.8	1.3	64.3	8.2	27.5	0.079	0.501	24.735740	-103.847834

DURANGO

40 CARR: Yerbanís - Peñón Blanco

CLAVE: 10032

RUTA: DGO-316

AÑO: 2018

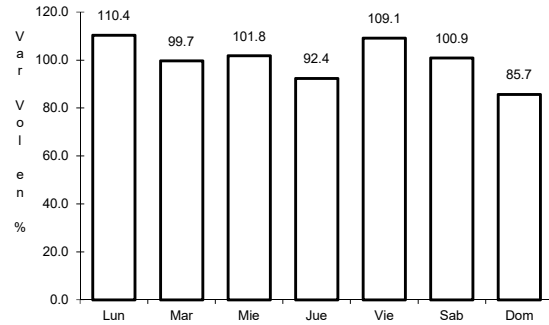
L U G A R	E S T A C I O N				C L A S I F I C A C I O N V E H I C U L A R E N P O R C I E N T O														C O O R D E N A D A S	
	KM	TE	SC	TDPA	M	A	B	C2	C3	T3S2	T3S3	T3S2R4	OTROS	A	B	C	K'	D	LATITUD	LONGITUD
Peñón Blanco	22.00	1	0	1002	1.5	73.5	6.7	12.5	3.5	0.5	0.1	0.3	1.4	75.0	6.7	18.3	0.084	0.507	24.782215	-104.011465



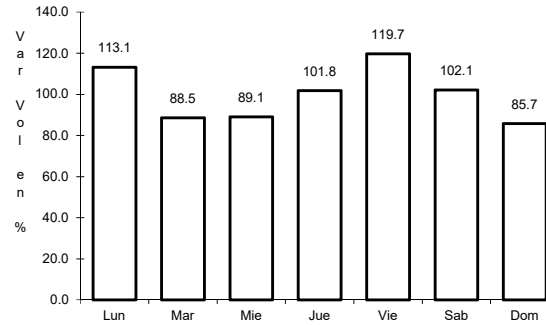
1 CARR: Bermejillo - El Palmito

CLAVE: 10105

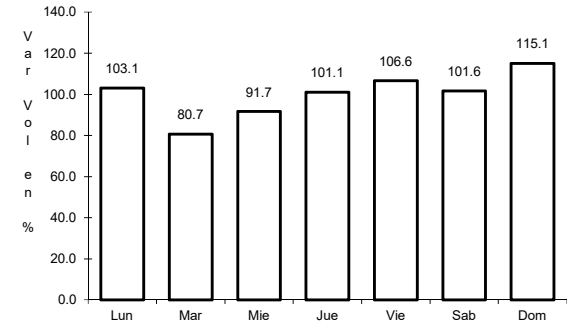
RUTA: MEX-030



Km: 0.00      Tipo: 3      Sent: 0



Km: 86.00      Tipo: 1      Sent: 0

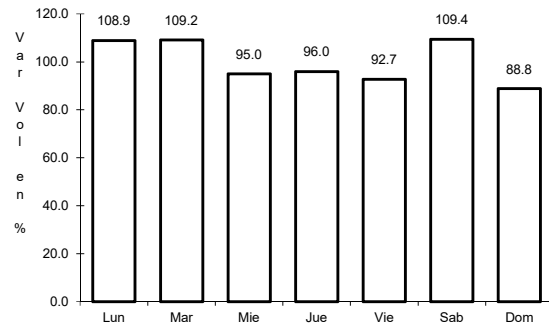


Km: 160.00      Tipo: 1      Sent: 0

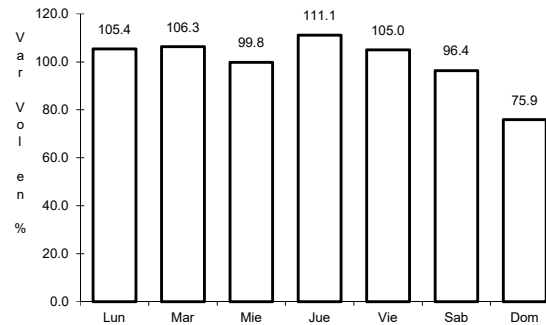
2 CARR: Durango - Ent. La Zarca

CLAVE: 10016

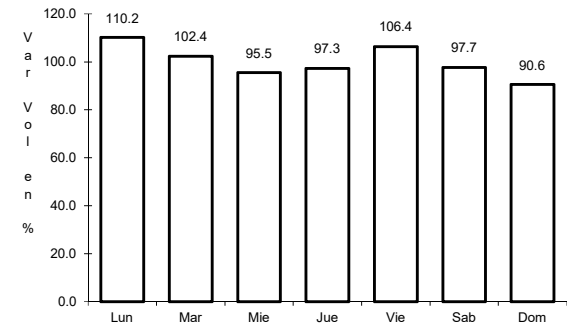
RUTA: MEX-045



Km: 0.00      Tipo: 3      Sent: 1



Km: 0.00      Tipo: 3      Sent: 2

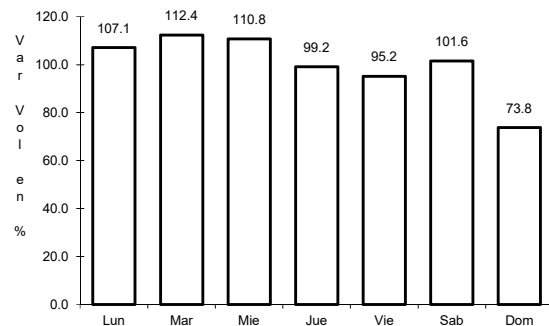


Km: 239.50      Tipo: 1      Sent: 0

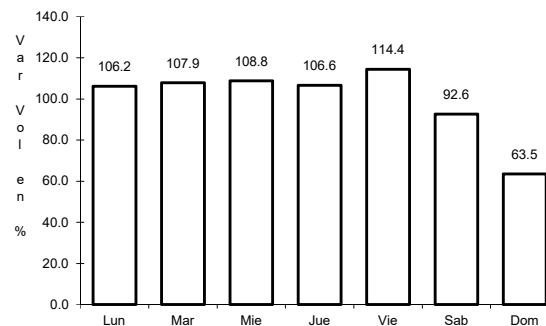
3 CARR: Durango - Mezquital

CLAVE: 10423

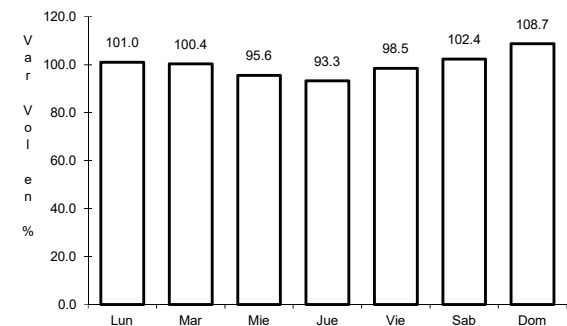
RUTA: MEX-023



Km: 0.00      Tipo: 3      Sent: 1



Km: 0.00      Tipo: 3      Sent: 2

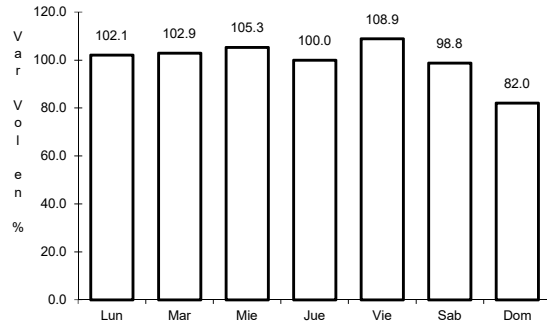


Km: 13.00      Tipo: 3      Sent: 0

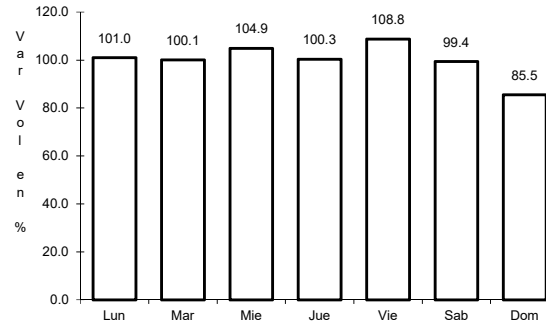
4 CARR: Durango - Torreón

CLAVE: 10085

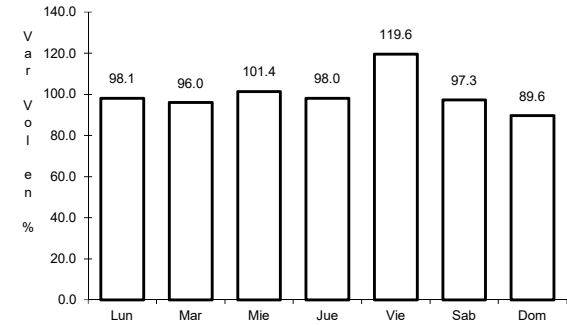
RUTA: MEX-040



Km: 0.00      Tipo: 3      Sent: 1



Km: 0.00      Tipo: 3      Sent: 2

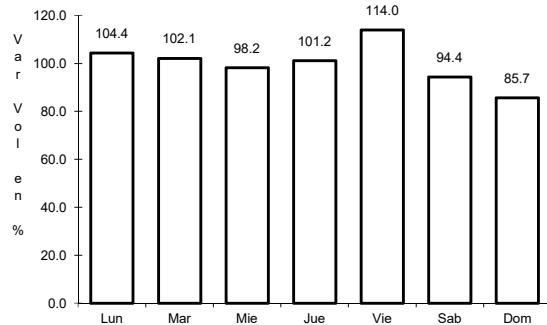


Km: 120.90      Tipo: 1      Sent: 0

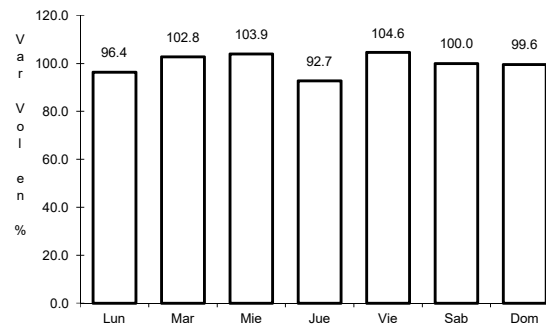
5 CARR: Durango - Villa Unión

CLAVE: 0083

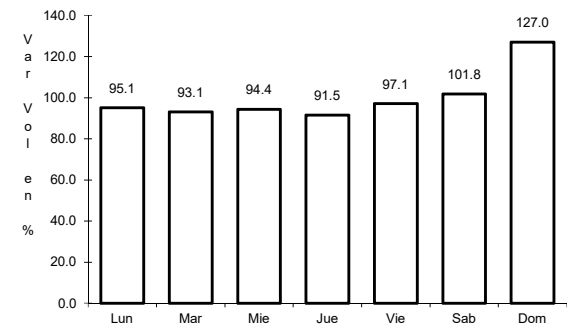
RUTA: MEX-040



Km: 0.00      Tipo: 3      Sent: 0



Km: 145.50      Tipo: 1      Sent: 0

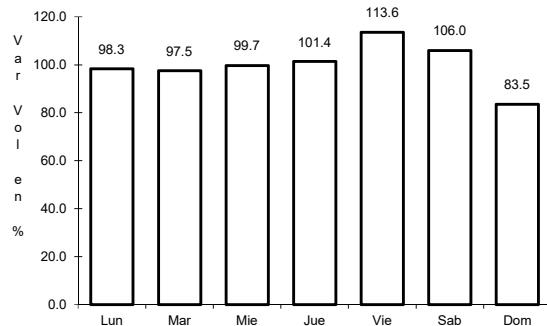


Km: 294.40      Tipo: 1      Sent: 0

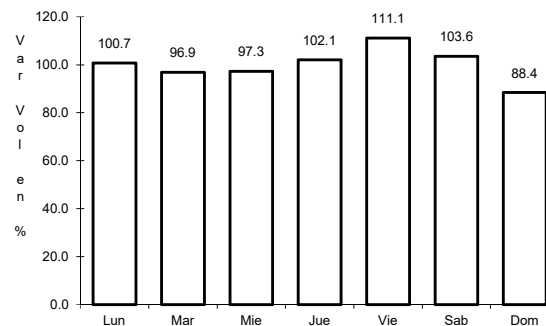
6 CARR: Ent. La Chicharrona - Cuencamé

CLAVE: 00152

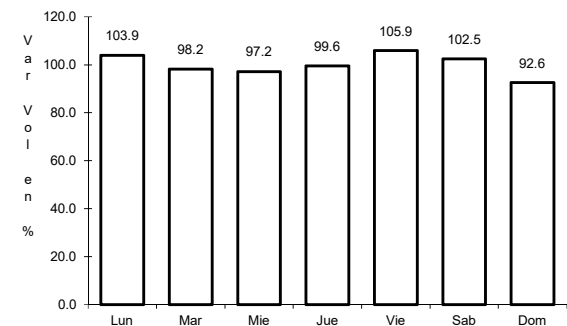
RUTA: MEX-049



Km: 0.00      Tipo: 3      Sent: 1



Km: 0.00      Tipo: 3      Sent: 2

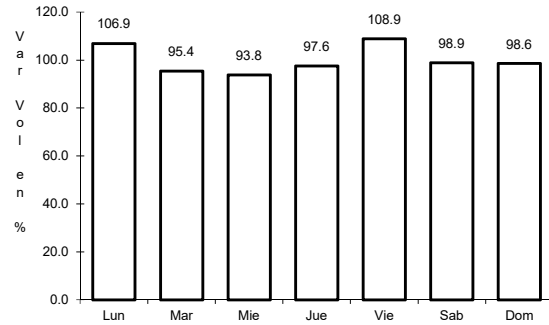


Km: 124.50      Tipo: 1      Sent: 0

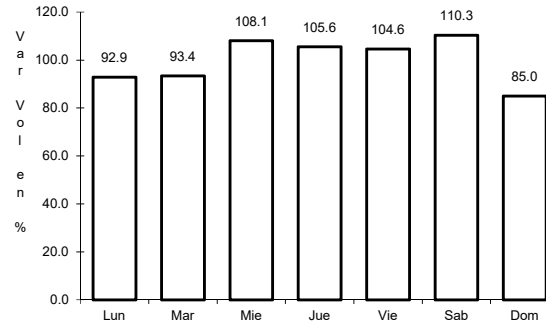
7 CARR: Ent. La Zarca - Hidalgo del Parral

CLAVE: 00488

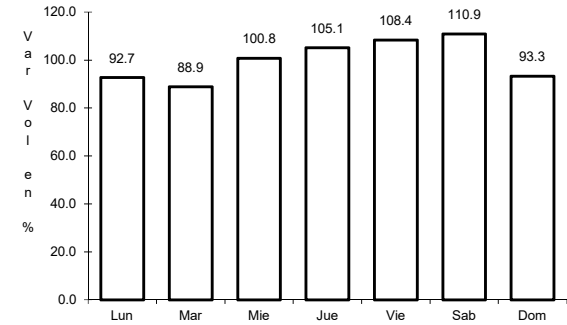
ruta: MEX-045



Km: 0.00      Tipo: 3      Sent: 0



Km: 92.35      Tipo: 3      Sent: 0

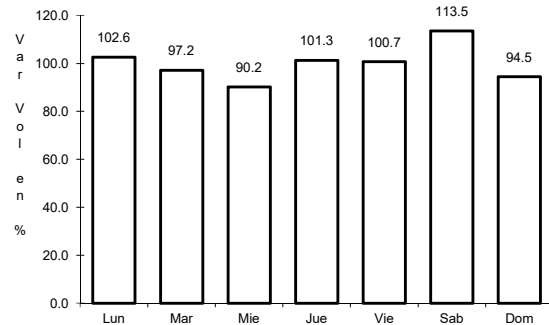


Km: 171.00      Tipo: 1      Sent: 0

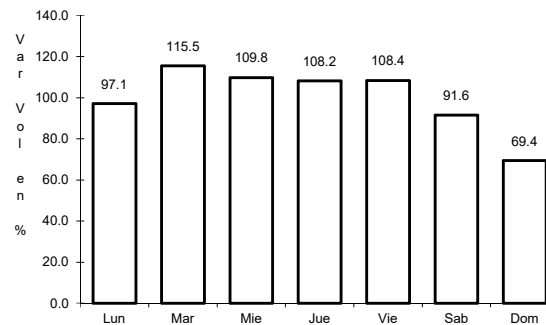
8 CARR: Ent. Los Herrera - Topia

CLAVE: 10090

ruta: MEX-036



Km: 0.00      Tipo: 3      Sent: 0

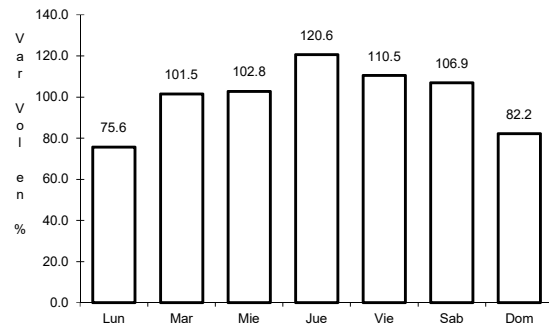


Km: 80.00      Tipo: 1      Sent: 0

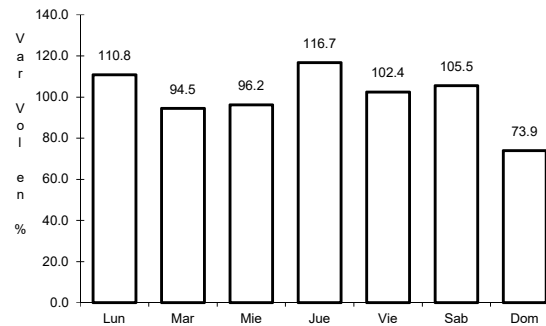
9 CARR: Gómez Palacio - Jiménez

CLAVE: 00006

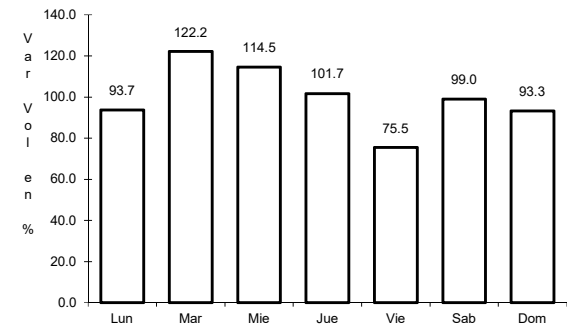
ruta: MEX-049



Km: 0.00      Tipo: 3      Sent: 1



Km: 0.00      Tipo: 3      Sent: 2

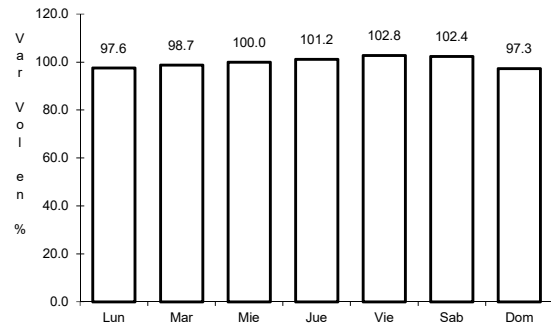


Km: 107.95      Tipo: 1      Sent: 0

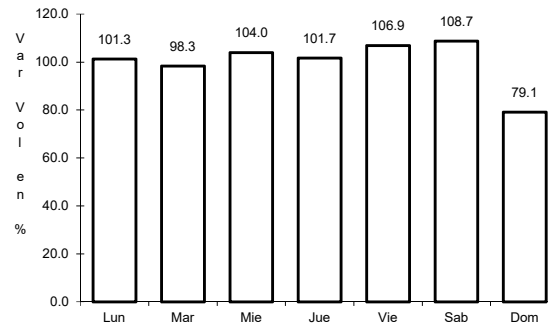
10 CARR: Gómez Palacio - La Unión

CLAVE: 10009

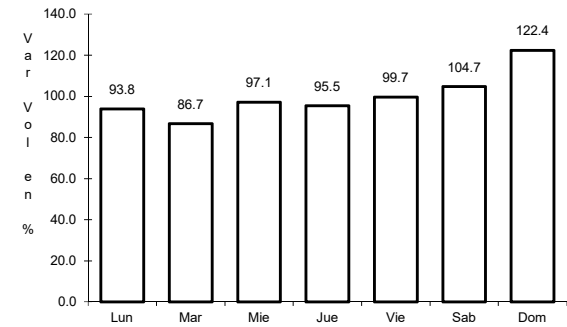
RUTA: MEX-040



Km: 0.00      Tipo: 3      Sent: 0



Km: 20.90      Tipo: 1      Sent: 0

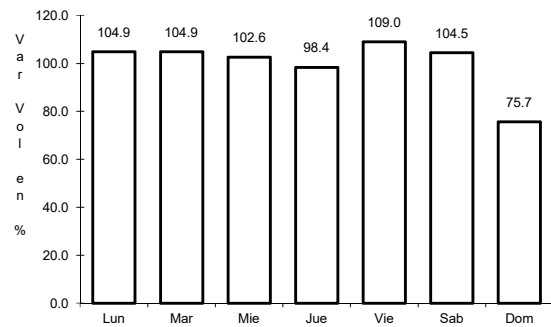


Km: 42.20      Tipo: 1      Sent: 0

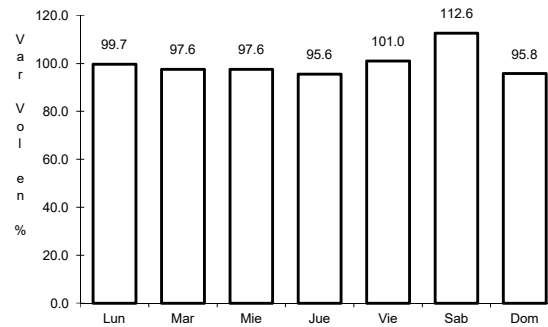
11 CARR: Gómez Palacio - Tlahualillo

CLAVE: 10005

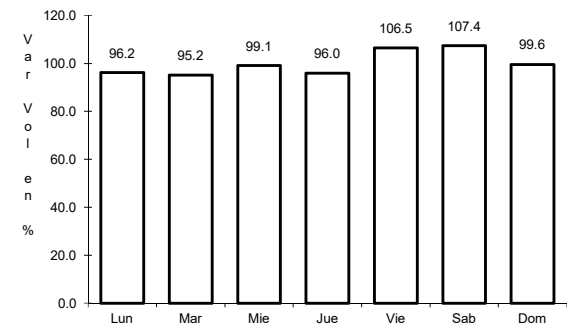
RUTA: MEX-040



Km: 5.60      Tipo: 1      Sent: 0



Km: 31.44      Tipo: 1      Sent: 0

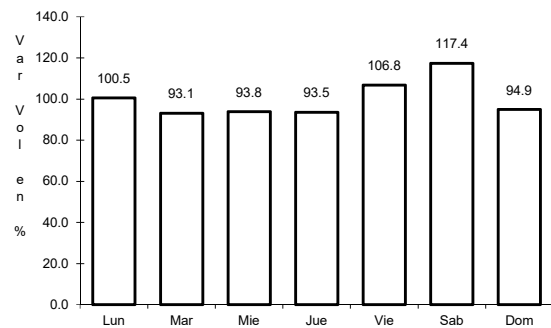


Km: 72.90      Tipo: 1      Sent: 0

12 CARR: Gregorio García - Francisco I. Madero

CLAVE: 00110

RUTA: MEX-040



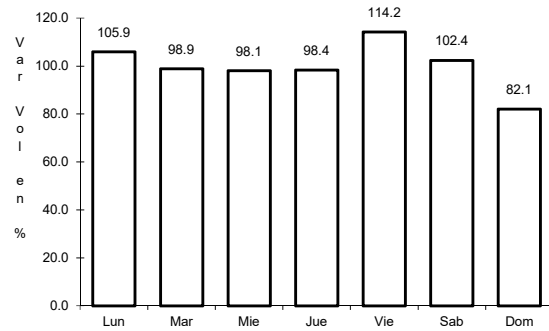
Km: 9.60      Tipo: 1      Sent: 0



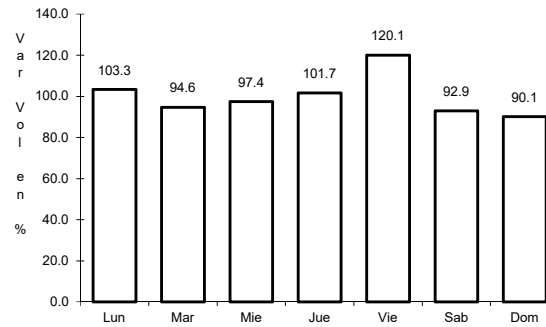
13 CARR: Guadalupe Aguilera - Tepehuanes

CLAVE: 10220

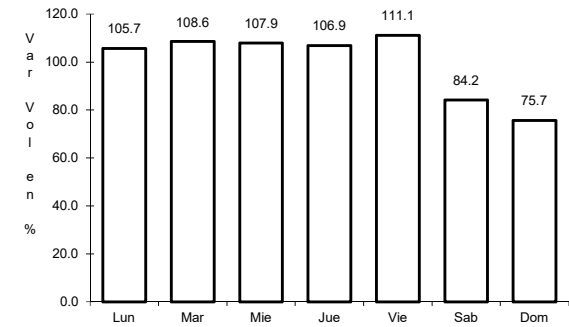
ruta: MEX-023



Km: 0.00      Tipo: 3      Sent: 1



Km: 0.00      Tipo: 3      Sent: 2

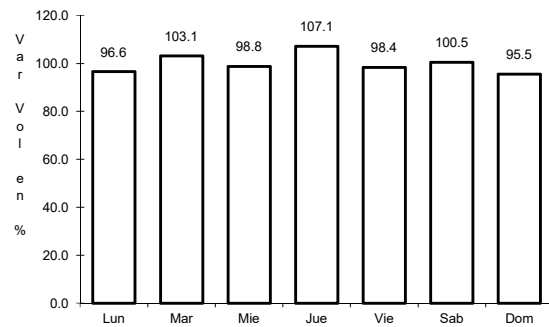


Km: 169.00      Tipo: 1      Sent: 0

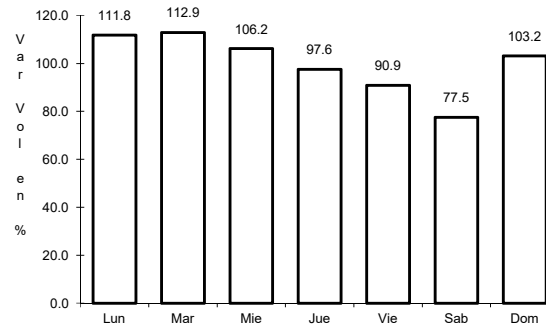
14 CARR: Hidalgo del Parral - Guadalupe y Calvo

CLAVE: 00802

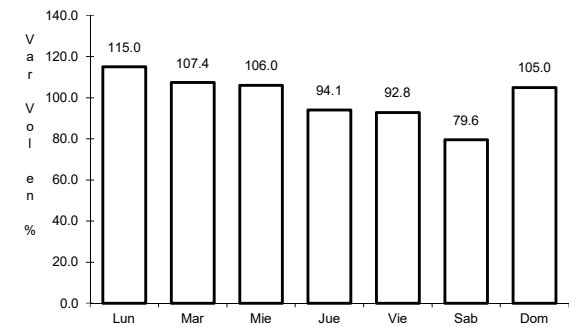
ruta: MEX-024



Km: 0.00      Tipo: 3      Sent: 0



Km: 110.00      Tipo: 1      Sent: 0

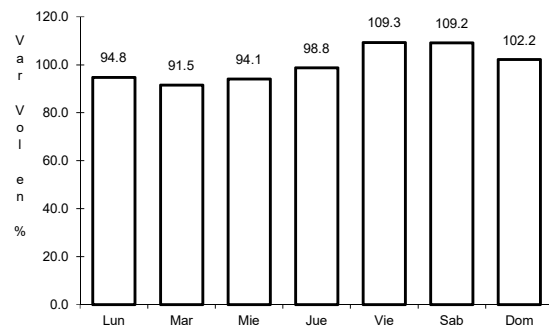


Km: 212.00      Tipo: 1      Sent: 0

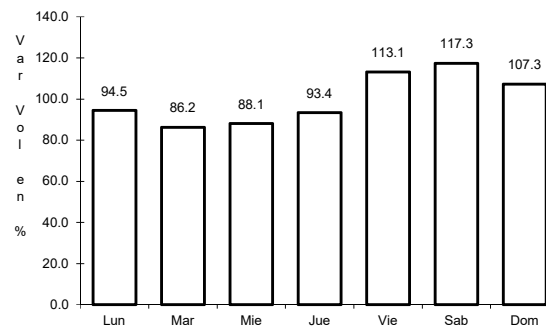
15 CARR: Libramiento Cuencamé

CLAVE: 10006

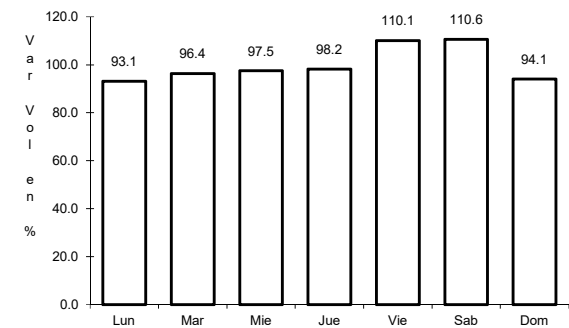
ruta: MEX



Km: 0.00      Tipo: 3      Sent: 1



Km: 0.00      Tipo: 3      Sent: 2

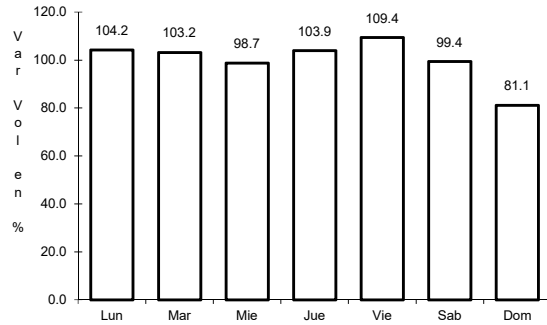


Km: 2.60      Tipo: 1      Sent: 1

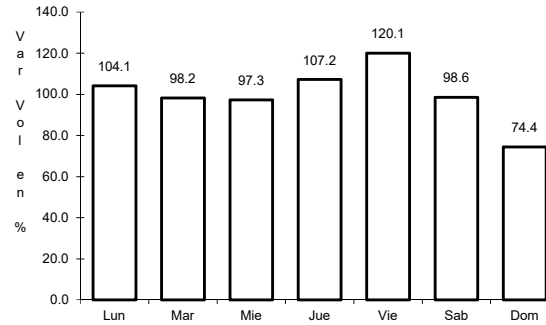
16 CARR: Libramiento Oriente de Durango

CLAVE:

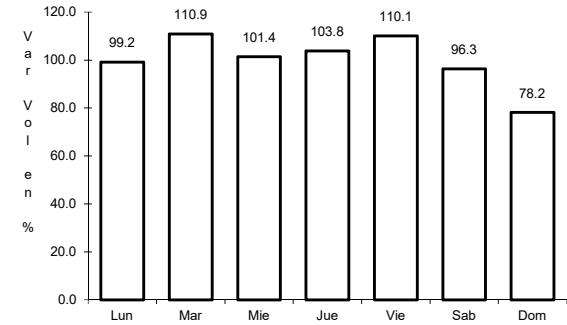
RUTA: MEX-045



Km: 0.00      Tipo: 3      Sent: 1



Km: 0.00      Tipo: 3      Sent: 2

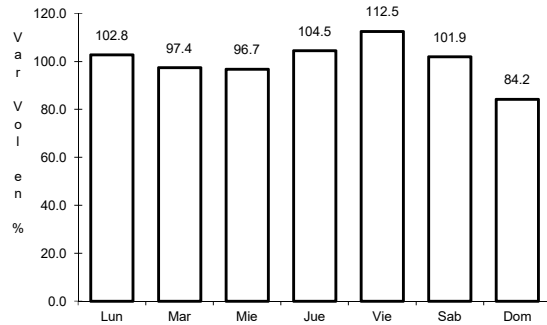


Km: 10.50      Tipo: 1      Sent: 1

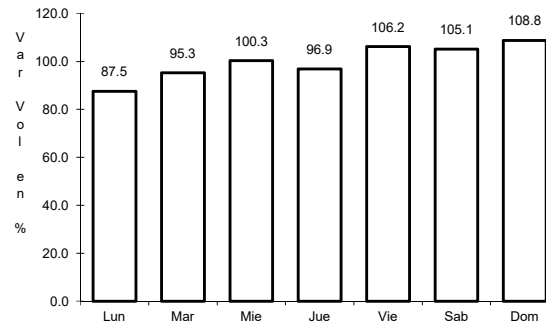
17 CARR: Libramiento Sur de Durango

CLAVE:

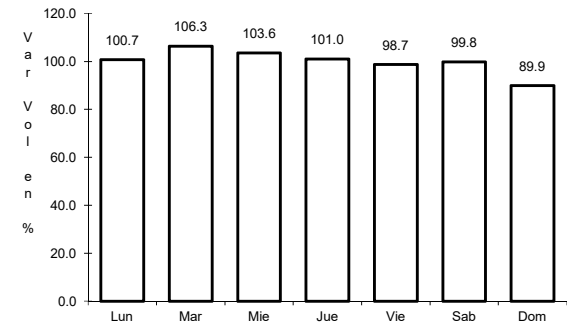
RUTA: MEX-045



Km: 0.00      Tipo: 3      Sent: 0



Km: 19.50      Tipo: 1      Sent: 0

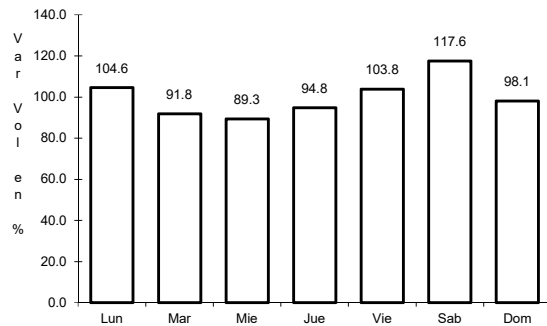


Km: 27.70      Tipo: 1      Sent: 0

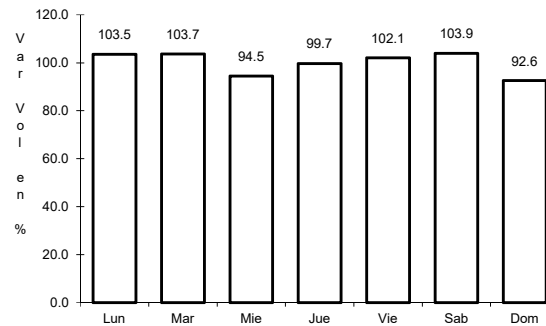
18 CARR: Pedriceña - Ent. Rodeo

CLAVE: 10002

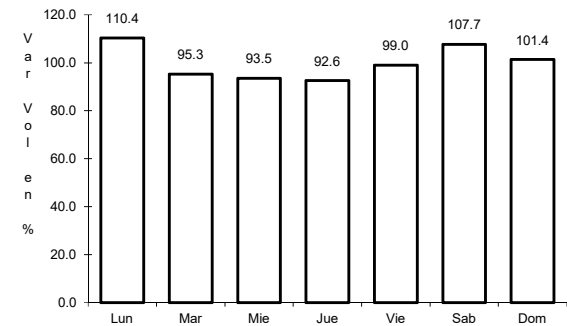
RUTA: MEX-034



Km: 0.00      Tipo: 3      Sent: 0



Km: 45.00      Tipo: 1      Sent: 0

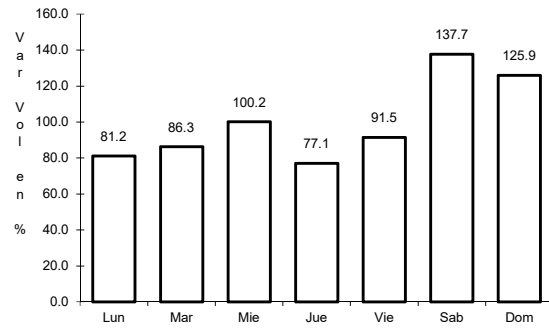


Km: 98.00      Tipo: 1      Sent: 0

19 CARR: Ramal a Otinapa

CLAVE: 10002

RUTA: MEX



Km: 0.00

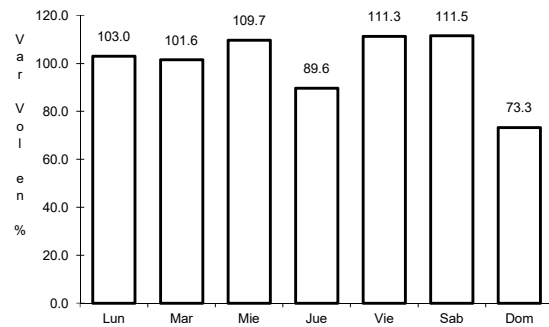
Tipo: 3

Sent: 0

20 CARR: Ramal a Santa Clara

CLAVE: 10287

RUTA: MEX-049



Km: 0.00

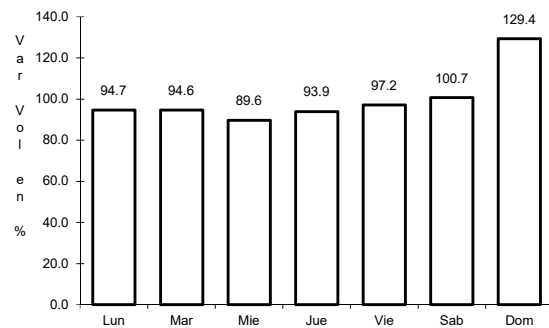
Tipo: 3

Sent: 0

21 CARR: Ramal a Villa Juárez

CLAVE: 10287

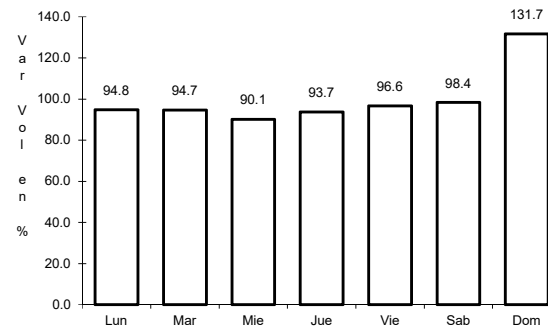
RUTA: MEX-040



Km: 0.00

Tipo: 3

Sent: 1



Km: 0.00

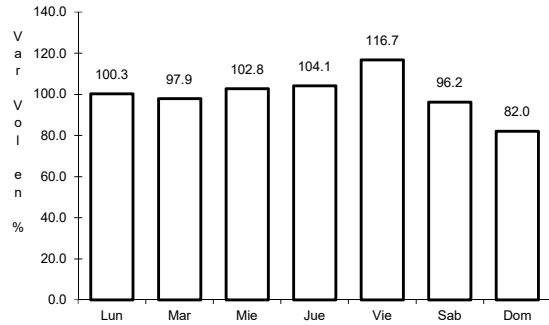
Tipo: 3

Sent: 2

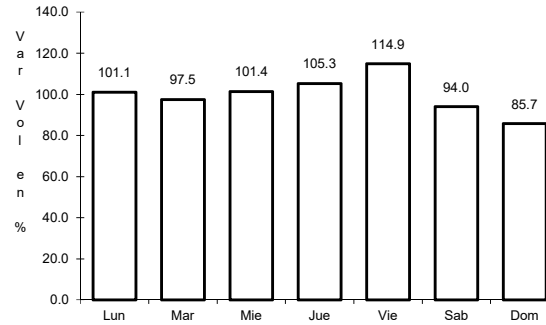
22 CARR: Zacatecas - Durango

CLAVE: 00544

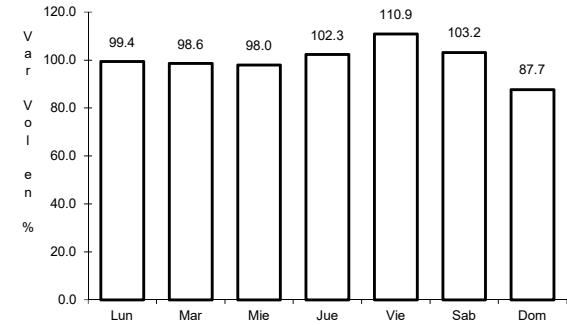
ruta: MEX-045



Km: 6.40 Tipo: 3 Sent: 1



Km: 6.40 Tipo: 3 Sent: 2

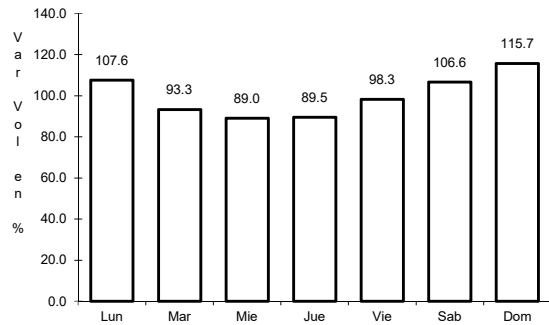


Km: 121.00 Tipo: 3 Sent: 0

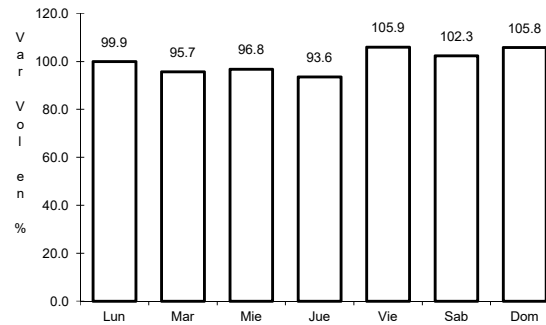
23 CARR: Durango - Mazatlán (Cuota)

CLAVE: 00084

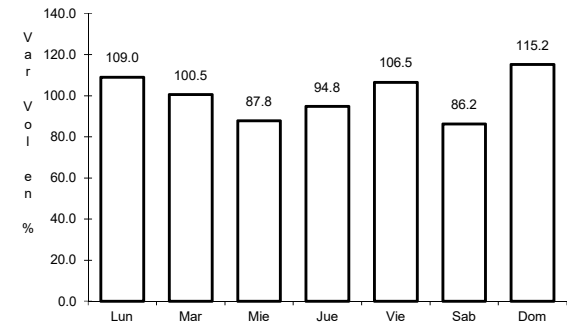
ruta: MEX-040D



Km: 20.50 Tipo: 3 Sent: 0



Km: 44.50 Tipo: 1 Sent: 0

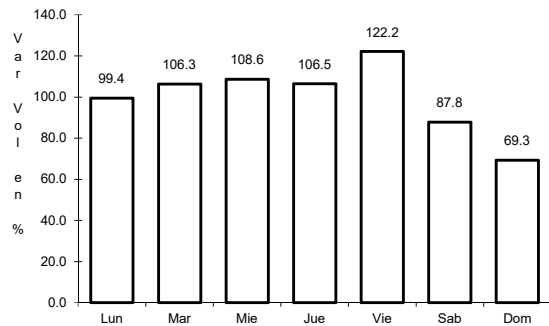


Km: 208.35 Tipo: 1 Sent: 0

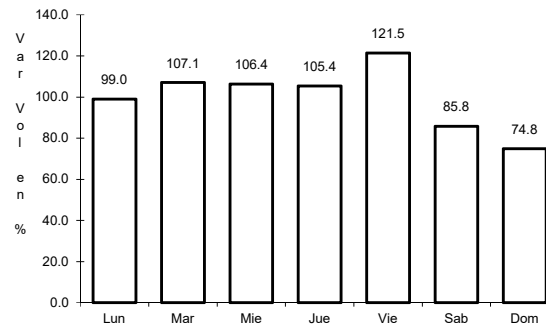
24 CARR: Durango - Yerbanís (Cuota)

CLAVE: 10003

ruta: MEX-040D



Km: 5.30 Tipo: 1 Sent: 1

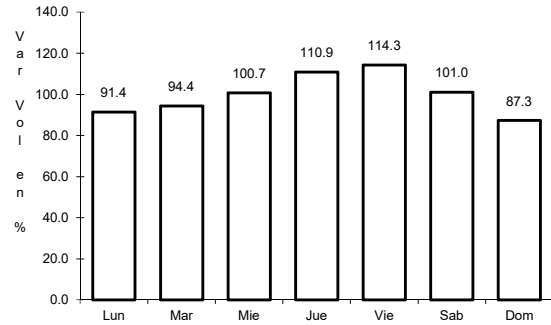


Km: 5.30 Tipo: 1 Sent: 2

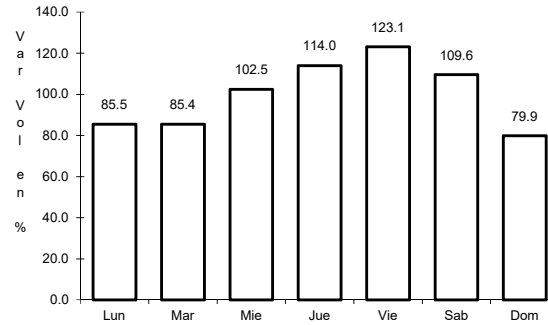
25 CARR: Gómez Palacio - Corralitos (Cuota)

CLAVE: 00016

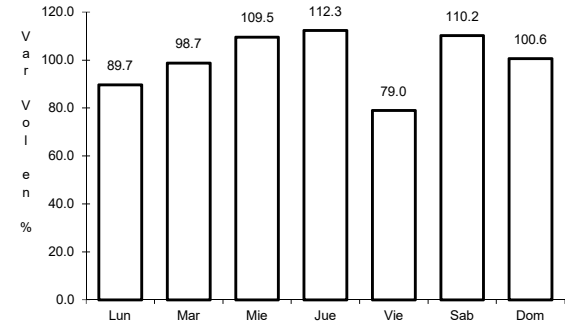
ruta: MEX-049D



Km: 40.10      Tipo: 1      Sent: 1



Km: 40.10      Tipo: 1      Sent: 2

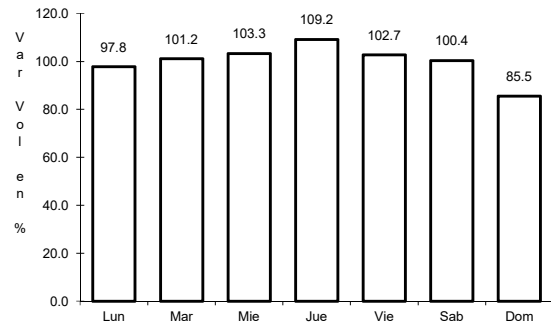


Km: 226.50      Tipo: 1      Sent: 1

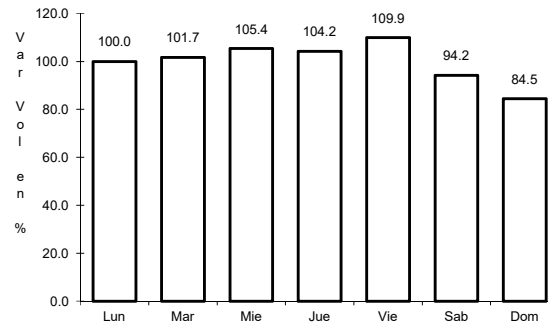
26 CARR: Libramiento de Durango (Cuota)

CLAVE: 10006

ruta: MEX-040D



Km: 0.00      Tipo: 3      Sent: 0

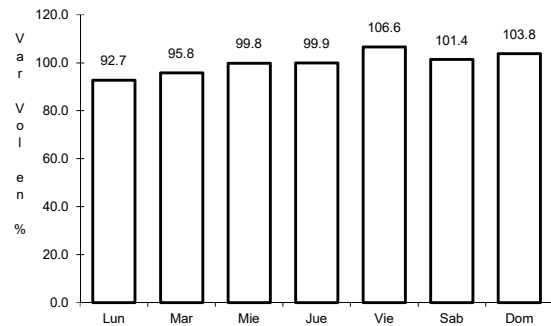


Km: 21.60      Tipo: 1      Sent: 0

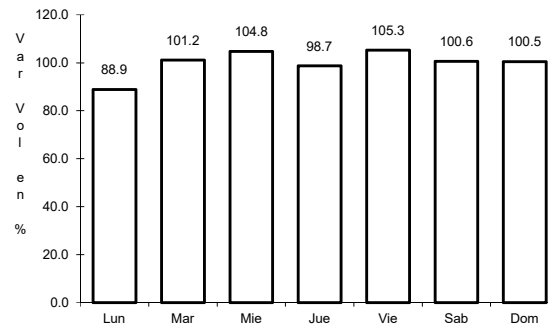
27 CARR: Libramiento Norte de Torreón (Cuota)

CLAVE:

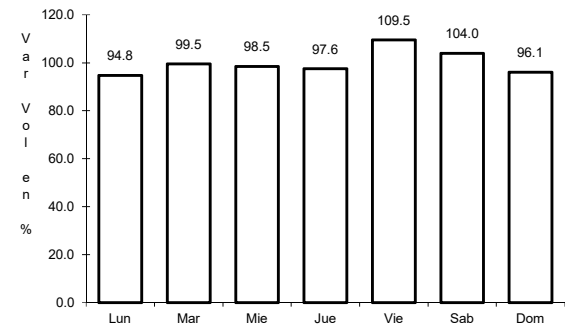
ruta: MEX-040D



Km: 0.00      Tipo: 3      Sent: 0



Km: 17.36      Tipo: 1      Sent: 0

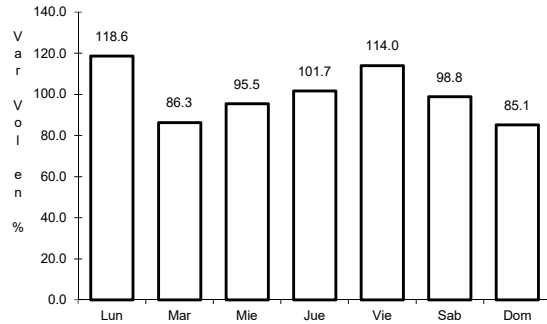


Km: 40.70      Tipo: 1      Sent: 0

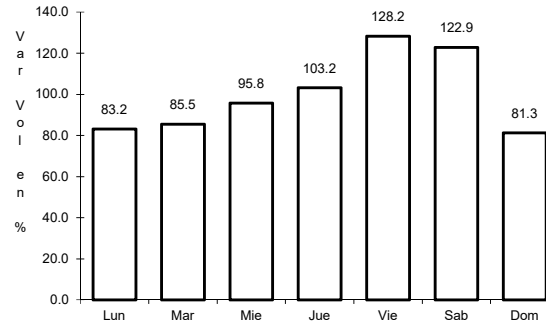
28 CARR: Yerbanís - Gómez Palicio (Cuota)

CLAVE: 10003

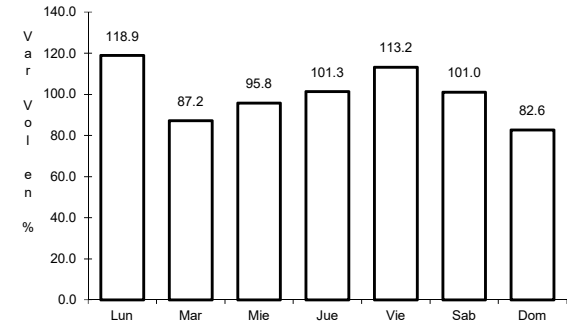
ruta: MEX-040D



Km: 180.00 Tipo: 1 Sent: 1



Km: 180.00 Tipo: 1 Sent: 2

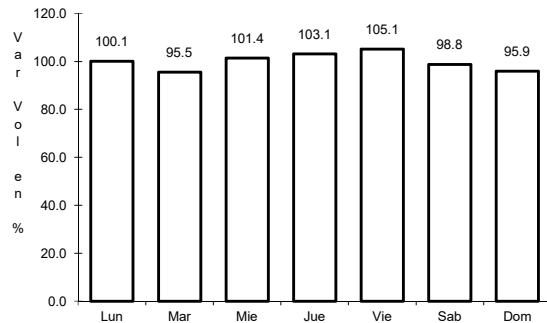


Km: 212.71 Tipo: 3 Sent: 1

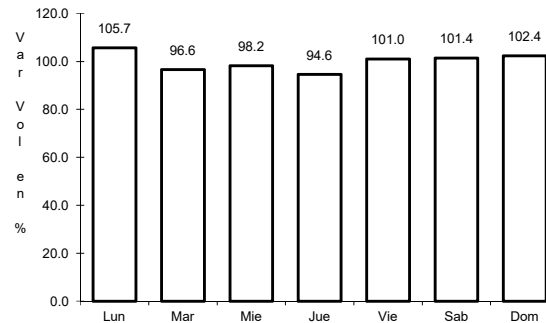
29 CARR: Amado Nervo - La Ochoa

CLAVE: 10012

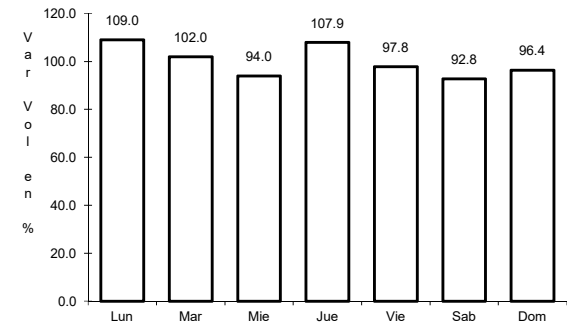
ruta: DGO-542



Km: 0.00 Tipo: 3 Sent: 0



Km: 25.00 Tipo: 1 Sent: 0

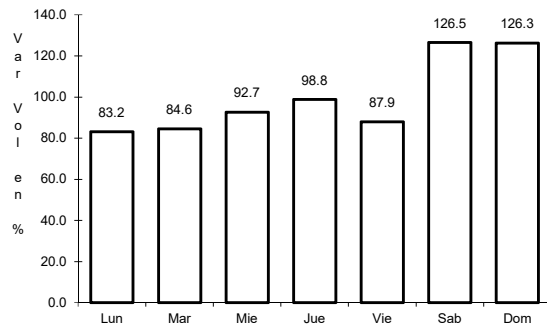


Km: 42.00 Tipo: 1 Sent: 0

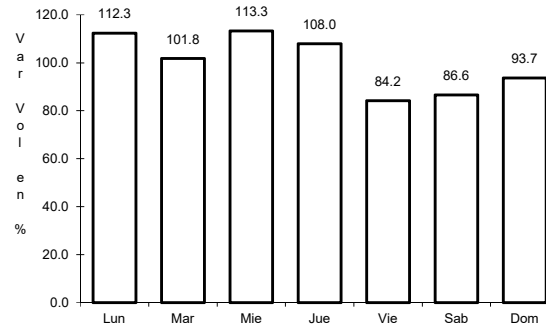
30 CARR: Ceballos - El Mirador

CLAVE: 10417

ruta: DGO-044



Km: 0.00 Tipo: 3 Sent: 0

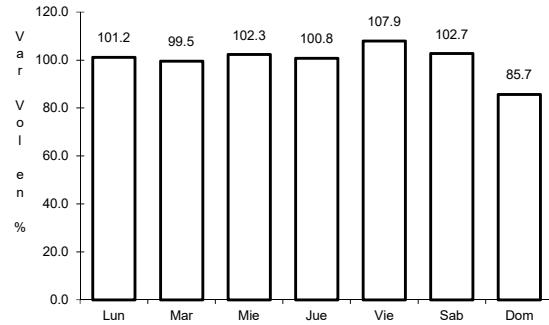


Km: 113.50 Tipo: 1 Sent: 0

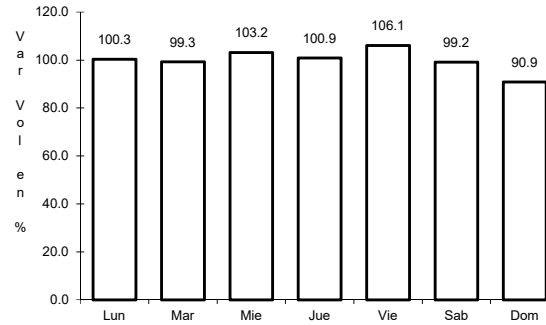
31 CARR: Durango - Aserradero La Flor

CLAVE: 10422

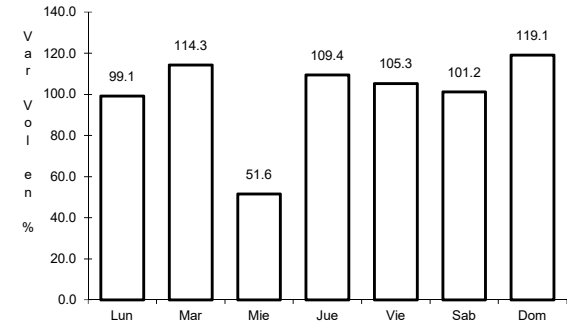
RUTA: DGO-115



Km: 0.00      Tipo: 3      Sent: 1



Km: 0.00      Tipo: 3      Sent: 2

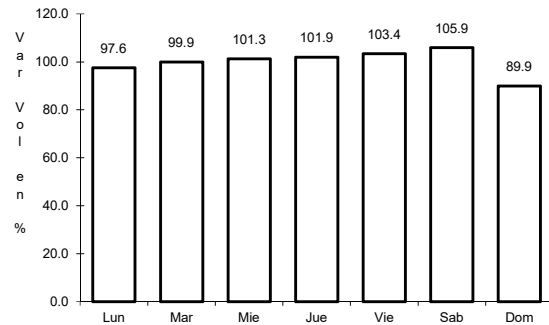


Km: 39.00      Tipo: 1      Sent: 0

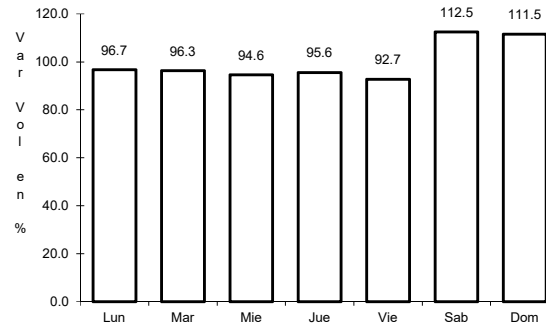
32 CARR: Jabonoso - Esmeralda

CLAVE: 10004

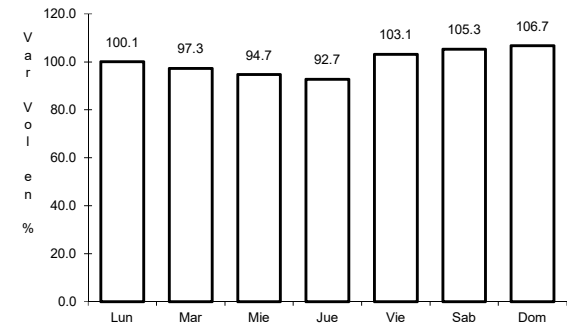
RUTA: DGO-363



Km: 0.00      Tipo: 3      Sent: 0



Km: 10.00      Tipo: 3      Sent: 0

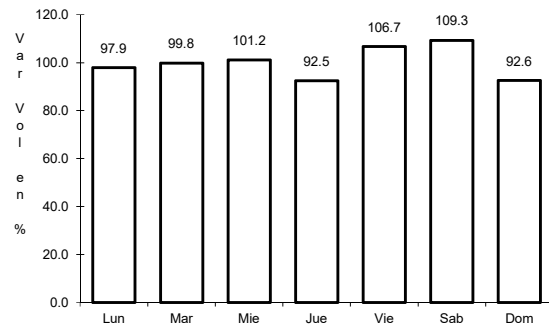


Km: 16.30      Tipo: 1      Sent: 0

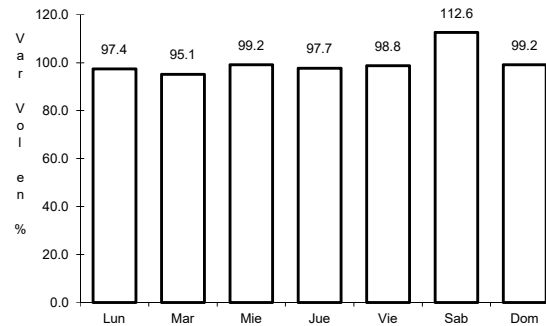
33 CARR: La Torreña - Brittingham

CLAVE: 10010

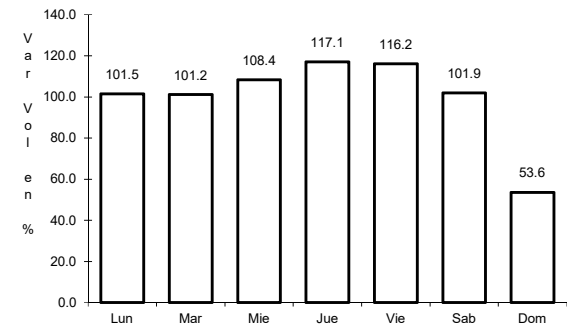
RUTA: DGO-325



Km: 0.00      Tipo: 3      Sent: 0



Km: 16.00      Tipo: 1      Sent: 0

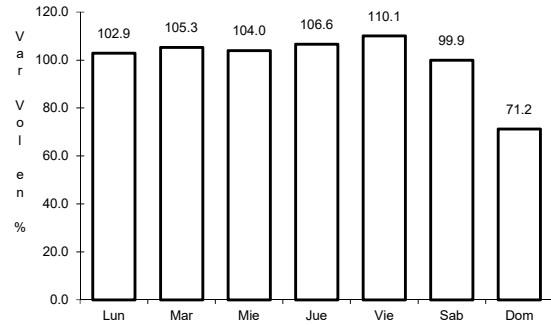


Km: 33.00      Tipo: 1      Sent: 0

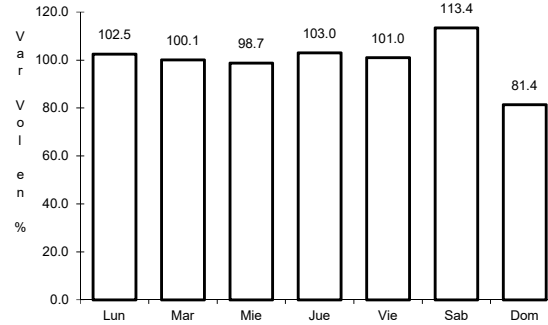
34 CARR: Libramiento de Torreón

CLAVE: 05516

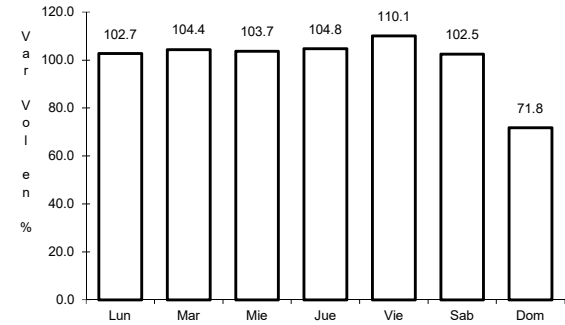
ruta: COA



Km: 0.00      Tipo: 3      Sent: 1



Km: 0.00      Tipo: 3      Sent: 2

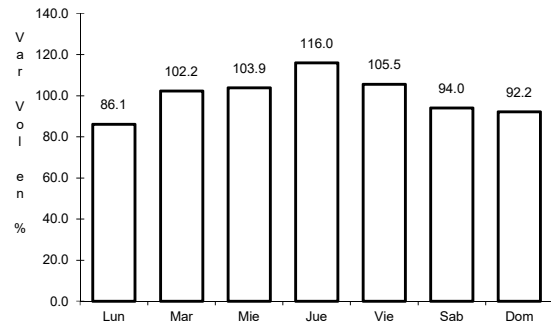


Km: 7.30      Tipo: 1      Sent: 1

35 CARR: Libramiento Exterior Cuernavaca

CLAVE: 10006

ruta: DGO

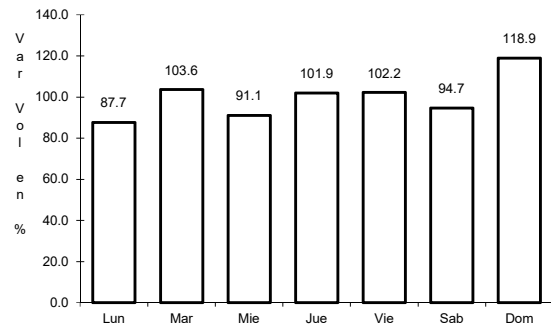


Km: 0.00      Tipo: 3      Sent: 0

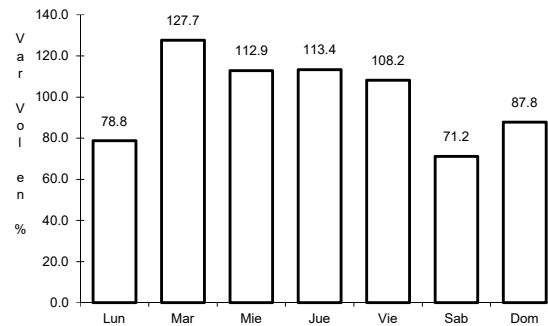
36 CARR: Mezquital - San Miguel de Temoaya

CLAVE: 10006

ruta: DGO



Km: 0.00      Tipo: 3      Sent: 0



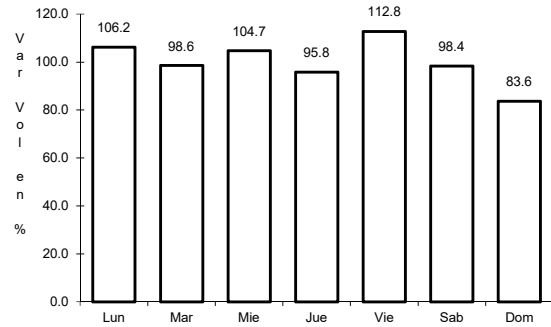
Km: 48.00      Tipo: 1      Sent: 0



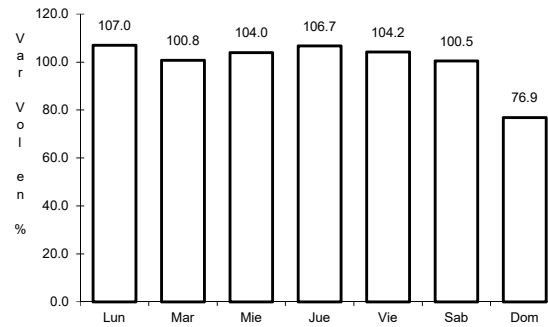
37 CARR: Ramal a San Juan del Río

CLAVE: 10001

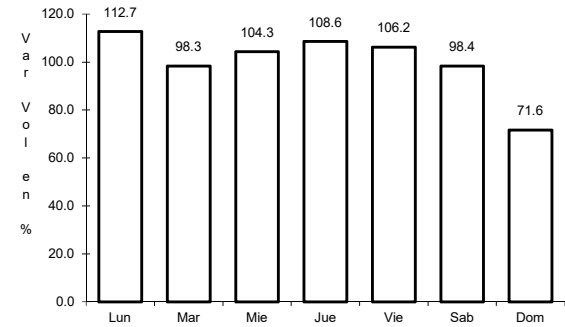
RUTA: DGO-290



Km: 0.00                      Tipo: 3                      Sent: 0



Km: 5.00                      Tipo: 1                      Sent: 1

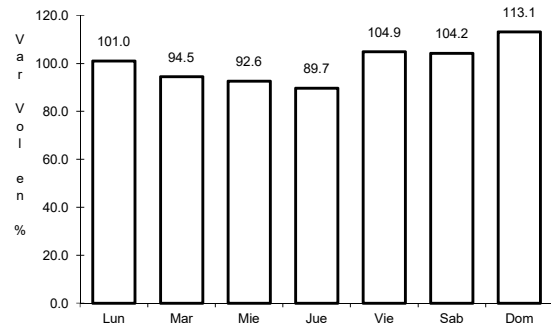


Km: 5.00                      Tipo: 1                      Sent: 2

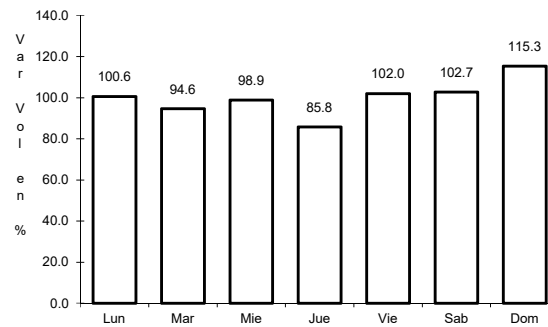
38 CARR: Súchil - Villa Unión

CLAVE: 10419

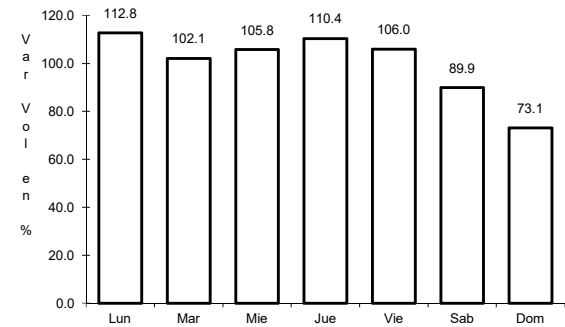
RUTA: DGO-241



Km: 0.00                      Tipo: 3                      Sent: 1



Km: 0.00                      Tipo: 3                      Sent: 2

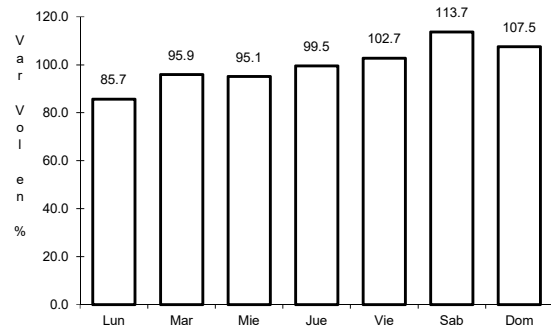


Km: 41.40                      Tipo: 1                      Sent: 0

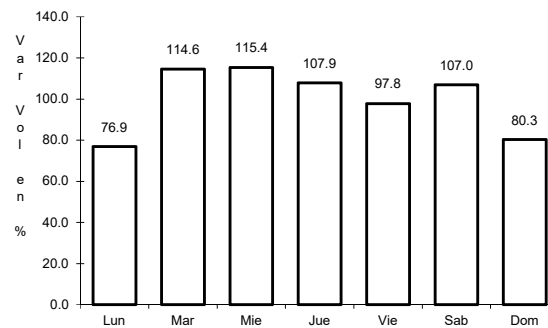
39 CARR: Tlahualillo de Zaragoza - T.C. Gómez Palacio - Jiménez

CLAVE: 10419

RUTA: DGO



Km: 0.00                      Tipo: 3                      Sent: 0

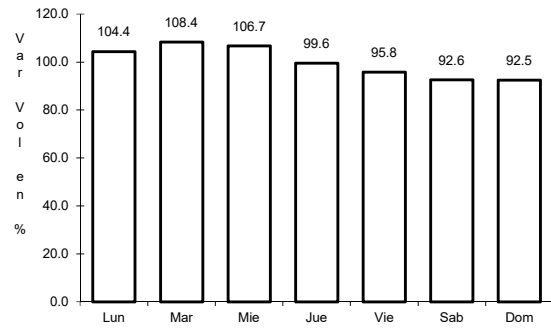


Km: 37.00                      Tipo: 1                      Sent: 0

40 CARR: Yerbanís - Peñón Blanco

CLAVE: 10032

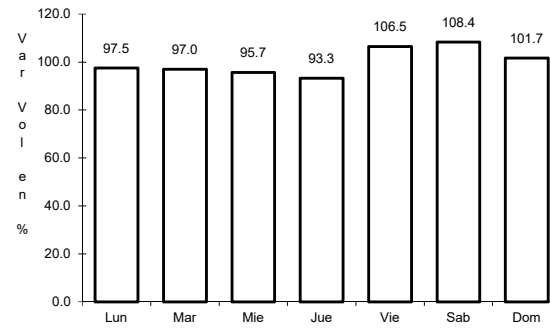
RUTA: DGO-316



Km: 0.00

Tipo: 3

Sent: 0



Km: 22.00

Tipo: 1

Sent: 0