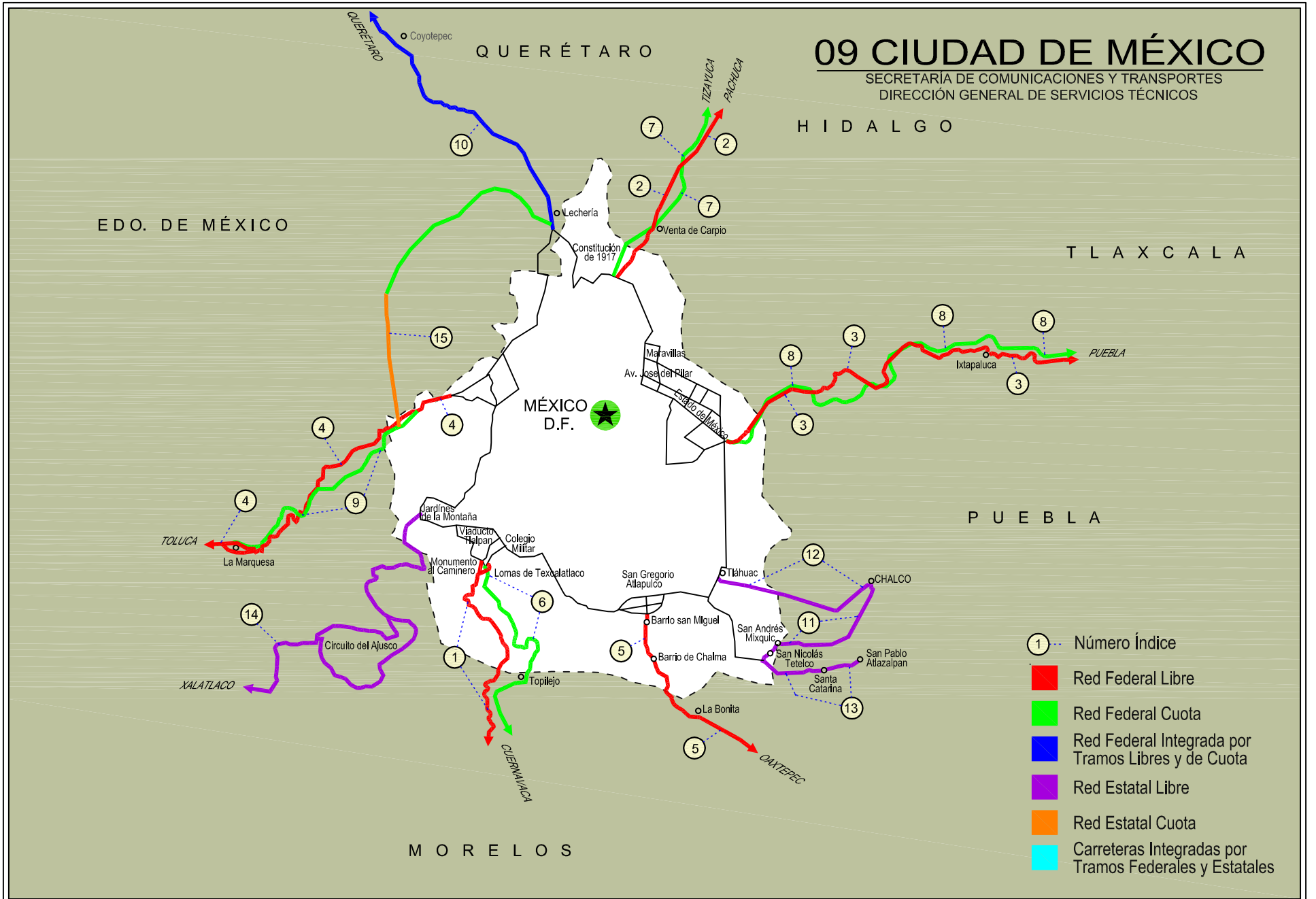
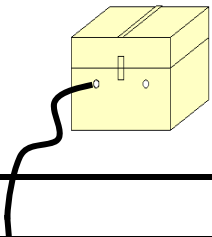


09 CIUDAD DE MÉXICO

SECRETARÍA DE COMUNICACIONES Y TRANSPORTES
DIRECCIÓN GENERAL DE SERVICIOS TÉCNICOS



- ① --- Número Índice
- Red Federal Libre
- Red Federal Cuota
- Red Federal Integrada por Tramos Libres y de Cuota
- Red Estatal Libre
- Red Estatal Cuota
- Carreteras Integradas por Tramos Federales y Estatales



CIUDAD DE MEXICO

NO. INDICE CARRETERA

RUTA

NO. INDICE CARRETERA		RUTA
	---RED FEDERAL LIBRE---	
1	México - Cuernavaca (Libre)	MEX-095
2	México - Pachuca (Libre)	MEX-085
3	México - Puebla (Libre)	MEX-150
4	México - Toluca	MEX-015
5	San Gregorio - Oaxtepec	MEX-113
	---RED FEDERAL DE CUOTA---	
6	México - Cuernavaca (Cuota)	MEX-095D
7	México - Pachuca (Cuota)	MEX-085D
8	México - Puebla (Cuota)	MEX-150D
9	México - Toluca (Cuota)	MEX-015D
	---RED FEDERAL INTEGRADA POR TRAMOS LIBRES Y DE CUOTA---	
10	México - Querétaro (Cuota)	MEX-057-MEX-057D
	---RED ESTATAL LIBRE---	
11	Chalco - Mixquic	EM-CDMX
12	Chalco - Tláhuac	EM-CDMX
13	T. C. (México - Mixquic) - San Pablo Atlazalpan	EM-106-CDMX
14	Xalatlaco - El Ajusco	EM-CDMX
	---RED ESTATAL DE CUOTA---	
15	La Venta - Chamapa (Cuota)	EM-D

CIUDAD DE MEXICO

1 CARR: México - Cuernavaca (Libre)

CLAVE: 00040

RUTA: MEX-095

AÑO: 2018

LUGAR	ESTACION				CLASIFICACION VEHICULAR EN PORCIENTO										COORDENADAS					
	KM	TE	SC	TDPA	M	A	B	C2	C3	T3S2	T3S3	T3S2R4	OTROS	A	B	C	K'	D	LATITUD	LONGITUD
México	0.00																			
T., Izq. San Miguel Xicalco	25.50	1	0	26887	2.9	83.5	5.2	4.7	1.4	1.0	1.3	0.0	0.0	86.4	5.2	8.4	0.061	0.500	19.235966	-99.158195
T., Izq. San Miguel Xicalco	25.50	3	0	24459	2.8	84.3	4.4	6.5	1.1	0.4	0.5	0.0	0.0	87.1	4.4	8.5	0.064	0.514	19.233579	-99.156466
T. Izq. San Miguel Topilejo	28.78	1	1	10611	2.6	87.6	3.0	4.7	1.0	0.6	0.5	0.0	0.0	90.2	3.0	6.8	0.081	0.518	19.213855	-99.151673
T. Izq. San Miguel Topilejo	28.78	1	2	11396	3.4	87.2	2.8	4.5	1.1	0.6	0.4	0.0	0.0	90.6	2.8	6.6	0.090	0.518	19.213817	-99.151665
T. Izq. San Miguel Topilejo	28.78	3	0	9140	3.1	88.7	1.6	5.1	1.0	0.4	0.1	0.0	0.0	91.8	1.6	6.6	0.102	0.511	19.204565	-99.156808
Parres El Guarda	39.50	1	0	8672	1.8	90.3	1.8	4.5	1.0	0.4	0.2	0.0	0.0	92.1	1.8	6.1	0.097	0.532	19.139423	-99.170251
Parres El Guarda	39.50	3	0	7313	3.1	89.3	1.8	5.0	0.5	0.2	0.1	0.0	0.0	92.4	1.8	5.8	0.127	0.515	19.127283	-99.181799
Lim. Edos. Term. CDMX Ppia. Mor.	45.44																			
T. Der. Zempoala	51.40	1	0	8148	4.0	86.9	3.1	4.9	0.5	0.4	0.2	0.0	0.0	90.9	3.1	6.0	0.117	0.502	19.057493	-99.242001
T. Der. Zempoala	51.40	3	0	6301	2.7	87.5	3.6	5.3	0.5	0.2	0.2	0.0	0.0	90.2	3.6	6.2	0.088	0.512	19.041995	-99.233044
T. Izq. Coajomulco	57.12	3	0	5472	3.2	87.9	3.6	4.4	0.6	0.1	0.2	0.0	0.0	91.1	3.6	5.3	0.090	0.512	19.027108	-99.207183
T. Der. Huitzilac	64.20	1	0	8400	3.0	87.0	4.9	3.7	0.5	0.3	0.6	0.0	0.0	90.0	4.9	5.1	0.078	0.511	19.002747	-99.257424
T. Der. Huitzilac	64.20	3	0	14155	1.9	89.8	4.7	2.6	0.8	0.1	0.1	0.0	0.0	91.7	4.7	3.6	0.080	0.509	18.995641	-99.260771
T. Izq. Tepoztlán	71.36	1	0	26392	2.7	88.3	4.1	4.5	0.2	0.1	0.1	0.0	0.0	91.0	4.1	4.9	0.065	0.503	18.970750	-99.249579
T. Izq. Tepoztlán	71.36	3	1	20138	2.1	88.8	4.5	4.4	0.2	0.0	0.0	0.0	0.0	90.9	4.5	4.6	0.069	0.513	18.960516	-99.246184
T. Izq. Tepoztlán	71.36	3	2	21213	1.8	90.8	3.8	3.4	0.2	0.0	0.0	0.0	0.0	92.6	3.8	3.6	0.067	0.513	18.960518	-99.246136
Cuernavaca	75.42																			

2 CARR: México - Pachuca (Libre)

CLAVE: 00431

RUTA: MEX-085

AÑO: 2018

LUGAR	ESTACION				CLASIFICACION VEHICULAR EN PORCIENTO										COORDENADAS					
	KM	TE	SC	TDPA	M	A	B	C2	C3	T3S2	T3S3	T3S2R4	OTROS	A	B	C	K'	D	LATITUD	LONGITUD
México	0.00																			
Lim. Edos. Term. CDMX Ppia. Méx.	9.89																			
T. Der. Pirámides	26.93	1	1	15443	2.9	84.0	1.0	4.0	0.8	5.3	1.1	0.5	0.4	86.9	1.0	12.1	0.054	0.500	19.616663	-99.011776
T. Der. Pirámides	26.93	1	2	15474	2.8	82.8	1.1	4.6	0.9	5.7	1.1	0.5	0.5	85.6	1.1	13.3	0.054	0.500	19.616789	-99.011830
Venta de Carpio	27.00	3	1	25409	3.3	87.7	0.3	4.8	0.9	1.5	1.2	0.0	0.3	91.0	0.3	8.7	0.058	0.510	19.627105	-99.002541
Venta de Carpio	27.00	3	2	24434	3.3	86.7	0.3	5.3	1.0	1.7	1.4	0.0	0.3	90.0	0.3	9.7	0.056	0.510	19.627134	-99.002676
T. Der. Aut. México - Pachuca (Cuota)	37.52	1	1	30247	1.4	93.0	0.3	3.9	0.6	0.5	0.3	0.0	0.0	94.4	0.3	5.3	0.073	0.503	19.703877	-98.978575
T. Der. Aut. México - Pachuca (Cuota)	37.52	1	2	30618	2.0	92.0	0.3	4.3	0.6	0.5	0.3	0.0	0.0	94.0	0.3	5.7	0.073	0.503	19.703911	-98.978668
T. Izq. Zumpango	44.68	1	1	18838	3.3	84.4	0.9	7.8	1.1	1.0	1.1	0.1	0.3	87.7	0.9	11.4	0.059	0.504	19.760472	-98.973571
T. Izq. Zumpango	44.68	1	2	18559	3.2	82.6	1.1	9.0	1.2	1.2	1.3	0.1	0.3	85.8	1.1	13.1	0.057	0.504	19.760469	-98.973644
T. Izq. Zumpango	44.68	3	1	11250	1.9	83.5	1.4	9.3	1.7	1.3	0.7	0.1	0.1	85.4	1.4	13.2	0.073	0.517	19.770369	-98.973203
T. Izq. Zumpango	44.68	3	2	10525	2.6	81.2	1.4	10.3	1.9	1.5	0.9	0.1	0.1	83.8	1.4	14.8	0.075	0.517	19.770370	-98.973247

CIUDAD DE MEXICO

2 CARR: México - Pachuca (Libre)

CLAVE: 00431

RUTA: MEX-085

AÑO: 2018

LUGAR	ESTACION				CLASIFICACION VEHICULAR EN PORCIENTO										COORDENADAS					
	KM	TE	SC	TDPA	M	A	B	C2	C3	T3S2	T3S3	T3S2R4	OTROS	A	B	C	K'	D	LATITUD	LONGITUD
Lim. Edos. Term. Méx. Ppia. Hgo.	49.30																			
Tizayuca	52.50	3	1	13977	2.8	84.4	2.0	6.0	1.5	1.1	1.7	0.2	0.3	87.2	2.0	10.8	0.082	0.520	19.862132	-98.964388
Tizayuca	52.50	3	2	15171	3.0	82.3	2.2	7.2	1.6	1.3	1.9	0.2	0.3	85.3	2.2	12.5	0.089	0.520	19.862208	-98.964451
T. C. México - Tizayuca (Cuota)	61.00	3	1	25927	1.1	85.3	3.0	6.0	1.5	1.8	0.8	0.4	0.1	86.4	3.0	10.6	0.061	0.513	19.898258	-98.928426
T. C. México - Tizayuca (Cuota)	61.00	3	2	27276	1.1	86.1	3.1	5.2	1.5	1.6	0.9	0.4	0.1	87.2	3.1	9.7	0.061	0.513	19.898387	-98.928543
X. C. Arco Norte de La Ciudad de México	64.20	1	1	25514	0.9	85.3	3.0	6.2	1.5	2.1	0.5	0.4	0.1	86.2	3.0	10.8	0.062	0.504	19.924552	-98.899128
X. C. Arco Norte de La Ciudad de México	64.20	1	2	25115	1.0	83.8	3.3	7.1	1.5	2.3	0.5	0.4	0.1	84.8	3.3	11.9	0.061	0.504	19.919575	-98.904843
X. C. Arco Norte de La Ciudad de México	64.20	3	1	27788	0.9	86.3	3.8	5.6	0.9	1.4	0.6	0.3	0.2	87.2	3.8	9.0	0.062	0.508	19.929675	-98.892529
X. C. Arco Norte de La Ciudad de México	64.20	3	2	26962	0.9	85.2	4.1	6.2	1.0	1.5	0.6	0.3	0.2	86.1	4.1	9.8	0.064	0.508	19.929833	-98.892799
Ent. Colonia	83.97	1	1	44724	1.0	88.4	3.0	5.3	0.5	1.2	0.4	0.1	0.1	89.4	3.0	7.6	0.088	0.540	20.045077	-98.792192
Ent. Colonia	83.97	1	2	38083	1.0	87.1	3.5	6.0	0.5	1.3	0.4	0.1	0.1	88.1	3.5	8.4	0.082	0.540	20.045206	-98.792420
X. C. Libramiento de Pachuca	86.50	1	1	36146	1.1	88.0	3.1	4.2	0.7	1.3	1.1	0.3	0.2	89.1	3.1	7.8	0.065	0.504	20.096954	-98.767100
X. C. Libramiento de Pachuca	86.50	1	2	36739	1.0	87.2	3.4	4.6	0.7	1.4	1.2	0.3	0.2	88.2	3.4	8.4	0.053	0.504	20.097085	-98.767200
Pachuca	94.00																			

3 CARR: México - Puebla (Libre)

CLAVE: 00449

RUTA: MEX-150

AÑO: 2018

LUGAR	ESTACION				CLASIFICACION VEHICULAR EN PORCIENTO										COORDENADAS					
	KM	TE	SC	TDPA	M	A	B	C2	C3	T3S2	T3S3	T3S2R4	OTROS	A	B	C	K'	D	LATITUD	LONGITUD
México	0.00																			
Lim. Edos. Term. CDMX Ppia. Méx.	18.66																			
T. Der. Chalco	28.85	1	1	35551	2.6	89.8	0.5	4.5	0.8	0.8	0.6	0.2	0.2	92.4	0.5	7.1	0.055	0.503	19.310969	-98.904625
T. Der. Chalco	28.85	1	2	36019	2.6	88.9	0.5	5.2	0.9	0.8	0.7	0.2	0.2	91.5	0.5	8.0	0.054	0.503	19.311126	-98.904637
T. Der. Chalco (Central)	28.85	3	1	18762	4.3	90.6	0.3	3.3	0.4	0.4	0.6	0.0	0.1	94.9	0.3	4.8	0.073	0.505	19.312697	-98.894162
T. Der. Chalco (Lateral)	28.85	3	1	7247	4.5	90.6	0.2	3.1	0.4	0.6	0.5	0.0	0.1	95.1	0.2	4.7	0.090	0.565	19.312626	-98.894156
T. Der. Chalco (Lateral)	28.85	3	2	9428	3.7	90.8	0.2	3.7	0.5	0.5	0.4	0.1	0.1	94.5	0.2	5.3	0.074	0.565	19.312859	-98.894176
T. Der. Chalco (Central)	28.85	3	2	16260	4.9	89.5	0.3	3.8	0.4	0.4	0.6	0.0	0.1	94.4	0.3	5.3	0.080	0.505	19.312770	-98.894160
Ixtapaluca	31.06	3	1	23148	4.0	92.3	0.2	2.5	0.3	0.3	0.3	0.0	0.1	96.3	0.2	3.5	0.058	0.517	19.315767	-98.875005
Ixtapaluca	31.06	3	2	21622	4.1	91.1	0.2	3.6	0.3	0.3	0.3	0.0	0.1	95.2	0.2	4.6	0.065	0.517	19.315880	-98.875023
T. Der. C. México - Puebla (Cuota) (Río Frío)	62.06	1	0	3278	2.6	69.0	2.5	13.3	5.0	6.8	0.8	0.0	0.0	71.6	2.5	25.9	0.066	0.547	19.349607	-98.670833
T. Der. C. México - Puebla (Cuota) (Río Frío)	62.06	3	0	1325	1.6	73.5	2.1	12.1	3.5	5.8	1.0	0.2	0.2	75.1	2.1	22.8	0.079	0.523	19.352898	-98.662900
Lim. Edos. Term. Méx. Ppia. Pue.	62.98																			
San Martín Texmelucan	70.00	1	0	13383	10.4	74.1	0.4	12.9	0.6	0.6	0.8	0.1	0.1	84.5	0.4	15.1	0.072	0.502	19.301785	-98.452891
X. C. México - Puebla (Cuota)	74.10	3	1	8816	6.2	79.4	0.9	8.8	0.8	1.9	1.2	0.3	0.5	85.6	0.9	13.5	0.087	0.526	19.254818	-98.428626
X. C. México - Puebla (Cuota)	74.10	3	2	9795	5.6	78.9	0.9	9.4	1.0	2.2	1.2	0.3	0.5	84.5	0.9	14.6	0.087	0.526	19.254838	-98.428619

CIUDAD DE MEXICO

3 CARR: México - Puebla (Libre)

CLAVE: 00449

RUTA: MEX-150

AÑO: 2018

LUGAR	ESTACION				CLASIFICACION VEHICULAR EN PORCIENTO										COORDENADAS					
	KM	TE	SC	TDPA	M	A	B	C2	C3	T3S2	T3S3	T3S2R4	OTROS	A	B	C	K'	D	LATITUD	LONGITUD
Huejotzingo	88.00	1	1	6140	3.2	82.4	1.2	10.1	1.0	1.3	0.5	0.1	0.2	85.6	1.2	13.2	0.085	0.501	19.174852	-98.414288
Huejotzingo	88.00	1	2	6115	4.0	79.7	1.4	11.6	1.1	1.4	0.5	0.1	0.2	83.7	1.4	14.9	0.075	0.501	19.174840	-98.414290
Huejotzingo	88.00	3	1	6342	1.5	84.5	1.3	9.5	1.2	1.4	0.4	0.1	0.1	86.0	1.3	12.7	0.081	0.517	19.146708	-98.390527
Huejotzingo	88.00	3	2	5916	1.7	85.3	0.9	8.9	1.2	1.4	0.4	0.1	0.1	87.0	0.9	12.1	0.079	0.517	19.146696	-98.390554
T. Izq. Aeropuerto	92.80	1	1	6064	1.5	85.0	0.9	9.0	1.3	1.5	0.5	0.1	0.2	86.5	0.9	12.6	0.085	0.506	19.136322	-98.377392
T. Izq. Aeropuerto	92.80	1	2	5921	2.4	83.1	0.9	9.6	1.5	1.7	0.5	0.1	0.2	85.5	0.9	13.6	0.087	0.506	19.136308	-98.377387
T. Der. Cholula	101.00	1	1	13688	1.5	90.3	0.5	3.1	1.0	1.5	1.6	0.1	0.4	91.8	0.5	7.7	0.074	0.501	19.076654	-98.322611
T. Der. Cholula	101.00	1	2	13659	1.5	89.6	0.5	3.5	1.1	1.7	1.6	0.1	0.4	91.1	0.5	8.4	0.068	0.501	19.076660	-98.322616
T. Der. Cholula	101.00	3	1	19639	2.2	89.5	0.4	4.3	1.0	1.4	0.8	0.1	0.3	91.7	0.4	7.9	0.080	0.512	19.070218	-98.312847
T. Der. Cholula	101.00	3	2	18750	1.9	89.1	0.4	4.8	1.0	1.6	0.8	0.1	0.3	91.0	0.4	8.6	0.070	0.512	19.070243	-98.312843
Puebla	131.00																			

4 CARR: México - Toluca

CLAVE: 00447

RUTA: MEX-015

AÑO: 2018

LUGAR	ESTACION				CLASIFICACION VEHICULAR EN PORCIENTO										COORDENADAS					
	KM	TE	SC	TDPA	M	A	B	C2	C3	T3S2	T3S3	T3S2R4	OTROS	A	B	C	K'	D	LATITUD	LONGITUD
México	0.00																			
Ent. Constituyentes y Reforma	12.84	3	1	42085	1.1	89.8	1.3	4.8	0.7	1.3	0.8	0.1	0.1	90.9	1.3	7.8	0.067	0.501	19.386220	-99.247433
Ent. Constituyentes y Reforma	12.84	3	2	42217	1.1	90.3	1.8	4.4	0.6	1.2	0.4	0.1	0.1	91.4	1.8	6.8	0.080	0.501	19.386098	-99.247314
T. Der. Cuajimalpa (1° Acceso)	20.56	1	1	39069	1.1	90.5	1.6	4.2	0.6	1.2	0.6	0.1	0.1	91.6	1.6	6.8	0.065	0.503	19.364283	-99.277917
T. Der. Cuajimalpa (1° Acceso)	20.56	1	2	39551	1.1	89.5	1.6	4.9	0.6	1.4	0.7	0.1	0.1	90.6	1.6	7.8	0.081	0.503	19.364372	-99.277927
T. Izq. Desierto de Los Leones	23.96	1	1	33634	0.7	87.0	1.7	7.8	1.0	1.2	0.4	0.1	0.1	87.7	1.7	10.6	0.074	0.505	19.338961	-99.311292
T. Izq. Desierto de Los Leones	23.96	1	2	33019	0.6	87.1	1.7	7.8	1.0	1.2	0.4	0.1	0.1	87.7	1.7	10.6	0.090	0.505	19.338942	-99.311188
Lim. Edos. Term. CDMX Ppia. Méx.	33.44																			
T. Der. Huixquilucan	33.98	1	1	25183	0.7	87.0	1.7	7.8	1.0	1.2	0.4	0.1	0.1	87.7	1.7	10.6	0.080	0.510	19.297285	-99.362170
T. Der. Huixquilucan	33.98	1	2	26225	0.6	86.6	1.9	7.9	1.1	1.3	0.4	0.1	0.1	87.2	1.9	10.9	0.090	0.510	19.297220	-99.362225
X. C. Amomolulco - Stgo. Tianguistenco	47.26	1	1	51523	0.9	86.1	2.4	5.9	1.3	2.3	0.4	0.5	0.2	87.0	2.4	10.6	0.071	0.511	19.282680	-99.477434
X. C. Amomolulco - Stgo. Tianguistenco	47.26	1	2	49296	0.6	87.5	2.2	5.0	1.1	2.4	0.5	0.5	0.2	88.1	2.2	9.7	0.068	0.511	19.282014	-99.478857
T. Der. Lerma - Izq. San Pedro Tultepec	51.71	1	1	73781	0.9	88.4	2.1	4.3	1.1	1.9	0.7	0.5	0.1	89.3	2.1	8.6	0.071	0.520	19.284153	-99.502382
T. Der. Lerma - Izq. San Pedro Tultepec	51.71	1	2	67976	0.7	88.4	1.7	4.4	1.0	2.3	0.9	0.5	0.1	89.1	1.7	9.2	0.066	0.520	19.280446	-99.502045
T. Izq. San Mateo Atenco (Baja)	52.00	3	1	17305	0.6	75.1	4.3	11.1	2.4	4.2	0.8	1.3	0.2	75.7	4.3	20.0	0.060	0.505	19.286351	-99.536739
T. Izq. San Mateo Atenco (Alta)	52.00	3	1	58636	0.7	99.3	0.0	0.0	0.0	0.0	0.0	0.0	0.0	100.0	0.0	0.0	0.071	0.506	19.285909	-99.535734
T. Izq. San Mateo Atenco (Alta)	52.00	3	2	67994	0.9	99.1	0.0	0.0	0.0	0.0	0.0	0.0	0.0	100.0	0.0	0.0	0.071	0.506	19.285552	-99.535632
T. Izq. San Mateo Atenco (Baja)	52.00	3	2	16929	0.7	71.5	4.9	13.4	2.7	4.5	0.8	1.3	0.2	72.2	4.9	22.9	0.068	0.505	19.285237	-99.534823
X. C. Libramiento de Toluca (Baja)	62.20	1	1	27329	1.6	76.7	3.0	12.8	1.8	3.0	0.7	0.2	0.2	78.3	3.0	18.7	0.079	0.500	19.288474	-99.619975

CIUDAD DE MEXICO

4 CARR: México - Toluca

CLAVE: 00447

RUTA: MEX-015

AÑO: 2018

LUGAR	ESTACION				CLASIFICACION VEHICULAR EN PORCIENTO													COORDENADAS		
	KM	TE	SC	TDPA	M	A	B	C2	C3	T3S2	T3S3	T3S2R4	OTROS	A	B	C	K'	D	LATITUD	LONGITUD
X. C. Libramiento de Toluca (Alta)	62.20	1	1	69150	0.7	99.3	0.0	0.0	0.0	0.0	0.0	0.0	0.0	100.0	0.0	0.0	0.065	0.504	19.288144	-99.620610
X. C. Libramiento de Toluca (Baja)	62.20	1	2	27288	1.3	75.2	3.1	13.8	2.2	3.3	0.7	0.2	0.2	76.5	3.1	20.4	0.081	0.500	19.287478	-99.620016
X. C. Libramiento de Toluca (Alta)	62.20	1	2	65992	0.9	99.1	0.0	0.0	0.0	0.0	0.0	0.0	0.0	100.0	0.0	0.0	0.079	0.504	19.287766	-99.620581
Toluca	66.00																			

5 CARR: San Gregorio - Oaxtepec

CLAVE: 00901

RUTA: MEX-113

AÑO: 2018

LUGAR	ESTACION				CLASIFICACION VEHICULAR EN PORCIENTO													COORDENADAS		
	KM	TE	SC	TDPA	M	A	B	C2	C3	T3S2	T3S3	T3S2R4	OTROS	A	B	C	K'	D	LATITUD	LONGITUD
San Gregorio	0.00	3	0	18025	5.0	84.1	1.3	8.0	0.3	0.3	0.8	0.1	0.1	89.1	1.3	9.6	0.057	0.507	19.237114	-99.054382
X. C. Milpa Alta - San Lorenzo Tlacoyucan	9.00	3	0	7937	2.4	87.1	1.9	5.8	0.8	0.5	0.6	0.3	0.6	89.5	1.9	8.6	0.079	0.508	19.180698	-99.029623
Lim. Edos. Term. CDMX Ppia. Méx.	18.80																			
Lim. Edos. Term. Méx. Ppia. Mor.	28.50																			
T. Der. San Felipe Neri	33.80	1	0	4523	2.3	86.7	1.3	7.9	1.1	0.4	0.3	0.0	0.0	89.0	1.3	9.7	0.127	0.505	19.046014	-98.935993
T. Der. Tlalnepantla	40.50	3	0	5256	3.5	87.1	0.3	8.4	0.3	0.2	0.2	0.0	0.0	90.6	0.3	9.1	0.100	0.502	19.004101	-98.990090
Tlayacapan	48.50	3	0	12714	4.9	89.0	0.3	4.5	0.3	0.4	0.6	0.0	0.0	93.9	0.3	5.8	0.069	0.507	18.940617	-98.974922
T. Der. Yautepec	53.00	1	0	11641	8.3	84.8	0.4	5.2	0.4	0.2	0.6	0.0	0.1	93.1	0.4	6.5	0.106	0.502	18.922043	-98.968954
T. Der. Yautepec	53.00	3	1	7943	9.1	83.8	0.4	5.2	0.5	0.4	0.5	0.0	0.1	92.9	0.4	6.7	0.082	0.516	18.916087	-98.969997
T. Der. Yautepec	53.00	3	2	7457	9.0	83.2	0.4	5.9	0.5	0.4	0.5	0.0	0.1	92.2	0.4	7.4	0.095	0.516	18.916115	-98.970037
Oaxtepec	56.00																			

6 CARR: México - Cuernavaca (Cuota)

CLAVE: 00041

RUTA: MEX-095D

AÑO: 2018

LUGAR	ESTACION				CLASIFICACION VEHICULAR EN PORCIENTO													COORDENADAS		
	KM	TE	SC	TDPA	M	A	B	C2	C3	T3S2	T3S3	T3S2R4	OTROS	A	B	C	K'	D	LATITUD	LONGITUD
México	0.00																			
T. C. México - Cuernavaca (Libre)	18.65	3	1	32888	1.7	86.9	2.9	4.9	0.7	1.6	0.6	0.5	0.2	88.6	2.9	8.5	0.066	0.544	19.266138	-99.165163
T. C. México - Cuernavaca (Libre)	18.65	3	2	34080	2.0	85.3	3.2	5.7	0.7	1.6	0.8	0.5	0.2	87.3	3.2	9.5	0.074	0.544	19.266811	-99.164720
Caseta de Cobro Tlalpan	23.36	2	1	14080	1.5	83.4	5.9	2.5	2.3	2.6	0.6	0.9	0.3	84.9	5.9	9.2	0.145	0.500	19.242519	-99.148716
Caseta de Cobro Tlalpan	23.36	2	2	14080	1.5	83.4	5.9	2.5	2.3	2.6	0.6	0.9	0.3	84.9	5.9	9.2	0.145	0.500	19.242519	-99.148716
Lim. Edos. Term. CDMX Ppia. Mor.	47.09																			
Tres Marías	53.00	1	1	21735	0.6	84.9	5.4	4.5	1.3	1.8	0.6	0.7	0.2	85.5	5.4	9.1	0.137	0.505	19.077405	-99.233529
Tres Marías	53.00	1	2	21276	0.8	83.5	5.7	5.0	1.4	2.1	0.6	0.7	0.2	84.3	5.7	10.0	0.147	0.505	19.079165	-99.232729
Tres Marías	53.00	3	1	21223	0.7	86.4	4.2	4.1	0.9	1.8	0.8	0.8	0.3	87.1	4.2	8.7	0.152	0.509	19.043102	-99.233333
Tres Marías	53.00	3	2	21987	0.9	84.7	4.8	4.5	1.1	2.0	0.8	0.9	0.3	85.6	4.8	9.6	0.159	0.509	19.044798	-99.234759

CIUDAD DE MEXICO

6 CARR: México - Cuernavaca (Cuota)

CLAVE: 00041

RUTA: MEX-095D

AÑO: 2018

LUGAR	ESTACION				CLASIFICACION VEHICULAR EN PORCIENTO													COORDENADAS		
	KM	TE	SC	TDPA	M	A	B	C2	C3	T3S2	T3S3	T3S2R4	OTROS	A	B	C	K'	D	LATITUD	LONGITUD
T. Izq. Cuautla	70.50	1	1	21627	0.7	87.2	4.1	4.1	0.8	1.7	0.7	0.6	0.1	87.9	4.1	8.0	0.153	0.512	19.013071	-99.164058
T. Izq. Cuautla	70.50	1	2	22730	0.8	85.3	4.9	4.7	1.0	1.8	0.7	0.7	0.1	86.1	4.9	9.0	0.152	0.512	19.014111	-99.157913
T. Izq. A Glorieta La Paloma	79.26	1	1	22813	1.7	84.2	3.7	4.7	1.3	2.4	0.7	1.1	0.2	85.9	3.7	10.4	0.095	0.553	18.984261	-99.212831
T. Izq. A Glorieta La Paloma	79.26	1	2	18436	0.8	83.2	4.2	5.5	1.4	2.8	0.8	1.1	0.2	84.0	4.2	11.8	0.073	0.553	18.982157	-99.219510
Libramiento de Cuernavaca	79.30	1	1	19662	1.1	85.1	2.9	5.4	1.0	2.4	0.8	1.0	0.3	86.2	2.9	10.9	0.090	0.686	18.969474	-99.238642
Libramiento de Cuernavaca	79.30	1	2	42976	1.4	84.2	3.1	5.6	1.0	2.5	0.9	1.0	0.3	85.6	3.1	11.3	0.076	0.686	18.969537	-99.238601
T. C. México - Cuernavaca (Libre)	80.26																			

7 CARR: México - Pachuca (Cuota)

CLAVE: 00432

RUTA: MEX-085D

AÑO: 2018

LUGAR	ESTACION				CLASIFICACION VEHICULAR EN PORCIENTO													COORDENADAS		
	KM	TE	SC	TDPA	M	A	B	C2	C3	T3S2	T3S3	T3S2R4	OTROS	A	B	C	K'	D	LATITUD	LONGITUD
T. C. México - Pachuca (Libre)	0.00																			
Lim. Edos. Term. CDMX Ppia. Méx.	9.86																			
Caseta de Cobro Ojo de Agua	25.00	2	1	32304	1.0	86.4	5.3	1.5	3.9	1.3	0.2	0.3	0.1	87.4	5.3	7.3	0.081	0.500	19.618737	-99.029315
Caseta de Cobro Ojo de Agua	25.00	2	2	32304	1.0	86.4	5.3	1.5	3.9	1.3	0.2	0.3	0.1	87.4	5.3	7.3	0.081	0.500	19.618737	-99.029315
Caseta de Cobro Ojo de Agua	25.00	3	1	31407	1.3	85.0	2.2	7.7	1.3	1.7	0.3	0.4	0.1	86.3	2.2	11.5	0.086	0.516	19.630101	-99.023419
Caseta de Cobro Ojo de Agua	25.00	3	2	29491	1.5	83.3	2.6	8.5	1.4	1.9	0.3	0.4	0.1	84.8	2.6	12.6	0.094	0.516	19.630664	-99.023293
T. Izq. Tecámac	35.62	3	1	28088	1.6	84.6	2.2	7.2	1.5	2.1	0.3	0.4	0.1	86.2	2.2	11.6	0.073	0.503	19.708404	-98.966257
T. Izq. Tecámac	35.62	3	2	28402	1.4	83.4	2.5	8.0	1.7	2.2	0.3	0.4	0.1	84.8	2.5	12.7	0.078	0.503	19.710735	-98.964927
Lim. Edos. Term. Méx. Ppia. Hgo.	49.60																			
X. C. Otumba - Tizayuca	53.45	1	1	26240	1.4	86.0	2.3	6.1	1.3	1.9	0.4	0.5	0.1	87.4	2.3	10.3	0.078	0.512	19.829320	-98.950168
X. C. Otumba - Tizayuca	53.45	1	2	24975	1.6	83.8	2.6	7.1	1.6	2.3	0.4	0.5	0.1	85.4	2.6	12.0	0.084	0.512	19.828626	-98.950032
T. C. México - Pachuca (Libre)	60.50	1	1	22086	1.2	84.7	2.7	5.8	1.8	2.5	0.6	0.5	0.2	85.9	2.7	11.4	0.077	0.531	19.884118	-98.937468
T. C. México - Pachuca (Libre)	60.50	1	2	19489	1.8	81.6	2.6	8.4	1.8	2.5	0.5	0.6	0.2	83.4	2.6	14.0	0.092	0.531	19.880121	-98.937931

8 CARR: México - Puebla (Cuota)

CLAVE: 00450

RUTA: MEX-150D

AÑO: 2018

LUGAR	ESTACION				CLASIFICACION VEHICULAR EN PORCIENTO													COORDENADAS		
	KM	TE	SC	TDPA	M	A	B	C2	C3	T3S2	T3S3	T3S2R4	OTROS	A	B	C	K'	D	LATITUD	LONGITUD
México	0.00																			
Ent Concordía (T. Izq. Los Reyes) Central	17.00	3	1	69672	1.0	88.8	1.8	5.4	0.9	1.2	0.6	0.1	0.2	89.8	1.8	8.4	0.072	0.521	19.353351	-98.989473
Ent Concordía (T. Izq. Los Reyes) Lateral	17.00	3	1	10415	3.4	75.7	2.7	13.5	1.3	1.9	0.9	0.2	0.4	79.1	2.7	18.2	0.075	0.699	19.353273	-98.989564
Ent Concordía (T. Izq. Los Reyes) Lateral	17.00	3	2	24130	2.9	75.2	2.8	14.1	1.4	2.0	1.0	0.2	0.4	78.1	2.8	19.1	0.061	0.699	19.353571	-98.989145
Ent Concordía (T. Izq. Los Reyes) Central	17.00	3	2	65305	1.5	87.3	1.9	6.1	1.0	1.2	0.7	0.1	0.2	88.8	1.9	9.3	0.068	0.521	19.353464	-98.989314

CIUDAD DE MEXICO

8 CARR: México - Puebla (Cuota)

CLAVE: 00450

RUTA: MEX-150D

AÑO: 2018

LUGAR	ESTACION				CLASIFICACION VEHICULAR EN PORCIENTO												COORDENADAS			
	KM	TE	SC	TDPA	M	A	B	C2	C3	T3S2	T3S3	T3S2R4	OTROS	A	B	C	K'	D	LATITUD	LONGITUD
Lim. Edos. Term. CDMX Ppia. Méx.	17.51																			
Av. Las Torres (Eje 6) Central	19.27	1	1	63063	1.0	88.7	1.8	5.7	0.6	1.2	0.7	0.1	0.2	89.7	1.8	8.5	0.070	0.522	19.346713	-98.982332
Av. Las Torres (Eje 6) Lateral	19.27	1	1	24967	3.3	83.7	1.3	9.1	0.8	0.9	0.5	0.2	0.2	87.0	1.3	11.7	0.057	0.515	19.346621	-98.982409
Av. Las Torres (Eje 6) Central	19.27	1	2	65100	1.5	87.0	2.0	6.5	0.6	1.4	0.7	0.1	0.2	88.5	2.0	9.5	0.062	0.522	19.346813	-98.982262
Av. Las Torres (Eje 6) Lateral	19.27	1	2	26490	3.4	82.2	1.4	10.3	0.8	1.0	0.5	0.2	0.2	85.6	1.4	13.0	0.061	0.515	19.347153	-98.982424
Av. Las Torres (Eje 6) Central	19.27	3	1	68114	2.1	87.4	2.2	5.6	0.7	1.1	0.6	0.1	0.2	89.5	2.2	8.3	0.062	0.516	19.339646	-98.976333
Av. Las Torres (Eje 6) Lateral	19.27	3	1	28309	3.4	75.9	2.9	13.6	1.2	1.8	0.7	0.2	0.3	79.3	2.9	17.8	0.069	0.552	19.339600	-98.976409
Av. Las Torres (Eje 6) Lateral	19.27	3	2	22945	3.5	74.1	3.1	14.8	1.3	2.0	0.7	0.2	0.3	77.6	3.1	19.3	0.060	0.552	19.339776	-98.976081
Av. Las Torres (Eje 6) Central	19.27	3	2	56658	2.2	86.6	2.3	6.0	0.7	1.3	0.6	0.1	0.2	88.8	2.3	8.9	0.070	0.516	19.339709	-98.976200
Eje 10 Sur (Lateral)	22.80	1	1	25567	3.7	78.9	1.4	13.1	0.9	1.1	0.6	0.1	0.2	82.6	1.4	16.0	0.064	0.544	19.329629	-98.965715
Eje 10 Sur (Central)	22.80	1	1	68146	2.1	87.1	2.1	6.0	0.7	1.0	0.7	0.1	0.2	89.2	2.1	8.7	0.057	0.517	19.329695	-98.965649
Eje 10 Sur (Central)	22.80	1	2	58344	2.3	86.0	2.2	6.6	0.8	1.1	0.7	0.1	0.2	88.3	2.2	9.5	0.062	0.517	19.332094	-98.968254
Eje 10 Sur (Lateral)	22.80	1	2	21446	3.7	77.3	1.5	14.4	1.0	1.2	0.6	0.1	0.2	81.0	1.5	17.5	0.059	0.544	19.332192	-98.968167
Eje 10 Sur (Central)	22.80	3	1	38377	1.8	85.9	2.7	6.2	0.9	1.5	0.6	0.2	0.2	87.7	2.7	9.6	0.069	0.504	19.313741	-98.946817
Eje 10 Sur (Lateral)	22.80	3	1	21318	3.4	84.7	1.3	8.4	0.6	0.7	0.6	0.1	0.2	88.1	1.3	10.6	0.074	0.614	19.313650	-98.946908
Eje 10 Sur (Central)	22.80	3	2	41218	2.0	85.0	3.1	6.5	0.9	1.5	0.6	0.2	0.2	87.0	3.1	9.9	0.073	0.504	19.315416	-98.948443
Eje 10 Sur (Lateral)	22.80	3	2	33886	3.0	84.7	1.4	8.5	0.7	0.8	0.6	0.1	0.2	87.7	1.4	10.9	0.068	0.614	19.315514	-98.948375
X. C. Santa Bárbara - Izúcar de Matamoros (Central)	32.14	1	1	41494	1.8	86.5	2.7	5.7	0.9	1.5	0.5	0.2	0.2	88.3	2.7	9.0	0.061	0.514	19.292300	-98.892006
X. C. Santa Bárbara - Izúcar de Matamoros (Lateral)	32.14	1	1	10063	6.7	79.0	1.4	9.7	1.0	1.3	0.5	0.2	0.2	85.7	1.4	12.9	0.068	0.685	19.292192	-98.891994
X. C. Santa Bárbara - Izúcar de Matamoros (Central)	32.14	1	2	43871	1.5	85.4	3.2	6.2	1.1	1.7	0.5	0.2	0.2	86.9	3.2	9.9	0.067	0.514	19.292445	-98.891997
X. C. Santa Bárbara - Izúcar de Matamoros (Lateral)	32.14	1	2	21898	3.4	81.9	1.4	10.0	1.0	1.4	0.5	0.2	0.2	85.3	1.4	13.3	0.072	0.685	19.292578	-98.892011
X. C. Santa Bárbara - Izúcar de Matamoros (Central)	32.14	3	1	15390	0.8	78.1	9.4	6.0	0.8	3.8	0.4	0.5	0.2	78.9	9.4	11.7	0.099	0.524	19.294743	-98.876263
X. C. Santa Bárbara - Izúcar de Matamoros (Lateral)	32.14	3	1	1542	6.2	66.0	5.1	10.1	2.5	4.2	0.7	4.2	1.0	72.2	5.1	22.7	0.073	0.522	19.294566	-98.876386
X. C. Santa Bárbara - Izúcar de Matamoros (Central)	32.14	3	2	14005	0.7	77.2	9.6	6.5	0.8	4.1	0.4	0.5	0.2	77.9	9.6	12.5	0.149	0.524	19.294842	-98.876295
X. C. Santa Bárbara - Izúcar de Matamoros (Lateral)	32.14	3	2	1415	2.0	73.0	2.6	8.6	2.2	5.2	1.3	4.1	1.0	75.0	2.6	22.4	0.107	0.522	19.294965	-98.876546
Caseta de Cobro San Marcos	33.30	2	1	16393	0.4	72.6	7.4	4.2	5.2	6.8	0.5	2.6	0.3	73.0	7.4	19.6	0.068	0.500	19.296272	-98.870712
Caseta de Cobro San Marcos	33.30	2	2	16393	0.4	72.6	7.4	4.2	5.2	6.8	0.5	2.6	0.3	73.0	7.4	19.6	0.068	0.500	19.296272	-98.870712
T. Izq. Río Frio	63.79	3	1	17207	0.8	79.9	8.3	5.2	1.0	3.3	0.6	0.5	0.4	80.7	8.3	11.0	0.073	0.504	19.350727	-98.658800
T. Izq. Río Frio	63.79	3	2	16907	1.0	77.0	9.7	5.9	1.2	3.7	0.6	0.5	0.4	78.0	9.7	12.3	0.108	0.504	19.351770	-98.660351
Lim. Edos. Term. Méx. Ppia. Pue.	65.46																			
T. Izq. Tlaxcala	90.61	1	1	18760	1.3	71.8	8.2	8.4	2.2	5.1	0.7	1.9	0.4	73.1	8.2	18.7	0.073	0.505	19.273746	-98.435708
T. Izq. Tlaxcala	90.61	1	2	19125	1.2	70.4	8.5	9.1	2.3	5.3	0.7	2.1	0.4	71.6	8.5	19.9	0.078	0.505	19.273843	-98.435648
T. Izq. Tlaxcala	90.61	3	1	24501	0.7	67.6	6.2	9.4	2.8	8.3	1.3	3.3	0.4	68.3	6.2	25.5	0.070	0.528	19.261900	-98.417420
T. Izq. Tlaxcala	90.61	3	2	21915	1.0	67.9	5.8	8.1	2.8	8.6	1.9	3.5	0.4	68.9	5.8	25.3	0.077	0.528	19.261842	-98.417470
Caseta de Cobro San Martín Texmelucan	91.17	2	1	24843	0.5	68.7	6.8	3.9	4.9	9.7	1.2	3.8	0.5	69.2	6.8	24.0	0.068	0.500	19.241190	-98.385786

CIUDAD DE MEXICO

8 CARR: México - Puebla (Cuota)

CLAVE: 00450

RUTA: MEX-150D

AÑO: 2018

LUGAR	ESTACION				CLASIFICACION VEHICULAR EN PORCIENTO										COORDENADAS					
	KM	TE	SC	TDPA	M	A	B	C2	C3	T3S2	T3S3	T3S2R4	OTROS	A	B	C	K'	D	LATITUD	LONGITUD
Caseta de Cobro San Martín Texmelucan	91.17	2	2	24843	0.5	68.7	6.8	3.9	4.9	9.7	1.2	3.8	0.5	69.2	6.8	24.0	0.068	0.500	19.241190	-98.385786
Lim. Edos. Term. Pue. Ppia. Tlax.	99.11																			
T. Der. Aeropuerto Internacional De Puebla	101.10	3	1	28305	0.8	74.7	5.3	5.9	2.6	5.8	1.3	2.7	0.9	75.5	5.3	19.2	0.072	0.504	19.209521	-98.349955
T. Der. Aeropuerto Internacional De Puebla	101.10	3	2	28759	0.9	72.3	5.4	6.5	3.0	6.4	1.5	3.0	1.0	73.2	5.4	21.4	0.078	0.504	19.209623	-98.349873
X. C. Xoxtla - Huactzinco	107.98	1	1	31041	0.9	73.8	5.1	6.6	2.7	6.2	1.5	2.4	0.8	74.7	5.1	20.2	0.070	0.507	19.179867	-98.313900
X. C. Xoxtla - Huactzinco	107.98	1	2	31952	0.8	71.3	5.6	6.8	2.9	7.2	1.7	2.8	0.9	72.1	5.6	22.3	0.075	0.507	19.179987	-98.313820
X. C. Xoxtla - Huactzinco	107.98	3	1	33722	0.9	75.5	3.8	7.8	2.1	5.6	1.4	2.1	0.8	76.4	3.8	19.8	0.076	0.504	19.166519	-98.299004
X. C. Xoxtla - Huactzinco	107.98	3	2	33123	0.9	72.9	4.5	8.9	2.4	5.7	1.6	2.3	0.8	73.8	4.5	21.7	0.077	0.504	19.166589	-98.298903
Lim. Edos. Term. Tlax. Ppia. Pue.	108.00																			
Anillo Periferico Poniente de Puebla (Lateral)	114.00	3	1	26159	0.6	83.5	3.2	6.7	2.6	1.4	0.5	0.7	0.8	84.1	3.2	12.7	0.106	0.521	19.126228	-98.263345
Anillo Periferico Poniente de Puebla (Central)	114.00	3	1	22985	0.7	74.0	5.5	4.8	3.7	7.1	0.9	2.7	0.6	74.7	5.5	19.8	0.067	0.506	19.126312	-98.263258
Anillo Periferico Poniente de Puebla (Lateral)	114.00	3	2	28496	0.4	81.9	3.4	7.4	3.1	1.6	0.5	0.9	0.8	82.3	3.4	14.3	0.113	0.521	19.126545	-98.262939
Anillo Periferico Poniente de Puebla (Central)	114.00	3	2	22484	0.7	70.6	6.3	5.8	4.0	7.9	1.0	3.1	0.6	71.3	6.3	22.4	0.079	0.506	19.126492	-98.263000
Boulevard Hermanos Serdán	120.46	3	1	56312	0.7	80.3	4.8	6.0	3.1	3.0	0.6	1.3	0.2	81.0	4.8	14.2	0.063	0.502	19.093255	-98.223988
Boulevard Hermanos Serdán	120.46	3	2	55861	0.7	77.7	5.3	6.9	3.7	3.5	0.6	1.4	0.2	78.4	5.3	16.3	0.065	0.502	19.093342	-98.223928
X. C. Puebla - Tlaxcala (Lateral)	123.00	3	1	30065	0.7	85.6	6.5	3.5	1.9	1.0	0.5	0.1	0.2	86.3	6.5	7.2	0.071	0.507	19.086033	-98.200631
X. C. Puebla - Tlaxcala (Central)	123.00	3	1	41809	0.7	79.9	3.2	6.1	3.1	3.0	1.5	2.3	0.2	80.6	3.2	16.2	0.079	0.505	19.086166	-98.200591
X. C. Puebla - Tlaxcala (Lateral)	123.00	3	2	24905	0.8	83.5	7.8	3.9	2.0	1.2	0.5	0.1	0.2	84.3	7.8	7.9	0.105	0.507	19.086386	-98.200570
X. C. Puebla - Tlaxcala (Central)	123.00	3	2	40994	0.7	77.8	3.7	6.7	3.5	3.3	1.5	2.6	0.2	78.5	3.7	17.8	0.082	0.505	19.086225	-98.200582
T. C. Puebla - Tlaxcala	124.90																			

9 CARR: México - Toluca (Cuota)

CLAVE: 00446

RUTA: MEX-015D

AÑO: 2018

LUGAR	ESTACION				CLASIFICACION VEHICULAR EN PORCIENTO										COORDENADAS					
	KM	TE	SC	TDPA	M	A	B	C2	C3	T3S2	T3S3	T3S2R4	OTROS	A	B	C	K'	D	LATITUD	LONGITUD
T. C. México - Toluca (Libre) (Puente Conafrut)	0.00	3	1	30487	0.4	86.8	3.8	5.1	0.5	1.3	1.0	0.6	0.5	87.2	3.8	9.0	0.063	0.515	19.380506	-99.251283
T. C. México - Toluca (Libre) (Puente Conafrut)	0.00	3	2	28666	0.6	85.9	4.0	5.4	0.5	1.5	1.0	0.6	0.5	86.5	4.0	9.5	0.096	0.515	19.381101	-99.250233
Caseta de Cobro Santa Fe	3.50	1	1	29006	0.4	87.7	3.2	4.8	0.4	1.5	1.3	0.3	0.4	88.1	3.2	8.7	0.084	0.516	19.368806	-99.266475
Caseta de Cobro Santa Fe	3.50	1	2	30960	0.6	86.9	3.2	5.2	0.4	1.5	1.5	0.3	0.4	87.5	3.2	9.3	0.100	0.516	19.368756	-99.266341
Caseta de Cobro Santa Fe	3.50	3	1	22202	0.4	87.5	3.4	4.8	0.4	1.5	1.3	0.3	0.4	87.9	3.4	8.7	0.095	0.532	19.355934	-99.278017
Caseta de Cobro Santa Fe	3.50	3	2	25218	0.6	86.4	3.6	5.1	0.4	1.7	1.5	0.3	0.4	87.0	3.6	9.4	0.112	0.532	19.355828	-99.277893
Caseta de Cobro La Venta	10.00	1	1	23610	0.4	87.7	3.1	4.7	0.4	1.7	1.3	0.3	0.4	88.1	3.1	8.8	0.087	0.534	19.334791	-99.307156
Caseta de Cobro La Venta	10.00	1	2	27097	0.6	86.3	3.5	5.3	0.4	1.7	1.5	0.3	0.4	86.9	3.5	9.6	0.112	0.534	19.334681	-99.307165
Caseta de Cobro La Venta	10.00	2	1	25380	0.6	89.3	6.1	0.0	2.2	0.1	0.9	0.0	0.8	89.9	6.1	4.0	0.089	0.500	19.332816	-99.314301
Caseta de Cobro La Venta	10.00	2	2	25380	0.6	89.3	6.1	0.0	2.2	0.1	0.9	0.0	0.8	89.9	6.1	4.0	0.089	0.500	19.332816	-99.314301

CIUDAD DE MEXICO

9 CARR: México - Toluca (Cuota)

CLAVE: 00446

RUTA: MEX-015D

AÑO: 2018

LUGAR	ESTACION				CLASIFICACION VEHICULAR EN PORCIENTO										COORDENADAS					
	KM	TE	SC	TDPA	M	A	B	C2	C3	T3S2	T3S3	T3S2R4	OTROS	A	B	C	K'	D	LATITUD	LONGITUD
Caseta de Cobro La Venta	10.00	3	1	35578	0.6	87.5	3.7	3.3	0.7	2.2	0.8	0.7	0.5	88.1	3.7	8.2	0.085	0.515	19.321639	-99.319676
Caseta de Cobro La Venta	10.00	3	2	33456	0.7	87.9	3.4	3.3	0.8	2.3	0.6	0.7	0.3	88.6	3.4	8.0	0.085	0.515	19.321581	-99.319562
Lim. Edos. Term. CDMX Ppia. Méx.	18.66																			
T. C. México - Toluca (Libre) (La Marquesa)	19.20	1	1	34691	0.6	88.6	3.4	3.1	0.7	1.9	0.7	0.6	0.4	89.2	3.4	7.4	0.088	0.513	19.298686	-99.360278
T. C. México - Toluca (Libre) (La Marquesa)	19.20	1	2	32949	0.7	86.9	4.1	3.6	0.7	2.2	0.7	0.7	0.4	87.6	4.1	8.3	0.086	0.513	19.299713	-99.364069

10 CARR: México - Querétaro (Cuota)

CLAVE: 00411

RUTA: MEX-057-MEX-057D

AÑO: 2018

LUGAR	ESTACION				CLASIFICACION VEHICULAR EN PORCIENTO										COORDENADAS					
	KM	TE	SC	TDPA	M	A	B	C2	C3	T3S2	T3S3	T3S2R4	OTROS	A	B	C	K'	D	LATITUD	LONGITUD
México	0.00																			
Lim. Edos. Term. CDMX Ppia. Méx.	11.30																			
Caseta de Cobro Tepotzotlán	43.01	2	1	29039	0.4	70.8	4.9	3.4	6.5	10.6	0.7	2.2	0.5	71.2	4.9	23.9	0.077	0.500	19.715361	-99.207448
Caseta de Cobro Tepotzotlán	43.01	2	2	29039	0.4	70.8	4.9	3.4	6.5	10.6	0.7	2.2	0.5	71.2	4.9	23.9	0.077	0.500	19.715361	-99.207448
Ent. Jorobas	56.18	1	1	32902	1.7	69.5	5.7	4.2	4.6	10.5	0.9	2.3	0.6	71.2	5.7	23.1	0.058	0.504	19.811585	-99.238604
Ent. Jorobas	56.18	1	2	33457	1.9	66.0	6.3	4.5	5.0	12.3	1.0	2.4	0.6	67.9	6.3	25.8	0.070	0.504	19.806545	-99.236522
Ent. Jorobas	56.18	3	1	31045	1.3	66.0	5.4	4.3	6.4	12.7	0.7	2.3	0.9	67.3	5.4	27.3	0.063	0.506	19.830980	-99.262040
Ent. Jorobas	56.18	3	2	30280	1.2	63.5	5.9	4.4	6.7	14.2	0.7	2.5	0.9	64.7	5.9	29.4	0.068	0.506	19.837164	-99.274036
Lim. Edos. Term. Méx. Ppia. Hgo.	59.85																			
T. Der. Tepeji del Río	69.36	1	1	33652	1.1	70.0	4.9	3.7	5.0	11.3	0.9	2.4	0.7	71.1	4.9	24.0	0.064	0.506	19.862975	-99.313440
T. Der. Tepeji del Río	69.36	1	2	32843	1.1	67.3	5.1	4.1	5.0	12.9	1.0	2.8	0.7	68.4	5.1	26.5	0.068	0.506	19.874607	-99.340292
T. Der. Tepeji del Río	69.36	3	1	33780	1.0	72.5	3.6	2.9	4.7	11.8	0.6	2.1	0.8	73.5	3.6	22.9	0.061	0.517	19.914373	-99.362067
T. Der. Tepeji del Río	69.36	3	2	36087	0.9	69.9	4.0	3.3	5.2	12.9	0.6	2.4	0.8	70.8	4.0	25.2	0.065	0.517	19.920814	-99.370502
T. Izq. Jilotepec	83.75	1	1	31965	1.2	69.5	4.7	3.5	5.2	12.0	0.9	2.4	0.6	70.7	4.7	24.6	0.069	0.503	19.976602	-99.436076
T. Izq. Jilotepec	83.75	1	2	31550	1.2	67.1	5.2	3.9	5.4	12.8	1.0	2.7	0.7	68.3	5.2	26.5	0.065	0.503	19.975601	-99.437310
T. Izq. Jilotepec	83.75	3	1	26144	2.3	66.1	5.6	3.7	4.3	13.7	1.1	2.6	0.6	68.4	5.6	26.0	0.076	0.506	19.985876	-99.444380
T. Izq. Jilotepec	83.75	3	2	25522	1.9	63.0	6.1	3.9	5.0	15.3	1.2	2.9	0.7	64.9	6.1	29.0	0.071	0.506	19.985631	-99.444388
Lim. Edos. Term. Hgo. Ppia. Méx.	86.00																			
X. C. Jilotepec - Maravillas	107.00	1	1	30695	1.3	65.2	4.2	3.1	4.7	15.6	1.8	3.5	0.6	66.5	4.2	29.3	0.066	0.507	20.080729	-99.619449
X. C. Jilotepec - Maravillas	107.00	1	2	29842	1.2	61.6	4.7	3.5	5.7	17.0	1.9	3.8	0.6	62.8	4.7	32.5	0.068	0.507	20.082406	-99.624755
X. C. Jilotepec - Maravillas	107.00	3	1	31321	1.3	65.5	3.4	3.6	5.3	15.0	1.8	3.3	0.8	66.8	3.4	29.8	0.066	0.508	20.082424	-99.635826
X. C. Jilotepec - Maravillas	107.00	3	2	30371	1.0	63.7	4.1	3.8	5.7	15.3	2.0	3.5	0.9	64.7	4.1	31.2	0.068	0.508	20.082382	-99.634630
T. Izq. Aculco	125.00	1	1	31414	1.3	63.3	3.9	3.3	5.6	16.2	1.9	3.8	0.7	64.6	3.9	31.5	0.066	0.508	20.097498	-99.692882
T. Izq. Aculco	125.00	1	2	30455	0.9	61.4	4.4	3.7	5.7	17.0	2.0	4.0	0.9	62.3	4.4	33.3	0.067	0.508	20.091885	-99.687289
T. Izq. Aculco	125.00	3	1	28838	1.3	64.4	4.1	3.2	5.3	15.3	1.9	3.6	0.9	65.7	4.1	30.2	0.066	0.508	20.109953	-99.707214

CIUDAD DE MEXICO

10 CARR: México - Querétaro (Cuota)

CLAVE: 00411

RUTA: MEX-057-MEX-057D

AÑO: 2018

LUGAR	ESTACION				CLASIFICACION VEHICULAR EN PORCIENTO										COORDENADAS					
	KM	TE	SC	TDPA	M	A	B	C2	C3	T3S2	T3S3	T3S2R4	OTROS	A	B	C	K'	D	LATITUD	LONGITUD
T. Izq. Aculco	125.00	3	2	27958	1.0	62.8	4.6	3.5	5.4	16.0	2.1	3.7	0.9	63.8	4.6	31.6	0.068	0.508	20.108566	-99.704323
Lim. Edos. Term. Méx. Ppia. Qro.	145.50																			
Caseta de Cobro Palmillas	145.80	2	1	21643	0.3	57.5	4.5	4.9	6.2	19.7	1.8	4.4	0.7	57.8	4.5	37.7	0.077	0.500	20.296112	-99.929069
Caseta de Cobro Palmillas	145.80	2	2	21643	0.3	57.5	4.5	4.9	6.2	19.7	1.8	4.4	0.7	57.8	4.5	37.7	0.077	0.500	20.296112	-99.929069
T. Izq. Toluca	148.50	1	1	25868	1.1	54.6	4.2	5.3	7.1	20.6	1.6	4.9	0.6	55.7	4.2	40.1	0.061	0.510	20.287457	-99.913512
T. Izq. Toluca	148.50	1	2	26924	1.4	52.3	4.8	5.6	7.2	21.4	1.7	4.9	0.7	53.7	4.8	41.5	0.054	0.510	20.286143	-99.911987
T. Izq. Toluca	148.50	3	1	38953	1.3	56.2	4.1	4.8	7.0	19.8	1.7	4.4	0.7	57.5	4.1	38.4	0.057	0.500	20.306620	-99.934504
T. Izq. Toluca	148.50	3	2	38967	1.1	53.0	4.5	5.6	7.9	20.5	1.8	4.9	0.7	54.1	4.5	41.4	0.063	0.500	20.306883	-99.935004
T. Der. Poniente San Juan del Río	164.10	3	1	34644	1.0	65.1	3.7	4.1	6.1	14.5	1.9	2.8	0.8	66.1	3.7	30.2	0.075	0.502	20.373007	-99.992375
T. Der. Poniente San Juan del Río	164.10	3	2	34955	0.9	62.2	3.9	4.3	6.4	15.9	2.2	3.2	1.0	63.1	3.9	33.0	0.072	0.502	20.373516	-99.994167
T. Izq. Acámbaro	170.45	3	1	45903	1.0	74.2	3.9	2.9	5.2	8.7	1.6	1.6	0.9	75.2	3.9	20.9	0.077	0.502	20.447311	-100.078766
T. Izq. Acámbaro	170.45	3	2	46360	0.9	71.1	4.6	3.4	5.6	10.0	1.7	1.8	0.9	72.0	4.6	23.4	0.072	0.502	20.449792	-100.082240
T. Der. Libramiento de Querétaro a San Luis Potosí	207.00	1	1	64373	0.9	80.7	2.4	2.6	4.2	5.3	2.2	0.9	0.8	81.6	2.4	16.0	0.073	0.501	20.573161	-100.323269
T. Der. Libramiento de Querétaro a San Luis Potosí	207.00	1	2	64688	0.7	78.9	2.5	2.9	4.6	5.9	2.5	1.1	0.9	79.6	2.5	17.9	0.081	0.501	20.574483	-100.331021
T. Der. Libramiento de Querétaro a San Luis Potosí	207.00	3	1	71029	0.9	84.6	2.2	2.1	3.5	4.0	1.7	0.4	0.6	85.5	2.2	12.3	0.071	0.503	20.578266	-100.380363
T. Der. Libramiento de Querétaro a San Luis Potosí Querétaro	207.00	3	2	70057	0.7	83.4	2.4	2.3	3.9	4.5	1.8	0.4	0.6	84.1	2.4	13.5	0.089	0.503	20.578145	-100.380335
Querétaro	211.60																			

11 CARR: Chalco - Mixquic

CLAVE: 00171

RUTA: EM-CDMX

AÑO: 2018

LUGAR	ESTACION				CLASIFICACION VEHICULAR EN PORCIENTO										COORDENADAS					
	KM	TE	SC	TDPA	M	A	B	C2	C3	T3S2	T3S3	T3S2R4	OTROS	A	B	C	K'	D	LATITUD	LONGITUD
Chalco	0.00	3	1	12823	6.2	89.0	0.2	3.4	0.4	0.4	0.3	0.0	0.1	95.2	0.2	4.6	0.064	0.519	19.240537	-98.909088
Chalco	0.00	3	2	13828	7.0	87.9	0.2	3.7	0.4	0.4	0.3	0.0	0.1	94.9	0.2	4.9	0.061	0.519	19.240484	-98.909028
Lim. Edos. Term. Méx. Ppia. CDMX	8.00																			
Mixquic	10.00	1	0	7132	7.4	83.7	0.4	6.3	0.7	1.2	0.2	0.0	0.1	91.1	0.4	8.5	0.076	0.514	19.224993	-98.946445

12 CARR: Chalco - Tláhuac

CLAVE: 00170

RUTA: EM-CDMX

AÑO: 2018

LUGAR	ESTACION				CLASIFICACION VEHICULAR EN PORCIENTO										COORDENADAS					
	KM	TE	SC	TDPA	M	A	B	C2	C3	T3S2	T3S3	T3S2R4	OTROS	A	B	C	K'	D	LATITUD	LONGITUD
Chalco	0.00	3	1	10350	5.3	85.8	0.6	6.7	0.7	0.5	0.3	0.0	0.1	91.1	0.6	8.3	0.078	0.521	19.250157	-98.919193
Chalco	0.00	3	2	9497	3.2	86.9	0.6	7.7	0.7	0.5	0.3	0.0	0.1	90.1	0.6	9.3	0.069	0.521	19.250084	-98.919127
Lim. Edos. Term. Méx. Ppia. CDMX	7.50																			
Tláhuac	12.00	1	1	10860	4.4	85.3	0.3	7.4	1.0	0.8	0.7	0.0	0.1	89.7	0.3	10.0	0.074	0.503	19.264362	-98.992622

CIUDAD DE MEXICO

12 CARR: Chalco - Tláhuac

CLAVE: 00170

RUTA: EM-CDMX

AÑO: 2018

LUGAR	ESTACION				CLASIFICACION VEHICULAR EN PORCIENTO														COORDENADAS	
	KM	TE	SC	TDPA	M	A	B	C2	C3	T3S2	T3S3	T3S2R4	OTROS	A	B	C	K'	D	LATITUD	LONGITUD
Tláhuac	12.00	1	2	10970	4.7	83.3	0.3	8.7	1.2	1.0	0.7	0.0	0.1	88.0	0.3	11.7	0.066	0.503	19.264284	-98.992631

13 CARR: T. C. (México - Mixquic) - San Pablo Atlatzalan

CLAVE: 00044

RUTA: EM-106-CDMX

AÑO: 2018

LUGAR	ESTACION				CLASIFICACION VEHICULAR EN PORCIENTO														COORDENADAS	
	KM	TE	SC	TDPA	M	A	B	C2	C3	T3S2	T3S3	T3S2R4	OTROS	A	B	C	K'	D	LATITUD	LONGITUD
T. C. México - Mixquic	0.00	3	0	9293	11.2	82.1	0.4	6.0	0.1	0.1	0.1	0.0	0.0	93.3	0.4	6.3	0.060	0.513	19.212833	-98.972435
Lim. Edos. Term. CDMX Ppia. Méx.	2.00																			
San Pablo Atlatzalan	7.00																			

14 CARR: Xalatlaco - El Ajusco

CLAVE: 00017

RUTA: EM-CDMX

AÑO: 2018

LUGAR	ESTACION				CLASIFICACION VEHICULAR EN PORCIENTO														COORDENADAS	
	KM	TE	SC	TDPA	M	A	B	C2	C3	T3S2	T3S3	T3S2R4	OTROS	A	B	C	K'	D	LATITUD	LONGITUD
T. C. Ent. Cruz de La Misión - San Nicolás Coatepec	0.00	3	0	2172	2.3	86.6	0.3	9.8	0.3	0.4	0.2	0.0	0.1	88.9	0.3	10.8	0.087	0.523	19.162868	-99.406193
Lim. Edos. Term. Méx. Ppia. CDMX	17.70																			
T. C. Circuito del Ajusco	27.60	1	0	791	2.5	86.2	0.5	9.2	0.9	0.4	0.2	0.0	0.1	88.7	0.5	10.8	0.105	0.508	19.207160	-99.276397

15 CARR: La Venta - Chamapa (Cuota)

CLAVE: 15014

RUTA: EM-D

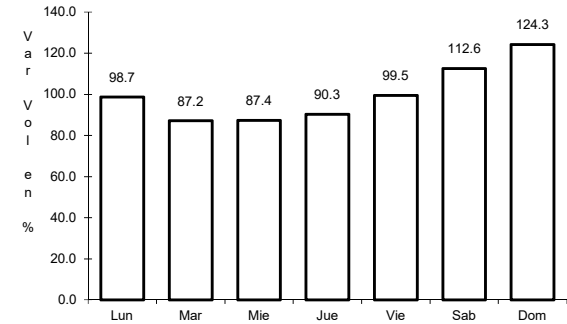
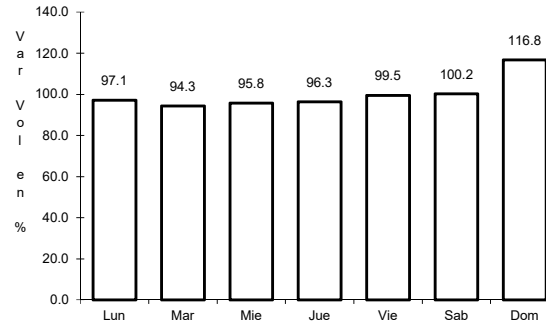
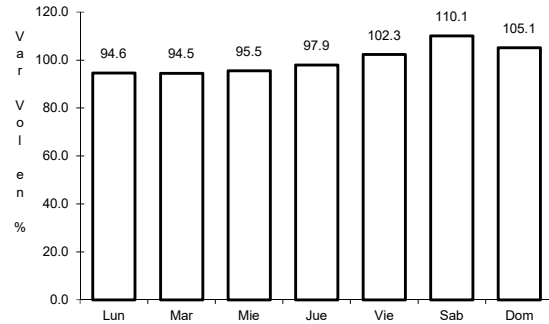
AÑO: 2018

LUGAR	ESTACION				CLASIFICACION VEHICULAR EN PORCIENTO														COORDENADAS	
	KM	TE	SC	TDPA	M	A	B	C2	C3	T3S2	T3S3	T3S2R4	OTROS	A	B	C	K'	D	LATITUD	LONGITUD
T. C. México - Toluca	0.00																			
Caseta de Cobro La Venta	0.10	2	1	13109	0.5	87.3	0.9	4.0	2.2	4.0	0.3	0.6	0.2	87.8	0.9	11.3	0.090	0.500	19.348946	-99.306623
Caseta de Cobro La Venta	0.10	2	2	13109	0.5	87.3	0.9	4.0	2.2	4.0	0.3	0.6	0.2	87.8	0.9	11.3	0.090	0.500	19.348946	-99.306623
Caseta de Cobro La Venta	0.10	3	1	17615	1.3	83.1	1.7	6.5	2.2	3.5	0.7	0.7	0.3	84.4	1.7	13.9	0.112	0.506	19.356008	-99.304269
Caseta de Cobro La Venta	0.10	3	2	17186	1.3	81.9	1.9	6.9	2.4	3.8	0.7	0.8	0.3	83.2	1.9	14.9	0.126	0.506	19.354000	-99.305200
Lim. Edos. Term. CDMX Tab. Ppia. Méx.	2.70																			
T. Der. Interlomas	5.60	3	1	24166	1.5	82.9	1.7	6.4	2.3	3.7	0.5	0.7	0.3	84.4	1.7	13.9	0.109	0.536	19.399365	-99.296779
T. Der. Interlomas	5.60	3	2	20936	0.8	82.3	1.7	6.9	2.7	3.9	0.6	0.7	0.4	83.1	1.7	15.2	0.118	0.536	19.397798	-99.296568
X. C. Naucalpan - Toluca	11.10	1	1	25317	1.1	84.6	1.5	6.1	2.1	3.3	0.5	0.5	0.3	85.7	1.5	12.8	0.110	0.508	19.423300	-99.297061
X. C. Naucalpan - Toluca	11.10	1	2	24483	1.2	82.9	1.7	6.8	2.2	3.8	0.5	0.6	0.3	84.1	1.7	14.2	0.143	0.508	19.423349	-99.297133

1 CARR: México - Cuernavaca (Libre)

CLAVE: 00040

RUTA: MEX-095



Km: 28.78

Tipo: 1

Sent: 1

Km: 28.78

Tipo: 1

Sent: 2

Km: 51.40

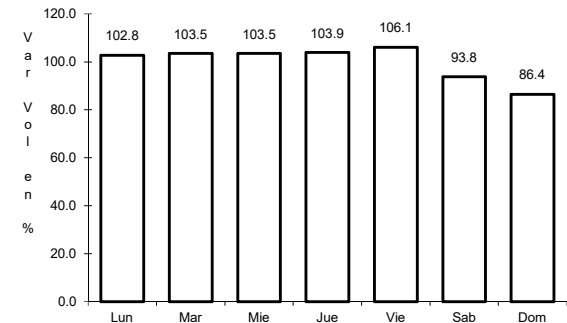
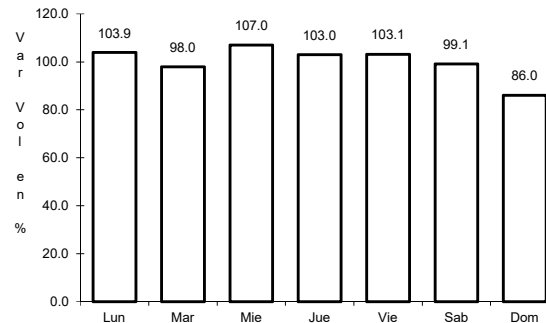
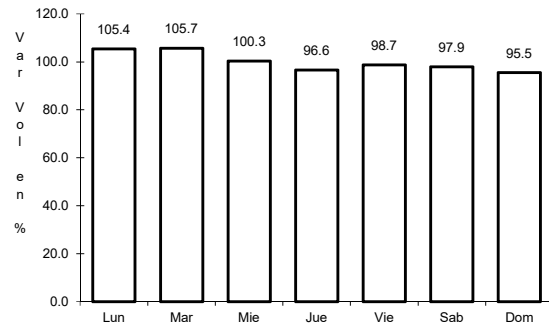
Tipo: 3

Sent: 0

2 CARR: México - Pachuca (Libre)

CLAVE: 00431

RUTA: MEX-085



Km: 26.93

Tipo: 1

Sent: 1

Km: 86.50

Tipo: 1

Sent: 1

Km: 86.50

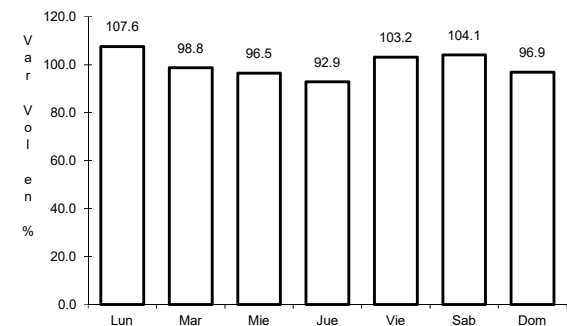
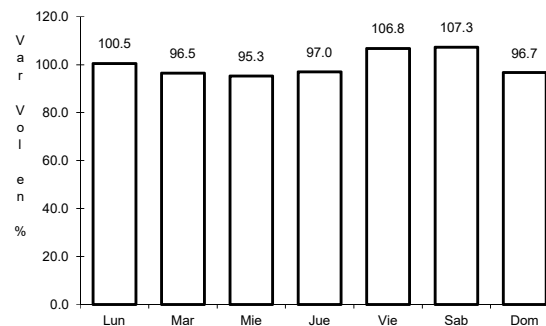
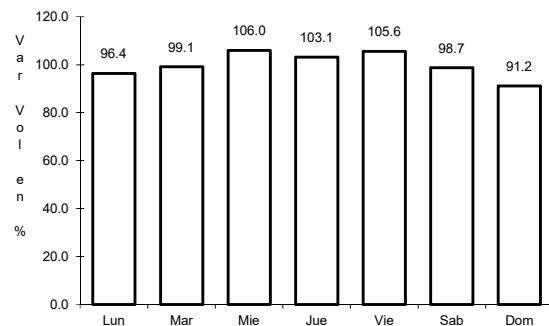
Tipo: 1

Sent: 2

3 CARR: México - Puebla (Libre)

CLAVE: 00449

RUTA: MEX-150



Km: 28.85

Tipo: 1

Sent: 1

Km: 28.85

Tipo: 1

Sent: 2

Km: 62.06

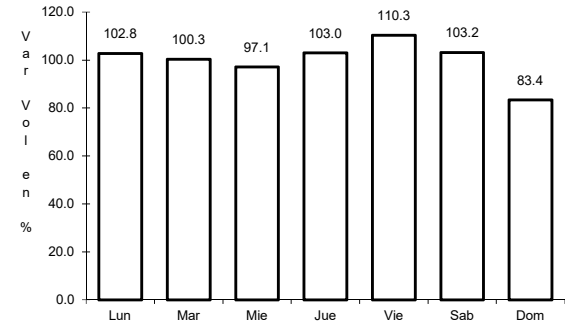
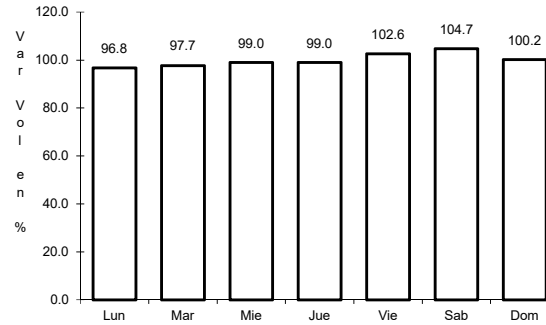
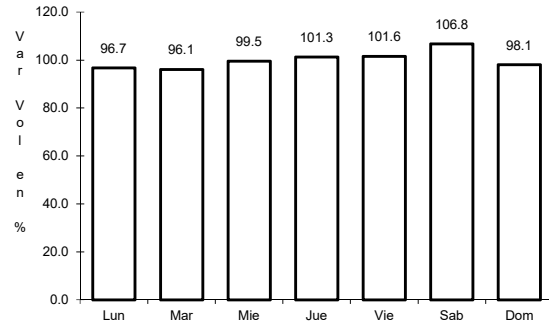
Tipo: 1

Sent: 0

4 CARR: México - Toluca

CLAVE: 00447

RUTA: MEX-015



Km: 12.84

Tipo: 3

Sent: 1

Km: 12.84

Tipo: 3

Sent: 2

Km: 51.71

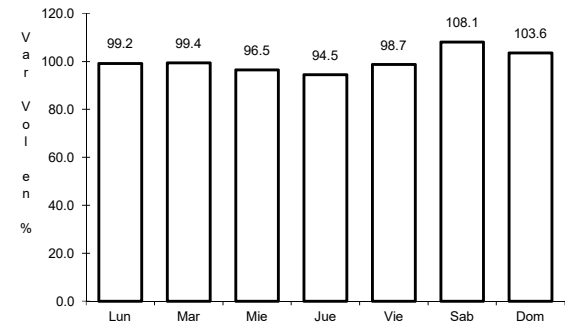
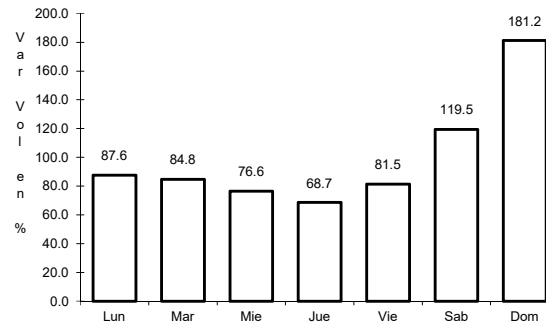
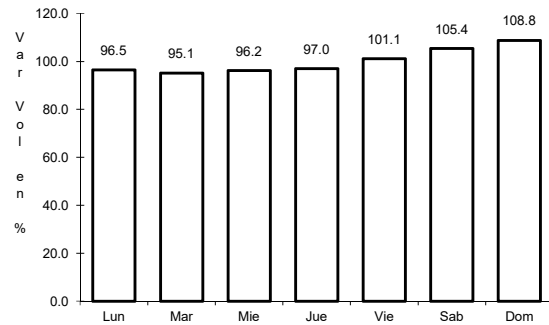
Tipo: 1

Sent: 1

5 CARR: San Gregorio - Oaxtepec

CLAVE: 00901

RUTA: MEX-113



Km: 0.00

Tipo: 3

Sent: 0

Km: 33.80

Tipo: 1

Sent: 0

Km: 53.00

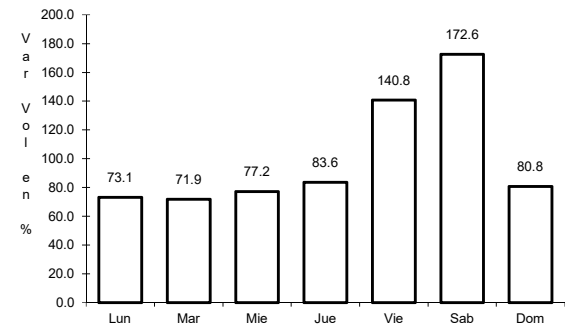
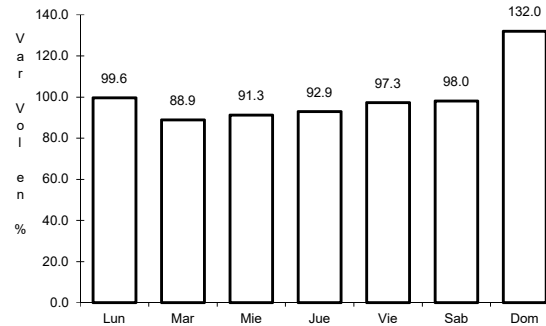
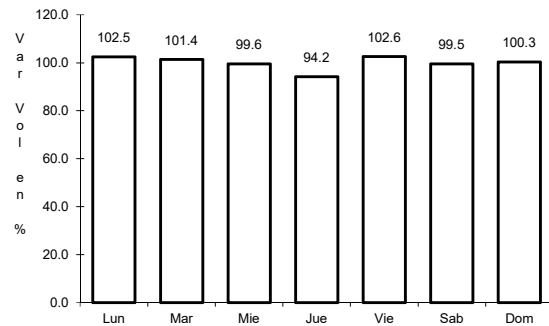
Tipo: 3

Sent: 1

6 CARR: México - Cuernavaca (Cuota)

CLAVE: 00041

RUTA: MEX-095D



Km: 18.65

Tipo: 3

Sent: 1

Km: 18.65

Tipo: 3

Sent: 2

Km: 70.50

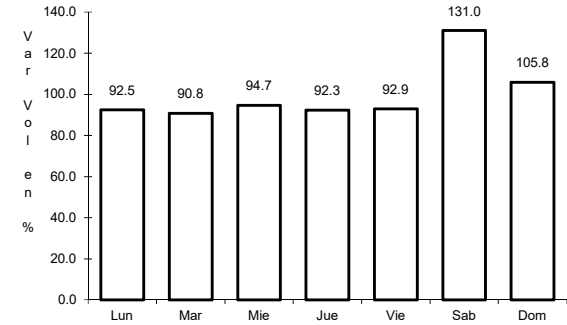
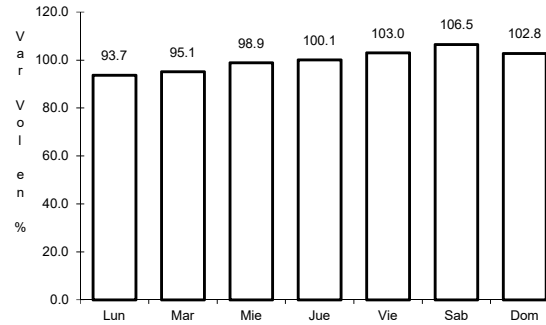
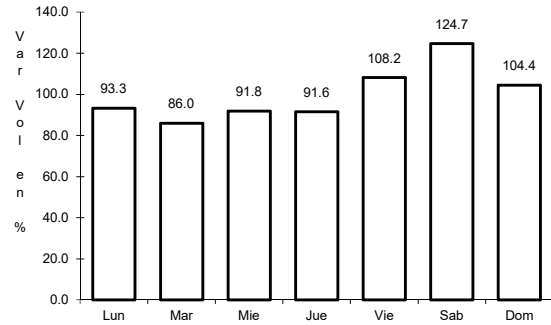
Tipo: 1

Sent: 1

7 CARR: México - Pachuca (Cuota)

CLAVE: 00432

RUTA: MEX-085D



Km: 25.00

Tipo: 3

Sent: 1

Km: 25.00

Tipo: 3

Sent: 2

Km: 60.50

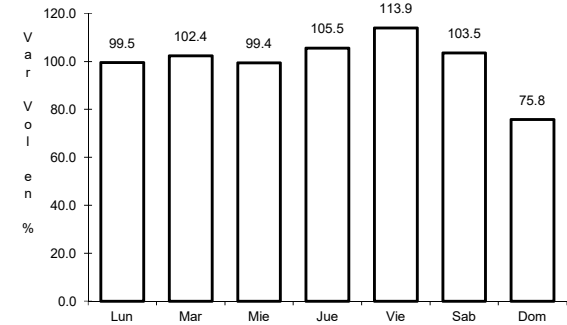
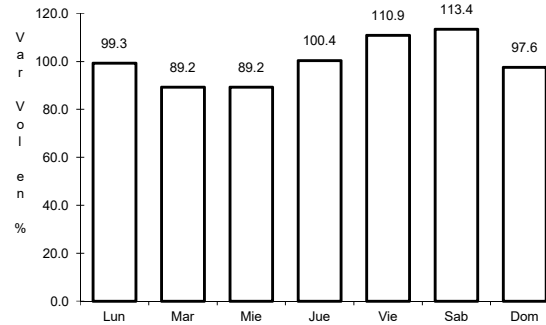
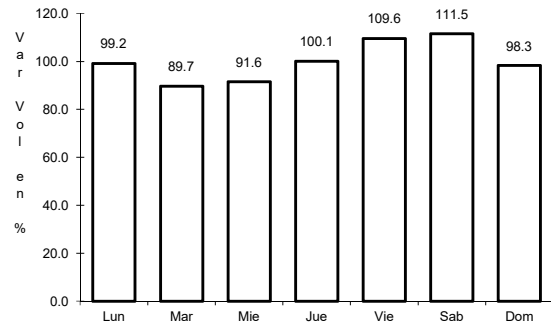
Tipo: 1

Sent: 1

8 CARR: México - Puebla (Cuota)

CLAVE: 00450

RUTA: MEX-150D



Km: 17.00

Tipo: 3

Sent: 1

Km: 17.00

Tipo: 3

Sent: 2

Km: 120.46

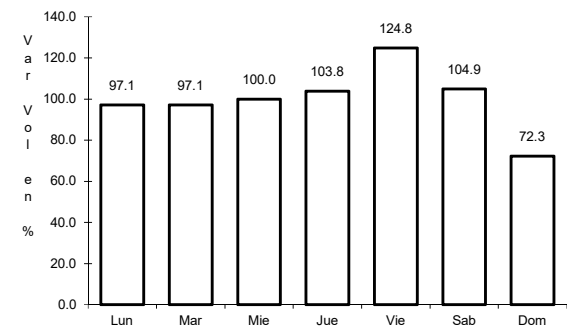
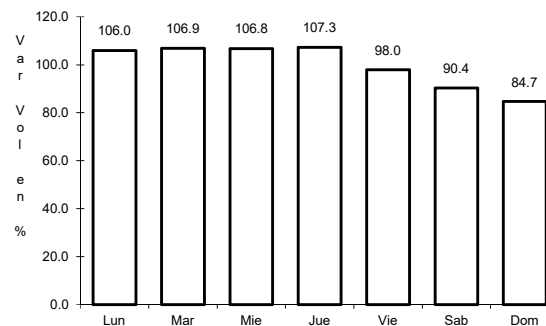
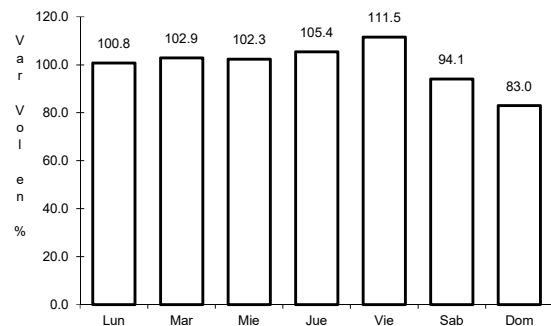
Tipo: 3

Sent: 1

9 CARR: México - Toluca (Cuota)

CLAVE: 00446

RUTA: MEX-015D



Km: 0.00

Tipo: 3

Sent: 1

Km: 0.00

Tipo: 3

Sent: 2

Km: 19.20

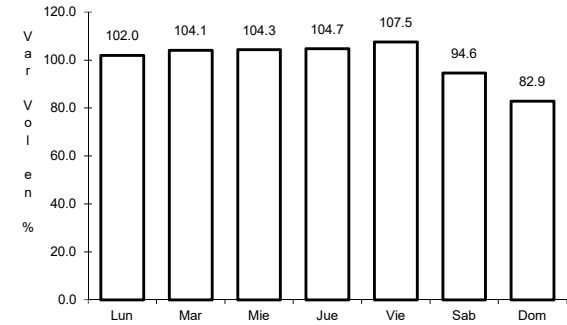
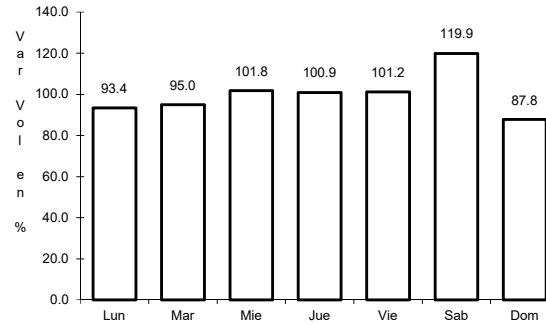
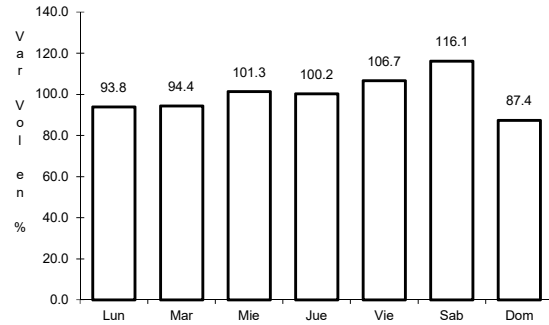
Tipo: 1

Sent: 1

10 CARR: México - Querétaro (Cuota)

CLAVE: 00411

RUTA: MEX-057-MEX-057D



Km: 56.18

Tipo: 1

Sent: 1

Km: 56.18

Tipo: 1

Sent: 2

Km: 207.00

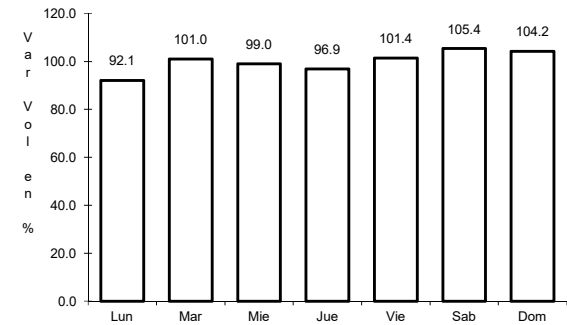
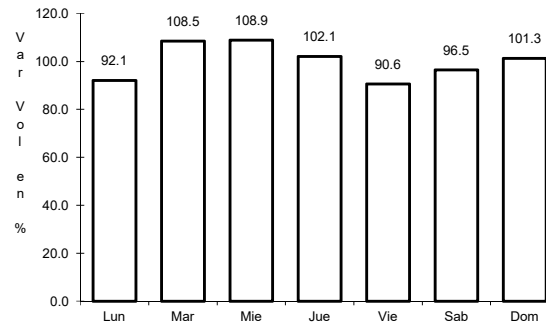
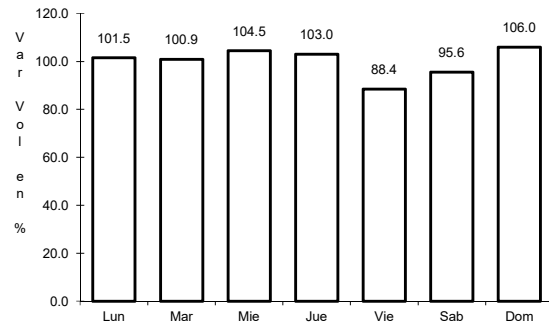
Tipo: 3

Sent: 1

11 CARR: Chalco - Mixquic

CLAVE: 00171

RUTA: EM-CDMX



Km: 0.00

Tipo: 3

Sent: 1

Km: 0.00

Tipo: 3

Sent: 2

Km: 10.00

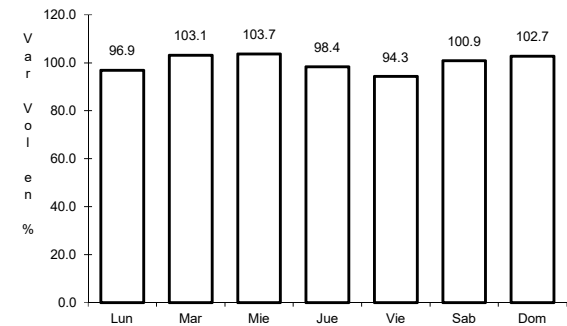
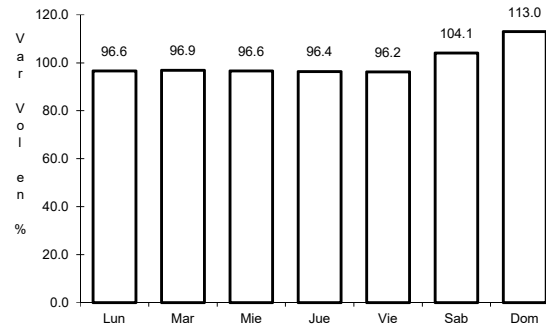
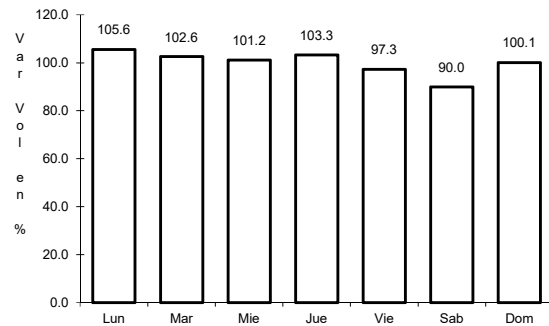
Tipo: 1

Sent: 0

12 CARR: Chalco - Tláhuac

CLAVE: 00170

RUTA: EM-CDMX



Km: 0.00

Tipo: 3

Sent: 1

Km: 0.00

Tipo: 3

Sent: 2

Km: 12.00

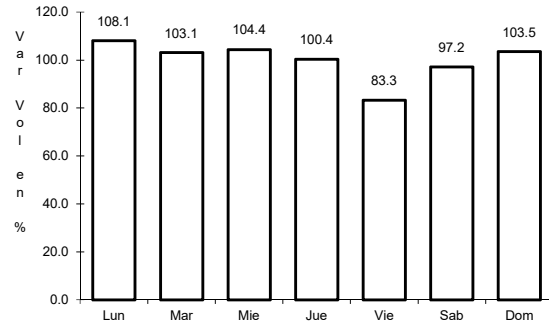
Tipo: 1

Sent: 1

13 CARR: T. C. (México - Mixquic) - San Pablo Atlazalpan

CLAVE: 00044

ruta: EM-106-CDMX



Km: 0.00

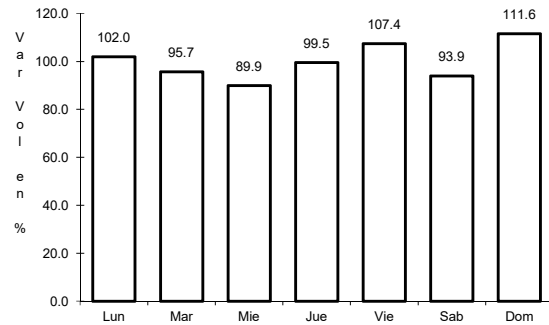
Tipo: 3

Sent: 0

14 CARR: Xalatlaco - El Ajusco

CLAVE: 00017

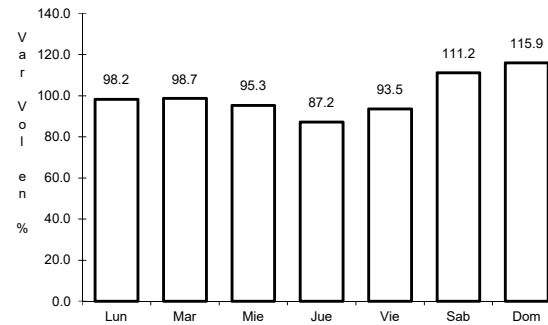
ruta: EM-CDMX



Km: 0.00

Tipo: 3

Sent: 0



Km: 27.60

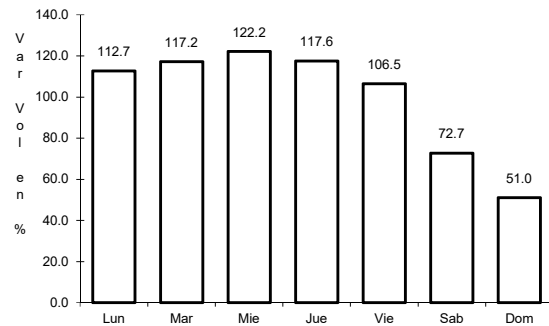
Tipo: 1

Sent: 0

15 CARR: La Venta - Chamapa (Cuota)

CLAVE: 15014

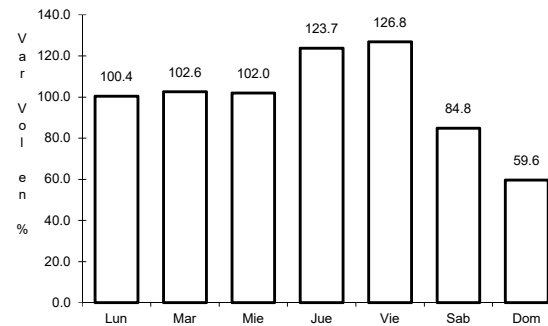
ruta: EM-D



Km: 0.10

Tipo: 3

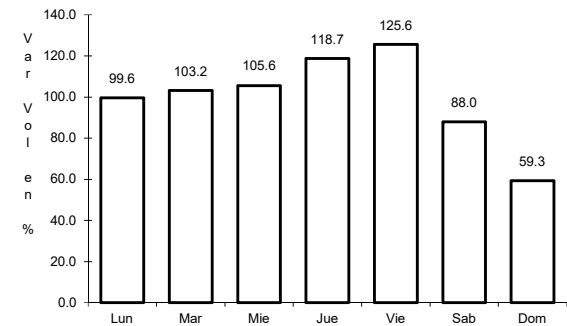
Sent: 1



Km: 0.10

Tipo: 3

Sent: 2



Km: 11.10

Tipo: 1

Sent: 1

