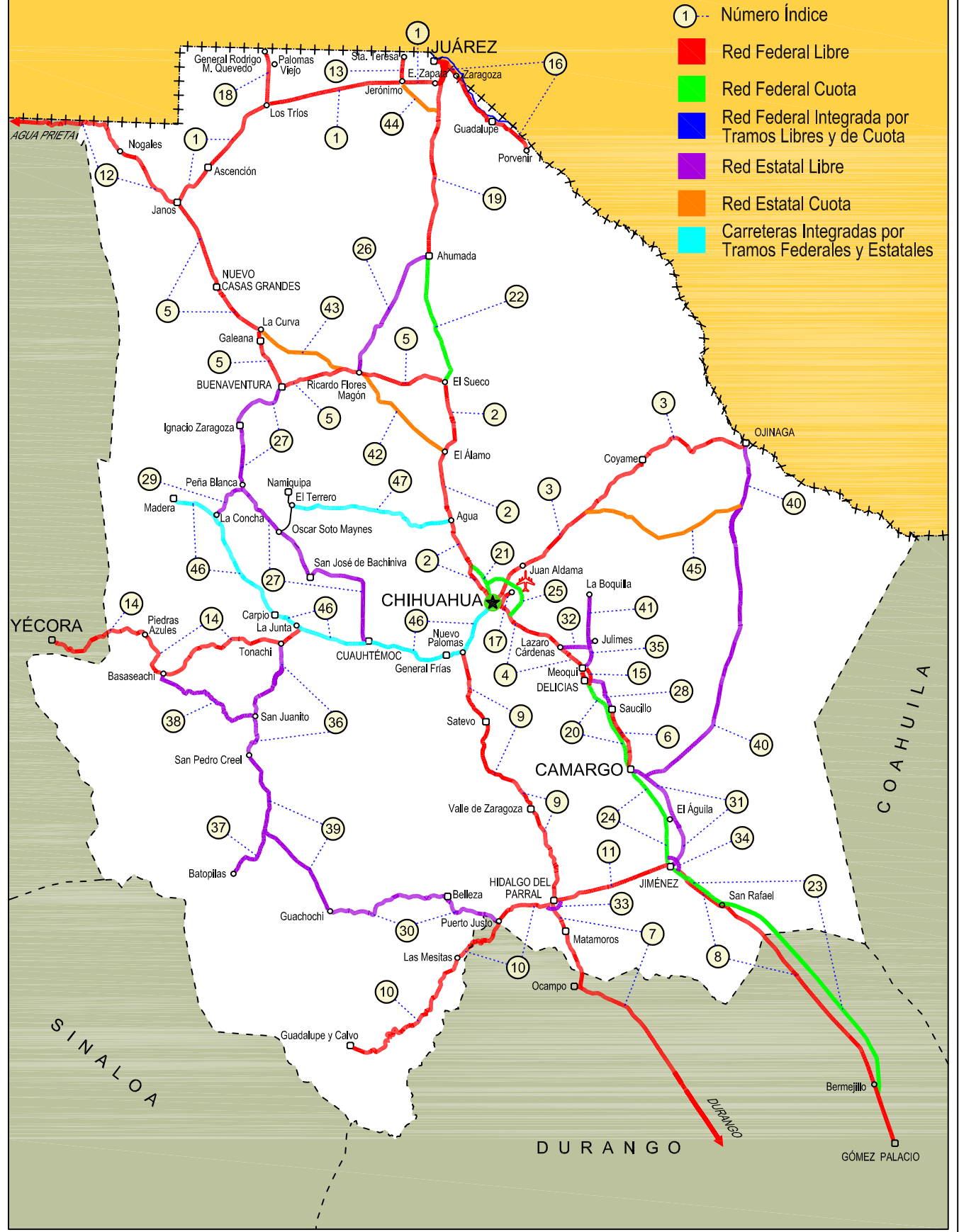


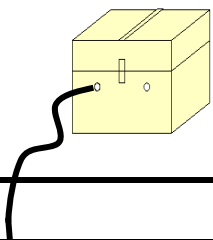
# 08 CHIHUAHUA

SECRETARÍA DE COMUNICACIONES Y TRANSPORTES  
DIRECCIÓN GENERAL DE SERVICIOS TÉCNICOS

ESTADOS UNIDOS DE AMERICA







CHIHUAHUA

## ---RED FEDERAL LIBRE---

1 Cd. Juárez - Janos	MEX-002
2 Chihuahua - El Sueco	MEX-045
3 Chihuahua - Ojinaga	MEX-016
4 Delicias - Chihuahua (Libre)	MEX-045
5 El Sueco - Janos	MEX-010
6 Ent. Ciudad Camargo - Saucillo	MEX-045
7 Ent. La Zarca - Hidalgo del Parral	MEX-045
8 Gómez Palacio - Jiménez	MEX-049
9 Hidalgo del Parral - Ent. Nuevo Palomas (Vía Corta)	MEX-024
10 Hidalgo del Parral - Guadalupe y Calvo	MEX-024
11 Hidalgo del Parral - Jiménez	MEX-045
12 Janos - Agua Prieta	MEX-002
13 Jerónimo - Sta. Teresa	MEX-002
14 La Junta - Yécora	MEX-016
15 Libramiento de Delicias - Meoqui	MEX-045
16 Porvenir - Cd. Juárez	MEX-002
17 Ramal a Aeropuerto de Chihuahua	MEX-016
18 Ramal a Palomas	MEX-002
19 Villa Ahumada - Cd. Juárez (Libre)	MEX-045

## ---RED FEDERAL DE CUOTA---

20 Camargo - Delicias (Cuota)	MEX-045D
21 Chihuahua - Sacramento (Cuota)	MEX-045D
22 El Sueco - Villa Ahumada (Cuota)	MEX-045D
23 Gómez Palacio - Corralitos (Cuota)	MEX-049D
24 Jiménez - Camargo (Cuota)	MEX-045D
25 Libramiento Oriente Chihuahua (Cuota)	MEX-045D

## ---RED ESTATAL LIBRE---

26 Ahumada - Ricardo Flores Magón	CHIH
27 Cuauhtémoc - Buenaventura	CHIH
28 Delicias - Saucillo	CHIH-007
29 Ent. Peña Blanca - Ent. La Concha	CHIH
30 Ent. Puerto Justo - Ent. Guachoic	CHIH
31 Jiménez - Camargo	CHIH-049
32 Lázaro Cárdenas - Ent. Colonia San José	CHIH-004
33 Libramiento de Hidalgo del Parral	CHIH
34 Libramiento de Jiménez	CHIH
35 Meoqui - Julimes	CHIH-005
36 Ramal a San Pedro Creel	CHIH-025
37 Samachique - Batopilas	CHIH
38 San Juanito - Ent. Basaseachi	CHIH
39 San Pedro Creel - Guachochi	CHIH-025
40 T. C. (Jiménez - Camargo) - Ojinaga	CHIH-018
41 T. Julimes - La Boquilla	CHIH-018

## ---RED ESTATAL DE CUOTA---

42 Ent. El Álamo - Ent. Ricardo Flores Magón (Cuota)	CHIH-D
43 Ricardo Flores Magón - Galeana (Cuota)	CHIH-D
44 Samalayuca - San Jerónimo (Cuota)	CHIH-D
45 T. C. (Chihuahua - Ojinaga) - La Mula (Cuota)	CHIH-D

## ---CARRETERAS INTEGRADAS POR TRAMOS FEDERALES Y ESTATALES---

46 Chihuahua - Madera	CHIH-D-MEX-001-CHIH
47 Ent. Agua Caliente - El Terrero	CHIH-MEX

CHIHUAHUA

1 CARR: Cd. Juárez - Janos

CLAVE: 08041

RUTA: MEX-002

AÑO: 2018

LUGAR	ESTACION				CLASIFICACION VEHICULAR EN PORCIENTO													COORDENADAS		
	KM	TE	SC	TDPA	M	A	B	C2	C3	T3S2	T3S3	T3S2R4	OTROS	A	B	C	K'	D	LATITUD	LONGITUD
T. C. El Sueco - Cd. Juárez	0.00	3	1	6882	1.0	77.5	4.0	11.7	1.5	3.4	0.4	0.3	0.2	78.5	4.0	17.5	0.080	0.505	31.605707	-106.486951
T. C. El Sueco - Cd. Juárez	0.00	3	2	6758	1.0	75.3	4.4	12.7	1.7	4.0	0.4	0.3	0.2	76.3	4.4	19.3	0.079	0.505	31.605607	-106.486928
T. Der. Palomas	112.00	1	0	1807	1.8	67.2	2.7	12.7	3.3	8.2	2.2	1.6	0.3	69.0	2.7	28.3	0.082	0.503	31.471780	-107.608052
Ascención	170.95	1	0	3141	1.5	65.3	2.1	18.8	2.5	7.2	1.4	1.0	0.2	66.8	2.1	31.1	0.068	0.502	31.111175	-107.980020
Janos	205.00	1	0	3402	1.0	69.1	1.8	18.8	2.1	4.9	0.9	1.2	0.2	70.1	1.8	28.1	0.067	0.509	30.904943	-108.176610

2 CARR: Chihuahua - El Sueco

CLAVE: 08419

RUTA: MEX-045

AÑO: 2018

LUGAR	ESTACION				CLASIFICACION VEHICULAR EN PORCIENTO													COORDENADAS		
	KM	TE	SC	TDPA	M	A	B	C2	C3	T3S2	T3S3	T3S2R4	OTROS	A	B	C	K'	D	LATITUD	LONGITUD
Chihuahua	0.00																			
San Cristóbal	24.00	1	0	2987	2.6	60.9	2.5	11.7	2.9	14.0	3.8	0.8	0.8	63.5	2.5	34.0	0.069	0.501	28.799043	-106.216086
T. C. Chihuahua - Sacramento (Cuota)	32.00	1	0	4250	1.2	65.2	1.6	11.5	1.3	12.1	4.2	1.0	1.9	66.4	1.6	32.0	0.083	0.521	28.858332	-106.218474
T. C. Chihuahua - Sacramento (Cuota)	32.00	3	1	6326	0.7	66.2	3.9	11.4	1.0	12.5	1.8	2.0	0.5	66.9	3.9	29.2	0.071	0.502	28.869098	-106.228150
T. C. Chihuahua - Sacramento (Cuota)	32.00	3	2	6272	0.5	61.6	4.4	13.3	1.2	14.2	2.1	2.2	0.5	62.1	4.4	33.5	0.086	0.502	28.869042	-106.228278
T. Der. El Sauz	55.38	1	1	5122	0.4	67.3	4.3	9.2	1.8	11.8	2.4	2.0	0.8	67.7	4.3	28.0	0.072	0.508	29.047133	-106.327809
T. Der. El Sauz	55.38	1	2	4952	0.9	64.1	4.6	9.9	1.9	13.0	2.6	2.1	0.9	65.0	4.6	30.4	0.106	0.508	29.041498	-106.333030
Ent. El Sueco	155.87	1	1	3578	0.6	57.7	5.6	9.8	1.5	20.5	1.5	2.3	0.5	58.3	5.6	36.1	0.074	0.509	29.884995	-106.394992
Ent. El Sueco	155.87	1	2	3713	0.3	58.3	5.1	9.4	1.0	21.5	1.3	2.8	0.3	58.6	5.1	36.3	0.092	0.509	29.884473	-106.395657

3 CARR: Chihuahua - Ojinaga

CLAVE: 08042

RUTA: MEX-016

AÑO: 2018

LUGAR	ESTACION				CLASIFICACION VEHICULAR EN PORCIENTO													COORDENADAS		
	KM	TE	SC	TDPA	M	A	B	C2	C3	T3S2	T3S3	T3S2R4	OTROS	A	B	C	K'	D	LATITUD	LONGITUD
Chihuahua	0.00																			
T. Der. Aeropuerto	6.50	1	1	18774	1.3	85.4	0.9	7.5	0.9	2.7	0.7	0.4	0.2	86.7	0.9	12.4	0.085	0.520	28.686423	-106.015254
T. Der. Aeropuerto	6.50	1	2	17308	1.3	84.3	1.0	7.3	0.8	2.8	1.7	0.4	0.4	85.6	1.0	13.4	0.081	0.520	28.686500	-106.015389
T. Der. Aeropuerto	6.50	3	1	9475	1.2	87.2	0.9	7.1	0.9	1.2	1.0	0.1	0.4	88.4	0.9	10.7	0.106	0.502	28.691707	-106.012084
T. Der. Aeropuerto	6.50	3	2	9399	1.1	85.5	1.0	9.2	1.1	0.9	0.9	0.1	0.2	86.6	1.0	12.4	0.125	0.502	28.691770	-106.012226
Aldama	26.80	1	1	6061	0.8	84.4	1.6	11.1	0.6	0.9	0.6	0.0	0.0	85.2	1.6	13.2	0.100	0.510	28.818877	-105.925613
Aldama	26.80	1	2	6296	1.0	83.4	1.9	11.6	0.6	0.7	0.8	0.0	0.0	84.4	1.9	13.7	0.104	0.510	28.818988	-105.925694
Aldama	26.80	3	0	1825	0.7	79.1	1.6	16.1	0.8	0.8	0.8	0.0	0.1	79.8	1.6	18.6	0.096	0.509	28.852265	-105.870649
El Morrión	84.00	3	0	1506	0.5	76.5	1.9	17.8	1.5	0.9	0.8	0.0	0.1	77.0	1.9	21.1	0.088	0.512	29.064279	-105.604228
Coyame	141.00	1	0	361	0.7	75.2	0.9	19.1	1.9	1.3	0.7	0.0	0.2	75.9	0.9	23.2	0.094	0.542	29.444567	-105.098984
Ojinaga	224.00	1	0	2594	0.9	71.8	0.5	24.1	1.9	0.4	0.3	0.0	0.1	72.7	0.5	26.8	0.091	0.505	29.539981	-104.445113

CHIHUAHUA

4 CARR: Delicias - Chihuahua (Libre)

CLAVE: 08418

RUTA: MEX-045

AÑO: 2018

LUGAR	ESTACION				CLASIFICACION VEHICULAR EN PORCIENTO													COORDENADAS		
	KM	TE	SC	TDPA	M	A	B	C2	C3	T3S2	T3S3	T3S2R4	OTROS	A	B	C	K'	D	LATITUD	LONGITUD
Delicias	138.00																			
T. Der. Lazáro Cárdenas	166.87	1	1	8382	0.7	71.3	3.5	8.8	1.3	9.6	2.0	2.2	0.6	72.0	3.5	24.5	0.107	0.512	28.380978	-105.621767
T. Der. Lazáro Cárdenas	166.87	1	2	7994	0.8	72.5	3.4	7.8	1.3	9.5	1.9	2.2	0.6	73.3	3.4	23.3	0.092	0.512	28.380877	-105.621836
T. Der. Lazáro Cárdenas	166.87	3	1	8777	0.7	72.6	3.5	8.4	1.7	8.8	1.9	1.9	0.5	73.3	3.5	23.2	0.127	0.530	28.391166	-105.635614
T. Der. Lazáro Cárdenas	166.87	3	2	7772	0.5	70.2	3.8	9.5	1.9	9.7	1.8	2.1	0.5	70.7	3.8	25.5	0.070	0.530	28.391219	-105.635995
T. Der. Aquiles Serdán	210.00	1	1	9143	0.9	76.5	3.0	7.3	2.0	6.9	1.6	1.3	0.5	77.4	3.0	19.6	0.120	0.507	28.585792	-105.959966
T. Der. Aquiles Serdán	210.00	1	2	8875	0.7	75.2	3.3	8.9	2.2	6.7	1.4	1.2	0.4	75.9	3.3	20.8	0.077	0.507	28.585735	-105.960139
Chihuahua	222.56																			

5 CARR: El Sueco - Janos

CLAVE: 08037

RUTA: MEX-010

AÑO: 2018

LUGAR	ESTACION				CLASIFICACION VEHICULAR EN PORCIENTO													COORDENADAS		
	KM	TE	SC	TDPA	M	A	B	C2	C3	T3S2	T3S3	T3S2R4	OTROS	A	B	C	K'	D	LATITUD	LONGITUD
El Sueco	0.00	3	0	460	19.4	34.6	9.7	10.6	3.5	16.1	3.1	3.0	0.0	54.0	9.7	36.3	0.078	0.503	29.893185	-106.400581
Ricardo Flores Magón	59.00	3	0	4560	1.4	58.1	3.7	13.5	1.5	13.8	2.5	2.3	3.2	59.5	3.7	36.8	0.066	0.507	29.946188	-106.977886
Buenaventura	114.00	1	0	1382	6.8	72.7	5.4	6.4	1.6	3.2	1.9	1.1	0.9	79.5	5.4	15.1	0.076	0.521	29.853445	-107.444629
Buenaventura	114.00	3	0	4744	2.2	75.9	1.3	17.5	1.1	0.7	0.7	0.5	0.1	78.1	1.3	20.6	0.062	0.512	29.868906	-107.479543
Nuevo Casas Grandes	195.00	3	0	6473	2.6	64.4	1.6	14.5	1.3	9.8	1.7	1.7	2.4	67.0	1.6	31.4	0.058	0.507	30.461924	-107.917931
Janos	257.00	1	0	4987	3.3	58.5	2.0	16.9	2.2	11.1	1.9	2.0	2.1	61.8	2.0	36.2	0.064	0.502	30.884863	-108.184953

6 CARR: Ent. Ciudad Camargo - Saucillo

CLAVE: 08417

RUTA: MEX-045

AÑO: 2018

LUGAR	ESTACION				CLASIFICACION VEHICULAR EN PORCIENTO													COORDENADAS		
	KM	TE	SC	TDPA	M	A	B	C2	C3	T3S2	T3S3	T3S2R4	OTROS	A	B	C	K'	D	LATITUD	LONGITUD
Camargo	0.00	3	0	4639	1.5	71.8	1.3	11.2	2.2	9.4	1.8	0.5	0.3	73.3	1.3	25.4	0.062	0.502	27.727380	-105.191087
T. Der. La Cruz	20.92	3	0	2908	4.2	61.0	2.3	11.9	3.0	13.7	2.7	0.8	0.4	65.2	2.3	32.5	0.065	0.516	27.874154	-105.218930
Saucillo	42.52	1	0	4092	1.5	71.4	2.5	17.2	1.6	4.1	1.4	0.2	0.1	72.9	2.5	24.6	0.077	0.517	28.018857	-105.290297

7 CARR: Ent. La Zarca - Hidalgo del Parral

CLAVE: 00488

RUTA: MEX-045

AÑO: 2018

LUGAR	ESTACION				CLASIFICACION VEHICULAR EN PORCIENTO													COORDENADAS		
	KM	TE	SC	TDPA	M	A	B	C2	C3	T3S2	T3S3	T3S2R4	OTROS	A	B	C	K'	D	LATITUD	LONGITUD
Ent. La Zarca	0.00	3	0	1045	1.1	66.0	5.1	14.2	3.5	6.7	2.9	0.3	0.2	67.1	5.1	27.8	0.084	0.503	25.785529	-104.765524
T. Der. Ceballos	47.85	1	0	779	1.8	72.7	4.6	15.2	1.9	2.0	1.6	0.1	0.1	74.5	4.6	20.9	0.163	0.516	26.139809	-105.028701
T. Der. Ceballos	47.85	3	0	1285	0.9	77.2	3.3	13.0	2.0	2.4	1.1	0.1	0.0	78.1	3.3	18.6	0.111	0.549	26.144219	-105.032006

CHIHUAHUA

7 CARR: Ent. La Zarca - Hidalgo del Parral

CLAVE: 00488

RUTA: MEX-045

AÑO: 2018

LUGAR	ESTACION				CLASIFICACION VEHICULAR EN PORCIENTO										COORDENADAS					
	KM	TE	SC	TDPA	M	A	B	C2	C3	T3S2	T3S3	T3S2R4	OTROS	A	B	C	K'	D	LATITUD	LONGITUD
T. Izq. Canutillo	92.35	3	0	1172	1.9	73.0	4.0	15.5	2.1	2.1	1.3	0.1	0.0	74.9	4.0	21.1	0.108	0.510	26.389567	-105.353913
Las Nieves	97.60	3	0	1774	1.2	73.1	3.5	15.8	2.1	2.3	1.7	0.1	0.2	74.3	3.5	22.2	0.073	0.515	26.400072	-105.405717
T. Izq. Ocampo	109.22	3	0	1288	0.9	71.3	4.4	15.9	2.5	2.7	1.7	0.3	0.3	72.2	4.4	23.4	0.095	0.517	26.442541	-105.494177
Lim. Edos. Term. Dgo. Ppia. Chih.	122.89																			
Matamoros	148.00	1	0	1247	1.1	72.5	4.0	16.5	2.1	2.2	1.3	0.2	0.1	73.6	4.0	22.4	0.112	0.516	26.750980	-105.580989
Hidalgo del Parral	171.00	1	0	3579	1.5	78.8	1.8	14.3	1.5	1.1	0.9	0.1	0.0	80.3	1.8	17.9	0.085	0.524	26.917729	-105.639926

8 CARR: Gómez Palacio - Jiménez

CLAVE: 00006

RUTA: MEX-049

AÑO: 2018

LUGAR	ESTACION				CLASIFICACION VEHICULAR EN PORCIENTO										COORDENADAS					
	KM	TE	SC	TDPA	M	A	B	C2	C3	T3S2	T3S3	T3S2R4	OTROS	A	B	C	K'	D	LATITUD	LONGITUD
Gómez Palacio	0.00	3	1	15020	4.2	72.5	2.8	7.7	2.6	6.1	2.0	1.6	0.5	76.7	2.8	20.5	0.078	0.502	25.613260	-103.512991
Gómez Palacio	0.00	3	2	15127	3.4	71.0	2.9	8.9	2.9	6.5	2.2	1.7	0.5	74.4	2.9	22.7	0.063	0.502	25.613654	-103.513258
X. C. La Torreña - Brittingham	10.96	1	1	10495	4.7	65.7	2.0	7.4	2.7	10.4	3.4	2.7	1.0	70.4	2.0	27.6	0.076	0.548	25.638037	-103.522940
X. C. La Torreña - Brittingham	10.96	1	2	11574	3.5	68.0	2.4	8.7	2.4	9.6	2.6	2.3	0.5	71.5	2.4	26.1	0.071	0.548	25.638003	-103.523074
T. Izq. Dinamita	26.27	1	1	6569	2.4	57.7	3.8	10.2	2.4	15.3	4.0	3.9	0.3	60.1	3.8	36.1	0.083	0.500	25.751510	-103.568046
T. Izq. Dinamita	26.27	1	2	6574	2.3	60.6	3.5	10.1	2.3	14.2	3.3	3.1	0.6	62.9	3.5	33.6	0.074	0.500	25.751442	-103.568241
Bermejillo	39.30	1	0	8277	4.1	66.2	1.7	12.1	2.8	9.3	2.7	0.7	0.4	70.3	1.7	28.0	0.056	0.504	25.874643	-103.616501
T. Izq. Ent. La Zarca	40.89	3	0	3486	2.1	44.8	2.4	11.3	4.7	24.2	7.4	2.4	0.7	46.9	2.4	50.7	0.048	0.501	25.901509	-103.627698
Yermo	107.95	1	0	2640	3.7	45.7	3.0	11.3	4.8	23.4	5.3	2.2	0.6	49.4	3.0	47.6	0.059	0.500	26.384898	-104.000054
Yermo	107.95	3	0	3114	9.1	49.3	3.0	13.8	4.2	14.8	3.8	1.5	0.5	58.4	3.0	38.6	0.055	0.519	26.397250	-104.011537
Ceballos	127.20	1	0	2626	2.1	42.9	3.2	11.9	3.7	26.4	6.5	2.6	0.7	45.0	3.2	51.8	0.054	0.508	26.516945	-104.120595
Ceballos	127.20	3	0	3196	6.2	48.9	3.1	14.4	3.6	16.7	4.9	1.0	1.2	55.1	3.1	41.8	0.050	0.527	26.536616	-104.138998
Lim. Edos. Term. Dgo. Ppia. Chih.	146.15																			
Estación Escalón	160.89	3	0	2323	6.5	43.9	3.1	9.6	3.3	22.1	7.4	3.1	1.0	50.4	3.1	46.5	0.065	0.501	26.761025	-104.346525
Jiménez	223.00	1	1	3604	1.6	43.2	6.5	9.2	2.1	23.8	6.0	6.5	1.1	44.8	6.5	48.7	0.082	0.531	27.117647	-104.890906
Jiménez	223.00	1	2	4077	2.2	49.9	5.8	9.8	2.0	19.5	4.7	4.3	1.8	52.1	5.8	42.1	0.064	0.531	27.117545	-104.890945

9 CARR: Hidalgo del Parral - Ent. Nuevo Palomas (Vía Corta)

CLAVE: 08811

RUTA: MEX-024

AÑO: 2018

LUGAR	ESTACION				CLASIFICACION VEHICULAR EN PORCIENTO										COORDENADAS					
	KM	TE	SC	TDPA	M	A	B	C2	C3	T3S2	T3S3	T3S2R4	OTROS	A	B	C	K'	D	LATITUD	LONGITUD
Hidalgo del Parral	0.00	3	0	4897	1.0	69.7	2.8	15.9	2.9	4.0	2.5	0.9	0.3	70.7	2.8	26.5	0.088	0.516	26.980110	-105.663730
Valle Zaragoza	66.00	1	0	3535	1.0	72.0	3.7	15.5	1.8	3.1	2.3	0.4	0.2	73.0	3.7	23.3	0.103	0.506	27.440356	-105.806371
Satevo	126.00	3	0	3409	1.1	69.1	3.8	15.0	2.3	4.7	3.3	0.4	0.3	70.2	3.8	26.0	0.093	0.503	27.975370	-106.124309

CHIHUAHUA

9 CARR: Hidalgo del Parral - Ent. Nuevo Palomas (Vía Corta)

CLAVE: 08811

RUTA: MEX-024

AÑO: 2018

LUGAR	ESTACION				CLASIFICACION VEHICULAR EN PORCIENTO													COORDENADAS		
	KM	TE	SC	TDPA	M	A	B	C2	C3	T3S2	T3S3	T3S2R4	OTROS	A	B	C	K'	D	LATITUD	LONGITUD
T. C. Chihuahua - Madera	182.40	1	0	3818	1.4	68.6	3.3	15.9	2.3	4.9	2.9	0.3	0.4	70.0	3.3	26.7	0.086	0.562	28.354426	-106.261883

10 CARR: Hidalgo del Parral - Guadalupe y Calvo

CLAVE: 00802

RUTA: MEX-024

AÑO: 2018

LUGAR	ESTACION				CLASIFICACION VEHICULAR EN PORCIENTO													COORDENADAS		
	KM	TE	SC	TDPA	M	A	B	C2	C3	T3S2	T3S3	T3S2R4	OTROS	A	B	C	K'	D	LATITUD	LONGITUD
T. C. Hidalgo del Parral - Santa Bárbara	0.00	3	0	2824	1.6	71.4	1.2	17.3	4.2	2.3	1.7	0.0	0.3	73.0	1.2	25.8	0.073	0.505	26.915180	-105.763413
T. Der. Guacho chic	35.00	1	0	864	1.3	58.1	2.1	21.8	8.6	4.3	2.1	0.0	1.7	59.4	2.1	38.5	0.075	0.503	26.815932	-106.014953
T. Der. Guacho chic	35.00	3	0	902	2.3	64.8	1.4	22.2	4.9	2.0	1.2	0.0	1.2	67.1	1.4	31.5	0.099	0.515	26.808716	-106.016624
Lim. Edos. Term. Chih. Ppia. Dgo	38.00																			
Lim. Edos. Term. Dgo. Ppia. Chih.	57.00																			
El Vergel	110.00	1	0	943	1.6	66.7	1.4	22.2	4.7	1.8	0.9	0.0	0.7	68.3	1.4	30.3	0.090	0.525	26.490592	-106.367368
Puerto Sabinas	212.00	1	0	674	1.7	67.1	1.3	21.8	4.8	1.7	0.9	0.0	0.7	68.8	1.3	29.9	0.126	0.514	26.068775	-106.778028
Guadalupe y Calvo	234.00																			

11 CARR: Hidalgo del Parral - Jiménez

CLAVE: 08444

RUTA: MEX-045

AÑO: 2018

LUGAR	ESTACION				CLASIFICACION VEHICULAR EN PORCIENTO													COORDENADAS		
	KM	TE	SC	TDPA	M	A	B	C2	C3	T3S2	T3S3	T3S2R4	OTROS	A	B	C	K'	D	LATITUD	LONGITUD
Hidalgo del Parral	0.00	3	1	4117	1.6	78.6	1.4	10.9	2.5	2.0	2.2	0.5	0.3	80.2	1.4	18.4	0.095	0.518	26.934226	-105.634716
Hidalgo del Parral	0.00	3	2	4434	1.4	79.5	1.4	10.7	2.5	1.5	2.0	0.7	0.3	80.9	1.4	17.7	0.162	0.518	26.934338	-105.634690
Jiménez	76.63	1	1	2941	2.0	73.7	1.8	13.6	1.6	3.6	2.3	1.1	0.3	75.7	1.8	22.5	0.085	0.500	27.142597	-104.936306
Jiménez	76.63	1	2	2939	2.2	75.5	1.9	13.2	1.5	2.7	1.7	0.9	0.4	77.7	1.9	20.4	0.084	0.500	27.142737	-104.936370

12 CARR: Janos - Agua Prieta

CLAVE: 00220

RUTA: MEX-002

AÑO: 2018

LUGAR	ESTACION				CLASIFICACION VEHICULAR EN PORCIENTO													COORDENADAS		
	KM	TE	SC	TDPA	M	A	B	C2	C3	T3S2	T3S3	T3S2R4	OTROS	A	B	C	K'	D	LATITUD	LONGITUD
T. C. Cd. Juárez - Janos	0.00	3	0	3793	2.6	54.7	2.8	12.9	2.5	15.3	3.6	5.0	0.6	57.3	2.8	39.9	0.073	0.514	30.889802	-108.212008
Los Mimbres	56.00	3	0	2685	2.0	50.2	2.7	21.8	2.6	12.9	3.5	3.5	0.8	52.2	2.7	45.1	0.080	0.509	31.243583	-108.579541
Lim. Edos. Term. Chih. Ppia. Son.	78.00																			
Agua Prieta	160.00	1	0	2980	4.7	45.1	3.5	11.6	2.9	19.2	5.7	6.5	0.8	49.8	3.5	46.7	0.057	0.514	31.321136	-109.510517



CHIHUAHUA

13 CARR: Jerónimo - Sta. Teresa

CLAVE: 08043

RUTA: MEX-002

AÑO: 2018

LUGAR	ESTACION				CLASIFICACION VEHICULAR EN PORCIENTO													COORDENADAS		
	KM	TE	SC	TDPA	M	A	B	C2	C3	T3S2	T3S3	T3S2R4	OTROS	A	B	C	K'	D	LATITUD	LONGITUD
X. C. Cd. Juárez - Janos	0.00	3	0	2544	1.0	65.5	8.0	11.6	2.9	10.2	0.4	0.3	0.1	66.5	8.0	25.5	0.086	0.549	31.617101	-106.684669
El Mirador	20.00																			

14 CARR: La Junta - Yécora

CLAVE: 00065

RUTA: MEX-016

AÑO: 2018

LUGAR	ESTACION				CLASIFICACION VEHICULAR EN PORCIENTO													COORDENADAS		
	KM	TE	SC	TDPA	M	A	B	C2	C3	T3S2	T3S3	T3S2R4	OTROS	A	B	C	K'	D	LATITUD	LONGITUD
T. C. Chihuahua - Madera	0.00	3	0	3490	1.2	72.3	2.6	16.9	2.0	3.0	1.4	0.2	0.4	73.5	2.6	23.9	0.069	0.506	28.471634	-107.320484
T. Izq. San Juanito	16.00	1	0	2527	1.3	67.3	2.9	19.8	2.4	3.9	1.7	0.2	0.5	68.6	2.9	28.5	0.076	0.515	28.388213	-107.439226
T. Izq. San Juanito	16.00	3	0	1225	0.8	66.3	1.0	20.8	3.2	5.1	2.0	0.1	0.7	67.1	1.0	31.9	0.078	0.536	28.390772	-107.441796
Tomochi	70.00	3	0	1402	1.9	62.0	1.1	25.6	2.5	5.1	1.6	0.0	0.2	63.9	1.1	35.0	0.068	0.502	28.354429	-107.856726
Lim. Edos. Term. Chih. Ppia. Son.	190.00																			
Yécora	253.00	1	0	428	3.2	56.5	2.6	28.4	2.8	4.3	2.0	0.0	0.2	59.7	2.6	37.7	0.100	0.506	28.368591	-108.917083

15 CARR: Libramiento de Delicias - Mecoqui

CLAVE: 08813

RUTA: MEX-045

AÑO: 2018

LUGAR	ESTACION				CLASIFICACION VEHICULAR EN PORCIENTO													COORDENADAS		
	KM	TE	SC	TDPA	M	A	B	C2	C3	T3S2	T3S3	T3S2R4	OTROS	A	B	C	K'	D	LATITUD	LONGITUD
T. C. Jiménez - Chihuahua (Sur)	0.00	3	1	11124	1.0	75.2	2.3	8.9	1.3	7.7	1.4	1.8	0.4	76.2	2.3	21.5	0.063	0.532	28.190080	-105.452258
T. C. Jiménez - Chihuahua (Sur)	0.00	3	2	12622	1.1	77.6	2.0	8.7	1.2	6.3	1.1	1.6	0.4	78.7	2.0	19.3	0.068	0.532	28.190124	-105.452446
T. C. Jiménez - Chihuahua (Norte)	13.60	1	1	9104	0.7	70.7	3.2	9.0	2.4	9.4	1.9	2.2	0.5	71.4	3.2	25.4	0.086	0.526	28.290210	-105.487839
T. C. Jiménez - Chihuahua (Norte)	13.60	1	2	8207	0.7	66.8	3.4	10.2	3.0	11.0	2.0	2.4	0.5	67.5	3.4	29.1	0.079	0.526	28.290063	-105.487883

16 CARR: Porvenir - Cd. Juárez

CLAVE: 08169

RUTA: MEX-002

AÑO: 2018

LUGAR	ESTACION				CLASIFICACION VEHICULAR EN PORCIENTO													COORDENADAS		
	KM	TE	SC	TDPA	M	A	B	C2	C3	T3S2	T3S3	T3S2R4	OTROS	A	B	C	K'	D	LATITUD	LONGITUD
Porvenir	0.00																			
T. Der. Puente Porvenir	1.67	3	0	1382	0.3	78.6	6.0	13.3	0.5	0.7	0.2	0.0	0.4	78.9	6.0	15.1	0.083	0.507	31.256314	-105.879581
Guadalupe	30.54	1	0	2352	0.6	78.2	4.4	15.6	0.5	0.5	0.1	0.1	0.0	78.8	4.4	16.8	0.085	0.502	31.388173	-106.094211
San Isidro	55.93	1	0	4651	0.7	70.3	7.3	18.0	0.8	2.2	0.4	0.1	0.2	71.0	7.3	21.7	0.072	0.553	31.541257	-106.272987
Zaragoza	70.32	1	1	17700	1.2	83.8	4.2	7.3	1.0	1.4	0.8	0.1	0.2	85.0	4.2	10.8	0.078	0.510	31.641567	-106.342540
Zaragoza	70.32	1	2	17007	1.1	82.3	4.6	8.3	1.0	1.6	0.8	0.1	0.2	83.4	4.6	12.0	0.083	0.510	31.641449	-106.342631
Cd. Juárez	81.43																			

CHIHUAHUA

17 CARR: Ramal a Aeropuerto de Chihuahua

CLAVE: 08421

RUTA: MEX-016

AÑO: 2018

LUGAR	ESTACION				CLASIFICACION VEHICULAR EN PORCIENTO										COORDENADAS					
	KM	TE	SC	TDPA	M	A	B	C2	C3	T3S2	T3S3	T3S2R4	OTROS	A	B	C	K'	D	LATITUD	LONGITUD
T. C. Chihuahua - Ojinaga	0.00	3	1	8632	1.7	90.7	0.9	5.0	0.6	0.4	0.5	0.1	0.1	92.4	0.9	6.7	0.084	0.516	28.679664	-105.993898
T. C. Chihuahua - Ojinaga Aeropuerto	0.00 5.00	3	2	9191	2.2	92.7	0.7	3.3	0.7	0.0	0.2	0.1	0.1	94.9	0.7	4.4	0.114	0.516	28.679718	-105.993981

18 CARR: Ramal a Palomas

CLAVE: 08019

RUTA: MEX-002

AÑO: 2018

LUGAR	ESTACION				CLASIFICACION VEHICULAR EN PORCIENTO										COORDENADAS					
	KM	TE	SC	TDPA	M	A	B	C2	C3	T3S2	T3S3	T3S2R4	OTROS	A	B	C	K'	D	LATITUD	LONGITUD
T. C. Cd. Juárez - Janos	0.00	3	0	1542	0.7	76.0	1.3	18.1	1.6	1.9	0.4	0.0	0.0	76.7	1.3	22.0	0.088	0.524	31.471738	-107.612997
T. Izq. Guadalupe Victoria Palomas	7.50 34.10	3	0	1230	0.9	76.0	1.3	18.2	1.6	1.7	0.3	0.0	0.0	76.9	1.3	21.8	0.101	0.530	31.523479	-107.613122

19 CARR: Villa Ahumada - Cd. Juárez (Libre)

CLAVE: 08420

RUTA: MEX-045

AÑO: 2018

LUGAR	ESTACION				CLASIFICACION VEHICULAR EN PORCIENTO										COORDENADAS					
	KM	TE	SC	TDPA	M	A	B	C2	C3	T3S2	T3S3	T3S2R4	OTROS	A	B	C	K'	D	LATITUD	LONGITUD
Villa Ahumada	83.63	3	1	4032	0.5	60.9	4.3	10.7	1.2	18.4	1.6	1.9	0.5	61.4	4.3	34.3	0.068	0.530	30.640318	-106.514427
Villa Ahumada	83.63	3	2	4538	0.5	58.7	5.0	11.0	1.3	19.3	1.8	2.0	0.4	59.2	5.0	35.8	0.095	0.530	30.640925	-106.514736
Samalayuca	167.65	3	1	5144	0.8	62.3	4.4	12.3	1.4	15.4	1.2	1.7	0.5	63.1	4.4	32.5	0.073	0.512	31.372821	-106.466345
Samalayuca	167.65	3	2	5399	1.2	62.6	4.7	12.7	1.2	14.8	1.2	1.4	0.2	63.8	4.7	31.5	0.089	0.512	31.372882	-106.466878
T. Izq. Janos	197.92	1	1	8189	0.5	69.4	3.3	12.6	2.9	9.4	0.8	0.8	0.3	69.9	3.3	26.8	0.075	0.535	31.601700	-106.454207
T. Izq. Janos	197.92	1	2	9408	0.8	66.9	3.7	13.3	3.1	10.2	0.8	0.9	0.3	67.7	3.7	28.6	0.077	0.535	31.601758	-106.454364
T. Der. Antiguo Aeropuerto	201.35	1	1	22487	0.9	85.1	3.4	7.1	0.8	1.5	0.8	0.1	0.3	86.0	3.4	10.6	0.079	0.510	31.633757	-106.439610
T. Der. Antiguo Aeropuerto Cd. Juárez	201.35 219.00	1	2	21602	0.8	84.0	3.5	7.9	0.8	1.7	0.9	0.1	0.3	84.8	3.5	11.7	0.075	0.510	31.633828	-106.439821

20 CARR: Camargo - Delicias (Cuota)

CLAVE: 08418

RUTA: MEX-045D

AÑO: 2018

LUGAR	ESTACION				CLASIFICACION VEHICULAR EN PORCIENTO										COORDENADAS					
	KM	TE	SC	TDPA	M	A	B	C2	C3	T3S2	T3S3	T3S2R4	OTROS	A	B	C	K'	D	LATITUD	LONGITUD
Camargo	68.98																			
Caseta de Cobro Altavista	73.00	2	1	3344	0.0	52.4	5.2	5.5	3.9	22.9	2.8	5.5	1.8	52.4	5.2	42.4	0.088	0.500	27.730871	-105.197567
Caseta de Cobro Altavista	73.00	2	2	3344	0.0	52.4	5.2	5.5	3.9	22.9	2.8	5.5	1.8	52.4	5.2	42.4	0.088	0.500	27.730871	-105.197567
Saucillo	111.50	3	1	3941	0.9	65.3	4.2	11.1	1.6	11.5	1.8	3.2	0.4	66.2	4.2	29.6	0.092	0.551	28.035976	-105.325024
Saucillo	111.50	3	2	4840	0.7	71.9	3.5	9.9	1.2	8.6	1.2	2.5	0.5	72.6	3.5	23.9	0.104	0.551	28.035952	-105.325145

CHIHUAHUA

20 CARR: Camargo - Delicias (Cuota)

CLAVE: 08418

RUTA: MEX-045D

AÑO: 2018

LUGAR	ESTACION				CLASIFICACION VEHICULAR EN PORCIENTO													COORDENADAS		
	KM	TE	SC	TDPA	M	A	B	C2	C3	T3S2	T3S3	T3S2R4	OTROS	A	B	C	K'	D	LATITUD	LONGITUD
Caseta de Cobro Saucillo	116.30	2	1	4702	0.0	57.1	4.0	5.6	3.6	21.4	2.6	4.2	1.5	57.1	4.0	38.9	0.088	0.500	28.046417	-105.329309
Caseta de Cobro Saucillo	116.30	2	2	4702	0.0	57.1	4.0	5.6	3.6	21.4	2.6	4.2	1.5	57.1	4.0	38.9	0.088	0.500	28.046417	-105.329309
Delicias	138.00	1	1	9154	0.9	70.6	3.5	10.5	1.4	8.9	1.6	2.3	0.3	71.5	3.5	25.0	0.071	0.538	28.178761	-105.446293
Delicias	138.00	1	2	10658	0.7	74.4	3.1	10.1	1.3	7.0	1.2	1.9	0.3	75.1	3.1	21.8	0.070	0.538	28.178657	-105.446415

21 CARR: Chihuahua - Sacramento (Cuota)

CLAVE: 08015

RUTA: MEX-045D

AÑO: 2018

LUGAR	ESTACION				CLASIFICACION VEHICULAR EN PORCIENTO													COORDENADAS		
	KM	TE	SC	TDPA	M	A	B	C2	C3	T3S2	T3S3	T3S2R4	OTROS	A	B	C	K'	D	LATITUD	LONGITUD
T. C. Chihuahua - El Sueco	18.12	3	1	7523	0.7	76.4	4.0	9.9	1.8	5.7	0.7	0.6	0.2	77.1	4.0	18.9	0.080	0.520	28.769457	-106.170600
T. C. Chihuahua - El Sueco	18.12	3	2	6955	0.7	73.5	3.9	13.0	1.6	6.0	0.4	0.7	0.2	74.2	3.9	21.9	0.117	0.520	28.769437	-106.170796
Francisco Villa	20.00	3	1	5570	0.7	71.4	3.5	13.2	1.9	7.6	0.7	0.7	0.3	72.1	3.5	24.4	0.104	0.547	28.780476	-106.172737
Francisco Villa	20.00	3	2	5855	0.4	77.4	2.9	9.5	1.5	6.7	0.6	0.8	0.2	77.8	2.9	19.3	0.131	0.547	28.780446	-106.172921
T. C. (Chihuahua - El Sueco)	31.30																			

22 CARR: El Sueco - Villa Ahumada (Cuota)

CLAVE: 08420

RUTA: MEX-045D

AÑO: 2018

LUGAR	ESTACION				CLASIFICACION VEHICULAR EN PORCIENTO													COORDENADAS		
	KM	TE	SC	TDPA	M	A	B	C2	C3	T3S2	T3S3	T3S2R4	OTROS	A	B	C	K'	D	LATITUD	LONGITUD
Ent. El Sueco	0.00	3	1	2969	0.6	56.7	5.6	10.1	1.4	21.1	1.7	2.4	0.4	57.3	5.6	37.1	0.083	0.530	29.895213	-106.395466
Ent. El Sueco	0.00	3	2	3344	0.8	57.0	5.3	10.9	1.4	20.2	1.4	2.7	0.3	57.8	5.3	36.9	0.110	0.530	29.894772	-106.395999
Caseta de Cobro Villa Ahumada	82.00	2	1	3164	0.0	67.4	5.0	2.8	2.6	18.6	0.8	1.7	1.1	67.4	5.0	27.6	0.103	0.500	30.437059	-106.521897
Caseta de Cobro Villa Ahumada	82.00	2	2	3164	0.0	67.4	5.0	2.8	2.6	18.6	0.8	1.7	1.1	67.4	5.0	27.6	0.103	0.500	30.437059	-106.521897
Villa Ahumada	83.63																			

23 CARR: Gómez Palacio - Corralitos (Cuota)

CLAVE: 00016

RUTA: MEX-049D

AÑO: 2018

LUGAR	ESTACION				CLASIFICACION VEHICULAR EN PORCIENTO													COORDENADAS		
	KM	TE	SC	TDPA	M	A	B	C2	C3	T3S2	T3S3	T3S2R4	OTROS	A	B	C	K'	D	LATITUD	LONGITUD
T. C. Gómez Palacio - Jiménez (Libre)	38.00																			
T. Izq. Bermejillo	40.10	1	1	2050	1.0	36.9	8.7	8.5	2.6	26.4	5.6	9.7	0.6	37.9	8.7	53.4	0.063	0.503	25.877443	-103.612389
T. Izq. Bermejillo	40.10	1	2	2027	0.9	37.8	8.4	8.6	2.2	26.5	6.1	8.5	1.0	38.7	8.4	52.9	0.067	0.503	25.877467	-103.612584
T. Izq. Bermejillo	40.10	3	1	2008	1.1	40.4	8.3	8.6	2.3	24.1	5.6	8.8	0.8	41.5	8.3	50.2	0.067	0.506	25.896643	-103.611796
T. Izq. Bermejillo	40.10	3	2	2053	0.9	38.2	8.3	8.4	2.2	26.0	6.5	8.8	0.7	39.1	8.3	52.6	0.065	0.506	25.896578	-103.612052
Caseta de Cobro Bermejillo	44.16	2	1	1954	0.2	36.7	8.5	5.8	1.8	29.1	6.1	9.9	1.9	36.9	8.5	54.6	0.079	0.500	25.923705	-103.622079

CHIHUAHUA

23 CARR: Gómez Palacio - Corralitos (Cuota)

CLAVE: 00016

RUTA: MEX-049D

AÑO: 2018

LUGAR	ESTACION				CLASIFICACION VEHICULAR EN PORCIENTO										COORDENADAS					
	KM	TE	SC	TDPA	M	A	B	C2	C3	T3S2	T3S3	T3S2R4	OTROS	A	B	C	K'	D	LATITUD	LONGITUD
Caseta de Cobro Bermejillo	44.16	2	2	1954	0.2	36.7	8.5	5.8	1.8	29.1	6.1	9.9	1.9	36.9	8.5	54.6	0.079	0.500	25.923705	-103.622079
Caseta de Cobro Ceballos	128.80	2	1	1907	0.2	36.6	8.6	5.7	1.7	29.0	6.2	10.1	1.9	36.8	8.6	54.6	0.079	0.500	26.586801	-104.057535
Caseta de Cobro Ceballos	128.80	2	2	1907	0.2	36.6	8.6	5.7	1.7	29.0	6.2	10.1	1.9	36.8	8.6	54.6	0.079	0.500	26.586801	-104.057535
Lim. Edos. Term. Dgo. Ppia. Chih.	158.00																			
T. C. Gómez Palacio - Jiménez (Libre)	226.50	1	1	1898	1.5	50.0	7.7	8.3	1.8	19.4	4.0	5.8	1.5	51.5	7.7	40.8	0.094	0.525	27.093530	-104.857443
T. C. Gómez Palacio - Jiménez (Libre)	226.50	1	2	2101	1.4	45.6	8.5	9.3	2.0	21.4	4.4	5.9	1.5	47.0	8.5	44.5	0.093	0.525	27.093423	-104.857772

24 CARR: Jiménez - Camargo (Cuota)

CLAVE: 08418

RUTA: MEX-045D

AÑO: 2018

LUGAR	ESTACION				CLASIFICACION VEHICULAR EN PORCIENTO										COORDENADAS					
	KM	TE	SC	TDPA	M	A	B	C2	C3	T3S2	T3S3	T3S2R4	OTROS	A	B	C	K'	D	LATITUD	LONGITUD
Jiménez	0.00	3	1	3174	1.4	57.1	5.2	9.2	1.9	16.4	3.4	4.8	0.6	58.5	5.2	36.3	0.069	0.564	27.150533	-104.930113
Jiménez	0.00	3	2	4099	1.9	56.5	5.8	8.7	1.4	17.8	2.6	4.6	0.7	58.4	5.8	35.8	0.070	0.564	27.150534	-104.930254
Caseta de Cobro Camargo	11.00	2	1	2673	0.0	41.4	5.9	4.9	4.2	31.4	3.6	6.5	2.1	41.4	5.9	52.7	0.085	0.500	27.244960	-104.933154
Caseta de Cobro Camargo	11.00	2	2	2673	0.0	41.4	5.9	4.9	4.2	31.4	3.6	6.5	2.1	41.4	5.9	52.7	0.085	0.500	27.244960	-104.933154
Camargo	68.98	1	1	3517	0.7	49.7	6.1	10.8	2.2	20.3	3.5	6.2	0.5	50.4	6.1	43.5	0.073	0.525	27.654256	-105.147890
Camargo	68.98	1	2	3887	1.1	55.8	5.5	11.8	2.1	15.5	2.5	4.9	0.8	56.9	5.5	37.6	0.080	0.525	27.654195	-105.147993

25 CARR: Libramiento Oriente Chihuahua (Cuota)

CLAVE:

RUTA: MEX-045D

AÑO: 2018

LUGAR	ESTACION				CLASIFICACION VEHICULAR EN PORCIENTO										COORDENADAS					
	KM	TE	SC	TDPA	M	A	B	C2	C3	T3S2	T3S3	T3S2R4	OTROS	A	B	C	K'	D	LATITUD	LONGITUD
T. C. Delicias - Chihuahua	0.00	3	0	2570	1.4	38.8	4.1	11.0	3.0	27.7	5.1	7.8	1.1	40.2	4.1	55.7	0.061	0.516	28.596174	-105.949146
T. C. Chihuahua - Ojinaga	22.00	1	0	3750	1.8	56.7	3.3	8.1	2.6	18.5	3.1	4.9	1.0	58.5	3.3	38.2	0.071	0.505	28.736597	-105.980164
T. C. Chihuahua - Ojinaga	22.00	3	0	3285	2.2	51.9	3.4	14.5	2.6	17.0	2.8	4.7	0.9	54.1	3.4	42.5	0.066	0.501	28.742608	-105.993142
T. C. Chihuahua - Sacramento (Cuota)	42.20																			

26 CARR: Ahumada - Ricardo Flores Magón

CLAVE: 08804

RUTA: CHIH

AÑO: 2018

LUGAR	ESTACION				CLASIFICACION VEHICULAR EN PORCIENTO										COORDENADAS					
	KM	TE	SC	TDPA	M	A	B	C2	C3	T3S2	T3S3	T3S2R4	OTROS	A	B	C	K'	D	LATITUD	LONGITUD
Ahumada	0.00	3	0	1712	1.5	62.4	4.6	20.0	2.1	5.6	1.5	2.2	0.1	63.9	4.6	31.5	0.077	0.517	30.615815	-106.525926
Ricardo Flores Magón	96.00	1	0	2076	4.6	69.4	3.2	13.3	2.1	4.9	2.1	0.4	0.0	74.0	3.2	22.8	0.072	0.517	29.958030	-106.952075

CHIHUAHUA

27 CARR: Cuauhtémoc - Buenaventura

CLAVE: 08015

RUTA: CHIH

AÑO: 2018

LUGAR	ESTACION				CLASIFICACION VEHICULAR EN PORCIENTO										COORDENADAS					
	KM	TE	SC	TDPA	M	A	B	C2	C3	T3S2	T3S3	T3S2R4	OTROS	A	B	C	K'	D	LATITUD	LONGITUD
T. C. Chihuahua - Madera	0.00	3	1	10152	0.6	84.9	0.5	10.5	1.0	1.4	0.9	0.0	0.2	85.5	0.5	14.0	0.092	0.524	28.405976	-106.895678
T. C. Chihuahua - Madera	0.00	3	2	11160	1.1	85.5	0.5	9.3	0.8	1.2	1.2	0.1	0.3	86.6	0.5	12.9	0.100	0.524	28.406016	-106.895855
Álvaro Obregón	42.00	3	1	3624	0.3	73.0	1.2	17.8	2.3	3.2	1.3	0.8	0.1	73.3	1.2	25.5	0.076	0.517	28.752800	-106.917942
Álvaro Obregón	42.00	3	2	3386	0.8	74.6	1.2	15.1	2.4	3.6	1.5	0.5	0.3	75.4	1.2	23.4	0.075	0.517	28.752654	-106.917936
Bachiniva	77.50	1	0	3209	1.5	75.6	1.3	17.6	2.1	1.0	0.6	0.2	0.1	77.1	1.3	21.6	0.086	0.501	28.772111	-107.249090
T. Der. Namiquipa	112.06	3	0	3402	0.8	76.6	0.8	16.6	2.4	1.2	1.0	0.5	0.1	77.4	0.8	21.8	0.076	0.506	29.026736	-107.451560
T. Izq. Madera	150.50	3	0	1194	0.7	74.7	2.1	16.3	3.9	1.4	0.9	0.0	0.0	75.4	2.1	22.5	0.095	0.504	29.268315	-107.709236
Buenaventura	253.30	1	0	828	1.8	67.4	2.1	21.5	3.1	2.7	1.3	0.0	0.1	69.2	2.1	28.7	0.082	0.514	29.839896	-107.485180

28 CARR: Delicias - Saucillo

CLAVE: 08007

RUTA: CHIH-007

AÑO: 2018

LUGAR	ESTACION				CLASIFICACION VEHICULAR EN PORCIENTO										COORDENADAS					
	KM	TE	SC	TDPA	M	A	B	C2	C3	T3S2	T3S3	T3S2R4	OTROS	A	B	C	K'	D	LATITUD	LONGITUD
Delicias	0.00	3	0	4546	13.0	72.6	1.0	10.4	1.6	0.9	0.3	0.1	0.1	85.6	1.0	13.4	0.097	0.504	28.194986	-105.426755
Las Varas	17.00	1	0	1873	5.3	75.8	1.0	16.4	1.1	0.3	0.1	0.0	0.0	81.1	1.0	17.9	0.105	0.500	28.165776	-105.340944
Saucillo	33.00	1	0	5795	4.0	78.9	1.1	12.3	1.2	1.9	0.5	0.0	0.1	82.9	1.1	16.0	0.070	0.504	28.046476	-105.299998

29 CARR: Ent. Peña Blanca - Ent. La Concha

CLAVE: 08493

RUTA: CHIH

AÑO: 2018

LUGAR	ESTACION				CLASIFICACION VEHICULAR EN PORCIENTO										COORDENADAS					
	KM	TE	SC	TDPA	M	A	B	C2	C3	T3S2	T3S3	T3S2R4	OTROS	A	B	C	K'	D	LATITUD	LONGITUD
T. C. Cuauhtémoc - Buenaventura	0.00	3	0	822	1.4	73.7	1.4	17.7	2.8	1.9	1.1	0.0	0.0	75.1	1.4	23.5	0.082	0.508	29.262833	-107.710676
T. C. Chihuahua - Madera	17.00	1	0	388	1.8	65.6	1.1	19.8	3.2	3.9	3.8	0.2	0.6	67.4	1.1	31.5	0.090	0.509	29.122099	-107.905885

30 CARR: Ent. Puerto Justo - Ent. Guacho chic

CLAVE: 08044

RUTA: CHIH

AÑO: 2018

LUGAR	ESTACION				CLASIFICACION VEHICULAR EN PORCIENTO										COORDENADAS					
	KM	TE	SC	TDPA	M	A	B	C2	C3	T3S2	T3S3	T3S2R4	OTROS	A	B	C	K'	D	LATITUD	LONGITUD
T. C. Hidalgo del Parral - Pto. Sabinal	0.00	3	0	186	6.1	72.0	0.9	19.2	0.9	0.4	0.2	0.0	0.3	78.1	0.9	21.0	0.167	0.536	26.813694	-106.017248
Guacho chic	130.00																			

CHIHUAHUA

31 CARR: Jiménez - Camargo

CLAVE: 08021

RUTA: CHIH-049

AÑO: 2018

LUGAR	ESTACION				CLASIFICACION VEHICULAR EN PORCIENTO													COORDENADAS		
	KM	TE	SC	TDPA	M	A	B	C2	C3	T3S2	T3S3	T3S2R4	OTROS	A	B	C	K'	D	LATITUD	LONGITUD
Jiménez	0.00	3	0	3048	1.8	73.5	1.5	14.9	2.5	4.3	1.2	0.2	0.1	75.3	1.5	23.2	0.128	0.505	27.156729	-104.888666
T. Der. Ojinaga	65.80	3	0	2142	0.9	61.9	1.8	20.5	3.5	8.9	2.1	0.2	0.2	62.8	1.8	35.4	0.069	0.507	27.650577	-105.081387
T. C. Jiménez - Chihuahua (Cuota)	78.20	1	0	2617	1.4	62.0	1.8	21.1	4.0	7.6	1.7	0.2	0.2	63.4	1.8	34.8	0.069	0.503	27.678813	-105.140124

32 CARR: Lázaro Cárdenas - Ent. Colonia San José

CLAVE: 08004

RUTA: CHIH-004

AÑO: 2018

LUGAR	ESTACION				CLASIFICACION VEHICULAR EN PORCIENTO													COORDENADAS		
	KM	TE	SC	TDPA	M	A	B	C2	C3	T3S2	T3S3	T3S2R4	OTROS	A	B	C	K'	D	LATITUD	LONGITUD
T. C. Jiménez - Chihuahua	0.00	3	1	2734	3.3	81.2	1.5	11.0	0.4	0.4	0.5	0.9	0.8	84.5	1.5	14.0	0.102	0.568	28.388117	-105.627554
T. C. Jiménez - Chihuahua	0.00	3	2	3600	2.6	84.3	1.7	8.5	0.5	0.4	0.5	0.8	0.7	86.9	1.7	11.4	0.090	0.568	28.388171	-105.627597
T. C. Meoqui - Julimes	16.00	1	0	1987	1.7	82.8	2.1	11.2	1.0	0.9	0.2	0.0	0.1	84.5	2.1	13.4	0.150	0.504	28.387353	-105.447496

33 CARR: Libramiento de Hidalgo del Parral

CLAVE: 08221

RUTA: CHIH

AÑO: 2018

LUGAR	ESTACION				CLASIFICACION VEHICULAR EN PORCIENTO													COORDENADAS		
	KM	TE	SC	TDPA	M	A	B	C2	C3	T3S2	T3S3	T3S2R4	OTROS	A	B	C	K'	D	LATITUD	LONGITUD
T. C. Hidalgo del Parral - Santa Bárbara	0.00																			
T. C. Ent. La Zarca - Hidalgo del Parral	8.00	3	1	4510	2.4	86.9	0.8	7.8	0.8	0.7	0.4	0.1	0.1	89.3	0.8	9.9	0.091	0.500	26.923449	-105.643265
T. C. Ent. La Zarca - Hidalgo del Parral	8.00	3	2	4510	2.5	85.7	1.0	8.5	0.9	0.8	0.4	0.1	0.1	88.2	1.0	10.8	0.085	0.500	26.923527	-105.643337
T. C. Hidalgo del Parral - Jiménez	10.00																			

34 CARR: Libramiento de Jiménez

CLAVE: 08047

RUTA: CHIH

AÑO: 2018

LUGAR	ESTACION				CLASIFICACION VEHICULAR EN PORCIENTO													COORDENADAS		
	KM	TE	SC	TDPA	M	A	B	C2	C3	T3S2	T3S3	T3S2R4	OTROS	A	B	C	K'	D	LATITUD	LONGITUD
T. C. Gómez Palacio - Jiménez	0.00	3	1	5387	1.6	60.6	3.9	11.0	1.9	13.4	3.5	3.4	0.7	62.2	3.9	33.9	0.080	0.527	27.133869	-104.909656
T. C. Gómez Palacio - Jiménez	0.00	3	2	6008	1.7	65.8	3.1	10.5	1.9	10.1	2.7	3.3	0.9	67.5	3.1	29.4	0.079	0.527	27.133777	-104.909782
T. C. Jiménez - Chihuahua (Cuota)	3.40	1	1	4297	1.8	56.0	5.4	11.7	1.5	14.7	3.8	4.2	0.9	57.8	5.4	36.8	0.074	0.505	27.141308	-104.921981
T. C. Jiménez - Chihuahua (Cuota)	3.40	1	2	4204	0.4	60.1	4.6	8.1	1.9	16.0	3.4	4.6	0.9	60.5	4.6	34.9	0.074	0.505	27.141237	-104.922012

35 CARR: Meoqui - Julimes

CLAVE: 08005

RUTA: CHIH-005

AÑO: 2018

LUGAR	ESTACION				CLASIFICACION VEHICULAR EN PORCIENTO													COORDENADAS		
	KM	TE	SC	TDPA	M	A	B	C2	C3	T3S2	T3S3	T3S2R4	OTROS	A	B	C	K'	D	LATITUD	LONGITUD
Meoqui	0.00	3	0	5398	3.7	80.7	0.7	13.1	1.0	0.5	0.2	0.0	0.1	84.4	0.7	14.9	0.092	0.508	28.285269	-105.461900

CHIHUAHUA

35 CARR: Mecoqui - Julimes

CLAVE: 08005

RUTA: CHIH-005

AÑO: 2018

LUGAR	ESTACION				CLASIFICACION VEHICULAR EN PORCIENTO										COORDENADAS					
	KM	TE	SC	TDPA	M	A	B	C2	C3	T3S2	T3S3	T3S2R4	OTROS	A	B	C	K'	D	LATITUD	LONGITUD
Loreto	8.00	3	0	4007	3.8	79.5	1.0	13.7	1.0	0.6	0.3	0.0	0.1	83.3	1.0	15.7	0.090	0.523	28.321963	-105.433544
Regina	15.40	3	0	3248	3.4	81.3	1.4	12.7	0.8	0.3	0.1	0.0	0.0	84.7	1.4	13.9	0.144	0.506	28.421327	-105.454332
Julimes	23.00	1	0	3538	4.3	80.3	1.6	12.1	1.1	0.4	0.2	0.0	0.0	84.6	1.6	13.8	0.085	0.527	28.427477	-105.441382

36 CARR: Ramal a San Pedro Creel

CLAVE: 08812

RUTA: CHIH-025

AÑO: 2018

LUGAR	ESTACION				CLASIFICACION VEHICULAR EN PORCIENTO										COORDENADAS					
	KM	TE	SC	TDPA	M	A	B	C2	C3	T3S2	T3S3	T3S2R4	OTROS	A	B	C	K'	D	LATITUD	LONGITUD
T. C. La Junta - Yepachi	0.00	3	0	2329	1.0	73.1	2.7	17.6	2.1	2.0	1.1	0.1	0.3	74.1	2.7	23.2	0.097	0.502	28.385256	-107.441782
San Juanito	58.00	3	0	2000	1.0	75.1	2.7	14.7	1.9	2.7	1.4	0.0	0.5	76.1	2.7	21.2	0.086	0.536	27.962190	-107.608698
San Pedro Creel	85.00	1	0	1526	1.5	76.6	3.1	13.0	2.6	1.6	1.1	0.2	0.3	78.1	3.1	18.8	0.093	0.543	27.768402	-107.638304

37 CARR: Samachique - Batopilas

CLAVE:

RUTA: CHIH

AÑO: 2018

LUGAR	ESTACION				CLASIFICACION VEHICULAR EN PORCIENTO										COORDENADAS					
	KM	TE	SC	TDPA	M	A	B	C2	C3	T3S2	T3S3	T3S2R4	OTROS	A	B	C	K'	D	LATITUD	LONGITUD
Samachique	0.00	3	0	74	4.7	71.9	1.2	19.8	1.8	0.6	0.0	0.0	0.0	76.6	1.2	22.2	0.176	0.508	27.286787	-107.530504
Batopilas	61.00																			

38 CARR: San Juanito - Ent. Basaseachi

CLAVE: 08045

RUTA: CHIH

AÑO: 2018

LUGAR	ESTACION				CLASIFICACION VEHICULAR EN PORCIENTO										COORDENADAS					
	KM	TE	SC	TDPA	M	A	B	C2	C3	T3S2	T3S3	T3S2R4	OTROS	A	B	C	K'	D	LATITUD	LONGITUD
San Juanito	0.00	3	0	661	1.4	64.3	1.0	31.0	1.6	0.1	0.4	0.0	0.2	65.7	1.0	33.3	0.135	0.510	27.972387	-107.616614
T. C. La Junta - Yécora	84.00	1	0	528	2.5	67.6	1.4	22.9	4.1	0.6	0.6	0.0	0.3	70.1	1.4	28.5	0.098	0.507	28.189531	-108.172678

39 CARR: San Pedro Creel - Guachochi

CLAVE:

RUTA: CHIH-025

AÑO: 2018

LUGAR	ESTACION				CLASIFICACION VEHICULAR EN PORCIENTO										COORDENADAS					
	KM	TE	SC	TDPA	M	A	B	C2	C3	T3S2	T3S3	T3S2R4	OTROS	A	B	C	K'	D	LATITUD	LONGITUD
San Pedro Creel	90.30																			
Samachique	164.30	1	0	135	3.0	65.5	0.5	30.1	0.5	0.0	0.4	0.0	0.0	68.5	0.5	31.0	0.193	0.507	27.298804	-107.526876
Samachique	164.30	3	0	151	0.4	64.9	0.0	32.9	0.2	0.2	1.4	0.0	0.0	65.3	0.0	34.7	0.132	0.513	27.295651	-107.523257
Guachochi	246.00																			

CHIHUAHUA

40 CARR: T. C. (Jiménez - Camargo) - Ojinaga

CLAVE: 08009

RUTA: CHIH-018

AÑO: 2018

LUGAR	ESTACION				CLASIFICACION VEHICULAR EN PORCIENTO													COORDENADAS		
	KM	TE	SC	TDPA	M	A	B	C2	C3	T3S2	T3S3	T3S2R4	OTROS	A	B	C	K'	D	LATITUD	LONGITUD
T. C. Jimenez - Camargo	0.00	3	1	467	0.6	67.8	0.9	18.5	1.1	6.7	3.0	1.1	0.3	68.4	0.9	30.7	0.094	0.517	27.658181	-105.059107
T. C. Jimenez - Camargo	0.00	3	2	437	1.1	62.5	0.9	22.1	1.0	7.1	3.4	1.6	0.3	63.6	0.9	35.5	0.119	0.517	27.658205	-105.059129
T. Der. La Perla	97.00	3	0	494	1.4	54.1	1.7	21.8	2.9	9.6	5.2	2.3	1.0	55.5	1.7	42.8	0.085	0.506	28.308098	-104.573303
T. Der. Majjoma	174.20	3	0	376	0.8	61.2	1.5	28.7	3.4	2.7	1.6	0.0	0.1	62.0	1.5	36.5	0.098	0.503	28.939879	-104.482323
T. Der. Manuel Benavides	218.00	3	0	1812	0.5	67.8	1.6	24.0	2.8	2.1	0.8	0.2	0.2	68.3	1.6	30.1	0.088	0.508	29.325653	-104.396164
Ojinaga	247.00	1	0	2141	0.4	71.3	1.3	23.1	2.3	1.2	0.2	0.1	0.1	71.7	1.3	27.0	0.164	0.503	29.517186	-104.422572

41 CARR: T. Julimes - La Boquilla

CLAVE: 08009

RUTA: CHIH-018

AÑO: 2018

LUGAR	ESTACION				CLASIFICACION VEHICULAR EN PORCIENTO													COORDENADAS		
	KM	TE	SC	TDPA	M	A	B	C2	C3	T3S2	T3S3	T3S2R4	OTROS	A	B	C	K'	D	LATITUD	LONGITUD
T. C. Meoqui - Julimes	0.00	3	0	1412	6.4	74.7	2.1	14.1	1.9	0.6	0.2	0.0	0.0	81.1	2.1	16.8	0.090	0.501	28.427677	-105.456310
La Boquilla	7.50																			

42 CARR: Ent. El Álamo - Ent. Ricardo Flores Magón (Cuota)

CLAVE: 08046

RUTA: CHIH-D

AÑO: 2018

LUGAR	ESTACION				CLASIFICACION VEHICULAR EN PORCIENTO													COORDENADAS		
	KM	TE	SC	TDPA	M	A	B	C2	C3	T3S2	T3S3	T3S2R4	OTROS	A	B	C	K'	D	LATITUD	LONGITUD
T. C. Chihuahua - El Sueco	0.00	3	0	1881	1.8	42.7	4.6	10.9	3.2	22.6	5.7	7.5	1.0	44.5	4.6	50.9	0.071	0.501	29.486855	-106.410965
T. C. El Sueco - Janos	75.00																			

43 CARR: Ricardo Flores Magón - Galeana (Cuota)

CLAVE: 08019

RUTA: CHIH-D

AÑO: 2018

LUGAR	ESTACION				CLASIFICACION VEHICULAR EN PORCIENTO													COORDENADAS		
	KM	TE	SC	TDPA	M	A	B	C2	C3	T3S2	T3S3	T3S2R4	OTROS	A	B	C	K'	D	LATITUD	LONGITUD
T. C. El Sueco - Janos	0.00	3	0	2318	1.7	49.4	3.4	17.0	2.9	16.3	4.1	4.2	1.0	51.1	3.4	45.5	0.071	0.507	29.968161	-107.066835
Galeana	58.00	1	0	2368	2.1	45.9	3.4	16.3	3.1	18.5	4.7	4.9	1.1	48.0	3.4	48.6	0.072	0.503	30.175922	-107.619242

44 CARR: Samalayuca - San Jerónimo (Cuota)

CLAVE: 08019

RUTA: CHIH-D

AÑO: 2018

LUGAR	ESTACION				CLASIFICACION VEHICULAR EN PORCIENTO													COORDENADAS		
	KM	TE	SC	TDPA	M	A	B	C2	C3	T3S2	T3S3	T3S2R4	OTROS	A	B	C	K'	D	LATITUD	LONGITUD
T. C. El Sueco - Cd. Juárez	0.00	3	0	1181	1.1	75.7	0.3	14.8	1.9	5.3	0.5	0.3	0.1	76.8	0.3	22.9	0.097	0.545	31.452278	-106.473859
San Jerónimo	28.10																			



CHIHUAHUA

45 CARR: T. C. (Chihuahua - Ojinaga) - La Mula (Cuota)

CLAVE: 08170

RUTA: CHIH-D

AÑO: 2018

LUGAR	ESTACION				CLASIFICACION VEHICULAR EN PORCIENTO										COORDENADAS					
	KM	TE	SC	TDPA	M	A	B	C2	C3	T3S2	T3S3	T3S2R4	OTROS	A	B	C	K'	D	LATITUD	LONGITUD
T. C. Chihuahua - Ojinaga	0.00	3	0	1315	0.6	68.6	2.0	21.4	2.6	3.3	0.9	0.4	0.2	69.2	2.0	28.8	0.086	0.507	29.146063	-105.485960
La Mula	110.00	1	0	1145	0.4	71.3	2.0	20.7	2.1	2.2	0.8	0.3	0.2	71.7	2.0	26.3	0.093	0.532	29.180575	-104.473104

46 CARR: Chihuahua - Madera

CLAVE: 08038

RUTA: CHIH-D-MEX-001-CHIH

AÑO: 2018

LUGAR	ESTACION				CLASIFICACION VEHICULAR EN PORCIENTO										COORDENADAS					
	KM	TE	SC	TDPA	M	A	B	C2	C3	T3S2	T3S3	T3S2R4	OTROS	A	B	C	K'	D	LATITUD	LONGITUD
Chihuahua	0.00																			
T. Der. Presa Chihuahua	10.50	1	1	10149	0.8	76.8	2.3	13.2	1.9	3.0	1.3	0.3	0.4	77.6	2.3	20.1	0.084	0.507	28.570160	-106.140263
T. Der. Presa Chihuahua	10.50	1	2	10420	0.7	78.2	2.0	13.0	1.8	2.7	1.2	0.2	0.2	78.9	2.0	19.1	0.125	0.507	28.570049	-106.140206
T. Der. Presa Chihuahua	10.50	3	1	8169	0.7	76.1	2.3	13.7	1.9	3.4	1.4	0.3	0.2	76.8	2.3	20.9	0.092	0.507	28.565151	-106.146905
T. Der. Presa Chihuahua	10.50	3	2	8407	0.6	77.2	2.2	13.2	1.8	3.0	1.4	0.3	0.3	77.8	2.2	20.0	0.133	0.507	28.564929	-106.146930
T. Izq. Hidalgo del Parral (Vía Corta)	36.20	1	1	5963	0.7	76.9	2.7	12.9	1.3	3.4	1.4	0.3	0.4	77.6	2.7	19.7	0.099	0.515	28.364766	-106.257950
T. Izq. Hidalgo del Parral (Vía Corta)	36.20	1	2	6321	0.7	77.2	2.6	12.8	1.2	3.2	1.2	0.5	0.6	77.9	2.6	19.5	0.139	0.515	28.364611	-106.257950
T. Izq. Hidalgo del Parral (Vía Corta)	36.20	3	1	4852	0.5	73.7	2.5	13.7	1.4	4.9	2.0	0.8	0.5	74.2	2.5	23.3	0.094	0.505	28.358748	-106.271062
T. Izq. Hidalgo del Parral (Vía Corta)	36.20	3	2	4753	0.4	74.7	2.3	13.2	1.8	4.5	2.0	0.6	0.5	75.1	2.3	22.6	0.100	0.505	28.358672	-106.271103
Cuahtémoc	103.50	1	1	5035	1.0	79.3	3.1	11.4	1.4	2.3	0.9	0.3	0.3	80.3	3.1	16.6	0.071	0.501	28.400440	-106.824824
Cuahtémoc	103.50	1	2	5048	1.2	77.3	3.2	12.5	1.5	2.6	1.1	0.3	0.3	78.5	3.2	18.3	0.078	0.501	28.400333	-106.824872
Cuahtémoc	103.50	3	1	10729	1.3	83.6	0.7	13.5	0.3	0.3	0.3	0.0	0.0	84.9	0.7	14.4	0.073	0.523	28.399728	-106.879957
Cuahtémoc	103.50	3	2	11773	1.1	82.6	0.8	14.6	0.3	0.3	0.3	0.0	0.0	83.7	0.8	15.5	0.079	0.523	28.399705	-106.879982
T. Der. Álvaro Obregón	107.10	3	1	6384	1.1	80.3	1.0	10.8	1.7	2.4	1.8	0.4	0.5	81.4	1.0	17.6	0.070	0.507	28.399157	-106.925784
T. Der. Álvaro Obregón	107.10	3	2	6564	0.7	79.4	1.1	11.7	1.8	2.4	1.8	0.4	0.7	80.1	1.1	18.8	0.068	0.507	28.399050	-106.925762
T. Izq. Yepachi	150.80	1	1	3425	0.6	76.4	2.0	15.3	1.5	2.5	1.4	0.1	0.2	77.0	2.0	21.0	0.079	0.503	28.469313	-107.294840
T. Izq. Yepachi	150.80	1	2	3378	0.4	76.0	2.1	15.8	1.6	2.5	1.3	0.1	0.2	76.4	2.1	21.5	0.078	0.503	28.469213	-107.294886
Guerrero	169.80	3	0	2765	1.3	75.4	1.4	17.7	2.1	1.2	0.9	0.0	0.0	76.7	1.4	21.9	0.082	0.504	28.554118	-107.498064
T. Der. Peña Blanca	261.30	1	0	1026	1.1	70.9	2.1	18.7	2.2	2.0	2.7	0.0	0.3	72.0	2.1	25.9	0.080	0.510	29.117608	-107.901912
T. Der. Peña Blanca	261.30	3	0	1145	0.7	74.4	1.8	15.3	2.8	2.2	2.5	0.2	0.1	75.1	1.8	23.1	0.072	0.513	29.120050	-107.907890
Madera	279.00																			

47 CARR: Ent. Agua Caliente - El Terrero

CLAVE: 08170

RUTA: CHIH-MEX

AÑO: 2018

LUGAR	ESTACION				CLASIFICACION VEHICULAR EN PORCIENTO										COORDENADAS					
	KM	TE	SC	TDPA	M	A	B	C2	C3	T3S2	T3S3	T3S2R4	OTROS	A	B	C	K'	D	LATITUD	LONGITUD
T. C. Chihuahua - El Sueco	0.00	3	0	694	1.3	63.5	1.0	21.3	5.9	4.8	1.9	0.1	0.2	64.8	1.0	34.2	0.076	0.516	29.095971	-106.344274
Nuevas Delicias	22.00	1	0	705	1.1	62.1	0.7	24.6	4.8	4.6	1.7	0.1	0.3	63.2	0.7	36.1	0.094	0.501	29.089027	-106.469086

CHIHUAHUA

47 CARR: Ent. Agua Caliente - El Terrero

CLAVE: 08170

RUTA: CHIH-MEX

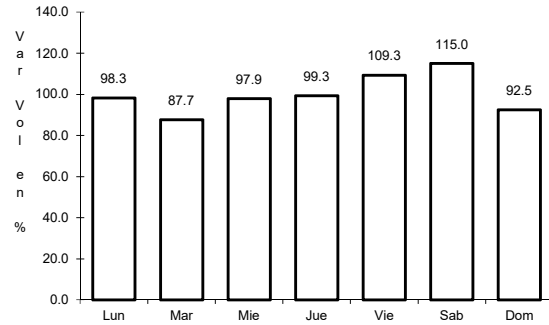
AÑO: 2018

L U G A R	E S T A C I O N				C L A S I F I C A C I O N V E H I C U L A R E N P O R C I E N T O														C O O R D E N A D A S	
	KM	TE	SC	TDPA	M	A	B	C2	C3	T3S2	T3S3	T3S2R4	OTROS	A	B	C	K'	D	LATITUD	LONGITUD
El Terrero	120.00	1	0	1241	1.0	77.6	0.7	16.9	2.2	0.9	0.6	0.0	0.1	78.6	0.7	20.7	0.089	0.501	29.177138	-107.373373

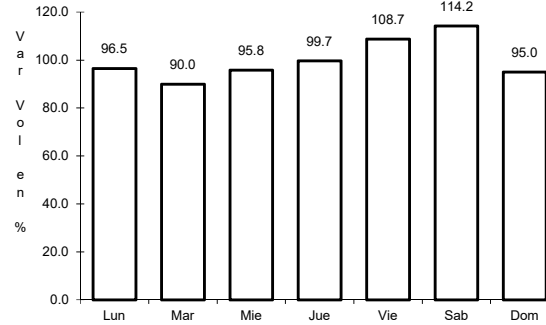
1 CARR: Cd. Juárez - Janos

CLAVE: 08041

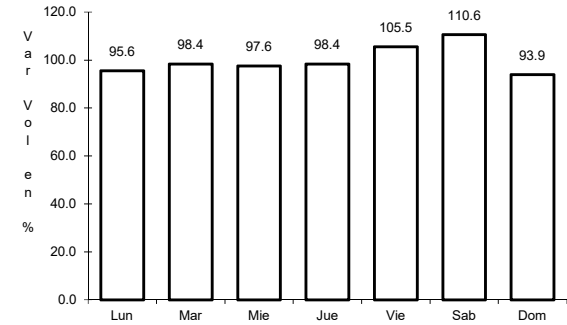
RUTA: MEX-002



Km: 0.00      Tipo: 3      Sent: 1



Km: 0.00      Tipo: 3      Sent: 2

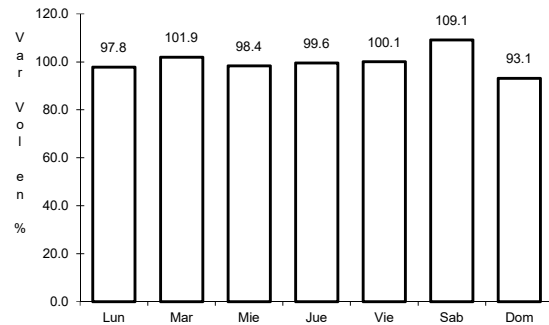


Km: 205.00      Tipo: 1      Sent: 0

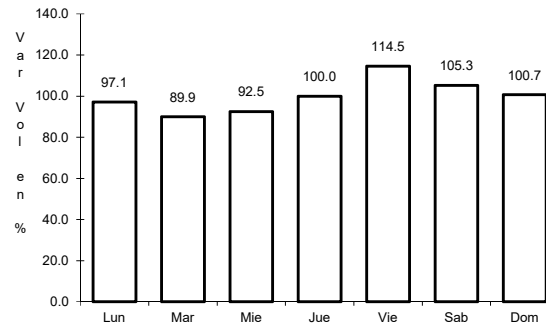
2 CARR: Chihuahua - El Succo

CLAVE: 08419

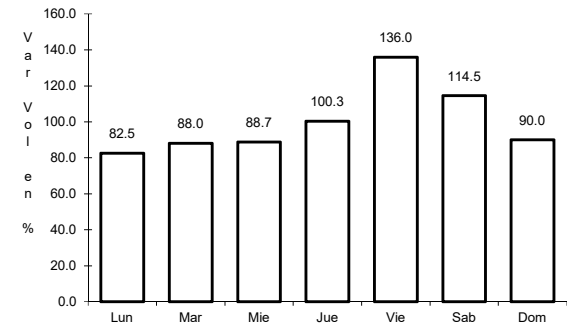
RUTA: MEX-045



Km: 24.00      Tipo: 1      Sent: 0



Km: 155.87      Tipo: 1      Sent: 1

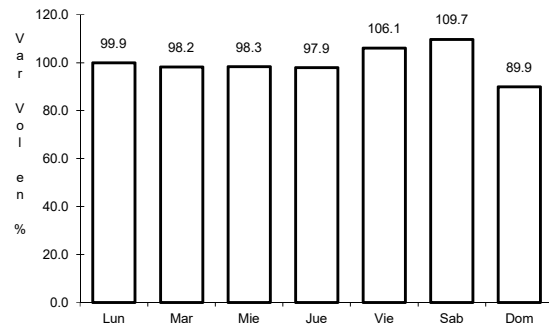


Km: 155.87      Tipo: 1      Sent: 2

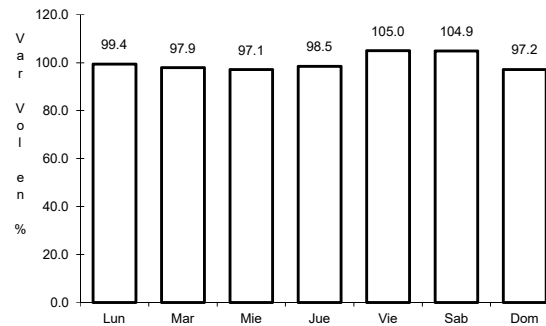
3 CARR: Chihuahua - Ojinaga

CLAVE: 08042

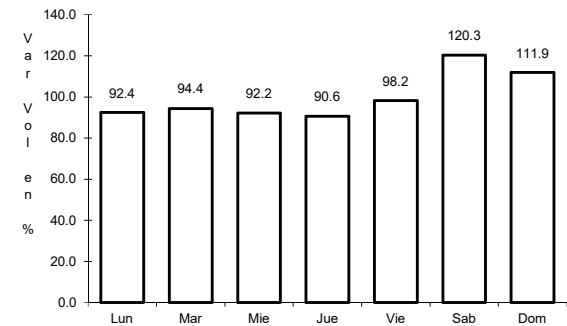
RUTA: MEX-016



Km: 6.50      Tipo: 1      Sent: 1



Km: 6.50      Tipo: 1      Sent: 2

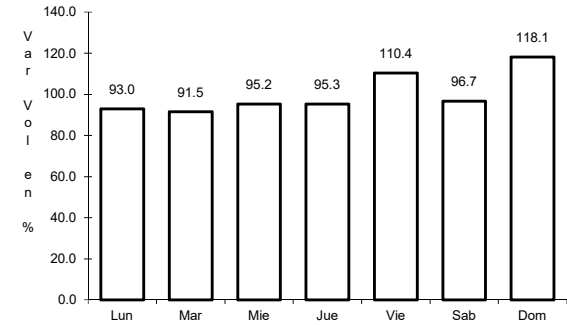
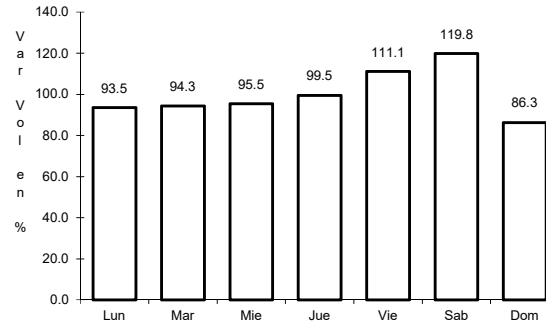
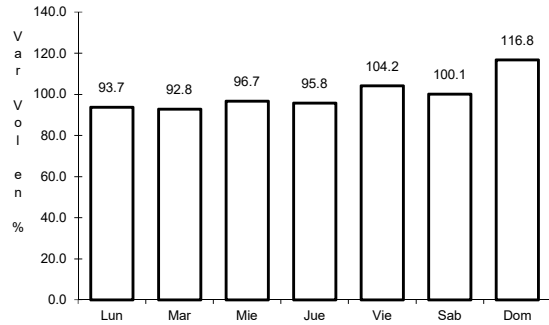


Km: 224.00      Tipo: 1      Sent: 0

4 CARR: Delicias - Chihuahua (Libre)

CLAVE: 08418

ruta: MEX-045



Km: 166.87 Tipo: 1 Sent: 1

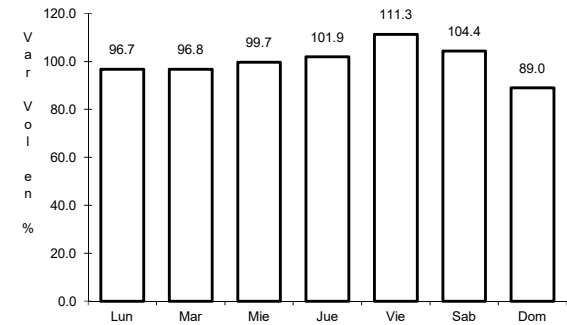
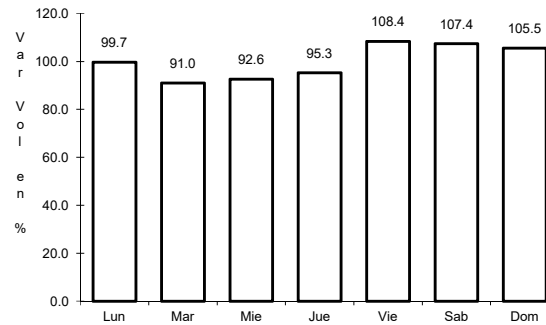
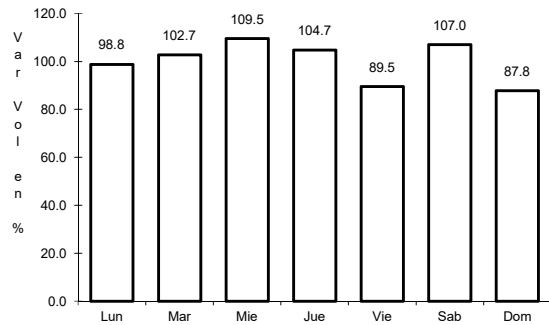
Km: 166.87 Tipo: 1 Sent: 2

Km: 210.00 Tipo: 1 Sent: 1

5 CARR: El Sueco - Janos

CLAVE: 08037

ruta: MEX-010



Km: 0.00 Tipo: 3 Sent: 0

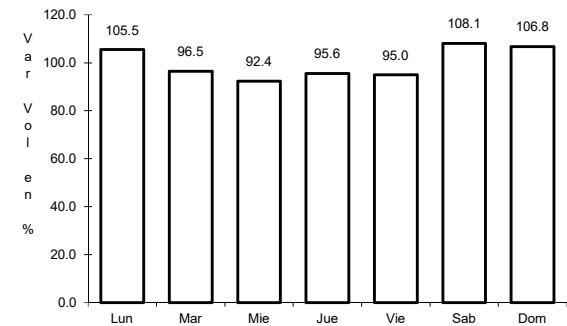
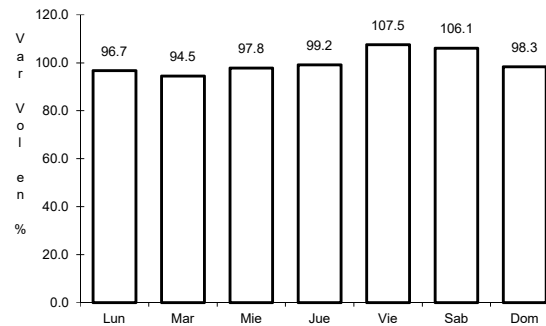
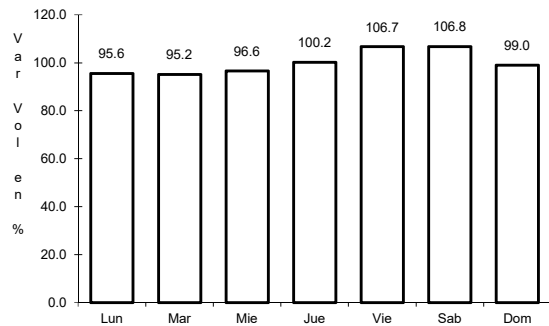
Km: 114.00 Tipo: 1 Sent: 0

Km: 257.00 Tipo: 1 Sent: 0

6 CARR: Ent. Ciudad Camargo - Saucillo

CLAVE: 08417

ruta: MEX-045



Km: 0.00 Tipo: 3 Sent: 0

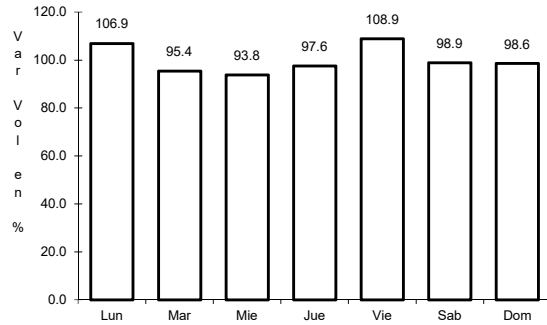
Km: 20.92 Tipo: 3 Sent: 0

Km: 42.52 Tipo: 1 Sent: 0

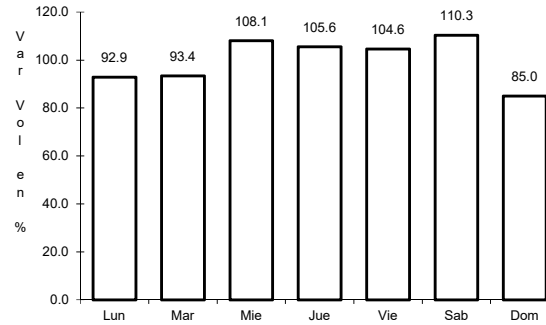
7 CARR: Ent. La Zarca - Hidalgo del Parral

CLAVE: 00488

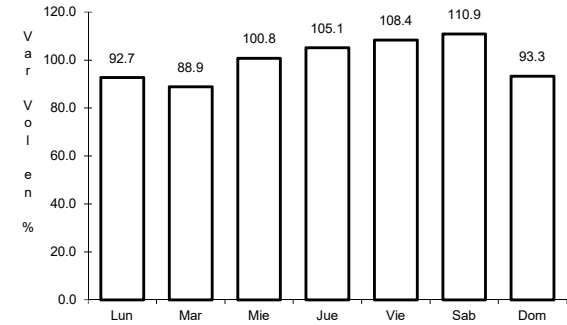
ruta: MEX-045



Km: 0.00 Tipo: 3 Sent: 0



Km: 92.35 Tipo: 3 Sent: 0

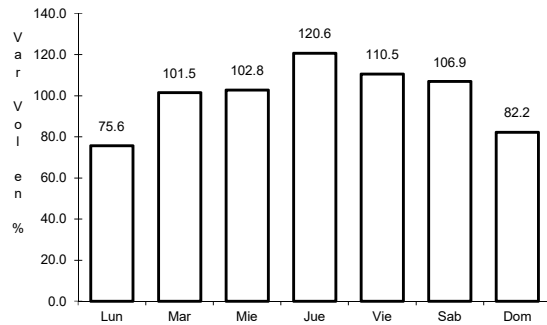


Km: 171.00 Tipo: 1 Sent: 0

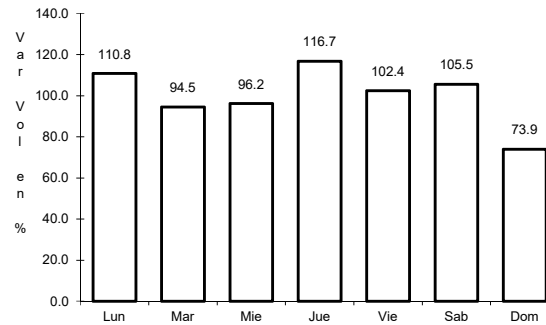
8 CARR: Gómez Palacio - Jiménez

CLAVE: 00006

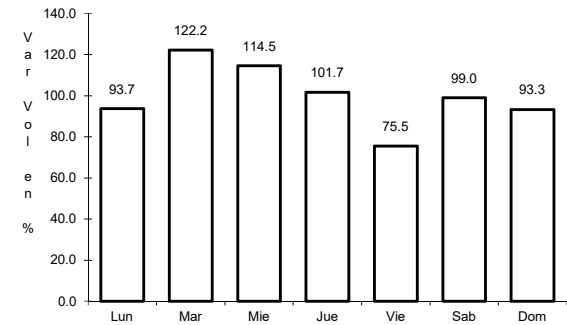
ruta: MEX-049



Km: 0.00 Tipo: 3 Sent: 1



Km: 0.00 Tipo: 3 Sent: 2

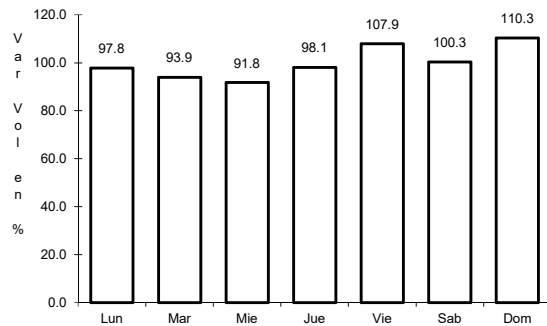


Km: 107.95 Tipo: 1 Sent: 0

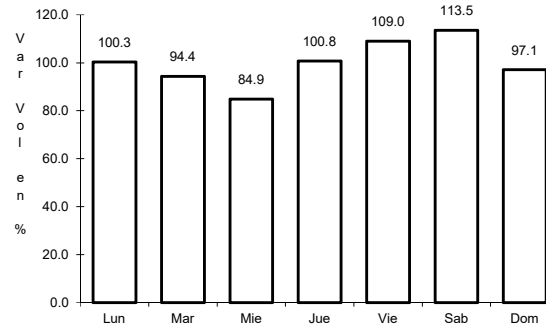
9 CARR: Hidalgo del Parral - Ent. Nuevo Palomas (Vía Corta)

CLAVE: 08811

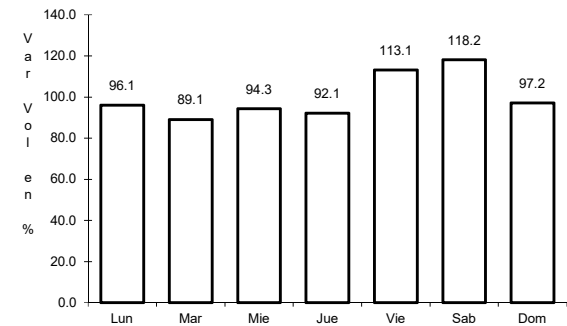
ruta: MEX-024



Km: 0.00 Tipo: 3 Sent: 0



Km: 66.00 Tipo: 1 Sent: 0

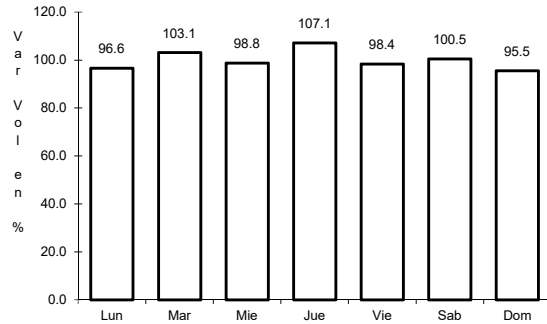


Km: 182.40 Tipo: 1 Sent: 0

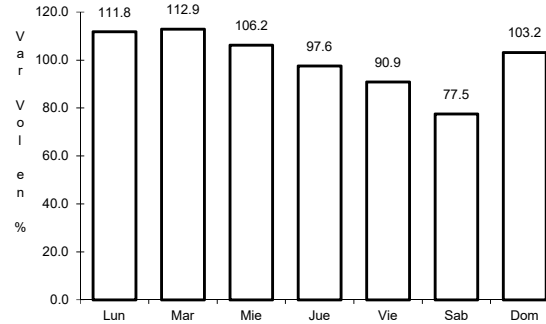
10 CARR: Hidalgo del Parral - Guadalupe y Calvo

CLAVE: 00802

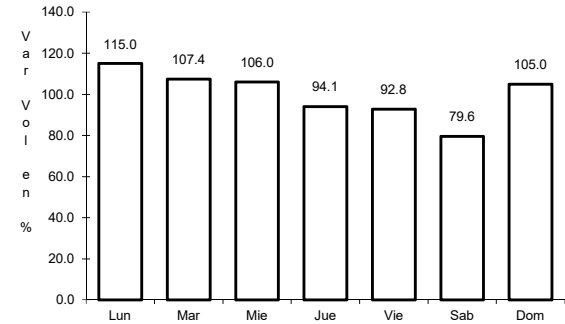
ruta: MEX-024



Km: 0.00      Tipo: 3      Sent: 0



Km: 110.00      Tipo: 1      Sent: 0

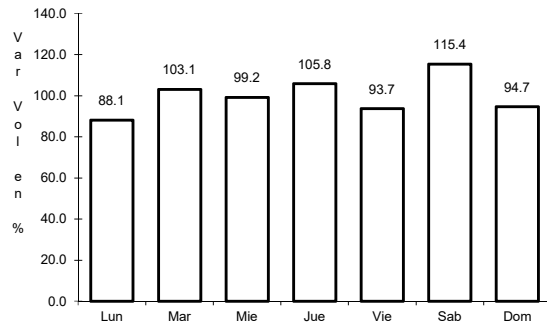


Km: 212.00      Tipo: 1      Sent: 0

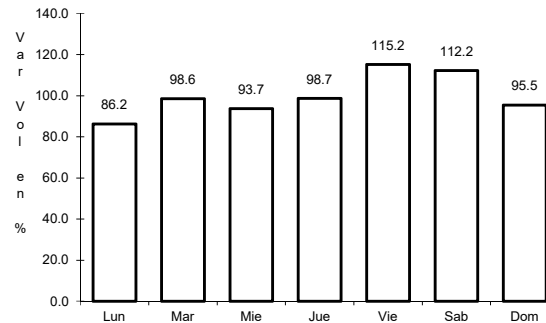
11 CARR: Hidalgo del Parral - Jiménez

CLAVE: 08444

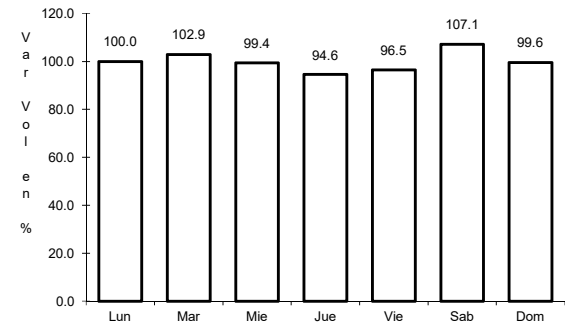
ruta: MEX-045



Km: 0.00      Tipo: 3      Sent: 1



Km: 0.00      Tipo: 3      Sent: 2

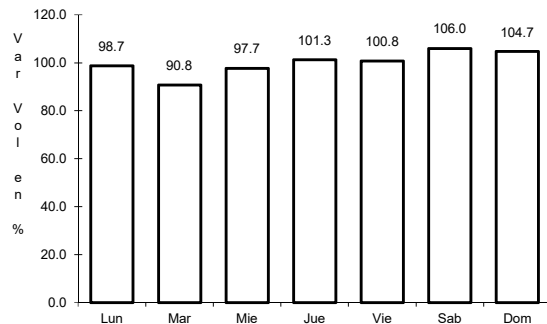


Km: 76.63      Tipo: 1      Sent: 1

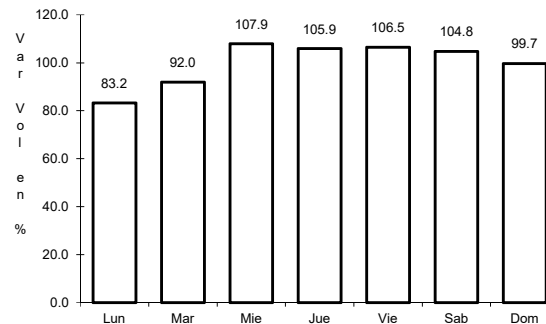
12 CARR: Janos - Agua Prieta

CLAVE: 00220

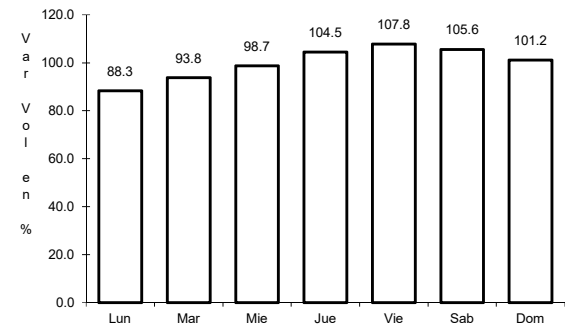
ruta: MEX-002



Km: 0.00      Tipo: 3      Sent: 0



Km: 56.00      Tipo: 3      Sent: 0

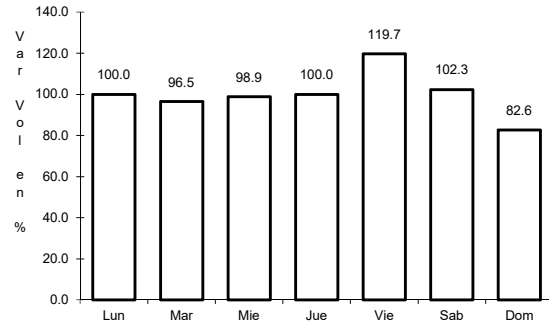


Km: 160.00      Tipo: 1      Sent: 0

13 CARR: Jerónimo - Sta. Teresa

CLAVE: 08043

ruta: MEX-002



Km: 0.00

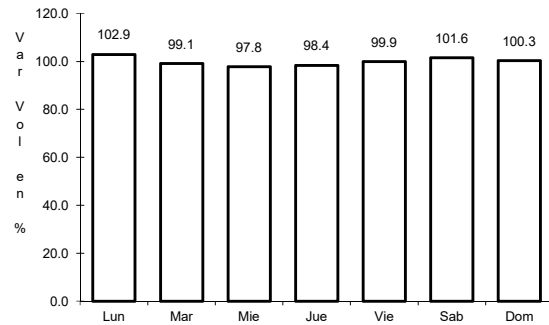
Tipo: 3

Sent: 0

14 CARR: La Junta - Yécora

CLAVE: 00065

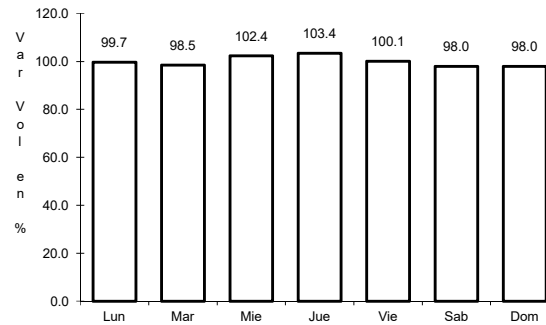
ruta: MEX-016



Km: 0.00

Tipo: 3

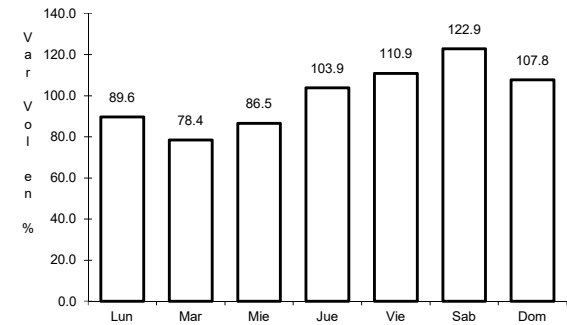
Sent: 0



Km: 70.00

Tipo: 3

Sent: 0



Km: 253.00

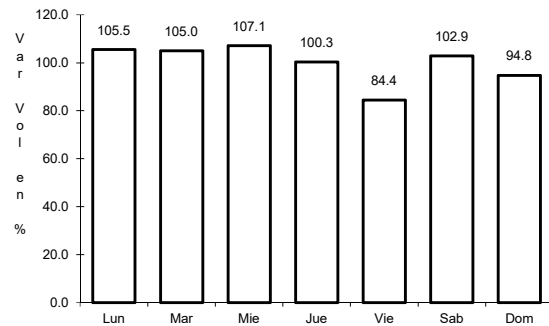
Tipo: 1

Sent: 0

15 CARR: Libramiento de Delicias - Meoqui

CLAVE: 08813

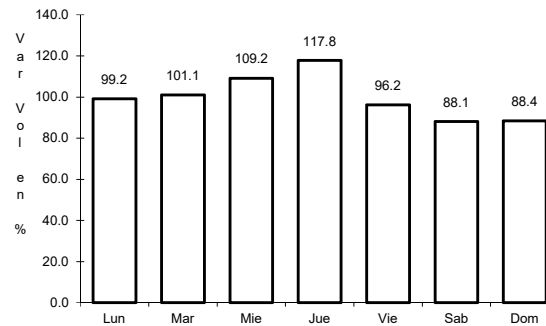
ruta: MEX-045



Km: 0.00

Tipo: 3

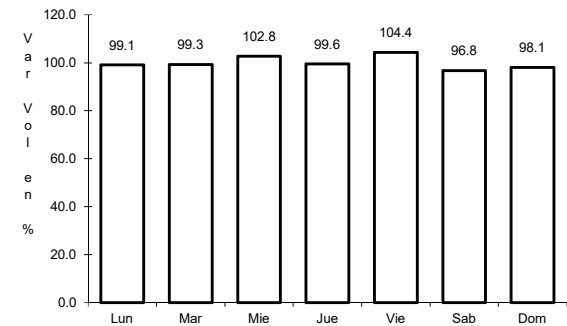
Sent: 1



Km: 0.00

Tipo: 3

Sent: 2



Km: 13.60

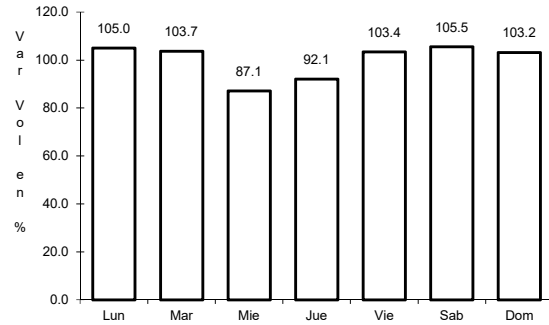
Tipo: 1

Sent: 1

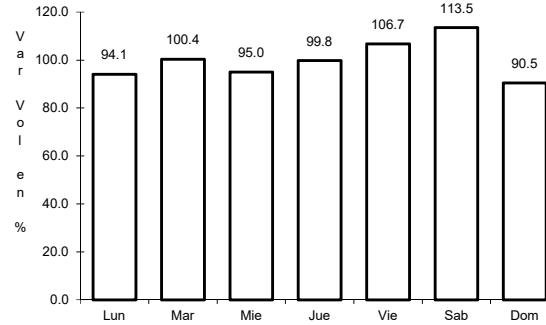
16 CARR: Porvenir - Cd. Juárez

CLAVE: 08169

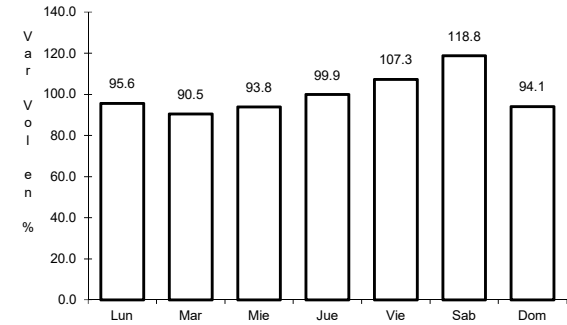
ruta: MEX-002



Km: 1.67      Tipo: 3      Sent: 0



Km: 70.32      Tipo: 1      Sent: 1

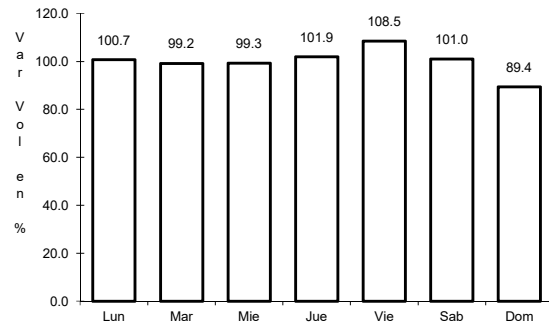


Km: 70.32      Tipo: 1      Sent: 2

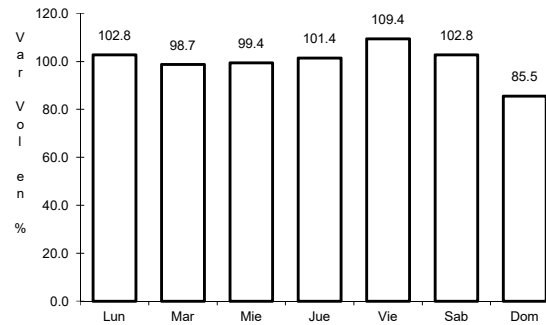
17 CARR: Ramal a Aeropuerto de Chihuahua

CLAVE: 08421

ruta: MEX-016



Km: 0.00      Tipo: 3      Sent: 1

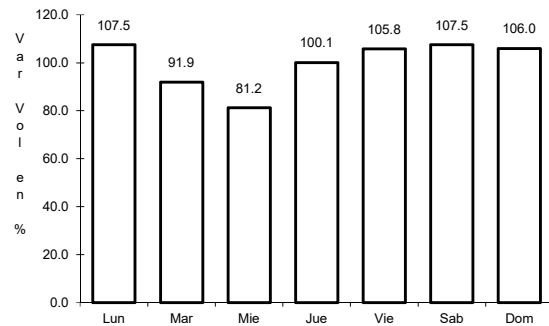


Km: 0.00      Tipo: 3      Sent: 2

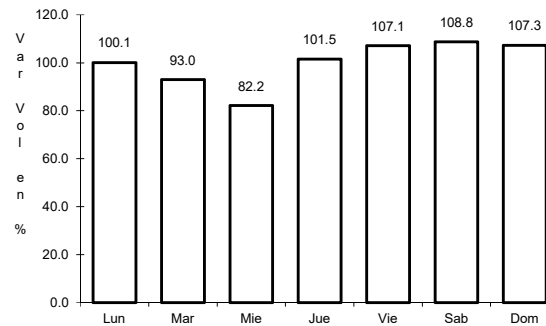
18 CARR: Ramal a Palomas

CLAVE: 08019

ruta: MEX-002



Km: 0.00      Tipo: 3      Sent: 0



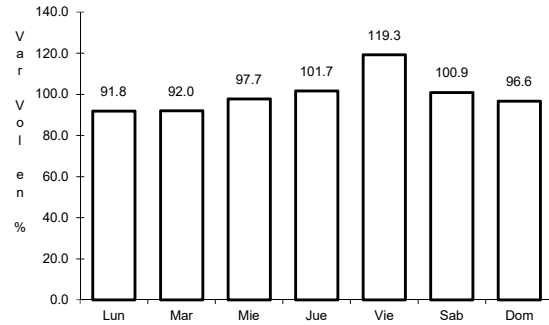
Km: 7.50      Tipo: 3      Sent: 0



19 CARR: Villa Ahumada - Cd. Juárez (Libre)

CLAVE: 08420

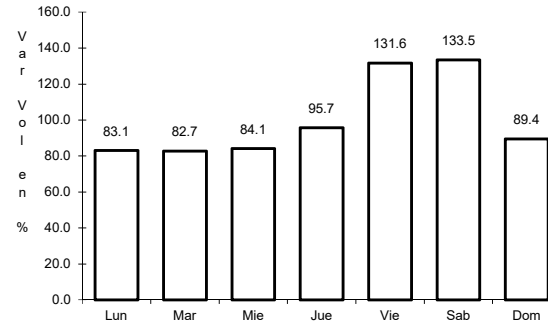
RUTA: MEX-045



Km: 83.63

Tipo: 3

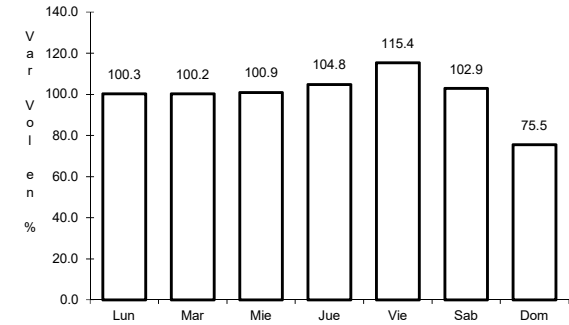
Sent: 1



Km: 83.63

Tipo: 3

Sent: 2



Km: 201.35

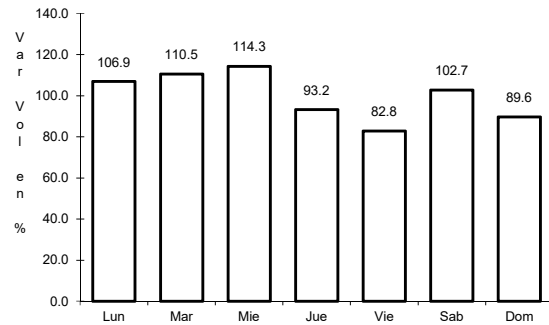
Tipo: 1

Sent: 1

20 CARR: Camargo - Delicias (Cuota)

CLAVE: 08418

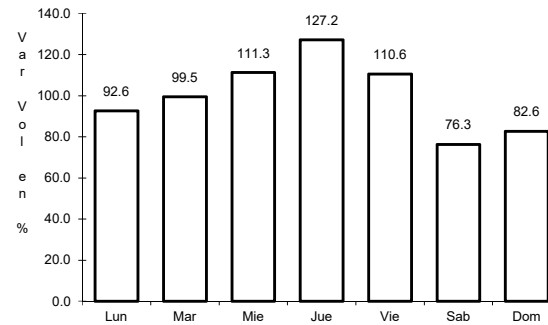
RUTA: MEX-045D



Km: 111.50

Tipo: 3

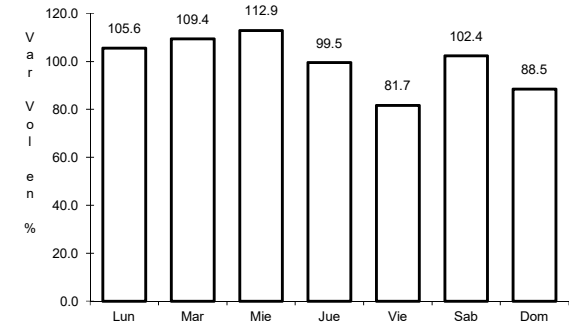
Sent: 1



Km: 111.50

Tipo: 3

Sent: 2



Km: 138.00

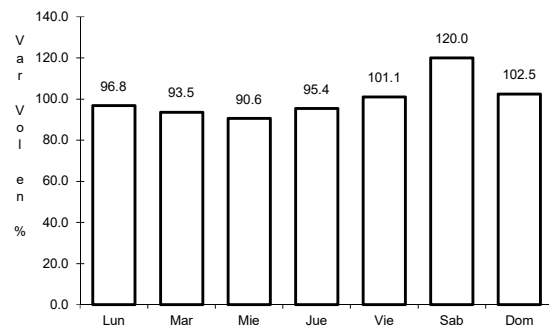
Tipo: 1

Sent: 1

21 CARR: Chihuahua - Sacramento (Cuota)

CLAVE: 08015

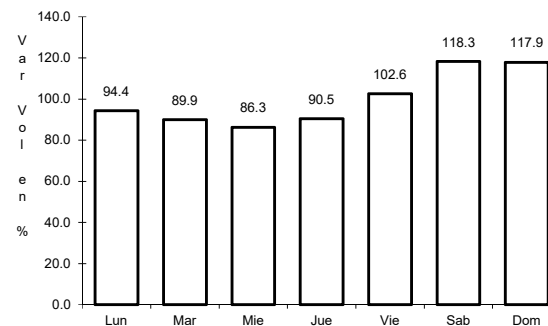
RUTA: MEX-045D



Km: 18.12

Tipo: 3

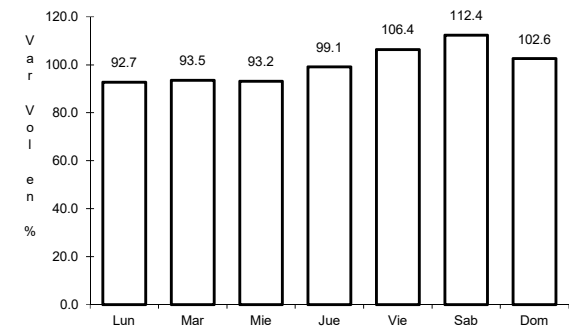
Sent: 1



Km: 18.12

Tipo: 3

Sent: 2



Km: 20.00

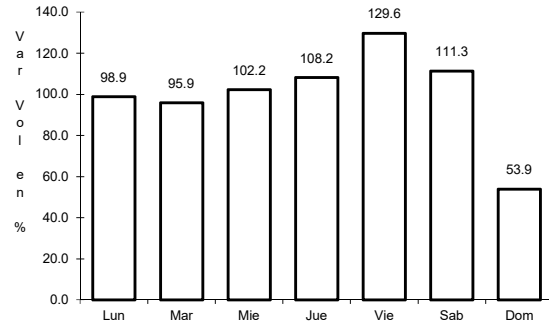
Tipo: 3

Sent: 1

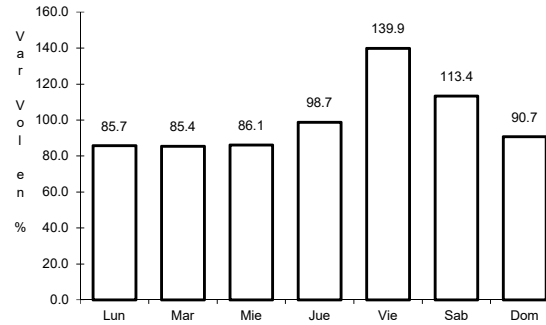
22 CARR: El Sueco - Villa Ahumada (Cuota)

CLAVE: 08420

RUTA: MEX-045D



Km: 0.00 Tipo: 3 Sent: 1

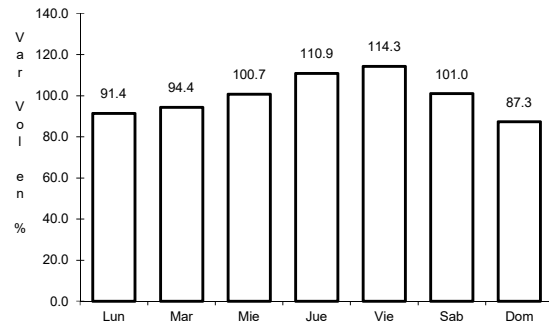


Km: 0.00 Tipo: 3 Sent: 2

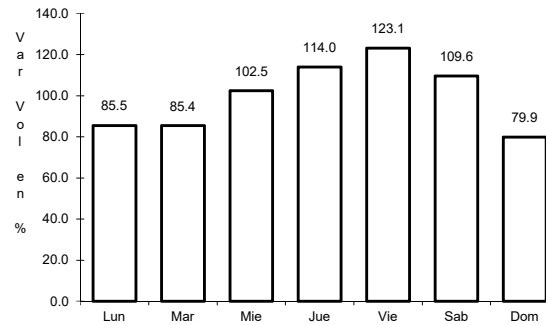
23 CARR: Gómez Palacio - Corralitos (Cuota)

CLAVE: 00016

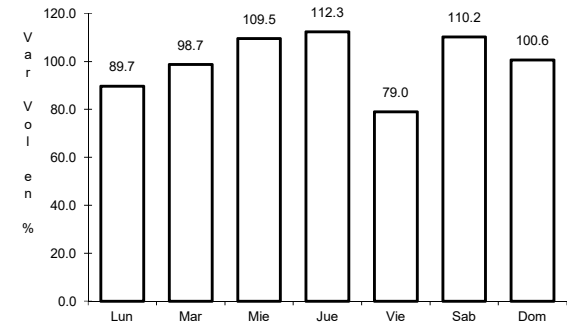
RUTA: MEX-049D



Km: 40.10 Tipo: 1 Sent: 1



Km: 40.10 Tipo: 1 Sent: 2

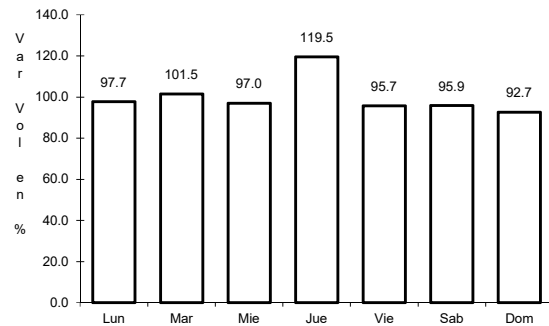


Km: 226.50 Tipo: 1 Sent: 1

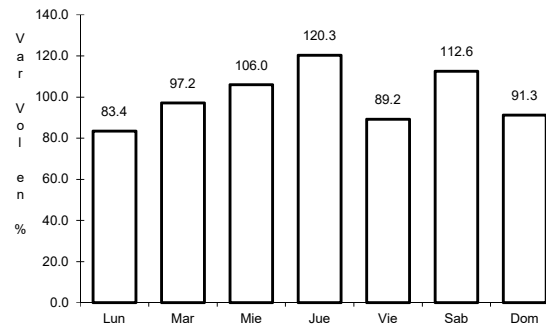
24 CARR: Jiménez - Camargo (Cuota)

CLAVE: 08418

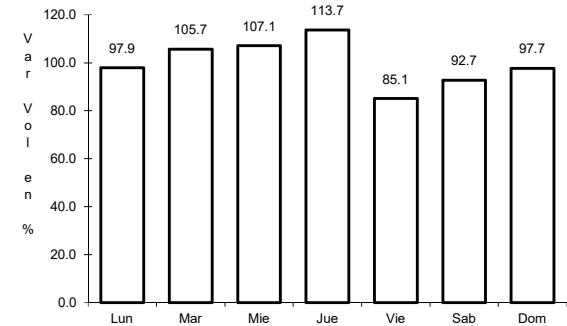
RUTA: MEX-045D



Km: 0.00 Tipo: 3 Sent: 1



Km: 0.00 Tipo: 3 Sent: 2

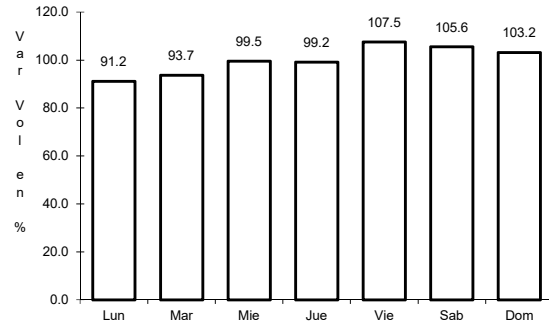


Km: 68.98 Tipo: 1 Sent: 1

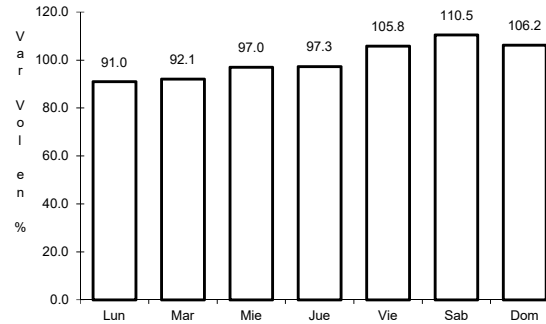
25 CARR: Libramiento Oriente Chihuahua (Cuota)

CLAVE:

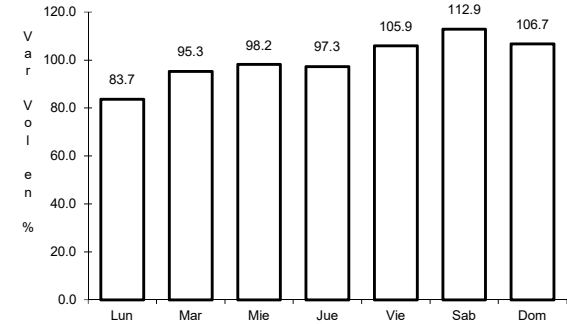
RUTA: MEX-045D



Km: 0.00      Tipo: 3      Sent: 0



Km: 22.00      Tipo: 1      Sent: 0

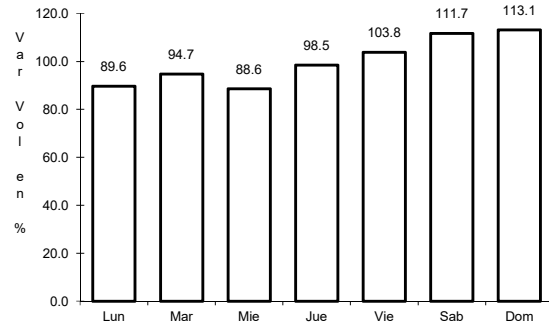


Km: 22.00      Tipo: 3      Sent: 0

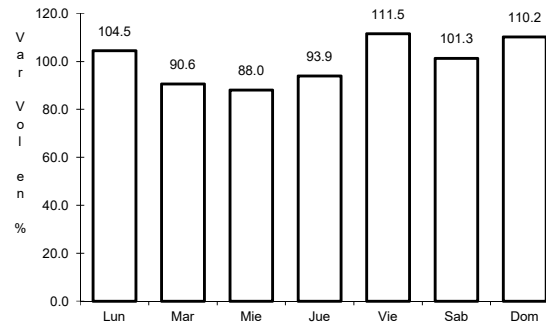
26 CARR: Ahumada - Ricardo Flores Magón

CLAVE: 08804

RUTA: CHIH



Km: 0.00      Tipo: 3      Sent: 0

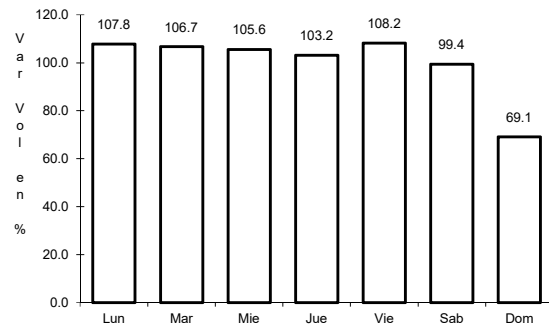


Km: 96.00      Tipo: 1      Sent: 0

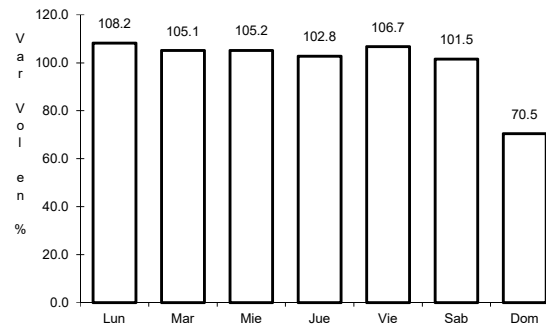
27 CARR: Cuauhtémoc - Buenaventura

CLAVE: 08015

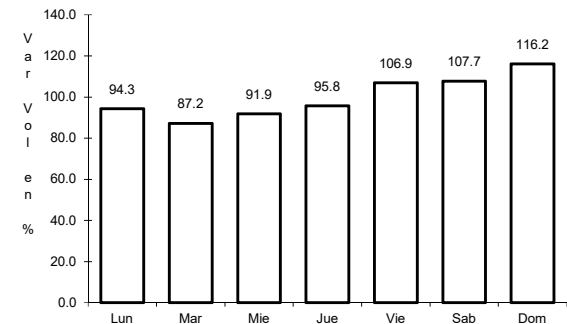
RUTA: CHIH



Km: 0.00      Tipo: 3      Sent: 1



Km: 0.00      Tipo: 3      Sent: 2

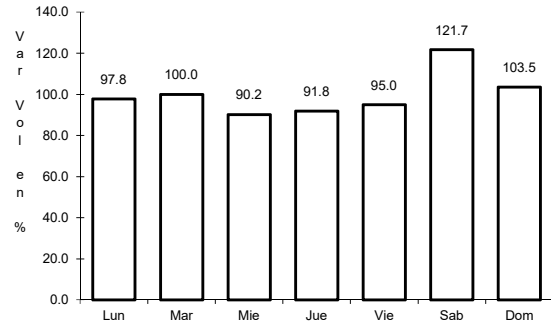


Km: 253.30      Tipo: 1      Sent: 0

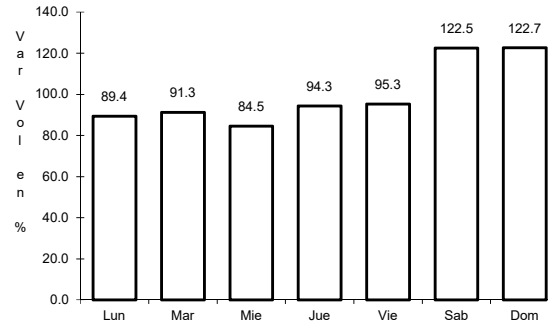
28 CARR: Delicias - Saucillo

CLAVE: 08007

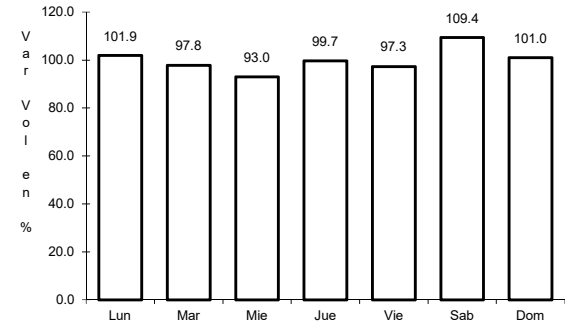
RUTA: CHIH-007



Km: 0.00      Tipo: 3      Sent: 0



Km: 17.00      Tipo: 1      Sent: 0

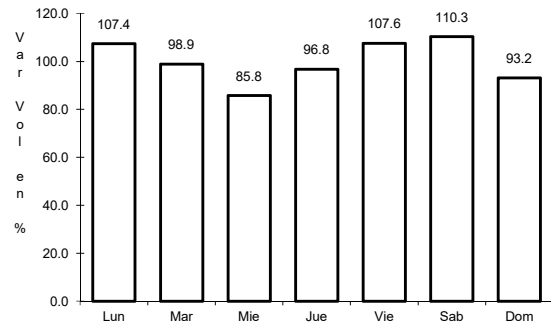


Km: 33.00      Tipo: 1      Sent: 0

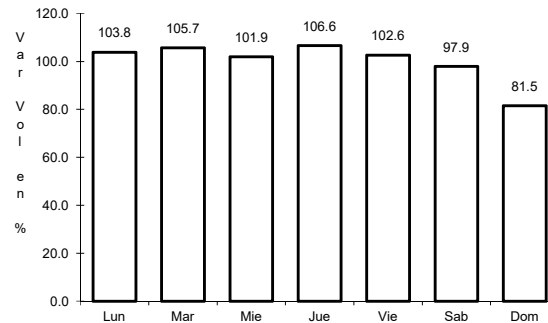
29 CARR: Ent. Peña Blanca - Ent. La Concha

CLAVE: 08493

RUTA: CHIH



Km: 0.00      Tipo: 3      Sent: 0

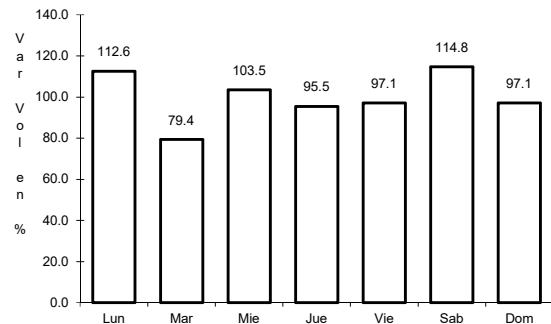


Km: 17.00      Tipo: 1      Sent: 0

30 CARR: Ent. Puerto Justo - Ent. Guachoicic

CLAVE: 08044

RUTA: CHIH

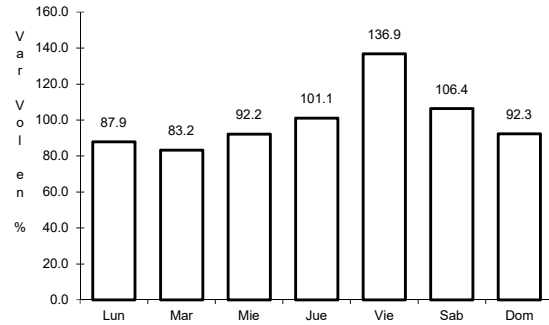


Km: 0.00      Tipo: 3      Sent: 0

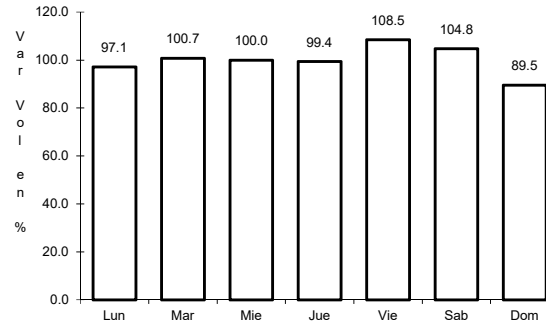
31 CARR: Jiménez - Camargo

CLAVE: 08021

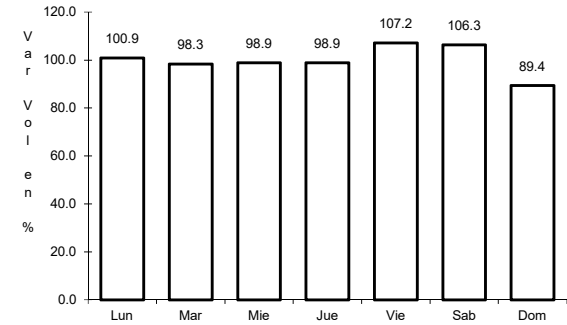
ruta: CHIH-049



Km: 0.00      Tipo: 3      Sent: 0



Km: 65.80      Tipo: 3      Sent: 0

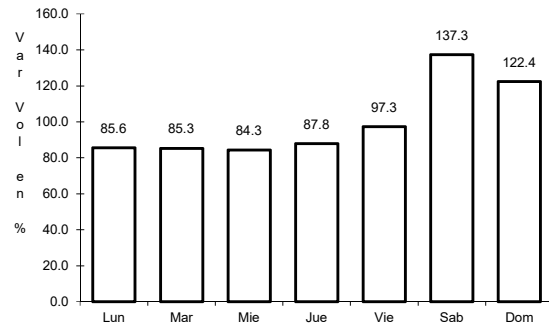


Km: 78.20      Tipo: 1      Sent: 0

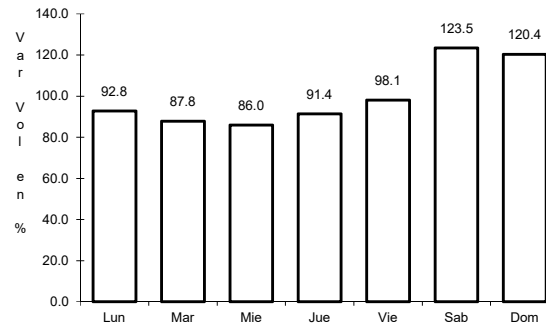
32 CARR: Lázaro Cárdenas - Ent. Colonia San José

CLAVE: 08004

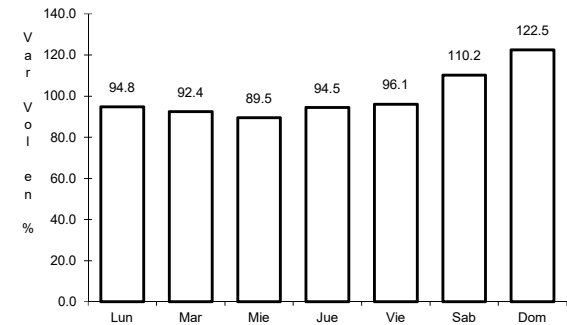
ruta: CHIH-004



Km: 0.00      Tipo: 3      Sent: 1



Km: 0.00      Tipo: 3      Sent: 2

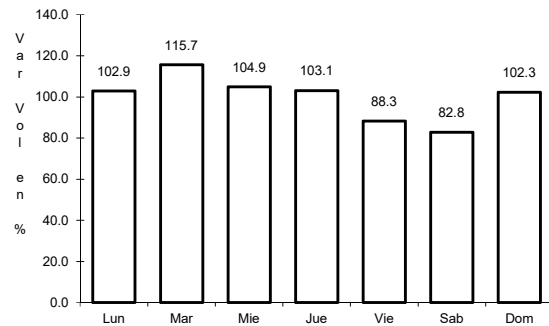


Km: 16.00      Tipo: 1      Sent: 0

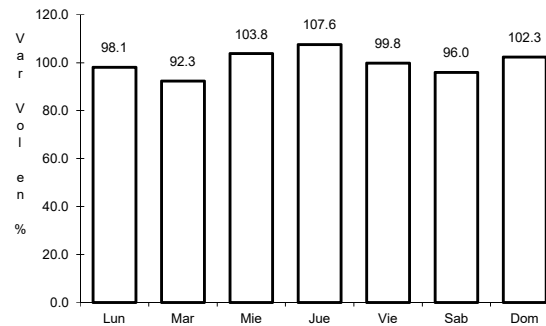
33 CARR: Libramiento de Hidalgo del Parral

CLAVE: 08221

ruta: CHIH



Km: 8.00      Tipo: 3      Sent: 1

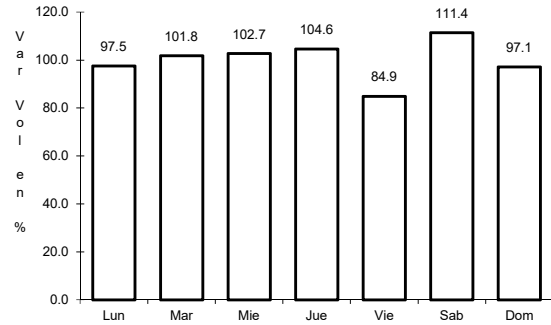


Km: 8.00      Tipo: 3      Sent: 2

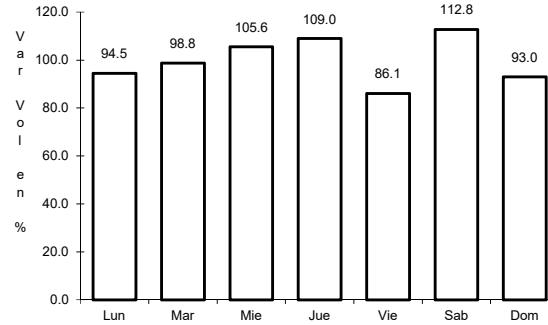
34 CARR: Libramiento de Jiménez

CLAVE: 08047

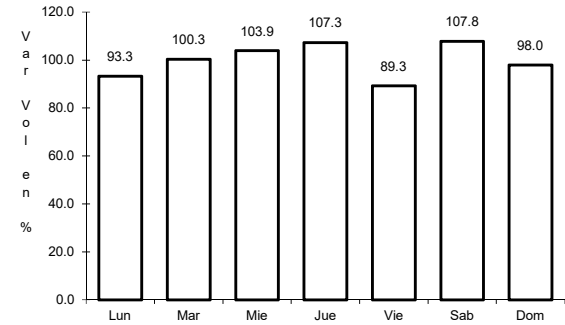
RUTA: CHIH



Km: 0.00      Tipo: 3      Sent: 1



Km: 0.00      Tipo: 3      Sent: 2

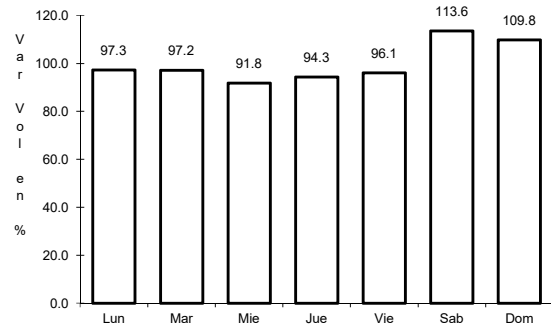


Km: 3.40      Tipo: 1      Sent: 1

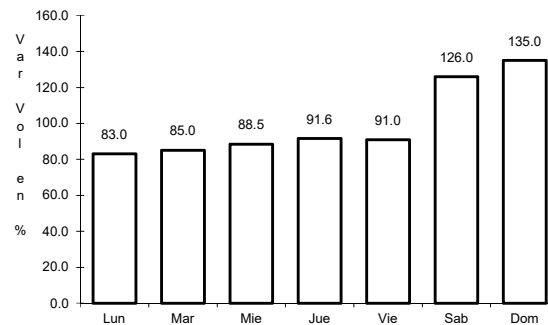
35 CARR: Meoqui - Julimes

CLAVE: 08005

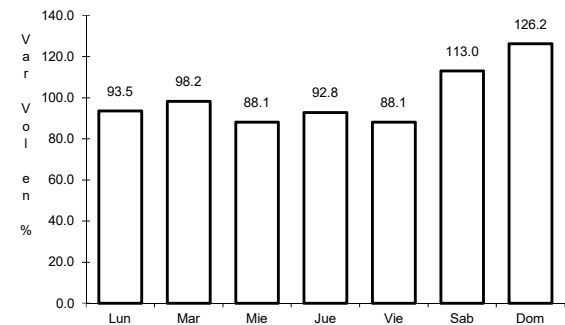
RUTA: CHIH-005



Km: 0.00      Tipo: 3      Sent: 0



Km: 15.40      Tipo: 3      Sent: 0

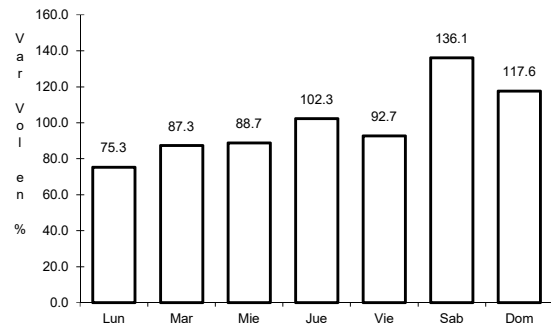


Km: 23.00      Tipo: 1      Sent: 0

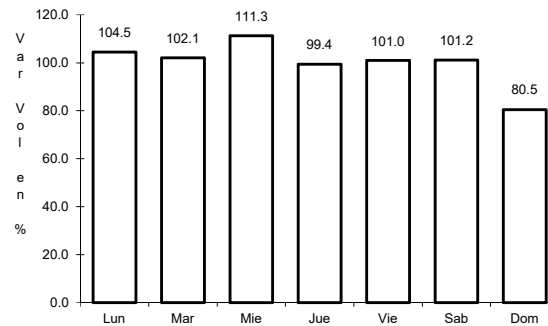
36 CARR: Ramal a San Pedro Creel

CLAVE: 08812

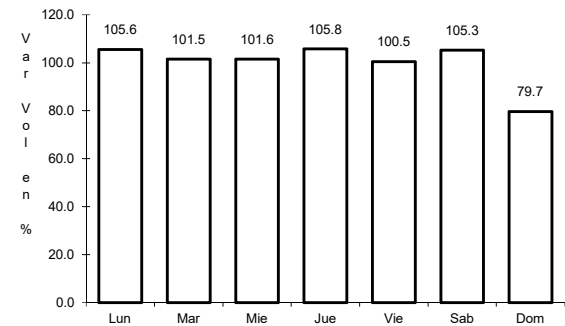
RUTA: CHIH-025



Km: 0.00      Tipo: 3      Sent: 0



Km: 58.00      Tipo: 3      Sent: 0

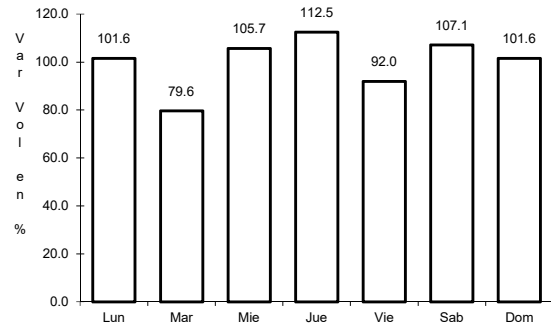


Km: 85.00      Tipo: 1      Sent: 0

37 CARR: Samachique - Batopilas

CLAVE:

RUTA: CHIH



Km: 0.00

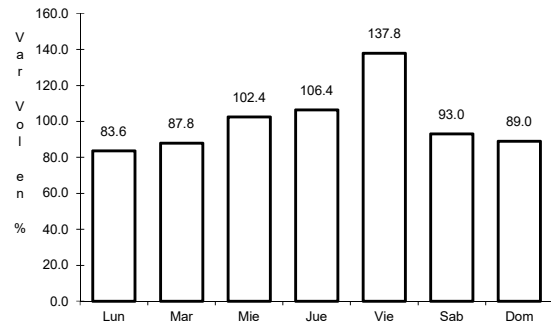
Tipo: 3

Sent: 0

38 CARR: San Juanito - Ent. Basaseachi

CLAVE: 08045

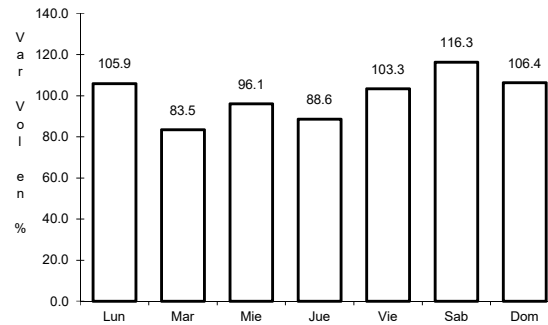
RUTA: CHIH



Km: 0.00

Tipo: 3

Sent: 0



Km: 84.00

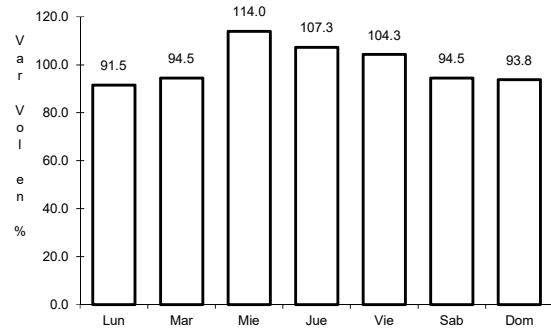
Tipo: 1

Sent: 0

39 CARR: San Pedro Creel - Guachochi

CLAVE:

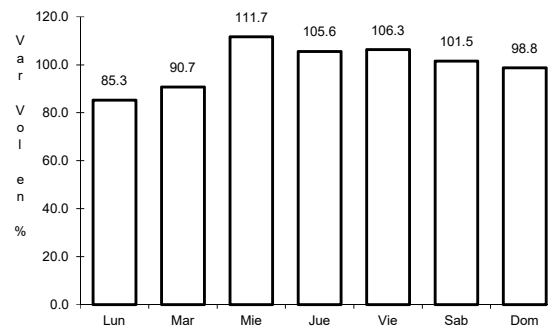
RUTA: CHIH-025



Km: 164.30

Tipo: 1

Sent: 0



Km: 164.30

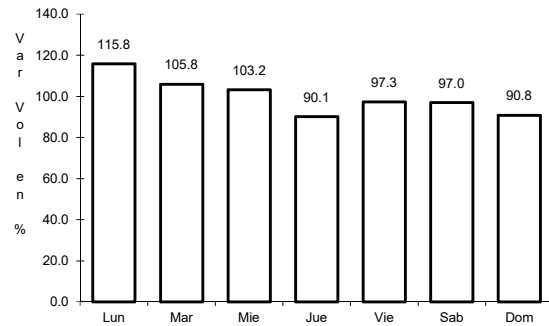
Tipo: 3

Sent: 0

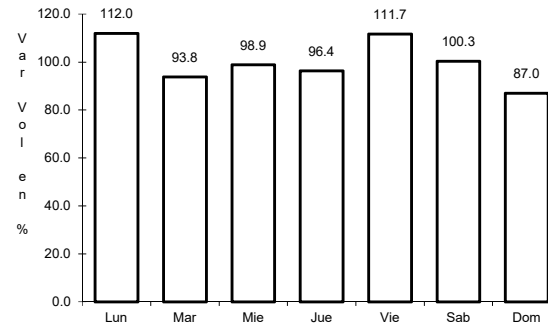
40 CARR: T. C. (Jiménez - Camargo) - Ojinaga

CLAVE: 08009

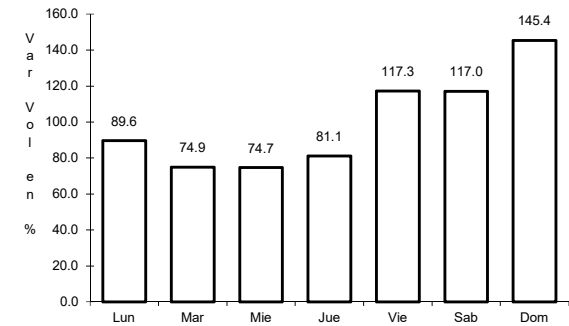
RUTA: CHIH-018



Km: 0.00      Tipo: 3      Sent: 1



Km: 97.00      Tipo: 3      Sent: 0

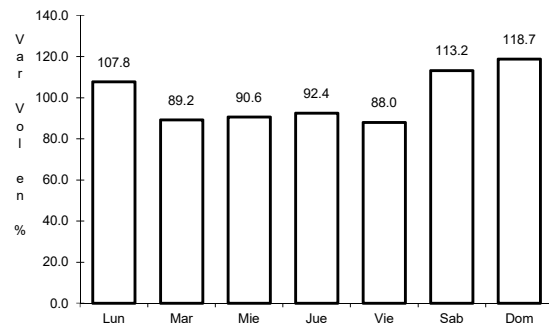


Km: 247.00      Tipo: 1      Sent: 0

41 CARR: T. Julimes - La Boquilla

CLAVE: 08009

RUTA: CHIH-018

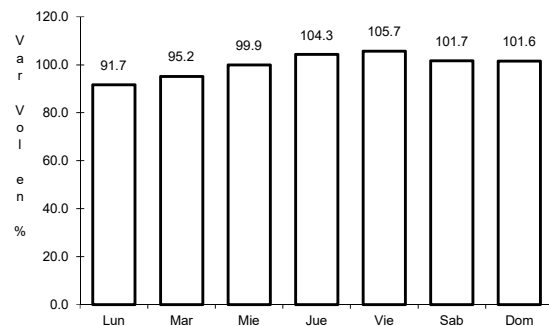


Km: 0.00      Tipo: 3      Sent: 0

42 CARR: Ent. El Álamo - Ent. Ricardo Flores Magón (Cuota)

CLAVE: 08046

RUTA: CHIH-D



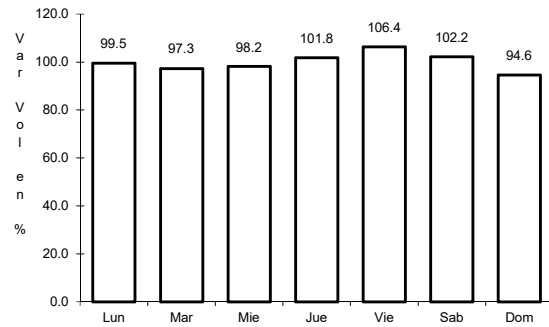
Km: 0.00      Tipo: 3      Sent: 0



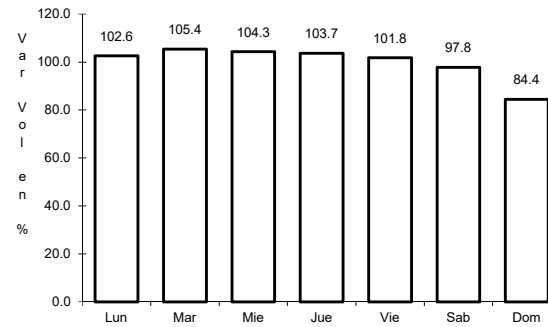
43 CARR: Ricardo Flores Magón - Galeana (Cuota)

CLAVE: 08019

RUTA: CHIH-D



Km: 0.00                      Tipo: 3                      Sent: 0

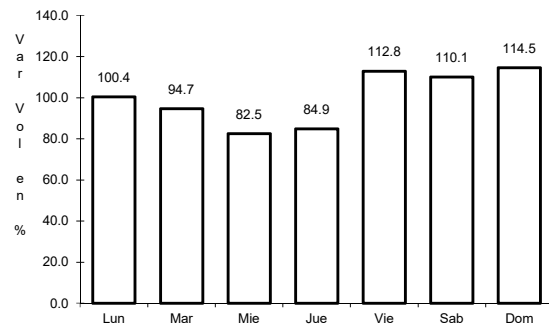


Km: 58.00                      Tipo: 1                      Sent: 0

44 CARR: Samalayuca - San Jerónimo (Cuota)

CLAVE: 08019

RUTA: CHIH-D

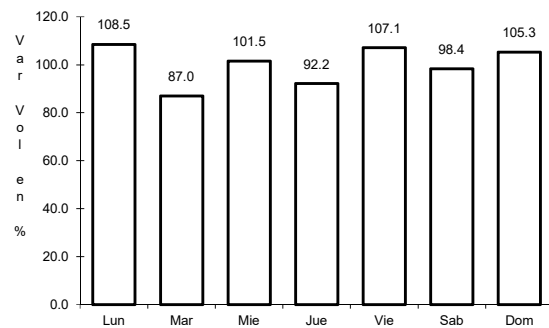


Km: 0.00                      Tipo: 3                      Sent: 0

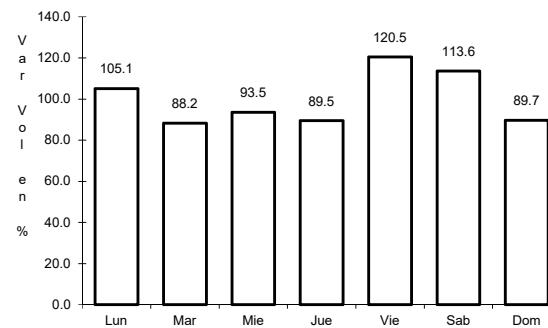
45 CARR: T. C. (Chihuahua - Ojinaga) - La Mula (Cuota)

CLAVE: 08170

RUTA: CHIH-D



Km: 0.00                      Tipo: 3                      Sent: 0

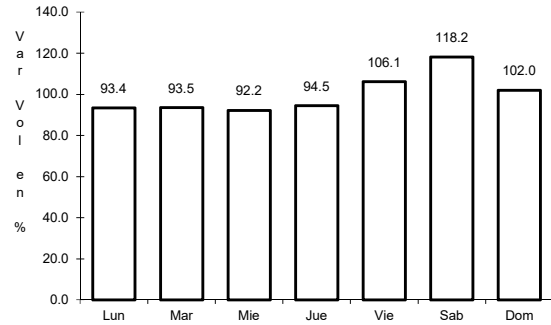


Km: 110.00                      Tipo: 1                      Sent: 0

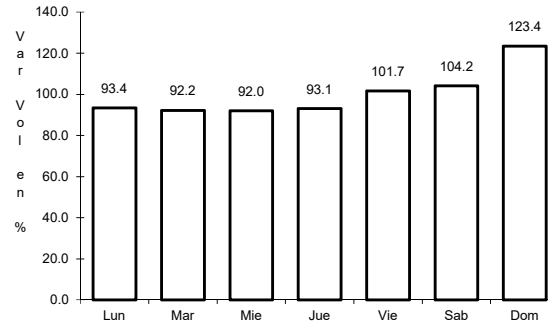
46 CARR: Chihuahua - Madera

CLAVE: 08038

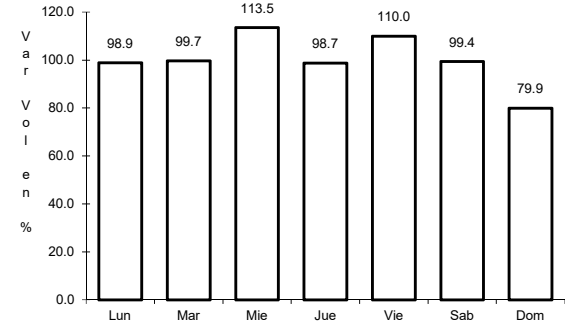
RUTA: CHIH-D-MEX-001-CHIH



Km: 10.50      Tipo: 1      Sent: 1



Km: 10.50      Tipo: 1      Sent: 2

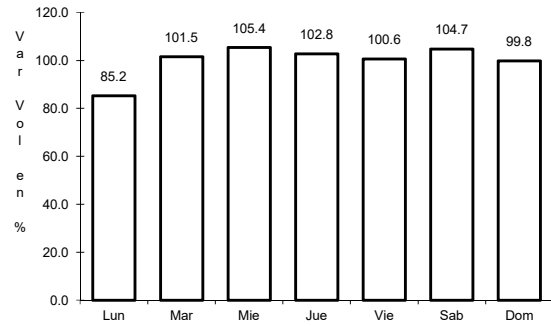


Km: 261.30      Tipo: 3      Sent: 0

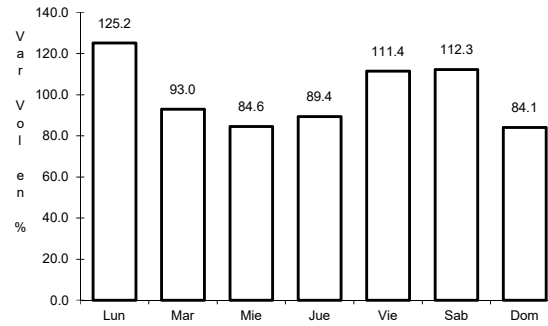
47 CARR: Ent. Agua Caliente - El Terrero

CLAVE: 08170

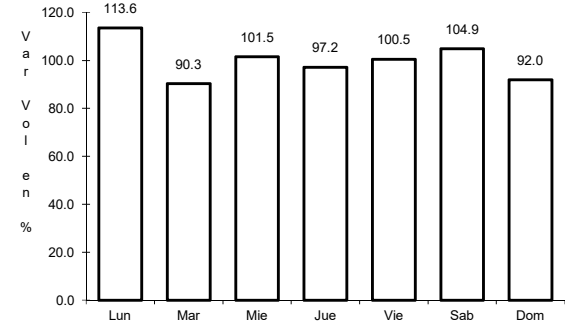
RUTA: CHIH-MEX



Km: 0.00      Tipo: 3      Sent: 0



Km: 22.00      Tipo: 1      Sent: 0



Km: 120.00      Tipo: 1      Sent: 0