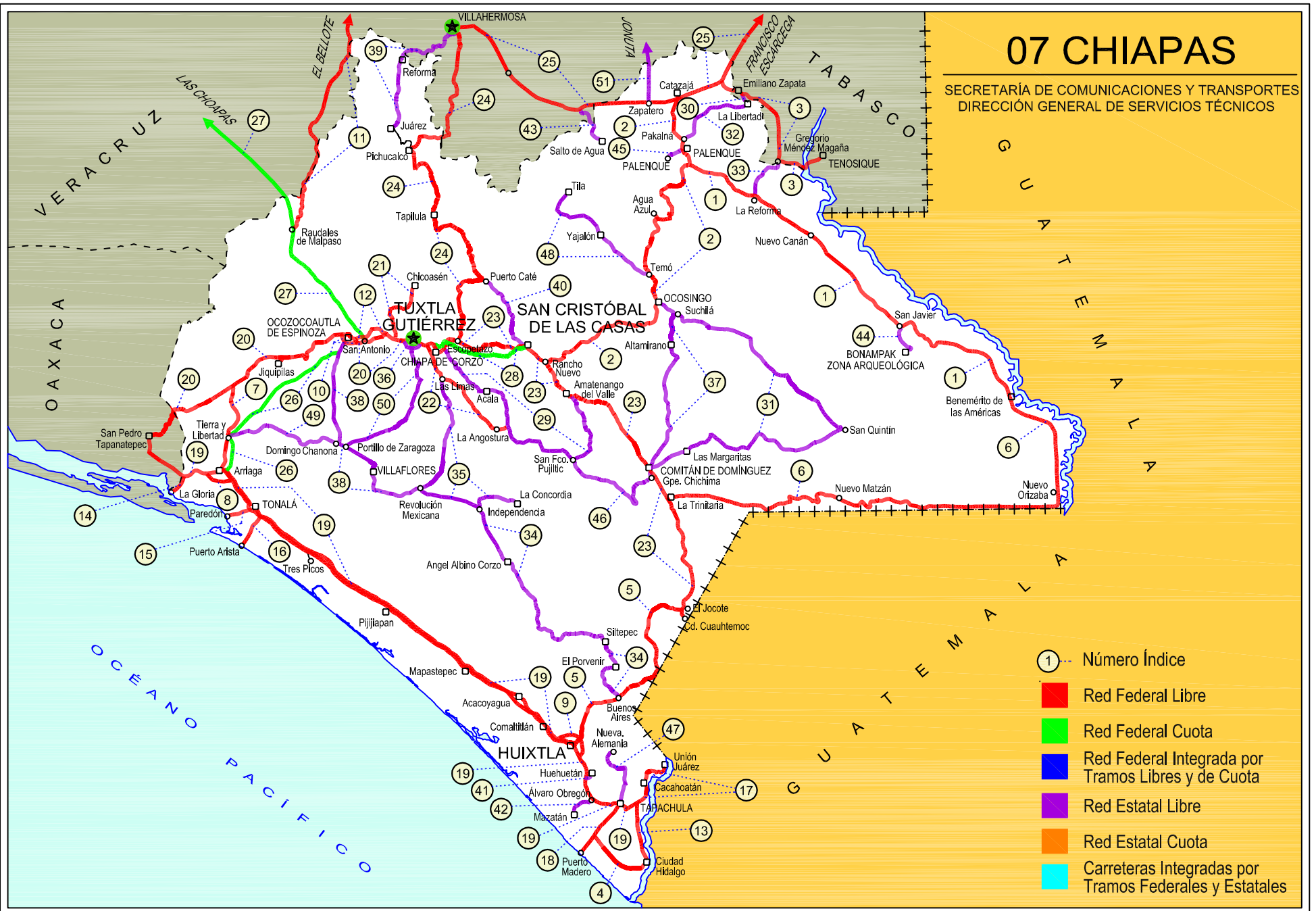
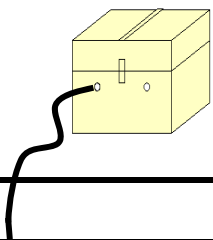


07 CHIAPAS

SECRETARÍA DE COMUNICACIONES Y TRANSPORTES
DIRECCIÓN GENERAL DE SERVICIOS TÉCNICOS





CHIAPAS

---RED FEDERAL LIBRE---

1 Benemérito de Las Américas - Palenque	MEX-307
2 Catazajá - T. C. (Tuxtla Gtz. - Cd. Cuauhtémoc)	MEX-199
3 El Suspiro - Tenosique	MEX-203
4 Ent. Jaritas - Ciudad Hidalgo	MEX-225
5 Huixtla - El Jocote	MEX-211
6 La Trinitaria - Benemérito de Las Américas	MEX-307
7 Las Cruces - Arriaga	MEX-190
8 Libramiento de Arriaga	MEX-200
9 Libramiento de Huixtla	MEX-200
10 Libramiento de Ocozocoautla	MEX-190
11 Malpaso - El Bellote	MEX-187
12 Ocozocoautla - Ent. El Sabino	MEX-190
13 Ramal a Cd. Hidalgo	MEX-200
14 Ramal a La Gloria	MEX-200
15 Ramal a Paredón	MEX-200
16 Ramal a Puerto Arista	MEX-200
17 Ramal a Unión Juárez	MEX-200
18 Tapachula - Puerto Madero	MEX-225
19 Tapanatepec - Talismán	MEX-200
20 Tapanatepec - Tuxtla Gutiérrez	MEX-190
21 Terán - Chicoasén	MEX-190
22 Tuxtla Gutiérrez - Angostura	MEX-190
23 Tuxtla Gutiérrez - Cd. Cuauhtémoc	MEX-190
24 Villahermosa - Escopetazo	MEX-195
25 Villahermosa - Francisco Escárcega	MEX-186

---RED FEDERAL DE CUOTA---

26 Arriaga - Ocozocoautla (Cuota)	MEX-200D
27 Las Choapas - Ocozocoautla (Cuota)	MEX-187D
28 Tuxtla Gutiérrez - San Cristóbal de Las Casas (Cuota)	MEX-190D

---RED ESTATAL LIBRE---

29 Chiapa de Corzo - Amatenango del Valle	CHIS
30 Ent. Emiliano Zapata - La Libertad	CHIS-TAB
31 Ent. Suschilá - Comitán	CHIS-TAB
32 Estación Palenque - La Libertad	CHIS-010
33 Gregorio Méndez Magaña - Reforma de Ocampo	CHIS
34 Independencia - Buenos Aires	CHIS
35 Las Limas - La Concordia	CHIS
36 Libramiento Sur de Tuxtla Gutiérrez	CHIS
37 Ocosingo - Comitán	CHIS
38 Ocozocoautla - Revolución Mexicana	CHIS-053-230
39 Paso de Cunduacán - Estación Juárez	TAB-CHIS
40 Puerto Caté - San Cristóbal de Las Casas	CHIS
41 Ramal a Huehuetán	CHIS
42 Ramal a Mazatán	CHIS-219
43 Ramal a Salto del Agua	TAB-CHIS
44 Ramal Zona Arqueológica " Bonampak "	CHIS
45 Ramal Zona Arqueológica " Palenque "	CHIS
46 San Francisco Pujilic - Ent. Comitán	CHIS
47 Tapachula - Nueva Alemania	CHIS-229
48 Temo - Tila	CHIS
49 Tierra y Libertad - Ent. Dr. Domingo Chanona	CHIS
50 Tuxtla Gutiérrez - Portillo Zaragoza	CHIS-133
51 Zapatero - T. C. (Jalapa - Jonuta)	CHIS-TAB

CHIAPAS

1 CARR: Benemérito de Las Américas - Palenque

CLAVE: 07095

RUTA: MEX-307

AÑO: 2018

LUGAR	ESTACION				CLASIFICACION VEHICULAR EN PORCIENTO										COORDENADAS						
	KM	TE	SC	TDPA	M	A	B	C2	C3	T3S2	T3S3	T3S2R4	OTROS	A	B	C	K'	D	LATITUD	LONGITUD	
Benemérito de las Américas	0.00																				
Frontera Corozal	42.00	3	0	823	10.0	76.3	0.9	6.2	3.2	2.4	0.6	0.3	0.1	86.3	0.9	12.8	0.100	0.510	16.761619	-91.009730	
San Javier	67.00	3	0	846	4.9	81.3	0.6	5.4	1.1	5.8	0.5	0.4	0.0	86.2	0.6	13.2	0.106	0.533	16.801853	-91.107270	
Reforma de Ocampo	160.00	1	0	1421	8.6	78.5	0.6	6.5	1.6	3.2	0.5	0.3	0.2	87.1	0.6	12.3	0.089	0.502	17.319138	-91.690420	
T. C. Catazajá - T. C. (Tuxtla Gtz. - Cd. Cuauhtémoc)	194.00	1	0	3752	3.5	83.5	0.4	9.2	1.5	1.5	0.2	0.1	0.1	87.0	0.4	12.6	0.098	0.504	17.442181	-91.960012	

2 CARR: Catazajá - T. C. (Tuxtla Gtz. - Cd. Cuauhtémoc)

CLAVE: 07582

RUTA: MEX-199

AÑO: 2018

LUGAR	ESTACION				CLASIFICACION VEHICULAR EN PORCIENTO										COORDENADAS						
	KM	TE	SC	TDPA	M	A	B	C2	C3	T3S2	T3S3	T3S2R4	OTROS	A	B	C	K'	D	LATITUD	LONGITUD	
Catazajá	0.00																				
X. C. Villahermosa - Francisco Escárcega	2.20	3	0	4712	2.6	81.5	2.5	8.7	1.5	2.2	0.6	0.3	0.1	84.1	2.5	13.4	0.080	0.521	17.703683	-92.017083	
Pakalná	23.46	1	0	7927	8.1	82.6	1.0	4.8	0.7	0.7	0.6	0.7	0.8	90.7	1.0	8.3	0.090	0.502	17.549690	-91.985155	
T. Izq. Palenque	27.50	1	1	9649	6.2	88.9	0.6	2.1	0.4	0.5	0.4	0.4	0.5	95.1	0.6	4.3	0.065	0.534	17.527420	-91.992156	
T. Izq. Palenque	27.50	1	2	11039	8.4	86.3	0.6	2.5	0.5	0.5	0.4	0.4	0.4	94.7	0.6	4.7	0.068	0.534	17.527430	-91.992071	
T. Izq. Palenque	27.50	3	0	8701	4.8	86.8	0.9	3.9	0.7	1.0	0.4	0.7	0.8	91.6	0.9	7.5	0.078	0.501	17.493271	-91.984348	
T. Izq. Bonampak	33.20	3	0	3212	2.0	87.4	2.0	3.7	1.4	0.9	0.7	0.7	1.2	89.4	2.0	8.6	0.072	0.507	17.444149	-91.965541	
T. Der. Salto del Agua	54.00	1	0	2575	1.9	89.8	1.2	3.6	1.1	1.3	0.8	0.2	0.1	91.7	1.2	7.1	0.096	0.501	17.361506	-92.047089	
T. Der. Agua Azul	68.30	1	0	1637	2.0	87.0	1.1	1.4	0.8	2.5	1.7	0.3	3.2	89.0	1.1	9.9	0.080	0.517	17.233179	-92.090217	
T. Der. Chilón	111.00	1	0	2399	3.9	88.1	0.7	3.8	0.7	2.0	0.6	0.1	0.1	92.0	0.7	7.3	0.068	0.514	17.019488	-92.134488	
T. Der. Chilón	111.00	3	0	3216	3.1	82.6	0.6	2.0	0.8	3.4	2.2	0.9	4.4	85.7	0.6	13.7	0.060	0.514	17.014492	-92.133589	
Ocosingo	136.00	3	0	3303	2.7	83.2	1.5	2.4	0.9	2.2	2.0	1.1	4.0	85.9	1.5	12.6	0.103	0.518	16.892021	-92.103981	
T. Izq. Altamirano	152.00	1	0	3140	1.6	84.0	0.6	2.8	0.8	3.5	2.5	0.7	3.5	85.6	0.6	13.8	0.065	0.507	16.813017	-92.156383	
Huixtán	190.60	1	0	4357	1.6	88.4	0.8	5.0	0.9	2.3	0.6	0.1	0.3	90.0	0.8	9.2	0.056	0.505	16.716791	-92.450131	
Huixtán	190.60	3	0	4107	2.0	86.4	0.6	6.6	0.8	2.5	0.7	0.1	0.3	88.4	0.6	11.0	0.067	0.516	16.706436	-92.463199	
T. C. Tuxtla Gutiérrez - Cd. Cuauhtémoc	210.00	1	0	5052	1.5	84.8	0.6	8.9	0.6	2.6	0.5	0.1	0.4	86.3	0.6	13.1	0.079	0.505	16.670383	-92.555444	

3 CARR: El Suspiro - Tenosique

CLAVE: 00276

RUTA: MEX-203

AÑO: 2018

LUGAR	ESTACION				CLASIFICACION VEHICULAR EN PORCIENTO										COORDENADAS						
	KM	TE	SC	TDPA	M	A	B	C2	C3	T3S2	T3S3	T3S2R4	OTROS	A	B	C	K'	D	LATITUD	LONGITUD	
Ent. El Suspiro	0.00	3	0	4859	2.2	79.9	2.0	9.8	1.4	3.0	0.7	0.5	0.5	82.1	2.0	15.9	0.083	0.502	17.749271	-91.813092	
Lim. Edos. Term. Chis. Ppia. Tab.	8.00																				
Emiliano Zapata	8.61	3	0	5982	2.8	83.5	1.7	7.2	1.4	2.3	0.5	0.2	0.4	86.3	1.7	12.0	0.085	0.505	17.727723	-91.757525	
T. Der. La Libertad	12.10	3	0	4210	4.1	83.1	1.7	7.9	1.3	1.4	0.4	0.1	0.0	87.2	1.7	11.1	0.076	0.501	17.724124	-91.738602	

CHIAPAS

3 CARR: El Suspiro - Tenosique

CLAVE: 00276

RUTA: MEX-203

AÑO: 2018

LUGAR	ESTACION				CLASIFICACION VEHICULAR EN PORCIENTO													COORDENADAS		
	KM	TE	SC	TDPA	M	A	B	C2	C3	T3S2	T3S3	T3S2R4	OTROS	A	B	C	K'	D	LATITUD	LONGITUD
T. Izq. Balancán	32.60	1	0	3263	3.9	82.0	1.8	9.4	1.5	0.9	0.4	0.1	0.0	85.9	1.8	12.3	0.104	0.512	17.636353	-91.603134
T. Izq. Balancán	32.60	3	0	2282	4.7	79.7	1.6	4.9	1.7	1.4	1.1	2.6	2.3	84.4	1.6	14.0	0.092	0.503	17.628780	-91.600145
Estación Zapata	53.00	1	0	2443	3.0	81.0	2.1	4.7	1.4	1.9	1.4	2.3	2.2	84.0	2.1	13.9	0.072	0.504	17.460700	-91.598276
Estación Zapata	53.00	3	0	3136	4.8	82.4	1.6	3.3	1.1	1.4	1.7	1.8	1.9	87.2	1.6	11.2	0.072	0.500	17.456370	-91.594800
Tenosique	75.30																			

4 CARR: Ent. Jaritas - Ciudad Hidalgo

CLAVE: 07094

RUTA: MEX-225

AÑO: 2018

LUGAR	ESTACION				CLASIFICACION VEHICULAR EN PORCIENTO													COORDENADAS		
	KM	TE	SC	TDPA	M	A	B	C2	C3	T3S2	T3S3	T3S2R4	OTROS	A	B	C	K'	D	LATITUD	LONGITUD
T. C. Tapachula - Puerto Madero	0.00	3	0	2521	15.3	69.2	1.0	7.2	2.6	4.1	0.2	0.3	0.1	84.5	1.0	14.5	0.079	0.537	14.784665	-92.366234
Ciudad Hidalgo	49.00	1	0	6735	33.1	50.3	0.5	3.8	2.3	8.2	0.8	0.6	0.4	83.4	0.5	16.1	0.091	0.562	14.672875	-92.162034

5 CARR: Huixtla - El Jocote

CLAVE: 07577

RUTA: MEX-211

AÑO: 2018

LUGAR	ESTACION				CLASIFICACION VEHICULAR EN PORCIENTO													COORDENADAS		
	KM	TE	SC	TDPA	M	A	B	C2	C3	T3S2	T3S3	T3S2R4	OTROS	A	B	C	K'	D	LATITUD	LONGITUD
Huixtla	0.00	3	0	3108	11.3	76.1	1.3	7.1	1.4	2.1	0.6	0.0	0.1	87.4	1.3	11.3	0.083	0.504	15.148554	-92.443971
B. Domínguez (Loma Bonita)	27.00	3	0	2557	8.4	79.7	1.1	6.0	1.5	2.6	0.6	0.0	0.1	88.1	1.1	10.8	0.069	0.520	15.304398	-92.376870
Motozintla	57.00	1	0	3148	9.8	79.7	1.0	5.8	0.7	2.5	0.4	0.0	0.1	89.5	1.0	9.5	0.082	0.515	15.355986	-92.252193
Motozintla	57.00	3	0	5345	7.0	86.2	0.5	4.2	0.4	1.2	0.5	0.0	0.0	93.2	0.5	6.3	0.082	0.504	15.373055	-92.231540
Amatenango de La Frontera	77.00	1	0	2139	5.5	85.3	1.1	5.3	0.9	1.2	0.5	0.0	0.2	90.8	1.1	8.1	0.075	0.514	15.433460	-92.119222
Amatenango de La Frontera	77.00	3	0	2087	6.0	81.7	1.6	6.6	1.4	1.9	0.7	0.0	0.1	87.7	1.6	10.7	0.062	0.507	15.439328	-92.113757
Frontera Comalapa	108.00	1	0	5905	14.1	78.1	0.3	3.2	0.3	3.5	0.4	0.0	0.1	92.2	0.3	7.5	0.078	0.505	15.642595	-92.144984
El Jocote	126.00	1	0	6789	11.9	79.4	0.7	6.1	0.7	0.7	0.5	0.0	0.0	91.3	0.7	8.0	0.073	0.511	15.684947	-92.007257

6 CARR: La Trinitaria - Benemérito de Las Américas

CLAVE: 07267

RUTA: MEX-307

AÑO: 2018

LUGAR	ESTACION				CLASIFICACION VEHICULAR EN PORCIENTO													COORDENADAS		
	KM	TE	SC	TDPA	M	A	B	C2	C3	T3S2	T3S3	T3S2R4	OTROS	A	B	C	K'	D	LATITUD	LONGITUD
T. C. Tuxtla Gutiérrez - Cd. Cuauhtémoc	0.00	3	0	5683	2.7	87.3	0.9	4.9	0.3	3.3	0.2	0.1	0.3	90.0	0.9	9.1	0.080	0.511	16.130035	-92.062123
Santa Rita	10.00	1	0	4054	3.2	88.0	0.4	4.5	0.5	2.6	0.5	0.1	0.2	91.2	0.4	8.4	0.081	0.504	16.141160	-91.981820
Santa Rita	10.00	3	0	4264	5.4	86.0	0.5	4.4	0.5	2.4	0.4	0.1	0.3	91.4	0.5	8.1	0.088	0.508	16.140650	-91.969224
T. Izq. La Independencia	20.00	3	0	4024	4.7	85.5	0.5	5.2	0.4	3.0	0.3	0.1	0.3	90.2	0.5	9.3	0.090	0.501	16.127090	-91.850433
Montebello	39.76	1	0	2179	4.3	86.9	1.1	5.3	0.5	1.7	0.2	0.0	0.0	91.2	1.1	7.7	0.075	0.521	16.101032	-91.742641

CHIAPAS

6 CARR: La Trinitaria - Benemérito de Las Américas

CLAVE: 07267

RUTA: MEX-307

AÑO: 2018

LUGAR	ESTACION				CLASIFICACION VEHICULAR EN PORCIENTO										COORDENADAS					
	KM	TE	SC	TDPA	M	A	B	C2	C3	T3S2	T3S3	T3S2R4	OTROS	A	B	C	K'	D	LATITUD	LONGITUD
Montebello	39.76	3	0	1842	6.4	86.8	0.7	4.6	0.6	0.6	0.3	0.0	0.0	93.2	0.7	6.1	0.090	0.505	16.101316	-91.731044
Nuevo San Juan Chamula	72.00	3	0	1130	8.6	84.6	0.6	5.0	0.5	0.5	0.2	0.0	0.0	93.2	0.6	6.2	0.118	0.508	16.144867	-91.437689
Benemérito de las Américas	268.00																			
Benemérito de las Américas	268.00	1	0	2240	13.0	75.7	0.3	5.7	0.8	3.1	0.6	0.2	0.6	88.7	0.3	11.0	0.081	0.522	16.501917	-90.654390

7 CARR: Las Cruces - Arriaga

CLAVE: 07196

RUTA: MEX-190

AÑO: 2018

LUGAR	ESTACION				CLASIFICACION VEHICULAR EN PORCIENTO										COORDENADAS					
	KM	TE	SC	TDPA	M	A	B	C2	C3	T3S2	T3S3	T3S2R4	OTROS	A	B	C	K'	D	LATITUD	LONGITUD
Las Cruces	0.00	3	0	1789	4.0	81.4	1.5	9.9	1.5	1.1	0.4	0.1	0.1	85.4	1.5	13.1	0.089	0.510	16.568341	-93.844565
Santa Isabel	27.90	3	0	349	10.1	83.4	0.2	5.4	0.4	0.2	0.3	0.0	0.0	93.5	0.2	6.3	0.103	0.532	16.348356	-93.866519
Arriaga	49.00	1	0	1171	23.5	69.9	0.1	4.7	0.6	0.9	0.2	0.0	0.1	93.4	0.1	6.5	0.076	0.504	16.249315	-93.885985

8 CARR: Libramiento de Arriaga

CLAVE:

RUTA: MEX-200

AÑO: 2018

LUGAR	ESTACION				CLASIFICACION VEHICULAR EN PORCIENTO										COORDENADAS					
	KM	TE	SC	TDPA	M	A	B	C2	C3	T3S2	T3S3	T3S2R4	OTROS	A	B	C	K'	D	LATITUD	LONGITUD
T. C. Tapanatepec - Talismán	0.00	3	0	2425	3.5	55.8	6.3	6.4	4.5	10.0	4.1	8.2	1.2	59.3	6.3	34.4	0.080	0.544	16.220797	-93.925743
T. Der. Villa del Mar	2.60	1	0	2829	4.1	55.0	7.6	7.0	4.2	9.6	3.7	7.6	1.2	59.1	7.6	33.3	0.065	0.545	16.207225	-93.911658
T. Der. Villa del Mar	2.60	3	0	2554	2.8	48.4	10.7	7.1	5.6	10.5	4.7	9.2	1.0	51.2	10.7	38.1	0.066	0.535	16.207885	-93.900296
T. C. Tapanatepec - Talismán	7.50	1	0	2482	3.2	55.3	7.2	7.2	4.0	10.1	3.5	7.7	1.8	58.5	7.2	34.3	0.071	0.528	16.218859	-93.870514

9 CARR: Libramiento de Huixtla

CLAVE:

RUTA: MEX-200

AÑO: 2018

LUGAR	ESTACION				CLASIFICACION VEHICULAR EN PORCIENTO										COORDENADAS					
	KM	TE	SC	TDPA	M	A	B	C2	C3	T3S2	T3S3	T3S2R4	OTROS	A	B	C	K'	D	LATITUD	LONGITUD
T. C. Tapanatepec - Talismán	0.00	3	1	3810	2.8	73.0	3.2	9.2	2.1	5.7	1.2	2.5	0.3	75.8	3.2	21.0	0.080	0.501	15.160243	-92.489382
T. C. Tapanatepec - Talismán	0.00	3	2	3825	3.1	72.7	3.2	9.2	2.1	5.7	1.2	2.5	0.3	75.8	3.2	21.0	0.079	0.501	15.160296	-92.489499
T. C. Huixtla - El Jocote	5.80	1	1	4200	4.7	71.5	3.2	9.0	2.1	5.7	1.0	2.5	0.3	76.2	3.2	20.6	0.082	0.517	15.150689	-92.450704
T. C. Huixtla - El Jocote	5.80	1	2	3932	5.7	70.2	3.1	9.0	2.2	5.9	1.0	2.5	0.4	75.9	3.1	21.0	0.076	0.517	15.150728	-92.450629
T. C. Huixtla - El Jocote	5.80	3	1	4071	6.3	70.0	3.1	8.8	2.2	5.9	0.8	2.5	0.4	76.3	3.1	20.6	0.084	0.502	15.141947	-92.447943
T. C. Huixtla - El Jocote	5.80	3	2	4038	6.8	69.7	3.1	8.6	2.2	5.9	0.8	2.5	0.4	76.5	3.1	20.4	0.074	0.502	15.141945	-92.447827
T. C. Tapanatepec - Talismán	7.07																			

CHIAPAS

10 CARR: Libramiento de Ocozocoautla

CLAVE: 07583

RUTA: MEX-190

AÑO: 2018

LUGAR	ESTACION				CLASIFICACION VEHICULAR EN PORCIENTO													COORDENADAS		
	KM	TE	SC	TDPA	M	A	B	C2	C3	T3S2	T3S3	T3S2R4	OTROS	A	B	C	K'	D	LATITUD	LONGITUD
T. C. Tapanatepec - Tuxtla Gutiérrez	0.00	3	0	8016	3.6	76.8	0.7	9.3	3.0	4.0	1.3	0.8	0.5	80.4	0.7	18.9	0.068	0.502	16.767628	-93.387388
T. C. Arriaga - Ocozocoautla (Cuota)	5.54	1	0	7110	3.0	75.8	0.8	9.7	3.2	4.8	1.4	0.8	0.5	78.8	0.8	20.4	0.079	0.511	16.747150	-93.376312
T. C. Arriaga - Ocozocoautla (Cuota)	5.54	3	0	10276	1.0	76.9	2.4	8.4	2.0	5.4	1.4	1.7	0.8	77.9	2.4	19.7	0.076	0.524	16.735772	-93.351806
T. C. Tapanatepec - Tuxtla Gutiérrez	9.00	1	0	12504	1.2	76.4	2.5	8.3	1.9	5.4	1.7	1.7	0.9	77.6	2.5	19.9	0.064	0.512	16.745851	-93.341919

11 CARR: Malpaso - El Bellote

CLAVE: 00137

RUTA: MEX-187

AÑO: 2018

LUGAR	ESTACION				CLASIFICACION VEHICULAR EN PORCIENTO													COORDENADAS		
	KM	TE	SC	TDPA	M	A	B	C2	C3	T3S2	T3S3	T3S2R4	OTROS	A	B	C	K'	D	LATITUD	LONGITUD
Presa Malpaso	0.00																			
Lim. Edos. Term. Chis. Ppia. Tab.	43.99																			
Lim. Edos. Term. Tab. Ppia. Chis.	44.59																			
Lim. Edos. Term. Chis. Ppia. Tab.	45.26																			
Lim. Edos. Term. Tab. Ppia. Chis.	45.63																			
Lim. Edos. Term. Chis. Ppia. Tab.	55.04																			
Macabil (La Estrella)	70.12	1	0	3775	10.2	76.0	2.1	8.8	1.0	1.6	0.2	0.0	0.1	86.2	2.1	11.7	0.091	0.509	17.610207	-93.513079
Estación Chontalpa	75.69	1	0	6003	14.5	71.9	1.6	8.1	0.7	2.6	0.3	0.1	0.2	86.4	1.6	12.0	0.080	0.515	17.653773	-93.485553
Estación Chontalpa	75.69	3	0	6525	10.0	71.7	1.4	11.8	1.2	2.8	0.5	0.3	0.3	81.7	1.4	16.9	0.072	0.502	17.684662	-93.473781
T. Izq. Francisco Rueda	90.49	1	0	6642	10.7	76.1	1.7	6.9	0.8	3.0	0.3	0.2	0.3	86.8	1.7	11.5	0.072	0.510	17.786167	-93.440000
T. Izq. Francisco Rueda	90.49	3	0	8983	11.5	73.6	0.9	8.5	0.9	3.1	0.5	0.6	0.4	85.1	0.9	14.0	0.066	0.500	17.793070	-93.431310
Huimanguillo	98.03	1	1	6318	19.2	71.1	0.6	6.0	0.6	1.0	1.0	0.2	0.3	90.3	0.6	9.1	0.082	0.508	17.814336	-93.405920
Huimanguillo	98.03	1	2	6532	18.4	72.4	0.7	6.2	0.6	0.9	0.5	0.2	0.1	90.8	0.7	8.5	0.079	0.508	17.814395	-93.405989
Huimanguillo	98.03	3	1	6714	10.4	78.5	1.0	6.8	0.8	1.2	0.7	0.4	0.2	88.9	1.0	10.1	0.071	0.509	17.853000	-93.397000
Huimanguillo	98.03	3	2	6951	10.1	76.6	1.8	7.4	1.0	1.5	0.7	0.6	0.3	86.7	1.8	11.5	0.072	0.509	17.853006	-93.397089
Cárdenas	117.56	1	0	14896	7.3	81.9	1.1	6.1	0.8	1.8	0.6	0.2	0.2	89.2	1.1	9.7	0.070	0.503	17.942483	-93.363176
Cárdenas	117.56	3	0	18673	7.7	83.7	0.9	5.1	0.4	1.1	0.7	0.2	0.2	91.4	0.9	7.7	0.061	0.516	18.016621	-93.368579
Tulipán	134.70	3	0	8862	8.2	75.9	1.0	8.2	0.9	3.7	1.1	0.4	0.6	84.1	1.0	14.9	0.062	0.523	18.125746	-93.291658
T. Der. Conduacán	141.70	1	0	7154	6.7	78.0	1.5	8.4	0.7	3.3	0.7	0.2	0.5	84.7	1.5	13.8	0.068	0.509	18.140096	-93.271460
T. Der. Conduacán	141.70	3	0	6423	5.2	79.3	1.7	7.7	1.1	3.6	0.8	0.2	0.4	84.5	1.7	13.8	0.068	0.513	18.142547	-93.269737
T. Der. Jalpa	153.50	1	0	11808	9.2	77.9	1.2	8.5	1.3	1.0	0.7	0.1	0.1	87.1	1.2	11.7	0.067	0.504	18.243000	-93.211000
T. Der. Jalpa	153.50	3	1	11609	7.7	81.8	0.6	7.1	0.4	1.1	0.9	0.1	0.3	89.5	0.6	9.9	0.065	0.514	18.247830	-93.213085
T. Der. Jalpa	153.50	3	2	10978	8.5	79.7	0.7	8.3	0.4	1.1	0.9	0.1	0.3	88.2	0.7	11.1	0.066	0.514	18.247803	-93.213149
Paraíso	176.85	1	1	10783	4.3	87.5	0.3	5.1	0.4	1.2	0.8	0.1	0.3	91.8	0.3	7.9	0.103	0.509	18.371464	-93.218370
Paraíso	176.85	1	2	11158	5.1	86.2	0.6	5.1	0.4	1.3	1.0	0.1	0.2	91.3	0.6	8.1	0.085	0.509	18.371410	-93.218438
Paraíso	176.85	3	1	9596	5.4	87.8	0.1	4.9	0.2	0.8	0.6	0.0	0.2	93.2	0.1	6.7	0.070	0.515	18.407843	-93.199062

CHIAPAS

11 CARR: Malpaso - El Bellote

CLAVE: 00137

RUTA: MEX-187

AÑO: 2018

LUGAR	ESTACION				CLASIFICACION VEHICULAR EN PORCIENTO													COORDENADAS		
	KM	TE	SC	TDPA	M	A	B	C2	C3	T3S2	T3S3	T3S2R4	OTROS	A	B	C	K'	D	LATITUD	LONGITUD
Paraíso	176.85	3	2	9038	6.3	87.1	0.2	4.8	0.2	0.6	0.7	0.0	0.1	93.4	0.2	6.4	0.081	0.515	18.407934	-93.199071
Ceiba	182.00	3	0	9684	6.6	83.3	0.3	5.1	0.3	3.5	0.7	0.1	0.1	89.9	0.3	9.8	0.073	0.517	18.420699	-93.170116
El Bellote	185.47																			

12 CARR: Ocozocoautla - Ent. El Sabino

CLAVE: 07579

RUTA: MEX-190

AÑO: 2018

LUGAR	ESTACION				CLASIFICACION VEHICULAR EN PORCIENTO													COORDENADAS		
	KM	TE	SC	TDPA	M	A	B	C2	C3	T3S2	T3S3	T3S2R4	OTROS	A	B	C	K'	D	LATITUD	LONGITUD
T. C. Tapanatepec - Tuxtla Gutiérrez	0.00																			
X. C. Tapanatepec - Tuxtla Gutiérrez	7.85	3	0	5266	7.5	78.9	0.7	8.9	0.8	2.5	0.3	0.1	0.3	86.4	0.7	12.9	0.083	0.503	16.773988	-93.283228
T. C. Tapanatepec - Tuxtla Gutiérrez	18.25	1	0	8938	3.7	82.7	0.3	7.6	0.4	4.2	0.4	0.1	0.6	86.4	0.3	13.3	0.085	0.516	16.776053	-93.207194

13 CARR: Ramal a Cd. Hidalgo

CLAVE: 07274

RUTA: MEX-200

AÑO: 2018

LUGAR	ESTACION				CLASIFICACION VEHICULAR EN PORCIENTO													COORDENADAS		
	KM	TE	SC	TDPA	M	A	B	C2	C3	T3S2	T3S3	T3S2R4	OTROS	A	B	C	K'	D	LATITUD	LONGITUD
T. C. Tapanatepec - Talismán	0.00	3	0	9977	3.2	86.3	0.4	4.2	0.8	3.7	0.4	0.9	0.1	89.5	0.4	10.1	0.072	0.522	14.911044	-92.191938
Metapa de Domínguez	9.00	3	0	7610	4.5	82.5	0.7	5.4	0.9	4.1	0.5	1.2	0.2	87.0	0.7	12.3	0.075	0.527	14.805372	-92.189346
Frontera Hidalgo	15.30	3	0	6555	5.8	83.4	0.5	3.9	1.0	3.4	0.4	1.4	0.2	89.2	0.5	10.3	0.081	0.511	14.779718	-92.181710
Cd. Hidalgo	27.00	1	0	7869	6.0	86.7	0.3	2.1	1.1	1.8	0.4	1.5	0.1	92.7	0.3	7.0	0.077	0.516	14.694632	-92.154352

14 CARR: Ramal a La Gloria

CLAVE: 07091

RUTA: MEX-200

AÑO: 2018

LUGAR	ESTACION				CLASIFICACION VEHICULAR EN PORCIENTO													COORDENADAS		
	KM	TE	SC	TDPA	M	A	B	C2	C3	T3S2	T3S3	T3S2R4	OTROS	A	B	C	K'	D	LATITUD	LONGITUD
T. C. Tapanatepec - Talismán	0.00	3	0	1449	13.9	77.6	1.0	6.4	0.6	0.3	0.1	0.0	0.1	91.5	1.0	7.5	0.081	0.524	16.210599	-94.048999
La Gloria	6.00																			

15 CARR: Ramal a Paredón

CLAVE: 07269

RUTA: MEX-200

AÑO: 2018

LUGAR	ESTACION				CLASIFICACION VEHICULAR EN PORCIENTO													COORDENADAS		
	KM	TE	SC	TDPA	M	A	B	C2	C3	T3S2	T3S3	T3S2R4	OTROS	A	B	C	K'	D	LATITUD	LONGITUD
T. C. Tapanatepec - Talismán	0.00	3	0	5214	15.3	70.3	1.4	6.2	1.4	1.7	1.4	1.2	1.1	85.6	1.4	13.0	0.097	0.540	16.079968	-93.778041
Paredón	14.00																			

CHIAPAS

16 CARR: Ramal a Puerto Arista

CLAVE: 07270

RUTA: MEX-200

AÑO: 2018

LUGAR	ESTACION				CLASIFICACION VEHICULAR EN PORCIENTO										COORDENADAS					
	KM	TE	SC	TDPA	M	A	B	C2	C3	T3S2	T3S3	T3S2R4	OTROS	A	B	C	K'	D	LATITUD	LONGITUD
T. C. Tapanatepec - Talismán	0.00	3	0	4065	8.0	75.7	2.1	7.2	1.9	2.1	1.3	0.6	1.1	83.7	2.1	14.2	0.089	0.502	16.052041	-93.736708
T. Der. Paredón	11.00	3	0	3281	16.8	74.3	0.2	6.0	0.9	1.5	0.2	0.0	0.1	91.1	0.2	8.7	0.101	0.521	15.974905	-93.774948
Puerto Arista	17.00	1	0	2055	26.7	65.9	0.2	4.9	0.6	1.4	0.2	0.0	0.1	92.6	0.2	7.2	0.078	0.538	15.941900	-93.800319

17 CARR: Ramal a Unión Juárez

CLAVE: 07273

RUTA: MEX-200

AÑO: 2018

LUGAR	ESTACION				CLASIFICACION VEHICULAR EN PORCIENTO										COORDENADAS					
	KM	TE	SC	TDPA	M	A	B	C2	C3	T3S2	T3S3	T3S2R4	OTROS	A	B	C	K'	D	LATITUD	LONGITUD
T. C. Tapanatepec - Talismán	0.00																			
Cacahoatán	5.00	1	0	8208	4.0	90.6	0.5	4.6	0.1	0.1	0.1	0.0	0.0	94.6	0.5	4.9	0.079	0.517	14.983121	-92.157244
Unión Juárez	22.00	1	0	1052	9.7	84.8	0.4	5.1	0.0	0.0	0.0	0.0	0.0	94.5	0.4	5.1	0.097	0.528	15.054376	-92.080201

18 CARR: Tapachula - Puerto Madero

CLAVE: 07018

RUTA: MEX-225

AÑO: 2018

LUGAR	ESTACION				CLASIFICACION VEHICULAR EN PORCIENTO										COORDENADAS					
	KM	TE	SC	TDPA	M	A	B	C2	C3	T3S2	T3S3	T3S2R4	OTROS	A	B	C	K'	D	LATITUD	LONGITUD
Tapachula	0.00	3	1	10031	6.7	83.4	0.3	6.4	1.3	0.9	0.7	0.1	0.2	90.1	0.3	9.6	0.099	0.501	14.869660	-92.289251
Tapachula	0.00	3	2	10008	7.1	83.9	0.4	5.4	1.5	0.9	0.5	0.1	0.2	91.0	0.4	8.6	0.074	0.501	14.869612	-92.289186
T. Der. Aeropuerto	14.50	3	1	4806	7.8	81.9	0.8	4.7	1.6	1.7	0.7	0.6	0.2	89.7	0.8	9.5	0.107	0.512	14.787321	-92.365905
T. Der. Aeropuerto	14.50	3	2	4573	8.4	80.1	0.8	5.3	1.8	2.0	0.8	0.6	0.2	88.5	0.8	10.7	0.100	0.512	14.787275	-92.365844
Puerto Madero	27.00	1	0	7473	31.2	65.9	0.2	2.6	0.1	0.0	0.0	0.0	0.0	97.1	0.2	2.7	0.087	0.531	14.723412	-92.418573

19 CARR: Tapanatepec - Talismán

CLAVE: 00075

RUTA: MEX-200

AÑO: 2018

LUGAR	ESTACION				CLASIFICACION VEHICULAR EN PORCIENTO										COORDENADAS					
	KM	TE	SC	TDPA	M	A	B	C2	C3	T3S2	T3S3	T3S2R4	OTROS	A	B	C	K'	D	LATITUD	LONGITUD
Tapanatepec	0.00	3	0	5763	5.5	67.6	2.5	8.7	3.0	6.5	1.9	4.0	0.3	73.1	2.5	24.4	0.073	0.505	16.344104	-94.190524
Lim. Edos. Term. Oax. Ppia. Chis.	25.90																			
T. Der. Emiliano Zapata	26.20	1	0	3758	3.8	60.2	4.0	8.6	2.8	10.2	3.0	7.1	0.3	64.0	4.0	32.0	0.071	0.539	16.216916	-94.051382
T. Der. Emiliano Zapata	26.20	3	0	4289	4.1	65.8	3.1	8.1	2.4	8.0	2.6	5.5	0.4	69.9	3.1	27.0	0.071	0.537	16.214591	-94.037712
Arriaga	45.00	1	0	5993	6.1	69.0	2.3	7.3	2.3	6.7	1.7	4.2	0.4	75.1	2.3	22.6	0.071	0.524	16.221911	-93.936634
Arriaga	45.00	3	1	3989	8.1	78.2	3.1	8.2	0.7	1.0	0.4	0.2	0.1	86.3	3.1	10.6	0.072	0.507	16.237034	-93.882945
Arriaga	45.00	3	2	4106	7.5	78.9	2.9	7.9	0.8	1.2	0.4	0.2	0.2	86.4	2.9	10.7	0.070	0.507	16.237048	-93.882840
X. C. Arriaga- Ocozocoautla (Cuota)	47.00	3	1	4811	5.9	76.3	3.1	7.4	1.9	2.6	0.8	1.8	0.2	82.2	3.1	14.7	0.074	0.502	16.232960	-93.876808
X. C. Arriaga- Ocozocoautla (Cuota)	47.00	3	2	4858	5.6	76.7	3.1	7.5	1.8	2.7	0.8	1.7	0.1	82.3	3.1	14.6	0.088	0.502	16.233284	-93.877110

CHIAPAS

19 CARR: Tapanatepec - Talismán

CLAVE: 00075

RUTA: MEX-200

AÑO: 2018

LUGAR	ESTACION				CLASIFICACION VEHICULAR EN PORCIENTO														COORDENADAS	
	KM	TE	SC	TDPA	M	A	B	C2	C3	T3S2	T3S3	T3S2R4	OTROS	A	B	C	K'	D	LATITUD	LONGITUD
T. Der. Libramiento de Arriaga	49.50	1	1	4115	4.6	74.0	3.8	8.8	1.6	3.8	1.0	2.2	0.2	78.6	3.8	17.6	0.077	0.507	16.222447	-93.867303
T. Der. Libramiento de Arriaga	49.50	1	2	4002	4.6	74.4	3.7	8.9	1.3	3.4	1.1	2.4	0.2	79.0	3.7	17.3	0.098	0.507	16.222496	-93.867155
T. Der. Libramiento de Arriaga	49.50	3	1	4491	3.5	73.2	3.0	7.7	1.9	6.1	1.3	3.0	0.3	76.7	3.0	20.3	0.075	0.500	16.208624	-93.855786
T. Der. Libramiento de Arriaga	49.50	3	2	4485	3.9	70.4	3.8	9.2	2.0	6.4	1.1	3.0	0.2	74.3	3.8	21.9	0.102	0.500	16.208974	-93.855903
Tonalá	68.80	1	1	5785	5.0	71.5	2.6	9.3	2.0	5.6	1.0	2.7	0.3	76.5	2.6	20.9	0.058	0.517	16.117159	-93.790272
Tonalá	68.80	1	2	5402	4.8	71.2	2.6	9.4	2.1	5.8	1.0	2.8	0.3	76.0	2.6	21.4	0.083	0.517	16.117224	-93.790150
T. Der. Puerto Arista	73.00	1	1	3010	3.8	70.6	3.4	8.0	2.2	7.0	1.2	3.5	0.3	74.4	3.4	22.2	0.069	0.500	16.059972	-93.741886
T. Der. Puerto Arista	73.00	1	2	3003	4.4	69.8	3.5	8.1	2.2	7.0	1.2	3.5	0.3	74.2	3.5	22.3	0.118	0.500	16.060026	-93.741837
T. Der. Puerto Arista	73.00	3	1	3237	4.3	68.5	4.0	7.0	2.3	8.4	1.3	4.0	0.2	72.8	4.0	23.2	0.086	0.509	16.056082	-93.735000
T. Der. Puerto Arista	73.00	3	2	3119	4.7	66.8	4.3	7.6	2.5	8.6	1.3	4.0	0.2	71.5	4.3	24.2	0.088	0.509	16.056341	-93.735135
T. Der. Tres Picos	100.40	1	1	2913	3.8	68.2	4.2	6.9	2.6	8.1	1.6	4.3	0.3	72.0	4.2	23.8	0.068	0.524	15.916068	-93.544164
T. Der. Tres Picos	100.40	1	2	2641	4.2	63.6	5.2	8.2	2.8	9.5	1.6	4.6	0.3	67.8	5.2	27.0	0.079	0.524	15.916175	-93.544062
T. Der. Tres Picos	100.40	3	1	2965	2.9	65.9	5.2	8.2	2.7	8.0	2.1	4.5	0.5	68.8	5.2	26.0	0.060	0.527	15.906316	-93.523329
T. Der. Tres Picos	100.40	3	2	2666	3.5	64.0	5.2	9.0	2.7	8.3	2.1	4.7	0.5	67.5	5.2	27.3	0.066	0.527	15.906549	-93.523567
T. Der. Los Patos	114.75	1	1	2732	2.9	63.3	5.5	8.2	2.6	10.3	1.7	5.2	0.3	66.2	5.5	28.3	0.069	0.531	15.841279	-93.437836
T. Der. Los Patos	114.75	1	2	2414	3.5	58.8	6.6	9.4	3.1	11.1	1.7	5.5	0.3	62.3	6.6	31.1	0.100	0.531	15.841335	-93.437447
T. Der. Los Patos	114.75	3	1	2545	2.3	64.5	4.9	7.7	2.7	10.7	1.6	5.3	0.3	66.8	4.9	28.3	0.077	0.529	15.815989	-93.416557
T. Der. Los Patos	114.75	3	2	2264	2.2	61.2	6.1	9.1	3.1	11.1	1.5	5.4	0.3	63.4	6.1	30.5	0.100	0.529	15.816246	-93.416260
T. Der. San Isidro	125.00	1	1	2743	4.3	62.3	4.8	9.4	2.4	10.0	1.9	4.5	0.4	66.6	4.8	28.6	0.068	0.520	15.779639	-93.364594
T. Der. San Isidro	125.00	1	2	2529	4.1	59.9	5.6	9.3	3.2	11.1	1.7	4.7	0.4	64.0	5.6	30.4	0.078	0.520	15.781629	-93.364750
T. Der. San Isidro	125.00	3	1	2896	4.2	63.6	4.8	8.1	2.5	9.9	1.6	5.0	0.3	67.8	4.8	27.4	0.077	0.529	15.777885	-93.358332
T. Der. San Isidro	125.00	3	2	2579	4.7	62.4	5.3	8.8	2.9	9.3	1.8	4.4	0.4	67.1	5.3	27.6	0.095	0.529	15.778012	-93.358010
Pijijapan	144.45	1	1	5335	10.5	67.6	2.9	7.4	1.6	5.8	1.0	2.9	0.3	78.1	2.9	19.0	0.065	0.537	15.698409	-93.212061
Pijijapan	144.45	1	2	4597	10.7	65.1	3.5	8.4	1.9	6.2	1.0	2.9	0.3	75.8	3.5	20.7	0.079	0.537	15.699832	-93.212851
T. Der. Mapastepec	188.85	3	1	4031	12.7	63.5	3.7	8.3	1.3	6.3	1.0	3.0	0.2	76.2	3.7	20.1	0.078	0.512	15.453835	-92.879008
T. Der. Mapastepec	188.85	3	2	3835	13.8	61.2	4.0	8.3	1.9	6.5	1.1	3.0	0.2	75.0	4.0	21.0	0.081	0.512	15.454144	-92.878565
T. Der. Estación Soconusco	213.30	1	1	3902	10.2	65.5	3.6	8.1	1.9	6.4	1.1	3.0	0.2	75.7	3.6	20.7	0.077	0.513	15.338073	-92.711327
T. Der. Estación Soconusco	213.30	1	2	3699	10.3	65.9	3.5	8.1	1.8	6.2	1.1	2.9	0.2	76.2	3.5	20.3	0.079	0.513	15.359610	-92.715689
T. Der. Estación Soconusco	213.30	3	1	4233	11.2	64.8	3.4	8.1	1.8	6.4	1.2	2.9	0.2	76.0	3.4	20.6	0.085	0.506	15.336426	-92.709374
T. Der. Estación Soconusco	213.30	3	2	4341	12.0	64.6	2.6	8.1	2.1	6.2	1.0	3.1	0.3	76.6	2.6	20.8	0.071	0.506	15.349593	-92.692013
Huixtla	250.50	1	1	4934	6.0	74.2	2.4	6.5	1.8	5.7	1.0	2.2	0.2	80.2	2.4	17.4	0.075	0.523	15.159286	-92.511322
Huixtla	250.50	1	2	4508	4.2	74.7	2.6	6.7	1.9	6.1	0.9	2.5	0.4	78.9	2.6	18.5	0.075	0.523	15.159367	-92.511126
Huixtla	250.50	3	1	8630	10.9	75.2	1.8	5.9	1.4	3.0	0.4	1.3	0.1	86.1	1.8	12.1	0.075	0.511	15.133933	-92.445835
Huixtla	250.50	3	2	8261	11.8	75.0	1.8	5.4	1.4	2.9	0.4	1.2	0.1	86.8	1.8	11.4	0.074	0.511	15.133983	-92.445765
T. Izq. Hamburgo	262.70	3	1	6411	5.7	77.7	2.2	6.1	1.8	4.0	0.6	1.7	0.2	83.4	2.2	14.4	0.080	0.501	15.105673	-92.431291

CHIAPAS

19 CARR: Tapanatepec - Talismán

CLAVE: 00075

RUTA: MEX-200

AÑO: 2018

LUGAR	ESTACION				CLASIFICACION VEHICULAR EN PORCIENTO													COORDENADAS		
	KM	TE	SC	TDPA	M	A	B	C2	C3	T3S2	T3S3	T3S2R4	OTROS	A	B	C	K'	D	LATITUD	LONGITUD
T. Izq. Hamburgo	262.70	3	2	6380	6.3	77.0	2.4	6.8	1.7	3.6	0.6	1.4	0.2	83.3	2.4	14.3	0.078	0.501	15.105676	-92.431129
T. Izq. Huehuetán	273.70	1	1	7190	8.8	75.2	1.8	6.8	1.7	3.4	0.7	1.4	0.2	84.0	1.8	14.2	0.077	0.517	15.015032	-92.402626
T. Izq. Huehuetán	273.70	1	2	6719	9.4	73.8	2.4	7.2	1.7	3.5	0.5	1.3	0.2	83.2	2.4	14.4	0.075	0.517	15.015032	-92.402534
T. Izq. Huehuetán	273.70	3	1	7352	8.3	76.0	2.2	7.5	1.3	3.0	0.4	1.1	0.2	84.3	2.2	13.5	0.075	0.502	14.992595	-92.402444
T. Izq. Huehuetán	273.70	3	2	7280	8.9	74.9	2.4	7.2	1.5	3.2	0.4	1.3	0.2	83.8	2.4	13.8	0.073	0.502	14.992609	-92.402367
Tapachula	292.25	1	1	10361	2.9	83.2	1.4	5.4	1.2	3.0	1.0	1.3	0.6	86.1	1.4	12.5	0.071	0.518	14.911261	-92.335596
Tapachula	292.25	1	2	9652	3.1	81.6	1.5	6.3	1.4	3.3	1.0	1.2	0.6	84.7	1.5	13.8	0.082	0.518	14.911462	-92.335662
T. Der. Cd. Hidalgo	302.75	1	1	11030	3.3	86.7	0.8	6.7	0.4	1.5	0.2	0.4	0.0	90.0	0.8	9.2	0.085	0.510	14.912776	-92.196331
T. Der. Cd. Hidalgo	302.75	1	2	10603	2.8	90.1	0.4	4.2	0.4	1.5	0.2	0.4	0.0	92.9	0.4	6.7	0.078	0.510	14.912726	-92.196285
Tuxtla Chico	307.00	1	0	12463	6.9	88.1	0.3	4.2	0.2	0.1	0.2	0.0	0.0	95.0	0.3	4.7	0.077	0.516	14.930542	-92.165343
Talismán	310.77	1	0	2323	35.9	60.6	0.7	2.6	0.0	0.1	0.1	0.0	0.0	96.5	0.7	2.8	0.116	0.571	14.961057	-92.150706

20 CARR: Tapanatepec - Tuxtla Gutiérrez

CLAVE: 00060

RUTA: MEX-190

AÑO: 2018

LUGAR	ESTACION				CLASIFICACION VEHICULAR EN PORCIENTO													COORDENADAS		
	KM	TE	SC	TDPA	M	A	B	C2	C3	T3S2	T3S3	T3S2R4	OTROS	A	B	C	K'	D	LATITUD	LONGITUD
Tapanatepec	0.00	3	0	2320	8.6	77.4	3.2	6.9	2.3	1.3	0.2	0.1	0.0	86.0	3.2	10.8	0.081	0.526	16.371136	-94.184517
Lim. Edos. Term. Oax. Ppia. Chis.	17.90																			
Rizo de Oro	26.60	1	0	781	2.7	73.2	3.6	9.8	3.2	2.9	4.2	0.3	0.1	75.9	3.6	20.5	0.082	0.506	16.475798	-94.087872
T. Der. Arriaga	56.80	1	0	2220	6.3	77.5	1.3	9.5	1.6	1.9	1.7	0.1	0.1	83.8	1.3	14.9	0.087	0.506	16.570047	-93.847967
T. Der. Arriaga	56.80	3	0	3657	4.1	79.2	1.6	8.7	2.1	2.2	1.9	0.1	0.1	83.3	1.6	15.1	0.072	0.506	16.574196	-93.841379
T. Der. Jiquipilas	82.00	1	0	7539	5.4	79.8	1.2	7.2	1.1	3.7	0.9	0.2	0.5	85.2	1.2	13.6	0.072	0.502	16.687947	-93.667027
T. Der. Jiquipilas	82.00	3	0	5906	3.7	81.6	1.5	8.6	1.5	1.7	1.1	0.1	0.2	85.3	1.5	13.2	0.083	0.505	16.688033	-93.660508
Ocozacoautla	123.29	1	0	4304	5.2	80.5	0.8	7.9	1.9	2.5	0.9	0.1	0.2	85.7	0.8	13.5	0.086	0.515	16.772319	-93.391740
Ocozacoautla	123.29	3	0	5075	6.1	78.4	0.3	11.0	0.2	3.0	0.4	0.1	0.5	84.5	0.3	15.2	0.070	0.524	16.757789	-93.362496
T. Izq. Aeropuerto	132.70	1	0	5024	5.9	80.2	0.2	11.0	0.2	1.9	0.3	0.0	0.3	86.1	0.2	13.7	0.080	0.541	16.753321	-93.349865
T. Izq. Berriozábal (1º Acceso)	136.40	1	1	9775	1.2	78.8	2.7	9.3	1.8	2.8	1.4	1.7	0.3	80.0	2.7	17.3	0.068	0.514	16.767820	-93.292674
T. Izq. Berriozábal (1º Acceso)	136.40	1	2	10344	1.5	77.8	3.4	9.7	1.5	3.1	1.1	1.5	0.4	79.3	3.4	17.3	0.071	0.514	16.767898	-93.292669
T. Izq. Berriozábal (1º Acceso)	136.40	3	1	10908	1.5	83.3	1.9	6.5	1.5	2.6	1.1	1.2	0.4	84.8	1.9	13.3	0.091	0.501	16.769026	-93.279687
T. Izq. Berriozábal (1º Acceso)	136.40	3	2	10972	1.6	82.3	2.0	6.8	1.6	2.8	1.1	1.3	0.5	83.9	2.0	14.1	0.076	0.501	16.769133	-93.279681
T. Izq. San Fernando	151.70	1	1	16044	2.0	83.8	1.2	5.9	0.9	2.0	2.7	0.8	0.7	85.8	1.2	13.0	0.068	0.512	16.770861	-93.197555
T. Izq. San Fernando	151.70	1	2	16854	2.0	83.2	1.2	6.5	0.9	2.2	2.4	0.8	0.8	85.2	1.2	13.6	0.071	0.512	16.770939	-93.197496
Tuxtla Gutiérrez	159.00	1	1	13326	2.5	84.2	0.8	6.8	1.1	1.8	1.7	0.5	0.6	86.7	0.8	12.5	0.066	0.507	16.767428	-93.192651
Tuxtla Gutiérrez	159.00	1	2	13685	2.3	83.5	0.9	7.0	1.2	2.0	1.9	0.5	0.7	85.8	0.9	13.3	0.063	0.507	16.767562	-93.192572

CHIAPAS

21 CARR: Terán - Chicoasén

CLAVE: 07072

RUTA: MEX-190

AÑO: 2018

LUGAR	ESTACION				CLASIFICACION VEHICULAR EN PORCIENTO													COORDENADAS		
	KM	TE	SC	TDPA	M	A	B	C2	C3	T3S2	T3S3	T3S2R4	OTROS	A	B	C	K'	D	LATITUD	LONGITUD
Terán	0.00	3	0	9066	3.6	77.5	0.6	11.5	0.4	4.4	0.6	0.3	1.1	81.1	0.6	18.3	0.081	0.584	16.791205	-93.180158
T. Izq. San Fernando (1° Acceso)	14.00	1	0	9352	7.5	83.1	1.4	2.3	0.8	2.2	0.9	0.8	1.0	90.6	1.4	8.0	0.080	0.501	16.852963	-93.198757
Chicoasén	34.00																			

22 CARR: Tuxtla Gutiérrez - Angostura

CLAVE: 07584

RUTA: MEX-190

AÑO: 2018

LUGAR	ESTACION				CLASIFICACION VEHICULAR EN PORCIENTO													COORDENADAS		
	KM	TE	SC	TDPA	M	A	B	C2	C3	T3S2	T3S3	T3S2R4	OTROS	A	B	C	K'	D	LATITUD	LONGITUD
T. C. Tuxtla Gutiérrez - Cd. Cuauhtémoc	0.00	3	1	13798	2.2	90.4	0.2	3.7	0.6	1.1	1.3	0.2	0.3	92.6	0.2	7.2	0.077	0.505	16.732186	-93.045933
T. C. Tuxtla Gutiérrez - Cd. Cuauhtémoc	0.00	3	2	14069	2.0	89.8	0.2	4.1	0.7	1.2	1.4	0.2	0.4	91.8	0.2	8.0	0.083	0.505	16.732395	-93.045876
T. Der. Revolución Mexicana	16.70	3	0	4627	3.5	81.1	3.4	3.1	1.6	2.6	1.6	1.7	1.4	84.6	3.4	12.0	0.094	0.501	16.609416	-92.992292
Angostura	52.00	1	0	2161	6.2	68.3	4.3	5.0	3.6	3.9	3.3	3.6	1.8	74.5	4.3	21.2	0.080	0.506	16.403837	-92.766718

23 CARR: Tuxtla Gutiérrez - Cd. Cuauhtémoc

CLAVE: 07061

RUTA: MEX-190

AÑO: 2018

LUGAR	ESTACION				CLASIFICACION VEHICULAR EN PORCIENTO													COORDENADAS		
	KM	TE	SC	TDPA	M	A	B	C2	C3	T3S2	T3S3	T3S2R4	OTROS	A	B	C	K'	D	LATITUD	LONGITUD
Tuxtla Gutiérrez	0.00																			
T. Der. Presa La Angostura	7.50	1	1	29427	2.0	88.6	0.4	3.4	0.4	1.5	2.7	0.4	0.6	90.6	0.4	9.0	0.071	0.533	16.735053	-93.058275
T. Der. Presa La Angostura	7.50	1	2	25748	1.5	88.6	0.4	3.7	0.4	1.5	2.9	0.4	0.6	90.1	0.4	9.5	0.060	0.533	16.735160	-93.058211
T. Der. Presa La Angostura	7.50	3	1	16493	2.6	87.7	0.7	5.6	0.6	1.1	1.2	0.2	0.3	90.3	0.7	9.0	0.078	0.509	16.742487	-93.031675
T. Der. Presa La Angostura	7.50	3	2	17069	2.5	87.1	0.7	5.9	0.6	1.3	1.4	0.2	0.3	89.6	0.7	9.7	0.072	0.509	16.742630	-93.031632
Chiapa de Corzo	15.33	3	0	10172	5.6	81.5	0.3	4.3	0.5	6.0	0.8	0.3	0.7	87.1	0.3	12.6	0.072	0.505	16.710846	-92.994263
T. Izq. Pichucalco	34.41	1	0	4313	1.3	90.7	0.1	3.8	1.1	2.0	0.6	0.1	0.3	92.0	0.1	7.9	0.069	0.516	16.760268	-92.946950
T. Izq. Pichucalco	34.41	3	0	1278	1.4	92.9	0.6	3.4	0.2	1.2	0.2	0.0	0.1	94.3	0.6	5.1	0.063	0.520	16.758417	-92.940191
San Cristóbal de Las Casas	85.19	1	0	6316	9.1	83.3	0.2	2.2	0.2	3.5	0.7	0.1	0.7	92.4	0.2	7.4	0.062	0.503	16.724469	-92.675036
San Cristóbal de Las Casas	85.19	3	0	14011	2.1	78.7	1.1	7.5	0.8	7.2	1.2	0.4	1.0	80.8	1.1	18.1	0.062	0.508	16.704752	-92.613151
T. Izq. Ocosingo	95.90	3	0	7559	1.9	83.4	1.5	4.8	1.0	5.6	0.9	0.2	0.7	85.3	1.5	13.2	0.087	0.504	16.658469	-92.555199
Teopisca	116.90	1	0	8152	4.0	80.9	1.2	5.3	0.9	5.5	1.1	0.2	0.9	84.9	1.2	13.9	0.083	0.501	16.554341	-92.479694
Teopisca	116.90	3	0	6872	3.8	81.9	1.4	5.6	0.8	4.5	1.0	0.3	0.7	85.7	1.4	12.9	0.084	0.501	16.533348	-92.460975
T. Der. Las Rosas	121.00	3	0	6857	2.2	82.6	1.4	5.4	0.8	5.4	1.0	0.3	0.9	84.8	1.4	13.8	0.077	0.501	16.302601	-92.184623
Comitán	171.60	1	0	7227	2.8	84.0	1.5	5.7	0.8	3.8	0.6	0.3	0.5	86.8	1.5	11.7	0.084	0.502	16.277703	-92.169455
Comitán	171.60	3	1	7700	3.5	86.7	0.6	5.9	0.9	1.5	0.6	0.1	0.2	90.2	0.6	9.2	0.082	0.507	16.206537	-92.110469
Comitán	171.60	3	2	7916	3.8	85.4	0.7	6.6	0.9	1.6	0.7	0.1	0.2	89.2	0.7	10.1	0.082	0.507	16.206584	-92.110380
T. Izq. Montebello	187.46	1	1	5676	3.4	89.2	0.6	4.7	0.7	0.8	0.4	0.1	0.1	92.6	0.6	6.8	0.087	0.510	16.133277	-92.065514

CHIAPAS

23 CARR: Tuxtla Gutiérrez - Cd. Cuauhtémoc

CLAVE: 07061

RUTA: MEX-190

AÑO: 2018

LUGAR	ESTACION				CLASIFICACION VEHICULAR EN PORCIENTO										COORDENADAS					
	KM	TE	SC	TDPA	M	A	B	C2	C3	T3S2	T3S3	T3S2R4	OTROS	A	B	C	K'	D	LATITUD	LONGITUD
T. Izq. Montebello	187.46	1	2	5906	3.0	89.4	0.6	4.8	0.7	0.9	0.4	0.1	0.1	92.4	0.6	7.0	0.072	0.510	16.133311	-92.065454
T. Izq. Chihuahua	201.04	3	0	4981	2.1	88.7	1.2	3.3	1.1	2.4	0.7	0.2	0.3	90.8	1.2	8.0	0.082	0.547	16.014982	-92.019747
Cd. Cuauhtémoc	256.00	1	0	5650	15.8	76.6	0.5	5.6	0.5	0.6	0.3	0.0	0.1	92.4	0.5	7.1	0.077	0.519	15.672037	-92.001740

24 CARR: Villahermosa - Escopetazo

CLAVE: 00104

RUTA: MEX-195

AÑO: 2018

LUGAR	ESTACION				CLASIFICACION VEHICULAR EN PORCIENTO										COORDENADAS					
	KM	TE	SC	TDPA	M	A	B	C2	C3	T3S2	T3S3	T3S2R4	OTROS	A	B	C	K'	D	LATITUD	LONGITUD
Villahermosa	0.00	3	1	23121	3.0	90.1	0.6	4.9	0.4	0.6	0.3	0.1	0.0	93.1	0.6	6.3	0.084	0.504	17.946553	-92.916608
Villahermosa	0.00	3	2	22779	2.8	91.2	0.4	4.3	0.4	0.5	0.3	0.1	0.0	94.0	0.4	5.6	0.128	0.504	17.946518	-92.916499
Parrilla	10.00	1	1	20214	3.1	90.0	0.7	3.9	0.7	0.9	0.5	0.2	0.0	93.1	0.7	6.2	0.070	0.518	17.913199	-92.923456
Parrilla	10.00	1	2	21745	2.9	88.9	0.9	4.1	1.0	1.1	0.8	0.2	0.1	91.8	0.9	7.3	0.075	0.518	17.913176	-92.923364
Parrilla	10.00	3	1	23161	3.7	90.3	0.3	4.2	0.5	0.7	0.2	0.1	0.0	94.0	0.3	5.7	0.063	0.502	17.890766	-92.923248
Parrilla	10.00	3	2	22938	3.7	89.9	0.3	4.5	0.5	0.7	0.3	0.1	0.0	93.6	0.3	6.1	0.089	0.502	17.890775	-92.923171
T. Izq. Subte. García	20.00	3	0	14972	6.1	78.8	0.6	5.8	1.3	5.2	1.1	0.7	0.4	84.9	0.6	14.5	0.063	0.515	17.825227	-92.929203
La Arena	44.00	1	0	6707	4.4	76.6	1.4	8.8	1.4	4.9	1.0	0.8	0.7	81.0	1.4	17.6	0.085	0.509	17.653198	-92.960168
T. Izq. Teapa	54.80	1	0	11820	7.9	78.6	0.5	5.7	0.7	4.8	0.7	0.3	0.8	86.5	0.5	13.0	0.083	0.515	17.576024	-92.959195
T. Izq. Teapa	54.80	3	0	6884	8.9	77.6	0.8	8.0	0.9	2.7	0.7	0.1	0.3	86.5	0.8	12.7	0.072	0.501	17.568398	-92.959969
Lim. Edos. Term. Tab. Ppia. Chis.	61.42																			
Pichucalco	76.00	1	0	3312	8.6	77.8	1.0	9.6	0.9	1.5	0.5	0.0	0.1	86.4	1.0	12.6	0.072	0.510	17.520345	-93.100900
Pichucalco	76.00	3	0	3249	11.1	81.7	0.3	4.0	0.8	1.3	0.5	0.0	0.3	92.8	0.3	6.9	0.090	0.508	17.492994	-93.103442
Solusuchiapa	112.00	1	0	1817	7.1	82.5	0.6	5.3	1.5	1.7	1.1	0.0	0.2	89.6	0.6	9.8	0.080	0.510	17.428168	-93.038283
Solusuchiapa	112.00	3	0	1570	7.1	83.5	0.8	4.3	1.3	1.6	0.9	0.2	0.3	90.6	0.8	8.6	0.077	0.503	17.416750	-93.030099
Rayón	146.00	1	0	2295	3.3	87.1	0.3	5.4	0.6	2.1	0.6	0.1	0.5	90.4	0.3	9.3	0.075	0.514	17.203120	-93.012359
Jitotol	197.79	1	0	2016	2.1	91.4	0.2	4.1	0.6	1.2	0.3	0.0	0.1	93.5	0.2	6.3	0.086	0.501	17.073941	-92.864885
Bochil	211.00	1	0	4799	2.9	89.2	0.3	3.2	0.6	2.6	0.6	0.1	0.5	92.1	0.3	7.6	0.091	0.505	16.989059	-92.879577
Ixtapa	247.00	1	0	3831	2.2	89.1	0.3	4.1	0.9	2.4	0.6	0.1	0.3	91.3	0.3	8.4	0.071	0.501	16.815449	-92.908017
Escopetazo	259.00	1	0	3681	1.3	90.4	0.6	3.2	1.5	1.8	0.8	0.1	0.3	91.7	0.6	7.7	0.070	0.502	16.757193	-92.936591

25 CARR: Villahermosa - Francisco Escárcega

CLAVE: 00092

RUTA: MEX-186

AÑO: 2018

LUGAR	ESTACION				CLASIFICACION VEHICULAR EN PORCIENTO										COORDENADAS					
	KM	TE	SC	TDPA	M	A	B	C2	C3	T3S2	T3S3	T3S2R4	OTROS	A	B	C	K'	D	LATITUD	LONGITUD
Villahermosa	0.00	3	1	17905	3.3	85.2	1.1	4.1	1.1	2.5	0.7	1.9	0.1	88.5	1.1	10.4	0.068	0.512	18.001028	-92.890761
Villahermosa	0.00	3	2	18751	2.1	85.2	1.3	5.2	1.1	2.5	0.7	1.8	0.1	87.3	1.3	11.4	0.073	0.512	18.001155	-92.890733

CHIAPAS

25 CARR: Villahermosa - Francisco Escárcega

CLAVE: 00092

RUTA: MEX-186

AÑO: 2018

LUGAR	ESTACION				CLASIFICACION VEHICULAR EN PORCIENTO													COORDENADAS		
	KM	TE	SC	TDPA	M	A	B	C2	C3	T3S2	T3S3	T3S2R4	OTROS	A	B	C	K'	D	LATITUD	LONGITUD
T. Izq. Aeropuerto (Alta)	12.00	1	1	15422	2.1	81.3	1.7	6.7	1.0	3.2	1.4	1.9	0.7	83.4	1.7	14.9	0.069	0.513	17.983779	-92.827823
T. Izq. Aeropuerto (Baja)	12.00	1	1	1461	15.6	72.1	1.1	5.7	1.5	2.7	0.5	0.6	0.2	87.7	1.1	11.2	0.077	0.542	17.983828	-92.828028
T. Izq. Aeropuerto (Baja)	12.00	1	2	1234	13.0	73.2	1.3	6.3	1.7	3.0	0.6	0.7	0.2	86.2	1.3	12.5	0.083	0.542	17.983721	-92.827270
T. Izq. Aeropuerto (Alta)	12.00	1	2	14657	2.3	80.3	1.7	7.5	1.0	3.0	1.4	2.0	0.8	82.6	1.7	15.7	0.066	0.513	17.983585	-92.827313
Puente Grijalva	17.60	2	1	7565	1.8	78.5	4.7	3.5	2.2	4.7	1.2	3.1	0.3	80.3	4.7	15.0	0.079	0.500	17.947602	-92.785235
Puente Grijalva	17.60	2	2	7565	1.8	78.5	4.7	3.5	2.2	4.7	1.2	3.1	0.3	80.3	4.7	15.0	0.079	0.500	17.947602	-92.785235
X. C. Cacaos - La Granja	32.46	1	1	9761	1.4	77.4	2.7	6.8	1.4	4.8	1.3	3.9	0.3	78.8	2.7	18.5	0.078	0.500	17.828733	-92.717376
X. C. Cacaos - La Granja	32.46	1	2	9760	1.4	76.9	2.7	7.4	1.4	5.0	1.2	3.7	0.3	78.3	2.7	19.0	0.092	0.500	17.828839	-92.717096
X. C. Cacaos - La Granja	32.46	3	1	6958	2.0	74.5	3.2	7.7	1.7	4.9	1.3	4.3	0.4	76.5	3.2	20.3	0.074	0.503	17.816276	-92.710252
X. C. Cacaos - La Granja	32.46	3	2	7036	2.0	75.0	2.9	7.3	2.0	4.7	1.3	4.3	0.5	77.0	2.9	20.1	0.095	0.503	17.816324	-92.710173
X. C. Jalapa - Jonuta	40.00	3	1	7295	2.4	75.0	3.1	6.9	1.6	4.7	1.5	4.3	0.5	77.4	3.1	19.5	0.071	0.520	17.775953	-92.674973
X. C. Jalapa - Jonuta	40.00	3	2	7915	2.4	76.5	3.0	6.9	1.6	4.2	1.3	3.8	0.3	78.9	3.0	18.1	0.094	0.520	17.776009	-92.674917
T. Izq. Macuspana	46.20	1	1	7723	2.2	74.3	2.9	7.2	2.8	4.7	1.7	3.8	0.4	76.5	2.9	20.6	0.067	0.517	17.742931	-92.632613
T. Izq. Macuspana	46.20	1	2	7224	2.2	71.0	3.2	8.5	3.2	6.1	1.9	3.5	0.4	73.2	3.2	23.6	0.068	0.517	17.743016	-92.632556
T. Izq. Macuspana	46.20	3	1	6504	3.9	70.0	2.2	8.3	2.9	5.9	2.1	4.1	0.6	73.9	2.2	23.9	0.063	0.510	17.735287	-92.622844
T. Izq. Macuspana	46.20	3	2	6769	3.6	67.6	2.4	9.8	3.3	6.5	2.2	3.9	0.7	71.2	2.4	26.4	0.090	0.510	17.735357	-92.622766
X. C. Estación Macuspana - Vernet	54.30	1	0	10144	3.1	68.6	2.7	12.0	2.4	6.8	1.9	2.1	0.4	71.7	2.7	25.6	0.080	0.523	17.711379	-92.578960
T. Der. Chivalito (Est. Pino Suárez)	70.00	1	0	11518	2.4	74.8	2.0	6.1	2.1	5.7	1.4	5.1	0.4	77.2	2.0	20.8	0.081	0.537	17.669145	-92.442167
T. Der. Chivalito (Est. Pino Suárez)	70.00	3	1	3988	3.3	63.2	4.6	8.1	2.0	8.3	1.7	8.2	0.6	66.5	4.6	28.9	0.072	0.520	17.665823	-92.431402
T. Der. Chivalito (Est. Pino Suárez)	70.00	3	2	4316	2.8	61.8	5.2	8.8	2.3	8.9	1.7	7.9	0.6	64.6	5.2	30.2	0.079	0.520	17.665870	-92.431387
T. Der. Estación Zopo	71.00	1	0	8265	3.0	63.5	4.1	7.8	2.5	9.0	1.8	8.0	0.3	66.5	4.1	29.4	0.072	0.512	17.671241	-92.416830
T. Der. Estación Zopo	71.00	3	1	4362	2.4	69.2	4.1	6.7	2.2	7.0	1.7	6.3	0.4	71.6	4.1	24.3	0.067	0.505	17.680102	-92.403113
T. Der. Estación Zopo	71.00	3	2	4273	2.2	63.8	5.2	8.1	2.5	8.6	1.9	7.3	0.4	66.0	5.2	28.8	0.083	0.505	17.680138	-92.403161
Lim. Edos. Term. Tab. Ppia. Chis.	76.90																			
T. Izq. Bonanza	88.00	1	0	8015	2.8	65.1	3.6	9.8	2.1	8.9	2.0	4.9	0.8	67.9	3.6	28.5	0.078	0.522	17.698247	-92.267933
T. Izq. Jonuta	101.00	1	0	6505	1.8	63.0	3.5	10.2	2.2	9.3	1.9	7.4	0.7	64.8	3.5	31.7	0.082	0.511	17.697882	-92.135387
T. Izq. Jonuta	101.00	3	0	7652	1.7	67.4	4.2	7.8	3.3	8.4	1.9	4.7	0.6	69.1	4.2	26.7	0.070	0.502	17.697549	-92.121832
X. C. Catazajá - Palenque	114.00	1	0	7750	2.3	69.0	3.4	6.7	1.6	9.7	1.4	5.3	0.6	71.3	3.4	25.3	0.107	0.529	17.707807	-92.024265
X. C. Catazajá - Palenque	114.00	3	0	6363	1.9	66.0	3.4	6.4	2.4	9.5	1.7	8.4	0.3	67.9	3.4	28.7	0.086	0.504	17.715068	-92.001802
T. Der. Emiliano Zapata	134.70	1	0	6877	1.4	62.6	4.6	7.5	1.9	10.9	1.5	8.8	0.8	64.0	4.6	31.4	0.079	0.519	17.771036	-91.836126
T. Der. Emiliano Zapata	134.70	3	0	4836	2.0	60.6	4.4	7.1	2.3	11.2	2.4	8.9	1.1	62.6	4.4	33.0	0.058	0.510	17.784949	-91.822232
Lim. Edos. Term. Chis. Ppia. Tab.	140.70																			
Puente Usumacinta	145.20	2	0	4369	2.9	56.3	4.6	4.7	4.5	13.5	2.0	10.5	1.0	59.2	4.6	36.2	0.079	0.500	17.859905	-91.783654
T. Izq. Palizada	154.05	1	0	4057	2.5	52.3	5.8	7.2	2.3	13.9	3.1	11.9	1.0	54.8	5.8	39.4	0.062	0.508	17.937705	-91.737378
T. Izq. Palizada	154.05	3	0	3412	1.7	56.8	5.9	7.8	2.6	10.7	3.2	10.0	1.3	58.5	5.9	35.6	0.077	0.526	17.946491	-91.729919

CHIAPAS

25 CARR: Villahermosa - Francisco Escárcega

CLAVE: 00092

RUTA: MEX-186

AÑO: 2018

LUGAR	ESTACION				CLASIFICACION VEHICULAR EN PORCIENTO													COORDENADAS			
	KM	TE	SC	TDPA	M	A	B	C2	C3	T3S2	T3S3	T3S2R4	OTROS	A	B	C	K'	D	LATITUD	LONGITUD	
Lim. Edos. Term. Tab. Ppia. Camp.	154.60																				
T. Der. Candelaria	233.40	1	0	3885	2.7	48.3	5.1	7.6	2.8	15.8	3.0	14.1	0.6	51.0	5.1	43.9	0.065	0.502	18.373074	-91.201755	
T. Der. Felipe Ángeles	253.00	1	0	3938	3.7	50.9	5.5	8.6	2.4	12.7	2.8	12.3	1.1	54.6	5.5	39.9	0.067	0.524	18.504011	-91.106451	
T. Izq. Sabancuy	274.10	1	0	4701	3.9	59.8	4.6	7.8	2.2	12.4	2.7	5.7	0.9	63.7	4.6	31.7	0.072	0.501	18.629556	-90.987576	
Francisco Escárcega	297.04	1	0	7170	2.2	63.6	3.8	9.0	1.7	10.6	2.2	6.1	0.8	65.8	3.8	30.4	0.071	0.512	18.610029	-90.776006	

26 CARR: Arriaga - Ocozocoautla (Cuota)

CLAVE: 00092

RUTA: MEX-200D

AÑO: 2018

LUGAR	ESTACION				CLASIFICACION VEHICULAR EN PORCIENTO													COORDENADAS		
	KM	TE	SC	TDPA	M	A	B	C2	C3	T3S2	T3S3	T3S2R4	OTROS	A	B	C	K'	D	LATITUD	LONGITUD
Arriaga	0.00	3	0	4521	0.8	69.6	4.5	10.1	2.4	5.2	2.2	3.5	1.7	70.4	4.5	25.1	0.101	0.506	16.244072	-93.880826
Caseta de Cobro Arriaga	2.70	2	0	4921	0.6	76.1	4.8	5.1	3.0	4.9	1.1	3.8	0.6	76.7	4.8	18.5	0.087	0.500	16.257485	-93.875377
Caseta de Cobro Arriaga	2.70	3	0	4913	0.7	69.6	4.2	10.0	2.1	5.3	2.7	3.2	2.2	70.3	4.2	25.5	0.091	0.506	16.259373	-93.873751
T. Izq. Tierra y Libertad	20.70	1	0	4816	0.9	71.4	3.9	9.3	2.1	5.8	2.2	3.1	1.3	72.3	3.9	23.8	0.097	0.505	16.354088	-93.865735
T. Izq. Tierra y Libertad	21.55	3	0	3782	0.7	71.2	3.9	4.8	2.2	6.0	3.1	4.0	4.1	71.9	3.9	24.2	0.093	0.505	16.370753	-93.861855
Caseta de Cobro Jiquipilas	61.05	2	0	3966	0.4	75.3	4.0	4.9	3.1	5.9	1.2	4.6	0.6	75.7	4.0	20.3	0.087	0.500	16.620512	-93.602104
Caseta de Cobro Jiquipilas	61.05	3	0	3920	0.8	66.9	3.2	9.4	3.2	6.1	3.0	3.7	3.7	67.7	3.2	29.1	0.100	0.511	16.626859	-93.597497
Caseta de Cobro Montes Azules	70.60	2	0	4230	0.6	75.2	3.8	5.0	3.5	5.7	1.2	4.4	0.6	75.8	3.8	20.4	0.087	0.500	16.620609	-93.600526
Caseta de Cobro Ocozocoautla	92.00	1	0	6810	0.6	73.2	2.3	9.7	2.2	4.7	2.3	2.2	2.8	73.8	2.3	23.9	0.089	0.502	16.737208	-93.404840
Caseta de Cobro Ocozocoautla	92.00	2	0	6750	0.5	78.6	5.0	4.8	2.9	3.9	1.1	2.8	0.4	79.1	5.0	15.9	0.087	0.500	16.738487	-93.400346
Ocozocoautla	93.77																			

27 CARR: Las Choapas - Ocozocoautla (Cuota)

CLAVE: 00077

RUTA: MEX-187D

AÑO: 2018

LUGAR	ESTACION				CLASIFICACION VEHICULAR EN PORCIENTO													COORDENADAS		
	KM	TE	SC	TDPA	M	A	B	C2	C3	T3S2	T3S3	T3S2R4	OTROS	A	B	C	K'	D	LATITUD	LONGITUD
T. C. Coatzacoalcos - Villahermosa	0.00	3	0	4297	1.2	56.1	6.0	7.0	5.3	12.2	2.8	8.5	0.9	57.3	6.0	36.7	0.061	0.514	18.063483	-94.246694
Caseta de Cobro Las Choapas	16.80	1	0	3637	1.3	47.9	7.4	7.0	6.6	15.8	2.8	10.5	0.7	49.2	7.4	43.4	0.069	0.516	17.950450	-94.175135
Caseta de Cobro Las Choapas	16.80	3	0	2925	1.0	39.8	10.8	7.7	4.9	18.9	3.7	12.5	0.7	40.8	10.8	48.4	0.072	0.520	17.935725	-94.167789
Lim. Edos. Term. Ver. Ppia. Tab.	96.68																			
Caseta de Cobro Malpasito	112.70	1	0	2689	1.8	40.7	9.5	6.6	5.2	19.6	3.1	12.9	0.6	42.5	9.5	48.0	0.080	0.528	17.352367	-93.587833
Caseta de Cobro Malpasito	112.70	2	0	2191	0.4	35.8	9.8	4.8	8.6	20.8	3.3	14.9	1.6	36.2	9.8	54.0	0.072	0.500	17.349070	-93.586472
Lim. Edos. Term. Tab. Ppia. Chis.	113.70																			
T. Izq. Malpaso	123.79	1	0	4594	1.4	57.6	8.0	11.1	3.9	9.2	3.1	4.8	0.9	59.0	8.0	33.0	0.061	0.528	17.261031	-93.570026
Caseta de Cobro Ocozocoautla	182.50	1	0	4898	1.4	62.0	6.0	11.1	3.3	7.8	1.9	5.6	0.9	63.4	6.0	30.6	0.071	0.501	16.871455	-93.414378

CHIAPAS

27 CARR: Las Choapas - Ocozocoautla (Cuota)

CLAVE: 00077

RUTA: MEX-187D

AÑO: 2018

LUGAR	ESTACION				CLASIFICACION VEHICULAR EN PORCIENTO										COORDENADAS					
	KM	TE	SC	TDPA	M	A	B	C2	C3	T3S2	T3S3	T3S2R4	OTROS	A	B	C	K'	D	LATITUD	LONGITUD
Caseta de Cobro Ocozocoautla	182.50	2	0	4440	0.4	57.9	7.0	5.2	6.7	11.8	1.9	8.2	0.9	58.3	7.0	34.7	0.072	0.500	16.863183	-93.406856
T. C. Tapanatepec - Tuxtla Gutiérrez	197.50	1	0	5528	1.2	61.7	5.9	8.5	3.4	10.4	2.1	6.0	0.8	62.9	5.9	31.2	0.070	0.528	16.772584	-93.318631

28 CARR: Tuxtla Gutiérrez - San Cristóbal de Las Casas (Cuota)

CLAVE: 07580

RUTA: MEX-190D

AÑO: 2018

LUGAR	ESTACION				CLASIFICACION VEHICULAR EN PORCIENTO										COORDENADAS					
	KM	TE	SC	TDPA	M	A	B	C2	C3	T3S2	T3S3	T3S2R4	OTROS	A	B	C	K'	D	LATITUD	LONGITUD
T. C. Tuxtla Gutiérrez - Cd. Cuauhtémoc	0.00																			
Caseta de Cobro Chiapa de Corzo	1.30	1	0	10885	0.5	81.9	2.1	7.6	1.2	4.5	1.0	0.6	0.6	82.4	2.1	15.5	0.082	0.503	16.727630	-93.000850
Caseta de Cobro Chiapa de Corzo	1.30	2	0	11628	0.6	88.9	2.3	3.5	1.8	1.6	0.6	0.6	0.1	89.5	2.3	8.2	0.088	0.500	16.730567	-93.009544
T. C. Libramiento de San Cristóbal de Las Casas	46.00	1	0	11794	0.9	82.1	1.8	7.3	1.1	4.2	1.2	0.6	0.8	83.0	1.8	15.2	0.079	0.505	16.719488	-92.665644

29 CARR: Chiapa de Corzo - Amatenango del Valle

CLAVE: 07024

RUTA: CHIS

AÑO: 2018

LUGAR	ESTACION				CLASIFICACION VEHICULAR EN PORCIENTO										COORDENADAS					
	KM	TE	SC	TDPA	M	A	B	C2	C3	T3S2	T3S3	T3S2R4	OTROS	A	B	C	K'	D	LATITUD	LONGITUD
T. C. Tuxtla Gutiérrez - Cd. Cuauhtémoc	0.00	3	0	1902	3.3	83.8	0.4	4.8	1.4	2.8	2.0	1.3	0.2	87.1	0.4	12.5	0.080	0.505	16.721589	-92.980516
Flores Magón	74.00	1	0	2757	3.5	83.2	0.6	4.9	1.5	2.7	2.1	1.2	0.3	86.7	0.6	12.7	0.070	0.504	16.401047	-92.707038
Flores Magón	74.00	3	0	2079	3.8	82.4	0.4	4.9	1.4	2.9	2.1	1.6	0.5	86.2	0.4	13.4	0.085	0.503	16.387303	-92.698664
T. Izq. Venustiano Carranza (1º Acceso)	92.80	1	0	3622	5.4	82.2	0.3	5.7	1.2	2.2	1.4	1.3	0.3	87.6	0.3	12.1	0.070	0.504	16.344073	-92.584671
T. Izq. Venustiano Carranza (1º Acceso)	92.80	3	0	1866	7.3	81.5	0.3	6.8	0.9	1.5	0.7	0.9	0.1	88.8	0.3	10.9	0.073	0.507	16.341326	-92.577600
Soyatitán	111.20	1	0	3551	5.9	83.1	0.1	6.5	0.8	2.4	0.7	0.1	0.4	89.0	0.1	10.9	0.077	0.501	16.297722	-92.430370
T. Der. Las Rosas (1º Acceso)	120.22	1	0	3238	4.2	87.3	0.2	4.3	0.7	2.8	0.3	0.0	0.2	91.5	0.2	8.3	0.064	0.504	16.348276	-92.378073
T. Der. Las Rosas (1º Acceso)	120.22	3	0	3566	8.2	86.0	0.3	3.1	0.7	1.3	0.3	0.0	0.1	94.2	0.3	5.5	0.065	0.500	16.361459	-92.378867
T. C. Tuxtla Gutiérrez - Cd. Cuauhtémoc	146.50	1	0	2000	6.0	86.6	0.5	5.6	0.3	0.8	0.1	0.0	0.1	92.6	0.5	6.9	0.069	0.515	16.523291	-92.444874

30 CARR: Ent. Emiliano Zapata - La Libertad

CLAVE: 00062

RUTA: CHIS-TAB

AÑO: 2018

LUGAR	ESTACION				CLASIFICACION VEHICULAR EN PORCIENTO										COORDENADAS					
	KM	TE	SC	TDPA	M	A	B	C2	C3	T3S2	T3S3	T3S2R4	OTROS	A	B	C	K'	D	LATITUD	LONGITUD
T. C. El Suspiro - Tenosique	0.00	3	0	1789	9.8	84.9	0.2	4.1	0.7	0.2	0.1	0.0	0.0	94.7	0.2	5.1	0.079	0.509	17.721121	-91.744530
Lim. Edos. Term. Tab. Ppia. Chis.	8.00																			
La Libertad	10.00	1	0	1620	7.2	82.3	0.3	8.2	0.3	1.5	0.2	0.0	0.0	89.5	0.3	10.2	0.080	0.520	17.690564	-91.722352

CHIAPAS

31 CARR: Ent. Suschilá - Comitán

CLAVE: 00061

RUTA: CHIS-TAB

AÑO: 2018

LUGAR	ESTACION				CLASIFICACION VEHICULAR EN PORCIENTO										COORDENADAS					
	KM	TE	SC	TDPA	M	A	B	C2	C3	T3S2	T3S3	T3S2R4	OTROS	A	B	C	K'	D	LATITUD	LONGITUD
T. C. Ocosingo - Comitán	0.00	3	0	596	7.3	85.6	0.0	5.7	0.9	0.5	0.0	0.0	0.0	92.9	0.0	7.1	0.086	0.522	16.864180	-92.025973
Shuvi	23.40	1	0	491	4.3	86.1	0.3	7.5	1.1	0.6	0.1	0.0	0.0	90.4	0.3	9.3	0.094	0.520	16.805725	-91.895860
Shuvi	23.40	3	0	455	4.9	85.9	0.2	7.2	1.1	0.6	0.1	0.0	0.0	90.8	0.2	9.0	0.079	0.509	16.803058	-91.887537
Nuevo Momón	205.00	1	0	247	9.6	79.6	0.1	9.7	0.0	0.9	0.1	0.0	0.0	89.2	0.1	10.7	0.126	0.512	16.333605	-91.744057
Nuevo Momón	205.00	3	0	396	9.0	80.5	0.1	9.2	0.1	0.9	0.2	0.0	0.0	89.5	0.1	10.4	0.106	0.504	16.334658	-91.751373
Las Margaritas	242.50	1	0	2467	20.0	73.1	0.1	6.3	0.1	0.3	0.1	0.0	0.0	93.1	0.1	6.8	0.077	0.509	16.323665	-91.976144
Las Margaritas	242.50	3	1	2748	9.2	86.2	0.1	3.9	0.3	0.2	0.1	0.0	0.0	95.4	0.1	4.5	0.088	0.517	16.312349	-91.994990
Las Margaritas	242.50	3	2	2939	7.9	87.5	0.1	4.0	0.3	0.1	0.1	0.0	0.0	95.4	0.1	4.5	0.084	0.517	16.312300	-91.994946
Caxh	257.50	1	0	5149	6.9	86.5	0.2	5.6	0.5	0.2	0.1	0.0	0.0	93.4	0.2	6.4	0.082	0.512	16.265292	-92.089813
Caxh	257.50	3	1	5225	9.7	86.0	0.0	3.5	0.5	0.2	0.1	0.0	0.0	95.7	0.0	4.3	0.085	0.502	16.259317	-92.107818
Caxh	257.50	3	2	5274	10.0	84.1	0.1	5.2	0.4	0.1	0.1	0.0	0.0	94.1	0.1	5.8	0.081	0.502	16.259251	-92.107791
Comitán	261.00																			

32 CARR: Estación Palenque - La Libertad

CLAVE: 07002

RUTA: CHIS-010

AÑO: 2018

LUGAR	ESTACION				CLASIFICACION VEHICULAR EN PORCIENTO										COORDENADAS					
	KM	TE	SC	TDPA	M	A	B	C2	C3	T3S2	T3S3	T3S2R4	OTROS	A	B	C	K'	D	LATITUD	LONGITUD
Estación Palenque	0.00	3	0	2481	15.5	75.2	0.2	7.6	1.1	0.2	0.1	0.1	0.0	90.7	0.2	9.1	0.091	0.508	17.549563	-91.982999
La Libertad	40.00	1	0	1003	13.8	78.0	0.3	6.0	0.4	1.1	0.4	0.0	0.0	91.8	0.3	7.9	0.074	0.500	17.680874	-91.727746

33 CARR: Gregorio Méndez Magaña - Reforma de Ocampo

CLAVE: 00103

RUTA: CHIS

AÑO: 2018

LUGAR	ESTACION				CLASIFICACION VEHICULAR EN PORCIENTO										COORDENADAS					
	KM	TE	SC	TDPA	M	A	B	C2	C3	T3S2	T3S3	T3S2R4	OTROS	A	B	C	K'	D	LATITUD	LONGITUD
Gregorio Méndez Magaña	0.00	3	0	948	22.9	63.6	0.4	8.7	3.5	0.7	0.2	0.0	0.0	86.5	0.4	13.1	0.089	0.502	17.446863	-91.596073
Lim. Edos. Term. Tab. Ppia. Chis.	3.00																			
T. C. Benemérito de Las Américas - Palenque	21.00	1	0	2566	16.0	76.9	0.1	4.3	0.9	1.6	0.2	0.0	0.0	92.9	0.1	7.0	0.078	0.504	17.323802	-91.692250
Reforma de Ocampo	22.00																			

34 CARR: Independencia - Buenos Aires

CLAVE: 07098

RUTA: CHIS

AÑO: 2018

LUGAR	ESTACION				CLASIFICACION VEHICULAR EN PORCIENTO										COORDENADAS					
	KM	TE	SC	TDPA	M	A	B	C2	C3	T3S2	T3S3	T3S2R4	OTROS	A	B	C	K'	D	LATITUD	LONGITUD
Independencia	0.00																			
El Porvenir	139.00	3	0	1158	8.6	86.0	0.2	5.0	0.1	0.0	0.1	0.0	0.0	94.6	0.2	5.2	0.098	0.515	15.448788	-92.290089

CHIAPAS

34 CARR: Independencia - Buenos Aires

CLAVE: 07098

RUTA: CHIS

AÑO: 2018

LUGAR	ESTACION				CLASIFICACION VEHICULAR EN PORCIENTO													COORDENADAS		
	KM	TE	SC	TDPA	M	A	B	C2	C3	T3S2	T3S3	T3S2R4	OTROS	A	B	C	K'	D	LATITUD	LONGITUD
Buenos Aires	159.00	1	0	978	6.7	85.7	0.3	6.3	0.3	0.5	0.2	0.0	0.0	92.4	0.3	7.3	0.098	0.512	15.334974	-92.277972

35 CARR: Las Limas - La Concordia

CLAVE: 07028

RUTA: CHIS

AÑO: 2018

LUGAR	ESTACION				CLASIFICACION VEHICULAR EN PORCIENTO													COORDENADAS		
	KM	TE	SC	TDPA	M	A	B	C2	C3	T3S2	T3S3	T3S2R4	OTROS	A	B	C	K'	D	LATITUD	LONGITUD
T. C. Tuxtla Gutiérrez - Angostura	0.00	3	0	4558	3.6	82.4	1.1	8.9	0.8	2.3	0.5	0.2	0.2	86.0	1.1	12.9	0.068	0.503	16.607060	-92.992971
Revolución Mexicana	83.00	1	0	2814	3.6	85.9	1.0	6.1	0.9	1.6	0.5	0.3	0.1	89.5	1.0	9.5	0.094	0.503	16.174533	-93.059742
La Concordia	135.00																			

36 CARR: Libramiento Sur de Tuxtla Gutiérrez

CLAVE: 07578

RUTA: CHIS

AÑO: 2018

LUGAR	ESTACION				CLASIFICACION VEHICULAR EN PORCIENTO													COORDENADAS		
	KM	TE	SC	TDPA	M	A	B	C2	C3	T3S2	T3S3	T3S2R4	OTROS	A	B	C	K'	D	LATITUD	LONGITUD
T. C. Tapanatepec - Tuxtla Gutiérrez	0.00	3	1	16020	2.1	87.9	0.3	4.1	0.1	1.4	3.2	0.3	0.6	90.0	0.3	9.7	0.058	0.532	16.752684	-93.141951
T. C. Tapanatepec - Tuxtla Gutiérrez	0.00	3	2	18176	1.8	89.0	0.3	4.0	0.1	1.1	3.2	0.1	0.4	90.8	0.3	8.9	0.058	0.532	16.752706	-93.141814
T. C. Tuxtla Gutiérrez - Cd. Cuauhtémoc	9.20	1	1	16882	2.5	88.7	0.3	3.0	0.5	1.4	2.4	0.3	0.9	91.2	0.3	8.5	0.067	0.528	16.740894	-93.078898
T. C. Tuxtla Gutiérrez - Cd. Cuauhtémoc	9.20	1	2	18858	2.6	88.8	0.2	3.1	0.4	1.4	2.3	0.3	0.9	91.4	0.2	8.4	0.074	0.528	16.741016	-93.078942

37 CARR: Ocosingo - Comitán

CLAVE: 07092

RUTA: CHIS

AÑO: 2018

LUGAR	ESTACION				CLASIFICACION VEHICULAR EN PORCIENTO													COORDENADAS		
	KM	TE	SC	TDPA	M	A	B	C2	C3	T3S2	T3S3	T3S2R4	OTROS	A	B	C	K'	D	LATITUD	LONGITUD
Ocosingo	0.00	3	0	7930	13.4	76.7	0.4	2.9	0.1	4.8	0.3	0.4	1.0	90.1	0.4	9.5	0.085	0.512	16.896461	-92.074290
Altamirano	24.00	1	0	1765	2.9	88.0	0.4	5.3	1.0	1.1	0.7	0.3	0.3	90.9	0.4	8.7	0.117	0.508	16.745711	-92.040952
Altamirano	24.00	3	0	2337	5.4	84.7	0.7	5.1	0.5	2.5	0.7	0.1	0.3	90.1	0.7	9.2	0.101	0.515	16.716706	-92.043453
La Mendoza	30.00	1	0	1246	3.0	83.5	0.9	6.3	1.2	2.1	1.5	0.6	0.9	86.5	0.9	12.6	0.113	0.739	16.684874	-92.022529
Comitán	100.00	1	0	5212	13.5	79.4	0.3	2.3	0.3	3.1	0.6	0.1	0.4	92.9	0.3	6.8	0.085	0.520	16.281818	-92.123996

38 CARR: Ocozocoautla - Revolución Mexicana

CLAVE: 07571

RUTA: CHIS-053-230

AÑO: 2018

LUGAR	ESTACION				CLASIFICACION VEHICULAR EN PORCIENTO													COORDENADAS		
	KM	TE	SC	TDPA	M	A	B	C2	C3	T3S2	T3S3	T3S2R4	OTROS	A	B	C	K'	D	LATITUD	LONGITUD
Ocozocoautla	0.00	3	0	5765	8.7	70.1	0.4	10.4	3.4	4.1	1.4	0.7	0.8	78.8	0.4	20.8	0.064	0.500	16.752814	-93.382489
Nuevo México	36.00	3	0	2525	5.6	71.9	0.5	16.1	1.5	2.7	0.9	0.6	0.2	77.5	0.5	22.0	0.079	0.542	16.452677	-93.434280

CHIAPAS

38 CARR: Ocozocoautla - Revolución Mexicana

CLAVE: 07571

RUTA: CHIS-053-230

AÑO: 2018

LUGAR	ESTACION				CLASIFICACION VEHICULAR EN PORCIENTO													COORDENADAS		
	KM	TE	SC	TDPA	M	A	B	C2	C3	T3S2	T3S3	T3S2R4	OTROS	A	B	C	K'	D	LATITUD	LONGITUD
T. Der. Cristóbal Obregón	41.00	3	0	2389	7.2	74.8	0.4	11.0	2.2	2.7	0.7	0.8	0.2	82.0	0.4	17.6	0.077	0.514	16.407583	-93.413189
T. Izq. Tuxtla Gutiérrez	76.00	1	0	3911	7.0	73.0	2.6	10.1	2.4	3.5	0.8	0.4	0.2	80.0	2.6	17.4	0.077	0.504	16.316442	-93.332268
T. Izq. Tuxtla Gutiérrez	76.00	3	0	6447	6.0	80.5	0.1	6.7	1.7	3.7	0.7	0.3	0.3	86.5	0.1	13.4	0.080	0.502	16.315015	-93.329364
Villa Flores	84.00	1	0	7553	10.0	79.6	0.7	3.5	0.5	4.0	0.9	0.2	0.6	89.6	0.7	9.7	0.082	0.526	16.258696	-93.263323
Villa de Corzo	94.00	1	0	9543	13.8	76.0	0.4	4.7	0.5	3.1	0.6	0.3	0.6	89.8	0.4	9.8	0.068	0.526	16.205593	-93.265148
Revolución Mexicana	119.00	1	0	3635	13.5	79.0	0.4	4.6	0.8	1.2	0.2	0.1	0.2	92.5	0.4	7.1	0.070	0.535	16.166861	-93.091021

39 CARR: Paso de Cunduacán - Estación Juárez

CLAVE: 00588

RUTA: TAB-CHIS

AÑO: 2018

LUGAR	ESTACION				CLASIFICACION VEHICULAR EN PORCIENTO													COORDENADAS		
	KM	TE	SC	TDPA	M	A	B	C2	C3	T3S2	T3S3	T3S2R4	OTROS	A	B	C	K'	D	LATITUD	LONGITUD
Paso de Cunduacán	0.00	3	0	9881	2.7	82.0	0.4	7.5	0.8	4.1	1.3	0.6	0.6	84.7	0.4	14.9	0.094	0.508	17.960167	-93.138167
Lim. Edos. Term. Tab. Ppia. Chis.	9.00																			
Santa Teresa 2º Secc.	18.00	3	0	2375	7.2	82.9	0.5	6.4	1.0	1.5	0.5	0.0	0.0	90.1	0.5	9.4	0.083	0.536	17.765787	-93.169016
Estación Juárez	57.80	1	0	3094	10.5	80.1	0.4	6.1	0.8	1.7	0.4	0.0	0.0	90.6	0.4	9.0	0.072	0.501	17.618624	-93.168109

40 CARR: Puerto Caté - San Cristóbal de Las Casas

CLAVE: 07097

RUTA: CHIS

AÑO: 2018

LUGAR	ESTACION				CLASIFICACION VEHICULAR EN PORCIENTO													COORDENADAS		
	KM	TE	SC	TDPA	M	A	B	C2	C3	T3S2	T3S3	T3S2R4	OTROS	A	B	C	K'	D	LATITUD	LONGITUD
Puerto Caté	0.00	3	0	1325	2.7	84.4	2.9	5.4	1.1	2.0	0.6	0.5	0.4	87.1	2.9	10.0	0.085	0.502	16.989417	-92.818533
Larrazar	20.00	1	0	3434	4.2	83.3	2.2	3.1	1.0	3.5	1.2	0.3	1.2	87.5	2.2	10.3	0.092	0.529	16.886236	-92.725669
T. Izq. Chamula	32.00	1	0	4411	3.1	81.5	2.9	3.3	1.9	2.5	1.8	0.6	2.4	84.6	2.9	12.5	0.076	0.517	16.791582	-92.698243
San Cristóbal de Las Casas	40.00	1	0	8409	3.0	76.6	2.5	2.5	2.2	3.9	3.2	1.4	4.7	79.6	2.5	17.9	0.080	0.547	16.756790	-92.671666

41 CARR: Ramal a Huehuetán

CLAVE: 07360

RUTA: CHIS

AÑO: 2018

LUGAR	ESTACION				CLASIFICACION VEHICULAR EN PORCIENTO													COORDENADAS		
	KM	TE	SC	TDPA	M	A	B	C2	C3	T3S2	T3S3	T3S2R4	OTROS	A	B	C	K'	D	LATITUD	LONGITUD
T. C. Tapanatepec - Talismán	0.00	3	1	3809	23.3	72.5	0.1	3.8	0.0	0.1	0.1	0.0	0.1	95.8	0.1	4.1	0.080	0.514	15.010461	-92.398119
T. C. Tapanatepec - Talismán	0.00	3	2	3604	26.3	68.9	0.1	4.4	0.0	0.1	0.1	0.0	0.1	95.2	0.1	4.7	0.078	0.514	15.010520	-92.398109
Huehuetán	2.50																			

CHIAPAS

42 CARR: Ramal a Mazatán

CLAVE: 07560

RUTA: CHIS-219

AÑO: 2018

LUGAR	ESTACION				CLASIFICACION VEHICULAR EN PORCIENTO													COORDENADAS		
	KM	TE	SC	TDPA	M	A	B	C2	C3	T3S2	T3S3	T3S2R4	OTROS	A	B	C	K'	D	LATITUD	LONGITUD
T. C. Tapanatepec - Talismán	0.00	3	1	3972	2.4	89.4	0.2	6.0	0.8	0.9	0.1	0.1	0.1	91.8	0.2	8.0	0.083	0.518	14.926160	-92.375608
T. C. Tapanatepec - Talismán	0.00	3	2	3690	2.7	88.0	0.2	6.8	0.9	1.0	0.2	0.1	0.1	90.7	0.2	9.1	0.091	0.518	14.926043	-92.375508
Mazatán	12.00																			

43 CARR: Ramal a Salto del Agua

CLAVE: 00069

RUTA: TAB-CHIS

AÑO: 2018

LUGAR	ESTACION				CLASIFICACION VEHICULAR EN PORCIENTO													COORDENADAS		
	KM	TE	SC	TDPA	M	A	B	C2	C3	T3S2	T3S3	T3S2R4	OTROS	A	B	C	K'	D	LATITUD	LONGITUD
T. C. Villahermosa - Francisco Escárcega	0.00	3	0	1616	6.0	71.8	1.0	4.5	4.1	4.8	3.2	4.4	0.2	77.8	1.0	21.2	0.125	0.508	17.665591	-92.436140
Lim. Edos. Term. Tab. Ppia. Chis.	12.00																			
Salto del Agua	17.00	1	0	1768	10.5	80.3	0.7	5.9	1.1	1.1	0.4	0.0	0.0	90.8	0.7	8.5	0.095	0.524	17.559632	-92.354172

44 CARR: Ramal Zona Arqueológica " Bonampak "

CLAVE: 07100

RUTA: CHIS

AÑO: 2018

LUGAR	ESTACION				CLASIFICACION VEHICULAR EN PORCIENTO													COORDENADAS		
	KM	TE	SC	TDPA	M	A	B	C2	C3	T3S2	T3S3	T3S2R4	OTROS	A	B	C	K'	D	LATITUD	LONGITUD
T. C. Benemérito de Las Américas - Palenque	0.00	3	0	482	9.0	83.6	0.5	6.8	0.1	0.0	0.0	0.0	0.0	92.6	0.5	6.9	0.122	0.502	16.798817	-91.105678
Zona Arqueológica Bonampak	13.00																			

45 CARR: Ramal Zona Arqueológica " Palenque "

CLAVE: 07099

RUTA: CHIS

AÑO: 2018

LUGAR	ESTACION				CLASIFICACION VEHICULAR EN PORCIENTO													COORDENADAS		
	KM	TE	SC	TDPA	M	A	B	C2	C3	T3S2	T3S3	T3S2R4	OTROS	A	B	C	K'	D	LATITUD	LONGITUD
T. C. (Catazajá - T. C. (Tuxtla Gtz. - Cd. Cuauhtémoc))	0.00	3	0	5848	7.7	83.0	0.7	4.3	0.1	3.6	0.1	0.1	0.4	90.7	0.7	8.6	0.099	0.507	17.503370	-91.996728
Zona Arqueológica Palenque	7.30	1	0	1207	7.5	84.3	2.0	4.9	0.0	0.9	0.2	0.0	0.2	91.8	2.0	6.2	0.109	0.517	17.487427	-92.047879

46 CARR: San Francisco Pujilic - Ent. Comitán

CLAVE: 07093

RUTA: CHIS

AÑO: 2018

LUGAR	ESTACION				CLASIFICACION VEHICULAR EN PORCIENTO													COORDENADAS		
	KM	TE	SC	TDPA	M	A	B	C2	C3	T3S2	T3S3	T3S2R4	OTROS	A	B	C	K'	D	LATITUD	LONGITUD
T. C. Chiapa de Corzo - Amatenango del Valle	0.00	3	0	4136	13.5	62.3	0.3	4.8	11.9	3.6	2.2	0.7	0.7	75.8	0.3	23.9	0.073	0.506	16.272078	-92.444383
Comitán	54.00	1	0	4620	7.1	84.6	0.4	5.4	0.5	0.7	0.8	0.4	0.1	91.7	0.4	7.9	0.118	0.514	16.204066	-92.132722

CHIAPAS

47 CARR: Tapachula - Nueva Alemania

CLAVE: 07581

RUTA: CHIS-229

AÑO: 2018

LUGAR	ESTACION				CLASIFICACION VEHICULAR EN PORCIENTO														COORDENADAS	
	KM	TE	SC	TDPA	M	A	B	C2	C3	T3S2	T3S3	T3S2R4	OTROS	A	B	C	K'	D	LATITUD	LONGITUD
Tapachula	0.00	3	0	5734	8.6	86.0	0.1	4.6	0.2	0.3	0.2	0.0	0.0	94.6	0.1	5.3	0.086	0.502	14.953584	-92.254732
Nueva Alemania	27.20																			

48 CARR: Temo - Tila

CLAVE: 07090

RUTA: CHIS

AÑO: 2018

LUGAR	ESTACION				CLASIFICACION VEHICULAR EN PORCIENTO														COORDENADAS	
	KM	TE	SC	TDPA	M	A	B	C2	C3	T3S2	T3S3	T3S2R4	OTROS	A	B	C	K'	D	LATITUD	LONGITUD
Temo	0.00	3	0	2886	4.4	87.4	0.4	5.3	0.5	1.6	0.3	0.0	0.1	91.8	0.4	7.8	0.091	0.522	17.018148	-92.156582
Yajalón	28.00	1	0	2844	8.3	84.3	0.3	4.3	0.4	1.6	0.5	0.1	0.2	92.6	0.3	7.1	0.101	0.540	17.159308	-92.318278
Tila	50.00	1	0	1960	5.9	88.1	0.2	2.9	0.7	1.3	0.4	0.4	0.1	94.0	0.2	5.8	0.096	0.520	17.290771	-92.428411

49 CARR: Tierra y Libertad - Ent. Dr. Domingo Chanona

CLAVE: 07096

RUTA: CHIS

AÑO: 2018

LUGAR	ESTACION				CLASIFICACION VEHICULAR EN PORCIENTO														COORDENADAS	
	KM	TE	SC	TDPA	M	A	B	C2	C3	T3S2	T3S3	T3S2R4	OTROS	A	B	C	K'	D	LATITUD	LONGITUD
T. C. Las Cruces - Arriaga	0.00	3	0	312	7.1	74.8	0.5	11.3	4.5	1.1	0.6	0.0	0.1	81.9	0.5	17.6	0.112	0.509	16.375157	-93.857575
T. C. Ocozacoautla - Revolución Mexicana	60.00	1	0	3348	19.3	71.5	0.2	5.7	0.4	2.4	0.3	0.0	0.2	90.8	0.2	9.0	0.082	0.505	16.345453	-93.407250

50 CARR: Tuxtla Gutiérrez - Portillo Zaragoza

CLAVE: 07574

RUTA: CHIS-133

AÑO: 2018

LUGAR	ESTACION				CLASIFICACION VEHICULAR EN PORCIENTO														COORDENADAS	
	KM	TE	SC	TDPA	M	A	B	C2	C3	T3S2	T3S3	T3S2R4	OTROS	A	B	C	K'	D	LATITUD	LONGITUD
Ent. Periférico Tuxtla Gutiérrez	0.00	3	0	14885	3.0	85.2	1.4	2.6	1.1	3.2	1.2	1.1	1.2	88.2	1.4	10.4	0.072	0.511	16.731633	-93.110672
Suchiapa	19.00	1	0	5438	1.7	86.2	1.1	3.2	0.7	3.1	1.3	0.5	2.2	87.9	1.1	11.0	0.100	0.508	16.637543	-93.092635
Las Cruces	53.50	1	0	2820	3.8	85.7	1.7	3.4	1.6	2.2	0.9	0.2	0.5	89.5	1.7	8.8	0.083	0.503	16.412008	-93.174040
Las Cruces	53.50	3	0	2732	4.2	83.0	1.6	6.1	1.2	1.3	0.7	1.1	0.8	87.2	1.6	11.2	0.091	0.541	16.397495	-93.203787
Portillo de Tacubaya	79.00	1	0	3885	3.5	80.8	3.1	3.5	2.0	3.0	2.0	0.2	1.9	84.3	3.1	12.6	0.074	0.509	16.317028	-93.330600

51 CARR: Zapatero - T. C. (Jalapa - Jonuta)

CLAVE: 00061

RUTA: CHIS-TAB

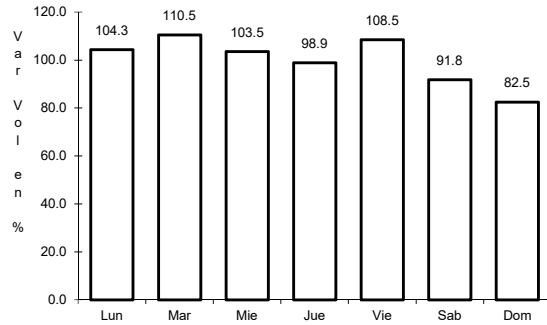
AÑO: 2018

LUGAR	ESTACION				CLASIFICACION VEHICULAR EN PORCIENTO														COORDENADAS	
	KM	TE	SC	TDPA	M	A	B	C2	C3	T3S2	T3S3	T3S2R4	OTROS	A	B	C	K'	D	LATITUD	LONGITUD
T. C. Villahermosa - Francisco Escárcega	0.00	3	0	1544	11.6	80.9	0.3	4.8	0.7	1.4	0.2	0.0	0.1	92.5	0.3	7.2	0.080	0.505	17.699082	-92.131896
Lim. Edos. Term. Chis. Ppia. Tab.	16.00																			
T. C. Jalapa - Jonuta	41.00	1	0	1429	10.6	84.7	0.2	3.3	0.3	0.7	0.2	0.0	0.0	95.3	0.2	4.5	0.096	0.540	18.030846	-92.157767

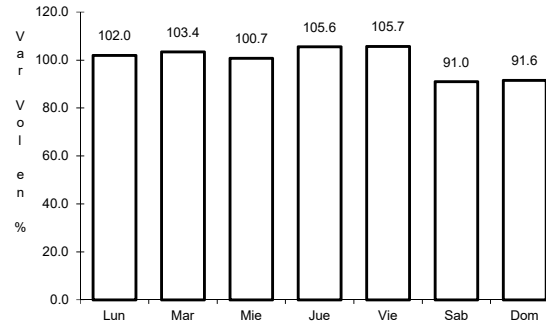
1 CARR: Benemérito de Las Américas - Palenque

CLAVE: 07095

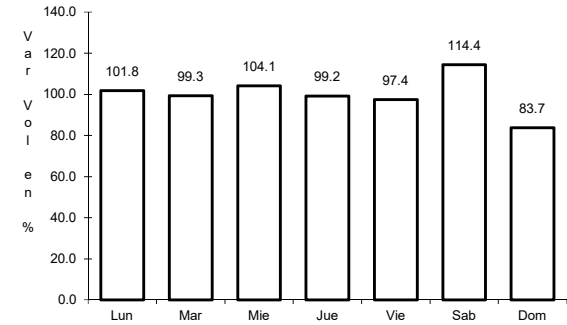
RUTA: MEX-307



Km: 42.00 Tipo: 3 Sent: 0



Km: 160.00 Tipo: 1 Sent: 0

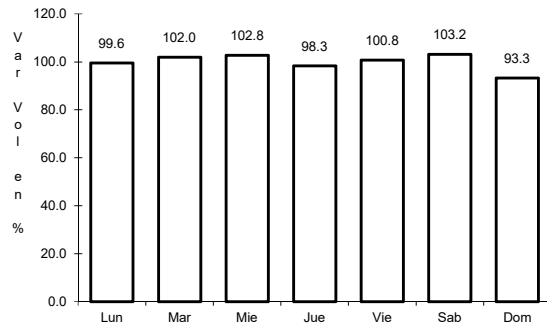


Km: 194.00 Tipo: 1 Sent: 0

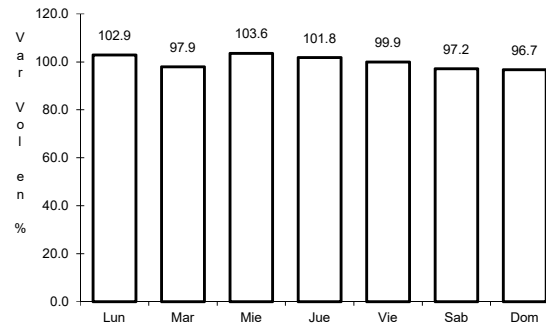
2 CARR: Catazajá - T. C. (Tuxtla Gtz. - Cd. Cuauhtémoc)

CLAVE: 07582

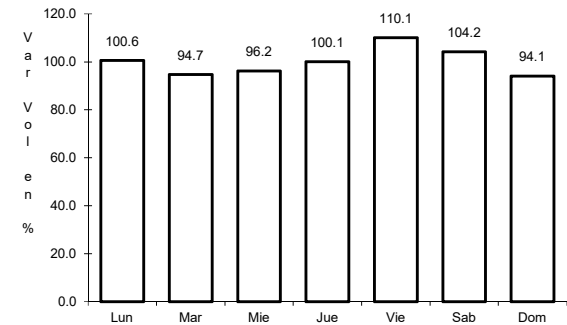
RUTA: MEX-199



Km: 2.20 Tipo: 3 Sent: 0



Km: 68.30 Tipo: 1 Sent: 0

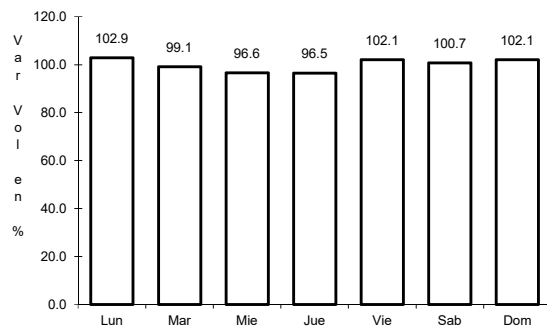


Km: 210.00 Tipo: 1 Sent: 0

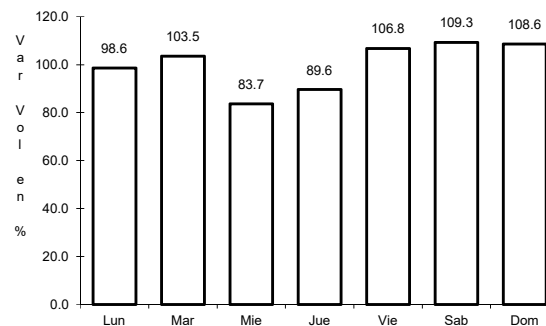
3 CARR: El Suspiro - Tenosique

CLAVE: 00276

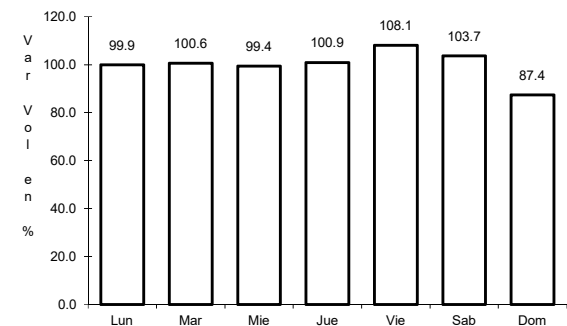
RUTA: MEX-203



Km: 0.00 Tipo: 3 Sent: 0



Km: 32.60 Tipo: 1 Sent: 0

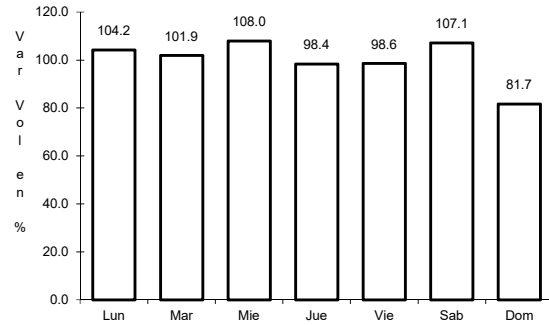


Km: 53.00 Tipo: 3 Sent: 0

4 CARR: Ent. Jaritas - Ciudad Hidalgo

CLAVE: 07094

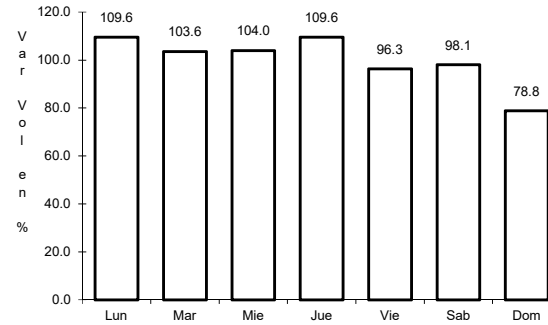
ruta: MEX-225



Km: 0.00

Tipo: 3

Sent: 0



Km: 49.00

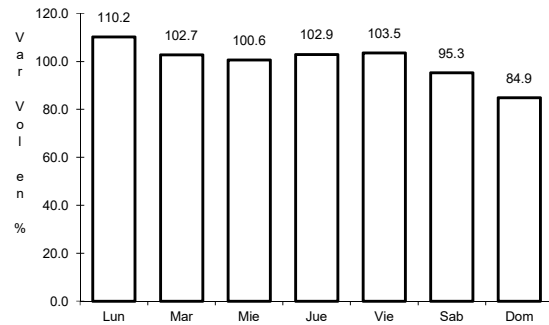
Tipo: 1

Sent: 0

5 CARR: Huixtla - El Jocote

CLAVE: 07577

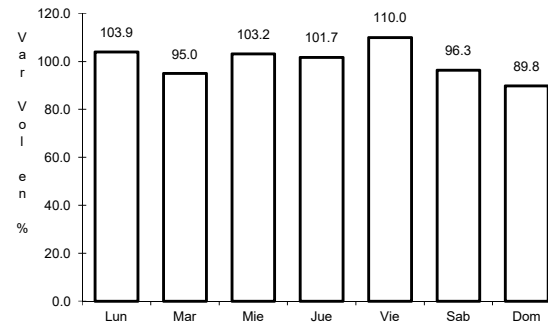
ruta: MEX-211



Km: 0.00

Tipo: 3

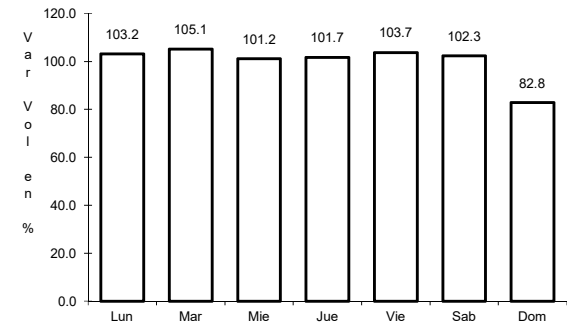
Sent: 0



Km: 57.00

Tipo: 1

Sent: 0



Km: 126.00

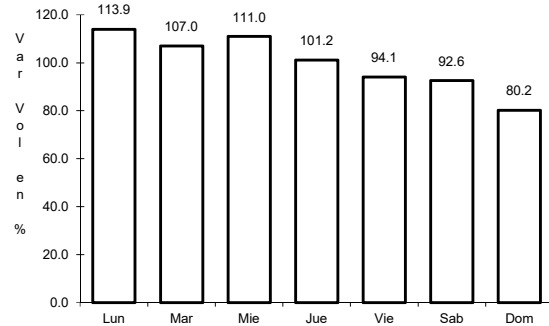
Tipo: 1

Sent: 0

6 CARR: La Trinitaria - Benemérito de Las Américas

CLAVE: 07267

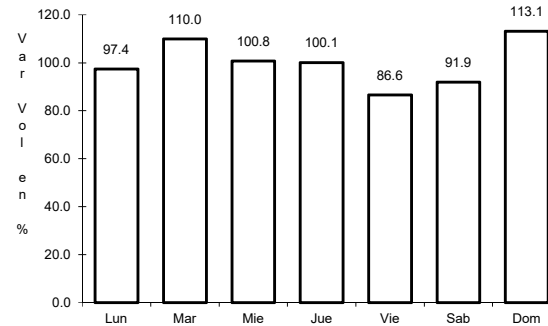
ruta: MEX-307



Km: 0.00

Tipo: 3

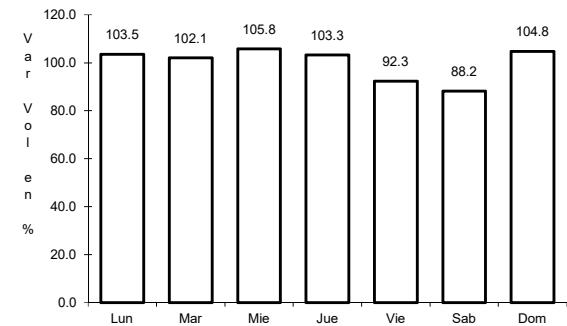
Sent: 0



Km: 39.76

Tipo: 3

Sent: 0



Km: 72.00

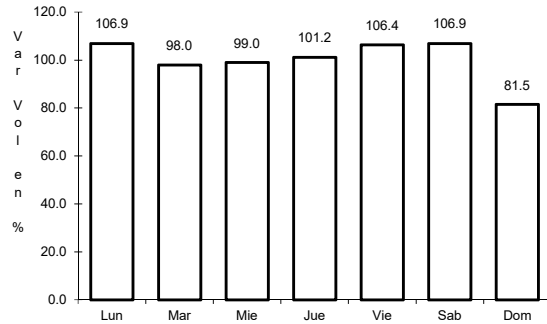
Tipo: 3

Sent: 0

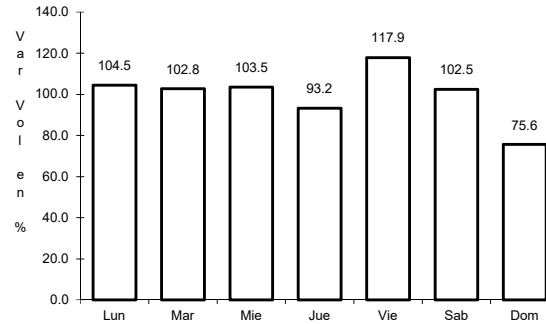
7 CARR: Las Cruces - Arriaga

CLAVE: 07196

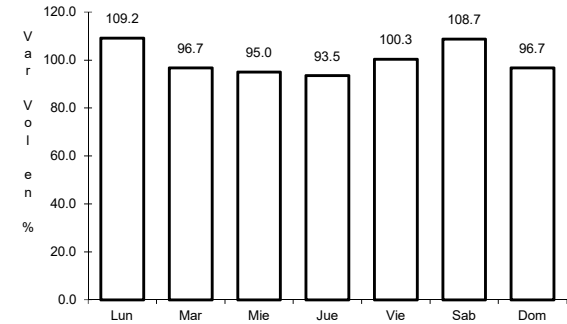
RUTA: MEX-190



Km: 0.00 Tipo: 3 Sent: 0



Km: 27.90 Tipo: 3 Sent: 0

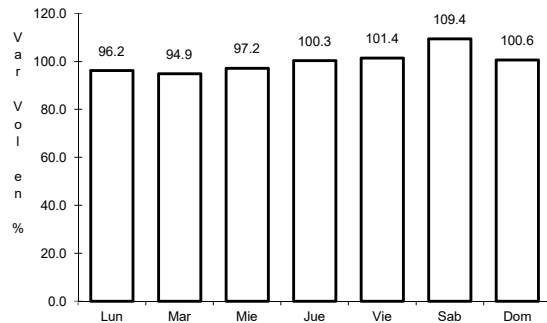


Km: 49.00 Tipo: 1 Sent: 0

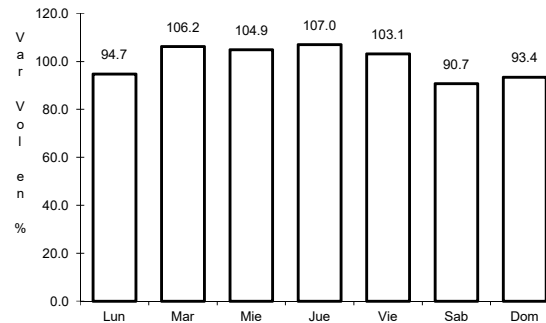
8 CARR: Libramiento de Arriaga

CLAVE:

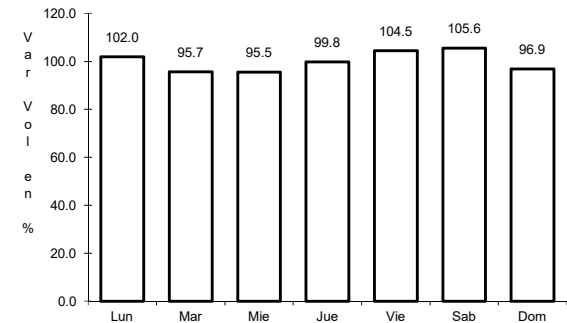
RUTA: MEX-200



Km: 0.00 Tipo: 3 Sent: 0



Km: 2.60 Tipo: 1 Sent: 0

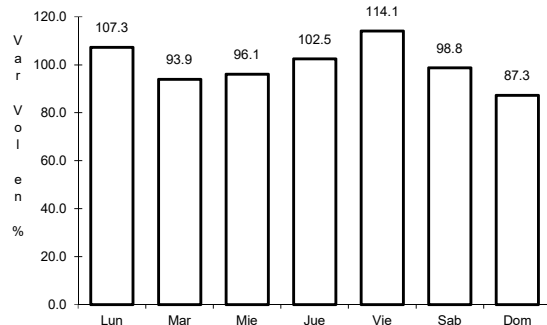


Km: 7.50 Tipo: 1 Sent: 0

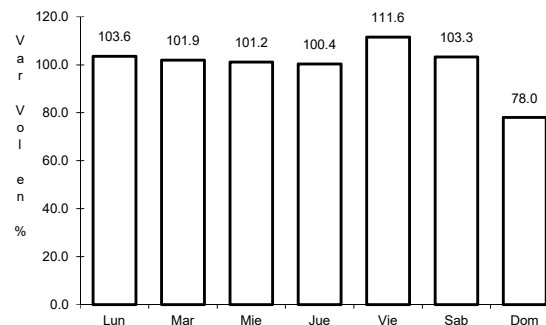
9 CARR: Libramiento de Huixtla

CLAVE:

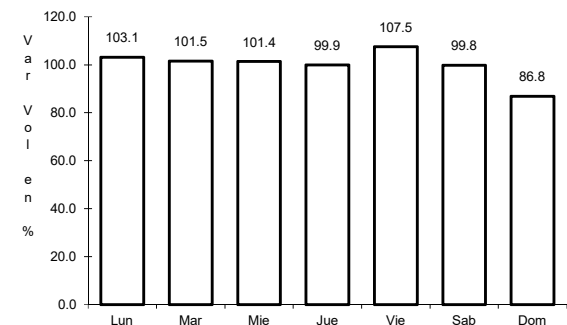
RUTA: MEX-200



Km: 0.00 Tipo: 3 Sent: 1



Km: 0.00 Tipo: 3 Sent: 2

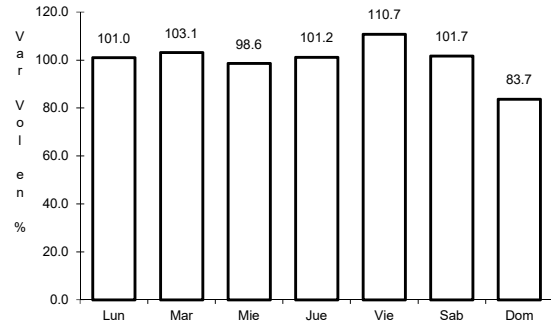


Km: 5.80 Tipo: 3 Sent: 1

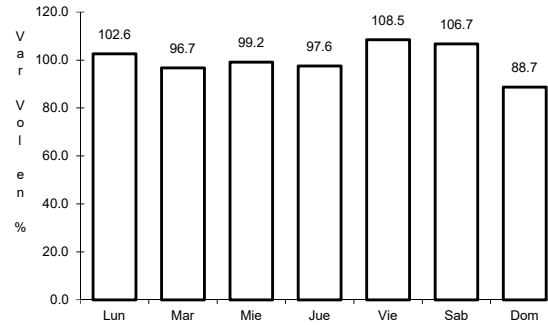
10 CARR: Libramiento de Ocozocoautla

CLAVE: 07583

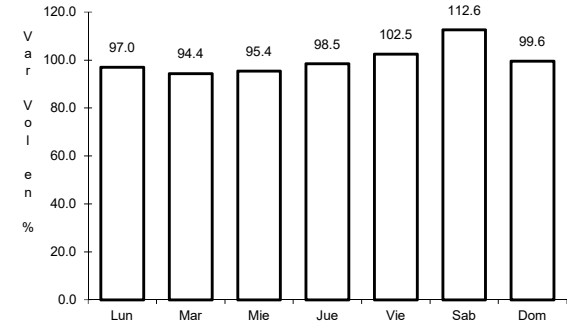
RUTA: MEX-190



Km: 0.00 Tipo: 3 Sent: 0



Km: 5.54 Tipo: 1 Sent: 0

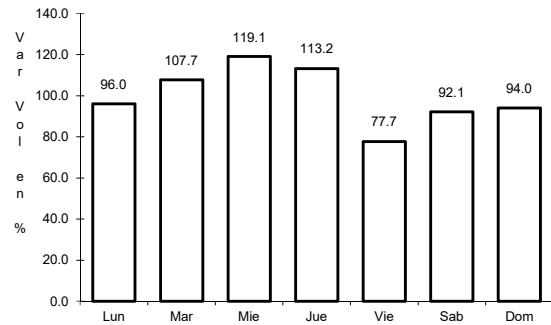


Km: 9.00 Tipo: 1 Sent: 0

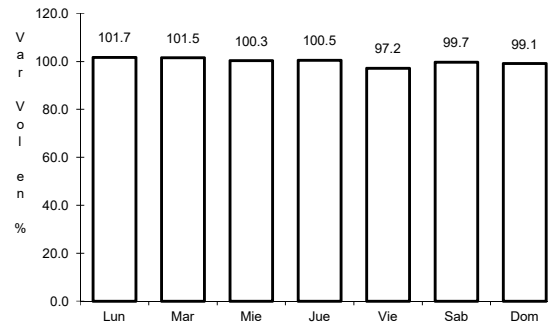
11 CARR: Malpaso - El Bellote

CLAVE: 00137

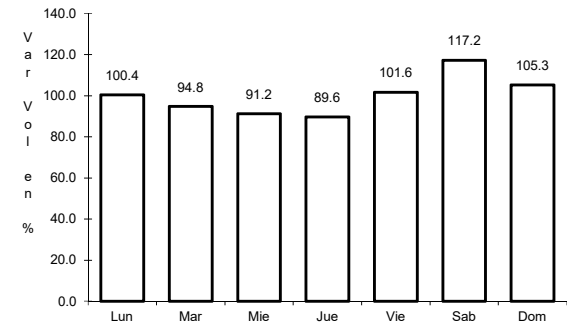
RUTA: MEX-187



Km: 70.12 Tipo: 1 Sent: 0



Km: 134.70 Tipo: 3 Sent: 0

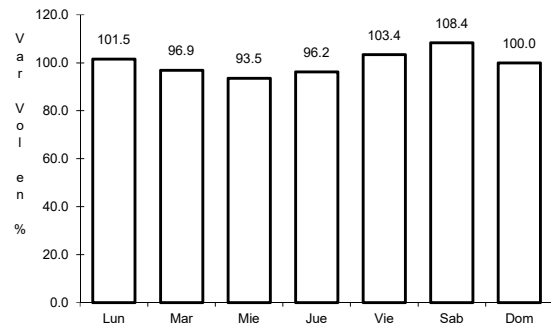


Km: 182.00 Tipo: 3 Sent: 0

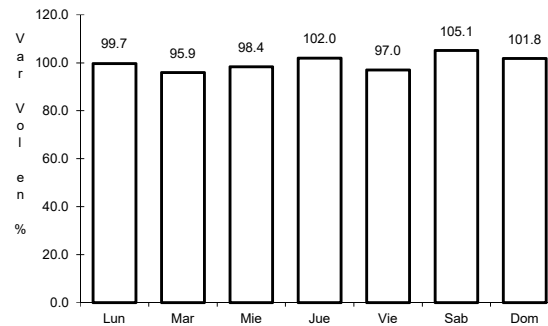
12 CARR: Ocozocoautla - Ent. El Sabino

CLAVE: 07579

RUTA: MEX-190



Km: 7.85 Tipo: 3 Sent: 0

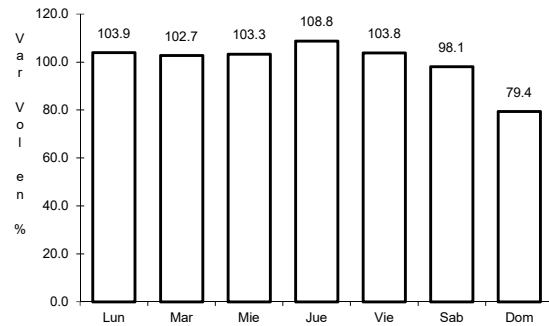


Km: 18.25 Tipo: 1 Sent: 0

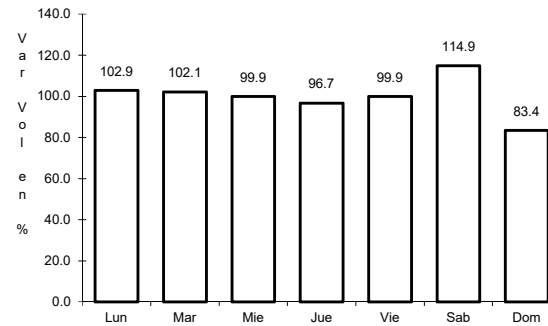
13 CARR: Ramal a Cd. Hidalgo

CLAVE: 07274

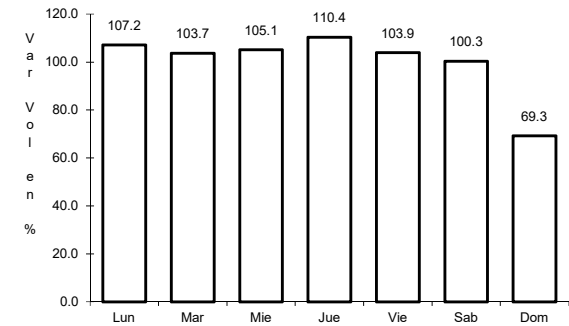
ruta: MEX-200



Km: 0.00 Tipo: 3 Sent: 0



Km: 15.30 Tipo: 3 Sent: 0

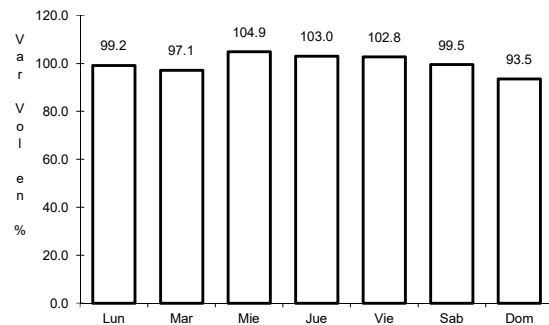


Km: 27.00 Tipo: 1 Sent: 0

14 CARR: Ramal a La Gloria

CLAVE: 07091

ruta: MEX-200

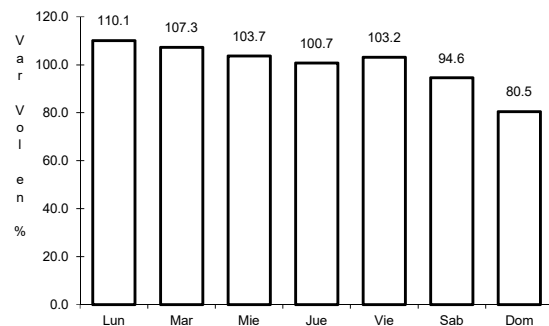


Km: 0.00 Tipo: 3 Sent: 0

15 CARR: Ramal a Paredón

CLAVE: 07269

ruta: MEX-200

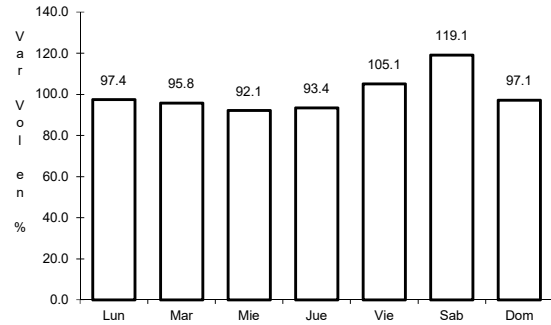


Km: 0.00 Tipo: 3 Sent: 0

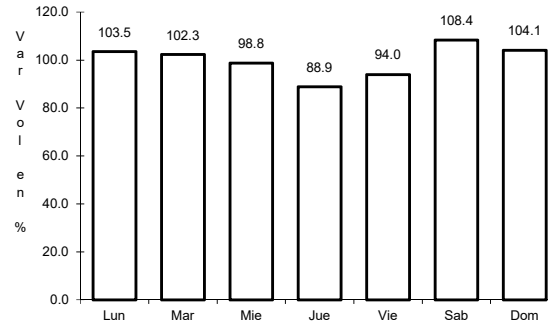
16 CARR: Ramal a Puerto Arista

CLAVE: 07270

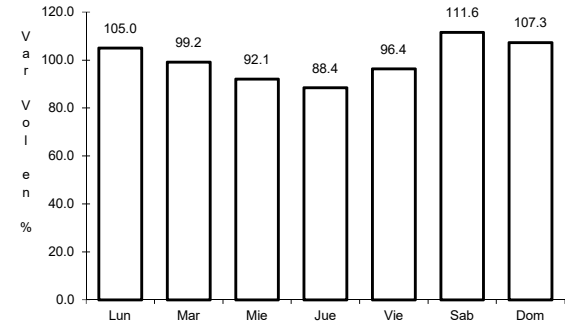
ruta: MEX-200



Km: 0.00 Tipo: 3 Sent: 0



Km: 11.00 Tipo: 3 Sent: 0

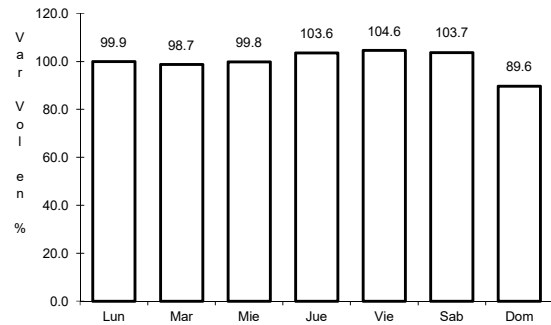


Km: 17.00 Tipo: 1 Sent: 0

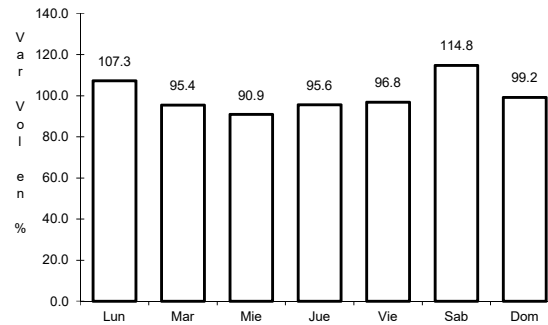
17 CARR: Ramal a Unión Juárez

CLAVE: 07273

ruta: MEX-200



Km: 5.00 Tipo: 1 Sent: 0

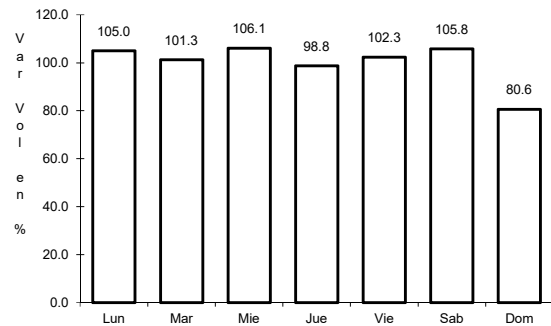


Km: 22.00 Tipo: 1 Sent: 0

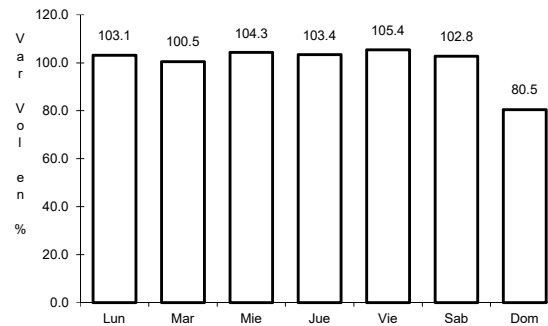
18 CARR: Tapachula - Puerto Madero

CLAVE: 07018

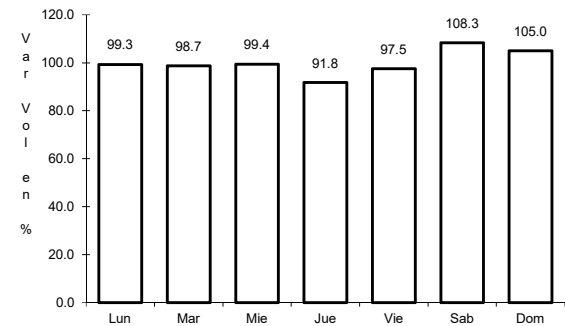
ruta: MEX-225



Km: 0.00 Tipo: 3 Sent: 1



Km: 0.00 Tipo: 3 Sent: 2

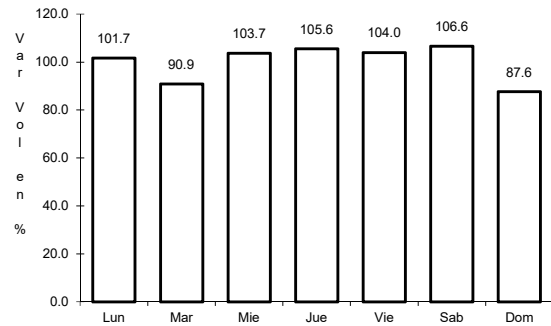


Km: 27.00 Tipo: 1 Sent: 0

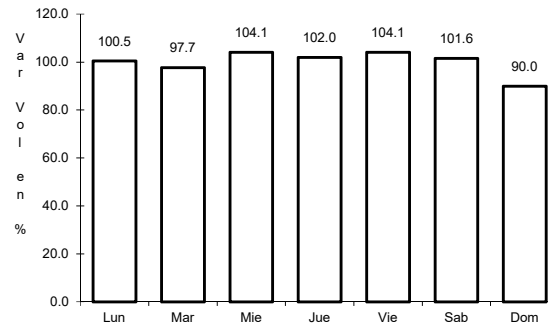
19 CARR: Tapanatepec - Talismán

CLAVE: 00075

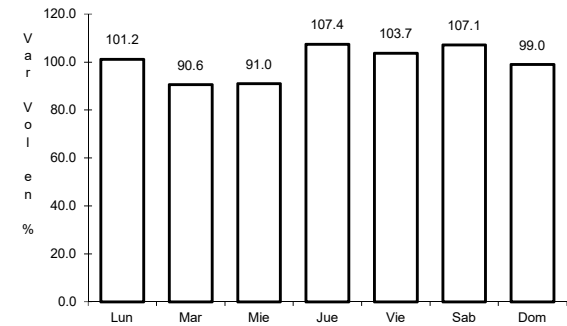
ruta: MEX-200



Km: 0.00 Tipo: 3 Sent: 0



Km: 45.00 Tipo: 1 Sent: 0

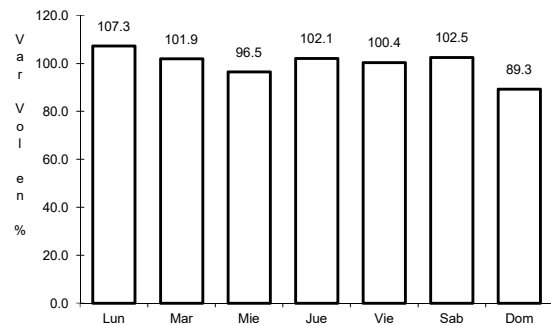


Km: 310.77 Tipo: 1 Sent: 0

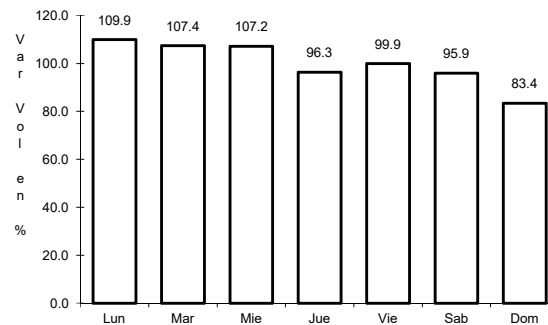
20 CARR: Tapanatepec - Tuxtla Gutiérrez

CLAVE: 00060

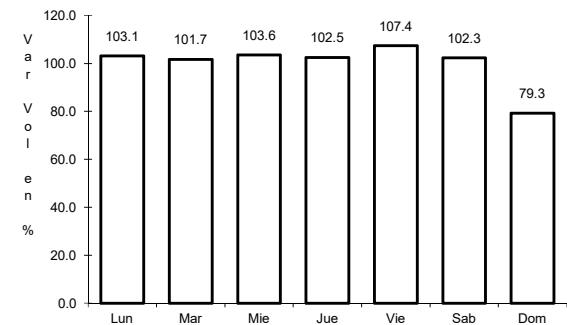
ruta: MEX-190



Km: 0.00 Tipo: 3 Sent: 0



Km: 159.00 Tipo: 1 Sent: 1

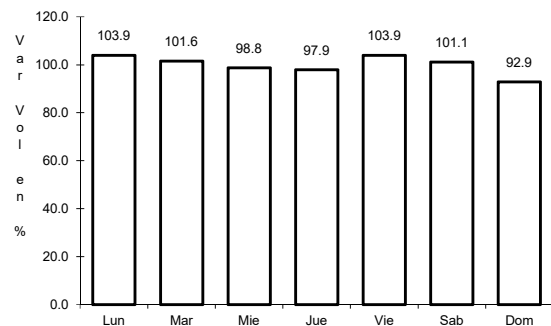


Km: 159.00 Tipo: 1 Sent: 2

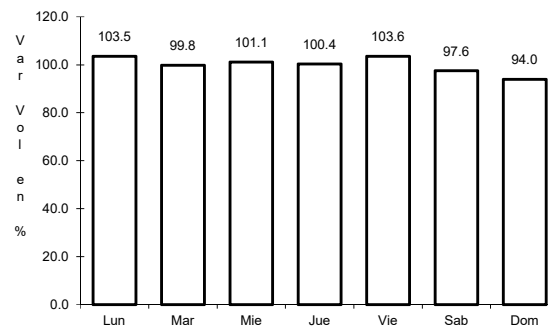
21 CARR: Terán - Chicoasén

CLAVE: 07072

ruta: MEX-190



Km: 0.00 Tipo: 3 Sent: 0

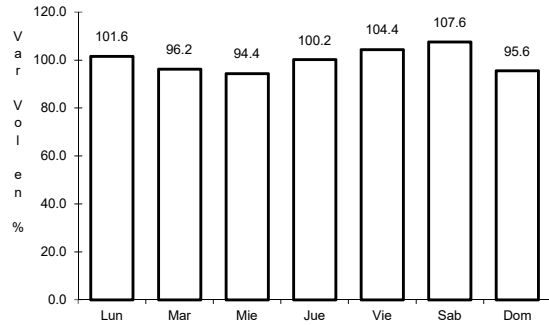


Km: 14.00 Tipo: 1 Sent: 0

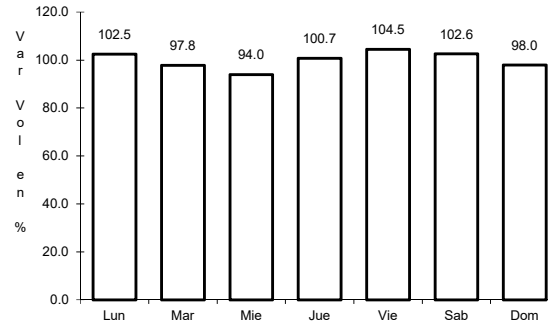
22 CARR: Tuxtla Gutiérrez - Angostura

CLAVE: 07584

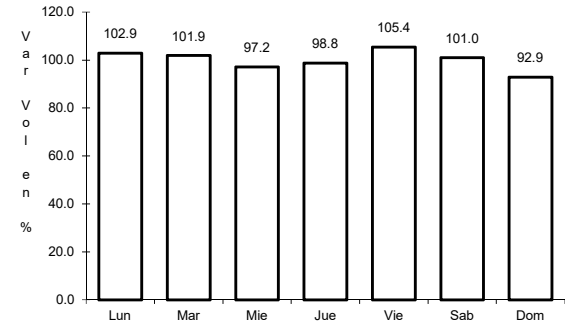
RUTA: MEX-190



Km: 0.00 Tipo: 3 Sent: 1



Km: 0.00 Tipo: 3 Sent: 2

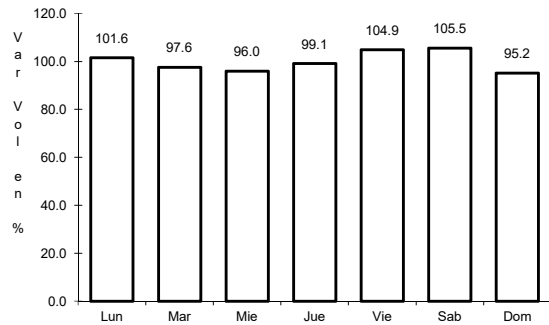


Km: 52.00 Tipo: 1 Sent: 0

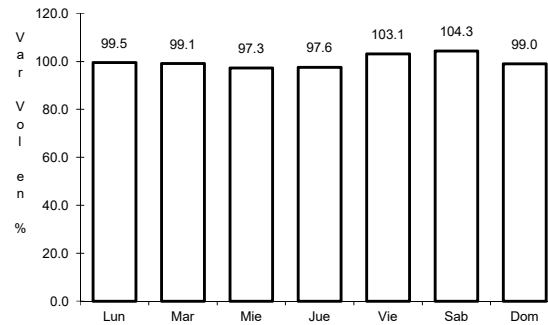
23 CARR: Tuxtla Gutiérrez - Cd. Cuauhtémoc

CLAVE: 07061

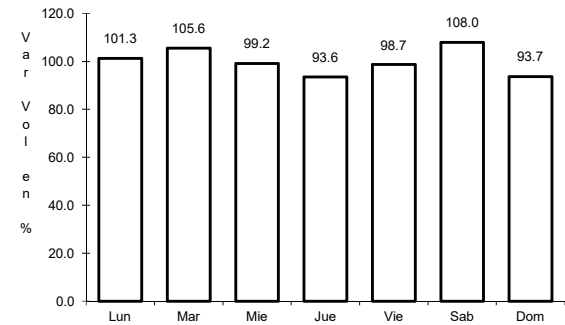
RUTA: MEX-190



Km: 7.50 Tipo: 1 Sent: 1



Km: 7.50 Tipo: 1 Sent: 2

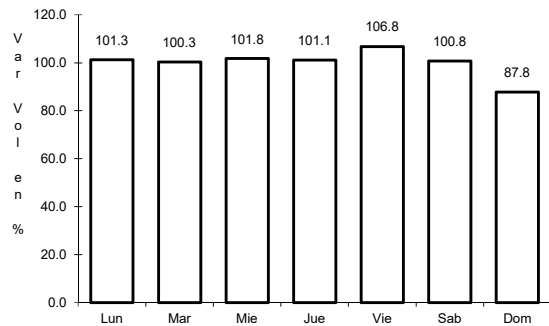


Km: 256.00 Tipo: 1 Sent: 0

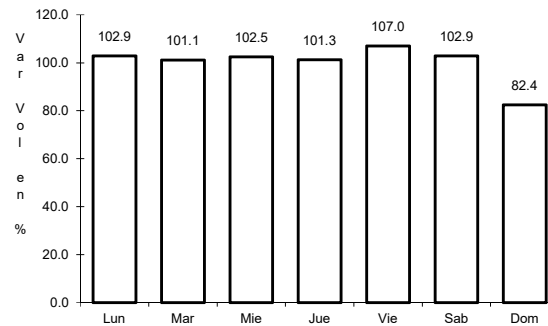
24 CARR: Villahermosa - Escopetazo

CLAVE: 00104

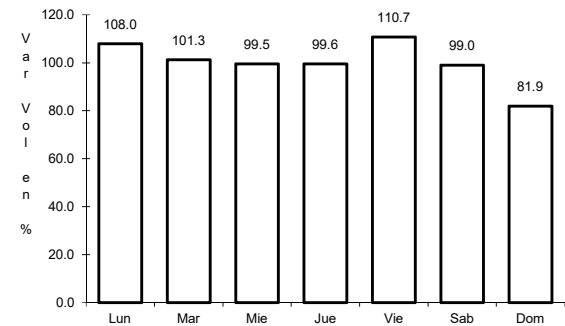
RUTA: MEX-195



Km: 0.00 Tipo: 3 Sent: 1



Km: 0.00 Tipo: 3 Sent: 2

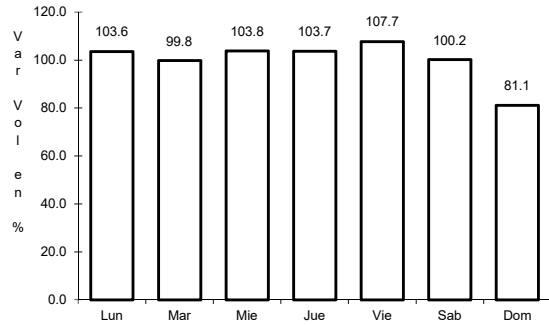


Km: 259.00 Tipo: 1 Sent: 0

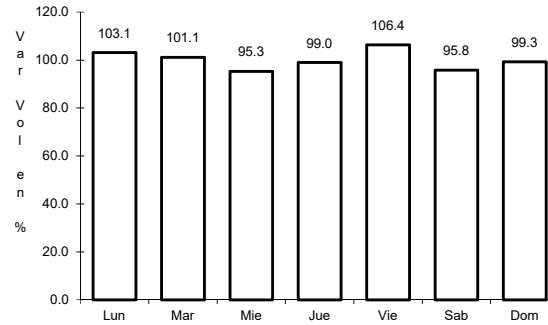
25 CARR: Villahermosa - Francisco Escárcega

CLAVE: 00092

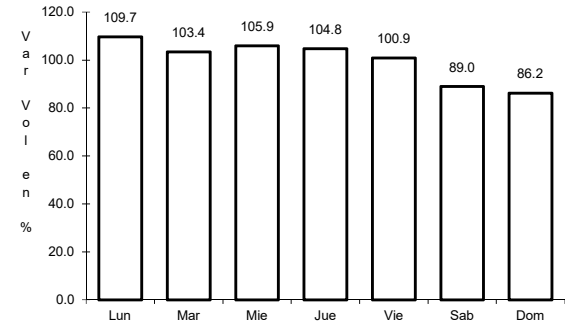
ruta: MEX-186



Km: 0.00 Tipo: 3 Sent: 1



Km: 0.00 Tipo: 3 Sent: 2

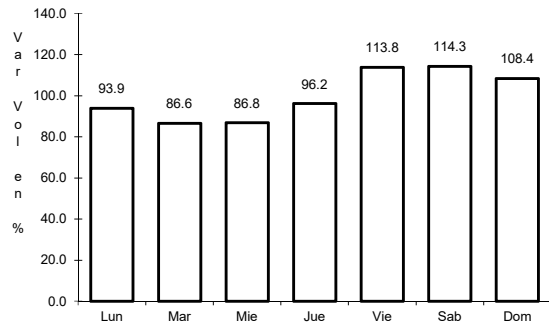


Km: 297.04 Tipo: 1 Sent: 0

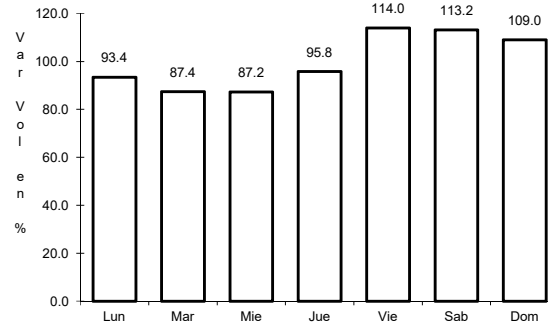
26 CARR: Arriaga - Ocozocoautla (Cuota)

CLAVE: 00092

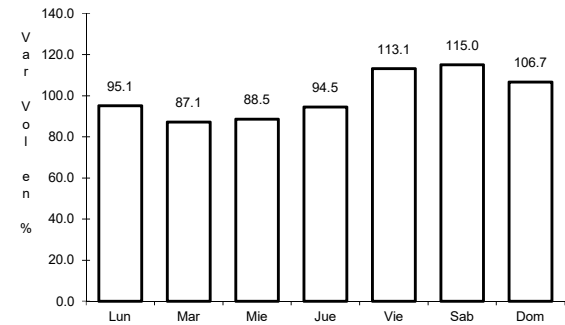
ruta: MEX-200D



Km: 0.00 Tipo: 3 Sent: 0



Km: 20.70 Tipo: 1 Sent: 0

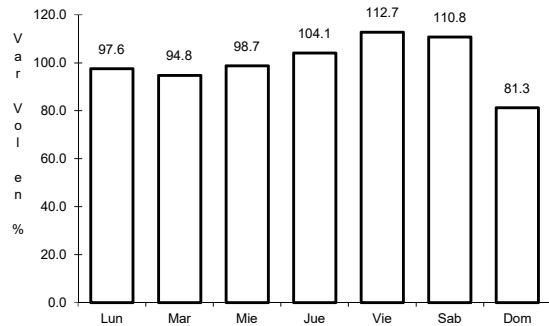


Km: 92.00 Tipo: 1 Sent: 0

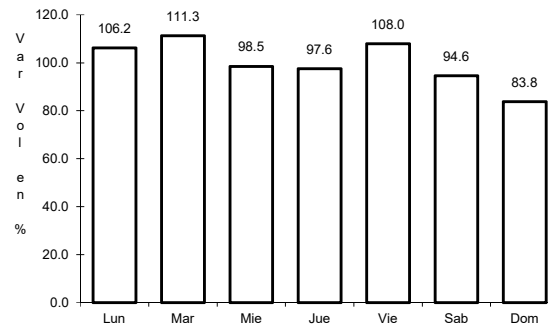
27 CARR: Las Choapas - Ocozocoautla (Cuota)

CLAVE: 00077

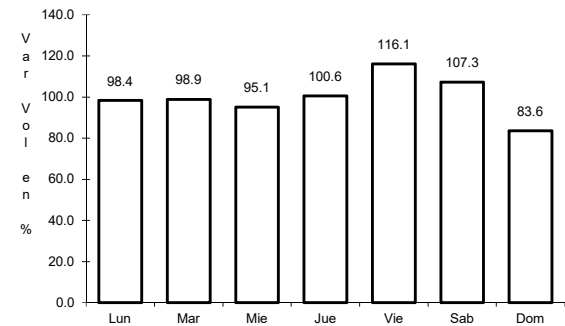
ruta: MEX-187D



Km: 0.00 Tipo: 3 Sent: 0



Km: 123.79 Tipo: 1 Sent: 0

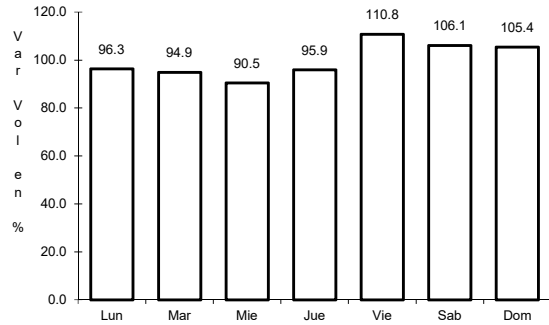


Km: 197.50 Tipo: 1 Sent: 0

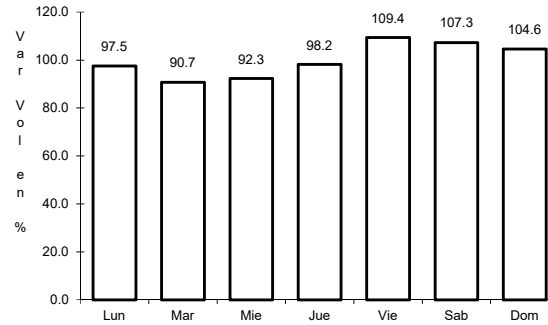
28 CARR: Tuxtla Gutiérrez - San Cristóbal de Las Casas (Cuota)

CLAVE: 07580

ruta: MEX-190D



Km: 1.30 Tipo: 1 Sent: 0

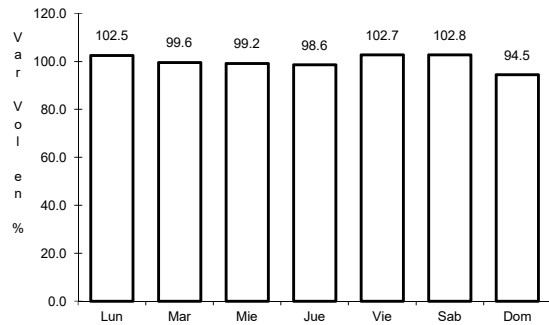


Km: 46.00 Tipo: 1 Sent: 0

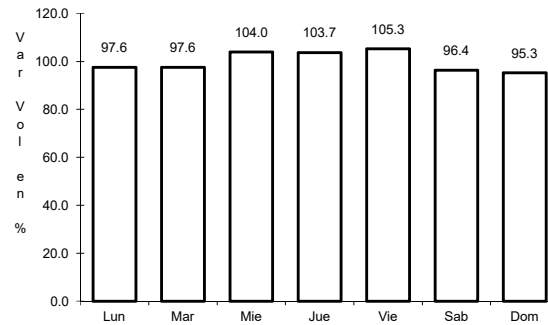
29 CARR: Chiapa de Corzo - Amatenango del Valle

CLAVE: 07024

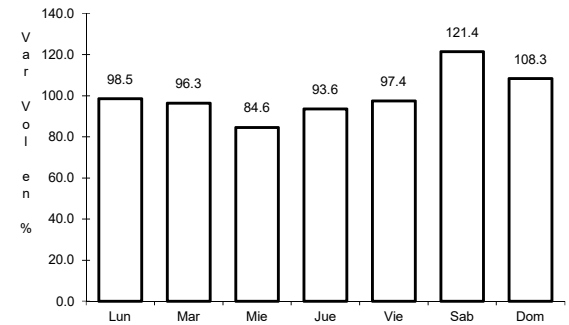
ruta: CHIS



Km: 0.00 Tipo: 3 Sent: 0



Km: 74.00 Tipo: 1 Sent: 0

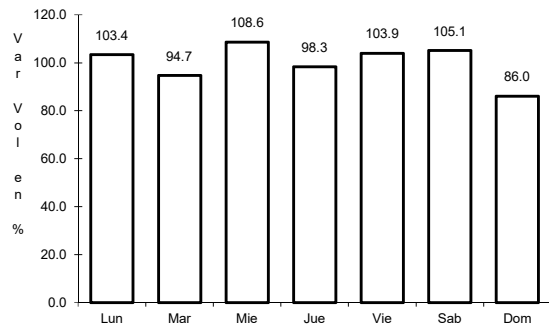


Km: 146.50 Tipo: 1 Sent: 0

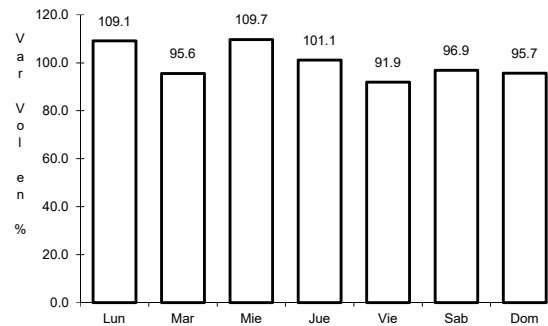
30 CARR: Ent. Emiliano Zapata - La Libertad

CLAVE: 00062

ruta: CHIS-TAB



Km: 0.00 Tipo: 3 Sent: 0

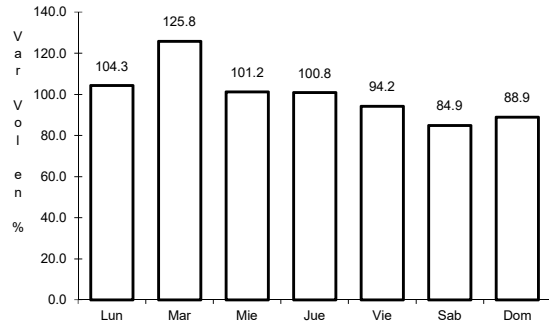


Km: 10.00 Tipo: 1 Sent: 0

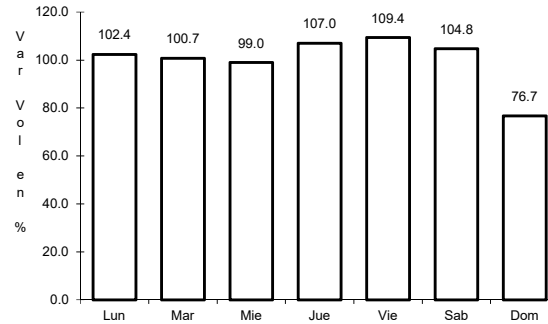
31 CARR: Ent. Suschilá - Comitán

CLAVE: 00061

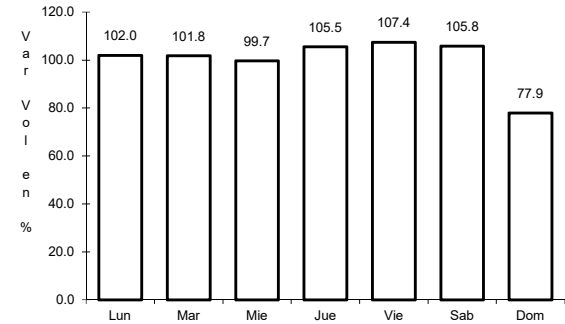
RUTA: CHIS-TAB



Km: 205.00 Tipo: 1 Sent: 0



Km: 257.50 Tipo: 3 Sent: 1

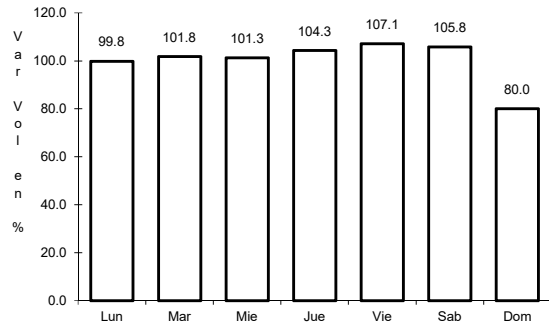


Km: 257.50 Tipo: 3 Sent: 2

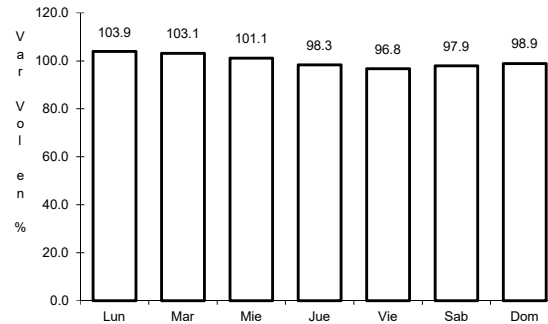
32 CARR: Estación Palenque - La Libertad

CLAVE: 07002

RUTA: CHIS-010



Km: 0.00 Tipo: 3 Sent: 0

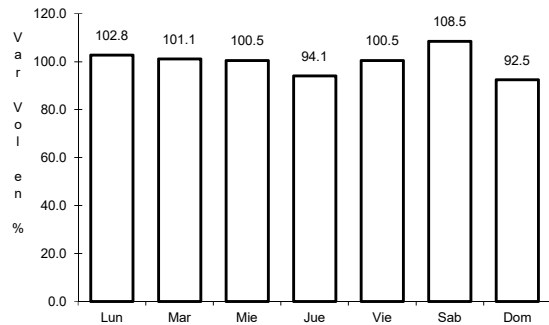


Km: 40.00 Tipo: 1 Sent: 0

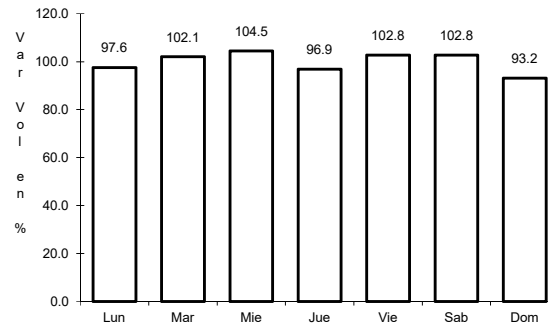
33 CARR: Gregorio Méndez Magaña - Reforma de Ocampo

CLAVE: 00103

RUTA: CHIS



Km: 0.00 Tipo: 3 Sent: 0

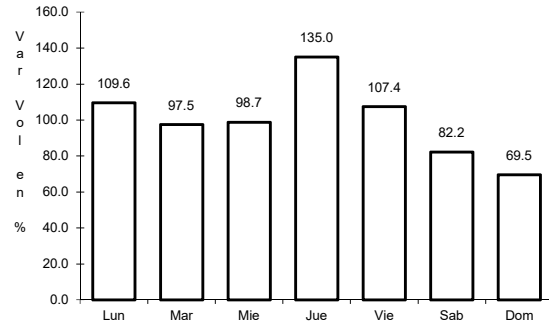


Km: 21.00 Tipo: 1 Sent: 0

34 CARR: Independencia - Buenos Aires

CLAVE: 07098

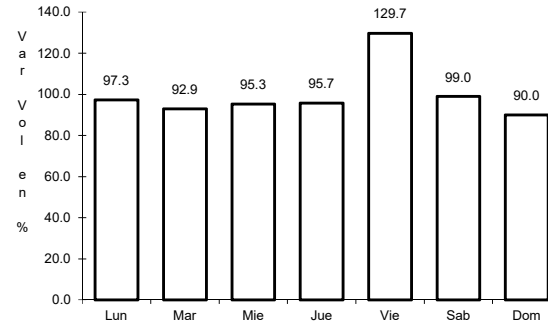
RUTA: CHIS



Km: 139.00

Tipo: 3

Sent: 0



Km: 159.00

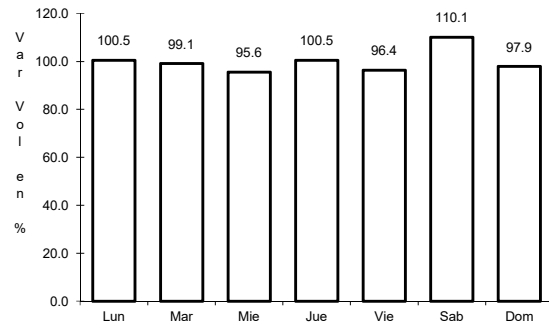
Tipo: 1

Sent: 0

35 CARR: Las Limas - La Concordia

CLAVE: 07028

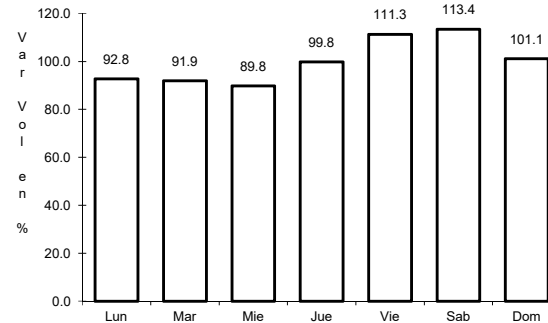
RUTA: CHIS



Km: 0.00

Tipo: 3

Sent: 0



Km: 83.00

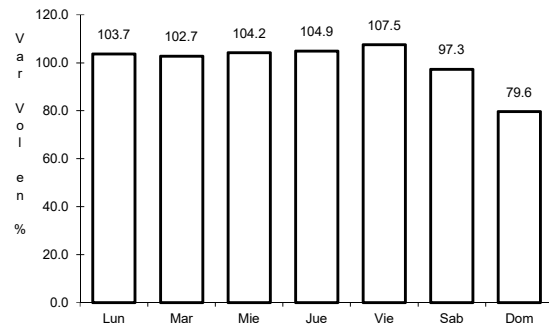
Tipo: 1

Sent: 0

36 CARR: Libramiento Sur de Tuxtla Gutiérrez

CLAVE: 07578

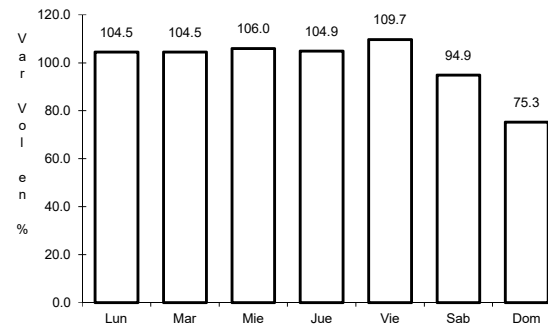
RUTA: CHIS



Km: 0.00

Tipo: 3

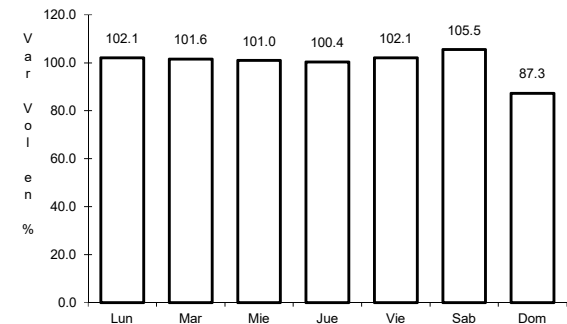
Sent: 1



Km: 0.00

Tipo: 3

Sent: 2



Km: 9.20

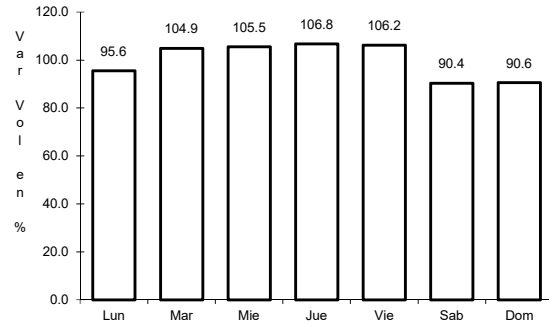
Tipo: 1

Sent: 1

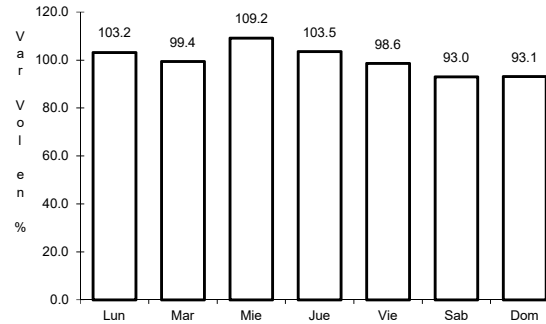
37 CARR: Ocosingo - Comitán

CLAVE: 07092

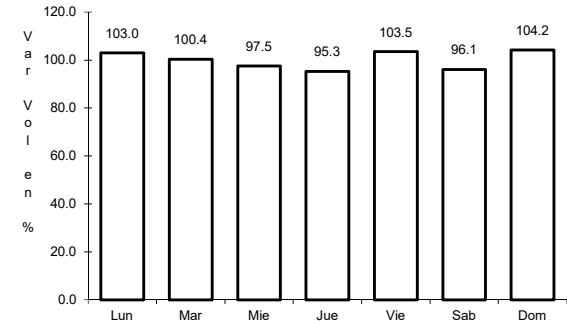
RUTA: CHIS



Km: 0.00 Tipo: 3 Sent: 0



Km: 30.00 Tipo: 1 Sent: 0

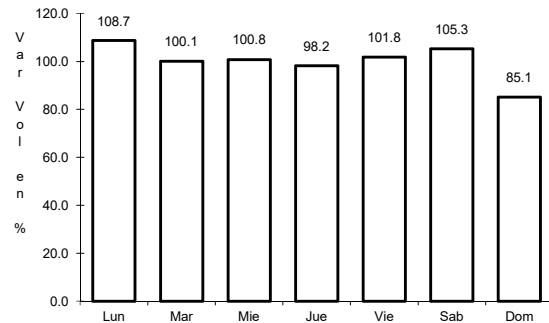


Km: 100.00 Tipo: 1 Sent: 0

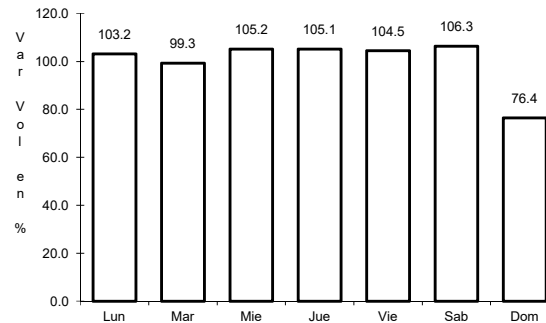
38 CARR: Ocozocoautla - Revolución Mexicana

CLAVE: 07571

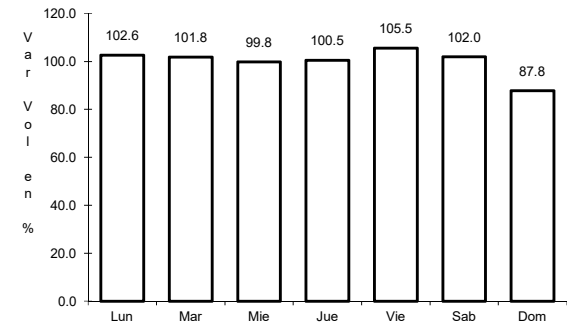
RUTA: CHIS-053-230



Km: 0.00 Tipo: 3 Sent: 0



Km: 76.00 Tipo: 1 Sent: 0

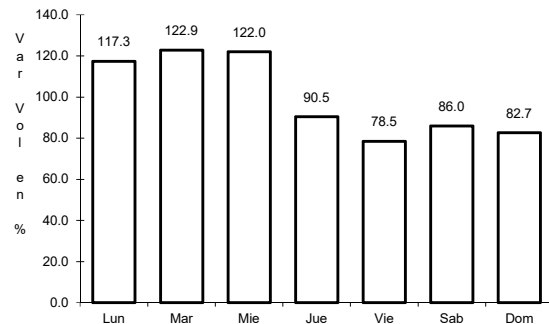


Km: 119.00 Tipo: 1 Sent: 0

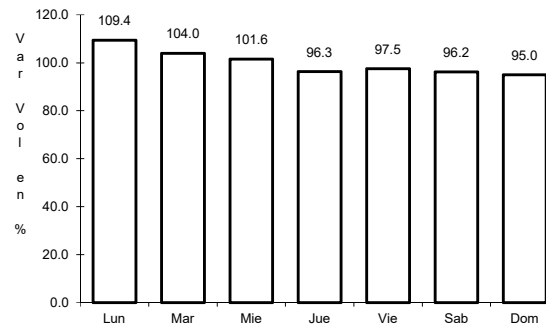
39 CARR: Paso de Cunduacán - Estación Juárez

CLAVE: 00588

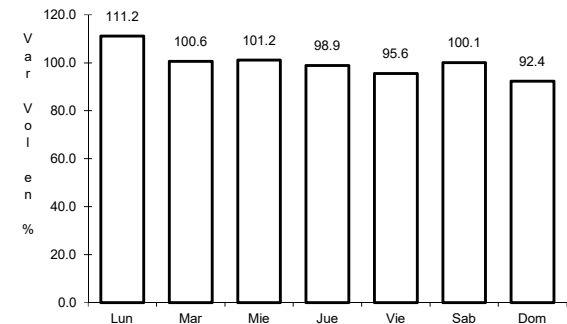
RUTA: TAB-CHIS



Km: 0.00 Tipo: 3 Sent: 0



Km: 18.00 Tipo: 3 Sent: 0

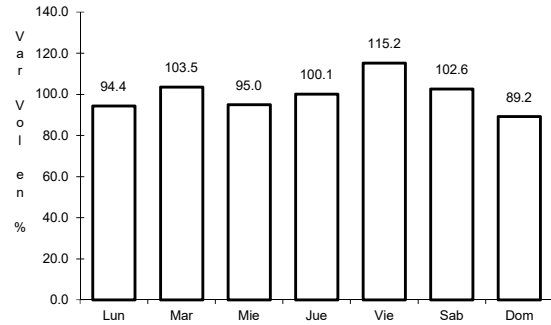


Km: 57.80 Tipo: 1 Sent: 0

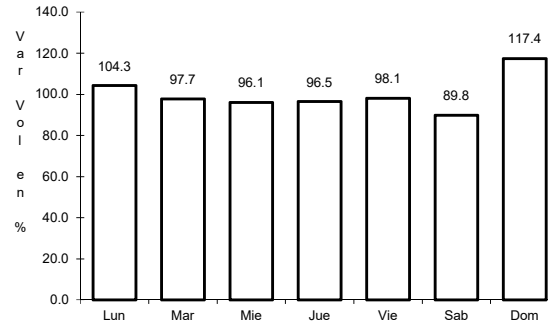
40 CARR: Puerto Caté - San Cristóbal de Las Casas

CLAVE: 07097

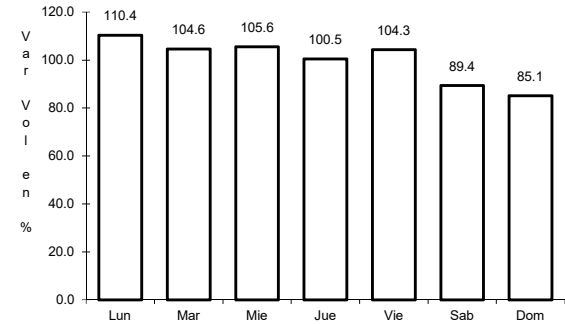
RUTA: CHIS



Km: 0.00 Tipo: 3 Sent: 0



Km: 20.00 Tipo: 1 Sent: 0

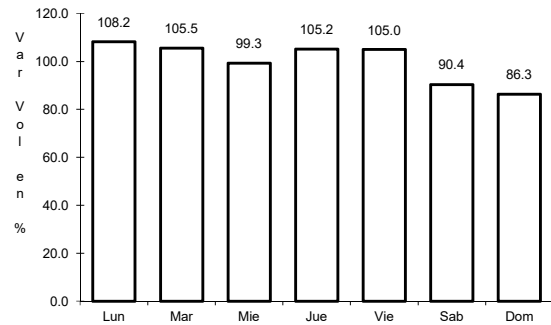


Km: 40.00 Tipo: 1 Sent: 0

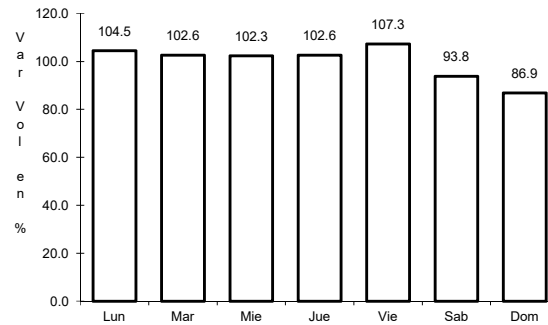
41 CARR: Ramal a Huehuetán

CLAVE: 07360

RUTA: CHIS



Km: 0.00 Tipo: 3 Sent: 1

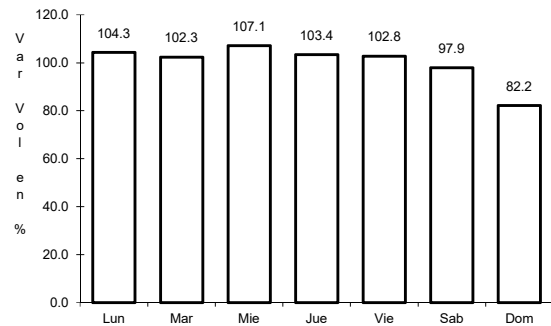


Km: 0.00 Tipo: 3 Sent: 2

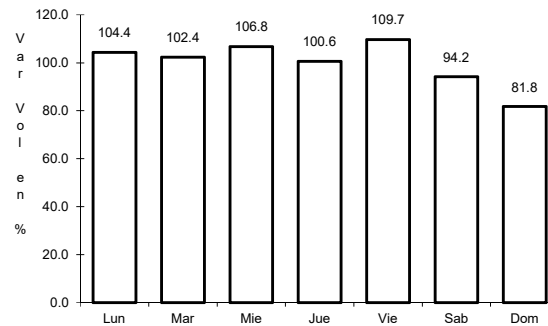
42 CARR: Ramal a Mazatán

CLAVE: 07560

RUTA: CHIS-219



Km: 0.00 Tipo: 3 Sent: 1

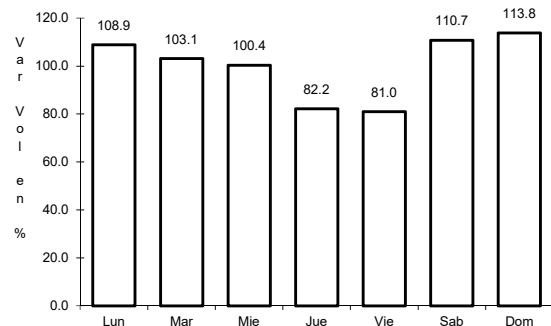


Km: 0.00 Tipo: 3 Sent: 2

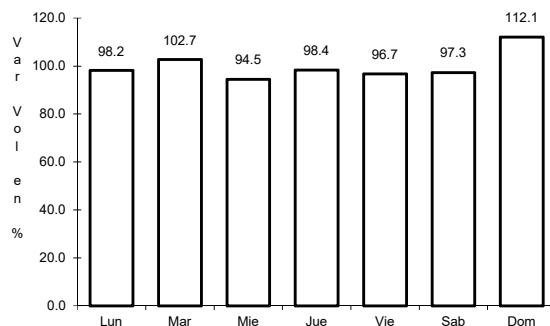
43 CARR: Ramal a Salto del Agua

CLAVE: 00069

RUTA: TAB-CHIS



Km: 0.00 Tipo: 3 Sent: 0

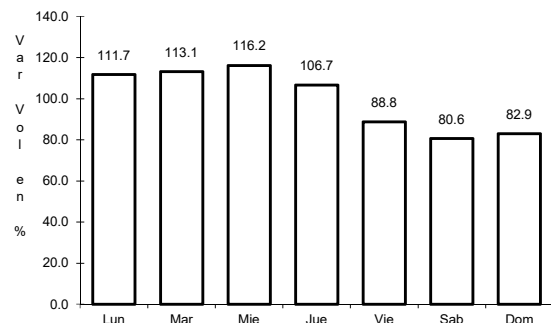


Km: 17.00 Tipo: 1 Sent: 0

44 CARR: Ramal Zona Arqueológica " Bonampak "

CLAVE: 07100

RUTA: CHIS

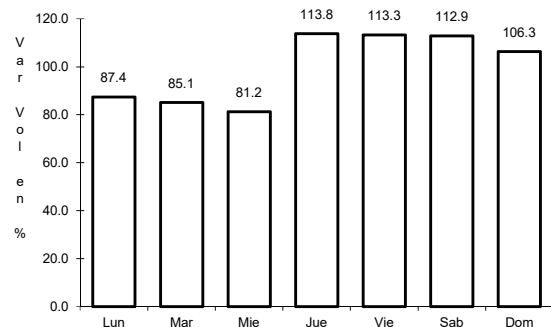


Km: 0.00 Tipo: 3 Sent: 0

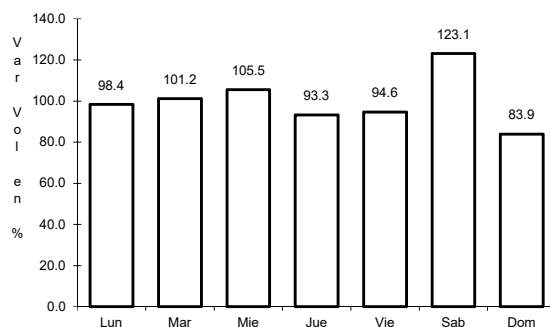
45 CARR: Ramal Zona Arqueológica " Palenque "

CLAVE: 07099

RUTA: CHIS



Km: 0.00 Tipo: 3 Sent: 0

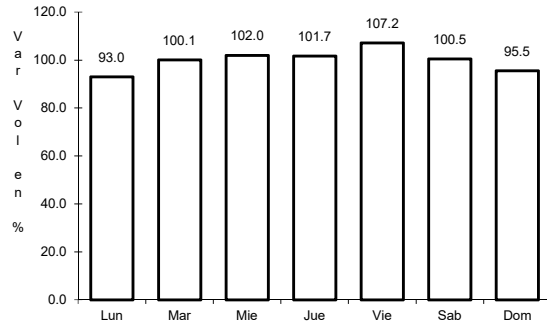


Km: 7.30 Tipo: 1 Sent: 0

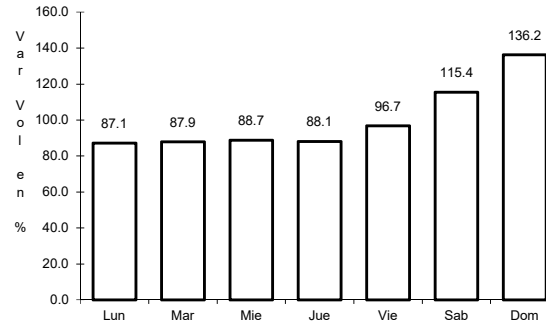
46 CARR: San Francisco Pujilic - Ent. Comitán

CLAVE: 07093

ruta: CHIS



Km: 0.00 Tipo: 3 Sent: 0

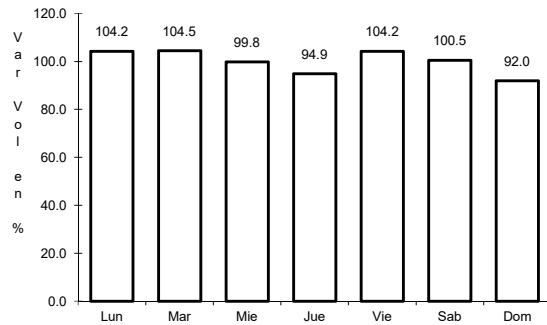


Km: 54.00 Tipo: 1 Sent: 0

47 CARR: Tapachula - Nueva Alemania

CLAVE: 07581

ruta: CHIS-229

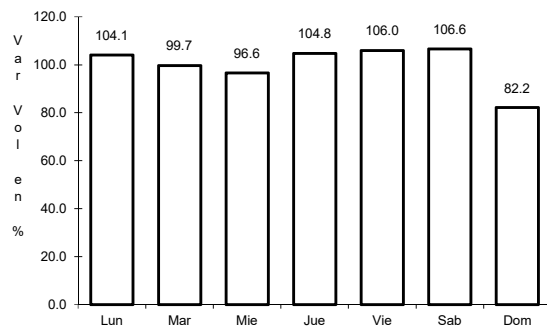


Km: 0.00 Tipo: 3 Sent: 0

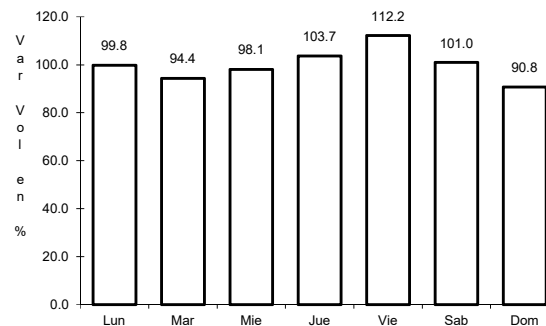
48 CARR: Temo - Tila

CLAVE: 07090

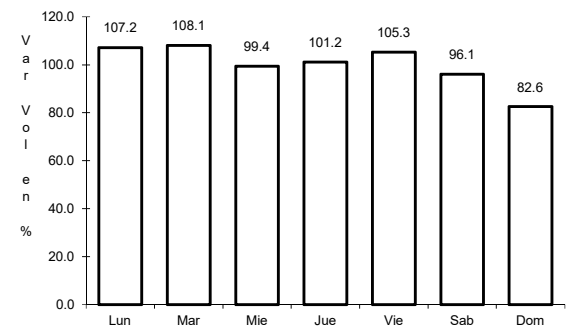
ruta: CHIS



Km: 0.00 Tipo: 3 Sent: 0



Km: 28.00 Tipo: 1 Sent: 0

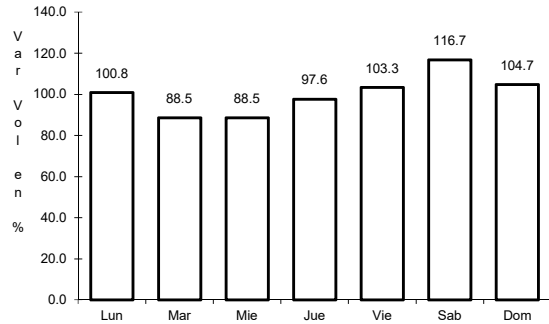


Km: 50.00 Tipo: 1 Sent: 0

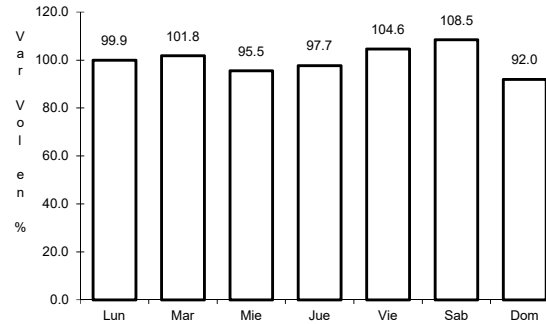
49 CARR: Tierra y Libertad - Ent. Dr. Domingo Chanona

CLAVE: 07096

ruta: CHIS



Km: 0.00 Tipo: 3 Sent: 0

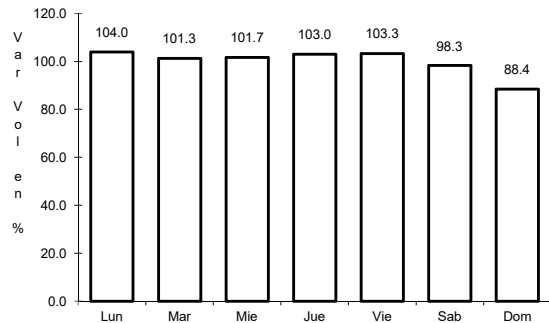


Km: 60.00 Tipo: 1 Sent: 0

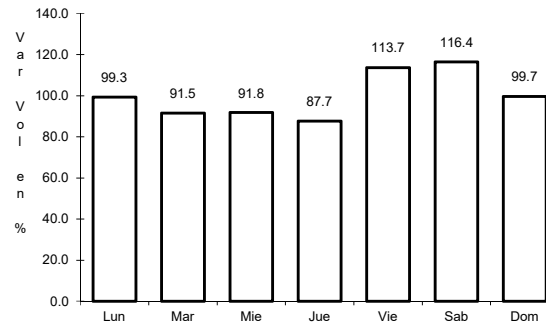
50 CARR: Tuxtla Gutiérrez - Portillo Zaragoza

CLAVE: 07574

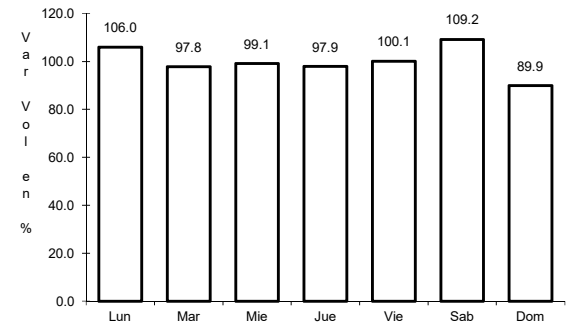
ruta: CHIS-133



Km: 0.00 Tipo: 3 Sent: 0



Km: 53.50 Tipo: 1 Sent: 0

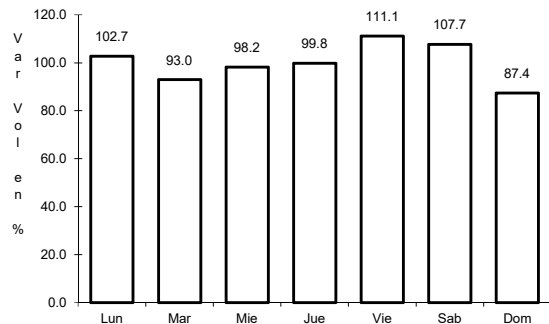


Km: 79.00 Tipo: 1 Sent: 0

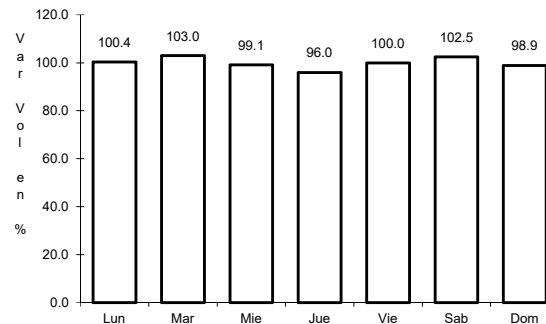
51 CARR: Zapatero - T. C. (Jalapa - Jonuta)

CLAVE: 00061

ruta: CHIS-TAB



Km: 0.00 Tipo: 3 Sent: 0



Km: 41.00 Tipo: 1 Sent: 0

