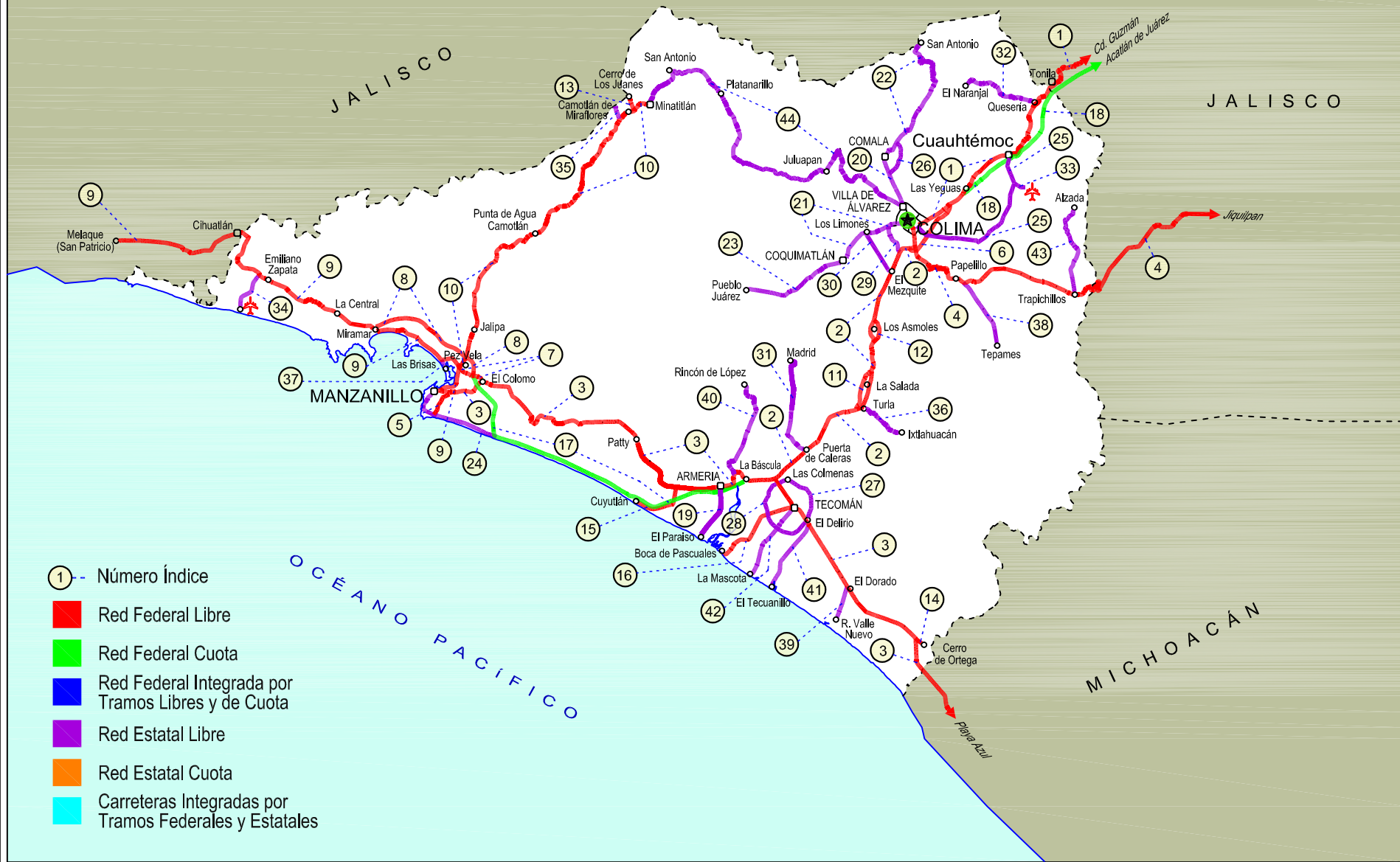
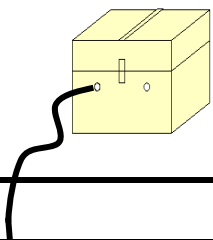


# 06 COLIMA

SECRETARÍA DE COMUNICACIONES Y TRANSPORTES  
DIRECCIÓN GENERAL DE SERVICIOS TÉCNICOS







COLIMA

## ---RED FEDERAL LIBRE---

1 Cd. Guzmán - Colima	MEX-054
2 Colima - Ent. Tecomán	MEX-110
3 Ent. Playa Azul - Manzanillo	MEX-200
4 Jiquilpan - Colima	MEX-110
5 Libramiento Campos - Alameda	MEX
6 Libramiento de Colima	MEX-054
7 Libramiento de Manzanillo (Libre)	MEX-200
8 Libramiento de Manzanillo Norte	MEX-200
9 Manzanillo - Puerto Vallarta	MEX-200
10 Minatitlán - Ent. Pez Vela	MEX-098
11 Paso por La Salada	MEX-110
12 Paso por Los Asmoles	MEX-110
13 Ramal a Cerro de Los Juanes	MEX-098
14 Ramal a Cerro de Ortega	MEX-200
15 Ramal a Cuyutlán	MEX-200
16 Tecomán - Boca de Pascuales	MEX-200

## ---RED FEDERAL DE CUOTA---

17 Armería - Manzanillo (Cuota)	MEX-200D
18 Guadalajara - Colima (Cuota)	MEX-054D

## ---RED ESTATAL LIBRE---

19 Armería - Playa El Paraíso	COL
20 Colima - Comala	COL-016
21 Colima - Coquimatlán	COL-034
22 Comala - San Antonio	COL-016
23 Coquimatlán - Pueblo Juárez	COL-034
24 Costera Laguna de Cuyutlán	COL
25 Cuauhtémoc - Colima	COL-019
26 Libramiento de Comala	COL-016
27 Libramiento de Tecomán	COL
28 Libramiento Poniente Arco Sur de Tecomán	COL
29 Libramiento Poniente de Colima	COL
30 Los Limones - Loma de Juárez	COL
31 Puerta de Caleras - Madrid	COL-014
32 Quesería - El Naranjal	COL-001
33 Ramal a Aeropuerto de Colima	COL
34 Ramal a Aeropuerto Manzanillo	COL
35 Ramal a Camotlán de Miraflores	COL
36 Ramal a Ixtlahuacán	COL-005
37 Ramal a Las Brisas	COL
38 Ramal a Los Tepames	COL-004
39 Ramal a Rancho Valle Nuevo	COL
40 Ramal a Rincón de López	COL
41 Ramal a Tecuanillo	COL-009
42 Tecomán - La Mascota	COL
43 Trapichillos - Estación Alzada	COL-003
44 Villa de Álvarez - Minatitlán	COL

COLIMA

1 CARR: Cd. Guzmán - Colima

CLAVE: 00117

RUTA: MEX-054

AÑO: 2018

LUGAR	ESTACION				CLASIFICACION VEHICULAR EN PORCIENTO													COORDENADAS		
	KM	TE	SC	TDPA	M	A	B	C2	C3	T3S2	T3S3	T3S2R4	OTROS	A	B	C	K'	D	LATITUD	LONGITUD
Cd. Guzmán	0.00	3	1	10594	3.4	83.3	0.8	8.3	0.9	0.9	1.0	0.7	0.7	86.7	0.8	12.5	0.066	0.507	19.677486	-103.475282
Cd. Guzmán	0.00	3	2	10285	4.3	81.0	0.8	9.4	0.9	1.1	0.9	0.9	0.7	85.3	0.8	13.9	0.080	0.507	19.677445	-103.475199
T. Izq. Zapotiltic	4.35	3	0	5192	1.9	82.6	1.5	6.5	1.5	2.0	1.5	1.3	1.2	84.5	1.5	14.0	0.072	0.524	19.645900	-103.471683
T. Der. Tepozal y Nevado de Colima	15.50	1	0	4890	1.7	82.7	1.4	7.3	1.6	1.7	1.1	1.4	1.1	84.4	1.4	14.2	0.072	0.529	19.578175	-103.447334
Atenquique	31.90	1	0	3378	3.4	71.6	3.5	4.1	6.0	2.8	2.0	3.5	3.1	75.0	3.5	21.5	0.066	0.510	19.531173	-103.432516
Atenquique	31.90	3	0	2449	2.5	79.0	2.6	3.1	2.4	2.2	2.0	3.7	2.5	81.5	2.6	15.9	0.072	0.501	19.525921	-103.440050
Lim. Edos. Term. Jal. Ppia. Col.	56.50																			
T. Der. Quesería	58.35	1	0	3490	3.3	74.8	2.0	4.4	2.0	3.5	2.9	1.3	5.8	78.1	2.0	19.9	0.061	0.504	19.392916	-103.563325
Cuahtémoc	66.25	1	0	4418	3.0	82.7	1.2	3.5	1.3	2.7	1.1	0.9	3.6	85.7	1.2	13.1	0.070	0.511	19.333526	-103.590865
Cuahtémoc	66.25	3	0	4877	3.4	82.0	1.3	3.5	1.3	2.1	1.6	1.0	3.8	85.4	1.3	13.3	0.060	0.543	19.324210	-103.609684
El Trapiche	76.55	3	1	13970	2.0	75.8	2.0	4.8	2.8	5.0	2.4	4.9	0.3	77.8	2.0	20.2	0.055	0.502	19.282723	-103.661961
El Trapiche	76.55	3	2	14080	1.5	72.8	2.3	5.8	3.2	5.7	2.8	5.6	0.3	74.3	2.3	23.4	0.061	0.502	19.282612	-103.661876
T. Izq. Libramiento de Colima	78.05	1	1	17167	3.1	72.2	2.6	8.5	1.9	4.5	2.4	4.4	0.4	75.3	2.6	22.1	0.061	0.509	19.268268	-103.676672
T. Izq. Libramiento de Colima	78.05	1	2	16551	2.3	70.3	2.9	9.5	2.3	4.7	2.8	4.8	0.4	72.6	2.9	24.5	0.068	0.509	19.268063	-103.676543
T. C. Cuahtémoc - Colima	83.40																			

2 CARR: Colima - Ent. Tecomán

CLAVE: 06119

RUTA: MEX-110

AÑO: 2018

LUGAR	ESTACION				CLASIFICACION VEHICULAR EN PORCIENTO													COORDENADAS		
	KM	TE	SC	TDPA	M	A	B	C2	C3	T3S2	T3S3	T3S2R4	OTROS	A	B	C	K'	D	LATITUD	LONGITUD
T. C. Jiquilpan - Colima	0.00	3	1	17293	2.9	80.4	1.4	5.1	1.3	3.7	1.9	2.5	0.8	83.3	1.4	15.3	0.075	0.510	19.215037	-103.733950
T. C. Jiquilpan - Colima	0.00	3	2	16584	2.6	78.8	1.5	5.8	1.4	4.1	2.0	2.9	0.9	81.4	1.5	17.1	0.073	0.510	19.214866	-103.733971
T. Izq. Los Asmoles	13.00	3	1	10386	1.2	80.1	1.9	6.9	1.5	3.5	2.4	1.9	0.6	81.3	1.9	16.8	0.097	0.543	19.109325	-103.775941
T. Izq. Los Asmoles	13.00	3	2	12361	0.8	79.1	2.2	7.1	1.7	3.5	2.7	2.1	0.8	79.9	2.2	17.9	0.113	0.543	19.109330	-103.775845
T. Der. Caleras	34.55	1	1	12118	1.4	77.2	1.9	6.2	2.1	3.9	2.1	4.4	0.8	78.6	1.9	19.5	0.082	0.502	18.981482	-103.853442
T. Der. Caleras	34.55	1	2	12043	1.5	76.6	1.8	5.2	2.2	4.7	1.6	5.7	0.7	78.1	1.8	20.1	0.110	0.502	18.981418	-103.853392
T. C. Ent. Playa Azul - Manzanillo	40.10	1	1	13088	2.2	73.9	3.2	8.2	1.6	4.1	1.8	4.5	0.5	76.1	3.2	20.7	0.080	0.503	18.958308	-103.881336
T. C. Ent. Playa Azul - Manzanillo	40.10	1	2	12936	2.5	74.7	2.2	7.0	1.9	4.4	1.6	5.2	0.5	77.2	2.2	20.6	0.108	0.503	18.958243	-103.881300

3 CARR: Ent. Playa Azul - Manzanillo

CLAVE: 00495

RUTA: MEX-200

AÑO: 2018

LUGAR	ESTACION				CLASIFICACION VEHICULAR EN PORCIENTO													COORDENADAS		
	KM	TE	SC	TDPA	M	A	B	C2	C3	T3S2	T3S3	T3S2R4	OTROS	A	B	C	K'	D	LATITUD	LONGITUD
T. C. Carapan - Playa Azul	0.00	3	0	4305	2.3	87.2	1.4	7.7	0.7	0.4	0.2	0.1	0.0	89.5	1.4	9.1	0.081	0.504	18.022835	-102.347085
Caleta de Campos	50.24	1	0	2746	8.9	81.3	0.6	7.5	0.7	0.6	0.3	0.1	0.0	90.2	0.6	9.2	0.066	0.504	18.077331	-102.745823

COLIMA

3 CARR: Ent. Playa Azul - Manzanillo

CLAVE: 00495

RUTA: MEX-200

AÑO: 2018

LUGAR	ESTACION				CLASIFICACION VEHICULAR EN PORCIENTO										COORDENADAS					
	KM	TE	SC	TDPA	M	A	B	C2	C3	T3S2	T3S3	T3S2R4	OTROS	A	B	C	K'	D	LATITUD	LONGITUD
Tizupan	106.60	1	0	570	16.9	64.0	1.7	10.7	2.4	2.5	1.4	0.4	0.0	80.9	1.7	17.4	0.072	0.515	18.219872	-103.124302
Maruata	149.75	1	0	639	7.4	71.9	5.3	9.4	1.9	2.3	1.5	0.3	0.0	79.3	5.3	15.4	0.102	0.505	18.271236	-103.336523
Maruata	149.75	3	0	1209	7.2	80.0	1.2	8.6	0.9	1.1	0.8	0.2	0.0	87.2	1.2	11.6	0.112	0.513	18.281883	-103.357777
T. Der. Aquila	190.10	3	0	2596	4.3	84.5	0.5	5.9	1.6	2.4	0.6	0.2	0.0	88.8	0.5	10.7	0.149	0.504	18.566351	-103.623164
Lim. Edos. Term. Mich. Ppia. Col.	229.60																			
Cerro de Ortega	233.20	1	0	6069	12.6	66.8	1.2	8.7	1.3	2.8	3.1	0.6	2.9	79.4	1.2	19.4	0.088	0.511	18.737483	-103.723809
El Balcón	242.95	1	0	5372	2.3	73.3	1.8	10.5	1.6	3.7	2.7	0.7	3.4	75.6	1.8	22.6	0.090	0.505	18.783784	-103.773217
El Balcón	242.95	3	0	6046	2.9	78.4	1.7	7.4	1.5	2.6	1.8	0.6	3.1	81.3	1.7	17.0	0.077	0.519	18.787508	-103.783351
Cofradía de Morelos	252.45	1	0	8380	5.4	72.0	2.6	14.2	1.5	2.6	1.0	0.2	0.5	77.4	2.6	20.0	0.069	0.565	18.859551	-103.834605
Cofradía de Morelos	252.45	3	1	4504	9.8	74.4	1.0	7.8	1.1	1.8	1.6	0.4	2.1	84.2	1.0	14.8	0.099	0.502	18.874282	-103.844090
Cofradía de Morelos	252.45	3	2	4538	7.9	73.1	0.8	8.7	0.9	2.6	2.3	0.7	3.0	81.0	0.8	18.2	0.093	0.502	18.874255	-103.844158
T. C. Colima - Ent. Tecomán	263.75	1	1	6130	6.5	78.2	0.6	9.3	0.7	1.1	1.1	0.4	2.1	84.7	0.6	14.7	0.086	0.501	18.895900	-103.858152
T. C. Colima - Ent. Tecomán	263.75	1	2	6104	11.4	71.8	0.6	10.3	0.8	1.4	1.6	0.6	1.5	83.2	0.6	16.2	0.090	0.501	18.895864	-103.858226
T. Der. Rincón de López	269.25	1	0	5828	9.5	64.5	1.1	11.5	1.7	4.0	2.8	1.1	3.8	74.0	1.1	24.9	0.068	0.502	18.952321	-103.940125
Armería	272.50	1	0	5472	14.4	61.9	1.3	9.0	1.9	3.8	2.5	1.1	4.1	76.3	1.3	22.4	0.063	0.500	18.941878	-103.947425
T. Izq. Cuyutlán	278.17	1	0	6505	2.0	75.4	1.3	6.3	2.1	3.6	2.8	1.4	5.1	77.4	1.3	21.3	0.054	0.528	18.935414	-104.017364
Santa Rita	292.50	1	0	5938	2.4	72.7	1.2	7.9	2.0	4.2	3.0	1.6	5.0	75.1	1.2	23.7	0.060	0.510	18.990674	-104.067173
Santa Rita	292.50	3	0	5877	11.7	69.7	1.2	5.6	1.3	3.7	2.4	0.8	3.6	81.4	1.2	17.4	0.065	0.503	19.013353	-104.099424
Las Nuevas Juntas	310.65	1	0	5806	2.8	76.3	1.3	6.3	1.3	3.4	2.4	1.3	4.9	79.1	1.3	19.6	0.072	0.514	19.042977	-104.218778
T. Der. Libramiento de Manzanillo (Libre)	312.65	1	0	10350	11.4	71.0	0.9	10.2	0.9	1.5	1.1	0.7	2.3	82.4	0.9	16.7	0.087	0.525	19.055529	-104.235803
T. Der. Libramiento de Manzanillo (Libre)	312.65	3	0	5153	14.4	75.2	1.0	3.2	0.7	1.2	1.7	0.3	2.3	89.6	1.0	9.4	0.070	0.514	19.055648	-104.243122
Manzanillo	321.12	1	0	7409	15.8	71.7	0.4	11.2	0.2	0.3	0.1	0.3	0.0	87.5	0.4	12.1	0.075	0.507	19.049519	-104.292995

4 CARR: Jiquilpan - Colima

CLAVE: 00156

RUTA: MEX-110

AÑO: 2018

LUGAR	ESTACION				CLASIFICACION VEHICULAR EN PORCIENTO										COORDENADAS					
	KM	TE	SC	TDPA	M	A	B	C2	C3	T3S2	T3S3	T3S2R4	OTROS	A	B	C	K'	D	LATITUD	LONGITUD
Jiquilpan	0.00	3	0	5527	2.0	78.7	0.9	9.4	2.4	4.8	0.9	0.4	0.5	80.7	0.9	18.4	0.069	0.512	19.995897	-102.745313
San José de Gracia	37.93	1	0	4642	3.5	83.9	0.7	7.4	0.9	2.9	0.4	0.0	0.3	87.4	0.7	11.9	0.096	0.532	20.000679	-103.014369
Lim. Edos. Term. Mich. Ppia. Jal.	41.00																			
Mazamitla	48.65	1	0	4353	2.7	87.8	0.6	6.5	0.3	1.8	0.1	0.0	0.2	90.5	0.6	8.9	0.099	0.507	19.940457	-103.008680
Mazamitla	48.65	3	0	5346	2.9	80.2	0.6	7.5	1.7	5.1	1.1	0.2	0.7	83.1	0.6	16.3	0.097	0.504	19.923702	-103.050511
T. Izq. Tamazula de Gordiano (2º Acceso)	96.70	3	0	8818	6.9	73.3	0.8	7.0	3.5	5.3	2.1	0.4	0.7	80.2	0.8	19.0	0.078	0.505	19.682636	-103.262361
T. Der. Cd. Guzmán	108.50	3	0	4173	2.7	74.0	1.3	8.6	5.2	4.5	2.8	0.5	0.4	76.7	1.3	22.0	0.079	0.540	19.642285	-103.335096
Tecalitlán	132.00	3	0	3030	5.1	80.4	0.5	10.2	2.1	1.4	0.2	0.0	0.1	85.5	0.5	14.0	0.079	0.508	19.462296	-103.318956

COLIMA

4 CARR: Jiquilpan - Colima

CLAVE: 00156

RUTA: MEX-110

AÑO: 2018

LUGAR	ESTACION				CLASIFICACION VEHICULAR EN PORCIENTO										COORDENADAS					
	KM	TE	SC	TDPA	M	A	B	C2	C3	T3S2	T3S3	T3S2R4	OTROS	A	B	C	K'	D	LATITUD	LONGITUD
T. Der. Atenquique	137.67	3	0	1446	3.2	78.5	0.6	12.6	2.4	1.0	1.5	0.0	0.2	81.7	0.6	17.7	0.089	0.521	19.455803	-103.349868
Pihuamo	168.19	3	0	2714	2.6	81.5	1.0	9.3	2.6	2.1	0.6	0.0	0.3	84.1	1.0	14.9	0.082	0.504	19.249238	-103.394962
Lim. Edos. Term. Jal. Ppia. Col.	189.60																			
T. Der. Estación Alzada	198.60	3	0	1600	3.6	79.3	0.7	9.1	1.3	3.1	2.5	0.3	0.1	82.9	0.7	16.4	0.082	0.507	19.160822	-103.528850
T. Izq. Los Tepames	214.20	1	0	2173	2.0	82.9	0.7	9.0	0.9	2.2	1.8	0.2	0.3	84.9	0.7	14.4	0.074	0.507	19.175550	-103.655960
X. C. Libramiento de Colima	220.00	1	0	8596	5.4	81.0	0.4	6.1	0.8	4.6	1.1	0.3	0.3	86.4	0.4	13.2	0.101	0.502	19.210497	-103.721305
Colima	222.00	1	1	9504	5.6	87.5	0.3	4.5	0.4	0.8	0.6	0.1	0.2	93.1	0.3	6.6	0.094	0.501	19.218129	-103.721990
Colima	222.00	1	2	9537	5.3	87.0	0.3	5.1	0.4	0.9	0.7	0.1	0.2	92.3	0.3	7.4	0.082	0.501	19.218122	-103.722141

5 CARR: Libramiento Campos - Alameda

CLAVE:

RUTA: MEX

AÑO: 2018

LUGAR	ESTACION				CLASIFICACION VEHICULAR EN PORCIENTO										COORDENADAS					
	KM	TE	SC	TDPA	M	A	B	C2	C3	T3S2	T3S3	T3S2R4	OTROS	A	B	C	K'	D	LATITUD	LONGITUD
T. C. Costera Laguna de Cuyután	0.00	3	0	1633	11.6	76.3	0.6	7.5	0.5	1.7	0.4	1.4	0.0	87.9	0.6	11.5	0.127	0.511	19.026748	-104.315872
T. C. Playa Azul - Manzanillo	5.00	1	0	1756	11.5	76.2	0.5	7.5	0.6	1.8	0.4	1.5	0.0	87.7	0.5	11.8	0.124	0.502	19.047285	-104.301330

6 CARR: Libramiento de Colima

CLAVE: 06573

RUTA: MEX-054

AÑO: 2018

LUGAR	ESTACION				CLASIFICACION VEHICULAR EN PORCIENTO										COORDENADAS					
	KM	TE	SC	TDPA	M	A	B	C2	C3	T3S2	T3S3	T3S2R4	OTROS	A	B	C	K'	D	LATITUD	LONGITUD
T. C. Cd. Guzmán - Colima	0.00	3	1	8164	2.3	75.4	2.3	5.3	2.1	5.1	2.3	4.4	0.8	77.7	2.3	20.0	0.096	0.525	19.262047	-103.682618
T. C. Cd. Guzmán - Colima	0.00	3	2	9006	2.3	73.0	2.7	5.5	2.3	5.5	2.7	5.1	0.9	75.3	2.7	22.0	0.090	0.525	19.262849	-103.681733
T. C. Colima - Ent. Tecomán	9.00	1	1	17376	3.3	79.9	1.4	5.5	1.3	3.5	2.2	2.5	0.4	83.2	1.4	15.4	0.066	0.509	19.215372	-103.717919
T. C. Colima - Ent. Tecomán	9.00	1	2	17981	2.9	78.5	1.5	6.0	1.4	4.1	2.4	2.8	0.4	81.4	1.5	17.1	0.067	0.509	19.215234	-103.717763

7 CARR: Libramiento de Manzanillo (Libre)

CLAVE: 06574

RUTA: MEX-200

AÑO: 2018

LUGAR	ESTACION				CLASIFICACION VEHICULAR EN PORCIENTO										COORDENADAS					
	KM	TE	SC	TDPA	M	A	B	C2	C3	T3S2	T3S3	T3S2R4	OTROS	A	B	C	K'	D	LATITUD	LONGITUD
T. C. Ent. Playa Azul - Manzanillo	0.00	3	0	10077	8.2	67.8	1.0	6.6	3.5	7.3	2.0	3.2	0.4	76.0	1.0	23.0	0.077	0.505	19.057472	-104.244044
T. C. Manzanillo - Puerto Vallarta	6.30	1	1	9022	8.5	73.1	1.7	5.4	3.5	3.5	2.4	1.4	0.5	81.6	1.7	16.7	0.081	0.540	19.072293	-104.279427
T. C. Manzanillo - Puerto Vallarta	6.30	1	2	7679	4.9	75.1	1.9	5.9	3.8	3.7	2.6	1.5	0.6	80.0	1.9	18.1	0.089	0.540	19.072213	-104.279482

COLIMA

8 CARR: Libramiento de Manzanillo Norte

CLAVE: 06122

RUTA: MEX-200

AÑO: 2018

LUGAR	ESTACION				CLASIFICACION VEHICULAR EN PORCIENTO										COORDENADAS					
	KM	TE	SC	TDPA	M	A	B	C2	C3	T3S2	T3S3	T3S2R4	OTROS	A	B	C	K'	D	LATITUD	LONGITUD
T. C. Libramiento de Manzanillo (Libre)	0.00																			
T. C. Minatitlán - Ent. Pez Vela	3.00	3	0	16508	3.8	82.3	1.8	6.9	1.3	3.2	0.5	0.1	0.1	86.1	1.8	12.1	0.102	0.539	19.096296	-104.277480
T. C. Manzanillo - Puerto Vallarta	19.00	1	0	5428	3.3	84.6	1.9	7.2	1.4	0.9	0.5	0.1	0.1	87.9	1.9	10.2	0.150	0.541	19.128124	-104.394060

9 CARR: Manzanillo - Puerto Vallarta

CLAVE: 00070

RUTA: MEX-200

AÑO: 2018

LUGAR	ESTACION				CLASIFICACION VEHICULAR EN PORCIENTO										COORDENADAS					
	KM	TE	SC	TDPA	M	A	B	C2	C3	T3S2	T3S3	T3S2R4	OTROS	A	B	C	K'	D	LATITUD	LONGITUD
Manzanillo	0.00	3	1	16551	8.9	82.6	0.8	7.1	0.2	0.2	0.2	0.0	0.0	91.5	0.8	7.7	0.070	0.519	19.055269	-104.299472
Manzanillo	0.00	3	2	17834	9.6	79.4	0.8	9.4	0.3	0.2	0.3	0.0	0.0	89.0	0.8	10.2	0.068	0.519	19.055367	-104.299478
T. Der. Minatitlán	3.14	1	1	18382	14.7	76.6	0.9	7.3	0.2	0.1	0.2	0.0	0.0	91.3	0.9	7.8	0.067	0.526	19.065621	-104.288613
T. Der. Minatitlán	3.14	1	2	20407	15.6	77.8	0.7	5.3	0.2	0.2	0.2	0.0	0.0	93.4	0.7	5.9	0.068	0.526	19.065705	-104.288692
Santiago	13.24	1	1	11249	6.0	88.8	0.4	3.4	0.1	0.4	0.8	0.0	0.1	94.8	0.4	4.8	0.088	0.531	19.115612	-104.349032
Santiago	13.24	1	2	12753	6.3	88.1	0.4	4.1	0.1	0.2	0.7	0.0	0.1	94.4	0.4	5.2	0.106	0.531	19.115529	-104.349049
Santiago	13.24	3	1	7080	7.2	85.2	0.6	6.4	0.1	0.3	0.2	0.0	0.0	92.4	0.6	7.0	0.127	0.515	19.120496	-104.377983
Santiago	13.24	3	2	6660	7.4	84.5	0.7	6.8	0.1	0.3	0.2	0.0	0.0	91.9	0.7	7.4	0.153	0.515	19.120415	-104.377978
San Juan de Cuatro Vientos	39.04	3	0	6533	5.3	81.2	2.1	5.5	1.5	2.9	0.9	0.2	0.4	86.5	2.1	11.4	0.086	0.514	19.193395	-104.539715
T. Izq. Aeropuerto Manzanillo	40.55	3	0	6888	5.1	83.2	2.4	5.6	1.8	1.1	0.6	0.1	0.1	88.3	2.4	9.3	0.107	0.533	19.195487	-104.550847
Lim. Edos. Term. Col. Ppia. Jal.	43.50																			
Cihuatlán	47.92	1	0	9121	11.3	76.9	2.1	6.6	1.5	0.9	0.5	0.1	0.1	88.2	2.1	9.7	0.096	0.550	19.233947	-104.549871
Cihuatlán	47.92	3	0	9488	9.1	80.3	1.7	7.0	0.9	0.5	0.3	0.1	0.1	89.4	1.7	8.9	0.103	0.519	19.228801	-104.583864
T. Izq. San Francisco	50.18	3	0	7913	8.2	77.8	1.9	8.7	1.4	1.1	0.6	0.2	0.1	86.0	1.9	12.1	0.097	0.506	19.216786	-104.624493
Melaque	61.64	1	0	13547	13.9	76.3	0.9	6.6	0.7	0.7	0.7	0.1	0.1	90.2	0.9	8.9	0.081	0.515	19.228766	-104.690968
Melaque	61.64	3	0	7258	17.5	69.5	1.0	8.1	1.0	1.8	0.7	0.2	0.2	87.0	1.0	12.0	0.076	0.510	19.240989	-104.713830
T. Izq. Tenacatita	90.44	3	0	2828	4.9	85.4	1.1	5.1	0.8	1.6	0.7	0.3	0.1	90.3	1.1	8.6	0.085	0.506	19.349719	-104.883663
T. Der. Tomatlán	177.64	1	0	2473	4.3	75.1	2.1	12.1	2.6	2.1	1.1	0.3	0.3	79.4	2.1	18.5	0.089	0.510	19.869136	-105.329220
T. Der. Tomatlán	177.64	3	0	2709	4.8	80.0	1.5	9.1	1.7	1.6	0.9	0.4	0.0	84.8	1.5	13.7	0.103	0.519	19.876417	-105.335876
T. Izq. El Tuito	230.64	3	0	3310	4.9	79.5	1.7	10.3	1.3	1.3	0.7	0.2	0.1	84.4	1.7	13.9	0.080	0.502	20.329555	-105.316972
Puerto Vallarta	273.64	1	0	9818	2.8	88.7	0.7	5.8	0.3	0.4	1.1	0.1	0.1	91.5	0.7	7.8	0.114	0.511	20.581598	-105.244000

10 CARR: Minatitlán - Ent. Pez Vela

CLAVE: 06015

RUTA: MEX-098

AÑO: 2018

LUGAR	ESTACION				CLASIFICACION VEHICULAR EN PORCIENTO										COORDENADAS					
	KM	TE	SC	TDPA	M	A	B	C2	C3	T3S2	T3S3	T3S2R4	OTROS	A	B	C	K'	D	LATITUD	LONGITUD
Minatitlán	0.00																			



COLIMA

10 CARR: Minatitlán - Ent. Pez Vela

CLAVE: 06015

RUTA: MEX-098

AÑO: 2018

LUGAR	ESTACION				CLASIFICACION VEHICULAR EN PORCIENTO										COORDENADAS					
	KM	TE	SC	TDPA	M	A	B	C2	C3	T3S2	T3S3	T3S2R4	OTROS	A	B	C	K'	D	LATITUD	LONGITUD
T. Der. Jalipa	49.50	1	0	2635	12.5	76.7	0.4	7.7	1.3	0.3	0.1	0.9	0.1	89.2	0.4	10.4	0.082	0.506	19.132681	-104.264339
T. Der. Jalipa	49.50	3	1	4120	11.6	67.1	0.7	5.5	3.6	4.0	0.8	6.2	0.5	78.7	0.7	20.6	0.077	0.513	19.113065	-104.261063
T. Der. Jalipa	49.50	3	2	4340	11.7	67.5	0.7	5.1	3.8	4.3	0.7	5.4	0.8	79.2	0.7	20.1	0.085	0.513	19.113065	-104.261063
T. C. Manzanillo - Puerto Vallarta	58.50	1	1	11399	5.0	67.0	0.9	4.3	4.9	6.0	3.2	7.7	1.0	72.0	0.9	27.1	0.100	0.511	19.088504	-104.279887
T. C. Manzanillo - Puerto Vallarta	58.50	1	2	11923	5.3	65.0	0.9	4.6	4.8	7.6	3.2	7.7	0.9	70.3	0.9	28.8	0.088	0.511	19.088402	-104.279734

11 CARR: Paso por La Salada

CLAVE: 06121

RUTA: MEX-110

AÑO: 2018

LUGAR	ESTACION				CLASIFICACION VEHICULAR EN PORCIENTO										COORDENADAS						
	KM	TE	SC	TDPA	M	A	B	C2	C3	T3S2	T3S3	T3S2R4	OTROS	A	B	C	K'	D	LATITUD	LONGITUD	
La Salada	0.00	3	0	45	10.4	78.8	1.2	8.8	0.4	0.4	0.0	0.0	0.0	89.2	1.2	9.6	0.200	0.592	19.054289	-103.785220	
T. C. Ramal a Ixtlahuacán	6.00																				

12 CARR: Paso por Los Asmoles

CLAVE: 06120

RUTA: MEX-110

AÑO: 2018

LUGAR	ESTACION				CLASIFICACION VEHICULAR EN PORCIENTO										COORDENADAS						
	KM	TE	SC	TDPA	M	A	B	C2	C3	T3S2	T3S3	T3S2R4	OTROS	A	B	C	K'	D	LATITUD	LONGITUD	
T. C. Colima - Ent. Tecomán	0.00																				
Los Asmoles	1.80	3	0	2117	2.9	89.6	0.2	5.1	0.8	1.1	0.2	0.0	0.1	92.5	0.2	7.3	0.088	0.514	19.121869	-103.771993	
T. C. Colima - Ent. Tecomán	2.90																				

13 CARR: Ramal a Cerro de Los Juanes

CLAVE: 06009

RUTA: MEX-098

AÑO: 2018

LUGAR	ESTACION				CLASIFICACION VEHICULAR EN PORCIENTO										COORDENADAS						
	KM	TE	SC	TDPA	M	A	B	C2	C3	T3S2	T3S3	T3S2R4	OTROS	A	B	C	K'	D	LATITUD	LONGITUD	
T. C. Minatitlán - Ent. Pez Vela	0.00	3	0	925	2.3	72.5	2.4	21.0	0.9	0.6	0.2	0.0	0.1	74.8	2.4	22.8	0.069	0.515	19.377821	-104.092478	
Cerro de Los Juanes	3.30																				

14 CARR: Ramal a Cerro de Ortega

CLAVE: 06009

RUTA: MEX-200

AÑO: 2018

LUGAR	ESTACION				CLASIFICACION VEHICULAR EN PORCIENTO										COORDENADAS						
	KM	TE	SC	TDPA	M	A	B	C2	C3	T3S2	T3S3	T3S2R4	OTROS	A	B	C	K'	D	LATITUD	LONGITUD	
T. C. Ent. Playa Azul - Manzanillo	0.00	3	0	2840	36.4	54.8	1.0	7.5	0.1	0.2	0.0	0.0	0.0	91.2	1.0	7.8	0.083	0.572	18.753253	-103.721255	
Cerro de Ortega	1.00																				

COLIMA

15 CARR: Ramal a Cuyutlán

CLAVE: 06225

RUTA: MEX-200

AÑO: 2018

LUGAR	ESTACION				CLASIFICACION VEHICULAR EN PORCIENTO										COORDENADAS					
	KM	TE	SC	TDPA	M	A	B	C2	C3	T3S2	T3S3	T3S2R4	OTROS	A	B	C	K'	D	LATITUD	LONGITUD
T. C. Ent. Playa Azul - Manzanillo	0.00	3	0	1057	8.8	81.2	0.3	9.1	0.4	0.1	0.1	0.0	0.0	90.0	0.3	9.7	0.090	0.514	18.926528	-104.021209
Cuyutlán	7.00	1	0	1215	5.2	85.2	0.5	8.8	0.3	0.0	0.0	0.0	0.0	90.4	0.5	9.1	0.081	0.544	18.912048	-104.055709

16 CARR: Tecomán - Boca de Pascuales

CLAVE: 06226

RUTA: MEX-200

AÑO: 2018

LUGAR	ESTACION				CLASIFICACION VEHICULAR EN PORCIENTO										COORDENADAS					
	KM	TE	SC	TDPA	M	A	B	C2	C3	T3S2	T3S3	T3S2R4	OTROS	A	B	C	K'	D	LATITUD	LONGITUD
Tecomán	0.00	3	0	3602	14.3	78.1	0.5	6.5	0.6	0.0	0.0	0.0	0.0	92.4	0.5	7.1	0.145	0.555	18.896150	-103.916432
Boca de Pascuales	12.00																			

17 CARR: Armería - Manzanillo (Cuota)

CLAVE: 06585

RUTA: MEX-200D

AÑO: 2018

LUGAR	ESTACION				CLASIFICACION VEHICULAR EN PORCIENTO										COORDENADAS					
	KM	TE	SC	TDPA	M	A	B	C2	C3	T3S2	T3S3	T3S2R4	OTROS	A	B	C	K'	D	LATITUD	LONGITUD
T. C. Ent. Playa Azul - Manzanillo	0.00																			
T. Izq. Playa Paraíso	3.50	3	1	5373	0.4	68.8	2.6	4.9	2.0	4.8	3.3	11.8	1.4	69.2	2.6	28.2	0.106	0.526	18.928209	-103.969068
T. Izq. Playa Paraíso	3.50	3	2	4833	1.7	64.0	3.2	6.7	1.8	6.8	1.9	12.5	1.4	65.7	3.2	31.1	0.091	0.526	18.928121	-103.969063
T. Izq. Cuyutlán	17.58	3	1	4285	0.6	63.2	3.7	5.7	2.2	5.4	3.8	14.0	1.4	63.8	3.7	32.5	0.123	0.521	18.930679	-104.086744
T. Izq. Cuyutlán	17.58	3	2	3932	1.0	62.3	3.2	4.3	2.3	8.0	2.0	15.6	1.3	63.3	3.2	33.5	0.085	0.521	18.930624	-104.086788
Caseta de Cobro Cuyutlán	18.00	2	1	3842	0.5	79.1	3.4	0.0	2.5	0.9	7.0	0.3	6.3	79.6	3.4	17.0	0.096	0.500	18.927852	-104.081512
Caseta de Cobro Cuyutlán	18.00	2	2	3842	0.5	79.1	3.4	0.0	2.5	0.9	7.0	0.3	6.3	79.6	3.4	17.0	0.096	0.500	18.927852	-104.081512
T. C. Ent. Playa Azul - Manzanillo	44.00	3	1	6109	3.2	63.9	2.6	5.8	2.9	4.1	2.7	14.0	0.8	67.1	2.6	30.3	0.105	0.602	19.053025	-104.268610
T. C. Ent. Playa Azul - Manzanillo	44.00	3	2	4047	4.8	58.4	3.6	6.2	2.1	7.0	1.9	14.9	1.1	63.2	3.6	33.2	0.085	0.602	19.053031	-104.268681
T. C. Libramiento de Manzanillo (Libre)	46.00																			

18 CARR: Guadalajara - Colima (Cuota)

CLAVE: 00118

RUTA: MEX-054D

AÑO: 2018

LUGAR	ESTACION				CLASIFICACION VEHICULAR EN PORCIENTO										COORDENADAS					
	KM	TE	SC	TDPA	M	A	B	C2	C3	T3S2	T3S3	T3S2R4	OTROS	A	B	C	K'	D	LATITUD	LONGITUD
T. C. Ent. Santa Cruz - Melaque	0.00																			
Caseta de Cobro Acatlán	0.20	2	1	6583	0.3	67.3	3.6	4.0	3.9	6.5	2.7	10.2	1.5	67.6	3.6	28.8	0.084	0.500	20.373443	-103.576317
Caseta de Cobro Acatlán	0.20	2	2	6583	0.3	67.3	3.6	4.0	3.9	6.5	2.7	10.2	1.5	67.6	3.6	28.8	0.084	0.500	20.373443	-103.576317
Caseta de Cobro Acatlán	0.20	3	1	6117	0.4	70.3	2.8	5.2	2.9	7.1	2.9	7.8	0.6	70.7	2.8	26.5	0.187	0.506	20.418360	-103.556447
Caseta de Cobro Acatlán	0.20	3	2	6271	0.4	67.7	3.1	5.7	3.1	7.5	3.3	8.6	0.6	68.1	3.1	28.8	0.236	0.506	20.418350	-103.556347
T. Izq. San Marcos	10.80	1	1	6431	0.4	72.9	2.8	5.0	2.3	5.6	2.6	7.8	0.6	73.3	2.8	23.9	0.172	0.500	20.343501	-103.573078

COLIMA

18 CARR: Guadalajara - Colima (Cuota)

CLAVE: 00118

RUTA: MEX-054D

AÑO: 2018

LUGAR	ESTACION				CLASIFICACION VEHICULAR EN PORCIENTO													COORDENADAS		
	KM	TE	SC	TDPA	M	A	B	C2	C3	T3S2	T3S3	T3S2R4	OTROS	A	B	C	K'	D	LATITUD	LONGITUD
T. Izq. San Marcos	10.80	1	2	6436	0.4	69.7	3.2	5.3	2.7	6.4	2.9	8.8	0.6	70.1	3.2	26.7	0.229	0.500	20.343573	-103.572875
T. Der. Usmajac	67.80	1	1	7959	0.4	71.6	3.1	5.0	2.4	6.4	2.8	7.7	0.6	72.0	3.1	24.9	0.133	0.508	19.892071	-103.520620
T. Der. Usmajac	67.80	1	2	7717	0.5	68.9	3.4	5.6	2.6	7.0	2.9	8.5	0.6	69.4	3.4	27.2	0.144	0.508	19.892192	-103.520474
T. Izq. Cd. Guzmán	86.70	1	1	7801	0.4	72.4	2.9	5.4	2.6	5.0	2.7	8.1	0.5	72.8	2.9	24.3	0.134	0.516	19.708444	-103.501063
T. Izq. Cd. Guzmán	86.70	1	2	7308	0.6	68.8	3.5	5.9	3.0	5.6	3.0	9.1	0.5	69.4	3.5	27.1	0.149	0.516	19.708468	-103.500972
Caseta de Cobro San Marcos	122.50	2	1	5767	0.4	58.1	3.4	4.3	5.3	9.4	4.2	12.2	2.7	58.5	3.4	38.1	0.084	0.500	19.433745	-103.494491
Caseta de Cobro San Marcos	122.50	2	2	5767	0.4	58.1	3.4	4.3	5.3	9.4	4.2	12.2	2.7	58.5	3.4	38.1	0.084	0.500	19.433745	-103.494491
Lim. Edos. Term. Jal. Ppia. Col.	129.50																			
T. C. Cd. Guzmán - Colima	148.00																			

19 CARR: Armería - Playa El Paraíso

CLAVE: 06580

RUTA: COL

AÑO: 2018

LUGAR	ESTACION				CLASIFICACION VEHICULAR EN PORCIENTO													COORDENADAS		
	KM	TE	SC	TDPA	M	A	B	C2	C3	T3S2	T3S3	T3S2R4	OTROS	A	B	C	K'	D	LATITUD	LONGITUD
T. C. Ent. Playa Azul - Manzanillo	0.00	3	0	3096	14.1	77.8	0.2	6.6	0.7	0.2	0.4	0.0	0.0	91.9	0.2	7.9	0.120	0.521	18.923848	-103.963914
Playa Paraíso	7.50	1	0	1524	12.7	82.0	0.1	5.1	0.1	0.0	0.0	0.0	0.0	94.7	0.1	5.2	0.242	0.506	18.878355	-103.989542

20 CARR: Colima - Comala

CLAVE: 06016

RUTA: COL-016

AÑO: 2018

LUGAR	ESTACION				CLASIFICACION VEHICULAR EN PORCIENTO													COORDENADAS		
	KM	TE	SC	TDPA	M	A	B	C2	C3	T3S2	T3S3	T3S2R4	OTROS	A	B	C	K'	D	LATITUD	LONGITUD
Colima	0.00																			
Villa Álvarez	3.00	3	1	14424	5.1	89.3	0.1	2.8	0.2	0.7	1.5	0.1	0.2	94.4	0.1	5.5	0.078	0.503	19.287409	-103.746256
Villa Álvarez	3.00	3	2	14612	5.3	88.5	0.1	3.6	0.2	0.7	1.4	0.0	0.2	93.8	0.1	6.1	0.066	0.503	19.287372	-103.746333
Comala	10.00																			

21 CARR: Colima - Coquimatlán

CLAVE: 06034

RUTA: COL-034

AÑO: 2018

LUGAR	ESTACION				CLASIFICACION VEHICULAR EN PORCIENTO													COORDENADAS		
	KM	TE	SC	TDPA	M	A	B	C2	C3	T3S2	T3S3	T3S2R4	OTROS	A	B	C	K'	D	LATITUD	LONGITUD
Colima	0.00																			
T. Der. Villa Álvarez	3.00	3	1	16099	7.4	86.9	0.3	4.7	0.3	0.1	0.3	0.0	0.0	94.3	0.3	5.4	0.076	0.513	19.242881	-103.751777
T. Der. Villa Álvarez	3.00	3	2	15283	8.4	85.7	0.3	4.9	0.3	0.2	0.2	0.0	0.0	94.1	0.3	5.6	0.071	0.513	19.242808	-103.751735
Coquimatlán	11.00	1	1	7244	8.5	84.6	0.9	4.9	0.4	0.5	0.2	0.0	0.0	93.1	0.9	6.0	0.092	0.508	19.217138	-103.802590
Coquimatlán	11.00	1	2	7007	8.0	85.2	0.2	4.9	0.4	0.6	0.6	0.0	0.1	93.2	0.2	6.6	0.092	0.508	19.217068	-103.802494

COLIMA

22 CARR: Comala - San Antonio

CLAVE: 06030

RUTA: COL-016

AÑO: 2018

LUGAR	ESTACION				CLASIFICACION VEHICULAR EN PORCIENTO										COORDENADAS					
	KM	TE	SC	TDPA	M	A	B	C2	C3	T3S2	T3S3	T3S2R4	OTROS	A	B	C	K'	D	LATITUD	LONGITUD
Comala	0.00	3	1	1539	4.3	88.8	0.4	6.2	0.3	0.0	0.0	0.0	0.0	93.1	0.4	6.5	0.116	0.510	19.335860	-103.746507
Comala	0.00	3	2	1602	4.3	88.0	0.4	7.0	0.3	0.0	0.0	0.0	0.0	92.3	0.4	7.3	0.123	0.510	19.335870	-103.746536
Suchitlán	10.00	1	0	4964	4.4	88.0	0.5	5.7	0.5	0.4	0.4	0.0	0.1	92.4	0.5	7.1	0.117	0.508	19.369048	-103.722293
San Antonio	20.50																			

23 CARR: Coquimatlán - Pueblo Juárez

CLAVE: 06029

RUTA: COL-034

AÑO: 2018

LUGAR	ESTACION				CLASIFICACION VEHICULAR EN PORCIENTO										COORDENADAS					
	KM	TE	SC	TDPA	M	A	B	C2	C3	T3S2	T3S3	T3S2R4	OTROS	A	B	C	K'	D	LATITUD	LONGITUD
Coquimatlán	0.00	3	0	3457	7.9	80.6	1.2	6.9	1.2	1.6	0.3	0.0	0.3	88.5	1.2	10.3	0.083	0.516	19.198158	-103.817933
Pueblo Juárez	16.00																			

24 CARR: Costera Laguna de Cuyutlán

CLAVE: 06010

RUTA: COL

AÑO: 2018

LUGAR	ESTACION				CLASIFICACION VEHICULAR EN PORCIENTO										COORDENADAS					
	KM	TE	SC	TDPA	M	A	B	C2	C3	T3S2	T3S3	T3S2R4	OTROS	A	B	C	K'	D	LATITUD	LONGITUD
T. C. Armería - Manzanillo (Cuota)	0.00	3	0	485	13.4	70.2	0.5	6.1	0.1	5.9	0.5	2.7	0.6	83.6	0.5	15.9	0.089	0.534	19.019299	-104.304512
Manzanillo	13.00	1	0	2286	17.4	74.0	0.8	7.8	0.0	0.0	0.0	0.0	0.0	91.4	0.8	7.8	0.075	0.516	19.034111	-104.330489

25 CARR: Cuauhtémoc - Colima

CLAVE: 06019

RUTA: COL-019

AÑO: 2018

LUGAR	ESTACION				CLASIFICACION VEHICULAR EN PORCIENTO										COORDENADAS					
	KM	TE	SC	TDPA	M	A	B	C2	C3	T3S2	T3S3	T3S2R4	OTROS	A	B	C	K'	D	LATITUD	LONGITUD
Cuauhtémoc	0.00	3	0	5401	2.3	89.5	0.5	3.3	0.9	2.5	0.4	0.3	0.3	91.8	0.5	7.7	0.065	0.530	19.316301	-103.603591
X. C. Libramiento de Colima	19.50	1	1	14412	8.2	85.7	0.2	4.6	0.1	0.5	0.6	0.0	0.1	93.9	0.2	5.9	0.074	0.505	19.236320	-103.700779
X. C. Libramiento de Colima	19.50	1	2	14104	8.1	85.6	0.3	5.0	0.1	0.5	0.3	0.0	0.1	93.7	0.3	6.0	0.066	0.505	19.236127	-103.700772
Colima	22.40																			

26 CARR: Libramiento de Comala

CLAVE:

RUTA: COL-016

AÑO: 2018

LUGAR	ESTACION				CLASIFICACION VEHICULAR EN PORCIENTO										COORDENADAS					
	KM	TE	SC	TDPA	M	A	B	C2	C3	T3S2	T3S3	T3S2R4	OTROS	A	B	C	K'	D	LATITUD	LONGITUD
T. C. Colima - Comala	0.00	3	0	4768	5.5	86.1	0.3	3.7	0.4	2.7	0.5	0.3	0.5	91.6	0.3	8.1	0.097	0.508	19.293578	-103.747093
T. C. Comala - San Antonio	7.10	1	0	3433	4.4	88.5	0.2	4.0	0.5	1.8	0.3	0.1	0.2	92.9	0.2	6.9	0.103	0.509	19.343081	-103.740632

COLIMA

27 CARR: Libramiento de Tecmán

CLAVE: 06122

RUTA: COL

AÑO: 2018

LUGAR	ESTACION				CLASIFICACION VEHICULAR EN PORCIENTO													COORDENADAS		
	KM	TE	SC	TDPA	M	A	B	C2	C3	T3S2	T3S3	T3S2R4	OTROS	A	B	C	K'	D	LATITUD	LONGITUD
T. C. Ent. Playa Azul - Manzanillo (Sur)	0.00	3	1	2510	4.5	72.6	1.2	8.3	2.7	3.6	3.5	0.6	3.0	77.1	1.2	21.7	0.088	0.529	18.898663	-103.858798
T. C. Ent. Playa Azul - Manzanillo (Sur)	0.00	3	2	2233	4.6	71.6	1.3	8.3	3.0	3.7	3.8	0.6	3.1	76.2	1.3	22.5	0.084	0.529	18.898712	-103.858919
T. C. Ent. Playa Azul - Manzanillo (Norte)	7.90	1	1	3294	3.9	80.6	0.8	6.5	2.4	2.5	2.4	0.3	0.6	84.5	0.8	14.7	0.070	0.511	18.942583	-103.890225
T. C. Ent. Playa Azul - Manzanillo (Norte)	7.90	1	2	3151	5.3	77.7	0.8	7.1	2.7	3.0	2.6	0.2	0.6	83.0	0.8	16.2	0.067	0.511	18.942479	-103.890134

28 CARR: Libramiento Poniente Arco Sur de Tecmán

CLAVE:

RUTA: COL

AÑO: 2018

LUGAR	ESTACION				CLASIFICACION VEHICULAR EN PORCIENTO													COORDENADAS		
	KM	TE	SC	TDPA	M	A	B	C2	C3	T3S2	T3S3	T3S2R4	OTROS	A	B	C	K'	D	LATITUD	LONGITUD
Ent. C. Playa Azul - Manzanillo	0.00	3	0	3098	3.0	84.8	1.7	3.3	2.6	3.0	1.1	0.3	0.2	87.8	1.7	10.5	0.093	0.519	18.939676	-103.897296
X. C. Tecmán - Boca de Pascuales	4.60	3	0	2994	4.1	74.5	1.9	9.1	3.0	4.7	1.7	0.5	0.5	78.6	1.9	19.5	0.085	0.522	18.899830	-103.904921
X. C. Tecmán - La Mascota	6.90	3	0	2450	4.3	70.6	2.5	10.0	4.8	4.7	2.2	0.6	0.3	74.9	2.5	22.6	0.122	0.538	18.888412	-103.887342
Ent. C. Playa Azul - Manzanillo	11.17																			

29 CARR: Libramiento Poniente de Colima

CLAVE: 06122

RUTA: COL

AÑO: 2018

LUGAR	ESTACION				CLASIFICACION VEHICULAR EN PORCIENTO													COORDENADAS		
	KM	TE	SC	TDPA	M	A	B	C2	C3	T3S2	T3S3	T3S2R4	OTROS	A	B	C	K'	D	LATITUD	LONGITUD
T. C. Colima - Ent. Tecmán	0.00	3	1	10552	3.3	88.3	0.3	5.1	1.0	0.6	0.6	0.6	0.2	91.6	0.3	8.1	0.106	0.525	19.216612	-103.744728
T. C. Colima - Ent. Tecmán	0.00	3	2	9562	5.6	85.7	0.3	5.4	1.0	0.6	0.6	0.6	0.2	91.3	0.3	8.4	0.077	0.525	19.216518	-103.744810
T. C. Colima - Coquimatlán	6.00																			

30 CARR: Los Limones - Loma de Juárez

CLAVE: 06122

RUTA: COL

AÑO: 2018

LUGAR	ESTACION				CLASIFICACION VEHICULAR EN PORCIENTO													COORDENADAS		
	KM	TE	SC	TDPA	M	A	B	C2	C3	T3S2	T3S3	T3S2R4	OTROS	A	B	C	K'	D	LATITUD	LONGITUD
Los Limones	0.00																			
T. C. Colima - Ent. Tecmán	5.77	1	0	1811	3.9	85.1	0.8	7.5	1.0	0.7	0.7	0.3	0.0	89.0	0.8	10.2	0.084	0.504	19.199417	-103.758582

31 CARR: Puerta de Caleras - Madrid

CLAVE: 06014

RUTA: COL-014

AÑO: 2018

LUGAR	ESTACION				CLASIFICACION VEHICULAR EN PORCIENTO													COORDENADAS		
	KM	TE	SC	TDPA	M	A	B	C2	C3	T3S2	T3S3	T3S2R4	OTROS	A	B	C	K'	D	LATITUD	LONGITUD
T. C. Colima - Ent. Tecmán	0.00	3	0	3190	12.9	70.3	1.9	7.5	3.0	2.0	2.3	0.0	0.1	83.2	1.9	14.9	0.068	0.510	18.979461	-103.862400
Madrid	14.00																			

COLIMA

32 CARR: Quesería - El Naranjal

CLAVE: 06001

RUTA: COL-001

AÑO: 2018

LUGAR	ESTACION				CLASIFICACION VEHICULAR EN PORCIENTO										COORDENADAS					
	KM	TE	SC	TDPA	M	A	B	C2	C3	T3S2	T3S3	T3S2R4	OTROS	A	B	C	K'	D	LATITUD	LONGITUD
Quesería	0.00	3	0	1438	4.4	67.2	2.4	11.4	13.4	0.8	0.4	0.0	0.0	71.6	2.4	26.0	0.088	0.503	19.392112	-103.590361
El Naranjal	10.00	1	0	643	7.2	56.7	3.3	11.3	20.0	1.0	0.5	0.0	0.0	63.9	3.3	32.8	0.079	0.502	19.412045	-103.651886

33 CARR: Ramal a Aeropuerto de Colima

CLAVE: 06224

RUTA: COL

AÑO: 2018

LUGAR	ESTACION				CLASIFICACION VEHICULAR EN PORCIENTO										COORDENADAS					
	KM	TE	SC	TDPA	M	A	B	C2	C3	T3S2	T3S3	T3S2R4	OTROS	A	B	C	K'	D	LATITUD	LONGITUD
T. C. Cuauhtémoc - Colima	0.00	3	0	1243	2.0	90.8	0.6	6.2	0.2	0.0	0.0	0.1	0.1	92.8	0.6	6.6	0.080	0.502	19.287441	-103.591201
Aeropuerto de Colima	1.00																			

34 CARR: Ramal a Aeropuerto Manzanillo

CLAVE: 06582

RUTA: COL

AÑO: 2018

LUGAR	ESTACION				CLASIFICACION VEHICULAR EN PORCIENTO										COORDENADAS					
	KM	TE	SC	TDPA	M	A	B	C2	C3	T3S2	T3S3	T3S2R4	OTROS	A	B	C	K'	D	LATITUD	LONGITUD
T. C. Manzanillo - Puerto Vallarta	0.00	3	0	1181	11.0	77.2	0.3	9.8	0.5	0.6	0.2	0.2	0.2	88.2	0.3	11.5	0.111	0.516	19.191443	-104.550505
Aeropuerto Manzanillo	5.50	1	0	1063	4.1	90.6	0.3	4.0	0.6	0.2	0.1	0.1	0.0	94.7	0.3	5.0	0.168	0.505	19.152174	-104.560120

35 CARR: Ramal a Camotlán de Miraflores

CLAVE: 06009

RUTA: COL

AÑO: 2018

LUGAR	ESTACION				CLASIFICACION VEHICULAR EN PORCIENTO										COORDENADAS					
	KM	TE	SC	TDPA	M	A	B	C2	C3	T3S2	T3S3	T3S2R4	OTROS	A	B	C	K'	D	LATITUD	LONGITUD
T. C. Minatitlán - Ent. Pez Vela	0.00	3	0	2063	19.5	70.6	0.4	8.8	0.1	0.2	0.3	0.0	0.1	90.1	0.4	9.5	0.079	0.505	19.217303	-104.233318
Camotlán de Miraflores	1.00																			

36 CARR: Ramal a Ixtlahuacán

CLAVE: 06577

RUTA: COL-005

AÑO: 2018

LUGAR	ESTACION				CLASIFICACION VEHICULAR EN PORCIENTO										COORDENADAS					
	KM	TE	SC	TDPA	M	A	B	C2	C3	T3S2	T3S3	T3S2R4	OTROS	A	B	C	K'	D	LATITUD	LONGITUD
T. C. Colima - Ent. Tecomán	0.00	3	0	714	4.4	81.6	0.9	7.9	2.5	0.7	1.8	0.1	0.1	86.0	0.9	13.1	0.087	0.520	19.026009	-103.790759
Ixtlahuacán	8.50																			

COLIMA

37 CARR: Ramal a Las Brisas

CLAVE: 06571

RUTA: COL

AÑO: 2018

LUGAR	ESTACION				CLASIFICACION VEHICULAR EN PORCIENTO										COORDENADAS					
	KM	TE	SC	TDPA	M	A	B	C2	C3	T3S2	T3S3	T3S2R4	OTROS	A	B	C	K'	D	LATITUD	LONGITUD
T. C. Manzanillo - Puerto Vallarta (Central)	0.00	3	0	6546	8.6	87.2	0.1	3.9	0.1	0.0	0.1	0.0	0.0	95.8	0.1	4.1	0.081	0.631	19.082518	-104.307313
T. C. Manzanillo - Puerto Vallarta (Lateral)	0.00	3	1	5759	7.8	88.8	0.1	3.0	0.1	0.1	0.1	0.0	0.0	96.6	0.1	3.3	0.085	0.603	19.082565	-104.307238
T. C. Manzanillo - Puerto Vallarta (Lateral)	0.00	3	2	5677	7.3	87.1	0.2	5.0	0.1	0.1	0.2	0.0	0.0	94.4	0.2	5.4	0.084	0.603	19.082472	-104.307386
Las Brisas	2.30																			

38 CARR: Ramal a Los Tepames

CLAVE: 06004

RUTA: COL-004

AÑO: 2018

LUGAR	ESTACION				CLASIFICACION VEHICULAR EN PORCIENTO										COORDENADAS					
	KM	TE	SC	TDPA	M	A	B	C2	C3	T3S2	T3S3	T3S2R4	OTROS	A	B	C	K'	D	LATITUD	LONGITUD
T. C. Jiquilpan - Colima	0.00	3	0	1592	4.0	84.7	0.8	8.0	0.9	1.3	0.3	0.0	0.0	88.7	0.8	10.5	0.076	0.510	19.171956	-103.659470
Los Tepames	9.50																			

39 CARR: Ramal a Rancho Valle Nuevo

CLAVE: 06583

RUTA: COL

AÑO: 2018

LUGAR	ESTACION				CLASIFICACION VEHICULAR EN PORCIENTO										COORDENADAS					
	KM	TE	SC	TDPA	M	A	B	C2	C3	T3S2	T3S3	T3S2R4	OTROS	A	B	C	K'	D	LATITUD	LONGITUD
T. C. Ent. Playa Azul - Manzanillo	0.00	3	0	733	8.4	74.7	0.9	13.6	1.4	0.7	0.1	0.1	0.1	83.1	0.9	16.0	0.111	0.547	18.816431	-103.809297
Rancho Valle Nuevo	4.00																			

40 CARR: Ramal a Rincón de López

CLAVE: 06578

RUTA: COL

AÑO: 2018

LUGAR	ESTACION				CLASIFICACION VEHICULAR EN PORCIENTO										COORDENADAS					
	KM	TE	SC	TDPA	M	A	B	C2	C3	T3S2	T3S3	T3S2R4	OTROS	A	B	C	K'	D	LATITUD	LONGITUD
T. C. Ent. Playa Azul - Manzanillo	0.00	3	0	4308	15.1	72.8	0.7	7.2	0.8	2.1	0.7	0.2	0.4	87.9	0.7	11.4	0.079	0.525	18.951974	-103.947399
Rincón de López	14.00																			

41 CARR: Ramal a Tecuanillo

CLAVE: 06009

RUTA: COL-009

AÑO: 2018

LUGAR	ESTACION				CLASIFICACION VEHICULAR EN PORCIENTO										COORDENADAS					
	KM	TE	SC	TDPA	M	A	B	C2	C3	T3S2	T3S3	T3S2R4	OTROS	A	B	C	K'	D	LATITUD	LONGITUD
T. C. Ent. Playa Azul - Manzanillo	0.00	3	0	2129	10.1	74.3	1.1	11.7	0.7	1.8	0.2	0.0	0.1	84.4	1.1	14.5	0.092	0.530	18.890248	-103.855423
Tecuanillo	10.00																			

COLIMA

42 CARR: Tecomán - La Mascota

CLAVE: 06572

RUTA: COL

AÑO: 2018

LUGAR	ESTACION				CLASIFICACION VEHICULAR EN PORCIENTO													COORDENADAS		
	KM	TE	SC	TDPA	M	A	B	C2	C3	T3S2	T3S3	T3S2R4	OTROS	A	B	C	K'	D	LATITUD	LONGITUD
Tecomán	0.00	3	0	3002	11.3	74.8	0.8	8.6	1.3	2.7	0.2	0.1	0.2	86.1	0.8	13.1	0.103	0.553	18.892011	-103.890509
X. Libramiento Poniente Arco Sur de Tecomán	2.70	3	0	2170	14.1	75.3	0.5	8.1	0.8	1.1	0.0	0.0	0.1	89.4	0.5	10.1	0.169	0.520	18.887115	-103.893582
La Mascota	11.00																			

43 CARR: Trapichillos - Estación Alzada

CLAVE: 06003

RUTA: COL-003

AÑO: 2018

LUGAR	ESTACION				CLASIFICACION VEHICULAR EN PORCIENTO													COORDENADAS		
	KM	TE	SC	TDPA	M	A	B	C2	C3	T3S2	T3S3	T3S2R4	OTROS	A	B	C	K'	D	LATITUD	LONGITUD
T. C. Jiquilpan - Colima	0.00	3	0	406	3.2	73.5	1.1	8.5	7.9	2.9	1.9	0.1	0.9	76.7	1.1	22.2	0.106	0.507	19.164164	-103.525237
Estación Alzada	12.50	1	0	481	5.1	64.3	1.8	12.9	10.6	2.9	1.7	0.5	0.2	69.4	1.8	28.8	0.091	0.502	19.250827	-103.531605

44 CARR: Villa de Álvarez - Minatitlán

CLAVE: 06040

RUTA: COL

AÑO: 2018

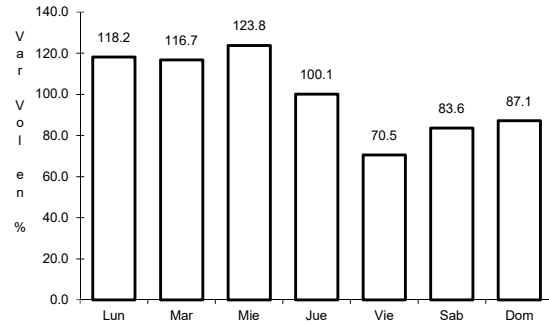
LUGAR	ESTACION				CLASIFICACION VEHICULAR EN PORCIENTO													COORDENADAS		
	KM	TE	SC	TDPA	M	A	B	C2	C3	T3S2	T3S3	T3S2R4	OTROS	A	B	C	K'	D	LATITUD	LONGITUD
T. C. Colima - Comala	0.00	3	0	12998	5.2	78.4	0.4	6.9	1.1	5.8	0.9	0.3	1.0	83.6	0.4	16.0	0.067	0.506	19.290857	-103.796798
T. C. Minatitlán - Ent. Pez Vela	55.00																			



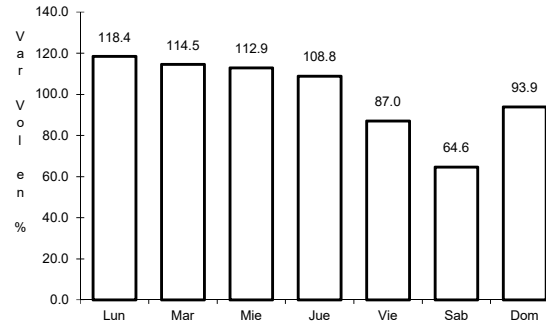
1 CARR: Cd. Guzmán - Colima

CLAVE: 00117

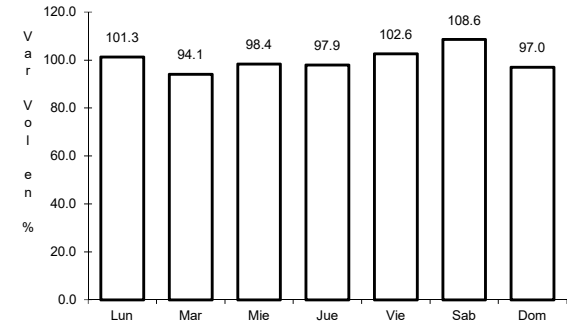
RUTA: MEX-054



Km: 0.00      Tipo: 3      Sent: 1



Km: 0.00      Tipo: 3      Sent: 2

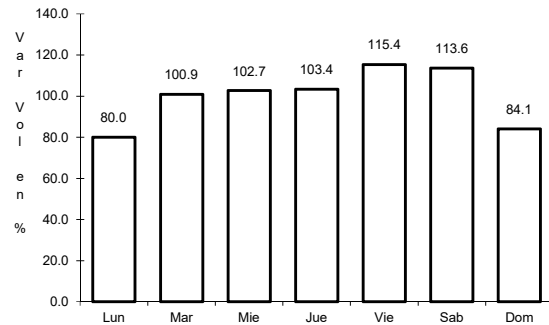


Km: 58.35      Tipo: 1      Sent: 0

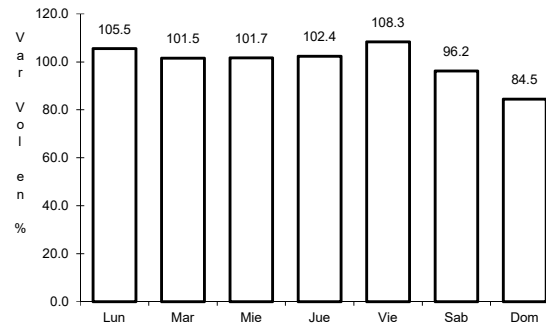
2 CARR: Colima - Ent. Tecomán

CLAVE: 06119

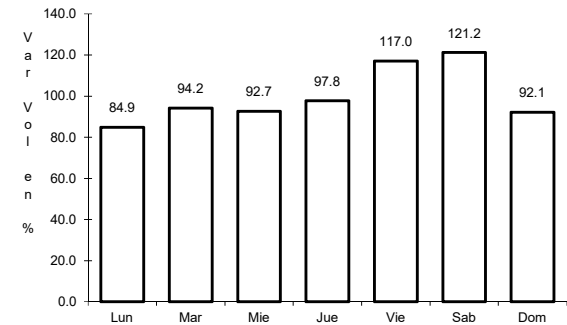
RUTA: MEX-110



Km: 0.00      Tipo: 3      Sent: 1



Km: 0.00      Tipo: 3      Sent: 2

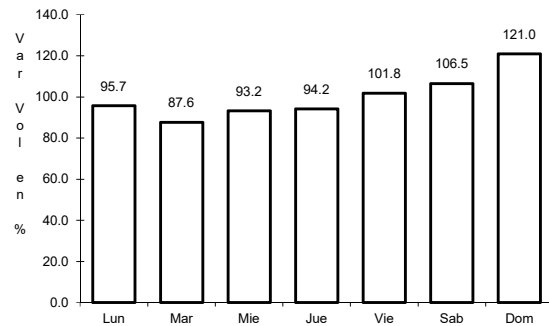


Km: 40.10      Tipo: 1      Sent: 1

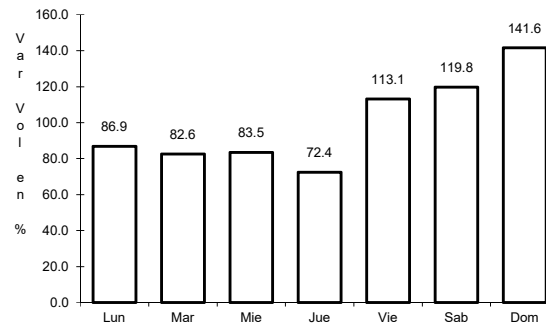
3 CARR: Ent. Playa Azul - Manzanillo

CLAVE: 00495

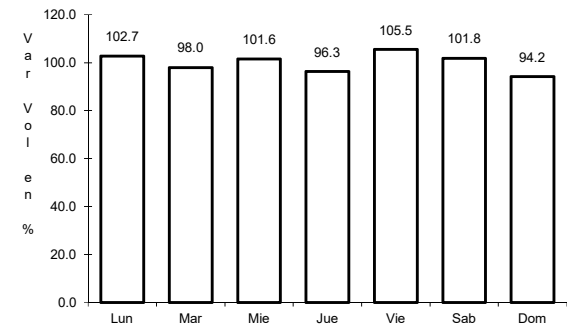
RUTA: MEX-200



Km: 0.00      Tipo: 3      Sent: 0



Km: 190.10      Tipo: 3      Sent: 0

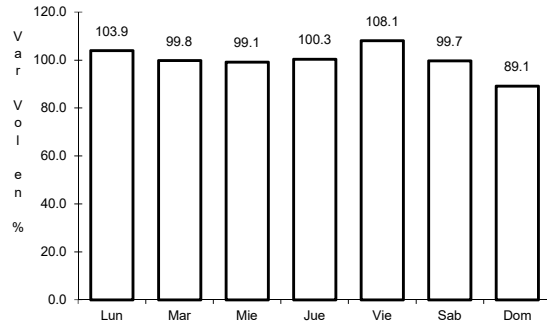


Km: 321.12      Tipo: 1      Sent: 0

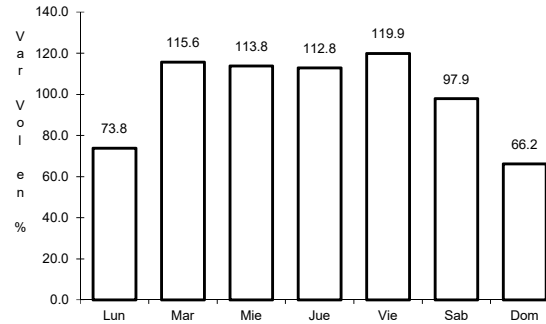
4 CARR: Jiquilpan - Colima

CLAVE: 00156

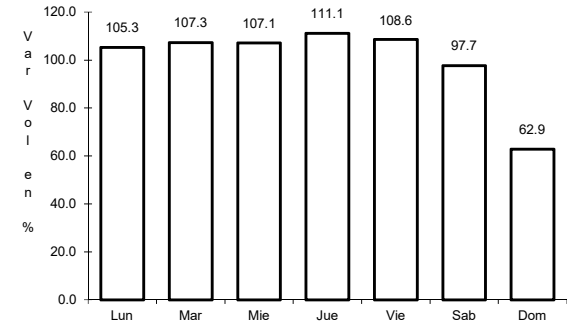
RUTA: MEX-110



Km: 0.00      Tipo: 3      Sent: 0



Km: 222.00      Tipo: 1      Sent: 1

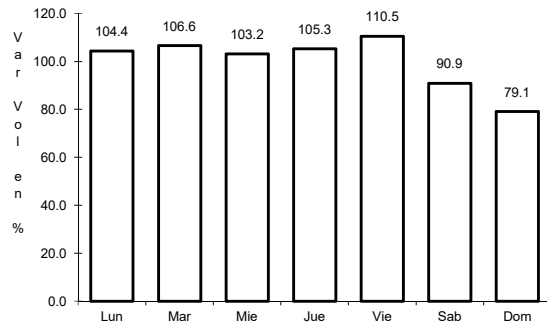


Km: 222.00      Tipo: 1      Sent: 2

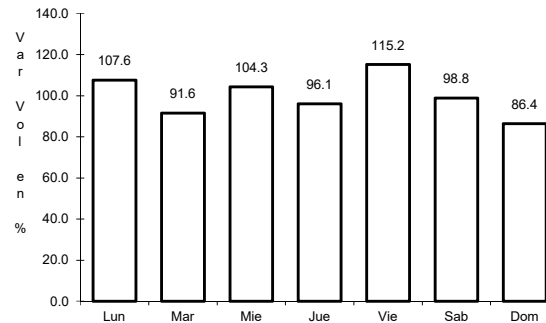
5 CARR: Libramiento Campos - Alameda

CLAVE:

RUTA: MEX



Km: 0.00      Tipo: 3      Sent: 0

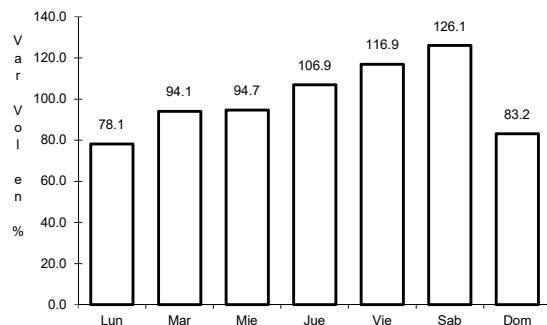


Km: 5.00      Tipo: 1      Sent: 0

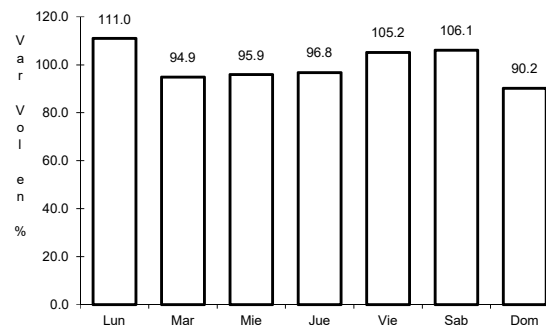
6 CARR: Libramiento de Colima

CLAVE: 06573

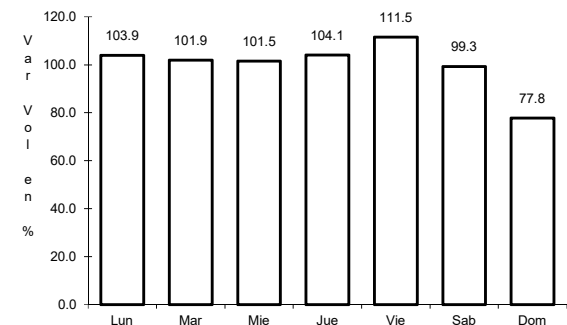
RUTA: MEX-054



Km: 0.00      Tipo: 3      Sent: 1



Km: 0.00      Tipo: 3      Sent: 2

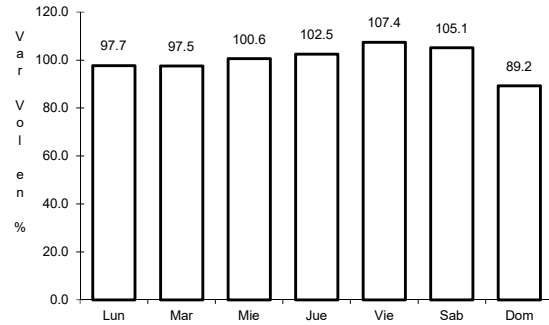


Km: 9.00      Tipo: 1      Sent: 1

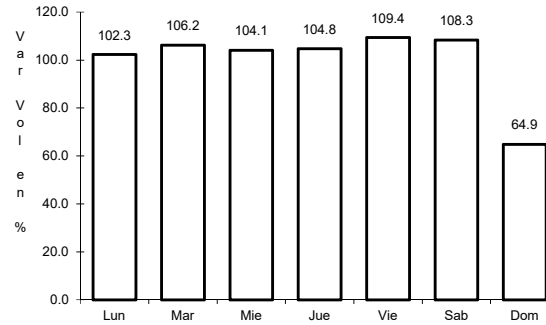
7 CARR: Libramiento de Manzanillo (Libre)

CLAVE: 06574

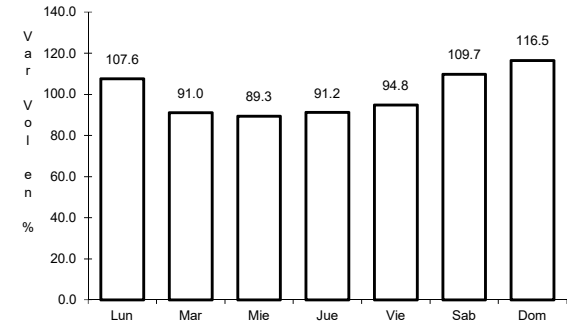
ruta: MEX-200



Km: 0.00      Tipo: 3      Sent: 0



Km: 6.30      Tipo: 1      Sent: 1

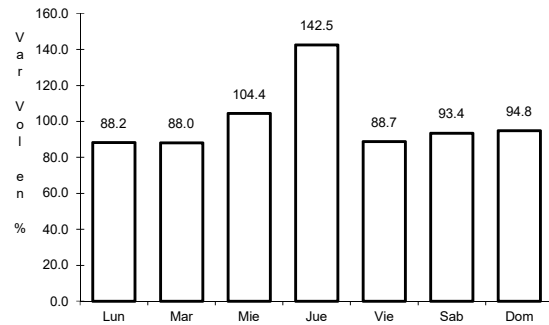


Km: 6.30      Tipo: 1      Sent: 2

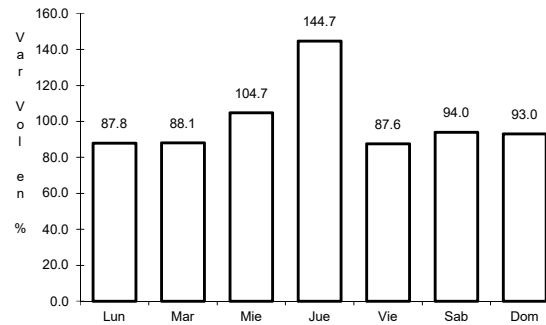
8 CARR: Libramiento de Manzanillo Norte

CLAVE: 06122

ruta: MEX-200



Km: 3.00      Tipo: 3      Sent: 0

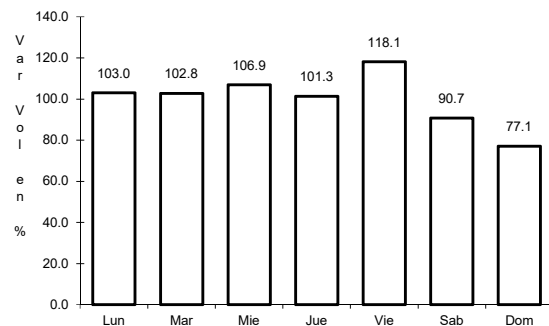


Km: 19.00      Tipo: 1      Sent: 0

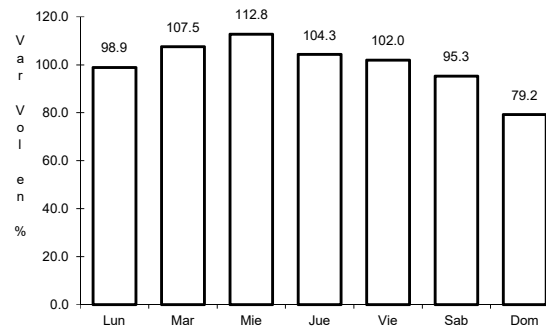
9 CARR: Manzanillo - Puerto Vallarta

CLAVE: 00070

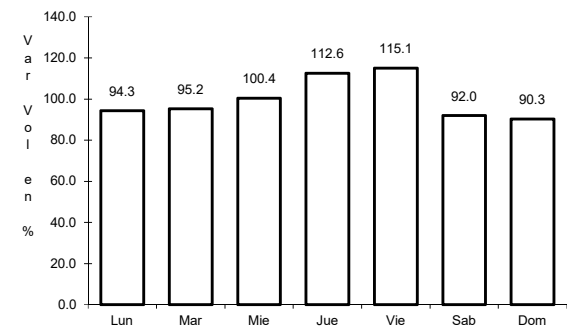
ruta: MEX-200



Km: 0.00      Tipo: 3      Sent: 1



Km: 0.00      Tipo: 3      Sent: 2

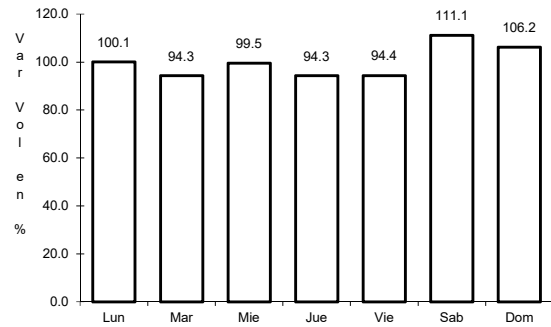


Km: 273.64      Tipo: 1      Sent: 0

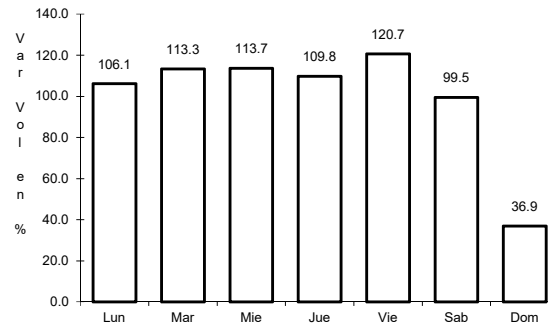
10 CARR: Minatitlán - Ent. Pez Vela

CLAVE: 06015

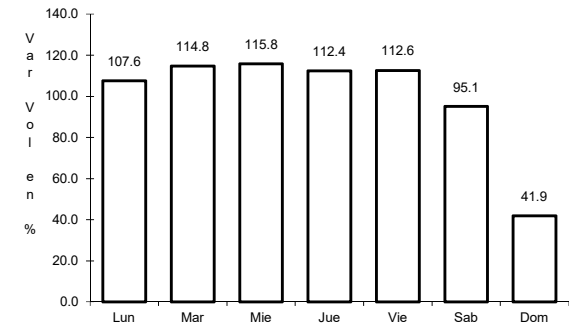
ruta: MEX-098



Km: 49.50      Tipo: 1      Sent: 0



Km: 58.50      Tipo: 1      Sent: 1

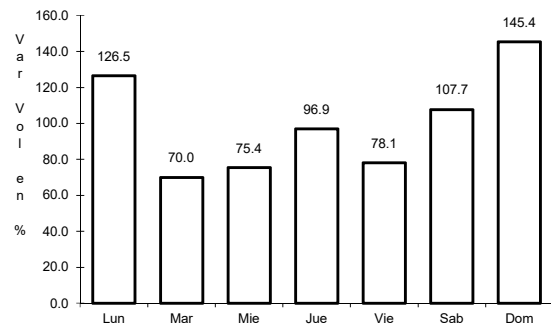


Km: 58.50      Tipo: 1      Sent: 2

11 CARR: Paso por La Salada

CLAVE: 06121

ruta: MEX-110

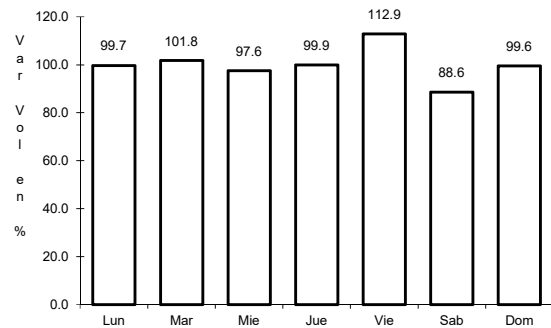


Km: 0.00      Tipo: 3      Sent: 0

12 CARR: Paso por Los Asmoles

CLAVE: 06120

ruta: MEX-110

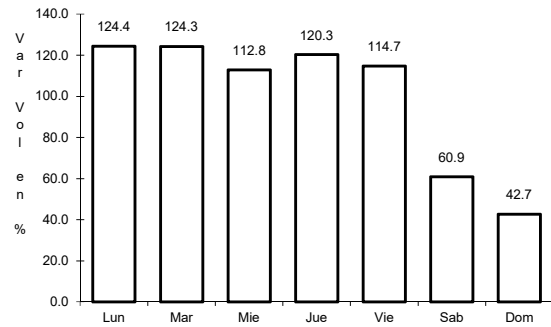


Km: 1.80      Tipo: 3      Sent: 0

13 CARR: Ramal a Cerro de Los Juanes

CLAVE: 06009

RUTA: MEX-098



Km: 0.00

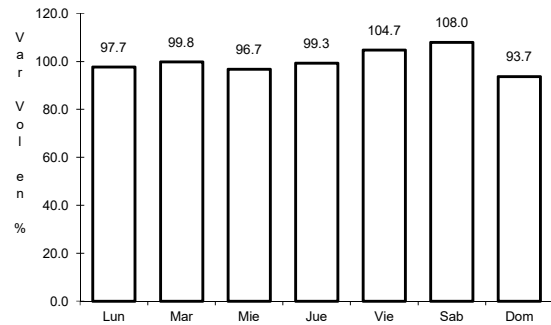
Tipo: 3

Sent: 0

14 CARR: Ramal a Cerro de Ortega

CLAVE: 06009

RUTA: MEX-200



Km: 0.00

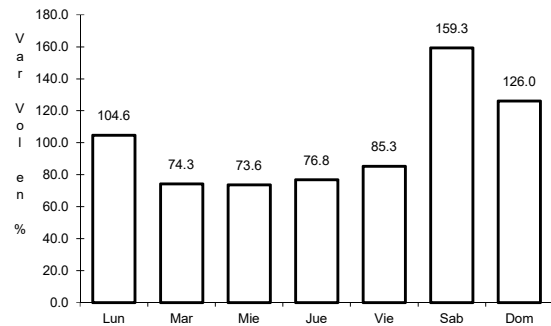
Tipo: 3

Sent: 0

15 CARR: Ramal a Cuyutlán

CLAVE: 06225

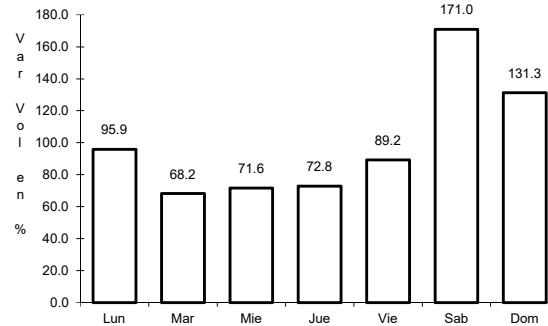
RUTA: MEX-200



Km: 0.00

Tipo: 3

Sent: 0



Km: 7.00

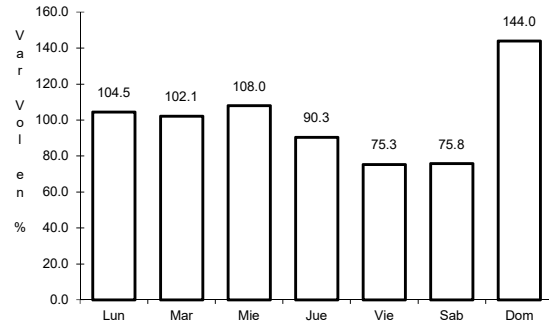
Tipo: 1

Sent: 0

16 CARR: Tecomán - Boca de Pascuales

CLAVE: 06226

ruta: MEX-200



Km: 0.00

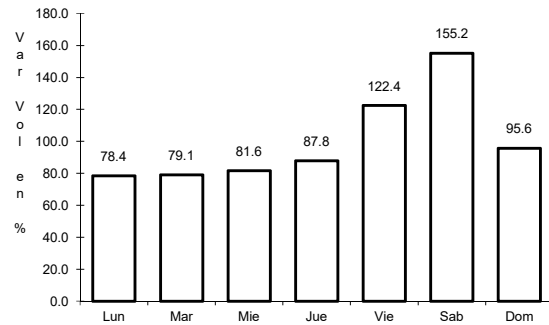
Tipo: 3

Sent: 0

17 CARR: Armería - Manzanillo (Cuota)

CLAVE: 06585

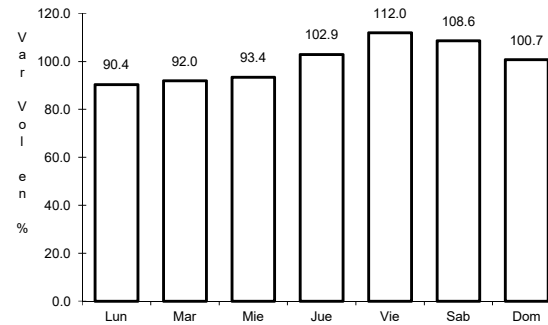
ruta: MEX-200D



Km: 3.50

Tipo: 3

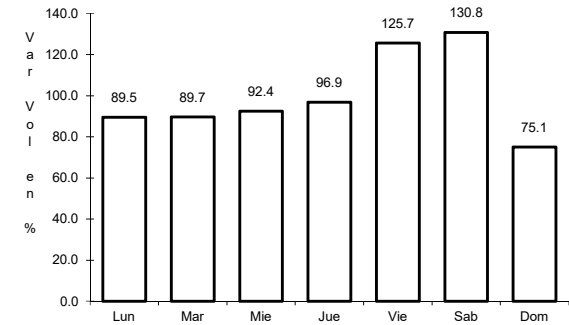
Sent: 1



Km: 3.50

Tipo: 3

Sent: 2



Km: 44.00

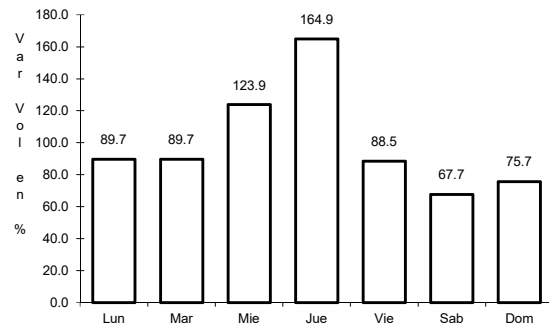
Tipo: 3

Sent: 1

18 CARR: Guadalajara - Colima (Cuota)

CLAVE: 00118

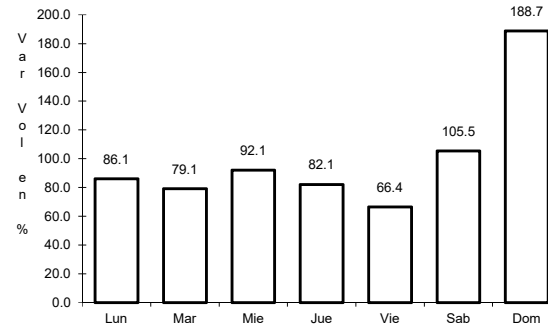
ruta: MEX-054D



Km: 0.20

Tipo: 3

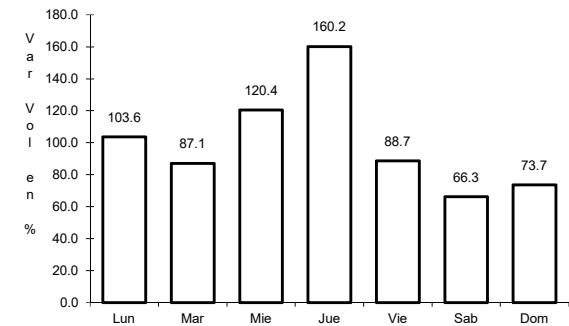
Sent: 1



Km: 0.20

Tipo: 3

Sent: 2



Km: 86.70

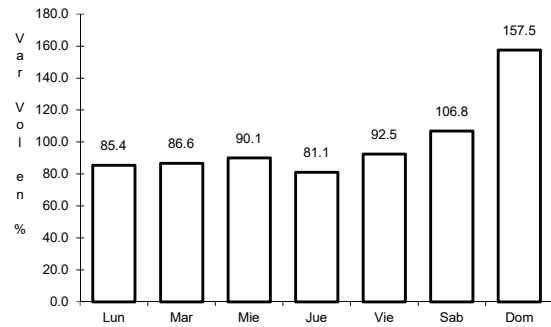
Tipo: 1

Sent: 1

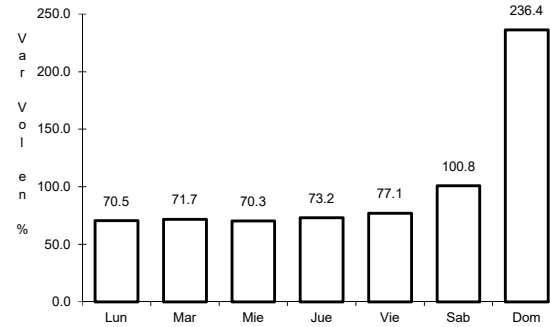
19 CARR: Armería - Playa El Paraíso

CLAVE: 06580

RUTA: COL



Km: 0.00      Tipo: 3      Sent: 0

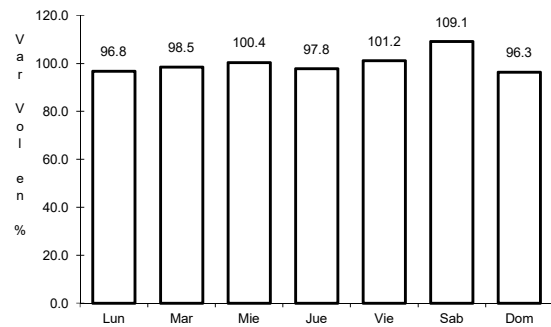


Km: 7.50      Tipo: 1      Sent: 0

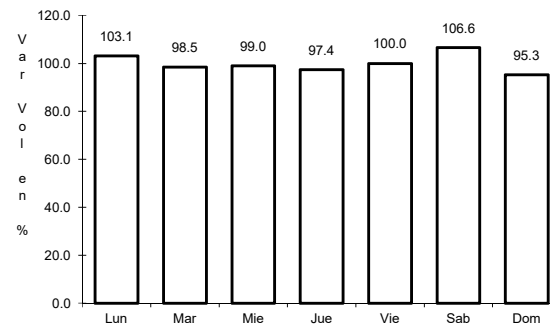
20 CARR: Colima - Comala

CLAVE: 06016

RUTA: COL-016



Km: 3.00      Tipo: 3      Sent: 1

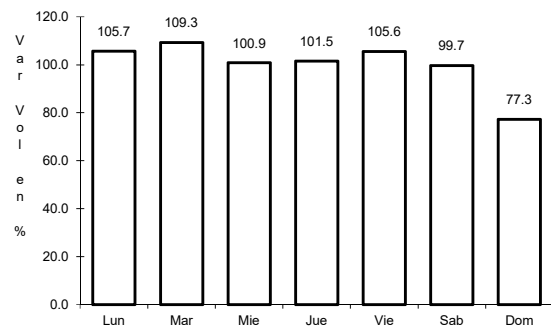


Km: 3.00      Tipo: 3      Sent: 2

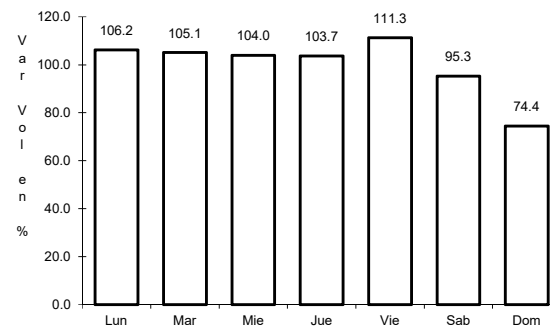
21 CARR: Colima - Coquimatlán

CLAVE: 06034

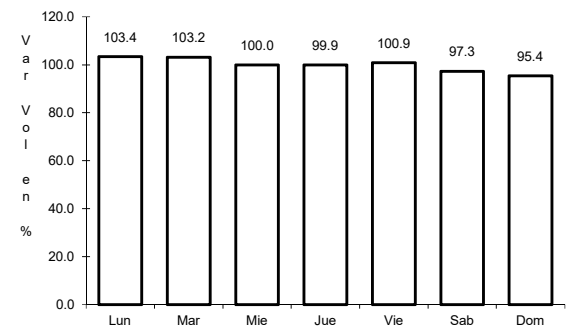
RUTA: COL-034



Km: 3.00      Tipo: 3      Sent: 1



Km: 3.00      Tipo: 3      Sent: 2

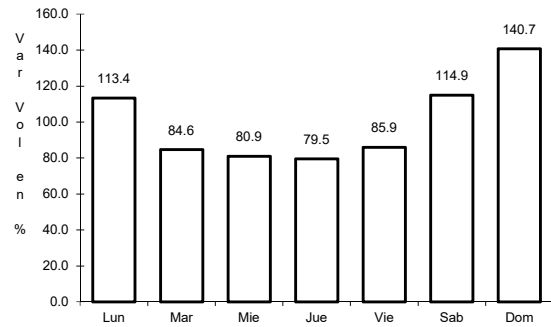


Km: 11.00      Tipo: 1      Sent: 1

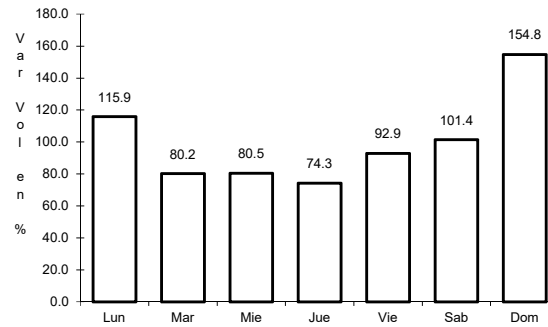
22 CARR: Comala - San Antonio

CLAVE: 06030

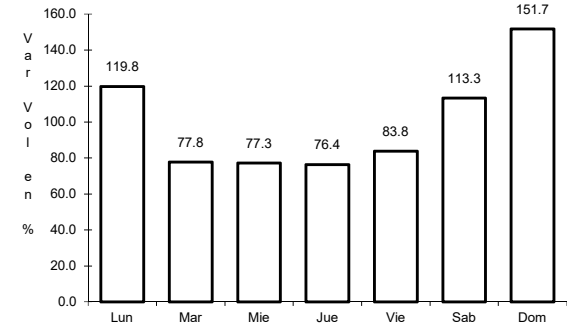
RUTA: COL-016



Km: 0.00      Tipo: 3      Sent: 1



Km: 0.00      Tipo: 3      Sent: 2

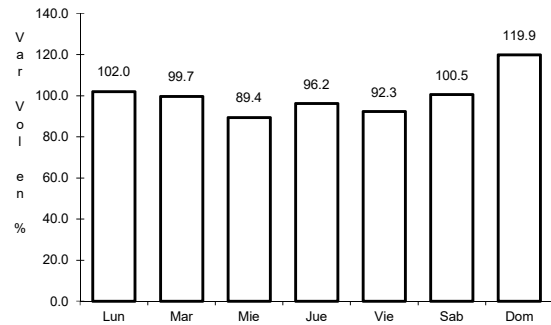


Km: 10.00      Tipo: 1      Sent: 0

23 CARR: Coquimatlán - Pueblo Juárez

CLAVE: 06029

RUTA: COL-034

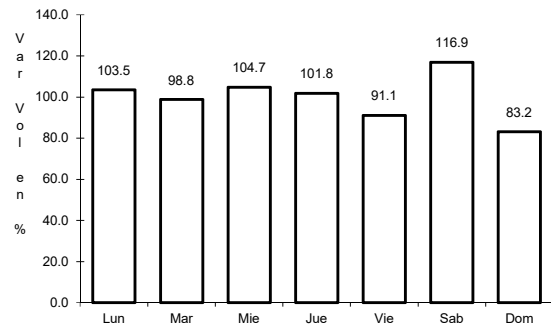


Km: 0.00      Tipo: 3      Sent: 0

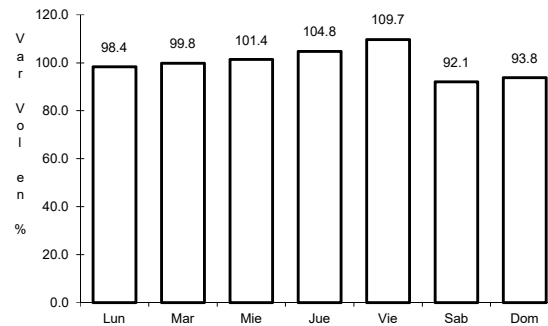
24 CARR: Costera Laguna de Cuyutlán

CLAVE: 06010

RUTA: COL



Km: 0.00      Tipo: 3      Sent: 0



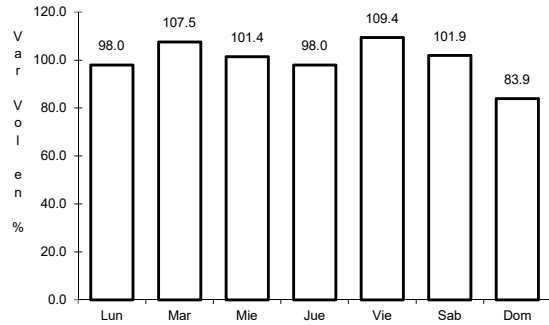
Km: 13.00      Tipo: 1      Sent: 0



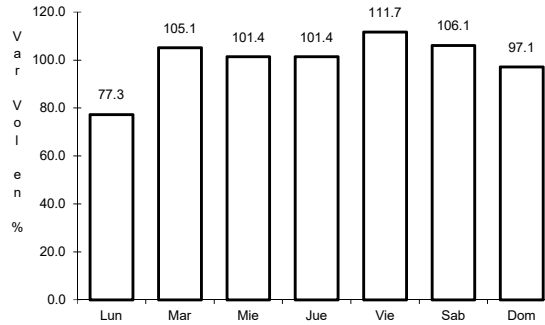
25 CARR: Cuauhtémoc - Colima

CLAVE: 06019

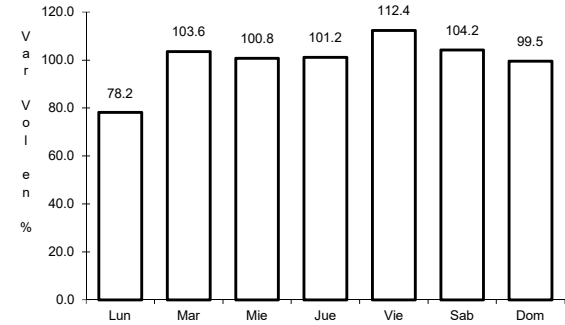
RUTA: COL-019



Km: 0.00      Tipo: 3      Sent: 0



Km: 19.50      Tipo: 1      Sent: 1

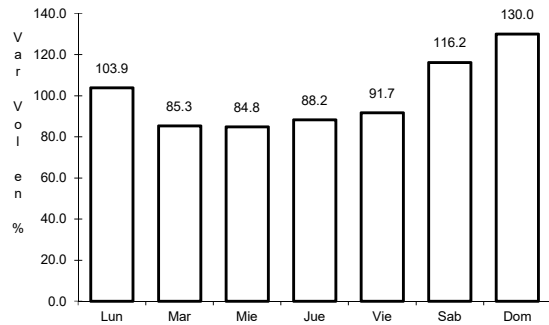


Km: 19.50      Tipo: 1      Sent: 2

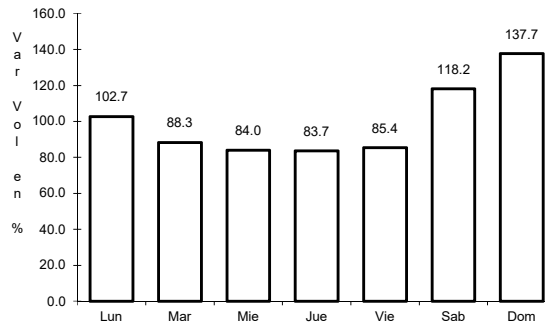
26 CARR: Libramiento de Comala

CLAVE:

RUTA: COL-016



Km: 0.00      Tipo: 3      Sent: 0

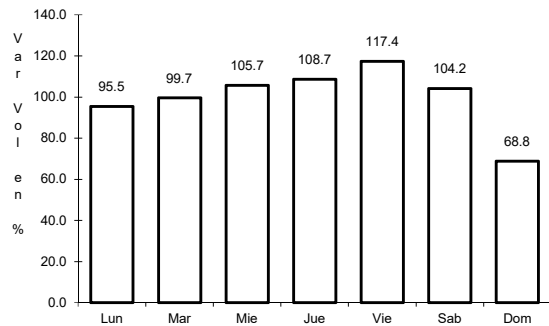


Km: 7.10      Tipo: 1      Sent: 0

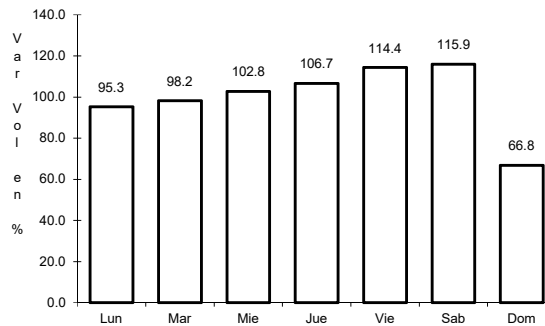
27 CARR: Libramiento de Tecomán

CLAVE: 06122

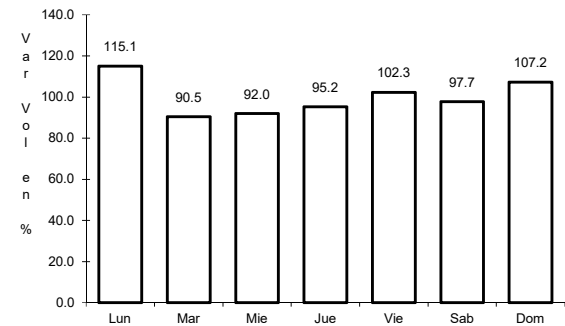
RUTA: COL



Km: 0.00      Tipo: 3      Sent: 1



Km: 0.00      Tipo: 3      Sent: 2

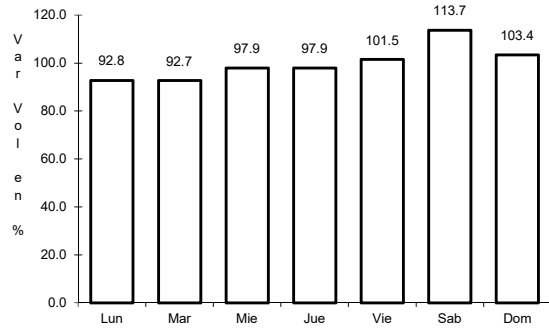


Km: 7.90      Tipo: 1      Sent: 1

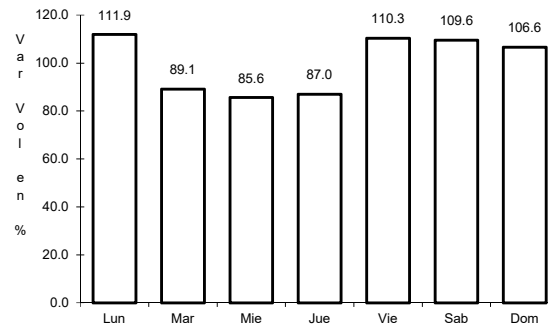
28 CARR: Libramiento Poniente Arco Sur de Tecomán

CLAVE:

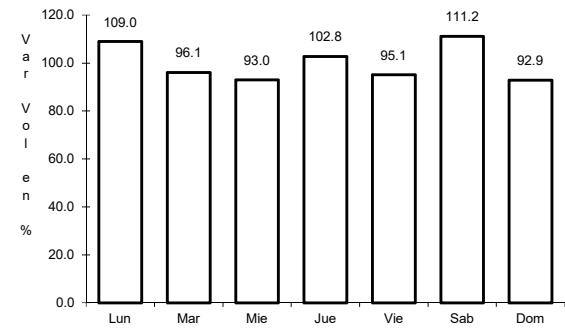
RUTA: COL



Km: 0.00      Tipo: 3      Sent: 0



Km: 4.60      Tipo: 3      Sent: 0

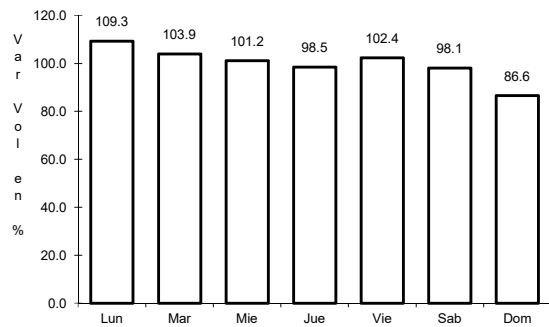


Km: 6.90      Tipo: 3      Sent: 0

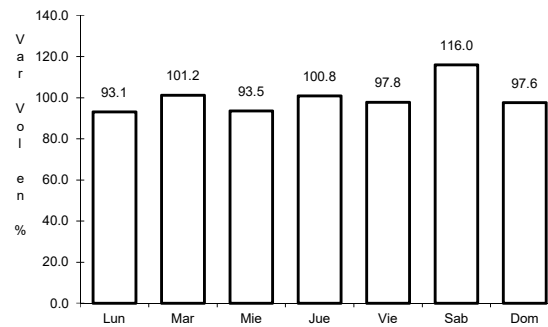
29 CARR: Libramiento Poniente de Colima

CLAVE: 06122

RUTA: COL



Km: 0.00      Tipo: 3      Sent: 1

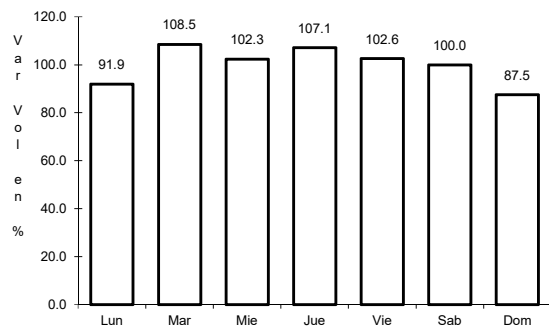


Km: 0.00      Tipo: 3      Sent: 2

30 CARR: Los Limones - Loma de Juárez

CLAVE: 06122

RUTA: COL

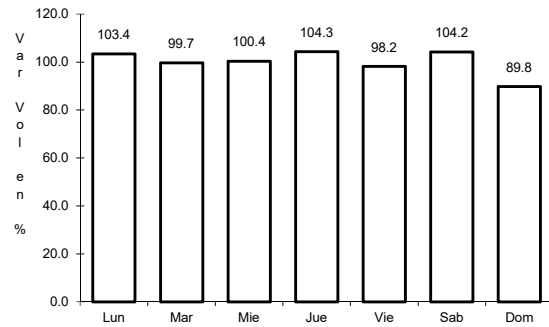


Km: 5.77      Tipo: 1      Sent: 0

31 CARR: Puerta de Caleras - Madrid

CLAVE: 06014

RUTA: COL-014



Km: 0.00

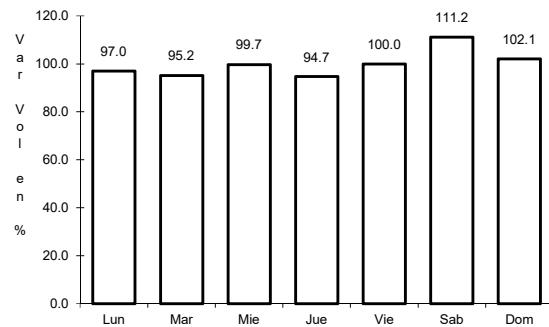
Tipo: 3

Sent: 0

32 CARR: Quesería - El Naranjal

CLAVE: 06001

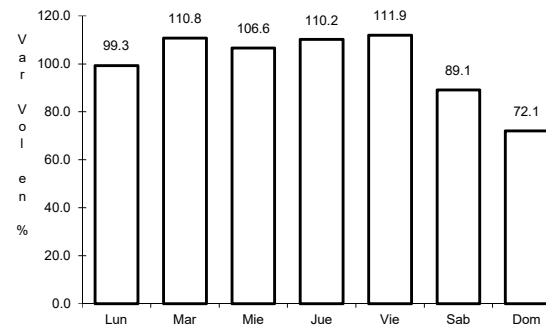
RUTA: COL-001



Km: 0.00

Tipo: 3

Sent: 0



Km: 10.00

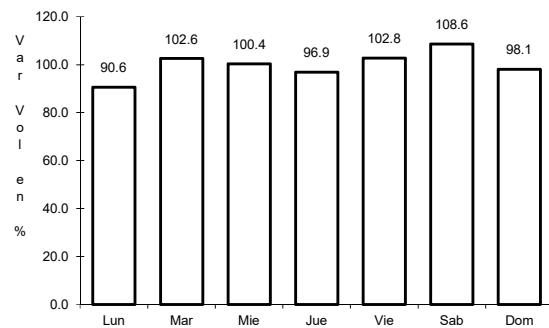
Tipo: 1

Sent: 0

33 CARR: Ramal a Aeropuerto de Colima

CLAVE: 06224

RUTA: COL



Km: 0.00

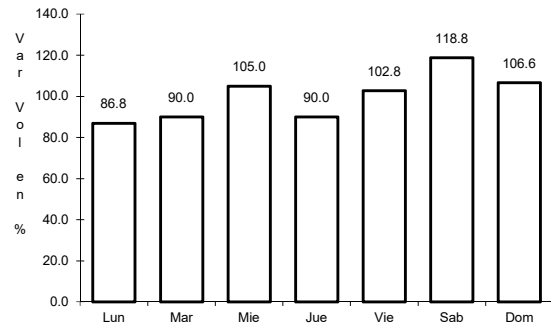
Tipo: 3

Sent: 0

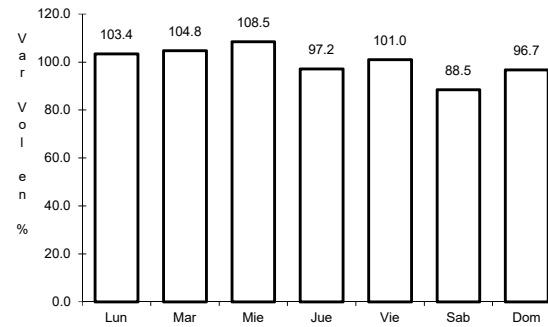
34 CARR: Ramal a Aeropuerto Manzanillo

CLAVE: 06582

RUTA: COL



Km: 0.00                      Tipo: 3                      Sent: 0

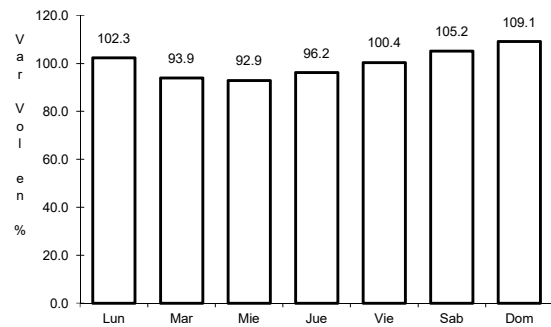


Km: 5.50                      Tipo: 1                      Sent: 0

35 CARR: Ramal a Camotlán de Miraflores

CLAVE: 06009

RUTA: COL

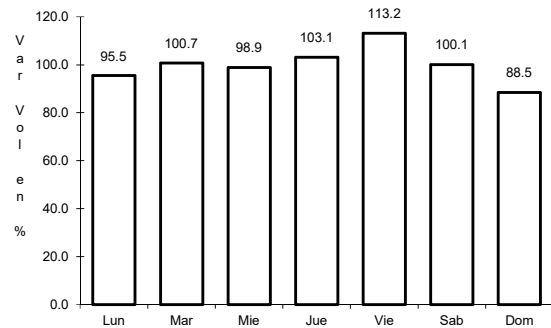


Km: 0.00                      Tipo: 3                      Sent: 0

36 CARR: Ramal a Ixtlahuacán

CLAVE: 06577

RUTA: COL-005

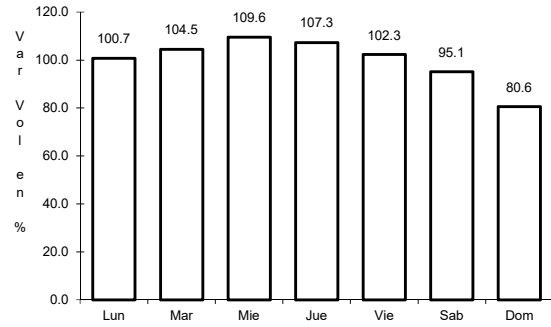


Km: 0.00                      Tipo: 3                      Sent: 0

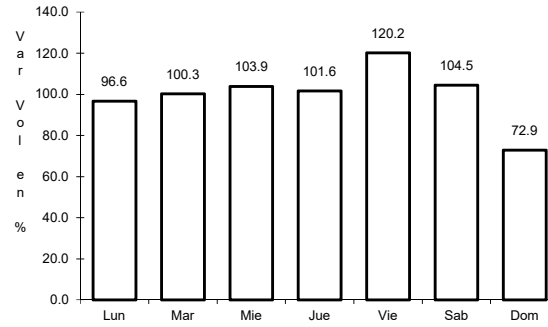
37 CARR: Ramal a Las Brisas

CLAVE: 06571

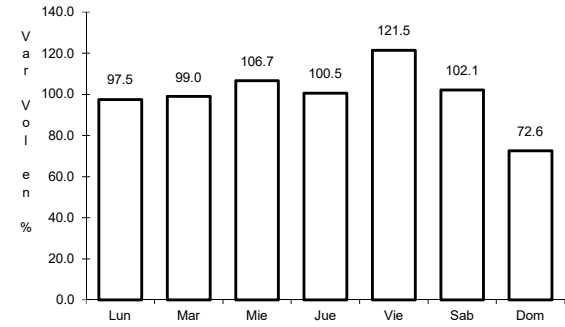
ruta: COL



Km: 0.00      Tipo: 3      Sent: 0



Km: 0.00      Tipo: 3      Sent: 1

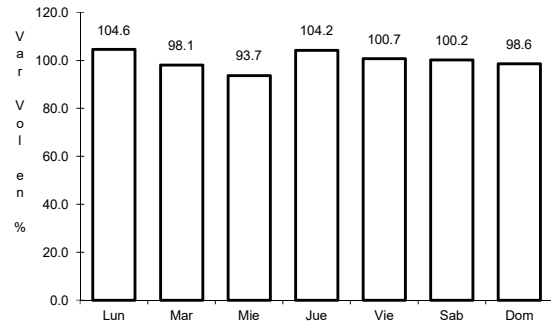


Km: 0.00      Tipo: 3      Sent: 2

38 CARR: Ramal a Los Tepames

CLAVE: 06004

ruta: COL-004

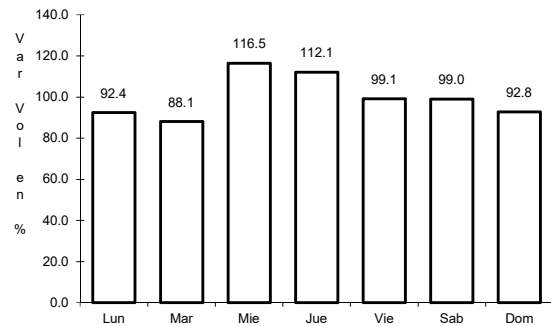


Km: 0.00      Tipo: 3      Sent: 0

39 CARR: Ramal a Rancho Valle Nuevo

CLAVE: 06583

ruta: COL

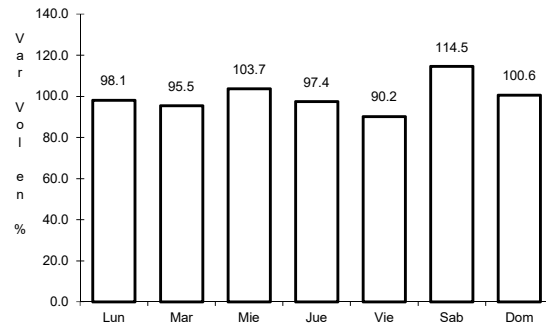


Km: 0.00      Tipo: 3      Sent: 0

40 CARR: Ramal a Rincón de López

CLAVE: 06578

RUTA: COL



Km: 0.00

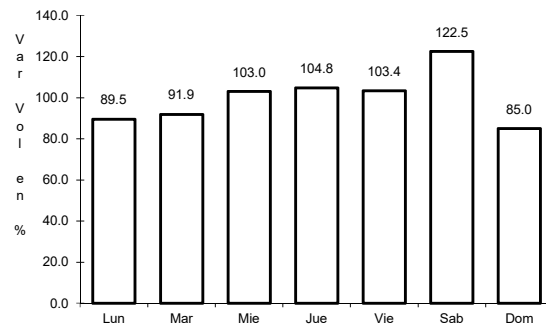
Tipo: 3

Sent: 0

41 CARR: Ramal a Tecuanillo

CLAVE: 06009

RUTA: COL-009



Km: 0.00

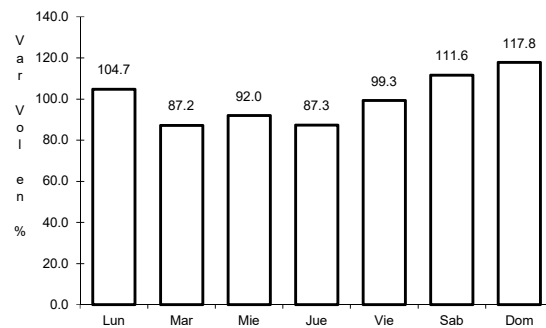
Tipo: 3

Sent: 0

42 CARR: Tecomán - La Mascota

CLAVE: 06572

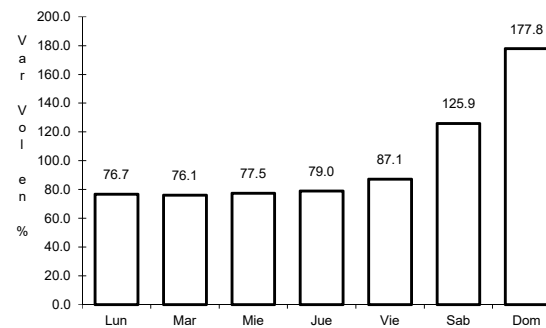
RUTA: COL



Km: 0.00

Tipo: 3

Sent: 0



Km: 2.70

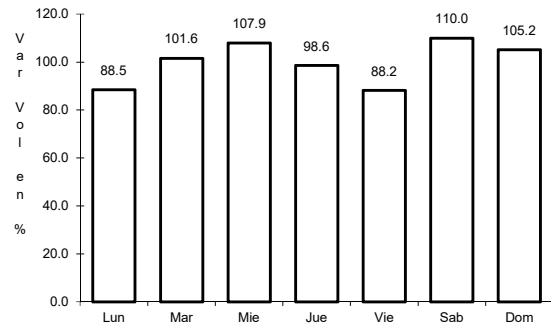
Tipo: 3

Sent: 0

43 CARR: Trapichillos - Estación Alzada

CLAVE: 06003

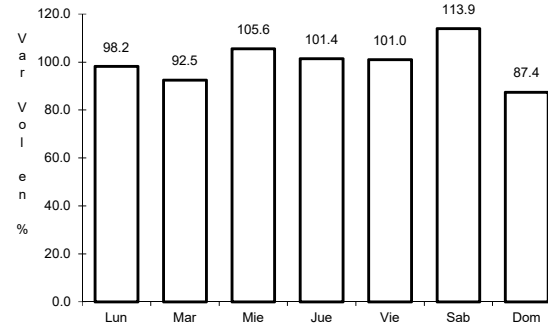
RUTA: COL-003



Km: 0.00

Tipo: 3

Sent: 0



Km: 12.50

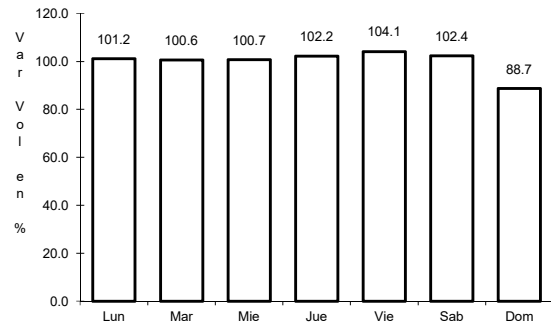
Tipo: 1

Sent: 0

44 CARR: Villa de Álvarez - Minatitlán

CLAVE: 06040

RUTA: COL



Km: 0.00

Tipo: 3

Sent: 0

