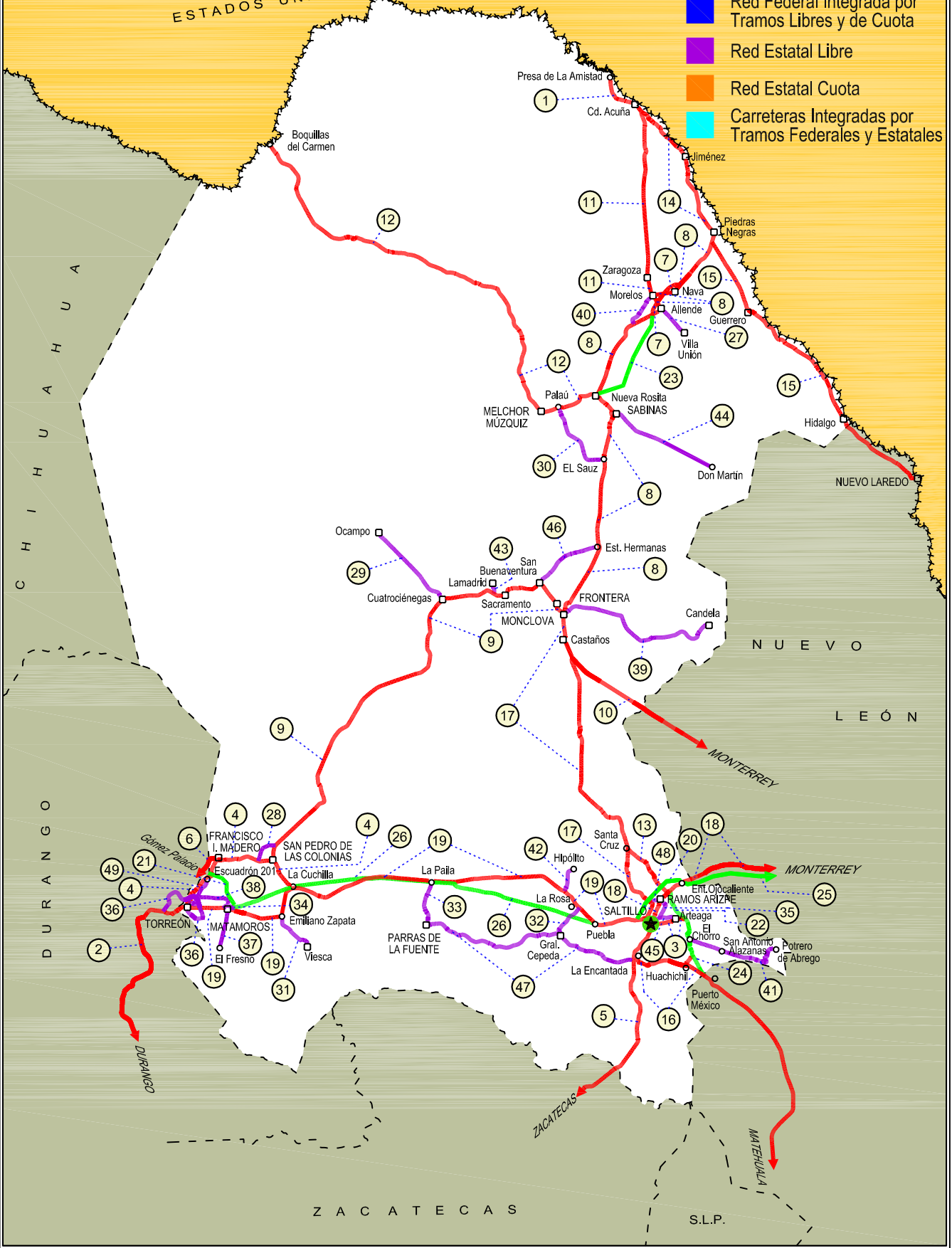


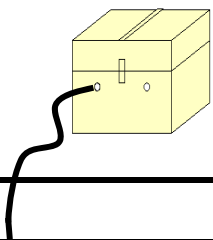
05 COAHUILA

SECRETARÍA DE COMUNICACIONES Y TRANSPORTES
DIRECCIÓN GENERAL DE SERVICIOS TÉCNICOS

ESTADOS UNIDOS DE AMÉRICA

- ① --- Número Índice
- Red Federal Libre
- Red Federal Cuota
- Red Federal Integrada por Tramos Libres y de Cuota
- Red Estatal Libre
- Red Estatal Cuota
- Carreteras Integradas por Tramos Federales y Estatales





COAHUILA

---RED FEDERAL LIBRE---

1 Cd. Acuña - Presa de La Amistad	MEX-002
2 Durango - Torreón	MEX-040
3 Ent. Bella Unión - Saltillo	MEX-057
4 Ent. La Cuchilla - Torreón	MEX-030
5 Ent. Morelos - Saltillo	MEX-054
6 Gregorio García - Francisco I. Madero	MEX-040
7 Libramiento Allende - Nava	MEX-057
8 Monclova - Piedras Negras	MEX-057
9 Monclova - San Pedro de Las Colonias	MEX-030
10 Monterrey - Castaños	MEX-053
11 Morelos - Cd. Acuña	MEX-029
12 Nueva Rosita - Boquillas del Carmen	MEX-053
13 Ojo Caliente - Santa Cruz	MEX-057
14 Piedras Negras - Cd. Acuña	MEX-002
15 Piedras Negras - Nuevo Laredo	MEX-002
16 Puerto México - La Encantada	MEX-057
17 Saltillo - Monclova	MEX-057
18 Saltillo - Monterrey	MEX-040
19 Saltillo - Torreón	MEX-040

---RED FEDERAL DE CUOTA---

20 Libramiento Norponiente de Saltillo (Cuota)	MEX-S30
21 Libramiento Norte de Torreón (Cuota)	MEX-040D
22 Libramiento Oriente de Saltillo (Cuota)	MEX-057D
23 Nueva Rosita - Ent. Allende (Cuota)	MEX-057D
24 Puerto México - La Carbonera (Cuota)	MEX-057D
25 Saltillo - Monterrey (Cuota)	MEX-040D
26 Torreón - Saltillo (Cuota)	MEX-040D

---RED ESTATAL LIBRE---

27 Allende - Villa Unión	COA-015
28 Corredor Libramiento de San Pedro	COA-087
29 Cuatro Ciénegas - Ocampo	COA-048
30 El Sauz - Palau	COA-022
31 Emiliano Zapata - Viesca	COA-082
32 Ent. La Rosa - General Cepeda	COA-034
33 Ent. Paila - Parras de La Fuente	COA-102
34 Libramiento de Matamoros	COA
35 Libramiento de Saltillo J.L.P.	COA
36 Libramiento de Torreón	COA
37 Matamoros - El Fresno	COA-078
38 Matamoros - La Unión	COA-070
39 Monclova - Estación Candela	COA-030-NL
40 Morelos - Ent. Las Corrientes	COA-010
41 Puerto de Flores - El Hondable	COA-112
42 Ramal a Hipólito	COA-114
43 Ramal a Lamadrid	COA-042
44 Sabinas - Don Martín	COA-025
45 Saltillo - Arteaga	COA-106
46 San Buenaventura - Estación Hermanas	COA-034
47 T. C. (Ent. Morelos - Saltillo) - Parras de La Fuente	COA-105
48 T. C. (Saltillo - Monclova) - Ramos Arizpe	COA
49 Torreón - Escuadrón 201	COA-011

COAHUILA

1 CARR: Cd. Acuña - Presa de La Amistad

CLAVE: 05085

RUTA: MEX-002

AÑO: 2018

LUGAR	ESTACION				CLASIFICACION VEHICULAR EN PORCIENTO										COORDENADAS					
	KM	TE	SC	TDPA	M	A	B	C2	C3	T3S2	T3S3	T3S2R4	OTROS	A	B	C	K'	D	LATITUD	LONGITUD
Cd. Acuña	0.00	3	1	13206	0.7	86.8	1.2	7.6	0.6	1.4	1.4	0.2	0.1	87.5	1.2	11.3	0.061	0.502	29.333874	-100.964375
Cd. Acuña	0.00	3	2	13119	0.9	86.2	0.9	7.9	0.8	1.6	1.4	0.2	0.1	87.1	0.9	12.0	0.078	0.502	29.333762	-100.964416
T. Izq. Santa Eulalia	10.60	1	1	4251	1.6	81.2	4.1	8.6	1.6	1.6	1.3	0.0	0.0	82.8	4.1	13.1	0.125	0.503	29.342730	-101.001876
T. Izq. Santa Eulalia	10.60	1	2	4199	1.3	79.4	4.6	10.1	1.8	1.6	1.2	0.0	0.0	80.7	4.6	14.7	0.130	0.503	29.342633	-101.001897
Presa de La Amistad	23.00	1	0	518	3.4	73.5	4.7	14.8	3.6	0.0	0.0	0.0	0.0	76.9	4.7	18.4	0.168	0.506	29.444325	-101.074522

2 CARR: Durango - Torreón

CLAVE: 10085

RUTA: MEX-040

AÑO: 2018

LUGAR	ESTACION				CLASIFICACION VEHICULAR EN PORCIENTO										COORDENADAS					
	KM	TE	SC	TDPA	M	A	B	C2	C3	T3S2	T3S3	T3S2R4	OTROS	A	B	C	K'	D	LATITUD	LONGITUD
Durango	0.00	3	1	10650	2.7	86.1	1.4	6.9	1.1	1.1	0.5	0.1	0.1	88.8	1.4	9.8	0.072	0.526	24.076069	-104.591502
Durango	0.00	3	2	9597	2.4	87.5	1.2	5.6	1.3	1.1	0.6	0.1	0.2	89.9	1.2	8.9	0.079	0.526	24.076356	-104.591471
T. Der. Cd. de Los Niños	7.70	3	1	7448	1.8	82.9	1.9	9.5	1.3	1.6	0.7	0.2	0.1	84.7	1.9	13.4	0.079	0.515	24.082553	-104.585925
T. Der. Cd. de Los Niños	7.70	3	2	7918	1.7	83.7	1.7	9.2	1.3	1.5	0.6	0.2	0.1	85.4	1.7	12.9	0.076	0.515	24.082648	-104.586062
X. Periférico de Durango	9.00	1	1	8026	2.1	81.2	2.0	10.3	1.4	1.8	0.8	0.3	0.1	83.3	2.0	14.7	0.074	0.503	24.088312	-104.580968
X. Periférico de Durango	9.00	1	2	8109	1.6	82.0	2.0	10.2	1.3	1.7	0.8	0.3	0.1	83.6	2.0	14.4	0.071	0.503	24.088428	-104.581107
T. Der. Aeropuerto	9.42	1	1	8019	2.3	81.8	2.1	8.3	1.6	2.2	1.2	0.4	0.1	84.1	2.1	13.8	0.076	0.520	24.092409	-104.577473
T. Der. Aeropuerto	9.42	1	2	8679	2.8	79.8	2.1	10.2	1.9	1.8	1.0	0.3	0.1	82.6	2.1	15.3	0.078	0.520	24.092542	-104.577623
T. Der. Aeropuerto	9.42	3	1	4468	2.7	81.1	1.6	9.6	1.6	1.7	1.3	0.2	0.2	83.8	1.6	14.6	0.074	0.503	24.099539	-104.575698
T. Der. Aeropuerto	9.42	3	2	4419	2.6	82.0	1.5	8.1	2.1	2.0	1.3	0.2	0.2	84.6	1.5	13.9	0.075	0.503	24.099561	-104.575799
La Calera	10.85	3	0	5486	2.8	72.3	2.7	15.7	1.9	2.5	1.5	0.3	0.3	75.1	2.7	22.2	0.071	0.523	24.110805	-104.571812
Abraham González	27.10	3	0	4433	1.4	67.5	3.3	15.0	5.4	4.0	2.2	0.8	0.4	68.9	3.3	27.8	0.073	0.502	24.206385	-104.515073
Francisco I. Madero	56.30	1	0	4159	1.3	68.2	3.1	13.4	3.4	5.5	3.6	1.1	0.4	69.5	3.1	27.4	0.078	0.510	24.392359	-104.330991
Francisco I. Madero	56.30	3	0	4277	1.1	73.0	3.2	13.8	2.2	3.6	1.9	0.8	0.4	74.1	3.2	22.7	0.072	0.504	24.405103	-104.305659
Guadalupe Victoria	77.50	1	0	5045	2.2	71.9	2.9	13.5	1.9	4.7	2.3	0.3	0.3	74.1	2.9	23.0	0.080	0.503	24.446801	-104.139696
Guadalupe Victoria	77.50	3	0	6487	1.4	73.4	2.2	16.5	1.7	2.5	1.7	0.4	0.2	74.8	2.2	23.0	0.078	0.503	24.461980	-104.087829
T. Der. Ignacio Allende	90.13	1	0	4572	2.1	67.0	2.9	16.3	2.7	5.4	2.6	0.7	0.3	69.1	2.9	28.0	0.067	0.540	24.496007	-104.026391
T. Der. Ignacio Allende	90.13	3	0	3344	1.3	61.9	4.1	16.2	5.2	6.8	3.1	0.7	0.7	63.2	4.1	32.7	0.072	0.526	24.506275	-104.011803
T. Izq. Peñón Blanco	120.90	1	0	2330	1.4	55.6	5.7	12.6	6.6	9.5	6.7	1.3	0.6	57.0	5.7	37.3	0.078	0.509	24.732624	-103.843594
T. Izq. Peñón Blanco	120.90	3	0	2027	1.6	51.5	6.4	12.5	8.0	10.6	7.2	1.7	0.5	53.1	6.4	40.5	0.074	0.505	24.744805	-103.836579
Cuencamé	144.30	1	0	2145	2.0	51.3	5.2	12.3	6.5	14.5	5.8	1.9	0.5	53.3	5.2	41.5	0.076	0.511	24.861202	-103.701448
Cuencamé	144.30	3	0	7792	3.4	47.4	5.6	11.4	4.7	16.4	4.9	5.3	0.9	50.8	5.6	43.6	0.063	0.509	24.909523	-103.704752
T. Izq. Nazas	171.61	1	0	4692	1.4	56.9	3.5	11.5	4.5	15.0	4.0	2.6	0.6	58.3	3.5	38.2	0.054	0.511	25.086144	-103.771169
T. Izq. Nazas	171.61	3	0	6588	1.9	59.3	2.8	10.5	3.4	14.2	4.7	2.4	0.8	61.2	2.8	36.0	0.056	0.521	25.092340	-103.769622
T. Der. Villa Juárez	194.40	3	0	5495	1.2	59.8	3.1	9.2	4.0	14.6	4.7	2.4	1.0	61.0	3.1	35.9	0.072	0.514	25.225908	-103.628508

COAHUILA

2 CARR: Durango - Torreón

CLAVE: 10085

RUTA: MEX-040

AÑO: 2018

LUGAR	ESTACION				CLASIFICACION VEHICULAR EN PORCIENTO														COORDENADAS	
	KM	TE	SC	TDPA	M	A	B	C2	C3	T3S2	T3S3	T3S2R4	OTROS	A	B	C	K'	D	LATITUD	LONGITUD
León Guzmán	229.58	3	0	8460	2.6	69.0	1.8	12.6	3.2	6.8	2.6	1.1	0.3	71.6	1.8	26.6	0.081	0.514	25.512439	-103.646991
Cd. Lerdo	244.80	1	1	7355	2.7	77.1	1.3	9.6	1.6	4.0	1.3	2.2	0.2	79.8	1.3	18.9	0.170	0.510	25.511887	-103.542416
Cd. Lerdo	244.80	1	2	7655	2.5	75.9	1.4	10.5	1.6	4.3	1.4	2.2	0.2	78.4	1.4	20.2	0.133	0.510	25.512004	-103.542419
T. Izq. Gómez Palacio	248.90	3	1	10097	3.2	90.7	0.3	4.0	0.7	0.5	0.4	0.1	0.1	93.9	0.3	5.8	0.087	0.541	25.556638	-103.480471
T. Izq. Gómez Palacio	248.90	3	2	8560	4.2	88.8	0.5	4.8	0.7	0.4	0.4	0.1	0.1	93.0	0.5	6.5	0.085	0.541	25.556680	-103.480641
Lim. Edos. Term. Dgo. Ppia. Coah.	251.00																			
Torreón	255.80	1	1	22342	3.4	88.7	0.3	5.5	0.2	0.5	1.2	0.0	0.2	92.1	0.3	7.6	0.075	0.501	25.547779	-103.471410
Torreón	255.80	1	2	22444	3.0	86.7	0.4	7.1	0.2	0.7	1.6	0.0	0.3	89.7	0.4	9.9	0.078	0.501	25.547867	-103.471256

3 CARR: Ent. Bella Unión - Saltillo

CLAVE: 05003

RUTA: MEX-057

AÑO: 2018

LUGAR	ESTACION				CLASIFICACION VEHICULAR EN PORCIENTO														COORDENADAS	
	KM	TE	SC	TDPA	M	A	B	C2	C3	T3S2	T3S3	T3S2R4	OTROS	A	B	C	K'	D	LATITUD	LONGITUD
T. C. Ent. Puerto México - Ent. Ojo Caliente (Cuota)	0.00																			
T. Der. Arteaga	4.61	1	1	5311	0.9	78.8	0.8	12.7	1.2	4.1	0.7	0.3	0.5	79.7	0.8	19.5	0.147	0.518	25.443947	-100.834479
T. Der. Arteaga	4.61	1	2	5702	0.7	77.5	1.0	13.1	1.3	4.8	0.8	0.3	0.5	78.2	1.0	20.8	0.133	0.518	25.443843	-100.834541
Saltillo	17.00	1	1	22149	0.8	82.3	0.4	8.9	1.8	3.4	1.6	0.5	0.3	83.1	0.4	16.5	0.085	0.501	25.436247	-100.909461
Saltillo	17.00	1	2	22065	0.9	80.9	0.4	9.4	1.9	3.9	1.8	0.5	0.3	81.8	0.4	17.8	0.078	0.501	25.436177	-100.909170

4 CARR: Ent. La Cuchilla - Torreón

CLAVE: 05021

RUTA: MEX-030

AÑO: 2018

LUGAR	ESTACION				CLASIFICACION VEHICULAR EN PORCIENTO														COORDENADAS	
	KM	TE	SC	TDPA	M	A	B	C2	C3	T3S2	T3S3	T3S2R4	OTROS	A	B	C	K'	D	LATITUD	LONGITUD
La Cuchilla	0.00	3	0	1189	5.9	68.7	3.8	11.1	3.0	4.9	0.9	1.4	0.3	74.6	3.8	21.6	0.076	0.503	25.626683	-102.882777
T. Der. Mayran	3.30	3	0	1327	8.3	64.7	3.4	16.5	2.2	3.1	0.7	0.8	0.3	73.0	3.4	23.6	0.084	0.511	25.648829	-102.907050
T. Izq. San Patricio	9.07	3	0	1833	11.3	62.9	2.3	16.7	2.4	2.4	0.7	1.1	0.2	74.2	2.3	23.5	0.080	0.501	25.683058	-102.938416
San Pedro de Las Colonias	18.70	1	1	2604	13.3	68.3	0.5	14.9	0.9	0.6	0.6	0.2	0.7	81.6	0.5	17.9	0.103	0.502	25.747846	-102.970009
San Pedro de Las Colonias	18.70	1	2	2629	10.8	69.4	0.6	16.0	0.9	0.6	0.7	0.3	0.7	80.2	0.6	19.2	0.096	0.502	25.747820	-102.970126
San Pedro de Las Colonias	18.70	3	1	5576	5.6	80.0	1.6	8.7	1.0	1.5	0.9	0.4	0.3	85.6	1.6	12.8	0.092	0.503	25.757664	-103.005898
San Pedro de Las Colonias	18.70	3	2	5500	5.7	78.7	1.5	10.7	0.9	1.2	0.7	0.4	0.2	84.4	1.5	14.1	0.096	0.503	25.757580	-103.005913
Urquizo	33.00	1	1	4787	4.6	79.3	1.9	9.8	1.2	1.7	0.7	0.7	0.1	83.9	1.9	14.2	0.082	0.501	25.766064	-103.085403
Urquizo	33.00	1	2	4776	4.5	78.0	2.0	10.9	1.2	1.9	0.7	0.7	0.1	82.5	2.0	15.5	0.083	0.501	25.765994	-103.085486
Urquizo	33.00	3	1	5286	3.8	78.5	2.2	10.4	1.5	2.0	0.8	0.6	0.2	82.3	2.2	15.5	0.074	0.501	25.767193	-103.146964
Urquizo	33.00	3	2	5316	4.1	76.2	2.4	12.0	1.7	2.1	0.7	0.6	0.2	80.3	2.4	17.3	0.066	0.501	25.767160	-103.146877
T. Izq. San Lorenzo	37.30	3	1	4324	2.5	76.6	2.6	12.0	1.8	2.4	1.2	0.8	0.1	79.1	2.6	18.3	0.093	0.507	25.762016	-103.166842

COAHUILA

4 CARR: Ent. La Cuchilla - Torreón

CLAVE: 05021

RUTA: MEX-030

AÑO: 2018

LUGAR	ESTACION				CLASIFICACION VEHICULAR EN PORCIENTO													COORDENADAS		
	KM	TE	SC	TDPA	M	A	B	C2	C3	T3S2	T3S3	T3S2R4	OTROS	A	B	C	K'	D	LATITUD	LONGITUD
T. Izq. San Lorenzo	37.30	3	2	4204	2.0	74.4	3.2	12.9	2.2	3.0	1.1	0.9	0.3	76.4	3.2	20.4	0.081	0.507	25.761884	-103.166916
T. Der. Colón	41.00	3	1	5997	3.6	78.6	1.9	10.2	1.7	2.0	1.1	0.7	0.2	82.2	1.9	15.9	0.075	0.501	25.759250	-103.202755
T. Der. Colón	41.00	3	2	5977	3.5	77.6	1.9	11.3	1.7	2.3	0.9	0.6	0.2	81.1	1.9	17.0	0.074	0.501	25.759152	-103.202776
T. Izq. Guadalupe Victoria	41.78	3	1	5818	4.6	76.0	2.1	11.7	1.7	2.0	1.0	0.7	0.2	80.6	2.1	17.3	0.088	0.502	25.761962	-103.227154
T. Izq. Guadalupe Victoria	41.78	3	2	5856	4.7	77.6	1.8	10.0	1.9	2.1	1.0	0.7	0.2	82.3	1.8	15.9	0.086	0.502	25.761885	-103.227186
T. Der. Fco. I. Madero	43.80	1	1	8151	5.1	81.5	1.1	6.7	2.2	2.0	0.8	0.2	0.4	86.6	1.1	12.3	0.072	0.520	25.762586	-103.241098
T. Der. Fco. I. Madero	43.80	1	2	7529	4.1	80.2	1.1	8.6	2.6	2.0	0.9	0.1	0.4	84.3	1.1	14.6	0.062	0.520	25.762467	-103.241019
T. Der. Fco. I. Madero	43.80	3	1	7066	3.7	78.6	1.4	11.7	1.4	1.7	0.9	0.5	0.1	82.3	1.4	16.3	0.088	0.507	25.749892	-103.296630
T. Der. Fco. I. Madero	43.80	3	2	7260	3.5	79.0	1.7	11.4	1.4	1.8	0.7	0.4	0.1	82.5	1.7	15.8	0.086	0.507	25.749800	-103.296520
T. Izq. Escuadrón 201	62.40	3	1	10002	2.3	82.9	1.1	8.4	1.1	2.3	1.2	0.4	0.3	85.2	1.1	13.7	0.071	0.502	25.670523	-103.351933
T. Izq. Escuadrón 201	62.40	3	2	9916	2.2	81.8	1.1	9.3	1.4	2.4	1.1	0.4	0.3	84.0	1.1	14.9	0.081	0.502	25.670442	-103.351909
Torreón	84.00	1	1	27704	1.4	94.6	0.3	3.2	0.1	0.2	0.2	0.0	0.0	96.0	0.3	3.7	0.087	0.512	25.579802	-103.413554
Torreón	84.00	1	2	26388	1.4	94.3	0.3	3.5	0.1	0.2	0.2	0.0	0.0	95.7	0.3	4.0	0.095	0.512	25.579771	-103.413429

5 CARR: Ent. Morelos - Saltillo

CLAVE: 00149

RUTA: MEX-054

AÑO: 2018

LUGAR	ESTACION				CLASIFICACION VEHICULAR EN PORCIENTO													COORDENADAS		
	KM	TE	SC	TDPA	M	A	B	C2	C3	T3S2	T3S3	T3S2R4	OTROS	A	B	C	K'	D	LATITUD	LONGITUD
T. C. Zacatecas - Durango	0.00	3	1	4172	0.9	73.6	3.9	10.7	1.5	5.3	1.3	2.4	0.4	74.5	3.9	21.6	0.067	0.503	22.868920	-102.619591
T. C. Zacatecas - Durango	0.00	3	2	4115	0.7	71.9	4.1	10.4	1.8	6.0	2.3	2.5	0.3	72.6	4.1	23.3	0.084	0.503	22.868962	-102.619664
T. Der. Sta. Mónica	11.00	1	1	3628	1.0	67.8	3.6	8.2	2.3	11.1	2.7	2.9	0.4	68.8	3.6	27.6	0.101	0.508	22.937460	-102.570168
T. Der. Sta. Mónica	11.00	1	2	3750	1.1	65.0	3.9	10.1	2.0	11.2	2.9	3.1	0.7	66.1	3.9	30.0	0.089	0.508	22.937500	-102.570238
T. Der. Sta. Mónica	11.00	3	1	3214	0.7	59.5	4.3	9.7	2.0	14.1	4.6	4.4	0.7	60.2	4.3	35.5	0.077	0.514	22.950395	-102.559213
T. Der. Sta. Mónica	11.00	3	2	3399	0.9	61.7	3.8	7.7	2.4	14.6	4.2	4.0	0.7	62.6	3.8	33.6	0.095	0.514	22.950452	-102.559281
T. Izq. Villa de Cos	53.90	1	1	3274	1.1	58.8	5.0	12.0	2.0	13.9	2.5	3.9	0.8	59.9	5.0	35.1	0.071	0.515	23.261524	-102.335746
T. Izq. Villa de Cos	53.90	1	2	3483	1.0	58.6	4.9	12.2	2.0	13.6	3.1	3.9	0.7	59.6	4.9	35.5	0.078	0.515	23.261582	-102.335834
T. Izq. Villa de Cos	53.90	3	1	2822	1.0	54.7	5.4	12.0	2.0	17.1	2.3	4.5	1.0	55.7	5.4	38.9	0.086	0.516	23.276887	-102.324678
T. Izq. Villa de Cos	53.90	3	2	3011	1.0	54.8	5.0	12.1	2.0	16.5	3.6	4.1	0.9	55.8	5.0	39.2	0.077	0.516	23.276939	-102.324778
Sierra Vieja	85.50	3	1	2125	0.6	50.1	7.0	11.9	2.7	18.3	2.8	5.9	0.7	50.7	7.0	42.3	0.069	0.516	23.505541	-102.121947
Sierra Vieja	85.50	3	2	1989	0.6	45.1	7.2	12.5	2.9	20.6	3.4	6.9	0.8	45.7	7.2	47.1	0.064	0.516	23.505435	-102.121835
T. Der. Majoma	144.50	3	1	1826	0.0	41.9	8.2	10.3	2.5	24.7	3.9	7.1	1.4	41.9	8.2	49.9	0.062	0.543	23.878141	-101.735481
T. Der. Majoma	144.50	3	2	2167	0.8	42.3	7.4	10.2	2.5	25.5	4.3	6.2	0.8	43.1	7.4	49.5	0.073	0.543	23.878341	-101.735549
T. Der. San Tiburcio	185.25	1	1	1984	1.1	51.3	6.4	9.5	2.7	18.4	3.0	6.3	1.3	52.4	6.4	41.2	0.069	0.543	24.157548	-101.495739
T. Der. San Tiburcio	185.25	1	2	2352	0.5	49.4	6.8	10.2	3.0	18.5	3.3	7.0	1.3	49.9	6.8	43.3	0.086	0.543	24.157638	-101.495872
T. Der. San Tiburcio	185.25	3	1	2576	1.4	55.9	6.2	13.2	2.3	13.7	2.1	4.7	0.5	57.3	6.2	36.5	0.076	0.513	24.160267	-101.493751

COAHUILA

5 CARR: Ent. Morelos - Saltillo

CLAVE: 00149

RUTA: MEX-054

AÑO: 2018

LUGAR	ESTACION				CLASIFICACION VEHICULAR EN PORCIENTO										COORDENADAS					
	KM	TE	SC	TDPA	M	A	B	C2	C3	T3S2	T3S3	T3S2R4	OTROS	A	B	C	K'	D	LATITUD	LONGITUD
T. Der. San Tiburcio	185.25	3	2	2716	1.4	51.4	6.7	14.5	2.6	15.0	2.4	5.2	0.8	52.8	6.7	40.5	0.101	0.513	24.160358	-101.493871
T. Izq. Concepción del Oro	240.00	1	1	3140	1.4	60.6	4.4	11.1	1.7	13.8	2.0	4.4	0.6	62.0	4.4	33.6	0.062	0.514	24.612121	-101.369831
T. Izq. Concepción del Oro	240.00	1	2	3313	1.5	59.5	4.4	13.1	1.4	13.1	2.2	3.8	1.0	61.0	4.4	34.6	0.084	0.514	24.612006	-101.369904
T. Izq. Concepción del Oro	240.00	3	1	3505	0.6	60.4	4.7	13.2	1.5	13.6	1.7	3.9	0.4	61.0	4.7	34.3	0.071	0.507	24.625853	-101.381892
T. Izq. Concepción del Oro	240.00	3	2	3612	1.5	59.5	5.0	14.0	1.8	12.7	1.4	3.5	0.6	61.0	5.0	34.0	0.079	0.507	24.625921	-101.381932
Lim. Edos. Term. Zac. Ppia. Coah.	266.50																			
Agua Nueva	322.00	1	0	6079	1.1	57.5	5.1	13.1	2.5	13.6	2.4	3.8	0.9	58.6	5.1	36.3	0.077	0.513	25.180349	-101.094449
T. Der. La Trinidad	333.00	3	0	15204	0.5	74.8	2.9	12.6	1.5	5.5	1.0	0.3	0.9	75.3	2.9	21.8	0.095	0.504	25.291179	-101.084734
X. C. Libramiento de Saltillo	348.00	1	1	19197	2.0	81.4	1.9	8.8	1.3	2.3	1.8	0.3	0.2	83.4	1.9	14.7	0.069	0.501	25.367437	-101.015532
X. C. Libramiento de Saltillo	348.00	1	2	19257	1.9	79.9	2.0	10.0	1.4	2.4	1.9	0.3	0.2	81.8	2.0	16.2	0.083	0.501	25.367477	-101.015732
Saltillo	354.00	1	1	16658	1.4	88.8	1.1	7.3	0.4	0.6	0.3	0.0	0.1	90.2	1.1	8.7	0.082	0.507	25.387841	-101.006245
Saltillo	354.00	1	2	16218	1.4	87.9	1.2	8.1	0.4	0.6	0.3	0.0	0.1	89.3	1.2	9.5	0.083	0.507	25.387887	-101.006359

6 CARR: Gregorio García - Francisco I. Madero

CLAVE: 00110

RUTA: MEX-040

AÑO: 2018

LUGAR	ESTACION				CLASIFICACION VEHICULAR EN PORCIENTO										COORDENADAS					
	KM	TE	SC	TDPA	M	A	B	C2	C3	T3S2	T3S3	T3S2R4	OTROS	A	B	C	K'	D	LATITUD	LONGITUD
T. C. Gómez Palacio - Tlahualillo	0.00																			
Lim. Edos. Term. Dgo. Ppia. Coah.	3.60																			
Francisco I. Madero	9.60	1	0	7819	3.2	81.5	0.5	11.0	1.4	1.2	0.5	0.5	0.2	84.7	0.5	14.8	0.074	0.516	25.772708	-103.288760

7 CARR: Libramiento Allende - Nava

CLAVE: 05518

RUTA: MEX-057

AÑO: 2018

LUGAR	ESTACION				CLASIFICACION VEHICULAR EN PORCIENTO										COORDENADAS					
	KM	TE	SC	TDPA	M	A	B	C2	C3	T3S2	T3S3	T3S2R4	OTROS	A	B	C	K'	D	LATITUD	LONGITUD
T. C. Monclova - Piedras Negras	0.00	3	1	4802	0.9	70.1	1.3	7.7	1.6	9.3	5.0	3.1	1.0	71.0	1.3	27.7	0.062	0.522	28.326291	-100.886345
T. C. Monclova - Piedras Negras	0.00	3	2	4398	0.4	67.0	1.4	8.6	1.7	10.4	6.3	3.4	0.8	67.4	1.4	31.2	0.059	0.522	28.326306	-100.886404
X. Der. Allende - Izq. Morelos	6.06	3	1	5860	1.1	69.3	2.3	11.6	1.2	7.2	4.3	2.3	0.7	70.4	2.3	27.3	0.065	0.514	28.377252	-100.858856
X. Der. Allende - Izq. Morelos	6.06	3	2	6188	0.6	67.4	2.6	12.8	1.4	7.4	4.6	2.5	0.7	68.0	2.6	29.4	0.080	0.514	28.377288	-100.858905
T. C. Monclova - Piedras Negras	18.55	1	1	5558	0.8	70.6	2.5	9.2	1.5	8.0	4.7	2.1	0.6	71.4	2.5	26.1	0.069	0.520	28.431948	-100.778423
T. C. Monclova - Piedras Negras	18.55	1	2	6020	0.7	68.2	2.6	9.7	1.7	8.9	5.2	2.4	0.6	68.9	2.6	28.5	0.080	0.520	28.432007	-100.778438

COAHUILA

8 CARR: Monclova - Piedras Negras

CLAVE: 05407

RUTA: MEX-057

AÑO: 2018

LUGAR	ESTACION				CLASIFICACION VEHICULAR EN PORCIENTO										COORDENADAS					
	KM	TE	SC	TDPA	M	A	B	C2	C3	T3S2	T3S3	T3S2R4	OTROS	A	B	C	K'	D	LATITUD	LONGITUD
Monclova	0.00	3	1	11760	1.2	86.1	1.3	8.0	0.6	1.3	1.1	0.1	0.3	87.3	1.3	11.4	0.063	0.505	26.954384	-101.411357
Monclova	0.00	3	2	11526	0.9	85.3	1.4	8.9	0.6	1.4	1.1	0.1	0.3	86.2	1.4	12.4	0.062	0.505	26.954421	-101.411540
T. Der. Libramiento de Monclova	10.80	3	1	5294	0.6	72.4	2.0	12.1	1.4	6.7	1.4	2.8	0.6	73.0	2.0	25.0	0.071	0.533	26.978206	-101.375624
T. Der. Libramiento de Monclova	10.80	3	2	4641	1.2	69.1	2.5	13.1	1.5	7.4	1.4	3.2	0.6	70.3	2.5	27.2	0.076	0.533	26.978290	-101.375801
T. Der. Progreso	61.50	1	1	3112	0.3	70.3	2.3	7.7	2.1	9.5	2.0	5.1	0.7	70.6	2.3	27.1	0.084	0.509	27.377035	-101.215973
T. Der. Progreso	61.50	1	2	3230	0.5	67.0	2.7	7.9	2.4	10.7	2.1	6.0	0.7	67.5	2.7	29.8	0.089	0.509	27.379461	-101.215948
T. Izq. Palau	88.50	1	1	3153	0.6	68.3	2.2	9.5	2.0	9.6	1.7	5.4	0.7	68.9	2.2	28.9	0.082	0.513	27.634641	-101.181875
T. Izq. Palau	88.50	1	2	2994	0.4	65.9	2.3	11.0	2.4	10.0	2.0	5.4	0.6	66.3	2.3	31.4	0.085	0.513	27.634941	-101.182158
T. Izq. Palau	88.50	3	1	3840	0.5	69.1	4.5	9.0	2.0	6.9	3.0	4.4	0.6	69.6	4.5	25.9	0.081	0.506	27.642365	-101.184110
T. Izq. Palau	88.50	3	2	3747	0.4	67.9	4.6	9.3	2.1	7.2	3.2	4.6	0.7	68.3	4.6	27.1	0.090	0.506	27.642376	-101.184253
T. Der. Sabinas (2° Acceso)	115.00	1	1	5690	0.9	76.0	1.2	8.9	1.8	5.9	2.0	2.5	0.8	76.9	1.2	21.9	0.070	0.506	27.862408	-101.135992
T. Der. Sabinas (2° Acceso)	115.00	1	2	5556	1.0	73.5	1.4	9.7	2.0	6.7	2.2	2.7	0.8	74.5	1.4	24.1	0.078	0.506	27.862418	-101.136100
Agujita	118.85	1	1	11576	1.3	81.7	0.7	8.5	0.8	2.7	2.4	1.0	0.9	83.0	0.7	16.3	0.077	0.503	27.882820	-101.144852
Agujita	118.85	1	2	11725	1.0	80.6	0.7	9.4	0.9	2.9	2.4	1.2	0.9	81.6	0.7	17.7	0.071	0.503	27.882748	-101.144997
T. Izq. Nueva Rosita (1° Acceso)	126.30	3	0	5950	1.0	57.8	1.2	13.6	2.1	11.0	10.7	2.1	0.5	58.8	1.2	40.0	0.065	0.501	27.957253	-101.200333
T. Izq. Libramiento de Allende	182.00	1	0	6557	1.0	61.0	1.2	13.1	2.2	10.5	8.1	2.3	0.6	62.0	1.2	36.8	0.066	0.508	28.312250	-100.910800
Allende	187.20	3	1	5832	1.0	84.5	2.0	11.3	0.4	0.4	0.4	0.0	0.0	85.5	2.0	12.5	0.068	0.503	28.361532	-100.858562
Allende	187.20	3	2	5771	1.0	82.7	2.3	12.8	0.4	0.4	0.4	0.0	0.0	83.7	2.3	14.0	0.072	0.503	28.361484	-100.858654
Nava	206.85	1	1	2706	1.5	77.9	4.5	15.0	0.6	0.4	0.1	0.0	0.0	79.4	4.5	16.1	0.090	0.504	28.421369	-100.789310
Nava	206.85	1	2	2744	1.3	74.5	5.0	17.9	0.8	0.4	0.1	0.0	0.0	75.8	5.0	19.2	0.089	0.504	28.421475	-100.789315
Nava	206.85	3	1	7494	0.8	73.2	2.0	13.7	1.1	5.3	2.0	1.3	0.6	74.0	2.0	24.0	0.096	0.515	28.443420	-100.754956
Nava	206.85	3	2	7970	0.5	71.4	2.2	14.6	1.1	5.8	2.3	1.5	0.6	71.9	2.2	25.9	0.103	0.515	28.443495	-100.755039
T. Der. Guerrero	240.28	1	1	10378	1.1	79.1	1.9	10.5	1.6	3.4	1.4	0.4	0.6	80.2	1.9	17.9	0.095	0.501	28.640554	-100.559183
T. Der. Guerrero	240.28	1	2	10339	1.1	76.8	2.1	11.7	1.8	4.0	1.5	0.4	0.6	77.9	2.1	20.0	0.120	0.501	28.640593	-100.559289
Piedras Negras	248.00																			

9 CARR: Monclova - San Pedro de Las Colonias

CLAVE: 05062

RUTA: MEX-030

AÑO: 2018

LUGAR	ESTACION				CLASIFICACION VEHICULAR EN PORCIENTO										COORDENADAS					
	KM	TE	SC	TDPA	M	A	B	C2	C3	T3S2	T3S3	T3S2R4	OTROS	A	B	C	K'	D	LATITUD	LONGITUD
Monclova	0.00																			
Frontera	2.00	3	1	10811	1.6	82.1	2.5	10.3	0.9	1.2	0.8	0.3	0.3	83.7	2.5	13.8	0.080	0.504	26.960197	-101.462422
Frontera	2.00	3	2	10632	0.9	81.4	2.7	11.2	1.0	1.4	0.8	0.3	0.3	82.3	2.7	15.0	0.085	0.504	26.960103	-101.462562
8 de Enero	11.00	3	1	8985	1.4	81.9	2.1	10.0	1.4	1.5	0.8	0.6	0.3	83.3	2.1	14.6	0.074	0.501	27.004980	-101.498032
8 de Enero	11.00	3	2	9011	1.2	80.1	1.7	12.1	1.1	1.7	1.0	0.7	0.4	81.3	1.7	17.0	0.076	0.501	27.005386	-101.498483

COAHUILA

9 CARR: Monclova - San Pedro de Las Colonias

CLAVE: 05062

RUTA: MEX-030

AÑO: 2018

LUGAR	ESTACION				CLASIFICACION VEHICULAR EN PORCIENTO													COORDENADAS		
	KM	TE	SC	TDPA	M	A	B	C2	C3	T3S2	T3S3	T3S2R4	OTROS	A	B	C	K'	D	LATITUD	LONGITUD
Nadadores	27.00	3	1	2591	1.1	80.4	2.0	9.6	1.1	2.8	1.2	1.5	0.3	81.5	2.0	16.5	0.100	0.501	27.033394	-101.612579
Nadadores	27.00	3	2	2582	1.2	79.0	2.0	11.6	1.0	2.4	1.2	1.3	0.3	80.2	2.0	17.8	0.165	0.501	27.033292	-101.612600
Sacramento	45.27	1	1	2058	1.1	75.4	2.9	12.0	1.4	3.5	1.5	1.6	0.6	76.5	2.9	20.6	0.075	0.512	27.010927	-101.719600
Sacramento	45.27	1	2	2161	1.1	74.1	3.2	12.4	1.4	3.8	1.7	1.4	0.9	75.2	3.2	21.6	0.112	0.512	27.010919	-101.719499
T. Der. La Madrid	51.00	3	1	1426	1.0	72.0	3.7	11.4	1.5	5.7	2.1	2.3	0.3	73.0	3.7	23.3	0.081	0.502	27.019392	-101.799961
T. Der. La Madrid	51.00	3	2	1435	0.5	74.0	2.8	9.8	1.8	6.1	1.8	2.5	0.7	74.5	2.8	22.7	0.070	0.502	27.019300	-101.800022
Cuatro Ciénegas	80.15	3	0	1238	1.0	68.6	3.4	10.3	3.1	7.1	2.9	2.9	0.7	69.6	3.4	27.0	0.121	0.512	26.975104	-102.073305
San Pedro de Las Colonias	267.00	1	1	932	5.3	62.1	2.9	11.2	3.6	8.0	2.7	3.0	1.2	67.4	2.9	29.7	0.088	0.505	25.781940	-102.979180
San Pedro de Las Colonias	267.00	1	2	915	5.6	63.3	3.2	10.3	3.8	7.5	2.1	3.0	1.2	68.9	3.2	27.9	0.080	0.505	25.781945	-102.979059

10 CARR: Monterrey - Castaños

CLAVE: 00128

RUTA: MEX-053

AÑO: 2018

LUGAR	ESTACION				CLASIFICACION VEHICULAR EN PORCIENTO													COORDENADAS		
	KM	TE	SC	TDPA	M	A	B	C2	C3	T3S2	T3S3	T3S2R4	OTROS	A	B	C	K'	D	LATITUD	LONGITUD
T. C. Monterrey - Nuevo Laredo	0.00	3	0	22014	1.5	80.0	0.6	10.6	2.3	2.1	1.9	0.6	0.4	81.5	0.6	17.9	0.078	0.544	25.805237	-100.278866
X. C. Libramiento Noroeste de Monterrey	3.46	3	1	14149	2.3	72.6	1.9	9.4	3.6	5.4	2.8	1.6	0.4	74.9	1.9	23.2	0.096	0.520	25.830333	-100.306067
X. C. Libramiento Noroeste de Monterrey	3.46	3	2	15341	2.1	70.1	2.1	10.6	3.9	6.2	3.0	1.6	0.4	72.2	2.1	25.7	0.077	0.520	25.830287	-100.306149
T. Der. Villa del Carmen	13.80	1	1	9302	0.6	75.5	1.1	10.0	2.6	4.9	3.1	1.7	0.5	76.1	1.1	22.8	0.087	0.503	25.896397	-100.351928
T. Der. Villa del Carmen	13.80	1	2	9400	0.8	71.8	1.3	11.5	2.9	5.9	3.5	1.7	0.6	72.6	1.3	26.1	0.072	0.503	25.896364	-100.351994
T. Izq. Hidalgo	24.78	1	0	14454	1.0	74.1	1.1	10.1	2.1	5.4	3.7	2.1	0.4	75.1	1.1	23.8	0.076	0.504	25.955729	-100.424222
T. Izq. Hidalgo	24.78	3	0	7658	2.0	67.9	2.3	10.1	2.8	7.2	3.6	3.1	1.0	69.9	2.3	27.8	0.074	0.549	25.991278	-100.457888
T. Izq. Mina	34.75	1	0	9054	1.7	67.9	1.7	10.6	2.3	7.7	4.8	2.8	0.5	69.6	1.7	28.7	0.071	0.515	26.000506	-100.512735
T. Izq. Espinazo	91.90	1	0	4448	0.4	54.7	2.6	9.7	3.5	12.4	8.1	7.5	1.1	55.1	2.6	42.3	0.065	0.517	26.360315	-100.874867
T. Izq. Espinazo	91.90	3	0	3967	0.3	57.8	2.4	8.4	2.8	11.7	9.6	6.0	1.0	58.1	2.4	39.5	0.090	0.501	26.367364	-100.886613
Lim. Edos. Term. N. L. Ppia. Coah.	115.90																			
T. C. Saltillo - Monclova	155.90	1	1	2345	0.8	56.3	2.8	10.3	2.6	11.0	8.4	7.1	0.7	57.1	2.8	40.1	0.078	0.514	26.692126	-101.382725
T. C. Saltillo - Monclova	155.90	1	2	2483	0.2	60.6	2.2	8.5	2.6	10.9	7.3	7.3	0.4	60.8	2.2	37.0	0.093	0.514	26.692103	-101.382773

11 CARR: Morelos - Cd. Acuña

CLAVE: 05029

RUTA: MEX-029

AÑO: 2018

LUGAR	ESTACION				CLASIFICACION VEHICULAR EN PORCIENTO													COORDENADAS		
	KM	TE	SC	TDPA	M	A	B	C2	C3	T3S2	T3S3	T3S2R4	OTROS	A	B	C	K'	D	LATITUD	LONGITUD
Morelos	0.00	3	1	3253	0.9	75.2	2.0	17.0	1.1	2.4	0.8	0.3	0.3	76.1	2.0	21.9	0.080	0.509	28.418128	-100.890552
Morelos	0.00	3	2	3144	1.0	74.5	2.1	16.7	1.1	3.0	0.8	0.5	0.3	75.5	2.1	22.4	0.076	0.509	28.418098	-100.890632
T. Izq. El Remolino	40.10	1	0	1615	0.7	68.8	2.2	16.5	2.3	6.9	1.1	1.1	0.4	69.5	2.2	28.3	0.107	0.518	28.720292	-100.912096

COAHUILA

11 CARR: Morelos - Cd. Acuña

CLAVE: 05029

RUTA: MEX-029

AÑO: 2018

LUGAR	ESTACION				CLASIFICACION VEHICULAR EN PORCIENTO										COORDENADAS					
	KM	TE	SC	TDPA	M	A	B	C2	C3	T3S2	T3S3	T3S2R4	OTROS	A	B	C	K'	D	LATITUD	LONGITUD
T. Izq. El Remolino	40.10	3	0	1405	1.2	65.1	2.4	15.4	2.7	9.8	1.5	1.7	0.2	66.3	2.4	31.3	0.098	0.500	28.725789	-100.912286
San Carlos	73.84	1	0	2164	0.6	64.9	1.9	22.1	1.7	6.5	0.9	1.1	0.3	65.5	1.9	32.6	0.067	0.522	29.011378	-100.905620
T. Der. Piedras Negras	104.50	3	1	6459	1.4	74.6	2.5	17.1	0.9	1.9	1.1	0.2	0.3	76.0	2.5	21.5	0.097	0.515	29.299976	-100.917686
T. Der. Piedras Negras	104.50	3	2	6084	1.1	73.7	2.6	17.9	1.0	1.9	1.3	0.2	0.3	74.8	2.6	22.6	0.095	0.515	29.299932	-100.917768
Cd. Acuña	109.10	1	1	7182	1.1	78.6	1.2	17.2	0.4	0.7	0.5	0.1	0.2	79.7	1.2	19.1	0.068	0.527	29.304148	-100.923117
Cd. Acuña	109.10	1	2	7995	1.4	81.4	1.2	13.8	0.5	0.8	0.5	0.2	0.2	82.8	1.2	16.0	0.069	0.527	29.304084	-100.923170

12 CARR: Nueva Rosita - Boquillas del Carmen

CLAVE: 05028

RUTA: MEX-053

AÑO: 2018

LUGAR	ESTACION				CLASIFICACION VEHICULAR EN PORCIENTO										COORDENADAS					
	KM	TE	SC	TDPA	M	A	B	C2	C3	T3S2	T3S3	T3S2R4	OTROS	A	B	C	K'	D	LATITUD	LONGITUD
Nueva Rosita	0.00	3	1	4560	1.8	73.6	2.4	16.3	1.2	2.1	1.7	0.5	0.4	75.4	2.4	22.2	0.093	0.503	27.947733	-101.243629
Nueva Rosita	0.00	3	2	4510	2.3	74.0	2.3	16.0	1.3	1.8	1.4	0.4	0.5	76.3	2.3	21.4	0.095	0.503	27.947622	-101.243601
T. Der. Santa María	14.00	3	1	3230	1.2	74.3	2.0	14.3	1.8	2.6	2.7	0.4	0.7	75.5	2.0	22.5	0.069	0.508	27.911000	-101.325449
T. Der. Santa María	14.00	3	2	3337	1.1	71.8	2.2	15.9	1.9	3.0	2.8	0.4	0.9	72.9	2.2	24.9	0.078	0.508	27.910908	-101.325412
Palau	25.00	1	1	4378	1.3	77.0	1.9	12.4	2.5	2.5	1.6	0.2	0.6	78.3	1.9	19.8	0.070	0.502	27.887449	-101.411835
Palau	25.00	1	2	4418	1.2	75.4	1.9	13.7	2.6	2.8	1.6	0.2	0.6	76.6	1.9	21.5	0.066	0.502	27.887321	-101.411879
Palau	25.00	3	1	5076	1.5	76.5	1.9	13.7	2.7	1.9	1.0	0.3	0.5	78.0	1.9	20.1	0.070	0.512	27.887892	-101.430881
Palau	25.00	3	2	5326	1.5	74.1	2.0	15.5	2.5	2.4	0.9	0.5	0.6	75.6	2.0	22.4	0.065	0.512	27.887754	-101.430818
Melchor Múzquiz	35.00	3	0	3220	1.7	78.1	0.1	15.3	1.7	1.9	0.6	0.3	0.3	79.8	0.1	20.1	0.091	0.507	27.895598	-101.531992
Boquillas del Carmen	250.00																			

13 CARR: Ojo Caliente - Santa Cruz

CLAVE: 05007

RUTA: MEX-057

AÑO: 2018

LUGAR	ESTACION				CLASIFICACION VEHICULAR EN PORCIENTO										COORDENADAS					
	KM	TE	SC	TDPA	M	A	B	C2	C3	T3S2	T3S3	T3S2R4	OTROS	A	B	C	K'	D	LATITUD	LONGITUD
T. C. Saltillo - Monterrey	0.00	3	0	6363	0.6	60.8	2.1	8.9	2.0	14.2	4.9	5.4	1.1	61.4	2.1	36.5	0.091	0.504	25.603315	-100.897042
T. C. Saltillo - Monclova	34.00	1	0	4400	0.5	70.3	2.7	9.4	1.1	7.6	2.7	5.1	0.6	70.8	2.7	26.5	0.099	0.525	25.785930	-101.106239

14 CARR: Piedras Negras - Cd. Acuña

CLAVE: 05061

RUTA: MEX-002

AÑO: 2018

LUGAR	ESTACION				CLASIFICACION VEHICULAR EN PORCIENTO										COORDENADAS					
	KM	TE	SC	TDPA	M	A	B	C2	C3	T3S2	T3S3	T3S2R4	OTROS	A	B	C	K'	D	LATITUD	LONGITUD
Piedras Negras	0.00	3	1	3037	1.8	65.9	3.1	21.6	3.3	2.1	1.7	0.3	0.2	67.7	3.1	29.2	0.084	0.508	28.730368	-100.574876
Piedras Negras	0.00	3	2	2943	1.7	71.0	3.0	17.0	3.2	2.0	1.6	0.3	0.2	72.7	3.0	24.3	0.089	0.508	28.730325	-100.574990

COAHUILA

14 CARR: Piedras Negras - Cd. Acuña

CLAVE: 05061

RUTA: MEX-002

AÑO: 2018

LUGAR	ESTACION				CLASIFICACION VEHICULAR EN PORCIENTO														COORDENADAS	
	KM	TE	SC	TDPA	M	A	B	C2	C3	T3S2	T3S3	T3S2R4	OTROS	A	B	C	K'	D	LATITUD	LONGITUD
T. C. Morelos - Cd. Acuña	83.30	1	0	3693	1.2	68.7	3.2	21.3	1.3	2.8	0.8	0.4	0.3	69.9	3.2	26.9	0.096	0.500	29.291639	-100.910876

15 CARR: Piedras Negras - Nuevo Laredo

CLAVE: 00503

RUTA: MEX-002

AÑO: 2018

LUGAR	ESTACION				CLASIFICACION VEHICULAR EN PORCIENTO														COORDENADAS	
	KM	TE	SC	TDPA	M	A	B	C2	C3	T3S2	T3S3	T3S2R4	OTROS	A	B	C	K'	D	LATITUD	LONGITUD
T. C. Monclova - Piedras Negras	0.00	3	1	4456	1.3	69.8	1.0	14.8	2.9	7.6	1.1	0.8	0.7	71.1	1.0	27.9	0.080	0.503	28.635136	-100.549136
T. C. Monclova - Piedras Negras	0.00	3	2	4508	1.4	66.4	1.2	16.7	3.3	8.5	1.1	0.8	0.6	67.8	1.2	31.0	0.083	0.503	28.635199	-100.549037
El Saucito	16.90	3	0	1495	1.2	58.0	2.9	18.6	3.3	9.6	0.7	5.2	0.5	59.2	2.9	37.9	0.083	0.508	28.501889	-100.467250
T. Der. Villa Unión	37.00	1	0	1197	1.2	66.9	3.7	7.0	3.7	10.0	0.7	6.1	0.7	68.1	3.7	28.2	0.084	0.506	28.339797	-100.390596
T. Der. Villa Unión	37.00	3	0	1076	0.4	56.0	3.3	15.7	2.9	12.7	1.3	7.3	0.4	56.4	3.3	40.3	0.086	0.512	28.335479	-100.389282
Guerrero	42.00	3	0	974	0.2	58.7	3.4	14.6	3.2	13.1	1.1	5.5	0.2	58.9	3.4	37.7	0.086	0.514	28.308012	-100.366749
Lim. Edos. Term. Coah. Ppia. N. L.	124.40																			
T. C. Monclova - Colombia	134.00	3	0	2832	1.1	62.8	1.4	15.4	3.0	12.2	1.3	2.4	0.4	63.9	1.4	34.7	0.089	0.505	27.687979	-99.777207
Lim. Edos. Term. N. L. Ppia. Tamps.	138.20																			
T. Der. Libramiento de Nuevo Laredo	157.70	1	1	4735	0.8	49.8	1.1	7.5	11.1	26.3	1.4	1.1	0.9	50.6	1.1	48.3	0.090	0.516	27.571789	-99.597277
T. Der. Libramiento de Nuevo Laredo	157.70	1	2	4444	1.1	44.7	1.2	8.6	13.1	27.7	1.5	1.2	0.9	45.8	1.2	53.0	0.085	0.516	27.571904	-99.597272
Nuevo Laredo	175.00	1	1	8205	0.8	54.4	1.8	12.7	8.2	18.8	1.9	0.7	0.7	55.2	1.8	43.0	0.096	0.530	27.544489	-99.576750
Nuevo Laredo	175.00	1	2	9254	1.0	49.1	1.9	14.7	9.2	20.3	2.1	0.8	0.9	50.1	1.9	48.0	0.083	0.530	27.544691	-99.576636

16 CARR: Puerto México - La Encantada

CLAVE: 05002

RUTA: MEX-057

AÑO: 2018

LUGAR	ESTACION				CLASIFICACION VEHICULAR EN PORCIENTO														COORDENADAS	
	KM	TE	SC	TDPA	M	A	B	C2	C3	T3S2	T3S3	T3S2R4	OTROS	A	B	C	K'	D	LATITUD	LONGITUD
T. C. Aut. Puerto México - Ojo Caliente	0.00	3	0	1562	1.4	53.1	7.6	13.2	2.8	17.4	1.8	2.3	0.4	54.5	7.6	37.9	0.063	0.505	25.230413	-100.825519
Lim. Edos. Term. N. L. Ppia. Coah.	3.50																			
T. C. Ent. Morelos - Saltillo	41.00	1	0	1952	1.3	59.5	5.5	15.0	2.9	13.9	1.2	0.6	0.1	60.8	5.5	33.7	0.100	0.508	25.260748	-101.085841

17 CARR: Saltillo - Monclova

CLAVE: 05406

RUTA: MEX-057

AÑO: 2018

LUGAR	ESTACION				CLASIFICACION VEHICULAR EN PORCIENTO														COORDENADAS	
	KM	TE	SC	TDPA	M	A	B	C2	C3	T3S2	T3S3	T3S2R4	OTROS	A	B	C	K'	D	LATITUD	LONGITUD
Saltillo	0.00																			
T. Der. Ramos Arizpe	13.00	1	0	5036	1.3	58.2	0.9	13.7	3.5	17.4	2.6	1.5	0.9	59.5	0.9	39.6	0.083	0.507	25.527527	-101.002815
T. Der. Ramos Arizpe	13.00	3	0	2352	2.0	71.2	1.6	18.5	2.3	2.9	1.1	0.3	0.1	73.2	1.6	25.2	0.084	0.511	25.529465	-101.006385

COAHUILA

17 CARR: Saltillo - Monclova

CLAVE: 05406

RUTA: MEX-057

AÑO: 2018

LUGAR	ESTACION				CLASIFICACION VEHICULAR EN PORCIENTO										COORDENADAS					
	KM	TE	SC	TDPA	M	A	B	C2	C3	T3S2	T3S3	T3S2R4	OTROS	A	B	C	K'	D	LATITUD	LONGITUD
T. C. Ojo Caliente - Santa Cruz	49.60	1	0	462	1.1	67.2	2.1	18.5	2.4	5.9	2.3	0.5	0.0	68.3	2.1	29.6	0.084	0.501	25.781576	-101.111932
T. C. Ojo Caliente - Santa Cruz	49.60	3	0	4293	0.3	69.8	2.7	9.7	1.1	7.5	3.3	5.0	0.6	70.1	2.7	27.2	0.101	0.508	25.796287	-101.115716
T. Der. Paredón	64.00	1	0	4464	0.3	69.8	2.9	10.5	1.0	7.5	2.6	4.9	0.5	70.1	2.9	27.0	0.107	0.502	25.899979	-101.147058
T. Der. Paredón	64.00	3	0	4462	0.3	66.6	2.7	11.6	1.1	8.0	3.3	5.4	1.0	66.9	2.7	30.4	0.103	0.500	25.921366	-101.158515
T. Izq. Hipólito	78.00	1	0	4152	0.8	67.4	3.1	10.3	1.2	8.1	3.1	5.4	0.6	68.2	3.1	28.7	0.104	0.518	25.971027	-101.260309
T. Izq. Hipólito	78.00	3	0	4182	0.4	69.3	3.1	10.8	1.1	7.2	2.7	4.9	0.5	69.7	3.1	27.2	0.115	0.505	25.976999	-101.267029
T. Der. Monterrey	165.50	1	0	4274	0.3	67.2	2.6	11.0	1.1	8.0	3.3	5.6	0.9	67.5	2.6	29.9	0.106	0.514	26.683407	-101.386656
T. Der. Monterrey	165.50	3	1	5138	0.4	63.7	2.5	9.4	1.8	10.0	5.5	5.9	0.8	64.1	2.5	33.4	0.094	0.517	26.711212	-101.393519
T. Der. Monterrey	165.50	3	2	4804	0.5	58.7	2.5	9.7	2.0	11.9	7.6	6.0	1.1	59.2	2.5	38.3	0.068	0.517	26.711174	-101.393666
T. Der. Libramiento de Castaños (1º Acceso)	175.20	1	1	7170	0.8	74.9	2.2	9.6	1.7	4.6	3.0	2.3	0.9	75.7	2.2	22.1	0.114	0.500	26.778766	-101.416186
T. Der. Libramiento de Castaños (1º Acceso)	175.20	1	2	7160	0.8	75.8	1.9	8.5	1.9	4.7	3.2	2.2	1.0	76.6	1.9	21.5	0.098	0.500	26.778751	-101.416306
T. Der. Libramiento de Castaños (2º Acceso)	177.10	3	1	11274	0.9	78.3	1.8	7.6	1.9	4.2	2.7	2.0	0.6	79.2	1.8	19.0	0.071	0.508	26.806631	-101.420350
T. Der. Libramiento de Castaños (2º Acceso)	177.10	3	2	11634	0.9	75.5	2.1	9.3	2.4	4.4	2.9	2.1	0.4	76.4	2.1	21.5	0.077	0.508	26.806647	-101.420515
T. Izq. Libramiento Lic. Carlos Salinas De Gortari	184.10	1	1	12734	0.6	50.3	6.5	9.0	6.9	18.3	4.6	2.8	1.0	50.9	6.5	42.6	0.070	0.510	26.829278	-101.421928
T. Izq. Libramiento Lic. Carlos Salinas De Gortari	184.10	1	2	12244	0.6	44.2	7.4	9.3	7.9	21.2	5.2	3.0	1.2	44.8	7.4	47.8	0.065	0.510	26.829275	-101.422090
T. Izq. Libramiento Lic. Carlos Salinas De Gortari	184.10	3	1	28300	1.9	85.5	0.9	5.8	1.7	1.7	1.7	0.4	0.4	87.4	0.9	11.7	0.057	0.512	26.864927	-101.427336
T. Izq. Libramiento Lic. Carlos Salinas De Gortari	184.10	3	2	29697	1.7	84.2	1.0	6.4	2.0	2.0	1.9	0.4	0.4	85.9	1.0	13.1	0.056	0.512	26.864906	-101.427189
Monclova	192.00	1	1	30265	1.9	85.1	0.9	6.1	1.7	1.8	1.7	0.4	0.4	87.0	0.9	12.1	0.077	0.512	26.877338	-101.426379
Monclova	192.00	1	2	31759	1.7	83.9	1.0	6.7	2.0	1.9	2.0	0.4	0.4	85.6	1.0	13.4	0.076	0.512	26.877345	-101.426503

18 CARR: Saltillo - Monterrey

CLAVE: 00087

RUTA: MEX-040

AÑO: 2018

LUGAR	ESTACION				CLASIFICACION VEHICULAR EN PORCIENTO										COORDENADAS						
	KM	TE	SC	TDPA	M	A	B	C2	C3	T3S2	T3S3	T3S2R4	OTROS	A	B	C	K'	D	LATITUD	LONGITUD	
T. C. Saltillo - Arteaga	0.00																				
T. Izq. Zinacamex	4.25	3	1	58236	0.5	86.8	0.8	5.7	0.8	1.7	2.9	0.5	0.3	87.3	0.8	11.9	0.053	0.509	25.483428	-100.971803	
T. Izq. Zinacamex	4.25	3	2	56134	0.4	85.4	0.9	6.2	0.9	2.0	3.4	0.5	0.3	85.8	0.9	13.3	0.064	0.509	25.481087	-100.973134	
Ramos Arizpe	11.30	1	1	43365	0.5	86.6	0.8	6.4	0.9	1.6	2.8	0.1	0.3	87.1	0.8	12.1	0.072	0.505	25.516071	-100.957397	
Ramos Arizpe	11.30	1	2	44263	0.4	84.8	0.9	7.5	1.1	1.9	3.0	0.1	0.3	85.2	0.9	13.9	0.086	0.505	25.516159	-100.957577	
T. Der. Aeropuerto	13.00	3	1	28094	0.5	86.0	0.8	6.7	0.9	1.7	2.4	0.5	0.5	86.5	0.8	12.7	0.084	0.503	25.554367	-100.927690	
T. Der. Aeropuerto	13.00	3	2	28468	0.4	84.4	0.8	7.7	1.0	1.9	2.8	0.5	0.5	84.8	0.8	14.4	0.096	0.503	25.554489	-100.927826	
T. Der. Libramiento J.L.P.	16.00	3	1	30898	0.5	85.1	0.8	7.3	1.0	1.8	2.5	0.5	0.5	85.6	0.8	13.6	0.063	0.505	25.566069	-100.914119	
T. Der. Libramiento J.L.P.	16.00	3	2	31487	0.4	84.1	0.8	7.8	1.0	2.0	2.9	0.5	0.5	84.5	0.8	14.7	0.073	0.505	25.566587	-100.913877	
Ojo Caliente	26.30	1	1	21060	0.8	58.9	3.1	9.0	2.3	20.8	2.1	2.8	0.2	59.7	3.1	37.2	0.069	0.534	25.611746	-100.841425	
Ojo Caliente	26.30	1	2	24120	0.8	59.4	3.2	8.9	2.5	20.0	2.4	2.5	0.3	60.2	3.2	36.6	0.063	0.534	25.612974	-100.846146	

COAHUILA

18 CARR: Saltillo - Monterrey

CLAVE: 00087

RUTA: MEX-040

AÑO: 2018

LUGAR	ESTACION				CLASIFICACION VEHICULAR EN PORCIENTO										COORDENADAS					
	KM	TE	SC	TDPA	M	A	B	C2	C3	T3S2	T3S3	T3S2R4	OTROS	A	B	C	K'	D	LATITUD	LONGITUD
Lim. Edos. Term. Coah. Ppia. N. L.	33.00																			
T. Izq. Libramiento Noroeste de Monterrey	54.00	1	1	20156	0.7	52.7	3.6	8.6	2.7	24.4	2.9	3.3	1.1	53.4	3.6	43.0	0.079	0.539	25.698318	-100.562319
T. Izq. Libramiento Noroeste de Monterrey	54.00	1	2	23587	0.5	49.4	3.9	9.0	2.8	26.1	3.2	3.9	1.2	49.9	3.9	46.2	0.075	0.539	25.698678	-100.562811
T. Der. Santa Catarina (1º Acceso)	62.46	1	1	33594	1.1	82.7	1.6	8.0	1.4	3.1	1.1	0.6	0.4	83.8	1.6	14.6	0.090	0.539	25.687243	-100.494983
T. Der. Santa Catarina (1º Acceso)	62.46	1	2	39313	0.9	82.6	1.4	9.2	1.2	2.7	1.1	0.5	0.4	83.5	1.4	15.1	0.078	0.539	25.687090	-100.494038
Ppia. Monterrey	79.20	1	1	68896	1.1	84.4	0.7	5.6	1.4	2.7	2.5	0.6	1.0	85.5	0.7	13.8	0.081	0.538	25.674377	-100.426507
Ppia. Monterrey	79.20	1	2	80301	0.9	83.2	0.9	5.2	1.4	3.3	3.6	0.4	1.1	84.1	0.9	15.0	0.076	0.538	25.674541	-100.426479

19 CARR: Saltillo - Torreón

CLAVE: 05086

RUTA: MEX-040

AÑO: 2018

LUGAR	ESTACION				CLASIFICACION VEHICULAR EN PORCIENTO										COORDENADAS					
	KM	TE	SC	TDPA	M	A	B	C2	C3	T3S2	T3S3	T3S2R4	OTROS	A	B	C	K'	D	LATITUD	LONGITUD
Saltillo	0.00																			
T. Der. Monclova	6.10	3	1	6603	0.8	49.5	5.1	11.9	2.4	17.7	4.7	7.2	0.7	50.3	5.1	44.6	0.056	0.516	25.453732	-101.075724
T. Der. Monclova	6.10	3	2	6183	0.5	43.5	6.0	12.4	2.8	21.3	4.9	7.8	0.8	44.0	6.0	50.0	0.058	0.516	25.453615	-101.075724
T. Izq. General Cepeda	44.14	1	0	4177	0.8	65.0	2.6	15.6	3.0	9.1	2.4	1.4	0.1	65.8	2.6	31.6	0.086	0.522	25.505114	-101.375262
T. Izq. General Cepeda	44.14	3	0	3416	0.5	47.5	6.2	13.9	3.3	17.4	6.6	3.5	1.1	48.0	6.2	45.8	0.081	0.522	25.512106	-101.382021
T. Der. Estación Marte	91.20	1	0	2285	0.8	56.1	4.9	13.6	4.2	14.2	4.2	1.8	0.2	56.9	4.9	38.2	0.084	0.532	25.658849	-101.762974
Ent. Paila	127.90	1	1	4540	0.3	53.1	4.5	8.7	2.0	18.5	4.6	7.4	0.9	53.4	4.5	42.1	0.073	0.505	25.648966	-102.129495
Ent. Paila	127.90	1	2	4454	0.3	48.8	4.9	9.8	2.2	19.7	5.0	8.4	0.9	49.1	4.9	46.0	0.081	0.505	25.648782	-102.129502
T. Der. San Pedro de Las Colonias (La Cuchilla)	204.58	1	1	3803	0.5	48.2	4.9	8.5	2.7	21.3	5.1	7.7	1.1	48.7	4.9	46.4	0.077	0.515	25.632650	-102.866079
T. Der. San Pedro de Las Colonias (La Cuchilla)	204.58	1	2	4032	1.9	39.6	5.6	9.4	3.1	24.1	6.0	9.0	1.3	41.5	5.6	52.9	0.073	0.515	25.625179	-102.863120
Emiliano Zapata	221.68	1	0	1316	2.6	43.4	5.2	19.0	5.8	17.7	4.6	1.3	0.4	46.0	5.2	48.8	0.065	0.505	25.497615	-102.943188
Emiliano Zapata	221.68	3	0	2232	1.3	58.2	3.4	18.1	3.7	10.9	3.1	1.2	0.1	59.5	3.4	37.1	0.061	0.501	25.489086	-102.957220
T. Der. Libramiento de Matamoros (1º Acceso)	246.80	1	0	6839	2.4	64.1	1.6	17.8	3.4	7.0	1.9	1.0	0.8	66.5	1.6	31.9	0.080	0.508	25.526327	-103.212291
T. Der. Libramiento de Matamoros (1º Acceso)	246.80	3	1	4610	4.2	76.7	0.8	13.9	1.6	1.1	0.8	0.4	0.5	80.9	0.8	18.3	0.082	0.509	25.527881	-103.218315
T. Der. Libramiento de Matamoros (1º Acceso)	246.80	3	2	4775	4.3	74.8	0.9	15.3	1.7	1.2	0.9	0.4	0.5	79.1	0.9	20.0	0.085	0.509	25.527768	-103.218338
Matamoros	252.80	3	1	8947	4.4	87.0	0.5	6.4	0.1	0.7	0.6	0.0	0.3	91.4	0.5	8.1	0.085	0.520	25.534720	-103.246779
Matamoros	252.80	3	2	9704	4.7	85.5	0.5	7.3	0.1	0.8	0.8	0.0	0.3	90.2	0.5	9.3	0.084	0.520	25.534620	-103.246797
T. Der. Libramiento de Matamoros (2º Acceso)	253.12	3	1	11793	4.3	75.9	2.0	9.3	1.8	3.9	1.3	1.0	0.5	80.2	2.0	17.8	0.081	0.503	25.535324	-103.260145
T. Der. Libramiento de Matamoros (2º Acceso)	253.12	3	2	11912	4.8	74.1	2.1	8.9	2.0	4.7	1.6	1.2	0.6	78.9	2.1	19.0	0.078	0.503	25.535170	-103.260130
T. Der. Libramiento de Torreón	264.50	3	1	39465	1.7	90.4	0.5	3.9	0.2	0.8	2.0	0.2	0.3	92.1	0.5	7.4	0.078	0.509	25.535252	-103.389575
T. Der. Libramiento de Torreón	264.50	3	2	38029	1.9	89.1	0.5	4.6	0.2	1.0	2.2	0.2	0.3	91.0	0.5	8.5	0.076	0.509	25.535100	-103.389573
Torreón	291.00																			

COAHUILA

20 CARR: Libramiento Norponiente de Saltillo (Cuota)

CLAVE: 05022

RUTA: MEX-S30

AÑO: 2018

LUGAR	ESTACION				CLASIFICACION VEHICULAR EN PORCIENTO										COORDENADAS					
	KM	TE	SC	TDPA	M	A	B	C2	C3	T3S2	T3S3	T3S2R4	OTROS	A	B	C	K'	D	LATITUD	LONGITUD
T. C. Ent. Morelos - Saltillo	0.00	3	0	4547	2.0	41.4	5.8	7.5	3.7	24.4	5.0	8.4	1.8	43.4	5.8	50.8	0.076	0.501	25.289335	-101.091166
X. C. Saltillo - Torreón	22.44	1	0	5345	1.9	40.1	5.4	7.9	3.7	26.2	4.7	8.4	1.7	42.0	5.4	52.6	0.065	0.503	25.445890	-101.067636
X. C. Saltillo - Torreón	22.44	3	0	7908	1.9	42.1	5.4	7.6	3.7	24.5	4.8	8.2	1.8	44.0	5.4	50.6	0.069	0.501	25.459224	-101.059741
X. C. Saltillo - Monclova	32.44	1	0	8071	1.8	41.5	5.2	7.4	3.7	25.3	4.7	8.6	1.8	43.3	5.2	51.5	0.068	0.501	25.514817	-101.002401
X. C. Saltillo - Monclova	32.44	3	0	7692	1.8	40.1	4.9	6.4	3.1	27.8	5.4	9.0	1.5	41.9	4.9	53.2	0.066	0.507	25.526681	-100.985861
Ojo Caliente	46.21	1	0	8301	1.0	41.7	4.3	5.3	3.3	28.3	4.3	10.5	1.3	42.7	4.3	53.0	0.080	0.502	25.609208	-100.917712

21 CARR: Libramiento Norte de Torreón (Cuota)

CLAVE:

RUTA: MEX-040D

AÑO: 2018

LUGAR	ESTACION				CLASIFICACION VEHICULAR EN PORCIENTO										COORDENADAS					
	KM	TE	SC	TDPA	M	A	B	C2	C3	T3S2	T3S3	T3S2R4	OTROS	A	B	C	K'	D	LATITUD	LONGITUD
X. C. Gómez Palacio - Jiménez	0.00	3	0	2974	1.9	48.7	3.2	7.6	3.2	19.9	5.4	8.6	1.5	50.6	3.2	46.2	0.073	0.510	25.633771	-103.505449
Lim. Edos. Term. Dgo. Ppia. Coah.	15.60																			
X. C. La Cuchilla - Torreón	17.36	1	0	2878	1.5	45.3	3.6	8.1	3.7	19.4	6.4	10.8	1.2	46.8	3.6	49.6	0.071	0.511	25.660530	-103.388514
X. C. La Cuchilla - Torreón	17.36	3	0	2992	2.8	50.4	3.4	8.1	3.2	16.8	5.2	8.7	1.4	53.2	3.4	43.4	0.071	0.502	25.647721	-103.353667
X. C. Torreón - Saltillo	40.70	1	0	2921	1.9	50.7	3.3	8.3	3.1	17.7	5.0	8.7	1.3	52.6	3.3	44.1	0.067	0.512	25.547717	-103.227241

22 CARR: Libramiento Oriente de Saltillo (Cuota)

CLAVE: 00115

RUTA: MEX-057D

AÑO: 2018

LUGAR	ESTACION				CLASIFICACION VEHICULAR EN PORCIENTO										COORDENADAS					
	KM	TE	SC	TDPA	M	A	B	C2	C3	T3S2	T3S3	T3S2R4	OTROS	A	B	C	K'	D	LATITUD	LONGITUD
Ent. La Carbonera	0.00																			
Caseta de Cobro Carbonera	12.30	2	1	7253	0.2	34.2	3.9	5.4	2.6	42.3	4.2	6.3	0.9	34.4	3.9	61.7	0.072	0.500	25.510948	-100.868249
Caseta de Cobro Carbonera	12.30	2	2	7253	0.2	34.2	3.9	5.4	2.6	42.3	4.2	6.3	0.9	34.4	3.9	61.7	0.072	0.500	25.510948	-100.868249
Caseta de Cobro Carbonera	12.30	3	1	8166	1.3	40.1	4.8	8.0	2.0	33.8	4.1	5.0	0.9	41.4	4.8	53.8	0.064	0.529	25.521798	-100.864962
Caseta de Cobro Carbonera	12.30	3	2	9184	1.2	34.5	5.0	8.5	1.8	38.1	4.5	5.5	0.9	35.7	5.0	59.3	0.061	0.529	25.521880	-100.865247
T. C. Saltillo - Monterrey	21.00																			

23 CARR: Nueva Rosita - Ent. Allende (Cuota)

CLAVE: 05502

RUTA: MEX-057D

AÑO: 2018

LUGAR	ESTACION				CLASIFICACION VEHICULAR EN PORCIENTO										COORDENADAS					
	KM	TE	SC	TDPA	M	A	B	C2	C3	T3S2	T3S3	T3S2R4	OTROS	A	B	C	K'	D	LATITUD	LONGITUD
T. C. Monclova - Piedras Negras	0.00	3	1	1688	0.5	66.8	4.4	14.2	1.8	6.0	1.0	5.0	0.3	67.3	4.4	28.3	0.113	0.502	27.940763	-101.191445
T. C. Monclova - Piedras Negras	0.00	3	2	1701	0.5	68.3	4.3	14.9	1.5	5.0	0.6	4.8	0.1	68.8	4.3	26.9	0.109	0.502	27.940834	-101.191607
Allende	52.20																			

COAHUILA

23 CARR: Nueva Rosita - Ent. Allende (Cuota)

CLAVE: 05502

RUTA: MEX-057D

AÑO: 2018

LUGAR	ESTACION				CLASIFICACION VEHICULAR EN PORCIENTO										COORDENADAS					
	KM	TE	SC	TDPA	M	A	B	C2	C3	T3S2	T3S3	T3S2R4	OTROS	A	B	C	K'	D	LATITUD	LONGITUD
T. C. Monclova - Piedras Negras	54.00	1	1	1755	0.2	70.9	3.3	16.6	1.0	3.8	0.6	3.2	0.4	71.1	3.3	25.6	0.130	0.506	28.306259	-100.908022
T. C. Monclova - Piedras Negras	54.00	1	2	1715	0.2	68.8	3.5	17.3	1.3	4.4	0.7	3.4	0.4	69.0	3.5	27.5	0.120	0.506	28.308886	-100.907086

24 CARR: Puerto México - La Carbonera (Cuota)

CLAVE: 00115

RUTA: MEX-057D

AÑO: 2018

LUGAR	ESTACION				CLASIFICACION VEHICULAR EN PORCIENTO										COORDENADAS					
	KM	TE	SC	TDPA	M	A	B	C2	C3	T3S2	T3S3	T3S2R4	OTROS	A	B	C	K'	D	LATITUD	LONGITUD
Ent. Puerto México	202.00																			
Caseta de Cobro Los Chorros	203.64	2	1	7219	0.1	35.2	4.6	4.0	2.1	40.7	4.6	6.9	1.8	35.3	4.6	60.1	0.076	0.500	25.186696	-100.731988
Caseta de Cobro Los Chorros	203.64	2	2	7219	0.1	35.2	4.6	4.0	2.1	40.7	4.6	6.9	1.8	35.3	4.6	60.1	0.076	0.500	25.186696	-100.731988
Lim. Edos. Term. N. L. Ppia. Coah.	204.07																			
Lim. Edos. Term. Coah. Ppia. N. L.	204.50																			
Lim. Edos. Term. N. L. Ppia. Coah.	205.76																			
T. Der. San Antonio de Las Alazanas	224.94	1	1	8404	2.3	44.7	4.6	8.2	2.2	27.2	4.1	5.2	1.5	47.0	4.6	48.4	0.059	0.520	25.341953	-100.794616
T. Der. San Antonio de Las Alazanas	224.94	1	2	9121	1.5	40.2	4.8	9.3	2.4	29.5	4.6	6.0	1.7	41.7	4.8	53.5	0.063	0.520	25.342104	-100.794715
T. Der. San Antonio de Las Alazanas	224.94	3	1	7704	2.1	50.3	3.8	8.7	1.9	22.9	4.0	4.6	1.7	52.4	3.8	43.8	0.071	0.523	25.351274	-100.794343
T. Der. San Antonio de Las Alazanas	224.94	3	2	8443	1.8	44.9	4.0	9.5	2.0	26.0	4.7	5.1	2.0	46.7	4.0	49.3	0.073	0.523	25.350975	-100.794461
Los Lirios	228.30	3	1	10282	1.5	49.5	4.0	9.3	2.1	25.2	3.6	3.8	1.0	51.0	4.0	45.0	0.110	0.511	25.406936	-100.800658
Los Lirios	228.30	3	2	9831	1.5	45.4	4.4	10.2	2.3	26.7	4.0	4.3	1.2	46.9	4.4	48.7	0.092	0.511	25.406928	-100.800754
Ent. La Carbonera	235.60																			

25 CARR: Saltillo - Monterrey (Cuota)

CLAVE: 00087

RUTA: MEX-040D

AÑO: 2018

LUGAR	ESTACION				CLASIFICACION VEHICULAR EN PORCIENTO										COORDENADAS					
	KM	TE	SC	TDPA	M	A	B	C2	C3	T3S2	T3S3	T3S2R4	OTROS	A	B	C	K'	D	LATITUD	LONGITUD
Ojo Caliente	46.21	3	1	3699	1.0	53.9	4.3	6.9	3.5	19.2	4.2	6.2	0.8	54.9	4.3	40.8	0.068	0.525	25.617073	-100.906702
Ojo Caliente	46.21	3	2	4094	2.3	47.9	4.6	7.7	3.8	20.7	4.9	7.2	0.9	50.2	4.6	45.2	0.061	0.525	25.617132	-100.906769
Lim. Edos. Term. Coah. Ppia. N. L.	61.08																			
T. Izq. Anillo Periférico de Monterrey (Cuota)	82.00	1	1	8784	1.6	73.6	4.8	6.5	1.6	6.6	1.7	2.7	0.9	75.2	4.8	20.0	0.072	0.523	25.697895	-100.600151
T. Izq. Anillo Periférico de Monterrey (Cuota)	82.00	1	2	8006	1.8	71.3	5.6	7.1	1.6	7.0	1.9	2.7	1.0	73.1	5.6	21.3	0.083	0.523	25.698059	-100.600599
T. Izq. Anillo Periférico de Monterrey (Cuota)	82.00	3	1	4617	0.8	92.0	2.0	4.7	0.2	0.2	0.1	0.0	0.0	92.8	2.0	5.2	0.080	0.521	25.691946	-100.561941
T. Izq. Anillo Periférico de Monterrey (Cuota)	82.00	3	2	4245	0.8	91.1	2.1	5.3	0.4	0.2	0.1	0.0	0.0	91.9	2.1	6.0	0.090	0.521	25.692046	-100.561885
Morones Prieto	96.10																			

COAHUILA

26 CARR: Torreón - Saltillo (Cuota)

CLAVE:

RUTA: MEX-040D

AÑO: 2018

LUGAR	ESTACION				CLASIFICACION VEHICULAR EN PORCIENTO													COORDENADAS		
	KM	TE	SC	TDPA	M	A	B	C2	C3	T3S2	T3S3	T3S2R4	OTROS	A	B	C	K'	D	LATITUD	LONGITUD
Matamoros	0.00																			
Caseta de Cobro La Cuchilla	37.00	2	1	3033	0.3	47.9	5.8	4.4	1.4	24.3	5.2	9.3	1.4	48.2	5.8	46.0	0.091	0.500	25.627052	-102.878352
Caseta de Cobro La Cuchilla	37.00	2	2	3033	0.3	47.9	5.8	4.4	1.4	24.3	5.2	9.3	1.4	48.2	5.8	46.0	0.091	0.500	25.627052	-102.878352
Caseta de Cobro Plan de Ayala	205.00	2	1	3185	0.4	49.8	6.8	4.0	1.1	22.7	4.8	9.0	1.4	50.2	6.8	43.0	0.091	0.500	25.444203	-101.303908
Caseta de Cobro Plan de Ayala	205.00	2	2	3185	0.4	49.8	6.8	4.0	1.1	22.7	4.8	9.0	1.4	50.2	6.8	43.0	0.091	0.500	25.444203	-101.303908
T. C. Saltillo - Torreón (Libre)	206.80																			

27 CARR: Allende - Villa Unión

CLAVE: 05001

RUTA: COA-015

AÑO: 2018

LUGAR	ESTACION				CLASIFICACION VEHICULAR EN PORCIENTO													COORDENADAS		
	KM	TE	SC	TDPA	M	A	B	C2	C3	T3S2	T3S3	T3S2R4	OTROS	A	B	C	K'	D	LATITUD	LONGITUD
Allende	0.00	3	0	2171	1.6	72.6	2.7	21.0	0.3	1.6	0.1	0.0	0.1	74.2	2.7	23.1	0.100	0.501	28.336234	-100.838755
Villa Unión	19.00																			

28 CARR: Corredor Libramiento de San Pedro

CLAVE: 05023

RUTA: COA-087

AÑO: 2018

LUGAR	ESTACION				CLASIFICACION VEHICULAR EN PORCIENTO													COORDENADAS		
	KM	TE	SC	TDPA	M	A	B	C2	C3	T3S2	T3S3	T3S2R4	OTROS	A	B	C	K'	D	LATITUD	LONGITUD
T. C. Monclova - San Pedro de las Colonias	0.00	3	0	2868	14.4	61.6	1.4	10.3	2.5	5.6	1.6	2.2	0.4	76.0	1.4	22.6	0.093	0.545	25.774550	-102.982876
T. C. La Cuchilla - Torreón	3.60	1	0	4436	12.6	68.2	1.3	8.9	1.4	4.4	1.4	1.6	0.2	80.8	1.3	17.9	0.095	0.533	25.759186	-103.000219

29 CARR: Cuatro Ciénegas - Ocampo

CLAVE: 05026

RUTA: COA-048

AÑO: 2018

LUGAR	ESTACION				CLASIFICACION VEHICULAR EN PORCIENTO													COORDENADAS		
	KM	TE	SC	TDPA	M	A	B	C2	C3	T3S2	T3S3	T3S2R4	OTROS	A	B	C	K'	D	LATITUD	LONGITUD
Cuatro Ciénegas	0.00	3	0	1274	2.8	73.6	0.4	20.3	0.4	1.8	0.4	0.2	0.1	76.4	0.4	23.2	0.076	0.508	27.000284	-102.072726
Ocampo	50.00																			

30 CARR: El Sauz - Palau

CLAVE: 05060

RUTA: COA-022

AÑO: 2018

LUGAR	ESTACION				CLASIFICACION VEHICULAR EN PORCIENTO													COORDENADAS		
	KM	TE	SC	TDPA	M	A	B	C2	C3	T3S2	T3S3	T3S2R4	OTROS	A	B	C	K'	D	LATITUD	LONGITUD
El Sauz	0.00	3	1	1327	0.6	69.6	5.4	13.8	1.9	3.8	2.6	1.9	0.4	70.2	5.4	24.4	0.093	0.504	27.640606	-101.188957
El Sauz	0.00	3	2	1308	0.3	66.6	5.9	15.6	2.1	4.5	2.7	2.0	0.3	66.9	5.9	27.2	0.106	0.504	27.640498	-101.188940
Minas de Barroterán	31.00	3	1	1246	1.7	68.6	3.9	15.1	2.1	4.4	2.2	1.5	0.5	70.3	3.9	25.8	0.104	0.506	27.662578	-101.289020

COAHUILA

30 CARR: El Sauz - Palau

CLAVE: 05060

RUTA: COA-022

AÑO: 2018

LUGAR	ESTACION				CLASIFICACION VEHICULAR EN PORCIENTO														COORDENADAS	
	KM	TE	SC	TDPA	M	A	B	C2	C3	T3S2	T3S3	T3S2R4	OTROS	A	B	C	K'	D	LATITUD	LONGITUD
Minas de Barroterán	31.00	3	2	1279	1.5	65.4	4.2	16.9	2.2	5.0	2.5	1.6	0.7	66.9	4.2	28.9	0.081	0.506	27.662567	-101.289100
Palau	42.50	1	1	1161	1.7	68.6	0.7	15.1	2.5	5.6	4.4	1.0	0.4	70.3	0.7	29.0	0.094	0.518	27.874750	-101.415446
Palau	42.50	1	2	1249	1.7	66.1	0.6	16.7	2.8	5.9	4.8	1.1	0.3	67.8	0.6	31.6	0.096	0.518	27.874750	-101.415534

31 CARR: Emiliano Zapata - Viesca

CLAVE: 05521

RUTA: COA-082

AÑO: 2018

LUGAR	ESTACION				CLASIFICACION VEHICULAR EN PORCIENTO														COORDENADAS		
	KM	TE	SC	TDPA	M	A	B	C2	C3	T3S2	T3S3	T3S2R4	OTROS	A	B	C	K'	D	LATITUD	LONGITUD	
Emiliano Zapata	0.00	3	0	799	2.2	79.0	0.9	16.1	1.1	0.6	0.1	0.0	0.0	81.2	0.9	17.9	0.089	0.501	25.480021	-102.943334	
Viesca	24.00																				

32 CARR: Ent. La Rosa - General Cepeda

CLAVE: 05034

RUTA: COA-034

AÑO: 2018

LUGAR	ESTACION				CLASIFICACION VEHICULAR EN PORCIENTO														COORDENADAS	
	KM	TE	SC	TDPA	M	A	B	C2	C3	T3S2	T3S3	T3S2R4	OTROS	A	B	C	K'	D	LATITUD	LONGITUD
T. C. Saltillo - Torreón	0.00	3	0	1339	0.8	79.5	0.3	17.2	0.8	1.1	0.2	0.0	0.1	80.3	0.3	19.4	0.115	0.501	25.506982	-101.379115
Gral. Cepeda	21.00	1	0	1355	1.8	71.3	0.5	24.2	0.8	1.1	0.2	0.0	0.1	73.1	0.5	26.4	0.099	0.507	25.387712	-101.476828

33 CARR: Ent. Paila - Parras de La Fuente

CLAVE: 05014

RUTA: COA-102

AÑO: 2018

LUGAR	ESTACION				CLASIFICACION VEHICULAR EN PORCIENTO														COORDENADAS	
	KM	TE	SC	TDPA	M	A	B	C2	C3	T3S2	T3S3	T3S2R4	OTROS	A	B	C	K'	D	LATITUD	LONGITUD
Ent. Paila	0.00	3	0	2531	2.1	77.6	2.6	11.1	1.8	2.9	0.7	0.7	0.5	79.7	2.6	17.7	0.070	0.511	25.644278	-102.148389
Parras de La Fuente	20.05	1	1	2421	6.8	79.5	1.1	9.3	0.8	1.5	0.4	0.3	0.3	86.3	1.1	12.6	0.095	0.523	25.468864	-102.173821
Parras de La Fuente	20.05	1	2	2206	6.9	79.9	1.1	9.0	0.8	1.6	0.3	0.3	0.1	86.8	1.1	12.1	0.112	0.523	25.468857	-102.173691

34 CARR: Libramiento de Matamoros

CLAVE: 05032

RUTA: COA

AÑO: 2018

LUGAR	ESTACION				CLASIFICACION VEHICULAR EN PORCIENTO														COORDENADAS	
	KM	TE	SC	TDPA	M	A	B	C2	C3	T3S2	T3S3	T3S2R4	OTROS	A	B	C	K'	D	LATITUD	LONGITUD
T. C. Saltillo - Torreón	0.00	3	0	7984	2.1	72.1	1.5	11.5	2.5	6.8	2.0	0.8	0.7	74.2	1.5	24.3	0.061	0.506	25.532302	-103.219298
X. C. Matamoros - La Unión	3.70	3	1	7518	2.9	71.0	2.8	9.9	2.5	6.7	1.8	1.8	0.6	73.9	2.8	23.3	0.085	0.521	25.538686	-103.225887
X. C. Matamoros - La Unión	3.70	3	2	6924	2.8	67.1	3.2	11.6	3.1	7.7	2.0	1.9	0.6	69.9	3.2	26.9	0.085	0.521	25.538385	-103.225698
T. C. Saltillo - Torreón	5.32	1	1	8532	2.8	71.0	2.6	9.4	2.5	6.9	1.9	2.3	0.6	73.8	2.6	23.6	0.066	0.512	25.536781	-103.244917
T. C. Saltillo - Torreón	5.32	1	2	8138	3.0	68.6	2.8	9.9	2.6	7.9	2.0	2.5	0.7	71.6	2.8	25.6	0.063	0.512	25.536701	-103.244905

COAHUILA

35 CARR: Libramiento de Saltillo J.L.P.

CLAVE: 05031

RUTA: COA

AÑO: 2018

LUGAR	ESTACION				CLASIFICACION VEHICULAR EN PORCIENTO												COORDENADAS			
	KM	TE	SC	TDPA	M	A	B	C2	C3	T3S2	T3S3	T3S2R4	OTROS	A	B	C	K'	D	LATITUD	LONGITUD
T. C. Ent. Bella Unión - Saltillo	0.00																			
X. C. Saltillo - Arteaga	2.50	3	1	11737	0.8	75.5	0.6	8.3	3.5	6.2	3.2	1.1	0.8	76.3	0.6	23.1	0.106	0.528	25.448427	-100.892083
X. C. Saltillo - Arteaga	2.50	3	2	13105	0.7	74.7	0.9	10.4	3.9	6.2	1.9	0.6	0.7	75.4	0.9	23.7	0.095	0.528	25.448381	-100.892229
T. C. Saltillo - Monterrey	18.00	1	1	8806	1.2	69.3	1.1	11.8	4.8	9.5	1.2	0.6	0.5	70.5	1.1	28.4	0.130	0.504	25.554639	-100.921505
T. C. Saltillo - Monterrey	18.00	1	2	8665	0.8	66.5	2.3	12.3	4.9	10.7	1.3	0.7	0.5	67.3	2.3	30.4	0.137	0.504	25.554730	-100.921734

36 CARR: Libramiento de Torreón

CLAVE: 05516

RUTA: COA

AÑO: 2018

LUGAR	ESTACION				CLASIFICACION VEHICULAR EN PORCIENTO												COORDENADAS			
	KM	TE	SC	TDPA	M	A	B	C2	C3	T3S2	T3S3	T3S2R4	OTROS	A	B	C	K'	D	LATITUD	LONGITUD
X. C. Saltillo - Torreón	0.00	3	1	41935	1.7	83.9	1.5	5.5	2.2	1.9	2.3	0.6	0.4	85.6	1.5	12.9	0.081	0.543	25.538984	-103.370561
X. C. Saltillo - Torreón	0.00	3	2	40595	1.9	82.4	1.8	5.7	2.2	2.4	2.6	0.6	0.4	84.3	1.8	13.9	0.077	0.543	25.538980	-103.370986
T. C. La Cuchilla - Torreón (Baja)	7.30	1	1	22889	1.8	83.0	0.8	4.3	0.7	3.9	2.9	1.8	0.8	84.8	0.8	14.4	0.090	0.518	25.582408	-103.402380
T. C. La Cuchilla - Torreón (Alta)	7.30	1	1	17964	2.6	83.5	0.6	6.0	2.0	3.0	1.2	0.7	0.4	86.1	0.6	13.3	0.105	0.513	25.582271	-103.402497
T. C. La Cuchilla - Torreón (Baja)	7.30	1	2	21268	1.3	81.4	0.8	3.9	0.8	4.9	3.8	2.0	1.1	82.7	0.8	16.5	0.075	0.518	25.582021	-103.402639
T. C. La Cuchilla - Torreón (Alta)	7.30	1	2	13776	3.4	81.5	0.7	6.2	2.3	3.3	1.4	0.8	0.4	84.9	0.7	14.4	0.104	0.513	25.582178	-103.402528
Lim. Edos. Term. Coah. Ppia. Dgo.	11.80																			
T. C. Durango - Torreón	28.60																			

37 CARR: Matamoros - El Fresno

CLAVE: 05023

RUTA: COA-078

AÑO: 2018

LUGAR	ESTACION				CLASIFICACION VEHICULAR EN PORCIENTO												COORDENADAS			
	KM	TE	SC	TDPA	M	A	B	C2	C3	T3S2	T3S3	T3S2R4	OTROS	A	B	C	K'	D	LATITUD	LONGITUD
Matamoros	0.00	3	0	3380	11.4	63.2	0.9	17.8	2.3	2.7	1.1	0.3	0.3	74.6	0.9	24.5	0.089	0.505	25.500008	-103.224761
El Fresno	12.60	1	0	1255	12.9	58.2	5.9	15.0	3.9	3.6	0.5	0.0	0.0	71.1	5.9	23.0	0.098	0.510	25.426273	-103.227748

38 CARR: Matamoros - La Unión

CLAVE: 05023

RUTA: COA-070

AÑO: 2018

LUGAR	ESTACION				CLASIFICACION VEHICULAR EN PORCIENTO												COORDENADAS			
	KM	TE	SC	TDPA	M	A	B	C2	C3	T3S2	T3S3	T3S2R4	OTROS	A	B	C	K'	D	LATITUD	LONGITUD
X. C. Libramiento de Matamoros	1.00	3	1	1717	4.3	71.4	2.1	14.0	2.9	2.5	1.2	0.9	0.7	75.7	2.1	22.2	0.084	0.517	25.542837	-103.222450
X. C. Libramiento de Matamoros	1.00	3	2	1607	4.9	70.7	2.1	14.2	2.7	2.5	1.3	0.9	0.7	75.6	2.1	22.3	0.077	0.517	25.542856	-103.222584
La Partida	14.09	1	0	3384	7.7	68.7	0.9	11.7	4.8	4.1	1.4	0.4	0.3	76.4	0.9	22.7	0.085	0.517	25.586447	-103.297684
La Partida	14.09	3	0	6520	8.0	71.4	1.8	9.4	2.9	3.8	1.4	0.7	0.6	79.4	1.8	18.8	0.063	0.511	25.594571	-103.314848
X. C. Antigua Carretera a San Pedro	22.00	1	1	8367	5.1	83.5	0.3	6.1	2.3	1.0	1.1	0.2	0.4	88.6	0.3	11.1	0.068	0.523	25.598279	-103.374687

COAHUILA

38 CARR: Matamoros - La Unión

CLAVE: 05023

RUTA: COA-070

AÑO: 2018

LUGAR	ESTACION				CLASIFICACION VEHICULAR EN PORCIENTO													COORDENADAS		
	KM	TE	SC	TDPA	M	A	B	C2	C3	T3S2	T3S3	T3S2R4	OTROS	A	B	C	K'	D	LATITUD	LONGITUD
X. C. Antigua Carretera a San Pedro	22.00	1	2	7640	4.9	83.5	0.4	6.2	2.1	1.4	1.0	0.2	0.3	88.4	0.4	11.2	0.079	0.523	25.598181	-103.374687
La Unión	25.00	1	1	10997	4.7	83.6	0.5	5.4	1.4	1.9	1.5	0.5	0.5	88.3	0.5	11.2	0.076	0.505	25.597409	-103.397606
La Unión	25.00	1	2	10780	4.8	83.8	0.6	5.2	1.4	2.0	1.5	0.4	0.3	88.6	0.6	10.8	0.077	0.505	25.597298	-103.397602

39 CARR: Monclova - Estación Candela

CLAVE: 00501

RUTA: COA-030-NL

AÑO: 2018

LUGAR	ESTACION				CLASIFICACION VEHICULAR EN PORCIENTO													COORDENADAS		
	KM	TE	SC	TDPA	M	A	B	C2	C3	T3S2	T3S3	T3S2R4	OTROS	A	B	C	K'	D	LATITUD	LONGITUD
T. C. Monclova - Piedras Negras	0.00																			
T. Izq. Libramiento de Monclova	5.10	1	1	2472	3.4	78.0	0.8	14.9	1.2	1.2	0.4	0.0	0.1	81.4	0.8	17.8	0.091	0.503	26.930474	-101.387411
T. Izq. Libramiento de Monclova	5.10	1	2	2503	3.1	76.0	0.9	16.9	1.2	1.3	0.4	0.0	0.2	79.1	0.9	20.0	0.100	0.503	26.930540	-101.387505
Lim. Edos. Term. Coah. Ppia. N. L.	118.00																			
T. C. Monterrey - Colombia	125.50	1	0	536	0.2	69.1	2.6	17.6	1.1	8.3	0.3	0.7	0.1	69.3	2.6	28.1	0.170	0.523	26.838217	-100.495000

40 CARR: Morelos - Ent. Las Corrientes

CLAVE: 05500

RUTA: COA-010

AÑO: 2018

LUGAR	ESTACION				CLASIFICACION VEHICULAR EN PORCIENTO													COORDENADAS		
	KM	TE	SC	TDPA	M	A	B	C2	C3	T3S2	T3S3	T3S2R4	OTROS	A	B	C	K'	D	LATITUD	LONGITUD
T. C. Morelos - Cd. Acuña	0.00	3	0	1579	1.9	76.2	0.4	19.6	0.4	1.3	0.1	0.0	0.1	78.1	0.4	21.5	0.098	0.507	28.401787	-100.895212
Los Álamos	9.20	1	0	952	3.2	66.4	0.9	28.3	0.3	0.8	0.1	0.0	0.0	69.6	0.9	29.5	0.103	0.501	28.355748	-100.941847
T. C. Monclova - Piedras Negras	20.00																			

41 CARR: Puerto de Flores - El Hondable

CLAVE: 05512

RUTA: COA-112

AÑO: 2018

LUGAR	ESTACION				CLASIFICACION VEHICULAR EN PORCIENTO													COORDENADAS		
	KM	TE	SC	TDPA	M	A	B	C2	C3	T3S2	T3S3	T3S2R4	OTROS	A	B	C	K'	D	LATITUD	LONGITUD
T. C. Aut. Puerto México - Ojo Caliente	0.00	3	0	2251	1.0	76.6	0.8	18.3	1.0	1.4	0.5	0.2	0.2	77.6	0.8	21.6	0.080	0.504	25.340694	-100.777709
San Antonio de Las Alazanas	24.00	1	0	1903	7.2	74.8	1.1	14.6	0.6	1.2	0.2	0.1	0.2	82.0	1.1	16.9	0.112	0.504	25.278624	-100.601262
El Hondable	50.50																			

42 CARR: Ramal a Hipólito

CLAVE: 05509

RUTA: COA-114

AÑO: 2018

LUGAR	ESTACION				CLASIFICACION VEHICULAR EN PORCIENTO													COORDENADAS		
	KM	TE	SC	TDPA	M	A	B	C2	C3	T3S2	T3S3	T3S2R4	OTROS	A	B	C	K'	D	LATITUD	LONGITUD
T. C. Saltillo - Torreón	0.00	3	0	1213	0.3	70.7	0.3	15.8	1.9	4.9	3.5	2.1	0.5	71.0	0.3	28.7	0.085	0.514	25.595294	-101.452038

COAHUILA

42 CARR: Ramal a Hipólito

CLAVE: 05509

RUTA: COA-114

AÑO: 2018

LUGAR	ESTACION	CLASIFICACION VEHICULAR EN PORCIENTO												COORDENADAS								
		KM	TE	SC	TDPA	M	A	B	C2	C3	T3S2	T3S3	T3S2R4	OTROS	A	B	C	K'	D	LATITUD	LONGITUD	
Hipólito	13.00																					

43 CARR: Ramal a Lamadrid

CLAVE: 05522

RUTA: COA-042

AÑO: 2018

LUGAR	ESTACION	CLASIFICACION VEHICULAR EN PORCIENTO												COORDENADAS								
		KM	TE	SC	TDPA	M	A	B	C2	C3	T3S2	T3S3	T3S2R4	OTROS	A	B	C	K'	D	LATITUD	LONGITUD	
T. C. Monclova - San Pedro de las Colonias	0.00	3	0	1226	0.4	76.5	3.8	17.5	0.8	0.9	0.1	0.0	0.0	76.9	3.8	19.3	0.090	0.515	27.016674	-101.791860		
Lamadrid	4.00																					

44 CARR: Sabinas - Don Martín

CLAVE: 05501

RUTA: COA-025

AÑO: 2018

LUGAR	ESTACION	CLASIFICACION VEHICULAR EN PORCIENTO												COORDENADAS						
		KM	TE	SC	TDPA	M	A	B	C2	C3	T3S2	T3S3	T3S2R4	OTROS	A	B	C	K'	D	LATITUD
Sabinas	0.00	3	0	2019	4.9	71.5	0.2	21.0	0.5	1.5	0.1	0.2	0.1	76.4	0.2	23.4	0.086	0.503	27.849817	-101.097000
T. Izq. La Mezquitosa	3.00	3	0	1054	1.8	62.8	0.4	31.8	0.8	1.3	0.4	0.6	0.1	64.6	0.4	35.0	0.102	0.522	27.836519	-101.076364
Juárez	53.00	3	0	421	0.8	67.4	0.5	27.4	2.5	1.1	0.1	0.2	0.0	68.2	0.5	31.3	0.128	0.515	27.619283	-100.704633
Don Martín	66.00	1	0	394	0.6	76.2	0.5	18.0	3.2	1.2	0.1	0.2	0.0	76.8	0.5	22.7	0.109	0.503	27.540567	-100.625533

45 CARR: Saltillo - Arteaga

CLAVE: 05008

RUTA: COA-106

AÑO: 2018

LUGAR	ESTACION	CLASIFICACION VEHICULAR EN PORCIENTO												COORDENADAS								
		KM	TE	SC	TDPA	M	A	B	C2	C3	T3S2	T3S3	T3S2R4	OTROS	A	B	C	K'	D	LATITUD	LONGITUD	
Saltillo	0.00	3	1	9725	1.1	90.1	0.3	6.4	1.0	0.6	0.4	0.0	0.1	91.2	0.3	8.5	0.105	0.505	25.442955	-100.948171		
Saltillo	0.00	3	2	9546	1.0	89.8	0.3	6.9	1.0	0.6	0.3	0.0	0.1	90.8	0.3	8.9	0.116	0.505	25.443054	-100.948191		
X. C. Libramiento de Matehuala - Monterrey	9.00	1	1	5545	1.2	81.2	2.8	8.6	2.5	2.4	0.9	0.1	0.3	82.4	2.8	14.8	0.145	0.519	25.444628	-100.896542		
X. C. Libramiento de Matehuala - Monterrey	9.00	1	2	5141	1.2	79.5	3.1	9.4	2.7	2.7	1.0	0.1	0.3	80.7	3.1	16.2	0.153	0.519	25.444720	-100.896560		
X. C. Libramiento de Matehuala - Monterrey	9.00	3	1	3136	1.3	80.7	0.6	13.8	1.8	1.2	0.4	0.1	0.1	82.0	0.6	17.4	0.159	0.518	25.447422	-100.888304		
X. C. Libramiento de Matehuala - Monterrey	9.00	3	2	2923	1.4	78.1	0.6	16.0	2.0	1.3	0.4	0.1	0.1	79.5	0.6	19.9	0.210	0.518	25.447488	-100.888346		
Arteaga	12.00	1	1	3403	1.4	81.6	1.0	13.3	1.2	0.9	0.4	0.1	0.1	83.0	1.0	16.0	0.177	0.531	25.448786	-100.869358		
Arteaga	12.00	1	2	2999	2.1	79.7	0.9	14.5	1.2	1.0	0.4	0.1	0.1	81.8	0.9	17.3	0.092	0.531	25.448870	-100.869378		
T. C. Ent. Bella Unión - Saltillo	18.00																					

COAHUILA

46 CARR: San Buenaventura - Estación Hermanas

CLAVE: 05004

RUTA: COA-034

AÑO: 2018

LUGAR	ESTACION				CLASIFICACION VEHICULAR EN PORCIENTO										COORDENADAS					
	KM	TE	SC	TDPA	M	A	B	C2	C3	T3S2	T3S3	T3S2R4	OTROS	A	B	C	K'	D	LATITUD	LONGITUD
San Buenaventura	0.00	3	0	2011	2.2	79.6	0.6	13.9	1.5	1.5	0.4	0.2	0.1	81.8	0.6	17.6	0.083	0.514	27.078779	-101.531653
T. Izq. Santa Gertrudis	2.48	1	0	1873	1.3	81.0	2.1	13.2	1.0	1.0	0.3	0.0	0.1	82.3	2.1	15.6	0.082	0.508	27.089401	-101.513520
Abasolo	15.71	1	0	961	1.5	80.5	2.0	13.3	1.5	1.0	0.2	0.0	0.0	82.0	2.0	16.0	0.096	0.510	27.174515	-101.431292
Los Rodríguez	31.00	3	0	537	1.6	75.2	6.2	14.3	1.6	0.8	0.3	0.0	0.0	76.8	6.2	17.0	0.101	0.511	27.198931	-101.353821
Estación Hermanas	50.00	1	0	524	2.1	72.7	3.5	19.0	2.0	0.6	0.1	0.0	0.0	74.8	3.5	21.7	0.126	0.511	27.220389	-101.244751

47 CARR: T. C. (Ent. Morelos - Saltillo) - Parras de La Fuente

CLAVE: 05510

RUTA: COA-105

AÑO: 2018

LUGAR	ESTACION				CLASIFICACION VEHICULAR EN PORCIENTO										COORDENADAS					
	KM	TE	SC	TDPA	M	A	B	C2	C3	T3S2	T3S3	T3S2R4	OTROS	A	B	C	K'	D	LATITUD	LONGITUD
T. C. Morelos - Saltillo	0.00	3	1	5896	1.6	67.2	1.0	14.1	2.6	11.6	0.8	0.7	0.4	68.8	1.0	30.2	0.131	0.509	25.259974	-101.105689
T. C. Morelos - Saltillo	0.00	3	2	6118	1.2	68.0	1.1	13.3	3.1	11.3	1.0	0.7	0.3	69.2	1.1	29.7	0.140	0.509	25.259843	-101.105632
Gral. Cepeda	40.00	1	0	1430	2.1	68.3	2.0	26.2	0.6	0.8	0.0	0.0	0.0	70.4	2.0	27.6	0.122	0.508	25.365698	-101.480621
Gral. Cepeda	40.00	3	0	860	1.4	68.5	0.9	27.9	0.3	1.0	0.0	0.0	0.0	69.9	0.9	29.2	0.098	0.511	25.384996	-101.494060
Parras de La Fuente	102.00	1	0	2493	6.6	66.9	5.3	13.1	5.3	2.6	0.2	0.0	0.0	73.5	5.3	21.2	0.093	0.516	25.443537	-102.157295

48 CARR: T. C. (Saltillo - Monclova) - Ramos Arizpe

CLAVE: 05508

RUTA: COA

AÑO: 2018

LUGAR	ESTACION				CLASIFICACION VEHICULAR EN PORCIENTO										COORDENADAS					
	KM	TE	SC	TDPA	M	A	B	C2	C3	T3S2	T3S3	T3S2R4	OTROS	A	B	C	K'	D	LATITUD	LONGITUD
T. C. Saltillo - Monclova	0.00	3	0	5395	1.7	63.2	1.6	13.0	3.3	13.2	2.1	1.1	0.8	64.9	1.6	33.5	0.063	0.505	25.529086	-101.002974
Ramos Arizpe	12.00																			

49 CARR: Torreón - Escuadrón 201

CLAVE: 05022

RUTA: COA-011

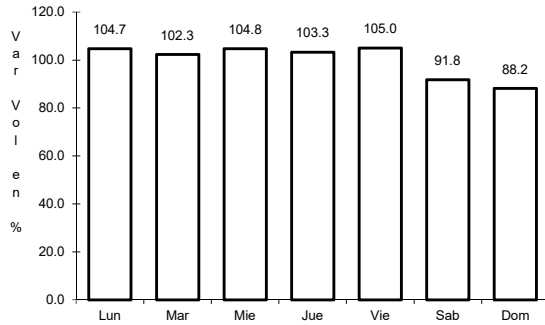
AÑO: 2018

LUGAR	ESTACION				CLASIFICACION VEHICULAR EN PORCIENTO										COORDENADAS					
	KM	TE	SC	TDPA	M	A	B	C2	C3	T3S2	T3S3	T3S2R4	OTROS	A	B	C	K'	D	LATITUD	LONGITUD
Torreón	0.00	3	1	18672	5.3	84.3	0.4	6.3	1.2	0.9	1.2	0.2	0.2	89.6	0.4	10.0	0.091	0.518	25.581473	-103.389185
Torreón	0.00	3	2	20035	5.3	84.7	0.5	5.5	1.5	1.1	1.0	0.2	0.2	90.0	0.5	9.5	0.074	0.518	25.581515	-103.389323
El Aguila	11.35	1	0	3330	9.1	76.5	0.5	10.1	1.9	1.7	0.1	0.0	0.1	85.6	0.5	13.9	0.068	0.515	25.626083	-103.366867
Escuadrón 201	17.06	1	0	1174	7.3	70.0	0.3	18.0	1.3	1.7	0.5	0.2	0.7	77.3	0.3	22.4	0.093	0.515	25.665206	-103.347398

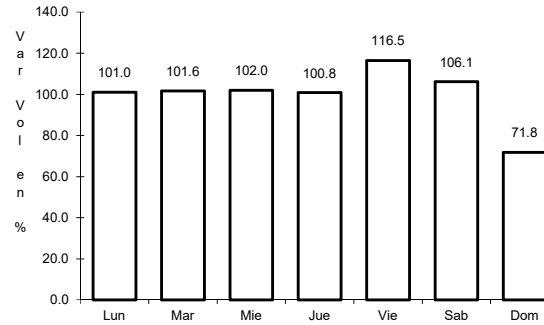
1 CARR: Cd. Acuña - Presa de La Amistad

CLAVE: 05085

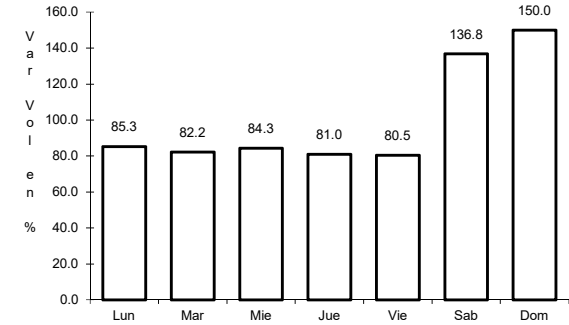
RUTA: MEX-002



Km: 0.00 Tipo: 3 Sent: 1



Km: 0.00 Tipo: 3 Sent: 2

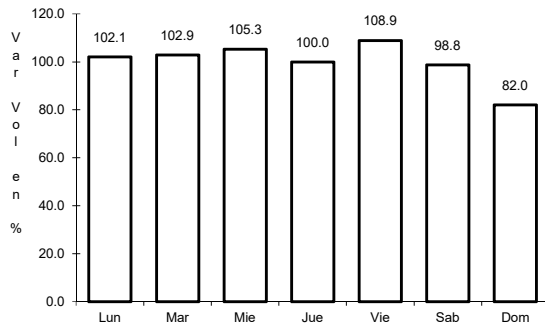


Km: 23.00 Tipo: 1 Sent: 0

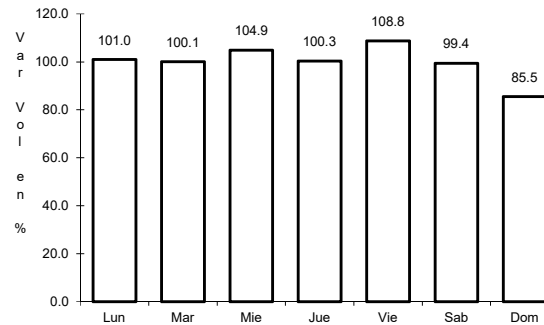
2 CARR: Durango - Torreón

CLAVE: 10085

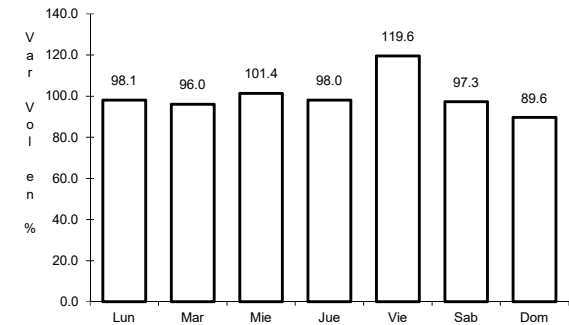
RUTA: MEX-040



Km: 0.00 Tipo: 3 Sent: 1



Km: 0.00 Tipo: 3 Sent: 2

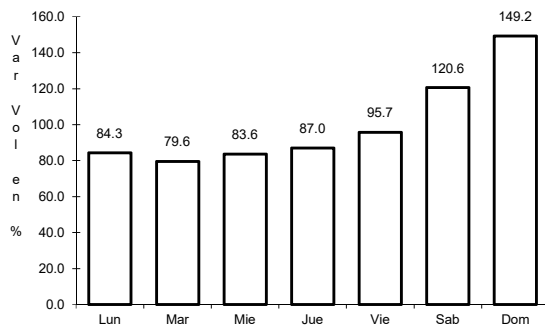


Km: 120.90 Tipo: 1 Sent: 0

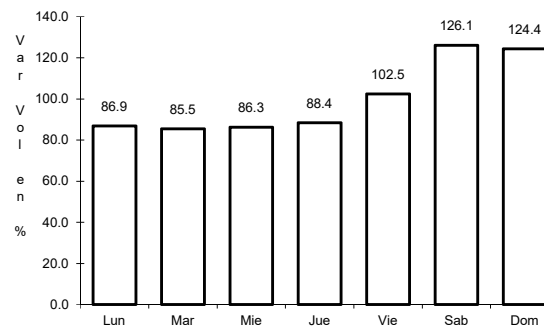
3 CARR: Ent. Bella Unión - Saltillo

CLAVE: 05003

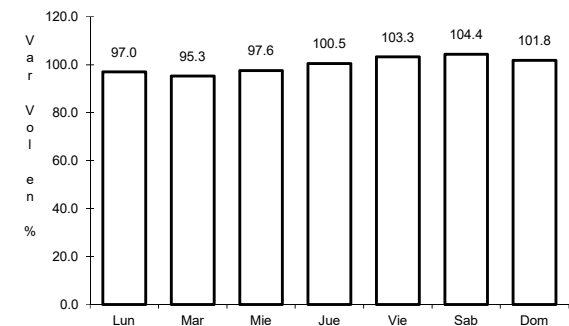
RUTA: MEX-057



Km: 4.61 Tipo: 1 Sent: 1



Km: 4.61 Tipo: 1 Sent: 2

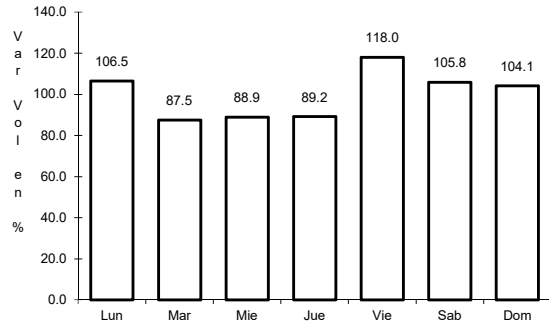


Km: 17.00 Tipo: 1 Sent: 1

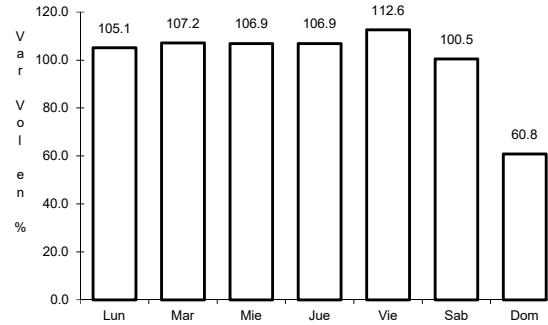
4 CARR: Ent. La Cuchilla - Torreón

CLAVE: 05021

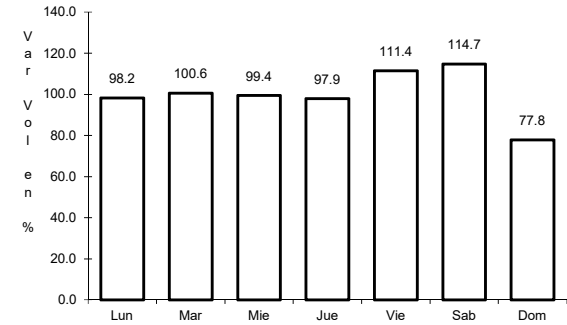
ruta: MEX-030



Km: 0.00 Tipo: 3 Sent: 0



Km: 84.00 Tipo: 1 Sent: 1

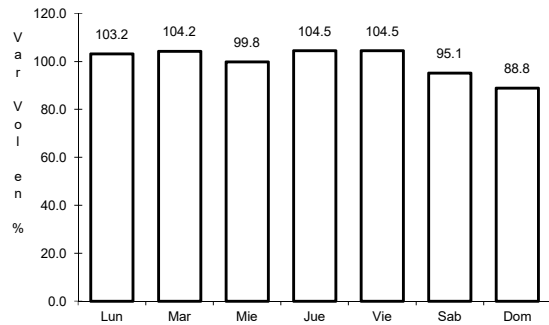


Km: 84.00 Tipo: 1 Sent: 2

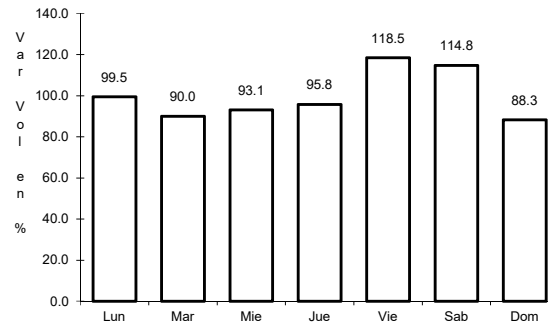
5 CARR: Ent. Morelos - Saltillo

CLAVE: 00149

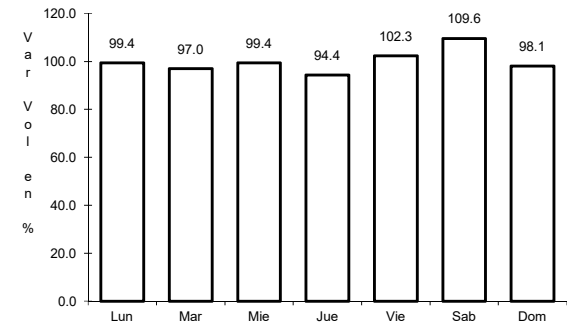
ruta: MEX-054



Km: 0.00 Tipo: 3 Sent: 1



Km: 0.00 Tipo: 3 Sent: 2

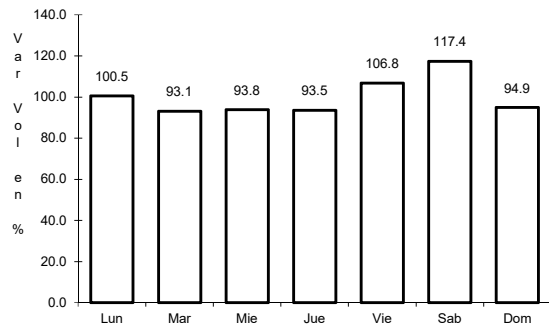


Km: 333.00 Tipo: 3 Sent: 0

6 CARR: Gregorio García - Francisco I. Madero

CLAVE: 00110

ruta: MEX-040

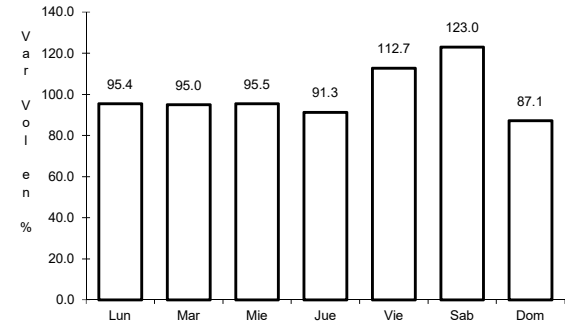
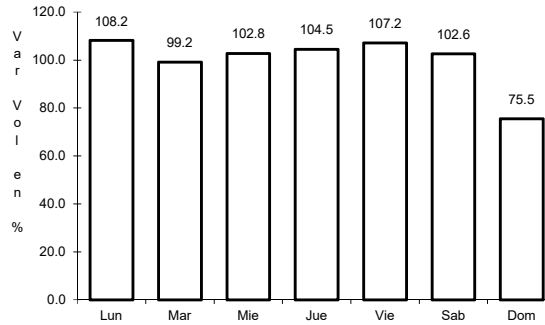
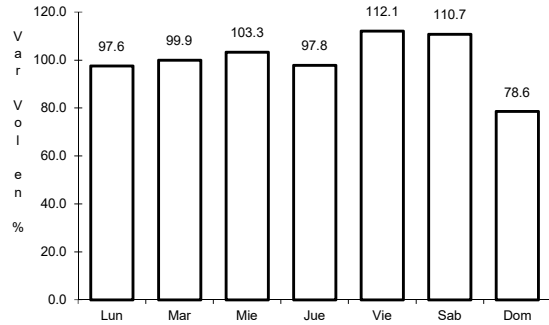


Km: 9.60 Tipo: 1 Sent: 0

7 CARR: Libramiento Allende - Nava

CLAVE: 05518

ruta: MEX-057



Km: 0.00 Tipo: 3 Sent: 1

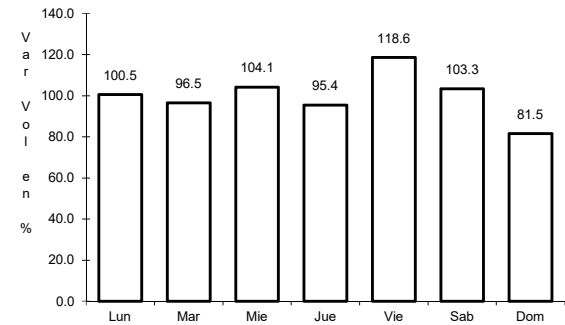
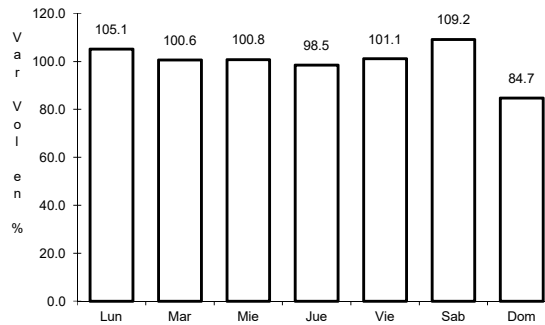
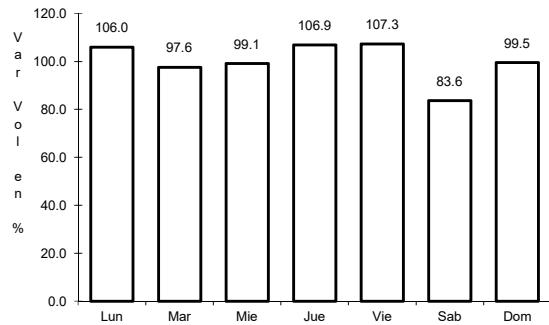
Km: 0.00 Tipo: 3 Sent: 2

Km: 18.55 Tipo: 1 Sent: 1

8 CARR: Monclova - Piedras Negras

CLAVE: 05407

ruta: MEX-057



Km: 0.00 Tipo: 3 Sent: 1

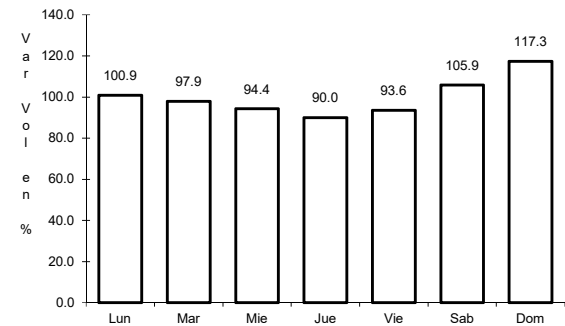
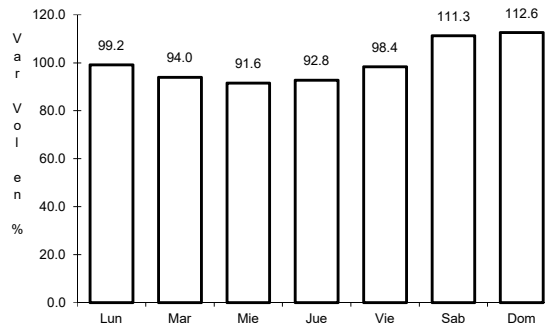
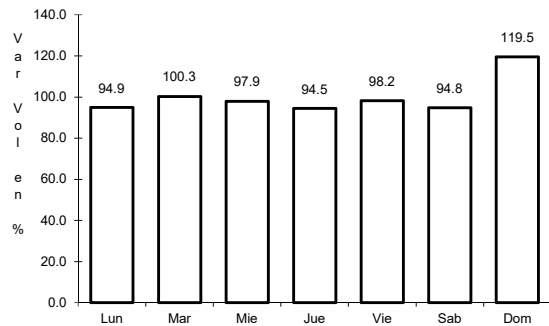
Km: 0.00 Tipo: 3 Sent: 2

Km: 126.30 Tipo: 3 Sent: 0

9 CARR: Monclova - San Pedro de Las Colonias

CLAVE: 05062

ruta: MEX-030



Km: 2.00 Tipo: 3 Sent: 1

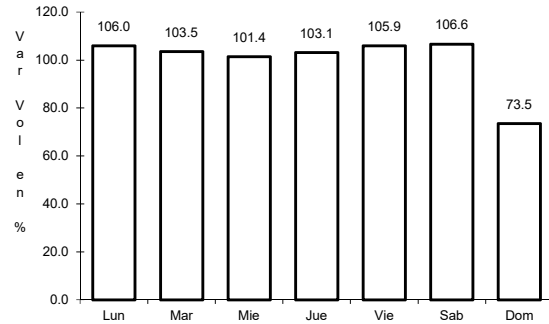
Km: 2.00 Tipo: 3 Sent: 2

Km: 80.15 Tipo: 3 Sent: 0

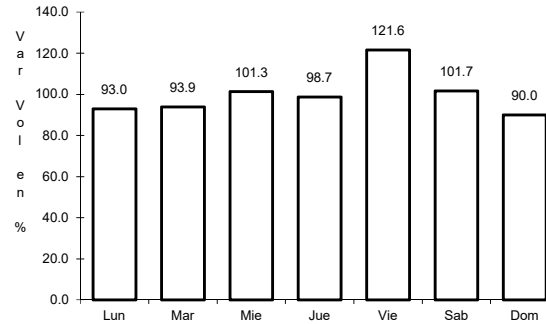
10 CARR: Monterrey - Castaños

CLAVE: 00128

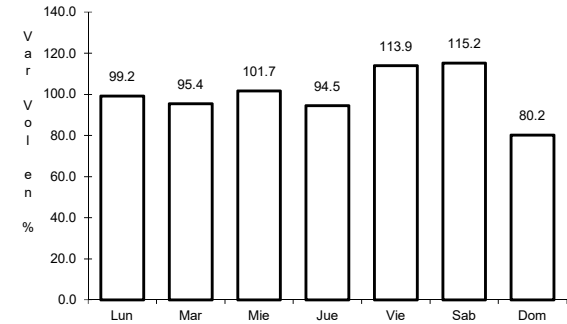
ruta: MEX-053



Km: 0.00 Tipo: 3 Sent: 0



Km: 155.90 Tipo: 1 Sent: 1

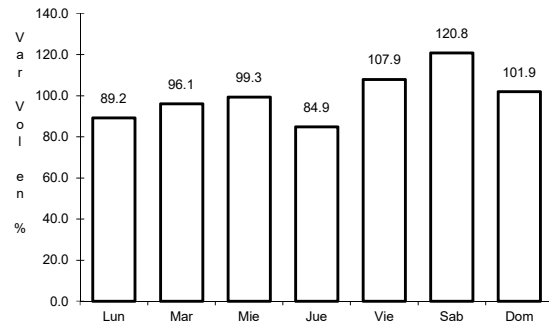


Km: 155.90 Tipo: 1 Sent: 2

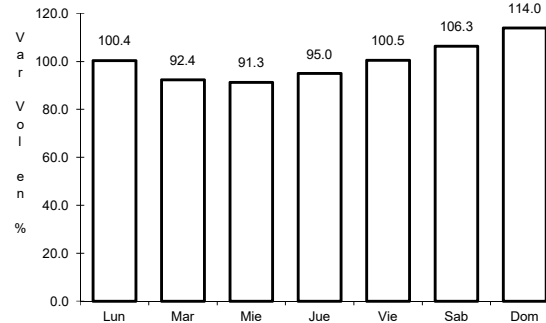
11 CARR: Morelos - Cd. Acuña

CLAVE: 05029

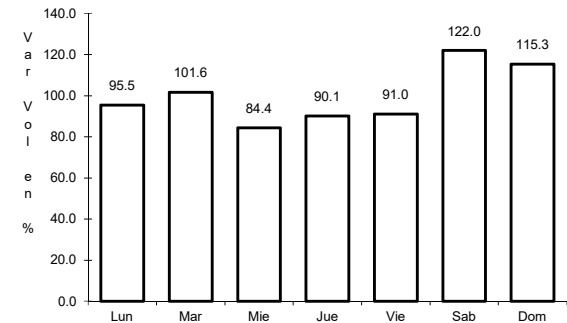
ruta: MEX-029



Km: 0.00 Tipo: 3 Sent: 1



Km: 0.00 Tipo: 3 Sent: 2

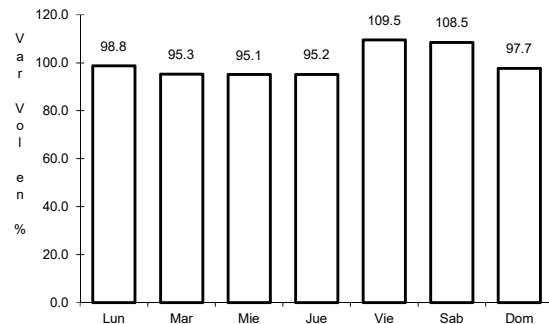


Km: 73.84 Tipo: 1 Sent: 0

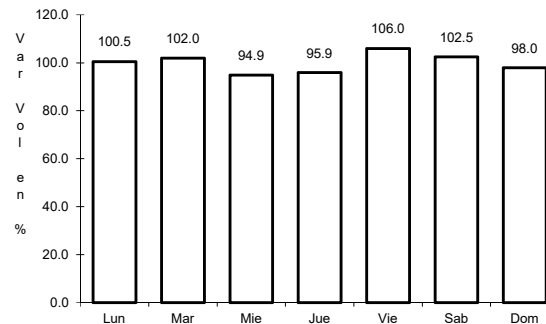
12 CARR: Nueva Rosita - Boquillas del Carmen

CLAVE: 05028

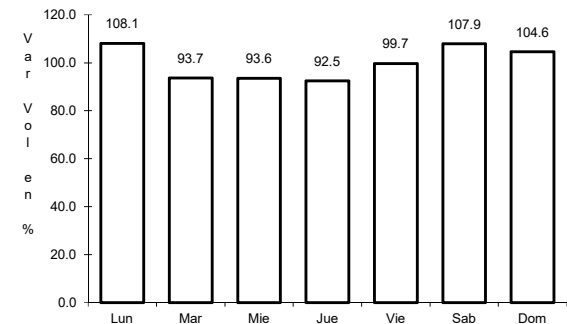
ruta: MEX-053



Km: 0.00 Tipo: 3 Sent: 1



Km: 0.00 Tipo: 3 Sent: 2

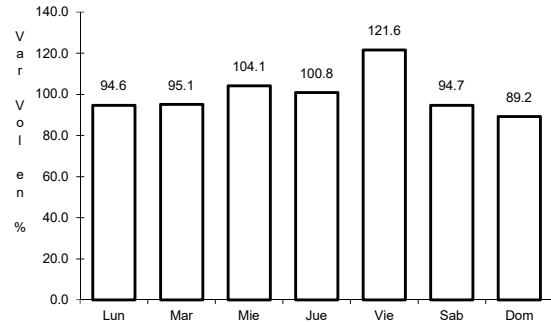


Km: 35.00 Tipo: 3 Sent: 0

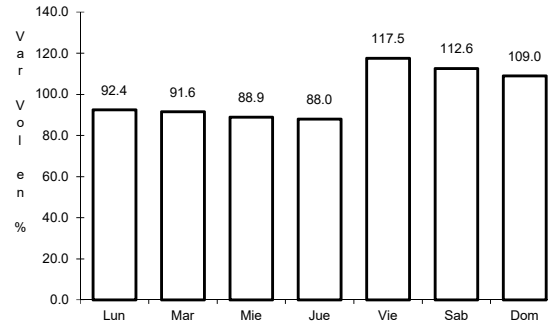
13 CARR: Ojo Caliente - Santa Cruz

CLAVE: 05007

ruta: MEX-057



Km: 0.00 Tipo: 3 Sent: 0

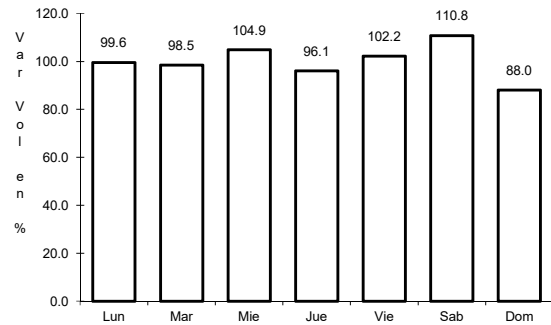


Km: 34.00 Tipo: 1 Sent: 0

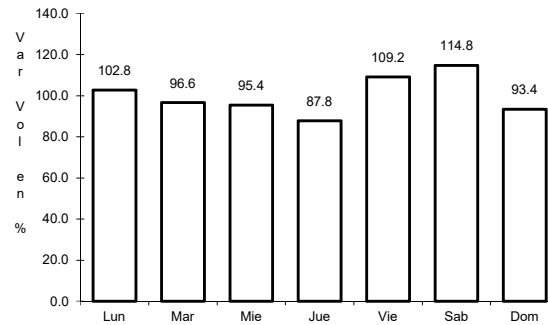
14 CARR: Piedras Negras - Cd. Acuña

CLAVE: 05061

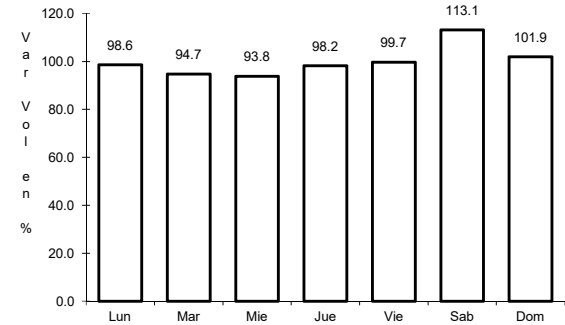
ruta: MEX-002



Km: 0.00 Tipo: 3 Sent: 1



Km: 0.00 Tipo: 3 Sent: 2

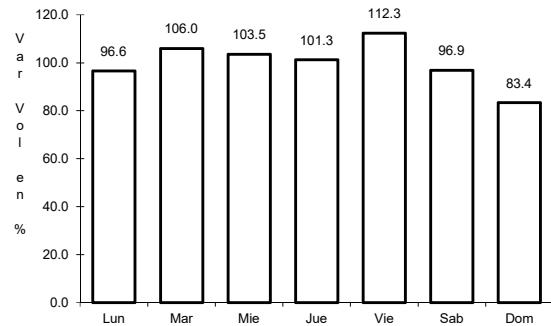


Km: 83.30 Tipo: 1 Sent: 0

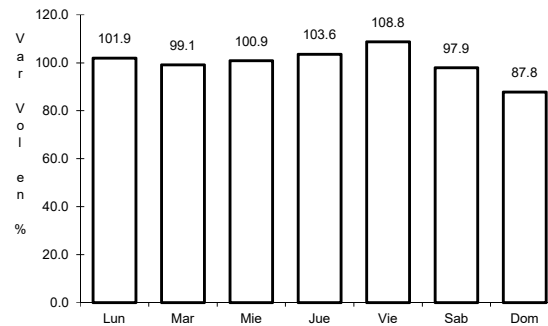
15 CARR: Piedras Negras - Nuevo Laredo

CLAVE: 00503

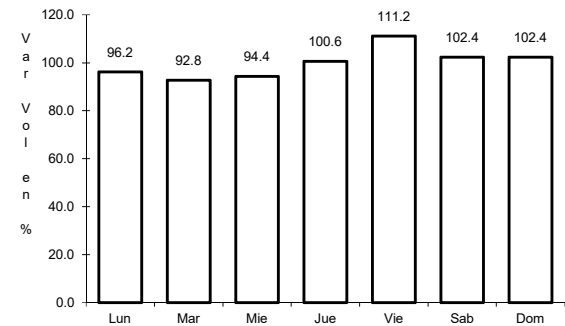
ruta: MEX-002



Km: 0.00 Tipo: 3 Sent: 1



Km: 0.00 Tipo: 3 Sent: 2

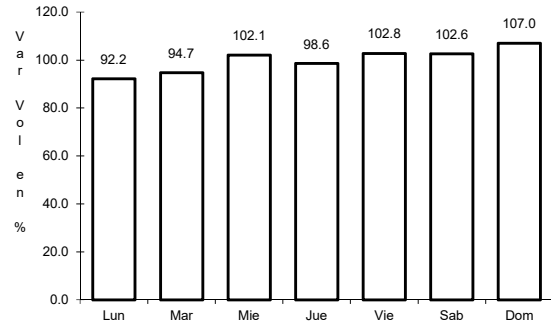


Km: 134.00 Tipo: 3 Sent: 0

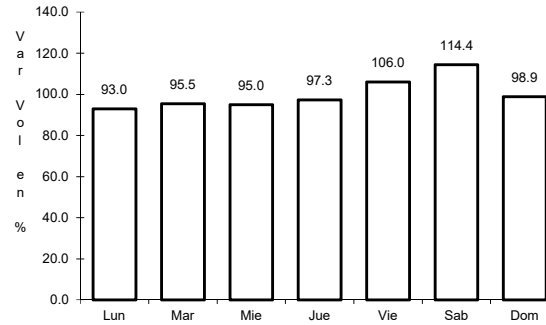
16 CARR: Puerto México - La Encantada

CLAVE: 05002

ruta: MEX-057



Km: 0.00 Tipo: 3 Sent: 0

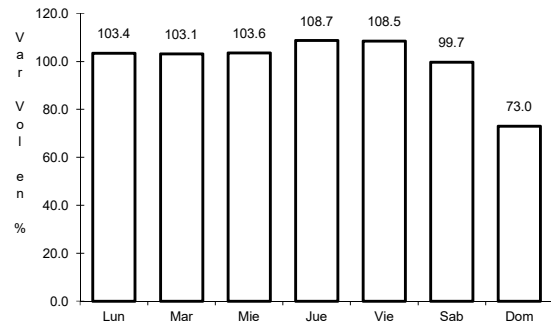


Km: 41.00 Tipo: 1 Sent: 0

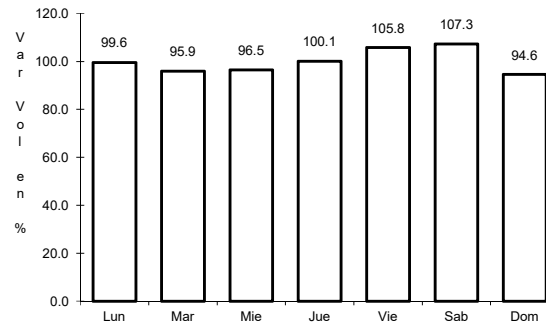
17 CARR: Saltillo - Monclova

CLAVE: 05406

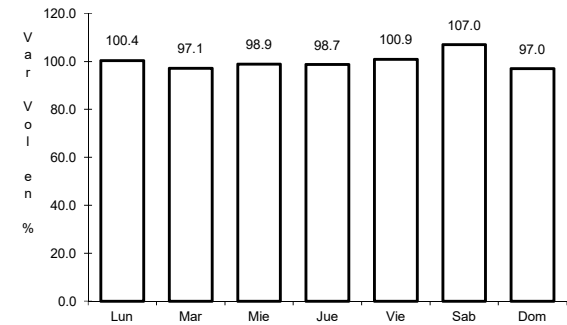
ruta: MEX-057



Km: 13.00 Tipo: 1 Sent: 0



Km: 192.00 Tipo: 1 Sent: 1

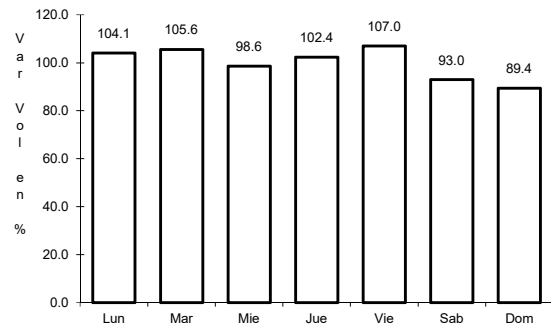


Km: 192.00 Tipo: 1 Sent: 2

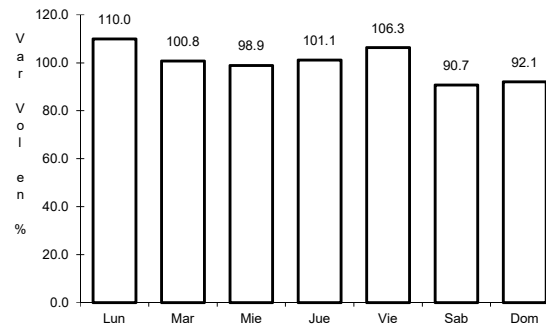
18 CARR: Saltillo - Monterrey

CLAVE: 00087

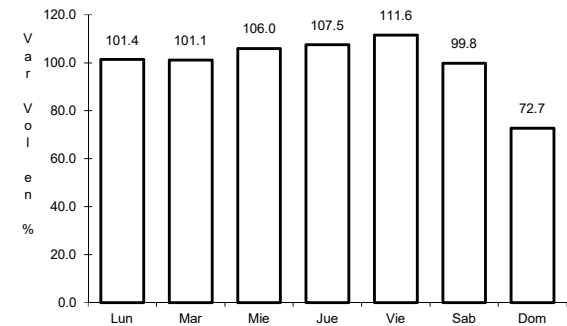
ruta: MEX-040



Km: 4.25 Tipo: 3 Sent: 1



Km: 4.25 Tipo: 3 Sent: 2

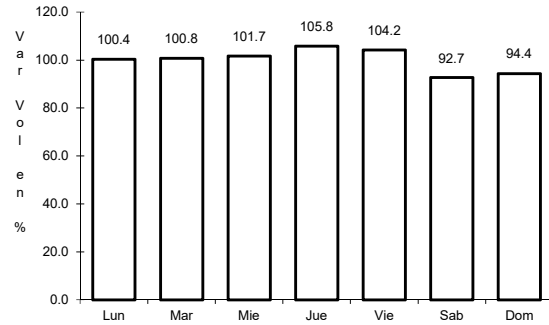


Km: 79.20 Tipo: 1 Sent: 1

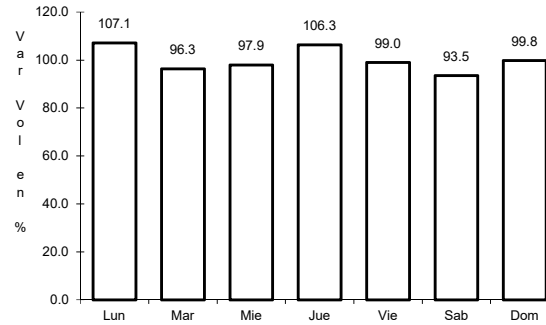
19 CARR: Saltillo - Torreón

CLAVE: 05086

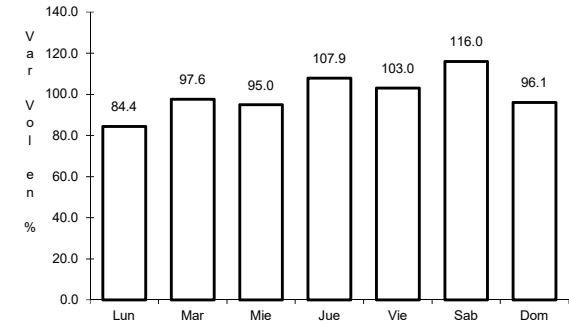
ruta: MEX-040



Km: 6.10 Tipo: 3 Sent: 1



Km: 6.10 Tipo: 3 Sent: 2

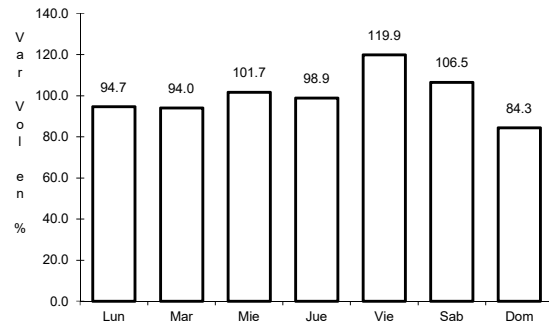


Km: 91.20 Tipo: 1 Sent: 0

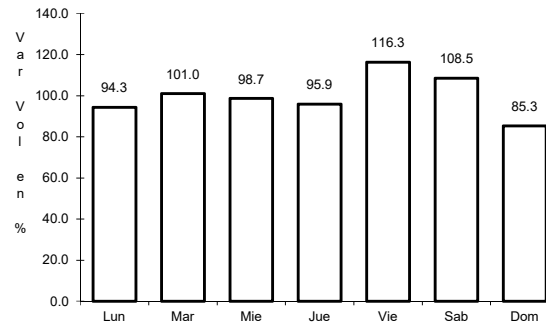
20 CARR: Libramiento Norponiente de Saltillo (Cuota)

CLAVE: 05022

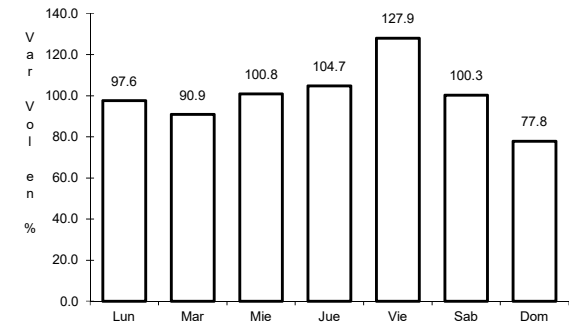
ruta: MEX-S30



Km: 0.00 Tipo: 3 Sent: 0



Km: 22.44 Tipo: 3 Sent: 0

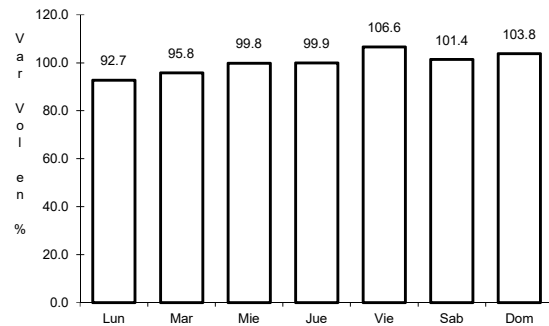


Km: 46.21 Tipo: 1 Sent: 0

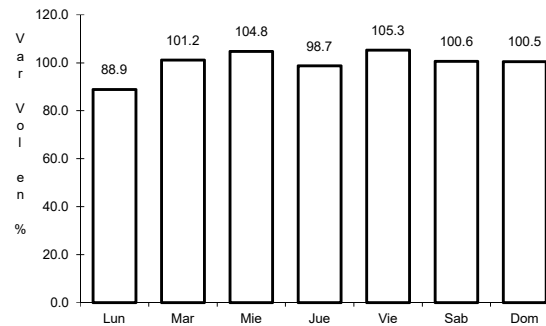
21 CARR: Libramiento Norte de Torreón (Cuota)

CLAVE:

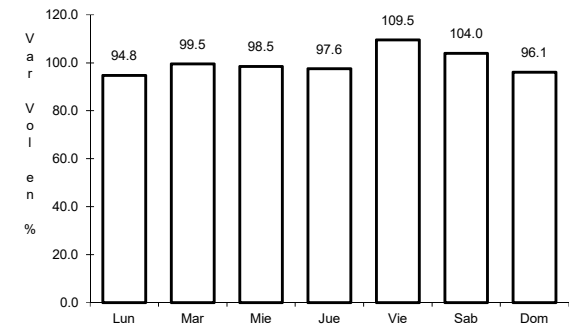
ruta: MEX-040D



Km: 0.00 Tipo: 3 Sent: 0



Km: 17.36 Tipo: 1 Sent: 0

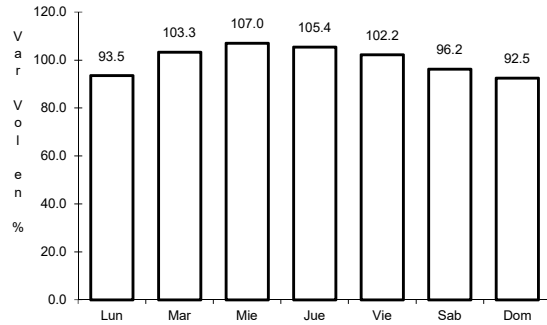


Km: 40.70 Tipo: 1 Sent: 0

22 CARR: Libramiento Oriente de Saltillo (Cuota)

CLAVE: 00115

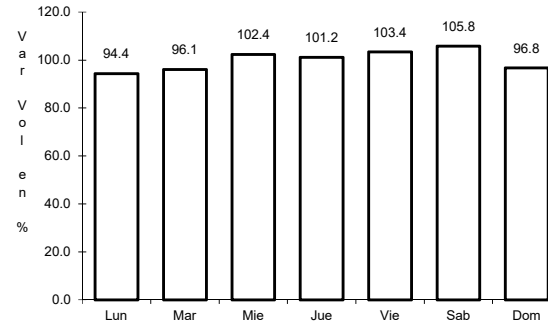
ruta: MEX-057D



Km: 12.30

Tipo: 3

Sent: 1



Km: 12.30

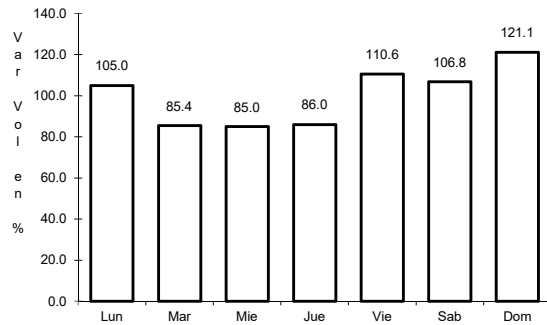
Tipo: 3

Sent: 2

23 CARR: Nueva Rosita - Ent. Allende (Cuota)

CLAVE: 05502

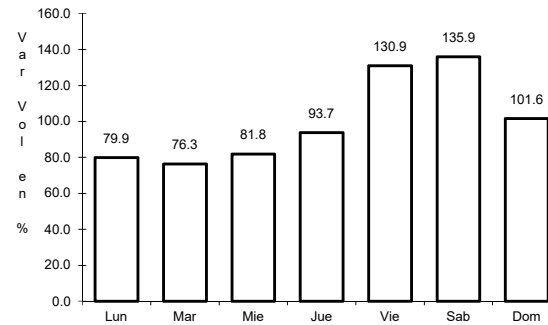
ruta: MEX-057D



Km: 0.00

Tipo: 3

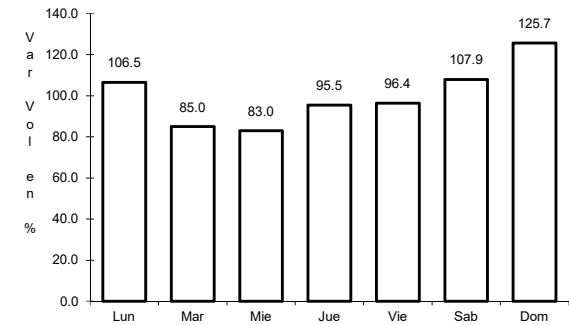
Sent: 1



Km: 0.00

Tipo: 3

Sent: 2



Km: 54.00

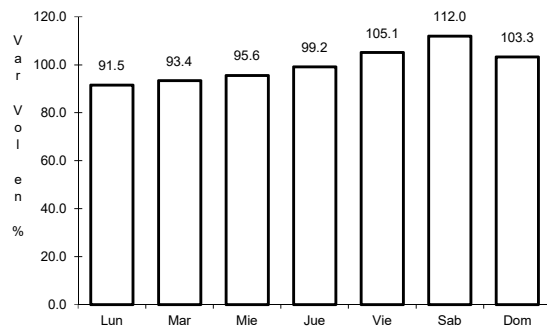
Tipo: 1

Sent: 1

24 CARR: Puerto México - La Carbonera (Cuota)

CLAVE: 00115

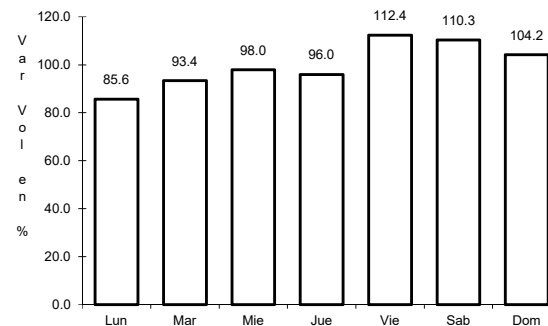
ruta: MEX-057D



Km: 224.94

Tipo: 1

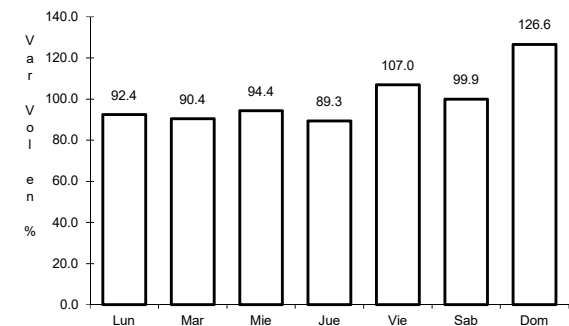
Sent: 1



Km: 224.94

Tipo: 1

Sent: 2



Km: 228.30

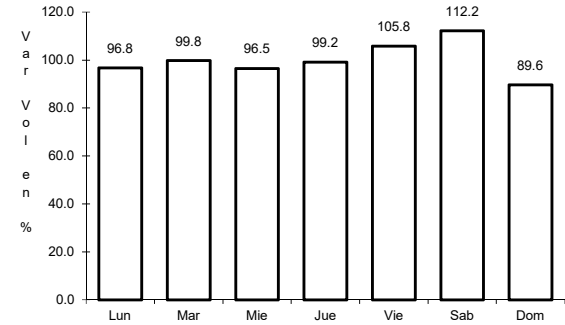
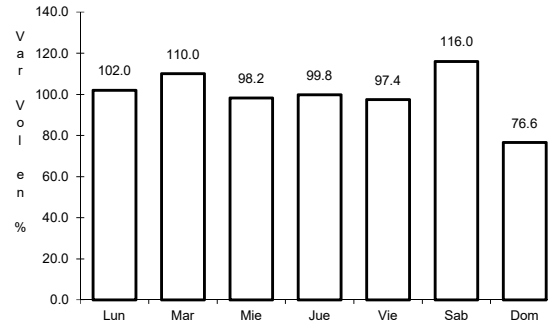
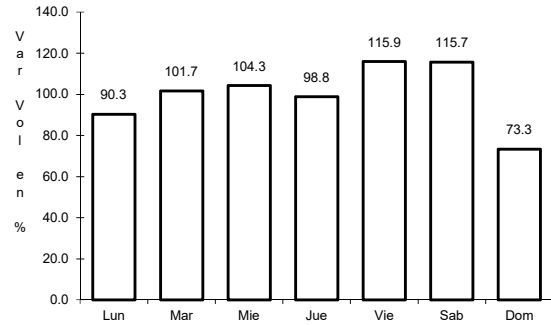
Tipo: 3

Sent: 1

25 CARR: Saltillo - Monterrey (Cuota)

CLAVE: 00087

ruta: MEX-040D



Km: 46.21 Tipo: 3 Sent: 1

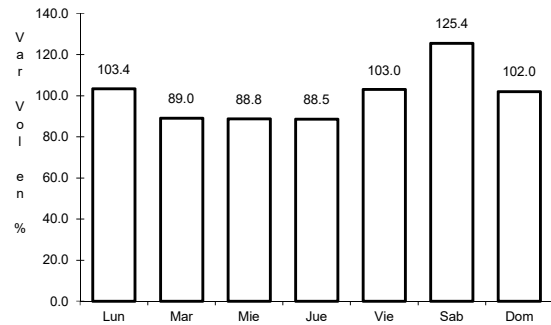
Km: 46.21 Tipo: 3 Sent: 2

Km: 82.00 Tipo: 3 Sent: 1

27 CARR: Allende - Villa Unión

CLAVE: 05001

ruta: COA-015

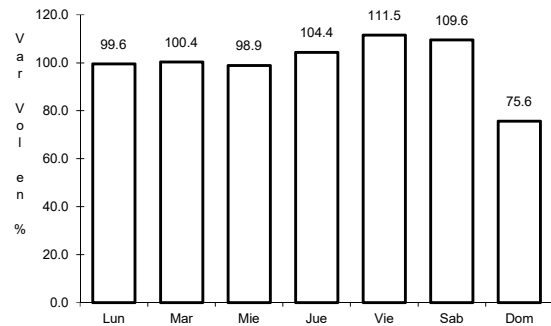


Km: 0.00 Tipo: 3 Sent: 0

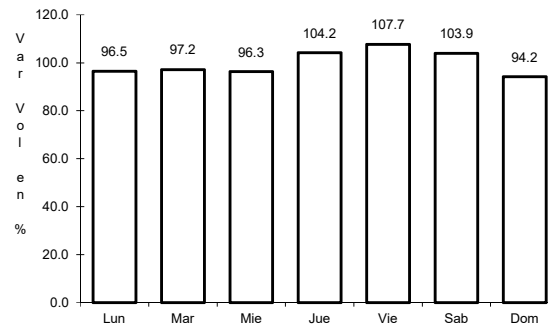
28 CARR: Corredor Libramiento de San Pedro

CLAVE: 05023

ruta: COA-087



Km: 0.00 Tipo: 3 Sent: 0

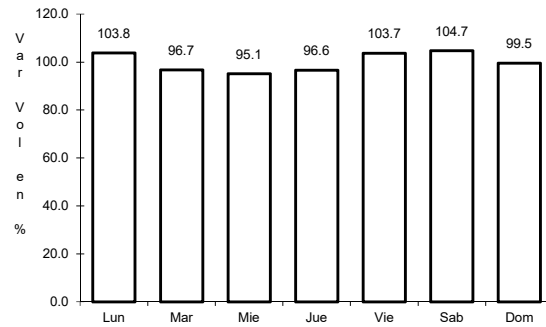


Km: 3.60 Tipo: 1 Sent: 0

29 CARR: Cuatro Ciénegas - Ocampo

CLAVE: 05026

RUTA: COA-048



Km: 0.00

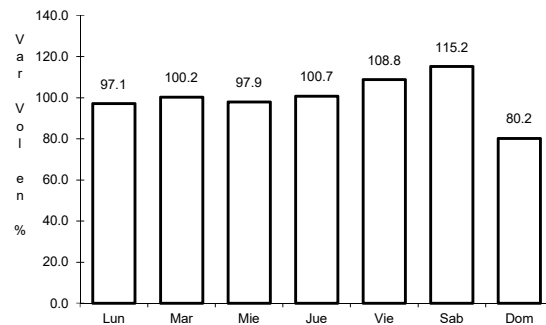
Tipo: 3

Sent: 0

30 CARR: El Sauz - Palau

CLAVE: 05060

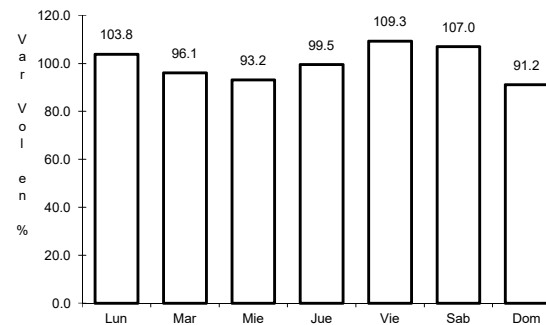
RUTA: COA-022



Km: 0.00

Tipo: 3

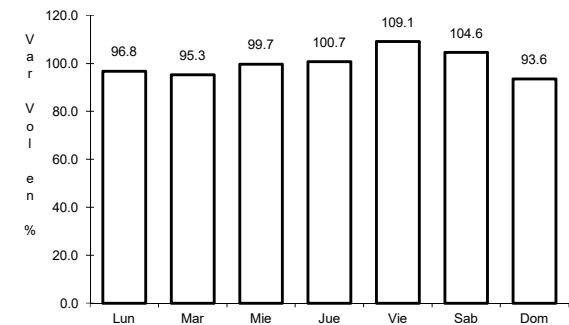
Sent: 1



Km: 0.00

Tipo: 3

Sent: 2



Km: 42.50

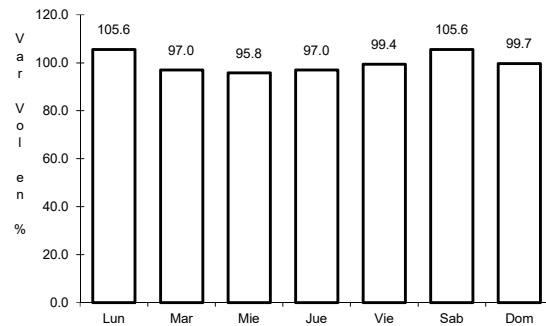
Tipo: 1

Sent: 1

31 CARR: Emiliano Zapata - Viesca

CLAVE: 05521

RUTA: COA-082



Km: 0.00

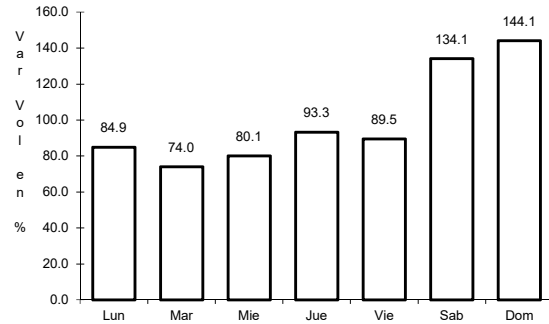
Tipo: 3

Sent: 0

32 CARR: Ent. La Rosa - General Cepeda

CLAVE: 05034

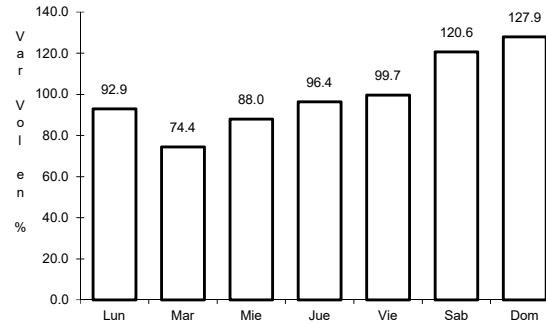
RUTA: COA-034



Km: 0.00

Tipo: 3

Sent: 0



Km: 21.00

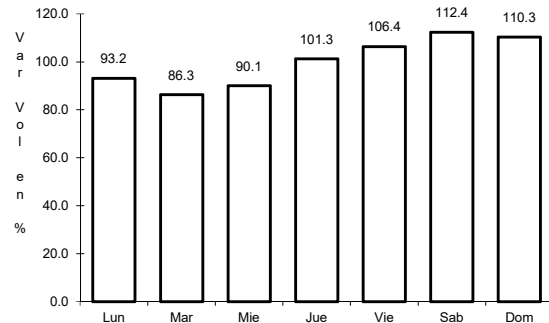
Tipo: 1

Sent: 0

33 CARR: Ent. Paila - Parras de La Fuente

CLAVE: 05014

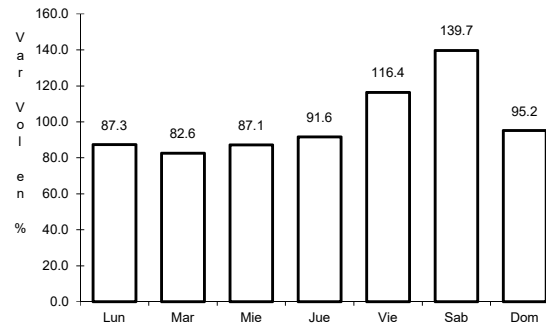
RUTA: COA-102



Km: 0.00

Tipo: 3

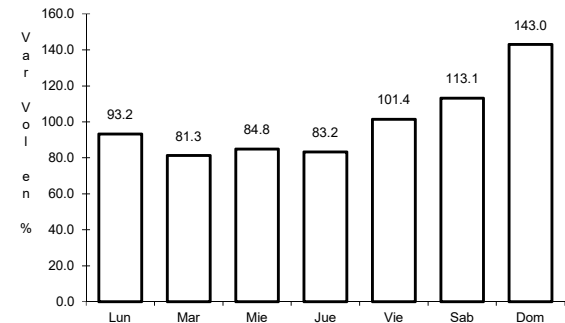
Sent: 0



Km: 20.05

Tipo: 1

Sent: 1



Km: 20.05

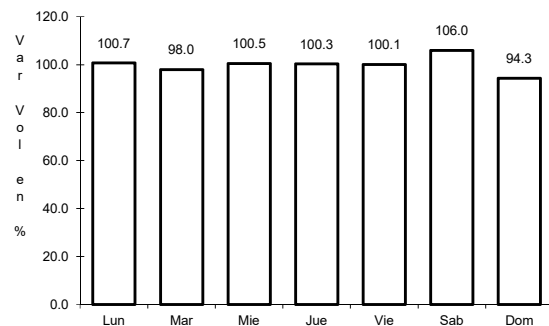
Tipo: 1

Sent: 2

34 CARR: Libramiento de Matamoros

CLAVE: 05032

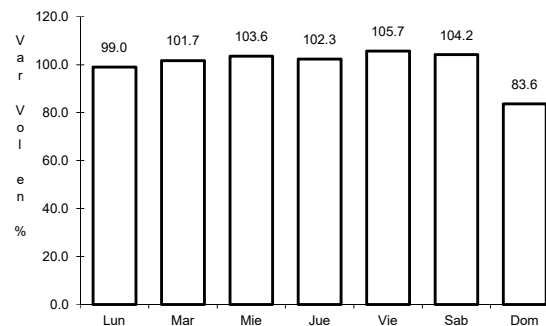
RUTA: COA



Km: 0.00

Tipo: 3

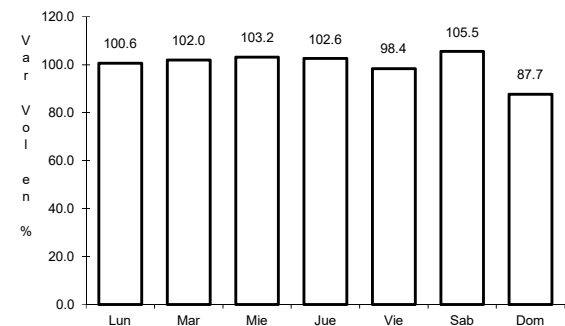
Sent: 0



Km: 5.32

Tipo: 1

Sent: 1



Km: 5.32

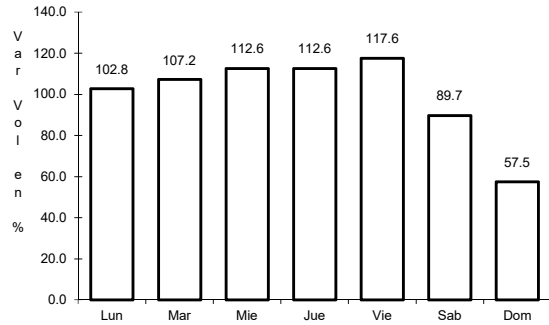
Tipo: 1

Sent: 2

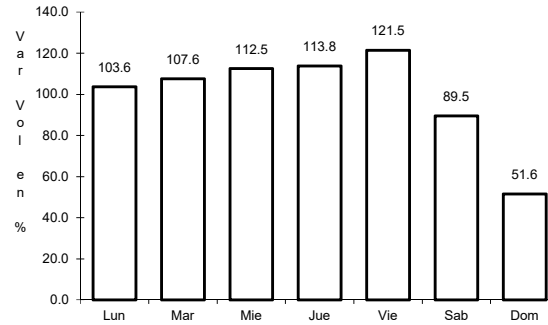
35 CARR: Libramiento de Saltillo J.L.P.

CLAVE: 05031

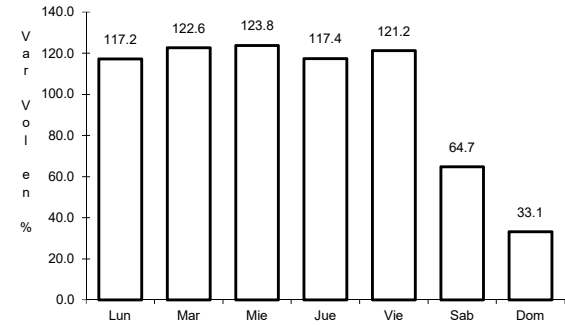
RUTA: COA



Km: 2.50 Tipo: 3 Sent: 1



Km: 2.50 Tipo: 3 Sent: 2

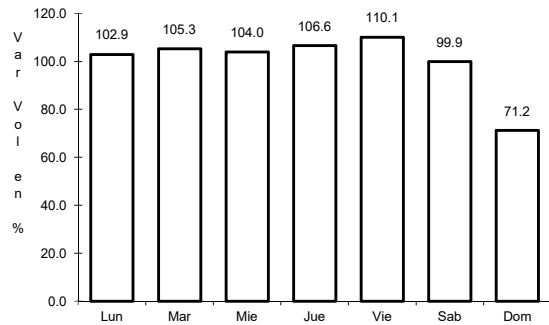


Km: 18.00 Tipo: 1 Sent: 1

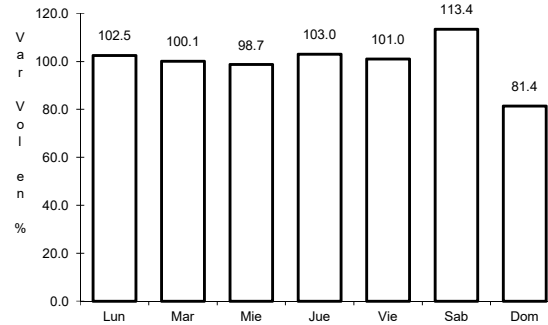
36 CARR: Libramiento de Torreón

CLAVE: 05516

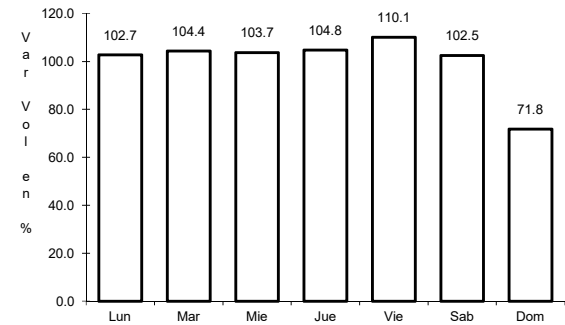
RUTA: COA



Km: 0.00 Tipo: 3 Sent: 1



Km: 0.00 Tipo: 3 Sent: 2

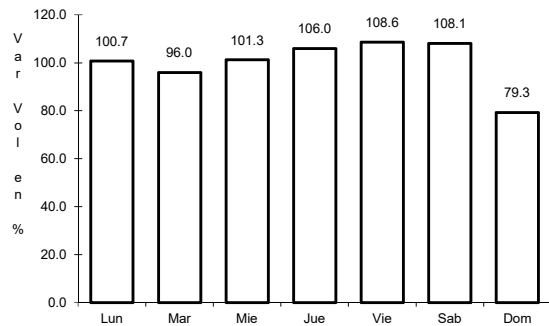


Km: 7.30 Tipo: 1 Sent: 1

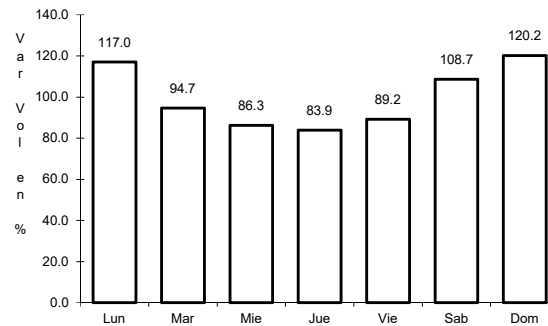
37 CARR: Matamoros - El Fresno

CLAVE: 05023

RUTA: COA-078



Km: 0.00 Tipo: 3 Sent: 0

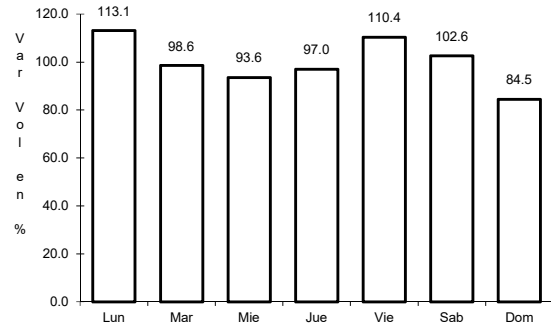


Km: 12.60 Tipo: 1 Sent: 0

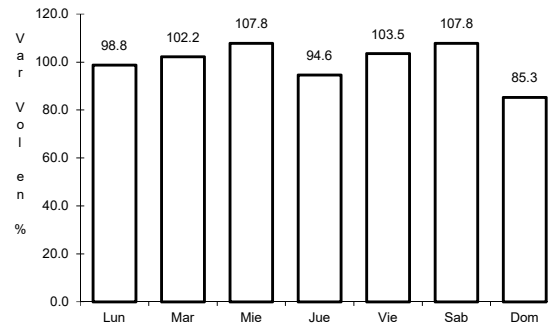
38 CARR: Matamoros - La Unión

CLAVE: 05023

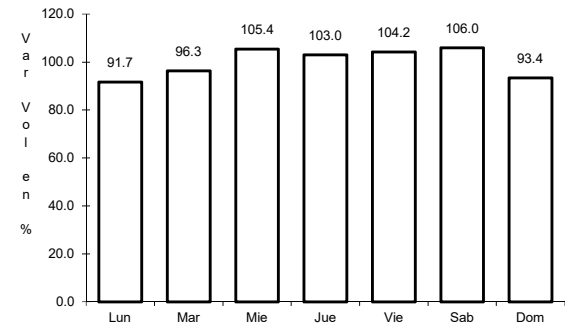
ruta: COA-070



Km: 1.00 Tipo: 3 Sent: 1



Km: 1.00 Tipo: 3 Sent: 2

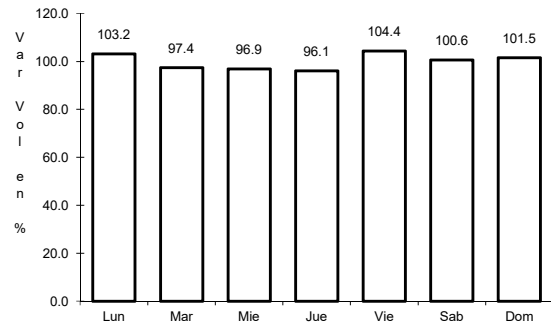


Km: 14.09 Tipo: 1 Sent: 0

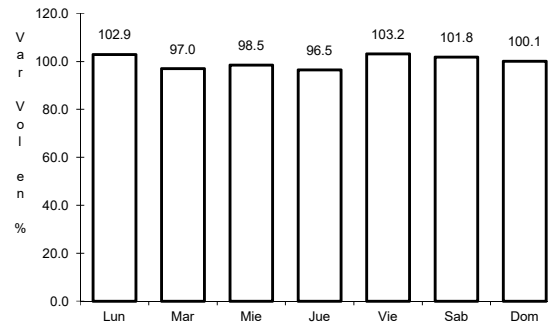
39 CARR: Monclova - Estación Candela

CLAVE: 00501

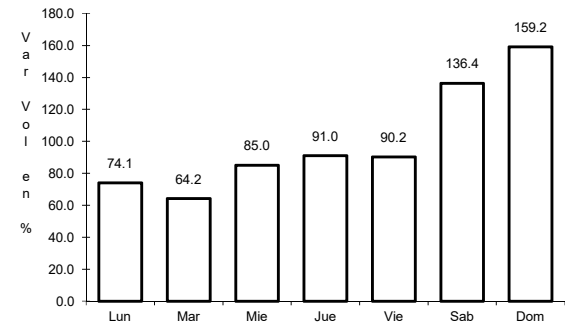
ruta: COA-030-NL



Km: 5.10 Tipo: 1 Sent: 1



Km: 5.10 Tipo: 1 Sent: 2

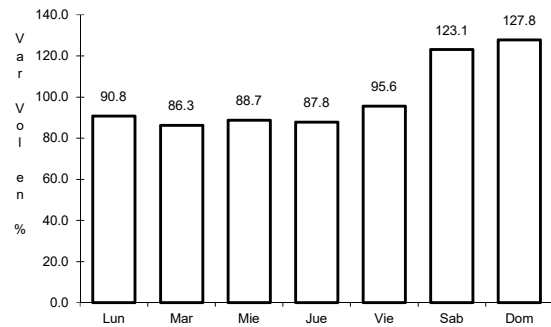


Km: 125.50 Tipo: 1 Sent: 0

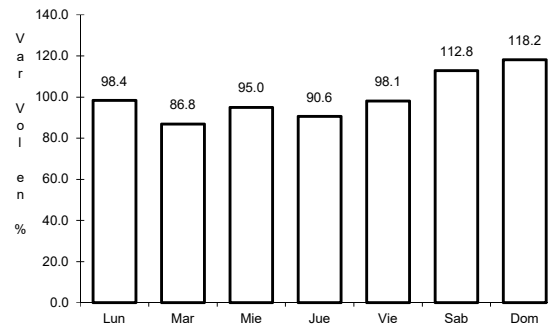
40 CARR: Morelos - Ent. Las Corrientes

CLAVE: 05500

ruta: COA-010



Km: 0.00 Tipo: 3 Sent: 0

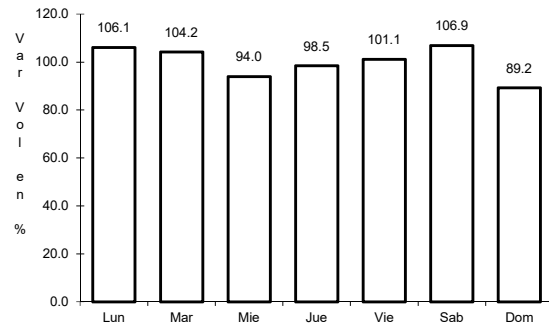


Km: 9.20 Tipo: 1 Sent: 0

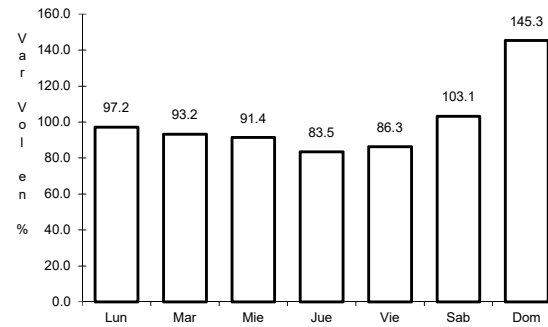
41 CARR: Puerto de Flores - El Hondable

CLAVE: 05512

RUTA: COA-112



Km: 0.00 Tipo: 3 Sent: 0

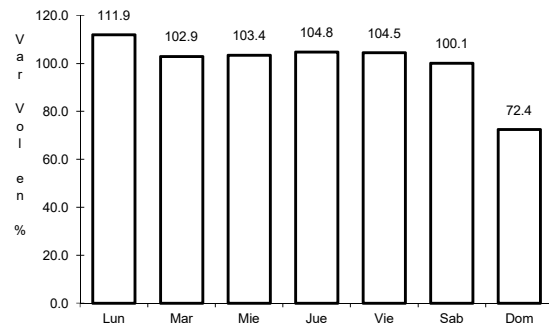


Km: 24.00 Tipo: 1 Sent: 0

42 CARR: Ramal a Hipólito

CLAVE: 05509

RUTA: COA-114

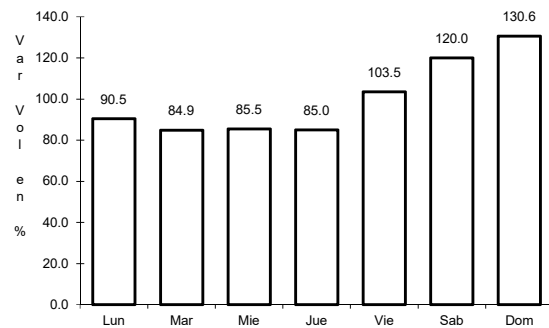


Km: 0.00 Tipo: 3 Sent: 0

43 CARR: Ramal a Lamadrid

CLAVE: 05522

RUTA: COA-042

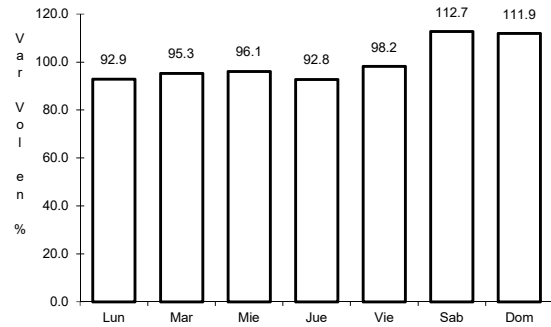


Km: 0.00 Tipo: 3 Sent: 0

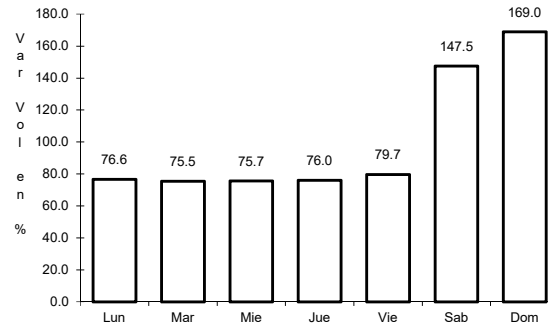
44 CARR: Sabinas - Don Martín

CLAVE: 05501

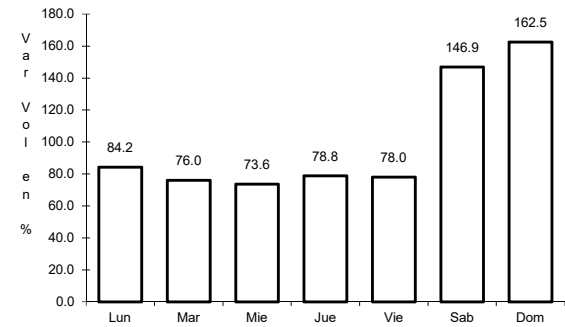
RUTA: COA-025



Km: 0.00 Tipo: 3 Sent: 0



Km: 53.00 Tipo: 3 Sent: 0

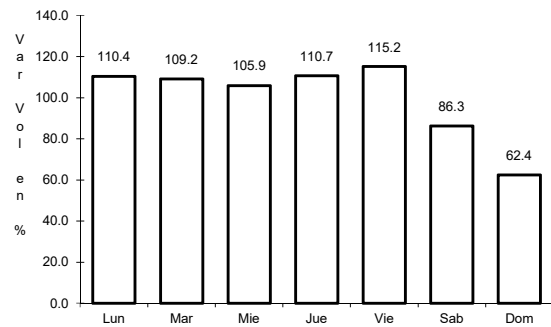


Km: 66.00 Tipo: 1 Sent: 0

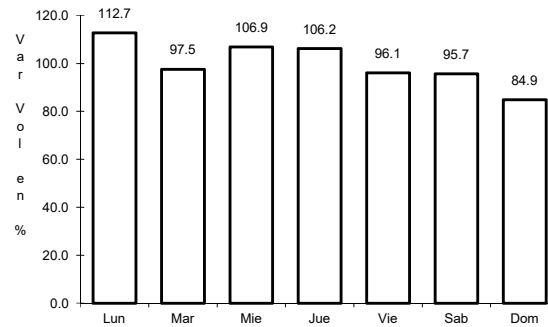
45 CARR: Saltillo - Arteaga

CLAVE: 05008

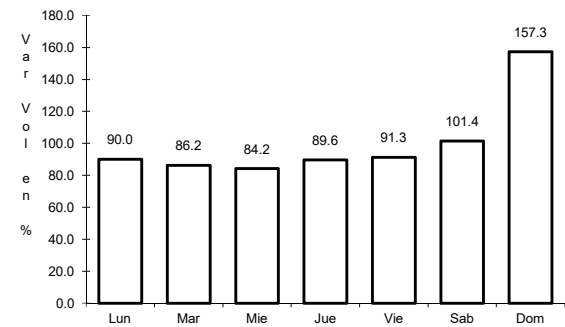
RUTA: COA-106



Km: 0.00 Tipo: 3 Sent: 1



Km: 0.00 Tipo: 3 Sent: 2

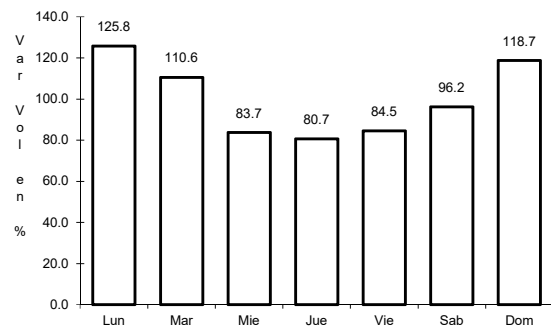


Km: 12.00 Tipo: 1 Sent: 1

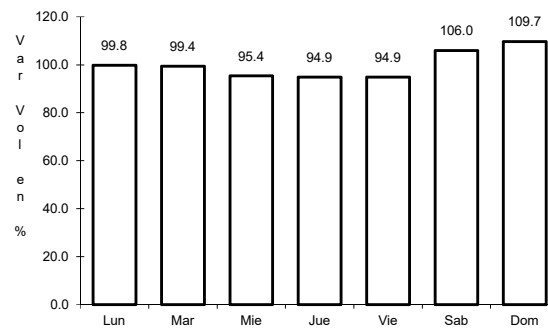
46 CARR: San Buenaventura - Estación Hermanas

CLAVE: 05004

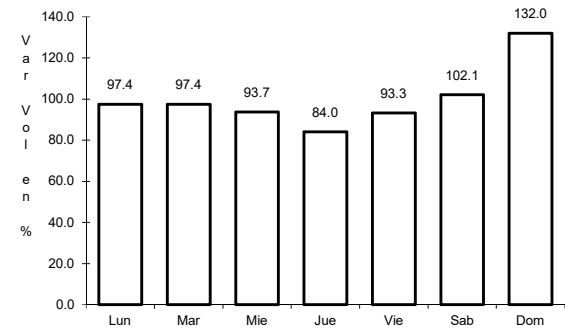
RUTA: COA-034



Km: 0.00 Tipo: 3 Sent: 0



Km: 15.71 Tipo: 1 Sent: 0

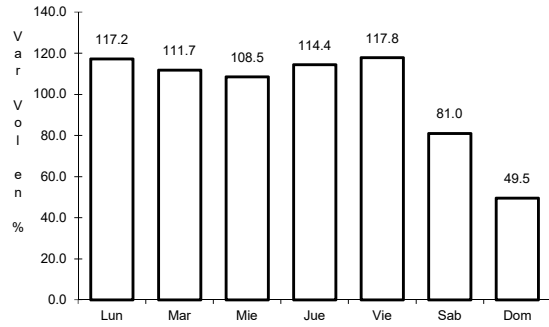


Km: 50.00 Tipo: 1 Sent: 0

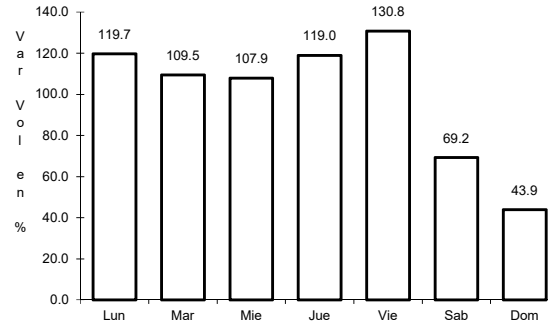
47 CARR: T. C. (Ent. Morelos - Saltillo) - Parras de La Fuente

CLAVE: 05510

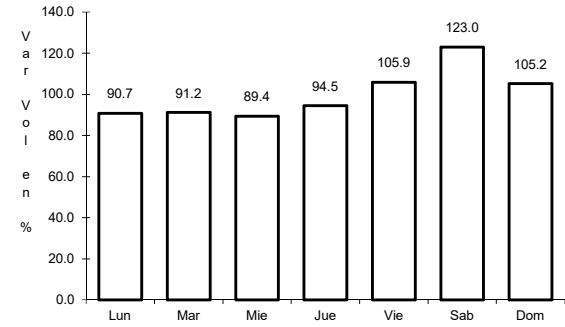
RUTA: COA-105



Km: 0.00 Tipo: 3 Sent: 1



Km: 0.00 Tipo: 3 Sent: 2

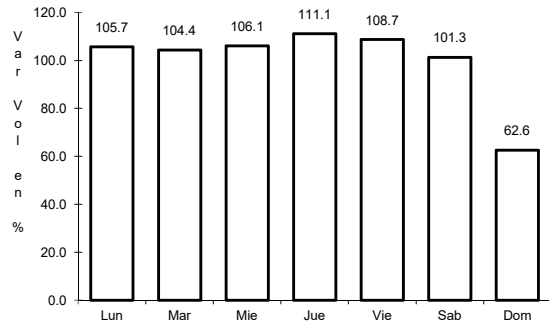


Km: 102.00 Tipo: 1 Sent: 0

48 CARR: T. C. (Saltillo - Monclova) - Ramos Arizpe

CLAVE: 05508

RUTA: COA

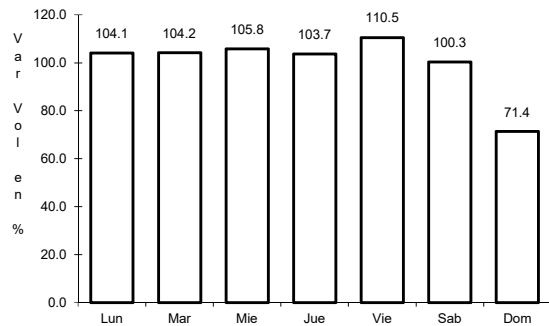


Km: 0.00 Tipo: 3 Sent: 0

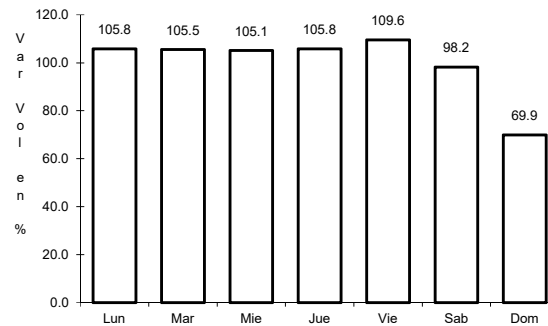
49 CARR: Torreón - Escuadrón 201

CLAVE: 05022

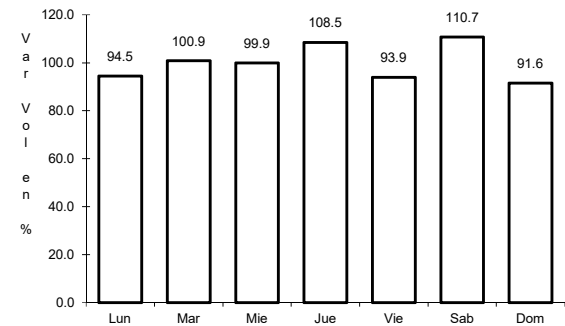
RUTA: COA-011



Km: 0.00 Tipo: 3 Sent: 1



Km: 0.00 Tipo: 3 Sent: 2



Km: 17.06 Tipo: 1 Sent: 0