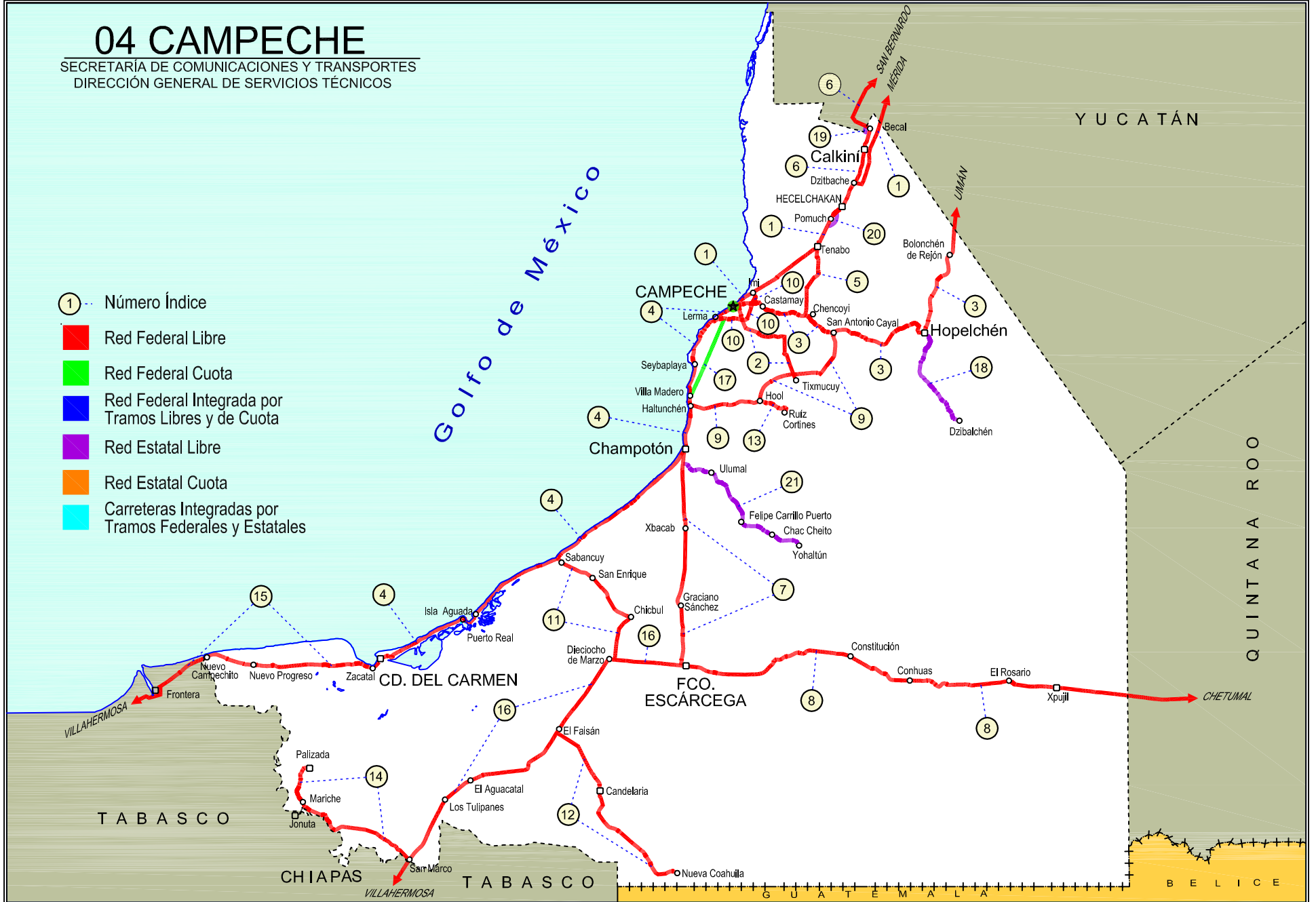
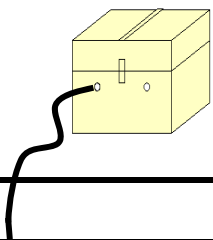


04 CAMPECHE

SECRETARÍA DE COMUNICACIONES Y TRANSPORTES
DIRECCIÓN GENERAL DE SERVICIOS TÉCNICOS

- ① Número Índice
- Red Federal Libre
- Red Federal Cuota
- Red Federal Integrada por Tramos Libres y de Cuota
- Red Estatal Libre
- Red Estatal Cuota
- Carreteras Integradas por Tramos Federales y Estatales





CAMPECHE

NO. INDICE CARRETERA	RUTA
---RED FEDERAL LIBRE---	
1 Campeche - Mérida	MEX-180
2 Campeche - Tixmucuy	MEX-180
3 Campeche - Umán	MEX-261
4 Cd. del Carmen - Campeche	MEX-180
5 Chencoyi - Tenabo	MEX-180
6 Dzitbalché - Ent. San Bernardo	MEX-180
7 Francisco Escárcega - Champotón	MEX-201
8 Francisco Escárcega - Chetumal	MEX-186
9 Hattunchén - San Antonio Cayal	MEX-180
10 Periférico Pablo García y Montilla (Libramiento de Campeche)	MEX-202
11 Presidente Díaz Ordaz - Sabancuy	MEX-186
12 Ramal a Nuevo Coahuila	MEX-186
13 Ramal a Ruíz Cortines	MEX-180
14 San Marcos - Palizada	MEX-186
15 Villahermosa - Cd. del Carmen	MEX-180
16 Villahermosa - Francisco Escárcega	MEX-186
---RED FEDERAL DE CUOTA---	
17 Champotón - Campeche (Cuota)	MEX-180D
---RED ESTATAL LIBRE---	
18 Hopelchén - Dzibalchén	CAM-261
19 Libramiento de Becal	CAM
20 Libramiento de Pomuch	CAM
21 T. C. (Francisco Escárcega - Champotón) - Yohaltún	CAM

CAMPECHE

1 CARR: Campeche - Mérida

CLAVE: 00066

RUTA: MEX-180

AÑO: 2018

LUGAR	ESTACION				CLASIFICACION VEHICULAR EN PORCIENTO														COORDENADAS	
	KM	TE	SC	TDPA	M	A	B	C2	C3	T3S2	T3S3	T3S2R4	OTROS	A	B	C	K'	D	LATITUD	LONGITUD
Campeche	0.00	3	1	7181	7.6	85.7	0.3	4.7	0.4	0.5	0.7	0.0	0.1	93.3	0.3	6.4	0.079	0.517	19.891077	-90.464607
Campeche	0.00	3	2	6702	7.3	83.6	0.4	6.7	0.5	0.5	0.9	0.0	0.1	90.9	0.4	8.7	0.068	0.517	19.891201	-90.464528
T. Der. Periférico Pablo García y Montilla (Libramiento De Campeche)	7.00	3	1	6042	5.8	72.3	3.2	6.9	1.6	5.1	1.0	3.7	0.4	78.1	3.2	18.7	0.089	0.506	19.896714	-90.454998
T. Der. Periférico Pablo García y Montilla (Libramiento De Campeche)	7.00	3	2	5908	4.6	76.1	2.5	5.4	1.6	5.3	0.7	3.5	0.3	80.7	2.5	16.8	0.083	0.506	19.896948	-90.455096
Tenabo	40.00	1	1	5412	1.6	75.3	3.3	5.2	1.6	6.2	1.5	4.8	0.5	76.9	3.3	19.8	0.090	0.505	20.028194	-90.241880
Tenabo	40.00	1	2	5529	1.5	75.3	3.5	5.7	1.4	6.3	1.1	4.7	0.5	76.8	3.5	19.7	0.068	0.505	20.028300	-90.241955
T. Der. Libramiento de Pomuch (2° Acceso)	50.00	3	1	5058	1.9	74.9	3.6	6.2	1.3	5.9	1.5	4.2	0.5	76.8	3.6	19.6	0.099	0.507	20.149547	-90.163127
T. Der. Libramiento de Pomuch (2° Acceso)	50.00	3	2	5196	4.0	74.6	2.9	4.8	1.6	6.1	1.1	4.5	0.4	78.6	2.9	18.5	0.079	0.507	20.149677	-90.163233
Lim. Edos. Term. Camp. Ppia. Yuc.	96.96																			
Kopomá	124.29	3	1	4960	1.5	72.4	3.4	8.0	2.0	6.3	1.5	4.4	0.5	73.9	3.4	22.7	0.084	0.500	20.663185	-89.890187
Kopomá	124.29	3	2	4955	1.4	72.0	3.4	8.5	1.9	6.4	1.4	4.5	0.5	73.4	3.4	23.2	0.101	0.500	20.663227	-89.890350
T. Der. Libramiento de Chocholá (1° Acceso)	137.89	1	1	4975	1.3	74.6	3.0	6.4	2.0	6.3	1.5	4.4	0.5	75.9	3.0	21.1	0.082	0.500	20.725561	-89.843352
T. Der. Libramiento de Chocholá (1° Acceso)	137.89	1	2	4979	1.3	71.0	3.7	9.4	1.8	6.3	1.5	4.5	0.5	72.3	3.7	24.0	0.100	0.500	20.725642	-89.843542
T. Izq. Umán	146.99	3	1	4887	1.0	74.1	3.2	6.6	2.0	6.3	1.8	4.4	0.6	75.1	3.2	21.7	0.087	0.504	20.801539	-89.805636
T. Izq. Umán	146.99	3	2	4973	1.1	73.9	3.5	6.7	2.1	6.1	1.5	4.5	0.6	75.0	3.5	21.5	0.101	0.504	20.801658	-89.805759
X. C. Campeche - Umán	160.49	1	1	5300	1.3	72.2	3.3	6.4	2.9	6.8	1.8	4.8	0.5	73.5	3.3	23.2	0.087	0.510	20.836265	-89.754650
X. C. Campeche - Umán	160.49	1	2	5510	1.1	71.4	3.5	6.5	3.0	7.0	1.9	5.1	0.5	72.5	3.5	24.0	0.102	0.510	20.836444	-89.754738
T. C. Periférico de Mérida	171.21																			

2 CARR: Campeche - Tixmucuy

CLAVE: 04575

RUTA: MEX-180

AÑO: 2018

LUGAR	ESTACION				CLASIFICACION VEHICULAR EN PORCIENTO														COORDENADAS	
	KM	TE	SC	TDPA	M	A	B	C2	C3	T3S2	T3S3	T3S2R4	OTROS	A	B	C	K'	D	LATITUD	LONGITUD
Campeche	0.00	3	1	7609	9.5	81.2	0.7	6.2	0.9	0.8	0.4	0.2	0.1	90.7	0.7	8.6	0.085	0.503	19.810182	-90.506029
Campeche	0.00	3	2	7519	8.0	83.2	0.5	6.1	0.8	0.7	0.4	0.2	0.1	91.2	0.5	8.3	0.110	0.503	19.810215	-90.505873
T. Der. Periférico Pablo García y Montilla (Libramiento De Campeche)	4.00	3	1	3103	20.8	72.3	0.1	5.8	0.5	0.4	0.1	0.0	0.0	93.1	0.1	6.8	0.080	0.504	19.787195	-90.500133
T. Der. Periférico Pablo García y Montilla (Libramiento De Campeche)	4.00	3	2	3158	22.5	71.4	0.1	4.7	0.4	0.6	0.2	0.0	0.1	93.9	0.1	6.0	0.083	0.504	19.787228	-90.499854
X. C. Haltunchén - Cayal	39.00	1	0	1498	6.9	80.5	0.8	8.7	1.3	1.2	0.3	0.3	0.0	87.4	0.8	11.8	0.085	0.505	19.604811	-90.319467
Tixmucuy	42.00	1	0	507	20.1	69.1	1.1	7.7	0.8	0.6	0.3	0.3	0.0	89.2	1.1	9.7	0.103	0.501	19.586004	-90.317769

3 CARR: Campeche - Umán

CLAVE: 00164

RUTA: MEX-261

AÑO: 2018

LUGAR	ESTACION				CLASIFICACION VEHICULAR EN PORCIENTO														COORDENADAS	
	KM	TE	SC	TDPA	M	A	B	C2	C3	T3S2	T3S3	T3S2R4	OTROS	A	B	C	K'	D	LATITUD	LONGITUD
Campeche	0.00																			

CAMPECHE

3 CARR: Campeche - Umán

CLAVE: 00164

RUTA: MEX-261

AÑO: 2018

LUGAR	ESTACION				CLASIFICACION VEHICULAR EN PORCIENTO										COORDENADAS					
	KM	TE	SC	TDPA	M	A	B	C2	C3	T3S2	T3S3	T3S2R4	OTROS	A	B	C	K'	D	LATITUD	LONGITUD
T. Der. Periferico Pablo García y Montilla (Libramiento De Campeche)	7.00	1	0	5563	9.5	79.4	0.3	5.7	1.1	3.2	0.4	0.1	0.3	88.9	0.3	10.8	0.099	0.513	19.849206	-90.473768
T. Der. Periferico Pablo García y Montilla (Libramiento De Campeche)	7.00	3	0	2579	10.5	78.0	0.5	8.6	0.7	1.3	0.3	0.0	0.1	88.5	0.5	11.0	0.088	0.500	19.848158	-90.453081
T. Izq. Tenabo	30.88	1	0	1566	8.6	74.3	0.7	14.0	1.0	1.1	0.3	0.0	0.0	82.9	0.7	16.4	0.082	0.506	19.804954	-90.280497
T. Izq. Tenabo	30.88	3	0	1579	7.9	75.8	1.0	10.8	1.5	2.1	0.5	0.3	0.1	83.7	1.0	15.3	0.085	0.506	19.804484	-90.271972
T. Der. Edzna	44.51	1	0	1530	11.7	72.7	1.2	10.9	1.0	1.8	0.4	0.3	0.0	84.4	1.2	14.4	0.089	0.501	19.743557	-90.178673
T. Der. Edzna	44.51	3	0	1541	15.1	67.2	1.6	11.5	1.5	2.2	0.7	0.2	0.0	82.3	1.6	16.1	0.084	0.504	19.745729	-90.169921
Hopelchén	84.88	1	0	2045	11.4	75.1	0.4	11.0	0.5	1.3	0.2	0.0	0.1	86.5	0.4	13.1	0.088	0.504	19.754601	-89.854670
Bolonchén de Rejón	117.88	3	0	1038	18.5	64.1	1.0	10.3	1.7	1.7	0.7	1.9	0.1	82.6	1.0	16.4	0.102	0.512	20.012936	-89.733997
Lim. Edos. Term. Camp. Ppia. Yuc.	126.88																			
T. Der. Sayil	140.88	1	0	553	6.3	70.2	1.8	12.0	2.8	3.0	1.3	2.6	0.0	76.5	1.8	21.7	0.110	0.515	20.207584	-89.672034
Santa Elena	158.88	1	0	1014	29.6	54.9	1.4	7.3	1.6	2.6	0.9	1.6	0.1	84.5	1.4	14.1	0.128	0.516	20.319098	-89.643296
T. Izq. Ruinas de Uxmal	172.48	1	0	704	16.3	65.8	1.1	8.7	1.9	2.2	0.7	3.2	0.1	82.1	1.1	16.8	0.107	0.501	20.361920	-89.763699
Muna	187.43	1	0	1330	21.2	66.0	0.9	7.7	0.9	1.5	0.4	1.3	0.1	87.2	0.9	11.9	0.099	0.559	20.460838	-89.725089
Muna	187.43	3	0	4029	5.0	79.1	0.5	10.4	1.3	2.2	0.5	0.8	0.2	84.1	0.5	15.4	0.095	0.526	20.511064	-89.709191
Xtepén	225.38	1	0	4689	2.4	79.2	0.7	9.4	1.5	2.6	3.2	0.8	0.2	81.6	0.7	17.7	0.094	0.508	20.803354	-89.734068
Umán	230.83	1	0	3531	13.3	65.4	1.2	9.2	3.6	5.5	0.9	0.4	0.5	78.7	1.2	20.1	0.078	0.501	20.865852	-89.745959

4 CARR: Cd. del Carmen - Campeche

CLAVE: 04065

RUTA: MEX-180

AÑO: 2018

LUGAR	ESTACION				CLASIFICACION VEHICULAR EN PORCIENTO										COORDENADAS					
	KM	TE	SC	TDPA	M	A	B	C2	C3	T3S2	T3S3	T3S2R4	OTROS	A	B	C	K'	D	LATITUD	LONGITUD
Cd. del Carmen	0.00	3	1	12583	3.7	84.8	1.2	5.2	0.6	2.2	1.4	0.3	0.6	88.5	1.2	10.3	0.092	0.510	18.659034	-91.774769
Cd. del Carmen	0.00	3	2	12098	4.6	84.0	1.2	5.3	0.7	2.1	1.3	0.3	0.5	88.6	1.2	10.2	0.076	0.510	18.659187	-91.774827
La Palma	26.70	1	0	4915	2.6	71.4	4.7	8.5	1.9	5.4	1.5	3.5	0.5	74.0	4.7	21.3	0.107	0.503	18.730056	-91.642312
Isla Aguada	37.75	3	0	4133	2.3	70.1	5.7	8.9	2.2	7.5	1.4	1.1	0.8	72.4	5.7	21.9	0.069	0.502	18.797547	-91.482977
T. Der. Sabancuy	78.05	3	0	3616	2.7	68.2	6.1	8.4	2.6	6.3	1.4	3.8	0.5	70.9	6.1	23.0	0.076	0.516	18.991868	-91.187603
Chamotón	141.80	1	0	5267	12.5	64.1	4.3	7.0	1.7	7.5	1.1	1.2	0.6	76.6	4.3	19.1	0.075	0.518	19.325483	-90.743481
Chamotón	141.80	3	1	5420	5.5	70.7	2.5	5.2	3.3	6.4	1.6	4.2	0.6	76.2	2.5	21.3	0.078	0.507	19.372081	-90.721480
Chamotón	141.80	3	2	5572	5.0	66.6	3.4	6.9	3.5	7.8	1.4	4.7	0.7	71.6	3.4	25.0	0.069	0.507	19.372071	-90.721644
T. Der. Libramiento de Seybaplaya (1º Acceso)	175.71	1	0	3209	11.3	76.0	0.7	6.7	3.0	1.8	0.3	0.1	0.1	87.3	0.7	12.0	0.081	0.509	19.622169	-90.685483
T. Der. Libramiento de Seybaplaya (1º Acceso)	175.71	3	1	628	20.3	70.9	0.4	7.9	0.2	0.3	0.0	0.0	0.0	91.2	0.4	8.4	0.134	0.517	19.625808	-90.685170
T. Der. Libramiento de Seybaplaya (1º Acceso)	175.71	3	2	586	22.3	68.5	0.4	8.3	0.2	0.3	0.0	0.0	0.0	90.8	0.4	8.8	0.090	0.517	19.625807	-90.685252
T. Der. Periferico Pablo García y Montilla (Libramiento De Campeche)	195.70	1	0	2627	7.1	81.4	0.6	6.8	1.2	1.8	0.6	0.1	0.4	88.5	0.6	10.9	0.083	0.518	19.786619	-90.625273
Lerma	199.51	1	1	1374	15.3	73.9	0.2	9.6	0.1	0.2	0.5	0.1	0.1	89.2	0.2	10.6	0.115	0.516	19.792002	-90.619044
Lerma	199.51	1	2	1289	14.0	82.8	0.2	2.0	0.2	0.2	0.6	0.0	0.0	96.8	0.2	3.0	0.087	0.516	19.792051	-90.619108

CAMPECHE

4 CARR: Cd. del Carmen - Campeche

CLAVE: 04065

RUTA: MEX-180

AÑO: 2018

LUGAR	ESTACION	CLASIFICACION VEHICULAR EN PORCIENTO														COORDENADAS						
		KM	TE	SC	TDPA	M	A	B	C2	C3	T3S2	T3S3	T3S2R4	OTROS	A	B	C	K'	D	LATITUD	LONGITUD	
Campeche	203.18																					

5 CARR: Chencoyi - Tenabo

CLAVE: 04576

RUTA: MEX-180

AÑO: 2018

LUGAR	ESTACION	CLASIFICACION VEHICULAR EN PORCIENTO														COORDENADAS						
		KM	TE	SC	TDPA	M	A	B	C2	C3	T3S2	T3S3	T3S2R4	OTROS	A	B	C	K'	D	LATITUD	LONGITUD	
T. C. Campeche - Umán	0.00																					
Tenabo	28.00	1	0	1008	13.0	76.7	0.7	6.0	0.8	1.6	0.3	0.9	0.0	89.7	0.7	9.6	0.094	0.505	20.027054	-90.226648		

6 CARR: Dzitbalché - Ent. San Bernardo

CLAVE: 00162

RUTA: MEX-180

AÑO: 2018

LUGAR	ESTACION	CLASIFICACION VEHICULAR EN PORCIENTO														COORDENADAS						
		KM	TE	SC	TDPA	M	A	B	C2	C3	T3S2	T3S3	T3S2R4	OTROS	A	B	C	K'	D	LATITUD	LONGITUD	
T. C. Campeche - Mérida	0.00																					
T. Izq. Libramiento de Becal (1º Acceso)	12.33	1	0	3223	18.9	72.3	0.9	4.7	0.4	2.1	0.3	0.1	0.3	91.2	0.9	7.9	0.079	0.507	20.418770	-90.033975		
T. Izq. Libramiento de Becal (2º Acceso)	15.41	3	0	1682	13.1	75.8	1.7	7.0	0.7	1.5	0.1	0.0	0.1	88.9	1.7	9.4	0.077	0.508	20.450859	-90.040625		
Lim. Edos. Term. Camp. Ppia. Yuc.	15.80																					
Halachó	21.08	1	0	1959	19.6	69.0	1.3	7.6	0.7	1.6	0.1	0.0	0.1	88.6	1.3	10.1	0.073	0.507	20.469244	-90.066449		
T. Izq. Libramiento de Maxcanú (1º Acceso)	35.60	1	0	2489	23.9	63.8	1.0	8.3	0.9	1.6	0.3	0.1	0.1	87.7	1.0	11.3	0.089	0.500	20.577279	-90.035452		
T. Der. Muna	40.36	3	0	3370	7.3	71.5	1.2	16.8	0.8	1.9	0.3	0.1	0.1	78.8	1.2	20.0	0.094	0.502	20.601756	-89.975494		
Ent. San Bernardo	41.53																					

7 CARR: Francisco Escárcega - Champotón

CLAVE: 04103

RUTA: MEX-201

AÑO: 2018

LUGAR	ESTACION	CLASIFICACION VEHICULAR EN PORCIENTO														COORDENADAS				
		KM	TE	SC	TDPA	M	A	B	C2	C3	T3S2	T3S3	T3S2R4	OTROS	A	B	C	K'	D	LATITUD
Francisco Escárcega	0.00	3	0	5327	10.3	61.0	1.9	7.2	1.6	8.8	1.9	6.7	0.6	71.3	1.9	26.8	0.067	0.537	18.623058	-90.741968
T. Izq. Ley Federal de La Reforma Agraria	51.40	1	0	3472	2.5	57.7	2.9	7.4	2.1	11.7	2.6	12.5	0.6	60.2	2.9	36.9	0.063	0.503	19.064377	-90.725174
T. Der. Ulumal y Patzajol	77.00	1	0	4399	4.1	63.7	2.2	7.3	2.5	9.7	2.0	7.9	0.6	67.8	2.2	30.0	0.062	0.510	19.294099	-90.732337
Champotón	81.40	1	0	5779	4.4	67.8	2.1	7.8	1.6	8.0	1.8	5.6	0.9	72.2	2.1	25.7	0.061	0.520	19.317669	-90.729090

CAMPECHE

8 CARR: Francisco Escárcega - Chetumal

CLAVE: 00093

RUTA: MEX-186

AÑO: 2018

LUGAR	ESTACION				CLASIFICACION VEHICULAR EN PORCIENTO													COORDENADAS		
	KM	TE	SC	TDPA	M	A	B	C2	C3	T3S2	T3S3	T3S2R4	OTROS	A	B	C	K'	D	LATITUD	LONGITUD
Francisco Escárcega	0.00	3	0	3385	9.8	64.1	4.2	7.0	1.5	5.8	1.1	6.1	0.4	73.9	4.2	21.9	0.073	0.521	18.604158	-90.718173
Adolfo López Mateos	41.50	1	0	2506	8.7	63.8	4.3	6.2	2.2	6.6	1.3	5.8	1.1	72.5	4.3	23.2	0.074	0.532	18.639905	-90.307327
T. Der. Silvituc	55.70	1	0	2489	5.8	69.6	2.4	7.0	2.1	4.0	2.0	6.5	0.6	75.4	2.4	22.2	0.067	0.522	18.651211	-90.277296
T. Der. Silvituc	55.70	3	0	2134	6.4	58.9	6.1	8.6	2.3	7.3	2.5	7.1	0.8	65.3	6.1	28.6	0.067	0.511	18.648062	-90.252646
Conhuás	100.00	1	0	2242	7.7	61.8	6.7	8.0	1.6	5.1	2.0	6.4	0.7	69.5	6.7	23.8	0.081	0.522	18.539926	-89.910344
Xpujil	155.73	1	0	2828	6.8	65.4	3.0	8.2	2.6	6.2	1.6	5.3	0.9	72.2	3.0	24.8	0.069	0.547	18.509272	-89.409150
Lim. Edos. Term. Camp. Ppia. Qroo.	179.90																			
Nicolás Bravo	206.01	1	0	3128	6.2	71.3	3.7	6.5	0.9	5.5	1.5	4.0	0.4	77.5	3.7	18.8	0.085	0.502	18.458474	-88.940896
Nicolás Bravo	206.01	3	0	3516	9.4	63.6	3.9	7.0	1.3	7.4	1.5	5.4	0.5	73.0	3.9	23.1	0.066	0.527	18.459102	-88.920562
T. Izq. Morocoy	214.90	1	0	3081	5.9	69.2	4.0	8.8	1.2	4.9	1.0	4.4	0.6	75.1	4.0	20.9	0.072	0.584	18.478730	-88.818210
T. Izq. Morocoy	214.90	3	0	2948	6.4	59.6	4.8	12.6	1.7	6.5	1.1	6.8	0.5	66.0	4.8	29.2	0.069	0.509	18.478837	-88.814719
T. Der. Unión	247.50	1	0	4860	8.7	66.7	2.9	8.8	2.6	5.2	1.0	3.4	0.7	75.4	2.9	21.7	0.074	0.526	18.504224	-88.532884
T. Der. Unión	247.50	3	0	7694	5.4	77.2	2.1	5.4	1.0	5.2	0.8	2.4	0.5	82.6	2.1	15.3	0.069	0.505	18.508197	-88.509467
T. Izq. Fpe. Carrillo Puerto	255.15	1	0	7651	4.8	78.3	2.0	4.8	1.9	4.3	0.9	2.5	0.5	83.1	2.0	14.9	0.073	0.512	18.523760	-88.473466
T. Der. Subteniente López	268.57	1	1	8268	4.1	88.0	1.0	4.6	0.8	0.7	0.3	0.3	0.2	92.1	1.0	6.9	0.081	0.504	18.516635	-88.377970
T. Der. Subteniente López	268.57	1	2	8387	4.2	87.3	1.1	5.1	0.7	0.7	0.4	0.3	0.2	91.5	1.1	7.4	0.102	0.504	18.516745	-88.377938
T. Izq. Av. Insurgentes	270.00	1	1	13046	5.8	86.8	0.8	3.9	0.6	1.0	0.6	0.3	0.2	92.6	0.8	6.6	0.076	0.503	18.513372	-88.363098
T. Izq. Av. Insurgentes	270.00	1	2	12896	5.6	86.7	1.0	4.1	0.6	1.0	0.6	0.2	0.2	92.3	1.0	6.7	0.082	0.503	18.513495	-88.363072
T. Izq. Av. Insurgentes	270.00	3	1	5665	3.1	89.2	0.5	6.3	0.4	0.2	0.1	0.1	0.1	92.3	0.5	7.2	0.068	0.504	18.510508	-88.354016
T. Izq. Av. Insurgentes	270.00	3	2	5578	4.0	88.7	0.5	5.7	0.4	0.4	0.1	0.1	0.1	92.7	0.5	6.8	0.075	0.504	18.510630	-88.353943
Chetumal	277.36	1	1	7736	5.5	88.9	0.4	4.3	0.2	0.4	0.1	0.1	0.1	94.4	0.4	5.2	0.091	0.501	18.501572	-88.320674
Chetumal	277.36	1	2	7767	5.7	89.2	0.3	4.0	0.2	0.5	0.1	0.0	0.0	94.9	0.3	4.8	0.090	0.501	18.501675	-88.320632

9 CARR: Haltunchén - San Antonio Cayal

CLAVE: 04009

RUTA: MEX-180

AÑO: 2018

LUGAR	ESTACION				CLASIFICACION VEHICULAR EN PORCIENTO													COORDENADAS		
	KM	TE	SC	TDPA	M	A	B	C2	C3	T3S2	T3S3	T3S2R4	OTROS	A	B	C	K'	D	LATITUD	LONGITUD
T. C. Cd. del Carmen - Campeche	0.00	3	0	1350	17.7	71.0	0.8	6.0	0.9	1.9	0.4	1.3	0.0	88.7	0.8	10.5	0.099	0.500	19.499155	-90.700467
Sihochac	14.00	3	0	1319	26.6	62.7	0.4	6.5	0.7	1.8	0.6	0.6	0.1	89.3	0.4	10.3	0.087	0.505	19.502462	-90.570643
X. C. China - Tixmucuy	47.10	1	0	590	8.5	76.0	0.8	7.7	2.2	2.0	1.1	1.7	0.0	84.5	0.8	14.7	0.095	0.507	19.603426	-90.321285
Edzna	59.00	1	0	1204	8.0	74.8	1.1	9.5	3.0	1.4	0.7	1.5	0.0	82.8	1.1	16.1	0.086	0.504	19.604242	-90.226927
T. Der. Pichucalco	60.00	3	0	629	18.9	62.8	1.2	9.7	2.4	2.7	0.9	1.4	0.0	81.7	1.2	17.1	0.099	0.504	19.608925	-90.220456
San Antonio Cayal	79.00	1	0	506	21.1	59.1	1.5	9.2	2.6	2.7	1.2	2.6	0.0	80.2	1.5	18.3	0.121	0.509	19.740810	-90.173826

CAMPECHE

10 CARR: Periférico Pablo García y Montilla (Libramiento de Campeche)

CLAVE: 04573

RUTA: MEX-202

AÑO: 2018

LUGAR	ESTACION				CLASIFICACION VEHICULAR EN PORCIENTO													COORDENADAS		
	KM	TE	SC	TDPA	M	A	B	C2	C3	T3S2	T3S3	T3S2R4	OTROS	A	B	C	K'	D	LATITUD	LONGITUD
Ent. Lerma	0.00	3	1	2470	4.9	88.4	0.3	4.3	1.1	0.5	0.4	0.1	0.0	93.3	0.3	6.4	0.134	0.513	19.797821	-90.587221
Ent. Lerma	0.00	3	2	2600	5.0	87.1	0.4	5.1	1.1	0.7	0.4	0.1	0.1	92.1	0.4	7.5	0.140	0.513	19.797971	-90.587216
X. C. Campeche - Umán	21.00	1	1	5656	2.3	74.4	3.1	6.6	2.2	5.7	1.1	4.1	0.5	76.7	3.1	20.2	0.085	0.532	19.845969	-90.469863
X. C. Campeche - Umán	21.00	1	2	4970	2.8	71.8	3.2	7.2	2.3	6.4	1.3	4.5	0.5	74.6	3.2	22.2	0.094	0.532	19.846015	-90.469984
T. C. Campeche - Mérida	26.00	1	1	5054	3.1	68.9	3.7	9.1	2.2	6.5	1.3	4.7	0.5	72.0	3.7	24.3	0.080	0.507	19.881179	-90.461929
T. C. Campeche - Mérida	26.00	1	2	5187	3.2	69.4	3.5	9.0	2.1	6.6	1.2	4.5	0.5	72.6	3.5	23.9	0.071	0.507	19.881110	-90.462018

11 CARR: Presidente Díaz Ordaz - Sabancuy

CLAVE: 04570

RUTA: MEX-186

AÑO: 2018

LUGAR	ESTACION				CLASIFICACION VEHICULAR EN PORCIENTO													COORDENADAS		
	KM	TE	SC	TDPA	M	A	B	C2	C3	T3S2	T3S3	T3S2R4	OTROS	A	B	C	K'	D	LATITUD	LONGITUD
T. C. Villahermosa - Francisco Escárcega	0.00	3	0	1358	10.3	74.7	0.8	9.5	1.7	1.6	0.5	0.7	0.2	85.0	0.8	14.2	0.072	0.505	18.632297	-90.982694
Chicbul	18.00	1	0	1482	18.4	67.1	1.0	10.0	1.2	1.3	0.5	0.5	0.0	85.5	1.0	13.5	0.084	0.510	18.771212	-90.930301
T. C. Cd. del Carmen - Campeche	57.00	1	0	1689	7.5	77.1	2.9	9.5	0.5	1.5	0.4	0.5	0.1	84.6	2.9	12.5	0.079	0.505	18.987966	-91.189099

12 CARR: Ramal a Nuevo Coahuila

CLAVE: 04015

RUTA: MEX-186

AÑO: 2018

LUGAR	ESTACION				CLASIFICACION VEHICULAR EN PORCIENTO													COORDENADAS		
	KM	TE	SC	TDPA	M	A	B	C2	C3	T3S2	T3S3	T3S2R4	OTROS	A	B	C	K'	D	LATITUD	LONGITUD
T. C. Villahermosa - Francisco Escárcega	0.00	3	0	956	8.6	75.2	1.3	10.4	1.2	1.8	0.7	0.8	0.0	83.8	1.3	14.9	0.073	0.510	18.376430	-91.194240
Candelaria	28.00	3	0	2539	7.8	87.2	0.4	2.7	0.6	0.7	0.2	0.3	0.1	95.0	0.4	4.6	0.074	0.518	18.174523	-91.053523
Reforma	44.50	3	0	1338	13.7	75.9	0.6	7.1	1.3	0.8	0.4	0.2	0.0	89.6	0.6	9.8	0.093	0.514	18.072432	-91.024223
T. Izq. Pedro Baranda	54.80	1	0	797	10.9	77.1	1.1	9.0	0.8	0.5	0.3	0.3	0.0	88.0	1.1	10.9	0.102	0.506	17.970073	-90.907516
T. Izq. Pedro Baranda	54.80	3	0	721	10.3	79.9	0.5	6.0	2.0	0.9	0.1	0.3	0.0	90.2	0.5	9.3	0.092	0.506	17.960697	-90.897587
Nuevo Coahuila	70.00	1	0	781	32.1	58.5	1.3	5.8	1.3	0.4	0.1	0.1	0.4	90.6	1.3	8.1	0.101	0.510	17.894077	-90.793066

13 CARR: Ramal a Ruíz Cortines

CLAVE: 04101

RUTA: MEX-180

AÑO: 2018

LUGAR	ESTACION				CLASIFICACION VEHICULAR EN PORCIENTO													COORDENADAS		
	KM	TE	SC	TDPA	M	A	B	C2	C3	T3S2	T3S3	T3S2R4	OTROS	A	B	C	K'	D	LATITUD	LONGITUD
Hool	0.00																			
T. Der. Hool	1.00	3	0	311	35.4	56.8	0.4	6.0	0.7	0.6	0.1	0.0	0.0	92.2	0.4	7.4	0.116	0.506	19.512271	-90.439800
Ruiz Cortines	12.00																			

CAMPECHE

14 CARR: San Marcos - Palizada

CLAVE: 00490

RUTA: MEX-186

AÑO: 2018

LUGAR	ESTACION				CLASIFICACION VEHICULAR EN PORCIENTO										COORDENADAS					
	KM	TE	SC	TDPA	M	A	B	C2	C3	T3S2	T3S3	T3S2R4	OTROS	A	B	C	K'	D	LATITUD	LONGITUD
T. C. Villahermosa - Francisco Escárcega	0.00	3	0	813	12.1	73.5	1.0	8.8	3.2	1.0	0.4	0.0	0.0	85.6	1.0	13.4	0.113	0.502	17.942294	-91.735106
T. Izq. Jonuta	46.20	1	0	710	6.9	83.2	0.4	7.3	1.0	0.8	0.3	0.0	0.1	90.1	0.4	9.5	0.082	0.508	18.122816	-92.102231
T. Izq. Jonuta	46.20	3	0	880	12.0	80.0	0.4	7.0	0.5	0.1	0.0	0.0	0.0	92.0	0.4	7.6	0.089	0.500	18.130613	-92.113380
Palizada	68.00																			

15 CARR: Villahermosa - Cd. del Carmen

CLAVE: 00064

RUTA: MEX-180

AÑO: 2018

LUGAR	ESTACION				CLASIFICACION VEHICULAR EN PORCIENTO										COORDENADAS					
	KM	TE	SC	TDPA	M	A	B	C2	C3	T3S2	T3S3	T3S2R4	OTROS	A	B	C	K'	D	LATITUD	LONGITUD
Villahermosa	0.00																			
T. Izq. Cd. Industrial	4.30	3	1	36032	3.0	87.9	0.8	3.3	0.9	1.8	0.9	1.2	0.2	90.9	0.8	8.3	0.078	0.516	18.038002	-92.901343
T. Izq. Cd. Industrial	4.30	3	2	33810	2.0	90.2	0.7	3.0	0.7	1.5	0.8	1.0	0.1	92.2	0.7	7.1	0.062	0.516	18.037063	-92.901621
Macultepec	18.60	1	1	12681	5.1	85.2	1.8	2.6	0.6	3.0	1.0	0.3	0.4	90.3	1.8	7.9	0.067	0.514	18.139796	-92.865074
Macultepec	18.60	1	2	11985	5.3	85.1	1.5	2.3	0.6	3.2	1.1	0.4	0.5	90.4	1.5	8.1	0.070	0.514	18.139852	-92.865172
Macultepec	18.60	3	1	6551	1.5	82.2	3.9	6.3	1.2	3.3	0.6	0.7	0.3	83.7	3.9	12.4	0.061	0.502	18.168742	-92.858179
Macultepec	18.60	3	2	6510	1.6	80.7	4.4	6.8	1.4	3.4	0.7	0.7	0.3	82.3	4.4	13.3	0.062	0.502	18.168997	-92.858155
El Espino	33.20	1	0	8914	1.0	77.5	5.0	6.4	1.5	5.6	1.2	1.0	0.8	78.5	5.0	16.5	0.062	0.502	18.240151	-92.830264
El Espino	33.20	3	0	8718	0.9	76.5	5.0	7.2	1.5	5.9	1.2	1.0	0.8	77.4	5.0	17.6	0.064	0.502	18.256365	-92.831772
T. Izq. El Bellote	49.67	3	0	9460	1.9	78.0	4.3	6.3	1.1	6.0	0.9	0.9	0.6	79.9	4.3	15.8	0.077	0.519	18.397486	-92.798687
Frontera	74.59	1	0	10218	1.9	77.9	4.3	6.3	1.1	6.1	0.9	0.9	0.6	79.8	4.3	15.9	0.064	0.519	18.513284	-92.658615
Frontera	74.59	3	0	6641	2.3	71.0	6.9	8.3	1.5	7.2	1.1	1.2	0.5	73.3	6.9	19.8	0.065	0.520	18.542253	-92.631910
T. Izq. Escolleras	78.00	3	0	7080	2.2	72.4	6.6	7.7	1.5	6.8	1.1	1.2	0.5	74.6	6.6	18.8	0.066	0.526	18.561377	-92.602855
Puente San Pedro	96.50	3	0	4902	1.5	69.4	7.6	8.1	2.1	7.7	1.4	1.6	0.6	70.9	7.6	21.5	0.076	0.505	18.641517	-92.462877
Lim. Edos. Term. Tab. Ppia. Camp.	99.75																			
Nuevo Campechito	100.00	3	0	4549	1.4	67.9	8.3	8.3	2.1	8.3	1.5	1.6	0.6	69.3	8.3	22.4	0.087	0.501	18.643100	-92.454444
Nuevo Progreso	116.57	1	0	5230	2.6	69.8	4.7	8.8	2.8	8.1	1.1	1.6	0.5	72.4	4.7	22.9	0.070	0.501	18.626566	-92.326449
Puente Zacatal	162.41	1	0	5550	1.0	67.9	8.1	9.1	2.0	8.5	1.3	1.5	0.6	68.9	8.1	23.0	0.071	0.501	18.614954	-91.868853
Puente Zacatal	162.41	2	0	4790	1.3	71.5	8.0	4.7	4.1	7.2	1.0	1.8	0.4	72.8	8.0	19.2	0.077	0.500	18.641814	-92.460301
Cd. del Carmen	167.50																			

16 CARR: Villahermosa - Francisco Escárcega

CLAVE: 00092

RUTA: MEX-186

AÑO: 2018

LUGAR	ESTACION				CLASIFICACION VEHICULAR EN PORCIENTO										COORDENADAS					
	KM	TE	SC	TDPA	M	A	B	C2	C3	T3S2	T3S3	T3S2R4	OTROS	A	B	C	K'	D	LATITUD	LONGITUD
Villahermosa	0.00	3	1	17905	3.3	85.2	1.1	4.1	1.1	2.5	0.7	1.9	0.1	88.5	1.1	10.4	0.068	0.512	18.001028	-92.890761

CAMPECHE

16 CARR: Villahermosa - Francisco Escárcega

CLAVE: 00092

RUTA: MEX-186

AÑO: 2018

LUGAR	ESTACION				CLASIFICACION VEHICULAR EN PORCIENTO														COORDENADAS	
	KM	TE	SC	TDPA	M	A	B	C2	C3	T3S2	T3S3	T3S2R4	OTROS	A	B	C	K'	D	LATITUD	LONGITUD
Villahermosa	0.00	3	2	18751	2.1	85.2	1.3	5.2	1.1	2.5	0.7	1.8	0.1	87.3	1.3	11.4	0.073	0.512	18.001155	-92.890733
T. Izq. Aeropuerto (Baja)	12.00	1	1	1461	15.6	72.1	1.1	5.7	1.5	2.7	0.5	0.6	0.2	87.7	1.1	11.2	0.077	0.542	17.983828	-92.828028
T. Izq. Aeropuerto (Alta)	12.00	1	1	15422	2.1	81.3	1.7	6.7	1.0	3.2	1.4	1.9	0.7	83.4	1.7	14.9	0.069	0.513	17.983779	-92.827823
T. Izq. Aeropuerto (Baja)	12.00	1	2	1234	13.0	73.2	1.3	6.3	1.7	3.0	0.6	0.7	0.2	86.2	1.3	12.5	0.083	0.542	17.983721	-92.827270
T. Izq. Aeropuerto (Alta)	12.00	1	2	14657	2.3	80.3	1.7	7.5	1.0	3.0	1.4	2.0	0.8	82.6	1.7	15.7	0.066	0.513	17.983585	-92.827313
Puente Grijalva	17.60	2	1	7565	1.8	78.5	4.7	3.5	2.2	4.7	1.2	3.1	0.3	80.3	4.7	15.0	0.079	0.500	17.947602	-92.785235
Puente Grijalva	17.60	2	2	7565	1.8	78.5	4.7	3.5	2.2	4.7	1.2	3.1	0.3	80.3	4.7	15.0	0.079	0.500	17.947602	-92.785235
X. C. Cacaos - La Granja	32.46	1	1	9761	1.4	77.4	2.7	6.8	1.4	4.8	1.3	3.9	0.3	78.8	2.7	18.5	0.078	0.500	17.828733	-92.717376
X. C. Cacaos - La Granja	32.46	1	2	9760	1.4	76.9	2.7	7.4	1.4	5.0	1.2	3.7	0.3	78.3	2.7	19.0	0.092	0.500	17.828839	-92.717096
X. C. Cacaos - La Granja	32.46	3	1	6958	2.0	74.5	3.2	7.7	1.7	4.9	1.3	4.3	0.4	76.5	3.2	20.3	0.074	0.503	17.816276	-92.710252
X. C. Cacaos - La Granja	32.46	3	2	7036	2.0	75.0	2.9	7.3	2.0	4.7	1.3	4.3	0.5	77.0	2.9	20.1	0.095	0.503	17.816324	-92.710173
X. C. Jalapa - Jonuta	40.00	3	1	7295	2.4	75.0	3.1	6.9	1.6	4.7	1.5	4.3	0.5	77.4	3.1	19.5	0.071	0.520	17.775953	-92.674973
X. C. Jalapa - Jonuta	40.00	3	2	7915	2.4	76.5	3.0	6.9	1.6	4.2	1.3	3.8	0.3	78.9	3.0	18.1	0.094	0.520	17.776009	-92.674917
T. Izq. Macuspana	46.20	1	1	7723	2.2	74.3	2.9	7.2	2.8	4.7	1.7	3.8	0.4	76.5	2.9	20.6	0.067	0.517	17.742931	-92.632613
T. Izq. Macuspana	46.20	1	2	7224	2.2	71.0	3.2	8.5	3.2	6.1	1.9	3.5	0.4	73.2	3.2	23.6	0.068	0.517	17.743016	-92.632556
T. Izq. Macuspana	46.20	3	1	6504	3.9	70.0	2.2	8.3	2.9	5.9	2.1	4.1	0.6	73.9	2.2	23.9	0.063	0.510	17.735287	-92.622844
T. Izq. Macuspana	46.20	3	2	6769	3.6	67.6	2.4	9.8	3.3	6.5	2.2	3.9	0.7	71.2	2.4	26.4	0.090	0.510	17.735357	-92.622766
X. C. Estación Macuspana - Vernet	54.30	1	0	10144	3.1	68.6	2.7	12.0	2.4	6.8	1.9	2.1	0.4	71.7	2.7	25.6	0.080	0.523	17.711379	-92.578960
T. Der. Chivalito (Est. Pino Suárez)	70.00	1	0	11518	2.4	74.8	2.0	6.1	2.1	5.7	1.4	5.1	0.4	77.2	2.0	20.8	0.081	0.537	17.669145	-92.442167
T. Der. Chivalito (Est. Pino Suárez)	70.00	3	1	3988	3.3	63.2	4.6	8.1	2.0	8.3	1.7	8.2	0.6	66.5	4.6	28.9	0.072	0.520	17.665823	-92.431402
T. Der. Chivalito (Est. Pino Suárez)	70.00	3	2	4316	2.8	61.8	5.2	8.8	2.3	8.9	1.7	7.9	0.6	64.6	5.2	30.2	0.079	0.520	17.665870	-92.431387
T. Der. Estación Zopo	71.00	1	0	8265	3.0	63.5	4.1	7.8	2.5	9.0	1.8	8.0	0.3	66.5	4.1	29.4	0.072	0.512	17.671241	-92.416830
T. Der. Estación Zopo	71.00	3	1	4362	2.4	69.2	4.1	6.7	2.2	7.0	1.7	6.3	0.4	71.6	4.1	24.3	0.067	0.505	17.680102	-92.403113
T. Der. Estación Zopo	71.00	3	2	4273	2.2	63.8	5.2	8.1	2.5	8.6	1.9	7.3	0.4	66.0	5.2	28.8	0.083	0.505	17.680138	-92.403161
Lim. Edos. Term. Tab. Ppia. Chis.	76.90																			
T. Izq. Bonanza	88.00	1	0	8015	2.8	65.1	3.6	9.8	2.1	8.9	2.0	4.9	0.8	67.9	3.6	28.5	0.078	0.522	17.698247	-92.267933
T. Izq. Jonuta	101.00	1	0	6505	1.8	63.0	3.5	10.2	2.2	9.3	1.9	7.4	0.7	64.8	3.5	31.7	0.082	0.511	17.697882	-92.135387
T. Izq. Jonuta	101.00	3	0	7652	1.7	67.4	4.2	7.8	3.3	8.4	1.9	4.7	0.6	69.1	4.2	26.7	0.070	0.502	17.697549	-92.121832
X. C. Catazajá - Palenque	114.00	1	0	7750	2.3	69.0	3.4	6.7	1.6	9.7	1.4	5.3	0.6	71.3	3.4	25.3	0.107	0.529	17.707807	-92.024265
X. C. Catazajá - Palenque	114.00	3	0	6363	1.9	66.0	3.4	6.4	2.4	9.5	1.7	8.4	0.3	67.9	3.4	28.7	0.086	0.504	17.715068	-92.001802
T. Der. Emiliano Zapata	134.70	1	0	6877	1.4	62.6	4.6	7.5	1.9	10.9	1.5	8.8	0.8	64.0	4.6	31.4	0.079	0.519	17.771036	-91.836126
T. Der. Emiliano Zapata	134.70	3	0	4836	2.0	60.6	4.4	7.1	2.3	11.2	2.4	8.9	1.1	62.6	4.4	33.0	0.058	0.510	17.784949	-91.822232
Lim. Edos. Term. Chis. Ppia. Tab.	140.70																			
Puente Usumacinta	145.20	2	0	4369	2.9	56.3	4.6	4.7	4.5	13.5	2.0	10.5	1.0	59.2	4.6	36.2	0.079	0.500	17.859905	-91.783654
T. Izq. Palizada	154.05	1	0	4057	2.5	52.3	5.8	7.2	2.3	13.9	3.1	11.9	1.0	54.8	5.8	39.4	0.062	0.508	17.937705	-91.737378

CAMPECHE

16 CARR: Villahermosa - Francisco Escárcega

CLAVE: 00092

RUTA: MEX-186

AÑO: 2018

LUGAR	ESTACION				CLASIFICACION VEHICULAR EN PORCIENTO														COORDENADAS	
	KM	TE	SC	TDPA	M	A	B	C2	C3	T3S2	T3S3	T3S2R4	OTROS	A	B	C	K'	D	LATITUD	LONGITUD
T. Izq. Palizada	154.05	3	0	3412	1.7	56.8	5.9	7.8	2.6	10.7	3.2	10.0	1.3	58.5	5.9	35.6	0.077	0.526	17.946491	-91.729919
Lim. Edos. Term. Tab. Ppia. Camp.	154.60																			
T. Der. Candelaria	233.40	1	0	3885	2.7	48.3	5.1	7.6	2.8	15.8	3.0	14.1	0.6	51.0	5.1	43.9	0.065	0.502	18.373074	-91.201755
T. Der. Felipe Ángeles	253.00	1	0	3938	3.7	50.9	5.5	8.6	2.4	12.7	2.8	12.3	1.1	54.6	5.5	39.9	0.067	0.524	18.504011	-91.106451
T. Izq. Sabancuy	274.10	1	0	4701	3.9	59.8	4.6	7.8	2.2	12.4	2.7	5.7	0.9	63.7	4.6	31.7	0.072	0.501	18.629556	-90.987576
Francisco Escárcega	297.04	1	0	7170	2.2	63.6	3.8	9.0	1.7	10.6	2.2	6.1	0.8	65.8	3.8	30.4	0.071	0.512	18.610029	-90.776006

17 CARR: Champotón - Campeche (Cuota)

CLAVE: 04014

RUTA: MEX-180D

AÑO: 2018

LUGAR	ESTACION				CLASIFICACION VEHICULAR EN PORCIENTO														COORDENADAS	
	KM	TE	SC	TDPA	M	A	B	C2	C3	T3S2	T3S3	T3S2R4	OTROS	A	B	C	K'	D	LATITUD	LONGITUD
T. C. Cd. del Carmen - Campeche	160.50	3	1	3156	0.8	62.9	5.6	8.5	2.3	10.1	2.0	7.4	0.4	63.7	5.6	30.7	0.092	0.503	19.511734	-90.700190
T. C. Cd. del Carmen - Campeche	160.50	3	2	3123	0.9	65.0	4.6	7.4	2.4	10.2	1.9	6.9	0.7	65.9	4.6	29.5	0.067	0.503	19.512007	-90.700323
Caseta de Cobro Seybaplaya	174.80	2	1	3112	0.7	66.8	4.6	3.7	4.1	10.4	1.7	7.2	0.8	67.5	4.6	27.9	0.088	0.500	19.636235	-90.671582
Caseta de Cobro Seybaplaya	174.80	2	2	3112	0.7	66.8	4.6	3.7	4.1	10.4	1.7	7.2	0.8	67.5	4.6	27.9	0.088	0.500	19.636235	-90.671582
T. Der. Periférico Pablo García y Montilla (Libramiento De Campeche)	199.00	1	1	3829	1.4	69.3	4.3	7.6	2.1	8.0	1.1	5.6	0.6	70.7	4.3	25.0	0.087	0.510	19.787593	-90.538448
T. Der. Periférico Pablo García y Montilla (Libramiento De Campeche)	199.00	1	2	3676	1.5	67.3	4.3	7.4	2.1	9.2	1.5	6.2	0.5	68.8	4.3	26.9	0.073	0.510	19.787635	-90.538531

18 CARR: Hopelchén - Dzibalchén

CLAVE: 04572

RUTA: CAM-261

AÑO: 2018

LUGAR	ESTACION				CLASIFICACION VEHICULAR EN PORCIENTO														COORDENADAS	
	KM	TE	SC	TDPA	M	A	B	C2	C3	T3S2	T3S3	T3S2R4	OTROS	A	B	C	K'	D	LATITUD	LONGITUD
Hopelchén	0.00	3	0	1381	9.2	72.9	0.7	14.7	0.7	0.9	0.0	0.9	0.0	82.1	0.7	17.2	0.085	0.500	19.729648	-89.835238
Dzibalchén	41.00																			

19 CARR: Libramiento de Becal

CLAVE: 04010

RUTA: CAM

AÑO: 2018

LUGAR	ESTACION				CLASIFICACION VEHICULAR EN PORCIENTO														COORDENADAS	
	KM	TE	SC	TDPA	M	A	B	C2	C3	T3S2	T3S3	T3S2R4	OTROS	A	B	C	K'	D	LATITUD	LONGITUD
T. C. Dzitalché - Ent. San Bernardo (1º Acceso)	0.00																			
T. C. Campeche - Mérida (2º Acceso)	2.30	1	0	1561	17.3	76.0	2.3	2.3	1.0	1.1	0.0	0.0	0.0	93.3	2.3	4.4	0.079	0.524	20.440581	-90.034276

CAMPECHE

20 CARR: Libramiento de Pomuch

CLAVE: 04579

RUTA: CAM

AÑO: 2018

LUGAR	ESTACION				CLASIFICACION VEHICULAR EN PORCIENTO														COORDENADAS	
	KM	TE	SC	TDPA	M	A	B	C2	C3	T3S2	T3S3	T3S2R4	OTROS	A	B	C	K'	D	LATITUD	LONGITUD
T. C. Campeche - Mérida (1° Acceso)	0.00	3	1	4391	1.3	75.0	3.8	5.5	1.6	6.2	1.8	4.7	0.1	76.3	3.8	19.9	0.101	0.510	20.122198	-90.177178
T. C. Campeche - Mérida (1° Acceso)	0.00	3	2	4225	1.6	71.7	4.2	6.0	1.9	7.0	2.0	5.3	0.3	73.3	4.2	22.5	0.082	0.510	20.122362	-90.177190
T. C. Campeche - Mérida (2° Acceso)	4.10																			

21 CARR: T. C. (Francisco Escárcega - Champotón) - Yohaltún

CLAVE: 04581

RUTA: CAM

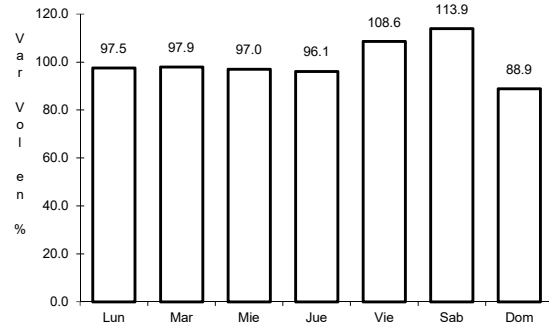
AÑO: 2018

LUGAR	ESTACION				CLASIFICACION VEHICULAR EN PORCIENTO														COORDENADAS	
	KM	TE	SC	TDPA	M	A	B	C2	C3	T3S2	T3S3	T3S2R4	OTROS	A	B	C	K'	D	LATITUD	LONGITUD
T. C. Francisco Escárcega - Champotón	0.00	3	0	1429	19.1	68.4	0.8	7.9	1.2	1.9	0.5	0.2	0.0	87.5	0.8	11.7	0.086	0.508	19.290023	-90.709624
Felipe Carrillo Puerto	36.50	1	0	750	24.7	66.5	1.3	5.6	0.5	0.6	0.3	0.5	0.0	91.2	1.3	7.5	0.071	0.517	19.112721	-90.516154
Felipe Carrillo Puerto	36.50	3	0	726	35.4	58.1	0.7	2.7	1.4	0.9	0.8	0.0	0.0	93.5	0.7	5.8	0.085	0.515	19.092114	-90.517997
Yohaltún	70.60																			

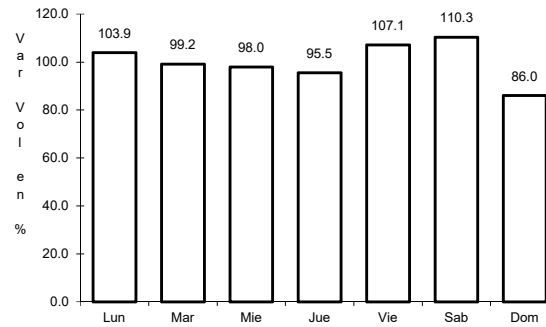
1 CARR: Campeche - Mérida

CLAVE: 00066

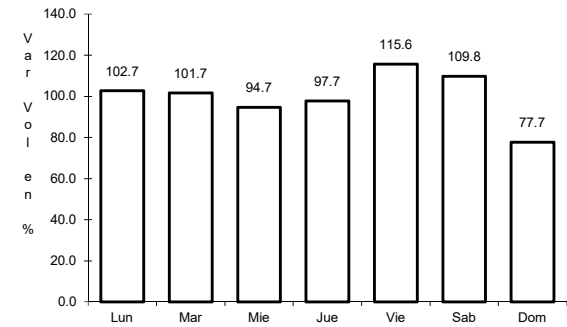
RUTA: MEX-180



Km: 0.00 Tipo: 3 Sent: 1



Km: 0.00 Tipo: 3 Sent: 2

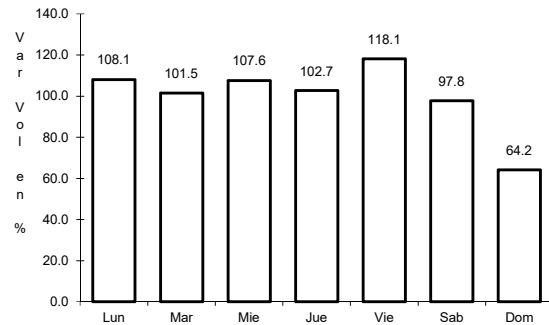


Km: 160.49 Tipo: 1 Sent: 1

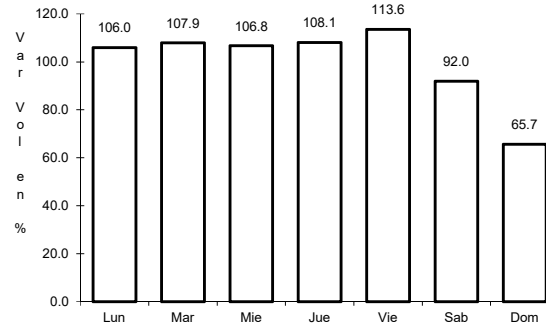
2 CARR: Campeche - Tixmucuy

CLAVE: 04575

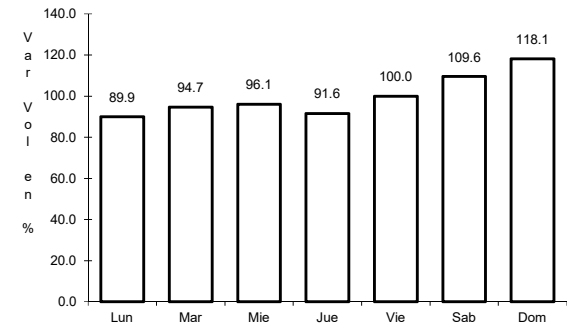
RUTA: MEX-180



Km: 0.00 Tipo: 3 Sent: 1



Km: 0.00 Tipo: 3 Sent: 2

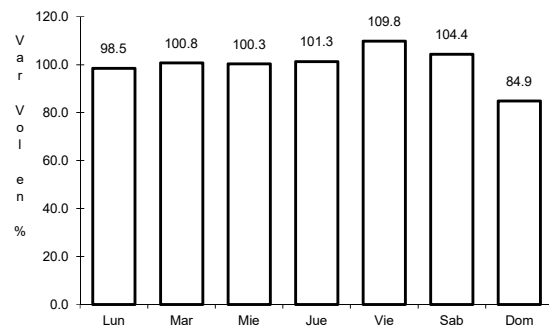


Km: 42.00 Tipo: 1 Sent: 0

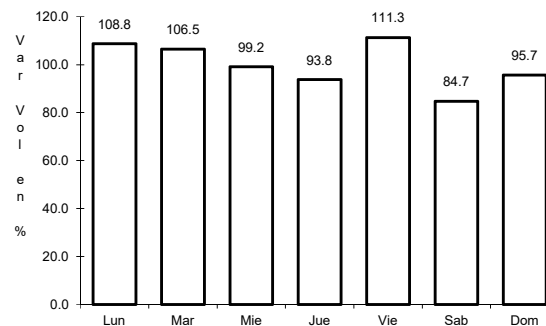
3 CARR: Campeche - Umán

CLAVE: 00164

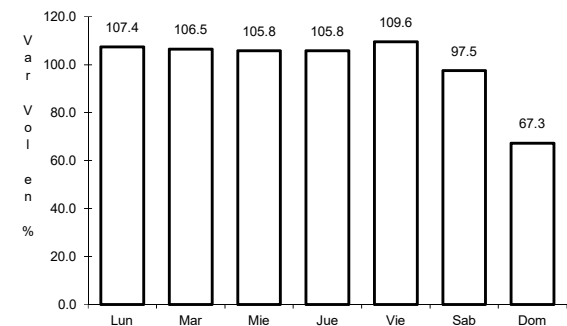
RUTA: MEX-261



Km: 7.00 Tipo: 1 Sent: 0



Km: 117.88 Tipo: 3 Sent: 0

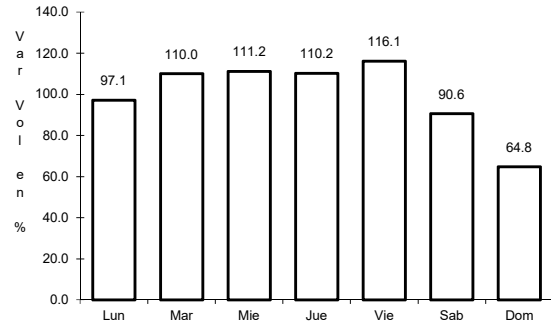


Km: 230.83 Tipo: 1 Sent: 0

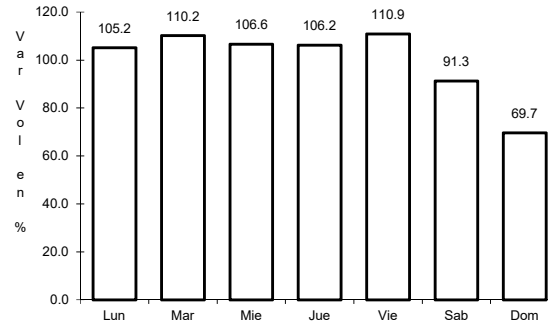
4 CARR: Cd. del Carmen - Campeche

CLAVE: 04065

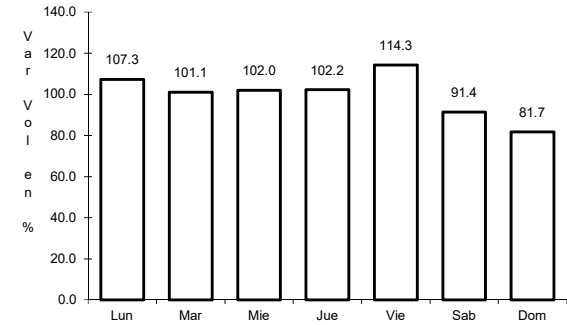
ruta: MEX-180



Km: 0.00 Tipo: 3 Sent: 1



Km: 0.00 Tipo: 3 Sent: 2

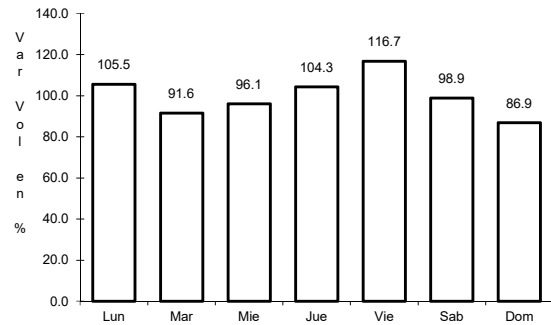


Km: 141.80 Tipo: 1 Sent: 0

5 CARR: Chencoyi - Tenabo

CLAVE: 04576

ruta: MEX-180

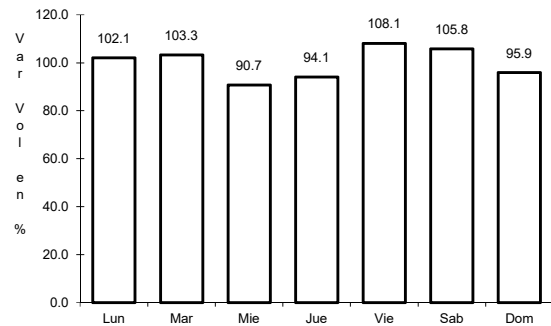


Km: 28.00 Tipo: 1 Sent: 0

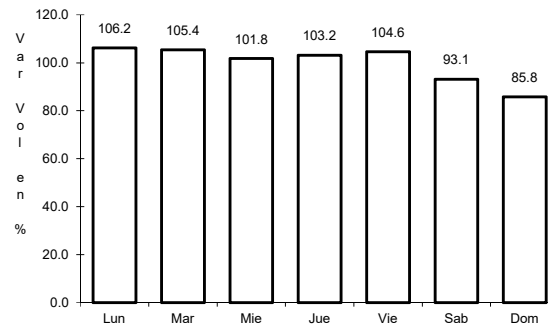
6 CARR: Dzitbalché - Ent. San Bernardo

CLAVE: 00162

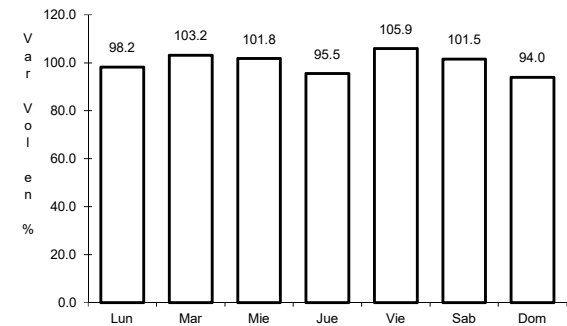
ruta: MEX-180



Km: 12.33 Tipo: 1 Sent: 0



Km: 21.08 Tipo: 1 Sent: 0

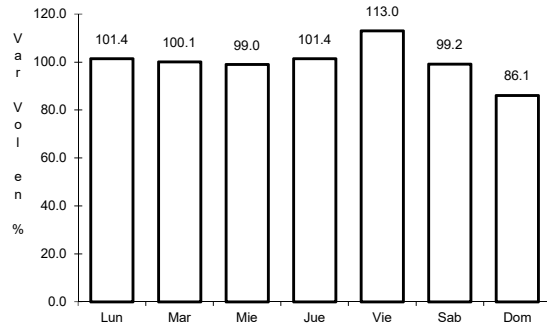


Km: 40.36 Tipo: 3 Sent: 0

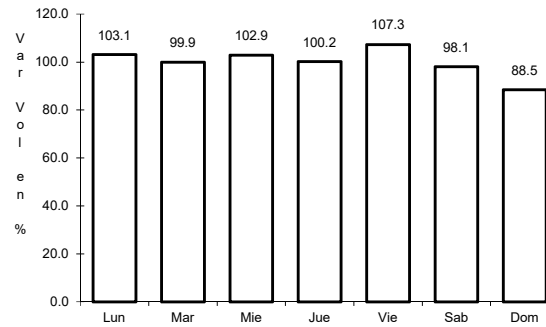
7 CARR: Francisco Escárcega - Champotón

CLAVE: 04103

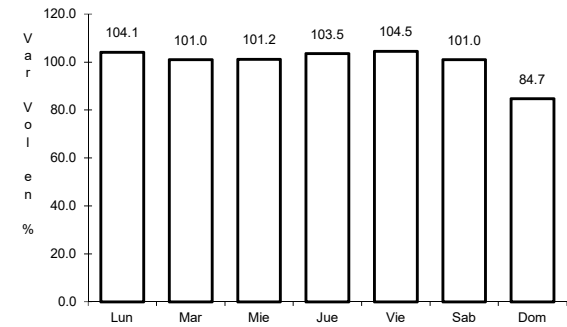
ruta: MEX-201



Km: 0.00 Tipo: 3 Sent: 0



Km: 51.40 Tipo: 1 Sent: 0

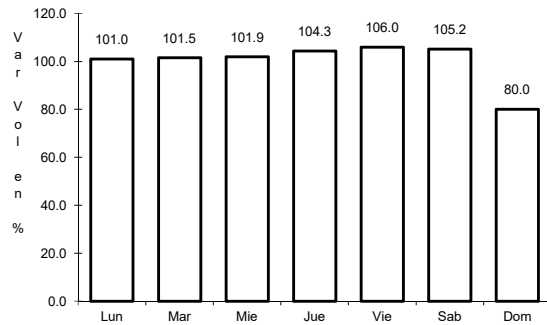


Km: 81.40 Tipo: 1 Sent: 0

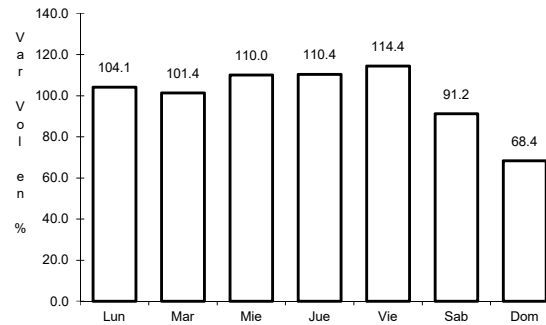
8 CARR: Francisco Escárcega - Chetumal

CLAVE: 00093

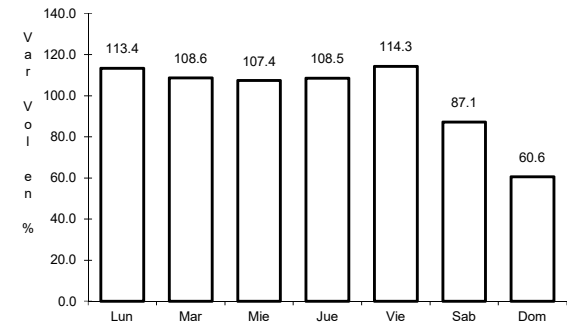
ruta: MEX-186



Km: 0.00 Tipo: 3 Sent: 0



Km: 277.36 Tipo: 1 Sent: 1

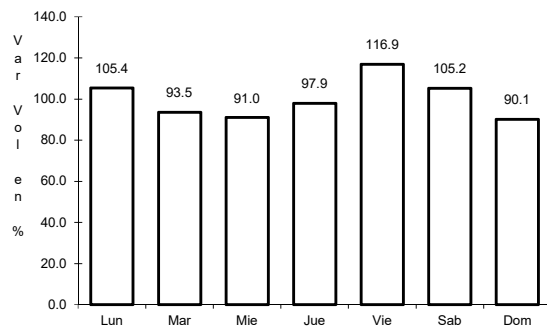


Km: 277.36 Tipo: 1 Sent: 2

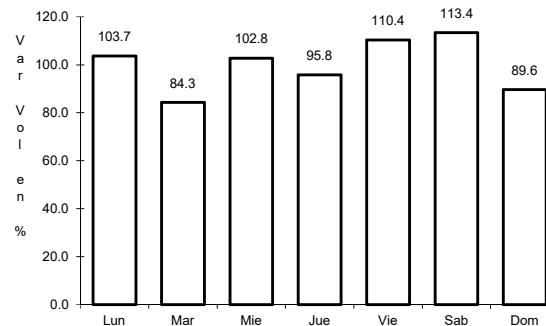
9 CARR: Haltunchén - San Antonio Cayal

CLAVE: 04009

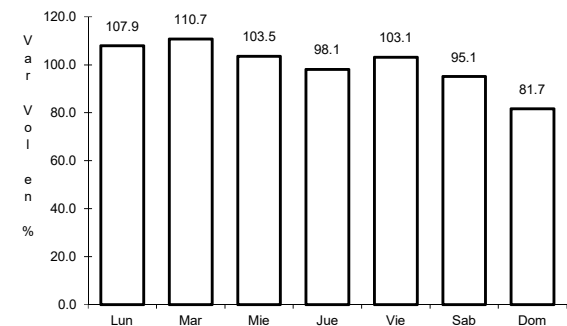
ruta: MEX-180



Km: 0.00 Tipo: 3 Sent: 0



Km: 47.10 Tipo: 1 Sent: 0

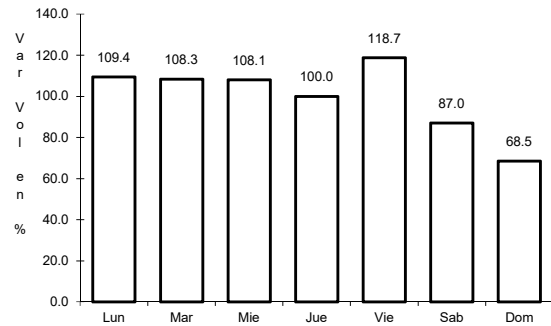


Km: 79.00 Tipo: 1 Sent: 0

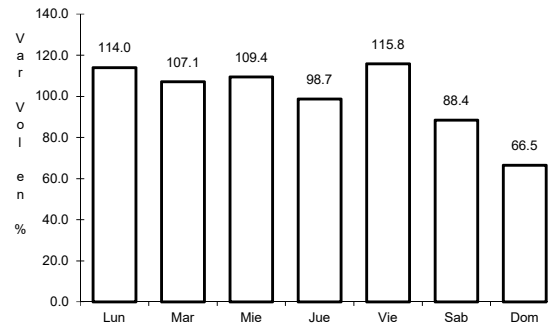
10 CARR: Periférico Pablo García y Montilla (Libramiento de Campeche)

CLAVE: 04573

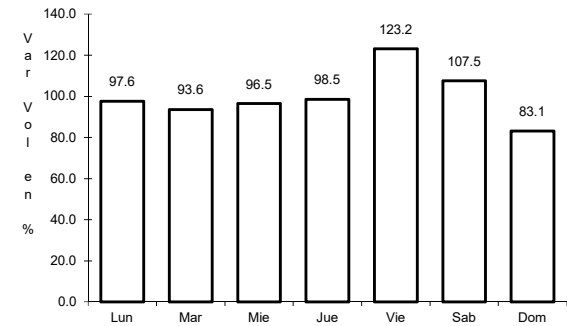
ruta: MEX-202



Km: 0.00 Tipo: 3 Sent: 1



Km: 0.00 Tipo: 3 Sent: 2

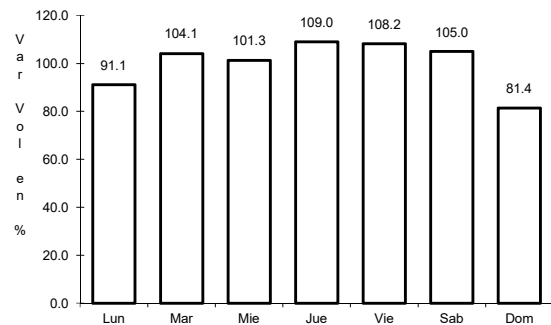


Km: 26.00 Tipo: 1 Sent: 1

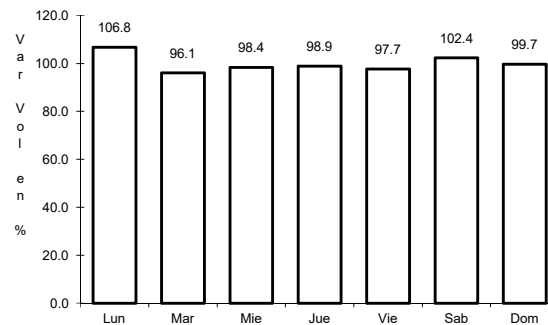
11 CARR: Presidente Díaz Ordaz - Sabancuy

CLAVE: 04570

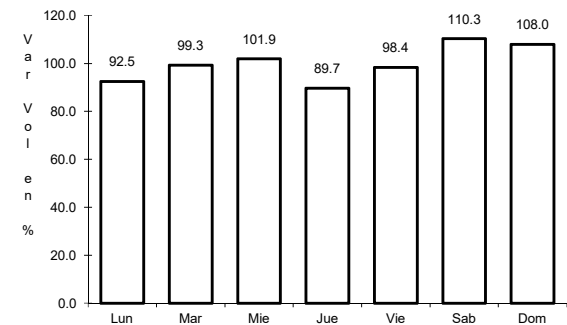
ruta: MEX-186



Km: 0.00 Tipo: 3 Sent: 0



Km: 18.00 Tipo: 1 Sent: 0

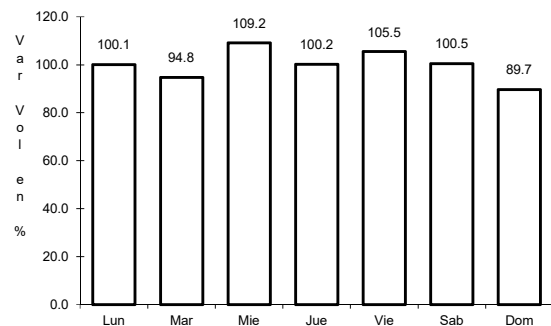


Km: 57.00 Tipo: 1 Sent: 0

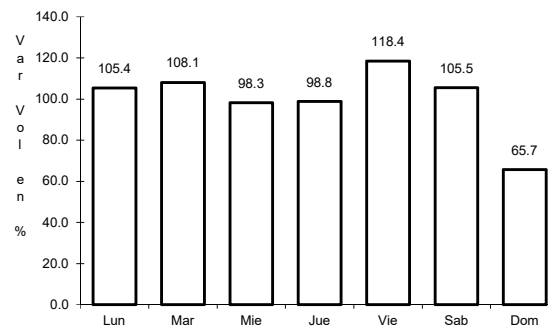
12 CARR: Ramal a Nuevo Coahuila

CLAVE: 04015

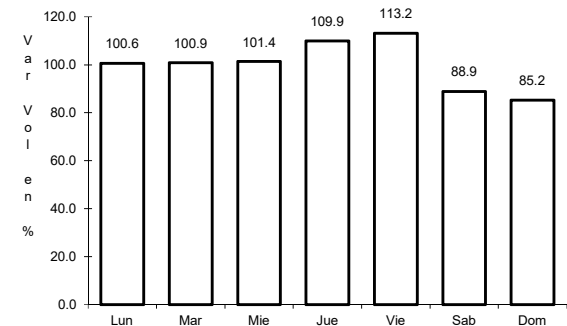
ruta: MEX-186



Km: 0.00 Tipo: 3 Sent: 0



Km: 44.50 Tipo: 3 Sent: 0

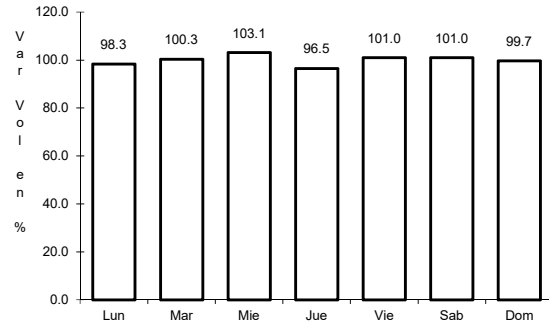


Km: 70.00 Tipo: 1 Sent: 0

13 CARR: Ramal a Ruíz Cortines

CLAVE: 04101

ruta: MEX-180

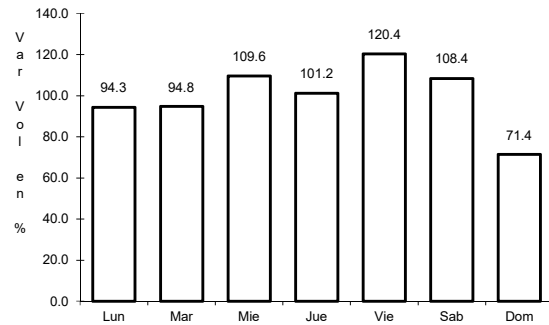


Km: 1.00 Tipo: 3 Sent: 0

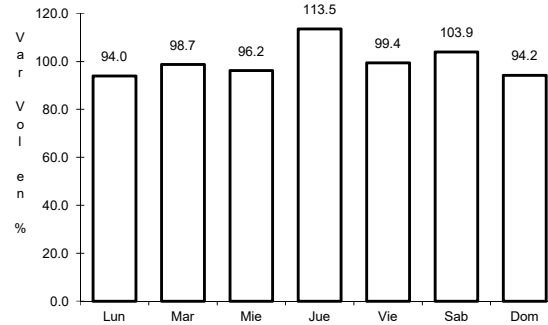
14 CARR: San Marcos - Palizada

CLAVE: 00490

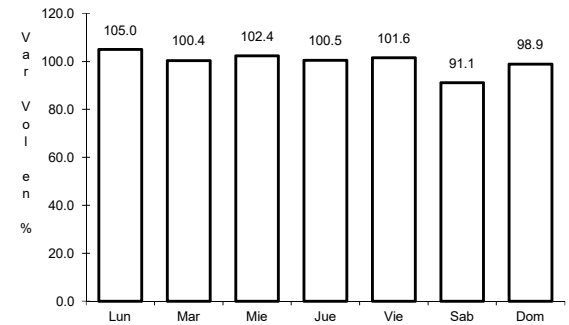
ruta: MEX-186



Km: 0.00 Tipo: 3 Sent: 0



Km: 46.20 Tipo: 1 Sent: 0

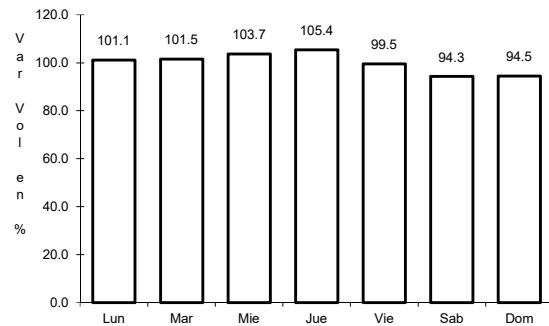


Km: 46.20 Tipo: 3 Sent: 0

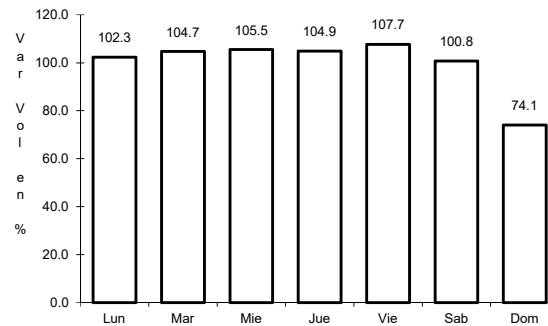
15 CARR: Villahermosa - Cd. del Carmen

CLAVE: 00064

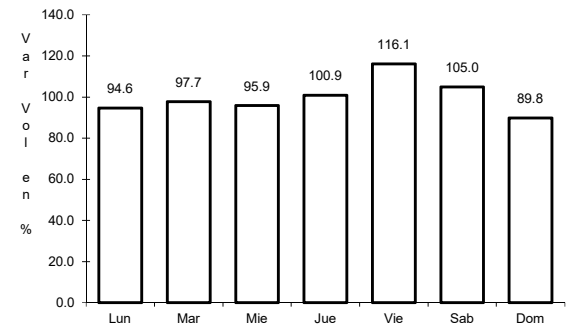
ruta: MEX-180



Km: 4.30 Tipo: 3 Sent: 1



Km: 4.30 Tipo: 3 Sent: 2

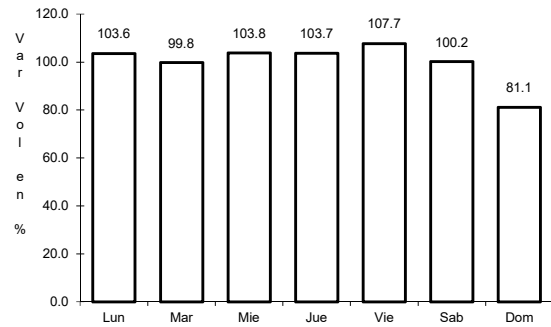


Km: 162.41 Tipo: 1 Sent: 0

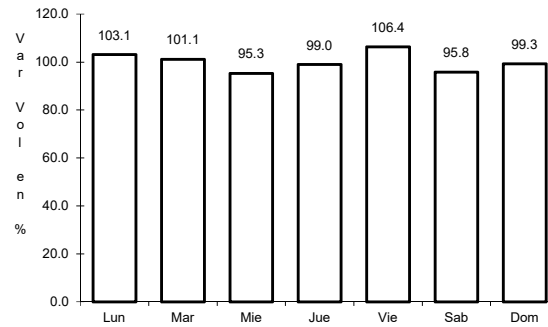
16 CARR: Villahermosa - Francisco Escárcega

CLAVE: 00092

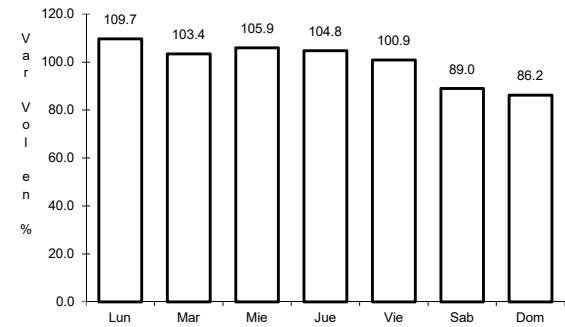
ruta: MEX-186



Km: 0.00 Tipo: 3 Sent: 1



Km: 0.00 Tipo: 3 Sent: 2

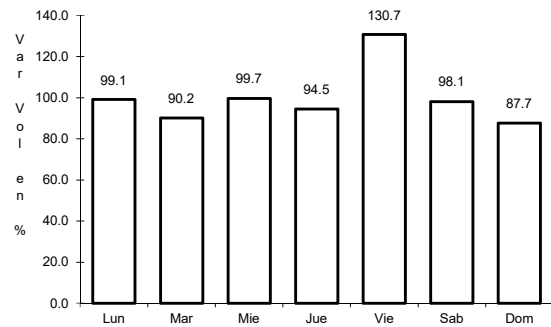


Km: 297.04 Tipo: 1 Sent: 0

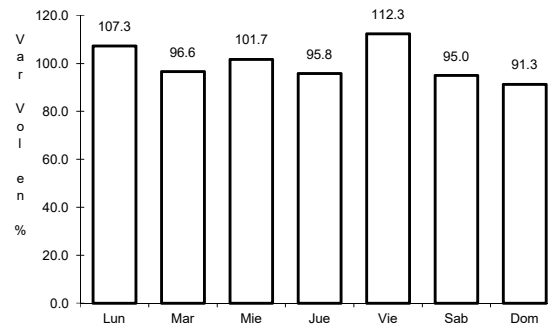
17 CARR: Champotón - Campeche (Cuota)

CLAVE: 04014

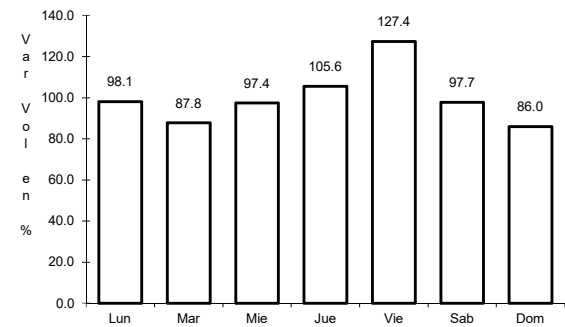
ruta: MEX-180D



Km: 160.50 Tipo: 3 Sent: 1



Km: 160.50 Tipo: 3 Sent: 2

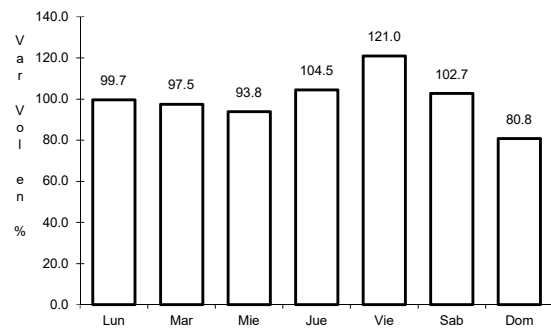


Km: 199.00 Tipo: 1 Sent: 1

18 CARR: Hopolchén - Dzibalchén

CLAVE: 04572

ruta: CAM-261

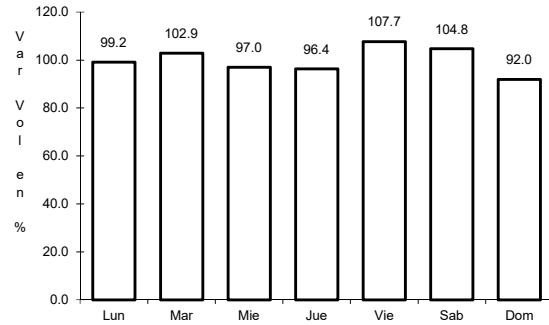


Km: 0.00 Tipo: 3 Sent: 0

19 CARR: Libramiento de Becal

CLAVE: 04010

ruta: CAM



Km: 2.30

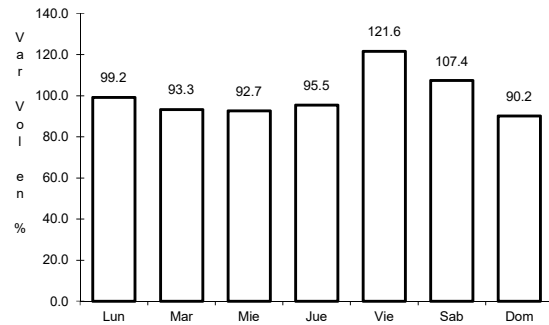
Tipo: 1

Sent: 0

20 CARR: Libramiento de Pomuch

CLAVE: 04579

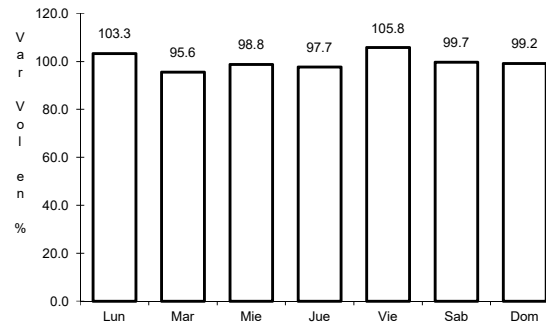
ruta: CAM



Km: 0.00

Tipo: 3

Sent: 1



Km: 0.00

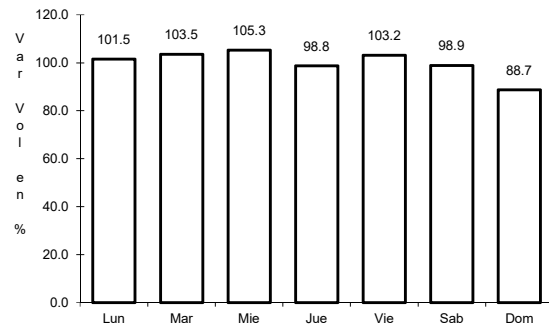
Tipo: 3

Sent: 2

21 CARR: T. C. (Francisco Escárcega - Champotón) - Yohaltún

CLAVE: 04581

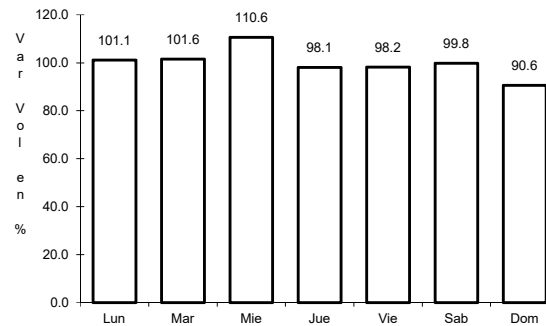
ruta: CAM



Km: 0.00

Tipo: 3

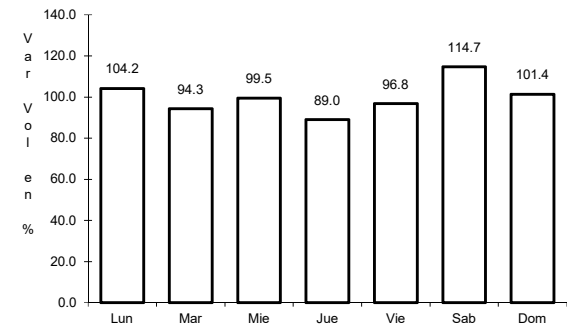
Sent: 0



Km: 36.50

Tipo: 1

Sent: 0



Km: 36.50

Tipo: 3

Sent: 0

