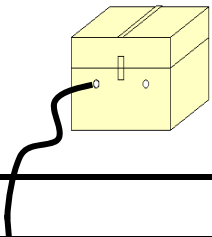


03 BAJA CALIFORNIA SUR

SECRETARÍA DE COMUNICACIONES Y TRANSPORTES
DIRECCIÓN GENERAL DE SERVICIOS TÉCNICOS



- ① - Número Índice
- Red Federal Libre
- Red Federal Cuota
- Red Federal Integrada por Tramos Libres y de Cuota
- Red Estatal Libre
- Red Estatal Cuota
- Carreteras Integradas por Tramos Federales y Estatales



BAJA CALIFORNIA SUR

---RED FEDERAL LIBRE---

1	Cabo San Lucas - La Paz	MEX-001
2	Cd. Constitución - Puerto San Carlos	MEX-001
3	Cd. Insurgentes - Loreto	MEX-001
4	Ent. Punta Prieta - Guerrero Negro	MEX-001
5	La Paz - Cd. Insurgentes	MEX-001
6	La Paz - Pichilingue	MEX-011
7	Libramiento de Cabo San Lucas	MEX-001
8	Loreto - Santa Rosalía	MEX-001
9	Ramal a Aeropuerto de La Paz	MEX-001
10	Ramal a Aeropuerto de Los Cabos	MEX-001
11	Ramal a Los Paredones	MEX-001
12	Ramal a Miraflores	MEX-001
13	Ramal a Puerto Escondido	MEX-001
14	Ramal a San Ignacio	MEX-001
15	Ramal a Santiago	MEX-001
16	Ramal Aeropista San Ignacio	MEX-001
17	San Pedro - Cabo San Lucas	MEX-019
18	Santa Rosalía - Guerrero Negro	MEX-001

---RED FEDERAL DE CUOTA---

19	Libramiento San José del Cabo - Aeropuerto Los Cabos (Cuota)	MEX-001D
20	Ramal a El Mague (Cuota)	MEX-001D
21	San José del Cabo - Libramiento de Cabo San Lucas - (Cuota)	MEX-001D

---RED ESTATAL LIBRE---

22	Cd. Insurgentes - La Purísima	BCS-001
23	Cd. Insurgentes - Pto. Adolfo López Mateos	BCS
24	Ent. Campo Fisher - Punta Abreojos	BCS
25	La Paz - Ensenada de Muertos	BCS-246
26	Libramiento de La Paz	BCS
27	Libramiento Norte de La Paz	BCS
28	Ramal a Benito Juárez	BCS
29	Ramal a Ejido Ley Federal de Aguas Número Cuatro	BCS
30	Ramal a El Carrizal	BCS
31	Ramal a Guerrero Negro	BCS
32	Ramal a La Ribera	BCS
33	Ramal a Melitón Albáñez	BCS
34	Ramal a Santa Catarina	BCS

---CARRETERAS INTEGRADAS POR TRAMOS FEDERALES Y ESTATALES---

35	Ramal a Bahía de Tortugas	MEX-001-BCS
36	Ramal a Ejido Ley Federal de Aguas Número Dos	BCS-MEX-001
37	Ramal a Ley Federal de Aguas Número Cinco	BCS-MEX-001
38	Ramal a San Juan de La Costa	BCS-163-MEX-001

BAJA CALIFORNIA SUR

1 CARR: Cabo San Lucas - La Paz

CLAVE: 03102

RUTA: MEX-001

AÑO: 2018

LUGAR	ESTACION				CLASIFICACION VEHICULAR EN PORCIENTO										COORDENADAS					
	KM	TE	SC	TDPA	M	A	B	C2	C3	T3S2	T3S3	T3S2R4	OTROS	A	B	C	K'	D	LATITUD	LONGITUD
Cabo San Lucas	0.00	3	1	24583	1.2	81.6	0.8	14.7	1.2	0.2	0.1	0.1	0.1	82.8	0.8	16.4	0.072	0.533	22.901487	-109.895933
Cabo San Lucas	0.00	3	2	28030	1.2	79.6	0.8	16.5	1.4	0.2	0.1	0.1	0.1	80.8	0.8	18.4	0.071	0.533	22.901565	-109.896025
El Tule	13.00	3	1	14458	0.9	86.2	0.8	10.3	1.0	0.3	0.3	0.1	0.1	87.1	0.8	12.1	0.091	0.519	22.978938	-109.772972
El Tule	13.00	3	2	15622	1.0	84.6	0.8	11.7	1.1	0.3	0.3	0.1	0.1	85.6	0.8	13.6	0.099	0.519	22.979062	-109.773042
San José del Cabo	31.00	1	1	20943	0.9	87.5	1.0	9.3	0.8	0.2	0.1	0.0	0.2	88.4	1.0	10.6	0.087	0.502	23.029811	-109.715676
San José del Cabo	31.00	1	2	21134	0.8	86.7	1.0	10.1	0.9	0.2	0.1	0.0	0.2	87.5	1.0	11.5	0.093	0.502	23.029868	-109.715740
San José del Cabo	31.00	3	1	25962	1.7	86.3	1.2	9.3	1.0	0.2	0.2	0.0	0.1	88.0	1.2	10.8	0.063	0.514	23.066490	-109.703604
San José del Cabo	31.00	3	2	27465	2.1	83.9	1.4	10.9	1.2	0.2	0.2	0.0	0.1	86.0	1.4	12.6	0.064	0.514	23.066444	-109.703703
T. Der. Santa Catarina	41.00	1	1	17483	1.4	86.6	1.0	9.6	0.9	0.2	0.2	0.0	0.1	88.0	1.0	11.0	0.063	0.501	23.125854	-109.711193
T. Der. Santa Catarina	41.00	1	2	17386	1.5	85.8	1.0	10.2	1.0	0.2	0.2	0.0	0.1	87.3	1.0	11.7	0.065	0.501	23.125868	-109.711320
T. Izq. Aeropuerto	43.46	1	1	11715	1.1	85.8	0.8	10.8	1.1	0.2	0.2	0.0	0.0	86.9	0.8	12.3	0.066	0.504	23.149643	-109.708860
T. Izq. Aeropuerto	43.46	1	2	11524	1.3	85.7	0.8	10.8	1.0	0.2	0.2	0.0	0.0	87.0	0.8	12.2	0.071	0.504	23.149646	-109.708991
Santa Anita	46.00	1	0	9109	1.3	79.3	0.7	16.5	1.5	0.3	0.4	0.0	0.0	80.6	0.7	18.7	0.062	0.507	23.172298	-109.704078
Santa Anita	46.00	3	0	4419	2.2	86.5	0.8	7.6	1.9	0.4	0.5	0.0	0.1	88.7	0.8	10.5	0.093	0.519	23.187658	-109.707692
T. Izq. Miraflores	71.50	3	0	2246	1.0	85.5	0.9	10.0	1.4	0.6	0.4	0.0	0.2	86.5	0.9	12.6	0.101	0.504	23.371182	-109.752059
T. Izq. Santiago	84.00	3	0	2283	0.6	87.7	0.8	9.1	1.3	0.3	0.2	0.0	0.0	88.3	0.8	10.9	0.102	0.501	23.477888	-109.694472
La Cueva	95.20	3	0	2230	0.7	86.8	0.7	9.8	1.2	0.6	0.2	0.0	0.0	87.5	0.7	11.8	0.076	0.502	23.559470	-109.676532
T. Der. Bahía de Las Palmas	110.00	3	0	2613	0.6	85.3	0.5	10.9	1.5	0.7	0.4	0.0	0.1	85.9	0.5	13.6	0.067	0.538	23.684946	-109.726113
San Bartolo	128.50	1	0	1756	1.5	84.1	0.6	11.4	1.2	0.8	0.4	0.0	0.0	85.6	0.6	13.8	0.082	0.520	23.739217	-109.837324
San Antonio	156.00	3	0	1531	1.4	84.1	1.0	10.7	1.4	0.7	0.5	0.0	0.2	85.5	1.0	13.5	0.084	0.504	23.809403	-110.059940
El Triunfo	162.80	1	0	1420	1.4	83.7	0.9	10.8	1.4	1.0	0.6	0.0	0.2	85.1	0.9	14.0	0.087	0.507	23.806648	-110.101614
El Triunfo	162.80	3	0	1409	1.0	84.9	0.9	10.2	1.4	1.1	0.5	0.0	0.0	85.9	0.9	13.2	0.110	0.511	23.795708	-110.111593
T. Izq. Todos Santos	184.40	1	0	1460	1.0	88.6	1.0	6.5	1.3	1.1	0.5	0.0	0.0	89.6	1.0	9.4	0.097	0.540	23.882173	-110.245096
T. Izq. Todos Santos	184.40	3	1	3734	0.3	83.5	1.2	9.2	1.4	2.4	0.9	1.0	0.1	83.8	1.2	15.0	0.108	0.506	23.896172	-110.257985
T. Izq. Todos Santos	184.40	3	2	3819	0.5	80.9	1.4	10.5	1.5	2.9	1.0	1.2	0.1	81.4	1.4	17.2	0.088	0.506	23.896166	-110.258147
San Pedro	191.00	1	1	3943	0.5	83.3	1.0	9.5	1.5	2.4	0.9	0.8	0.1	83.8	1.0	15.2	0.105	0.519	23.914142	-110.260754
San Pedro	191.00	1	2	3653	0.5	81.6	1.2	10.6	1.7	2.6	0.9	0.8	0.1	82.1	1.2	16.7	0.082	0.519	23.914116	-110.260914
San Pedro	191.00	3	1	4833	0.5	83.1	1.2	9.6	1.4	2.4	0.7	1.0	0.1	83.6	1.2	15.2	0.115	0.504	23.945699	-110.278746
San Pedro	191.00	3	2	4920	0.4	81.8	1.3	10.5	1.6	2.4	0.9	1.0	0.1	82.2	1.3	16.5	0.098	0.504	23.945660	-110.278888
Limite Zona Urbana de La Paz	211.00	1	1	7163	1.5	84.4	1.7	8.9	1.1	1.2	0.6	0.5	0.1	85.9	1.7	12.4	0.093	0.508	24.031032	-110.297455
Limite Zona Urbana de La Paz	211.00	1	2	6939	1.5	82.1	2.0	10.6	1.1	1.3	0.8	0.5	0.1	83.6	2.0	14.4	0.075	0.508	24.031014	-110.297526
La Paz	213.00																			

BAJA CALIFORNIA SUR

2 CARR: Cd. Constitución - Puerto San Carlos

CLAVE: 03231

RUTA: MEX-001

AÑO: 2018

LUGAR	ESTACION				CLASIFICACION VEHICULAR EN PORCIENTO										COORDENADAS					
	KM	TE	SC	TDPA	M	A	B	C2	C3	T3S2	T3S3	T3S2R4	OTROS	A	B	C	K'	D	LATITUD	LONGITUD
Cd. Constitución	0.00	3	0	2718	1.0	83.7	1.2	11.9	1.1	0.9	0.1	0.0	0.1	84.7	1.2	14.1	0.092	0.505	25.039802	-111.692029
T. Der. Benito Juárez	10.00	1	0	2070	0.5	84.7	0.8	10.8	1.9	1.0	0.3	0.0	0.0	85.2	0.8	14.0	0.075	0.501	25.040603	-111.757905
T. Der. Benito Juárez	10.00	3	0	1448	0.8	80.2	1.0	14.4	2.0	1.2	0.3	0.0	0.1	81.0	1.0	18.0	0.089	0.510	25.031957	-111.777730
Puerto San Carlos	57.70																			

3 CARR: Cd. Insurgentes - Loreto

CLAVE: 03092

RUTA: MEX-001

AÑO: 2018

LUGAR	ESTACION				CLASIFICACION VEHICULAR EN PORCIENTO										COORDENADAS					
	KM	TE	SC	TDPA	M	A	B	C2	C3	T3S2	T3S3	T3S2R4	OTROS	A	B	C	K'	D	LATITUD	LONGITUD
Cd. Insurgentes	0.00	3	0	2953	2.4	80.4	2.1	10.3	1.1	3.0	0.3	0.3	0.1	82.8	2.1	15.1	0.083	0.503	25.259281	-111.766793
T. Der. Ley Federal de Aguas Número Dos	13.46	3	0	1708	1.5	72.8	2.6	11.8	2.0	7.2	1.0	0.9	0.2	74.3	2.6	23.1	0.075	0.503	25.317365	-111.657996
T. Izq. Ley Federal de Aguas Número Uno	16.50	3	0	1398	1.1	73.4	2.3	10.6	2.2	8.1	1.2	0.9	0.2	74.5	2.3	23.2	0.071	0.503	25.333947	-111.632869
T. Der. Puerto Agua Verde	65.00	1	0	1291	1.8	71.2	2.8	10.2	2.3	9.2	1.1	1.2	0.2	73.0	2.8	24.2	0.079	0.517	25.606343	-111.319388
T. Der. Puerto Agua Verde	65.00	3	0	1399	1.7	72.3	2.8	10.5	2.0	8.7	0.9	0.9	0.2	74.0	2.8	23.2	0.079	0.515	25.614469	-111.304021
El Ligüi	84.50	1	0	1831	0.9	68.5	2.8	12.4	1.8	11.0	1.0	1.4	0.2	69.4	2.8	27.8	0.087	0.521	25.723180	-111.264929
T. Der. Puerto Escondido	95.40	1	0	1750	1.6	73.8	2.7	11.7	1.8	6.4	1.0	0.9	0.1	75.4	2.7	21.9	0.073	0.508	25.799922	-111.327175
T. Der. Puerto Escondido	95.40	3	0	2021	4.9	74.6	2.4	12.7	1.3	3.1	0.4	0.4	0.2	79.5	2.4	18.1	0.088	0.533	25.806239	-111.329524
Nopoló	109.50	1	0	2335	0.7	73.4	2.5	14.8	2.0	5.0	0.8	0.7	0.1	74.1	2.5	23.4	0.083	0.521	25.935369	-111.368864
T. Der. Aeropuerto de Loreto	117.30	1	0	3315	0.8	78.8	1.5	12.5	1.4	3.9	0.6	0.4	0.1	79.6	1.5	18.9	0.085	0.511	25.959718	-111.367974
T. Der. Loreto	120.00	1	0	4250	1.0	83.5	0.8	9.8	0.9	3.2	0.4	0.3	0.1	84.5	0.8	14.7	0.083	0.508	26.002337	-111.366480

4 CARR: Ent. Punta Prieta - Guerrero Negro

CLAVE: 00321

RUTA: MEX-001

AÑO: 2018

LUGAR	ESTACION				CLASIFICACION VEHICULAR EN PORCIENTO										COORDENADAS					
	KM	TE	SC	TDPA	M	A	B	C2	C3	T3S2	T3S3	T3S2R4	OTROS	A	B	C	K'	D	LATITUD	LONGITUD
Parador Punta Prieta	0.00	3	0	781	2.3	57.1	2.7	13.9	2.6	18.6	2.0	0.8	0.0	59.4	2.7	37.9	0.088	0.536	29.042393	-114.152331
Rosarito	50.60	3	0	996	1.7	58.3	2.5	13.2	2.6	18.7	2.4	0.6	0.0	60.0	2.5	37.5	0.071	0.543	28.624509	-114.031599
Tanatán	70.10	3	0	885	2.6	60.2	2.6	12.5	2.4	16.5	2.5	0.7	0.0	62.8	2.6	34.6	0.085	0.543	28.493732	-114.015014
Tampico	105.00	1	0	1087	4.6	64.0	2.2	12.7	2.7	11.3	2.3	0.2	0.0	68.6	2.2	29.2	0.078	0.506	28.216782	-114.000083
Lim. Edos. Term. B.C. Ppia. B.C.S. (Paralelo 28)	128.56																			
Ent. Guerrero Negro	130.00	1	0	1885	2.0	75.5	1.7	8.9	1.4	9.3	1.0	0.2	0.0	77.5	1.7	20.8	0.075	0.525	27.972859	-114.013577

BAJA CALIFORNIA SUR

5 CARR: La Paz - Cd. Insurgentes

CLAVE: 03101

RUTA: MEX-001

AÑO: 2018

LUGAR	ESTACION				CLASIFICACION VEHICULAR EN PORCIENTO										COORDENADAS					
	KM	TE	SC	TDPA	M	A	B	C2	C3	T3S2	T3S3	T3S2R4	OTROS	A	B	C	K'	D	LATITUD	LONGITUD
La Paz	0.00	3	1	15766	1.5	86.9	0.5	8.6	0.5	0.8	0.9	0.1	0.2	88.4	0.5	11.1	0.078	0.552	24.121674	-110.336660
La Paz	0.00	3	2	12780	1.4	85.1	0.5	9.9	0.5	1.1	1.2	0.1	0.2	86.5	0.5	13.0	0.078	0.552	24.121535	-110.336536
T. Izq. Aeropuerto	8.90	1	1	12634	1.2	89.5	0.6	5.6	0.8	1.1	1.1	0.1	0.0	90.7	0.6	8.7	0.074	0.501	24.109149	-110.358693
T. Izq. Aeropuerto	8.90	1	2	12696	1.3	89.0	0.6	5.9	0.8	1.1	1.2	0.1	0.0	90.3	0.6	9.1	0.080	0.501	24.109043	-110.358560
T. Izq. Aeropuerto	8.90	3	1	9821	1.0	91.1	0.5	4.5	1.4	0.9	0.4	0.2	0.0	92.1	0.5	7.4	0.059	0.517	24.104574	-110.369250
T. Izq. Aeropuerto	8.90	3	2	9191	0.9	90.4	0.7	4.7	1.6	1.0	0.5	0.2	0.0	91.3	0.7	8.0	0.059	0.517	24.104481	-110.369200
El Centenario	13.50	3	1	3788	1.3	84.2	0.8	8.5	1.9	2.2	0.6	0.4	0.1	85.5	0.8	13.7	0.094	0.517	24.111451	-110.421214
El Centenario	13.50	3	2	4056	1.3	83.0	0.8	9.1	2.2	2.5	0.6	0.4	0.1	84.3	0.8	14.9	0.084	0.517	24.111406	-110.421248
T. Der. San Juan de La Costa	17.00	1	0	5561	1.3	80.6	1.2	11.9	1.8	2.4	0.5	0.3	0.0	81.9	1.2	16.9	0.080	0.504	24.117531	-110.431231
T. Der. San Juan de La Costa	17.00	3	0	2579	1.0	70.0	1.8	14.6	3.8	6.1	1.4	1.2	0.1	71.0	1.8	27.2	0.071	0.508	24.120234	-110.447344
T. Der. Alfredo V. Bonfil	24.00	3	0	2770	0.8	70.3	2.6	11.1	4.9	6.9	1.9	1.4	0.1	71.1	2.6	26.3	0.060	0.516	24.087805	-110.523689
T. Izq. El Conejo	79.60	1	0	2380	0.7	70.4	2.6	12.5	2.4	8.2	1.8	1.3	0.1	71.1	2.6	26.3	0.066	0.505	24.178140	-110.938837
T. Izq. El Conejo	79.60	3	0	2167	0.5	70.0	2.8	12.8	2.4	8.4	1.7	1.3	0.1	70.5	2.8	26.7	0.084	0.505	24.196401	-110.945883
El Ciento Veintiocho	118.20	1	0	2236	0.6	71.9	2.3	11.4	2.7	8.0	1.7	1.2	0.2	72.5	2.3	25.2	0.080	0.502	24.457666	-111.189191
Santa Rita	156.70	1	0	2365	0.8	77.1	2.1	8.5	2.4	6.7	1.4	0.9	0.1	77.9	2.1	20.0	0.085	0.521	24.586092	-111.460696
Santa Rita	156.70	3	0	2197	0.7	72.0	3.0	11.3	2.5	7.2	2.0	1.1	0.2	72.7	3.0	24.3	0.084	0.504	24.596329	-111.472531
Cd. Constitución	213.00	1	0	4518	0.9	79.9	0.9	10.9	1.7	4.1	0.9	0.6	0.1	80.8	0.9	18.3	0.092	0.511	25.006809	-111.661374
Cd. Constitución	213.00	3	1	4358	1.0	86.5	0.6	8.2	1.1	2.1	0.4	0.1	0.0	87.5	0.6	11.9	0.111	0.506	25.045349	-111.679177
Cd. Constitución	213.00	3	2	4466	0.9	85.8	0.7	8.5	1.2	2.4	0.4	0.1	0.0	86.7	0.7	12.6	0.100	0.506	25.045313	-111.679280
T. Der. Ley Federal de Aguas Número Cuatro	229.00	1	1	2656	0.5	84.4	1.0	8.4	1.1	3.5	0.7	0.3	0.1	84.9	1.0	14.1	0.076	0.515	25.194944	-111.748335
T. Der. Ley Federal de Aguas Número Cuatro	229.00	1	2	2504	0.5	82.9	1.1	9.4	1.3	3.6	0.7	0.4	0.1	83.4	1.1	15.5	0.073	0.515	25.194925	-111.748406
Cd. Insurgentes	236.50	1	1	2643	0.5	82.6	1.0	10.1	1.2	3.5	0.6	0.4	0.1	83.1	1.0	15.9	0.081	0.504	25.235932	-111.767298
Cd. Insurgentes	236.50	1	2	2689	0.5	82.0	1.0	10.4	1.2	3.8	0.6	0.4	0.1	82.5	1.0	16.5	0.077	0.504	25.235913	-111.767368

6 CARR: La Paz - Pichilingue

CLAVE: 03230

RUTA: MEX-011

AÑO: 2018

LUGAR	ESTACION				CLASIFICACION VEHICULAR EN PORCIENTO										COORDENADAS					
	KM	TE	SC	TDPA	M	A	B	C2	C3	T3S2	T3S3	T3S2R4	OTROS	A	B	C	K'	D	LATITUD	LONGITUD
La Paz	0.00	3	1	7987	2.6	91.0	0.1	5.6	0.3	0.2	0.2	0.0	0.0	93.6	0.1	6.3	0.093	0.501	24.172271	-110.306570
La Paz	0.00	3	2	7957	2.8	90.8	0.1	5.4	0.3	0.2	0.3	0.0	0.1	93.6	0.1	6.3	0.104	0.501	24.172296	-110.306632
Escuela Técnica Pesquera	9.30	3	0	1878	2.2	79.0	0.5	6.6	5.1	2.5	2.6	1.4	0.1	81.2	0.5	18.3	0.190	0.520	24.230140	-110.308548
Pichilingue	17.00	1	0	3304	1.9	80.5	0.8	4.3	3.2	6.7	1.2	1.2	0.2	82.4	0.8	16.8	0.179	0.504	24.270290	-110.319618

BAJA CALIFORNIA SUR

7 CARR: Libramiento de Cabo San Lucas

CLAVE: 03100

RUTA: MEX-001

AÑO: 2018

LUGAR	ESTACION				CLASIFICACION VEHICULAR EN PORCIENTO													COORDENADAS		
	KM	TE	SC	TDPA	M	A	B	C2	C3	T3S2	T3S3	T3S2R4	OTROS	A	B	C	K'	D	LATITUD	LONGITUD
T. C. San Pedro - Cabo San Lucas	0.00	3	1	20136	2.6	86.1	0.8	6.9	2.0	0.8	0.8	0.0	0.0	88.7	0.8	10.5	0.072	0.515	22.899499	-109.923162
T. C. San Pedro - Cabo San Lucas	0.00	3	2	21394	2.0	88.1	0.8	6.4	1.3	0.8	0.6	0.0	0.0	90.1	0.8	9.1	0.085	0.515	22.899565	-109.923219
T. C. Cabo San Lucas - La Paz	3.00	1	1	22187	1.9	87.7	0.6	7.5	1.5	0.4	0.3	0.1	0.0	89.6	0.6	9.8	0.082	0.505	22.900014	-109.909639
T. C. Cabo San Lucas - La Paz	3.00	1	2	22625	2.0	87.3	0.6	7.3	1.8	0.4	0.4	0.1	0.1	89.3	0.6	10.1	0.086	0.505	22.900104	-109.909592

8 CARR: Loreto - Santa Rosalía

CLAVE: 03393

RUTA: MEX-001

AÑO: 2018

LUGAR	ESTACION				CLASIFICACION VEHICULAR EN PORCIENTO													COORDENADAS		
	KM	TE	SC	TDPA	M	A	B	C2	C3	T3S2	T3S3	T3S2R4	OTROS	A	B	C	K'	D	LATITUD	LONGITUD
Loreto	0.00	3	0	1547	1.5	69.9	2.0	12.9	2.0	9.4	1.1	1.2	0.0	71.4	2.0	26.6	0.065	0.529	26.038749	-111.364376
Rosarito	63.00	1	0	990	6.5	66.3	6.4	8.8	3.2	7.1	1.2	0.5	0.0	72.8	6.4	20.8	0.069	0.505	26.441532	-111.641560
Rosarito	63.00	3	0	1105	4.3	69.7	5.6	8.6	3.3	7.1	0.8	0.5	0.1	74.0	5.6	20.4	0.071	0.506	26.462402	-111.657676
Mulegé	135.00	1	0	2978	4.8	70.4	4.8	8.7	2.9	4.8	3.0	0.5	0.1	75.2	4.8	20.0	0.060	0.533	26.889417	-111.979124
Mulegé	135.00	3	0	1876	1.4	72.0	3.3	10.6	3.5	6.4	2.6	0.2	0.0	73.4	3.3	23.3	0.062	0.512	26.890630	-111.995073
T. Izq. Santa Águeda	189.00	1	0	2573	1.0	78.3	2.1	12.6	1.1	4.4	0.3	0.2	0.0	79.3	2.1	18.6	0.067	0.554	27.269739	-112.243650
T. Izq. Santa Águeda	189.00	3	0	2417	2.5	78.3	2.5	7.6	2.8	3.9	2.3	0.1	0.0	80.8	2.5	16.7	0.071	0.528	27.280853	-112.244469
Santa Rosalía	197.00	1	0	3777	2.1	79.4	1.8	13.9	0.7	1.7	0.2	0.2	0.0	81.5	1.8	16.7	0.087	0.526	27.320060	-112.244509

9 CARR: Ramal a Aeropuerto de La Paz

CLAVE: 03396

RUTA: MEX-001

AÑO: 2018

LUGAR	ESTACION				CLASIFICACION VEHICULAR EN PORCIENTO													COORDENADAS		
	KM	TE	SC	TDPA	M	A	B	C2	C3	T3S2	T3S3	T3S2R4	OTROS	A	B	C	K'	D	LATITUD	LONGITUD
T. C. La Paz - Cd. Insurgentes	0.00	3	1	2859	2.1	88.8	0.5	7.9	0.4	0.3	0.0	0.0	0.0	90.9	0.5	8.6	0.120	0.532	24.093532	-110.367762
T. C. La Paz - Cd. Insurgentes	0.00	3	2	3255	2.9	89.4	0.4	6.7	0.3	0.3	0.0	0.0	0.0	92.3	0.4	7.3	0.108	0.532	24.093505	-110.367634
Aeropuerto	3.44																			

10 CARR: Ramal a Aeropuerto de Los Cabos

CLAVE: 03394

RUTA: MEX-001

AÑO: 2018

LUGAR	ESTACION				CLASIFICACION VEHICULAR EN PORCIENTO													COORDENADAS		
	KM	TE	SC	TDPA	M	A	B	C2	C3	T3S2	T3S3	T3S2R4	OTROS	A	B	C	K'	D	LATITUD	LONGITUD
T. C. Cabo San Lucas - La Paz	0.00	3	0	10734	0.8	85.0	0.5	13.4	0.1	0.1	0.0	0.1	0.0	85.8	0.5	13.7	0.101	0.507	23.161592	-109.713706
Aeropuerto Los Cabos	1.00																			

BAJA CALIFORNIA SUR

11 CARR: Ramal a Los Paredones

CLAVE: 03407

RUTA: MEX-001

AÑO: 2018

LUGAR	ESTACION				CLASIFICACION VEHICULAR EN PORCIENTO													COORDENADAS		
	KM	TE	SC	TDPA	M	A	B	C2	C3	T3S2	T3S3	T3S2R4	OTROS	A	B	C	K'	D	LATITUD	LONGITUD
T. C. Cd. Santa Rosalía - Guerrero Negro	0.00	3	0	923	1.8	88.3	0.8	8.4	0.2	0.5	0.0	0.0	0.0	90.1	0.8	9.1	0.080	0.514	27.300808	-112.899861
Paredones	1.40																			

12 CARR: Ramal a Miraflores

CLAVE: 03407

RUTA: MEX-001

AÑO: 2018

LUGAR	ESTACION				CLASIFICACION VEHICULAR EN PORCIENTO													COORDENADAS		
	KM	TE	SC	TDPA	M	A	B	C2	C3	T3S2	T3S3	T3S2R4	OTROS	A	B	C	K'	D	LATITUD	LONGITUD
T. C. Cabo San Lucas - La Paz	0.00	3	1	1158	0.4	92.0	0.2	7.1	0.3	0.0	0.0	0.0	0.0	92.4	0.2	7.4	0.093	0.502	23.370892	-109.754321
T. C. Cabo San Lucas - La Paz	0.00	3	2	1166	0.5	93.1	0.2	5.9	0.2	0.1	0.0	0.0	0.0	93.6	0.2	6.2	0.088	0.502	23.370838	-109.754338
Miraflores	2.20																			

13 CARR: Ramal a Puerto Escondido

CLAVE: 03407

RUTA: MEX-001

AÑO: 2018

LUGAR	ESTACION				CLASIFICACION VEHICULAR EN PORCIENTO													COORDENADAS		
	KM	TE	SC	TDPA	M	A	B	C2	C3	T3S2	T3S3	T3S2R4	OTROS	A	B	C	K'	D	LATITUD	LONGITUD
T. C. Cd. Insurgentes - Loreto	0.00	3	0	299	1.6	75.3	0.2	21.5	1.3	0.0	0.1	0.0	0.0	76.9	0.2	22.9	0.124	0.502	25.803102	-111.326253
Puerto Escondido	2.50																			

14 CARR: Ramal a San Ignacio

CLAVE: 03413

RUTA: MEX-001

AÑO: 2018

LUGAR	ESTACION				CLASIFICACION VEHICULAR EN PORCIENTO													COORDENADAS		
	KM	TE	SC	TDPA	M	A	B	C2	C3	T3S2	T3S3	T3S2R4	OTROS	A	B	C	K'	D	LATITUD	LONGITUD
T. C. Santa Rosalía - Guerrero Negro	0.00	3	0	1579	1.9	89.4	0.4	7.4	0.5	0.1	0.1	0.0	0.2	91.3	0.4	8.3	0.072	0.504	27.300278	-112.893946
San Ignacio	2.70																			

15 CARR: Ramal a Santiago

CLAVE: 03051

RUTA: MEX-001

AÑO: 2018

LUGAR	ESTACION				CLASIFICACION VEHICULAR EN PORCIENTO													COORDENADAS		
	KM	TE	SC	TDPA	M	A	B	C2	C3	T3S2	T3S3	T3S2R4	OTROS	A	B	C	K'	D	LATITUD	LONGITUD
T. C. Cabo San Lucas - La Paz	0.00	3	1	718	1.7	90.5	1.1	6.5	0.2	0.0	0.0	0.0	0.0	92.2	1.1	6.7	0.074	0.512	23.479380	-109.706636
T. C. Cabo San Lucas - La Paz	0.00	3	2	683	0.3	90.6	1.0	7.8	0.3	0.0	0.0	0.0	0.0	90.9	1.0	8.1	0.078	0.512	23.479380	-109.706634
Santiago	2.30																			

BAJA CALIFORNIA SUR

16 CARR: Ramal Aeropista San Ignacio

CLAVE: 03053

RUTA: MEX-001

AÑO: 2018

LUGAR	ESTACION				CLASIFICACION VEHICULAR EN PORCIENTO													COORDENADAS		
	KM	TE	SC	TDPA	M	A	B	C2	C3	T3S2	T3S3	T3S2R4	OTROS	A	B	C	K'	D	LATITUD	LONGITUD
T.C. Cd. Santa Rosalia - Guerrero Negro	0.00	3	0	2	0.0	100.0	0.0	0.0	0.0	0.0	0.0	0.0	0.0	100.0	0.0	0.0	1.000	0.500	27.290770	-112.938082
Aeropista San Ignacio	1.00																			

17 CARR: San Pedro - Cabo San Lucas

CLAVE: 03003

RUTA: MEX-019

AÑO: 2018

LUGAR	ESTACION				CLASIFICACION VEHICULAR EN PORCIENTO													COORDENADAS		
	KM	TE	SC	TDPA	M	A	B	C2	C3	T3S2	T3S3	T3S2R4	OTROS	A	B	C	K'	D	LATITUD	LONGITUD
T. C. Cabo San Lucas - La Paz	0.00	3	1	3261	0.4	83.2	1.3	7.2	1.9	3.5	1.1	1.2	0.2	83.6	1.3	15.1	0.089	0.508	23.879171	-110.254141
T. C. Cabo San Lucas - La Paz	0.00	3	2	3158	0.4	82.1	1.4	7.6	1.9	4.0	1.1	1.4	0.1	82.5	1.4	16.1	0.101	0.508	23.879137	-110.254029
T. Der. Melitón Albáñez	16.00	1	1	3099	0.4	83.9	1.0	6.5	1.6	4.2	1.0	1.3	0.1	84.3	1.0	14.7	0.098	0.518	23.661134	-110.223128
T. Der. Melitón Albáñez	16.00	1	2	2879	0.3	82.8	1.1	7.1	1.8	4.3	1.1	1.4	0.1	83.1	1.1	15.8	0.104	0.518	23.661109	-110.223010
T. Der. Melitón Albáñez	16.00	3	1	3039	0.4	80.4	1.6	9.7	1.5	3.8	1.2	1.2	0.2	80.8	1.6	17.6	0.094	0.501	23.643288	-110.226737
T. Der. Melitón Albáñez	16.00	3	2	3050	0.3	79.5	1.7	10.4	1.6	3.8	1.3	1.2	0.2	79.8	1.7	18.5	0.109	0.501	23.643265	-110.226617
Todos Santos	52.00	1	0	3671	1.3	87.8	0.8	8.6	0.9	0.4	0.2	0.0	0.0	89.1	0.8	10.1	0.070	0.529	23.468993	-110.216367
Todos Santos	52.00	3	0	5011	0.7	89.5	0.8	8.3	0.6	0.1	0.0	0.0	0.0	90.2	0.8	9.0	0.075	0.503	23.438645	-110.219186
El Pescadero	62.00	1	1	3968	0.6	86.5	0.8	7.1	1.1	2.0	0.9	0.9	0.1	87.1	0.8	12.1	0.090	0.502	23.384873	-110.184688
El Pescadero	62.00	1	2	3935	0.6	85.1	0.8	7.9	1.2	2.4	0.9	1.0	0.1	85.7	0.8	13.5	0.102	0.502	23.384924	-110.184587
El Pescadero	62.00	3	1	3450	0.4	82.8	1.3	9.2	1.3	2.9	0.9	1.1	0.1	83.2	1.3	15.5	0.096	0.514	23.349123	-110.162023
El Pescadero	62.00	3	2	3262	0.5	80.7	1.5	10.5	1.4	3.2	1.0	1.1	0.1	81.2	1.5	17.3	0.109	0.514	23.349136	-110.161912
Migriño	102.50	1	1	2598	0.3	81.8	1.5	8.6	2.2	3.1	1.0	1.4	0.1	82.1	1.5	16.4	0.139	0.508	23.064037	-110.097589
Migriño	102.50	1	2	2680	0.3	79.8	1.7	9.5	2.4	3.5	1.0	1.7	0.1	80.1	1.7	18.2	0.122	0.508	23.064044	-110.097503
Cabo San Lucas	131.00	1	1	8725	0.9	89.6	0.5	6.9	1.0	0.6	0.3	0.1	0.1	90.5	0.5	9.0	0.077	0.508	22.921120	-109.974243
Cabo San Lucas	131.00	1	2	8998	1.1	89.0	0.5	7.2	1.1	0.6	0.3	0.1	0.1	90.1	0.5	9.4	0.073	0.508	22.921220	-109.974188

18 CARR: Santa Rosalía - Guerrero Negro

CLAVE: 03095

RUTA: MEX-001

AÑO: 2018

LUGAR	ESTACION				CLASIFICACION VEHICULAR EN PORCIENTO													COORDENADAS		
	KM	TE	SC	TDPA	M	A	B	C2	C3	T3S2	T3S3	T3S2R4	OTROS	A	B	C	K'	D	LATITUD	LONGITUD
Santa Rosalía	0.00	3	0	3323	2.5	72.6	2.3	16.1	1.3	4.3	0.4	0.4	0.1	75.1	2.3	22.6	0.082	0.523	27.361049	-112.279853
Cuesta Infernillo	12.00	1	0	1200	1.4	65.5	2.5	12.6	3.1	12.4	1.4	0.9	0.2	66.9	2.5	30.6	0.076	0.523	27.390655	-112.330263
Cuesta Infernillo	12.00	3	0	1184	2.3	65.7	1.8	13.3	2.4	12.3	1.1	0.9	0.2	68.0	1.8	30.2	0.079	0.514	27.386229	-112.358557
T. Izq. San Ignacio	73.60	1	0	2637	1.3	71.3	2.2	11.1	1.5	10.5	1.1	1.0	0.0	72.6	2.2	25.2	0.078	0.504	27.300556	-112.875309
T. Izq. San Ignacio	73.60	3	0	2063	3.5	78.9	1.6	9.7	1.1	4.3	0.5	0.3	0.1	82.4	1.6	16.0	0.091	0.537	27.302084	-112.895623
T. Izq. Punta Abreojos	95.70	1	0	1167	5.6	72.5	1.1	10.3	2.4	5.8	0.8	0.6	0.9	78.1	1.1	20.8	0.073	0.517	27.318380	-113.096770
T. Izq. Punta Abreojos	95.70	3	0	1152	2.6	65.1	2.4	12.6	3.2	11.6	1.4	0.9	0.2	67.7	2.4	29.9	0.077	0.513	27.330358	-113.117134

BAJA CALIFORNIA SUR

18 CARR: Santa Rosalía - Guerrero Negro

CLAVE: 03095

RUTA: MEX-001

AÑO: 2018

LUGAR	ESTACION				CLASIFICACION VEHICULAR EN PORCIENTO										COORDENADAS					
	KM	TE	SC	TDPA	M	A	B	C2	C3	T3S2	T3S3	T3S2R4	OTROS	A	B	C	K'	D	LATITUD	LONGITUD
Los Ángeles	117.90	1	0	1432	1.1	66.6	2.5	12.1	2.6	13.1	1.0	1.0	0.0	67.7	2.5	29.8	0.079	0.510	27.438193	-113.269667
Los Ángeles	117.90	3	0	1689	1.0	68.7	2.7	14.8	2.4	8.7	1.0	0.4	0.3	69.7	2.7	27.6	0.078	0.526	27.492407	-113.300120
T. Izq. Vizcaino	144.00	1	0	2733	1.3	77.3	2.1	9.7	1.9	6.7	0.5	0.4	0.1	78.6	2.1	19.3	0.076	0.512	27.633215	-113.377989
T. Izq. Vizcaino	144.00	3	0	1772	1.8	75.2	2.3	7.4	1.7	10.6	0.5	0.4	0.1	77.0	2.3	20.7	0.080	0.511	27.661308	-113.391557
T. Der. El Arco	189.00	1	0	1358	4.4	66.2	2.3	11.7	1.6	12.6	0.6	0.5	0.1	70.6	2.3	27.1	0.086	0.508	27.852085	-113.765480
T. Der. El Arco	189.00	3	0	1401	4.4	66.1	2.2	11.5	1.5	13.1	0.6	0.5	0.1	70.5	2.2	27.3	0.081	0.518	27.857198	-113.778726
Ent. Guerrero Negro	216.85	1	0	1732	1.9	69.7	1.7	12.5	1.6	11.3	0.8	0.4	0.1	71.6	1.7	26.7	0.082	0.501	27.965156	-114.010272

19 CARR: Libramiento San José del Cabo - Aeropuerto Los Cabos (Cuota)

CLAVE: 03392

RUTA: MEX-001D

AÑO: 2018

LUGAR	ESTACION				CLASIFICACION VEHICULAR EN PORCIENTO										COORDENADAS					
	KM	TE	SC	TDPA	M	A	B	C2	C3	T3S2	T3S3	T3S2R4	OTROS	A	B	C	K'	D	LATITUD	LONGITUD
Aeropuerto de Los Cabos	100.00																			
Caseta de Cobro Aeropuerto los Cabos	105.10	2	0	5450	0.2	97.5	1.0	0.4	0.2	0.2	0.2	0.3	0.0	97.7	1.0	1.3	0.102	0.500	23.150467	-109.740500
Caseta de Cobro Los Cabos	118.20	2	0	4543	0.2	98.1	1.1	0.4	0.1	0.1	0.0	0.0	0.0	98.3	1.1	0.6	0.102	0.500	23.049876	-109.719565
T. C. Cabo San Lucas - La Paz	120.20	3	0	12996	1.2	93.6	0.2	4.6	0.2	0.1	0.1	0.0	0.0	94.8	0.2	5.0	0.102	0.501	23.049098	-109.714744

20 CARR: Ramal a El Mangué (Cuota)

CLAVE:

RUTA: MEX-001D

AÑO: 2018

LUGAR	ESTACION				CLASIFICACION VEHICULAR EN PORCIENTO										COORDENADAS					
	KM	TE	SC	TDPA	M	A	B	C2	C3	T3S2	T3S3	T3S2R4	OTROS	A	B	C	K'	D	LATITUD	LONGITUD
T. C. Libramiento Cabo San Lucas - San José del Cabo (Cuota)	0.00																			
T. C. San Pedro - Cabo San Lucas	11.20	1	0	1033	1.2	85.7	0.5	8.8	0.8	1.1	0.9	1.0	0.0	86.9	0.5	12.6	0.103	0.524	22.949565	-109.982293

21 CARR: San José del Cabo - Libramiento de Cabo San Lucas - (Cuota)

CLAVE:

RUTA: MEX-001D

AÑO: 2018

LUGAR	ESTACION				CLASIFICACION VEHICULAR EN PORCIENTO										COORDENADAS					
	KM	TE	SC	TDPA	M	A	B	C2	C3	T3S2	T3S3	T3S2R4	OTROS	A	B	C	K'	D	LATITUD	LONGITUD
T. C. Libramiento San José del Cabo	0.00	3	0	2484	0.7	84.7	0.3	12.8	0.4	0.5	0.3	0.3	0.0	85.4	0.3	14.3	0.133	0.503	23.061667	-109.753670
Cabo San Lucas	27.48	1	0	1565	0.9	85.4	0.3	13.0	0.2	0.1	0.0	0.0	0.1	86.3	0.3	13.4	0.126	0.511	22.913063	-109.915953

BAJA CALIFORNIA SUR

22 CARR: Cd. Insurgentes - La Purísima

CLAVE: 03005

RUTA: BCS-001

AÑO: 2018

LUGAR	ESTACION				CLASIFICACION VEHICULAR EN PORCIENTO												COORDENADAS			
	KM	TE	SC	TDPA	M	A	B	C2	C3	T3S2	T3S3	T3S2R4	OTROS	A	B	C	K'	D	LATITUD	LONGITUD
Cd. Insurgentes	0.00	3	0	2664	1.0	80.0	0.8	13.7	1.9	2.4	0.1	0.1	0.0	81.0	0.8	18.2	0.077	0.507	25.271297	-111.783725
Ignacio Zaragoza	18.00	1	0	1427	0.7	79.4	0.7	15.0	2.0	2.0	0.1	0.1	0.0	80.1	0.7	19.2	0.074	0.509	25.389999	-111.838720
Ignacio Zaragoza	18.00	3	1	991	0.3	85.6	0.5	10.3	1.6	1.3	0.2	0.1	0.1	85.9	0.5	13.6	0.081	0.546	25.400645	-111.843531
Ignacio Zaragoza	18.00	3	2	824	0.6	83.5	0.5	12.4	1.6	1.1	0.2	0.1	0.0	84.1	0.5	15.4	0.081	0.546	25.400609	-111.843670
T. Izq. Santo Domingo	28.70	1	0	742	0.9	87.9	0.5	8.9	1.5	0.2	0.1	0.0	0.0	88.8	0.5	10.7	0.080	0.511	25.487166	-111.883748
Francisco Villa	64.00	3	0	300	3.5	81.5	0.6	12.5	1.4	0.3	0.2	0.0	0.0	85.0	0.6	14.4	0.150	0.516	25.803585	-112.030465
La Purísima	107.00	1	0	312	1.8	83.9	0.8	10.9	2.4	0.1	0.1	0.0	0.0	85.7	0.8	13.5	0.103	0.509	26.177231	-112.085314

23 CARR: Cd. Insurgentes - Pto. Adolfo López Mateos

CLAVE: 03404

RUTA: BCS

AÑO: 2018

LUGAR	ESTACION				CLASIFICACION VEHICULAR EN PORCIENTO												COORDENADAS			
	KM	TE	SC	TDPA	M	A	B	C2	C3	T3S2	T3S3	T3S2R4	OTROS	A	B	C	K'	D	LATITUD	LONGITUD
T. C. Cd. Insurgentes - La Purísima	0.00	3	0	707	1.2	80.4	1.6	13.1	2.0	1.6	0.1	0.0	0.0	81.6	1.6	16.8	0.093	0.501	25.275285	-111.805176
Puerto Adolfo López Mateos	35.50	1	0	589	1.2	82.9	1.1	11.2	2.3	1.2	0.1	0.0	0.0	84.1	1.1	14.8	0.104	0.508	25.193163	-112.098322

24 CARR: Ent. Campo Fisher - Punta Abreojos

CLAVE: 03411

RUTA: BCS

AÑO: 2018

LUGAR	ESTACION				CLASIFICACION VEHICULAR EN PORCIENTO												COORDENADAS				
	KM	TE	SC	TDPA	M	A	B	C2	C3	T3S2	T3S3	T3S2R4	OTROS	A	B	C	K'	D	LATITUD	LONGITUD	
T. C. Santa Rosalía - Paralelo 28	0.00	3	0	241	2.1	85.2	0.8	7.3	2.2	1.8	0.1	0.4	0.1	87.3	0.8	11.9	0.095	0.542	27.325172	-113.118503	
Punta Abreojos	88.00																				

25 CARR: La Paz - Ensenada de Muertos

CLAVE: 03103

RUTA: BCS-246

AÑO: 2018

LUGAR	ESTACION				CLASIFICACION VEHICULAR EN PORCIENTO												COORDENADAS			
	KM	TE	SC	TDPA	M	A	B	C2	C3	T3S2	T3S3	T3S2R4	OTROS	A	B	C	K'	D	LATITUD	LONGITUD
La Paz	0.00	3	0	3641	1.3	84.9	0.2	11.3	1.5	0.5	0.2	0.0	0.1	86.2	0.2	13.6	0.085	0.508	24.114254	-110.293290
T. Izq. El Sargento	45.00	1	0	1340	0.7	87.2	0.3	10.1	1.3	0.3	0.1	0.0	0.0	87.9	0.3	11.8	0.106	0.501	23.982802	-109.995140
T. Izq. El Sargento	45.00	3	0	1433	0.9	87.2	0.4	9.1	1.6	0.6	0.1	0.0	0.1	88.1	0.4	11.5	0.097	0.535	23.981569	-109.991481
Ensenada de Muertos	57.50	1	0	408	3.4	84.6	0.4	10.2	0.9	0.1	0.4	0.0	0.0	88.0	0.4	11.6	0.152	0.504	24.007618	-109.854230

BAJA CALIFORNIA SUR

26 CARR: Libramiento de La Paz

CLAVE: 03004

RUTA: BCS

AÑO: 2018

LUGAR	ESTACION				CLASIFICACION VEHICULAR EN PORCIENTO													COORDENADAS		
	KM	TE	SC	TDPA	M	A	B	C2	C3	T3S2	T3S3	T3S2R4	OTROS	A	B	C	K'	D	LATITUD	LONGITUD
T. C. Cabo San Lucas - La Paz	0.00	3	0	11593	1.8	85.1	0.8	6.5	1.7	2.9	0.4	0.5	0.3	86.9	0.8	12.3	0.061	0.508	24.107399	-110.318592
T. C. La Paz - Cd. Insurgentes	10.00																			

27 CARR: Libramiento Norte de La Paz

CLAVE: 03006

RUTA: BCS

AÑO: 2018

LUGAR	ESTACION				CLASIFICACION VEHICULAR EN PORCIENTO													COORDENADAS		
	KM	TE	SC	TDPA	M	A	B	C2	C3	T3S2	T3S3	T3S2R4	OTROS	A	B	C	K'	D	LATITUD	LONGITUD
T. C. La Paz - Pichilingue	0.00	3	0	3272	2.5	68.8	1.1	8.3	6.4	8.0	2.2	2.0	0.7	71.3	1.1	27.6	0.129	0.549	24.230723	-110.297431
T. C. La Paz - Ensenada de Muertos	18.80	1	0	4261	2.3	67.6	1.0	9.8	8.0	6.9	2.2	2.0	0.2	69.9	1.0	29.1	0.083	0.507	24.124366	-110.289158
T. C. La Paz - Ensenada de Muertos	18.80	3	0	6835	1.8	77.9	0.7	8.1	5.0	4.0	1.2	1.0	0.3	79.7	0.7	19.6	0.092	0.508	24.119867	-110.297503
T. C. Cabo San Lucas - La Paz	20.70	1	0	8780	3.2	77.3	0.6	7.9	4.6	4.0	1.1	1.1	0.2	80.5	0.6	18.9	0.067	0.511	24.115323	-110.306435

28 CARR: Ramal a Benito Juárez

CLAVE: 03405

RUTA: BCS

AÑO: 2018

LUGAR	ESTACION				CLASIFICACION VEHICULAR EN PORCIENTO													COORDENADAS		
	KM	TE	SC	TDPA	M	A	B	C2	C3	T3S2	T3S3	T3S2R4	OTROS	A	B	C	K'	D	LATITUD	LONGITUD
T. C. Cd. Constitución - Puerto San Carlos	0.00	3	0	723	1.3	84.6	0.7	10.1	2.6	0.6	0.1	0.0	0.0	85.9	0.7	13.4	0.095	0.513	25.037649	-111.769992
Benito Juárez	11.50	1	0	754	1.5	83.5	0.8	11.7	2.0	0.4	0.1	0.0	0.0	85.0	0.8	14.2	0.097	0.505	25.109335	-111.821170

29 CARR: Ramal a Ejido Ley Federal de Aguas Número Cuatro

CLAVE: 03007

RUTA: BCS

AÑO: 2018

LUGAR	ESTACION				CLASIFICACION VEHICULAR EN PORCIENTO													COORDENADAS		
	KM	TE	SC	TDPA	M	A	B	C2	C3	T3S2	T3S3	T3S2R4	OTROS	A	B	C	K'	D	LATITUD	LONGITUD
T. C. La Paz - Cd. Insurgentes	0.00	3	0	717	1.6	74.4	2.6	13.6	4.1	3.4	0.3	0.0	0.0	76.0	2.6	21.4	0.096	0.506	25.198617	-111.748974
Ejido Ley Federal de Aguas Número Cuatro	19.20																			

30 CARR: Ramal a El Carrizal

CLAVE: 03050

RUTA: BCS

AÑO: 2018

LUGAR	ESTACION				CLASIFICACION VEHICULAR EN PORCIENTO													COORDENADAS		
	KM	TE	SC	TDPA	M	A	B	C2	C3	T3S2	T3S3	T3S2R4	OTROS	A	B	C	K'	D	LATITUD	LONGITUD
T. C. San Pedro - Cabo San Lucas	0.00	3	0	459	1.0	86.1	2.8	8.2	1.3	0.6	0.0	0.0	0.0	87.1	2.8	10.1	0.081	0.508	23.829433	-110.257446
Carrizal	10.00																			

BAJA CALIFORNIA SUR

31 CARR: Ramal a Guerrero Negro

CLAVE: 03395

RUTA: BCS

AÑO: 2018

LUGAR	ESTACION				CLASIFICACION VEHICULAR EN PORCIENTO													COORDENADAS		
	KM	TE	SC	TDPA	M	A	B	C2	C3	T3S2	T3S3	T3S2R4	OTROS	A	B	C	K'	D	LATITUD	LONGITUD
T. C. Santa Rosalía - Guerrero Negro	0.00	3	0	2785	1.0	84.9	1.7	10.0	0.9	1.1	0.3	0.1	0.0	85.9	1.7	12.4	0.069	0.515	27.967480	-114.019795
Guerrero Negro	4.50																			

32 CARR: Ramal a La Ribera

CLAVE: 03406

RUTA: BCS

AÑO: 2018

LUGAR	ESTACION				CLASIFICACION VEHICULAR EN PORCIENTO													COORDENADAS		
	KM	TE	SC	TDPA	M	A	B	C2	C3	T3S2	T3S3	T3S2R4	OTROS	A	B	C	K'	D	LATITUD	LONGITUD
T. C. Cabo San Lucas - La Paz	0.00	3	0	1622	0.7	92.2	0.5	4.2	1.8	0.2	0.4	0.0	0.0	92.9	0.5	6.6	0.087	0.524	23.542650	-109.664700
La Ribera	12.00																			

33 CARR: Ramal a Melitón Albáñez

CLAVE: 03407

RUTA: BCS

AÑO: 2018

LUGAR	ESTACION				CLASIFICACION VEHICULAR EN PORCIENTO													COORDENADAS		
	KM	TE	SC	TDPA	M	A	B	C2	C3	T3S2	T3S3	T3S2R4	OTROS	A	B	C	K'	D	LATITUD	LONGITUD
T. C. San Pedro - Cabo San Lucas	0.00	3	0	567	1.4	84.2	2.0	9.2	1.4	1.8	0.0	0.0	0.0	85.6	2.0	12.4	0.088	0.511	23.653076	-110.226518
Melitón Albáñez	23.50																			

34 CARR: Ramal a Santa Catarina

CLAVE: 03052

RUTA: BCS

AÑO: 2018

LUGAR	ESTACION				CLASIFICACION VEHICULAR EN PORCIENTO													COORDENADAS		
	KM	TE	SC	TDPA	M	A	B	C2	C3	T3S2	T3S3	T3S2R4	OTROS	A	B	C	K'	D	LATITUD	LONGITUD
T. C. Cabo San Lucas - La Paz	0.00	3	0	1922	2.1	82.2	1.2	10.3	4.2	0.0	0.0	0.0	0.0	84.3	1.2	14.5	0.069	0.504	23.134750	-109.705634
Santa Catarina	1.00																			

35 CARR: Ramal a Bahía de Tortugas

CLAVE: 03397

RUTA: MEX-001-BCS

AÑO: 2018

LUGAR	ESTACION				CLASIFICACION VEHICULAR EN PORCIENTO													COORDENADAS		
	KM	TE	SC	TDPA	M	A	B	C2	C3	T3S2	T3S3	T3S2R4	OTROS	A	B	C	K'	D	LATITUD	LONGITUD
T. C. Santa Rosalía - Guerrero Negro	0.00	3	0	7332	0.9	84.3	1.9	10.2	0.7	1.8	0.1	0.0	0.1	85.2	1.9	12.9	0.068	0.506	27.645232	-113.390291
Vizcaino	6.00	3	0	1488	1.0	73.9	6.5	14.9	1.3	2.0	0.4	0.0	0.0	74.9	6.5	18.6	0.074	0.512	27.642470	-113.453763
Bahía de Tortugas	198.00																			

BAJA CALIFORNIA SUR

36 CARR: Ramal a Ejido Ley Federal de Aguas Número Dos

CLAVE: 03050

RUTA: BCS-MEX-001

AÑO: 2018

LUGAR	ESTACION				CLASIFICACION VEHICULAR EN PORCIENTO													COORDENADAS		
	KM	TE	SC	TDPA	M	A	B	C2	C3	T3S2	T3S3	T3S2R4	OTROS	A	B	C	K'	D	LATITUD	LONGITUD
T. C. Cd. Insurgentes - Loreto	0.00	3	0	177	2.1	87.2	0.8	8.3	0.8	0.8	0.0	0.0	0.0	89.3	0.8	9.9	0.119	0.516	25.295558	-111.649714
Ejido Ley Federal de Aguas Número Dos	10.00																			

37 CARR: Ramal a Ley Federal de Aguas Número Cinco

CLAVE: 03407

RUTA: BCS-MEX-001

AÑO: 2018

LUGAR	ESTACION				CLASIFICACION VEHICULAR EN PORCIENTO													COORDENADAS		
	KM	TE	SC	TDPA	M	A	B	C2	C3	T3S2	T3S3	T3S2R4	OTROS	A	B	C	K'	D	LATITUD	LONGITUD
Cd. Constitución	0.00	3	1	1251	2.2	82.3	0.2	12.1	2.2	0.7	0.2	0.0	0.1	84.5	0.2	15.3	0.103	0.511	25.034783	-111.631444
Cd. Constitución	0.00	3	2	1309	2.1	83.7	0.3	11.2	1.9	0.6	0.2	0.0	0.0	85.8	0.3	13.9	0.112	0.511	25.034873	-111.631487
Ley Federal de Aguas Número Cinco	17.50																			

38 CARR: Ramal a San Juan de La Costa

CLAVE: 03403

RUTA: BCS-163-MEX-001

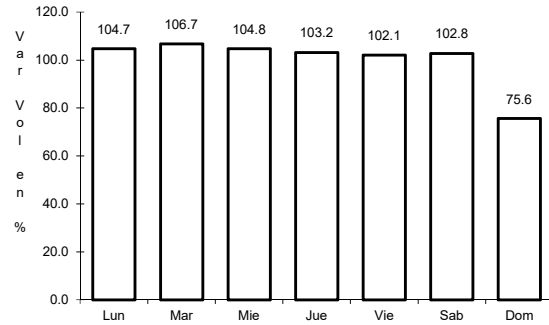
AÑO: 2018

LUGAR	ESTACION				CLASIFICACION VEHICULAR EN PORCIENTO													COORDENADAS		
	KM	TE	SC	TDPA	M	A	B	C2	C3	T3S2	T3S3	T3S2R4	OTROS	A	B	C	K'	D	LATITUD	LONGITUD
T. C. La Paz - Cd. Insurgentes	0.00	3	0	890	1.1	77.2	1.2	18.2	1.6	0.6	0.1	0.0	0.0	78.3	1.2	20.5	0.124	0.511	24.124162	-110.443122
Puerto Cajete	23.00	3	0	535	1.1	67.1	1.9	26.6	2.3	0.9	0.1	0.0	0.0	68.2	1.9	29.9	0.108	0.505	24.254149	-110.611514
San Juan de La Costa	40.70	1	0	509	0.6	65.3	2.1	27.2	3.1	1.0	0.4	0.0	0.3	65.9	2.1	32.0	0.084	0.508	24.364933	-110.686336

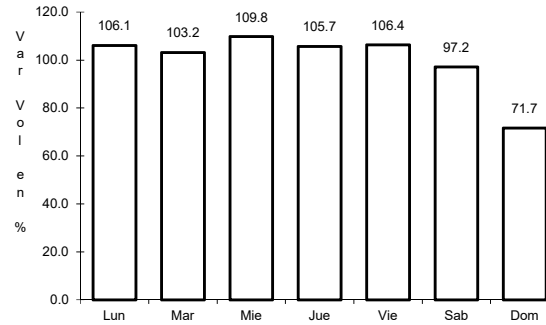
1 CARR: Cabo San Lucas - La Paz

CLAVE: 03102

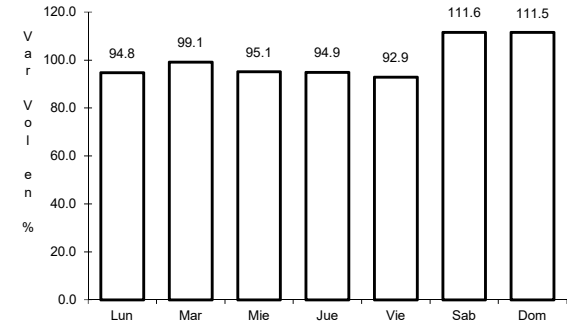
RUTA: MEX-001



Km: 0.00 Tipo: 3 Sent: 1



Km: 0.00 Tipo: 3 Sent: 2

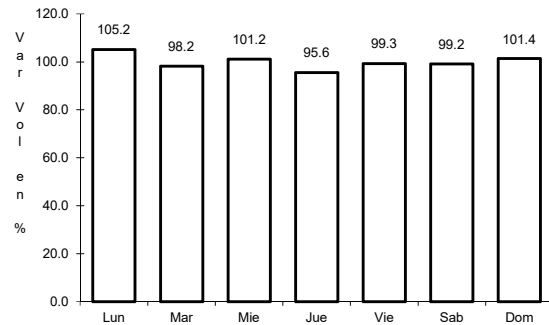


Km: 110.00 Tipo: 3 Sent: 0

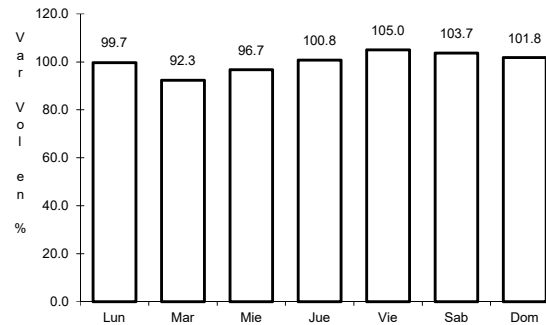
2 CARR: Cd. Constitución - Puerto San Carlos

CLAVE: 03231

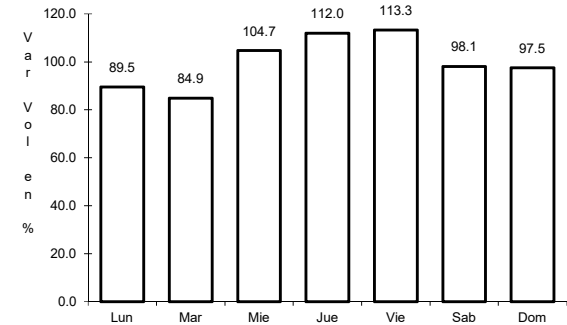
RUTA: MEX-001



Km: 0.00 Tipo: 3 Sent: 0



Km: 10.00 Tipo: 1 Sent: 0

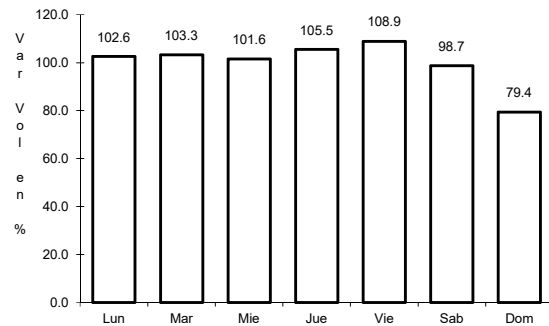


Km: 10.00 Tipo: 3 Sent: 0

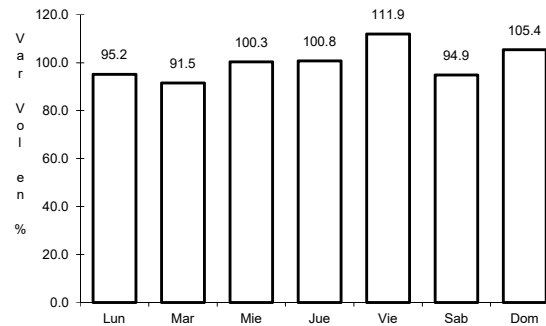
3 CARR: Cd. Insurgentes - Loreto

CLAVE: 03092

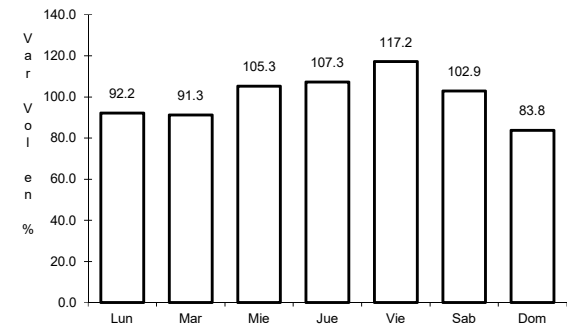
RUTA: MEX-001



Km: 0.00 Tipo: 3 Sent: 0



Km: 65.00 Tipo: 1 Sent: 0

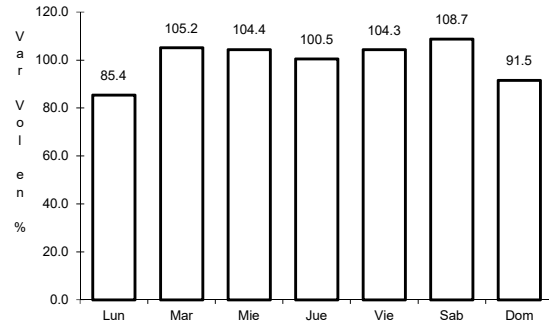


Km: 117.30 Tipo: 1 Sent: 0

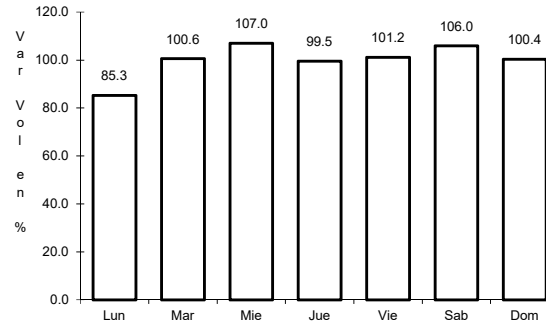
4 CARR: Ent. Punta Prieta - Guerrero Negro

CLAVE: 00321

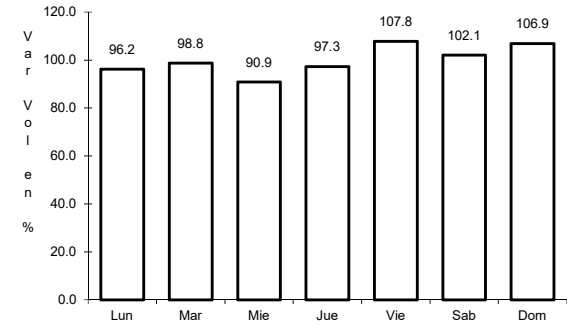
RUTA: MEX-001



Km: 0.00 Tipo: 3 Sent: 0



Km: 70.10 Tipo: 3 Sent: 0

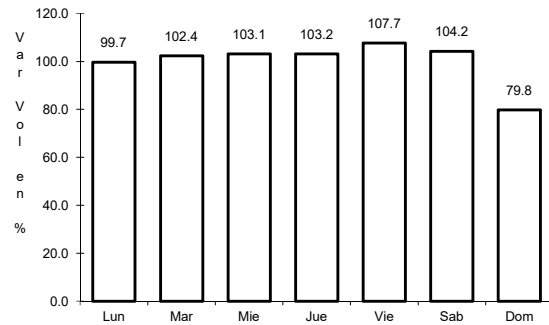


Km: 130.00 Tipo: 1 Sent: 0

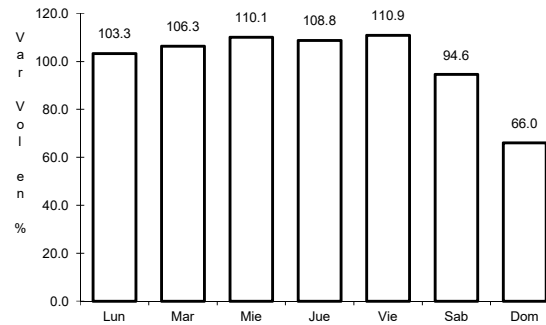
5 CARR: La Paz - Cd. Insurgentes

CLAVE: 03101

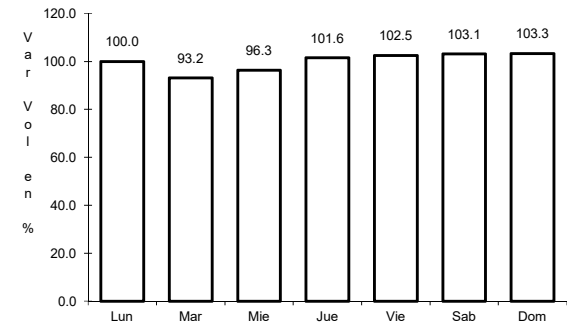
RUTA: MEX-001



Km: 0.00 Tipo: 3 Sent: 1



Km: 0.00 Tipo: 3 Sent: 2

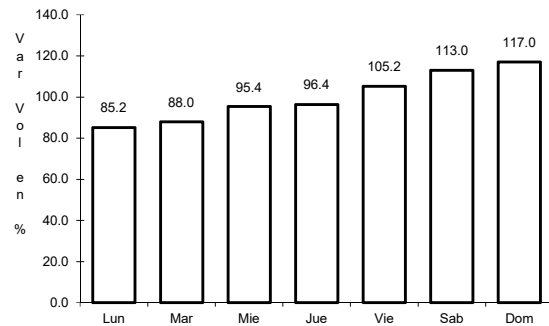


Km: 118.20 Tipo: 1 Sent: 0

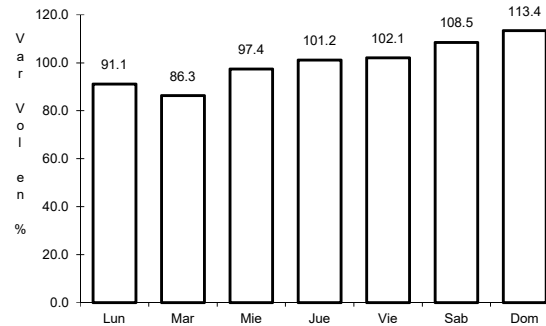
6 CARR: La Paz - Pichilingue

CLAVE: 03230

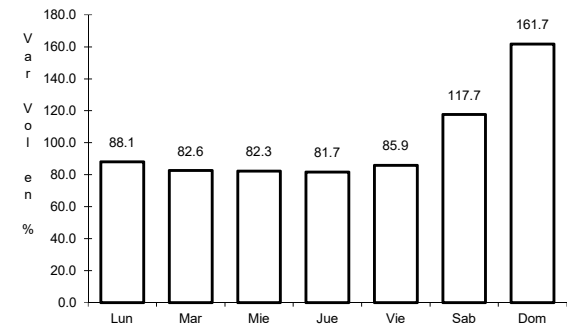
RUTA: MEX-011



Km: 0.00 Tipo: 3 Sent: 1



Km: 0.00 Tipo: 3 Sent: 2

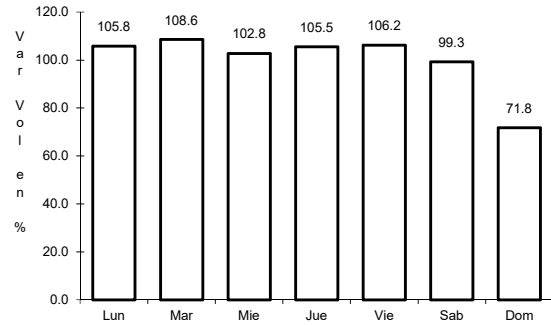


Km: 17.00 Tipo: 1 Sent: 0

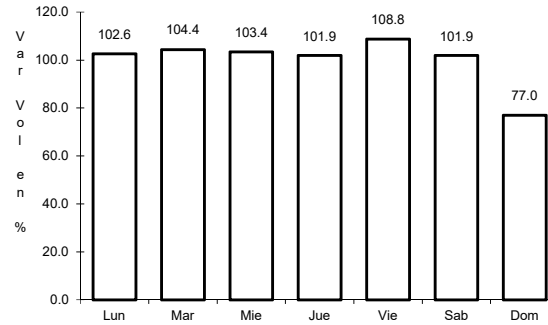
7 CARR: Libramiento de Cabo San Lucas

CLAVE: 03100

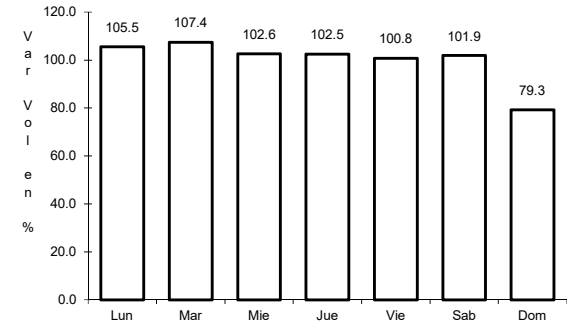
ruta: MEX-001



Km: 0.00 Tipo: 3 Sent: 1



Km: 0.00 Tipo: 3 Sent: 2

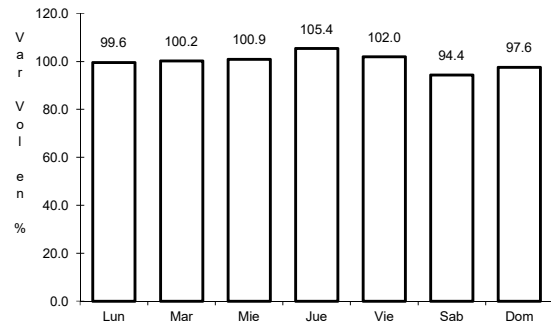


Km: 3.00 Tipo: 1 Sent: 1

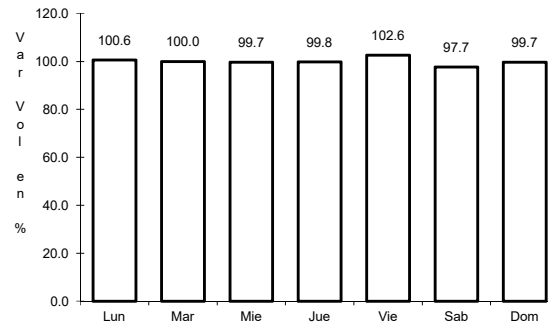
8 CARR: Loreto - Santa Rosalía

CLAVE: 03393

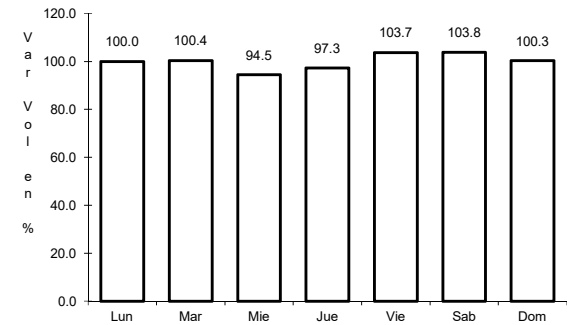
ruta: MEX-001



Km: 0.00 Tipo: 3 Sent: 0



Km: 135.00 Tipo: 1 Sent: 0

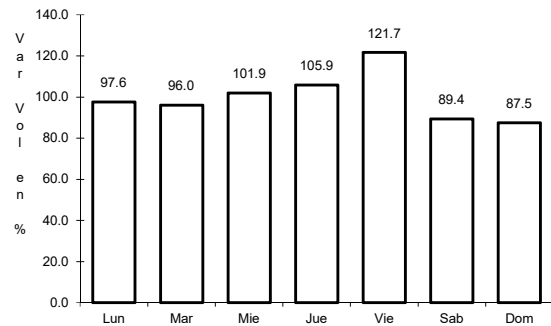


Km: 197.00 Tipo: 1 Sent: 0

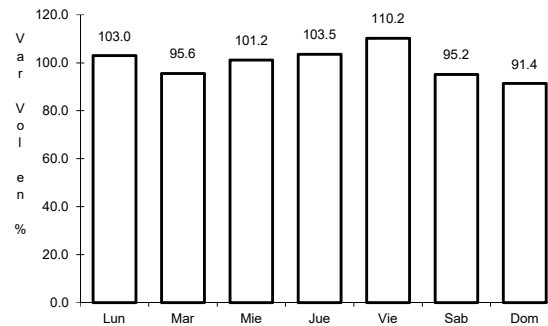
9 CARR: Ramal a Aeropuerto de La Paz

CLAVE: 03396

ruta: MEX-001



Km: 0.00 Tipo: 3 Sent: 1

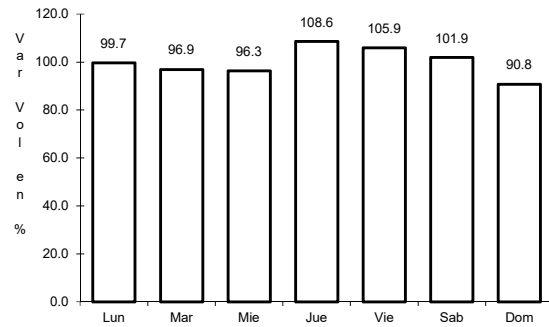


Km: 0.00 Tipo: 3 Sent: 2

10 CARR: Ramal a Aeropuerto de Los Cabos

CLAVE: 03394

ruta: MEX-001



Km: 0.00

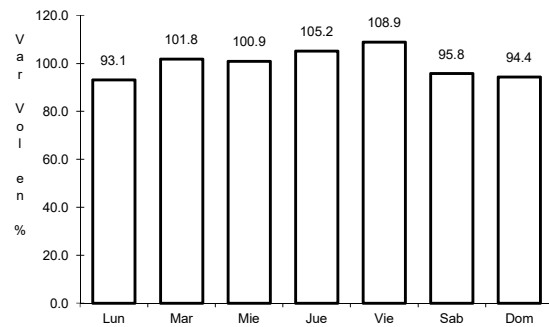
Tipo: 3

Sent: 0

11 CARR: Ramal a Los Paredones

CLAVE: 03407

ruta: MEX-001



Km: 0.00

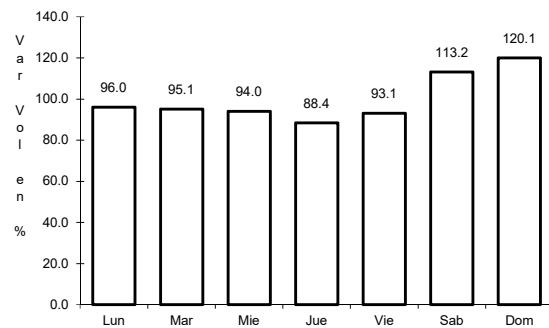
Tipo: 3

Sent: 0

12 CARR: Ramal a Miraflores

CLAVE: 03407

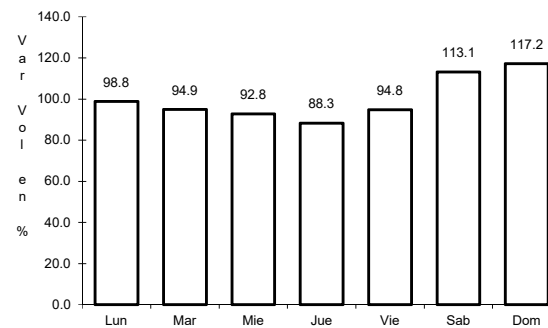
ruta: MEX-001



Km: 0.00

Tipo: 3

Sent: 1



Km: 0.00

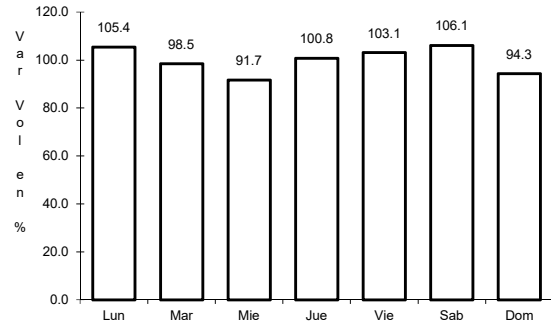
Tipo: 3

Sent: 2

13 CARR: Ramal a Puerto Escondido

CLAVE: 03407

ruta: MEX-001



Km: 0.00

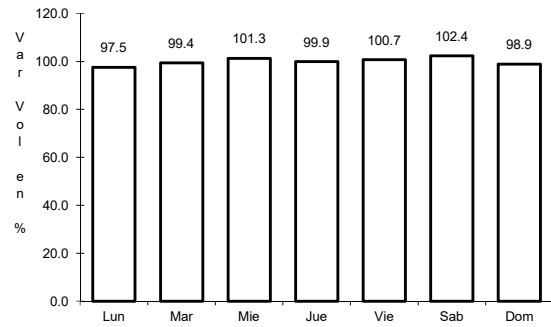
Tipo: 3

Sent: 0

14 CARR: Ramal a San Ignacio

CLAVE: 03413

ruta: MEX-001



Km: 0.00

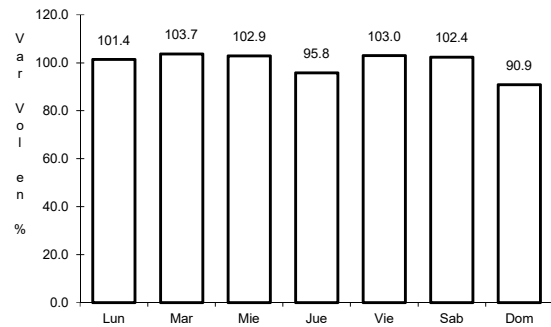
Tipo: 3

Sent: 0

15 CARR: Ramal a Santiago

CLAVE: 03051

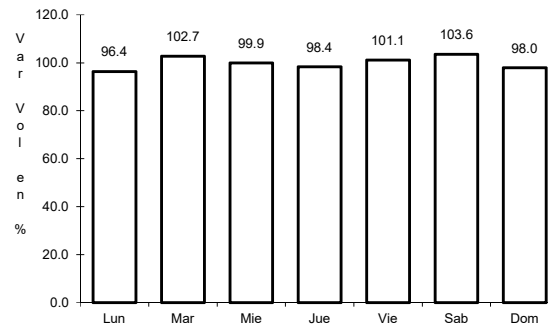
ruta: MEX-001



Km: 0.00

Tipo: 3

Sent: 1



Km: 0.00

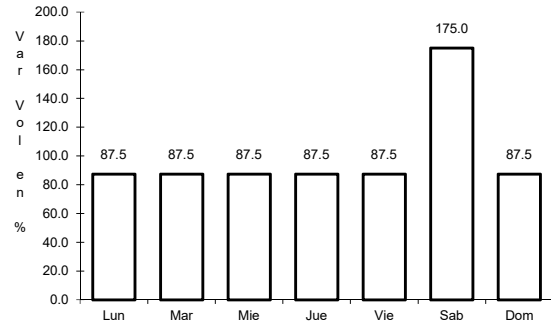
Tipo: 3

Sent: 2

16 CARR: Ramal Aeropista San Ignacio

CLAVE: 03053

RUTA: MEX-001



Km: 0.00

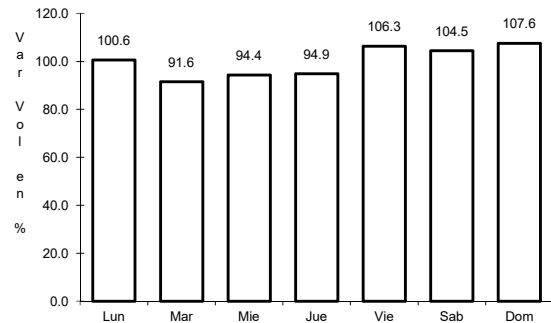
Tipo: 3

Sent: 0

17 CARR: San Pedro - Cabo San Lucas

CLAVE: 03003

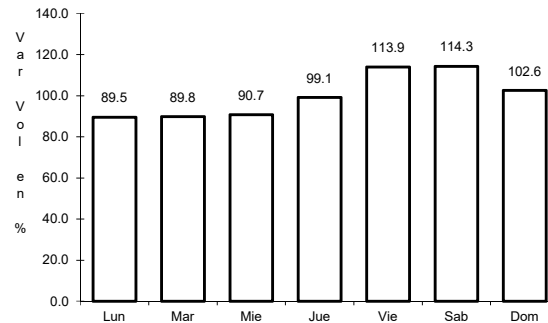
RUTA: MEX-019



Km: 0.00

Tipo: 3

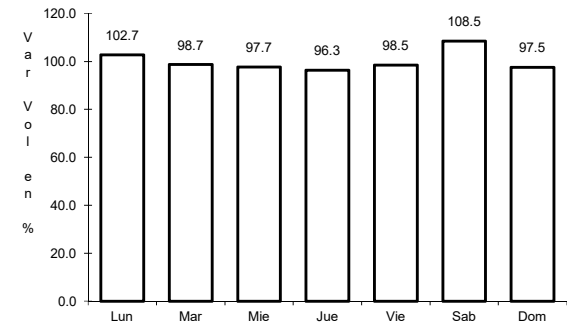
Sent: 1



Km: 0.00

Tipo: 3

Sent: 2



Km: 52.00

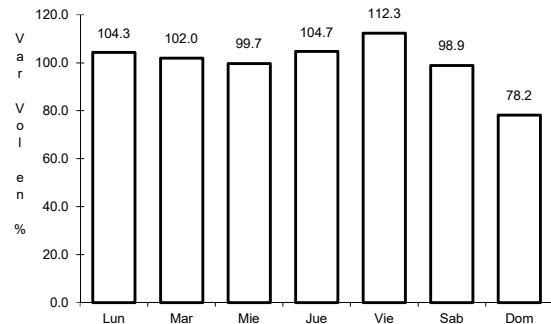
Tipo: 1

Sent: 0

18 CARR: Santa Rosalía - Guerrero Negro

CLAVE: 03095

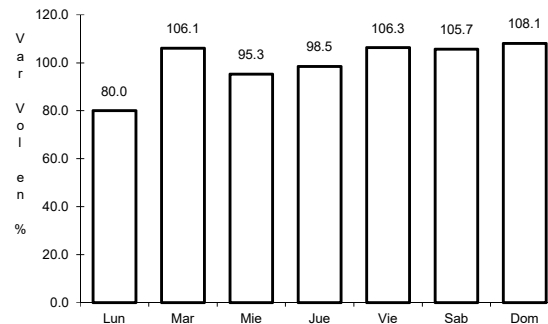
RUTA: MEX-001



Km: 0.00

Tipo: 3

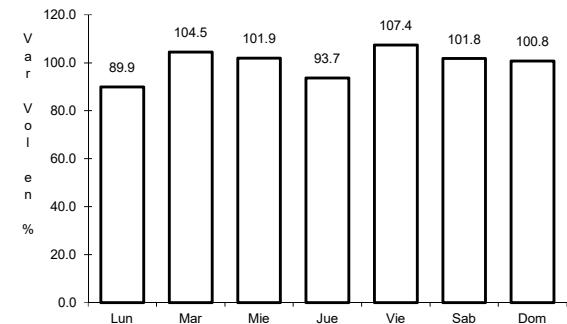
Sent: 0



Km: 117.90

Tipo: 1

Sent: 0



Km: 216.85

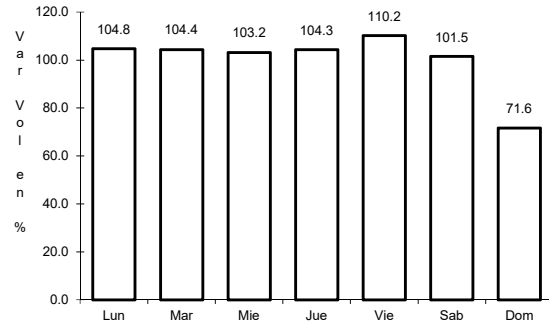
Tipo: 1

Sent: 0

19 CARR: Libramiento San José del Cabo - Aeropuerto Los Cabos (Cuota)

CLAVE: 03392

RUTA: MEX-001D



Km: 120.20

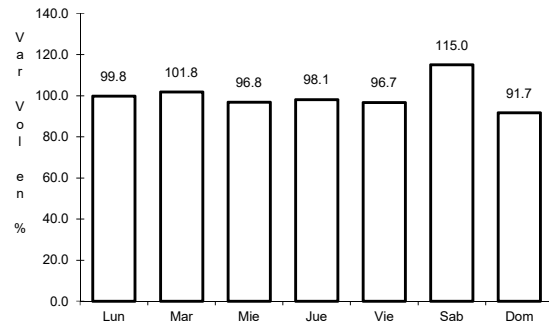
Tipo: 3

Sent: 0

20 CARR: Ramal a El Mangué (Cuota)

CLAVE:

RUTA: MEX-001D



Km: 11.20

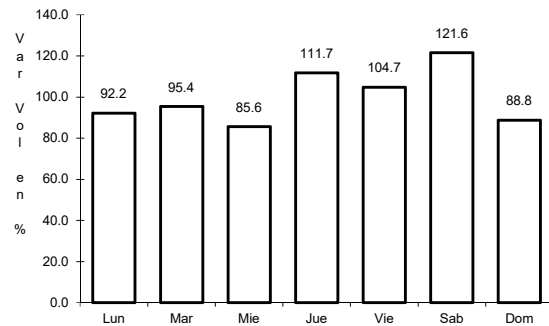
Tipo: 1

Sent: 0

21 CARR: San José del Cabo - Libramiento de Cabo San Lucas - (Cuota)

CLAVE:

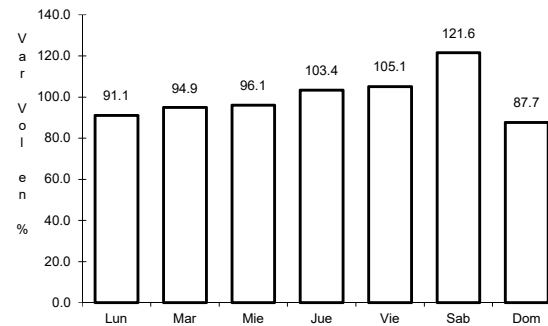
RUTA: MEX-001D



Km: 0.00

Tipo: 3

Sent: 0



Km: 27.48

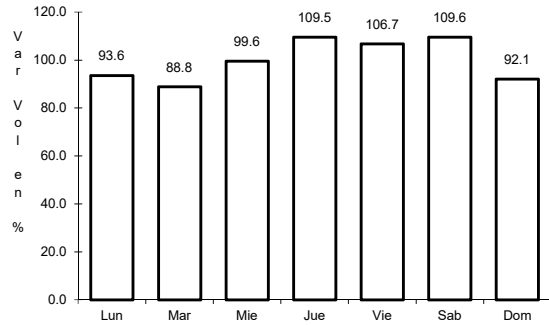
Tipo: 1

Sent: 0

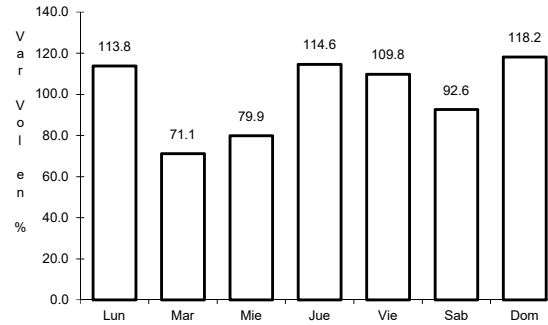
22 CARR: Cd. Insurgentes - La Purísima

CLAVE: 03005

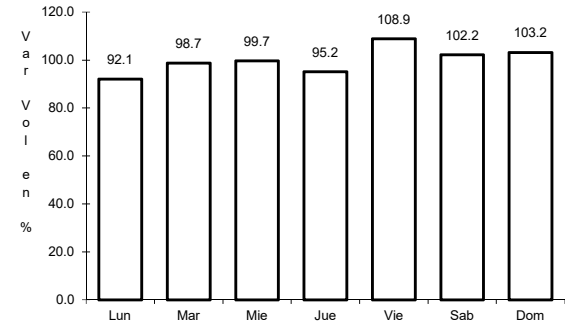
RUTA: BCS-001



Km: 0.00 Tipo: 3 Sent: 0



Km: 64.00 Tipo: 3 Sent: 0

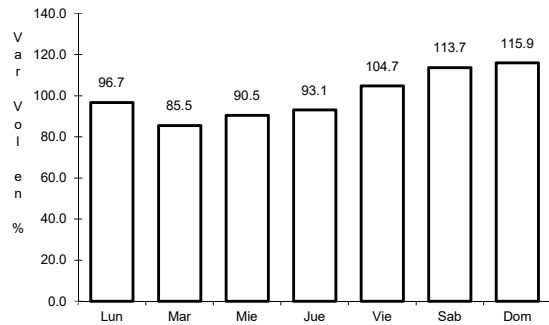


Km: 107.00 Tipo: 1 Sent: 0

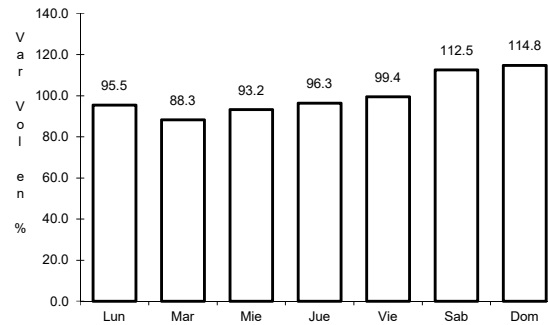
23 CARR: Cd. Insurgentes - Pto. Adolfo López Mateos

CLAVE: 03404

RUTA: BCS



Km: 0.00 Tipo: 3 Sent: 0

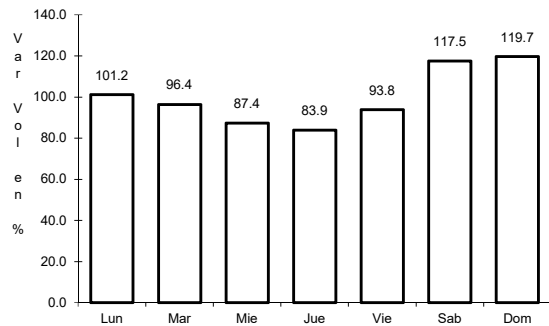


Km: 35.50 Tipo: 1 Sent: 0

24 CARR: Ent. Campo Fisher - Punta Abreojos

CLAVE: 03411

RUTA: BCS

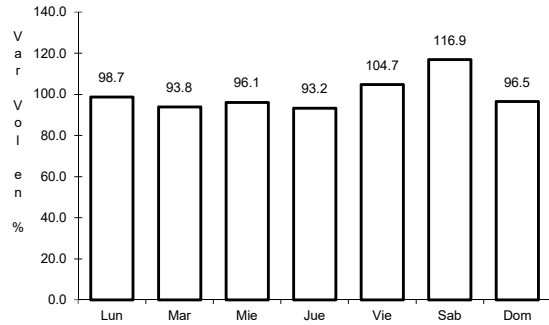


Km: 0.00 Tipo: 3 Sent: 0

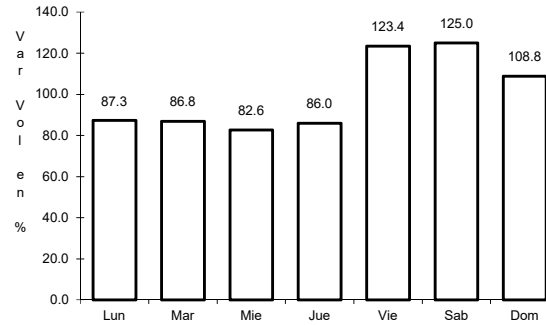
25 CARR: La Paz - Ensenada de Muertos

CLAVE: 03103

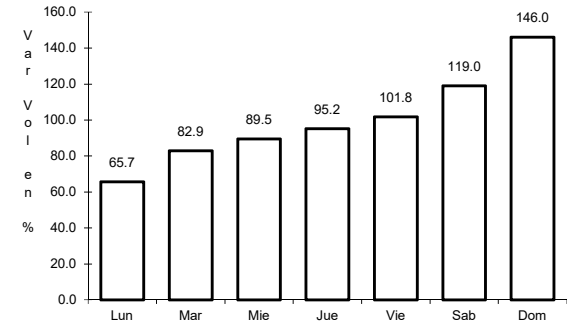
RUTA: BCS-246



Km: 0.00 Tipo: 3 Sent: 0



Km: 45.00 Tipo: 1 Sent: 0

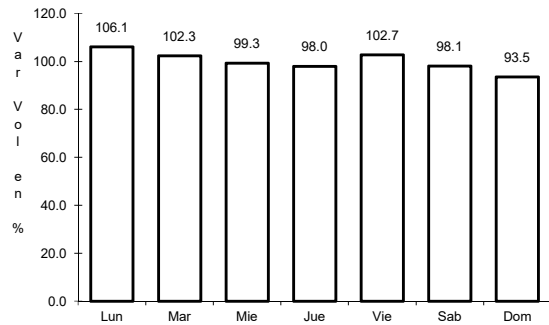


Km: 57.50 Tipo: 1 Sent: 0

26 CARR: Libramiento de La Paz

CLAVE: 03004

RUTA: BCS

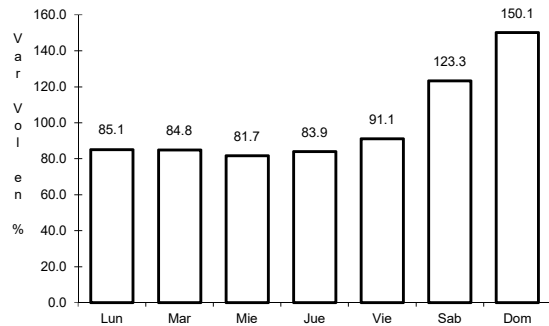


Km: 0.00 Tipo: 3 Sent: 0

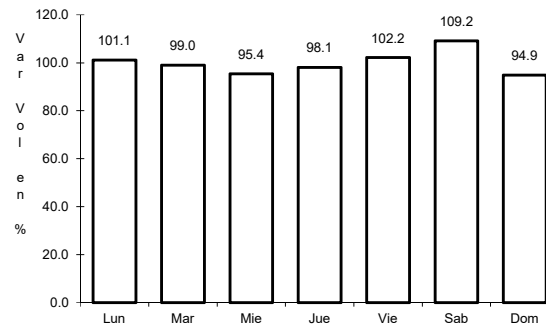
27 CARR: Libramiento Norte de La Paz

CLAVE: 03006

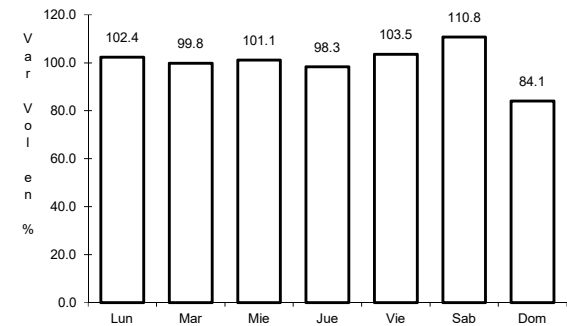
RUTA: BCS



Km: 0.00 Tipo: 3 Sent: 0



Km: 18.80 Tipo: 1 Sent: 0

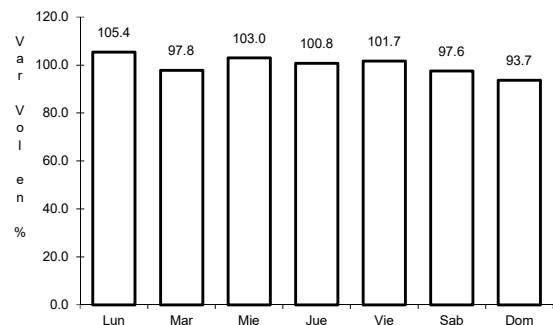


Km: 20.70 Tipo: 1 Sent: 0

28 CARR: Ramal a Benito Juárez

CLAVE: 03405

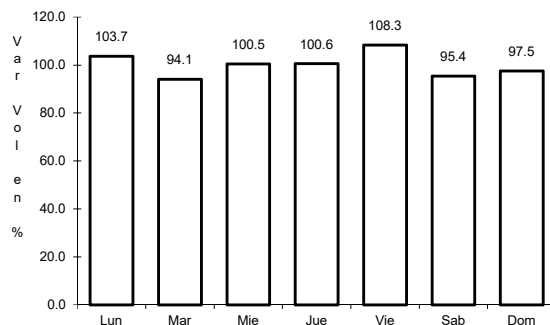
RUTA: BCS



Km: 0.00

Tipo: 3

Sent: 0



Km: 11.50

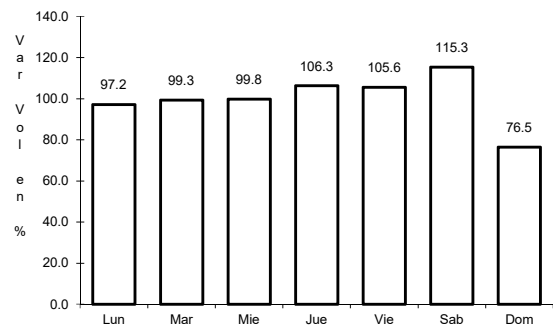
Tipo: 1

Sent: 0

29 CARR: Ramal a Ejido Ley Federal de Aguas Número Cuatro

CLAVE: 03007

RUTA: BCS



Km: 0.00

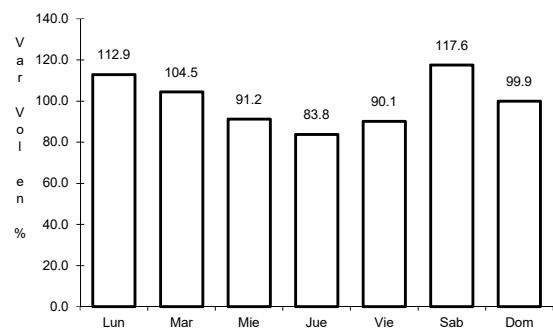
Tipo: 3

Sent: 0

30 CARR: Ramal a El Carrizal

CLAVE: 03050

RUTA: BCS



Km: 0.00

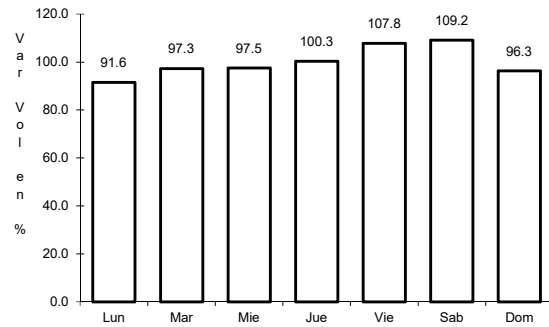
Tipo: 3

Sent: 0

31 CARR: Ramal a Guerrero Negro

CLAVE: 03395

RUTA: BCS



Km: 0.00

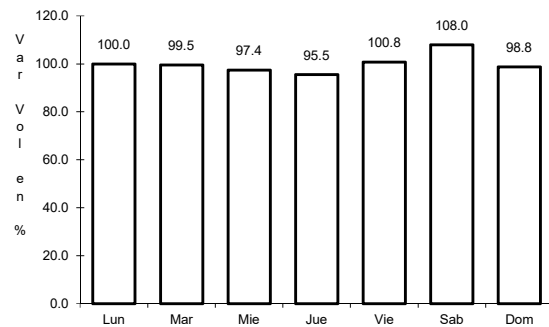
Tipo: 3

Sent: 0

32 CARR: Ramal a La Ribera

CLAVE: 03406

RUTA: BCS



Km: 0.00

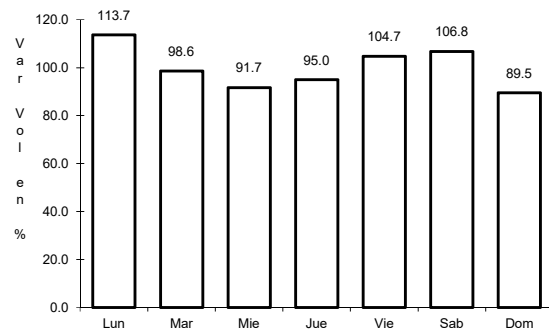
Tipo: 3

Sent: 0

33 CARR: Ramal a Melitón Albáñez

CLAVE: 03407

RUTA: BCS



Km: 0.00

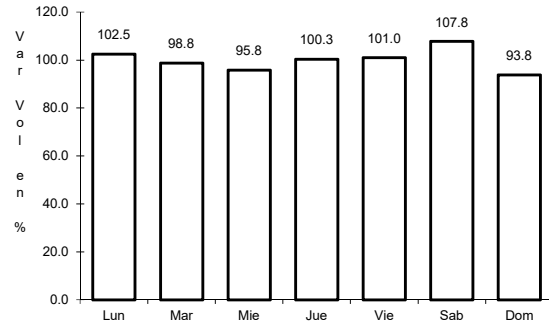
Tipo: 3

Sent: 0

34 CARR: Ramal a Santa Catarina

CLAVE: 03052

RUTA: BCS



Km: 0.00

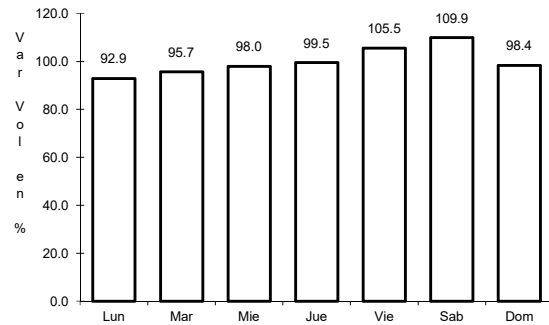
Tipo: 3

Sent: 0

35 CARR: Ramal a Bahía de Tortugas

CLAVE: 03397

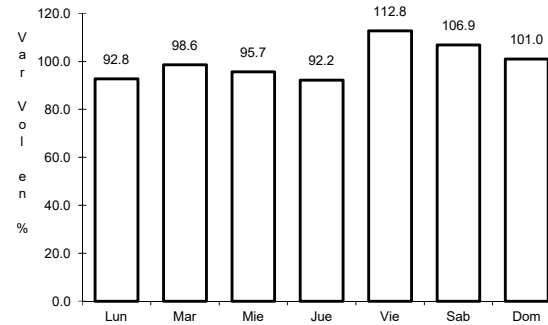
RUTA: MEX-001-BCS



Km: 0.00

Tipo: 3

Sent: 0



Km: 6.00

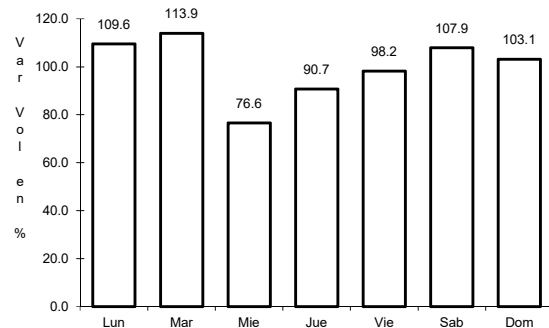
Tipo: 3

Sent: 0

36 CARR: Ramal a Ejido Ley Federal de Aguas Número Dos

CLAVE: 03050

RUTA: BCS-MEX-001



Km: 0.00

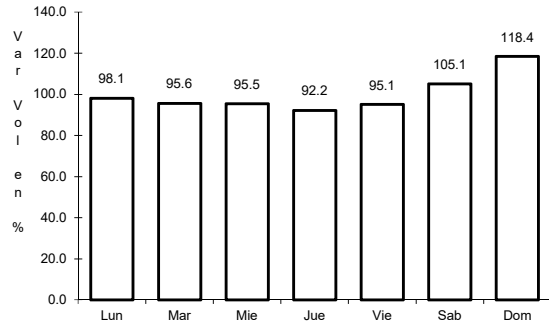
Tipo: 3

Sent: 0

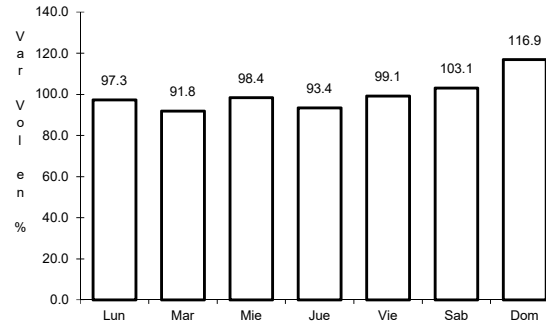
37 CARR: Ramal a Ley Federal de Aguas Número Cinco

CLAVE: 03407

RUTA: BCS-MEX-001



Km: 0.00 Tipo: 3 Sent: 1

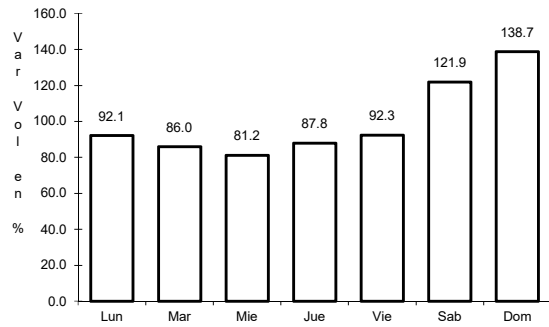


Km: 0.00 Tipo: 3 Sent: 2

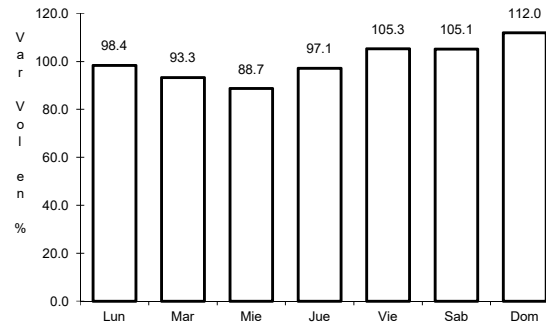
38 CARR: Ramal a San Juan de La Costa

CLAVE: 03403

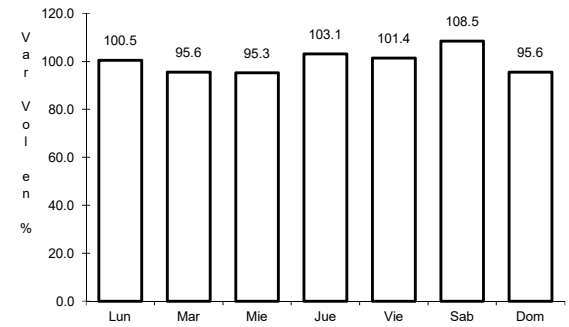
RUTA: BCS-163-MEX-001



Km: 0.00 Tipo: 3 Sent: 0



Km: 23.00 Tipo: 3 Sent: 0



Km: 40.70 Tipo: 1 Sent: 0

