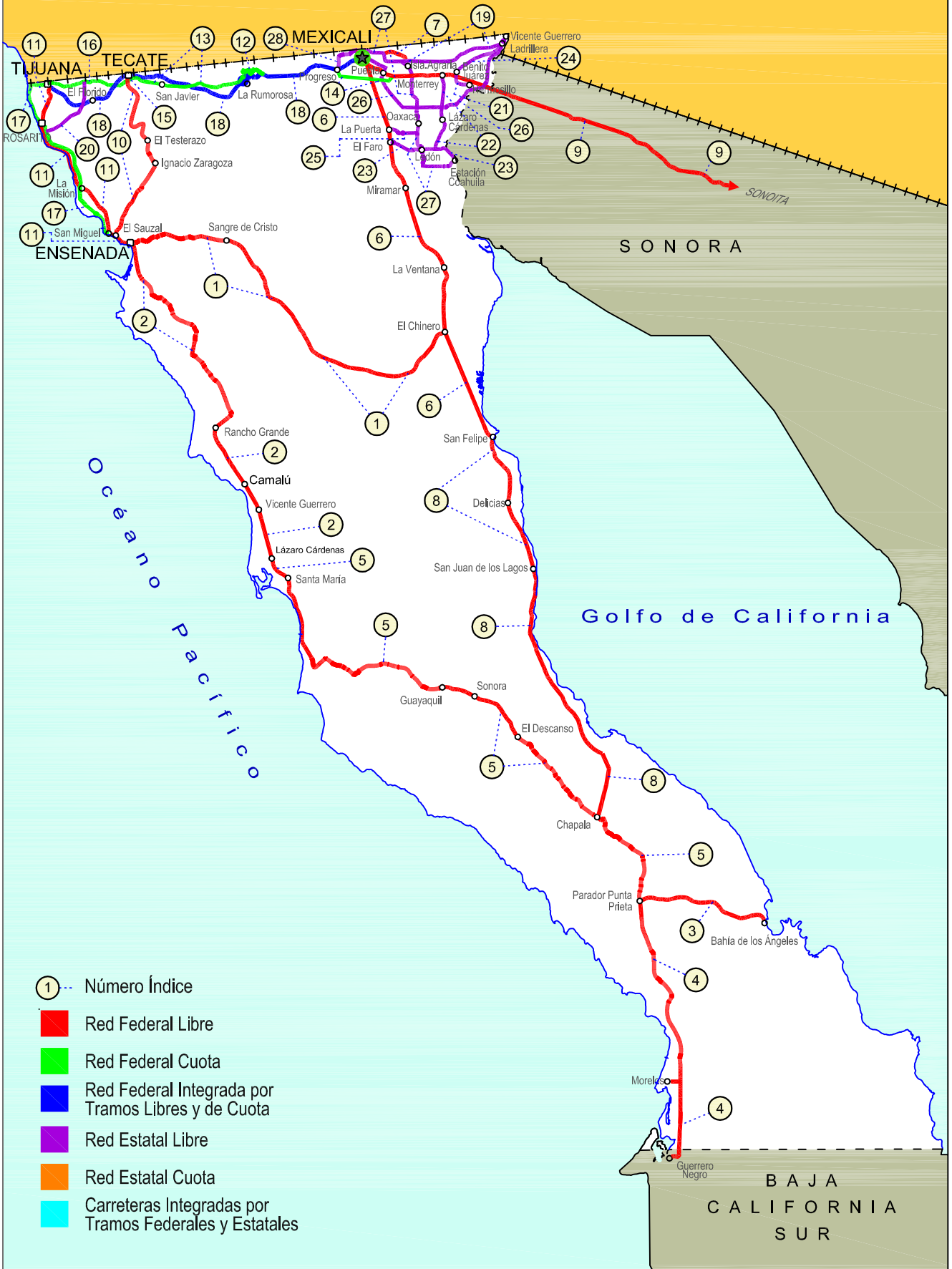


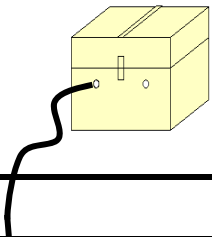
# 02 BAJA CALIFORNIA

SECRETARÍA DE COMUNICACIONES Y TRANSPORTES  
DIRECCIÓN GENERAL DE SERVICIOS TÉCNICOS

ESTADOS UNIDOS DE NORTE AMÉRICA







# BAJA CALIFORNIA

NO. INDICE CARRETERA	RUTA
---RED FEDERAL LIBRE---	
1 Ensenada - El Chinero	MEX-003
2 Ensenada - Lázaro Cárdenas	MEX-001
3 Ent. Punta Prieta - Bahía de Los Ángeles	MEX-001
4 Ent. Punta Prieta - Guerrero Negro	MEX-001
5 Lázaro Cárdenas - Ent. Punta Prieta	MEX-001
6 Mexicali - San Felipe	MEX-005
7 Ramal a Aeropuerto de Mexicali	MEX-002
8 San Felipe - Chapala	MEX-005
9 Sonoita - Mexicali	MEX-002
10 Tecate - El Sauzal	MEX-003
11 Tijuana - Ensenada (Libre)	MEX-001
---RED FEDERAL DE CUOTA---	
12 El Centinela - La Rumorosa (Cuota)	MEX-002D
13 La Rumorosa - Tecate (Cuota)	MEX-002D
14 Libramiento de Mexicali (Cuota)	MEX-002D
15 Libramiento de Tecate (Cuota)	MEX-002D
16 Tecate - Tijuana (Cuota)	MEX-002D
17 Tijuana - Ensenada (Cuota)	MEX-001D
---RED FEDERAL INTEGRADA POR TRAMOS LIBRES Y DE CUOTA---	
18 Mexicali - Tijuana	MEX-002D-MEX
---RED ESTATAL LIBRE---	
19 Algodones - Ent. Islas Agrarias Grupo B	BC-008
20 Corredor Tijuana 2000	BC
21 Ejido Benito Juárez - Ejido Chiapas	BC-061
22 Ejido Monterrey - Mazón	BC-003
23 El Faro - Estación Coahuila	BC-004
24 Ent. Santa Rosa - Ent. Pachuca	BC-006
25 La Puerta - T. C. (Mexicali - Estación Coahuila)	BC-010
26 Mexicali - Algodones	BC-002
27 Mexicali - Estación Coahuila	BC-001
28 Mexicali - Progreso	BC-005

BAJA CALIFORNIA

1 CARR: Ensenada - El Chinero

CLAVE: 02009

RUTA: MEX-003

AÑO: 2018

LUGAR	ESTACION				CLASIFICACION VEHICULAR EN PORCIENTO										COORDENADAS					
	KM	TE	SC	TDPA	M	A	B	C2	C3	T3S2	T3S3	T3S2R4	OTROS	A	B	C	K'	D	LATITUD	LONGITUD
Ensenada	0.00	3	0	8023	1.9	80.4	0.9	13.9	0.9	1.1	0.7	0.0	0.2	82.3	0.9	16.8	0.081	0.508	31.872194	-116.551722
El Tule	12.40	1	0	2749	1.3	76.8	1.1	14.5	1.5	2.9	1.8	0.0	0.1	78.1	1.1	20.8	0.084	0.501	31.888117	-116.504584
El Tule	12.40	3	0	2538	2.1	76.1	1.3	15.1	1.4	2.1	1.8	0.0	0.1	78.2	1.3	20.5	0.088	0.503	31.888812	-116.496338
Ojos Negros	38.50	1	0	2015	1.5	73.4	1.5	16.1	1.9	3.4	2.1	0.0	0.1	74.9	1.5	23.6	0.082	0.518	31.888917	-116.280531
San Salvador	60.50	1	0	897	2.1	75.2	1.5	13.8	2.3	3.2	1.5	0.0	0.4	77.3	1.5	21.2	0.077	0.500	31.842130	-116.070430
Héroes de La Independencia	93.00	3	0	1025	0.7	77.9	1.4	11.9	1.8	5.1	0.9	0.0	0.3	78.6	1.4	20.0	0.077	0.510	31.601513	-115.874334
Leyes de Reforma	103.00	3	0	1019	0.9	75.3	1.6	14.2	1.9	4.9	1.0	0.0	0.2	76.2	1.6	22.2	0.079	0.504	31.524516	-115.809504
Lázaro Cárdenas	122.00	3	0	980	1.1	75.7	2.2	11.7	1.6	6.3	1.0	0.0	0.4	76.8	2.2	21.0	0.088	0.504	31.379550	-115.686317
Francisco R. Serrano	137.50	3	0	676	1.3	72.8	2.0	12.8	1.6	7.8	1.1	0.0	0.6	74.1	2.0	23.9	0.109	0.504	31.327568	-115.530610
El Chinero	196.00	1	0	515	1.1	70.9	2.4	11.3	2.4	9.4	1.9	0.0	0.6	72.0	2.4	25.6	0.111	0.507	31.428394	-115.057814

2 CARR: Ensenada - Lázaro Cárdenas

CLAVE: 02098

RUTA: MEX-001

AÑO: 2018

LUGAR	ESTACION				CLASIFICACION VEHICULAR EN PORCIENTO										COORDENADAS					
	KM	TE	SC	TDPA	M	A	B	C2	C3	T3S2	T3S3	T3S2R4	OTROS	A	B	C	K'	D	LATITUD	LONGITUD
Ensenada	0.00	3	1	41122	1.3	86.3	0.5	8.3	0.5	1.2	1.4	0.1	0.4	87.6	0.5	11.9	0.065	0.502	31.822860	-116.599273
Ensenada	0.00	3	2	41403	1.4	85.7	0.5	8.7	0.5	1.3	1.4	0.1	0.4	87.1	0.5	12.4	0.066	0.502	31.822887	-116.599101
T. Der. Aeropuerto	13.50	3	1	23966	1.1	86.5	0.6	8.7	0.5	1.5	0.7	0.2	0.2	87.6	0.6	11.8	0.075	0.515	31.789081	-116.592561
T. Der. Aeropuerto	13.50	3	2	22564	1.5	85.1	0.6	9.6	0.5	1.6	0.7	0.2	0.2	86.6	0.6	12.8	0.081	0.515	31.789097	-116.592398
T. Der. La Bufadora	21.16	1	1	14458	0.7	86.0	0.7	9.2	0.6	2.0	0.5	0.1	0.2	86.7	0.7	12.6	0.077	0.512	31.731314	-116.580053
T. Der. La Bufadora	21.16	1	2	15156	0.7	85.2	0.6	9.8	0.6	2.3	0.5	0.1	0.2	85.9	0.6	13.5	0.073	0.512	31.731370	-116.579913
T. Der. La Bufadora	21.16	3	0	19004	0.6	80.3	1.0	13.1	0.7	3.6	0.4	0.2	0.1	80.9	1.0	18.1	0.063	0.502	31.698178	-116.548664
Cañón Buenavista	30.40	1	0	10503	1.1	73.7	1.6	18.2	0.9	4.1	0.3	0.1	0.0	74.8	1.6	23.6	0.072	0.515	31.676666	-116.523084
Cañón Buenavista	30.40	3	0	5921	2.6	74.4	1.5	14.2	1.5	5.3	0.3	0.1	0.1	77.0	1.5	21.5	0.074	0.530	31.659417	-116.517843
Santo Tomás	52.00	1	0	5152	1.2	72.3	1.7	15.2	1.6	7.1	0.5	0.3	0.1	73.5	1.7	24.8	0.076	0.523	31.585897	-116.420863
Misión San Vicente	90.00	1	0	4909	1.6	67.8	2.1	15.2	1.6	10.3	0.7	0.3	0.4	69.4	2.1	28.5	0.073	0.541	31.330685	-116.251775
El Salado	104.50	1	0	4159	0.6	70.2	1.9	14.7	1.5	10.0	0.6	0.3	0.2	70.8	1.9	27.3	0.065	0.520	31.233025	-116.168861
Punta Colonet	128.00	1	0	5544	1.0	72.4	3.0	12.1	1.2	9.1	0.7	0.3	0.2	73.4	3.0	23.6	0.068	0.511	31.080408	-116.204260
Punta Colonet	128.00	3	0	5100	0.7	69.7	3.3	13.5	1.5	10.2	0.7	0.2	0.2	70.4	3.3	26.3	0.074	0.502	31.053100	-116.208322
Camalú	159.00	1	0	6596	3.2	74.9	4.3	10.9	1.1	4.7	0.7	0.1	0.1	78.1	4.3	17.6	0.072	0.518	30.846185	-116.065592
Colonia Vicente Guerrero (Lazáro Cárdenas)	172.40	3	0	13838	1.0	83.5	2.0	9.9	0.7	2.4	0.3	0.1	0.1	84.5	2.0	13.5	0.083	0.508	30.700473	-115.984983
San Quintín	193.00	1	0	12983	0.4	83.8	1.9	9.8	0.5	2.9	0.5	0.1	0.1	84.2	1.9	13.9	0.072	0.508	30.593518	-115.952167
San Quintín	193.00	3	1	10947	0.4	91.4	1.5	4.5	0.3	1.6	0.3	0.0	0.0	91.8	1.5	6.7	0.074	0.511	30.548724	-115.938264
San Quintín	193.00	3	2	10482	0.4	91.1	1.4	4.5	0.3	1.7	0.4	0.1	0.1	91.5	1.4	7.1	0.074	0.511	30.548806	-115.938173
Lázaro Cárdenas	196.00																			

BAJA CALIFORNIA

3 CARR: Ent. Punta Prieta - Bahía de Los Ángeles

CLAVE: 02322

RUTA: MEX-001

AÑO: 2018

LUGAR	ESTACION				CLASIFICACION VEHICULAR EN PORCIENTO										COORDENADAS					
	KM	TE	SC	TDPA	M	A	B	C2	C3	T3S2	T3S3	T3S2R4	OTROS	A	B	C	K'	D	LATITUD	LONGITUD
Parador Punta Prieta	0.00	3	0	162	2.5	60.3	3.1	29.2	3.9	0.9	0.0	0.0	0.1	62.8	3.1	34.1	0.136	0.503	29.046248	-114.142776
Bahía de Los Ángeles	68.00	1	0	241	3.4	68.4	0.7	23.8	2.7	0.8	0.1	0.0	0.1	71.8	0.7	27.5	0.104	0.524	28.964305	-113.568116

4 CARR: Ent. Punta Prieta - Guerrero Negro

CLAVE: 00321

RUTA: MEX-001

AÑO: 2018

LUGAR	ESTACION				CLASIFICACION VEHICULAR EN PORCIENTO										COORDENADAS					
	KM	TE	SC	TDPA	M	A	B	C2	C3	T3S2	T3S3	T3S2R4	OTROS	A	B	C	K'	D	LATITUD	LONGITUD
Parador Punta Prieta	0.00	3	0	781	2.3	57.1	2.7	13.9	2.6	18.6	2.0	0.8	0.0	59.4	2.7	37.9	0.088	0.536	29.042393	-114.152331
Rosarito	50.60	3	0	996	1.7	58.3	2.5	13.2	2.6	18.7	2.4	0.6	0.0	60.0	2.5	37.5	0.071	0.543	28.624509	-114.031599
Tanatán	70.10	3	0	885	2.6	60.2	2.6	12.5	2.4	16.5	2.5	0.7	0.0	62.8	2.6	34.6	0.085	0.543	28.493732	-114.015014
Tampico	105.00	1	0	1087	4.6	64.0	2.2	12.7	2.7	11.3	2.3	0.2	0.0	68.6	2.2	29.2	0.078	0.506	28.216782	-114.000083
Lim. Edos. Term. B.C. Ppia. B.C.S. (Paralelo 28)	128.56																			
Ent. Guerrero Negro	130.00	1	0	1885	2.0	75.5	1.7	8.9	1.4	9.3	1.0	0.2	0.0	77.5	1.7	20.8	0.075	0.525	27.972859	-114.013577

5 CARR: Lázaro Cárdenas - Ent. Punta Prieta

CLAVE: 02319

RUTA: MEX-001

AÑO: 2018

LUGAR	ESTACION				CLASIFICACION VEHICULAR EN PORCIENTO										COORDENADAS					
	KM	TE	SC	TDPA	M	A	B	C2	C3	T3S2	T3S3	T3S2R4	OTROS	A	B	C	K'	D	LATITUD	LONGITUD
Lázaro Cárdenas	0.00	3	0	12260	0.4	82.6	3.8	10.1	0.4	2.4	0.2	0.1	0.0	83.0	3.8	13.2	0.085	0.509	30.511678	-115.926747
T. Izq. Ramal a Venustiano Carranza	14.50	1	0	2344	0.8	69.4	5.7	12.7	1.4	9.0	0.7	0.2	0.1	70.2	5.7	24.1	0.075	0.519	30.396747	-115.871840
Rosario de Arriba	53.70	1	0	1472	1.6	60.3	4.7	13.7	2.2	16.0	1.1	0.3	0.1	61.9	4.7	33.4	0.071	0.518	30.066225	-115.731248
Rosario de Arriba	53.70	3	0	2057	1.2	70.4	2.0	13.4	1.7	10.3	0.6	0.4	0.0	71.6	2.0	26.4	0.070	0.506	30.076785	-115.699938
T. Der. Emiliano Zapata	80.00	3	0	902	2.3	54.8	2.9	13.0	2.2	22.5	1.0	1.1	0.2	57.1	2.9	40.0	0.062	0.508	30.032830	-115.524965
San Agustín	140.00	1	0	905	1.5	53.7	2.5	16.2	2.4	21.4	1.6	0.5	0.2	55.2	2.5	42.3	0.075	0.520	29.926537	-114.993677
San Agustín	140.00	3	0	825	5.2	52.1	2.1	15.0	1.6	22.5	1.1	0.3	0.1	57.3	2.1	40.6	0.087	0.520	29.921378	-114.970637
San Luis	173.00	1	0	839	4.4	53.8	2.5	11.7	2.0	23.9	1.0	0.5	0.2	58.2	2.5	39.3	0.080	0.507	29.751408	-114.745639
Rancho Chapala	222.80	1	0	766	1.8	54.8	2.1	13.1	1.8	24.4	0.7	1.3	0.0	56.6	2.1	41.3	0.078	0.521	29.395303	-114.392196
Parador Punta Prieta	275.66	1	0	777	2.4	55.6	2.1	11.8	2.6	23.0	1.7	0.6	0.2	58.0	2.1	39.9	0.095	0.518	29.063250	-114.155378

6 CARR: Mexicali - San Felipe

CLAVE: 02096

RUTA: MEX-005

AÑO: 2018

LUGAR	ESTACION				CLASIFICACION VEHICULAR EN PORCIENTO										COORDENADAS					
	KM	TE	SC	TDPA	M	A	B	C2	C3	T3S2	T3S3	T3S2R4	OTROS	A	B	C	K'	D	LATITUD	LONGITUD
Mexicali	0.00	3	1	12254	0.7	82.7	1.3	8.7	2.4	2.9	1.0	0.2	0.1	83.4	1.3	15.3	0.084	0.505	32.556190	-115.418076
Mexicali	0.00	3	2	12021	0.6	80.9	1.5	9.9	2.6	3.2	1.0	0.2	0.1	81.5	1.5	17.0	0.079	0.505	32.556224	-115.417922

BAJA CALIFORNIA

6 CARR: Mexicali - San Felipe

CLAVE: 02096

RUTA: MEX-005

AÑO: 2018

LUGAR	ESTACION				CLASIFICACION VEHICULAR EN PORCIENTO													COORDENADAS		
	KM	TE	SC	TDPA	M	A	B	C2	C3	T3S2	T3S3	T3S2R4	OTROS	A	B	C	K'	D	LATITUD	LONGITUD
La Puerta	32.00	1	1	3962	0.6	83.3	0.7	10.0	1.5	1.3	1.2	0.7	0.7	83.9	0.7	15.4	0.099	0.503	32.373798	-115.342784
La Puerta	32.00	1	2	3915	0.5	82.2	0.8	10.7	1.6	1.4	1.3	0.7	0.8	82.7	0.8	16.5	0.132	0.503	32.373863	-115.342677
T. Izq. Estación Coahuila	39.00	1	1	2969	0.4	83.0	0.5	9.8	1.5	2.0	1.4	0.8	0.6	83.4	0.5	16.1	0.123	0.501	32.282996	-115.322677
T. Izq. Estación Coahuila	39.00	1	2	2952	0.5	81.5	0.6	10.5	1.4	1.9	1.5	1.3	0.8	82.0	0.6	17.4	0.152	0.501	32.283012	-115.322576
T. Izq. Estación Coahuila	39.00	3	0	3067	1.1	75.5	0.8	14.0	1.5	2.7	1.4	2.0	1.0	76.6	0.8	22.6	0.109	0.504	32.267251	-115.321477
El Chinero	141.00	1	0	1838	0.5	74.2	1.4	17.3	1.6	3.5	0.9	0.2	0.4	74.7	1.4	23.9	0.135	0.535	31.441448	-115.053699
El Chinero	141.00	3	0	1857	0.8	77.8	0.9	15.9	1.6	2.3	0.7	0.0	0.0	78.6	0.9	20.5	0.149	0.503	31.424374	-115.045667
San Felipe	189.60	1	1	3250	0.6	86.9	0.5	10.3	0.7	0.8	0.2	0.0	0.0	87.5	0.5	12.0	0.095	0.501	31.041521	-114.868211
San Felipe	189.60	1	2	3231	0.6	85.8	0.7	11.3	0.7	0.7	0.2	0.0	0.0	86.4	0.7	12.9	0.096	0.501	31.041563	-114.868116

7 CARR: Ramal a Aeropuerto de Mexicali

CLAVE: 02321

RUTA: MEX-002

AÑO: 2018

LUGAR	ESTACION				CLASIFICACION VEHICULAR EN PORCIENTO													COORDENADAS		
	KM	TE	SC	TDPA	M	A	B	C2	C3	T3S2	T3S3	T3S2R4	OTROS	A	B	C	K'	D	LATITUD	LONGITUD
T. C. Mexicali - Estación Coahuila	0.00	3	0	12759	1.0	88.3	0.8	5.2	1.7	2.8	0.2	0.0	0.0	89.3	0.8	9.9	0.085	0.513	32.650401	-115.340316
Aeropuerto	10.00	1	0	6230	0.9	87.3	0.9	8.5	0.5	1.8	0.1	0.0	0.0	88.2	0.9	10.9	0.096	0.508	32.629027	-115.254490
T. C. Algodones - Islas Agrarias Grupo B	12.10																			

8 CARR: San Felipe - Chapala

CLAVE: 02503

RUTA: MEX-005

AÑO: 2018

LUGAR	ESTACION				CLASIFICACION VEHICULAR EN PORCIENTO													COORDENADAS		
	KM	TE	SC	TDPA	M	A	B	C2	C3	T3S2	T3S3	T3S2R4	OTROS	A	B	C	K'	D	LATITUD	LONGITUD
San Felipe	0.00	3	1	1788	1.3	79.9	1.9	13.3	1.6	0.9	1.1	0.0	0.0	81.2	1.9	16.9	0.093	0.506	30.997757	-114.836355
San Felipe	0.00	3	2	1829	1.5	79.3	1.3	15.4	1.4	0.7	0.4	0.0	0.0	80.8	1.3	17.9	0.102	0.506	30.997771	-114.836301
Playa Curbina	75.46	3	0	325	6.3	63.2	4.6	18.1	5.0	1.7	1.1	0.0	0.0	69.5	4.6	25.9	0.120	0.525	30.354325	-114.643858
T. C. Lazaro Cárdenas - Parador Punta Prieta	213.00																			

9 CARR: Sonoita - Mexicali

CLAVE: 00081

RUTA: MEX-002

AÑO: 2018

LUGAR	ESTACION				CLASIFICACION VEHICULAR EN PORCIENTO													COORDENADAS		
	KM	TE	SC	TDPA	M	A	B	C2	C3	T3S2	T3S3	T3S2R4	OTROS	A	B	C	K'	D	LATITUD	LONGITUD
Sonoita	0.00	3	0	4156	2.0	45.6	6.8	8.0	2.2	23.0	3.3	8.7	0.4	47.6	6.8	45.6	0.059	0.527	31.886658	-112.858450
Los Vidrios	58.75	3	0	3862	4.6	42.2	6.9	6.7	3.3	25.8	4.3	5.7	0.5	46.8	6.9	46.3	0.066	0.526	32.027448	-113.423715
San Luis Río Colorado	191.80	1	0	4258	4.4	48.5	4.9	7.6	3.2	20.9	3.2	6.9	0.4	52.9	4.9	42.2	0.067	0.521	32.452725	-114.680632
San Luis Río Colorado	191.80	3	1	9702	1.0	81.8	1.1	8.4	0.9	4.6	0.9	1.2	0.1	82.8	1.1	16.1	0.076	0.502	32.488226	-114.796996

BAJA CALIFORNIA

9 CARR: Sonoita - Mexicali

CLAVE: 00081

RUTA: MEX-002

AÑO: 2018

LUGAR	ESTACION				CLASIFICACION VEHICULAR EN PORCIENTO														COORDENADAS	
	KM	TE	SC	TDPA	M	A	B	C2	C3	T3S2	T3S3	T3S2R4	OTROS	A	B	C	K'	D	LATITUD	LONGITUD
San Luis Río Colorado	191.80	3	2	9787	0.9	80.3	1.1	8.9	0.9	5.7	0.9	1.2	0.1	81.2	1.1	17.7	0.079	0.502	32.488079	-114.797045
Lim. Edos. Term. Son. Ppia. B.C.	203.69																			
X. C. Mexicali - Algodones	206.78	1	1	10322	0.8	80.8	1.0	10.2	0.7	4.6	0.8	1.0	0.1	81.6	1.0	17.4	0.076	0.501	32.498437	-114.831078
X. C. Mexicali - Algodones	206.78	1	2	10300	0.8	79.3	1.1	10.4	0.9	5.3	0.9	1.2	0.1	80.1	1.1	18.8	0.080	0.501	32.498424	-114.831316
X. C. Mexicali - Algodones	206.78	3	1	9647	0.6	78.0	2.0	9.2	0.7	6.2	1.1	2.1	0.1	78.6	2.0	19.4	0.070	0.504	32.509231	-114.867189
X. C. Mexicali - Algodones	206.78	3	2	9810	0.6	76.4	2.3	9.8	0.8	7.0	0.8	2.2	0.1	77.0	2.3	20.7	0.067	0.504	32.509150	-114.867219
T. Izq. Ejido Hermosillo	214.80	3	1	7442	0.5	77.9	2.2	8.2	0.8	6.7	1.1	2.4	0.2	78.4	2.2	19.4	0.077	0.500	32.527448	-114.928455
T. Izq. Ejido Hermosillo	214.80	3	2	7439	0.5	75.6	2.4	9.0	1.0	7.5	1.2	2.6	0.2	76.1	2.4	21.5	0.082	0.500	32.527354	-114.928533
Ejido Monterrey	228.63	3	1	11062	0.3	78.9	1.9	8.5	0.9	6.4	1.0	1.8	0.3	79.2	1.9	18.9	0.066	0.501	32.552042	-115.087579
Ejido Monterrey	228.63	3	2	11087	0.4	76.8	2.1	9.8	0.9	6.6	1.0	2.1	0.3	77.2	2.1	20.7	0.071	0.501	32.551865	-115.087555
X. C. Mexicali - Algodones	256.47	1	1	14111	0.6	82.2	1.3	9.3	0.8	4.2	0.8	0.7	0.1	82.8	1.3	15.9	0.074	0.501	32.565197	-115.325751
X. C. Mexicali - Algodones	256.47	1	2	14059	0.5	81.5	1.5	9.7	0.8	4.2	0.9	0.8	0.1	82.0	1.5	16.5	0.076	0.501	32.565055	-115.325756
T. C. Mexicali - San Felipe	265.12																			

10 CARR: Tecate - El Sauzal

CLAVE: 02097

RUTA: MEX-003

AÑO: 2018

LUGAR	ESTACION				CLASIFICACION VEHICULAR EN PORCIENTO														COORDENADAS	
	KM	TE	SC	TDPA	M	A	B	C2	C3	T3S2	T3S3	T3S2R4	OTROS	A	B	C	K'	D	LATITUD	LONGITUD
Tecate	0.00	3	0	11373	1.0	84.3	1.1	9.8	0.9	1.1	0.9	0.7	0.2	85.3	1.1	13.6	0.087	0.501	32.541188	-116.626970
T. Der. Valle de Las Palmas	27.80	1	0	4418	1.9	83.2	2.5	5.9	1.5	2.1	1.3	1.3	0.3	85.1	2.5	12.4	0.091	0.538	32.382563	-116.613959
El Tezterazo	48.80	3	0	3366	1.9	81.9	1.8	10.3	1.2	1.7	0.7	0.4	0.1	83.8	1.8	14.4	0.137	0.552	32.264672	-116.533368
T. Izq. San Marcos	63.50	1	0	3385	1.7	79.0	1.7	12.1	1.2	2.2	1.0	1.0	0.1	80.7	1.7	17.6	0.125	0.503	32.195568	-116.488548
El Porvenir Guadalupe	74.80	3	0	5721	1.1	81.2	1.2	12.2	0.9	1.7	0.9	0.7	0.1	82.3	1.2	16.5	0.118	0.521	32.091413	-116.562868
Las Palmas	85.00	1	0	6154	1.0	85.3	0.8	9.1	1.0	1.6	0.6	0.5	0.1	86.3	0.8	12.9	0.124	0.518	32.042740	-116.601037
San Antonio de Las Minas	93.90	1	1	3973	1.2	84.1	1.2	9.1	1.0	1.2	1.0	0.8	0.4	85.3	1.2	13.5	0.090	0.566	31.986084	-116.645757
San Antonio de Las Minas	93.90	1	2	5179	1.2	83.6	1.3	9.8	1.0	1.0	0.7	0.9	0.5	84.8	1.3	13.9	0.105	0.566	31.986116	-116.645590
El Sauzal	104.53	1	1	4819	0.9	85.1	1.0	9.9	0.7	1.0	0.5	0.7	0.2	86.0	1.0	13.0	0.109	0.568	31.910388	-116.694229
El Sauzal	104.53	1	2	5761	0.7	84.5	1.1	10.6	0.7	1.1	0.6	0.5	0.2	85.2	1.1	13.7	0.113	0.568	31.910288	-116.694138

11 CARR: Tijuana - Ensenada (Libre)

CLAVE: 02099

RUTA: MEX-001

AÑO: 2018

LUGAR	ESTACION				CLASIFICACION VEHICULAR EN PORCIENTO														COORDENADAS	
	KM	TE	SC	TDPA	M	A	B	C2	C3	T3S2	T3S3	T3S2R4	OTROS	A	B	C	K'	D	LATITUD	LONGITUD
Tijuana	0.00																			
X. C. Tijuana - San Miguel (Cuota)	22.00	1	1	27622	0.9	90.0	0.4	6.2	0.7	1.1	0.6	0.0	0.1	90.9	0.4	8.7	0.076	0.503	32.382507	-117.057355



BAJA CALIFORNIA

11 CARR: Tijuana - Ensenada (Libre)

CLAVE: 02099

RUTA: MEX-001

AÑO: 2018

LUGAR	ESTACION				CLASIFICACION VEHICULAR EN PORCIENTO										COORDENADAS					
	KM	TE	SC	TDPA	M	A	B	C2	C3	T3S2	T3S3	T3S2R4	OTROS	A	B	C	K'	D	LATITUD	LONGITUD
X. C. Tijuana - San Miguel (Cuota)	22.00	1	2	27328	1.2	82.3	0.9	14.1	0.6	0.7	0.2	0.0	0.0	83.5	0.9	15.6	0.073	0.503	32.382517	-117.057216
Rosarito	25.94	1	1	14438	1.3	93.2	0.2	4.0	0.2	0.5	0.5	0.0	0.1	94.5	0.2	5.3	0.089	0.557	32.367599	-117.060381
Rosarito	25.94	1	2	18178	1.5	92.4	0.1	4.4	0.2	0.7	0.6	0.0	0.1	93.9	0.1	6.0	0.086	0.557	32.367629	-117.060239
Rosarito	25.94	3	1	10343	1.0	93.2	0.1	4.4	0.3	0.5	0.4	0.0	0.1	94.2	0.1	5.7	0.087	0.505	32.339741	-117.056089
Rosarito	25.94	3	2	10148	1.1	92.8	0.1	4.7	0.3	0.5	0.4	0.0	0.1	93.9	0.1	6.0	0.088	0.505	32.339776	-117.055955
T. Izq. Aut. Tijuana - San Miguel	46.12	1	1	5889	1.0	86.0	0.7	9.9	0.6	1.3	0.2	0.2	0.1	87.0	0.7	12.3	0.145	0.608	32.230496	-116.921911
T. Izq. Aut. Tijuana - San Miguel	46.12	1	2	5315	1.5	87.1	0.3	10.5	0.4	0.2	0.0	0.0	0.0	88.6	0.3	11.1	0.125	0.608	32.230543	-116.921805
Población Plaza Santa María	56.98	1	0	1947	2.4	86.0	0.3	10.2	0.8	0.2	0.1	0.0	0.0	88.4	0.3	11.3	0.139	0.510	32.144724	-116.892282
La Misión	64.98	1	0	3772	1.5	82.8	0.4	13.9	0.5	0.4	0.3	0.1	0.1	84.3	0.4	15.3	0.123	0.533	32.092936	-116.859749
T. Izq. Colonia Guadalupe	82.90	1	0	2193	1.1	84.1	0.6	12.6	1.1	0.3	0.1	0.0	0.1	85.2	0.6	14.2	0.135	0.522	31.990822	-116.747104
Ent. San Miguel	95.80	1	0	1974	2.8	84.4	0.6	9.0	0.7	1.7	0.7	0.0	0.1	87.2	0.6	12.2	0.104	0.522	31.916036	-116.731931
El Sauzal	102.00	3	1	25329	1.0	85.9	0.8	7.8	0.7	2.7	0.5	0.4	0.2	86.9	0.8	12.3	0.076	0.526	31.868636	-116.674254
El Sauzal	102.00	3	2	22833	0.7	84.0	1.0	9.2	0.8	3.2	0.5	0.4	0.2	84.7	1.0	14.3	0.088	0.526	31.868727	-116.674181
Ensenada	110.00																			

12 CARR: El Centinela - La Rumorosa (Cuota)

CLAVE: 02011

RUTA: MEX-002D

AÑO: 2018

LUGAR	ESTACION				CLASIFICACION VEHICULAR EN PORCIENTO										COORDENADAS					
	KM	TE	SC	TDPA	M	A	B	C2	C3	T3S2	T3S3	T3S2R4	OTROS	A	B	C	K'	D	LATITUD	LONGITUD
Ent. El Centinela	20.30																			
Laguna Salada	25.00	1	1	5513	1.0	70.3	3.3	8.6	1.3	9.6	2.8	2.3	0.8	71.3	3.3	25.4	0.106	0.505	32.576769	-115.740228
Laguna Salada	25.00	1	2	5622	0.5	69.3	3.4	9.3	1.4	9.9	2.9	2.5	0.8	69.8	3.4	26.8	0.137	0.505	32.576834	-115.740240
La Rumorosa	67.60	1	1	2770	0.6	73.7	0.6	11.4	0.9	9.6	1.9	0.7	0.6	74.3	0.6	25.1	0.124	0.512	32.551091	-116.043307
La Rumorosa	67.60	1	2	2637	0.7	71.2	0.6	11.8	1.0	11.3	2.1	0.8	0.5	71.9	0.6	27.5	0.180	0.512	32.551053	-116.043254

13 CARR: La Rumorosa - Tecate (Cuota)

CLAVE: 02011

RUTA: MEX-002D

AÑO: 2018

LUGAR	ESTACION				CLASIFICACION VEHICULAR EN PORCIENTO										COORDENADAS					
	KM	TE	SC	TDPA	M	A	B	C2	C3	T3S2	T3S3	T3S2R4	OTROS	A	B	C	K'	D	LATITUD	LONGITUD
La Rumorosa	0.00	3	1	4185	0.3	64.5	4.9	9.5	1.0	13.3	1.9	4.0	0.6	64.8	4.9	30.3	0.090	0.526	32.552139	-116.062489
La Rumorosa	0.00	3	2	3775	0.3	67.4	4.9	9.0	0.9	12.1	0.6	4.3	0.5	67.7	4.9	27.4	0.095	0.526	32.552061	-116.062396
Caseta de Cobro El Hongo	30.56	1	1	4280	0.4	65.0	4.4	8.7	1.1	12.8	2.5	4.3	0.8	65.4	4.4	30.2	0.086	0.502	32.518491	-116.301105
Caseta de Cobro El Hongo	30.56	1	2	4238	0.4	69.3	4.5	7.6	1.1	11.9	0.7	3.9	0.6	69.7	4.5	25.8	0.099	0.502	32.518432	-116.301109
Caseta de Cobro El Hongo	30.56	2	1	3660	0.2	71.3	5.0	2.7	1.9	13.0	0.7	4.4	0.8	71.5	5.0	23.5	0.087	0.500	32.521843	-116.320010
Caseta de Cobro El Hongo	30.56	2	2	3660	0.2	71.3	5.0	2.7	1.9	13.0	0.7	4.4	0.8	71.5	5.0	23.5	0.087	0.500	32.521843	-116.320010

BAJA CALIFORNIA

13 CARR: La Rumorosa - Tecate (Cuota)

CLAVE: 02011

RUTA: MEX-002D

AÑO: 2018

LUGAR	ESTACION				CLASIFICACION VEHICULAR EN PORCIENTO														COORDENADAS	
	KM	TE	SC	TDPA	M	A	B	C2	C3	T3S2	T3S3	T3S2R4	OTROS	A	B	C	K'	D	LATITUD	LONGITUD
Caseta de Cobro El Hongo	30.56	3	1	4360	0.5	69.4	4.1	7.5	1.0	11.3	1.6	3.9	0.7	69.9	4.1	26.0	0.090	0.501	32.525059	-116.338235
Caseta de Cobro El Hongo	30.56	3	2	4341	0.4	66.4	4.4	8.6	1.0	12.5	1.7	4.3	0.7	66.8	4.4	28.8	0.098	0.501	32.524992	-116.338246
T. C. Mexicali - Tijuana (Libre)	55.50																			

14 CARR: Libramiento de Mexicali (Cuota)

CLAVE: 02319

RUTA: MEX-002D

AÑO: 2018

LUGAR	ESTACION				CLASIFICACION VEHICULAR EN PORCIENTO														COORDENADAS	
	KM	TE	SC	TDPA	M	A	B	C2	C3	T3S2	T3S3	T3S2R4	OTROS	A	B	C	K'	D	LATITUD	LONGITUD
T. C. Sonoita - Mexicali	0.00	3	0	4113	1.7	55.4	3.3	7.7	2.8	18.9	2.7	6.6	0.9	57.1	3.3	39.6	0.070	0.504	32.551101	-115.306461
T. C. Mexicali - Tijuana	40.60	1	0	2633	1.0	44.7	2.4	9.9	3.7	27.0	3.1	7.6	0.6	45.7	2.4	51.9	0.085	0.507	32.591483	-115.676739

15 CARR: Libramiento de Tecate (Cuota)

CLAVE: 02082

RUTA: MEX-002D

AÑO: 2018

LUGAR	ESTACION				CLASIFICACION VEHICULAR EN PORCIENTO														COORDENADAS	
	KM	TE	SC	TDPA	M	A	B	C2	C3	T3S2	T3S3	T3S2R4	OTROS	A	B	C	K'	D	LATITUD	LONGITUD
T. C. Mexicali - Tijuana (Libre) Oriente	118.35																			
Caseta de Cobro Tecate	130.50	2	1	2721	0.3	78.9	1.4	2.6	1.1	10.4	2.7	1.6	1.0	79.2	1.4	19.4	0.091	0.500	32.545717	-116.852059
Caseta de Cobro Tecate	130.50	2	2	2721	0.3	78.9	1.4	2.6	1.1	10.4	2.7	1.6	1.0	79.2	1.4	19.4	0.091	0.500	32.545717	-116.852059
T. C. Mexicali - Tijuana (Libre) Poniente	130.60																			

16 CARR: Tecate - Tijuana (Cuota)

CLAVE: 02011

RUTA: MEX-002D

AÑO: 2018

LUGAR	ESTACION				CLASIFICACION VEHICULAR EN PORCIENTO														COORDENADAS	
	KM	TE	SC	TDPA	M	A	B	C2	C3	T3S2	T3S3	T3S2R4	OTROS	A	B	C	K'	D	LATITUD	LONGITUD
T. C. Mexicali - Tijuana (Libre)	130.60																			
Caseta de Cobro Tijuana	147.60	1	1	4204	0.8	72.9	3.5	4.5	1.1	13.8	1.0	1.5	0.9	73.7	3.5	22.8	0.109	0.529	32.557542	-116.810767
Caseta de Cobro Tijuana	147.60	1	2	3742	1.2	69.6	3.8	4.9	1.0	15.2	1.3	2.0	1.0	70.8	3.8	25.4	0.096	0.529	32.557459	-116.810804
Caseta de Cobro Tijuana	147.60	2	1	3898	0.3	72.6	2.8	4.8	1.8	10.9	2.9	2.8	1.1	72.9	2.8	24.3	0.091	0.500	32.545717	-116.852059
Caseta de Cobro Tijuana	147.60	2	2	3898	0.3	72.6	2.8	4.8	1.8	10.9	2.9	2.8	1.1	72.9	2.8	24.3	0.091	0.500	32.545717	-116.852059
Caseta de Cobro Tijuana	147.60	3	1	16407	0.5	84.5	1.9	6.1	1.0	4.4	0.9	0.4	0.3	85.0	1.9	13.1	0.129	0.530	32.542352	-116.859051
Caseta de Cobro Tijuana	147.60	3	2	18492	0.4	82.9	2.2	6.7	1.1	4.9	1.0	0.5	0.3	83.3	2.2	14.5	0.141	0.530	32.542266	-116.859049
Termina Autopista Principia Tijuana	148.15																			

BAJA CALIFORNIA

17 CARR: Tijuana - Ensenada (Cuota)

CLAVE: 02100

RUTA: MEX-001D

AÑO: 2018

LUGAR	ESTACION				CLASIFICACION VEHICULAR EN PORCIENTO										COORDENADAS					
	KM	TE	SC	TDPA	M	A	B	C2	C3	T3S2	T3S3	T3S2R4	OTROS	A	B	C	K'	D	LATITUD	LONGITUD
Tijuana	0.00																			
T. Der. Playas de Tijuana	7.50	3	1	9412	1.0	90.9	0.2	6.9	0.4	0.4	0.1	0.0	0.1	91.9	0.2	7.9	0.121	0.525	32.528961	-117.108305
T. Der. Playas de Tijuana	7.50	3	2	8504	0.2	84.6	0.3	14.3	0.4	0.2	0.0	0.0	0.0	84.8	0.3	14.9	0.092	0.525	32.528968	-117.108211
Caseta de Cobro Playas de Tijuana	9.70	2	1	8228	1.0	97.5	0.7	0.3	0.2	0.3	0.0	0.0	0.0	98.5	0.7	0.8	0.100	0.500	32.514051	-117.109566
Caseta de Cobro Playas de Tijuana	9.70	2	2	8228	1.0	97.5	0.7	0.3	0.2	0.3	0.0	0.0	0.0	98.5	0.7	0.8	0.100	0.500	32.514051	-117.109566
X. C. Tijuana - Ensenada	29.50	1	1	10732	0.8	89.6	0.2	8.5	0.6	0.3	0.0	0.0	0.0	90.4	0.2	9.4	0.121	0.532	32.380985	-117.057806
X. C. Tijuana - Ensenada	29.50	1	2	9439	0.2	90.1	0.2	8.6	0.6	0.3	0.0	0.0	0.0	90.3	0.2	9.5	0.085	0.532	32.380958	-117.057729
X. C. Tijuana - Ensenada	29.50	3	1	22549	0.9	85.5	0.5	11.1	0.5	1.2	0.2	0.1	0.0	86.4	0.5	13.1	0.098	0.515	32.369615	-117.057618
X. C. Tijuana - Ensenada	29.50	3	2	21211	0.8	90.0	0.6	6.2	0.8	1.2	0.2	0.1	0.1	90.8	0.6	8.6	0.091	0.515	32.369628	-117.057527
Caseta de Cobro Rosarito	35.43	2	1	6052	0.5	90.4	1.8	1.3	0.7	4.4	0.2	0.5	0.2	90.9	1.8	7.3	0.100	0.500	32.311096	-117.044403
Caseta de Cobro Rosarito	35.43	2	2	6052	0.5	90.4	1.8	1.3	0.7	4.4	0.2	0.5	0.2	90.9	1.8	7.3	0.100	0.500	32.311096	-117.044403
T. Der. La Misión	66.44	3	1	8814	0.5	82.8	1.5	8.0	0.7	5.1	0.5	0.6	0.3	83.3	1.5	15.2	0.110	0.504	32.118310	-116.884170
T. Der. La Misión	66.44	3	2	8658	0.3	81.7	1.5	8.9	0.7	5.5	0.5	0.6	0.3	82.0	1.5	16.5	0.108	0.504	32.118338	-116.883996
Caseta de Cobro Ensenada	98.60	2	1	7272	0.4	86.7	1.8	2.1	1.1	6.4	0.4	0.8	0.3	87.1	1.8	11.1	0.100	0.500	31.903097	-116.732777
Caseta de Cobro Ensenada	98.60	2	2	7272	0.4	86.7	1.8	2.1	1.1	6.4	0.4	0.8	0.3	87.1	1.8	11.1	0.100	0.500	31.903097	-116.732777
T. C. Tijuana - Ensenada (Libre)	98.80																			

18 CARR: Mexicali - Tijuana

CLAVE: 02082

RUTA: MEX-002D-MEX

AÑO: 2018

LUGAR	ESTACION				CLASIFICACION VEHICULAR EN PORCIENTO										COORDENADAS					
	KM	TE	SC	TDPA	M	A	B	C2	C3	T3S2	T3S3	T3S2R4	OTROS	A	B	C	K'	D	LATITUD	LONGITUD
Mexicali	0.00																			
Colonia Progreso	7.80	3	1	6307	1.0	74.1	3.2	10.7	2.4	5.9	1.2	1.2	0.3	75.1	3.2	21.7	0.077	0.502	32.584516	-115.593082
Colonia Progreso	7.80	3	2	6358	0.6	73.1	3.1	10.2	3.2	6.9	1.2	1.4	0.3	73.7	3.1	23.2	0.096	0.502	32.584664	-115.594306
T. Der. Estación de Microondas	69.62	3	0	3114	0.8	72.0	1.5	11.3	3.1	9.2	1.5	0.2	0.4	72.8	1.5	25.7	0.102	0.552	32.510076	-116.090786
Agua Hechicera	87.00	1	0	2907	0.8	72.1	1.6	9.7	2.0	10.1	2.9	0.3	0.5	72.9	1.6	25.5	0.106	0.540	32.494754	-116.219889
El Encinal	112.15	1	0	4815	1.1	77.8	1.0	9.7	1.3	7.1	1.7	0.1	0.2	78.9	1.0	20.1	0.101	0.513	32.557419	-116.438972
Tecate	132.00	1	1	7032	0.8	83.7	1.1	8.2	0.8	3.4	1.0	0.7	0.3	84.5	1.1	14.4	0.074	0.529	32.563887	-116.580154
Tecate	132.00	1	2	6252	0.7	85.7	1.2	6.2	0.8	3.8	1.0	0.4	0.2	86.4	1.2	12.4	0.074	0.529	32.563782	-116.580192
Tecate	132.00	3	1	11907	0.8	81.4	1.4	12.5	0.8	2.5	0.3	0.2	0.1	82.2	1.4	16.4	0.069	0.540	32.546886	-116.673848
Tecate	132.00	3	2	10132	0.2	82.3	1.4	12.4	0.9	2.2	0.3	0.2	0.1	82.5	1.4	16.1	0.082	0.540	32.546823	-116.673774
Presa Abelardo L. Rodríguez	165.00	3	0	6869	1.2	90.8	0.5	6.5	0.4	0.2	0.3	0.0	0.1	92.0	0.5	7.5	0.105	0.527	32.455200	-116.914968
Tijuana	182.60																			

BAJA CALIFORNIA

19 CARR: Algodones - Ent. Islas Agrarias Grupo B

CLAVE: 02006

RUTA: BC-008

AÑO: 2018

LUGAR	ESTACION				CLASIFICACION VEHICULAR EN PORCIENTO										COORDENADAS					
	KM	TE	SC	TDPA	M	A	B	C2	C3	T3S2	T3S3	T3S2R4	OTROS	A	B	C	K'	D	LATITUD	LONGITUD
Algodones	0.00	3	0	4324	0.5	90.4	0.3	8.4	0.4	0.0	0.0	0.0	0.0	90.9	0.3	8.8	0.089	0.509	32.703599	-114.741730
T. Izq. Cd. Morelos	14.00	1	0	3933	0.3	88.5	0.2	10.1	0.6	0.2	0.1	0.0	0.0	88.8	0.2	11.0	0.089	0.513	32.665955	-114.839173
Mérida	20.30	3	0	2023	0.5	87.4	0.7	9.4	0.7	0.9	0.4	0.0	0.0	87.9	0.7	11.4	0.090	0.503	32.664614	-114.924956
T. Izq. Ejido Lazaro Cárdenas	31.50	1	0	2918	0.4	88.3	0.4	9.5	0.5	0.6	0.3	0.0	0.0	88.7	0.4	10.9	0.080	0.501	32.614523	-115.015666
Islas Agrarias Grupo B	55.50	1	0	4740	1.5	84.5	1.6	8.7	1.0	2.2	0.3	0.1	0.1	86.0	1.6	12.4	0.084	0.515	32.615701	-115.262993

20 CARR: Corredor Tijuana 2000

CLAVE: 02006

RUTA: BC

AÑO: 2018

LUGAR	ESTACION				CLASIFICACION VEHICULAR EN PORCIENTO										COORDENADAS					
	KM	TE	SC	TDPA	M	A	B	C2	C3	T3S2	T3S3	T3S2R4	OTROS	A	B	C	K'	D	LATITUD	LONGITUD
T. C. Mexicali - Tijuana (Cuota)	0.00	3	1	20804	1.0	84.5	1.7	6.8	1.5	3.0	0.9	0.3	0.3	85.5	1.7	12.8	0.114	0.524	32.527658	-116.853423
T. C. Mexicali - Tijuana (Cuota)	0.00	3	2	18890	0.9	85.2	1.6	6.2	1.6	3.2	0.8	0.3	0.2	86.1	1.6	12.3	0.121	0.524	32.527743	-116.853080
T. C. Mexicali - Tijuana	11.00	1	1	27081	0.9	86.5	1.6	6.2	1.1	2.6	0.7	0.2	0.2	87.4	1.6	11.0	0.076	0.531	32.459378	-116.839714
T. C. Mexicali - Tijuana	11.00	1	2	23878	0.7	85.5	1.9	6.9	1.0	2.9	0.6	0.3	0.2	86.2	1.9	11.9	0.075	0.531	32.459595	-116.839154
T. C. Tijuana - San Miguel (Cuota)	40.00	1	1	4881	0.4	81.3	1.0	8.1	2.1	5.1	0.7	1.1	0.2	81.7	1.0	17.3	0.147	0.519	32.288739	-117.022213
T. C. Tijuana - San Miguel (Cuota)	40.00	1	2	4521	0.3	85.4	0.4	3.5	1.9	6.5	0.6	1.2	0.2	85.7	0.4	13.9	0.220	0.519	32.288629	-117.022121

21 CARR: Ejido Benito Juárez - Ejido Chiapas

CLAVE: 02501

RUTA: BC-061

AÑO: 2018

LUGAR	ESTACION				CLASIFICACION VEHICULAR EN PORCIENTO										COORDENADAS					
	KM	TE	SC	TDPA	M	A	B	C2	C3	T3S2	T3S3	T3S2R4	OTROS	A	B	C	K'	D	LATITUD	LONGITUD
Ejido Benito Juárez	0.00	3	0	3821	0.9	89.1	0.4	9.0	0.3	0.2	0.1	0.0	0.0	90.0	0.4	9.6	0.108	0.503	32.559227	-114.993037
Ejido México	7.00	1	0	1375	0.8	85.8	0.6	11.5	0.6	0.5	0.2	0.0	0.0	86.6	0.6	12.8	0.089	0.519	32.519722	-114.979710
Ejido Chiapas	10.56	1	0	1261	1.0	85.4	1.0	11.7	0.7	0.2	0.0	0.0	0.0	86.4	1.0	12.6	0.094	0.501	32.499642	-114.966117

22 CARR: Ejido Monterrey - Mazón

CLAVE: 02004

RUTA: BC-003

AÑO: 2018

LUGAR	ESTACION				CLASIFICACION VEHICULAR EN PORCIENTO										COORDENADAS					
	KM	TE	SC	TDPA	M	A	B	C2	C3	T3S2	T3S3	T3S2R4	OTROS	A	B	C	K'	D	LATITUD	LONGITUD
T. C. Sonoita - Mexicali	0.00	3	0	5747	0.6	83.9	1.1	9.0	1.0	3.2	0.6	0.1	0.5	84.5	1.1	14.4	0.077	0.524	32.543010	-115.076424
X. C. Mexicali - Algodones	15.16	1	0	5342	1.1	81.0	1.0	12.4	1.0	2.5	0.7	0.1	0.2	82.1	1.0	16.9	0.082	0.501	32.423419	-115.067467
X. C. Mexicali - Algodones	15.16	3	0	8555	0.8	80.7	1.4	14.6	0.7	1.4	0.2	0.1	0.1	81.5	1.4	17.1	0.086	0.522	32.405235	-115.066702
Guadalupe Victoria	30.47	1	0	11437	0.5	87.7	0.6	10.0	0.4	0.7	0.1	0.0	0.0	88.2	0.6	11.2	0.038	0.501	32.295072	-115.088944
Mazón	35.00	1	0	7896	0.7	85.3	0.8	11.1	0.6	1.2	0.2	0.0	0.1	86.0	0.8	13.2	0.081	0.503	32.242343	-115.111072

BAJA CALIFORNIA

23 CARR: El Faro - Estación Coahuila

CLAVE: 02013

RUTA: BC-004

AÑO: 2018

LUGAR	ESTACION				CLASIFICACION VEHICULAR EN PORCIENTO												COORDENADAS			
	KM	TE	SC	TDPA	M	A	B	C2	C3	T3S2	T3S3	T3S2R4	OTROS	A	B	C	K'	D	LATITUD	LONGITUD
T. C. Mexicali - San Felipe	0.00	3	0	3237	0.7	80.2	1.3	12.6	1.2	2.3	1.4	0.0	0.3	80.9	1.3	17.8	0.099	0.522	32.273419	-115.316643
X. C. Mexicali - Estación Coahuila	16.30	1	0	3762	0.7	80.5	1.2	12.7	1.1	2.3	1.3	0.0	0.2	81.2	1.2	17.6	0.085	0.518	32.239532	-115.179696
X. C. Mexicali - Estación Coahuila	16.30	3	0	7739	1.0	84.3	1.2	11.0	0.6	1.5	0.3	0.0	0.1	85.3	1.2	13.5	0.079	0.534	32.239417	-115.157177
T. Izq. Carr. Ejido Monterrey - Mazón	26.70	3	0	6100	0.9	83.7	1.2	10.8	0.8	1.7	0.7	0.0	0.2	84.6	1.2	14.2	0.083	0.512	32.239503	-115.108033
Francisco Murguía	30.00	3	0	4673	0.9	83.0	1.1	10.7	0.9	2.5	0.7	0.0	0.2	83.9	1.1	15.0	0.111	0.513	32.239727	-115.063097
Estación Coahuila	34.50	1	0	6321	0.9	83.1	1.1	10.5	1.0	2.5	0.7	0.0	0.2	84.0	1.1	14.9	0.083	0.512	32.203147	-115.006591

24 CARR: Ent. Santa Rosa - Ent. Pachuca

CLAVE: 02015

RUTA: BC-006

AÑO: 2018

LUGAR	ESTACION				CLASIFICACION VEHICULAR EN PORCIENTO												COORDENADAS			
	KM	TE	SC	TDPA	M	A	B	C2	C3	T3S2	T3S3	T3S2R4	OTROS	A	B	C	K'	D	LATITUD	LONGITUD
T. C. Sonoyta - Mexicali	0.00	3	0	7095	0.6	87.4	0.6	9.6	0.6	0.8	0.2	0.1	0.1	88.0	0.6	11.4	0.075	0.511	32.559287	-115.019025
Paredones	10.90	3	0	6954	0.6	86.2	1.2	10.4	0.6	0.8	0.2	0.0	0.0	86.8	1.2	12.0	0.068	0.505	32.613673	-114.915431
Cd. Morelos	18.00	3	0	3316	0.7	86.4	0.9	9.7	0.3	1.9	0.1	0.0	0.0	87.1	0.9	12.0	0.074	0.515	32.639045	-114.834766
T. C. Mexicali - Algodones	23.22																			

25 CARR: La Puerta - T. C. (Mexicali - Estación Coahuila)

CLAVE: 02502

RUTA: BC-010

AÑO: 2018

LUGAR	ESTACION				CLASIFICACION VEHICULAR EN PORCIENTO												COORDENADAS			
	KM	TE	SC	TDPA	M	A	B	C2	C3	T3S2	T3S3	T3S2R4	OTROS	A	B	C	K'	D	LATITUD	LONGITUD
T. C. Mexicali - San Felipe	0.00																			
Zakamoto	4.60	1	0	2578	0.7	88.4	1.5	8.0	0.5	0.6	0.2	0.0	0.1	89.1	1.5	9.4	0.083	0.504	32.327916	-115.300594
Nayarit	9.00	3	0	3330	0.7	88.4	0.3	9.0	0.6	0.7	0.2	0.0	0.1	89.1	0.3	10.6	0.071	0.501	32.313190	-115.217039
T. C. Mexicali - Estación Coahuila	15.00																			

26 CARR: Mexicali - Algodones

CLAVE: 02012

RUTA: BC-002

AÑO: 2018

LUGAR	ESTACION				CLASIFICACION VEHICULAR EN PORCIENTO												COORDENADAS			
	KM	TE	SC	TDPA	M	A	B	C2	C3	T3S2	T3S3	T3S2R4	OTROS	A	B	C	K'	D	LATITUD	LONGITUD
T. C. Mexicali - San Felipe	0.00																			
Ejido Puebla	12.00	3	0	8355	1.7	81.9	0.9	9.7	1.9	2.5	0.6	0.5	0.3	83.6	0.9	15.5	0.074	0.515	32.556379	-115.360351
T. C. Geotérmica - Estación Delta	31.50	1	0	5064	0.6	83.1	1.2	11.3	0.7	2.5	0.5	0.0	0.1	83.7	1.2	15.1	0.095	0.507	32.424690	-115.262182
X. C. Mexicali - Estación Coahuila	37.70	1	0	3984	0.9	85.2	1.5	9.4	0.7	1.2	0.6	0.0	0.5	86.1	1.5	12.4	0.075	0.502	32.419123	-115.200003
X. C. Mexicali - Estación Coahuila	37.70	3	0	5135	0.5	83.9	1.5	11.8	0.6	1.1	0.4	0.0	0.2	84.4	1.5	14.1	0.083	0.501	32.418992	-115.170640
X. C. Ejido Monterrey - Mazón	49.65	1	0	5042	0.6	82.5	1.4	12.8	0.7	1.3	0.6	0.0	0.1	83.1	1.4	15.5	0.081	0.503	32.418495	-115.071326

BAJA CALIFORNIA

26 CARR: Mexicali - Algodones

CLAVE: 02012

RUTA: BC-002

AÑO: 2018

LUGAR	ESTACION				CLASIFICACION VEHICULAR EN PORCIENTO										COORDENADAS					
	KM	TE	SC	TDPA	M	A	B	C2	C3	T3S2	T3S3	T3S2R4	OTROS	A	B	C	K'	D	LATITUD	LONGITUD
X. C. Ejido Monterrey - Mazón	49.65	3	0	2155	1.0	78.4	0.6	16.8	0.8	1.4	0.8	0.0	0.2	79.4	0.6	20.0	0.081	0.511	32.418453	-115.063392
T. Izq. Tres de Marzo	60.50	1	0	1171	1.3	80.0	1.0	15.0	1.0	1.0	0.7	0.0	0.0	81.3	1.0	17.7	0.061	0.503	32.465452	-114.947239
X. C. Sonoita - Mexicali	72.00	1	0	1632	1.5	82.6	1.2	12.5	0.8	1.0	0.4	0.0	0.0	84.1	1.2	14.7	0.091	0.507	32.503983	-114.849127
X. C. Sonoita - Mexicali	72.00	3	0	4117	0.6	90.3	0.3	7.6	0.7	0.4	0.1	0.0	0.0	90.9	0.3	8.8	0.084	0.517	32.514055	-114.841563
Pachuca	83.00	1	0	4201	0.7	88.9	0.3	9.3	0.4	0.3	0.1	0.0	0.0	89.6	0.3	10.1	0.083	0.512	32.586420	-114.830850
Algodones	94.46	1	0	3799	0.8	90.1	0.6	8.3	0.2	0.0	0.0	0.0	0.0	90.9	0.6	8.5	0.084	0.526	32.701471	-114.731895

27 CARR: Mexicali - Estación Coahuila

CLAVE: 02016

RUTA: BC-001

AÑO: 2018

LUGAR	ESTACION				CLASIFICACION VEHICULAR EN PORCIENTO										COORDENADAS					
	KM	TE	SC	TDPA	M	A	B	C2	C3	T3S2	T3S3	T3S2R4	OTROS	A	B	C	K'	D	LATITUD	LONGITUD
Mexicali	0.00	3	1	16791	0.7	93.3	0.3	4.9	0.3	0.3	0.2	0.0	0.0	94.0	0.3	5.7	0.079	0.521	32.652969	-115.389792
Mexicali	0.00	3	2	18247	1.0	92.1	0.3	5.5	0.4	0.4	0.2	0.1	0.0	93.1	0.3	6.6	0.088	0.521	32.653135	-115.389931
T. Izq. Aeropuerto	11.30	1	1	13220	1.3	84.4	0.6	7.1	1.7	4.4	0.5	0.0	0.0	85.7	0.6	13.7	0.077	0.509	32.652895	-115.360635
T. Izq. Aeropuerto	11.30	1	2	13696	1.3	83.0	0.6	8.0	1.8	4.7	0.6	0.0	0.0	84.3	0.6	15.1	0.087	0.509	32.652947	-115.360648
Islas Agrarias Grupo a	14.10	1	0	10823	3.5	87.7	1.0	5.9	0.6	0.7	0.6	0.0	0.0	91.2	1.0	7.8	0.080	0.522	32.614120	-115.340684
X. C. Sonoita - Mexicali	30.79	1	0	3160	0.7	77.1	1.4	16.4	0.7	2.4	1.2	0.0	0.1	77.8	1.4	20.8	0.069	0.509	32.556733	-115.214970
X. C. Sonoita - Mexicali	30.79	3	0	6303	0.5	85.2	0.6	10.2	0.5	1.2	0.5	0.6	0.7	85.7	0.6	13.7	0.071	0.502	32.549600	-115.215090
Ejido Nuevo León	46.83	1	0	5856	0.5	87.0	0.5	8.9	0.5	0.8	0.5	0.9	0.4	87.5	0.5	12.0	0.072	0.508	32.421242	-115.192529
Ejido Nuevo León	46.83	3	0	6697	0.7	88.8	0.8	8.4	0.4	0.5	0.4	0.0	0.0	89.5	0.8	9.7	0.068	0.513	32.406898	-115.194780
T. Der. La Puerta	60.26	1	0	3218	0.7	87.6	0.8	8.7	0.7	0.7	0.7	0.0	0.1	88.3	0.8	10.9	0.078	0.508	32.315645	-115.189534
X. C. El Faro - Estación Coahuila	71.30	1	0	2246	1.3	85.3	1.5	8.1	0.6	1.5	1.5	0.0	0.2	86.6	1.5	11.9	0.070	0.517	32.243325	-115.167498
T. Der. Leona Vicario	80.50	1	0	525	1.5	79.9	4.3	12.1	1.0	0.5	0.4	0.0	0.3	81.4	4.3	14.3	0.107	0.514	32.214658	-115.167472
Estación Coahuila	96.65	1	0	1219	1.3	87.2	0.6	9.5	0.5	0.5	0.2	0.2	0.0	88.5	0.6	10.9	0.080	0.525	32.184869	-115.013642

28 CARR: Mexicali - Progreso

CLAVE: 02507

RUTA: BC-005

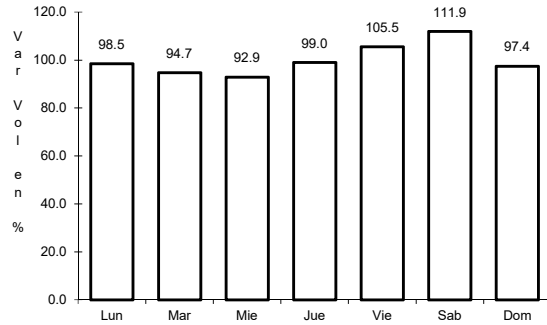
AÑO: 2018

LUGAR	ESTACION				CLASIFICACION VEHICULAR EN PORCIENTO										COORDENADAS					
	KM	TE	SC	TDPA	M	A	B	C2	C3	T3S2	T3S3	T3S2R4	OTROS	A	B	C	K'	D	LATITUD	LONGITUD
T. C. Mexicali - Tijuana	0.00																			
Progreso	15.30	1	0	6751	2.2	81.0	1.1	13.6	0.5	0.7	0.9	0.0	0.0	83.2	1.1	15.7	0.069	0.503	32.602022	-115.573740

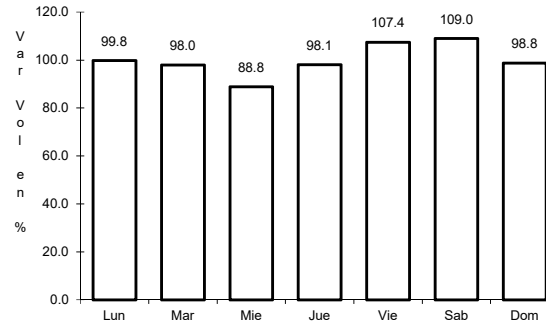
1 CARR: Ensenada - El Chirero

CLAVE: 02009

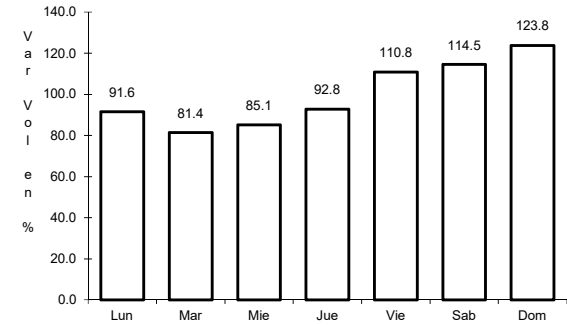
RUTA: MEX-003



Km: 0.00      Tipo: 3      Sent: 0



Km: 93.00      Tipo: 3      Sent: 0

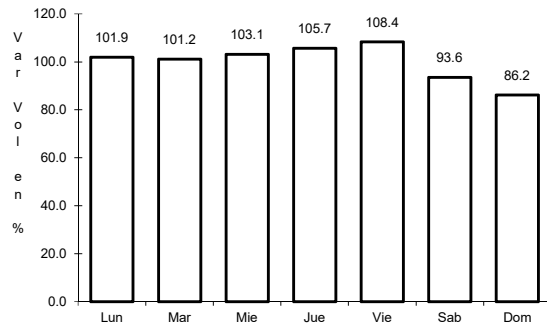


Km: 196.00      Tipo: 1      Sent: 0

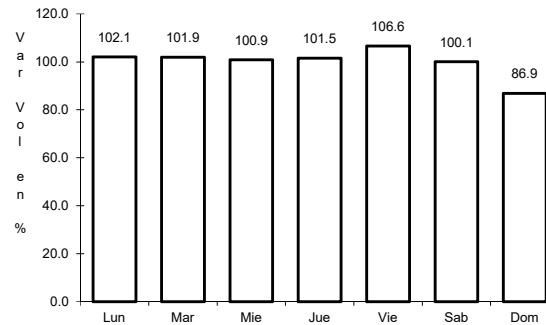
2 CARR: Ensenada - Lázaro Cárdenas

CLAVE: 02098

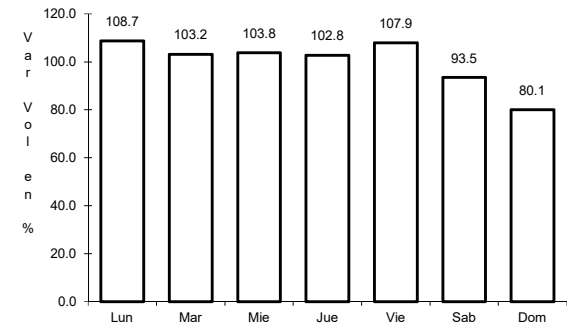
RUTA: MEX-001



Km: 0.00      Tipo: 3      Sent: 1



Km: 0.00      Tipo: 3      Sent: 2

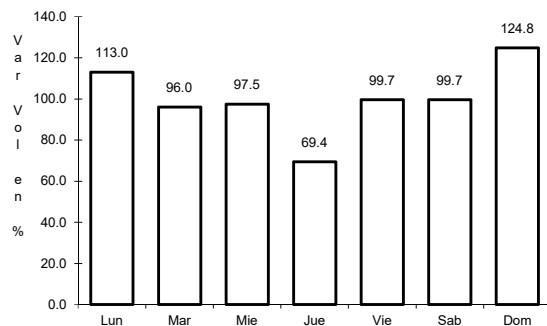


Km: 193.00      Tipo: 1      Sent: 0

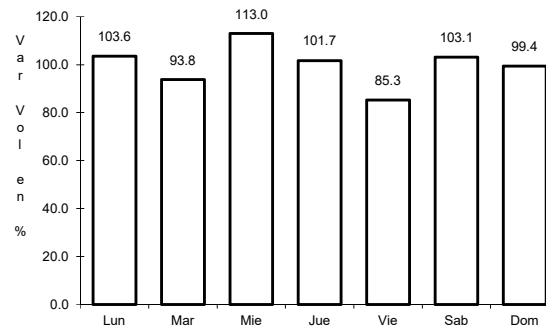
3 CARR: Ent. Punta Prieta - Bahía de Los Ángeles

CLAVE: 02322

RUTA: MEX-001



Km: 0.00      Tipo: 3      Sent: 0

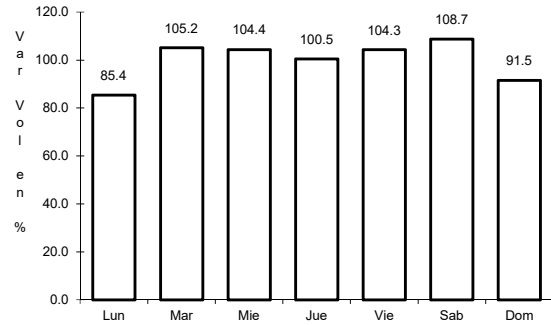


Km: 68.00      Tipo: 1      Sent: 0

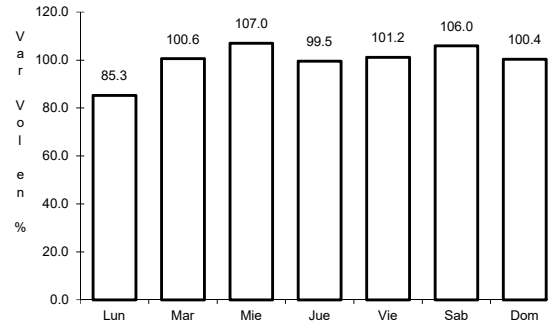
4 CARR: Ent. Punta Prieta - Guerrero Negro

CLAVE: 00321

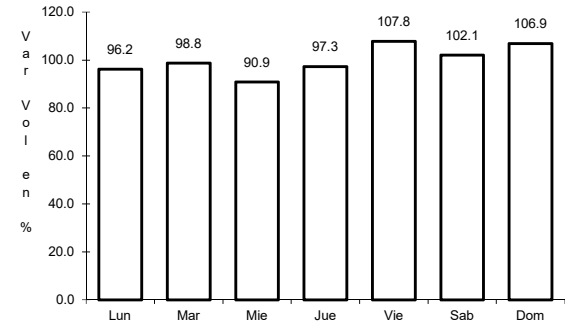
ruta: MEX-001



Km: 0.00      Tipo: 3      Sent: 0



Km: 70.10      Tipo: 3      Sent: 0

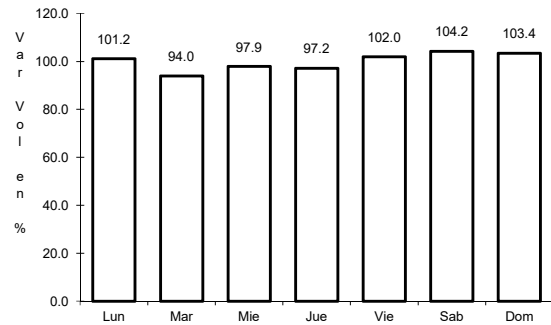


Km: 130.00      Tipo: 1      Sent: 0

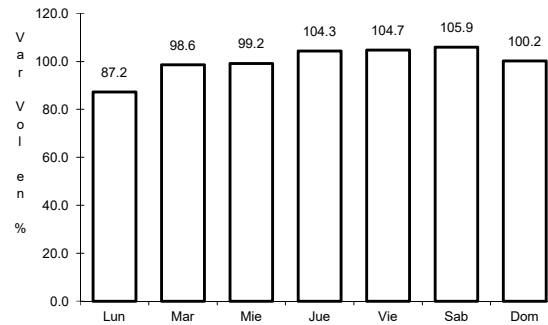
5 CARR: Lázaro Cárdenas - Ent. Punta Prieta

CLAVE: 02319

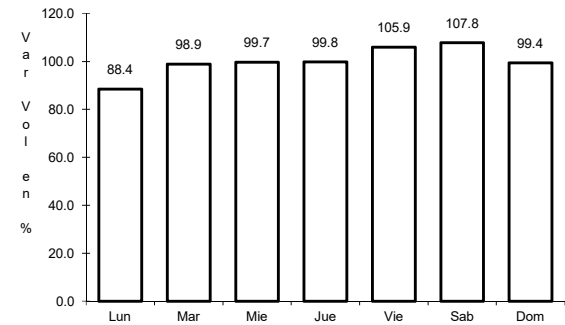
ruta: MEX-001



Km: 0.00      Tipo: 3      Sent: 0



Km: 140.00      Tipo: 1      Sent: 0

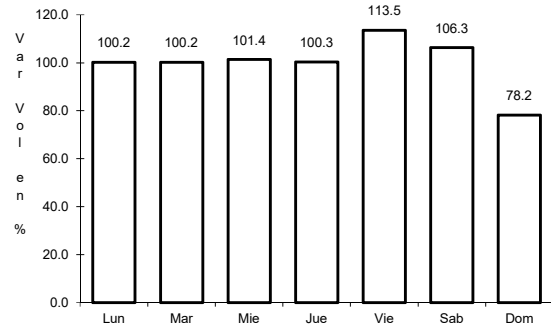


Km: 275.66      Tipo: 1      Sent: 0

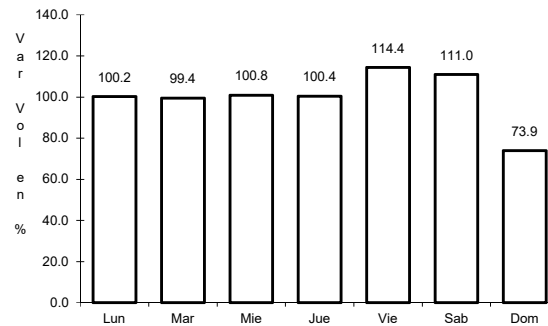
6 CARR: Mexicali - San Felipe

CLAVE: 02096

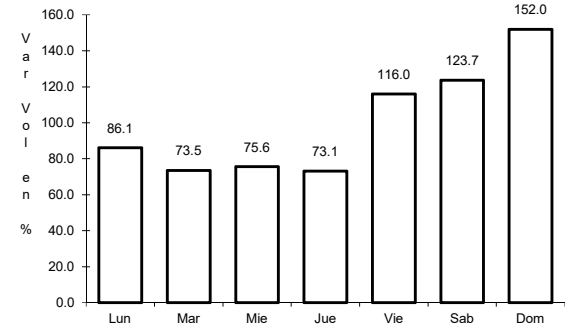
ruta: MEX-005



Km: 0.00      Tipo: 3      Sent: 1



Km: 0.00      Tipo: 3      Sent: 2



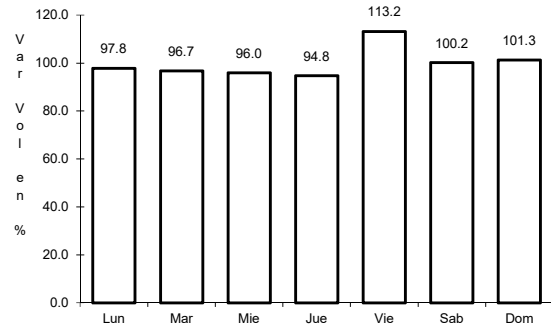
Km: 141.00      Tipo: 1      Sent: 0



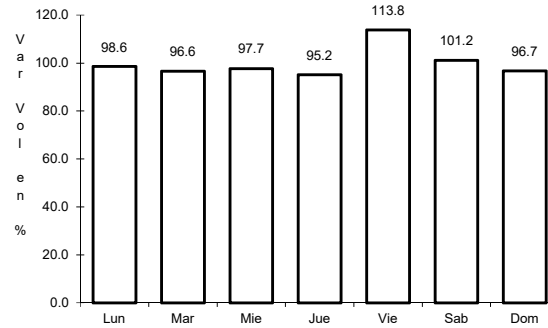
7 CARR: Ramal a Aeropuerto de Mexicali

CLAVE: 02321

ruta: MEX-002



Km: 0.00                      Tipo: 3                      Sent: 0

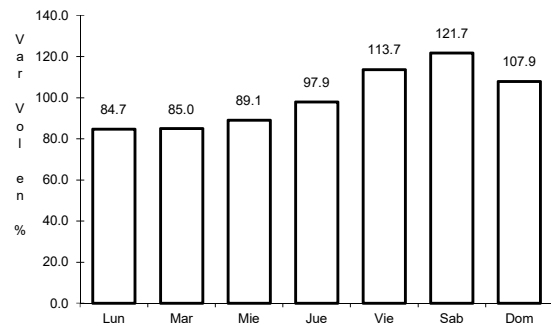


Km: 10.00                      Tipo: 1                      Sent: 0

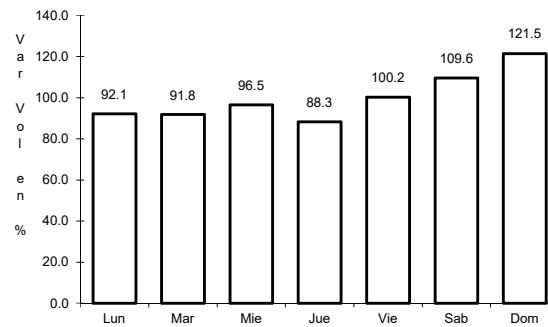
8 CARR: San Felipe - Chapala

CLAVE: 02503

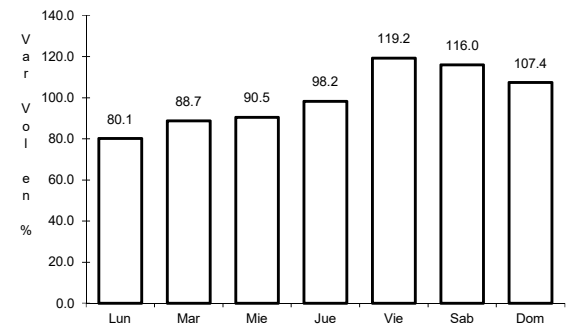
ruta: MEX-005



Km: 0.00                      Tipo: 3                      Sent: 1



Km: 0.00                      Tipo: 3                      Sent: 2

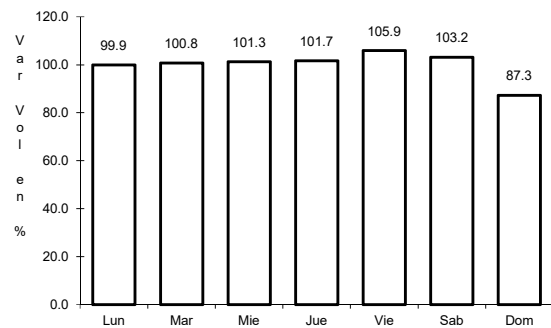


Km: 75.46                      Tipo: 3                      Sent: 0

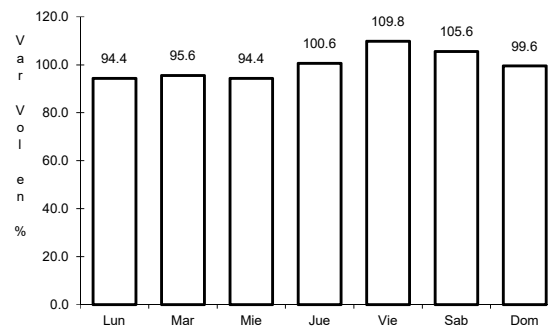
9 CARR: Sonoma - Mexicali

CLAVE: 00081

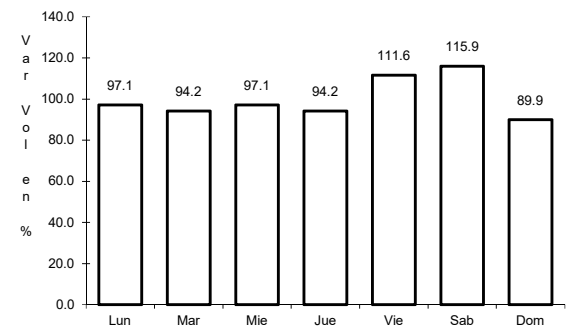
ruta: MEX-002



Km: 0.00                      Tipo: 3                      Sent: 0



Km: 256.47                      Tipo: 1                      Sent: 1

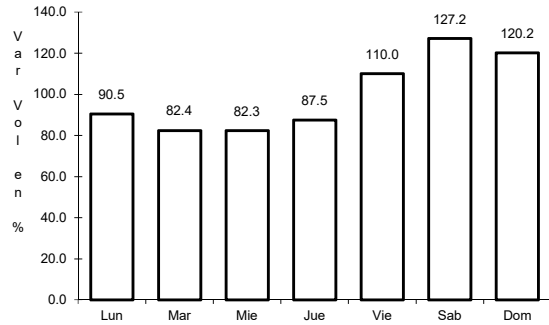


Km: 256.47                      Tipo: 1                      Sent: 2

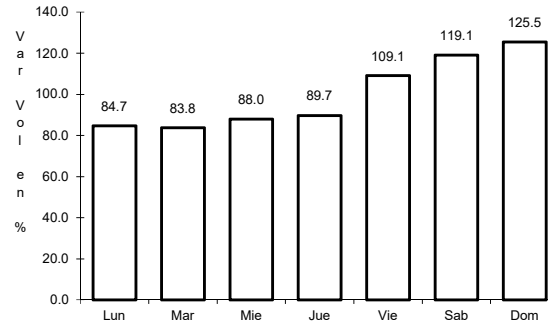
10 CARR: Tecate - El Sauzal

CLAVE: 02097

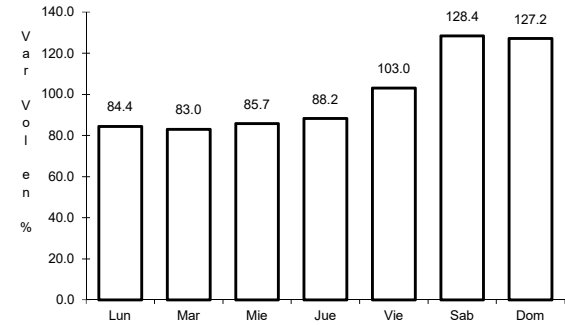
ruta: MEX-003



Km: 0.00      Tipo: 3      Sent: 0



Km: 104.53      Tipo: 1      Sent: 1

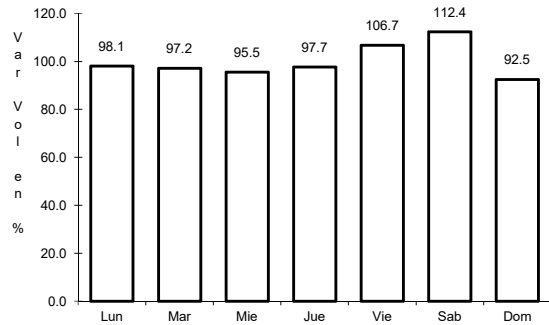


Km: 104.53      Tipo: 1      Sent: 2

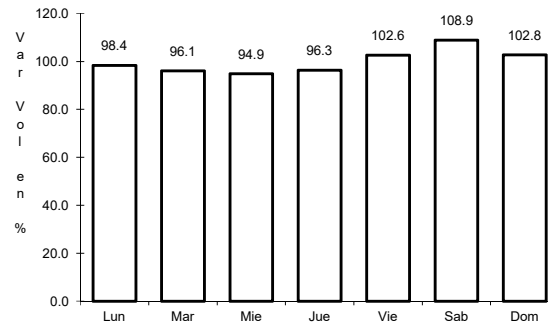
11 CARR: Tijuana - Ensenada (Libre)

CLAVE: 02099

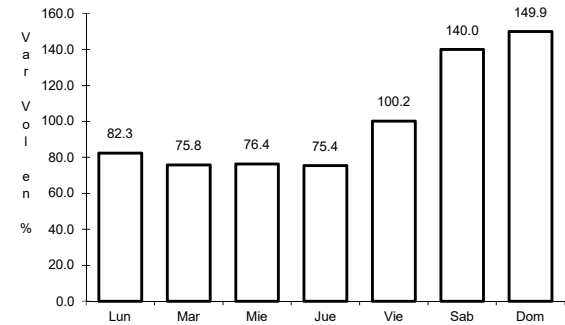
ruta: MEX-001



Km: 22.00      Tipo: 1      Sent: 1



Km: 22.00      Tipo: 1      Sent: 2

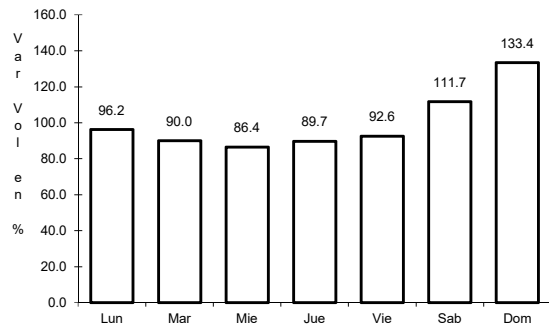


Km: 56.98      Tipo: 1      Sent: 0

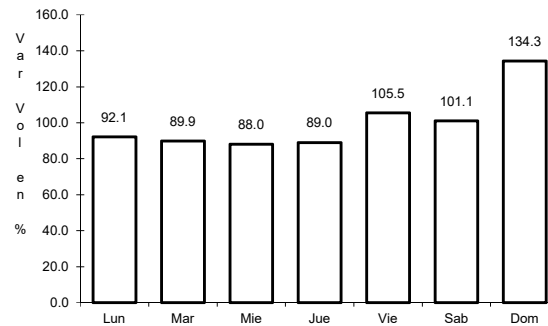
12 CARR: El Centinela - La Rumorosa (Cuota)

CLAVE: 02011

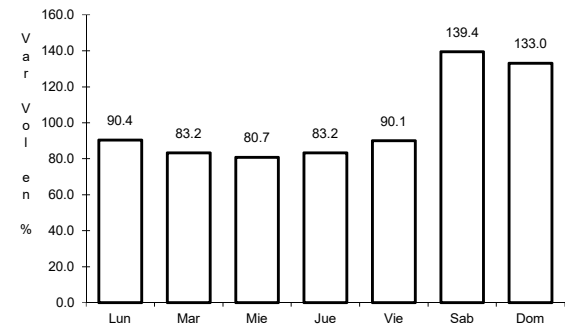
ruta: MEX-002D



Km: 25.00      Tipo: 1      Sent: 1



Km: 25.00      Tipo: 1      Sent: 2

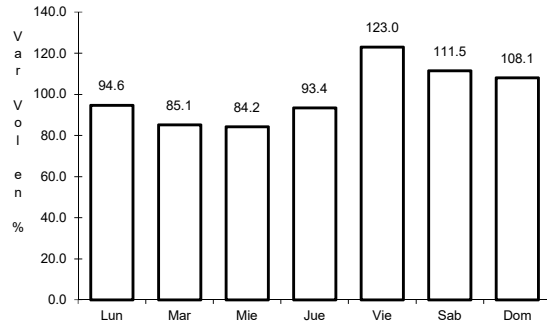


Km: 67.60      Tipo: 1      Sent: 1

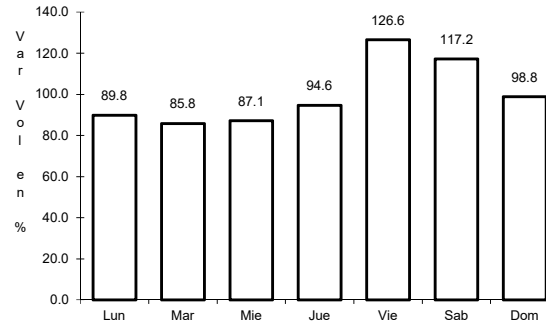
13 CARR: La Rumorosa - Tecate (Cuota)

CLAVE: 02011

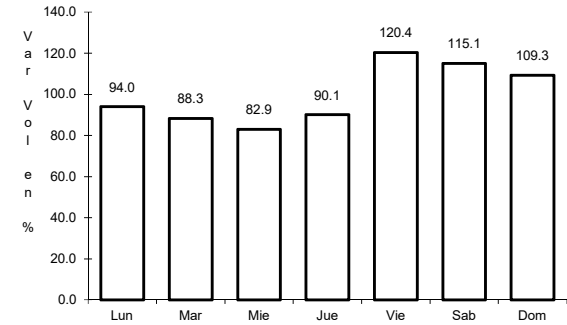
RUTA: MEX-002D



Km: 0.00      Tipo: 3      Sent: 1



Km: 0.00      Tipo: 3      Sent: 2

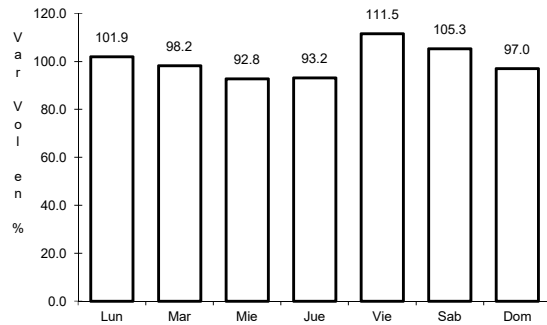


Km: 30.56      Tipo: 3      Sent: 1

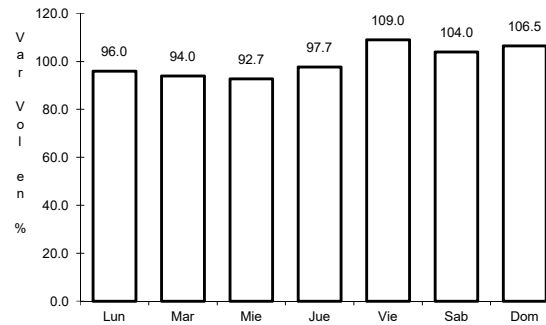
14 CARR: Libramiento de Mexicali (Cuota)

CLAVE: 02319

RUTA: MEX-002D



Km: 0.00      Tipo: 3      Sent: 0

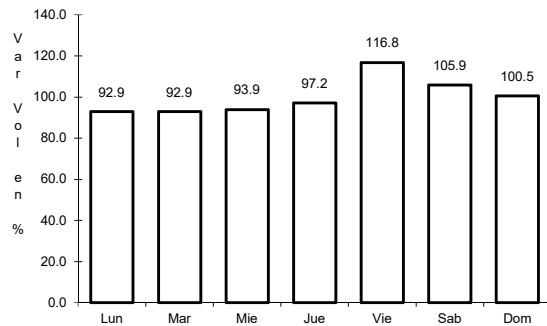


Km: 40.60      Tipo: 1      Sent: 0

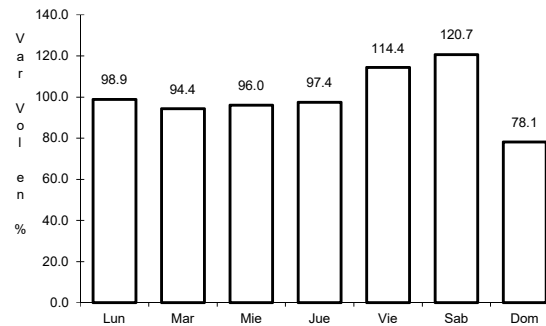
16 CARR: Tecate - Tijuana (Cuota)

CLAVE: 02011

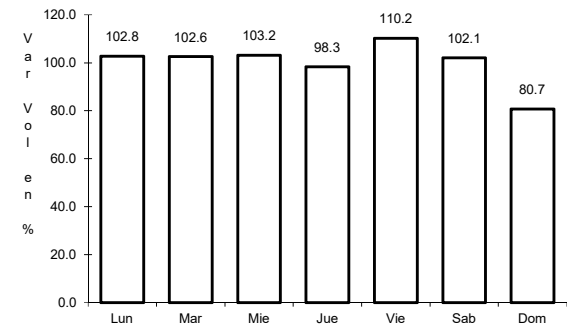
RUTA: MEX-002D



Km: 147.60      Tipo: 1      Sent: 1



Km: 147.60      Tipo: 1      Sent: 2

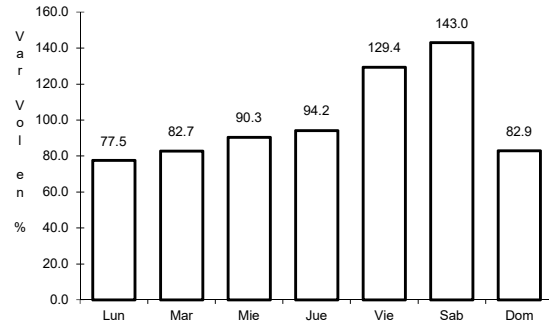


Km: 147.60      Tipo: 3      Sent: 1

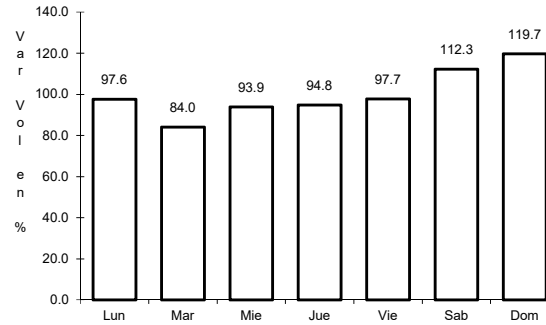
17 CARR: Tijuana - Ensenada (Cuota)

CLAVE: 02100

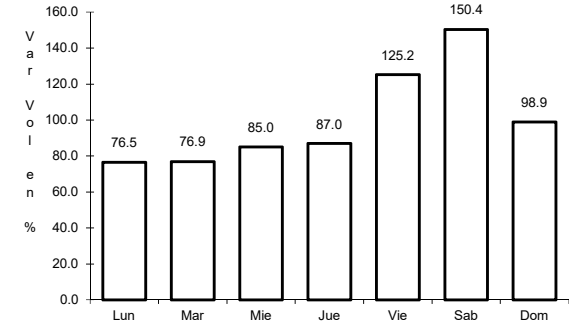
RUTA: MEX-001D



Km: 7.50      Tipo: 3      Sent: 1



Km: 7.50      Tipo: 3      Sent: 2

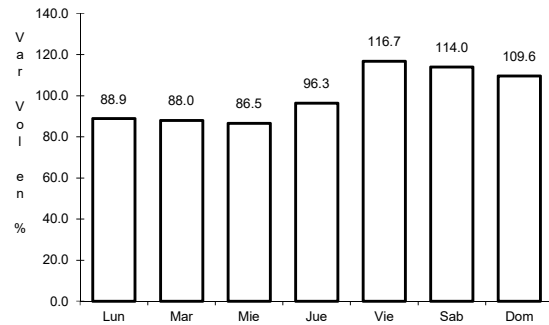


Km: 66.44      Tipo: 3      Sent: 1

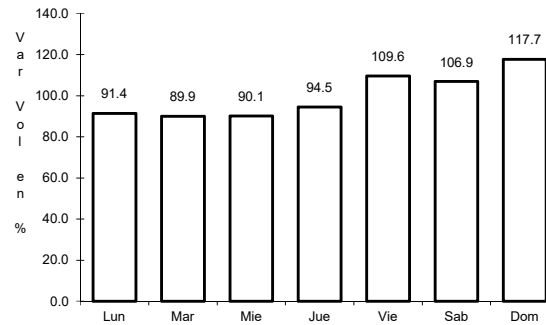
18 CARR: Mexicali - Tijuana

CLAVE: 02082

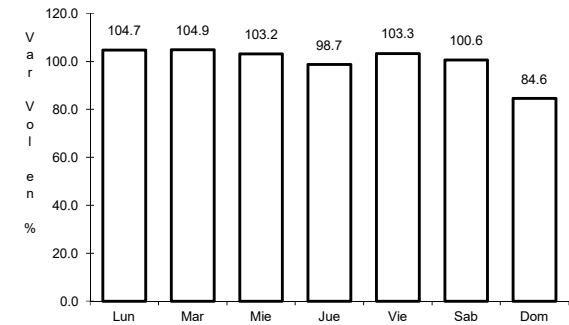
RUTA: MEX-002D-MEX



Km: 7.80      Tipo: 3      Sent: 1



Km: 7.80      Tipo: 3      Sent: 2

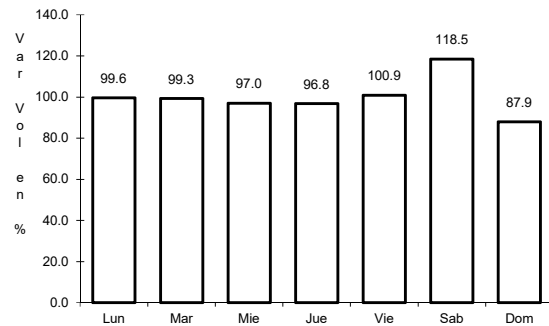


Km: 165.00      Tipo: 3      Sent: 0

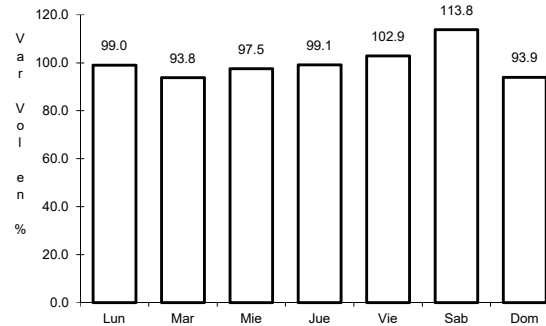
19 CARR: Algodones - Ent. Islas Agrarias Grupo B

CLAVE: 02006

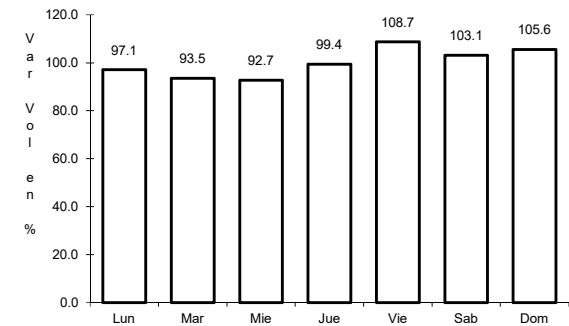
RUTA: BC-008



Km: 0.00      Tipo: 3      Sent: 0



Km: 31.50      Tipo: 1      Sent: 0

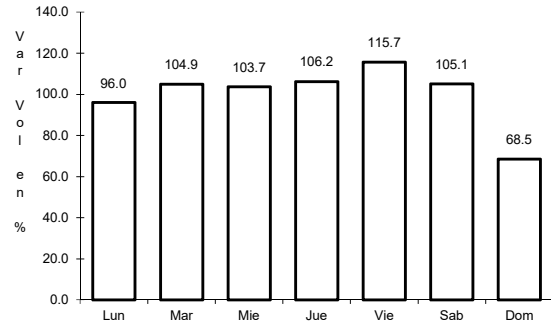


Km: 55.50      Tipo: 1      Sent: 0

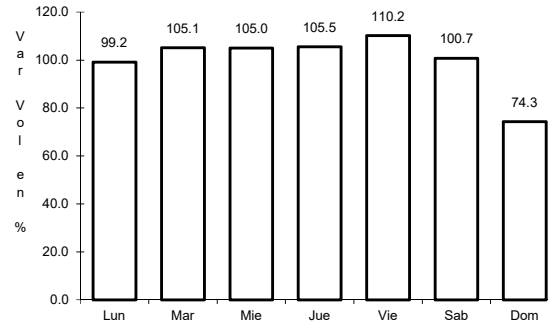
20 CARR: Corredor Tijuana 2000

CLAVE: 02006

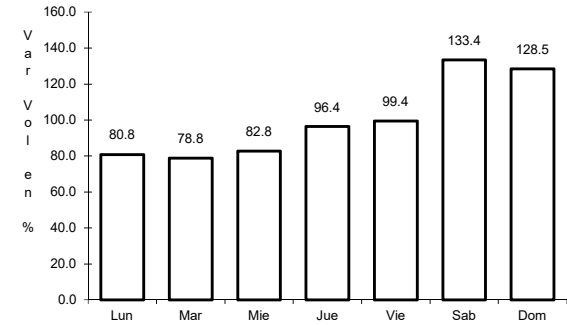
RUTA: BC



Km: 0.00      Tipo: 3      Sent: 1



Km: 0.00      Tipo: 3      Sent: 2

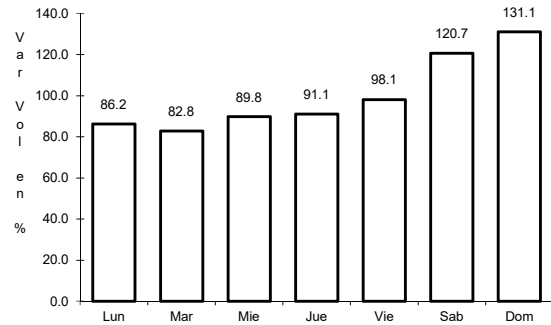


Km: 40.00      Tipo: 1      Sent: 1

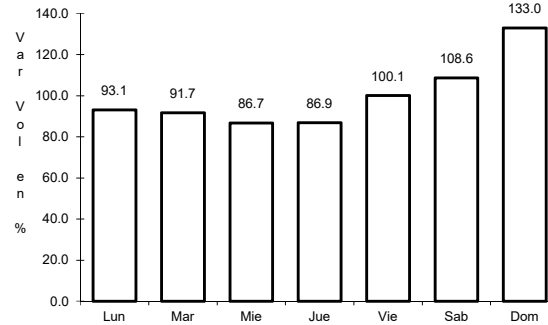
21 CARR: Ejido Benito Juárez - Ejido Chiapas

CLAVE: 02501

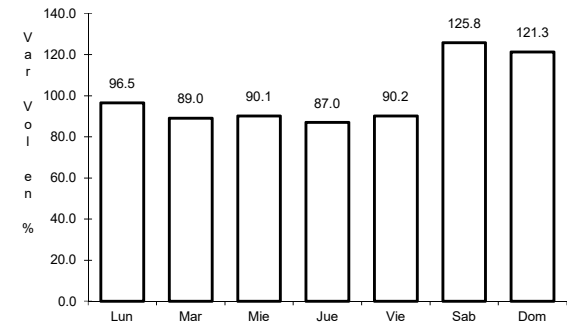
RUTA: BC-061



Km: 0.00      Tipo: 3      Sent: 0



Km: 7.00      Tipo: 1      Sent: 0

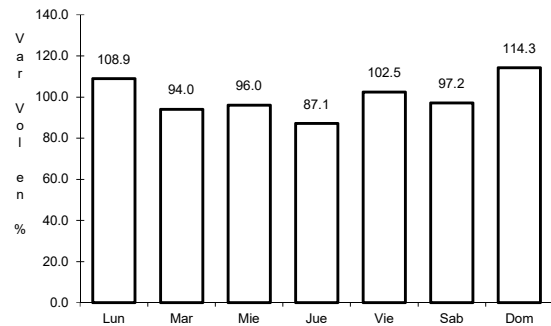


Km: 10.56      Tipo: 1      Sent: 0

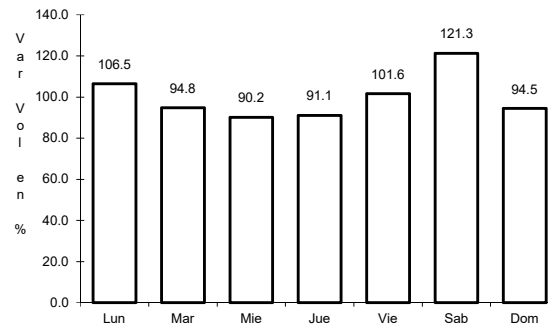
22 CARR: Ejido Monterrey - Mazón

CLAVE: 02004

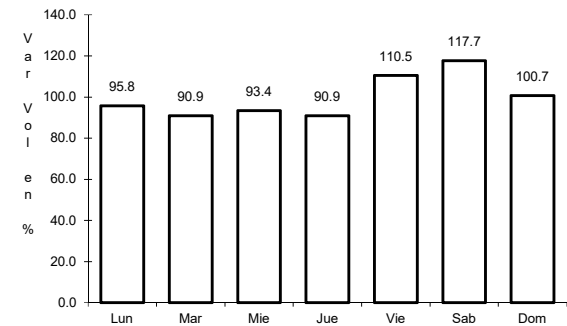
RUTA: BC-003



Km: 0.00      Tipo: 3      Sent: 0



Km: 15.16      Tipo: 3      Sent: 0

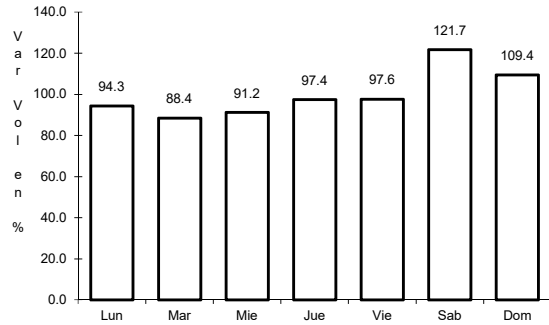


Km: 35.00      Tipo: 1      Sent: 0

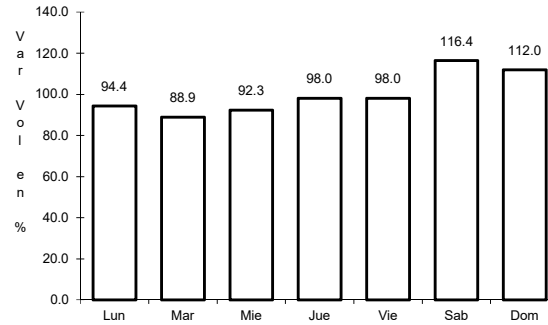
23 CARR: El Faro - Estación Coahuila

CLAVE: 02013

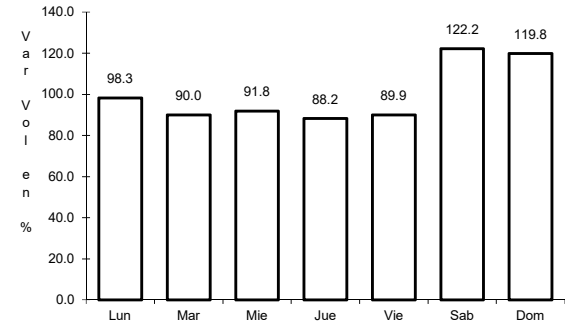
ruta: BC-004



Km: 0.00      Tipo: 3      Sent: 0



Km: 16.30      Tipo: 1      Sent: 0

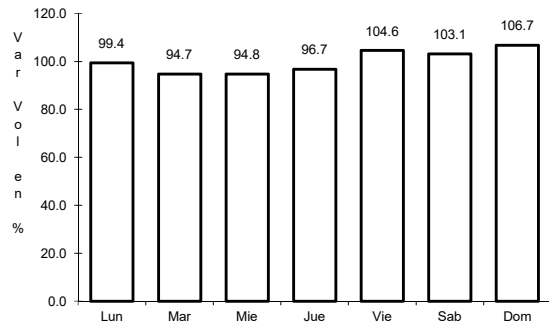


Km: 34.50      Tipo: 1      Sent: 0

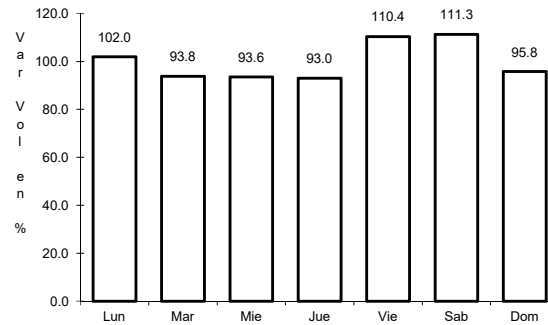
24 CARR: Ent. Santa Rosa - Ent. Pachuca

CLAVE: 02015

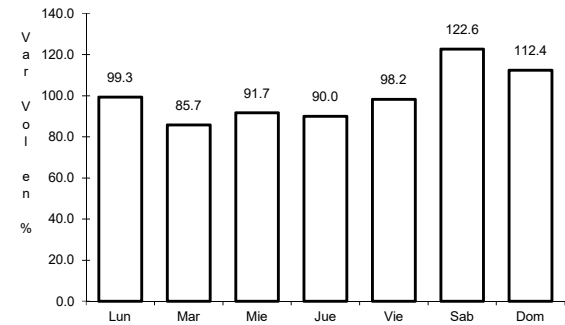
ruta: BC-006



Km: 0.00      Tipo: 3      Sent: 0



Km: 10.90      Tipo: 3      Sent: 0

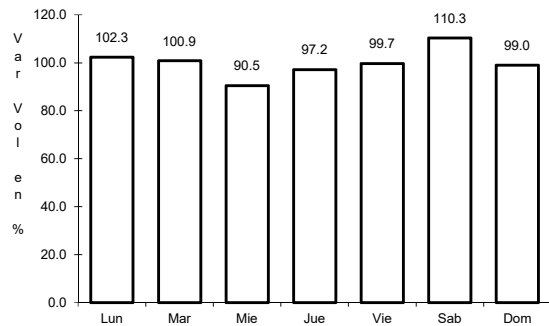


Km: 18.00      Tipo: 3      Sent: 0

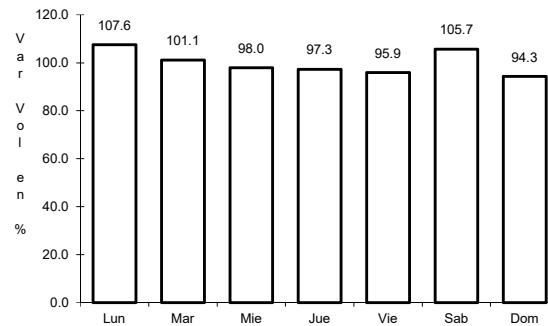
25 CARR: La Puerta - T. C. (Mexicali - Estación Coahuila)

CLAVE: 02502

ruta: BC-010



Km: 4.60      Tipo: 1      Sent: 0

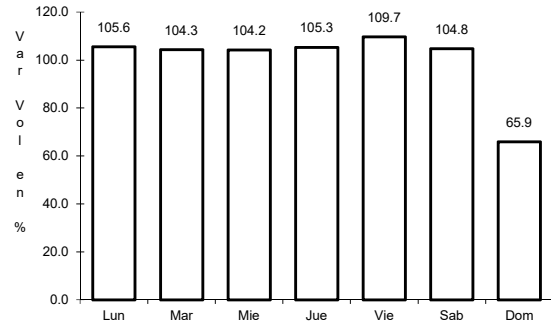


Km: 9.00      Tipo: 3      Sent: 0

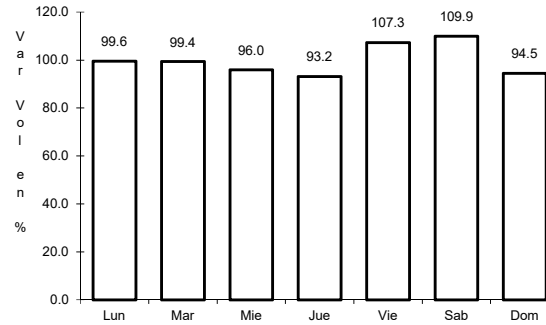
26 CARR: Mexicali - Algodones

CLAVE: 02012

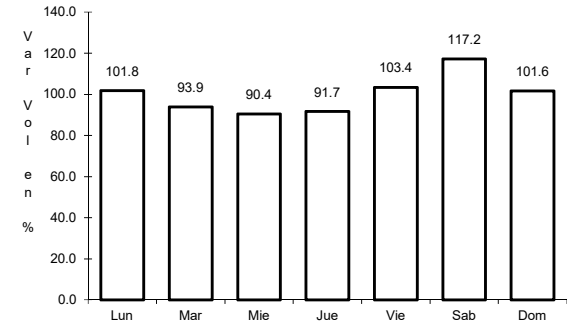
RUTA: BC-002



Km: 12.00 Tipo: 3 Sent: 0



Km: 49.65 Tipo: 1 Sent: 0

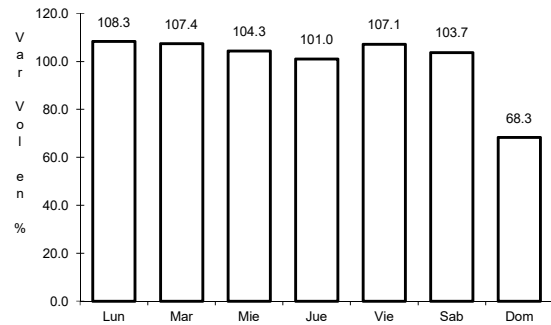


Km: 94.46 Tipo: 1 Sent: 0

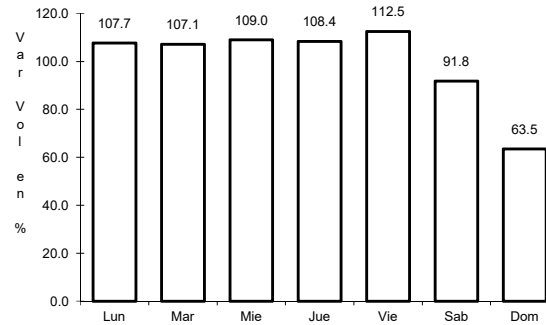
27 CARR: Mexicali - Estación Coahuila

CLAVE: 02016

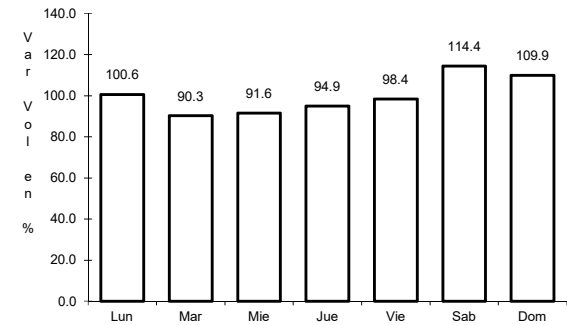
RUTA: BC-001



Km: 0.00 Tipo: 3 Sent: 1



Km: 0.00 Tipo: 3 Sent: 2

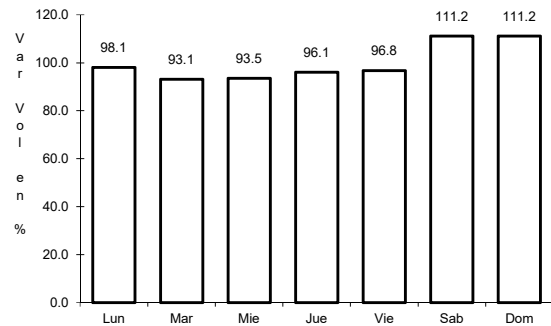


Km: 96.65 Tipo: 1 Sent: 0

28 CARR: Mexicali - Progreso

CLAVE: 02507

RUTA: BC-005



Km: 15.30 Tipo: 1 Sent: 0

