

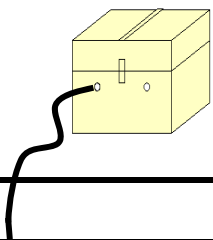
01 AGUASCALIENTES

SECRETARÍA DE COMUNICACIONES Y TRANSPORTES
DIRECCIÓN GENERAL DE SERVICIOS TÉCNICOS

① Número Índice

- Red Federal Libre
- Red Federal Cuota
- Red Federal Integrada por Tramos Libres y de Cuota
- Red Estatal Libre
- Red Estatal Cuota
- Carreteras Integradas por Tramos Federales y Estatales





AGUASCALIENTES

---RED FEDERAL LIBRE---

1 Acceso a Pabellón de Arteaga	MEX-045
2 Aguascalientes - Jalpa	MEX-070
3 Aguascalientes - Zacatecas	MEX-045
4 El Retoño - Ent. Asturias	MEX-070
5 Ent. Cosío - Ent. Cuauhtémoc	MEX-045
6 Ent. Penitenciaría - Villa Hidalgo	MEX-071
7 Ent. Rivier - San Marcos	MEX-066
8 León - Aguascalientes	MEX-045
9 Libramiento Rincón de Romos	MEX-045
10 Ojo Caliente - Malpaso	MEX-070
11 Ojuelos - Aguascalientes	MEX-070
12 Providencia - Luis Moya	MEX-071
13 Ramal a Aeropuerto de Aguascalientes	MEX-045
14 Rincón de Romos - Ciénega Grande	MEX-039

---RED ESTATAL LIBRE---

15 Aguascalientes - Ent. Cd. de Los Niños	AGS
16 Aguascalientes - Jesús María	AGS-095
17 Aguascalientes - José María Morelos	AGS
18 Carboneras - Villa Juárez	AGS-004
19 Cosío - Santa María de La Paz	AGS
20 Crucero Ojo de Agua de Crucitas - Santa Rosa	AGS
21 El Tanque - San José de La Ordeña	AGS
22 El Taray - T. C.(Ramal Aeropuerto de Aguascalientes)	AGS-002
23 Ent. Arellano - El Retoño	AGS
24 Ent. Buenavista - Gracias a Dios	AGS
25 Ent. El Novillo - Villa Juárez	AGS-005
26 Ent. La Calavera - Ent. San Pedro	AGS-043
27 Ent. La Chirida - San Francisco de Los Romo	AGS
28 Ent. Pabellón de Arteaga - California	AGS
29 Ent. Pabellón de Arteaga - San José de Gracia	AGS-019
30 Ent. Rincón de Romos - La Boquilla	AGS
31 Ent. San Carlos - Ent. El Milagro	AGS-010
32 Ent. San Felipe - Jesús María	AGS
33 Ent. San Isidro - Ent. El Salitre	AGS-016
34 Est. Coyotes - Ent. San Bartolo	AGS-069
35 Fracc. Ojo Caliente - El Conejal	AGS-079
36 Jesús María - Palomas	AGS-018
37 La Panadera - Palo Alto	AGS-017
38 La Punta - Mesillas	AGS-026
39 La Rinconada - El Terrero del Refugio	AGS-007
40 Las Norias de Ojo Caliente - La Luz	AGS-068
41 Libramiento San Francisco de Los Romo	AGS
42 Pabellón de Hidalgo - Rincón de Romos	AGS
43 Pilotos - Los Campos	AGS-030
44 Pocitos - Granja Miravalle	AGS-053
45 Ramal a San Pedro Piedra Gorda	ZAC-AGS
46 San Gil - Jarillas	AGS-012-ZAC
47 San Isidro El Grande - Bajío de San José	AGS-036
48 San Rafael - Villa García	AGS-ZAC
49 Santa Rosa - Pabellón de Hidalgo	AGS
50 T. Caldera - Ent. Ojo de Agua de Los Montes	AGS
51 Viñedos de California - Adolfo López Mateos	AGS

---RED ESTATAL DE CUOTA---

52 Libramiento Surponiente de Aguascalientes (Cuota)	MEX-A40
--	---------

AGUASCALIENTES

1 CARR: Acceso a Pabellón de Arteaga

CLAVE: 01113

RUTA: MEX-045

AÑO: 2018

LUGAR	ESTACION				CLASIFICACION VEHICULAR EN PORCIENTO										COORDENADAS					
	KM	TE	SC	TDPA	M	A	B	C2	C3	T3S2	T3S3	T3S2R4	OTROS	A	B	C	K'	D	LATITUD	LONGITUD
T. C. Aguascalientes - Zacatecas (Baja)	0.00	3	1	1032	5.4	86.4	3.4	4.4	0.1	0.2	0.1	0.0	0.0	91.8	3.4	4.8	0.082	0.510	22.146613	-102.289497
T. C. Aguascalientes - Zacatecas (Alta)	0.00	3	1	6083	2.4	92.0	0.1	4.2	0.3	0.4	0.5	0.0	0.1	94.4	0.1	5.5	0.068	0.504	22.146715	-102.289483
T. C. Aguascalientes - Zacatecas (Baja)	0.00	3	2	990	7.0	84.3	3.3	5.0	0.1	0.2	0.1	0.0	0.0	91.3	3.3	5.4	0.083	0.510	22.146851	-102.289654
T. C. Aguascalientes - Zacatecas (Alta)	0.00	3	2	6179	2.3	90.4	0.1	5.8	0.3	0.4	0.6	0.0	0.1	92.7	0.1	7.2	0.065	0.504	22.146776	-102.289496
Pabellón de Arteaga	1.80	1	1	6990	1.6	91.9	0.2	4.1	0.2	0.6	1.1	0.1	0.2	93.5	0.2	6.3	0.068	0.520	22.147144	-102.283319
Pabellón de Arteaga	1.80	1	2	6455	2.0	89.1	0.1	6.3	0.4	0.9	0.9	0.1	0.2	91.1	0.1	8.8	0.066	0.520	22.147230	-102.283315
T. C. Providencia - Luis Moya	4.64																			

2 CARR: Aguascalientes - Jalpa

CLAVE: 00095

RUTA: MEX-070

AÑO: 2018

LUGAR	ESTACION				CLASIFICACION VEHICULAR EN PORCIENTO										COORDENADAS					
	KM	TE	SC	TDPA	M	A	B	C2	C3	T3S2	T3S3	T3S2R4	OTROS	A	B	C	K'	D	LATITUD	LONGITUD
Aguascalientes	0.00	3	1	10088	1.9	89.8	0.4	6.3	0.8	0.4	0.2	0.2	0.0	91.7	0.4	7.9	0.114	0.524	21.874481	-102.336606
Aguascalientes	0.00	3	2	9155	2.6	85.8	0.5	9.2	0.9	0.5	0.2	0.2	0.1	88.4	0.5	11.1	0.085	0.524	21.874354	-102.336624
T. Der. Jesús María	7.30	1	1	8581	1.4	87.1	0.6	8.9	1.1	0.6	0.3	0.0	0.0	88.5	0.6	10.9	0.083	0.504	21.881279	-102.362102
T. Der. Jesús María	7.30	1	2	8722	2.0	87.9	0.4	7.6	1.0	0.7	0.4	0.0	0.0	89.9	0.4	9.7	0.082	0.504	21.881118	-102.362129
T. Izq. Villa Hidalgo	7.80	3	1	5615	1.5	88.1	0.5	7.7	1.2	0.7	0.3	0.0	0.0	89.6	0.5	9.9	0.097	0.504	21.884376	-102.373675
T. Izq. Villa Hidalgo	7.80	3	2	5704	0.3	86.9	0.9	9.4	1.5	0.7	0.2	0.1	0.0	87.2	0.9	11.9	0.118	0.504	21.884229	-102.373715
Libramiento Poniente de Aguascalientes	11.00	1	1	5957	0.7	85.0	1.2	11.4	0.9	0.6	0.2	0.0	0.0	85.7	1.2	13.1	0.084	0.502	21.889690	-102.393549
Libramiento Poniente de Aguascalientes	11.00	1	2	5996	0.3	89.2	0.5	6.9	1.8	0.8	0.3	0.1	0.1	89.5	0.5	10.0	0.099	0.502	21.889576	-102.393594
Libramiento Poniente de Aguascalientes	11.00	3	1	5818	0.9	92.6	0.4	3.5	1.4	0.8	0.3	0.0	0.1	93.5	0.4	6.1	0.083	0.501	21.892152	-102.403258
Libramiento Poniente de Aguascalientes	11.00	3	2	5784	0.7	87.9	0.4	6.1	3.2	1.1	0.4	0.1	0.1	88.6	0.4	11.0	0.087	0.501	21.892287	-102.403199
T. Der. Gracias a Dios	20.00	3	0	10709	0.7	85.9	0.6	7.3	1.3	3.2	0.6	0.1	0.3	86.6	0.6	12.8	0.073	0.501	21.887162	-102.464740
T. Izq. Malpaso	45.10	1	0	7005	0.4	84.9	0.8	9.7	1.3	2.3	0.3	0.1	0.2	85.3	0.8	13.9	0.089	0.500	21.880917	-102.653377
T. Der. Presa La Codorniz	49.30	3	1	9762	2.1	87.8	0.5	8.5	0.7	0.3	0.1	0.0	0.0	89.9	0.5	9.6	0.081	0.503	21.864101	-102.692157
T. Der. Presa La Codorniz	49.30	3	2	9874	1.8	90.2	0.3	6.3	0.7	0.5	0.2	0.0	0.0	92.0	0.3	7.7	0.082	0.503	21.864013	-102.692026
Calvillo	52.30	3	1	5220	2.2	89.6	0.2	6.7	0.9	0.3	0.1	0.0	0.0	91.8	0.2	8.0	0.082	0.501	21.835233	-102.746336
Calvillo	52.30	3	2	5238	2.3	87.5	0.4	8.6	0.8	0.3	0.1	0.0	0.0	89.8	0.4	9.8	0.079	0.501	21.835111	-102.746249
T. Der. Jaltiche de Abajo	63.80	3	0	2521	0.8	85.3	1.0	10.4	1.5	0.8	0.2	0.0	0.0	86.1	1.0	12.9	0.093	0.511	21.772492	-102.803823
Lim. Edos. Term. Ags. Ppia. Zac.	65.66																			
T. C. Guadalajara - Zacatecas	90.66	1	0	4866	3.2	83.4	0.7	10.3	1.1	0.7	0.4	0.1	0.1	86.6	0.7	12.7	0.078	0.512	21.652536	-102.963813

AGUASCALIENTES

3 CARR: Aguascalientes - Zacatecas

CLAVE: 00524

RUTA: MEX-045

AÑO: 2018

LUGAR	ESTACION				CLASIFICACION VEHICULAR EN PORCIENTO										COORDENADAS					
	KM	TE	SC	TDPA	M	A	B	C2	C3	T3S2	T3S3	T3S2R4	OTROS	A	B	C	K'	D	LATITUD	LONGITUD
Aguascalientes	0.00																			
T. Izq. Pocitos	6.00	1	1	19768	2.0	91.0	1.1	4.4	0.2	0.5	0.6	0.1	0.1	93.0	1.1	5.9	0.077	0.505	21.920025	-102.291720
T. Izq. Pocitos	6.00	1	2	19386	2.3	89.2	1.1	5.2	0.2	0.4	1.2	0.1	0.3	91.5	1.1	7.4	0.074	0.505	21.919696	-102.291835
T. Der. Loreto	9.83	3	1	28193	1.2	82.9	1.4	5.9	1.4	3.7	1.8	1.3	0.4	84.1	1.4	14.5	0.082	0.502	21.972847	-102.289353
T. Der. Loreto	9.83	3	2	28432	1.2	84.4	1.2	5.3	1.3	3.5	1.6	1.1	0.4	85.6	1.2	13.2	0.068	0.502	21.972847	-102.289524
Santa Fé	16.00	1	1	27444	0.8	82.7	1.7	5.7	2.2	3.7	1.3	1.6	0.3	83.5	1.7	14.8	0.081	0.505	22.014141	-102.286520
Santa Fé	16.00	1	2	26879	0.8	80.7	1.9	6.5	2.6	3.9	1.4	1.9	0.3	81.5	1.9	16.6	0.073	0.505	22.014168	-102.286640
Santa Fé	16.00	3	1	24392	0.6	81.7	1.9	6.4	2.0	4.2	1.3	1.7	0.2	82.3	1.9	15.8	0.082	0.507	22.026693	-102.283393
Santa Fé	16.00	3	2	25076	0.6	80.1	2.1	7.0	2.1	4.6	1.4	1.9	0.2	80.7	2.1	17.2	0.074	0.507	22.028339	-102.283108
La Concepción	18.00	3	1	21822	0.8	81.2	1.9	6.3	1.8	4.4	1.5	1.8	0.3	82.0	1.9	16.1	0.082	0.526	22.037407	-102.280928
La Concepción	18.00	3	2	24234	0.9	78.8	2.2	7.1	2.0	4.9	1.7	2.1	0.3	79.7	2.2	18.1	0.083	0.526	22.037441	-102.281049
San Francisco de Los Romo	22.73	1	1	7305	3.0	83.6	0.9	10.5	0.5	0.8	0.5	0.1	0.1	86.6	0.9	12.5	0.070	0.509	22.064239	-102.275521
San Francisco de Los Romo	22.73	1	2	7036	2.7	83.2	1.0	10.9	0.5	1.0	0.5	0.1	0.1	85.9	1.0	13.1	0.071	0.509	22.064252	-102.275657
T. Der. Estación Pabellón	31.00	1	1	15383	1.1	77.9	2.4	7.4	1.7	5.6	1.3	2.4	0.2	79.0	2.4	18.6	0.072	0.514	22.131472	-102.286203
T. Der. Estación Pabellón	31.00	1	2	16250	1.0	75.5	2.7	8.8	1.9	5.7	1.5	2.7	0.2	76.5	2.7	20.8	0.082	0.514	22.131416	-102.286340
T. Der. Estación Pabellón	31.00	3	1	12733	1.0	76.5	2.8	7.9	1.8	6.0	1.5	2.2	0.3	77.5	2.8	19.7	0.076	0.508	22.152181	-102.295140
T. Der. Estación Pabellón	31.00	3	2	13123	1.1	73.5	3.1	9.5	2.0	6.4	1.6	2.5	0.3	74.6	3.1	22.3	0.076	0.508	22.152126	-102.295274
Rincón de Romos	40.90	3	0	6004	4.9	83.7	0.6	7.5	0.3	2.6	0.2	0.0	0.2	88.6	0.6	10.8	0.088	0.508	22.237362	-102.317704
La Punta	51.00	1	1	8027	0.6	69.9	4.0	8.1	1.9	8.6	2.1	3.9	0.9	70.5	4.0	25.5	0.080	0.502	22.314141	-102.296528
La Punta	51.00	1	2	7970	0.6	66.8	4.4	9.3	2.0	9.5	2.4	4.1	0.9	67.4	4.4	28.2	0.079	0.502	22.314162	-102.296649
Cosío	56.00	3	1	6532	1.4	66.8	4.4	8.1	2.5	8.7	3.3	4.2	0.6	68.2	4.4	27.4	0.070	0.527	22.372605	-102.298412
Cosío	56.00	3	2	5874	0.9	64.4	4.9	8.2	2.6	9.9	3.7	4.6	0.8	65.3	4.9	29.8	0.079	0.527	22.372581	-102.298524
Lim. Edos. Term. Ags. Ppia. Zac.	62.67																			
Luis Moya	65.80	1	0	3637	2.6	79.8	1.5	9.8	1.7	2.4	1.7	0.3	0.2	82.4	1.5	16.1	0.072	0.502	22.422219	-102.259298
Luis Moya	65.80	3	1	3135	2.3	79.7	1.3	11.3	1.2	1.9	1.3	0.8	0.2	82.0	1.3	16.7	0.077	0.501	22.445534	-102.253173
Luis Moya	65.80	3	2	3144	2.2	78.0	1.5	12.7	1.3	1.9	1.4	0.8	0.2	80.2	1.5	18.3	0.076	0.501	22.445498	-102.253285
T. Der. San Luis Potosí	100.00	1	0	6492	0.9	80.8	1.5	10.2	1.6	2.6	1.5	0.8	0.1	81.7	1.5	16.8	0.089	0.508	22.711748	-102.325143
T. Der. San Luis Potosí	100.00	3	1	5833	0.5	66.9	3.9	10.4	1.9	9.1	2.2	4.6	0.5	67.4	3.9	28.7	0.083	0.501	22.727233	-102.336016
T. Der. San Luis Potosí	100.00	3	2	5855	0.8	63.7	4.6	10.2	2.6	9.6	2.7	4.9	0.9	64.5	4.6	30.9	0.084	0.501	22.727088	-102.336348
T. Izq. Aguascalientes (Cuota)	113.50	1	1	11203	0.6	75.0	1.9	10.7	2.0	5.3	1.3	2.9	0.3	75.6	1.9	22.5	0.082	0.503	22.751361	-102.439029
T. Izq. Aguascalientes (Cuota)	113.50	1	2	11085	1.3	74.1	2.1	11.1	2.1	5.3	1.3	2.5	0.2	75.4	2.1	22.5	0.085	0.503	22.751185	-102.439003
T. Izq. Libramiento De Guadalupe Y Zacatecas	118.20	1	1	23935	1.4	83.1	2.6	7.5	1.2	2.4	0.6	1.0	0.2	84.5	2.6	12.9	0.101	0.517	22.750769	-102.492459
T. Izq. Libramiento De Guadalupe Y Zacatecas	118.20	1	2	22386	1.7	81.4	3.1	8.1	1.2	2.5	0.8	1.1	0.1	83.1	3.1	13.8	0.081	0.517	22.750666	-102.492803
Zacatecas	119.82																			

AGUASCALIENTES

4 CARR: El Retoño - Ent. Asturias

CLAVE: 01124

RUTA: MEX-070

AÑO: 2018

LUGAR	ESTACION				CLASIFICACION VEHICULAR EN PORCIENTO										COORDENADAS					
	KM	TE	SC	TDPA	M	A	B	C2	C3	T3S2	T3S3	T3S2R4	OTROS	A	B	C	K'	D	LATITUD	LONGITUD
El Retoño	0.00	3	0	803	7.1	73.0	1.5	8.3	5.9	2.0	1.0	1.1	0.1	80.1	1.5	18.4	0.078	0.515	21.845584	-102.166298
Ent. Asturias	8.98	1	0	1294	6.4	79.3	0.7	9.7	2.0	1.0	0.2	0.6	0.1	85.7	0.7	13.6	0.085	0.504	21.863636	-102.208327

5 CARR: Ent. Cosío - Ent. Cuauhtémoc

CLAVE: 00579

RUTA: MEX-045

AÑO: 2018

LUGAR	ESTACION				CLASIFICACION VEHICULAR EN PORCIENTO										COORDENADAS					
	KM	TE	SC	TDPA	M	A	B	C2	C3	T3S2	T3S3	T3S2R4	OTROS	A	B	C	K'	D	LATITUD	LONGITUD
T. C. Aguascalientes - Zacatecas	57.20	3	0	9056	0.8	57.8	5.6	7.9	2.9	14.1	3.9	6.1	0.9	58.6	5.6	35.8	0.078	0.508	22.392980	-102.306046
Lim. Edos. Term. Ags. Ppia. Zac.	64.00																			
T. C. Ent. Cuauhtémoc - Ent. Osiris (Cuota)	70.40																			

6 CARR: Ent. Penitenciaria - Villa Hidalgo

CLAVE: 00120

RUTA: MEX-071

AÑO: 2018

LUGAR	ESTACION				CLASIFICACION VEHICULAR EN PORCIENTO										COORDENADAS					
	KM	TE	SC	TDPA	M	A	B	C2	C3	T3S2	T3S3	T3S2R4	OTROS	A	B	C	K'	D	LATITUD	LONGITUD
T. C. Aguascalientes - Jalpa	0.00	3	1	8086	1.9	69.6	1.7	7.2	3.5	8.3	3.0	4.0	0.8	71.5	1.7	26.8	0.078	0.509	21.878128	-102.369505
T. C. Aguascalientes - Jalpa	0.00	3	2	8382	2.2	66.1	1.8	8.2	3.9	9.2	3.4	4.3	0.9	68.3	1.8	29.9	0.079	0.509	21.878117	-102.369332
T. Izq. El Niágara	9.20	3	0	4303	1.1	85.3	1.3	8.6	1.1	1.6	0.6	0.2	0.2	86.4	1.3	12.3	0.092	0.510	21.803089	-102.392707
El Taray	27.00	3	0	3816	0.8	87.0	1.2	9.6	0.8	0.3	0.3	0.0	0.0	87.8	1.2	11.0	0.106	0.521	21.725194	-102.515150
Lim. Edos. Term. Ags. Ppia. Jal.	29.58																			
Villa Hidalgo	41.80	1	0	4070	1.7	86.8	0.8	9.0	1.1	0.3	0.3	0.0	0.0	88.5	0.8	10.7	0.109	0.538	21.691692	-102.568188

7 CARR: Ent. Rivier - San Marcos

CLAVE: 00285

RUTA: MEX-066

AÑO: 2018

LUGAR	ESTACION				CLASIFICACION VEHICULAR EN PORCIENTO										COORDENADAS					
	KM	TE	SC	TDPA	M	A	B	C2	C3	T3S2	T3S3	T3S2R4	OTROS	A	B	C	K'	D	LATITUD	LONGITUD
T. C. Aguascalientes - Zacatecas	0.00	3	1	8351	2.2	87.1	0.4	6.5	1.4	1.2	0.8	0.2	0.2	89.3	0.4	10.3	0.077	0.501	21.962324	-102.287851
T. C. Aguascalientes - Zacatecas	0.00	3	2	8395	1.8	86.7	0.4	7.0	1.5	1.2	1.0	0.2	0.2	88.5	0.4	11.1	0.096	0.501	21.962456	-102.287841
T. Izq. El Tepetate	10.50	3	0	9902	1.1	82.9	1.1	9.2	1.4	3.2	0.6	0.1	0.4	84.0	1.1	14.9	0.083	0.513	21.999545	-102.193041
T. Der. Jilotepec	23.60	3	0	8204	1.1	82.6	0.6	10.5	1.6	2.7	0.5	0.1	0.3	83.7	0.6	15.7	0.087	0.513	22.056827	-102.097923
Villa Juárez	30.00	3	0	8995	1.4	82.5	0.9	9.5	1.3	3.3	0.5	0.2	0.4	83.9	0.9	15.2	0.097	0.523	22.112101	-102.056247
Ciénega Grande	41.50	1	0	7625	1.2	78.7	1.8	12.9	1.6	2.8	0.6	0.1	0.3	79.9	1.8	18.3	0.082	0.512	22.179387	-102.022806
Ciénega Grande	41.50	3	0	6392	1.9	81.9	0.7	10.6	1.9	2.4	0.2	0.1	0.3	83.8	0.7	15.5	0.079	0.522	22.204816	-102.012459
Lim. Edos. Term. Ags. Ppia. Zac.	45.75																			
San Marcos	55.34	1	0	8192	7.7	72.6	0.5	10.1	0.7	6.2	1.0	0.4	0.8	80.3	0.5	19.2	0.079	0.508	22.277520	-101.954217

AGUASCALIENTES

8 CARR: León - Aguascalientes

CLAVE: 00167

RUTA: MEX-045

AÑO: 2018

LUGAR	ESTACION				CLASIFICACION VEHICULAR EN PORCIENTO										COORDENADAS					
	KM	TE	SC	TDPA	M	A	B	C2	C3	T3S2	T3S3	T3S2R4	OTROS	A	B	C	K'	D	LATITUD	LONGITUD
León	0.00																			
T. Der. Libramiento de León	11.00	1	1	12602	1.2	85.9	1.3	7.3	1.9	1.5	0.6	0.1	0.2	87.1	1.3	11.6	0.084	0.513	21.164222	-101.726924
T. Der. Libramiento de León	11.00	1	2	11943	1.7	84.0	1.5	8.3	1.9	1.6	0.7	0.1	0.2	85.7	1.5	12.8	0.095	0.513	21.164186	-101.726982
T. Der. Libramiento de León	11.00	3	1	9133	1.2	84.4	1.4	8.4	2.0	1.6	0.7	0.1	0.2	85.6	1.4	13.0	0.084	0.508	21.174147	-101.736830
T. Der. Libramiento de León	11.00	3	2	9431	1.6	82.8	1.5	9.2	2.2	1.7	0.7	0.1	0.2	84.4	1.5	14.1	0.089	0.508	21.174075	-101.736920
T. Izq. Centro de León	12.00	3	1	10457	1.5	88.3	0.9	4.6	2.1	1.3	0.9	0.1	0.3	89.8	0.9	9.3	0.077	0.518	21.198295	-101.752591
T. Izq. Centro de León	12.00	3	2	9724	1.2	86.9	1.0	5.5	2.4	1.6	1.0	0.1	0.3	88.1	1.0	10.9	0.085	0.518	21.198235	-101.752666
Lim. Edos. Term. Gto. Ppia. Jal.	17.88																			
X. C. San Luis Potosí - Lagos de Moreno	44.18	1	1	9506	5.9	76.0	1.4	11.0	2.3	2.5	0.6	0.2	0.1	81.9	1.4	16.7	0.090	0.504	21.367426	-101.900536
X. C. San Luis Potosí - Lagos de Moreno	44.18	1	2	9361	6.2	75.7	1.2	10.9	2.5	2.5	0.8	0.1	0.1	81.9	1.2	16.9	0.082	0.504	21.367410	-101.900636
T. Izq. Libramiento Lagos de Moreno	48.70	1	0	7971	2.1	82.7	2.4	8.3	3.2	0.7	0.3	0.1	0.2	84.8	2.4	12.8	0.081	0.505	21.367973	-101.958099
T. Izq. Libramiento Lagos de Moreno	48.70	3	0	8133	7.6	69.1	3.0	11.8	3.0	3.7	1.2	0.3	0.3	76.7	3.0	20.3	0.087	0.503	21.373719	-101.963946
T. Der. El Destierro	80.80	1	0	5473	1.5	70.1	2.4	11.4	4.7	7.1	2.1	0.5	0.2	71.6	2.4	26.0	0.071	0.515	21.498856	-102.187631
Encarnación de Díaz	88.20	1	0	8089	2.0	74.0	2.4	11.8	3.4	4.5	1.4	0.3	0.2	76.0	2.4	21.6	0.065	0.502	21.501567	-102.206950
T. Izq. Libramiento de Encarnación de Díaz	89.18	1	1	1874	7.2	86.5	0.4	5.4	0.3	0.2	0.0	0.0	0.0	93.7	0.4	5.9	0.083	0.504	21.535254	-102.239693
T. Izq. Libramiento de Encarnación de Díaz	89.18	1	2	1901	7.9	85.9	0.4	5.3	0.3	0.2	0.0	0.0	0.0	93.8	0.4	5.8	0.062	0.504	21.535253	-102.239768
T. Izq. Libramiento de Encarnación de Díaz	89.18	3	0	11833	1.2	75.7	2.3	9.0	3.5	5.6	1.9	0.6	0.2	76.9	2.3	20.8	0.069	0.513	21.548621	-102.240899
Lim. Edos. Term. Jal. Ppia. Ags.	103.30																			
T. Izq. Aeropuerto de Aguascalientes	110.15	1	1	13496	1.1	71.5	4.6	6.4	2.3	7.6	2.1	3.2	1.2	72.6	4.6	22.8	0.086	0.536	21.711402	-102.278818
T. Izq. Aeropuerto de Aguascalientes	110.15	1	2	11670	1.1	63.9	5.4	7.7	3.2	9.9	2.9	4.4	1.5	65.0	5.4	29.6	0.076	0.536	21.711430	-102.278947
T. Izq. Aeropuerto de Aguascalientes	110.15	3	1	17685	0.8	77.0	3.0	5.9	1.7	5.8	2.4	2.0	1.4	77.8	3.0	19.2	0.082	0.501	21.727906	-102.276706
T. Izq. Aeropuerto de Aguascalientes	110.15	3	2	17579	0.9	75.3	3.8	7.0	1.8	5.7	2.2	2.2	1.1	76.2	3.8	20.0	0.078	0.501	21.727890	-102.276834
Libramiento Poniente de Aguascalientes	116.50	1	1	22339	1.1	75.9	3.7	7.4	2.6	5.5	1.4	1.9	0.5	77.0	3.7	19.3	0.095	0.500	21.760877	-102.277099
Libramiento Poniente de Aguascalientes	116.50	1	2	22303	1.2	73.9	4.0	8.1	2.7	6.0	1.6	2.0	0.5	75.1	4.0	20.9	0.100	0.500	21.760872	-102.277242
Libramiento Poniente de Aguascalientes	116.50	3	1	18860	1.0	79.8	4.3	8.1	1.9	3.1	0.8	0.6	0.4	80.8	4.3	14.9	0.092	0.503	21.779880	-102.279827
Libramiento Poniente de Aguascalientes	116.50	3	2	19069	1.2	78.8	4.3	7.9	2.1	3.7	0.8	0.9	0.3	80.0	4.3	15.7	0.098	0.503	21.779870	-102.279973
T. Der. Estación Arellano (Central)	118.40	3	1	7041	2.5	81.9	2.8	8.3	1.5	2.0	0.3	0.4	0.3	84.4	2.8	12.8	0.111	0.762	21.802426	-102.283565
T. Der. Estación Arellano (Lateral)	118.40	3	1	16979	1.9	80.0	3.4	7.5	2.1	3.0	0.9	0.8	0.4	81.9	3.4	14.7	0.090	0.930	21.802450	-102.283456
T. Der. Estación Arellano (Lateral)	118.40	3	2	1272	2.7	83.8	2.2	6.4	2.6	1.3	0.4	0.2	0.4	86.5	2.2	11.3	0.097	0.930	21.802452	-102.283844
T. Der. Estación Arellano (Central)	118.40	3	2	22555	1.7	80.3	3.5	7.1	1.9	3.2	1.1	0.7	0.5	82.0	3.5	14.5	0.101	0.762	21.802442	-102.283730
Aguascalientes	129.18	1	1	25791	1.3	82.5	3.3	7.6	1.5	2.5	0.6	0.5	0.2	83.8	3.3	12.9	0.101	0.511	21.823603	-102.287137
Aguascalientes	129.18	1	2	26984	1.2	80.7	3.6	8.9	1.7	2.6	0.6	0.5	0.2	81.9	3.6	14.5	0.108	0.511	21.823600	-102.287275

AGUASCALIENTES

9 CARR: Libramiento Rincón de Romos

CLAVE: 00167

RUTA: MEX-045

AÑO: 2018

LUGAR	ESTACION				CLASIFICACION VEHICULAR EN PORCIENTO													COORDENADAS		
	KM	TE	SC	TDPA	M	A	B	C2	C3	T3S2	T3S3	T3S2R4	OTROS	A	B	C	K'	D	LATITUD	LONGITUD
T. C. Aguascalientes - Zacatecas (Sur)	0.00	3	0	14543	0.5	65.6	5.1	7.7	2.7	10.5	2.7	4.0	1.2	66.1	5.1	28.8	0.074	0.513	22.197478	-102.294547
T. C. Aguascalientes - Zacatecas (Norte)	10.00	1	0	11777	0.7	62.7	5.1	7.1	2.2	12.4	3.1	5.3	1.4	63.4	5.1	31.5	0.072	0.501	22.262654	-102.307066

10 CARR: Ojo Caliente - Malpaso

CLAVE: 01123

RUTA: MEX-070

AÑO: 2018

LUGAR	ESTACION				CLASIFICACION VEHICULAR EN PORCIENTO													COORDENADAS		
	KM	TE	SC	TDPA	M	A	B	C2	C3	T3S2	T3S3	T3S2R4	OTROS	A	B	C	K'	D	LATITUD	LONGITUD
T. C. Aguascalientes - Jalpa	0.00	3	0	3810	1.4	90.4	0.3	7.2	0.2	0.1	0.2	0.1	0.1	91.8	0.3	7.9	0.084	0.600	21.880365	-102.670810
Malpaso	3.10	1	0	2317	4.7	87.7	0.0	6.4	0.1	1.1	0.0	0.0	0.0	92.4	0.0	7.6	0.101	0.514	21.862045	-102.670460

11 CARR: Ojuelos - Aguascalientes

CLAVE: 00094

RUTA: MEX-070

AÑO: 2018

LUGAR	ESTACION				CLASIFICACION VEHICULAR EN PORCIENTO													COORDENADAS		
	KM	TE	SC	TDPA	M	A	B	C2	C3	T3S2	T3S3	T3S2R4	OTROS	A	B	C	K'	D	LATITUD	LONGITUD
Ojuelos	0.00	3	0	5049	1.2	74.4	2.5	11.4	2.0	5.4	1.8	0.9	0.4	75.6	2.5	21.9	0.102	0.539	21.878738	-101.607259
Matancillas	6.92	3	0	3910	1.1	67.1	3.2	18.4	2.2	5.2	1.7	0.8	0.3	68.2	3.2	28.6	0.114	0.527	21.876544	-101.666916
Vergel	40.70	3	0	5098	1.8	80.2	1.6	8.3	1.2	3.1	2.8	0.6	0.4	82.0	1.6	16.4	0.083	0.548	21.771410	-101.949337
Lim. Edos. Term. Jal. Ppia. Ags.	57.20																			
T. Der. Palo Alto	60.80	1	0	5970	1.0	78.0	2.2	10.1	2.0	4.6	1.2	0.6	0.3	79.0	2.2	18.8	0.109	0.519	21.818622	-102.093372
San Isidro	61.00	3	0	8167	1.0	80.3	1.5	9.5	1.7	4.0	1.1	0.4	0.5	81.3	1.5	17.2	0.079	0.520	21.823213	-102.107263
El Retoño	68.00	1	0	8598	1.7	80.0	1.2	9.1	1.8	3.9	1.2	0.6	0.5	81.7	1.2	17.1	0.077	0.540	21.838509	-102.154047
T. C. El Retoño - Asturias	78.00	1	1	8270	1.5	78.6	2.2	12.0	1.7	2.0	1.3	0.4	0.3	80.1	2.2	17.7	0.079	0.531	21.858286	-102.214231
T. C. El Retoño - Asturias	78.00	1	2	7306	1.5	77.5	2.5	12.4	1.6	2.4	1.4	0.5	0.2	79.0	2.5	18.5	0.087	0.531	21.858184	-102.214284
T. C. El Retoño - Asturias	78.00	3	1	8954	2.1	85.6	0.7	7.1	1.0	1.9	1.1	0.2	0.3	87.7	0.7	11.6	0.078	0.517	21.861462	-102.225545
T. C. El Retoño - Asturias	78.00	3	2	8361	1.8	85.9	0.6	7.3	1.1	1.8	1.2	0.1	0.2	87.7	0.6	11.7	0.081	0.517	21.861321	-102.225592
Salto del Ojo Caliente (Central)	81.51	1	1	16347	3.6	87.0	0.4	4.1	0.5	2.1	1.7	0.3	0.3	90.6	0.4	9.0	0.063	0.541	21.866273	-102.240036
Salto del Ojo Caliente (Lateral)	81.51	1	1	3762	7.1	86.8	0.1	4.4	0.4	0.6	0.4	0.1	0.1	93.9	0.1	6.0	0.069	0.550	21.866436	-102.239993
Salto del Ojo Caliente (Central)	81.51	1	2	13872	4.0	85.8	0.4	4.3	0.5	2.3	2.1	0.3	0.3	89.8	0.4	9.8	0.059	0.541	21.866155	-102.240103
Salto del Ojo Caliente (Lateral)	81.51	1	2	4798	5.3	88.5	0.1	4.6	0.4	0.5	0.4	0.1	0.1	93.8	0.1	6.1	0.069	0.550	21.866035	-102.240153

12 CARR: Providencia - Luis Moya

CLAVE: 00112

RUTA: MEX-071

AÑO: 2018

LUGAR	ESTACION				CLASIFICACION VEHICULAR EN PORCIENTO													COORDENADAS		
	KM	TE	SC	TDPA	M	A	B	C2	C3	T3S2	T3S3	T3S2R4	OTROS	A	B	C	K'	D	LATITUD	LONGITUD
T. C. Aguascalientes - Zacatecas	0.00	3	0	5352	2.7	76.8	0.7	8.0	3.1	3.4	1.9	2.9	0.5	79.5	0.7	19.8	0.071	0.502	22.060778	-102.274094

AGUASCALIENTES

12 CARR: Providencia - Luis Moya

CLAVE: 00112

RUTA: MEX-071

AÑO: 2018

LUGAR	ESTACION				CLASIFICACION VEHICULAR EN PORCIENTO										COORDENADAS					
	KM	TE	SC	TDPA	M	A	B	C2	C3	T3S2	T3S3	T3S2R4	OTROS	A	B	C	K'	D	LATITUD	LONGITUD
T. Izq. Pabellón de Arteaga	12.10	1	0	6019	1.8	78.7	2.0	8.1	2.0	2.6	2.3	2.1	0.4	80.5	2.0	17.5	0.067	0.521	22.144532	-102.251608
T. Der. Villa Juárez	14.90	3	0	6037	1.8	77.8	0.5	9.3	1.7	3.2	2.5	2.8	0.4	79.6	0.5	19.9	0.079	0.510	22.176877	-102.245285
X. C. Rincón de Romos - Ciénega Grande	21.22	3	0	5524	3.0	77.1	1.6	10.4	1.7	2.8	1.7	1.3	0.4	80.1	1.6	18.3	0.065	0.506	22.230835	-102.241394
X. C. La Punta - Mesillas	30.35	3	0	3245	2.8	77.9	1.4	11.0	1.9	1.9	2.1	0.9	0.1	80.7	1.4	17.9	0.085	0.509	22.318067	-102.233617
San Jacinto	34.25	3	0	2293	5.9	73.3	0.4	11.0	2.2	3.2	1.8	1.9	0.3	79.2	0.4	20.4	0.073	0.520	22.353217	-102.232493
Lim. Edos. Term. Ags. Ppia. Zac.	37.50																			
Luis Moya	43.52	1	0	4377	2.6	74.3	0.5	16.1	1.1	2.9	1.4	0.8	0.3	76.9	0.5	22.6	0.078	0.522	22.423499	-102.246241

13 CARR: Ramal a Aeropuerto de Aguascalientes

CLAVE: 01116

RUTA: MEX-045

AÑO: 2018

LUGAR	ESTACION				CLASIFICACION VEHICULAR EN PORCIENTO										COORDENADAS					
	KM	TE	SC	TDPA	M	A	B	C2	C3	T3S2	T3S3	T3S2R4	OTROS	A	B	C	K'	D	LATITUD	LONGITUD
T. C. León - Aguascalientes	0.00																			
Aeropuerto	6.13	1	1	2214	0.3	95.0	0.1	4.5	0.1	0.0	0.0	0.0	0.0	95.3	0.1	4.6	0.086	0.529	21.711591	-102.310694
Aeropuerto	6.13	1	2	1971	0.3	94.9	0.1	4.6	0.1	0.0	0.0	0.0	0.0	95.2	0.1	4.7	0.074	0.529	21.711589	-102.310576

14 CARR: Rincón de Romos - Ciénega Grande

CLAVE: 01002

RUTA: MEX-039

AÑO: 2018

LUGAR	ESTACION				CLASIFICACION VEHICULAR EN PORCIENTO										COORDENADAS					
	KM	TE	SC	TDPA	M	A	B	C2	C3	T3S2	T3S3	T3S2R4	OTROS	A	B	C	K'	D	LATITUD	LONGITUD
Rincón de Romos	0.00	3	0	7139	2.5	86.1	0.2	6.6	0.7	2.9	0.5	0.1	0.4	88.6	0.2	11.2	0.081	0.513	22.224098	-102.302259
X. C. Providencia - Luis Moya	8.00	3	0	3382	3.0	83.6	0.4	8.2	2.0	1.4	1.0	0.1	0.3	86.6	0.4	13.0	0.076	0.503	22.226949	-102.236654
Tepezala	15.00	3	0	1662	4.4	79.8	1.8	9.6	1.6	1.4	1.0	0.0	0.4	84.2	1.8	14.0	0.088	0.502	22.217866	-102.160745
Asientos	27.70	3	0	2017	6.3	79.5	1.2	11.5	0.4	0.8	0.2	0.0	0.1	85.8	1.2	13.0	0.086	0.517	22.234051	-102.074555
Ciénega Grande	36.70	1	0	4028	7.8	72.9	1.7	13.8	1.1	2.1	0.4	0.1	0.1	80.7	1.7	17.6	0.080	0.501	22.200010	-102.019227

15 CARR: Aguascalientes - Ent. Cd. de Los Niños

CLAVE: 01130

RUTA: AGS

AÑO: 2018

LUGAR	ESTACION				CLASIFICACION VEHICULAR EN PORCIENTO										COORDENADAS					
	KM	TE	SC	TDPA	M	A	B	C2	C3	T3S2	T3S3	T3S2R4	OTROS	A	B	C	K'	D	LATITUD	LONGITUD
T. C. Aguascalientes - Jalpa	0.00	3	1	13432	1.0	93.0	0.4	1.8	0.3	0.8	2.7	0.0	0.0	94.0	0.4	5.6	0.091	0.522	21.861281	-102.338699
T. C. Aguascalientes - Jalpa	0.00	3	2	12291	0.8	92.5	0.3	2.1	0.4	0.9	3.0	0.0	0.0	93.3	0.3	6.4	0.115	0.522	21.861221	-102.338622
T. C. Ent. Penitenciaria - Villa Hidalgo	8.00	1	0	1192	2.8	89.4	0.0	4.2	2.2	1.1	0.2	0.1	0.0	92.2	0.0	7.8	0.115	0.528	21.837333	-102.374444

AGUASCALIENTES

16 CARR: Aguascalientes - Jesús María

CLAVE: 01112

RUTA: AGS-095

AÑO: 2018

LUGAR	ESTACION				CLASIFICACION VEHICULAR EN PORCIENTO										COORDENADAS					
	KM	TE	SC	TDPA	M	A	B	C2	C3	T3S2	T3S3	T3S2R4	OTROS	A	B	C	K'	D	LATITUD	LONGITUD
T. C. Aguascalientes - Zacatecas	0.00																			
Pocitos	3.30	3	1	19911	2.6	92.9	0.1	3.5	0.2	0.3	0.4	0.0	0.0	95.5	0.1	4.4	0.065	0.500	21.920579	-102.315436
Pocitos	3.30	3	2	19926	2.4	93.0	0.1	3.6	0.2	0.3	0.4	0.0	0.0	95.4	0.1	4.5	0.064	0.500	21.920530	-102.315613
T. Der. Maravillas	7.00	3	1	12974	1.8	93.7	0.2	3.8	0.3	0.1	0.1	0.0	0.0	95.5	0.2	4.3	0.066	0.517	21.939354	-102.325732
T. Der. Maravillas	7.00	3	2	12110	3.7	91.5	0.2	4.1	0.3	0.1	0.1	0.0	0.0	95.2	0.2	4.6	0.073	0.517	21.939297	-102.325881
Jesús María	8.10	1	1	12988	4.6	91.2	0.3	3.4	0.3	0.1	0.1	0.0	0.0	95.8	0.3	3.9	0.067	0.506	21.949100	-102.332444
Jesús María	8.10	1	2	12696	3.8	91.5	0.3	3.9	0.3	0.1	0.1	0.0	0.0	95.3	0.3	4.4	0.070	0.506	21.949026	-102.332561

17 CARR: Aguascalientes - José María Morelos

CLAVE: 01131

RUTA: AGS

AÑO: 2018

LUGAR	ESTACION				CLASIFICACION VEHICULAR EN PORCIENTO										COORDENADAS					
	KM	TE	SC	TDPA	M	A	B	C2	C3	T3S2	T3S3	T3S2R4	OTROS	A	B	C	K'	D	LATITUD	LONGITUD
Las Cumbres (Av. Siglo XXI)	0.00	3	0	4735	3.4	80.6	0.7	10.0	2.6	1.9	0.4	0.2	0.2	84.0	0.7	15.3	0.074	0.521	21.932017	-102.230946
T. Der. San Jose de La Ordeña	8.00	3	0	3247	1.6	78.5	1.2	14.4	2.3	1.4	0.3	0.2	0.1	80.1	1.2	18.7	0.078	0.525	21.959942	-102.215080
José María Morelos	12.60																			

18 CARR: Carboneras - Villa Juárez

CLAVE: 01111

RUTA: AGS-004

AÑO: 2018

LUGAR	ESTACION				CLASIFICACION VEHICULAR EN PORCIENTO										COORDENADAS					
	KM	TE	SC	TDPA	M	A	B	C2	C3	T3S2	T3S3	T3S2R4	OTROS	A	B	C	K'	D	LATITUD	LONGITUD
Carboneras	0.00	3	0	1674	3.5	83.5	0.4	10.5	0.7	1.2	0.2	0.0	0.0	87.0	0.4	12.6	0.064	0.514	22.173616	-102.235979
Clavellinas	14.00	1	0	1382	3.6	81.1	0.6	10.9	1.9	1.3	0.5	0.0	0.1	84.7	0.6	14.7	0.078	0.518	22.138924	-102.143366
Ent. Villa Juárez	23.10	1	0	2860	5.3	79.0	1.0	10.6	1.9	1.8	0.3	0.0	0.1	84.3	1.0	14.7	0.080	0.502	22.104439	-102.067257

19 CARR: Cosío - Santa María de La Paz

CLAVE: 01132

RUTA: AGS

AÑO: 2018

LUGAR	ESTACION				CLASIFICACION VEHICULAR EN PORCIENTO										COORDENADAS					
	KM	TE	SC	TDPA	M	A	B	C2	C3	T3S2	T3S3	T3S2R4	OTROS	A	B	C	K'	D	LATITUD	LONGITUD
T. C. Aguascalientes - Zacatecas	0.00	3	0	1304	14.0	73.0	1.8	10.2	0.1	0.8	0.1	0.0	0.0	87.0	1.8	11.2	0.080	0.505	22.374631	-102.294079
Santa María de La Paz	5.60																			

AGUASCALIENTES

20 CARR: Crucero Ojo de Agua de Crucitas - Santa Rosa

CLAVE: 01140

RUTA: AGS

AÑO: 2018

LUGAR	ESTACION				CLASIFICACION VEHICULAR EN PORCIENTO													COORDENADAS		
	KM	TE	SC	TDPA	M	A	B	C2	C3	T3S2	T3S3	T3S2R4	OTROS	A	B	C	K'	D	LATITUD	LONGITUD
T. C. Ent. La Calavera - Ent. San Pedro	0.00	3	0	858	8.6	79.7	0.1	9.1	1.2	0.9	0.4	0.0	0.0	88.3	0.1	11.6	0.100	0.525	21.939445	-101.978996
Santa Rosa	5.00																			

21 CARR: El Tanque - San José de La Ordeña

CLAVE: 01143

RUTA: AGS

AÑO: 2018

LUGAR	ESTACION				CLASIFICACION VEHICULAR EN PORCIENTO													COORDENADAS		
	KM	TE	SC	TDPA	M	A	B	C2	C3	T3S2	T3S3	T3S2R4	OTROS	A	B	C	K'	D	LATITUD	LONGITUD
T. C. Aguascalientes - José María Morelos	0.00	3	0	1530	8.1	75.3	0.3	12.4	2.0	1.3	0.4	0.1	0.1	83.4	0.3	16.3	0.081	0.511	21.960875	-102.210930
San José de La Ordeña	8.50																			

22 CARR: El Taray - T. C. (Ramal Aeropuerto de Aguascalientes)

CLAVE: 01121

RUTA: AGS-002

AÑO: 2018

LUGAR	ESTACION				CLASIFICACION VEHICULAR EN PORCIENTO													COORDENADAS		
	KM	TE	SC	TDPA	M	A	B	C2	C3	T3S2	T3S3	T3S2R4	OTROS	A	B	C	K'	D	LATITUD	LONGITUD
T. C. Ent. Penitenciaria - Villa Hidalgo	0.00	3	0	736	1.7	83.7	0.5	13.3	0.7	0.1	0.0	0.0	0.0	85.4	0.5	14.1	0.087	0.566	21.733718	-102.483458
T. C. Ramal Aeropuerto de Aguascalientes	22.00	1	1	748	2.6	74.6	1.4	19.3	1.7	0.3	0.1	0.0	0.0	77.2	1.4	21.4	0.102	0.547	21.722413	-102.319179
T. C. Ramal Aeropuerto de Aguascalientes	22.00	1	2	902	4.7	76.8	1.4	14.2	2.0	0.6	0.2	0.1	0.0	81.5	1.4	17.1	0.090	0.547	21.722518	-102.319242

23 CARR: Ent. Arellano - El Retoño

CLAVE: 01121

RUTA: AGS

AÑO: 2018

LUGAR	ESTACION				CLASIFICACION VEHICULAR EN PORCIENTO													COORDENADAS		
	KM	TE	SC	TDPA	M	A	B	C2	C3	T3S2	T3S3	T3S2R4	OTROS	A	B	C	K'	D	LATITUD	LONGITUD
T. C. León - Aguascalientes	0.00	3	0	6717	5.9	73.2	1.4	9.5	4.2	3.4	0.8	1.3	0.3	79.1	1.4	19.5	0.079	0.507	21.798267	-102.264032
T. Izq. Villa Jesús Terán (Calvillito)	12.20	1	0	2081	6.5	68.5	5.9	7.5	3.6	3.4	3.2	1.3	0.1	75.0	5.9	19.1	0.082	0.501	21.817327	-102.188284
T. Izq. Villa Jesús Terán (Calvillito)	12.20	3	0	1766	7.4	67.4	6.9	6.0	3.3	3.3	3.2	2.4	0.1	74.8	6.9	18.3	0.079	0.507	21.826076	-102.178948
T. C. Ojuelos - Aguascalientes	15.92	1	0	1652	5.9	69.5	5.7	7.5	3.8	3.5	2.8	1.1	0.2	75.4	5.7	18.9	0.091	0.506	21.835288	-102.164676

24 CARR: Ent. Buenavista - Gracias a Dios

CLAVE: 01138

RUTA: AGS

AÑO: 2018

LUGAR	ESTACION				CLASIFICACION VEHICULAR EN PORCIENTO													COORDENADAS		
	KM	TE	SC	TDPA	M	A	B	C2	C3	T3S2	T3S3	T3S2R4	OTROS	A	B	C	K'	D	LATITUD	LONGITUD
T. C. Aguascalientes - Jalpa	0.00	3	0	1045	2.0	86.0	0.6	10.0	0.4	1.0	0.0	0.0	0.0	88.0	0.6	11.4	0.099	0.526	21.891045	-102.462376
Gracias a Dios	6.30																			

AGUASCALIENTES

25 CARR: Ent. El Novillo - Villa Juárez

CLAVE: 01103

RUTA: AGS-005

AÑO: 2018

LUGAR	ESTACION				CLASIFICACION VEHICULAR EN PORCIENTO												COORDENADAS				
	KM	TE	SC	TDPA	M	A	B	C2	C3	T3S2	T3S3	T3S2R4	OTROS	A	B	C	K'	D	LATITUD	LONGITUD	
T. C. Ent. La Calavera - Ent. San Pedro	0.00																				
Villa Juárez	12.60	1	0	2095	5.6	77.3	0.9	11.9	1.6	2.0	0.4	0.1	0.2	82.9	0.9	16.2	0.076	0.517	22.092045	-102.059489	

26 CARR: Ent. La Calavera - Ent. San Pedro

CLAVE: 01102

RUTA: AGS-043

AÑO: 2018

LUGAR	ESTACION				CLASIFICACION VEHICULAR EN PORCIENTO												COORDENADAS			
	KM	TE	SC	TDPA	M	A	B	C2	C3	T3S2	T3S3	T3S2R4	OTROS	A	B	C	K'	D	LATITUD	LONGITUD
T. C. Ojuelos - Aguascalientes	0.00	3	0	3712	4.9	77.1	3.9	4.7	3.0	2.1	3.3	0.9	0.1	82.0	3.9	14.1	0.066	0.501	21.825378	-102.088790
T. Der. Palo Alto	15.00	1	0	3828	3.5	82.1	0.8	8.6	2.1	2.3	0.4	0.1	0.1	85.6	0.8	13.6	0.079	0.504	21.912791	-101.977785
T. Der. Palo Alto	15.00	3	0	2782	5.2	74.5	2.0	12.4	3.0	1.9	0.6	0.3	0.1	79.7	2.0	18.3	0.072	0.510	21.928150	-101.972280
T. Izq. Ent. El Novillo - Villa Juárez	28.10	1	0	2261	3.3	77.6	1.6	12.1	3.0	1.7	0.5	0.2	0.0	80.9	1.6	17.5	0.103	0.505	22.009031	-101.995316
T. Izq. Ent. El Novillo - Villa Juárez	28.10	3	0	2340	4.4	78.6	1.7	11.4	1.8	1.6	0.2	0.3	0.0	83.0	1.7	15.3	0.076	0.516	22.013464	-101.992514
Pilotos	33.50	3	0	2754	5.6	80.4	1.4	8.9	1.4	1.7	0.5	0.1	0.0	86.0	1.4	12.6	0.068	0.506	22.039634	-101.961016
T. C. Rivier - San Marcos	47.60	1	0	2956	3.7	81.8	1.3	10.0	1.2	1.5	0.4	0.1	0.0	85.5	1.3	13.2	0.084	0.501	22.135506	-102.039964

27 CARR: Ent. La Chirida - San Francisco de Los Romo

CLAVE: 01016

RUTA: AGS

AÑO: 2018

LUGAR	ESTACION				CLASIFICACION VEHICULAR EN PORCIENTO												COORDENADAS				
	KM	TE	SC	TDPA	M	A	B	C2	C3	T3S2	T3S3	T3S2R4	OTROS	A	B	C	K'	D	LATITUD	LONGITUD	
T. C. Jesús María - Palomas	0.00																				
San Francisco de Los Romo	1.50	1	0	4462	10.8	74.6	0.3	8.6	1.8	2.7	0.7	0.2	0.3	85.4	0.3	14.3	0.082	0.526	22.067828	-102.282609	

28 CARR: Ent. Pabellón de Arteaga - California

CLAVE: 01137

RUTA: AGS

AÑO: 2018

LUGAR	ESTACION				CLASIFICACION VEHICULAR EN PORCIENTO												COORDENADAS			
	KM	TE	SC	TDPA	M	A	B	C2	C3	T3S2	T3S3	T3S2R4	OTROS	A	B	C	K'	D	LATITUD	LONGITUD
T. C. Aguascalientes - Zacatecas	0.00	3	0	6301	1.7	87.0	0.5	6.5	0.8	2.8	0.3	0.1	0.3	88.7	0.5	10.8	0.079	0.586	22.108170	-102.274351
Pabellón de Arteaga	5.60	3	0	3111	7.5	84.0	0.3	5.7	0.5	1.6	0.2	0.1	0.1	91.5	0.3	8.2	0.111	0.516	22.154819	-102.275678
X. C. Rincón de Romos - Ciénega Grande	13.30	1	0	2514	9.5	78.7	0.5	8.1	0.8	1.7	0.3	0.1	0.3	88.2	0.5	11.3	0.093	0.511	22.222540	-102.278374
X. C. Rincón de Romos - Ciénega Grande	13.30	3	0	1534	13.6	75.8	0.5	7.2	1.0	1.4	0.4	0.0	0.1	89.4	0.5	10.1	0.095	0.508	22.234109	-102.278477
Ejido California	20.50	1	0	1027	16.2	71.3	0.4	8.9	1.3	1.1	0.7	0.0	0.1	87.5	0.4	12.1	0.129	0.512	22.277015	-102.260022

AGUASCALIENTES

29 CARR: Ent. Pabellón de Arteaga - San José de Gracia

CLAVE: 01031

RUTA: AGS-019

AÑO: 2018

LUGAR	ESTACION				CLASIFICACION VEHICULAR EN PORCIENTO										COORDENADAS					
	KM	TE	SC	TDPA	M	A	B	C2	C3	T3S2	T3S3	T3S2R4	OTROS	A	B	C	K'	D	LATITUD	LONGITUD
T. C. Aguascalientes - Zacatecas	0.00	3	1	3417	0.2	87.8	0.4	9.4	1.7	0.2	0.3	0.0	0.0	88.0	0.4	11.6	0.106	0.560	22.146209	-102.297596
T. C. Aguascalientes - Zacatecas	0.00	3	2	2685	0.2	86.9	0.7	9.9	1.8	0.2	0.3	0.0	0.0	87.1	0.7	12.2	0.070	0.560	22.146107	-102.297600
T. Der. La Cieneguita	10.00	1	1	2185	2.7	87.1	0.9	8.1	1.0	0.1	0.1	0.0	0.0	89.8	0.9	9.3	0.135	0.511	22.140450	-102.380388
T. Der. La Cieneguita	10.00	1	2	2093	3.6	87.0	1.4	6.9	1.1	0.0	0.0	0.0	0.0	90.6	1.4	8.0	0.110	0.511	22.140328	-102.380441
San José de Gracia	13.80	1	1	1912	5.1	83.7	1.2	8.7	1.1	0.1	0.1	0.0	0.0	88.8	1.2	10.0	0.121	0.506	22.144789	-102.404739
San José de Gracia	13.80	1	2	1863	4.8	84.9	1.3	7.9	1.0	0.1	0.0	0.0	0.0	89.7	1.3	9.0	0.083	0.506	22.144717	-102.404829

30 CARR: Ent. Rincón de Romos - La Boquilla

CLAVE: 01139

RUTA: AGS

AÑO: 2018

LUGAR	ESTACION				CLASIFICACION VEHICULAR EN PORCIENTO										COORDENADAS					
	KM	TE	SC	TDPA	M	A	B	C2	C3	T3S2	T3S3	T3S2R4	OTROS	A	B	C	K'	D	LATITUD	LONGITUD
T. C. Aguascalientes - Zacatecas	0.00	3	0	2043	16.2	71.6	0.6	9.3	0.7	1.3	0.1	0.1	0.1	87.8	0.6	11.6	0.078	0.511	22.243227	-102.318637
La Boquilla	6.90																			

31 CARR: Ent. San Carlos - Ent. El Milagro

CLAVE: 01141

RUTA: AGS-010

AÑO: 2018

LUGAR	ESTACION				CLASIFICACION VEHICULAR EN PORCIENTO										COORDENADAS					
	KM	TE	SC	TDPA	M	A	B	C2	C3	T3S2	T3S3	T3S2R4	OTROS	A	B	C	K'	D	LATITUD	LONGITUD
T. C. Jesús María - Palomas	0.00	3	0	1985	7.5	78.8	0.1	8.0	2.1	1.5	1.8	0.1	0.1	86.3	0.1	13.6	0.087	0.512	22.048481	-102.303501
T. C. (T. C-(Ags. - Zac.)- San José de Gracia)	13.60	1	0	1474	8.4	75.7	0.2	9.6	4.1	0.6	1.1	0.1	0.2	84.1	0.2	15.7	0.100	0.522	22.142541	-102.336028

32 CARR: Ent. San Felipe - Jesús María

CLAVE: 01144

RUTA: AGS

AÑO: 2018

LUGAR	ESTACION				CLASIFICACION VEHICULAR EN PORCIENTO										COORDENADAS					
	KM	TE	SC	TDPA	M	A	B	C2	C3	T3S2	T3S3	T3S2R4	OTROS	A	B	C	K'	D	LATITUD	LONGITUD
T. C. Aguascalientes - Jalpa	0.00	3	0	1316	7.3	76.5	0.5	13.0	1.2	0.9	0.4	0.1	0.1	83.8	0.5	15.7	0.081	0.522	21.896652	-102.368529
Jesús María	12.70	1	0	1525	11.1	78.2	0.7	7.0	1.0	1.2	0.4	0.2	0.2	89.3	0.7	10.0	0.090	0.526	21.949328	-102.362311

33 CARR: Ent. San Isidro - Ent. El Salitre

CLAVE: 01142

RUTA: AGS-016

AÑO: 2018

LUGAR	ESTACION				CLASIFICACION VEHICULAR EN PORCIENTO										COORDENADAS					
	KM	TE	SC	TDPA	M	A	B	C2	C3	T3S2	T3S3	T3S2R4	OTROS	A	B	C	K'	D	LATITUD	LONGITUD
T. C. Aguascalientes - Jalpa	0.00	3	0	1566	1.9	84.7	0.4	10.8	1.5	0.6	0.1	0.0	0.0	86.6	0.4	13.0	0.085	0.509	21.887002	-102.492610
T. C. Ent. Penitenciaria - Villa Hidalgo	20.40	1	0	478	1.6	87.5	0.4	8.8	1.3	0.4	0.0	0.0	0.0	89.1	0.4	10.5	0.088	0.510	21.757865	-102.491961

AGUASCALIENTES

34 CARR: Est. Coyotes - Ent. San Bartolo

CLAVE: 01134

RUTA: AGS-069

AÑO: 2018

LUGAR	ESTACION				CLASIFICACION VEHICULAR EN PORCIENTO														COORDENADAS	
	KM	TE	SC	TDPA	M	A	B	C2	C3	T3S2	T3S3	T3S2R4	OTROS	A	B	C	K'	D	LATITUD	LONGITUD
T. C. León - Aguascalientes	0.00	3	0	2578	4.9	61.1	1.6	9.9	16.1	2.3	1.6	2.3	0.2	66.0	1.6	32.4	0.067	0.520	21.751602	-102.263730
T. C. San Isidro El Grande - Bajío de San José	13.10																			

35 CARR: Fracc. Ojo Caliente - El Conejal

CLAVE: 01129

RUTA: AGS-079

AÑO: 2018

LUGAR	ESTACION				CLASIFICACION VEHICULAR EN PORCIENTO														COORDENADAS	
	KM	TE	SC	TDPA	M	A	B	C2	C3	T3S2	T3S3	T3S2R4	OTROS	A	B	C	K'	D	LATITUD	LONGITUD
Fracc. Ojo Caliente	0.00																			
Las Norias de Ojo Caliente	3.50	1	1	6238	6.2	84.5	0.3	6.6	0.9	0.9	0.5	0.0	0.1	90.7	0.3	9.0	0.085	0.503	21.883934	-102.225601
Las Norias de Ojo Caliente	3.50	1	2	6311	6.9	83.0	0.3	7.1	1.1	1.0	0.5	0.0	0.1	89.9	0.3	9.8	0.067	0.503	21.884082	-102.225636
Las Norias de Ojo Caliente	3.50	3	0	2145	10.8	75.6	0.4	9.1	2.4	1.4	0.2	0.0	0.1	86.4	0.4	13.2	0.077	0.503	21.899498	-102.214045
El Conejal	7.50																			

36 CARR: Jesús María - Palomas

CLAVE: 01018

RUTA: AGS-018

AÑO: 2018

LUGAR	ESTACION				CLASIFICACION VEHICULAR EN PORCIENTO														COORDENADAS	
	KM	TE	SC	TDPA	M	A	B	C2	C3	T3S2	T3S3	T3S2R4	OTROS	A	B	C	K'	D	LATITUD	LONGITUD
Jesús María	0.00	3	1	8962	4.3	83.8	0.1	3.6	1.3	3.2	1.7	1.4	0.6	88.1	0.1	11.8	0.089	0.505	21.980759	-102.337344
Jesús María	0.00	3	2	9137	4.6	82.6	0.1	3.7	1.5	3.4	1.7	1.7	0.7	87.2	0.1	12.7	0.086	0.505	21.980785	-102.337416
Valladolid	7.30	3	0	4526	6.6	82.0	0.3	8.6	1.6	0.5	0.3	0.0	0.1	88.6	0.3	11.1	0.074	0.548	22.028193	-102.314339
Palomas	21.70	1	0	1784	6.6	75.6	1.3	10.8	2.9	1.3	1.5	0.0	0.0	82.2	1.3	16.5	0.080	0.501	22.104222	-102.279422

37 CARR: La Panadera - Palo Alto

CLAVE: 01105

RUTA: AGS-017

AÑO: 2018

LUGAR	ESTACION				CLASIFICACION VEHICULAR EN PORCIENTO														COORDENADAS	
	KM	TE	SC	TDPA	M	A	B	C2	C3	T3S2	T3S3	T3S2R4	OTROS	A	B	C	K'	D	LATITUD	LONGITUD
T. C. Aguascalientes - Jalpa	0.00	3	0	5142	2.4	86.5	0.1	7.5	0.5	2.4	0.3	0.1	0.2	88.9	0.1	11.0	0.071	0.508	21.870938	-102.702475
T. Izq. La Ordeña	8.40	3	0	2744	0.9	89.1	0.1	8.7	0.5	0.3	0.4	0.0	0.0	90.0	0.1	9.9	0.090	0.501	21.923402	-102.701354
La Labor	12.80	3	0	1868	2.1	85.5	0.1	11.6	0.7	0.0	0.0	0.0	0.0	87.6	0.1	12.3	0.076	0.512	21.967737	-102.686728
Palo Alto	23.30	1	0	286	1.3	89.9	0.1	8.5	0.1	0.1	0.0	0.0	0.0	91.2	0.1	8.7	0.098	0.512	22.038313	-102.681198

AGUASCALIENTES

38 CARR: La Punta - Mesillas

CLAVE: 01104

RUTA: AGS-026

AÑO: 2018

LUGAR	ESTACION				CLASIFICACION VEHICULAR EN PORCIENTO										COORDENADAS					
	KM	TE	SC	TDPA	M	A	B	C2	C3	T3S2	T3S3	T3S2R4	OTROS	A	B	C	K'	D	LATITUD	LONGITUD
T. C. Aguascalientes - Zacatecas	0.00	3	0	1537	5.6	81.3	1.0	9.2	1.3	1.1	0.5	0.0	0.0	86.9	1.0	12.1	0.085	0.510	22.316816	-102.276576
X. C. Providencia - Luis Moya	6.50	3	0	1987	6.1	82.5	0.6	8.1	1.1	1.2	0.4	0.0	0.0	88.6	0.6	10.8	0.072	0.500	22.313450	-102.230907
Mesillas	13.50	1	0	973	9.7	78.6	0.8	9.3	0.8	0.8	0.0	0.0	0.0	88.3	0.8	10.9	0.098	0.501	22.312670	-102.173949

39 CARR: La Rinconada - El Terrero del Refugio

CLAVE: 01133

RUTA: AGS-007

AÑO: 2018

LUGAR	ESTACION				CLASIFICACION VEHICULAR EN PORCIENTO										COORDENADAS					
	KM	TE	SC	TDPA	M	A	B	C2	C3	T3S2	T3S3	T3S2R4	OTROS	A	B	C	K'	D	LATITUD	LONGITUD
T. C. Aguascalientes - Jalpa	0.00	3	0	1587	3.2	86.6	0.2	8.0	0.7	1.2	0.1	0.0	0.0	89.8	0.2	10.0	0.118	0.510	21.791460	-102.801855
El Terrero del Refugio	15.00																			

40 CARR: Las Norias de Ojo Caliente - La Luz

CLAVE: 01122

RUTA: AGS-068

AÑO: 2018

LUGAR	ESTACION				CLASIFICACION VEHICULAR EN PORCIENTO										COORDENADAS					
	KM	TE	SC	TDPA	M	A	B	C2	C3	T3S2	T3S3	T3S2R4	OTROS	A	B	C	K'	D	LATITUD	LONGITUD
Las Norias de Ojo Caliente	0.00	3	0	4006	7.9	79.5	0.7	8.9	1.0	1.6	0.2	0.0	0.2	87.4	0.7	11.9	0.092	0.515	21.893998	-102.202306
T. Der. Sandovales	10.50	3	0	2194	3.3	85.6	1.0	7.7	1.0	1.0	0.2	0.1	0.1	88.9	1.0	10.1	0.086	0.507	21.914821	-102.119692
La Luz	27.60	1	0	1427	7.5	80.3	0.8	9.3	0.8	0.9	0.3	0.0	0.1	87.8	0.8	11.4	0.089	0.509	21.998813	-101.999179

41 CARR: Libramiento San Francisco de Los Romo

CLAVE: 01137

RUTA: AGS

AÑO: 2018

LUGAR	ESTACION				CLASIFICACION VEHICULAR EN PORCIENTO										COORDENADAS					
	KM	TE	SC	TDPA	M	A	B	C2	C3	T3S2	T3S3	T3S2R4	OTROS	A	B	C	K'	D	LATITUD	LONGITUD
T. C. Aguascalientes - Zacatecas (Sur)	0.00	3	1	14396	0.8	79.3	2.1	6.7	1.8	5.3	1.5	2.2	0.3	80.1	2.1	17.8	0.083	0.512	22.057265	-102.279995
T. C. Aguascalientes - Zacatecas (Sur)	0.00	3	2	13732	0.8	78.0	2.2	7.2	1.9	5.5	1.6	2.5	0.3	78.8	2.2	19.0	0.093	0.512	22.055612	-102.280419
T. C. Aguascalientes - Zacatecas (Norte)	5.50	1	1	14518	0.8	78.9	3.2	6.1	1.7	5.1	1.5	2.5	0.2	79.7	3.2	17.1	0.084	0.515	22.083983	-102.276118
T. C. Aguascalientes - Zacatecas (Norte)	5.50	1	2	13673	0.7	77.0	3.3	7.0	1.8	5.7	1.6	2.7	0.2	77.7	3.3	19.0	0.091	0.515	22.084021	-102.276239

42 CARR: Pabellón de Hidalgo - Rincón de Romos

CLAVE: 01136

RUTA: AGS

AÑO: 2018

LUGAR	ESTACION				CLASIFICACION VEHICULAR EN PORCIENTO										COORDENADAS					
	KM	TE	SC	TDPA	M	A	B	C2	C3	T3S2	T3S3	T3S2R4	OTROS	A	B	C	K'	D	LATITUD	LONGITUD
Pabellón de Hidalgo	0.00	3	0	2420	12.6	80.5	0.3	5.2	0.3	1.0	0.0	0.0	0.1	93.1	0.3	6.6	0.088	0.509	22.186150	-102.338421
Rincón de Romos	6.70																			

AGUASCALIENTES

43 CARR: Pilotos - Los Campos

CLAVE: 00007

RUTA: AGS-030

AÑO: 2018

LUGAR	ESTACION				CLASIFICACION VEHICULAR EN PORCIENTO										COORDENADAS					
	KM	TE	SC	TDPA	M	A	B	C2	C3	T3S2	T3S3	T3S2R4	OTROS	A	B	C	K'	D	LATITUD	LONGITUD
T. C. Ent. La Calavera - Ent. San Pedro	0.00	3	0	2045	5.2	81.8	0.2	11.3	0.5	0.8	0.1	0.0	0.1	87.0	0.2	12.8	0.078	0.512	22.042279	-101.943367
Lim. Edos. Term. Ags. Ppia. Jal.	10.50																			
Los Campos	12.00																			

44 CARR: Pocitos - Granja Miravalle

CLAVE: 01109

RUTA: AGS-053

AÑO: 2018

LUGAR	ESTACION				CLASIFICACION VEHICULAR EN PORCIENTO										COORDENADAS					
	KM	TE	SC	TDPA	M	A	B	C2	C3	T3S2	T3S3	T3S2R4	OTROS	A	B	C	K'	D	LATITUD	LONGITUD
T. C. Aguascalientes - Jesús María	0.00																			
Maravillas	1.50	3	1	4271	5.8	85.7	0.4	6.0	1.1	0.5	0.2	0.1	0.2	91.5	0.4	8.1	0.103	0.541	21.953875	-102.322507
Maravillas	1.50	3	2	5037	7.4	83.2	0.4	7.2	1.2	0.3	0.2	0.0	0.1	90.6	0.4	9.0	0.097	0.541	21.953875	-102.322507
Granja Miravalle	5.70	1	0	3960	8.0	81.7	0.5	8.5	0.6	0.3	0.2	0.0	0.2	89.7	0.5	9.8	0.071	0.523	21.977645	-102.316142

45 CARR: Ramal a San Pedro Piedra Gorda

CLAVE: 00553

RUTA: ZAC-AGS

AÑO: 2018

LUGAR	ESTACION				CLASIFICACION VEHICULAR EN PORCIENTO										COORDENADAS					
	KM	TE	SC	TDPA	M	A	B	C2	C3	T3S2	T3S3	T3S2R4	OTROS	A	B	C	K'	D	LATITUD	LONGITUD
T. C. Aguascalientes - Zacatecas	0.00	3	0	1432	3.7	81.6	1.4	11.4	1.0	0.8	0.1	0.0	0.0	85.3	1.4	13.3	0.089	0.503	22.465179	-102.264229
Lim. Edos. Term. Zac. Ppia. Ags.	5.00																			
Lim. Edos. Term. Ags. Ppia. Zac.	8.00																			
San Pedro Piedra Gorda	9.00	1	0	2171	9.2	77.4	0.6	10.2	0.6	1.7	0.2	0.0	0.1	86.6	0.6	12.8	0.081	0.507	22.452460	-102.337714

46 CARR: San Gil - Jarillas

CLAVE: 00527

RUTA: AGS-012-ZAC

AÑO: 2018

LUGAR	ESTACION				CLASIFICACION VEHICULAR EN PORCIENTO										COORDENADAS					
	KM	TE	SC	TDPA	M	A	B	C2	C3	T3S2	T3S3	T3S2R4	OTROS	A	B	C	K'	D	LATITUD	LONGITUD
T. C. Rincón de Romos - Ciénega Grande	0.00	3	0	2496	6.0	71.6	3.1	14.3	2.3	1.5	1.1	0.0	0.1	77.6	3.1	19.3	0.066	0.501	22.216485	-102.022150
Guadalupe de Atlas	5.40	1	0	2316	7.8	63.8	3.7	16.4	3.8	2.3	2.2	0.0	0.0	71.6	3.7	24.7	0.074	0.505	22.258393	-102.026514
Lim. Edos. Term. Ags. Ppia. Zac.	10.00																			
Lim. Edos. Term. Zac. Ppia. Ags.	11.30																			
Jarillas	12.00																			

AGUASCALIENTES

47 CARR: San Isidro El Grande - Bajío de San José

CLAVE: 00526

RUTA: AGS-036

AÑO: 2018

LUGAR	ESTACION				CLASIFICACION VEHICULAR EN PORCIENTO												COORDENADAS			
	KM	TE	SC	TDPA	M	A	B	C2	C3	T3S2	T3S3	T3S2R4	OTROS	A	B	C	K'	D	LATITUD	LONGITUD
T. C. Ojuelos - Aguascalientes	0.00	3	0	1153	9.1	67.1	1.6	13.5	4.7	1.8	1.2	0.7	0.3	76.2	1.6	22.2	0.101	0.510	21.816001	-102.107803
Ent. San Bartolo	11.50	3	0	1847	4.7	78.2	0.8	9.9	4.1	1.3	0.8	0.1	0.1	82.9	0.8	16.3	0.100	0.501	21.745739	-102.172586
Lim. Edos. Term. Ags. Ppia. Jal.	17.50																			
Bajío de San José	22.50																			

48 CARR: San Rafael - Villa García

CLAVE: 00525

RUTA: AGS-ZAC

AÑO: 2018

LUGAR	ESTACION				CLASIFICACION VEHICULAR EN PORCIENTO												COORDENADAS			
	KM	TE	SC	TDPA	M	A	B	C2	C3	T3S2	T3S3	T3S2R4	OTROS	A	B	C	K'	D	LATITUD	LONGITUD
T. C. Ent. La Calavera - Ent. San Pedro	0.00	3	0	2187	8.1	80.8	0.5	8.1	0.7	1.3	0.2	0.1	0.2	88.9	0.5	10.6	0.079	0.500	22.116923	-102.010710
Lim. Edos. Term. Ags. Ppia. Zac.	3.00																			
Villa García	10.00	1	0	3235	9.9	79.4	0.5	7.0	0.3	2.4	0.3	0.0	0.2	89.3	0.5	10.2	0.075	0.515	22.135261	-101.969949

49 CARR: Santa Rosa - Pabellón de Hidalgo

CLAVE: 01135

RUTA: AGS

AÑO: 2018

LUGAR	ESTACION				CLASIFICACION VEHICULAR EN PORCIENTO												COORDENADAS			
	KM	TE	SC	TDPA	M	A	B	C2	C3	T3S2	T3S3	T3S2R4	OTROS	A	B	C	K'	D	LATITUD	LONGITUD
T. C. Aguascalientes - Zacatecas	0.00	3	0	2620	2.9	84.9	0.4	8.5	1.7	1.3	0.2	0.0	0.1	87.8	0.4	11.8	0.088	0.511	22.159643	-102.303920
Pabellón de Hidalgo	5.10																			

50 CARR: T. Caldera - Ent. Ojo de Agua de Los Montes

CLAVE: 01137

RUTA: AGS

AÑO: 2018

LUGAR	ESTACION				CLASIFICACION VEHICULAR EN PORCIENTO												COORDENADAS			
	KM	TE	SC	TDPA	M	A	B	C2	C3	T3S2	T3S3	T3S2R4	OTROS	A	B	C	K'	D	LATITUD	LONGITUD
T. C. Carboneras - Villa Juárez	0.00	3	0	279	11.0	71.6	2.0	11.0	3.5	0.6	0.2	0.1	0.0	82.6	2.0	15.4	0.122	0.504	22.166300	-102.190333
Arroyo Hondo Acceso 1	3.60	1	0	312	11.4	71.3	1.9	11.1	3.4	0.6	0.2	0.1	0.0	82.7	1.9	15.4	0.112	0.502	22.184963	-102.189570
Arroyo Hondo Acceso 2	4.90	3	0	1225	4.0	78.3	1.8	8.1	3.1	1.5	2.5	0.5	0.2	82.3	1.8	15.9	0.099	0.517	22.195596	-102.195089
X. C. Rincón de Romos - Ciénega Grande	8.60	1	0	1187	4.1	83.0	0.5	7.1	1.3	1.4	2.3	0.3	0.0	87.1	0.5	12.4	0.103	0.508	22.221405	-102.183915
X. C. Rincón de Romos - Ciénega Grande	8.60	3	0	739	6.1	71.0	0.5	7.8	2.7	2.7	7.9	1.1	0.2	77.1	0.5	22.4	0.076	0.503	22.228359	-102.183234
T. C. La Punta - Mesillas	19.00	1	0	740	7.2	82.6	0.5	8.0	0.7	0.7	0.2	0.0	0.1	89.8	0.5	9.7	0.092	0.515	22.305293	-102.196147

AGUASCALIENTES

51 CARR: Viñedos de California - Adolfo López Mateos

CLAVE: 01137

RUTA: AGS

AÑO: 2018

LUGAR	ESTACION				CLASIFICACION VEHICULAR EN PORCIENTO														COORDENADAS	
	KM	TE	SC	TDPA	M	A	B	C2	C3	T3S2	T3S3	T3S2R4	OTROS	A	B	C	K'	D	LATITUD	LONGITUD
T. C. Providencia - Luis Moya	0.00	3	0	2831	5.2	83.0	0.4	8.1	0.9	1.4	0.8	0.0	0.2	88.2	0.4	11.4	0.077	0.508	22.150133	-102.244340
Adolfo López Mateos	5.00																			

52 CARR: Libramiento Surponiente de Aguascalientes (Cuota)

CLAVE: 00167

RUTA: MEX-A40

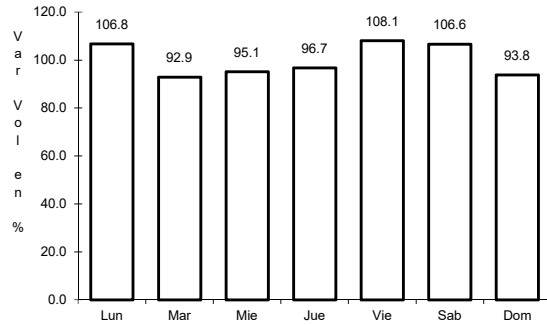
AÑO: 2018

LUGAR	ESTACION				CLASIFICACION VEHICULAR EN PORCIENTO														COORDENADAS	
	KM	TE	SC	TDPA	M	A	B	C2	C3	T3S2	T3S3	T3S2R4	OTROS	A	B	C	K'	D	LATITUD	LONGITUD
T. C. León - Aguascalientes	0.00	3	0	6864	8.1	51.5	2.5	5.1	7.1	9.7	5.1	9.7	1.2	59.6	2.5	37.9	0.083	0.501	21.772357	-102.284525
T. C. Aguascalientes - Jalpa	21.00	1	0	1204	2.2	74.6	2.4	9.4	4.2	4.8	1.6	0.3	0.5	76.8	2.4	20.8	0.067	0.518	21.886849	-102.401816

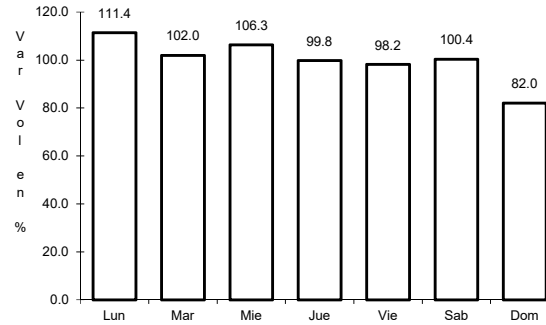
1 CARR: Acceso a Pabellón de Arteaga

CLAVE: 01113

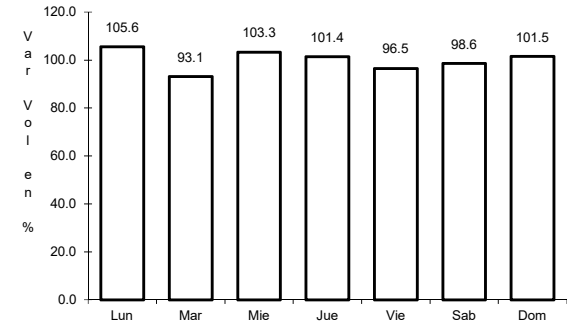
RUTA: MEX-045



Km: 0.00 Tipo: 3 Sent: 1



Km: 1.80 Tipo: 1 Sent: 1

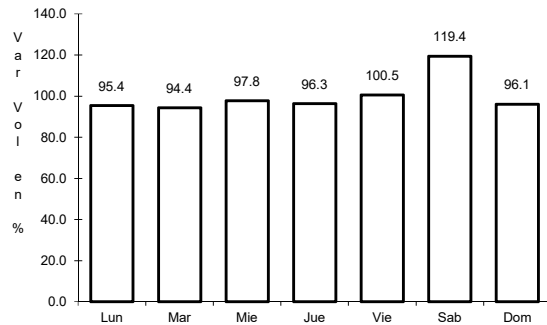


Km: 1.80 Tipo: 1 Sent: 2

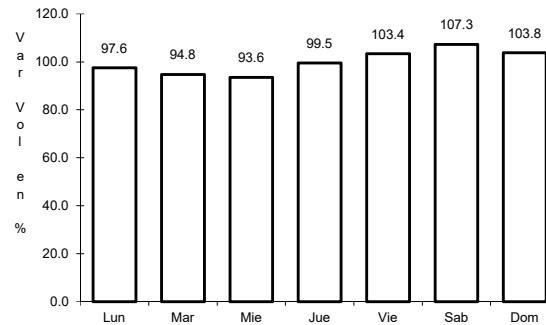
2 CARR: Aguascalientes - Jalpa

CLAVE: 00095

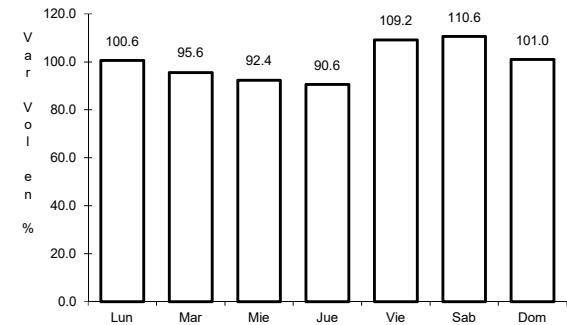
RUTA: MEX-070



Km: 0.00 Tipo: 3 Sent: 1



Km: 0.00 Tipo: 3 Sent: 2

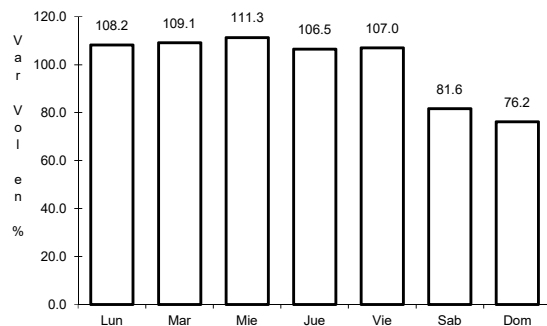


Km: 90.66 Tipo: 1 Sent: 0

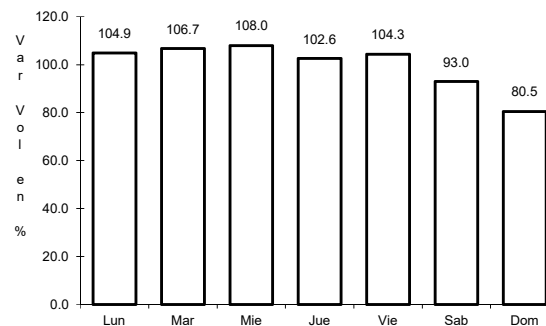
3 CARR: Aguascalientes - Zacatecas

CLAVE: 00524

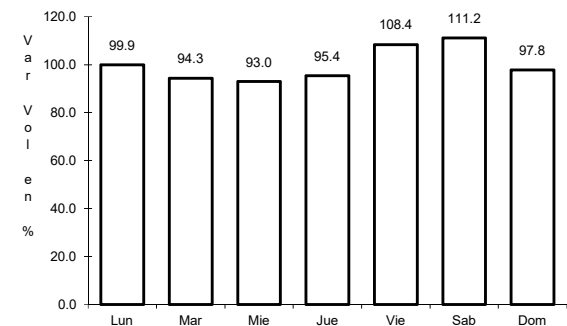
RUTA: MEX-045



Km: 6.00 Tipo: 1 Sent: 1



Km: 6.00 Tipo: 1 Sent: 2

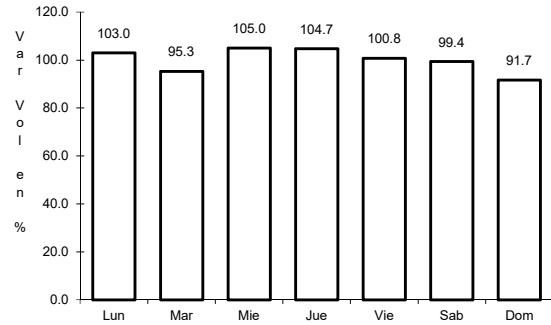


Km: 40.90 Tipo: 3 Sent: 0

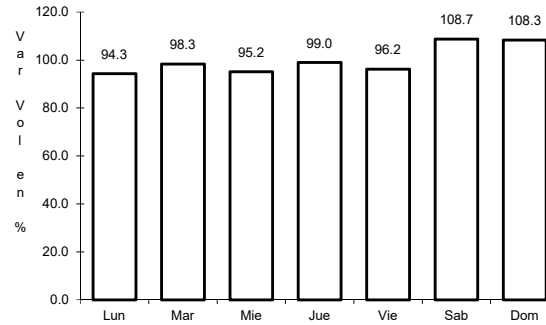
4 CARR: El Retoño - Ent. Asturias

CLAVE: 01124

ruta: MEX-070



Km: 0.00 Tipo: 3 Sent: 0

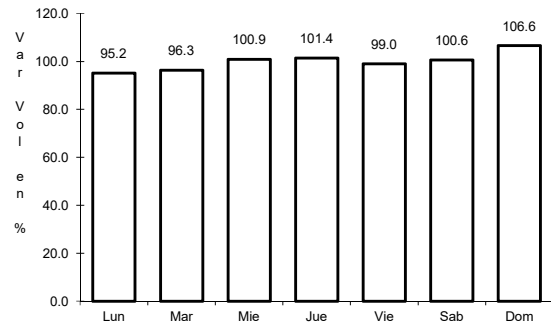


Km: 8.98 Tipo: 1 Sent: 0

5 CARR: Ent. Cosío - Ent. Cuauhtémoc

CLAVE: 00579

ruta: MEX-045

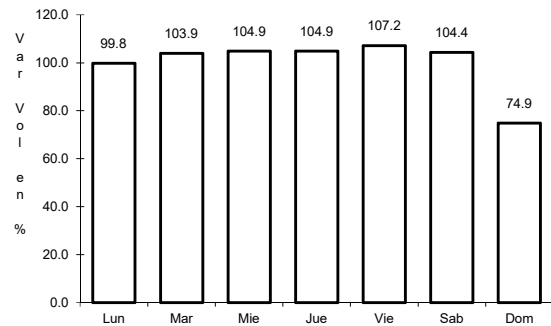


Km: 57.20 Tipo: 3 Sent: 0

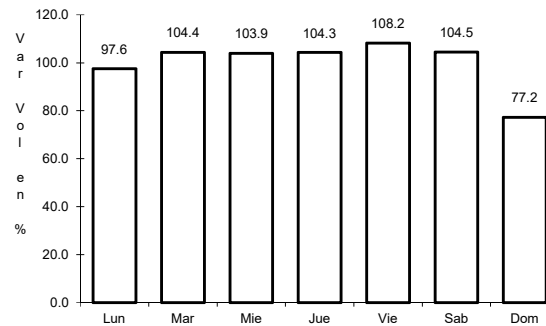
6 CARR: Ent. Penitenciaría - Villa Hidalgo

CLAVE: 00120

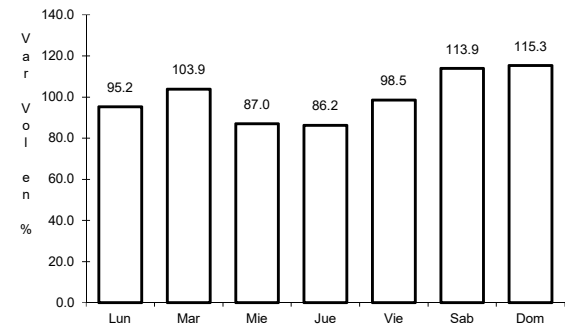
ruta: MEX-071



Km: 0.00 Tipo: 3 Sent: 1



Km: 0.00 Tipo: 3 Sent: 2

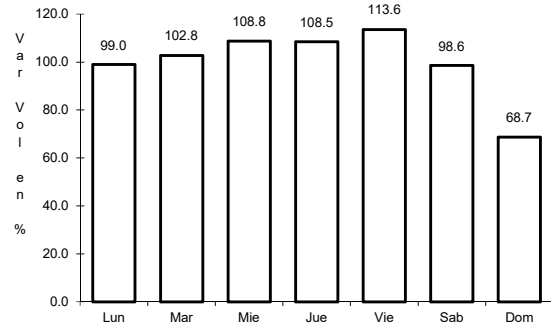


Km: 41.80 Tipo: 1 Sent: 0

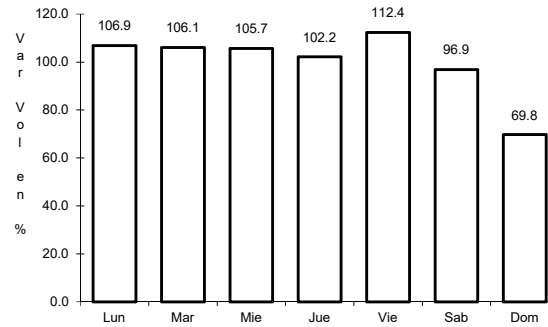
7 CARR: Ent. Rivier - San Marcos

CLAVE: 00285

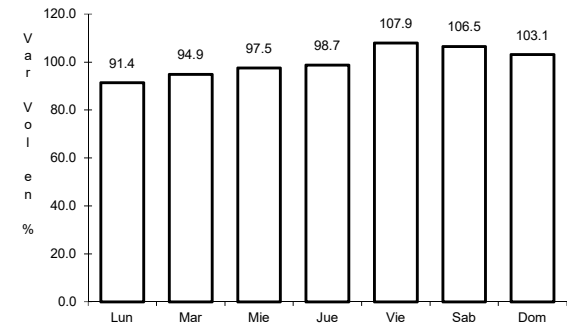
RUTA: MEX-066



Km: 0.00 Tipo: 3 Sent: 1



Km: 0.00 Tipo: 3 Sent: 2

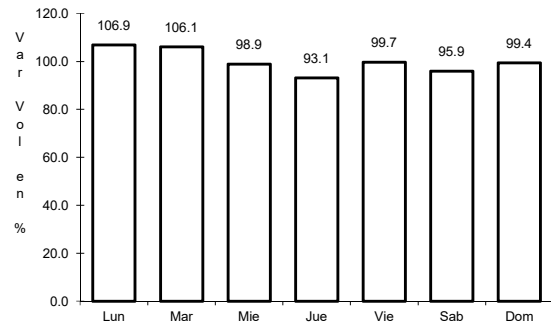


Km: 55.34 Tipo: 1 Sent: 0

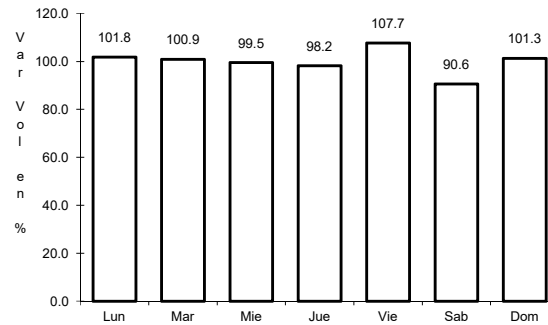
8 CARR: León - Aguascalientes

CLAVE: 00167

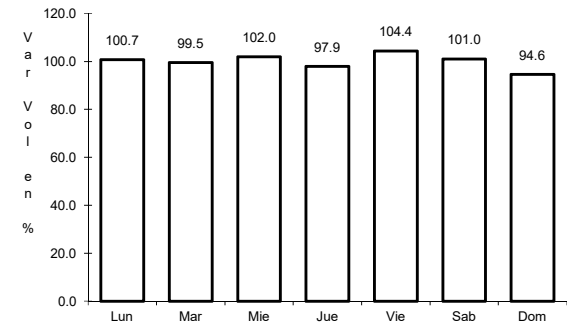
RUTA: MEX-045



Km: 11.00 Tipo: 1 Sent: 1



Km: 11.00 Tipo: 1 Sent: 2

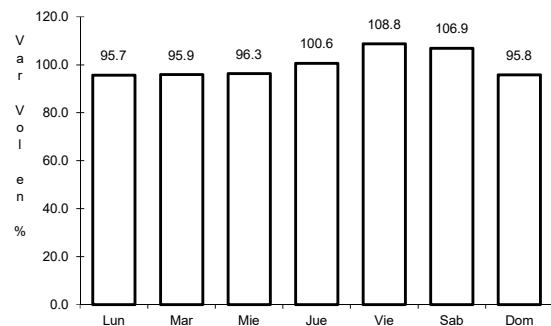


Km: 88.20 Tipo: 1 Sent: 0

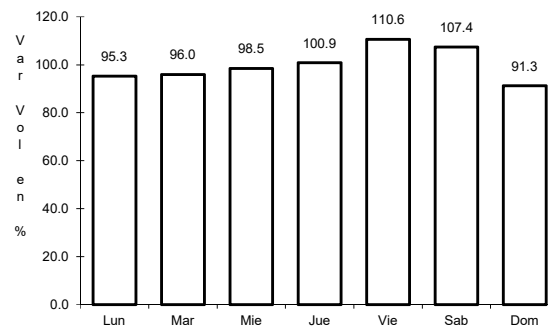
9 CARR: Libramiento Rincón de Romos

CLAVE: 00167

RUTA: MEX-045



Km: 0.00 Tipo: 3 Sent: 0

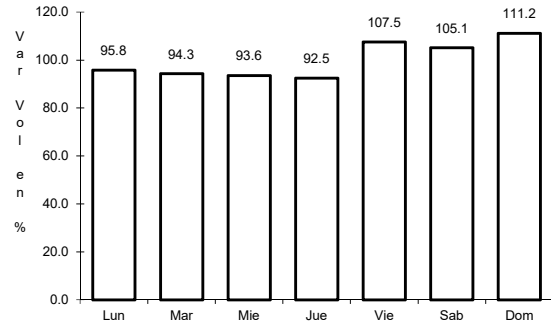


Km: 10.00 Tipo: 1 Sent: 0

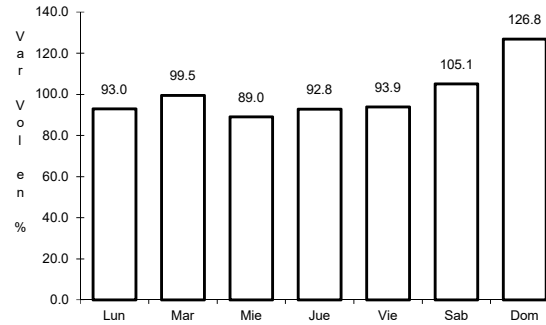
10 CARR: Ojo Caliente - Malpaso

CLAVE: 01123

RUTA: MEX-070



Km: 0.00 Tipo: 3 Sent: 0

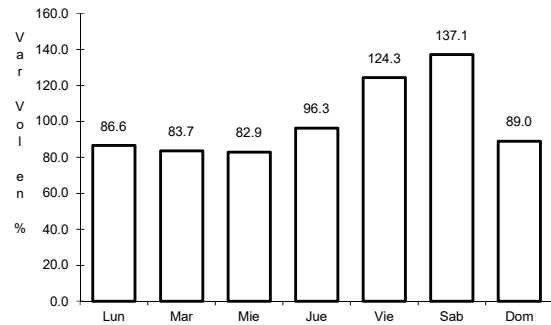


Km: 3.10 Tipo: 1 Sent: 0

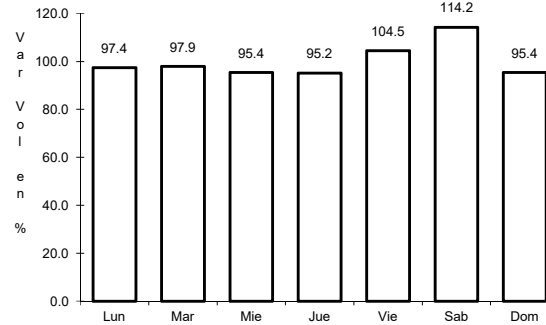
11 CARR: Ojuelos - Aguascalientes

CLAVE: 00094

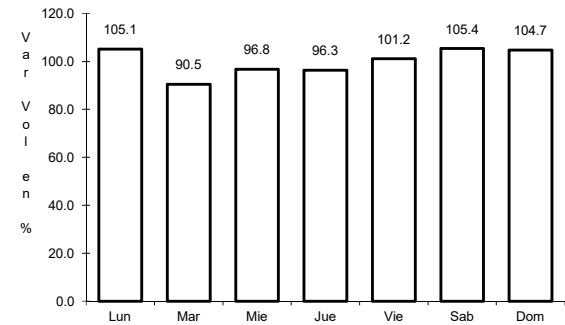
RUTA: MEX-070



Km: 0.00 Tipo: 3 Sent: 0



Km: 81.51 Tipo: 1 Sent: 1

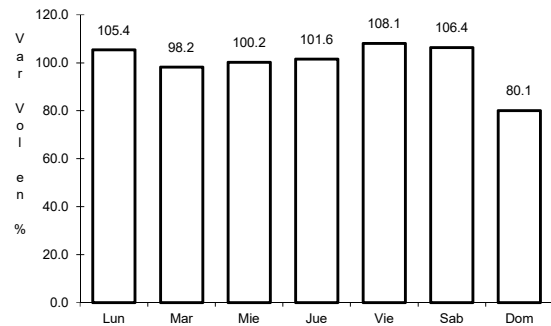


Km: 81.51 Tipo: 1 Sent: 2

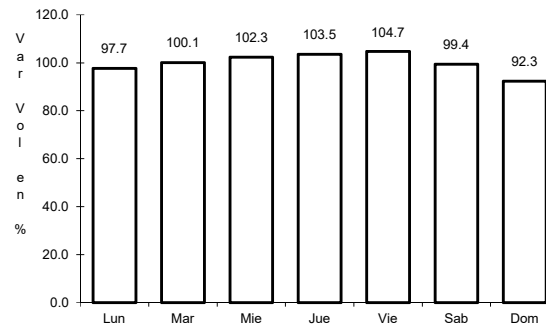
12 CARR: Providencia - Luis Moya

CLAVE: 00112

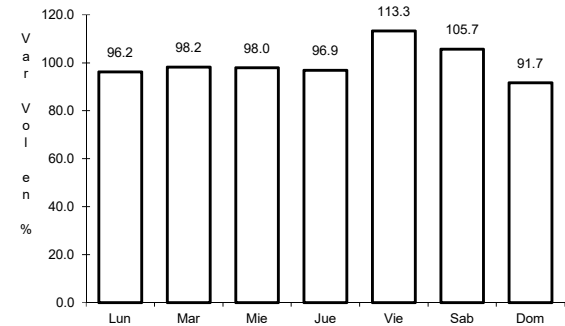
RUTA: MEX-071



Km: 0.00 Tipo: 3 Sent: 0



Km: 21.22 Tipo: 3 Sent: 0

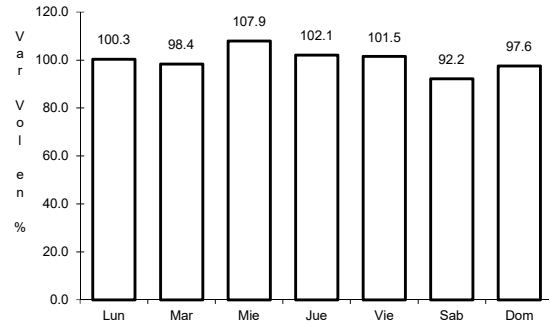


Km: 43.52 Tipo: 1 Sent: 0

13 CARR: Ramal a Aeropuerto de Aguascalientes

CLAVE: 01116

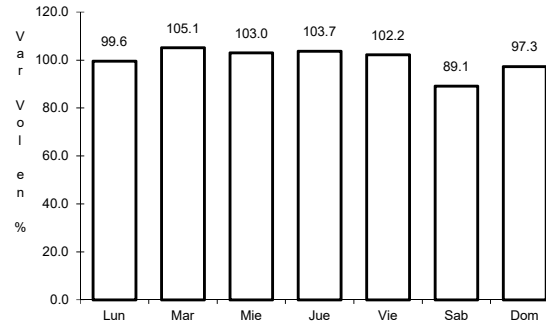
ruta: MEX-045



Km: 6.13

Tipo: 1

Sent: 1



Km: 6.13

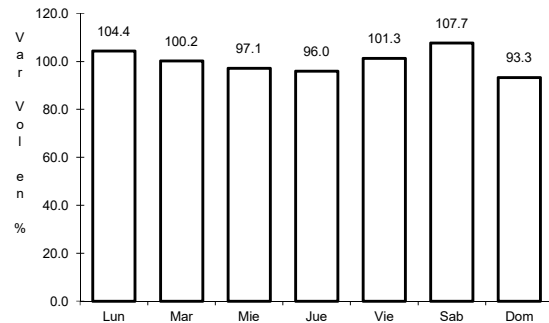
Tipo: 1

Sent: 2

14 CARR: Rincón de Romos - Ciénega Grande

CLAVE: 01002

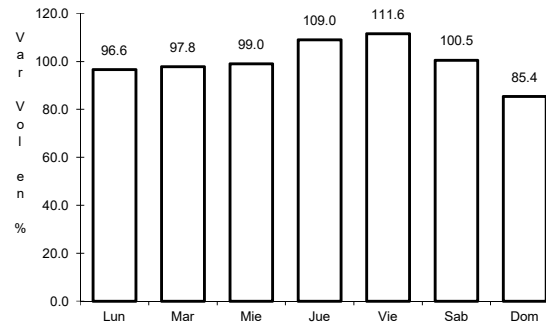
ruta: MEX-039



Km: 0.00

Tipo: 3

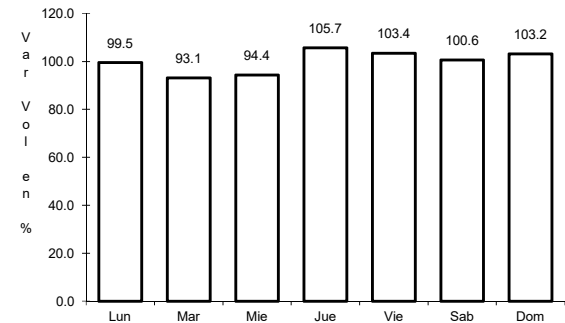
Sent: 0



Km: 15.00

Tipo: 3

Sent: 0



Km: 36.70

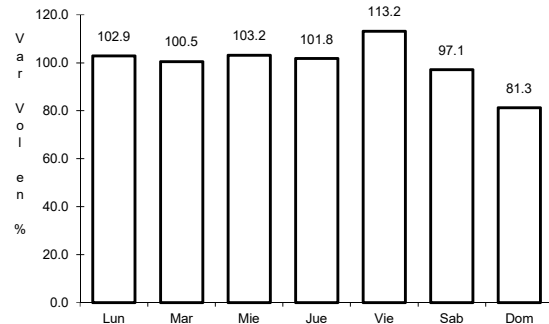
Tipo: 1

Sent: 0

15 CARR: Aguascalientes - Ent. Cd. de Los Niños

CLAVE: 01130

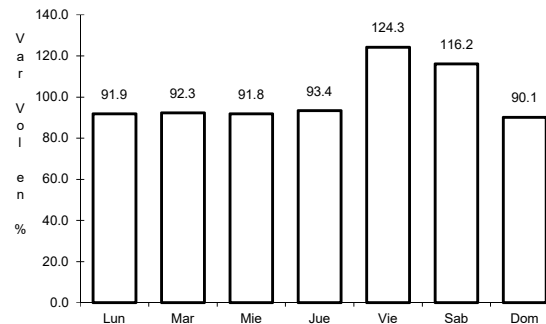
ruta: AGS



Km: 0.00

Tipo: 3

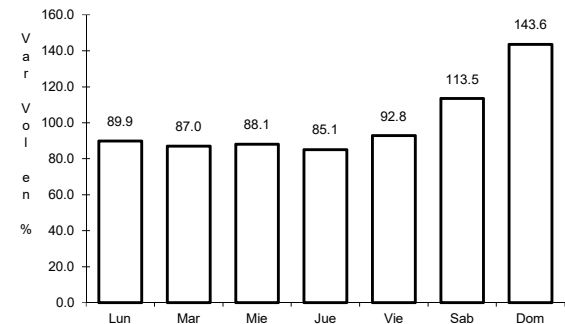
Sent: 1



Km: 0.00

Tipo: 3

Sent: 2



Km: 8.00

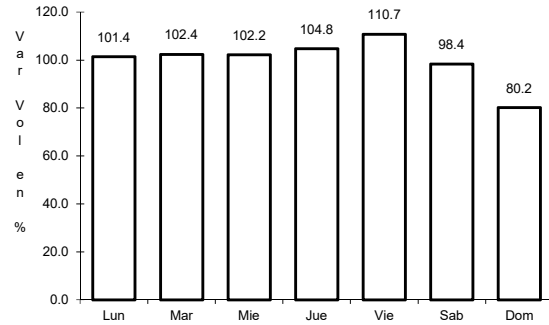
Tipo: 1

Sent: 0

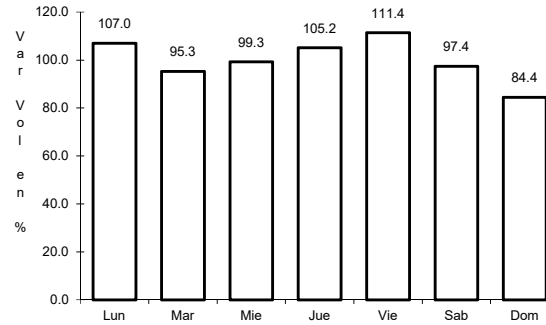
16 CARR: Aguascalientes - Jesús María

CLAVE: 01112

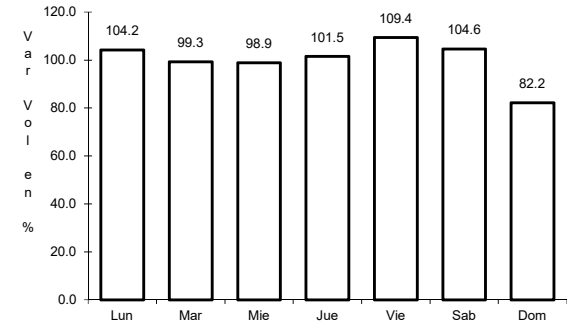
RUTA: AGS-095



Km: 3.30 Tipo: 3 Sent: 1



Km: 3.30 Tipo: 3 Sent: 2

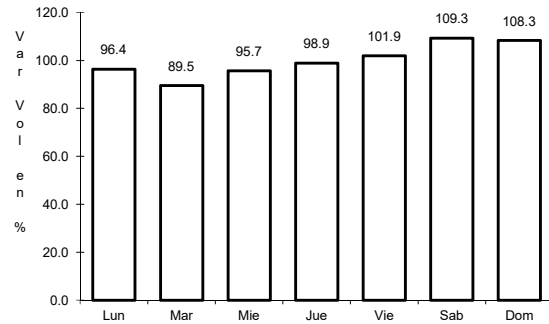


Km: 8.10 Tipo: 1 Sent: 1

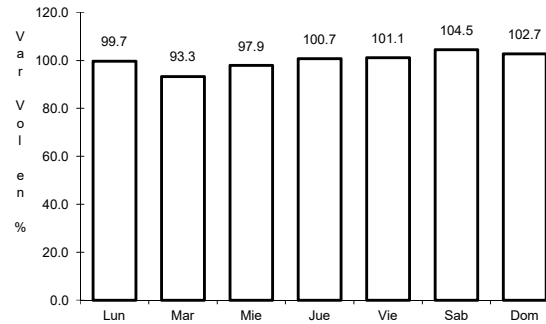
17 CARR: Aguascalientes - José María Morelos

CLAVE: 01131

RUTA: AGS



Km: 0.00 Tipo: 3 Sent: 0

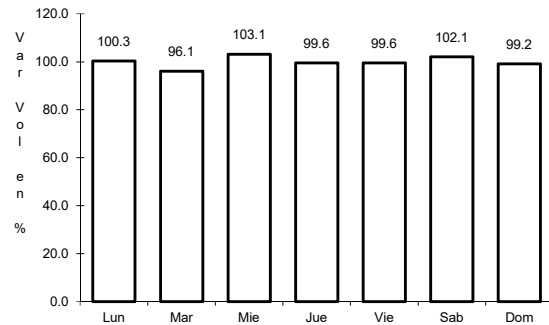


Km: 8.00 Tipo: 3 Sent: 0

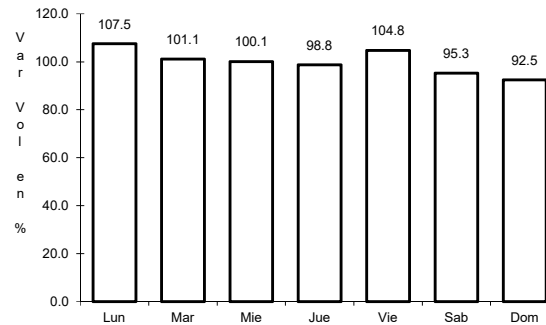
18 CARR: Carboneras - Villa Juárez

CLAVE: 01111

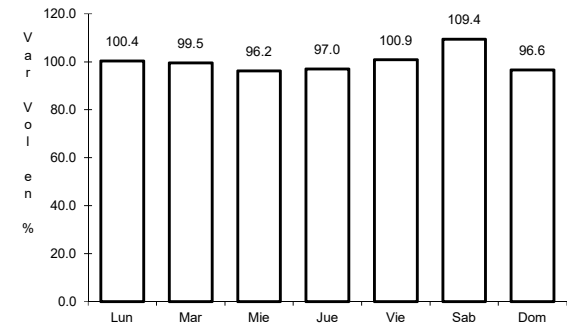
RUTA: AGS-004



Km: 0.00 Tipo: 3 Sent: 0



Km: 14.00 Tipo: 1 Sent: 0

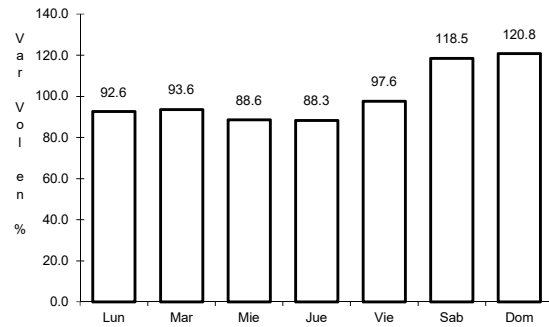


Km: 23.10 Tipo: 1 Sent: 0

19 CARR: Cosío - Santa María de La Paz

CLAVE: 01132

RUTA: AGS



Km: 0.00

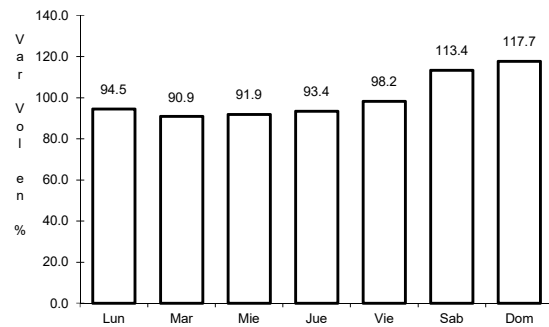
Tipo: 3

Sent: 0

20 CARR: Crucero Ojo de Agua de Crucitas - Santa Rosa

CLAVE: 01140

RUTA: AGS



Km: 0.00

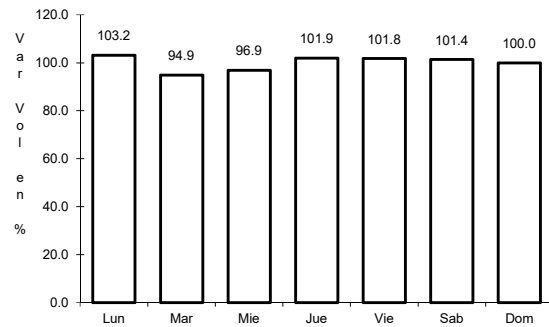
Tipo: 3

Sent: 0

21 CARR: El Tanque - San José de La Ordeña

CLAVE: 01143

RUTA: AGS



Km: 0.00

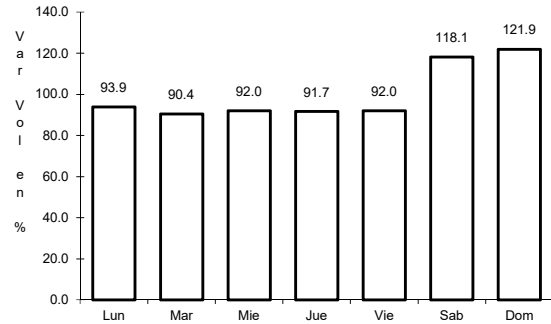
Tipo: 3

Sent: 0

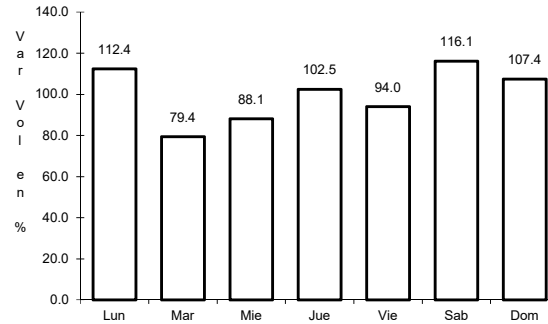
22 CARR: El Taray - T. C.(Ramal Aeropuerto de Aguascalientes)

CLAVE: 01121

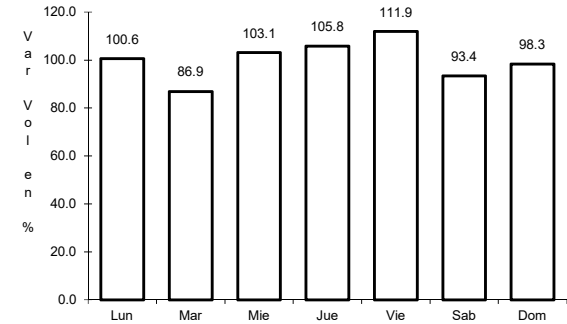
RUTA: AGS-002



Km: 0.00 Tipo: 3 Sent: 0



Km: 22.00 Tipo: 1 Sent: 1

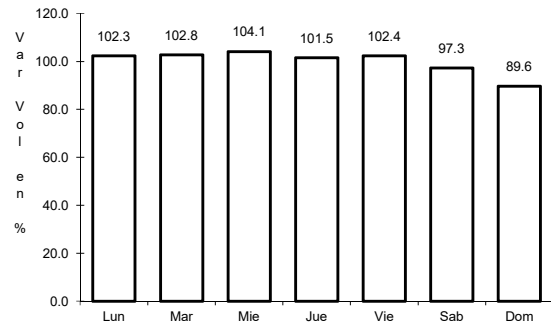


Km: 22.00 Tipo: 1 Sent: 2

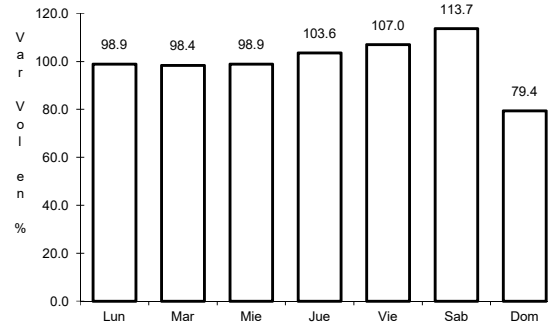
23 CARR: Ent. Arellano - El Retoño

CLAVE: 01121

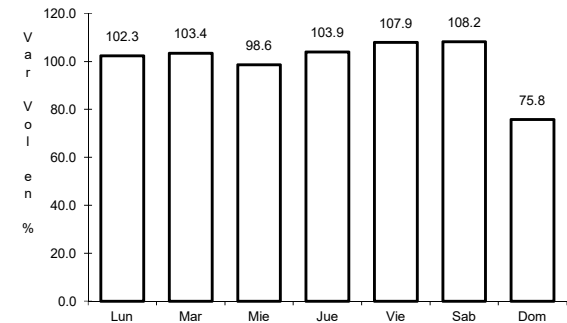
RUTA: AGS



Km: 0.00 Tipo: 3 Sent: 0



Km: 12.20 Tipo: 1 Sent: 0

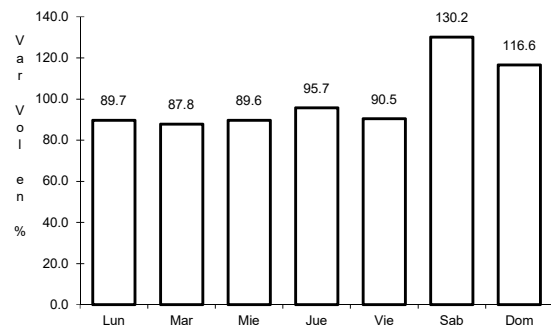


Km: 15.92 Tipo: 1 Sent: 0

24 CARR: Ent. Buenavista - Gracias a Dios

CLAVE: 01138

RUTA: AGS

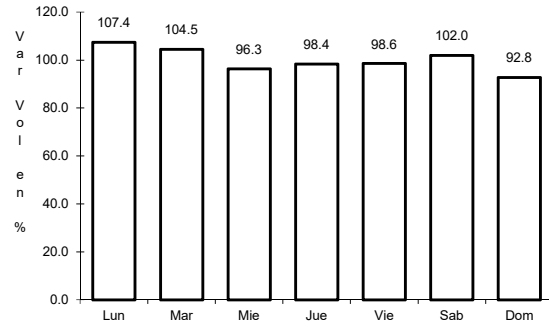


Km: 0.00 Tipo: 3 Sent: 0

25 CARR: Ent. El Novillo - Villa Juárez

CLAVE: 01103

RUTA: AGS-005



Km: 12.60

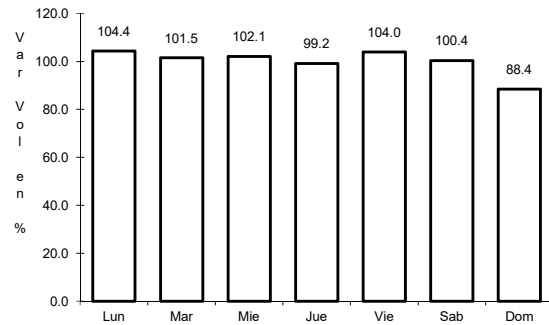
Tipo: 1

Sent: 0

26 CARR: Ent. La Calavera - Ent. San Pedro

CLAVE: 01102

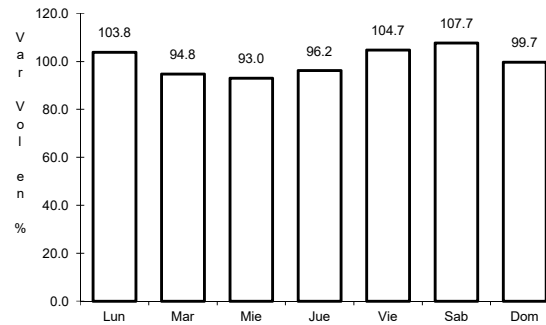
RUTA: AGS-043



Km: 0.00

Tipo: 3

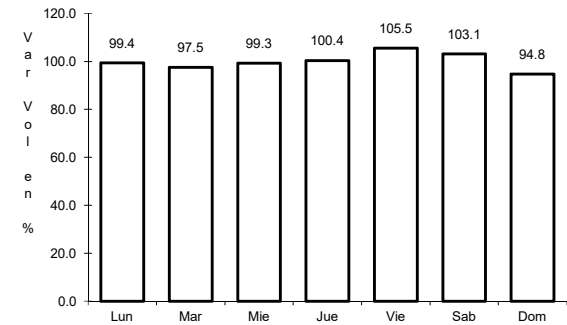
Sent: 0



Km: 28.10

Tipo: 1

Sent: 0



Km: 47.60

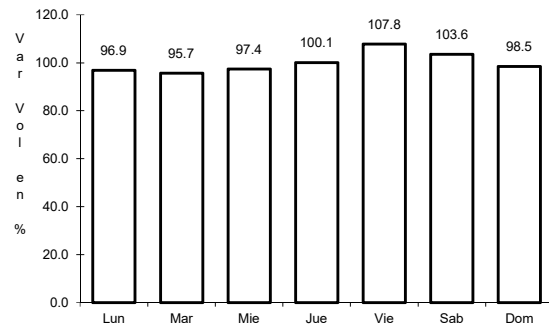
Tipo: 1

Sent: 0

27 CARR: Ent. La Chirida - San Francisco de Los Romo

CLAVE: 01016

RUTA: AGS



Km: 1.50

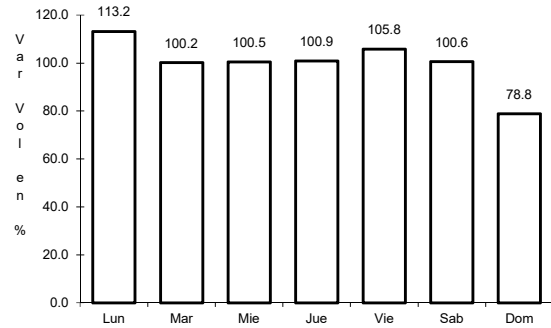
Tipo: 1

Sent: 0

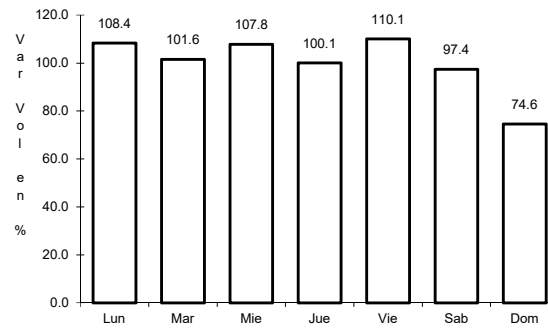
28 CARR: Ent. Pabellón de Arteaga - California

CLAVE: 01137

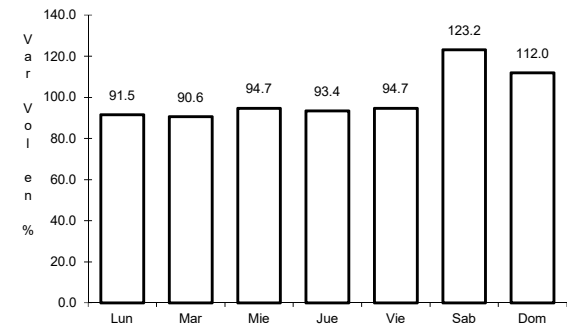
RUTA: AGS



Km: 0.00 Tipo: 3 Sent: 0



Km: 13.30 Tipo: 1 Sent: 0

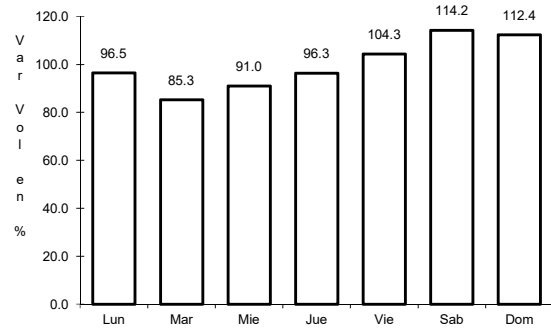


Km: 20.50 Tipo: 1 Sent: 0

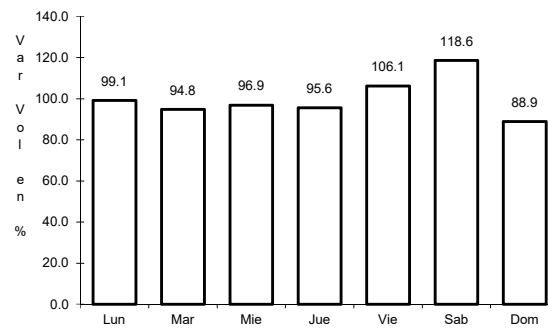
29 CARR: Ent. Pabellón de Arteaga - San José de Gracia

CLAVE: 01031

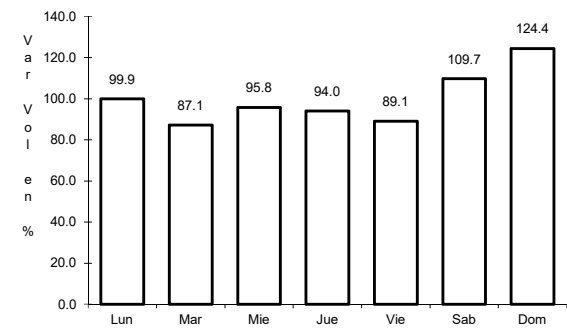
RUTA: AGS-019



Km: 0.00 Tipo: 3 Sent: 1



Km: 0.00 Tipo: 3 Sent: 2

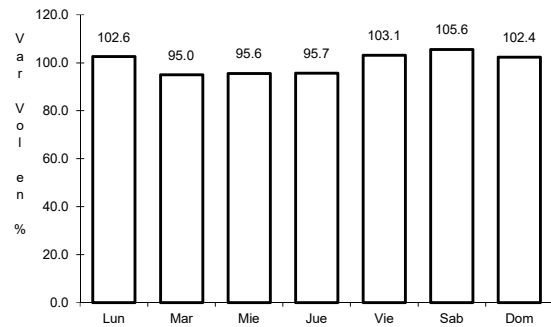


Km: 13.80 Tipo: 1 Sent: 1

30 CARR: Ent. Rincón de Romos - La Boquilla

CLAVE: 01139

RUTA: AGS

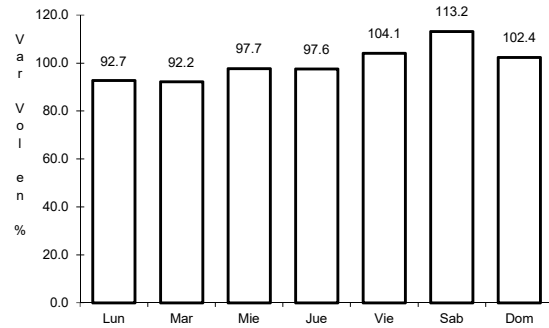


Km: 0.00 Tipo: 3 Sent: 0

31 CARR: Ent. San Carlos - Ent. El Milagro

CLAVE: 01141

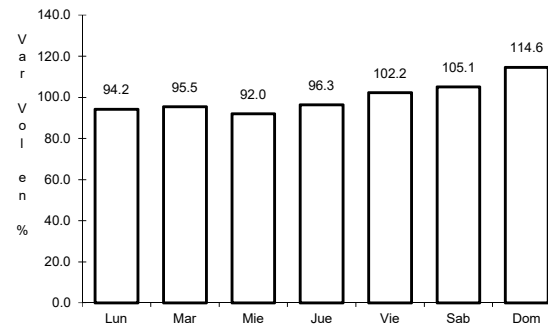
ruta: AGS-010



Km: 0.00

Tipo: 3

Sent: 0



Km: 13.60

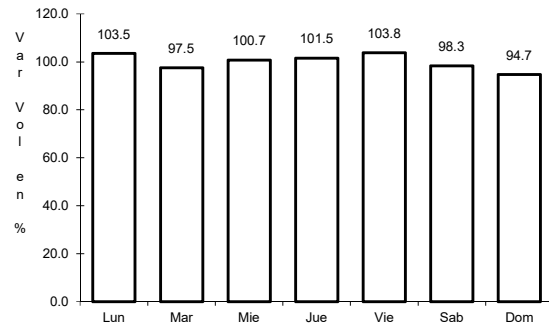
Tipo: 1

Sent: 0

32 CARR: Ent. San Felipe - Jesús María

CLAVE: 01144

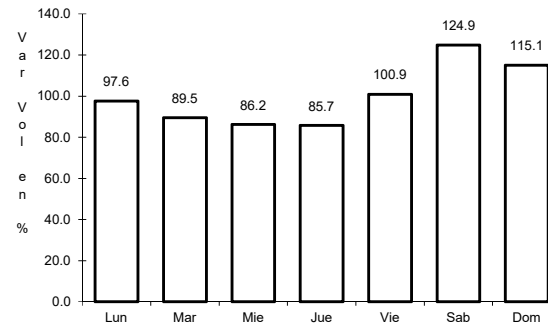
ruta: AGS



Km: 0.00

Tipo: 3

Sent: 0



Km: 12.70

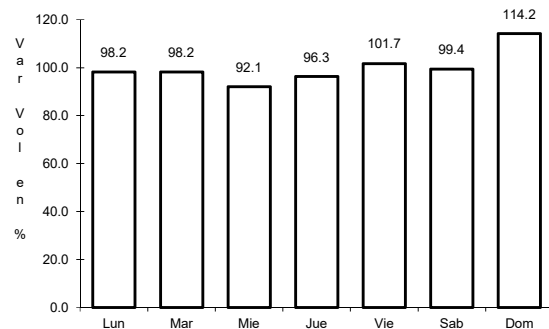
Tipo: 1

Sent: 0

33 CARR: Ent. San Isidro - Ent. El Salitre

CLAVE: 01142

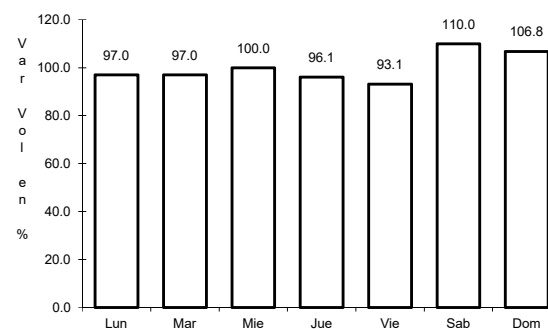
ruta: AGS-016



Km: 0.00

Tipo: 3

Sent: 0



Km: 20.40

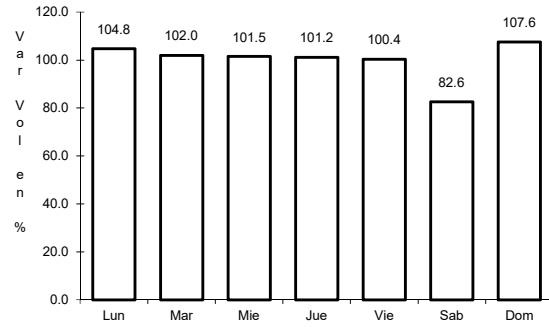
Tipo: 1

Sent: 0

34 CARR: Est. Coyotes - Ent. San Bartolo

CLAVE: 01134

RUTA: AGS-069



Km: 0.00

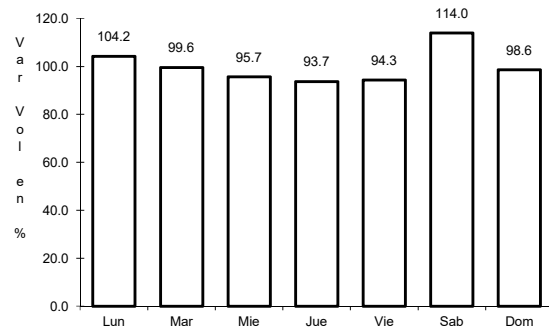
Tipo: 3

Sent: 0

35 CARR: Fracc. Ojo Caliente - El Conejal

CLAVE: 01129

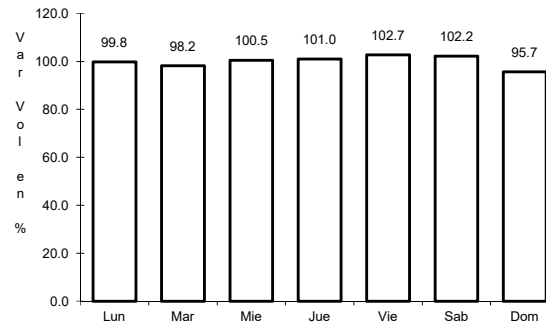
RUTA: AGS-079



Km: 3.50

Tipo: 1

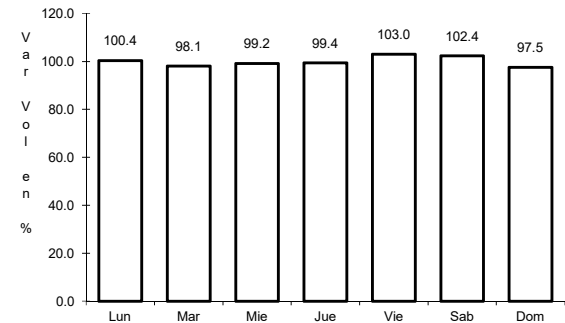
Sent: 1



Km: 3.50

Tipo: 1

Sent: 2



Km: 3.50

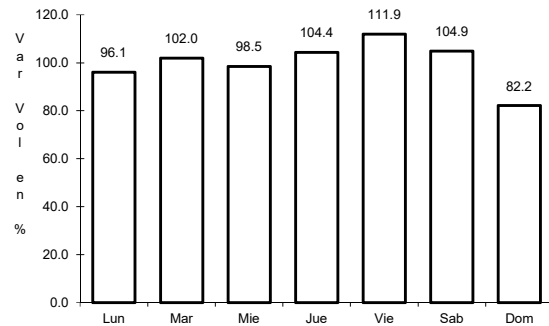
Tipo: 3

Sent: 0

36 CARR: Jesús María - Palomas

CLAVE: 01018

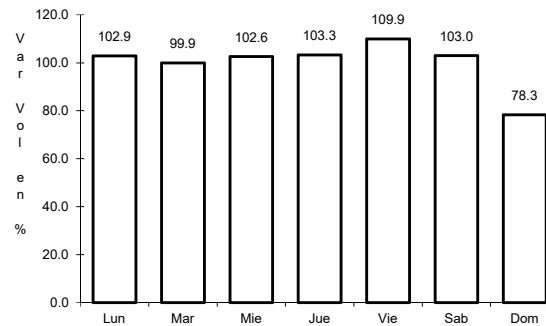
RUTA: AGS-018



Km: 0.00

Tipo: 3

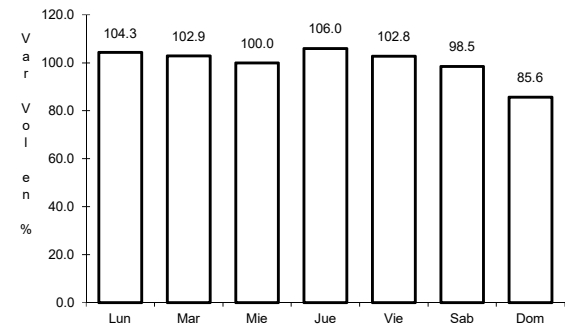
Sent: 1



Km: 0.00

Tipo: 3

Sent: 2



Km: 21.70

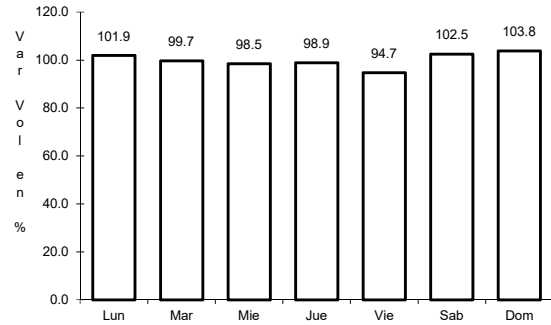
Tipo: 1

Sent: 0

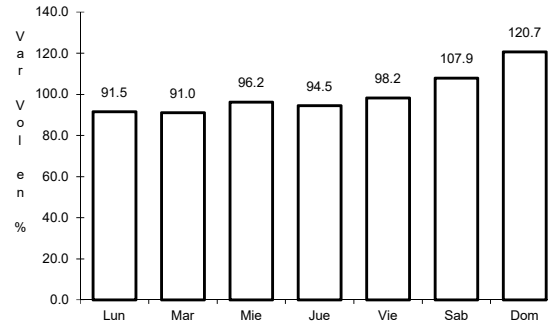
37 CARR: La Panadera - Palo Alto

CLAVE: 01105

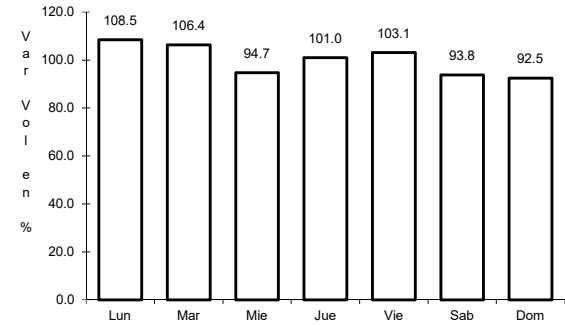
RUTA: AGS-017



Km: 0.00 Tipo: 3 Sent: 0



Km: 12.80 Tipo: 3 Sent: 0

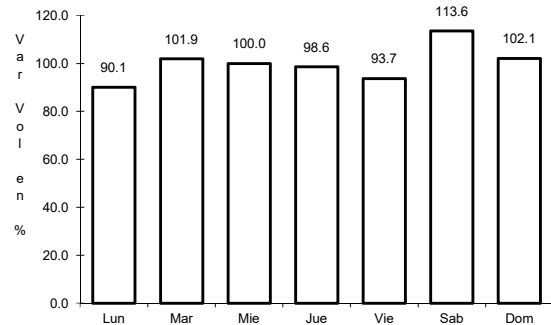


Km: 23.30 Tipo: 1 Sent: 0

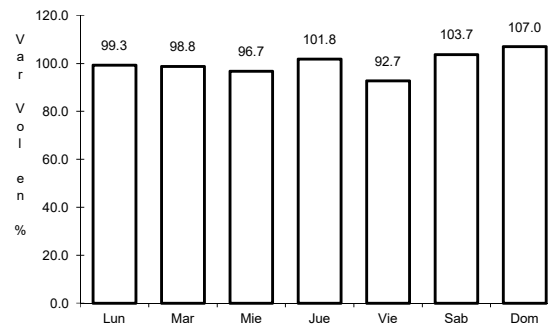
38 CARR: La Punta - Mesillas

CLAVE: 01104

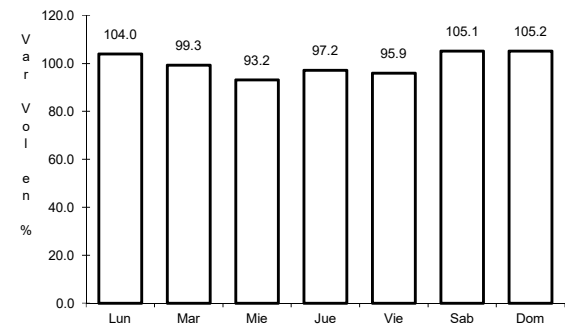
RUTA: AGS-026



Km: 0.00 Tipo: 3 Sent: 0



Km: 6.50 Tipo: 3 Sent: 0

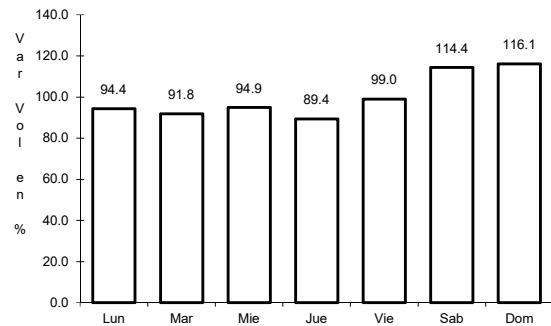


Km: 13.50 Tipo: 1 Sent: 0

39 CARR: La Rinconada - El Terrero del Refugio

CLAVE: 01133

RUTA: AGS-007

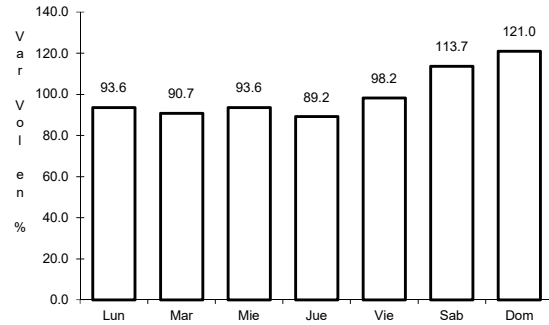


Km: 0.00 Tipo: 3 Sent: 0

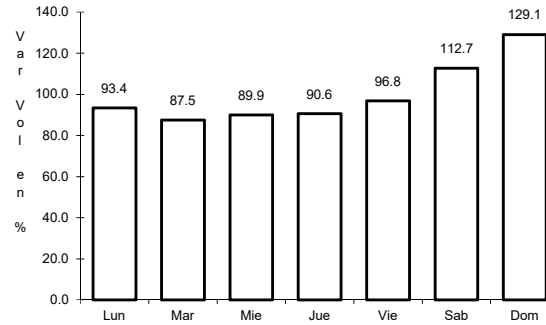
40 CARR: Las Norias de Ojo Caliente - La Luz

CLAVE: 01122

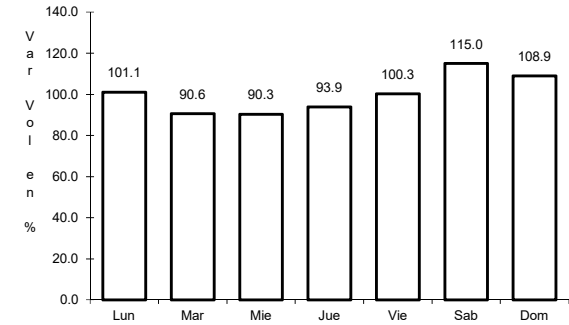
RUTA: AGS-068



Km: 0.00 Tipo: 3 Sent: 0



Km: 10.50 Tipo: 3 Sent: 0

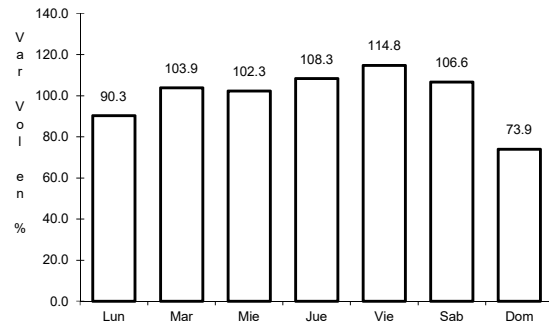


Km: 27.60 Tipo: 1 Sent: 0

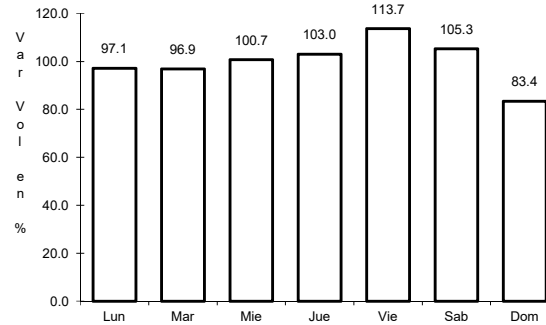
41 CARR: Libramiento San Francisco de Los Romo

CLAVE: 01137

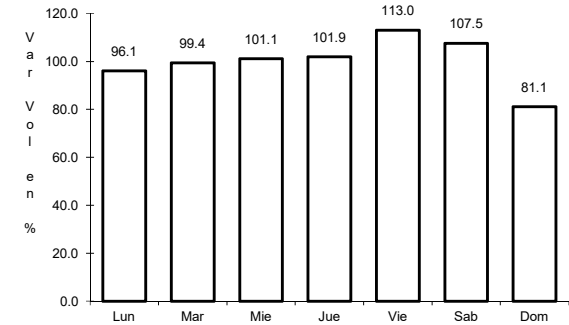
RUTA: AGS



Km: 0.00 Tipo: 3 Sent: 1



Km: 0.00 Tipo: 3 Sent: 2

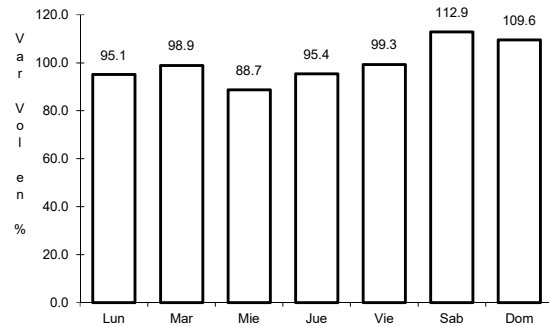


Km: 5.50 Tipo: 1 Sent: 1

42 CARR: Pabellón de Hidalgo - Rincón de Romos

CLAVE: 01136

RUTA: AGS

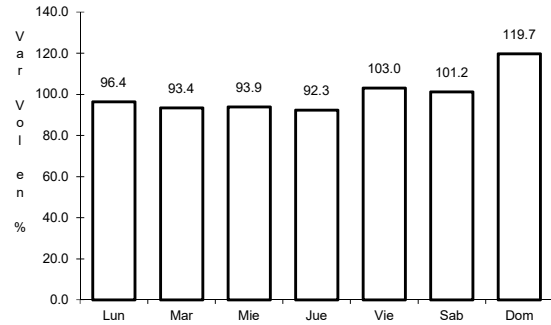


Km: 0.00 Tipo: 3 Sent: 0

43 CARR: Pilotos - Los Campos

CLAVE: 00007

RUTA: AGS-030



Km: 0.00

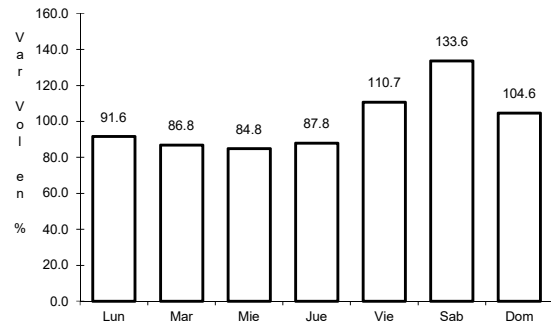
Tipo: 3

Sent: 0

44 CARR: Pocitos - Granja Miravalle

CLAVE: 01109

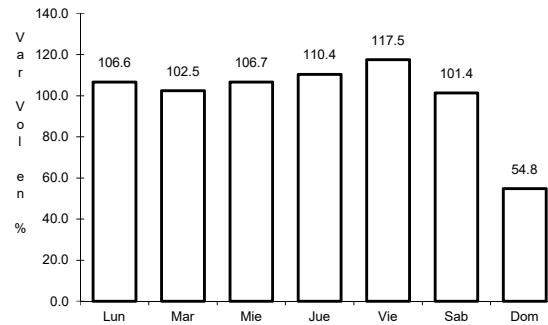
RUTA: AGS-053



Km: 1.50

Tipo: 3

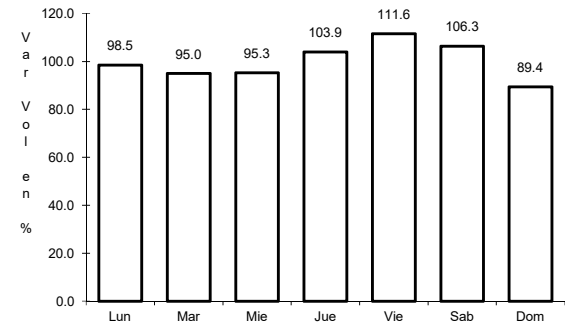
Sent: 1



Km: 1.50

Tipo: 3

Sent: 2



Km: 5.70

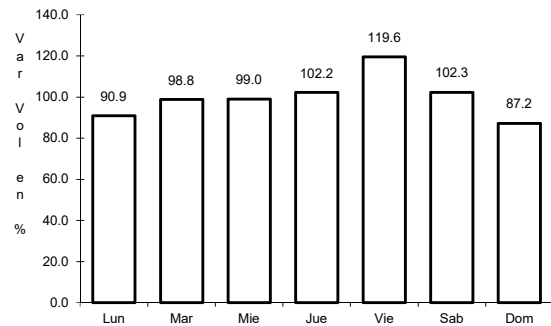
Tipo: 1

Sent: 0

45 CARR: Ramal a San Pedro Piedra Gorda

CLAVE: 00553

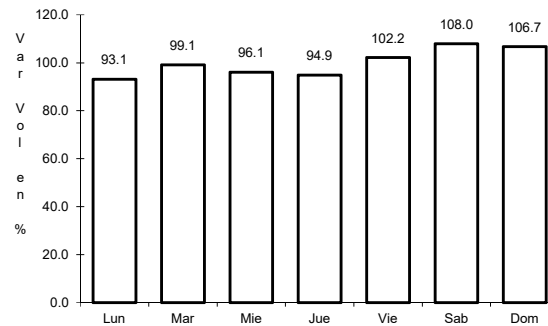
RUTA: ZAC-AGS



Km: 0.00

Tipo: 3

Sent: 0



Km: 9.00

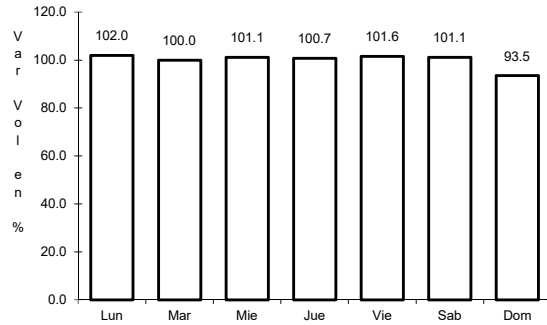
Tipo: 1

Sent: 0

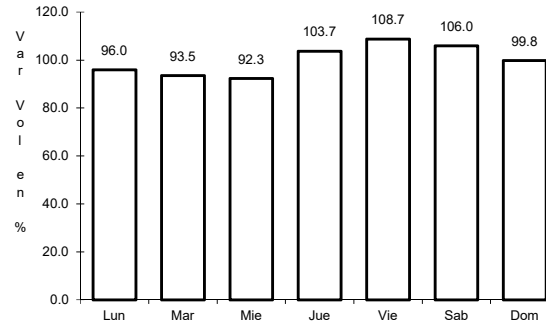
46 CARR: San Gil - Jarillas

CLAVE: 00527

RUTA: AGS-012-ZAC



Km: 0.00 Tipo: 3 Sent: 0

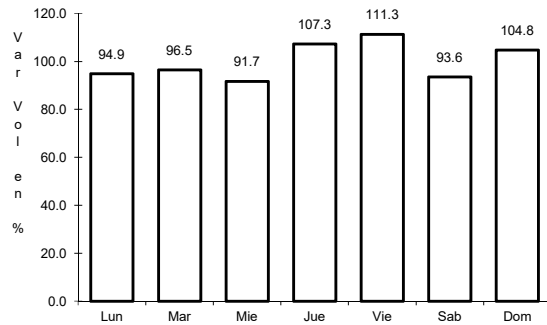


Km: 5.40 Tipo: 1 Sent: 0

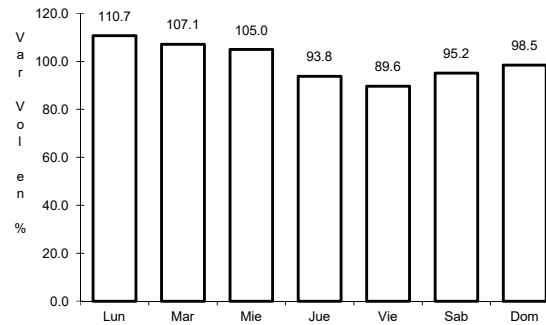
47 CARR: San Isidro El Grande - Bajío de San José

CLAVE: 00526

RUTA: AGS-036



Km: 0.00 Tipo: 3 Sent: 0

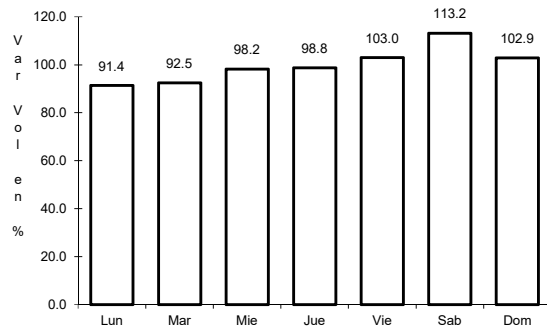


Km: 11.50 Tipo: 3 Sent: 0

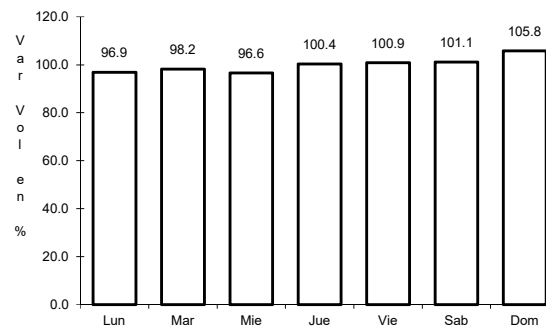
48 CARR: San Rafael - Villa García

CLAVE: 00525

RUTA: AGS-ZAC



Km: 0.00 Tipo: 3 Sent: 0

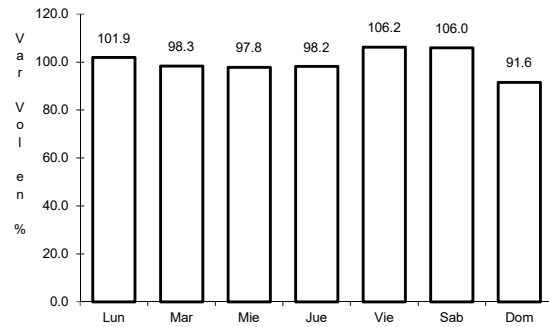


Km: 10.00 Tipo: 1 Sent: 0

49 CARR: Santa Rosa - Pabellón de Hidalgo

CLAVE: 01135

RUTA: AGS



Km: 0.00

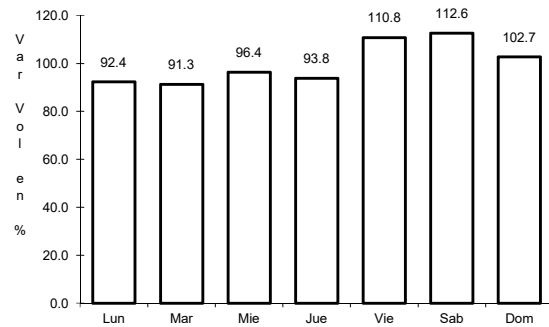
Tipo: 3

Sent: 0

50 CARR: T. Caldera - Ent. Ojo de Agua de Los Montes

CLAVE: 01137

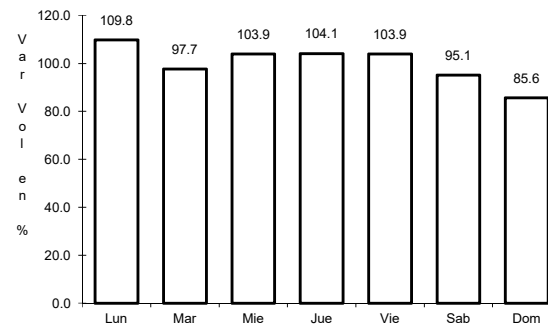
RUTA: AGS



Km: 0.00

Tipo: 3

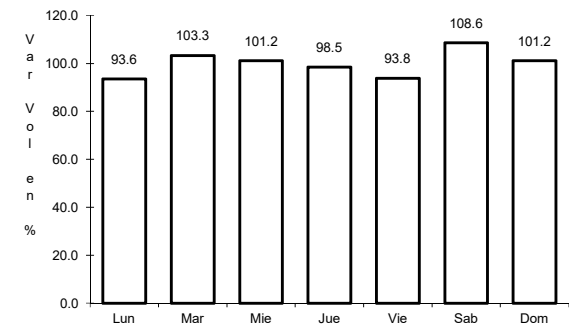
Sent: 0



Km: 8.60

Tipo: 1

Sent: 0



Km: 19.00

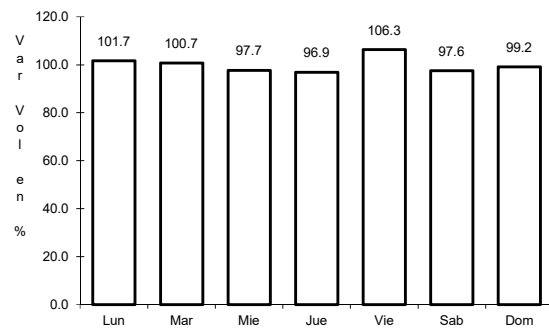
Tipo: 1

Sent: 0

51 CARR: Viñedos de California - Adolfo López Mateos

CLAVE: 01137

RUTA: AGS



Km: 0.00

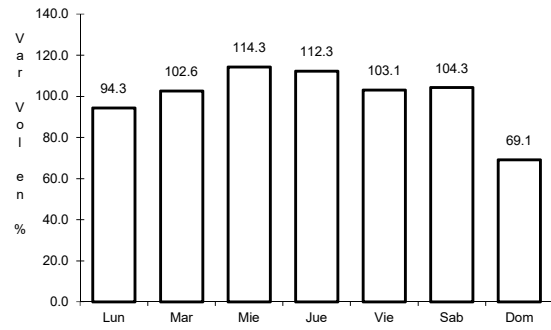
Tipo: 3

Sent: 0

52 CARR: Libramiento Surponiente de Aguascalientes (Cuota)

CLAVE: 00167

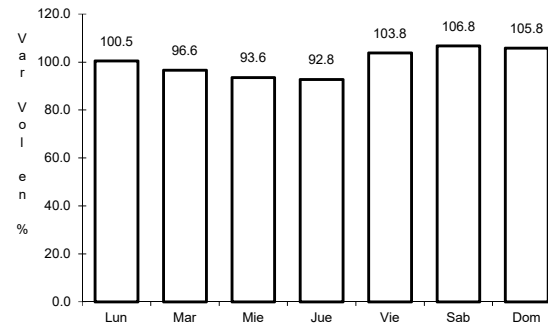
RUTA: MEX-A40



Km: 0.00

Tipo: 3

Sent: 0



Km: 21.00

Tipo: 1

Sent: 0