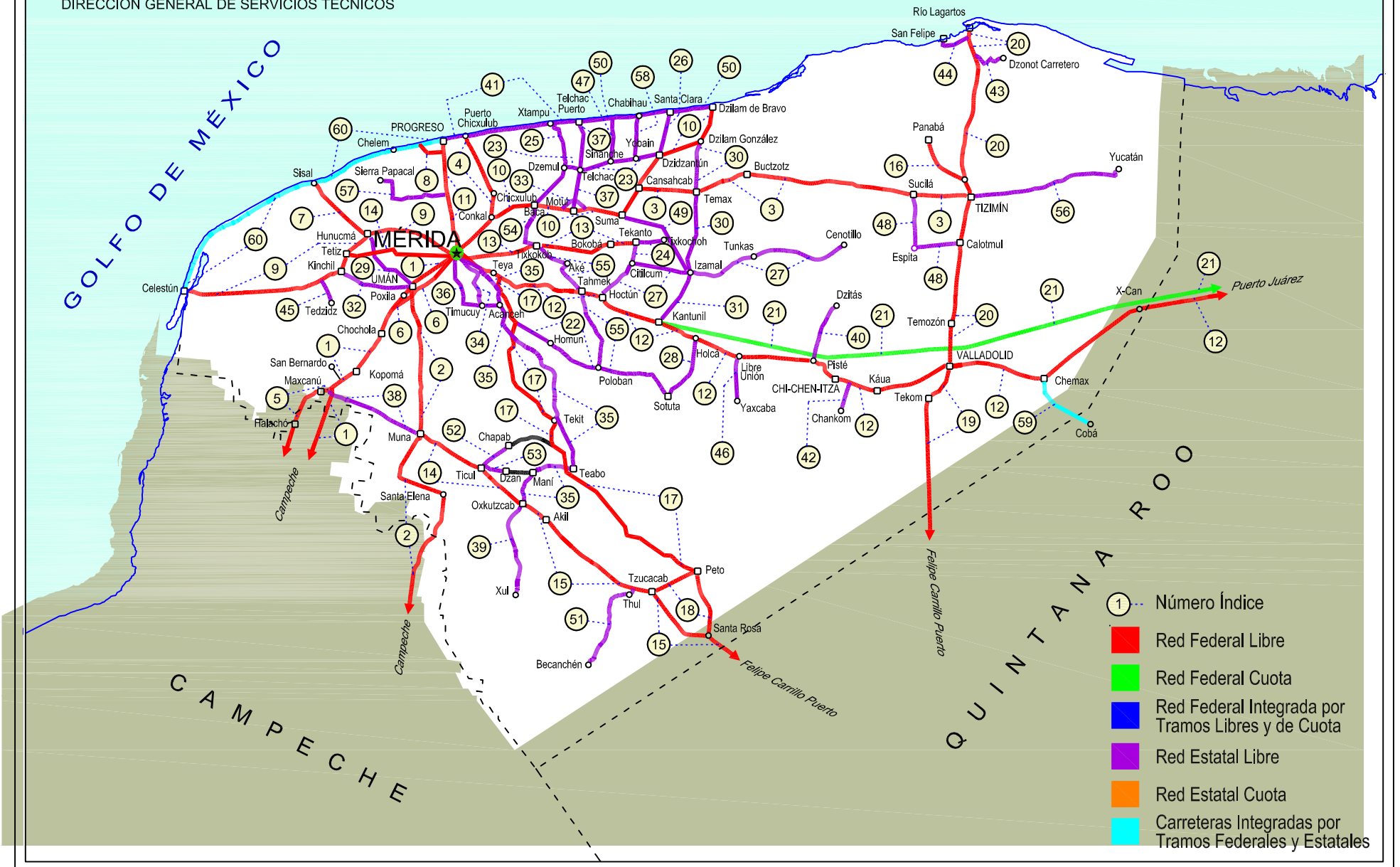
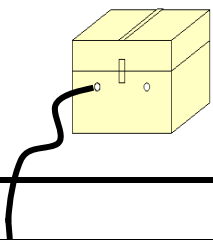


31 YUCATÁN

SECRETARÍA DE COMUNICACIONES Y TRANSPORTES
DIRECCIÓN GENERAL DE SERVICIOS TÉCNICOS





YUCATAN

---RED FEDERAL LIBRE---

1 Campeche - Mérida	MEX-180
2 Campeche - Umán	MEX-261
3 Cansahcab - Tizimín	MEX-176
4 Conkal - Puerto Chicxulub	MEX-176
5 Dzitbalché - Ent. San Bernardo	MEX-180
6 Ent. Poxilá - Mérida	MEX-180
7 Hunucmá - Sisal	MEX-281
8 Libramiento de Progreso	MEX-261
9 Mérida - Celestún	MEX-281
10 Mérida - Dzilam de Bravo	MEX-176
11 Mérida - Progreso	MEX-261
12 Mérida - Puerto Juárez	MEX-180
13 Mérida - Tekanto	MEX-180
14 Mérida - Tetiz	MEX-281
15 Muna - Felipe Carrillo Puerto	MEX-184
16 Ramal a Panabá	MEX-295
17 Teya -Peto	MEX-184
18 Tzucacab - Santa Rosa	MEX
19 Valladolid - Felipe Carrillo Puerto	MEX-295
20 Valladolid - Río Lagartos	MEX-295

---RED FEDERAL DE CUOTA---

21 Mérida - Cancún (Cuota)	MEX-180D
----------------------------	----------

---RED ESTATAL LIBRE---

22 Acanceh - Estación Polabán	YUC
23 Baca - Dzidzantún	YUC
24 Cútlum - Tixkochoh	YUC
25 Dzemplé - Xtampú	YUC
26 Dzidzantún - Santa Clara	YUC
27 Hochtún - Cenotillo	YUC-011
28 Holcá - Sotuta	YUC
29 Hunucmá - Umán	YUC
30 Izamal - Dzilam González	YUC
31 Kantunil - Izamal	YUC
32 Kinchil - Umán	YUC
33 Libramiento Norte de Motul	YUC
34 Mérida - Acanceh	YUC
35 Mérida - Oxkutzcab	YUC-018
36 Mérida - Timucuy	YUC
37 Motul - Puerto Telchac	YUC-172
38 Muna - Maxcanú	YUC
39 Oxkutzcab - Xul	YUC-031
40 Pisté - Dzitás	YUC-013
41 Progreso - Telchac Puerto	YUC-027
42 Ramal a Chankom	YUC
43 Ramal a Dzonot Carretero	YUC
44 Ramal a San Felipe	YUC
45 Ramal a Tedzidz	YUC
46 Ramal a Yaxcabá	YUC-289
47 Sinanché - Xitibcanul	YUC
48 Sucilá - Calotmul	YUC
49 Suma - Izamal	YUC-081
50 Telchac Puerto - Dzilam de Bravo	YUC
51 Thul - Becanchén	YUC-281
52 Ticul - Chapab	YUC
53 Ticul - Dzan	YUC
54 Tixkokob - Baca	YUC
55 Tixkokob - Sotuta	YUC
56 Tizimín - Yucatán	YUC
57 Yaxché - Sierra Papacal	YUC
58 Yobain - Chabihau	YUC

---CARRETERAS INTEGRADAS POR TRAMOS FEDERALES Y ESTATALES---

59 Chemax - Cobá	YUC-MEX-180
60 Progreso - Celestún	MEX-YUC

YUCATAN

1 CARR: Campeche - Mérida

CLAVE: 00066

RUTA: MEX-180

AÑO: 2017

LUGAR	ESTACION				CLASIFICACION VEHICULAR EN PORCIENTO										COORDENADAS					
	KM	TE	SC	TDPA	M	A	B	C2	C3	T3S2	T3S3	T3S2R4	OTROS	A	B	C	K'	D	LATITUD	LONGITUD
Campeche	0.00	3	1	7206	5.4	89.4	0.2	3.3	0.2	0.7	0.7	0.0	0.1	94.8	0.2	5.0	0.109	0.537	19.873539	-90.493758
Campeche	0.00	3	2	6208	6.3	88.4	0.2	3.4	0.2	0.7	0.7	0.0	0.1	94.7	0.2	5.1	0.088	0.537	19.873621	-90.493838
T. Der. Periférico Pablo García y Montilla (Libramiento De Campeche)	7.00	3	1	6172	4.5	75.4	2.6	6.7	1.3	4.9	1.0	3.3	0.3	79.9	2.6	17.5	0.098	0.501	19.895915	-90.456423
T. Der. Periférico Pablo García y Montilla (Libramiento De Campeche)	7.00	3	2	6141	4.3	76.9	2.3	5.3	1.5	5.2	0.7	3.5	0.3	81.2	2.3	16.5	0.079	0.501	19.896184	-90.456551
Tenabo	40.00	1	1	5548	1.6	77.2	2.9	4.8	1.8	5.9	1.2	4.2	0.4	78.8	2.9	18.3	0.094	0.509	20.028087	-90.241962
Tenabo	40.00	1	2	5356	1.8	74.3	3.0	7.0	1.6	6.4	0.9	4.6	0.4	76.1	3.0	20.9	0.071	0.509	20.028255	-90.242009
T. Der. Libramiento de Pomuch (2º Acceso)	50.00	3	1	5122	2.1	71.4	4.0	8.8	1.6	6.1	1.2	4.3	0.5	73.5	4.0	22.5	0.068	0.501	20.149675	-90.163018
T. Der. Libramiento de Pomuch (2º Acceso)	50.00	3	2	5136	1.7	73.8	3.9	6.9	1.8	6.1	1.0	4.4	0.4	75.5	3.9	20.6	0.067	0.501	20.149720	-90.163180
Lim. Edos. Term. Camp. Ppia. Yuc.	96.96																			
Kopomá	124.29	3	1	4991	1.8	70.0	4.8	9.1	2.3	5.6	1.1	5.0	0.3	71.8	4.8	23.4	0.075	0.501	20.663199	-89.890200
Kopomá	124.29	3	2	5021	1.8	69.2	4.8	10.2	2.4	5.6	1.2	4.5	0.3	71.0	4.8	24.2	0.065	0.501	20.663375	-89.890255
T. Der. Libramiento de Chocholá (1º Acceso)	137.89	1	1	5227	1.4	71.5	4.3	7.9	2.3	6.0	1.4	4.9	0.3	72.9	4.3	22.8	0.078	0.523	20.725536	-89.843559
T. Der. Libramiento de Chocholá (1º Acceso)	137.89	1	2	4770	1.5	69.8	4.6	8.1	2.5	6.6	1.6	5.0	0.3	71.3	4.6	24.1	0.067	0.523	20.725513	-89.843420
T. Izq. Umán	146.99	3	1	4620	1.1	70.7	4.4	7.7	1.8	7.5	1.4	5.0	0.4	71.8	4.4	23.8	0.088	0.502	20.801468	-89.805685
T. Izq. Umán	146.99	3	2	4654	1.0	70.0	4.4	8.1	2.1	7.4	1.5	5.1	0.4	71.0	4.4	24.6	0.089	0.502	20.801719	-89.805740
X. C. Campeche - Umán	160.49	1	1	4861	2.2	66.0	4.9	9.1	4.2	6.9	1.4	4.7	0.6	68.2	4.9	26.9	0.073	0.516	20.836086	-89.755114
X. C. Campeche - Umán	160.49	1	2	5181	1.6	65.6	4.7	9.9	4.6	6.9	1.6	4.4	0.7	67.2	4.7	28.1	0.086	0.516	20.836506	-89.754539
T. C. Periférico de Mérida	171.21																			

2 CARR: Campeche - Umán

CLAVE: 00164

RUTA: MEX-261

AÑO: 2017

LUGAR	ESTACION				CLASIFICACION VEHICULAR EN PORCIENTO										COORDENADAS					
	KM	TE	SC	TDPA	M	A	B	C2	C3	T3S2	T3S3	T3S2R4	OTROS	A	B	C	K'	D	LATITUD	LONGITUD
Campeche	0.00																			
T. Der. Periférico Pablo García y Montilla (Libramiento De Campeche)	7.00	1	0	5247	10.6	77.1	0.6	7.0	1.0	2.8	0.4	0.1	0.4	87.7	0.6	11.7	0.087	0.515	19.849215	-90.473578
T. Der. Periférico Pablo García y Montilla (Libramiento De Campeche)	7.00	3	0	2542	6.3	80.4	0.6	7.5	1.7	2.2	0.9	0.2	0.2	86.7	0.6	12.7	0.079	0.525	19.848024	-90.453440
T. Izq. Tenabo	30.88	1	0	1567	8.9	77.2	0.7	10.5	1.1	1.1	0.4	0.1	0.0	86.1	0.7	13.2	0.087	0.501	19.804860	-90.279528
T. Izq. Tenabo	30.88	3	0	1563	7.0	80.2	0.8	8.9	1.1	1.3	0.4	0.3	0.0	87.2	0.8	12.0	0.079	0.503	19.804333	-90.270076
T. Der. Edzna	44.51	1	0	1506	12.3	73.6	0.8	9.9	1.1	1.6	0.3	0.3	0.1	85.9	0.8	13.3	0.088	0.505	19.743661	-90.177913
T. Der. Edzna	44.51	3	0	1532	15.0	68.4	0.8	11.7	1.2	1.7	0.3	0.9	0.0	83.4	0.8	15.8	0.090	0.501	19.745718	-90.169922
Hopelchén	84.88	1	0	1945	4.8	76.8	0.7	14.6	0.7	1.5	0.3	0.5	0.1	81.6	0.7	17.7	0.087	0.518	19.753918	-89.854647
Bolonchén de Rejón	117.88	3	0	965	18.6	66.3	1.3	8.8	1.7	1.4	0.9	0.9	0.1	84.9	1.3	13.8	0.085	0.502	20.012954	-89.734015
Lim. Edos. Term. Camp. Ppia. Yuc.	126.88																			
T. Der. Sayil	140.88	1	0	497	7.2	70.9	2.3	13.6	2.0	1.4	0.5	2.0	0.1	78.1	2.3	19.6	0.095	0.501	20.207558	-89.672213
Santa Elena	158.88	1	0	931	32.6	53.4	1.5	8.3	1.2	1.4	0.3	1.2	0.1	86.0	1.5	12.5	0.085	0.502	20.318885	-89.643284

YUCATAN

2 CARR: Campeche - Umán

CLAVE: 00164

RUTA: MEX-261

AÑO: 2017

LUGAR	ESTACION				CLASIFICACION VEHICULAR EN PORCIENTO													COORDENADAS		
	KM	TE	SC	TDPA	M	A	B	C2	C3	T3S2	T3S3	T3S2R4	OTROS	A	B	C	K'	D	LATITUD	LONGITUD
T. Izq. Ruinas de Uxmal	172.48	1	0	713	19.8	64.1	1.0	8.2	1.4	1.9	0.5	3.1	0.0	83.9	1.0	15.1	0.086	0.503	20.361916	-89.763702
Muna	187.43	1	0	1340	15.9	72.3	0.8	7.2	0.9	1.3	0.3	1.2	0.1	88.2	0.8	11.0	0.079	0.559	20.460935	-89.725038
Muna	187.43	3	0	3761	4.8	76.8	0.8	12.5	1.6	2.0	0.6	0.8	0.1	81.6	0.8	17.6	0.083	0.519	20.511038	-89.709229
Xtepén	225.38	1	0	4520	1.9	77.1	0.9	10.3	2.8	2.3	3.5	1.0	0.2	79.0	0.9	20.1	0.080	0.506	20.803556	-89.734152
Umán	230.83	1	0	3603	13.3	65.2	1.2	10.0	3.6	5.3	0.9	0.3	0.2	78.5	1.2	20.3	0.072	0.501	20.866614	-89.746068

3 CARR: Cansahcab - Tizimin

CLAVE: 31014

RUTA: MEX-176

AÑO: 2017

LUGAR	ESTACION				CLASIFICACION VEHICULAR EN PORCIENTO													COORDENADAS		
	KM	TE	SC	TDPA	M	A	B	C2	C3	T3S2	T3S3	T3S2R4	OTROS	A	B	C	K'	D	LATITUD	LONGITUD
Cansahcab	0.00	3	0	3768	6.5	70.9	1.3	11.7	2.7	3.4	1.2	1.9	0.4	77.4	1.3	21.3	0.065	0.527	21.156814	-89.077637
Temax	16.73	3	0	2993	4.3	76.6	1.2	10.0	2.6	3.1	0.7	1.3	0.2	80.9	1.2	17.9	0.079	0.502	21.154740	-88.917528
Buctzotz	32.92	3	0	3149	4.9	77.9	1.4	7.5	2.5	3.5	0.7	1.4	0.2	82.8	1.4	15.8	0.080	0.502	21.199937	-88.776935
Tizimin	99.14	1	0	3553	3.8	78.9	1.3	6.8	2.1	3.9	1.0	1.9	0.3	82.7	1.3	16.0	0.062	0.517	21.150077	-88.187335

4 CARR: Conkal - Puerto Chicxulub

CLAVE: 31004

RUTA: MEX-176

AÑO: 2017

LUGAR	ESTACION				CLASIFICACION VEHICULAR EN PORCIENTO													COORDENADAS		
	KM	TE	SC	TDPA	M	A	B	C2	C3	T3S2	T3S3	T3S2R4	OTROS	A	B	C	K'	D	LATITUD	LONGITUD
Conkal	0.00	3	0	2407	30.0	60.7	0.1	6.5	0.5	1.8	0.2	0.0	0.2	90.7	0.1	9.2	0.079	0.512	21.083553	-89.520039
Puerto Chicxulub	27.00	1	0	3089	4.2	86.5	0.8	5.9	1.0	1.2	0.2	0.1	0.1	90.7	0.8	8.5	0.135	0.527	21.286121	-89.601093

5 CARR: Dzitbalché - Ent. San Bernardo

CLAVE: 00162

RUTA: MEX-180

AÑO: 2017

LUGAR	ESTACION				CLASIFICACION VEHICULAR EN PORCIENTO													COORDENADAS		
	KM	TE	SC	TDPA	M	A	B	C2	C3	T3S2	T3S3	T3S2R4	OTROS	A	B	C	K'	D	LATITUD	LONGITUD
T. C. Campeche - Mérida	0.00																			
T. Izq. Libramiento de Becal (1º Acceso)	12.33	1	0	3347	24.2	67.4	1.1	4.7	0.3	2.0	0.1	0.1	0.1	91.6	1.1	7.3	0.069	0.508	20.418901	-90.033871
T. Izq. Libramiento de Becal (2º Acceso)	15.41	3	0	1649	15.9	73.0	1.6	7.1	0.8	1.5	0.0	0.0	0.1	88.9	1.6	9.5	0.083	0.519	20.450884	-90.040616
Lim. Edos. Term. Camp. Ppia. Yuc.	15.80																			
Halachó	21.08	1	0	1984	20.2	69.2	1.0	7.3	0.6	1.6	0.1	0.0	0.0	89.4	1.0	9.6	0.072	0.503	20.469447	-90.066741
T. Izq. Libramiento de Maxcanú (1º Acceso)	35.60	1	0	2482	26.6	61.3	0.9	8.0	1.0	1.7	0.3	0.1	0.1	87.9	0.9	11.2	0.077	0.508	20.577200	-90.035797
T. Der. Muna	40.36	3	0	3321	11.3	68.4	1.4	16.1	0.8	1.6	0.2	0.1	0.1	79.7	1.4	18.9	0.072	0.502	20.601798	-89.975442
Ent. San Bernardo	41.53																			

YUCATAN

6 CARR: Ent. Poxilá - Mérida

CLAVE: 31003

RUTA: MEX-180

AÑO: 2017

LUGAR	ESTACION				CLASIFICACION VEHICULAR EN PORCIENTO													COORDENADAS			
	KM	TE	SC	TDPA	M	A	B	C2	C3	T3S2	T3S3	T3S2R4	OTROS	A	B	C	K'	D	LATITUD	LONGITUD	
T. C. Campeche - Mérida	0.00																				
Umán	9.46	1	0	2854	13.7	61.2	1.6	14.3	3.5	5.0	0.4	0.1	0.2	74.9	1.6	23.5	0.074	0.511	20.866450	-89.757874	
X. Periférico de Mérida	16.37	1	1	16779	7.1	79.0	0.9	7.0	1.9	1.7	1.2	0.7	0.5	86.1	0.9	13.0	0.086	0.508	20.921632	-89.694447	
X. Periférico de Mérida	16.37	1	2	16256	7.0	77.8	1.0	7.7	2.1	1.8	1.4	0.7	0.5	84.8	1.0	14.2	0.076	0.508	20.921710	-89.694489	
Mérida	25.70	1	1	20462	5.9	79.7	1.1	7.9	1.8	1.9	1.0	0.5	0.2	85.6	1.1	13.3	0.094	0.504	20.926800	-89.684141	
Mérida	25.70	1	2	20131	5.7	80.9	1.0	7.2	1.8	1.5	1.2	0.5	0.2	86.6	1.0	12.4	0.082	0.504	20.927002	-89.684351	

7 CARR: Hunucmá - Sisal

CLAVE: 31021

RUTA: MEX-281

AÑO: 2017

LUGAR	ESTACION				CLASIFICACION VEHICULAR EN PORCIENTO													COORDENADAS		
	KM	TE	SC	TDPA	M	A	B	C2	C3	T3S2	T3S3	T3S2R4	OTROS	A	B	C	K'	D	LATITUD	LONGITUD
Hunucmá	0.00	3	0	1687	11.3	80.5	0.4	5.0	0.6	1.7	0.2	0.1	0.2	91.8	0.4	7.8	0.163	0.506	21.030223	-89.896414
Sisal	23.20	1	0	1349	6.8	86.1	0.4	4.9	0.4	1.2	0.1	0.0	0.1	92.9	0.4	6.7	0.209	0.513	21.161080	-90.029858

8 CARR: Libramiento de Progreso

CLAVE: 31631

RUTA: MEX-261

AÑO: 2017

LUGAR	ESTACION				CLASIFICACION VEHICULAR EN PORCIENTO													COORDENADAS		
	KM	TE	SC	TDPA	M	A	B	C2	C3	T3S2	T3S3	T3S2R4	OTROS	A	B	C	K'	D	LATITUD	LONGITUD
T. C. Mérida - Progreso	0.00	3	0	4712	3.0	92.6	0.2	3.6	0.5	0.1	0.0	0.0	0.0	95.6	0.2	4.2	0.168	0.516	21.258065	-89.666046
Yucalpetén	6.50	1	0	4189	2.0	94.6	0.2	2.8	0.3	0.0	0.1	0.0	0.0	96.6	0.2	3.2	0.190	0.516	21.271513	-89.712147

9 CARR: Mérida - Celestún

CLAVE: 31025

RUTA: MEX-281

AÑO: 2017

LUGAR	ESTACION				CLASIFICACION VEHICULAR EN PORCIENTO													COORDENADAS		
	KM	TE	SC	TDPA	M	A	B	C2	C3	T3S2	T3S3	T3S2R4	OTROS	A	B	C	K'	D	LATITUD	LONGITUD
Mérida	0.00	3	1	20298	6.5	84.9	0.3	6.7	0.3	0.3	0.5	0.3	0.2	91.4	0.3	8.3	0.071	0.501	20.987319	-89.659819
Mérida	0.00	3	2	20409	5.7	84.9	0.3	7.5	0.3	0.3	0.5	0.3	0.2	90.6	0.3	9.1	0.071	0.501	20.987210	-89.659917
X. Periférico de Mérida	5.10	1	1	27011	4.8	88.1	0.3	5.0	0.5	0.3	0.5	0.3	0.2	92.9	0.3	6.8	0.083	0.522	20.993872	-89.670383
X. Periférico de Mérida	5.10	1	2	24738	5.4	86.9	0.3	5.6	0.5	0.3	0.5	0.3	0.2	92.3	0.3	7.4	0.093	0.522	20.993744	-89.670470
X. Periférico de Mérida	5.10	3	1	20093	6.5	87.7	0.1	5.1	0.2	0.1	0.1	0.1	0.1	94.2	0.1	5.7	0.096	0.532	20.998675	-89.678196
X. Periférico de Mérida	5.10	3	2	17674	6.4	87.5	0.2	5.2	0.3	0.1	0.1	0.1	0.1	93.9	0.2	5.9	0.108	0.532	20.998573	-89.678282
Ucú	14.80	1	0	3929	13.9	72.8	0.6	10.8	0.5	1.2	0.1	0.0	0.1	86.7	0.6	12.7	0.071	0.508	21.027295	-89.734268
Hunucmá	26.00	1	0	2528	15.2	67.4	0.9	13.7	0.5	1.7	0.3	0.1	0.2	82.6	0.9	16.5	0.111	0.526	21.028442	-89.847275
Hunucmá	26.00	3	0	2061	25.3	59.2	0.9	10.6	0.7	2.6	0.4	0.1	0.2	84.5	0.9	14.6	0.084	0.500	21.002981	-89.885372
Kinchil	40.00	3	0	1845	13.8	69.8	1.4	8.3	2.6	3.2	0.6	0.1	0.2	83.6	1.4	15.0	0.091	0.504	20.911750	-89.962942

YUCATAN

9 CARR: Mérida - Celestún

CLAVE: 31025

RUTA: MEX-281

AÑO: 2017

LUGAR	ESTACION				CLASIFICACION VEHICULAR EN PORCIENTO													COORDENADAS		
	KM	TE	SC	TDPA	M	A	B	C2	C3	T3S2	T3S3	T3S2R4	OTROS	A	B	C	K'	D	LATITUD	LONGITUD
T. Izq. San Mateo	67.00	1	0	1163	2.8	87.7	0.3	6.3	2.1	0.5	0.2	0.1	0.0	90.5	0.3	9.2	0.112	0.504	20.859845	-90.187253
Celestún	89.00	1	0	1094	9.2	77.7	1.6	9.2	1.4	0.7	0.1	0.0	0.1	86.9	1.6	11.5	0.148	0.517	20.857348	-90.379411

10 CARR: Mérida - Dzilam de Bravo

CLAVE: 31001

RUTA: MEX-176

AÑO: 2017

LUGAR	ESTACION				CLASIFICACION VEHICULAR EN PORCIENTO													COORDENADAS		
	KM	TE	SC	TDPA	M	A	B	C2	C3	T3S2	T3S3	T3S2R4	OTROS	A	B	C	K'	D	LATITUD	LONGITUD
Mérida	0.00																			
X. Periférico de Mérida	5.90	1	1	9564	2.8	90.7	0.1	2.1	0.1	1.0	2.6	0.2	0.4	93.5	0.1	6.4	0.087	0.536	21.019103	-89.568461
X. Periférico de Mérida	5.90	1	2	11044	3.3	90.4	0.1	2.7	0.2	1.2	1.5	0.2	0.4	93.7	0.1	6.2	0.078	0.536	21.019147	-89.568542
X. Periférico de Mérida	5.90	3	1	15539	3.9	89.2	0.2	2.7	0.7	1.3	1.4	0.2	0.4	93.1	0.2	6.7	0.085	0.509	21.036220	-89.552054
X. Periférico de Mérida	5.90	3	2	14975	4.2	88.7	0.2	3.1	0.7	1.2	1.3	0.3	0.3	92.9	0.2	6.9	0.091	0.509	21.036296	-89.552136
Conkal	18.00	1	1	11109	6.3	84.5	0.4	5.1	1.0	1.3	0.8	0.3	0.3	90.8	0.4	8.8	0.097	0.503	21.050667	-89.537856
Conkal	18.00	1	2	10962	6.3	81.8	0.5	6.7	1.0	2.0	0.9	0.4	0.4	88.1	0.5	11.4	0.105	0.503	21.050799	-89.537997
Baca	34.40	1	0	1749	36.3	54.2	0.2	7.1	0.4	1.4	0.2	0.1	0.1	90.5	0.2	9.3	0.110	0.501	21.108939	-89.410102
Motul	44.00	1	1	5329	9.6	74.6	1.1	11.5	1.2	1.1	0.4	0.4	0.1	84.2	1.1	14.7	0.105	0.508	21.097712	-89.312450
Motul	44.00	1	2	5158	9.6	80.6	0.5	5.5	1.3	1.3	0.5	0.5	0.2	90.2	0.5	9.3	0.116	0.508	21.097579	-89.312447
Motul	44.00	3	0	4571	4.3	81.0	0.9	7.7	1.9	2.6	0.5	0.9	0.2	85.3	0.9	13.8	0.082	0.511	21.115583	-89.271630
Cansahcab	68.00	3	0	1756	16.1	77.9	0.2	4.3	0.7	0.8	0.0	0.0	0.0	94.0	0.2	5.8	0.088	0.510	21.165737	-89.100702
Dzidzantún	80.00	1	0	1864	18.6	74.3	0.4	5.2	0.7	0.8	0.0	0.0	0.0	92.9	0.4	6.7	0.088	0.504	21.235448	-89.051648
Dzilam de Bravo	105.00	1	0	2358	48.0	44.2	0.2	4.6	0.3	2.1	0.3	0.1	0.2	92.2	0.2	7.6	0.088	0.503	21.390366	-88.891918

11 CARR: Mérida - Progreso

CLAVE: 31091

RUTA: MEX-261

AÑO: 2017

LUGAR	ESTACION				CLASIFICACION VEHICULAR EN PORCIENTO													COORDENADAS		
	KM	TE	SC	TDPA	M	A	B	C2	C3	T3S2	T3S3	T3S2R4	OTROS	A	B	C	K'	D	LATITUD	LONGITUD
T. C. Mérida - Dzilam de Bravo	0.00																			
Periférico Mérida	5.40	1	1	22122	2.2	91.2	0.4	3.3	0.2	0.5	1.4	0.3	0.5	93.4	0.4	6.2	0.083	0.532	21.044171	-89.629240
Periférico Mérida	5.40	1	2	19448	3.2	89.6	0.4	3.9	0.2	0.5	1.4	0.3	0.5	92.8	0.4	6.8	0.083	0.532	21.044151	-89.629364
T. Izq. Dzityá	10.40	1	1	26973	2.2	89.3	2.2	2.7	0.4	1.4	1.2	0.3	0.3	91.5	2.2	6.3	0.075	0.510	21.051286	-89.630523
T. Izq. Dzityá	10.40	1	2	25881	2.9	89.0	1.2	3.0	0.4	1.5	1.4	0.3	0.3	91.9	1.2	6.9	0.078	0.510	21.051228	-89.630816
T. Izq. Dzityá	10.40	3	1	20374	1.7	88.0	2.8	3.8	1.4	0.9	0.8	0.4	0.2	89.7	2.8	7.5	0.092	0.503	21.064780	-89.632765
T. Izq. Dzityá	10.40	3	2	20133	2.3	86.6	2.5	4.4	1.3	1.2	1.1	0.5	0.1	88.9	2.5	8.6	0.075	0.503	21.064754	-89.633172
Progreso	35.04	1	1	12637	3.9	86.4	0.4	3.9	0.6	2.6	1.6	0.3	0.3	90.3	0.4	9.3	0.105	0.509	21.269415	-89.660805
Progreso	35.04	1	2	12202	4.2	86.2	0.4	3.2	0.5	2.8	1.7	0.4	0.6	90.4	0.4	9.2	0.110	0.509	21.270551	-89.661629

YUCATAN

12 CARR: Mérida - Puerto Juárez

CLAVE: 00067

RUTA: MEX-180

AÑO: 2017

LUGAR	ESTACION				CLASIFICACION VEHICULAR EN PORCIENTO													COORDENADAS		
	KM	TE	SC	TDPA	M	A	B	C2	C3	T3S2	T3S3	T3S2R4	OTROS	A	B	C	K'	D	LATITUD	LONGITUD
Mérida	0.00																			
X. Periférico de Mérida	5.60	1	1	11832	9.4	83.6	0.3	3.4	0.2	1.6	1.0	0.1	0.4	93.0	0.3	6.7	0.077	0.501	20.957612	-89.572541
X. Periférico de Mérida	5.60	1	2	11899	9.4	82.2	0.7	4.0	0.3	2.0	0.8	0.1	0.5	91.6	0.7	7.7	0.074	0.501	20.957692	-89.572512
X. Periférico de Mérida	5.60	3	1	14697	5.9	80.4	1.0	5.1	1.1	2.5	2.1	1.0	0.9	86.3	1.0	12.7	0.082	0.502	20.955102	-89.566564
X. Periférico de Mérida	5.60	3	2	14794	6.4	80.7	0.9	4.3	1.2	2.6	1.9	1.1	0.9	87.1	0.9	12.0	0.069	0.502	20.955204	-89.566467
Teya	13.00	1	1	10431	4.0	80.9	1.7	6.6	1.5	2.3	1.0	1.6	0.4	84.9	1.7	13.4	0.095	0.516	20.936532	-89.532141
Teya	13.00	1	2	9780	4.0	81.0	1.6	6.4	1.5	2.7	0.7	1.7	0.4	85.0	1.6	13.4	0.092	0.516	20.936638	-89.532100
T. Der. Seyé	28.79	1	1	5959	4.0	79.8	2.2	7.0	1.8	2.2	0.5	2.3	0.2	83.8	2.2	14.0	0.094	0.513	20.894764	-89.389597
T. Der. Seyé	28.79	1	2	5659	3.9	78.3	2.6	7.6	2.0	2.5	0.5	2.4	0.2	82.2	2.6	15.2	0.088	0.513	20.894865	-89.389525
T. Der. Seyé	28.79	3	1	5340	1.0	83.0	3.1	5.6	1.8	2.1	0.7	2.5	0.2	84.0	3.1	12.9	0.097	0.518	20.891913	-89.371225
T. Der. Seyé	28.79	3	2	4978	1.1	81.2	3.3	6.3	2.0	2.2	0.8	2.9	0.2	82.3	3.3	14.4	0.094	0.518	20.892033	-89.371234
Tahmek	42.00	1	1	5560	1.1	83.9	2.3	5.7	1.7	2.0	0.6	2.3	0.4	85.0	2.3	12.7	0.072	0.500	20.876029	-89.279059
Tahmek	42.00	1	2	5563	0.6	84.8	2.4	5.6	1.5	1.8	0.7	2.2	0.4	85.4	2.4	12.2	0.100	0.500	20.876155	-89.279036
T. Izq. Hochtún (1º Acceso)	46.65	1	0	2564	8.5	77.0	1.8	9.5	0.7	1.9	0.3	0.3	0.0	85.5	1.8	12.7	0.078	0.531	20.867618	-89.214674
T. Izq. Hochtún (2º Acceso)	48.62	1	0	1182	10.1	73.1	1.4	9.3	2.4	2.1	0.9	0.5	0.2	83.2	1.4	15.4	0.093	0.525	20.858562	-89.201878
T. Izq. Hochtún (2º Acceso)	48.62	3	0	2219	15.3	71.7	1.9	7.7	0.7	1.9	0.4	0.3	0.1	87.0	1.9	11.1	0.078	0.514	20.854297	-89.195883
Kantunil	67.28	3	0	3046	3.1	77.9	4.0	7.7	3.6	2.4	0.6	0.6	0.1	81.0	4.0	15.0	0.063	0.513	20.791230	-89.019218
Libre Unión	92.91	1	0	2517	3.0	76.6	4.0	8.5	4.0	1.7	1.1	0.8	0.3	79.6	4.0	16.4	0.068	0.506	20.708396	-88.816140
Libre Unión	92.91	3	0	2584	2.9	76.2	3.7	9.4	4.3	2.1	0.8	0.5	0.1	79.1	3.7	17.2	0.063	0.516	20.706901	-88.800041
Piste	116.30	3	0	6964	5.7	79.3	2.6	6.4	1.6	2.6	0.9	0.3	0.6	85.0	2.6	12.4	0.078	0.547	20.691162	-88.579937
1er. Acceso a Zona Arqueológica de Chichen-Itzá	117.90	3	0	5749	9.5	73.0	3.5	8.1	2.2	2.4	0.7	0.3	0.3	82.5	3.5	14.0	0.077	0.514	20.688610	-88.571131
2do. Acceso a Zona Arqueológica de Chichen-Itzá	121.10	3	0	5920	7.4	76.0	3.3	7.4	2.0	2.6	0.7	0.2	0.4	83.4	3.3	13.3	0.078	0.507	20.668240	-88.555720
T. Der. Chankom	127.00	1	0	4312	3.7	75.2	4.2	11.3	2.5	1.9	0.6	0.4	0.2	78.9	4.2	16.9	0.086	0.501	20.643932	-88.494173
T. Der. Chankom	127.00	3	0	4017	4.1	80.9	3.4	5.7	3.6	0.8	0.5	0.7	0.3	85.0	3.4	11.6	0.072	0.511	20.640474	-88.483386
Valladolid	160.68	1	0	5511	13.4	76.5	1.8	4.9	0.4	2.4	0.2	0.2	0.2	89.9	1.8	8.3	0.074	0.532	20.683797	-88.231915
Valladolid	160.68	3	0	6354	14.5	77.0	0.8	3.9	0.4	2.8	0.2	0.2	0.2	91.5	0.8	7.7	0.074	0.534	20.694643	-88.165806
T. Der. Coba	187.80	1	0	6024	1.9	81.6	1.9	10.7	1.4	1.1	0.5	0.9	0.0	83.5	1.9	14.6	0.085	0.548	20.659555	-87.961108
T. Der. Chemax	189.79	1	0	4065	4.0	85.8	1.1	4.4	1.6	2.2	0.4	0.4	0.1	89.8	1.1	9.1	0.100	0.519	20.657916	-87.951519
T. Der. Chemax	189.79	3	0	3439	3.9	83.5	2.5	6.3	1.4	1.5	0.4	0.4	0.1	87.4	2.5	10.1	0.112	0.529	20.665067	-87.924670
X-Can	225.00	3	0	2818	2.2	83.3	2.5	7.1	1.8	1.9	0.6	0.5	0.1	85.5	2.5	12.0	0.110	0.517	20.860627	-87.655913
Lim. Edos. Term. Yuc. Ppia. Q. R.	230.40																			
Nuevo X-Can	231.90	3	0	3082	2.3	84.3	2.0	6.7	1.8	1.8	0.6	0.4	0.1	86.6	2.0	11.4	0.102	0.515	20.871582	-87.591102
Zaragoza	239.00	1	0	4490	3.6	84.8	2.2	5.8	1.4	1.4	0.4	0.2	0.2	88.4	2.2	9.4	0.064	0.510	20.881259	-87.533584
Vicente Guerrero	261.00	1	0	3184	2.2	82.2	2.8	7.7	2.1	2.0	0.5	0.4	0.1	84.4	2.8	12.8	0.096	0.502	20.940854	-87.331844
Leona Vicario	275.50	1	0	5225	2.2	84.9	1.8	5.5	1.8	2.5	0.6	0.4	0.3	87.1	1.8	11.1	0.085	0.503	20.981197	-87.222537

YUCATAN

12 CARR: Mérida - Puerto Juárez

CLAVE: 00067

RUTA: MEX-180

AÑO: 2017

LUGAR	ESTACION				CLASIFICACION VEHICULAR EN PORCIENTO														COORDENADAS	
	KM	TE	SC	TDPA	M	A	B	C2	C3	T3S2	T3S3	T3S2R4	OTROS	A	B	C	K'	D	LATITUD	LONGITUD
Leona Vicario	275.50	3	0	6119	3.3	81.9	1.6	7.6	1.3	3.2	0.5	0.4	0.2	85.2	1.6	13.2	0.075	0.511	20.993712	-87.187987
T. Der. Aeropuerto	302.50	1	0	7222	2.2	83.1	1.2	7.2	1.6	2.6	1.2	0.7	0.2	85.3	1.2	13.5	0.076	0.509	21.096229	-86.983384
T. Der. Aeropuerto	302.50	3	1	4521	2.0	82.0	1.9	6.4	2.2	2.1	1.2	1.8	0.4	84.0	1.9	14.1	0.079	0.506	21.103138	-86.969356
T. Der. Aeropuerto	302.50	3	2	4622	2.3	83.4	1.6	6.0	2.0	2.0	0.7	1.6	0.4	85.7	1.6	12.7	0.108	0.506	21.103250	-86.969413
T. Der. Alfredo V. Bonfil	310.00	1	1	22496	4.8	81.0	0.2	3.0	0.3	4.6	3.9	1.1	1.1	85.8	0.2	14.0	0.057	0.506	21.138413	-86.898843
T. Der. Alfredo V. Bonfil	310.00	1	2	23088	4.8	79.6	0.2	3.4	0.3	5.2	4.2	1.2	1.1	84.4	0.2	15.4	0.057	0.506	21.138312	-86.898753
Puerto Juárez	321.41																			

13 CARR: Mérida - Tekanto

CLAVE: 31587

RUTA: MEX-180

AÑO: 2017

LUGAR	ESTACION				CLASIFICACION VEHICULAR EN PORCIENTO														COORDENADAS	
	KM	TE	SC	TDPA	M	A	B	C2	C3	T3S2	T3S3	T3S2R4	OTROS	A	B	C	K'	D	LATITUD	LONGITUD
T. C. Mérida - Puerto Juárez	0.00																			
X. Periférico de Mérida	5.70	1	0	13099	11.3	79.7	0.1	7.5	0.2	0.3	0.8	0.0	0.1	91.0	0.1	8.9	0.074	0.507	20.961321	-89.569853
T. Der. Tixpéhual	13.25	1	0	6325	8.3	78.4	0.6	7.7	1.9	2.5	0.3	0.1	0.2	86.7	0.6	12.7	0.080	0.501	20.976439	-89.463251
T. Der. Tixpéhual	13.25	3	0	3879	8.7	81.6	0.5	6.9	0.5	1.6	0.1	0.0	0.1	90.3	0.5	9.2	0.093	0.545	20.981821	-89.454620
Tixkokob	21.00	1	0	3562	8.4	82.6	0.4	6.5	0.5	1.4	0.2	0.0	0.0	91.0	0.4	8.6	0.101	0.524	21.001840	-89.422552
Tixkokob	21.00	3	0	3176	31.9	58.5	0.3	8.7	0.4	0.2	0.0	0.0	0.0	90.4	0.3	9.3	0.078	0.512	21.000710	-89.378140
Cacalchén	38.00	1	0	1514	23.0	70.2	0.0	4.9	0.6	0.7	0.0	0.0	0.6	93.2	0.0	6.8	0.089	0.507	20.985817	-89.247895
Tekanto	51.00	1	0	895	38.8	45.6	0.2	13.0	0.3	1.0	0.1	0.0	1.0	84.4	0.2	15.4	0.067	0.500	21.010385	-89.118689

14 CARR: Mérida - Tetiz

CLAVE: 31610

RUTA: MEX-281

AÑO: 2017

LUGAR	ESTACION				CLASIFICACION VEHICULAR EN PORCIENTO														COORDENADAS	
	KM	TE	SC	TDPA	M	A	B	C2	C3	T3S2	T3S3	T3S2R4	OTROS	A	B	C	K'	D	LATITUD	LONGITUD
Anillo Periferico Lic. Manuel Berzunza	0.00	3	0	11856	7.4	83.7	0.7	4.8	1.1	1.8	0.3	0.2	0.0	91.1	0.7	8.2	0.101	0.537	20.983484	-89.699721
X. C. Hunucmá - Umán	17.98	1	0	4321	12.6	71.3	1.2	10.5	1.9	1.5	0.4	0.5	0.1	83.9	1.2	14.9	0.081	0.512	20.982028	-89.842119
X. C. Hunucmá - Umán	17.98	3	0	2309	5.7	80.8	1.1	8.4	1.4	1.7	0.6	0.1	0.2	86.5	1.1	12.4	0.067	0.501	20.979224	-89.861269
X. C. Mérida - Celestún	24.40	1	0	2885	2.3	86.2	1.2	7.0	1.0	1.3	0.4	0.2	0.4	88.5	1.2	10.3	0.069	0.502	20.979989	-89.908774

15 CARR: Muna - Felipe Carrillo Puerto

CLAVE: 00148

RUTA: MEX-184

AÑO: 2017

LUGAR	ESTACION				CLASIFICACION VEHICULAR EN PORCIENTO														COORDENADAS	
	KM	TE	SC	TDPA	M	A	B	C2	C3	T3S2	T3S3	T3S2R4	OTROS	A	B	C	K'	D	LATITUD	LONGITUD
Muna	0.00	3	0	3886	13.0	68.2	0.9	13.0	1.3	2.4	0.5	0.4	0.3	81.2	0.9	17.9	0.067	0.511	20.474584	-89.694601

YUCATAN

15 CARR: Muna - Felipe Carrillo Puerto

CLAVE: 00148

RUTA: MEX-184

AÑO: 2017

LUGAR	ESTACION				CLASIFICACION VEHICULAR EN PORCIENTO										COORDENADAS					
	KM	TE	SC	TDPA	M	A	B	C2	C3	T3S2	T3S3	T3S2R4	OTROS	A	B	C	K'	D	LATITUD	LONGITUD
Ticul	19.10	1	0	3799	11.8	70.7	0.8	13.0	1.3	1.6	0.4	0.3	0.1	82.5	0.8	16.7	0.070	0.502	20.406492	-89.573160
Ticul	19.10	3	0	6743	34.0	53.3	0.8	7.1	0.4	3.4	0.5	0.1	0.4	87.3	0.8	11.9	0.066	0.503	20.372844	-89.517069
Oxkutzcab	40.50	3	0	6149	27.3	60.7	0.5	7.2	0.9	2.6	0.4	0.1	0.3	88.0	0.5	11.5	0.082	0.500	20.281859	-89.374843
Tekax	53.90	3	0	3612	28.4	62.4	0.3	5.5	0.5	2.4	0.4	0.0	0.1	90.8	0.3	8.9	0.069	0.512	20.187776	-89.267261
Tzucacab	86.60	1	0	1883	24.4	64.1	0.3	9.1	0.8	1.1	0.2	0.0	0.0	88.5	0.3	11.2	0.084	0.515	20.078350	-89.061949
Tzucacab	86.60	3	0	1463	31.6	59.7	0.3	6.0	1.1	0.9	0.2	0.2	0.0	91.3	0.3	8.4	0.070	0.505	20.063693	-89.037060
Santa Rosa	109.60	3	0	2378	19.0	63.6	1.7	7.5	2.4	2.2	1.2	2.3	0.1	82.6	1.7	15.7	0.073	0.519	19.946679	-88.879175
Lim. Edos. Term. Yuc. Ppia. Q. R.	117.00																			
Dziuche	118.00	1	0	2310	8.3	77.6	0.4	4.6	3.4	1.7	1.2	2.5	0.3	85.9	0.4	13.7	0.068	0.511	19.905600	-88.819774
Dziuche	118.00	3	0	2801	5.8	78.0	1.1	5.7	2.5	2.7	1.3	2.4	0.5	83.8	1.1	15.1	0.080	0.522	19.888397	-88.803539
José María Morelos	138.60	1	0	3871	8.9	79.5	1.5	6.1	1.5	0.9	0.5	1.0	0.1	88.4	1.5	10.1	0.079	0.520	19.763265	-88.724057
José María Morelos	138.60	3	0	2945	9.4	74.8	2.0	7.8	1.5	2.0	1.0	1.4	0.1	84.2	2.0	13.8	0.077	0.532	19.738638	-88.693881
Polyuc	161.94	1	0	2618	3.8	78.8	1.7	8.3	2.0	2.3	1.1	1.9	0.1	82.6	1.7	15.7	0.069	0.501	19.611452	-88.571509
Polyuc	161.94	3	0	1335	9.1	77.7	0.8	8.2	1.5	1.4	0.5	0.6	0.2	86.8	0.8	12.4	0.081	0.504	19.609492	-88.554964
T. Der. Dzulá	178.11	3	0	1344	6.0	80.6	1.5	8.6	1.4	0.9	0.5	0.5	0.0	86.6	1.5	11.9	0.077	0.532	19.643472	-88.405917
Felipe Carrillo Puerto	216.97	1	0	5536	19.7	71.0	0.6	3.5	0.5	3.7	0.5	0.1	0.4	90.7	0.6	8.7	0.074	0.508	19.584367	-88.057788

16 CARR: Ramal a Panabá

CLAVE: 31609

RUTA: MEX-295

AÑO: 2017

LUGAR	ESTACION				CLASIFICACION VEHICULAR EN PORCIENTO										COORDENADAS					
	KM	TE	SC	TDPA	M	A	B	C2	C3	T3S2	T3S3	T3S2R4	OTROS	A	B	C	K'	D	LATITUD	LONGITUD
T. C. Valladolid - Río Lagartos	0.00	3	0	1374	21.8	70.2	0.5	5.9	0.6	0.9	0.1	0.0	0.0	92.0	0.5	7.5	0.081	0.503	21.194143	-88.170104
Panabá	18.00	1	0	1426	23.5	67.1	0.6	6.6	0.5	1.4	0.1	0.0	0.2	90.6	0.6	8.8	0.083	0.508	21.286017	-88.269363

17 CARR: Teya -Peto

CLAVE: 31042

RUTA: MEX-184

AÑO: 2017

LUGAR	ESTACION				CLASIFICACION VEHICULAR EN PORCIENTO										COORDENADAS					
	KM	TE	SC	TDPA	M	A	B	C2	C3	T3S2	T3S3	T3S2R4	OTROS	A	B	C	K'	D	LATITUD	LONGITUD
T. C. Mérida - Puerto Juárez	0.00																			
San Antonio Tehuiz	3.80	3	1	4556	6.1	79.5	0.8	8.5	1.7	1.8	0.6	0.8	0.2	85.6	0.8	13.6	0.106	0.509	20.887969	-89.507806
San Antonio Tehuiz	3.80	3	2	4394	5.7	77.8	1.4	9.1	1.7	2.7	0.5	1.0	0.1	83.5	1.4	15.1	0.113	0.509	20.888034	-89.507739
T. Izq. Acanceh	13.70	1	1	3015	4.8	78.6	2.1	8.4	2.4	1.6	0.6	1.4	0.1	83.4	2.1	14.5	0.105	0.503	20.816004	-89.471822
T. Izq. Acanceh	13.70	1	2	2982	4.1	77.4	2.2	9.2	2.6	1.9	0.8	1.6	0.2	81.5	2.2	16.3	0.106	0.503	20.816043	-89.471991
Tecoh	22.00	3	1	3464	7.0	75.3	1.4	10.4	2.3	1.8	0.6	1.0	0.2	82.3	1.4	16.3	0.081	0.520	20.711733	-89.476032
Tecoh	22.00	3	2	3194	5.1	75.8	1.6	11.4	2.3	2.0	0.7	0.8	0.3	80.9	1.6	17.5	0.103	0.520	20.711783	-89.476039

YUCATAN

17 CARR: Teya -Peto

CLAVE: 31042

RUTA: MEX-184

AÑO: 2017

LUGAR	ESTACION				CLASIFICACION VEHICULAR EN PORCIENTO													COORDENADAS		
	KM	TE	SC	TDPA	M	A	B	C2	C3	T3S2	T3S3	T3S2R4	OTROS	A	B	C	K'	D	LATITUD	LONGITUD
T. Der. Zona Arq. de Mayapan	37.65	1	1	2060	1.4	78.6	2.1	10.2	2.9	1.5	0.9	2.3	0.1	80.0	2.1	17.9	0.087	0.501	20.633607	-89.459122
T. Der. Zona Arq. de Mayapan	37.65	1	2	2051	1.7	78.6	1.8	10.3	2.8	1.4	0.9	2.4	0.1	80.3	1.8	17.9	0.080	0.501	20.633639	-89.458990
T. Izq. Teabo	69.05	1	1	2000	4.2	79.9	3.4	5.2	2.6	1.8	1.0	1.8	0.1	84.1	3.4	12.5	0.112	0.508	20.413431	-89.307728
T. Izq. Teabo	69.05	1	2	1937	3.8	79.2	3.2	5.8	2.8	2.0	1.0	2.1	0.1	83.0	3.2	13.8	0.079	0.508	20.413368	-89.307735
T. Izq. Tixmehuac	97.10	1	0	2101	3.4	74.1	5.1	7.5	3.3	2.3	1.5	2.3	0.5	77.5	5.1	17.4	0.072	0.506	20.231528	-89.129639
Peto	120.70	1	0	2669	5.7	76.5	2.6	6.7	2.4	2.4	1.3	2.2	0.2	82.2	2.6	15.2	0.084	0.502	20.126171	-88.951606

18 CARR: Tzucacab - Santa Rosa

CLAVE: 31017

RUTA: MEX

AÑO: 2017

LUGAR	ESTACION				CLASIFICACION VEHICULAR EN PORCIENTO													COORDENADAS		
	KM	TE	SC	TDPA	M	A	B	C2	C3	T3S2	T3S3	T3S2R4	OTROS	A	B	C	K'	D	LATITUD	LONGITUD
Tzucacab	0.00	3	0	1611	17.7	69.5	0.5	10.6	0.7	0.8	0.2	0.0	0.0	87.2	0.5	12.3	0.109	0.508	20.074085	-89.035051
Peto	16.00	3	0	2214	10.3	72.8	2.0	6.6	2.1	2.3	1.2	2.4	0.3	83.1	2.0	14.9	0.078	0.546	20.082193	-88.911434
Santa Rosa	34.50	1	0	1823	6.1	76.9	0.6	5.2	3.8	2.3	1.4	2.8	0.9	83.0	0.6	16.4	0.080	0.513	19.979185	-88.885903

19 CARR: Valladolid - Felipe Carrillo Puerto

CLAVE: 00010

RUTA: MEX-295

AÑO: 2017

LUGAR	ESTACION				CLASIFICACION VEHICULAR EN PORCIENTO													COORDENADAS		
	KM	TE	SC	TDPA	M	A	B	C2	C3	T3S2	T3S3	T3S2R4	OTROS	A	B	C	K'	D	LATITUD	LONGITUD
Valladolid	0.00	3	0	4789	20.7	74.4	0.2	1.8	0.1	2.3	0.2	0.1	0.2	95.1	0.2	4.7	0.084	0.518	20.672909	-88.204571
Chichimilá	6.90	3	0	2220	12.6	82.1	0.3	2.8	0.6	1.3	0.1	0.1	0.1	94.7	0.3	5.0	0.077	0.503	20.622693	-88.232274
Tekom	12.05	3	0	1437	12.1	79.3	0.5	5.3	1.1	1.0	0.4	0.3	0.0	91.4	0.5	8.1	0.088	0.510	20.590862	-88.265391
Tixcacalcupul	19.80	3	0	946	13.0	79.2	0.5	5.6	0.6	0.8	0.2	0.1	0.0	92.2	0.5	7.3	0.085	0.502	20.524785	-88.271176
Lim. Edos. Term. Yuc. Ppia. Q. R.	46.00																			
Tepich	51.40	1	0	718	11.9	76.9	0.4	8.6	0.6	1.1	0.4	0.1	0.0	88.8	0.4	10.8	0.106	0.511	20.255583	-88.255074
Tihosuco	65.00	1	0	880	6.7	82.9	1.5	7.2	0.5	0.8	0.3	0.1	0.0	89.6	1.5	8.9	0.088	0.504	20.193240	-88.360489
Tihosuco	65.00	3	0	989	11.9	78.8	0.5	5.9	0.7	1.4	0.4	0.2	0.2	90.7	0.5	8.8	0.087	0.504	20.190569	-88.386872
T. Izq. San Felipe Berriozábal	99.00	1	0	620	6.2	81.0	0.8	8.4	1.7	1.1	0.4	0.4	0.0	87.2	0.8	12.0	0.095	0.504	19.962875	-88.242069
T. Izq. San Felipe Berriozábal	99.00	3	0	688	5.7	82.9	1.4	7.6	1.3	0.4	0.4	0.3	0.0	88.6	1.4	10.0	0.090	0.506	19.961270	-88.240448
Señor	116.50	1	0	877	12.6	79.0	0.8	5.5	0.7	0.8	0.4	0.2	0.0	91.6	0.8	7.6	0.091	0.502	19.852862	-88.144924
Señor	116.50	3	0	1230	6.0	85.0	1.6	5.8	0.6	0.8	0.1	0.1	0.0	91.0	1.6	7.4	0.085	0.504	19.830925	-88.130835
Felipe Carrillo Puerto	147.70	1	0	1469	13.8	76.8	1.0	6.7	0.4	0.9	0.2	0.1	0.1	90.6	1.0	8.4	0.097	0.503	19.603366	-88.053830

YUCATAN

20 CARR: Valladolid - Río Lagartos

CLAVE: 31035

RUTA: MEX-295

AÑO: 2017

LUGAR	ESTACION				CLASIFICACION VEHICULAR EN PORCIENTO										COORDENADAS					
	KM	TE	SC	TDPA	M	A	B	C2	C3	T3S2	T3S3	T3S2R4	OTROS	A	B	C	K'	D	LATITUD	LONGITUD
Valladolid	0.00	3	1	4419	10.6	79.9	1.7	4.4	0.6	1.3	0.5	0.8	0.2	90.5	1.7	7.8	0.072	0.514	20.729924	-88.202928
Valladolid	0.00	3	2	4671	12.5	77.5	1.7	4.8	0.7	1.2	0.6	0.8	0.2	90.0	1.7	8.3	0.069	0.514	20.729931	-88.202839
Temozón	12.70	3	0	3614	11.7	75.5	1.6	6.6	0.6	2.5	0.5	0.8	0.2	87.2	1.6	11.2	0.068	0.547	20.817123	-88.195952
Tizimín	51.80	1	0	3188	8.6	80.8	1.0	4.4	0.7	2.6	0.5	1.2	0.2	89.4	1.0	9.6	0.067	0.515	21.093559	-88.161392
Tizimín	51.80	3	0	3238	22.5	67.6	0.1	6.2	0.8	1.0	0.4	1.2	0.2	90.1	0.1	9.8	0.083	0.505	21.188296	-88.166647
T. Der. Dzonot Carretero	79.90	1	0	1379	14.5	71.9	0.4	7.3	1.2	2.1	0.6	1.4	0.6	86.4	0.4	13.2	0.096	0.518	21.371230	-88.143526
Río Lagartos	103.90																			

21 CARR: Mérida - Cancún (Cuota)

CLAVE: 00071

RUTA: MEX-180D

AÑO: 2017

LUGAR	ESTACION				CLASIFICACION VEHICULAR EN PORCIENTO										COORDENADAS					
	KM	TE	SC	TDPA	M	A	B	C2	C3	T3S2	T3S3	T3S2R4	OTROS	A	B	C	K'	D	LATITUD	LONGITUD
T. C. Mérida - Puerto Juárez	0.00																			
Caseta de Cobro Piste	51.00	1	1	2157	0.4	72.6	3.5	11.7	1.1	3.6	1.4	5.6	0.1	73.0	3.5	23.5	0.070	0.514	20.730474	-88.590790
Caseta de Cobro Piste	51.00	1	2	2038	0.4	70.9	3.6	12.3	1.2	3.5	1.6	6.4	0.1	71.3	3.6	25.1	0.089	0.514	20.730766	-88.590889
Caseta de Cobro X-Can	155.00	1	1	1402	0.4	74.7	5.2	8.7	0.9	3.3	0.4	6.3	0.1	75.1	5.2	19.7	0.149	0.516	20.877205	-87.630480
Caseta de Cobro X-Can	155.00	1	2	1314	0.5	76.1	5.4	7.8	0.6	2.6	0.2	6.6	0.2	76.6	5.4	18.0	0.124	0.516	20.877447	-87.630849
Lim. Edos. Term. Yuc. Ppia. Q. R.	160.00																			
T. C. Mérida - Puerto Juárez	292.00	1	1	1476	3.7	74.4	5.8	6.4	1.0	2.7	1.0	4.4	0.6	78.1	5.8	16.1	0.096	0.528	21.095759	-86.979064
T. C. Mérida - Puerto Juárez	292.00	1	2	1319	3.9	73.1	6.3	6.4	1.1	3.0	1.2	4.5	0.5	77.0	6.3	16.7	0.095	0.528	21.095791	-86.979669
T. C. Reforma Agraria - Puerto Juárez	308.10	1	0	12885	2.3	79.1	1.4	8.1	1.8	4.1	1.1	1.4	0.7	81.4	1.4	17.2	0.089	0.507	21.020918	-86.859635

22 CARR: Acanceh - Estación Polabán

CLAVE: 31615

RUTA: YUC

AÑO: 2017

LUGAR	ESTACION				CLASIFICACION VEHICULAR EN PORCIENTO										COORDENADAS					
	KM	TE	SC	TDPA	M	A	B	C2	C3	T3S2	T3S3	T3S2R4	OTROS	A	B	C	K'	D	LATITUD	LONGITUD
Acanceh	0.00	3	0	1925	20.9	66.8	0.5	9.3	0.8	1.2	0.2	0.2	0.1	87.7	0.5	11.8	0.090	0.510	20.809159	-89.440873
Homún	20.00	3	0	917	47.1	45.9	0.3	5.5	0.3	0.7	0.2	0.0	0.0	93.0	0.3	6.7	0.113	0.526	20.734821	-89.267203
Estación Polabán	24.40	1	0	648	34.8	56.6	0.6	6.7	0.5	0.3	0.0	0.0	0.5	91.4	0.6	8.0	0.114	0.505	20.726797	-89.224824

23 CARR: Baca - Dzidzantún

CLAVE: 31591

RUTA: YUC

AÑO: 2017

LUGAR	ESTACION				CLASIFICACION VEHICULAR EN PORCIENTO										COORDENADAS					
	KM	TE	SC	TDPA	M	A	B	C2	C3	T3S2	T3S3	T3S2R4	OTROS	A	B	C	K'	D	LATITUD	LONGITUD
Baca	0.00	3	0	1876	32.8	59.9	0.5	4.9	0.8	0.8	0.3	0.0	0.0	92.7	0.5	6.8	0.092	0.540	21.122507	-89.393978

YUCATAN

23 CARR: Baca - Dzidzantún

CLAVE: 31591

RUTA: YUC

AÑO: 2017

LUGAR	ESTACION				CLASIFICACION VEHICULAR EN PORCIENTO										COORDENADAS					
	KM	TE	SC	TDPA	M	A	B	C2	C3	T3S2	T3S3	T3S2R4	OTROS	A	B	C	K'	D	LATITUD	LONGITUD
Dzemul	15.00	1	0	323	14.0	83.4	0.0	1.0	1.5	0.0	0.0	0.1	0.0	97.4	0.0	2.6	0.127	0.507	21.206031	-89.319983
Dzemul	15.00	3	0	1537	51.5	42.4	0.2	3.8	0.5	1.4	0.1	0.0	0.1	93.9	0.2	5.9	0.112	0.502	21.208952	-89.296966
Pueblo Telchac	19.10	1	0	1949	49.2	46.2	0.1	4.1	0.2	0.1	0.0	0.1	0.0	95.4	0.1	4.5	0.084	0.515	21.205435	-89.280750
Sinanché	29.10	3	0	666	33.4	56.7	0.7	7.9	1.0	0.3	0.0	0.0	0.0	90.1	0.7	9.2	0.087	0.506	21.225954	-89.174481
Dzidzantún	43.00	1	0	918	47.3	46.7	0.1	4.6	0.4	0.8	0.1	0.0	0.0	94.0	0.1	5.9	0.082	0.505	21.244523	-89.055847

24 CARR: Citilcum - Tixkochoh

CLAVE: 31064

RUTA: YUC

AÑO: 2017

LUGAR	ESTACION				CLASIFICACION VEHICULAR EN PORCIENTO										COORDENADAS					
	KM	TE	SC	TDPA	M	A	B	C2	C3	T3S2	T3S3	T3S2R4	OTROS	A	B	C	K'	D	LATITUD	LONGITUD
Citilcum	0.00	3	0	990	40.2	52.4	0.5	5.2	0.2	1.2	0.2	0.0	0.1	92.6	0.5	6.9	0.087	0.519	20.957625	-89.115808
Tekanto	7.00	1	0	647	43.3	53.3	0.6	1.6	0.2	0.9	0.1	0.0	0.0	96.6	0.6	2.8	0.097	0.500	21.001436	-89.105077
Tixkochoh	10.00	1	0	586	63.5	33.0	0.4	2.0	0.1	0.8	0.1	0.0	0.1	96.5	0.4	3.1	0.097	0.519	21.013835	-89.088638

25 CARR: Dzemul - Xtampú

CLAVE: 31608

RUTA: YUC

AÑO: 2017

LUGAR	ESTACION				CLASIFICACION VEHICULAR EN PORCIENTO										COORDENADAS					
	KM	TE	SC	TDPA	M	A	B	C2	C3	T3S2	T3S3	T3S2R4	OTROS	A	B	C	K'	D	LATITUD	LONGITUD
Dzemul	0.00	3	0	487	25.3	63.9	1.0	7.3	1.0	1.4	0.1	0.0	0.0	89.2	1.0	9.8	0.086	0.507	21.212820	-89.321320
Xtampú	10.00	1	0	583	27.8	65.2	0.1	6.0	0.7	0.2	0.0	0.0	0.0	93.0	0.1	6.9	0.103	0.510	21.331448	-89.348662

26 CARR: Dzidzantún - Santa Clara

CLAVE: 31592

RUTA: YUC

AÑO: 2017

LUGAR	ESTACION				CLASIFICACION VEHICULAR EN PORCIENTO										COORDENADAS					
	KM	TE	SC	TDPA	M	A	B	C2	C3	T3S2	T3S3	T3S2R4	OTROS	A	B	C	K'	D	LATITUD	LONGITUD
Dzidzantún	0.00	3	0	1056	48.8	44.2	0.1	5.1	0.3	1.0	0.3	0.2	0.0	93.0	0.1	6.9	0.081	0.509	21.259573	-89.041249
Santa Clara	14.00	1	0	670	35.3	58.9	0.2	4.9	0.0	0.6	0.1	0.0	0.0	94.2	0.2	5.6	0.106	0.500	21.370938	-89.014445

27 CARR: Hoctún - Cenotillo

CLAVE: 31011

RUTA: YUC-011

AÑO: 2017

LUGAR	ESTACION				CLASIFICACION VEHICULAR EN PORCIENTO										COORDENADAS					
	KM	TE	SC	TDPA	M	A	B	C2	C3	T3S2	T3S3	T3S2R4	OTROS	A	B	C	K'	D	LATITUD	LONGITUD
Hoctún	0.00	3	0	2795	4.8	87.7	0.2	3.1	1.8	1.2	0.4	0.5	0.3	92.5	0.2	7.3	0.074	0.511	20.878392	-89.190962
Citilcum	13.20	3	0	1817	33.1	59.9	0.3	4.9	0.4	1.2	0.1	0.0	0.1	93.0	0.3	6.7	0.100	0.530	20.950764	-89.110221
Izamal	24.00	3	0	2219	31.7	58.1	0.4	7.8	0.5	1.3	0.1	0.0	0.1	89.8	0.4	9.8	0.075	0.506	20.933801	-89.001487

YUCATAN

27 CARR: Hoctún - Cenotillo

CLAVE: 31011

RUTA: YUC-011

AÑO: 2017

LUGAR	ESTACION				CLASIFICACION VEHICULAR EN PORCIENTO													COORDENADAS		
	KM	TE	SC	TDPA	M	A	B	C2	C3	T3S2	T3S3	T3S2R4	OTROS	A	B	C	K'	D	LATITUD	LONGITUD
Tunkás	55.20	3	0	603	36.6	54.6	0.8	6.6	0.7	0.4	0.3	0.0	0.0	91.2	0.8	8.0	0.076	0.503	20.916168	-88.735303
Cenotillo	70.90	1	0	510	31.1	54.8	1.1	6.6	5.1	0.7	0.4	0.1	0.1	85.9	1.1	13.0	0.120	0.511	20.964510	-88.620378

28 CARR: Holcá - Sotuta

CLAVE: 31626

RUTA: YUC

AÑO: 2017

LUGAR	ESTACION				CLASIFICACION VEHICULAR EN PORCIENTO													COORDENADAS		
	KM	TE	SC	TDPA	M	A	B	C2	C3	T3S2	T3S3	T3S2R4	OTROS	A	B	C	K'	D	LATITUD	LONGITUD
T. C. Mérida - Puerto Juárez	0.00	3	0	859	12.9	77.2	0.6	6.6	0.6	1.2	0.4	0.1	0.4	90.1	0.6	9.3	0.069	0.504	20.750683	-88.930472
Tibolón	10.00	3	0	832	14.0	74.3	1.0	8.5	1.1	0.6	0.1	0.4	0.0	88.3	1.0	10.7	0.073	0.522	20.660107	-88.949575
Sotuta	20.00	1	0	919	18.1	71.1	1.1	7.6	0.9	0.8	0.1	0.2	0.1	89.2	1.1	9.7	0.076	0.503	20.606940	-89.002521

29 CARR: Hunucmá - Umán

CLAVE: 31610

RUTA: YUC

AÑO: 2017

LUGAR	ESTACION				CLASIFICACION VEHICULAR EN PORCIENTO													COORDENADAS		
	KM	TE	SC	TDPA	M	A	B	C2	C3	T3S2	T3S3	T3S2R4	OTROS	A	B	C	K'	D	LATITUD	LONGITUD
Hunucmá	0.00	3	0	4176	15.0	74.5	0.6	6.5	0.7	2.0	0.4	0.1	0.2	89.5	0.6	9.9	0.065	0.511	21.002331	-89.862482
X. C. Mérida - Tetiz	4.87	1	0	4313	11.2	75.2	0.9	8.6	1.0	2.2	0.4	0.2	0.3	86.4	0.9	12.7	0.080	0.517	20.982728	-89.854820
X. C. Mérida - Tetiz	4.87	3	0	1079	32.7	57.0	0.5	8.1	0.4	1.1	0.2	0.0	0.0	89.7	0.5	9.8	0.082	0.519	20.975153	-89.852006
Hacienda Dzibikak	16.16	1	0	1232	35.1	57.7	0.3	4.4	1.1	0.8	0.3	0.3	0.0	92.8	0.3	6.9	0.117	0.507	20.905776	-89.798409
Hacienda Dzibikak	16.16	3	0	1890	39.5	54.3	0.2	3.8	1.3	0.5	0.2	0.2	0.0	93.8	0.2	6.0	0.098	0.504	20.902035	-89.787479
Umán	22.00	1	0	3036	44.9	49.3	0.3	3.6	1.2	0.3	0.1	0.3	0.0	94.2	0.3	5.5	0.152	0.519	20.894156	-89.763816

30 CARR: Izamal - Dzilam González

CLAVE: 31605

RUTA: YUC

AÑO: 2017

LUGAR	ESTACION				CLASIFICACION VEHICULAR EN PORCIENTO													COORDENADAS		
	KM	TE	SC	TDPA	M	A	B	C2	C3	T3S2	T3S3	T3S2R4	OTROS	A	B	C	K'	D	LATITUD	LONGITUD
Izamal	0.00	3	0	1498	42.9	51.2	0.9	3.5	0.3	1.0	0.2	0.0	0.0	94.1	0.9	5.0	0.089	0.502	20.944028	-89.007157
Temax	30.00	1	0	787	29.0	61.2	1.3	7.4	0.6	0.5	0.0	0.0	0.0	90.2	1.3	8.5	0.076	0.523	21.132810	-88.938850
Dzilam González	43.00	1	0	907	50.5	43.6	0.6	4.3	0.3	0.6	0.1	0.0	0.0	94.1	0.6	5.3	0.092	0.501	21.268835	-88.931827

31 CARR: Kantunil - Izamal

CLAVE: 31012

RUTA: YUC

AÑO: 2017

LUGAR	ESTACION				CLASIFICACION VEHICULAR EN PORCIENTO													COORDENADAS		
	KM	TE	SC	TDPA	M	A	B	C2	C3	T3S2	T3S3	T3S2R4	OTROS	A	B	C	K'	D	LATITUD	LONGITUD
Kantunil	0.00	3	0	1036	19.9	72.2	0.7	5.6	0.3	1.1	0.2	0.0	0.0	92.1	0.7	7.2	0.091	0.502	20.811323	-89.026164

YUCATAN

31 CARR: Kantunil - Izamal

CLAVE: 31012

RUTA: YUC

AÑO: 2017

LUGAR	ESTACION				CLASIFICACION VEHICULAR EN PORCIENTO														COORDENADAS	
	KM	TE	SC	TDPA	M	A	B	C2	C3	T3S2	T3S3	T3S2R4	OTROS	A	B	C	K'	D	LATITUD	LONGITUD
Izamal	17.80	1	0	2045	29.9	65.5	0.5	2.3	0.2	1.4	0.1	0.0	0.1	95.4	0.5	4.1	0.091	0.504	20.920459	-89.013248

32 CARR: Kinchil - Umán

CLAVE: 31009

RUTA: YUC

AÑO: 2017

LUGAR	ESTACION				CLASIFICACION VEHICULAR EN PORCIENTO														COORDENADAS	
	KM	TE	SC	TDPA	M	A	B	C2	C3	T3S2	T3S3	T3S2R4	OTROS	A	B	C	K'	D	LATITUD	LONGITUD
Kinchil	0.00	3	0	1704	30.0	61.2	0.3	5.2	1.5	1.2	0.4	0.2	0.0	91.2	0.3	8.5	0.085	0.511	20.911462	-89.937907
Umán	26.00																			

33 CARR: Libramiento Norte de Motul

CLAVE: 31610

RUTA: YUC

AÑO: 2017

LUGAR	ESTACION				CLASIFICACION VEHICULAR EN PORCIENTO														COORDENADAS	
	KM	TE	SC	TDPA	M	A	B	C2	C3	T3S2	T3S3	T3S2R4	OTROS	A	B	C	K'	D	LATITUD	LONGITUD
T. C. Mérida - Dzilam de Bravo Poniente	0.00	3	0	6434	6.7	78.4	1.0	7.5	1.6	3.1	0.6	0.8	0.3	85.1	1.0	13.9	0.079	0.515	21.101342	-89.301285
X. C. Motul - Puerto Telchac	3.16	1	0	6583	8.8	75.8	0.9	7.6	1.8	3.4	0.6	0.8	0.3	84.6	0.9	14.5	0.080	0.523	21.114449	-89.283945
X. C. Motul - Puerto Telchac	3.16	3	0	6132	12.7	72.8	0.8	6.3	1.8	3.7	0.7	0.9	0.3	85.5	0.8	13.7	0.077	0.517	21.114486	-89.278733
X. C. Libramiento Suma de Hidalgo	3.70	3	0	1177	27.7	64.9	0.8	5.6	0.2	0.7	0.1	0.0	0.0	92.6	0.8	6.6	0.089	0.511	21.112435	-89.274145
T. C. Mérida - Dzilam de Bravo Oriente	6.53	1	0	806	26.7	65.4	0.8	6.2	0.4	0.5	0.0	0.0	0.0	92.1	0.8	7.1	0.086	0.517	21.096725	-89.261428

34 CARR: Mérida - Acanceh

CLAVE: 31023

RUTA: YUC

AÑO: 2017

LUGAR	ESTACION				CLASIFICACION VEHICULAR EN PORCIENTO														COORDENADAS	
	KM	TE	SC	TDPA	M	A	B	C2	C3	T3S2	T3S3	T3S2R4	OTROS	A	B	C	K'	D	LATITUD	LONGITUD
Mérida	0.00	3	0	8396	20.5	68.2	0.1	5.3	1.9	1.1	0.9	1.6	0.4	88.7	0.1	11.2	0.075	0.624	20.935030	-89.579683
T. Der. Uxec Tamán	11.00	1	0	571	33.6	62.3	0.4	3.1	0.4	0.1	0.1	0.0	0.0	95.9	0.4	3.7	0.095	0.505	20.875550	-89.528538
T. Der. Uxec Tamán	11.00	3	0	382	31.0	59.3	0.3	8.4	0.5	0.5	0.0	0.0	0.0	90.3	0.3	9.4	0.089	0.516	20.862871	-89.532240
Timucuy	20.00	3	0	1066	34.8	57.8	0.7	5.3	0.6	0.8	0.0	0.0	0.0	92.6	0.7	6.7	0.086	0.523	20.812400	-89.504247
Acanceh	26.00	1	0	1093	35.1	55.4	0.8	6.0	0.7	1.7	0.2	0.0	0.1	90.5	0.8	8.7	0.081	0.517	20.812515	-89.473930

35 CARR: Mérida - Oxkutzcab

CLAVE: 31018

RUTA: YUC-018

AÑO: 2017

LUGAR	ESTACION				CLASIFICACION VEHICULAR EN PORCIENTO														COORDENADAS	
	KM	TE	SC	TDPA	M	A	B	C2	C3	T3S2	T3S3	T3S2R4	OTROS	A	B	C	K'	D	LATITUD	LONGITUD
Mérida	0.00	3	1	9608	12.2	79.0	0.3	6.8	0.2	0.7	0.6	0.1	0.1	91.2	0.3	8.5	0.078	0.506	20.944867	-89.582624
Mérida	0.00	3	2	9841	13.0	77.1	0.2	7.8	0.3	0.8	0.6	0.1	0.1	90.1	0.2	9.7	0.079	0.506	20.944971	-89.582636

YUCATAN

35 CARR: Mérida - Oxkutzcab

CLAVE: 31018

RUTA: YUC-018

AÑO: 2017

LUGAR	ESTACION				CLASIFICACION VEHICULAR EN PORCIENTO													COORDENADAS		
	KM	TE	SC	TDPA	M	A	B	C2	C3	T3S2	T3S3	T3S2R4	OTROS	A	B	C	K'	D	LATITUD	LONGITUD
Kanasín	5.97	1	1	10837	23.1	67.6	0.3	7.3	0.3	0.7	0.5	0.1	0.1	90.7	0.3	9.0	0.060	0.527	20.941170	-89.572421
Kanasín	5.97	1	2	9726	23.9	68.1	0.3	5.6	0.5	0.7	0.7	0.1	0.1	92.0	0.3	7.7	0.071	0.527	20.941283	-89.572430
Acanceh	20.39	1	0	5106	27.9	59.9	0.4	6.2	0.4	3.8	0.6	0.2	0.6	87.8	0.4	11.8	0.082	0.534	20.822963	-89.466161
Acanceh	20.39	3	1	3451	7.9	76.5	1.4	7.6	2.6	1.8	0.8	1.1	0.3	84.4	1.4	14.2	0.067	0.509	20.789426	-89.460485
Acanceh	20.39	3	2	3331	6.2	76.6	1.6	8.5	2.7	2.0	0.9	1.1	0.4	82.8	1.6	15.6	0.086	0.509	20.789382	-89.460362
Tekit	61.70	1	0	368	26.0	68.1	0.5	4.6	0.6	0.2	0.0	0.0	0.0	94.1	0.5	5.4	0.092	0.504	20.544221	-89.338274
Maní	98.20	1	0	3180	12.5	74.6	1.0	7.4	1.8	1.9	0.2	0.5	0.1	87.1	1.0	11.9	0.073	0.500	20.399403	-89.360998
Maní	98.20	3	0	1760	31.1	60.7	0.3	6.5	0.2	1.1	0.1	0.0	0.0	91.8	0.3	7.9	0.084	0.506	20.371939	-89.398744
Oxkutzcab	109.30	1	0	1771	30.1	62.3	0.3	5.7	0.3	1.2	0.0	0.0	0.1	92.4	0.3	7.3	0.077	0.507	20.328046	-89.416608

36 CARR: Mérida - Timucuy

CLAVE: 31024

RUTA: YUC

AÑO: 2017

LUGAR	ESTACION				CLASIFICACION VEHICULAR EN PORCIENTO													COORDENADAS		
	KM	TE	SC	TDPA	M	A	B	C2	C3	T3S2	T3S3	T3S2R4	OTROS	A	B	C	K'	D	LATITUD	LONGITUD
Mérida	0.00	3	0	5305	18.4	72.0	0.0	7.6	1.0	0.5	0.2	0.3	0.0	90.4	0.0	9.6	0.071	0.514	20.899056	-89.599507
Tekik de Regil	15.10	1	0	1729	17.3	70.7	0.4	10.4	0.4	0.7	0.1	0.0	0.0	88.0	0.4	11.6	0.079	0.537	20.822987	-89.559577
Tekik de Regil	15.10	3	0	1130	26.3	59.9	0.4	11.9	0.3	0.9	0.2	0.0	0.1	86.2	0.4	13.4	0.088	0.506	20.815804	-89.554867
Timucuy	18.65	1	0	1170	18.1	66.4	0.4	14.5	0.3	0.3	0.0	0.0	0.0	84.5	0.4	15.1	0.096	0.519	20.812763	-89.527383

37 CARR: Motul - Puerto Telchac

CLAVE: 31006

RUTA: YUC-172

AÑO: 2017

LUGAR	ESTACION				CLASIFICACION VEHICULAR EN PORCIENTO													COORDENADAS		
	KM	TE	SC	TDPA	M	A	B	C2	C3	T3S2	T3S3	T3S2R4	OTROS	A	B	C	K'	D	LATITUD	LONGITUD
Motul	0.00	3	0	3660	25.4	62.5	6.6	2.3	1.0	1.3	0.2	0.1	0.6	87.9	6.6	5.5	0.088	0.504	21.122182	-89.280568
Pueblo Telchac	12.00	3	0	2100	28.4	65.4	0.4	4.7	0.3	0.6	0.2	0.0	0.0	93.8	0.4	5.8	0.137	0.503	21.215246	-89.271418
Puerto Telchac	28.00																			

38 CARR: Muna - Maxcanú

CLAVE: 31053

RUTA: YUC

AÑO: 2017

LUGAR	ESTACION				CLASIFICACION VEHICULAR EN PORCIENTO													COORDENADAS		
	KM	TE	SC	TDPA	M	A	B	C2	C3	T3S2	T3S3	T3S2R4	OTROS	A	B	C	K'	D	LATITUD	LONGITUD
Muna	0.00	3	0	1190	18.4	64.6	1.0	10.5	1.1	3.3	0.7	0.3	0.1	83.0	1.0	16.0	0.065	0.520	20.490650	-89.735252
Opichén	17.00	3	0	1321	18.8	69.3	1.2	7.3	1.2	1.4	0.5	0.3	0.0	88.1	1.2	10.7	0.059	0.505	20.554801	-89.869121
T. C. Campeche - Mérida	31.00	1	0	1313	19.3	65.7	2.1	9.1	1.3	1.8	0.3	0.4	0.0	85.0	2.1	12.9	0.057	0.512	20.582208	-89.966980

YUCATAN

39 CARR: Oxkutzcab - Xul

CLAVE: 31051

RUTA: YUC-031

AÑO: 2017

LUGAR	ESTACION				CLASIFICACION VEHICULAR EN PORCIENTO													COORDENADAS		
	KM	TE	SC	TDPA	M	A	B	C2	C3	T3S2	T3S3	T3S2R4	OTROS	A	B	C	K'	D	LATITUD	LONGITUD
Oxkutzcab	0.00	3	0	2728	38.5	53.6	0.1	5.5	0.1	1.5	0.5	0.1	0.1	92.1	0.1	7.8	0.131	0.504	20.283575	-89.426659
Emiliano Zapata	10.00	3	0	1075	53.6	40.4	0.3	4.4	0.2	0.9	0.1	0.0	0.1	94.0	0.3	5.7	0.075	0.503	20.216158	-89.463486
Xul	25.00	1	0	737	45.8	47.5	0.5	4.5	0.4	1.1	0.1	0.0	0.1	93.3	0.5	6.2	0.085	0.504	20.108233	-89.457771

40 CARR: Piste - Dzitás

CLAVE: 31013

RUTA: YUC-013

AÑO: 2017

LUGAR	ESTACION				CLASIFICACION VEHICULAR EN PORCIENTO													COORDENADAS		
	KM	TE	SC	TDPA	M	A	B	C2	C3	T3S2	T3S3	T3S2R4	OTROS	A	B	C	K'	D	LATITUD	LONGITUD
Piste	0.00	3	0	1935	17.8	73.8	1.1	5.1	0.4	1.2	0.4	0.1	0.1	91.6	1.1	7.3	0.112	0.529	20.708411	-88.586083
Dzitás	18.00	1	0	659	25.7	71.6	0.3	1.8	0.3	0.2	0.1	0.0	0.0	97.3	0.3	2.4	0.082	0.520	20.829566	-88.540504

41 CARR: Progreso - Telchac Puerto

CLAVE: 31616

RUTA: YUC-027

AÑO: 2017

LUGAR	ESTACION				CLASIFICACION VEHICULAR EN PORCIENTO													COORDENADAS		
	KM	TE	SC	TDPA	M	A	B	C2	C3	T3S2	T3S3	T3S2R4	OTROS	A	B	C	K'	D	LATITUD	LONGITUD
Progreso	0.00	3	1	6215	5.3	88.9	0.2	3.2	0.6	1.2	0.4	0.0	0.2	94.2	0.2	5.6	0.106	0.540	21.276818	-89.654472
Progreso	0.00	3	2	5299	4.7	90.7	0.1	2.6	0.5	0.6	0.7	0.0	0.1	95.4	0.1	4.5	0.111	0.540	21.276955	-89.654507
Chicxulub Puerto	6.00	1	1	3634	3.2	92.3	0.2	3.1	0.7	0.3	0.2	0.0	0.0	95.5	0.2	4.3	0.149	0.503	21.288191	-89.608235
Chicxulub Puerto	6.00	1	2	3595	4.0	92.7	0.2	2.0	0.6	0.3	0.2	0.0	0.0	96.7	0.2	3.1	0.155	0.503	21.288313	-89.608374
Chicxulub Puerto	6.00	3	0	11136	2.1	90.0	0.3	4.5	0.4	2.1	0.2	0.0	0.4	92.1	0.3	7.6	0.088	0.505	21.296821	-89.575518
Xtampú	20.00	1	0	1604	13.3	77.0	0.6	6.2	1.5	1.0	0.2	0.2	0.0	90.3	0.6	9.1	0.111	0.506	21.332591	-89.352778
Xtampú	20.00	3	0	1704	9.2	82.6	0.5	5.8	1.2	0.5	0.1	0.1	0.0	91.8	0.5	7.7	0.106	0.506	21.333957	-89.343218
Telchac Puerto	33.00	1	0	2086	22.6	68.9	0.3	5.1	0.7	1.8	0.2	0.2	0.2	91.5	0.3	8.2	0.105	0.503	21.340169	-89.291283

42 CARR: Ramal a Chankom

CLAVE: 31049

RUTA: YUC

AÑO: 2017

LUGAR	ESTACION				CLASIFICACION VEHICULAR EN PORCIENTO													COORDENADAS		
	KM	TE	SC	TDPA	M	A	B	C2	C3	T3S2	T3S3	T3S2R4	OTROS	A	B	C	K'	D	LATITUD	LONGITUD
T. C. Mérida - Puerto Juárez	0.00	3	0	505	19.5	74.6	0.9	4.1	0.3	0.4	0.2	0.0	0.0	94.1	0.9	5.0	0.079	0.534	20.637309	-88.490163
Chankom	9.00	1	0	418	17.3	76.3	0.6	5.2	0.5	0.1	0.0	0.0	0.0	93.6	0.6	5.8	0.093	0.515	20.582306	-88.508049

YUCATAN

43 CARR: Ramal a Dzonot Carretero

CLAVE: 31614

RUTA: YUC

AÑO: 2017

LUGAR	ESTACION				CLASIFICACION VEHICULAR EN PORCIENTO														COORDENADAS	
	KM	TE	SC	TDPA	M	A	B	C2	C3	T3S2	T3S3	T3S2R4	OTROS	A	B	C	K'	D	LATITUD	LONGITUD
T. C. Valladolid - Río Lagartos	0.00	3	0	592	32.6	63.0	0.0	1.6	1.8	0.3	0.1	0.1	0.5	95.6	0.0	4.4	0.106	0.501	21.378950	-88.138306
Dzonot Carretero	35.00																			

44 CARR: Ramal a San Felipe

CLAVE: 31628

RUTA: YUC

AÑO: 2017

LUGAR	ESTACION				CLASIFICACION VEHICULAR EN PORCIENTO														COORDENADAS	
	KM	TE	SC	TDPA	M	A	B	C2	C3	T3S2	T3S3	T3S2R4	OTROS	A	B	C	K'	D	LATITUD	LONGITUD
T. C. Valladolid - Río Lagartos	0.00	3	0	522	17.4	75.6	1.0	5.6	0.0	0.4	0.0	0.0	0.0	93.0	1.0	6.0	0.082	0.543	21.572302	-88.161715
San Felipe	7.20	1	0	582	13.8	78.5	0.3	6.8	0.1	0.5	0.0	0.0	0.0	92.3	0.3	7.4	0.089	0.509	21.552707	-88.230435

45 CARR: Ramal a Tedzidz

CLAVE: 31600

RUTA: YUC

AÑO: 2017

LUGAR	ESTACION				CLASIFICACION VEHICULAR EN PORCIENTO														COORDENADAS	
	KM	TE	SC	TDPA	M	A	B	C2	C3	T3S2	T3S3	T3S2R4	OTROS	A	B	C	K'	D	LATITUD	LONGITUD
T. C. Mérida - Celestún	0.00																			
Tedzidz	6.00	1	0	150	46.8	48.6	0.9	3.1	0.1	0.4	0.0	0.1	0.0	95.4	0.9	3.7	0.140	0.500	20.843142	-89.975006

46 CARR: Ramal a Yaxcabá

CLAVE: 31111

RUTA: YUC-289

AÑO: 2017

LUGAR	ESTACION				CLASIFICACION VEHICULAR EN PORCIENTO														COORDENADAS	
	KM	TE	SC	TDPA	M	A	B	C2	C3	T3S2	T3S3	T3S2R4	OTROS	A	B	C	K'	D	LATITUD	LONGITUD
T. C. Mérida - Puerto Juárez	0.00	3	0	680	11.5	81.3	0.5	3.4	0.4	2.3	0.1	0.5	0.0	92.8	0.5	6.7	0.082	0.515	20.696616	-88.811552
Yaxcabá	18.00	1	0	613	13.9	76.9	1.0	3.6	0.5	3.0	0.2	0.9	0.0	90.8	1.0	8.2	0.078	0.513	20.563956	-88.824227

47 CARR: Sinanché - Xitibcanul

CLAVE: 31619

RUTA: YUC

AÑO: 2017

LUGAR	ESTACION				CLASIFICACION VEHICULAR EN PORCIENTO														COORDENADAS	
	KM	TE	SC	TDPA	M	A	B	C2	C3	T3S2	T3S3	T3S2R4	OTROS	A	B	C	K'	D	LATITUD	LONGITUD
Sinanché	0.00	3	0	552	42.8	52.9	0.3	3.2	0.0	0.5	0.3	0.0	0.0	95.7	0.3	4.0	0.091	0.522	21.234082	-89.184451
Xitibcanul	7.00	1	0	447	46.9	47.9	0.2	3.7	1.0	0.3	0.0	0.0	0.0	94.8	0.2	5.0	0.134	0.518	21.350552	-89.172096

YUCATAN

48 CARR: Sucilá - Calotmul

CLAVE: 31617

RUTA: YUC

AÑO: 2017

LUGAR	ESTACION				CLASIFICACION VEHICULAR EN PORCIENTO													COORDENADAS		
	KM	TE	SC	TDPA	M	A	B	C2	C3	T3S2	T3S3	T3S2R4	OTROS	A	B	C	K'	D	LATITUD	LONGITUD
Sucilá	0.00																			
X. C. Cansahcab - Tizimin	2.00	3	0	1066	17.7	74.5	0.6	5.5	0.8	0.8	0.0	0.0	0.1	92.2	0.6	7.2	0.082	0.500	21.137917	-88.313496
Calotmul	30.20	1	0	840	22.4	68.3	0.5	7.5	0.4	0.6	0.1	0.1	0.1	90.7	0.5	8.8	0.075	0.511	21.017006	-88.194715

49 CARR: Suma - Izamal

CLAVE: 31081

RUTA: YUC-081

AÑO: 2017

LUGAR	ESTACION				CLASIFICACION VEHICULAR EN PORCIENTO													COORDENADAS		
	KM	TE	SC	TDPA	M	A	B	C2	C3	T3S2	T3S3	T3S2R4	OTROS	A	B	C	K'	D	LATITUD	LONGITUD
Suma	0.00	3	0	715	31.9	58.3	1.2	7.9	0.2	0.4	0.1	0.0	0.0	90.2	1.2	8.6	0.115	0.505	21.082332	-89.138315
Izamal	22.00	1	0	784	32.4	59.0	0.3	7.0	0.5	0.7	0.1	0.0	0.0	91.4	0.3	8.3	0.107	0.506	20.949151	-89.020450

50 CARR: Telchac Puerto - Dzilam de Bravo

CLAVE: 31042

RUTA: YUC

AÑO: 2017

LUGAR	ESTACION				CLASIFICACION VEHICULAR EN PORCIENTO													COORDENADAS		
	KM	TE	SC	TDPA	M	A	B	C2	C3	T3S2	T3S3	T3S2R4	OTROS	A	B	C	K'	D	LATITUD	LONGITUD
Telchac Puerto	0.00	3	0	1311	28.6	66.4	0.0	1.4	1.0	1.1	0.4	0.2	0.9	95.0	0.0	5.0	0.119	0.506	21.343482	-89.248407
T. Der. Sinanché	8.00	1	0	1057	27.6	64.6	0.5	4.5	0.8	1.3	0.5	0.2	0.0	92.2	0.5	7.3	0.132	0.501	21.352598	-89.179393
T. Der. Sinanché	8.00	3	0	996	30.7	61.5	0.6	4.4	0.9	1.1	0.6	0.2	0.0	92.2	0.6	7.2	0.097	0.501	21.352130	-89.164461
Chabihau	15.00	1	0	671	25.2	64.9	0.6	5.6	1.4	1.1	0.9	0.3	0.0	90.1	0.6	9.3	0.112	0.507	21.355250	-89.129560
Chabihau	15.00	3	0	428	12.5	77.6	0.4	8.6	0.4	0.5	0.0	0.0	0.0	90.1	0.4	9.5	0.138	0.516	21.358413	-89.104271
Santa Clara	26.00	1	0	485	18.7	69.5	0.5	6.2	1.8	1.6	1.1	0.5	0.1	88.2	0.5	11.3	0.120	0.511	21.372180	-89.021432
Santa Clara	26.00	3	0	307	19.3	69.1	1.6	8.4	0.3	0.6	0.3	0.4	0.0	88.4	1.6	10.0	0.163	0.511	21.374459	-89.002632
Dzilam de Bravo	39.00	1	0	421	21.8	67.1	0.8	7.3	0.9	0.9	0.6	0.6	0.0	88.9	0.8	10.3	0.116	0.521	21.387839	-88.910957

51 CARR: Thul - Becanchén

CLAVE: 31104

RUTA: YUC-281

AÑO: 2017

LUGAR	ESTACION				CLASIFICACION VEHICULAR EN PORCIENTO													COORDENADAS		
	KM	TE	SC	TDPA	M	A	B	C2	C3	T3S2	T3S3	T3S2R4	OTROS	A	B	C	K'	D	LATITUD	LONGITUD
T. C. Muna - Felipe Carrillo Puerto	0.00	3	0	206	26.9	56.0	3.1	10.7	1.8	1.1	0.4	0.0	0.0	82.9	3.1	14.0	0.146	0.525	20.085622	-89.099605
Becanchén	32.00																			

YUCATAN

52 CARR: Ticul - Chapab

CLAVE: 31623

RUTA: YUC

AÑO: 2017

LUGAR	ESTACION				CLASIFICACION VEHICULAR EN PORCIENTO													COORDENADAS		
	KM	TE	SC	TDPA	M	A	B	C2	C3	T3S2	T3S3	T3S2R4	OTROS	A	B	C	K'	D	LATITUD	LONGITUD
Ticul	0.00	3	0	1666	29.9	65.1	0.6	3.3	0.4	0.6	0.0	0.0	0.1	95.0	0.6	4.4	0.085	0.566	20.412481	-89.520885
Chapab	8.00	1	0	1592	37.7	56.0	0.7	4.5	0.3	0.8	0.0	0.0	0.0	93.7	0.7	5.6	0.086	0.516	20.451899	-89.464274

53 CARR: Ticul - Dzan

CLAVE: 31621

RUTA: YUC

AÑO: 2017

LUGAR	ESTACION				CLASIFICACION VEHICULAR EN PORCIENTO													COORDENADAS		
	KM	TE	SC	TDPA	M	A	B	C2	C3	T3S2	T3S3	T3S2R4	OTROS	A	B	C	K'	D	LATITUD	LONGITUD
Ticul	0.00																			
T. Izq. Libramiento de Ticul	2.50	3	0	3394	44.3	51.1	0.2	2.3	0.2	1.6	0.2	0.0	0.1	95.4	0.2	4.4	0.082	0.502	20.393921	-89.506163
Dzan	7.00	1	0	3273	45.0	50.2	0.2	2.3	0.2	1.8	0.2	0.0	0.1	95.2	0.2	4.6	0.084	0.502	20.390301	-89.479856

54 CARR: Tixkokob - Baca

CLAVE: 31010

RUTA: YUC

AÑO: 2017

LUGAR	ESTACION				CLASIFICACION VEHICULAR EN PORCIENTO													COORDENADAS		
	KM	TE	SC	TDPA	M	A	B	C2	C3	T3S2	T3S3	T3S2R4	OTROS	A	B	C	K'	D	LATITUD	LONGITUD
Tixkokob	0.00	3	0	3018	52.8	40.0	0.2	3.4	0.2	2.8	0.3	0.1	0.2	92.8	0.2	7.0	0.089	0.505	21.007269	-89.416660
Baca	15.00	1	0	2232	55.7	38.7	0.2	2.7	0.5	1.8	0.3	0.0	0.1	94.4	0.2	5.4	0.095	0.505	21.097834	-89.398059

55 CARR: Tixkokob - Sotuta

CLAVE: 31106

RUTA: YUC

AÑO: 2017

LUGAR	ESTACION				CLASIFICACION VEHICULAR EN PORCIENTO													COORDENADAS		
	KM	TE	SC	TDPA	M	A	B	C2	C3	T3S2	T3S3	T3S2R4	OTROS	A	B	C	K'	D	LATITUD	LONGITUD
Tixkokob	0.00	3	0	2158	53.4	42.9	0.2	1.6	0.1	1.5	0.2	0.0	0.1	96.3	0.2	3.5	0.087	0.506	20.997929	-89.380413
Tahmek	24.00	3	0	1571	28.1	64.3	0.4	4.9	0.7	1.2	0.3	0.0	0.1	92.4	0.4	7.2	0.076	0.500	20.862920	-89.255518
Hocabá	31.00	3	0	723	22.1	63.6	1.0	11.2	1.5	0.5	0.1	0.0	0.0	85.7	1.0	13.3	0.076	0.532	20.809590	-89.239626
Huhí	43.00	1	0	635	35.2	57.1	0.2	7.1	0.0	0.2	0.2	0.0	0.0	92.3	0.2	7.5	0.135	0.503	20.724364	-89.176373
Sotuta	65.00	1	0	164	42.4	47.2	0.9	7.9	0.4	1.1	0.1	0.0	0.0	89.6	0.9	9.5	0.128	0.542	20.603188	-89.020940

56 CARR: Tizimin - Yucatán

CLAVE: 31588

RUTA: YUC

AÑO: 2017

LUGAR	ESTACION				CLASIFICACION VEHICULAR EN PORCIENTO													COORDENADAS		
	KM	TE	SC	TDPA	M	A	B	C2	C3	T3S2	T3S3	T3S2R4	OTROS	A	B	C	K'	D	LATITUD	LONGITUD
Tizimin	0.00	3	0	3692	15.8	73.3	1.3	4.9	1.2	2.2	0.6	0.5	0.2	89.1	1.3	9.6	0.077	0.518	21.149556	-88.110797
T. Der. Buenaventura	30.00	3	0	1886	8.2	76.8	0.9	8.1	2.3	2.1	0.6	0.9	0.1	85.0	0.9	14.1	0.082	0.508	21.180369	-87.921214
Yucatán	46.50	1	0	2028	11.4	76.0	0.5	7.1	1.5	2.1	0.4	0.9	0.1	87.4	0.5	12.1	0.074	0.503	21.202595	-87.731574

YUCATAN

57 CARR: Yaxché - Sierra Papacal

CLAVE: 31620

RUTA: YUC

AÑO: 2017

LUGAR	ESTACION				CLASIFICACION VEHICULAR EN PORCIENTO										COORDENADAS					
	KM	TE	SC	TDPA	M	A	B	C2	C3	T3S2	T3S3	T3S2R4	OTROS	A	B	C	K'	D	LATITUD	LONGITUD
T. C. Mérida - Progreso	0.00	3	0	3838	20.2	68.9	1.2	7.7	1.0	0.6	0.2	0.2	0.0	89.1	1.2	9.7	0.083	0.501	21.105280	-89.641671
Sierra Papacal	12.00	1	0	2640	4.2	90.4	0.2	4.7	0.5	0.0	0.0	0.0	0.0	94.6	0.2	5.2	0.125	0.544	21.122359	-89.721918

58 CARR: Yobaín - Chabihau

CLAVE: 31610

RUTA: YUC

AÑO: 2017

LUGAR	ESTACION				CLASIFICACION VEHICULAR EN PORCIENTO										COORDENADAS					
	KM	TE	SC	TDPA	M	A	B	C2	C3	T3S2	T3S3	T3S2R4	OTROS	A	B	C	K'	D	LATITUD	LONGITUD
T. C. Baca - Dzidzantún	0.00	3	0	720	52.8	44.6	0.1	0.6	0.2	0.4	0.2	0.1	1.0	97.4	0.1	2.5	0.129	0.506	21.240619	-89.116749
Chabihau	12.00	1	0	440	51.0	46.6	0.1	1.2	0.2	0.7	0.2	0.0	0.0	97.6	0.1	2.3	0.091	0.502	21.355249	-89.117249

59 CARR: Chemax - Cobá

CLAVE:

RUTA: YUC-MEX-180

AÑO: 2017

LUGAR	ESTACION				CLASIFICACION VEHICULAR EN PORCIENTO										COORDENADAS					
	KM	TE	SC	TDPA	M	A	B	C2	C3	T3S2	T3S3	T3S2R4	OTROS	A	B	C	K'	D	LATITUD	LONGITUD
Chemax	0.00	3	0	5061	1.5	88.9	1.5	3.2	2.0	1.4	0.4	1.0	0.1	90.4	1.5	8.1	0.128	0.527	20.655699	-87.954026
Lim. Edos. Term. Yucatán Ppia. Q Roo.	25.00																			
Cobá	30.90	1	0	4550	1.2	86.9	2.1	3.9	2.7	1.5	0.4	1.1	0.2	88.1	2.1	9.8	0.083	0.563	20.509153	-87.720625

60 CARR: Progreso - Celestún

CLAVE: 31040

RUTA: MEX-YUC

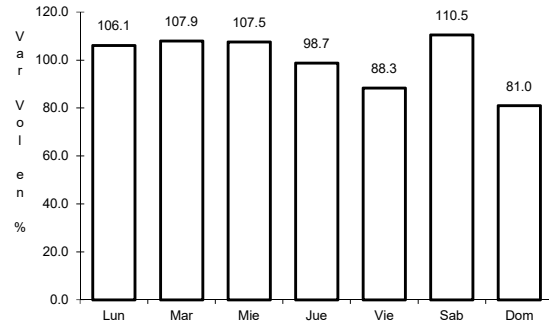
AÑO: 2017

LUGAR	ESTACION				CLASIFICACION VEHICULAR EN PORCIENTO										COORDENADAS					
	KM	TE	SC	TDPA	M	A	B	C2	C3	T3S2	T3S3	T3S2R4	OTROS	A	B	C	K'	D	LATITUD	LONGITUD
T. C. Mérida - Progreso	0.00	3	1	4302	17.1	76.8	0.2	5.4	0.4	0.1	0.0	0.0	0.0	93.9	0.2	5.9	0.106	0.502	21.273879	-89.692612
T. C. Mérida - Progreso	0.00	3	2	4334	18.0	74.8	0.2	6.4	0.4	0.1	0.1	0.0	0.0	92.8	0.2	7.0	0.118	0.502	21.273872	-89.692680
Yucalpetén	6.00	3	0	7161	7.0	88.2	0.2	4.2	0.2	0.1	0.1	0.0	0.0	95.2	0.2	4.6	0.145	0.503	21.275127	-89.722526
Celestún	80.00																			

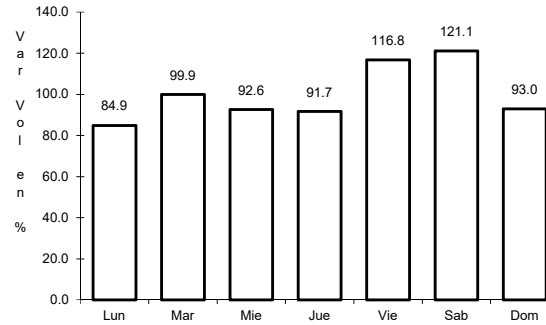
1 CARR: Campeche - Mérida

CLAVE: 00066

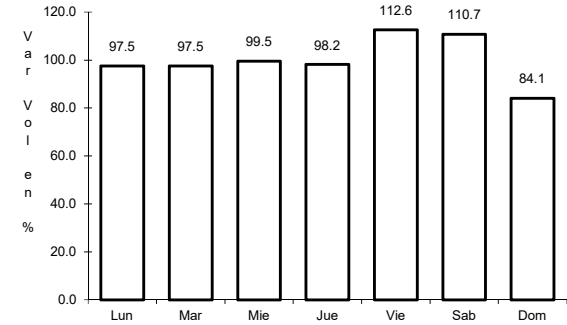
RUTA: MEX-180



Km: 0.00 Tipo: 3 Sent: 1



Km: 0.00 Tipo: 3 Sent: 2

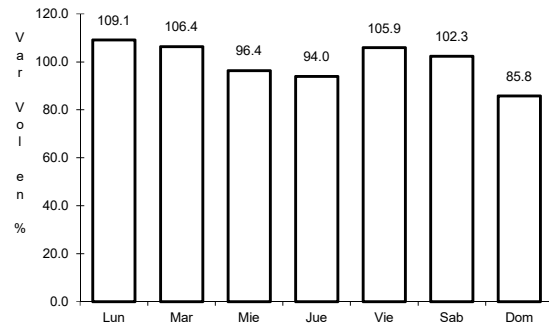


Km: 160.49 Tipo: 1 Sent: 1

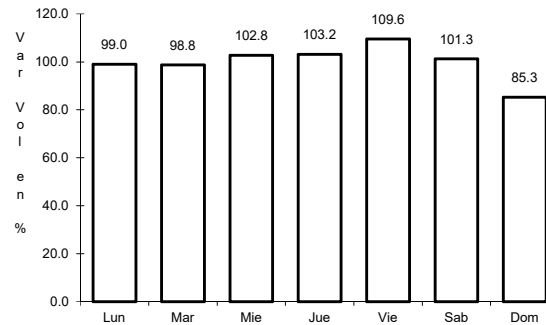
2 CARR: Campeche - Umán

CLAVE: 00164

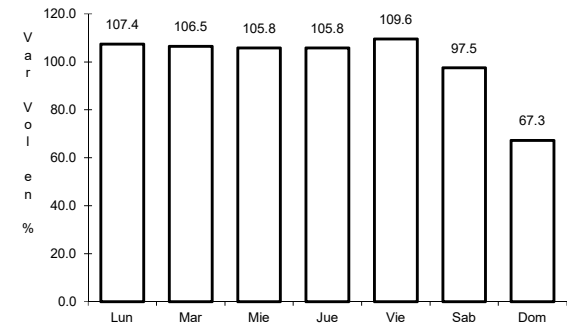
RUTA: MEX-261



Km: 7.00 Tipo: 1 Sent: 0



Km: 117.88 Tipo: 3 Sent: 0

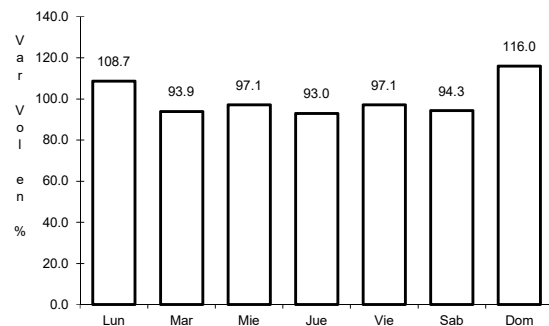


Km: 230.83 Tipo: 1 Sent: 0

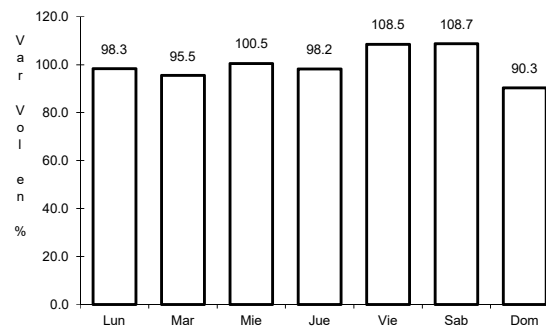
3 CARR: Cansahcab - Tizimín

CLAVE: 31014

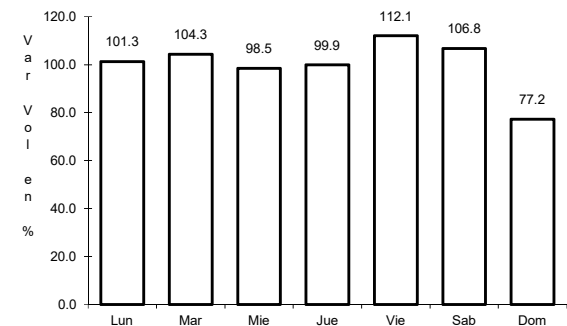
RUTA: MEX-176



Km: 0.00 Tipo: 3 Sent: 0



Km: 32.92 Tipo: 3 Sent: 0

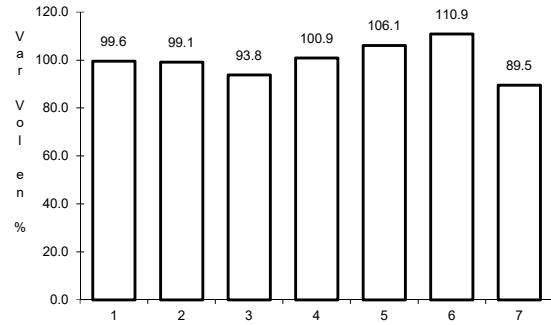


Km: 99.14 Tipo: 1 Sent: 0

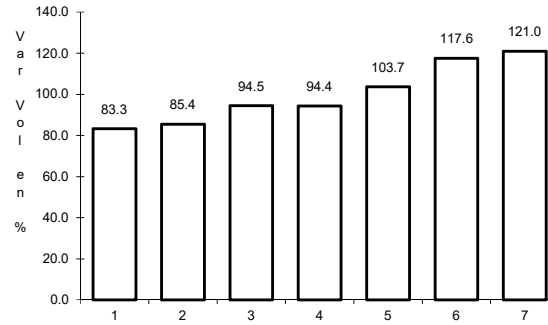
4 CARR: Conkal - Puerto Chicxulub

CLAVE: 31004

RUTA: MEX-176



Km: 0.00 Tipo: 3 Sent: 0

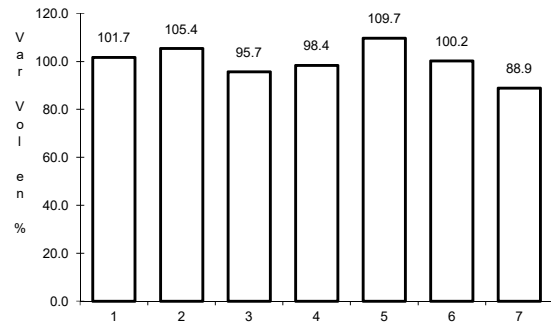


Km: 27.00 Tipo: 1 Sent: 0

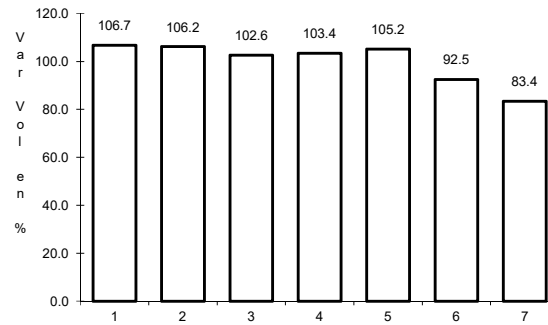
5 CARR: Dzitbalché - Ent. San Bernardo

CLAVE: 00162

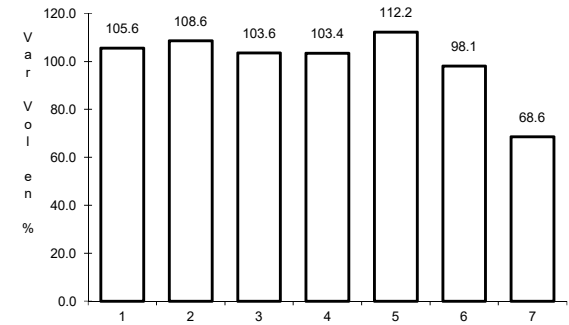
RUTA: MEX-180



Km: 12.33 Tipo: 1 Sent: 0



Km: 21.08 Tipo: 1 Sent: 0

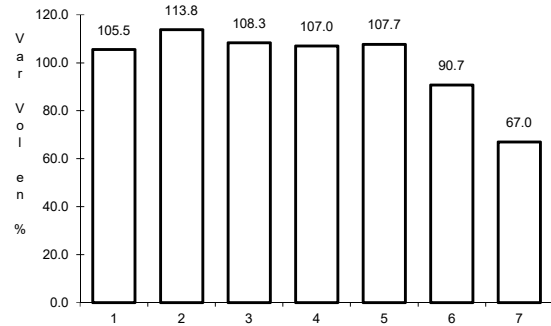


Km: 40.36 Tipo: 3 Sent: 0

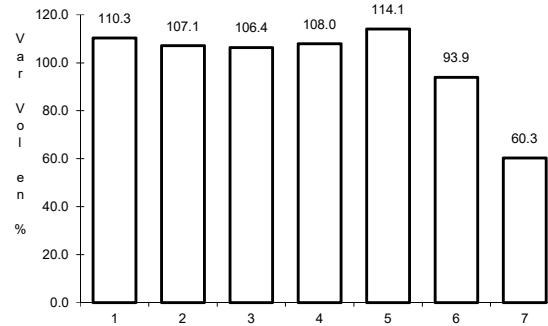
6 CARR: Ent. Poxilá - Mérida

CLAVE: 31003

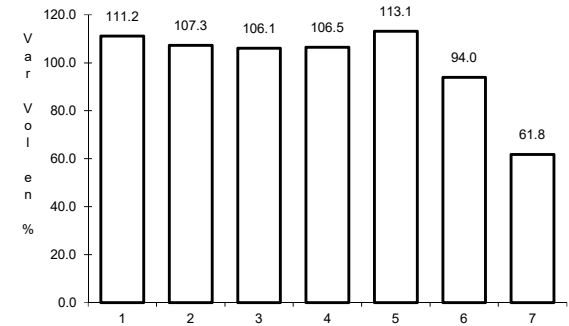
RUTA: MEX-180



Km: 9.46 Tipo: 1 Sent: 0



Km: 25.70 Tipo: 1 Sent: 1

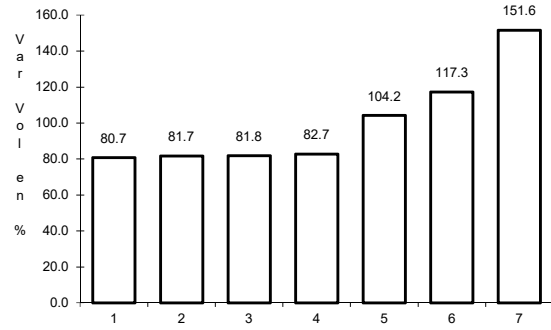


Km: 25.70 Tipo: 1 Sent: 2

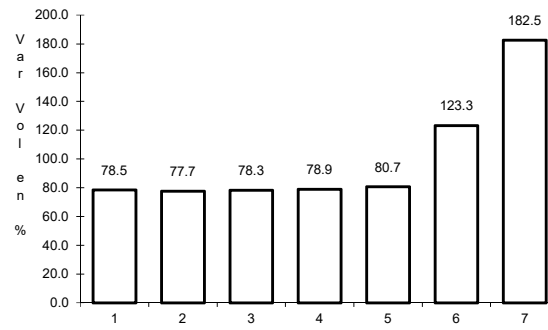
7 CARR: Hunucmá - Sisal

CLAVE: 31021

RUTA: MEX-281



Km: 0.00 Tipo: 3 Sent: 0

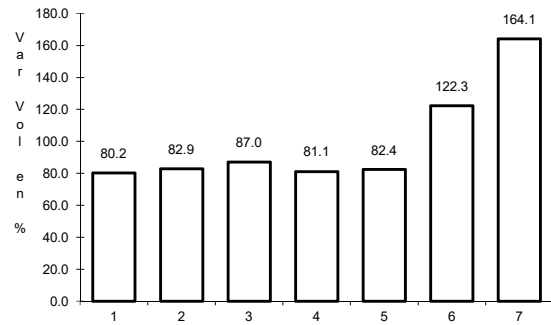


Km: 23.20 Tipo: 1 Sent: 0

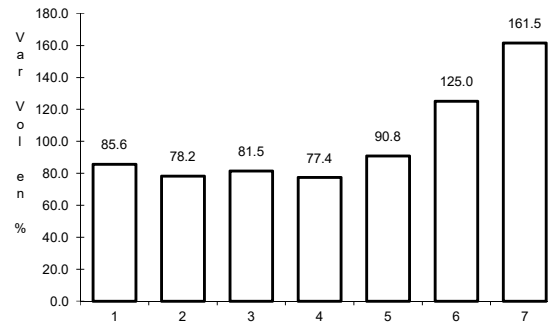
8 CARR: Libramiento de Progreso

CLAVE: 31631

RUTA: MEX-261



Km: 0.00 Tipo: 3 Sent: 0

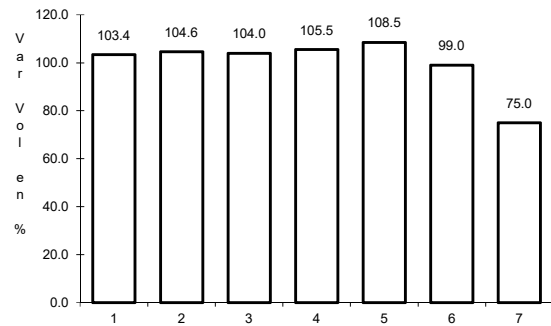


Km: 6.50 Tipo: 1 Sent: 0

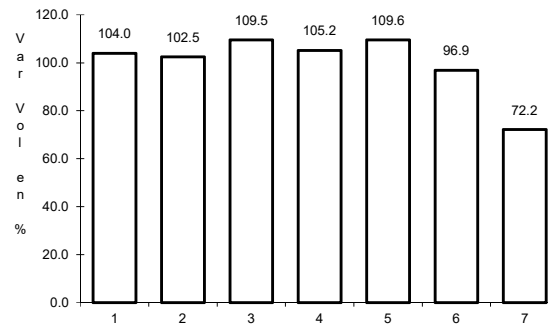
9 CARR: Mérida - Celestún

CLAVE: 31025

RUTA: MEX-281



Km: 0.00 Tipo: 3 Sent: 1



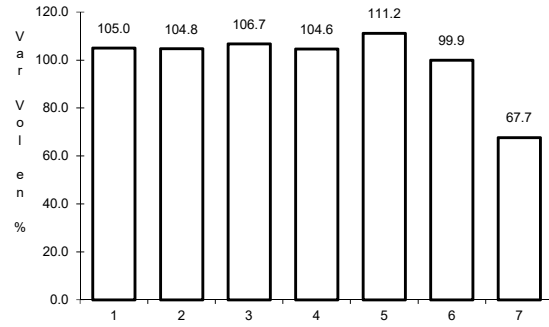
Km: 0.00 Tipo: 3 Sent: 2

Km: 40.00 Tipo: 3 Sent: 0

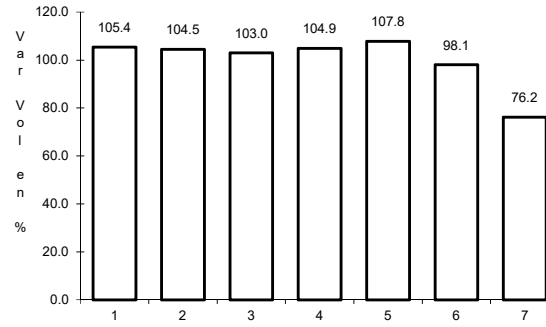
10 CARR: Mérida - Dzilam de Bravo

CLAVE: 31001

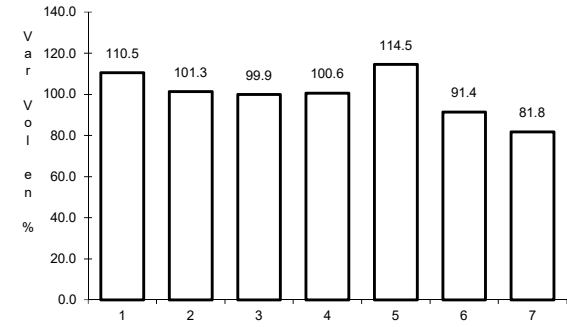
RUTA: MEX-176



Km: 5.90 Tipo: 1 Sent: 1



Km: 5.90 Tipo: 1 Sent: 2

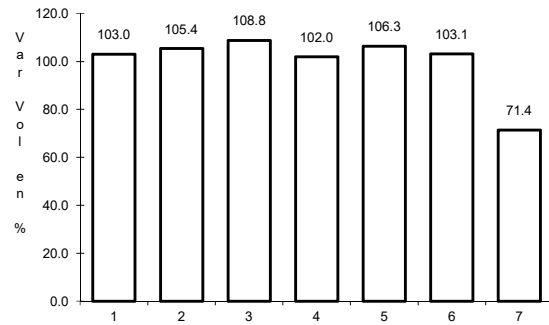


Km: 105.00 Tipo: 1 Sent: 0

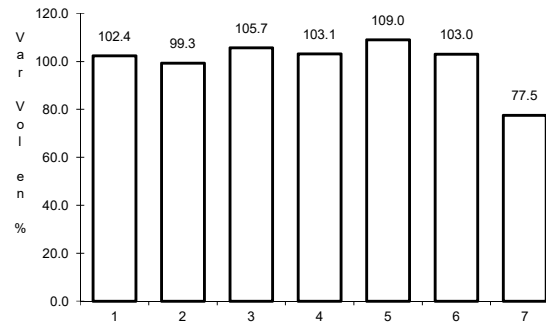
11 CARR: Mérida - Progreso

CLAVE: 31091

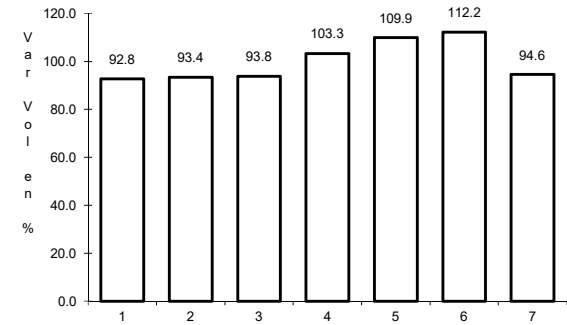
RUTA: MEX-261



Km: 5.40 Tipo: 1 Sent: 1



Km: 5.40 Tipo: 1 Sent: 2

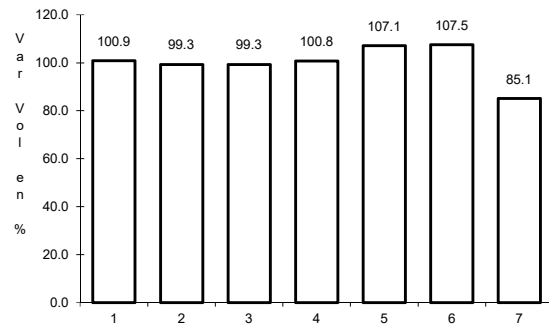


Km: 35.04 Tipo: 1 Sent: 1

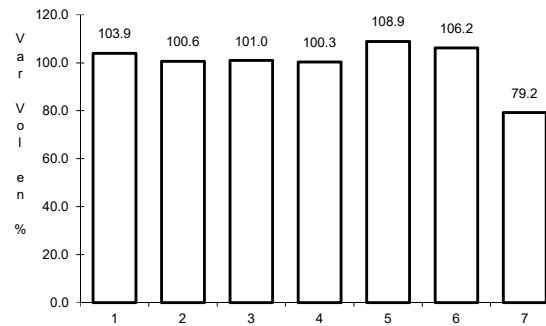
12 CARR: Mérida - Puerto Juárez

CLAVE: 00067

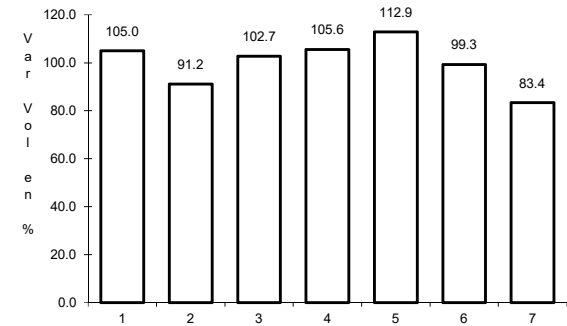
RUTA: MEX-180



Km: 5.60 Tipo: 1 Sent: 1



Km: 5.60 Tipo: 1 Sent: 2

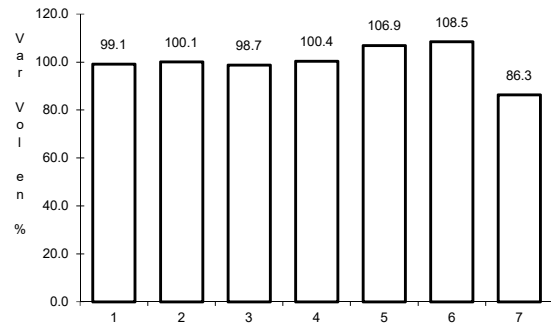


Km: 160.68 Tipo: 1 Sent: 0

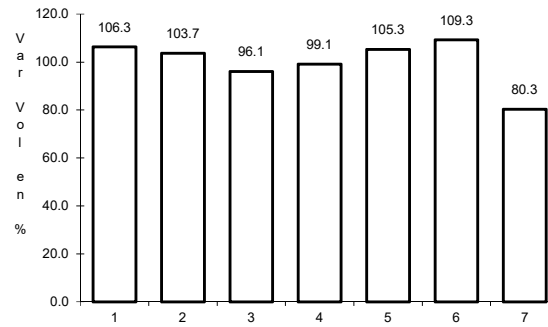
13 CARR: Mérida - Tekanto

CLAVE: 31587

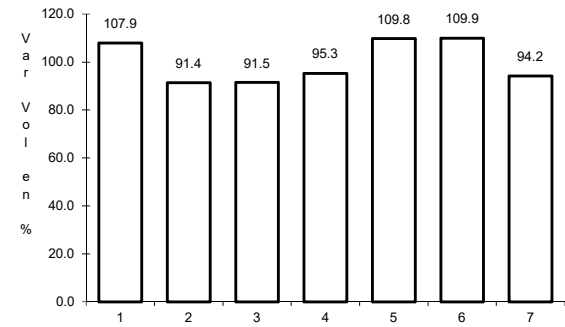
RUTA: MEX-180



Km: 5.70 Tipo: 1 Sent: 0



Km: 21.00 Tipo: 1 Sent: 0

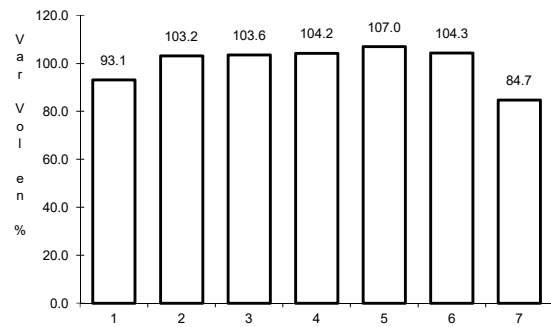


Km: 51.00 Tipo: 1 Sent: 0

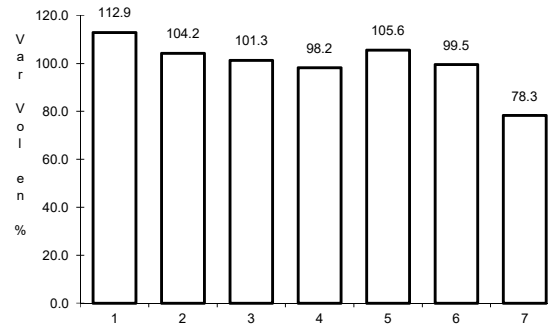
14 CARR: Mérida - Tetiz

CLAVE: 31610

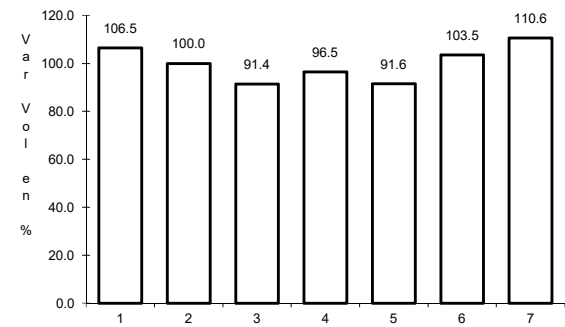
RUTA: MEX-281



Km: 0.00 Tipo: 3 Sent: 0



Km: 17.98 Tipo: 1 Sent: 0

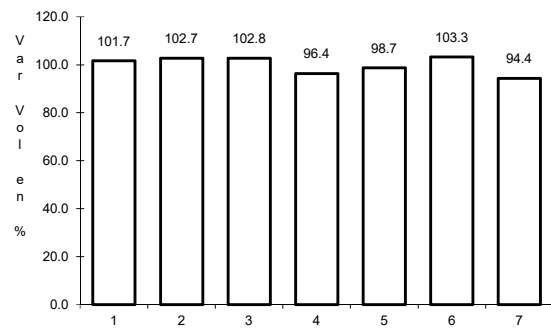


Km: 24.40 Tipo: 1 Sent: 0

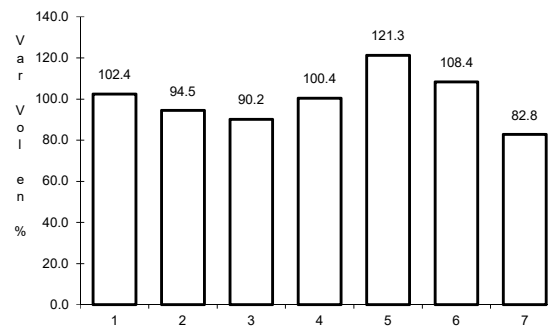
15 CARR: Muna - Felipe Carrillo Puerto

CLAVE: 00148

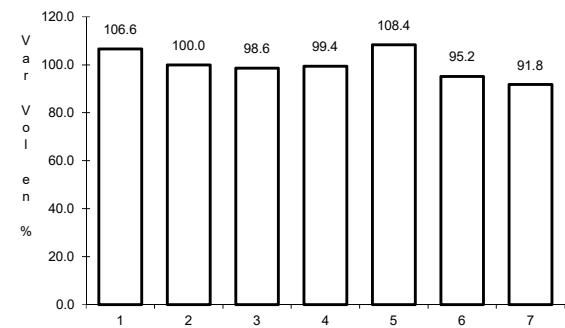
RUTA: MEX-184



Km: 0.00 Tipo: 3 Sent: 0



Km: 109.60 Tipo: 3 Sent: 0

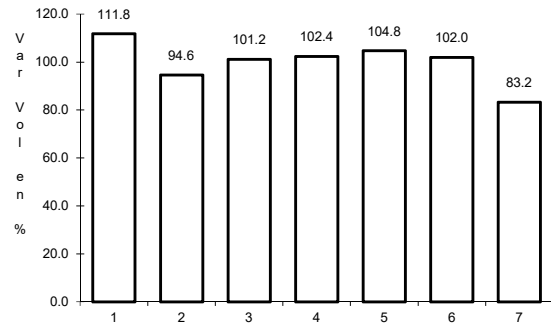


Km: 216.97 Tipo: 1 Sent: 0

16 CARR: Ramal a Panabá

CLAVE: 31609

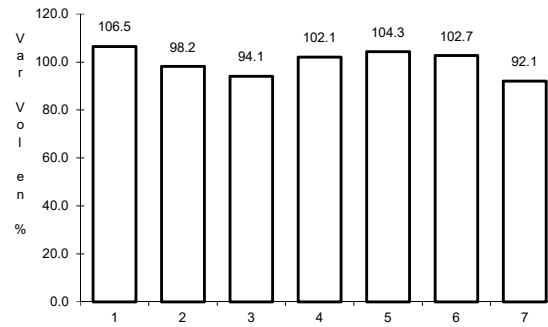
ruta: MEX-295



Km: 0.00

Tipo: 3

Sent: 0



Km: 18.00

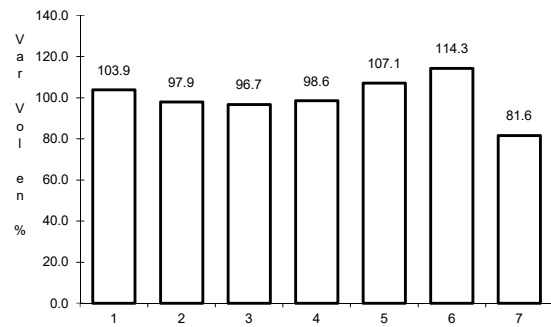
Tipo: 1

Sent: 0

17 CARR: Teya -Peto

CLAVE: 31042

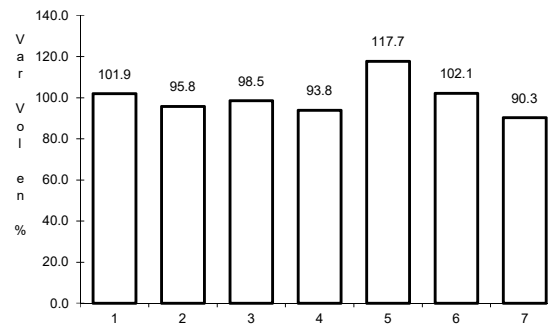
ruta: MEX-184



Km: 3.80

Tipo: 3

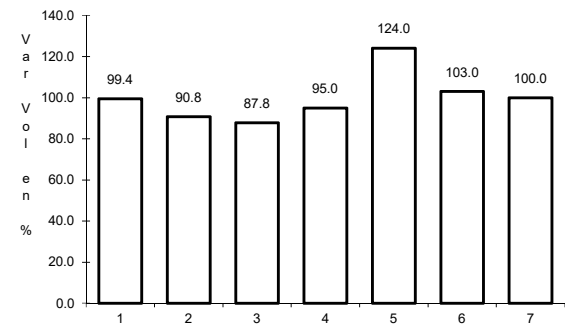
Sent: 1



Km: 97.10

Tipo: 1

Sent: 0



Km: 120.70

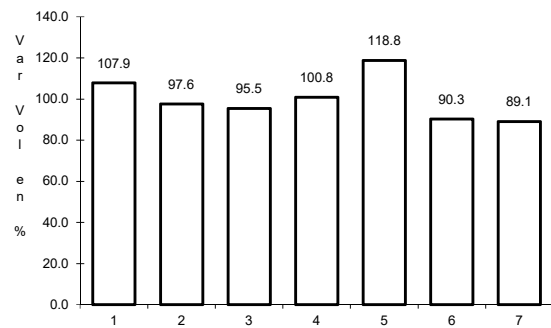
Tipo: 1

Sent: 0

18 CARR: Tzucacab - Santa Rosa

CLAVE: 31017

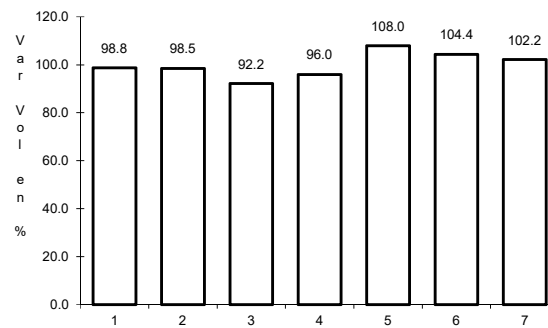
ruta: MEX



Km: 0.00

Tipo: 3

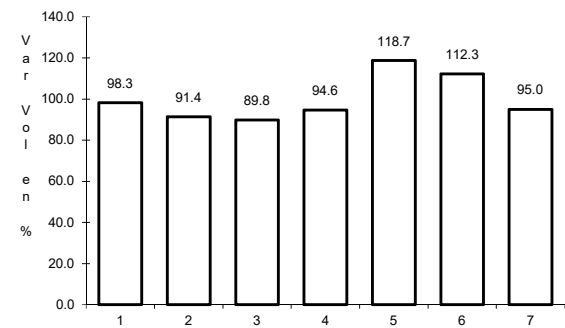
Sent: 0



Km: 16.00

Tipo: 3

Sent: 0



Km: 34.50

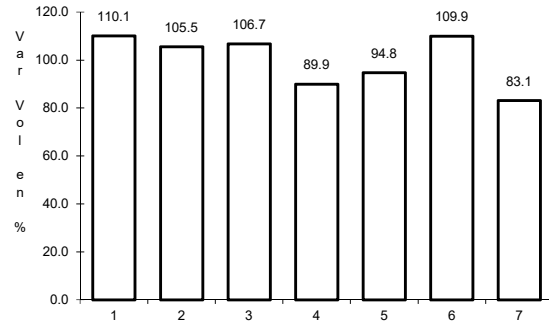
Tipo: 1

Sent: 0

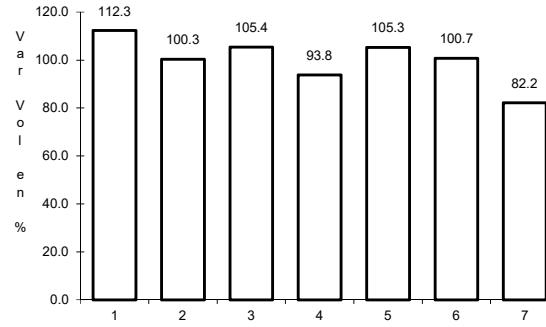
19 CARR: Valladolid - Felipe Carrillo Puerto

CLAVE: 00010

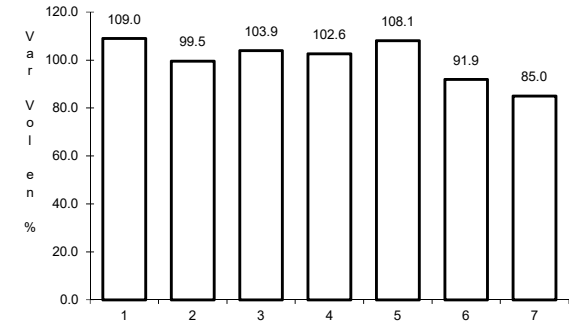
ruta: MEX-295



Km: 0.00 Tipo: 3 Sent: 0



Km: 99.00 Tipo: 1 Sent: 0

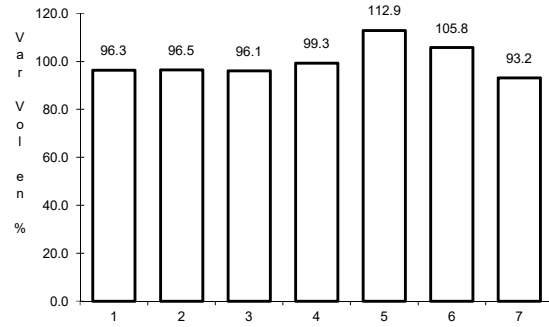


Km: 147.70 Tipo: 1 Sent: 0

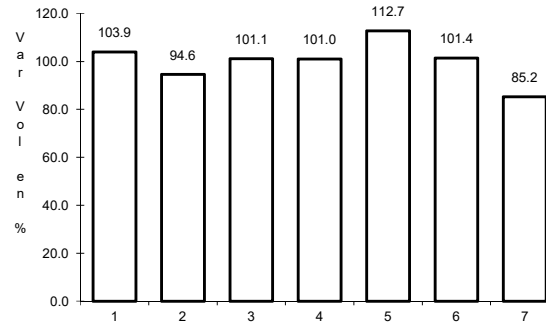
20 CARR: Valladolid - Río Lagartos

CLAVE: 31035

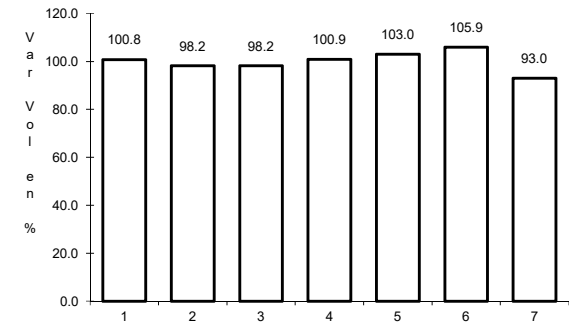
ruta: MEX-295



Km: 0.00 Tipo: 3 Sent: 1



Km: 0.00 Tipo: 3 Sent: 2

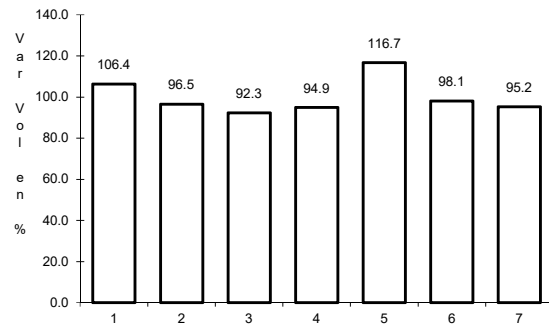


Km: 79.90 Tipo: 1 Sent: 0

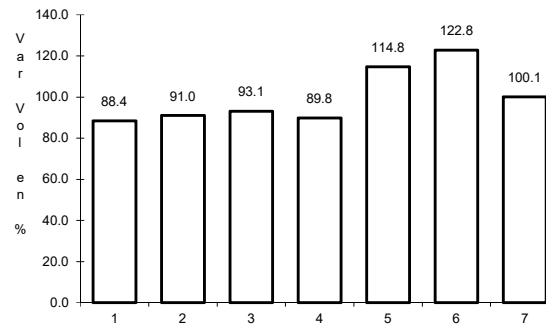
21 CARR: Mérida - Cancún (Cuota)

CLAVE: 00071

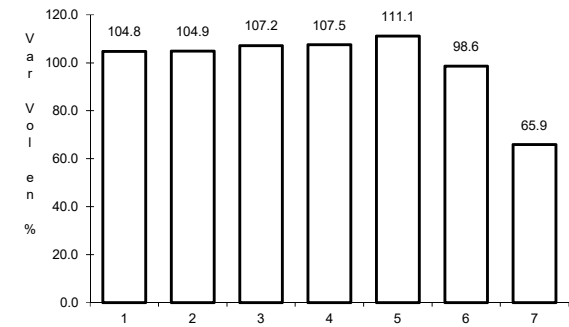
ruta: MEX-180D



Km: 51.00 Tipo: 1 Sent: 1



Km: 51.00 Tipo: 1 Sent: 2

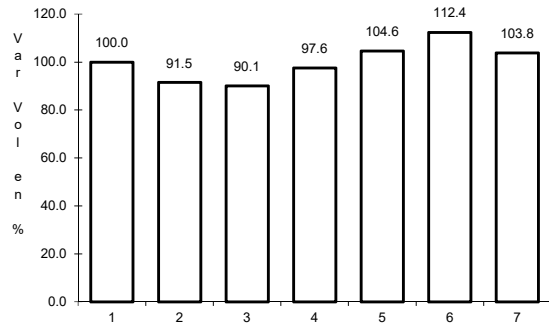


Km: 308.10 Tipo: 1 Sent: 0

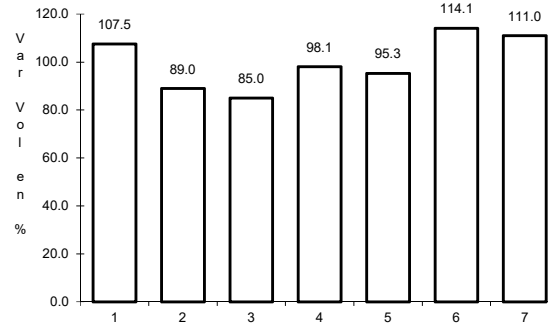
22 CARR: Acanceh - Estación Polabán

CLAVE: 31615

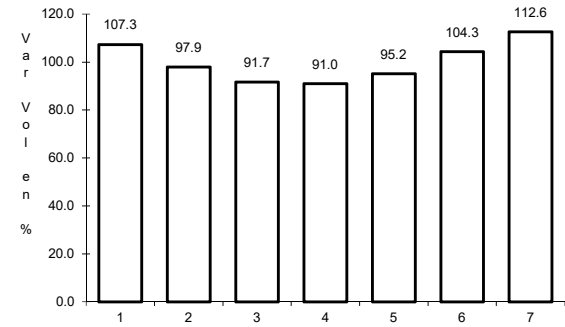
RUTA: YUC



Km: 0.00 Tipo: 3 Sent: 0



Km: 20.00 Tipo: 3 Sent: 0

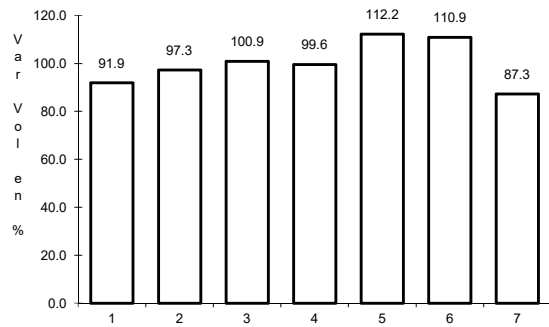


Km: 24.40 Tipo: 1 Sent: 0

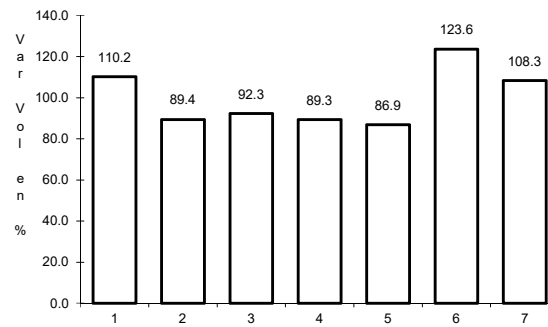
23 CARR: Baca - Dzidzantún

CLAVE: 31591

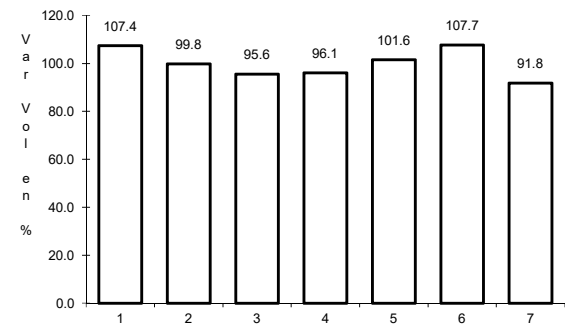
RUTA: YUC



Km: 0.00 Tipo: 3 Sent: 0



Km: 19.10 Tipo: 1 Sent: 0

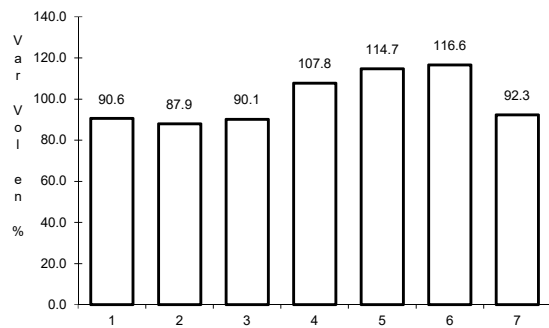


Km: 43.00 Tipo: 1 Sent: 0

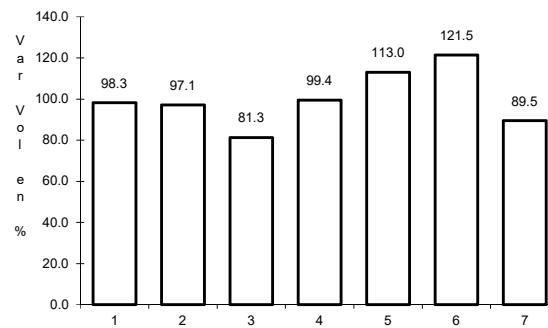
24 CARR: Citilcum - Tixkochoh

CLAVE: 31064

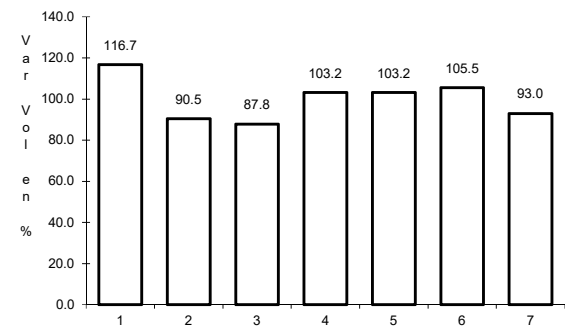
RUTA: YUC



Km: 0.00 Tipo: 3 Sent: 0



Km: 7.00 Tipo: 1 Sent: 0

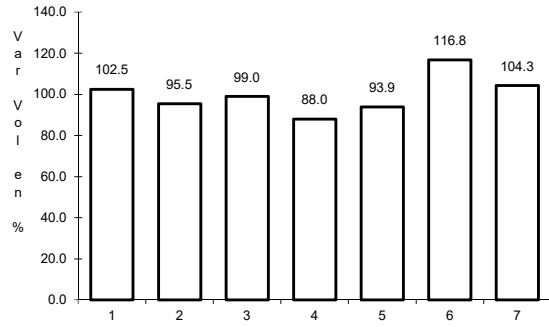


Km: 10.00 Tipo: 1 Sent: 0

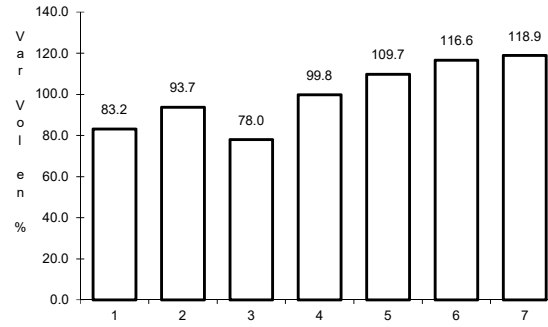
25 CARR: Dzemul - Xtampú

CLAVE: 31608

RUTA: YUC



Km: 0.00 Tipo: 3 Sent: 0

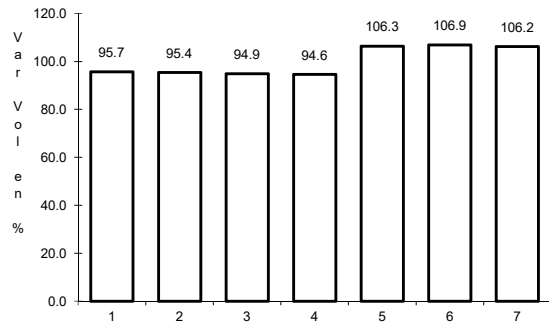


Km: 10.00 Tipo: 1 Sent: 0

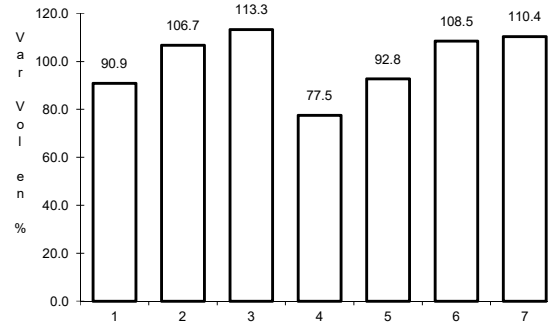
26 CARR: Dzidzantún - Santa Clara

CLAVE: 31592

RUTA: YUC



Km: 0.00 Tipo: 3 Sent: 0

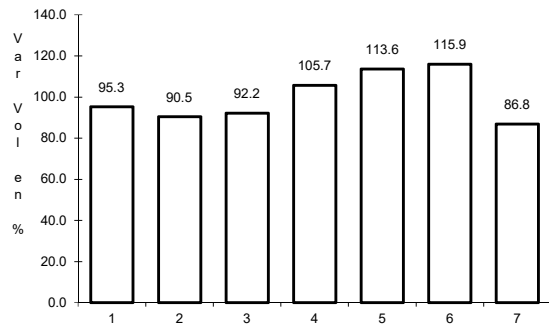


Km: 14.00 Tipo: 1 Sent: 0

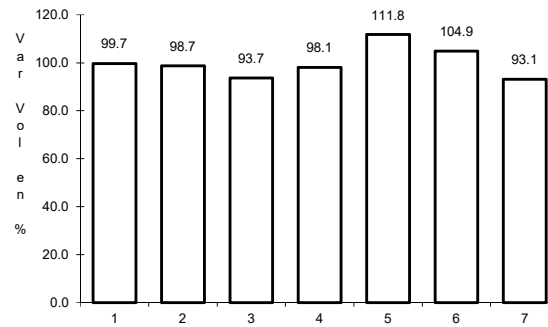
27 CARR: Hochtún - Cenotillo

CLAVE: 31011

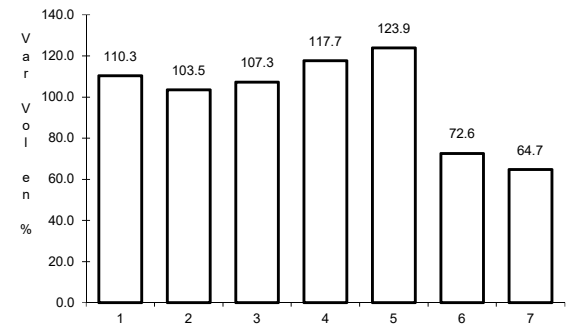
RUTA: YUC-011



Km: 0.00 Tipo: 3 Sent: 0



Km: 24.00 Tipo: 3 Sent: 0

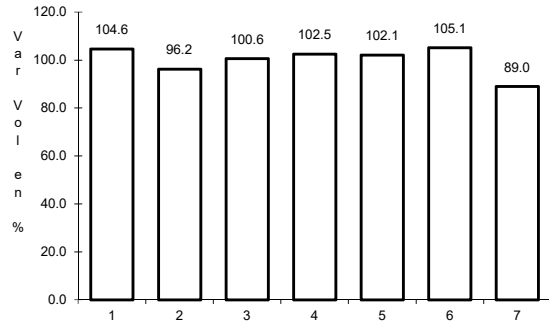


Km: 70.90 Tipo: 1 Sent: 0

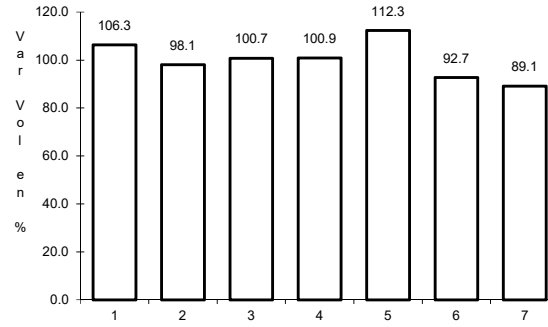
28 CARR: Holcá - Sotuta

CLAVE: 31626

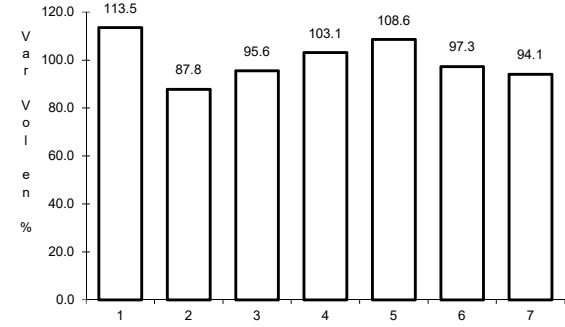
RUTA: YUC



Km: 0.00 Tipo: 3 Sent: 0



Km: 10.00 Tipo: 3 Sent: 0

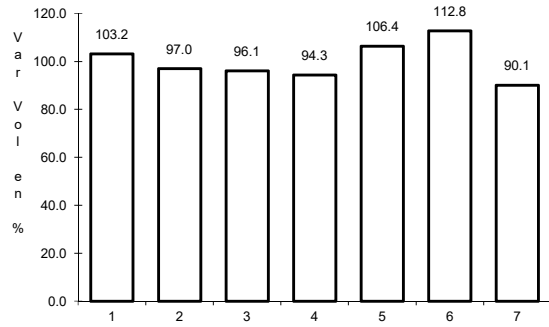


Km: 20.00 Tipo: 1 Sent: 0

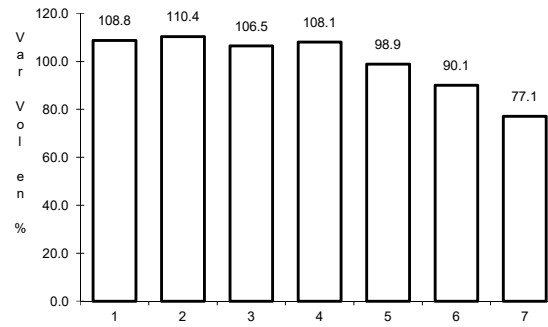
29 CARR: Hunucmá - Umán

CLAVE: 31610

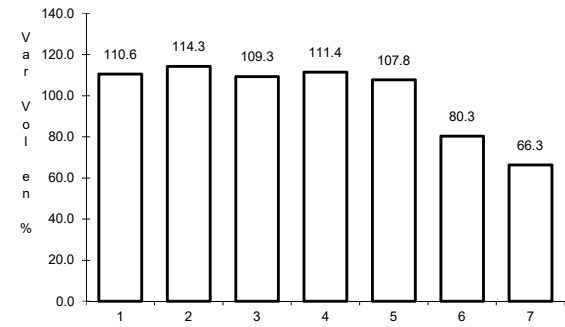
RUTA: YUC



Km: 0.00 Tipo: 3 Sent: 0



Km: 16.16 Tipo: 1 Sent: 0

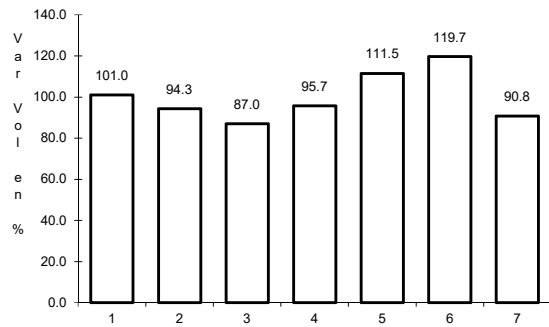


Km: 22.00 Tipo: 1 Sent: 0

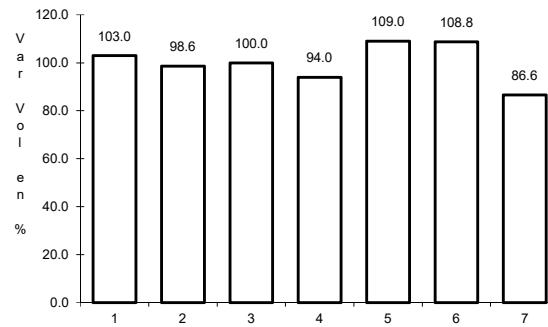
30 CARR: Izamal - Dzilam González

CLAVE: 31605

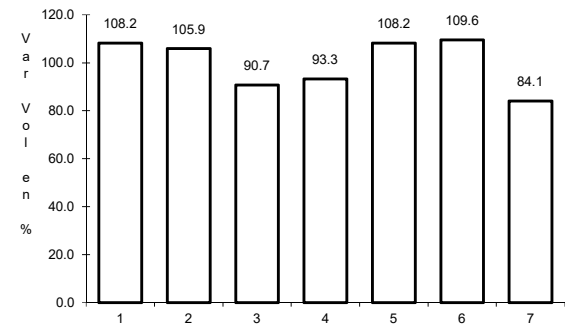
RUTA: YUC



Km: 0.00 Tipo: 3 Sent: 0



Km: 30.00 Tipo: 1 Sent: 0

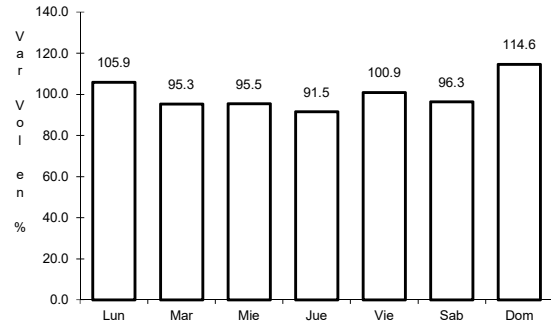


Km: 43.00 Tipo: 1 Sent: 0

31 CARR: Kantunil - Izamal

CLAVE: 31012

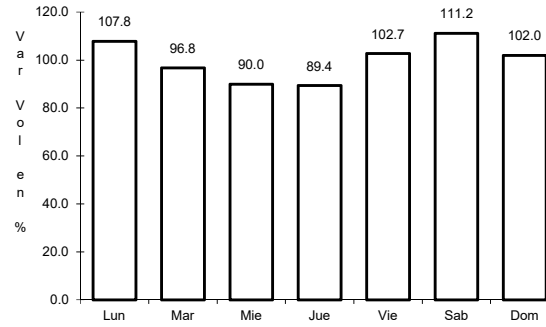
RUTA: YUC



Km: 0.00

Tipo: 3

Sent: 0



Km: 17.80

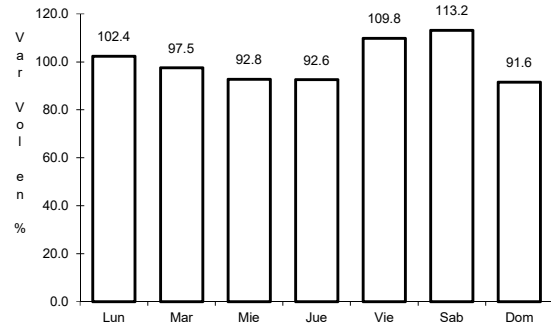
Tipo: 1

Sent: 0

32 CARR: Kinchil - Umán

CLAVE: 31009

RUTA: YUC



Km: 0.00

Tipo: 3

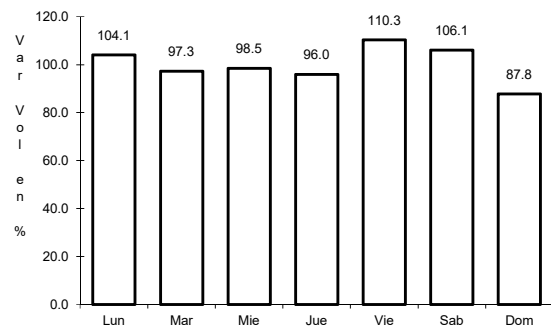
Sent: 0



33 CARR: Libramiento Norte de Motul

CLAVE: 31610

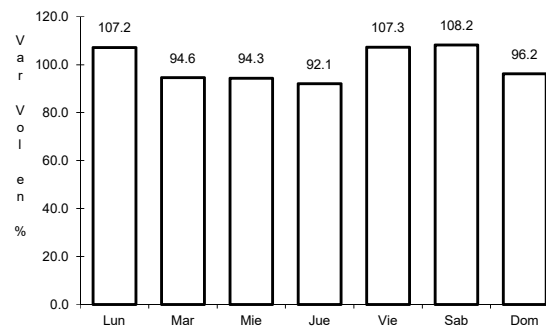
RUTA: YUC



Km: 0.00

Tipo: 3

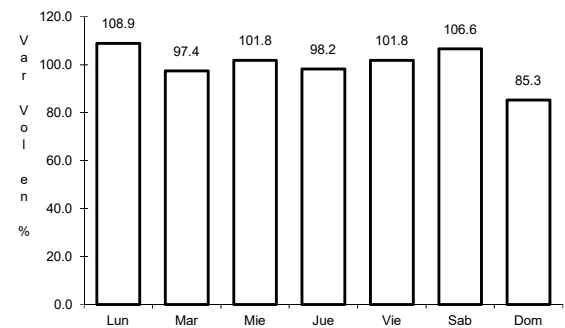
Sent: 0



Km: 3.16

Tipo: 3

Sent: 0



Km: 6.53

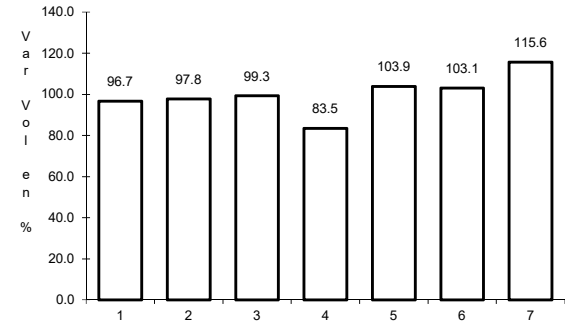
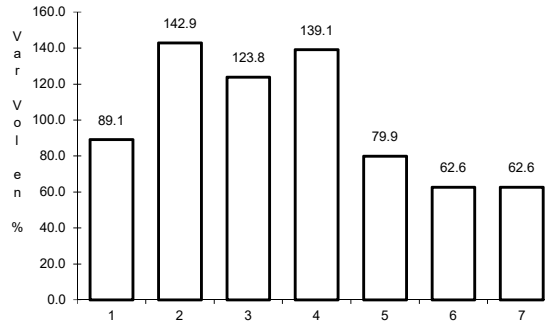
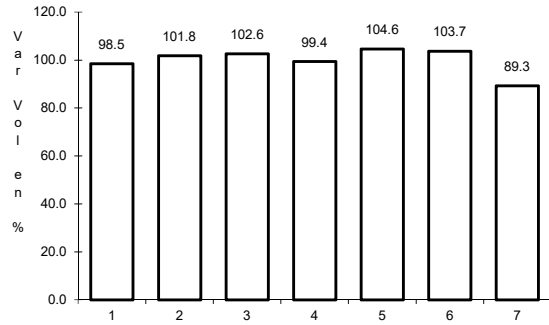
Tipo: 1

Sent: 0

34 CARR: Mérida - Acanceh

CLAVE: 31023

RUTA: YUC



Km: 0.00 Tipo: 3 Sent: 0

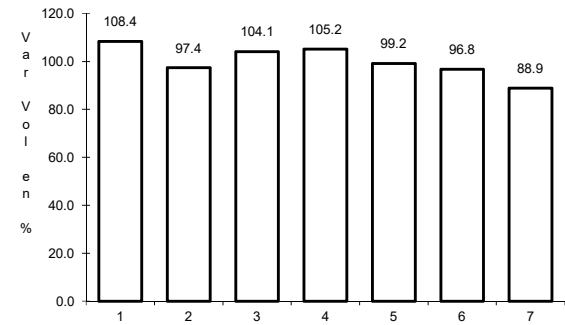
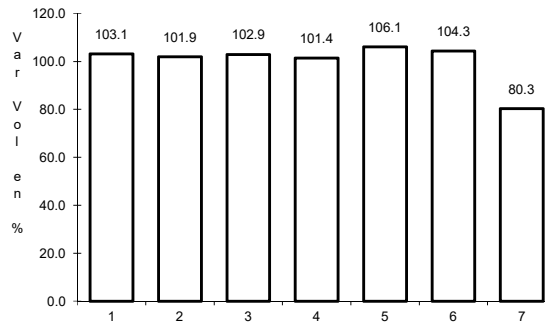
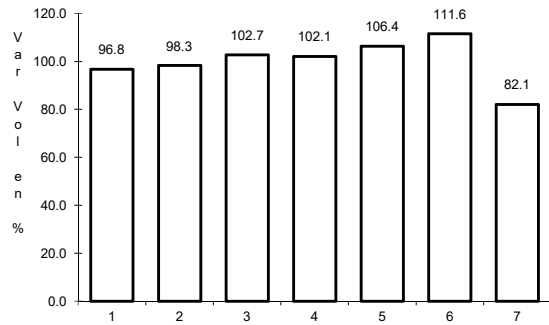
Km: 11.00 Tipo: 3 Sent: 0

Km: 26.00 Tipo: 1 Sent: 0

35 CARR: Mérida - Oxkutzcab

CLAVE: 31018

RUTA: YUC-018



Km: 0.00 Tipo: 3 Sent: 1

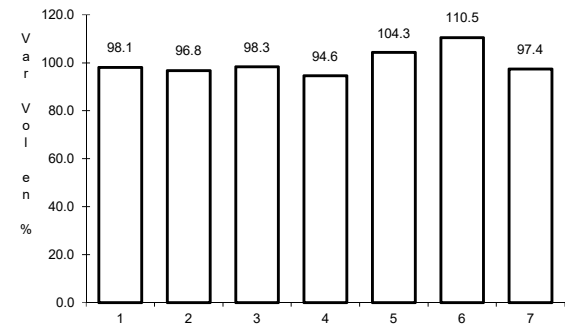
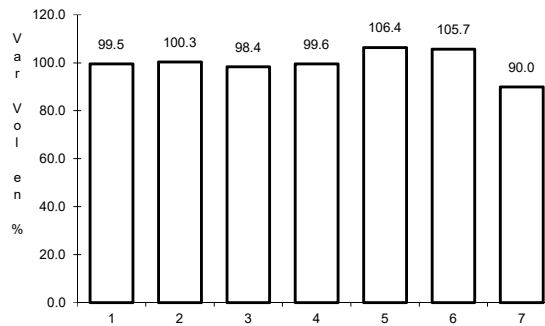
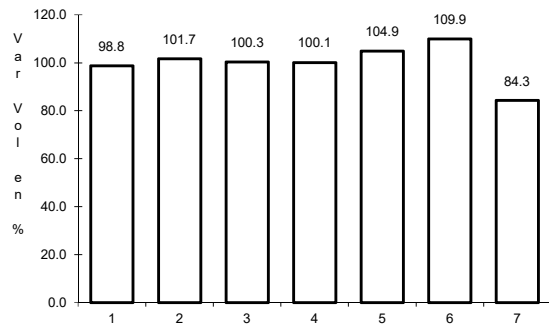
Km: 0.00 Tipo: 3 Sent: 2

Km: 109.30 Tipo: 1 Sent: 0

36 CARR: Mérida - Timucuy

CLAVE: 31024

RUTA: YUC



Km: 0.00 Tipo: 3 Sent: 0

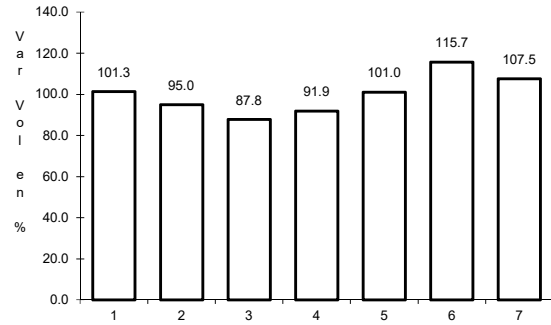
Km: 15.10 Tipo: 1 Sent: 0

Km: 18.65 Tipo: 1 Sent: 0

37 CARR: Motul - Puerto Telchac

CLAVE: 31006

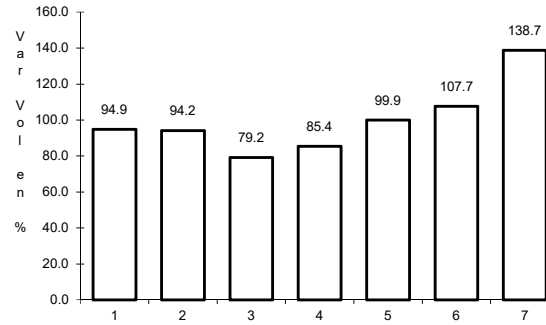
RUTA: YUC-172



Km: 0.00

Tipo: 3

Sent: 0



Km: 12.00

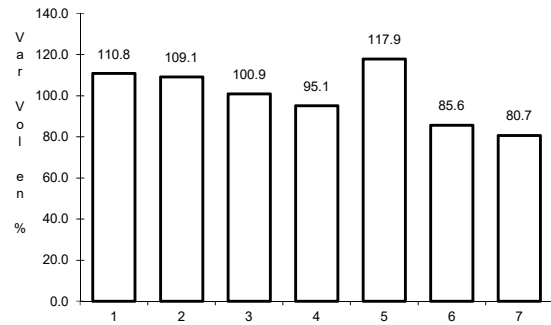
Tipo: 3

Sent: 0

38 CARR: Muna - Maxcanú

CLAVE: 31053

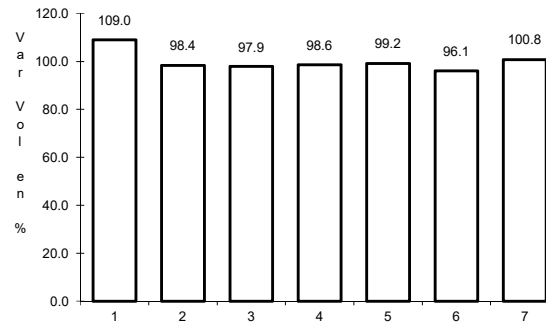
RUTA: YUC



Km: 0.00

Tipo: 3

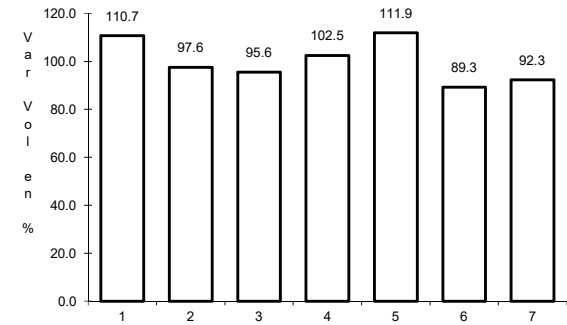
Sent: 0



Km: 17.00

Tipo: 3

Sent: 0



Km: 31.00

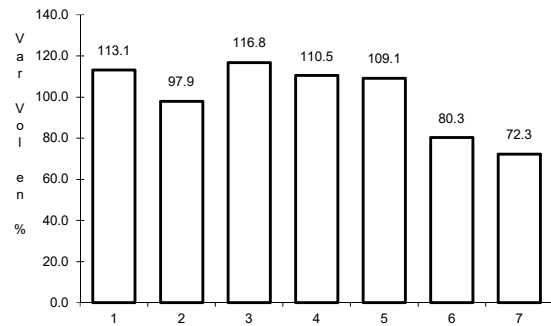
Tipo: 1

Sent: 0

39 CARR: Oxkutzcab - Xul

CLAVE: 31051

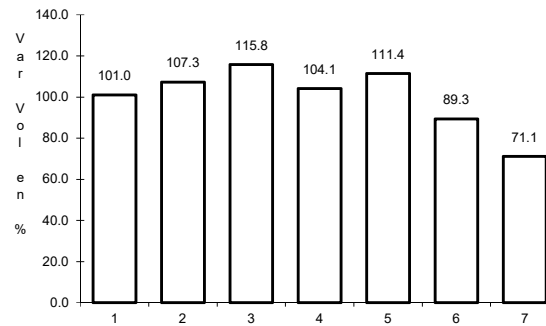
RUTA: YUC-031



Km: 0.00

Tipo: 3

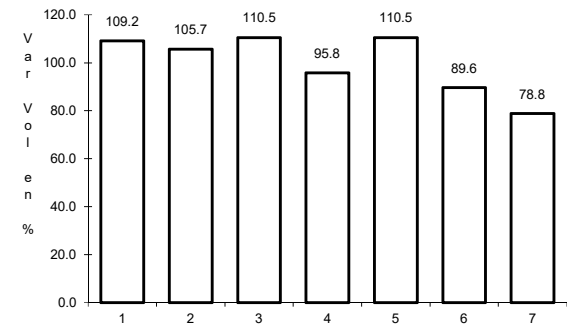
Sent: 0



Km: 10.00

Tipo: 3

Sent: 0



Km: 25.00

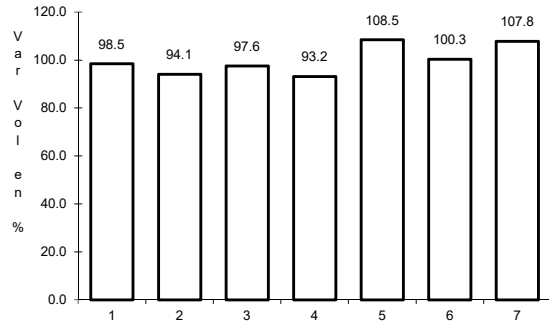
Tipo: 1

Sent: 0

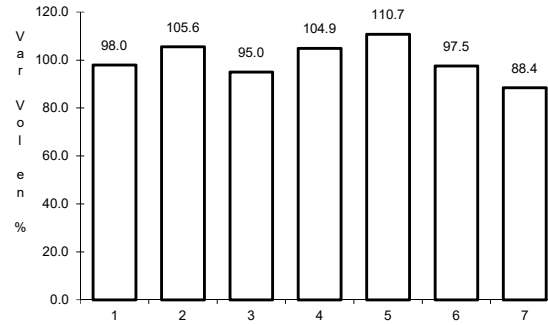
40 CARR: Piste - Dzitás

CLAVE: 31013

ruta: YUC-013



Km: 0.00 Tipo: 3 Sent: 0

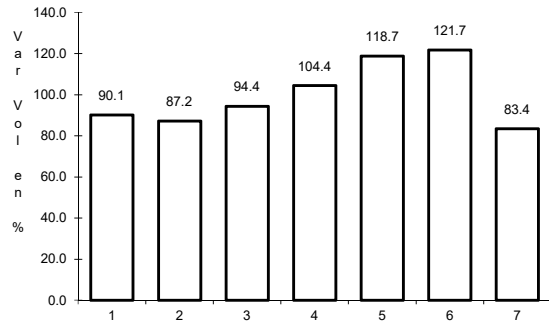


Km: 18.00 Tipo: 1 Sent: 0

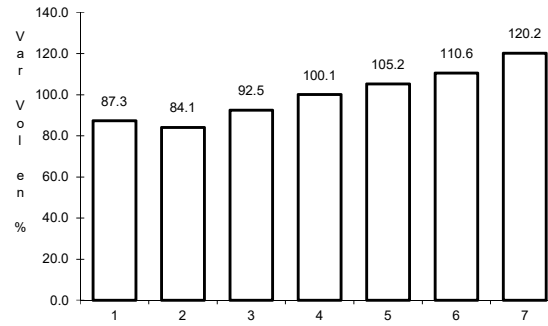
41 CARR: Progreso - Telchac Puerto

CLAVE: 31616

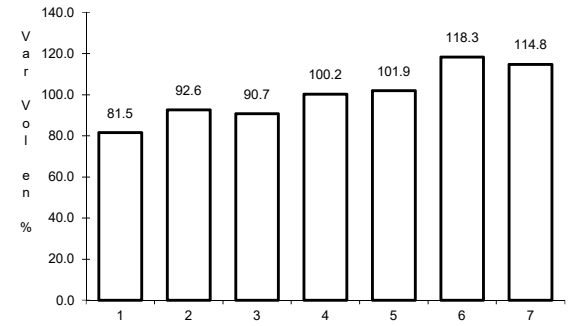
ruta: YUC-027



Km: 0.00 Tipo: 3 Sent: 1



Km: 0.00 Tipo: 3 Sent: 2

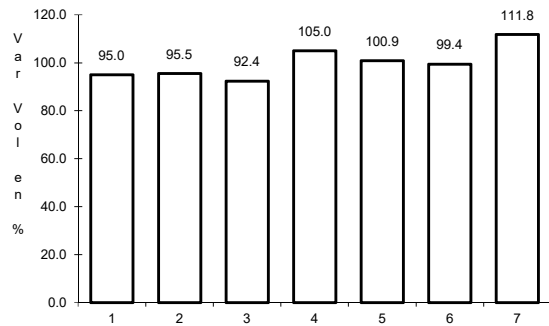


Km: 33.00 Tipo: 1 Sent: 0

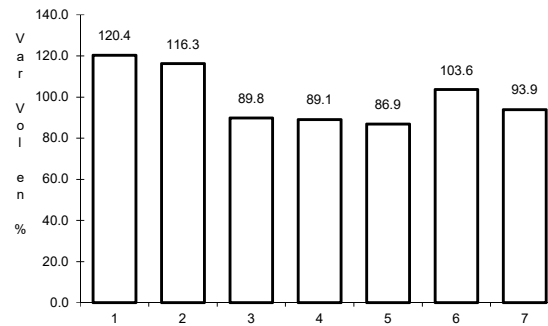
42 CARR: Ramal a Chankom

CLAVE: 31049

ruta: YUC



Km: 0.00 Tipo: 3 Sent: 0

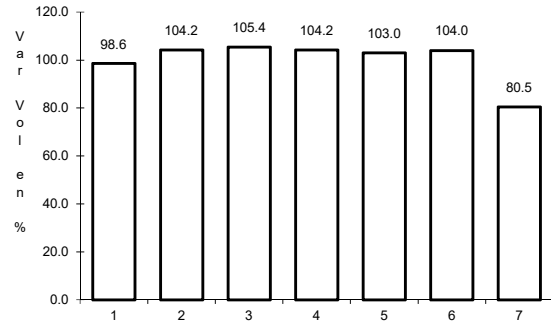


Km: 9.00 Tipo: 1 Sent: 0

43 CARR: Ramal a Dzonot Carretero

CLAVE: 31614

RUTA: YUC



Km: 0.00

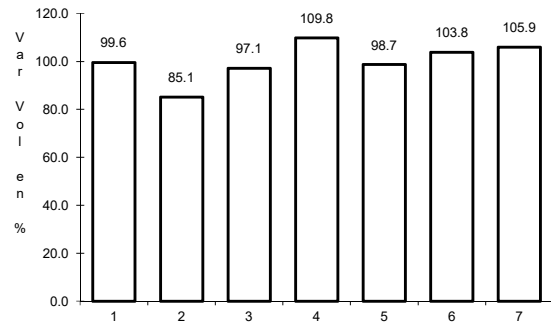
Tipo: 3

Sent: 0

44 CARR: Ramal a San Felipe

CLAVE: 31628

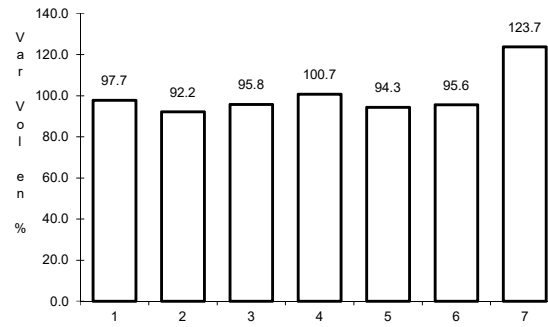
RUTA: YUC



Km: 0.00

Tipo: 3

Sent: 0



Km: 7.20

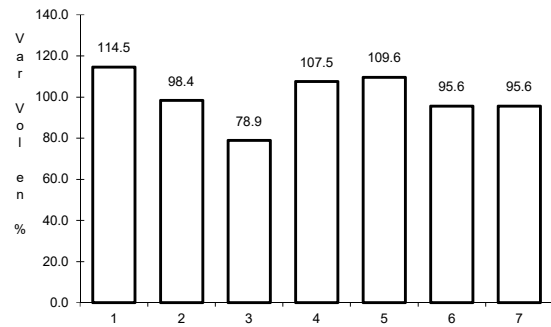
Tipo: 1

Sent: 0

45 CARR: Ramal a Tedzidz

CLAVE: 31600

RUTA: YUC



Km: 6.00

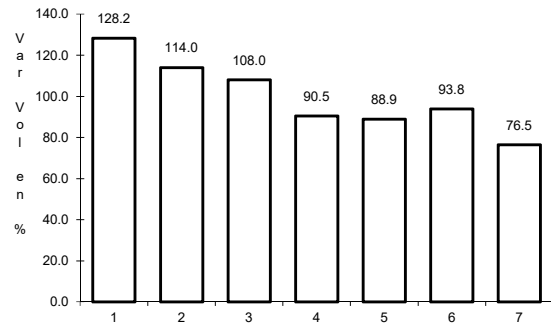
Tipo: 1

Sent: 0

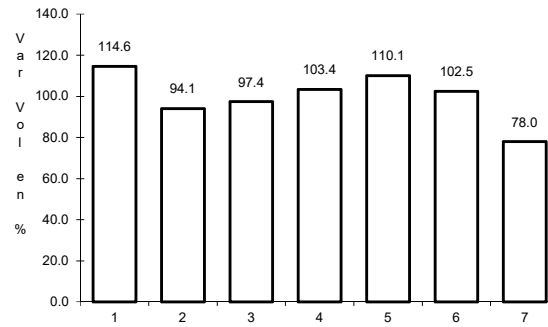
46 CARR: Ramal a Yaxcabá

CLAVE: 31111

RUTA: YUC-289



Km: 0.00 Tipo: 3 Sent: 0

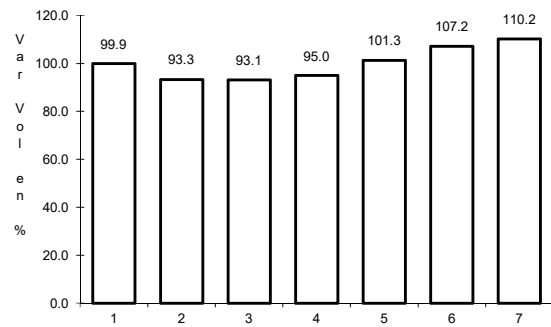


Km: 18.00 Tipo: 1 Sent: 0

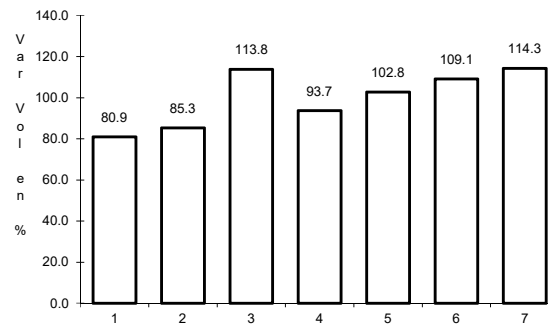
47 CARR: Sinanché - Xitibcanul

CLAVE: 31619

RUTA: YUC



Km: 0.00 Tipo: 3 Sent: 0

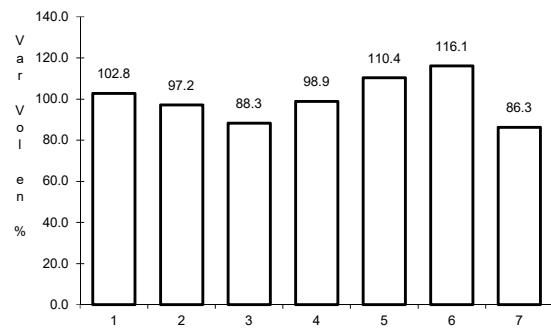


Km: 7.00 Tipo: 1 Sent: 0

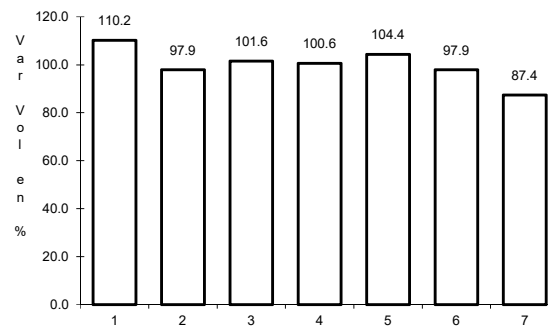
48 CARR: Sucilá - Calotmul

CLAVE: 31617

RUTA: YUC



Km: 2.00 Tipo: 3 Sent: 0

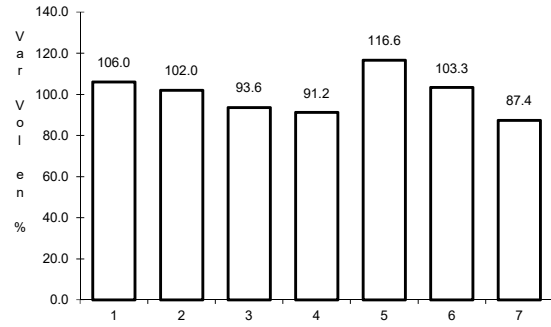


Km: 30.20 Tipo: 1 Sent: 0

49 CARR: Suma - Izamal

CLAVE: 31081

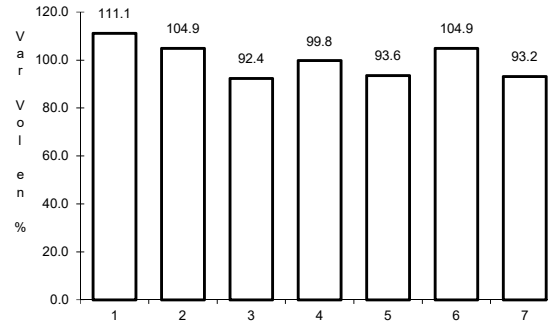
RUTA: YUC-081



Km: 0.00

Tipo: 3

Sent: 0



Km: 22.00

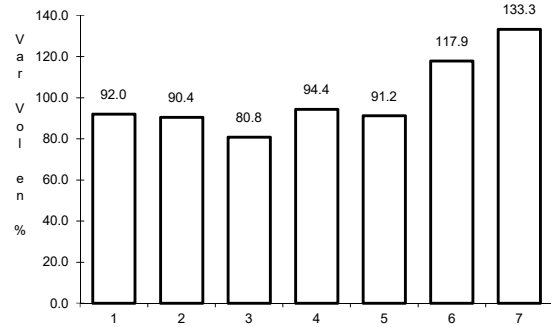
Tipo: 1

Sent: 0

50 CARR: Telchac Puerto - Dzilam de Bravo

CLAVE: 31042

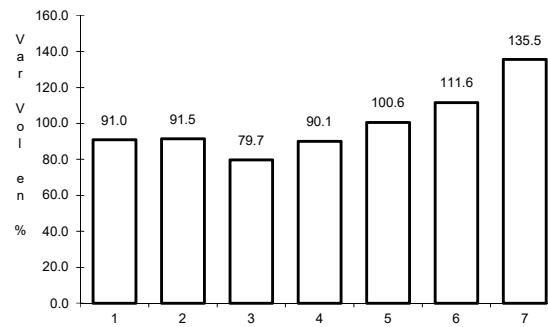
RUTA: YUC



Km: 0.00

Tipo: 3

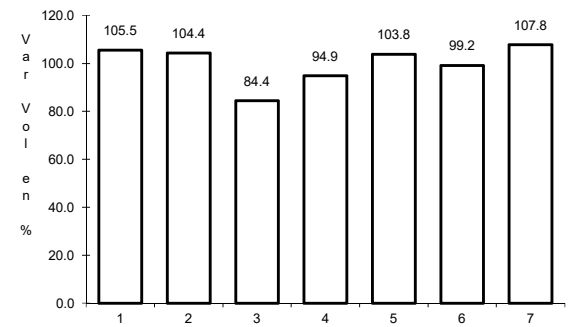
Sent: 0



Km: 26.00

Tipo: 1

Sent: 0



Km: 39.00

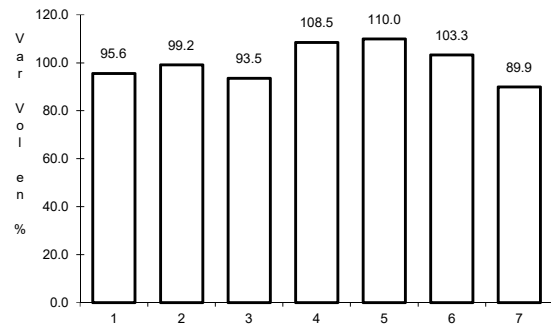
Tipo: 1

Sent: 0

51 CARR: Thul - Becanchén

CLAVE: 31104

RUTA: YUC-281



Km: 0.00

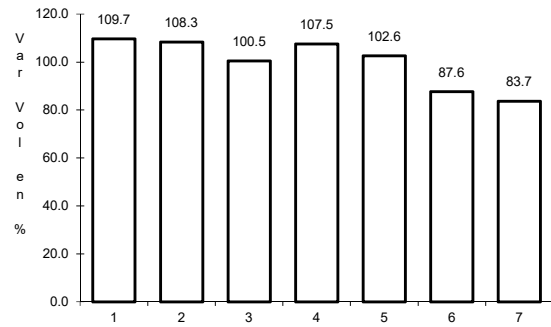
Tipo: 3

Sent: 0

52 CARR: Ticul - Chapab

CLAVE: 31623

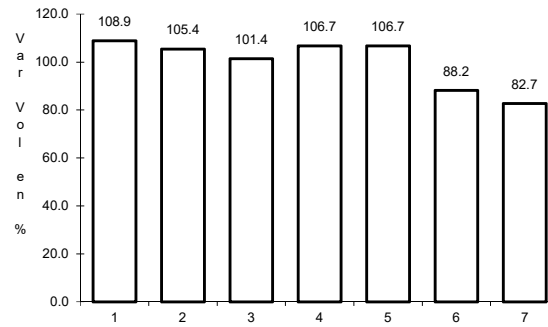
RUTA: YUC



Km: 0.00

Tipo: 3

Sent: 0



Km: 8.00

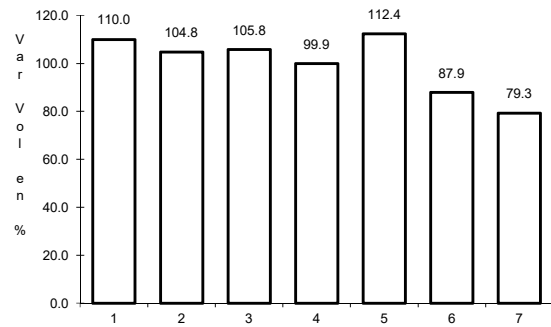
Tipo: 1

Sent: 0

53 CARR: Ticul - Dzan

CLAVE: 31621

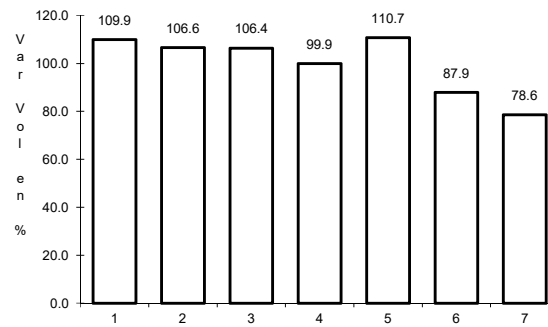
RUTA: YUC



Km: 2.50

Tipo: 3

Sent: 0



Km: 7.00

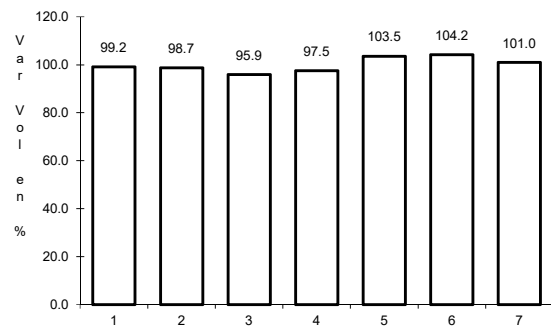
Tipo: 1

Sent: 0

54 CARR: Tixkokob - Baca

CLAVE: 31010

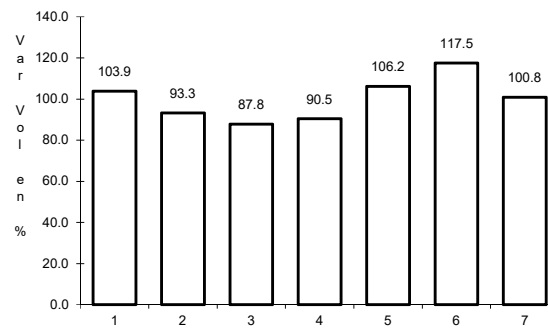
RUTA: YUC



Km: 0.00

Tipo: 3

Sent: 0



Km: 15.00

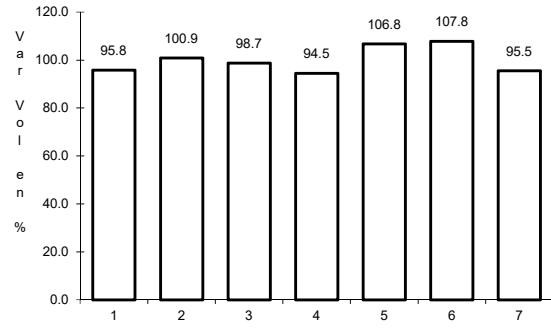
Tipo: 1

Sent: 0

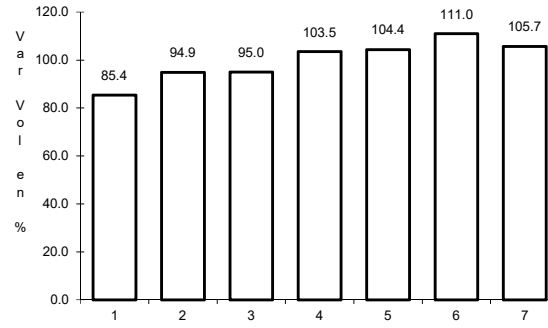
55 CARR: Tixkokob - Sotuta

CLAVE: 31106

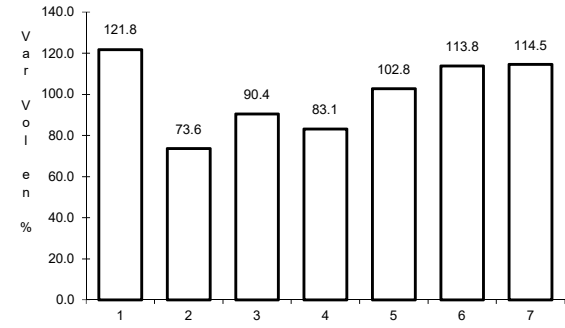
RUTA: YUC



Km: 0.00 Tipo: 3 Sent: 0



Km: 31.00 Tipo: 3 Sent: 0

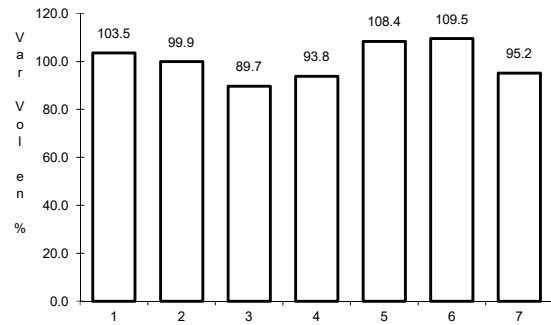


Km: 65.00 Tipo: 1 Sent: 0

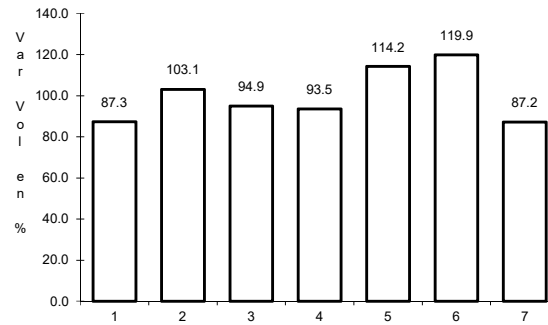
56 CARR: Tizimin - Yucatán

CLAVE: 31588

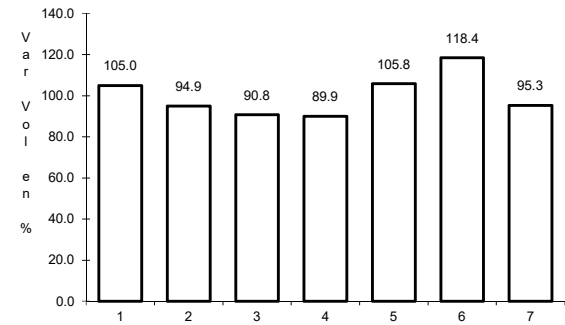
RUTA: YUC



Km: 0.00 Tipo: 3 Sent: 0



Km: 30.00 Tipo: 3 Sent: 0

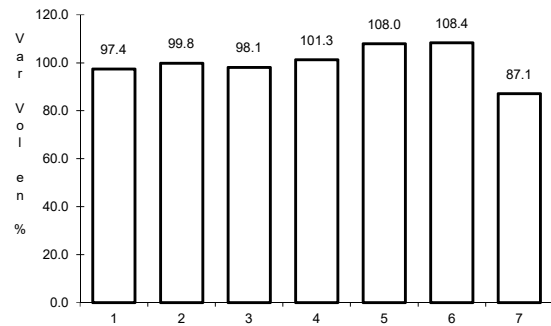


Km: 46.50 Tipo: 1 Sent: 0

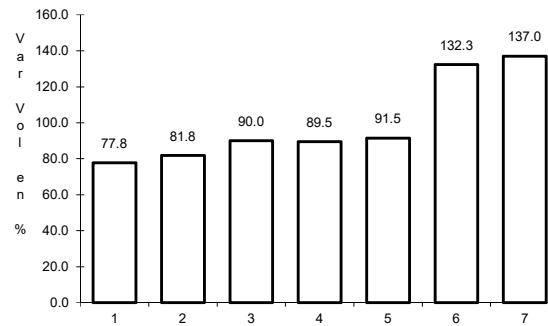
57 CARR: Yaxché - Sierra Papacal

CLAVE: 31620

RUTA: YUC



Km: 0.00 Tipo: 3 Sent: 0

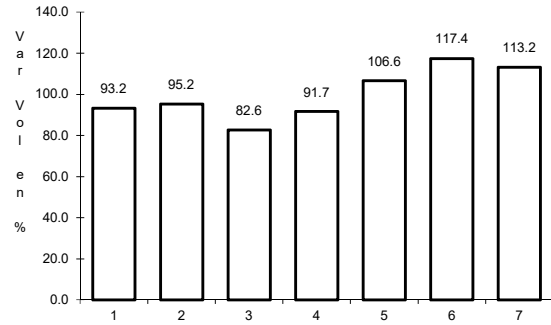


Km: 12.00 Tipo: 1 Sent: 0

58 CARR: Yobain - Chabihau

CLAVE: 31610

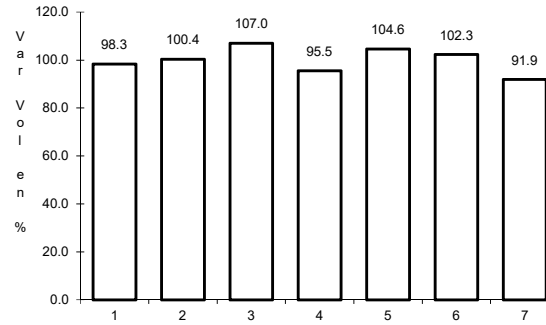
ruta: YUC



Km: 0.00

Tipo: 3

Sent: 0



Km: 12.00

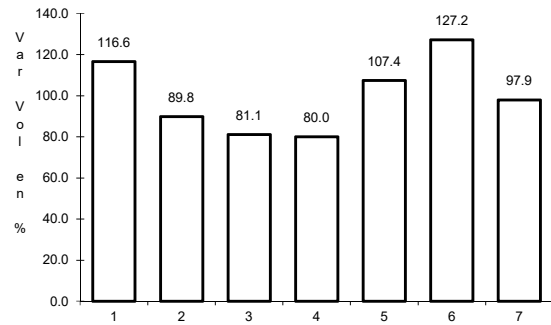
Tipo: 1

Sent: 0

59 CARR: Chemax - Cobá

CLAVE:

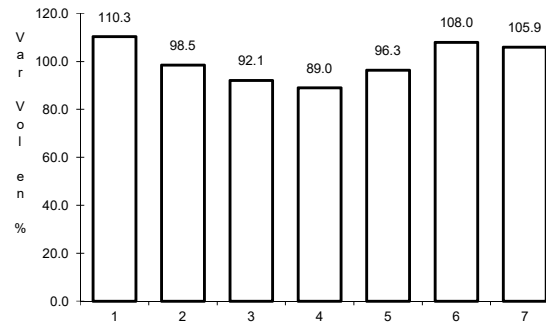
ruta: YUC-MEX-180



Km: 0.00

Tipo: 3

Sent: 0



Km: 30.90

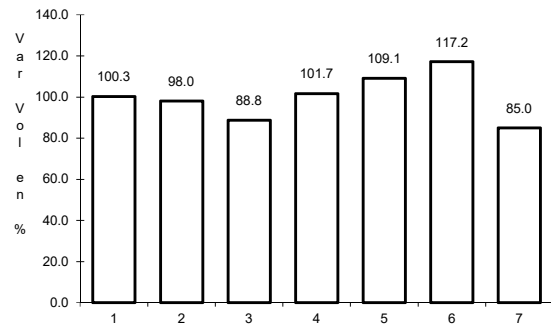
Tipo: 1

Sent: 0

60 CARR: Progreso - Celestún

CLAVE: 31040

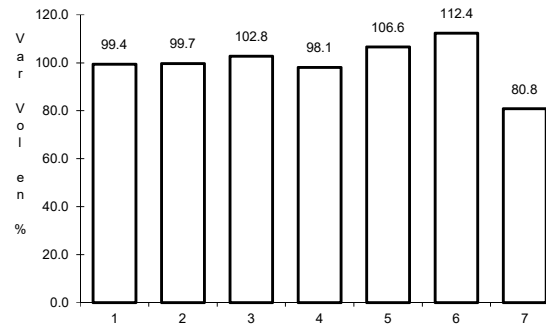
ruta: MEX-YUC



Km: 0.00

Tipo: 3

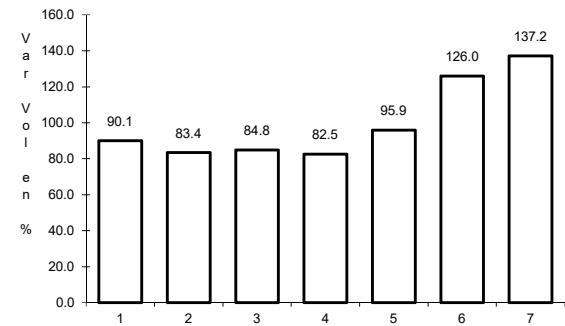
Sent: 1



Km: 0.00

Tipo: 3

Sent: 2



Km: 6.00

Tipo: 3

Sent: 0