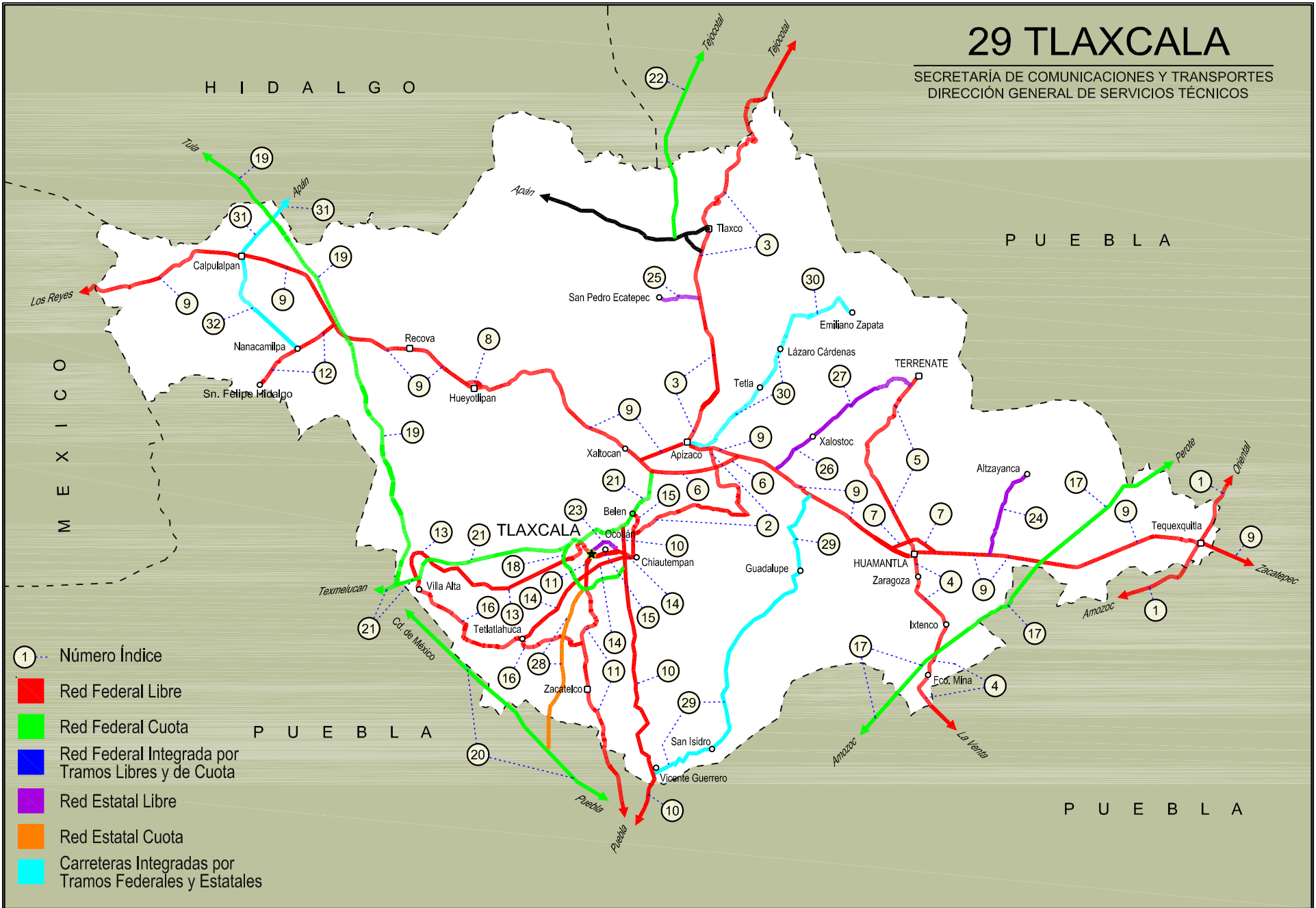


29 TLAXCALA

SECRETARÍA DE COMUNICACIONES Y TRANSPORTES
DIRECCIÓN GENERAL DE SERVICIOS TÉCNICOS





TLAXCALA

NO. INDICE CARRETERA	RUTA
---RED FEDERAL LIBRE---	
1 Amozoc - Teziutlán	MEX-129
2 Apizaco - San Pablo Apetatitlán	MEX-119
3 Apizaco - Tejocotal	MEX-119
4 Huamantla - La Venta	MEX-136
5 Huamantla - Terrenate	MEX-136
6 Libramiento de Apizaco	MEX-136
7 Libramiento Huamantla	MEX-136
8 Libramiento Hueyotlipan	MEX-136
9 Los Reyes - Zacatepec	MEX-136
10 Puebla - Belem	MEX-121
11 Puebla - Tlaxcala	MEX-119
12 Ramal a San Felipe de Hidalgo	MEX-136
13 San Martín Texmelucan - Tlaxcala	MEX-117
14 Tetlatlahuca - Santa Ana Chiautempan	MEX-119
15 Tlaxcala - Belem	MEX-119
16 Villa Alta - T. C. (Puebla - Tlaxcala)	MEX-119
---RED FEDERAL DE CUOTA---	
17 Amozoc - Perote (Cuota)	MEX-140D
18 Libramiento de Tlaxcala (Cuota)	MEX-117D
19 Libramiento Norte de la Ciudad de México (Cuota)	MEX-M40D
20 México - Puebla (Cuota)	MEX-150D
21 San Martín Texmelucan - Tlaxcala - El Molinito (Cuota)	MEX-117D
22 Tlaxco - Tejocotal (Cuota)	MEX-119D
---RED ESTATAL LIBRE---	
23 Libramiento de Ocotlán	TLAX
24 Ramal a Altzayanca de Hidalgo	TLAX
25 Ramal a San Pedro Ecatepec	TLAX
26 Ramal a Xalostoc	TLAX
27 Xalostoc - Terrenate	TLAX
---RED ESTATAL DE CUOTA---	
28 Puebla - Tlaxcala (Cuota)	PUE-D
---CARRETERAS INTEGRADAS POR TRAMOS FEDERALES Y ESTATALES---	
29 Acocotla - Vicente Guerrero	MEX-TLAX
30 Apizaco - Emiliano Zapata	TLAX-MEX-136
31 Calpulalpan - El Ocote	MEX-HGO
32 Calpulalpan - Nanacamilpa	TLAX-MEX-136

TLAXCALA

1 CARR: Amozoc - Teziutlán

CLAVE: 00210

RUTA: MEX-129

AÑO: 2017

LUGAR	ESTACION				CLASIFICACION VEHICULAR EN PORCIENTO										COORDENADAS					
	KM	TE	SC	TDPA	M	A	B	C2	C3	T3S2	T3S3	T3S2R4	OTROS	A	B	C	K'	D	LATITUD	LONGITUD
Amozoc	0.00																			
X. C. Puebla - Córdoba (Cuota)	1.40	3	0	10772	0.8	68.2	2.2	15.2	3.4	5.4	3.3	0.6	0.9	69.0	2.2	28.8	0.088	0.505	19.051923	-98.026757
Acajete	12.00	3	0	8832	1.3	72.0	1.8	13.1	2.7	5.5	2.1	0.6	0.9	73.3	1.8	24.9	0.080	0.502	19.118196	-97.942258
Rafael Lara Grajales	35.50	1	0	4970	1.2	74.1	3.1	7.7	6.6	3.7	2.4	0.6	0.6	75.3	3.1	21.6	0.078	0.506	19.236996	-97.808396
Rafael Lara Grajales	35.50	3	0	9001	2.2	77.3	1.9	6.2	3.9	4.7	1.9	0.8	1.1	79.5	1.9	18.6	0.080	0.500	19.230977	-97.786551
Lim. Edos. Term. Pue. Ppia. Tlax.	50.54																			
X. C. Los Reyes - Zacatepec	56.31	1	0	3521	1.9	72.6	3.7	6.7	6.7	4.2	3.3	0.6	0.3	74.5	3.7	21.8	0.080	0.519	19.313561	-97.656011
Lim. Edos. Term. Tlax. Ppia. Pue.	60.22																			
Oriental	62.62	1	0	5064	2.7	82.9	1.4	4.7	1.2	3.4	2.1	0.7	0.9	85.6	1.4	13.0	0.076	0.506	19.363214	-97.630903
Oriental	62.62	3	0	6223	2.8	80.9	2.3	6.7	1.7	3.8	1.1	0.3	0.4	83.7	2.3	14.0	0.074	0.501	19.383583	-97.618884
X. C. Amozoc - Perote (Cuota)	69.00	1	1	3746	2.7	84.4	2.1	6.8	1.4	1.1	1.1	0.2	0.2	87.1	2.1	10.8	0.084	0.501	19.410776	-97.635408
X. C. Amozoc - Perote (Cuota)	69.00	1	2	3711	3.1	82.7	2.4	7.4	1.5	1.3	1.2	0.2	0.2	85.8	2.4	11.8	0.082	0.501	19.410760	-97.635407
X. C. Amozoc - Perote (Cuota)	69.00	3	0	8674	1.9	82.3	2.6	6.4	1.8	3.3	1.1	0.2	0.4	84.2	2.6	13.2	0.076	0.506	19.421233	-97.645514
Libres	76.35	3	0	8607	1.6	81.3	2.3	7.2	1.8	3.4	1.3	0.5	0.6	82.9	2.3	14.8	0.076	0.508	19.482139	-97.673867
San Miguel Tenextatiloyán	106.70	1	0	3537	1.6	81.5	3.1	7.4	2.2	2.5	1.1	0.1	0.5	83.1	3.1	13.8	0.074	0.505	19.702258	-97.598856
T. Izq. Zacapoaxtla	114.80	1	0	7090	2.1	84.9	1.8	4.8	1.1	3.7	0.8	0.1	0.7	87.0	1.8	11.2	0.068	0.505	19.759971	-97.567801
T. Izq. Zacapoaxtla	114.80	3	0	9990	2.0	84.2	1.5	5.0	0.5	4.9	0.7	0.2	1.0	86.2	1.5	12.3	0.071	0.505	19.764664	-97.564438
Zaragoza	116.80	3	0	7848	2.3	84.9	2.5	5.1	0.8	3.4	0.5	0.1	0.4	87.2	2.5	10.3	0.066	0.504	19.783061	-97.543999
Teziutlán	157.80	1	0	12240	2.7	80.0	1.3	8.5	0.4	5.1	0.7	0.3	1.0	82.7	1.3	16.0	0.066	0.502	19.817268	-97.379941

2 CARR: Apizaco - San Pablo Apetatitlán

CLAVE: 29035

RUTA: MEX-119

AÑO: 2017

LUGAR	ESTACION				CLASIFICACION VEHICULAR EN PORCIENTO										COORDENADAS					
	KM	TE	SC	TDPA	M	A	B	C2	C3	T3S2	T3S3	T3S2R4	OTROS	A	B	C	K'	D	LATITUD	LONGITUD
T. C. Los Reyes - Zacatepec	0.00	3	0	6571	4.9	84.9	0.5	3.8	0.6	3.7	0.5	0.4	0.7	89.8	0.5	9.7	0.077	0.512	19.411360	-98.118875
T. Der. Tecnológico	0.55	3	0	8945	4.6	86.3	0.1	2.2	0.1	5.2	0.4	0.2	0.9	90.9	0.1	9.0	0.074	0.536	19.404933	-98.117258
Cuaxomulco	9.10	3	0	2940	9.2	83.1	0.3	4.4	0.3	1.9	0.4	0.1	0.3	92.3	0.3	7.4	0.081	0.517	19.355796	-98.106454
Santa Cruz Tlaxcala	14.50	3	0	5874	6.3	87.8	0.2	2.8	0.1	2.5	0.2	0.0	0.1	94.1	0.2	5.7	0.070	0.511	19.353447	-98.157951
T. Izq. Contla	18.90	1	0	8715	5.4	83.9	0.1	2.0	0.1	5.7	1.2	0.4	1.2	89.3	0.1	10.6	0.066	0.516	19.339477	-98.184730
San Pablo Apetatitlán	20.00	1	0	13992	4.6	79.5	0.4	2.5	0.4	7.7	1.5	0.6	2.8	84.1	0.4	15.5	0.059	0.509	19.335707	-98.190333

TLAXCALA

3 CARR: Apizaco - Tejocotal

CLAVE: 00430

RUTA: MEX-119

AÑO: 2017

LUGAR	ESTACION				CLASIFICACION VEHICULAR EN PORCIENTO										COORDENADAS					
	KM	TE	SC	TDPA	M	A	B	C2	C3	T3S2	T3S3	T3S2R4	OTROS	A	B	C	K'	D	LATITUD	LONGITUD
Apizaco	0.00	3	1	11916	1.2	87.2	1.1	5.0	1.0	1.9	1.5	0.5	0.6	88.4	1.1	10.5	0.080	0.508	19.427544	-98.136298
Apizaco	0.00	3	2	13079	1.3	85.6	1.1	5.8	1.2	2.3	1.6	0.5	0.6	86.9	1.1	12.0	0.078	0.508	19.427526	-98.136303
T. Der. Tetla	6.60	3	0	19136	1.0	81.3	2.4	9.5	1.2	2.5	1.0	0.7	0.4	82.3	2.4	15.3	0.078	0.501	19.469346	-98.111916
T. Izq. Atlangatepec	12.15	1	0	12551	0.6	78.9	2.3	9.4	1.6	4.4	1.6	0.5	0.7	79.5	2.3	18.2	0.076	0.506	19.505833	-98.117015
Tlaxco	23.91	1	0	7824	1.3	84.7	0.5	6.6	0.8	4.1	1.0	0.2	0.8	86.0	0.5	13.5	0.067	0.506	19.582731	-98.130705
Tlaxco	23.91	3	0	5387	1.7	78.6	1.3	9.2	1.7	4.8	1.7	0.5	0.5	80.3	1.3	18.4	0.082	0.508	19.626413	-98.124663
Lim. Edos. Term. Tlax. Ppia. Pue.	34.45																			
T. Der. Tetela de Ocampo	52.20	1	0	6952	2.2	80.8	0.7	8.0	1.2	4.7	1.5	0.3	0.6	83.0	0.7	16.3	0.085	0.507	19.801089	-98.026394
Zacatlán	71.25	1	0	10298	3.3	81.2	1.3	5.9	0.5	4.6	1.6	0.5	1.1	84.5	1.3	14.2	0.069	0.502	19.918535	-97.959240
Lim. Edos. Term. Pue. Ppia. Hgo.	110.45																			
T. C. Pachuca - Tuxpam	113.15	1	0	7928	2.0	81.8	1.9	10.5	1.1	1.1	0.9	0.5	0.2	83.8	1.9	14.3	0.084	0.514	20.123862	-98.128687

4 CARR: Huamantla - La Venta

CLAVE: 29564

RUTA: MEX-136

AÑO: 2017

LUGAR	ESTACION				CLASIFICACION VEHICULAR EN PORCIENTO										COORDENADAS					
	KM	TE	SC	TDPA	M	A	B	C2	C3	T3S2	T3S3	T3S2R4	OTROS	A	B	C	K'	D	LATITUD	LONGITUD
Huamantla	0.00	3	1	5107	1.8	86.9	0.4	8.7	0.5	0.8	0.6	0.1	0.2	88.7	0.4	10.9	0.064	0.509	19.298428	-97.921141
Huamantla	0.00	3	2	5290	3.2	84.6	0.4	9.5	0.5	0.9	0.6	0.1	0.2	87.8	0.4	11.8	0.072	0.509	19.298472	-97.920936
Ignacio Zaragoza	2.30	3	0	6565	1.6	83.4	0.5	9.8	0.6	2.9	0.8	0.1	0.3	85.0	0.5	14.5	0.068	0.502	19.283369	-97.921065
Ixtenco	8.00	1	0	6094	1.6	83.1	0.5	10.6	0.5	2.8	0.4	0.1	0.4	84.7	0.5	14.8	0.069	0.508	19.259608	-97.898200
Ixtenco	8.00	3	0	4453	1.4	81.1	0.4	13.1	0.8	2.2	0.6	0.1	0.3	82.5	0.4	17.1	0.073	0.502	19.242135	-97.896605
X. C. Amozoc - Perote (Cuota)	11.40	1	0	4193	1.4	81.4	0.4	13.0	0.8	2.1	0.6	0.1	0.2	82.8	0.4	16.8	0.072	0.502	19.227353	-97.902280
Zitlaltepec	13.60	1	0	3455	1.5	82.6	0.4	10.7	0.8	2.5	1.1	0.2	0.2	84.1	0.4	15.5	0.075	0.502	19.215612	-97.907749
Zitlaltepec	13.60	3	0	3354	2.6	80.5	0.5	12.1	0.8	2.2	0.9	0.2	0.2	83.1	0.5	16.4	0.075	0.502	19.195480	-97.917401
T. C. Amozoc - Teziutlán	17.60	1	0	3236	1.8	80.2	0.4	12.1	0.9	2.8	1.2	0.3	0.3	82.0	0.4	17.6	0.065	0.502	19.176773	-97.909484

5 CARR: Huamantla - Terrenate

CLAVE: 29036

RUTA: MEX-136

AÑO: 2017

LUGAR	ESTACION				CLASIFICACION VEHICULAR EN PORCIENTO										COORDENADAS					
	KM	TE	SC	TDPA	M	A	B	C2	C3	T3S2	T3S3	T3S2R4	OTROS	A	B	C	K'	D	LATITUD	LONGITUD
Huamantla	0.00	3	0	1632	5.7	82.5	0.3	8.2	1.0	1.5	0.5	0.1	0.2	88.2	0.3	11.5	0.094	0.505	19.334761	-97.933483
T. Izq. Xicoténcatl	12.50	1	0	844	5.9	83.9	0.2	7.5	1.2	0.7	0.6	0.0	0.0	89.8	0.2	10.0	0.138	0.531	19.413362	-97.968767
Terrenate	21.00	1	0	1247	2.8	87.6	0.4	6.4	0.8	1.4	0.6	0.0	0.0	90.4	0.4	9.2	0.101	0.506	19.463852	-97.929942

TLAXCALA

6 CARR: Libramiento de Apizaco

CLAVE: 29567

RUTA: MEX-136

AÑO: 2017

LUGAR	ESTACION				CLASIFICACION VEHICULAR EN PORCIENTO													COORDENADAS			
	KM	TE	SC	TDPA	M	A	B	C2	C3	T3S2	T3S3	T3S2R4	OTROS	A	B	C	K'	D	LATITUD	LONGITUD	
T. C. Los Reyes - Zacatepec	0.00																				
T. Der. Amaxac de Guerrero	6.00	1	1	12908	1.2	78.3	2.5	4.4	2.3	5.7	2.9	1.7	1.0	79.5	2.5	18.0	0.085	0.503	19.381755	-98.131746	
T. Der. Amaxac de Guerrero	6.00	1	2	13284	0.9	76.5	2.7	4.8	2.5	6.5	2.9	2.1	1.1	77.4	2.7	19.9	0.071	0.503	19.381755	-98.131744	
T. Der. Amaxac de Guerrero	6.00	3	1	13148	1.3	75.9	3.4	4.6	2.6	6.5	2.6	2.1	1.0	77.2	3.4	19.4	0.079	0.520	19.386847	-98.124047	
T. Der. Amaxac de Guerrero	6.00	3	2	12703	1.2	73.7	3.8	5.2	2.9	7.1	2.8	2.3	1.0	74.9	3.8	21.3	0.069	0.520	19.386847	-98.124047	
T. C. Los Reyes - Zacatepec	10.40																				

7 CARR: Libramiento Huamantla

CLAVE: 29567

RUTA: MEX-136

AÑO: 2017

LUGAR	ESTACION				CLASIFICACION VEHICULAR EN PORCIENTO													COORDENADAS		
	KM	TE	SC	TDPA	M	A	B	C2	C3	T3S2	T3S3	T3S2R4	OTROS	A	B	C	K'	D	LATITUD	LONGITUD
T. C. Los Reyes - Zacatepec	0.00	3	1	7970	0.6	70.0	4.0	6.5	3.0	9.2	3.2	2.8	0.7	70.6	4.0	25.4	0.089	0.510	19.322670	-97.933547
T. C. Los Reyes - Zacatepec	0.00	3	2	8561	0.5	66.9	4.3	7.1	3.5	10.2	3.7	3.1	0.7	67.4	4.3	28.3	0.100	0.510	19.322776	-97.933584
T. C. Los Reyes - Zacatepec	4.60	1	1	8353	0.7	71.5	3.6	6.7	2.3	7.8	3.9	2.7	0.8	72.2	3.6	24.2	0.078	0.517	19.320085	-97.911218
T. C. Los Reyes - Zacatepec	4.60	1	2	7611	0.6	69.6	3.8	7.1	2.6	8.1	4.3	3.1	0.8	70.2	3.8	26.0	0.100	0.517	19.320213	-97.911235

8 CARR: Libramiento Hueyotlipan

CLAVE: 29567

RUTA: MEX-136

AÑO: 2017

LUGAR	ESTACION				CLASIFICACION VEHICULAR EN PORCIENTO													COORDENADAS		
	KM	TE	SC	TDPA	M	A	B	C2	C3	T3S2	T3S3	T3S2R4	OTROS	A	B	C	K'	D	LATITUD	LONGITUD
T. C. Los Reyes - Zacatepec	0.00	3	1	7617	0.5	62.6	3.7	8.0	3.9	14.0	3.7	3.4	0.2	63.1	3.7	33.2	0.075	0.527	19.476071	-98.353925
T. C. Los Reyes - Zacatepec	0.00	3	2	6154	0.5	60.3	4.0	8.6	4.5	14.3	4.1	3.5	0.2	60.8	4.0	35.2	0.060	0.527	19.476160	-98.353939
T. C. Los Reyes - Zacatepec	2.70	1	1	6699	0.8	67.5	3.2	6.2	3.5	11.8	3.9	2.7	0.4	68.3	3.2	28.5	0.080	0.539	19.472555	-98.338907
T. C. Los Reyes - Zacatepec	2.70	1	2	7886	0.5	63.3	3.5	7.2	4.1	13.6	4.2	3.2	0.4	63.8	3.5	32.7	0.096	0.539	19.472686	-98.338861

9 CARR: Los Reyes - Zacatepec

CLAVE: 00052

RUTA: MEX-136

AÑO: 2017

LUGAR	ESTACION				CLASIFICACION VEHICULAR EN PORCIENTO													COORDENADAS		
	KM	TE	SC	TDPA	M	A	B	C2	C3	T3S2	T3S3	T3S2R4	OTROS	A	B	C	K'	D	LATITUD	LONGITUD
T. C. México - Puebla (Libre)	0.00																			
T. Izq. La Magdalena	3.35	3	1	47901	2.5	85.9	0.4	4.8	1.4	2.1	2.3	0.2	0.4	88.4	0.4	11.2	0.045	0.500	19.379890	-98.941176
T. Izq. La Magdalena	3.35	3	2	47867	3.3	83.7	0.4	5.5	1.6	2.4	2.5	0.2	0.4	87.0	0.4	12.6	0.049	0.500	19.380429	-98.941134
T. Izq. Chimalhuacán	8.45	1	1	37442	2.5	85.7	0.4	4.8	1.4	2.1	2.3	0.2	0.6	88.2	0.4	11.4	0.058	0.504	19.411230	-98.921587
T. Izq. Chimalhuacán	8.45	1	2	36829	3.3	83.6	0.4	5.4	1.6	2.4	2.5	0.2	0.6	86.9	0.4	12.7	0.063	0.504	19.412925	-98.920444
T. C. San Bernardino - Tepexpan	17.00	3	1	13723	3.6	87.6	0.2	7.0	0.7	0.5	0.2	0.1	0.1	91.2	0.2	8.6	0.074	0.506	19.483807	-98.886540

TLAXCALA

9 CARR: Los Reyes - Zacatepec

CLAVE: 00052

RUTA: MEX-136

AÑO: 2017

LUGAR	ESTACION				CLASIFICACION VEHICULAR EN PORCIENTO														COORDENADAS	
	KM	TE	SC	TDPA	M	A	B	C2	C3	T3S2	T3S3	T3S2R4	OTROS	A	B	C	K'	D	LATITUD	LONGITUD
T. C. San Bernardino - Tepexpan	17.00	3	2	13412	3.3	86.7	0.2	8.1	0.8	0.5	0.2	0.1	0.1	90.0	0.2	9.8	0.085	0.506	19.483914	-98.886654
Texcoco	23.02	3	1	19304	1.6	80.6	1.7	7.3	2.5	3.9	1.6	0.5	0.3	82.2	1.7	16.1	0.077	0.510	19.527176	-98.858003
Texcoco	23.02	3	2	20120	1.6	78.7	1.9	7.6	2.6	4.6	2.0	0.7	0.3	80.3	1.9	17.8	0.074	0.510	19.527297	-98.858086
T. Izq. Tepetlaoxtoc	30.03	1	1	17173	1.6	79.4	2.0	7.7	2.3	4.2	1.9	0.6	0.3	81.0	2.0	17.0	0.077	0.508	19.546040	-98.825647
T. Izq. Tepetlaoxtoc	30.03	1	2	16642	1.8	77.2	2.3	8.5	2.5	4.5	2.3	0.6	0.3	79.0	2.3	18.7	0.082	0.508	19.546173	-98.825680
T. Der. Totolapan	42.00	3	1	6474	0.7	76.8	2.7	5.7	2.5	7.1	2.7	0.9	0.9	77.5	2.7	19.8	0.082	0.530	19.558561	-98.724234
T. Der. Totolapan	42.00	3	2	7296	0.7	79.0	1.8	4.8	3.3	7.4	1.7	0.9	0.4	79.7	1.8	18.5	0.124	0.530	19.558729	-98.724303
Lim. Edos. Term. Mex. Ppia. Tlax.	43.15																			
Calpulalpan	59.58	3	0	17865	1.0	73.4	2.6	8.2	1.7	9.5	1.8	1.4	0.4	74.4	2.6	23.0	0.073	0.502	19.582511	-98.534419
T. Der. Nanacamilpa	71.76	3	0	12667	0.5	67.9	2.9	6.1	3.2	13.9	2.4	2.1	1.0	68.4	2.9	28.7	0.066	0.517	19.525779	-98.479745
X. C. Arco Norte de La Ciudad de México	73.80	3	1	7971	0.4	70.0	3.8	6.7	3.6	10.8	2.0	1.8	0.9	70.4	3.8	25.8	0.066	0.511	19.513504	-98.455949
X. C. Arco Norte de La Ciudad de México	73.80	3	2	8480	0.5	67.8	4.2	7.1	3.8	11.6	2.2	1.9	0.9	68.3	4.2	27.5	0.094	0.511	19.513703	-98.455942
Hueyotlipan	88.21	3	1	8345	0.5	74.6	4.3	7.0	1.6	7.8	1.8	1.5	0.9	75.1	4.3	20.6	0.065	0.513	19.468037	-98.328315
Hueyotlipan	88.21	3	2	7747	0.5	72.6	4.6	7.3	1.8	8.6	2.1	1.6	0.9	73.1	4.6	22.3	0.098	0.513	19.468117	-98.328355
Xaltocan	108.10	1	1	9341	0.5	74.9	2.2	6.3	2.2	8.8	2.5	1.7	0.9	75.4	2.2	22.4	0.071	0.508	19.425315	-98.218697
Xaltocan	108.10	1	2	10025	0.5	71.5	2.5	7.0	2.5	10.4	2.5	2.1	1.0	72.0	2.5	25.5	0.087	0.508	19.425400	-98.218642
Apizaco	117.74	1	1	20539	0.8	87.3	1.2	6.9	0.6	1.5	1.2	0.2	0.3	88.1	1.2	10.7	0.067	0.500	19.398650	-98.173713
Apizaco	117.74	1	2	20725	0.8	86.5	1.3	7.5	0.6	1.6	1.2	0.2	0.3	87.3	1.3	11.4	0.064	0.500	19.398900	-98.173693
Apizaco	117.74	3	0	18687	1.8	87.5	0.8	6.8	0.4	1.1	0.7	0.7	0.2	89.3	0.8	9.9	0.068	0.516	19.411909	-98.127827
T. Der. Cuaxomulco	119.85	3	1	10630	1.8	88.4	0.5	5.2	0.5	1.4	1.2	0.6	0.4	90.2	0.5	9.3	0.070	0.511	19.413303	-98.115706
T. Der. Cuaxomulco	119.85	3	2	11128	2.1	87.3	0.6	5.6	0.5	1.5	1.4	0.6	0.4	89.4	0.6	10.0	0.069	0.511	19.413324	-98.115196
T. Izq. Xalostoc	126.67	3	1	13451	0.4	77.0	2.7	7.1	1.9	5.8	2.8	1.5	0.8	77.4	2.7	19.9	0.074	0.508	19.389588	-98.052568
T. Izq. Xalostoc	126.67	3	2	12923	0.7	73.9	3.0	8.1	2.2	6.5	3.0	1.7	0.9	74.6	3.0	22.4	0.078	0.508	19.389647	-98.052484
T. Izq. Libramiento de Huamantla	141.70	1	1	12318	0.9	74.9	3.2	7.6	2.1	5.8	2.9	1.8	0.8	75.8	3.2	21.0	0.075	0.511	19.321927	-97.948095
T. Izq. Libramiento de Huamantla	141.70	1	2	13007	0.6	72.1	3.7	8.7	2.3	6.6	3.2	1.9	0.9	72.7	3.7	23.6	0.081	0.511	19.322035	-97.948110
Huamantla	143.02	3	1	10071	1.0	73.6	2.9	7.2	2.3	7.0	3.5	1.5	1.0	74.6	2.9	22.5	0.074	0.502	19.315338	-97.884165
Huamantla	143.02	3	2	10173	0.8	71.6	3.4	8.0	2.5	7.2	3.8	1.6	1.1	72.4	3.4	24.2	0.083	0.502	19.315226	-97.884171
X. C. Amozoc - Perote (Cuota)	156.76	1	1	8049	0.9	68.3	3.8	7.4	3.4	9.2	4.0	2.1	0.9	69.2	3.8	27.0	0.077	0.504	19.308307	-97.810026
X. C. Amozoc - Perote (Cuota)	156.76	1	2	7862	0.9	66.0	4.1	7.8	3.7	9.8	4.4	2.2	1.1	66.9	4.1	29.0	0.082	0.504	19.308369	-97.810023
T. Der. Cuapiaxtla	159.40	1	0	10573	1.0	59.2	2.4	10.2	4.3	13.6	5.2	3.2	0.9	60.2	2.4	37.4	0.054	0.505	19.303354	-97.779718
X. C. Amozoc - Teziutlán	173.47	1	0	10724	1.3	61.9	2.8	9.2	4.2	12.7	4.3	2.6	1.0	63.2	2.8	34.0	0.068	0.512	19.325200	-97.663158
X. C. Amozoc - Teziutlán	173.47	3	0	6713	0.7	48.1	3.9	8.3	9.6	13.7	9.7	5.1	0.9	48.8	3.9	47.3	0.052	0.510	19.315022	-97.631081
Lim. Edos. Term. Tlax. Ppia. Pue.	177.57																			
Zacatepec	187.67	1	0	6551	0.3	42.2	4.8	9.7	7.9	21.2	7.4	5.8	0.7	42.5	4.8	52.7	0.058	0.516	19.268404	-97.535621

TLAXCALA

10 CARR: Puebla - Belem

CLAVE: 00055

RUTA: MEX-121

AÑO: 2017

LUGAR	ESTACION				CLASIFICACION VEHICULAR EN PORCIENTO										COORDENADAS					
	KM	TE	SC	TDPA	M	A	B	C2	C3	T3S2	T3S3	T3S2R4	OTROS	A	B	C	K'	D	LATITUD	LONGITUD
T. C. Puebla - Tlaxcala	0.00																			
X. C. Puebla - Córdoba (Cuota)	4.00	3	1	37606	1.1	86.0	0.7	6.7	0.8	2.0	1.7	0.4	0.6	87.1	0.7	12.2	0.065	0.529	19.089000	-98.185160
X. C. Puebla - Córdoba (Cuota)	4.00	3	2	32425	0.9	84.5	0.8	7.9	0.8	2.2	1.9	0.4	0.6	85.4	0.8	13.8	0.083	0.529	19.089044	-98.185400
Lim. Edos. Term. Pue. Ppia. Tlax.	6.60																			
Lim. Edos. Term. Tlax. Ppia. Pue.	9.77																			
Lim. Edos. Term. Pue. Ppia. Tlax.	10.25																			
T. Izq. Zacatelco	16.70	1	1	18376	1.4	83.6	0.9	9.3	1.2	2.2	0.7	0.6	0.1	85.0	0.9	14.1	0.070	0.507	19.207005	-98.196186
T. Izq. Zacatelco	16.70	1	2	17679	1.2	82.9	1.0	9.7	1.2	2.6	0.7	0.6	0.1	84.1	1.0	14.9	0.074	0.507	19.207197	-98.196396
X. C. Tlaxcala - Belem	28.80	1	1	25290	1.6	87.9	0.7	3.9	0.7	2.2	1.7	0.5	0.8	89.5	0.7	9.8	0.066	0.511	19.315694	-98.204369
X. C. Tlaxcala - Belem	28.80	1	2	23964	1.7	86.7	0.7	4.4	0.7	2.5	1.9	0.5	0.9	88.4	0.7	10.9	0.077	0.511	19.315649	-98.204219
T. C. San Martín Texmelucan - Ocotoxco (Cuota)	34.90																			

11 CARR: Puebla - Tlaxcala

CLAVE: 00475

RUTA: MEX-119

AÑO: 2017

LUGAR	ESTACION				CLASIFICACION VEHICULAR EN PORCIENTO										COORDENADAS					
	KM	TE	SC	TDPA	M	A	B	C2	C3	T3S2	T3S3	T3S2R4	OTROS	A	B	C	K'	D	LATITUD	LONGITUD
Puebla	0.00																			
X. C. Puebla - Córdoba (Cuota) Lateral	5.41	3	1	3665	3.3	79.4	0.5	13.7	0.8	1.2	0.8	0.1	0.2	82.7	0.5	16.8	0.079	0.546	19.092592	-98.206549
X. C. Puebla - Córdoba (Cuota) Central	5.41	3	1	10439	1.5	86.8	0.7	3.7	1.4	2.1	2.5	0.5	0.8	88.3	0.7	11.0	0.071	0.521	19.092296	-98.206552
X. C. Puebla - Córdoba (Cuota) Central	5.41	3	2	9988	2.0	85.3	0.7	4.1	1.4	2.3	2.8	0.5	0.9	87.3	0.7	12.0	0.066	0.521	19.092290	-98.206640
X. C. Puebla - Córdoba (Cuota) Lateral	5.41	3	2	4322	2.0	78.3	0.5	15.8	0.9	1.4	0.8	0.1	0.2	80.3	0.5	19.2	0.100	0.546	19.092583	-98.206749
Lim. Edos. Term. Pue. Ppia. Tlax.	11.83																			
Panzacola	13.14	3	1	11301	1.9	87.0	0.3	5.0	0.3	2.0	2.3	0.4	0.8	88.9	0.3	10.8	0.062	0.505	19.151730	-98.223604
Panzacola	13.14	3	2	10876	1.9	86.1	0.3	5.5	0.3	2.3	2.4	0.4	0.8	88.0	0.3	11.7	0.062	0.505	19.151854	-98.223683
San Toribio Xicohtzinco	16.10	3	1	9949	3.1	87.3	0.4	6.7	0.2	1.0	0.9	0.1	0.3	90.4	0.4	9.2	0.076	0.502	19.187110	-98.237806
San Toribio Xicohtzinco	16.10	3	2	10021	3.7	85.9	0.4	7.3	0.2	1.1	1.0	0.1	0.3	89.6	0.4	10.0	0.073	0.502	19.186905	-98.237847
Zacatelco	20.78	1	1	10911	3.5	87.7	0.3	6.4	0.2	0.8	0.9	0.0	0.2	91.2	0.3	8.5	0.066	0.511	19.207408	-98.240434
Zacatelco	20.78	1	2	10086	3.5	87.3	0.3	6.7	0.2	0.8	1.0	0.0	0.2	90.8	0.3	8.9	0.061	0.511	19.207447	-98.240534
T. Izq. San Martín Texmelucan	22.99	1	1	11846	2.1	89.9	0.3	5.1	0.3	1.0	0.9	0.1	0.3	92.0	0.3	7.7	0.068	0.503	19.234046	-98.243016
T. Izq. San Martín Texmelucan	22.99	1	2	11847	2.3	89.2	0.3	5.6	0.3	1.0	0.9	0.1	0.3	91.5	0.3	8.2	0.070	0.503	19.234002	-98.243186
T. Der. Tepeyanco (2º Acceso)	24.97	3	1	10573	2.0	90.9	0.4	4.3	0.3	0.5	0.9	0.1	0.6	92.9	0.4	6.7	0.070	0.510	19.252763	-98.230180
T. Der. Tepeyanco (2º Acceso)	24.97	3	2	10063	2.1	90.3	0.4	4.6	0.3	0.6	1.0	0.1	0.6	92.4	0.4	7.2	0.070	0.510	19.252833	-98.230285
T. Der. Ocotlán (Baja)	32.45	1	1	5485	2.4	93.6	0.1	3.1	0.0	0.2	0.5	0.0	0.1	96.0	0.1	3.9	0.084	0.505	19.302461	-98.241025
T. Der. Ocotlán (Alta)	32.45	1	1	9177	1.4	93.4	0.1	1.9	0.0	0.6	2.2	0.1	0.3	94.8	0.1	5.1	0.074	0.529	19.302861	-98.241084
T. Der. Ocotlán (Alta)	32.45	1	2	8004	1.2	93.2	0.1	2.0	0.0	0.7	2.4	0.1	0.3	94.4	0.1	5.5	0.070	0.529	19.302674	-98.241193

TLAXCALA

11 CARR: Puebla - Tlaxcala

CLAVE: 00475

RUTA: MEX-119

AÑO: 2017

LUGAR	ESTACION				CLASIFICACION VEHICULAR EN PORCIENTO													COORDENADAS		
	KM	TE	SC	TDPA	M	A	B	C2	C3	T3S2	T3S3	T3S2R4	OTROS	A	B	C	K'	D	LATITUD	LONGITUD
T. Der. Ocotlán (Baja)	32.45	1	2	5704	1.3	94.4	0.1	3.4	0.0	0.2	0.5	0.0	0.1	95.7	0.1	4.2	0.076	0.505	19.302231	-98.241307
Tlaxcala	33.22	1	1	9269	2.3	95.2	0.0	1.3	0.1	0.1	0.8	0.1	0.1	97.5	0.0	2.5	0.069	0.531	19.309706	-98.240473
Tlaxcala	33.22	1	2	11427	1.5	95.9	0.0	1.4	0.1	0.1	0.8	0.1	0.1	97.4	0.0	2.6	0.066	0.531	19.309625	-98.240544

12 CARR: Ramal a San Felipe de Hidalgo

CLAVE: 29565

RUTA: MEX-136

AÑO: 2017

LUGAR	ESTACION				CLASIFICACION VEHICULAR EN PORCIENTO													COORDENADAS		
	KM	TE	SC	TDPA	M	A	B	C2	C3	T3S2	T3S3	T3S2R4	OTROS	A	B	C	K'	D	LATITUD	LONGITUD
T. C. Los Reyes - Zacatepec	0.00	3	0	3448	0.9	86.6	0.5	8.6	0.9	2.0	0.3	0.1	0.1	87.5	0.5	12.0	0.081	0.514	19.526826	-98.482692
San Felipe de Hidalgo	10.50	1	0	1879	7.0	85.0	0.6	5.7	0.3	1.3	0.1	0.0	0.0	92.0	0.6	7.4	0.092	0.502	19.472839	-98.553327

13 CARR: San Martín Texmelucan - Tlaxcala

CLAVE: 00158

RUTA: MEX-117

AÑO: 2017

LUGAR	ESTACION				CLASIFICACION VEHICULAR EN PORCIENTO													COORDENADAS		
	KM	TE	SC	TDPA	M	A	B	C2	C3	T3S2	T3S3	T3S2R4	OTROS	A	B	C	K'	D	LATITUD	LONGITUD
San Martín Texmelucan	0.00	3	1	9837	7.0	83.3	0.4	4.9	0.3	1.5	1.8	0.2	0.6	90.3	0.4	9.3	0.069	0.547	19.287971	-98.422738
San Martín Texmelucan	0.00	3	2	10808	6.0	83.4	0.4	5.5	0.3	1.7	1.9	0.2	0.6	89.4	0.4	10.2	0.072	0.547	19.288124	-98.422646
X. C. San Martín Texmelucan - Ocotoxco (Cuota)	1.65	3	0	22356	7.5	83.6	0.5	6.3	0.4	0.5	1.0	0.1	0.1	91.1	0.5	8.4	0.061	0.501	19.291445	-98.412062
Lim. Edos. Term. Pue. Ppia. Tlax.	2.84																			
T. Der. Tepetitla	3.45	3	1	7012	6.0	86.6	0.3	4.6	0.4	0.9	0.9	0.1	0.2	92.6	0.3	7.1	0.076	0.501	19.293808	-98.404549
T. Der. Tepetitla	3.45	3	2	7331	7.2	84.9	0.3	4.7	0.4	1.1	1.1	0.1	0.2	92.1	0.3	7.6	0.083	0.501	19.293942	-98.404413
San Diego Xocoyucan	7.21	3	0	6633	6.5	84.4	0.2	2.6	0.3	4.5	0.6	0.2	0.7	90.9	0.2	8.9	0.073	0.506	19.307894	-98.369337
T. Der. Panotla	19.72	1	0	7261	3.8	85.4	0.2	4.3	0.4	4.7	0.4	0.1	0.7	89.2	0.2	10.6	0.079	0.557	19.319550	-98.276848
T. Der. Panotla	19.72	3	0	8977	4.6	84.4	0.2	3.9	0.2	5.1	0.6	0.2	0.8	89.0	0.2	10.8	0.067	0.505	19.319541	-98.269838
Totolac	21.38	1	0	9048	4.0	83.4	0.1	3.2	0.2	6.4	0.9	0.4	1.4	87.4	0.1	12.5	0.065	0.542	19.322534	-98.260446
Totolac	21.38	3	0	10856	2.7	83.8	0.1	2.6	0.2	7.8	1.2	0.6	1.0	86.5	0.1	13.4	0.067	0.548	19.329894	-98.250336
Tlaxcala	24.81	1	0	14487	2.6	93.8	0.1	2.2	0.1	0.2	0.8	0.1	0.1	96.4	0.1	3.5	0.075	0.523	19.326548	-98.244369

14 CARR: Tetlatlahuca - Santa Ana Chiautempan

CLAVE: 00158

RUTA: MEX-119

AÑO: 2017

LUGAR	ESTACION				CLASIFICACION VEHICULAR EN PORCIENTO													COORDENADAS		
	KM	TE	SC	TDPA	M	A	B	C2	C3	T3S2	T3S3	T3S2R4	OTROS	A	B	C	K'	D	LATITUD	LONGITUD
Tetlatlahuca	0.00																			
San Bartolomé Tenango	2.39	1	0	4419	4.2	86.4	0.1	5.1	0.4	2.4	0.7	0.1	0.6	90.6	0.1	9.3	0.075	0.503	19.246433	-98.296757
San Damián Texoloc	5.50	1	0	4445	3.6	87.6	0.1	4.3	0.4	3.1	0.4	0.1	0.4	91.2	0.1	8.7	0.075	0.503	19.273358	-98.284653

TLAXCALA

14 CARR: Tetlatlahuca - Santa Ana Chiautempan

CLAVE: 00158

RUTA: MEX-119

AÑO: 2017

LUGAR	ESTACION				CLASIFICACION VEHICULAR EN PORCIENTO										COORDENADAS					
	KM	TE	SC	TDPA	M	A	B	C2	C3	T3S2	T3S3	T3S2R4	OTROS	A	B	C	K'	D	LATITUD	LONGITUD
San Damián Texoloc	5.50	3	0	6551	2.8	90.0	0.1	2.9	0.4	2.9	0.5	0.0	0.4	92.8	0.1	7.1	0.072	0.503	19.278209	-98.275281
T. Izq. Cuauhtelupan	9.63	1	0	10410	1.8	87.5	0.1	3.3	0.3	5.7	0.4	0.1	0.8	89.3	0.1	10.6	0.072	0.503	19.288029	-98.251634
T. Izq. Cuauhtelupan	9.63	3	0	14835	0.8	85.7	0.1	2.1	0.2	5.7	2.1	0.9	2.4	86.5	0.1	13.4	0.070	0.510	19.292007	-98.249640
T. Der. Puebla	9.94	1	0	13989	1.2	85.8	0.1	2.9	0.1	8.6	0.8	0.4	0.1	87.0	0.1	12.9	0.072	0.521	19.301024	-98.245434
Santa Ana Chiautempan	16.00																			

15 CARR: Tlaxcala - Belem

CLAVE: 29389

RUTA: MEX-119

AÑO: 2017

LUGAR	ESTACION				CLASIFICACION VEHICULAR EN PORCIENTO										COORDENADAS					
	KM	TE	SC	TDPA	M	A	B	C2	C3	T3S2	T3S3	T3S2R4	OTROS	A	B	C	K'	D	LATITUD	LONGITUD
Tlaxcala	0.00																			
T. Der. Ocotlán	3.91	1	1	18591	2.2	94.7	0.0	1.9	0.1	0.2	0.8	0.0	0.1	96.9	0.0	3.1	0.066	0.502	19.321745	-98.210288
T. Der. Ocotlán	3.91	1	2	18908	2.4	94.0	0.0	2.2	0.1	0.2	1.0	0.0	0.1	96.4	0.0	3.6	0.071	0.502	19.321779	-98.210055
X. C. Puebla - Belem	4.55	1	1	26483	2.3	92.1	0.1	2.7	0.3	0.5	1.4	0.3	0.3	94.4	0.1	5.5	0.084	0.542	19.319281	-98.206381
X. C. Puebla - Belem	4.55	1	2	20605	2.2	91.8	0.1	3.0	0.3	0.5	1.5	0.3	0.3	94.0	0.1	5.9	0.068	0.542	19.319270	-98.206176
Santa Ana Chiautempan	5.82	1	1	11798	2.6	92.9	0.1	1.1	0.1	0.6	1.5	0.7	0.4	95.5	0.1	4.4	0.057	0.507	19.316277	-98.201212
Santa Ana Chiautempan	5.82	1	2	11391	2.9	92.2	0.1	1.3	0.1	0.6	1.7	0.7	0.4	95.1	0.1	4.8	0.055	0.507	19.316212	-98.200940
T. Der. Ixcotla	7.19	3	1	11342	4.2	91.0	0.3	1.3	0.1	1.1	1.5	0.1	0.4	95.2	0.3	4.5	0.064	0.519	19.328303	-98.193912
T. Der. Ixcotla	7.19	3	2	10608	4.4	90.5	0.3	1.3	0.1	1.2	1.7	0.1	0.4	94.9	0.3	4.8	0.060	0.519	19.328168	-98.194069
Belem	10.06	1	0	6985	4.4	85.2	0.2	5.2	0.3	3.6	0.5	0.1	0.5	89.6	0.2	10.2	0.074	0.515	19.337690	-98.193257

16 CARR: Villa Alta - T. C. (Puebla - Tlaxcala)

CLAVE: 29566

RUTA: MEX-119

AÑO: 2017

LUGAR	ESTACION				CLASIFICACION VEHICULAR EN PORCIENTO										COORDENADAS					
	KM	TE	SC	TDPA	M	A	B	C2	C3	T3S2	T3S3	T3S2R4	OTROS	A	B	C	K'	D	LATITUD	LONGITUD
T. C. San Martín Texmelucan - Tlaxcala	0.00	3	0	7465	13.6	71.4	0.4	9.2	0.3	3.5	0.5	0.3	0.8	85.0	0.4	14.6	0.069	0.522	19.284866	-98.401730
Nativitas	10.50	3	0	8212	5.3	80.5	0.4	6.6	0.3	5.2	1.0	0.3	0.4	85.8	0.4	13.8	0.070	0.507	19.239139	-98.307186
T. C. Puebla - Tlaxcala	22.05	1	0	7558	3.2	81.6	0.4	8.6	0.3	4.8	0.5	0.3	0.3	84.8	0.4	14.8	0.075	0.504	19.234653	-98.245024

17 CARR: Amozoc - Perote (Cuota)

CLAVE: 00030

RUTA: MEX-140D

AÑO: 2017

LUGAR	ESTACION				CLASIFICACION VEHICULAR EN PORCIENTO										COORDENADAS					
	KM	TE	SC	TDPA	M	A	B	C2	C3	T3S2	T3S3	T3S2R4	OTROS	A	B	C	K'	D	LATITUD	LONGITUD
T. C. Puebla - Córdoba (Cuota)	0.00	3	0	10001	0.6	81.9	2.9	5.9	1.3	4.1	1.1	1.3	0.9	82.5	2.9	14.6	0.082	0.507	19.071946	-98.062704
Caseta de Cobro Amozoc	0.68	2	0	10822	0.4	79.8	7.2	3.3	2.5	4.4	0.7	1.3	0.4	80.2	7.2	12.6	0.085	0.500	19.063599	-98.069031

TLAXCALA

17 CARR: Amozoc - Perote (Cuota)

CLAVE: 00030

RUTA: MEX-140D

AÑO: 2017

LUGAR	ESTACION				CLASIFICACION VEHICULAR EN PORCIENTO													COORDENADAS		
	KM	TE	SC	TDPA	M	A	B	C2	C3	T3S2	T3S3	T3S2R4	OTROS	A	B	C	K'	D	LATITUD	LONGITUD
Lim. Edos. Term. Pue. Ppia. Tlax.	20.08																			
X. C. Huamantla - La Venta	25.80	3	0	8775	0.4	81.2	4.7	5.5	1.6	3.8	1.0	1.3	0.5	81.6	4.7	13.7	0.112	0.503	19.235256	-97.887216
Lim. Edos. Term. Tlax. Ppia. Pue.	30.50																			
Lim. Edos. Term. Pue. Ppia. Tlax.	31.26																			
Lim. Edos. Term. Tlax. Ppia. Pue.	31.67																			
Lim. Edos. Term. Pue. Ppia. Tlax.	38.93																			
Caseta de Cobro Cuapiaxtla	40.34	2	0	5776	0.5	83.9	5.2	3.2	2.3	2.3	0.6	1.6	0.4	84.4	5.2	10.4	0.085	0.500	19.310346	-97.797548
Lim. Edos. Term. Tlax. Ppia. Pue.	54.50																			
T. Der. Oriental	61.45	1	0	10833	0.9	75.0	7.0	6.7	1.9	4.2	1.5	1.9	0.9	75.9	7.0	17.1	0.111	0.515	19.414361	-97.645825
T. Der. Oriental	61.45	3	1	4239	1.8	75.4	6.9	6.5	1.9	2.9	1.6	2.0	1.0	77.2	6.9	15.9	0.089	0.528	19.420074	-97.638378
T. Der. Oriental	61.45	3	2	3557	1.5	73.2	7.9	7.3	2.0	3.2	1.8	2.1	1.0	74.7	7.9	17.4	0.078	0.528	19.420242	-97.638272
T. Izq. Teziutlán	62.70	3	0	6538	1.3	71.9	7.7	7.1	2.3	4.7	1.9	2.1	1.0	73.2	7.7	19.1	0.115	0.518	19.427240	-97.628974
Lim. Edos. Term. Pue. Ppia. Ver.	90.36																			
T. C. Lib. de Perote	105.00																			

18 CARR: Libramiento de Tlaxcala (Cuota)

CLAVE:

RUTA: MEX-117D

AÑO: 2017

LUGAR	ESTACION				CLASIFICACION VEHICULAR EN PORCIENTO													COORDENADAS		
	KM	TE	SC	TDPA	M	A	B	C2	C3	T3S2	T3S3	T3S2R4	OTROS	A	B	C	K'	D	LATITUD	LONGITUD
T. C. San Martín Texmelucan - Tlaxcala (Cuota)	0.00	3	1	10135	1.3	92.2	0.6	3.4	0.5	0.8	0.6	0.5	0.1	93.5	0.6	5.9	0.085	0.510	19.317662	-98.256159
T. C. San Martín Texmelucan - Tlaxcala (Cuota)	0.00	3	2	10534	1.3	91.7	0.6	3.8	0.5	0.9	0.6	0.5	0.1	93.0	0.6	6.4	0.084	0.510	19.317600	-98.256075
X. C. Puebla - Tlaxcala	6.50	1	1	10208	1.2	92.0	0.5	3.4	0.5	1.0	0.6	0.6	0.2	93.2	0.5	6.3	0.090	0.507	19.295447	-98.253152
X. C. Puebla - Tlaxcala	6.50	1	2	10518	1.3	91.6	0.6	3.5	0.5	1.1	0.6	0.6	0.2	92.9	0.6	6.5	0.084	0.507	19.295473	-98.253073
X. C. Puebla - Tlaxcala	6.50	3	1	11057	1.8	92.9	0.2	2.5	0.8	1.0	0.6	0.1	0.1	94.7	0.2	5.1	0.085	0.510	19.287998	-98.233738
X. C. Puebla - Tlaxcala	6.50	3	2	11520	1.8	92.5	0.1	2.8	0.9	1.1	0.6	0.1	0.1	94.3	0.1	5.6	0.093	0.510	19.288014	-98.233795
T. C. Puebla - Belén Atzitzimitlán	11.00	1	1	10115	1.5	91.6	0.2	4.3	0.7	0.8	0.7	0.1	0.1	93.1	0.2	6.7	0.089	0.514	19.301821	-98.203310
T. C. Puebla - Belén Atzitzimitlán	11.00	1	2	10714	1.5	90.8	0.2	4.9	0.8	0.9	0.7	0.1	0.1	92.3	0.2	7.5	0.088	0.514	19.301940	-98.203376

19 CARR: Libramiento Norte de la Ciudad de México (Cuota)

CLAVE: 0902

RUTA: MEX-M40D

AÑO: 2017

LUGAR	ESTACION				CLASIFICACION VEHICULAR EN PORCIENTO													COORDENADAS		
	KM	TE	SC	TDPA	M	A	B	C2	C3	T3S2	T3S3	T3S2R4	OTROS	A	B	C	K'	D	LATITUD	LONGITUD
T. C. Toluca - Palmillas	0.00																			
X. C. Toluca - Palmillas	12.90	1	1	2885	0.3	68.4	3.5	5.3	5.0	8.8	3.2	5.2	0.3	68.7	3.5	27.8	0.081	0.504	19.915379	-99.851410
X. C. Toluca - Palmillas	12.90	1	2	2930	0.3	65.6	4.1	5.5	6.0	9.2	3.5	5.5	0.3	65.9	4.1	30.0	0.074	0.504	19.915387	-99.851447

TLAXCALA

19 CARR: Libramiento Norte de la Ciudad de México (Cuota)

CLAVE: 0902

RUTA: MEX-M40D

AÑO: 2017

LUGAR	ESTACION				CLASIFICACION VEHICULAR EN PORCIENTO													COORDENADAS		
	KM	TE	SC	TDPA	M	A	B	C2	C3	T3S2	T3S3	T3S2R4	OTROS	A	B	C	K'	D	LATITUD	LONGITUD
X. C. Toluca - Palmillas	12.90	3	1	3120	0.6	73.4	2.3	5.6	4.8	7.1	2.4	3.1	0.7	74.0	2.3	23.7	0.096	0.506	19.924234	-99.840754
X. C. Toluca - Palmillas	12.90	3	2	3201	0.5	70.2	2.4	6.5	5.7	7.9	2.7	3.4	0.7	70.7	2.4	26.9	0.087	0.506	19.924266	-99.840723
C. P. Jilotepec	48.70	1	1	3344	0.4	71.4	2.8	6.4	4.9	7.2	2.7	3.4	0.8	71.8	2.8	25.4	0.102	0.504	19.967624	-99.539103
C. P. Jilotepec	48.70	1	2	3400	0.5	69.1	2.8	7.1	5.5	7.5	2.9	3.9	0.7	69.6	2.8	27.6	0.089	0.504	19.967753	-99.539318
C. P. Jilotepec	48.70	3	1	4730	0.6	73.5	2.1	6.2	4.9	6.7	2.9	2.5	0.6	74.1	2.1	23.8	0.083	0.510	19.978497	-99.525959
C. P. Jilotepec	48.70	3	2	4931	0.6	71.4	2.4	6.4	4.9	7.4	3.2	3.1	0.6	72.0	2.4	25.6	0.071	0.510	19.978528	-99.525949
X. C. México - Querétaro	54.00	3	1	6985	1.7	72.4	1.4	5.8	2.6	8.5	3.3	3.7	0.6	74.1	1.4	24.5	0.076	0.502	20.004159	-99.481933
X. C. México - Querétaro	54.00	3	2	7034	2.3	68.7	1.6	6.0	2.9	9.9	3.8	4.1	0.7	71.0	1.6	27.4	0.081	0.502	20.006668	-99.478442
Caseta de Cobro Querétaro	55.00	3	1	7876	0.2	55.3	2.3	5.1	6.4	17.7	4.2	7.2	1.6	55.5	2.3	42.2	0.067	0.500	19.996132	-99.490433
Caseta de Cobro Querétaro	55.00	3	2	7876	0.2	55.3	2.3	5.1	6.4	17.7	4.2	7.2	1.6	55.5	2.3	42.2	0.067	0.500	19.996132	-99.490433
Lim. Edos. Term. Mex. Ppia. Hgo.	60.72																			
X. C. Ent. Tepeji del Río - Tlahuelilpan	79.00	1	1	7059	1.1	72.9	1.2	5.2	5.3	7.4	2.9	3.3	0.7	74.0	1.2	24.8	0.083	0.515	20.098064	-99.288384
X. C. Ent. Tepeji del Río - Tlahuelilpan	79.00	1	2	6656	1.6	69.0	1.4	6.2	5.8	8.1	3.3	3.8	0.8	70.6	1.4	28.0	0.083	0.515	20.098163	-99.288407
X. C. Ent. Tepeji del Río - Tlahuelilpan	79.00	3	1	8518	1.2	71.7	1.3	5.5	5.1	7.7	3.0	3.7	0.8	72.9	1.3	25.8	0.074	0.512	20.097229	-99.277016
X. C. Ent. Tepeji del Río - Tlahuelilpan	79.00	3	2	8104	1.5	68.5	1.4	6.1	5.5	8.3	3.6	4.2	0.9	70.0	1.4	28.6	0.081	0.512	20.097398	-99.276922
X. C. Los Reyes - El Tephé	86.40	1	1	8706	1.2	71.1	1.6	4.6	5.6	8.2	3.4	3.5	0.8	72.3	1.6	26.1	0.074	0.505	20.070084	-99.227949
X. C. Los Reyes - El Tephé	86.40	1	2	8520	1.4	68.0	1.7	5.2	6.1	8.8	3.8	4.1	0.9	69.4	1.7	28.9	0.080	0.505	20.070187	-99.227829
X. C. Los Reyes - El Tephé	86.40	3	1	8110	1.1	71.2	1.7	5.5	4.7	7.9	3.3	3.7	0.9	72.3	1.7	26.0	0.074	0.512	20.064221	-99.211570
X. C. Los Reyes - El Tephé	86.40	3	2	8497	0.9	68.1	1.8	6.0	5.4	9.2	3.4	4.3	0.9	69.0	1.8	29.2	0.077	0.512	20.064373	-99.211498
Lim. Edos. Term. Hgo. Ppia. Mex.	95.75																			
X. C. (Los Reyes - El Tephé) - Tianguistongo	108.60	1	1	8864	1.6	70.7	1.6	5.6	4.8	7.9	3.3	3.7	0.8	72.3	1.6	26.1	0.073	0.511	19.958394	-99.067528
X. C. (Los Reyes - El Tephé) - Tianguistongo	108.60	1	2	8472	2.1	67.0	1.7	6.3	5.3	9.0	3.6	4.1	0.9	69.1	1.7	29.2	0.081	0.511	19.958586	-99.067523
X. C. (Los Reyes - El Tephé) - Tianguistongo	108.60	3	1	8712	1.6	70.3	1.5	4.8	4.6	8.8	3.0	4.5	0.9	71.9	1.5	26.6	0.077	0.507	19.956470	-99.040592
X. C. (Los Reyes - El Tephé) - Tianguistongo	108.60	3	2	8473	2.1	66.5	1.6	5.1	5.3	10.4	3.4	4.6	1.0	68.6	1.6	29.8	0.073	0.507	19.956591	-99.040745
Lim. Edos. Term. Mex. Ppia. Hgo.	115.89																			
X. C. México - Pachuca	127.30	1	1	8224	1.3	69.7	1.9	4.3	5.0	9.6	3.4	4.0	0.8	71.0	1.9	27.1	0.081	0.505	19.931432	-98.898888
X. C. México - Pachuca	127.30	1	2	8066	0.9	66.9	1.9	4.8	5.6	10.8	3.9	4.4	0.8	67.8	1.9	30.3	0.081	0.505	19.931610	-98.898826
X. C. México - Pachuca	127.30	3	1	7139	1.7	70.6	1.0	4.9	4.8	9.5	2.7	3.9	0.9	72.3	1.0	26.7	0.102	0.506	19.926224	-98.876755
X. C. México - Pachuca	127.30	3	2	6962	1.4	67.9	1.0	5.4	5.8	10.1	3.0	4.5	0.9	69.3	1.0	29.7	0.100	0.506	19.926377	-98.876719
Lim. Edos. Term. Hgo. Ppia. Mex.	143.98																			
X. C. Venta De Carpio - T. C. (Pachuca - Tuxpan)	151.11	1	1	8278	2.0	68.3	1.6	4.5	5.7	9.6	3.4	4.0	0.9	70.3	1.6	28.1	0.080	0.507	19.837717	-98.705364
X. C. Venta De Carpio - T. C. (Pachuca - Tuxpan)	151.11	1	2	8061	1.6	65.4	1.8	5.4	6.3	10.6	3.5	4.5	0.9	67.0	1.8	31.2	0.088	0.507	19.837784	-98.705216
X. C. Venta De Carpio - T. C. (Pachuca - Tuxpan)	151.11	3	1	8270	1.6	65.9	1.6	4.9	5.4	10.4	3.9	5.5	0.8	67.5	1.6	30.9	0.077	0.506	19.828458	-98.693426
X. C. Venta De Carpio - T. C. (Pachuca - Tuxpan)	151.11	3	2	8089	1.5	61.4	1.8	5.5	5.8	12.5	4.1	6.4	1.0	62.9	1.8	35.3	0.083	0.506	19.828337	-98.693536
X. C. Ent. Tolman - Cd. Sahagún	162.55	1	1	8268	1.4	64.9	1.8	5.0	5.3	12.0	3.7	5.0	0.9	66.3	1.8	31.9	0.070	0.518	19.762363	-98.632874

TLAXCALA

19 CARR: Libramiento Norte de la Ciudad de México (Cuota)

CLAVE: 0902

RUTA: MEX-M40D

AÑO: 2017

LUGAR	ESTACION				CLASIFICACION VEHICULAR EN PORCIENTO													COORDENADAS		
	KM	TE	SC	TDPA	M	A	B	C2	C3	T3S2	T3S3	T3S2R4	OTROS	A	B	C	K'	D	LATITUD	LONGITUD
X. C. Ent. Tolman - Cd. Sahagún	162.55	1	2	7706	1.2	61.4	2.0	5.5	6.1	13.5	3.8	5.5	1.0	62.6	2.0	35.4	0.077	0.518	19.762403	-98.632699
X. C. Ent. Tolman - Cd. Sahagún	162.55	3	1	7206	1.3	58.4	5.2	7.1	3.3	14.5	3.4	5.9	0.9	59.7	5.2	35.1	0.070	0.506	19.749929	-98.625936
X. C. Ent. Tolman - Cd. Sahagún	162.55	3	2	7046	1.1	53.0	5.7	7.7	3.6	17.3	3.5	7.1	1.0	54.1	5.7	40.2	0.080	0.506	19.749983	-98.625737
Lim. Edos. Term. Mex. Ppia. Hgo.	166.53																			
X. C. Calpulallpan - El Ocote	180.39	1	1	8526	1.2	57.0	5.1	7.2	3.4	15.4	3.5	6.4	0.8	58.2	5.1	36.7	0.070	0.505	19.624857	-98.552624
X. C. Calpulallpan - El Ocote	180.39	1	2	8692	1.1	54.3	5.5	8.0	3.8	15.9	3.5	6.9	1.0	55.4	5.5	39.1	0.073	0.505	19.624962	-98.552454
X. C. Calpulallpan - El Ocote	180.39	3	1	8423	1.2	60.5	4.7	6.8	3.2	13.6	3.2	6.1	0.7	61.7	4.7	33.6	0.079	0.502	19.615814	-98.544893
X. C. Calpulallpan - El Ocote	180.39	3	2	8342	1.0	56.8	5.4	7.5	3.5	14.8	3.6	6.7	0.7	57.8	5.4	36.8	0.081	0.502	19.615865	-98.544690
Lim. Edos. Term. Hgo. Ppia. Tlax.	180.98																			
X. C. Los Reyes - Zacatepec	196.70	1	1	7869	0.6	58.5	3.7	6.1	3.8	15.1	3.7	6.8	1.7	59.1	3.7	37.2	0.083	0.504	19.520256	-98.472955
X. C. Los Reyes - Zacatepec	196.70	1	2	7758	0.9	52.6	4.0	6.8	4.1	17.3	4.4	8.0	1.9	53.5	4.0	42.5	0.083	0.504	19.520226	-98.472905
X. C. Los Reyes - Zacatepec	196.70	3	1	6878	2.1	56.7	4.9	7.4	3.1	14.5	3.6	5.8	1.9	58.8	4.9	36.3	0.084	0.503	19.502977	-98.465433
X. C. Los Reyes - Zacatepec	196.70	3	2	7190	0.9	52.3	5.5	7.8	3.5	16.9	4.3	6.6	2.2	53.2	5.5	41.3	0.075	0.503	19.502958	-98.465504
X. C. San Martín Texmelucan - Tlaxcala - El Molinito	220.95	1	1	6852	1.2	58.3	4.2	5.9	3.0	15.9	3.4	6.0	2.1	59.5	4.2	36.3	0.086	0.522	19.308314	-98.408434
X. C. San Martín Texmelucan - Tlaxcala - El Molinito	220.95	1	2	7284	1.0	54.1	4.9	7.0	3.3	16.5	4.0	6.8	2.4	55.1	4.9	40.0	0.078	0.522	19.308325	-98.408548
X. C. San Martín Texmelucan - Tlaxcala - El Molinito	220.95	3	1	8663	0.9	63.2	5.6	6.3	2.4	12.2	2.7	5.3	1.4	64.1	5.6	30.3	0.084	0.509	19.287935	-98.410588
X. C. San Martín Texmelucan - Tlaxcala - El Molinito	220.95	3	2	9834	0.8	58.3	6.4	7.3	2.9	14.2	3.0	5.5	1.6	59.1	6.4	34.5	0.080	0.509	19.287926	-98.410719
Caseta de Cobro San Martín Texmelucan	222.00	1	1	7488	0.3	54.8	2.5	5.8	5.8	19.1	3.1	7.3	1.3	55.1	2.5	42.4	0.067	0.500	19.301905	-98.409630
Caseta de Cobro San Martín Texmelucan	222.00	1	2	7488	0.3	54.8	2.5	5.8	5.8	19.1	3.1	7.3	1.3	55.1	2.5	42.4	0.067	0.500	19.301905	-98.409630
T. C. San Martín Texmelucan - Ocotoxco (Cuota)	222.44																			
T. C. México - Puebla (Cuota)	226.73	1	1	7658	1.2	60.3	4.5	6.4	3.2	13.2	3.8	6.4	1.0	61.5	4.5	34.0	0.059	0.505	19.269894	-98.420215
T. C. México - Puebla (Cuota)	226.73	1	2	8335	0.8	56.9	5.3	6.8	3.7	14.7	4.0	6.8	1.0	57.7	5.3	37.0	0.071	0.505	19.269812	-98.420133

20 CARR: México - Puebla (Cuota)

CLAVE: 00450

RUTA: MEX-150D

AÑO: 2017

LUGAR	ESTACION				CLASIFICACION VEHICULAR EN PORCIENTO													COORDENADAS		
	KM	TE	SC	TDPA	M	A	B	C2	C3	T3S2	T3S3	T3S2R4	OTROS	A	B	C	K'	D	LATITUD	LONGITUD
México	0.00																			
Ent Concordía (T. Izq. Los Reyes) Lateral	17.00	3	1	9964	3.4	75.9	2.6	13.6	1.2	2.0	0.8	0.2	0.3	79.3	2.6	18.1	0.078	0.697	19.353498	-98.989034
Ent Concordía (T. Izq. Los Reyes) Central	17.00	3	1	65809	0.9	88.7	1.7	5.8	0.8	1.1	0.7	0.1	0.2	89.6	1.7	8.7	0.075	0.509	19.353291	-98.989238
Ent Concordía (T. Izq. Los Reyes) Lateral	17.00	3	2	22899	2.9	75.0	2.9	14.0	1.5	2.0	1.0	0.3	0.4	77.9	2.9	19.2	0.062	0.697	19.353498	-98.989034
Ent Concordía (T. Izq. Los Reyes) Central	17.00	3	2	63495	1.5	87.3	2.0	6.0	0.9	1.2	0.8	0.1	0.2	88.8	2.0	9.2	0.068	0.509	19.353381	-98.989136
Lim. Edos. Term. D. F. Ppia. Mex.	17.51																			
Av. Las Torres (Eje 6) Central	19.27	1	1	64967	0.9	88.8	1.9	5.7	0.6	1.2	0.6	0.1	0.2	89.7	1.9	8.4	0.067	0.507	19.346755	-98.982451
Av. Las Torres (Eje 6) Lateral	19.27	1	1	20665	1.5	85.4	1.4	9.1	0.8	1.0	0.4	0.2	0.2	86.9	1.4	11.7	0.068	0.515	19.346675	-98.982519

TLAXCALA

20 CARR: México - Puebla (Cuota)

CLAVE: 00450

RUTA: MEX-150D

AÑO: 2017

LUGAR	ESTACION				CLASIFICACION VEHICULAR EN PORCIENTO													COORDENADAS		
	KM	TE	SC	TDPA	M	A	B	C2	C3	T3S2	T3S3	T3S2R4	OTROS	A	B	C	K'	D	LATITUD	LONGITUD
Av. Las Torres (Eje 6) Central	19.27	1	2	63073	1.5	87.6	2.0	6.0	0.7	1.3	0.6	0.1	0.2	89.1	2.0	8.9	0.063	0.507	19.346630	-98.982222
Av. Las Torres (Eje 6) Lateral	19.27	1	2	21986	3.4	81.9	1.5	10.5	0.8	1.0	0.5	0.2	0.2	85.3	1.5	13.2	0.073	0.515	19.346709	-98.982125
Av. Las Torres (Eje 6) Lateral	19.27	3	1	25705	3.7	82.8	1.3	8.7	0.8	1.5	0.8	0.1	0.3	86.5	1.3	12.2	0.074	0.552	19.339508	-98.976362
Av. Las Torres (Eje 6) Central	19.27	3	1	68301	2.1	87.3	2.2	5.7	0.7	1.1	0.6	0.1	0.2	89.4	2.2	8.4	0.061	0.501	19.339590	-98.976294
Av. Las Torres (Eje 6) Central	19.27	3	2	68025	1.5	86.9	2.3	6.3	0.7	1.3	0.7	0.1	0.2	88.4	2.3	9.3	0.057	0.501	19.339653	-98.976176
Av. Las Torres (Eje 6) Lateral	19.27	3	2	20835	3.2	66.0	4.7	20.1	1.8	2.7	0.9	0.3	0.3	69.2	4.7	26.1	0.064	0.552	19.339735	-98.976050
Eje 10 Sur (Lateral)	22.80	1	1	22498	3.8	82.3	0.5	11.7	0.7	0.4	0.4	0.1	0.1	86.1	0.5	13.4	0.072	0.544	19.329612	-98.965659
Eje 10 Sur (Central)	22.80	1	1	69170	2.1	87.5	2.0	5.5	0.7	1.2	0.7	0.1	0.2	89.6	2.0	8.4	0.061	0.504	19.329659	-98.965602
Eje 10 Sur (Central)	22.80	1	2	70220	1.5	87.1	2.3	6.1	0.8	1.2	0.7	0.1	0.2	88.6	2.3	9.1	0.062	0.504	19.329728	-98.965539
Eje 10 Sur (Lateral)	22.80	1	2	18871	3.5	73.8	3.0	14.9	1.4	2.1	0.8	0.2	0.3	77.3	3.0	19.7	0.066	0.544	19.329766	-98.965453
Eje 10 Sur (Lateral)	22.80	3	1	19844	3.3	82.7	2.3	9.6	0.7	0.8	0.4	0.1	0.1	86.0	2.3	11.7	0.076	0.615	19.313787	-98.947065
Eje 10 Sur (Central)	22.80	3	1	37256	1.8	86.4	2.9	5.6	0.9	1.4	0.6	0.2	0.2	88.2	2.9	8.9	0.070	0.511	19.313852	-98.946977
Eje 10 Sur (Lateral)	22.80	3	2	31691	3.6	85.6	0.9	7.6	0.5	0.7	0.8	0.1	0.2	89.2	0.9	9.9	0.073	0.615	19.314106	-98.946680
Eje 10 Sur (Central)	22.80	3	2	38916	1.4	85.5	3.2	6.4	1.0	1.5	0.6	0.2	0.2	86.9	3.2	9.9	0.078	0.511	19.314011	-98.946788
X. C. Santa Bárbara - Izúcar de Matamoros (Lateral)	32.14	1	1	9646	1.5	80.9	1.3	12.7	1.1	1.8	0.3	0.3	0.1	82.4	1.3	16.3	0.068	0.692	19.292316	-98.889187
X. C. Santa Bárbara - Izúcar de Matamoros (Central)	32.14	1	1	41779	1.8	85.8	2.8	6.1	1.0	1.5	0.6	0.2	0.2	87.6	2.8	9.6	0.060	0.517	19.292451	-98.889204
X. C. Santa Bárbara - Izúcar de Matamoros (Central)	32.14	1	2	44647	1.4	85.0	3.2	6.7	1.0	1.7	0.6	0.2	0.2	86.4	3.2	10.4	0.064	0.517	19.292634	-98.889153
X. C. Santa Bárbara - Izúcar de Matamoros (Lateral)	32.14	1	2	21628	3.5	84.4	1.4	8.5	0.6	0.7	0.6	0.1	0.2	87.9	1.4	10.7	0.072	0.692	19.292788	-98.889108
X. C. Santa Bárbara - Izúcar de Matamoros (Lateral)	32.14	3	1	10081	1.0	72.4	12.6	7.0	0.9	4.3	0.6	0.9	0.3	73.4	12.6	14.0	0.098	0.848	19.294621	-98.876147
X. C. Santa Bárbara - Izúcar de Matamoros (Central)	32.14	3	1	14471	0.9	78.4	9.3	5.9	0.7	3.6	0.4	0.5	0.3	79.3	9.3	11.4	0.101	0.504	19.294749	-98.876195
X. C. Santa Bárbara - Izúcar de Matamoros (Central)	32.14	3	2	14262	0.7	75.8	11.3	6.5	0.7	3.8	0.4	0.5	0.3	76.5	11.3	12.2	0.131	0.504	19.294924	-98.876227
X. C. Santa Bárbara - Izúcar de Matamoros (Lateral)	32.14	3	2	1801	0.8	61.4	17.5	10.6	1.5	6.2	0.7	1.0	0.3	62.2	17.5	20.3	0.102	0.848	19.295062	-98.876264
Caseta de Cobro San Marcos	33.30	2	1	17095	0.4	74.5	7.0	3.5	5.5	6.1	0.5	2.2	0.3	74.9	7.0	18.1	0.068	0.500	19.296362	-98.870728
Caseta de Cobro San Marcos	33.30	2	2	17095	0.4	74.5	7.0	3.5	5.5	6.1	0.5	2.2	0.3	74.9	7.0	18.1	0.068	0.500	19.296362	-98.870728
T. Izq. Río Frío	63.79	3	1	17060	0.9	78.8	9.6	5.5	0.7	3.3	0.4	0.5	0.3	79.7	9.6	10.7	0.099	0.506	19.351889	-98.663071
T. Izq. Río Frío	63.79	3	2	16686	0.6	77.1	10.3	6.5	0.7	3.6	0.4	0.5	0.3	77.7	10.3	12.0	0.124	0.506	19.351801	-98.660479
Lim. Edos. Term. Mex. Ppia. Pue.	65.46																			
T. Izq. Tlaxcala	90.61	1	1	18275	1.2	73.6	7.9	8.0	2.4	4.4	0.5	1.6	0.4	74.8	7.9	17.3	0.079	0.504	19.273278	-98.434400
T. Izq. Tlaxcala	90.61	1	2	18687	1.3	70.8	8.9	8.7	2.6	5.0	0.5	1.8	0.4	72.1	8.9	19.0	0.083	0.504	19.273369	-98.434351
T. Izq. Tlaxcala	90.61	3	1	23123	0.7	69.1	5.8	8.5	2.7	8.0	1.5	3.3	0.4	69.8	5.8	24.4	0.072	0.528	19.261795	-98.417522
T. Izq. Tlaxcala	90.61	3	2	20533	1.0	66.3	6.4	8.9	2.9	8.8	1.6	3.7	0.4	67.3	6.4	26.3	0.077	0.528	19.261734	-98.417036
Caseta de Cobro San Martín Texmelucan	91.17	2	1	24551	0.5	70.0	7.1	3.6	4.7	8.9	1.1	3.7	0.4	70.5	7.1	22.4	0.068	0.500	19.241098	-98.385681
Caseta de Cobro San Martín Texmelucan	91.17	2	2	24551	0.5	70.0	7.1	3.6	4.7	8.9	1.1	3.7	0.4	70.5	7.1	22.4	0.068	0.500	19.241098	-98.385681
Lim. Edos. Term. Pue. Ppia. Tlax.	99.11																			
T. Der. Aeropuerto Internacional De Puebla	101.10	3	1	27458	0.8	74.6	5.3	5.5	2.7	6.1	1.4	2.6	1.0	75.4	5.3	19.3	0.067	0.504	19.208132	-98.348055

TLAXCALA

20 CARR: México - Puebla (Cuota)

CLAVE: 00450

RUTA: MEX-150D

AÑO: 2017

LUGAR	ESTACION				CLASIFICACION VEHICULAR EN PORCIENTO										COORDENADAS					
	KM	TE	SC	TDPA	M	A	B	C2	C3	T3S2	T3S3	T3S2R4	OTROS	A	B	C	K'	D	LATITUD	LONGITUD
T. Der. Aeropuerto Internacional De Puebla	101.10	3	2	27847	0.9	71.9	5.5	6.5	3.0	6.8	1.5	2.8	1.1	72.8	5.5	21.7	0.073	0.504	19.208074	-98.348160
X. C. Xoxtla - Huactzinco	107.98	1	1	29255	1.1	73.0	5.4	6.2	2.9	6.4	1.5	2.6	0.9	74.1	5.4	20.5	0.068	0.506	19.179761	-98.313770
X. C. Xoxtla - Huactzinco	107.98	1	2	28363	0.7	70.7	6.1	6.8	3.0	7.1	1.7	2.9	1.0	71.4	6.1	22.5	0.070	0.506	19.179873	-98.313655
X. C. Xoxtla - Huactzinco	107.98	3	1	32887	1.2	74.5	4.1	8.1	2.1	5.4	1.6	2.1	0.9	75.7	4.1	20.2	0.069	0.508	19.170745	-98.302845
X. C. Xoxtla - Huactzinco	107.98	3	2	31566	1.2	71.5	4.5	9.7	2.3	5.7	1.8	2.3	1.0	72.7	4.5	22.8	0.070	0.508	19.170760	-98.302465
Lim. Edos. Term. Tlax. Ppia. Pue.	108.00																			
Anillo Periferico Poniente De Puebla (Lateral)	114.00	3	1	26094	0.6	83.5	3.2	6.1	2.9	1.6	0.5	0.8	0.8	84.1	3.2	12.7	0.102	0.523	19.127117	-98.263420
Anillo Periferico Poniente De Puebla (Central)	114.00	3	1	22701	0.8	74.2	5.9	4.8	3.3	7.0	0.7	2.7	0.6	75.0	5.9	19.1	0.061	0.522	19.126756	-98.263698
Anillo Periferico Poniente De Puebla (Lateral)	114.00	3	2	29991	0.4	82.3	3.4	7.0	3.1	1.7	0.5	0.8	0.8	82.7	3.4	13.9	0.106	0.523	19.126797	-98.263627
Anillo Periferico Poniente De Puebla (Central)	114.00	3	2	20814	0.9	71.3	6.3	5.4	3.8	7.7	0.8	3.2	0.6	72.2	6.3	21.5	0.072	0.522	19.126890	-98.263419
Boulevard Hermanos Serdán	120.46	3	1	53437	0.7	79.6	5.0	5.9	3.4	3.2	0.5	1.5	0.2	80.3	5.0	14.7	0.065	0.503	19.094829	-98.226449
Boulevard Hermanos Serdán	120.46	3	2	52004	0.7	77.2	5.7	6.9	3.8	3.4	0.5	1.6	0.2	77.9	5.7	16.4	0.068	0.503	19.094829	-98.226449
X. C. Puebla - Tlaxcala (Central)	123.00	3	1	31353	0.7	76.6	3.9	7.4	3.4	4.5	0.9	2.3	0.3	77.3	3.9	18.8	0.071	0.529	19.086118	-98.200375
X. C. Puebla - Tlaxcala (Lateral)	123.00	3	1	29064	0.7	85.1	7.2	3.5	1.7	1.0	0.5	0.1	0.2	85.8	7.2	7.0	0.072	0.549	19.085248	-98.196039
X. C. Puebla - Tlaxcala (Central)	123.00	3	2	43795	0.6	75.4	4.1	7.6	3.7	5.0	1.0	2.3	0.3	76.0	4.1	19.9	0.073	0.529	19.086118	-98.200375
X. C. Puebla - Tlaxcala (Lateral)	123.00	3	2	23754	0.8	83.8	8.0	3.7	1.8	1.1	0.5	0.1	0.2	84.6	8.0	7.4	0.091	0.549	19.085373	-98.196001
T. C. Puebla - Tlaxcala	124.90																			

21 CARR: San Martín Texmelucan - Tlaxcala - El Molinito (Cuota)

CLAVE: 00212

RUTA: MEX-117D

AÑO: 2017

LUGAR	ESTACION				CLASIFICACION VEHICULAR EN PORCIENTO										COORDENADAS					
	KM	TE	SC	TDPA	M	A	B	C2	C3	T3S2	T3S3	T3S2R4	OTROS	A	B	C	K'	D	LATITUD	LONGITUD
T. C. México - Puebla (Cuota)	0.00																			
X. C. San Martín Texmelucan - Tlaxcala	1.80	1	0	3870	4.7	78.5	2.4	8.2	1.1	3.7	0.7	0.5	0.2	83.2	2.4	14.4	0.120	0.551	19.290008	-98.419461
Lim. Edos. Term. Pue. Ppia. Tlax.	4.05																			
Caseta de Cobro San Martín Texmelucan	5.45	2	1	3168	0.5	77.9	9.6	4.0	2.0	3.4	1.1	1.2	0.3	78.4	9.6	12.0	0.088	0.500	19.301567	-98.404045
Caseta de Cobro San Martín Texmelucan	5.45	2	2	3168	0.5	77.9	9.6	4.0	2.0	3.4	1.1	1.2	0.3	78.4	9.6	12.0	0.088	0.500	19.301567	-98.404045
X. C. San Martín Texmelucan - Tlaxcala (Trébol)	24.75	1	1	20523	1.4	90.6	1.8	3.5	0.4	1.0	0.6	0.5	0.2	92.0	1.8	6.2	0.094	0.513	19.325883	-98.249535
X. C. San Martín Texmelucan - Tlaxcala (Trébol)	24.75	1	2	19837	1.2	90.0	1.9	4.2	0.4	1.0	0.6	0.5	0.2	91.2	1.9	6.9	0.087	0.513	19.325820	-98.249457
X. C. San Martín Texmelucan - Tlaxcala (Trébol)	24.75	3	1	19721	1.1	87.8	2.0	6.7	0.5	0.8	0.4	0.6	0.1	88.9	2.0	9.1	0.090	0.531	19.331595	-98.239915
X. C. San Martín Texmelucan - Tlaxcala (Trébol)	24.75	3	2	17320	1.1	87.4	2.3	6.8	0.5	0.8	0.4	0.6	0.1	88.5	2.3	9.2	0.087	0.531	19.331597	-98.239918
T. Izq. Tizatlán	29.00	3	1	16670	0.8	85.9	2.0	9.1	0.6	0.7	0.4	0.4	0.1	86.7	2.0	11.3	0.092	0.501	19.335715	-98.220064
T. Izq. Tizatlán	29.00	3	2	17228	0.8	84.9	2.2	9.7	0.6	0.9	0.4	0.4	0.1	85.7	2.2	12.1	0.081	0.501	19.335653	-98.220045
T. Der. San Pablo Apetatitlán	31.65	3	1	37836	0.8	88.6	1.1	6.1	0.7	1.3	0.8	0.4	0.2	89.4	1.1	9.5	0.073	0.509	19.347201	-98.194946
T. Der. San Pablo Apetatitlán	31.65	3	2	39609	0.8	87.4	1.2	6.7	0.9	1.4	1.0	0.4	0.2	88.2	1.2	10.6	0.077	0.509	19.347201	-98.194945

TLAXCALA

21 CARR: San Martin Texmelucan - Tlaxcala - El Molinito (Cuota)

CLAVE: 00212

RUTA: MEX-117D

AÑO: 2017

LUGAR	ESTACION				CLASIFICACION VEHICULAR EN PORCIENTO														COORDENADAS	
	KM	TE	SC	TDPA	M	A	B	C2	C3	T3S2	T3S3	T3S2R4	OTROS	A	B	C	K'	D	LATITUD	LONGITUD
Ocotoxco	35.20	1	1	33521	0.9	86.9	1.4	6.4	1.1	1.8	0.8	0.5	0.2	87.8	1.4	10.8	0.075	0.505	19.385336	-98.177975
Ocotoxco	35.20	1	2	32056	0.9	86.2	1.5	6.7	1.2	1.9	0.9	0.5	0.2	87.1	1.5	11.4	0.075	0.505	19.385093	-98.178305

22 CARR: Tlaxco - Tejocotal (Cuota)

CLAVE: 00209

RUTA: MEX-119D

AÑO: 2017

LUGAR	ESTACION				CLASIFICACION VEHICULAR EN PORCIENTO														COORDENADAS	
	KM	TE	SC	TDPA	M	A	B	C2	C3	T3S2	T3S3	T3S2R4	OTROS	A	B	C	K'	D	LATITUD	LONGITUD
T.C. Apan - Tlaxco	23.00	3	0	3426	0.4	78.2	6.0	9.3	1.8	2.0	1.0	1.1	0.2	78.6	6.0	15.4	0.128	0.540	19.608514	-98.156734
Lim. Edos. Term. Tlax. Ppia. Pue.	30.70																			
Ent. Chignahuapan	56.20	3	0	2503	0.6	76.7	4.7	9.8	2.5	2.1	1.3	2.0	0.3	77.3	4.7	18.0	0.110	0.501	19.877531	-98.061897
Lim. Edos. Term. Pue. Ppia. Hgo.	84.80																			
T. C. Apizaco - Tejocotal	85.60																			

23 CARR: Libramiento de Ocotlán

CLAVE: 29567

RUTA: TLAX

AÑO: 2017

LUGAR	ESTACION				CLASIFICACION VEHICULAR EN PORCIENTO														COORDENADAS	
	KM	TE	SC	TDPA	M	A	B	C2	C3	T3S2	T3S3	T3S2R4	OTROS	A	B	C	K'	D	LATITUD	LONGITUD
T. C. Tlaxcala - Belem	0.00	3	1	14639	1.4	91.3	0.1	1.2	0.1	1.2	3.7	0.3	0.7	92.7	0.1	7.2	0.073	0.519	19.319157	-98.209738
T. C. Tlaxcala - Belem	0.00	3	2	12996	1.8	90.1	0.1	1.4	0.1	1.3	4.1	0.3	0.8	91.9	0.1	8.0	0.067	0.519	19.319157	-98.209741
T. C. Tlaxcala - Belem	5.50																			

24 CARR: Ramal a Altzayanca de Hidalgo

CLAVE: 29562

RUTA: TLAX

AÑO: 2017

LUGAR	ESTACION				CLASIFICACION VEHICULAR EN PORCIENTO														COORDENADAS	
	KM	TE	SC	TDPA	M	A	B	C2	C3	T3S2	T3S3	T3S2R4	OTROS	A	B	C	K'	D	LATITUD	LONGITUD
T. C. Los Reyes - Zacatepec	0.00	3	0	3089	2.7	83.6	0.3	11.1	0.5	1.5	0.1	0.1	0.1	86.3	0.3	13.4	0.083	0.503	19.319141	-97.846094
Xicoténcatl	6.50	3	0	2370	3.7	85.0	0.2	8.8	0.3	1.7	0.2	0.0	0.1	88.7	0.2	11.1	0.069	0.501	19.356799	-97.832009
Altzayanca de Hidalgo	15.00	1	0	2079	6.8	83.1	0.1	8.3	0.3	1.2	0.1	0.0	0.1	89.9	0.1	10.0	0.083	0.505	19.422789	-97.804260

25 CARR: Ramal a San Pedro Ecatepec

CLAVE: 29561

RUTA: TLAX

AÑO: 2017

LUGAR	ESTACION				CLASIFICACION VEHICULAR EN PORCIENTO														COORDENADAS	
	KM	TE	SC	TDPA	M	A	B	C2	C3	T3S2	T3S3	T3S2R4	OTROS	A	B	C	K'	D	LATITUD	LONGITUD
T. C. Apizaco - Tejocotal	0.00	3	0	1850	3.0	84.4	0.1	10.1	0.6	1.4	0.2	0.1	0.1	87.4	0.1	12.5	0.083	0.503	19.514517	-98.119612
San Pedro Ecatepec	4.60	1	0	1872	3.7	84.4	0.1	9.1	0.8	1.4	0.4	0.0	0.1	88.1	0.1	11.8	0.079	0.503	19.518942	-98.153678

TLAXCALA

26 CARR: Ramal a Xalostoc

CLAVE: 29563

RUTA: TLAX

AÑO: 2017

LUGAR	ESTACION				CLASIFICACION VEHICULAR EN PORCIENTO													COORDENADAS		
	KM	TE	SC	TDPA	M	A	B	C2	C3	T3S2	T3S3	T3S2R4	OTROS	A	B	C	K'	D	LATITUD	LONGITUD
T. C. Los Reyes - Zacatepec	0.00	3	0	9816	1.4	83.8	0.1	4.3	0.5	7.2	1.3	0.6	0.8	85.2	0.1	14.7	0.059	0.504	19.395416	-98.058669
Xalostoc	2.50	1	0	10641	2.8	86.0	0.1	3.7	0.3	5.4	0.6	0.2	0.9	88.8	0.1	11.1	0.065	0.509	19.400339	-98.051782

27 CARR: Xalostoc - Terrenate

CLAVE: 29390

RUTA: TLAX

AÑO: 2017

LUGAR	ESTACION				CLASIFICACION VEHICULAR EN PORCIENTO													COORDENADAS		
	KM	TE	SC	TDPA	M	A	B	C2	C3	T3S2	T3S3	T3S2R4	OTROS	A	B	C	K'	D	LATITUD	LONGITUD
Xalostoc	0.00	3	0	3818	2.9	87.0	0.4	5.8	1.1	2.1	0.3	0.2	0.2	89.9	0.4	9.7	0.071	0.500	19.415952	-98.033864
San Francisco Teometitla	7.10	3	0	2174	2.1	89.3	0.5	6.3	0.5	1.0	0.2	0.0	0.1	91.4	0.5	8.1	0.080	0.500	19.450929	-97.988357
T. C. Huamantla - Terrenate	17.50	1	0	1929	2.6	89.9	0.2	5.3	0.5	1.1	0.2	0.0	0.2	92.5	0.2	7.3	0.088	0.502	19.467421	-97.931205

28 CARR: Puebla - Tlaxcala (Cuota)

CLAVE:

RUTA: PUE-D

AÑO: 2017

LUGAR	ESTACION				CLASIFICACION VEHICULAR EN PORCIENTO													COORDENADAS		
	KM	TE	SC	TDPA	M	A	B	C2	C3	T3S2	T3S3	T3S2R4	OTROS	A	B	C	K'	D	LATITUD	LONGITUD
Anillo Periferico Poniente De Puebla	0.00	3	0	7944	0.6	87.2	1.5	5.0	0.6	2.7	0.7	1.3	0.4	87.8	1.5	10.7	0.082	0.532	19.148028	-98.269071
T Der. Zacatelco	8.00	1	0	8162	0.6	88.4	1.5	4.1	0.6	2.7	0.5	1.3	0.3	89.0	1.5	9.5	0.083	0.534	19.202213	-98.261899
T Der. Zacatelco	8.00	3	0	8066	0.5	88.2	1.5	4.4	0.6	2.6	0.6	1.3	0.3	88.7	1.5	9.8	0.082	0.536	19.229377	-98.271952
Lib. de Tlaxcala (Cuota)	17.80	1	0	8101	0.6	87.8	1.6	4.6	0.6	2.7	0.6	1.2	0.3	88.4	1.6	10.0	0.082	0.538	19.276522	-98.252067

29 CARR: Acocotla - Vicente Guerrero

CLAVE: 29560

RUTA: MEX-TLAX

AÑO: 2017

LUGAR	ESTACION				CLASIFICACION VEHICULAR EN PORCIENTO													COORDENADAS		
	KM	TE	SC	TDPA	M	A	B	C2	C3	T3S2	T3S3	T3S2R4	OTROS	A	B	C	K'	D	LATITUD	LONGITUD
T. C. Los Reyes - Zacatepec	0.00	3	0	1850	3.0	88.5	0.3	5.6	0.4	1.8	0.3	0.0	0.1	91.5	0.3	8.2	0.082	0.504	19.371218	-98.028591
Vicente Guerrero	35.60	1	0	5947	2.3	80.9	3.4	6.5	0.6	3.8	1.1	0.7	0.7	83.2	3.4	13.4	0.077	0.500	19.113046	-98.175989

30 CARR: Apizaco - Emiliano Zapata

CLAVE: 29033

RUTA: TLAX-MEX-136

AÑO: 2017

LUGAR	ESTACION				CLASIFICACION VEHICULAR EN PORCIENTO													COORDENADAS		
	KM	TE	SC	TDPA	M	A	B	C2	C3	T3S2	T3S3	T3S2R4	OTROS	A	B	C	K'	D	LATITUD	LONGITUD
Apizaco	0.00	3	0	8634	5.9	79.0	0.2	6.1	0.3	5.5	1.0	0.4	1.6	84.9	0.2	14.9	0.059	0.504	19.417628	-98.131587
Capula	16.00	1	0	3458	3.6	89.5	0.2	4.7	0.4	1.4	0.1	0.0	0.1	93.1	0.2	6.7	0.075	0.509	19.529627	-98.041184
Emiliano Zapata	37.00	1	0	1248	1.9	91.0	0.3	4.4	1.3	1.0	0.1	0.0	0.0	92.9	0.3	6.8	0.132	0.511	19.551407	-97.917241

TLAXCALA

31 CARR: Calpulalpan - El Ocote

CLAVE: 00054

RUTA: MEX-HGO

AÑO: 2017

LUGAR	ESTACION				CLASIFICACION VEHICULAR EN PORCIENTO														COORDENADAS	
	KM	TE	SC	TDPA	M	A	B	C2	C3	T3S2	T3S3	T3S2R4	OTROS	A	B	C	K'	D	LATITUD	LONGITUD
Calpulalpan	0.00	3	0	9516	1.0	73.9	2.0	7.8	2.3	8.2	2.1	1.7	1.0	74.9	2.0	23.1	0.062	0.512	19.600825	-98.567609
X. C. Arco Norte de La Ciudad de México	4.00	3	0	8013	1.3	77.2	1.8	6.6	2.1	6.7	2.1	1.2	1.0	78.5	1.8	19.7	0.071	0.510	19.633756	-98.536070
Lim. Edos. Term. Tlax. Ppia. Hgo.	5.00																			
Apan	19.58	3	1	4681	1.3	91.6	0.4	5.5	0.5	0.2	0.2	0.1	0.2	92.9	0.4	6.7	0.067	0.523	19.728512	-98.470831
Apan	19.58	3	2	5130	1.1	91.1	0.3	6.3	0.5	0.2	0.2	0.1	0.2	92.2	0.3	7.5	0.065	0.523	19.728428	-98.470905
Tepeapulco	34.92	3	0	4356	1.2	84.6	0.6	8.2	1.2	2.9	0.7	0.2	0.4	85.8	0.6	13.6	0.093	0.509	19.795499	-98.558866
X. C. Venta de Carpio - Tulancingo	51.18	1	0	3210	1.2	81.9	0.9	12.1	2.9	0.6	0.4	0.0	0.0	83.1	0.9	16.0	0.071	0.507	19.918350	-98.576434
X. C. Venta de Carpio - Tulancingo	51.18	3	0	2104	3.0	82.8	0.7	10.4	1.2	1.3	0.4	0.0	0.2	85.8	0.7	13.5	0.083	0.525	19.927622	-98.582852
El Ocote	70.44	1	0	3348	1.1	90.0	0.3	5.9	1.2	1.0	0.4	0.0	0.1	91.1	0.3	8.6	0.090	0.503	20.041043	-98.621450

32 CARR: Calpulalpan - Nanacamilpa

CLAVE: 29034

RUTA: TLAX-MEX-136

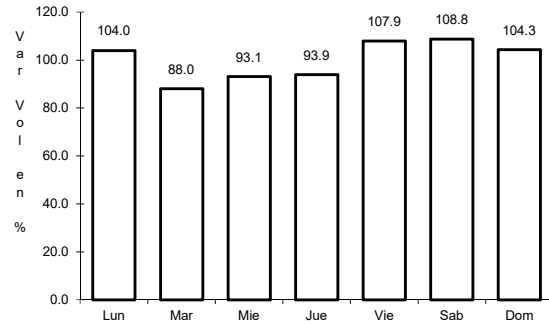
AÑO: 2017

LUGAR	ESTACION				CLASIFICACION VEHICULAR EN PORCIENTO														COORDENADAS	
	KM	TE	SC	TDPA	M	A	B	C2	C3	T3S2	T3S3	T3S2R4	OTROS	A	B	C	K'	D	LATITUD	LONGITUD
Calpulalpan	0.00	3	0	2279	4.7	86.3	0.1	6.7	0.6	1.4	0.1	0.0	0.1	91.0	0.1	8.9	0.078	0.534	19.567989	-98.568350
Nanacamilpa	15.50	1	0	1741	8.4	83.8	0.1	5.7	0.4	1.4	0.1	0.0	0.1	92.2	0.1	7.7	0.130	0.540	19.498428	-98.533205

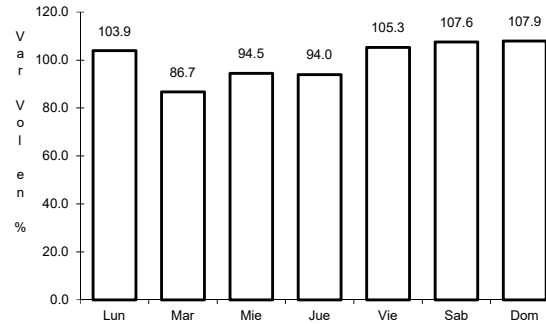
1 CARR: Amozoc - Teziutlán

CLAVE: 00210

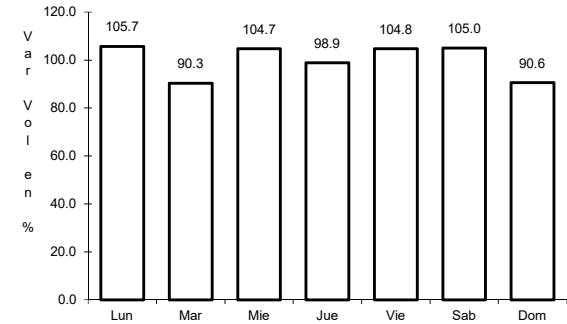
RUTA: MEX-129



Km: 1.40 Tipo: 3 Sent: 0



Km: 76.35 Tipo: 3 Sent: 0

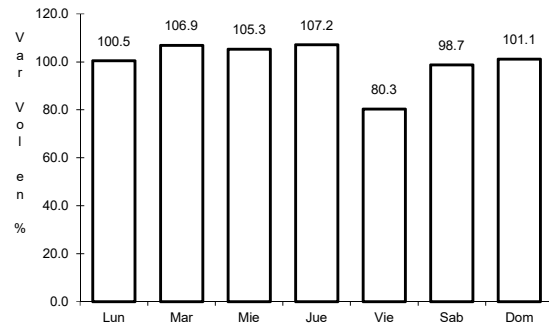


Km: 157.80 Tipo: 1 Sent: 0

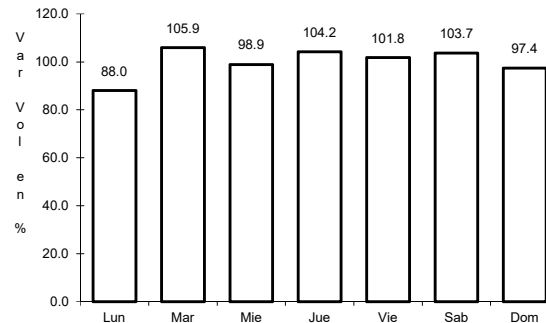
2 CARR: Apizaco - San Pablo Apetatitlán

CLAVE: 29035

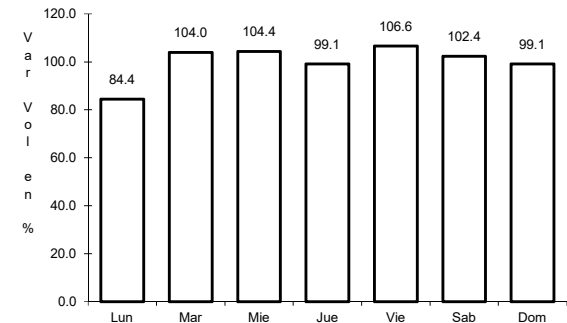
RUTA: MEX-119



Km: 0.00 Tipo: 3 Sent: 0



Km: 14.50 Tipo: 3 Sent: 0

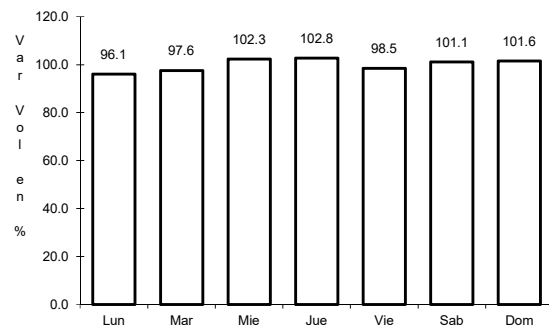


Km: 20.00 Tipo: 1 Sent: 0

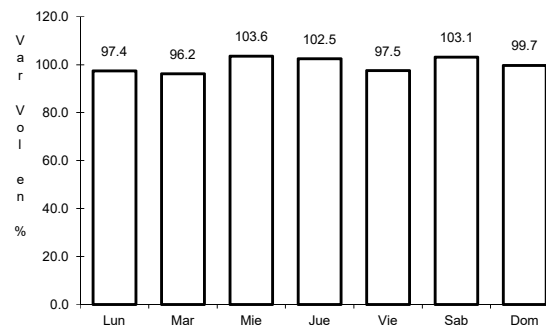
3 CARR: Apizaco - Tejocotal

CLAVE: 00430

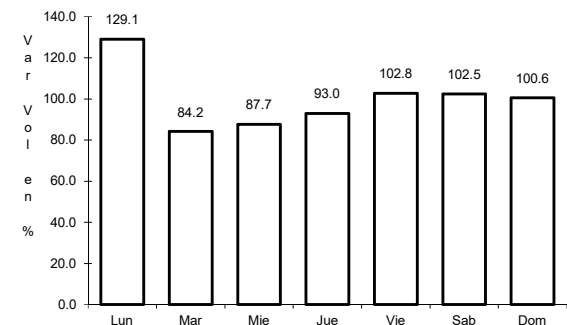
RUTA: MEX-119



Km: 0.00 Tipo: 3 Sent: 1



Km: 0.00 Tipo: 3 Sent: 2

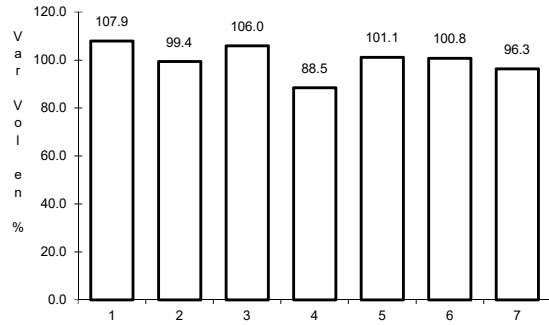


Km: 113.15 Tipo: 1 Sent: 0

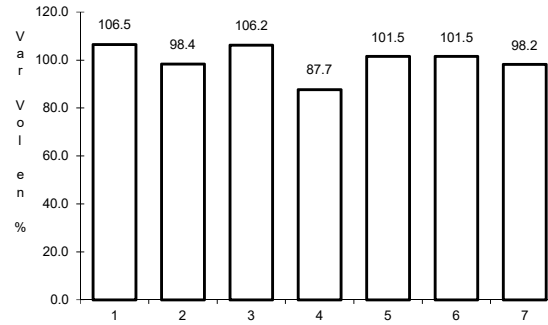
4 CARR: Huamantla - La Venta

CLAVE: 29564

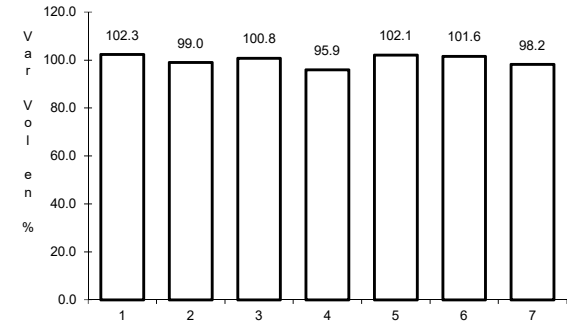
ruta: MEX-136



Km: 0.00 Tipo: 3 Sent: 1



Km: 0.00 Tipo: 3 Sent: 2

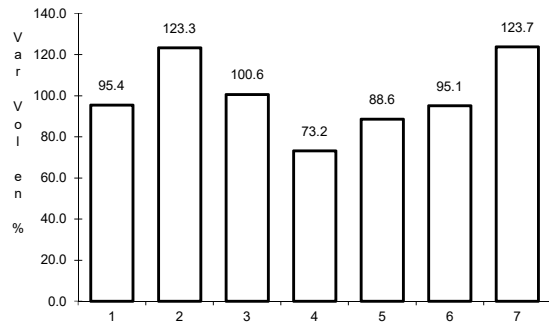


Km: 17.60 Tipo: 1 Sent: 0

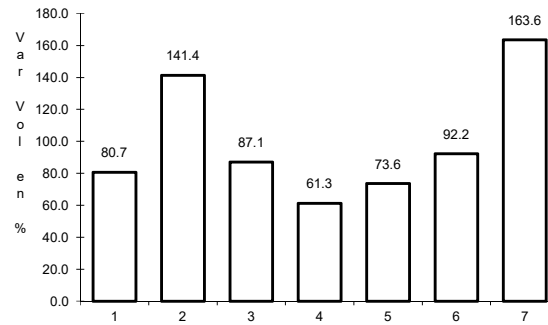
5 CARR: Huamantla - Terrenate

CLAVE: 29036

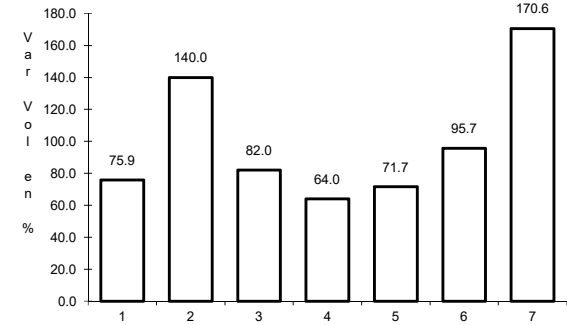
ruta: MEX-136



Km: 0.00 Tipo: 3 Sent: 0



Km: 12.50 Tipo: 1 Sent: 0

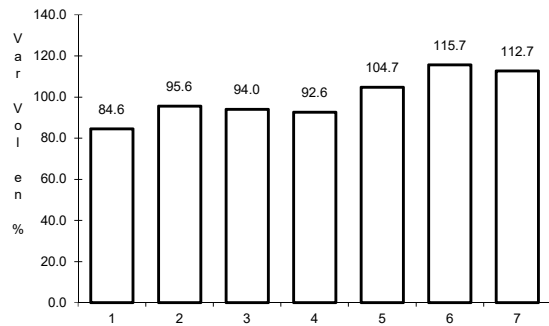


Km: 21.00 Tipo: 1 Sent: 0

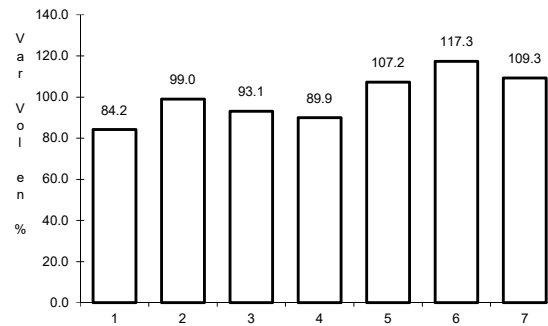
6 CARR: Libramiento de Apizaco

CLAVE: 29567

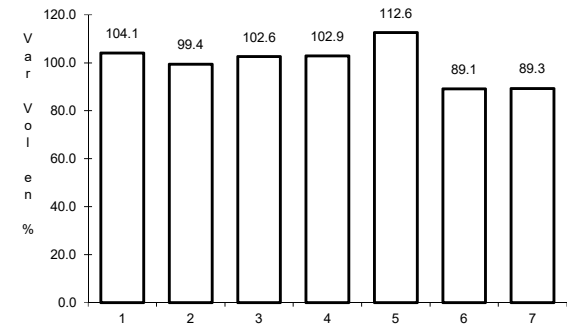
ruta: MEX-136



Km: 6.00 Tipo: 1 Sent: 1



Km: 6.00 Tipo: 1 Sent: 2

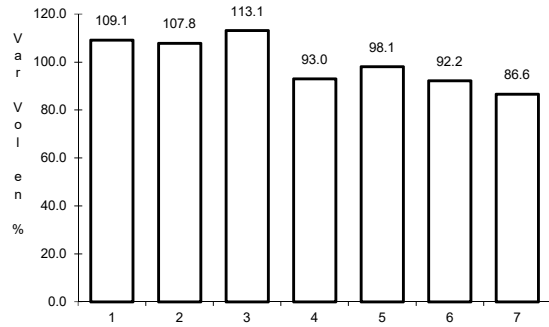


Km: 6.00 Tipo: 3 Sent: 1

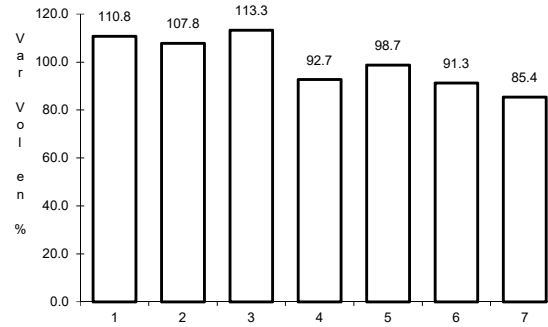
7 CARR: Libramiento Huamantla

CLAVE: 29567

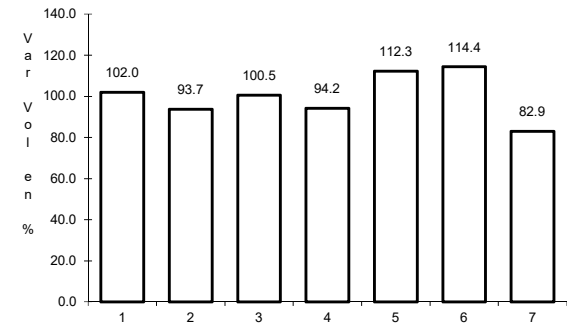
RUTA: MEX-136



Km: 0.00 Tipo: 3 Sent: 1



Km: 0.00 Tipo: 3 Sent: 2

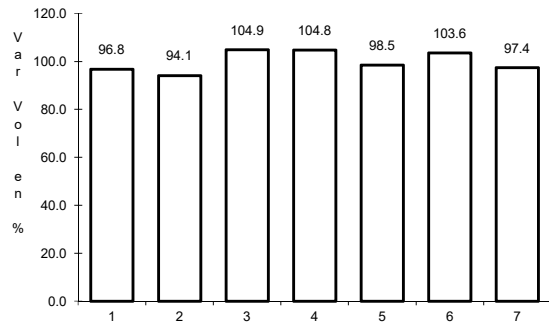


Km: 4.60 Tipo: 1 Sent: 1

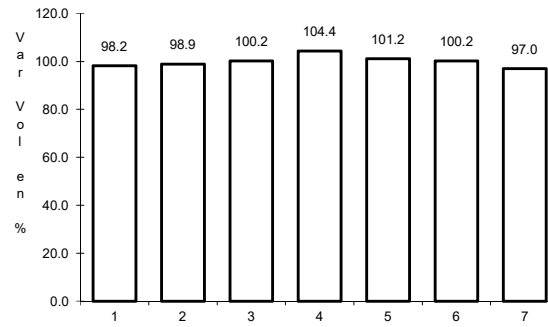
8 CARR: Libramiento Hueyotlipan

CLAVE: 29567

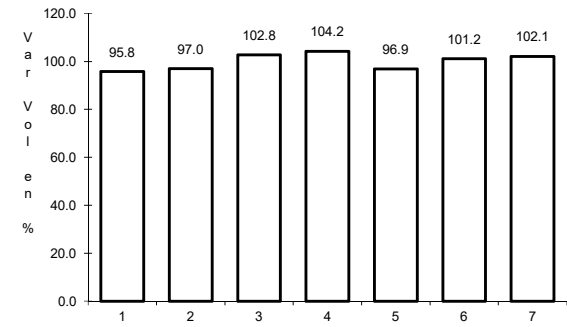
RUTA: MEX-136



Km: 0.00 Tipo: 3 Sent: 1



Km: 0.00 Tipo: 3 Sent: 2

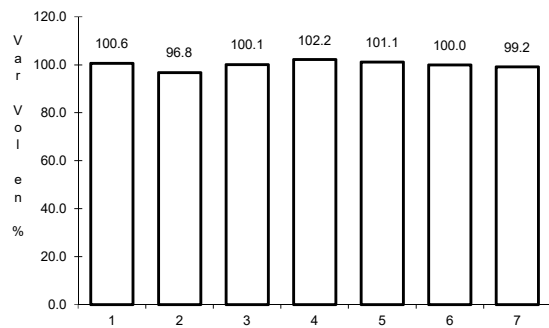


Km: 2.70 Tipo: 1 Sent: 1

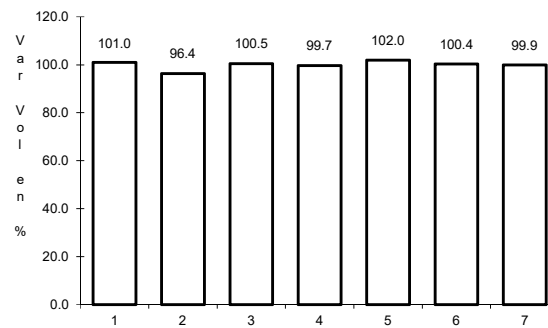
9 CARR: Los Reyes - Zacatepec

CLAVE: 00052

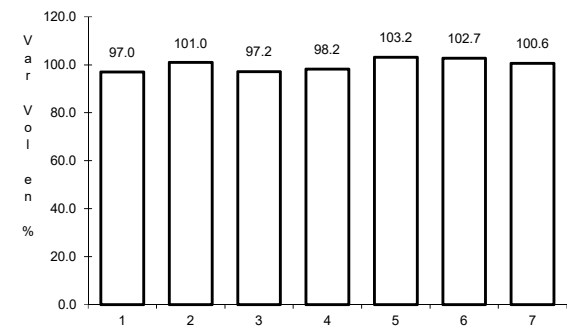
RUTA: MEX-136



Km: 3.35 Tipo: 3 Sent: 1



Km: 3.35 Tipo: 3 Sent: 2

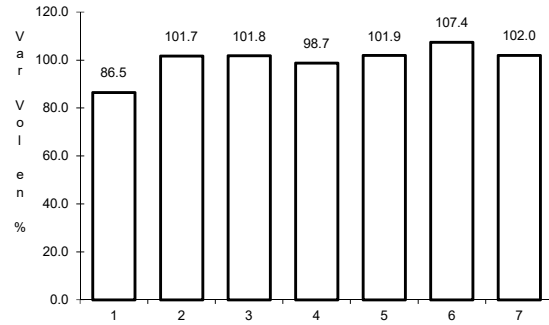


Km: 173.47 Tipo: 3 Sent: 0

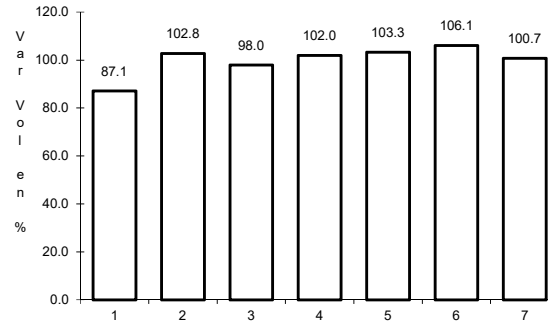
10 CARR: Puebla - Belem

CLAVE: 00055

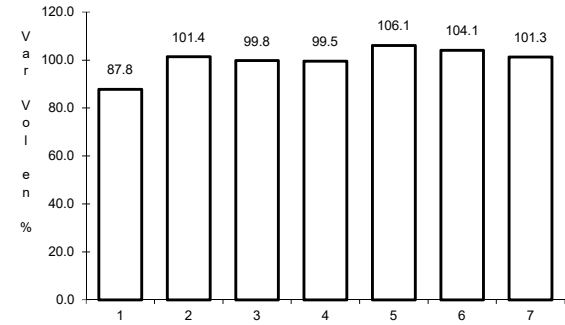
RUTA: MEX-121



Km: 4.00 Tipo: 3 Sent: 1



Km: 4.00 Tipo: 3 Sent: 2

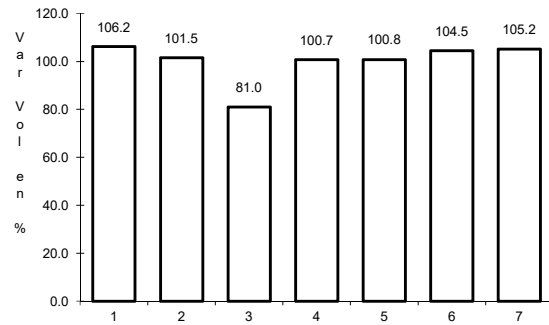


Km: 28.80 Tipo: 1 Sent: 1

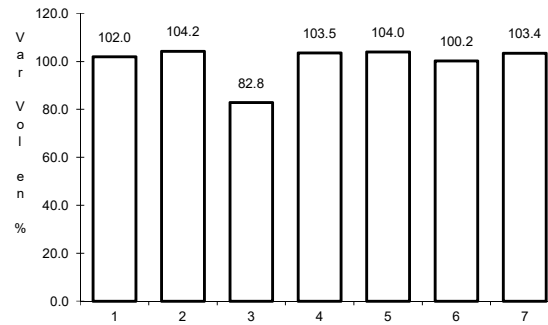
11 CARR: Puebla - Tlaxcala

CLAVE: 00475

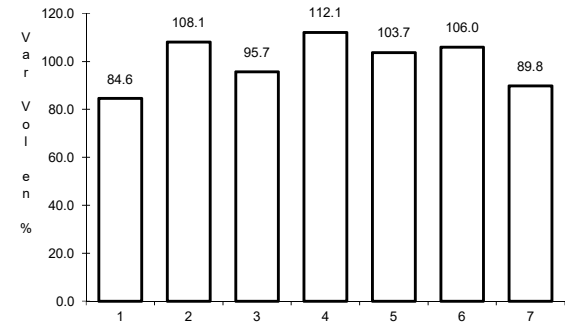
RUTA: MEX-119



Km: 5.41 Tipo: 3 Sent: 1



Km: 5.41 Tipo: 3 Sent: 2

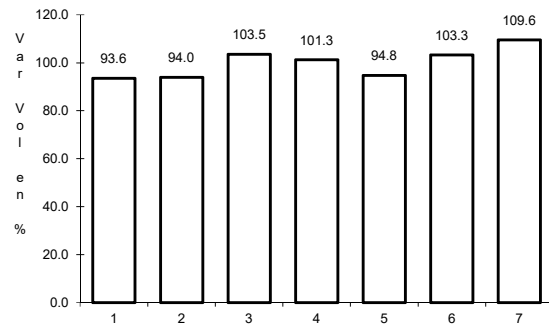


Km: 33.22 Tipo: 1 Sent: 1

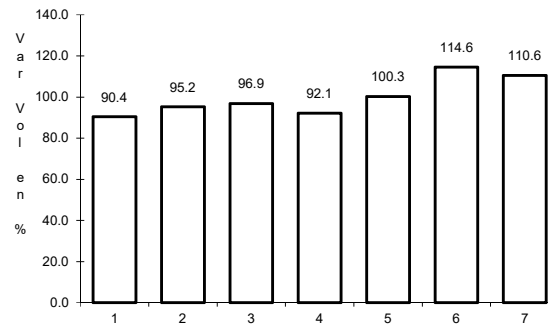
12 CARR: Ramal a San Felipe de Hidalgo

CLAVE: 29565

RUTA: MEX-136



Km: 0.00 Tipo: 3 Sent: 0

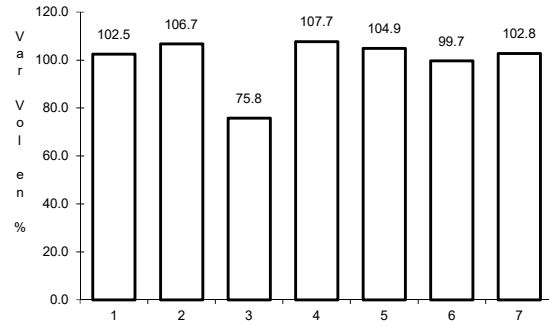


Km: 10.50 Tipo: 1 Sent: 0

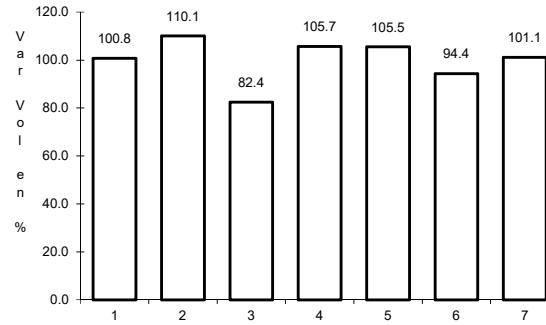
13 CARR: San Martín Texmelucan - Tlaxcala

CLAVE: 00158

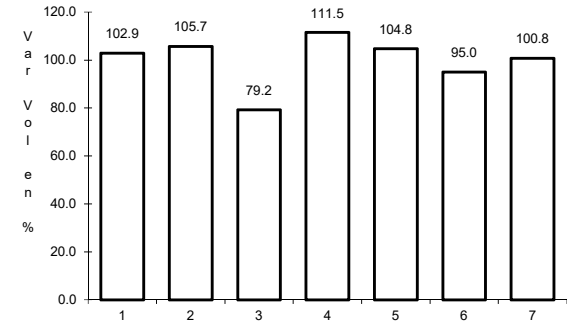
ruta: MEX-117



Km: 0.00 Tipo: 3 Sent: 1



Km: 0.00 Tipo: 3 Sent: 2

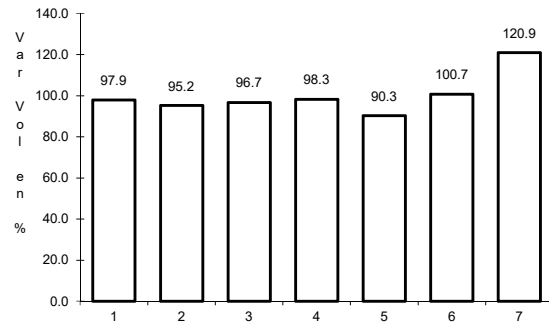


Km: 24.81 Tipo: 1 Sent: 0

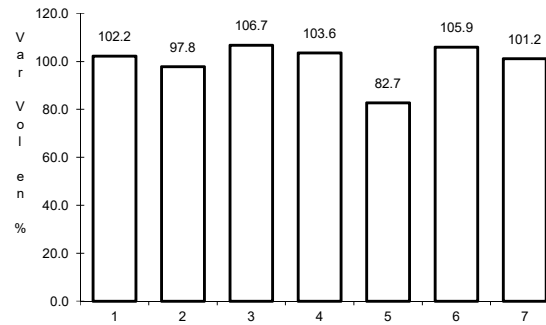
14 CARR: Tetlatlahuca - Santa Ana Chiautempan

CLAVE: 00158

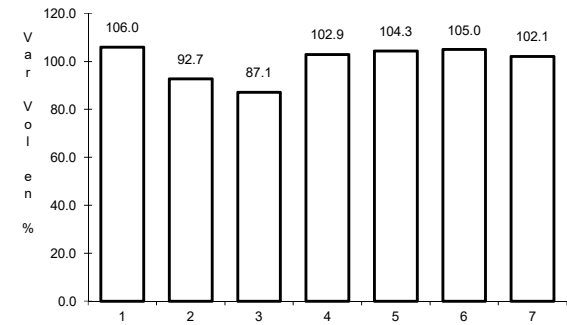
ruta: MEX-119



Km: 2.39 Tipo: 1 Sent: 0



Km: 5.50 Tipo: 1 Sent: 0

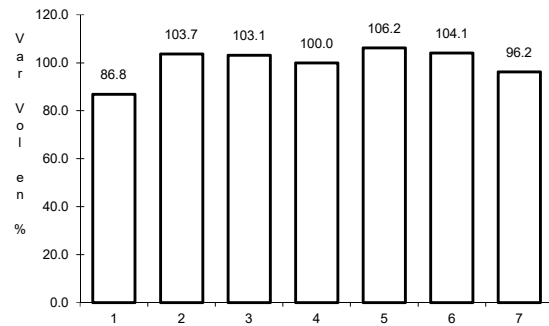


Km: 9.94 Tipo: 1 Sent: 0

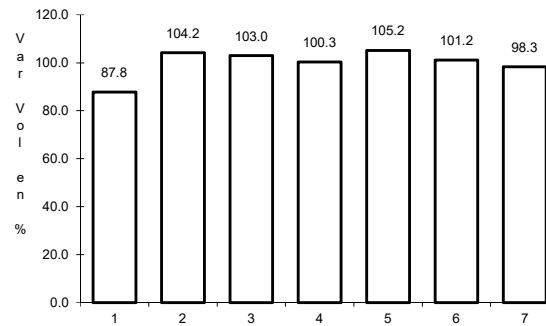
15 CARR: Tlaxcala - Belem

CLAVE: 29389

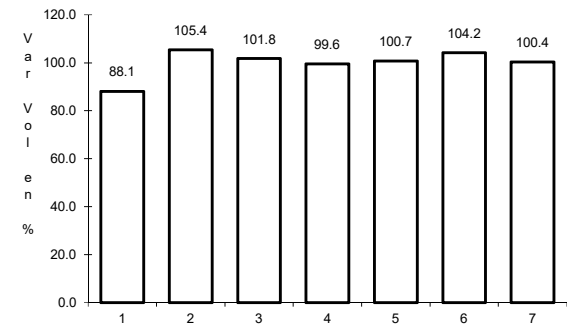
ruta: MEX-119



Km: 3.91 Tipo: 1 Sent: 1



Km: 3.91 Tipo: 1 Sent: 2

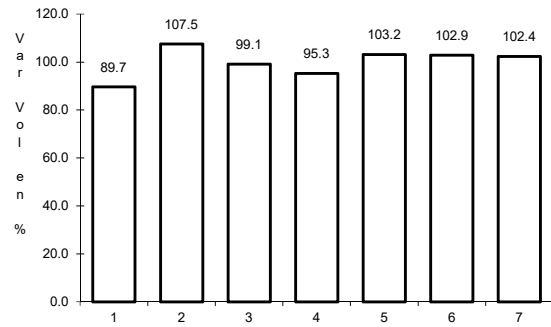


Km: 10.06 Tipo: 1 Sent: 0

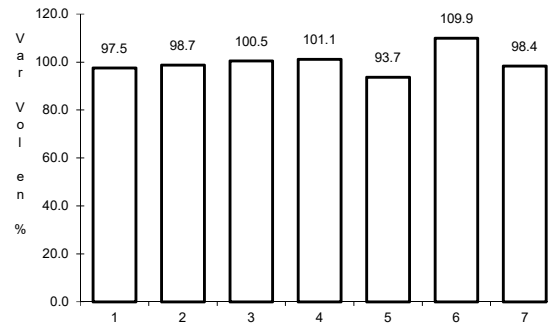
16 CARR: Villa Alta - T. C. (Puebla - Tlaxcala)

CLAVE: 29566

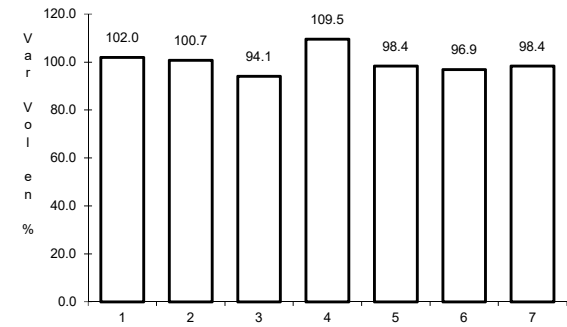
RUTA: MEX-119



Km: 0.00 Tipo: 3 Sent: 0



Km: 10.50 Tipo: 3 Sent: 0

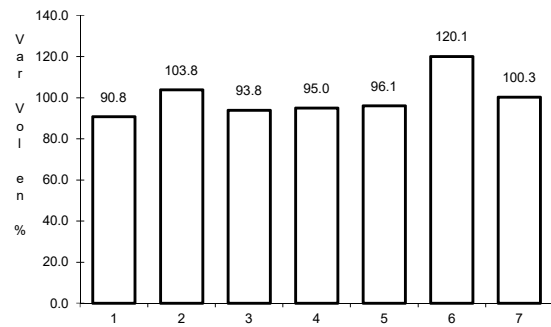


Km: 22.05 Tipo: 1 Sent: 0

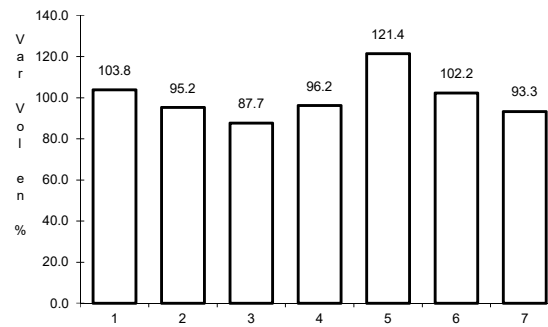
17 CARR: Amozoc - Perote (Cuota)

CLAVE: 00030

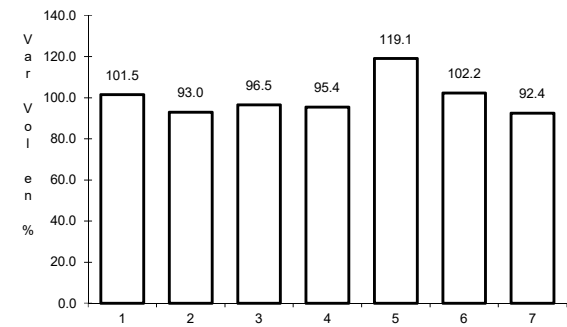
RUTA: MEX-140D



Km: 0.00 Tipo: 3 Sent: 0



Km: 25.80 Tipo: 3 Sent: 0

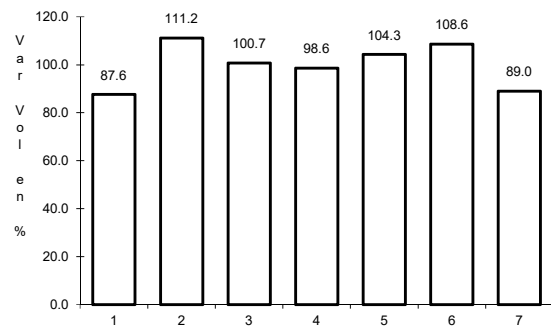


Km: 62.70 Tipo: 3 Sent: 0

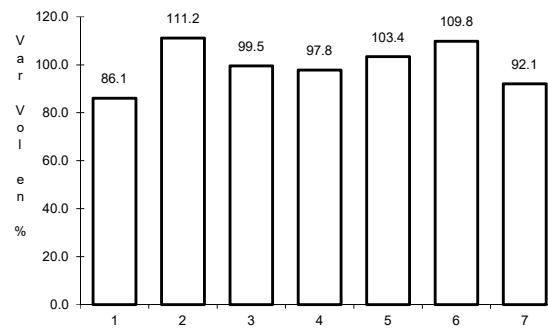
18 CARR: Libramiento de Tlaxcala (Cuota)

CLAVE:

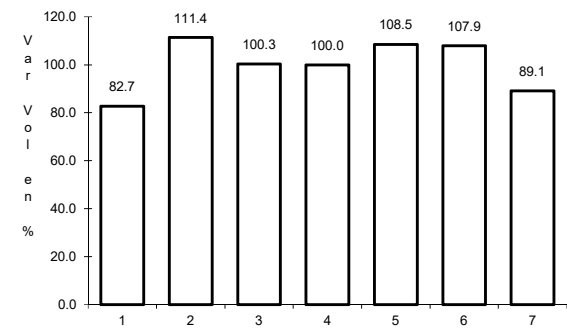
RUTA: MEX-117D



Km: 0.00 Tipo: 3 Sent: 1



Km: 0.00 Tipo: 3 Sent: 2

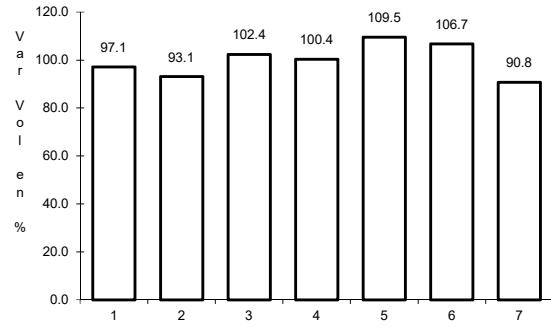


Km: 11.00 Tipo: 1 Sent: 1

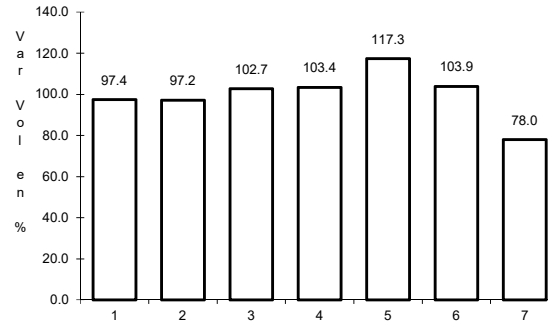
19 CARR: Libramiento Norte de la Ciudad de México (Cuota)

CLAVE: 0902

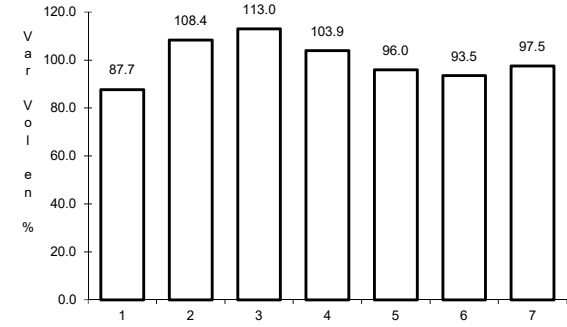
RUTA: MEX-M40D



Km: 12.90 Tipo: 1 Sent: 1



Km: 12.90 Tipo: 1 Sent: 2

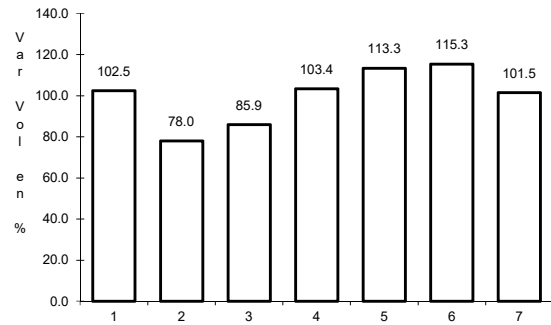


Km: 226.73 Tipo: 1 Sent: 1

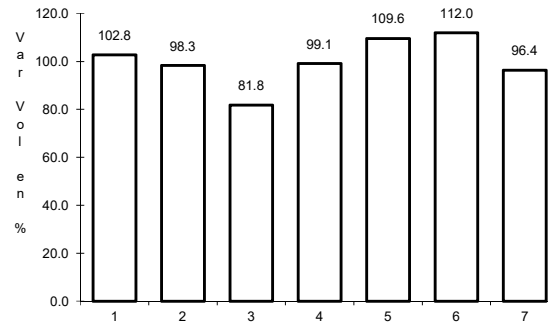
20 CARR: México - Puebla (Cuota)

CLAVE: 00450

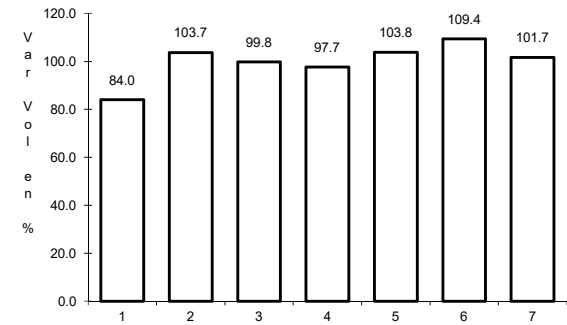
RUTA: MEX-150D



Km: 17.00 Tipo: 3 Sent: 1



Km: 17.00 Tipo: 3 Sent: 2

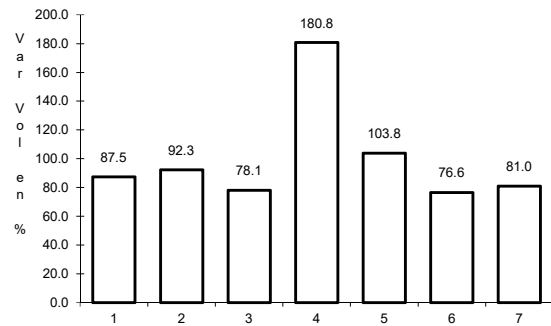


Km: 120.46 Tipo: 3 Sent: 1

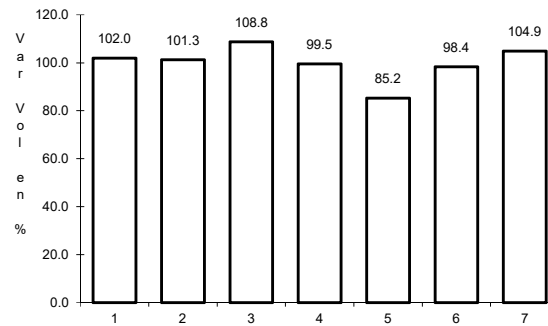
21 CARR: San Martin Texmelucan - Tlaxcala - El Molinito (Cuota)

CLAVE: 00212

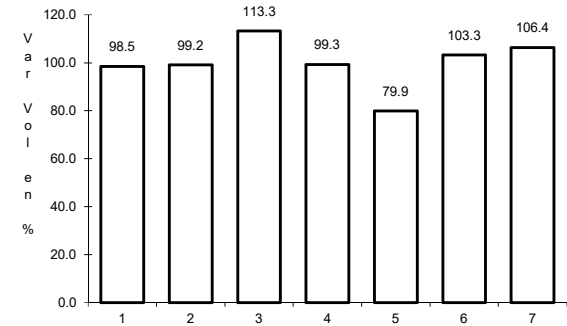
RUTA: MEX-117D



Km: 1.80 Tipo: 1 Sent: 0



Km: 35.20 Tipo: 1 Sent: 1

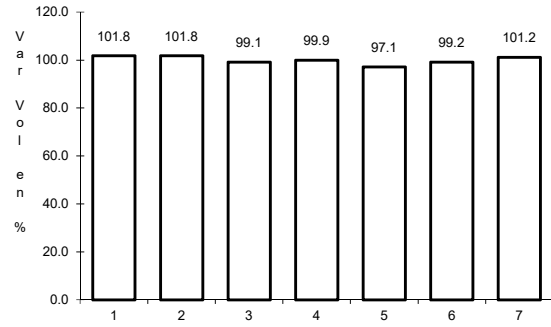


Km: 35.20 Tipo: 1 Sent: 2

22 CARR: Tlaxco - Tejocotal (Cuota)

CLAVE: 00209

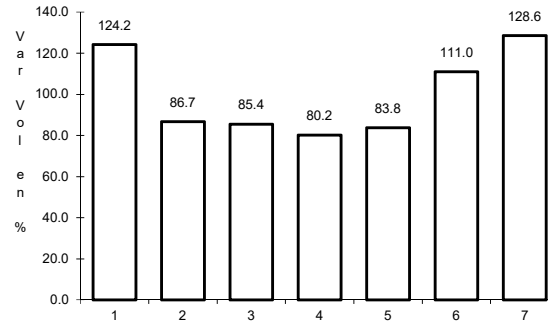
RUTA: MEX-119D



Km: 23.00

Tipo: 3

Sent: 0



Km: 56.20

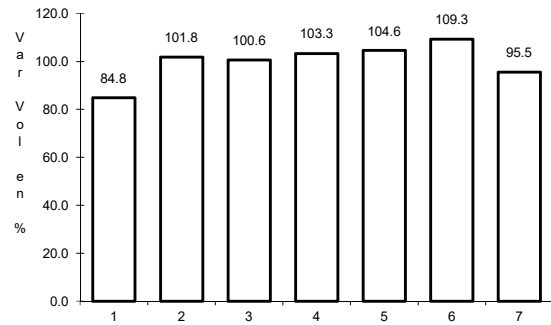
Tipo: 3

Sent: 0

23 CARR: Libramiento de Ocotlán

CLAVE: 29567

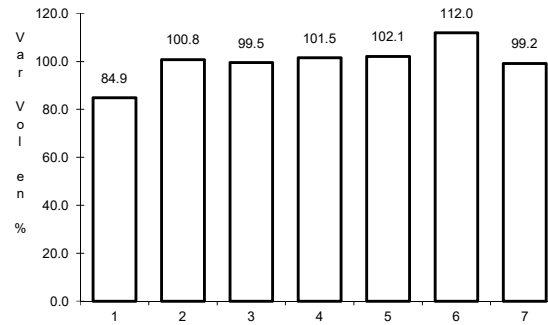
RUTA: TLAX



Km: 0.00

Tipo: 3

Sent: 1



Km: 0.00

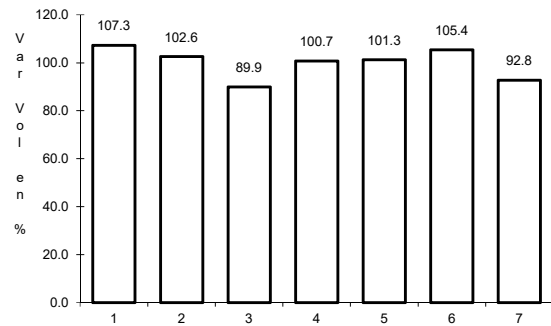
Tipo: 3

Sent: 2

24 CARR: Ramal a Altzayanca de Hidalgo

CLAVE: 29562

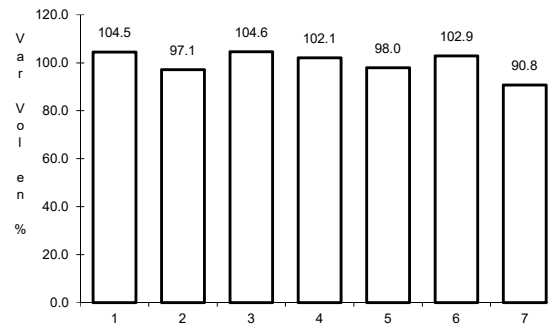
RUTA: TLAX



Km: 0.00

Tipo: 3

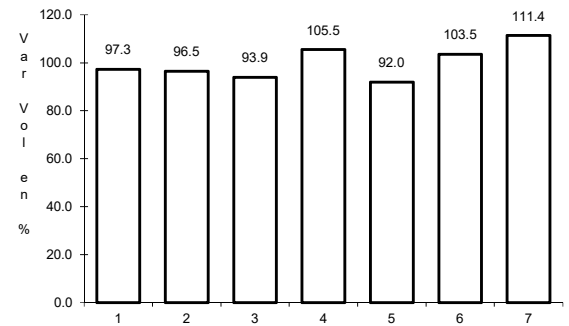
Sent: 0



Km: 6.50

Tipo: 3

Sent: 0



Km: 15.00

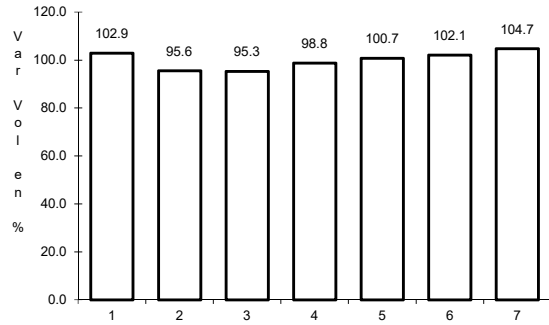
Tipo: 1

Sent: 0

25 CARR: Ramal a San Pedro Ecatepec

CLAVE: 29561

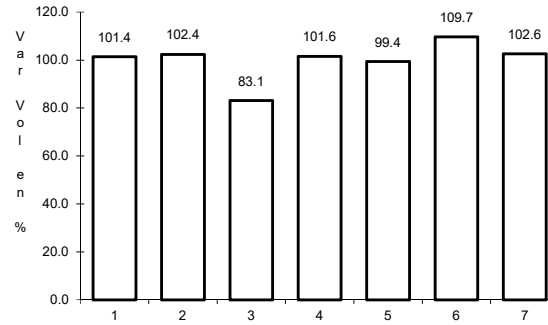
RUTA: TLAX



Km: 0.00

Tipo: 3

Sent: 0



Km: 4.60

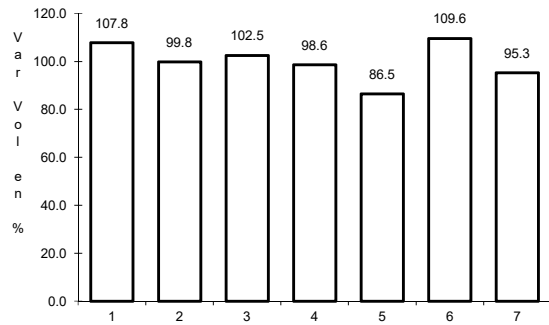
Tipo: 1

Sent: 0

26 CARR: Ramal a Xalostoc

CLAVE: 29563

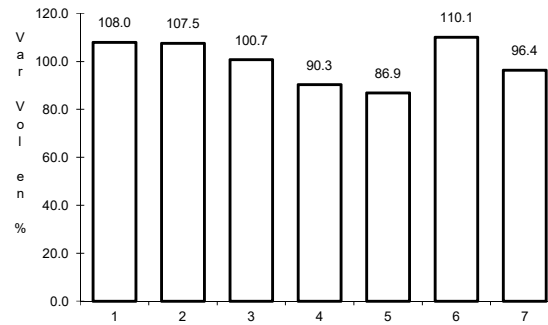
RUTA: TLAX



Km: 0.00

Tipo: 3

Sent: 0



Km: 2.50

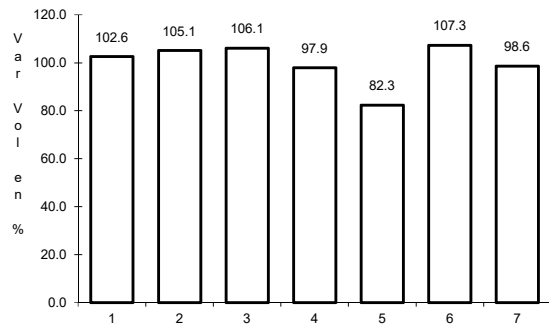
Tipo: 1

Sent: 0

27 CARR: Xalostoc - Terrenate

CLAVE: 29390

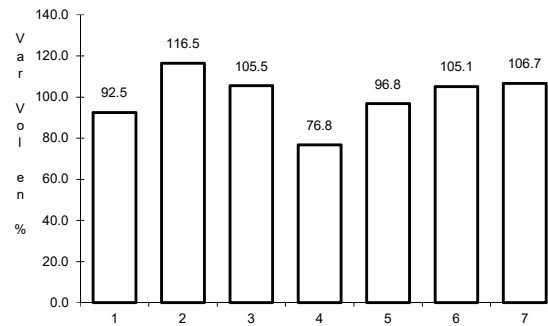
RUTA: TLAX



Km: 0.00

Tipo: 3

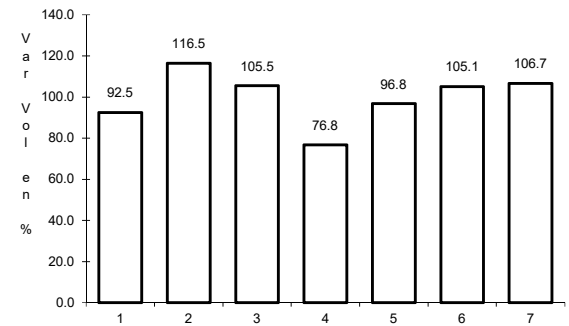
Sent: 0



Km: 7.10

Tipo: 3

Sent: 0



Km: 17.50

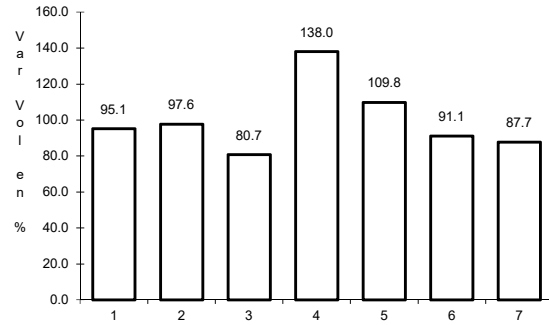
Tipo: 1

Sent: 0

28 CARR: Puebla - Tlaxcala (Cuota)

CLAVE:

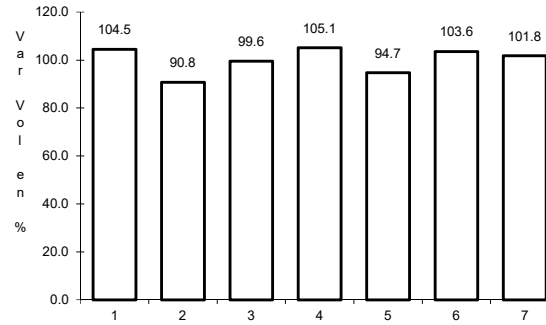
ruta: PUE-D



Km: 0.00

Tipo: 3

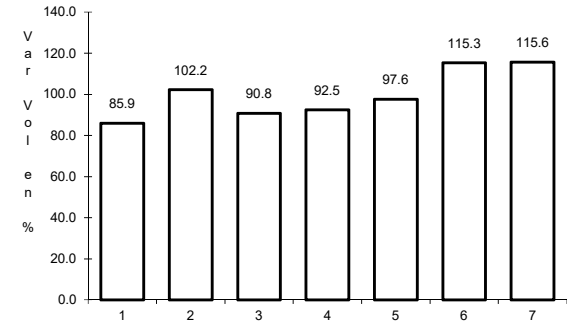
Sent: 0



Km: 8.00

Tipo: 3

Sent: 0



Km: 17.80

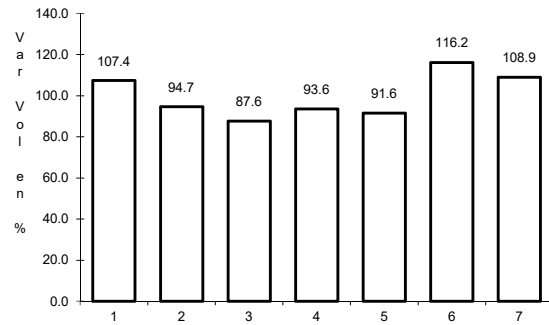
Tipo: 1

Sent: 0

29 CARR: Acocotla - Vicente Guerrero

CLAVE: 29560

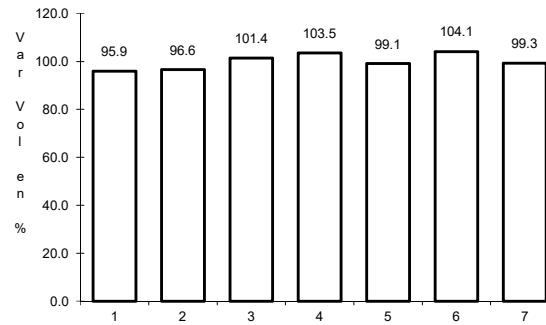
ruta: MEX-TLAX



Km: 0.00

Tipo: 3

Sent: 0



Km: 35.60

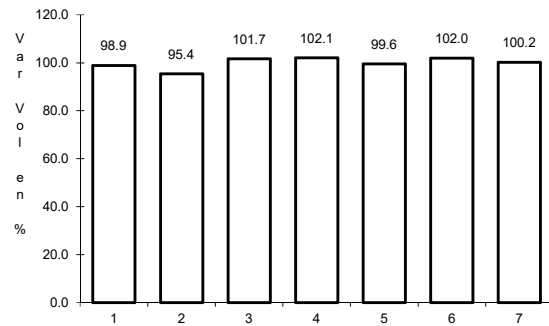
Tipo: 1

Sent: 0

30 CARR: Apizaco - Emiliano Zapata

CLAVE: 29033

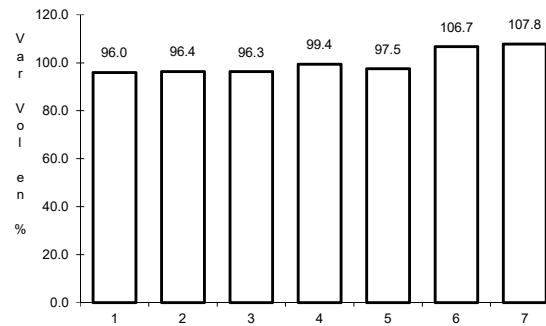
ruta: TLAX-MEX-136



Km: 0.00

Tipo: 3

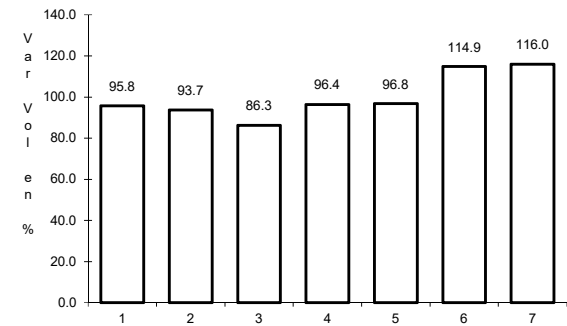
Sent: 0



Km: 16.00

Tipo: 1

Sent: 0



Km: 37.00

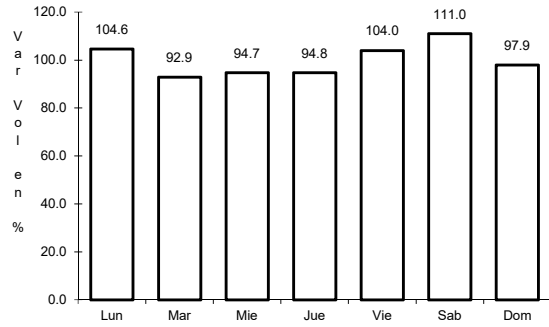
Tipo: 1

Sent: 0

31 CARR: Calpulalpan - El Ocote

CLAVE: 00054

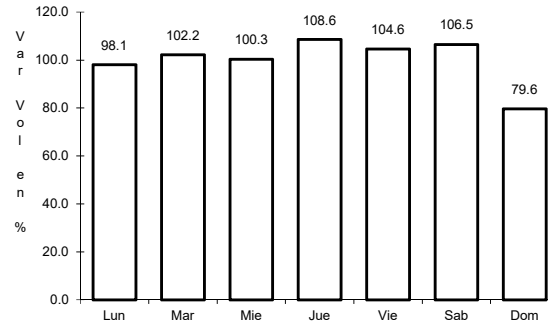
RUTA: MEX-HGO



Km: 0.00

Tipo: 3

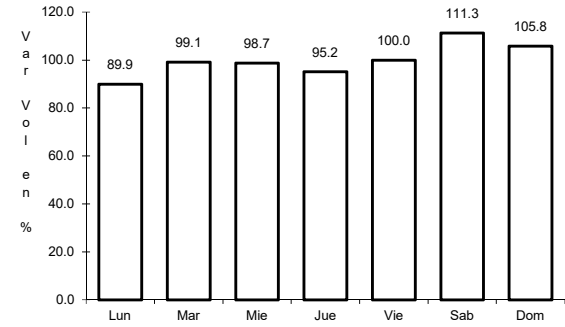
Sent: 0



Km: 34.92

Tipo: 3

Sent: 0



Km: 70.44

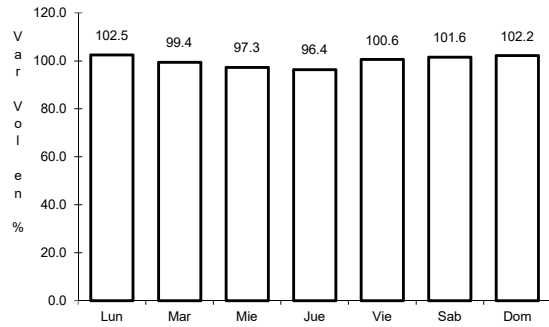
Tipo: 1

Sent: 0

32 CARR: Calpulalpan - Nanacamilpa

CLAVE: 29034

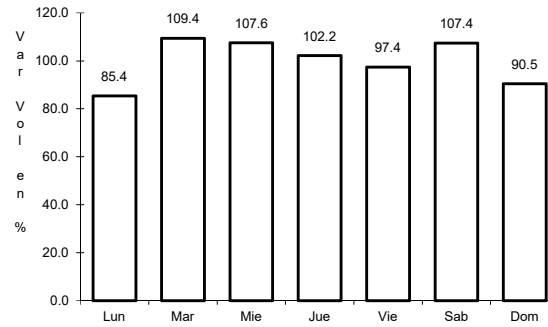
RUTA: TLAX-MEX-136



Km: 0.00

Tipo: 3

Sent: 0



Km: 15.50

Tipo: 1

Sent: 0

