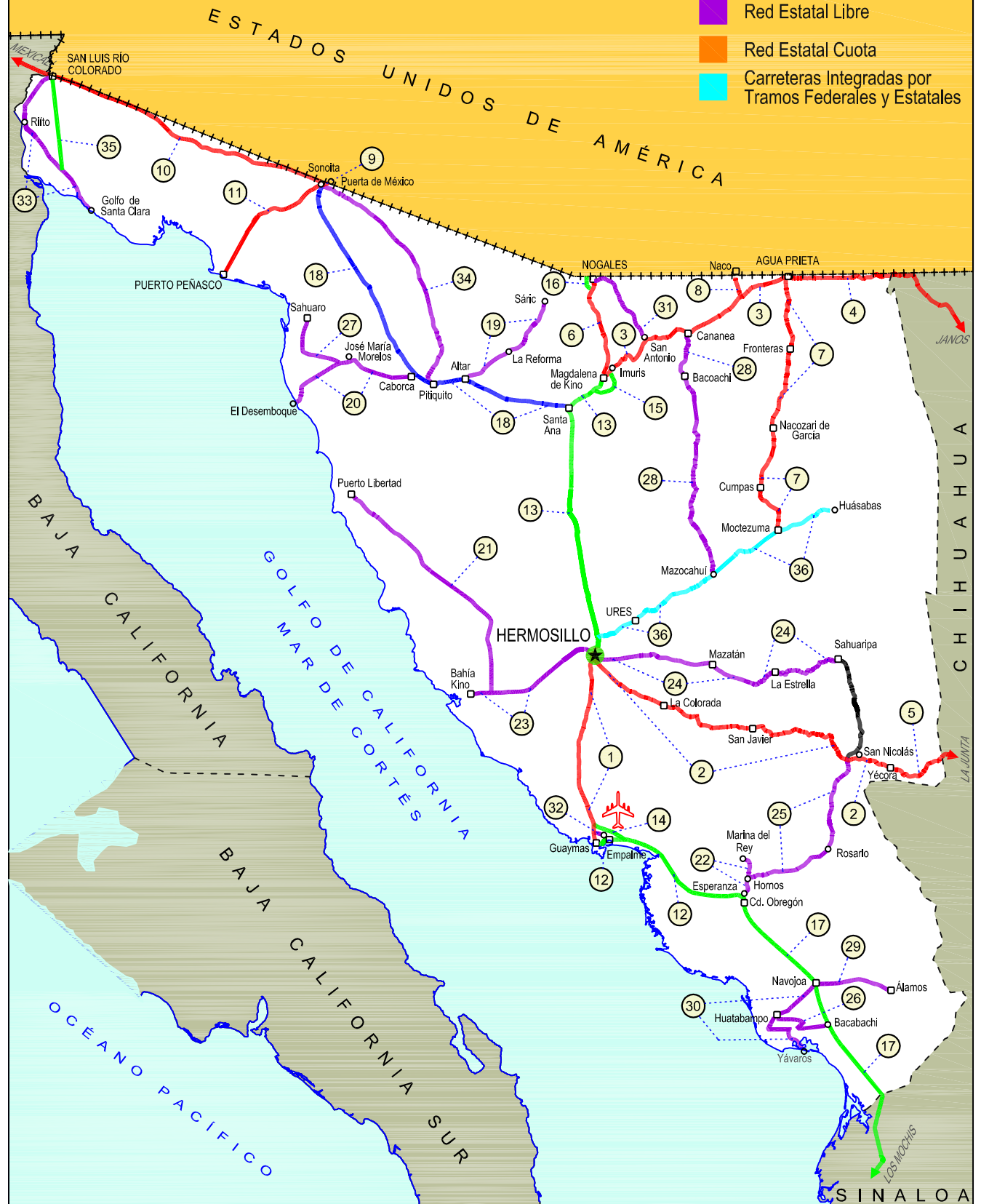
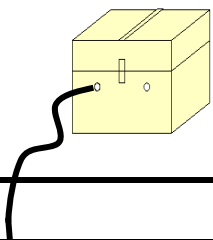


26 SONORA

SECRETARÍA DE COMUNICACIONES Y TRANSPORTES
DIRECCIÓN GENERAL DE SERVICIOS TÉCNICOS

- ① --- Número Índice
- Red Federal Libre
- Red Federal Cuota
- Red Federal Integrada por Tramos Libres y de Cuota
- Red Estatal Libre
- Red Estatal Cuota
- Carreteras Integradas por Tramos Federales y Estatales





SONORA

NO. INDICE CARRETERA	RUTA
---RED FEDERAL LIBRE---	
1 Guaymas - Hermosillo	MEX-015
2 Hermosillo - Yécora	MEX-016
3 Imuris - Agua Prieta	MEX-002
4 Janos - Agua Prieta	MEX-002
5 La Junta - Yécora	MEX-016
6 Magdalena de Kino - Nogales	MEX-015
7 Moctezuma - Agua Prieta	MEX-017
8 Ramal a Naco	MEX-002
9 Ramal a Puerta de México	MEX-002
10 Sonoita - Mexicali	MEX-002
11 Sonoita - Puerto Peñasco	MEX-002
---RED FEDERAL DE CUOTA---	
12 Cd. Obregón - Guaymas (Cuota)	MEX-015D
13 Hermosillo - Magdalena de Kino (Cuota)	MEX-015D
14 Libramiento de Empalme - Guaymas (Cuota)	MEX-015D
15 Libramiento de Magdalena de Kino (Cuota)	MEX-015D
16 Libramiento de Nogales (Cuota)	MEX-15D
17 Los Mochis - Cd. Obregón (Cuota)	MEX-015D
---RED FEDERAL INTEGRADA POR TRAMOS LIBRES Y DE CUOTA---	
18 Santa Ana - Sonoita	MEX-002D-MEX
---RED ESTATAL LIBRE---	
19 Altar - Sáríc	SON-064
20 Caborca - El Desemboque	SON-037
21 Calle 36 Norte - Puerto de La Libertad	SON-029
22 Esperanza - Presa Álvaro Obregón	SON-117
23 Hermosillo - Bahía Kino	SON-100
24 Hermosillo - Sahuaripa	SON-020
25 Hornos - San Nicolás	SON-012
26 Huatabampo - Bacabachi	SON-176
27 La Alameda - El Sahuaro	SON-037
28 Mazocahui - Cananea	SON-118
29 Navojoa - Álamos	SON-013
30 Navojoa - Yavaros	SON-056
31 Nogales - San Antonio	SON
32 Ramal a Aeropuerto de Guaymas	SON
33 San Luis Río Colorado - Golfo de Santa Clara	SON-040
34 Sonoita - Pitiquito	SON
---RED ESTATAL DE CUOTA---	
35 San Luis Río Colorado - Golfo de Santa Clara (Cuota)	SON-D
---CARRETERAS INTEGRADAS POR TRAMOS FEDERALES Y ESTATALES---	
36 T. C. (Hermosillo - Nogales) - Huásabas	MEX-014-SON

SONORA

1 CARR: Guaymas - Hermosillo

CLAVE: 26444

RUTA: MEX-015

AÑO: 2017

LUGAR	ESTACION				CLASIFICACION VEHICULAR EN PORCIENTO										COORDENADAS					
	KM	TE	SC	TDPA	M	A	B	C2	C3	T3S2	T3S3	T3S2R4	OTROS	A	B	C	K'	D	LATITUD	LONGITUD
T. Der. Libramiento de Guaymas	107.70	3	0	7036	1.8	74.3	4.3	11.1	1.6	4.5	1.4	0.8	0.2	76.1	4.3	19.6	0.082	0.510	27.952251	-110.764151
Empalme	115.02	1	0	7871	2.0	73.4	3.9	12.2	2.3	3.7	1.7	0.6	0.2	75.4	3.9	20.7	0.088	0.505	27.952336	-110.809706
Empalme	115.02	3	1	9586	2.6	82.4	1.6	9.6	0.9	1.9	0.7	0.2	0.1	85.0	1.6	13.4	0.102	0.502	27.955685	-110.831310
Empalme	115.02	3	2	9677	2.2	83.0	1.6	9.1	1.0	1.6	1.0	0.3	0.2	85.2	1.6	13.2	0.083	0.502	27.955587	-110.831286
T. Izq. San Carlos	133.00	1	1	7708	1.3	83.2	1.4	9.8	1.1	1.5	0.8	0.7	0.2	84.5	1.4	14.1	0.068	0.506	27.980092	-110.939127
T. Izq. San Carlos	133.00	1	2	7534	1.0	83.5	1.3	9.8	1.2	1.8	0.5	0.8	0.1	84.5	1.3	14.2	0.074	0.506	27.980038	-110.939352
T. Izq. San Carlos	133.00	3	1	4088	1.2	84.9	1.8	5.5	1.6	2.1	1.3	0.9	0.7	86.1	1.8	12.1	0.106	0.515	27.996008	-110.938738
T. Izq. San Carlos	133.00	3	2	3847	1.4	75.7	2.5	12.4	2.0	3.4	0.9	1.5	0.2	77.1	2.5	20.4	0.094	0.515	27.996026	-110.938903
T. Izq. Bahía Kino	171.30	1	1	5311	0.4	66.5	1.7	4.6	2.8	14.3	3.3	5.9	0.5	66.9	1.7	31.4	0.120	0.510	28.316177	-111.041739
T. Izq. Bahía Kino	171.30	1	2	5097	0.6	59.4	5.2	10.2	1.8	14.7	2.0	5.6	0.5	60.0	5.2	34.8	0.091	0.510	28.316193	-111.042065
T. Izq. Bahía Kino	171.30	3	1	6527	0.5	60.3	5.2	9.1	1.5	14.0	3.1	5.9	0.4	60.8	5.2	34.0	0.102	0.514	28.325321	-111.041887
T. Izq. Bahía Kino	171.30	3	2	6179	0.4	60.1	5.2	8.8	1.6	15.4	2.0	6.0	0.5	60.5	5.2	34.3	0.075	0.514	28.325329	-111.042241
Hermosillo	251.00	1	1	7396	1.0	60.6	5.2	8.3	1.5	14.6	2.4	5.9	0.5	61.6	5.2	33.2	0.081	0.517	29.003093	-110.967272
Hermosillo	251.00	1	2	7931	0.9	56.6	5.7	9.8	1.7	15.8	2.8	6.2	0.5	57.5	5.7	36.8	0.068	0.517	29.003186	-110.967438

2 CARR: Hermosillo - Yécora

CLAVE: 26251

RUTA: MEX-016

AÑO: 2017

LUGAR	ESTACION				CLASIFICACION VEHICULAR EN PORCIENTO										COORDENADAS					
	KM	TE	SC	TDPA	M	A	B	C2	C3	T3S2	T3S3	T3S2R4	OTROS	A	B	C	K'	D	LATITUD	LONGITUD
T. C. Cd. Obregón - Hermosillo	0.00																			
T. Izq. Sahuaripa	4.00	3	1	1299	5.4	50.5	2.6	30.0	2.9	4.2	2.7	1.1	0.6	55.9	2.6	41.5	0.145	0.508	28.995273	-110.901048
T. Izq. Sahuaripa	4.00	3	2	1257	6.6	45.3	3.3	33.5	2.5	3.8	3.1	1.5	0.4	51.9	3.3	44.8	0.107	0.508	28.995302	-110.901019
La Colorada	47.00	3	0	712	0.9	56.6	2.0	24.9	4.8	5.4	3.3	1.3	0.8	57.5	2.0	40.5	0.107	0.503	28.807158	-110.576725
Tecoripa	138.00	3	0	687	1.8	43.6	2.5	37.6	7.1	4.2	2.2	0.5	0.5	45.4	2.5	52.1	0.080	0.508	28.622168	-109.949753
Yécora	250.60																			

3 CARR: Imuris - Agua Prieta

CLAVE: 26079

RUTA: MEX-002

AÑO: 2017

LUGAR	ESTACION				CLASIFICACION VEHICULAR EN PORCIENTO										COORDENADAS					
	KM	TE	SC	TDPA	M	A	B	C2	C3	T3S2	T3S3	T3S2R4	OTROS	A	B	C	K'	D	LATITUD	LONGITUD
Imuris	0.00	3	0	3844	0.9	66.9	3.7	12.7	2.5	8.2	2.1	2.0	1.0	67.8	3.7	28.5	0.075	0.513	30.812799	-110.822429
T. Der. Cananea	80.93	1	0	4080	1.0	52.9	3.4	13.9	2.4	16.1	3.7	5.6	1.0	53.9	3.4	42.7	0.064	0.506	31.011556	-110.316955
T. Der. Cananea	80.93	3	1	3010	0.4	62.9	2.6	12.0	1.8	12.2	3.2	4.2	0.7	63.3	2.6	34.1	0.063	0.501	31.010121	-110.239882
T. Der. Cananea	80.93	3	2	3021	0.3	64.8	2.0	11.8	1.6	11.4	3.2	4.4	0.5	65.1	2.0	32.9	0.064	0.501	31.008378	-110.241950
Agua Prieta	164.67	1	1	2175	0.6	56.7	3.4	14.0	1.7	14.3	3.5	4.9	0.9	57.3	3.4	39.3	0.076	0.500	31.311557	-109.589071

SONORA

3 CARR : Imuris - Agua Prieta

CLAVE: 26079

RUTA: MEX-002

AÑO : 2017

LUGAR	ESTACION				CLASIFICACION VEHICULAR EN PORCIENTO														COORDENADAS	
	KM	TE	SC	TDPA	M	A	B	C2	C3	T3S2	T3S3	T3S2R4	OTROS	A	B	C	K'	D	LATITUD	LONGITUD
Agua Prieta	164.67	1	2	2170	0.5	56.8	3.7	13.1	1.4	14.3	3.9	5.9	0.4	57.3	3.7	39.0	0.078	0.500	31.311683	-109.589118

4 CARR : Janos - Agua Prieta

CLAVE: 00220

RUTA: MEX-002

AÑO : 2017

LUGAR	ESTACION				CLASIFICACION VEHICULAR EN PORCIENTO														COORDENADAS	
	KM	TE	SC	TDPA	M	A	B	C2	C3	T3S2	T3S3	T3S2R4	OTROS	A	B	C	K'	D	LATITUD	LONGITUD
T. C. Cd. Juárez - Janos	0.00	3	0	3911	2.0	52.6	2.8	20.4	2.2	12.5	2.9	3.9	0.7	54.6	2.8	42.6	0.069	0.501	30.889749	-108.208142
Los Mimbres	56.00	3	0	2266	1.9	48.5	2.7	20.6	2.7	15.2	3.8	3.8	0.8	50.4	2.7	46.9	0.093	0.505	31.244135	-108.580226
Lim. Edos. Term. Chih. Ppia. Son.	78.00																			
Agua Prieta	160.00	1	0	3025	1.6	48.5	2.7	21.3	2.6	15.2	3.7	3.7	0.7	50.1	2.7	47.2	0.074	0.505	31.321126	-109.510634

5 CARR : La Junta - Yécora

CLAVE: 00065

RUTA: MEX-016

AÑO : 2017

LUGAR	ESTACION				CLASIFICACION VEHICULAR EN PORCIENTO														COORDENADAS	
	KM	TE	SC	TDPA	M	A	B	C2	C3	T3S2	T3S3	T3S2R4	OTROS	A	B	C	K'	D	LATITUD	LONGITUD
T. C. Chihuahua - Madera	0.00	3	0	4349	1.0	74.3	1.9	17.0	2.0	2.6	1.1	0.0	0.1	75.3	1.9	22.8	0.079	0.505	28.472286	-107.319716
T. Izq. San Juanito	16.00	1	0	2519	1.0	64.3	2.7	22.9	3.0	4.0	1.6	0.1	0.4	65.3	2.7	32.0	0.087	0.502	28.388653	-107.439541
T. Izq. San Juanito	16.00	3	0	1261	0.8	66.5	0.9	21.1	3.2	5.3	1.5	0.1	0.6	67.3	0.9	31.8	0.072	0.506	28.388602	-107.448653
Tomochi	70.00	3	0	1370	1.2	65.9	1.3	19.5	3.7	6.0	1.6	0.2	0.6	67.1	1.3	31.6	0.069	0.513	28.352628	-107.852609
Lim. Edos. Term. Chih. Ppia. Son.	190.00																			
Yécora	253.00	1	0	417	2.9	59.5	2.3	26.6	2.6	4.0	1.9	0.0	0.2	62.4	2.3	35.3	0.139	0.555	28.367948	-108.918967

6 CARR : Magdalena de Kino - Nogales

CLAVE: 26444

RUTA: MEX-015

AÑO : 2017

LUGAR	ESTACION				CLASIFICACION VEHICULAR EN PORCIENTO														COORDENADAS	
	KM	TE	SC	TDPA	M	A	B	C2	C3	T3S2	T3S3	T3S2R4	OTROS	A	B	C	K'	D	LATITUD	LONGITUD
Magdalena de Kino	181.30	3	1	3650	0.7	80.7	1.2	13.0	0.9	2.9	0.3	0.3	0.0	81.4	1.2	17.4	0.071	0.506	30.649318	-110.944369
Magdalena de Kino	181.30	3	2	3563	1.0	80.3	1.1	12.8	1.1	3.2	0.2	0.3	0.0	81.3	1.1	17.6	0.071	0.506	30.649345	-110.944390
Imuris	209.00	1	1	7399	1.1	67.7	2.2	12.4	2.6	9.3	1.1	3.2	0.4	68.8	2.2	29.0	0.065	0.530	30.775674	-110.857191
Imuris	209.00	1	2	8336	0.9	69.0	2.0	11.8	2.0	9.3	1.1	3.6	0.3	69.9	2.0	28.1	0.079	0.530	30.775676	-110.857130
T. Der. Agua Prieta	209.50	3	1	5756	0.6	71.0	2.1	11.7	1.4	9.2	0.4	3.5	0.1	71.6	2.1	26.3	0.076	0.509	30.792497	-110.850673
T. Der. Agua Prieta	209.50	3	2	5955	0.7	71.0	2.1	12.3	2.5	7.9	0.5	2.8	0.2	71.7	2.1	26.2	0.093	0.509	30.792521	-110.850583
T. Izq. Sáric	255.90	1	1	10197	1.2	74.6	2.8	11.0	2.5	5.4	0.6	1.8	0.1	75.8	2.8	21.4	0.074	0.518	31.177136	-110.968576
T. Izq. Sáric	255.90	1	2	9507	1.1	75.9	2.6	11.1	2.2	5.1	0.3	1.5	0.2	77.0	2.6	20.4	0.090	0.518	31.177059	-110.968626
T. Izq. Sáric	255.90	3	1	10769	1.2	76.1	2.3	10.5	2.6	5.4	0.3	1.4	0.2	77.3	2.3	20.4	0.076	0.506	31.189500	-110.972577

SONORA

6 CARR: Magdalena de Kino - Nogales

CLAVE: 26444

RUTA: MEX-015

AÑO: 2017

LUGAR	ESTACION				CLASIFICACION VEHICULAR EN PORCIENTO													COORDENADAS		
	KM	TE	SC	TDPA	M	A	B	C2	C3	T3S2	T3S3	T3S2R4	OTROS	A	B	C	K'	D	LATITUD	LONGITUD
T. Izq. Sáric	255.90	3	2	10518	1.4	76.3	2.5	10.4	2.8	5.0	0.2	1.2	0.2	77.7	2.5	19.8	0.082	0.506	31.189513	-110.972494
T. Izq. Libramiento de Nogales (Cuota)	261.00	3	1	12983	0.7	88.9	1.9	6.7	0.4	0.4	0.8	0.1	0.1	89.6	1.9	8.5	0.139	0.504	31.244481	-110.959822
T. Izq. Libramiento de Nogales (Cuota)	261.00	3	2	13193	0.7	89.1	2.2	6.9	0.5	0.3	0.3	0.0	0.0	89.8	2.2	8.0	0.105	0.504	31.247522	-110.957610
T. Izq. Periférico Luis Donaldo Colosio	267.00	1	1	27130	0.5	87.9	2.1	7.2	0.6	0.6	0.9	0.1	0.1	88.4	2.1	9.5	0.076	0.507	31.276115	-110.941568
T. Izq. Periférico Luis Donaldo Colosio	267.00	1	2	27953	0.6	89.2	2.2	6.0	0.6	0.7	0.5	0.1	0.1	89.8	2.2	8.0	0.065	0.507	31.276066	-110.941420
Nogales	272.70	1	1	13039	0.4	82.1	2.7	9.1	2.2	2.8	0.4	0.2	0.1	82.5	2.7	14.8	0.067	0.558	31.281603	-110.939053
Nogales	272.70	1	2	16446	0.5	82.6	3.2	8.8	2.0	2.3	0.3	0.2	0.1	83.1	3.2	13.7	0.067	0.558	31.281630	-110.939207

7 CARR: Moctezuma - Agua Prieta

CLAVE: 26027

RUTA: MEX-017

AÑO: 2017

LUGAR	ESTACION				CLASIFICACION VEHICULAR EN PORCIENTO													COORDENADAS		
	KM	TE	SC	TDPA	M	A	B	C2	C3	T3S2	T3S3	T3S2R4	OTROS	A	B	C	K'	D	LATITUD	LONGITUD
Moctezuma	0.00	3	0	1778	0.5	76.6	1.3	16.9	2.1	1.4	0.6	0.3	0.3	77.1	1.3	21.6	0.097	0.524	29.826331	-109.676604
Nacozeni de García	81.00	3	0	2054	0.7	72.8	2.1	19.9	1.7	1.6	0.5	0.4	0.3	73.5	2.1	24.4	0.087	0.505	30.387725	-109.693478
Turicachi	111.00	1	0	1864	0.6	68.6	2.7	20.0	1.9	1.9	1.2	2.4	0.7	69.2	2.7	28.1	0.106	0.502	30.653680	-109.596109
T. C. Imuris - Agua Prieta	197.60	1	0	4067	1.1	77.0	2.8	13.3	1.5	1.8	0.8	1.5	0.2	78.1	2.8	19.1	0.083	0.501	31.308690	-109.581929

8 CARR: Ramal a Naco

CLAVE: 26579

RUTA: MEX-002

AÑO: 2017

LUGAR	ESTACION				CLASIFICACION VEHICULAR EN PORCIENTO													COORDENADAS		
	KM	TE	SC	TDPA	M	A	B	C2	C3	T3S2	T3S3	T3S2R4	OTROS	A	B	C	K'	D	LATITUD	LONGITUD
T. C. Imuris - Agua Prieta	0.00	3	0	1319	0.3	78.8	2.5	16.0	1.1	1.2	0.1	0.0	0.0	79.1	2.5	18.4	0.089	0.509	31.211007	-109.909430
Naco	14.00																			

9 CARR: Ramal a Puerta de México

CLAVE: 26577

RUTA: MEX-002

AÑO: 2017

LUGAR	ESTACION				CLASIFICACION VEHICULAR EN PORCIENTO													COORDENADAS		
	KM	TE	SC	TDPA	M	A	B	C2	C3	T3S2	T3S3	T3S2R4	OTROS	A	B	C	K'	D	LATITUD	LONGITUD
T. C. Sonoita - Mexicali	0.00	3	0	11155	0.7	89.5	0.1	9.2	0.3	0.1	0.1	0.0	0.0	90.2	0.1	9.7	0.094	0.538	31.868787	-112.832491
Frontera E.U.A	3.30																			

SONORA

10 CARR: Sonoita - Mexicali

CLAVE: 00081

RUTA: MEX-002

AÑO: 2017

LUGAR	ESTACION				CLASIFICACION VEHICULAR EN PORCIENTO													COORDENADAS		
	KM	TE	SC	TDPA	M	A	B	C2	C3	T3S2	T3S3	T3S2R4	OTROS	A	B	C	K'	D	LATITUD	LONGITUD
Sonoita	0.00	3	0	4318	1.9	45.4	6.3	8.3	2.1	24.1	3.1	8.1	0.7	47.3	6.3	46.4	0.058	0.546	31.885249	-112.857503
Los Vidrios	58.75	3	0	3461	2.3	38.6	6.6	7.2	2.5	27.8	5.4	8.6	1.0	40.9	6.6	52.5	0.061	0.538	32.027432	-113.423699
San Luis Río Colorado	191.80	1	0	4263	3.2	48.8	6.7	9.0	2.1	20.6	2.5	6.2	0.9	52.0	6.7	41.3	0.056	0.505	32.451770	-114.677541
San Luis Río Colorado	191.80	3	1	10092	0.6	80.5	1.8	8.6	0.5	5.2	0.9	1.7	0.2	81.1	1.8	17.1	0.074	0.501	32.488429	-114.798166
San Luis Río Colorado	191.80	3	2	10120	0.5	80.2	1.9	8.6	0.5	5.4	1.0	1.7	0.2	80.7	1.9	17.4	0.078	0.501	32.488572	-114.798112
Lim. Edos. Term. Son. Ppia. B.C.	203.69																			
X. C. Mexicali - Algodones	206.78	1	1	10760	0.5	79.2	1.7	10.0	0.6	5.2	0.9	1.7	0.2	79.7	1.7	18.6	0.071	0.502	32.498500	-114.831550
X. C. Mexicali - Algodones	206.78	1	2	10664	0.5	78.8	1.7	10.0	0.8	5.6	0.7	1.7	0.2	79.3	1.7	19.0	0.077	0.502	32.498563	-114.831524
X. C. Mexicali - Algodones	206.78	3	1	8850	0.5	78.6	1.9	8.6	0.7	6.3	1.1	2.1	0.2	79.1	1.9	19.0	0.075	0.506	32.507571	-114.861438
X. C. Mexicali - Algodones	206.78	3	2	9051	0.5	78.3	1.9	8.9	0.8	6.6	0.8	2.0	0.2	78.8	1.9	19.3	0.074	0.506	32.507572	-114.861438
T. Izq. Ejido Hermosillo	214.80	3	1	7526	0.6	77.1	2.2	8.8	0.9	6.3	1.6	1.9	0.6	77.7	2.2	20.1	0.072	0.508	32.527626	-114.928973
T. Izq. Ejido Hermosillo	214.80	3	2	7768	0.4	75.2	2.4	9.5	1.0	7.0	1.8	2.1	0.6	75.6	2.4	22.0	0.080	0.508	32.527502	-114.929001
Ejido Monterrey	228.63	3	1	10989	0.3	78.8	2.0	8.6	0.8	6.4	1.0	1.8	0.3	79.1	2.0	18.9	0.067	0.503	32.552060	-115.087606
Ejido Monterrey	228.63	3	2	11110	0.3	80.3	1.8	7.3	0.9	6.5	0.8	1.7	0.4	80.6	1.8	17.6	0.070	0.503	32.552060	-115.087606
X. C. Mexicali - Algodones	256.47	1	1	14291	0.6	83.0	1.6	10.0	0.8	2.8	0.4	0.7	0.1	83.6	1.6	14.8	0.071	0.502	32.565227	-115.326374
X. C. Mexicali - Algodones	256.47	1	2	14415	0.5	84.4	1.3	8.6	0.9	3.0	0.5	0.7	0.1	84.9	1.3	13.8	0.072	0.502	32.565217	-115.326378
T. C. Mexicali - San Felipe	265.12																			

11 CARR: Sonoita - Puerto Peñasco

CLAVE: 26232

RUTA: MEX-002

AÑO: 2017

LUGAR	ESTACION				CLASIFICACION VEHICULAR EN PORCIENTO													COORDENADAS			
	KM	TE	SC	TDPA	M	A	B	C2	C3	T3S2	T3S3	T3S2R4	OTROS	A	B	C	K'	D	LATITUD	LONGITUD	
Sonoita	0.00	3	0	1963	0.3	79.6	0.5	15.8	2.5	1.0	0.1	0.2	0.0	79.9	0.5	19.6	0.107	0.524	31.862384	-112.876873	
Puerto Peñasco	100.40																				

12 CARR: Cd. Obregón - Guaymas (Cuota)

CLAVE: 26444

RUTA: MEX-015D

AÑO: 2017

LUGAR	ESTACION				CLASIFICACION VEHICULAR EN PORCIENTO													COORDENADAS			
	KM	TE	SC	TDPA	M	A	B	C2	C3	T3S2	T3S3	T3S2R4	OTROS	A	B	C	K'	D	LATITUD	LONGITUD	
Cd. Obregón	0.00																				
Esperanza	7.96	1	1	9007	1.7	67.5	4.6	9.7	2.6	8.0	2.6	2.4	0.9	69.2	4.6	26.2	0.090	0.524	27.563357	-109.927089	
Esperanza	7.96	1	2	9934	1.5	65.6	5.2	10.8	2.9	7.7	3.1	2.4	0.8	67.1	5.2	27.7	0.085	0.524	27.563362	-109.927228	
Esperanza	7.96	3	1	5177	1.2	60.7	4.8	5.9	3.2	13.6	4.5	5.6	0.5	61.9	4.8	33.3	0.069	0.532	27.596668	-109.931601	
Esperanza	7.96	3	2	4563	1.3	56.2	6.0	6.7	4.2	14.7	3.3	7.1	0.5	57.5	6.0	36.5	0.072	0.532	27.596543	-109.931725	
Caseta de Cobro Esperanza	10.70	2	1	2927	0.1	59.4	6.0	3.2	2.3	18.2	1.9	8.0	0.9	59.5	6.0	34.5	0.086	0.500	27.603716	-109.939117	

SONORA

12 CARR: Cd. Obregón - Guaymas (Cuota)

CLAVE: 26444

RUTA: MEX-015D

AÑO: 2017

LUGAR	ESTACION				CLASIFICACION VEHICULAR EN PORCIENTO														COORDENADAS	
	KM	TE	SC	TDPA	M	A	B	C2	C3	T3S2	T3S3	T3S2R4	OTROS	A	B	C	K'	D	LATITUD	LONGITUD
Caseta de Cobro Esperanza	10.70	2	2	2927	0.1	59.4	6.0	3.2	2.3	18.2	1.9	8.0	0.9	59.5	6.0	34.5	0.086	0.500	27.603716	-109.939117
T. Der. Estación Corral	13.80	1	1	3845	1.2	58.2	8.1	7.6	3.0	14.2	2.8	4.2	0.7	59.4	8.1	32.5	0.089	0.503	27.611229	-109.946589
T. Der. Estación Corral	13.80	1	2	3792	0.8	53.5	9.1	8.2	3.5	16.8	3.1	4.3	0.7	54.3	9.1	36.6	0.085	0.503	27.611156	-109.946744
T. Der. Estación Corral	13.80	3	1	3725	0.8	45.4	8.0	15.3	4.9	15.1	2.6	7.5	0.4	46.2	8.0	45.8	0.082	0.513	27.618552	-109.963023
T. Der. Estación Corral	13.80	3	2	3932	0.7	47.9	7.4	10.0	4.4	16.5	5.2	7.0	0.9	48.6	7.4	44.0	0.080	0.513	27.618411	-109.962971
T. Izq. Bécum	25.46	1	1	4523	1.0	53.9	6.6	9.0	3.7	15.0	4.1	5.9	0.8	54.9	6.6	38.5	0.079	0.529	27.599762	-110.072252
T. Izq. Bécum	25.46	1	2	4022	0.6	48.4	7.6	9.6	3.8	17.9	4.6	6.7	0.8	49.0	7.6	43.4	0.083	0.529	27.599597	-110.072179
T. Izq. Bécum	25.46	3	1	5722	0.9	64.7	5.7	6.9	2.0	11.2	3.2	4.8	0.6	65.6	5.7	28.7	0.092	0.521	27.598494	-110.093520
T. Izq. Bécum	25.46	3	2	5255	0.6	61.1	6.0	7.9	2.3	12.5	3.7	5.3	0.6	61.7	6.0	32.3	0.109	0.521	27.598342	-110.093574
Vícam	47.28	3	1	5442	1.1	68.0	5.4	7.9	2.3	9.2	2.4	3.0	0.7	69.1	5.4	25.5	0.112	0.513	27.645776	-110.303502
Vícam	47.28	3	2	5736	2.1	62.7	5.9	8.7	2.6	10.8	2.7	3.7	0.8	64.8	5.9	29.3	0.093	0.513	27.645667	-110.303595
T. Izq. Pótam	57.40	1	1	5623	1.5	60.4	5.5	7.8	3.7	11.1	4.5	4.4	1.1	61.9	5.5	32.6	0.096	0.522	27.695383	-110.364654
T. Izq. Pótam	57.40	1	2	5139	0.7	58.2	5.7	8.8	4.1	11.6	4.8	5.0	1.1	58.9	5.7	35.4	0.102	0.522	27.695323	-110.364746
T. Izq. Pótam	57.40	3	1	4894	1.9	58.8	5.7	7.6	3.5	14.5	2.8	4.4	0.8	60.7	5.7	33.6	0.110	0.501	27.703241	-110.370085
T. Izq. Pótam	57.40	3	2	4875	1.6	56.9	5.4	7.6	3.4	15.6	2.9	5.7	0.9	58.5	5.4	36.1	0.101	0.501	27.703179	-110.370182
T. Der. Libramiento de Guaymas	107.70	1	1	6268	1.2	61.9	5.4	10.1	1.7	11.5	3.2	4.1	0.9	63.1	5.4	31.5	0.082	0.508	27.951630	-110.741191
T. Der. Libramiento de Guaymas	107.70	1	2	6462	1.7	65.5	4.2	6.5	2.2	12.6	2.6	3.8	0.9	67.2	4.2	28.6	0.097	0.508	27.951323	-110.741148

13 CARR: Hermosillo - Magdalena de Kino (Cuota)

CLAVE: 26444

RUTA: MEX-015D

AÑO: 2017

LUGAR	ESTACION				CLASIFICACION VEHICULAR EN PORCIENTO														COORDENADAS	
	KM	TE	SC	TDPA	M	A	B	C2	C3	T3S2	T3S3	T3S2R4	OTROS	A	B	C	K'	D	LATITUD	LONGITUD
Hermosillo	0.00	3	1	15353	1.2	77.7	2.1	8.6	1.4	5.6	1.0	2.0	0.4	78.9	2.1	19.0	0.087	0.507	29.116426	-110.912221
Hermosillo	0.00	3	2	15798	0.7	75.8	2.3	9.6	1.5	6.1	1.2	2.4	0.4	76.5	2.3	21.2	0.114	0.507	29.116417	-110.912429
T. Der. Ures	8.60	1	1	12888	1.0	71.1	3.4	11.1	1.6	6.7	1.6	3.0	0.5	72.1	3.4	24.5	0.077	0.509	29.149369	-110.909508
T. Der. Ures	8.60	1	2	13383	0.7	73.0	2.9	9.8	1.4	7.6	1.1	3.1	0.4	73.7	2.9	23.4	0.106	0.509	29.149357	-110.909731
T. Der. Ures	8.60	3	1	9007	1.9	68.0	3.0	15.1	1.6	5.9	1.2	3.0	0.3	69.9	3.0	27.1	0.076	0.505	29.173678	-110.916091
T. Der. Ures	8.60	3	2	9188	0.7	70.2	2.8	13.2	1.4	7.4	1.1	2.9	0.3	70.9	2.8	26.3	0.104	0.505	29.173597	-110.916249
Caseta de Cobro Hermosillo	15.20	2	1	5274	0.1	80.9	2.4	1.9	1.0	8.4	0.9	4.0	0.4	81.0	2.4	16.6	0.086	0.500	29.220739	-110.930199
Caseta de Cobro Hermosillo	15.20	2	2	5274	0.1	80.9	2.4	1.9	1.0	8.4	0.9	4.0	0.4	81.0	2.4	16.6	0.086	0.500	29.220739	-110.930199
T. Der. Pesqueira	32.39	3	1	5649	1.4	61.2	4.1	9.9	1.5	13.0	2.1	6.0	0.8	62.6	4.1	33.3	0.079	0.507	29.374946	-110.973018
T. Der. Pesqueira	32.39	3	2	5489	0.3	57.1	4.4	11.5	1.6	15.1	2.4	6.8	0.8	57.4	4.4	38.2	0.101	0.507	29.374864	-110.973218
T. Der. Carbó	68.90	1	1	5560	1.4	57.6	4.3	10.9	1.9	14.5	2.0	6.7	0.7	59.0	4.3	36.7	0.079	0.513	29.683194	-111.042103
T. Der. Carbó	68.90	1	2	5273	0.3	59.7	4.0	10.1	1.3	14.5	2.5	6.7	0.9	60.0	4.0	36.0	0.100	0.513	29.683170	-111.042523
T. Der. Carbó	68.90	3	1	5274	1.5	60.4	4.2	10.2	1.5	13.0	2.1	6.4	0.7	61.9	4.2	33.9	0.080	0.507	29.692357	-111.044161

SONORA

13 CARR: Hermosillo - Magdalena de Kino (Cuota)

CLAVE: 26444

RUTA: MEX-015D

AÑO: 2017

LUGAR	ESTACION				CLASIFICACION VEHICULAR EN PORCIENTO														COORDENADAS	
	KM	TE	SC	TDPA	M	A	B	C2	C3	T3S2	T3S3	T3S2R4	OTROS	A	B	C	K'	D	LATITUD	LONGITUD
T. Der. Carbó	68.90	3	2	5124	0.3	57.6	4.6	11.2	1.7	14.6	2.4	6.7	0.9	57.9	4.6	37.5	0.100	0.507	29.692314	-111.044565
T. Izq. Benjamín Hill	125.40	1	1	5536	0.8	62.2	4.0	10.7	1.3	12.2	2.1	5.8	0.9	63.0	4.0	33.0	0.086	0.520	30.163497	-111.097181
T. Izq. Benjamín Hill	125.40	1	2	5113	0.3	64.3	3.9	10.8	1.4	9.5	1.8	7.5	0.5	64.6	3.9	31.5	0.108	0.520	30.163507	-111.097495
T. Izq. Benjamín Hill	125.40	3	1	6235	0.5	56.8	4.2	12.7	1.4	14.1	2.4	7.1	0.8	57.3	4.2	38.5	0.077	0.544	30.178940	-111.097278
T. Izq. Benjamín Hill	125.40	3	2	5220	0.3	55.7	4.3	13.1	1.5	14.2	2.6	7.5	0.8	56.0	4.3	39.7	0.089	0.544	30.178927	-111.097586
Santa Ana	167.27	1	1	8024	1.5	65.5	3.3	9.9	1.6	10.8	1.7	5.0	0.7	67.0	3.3	29.7	0.070	0.511	30.534399	-111.116762
Santa Ana	167.27	1	2	7690	2.2	66.7	3.6	9.2	1.8	11.0	1.6	2.8	1.1	68.9	3.6	27.5	0.084	0.511	30.534160	-111.117006
Santa Ana	167.27	3	1	6554	0.4	67.4	2.2	9.7	1.3	11.2	1.5	5.7	0.6	67.8	2.2	30.0	0.068	0.532	30.557240	-111.099105
Santa Ana	167.27	3	2	5765	1.9	69.1	3.2	15.6	1.2	5.4	1.6	1.0	1.0	71.0	3.2	25.8	0.102	0.532	30.559327	-111.097853
Magdalena de Kino	181.30	1	1	3299	0.5	81.2	1.4	13.2	1.7	1.9	0.1	0.0	0.0	81.7	1.4	16.9	0.087	0.506	30.621671	-110.983104
Magdalena de Kino	181.30	1	2	3217	0.8	84.7	1.1	9.4	1.4	2.2	0.3	0.0	0.1	85.5	1.1	13.4	0.091	0.506	30.621938	-110.983053

14 CARR: Libramiento de Empalme - Guaymas (Cuota)

CLAVE: 26256

RUTA: MEX-015D

AÑO: 2017

LUGAR	ESTACION				CLASIFICACION VEHICULAR EN PORCIENTO														COORDENADAS	
	KM	TE	SC	TDPA	M	A	B	C2	C3	T3S2	T3S3	T3S2R4	OTROS	A	B	C	K'	D	LATITUD	LONGITUD
T. C. Cd. Obregón - Hermosillo	0.00	3	1	3471	1.7	53.2	4.4	4.5	3.0	20.4	4.3	7.8	0.7	54.9	4.4	40.7	0.084	0.506	27.957650	-110.754564
T. C. Cd. Obregón - Hermosillo	0.00	3	2	3389	1.0	49.7	5.0	4.7	3.3	22.9	4.8	7.9	0.7	50.7	5.0	44.3	0.083	0.506	27.957456	-110.754855
T. C. Cd. Obregón - Hermosillo	21.50	1	1	3332	1.3	48.2	6.1	8.4	2.6	20.7	3.5	8.8	0.4	49.5	6.1	44.4	0.093	0.515	28.038225	-110.932932
T. C. Cd. Obregón - Hermosillo	21.50	1	2	3538	0.4	51.7	4.8	10.3	2.0	20.3	2.2	7.8	0.5	52.1	4.8	43.1	0.089	0.515	28.038043	-110.932981

15 CARR: Libramiento de Magdalena de Kino (Cuota)

CLAVE:

RUTA: MEX-015D

AÑO: 2017

LUGAR	ESTACION				CLASIFICACION VEHICULAR EN PORCIENTO														COORDENADAS	
	KM	TE	SC	TDPA	M	A	B	C2	C3	T3S2	T3S3	T3S2R4	OTROS	A	B	C	K'	D	LATITUD	LONGITUD
T. C. Hermosillo - Nogales	181.30	3	1	4399	1.5	56.5	3.0	10.9	2.7	15.7	2.0	7.3	0.4	58.0	3.0	39.0	0.093	0.514	30.612215	-110.956722
T. C. Hermosillo - Nogales	181.30	3	2	4165	1.2	53.7	3.3	12.0	3.0	17.0	2.0	7.2	0.6	54.9	3.3	41.8	0.073	0.514	30.612153	-110.956666
T. C. Hermosillo - Nogales	193.00	1	1	4265	1.1	68.0	3.0	12.2	2.1	8.1	1.7	3.3	0.5	69.1	3.0	27.9	0.102	0.502	30.663289	-110.922161
T. C. Hermosillo - Nogales	193.00	1	2	4237	0.7	69.0	2.8	11.6	2.0	8.7	1.8	3.1	0.3	69.7	2.8	27.5	0.078	0.502	30.663614	-110.922303

16 CARR: Libramiento de Nogales (Cuota)

CLAVE: 26100

RUTA: MEX-15D

AÑO: 2017

LUGAR	ESTACION				CLASIFICACION VEHICULAR EN PORCIENTO														COORDENADAS	
	KM	TE	SC	TDPA	M	A	B	C2	C3	T3S2	T3S3	T3S2R4	OTROS	A	B	C	K'	D	LATITUD	LONGITUD
T. C. Hermosillo - Nogales	0.00	3	1	3065	0.5	55.7	0.0	8.9	7.3	24.9	0.2	2.2	0.3	56.2	0.0	43.8	0.138	0.521	31.235558	-110.968795

SONORA

16 CARR: Libramiento de Nogales (Cuota)

CLAVE: 26100

RUTA: MEX-15D

AÑO: 2017

LUGAR	ESTACION				CLASIFICACION VEHICULAR EN PORCIENTO										COORDENADAS					
	KM	TE	SC	TDPA	M	A	B	C2	C3	T3S2	T3S3	T3S2R4	OTROS	A	B	C	K'	D	LATITUD	LONGITUD
T. C. Hermosillo - Nogales	0.00	3	2	3331	0.6	59.5	0.0	8.0	5.8	23.4	0.4	2.0	0.3	60.1	0.0	39.9	0.135	0.521	31.235589	-110.968718
Caseta de Cobro Nogales	4.50	2	1	1044	0.1	68.5	0.5	2.7	0.6	27.3	0.0	0.0	0.3	68.6	0.5	30.9	0.184	0.500	31.247637	-110.972542
Caseta de Cobro Nogales	4.50	2	2	1044	0.1	68.5	0.5	2.7	0.6	27.3	0.0	0.0	0.3	68.6	0.5	30.9	0.184	0.500	31.247637	-110.972542
Frontera E.U.A.	12.50	1	1	1700	0.7	33.9	0.0	10.7	3.5	49.5	0.6	0.1	1.0	34.6	0.0	65.4	0.143	0.530	31.285865	-110.979694
Frontera E.U.A.	12.50	1	2	1918	0.4	43.2	0.0	8.2	2.2	42.0	2.9	0.2	0.9	43.6	0.0	56.4	0.158	0.530	31.285823	-110.979837

17 CARR: Los Mochis - Cd. Obregón (Cuota)

CLAVE: 26444

RUTA: MEX-015D

AÑO: 2017

LUGAR	ESTACION				CLASIFICACION VEHICULAR EN PORCIENTO										COORDENADAS					
	KM	TE	SC	TDPA	M	A	B	C2	C3	T3S2	T3S3	T3S2R4	OTROS	A	B	C	K'	D	LATITUD	LONGITUD
T. C. Topolobampo - Choix	0.00	3	1	9293	2.3	73.2	4.1	9.1	1.6	6.1	0.9	2.5	0.2	75.5	4.1	20.4	0.084	0.509	25.835173	-108.974830
T. C. Topolobampo - Choix	0.00	3	2	9633	4.2	63.3	3.6	19.7	1.8	4.0	0.7	2.5	0.2	67.5	3.6	28.9	0.090	0.509	25.835254	-108.974663
T. Izq. Ahome	17.13	3	1	8443	2.1	76.2	3.7	7.7	1.4	5.2	1.1	2.0	0.6	78.3	3.7	18.0	0.108	0.549	25.945374	-109.053335
T. Izq. Ahome	17.13	3	2	10288	3.5	76.5	3.2	6.3	1.4	5.1	1.1	2.4	0.5	80.0	3.2	16.8	0.109	0.549	25.945402	-109.053246
T. Izq. Coahuilbampo	19.00	1	1	9749	3.6	75.2	3.1	8.1	1.5	4.9	1.0	2.1	0.5	78.8	3.1	18.1	0.105	0.550	25.958299	-109.053443
T. Izq. Coahuilbampo	19.00	1	2	7981	5.1	71.5	4.2	8.5	1.5	5.0	1.0	2.5	0.7	76.6	4.2	19.2	0.100	0.550	25.958322	-109.053648
T. Izq. Coahuilbampo	19.00	3	1	7126	3.0	71.5	4.6	8.7	1.0	6.6	1.4	2.9	0.3	74.5	4.6	20.9	0.086	0.501	25.966225	-109.047519
T. Izq. Coahuilbampo	19.00	3	2	7092	3.3	71.1	4.6	8.2	2.0	6.5	1.1	2.8	0.4	74.4	4.6	21.0	0.086	0.501	25.966391	-109.047573
Poblado Chico	50.00	3	1	4985	2.9	61.4	5.0	7.5	2.5	12.4	3.7	3.8	0.8	64.3	5.0	30.7	0.082	0.508	26.225132	-109.055145
Poblado Chico	50.00	3	2	4834	1.8	57.1	5.9	8.5	2.7	14.3	4.2	4.5	1.0	58.9	5.9	35.2	0.088	0.508	26.225166	-109.055343
T. Der. El Fuerte	54.80	1	1	4928	2.0	62.4	4.9	7.3	2.3	12.4	4.0	3.9	0.8	64.4	4.9	30.7	0.094	0.504	26.261539	-109.044801
T. Der. El Fuerte	54.80	1	2	5014	2.4	58.5	5.7	8.0	2.7	13.1	4.3	4.5	0.8	60.9	5.7	33.4	0.080	0.504	26.261584	-109.044987
T. Der. El Fuerte	54.80	3	1	4907	2.7	59.6	5.4	9.2	2.5	12.0	3.8	4.0	0.8	62.3	5.4	32.3	0.084	0.502	26.276898	-109.040423
T. Der. El Fuerte	54.80	3	2	4945	2.5	56.3	5.7	10.7	2.6	12.9	4.0	4.4	0.9	58.8	5.7	35.5	0.077	0.502	26.276939	-109.040639
Lim. Edos. Term. Sin. Ppia. Son.	69.80																			
T. Izq. Huatabampo	128.50	1	1	3224	2.0	48.1	9.3	10.5	3.7	14.8	3.7	7.3	0.6	50.1	9.3	40.6	0.070	0.529	26.830759	-109.362878
T. Izq. Huatabampo	128.50	1	2	3617	1.4	52.9	9.0	10.0	3.5	13.6	3.4	5.6	0.6	54.3	9.0	36.7	0.077	0.529	26.830729	-109.363163
Caseta de Cobro Estacion Don (La Jaula)	129.90	2	1	2715	0.2	51.9	6.5	3.8	3.0	21.8	2.4	9.1	1.3	52.1	6.5	41.4	0.086	0.500	26.849800	-109.373283
Caseta de Cobro Estacion Don (La Jaula)	129.90	2	2	2715	0.2	51.9	6.5	3.8	3.0	21.8	2.4	9.1	1.3	52.1	6.5	41.4	0.086	0.500	26.849800	-109.373283
Navojoa	155.00	1	1	6832	6.0	51.2	6.8	13.0	4.8	11.1	2.2	4.6	0.3	57.2	6.8	36.0	0.091	0.512	27.039050	-109.436263
Navojoa	155.00	1	2	6508	6.9	48.8	7.0	13.6	4.7	11.7	1.9	5.0	0.4	55.7	7.0	37.3	0.107	0.512	27.039059	-109.436528
Navojoa	155.00	3	1	9462	8.5	61.6	4.8	8.5	2.7	9.0	1.6	3.0	0.3	70.1	4.8	25.1	0.063	0.523	27.105032	-109.448015
Navojoa	155.00	3	2	10376	7.1	63.2	4.8	8.4	2.8	8.8	1.6	3.0	0.3	70.3	4.8	24.9	0.066	0.523	27.105030	-109.448137
T. Izq. Villa Juárez	167.25	3	1	6868	1.8	62.0	5.1	7.3	3.3	12.7	2.7	4.7	0.4	63.8	5.1	31.1	0.073	0.514	27.156610	-109.509043
T. Izq. Villa Juárez	167.25	3	2	6498	2.1	58.7	5.3	8.8	3.6	13.6	2.7	4.8	0.4	60.8	5.3	33.9	0.068	0.514	27.156373	-109.509247

SONORA

17 CARR: Los Mochis - Cd. Obregón (Cuota)

CLAVE: 26444

RUTA: MEX-015D

AÑO: 2017

LUGAR	ESTACION				CLASIFICACION VEHICULAR EN PORCIENTO													COORDENADAS		
	KM	TE	SC	TDPA	M	A	B	C2	C3	T3S2	T3S3	T3S2R4	OTROS	A	B	C	K'	D	LATITUD	LONGITUD
Caseta de Cobro Fundición	195.80	2	1	3753	0.2	64.1	5.3	3.2	2.4	15.6	1.9	6.5	0.8	64.3	5.3	30.4	0.086	0.500	27.320379	-109.719788
Caseta de Cobro Fundición	195.80	2	2	3753	0.2	64.1	5.3	3.2	2.4	15.6	1.9	6.5	0.8	64.3	5.3	30.4	0.086	0.500	27.320379	-109.719788
T. Der. Fundición	196.30	1	1	5325	1.1	58.6	6.4	8.7	2.5	14.3	2.7	5.4	0.3	59.7	6.4	33.9	0.088	0.509	27.327667	-109.728850
T. Der. Fundición	196.30	1	2	5139	1.2	56.1	6.6	9.4	2.7	15.0	2.8	5.9	0.3	57.3	6.6	36.1	0.077	0.509	27.326588	-109.729571
Cd. Obregón	222.70	1	1	13386	1.9	65.9	4.4	8.8	4.0	9.2	2.7	2.8	0.3	67.8	4.4	27.8	0.068	0.504	27.461180	-109.901316
Cd. Obregón	222.70	1	2	13159	2.6	67.8	3.9	6.8	3.9	8.9	3.1	2.7	0.3	70.4	3.9	25.7	0.064	0.504	27.460953	-109.901415

18 CARR: Santa Ana - Sonoita

CLAVE: 26080

RUTA: MEX-002D-MEX

AÑO: 2017

LUGAR	ESTACION				CLASIFICACION VEHICULAR EN PORCIENTO													COORDENADAS		
	KM	TE	SC	TDPA	M	A	B	C2	C3	T3S2	T3S3	T3S2R4	OTROS	A	B	C	K'	D	LATITUD	LONGITUD
Santa Ana	0.00	3	0	8651	1.0	74.5	2.7	12.9	1.0	4.7	1.1	1.6	0.5	75.5	2.7	21.8	0.076	0.505	30.549143	-111.119371
El Ocuca	31.55	1	1	2423	0.8	48.6	6.8	11.3	1.4	19.4	4.3	7.0	0.4	49.4	6.8	43.8	0.084	0.505	30.585616	-111.424143
El Ocuca	31.55	1	2	2472	0.6	50.4	6.0	9.2	1.7	20.0	4.2	7.2	0.7	51.0	6.0	43.0	0.074	0.505	30.585547	-111.424149
El Ocuca	31.55	3	1	2558	0.6	48.8	6.8	9.9	1.7	20.0	4.4	7.4	0.4	49.4	6.8	43.8	0.079	0.506	30.585599	-111.440174
El Ocuca	31.55	3	2	2500	0.8	50.8	6.8	9.9	1.7	20.0	2.8	6.2	1.0	51.6	6.8	41.6	0.068	0.506	30.585456	-111.440160
Altar	72.80	1	1	4748	1.6	63.8	4.1	10.4	1.1	11.7	2.8	4.2	0.3	65.4	4.1	30.5	0.064	0.515	30.710352	-111.830148
Altar	72.80	1	2	4479	0.9	71.7	3.3	4.9	1.3	10.6	3.4	3.0	0.9	72.6	3.3	24.1	0.062	0.515	30.710285	-111.830215
Altar	72.80	3	1	3752	0.9	56.8	4.2	13.5	1.6	13.9	3.4	5.2	0.5	57.7	4.2	38.1	0.071	0.507	30.713360	-111.853430
Altar	72.80	3	2	3652	0.6	60.5	4.4	7.5	1.6	16.9	2.5	4.9	1.1	61.1	4.4	34.5	0.064	0.507	30.713283	-111.853416
T. Izq. Estación Pitiquito	94.28	1	1	4001	1.5	64.2	2.1	6.2	3.2	14.6	2.8	5.0	0.4	65.7	2.1	32.2	0.066	0.505	30.688353	-112.033209
T. Izq. Estación Pitiquito	94.28	1	2	4087	2.8	58.0	4.6	10.1	2.7	15.1	2.2	3.2	1.3	60.8	4.6	34.6	0.060	0.505	30.688251	-112.033156
Caborca	103.83	1	0	10996	1.5	70.3	3.2	9.2	1.4	9.4	1.5	3.0	0.5	71.8	3.2	25.0	0.065	0.509	30.709150	-112.126097
Cozón	180.30	1	0	3664	1.5	38.9	7.6	8.4	2.0	28.0	3.7	9.0	0.9	40.4	7.6	52.0	0.081	0.512	31.283873	-112.535293
Sonoita	253.70	1	0	3512	1.6	40.3	7.3	8.4	2.0	27.0	3.6	8.9	0.9	41.9	7.3	50.8	0.064	0.500	31.846087	-112.859281

19 CARR: Altar - Sáric

CLAVE: 26233

RUTA: SON-064

AÑO: 2017

LUGAR	ESTACION				CLASIFICACION VEHICULAR EN PORCIENTO													COORDENADAS		
	KM	TE	SC	TDPA	M	A	B	C2	C3	T3S2	T3S3	T3S2R4	OTROS	A	B	C	K'	D	LATITUD	LONGITUD
T. C. Santa Ana - Sonoita	0.00	3	0	1239	1.3	74.7	0.3	19.6	2.0	2.0	0.1	0.0	0.0	76.0	0.3	23.7	0.071	0.506	30.722351	-111.831124
Sáric	68.00	1	0	347	0.4	75.7	0.2	21.5	1.7	0.5	0.0	0.0	0.0	76.1	0.2	23.7	0.095	0.509	31.095101	-111.391075

SONORA

20 CARR: Caborca - El Desemboque

CLAVE: 26225

RUTA: SON-037

AÑO: 2017

LUGAR	ESTACION				CLASIFICACION VEHICULAR EN PORCIENTO													COORDENADAS		
	KM	TE	SC	TDPA	M	A	B	C2	C3	T3S2	T3S3	T3S2R4	OTROS	A	B	C	K'	D	LATITUD	LONGITUD
Caborca	0.00	3	0	8057	1.3	79.8	0.9	14.0	1.9	1.3	0.5	0.2	0.1	81.1	0.9	18.0	0.077	0.506	30.708539	-112.182142
T. Der. Productora Nal. de Semillas	4.20	3	0	5664	1.6	75.9	1.4	16.6	1.9	1.6	0.6	0.3	0.1	77.5	1.4	21.1	0.075	0.502	30.703728	-112.207462
T. Izq. Ramal El Deseo	6.90	3	0	4696	1.2	76.8	2.0	15.5	1.5	1.6	0.8	0.4	0.2	78.0	2.0	20.0	0.073	0.501	30.703285	-112.209769
T. Der. El Sahuaro	61.20	3	0	1293	1.0	78.2	1.3	17.1	1.0	1.1	0.2	0.1	0.0	79.2	1.3	19.5	0.078	0.505	30.801029	-112.720166
El Desemboque	102.30																			

21 CARR: Calle 36 Norte - Puerto de La Libertad

CLAVE: 26117

RUTA: SON-029

AÑO: 2017

LUGAR	ESTACION				CLASIFICACION VEHICULAR EN PORCIENTO													COORDENADAS		
	KM	TE	SC	TDPA	M	A	B	C2	C3	T3S2	T3S3	T3S2R4	OTROS	A	B	C	K'	D	LATITUD	LONGITUD
T. C. Hermosillo - Bahía Kino	0.00	3	0	351	4.1	63.0	1.9	23.3	2.5	3.9	0.6	0.5	0.2	67.1	1.9	31.0	0.103	0.504	28.832324	-111.714293
Casas Grandes	45.00	3	0	353	3.9	61.2	1.9	24.4	2.8	4.4	0.7	0.7	0.0	65.1	1.9	33.0	0.108	0.505	29.182725	-111.714309
Puerto de La Libertad	156.00																			

22 CARR: Esperanza - Presa Álvaro Obregón

CLAVE: 26242

RUTA: SON-117

AÑO: 2017

LUGAR	ESTACION				CLASIFICACION VEHICULAR EN PORCIENTO													COORDENADAS		
	KM	TE	SC	TDPA	M	A	B	C2	C3	T3S2	T3S3	T3S2R4	OTROS	A	B	C	K'	D	LATITUD	LONGITUD
Esperanza	0.00	3	0	5319	3.0	71.8	0.7	11.9	3.4	2.4	5.9	0.4	0.5	74.8	0.7	24.5	0.124	0.503	27.583833	-109.917838
T. Der. Los Hornos	17.00	3	0	991	2.8	82.3	0.1	12.8	1.7	0.2	0.1	0.0	0.0	85.1	0.1	14.8	0.200	0.515	27.720740	-109.897582
Presa Álvaro Obregón	32.00																			

23 CARR: Hermosillo - Bahía Kino

CLAVE: 26109

RUTA: SON-100

AÑO: 2017

LUGAR	ESTACION				CLASIFICACION VEHICULAR EN PORCIENTO													COORDENADAS		
	KM	TE	SC	TDPA	M	A	B	C2	C3	T3S2	T3S3	T3S2R4	OTROS	A	B	C	K'	D	LATITUD	LONGITUD
Hermosillo	0.00	3	1	23946	0.8	80.4	0.8	12.0	2.4	2.2	0.4	0.9	0.1	81.2	0.8	18.0	0.080	0.507	29.094736	-111.008156
Hermosillo	0.00	3	2	23322	0.9	78.1	0.9	13.6	2.6	2.4	0.4	1.0	0.1	79.0	0.9	20.1	0.082	0.507	29.094599	-111.008139
T. Der. Aeropuerto	11.00	1	1	12660	1.1	81.7	0.3	9.4	2.2	2.7	0.7	1.8	0.1	82.8	0.3	16.9	0.089	0.512	29.090429	-111.044869
T. Der. Aeropuerto	11.00	1	2	13284	1.0	82.6	0.4	10.1	1.9	2.2	0.4	1.3	0.1	83.6	0.4	16.0	0.088	0.512	29.090281	-111.044829
T. Der. Aeropuerto	11.00	3	1	7473	0.9	74.6	0.6	12.9	4.0	3.9	0.7	2.2	0.2	75.5	0.6	23.9	0.114	0.509	29.087488	-111.056232
T. Der. Aeropuerto	11.00	3	2	7740	0.9	73.8	0.6	14.2	4.0	3.5	0.7	2.1	0.2	74.7	0.6	24.7	0.107	0.509	29.087436	-111.056194
T. Izq. Calle 4 Sur	53.00	3	0	6939	1.0	71.8	1.7	18.1	3.0	2.9	0.5	0.8	0.2	72.8	1.7	25.5	0.091	0.522	28.839452	-111.395893
El Triunfo	55.50	1	0	7518	1.1	73.7	1.6	16.7	2.5	2.6	0.6	1.0	0.2	74.8	1.6	23.6	0.085	0.519	28.839610	-111.427038
T. Der. Calle 36	84.40	1	0	3123	0.6	79.9	1.1	14.2	2.3	1.3	0.3	0.3	0.0	80.5	1.1	18.4	0.134	0.509	28.831349	-111.706737

SONORA

23 CARR: Hermosillo - Bahía Kino

CLAVE: 26109

RUTA: SON-100

AÑO: 2017

LUGAR	ESTACION				CLASIFICACION VEHICULAR EN PORCIENTO													COORDENADAS		
	KM	TE	SC	TDPA	M	A	B	C2	C3	T3S2	T3S3	T3S2R4	OTROS	A	B	C	K'	D	LATITUD	LONGITUD
T. Der. Calle 36	84.40	3	0	2846	0.8	85.1	0.7	11.6	1.3	0.4	0.1	0.0	0.0	85.9	0.7	13.4	0.142	0.510	28.831174	-111.720687
Bahía Kino	106.50	1	0	2864	0.7	86.2	0.6	10.7	1.3	0.3	0.1	0.1	0.0	86.9	0.6	12.5	0.135	0.511	28.828511	-111.928554

24 CARR: Hermosillo - Sahuaripa

CLAVE: 26230

RUTA: SON-020

AÑO: 2017

LUGAR	ESTACION				CLASIFICACION VEHICULAR EN PORCIENTO													COORDENADAS		
	KM	TE	SC	TDPA	M	A	B	C2	C3	T3S2	T3S3	T3S2R4	OTROS	A	B	C	K'	D	LATITUD	LONGITUD
T. C. Libramiento de Hermosillo	0.00	3	1	1771	1.0	73.4	0.5	16.1	3.6	1.9	1.4	1.4	0.7	74.4	0.5	25.1	0.131	0.521	29.030369	-110.897209
T. C. Libramiento de Hermosillo	0.00	3	2	1631	1.3	70.3	0.5	17.6	4.0	2.4	1.7	1.6	0.6	71.6	0.5	27.9	0.092	0.521	29.030434	-110.897209
Mazatán	88.00	1	0	942	1.0	77.7	0.7	17.7	2.1	0.6	0.2	0.0	0.0	78.7	0.7	20.6	0.107	0.546	29.005238	-110.148273
Mazatán	88.00	3	0	814	1.1	78.9	0.4	17.1	1.9	0.4	0.2	0.0	0.0	80.0	0.4	19.6	0.091	0.514	28.998696	-110.137280
Sahuaripa	199.00																			

25 CARR: Hornos - San Nicolás

CLAVE: 26243

RUTA: SON-012

AÑO: 2017

LUGAR	ESTACION				CLASIFICACION VEHICULAR EN PORCIENTO													COORDENADAS		
	KM	TE	SC	TDPA	M	A	B	C2	C3	T3S2	T3S3	T3S2R4	OTROS	A	B	C	K'	D	LATITUD	LONGITUD
Hornos	0.00	3	0	1505	2.6	50.6	0.9	12.1	3.0	5.5	24.4	0.8	0.1	53.2	0.9	45.9	0.126	0.500	27.719260	-109.894945
Rosario	58.00	1	0	1186	3.1	56.6	0.5	5.6	2.2	4.6	26.3	1.0	0.1	59.7	0.5	39.8	0.137	0.503	27.842147	-109.383703
San Nicolás	137.20																			

26 CARR: Huatabampo - Bacabachi

CLAVE: 26237

RUTA: SON-176

AÑO: 2017

LUGAR	ESTACION				CLASIFICACION VEHICULAR EN PORCIENTO													COORDENADAS		
	KM	TE	SC	TDPA	M	A	B	C2	C3	T3S2	T3S3	T3S2R4	OTROS	A	B	C	K'	D	LATITUD	LONGITUD
Huatabampo	0.00	3	0	1882	9.4	61.5	2.5	14.1	5.8	5.2	1.1	0.3	0.1	70.9	2.5	26.6	0.088	0.530	26.825277	-109.596519
T. C. Los Mochis - Cd. Obregón (Cuota)	29.00	1	0	1252	10.3	56.9	3.5	15.4	4.4	7.3	1.7	0.3	0.2	67.2	3.5	29.3	0.090	0.521	26.838741	-109.369868

27 CARR: La Alameda - El Sahuaro

CLAVE: 26234

RUTA: SON-037

AÑO: 2017

LUGAR	ESTACION				CLASIFICACION VEHICULAR EN PORCIENTO													COORDENADAS		
	KM	TE	SC	TDPA	M	A	B	C2	C3	T3S2	T3S3	T3S2R4	OTROS	A	B	C	K'	D	LATITUD	LONGITUD
T. C. Caborca - El Desemboque	0.00	3	0	3208	0.7	71.2	2.5	21.8	1.4	1.4	0.6	0.3	0.1	71.9	2.5	25.6	0.089	0.507	30.813784	-112.730000
Estación El Sahuaro	47.00	1	0	1330	0.7	64.3	3.6	25.0	1.9	2.3	1.2	0.7	0.3	65.0	3.6	31.4	0.103	0.507	31.037126	-112.945690

SONORA

28 CARR: Mazocahui - Cananea

CLAVE: 26118

RUTA: SON-118

AÑO: 2017

LUGAR	ESTACION				CLASIFICACION VEHICULAR EN PORCIENTO													COORDENADAS		
	KM	TE	SC	TDPA	M	A	B	C2	C3	T3S2	T3S3	T3S2R4	OTROS	A	B	C	K'	D	LATITUD	LONGITUD
T. C. Hermosillo - Moctezuma	0.00	3	0	1171	0.4	75.9	0.7	18.2	2.5	1.1	1.1	0.0	0.1	76.3	0.7	23.0	0.081	0.503	29.547043	-110.121324
Baviácora	15.20	3	0	1795	0.6	78.8	1.3	17.5	1.0	0.5	0.3	0.0	0.0	79.4	1.3	19.3	0.083	0.503	29.726670	-110.166409
Arizpe	98.00	1	0	355	1.6	64.3	1.6	25.2	3.6	2.0	1.3	0.1	0.3	65.9	1.6	32.5	0.093	0.514	30.329568	-110.181550
T. C. Imuris - Agua Prieta	204.00	1	0	1875	0.3	71.2	0.8	15.4	7.6	2.7	1.3	0.2	0.5	71.5	0.8	27.7	0.098	0.507	30.987435	-110.259524

29 CARR: Navojoa - Álamos

CLAVE: 26240

RUTA: SON-013

AÑO: 2017

LUGAR	ESTACION				CLASIFICACION VEHICULAR EN PORCIENTO													COORDENADAS		
	KM	TE	SC	TDPA	M	A	B	C2	C3	T3S2	T3S3	T3S2R4	OTROS	A	B	C	K'	D	LATITUD	LONGITUD
Navojoa	0.00	3	0	3783	7.8	71.1	1.7	14.7	2.8	0.8	0.3	0.7	0.1	78.9	1.7	19.4	0.084	0.505	27.074101	-109.409610
Álamos	52.80	1	0	2488	4.9	78.4	1.5	13.8	1.2	0.2	0.0	0.0	0.0	83.3	1.5	15.2	0.084	0.511	27.042754	-108.973838

30 CARR: Navojoa - Yavaros

CLAVE: 26229

RUTA: SON-056

AÑO: 2017

LUGAR	ESTACION				CLASIFICACION VEHICULAR EN PORCIENTO													COORDENADAS		
	KM	TE	SC	TDPA	M	A	B	C2	C3	T3S2	T3S3	T3S2R4	OTROS	A	B	C	K'	D	LATITUD	LONGITUD
Navojoa	0.00	3	1	4868	5.6	76.9	2.7	9.7	2.7	1.5	0.5	0.2	0.2	82.5	2.7	14.8	0.072	0.536	27.040643	-109.466595
Navojoa	0.00	3	2	5630	6.9	77.9	2.2	9.0	2.5	0.9	0.4	0.1	0.1	84.8	2.2	13.0	0.073	0.536	27.040540	-109.466498
Yavaros	55.00	1	0	1781	10.2	71.5	3.9	10.1	3.1	0.7	0.3	0.0	0.2	81.7	3.9	14.4	0.087	0.510	26.706800	-109.546466

31 CARR: Nogales - San Antonio

CLAVE: 26110

RUTA: SON

AÑO: 2017

LUGAR	ESTACION				CLASIFICACION VEHICULAR EN PORCIENTO													COORDENADAS		
	KM	TE	SC	TDPA	M	A	B	C2	C3	T3S2	T3S3	T3S2R4	OTROS	A	B	C	K'	D	LATITUD	LONGITUD
Nogales	0.00																			
San Antonio	58.00	1	0	362	0.9	74.7	1.2	21.4	1.7	0.1	0.0	0.0	0.0	75.6	1.2	23.2	0.124	0.507	31.137779	-110.718060

32 CARR: Ramal a Aeropuerto de Guaymas

CLAVE: 26568

RUTA: SON

AÑO: 2017

LUGAR	ESTACION				CLASIFICACION VEHICULAR EN PORCIENTO													COORDENADAS		
	KM	TE	SC	TDPA	M	A	B	C2	C3	T3S2	T3S3	T3S2R4	OTROS	A	B	C	K'	D	LATITUD	LONGITUD
T. C. Cd. Obregón - Hermosillo	0.00	3	1	5129	2.4	84.3	0.7	6.7	1.6	2.2	0.9	0.9	0.3	86.7	0.7	12.6	0.094	0.522	27.952949	-110.930233
T. C. Cd. Obregón - Hermosillo	0.00	3	2	5589	3.2	82.8	0.9	7.8	1.6	1.6	1.1	0.6	0.4	86.0	0.9	13.1	0.093	0.522	27.953001	-110.930296
Aeropuerto de Guaymas	3.00	3	0	6185	4.0	75.6	1.3	8.5	2.4	3.8	2.1	1.9	0.4	79.6	1.3	19.1	0.069	0.528	27.977943	-110.915173

SONORA

33 CARR: San Luis Río Colorado - Golfo de Santa Clara

CLAVE: 26226

RUTA: SON-040

AÑO: 2017

LUGAR	ESTACION				CLASIFICACION VEHICULAR EN PORCIENTO													COORDENADAS		
	KM	TE	SC	TDPA	M	A	B	C2	C3	T3S2	T3S3	T3S2R4	OTROS	A	B	C	K'	D	LATITUD	LONGITUD
San Luis Río Colorado	0.00	3	1	2443	0.6	80.5	0.5	15.3	0.8	1.0	0.7	0.2	0.4	81.1	0.5	18.4	0.108	0.501	32.438805	-114.848708
San Luis Río Colorado	0.00	3	2	2436	0.9	77.3	0.9	15.9	1.3	1.9	1.1	0.3	0.4	78.2	0.9	20.9	0.087	0.501	32.438805	-114.848708
T. Izq. Lagunitas	25.50	3	0	5841	0.9	79.3	0.9	13.6	1.7	2.3	1.0	0.1	0.2	80.2	0.9	18.9	0.088	0.503	32.321059	-114.948346
Golfo de Santa Clara	114.30	1	0	2299	0.9	75.3	0.9	16.4	3.6	1.8	0.6	0.4	0.1	76.2	0.9	22.9	0.154	0.575	31.706722	-114.524000

34 CARR: Sonoita - Pitiquito

CLAVE: 26022

RUTA: SON

AÑO: 2017

LUGAR	ESTACION				CLASIFICACION VEHICULAR EN PORCIENTO													COORDENADAS		
	KM	TE	SC	TDPA	M	A	B	C2	C3	T3S2	T3S3	T3S2R4	OTROS	A	B	C	K'	D	LATITUD	LONGITUD
Sonoita	0.00	3	0	1118	0.7	86.1	0.2	12.1	0.4	0.2	0.2	0.0	0.1	86.8	0.2	13.0	0.082	0.512	31.854153	-112.826090
Pitiquito	170.00	1	0	570	1.8	53.9	0.9	24.4	2.8	12.5	1.0	2.2	0.5	55.7	0.9	43.4	0.105	0.529	30.722461	-112.094744

35 CARR: San Luis Río Colorado - Golfo de Santa Clara (Cuota)

CLAVE:

RUTA: SON-D

AÑO: 2017

LUGAR	ESTACION				CLASIFICACION VEHICULAR EN PORCIENTO													COORDENADAS			
	KM	TE	SC	TDPA	M	A	B	C2	C3	T3S2	T3S3	T3S2R4	OTROS	A	B	C	K'	D	LATITUD	LONGITUD	
Libramiento de San Luis Río Colorado	0.00																				
Caseta de Cobro Estación Doctor	0.50	2	0	651	1.2	93.6	0.5	1.2	0.5	1.1	0.5	1.2	0.2	94.8	0.5	4.7	0.080	0.500	32.375212	-114.760686	
Golfo de Santa Clara	44.60																				

36 CARR: T. C. (Hermosillo - Nogales) - Huásabas

CLAVE: 26231

RUTA: MEX-014-SON

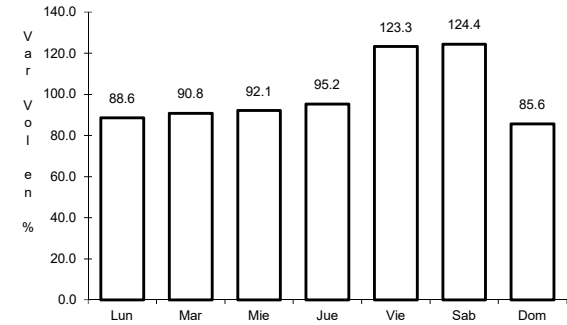
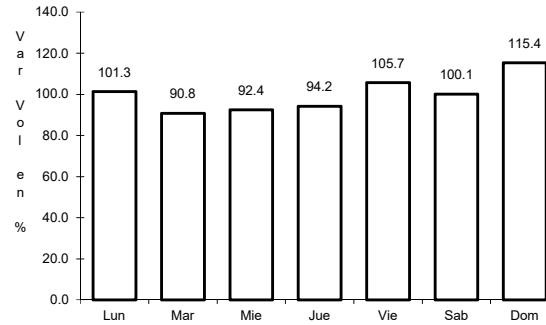
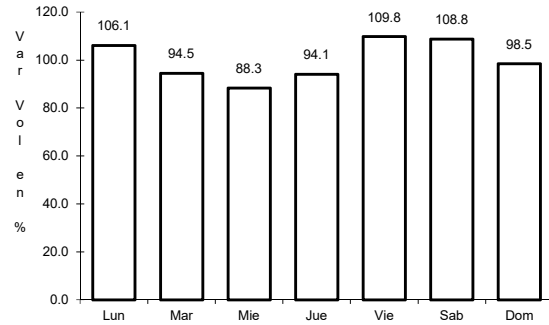
AÑO: 2017

LUGAR	ESTACION				CLASIFICACION VEHICULAR EN PORCIENTO													COORDENADAS		
	KM	TE	SC	TDPA	M	A	B	C2	C3	T3S2	T3S3	T3S2R4	OTROS	A	B	C	K'	D	LATITUD	LONGITUD
T. C. Hermosillo - Nogales	0.00	3	1	8868	0.9	79.6	1.5	15.0	1.0	1.2	0.4	0.3	0.1	80.5	1.5	18.0	0.115	0.513	29.169657	-110.901587
T. C. Hermosillo - Nogales	0.00	3	2	9324	0.8	83.0	0.8	12.2	1.0	1.4	0.4	0.2	0.2	83.8	0.8	15.4	0.137	0.513	29.169747	-110.901680
Ures	62.00	3	0	2250	1.4	81.4	1.3	11.4	1.5	1.7	0.7	0.4	0.2	82.8	1.3	15.9	0.094	0.510	29.429129	-110.376442
Mazocahui	97.50	3	0	1064	2.3	69.1	1.4	17.7	2.4	3.8	1.8	0.6	0.9	71.4	1.4	27.2	0.113	0.502	29.544206	-110.119026
Moctezuma	165.00	1	0	1103	1.0	75.3	1.3	12.1	2.4	4.5	2.0	0.6	0.8	76.3	1.3	22.4	0.115	0.509	29.798666	-109.691842
Moctezuma	165.00	3	0	1471	1.1	76.6	0.6	16.6	1.4	2.2	1.1	0.0	0.4	77.7	0.6	21.7	0.090	0.518	29.801179	-109.668179
Huásabas	212.50	1	0	543	1.1	64.8	1.1	22.1	2.4	4.7	3.3	0.0	0.5	65.9	1.1	33.0	0.098	0.509	29.917695	-109.308627

1 CARR: Guaymas - Hermosillo

CLAVE: 26444

RUTA: MEX-015



Km: 107.70 Tipo: 3 Sent: 0

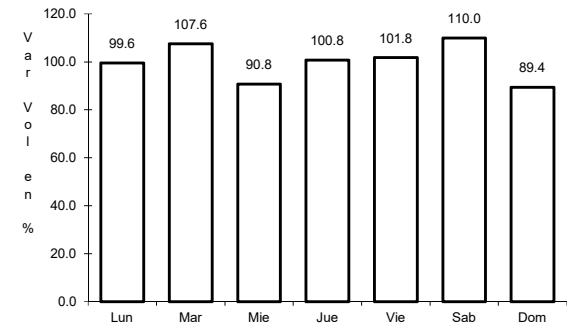
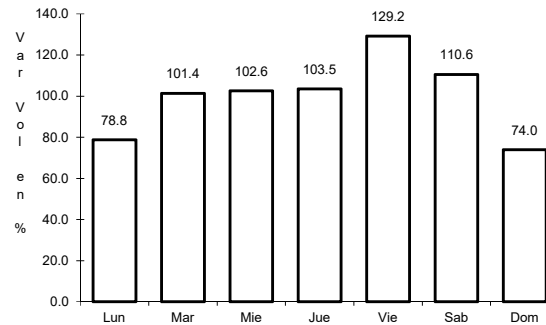
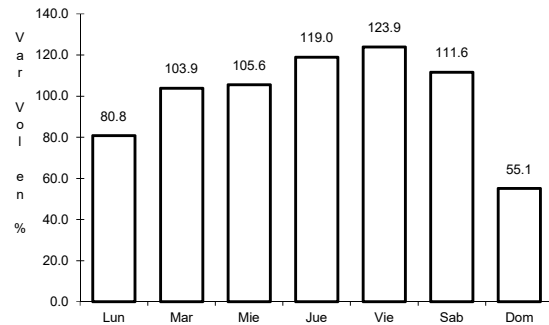
Km: 251.00 Tipo: 1 Sent: 1

Km: 251.00 Tipo: 1 Sent: 2

2 CARR: Hermosillo - Yécora

CLAVE: 26251

RUTA: MEX-016



Km: 4.00 Tipo: 3 Sent: 1

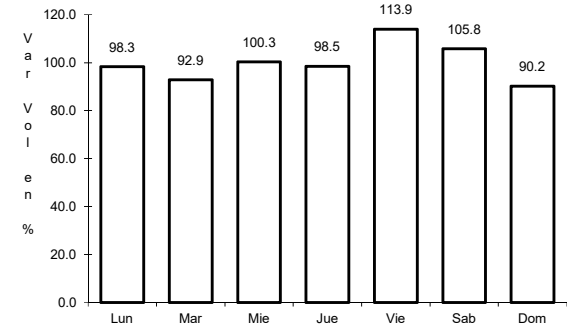
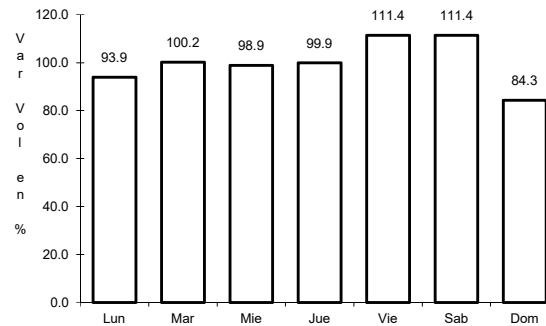
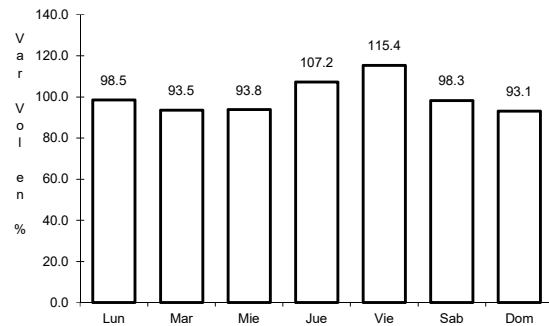
Km: 4.00 Tipo: 3 Sent: 2

Km: 138.00 Tipo: 3 Sent: 0

3 CARR: Imuris - Agua Prieta

CLAVE: 26079

RUTA: MEX-002



Km: 0.00 Tipo: 3 Sent: 0

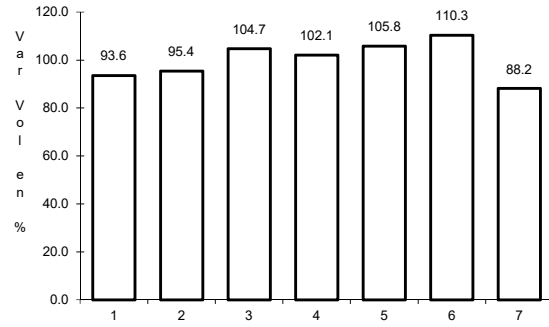
Km: 164.67 Tipo: 1 Sent: 1

Km: 164.67 Tipo: 1 Sent: 2

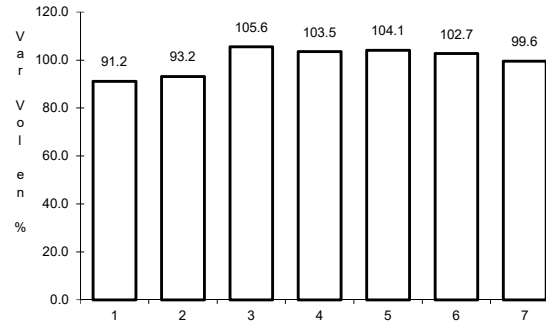
4 CARR: Janos - Agua Prieta

CLAVE: 00220

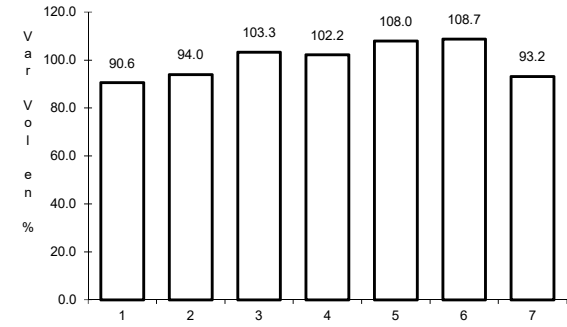
RUTA: MEX-002



Km: 0.00 Tipo: 3 Sent: 0



Km: 56.00 Tipo: 3 Sent: 0

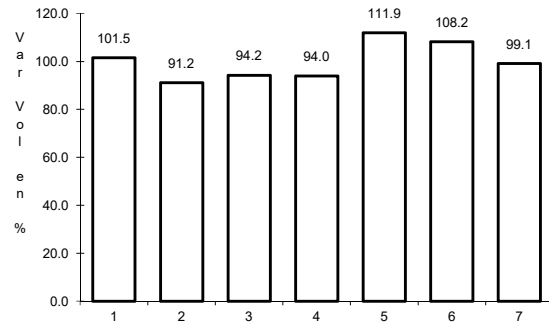


Km: 160.00 Tipo: 1 Sent: 0

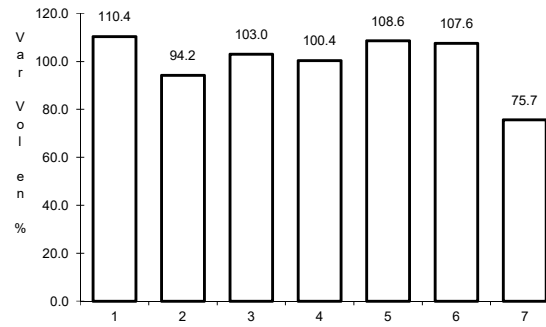
5 CARR: La Junta - Yécora

CLAVE: 00065

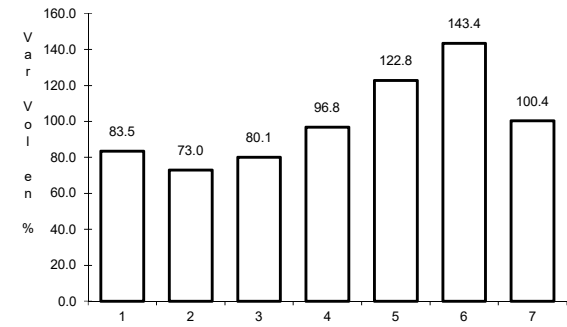
RUTA: MEX-016



Km: 0.00 Tipo: 3 Sent: 0



Km: 70.00 Tipo: 3 Sent: 0

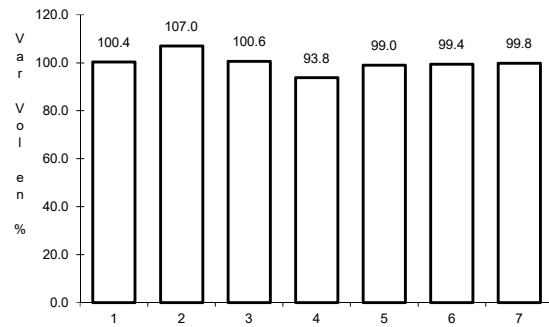


Km: 253.00 Tipo: 1 Sent: 0

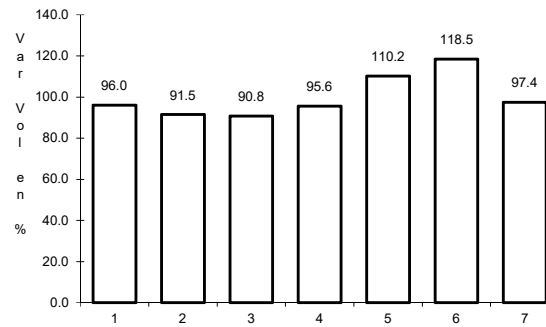
6 CARR: Magdalena de Kino - Nogales

CLAVE: 26444

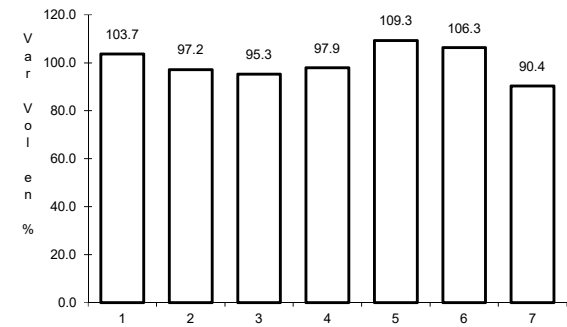
RUTA: MEX-015



Km: 181.30 Tipo: 3 Sent: 1



Km: 181.30 Tipo: 3 Sent: 2

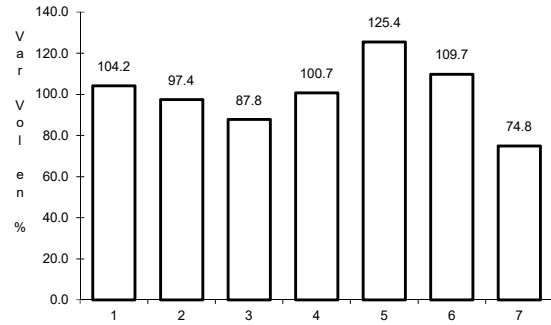


Km: 272.70 Tipo: 1 Sent: 1

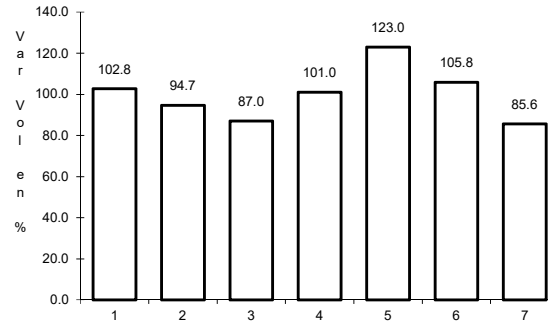
7 CARR: Moctezuma - Agua Prieta

CLAVE: 26027

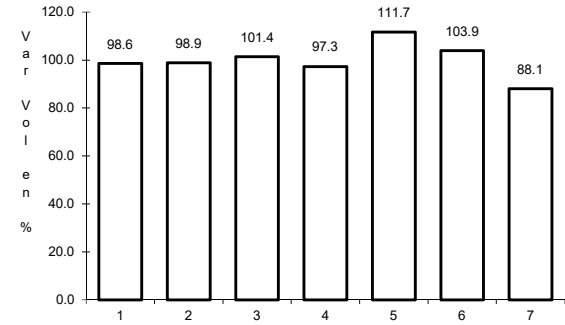
RUTA: MEX-017



Km: 0.00 Tipo: 3 Sent: 0



Km: 81.00 Tipo: 3 Sent: 0

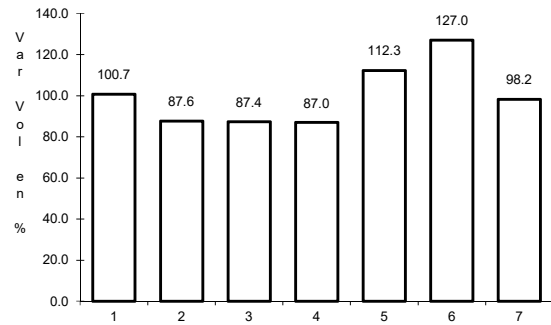


Km: 197.60 Tipo: 1 Sent: 0

8 CARR: Ramal a Naco

CLAVE: 26579

RUTA: MEX-002

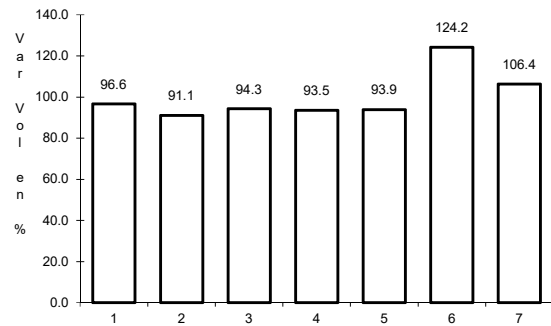


Km: 0.00 Tipo: 3 Sent: 0

9 CARR: Ramal a Puerta de México

CLAVE: 26577

RUTA: MEX-002

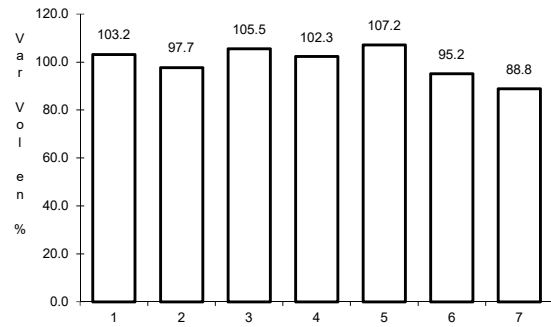


Km: 0.00 Tipo: 3 Sent: 0

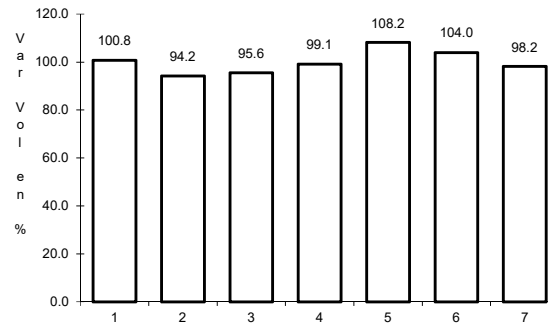
10 CARR: Sonoita - Mexicali

CLAVE: 00081

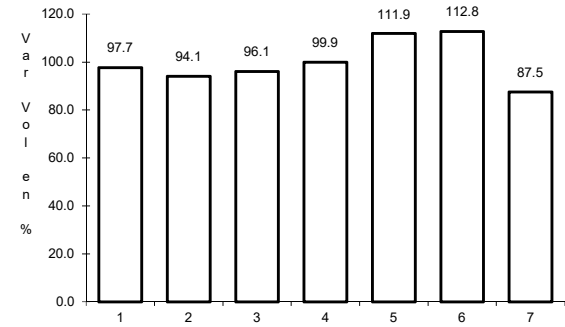
RUTA: MEX-002



Km: 0.00 Tipo: 3 Sent: 0



Km: 256.47 Tipo: 1 Sent: 1

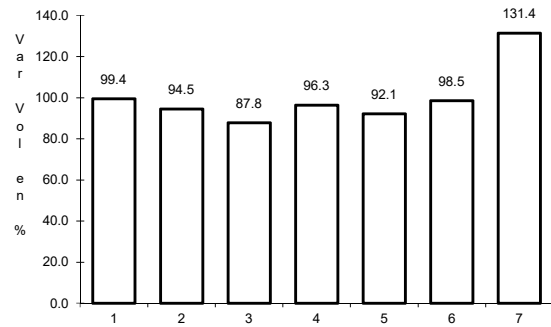


Km: 256.47 Tipo: 1 Sent: 2

11 CARR: Sonoita - Puerto Peñasco

CLAVE: 26232

RUTA: MEX-002

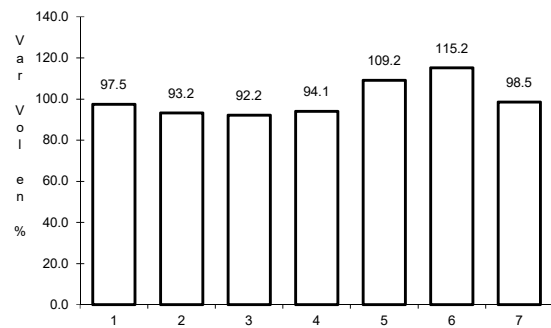


Km: 0.00 Tipo: 3 Sent: 0

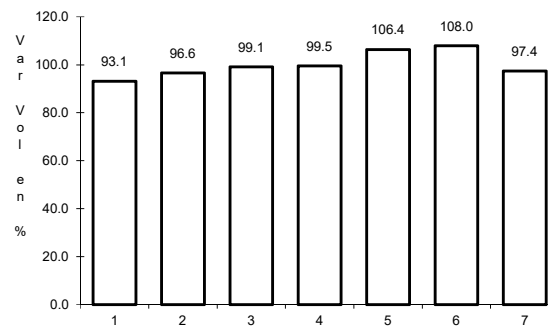
12 CARR: Cd. Obregón - Guaymas (Cuota)

CLAVE: 26444

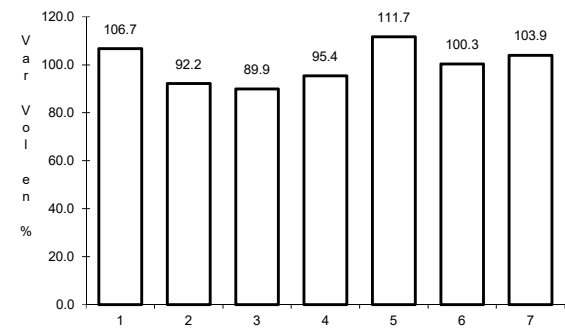
RUTA: MEX-015D



Km: 7.96 Tipo: 1 Sent: 1



Km: 7.96 Tipo: 1 Sent: 2

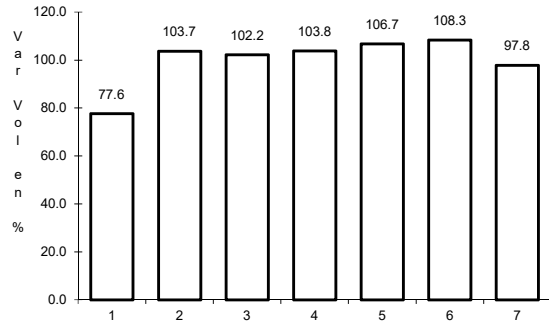


Km: 107.70 Tipo: 1 Sent: 1

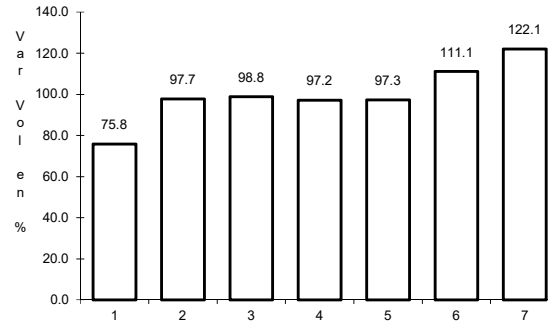
13 CARR: Hermosillo - Magdalena de Kino (Cuota)

CLAVE: 26444

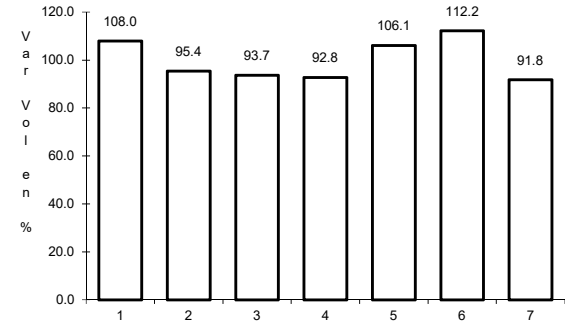
ruta: MEX-015D



Km: 0.00 Tipo: 3 Sent: 1



Km: 0.00 Tipo: 3 Sent: 2

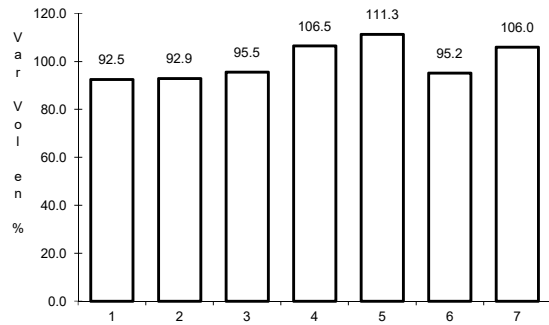


Km: 181.30 Tipo: 1 Sent: 1

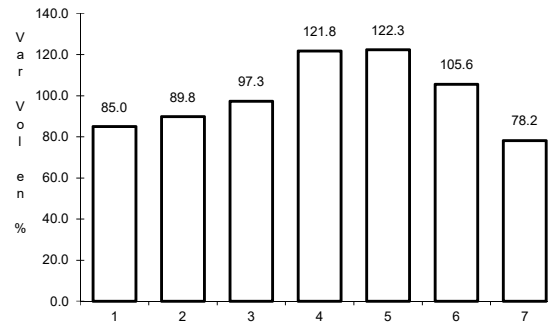
14 CARR: Libramiento de Empalme - Guaymas (Cuota)

CLAVE: 26256

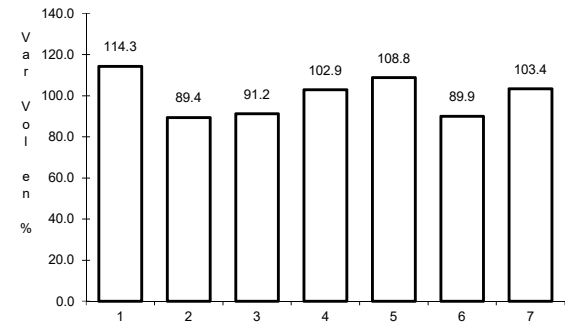
ruta: MEX-015D



Km: 0.00 Tipo: 3 Sent: 1



Km: 0.00 Tipo: 3 Sent: 2

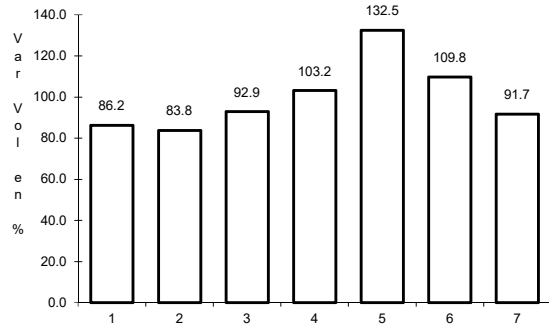


Km: 21.50 Tipo: 1 Sent: 1

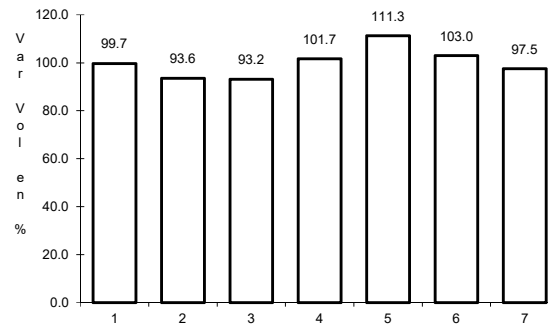
15 CARR: Libramiento de Magdalena de Kino (Cuota)

CLAVE:

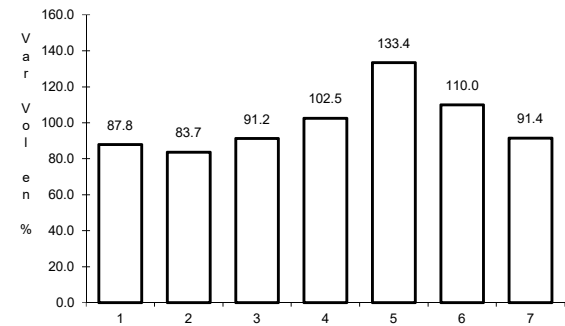
ruta: MEX-015D



Km: 181.30 Tipo: 3 Sent: 1



Km: 181.30 Tipo: 3 Sent: 2

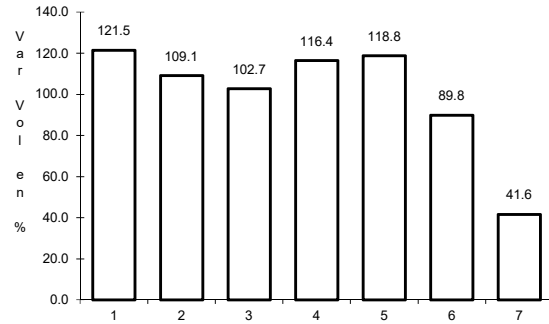


Km: 193.00 Tipo: 1 Sent: 1

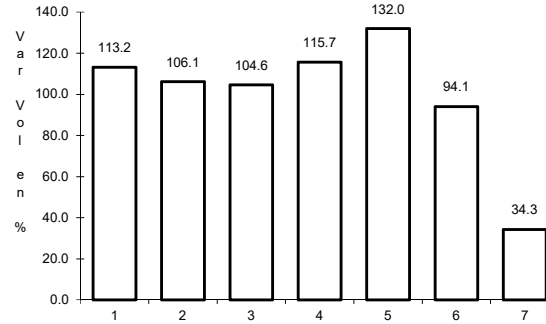
16 CARR: Libramiento de Nogales (Cuota)

CLAVE: 26100

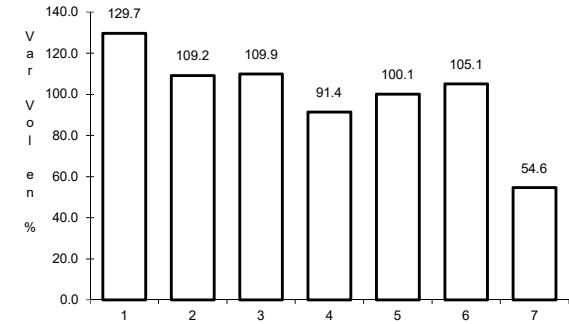
ruta: MEX-15D



Km: 0.00 Tipo: 3 Sent: 1



Km: 0.00 Tipo: 3 Sent: 2

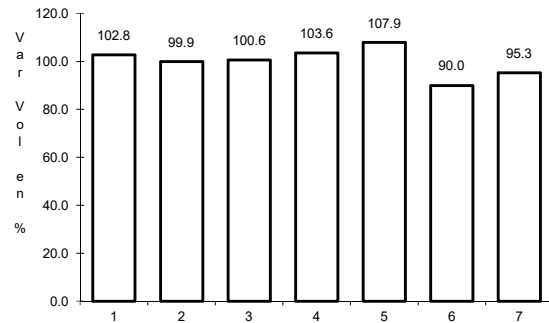


Km: 12.50 Tipo: 1 Sent: 1

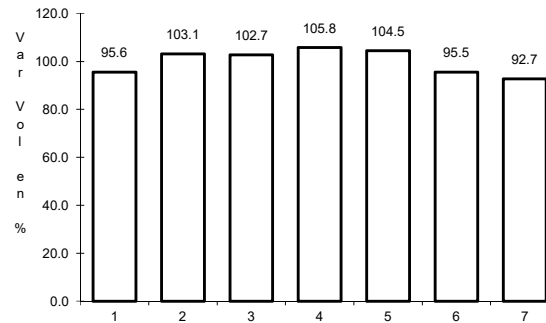
17 CARR: Los Mochis - Cd. Obregón (Cuota)

CLAVE: 26444

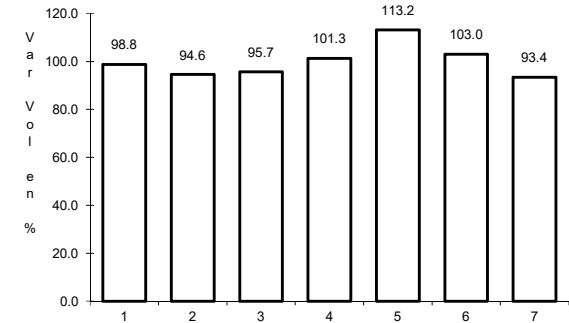
ruta: MEX-015D



Km: 0.00 Tipo: 3 Sent: 1



Km: 0.00 Tipo: 3 Sent: 2

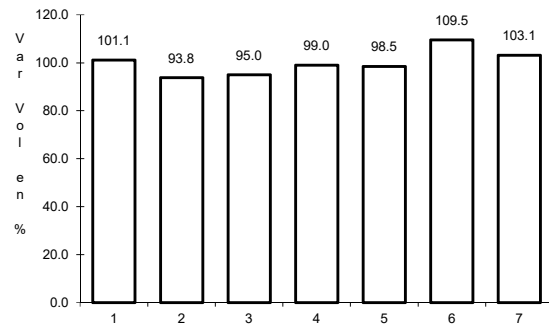


Km: 222.70 Tipo: 1 Sent: 1

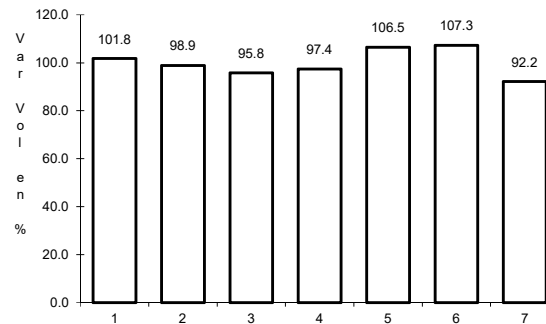
18 CARR: Santa Ana - Sonoita

CLAVE: 26080

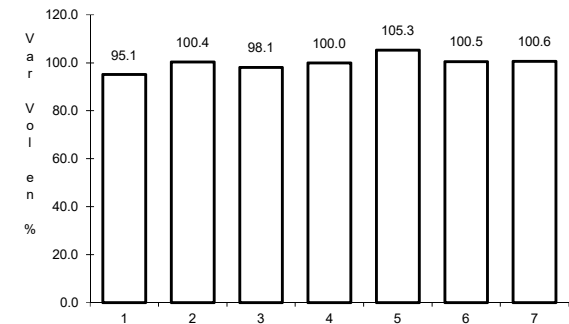
ruta: MEX-002D-MEX



Km: 0.00 Tipo: 3 Sent: 0



Km: 103.83 Tipo: 1 Sent: 0

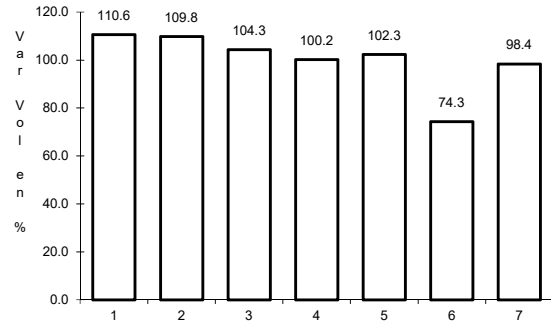


Km: 253.70 Tipo: 1 Sent: 0

19 CARR: Altar - Sáric

CLAVE: 26233

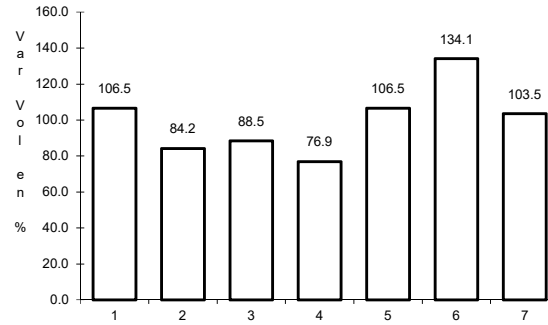
RUTA: SON-064



Km: 0.00

Tipo: 3

Sent: 0



Km: 68.00

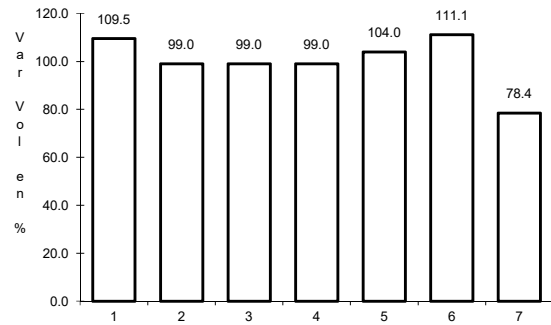
Tipo: 1

Sent: 0

20 CARR: Caborca - El Desemboque

CLAVE: 26225

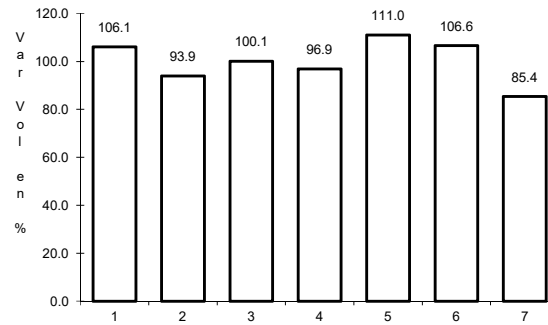
RUTA: SON-037



Km: 0.00

Tipo: 3

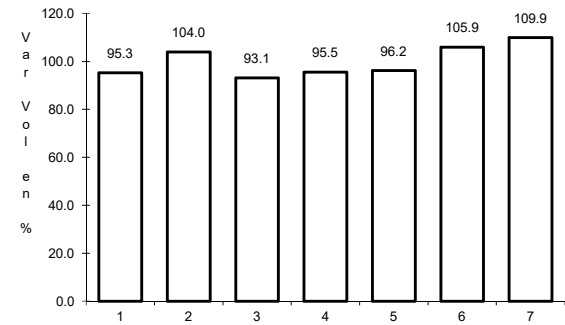
Sent: 0



Km: 6.90

Tipo: 3

Sent: 0



Km: 61.20

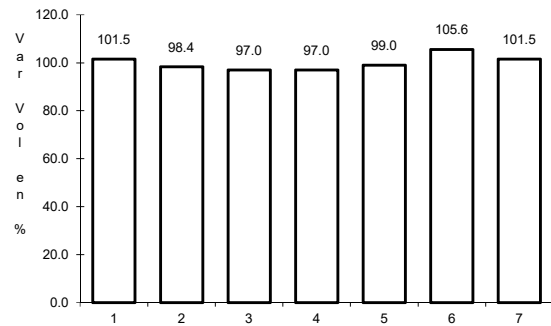
Tipo: 3

Sent: 0

21 CARR: Calle 36 Norte - Puerto de La Libertad

CLAVE: 26117

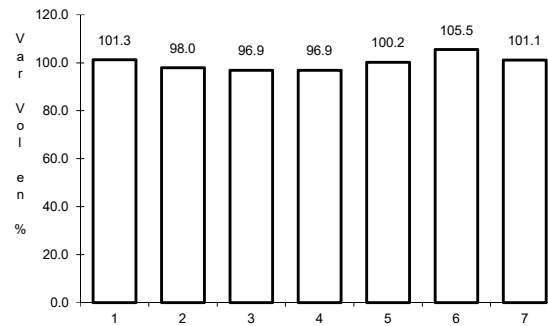
RUTA: SON-029



Km: 0.00

Tipo: 3

Sent: 0



Km: 45.00

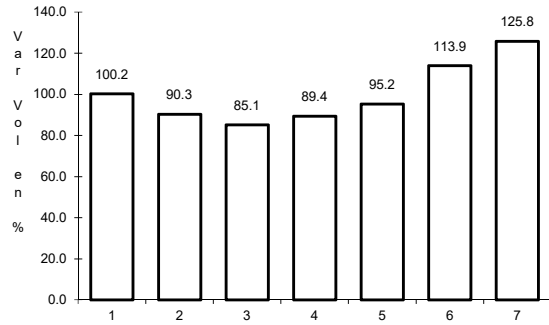
Tipo: 3

Sent: 0

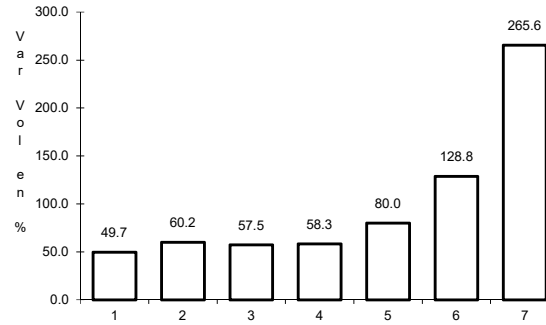
22 CARR: Esperanza - Presa Álvaro Obregón

CLAVE: 26242

RUTA: SON-117



Km: 0.00 Tipo: 3 Sent: 0

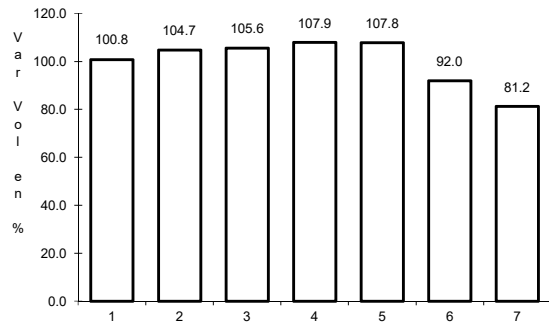


Km: 17.00 Tipo: 3 Sent: 0

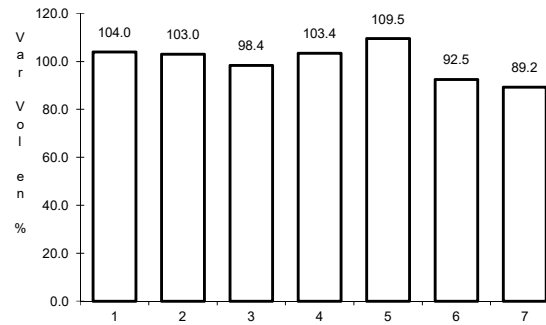
23 CARR: Hermosillo - Bahía Kino

CLAVE: 26109

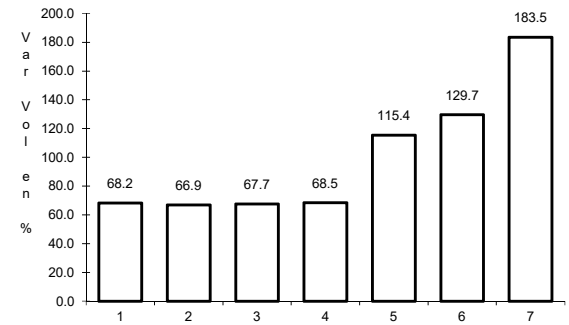
RUTA: SON-100



Km: 0.00 Tipo: 3 Sent: 1



Km: 0.00 Tipo: 3 Sent: 2

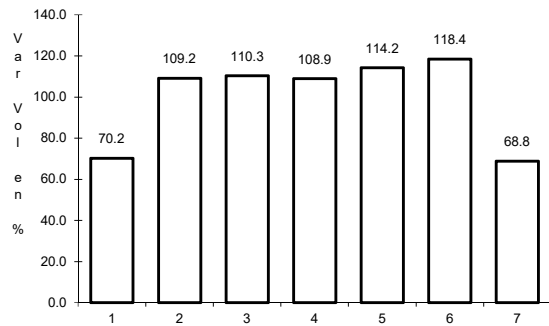


Km: 106.50 Tipo: 1 Sent: 0

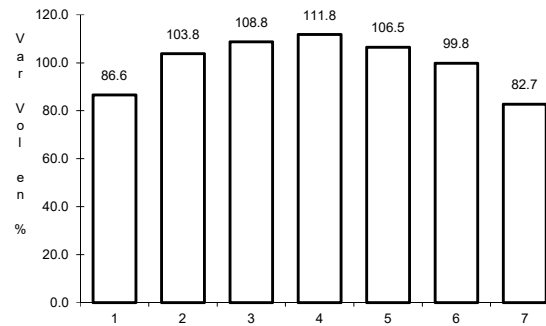
24 CARR: Hermosillo - Sahuaripa

CLAVE: 26230

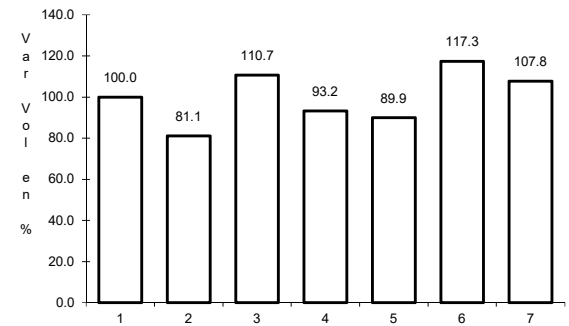
RUTA: SON-020



Km: 0.00 Tipo: 3 Sent: 1



Km: 0.00 Tipo: 3 Sent: 2

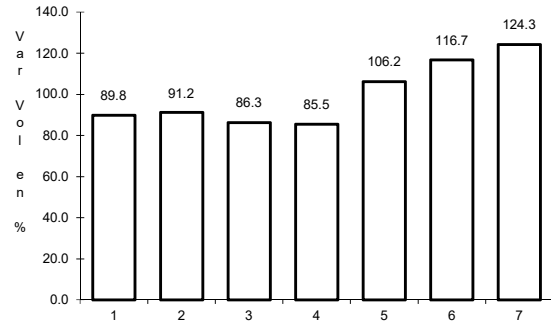


Km: 88.00 Tipo: 3 Sent: 0

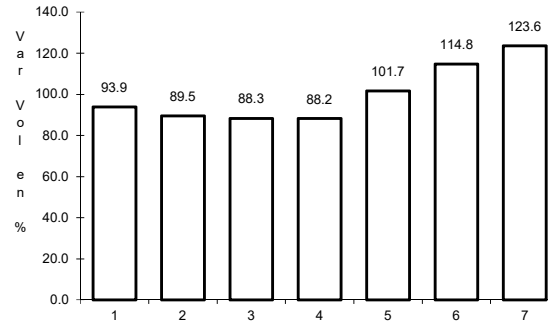
25 CARR: Hornos - San Nicolás

CLAVE: 26243

RUTA: SON-012



Km: 0.00 Tipo: 3 Sent: 0

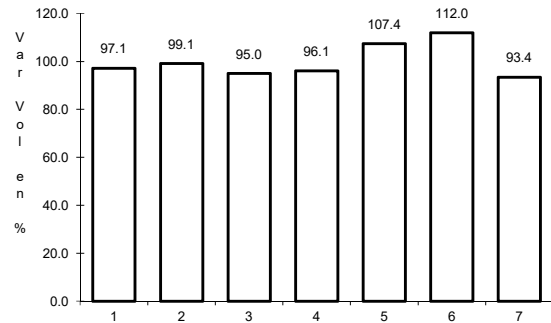


Km: 58.00 Tipo: 1 Sent: 0

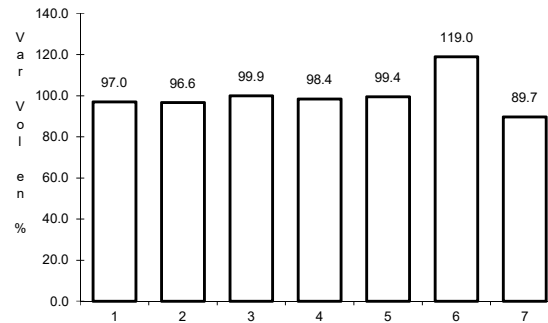
26 CARR: Huatabampo - Bacabachi

CLAVE: 26237

RUTA: SON-176



Km: 0.00 Tipo: 3 Sent: 0

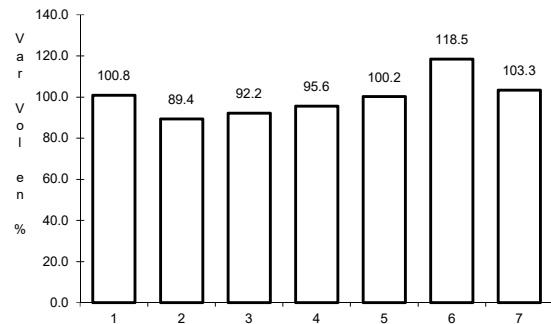


Km: 29.00 Tipo: 1 Sent: 0

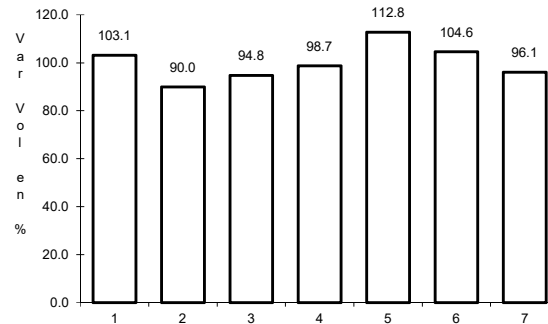
27 CARR: La Alameda - El Sahuaro

CLAVE: 26234

RUTA: SON-037



Km: 0.00 Tipo: 3 Sent: 0

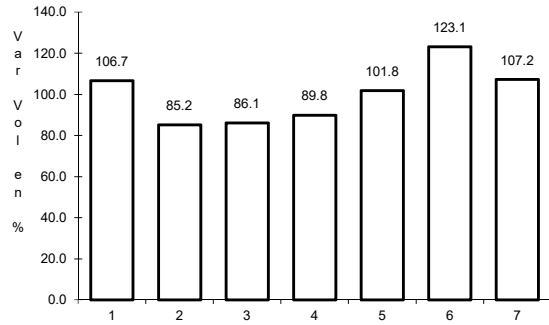


Km: 47.00 Tipo: 1 Sent: 0

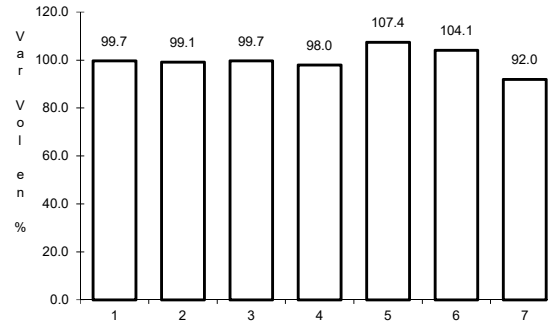
28 CARR: Mazocahui - Cananea

CLAVE: 26118

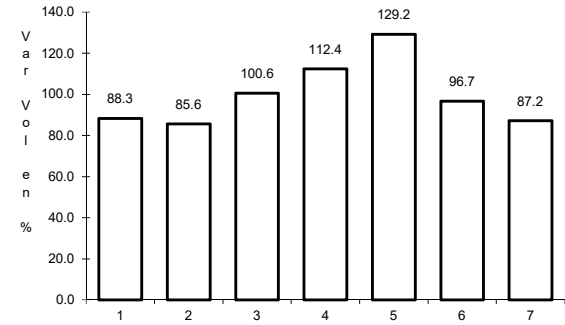
ruta: SON-118



Km: 0.00 Tipo: 3 Sent: 0



Km: 98.00 Tipo: 1 Sent: 0

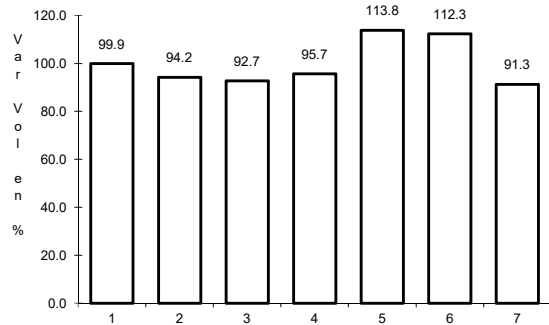


Km: 204.00 Tipo: 1 Sent: 0

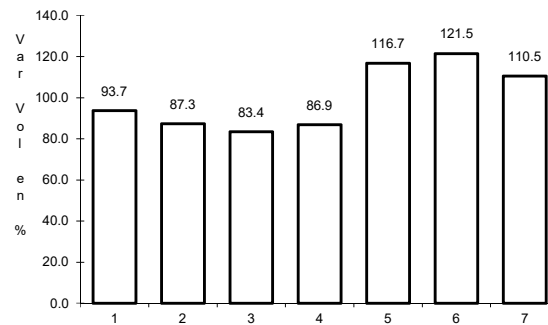
29 CARR: Navojoa - Álamos

CLAVE: 26240

ruta: SON-013



Km: 0.00 Tipo: 3 Sent: 0

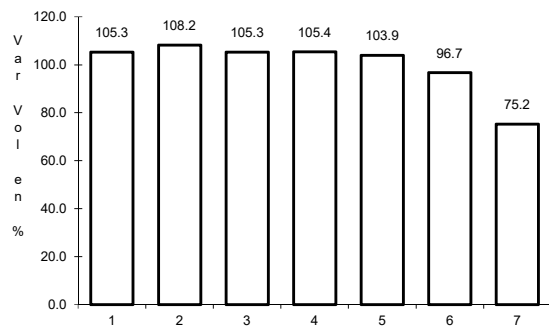


Km: 52.80 Tipo: 1 Sent: 0

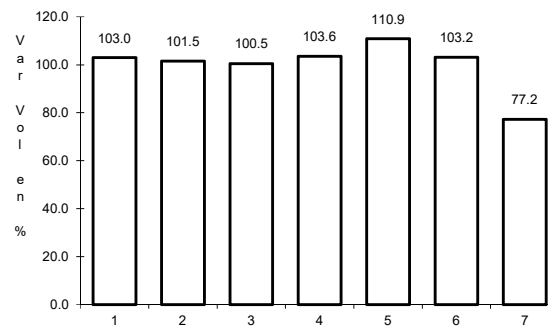
30 CARR: Navojoa - Yavaros

CLAVE: 26229

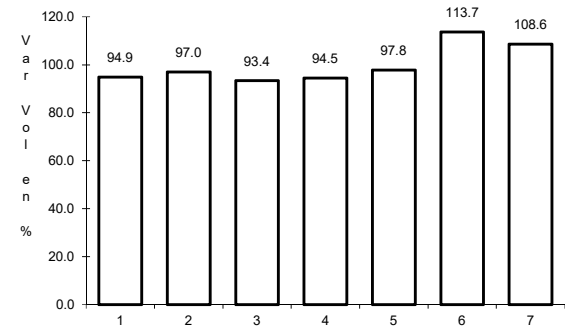
ruta: SON-056



Km: 0.00 Tipo: 3 Sent: 1



Km: 0.00 Tipo: 3 Sent: 2

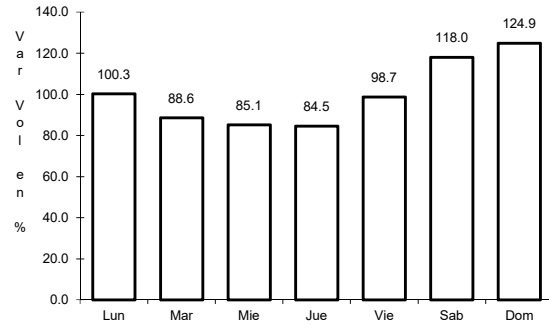


Km: 55.00 Tipo: 1 Sent: 0

31 CARR: Nogales - San Antonio

CLAVE: 26110

RUTA: SON



Km: 58.00

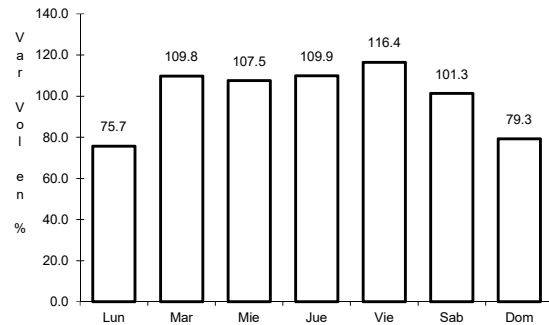
Tipo: 1

Sent: 0

32 CARR: Ramal a Aeropuerto de Guaymas

CLAVE: 26568

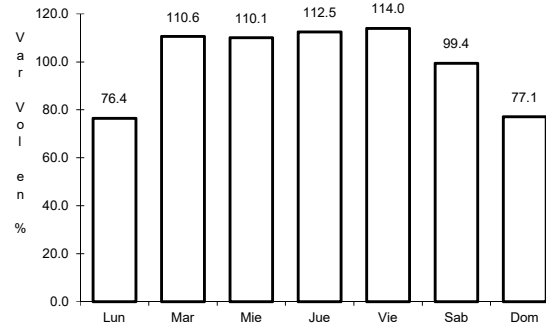
RUTA: SON



Km: 0.00

Tipo: 3

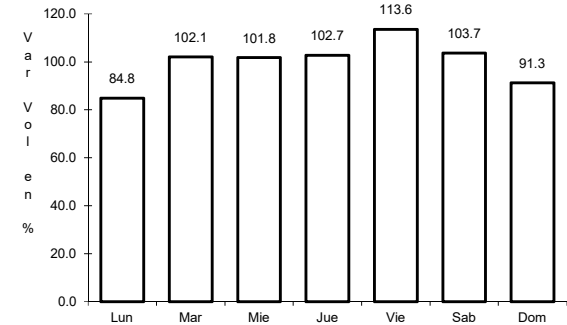
Sent: 1



Km: 0.00

Tipo: 3

Sent: 2



Km: 3.00

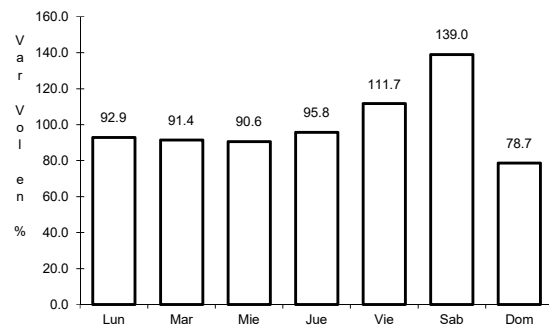
Tipo: 3

Sent: 0

33 CARR: San Luis Río Colorado - Golfo de Santa Clara

CLAVE: 26226

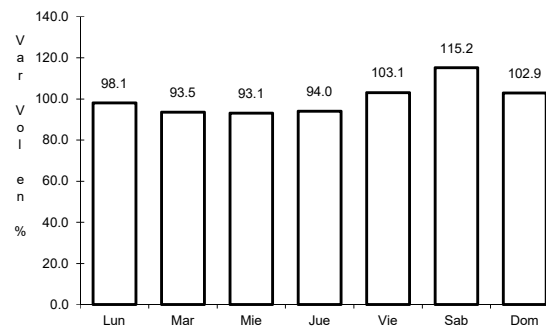
RUTA: SON-040



Km: 0.00

Tipo: 3

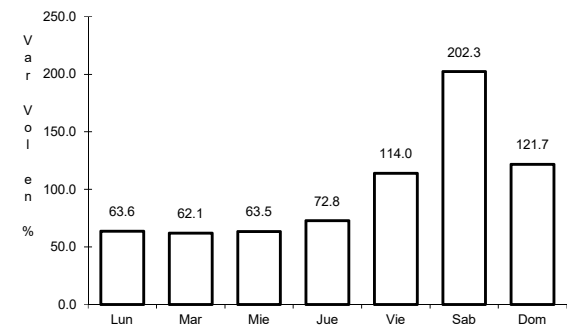
Sent: 1



Km: 0.00

Tipo: 3

Sent: 2



Km: 114.30

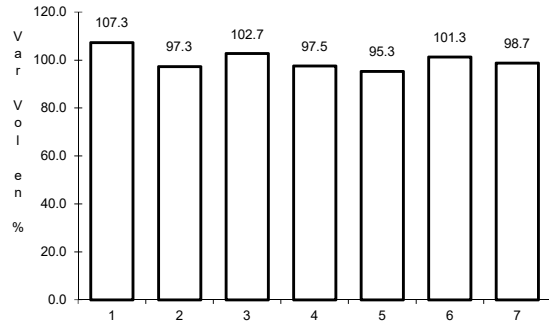
Tipo: 1

Sent: 0

34 CARR: Sonoita - Pitiquito

CLAVE: 26022

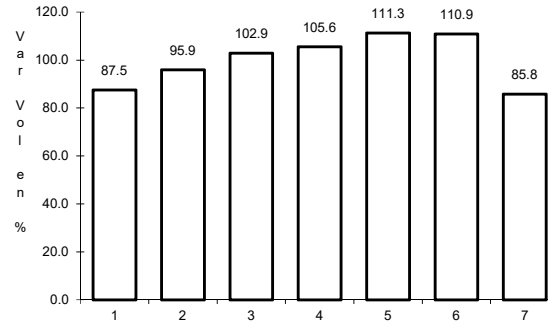
RUTA: SON



Km: 0.00

Tipo: 3

Sent: 0



Km: 170.00

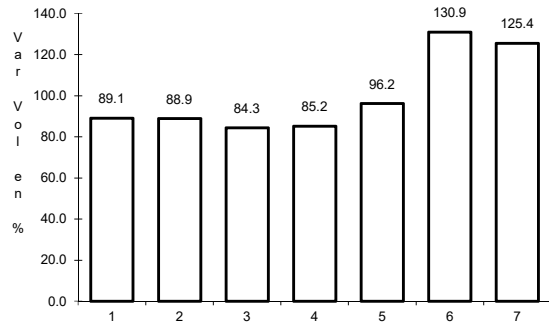
Tipo: 1

Sent: 0

36 CARR: T. C. (Hermosillo - Nogales) - Huásabas

CLAVE: 26231

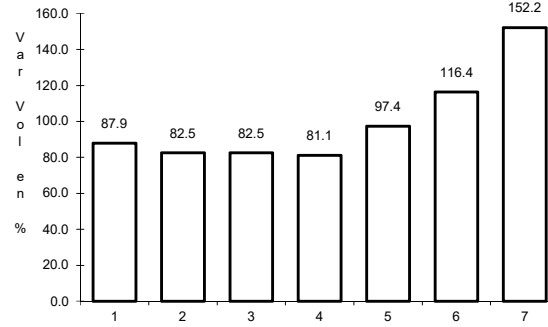
RUTA: MEX-014-SON



Km: 0.00

Tipo: 3

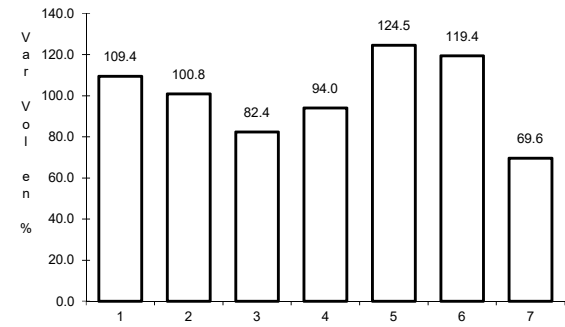
Sent: 1



Km: 0.00

Tipo: 3

Sent: 2



Km: 212.50

Tipo: 1

Sent: 0