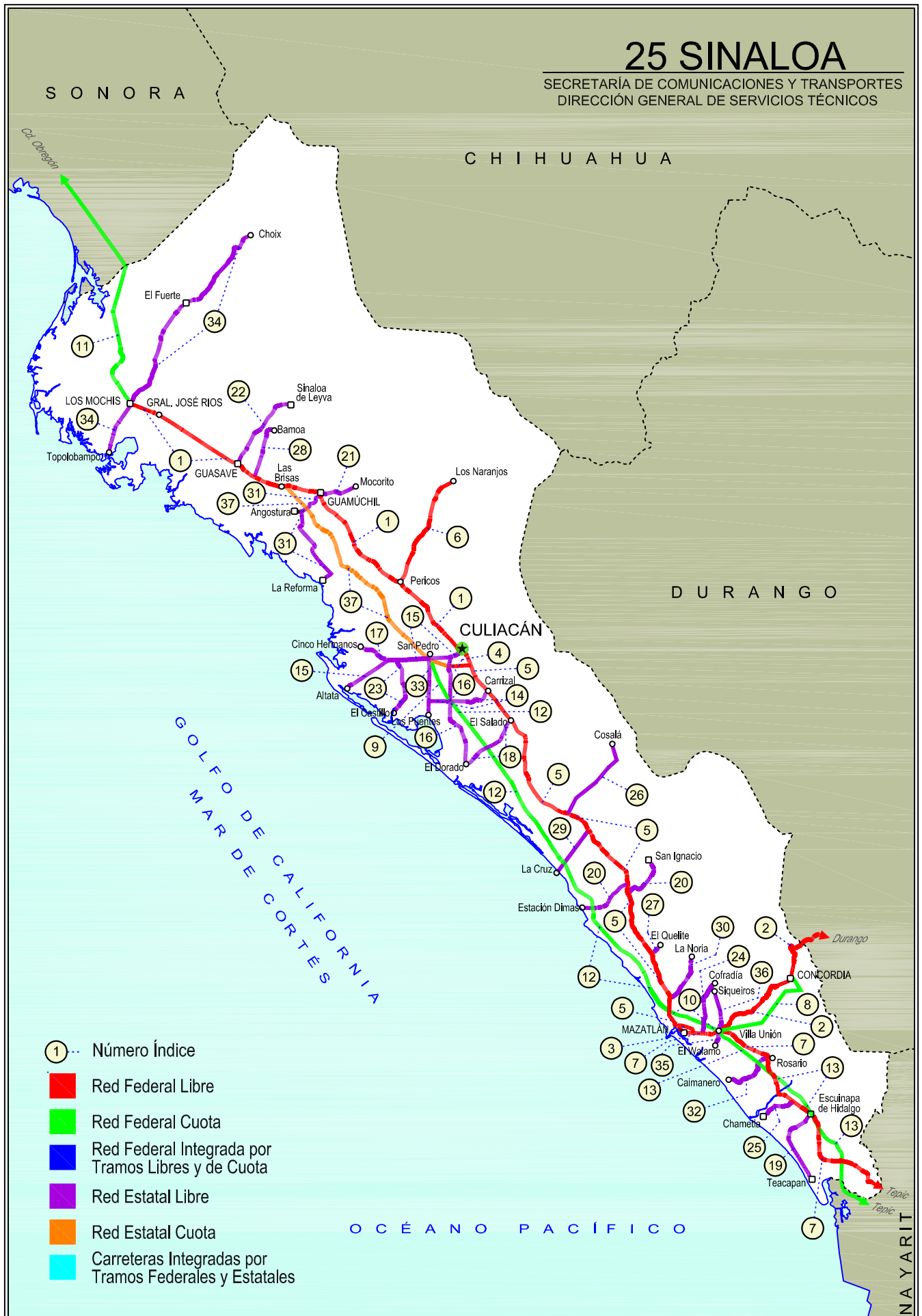


# 25 SINALOA

SECRETARÍA DE COMUNICACIONES Y TRANSPORTES  
DIRECCIÓN GENERAL DE SERVICIOS TÉCNICOS







SINALOA

NO. INDICE CARRETERA	RUTA
---RED FEDERAL LIBRE---	
1 Culiacán - Los Mochis	MEX-015
2 Durango - Villa Unión	MEX-040
3 Libramiento de Mazatlán	MEX
4 Libramiento Sur de Culiacán	MEX-015
5 Mazatlán - Culiacán	MEX-015
6 Pericos - Los Naranjos	MEX-024
7 Tepic - Mazatlán	MEX-015
---RED FEDERAL DE CUOTA---	
8 Durango - Mazatlán (Cuota)	MEX-040D
9 Libramiento de Culiacán (Cuota)	MEX-015D
10 Libramiento de Mazatlán (Cuota)	MEX-015D
11 Los Mochis - Cd. Obregón (Cuota)	MEX-015D
12 Mazatlán - Culiacán (Cuota)	MEX-015D
13 Tepic - Villa Unión (cuota)	MEX-015D
---RED ESTATAL LIBRE---	
14 Carrizal - Campo Aníbal	SIN-019
15 Culiacán - Altata	SIN-030
16 Culiacán - El Dorado	SIN-005
17 El Limoncito - Cinco Hermanos	SIN-016
18 El Salado - El Dorado	SIN-010
19 Escuinapa de Hidalgo - Teacapan	SIN-001
20 Estación Dimas - San Ignacio	SIN-006
21 Guamuchil - Mocoquito	SIN-021
22 Guasave - Sinaloa de Leyva	SIN-023
23 Navolato - El Castillo	SIN-004
24 Pozole - Cofradía	SIN-080
25 Ramal a Chametla	SIN-002
26 Ramal a Cosalá	SIN-008
27 Ramal a El Quelite	SIN-060
28 Ramal a Estación Bamoa	SIN-022
29 Ramal a La Cruz	SIN
30 Ramal a La Noria	SIN
31 Ramal a La Reforma	SIN-004
32 Rosario - Caimanero	SIN-003
33 San Pedro - Campo Aníbal	SIN
34 Topolobampo - Choix	SIN-023
35 Villa Unión - El Walamo	SIN-081
36 Villa Unión - Siqueiros	SIN-063
---RED ESTATAL DE CUOTA---	
37 Culiacán - Las Brisas (Cuota)	SIN-001D

SINALOA

1 CARR: Culiacán - Los Mochis

CLAVE: 25502

RUTA: MEX-015

AÑO: 2017

LUGAR	ESTACION				CLASIFICACION VEHICULAR EN PORCIENTO										COORDENADAS					
	KM	TE	SC	TDPA	M	A	B	C2	C3	T3S2	T3S3	T3S2R4	OTROS	A	B	C	K'	D	LATITUD	LONGITUD
Culiacán	0.00																			
T. Der. Los Monzones	4.00	1	1	8858	1.9	88.7	1.5	5.2	0.9	1.3	0.3	0.1	0.1	90.6	1.5	7.9	0.071	0.543	24.836491	-107.435434
T. Der. Los Monzones	4.00	1	2	10512	1.5	86.6	1.9	7.4	1.2	0.9	0.1	0.4	0.0	88.1	1.9	10.0	0.105	0.543	24.836642	-107.435282
Caseta de Cobro Puente Culiacán	22.00	2	1	3706	0.8	84.7	4.3	3.6	1.8	3.7	0.8	0.1	0.2	85.5	4.3	10.2	0.084	0.500	24.811495	-107.410225
Caseta de Cobro Puente Culiacán	22.00	2	2	3706	0.8	84.7	4.3	3.6	1.8	3.7	0.8	0.1	0.2	85.5	4.3	10.2	0.084	0.500	24.811495	-107.410225
T. Der. Presa López Mateos	27.20	3	0	9693	1.8	85.9	2.5	5.2	1.1	2.3	0.6	0.3	0.3	87.7	2.5	9.8	0.089	0.557	24.994153	-107.570988
X. C. Pericos - Los Naranjos	43.60	3	0	5323	1.0	83.3	3.7	5.8	1.4	3.6	0.7	0.3	0.2	84.3	3.7	12.0	0.120	0.572	25.093930	-107.697572
Guamuchil	104.70	1	0	8185	4.6	80.8	2.6	7.4	1.1	2.4	0.5	0.3	0.3	85.4	2.6	12.0	0.091	0.543	25.427447	-108.057617
Guamuchil	104.70	3	1	9889	4.9	82.7	1.7	5.4	1.4	2.4	0.7	0.4	0.4	87.6	1.7	10.7	0.081	0.510	25.468749	-108.091675
Guamuchil	104.70	3	2	9515	4.8	82.9	1.7	6.8	1.3	1.4	0.5	0.3	0.3	87.7	1.7	10.6	0.083	0.510	25.468658	-108.091780
T. Izq. Aut. Culiacán - Las Brisas	121.20	1	0	8371	1.4	81.2	3.9	7.6	1.6	3.1	0.6	0.4	0.2	82.6	3.9	13.5	0.093	0.539	25.489430	-108.226893
T. Izq. Aut. Culiacán - Las Brisas	121.20	3	1	6975	1.1	73.2	4.2	7.8	1.6	7.1	1.1	3.3	0.6	74.3	4.2	21.5	0.097	0.530	25.487925	-108.241285
T. Izq. Aut. Culiacán - Las Brisas	121.20	3	2	7853	0.9	71.3	5.0	8.0	1.6	7.9	1.2	3.5	0.6	72.2	5.0	22.8	0.113	0.530	25.487790	-108.241279
T. Der. Estación Bamoa	133.17	3	1	6415	1.1	73.9	4.9	8.4	2.3	6.1	1.1	1.5	0.7	75.0	4.9	20.1	0.101	0.515	25.518285	-108.359648
T. Der. Estación Bamoa	133.17	3	2	6029	1.5	71.8	5.2	8.6	2.4	6.7	1.3	1.7	0.8	73.3	5.2	21.5	0.125	0.515	25.518084	-108.359745
Caseta de Cobro Puente Sinaloa	136.00	2	1	5320	0.3	62.1	7.0	4.5	4.0	14.7	1.7	4.9	0.8	62.4	7.0	30.6	0.084	0.500	25.577763	-108.455849
Caseta de Cobro Puente Sinaloa	136.00	2	2	5320	0.3	62.1	7.0	4.5	4.0	14.7	1.7	4.9	0.8	62.4	7.0	30.6	0.084	0.500	25.577763	-108.455849
Guasave	146.28	3	1	12484	1.7	77.0	3.2	5.7	3.0	5.8	1.2	1.8	0.6	78.7	3.2	18.1	0.064	0.524	25.590295	-108.493873
Guasave	146.28	3	2	13742	1.3	75.6	3.5	6.8	2.8	6.4	1.3	1.8	0.5	76.9	3.5	19.6	0.063	0.524	25.590456	-108.493737
T. Izq. Los Mochis (1º Acceso)	201.97	1	1	16154	1.9	72.1	3.2	8.8	4.2	5.4	2.3	1.8	0.3	74.0	3.2	22.8	0.063	0.507	25.807206	-108.955936
T. Izq. Los Mochis (1º Acceso)	201.97	1	2	15729	1.9	69.9	3.7	9.8	4.7	5.6	2.3	1.8	0.3	71.8	3.7	24.5	0.072	0.507	25.807148	-108.956125
T. Izq. Los Mochis (1º Acceso)	201.97	3	1	15008	1.8	73.0	3.2	8.0	4.5	5.0	2.4	1.7	0.4	74.8	3.2	22.0	0.072	0.502	25.819829	-108.963708
T. Izq. Los Mochis (1º Acceso)	201.97	3	2	15153	2.0	69.8	3.3	9.4	4.8	5.6	2.8	1.9	0.4	71.8	3.3	24.9	0.063	0.502	25.819894	-108.963543
T. C. Topolobampo - Choix	205.21																			

2 CARR: Durango - Villa Unión

CLAVE: 0083

RUTA: MEX-040

AÑO: 2017

LUGAR	ESTACION				CLASIFICACION VEHICULAR EN PORCIENTO										COORDENADAS					
	KM	TE	SC	TDPA	M	A	B	C2	C3	T3S2	T3S3	T3S2R4	OTROS	A	B	C	K'	D	LATITUD	LONGITUD
Durango	0.00	3	0	4186	3.0	72.0	2.1	14.5	4.6	2.2	1.0	0.3	0.3	75.0	2.1	22.9	0.073	0.521	23.994120	-104.717900
T. Der. Pino	22.86	3	0	2380	2.0	66.8	3.6	15.1	4.3	5.5	2.4	0.0	0.3	68.8	3.6	27.6	0.116	0.516	23.967270	-104.820431
T. Izq. Estación Navíos	58.42	3	0	2115	6.2	66.4	3.0	14.9	3.7	4.0	1.5	0.1	0.2	72.6	3.0	24.4	0.106	0.502	23.895092	-105.054296
Llano Grande	77.23	1	0	2308	2.1	66.9	3.3	15.4	4.3	5.3	2.5	0.0	0.2	69.0	3.3	27.7	0.095	0.502	23.867003	-105.197873
El Salto	99.76	3	0	1972	3.4	76.5	1.4	16.3	0.9	0.9	0.5	0.0	0.1	79.9	1.4	18.7	0.100	0.506	23.784345	-105.376136
La Ciudad	145.50	1	0	806	5.9	72.3	2.5	14.6	1.5	2.4	0.8	0.0	0.0	78.2	2.5	19.3	0.091	0.517	23.731361	-105.678283

SINALOA

2 CARR: Durango - Villa Unión

CLAVE: 0083

RUTA: MEX-040

AÑO: 2017

LUGAR	ESTACION				CLASIFICACION VEHICULAR EN PORCIENTO										COORDENADAS					
	KM	TE	SC	TDPA	M	A	B	C2	C3	T3S2	T3S3	T3S2R4	OTROS	A	B	C	K'	D	LATITUD	LONGITUD
La Ciudad	145.50	3	0	404	11.8	62.9	2.4	17.2	1.9	2.6	1.2	0.0	0.0	74.7	2.4	22.9	0.126	0.522	23.726953	-105.692327
Lim. Edos. Term. Dgo. Ppia. Sin.	198.50																			
T. C. Tepic - Mazatlán	294.40	1	0	3629	4.5	70.7	5.8	10.9	3.0	3.7	1.3	0.0	0.1	75.2	5.8	19.0	0.088	0.510	23.204593	-106.198185

3 CARR: Libramiento de Mazatlán

CLAVE: 25604

RUTA: MEX

AÑO: 2017

LUGAR	ESTACION				CLASIFICACION VEHICULAR EN PORCIENTO										COORDENADAS					
	KM	TE	SC	TDPA	M	A	B	C2	C3	T3S2	T3S3	T3S2R4	OTROS	A	B	C	K'	D	LATITUD	LONGITUD
T. C. Tepic - Mazatlán	0.00	3	1	36714	5.4	73.6	1.8	7.5	2.3	4.4	2.5	1.6	0.9	79.0	1.8	19.2	0.057	0.531	23.235778	-106.389875
T. C. Tepic - Mazatlán	0.00	3	2	32450	5.5	72.7	2.5	8.6	2.1	4.2	2.2	1.3	0.9	78.2	2.5	19.3	0.056	0.531	23.235785	-106.389870
T. C. Mazatlán - Culiacán	5.40	1	1	26630	6.3	82.6	1.0	6.2	1.3	1.6	0.6	0.3	0.1	88.9	1.0	10.1	0.059	0.521	23.261000	-106.410832
T. C. Mazatlán - Culiacán	5.40	1	2	24514	6.5	78.9	1.7	8.0	1.7	2.1	0.5	0.4	0.2	85.4	1.7	12.9	0.059	0.521	23.260999	-106.410827

4 CARR: Libramiento Sur de Culiacán

CLAVE: 25500

RUTA: MEX-015

AÑO: 2017

LUGAR	ESTACION				CLASIFICACION VEHICULAR EN PORCIENTO										COORDENADAS					
	KM	TE	SC	TDPA	M	A	B	C2	C3	T3S2	T3S3	T3S2R4	OTROS	A	B	C	K'	D	LATITUD	LONGITUD
T. C. Mazatlán - Culiacán	0.00	3	1	14209	1.7	87.2	0.5	5.4	1.9	2.2	0.5	0.4	0.2	88.9	0.5	10.6	0.077	0.501	24.751568	-107.365294
T. C. Mazatlán - Culiacán	0.00	3	2	14162	2.1	85.3	0.8	7.0	1.7	2.1	0.5	0.3	0.2	87.4	0.8	11.8	0.083	0.501	24.751768	-107.365302
T. C. Culiacán - El Dorado	8.90	1	1	15123	2.2	84.2	0.7	6.1	2.7	2.9	0.5	0.6	0.1	86.4	0.7	12.9	0.100	0.502	24.743022	-107.442740
T. C. Culiacán - El Dorado	8.90	1	2	14979	2.6	82.7	0.7	6.5	2.9	3.2	0.5	0.8	0.1	85.3	0.7	14.0	0.087	0.502	24.742918	-107.442753

5 CARR: Mazatlán - Culiacán

CLAVE: 25501

RUTA: MEX-015

AÑO: 2017

LUGAR	ESTACION				CLASIFICACION VEHICULAR EN PORCIENTO										COORDENADAS					
	KM	TE	SC	TDPA	M	A	B	C2	C3	T3S2	T3S3	T3S2R4	OTROS	A	B	C	K'	D	LATITUD	LONGITUD
Mazatlán	0.00																			
T. Der. Libramiento de Mazatlán	6.40	1	1	20244	6.8	83.9	1.6	6.8	0.4	0.3	0.2	0.0	0.0	90.7	1.6	7.7	0.103	0.529	23.260578	-106.417815
T. Der. Libramiento de Mazatlán	6.40	1	2	18021	4.3	85.8	1.5	6.8	0.6	0.4	0.4	0.2	0.0	90.1	1.5	8.4	0.116	0.529	23.260572	-106.417821
T. Der. La Noria	10.92	1	0	6194	4.9	74.3	2.3	10.4	2.2	4.5	1.2	0.1	0.1	79.2	2.3	18.5	0.071	0.503	23.343834	-106.414465
T. Der. La Noria	10.92	3	0	4225	7.6	70.5	3.3	8.6	3.3	5.0	1.2	0.3	0.2	78.1	3.3	18.6	0.074	0.535	23.356415	-106.415828
T. Izq. Playa Los Cerritos	11.08	3	0	4299	4.6	68.4	2.7	12.8	3.0	6.8	1.3	0.2	0.2	73.0	2.7	24.3	0.072	0.502	23.360623	-106.418821
T. Der. El Quelite	33.00	1	0	3478	4.0	69.1	3.1	12.3	2.9	6.8	1.5	0.1	0.2	73.1	3.1	23.8	0.077	0.523	23.529978	-106.502654
T. Der. El Quelite	33.00	3	0	2764	5.2	70.0	3.0	13.6	2.2	3.4	2.5	0.0	0.1	75.2	3.0	21.8	0.073	0.525	23.532488	-106.504852
X. C. Estación Dimas - San Ignacio	66.77	1	0	2462	1.9	68.2	3.9	11.5	4.1	8.6	1.7	0.0	0.1	70.1	3.9	26.0	0.068	0.531	23.785775	-106.608855

SINALOA

5 CARR: Mazatlán - Culiacán

CLAVE: 25501

RUTA: MEX-015

AÑO: 2017

LUGAR	ESTACION				CLASIFICACION VEHICULAR EN PORCIENTO													COORDENADAS		
	KM	TE	SC	TDPA	M	A	B	C2	C3	T3S2	T3S3	T3S2R4	OTROS	A	B	C	K'	D	LATITUD	LONGITUD
X. C. Estación Dimas - San Ignacio	66.77	3	0	3086	3.5	69.5	3.6	9.2	3.9	8.8	1.4	0.0	0.1	73.0	3.6	23.4	0.080	0.506	23.795297	-106.612532
T. Izq. Estación Dimas	73.96	3	0	2786	4.7	67.0	3.5	10.0	4.1	9.2	1.3	0.0	0.2	71.7	3.5	24.8	0.070	0.533	23.840863	-106.614166
T. Der. Elota	91.92	3	0	2366	2.3	65.3	4.8	10.8	4.3	10.3	1.9	0.1	0.2	67.6	4.8	27.6	0.072	0.520	23.965421	-106.723514
T. Izq. La Cruz	105.21	3	0	3770	5.6	71.6	2.4	8.2	3.4	7.4	1.3	0.0	0.1	77.2	2.4	20.4	0.065	0.518	24.058157	-106.798983
El Salado	175.24	1	0	5796	5.6	73.4	1.0	7.3	1.9	7.9	1.4	0.4	1.1	79.0	1.0	20.0	0.078	0.512	24.502426	-107.156544
El Salado	175.24	3	0	6208	1.4	78.5	1.1	8.6	2.1	6.5	1.0	0.2	0.6	79.9	1.1	19.0	0.083	0.507	24.514209	-107.166313
T. Izq. Libramiento de Culiacán	210.40	1	1	8394	0.5	87.9	0.7	5.5	2.1	2.7	0.4	0.1	0.1	88.4	0.7	10.9	0.080	0.513	24.748445	-107.354514
T. Izq. Libramiento de Culiacán	210.40	1	2	8848	1.1	84.1	1.0	8.5	1.8	2.8	0.5	0.1	0.1	85.2	1.0	13.8	0.077	0.513	24.748476	-107.354360
Culiacán	215.30																			

6 CARR: Pericos - Los Naranjos

CLAVE: 25598

RUTA: MEX-024

AÑO: 2017

LUGAR	ESTACION				CLASIFICACION VEHICULAR EN PORCIENTO													COORDENADAS		
	KM	TE	SC	TDPA	M	A	B	C2	C3	T3S2	T3S3	T3S2R4	OTROS	A	B	C	K'	D	LATITUD	LONGITUD
Pericos	0.00	3	0	3391	4.3	83.6	0.6	9.4	1.1	0.4	0.2	0.2	0.2	87.9	0.6	11.5	0.083	0.546	25.097725	-107.682717
Badiraguato	37.50	1	0	2621	5.3	86.7	0.7	5.9	0.5	0.3	0.2	0.2	0.2	92.0	0.7	7.3	0.121	0.587	25.348185	-107.558907
Naranjos	66.00																			

7 CARR: Tepic - Mazatlán

CLAVE: 00499

RUTA: MEX-015

AÑO: 2017

LUGAR	ESTACION				CLASIFICACION VEHICULAR EN PORCIENTO													COORDENADAS		
	KM	TE	SC	TDPA	M	A	B	C2	C3	T3S2	T3S3	T3S2R4	OTROS	A	B	C	K'	D	LATITUD	LONGITUD
Tepic (Alta)	0.00	3	1	12212	2.8	89.7	0.0	0.9	0.0	1.3	3.9	0.5	0.9	92.5	0.0	7.5	0.055	0.523	21.511937	-104.906035
Tepic (Baja)	0.00	3	1	9427	8.2	82.2	0.1	7.4	0.1	0.5	1.2	0.1	0.2	90.4	0.1	9.5	0.061	0.518	21.511922	-104.906035
Tepic (Baja)	0.00	3	2	8785	6.9	83.4	0.5	5.3	0.1	0.8	2.4	0.2	0.4	90.3	0.5	9.2	0.062	0.518	21.512122	-104.906005
Tepic (Alta)	0.00	3	2	11146	3.1	88.3	0.0	1.0	0.0	1.4	4.7	0.5	1.0	91.4	0.0	8.6	0.057	0.523	21.512079	-104.906022
T. Izq. Libramiento de Tepic (Baja)	2.56	1	1	9825	7.1	81.3	0.5	9.9	0.7	0.3	0.2	0.0	0.0	88.4	0.5	11.1	0.071	0.533	21.520981	-104.921485
T. Izq. Libramiento de Tepic (Alta)	2.56	1	1	8467	8.2	88.7	0.1	2.3	0.0	0.1	0.5	0.0	0.1	96.9	0.1	3.0	0.077	0.526	21.520963	-104.921479
T. Izq. Libramiento de Tepic (Alta)	2.56	1	2	7631	4.1	93.7	0.0	1.8	0.0	0.1	0.3	0.0	0.0	97.8	0.0	2.2	0.093	0.526	21.520894	-104.921560
T. Izq. Libramiento de Tepic (Baja)	2.56	1	2	11221	7.5	81.6	0.6	9.1	0.6	0.3	0.2	0.0	0.1	89.1	0.6	10.3	0.055	0.533	21.520866	-104.921563
T. Izq. Aut. Tepic - Ent. San Blas (Cuota)	3.70	3	0	7990	4.5	74.4	1.8	7.3	4.1	5.0	2.1	0.1	0.7	78.9	1.8	19.3	0.067	0.535	21.538766	-104.934233
Los Otates	19.80	3	0	4725	3.2	67.6	3.5	8.2	6.4	7.9	2.6	0.1	0.5	70.8	3.5	25.7	0.060	0.545	21.640000	-104.972633
T. Izq. Jumatán	28.52	1	0	4909	3.5	67.8	3.5	7.4	6.2	8.3	2.9	0.1	0.3	71.3	3.5	25.2	0.064	0.548	21.669618	-105.022026
T. Izq. Jumatán	28.52	3	1	8222	1.8	61.3	5.9	9.3	4.3	11.6	2.4	2.7	0.7	63.1	5.9	31.0	0.083	0.504	21.667978	-105.029595
T. Izq. Jumatán	28.52	3	2	8368	2.0	61.4	6.2	9.8	3.7	11.2	2.0	2.8	0.9	63.4	6.2	30.4	0.063	0.504	21.667970	-105.029595

SINALOA

7 CARR: Tepic - Mazatlán

CLAVE: 00499

RUTA: MEX-015

AÑO: 2017

LUGAR	ESTACION				CLASIFICACION VEHICULAR EN PORCIENTO													COORDENADAS		
	KM	TE	SC	TDPA	M	A	B	C2	C3	T3S2	T3S3	T3S2R4	OTROS	A	B	C	K'	D	LATITUD	LONGITUD
T. Izq. San Blas	33.54	1	1	6932	1.8	61.3	5.8	8.9	4.4	11.6	2.7	2.7	0.8	63.1	5.8	31.1	0.099	0.506	21.679401	-105.042631
T. Izq. San Blas	33.54	1	2	7099	2.2	59.7	6.4	11.0	4.0	11.0	2.3	2.7	0.7	61.9	6.4	31.7	0.070	0.506	21.679277	-105.042689
T. Izq. San Blas	33.54	3	1	8371	2.0	60.5	6.1	9.9	3.8	12.1	2.1	3.0	0.5	62.5	6.1	31.4	0.055	0.502	21.700063	-105.053279
T. Izq. San Blas	33.54	3	2	8317	2.0	62.6	5.3	7.9	4.4	11.8	2.5	2.8	0.7	64.6	5.3	30.1	0.072	0.502	21.700166	-105.053326
T. Izq. Villa Hidalgo	48.12	1	0	7902	2.2	76.7	2.3	6.8	3.0	5.6	2.3	0.5	0.6	78.9	2.3	18.8	0.063	0.504	21.806756	-105.102600
T. Izq. Villa Hidalgo	48.12	3	0	7707	7.5	65.3	3.3	9.6	4.5	7.4	2.1	0.1	0.2	72.8	3.3	23.9	0.069	0.508	21.808789	-105.103416
T. Izq. Santiago Ixcuintla	56.42	1	0	7302	2.5	70.0	3.6	8.6	5.0	7.9	2.0	0.1	0.3	72.5	3.6	23.9	0.060	0.585	21.854211	-105.152600
T. Izq. Santiago Ixcuintla	56.42	3	0	7384	2.1	66.3	4.1	11.6	3.3	9.2	2.8	0.3	0.3	68.4	4.1	27.5	0.073	0.509	21.859764	-105.155786
T. Izq. Tuxpan	70.60	1	0	8927	5.1	68.9	3.5	10.6	2.7	6.6	2.0	0.1	0.5	74.0	3.5	22.5	0.065	0.506	21.944197	-105.216031
T. Izq. Tuxpan	70.60	3	0	9110	10.7	60.4	4.3	11.6	4.0	6.9	1.8	0.1	0.2	71.1	4.3	24.6	0.061	0.509	21.954529	-105.221315
T. Der. Rosamorada	90.70	3	0	5085	5.1	60.8	4.4	11.3	4.3	11.3	2.6	0.1	0.1	65.9	4.4	29.7	0.067	0.504	22.124706	-105.219615
Tierra Generosa	110.40	1	0	3599	2.6	49.8	6.4	11.4	6.3	18.8	4.4	0.1	0.2	52.4	6.4	41.2	0.057	0.509	22.293716	-105.273037
T. Der. Acaponeta	136.52	1	0	7445	9.5	65.0	3.1	10.1	2.9	7.3	1.8	0.1	0.2	74.5	3.1	22.4	0.072	0.524	22.482925	-105.384485
T. Der. Acaponeta	136.52	3	0	5150	7.3	59.1	3.5	9.6	5.1	12.1	3.0	0.1	0.2	66.4	3.5	30.1	0.073	0.501	22.492616	-105.384010
Lim. Edos. Term. Nay. Ppia. Sin.	144.60																			
Escuinapa de Hidalgo	200.00	1	0	5067	10.9	62.8	2.2	7.1	7.3	7.2	2.1	0.1	0.3	73.7	2.2	24.1	0.069	0.527	22.832692	-105.760957
Escuinapa de Hidalgo	200.00	3	0	5347	4.5	67.4	4.8	9.2	4.4	7.6	1.8	0.1	0.2	71.9	4.8	23.3	0.070	0.513	22.850454	-105.792774
Rosario	221.71	1	0	8326	8.3	67.7	3.9	11.5	2.8	4.3	1.2	0.1	0.2	76.0	3.9	20.1	0.072	0.538	22.997071	-105.851525
Rosario	221.71	3	0	5801	3.0	72.4	2.8	9.5	3.2	7.0	1.8	0.1	0.2	75.4	2.8	21.8	0.072	0.517	23.003403	-105.869151
X. C. Durango - Mazatlán (Cuota)	265.20	1	0	5161	2.9	72.4	3.4	8.2	3.2	7.9	1.8	0.1	0.1	75.3	3.4	21.3	0.074	0.521	23.189982	-106.175762
T. Der. Durango	267.99	1	0	4801	5.3	73.4	2.5	11.2	2.3	3.7	1.1	0.2	0.3	78.7	2.5	18.8	0.105	0.554	23.189382	-106.206340
T. Der. Durango	267.99	3	1	7604	9.4	65.3	4.8	8.9	3.2	5.0	1.4	1.2	0.8	74.7	4.8	20.5	0.076	0.558	23.189284	-106.210238
T. Der. Durango	267.99	3	2	9613	8.0	78.2	1.1	3.5	1.8	3.3	2.4	0.6	1.1	86.2	1.1	12.7	0.074	0.558	23.189283	-106.210359
Villa Unión	269.52	3	1	10398	5.2	75.4	2.9	8.4	1.8	3.9	0.9	1.2	0.3	80.6	2.9	16.5	0.078	0.518	23.190267	-106.222300
Villa Unión	269.52	3	2	11183	6.5	73.2	3.9	8.1	2.8	3.1	1.1	0.7	0.6	79.7	3.9	16.4	0.073	0.518	23.190483	-106.222367
T. Der. Libramiento de Mazatlán	288.87	1	1	17183	4.8	82.1	0.9	7.4	1.6	1.8	0.7	0.6	0.1	86.9	0.9	12.2	0.093	0.513	23.226148	-106.384119
T. Der. Libramiento de Mazatlán	288.87	1	2	16328	3.7	78.2	2.7	10.0	1.6	2.3	0.5	0.7	0.3	81.9	2.7	15.4	0.093	0.513	23.226147	-106.384116
Mazatlán	292.00																			

8 CARR: Durango - Mazatlán (Cuota)

CLAVE: 00084

RUTA: MEX-040D

AÑO: 2017

LUGAR	ESTACION				CLASIFICACION VEHICULAR EN PORCIENTO													COORDENADAS		
	KM	TE	SC	TDPA	M	A	B	C2	C3	T3S2	T3S3	T3S2R4	OTROS	A	B	C	K'	D	LATITUD	LONGITUD
Libramiento de Durango	20.50	3	0	2851	1.9	63.9	4.4	12.8	2.1	7.8	1.8	4.6	0.7	65.8	4.4	29.8	0.098	0.568	24.006367	-104.730600
Caseta de Cobro Durango	22.20	2	0	2793	0.9	72.1	4.1	2.4	2.4	9.6	1.3	6.4	0.8	73.0	4.1	22.9	0.108	0.500	24.005150	-104.734489



SINALOA

8 CARR: Durango - Mazatlán (Cuota)

CLAVE: 00084

RUTA: MEX-040D

AÑO: 2017

LUGAR	ESTACION				CLASIFICACION VEHICULAR EN PORCIENTO												COORDENADAS			
	KM	TE	SC	TDPA	M	A	B	C2	C3	T3S2	T3S3	T3S2R4	OTROS	A	B	C	K'	D	LATITUD	LONGITUD
Ent. Otinapa	44.50	1	0	2479	3.2	65.4	4.3	10.1	2.4	8.0	2.6	3.2	0.8	68.6	4.3	27.1	0.104	0.520	23.982267	-104.940517
Caseta de Cobro Llano Grande	78.10	2	0	2533	1.0	65.8	6.0	2.7	3.7	11.0	1.5	7.3	1.0	66.8	6.0	27.2	0.108	0.500	23.868855	-105.205734
Lim. Edos. Term. Dgo. Ppia. Sin.	157.40																			
Concordia	188.35	3	0	2338	2.1	62.6	5.4	8.2	2.5	10.2	2.0	6.2	0.8	64.7	5.4	29.9	0.122	0.517	23.251962	-106.058066
Villa Unión	208.35	1	0	2223	3.1	60.4	5.2	8.4	2.3	11.1	2.0	6.7	0.8	63.5	5.2	31.3	0.117	0.515	23.197999	-106.170981

9 CARR: Libramiento de Culiacán (Cuota)

CLAVE:

RUTA: MEX-015D

AÑO: 2017

LUGAR	ESTACION				CLASIFICACION VEHICULAR EN PORCIENTO												COORDENADAS			
	KM	TE	SC	TDPA	M	A	B	C2	C3	T3S2	T3S3	T3S2R4	OTROS	A	B	C	K'	D	LATITUD	LONGITUD
T. C. Mazatlán - Culiacán (Cuota)	181.80																			
Caseta de Cobro San Pedro	197.10	2	1	1333	0.2	40.8	2.9	3.5	4.7	32.1	4.8	9.1	1.9	41.0	2.9	56.1	0.101	0.500	24.748928	-107.568542
Caseta de Cobro San Pedro	197.10	2	2	1333	0.2	40.8	2.9	3.5	4.7	32.1	4.8	9.1	1.9	41.0	2.9	56.1	0.101	0.500	24.748928	-107.568542
T. C. Culiacán - Las Brisas (Cuota)	203.30	1	1	1475	5.5	33.1	5.2	7.7	4.6	27.1	5.7	9.7	1.4	38.6	5.2	56.2	0.075	0.534	24.737681	-107.558200
T. C. Culiacán - Las Brisas (Cuota)	203.30	1	2	1288	1.3	47.4	4.1	8.2	1.8	17.5	11.6	6.8	1.3	48.7	4.1	47.2	0.083	0.534	24.737503	-107.558442

10 CARR: Libramiento de Mazatlán (Cuota)

CLAVE:

RUTA: MEX-015D

AÑO: 2017

LUGAR	ESTACION				CLASIFICACION VEHICULAR EN PORCIENTO												COORDENADAS			
	KM	TE	SC	TDPA	M	A	B	C2	C3	T3S2	T3S3	T3S2R4	OTROS	A	B	C	K'	D	LATITUD	LONGITUD
Villa Unión (Ent. Caleritas)	0.00	3	1	2772	1.6	49.1	6.7	6.6	2.6	21.9	3.5	6.9	1.1	50.7	6.7	42.6	0.075	0.518	23.201405	-106.213584
Villa Unión (Ent. Caleritas)	0.00	3	2	2582	1.3	44.2	7.4	7.3	2.8	24.6	3.8	7.6	1.0	45.5	7.4	47.1	0.087	0.518	23.201404	-106.213592
Caseta de Cobro El Vainillo	6.00	2	1	2501	0.7	48.5	6.7	3.1	4.0	24.6	3.4	7.8	1.2	49.2	6.7	44.1	0.080	0.500	23.216143	-106.260319
Caseta de Cobro El Vainillo	6.00	2	2	2501	0.7	48.5	6.7	3.1	4.0	24.6	3.4	7.8	1.2	49.2	6.7	44.1	0.080	0.500	23.216143	-106.260319
T. C. Mazatlán - Culiacán	28.60	1	1	2407	1.7	36.8	8.6	7.4	2.4	28.4	4.3	9.6	0.8	38.5	8.6	52.9	0.071	0.523	23.304529	-106.387753
T. C. Mazatlán - Culiacán	28.60	1	2	2193	1.1	39.3	8.3	6.4	2.4	27.9	4.1	9.9	0.6	40.4	8.3	51.3	0.085	0.523	23.304528	-106.387753
T. C. Mazatlán - Culiacán	28.60	3	1	2016	1.7	44.8	5.1	6.6	2.6	24.7	4.7	8.8	1.0	46.5	5.1	48.4	0.085	0.508	23.307700	-106.411620
T. C. Mazatlán - Culiacán	28.60	3	2	1955	1.4	37.2	5.5	7.4	2.8	29.6	5.2	9.7	1.2	38.6	5.5	55.9	0.087	0.508	23.307701	-106.411619

11 CARR: Los Mochis - Cd. Obregón (Cuota)

CLAVE: 26444

RUTA: MEX-015D

AÑO: 2017

LUGAR	ESTACION				CLASIFICACION VEHICULAR EN PORCIENTO												COORDENADAS			
	KM	TE	SC	TDPA	M	A	B	C2	C3	T3S2	T3S3	T3S2R4	OTROS	A	B	C	K'	D	LATITUD	LONGITUD
T. C. Topolobampo - Choix	0.00	3	1	9293	2.3	73.2	4.1	9.1	1.6	6.1	0.9	2.5	0.2	75.5	4.1	20.4	0.084	0.509	25.835173	-108.974830
T. C. Topolobampo - Choix	0.00	3	2	9633	4.2	63.3	3.6	19.7	1.8	4.0	0.7	2.5	0.2	67.5	3.6	28.9	0.090	0.509	25.835254	-108.974663

SINALOA

11 CARR: Los Mochis - Cd. Obregón (Cuota)

CLAVE: 26444

RUTA: MEX-015D

AÑO: 2017

LUGAR	ESTACION				CLASIFICACION VEHICULAR EN PORCIENTO													COORDENADAS		
	KM	TE	SC	TDPA	M	A	B	C2	C3	T3S2	T3S3	T3S2R4	OTROS	A	B	C	K'	D	LATITUD	LONGITUD
T. Izq. Ahome	17.13	3	1	8443	2.1	76.2	3.7	7.7	1.4	5.2	1.1	2.0	0.6	78.3	3.7	18.0	0.108	0.549	25.945374	-109.053335
T. Izq. Ahome	17.13	3	2	10288	3.5	76.5	3.2	6.3	1.4	5.1	1.1	2.4	0.5	80.0	3.2	16.8	0.109	0.549	25.945402	-109.053246
T. Izq. Coahuibampo	19.00	1	1	9749	3.6	75.2	3.1	8.1	1.5	4.9	1.0	2.1	0.5	78.8	3.1	18.1	0.105	0.550	25.958299	-109.053443
T. Izq. Coahuibampo	19.00	1	2	7981	5.1	71.5	4.2	8.5	1.5	5.0	1.0	2.5	0.7	76.6	4.2	19.2	0.100	0.550	25.958322	-109.053648
T. Izq. Coahuibampo	19.00	3	1	7126	3.0	71.5	4.6	8.7	1.0	6.6	1.4	2.9	0.3	74.5	4.6	20.9	0.086	0.501	25.966225	-109.047519
T. Izq. Coahuibampo	19.00	3	2	7092	3.3	71.1	4.6	8.2	2.0	6.5	1.1	2.8	0.4	74.4	4.6	21.0	0.086	0.501	25.966391	-109.047573
Poblado Chico	50.00	3	1	4985	2.9	61.4	5.0	7.5	2.5	12.4	3.7	3.8	0.8	64.3	5.0	30.7	0.082	0.508	26.225132	-109.055145
Poblado Chico	50.00	3	2	4834	1.8	57.1	5.9	8.5	2.7	14.3	4.2	4.5	1.0	58.9	5.9	35.2	0.088	0.508	26.225166	-109.055343
T. Der. El Fuerte	54.80	1	1	4928	2.0	62.4	4.9	7.3	2.3	12.4	4.0	3.9	0.8	64.4	4.9	30.7	0.094	0.504	26.261539	-109.044801
T. Der. El Fuerte	54.80	1	2	5014	2.4	58.5	5.7	8.0	2.7	13.1	4.3	4.5	0.8	60.9	5.7	33.4	0.080	0.504	26.261584	-109.044987
T. Der. El Fuerte	54.80	3	1	4907	2.7	59.6	5.4	9.2	2.5	12.0	3.8	4.0	0.8	62.3	5.4	32.3	0.084	0.502	26.276898	-109.040423
T. Der. El Fuerte	54.80	3	2	4945	2.5	56.3	5.7	10.7	2.6	12.9	4.0	4.4	0.9	58.8	5.7	35.5	0.077	0.502	26.276939	-109.040639
Lim. Edos. Term. Sin. Ppia. Son.	69.80																			
T. Izq. Huatabampo	128.50	1	1	3224	2.0	48.1	9.3	10.5	3.7	14.8	3.7	7.3	0.6	50.1	9.3	40.6	0.070	0.529	26.830759	-109.362878
T. Izq. Huatabampo	128.50	1	2	3617	1.4	52.9	9.0	10.0	3.5	13.6	3.4	5.6	0.6	54.3	9.0	36.7	0.077	0.529	26.830729	-109.363163
Caseta de Cobro Estacion Don (La Jaula)	129.90	2	1	2715	0.2	51.9	6.5	3.8	3.0	21.8	2.4	9.1	1.3	52.1	6.5	41.4	0.086	0.500	26.849800	-109.373283
Caseta de Cobro Estacion Don (La Jaula)	129.90	2	2	2715	0.2	51.9	6.5	3.8	3.0	21.8	2.4	9.1	1.3	52.1	6.5	41.4	0.086	0.500	26.849800	-109.373283
Navojoa	155.00	1	1	6832	6.0	51.2	6.8	13.0	4.8	11.1	2.2	4.6	0.3	57.2	6.8	36.0	0.091	0.512	27.039050	-109.436263
Navojoa	155.00	1	2	6508	6.9	48.8	7.0	13.6	4.7	11.7	1.9	5.0	0.4	55.7	7.0	37.3	0.107	0.512	27.039059	-109.436528
Navojoa	155.00	3	1	9462	8.5	61.6	4.8	8.5	2.7	9.0	1.6	3.0	0.3	70.1	4.8	25.1	0.063	0.523	27.105032	-109.448015
Navojoa	155.00	3	2	10376	7.1	63.2	4.8	8.4	2.8	8.8	1.6	3.0	0.3	70.3	4.8	24.9	0.066	0.523	27.105030	-109.448137
T. Izq. Villa Juárez	167.25	3	1	6868	1.8	62.0	5.1	7.3	3.3	12.7	2.7	4.7	0.4	63.8	5.1	31.1	0.073	0.514	27.156610	-109.509043
T. Izq. Villa Juárez	167.25	3	2	6498	2.1	58.7	5.3	8.8	3.6	13.6	2.7	4.8	0.4	60.8	5.3	33.9	0.068	0.514	27.156373	-109.509247
Caseta de Cobro Fundición	195.80	2	1	3753	0.2	64.1	5.3	3.2	2.4	15.6	1.9	6.5	0.8	64.3	5.3	30.4	0.086	0.500	27.320379	-109.719788
Caseta de Cobro Fundición	195.80	2	2	3753	0.2	64.1	5.3	3.2	2.4	15.6	1.9	6.5	0.8	64.3	5.3	30.4	0.086	0.500	27.320379	-109.719788
T. Der. Fundición	196.30	1	1	5325	1.1	58.6	6.4	8.7	2.5	14.3	2.7	5.4	0.3	59.7	6.4	33.9	0.088	0.509	27.327667	-109.728850
T. Der. Fundición	196.30	1	2	5139	1.2	56.1	6.6	9.4	2.7	15.0	2.8	5.9	0.3	57.3	6.6	36.1	0.077	0.509	27.326588	-109.729571
Cd. Obregón	222.70	1	1	13386	1.9	65.9	4.4	8.8	4.0	9.2	2.7	2.8	0.3	67.8	4.4	27.8	0.068	0.504	27.461180	-109.901316
Cd. Obregón	222.70	1	2	13159	2.6	67.8	3.9	6.8	3.9	8.9	3.1	2.7	0.3	70.4	3.9	25.7	0.064	0.504	27.460953	-109.901415

12 CARR: Mazatlán - Culiacán (Cuota)

CLAVE: 25045

RUTA: MEX-015D

AÑO: 2017

LUGAR	ESTACION				CLASIFICACION VEHICULAR EN PORCIENTO													COORDENADAS		
	KM	TE	SC	TDPA	M	A	B	C2	C3	T3S2	T3S3	T3S2R4	OTROS	A	B	C	K'	D	LATITUD	LONGITUD
Ent. Venadillo	0.00	3	1	4430	2.1	48.4	7.6	9.0	3.0	18.7	3.8	6.0	1.4	50.5	7.6	41.9	0.069	0.503	23.310041	-106.426874

SINALOA

12 CARR: Mazatlán - Culiacán (Cuota)

CLAVE: 25045

RUTA: MEX-015D

AÑO: 2017

LUGAR	ESTACION				CLASIFICACION VEHICULAR EN PORCIENTO													COORDENADAS		
	KM	TE	SC	TDPA	M	A	B	C2	C3	T3S2	T3S3	T3S2R4	OTROS	A	B	C	K'	D	LATITUD	LONGITUD
Ent. Venadillo	0.00	3	2	4369	2.4	48.2	7.0	7.1	3.4	20.8	3.5	6.6	1.0	50.6	7.0	42.4	0.071	0.503	23.310036	-106.426876
Caseta de Cobro Mármol	25.15	3	1	3481	1.3	47.5	8.3	7.9	2.1	20.3	4.0	7.1	1.5	48.8	8.3	42.9	0.077	0.526	23.482329	-106.582180
Caseta de Cobro Mármol	25.15	3	2	3140	1.1	44.5	7.9	7.8	3.1	23.3	4.0	7.4	0.9	45.6	7.9	46.5	0.071	0.526	23.482327	-106.582178
Caseta de Cobro Costa Rica	187.80	3	1	4626	2.4	46.4	8.5	8.5	2.3	20.7	3.1	7.4	0.7	48.8	8.5	42.7	0.088	0.513	24.583113	-107.440672
Caseta de Cobro Costa Rica	187.80	3	2	4383	4.3	44.6	8.1	7.2	3.6	21.3	3.4	6.5	1.0	48.9	8.1	43.0	0.068	0.513	24.583250	-107.440327
T. C. Culiacán - El Dorado	190.26																			

13 CARR: Tepic - Villa Unión (cuota)

CLAVE: 00500

RUTA: MEX-015D

AÑO: 2017

LUGAR	ESTACION				CLASIFICACION VEHICULAR EN PORCIENTO													COORDENADAS		
	KM	TE	SC	TDPA	M	A	B	C2	C3	T3S2	T3S3	T3S2R4	OTROS	A	B	C	K'	D	LATITUD	LONGITUD
Tepic	0.00																			
Caseta de Cobro El Pichón	4.70	1	1	6425	2.4	79.6	2.6	7.2	1.8	4.3	0.6	1.3	0.2	82.0	2.6	15.4	0.154	0.511	21.555049	-104.960004
Caseta de Cobro El Pichón	4.70	1	2	6727	2.3	76.2	3.1	9.0	2.0	4.8	1.0	1.3	0.3	78.5	3.1	18.4	0.200	0.511	21.555052	-104.960007
Caseta de Cobro El Pichón	4.70	2	1	5022	0.8	64.8	7.3	3.7	4.1	12.5	1.6	4.4	0.8	65.6	7.3	27.1	0.098	0.500	21.571682	-104.987526
Caseta de Cobro El Pichón	4.70	2	2	5022	0.8	64.8	7.3	3.7	4.1	12.5	1.6	4.4	0.8	65.6	7.3	27.1	0.098	0.500	21.571682	-104.987526
T. C. Tepic - Mazatlán	21.00	1	1	5990	1.6	63.1	5.3	9.0	3.0	11.8	1.8	3.6	0.8	64.7	5.3	30.0	0.068	0.514	21.662840	-105.027816
T. C. Tepic - Mazatlán	21.00	1	2	6330	2.1	61.2	5.6	11.1	3.5	10.3	2.3	2.9	1.0	63.3	5.6	31.1	0.084	0.514	21.662794	-105.027816
T. C. Tepic - Mazatlán (Crucero De San Blas)	24.50	3	0	5713	2.2	66.4	4.8	10.4	2.8	7.6	2.8	2.3	0.7	68.6	4.8	26.6	0.071	0.556	21.715621	-105.061063
Est. Ruiz	54.90	1	0	5433	2.2	45.2	5.9	11.4	6.2	16.9	3.4	8.0	0.8	47.4	5.9	46.7	0.072	0.507	21.946002	-105.111120
Est. Ruiz	54.90	3	0	3802	2.1	44.5	8.1	12.1	5.0	15.2	3.4	8.9	0.7	46.6	8.1	45.3	0.073	0.536	21.961199	-105.122846
Rosamorada	73.50	1	0	4265	2.1	45.6	9.6	9.5	4.0	17.7	2.6	7.9	1.0	47.7	9.6	42.7	0.080	0.507	22.085161	-105.211473
Rosamorada	73.50	3	0	3813	1.5	46.3	10.1	7.6	3.8	17.8	3.0	9.1	0.8	47.8	10.1	42.1	0.065	0.500	22.091450	-105.219383
Acajoneta	120.20	1	0	4476	2.4	40.8	10.5	8.0	3.8	21.6	2.5	9.4	1.0	43.2	10.5	46.3	0.061	0.517	22.450108	-105.420498
Caseta de Cobro Acajoneta	120.20	2	0	3701	0.5	40.2	8.6	3.6	5.5	25.5	2.9	11.6	1.6	40.7	8.6	50.7	0.081	0.500	22.453809	-105.424718
Acajoneta	120.20	3	0	3736	1.1	54.6	8.8	8.6	3.7	13.1	2.2	7.0	0.9	55.7	8.8	35.5	0.064	0.512	22.458487	-105.430562
Lim. Edos. Term. Nay. Ppia. Sin.	132.80																			
Escuinapa de Hidalgo	208.60	1	1	2352	6.6	46.6	8.5	8.7	3.2	14.8	3.3	7.4	0.9	53.2	8.5	38.3	0.079	0.521	22.844473	-105.741374
Escuinapa de Hidalgo	208.60	1	2	2162	2.6	44.1	9.8	9.1	3.7	17.5	3.8	8.4	1.0	46.7	9.8	43.5	0.085	0.521	22.844445	-105.741387
Escuinapa de Hidalgo	208.60	3	0	3866	1.6	39.5	9.4	6.1	4.1	25.4	3.7	9.2	1.0	41.1	9.4	49.5	0.066	0.518	22.859778	-105.755165
Rosario	220.68	1	0	3819	3.0	35.3	8.2	7.4	3.0	22.6	3.2	8.1	9.2	38.3	8.2	53.5	0.087	0.524	22.977370	-105.869167
Caseta de Cobro Rosario	220.68	2	0	4483	0.5	40.3	7.9	3.6	5.1	27.7	3.2	10.0	1.7	40.8	7.9	51.3	0.081	0.500	22.984690	-105.877930
Rosario	220.68	3	1	2854	2.7	48.3	9.3	6.6	2.4	19.9	3.4	6.6	0.8	51.0	9.3	39.7	0.096	0.501	22.993069	-105.887548
Rosario	220.68	3	2	2862	2.0	42.8	10.4	7.4	2.6	22.4	4.1	7.3	1.0	44.8	10.4	44.8	0.088	0.501	22.993018	-105.887513
X. C. Durango - Villa Unión (Cuota)	240.90	1	0	4851	3.9	70.3	5.4	6.5	4.2	7.1	1.4	0.6	0.6	74.2	5.4	20.4	0.088	0.503	23.185860	-106.174050

SINALOA

13 CARR: Tepic - Villa Unión (cuota)

CLAVE: 00500

RUTA: MEX-015D

AÑO: 2017

LUGAR	ESTACION				CLASIFICACION VEHICULAR EN PORCIENTO													COORDENADAS		
	KM	TE	SC	TDPA	M	A	B	C2	C3	T3S2	T3S3	T3S2R4	OTROS	A	B	C	K'	D	LATITUD	LONGITUD
X. C. Durango - Villa Unión (Cuota)	240.90	3	1	4463	1.4	53.9	6.5	5.5	3.1	18.0	3.1	7.5	1.0	55.3	6.5	38.2	0.094	0.533	23.195803	-106.193448
X. C. Durango - Villa Unión (Cuota)	240.90	3	2	3917	2.0	47.0	8.9	6.9	3.4	19.7	3.4	7.9	0.8	49.0	8.9	42.1	0.064	0.533	23.195620	-106.193575

14 CARR: Carrizal - Campo Aníbal

CLAVE: 25585

RUTA: SIN-019

AÑO: 2017

LUGAR	ESTACION				CLASIFICACION VEHICULAR EN PORCIENTO													COORDENADAS		
	KM	TE	SC	TDPA	M	A	B	C2	C3	T3S2	T3S3	T3S2R4	OTROS	A	B	C	K'	D	LATITUD	LONGITUD
T. C. Mazatlán - Culiacán	0.00	3	0	1933	9.8	77.6	0.5	8.4	2.8	0.7	0.1	0.1	0.0	87.4	0.5	12.1	0.081	0.512	24.635525	-107.273612
X. C. Culiacán - El Dorado	29.20	1	0	11187	9.7	78.1	0.5	7.8	3.0	0.7	0.1	0.1	0.0	87.8	0.5	11.7	0.071	0.531	24.590335	-107.439945
X. C. Culiacán - El Dorado	29.20	3	0	1796	6.0	68.6	4.7	11.5	4.6	2.8	1.0	0.8	0.0	74.6	4.7	20.7	0.097	0.512	24.599415	-107.457849
T. C. San Pedro - Campo Aníbal	32.00	1	0	1561	6.2	68.5	4.8	11.3	4.4	3.0	1.0	0.8	0.0	74.7	4.8	20.5	0.094	0.553	24.590265	-107.541924

15 CARR: Culiacán - Altata

CLAVE: 25013

RUTA: SIN-030

AÑO: 2017

LUGAR	ESTACION				CLASIFICACION VEHICULAR EN PORCIENTO													COORDENADAS		
	KM	TE	SC	TDPA	M	A	B	C2	C3	T3S2	T3S3	T3S2R4	OTROS	A	B	C	K'	D	LATITUD	LONGITUD
Culiacán	0.00																			
T. Izq. El Dorado	6.20	1	1	28557	2.5	88.5	0.2	5.8	0.8	0.9	1.0	0.2	0.1	91.0	0.2	8.8	0.090	0.506	24.778586	-107.440967
T. Izq. El Dorado	6.20	1	2	29218	2.5	88.2	0.3	6.6	0.8	0.9	0.5	0.1	0.1	90.7	0.3	9.0	0.090	0.506	24.778722	-107.441007
T. Izq. El Dorado	6.20	3	1	32265	2.6	86.7	0.3	7.1	1.3	1.1	0.4	0.4	0.1	89.3	0.3	10.4	0.077	0.553	24.775424	-107.450182
T. Izq. El Dorado	6.20	3	2	39989	2.5	86.2	0.3	7.4	1.4	1.3	0.4	0.4	0.1	88.7	0.3	11.0	0.070	0.553	24.775586	-107.450214
T. Izq. Aeropuerto	8.70	3	1	25454	3.2	85.3	0.6	7.1	1.6	1.2	0.4	0.4	0.2	88.5	0.6	10.9	0.073	0.508	24.775049	-107.474666
T. Izq. Aeropuerto	8.70	3	2	26239	2.9	86.6	0.4	6.1	1.6	1.4	0.5	0.4	0.1	89.5	0.4	10.1	0.070	0.508	24.775138	-107.474708
Navolato	32.40	1	1	9390	4.6	87.3	0.9	5.4	1.0	0.4	0.2	0.1	0.1	91.9	0.9	7.2	0.116	0.516	24.755835	-107.687262
Navolato	32.40	1	2	8809	5.7	86.0	0.5	5.2	1.4	0.7	0.3	0.0	0.2	91.7	0.5	7.8	0.162	0.516	24.755919	-107.687293
Navolato	32.40	3	1	7109	5.7	85.5	0.9	5.9	1.4	0.4	0.1	0.1	0.0	91.2	0.9	7.9	0.139	0.532	24.755499	-107.703051
Navolato	32.40	3	2	8071	5.2	85.0	1.3	6.8	1.2	0.3	0.1	0.1	0.0	90.2	1.3	8.5	0.176	0.532	24.755588	-107.703025
T. Der. 5 Hermanos	38.20	3	1	3677	2.8	87.5	0.9	6.4	0.8	0.7	0.5	0.1	0.3	90.3	0.9	8.8	0.249	0.509	24.751513	-107.743783
T. Der. 5 Hermanos	38.20	3	2	3815	3.0	87.6	0.6	6.3	0.9	1.0	0.5	0.1	0.0	90.6	0.6	8.8	0.200	0.509	24.751403	-107.743707
Altata	67.00	1	1	2447	4.1	87.3	0.1	7.5	0.9	0.1	0.0	0.0	0.0	91.4	0.1	8.5	0.200	0.521	24.646035	-107.920168
Altata	67.00	1	2	2251	4.1	86.5	0.3	8.0	1.0	0.1	0.0	0.0	0.0	90.6	0.3	9.1	0.200	0.521	24.646144	-107.920141

SINALOA

16 CARR: Culiacán - El Dorado

CLAVE: 25044

RUTA: SIN-005

AÑO: 2017

LUGAR	ESTACION				CLASIFICACION VEHICULAR EN PORCIENTO												COORDENADAS			
	KM	TE	SC	TDPA	M	A	B	C2	C3	T3S2	T3S3	T3S2R4	OTROS	A	B	C	K'	D	LATITUD	LONGITUD
T. C. Culiacán - Altata	0.00	3	1	24919	1.7	84.3	2.6	5.8	1.9	2.3	0.8	0.4	0.2	86.0	2.6	11.4	0.077	0.512	24.768548	-107.447126
T. C. Culiacán - Altata	0.00	3	2	23727	1.6	82.9	2.9	6.6	2.0	2.6	0.8	0.4	0.2	84.5	2.9	12.6	0.080	0.512	24.768611	-107.447247
T. C. Libramiento Sur de Culiacán	3.60	3	1	20551	3.0	77.7	2.4	9.8	2.0	3.1	0.7	1.0	0.3	80.7	2.4	16.9	0.121	0.505	24.740254	-107.454069
T. C. Libramiento Sur de Culiacán	3.60	3	2	20968	2.8	79.3	1.8	9.5	2.1	2.9	0.5	0.9	0.2	82.1	1.8	16.1	0.110	0.505	24.739223	-107.454157
X. C. Carrizal - Campo Aníbal	21.35	1	1	9151	2.6	77.8	3.4	7.0	2.0	4.1	1.0	1.5	0.6	80.4	3.4	16.2	0.080	0.510	24.602623	-107.444610
X. C. Carrizal - Campo Aníbal	21.35	1	2	8790	3.6	75.4	3.5	7.7	2.3	4.4	1.0	1.5	0.6	79.0	3.5	17.5	0.078	0.510	24.602600	-107.444525
X. C. Carrizal - Campo Aníbal	21.35	3	0	7970	5.9	78.9	1.7	6.7	2.7	2.7	0.6	0.7	0.1	84.8	1.7	13.5	0.081	0.503	24.579376	-107.444649
El Dorado	55.00	1	1	4221	6.8	80.7	1.2	7.3	2.5	0.8	0.4	0.1	0.2	87.5	1.2	11.3	0.078	0.507	24.341575	-107.370571
El Dorado	55.00	1	2	4349	10.4	76.8	1.2	8.6	2.0	0.4	0.3	0.1	0.2	87.2	1.2	11.6	0.085	0.507	24.341575	-107.370572

17 CARR: El Limoncito - Cinco Hermanos

CLAVE: 25016

RUTA: SIN-016

AÑO: 2017

LUGAR	ESTACION				CLASIFICACION VEHICULAR EN PORCIENTO												COORDENADAS			
	KM	TE	SC	TDPA	M	A	B	C2	C3	T3S2	T3S3	T3S2R4	OTROS	A	B	C	K'	D	LATITUD	LONGITUD
T. C. Culiacán - Altata	0.00	3	0	3104	13.1	72.6	2.4	8.9	2.5	0.3	0.1	0.1	0.0	85.7	2.4	11.9	0.083	0.504	24.758883	-107.739188
Cinco Hermanos	16.00	1	0	961	29.9	53.7	2.1	9.7	4.2	0.3	0.1	0.0	0.0	83.6	2.1	14.3	0.091	0.501	24.809196	-107.857234

18 CARR: El Salado - El Dorado

CLAVE: 25010

RUTA: SIN-010

AÑO: 2017

LUGAR	ESTACION				CLASIFICACION VEHICULAR EN PORCIENTO												COORDENADAS			
	KM	TE	SC	TDPA	M	A	B	C2	C3	T3S2	T3S3	T3S2R4	OTROS	A	B	C	K'	D	LATITUD	LONGITUD
T. C. Mazatlán - Culiacán	0.00	3	0	2447	5.7	83.3	0.6	9.2	1.0	0.2	0.0	0.0	0.0	89.0	0.6	10.4	0.097	0.506	24.505211	-107.167676
El Dorado	31.00	1	0	3695	3.6	87.6	0.8	5.5	1.9	0.4	0.1	0.1	0.0	91.2	0.8	8.0	0.070	0.587	24.333814	-107.345118

19 CARR: Escuinapa de Hidalgo - Teacapan

CLAVE: 25001

RUTA: SIN-001

AÑO: 2017

LUGAR	ESTACION				CLASIFICACION VEHICULAR EN PORCIENTO												COORDENADAS			
	KM	TE	SC	TDPA	M	A	B	C2	C3	T3S2	T3S3	T3S2R4	OTROS	A	B	C	K'	D	LATITUD	LONGITUD
Escuinapa de Hidalgo	0.00	3	0	4542	10.7	69.3	3.1	11.1	3.7	1.2	0.5	0.3	0.1	80.0	3.1	16.9	0.081	0.511	22.816068	-105.795905
Teacapan	41.00	1	0	2339	18.0	69.2	2.4	9.5	0.8	0.1	0.0	0.0	0.0	87.2	2.4	10.4	0.105	0.516	22.549678	-105.741806

SINALOA

20 CARR: Estación Dimas - San Ignacio

CLAVE: 25007

RUTA: SIN-006

AÑO: 2017

LUGAR	ESTACION				CLASIFICACION VEHICULAR EN PORCIENTO										COORDENADAS					
	KM	TE	SC	TDPA	M	A	B	C2	C3	T3S2	T3S3	T3S2R4	OTROS	A	B	C	K'	D	LATITUD	LONGITUD
Dimas	0.00																			
X. C. Mazatlán - Culiacán	23.15	1	0	951	4.1	84.6	0.4	8.6	1.3	0.8	0.1	0.1	0.0	88.7	0.4	10.9	0.081	0.504	23.838268	-106.617329
X. C. Mazatlán - Culiacán	23.15	3	0	2059	6.6	80.1	1.4	9.1	1.3	1.4	0.1	0.0	0.0	86.7	1.4	11.9	0.085	0.525	23.790804	-106.609954
San Ignacio	56.00	1	0	1368	11.8	77.8	0.7	9.0	0.6	0.1	0.0	0.0	0.0	89.6	0.7	9.7	0.086	0.503	23.925061	-106.429295

21 CARR: Guamuchil - Mocorito

CLAVE: 25021

RUTA: SIN-021

AÑO: 2017

LUGAR	ESTACION				CLASIFICACION VEHICULAR EN PORCIENTO										COORDENADAS					
	KM	TE	SC	TDPA	M	A	B	C2	C3	T3S2	T3S3	T3S2R4	OTROS	A	B	C	K'	D	LATITUD	LONGITUD
Guamuchil	0.00	3	0	7493	6.0	83.9	0.2	8.6	0.9	0.1	0.1	0.1	0.1	89.9	0.2	9.9	0.082	0.518	25.458432	-108.058922
Mocorito	17.00	1	0	6635	6.6	84.3	0.1	8.5	0.2	0.1	0.1	0.1	0.0	90.9	0.1	9.0	0.092	0.513	25.471510	-107.945361

22 CARR: Guasave - Sinaloa de Leyva

CLAVE: 25023

RUTA: SIN-023

AÑO: 2017

LUGAR	ESTACION				CLASIFICACION VEHICULAR EN PORCIENTO										COORDENADAS					
	KM	TE	SC	TDPA	M	A	B	C2	C3	T3S2	T3S3	T3S2R4	OTROS	A	B	C	K'	D	LATITUD	LONGITUD
Guasave	0.00																			
X. C. Culiacán - Los Mochis	1.15	3	1	4863	10.8	79.0	0.6	8.0	0.8	0.6	0.1	0.1	0.0	89.8	0.6	9.6	0.110	0.514	25.593607	-108.456926
X. C. Culiacán - Los Mochis	1.15	3	2	5151	11.5	78.1	0.8	8.2	0.8	0.5	0.1	0.0	0.0	89.6	0.8	9.6	0.134	0.514	25.593523	-108.456744
Sinaloa de Leyva	74.50	1	1	1894	11.5	78.9	0.6	7.4	0.9	0.5	0.1	0.1	0.0	90.4	0.6	9.0	0.100	0.507	25.829385	-108.232543
Sinaloa de Leyva	74.50	1	2	1947	11.4	77.4	0.7	8.7	1.0	0.6	0.1	0.1	0.0	88.8	0.7	10.5	0.106	0.507	25.829451	-108.232505

23 CARR: Navolato - El Castillo

CLAVE: 25004

RUTA: SIN-004

AÑO: 2017

LUGAR	ESTACION				CLASIFICACION VEHICULAR EN PORCIENTO										COORDENADAS					
	KM	TE	SC	TDPA	M	A	B	C2	C3	T3S2	T3S3	T3S2R4	OTROS	A	B	C	K'	D	LATITUD	LONGITUD
Navolato	0.00	3	0	5967	8.4	78.4	1.7	9.6	1.4	0.3	0.2	0.0	0.0	86.8	1.7	11.5	0.075	0.502	24.739029	-107.685357
El Castillo	29.00	1	0	1090	15.8	67.9	3.2	12.7	0.3	0.0	0.1	0.0	0.0	83.7	3.2	13.1	0.096	0.526	24.551648	-107.701483

24 CARR: Pozole - Cofradía

CLAVE: 25080

RUTA: SIN-080

AÑO: 2017

LUGAR	ESTACION				CLASIFICACION VEHICULAR EN PORCIENTO										COORDENADAS					
	KM	TE	SC	TDPA	M	A	B	C2	C3	T3S2	T3S3	T3S2R4	OTROS	A	B	C	K'	D	LATITUD	LONGITUD
T. C. Tepic - Mazatlán	0.00	3	0	2906	12.8	74.7	1.1	5.6	2.5	0.6	1.9	0.1	0.7	87.5	1.1	11.4	0.122	0.506	23.195303	-106.260042
Cofradía	9.10	1	0	827	23.1	66.8	1.4	7.7	0.7	0.0	0.2	0.0	0.1	89.9	1.4	8.7	0.143	0.505	23.325464	-106.255564

SINALOA

25 CARR: Ramal a Chametla

CLAVE: 25002

RUTA: SIN-002

AÑO: 2017

LUGAR	ESTACION				CLASIFICACION VEHICULAR EN PORCIENTO										COORDENADAS					
	KM	TE	SC	TDPA	M	A	B	C2	C3	T3S2	T3S3	T3S2R4	OTROS	A	B	C	K'	D	LATITUD	LONGITUD
T. C. Tepic - Mazatlán	0.00	3	0	2250	11.9	74.3	1.3	10.3	1.5	0.5	0.1	0.0	0.1	86.2	1.3	12.5	0.082	0.517	22.931332	-105.835098
Chametla	15.00	1	0	1028	39.3	50.5	1.5	8.2	0.4	0.0	0.1	0.0	0.0	89.8	1.5	8.7	0.120	0.518	22.883006	-105.951683

26 CARR: Ramal a Cosalá

CLAVE: 25008

RUTA: SIN-008

AÑO: 2017

LUGAR	ESTACION				CLASIFICACION VEHICULAR EN PORCIENTO										COORDENADAS					
	KM	TE	SC	TDPA	M	A	B	C2	C3	T3S2	T3S3	T3S2R4	OTROS	A	B	C	K'	D	LATITUD	LONGITUD
T. C. Mazatlán - Culiacán	0.00	3	0	1684	7.8	79.7	0.3	9.3	2.1	0.5	0.3	0.0	0.0	87.5	0.3	12.2	0.072	0.501	24.070746	-106.800554
Cosalá	53.00	1	0	1566	13.0	73.9	0.3	11.0	1.0	0.5	0.3	0.0	0.0	86.9	0.3	12.8	0.069	0.540	24.407380	-106.714061

27 CARR: Ramal a El Quelite

CLAVE: 25060

RUTA: SIN-060

AÑO: 2017

LUGAR	ESTACION				CLASIFICACION VEHICULAR EN PORCIENTO										COORDENADAS					
	KM	TE	SC	TDPA	M	A	B	C2	C3	T3S2	T3S3	T3S2R4	OTROS	A	B	C	K'	D	LATITUD	LONGITUD
T. C. Mazatlán - Culiacán	0.00	3	0	1257	9.9	77.6	0.4	10.9	0.8	0.3	0.1	0.0	0.0	87.5	0.4	12.1	0.114	0.505	23.531816	-106.503092
El Quelite	6.00	1	0	1217	15.7	75.0	0.2	8.1	0.9	0.1	0.0	0.0	0.0	90.7	0.2	9.1	0.118	0.503	23.548022	-106.477513

28 CARR: Ramal a Estación Bamoa

CLAVE: 25022

RUTA: SIN-022

AÑO: 2017

LUGAR	ESTACION				CLASIFICACION VEHICULAR EN PORCIENTO										COORDENADAS					
	KM	TE	SC	TDPA	M	A	B	C2	C3	T3S2	T3S3	T3S2R4	OTROS	A	B	C	K'	D	LATITUD	LONGITUD
T. C. Culiacán - Los Mochis	0.00	3	0	3542	7.0	81.2	1.7	7.2	1.7	0.6	0.3	0.2	0.1	88.2	1.7	10.1	0.083	0.526	25.518384	-108.356040
Estación Bamoa	22.50	1	0	2012	7.9	80.6	1.1	8.0	1.3	0.4	0.4	0.2	0.1	88.5	1.1	10.4	0.121	0.616	25.682753	-108.311800

29 CARR: Ramal a La Cruz

CLAVE: 25043

RUTA: SIN

AÑO: 2017

LUGAR	ESTACION				CLASIFICACION VEHICULAR EN PORCIENTO										COORDENADAS					
	KM	TE	SC	TDPA	M	A	B	C2	C3	T3S2	T3S3	T3S2R4	OTROS	A	B	C	K'	D	LATITUD	LONGITUD
T. C. Mazatlán - Culiacán	0.00	3	0	2375	8.0	81.8	0.7	6.0	1.9	1.0	0.4	0.1	0.1	89.8	0.7	9.5	0.068	0.536	24.051829	-106.798748
La Cruz	18.00	1	0	3987	11.3	74.1	1.1	10.3	1.8	0.6	0.7	0.0	0.1	85.4	1.1	13.5	0.066	0.503	23.947729	-106.868703

SINALOA

30 CARR: Ramal a La Noria

CLAVE: 25592

RUTA: SIN

AÑO: 2017

LUGAR	ESTACION				CLASIFICACION VEHICULAR EN PORCIENTO										COORDENADAS					
	KM	TE	SC	TDPA	M	A	B	C2	C3	T3S2	T3S3	T3S2R4	OTROS	A	B	C	K'	D	LATITUD	LONGITUD
T. C. Mazatlán - Culiacán	0.00	3	0	1510	13.9	73.1	0.2	11.8	0.6	0.2	0.2	0.0	0.0	87.0	0.2	12.8	0.123	0.507	23.349771	-106.412866
La Noria	25.50	1	0	512	17.2	71.1	0.1	10.8	0.5	0.1	0.1	0.0	0.1	88.3	0.1	11.6	0.178	0.508	23.500265	-106.322223

31 CARR: Ramal a La Reforma

CLAVE: 25041

RUTA: SIN-004

AÑO: 2017

LUGAR	ESTACION				CLASIFICACION VEHICULAR EN PORCIENTO										COORDENADAS					
	KM	TE	SC	TDPA	M	A	B	C2	C3	T3S2	T3S3	T3S2R4	OTROS	A	B	C	K'	D	LATITUD	LONGITUD
T. C. Culiacán - Los Mochis	0.00	3	0	9685	3.9	85.1	1.4	8.5	0.6	0.2	0.1	0.1	0.1	89.0	1.4	9.6	0.075	0.531	25.446603	-108.084722
T. Der. La Angostura	14.00	3	0	2739	4.8	82.8	0.7	7.4	2.6	0.6	0.7	0.2	0.2	87.6	0.7	11.7	0.078	0.547	25.366408	-108.142700
La Reforma	60.00	1	0	3501	11.4	81.0	0.3	5.6	0.7	0.9	0.1	0.0	0.0	92.4	0.3	7.3	0.103	0.502	25.085801	-108.049128

32 CARR: Rosario - Caimanero

CLAVE: 25003

RUTA: SIN-003

AÑO: 2017

LUGAR	ESTACION				CLASIFICACION VEHICULAR EN PORCIENTO										COORDENADAS					
	KM	TE	SC	TDPA	M	A	B	C2	C3	T3S2	T3S3	T3S2R4	OTROS	A	B	C	K'	D	LATITUD	LONGITUD
Rosario	0.00	3	0	2892	10.9	65.8	2.9	11.7	2.3	3.7	1.6	0.9	0.2	76.7	2.9	20.4	0.067	0.508	22.980986	-105.878641
Caimanero	30.00	1	0	1258	21.2	62.0	3.5	9.4	3.4	0.4	0.1	0.0	0.0	83.2	3.5	13.3	0.149	0.510	22.882138	-106.063071

33 CARR: San Pedro - Campo Aníbal

CLAVE: 25600

RUTA: SIN

AÑO: 2017

LUGAR	ESTACION				CLASIFICACION VEHICULAR EN PORCIENTO										COORDENADAS					
	KM	TE	SC	TDPA	M	A	B	C2	C3	T3S2	T3S3	T3S2R4	OTROS	A	B	C	K'	D	LATITUD	LONGITUD
T. C. Culiacán - Altata	0.00	3	0	4986	3.2	82.9	2.0	7.2	2.6	1.1	0.2	0.7	0.1	86.1	2.0	11.9	0.067	0.520	24.759073	-107.544647
Campo Aníbal	24.50	1	0	1245	19.7	60.5	3.6	14.5	0.7	1.0	0.0	0.0	0.0	80.2	3.6	16.2	0.091	0.502	24.555884	-107.543320
Los Puentes	26.50																			

34 CARR: Topolobampo - Choix

CLAVE: 25032

RUTA: SIN-023

AÑO: 2017

LUGAR	ESTACION				CLASIFICACION VEHICULAR EN PORCIENTO										COORDENADAS					
	KM	TE	SC	TDPA	M	A	B	C2	C3	T3S2	T3S3	T3S2R4	OTROS	A	B	C	K'	D	LATITUD	LONGITUD
Topolobampo	0.00	3	1	3389	2.2	85.5	1.3	5.9	1.6	1.7	0.8	0.5	0.5	87.7	1.3	11.0	0.136	0.534	25.611930	-109.057448
Topolobampo	0.00	3	2	3878	3.0	85.0	1.9	5.6	1.5	1.6	0.6	0.6	0.2	88.0	1.9	10.1	0.136	0.534	25.611922	-109.057618
Los Mochis	24.00	1	1	9573	3.6	87.7	0.7	6.0	0.9	0.5	0.4	0.1	0.1	91.3	0.7	8.0	0.119	0.524	25.759523	-108.998198
Los Mochis	24.00	1	2	8696	1.6	88.8	0.9	6.4	0.9	0.7	0.5	0.1	0.1	90.4	0.9	8.7	0.083	0.524	25.759666	-108.998399
X. C. Los Mochis - Cd. Obregón (Cuota)	29.00	1	1	8450	3.1	87.3	1.5	6.2	0.8	0.6	0.4	0.0	0.1	90.4	1.5	8.1	0.075	0.566	25.819670	-108.973911



SINALOA

34 CARR: Topolobampo - Choix

CLAVE: 25032

RUTA: SIN-023

AÑO: 2017

LUGAR	ESTACION				CLASIFICACION VEHICULAR EN PORCIENTO										COORDENADAS					
	KM	TE	SC	TDPA	M	A	B	C2	C3	T3S2	T3S3	T3S2R4	OTROS	A	B	C	K'	D	LATITUD	LONGITUD
X. C. Los Mochis - Cd. Obregón (Cuota)	29.00	1	2	11004	2.8	88.4	0.9	5.2	1.0	0.8	0.6	0.1	0.2	91.2	0.9	7.9	0.077	0.566	25.819727	-108.973977
X. C. Los Mochis - Cd. Obregón (Cuota)	29.00	3	1	8737	4.7	83.2	1.7	7.9	1.0	0.7	0.6	0.1	0.1	87.9	1.7	10.4	0.088	0.509	25.840695	-108.964818
X. C. Los Mochis - Cd. Obregón (Cuota)	29.00	3	2	9071	5.1	82.7	1.9	8.0	1.1	0.7	0.3	0.1	0.1	87.8	1.9	10.3	0.095	0.509	25.840757	-108.964976
San Blas	65.00	1	1	2934	7.1	77.6	3.1	9.8	1.6	0.4	0.3	0.1	0.0	84.7	3.1	12.2	0.080	0.504	26.063086	-108.778315
San Blas	65.00	1	2	2983	8.5	73.4	4.2	11.6	1.5	0.5	0.2	0.0	0.1	81.9	4.2	13.9	0.099	0.504	26.063185	-108.778380
San Blas	65.00	3	1	1955	5.7	72.9	5.0	13.0	2.0	0.7	0.4	0.1	0.2	78.6	5.0	16.4	0.081	0.513	26.091692	-108.755569
San Blas	65.00	3	2	1854	8.1	68.3	6.7	13.6	2.1	0.7	0.4	0.1	0.0	76.4	6.7	16.9	0.100	0.513	26.091738	-108.755719
El Fuerte	107.70	1	1	2376	13.8	69.6	3.4	11.3	1.2	0.4	0.2	0.1	0.0	83.4	3.4	13.2	0.081	0.504	26.391785	-108.628133
El Fuerte	107.70	1	2	2415	13.8	70.5	3.4	10.3	1.2	0.4	0.2	0.1	0.1	84.3	3.4	12.3	0.098	0.504	26.391827	-108.628227
El Fuerte	107.70	3	0	2663	9.8	70.4	3.9	13.3	1.3	0.7	0.2	0.2	0.2	80.2	3.9	15.9	0.071	0.500	26.421595	-108.607186
Choix	159.00	1	0	2795	7.6	70.5	5.2	14.8	1.4	0.4	0.1	0.0	0.0	78.1	5.2	16.7	0.091	0.511	26.667575	-108.346697

35 CARR: Villa Unión - El Walamo

CLAVE: 25081

RUTA: SIN-081

AÑO: 2017

LUGAR	ESTACION				CLASIFICACION VEHICULAR EN PORCIENTO										COORDENADAS					
	KM	TE	SC	TDPA	M	A	B	C2	C3	T3S2	T3S3	T3S2R4	OTROS	A	B	C	K'	D	LATITUD	LONGITUD
Villa Unión	0.00	3	0	3420	18.4	65.4	1.4	14.0	0.4	0.1	0.1	0.1	0.1	83.8	1.4	14.8	0.114	0.515	23.183140	-106.219994
El Walamo	7.00	1	0	3249	19.0	64.1	2.0	12.2	1.7	0.7	0.1	0.1	0.1	83.1	2.0	14.9	0.110	0.505	23.143817	-106.238050

36 CARR: Villa Unión - Siqueiros

CLAVE: 25063

RUTA: SIN-063

AÑO: 2017

LUGAR	ESTACION				CLASIFICACION VEHICULAR EN PORCIENTO										COORDENADAS					
	KM	TE	SC	TDPA	M	A	B	C2	C3	T3S2	T3S3	T3S2R4	OTROS	A	B	C	K'	D	LATITUD	LONGITUD
Villa Unión	0.00	3	0	2930	11.8	78.0	1.2	6.4	2.2	0.2	0.2	0.0	0.0	89.8	1.2	9.0	0.075	0.504	23.199233	-106.211167
Siqueiros	11.00	1	0	836	20.8	71.6	1.1	5.9	0.3	0.1	0.2	0.0	0.0	92.4	1.1	6.5	0.136	0.500	23.335335	-106.239240

37 CARR: Culiacán - Las Brisas (Cuota)

CLAVE: 25503

RUTA: SIN-001D

AÑO: 2017

LUGAR	ESTACION				CLASIFICACION VEHICULAR EN PORCIENTO										COORDENADAS					
	KM	TE	SC	TDPA	M	A	B	C2	C3	T3S2	T3S3	T3S2R4	OTROS	A	B	C	K'	D	LATITUD	LONGITUD
T. C. Culiacán - El Dorado	0.00																			
Caseta de Cobro Culiacán	1.50	3	1	2568	1.3	68.3	5.4	6.9	3.0	9.0	0.9	4.9	0.3	69.6	5.4	25.0	0.096	0.506	24.749953	-107.470969
Caseta de Cobro Culiacán	1.50	3	2	2507	1.6	65.5	6.7	9.5	2.6	8.2	0.8	4.9	0.2	67.1	6.7	26.2	0.137	0.506	24.750079	-107.470943
X. C. Culiacán - Altata	14.70	3	1	3898	1.0	65.3	7.0	5.3	2.5	9.7	2.6	5.6	1.0	66.3	7.0	26.7	0.072	0.504	24.772298	-107.582715
X. C. Culiacán - Altata	14.70	3	2	3965	3.6	58.9	8.3	5.7	2.9	10.7	2.9	6.0	1.0	62.5	8.3	29.2	0.127	0.504	24.772380	-107.582900

SINALOA

37 CARR: Culiacán - Las Brisas (Cuota)

CLAVE: 25503

RUTA: SIN-001D

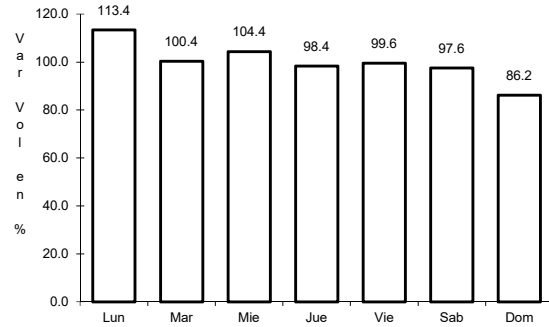
AÑO: 2017

LUGAR	ESTACION				CLASIFICACION VEHICULAR EN PORCIENTO													COORDENADAS		
	KM	TE	SC	TDPA	M	A	B	C2	C3	T3S2	T3S3	T3S2R4	OTROS	A	B	C	K'	D	LATITUD	LONGITUD
X. C. Ramal a La Reforma	110.00	1	1	3644	0.9	53.2	8.0	7.7	2.5	17.1	3.7	6.0	0.9	54.1	8.0	37.9	0.085	0.511	25.389855	-108.124411
X. C. Ramal a La Reforma	110.00	1	2	3813	0.8	48.0	8.7	8.6	2.5	19.9	3.8	6.6	1.1	48.8	8.7	42.5	0.127	0.511	25.389917	-108.124345
T. C. Culiacán - Los Mochis	125.70	1	1	3902	3.8	55.0	5.6	9.5	2.8	13.7	2.3	6.4	0.9	58.8	5.6	35.6	0.083	0.506	25.481023	-108.225121
T. C. Culiacán - Los Mochis	125.70	1	2	3991	1.2	53.5	6.1	11.0	3.4	14.4	2.5	7.0	0.9	54.7	6.1	39.2	0.134	0.506	25.480967	-108.225235

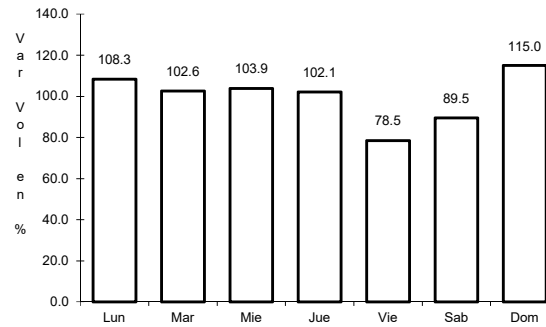
1 CARR: Culiacán - Los Mochis

CLAVE: 25502

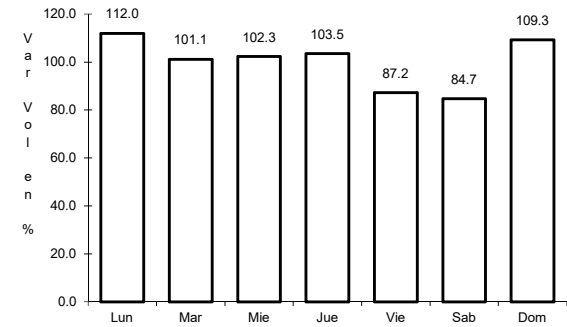
RUTA: MEX-015



Km: 4.00                      Tipo: 1                      Sent: 1



Km: 4.00                      Tipo: 1                      Sent: 2

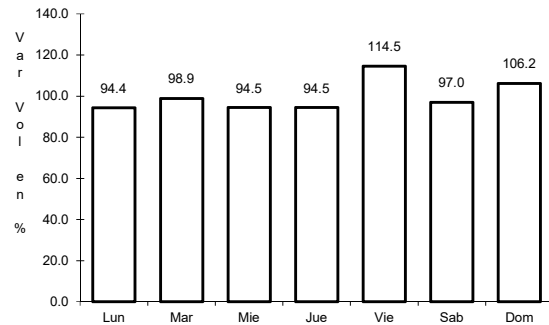


Km: 104.70                      Tipo: 1                      Sent: 0

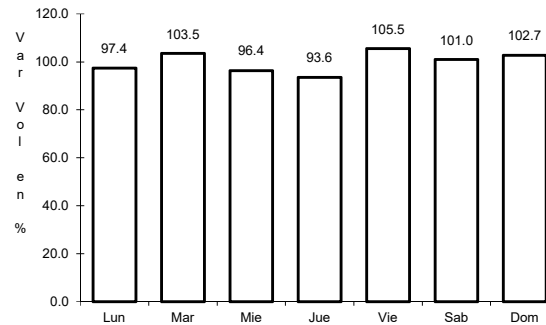
2 CARR: Durango - Villa Unión

CLAVE: 0083

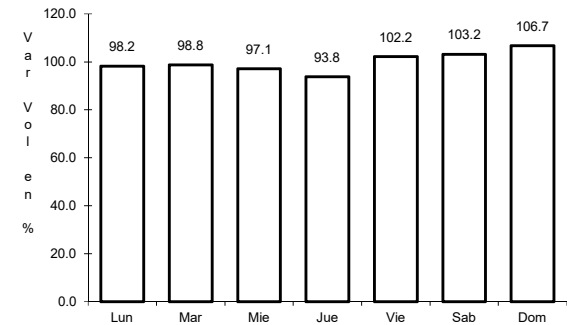
RUTA: MEX-040



Km: 0.00                      Tipo: 3                      Sent: 0



Km: 145.50                      Tipo: 1                      Sent: 0

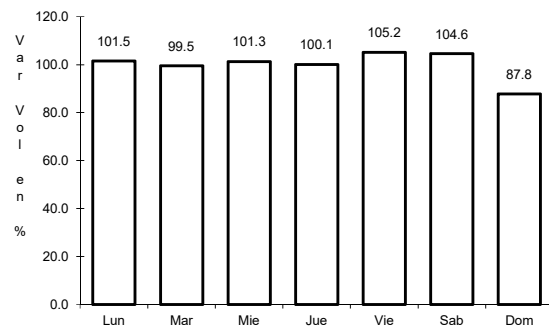


Km: 294.40                      Tipo: 1                      Sent: 0

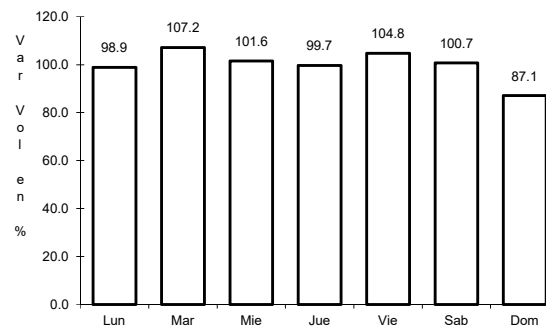
3 CARR: Libramiento de Mazatlán

CLAVE: 25604

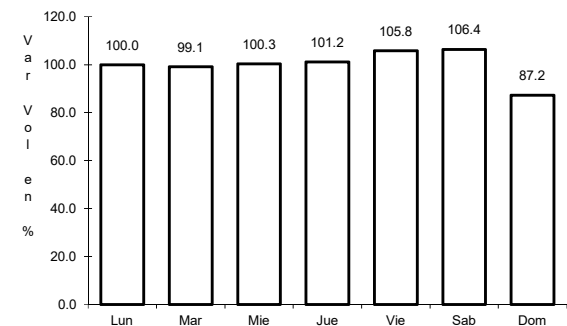
RUTA: MEX



Km: 0.00                      Tipo: 3                      Sent: 1



Km: 0.00                      Tipo: 3                      Sent: 2

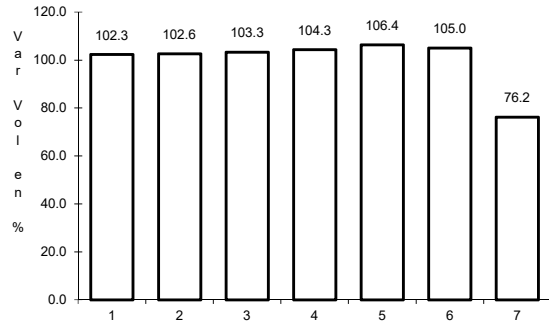


Km: 5.40                      Tipo: 1                      Sent: 1

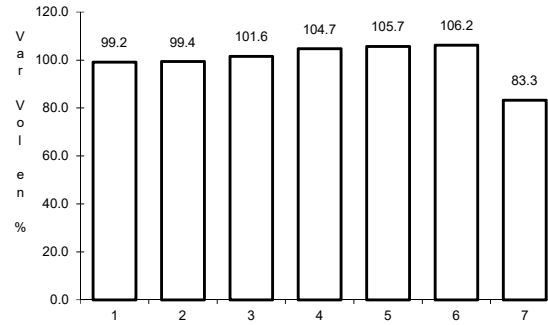
4 CARR: Libramiento Sur de Culiacán

CLAVE: 25500

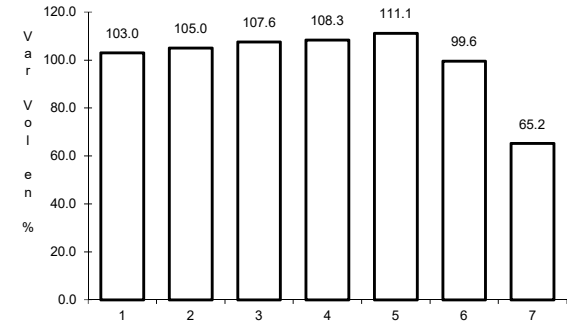
RUTA: MEX-015



Km: 0.00                      Tipo: 3                      Sent: 1



Km: 0.00                      Tipo: 3                      Sent: 2

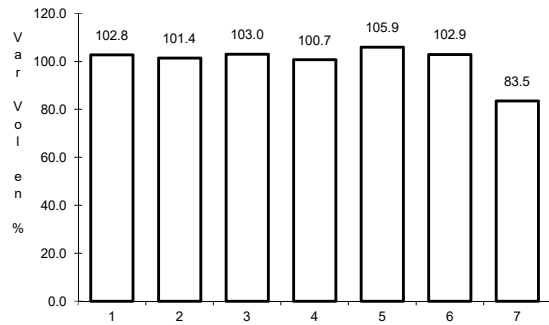


Km: 8.90                      Tipo: 1                      Sent: 1

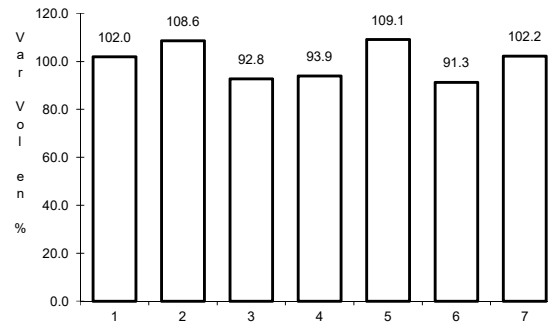
5 CARR: Mazatlán - Culiacán

CLAVE: 25501

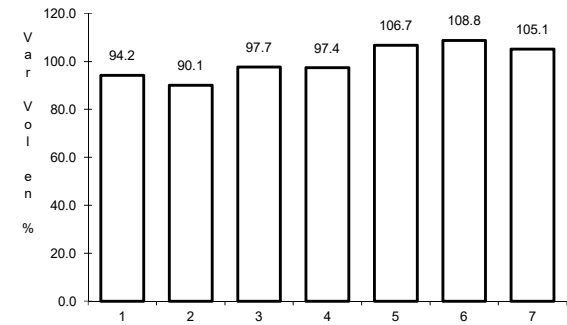
RUTA: MEX-015



Km: 6.40                      Tipo: 1                      Sent: 1



Km: 6.40                      Tipo: 1                      Sent: 2

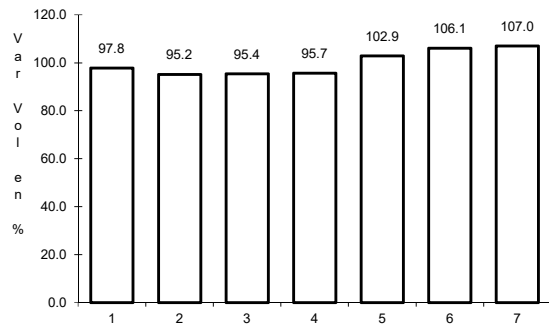


Km: 105.21                      Tipo: 3                      Sent: 0

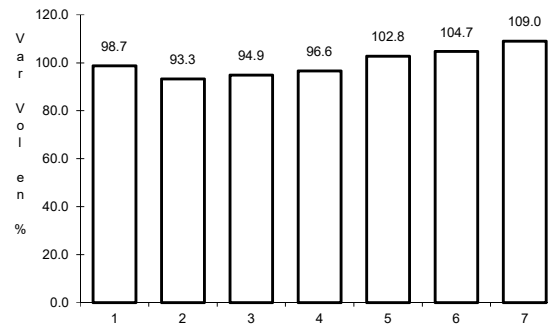
6 CARR: Pericos - Los Naranjos

CLAVE: 25598

RUTA: MEX-024



Km: 0.00                      Tipo: 3                      Sent: 0

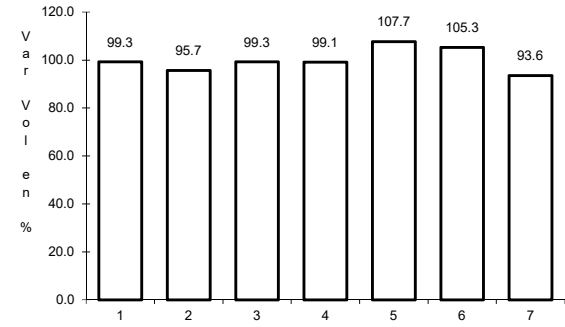
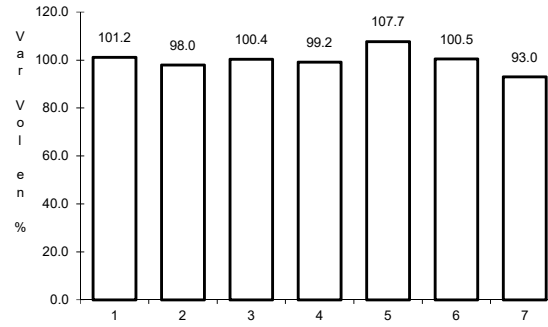
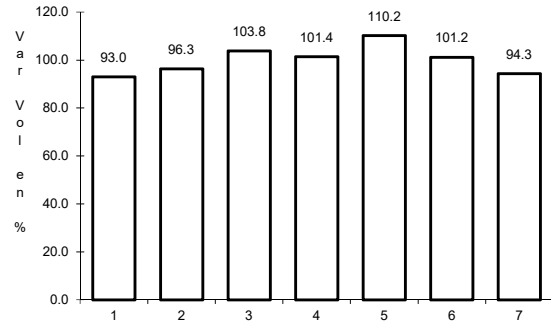


Km: 37.50                      Tipo: 1                      Sent: 0

7 CARR: Tepic - Mazatlán

CLAVE: 00499

ruta: MEX-015



Km: 136.52      Tipo: 1      Sent: 0

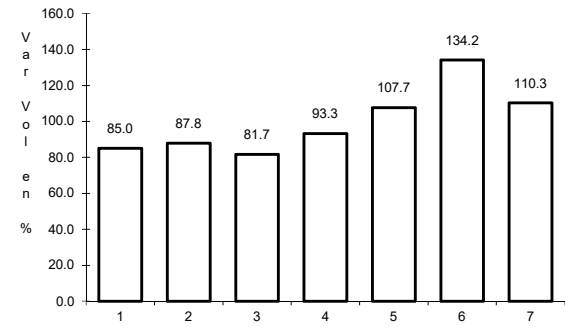
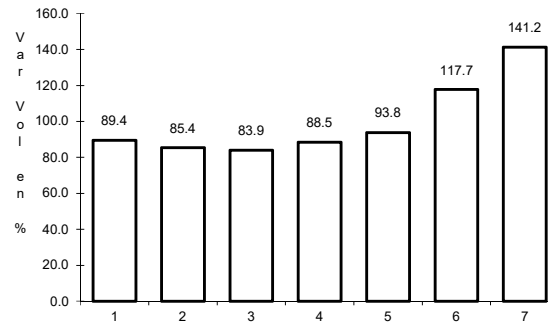
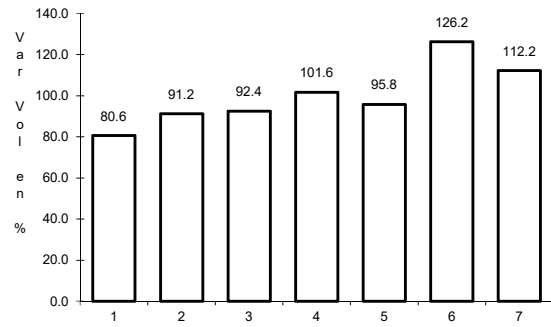
Km: 288.87      Tipo: 1      Sent: 1

Km: 288.87      Tipo: 1      Sent: 2

8 CARR: Durango - Mazatlán (Cuota)

CLAVE: 00084

ruta: MEX-040D



Km: 20.50      Tipo: 3      Sent: 0

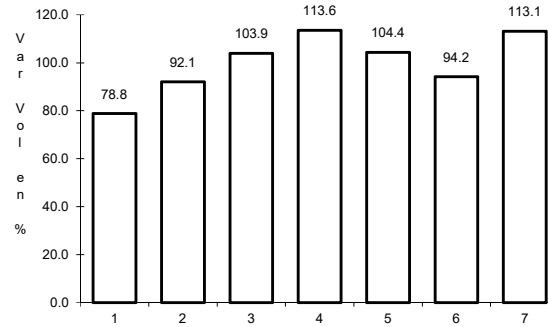
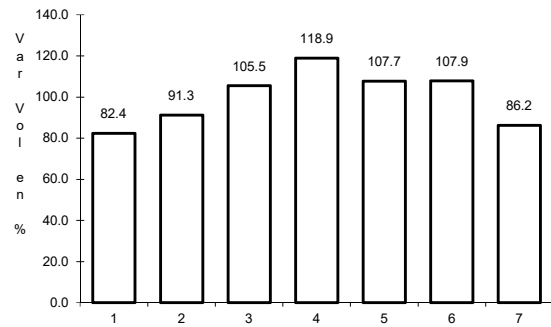
Km: 44.50      Tipo: 1      Sent: 0

Km: 208.35      Tipo: 1      Sent: 0

9 CARR: Libramiento de Culiacán (Cuota)

CLAVE:

ruta: MEX-015D



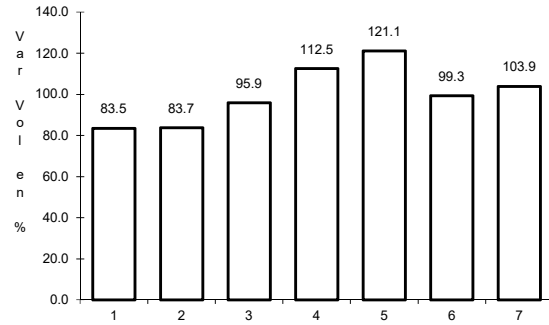
Km: 203.30      Tipo: 1      Sent: 1

Km: 203.30      Tipo: 1      Sent: 2

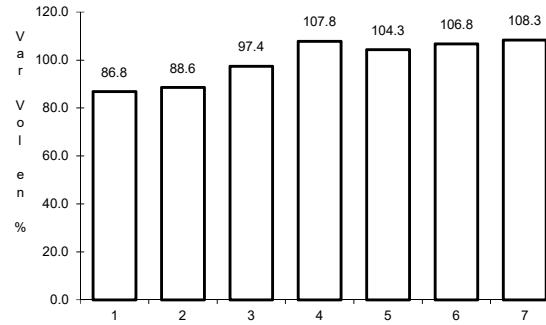
10 CARR: Libramiento de Mazatlán (Cuota)

CLAVE:

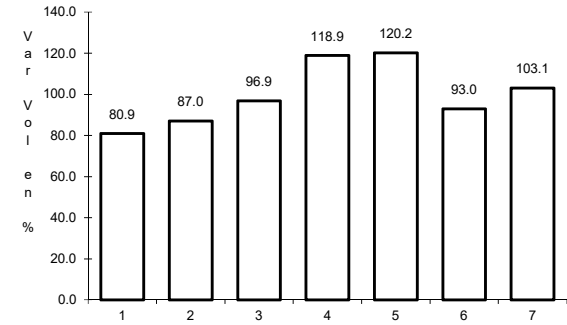
ruta: MEX-015D



Km: 0.00                      Tipo: 3                      Sent: 1



Km: 0.00                      Tipo: 3                      Sent: 2

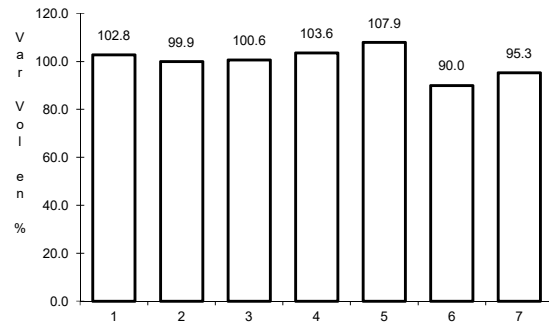


Km: 28.60                      Tipo: 3                      Sent: 1

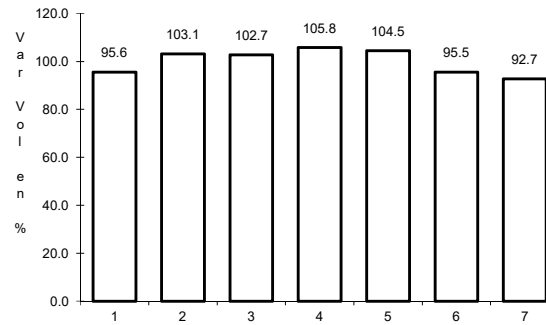
11 CARR: Los Mochis - Cd. Obregón (Cuota)

CLAVE: 26444

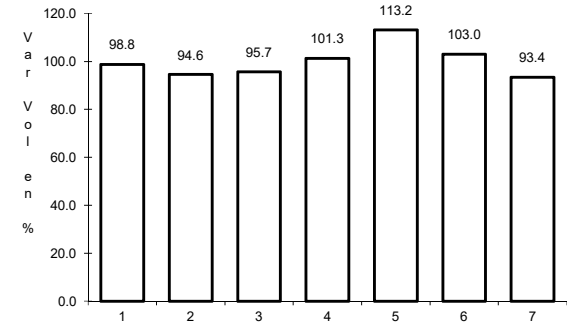
ruta: MEX-015D



Km: 0.00                      Tipo: 3                      Sent: 1



Km: 0.00                      Tipo: 3                      Sent: 2

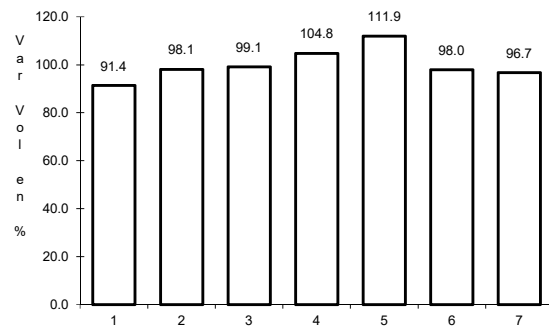


Km: 222.70                      Tipo: 1                      Sent: 1

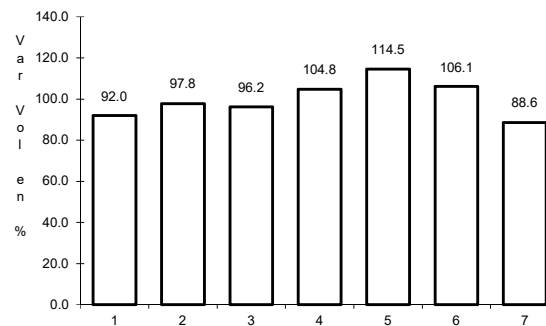
12 CARR: Mazatlán - Culiacán (Cuota)

CLAVE: 25045

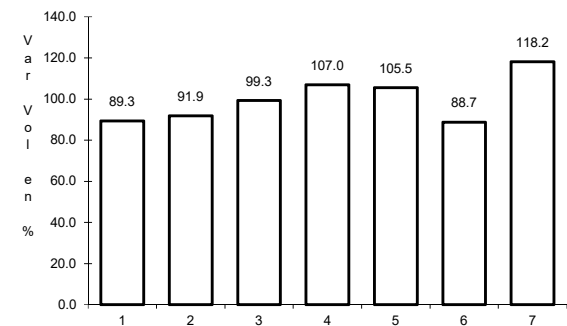
ruta: MEX-015D



Km: 0.00                      Tipo: 3                      Sent: 1



Km: 0.00                      Tipo: 3                      Sent: 2

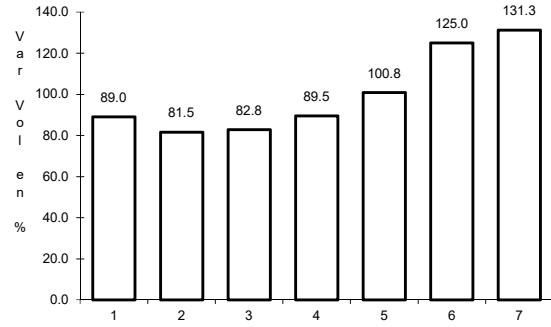


Km: 187.80                      Tipo: 3                      Sent: 1

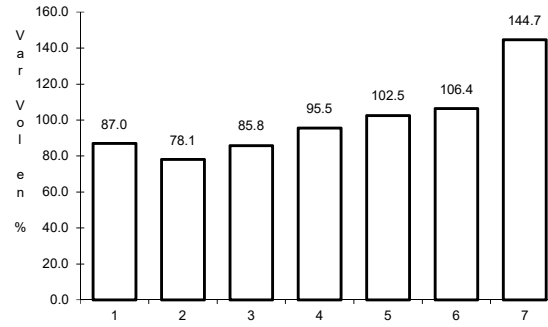
13 CARR: Tepic - Villa Unión (cuota)

CLAVE: 00500

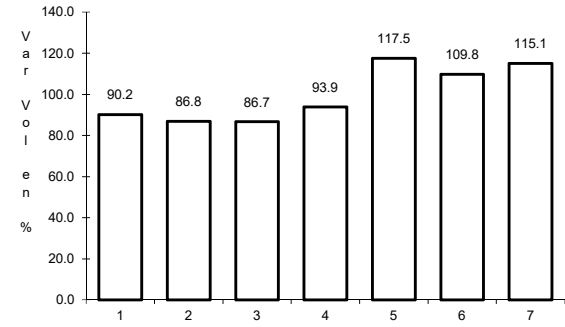
ruta: MEX-015D



Km: 4.70 Tipo: 1 Sent: 1



Km: 4.70 Tipo: 1 Sent: 2

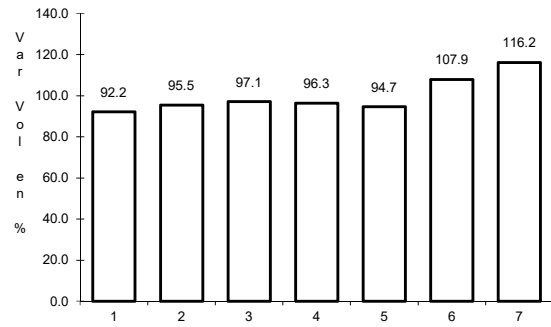


Km: 240.90 Tipo: 1 Sent: 0

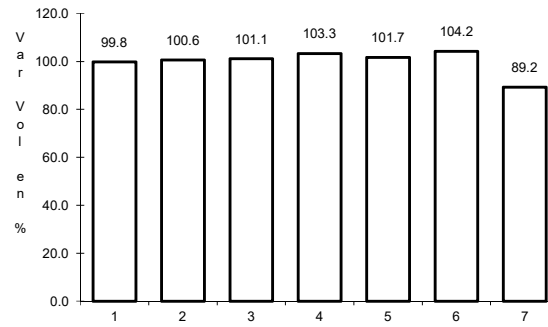
14 CARR: Carrizal - Campo Aníbal

CLAVE: 25585

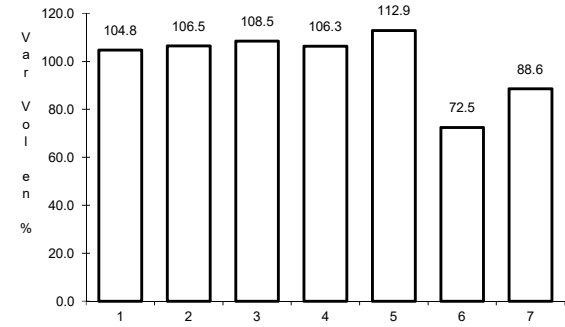
ruta: SIN-019



Km: 0.00 Tipo: 3 Sent: 0



Km: 29.20 Tipo: 1 Sent: 0

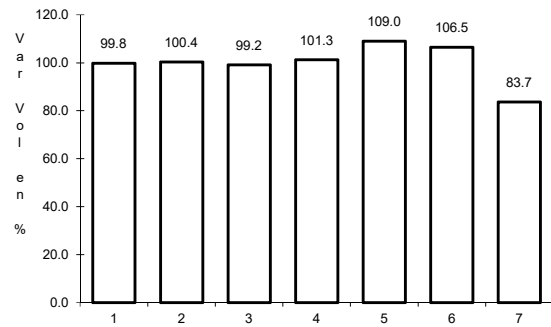


Km: 32.00 Tipo: 1 Sent: 0

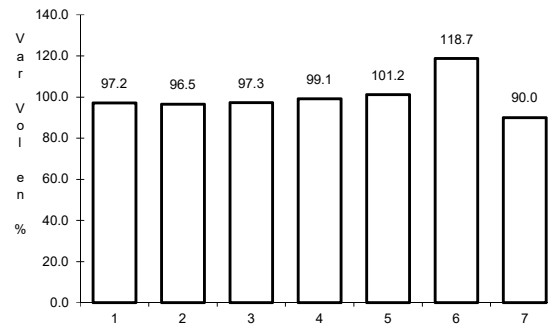
15 CARR: Culiacán - Altata

CLAVE: 25013

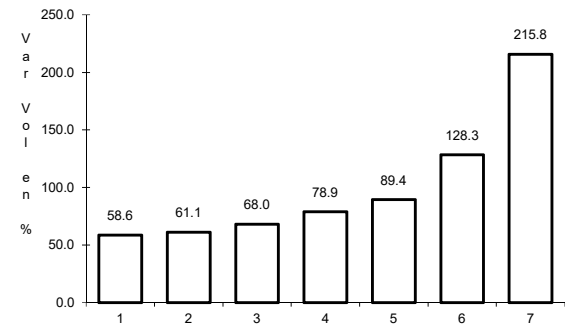
ruta: SIN-030



Km: 6.20 Tipo: 1 Sent: 1



Km: 6.20 Tipo: 1 Sent: 2

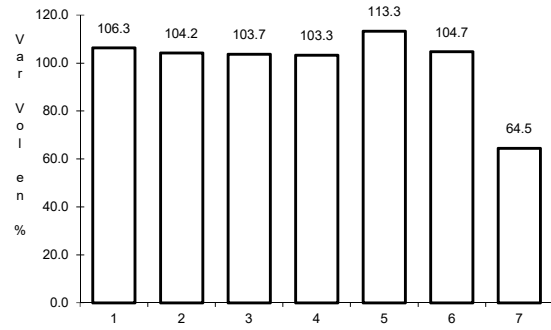


Km: 67.00 Tipo: 1 Sent: 1

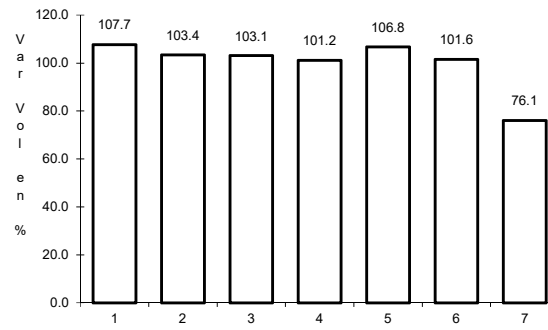
16 CARR: Culiacán - El Dorado

CLAVE: 25044

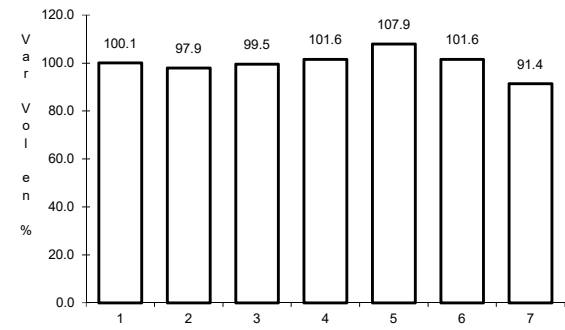
ruta: SIN-005



Km: 0.00                      Tipo: 3                      Sent: 1



Km: 0.00                      Tipo: 3                      Sent: 2

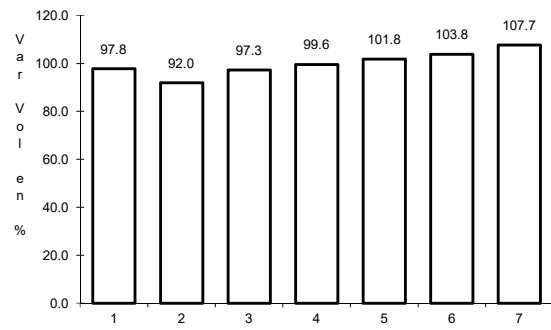


Km: 21.35                      Tipo: 3                      Sent: 0

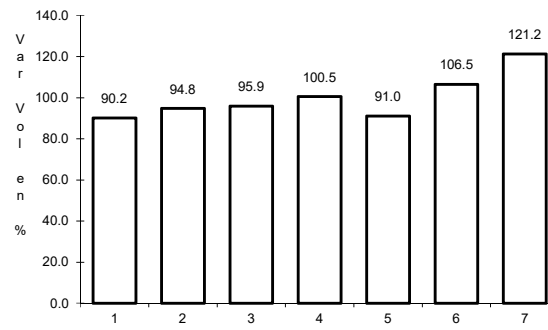
17 CARR: El Limoncito - Cinco Hermanos

CLAVE: 25016

ruta: SIN-016



Km: 0.00                      Tipo: 3                      Sent: 0

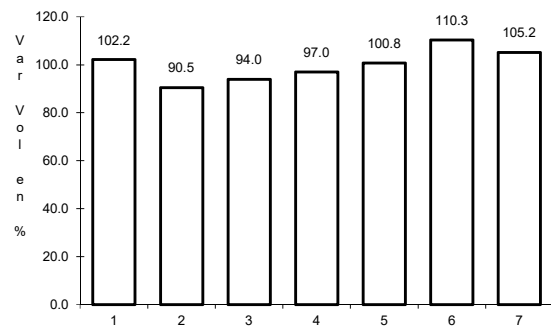


Km: 16.00                      Tipo: 1                      Sent: 0

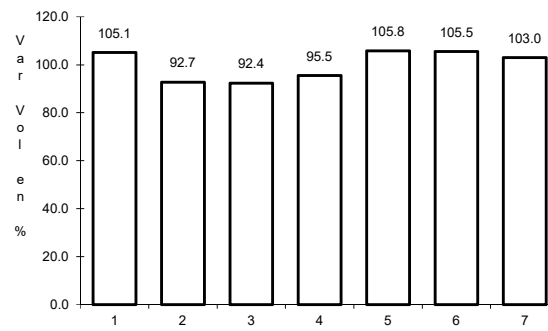
18 CARR: El Salado - El Dorado

CLAVE: 25010

ruta: SIN-010



Km: 0.00                      Tipo: 3                      Sent: 0



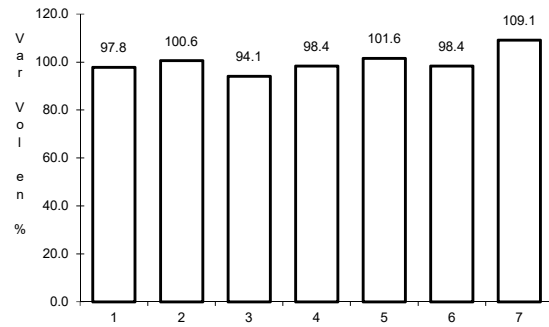
Km: 31.00                      Tipo: 1                      Sent: 0



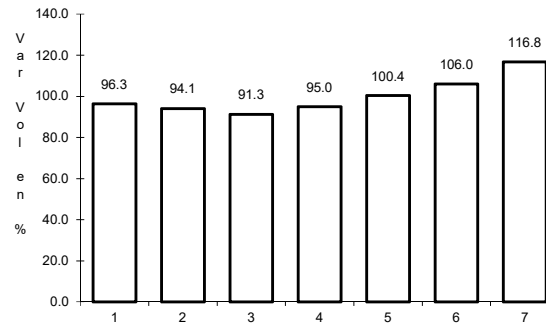
19 CARR: Escuinapa de Hidalgo - Teacapan

CLAVE: 25001

ruta: SIN-001



Km: 0.00                      Tipo: 3                      Sent: 0

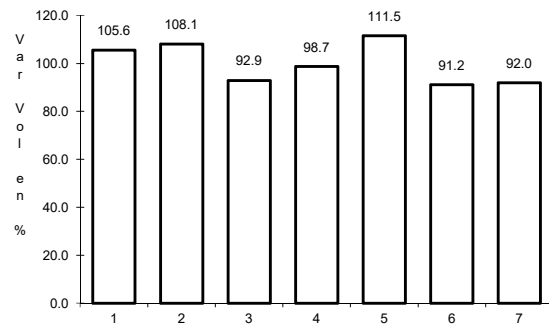


Km: 41.00                      Tipo: 1                      Sent: 0

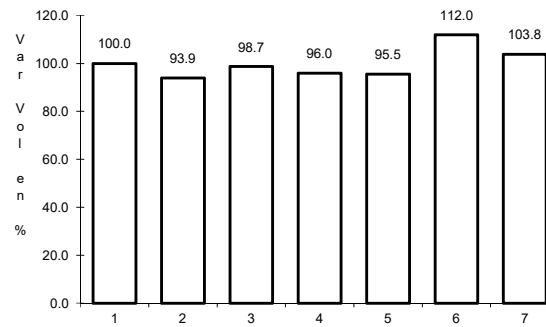
20 CARR: Estación Dimas - San Ignacio

CLAVE: 25007

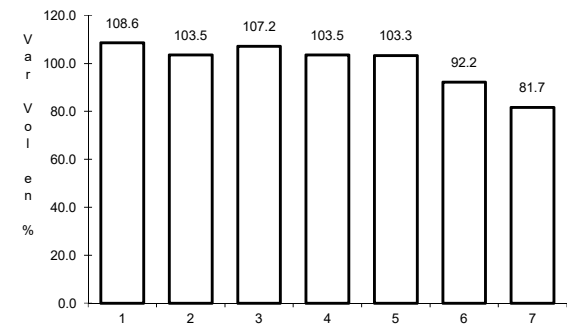
ruta: SIN-006



Km: 23.15                      Tipo: 1                      Sent: 0



Km: 23.15                      Tipo: 3                      Sent: 0

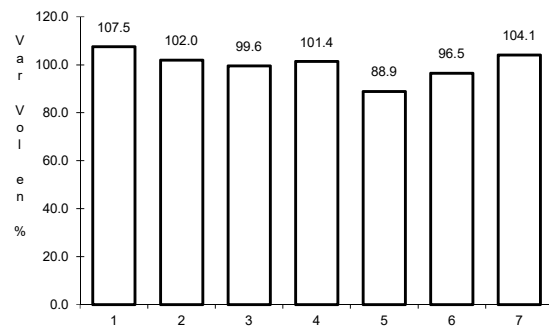


Km: 56.00                      Tipo: 1                      Sent: 0

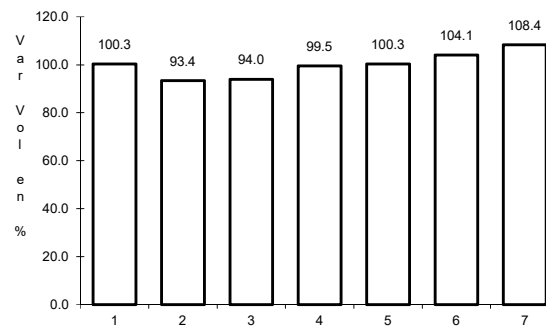
21 CARR: Guamuchil - Mocorito

CLAVE: 25021

ruta: SIN-021



Km: 0.00                      Tipo: 3                      Sent: 0

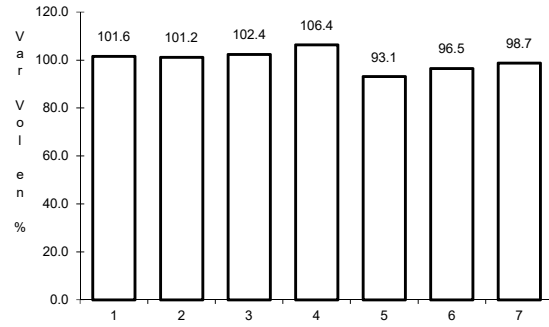


Km: 17.00                      Tipo: 1                      Sent: 0

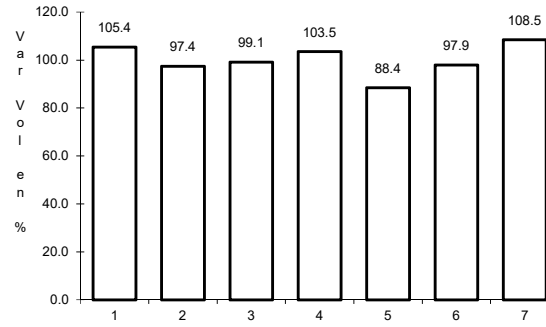
22 CARR: Guasave - Sinaloa de Leyva

CLAVE: 25023

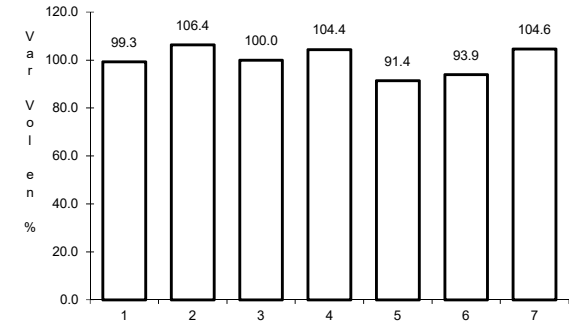
RUTA: SIN-023



Km: 1.15                      Tipo: 3                      Sent: 1



Km: 1.15                      Tipo: 3                      Sent: 2

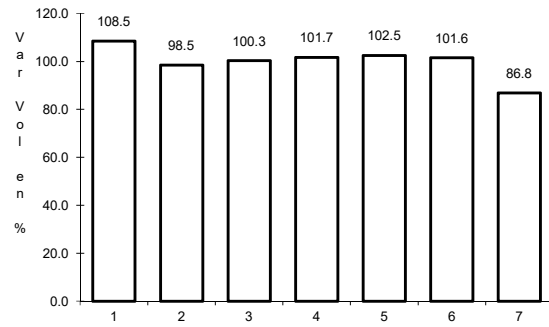


Km: 74.50                      Tipo: 1                      Sent: 1

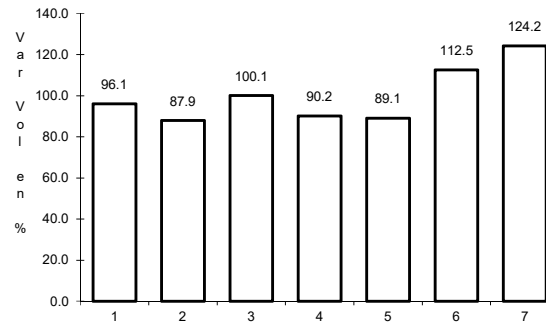
23 CARR: Navolato - El Castillo

CLAVE: 25004

RUTA: SIN-004



Km: 0.00                      Tipo: 3                      Sent: 0

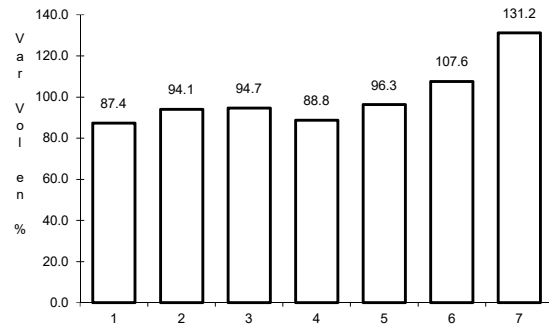


Km: 29.00                      Tipo: 1                      Sent: 0

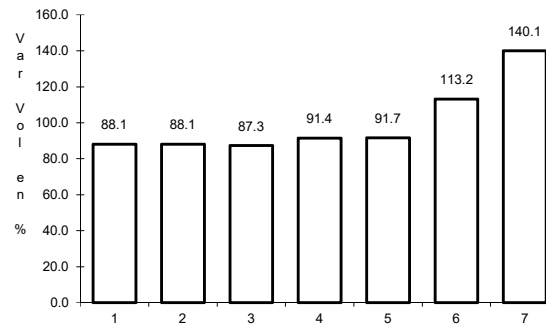
24 CARR: Pozole - Cofradía

CLAVE: 25080

RUTA: SIN-080



Km: 0.00                      Tipo: 3                      Sent: 0

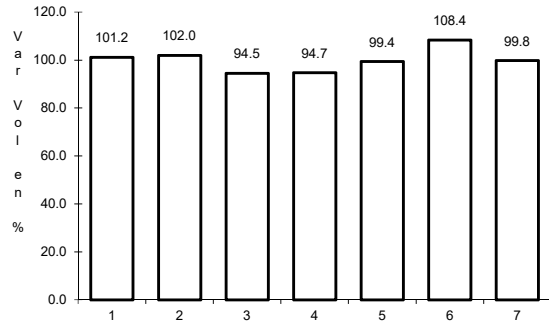


Km: 9.10                      Tipo: 1                      Sent: 0

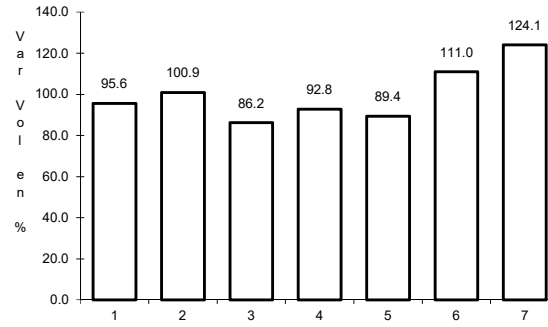
25 CARR: Ramal a Chametla

CLAVE: 25002

RUTA: SIN-002



Km: 0.00 Tipo: 3 Sent: 0

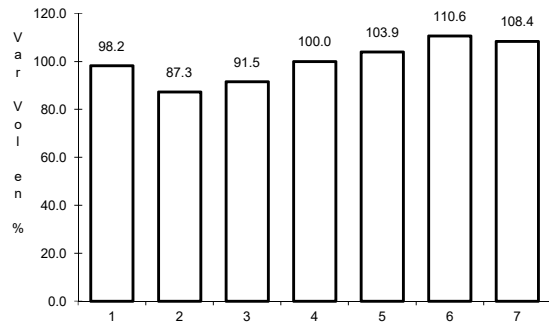


Km: 15.00 Tipo: 1 Sent: 0

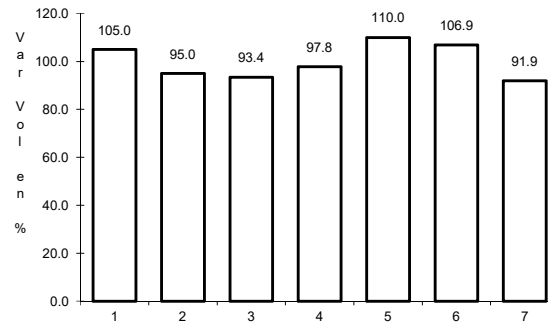
26 CARR: Ramal a Cosalá

CLAVE: 25008

RUTA: SIN-008



Km: 0.00 Tipo: 3 Sent: 0

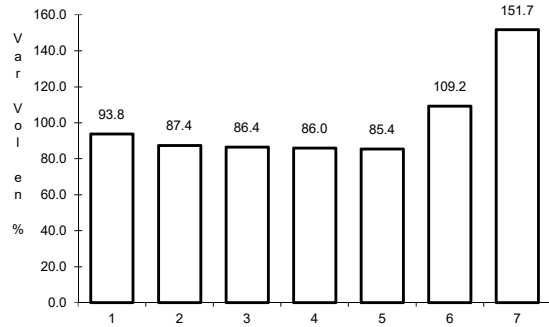


Km: 53.00 Tipo: 1 Sent: 0

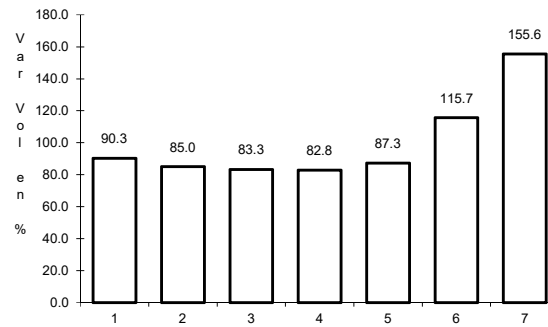
27 CARR: Ramal a El Quelite

CLAVE: 25060

RUTA: SIN-060



Km: 0.00 Tipo: 3 Sent: 0

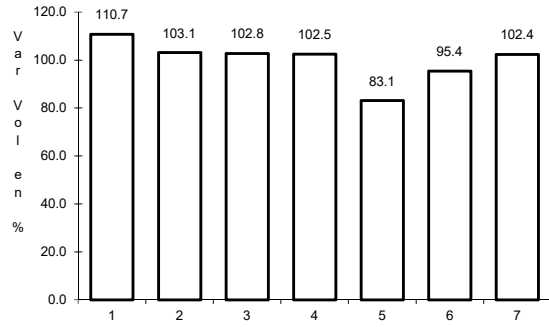


Km: 6.00 Tipo: 1 Sent: 0

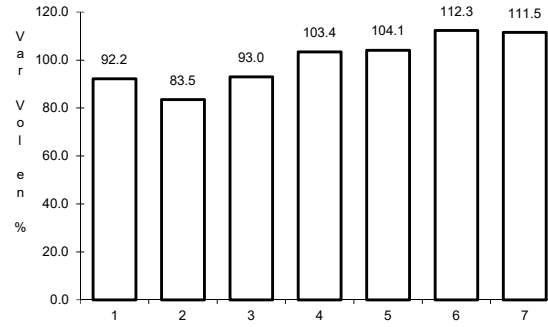
28 CARR: Ramal a Estación Bamoa

CLAVE: 25022

RUTA: SIN-022



Km: 0.00                      Tipo: 3                      Sent: 0

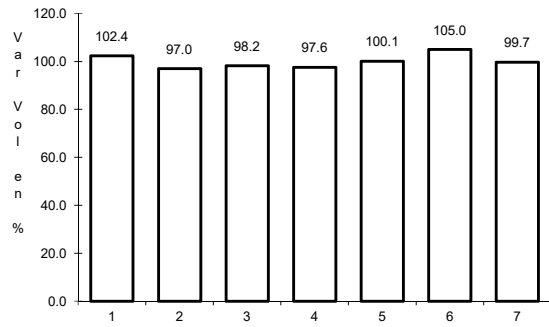


Km: 22.50                      Tipo: 1                      Sent: 0

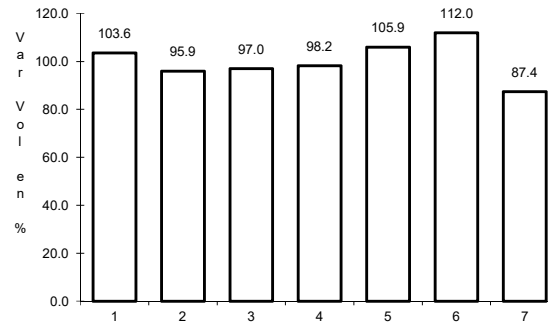
29 CARR: Ramal a La Cruz

CLAVE: 25043

RUTA: SIN



Km: 0.00                      Tipo: 3                      Sent: 0

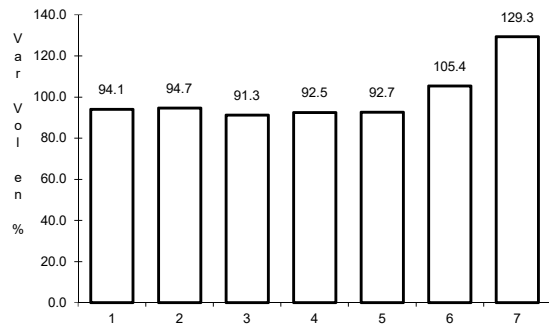


Km: 18.00                      Tipo: 1                      Sent: 0

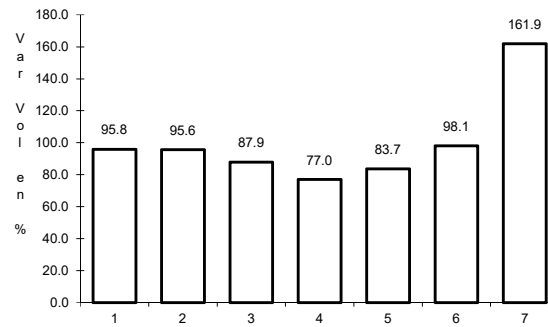
30 CARR: Ramal a La Noria

CLAVE: 25592

RUTA: SIN



Km: 0.00                      Tipo: 3                      Sent: 0

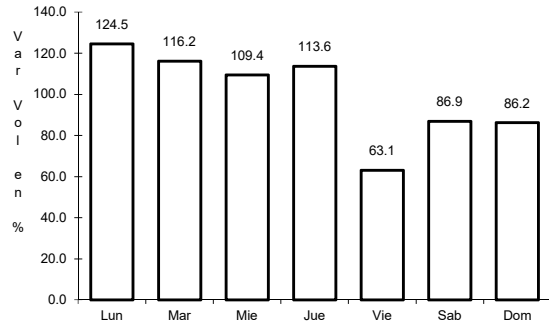


Km: 25.50                      Tipo: 1                      Sent: 0

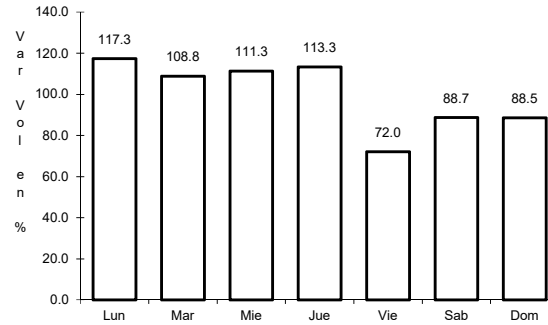
31 CARR: Ramal a La Reforma

CLAVE: 25041

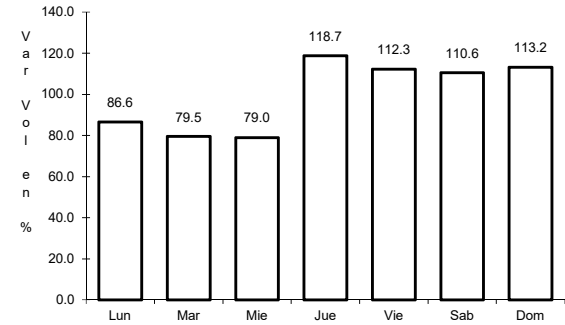
RUTA: SIN-004



Km: 0.00      Tipo: 3      Sent: 0



Km: 14.00      Tipo: 3      Sent: 0

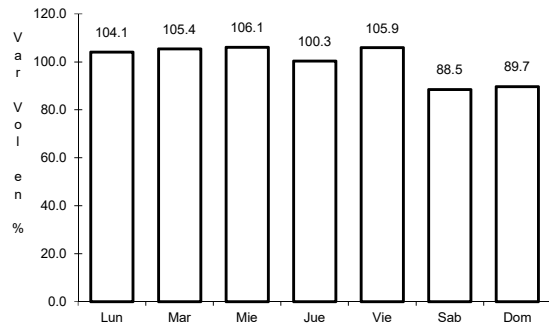


Km: 60.00      Tipo: 1      Sent: 0

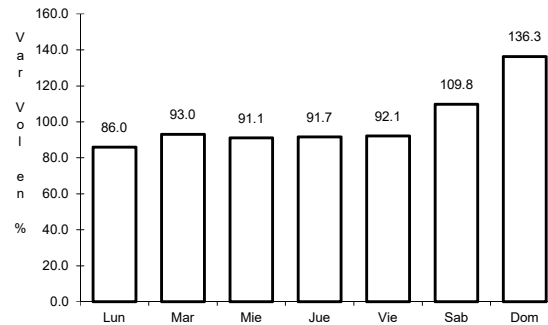
32 CARR: Rosario - Caimanero

CLAVE: 25003

RUTA: SIN-003



Km: 0.00      Tipo: 3      Sent: 0

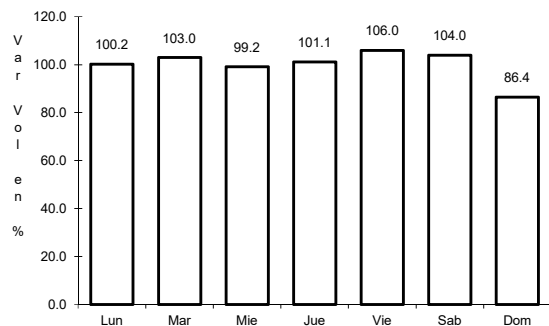


Km: 30.00      Tipo: 1      Sent: 0

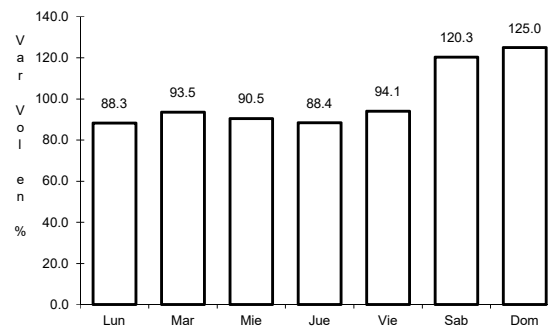
33 CARR: San Pedro - Campo Aníbal

CLAVE: 25600

RUTA: SIN



Km: 0.00      Tipo: 3      Sent: 0

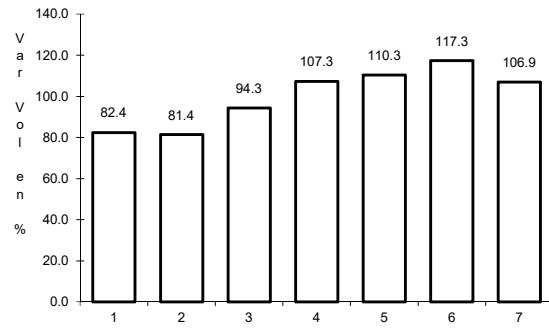


Km: 24.50      Tipo: 1      Sent: 0

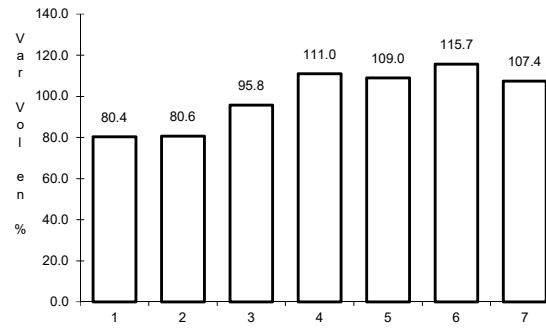
34 CARR: Topolobampo - Choix

CLAVE: 25032

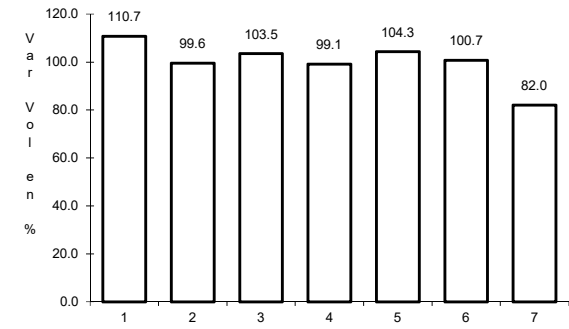
ruta: SIN-023



Km: 0.00                      Tipo: 3                      Sent: 1



Km: 0.00                      Tipo: 3                      Sent: 2

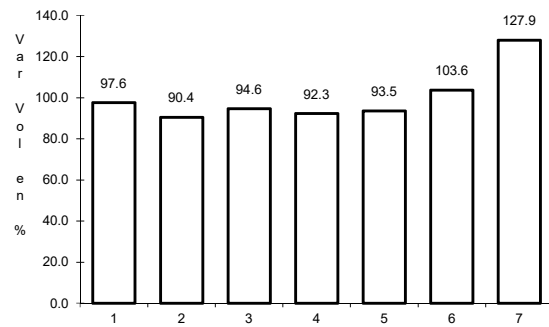


Km: 159.00                      Tipo: 1                      Sent: 0

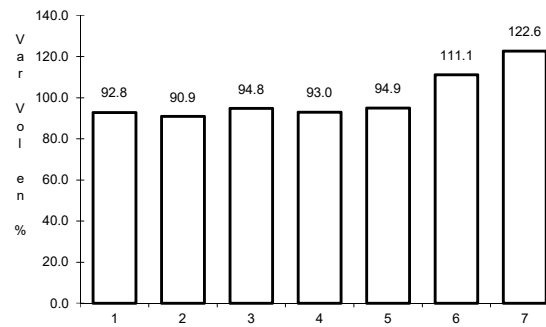
35 CARR: Villa Unión - El Walamo

CLAVE: 25081

ruta: SIN-081



Km: 0.00                      Tipo: 3                      Sent: 0

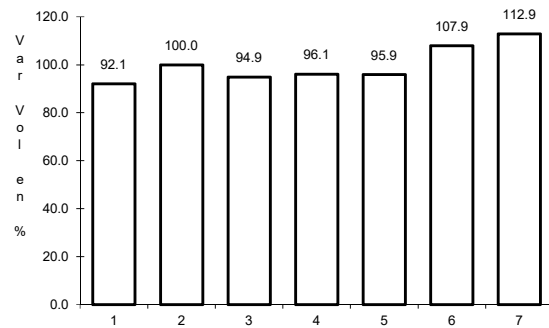


Km: 7.00                      Tipo: 1                      Sent: 0

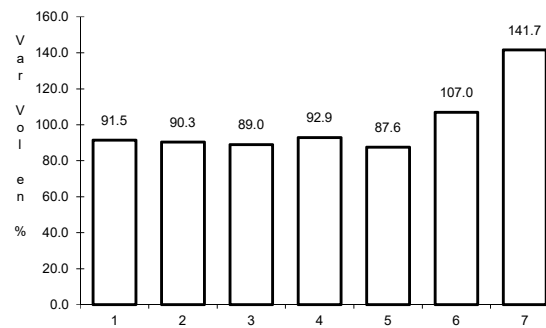
36 CARR: Villa Unión - Siqueiros

CLAVE: 25063

ruta: SIN-063

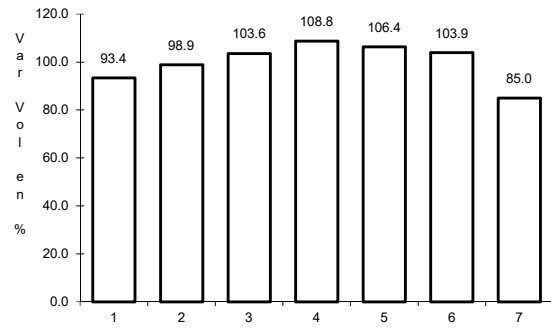


Km: 0.00                      Tipo: 3                      Sent: 0



Km: 11.00                      Tipo: 1                      Sent: 0

37 CARR: Culiacán - Las Brisas (Cuota)

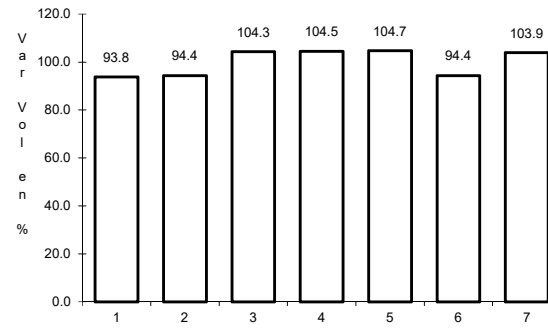


Km: 1.50

Tipo: 3

Sent: 1

CLAVE: 25503

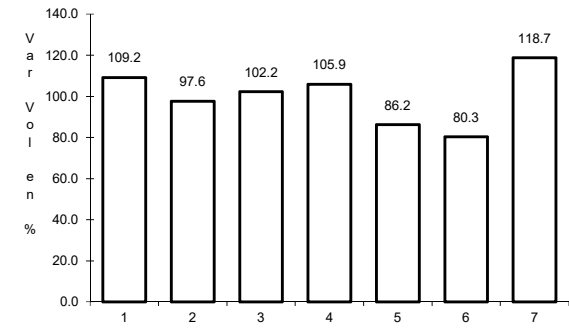


Km: 1.50

Tipo: 3

Sent: 2

RUTA: SIN-001D



Km: 125.70

Tipo: 1

Sent: 1

