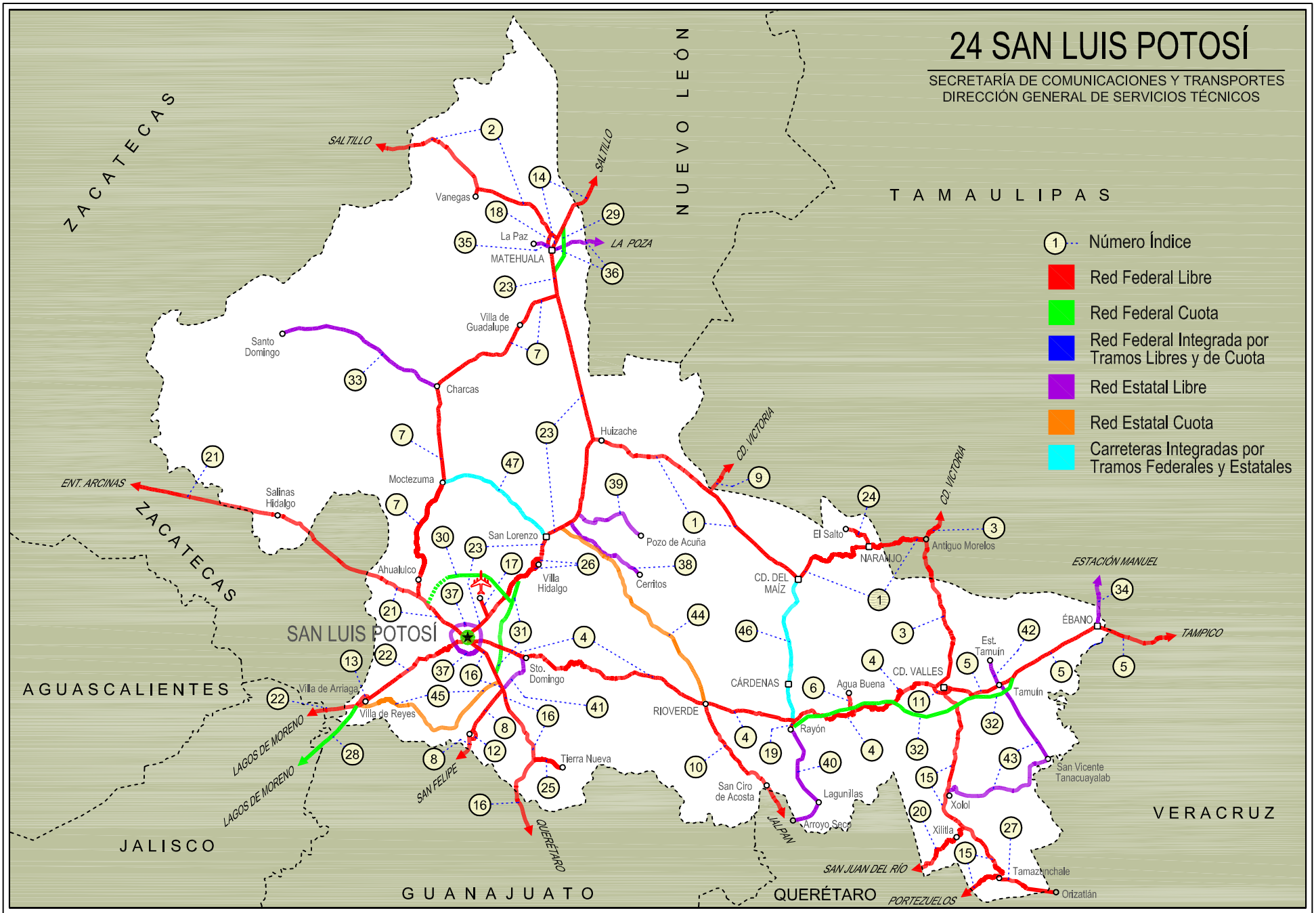


# 24 SAN LUIS POTOSÍ

SECRETARÍA DE COMUNICACIONES Y TRANSPORTES  
DIRECCIÓN GENERAL DE SERVICIOS TÉCNICOS



- ① Número Índice
- Red Federal Libre
- Red Federal Cuota
- Red Federal Integrada por Tramos Libres y de Cuota
- Red Estatal Libre
- Red Estatal Cuota
- Carreteras Integradas por Tramos Federales y Estatales





SAN LUIS POTOSI

## ---RED FEDERAL LIBRE---

1 Antiguo Morelos - Ent. El Huizache	MEX-080
2 Carbonera - T. C. (Ent. Morelos - Saltillo)	MEX-062
3 Cd. Valles - Cd. Victoria	MEX-085
4 Cd. Valles - San Luis Potosí	MEX-070
5 Cd. Valles - Tampico	MEX-070
6 El Clarín - Agua Buena	MEX-070
7 Ent. Ahualulco - Ent. La Bonita	MEX-063
8 Ent. de Zaragoza - San Felipe	MEX-037
9 Ent. Tula - Cd. Victoria	MEX-101
10 Jalpan de Serra - Rioverde	MEX-069
11 Libramiento de Cd. Valles	MEX-070
12 Libramiento de Villa de Reyes	MEX-037
13 Libramiento Villa de Arriaga	MEX-080
14 Matehuala - Ent. Puerto México	MEX-057
15 Portezuelo - Cd. Valles	MEX-085
16 Querétaro - San Luis Potosí	MEX-057
17 Ramal a Aeropuerto de S. L. P.	MEX-057
18 Ramal a Ojo de Agua	MEX-062
19 Ramal a Rayón	MEX-070
20 San Juan del Río - Xilitla	MEX-120
21 San Luis Potosí - Ent. Arcinas	MEX-049
22 San Luis Potosí - Lagos de Moreno	MEX-070-080
23 San Luis Potosí - Matehuala	MEX-057
24 T. C. (Ent. El Huizache- Ant. Morelos)-El Salto	MEX-080
25 T. C. (Qro - S.L.P.) - Tierra Nueva	MEX-057
26 T. C. (S.L.P. - Matehuala) - Villa Hidalgo	MEX-057
27 Tamazunchale - San Felipe Orizatlán	MEX-085

## ---RED FEDERAL DE CUOTA---

28 Lagos de Moreno - Villa de Arriaga (Cuota)	MEX-080D
29 Libramiento de Matehuala (Cuota)	MEX-057D
30 Libramiento Norponiente de San Luis Potosí (Cuota)	MEX-057D
31 Libramiento Oriente de San Luis Potosí (Cuota)	MEX-057D
32 Rayón - Ent. Tamuín (Cuota)	MEX-070D

## ---RED ESTATAL LIBRE---

33 Charcas - Villa Santo Domingo	SLP-017
34 Ébano - Estación Manuel	SLP-TAM
35 Matehuala - La Paz	SLP-020
36 Matehuala - La Poza	SLP-029-NL-061
37 Periférico de San Luis Potosí	SLP-032
38 Ramal a Cerritos	SLP-007
39 Ramal a Pozo de Acuña	SLP-009
40 Rayón - Arroyo Seco	SLP-011
41 Santo Domingo - Cerro Gordo	SLP-022
42 Tamuín - Estación F.F.C.C. Tamuín	SLP-040
43 Tamuín - Xolol	SLP-014

## ---RED ESTATAL DE CUOTA---

44 Cerritos - Rioverde (Cuota)	SLP-D
45 San Luis Potosí - Villa de Arriaga (Cuota)	SLP-D

## ---CARRETERAS INTEGRADAS POR TRAMOS FEDERALES Y ESTATALES---

46 Rayón - Cd. del Maíz	MEX-070-SLP-005
47 San Lorenzo - Moctezuma	MEX-063-SLP-012

SAN LUIS POTOSI

1 CARR: Antiguo Morelos - Ent. El Huizache

CLAVE: 00136

RUTA: MEX-080

AÑO: 2017

LUGAR	ESTACION				CLASIFICACION VEHICULAR EN PORCIENTO										COORDENADAS					
	KM	TE	SC	TDPA	M	A	B	C2	C3	T3S2	T3S3	T3S2R4	OTROS	A	B	C	K'	D	LATITUD	LONGITUD
Antiguo Morelos	0.00	3	0	2203	5.5	77.0	1.4	9.4	2.1	2.7	1.4	0.3	0.2	82.5	1.4	16.1	0.104	0.503	22.553832	-99.088136
Nuevo Morelos	19.28	1	0	1051	3.6	74.2	1.8	11.7	2.9	2.8	1.5	0.9	0.6	77.8	1.8	20.4	0.101	0.518	22.540836	-99.212234
Lim. Edos. Term. Tamps. Ppia. S. L. P.	25.00																			
El Naranjo	32.00	1	0	4312	4.8	82.0	0.6	6.9	1.6	3.2	0.4	0.2	0.3	86.8	0.6	12.6	0.082	0.503	22.532376	-99.307457
El Naranjo	32.00	3	0	2495	8.6	77.8	0.7	8.4	1.2	2.6	0.4	0.1	0.2	86.4	0.7	12.9	0.078	0.514	22.518081	-99.335636
Cd. del Maíz	86.00	3	0	1541	2.3	70.0	1.6	22.3	1.5	1.7	0.3	0.2	0.1	72.3	1.6	26.1	0.093	0.515	22.412202	-99.619740
T. Der. Tula	141.21	3	0	2594	0.8	39.2	2.2	6.6	3.5	20.9	6.9	18.5	1.4	40.0	2.2	57.8	0.057	0.500	22.737448	-99.978883
T. C. San Luis Potosí - Matehuala (Ent. El Huizache)	198.83	1	0	2820	0.7	36.0	2.1	9.9	3.1	20.1	6.1	20.9	1.1	36.7	2.1	61.2	0.074	0.507	22.930780	-100.448456

2 CARR: Carbonera - T. C. (Ent. Morelos - Saltillo)

CLAVE: 00218

RUTA: MEX-062

AÑO: 2017

LUGAR	ESTACION				CLASIFICACION VEHICULAR EN PORCIENTO										COORDENADAS					
	KM	TE	SC	TDPA	M	A	B	C2	C3	T3S2	T3S3	T3S2R4	OTROS	A	B	C	K'	D	LATITUD	LONGITUD
Carbonera	0.00	3	0	2972	9.8	72.5	1.0	11.6	1.6	2.5	0.6	0.3	0.1	82.3	1.0	16.7	0.083	0.505	23.703723	-100.627588
Cedral	18.00	1	0	3387	9.9	81.2	0.7	2.6	1.6	2.6	0.7	0.4	0.3	91.1	0.7	8.2	0.097	0.548	23.828865	-100.737636
Cedral	18.00	3	0	3523	8.9	71.5	0.7	13.8	1.3	2.8	0.4	0.4	0.2	80.4	0.7	18.9	0.090	0.505	23.803631	-100.706017
Lim. Edos. Term. S. L. P. Ppia. Zac.	79.20																			
T. C. Ent. Morelos - Saltillo	112.00	1	0	1326	4.3	72.9	1.4	16.9	2.2	1.6	0.3	0.2	0.2	77.2	1.4	21.4	0.106	0.516	24.155725	-101.491022

3 CARR: Cd. Valles - Cd. Victoria

CLAVE: 00509

RUTA: MEX-085

AÑO: 2017

LUGAR	ESTACION				CLASIFICACION VEHICULAR EN PORCIENTO										COORDENADAS					
	KM	TE	SC	TDPA	M	A	B	C2	C3	T3S2	T3S3	T3S2R4	OTROS	A	B	C	K'	D	LATITUD	LONGITUD
Cd. Valles	0.00	3	0	11379	4.8	78.8	1.5	6.0	0.7	5.9	0.9	0.4	1.0	83.6	1.5	14.9	0.068	0.501	22.007285	-99.004638
Lim. Edos. Term. S. L. P. Ppia. Tamps.	50.40																			
Antiguo Morelos	66.90	1	0	1949	4.5	70.8	6.4	8.1	2.3	3.5	1.2	2.8	0.4	75.3	6.4	18.3	0.097	0.528	22.549611	-99.078409
Antiguo Morelos	66.90	3	0	3713	4.5	72.3	5.0	10.4	1.5	3.2	0.9	1.8	0.4	76.8	5.0	18.2	0.071	0.507	22.561840	-99.077789
Cd. Mante	98.00	1	0	5454	8.9	71.5	2.0	6.7	2.4	4.0	1.8	1.7	1.0	80.4	2.0	17.6	0.091	0.516	22.711666	-98.989296
T. Izq. Ocampo	110.00	3	0	3456	10.1	73.4	4.5	7.0	1.3	2.1	0.5	0.7	0.4	83.5	4.5	12.0	0.094	0.500	22.838673	-99.024362
T. Izq. Gómez Farías	132.84	3	0	1842	7.6	74.8	7.5	6.8	1.3	1.4	0.5	0.1	0.0	82.4	7.5	10.1	0.094	0.502	23.030592	-99.093641
T. Izq. Llera de Canales	170.00	3	0	3488	4.5	72.3	5.0	10.4	1.5	3.2	0.9	1.8	0.4	76.8	5.0	18.2	0.071	0.507	23.310009	-99.018935
T. Der. González	172.50	3	0	2071	0.8	81.4	6.3	7.4	1.5	1.7	0.7	0.0	0.2	82.2	6.3	11.5	0.090	0.537	23.322354	-98.998077
Cd. Victoria	232.00	1	0	2401	1.0	80.1	5.9	8.5	1.6	1.5	1.0	0.1	0.3	81.1	5.9	13.0	0.105	0.521	23.659943	-99.096647

SAN LUIS POTOSI

4 CARR: Cd. Valles - San Luis Potosi

CLAVE: 24135

RUTA: MEX-070

AÑO: 2017

LUGAR	ESTACION				CLASIFICACION VEHICULAR EN PORCIENTO										COORDENADAS					
	KM	TE	SC	TDPA	M	A	B	C2	C3	T3S2	T3S3	T3S2R4	OTROS	A	B	C	K'	D	LATITUD	LONGITUD
Cd. Valles	0.00	3	1	4186	3.5	81.2	2.1	8.1	1.4	1.8	0.9	0.6	0.4	84.7	2.1	13.2	0.095	0.518	21.990555	-99.046439
Cd. Valles	0.00	3	2	4500	3.9	84.3	1.7	5.2	1.3	1.6	1.0	0.6	0.4	88.2	1.7	10.1	0.092	0.518	21.990444	-99.046473
T. Der. Damián Carmona	31.25	3	0	2052	4.2	78.1	1.3	10.9	1.9	2.4	0.8	0.1	0.3	82.3	1.3	16.4	0.085	0.510	21.925420	-99.227950
T. Der. Canoas	75.40	1	0	1800	1.9	84.5	0.5	7.0	1.5	2.3	1.4	0.3	0.6	86.4	0.5	13.1	0.091	0.521	21.874006	-99.496135
X. C. Cárdenas - Rayón	93.00	1	0	2778	1.9	78.4	0.5	13.0	1.7	3.1	1.1	0.2	0.1	80.3	0.5	19.2	0.081	0.517	21.852471	-99.626091
X. C. Cárdenas - Rayón	93.00	3	0	6737	0.6	77.4	3.2	8.5	1.7	5.0	1.5	1.3	0.8	78.0	3.2	18.8	0.082	0.509	21.858813	-99.654661
Río Verde	133.76	1	1	9525	7.5	80.8	0.9	5.4	0.7	1.4	2.6	0.2	0.5	88.3	0.9	10.8	0.072	0.505	21.922630	-99.983243
Río Verde	133.76	1	2	9820	7.6	79.5	1.2	8.0	0.7	1.0	1.7	0.1	0.2	87.1	1.2	11.7	0.076	0.505	21.922481	-99.983238
Río Verde	133.76	3	1	10602	6.8	78.0	0.5	11.3	0.8	1.4	0.8	0.1	0.3	84.8	0.5	14.7	0.081	0.505	21.934818	-100.024389
Río Verde	133.76	3	2	10337	7.8	83.1	0.3	5.3	0.7	1.4	1.0	0.1	0.3	90.9	0.3	8.8	0.082	0.505	21.934727	-100.024475
T. Der. Guaxcama	161.04	3	0	3369	1.0	80.6	1.2	8.6	3.0	3.2	1.6	0.3	0.5	81.6	1.2	17.2	0.094	0.505	22.041480	-100.274557
T. Izq. Zaragoza	239.50	1	0	4460	1.4	76.1	1.8	10.6	4.0	3.7	1.9	0.1	0.4	77.5	1.8	20.7	0.076	0.514	22.099084	-100.744106
T. Izq. Zaragoza	239.50	3	0	6969	1.6	75.8	1.0	13.2	2.3	3.6	1.4	0.6	0.5	77.4	1.0	21.6	0.088	0.505	22.102229	-100.752754
X. Lib. Ote. de San Luis Potosí	255.00	1	0	9517	2.4	68.2	6.7	10.4	4.3	4.9	2.0	0.5	0.6	70.6	6.7	22.7	0.069	0.502	22.126673	-100.821275
X. Periférico de San Luis Potosí	257.44	1	1	24536	2.4	88.3	0.4	6.3	1.2	0.8	0.6	0.0	0.0	90.7	0.4	8.9	0.084	0.527	22.153467	-100.896084
X. Periférico de San Luis Potosí	257.44	1	2	25639	1.5	88.8	0.3	6.5	1.3	0.9	0.7	0.0	0.0	90.3	0.3	9.4	0.085	0.527	22.153365	-100.896151
San Luis Potosí	261.94																			

5 CARR: Cd. Valles - Tampico

CLAVE: 00138

RUTA: MEX-070

AÑO: 2017

LUGAR	ESTACION				CLASIFICACION VEHICULAR EN PORCIENTO										COORDENADAS					
	KM	TE	SC	TDPA	M	A	B	C2	C3	T3S2	T3S3	T3S2R4	OTROS	A	B	C	K'	D	LATITUD	LONGITUD
Cd. Valles	0.00	3	0	8113	2.6	75.3	1.4	9.9	3.5	4.6	1.3	0.8	0.6	77.9	1.4	20.7	0.070	0.501	21.976069	-98.958223
T. Der. Santa Elena	15.25	3	0	7213	2.3	74.9	1.9	10.8	2.8	3.6	1.9	1.3	0.5	77.2	1.9	20.9	0.057	0.509	21.961335	-98.877803
Tamuín	29.60	1	0	6421	3.4	74.4	1.9	10.2	2.4	4.0	1.6	1.4	0.7	77.8	1.9	20.3	0.061	0.506	21.996921	-98.781071
Ébano	79.00	1	0	7891	8.9	72.3	1.4	5.0	1.1	6.5	1.7	1.7	1.4	81.2	1.4	17.4	0.073	0.513	22.214150	-98.392512
Ébano	79.00	3	0	5186	3.0	74.0	2.9	8.6	2.0	4.8	1.7	2.5	0.5	77.0	2.9	20.1	0.079	0.500	22.211310	-98.359584
Lim. Edos. Term. S. L. P. Ppia. Ver.	83.57																			
T. Der. Pánuco	103.00	1	0	5518	6.3	68.7	2.6	9.3	1.8	6.5	1.8	2.0	1.0	75.0	2.6	22.4	0.087	0.505	22.155969	-98.154629
T. Der. Pánuco	103.00	3	0	6870	2.1	70.8	3.1	11.2	2.0	6.4	1.6	2.1	0.7	72.9	3.1	24.0	0.089	0.503	22.158608	-98.149580
T. C. Anáhuac - El Prieto	128.40	1	1	5608	0.9	78.2	2.2	10.3	2.2	2.8	1.2	1.8	0.4	79.1	2.2	18.7	0.086	0.502	22.214623	-97.949045
T. C. Anáhuac - El Prieto	128.40	1	2	5522	0.9	76.4	2.3	11.3	2.4	3.0	1.3	2.0	0.4	77.3	2.3	20.4	0.080	0.502	22.214620	-97.949045
T. C. Anáhuac - El Prieto	128.40	3	1	7137	1.4	72.3	2.0	11.0	2.4	5.2	2.3	2.6	0.8	73.7	2.0	24.3	0.094	0.506	22.217333	-97.937611
T. C. Anáhuac - El Prieto	128.40	3	2	7212	1.4	69.6	2.2	12.6	2.5	5.4	2.5	3.0	0.8	71.0	2.2	26.8	0.098	0.506	22.217333	-97.937611
Lim. Edos. Term. Ver. Ppia. Tamps.	133.81																			

SAN LUIS POTOSI

5 CARR: Cd. Valles - Tampico

CLAVE: 00138

RUTA: MEX-070

AÑO: 2017

LUGAR	ESTACION				CLASIFICACION VEHICULAR EN PORCIENTO													COORDENADAS		
	KM	TE	SC	TDPA	M	A	B	C2	C3	T3S2	T3S3	T3S2R4	OTROS	A	B	C	K'	D	LATITUD	LONGITUD
Tampico	138.00	1	1	10338	3.3	63.0	2.6	13.3	2.7	7.5	3.6	3.6	0.4	66.3	2.6	31.1	0.062	0.549	22.226829	-97.894394
Tampico	138.00	1	2	8039	2.1	70.8	1.8	13.1	1.8	5.1	2.5	2.4	0.4	72.9	1.8	25.3	0.074	0.549	22.226812	-97.894393

6 CARR: El Clarin - Agua Buena

CLAVE: 24283

RUTA: MEX-070

AÑO: 2017

LUGAR	ESTACION				CLASIFICACION VEHICULAR EN PORCIENTO													COORDENADAS		
	KM	TE	SC	TDPA	M	A	B	C2	C3	T3S2	T3S3	T3S2R4	OTROS	A	B	C	K'	D	LATITUD	LONGITUD
T. C. Cd. Valles - San Luis Potosi	0.00	3	0	1038	4.8	76.7	1.6	15.6	0.3	0.7	0.2	0.0	0.1	81.5	1.6	16.9	0.112	0.503	21.892103	-99.382489
Agua Buena	11.23	1	0	3809	14.4	71.3	0.2	11.6	0.1	2.0	0.3	0.0	0.1	85.7	0.2	14.1	0.084	0.501	21.950910	-99.391587

7 CARR: Ent. Ahualulco - Ent. La Bonita

CLAVE: 24258

RUTA: MEX-063

AÑO: 2017

LUGAR	ESTACION				CLASIFICACION VEHICULAR EN PORCIENTO													COORDENADAS		
	KM	TE	SC	TDPA	M	A	B	C2	C3	T3S2	T3S3	T3S2R4	OTROS	A	B	C	K'	D	LATITUD	LONGITUD
T. C. San Luis Potosi - Ent. Arcinas	0.00	3	0	4694	3.0	81.0	1.1	11.4	0.8	2.0	0.3	0.1	0.3	84.0	1.1	14.9	0.107	0.503	22.320662	-101.165255
Ahualulco	11.00	3	0	4348	5.0	74.8	1.3	15.7	0.6	1.9	0.4	0.1	0.2	79.8	1.3	18.9	0.098	0.501	22.414495	-101.158398
Moctezuma	59.00	1	0	2245	2.2	77.1	1.5	16.4	0.8	1.3	0.4	0.1	0.2	79.3	1.5	19.2	0.101	0.506	22.733142	-101.086169
Charcas	100.00	1	0	2373	11.2	78.4	1.8	5.5	0.5	1.5	0.6	0.3	0.2	89.6	1.8	8.6	0.091	0.547	23.109421	-101.103045
Charcas	100.00	3	0	1548	19.0	63.3	2.2	13.0	0.8	1.3	0.2	0.1	0.1	82.3	2.2	15.5	0.090	0.503	23.130601	-101.100122
T. C. San Luis Potosi - Matehuala	169.90	1	0	1502	4.9	72.8	1.3	18.5	1.0	1.2	0.2	0.1	0.0	77.7	1.3	21.0	0.089	0.504	23.481552	-100.621936

8 CARR: Ent. de Zaragoza - San Felipe

CLAVE: 00240

RUTA: MEX-037

AÑO: 2017

LUGAR	ESTACION				CLASIFICACION VEHICULAR EN PORCIENTO													COORDENADAS		
	KM	TE	SC	TDPA	M	A	B	C2	C3	T3S2	T3S3	T3S2R4	OTROS	A	B	C	K'	D	LATITUD	LONGITUD
T. C. Querétaro - San Luis Potosi	0.00	3	0	11596	0.8	60.7	5.9	12.1	2.6	12.8	2.6	1.5	1.0	61.5	5.9	32.6	0.071	0.501	21.963148	-100.821018
Lim. Edos. Term. S. L. P. Ppia. Gto.	32.00																			
San Felipe	72.00	1	0	7759	0.9	62.5	2.0	10.2	2.6	17.2	2.2	1.6	0.8	63.4	2.0	34.6	0.074	0.504	21.481222	-101.153698

9 CARR: Ent. Tula - Cd. Victoria

CLAVE: 00179

RUTA: MEX-101

AÑO: 2017

LUGAR	ESTACION				CLASIFICACION VEHICULAR EN PORCIENTO													COORDENADAS		
	KM	TE	SC	TDPA	M	A	B	C2	C3	T3S2	T3S3	T3S2R4	OTROS	A	B	C	K'	D	LATITUD	LONGITUD
T. C. Antigua Morelos - El Huizache	0.00	3	0	3639	1.0	42.9	3.9	6.2	2.3	18.1	6.4	17.1	2.1	43.9	3.9	52.2	0.065	0.510	22.737317	-99.968528
Lim. Edos. Term. S. L. P. Ppia. Tamps.	2.40																			

SAN LUIS POTOSI

9 CARR: Ent. Tula - Cd. Victoria

CLAVE: 00179

RUTA: MEX-101

AÑO: 2017

LUGAR	ESTACION				CLASIFICACION VEHICULAR EN PORCIENTO														COORDENADAS	
	KM	TE	SC	TDPA	M	A	B	C2	C3	T3S2	T3S3	T3S2R4	OTROS	A	B	C	K'	D	LATITUD	LONGITUD
T. Der. Tula (1º Acceso)	38.00	1	0	4261	0.9	46.6	3.1	9.3	2.2	17.0	5.8	14.0	1.1	47.5	3.1	49.4	0.068	0.500	22.979914	-99.737547
T. Der. Tula (2º Acceso)	41.95	3	0	3848	0.9	41.9	4.2	11.2	2.5	19.1	5.0	14.1	1.1	42.8	4.2	53.0	0.070	0.518	23.020591	-99.714362
Jaumave	112.68	1	0	4813	0.9	51.3	3.5	8.0	2.0	15.2	5.4	13.0	0.7	52.2	3.5	44.3	0.055	0.509	23.400360	-99.401729
Jaumave	112.68	3	0	4919	1.1	52.4	2.8	7.4	1.8	14.8	4.6	14.1	1.0	53.5	2.8	43.7	0.063	0.515	23.418572	-99.373866
Cd. Victoria	180.00	1	1	3434	13.8	76.5	0.1	7.9	0.3	0.8	0.4	0.1	0.1	90.3	0.1	9.6	0.131	0.520	23.710649	-99.176606
Cd. Victoria	180.00	1	2	3120	10.3	78.9	0.1	9.0	0.3	0.8	0.4	0.1	0.1	89.2	0.1	10.7	0.082	0.520	23.710534	-99.176604

10 CARR: Jalpan de Serra - Rioverde

CLAVE: 00265

RUTA: MEX-069

AÑO: 2017

LUGAR	ESTACION				CLASIFICACION VEHICULAR EN PORCIENTO														COORDENADAS	
	KM	TE	SC	TDPA	M	A	B	C2	C3	T3S2	T3S3	T3S2R4	OTROS	A	B	C	K'	D	LATITUD	LONGITUD
Jalpan de Serra	0.00	3	0	6061	1.7	86.4	0.4	7.7	0.6	2.2	0.4	0.2	0.4	88.1	0.4	11.5	0.065	0.509	21.240462	-99.482670
T. Izq. Conca	35.01	1	0	2575	2.3	83.6	0.4	10.6	0.6	1.9	0.3	0.1	0.2	85.9	0.4	13.7	0.082	0.502	21.444691	-99.626784
Arroyo Seco	48.60	1	0	1815	3.3	79.2	0.6	13.8	1.3	1.2	0.4	0.0	0.2	82.5	0.6	16.9	0.083	0.504	21.542482	-99.688901
Lim. Edos. Term. Qro. Ppia. S. L. P.	52.27																			
San Ciro de Acosta	69.42	1	0	2030	7.0	75.9	0.6	13.6	0.7	1.4	0.5	0.1	0.2	82.9	0.6	16.5	0.083	0.503	21.648148	-99.808641
San Ciro de Acosta	69.42	3	0	2912	4.9	80.2	0.4	11.0	0.8	2.0	0.4	0.1	0.2	85.1	0.4	14.5	0.085	0.504	21.661578	-99.827364
Rioverde	105.43	1	0	6251	2.8	79.1	0.2	14.3	0.5	2.3	0.4	0.1	0.3	81.9	0.2	17.9	0.096	0.517	21.882120	-99.975855

11 CARR: Libramiento de Cd. Valles

CLAVE: 24205

RUTA: MEX-070

AÑO: 2017

LUGAR	ESTACION				CLASIFICACION VEHICULAR EN PORCIENTO														COORDENADAS	
	KM	TE	SC	TDPA	M	A	B	C2	C3	T3S2	T3S3	T3S2R4	OTROS	A	B	C	K'	D	LATITUD	LONGITUD
T. C. Cd. Valles - San Luis Potosi	0.00	3	0	8730	3.9	74.6	3.7	8.7	2.3	4.4	1.1	0.8	0.5	78.5	3.7	17.8	0.063	0.543	21.984122	-99.034463
T. C. Cd. Valles - Tampico	11.54	1	0	3300	3.1	66.3	3.6	10.2	6.9	5.2	2.3	1.9	0.5	69.4	3.6	27.0	0.069	0.509	21.974288	-98.966492

12 CARR: Libramiento de Villa de Reyes

CLAVE: 24010

RUTA: MEX-037

AÑO: 2017

LUGAR	ESTACION				CLASIFICACION VEHICULAR EN PORCIENTO														COORDENADAS	
	KM	TE	SC	TDPA	M	A	B	C2	C3	T3S2	T3S3	T3S2R4	OTROS	A	B	C	K'	D	LATITUD	LONGITUD
T. C. Ent. Zaragoza - San Felipe	0.00	3	0	4357	4.1	68.6	1.7	17.7	1.7	4.7	0.8	0.5	0.2	72.7	1.7	25.6	0.092	0.545	21.807920	-100.928000
T. C. Villa de Reyes - Bledos	3.10																			



SAN LUIS POTOSI

13 CARR: Libramiento Villa de Arriaga

CLAVE: 24009

RUTA: MEX-080

AÑO: 2017

LUGAR	ESTACION				CLASIFICACION VEHICULAR EN PORCIENTO														COORDENADAS	
	KM	TE	SC	TDPA	M	A	B	C2	C3	T3S2	T3S3	T3S2R4	OTROS	A	B	C	K'	D	LATITUD	LONGITUD
T. C. San Luis Potosí - Lagos de Moreno	0.00	3	0	3729	0.6	63.1	3.6	6.3	3.4	12.7	3.3	5.9	1.1	63.7	3.6	32.7	0.079	0.546	21.923951	-101.371035
T. C. San Luis Potosí - Lagos de Moreno	5.00																			

14 CARR: Matehuala - Ent. Puerto México

CLAVE: 00405

RUTA: MEX-057

AÑO: 2017

LUGAR	ESTACION				CLASIFICACION VEHICULAR EN PORCIENTO														COORDENADAS	
	KM	TE	SC	TDPA	M	A	B	C2	C3	T3S2	T3S3	T3S2R4	OTROS	A	B	C	K'	D	LATITUD	LONGITUD
Matehuala	0.00	3	1	6910	5.1	67.8	2.0	10.5	1.4	9.0	2.4	1.2	0.6	72.9	2.0	25.1	0.079	0.509	23.670917	-100.630972
Matehuala	0.00	3	2	6666	5.1	66.1	2.2	10.6	1.5	10.0	2.5	1.3	0.7	71.2	2.2	26.6	0.070	0.509	23.671043	-100.631194
T. Izq. Cedral	8.47	1	1	4470	3.1	59.9	3.5	12.8	1.9	14.3	2.3	1.4	0.8	63.0	3.5	33.5	0.069	0.506	23.692389	-100.620722
T. Izq. Cedral	8.47	1	2	4574	2.5	55.8	3.8	14.5	2.1	16.2	2.6	1.6	0.9	58.3	3.8	37.9	0.063	0.506	23.692309	-100.620442
T. Izq. Cedral	8.47	3	1	2386	1.9	48.8	5.2	13.8	1.7	21.7	3.9	2.3	0.7	50.7	5.2	44.1	0.081	0.501	23.700460	-100.616347
T. Izq. Cedral	8.47	3	2	2381	1.2	42.1	5.3	16.4	2.0	25.1	4.6	2.5	0.8	43.3	5.3	51.4	0.070	0.501	23.700624	-100.616632
Lim. Edos. Term. S. L. P. Ppia. N. L.	24.64																			
Santa Ana	59.65	1	1	6899	0.9	36.8	4.7	8.2	2.4	34.5	4.7	6.2	1.6	37.7	4.7	57.6	0.068	0.507	24.070288	-100.390481
Santa Ana	59.65	1	2	6430	1.1	27.5	5.4	8.8	2.4	41.2	5.1	6.7	1.8	28.6	5.4	66.0	0.068	0.507	24.070280	-100.390480
T. Der. Linares	128.99	3	1	7515	1.9	36.5	5.3	8.8	2.5	33.1	4.7	5.6	1.6	38.4	5.3	56.3	0.066	0.503	24.681000	-100.300722
T. Der. Linares	128.99	3	2	7032	2.3	28.3	6.0	10.2	2.7	37.3	5.0	6.4	1.8	30.6	6.0	63.4	0.069	0.503	24.681169	-100.300332
San Rafael	177.18	1	1	7070	1.4	42.8	5.2	8.1	2.5	28.9	4.8	5.4	0.9	44.2	5.2	50.6	0.064	0.500	25.017333	-100.538111
San Rafael	177.18	1	2	6878	1.2	35.9	5.8	8.8	2.6	33.6	5.0	6.0	1.1	37.1	5.8	57.1	0.078	0.500	25.017361	-100.537944
Ent. Puerto México	205.97																			

15 CARR: Portezuelo - Cd. Valles

CLAVE: 00023

RUTA: MEX-085

AÑO: 2017

LUGAR	ESTACION				CLASIFICACION VEHICULAR EN PORCIENTO														COORDENADAS	
	KM	TE	SC	TDPA	M	A	B	C2	C3	T3S2	T3S3	T3S2R4	OTROS	A	B	C	K'	D	LATITUD	LONGITUD
Portezuelo	0.00	3	0	5758	1.1	84.5	1.0	8.4	1.3	2.4	0.9	0.1	0.3	85.6	1.0	13.4	0.078	0.522	20.488169	-99.298377
T. Der. Tasquillo (2º Acceso)	10.50	1	0	4343	3.1	84.6	0.8	6.6	1.0	2.4	1.0	0.1	0.4	87.7	0.8	11.5	0.080	0.513	20.539748	-99.316815
T. Izq. Zimapán (1º Acceso)	32.00	1	0	5196	2.7	83.9	0.7	7.3	1.0	3.0	0.9	0.1	0.4	86.6	0.7	12.7	0.072	0.500	20.699419	-99.333193
T. Izq. Zimapán (1º Acceso)	32.00	3	0	2418	1.4	88.1	0.9	6.3	1.2	1.4	0.6	0.0	0.1	89.5	0.9	9.6	0.069	0.522	20.705781	-99.336087
La Estancia	41.00	3	0	1794	1.0	83.7	1.3	10.1	1.4	1.6	0.7	0.1	0.1	84.7	1.3	14.0	0.080	0.509	20.777545	-99.310308
Trancas	51.00	3	0	1431	0.5	85.7	1.4	8.6	1.4	1.3	0.7	0.0	0.4	86.2	1.4	12.4	0.085	0.502	20.802844	-99.262210
Jacala	98.60	3	0	2371	1.7	85.2	0.8	9.5	0.6	1.5	0.5	0.0	0.2	86.9	0.8	12.3	0.084	0.501	21.003019	-99.184782
Zacate Grande	143.10	1	0	1094	3.0	86.1	1.7	6.3	1.4	0.9	0.5	0.0	0.1	89.1	1.7	9.2	0.080	0.502	21.112862	-99.004863
T. Izq. Pisaflores	154.00	3	0	2041	2.1	84.6	1.2	7.8	1.5	1.8	0.8	0.1	0.1	86.7	1.2	12.1	0.087	0.504	21.153643	-98.949670

SAN LUIS POTOSI

15 CARR: Portezuelo - Cd. Valles

CLAVE: 00023

RUTA: MEX-085

AÑO: 2017

LUGAR	ESTACION				CLASIFICACION VEHICULAR EN PORCIENTO										COORDENADAS					
	KM	TE	SC	TDPA	M	A	B	C2	C3	T3S2	T3S3	T3S2R4	OTROS	A	B	C	K'	D	LATITUD	LONGITUD
Lim. Edos. Term. Hgo. Ppia. S. L. P.	168.63																			
Tamazunchale	192.80	1	0	6123	17.6	67.2	2.0	8.3	0.6	3.0	0.6	0.1	0.6	84.8	2.0	13.2	0.072	0.503	21.262293	-98.800400
T. Izq. Xilitla	228.75	1	0	5755	5.5	76.9	1.5	10.1	1.3	3.4	0.6	0.2	0.5	82.4	1.5	16.1	0.082	0.518	21.443465	-98.925808
T. Izq. Xilitla	228.75	3	0	5116	4.4	78.5	1.8	8.7	1.7	3.4	0.8	0.2	0.5	82.9	1.8	15.3	0.097	0.501	21.447752	-98.930138
T. Izq. Aquismón	252.50	1	0	6063	3.0	76.3	2.2	9.9	2.1	4.5	1.0	0.3	0.7	79.3	2.2	18.5	0.080	0.510	21.621994	-98.987352
Agua Hedionda	265.00	1	0	5110	2.2	82.6	1.4	7.3	2.3	3.2	0.3	0.2	0.5	84.8	1.4	13.8	0.092	0.514	21.728818	-98.964121
Cd. Valles	300.00	1	0	11423	3.0	78.8	1.2	9.2	1.0	5.1	0.7	0.2	0.8	81.8	1.2	17.0	0.074	0.503	21.958576	-98.999028

16 CARR: Querétaro - San Luis Potosí

CLAVE: 00165

RUTA: MEX-057

AÑO: 2017

LUGAR	ESTACION				CLASIFICACION VEHICULAR EN PORCIENTO										COORDENADAS					
	KM	TE	SC	TDPA	M	A	B	C2	C3	T3S2	T3S3	T3S2R4	OTROS	A	B	C	K'	D	LATITUD	LONGITUD
Querétaro	0.00																			
T. Der. Libramiento de Querétaro	6.28	3	1	48891	0.3	91.2	1.0	3.8	0.7	1.6	1.1	0.1	0.2	91.5	1.0	7.5	0.071	0.503	20.636829	-100.428829
T. Der. Libramiento de Querétaro	6.28	3	2	49411	0.2	90.8	1.0	4.2	0.8	1.6	1.1	0.1	0.2	91.0	1.0	8.0	0.068	0.503	20.636773	-100.428943
T. Izq. Juriquilla	15.63	3	1	32409	1.0	81.5	1.3	7.8	2.2	3.4	1.1	0.9	0.8	82.5	1.3	16.2	0.071	0.500	20.718008	-100.438789
T. Izq. Juriquilla	15.63	3	2	32447	1.5	78.9	1.6	8.0	2.5	3.7	1.4	1.3	1.1	80.4	1.6	18.0	0.069	0.500	20.718010	-100.438924
T. Izq. San Miguel de Allende	28.53	1	1	27801	0.6	80.4	2.0	9.4	1.8	3.6	1.0	0.9	0.3	81.0	2.0	17.0	0.128	0.505	20.809529	-100.448816
T. Izq. San Miguel de Allende	28.53	1	2	27252	0.3	78.8	2.0	10.6	1.9	4.1	1.1	0.9	0.3	79.1	2.0	18.9	0.098	0.505	20.806705	-100.449035
T. Izq. San Miguel de Allende	28.53	3	1	17905	0.4	42.5	3.8	9.8	3.4	30.1	2.6	7.1	0.3	42.9	3.8	53.3	0.093	0.515	20.839001	-100.438200
T. Izq. San Miguel de Allende	28.53	3	2	19017	0.4	42.5	3.6	9.7	3.0	31.1	2.5	6.9	0.3	42.9	3.6	53.5	0.107	0.515	20.839077	-100.438396
Lim. Edos. Term. Qro. Ppia. Gto.	36.70																			
X. C. San José Iturbide - El Arenal	46.83	1	1	19891	0.4	44.8	4.3	7.5	2.7	30.3	2.3	7.3	0.4	45.2	4.3	50.5	0.064	0.509	20.969428	-100.429409
X. C. San José Iturbide - El Arenal	46.83	1	2	20597	0.3	44.1	4.4	8.1	2.9	30.4	2.4	7.1	0.3	44.4	4.4	51.2	0.077	0.509	20.969340	-100.429579
X. C. Ent. San Miguel de Allende - Dr. Mora	61.93	1	1	14266	0.4	43.8	4.4	8.1	2.9	30.6	2.3	7.0	0.5	44.2	4.4	51.4	0.088	0.509	21.076591	-100.511963
X. C. Ent. San Miguel de Allende - Dr. Mora	61.93	1	2	14772	0.3	44.3	4.5	8.6	3.3	29.2	2.6	6.9	0.3	44.6	4.5	50.9	0.088	0.509	21.076491	-100.512129
X. C. San Luis de La Paz - Guanajuato	86.68	1	1	14197	0.4	49.0	4.3	7.1	2.9	27.8	2.5	5.6	0.4	49.4	4.3	46.3	0.068	0.511	21.273687	-100.590088
X. C. San Luis de La Paz - Guanajuato	86.68	1	2	14814	0.3	47.2	4.7	7.9	3.2	27.8	2.7	5.8	0.4	47.5	4.7	47.8	0.068	0.511	21.273808	-100.590321
T. Izq. San Diego de La Unión	119.07	3	1	12001	0.2	52.7	4.6	7.1	3.0	24.1	1.8	6.3	0.2	52.9	4.6	42.5	0.059	0.507	21.539328	-100.746309
T. Izq. San Diego de La Unión	119.07	3	2	12326	0.3	48.2	5.0	8.5	3.3	25.8	2.0	6.7	0.2	48.5	5.0	46.5	0.062	0.507	21.539046	-100.746391
Lim. Edos. Term. Gto. Ppia. S. L. P.	124.74																			
T. Izq. Santa María del Río	155.88	3	1	12228	0.9	56.1	4.6	8.2	2.2	19.7	3.2	4.3	0.8	57.0	4.6	38.4	0.067	0.512	21.819455	-100.727988
T. Izq. Santa María del Río	155.88	3	2	12854	1.2	53.5	5.2	9.0	2.3	19.6	3.9	4.5	0.8	54.7	5.2	40.1	0.082	0.512	21.820740	-100.729531
T. Izq. Villa de Reyes	176.35	1	1	14889	0.7	38.5	6.0	9.0	3.3	34.3	3.4	4.6	0.2	39.2	6.0	54.8	0.067	0.509	21.958797	-100.810345
T. Izq. Villa de Reyes	176.35	1	2	15425	1.1	31.2	6.5	9.7	3.9	38.7	3.7	5.0	0.2	32.3	6.5	61.2	0.058	0.509	21.958757	-100.810544

SAN LUIS POTOSI

16 CARR: Querétaro - San Luis Potosí

CLAVE: 00165

RUTA: MEX-057

AÑO: 2017

LUGAR	ESTACION				CLASIFICACION VEHICULAR EN PORCIENTO													COORDENADAS		
	KM	TE	SC	TDPA	M	A	B	C2	C3	T3S2	T3S3	T3S2R4	OTROS	A	B	C	K'	D	LATITUD	LONGITUD
T. Izq. Villa de Reyes	176.35	3	1	21048	0.4	36.9	3.8	8.6	4.2	37.8	3.5	4.5	0.3	37.3	3.8	58.9	0.073	0.506	21.978285	-100.820812
T. Izq. Villa de Reyes	176.35	3	2	21585	0.4	30.0	4.1	9.8	4.6	41.7	4.0	5.1	0.3	30.4	4.1	65.5	0.071	0.506	21.978193	-100.821075
X. C. Libramiento de San Luis Potosí	184.80	1	1	25509	0.7	66.5	2.6	7.7	2.9	14.2	2.2	2.7	0.5	67.2	2.6	30.2	0.110	0.503	22.026028	-100.846808
X. C. Libramiento de San Luis Potosí	184.80	1	2	25196	0.9	62.5	2.8	8.8	3.1	15.8	2.5	3.2	0.4	63.4	2.8	33.8	0.113	0.503	22.025987	-100.846971
X. Periférico de San Luis Potosí (Lateral)	197.50	1	1	14538	4.5	70.5	2.2	10.0	3.0	4.7	3.1	1.0	1.0	75.0	2.2	22.8	0.114	0.509	22.121986	-100.912760
X. Periférico de San Luis Potosí (Central)	197.50	1	1	32767	0.6	86.4	0.4	1.6	1.8	3.1	4.4	1.0	0.7	87.0	0.4	12.6	0.078	0.521	22.121873	-100.912836
X. Periférico de San Luis Potosí (Central)	197.50	1	2	35596	0.7	85.6	0.4	1.7	2.1	3.4	4.4	1.0	0.7	86.3	0.4	13.3	0.076	0.521	22.121731	-100.912941
X. Periférico de San Luis Potosí (Lateral)	197.50	1	2	14049	4.4	67.6	2.4	11.7	3.3	5.0	3.3	1.2	1.1	72.0	2.4	25.6	0.124	0.509	22.121468	-100.913181
San Luis Potosí	201.66																			

17 CARR: Ramal a Aeropuerto de S. L. P.

CLAVE: 24206

RUTA: MEX-057

AÑO: 2017

LUGAR	ESTACION				CLASIFICACION VEHICULAR EN PORCIENTO													COORDENADAS		
	KM	TE	SC	TDPA	M	A	B	C2	C3	T3S2	T3S3	T3S2R4	OTROS	A	B	C	K'	D	LATITUD	LONGITUD
T. C. San Luis Potosí - Matehuala	0.00	3	0	6497	4.6	82.0	0.4	7.1	1.4	3.0	0.4	0.9	0.2	86.6	0.4	13.0	0.070	0.500	22.222877	-100.913295
Aeropuerto de S. L. P.	6.00																			

18 CARR: Ramal a Ojo de Agua

CLAVE: 24023

RUTA: MEX-062

AÑO: 2017

LUGAR	ESTACION				CLASIFICACION VEHICULAR EN PORCIENTO													COORDENADAS		
	KM	TE	SC	TDPA	M	A	B	C2	C3	T3S2	T3S3	T3S2R4	OTROS	A	B	C	K'	D	LATITUD	LONGITUD
T. C. Ent. Carbonera - Ent. San Tiburcio	0.00	3	0	2697	8.3	77.4	0.4	11.6	0.2	1.7	0.2	0.0	0.2	85.7	0.4	13.9	0.091	0.505	23.718130	-100.650908
T. C. Ent. Carbonera - Ent. San Tiburcio	6.23																			

19 CARR: Ramal a Rayón

CLAVE: 24626

RUTA: MEX-070

AÑO: 2017

LUGAR	ESTACION				CLASIFICACION VEHICULAR EN PORCIENTO													COORDENADAS		
	KM	TE	SC	TDPA	M	A	B	C2	C3	T3S2	T3S3	T3S2R4	OTROS	A	B	C	K'	D	LATITUD	LONGITUD
T. C. (Cd. Valles - San Luis Potosí)	0.00																			
Rayón	1.50	1	0	4451	3.7	81.7	0.1	11.4	0.5	2.3	0.1	0.0	0.2	85.4	0.1	14.5	0.089	0.508	21.847993	-99.629731

SAN LUIS POTOSI

20 CARR: San Juan del Río - Xilitla

CLAVE: 00183

RUTA: MEX-120

AÑO: 2017

LUGAR	ESTACION				CLASIFICACION VEHICULAR EN PORCIENTO										COORDENADAS					
	KM	TE	SC	TDPA	M	A	B	C2	C3	T3S2	T3S3	T3S2R4	OTROS	A	B	C	K'	D	LATITUD	LONGITUD
San Juan del Río	0.00																			
T. Der. Libramiento de San Juan del Río	5.20	3	1	13676	1.4	86.7	1.0	5.4	1.1	2.4	1.2	0.3	0.5	88.1	1.0	10.9	0.087	0.517	20.428944	-99.973137
T. Der. Libramiento de San Juan del Río	5.20	3	2	12801	1.5	86.1	1.0	5.6	1.2	2.5	1.3	0.3	0.5	87.6	1.0	11.4	0.084	0.517	20.428872	-99.973013
T. Der. Tequisquiapan	19.80	1	1	10245	1.5	86.0	1.8	7.5	1.2	1.1	0.6	0.1	0.2	87.5	1.8	10.7	0.086	0.501	20.513161	-99.905776
T. Der. Tequisquiapan	19.80	1	2	10195	1.5	85.9	1.5	7.4	1.0	1.2	0.9	0.2	0.4	87.4	1.5	11.1	0.085	0.501	20.513266	-99.905834
T. Der. Tequisquiapan	19.80	3	1	9296	1.3	83.9	1.5	7.4	1.9	1.9	1.4	0.3	0.4	85.2	1.5	13.3	0.084	0.504	20.540871	-99.901518
T. Der. Tequisquiapan	19.80	3	2	9429	1.1	85.6	1.4	7.6	1.6	1.5	0.8	0.2	0.2	86.7	1.4	11.9	0.082	0.504	20.540868	-99.901634
Ezequiel Montes	36.50	1	1	7409	1.5	81.8	2.3	8.0	2.6	2.2	1.0	0.3	0.3	83.3	2.3	14.4	0.084	0.502	20.644793	-99.905633
Ezequiel Montes	36.50	1	2	7362	1.9	82.2	2.0	7.3	2.5	2.2	1.2	0.3	0.4	84.1	2.0	13.9	0.087	0.502	20.644799	-99.905747
Ezequiel Montes	36.50	3	1	6497	2.2	86.8	1.0	7.1	1.2	0.9	0.6	0.0	0.2	89.0	1.0	10.0	0.084	0.503	20.677711	-99.890736
Ezequiel Montes	36.50	3	2	6409	2.5	86.3	1.1	7.6	1.2	0.7	0.5	0.0	0.1	88.8	1.1	10.1	0.087	0.503	20.677688	-99.890750
Cadereyta	47.90	3	0	9376	0.9	79.2	1.1	10.2	2.4	3.8	1.5	0.3	0.6	80.1	1.1	18.8	0.089	0.502	20.702121	-99.804310
Vizarrón de Montes	73.50	3	0	3654	0.8	72.7	0.9	12.6	5.4	1.7	4.9	0.3	0.7	73.5	0.9	25.6	0.068	0.508	20.854863	-99.711786
T. Der. San Joaquín	79.50	3	0	1403	1.7	80.4	1.2	12.1	2.1	1.3	1.0	0.0	0.2	82.1	1.2	16.7	0.088	0.520	20.885276	-99.707415
T. Izq. Higuierillas	89.10	3	0	1633	2.3	76.8	2.2	14.6	1.8	1.2	1.0	0.0	0.1	79.1	2.2	18.7	0.112	0.501	20.951543	-99.748967
T. Izq. Peñamiller	103.00	3	0	1491	0.5	81.3	2.6	11.0	2.0	2.0	0.4	0.0	0.2	81.8	2.6	15.6	0.083	0.511	21.039793	-99.739608
Pinal de Amoles	140.00	3	0	1940	1.2	85.4	1.0	8.5	1.2	1.5	0.8	0.0	0.4	86.6	1.0	12.4	0.094	0.501	21.138643	-99.620154
Jalpan de Serra	179.30	3	0	6300	1.5	85.3	0.2	7.8	0.6	3.6	0.4	0.1	0.5	86.8	0.2	13.0	0.082	0.501	21.207893	-99.453170
Landa de Matamoros	201.60	3	0	2950	1.0	86.1	0.9	9.3	0.7	1.4	0.4	0.0	0.2	87.1	0.9	12.0	0.079	0.505	21.187017	-99.311408
El Lobo	236.40	3	0	870	2.0	83.4	2.4	6.2	2.3	2.1	0.7	0.0	0.9	85.4	2.4	12.2	0.092	0.518	21.291809	-99.115211
Lim. Edos. Term. Qro. Ppia. S. L. P.	238.33																			
Xilitla	266.40	1	0	1898	6.7	80.4	0.7	8.9	1.0	1.5	0.4	0.1	0.3	87.1	0.7	12.2	0.097	0.504	21.379067	-98.999019
T. C. Portezuelo - Cd. Valles	276.98	1	0	2921	5.7	81.4	1.3	7.9	1.2	1.9	0.4	0.0	0.2	87.1	1.3	11.6	0.110	0.500	21.442375	-98.929989

21 CARR: San Luis Potosí - Ent. Arcinas

CLAVE: 00134

RUTA: MEX-049

AÑO: 2017

LUGAR	ESTACION				CLASIFICACION VEHICULAR EN PORCIENTO										COORDENADAS					
	KM	TE	SC	TDPA	M	A	B	C2	C3	T3S2	T3S3	T3S2R4	OTROS	A	B	C	K'	D	LATITUD	LONGITUD
T. C. San Luis Potosí - Matehuala	0.00																			
T. Izq. Periférico de San Luis Potosí	9.35	3	1	11607	5.6	78.6	1.3	8.7	1.1	2.2	1.3	0.9	0.3	84.2	1.3	14.5	0.095	0.503	22.206351	-101.031366
T. Izq. Periférico de San Luis Potosí	9.35	3	2	11750	5.5	80.8	1.0	7.4	1.1	2.1	1.1	0.8	0.2	86.3	1.0	12.7	0.088	0.503	22.206249	-101.031444
Mexquitic	22.50	1	1	6850	4.2	71.6	3.0	7.4	1.9	6.1	2.3	2.6	0.9	75.8	3.0	21.2	0.124	0.516	22.249467	-101.105476
Mexquitic	22.50	1	2	7315	3.9	70.2	3.2	8.0	2.0	6.5	2.4	2.9	0.9	74.1	3.2	22.7	0.119	0.516	22.249339	-101.105529
T. Der. Charcas	30.90	1	1	6670	2.3	69.6	3.3	9.6	2.3	6.9	1.9	3.3	0.8	71.9	3.3	24.8	0.096	0.504	22.311195	-101.159807
T. Der. Charcas	30.90	1	2	6790	1.7	72.2	2.7	6.9	2.4	7.2	2.7	3.3	0.9	73.9	2.7	23.4	0.087	0.504	22.311109	-101.159907

SAN LUIS POTOSI

21 CARR: San Luis Potosi - Ent. Arcinas

CLAVE: 00134

RUTA: MEX-049

AÑO: 2017

LUGAR	ESTACION				CLASIFICACION VEHICULAR EN PORCIENTO													COORDENADAS		
	KM	TE	SC	TDPA	M	A	B	C2	C3	T3S2	T3S3	T3S2R4	OTROS	A	B	C	K'	D	LATITUD	LONGITUD
Lim. Edos. Term. S. L. P. Ppia. Zac.	55.13																			
Lim. Edos. Term. Zac. Ppia. S. L. P.	89.30																			
T. Der. Salinas	99.00	1	1	4067	1.7	58.6	4.9	9.6	3.5	12.0	2.7	6.3	0.7	60.3	4.9	34.8	0.069	0.515	22.604484	-101.709310
T. Der. Salinas	99.00	1	2	4310	2.0	56.8	5.7	11.1	2.9	11.4	3.5	6.0	0.6	58.8	5.7	35.5	0.075	0.515	22.604338	-101.709419
T. Der. Salinas	99.00	3	1	4109	0.7	55.8	5.6	8.9	4.0	13.7	3.2	7.3	0.8	56.5	5.6	37.9	0.065	0.508	22.620397	-101.746624
T. Der. Salinas	99.00	3	2	4243	0.7	56.9	5.6	9.5	3.2	13.2	3.6	6.6	0.7	57.6	5.6	36.8	0.060	0.508	22.620146	-101.746664
Lim. Edos. Term. S. L. P. Ppia. Zac.	122.47																			
T. Izq. Pánfilo Natera	139.00	1	1	3558	0.7	53.3	5.9	9.0	3.3	14.9	3.6	8.4	0.9	54.0	5.9	40.1	0.065	0.502	22.679051	-102.097768
T. Izq. Pánfilo Natera	139.00	1	2	3532	0.9	49.4	6.4	10.5	3.8	15.5	4.4	8.2	0.9	50.3	6.4	43.3	0.069	0.502	22.678864	-102.097814
Ent. Arcinas	162.98	1	1	3960	0.4	59.8	4.9	7.9	3.3	12.9	3.1	7.0	0.7	60.2	4.9	34.9	0.067	0.501	22.719481	-102.322545
Ent. Arcinas	162.98	1	2	3944	0.6	55.4	6.0	9.0	3.3	13.5	3.6	7.7	0.9	56.0	6.0	38.0	0.072	0.501	22.719238	-102.322577

22 CARR: San Luis Potosi - Lagos de Moreno

CLAVE: 00133

RUTA: MEX-070-080

AÑO: 2017

LUGAR	ESTACION				CLASIFICACION VEHICULAR EN PORCIENTO													COORDENADAS		
	KM	TE	SC	TDPA	M	A	B	C2	C3	T3S2	T3S3	T3S2R4	OTROS	A	B	C	K'	D	LATITUD	LONGITUD
San Luis Potosí	0.00	3	1	16906	1.3	92.3	0.1	3.4	0.1	0.7	1.8	0.1	0.2	93.6	0.1	6.3	0.081	0.534	22.134760	-101.029564
San Luis Potosí	0.00	3	2	19396	1.4	92.8	0.1	3.4	0.1	0.6	1.4	0.1	0.1	94.2	0.1	5.7	0.072	0.534	22.134679	-101.029495
X. Periférico de San Luis Potosí	8.41	3	0	11420	2.2	77.3	1.3	7.5	2.8	5.7	1.9	0.5	0.8	79.5	1.3	19.2	0.062	0.506	22.128160	-101.045444
El Tepetate	41.90	1	0	5355	1.0	67.4	2.6	7.9	3.1	9.5	3.6	4.1	0.8	68.4	2.6	29.0	0.088	0.504	22.021289	-101.230488
El Tepetate	41.90	3	0	5467	1.2	66.5	2.8	8.1	3.3	9.4	3.6	4.1	1.0	67.7	2.8	29.5	0.082	0.505	22.007253	-101.249916
Villa de Arriaga	61.90	3	0	4061	1.6	63.4	3.3	9.6	3.1	10.7	4.3	3.2	0.8	65.0	3.3	31.7	0.075	0.501	21.896132	-101.414493
Lim. Edos. Term. S. L. P. Ppia. Zac.	70.23																			
Lim. Edos. Term. Zac. Ppia. Jal.	82.94																			
Ojuelos de Jalisco	83.20	1	0	6768	1.6	70.2	2.0	8.6	3.2	7.9	3.5	2.3	0.7	71.8	2.0	26.2	0.064	0.506	21.875763	-101.570989
Ojuelos de Jalisco	83.20	3	0	4759	1.3	56.7	3.3	7.8	3.9	14.3	5.0	6.6	1.1	58.0	3.3	38.7	0.069	0.508	21.852306	-101.594140
X. C. Lagos de Moreno - San Luis Potosí (Cuota)	140.00	1	0	3532	3.6	61.8	2.5	12.9	4.0	7.8	3.8	3.0	0.6	65.4	2.5	32.1	0.080	0.507	21.448955	-101.804922
X. C. León - Aguascalientes	146.90	1	1	5301	5.0	61.3	1.8	7.0	4.4	11.9	2.6	5.2	0.8	66.3	1.8	31.9	0.093	0.513	21.375638	-101.894350
X. C. León - Aguascalientes	146.90	1	2	5030	3.4	61.3	1.9	7.9	4.3	10.9	3.1	6.4	0.8	64.7	1.9	33.4	0.096	0.513	21.375724	-101.894404
Lagos de Moreno	150.00																			

SAN LUIS POTOSI

23 CARR: San Luis Potosi - Matehuala

CLAVE: 24508

RUTA: MEX-057

AÑO: 2017

LUGAR	ESTACION				CLASIFICACION VEHICULAR EN PORCIENTO													COORDENADAS			
	KM	TE	SC	TDPA	M	A	B	C2	C3	T3S2	T3S3	T3S2R4	OTROS	A	B	C	K'	D	LATITUD	LONGITUD	
San Luis Potosi	0.00																				
X. Periférico de San Luis Potosi	7.36	3	1	15197	0.7	39.0	3.5	5.1	3.3	36.5	4.7	6.8	0.4	39.7	3.5	56.8	0.076	0.505	22.207382	-100.919688	
X. Periférico de San Luis Potosi	7.36	3	2	14873	0.8	34.4	3.8	5.8	3.6	38.8	5.1	7.3	0.4	35.2	3.8	61.0	0.084	0.505	22.207454	-100.919784	
Ventura (X. Nuevo Libramiento de SLP)	33.20	3	1	15500	0.6	35.7	5.2	5.6	3.7	38.3	3.4	6.9	0.6	36.3	5.2	58.5	0.058	0.509	22.337227	-100.797863	
Ventura (X. Nuevo Libramiento de SLP)	33.20	3	2	14931	0.9	31.2	5.4	6.0	4.0	40.7	3.4	7.7	0.7	32.1	5.4	62.5	0.076	0.509	22.337287	-100.798463	
T. Der. Villa Hidalgo	45.94	1	1	15617	0.0	39.2	4.1	5.9	3.3	35.5	4.8	6.7	0.5	39.2	4.1	56.7	0.070	0.515	22.415715	-100.720900	
T. Der. Villa Hidalgo	45.94	1	2	14710	0.4	34.9	4.3	6.7	3.7	37.6	5.1	6.8	0.5	35.3	4.3	60.4	0.077	0.515	22.415822	-100.721042	
T. Izq. Villa Arista	61.35	1	1	13850	0.7	37.5	4.4	6.2	2.8	36.4	4.9	6.2	0.9	38.2	4.4	57.4	0.055	0.508	22.558052	-100.647546	
T. Izq. Villa Arista	61.35	1	2	13424	0.6	30.4	4.9	6.8	3.4	40.5	5.1	7.2	1.1	31.0	4.9	64.1	0.063	0.508	22.558052	-100.647663	
T. Der. Guadalcázar	75.70	1	1	12071	1.1	39.6	3.7	7.2	2.6	33.2	4.7	7.2	0.7	40.7	3.7	55.6	0.093	0.525	22.634348	-100.522778	
T. Der. Guadalcázar	75.70	1	2	10914	0.8	30.0	4.4	8.6	2.6	39.1	5.2	8.5	0.8	30.8	4.4	64.8	0.076	0.525	22.634402	-100.522952	
T. Der. Guadalcázar	75.70	3	1	9772	0.8	35.9	4.7	6.9	2.5	36.3	4.3	7.8	0.8	36.7	4.7	58.6	0.069	0.509	22.645418	-100.515440	
T. Der. Guadalcázar	75.70	3	2	9445	0.7	27.2	4.7	7.6	3.0	42.0	4.9	8.9	1.0	27.9	4.7	67.4	0.075	0.509	22.645482	-100.515611	
T. Der. Cd. del Maíz	109.62	3	1	9137	1.1	33.0	4.5	7.4	2.3	37.1	4.5	9.4	0.7	34.1	4.5	61.4	0.058	0.515	22.937209	-100.460425	
T. Der. Cd. del Maíz	109.62	3	2	8620	0.9	29.5	4.7	7.8	2.4	39.5	4.8	9.6	0.8	30.4	4.7	64.9	0.068	0.515	22.937161	-100.460636	
La Bonita	171.40	1	1	8644	0.5	28.2	4.1	7.6	2.3	43.8	4.5	8.2	0.8	28.7	4.1	67.2	0.065	0.522	23.476786	-100.612706	
La Bonita	171.40	1	2	9454	0.8	28.6	4.6	8.2	2.3	41.2	5.0	8.6	0.7	29.4	4.6	66.0	0.056	0.522	23.476749	-100.612889	
Matehuala	187.39	1	1	10008	0.3	32.0	3.9	7.6	4.2	37.1	5.7	7.7	1.5	32.3	3.9	63.8	0.058	0.518	23.575689	-100.631349	
Matehuala	187.39	1	2	10761	0.1	22.1	4.2	8.5	4.7	43.7	6.5	8.6	1.6	22.2	4.2	73.6	0.056	0.518	23.575645	-100.631722	

24 CARR: T. C. (Ent. El Huizache- Ant. Morelos)-El Salto

CLAVE: 24204

RUTA: MEX-080

AÑO: 2017

LUGAR	ESTACION				CLASIFICACION VEHICULAR EN PORCIENTO													COORDENADAS			
	KM	TE	SC	TDPA	M	A	B	C2	C3	T3S2	T3S3	T3S2R4	OTROS	A	B	C	K'	D	LATITUD	LONGITUD	
T. C. El Huizache - Ant. Morelos	0.00	3	0	2693	3.8	85.0	0.1	7.5	1.1	1.6	0.3	0.4	0.2	88.8	0.1	11.1	0.087	0.516	22.535195	-99.307431	
Salto del Agua	12.00																				

25 CARR: T. C. (Qro - S.L.P.) - Tierra Nueva

CLAVE: 24203

RUTA: MEX-057

AÑO: 2017

LUGAR	ESTACION				CLASIFICACION VEHICULAR EN PORCIENTO													COORDENADAS			
	KM	TE	SC	TDPA	M	A	B	C2	C3	T3S2	T3S3	T3S2R4	OTROS	A	B	C	K'	D	LATITUD	LONGITUD	
T. C. Querétaro - San Luis Potosi	0.00	3	0	1555	1.0	78.0	0.5	10.7	5.2	2.3	1.7	0.0	0.6	79.0	0.5	20.5	0.082	0.517	21.694342	-100.681283	
Tierra Nueva	13.10																				

SAN LUIS POTOSI

26 CARR: T. C. (S.L.P. - Matehuala) - Villa Hidalgo

CLAVE: 24619

RUTA: MEX-057

AÑO: 2017

LUGAR	ESTACION				CLASIFICACION VEHICULAR EN PORCIENTO													COORDENADAS		
	KM	TE	SC	TDPA	M	A	B	C2	C3	T3S2	T3S3	T3S2R4	OTROS	A	B	C	K'	D	LATITUD	LONGITUD
Paso por Villa Hidalgo	0.00	3	0	1955	1.6	75.6	2.2	13.4	1.7	2.7	1.7	0.8	0.3	77.2	2.2	20.6	0.088	0.504	22.432851	-100.700560
Paso por Villa Hidalgo	10.20	1	0	2062	2.7	73.5	1.7	14.4	1.7	3.0	1.6	1.0	0.4	76.2	1.7	22.1	0.097	0.515	22.496978	-100.665730

27 CARR: Tamazunchale - San Felipe Orizatlán

CLAVE: 00609

RUTA: MEX-085

AÑO: 2017

LUGAR	ESTACION				CLASIFICACION VEHICULAR EN PORCIENTO													COORDENADAS		
	KM	TE	SC	TDPA	M	A	B	C2	C3	T3S2	T3S3	T3S2R4	OTROS	A	B	C	K'	D	LATITUD	LONGITUD
T. C. Portezuelo - Cd. Valles	0.00	3	0	10029	16.3	67.3	0.5	7.5	0.3	5.3	1.1	0.3	1.4	83.6	0.5	15.9	0.069	0.513	21.250129	-98.767041
Lim. Edos. Term. S. L. P. Ppia. Hgo.	18.50																			
San Felipe Orizatlán	27.10	1	0	2260	17.5	67.6	1.1	8.9	2.0	2.1	0.6	0.0	0.2	85.1	1.1	13.8	0.085	0.502	21.170161	-98.617461

28 CARR: Lagos de Moreno - Villa de Arriaga (Cuota)

CLAVE:

RUTA: MEX-080D

AÑO: 2017

LUGAR	ESTACION				CLASIFICACION VEHICULAR EN PORCIENTO													COORDENADAS		
	KM	TE	SC	TDPA	M	A	B	C2	C3	T3S2	T3S3	T3S2R4	OTROS	A	B	C	K'	D	LATITUD	LONGITUD
X. C. San Luis Potosí - Lagos de Moreno	12.10	3	0	3864	1.3	50.7	3.7	5.1	2.6	20.9	3.0	11.4	1.3	52.0	3.7	44.3	0.080	0.508	21.448647	-101.812883
Lim. Edos. Term. Jal. Tab. Ppia. Gto.	46.30																			
Lim. Edos. Term. Gto. Tab. Ppia. SLP.	68.63																			
X. C. San Luis Potosí - Villa de Arriaga (Cuota)	78.00	1	0	4094	0.6	50.8	3.7	5.4	2.5	20.9	3.5	11.4	1.2	51.4	3.7	44.9	0.078	0.513	21.890340	-101.406774

29 CARR: Libramiento de Matehuala (Cuota)

CLAVE: 24205

RUTA: MEX-057D

AÑO: 2017

LUGAR	ESTACION				CLASIFICACION VEHICULAR EN PORCIENTO													COORDENADAS		
	KM	TE	SC	TDPA	M	A	B	C2	C3	T3S2	T3S3	T3S2R4	OTROS	A	B	C	K'	D	LATITUD	LONGITUD
T. C. San Luis Potosí - Matehuala	0.00	3	1	6132	1.0	29.3	4.3	5.7	3.8	44.8	3.3	6.5	1.3	30.3	4.3	65.4	0.066	0.523	23.603912	-100.621061
T. C. San Luis Potosí - Matehuala	0.00	3	2	6734	0.8	29.0	4.7	6.1	3.6	44.4	3.6	6.5	1.3	29.8	4.7	65.5	0.062	0.523	23.604080	-100.621280
Caseta de Cobro Matehuala	7.00	2	1	5971	0.1	30.6	2.5	5.9	3.6	45.1	3.7	7.5	1.0	30.7	2.5	66.8	0.073	0.500	23.664154	-100.607285
Caseta de Cobro Matehuala	7.00	2	2	5971	0.1	30.6	2.5	5.9	3.6	45.1	3.7	7.5	1.0	30.7	2.5	66.8	0.073	0.500	23.664154	-100.607285
T. C. Matehuala - Ent. Puerto México	14.20	1	1	6435	0.6	35.3	2.5	5.4	3.4	41.4	4.0	6.2	1.2	35.9	2.5	61.6	0.071	0.501	23.694128	-100.611557
T. C. Matehuala - Ent. Puerto México	14.20	1	2	6458	0.3	34.0	2.7	5.3	3.7	42.1	4.1	6.5	1.3	34.3	2.7	63.0	0.062	0.501	23.694111	-100.611822

SAN LUIS POTOSI

30 CARR: Libramiento Norponiente de San Luis Potosí (Cuota)

CLAVE:

RUTA: MEX-057D

AÑO: 2017

LUGAR	ESTACION				CLASIFICACION VEHICULAR EN PORCIENTO													COORDENADAS		
	KM	TE	SC	TDPA	M	A	B	C2	C3	T3S2	T3S3	T3S2R4	OTROS	A	B	C	K'	D	LATITUD	LONGITUD
T. Libramiento Oriente de San Luis Potosí (Cuota)	0.00																			
X. C. San Luis Potosí - Matehuala	5.60	1	0	3265	8.6	44.5	6.5	17.6	3.8	9.3	3.1	5.2	1.4	53.1	6.5	40.4	0.070	0.516	22.256784	-100.858713
X. C. San Luis Potosí - Matehuala	5.60	3	0	3109	0.4	32.0	4.4	5.9	4.8	33.6	7.4	10.5	1.0	32.4	4.4	63.2	0.076	0.515	22.269071	-100.873924
Caseta de Cobro Vicente Rangel Lozano	17.40	2	0	2028	0.4	53.2	1.3	3.8	3.7	17.2	6.1	12.2	2.1	53.6	1.3	45.1	0.067	0.500	22.299833	-100.971420
T. C. San Luis Potosí - Ent. Arcinas	31.50																			

31 CARR: Libramiento Oriente de San Luis Potosí (Cuota)

CLAVE: 24009

RUTA: MEX-057D

AÑO: 2017

LUGAR	ESTACION				CLASIFICACION VEHICULAR EN PORCIENTO													COORDENADAS		
	KM	TE	SC	TDPA	M	A	B	C2	C3	T3S2	T3S3	T3S2R4	OTROS	A	B	C	K'	D	LATITUD	LONGITUD
T. C. Querétaro - San Luis Potosí	0.00																			
X. C. Cd. Valles - San Luis Potosí	11.20	1	1	7763	0.8	25.2	3.8	5.4	4.5	45.2	5.2	9.2	0.7	26.0	3.8	70.2	0.068	0.514	22.118743	-100.825951
X. C. Cd. Valles - San Luis Potosí	11.20	1	2	7344	0.8	19.0	4.4	6.4	5.0	47.9	5.3	10.4	0.8	19.8	4.4	75.8	0.070	0.514	22.118771	-100.826134
Caseta de Cobro San Nicolás de Los Jassos	11.22	2	1	8650	0.1	26.9	2.8	5.8	4.4	44.5	4.5	9.6	1.4	27.0	2.8	70.2	0.067	0.500	22.129766	-100.825104
Caseta de Cobro San Nicolás de Los Jassos	11.22	2	2	8650	0.1	26.9	2.8	5.8	4.4	44.5	4.5	9.6	1.4	27.0	2.8	70.2	0.067	0.500	22.129766	-100.825104
T. C. San Luis Potosí - Matehuala	33.76	1	1	8689	0.5	32.7	4.2	5.4	4.2	39.2	4.5	8.6	0.7	33.2	4.2	62.6	0.060	0.515	22.319560	-100.802965
T. C. San Luis Potosí - Matehuala	33.76	1	2	8182	0.6	30.2	4.3	6.2	3.9	41.1	4.9	8.1	0.7	30.8	4.3	64.9	0.060	0.515	22.319635	-100.803136

32 CARR: Rayón - Ent. Tamuín (Cuota)

CLAVE:

RUTA: MEX-070D

AÑO: 2017

LUGAR	ESTACION				CLASIFICACION VEHICULAR EN PORCIENTO													COORDENADAS		
	KM	TE	SC	TDPA	M	A	B	C2	C3	T3S2	T3S3	T3S2R4	OTROS	A	B	C	K'	D	LATITUD	LONGITUD
Rayón	0.00																			
Vicente Guerrero	19.70	1	0	2836	0.3	78.0	4.9	5.9	1.6	5.3	1.3	2.2	0.5	78.3	4.9	16.8	0.126	0.502	21.865614	-99.499604
Vicente Guerrero	19.70	3	0	2887	0.2	78.0	4.7	5.6	1.7	5.5	1.6	2.3	0.4	78.2	4.7	17.1	0.128	0.506	21.863984	-99.478062
La Pitahaya	68.58	1	0	2892	0.8	77.5	4.8	4.7	2.1	5.6	1.8	2.1	0.6	78.3	4.8	16.9	0.117	0.502	22.004141	-99.132117
T. C. Cd. Valles - Tampico	120.00																			

33 CARR: Charcas - Villa Santo Domingo

CLAVE: 24624

RUTA: SLP-017

AÑO: 2017

LUGAR	ESTACION				CLASIFICACION VEHICULAR EN PORCIENTO													COORDENADAS		
	KM	TE	SC	TDPA	M	A	B	C2	C3	T3S2	T3S3	T3S2R4	OTROS	A	B	C	K'	D	LATITUD	LONGITUD
Charcas	0.00	3	0	1948	25.2	58.9	2.9	9.4	2.0	1.0	0.4	0.1	0.1	84.1	2.9	13.0	0.105	0.502	23.138189	-101.131578
Villa Santo Domingo	75.00																			



SAN LUIS POTOSI

34 CARR: Ébano - Estación Manuel

CLAVE: 24624

RUTA: SLP-TAM

AÑO: 2017

LUGAR	ESTACION	CLASIFICACION VEHICULAR EN PORCIENTO																COORDENADAS		
		KM	TE	SC	TDPA	M	A	B	C2	C3	T3S2	T3S3	T3S2R4	OTROS	A	B	C	K'	D	LATITUD
Ébano	0.00	3	0	2493	20.9	64.3	0.2	9.6	1.1	2.2	0.7	0.9	0.1	85.2	0.2	14.6	0.085	0.514	22.233761	-98.365984
Lím. de Edos. Term. S. L. P.. Ppia. Ver.	2.71																			
Lím. de Edos. Term. Ver. Ppia. S. L. P.	3.95																			
Lím. de Edos. Term. S. L. P. Ppia. Ver.	5.00																			
Lím. de Edos. Term. Ver. Ppia. Tamps.	25.00																			
Estación Manuel	65.60																			

35 CARR: Matehuala - La Paz

CLAVE: 24621

RUTA: SLP-020

AÑO: 2017

LUGAR	ESTACION	CLASIFICACION VEHICULAR EN PORCIENTO																COORDENADAS		
		KM	TE	SC	TDPA	M	A	B	C2	C3	T3S2	T3S3	T3S2R4	OTROS	A	B	C	K'	D	LATITUD
Matehuala	0.00	3	1	2770	16.9	69.6	0.4	11.1	0.5	0.7	0.4	0.2	0.2	86.5	0.4	13.1	0.083	0.501	23.670018	-100.654167
Matehuala	0.00	3	2	2755	17.1	68.8	0.4	10.9	0.9	0.8	0.7	0.2	0.2	85.9	0.4	13.7	0.090	0.501	23.670045	-100.654092
La Paz	8.00	1	1	2492	25.0	67.6	0.4	5.1	0.6	0.8	0.2	0.2	0.1	92.6	0.4	7.0	0.119	0.505	23.680123	-100.701315
La Paz	8.00	1	2	2443	24.1	69.5	0.4	4.4	0.4	0.7	0.2	0.2	0.1	93.6	0.4	6.0	0.080	0.505	23.680065	-100.701323

36 CARR: Matehuala - La Poza

CLAVE: 00086

RUTA: SLP-029-NL-061

AÑO: 2017

LUGAR	ESTACION	CLASIFICACION VEHICULAR EN PORCIENTO																COORDENADAS		
		KM	TE	SC	TDPA	M	A	B	C2	C3	T3S2	T3S3	T3S2R4	OTROS	A	B	C	K'	D	LATITUD
Matehuala	0.00	3	0	4285	9.4	70.6	1.2	12.6	3.0	2.0	0.5	0.4	0.3	80.0	1.2	18.8	0.064	0.509	23.667171	-100.598733
Lim. Edos. Term. S. L. P. Ppia. N. L.	19.70																			
Lim. Edos. Term. N. L. Ppia. S. L. P.	19.90																			
Lim. Edos. Term. S. L. P. Ppia. N. L.	21.53																			
Doctor Arroyo	49.00	1	0	4151	3.9	76.1	1.1	13.5	2.7	1.9	0.3	0.4	0.1	80.0	1.1	18.9	0.085	0.501	23.686806	-100.211917
La Ascención	131.00	1	0	762	3.0	74.8	3.7	15.9	1.0	1.4	0.1	0.0	0.1	77.8	3.7	18.5	0.095	0.518	24.320806	-99.905556

37 CARR: Periférico de San Luis Potosí

CLAVE: 24618

RUTA: SLP-032

AÑO: 2017

LUGAR	ESTACION	CLASIFICACION VEHICULAR EN PORCIENTO																COORDENADAS		
		KM	TE	SC	TDPA	M	A	B	C2	C3	T3S2	T3S3	T3S2R4	OTROS	A	B	C	K'	D	LATITUD
T. C. San Luis Potosí - Ent. Arcinas	0.00																			
X. C. Querétaro - San Luis Potosí (Lateral)	22.00	3	1	7626	6.7	80.3	0.4	10.1	0.4	0.9	0.9	0.1	0.2	87.0	0.4	12.6	0.082	0.533	22.134951	-100.916878
X. C. Querétaro - San Luis Potosí (Central)	22.00	3	1	17975	3.6	77.2	1.1	6.4	2.1	4.0	3.1	1.1	1.4	80.8	1.1	18.1	0.061	0.521	22.134969	-100.916976
X. C. Querétaro - San Luis Potosí (Central)	22.00	3	2	15190	3.2	79.9	0.8	6.7	1.9	2.9	2.6	0.9	1.1	83.1	0.8	16.1	0.068	0.521	22.134985	-100.917065

SAN LUIS POTOSI

37 CARR: Periférico de San Luis Potosí

CLAVE: 24618

RUTA: SLP-032

AÑO: 2017

LUGAR	ESTACION				CLASIFICACION VEHICULAR EN PORCIENTO										COORDENADAS					
	KM	TE	SC	TDPA	M	A	B	C2	C3	T3S2	T3S3	T3S2R4	OTROS	A	B	C	K'	D	LATITUD	LONGITUD
X. C. Querétaro - San Luis Potosí (Lateral)	22.00	3	2	8692	5.8	82.2	0.3	8.7	0.6	0.8	1.2	0.1	0.3	88.0	0.3	11.7	0.096	0.533	22.134998	-100.917164
X. C. San Luis Potosí - Cd. Valles	25.00	3	1	13307	3.4	77.4	0.7	7.8	2.2	3.6	2.8	0.9	1.2	80.8	0.7	18.5	0.094	0.537	22.166336	-100.915085
X. C. San Luis Potosí - Cd. Valles	25.00	3	2	15460	4.1	78.7	0.6	7.5	2.0	3.0	2.5	0.6	1.0	82.8	0.6	16.6	0.096	0.537	22.166346	-100.915210
X. C. San Luis Potosí - Matehuala	30.70	1	1	13684	4.3	75.0	0.8	8.8	3.1	4.0	2.1	1.0	0.9	79.3	0.8	19.9	0.078	0.534	22.201502	-100.921881
X. C. San Luis Potosí - Matehuala	30.70	1	2	15682	3.8	77.2	1.0	7.4	2.2	4.0	2.6	0.9	0.9	81.0	1.0	18.0	0.077	0.534	22.201455	-100.922012
T. C. San Luis Potosí - Ent. Arcinas	44.80																			

38 CARR: Ramal a Cerritos

CLAVE: 24615

RUTA: SLP-007

AÑO: 2017

LUGAR	ESTACION				CLASIFICACION VEHICULAR EN PORCIENTO										COORDENADAS					
	KM	TE	SC	TDPA	M	A	B	C2	C3	T3S2	T3S3	T3S2R4	OTROS	A	B	C	K'	D	LATITUD	LONGITUD
T. C. San Luis Potosí - Matehuala	0.00	3	0	468	2.3	61.0	1.0	18.2	1.3	7.4	8.3	0.0	0.5	63.3	1.0	35.7	0.103	0.512	22.610791	-100.545833
Cerritos	37.00																			

39 CARR: Ramal a Pozo de Acuña

CLAVE: 24626

RUTA: SLP-009

AÑO: 2017

LUGAR	ESTACION				CLASIFICACION VEHICULAR EN PORCIENTO										COORDENADAS					
	KM	TE	SC	TDPA	M	A	B	C2	C3	T3S2	T3S3	T3S2R4	OTROS	A	B	C	K'	D	LATITUD	LONGITUD
T. C. San Luis Potosí - Matehuala	0.00	3	0	455	1.9	81.3	1.4	14.5	0.4	0.2	0.2	0.0	0.1	83.2	1.4	15.4	0.108	0.535	22.641347	-100.514402
Pozo de Acuña	37.90																			

40 CARR: Rayón - Arroyo Seco

CLAVE: 24008

RUTA: SLP-011

AÑO: 2017

LUGAR	ESTACION				CLASIFICACION VEHICULAR EN PORCIENTO										COORDENADAS					
	KM	TE	SC	TDPA	M	A	B	C2	C3	T3S2	T3S3	T3S2R4	OTROS	A	B	C	K'	D	LATITUD	LONGITUD
Rayón	0.00	3	0	1084	5.7	72.9	0.4	17.2	1.2	1.8	0.6	0.0	0.2	78.6	0.4	21.0	0.110	0.516	21.848141	-99.626908
Lagunillas	36.00	1	0	328	4.7	74.9	0.0	18.3	1.3	0.4	0.4	0.0	0.0	79.6	0.0	20.4	0.128	0.505	21.594608	-99.564983
Lim. De Edos. Term. S.L.P. Ppia Qro.	51.00																			
Arroyo Seco	57.00	1	0	587	6.5	72.7	0.1	19.3	1.2	0.2	0.0	0.0	0.0	79.2	0.1	20.7	0.114	0.509	21.552953	-99.682402

41 CARR: Santo Domingo - Cerro Gordo

CLAVE: 24614

RUTA: SLP-022

AÑO: 2017

LUGAR	ESTACION				CLASIFICACION VEHICULAR EN PORCIENTO										COORDENADAS					
	KM	TE	SC	TDPA	M	A	B	C2	C3	T3S2	T3S3	T3S2R4	OTROS	A	B	C	K'	D	LATITUD	LONGITUD
T. C. Cd. Valles - San Luis Potosí	0.00	3	0	4433	2.4	74.5	0.8	13.2	1.5	4.7	1.8	0.3	0.8	76.9	0.8	22.3	0.093	0.511	22.098802	-100.745278

SAN LUIS POTOSI

41 CARR: Santo Domingo - Cerro Gordo

CLAVE: 24614

RUTA: SLP-022

AÑO: 2017

LUGAR	ESTACION				CLASIFICACION VEHICULAR EN PORCIENTO														COORDENADAS	
	KM	TE	SC	TDPA	M	A	B	C2	C3	T3S2	T3S3	T3S2R4	OTROS	A	B	C	K'	D	LATITUD	LONGITUD
T. C. Querétaro - San Luis Potosí	19.00	1	0	3228	2.8	69.9	0.5	15.3	2.6	3.4	4.8	0.3	0.4	72.7	0.5	26.8	0.104	0.516	21.977773	-100.814013

42 CARR: Tamuín - Estación F.F.C.C. Tamuín

CLAVE: 24022

RUTA: SLP-040

AÑO: 2017

LUGAR	ESTACION				CLASIFICACION VEHICULAR EN PORCIENTO														COORDENADAS	
	KM	TE	SC	TDPA	M	A	B	C2	C3	T3S2	T3S3	T3S2R4	OTROS	A	B	C	K'	D	LATITUD	LONGITUD
Tamuín	0.00	3	0	6672	13.6	72.3	0.4	5.8	1.1	4.8	0.8	0.3	0.9	85.9	0.4	13.7	0.080	0.509	22.015209	-98.784578
Estación F.F.C.C. Tamuín	10.00	1	0	1524	33.3	60.1	0.3	3.9	0.3	1.6	0.4	0.0	0.1	93.4	0.3	6.3	0.077	0.504	22.077642	-98.810814

43 CARR: Tamuín - Xolol

CLAVE: 24027

RUTA: SLP-014

AÑO: 2017

LUGAR	ESTACION				CLASIFICACION VEHICULAR EN PORCIENTO														COORDENADAS	
	KM	TE	SC	TDPA	M	A	B	C2	C3	T3S2	T3S3	T3S2R4	OTROS	A	B	C	K'	D	LATITUD	LONGITUD
Tamuín	0.00	3	0	3604	11.7	68.6	0.6	9.8	2.7	3.9	1.2	1.1	0.4	80.3	0.6	19.1	0.083	0.516	21.998746	-98.762956
San Vicente Tancuayalab	37.62																			
Xolol	97.00																			

44 CARR: Cerritos - Rioverde (Cuota)

CLAVE: 00138

RUTA: SLP-D

AÑO: 2017

LUGAR	ESTACION				CLASIFICACION VEHICULAR EN PORCIENTO														COORDENADAS	
	KM	TE	SC	TDPA	M	A	B	C2	C3	T3S2	T3S3	T3S2R4	OTROS	A	B	C	K'	D	LATITUD	LONGITUD
Cerritos	0.00	3	0	4922	0.5	64.2	7.0	8.0	1.7	7.9	4.8	5.2	0.7	64.7	7.0	28.3	0.083	0.508	22.586965	-100.583331
Villa Juárez	58.00	3	0	2837	0.2	72.2	6.2	8.9	1.6	5.8	2.0	2.7	0.4	72.4	6.2	21.4	0.125	0.515	22.320002	-100.286185
Río Verde	103.00	1	0	4429	1.6	71.5	4.6	10.8	2.3	5.3	1.5	1.9	0.5	73.1	4.6	22.3	0.100	0.509	21.928800	-99.957496

45 CARR: San Luis Potosí - Villa de Arriaga (Cuota)

CLAVE: 24209

RUTA: SLP-D

AÑO: 2017

LUGAR	ESTACION				CLASIFICACION VEHICULAR EN PORCIENTO														COORDENADAS	
	KM	TE	SC	TDPA	M	A	B	C2	C3	T3S2	T3S3	T3S2R4	OTROS	A	B	C	K'	D	LATITUD	LONGITUD
T. C. Querétaro - San Luis Potosí	0.00	3	0	8777	2.7	58.5	4.0	9.9	5.2	12.8	1.9	3.7	1.3	61.2	4.0	34.8	0.119	0.522	22.008172	-100.847420
Villa de Arriaga	77.00	1	0	3058	1.0	41.9	5.0	6.5	2.3	26.7	3.7	11.9	1.0	42.9	5.0	52.1	0.063	0.543	21.892687	-101.388041

SAN LUIS POTOSI

46 CARR: Rayón - Cd. del Maíz

CLAVE: 24206

RUTA: MEX-070-SLP-005

AÑO: 2017

LUGAR	ESTACION				CLASIFICACION VEHICULAR EN PORCIENTO										COORDENADAS					
	KM	TE	SC	TDPA	M	A	B	C2	C3	T3S2	T3S3	T3S2R4	OTROS	A	B	C	K'	D	LATITUD	LONGITUD
T. C. (Cd. Valles - San Luis Potosí)	0.00																			
Cárdenas	15.80	1	0	3191	2.2	86.7	1.3	6.3	1.3	1.7	0.3	0.1	0.1	88.9	1.3	9.8	0.083	0.540	21.982562	-99.647562
Cd. del Maíz	55.70	1	0	748	3.2	80.2	0.9	13.6	0.8	0.9	0.3	0.0	0.1	83.4	0.9	15.7	0.099	0.504	22.393886	-99.611794

47 CARR: San Lorenzo - Moctezuma

CLAVE: 24016

RUTA: MEX-063-SLP-012

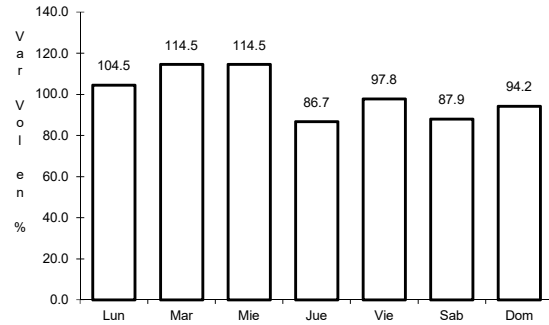
AÑO: 2017

LUGAR	ESTACION				CLASIFICACION VEHICULAR EN PORCIENTO										COORDENADAS					
	KM	TE	SC	TDPA	M	A	B	C2	C3	T3S2	T3S3	T3S2R4	OTROS	A	B	C	K'	D	LATITUD	LONGITUD
T. C. San Luis Potosí - Matehuala	0.00	3	0	1402	2.3	68.4	2.2	17.8	2.4	4.2	1.5	0.8	0.4	70.7	2.2	27.1	0.103	0.519	22.572454	-100.643766
Moctezuma	54.00	1	0	1610	7.9	70.3	0.5	18.0	1.2	1.3	0.5	0.2	0.1	78.2	0.5	21.3	0.093	0.503	22.759169	-101.063016

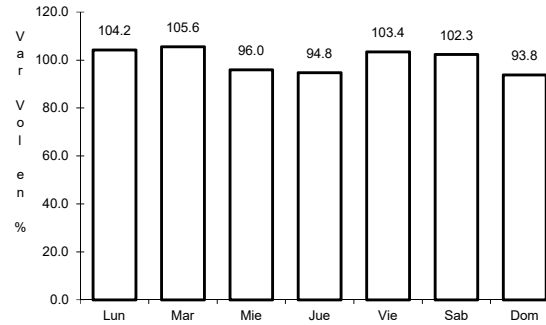
1 CARR: Antiguo Morelos - Ent. El Huizache

CLAVE: 00136

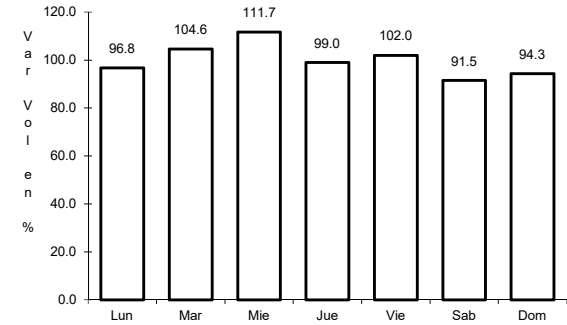
RUTA: MEX-080



Km: 0.00      Tipo: 3      Sent: 0



Km: 86.00      Tipo: 3      Sent: 0

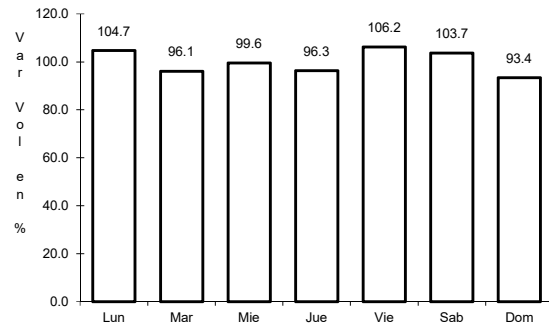


Km: 198.83      Tipo: 1      Sent: 0

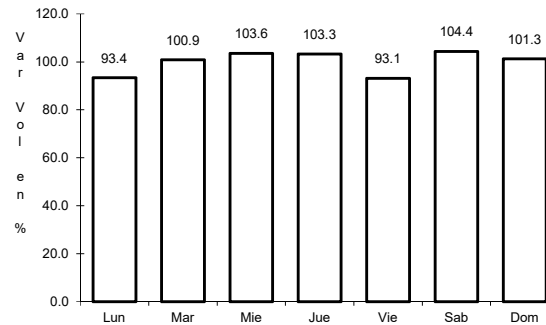
2 CARR: Carbonera - T. C. (Ent. Morelos - Saltillo)

CLAVE: 00218

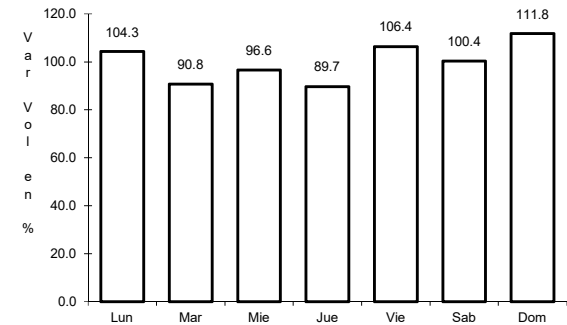
RUTA: MEX-062



Km: 0.00      Tipo: 3      Sent: 0



Km: 18.00      Tipo: 1      Sent: 0

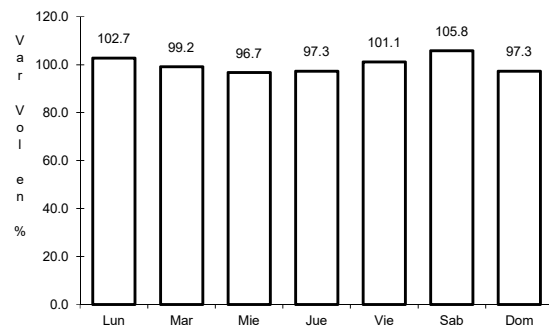


Km: 112.00      Tipo: 1      Sent: 0

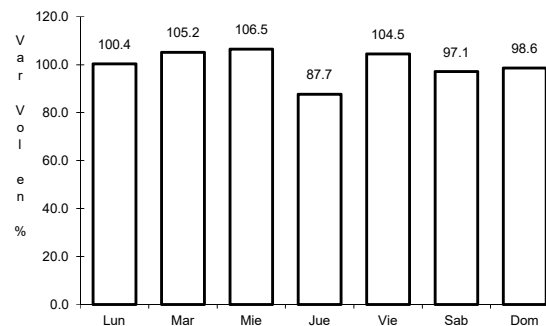
3 CARR: Cd. Valles - Cd. Victoria

CLAVE: 00509

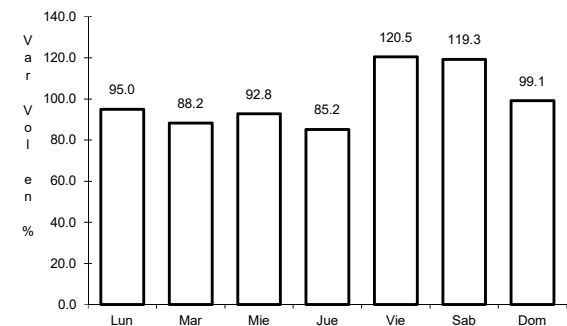
RUTA: MEX-085



Km: 0.00      Tipo: 3      Sent: 0



Km: 110.00      Tipo: 3      Sent: 0

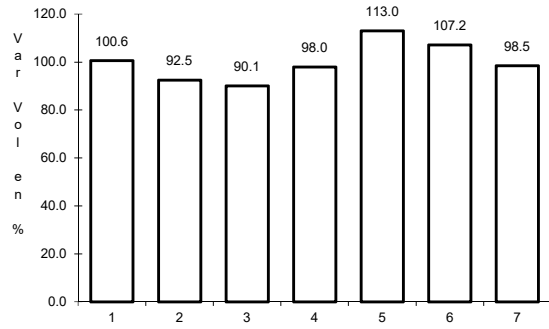


Km: 232.00      Tipo: 1      Sent: 0

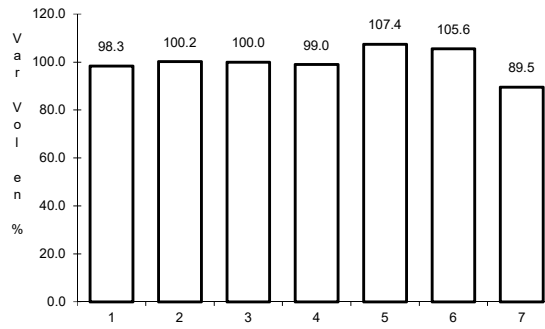
4 CARR: Cd. Valles - San Luis Potosí

CLAVE: 24135

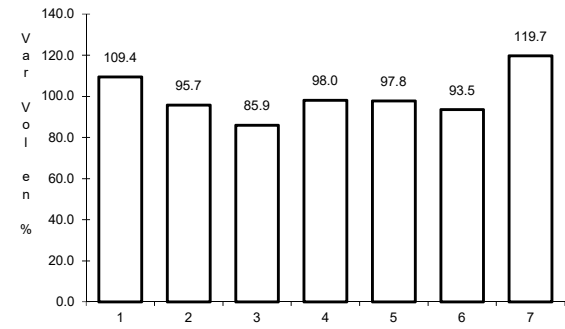
ruta: MEX-070



Km: 0.00      Tipo: 3      Sent: 1



Km: 0.00      Tipo: 3      Sent: 2

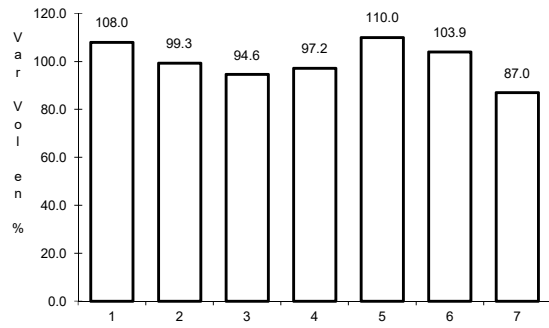


Km: 161.04      Tipo: 3      Sent: 0

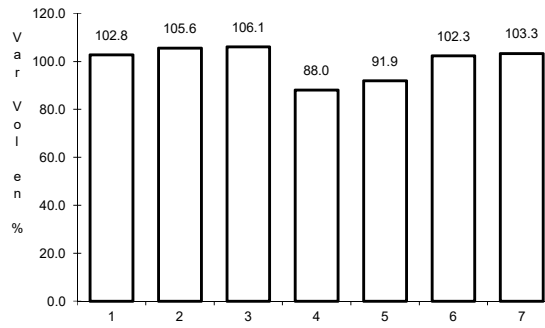
5 CARR: Cd. Valles - Tampico

CLAVE: 00138

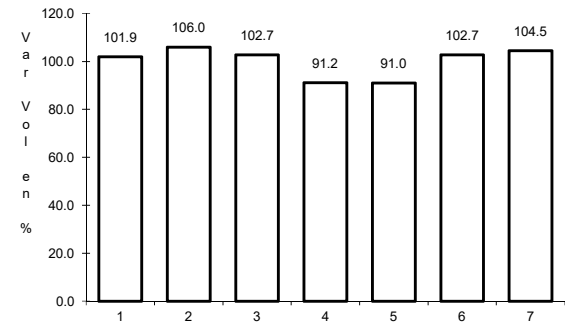
ruta: MEX-070



Km: 0.00      Tipo: 3      Sent: 0



Km: 138.00      Tipo: 1      Sent: 1

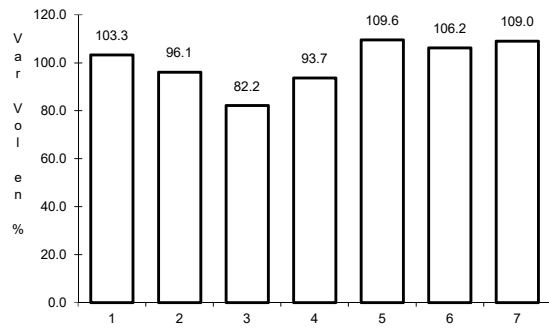


Km: 138.00      Tipo: 1      Sent: 2

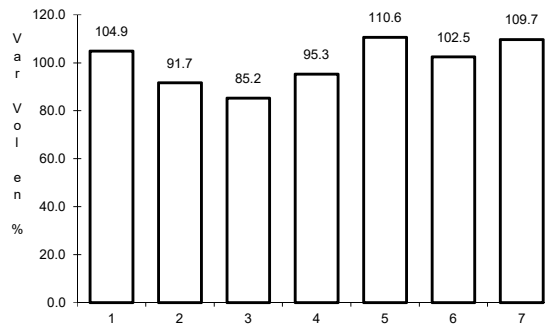
6 CARR: El Clarín - Agua Buena

CLAVE: 24283

ruta: MEX-070



Km: 0.00      Tipo: 3      Sent: 0

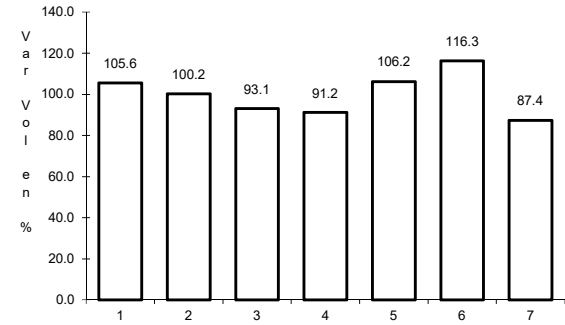
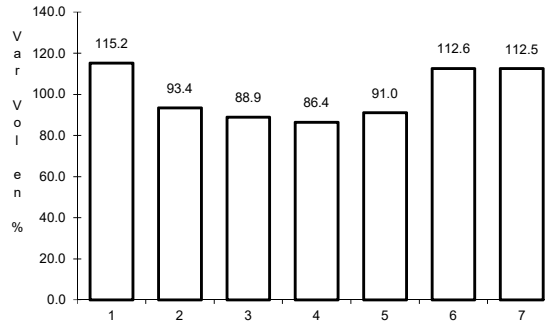
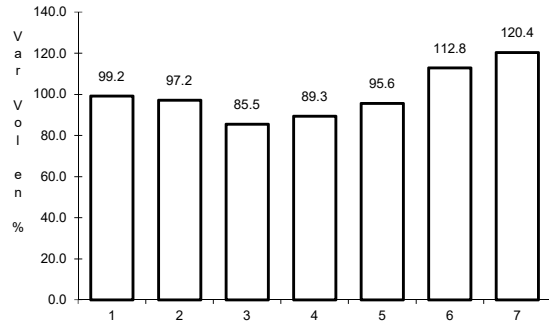


Km: 11.23      Tipo: 1      Sent: 0

7 CARR: Ent. Ahualulco - Ent. La Bonita

CLAVE: 24258

ruta: MEX-063



Km: 0.00                      Tipo: 3                      Sent: 0

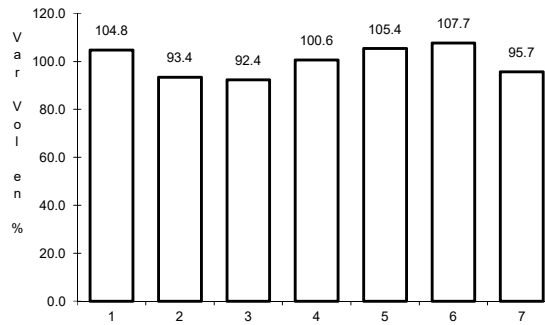
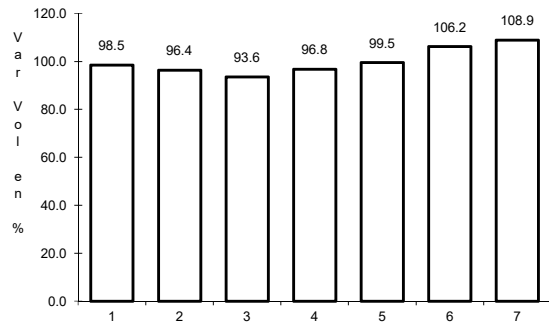
Km: 59.00                      Tipo: 1                      Sent: 0

Km: 169.90                      Tipo: 1                      Sent: 0

8 CARR: Ent. de Zaragoza - San Felipe

CLAVE: 00240

ruta: MEX-037



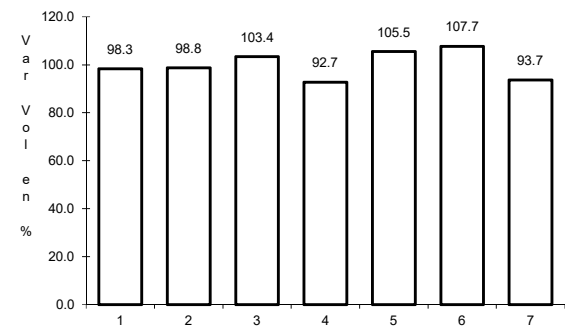
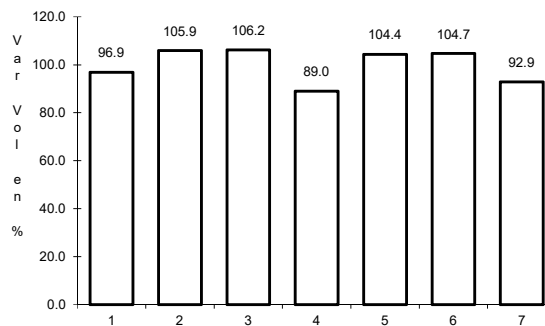
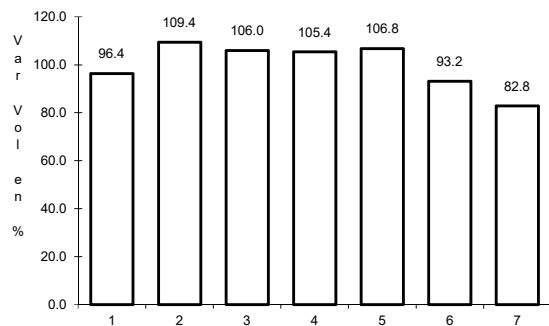
Km: 0.00                      Tipo: 3                      Sent: 0

Km: 72.00                      Tipo: 1                      Sent: 0

9 CARR: Ent. Tula - Cd. Victoria

CLAVE: 00179

ruta: MEX-101



Km: 0.00                      Tipo: 3                      Sent: 0

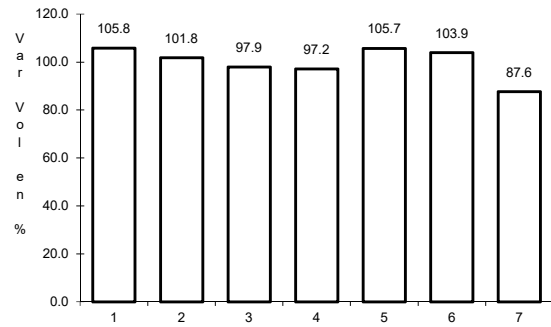
Km: 180.00                      Tipo: 1                      Sent: 1

Km: 180.00                      Tipo: 1                      Sent: 2

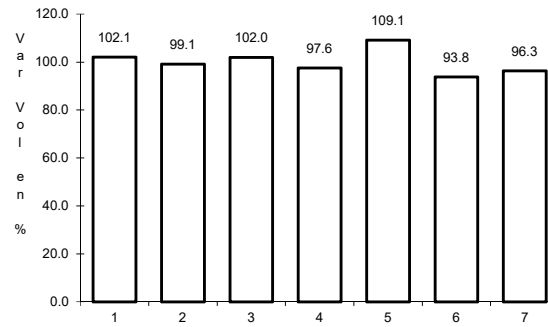
10 CARR: Jalpan de Serra - Rioverde

CLAVE: 00265

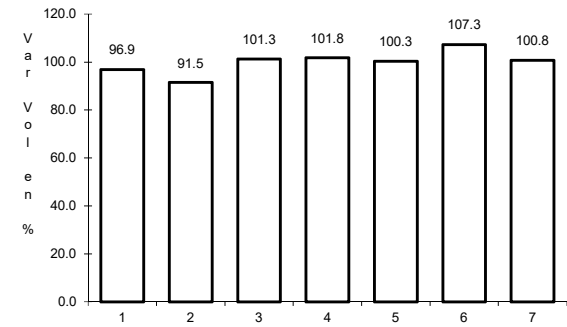
RUTA: MEX-069



Km: 0.00                      Tipo: 3                      Sent: 0



Km: 48.60                      Tipo: 1                      Sent: 0

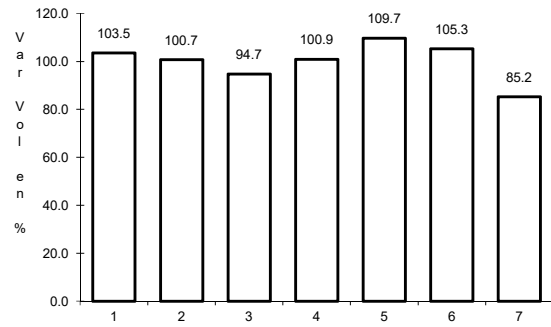


Km: 105.43                      Tipo: 1                      Sent: 0

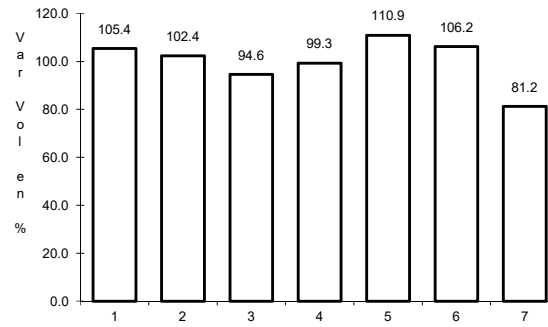
11 CARR: Libramiento de Cd. Valles

CLAVE: 24205

RUTA: MEX-070



Km: 0.00                      Tipo: 3                      Sent: 0

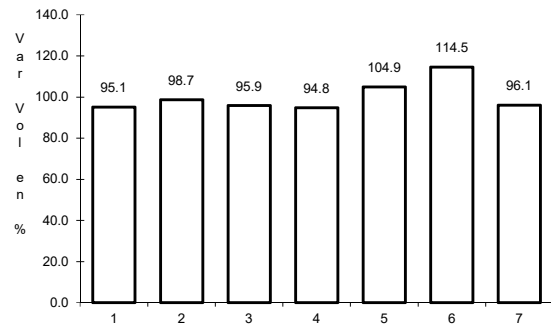


Km: 11.54                      Tipo: 1                      Sent: 0

12 CARR: Libramiento de Villa de Reyes

CLAVE: 24010

RUTA: MEX-037



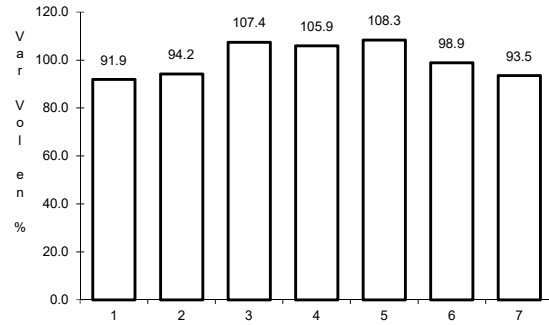
Km: 0.00                      Tipo: 3                      Sent: 0



13 CARR: Libramiento Villa de Arriaga

CLAVE: 24009

ruta: MEX-080

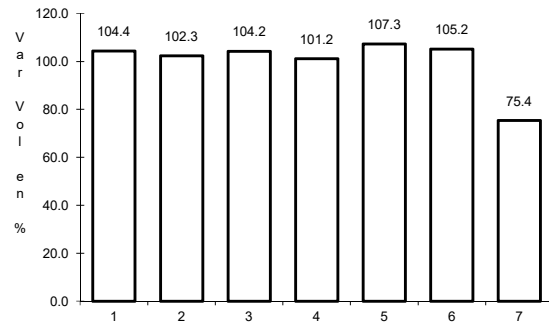


Km: 0.00                      Tipo: 3                      Sent: 0

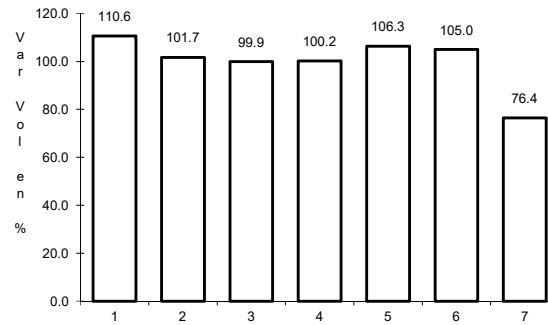
14 CARR: Matehuala - Ent. Puerto México

CLAVE: 00405

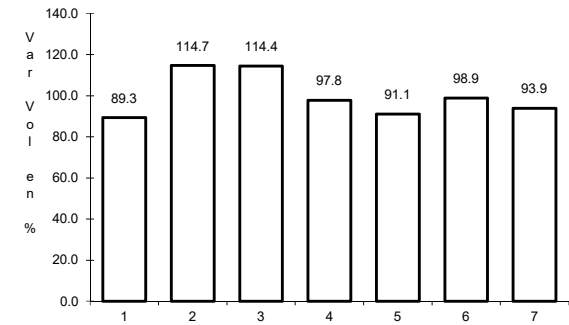
ruta: MEX-057



Km: 0.00                      Tipo: 3                      Sent: 1



Km: 0.00                      Tipo: 3                      Sent: 2

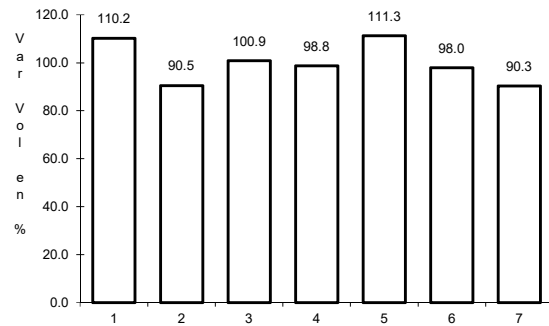


Km: 177.18                      Tipo: 1                      Sent: 1

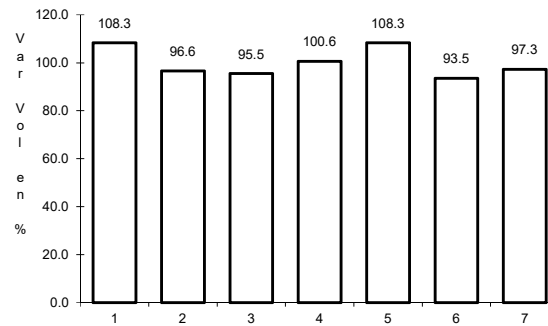
15 CARR: Portezuelo - Cd. Valles

CLAVE: 00023

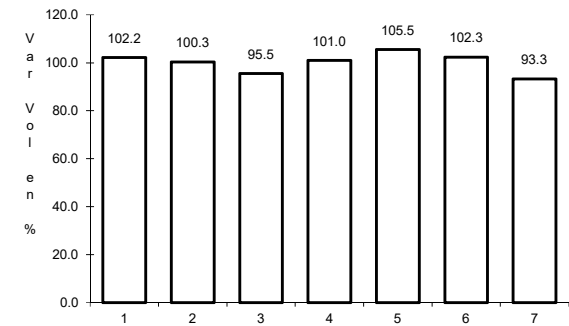
ruta: MEX-085



Km: 0.00                      Tipo: 3                      Sent: 0



Km: 154.00                      Tipo: 3                      Sent: 0

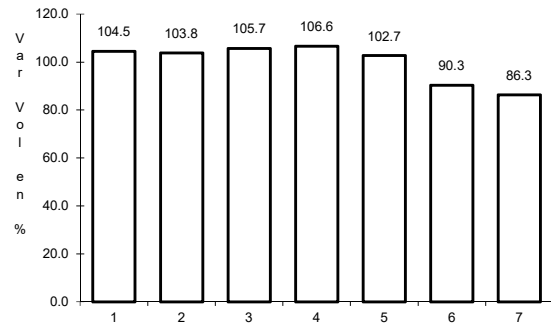


Km: 300.00                      Tipo: 1                      Sent: 0

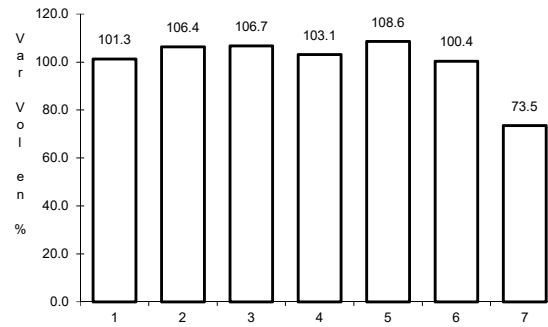
16 CARR: Querétaro - San Luis Potosí

CLAVE: 00165

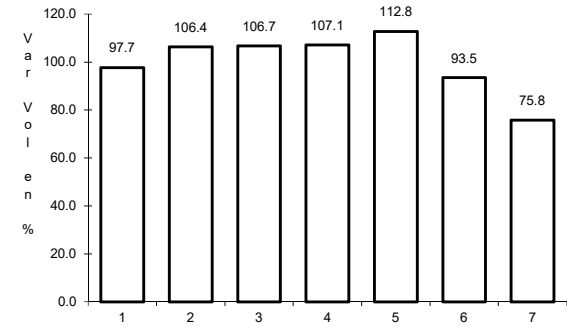
RUTA: MEX-057



Km: 6.28                      Tipo: 3                      Sent: 1



Km: 6.28                      Tipo: 3                      Sent: 2

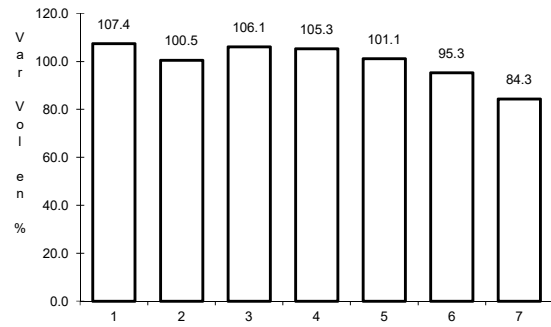


Km: 184.80                      Tipo: 1                      Sent: 1

17 CARR: Ramal a Aeropuerto de S. L. P.

CLAVE: 24206

RUTA: MEX-057

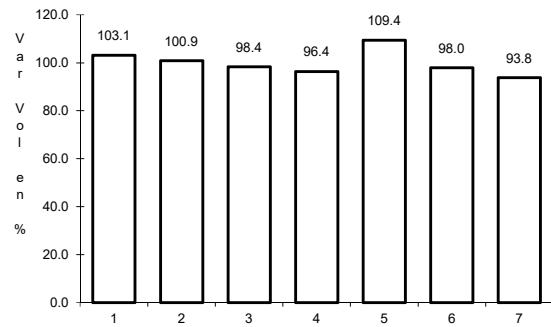


Km: 0.00                      Tipo: 3                      Sent: 0

18 CARR: Ramal a Ojo de Agua

CLAVE: 24023

RUTA: MEX-062

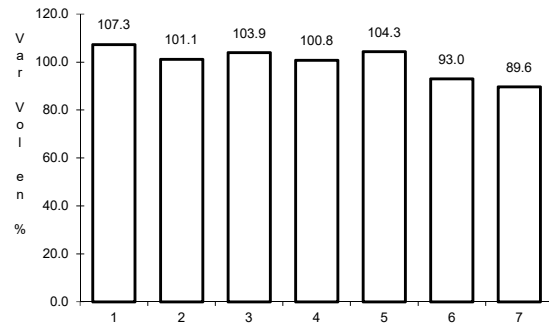


Km: 0.00                      Tipo: 3                      Sent: 0

19 CARR: Ramal a Rayón

CLAVE: 24626

ruta: MEX-070



Km: 1.50

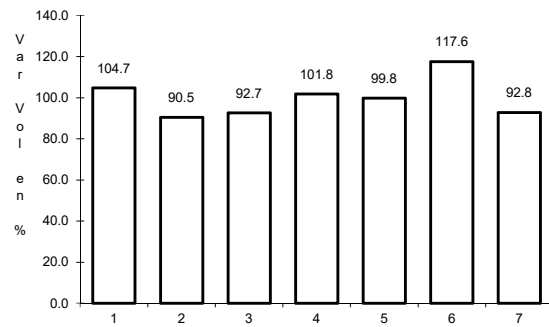
Tipo: 1

Sent: 0

20 CARR: San Juan del Río - Xilitla

CLAVE: 00183

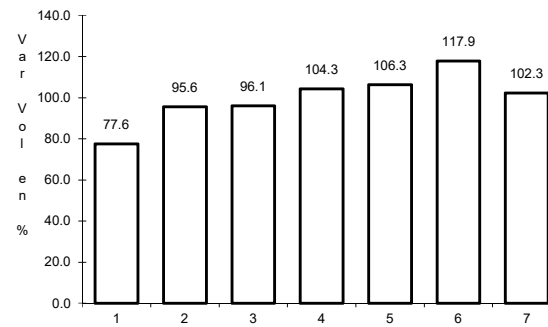
ruta: MEX-120



Km: 5.20

Tipo: 3

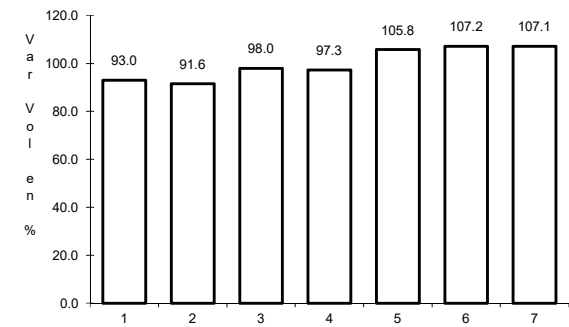
Sent: 1



Km: 5.20

Tipo: 3

Sent: 2



Km: 276.98

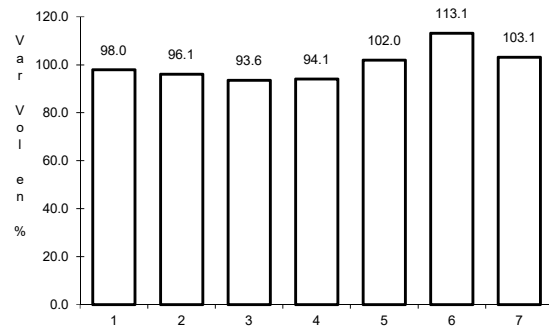
Tipo: 1

Sent: 0

21 CARR: San Luis Potosí - Ent. Arcinas

CLAVE: 00134

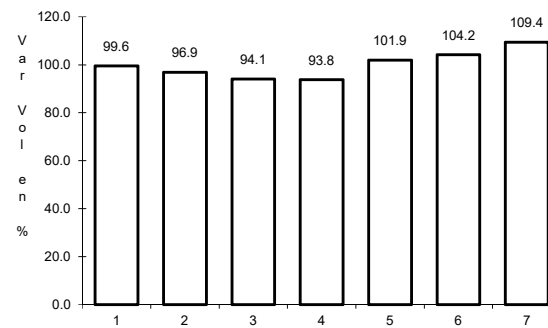
ruta: MEX-049



Km: 9.35

Tipo: 3

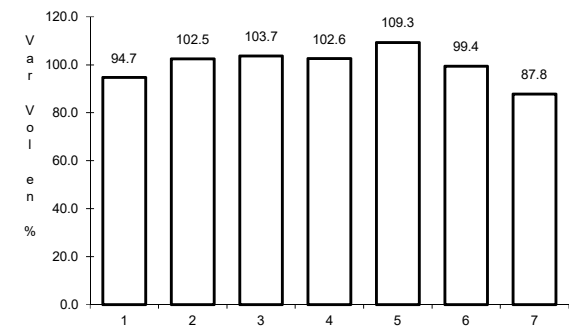
Sent: 1



Km: 9.35

Tipo: 3

Sent: 2



Km: 162.98

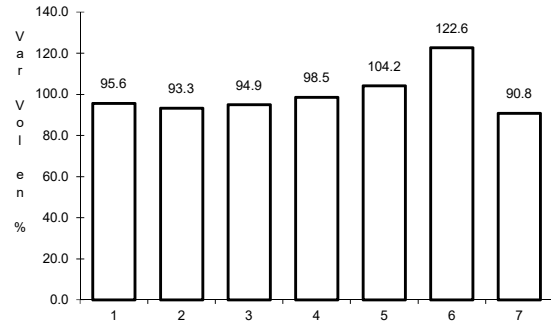
Tipo: 1

Sent: 1

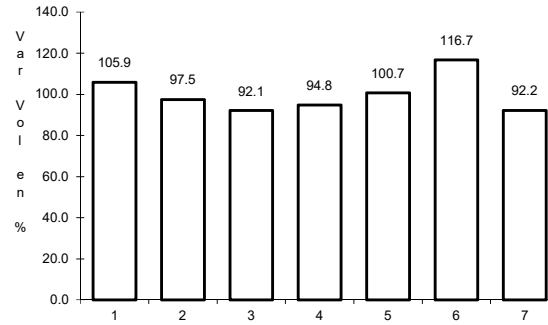
22 CARR: San Luis Potosí - Lagos de Moreno

CLAVE: 00133

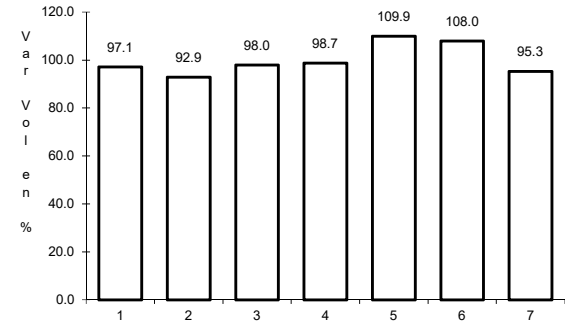
RUTA: MEX-070-080



Km: 0.00                      Tipo: 3                      Sent: 1



Km: 0.00                      Tipo: 3                      Sent: 2

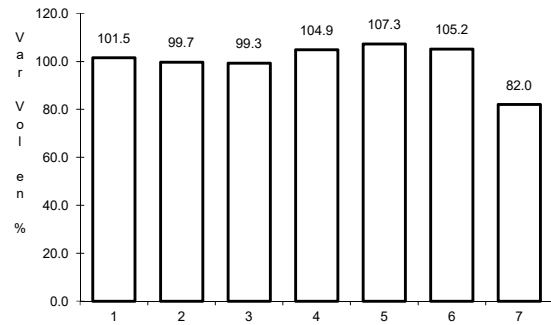


Km: 61.90                      Tipo: 3                      Sent: 0

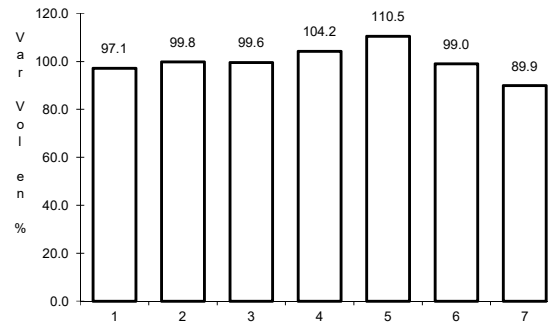
23 CARR: San Luis Potosí - Matchuala

CLAVE: 24508

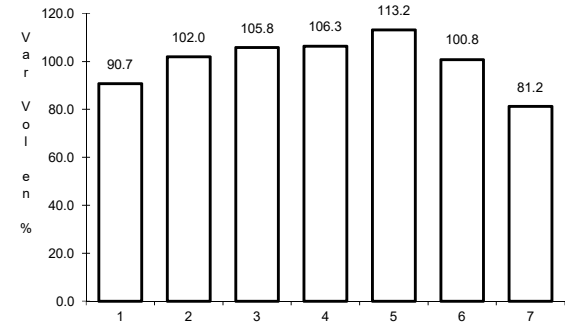
RUTA: MEX-057



Km: 7.36                      Tipo: 3                      Sent: 1



Km: 7.36                      Tipo: 3                      Sent: 2

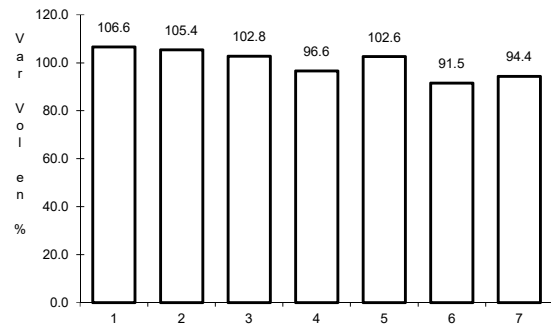


Km: 187.39                      Tipo: 1                      Sent: 1

24 CARR: T. C. (Ent. El Huizache- Ant. Morelos)-El Salto

CLAVE: 24204

RUTA: MEX-080

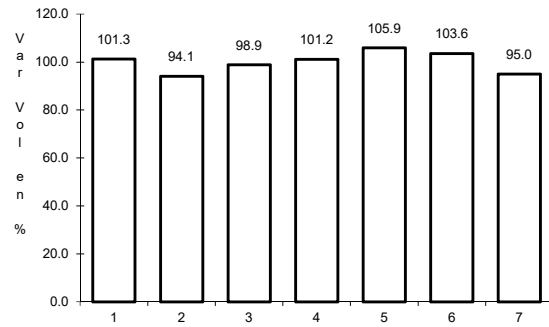


Km: 0.00                      Tipo: 3                      Sent: 0

25 CARR: T. C. (Qro - S.L.P.) - Tierra Nueva

CLAVE: 24203

RUTA: MEX-057

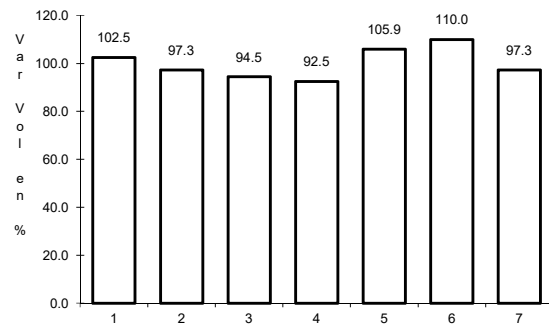


Km: 0.00                      Tipo: 3                      Sent: 0

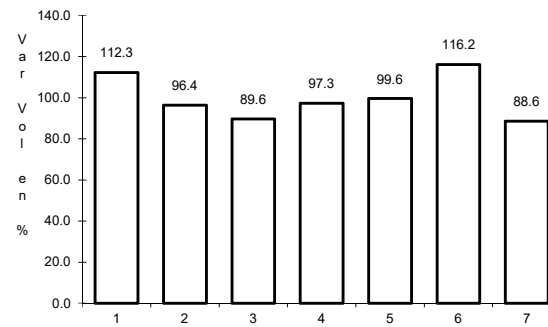
26 CARR: T. C. (S.L.P. - Matchuala) - Villa Hidalgo

CLAVE: 24619

RUTA: MEX-057



Km: 0.00                      Tipo: 3                      Sent: 0

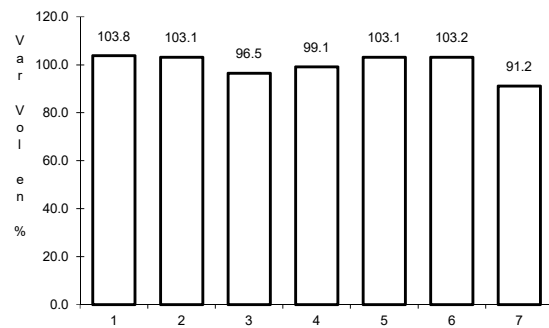


Km: 10.20                      Tipo: 1                      Sent: 0

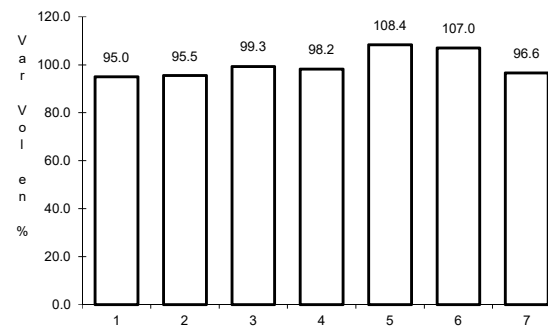
27 CARR: Tamazunchale - San Felipe Orizatlán

CLAVE: 00609

RUTA: MEX-085



Km: 0.00                      Tipo: 3                      Sent: 0

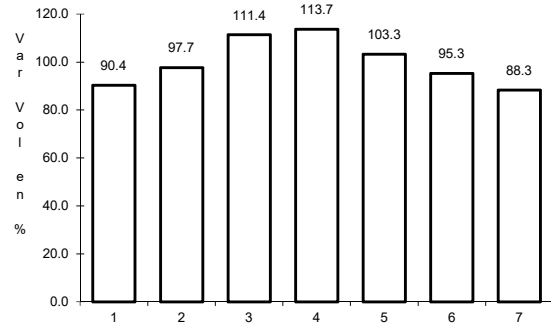


Km: 27.10                      Tipo: 1                      Sent: 0

28 CARR: Lagos de Moreno - Villa de Arriaga (Cuota)

CLAVE:

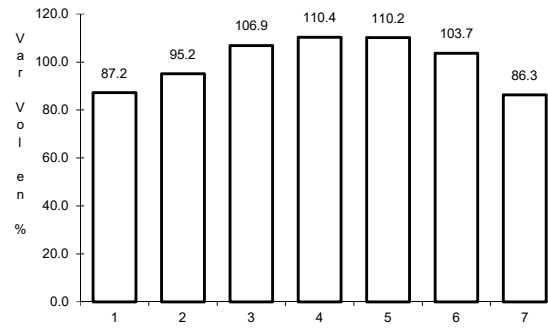
RUTA: MEX-080D



Km: 12.10

Tipo: 3

Sent: 0



Km: 78.00

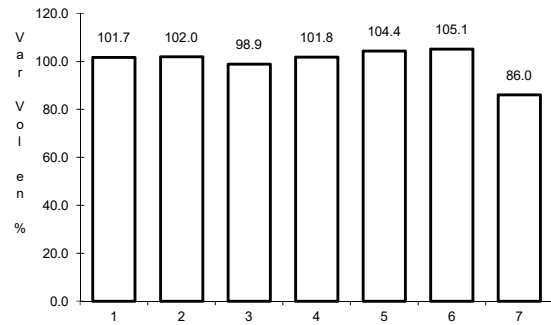
Tipo: 1

Sent: 0

29 CARR: Libramiento de Matchuala (Cuota)

CLAVE: 24205

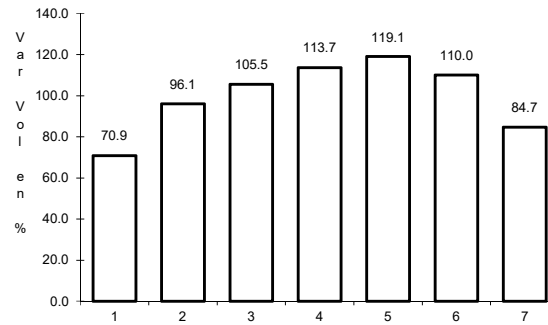
RUTA: MEX-057D



Km: 0.00

Tipo: 3

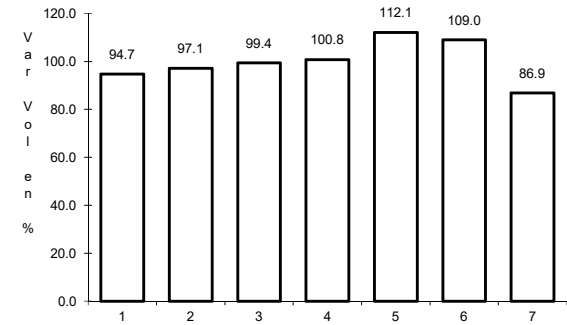
Sent: 1



Km: 0.00

Tipo: 3

Sent: 2



Km: 14.20

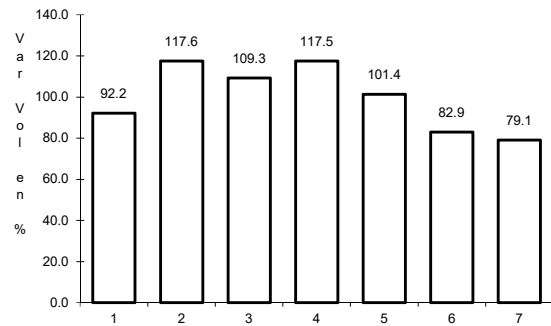
Tipo: 1

Sent: 1

30 CARR: Libramiento Norponiente de San Luis Potosí (Cuota)

CLAVE:

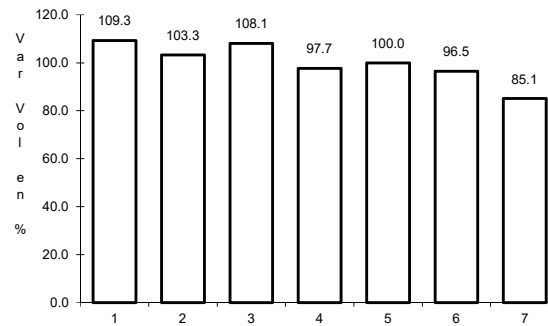
RUTA: MEX-057D



Km: 5.60

Tipo: 1

Sent: 0



Km: 5.60

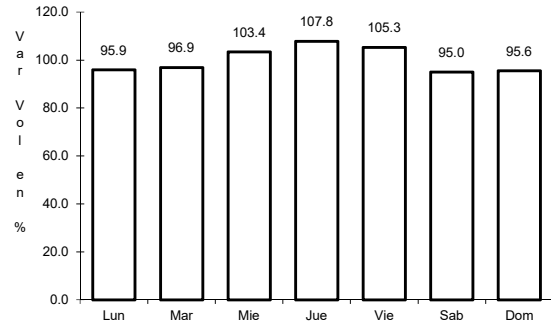
Tipo: 3

Sent: 0

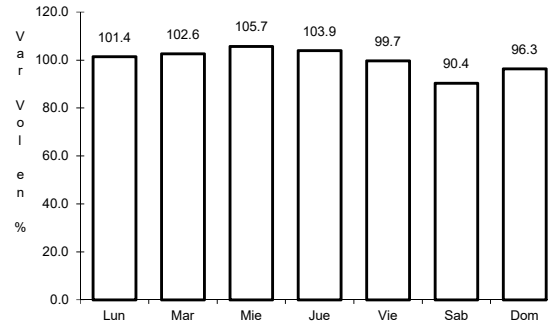
31 CARR: Libramiento Oriente de San Luis Potosí (Cuota)

CLAVE: 24009

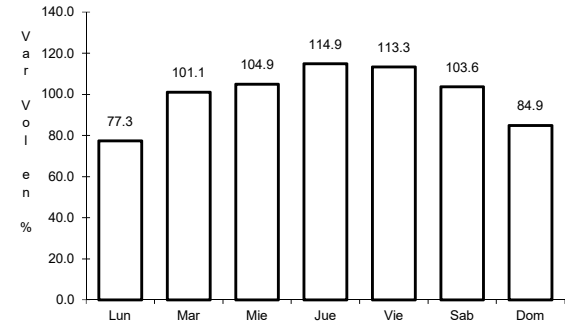
RUTA: MEX-057D



Km: 11.20      Tipo: 1      Sent: 1



Km: 11.20      Tipo: 1      Sent: 2

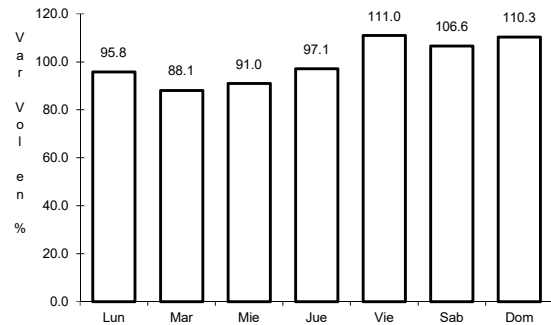


Km: 33.76      Tipo: 1      Sent: 1

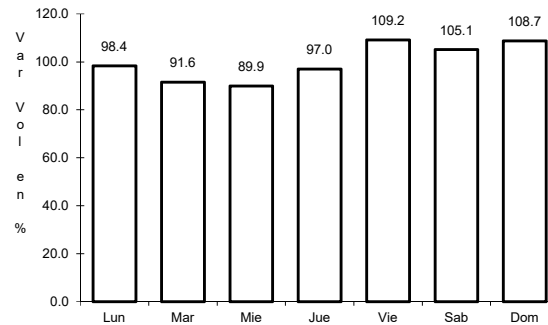
32 CARR: Rayón - Ent. Tamuín (Cuota)

CLAVE:

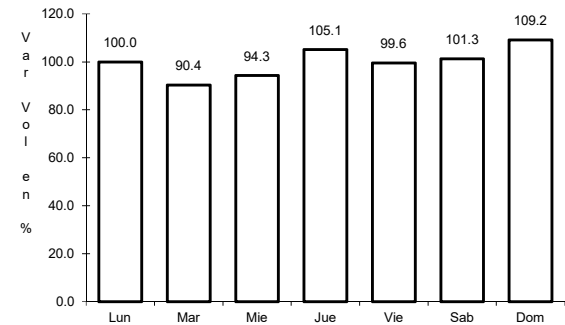
RUTA: MEX-070D



Km: 19.70      Tipo: 1      Sent: 0



Km: 19.70      Tipo: 3      Sent: 0

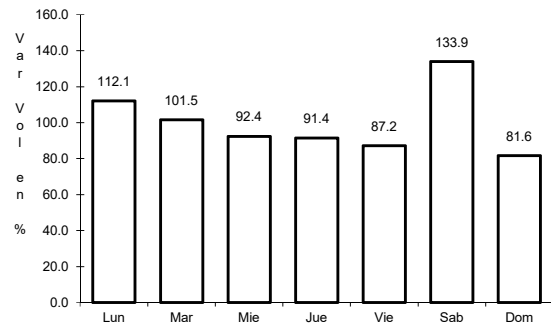


Km: 68.58      Tipo: 1      Sent: 0

33 CARR: Charcas - Villa Santo Domingo

CLAVE: 24624

RUTA: SLP-017

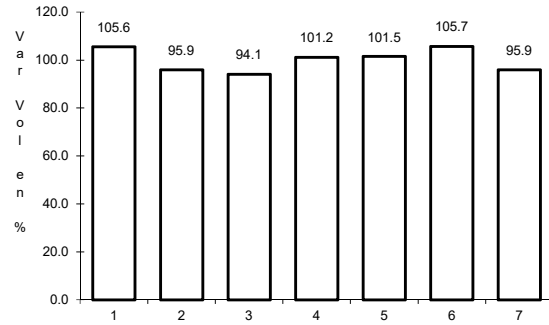


Km: 0.00      Tipo: 3      Sent: 0

34 CARR: Ébano - Estación Manuel

CLAVE: 24624

RUTA: SLP-TAM



Km: 0.00

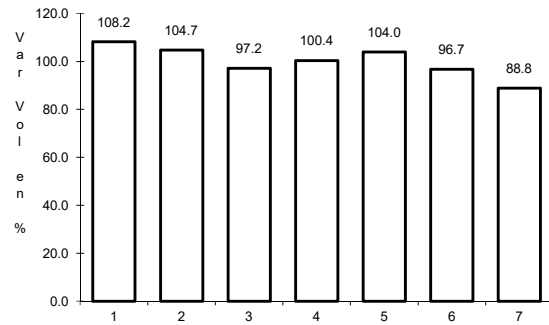
Tipo: 3

Sent: 0

35 CARR: Matchuala - La Paz

CLAVE: 24621

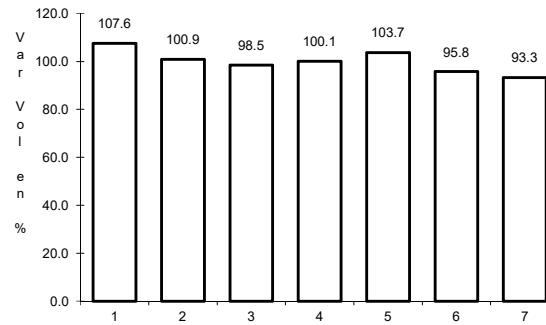
RUTA: SLP-020



Km: 0.00

Tipo: 3

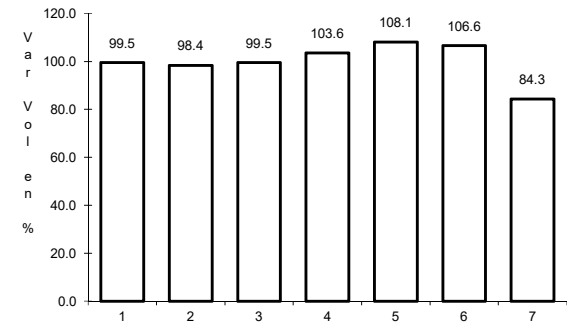
Sent: 1



Km: 0.00

Tipo: 3

Sent: 2



Km: 8.00

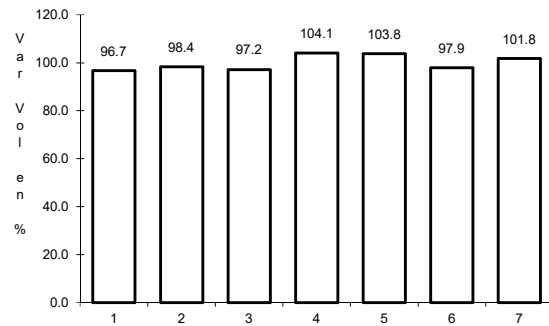
Tipo: 1

Sent: 1

36 CARR: Matchuala - La Poza

CLAVE: 00086

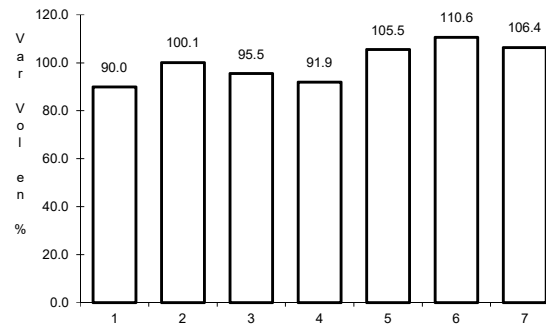
RUTA: SLP-029-NL-061



Km: 0.00

Tipo: 3

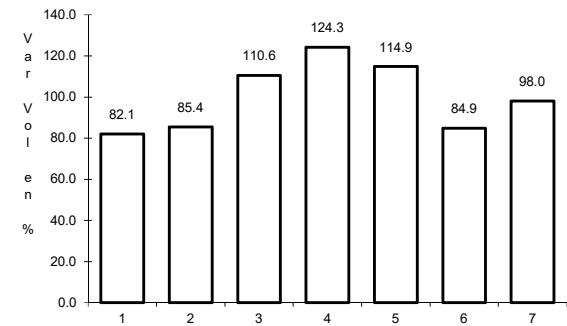
Sent: 0



Km: 49.00

Tipo: 1

Sent: 0



Km: 131.00

Tipo: 1

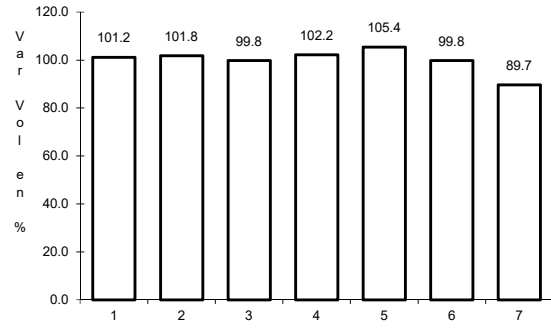
Sent: 0



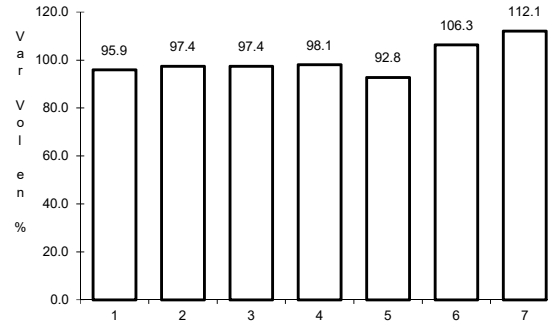
37 CARR: Periférico de San Luis Potosí

CLAVE: 24618

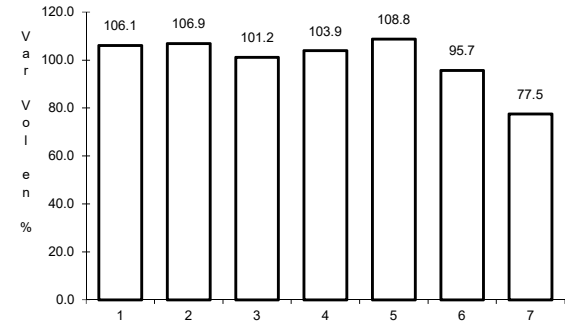
RUTA: SLP-032



Km: 22.00                      Tipo: 3                      Sent: 1



Km: 22.00                      Tipo: 3                      Sent: 2

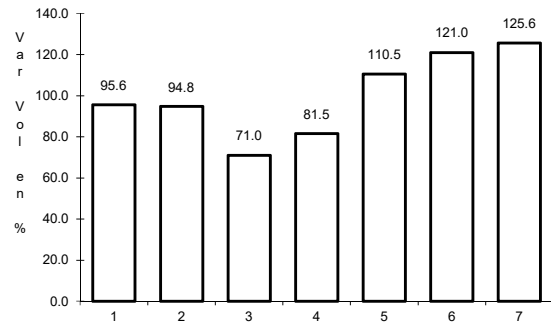


Km: 30.70                      Tipo: 1                      Sent: 1

38 CARR: Ramal a Cerritos

CLAVE: 24615

RUTA: SLP-007

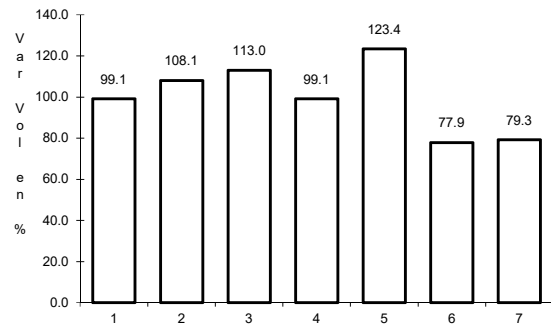


Km: 0.00                      Tipo: 3                      Sent: 0

39 CARR: Ramal a Pozo de Acuña

CLAVE: 24626

RUTA: SLP-009

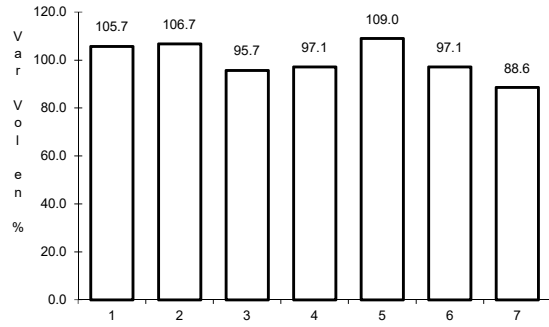


Km: 0.00                      Tipo: 3                      Sent: 0

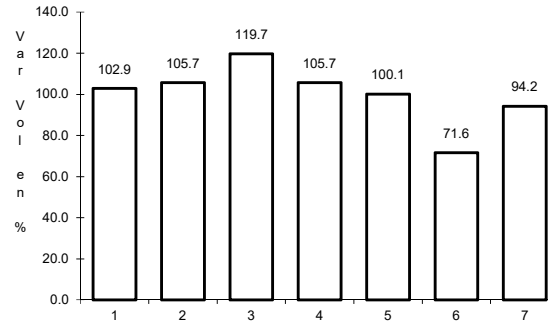
40 CARR: Rayón - Arroyo Seco

CLAVE: 24008

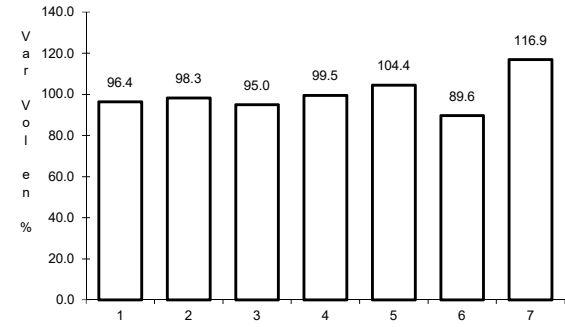
RUTA: SLP-011



Km: 0.00                      Tipo: 3                      Sent: 0



Km: 36.00                      Tipo: 1                      Sent: 0

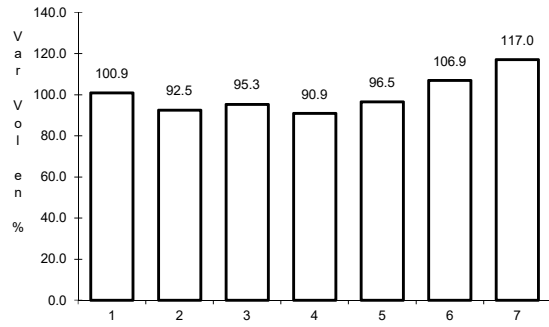


Km: 57.00                      Tipo: 1                      Sent: 0

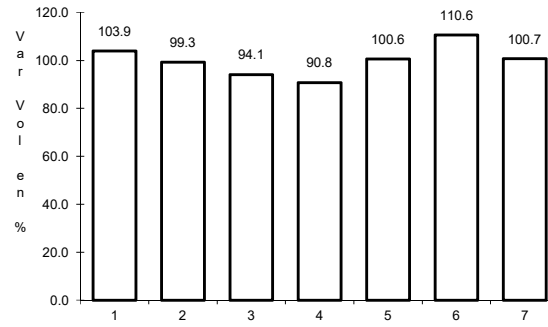
41 CARR: Santo Domingo - Cerro Gordo

CLAVE: 24614

RUTA: SLP-022



Km: 0.00                      Tipo: 3                      Sent: 0

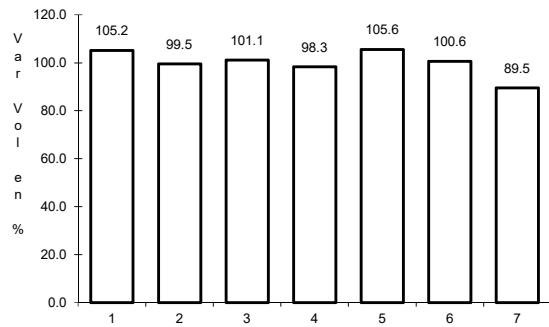


Km: 19.00                      Tipo: 1                      Sent: 0

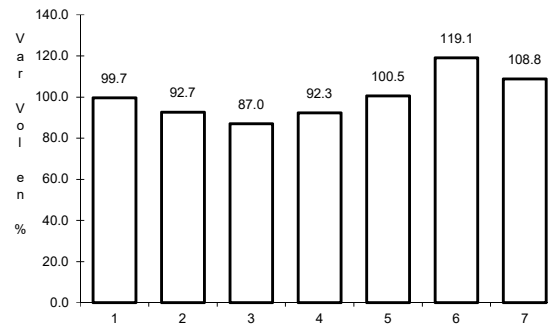
42 CARR: Tamuín - Estación F.F.C.C. Tamuín

CLAVE: 24022

RUTA: SLP-040



Km: 0.00                      Tipo: 3                      Sent: 0

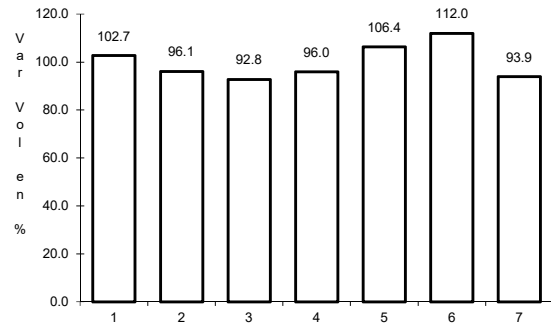


Km: 10.00                      Tipo: 1                      Sent: 0

43 CARR: Tamuín - Xolol

CLAVE: 24027

RUTA: SLP-014



Km: 0.00

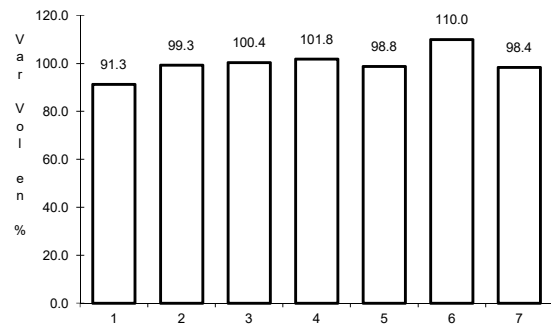
Tipo: 3

Sent: 0

44 CARR: Cerritos - Rioverde (Cuota)

CLAVE: 00138

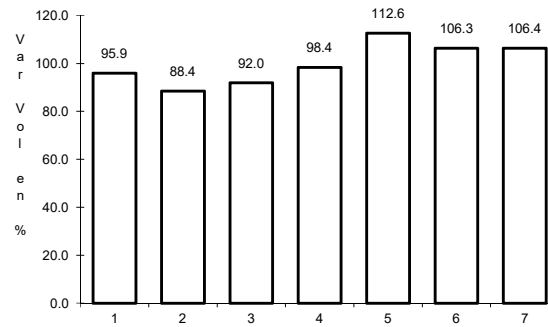
RUTA: SLP-D



Km: 0.00

Tipo: 3

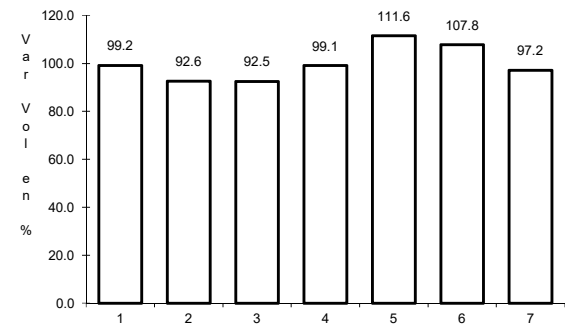
Sent: 0



Km: 58.00

Tipo: 3

Sent: 0



Km: 103.00

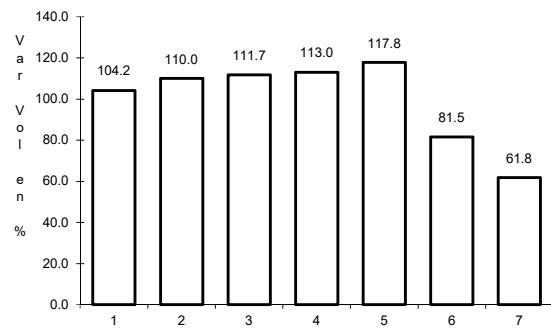
Tipo: 1

Sent: 0

45 CARR: San Luis Potosí - Villa de Arriaga (Cuota)

CLAVE: 24209

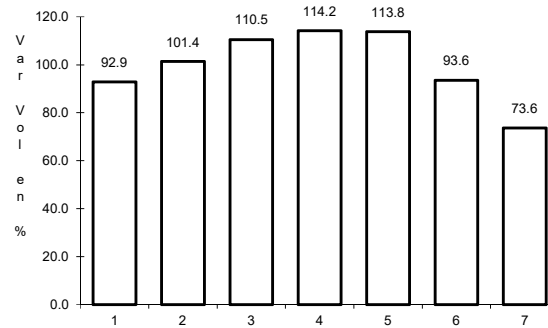
RUTA: SLP-D



Km: 0.00

Tipo: 3

Sent: 0



Km: 77.00

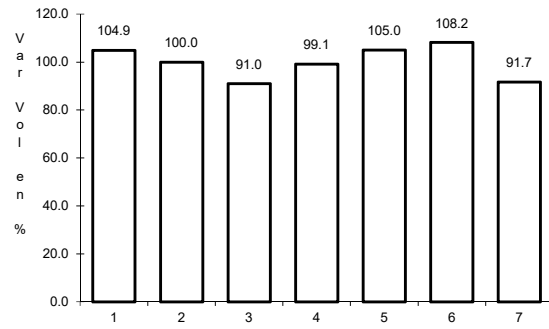
Tipo: 1

Sent: 0

46 CARR: Rayón - Cd. del Maíz

CLAVE: 24206

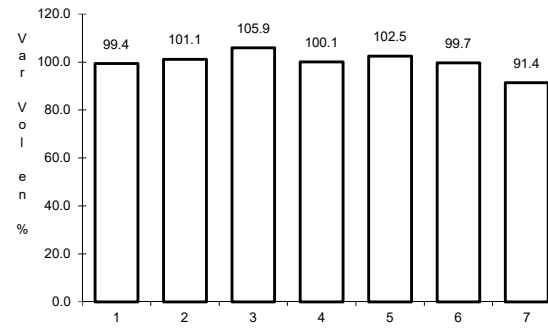
ruta: MEX-070-SLP-005



Km: 15.80

Tipo: 1

Sent: 0



Km: 55.70

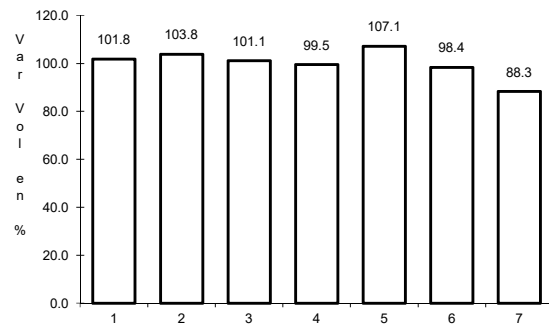
Tipo: 1

Sent: 0

47 CARR: San Lorenzo - Moctezuma

CLAVE: 24016

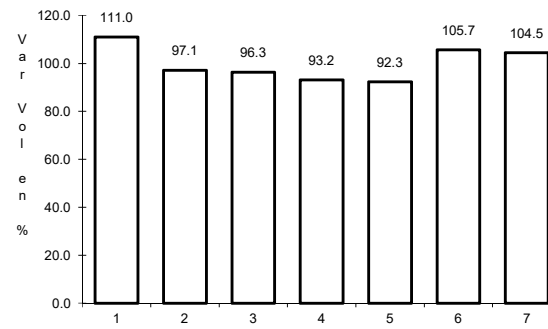
ruta: MEX-063-SLP-012



Km: 0.00

Tipo: 3

Sent: 0



Km: 54.00

Tipo: 1

Sent: 0