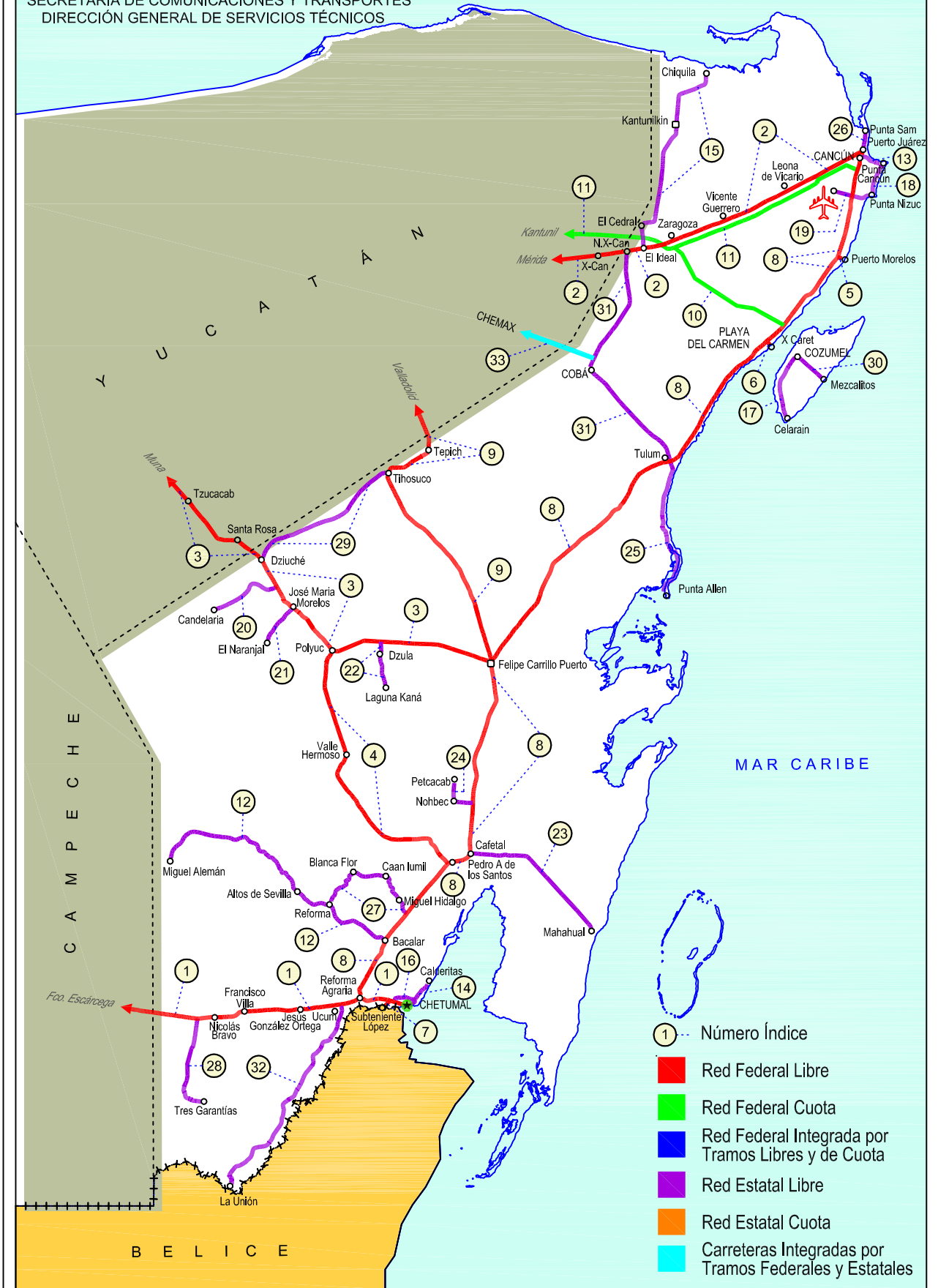
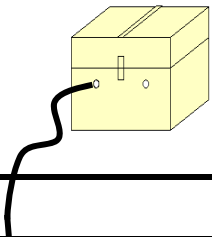


23 QUINTANA ROO

SECRETARÍA DE COMUNICACIONES Y TRANSPORTES
DIRECCIÓN GENERAL DE SERVICIOS TÉCNICOS





QUINTANA ROO

NO. INDICE CARRETERA	RUTA
---RED FEDERAL LIBRE---	
1 Francisco Escárcega - Chetumal	MEX-186
2 Mérida - Puerto Juárez	MEX-180
3 Muna - Felipe Carrillo Puerto	MEX-184
4 Polyuc - T. C. (Reforma Agraria - Puerto Juárez)	MEX-293
5 Ramal a Puerto Morelos	MEX
6 Ramal a Punta Piedra	MEX
7 Ramal a Subteniente López	MEX-186
8 Reforma Agraria - Puerto Juárez	MEX-307
9 Valladolid - Felipe Carrillo Puerto	MEX-295
---RED FEDERAL DE CUOTA---	
10 El Cedral - Playa del Carmen (Cuota)	MEX-180D
11 Mérida - Cancún (Cuota)	MEX-180D
---RED ESTATAL LIBRE---	
12 Bacalar - Miguel Alemán	QR
13 Cancún - Punta Cancún	QR
14 Chetumal - Calderitas	QR-004
15 El Ideal - Chiquila	QR-005
16 Libramiento de Chetumal	QR
17 Perimetral Cozumel	QR
18 Punta Nizuc - Cancún	QR
19 Ramal a Aeropuerto Cancún	QR
20 Ramal a Candelaria	QR
21 Ramal a El Naranjal	QR
22 Ramal a Laguna de Kaná	QR
23 Ramal a Mahahual	QR
24 Ramal a Petcacab	QR-018
25 Ramal a Punta Allen	QR-015
26 Ramal a Punta Sam	QR
27 Ramal a Reforma	QR-016
28 Ramal a Tres Garantías	QR
29 Tihosuco - Dziuche	QR
30 Transversal de Cozumel	QR
31 Tulum - Nuevo X-Can	QR
32 Ucum - Unión	QR
---CARRETERAS INTEGRADAS POR TRAMOS FEDERALES Y ESTATALES---	
33 Chemax - Cobá	YUC-MEX-180

QUINTANA ROO

1 CARR: Francisco Escárcega - Chetumal

CLAVE: 00093

RUTA: MEX-186

AÑO: 2017

LUGAR	ESTACION				CLASIFICACION VEHICULAR EN PORCIENTO										COORDENADAS					
	KM	TE	SC	TDPA	M	A	B	C2	C3	T3S2	T3S3	T3S2R4	OTROS	A	B	C	K'	D	LATITUD	LONGITUD
Francisco Escárcega	0.00	3	0	3525	8.5	67.2	3.8	5.8	1.2	6.7	1.5	4.8	0.5	75.7	3.8	20.5	0.064	0.539	18.603929	-90.716795
Adolfo López Mateos	41.50	1	0	2590	5.1	68.4	4.1	6.0	2.1	6.4	1.3	5.6	1.0	73.5	4.1	22.4	0.078	0.544	18.639622	-90.306457
T. Der. Silvituc	55.70	1	0	2417	5.8	72.3	2.3	7.0	2.1	4.1	2.0	3.8	0.6	78.1	2.3	19.6	0.077	0.513	18.651186	-90.278708
T. Der. Silvituc	55.70	3	0	2062	5.1	59.1	6.3	8.9	2.3	7.5	2.5	7.3	1.0	64.2	6.3	29.5	0.068	0.510	18.648185	-90.253425
Conhuás	100.00	1	0	2181	8.0	64.6	6.9	8.2	1.6	5.1	1.9	2.9	0.8	72.6	6.9	20.5	0.088	0.520	18.539911	-89.910475
Xpujil	155.73	1	0	2840	3.8	67.6	3.1	8.4	2.6	6.4	1.7	5.5	0.9	71.4	3.1	25.5	0.070	0.541	18.509258	-89.408979
Lim. Edos. Term. Camp. Ppia. Qroo.	179.90																			
Nicolás Bravo	206.01	1	0	2903	6.7	68.9	3.9	7.0	1.0	6.0	1.6	4.4	0.5	75.6	3.9	20.5	0.087	0.523	18.458437	-88.940790
Nicolás Bravo	206.01	3	0	3269	9.6	63.4	3.9	7.0	1.3	7.4	1.5	5.4	0.5	73.0	3.9	23.1	0.070	0.526	18.459069	-88.920520
T. Izq. Morocoy	214.90	1	0	3199	3.4	66.9	5.0	7.2	1.5	7.8	1.4	6.4	0.4	70.3	5.0	24.7	0.061	0.516	18.478733	-88.818352
T. Izq. Morocoy	214.90	3	0	2915	2.9	66.8	4.9	8.2	1.5	7.7	1.4	6.1	0.5	69.7	4.9	25.4	0.066	0.510	18.478821	-88.815516
T. Der. Unión	247.50	1	0	5074	6.9	69.5	2.9	8.7	1.7	5.6	1.3	2.7	0.7	76.4	2.9	20.7	0.074	0.507	18.504380	-88.531286
T. Der. Unión	247.50	3	0	6803	4.3	77.4	2.3	5.3	0.9	6.1	1.1	1.8	0.8	81.7	2.3	16.0	0.072	0.504	18.508194	-88.509456
T. Izq. Fpe. Carrillo Puerto	255.15	1	0	7140	4.4	78.0	2.0	5.2	1.7	5.0	0.9	2.3	0.5	82.4	2.0	15.6	0.075	0.512	18.523765	-88.473485
T. Der. Subteniente López	268.57	1	1	8694	3.6	87.2	1.0	5.5	0.7	0.9	0.6	0.3	0.2	90.8	1.0	8.2	0.100	0.503	18.516985	-88.379538
T. Der. Subteniente López	268.57	1	2	8590	4.2	89.1	0.7	2.9	0.7	1.0	0.7	0.4	0.3	93.3	0.7	6.0	0.090	0.503	18.517066	-88.379391
T. Izq. Av. Insurgentes	270.00	1	1	11570	4.3	88.7	0.7	3.9	0.5	0.9	0.6	0.2	0.2	93.0	0.7	6.3	0.094	0.503	18.513731	-88.364921
T. Izq. Av. Insurgentes	270.00	1	2	11451	4.2	90.3	0.5	2.3	0.5	1.1	0.7	0.2	0.2	94.5	0.5	5.0	0.086	0.503	18.513854	-88.364882
T. Izq. Av. Insurgentes	270.00	3	1	5212	4.0	88.2	0.4	6.2	0.4	0.5	0.2	0.1	0.0	92.2	0.4	7.4	0.080	0.521	18.510372	-88.353653
T. Izq. Av. Insurgentes	270.00	3	2	5664	3.6	88.4	0.5	6.0	0.5	0.5	0.2	0.2	0.1	92.0	0.5	7.5	0.078	0.521	18.510472	-88.353603
Chetumal	277.36	1	1	8061	5.7	88.2	0.2	4.2	0.2	0.9	0.4	0.1	0.1	93.9	0.2	5.9	0.085	0.531	18.501670	-88.321018
Chetumal	277.36	1	2	7110	5.3	88.2	0.3	4.7	0.3	0.5	0.5	0.1	0.1	93.5	0.3	6.2	0.086	0.531	18.501800	-88.321014

2 CARR: Mérida - Puerto Juárez

CLAVE: 00067

RUTA: MEX-180

AÑO: 2017

LUGAR	ESTACION				CLASIFICACION VEHICULAR EN PORCIENTO										COORDENADAS					
	KM	TE	SC	TDPA	M	A	B	C2	C3	T3S2	T3S3	T3S2R4	OTROS	A	B	C	K'	D	LATITUD	LONGITUD
Mérida	0.00																			
X. Periférico de Mérida	5.60	1	1	11832	9.4	83.6	0.3	3.4	0.2	1.6	1.0	0.1	0.4	93.0	0.3	6.7	0.077	0.501	20.957612	-89.572541
X. Periférico de Mérida	5.60	1	2	11899	9.4	82.2	0.7	4.0	0.3	2.0	0.8	0.1	0.5	91.6	0.7	7.7	0.074	0.501	20.957692	-89.572512
X. Periférico de Mérida	5.60	3	1	14697	5.9	80.4	1.0	5.1	1.1	2.5	2.1	1.0	0.9	86.3	1.0	12.7	0.082	0.502	20.955102	-89.566564
X. Periférico de Mérida	5.60	3	2	14794	6.4	80.7	0.9	4.3	1.2	2.6	1.9	1.1	0.9	87.1	0.9	12.0	0.069	0.502	20.955204	-89.566467
Teya	13.00	1	1	10431	4.0	80.9	1.7	6.6	1.5	2.3	1.0	1.6	0.4	84.9	1.7	13.4	0.095	0.516	20.936532	-89.532141
Teya	13.00	1	2	9780	4.0	81.0	1.6	6.4	1.5	2.7	0.7	1.7	0.4	85.0	1.6	13.4	0.092	0.516	20.936638	-89.532100
T. Der. Seyé	28.79	1	1	5959	4.0	79.8	2.2	7.0	1.8	2.2	0.5	2.3	0.2	83.8	2.2	14.0	0.094	0.513	20.894764	-89.389597

QUINTANA ROO

2 CARR: Mérida - Puerto Juárez

CLAVE: 00067

RUTA: MEX-180

AÑO: 2017

LUGAR	ESTACION				CLASIFICACION VEHICULAR EN PORCIENTO													COORDENADAS		
	KM	TE	SC	TDPA	M	A	B	C2	C3	T3S2	T3S3	T3S2R4	OTROS	A	B	C	K'	D	LATITUD	LONGITUD
T. Der. Seyé	28.79	1	2	5659	3.9	78.3	2.6	7.6	2.0	2.5	0.5	2.4	0.2	82.2	2.6	15.2	0.088	0.513	20.894865	-89.389525
T. Der. Seyé	28.79	3	1	5340	1.0	83.0	3.1	5.6	1.8	2.1	0.7	2.5	0.2	84.0	3.1	12.9	0.097	0.518	20.891913	-89.371225
T. Der. Seyé	28.79	3	2	4978	1.1	81.2	3.3	6.3	2.0	2.2	0.8	2.9	0.2	82.3	3.3	14.4	0.094	0.518	20.892033	-89.371234
Tahmek	42.00	1	1	5560	1.1	83.9	2.3	5.7	1.7	2.0	0.6	2.3	0.4	85.0	2.3	12.7	0.072	0.500	20.876029	-89.279059
Tahmek	42.00	1	2	5563	0.6	84.8	2.4	5.6	1.5	1.8	0.7	2.2	0.4	85.4	2.4	12.2	0.100	0.500	20.876155	-89.279036
T. Izq. Hochtún (1º Acceso)	46.65	1	0	2564	8.5	77.0	1.8	9.5	0.7	1.9	0.3	0.3	0.0	85.5	1.8	12.7	0.078	0.531	20.867618	-89.214674
T. Izq. Hochtún (2º Acceso)	48.62	1	0	1182	10.1	73.1	1.4	9.3	2.4	2.1	0.9	0.5	0.2	83.2	1.4	15.4	0.093	0.525	20.858562	-89.201878
T. Izq. Hochtún (2º Acceso)	48.62	3	0	2219	15.3	71.7	1.9	7.7	0.7	1.9	0.4	0.3	0.1	87.0	1.9	11.1	0.078	0.514	20.854297	-89.195883
Kantunil	67.28	3	0	3046	3.1	77.9	4.0	7.7	3.6	2.4	0.6	0.6	0.1	81.0	4.0	15.0	0.063	0.513	20.791230	-89.019218
Libre Unión	92.91	1	0	2517	3.0	76.6	4.0	8.5	4.0	1.7	1.1	0.8	0.3	79.6	4.0	16.4	0.068	0.506	20.708396	-88.816140
Libre Unión	92.91	3	0	2584	2.9	76.2	3.7	9.4	4.3	2.1	0.8	0.5	0.1	79.1	3.7	17.2	0.063	0.516	20.706901	-88.800041
Piste	116.30	3	0	6964	5.7	79.3	2.6	6.4	1.6	2.6	0.9	0.3	0.6	85.0	2.6	12.4	0.078	0.547	20.691162	-88.579937
1er. Acceso a Zona Arqueológica de Chichen-Itzá	117.90	3	0	5749	9.5	73.0	3.5	8.1	2.2	2.4	0.7	0.3	0.3	82.5	3.5	14.0	0.077	0.514	20.688610	-88.571131
2do. Acceso a Zona Arqueológica de Chichen-Itzá	121.10	3	0	5920	7.4	76.0	3.3	7.4	2.0	2.6	0.7	0.2	0.4	83.4	3.3	13.3	0.078	0.507	20.668240	-88.555720
T. Der. Chankom	127.00	1	0	4312	3.7	75.2	4.2	11.3	2.5	1.9	0.6	0.4	0.2	78.9	4.2	16.9	0.086	0.501	20.643932	-88.494173
T. Der. Chankom	127.00	3	0	4017	4.1	80.9	3.4	5.7	3.6	0.8	0.5	0.7	0.3	85.0	3.4	11.6	0.072	0.511	20.640474	-88.483386
Valladolid	160.68	1	0	5511	13.4	76.5	1.8	4.9	0.4	2.4	0.2	0.2	0.2	89.9	1.8	8.3	0.074	0.532	20.683797	-88.231915
Valladolid	160.68	3	0	6354	14.5	77.0	0.8	3.9	0.4	2.8	0.2	0.2	0.2	91.5	0.8	7.7	0.074	0.534	20.694643	-88.165806
T. Der. Coba	187.80	1	0	6024	1.9	81.6	1.9	10.7	1.4	1.1	0.5	0.9	0.0	83.5	1.9	14.6	0.085	0.548	20.659555	-87.961108
T. Der. Chemax	189.79	1	0	4065	4.0	85.8	1.1	4.4	1.6	2.2	0.4	0.4	0.1	89.8	1.1	9.1	0.100	0.519	20.657916	-87.951519
T. Der. Chemax	189.79	3	0	3439	3.9	83.5	2.5	6.3	1.4	1.5	0.4	0.4	0.1	87.4	2.5	10.1	0.112	0.529	20.665067	-87.924670
X-Can	225.00	3	0	2818	2.2	83.3	2.5	7.1	1.8	1.9	0.6	0.5	0.1	85.5	2.5	12.0	0.110	0.517	20.860627	-87.655913
Lim. Edos. Term. Yuc. Ppia. Q. R.	230.40																			
Nuevo X-Can	231.90	3	0	3082	2.3	84.3	2.0	6.7	1.8	1.8	0.6	0.4	0.1	86.6	2.0	11.4	0.102	0.515	20.871582	-87.591102
Zaragoza	239.00	1	0	4490	3.6	84.8	2.2	5.8	1.4	1.4	0.4	0.2	0.2	88.4	2.2	9.4	0.064	0.510	20.881259	-87.533584
Vicente Guerrero	261.00	1	0	3184	2.2	82.2	2.8	7.7	2.1	2.0	0.5	0.4	0.1	84.4	2.8	12.8	0.096	0.502	20.940854	-87.331844
Leona Vicario	275.50	1	0	5225	2.2	84.9	1.8	5.5	1.8	2.5	0.6	0.4	0.3	87.1	1.8	11.1	0.085	0.503	20.981197	-87.222537
Leona Vicario	275.50	3	0	6119	3.3	81.9	1.6	7.6	1.3	3.2	0.5	0.4	0.2	85.2	1.6	13.2	0.075	0.511	20.993712	-87.187987
T. Der. Aeropuerto	302.50	1	0	7222	2.2	83.1	1.2	7.2	1.6	2.6	1.2	0.7	0.2	85.3	1.2	13.5	0.076	0.509	21.096229	-86.983384
T. Der. Aeropuerto	302.50	3	1	4521	2.0	82.0	1.9	6.4	2.2	2.1	1.2	1.8	0.4	84.0	1.9	14.1	0.079	0.506	21.103138	-86.969356
T. Der. Aeropuerto	302.50	3	2	4622	2.3	83.4	1.6	6.0	2.0	2.0	0.7	1.6	0.4	85.7	1.6	12.7	0.108	0.506	21.103250	-86.969413
T. Der. Alfredo V. Bonfil	310.00	1	1	22496	4.8	81.0	0.2	3.0	0.3	4.6	3.9	1.1	1.1	85.8	0.2	14.0	0.057	0.506	21.138413	-86.898843
T. Der. Alfredo V. Bonfil	310.00	1	2	23088	4.8	79.6	0.2	3.4	0.3	5.2	4.2	1.2	1.1	84.4	0.2	15.4	0.057	0.506	21.138312	-86.898753
Puerto Juárez	321.41																			

QUINTANA ROO

3 CARR: Muna - Felipe Carrillo Puerto

CLAVE: 00148

RUTA: MEX-184

AÑO: 2017

LUGAR	ESTACION				CLASIFICACION VEHICULAR EN PORCIENTO										COORDENADAS					
	KM	TE	SC	TDPA	M	A	B	C2	C3	T3S2	T3S3	T3S2R4	OTROS	A	B	C	K'	D	LATITUD	LONGITUD
Muna	0.00	3	0	3886	13.0	68.2	0.9	13.0	1.3	2.4	0.5	0.4	0.3	81.2	0.9	17.9	0.067	0.511	20.474584	-89.694601
Ticul	19.10	1	0	3799	11.8	70.7	0.8	13.0	1.3	1.6	0.4	0.3	0.1	82.5	0.8	16.7	0.070	0.502	20.406492	-89.573160
Ticul	19.10	3	0	6743	34.0	53.3	0.8	7.1	0.4	3.4	0.5	0.1	0.4	87.3	0.8	11.9	0.066	0.503	20.372844	-89.517069
Oxkutzcab	40.50	3	0	6149	27.3	60.7	0.5	7.2	0.9	2.6	0.4	0.1	0.3	88.0	0.5	11.5	0.082	0.500	20.281859	-89.374843
Tekax	53.90	3	0	3612	28.4	62.4	0.3	5.5	0.5	2.4	0.4	0.0	0.1	90.8	0.3	8.9	0.069	0.512	20.187776	-89.267261
Tzucacab	86.60	1	0	1883	24.4	64.1	0.3	9.1	0.8	1.1	0.2	0.0	0.0	88.5	0.3	11.2	0.084	0.515	20.078350	-89.061949
Tzucacab	86.60	3	0	1463	31.6	59.7	0.3	6.0	1.1	0.9	0.2	0.2	0.0	91.3	0.3	8.4	0.070	0.505	20.063693	-89.037060
Santa Rosa	109.60	3	0	2378	19.0	63.6	1.7	7.5	2.4	2.2	1.2	2.3	0.1	82.6	1.7	15.7	0.073	0.519	19.946679	-88.879175
Lim. Edos. Term. Yuc. Ppia. Q. R.	117.00																			
Dziuche	118.00	1	0	2310	8.3	77.6	0.4	4.6	3.4	1.7	1.2	2.5	0.3	85.9	0.4	13.7	0.068	0.511	19.905600	-88.819774
Dziuche	118.00	3	0	2801	5.8	78.0	1.1	5.7	2.5	2.7	1.3	2.4	0.5	83.8	1.1	15.1	0.080	0.522	19.888397	-88.803539
José María Morelos	138.60	1	0	3871	8.9	79.5	1.5	6.1	1.5	0.9	0.5	1.0	0.1	88.4	1.5	10.1	0.079	0.520	19.763265	-88.724057
José María Morelos	138.60	3	0	2945	9.4	74.8	2.0	7.8	1.5	2.0	1.0	1.4	0.1	84.2	2.0	13.8	0.077	0.532	19.738638	-88.693881
Polyuc	161.94	1	0	2618	3.8	78.8	1.7	8.3	2.0	2.3	1.1	1.9	0.1	82.6	1.7	15.7	0.069	0.501	19.611452	-88.571509
Polyuc	161.94	3	0	1335	9.1	77.7	0.8	8.2	1.5	1.4	0.5	0.6	0.2	86.8	0.8	12.4	0.081	0.504	19.609492	-88.554964
T. Der. Dzulá	178.11	3	0	1344	6.0	80.6	1.5	8.6	1.4	0.9	0.5	0.5	0.0	86.6	1.5	11.9	0.077	0.532	19.643472	-88.405917
Felipe Carrillo Puerto	216.97	1	0	5536	19.7	71.0	0.6	3.5	0.5	3.7	0.5	0.1	0.4	90.7	0.6	8.7	0.074	0.508	19.584367	-88.057788

4 CARR: Polyuc - T. C. (Reforma Agraria - Puerto Juárez)

CLAVE: 23014

RUTA: MEX-293

AÑO: 2017

LUGAR	ESTACION				CLASIFICACION VEHICULAR EN PORCIENTO										COORDENADAS					
	KM	TE	SC	TDPA	M	A	B	C2	C3	T3S2	T3S3	T3S2R4	OTROS	A	B	C	K'	D	LATITUD	LONGITUD
Polyuc	0.00	3	0	2431	11.0	74.3	2.2	6.3	1.4	2.2	0.9	1.6	0.1	85.3	2.2	12.5	0.079	0.500	19.607663	-88.571903
T. Der. Ramonal	24.00	1	0	1430	4.4	77.2	2.7	7.4	2.1	2.2	1.3	2.2	0.5	81.6	2.7	15.7	0.091	0.501	19.400633	-88.565082
T. Der. Ramonal	24.00	3	0	1532	2.7	77.7	2.9	7.8	2.5	2.4	1.1	2.8	0.1	80.4	2.9	16.7	0.084	0.515	19.398164	-88.564342
T. Izq. Santa María Poniente	35.00	1	0	1639	4.5	74.1	2.3	8.9	3.3	2.6	1.6	2.5	0.2	78.6	2.3	19.1	0.076	0.534	19.341678	-88.547297
T. Izq. Santa María Poniente	35.00	3	0	1617	8.2	76.1	0.9	4.0	5.0	1.6	1.4	2.5	0.3	84.3	0.9	14.8	0.086	0.509	19.336426	-88.545764
Valle Hermoso	50.00	3	0	1518	12.5	69.1	2.8	7.7	2.2	2.2	1.0	2.1	0.4	81.6	2.8	15.6	0.086	0.537	19.180957	-88.523344
T. Izq. Chacchoben	93.50	1	0	1720	6.1	73.8	3.5	7.8	2.1	2.3	1.7	2.7	0.0	79.9	3.5	16.6	0.070	0.535	18.982217	-88.218138
T. Izq. Chacchoben	93.50	3	0	1593	6.6	75.6	2.7	8.1	1.8	1.8	1.0	2.3	0.1	82.2	2.7	15.1	0.079	0.516	18.969044	-88.205953
T. C. Reforma Agraria - Puerto Juárez	99.00	1	0	1580	3.7	81.0	2.1	5.7	2.0	2.2	1.0	2.2	0.1	84.7	2.1	13.2	0.094	0.502	18.950717	-88.188895

QUINTANA ROO

5 CARR: Ramal a Puerto Morelos

CLAVE: 23569

RUTA: MEX

AÑO: 2017

LUGAR	ESTACION				CLASIFICACION VEHICULAR EN PORCIENTO														COORDENADAS	
	KM	TE	SC	TDPA	M	A	B	C2	C3	T3S2	T3S3	T3S2R4	OTROS	A	B	C	K'	D	LATITUD	LONGITUD
T. C. Reforma Agraria - Puerto Juárez	0.00	3	0	11512	4.8	79.4	0.3	8.0	0.7	5.2	0.2	0.9	0.5	84.2	0.3	15.5	0.066	0.509	20.854446	-86.893673
Puerto Morelos	2.20																			

6 CARR: Ramal a Punta Piedra

CLAVE: 23575

RUTA: MEX

AÑO: 2017

LUGAR	ESTACION				CLASIFICACION VEHICULAR EN PORCIENTO														COORDENADAS	
	KM	TE	SC	TDPA	M	A	B	C2	C3	T3S2	T3S3	T3S2R4	OTROS	A	B	C	K'	D	LATITUD	LONGITUD
T. C. Reforma Agraria - Puerto Juárez	0.00	3	1	8472	6.2	80.3	0.6	5.4	0.1	1.7	4.2	0.6	0.9	86.5	0.6	12.9	0.057	0.537	20.626484	-87.081802
T. C. Reforma Agraria - Puerto Juárez	0.00	3	2	9833	5.3	83.7	0.7	4.5	0.1	1.3	3.4	0.4	0.6	89.0	0.7	10.3	0.057	0.537	20.626569	-87.081734
Punta Piedra (Playa del Carmen)	1.50																			

7 CARR: Ramal a Subteniente López

CLAVE: 23567

RUTA: MEX-186

AÑO: 2017

LUGAR	ESTACION				CLASIFICACION VEHICULAR EN PORCIENTO														COORDENADAS	
	KM	TE	SC	TDPA	M	A	B	C2	C3	T3S2	T3S3	T3S2R4	OTROS	A	B	C	K'	D	LATITUD	LONGITUD
T. C. Francisco Escárcega - Chetumal	0.00	3	1	4676	7.7	85.1	0.5	5.3	0.5	0.5	0.2	0.2	0.0	92.8	0.5	6.7	0.077	0.510	18.512159	-88.376494
T. C. Francisco Escárcega - Chetumal	0.00	3	2	4490	8.2	85.0	0.1	5.2	0.7	0.3	0.1	0.3	0.1	93.2	0.1	6.7	0.083	0.510	18.512097	-88.376433
Subteniente López	3.00																			

8 CARR: Reforma Agraria - Puerto Juárez

CLAVE: 23132

RUTA: MEX-307

AÑO: 2017

LUGAR	ESTACION				CLASIFICACION VEHICULAR EN PORCIENTO														COORDENADAS	
	KM	TE	SC	TDPA	M	A	B	C2	C3	T3S2	T3S3	T3S2R4	OTROS	A	B	C	K'	D	LATITUD	LONGITUD
T. C. Francisco Escárcega - Chetumal	0.00	3	1	5267	2.9	81.5	2.2	6.5	1.1	2.5	0.8	1.9	0.6	84.4	2.2	13.4	0.079	0.507	18.532452	-88.467257
T. C. Francisco Escárcega - Chetumal	0.00	3	2	5406	3.1	80.9	2.0	6.5	1.3	2.4	1.0	2.2	0.6	84.0	2.0	14.0	0.099	0.507	18.532379	-88.467383
Bacalar	19.15	1	1	4616	2.5	82.8	2.0	6.8	0.9	2.2	0.7	1.9	0.2	85.3	2.0	12.7	0.077	0.508	18.661357	-88.403647
Bacalar	19.15	1	2	4762	2.5	81.9	2.3	7.1	0.9	2.3	0.7	2.1	0.2	84.4	2.3	13.3	0.082	0.508	18.661422	-88.403738
Bacalar	19.15	3	0	8379	1.5	85.8	1.6	2.6	1.7	2.5	0.8	2.7	0.8	87.3	1.6	11.1	0.069	0.515	18.695224	-88.388235
T. Izq. Reforma	22.24	3	0	6499	2.1	78.5	2.7	7.8	1.1	3.6	0.9	2.7	0.6	80.6	2.7	16.7	0.075	0.512	18.706903	-88.384443
Buenavista	46.90	1	0	5040	1.8	76.9	3.9	6.8	1.3	4.4	1.0	3.6	0.3	78.7	3.9	17.4	0.078	0.505	18.878001	-88.247452
Buenavista	46.90	3	0	5094	2.0	74.7	4.3	8.0	1.4	4.7	0.9	3.6	0.4	76.7	4.3	19.0	0.077	0.507	18.890067	-88.237031
T. Izq. Lazáro Cárdenas	56.30	1	0	4986	1.3	75.4	4.1	8.6	1.3	4.6	1.0	3.3	0.4	76.7	4.1	19.2	0.094	0.510	18.942689	-88.188670
T. Izq. Lazáro Cárdenas	56.30	3	0	4799	1.5	78.4	3.5	6.4	1.5	4.6	0.8	3.0	0.3	79.9	3.5	16.6	0.079	0.536	18.949583	-88.181917
T. Izq. Chacchoben	70.80	1	0	4216	4.0	73.4	4.2	7.9	1.1	4.6	0.9	3.5	0.4	77.4	4.2	18.4	0.083	0.514	19.008891	-88.111370
T. Izq. Chacchoben	70.80	3	0	3816	2.8	71.0	4.1	10.0	1.5	5.5	0.9	3.8	0.4	73.8	4.1	22.1	0.096	0.514	19.038111	-88.109983

QUINTANA ROO

8 CARR: Reforma Agraria - Puerto Juárez

CLAVE: 23132

RUTA: MEX-307

AÑO: 2017

LUGAR	ESTACION				CLASIFICACION VEHICULAR EN PORCIENTO													COORDENADAS		
	KM	TE	SC	TDPA	M	A	B	C2	C3	T3S2	T3S3	T3S2R4	OTROS	A	B	C	K'	D	LATITUD	LONGITUD
T. Izq. Noh-Bec	81.94	1	0	3895	1.5	76.4	4.5	6.6	1.2	4.6	0.9	3.9	0.4	77.9	4.5	17.6	0.084	0.503	19.131197	-88.105333
T. Izq. Noh-Bec	81.94	3	0	4218	2.1	74.3	5.3	8.0	1.0	4.9	0.7	3.4	0.3	76.4	5.3	18.3	0.077	0.501	19.142725	-88.104763
Felipe Carrillo Puerto	132.00	1	0	4180	3.3	77.2	3.7	7.0	1.1	4.0	0.6	2.9	0.2	80.5	3.7	15.8	0.090	0.531	19.556900	-88.043477
Felipe Carrillo Puerto	132.00	3	0	3319	1.2	73.5	5.6	9.8	0.9	4.5	0.7	3.5	0.3	74.7	5.6	19.7	0.084	0.507	19.605834	-88.026905
Tulum Pueblo	227.00	1	0	5475	1.5	76.0	3.5	10.3	1.2	4.8	0.6	1.8	0.3	77.5	3.5	19.0	0.065	0.521	20.203895	-87.485394
Tulum Pueblo	227.00	3	1	9780	9.8	85.2	0.1	2.2	0.0	1.1	1.2	0.1	0.3	95.0	0.1	4.9	0.066	0.538	20.209597	-87.467479
Tulum Pueblo	227.00	3	2	8390	11.3	84.4	0.1	2.5	0.1	0.7	0.8	0.0	0.1	95.7	0.1	4.2	0.068	0.538	20.209651	-87.467489
T. Izq. Cobá	229.19	1	1	10064	5.0	88.6	0.7	2.9	0.2	0.7	1.3	0.2	0.4	93.6	0.7	5.7	0.066	0.504	20.213633	-87.455360
T. Izq. Cobá	229.19	1	2	9912	5.1	88.5	0.7	2.9	0.2	0.7	1.3	0.2	0.4	93.6	0.7	5.7	0.058	0.504	20.213672	-87.455364
T. Izq. Cobá	229.19	3	1	9332	2.2	85.8	1.2	4.7	0.8	1.7	2.1	0.7	0.8	88.0	1.2	10.8	0.067	0.506	20.215459	-87.449829
T. Izq. Cobá	229.19	3	2	9103	1.6	85.5	1.4	5.1	0.8	1.8	2.2	0.8	0.8	87.1	1.4	11.5	0.077	0.506	20.215411	-87.449829
X. C. Tulum - Aeropuerto	231.19	1	1	8972	1.2	86.9	1.7	5.8	1.0	1.5	0.8	0.7	0.4	88.1	1.7	10.2	0.069	0.509	20.217788	-87.442467
X. C. Tulum - Aeropuerto	231.19	1	2	9319	1.7	85.6	2.0	5.9	1.0	1.8	0.8	0.8	0.4	87.3	2.0	10.7	0.077	0.509	20.217817	-87.442495
X. C. Tulum - Aeropuerto	231.19	3	1	8597	1.2	84.8	2.5	7.2	0.9	1.6	0.7	0.9	0.2	86.0	2.5	11.5	0.087	0.510	20.220614	-87.433551
X. C. Tulum - Aeropuerto	231.19	3	2	8934	1.0	83.6	2.6	7.8	1.1	1.8	0.8	1.1	0.2	84.6	2.6	12.8	0.083	0.510	20.220606	-87.433498
T. Der. Xel-Ha	244.80	1	1	8316	0.8	86.7	2.4	6.2	0.8	1.4	0.6	0.9	0.2	87.5	2.4	10.1	0.074	0.502	20.314800	-87.367636
T. Der. Xel-Ha	244.80	1	2	8393	0.8	85.5	2.6	6.6	0.9	1.6	0.7	1.1	0.2	86.3	2.6	11.1	0.081	0.502	20.314723	-87.367791
T. Der. Xel-Ha	244.80	3	1	9202	0.6	86.8	2.1	6.1	1.1	1.5	0.7	0.9	0.2	87.4	2.1	10.5	0.098	0.516	20.331064	-87.358389
T. Der. Xel-Ha	244.80	3	2	8618	0.9	83.5	2.6	8.5	1.1	1.6	0.7	0.9	0.2	84.4	2.6	13.0	0.082	0.516	20.330971	-87.358266
T. Der. Akumal	254.44	1	1	9081	1.2	85.7	3.1	5.8	1.0	1.7	0.5	0.8	0.2	86.9	3.1	10.0	0.075	0.522	20.395159	-87.321626
T. Der. Akumal	254.44	1	2	9925	1.1	87.5	2.6	4.3	1.5	1.3	0.4	1.1	0.2	88.6	2.6	8.8	0.078	0.522	20.395222	-87.321748
Playa del Carmen	289.70	1	1	22595	2.8	84.1	2.1	8.6	0.8	0.7	0.4	0.5	0.0	86.9	2.1	11.0	0.088	0.508	20.609503	-87.105121
Playa del Carmen	289.70	1	2	23351	2.5	83.2	2.2	9.6	0.9	0.7	0.4	0.5	0.0	85.7	2.2	12.1	0.087	0.508	20.609552	-87.105312
Playa del Carmen	295.00	3	1	28158	2.6	87.2	1.5	7.2	0.5	0.3	0.4	0.2	0.1	89.8	1.5	8.7	0.067	0.510	20.662154	-87.057129
Playa del Carmen	295.00	3	2	27050	2.2	86.6	1.6	7.9	0.7	0.3	0.4	0.2	0.1	88.8	1.6	9.6	0.069	0.510	20.662217	-87.057299
T. Der. Puerto Morelos	321.48	1	1	22526	0.6	79.3	1.9	16.5	0.6	0.5	0.2	0.3	0.1	79.9	1.9	18.2	0.092	0.508	20.837741	-86.910128
T. Der. Puerto Morelos	321.48	1	2	21818	0.6	77.7	2.2	17.6	0.8	0.5	0.2	0.3	0.1	78.3	2.2	19.5	0.092	0.508	20.837775	-86.910327
T. Der. Puerto Morelos	321.48	3	1	24283	0.8	86.3	1.7	9.7	0.5	0.5	0.2	0.2	0.1	87.1	1.7	11.2	0.081	0.514	20.868501	-86.892321
T. Der. Puerto Morelos	321.48	3	2	25707	0.8	84.8	2.1	10.7	0.6	0.5	0.2	0.2	0.1	85.6	2.1	12.3	0.071	0.514	20.868518	-86.892549
T. Izq. Aeropuerto Cancún	341.50	1	1	29030	0.8	85.0	2.6	10.3	0.4	0.5	0.1	0.2	0.1	85.8	2.6	11.6	0.075	0.502	21.022651	-86.853785
T. Izq. Aeropuerto Cancún	341.50	1	2	29227	0.9	85.1	2.5	10.3	0.4	0.4	0.1	0.2	0.1	86.0	2.5	11.5	0.076	0.502	21.022633	-86.853663
T. Izq. Aeropuerto Cancún	341.50	3	1	32925	1.9	85.0	2.3	8.7	0.3	0.8	0.8	0.1	0.1	86.9	2.3	10.8	0.079	0.514	21.039438	-86.850143
T. Izq. Aeropuerto Cancún	341.50	3	2	34774	0.9	84.2	2.5	10.1	0.3	0.8	1.0	0.1	0.1	85.1	2.5	12.4	0.083	0.514	21.039473	-86.850252
T. Izq. Alfredo V. Bonfil	348.22	1	1	34375	1.7	86.4	2.3	7.9	0.2	0.6	0.6	0.1	0.2	88.1	2.3	9.6	0.091	0.501	21.083240	-86.843297
T. Izq. Alfredo V. Bonfil	348.22	1	2	34286	1.7	87.5	2.1	7.1	0.2	0.6	0.5	0.1	0.2	89.2	2.1	8.7	0.101	0.501	21.083208	-86.843485

QUINTANA ROO

8 CARR: Reforma Agraria - Puerto Juárez

CLAVE: 23132

RUTA: MEX-307

AÑO: 2017

LUGAR	ESTACION				CLASIFICACION VEHICULAR EN PORCIENTO													COORDENADAS		
	KM	TE	SC	TDPA	M	A	B	C2	C3	T3S2	T3S3	T3S2R4	OTROS	A	B	C	K'	D	LATITUD	LONGITUD
Cancún	355.48	1	1	35927	2.2	90.0	1.6	3.7	0.3	0.3	1.2	0.4	0.3	92.2	1.6	6.2	0.068	0.506	21.107745	-86.839482
Cancún	355.48	1	2	36769	2.0	89.8	1.8	4.0	0.3	0.3	1.2	0.3	0.3	91.8	1.8	6.4	0.069	0.506	21.107743	-86.839617
T. C. Mérida - Puerto Juárez	357.48																			

9 CARR: Valladolid - Felipe Carrillo Puerto

CLAVE: 00010

RUTA: MEX-295

AÑO: 2017

LUGAR	ESTACION				CLASIFICACION VEHICULAR EN PORCIENTO													COORDENADAS		
	KM	TE	SC	TDPA	M	A	B	C2	C3	T3S2	T3S3	T3S2R4	OTROS	A	B	C	K'	D	LATITUD	LONGITUD
Valladolid	0.00	3	0	4789	20.7	74.4	0.2	1.8	0.1	2.3	0.2	0.1	0.2	95.1	0.2	4.7	0.084	0.518	20.672909	-88.204571
Chichimilá	6.90	3	0	2220	12.6	82.1	0.3	2.8	0.6	1.3	0.1	0.1	0.1	94.7	0.3	5.0	0.077	0.503	20.622693	-88.232274
Tekom	12.05	3	0	1437	12.1	79.3	0.5	5.3	1.1	1.0	0.4	0.3	0.0	91.4	0.5	8.1	0.088	0.510	20.590862	-88.265391
Tixcacalcupul	19.80	3	0	946	13.0	79.2	0.5	5.6	0.6	0.8	0.2	0.1	0.0	92.2	0.5	7.3	0.085	0.502	20.524785	-88.271176
Lim. Edos. Term. Yuc. Ppia. Q. R.	46.00																			
Tepich	51.40	1	0	718	11.9	76.9	0.4	8.6	0.6	1.1	0.4	0.1	0.0	88.8	0.4	10.8	0.106	0.511	20.255583	-88.255074
Tihosuco	65.00	1	0	880	6.7	82.9	1.5	7.2	0.5	0.8	0.3	0.1	0.0	89.6	1.5	8.9	0.088	0.504	20.193240	-88.360489
Tihosuco	65.00	3	0	989	11.9	78.8	0.5	5.9	0.7	1.4	0.4	0.2	0.2	90.7	0.5	8.8	0.087	0.504	20.190569	-88.386872
T. Izq. San Felipe Berriozábal	99.00	1	0	620	6.2	81.0	0.8	8.4	1.7	1.1	0.4	0.4	0.0	87.2	0.8	12.0	0.095	0.504	19.962875	-88.242069
T. Izq. San Felipe Berriozábal	99.00	3	0	688	5.7	82.9	1.4	7.6	1.3	0.4	0.4	0.3	0.0	88.6	1.4	10.0	0.090	0.506	19.961270	-88.240448
Señor	116.50	1	0	877	12.6	79.0	0.8	5.5	0.7	0.8	0.4	0.2	0.0	91.6	0.8	7.6	0.091	0.502	19.852862	-88.144924
Señor	116.50	3	0	1230	6.0	85.0	1.6	5.8	0.6	0.8	0.1	0.1	0.0	91.0	1.6	7.4	0.085	0.504	19.830925	-88.130835
Felipe Carrillo Puerto	147.70	1	0	1469	13.8	76.8	1.0	6.7	0.4	0.9	0.2	0.1	0.1	90.6	1.0	8.4	0.097	0.503	19.603366	-88.053830

10 CARR: El Cedral - Playa del Carmen (Cuota)

CLAVE:

RUTA: MEX-180D

AÑO: 2017

LUGAR	ESTACION				CLASIFICACION VEHICULAR EN PORCIENTO													COORDENADAS		
	KM	TE	SC	TDPA	M	A	B	C2	C3	T3S2	T3S3	T3S2R4	OTROS	A	B	C	K'	D	LATITUD	LONGITUD
El Cedral	0.00																			
X. C. Mérida - Cancún (Cuota)	10.05	1	0	1474	6.1	78.3	1.7	8.3	1.9	2.0	0.6	1.1	0.0	84.4	1.7	13.9	0.076	0.501	20.907599	-87.446072
X. C. Mérida - Cancún (Cuota)	10.05	3	0	602	8.3	87.7	0.4	3.5	0.0	0.1	0.0	0.0	0.0	96.0	0.4	3.6	0.075	0.501	20.883295	-87.425916
Playa del Carmen	51.90																			

QUINTANA ROO

11 CARR: Mérida - Cancún (Cuota)

CLAVE: 00071

RUTA: MEX-180D

AÑO: 2017

LUGAR	ESTACION				CLASIFICACION VEHICULAR EN PORCIENTO												COORDENADAS				
	KM	TE	SC	TDPA	M	A	B	C2	C3	T3S2	T3S3	T3S2R4	OTROS	A	B	C	K'	D	LATITUD	LONGITUD	
T. C. Mérida - Puerto Juárez	0.00																				
Caseta de Cobro Piste	51.00	1	1	2157	0.4	72.6	3.5	11.7	1.1	3.6	1.4	5.6	0.1	73.0	3.5	23.5	0.070	0.514	20.730474	-88.590790	
Caseta de Cobro Piste	51.00	1	2	2038	0.4	70.9	3.6	12.3	1.2	3.5	1.6	6.4	0.1	71.3	3.6	25.1	0.089	0.514	20.730766	-88.590889	
Caseta de Cobro X-Can	155.00	1	1	1402	0.4	74.7	5.2	8.7	0.9	3.3	0.4	6.3	0.1	75.1	5.2	19.7	0.149	0.516	20.877205	-87.630480	
Caseta de Cobro X-Can	155.00	1	2	1314	0.5	76.1	5.4	7.8	0.6	2.6	0.2	6.6	0.2	76.6	5.4	18.0	0.124	0.516	20.877447	-87.630849	
Lim. Edos. Term. Yuc. Ppia. Q. R.	160.00																				
T. C. Mérida - Puerto Juárez	292.00	1	1	1476	3.7	74.4	5.8	6.4	1.0	2.7	1.0	4.4	0.6	78.1	5.8	16.1	0.096	0.528	21.095759	-86.979064	
T. C. Mérida - Puerto Juárez	292.00	1	2	1319	3.9	73.1	6.3	6.4	1.1	3.0	1.2	4.5	0.5	77.0	6.3	16.7	0.095	0.528	21.095791	-86.979669	
T. C. Reforma Agraria - Puerto Juárez	308.10	1	0	12885	2.3	79.1	1.4	8.1	1.8	4.1	1.1	1.4	0.7	81.4	1.4	17.2	0.089	0.507	21.020918	-86.859635	

12 CARR: Bacalar - Miguel Alemán

CLAVE: 20030

RUTA: QR

AÑO: 2017

LUGAR	ESTACION				CLASIFICACION VEHICULAR EN PORCIENTO												COORDENADAS				
	KM	TE	SC	TDPA	M	A	B	C2	C3	T3S2	T3S3	T3S2R4	OTROS	A	B	C	K'	D	LATITUD	LONGITUD	
T. C. (Reforma Agraria - Puerto Juárez)	0.00																				
Reforma	21.00	3	0	853	20.7	69.3	0.7	7.3	0.7	1.0	0.3	0.0	0.0	90.0	0.7	9.3	0.102	0.504	18.813069	-88.581134	
Altos de Sevilla	31.00	1	0	638	14.0	74.3	0.7	8.1	1.0	1.4	0.5	0.0	0.0	88.3	0.7	11.0	0.088	0.505	18.848962	-88.675631	
Altos de Sevilla	31.00	3	0	461	20.8	70.7	0.5	6.9	0.3	0.5	0.3	0.0	0.0	91.5	0.5	8.0	0.104	0.511	18.854855	-88.677454	
Miguel Alemán	110.00																				

13 CARR: Cancún - Punta Cancún

CLAVE: 23581

RUTA: QR

AÑO: 2017

LUGAR	ESTACION				CLASIFICACION VEHICULAR EN PORCIENTO												COORDENADAS			
	KM	TE	SC	TDPA	M	A	B	C2	C3	T3S2	T3S3	T3S2R4	OTROS	A	B	C	K'	D	LATITUD	LONGITUD
Cancún	0.00	3	1	25407	3.8	86.2	0.5	9.2	0.1	0.0	0.2	0.0	0.0	90.0	0.5	9.5	0.099	0.507	21.158324	-86.809645
Cancún	0.00	3	2	24675	3.2	86.5	0.5	9.5	0.1	0.0	0.2	0.0	0.0	89.7	0.5	9.8	0.084	0.507	21.158386	-86.809689
T. Der. Colibrí	7.00	1	1	26245	3.3	84.1	0.6	11.7	0.1	0.0	0.2	0.0	0.0	87.4	0.6	12.0	0.074	0.534	21.137133	-86.766908
T. Der. Colibrí	7.00	1	2	22918	3.5	83.1	0.6	12.5	0.1	0.0	0.2	0.0	0.0	86.6	0.6	12.8	0.059	0.534	21.137044	-86.766936
Punta Cancún	8.00	1	1	24230	3.6	82.1	0.5	13.5	0.2	0.0	0.1	0.0	0.0	85.7	0.5	13.8	0.068	0.501	21.134695	-86.756559
Punta Cancún	8.00	1	2	24179	3.8	81.0	0.7	14.2	0.2	0.0	0.1	0.0	0.0	84.8	0.7	14.5	0.065	0.501	21.134729	-86.756562

QUINTANA ROO

14 CARR: Chetumal - Calderitas

CLAVE: 23004

RUTA: QR-004

AÑO: 2017

LUGAR	ESTACION				CLASIFICACION VEHICULAR EN PORCIENTO													COORDENADAS		
	KM	TE	SC	TDPA	M	A	B	C2	C3	T3S2	T3S3	T3S2R4	OTROS	A	B	C	K'	D	LATITUD	LONGITUD
Chetumal	0.00	3	1	12709	8.3	87.3	0.0	2.2	0.1	0.7	1.1	0.1	0.2	95.6	0.0	4.4	0.072	0.502	18.533474	-88.277762
Chetumal	0.00	3	2	12993	12.0	82.9	0.0	2.1	0.1	1.2	1.2	0.1	0.4	94.9	0.0	5.1	0.078	0.502	18.533535	-88.277823
Calderitas	9.00	1	1	3302	13.5	83.2	0.0	2.5	0.1	0.5	0.2	0.0	0.0	96.7	0.0	3.3	0.115	0.517	18.553722	-88.257561
Calderitas	9.00	1	2	3084	10.1	87.1	0.0	2.2	0.1	0.4	0.1	0.0	0.0	97.2	0.0	2.8	0.125	0.517	18.553828	-88.257555

15 CARR: El Ideal - Chiquila

CLAVE: 23005

RUTA: QR-005

AÑO: 2017

LUGAR	ESTACION				CLASIFICACION VEHICULAR EN PORCIENTO													COORDENADAS		
	KM	TE	SC	TDPA	M	A	B	C2	C3	T3S2	T3S3	T3S2R4	OTROS	A	B	C	K'	D	LATITUD	LONGITUD
T. C. Mérida - Puerto Juárez	0.00	3	0	1119	5.6	88.0	0.6	4.4	0.8	0.6	0.0	0.0	0.0	93.6	0.6	5.8	0.080	0.515	20.897895	-87.547080
Kantunilkin	31.20	1	0	2766	4.9	83.7	1.0	6.2	1.5	2.1	0.3	0.3	0.0	88.6	1.0	10.4	0.075	0.506	21.082201	-87.488722
Kantunilkin	31.20	3	0	2387	14.8	77.8	0.3	4.7	0.8	1.4	0.1	0.0	0.1	92.6	0.3	7.1	0.103	0.503	21.119008	-87.484420
Chiquila	75.60	1	0	1481	12.9	77.8	0.6	6.6	0.9	1.0	0.1	0.0	0.1	90.7	0.6	8.7	0.110	0.504	21.419479	-87.337494

16 CARR: Libramiento de Chetumal

CLAVE: 23130

RUTA: QR

AÑO: 2017

LUGAR	ESTACION				CLASIFICACION VEHICULAR EN PORCIENTO													COORDENADAS		
	KM	TE	SC	TDPA	M	A	B	C2	C3	T3S2	T3S3	T3S2R4	OTROS	A	B	C	K'	D	LATITUD	LONGITUD
T. C. Francisco Escárcega - Chetumal	0.00	3	1	8220	6.3	85.3	1.1	4.5	0.6	1.0	0.8	0.2	0.2	91.6	1.1	7.3	0.100	0.510	18.517439	-88.345703
T. C. Francisco Escárcega - Chetumal	0.00	3	2	8556	6.3	85.2	1.0	5.3	0.5	0.9	0.5	0.2	0.1	91.5	1.0	7.5	0.099	0.510	18.517580	-88.345724
T. C. Chetumal - Calderitas	5.00																			

17 CARR: Perimetral Cozumel

CLAVE: 00148

RUTA: QR

AÑO: 2017

LUGAR	ESTACION				CLASIFICACION VEHICULAR EN PORCIENTO													COORDENADAS		
	KM	TE	SC	TDPA	M	A	B	C2	C3	T3S2	T3S3	T3S2R4	OTROS	A	B	C	K'	D	LATITUD	LONGITUD
Cozumel	0.00	3	0	10856	14.3	74.1	0.1	5.1	0.3	4.5	0.6	0.2	0.8	88.4	0.1	11.5	0.095	0.533	20.465921	-86.976743
El Cedral	13.40	1	1	1717	11.2	77.3	0.4	8.5	0.4	1.5	0.3	0.1	0.3	88.5	0.4	11.1	0.097	0.502	20.386455	-87.018449
El Cedral	13.40	1	2	1730	11.2	77.5	0.4	8.5	0.3	1.6	0.2	0.1	0.2	88.7	0.4	10.9	0.105	0.502	20.386449	-87.018594
El Cedral	13.40	3	1	523	6.2	85.1	2.8	3.2	0.8	0.3	0.6	0.5	0.5	91.3	2.8	5.9	0.134	0.516	20.363112	-87.018034
El Cedral	13.40	3	2	558	5.7	87.5	2.1	2.5	0.7	0.2	0.4	0.5	0.4	93.2	2.1	4.7	0.120	0.516	20.363099	-87.018155
Celarain	25.00	1	0	921	9.1	86.5	0.8	2.1	0.3	0.9	0.2	0.0	0.1	95.6	0.8	3.6	0.175	0.505	20.294401	-86.966136

QUINTANA ROO

18 CARR: Punta Nizuc - Cancún

CLAVE: 23014

RUTA: QR

AÑO: 2017

LUGAR	ESTACION				CLASIFICACION VEHICULAR EN PORCIENTO													COORDENADAS		
	KM	TE	SC	TDPA	M	A	B	C2	C3	T3S2	T3S3	T3S2R4	OTROS	A	B	C	K'	D	LATITUD	LONGITUD
Punta Nizuc	0.00	3	1	12215	0.9	85.1	1.5	10.1	0.4	0.9	0.9	0.0	0.2	86.0	1.5	12.5	0.077	0.513	21.043220	-86.782990
Punta Nizuc	0.00	3	2	12882	1.0	84.3	1.6	10.7	0.4	0.9	0.9	0.0	0.2	85.3	1.6	13.1	0.083	0.513	21.043224	-86.783105
Punta Cancún	12.40																			

19 CARR: Ramal a Aeropuerto Cancún

CLAVE: 23574

RUTA: QR

AÑO: 2017

LUGAR	ESTACION				CLASIFICACION VEHICULAR EN PORCIENTO													COORDENADAS		
	KM	TE	SC	TDPA	M	A	B	C2	C3	T3S2	T3S3	T3S2R4	OTROS	A	B	C	K'	D	LATITUD	LONGITUD
T. C. Reforma Agraria - Puerto Juárez	0.00	3	1	18068	0.4	89.9	0.4	6.9	0.1	0.5	1.6	0.1	0.1	90.3	0.4	9.3	0.086	0.517	21.035448	-86.857318
T. C. Reforma Agraria - Puerto Juárez	0.00	3	2	16879	0.6	88.8	0.5	7.1	0.1	0.5	2.1	0.1	0.2	89.4	0.5	10.1	0.080	0.517	21.035528	-86.857277
Aeropuerto Cancún	2.00	1	1	17136	0.6	90.5	0.6	6.2	0.1	0.5	1.0	0.4	0.1	91.1	0.6	8.3	0.068	0.506	21.040231	-86.864796
Aeropuerto Cancún	2.00	1	2	16746	0.7	89.6	0.7	6.9	0.1	0.5	1.0	0.4	0.1	90.3	0.7	9.0	0.073	0.506	21.040167	-86.864831

20 CARR: Ramal a Candelaria

CLAVE: 23027

RUTA: QR

AÑO: 2017

LUGAR	ESTACION				CLASIFICACION VEHICULAR EN PORCIENTO													COORDENADAS		
	KM	TE	SC	TDPA	M	A	B	C2	C3	T3S2	T3S3	T3S2R4	OTROS	A	B	C	K'	D	LATITUD	LONGITUD
T. C. Muna - Felipe Carrillo Puerto	0.00	3	0	1522	24.9	68.7	0.3	4.3	0.4	1.2	0.1	0.0	0.1	93.6	0.3	6.1	0.080	0.509	19.806746	-88.757766
Candelaria	15.30																			

21 CARR: Ramal a El Naranjal

CLAVE: 23579

RUTA: QR

AÑO: 2017

LUGAR	ESTACION				CLASIFICACION VEHICULAR EN PORCIENTO													COORDENADAS		
	KM	TE	SC	TDPA	M	A	B	C2	C3	T3S2	T3S3	T3S2R4	OTROS	A	B	C	K'	D	LATITUD	LONGITUD
José María Morelos	0.00	3	0	894	41.8	52.7	0.1	3.6	0.5	0.8	0.5	0.0	0.0	94.5	0.1	5.4	0.088	0.508	19.734524	-88.717188
El Naranjal	16.00																			

22 CARR: Ramal a Laguna de Kaná

CLAVE: 23213

RUTA: QR

AÑO: 2017

LUGAR	ESTACION				CLASIFICACION VEHICULAR EN PORCIENTO													COORDENADAS		
	KM	TE	SC	TDPA	M	A	B	C2	C3	T3S2	T3S3	T3S2R4	OTROS	A	B	C	K'	D	LATITUD	LONGITUD
T. C. Muna - Felipe Carrillo Puerto	0.00	3	0	411	21.5	68.4	0.6	7.6	0.7	0.7	0.4	0.0	0.1	89.9	0.6	9.5	0.100	0.521	19.642802	-88.411607
Laguna de Kaná	12.20																			

QUINTANA ROO

23 CARR: Ramal a Mahahual

CLAVE: 23583

RUTA: QR

AÑO: 2017

LUGAR	ESTACION				CLASIFICACION VEHICULAR EN PORCIENTO														COORDENADAS	
	KM	TE	SC	TDPA	M	A	B	C2	C3	T3S2	T3S3	T3S2R4	OTROS	A	B	C	K'	D	LATITUD	LONGITUD
T. C. Reforma Agraria - Puerto Juárez Mahahual	0.00	3	0	1231	6.2	85.4	1.4	5.2	0.4	0.9	0.3	0.0	0.2	91.6	1.4	7.0	0.098	0.512	18.980146	-88.110498
	60.09																			

24 CARR: Ramal a Petcacab

CLAVE: 23018

RUTA: QR-018

AÑO: 2017

LUGAR	ESTACION				CLASIFICACION VEHICULAR EN PORCIENTO														COORDENADAS	
	KM	TE	SC	TDPA	M	A	B	C2	C3	T3S2	T3S3	T3S2R4	OTROS	A	B	C	K'	D	LATITUD	LONGITUD
T. C. Reforma Agraria - Puerto Juárez Petcacab	0.00	3	0	668	18.7	73.8	0.3	4.4	0.6	1.2	0.6	0.1	0.3	92.5	0.3	7.2	0.088	0.521	19.135472	-88.106694
	37.00																			

25 CARR: Ramal a Punta Allen

CLAVE: 23015

RUTA: QR-015

AÑO: 2017

LUGAR	ESTACION				CLASIFICACION VEHICULAR EN PORCIENTO														COORDENADAS	
	KM	TE	SC	TDPA	M	A	B	C2	C3	T3S2	T3S3	T3S2R4	OTROS	A	B	C	K'	D	LATITUD	LONGITUD
T. C. Reforma Agraria - Puerto Juárez Beh-Ha	0.00	3	0	11313	7.6	80.7	0.1	3.4	0.2	6.0	0.5	0.3	1.2	88.3	0.1	11.6	0.095	0.509	20.205521	-87.450217
Punta Allen	10.20	1	0	976	9.8	76.2	0.2	13.5	0.0	0.1	0.1	0.0	0.1	86.0	0.2	13.8	0.126	0.512	20.128966	-87.465417
	57.00																			

26 CARR: Ramal a Punta Sam

CLAVE: 23582

RUTA: QR

AÑO: 2017

LUGAR	ESTACION				CLASIFICACION VEHICULAR EN PORCIENTO														COORDENADAS	
	KM	TE	SC	TDPA	M	A	B	C2	C3	T3S2	T3S3	T3S2R4	OTROS	A	B	C	K'	D	LATITUD	LONGITUD
Puerto Juárez	0.00	3	0	7506	4.0	86.1	0.1	3.4	0.1	5.1	0.4	0.1	0.7	90.1	0.1	9.8	0.067	0.502	21.190009	-86.807135
Punta Sam	5.00	1	0	2109	5.6	89.4	0.3	2.2	0.1	2.1	0.1	0.1	0.1	95.0	0.3	4.7	0.087	0.536	21.215903	-86.802440

27 CARR: Ramal a Reforma

CLAVE: 23016

RUTA: QR-016

AÑO: 2017

LUGAR	ESTACION				CLASIFICACION VEHICULAR EN PORCIENTO														COORDENADAS	
	KM	TE	SC	TDPA	M	A	B	C2	C3	T3S2	T3S3	T3S2R4	OTROS	A	B	C	K'	D	LATITUD	LONGITUD
T. C. Reforma Agraria - Puerto Juárez Reforma	0.00	3	0	1610	15.2	74.7	0.2	7.7	0.4	1.3	0.1	0.3	0.1	89.9	0.2	9.9	0.080	0.504	18.705434	-88.388601
	44.00																			

QUINTANA ROO

28 CARR: Ramal a Tres Garantías

CLAVE: 23585

RUTA: QR

AÑO: 2017

LUGAR	ESTACION				CLASIFICACION VEHICULAR EN PORCIENTO													COORDENADAS		
	KM	TE	SC	TDPA	M	A	B	C2	C3	T3S2	T3S3	T3S2R4	OTROS	A	B	C	K'	D	LATITUD	LONGITUD
T. C. Francisco Escárcega - Chetumal	0.00	3	0	177	25.5	71.5	0.2	2.3	0.2	0.0	0.1	0.0	0.2	97.0	0.2	2.8	0.130	0.506	18.452906	-89.001305
Tres Garantías	30.00																			

29 CARR: Tihosuco - Dziuche

CLAVE: 23576

RUTA: QR

AÑO: 2017

LUGAR	ESTACION				CLASIFICACION VEHICULAR EN PORCIENTO													COORDENADAS		
	KM	TE	SC	TDPA	M	A	B	C2	C3	T3S2	T3S3	T3S2R4	OTROS	A	B	C	K'	D	LATITUD	LONGITUD
T. C. Valladolid - Felipe Carrillo Puerto	0.00	3	0	465	10.5	81.4	0.4	5.6	1.0	0.5	0.6	0.0	0.0	91.9	0.4	7.7	0.105	0.523	20.176628	-88.397322
Dziuche	60.50	1	0	918	26.0	69.5	0.4	3.1	0.4	0.5	0.1	0.0	0.0	95.5	0.4	4.1	0.103	0.510	19.913717	-88.808076

30 CARR: Transversal de Cozumel

CLAVE: 23577

RUTA: QR

AÑO: 2017

LUGAR	ESTACION				CLASIFICACION VEHICULAR EN PORCIENTO													COORDENADAS		
	KM	TE	SC	TDPA	M	A	B	C2	C3	T3S2	T3S3	T3S2R4	OTROS	A	B	C	K'	D	LATITUD	LONGITUD
Cozumel	0.00	3	1	3600	40.3	55.3	0.2	2.2	0.5	0.7	0.4	0.2	0.2	95.6	0.2	4.2	0.099	0.513	20.482706	-86.914850
Cozumel	0.00	3	2	3414	42.6	52.6	0.2	2.5	0.5	0.8	0.4	0.2	0.2	95.2	0.2	4.6	0.104	0.513	20.482747	-86.914800
Mezcalitos	14.00																			

31 CARR: Tulum - Nuevo X-Can

CLAVE: 23570

RUTA: QR

AÑO: 2017

LUGAR	ESTACION				CLASIFICACION VEHICULAR EN PORCIENTO													COORDENADAS		
	KM	TE	SC	TDPA	M	A	B	C2	C3	T3S2	T3S3	T3S2R4	OTROS	A	B	C	K'	D	LATITUD	LONGITUD
T. C. Reforma Agraria - Puerto Juárez	0.00	3	1	4411	6.1	77.4	1.9	6.5	1.9	2.8	0.8	1.8	0.8	83.5	1.9	14.6	0.095	0.502	20.217177	-87.454407
T. C. Reforma Agraria - Puerto Juárez	0.00	3	2	4380	6.2	80.9	1.3	5.0	1.3	2.1	1.0	1.3	0.9	87.1	1.3	11.6	0.088	0.502	20.217205	-87.454422
T. Izq. Ruinas Cobá	42.95	1	0	4210	2.8	84.8	2.6	4.0	1.2	2.9	0.7	0.7	0.3	87.6	2.6	9.8	0.103	0.509	20.502844	-87.713783
T. Izq. Ruinas Cobá	42.95	3	0	487	4.1	84.5	1.1	9.4	0.1	0.5	0.2	0.1	0.0	88.6	1.1	10.3	0.088	0.509	20.509917	-87.717067
Nuevo X-Can	87.40	1	0	459	4.3	86.2	2.1	6.7	0.3	0.4	0.0	0.0	0.0	90.5	2.1	7.4	0.115	0.502	20.858701	-87.600846

32 CARR: Ucum - Unión

CLAVE: 23571

RUTA: QR

AÑO: 2017

LUGAR	ESTACION				CLASIFICACION VEHICULAR EN PORCIENTO													COORDENADAS		
	KM	TE	SC	TDPA	M	A	B	C2	C3	T3S2	T3S3	T3S2R4	OTROS	A	B	C	K'	D	LATITUD	LONGITUD
Ucum	0.00	3	0	3793	10.4	77.2	0.8	4.8	3.4	2.1	0.5	0.7	0.1	87.6	0.8	11.6	0.090	0.506	18.474488	-88.518072
T. Der. Ingenio Álvaro Obregón	31.00	1	0	1410	11.4	76.8	0.5	6.5	1.2	1.1	0.6	1.7	0.2	88.2	0.5	11.3	0.079	0.512	18.251011	-88.649562
T. Der. Ingenio Álvaro Obregón	31.00	3	0	2198	15.9	73.0	0.4	3.8	5.0	1.5	0.3	0.1	0.0	88.9	0.4	10.7	0.091	0.503	18.243884	-88.653090

QUINTANA ROO

32 CARR: Ucum - Unión

CLAVE: 23571

RUTA: QR

AÑO: 2017

LUGAR	ESTACION				CLASIFICACION VEHICULAR EN PORCIENTO													COORDENADAS		
	KM	TE	SC	TDPA	M	A	B	C2	C3	T3S2	T3S3	T3S2R4	OTROS	A	B	C	K'	D	LATITUD	LONGITUD
T. Der. U. A. Galeras	75.00	1	0	181	12.2	69.3	1.1	15.7	0.9	0.6	0.2	0.0	0.0	81.5	1.1	17.4	0.144	0.545	17.990021	-88.847629
T. Der. U. A. Galeras	75.00	3	0	179	15.1	71.0	1.2	12.3	0.2	0.1	0.0	0.0	0.1	86.1	1.2	12.7	0.101	0.513	17.987161	-88.855501
Unión	88.00	1	0	521	21.4	68.0	0.2	8.9	0.4	0.9	0.1	0.0	0.1	89.4	0.2	10.4	0.119	0.508	17.908638	-88.881016

33 CARR: Chemax - Cobá

CLAVE:

RUTA: YUC-MEX-180

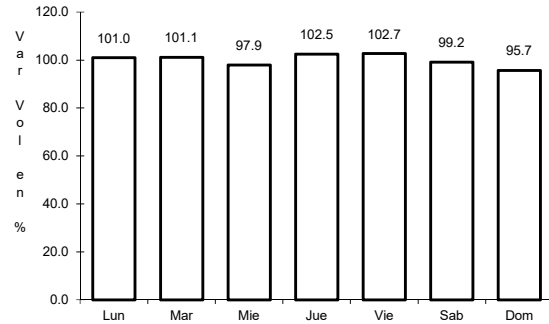
AÑO: 2017

LUGAR	ESTACION				CLASIFICACION VEHICULAR EN PORCIENTO													COORDENADAS		
	KM	TE	SC	TDPA	M	A	B	C2	C3	T3S2	T3S3	T3S2R4	OTROS	A	B	C	K'	D	LATITUD	LONGITUD
Chemax	0.00	3	0	5061	1.5	88.9	1.5	3.2	2.0	1.4	0.4	1.0	0.1	90.4	1.5	8.1	0.128	0.527	20.655699	-87.954026
Lim. Edos. Term. Yucatán Ppia. Q Roo.	25.00																			
Cobá	30.90	1	0	4550	1.2	86.9	2.1	3.9	2.7	1.5	0.4	1.1	0.2	88.1	2.1	9.8	0.083	0.563	20.509153	-87.720625

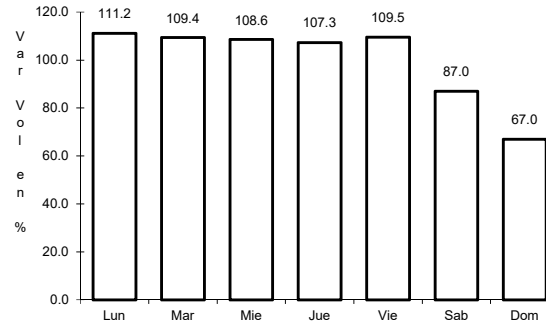
1 CARR: Francisco Escárcega - Chetumal

CLAVE: 00093

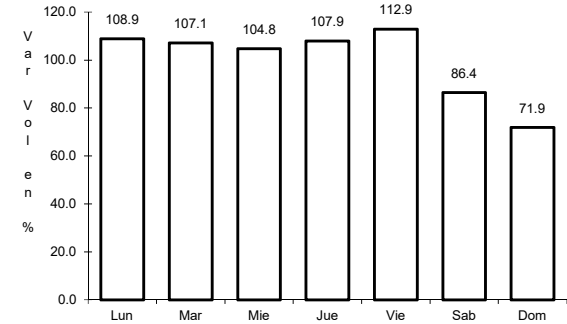
RUTA: MEX-186



Km: 0.00 Tipo: 3 Sent: 0



Km: 277.36 Tipo: 1 Sent: 1

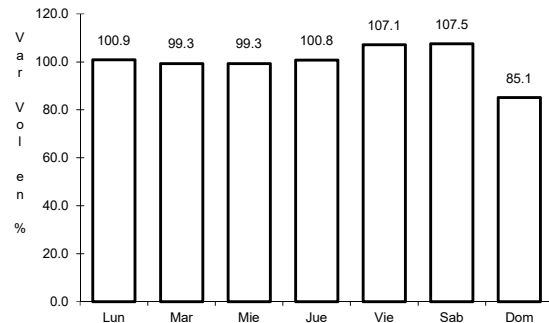


Km: 277.36 Tipo: 1 Sent: 2

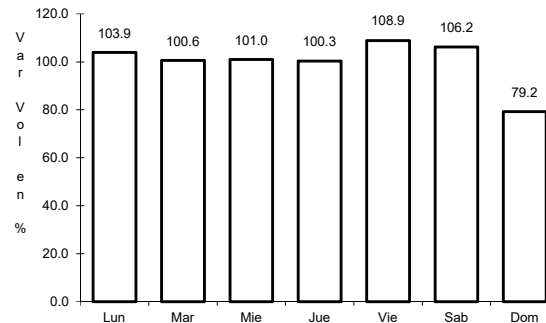
2 CARR: Mérida - Puerto Juárez

CLAVE: 00067

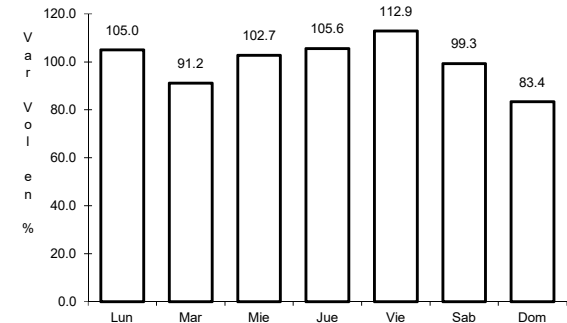
RUTA: MEX-180



Km: 5.60 Tipo: 1 Sent: 1



Km: 5.60 Tipo: 1 Sent: 2

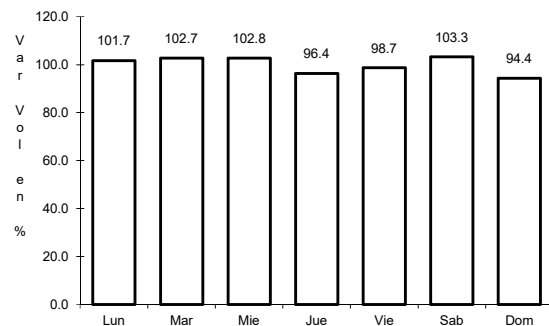


Km: 160.68 Tipo: 1 Sent: 0

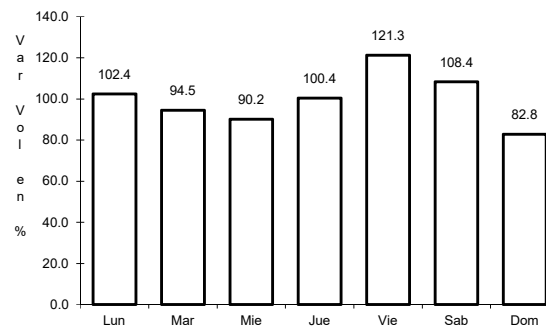
3 CARR: Muna - Felipe Carrillo Puerto

CLAVE: 00148

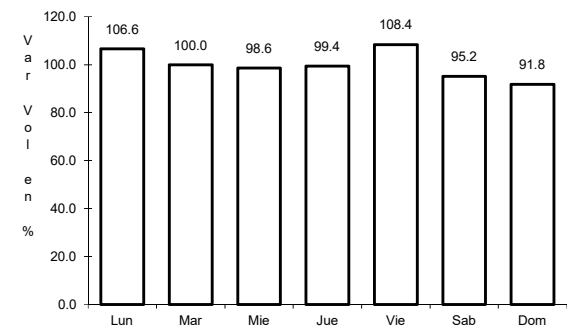
RUTA: MEX-184



Km: 0.00 Tipo: 3 Sent: 0



Km: 109.60 Tipo: 3 Sent: 0

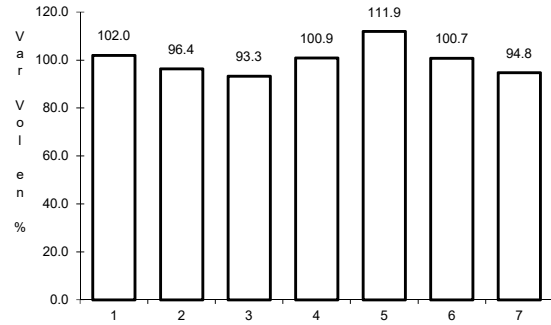


Km: 216.97 Tipo: 1 Sent: 0

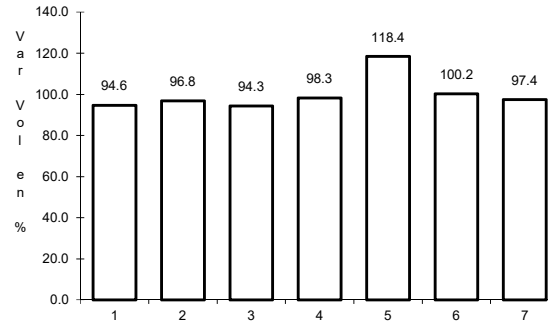
4 CARR: Polyuc - T. C. (Reforma Agraria - Puerto Juárez)

CLAVE: 23014

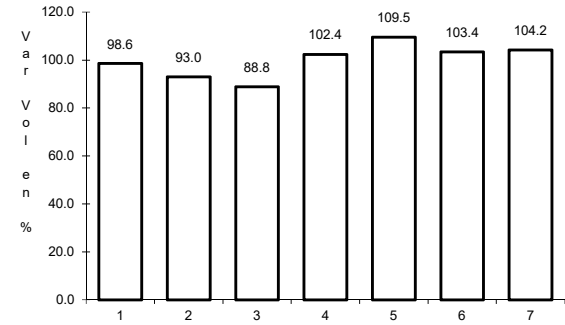
RUTA: MEX-293



Km: 0.00 Tipo: 3 Sent: 0



Km: 50.00 Tipo: 3 Sent: 0

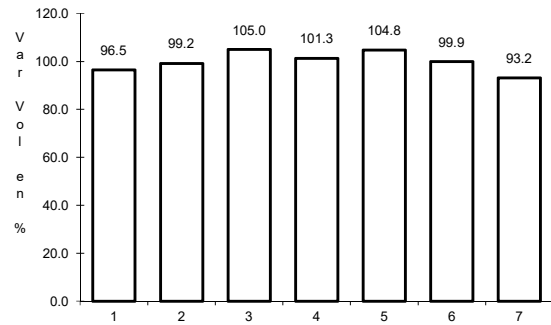


Km: 99.00 Tipo: 1 Sent: 0

5 CARR: Ramal a Puerto Morelos

CLAVE: 23569

RUTA: MEX

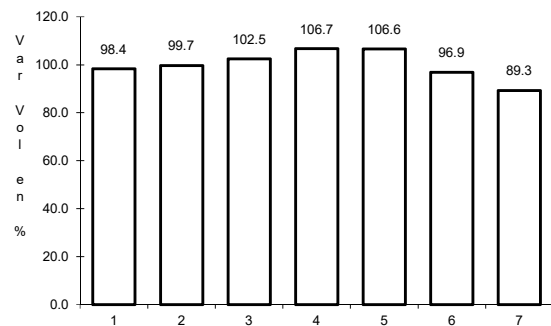


Km: 0.00 Tipo: 3 Sent: 0

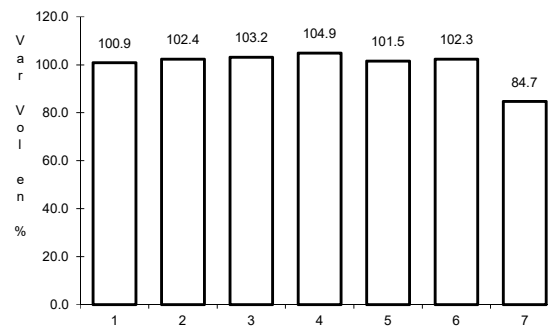
6 CARR: Ramal a Punta Piedra

CLAVE: 23575

RUTA: MEX



Km: 0.00 Tipo: 3 Sent: 1

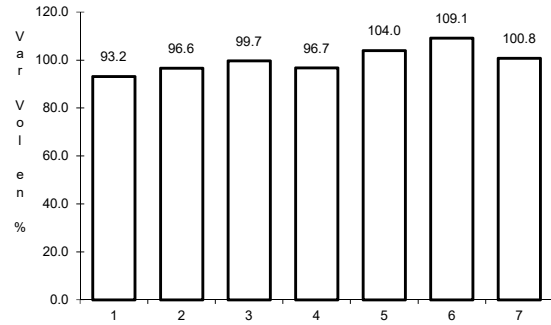


Km: 0.00 Tipo: 3 Sent: 2

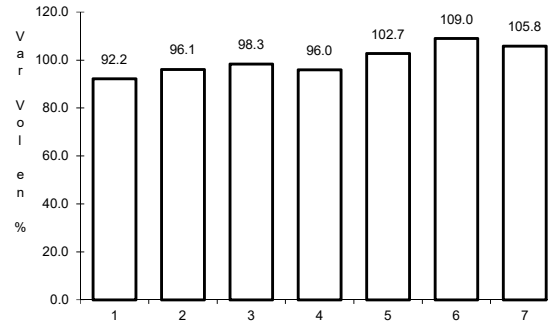
7 CARR: Ramal a Subteniente López

CLAVE: 23567

ruta: MEX-186



Km: 0.00 Tipo: 3 Sent: 1

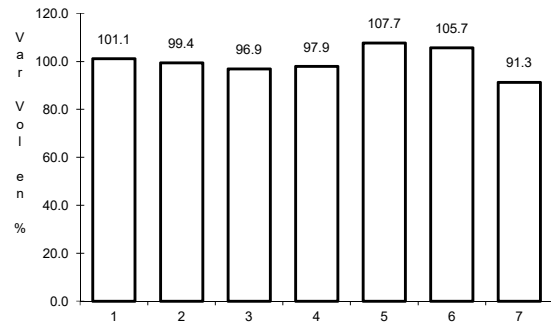


Km: 0.00 Tipo: 3 Sent: 2

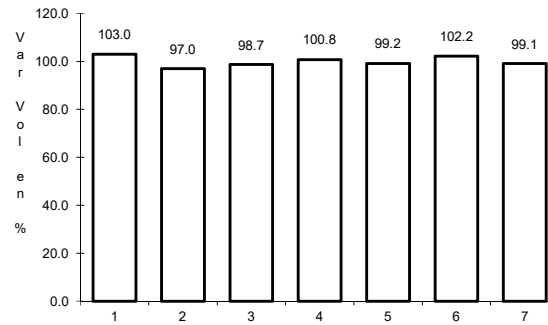
8 CARR: Reforma Agraria - Puerto Juárez

CLAVE: 23132

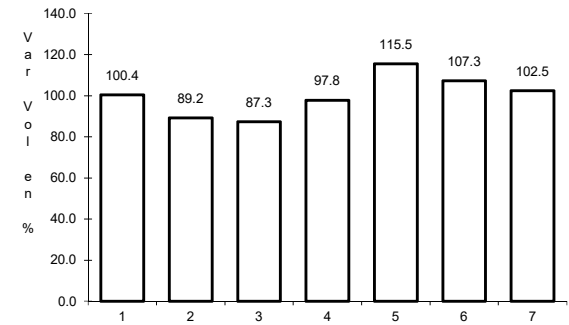
ruta: MEX-307



Km: 0.00 Tipo: 3 Sent: 1



Km: 0.00 Tipo: 3 Sent: 2

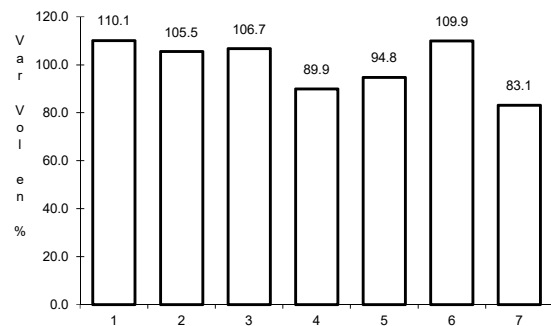


Km: 132.00 Tipo: 3 Sent: 0

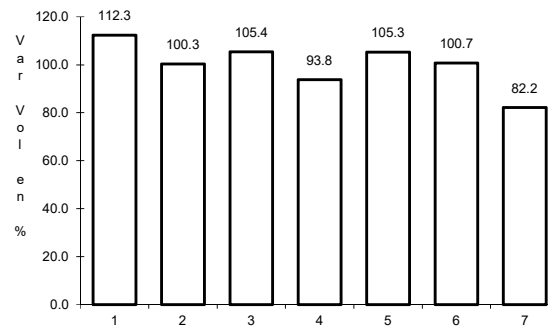
9 CARR: Valladolid - Felipe Carrillo Puerto

CLAVE: 00010

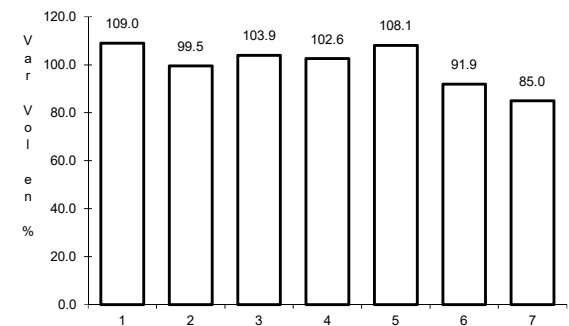
ruta: MEX-295



Km: 0.00 Tipo: 3 Sent: 0



Km: 99.00 Tipo: 1 Sent: 0

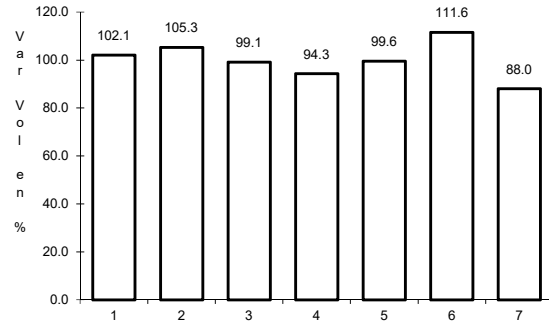


Km: 147.70 Tipo: 1 Sent: 0

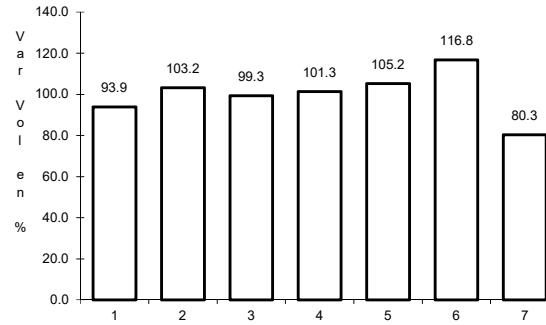
10 CARR: El Cedral - Playa del Carmen (Cuota)

CLAVE:

RUTA: MEX-180D



Km: 10.05 Tipo: 1 Sent: 0

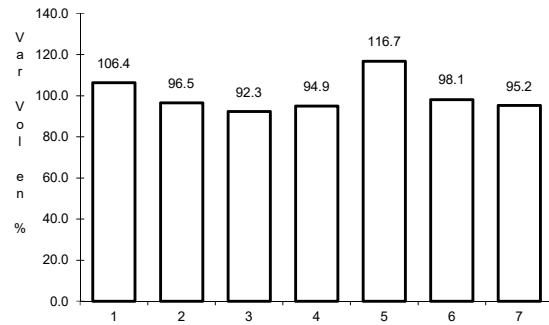


Km: 10.05 Tipo: 3 Sent: 0

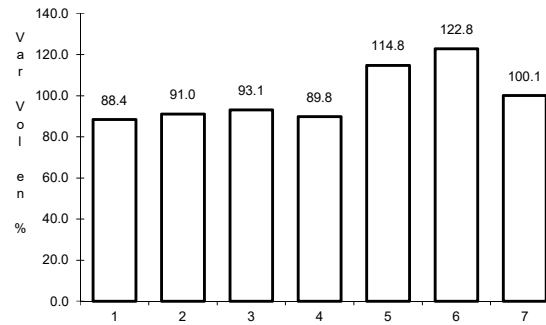
11 CARR: Mérida - Cancún (Cuota)

CLAVE: 00071

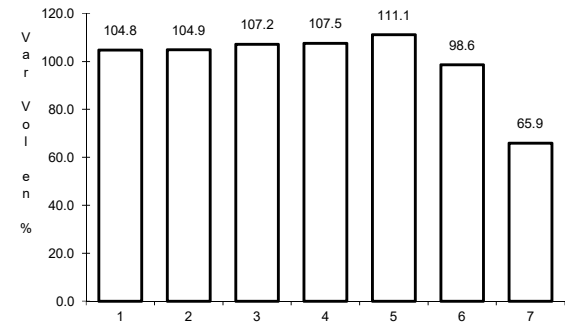
RUTA: MEX-180D



Km: 51.00 Tipo: 1 Sent: 1



Km: 51.00 Tipo: 1 Sent: 2

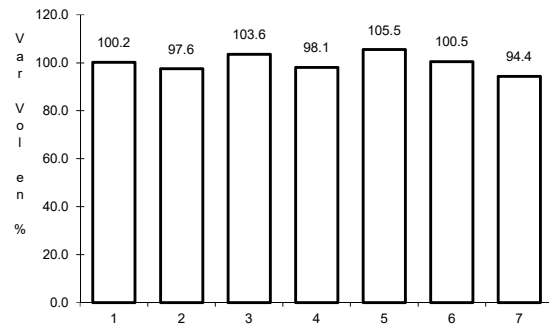


Km: 308.10 Tipo: 1 Sent: 0

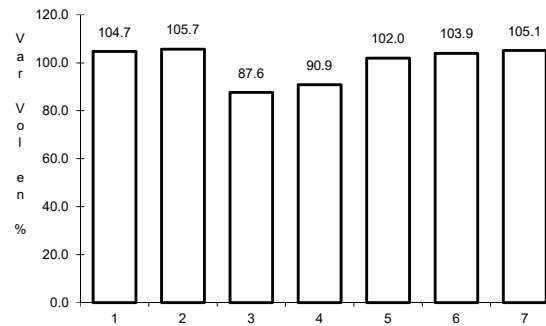
12 CARR: Bacalar - Miguel Alemán

CLAVE: 20030

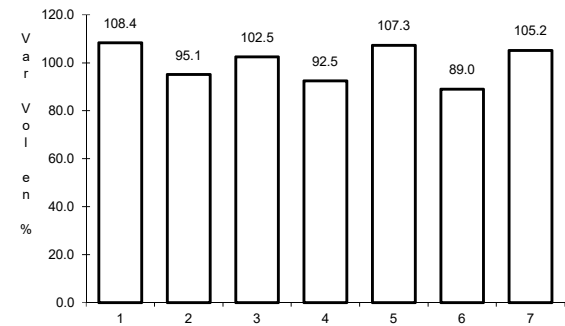
RUTA: QR



Km: 21.00 Tipo: 3 Sent: 0



Km: 31.00 Tipo: 1 Sent: 0

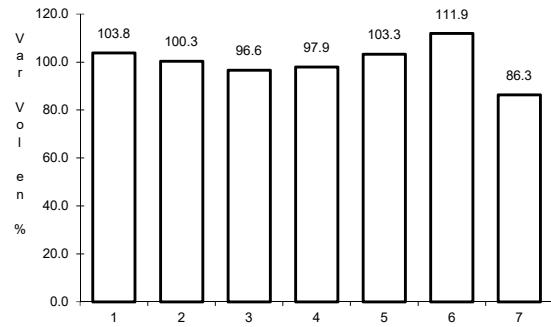


Km: 31.00 Tipo: 3 Sent: 0

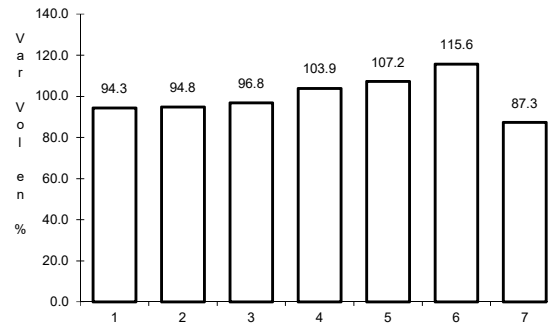
13 CARR: Cancún - Punta Cancún

CLAVE: 23581

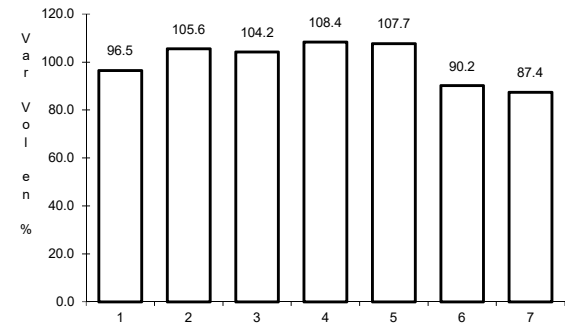
RUTA: QR



Km: 0.00 Tipo: 3 Sent: 1



Km: 0.00 Tipo: 3 Sent: 2

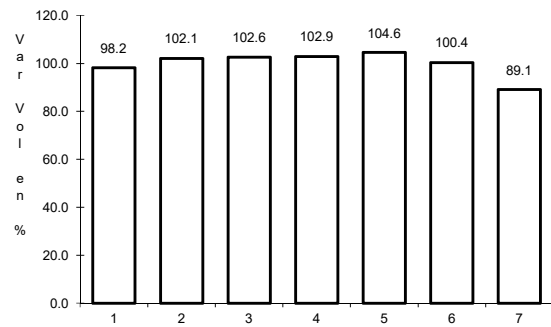


Km: 8.00 Tipo: 1 Sent: 1

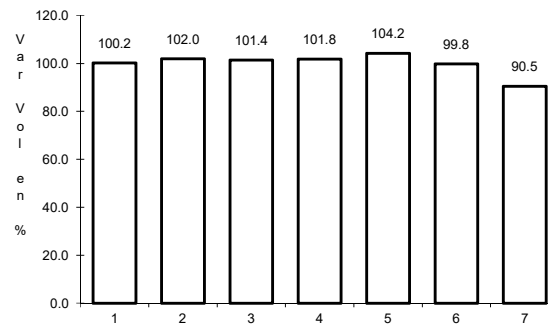
14 CARR: Chetumal - Calderitas

CLAVE: 23004

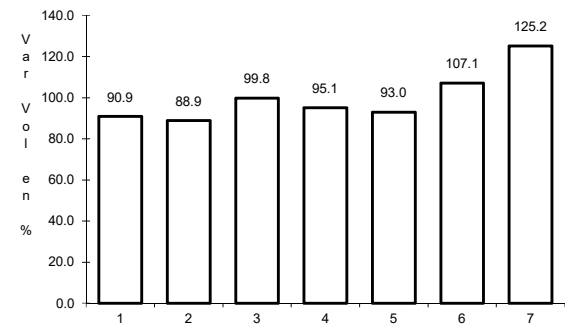
RUTA: QR-004



Km: 0.00 Tipo: 3 Sent: 1



Km: 0.00 Tipo: 3 Sent: 2

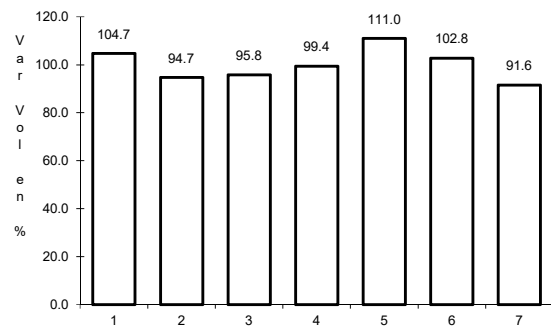


Km: 9.00 Tipo: 1 Sent: 1

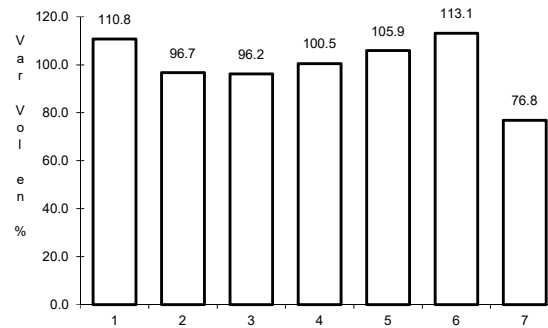
15 CARR: El Ideal - Chiquila

CLAVE: 23005

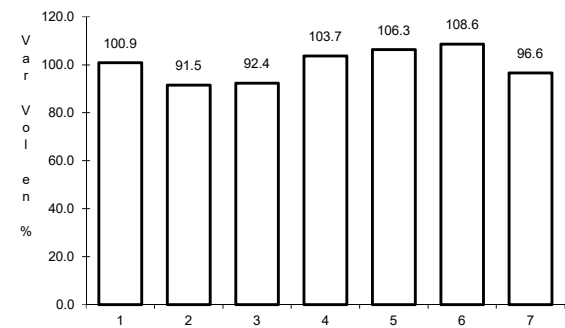
RUTA: QR-005



Km: 0.00 Tipo: 3 Sent: 0



Km: 31.20 Tipo: 1 Sent: 0

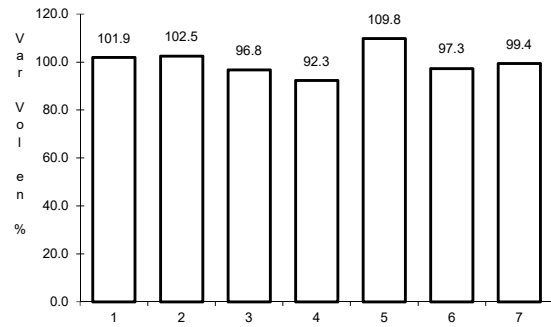


Km: 75.60 Tipo: 1 Sent: 0

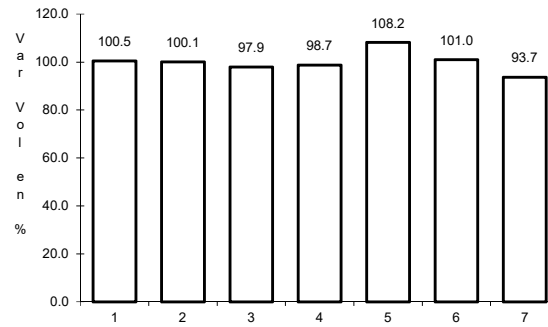
16 CARR: Libramiento de Chetumal

CLAVE: 23130

RUTA: QR



Km: 0.00 Tipo: 3 Sent: 1

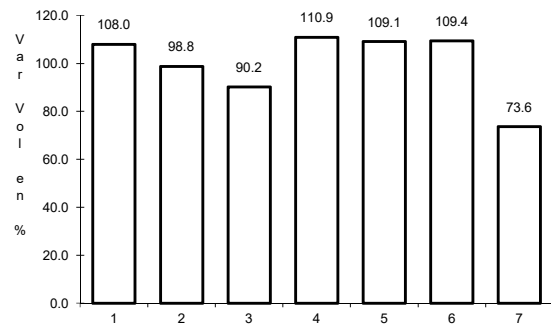


Km: 0.00 Tipo: 3 Sent: 2

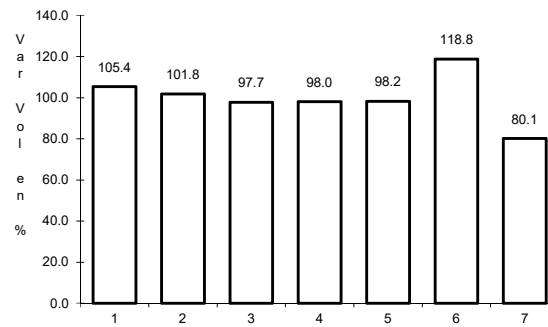
17 CARR: Perimetral Cozumel

CLAVE: 00148

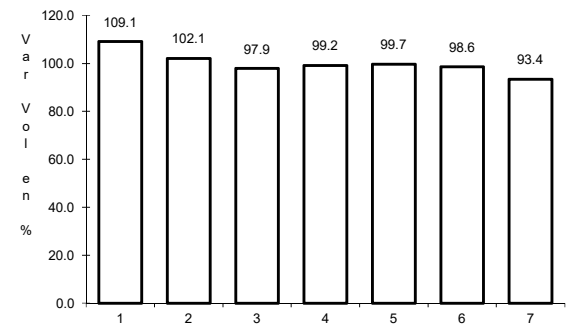
RUTA: QR



Km: 0.00 Tipo: 3 Sent: 0



Km: 13.40 Tipo: 3 Sent: 1

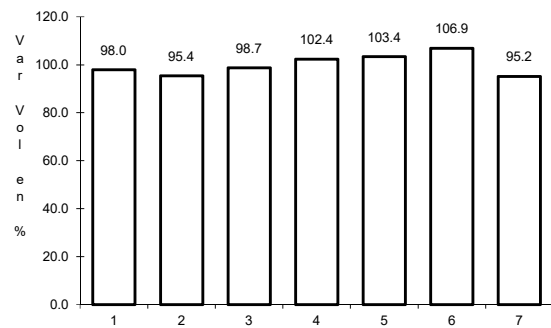


Km: 13.40 Tipo: 3 Sent: 2

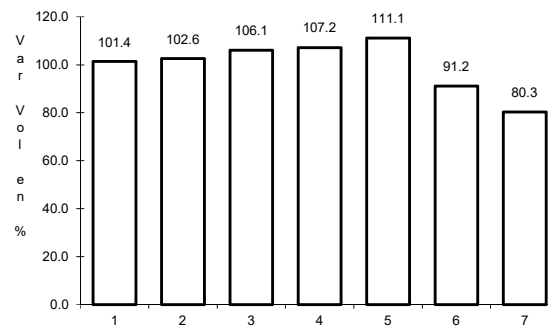
18 CARR: Punta Nizuc - Cancún

CLAVE: 23014

RUTA: QR



Km: 0.00 Tipo: 3 Sent: 1

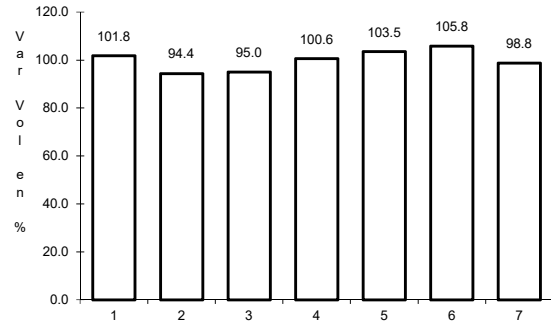


Km: 0.00 Tipo: 3 Sent: 2

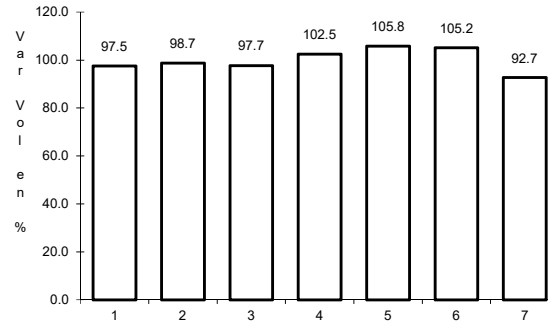
19 CARR: Ramal a Aeropuerto Cancún

CLAVE: 23574

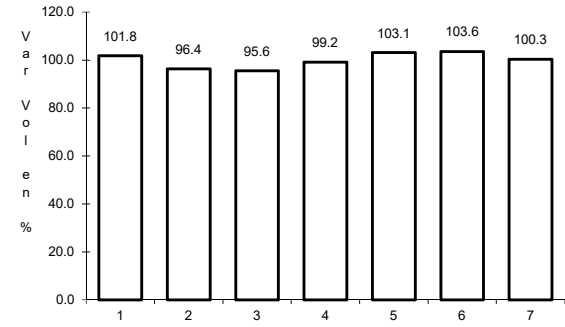
RUTA: QR



Km: 0.00 Tipo: 3 Sent: 1



Km: 0.00 Tipo: 3 Sent: 2

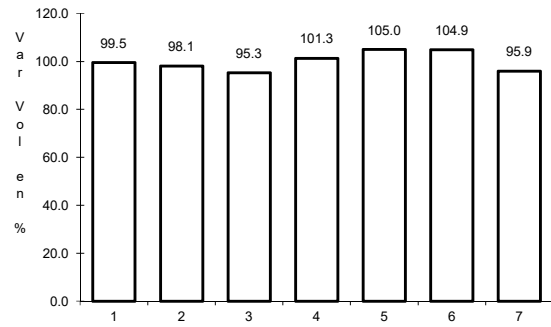


Km: 2.00 Tipo: 1 Sent: 1

20 CARR: Ramal a Candelaria

CLAVE: 23027

RUTA: QR

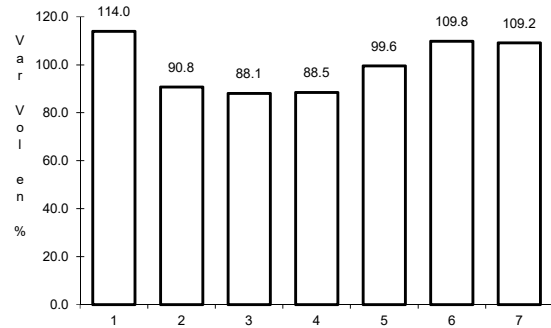


Km: 0.00 Tipo: 3 Sent: 0

21 CARR: Ramal a El Naranjal

CLAVE: 23579

RUTA: QR

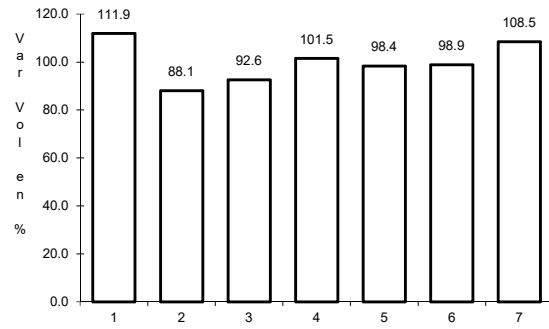


Km: 0.00 Tipo: 3 Sent: 0

22 CARR: Ramal a Laguna de Kaná

CLAVE: 23213

RUTA: QR



Km: 0.00

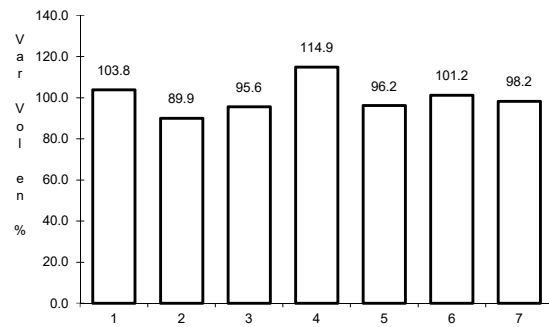
Tipo: 3

Sent: 0

23 CARR: Ramal a Mahahual

CLAVE: 23583

RUTA: QR



Km: 0.00

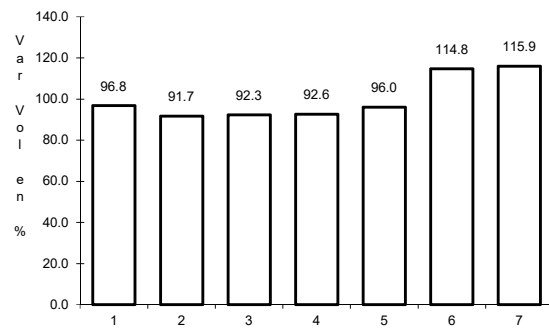
Tipo: 3

Sent: 0

24 CARR: Ramal a Petcacab

CLAVE: 23018

RUTA: QR-018



Km: 0.00

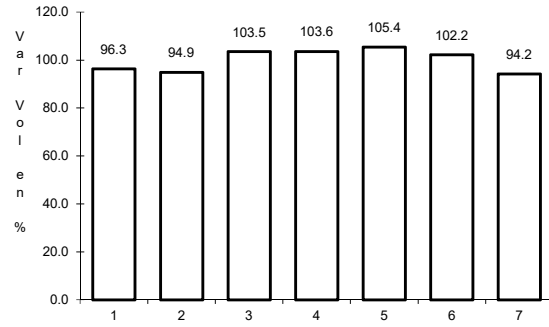
Tipo: 3

Sent: 0

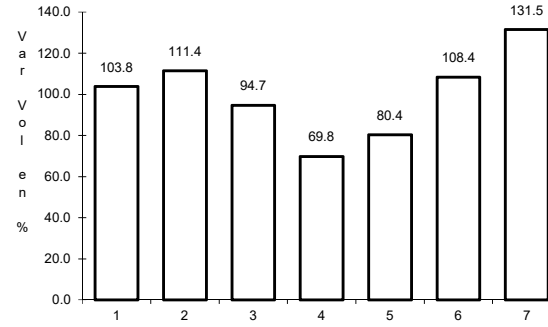
25 CARR: Ramal a Punta Allen

CLAVE: 23015

RUTA: QR-015



Km: 0.00 Tipo: 3 Sent: 0

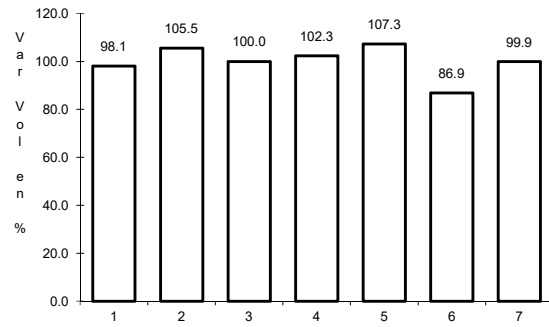


Km: 10.20 Tipo: 1 Sent: 0

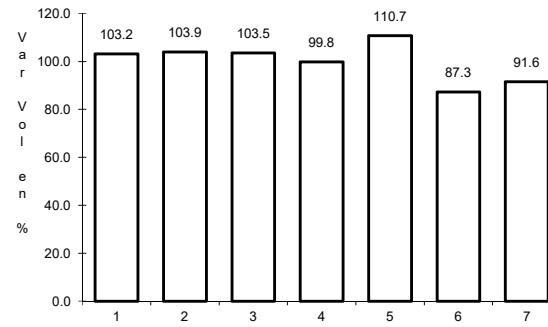
26 CARR: Ramal a Punta Sam

CLAVE: 23582

RUTA: QR



Km: 0.00 Tipo: 3 Sent: 0

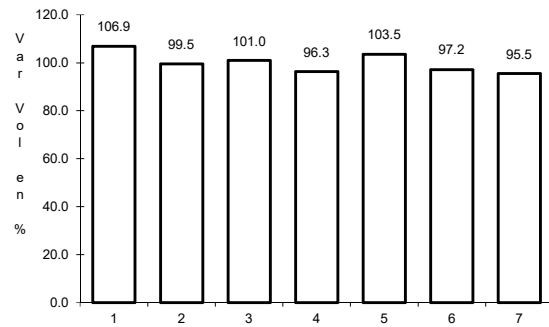


Km: 5.00 Tipo: 1 Sent: 0

27 CARR: Ramal a Reforma

CLAVE: 23016

RUTA: QR-016

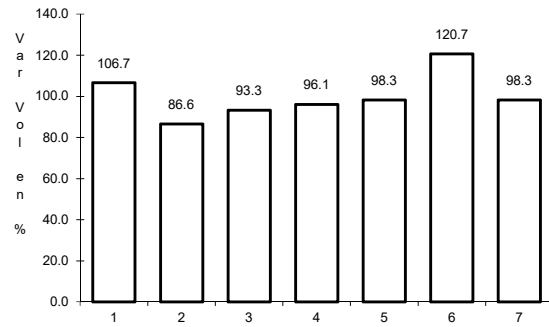


Km: 0.00 Tipo: 3 Sent: 0

28 CARR: Ramal a Tres Garantías

CLAVE: 23585

RUTA: QR

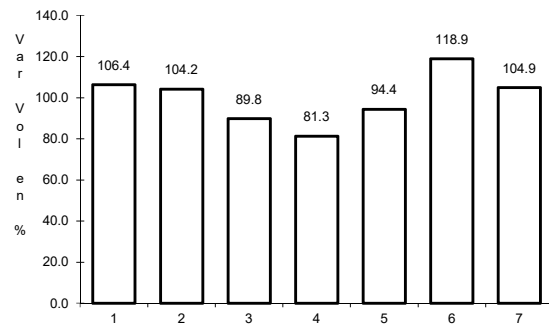


Km: 0.00 Tipo: 3 Sent: 0

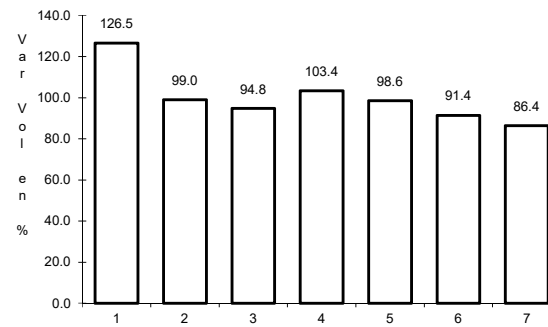
29 CARR: Tihosuco - Dziuche

CLAVE: 23576

RUTA: QR



Km: 0.00 Tipo: 3 Sent: 0

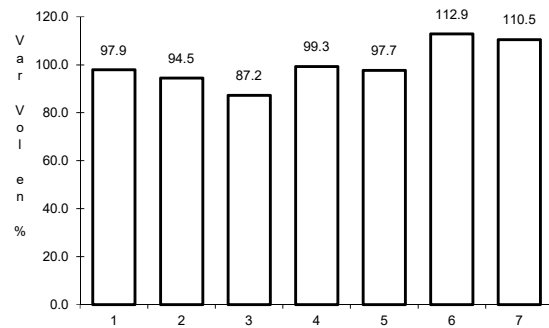


Km: 60.50 Tipo: 1 Sent: 0

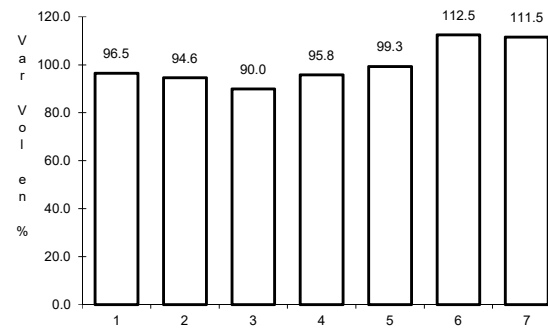
30 CARR: Transversal de Cozumel

CLAVE: 23577

RUTA: QR



Km: 0.00 Tipo: 3 Sent: 1

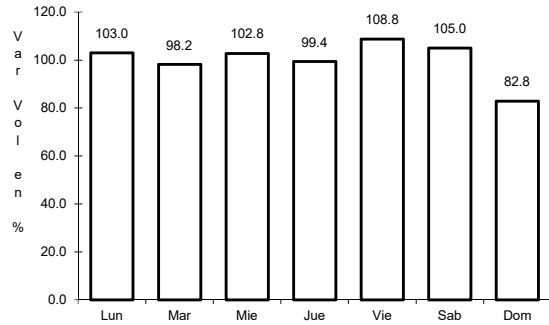


Km: 0.00 Tipo: 3 Sent: 2

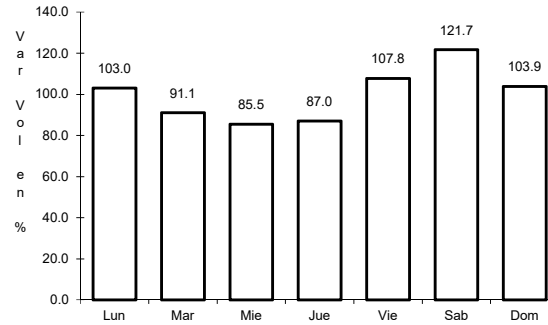
31 CARR: Tulum - Nuevo X-Can

CLAVE: 23570

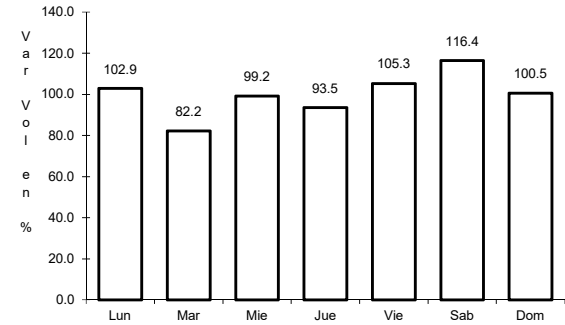
RUTA: QR



Km: 0.00 Tipo: 3 Sent: 1



Km: 42.95 Tipo: 1 Sent: 0

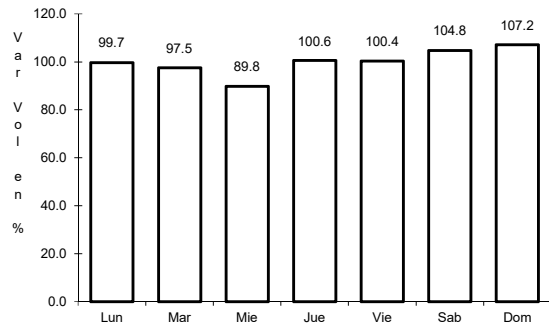


Km: 87.40 Tipo: 1 Sent: 0

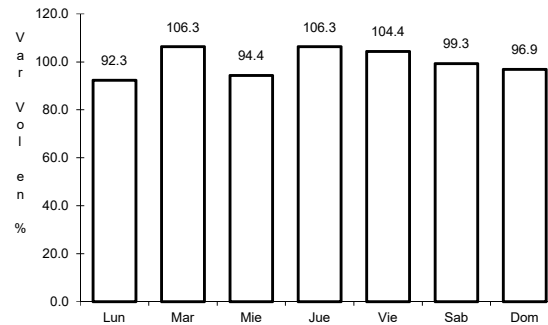
32 CARR: Ucum - Unión

CLAVE: 23571

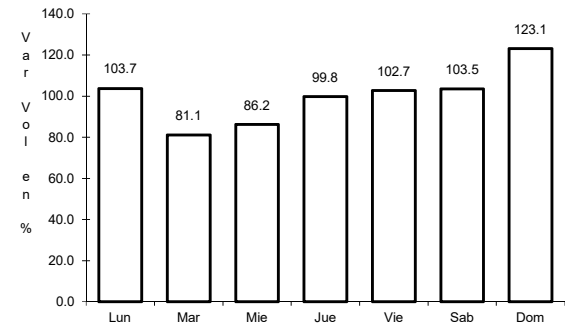
RUTA: QR



Km: 0.00 Tipo: 3 Sent: 0



Km: 31.00 Tipo: 3 Sent: 0

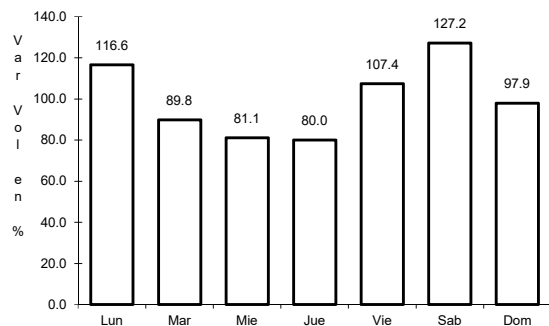


Km: 88.00 Tipo: 1 Sent: 0

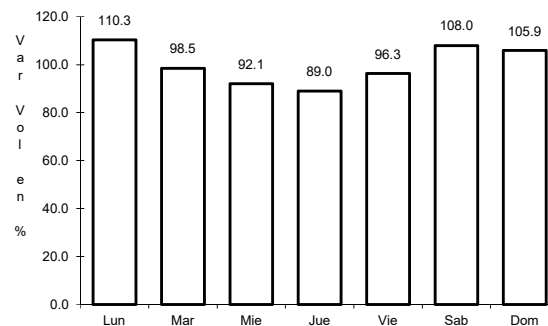
33 CARR: Chemax - Cobá

CLAVE:

RUTA: YUC-MEX-180



Km: 0.00 Tipo: 3 Sent: 0



Km: 30.90 Tipo: 1 Sent: 0

