

QUERETARO

NO. INDICE CARRETERA	RUTA
---RED FEDERAL LIBRE---	
1 Ent. Buenavista - San Miguel de Allende	MEX-057
2 Jalpan de Serra - Rioverde	MEX-069
3 La Noria - Acámbaro	MEX-120
4 Portezuelo - Palmillas	MEX-045
5 Querétaro - Irapuato (Libre)	MEX-045
6 Querétaro - San Luis Potosí	MEX-057
7 San Juan del Río - Xilitla	MEX-120
---RED FEDERAL DE CUOTA---	
8 Libramiento Nororiente de Querétaro (Cuota)	MEX-057D
9 Querétaro - Irapuato (Cuota)	MEX-045D
---RED FEDERAL INTEGRADA POR TRAMOS LIBRES Y DE CUOTA---	
10 México - Querétaro (Cuota)	MEX-057-MEX-057D
---RED ESTATAL LIBRE---	
11 Ajuchitlán - Colón	QRO-005
12 Ajuchitlán - Ezequiel Montes	QRO-005
13 El Colorado - Higuerrillas	QRO-004
14 Hacienda Paraíso - Chichimequillas	QRO-001
15 La Culata - San Joaquín	QRO-021
16 Libramiento de San Juan del Río	QRO
17 Libramiento Norte de Querétaro	QRO
18 Libramiento Surponiente de Querétaro	QRO
19 Peña Colorada - El Rodeo	QRO
20 Querétaro - Ent. San Martín	QRO
21 Querétaro - Estación Chichimequillas	QRO
22 Querétaro - Tequisquiapan	QRO
23 Querétaro - Tlacote El Bajo	QRO
24 Ramal a La Estancia	QRO
25 Ramal a Tolimán	QRO
26 Rayón - Arroyo Seco	SLP-011
27 San Juan del Río - Amealco	QRO
28 T. C. (Villa del Pueblito - Huimilpan) - Coroneo	QRO-GTO
29 Villa del Pueblito - Huimilpan	QRO
---CARRETERAS INTEGRADAS POR TRAMOS FEDERALES Y ESTATALES---	
30 Toluca - Palmillas	EM(D)-MEX-055

QUERETARO

1 CARR: Ent. Buenavista - San Miguel de Allende

CLAVE: 00111

RUTA: MEX-057

AÑO: 2017

LUGAR	ESTACION				CLASIFICACION VEHICULAR EN PORCIENTO													COORDENADAS		
	KM	TE	SC	TDPA	M	A	B	C2	C3	T3S2	T3S3	T3S2R4	OTROS	A	B	C	K'	D	LATITUD	LONGITUD
T. C. Querétaro - San Luis Potosí	0.00	3	0	14027	0.8	85.4	1.0	5.4	0.9	4.6	0.8	0.3	0.8	86.2	1.0	12.8	0.090	0.518	20.822064	-100.456673
Lim. Edos. Term. Qro. Ppia. Gto.	7.91																			
T. Izq. Guadalupe	12.00	1	0	9464	1.0	84.6	1.1	6.8	1.3	3.7	0.8	0.2	0.5	85.6	1.1	13.3	0.102	0.500	20.882391	-100.568818
San Miguel de Allende	35.11	1	0	11628	1.0	85.1	1.3	5.9	1.8	3.0	0.8	0.6	0.5	86.1	1.3	12.6	0.088	0.503	20.901979	-100.705793

2 CARR: Jalpan de Serra - Rioverde

CLAVE: 00265

RUTA: MEX-069

AÑO: 2017

LUGAR	ESTACION				CLASIFICACION VEHICULAR EN PORCIENTO													COORDENADAS		
	KM	TE	SC	TDPA	M	A	B	C2	C3	T3S2	T3S3	T3S2R4	OTROS	A	B	C	K'	D	LATITUD	LONGITUD
Jalpan de Serra	0.00	3	0	6061	1.7	86.4	0.4	7.7	0.6	2.2	0.4	0.2	0.4	88.1	0.4	11.5	0.065	0.509	21.240462	-99.482670
T. Izq. Conca	35.01	1	0	2575	2.3	83.6	0.4	10.6	0.6	1.9	0.3	0.1	0.2	85.9	0.4	13.7	0.082	0.502	21.444691	-99.626784
Arroyo Seco	48.60	1	0	1815	3.3	79.2	0.6	13.8	1.3	1.2	0.4	0.0	0.2	82.5	0.6	16.9	0.083	0.504	21.542482	-99.688901
Lim. Edos. Term. Qro. Ppia. S. L. P.	52.27																			
San Ciro de Acosta	69.42	1	0	2030	7.0	75.9	0.6	13.6	0.7	1.4	0.5	0.1	0.2	82.9	0.6	16.5	0.083	0.503	21.648148	-99.808641
San Ciro de Acosta	69.42	3	0	2912	4.9	80.2	0.4	11.0	0.8	2.0	0.4	0.1	0.2	85.1	0.4	14.5	0.085	0.504	21.661578	-99.827364
Rioverde	105.43	1	0	6251	2.8	79.1	0.2	14.3	0.5	2.3	0.4	0.1	0.3	81.9	0.2	17.9	0.096	0.517	21.882120	-99.975855

3 CARR: La Noria - Acámbaro

CLAVE: 00131

RUTA: MEX-120

AÑO: 2017

LUGAR	ESTACION				CLASIFICACION VEHICULAR EN PORCIENTO													COORDENADAS		
	KM	TE	SC	TDPA	M	A	B	C2	C3	T3S2	T3S3	T3S2R4	OTROS	A	B	C	K'	D	LATITUD	LONGITUD
La Noria	0.00	3	0	9265	1.2	79.2	1.0	10.8	1.3	4.4	1.0	0.4	0.7	80.4	1.0	18.6	0.079	0.502	20.438608	-100.074098
Amealco	34.66	1	0	5574	1.2	80.7	1.7	9.6	1.4	3.5	1.1	0.4	0.4	81.9	1.7	16.4	0.095	0.508	20.198733	-100.149917
Amealco	34.66	3	0	5420	1.3	85.6	0.6	6.9	0.9	3.0	1.0	0.3	0.4	86.9	0.6	12.5	0.123	0.502	20.186464	-100.159159
Lim. Edos. Term. Qro. Ppia. Mich.	39.15																			
Lim. Edos. Term. Mich. Ppia. Gto.	55.90																			
Coroneo	59.35	3	0	2103	1.2	82.5	2.9	9.4	0.9	1.5	1.2	0.3	0.1	83.7	2.9	13.4	0.088	0.555	20.194954	-100.376106
Jerécuaro	79.70	3	0	2886	3.8	82.0	1.3	9.8	0.7	1.4	0.7	0.2	0.1	85.8	1.3	12.9	0.078	0.502	20.143599	-100.536659
Acámbaro	111.12	1	0	7528	4.9	78.9	0.6	9.7	1.1	3.3	1.0	0.1	0.4	83.8	0.6	15.6	0.069	0.506	20.049599	-100.701259

4 CARR: Portezuelo - Palmillas

CLAVE: 00194

RUTA: MEX-045

AÑO: 2017

LUGAR	ESTACION				CLASIFICACION VEHICULAR EN PORCIENTO													COORDENADAS		
	KM	TE	SC	TDPA	M	A	B	C2	C3	T3S2	T3S3	T3S2R4	OTROS	A	B	C	K'	D	LATITUD	LONGITUD
Portezuelo	0.00	3	1	5034	1.7	73.5	3.0	8.8	2.5	6.2	2.8	1.0	0.5	75.2	3.0	21.8	0.066	0.508	20.486388	-99.301208

QUERETARO

4 CARR: Portezuelo - Palmillas

CLAVE: 00194

RUTA: MEX-045

AÑO: 2017

LUGAR	ESTACION				CLASIFICACION VEHICULAR EN PORCIENTO													COORDENADAS		
	KM	TE	SC	TDPA	M	A	B	C2	C3	T3S2	T3S3	T3S2R4	OTROS	A	B	C	K'	D	LATITUD	LONGITUD
Portezuelo	0.00	3	2	4869	1.9	70.9	3.1	10.5	2.7	6.4	2.9	1.1	0.5	72.8	3.1	24.1	0.065	0.508	20.486316	-99.301217
Jonacapa	29.41	3	0	6340	0.4	69.7	4.6	7.6	3.3	9.0	2.9	1.5	1.0	70.1	4.6	25.3	0.056	0.508	20.435878	-99.535699
Huichapan	45.10	1	0	9303	0.4	70.0	4.4	7.5	3.3	9.0	2.9	1.6	0.9	70.4	4.4	25.2	0.068	0.501	20.391783	-99.639322
T. Izq. Nopala	56.15	1	0	8932	1.1	69.2	5.0	7.2	2.8	7.5	3.5	2.5	1.2	70.3	5.0	24.7	0.083	0.513	20.318649	-99.712665
Lim. Edos. Term. Hgo. Ppia. Qro.	71.40																			
Palmillas	80.00	1	0	8665	0.4	77.3	4.6	9.3	3.7	1.9	1.1	0.8	0.9	77.7	4.6	17.7	0.060	0.516	20.327259	-99.933751

5 CARR: Querétaro - Irapuato (Libre)

CLAVE: 00154

RUTA: MEX-045

AÑO: 2017

LUGAR	ESTACION				CLASIFICACION VEHICULAR EN PORCIENTO													COORDENADAS		
	KM	TE	SC	TDPA	M	A	B	C2	C3	T3S2	T3S3	T3S2R4	OTROS	A	B	C	K'	D	LATITUD	LONGITUD
Querétaro Poniente	0.00	3	1	54872	0.5	86.5	0.1	5.2	0.3	3.8	2.6	0.3	0.7	87.0	0.1	12.9	0.074	0.509	20.554838	-100.420621
Querétaro Poniente	0.00	3	2	56972	0.5	86.3	0.1	5.2	0.3	3.7	2.9	0.3	0.7	86.8	0.1	13.1	0.070	0.509	20.554863	-100.420390
T. Der. Villa del Pueblito	6.67	3	1	20318	0.6	86.6	0.1	5.3	0.3	3.5	2.6	0.3	0.7	87.2	0.1	12.7	0.074	0.500	20.533138	-100.447163
T. Der. Villa del Pueblito	6.67	3	2	20323	0.6	86.0	0.1	5.4	0.4	3.5	3.0	0.3	0.7	86.6	0.1	13.3	0.070	0.500	20.533035	-100.447102
Los Ángeles	12.60	3	1	22384	0.6	79.1	1.2	6.1	2.2	6.1	2.5	0.7	1.5	79.7	1.2	19.1	0.069	0.505	20.533620	-100.500939
Los Ángeles	12.60	3	2	21924	0.6	81.1	0.4	4.0	2.6	6.5	2.5	0.8	1.5	81.7	0.4	17.9	0.062	0.505	20.533538	-100.500935
Lim. Edos. Term. Qro. Ppia. Gto.	13.49																			
T. Izq. Apaseo El Alto	28.37	3	1	18280	0.6	74.4	1.7	6.6	3.7	8.2	2.6	0.9	1.3	75.0	1.7	23.3	0.057	0.503	20.479502	-100.646948
T. Izq. Apaseo El Alto	28.37	3	2	18031	0.8	72.6	2.4	8.0	3.2	8.2	2.5	0.9	1.4	73.4	2.4	24.2	0.069	0.503	20.479571	-100.646902
T. Der. Apaseo El Grande	40.11	3	1	20059	1.2	72.0	3.3	7.8	2.8	7.5	2.6	1.3	1.5	73.2	3.3	23.5	0.069	0.505	20.532927	-100.713153
T. Der. Apaseo El Grande	40.11	3	2	20464	1.1	76.5	1.6	5.1	2.8	7.4	2.6	1.3	1.6	77.6	1.6	20.8	0.081	0.505	20.532989	-100.713202
T. Izq. Libramiento de Celaya Ote.	49.90	1	1	21085	0.7	66.0	4.6	15.7	2.0	6.2	2.4	1.2	1.2	66.7	4.6	28.7	0.080	0.501	20.520025	-100.753792
T. Izq. Libramiento de Celaya Ote.	49.90	1	2	21162	0.8	64.0	4.8	17.0	2.1	6.5	2.4	1.3	1.1	64.8	4.8	30.4	0.062	0.501	20.520077	-100.753820
T. Izq. Libramiento de Celaya Pte.	55.61	3	1	27010	0.4	80.2	1.4	5.9	1.5	5.8	2.6	0.8	1.4	80.6	1.4	18.0	0.072	0.530	20.516079	-100.885419
T. Izq. Libramiento de Celaya Pte.	55.61	3	2	23909	0.9	78.4	1.6	6.6	1.7	6.0	2.6	0.9	1.3	79.3	1.6	19.1	0.075	0.530	20.515984	-100.885415
T. Izq. Cortazar	67.50	3	1	23098	0.8	77.2	2.3	8.3	2.3	6.4	1.6	0.9	0.2	78.0	2.3	19.7	0.067	0.503	20.510065	-100.969824
T. Izq. Cortazar	67.50	3	2	23362	0.7	74.0	4.3	9.2	2.2	6.9	1.6	1.0	0.1	74.7	4.3	21.0	0.082	0.503	20.509961	-100.969830
T. Izq. Libramiento de Salamanca	93.80	1	1	20115	1.1	73.5	3.1	9.5	2.9	6.4	1.9	1.4	0.2	74.6	3.1	22.3	0.078	0.515	20.553986	-101.153375
T. Izq. Libramiento de Salamanca	93.80	1	2	18995	1.1	71.6	3.4	10.5	3.0	6.6	2.1	1.4	0.3	72.7	3.4	23.9	0.065	0.515	20.553986	-101.153375
Irapuato	113.70	1	1	15715	3.1	83.2	2.5	7.7	1.5	1.1	0.5	0.4	0.0	86.3	2.5	11.2	0.085	0.512	20.663146	-101.318122
Irapuato	113.70	1	2	16509	3.1	82.4	2.7	7.9	1.7	1.3	0.5	0.4	0.0	85.5	2.7	11.8	0.093	0.512	20.662960	-101.317863

QUERETARO

6 CARR: Querétaro - San Luis Potosí

CLAVE: 00165

RUTA: MEX-057

AÑO: 2017

LUGAR	ESTACION				CLASIFICACION VEHICULAR EN PORCIENTO													COORDENADAS		
	KM	TE	SC	TDPA	M	A	B	C2	C3	T3S2	T3S3	T3S2R4	OTROS	A	B	C	K'	D	LATITUD	LONGITUD
Querétaro	0.00																			
T. Der. Libramiento de Querétaro	6.28	3	1	48891	0.3	91.2	1.0	3.8	0.7	1.6	1.1	0.1	0.2	91.5	1.0	7.5	0.071	0.503	20.636829	-100.428829
T. Der. Libramiento de Querétaro	6.28	3	2	49411	0.2	90.8	1.0	4.2	0.8	1.6	1.1	0.1	0.2	91.0	1.0	8.0	0.068	0.503	20.636773	-100.428943
T. Izq. Juriquilla	15.63	3	1	32409	1.0	81.5	1.3	7.8	2.2	3.4	1.1	0.9	0.8	82.5	1.3	16.2	0.071	0.500	20.718008	-100.438789
T. Izq. Juriquilla	15.63	3	2	32447	1.5	78.9	1.6	8.0	2.5	3.7	1.4	1.3	1.1	80.4	1.6	18.0	0.069	0.500	20.718010	-100.438924
T. Izq. San Miguel de Allende	28.53	1	1	27801	0.6	80.4	2.0	9.4	1.8	3.6	1.0	0.9	0.3	81.0	2.0	17.0	0.128	0.505	20.809529	-100.448816
T. Izq. San Miguel de Allende	28.53	1	2	27252	0.3	78.8	2.0	10.6	1.9	4.1	1.1	0.9	0.3	79.1	2.0	18.9	0.098	0.505	20.806705	-100.449035
T. Izq. San Miguel de Allende	28.53	3	1	17905	0.4	42.5	3.8	9.8	3.4	30.1	2.6	7.1	0.3	42.9	3.8	53.3	0.093	0.515	20.839001	-100.438200
T. Izq. San Miguel de Allende	28.53	3	2	19017	0.4	42.5	3.6	9.7	3.0	31.1	2.5	6.9	0.3	42.9	3.6	53.5	0.107	0.515	20.839077	-100.438396
Lim. Edos. Term. Qro. Ppia. Gto.	36.70																			
X. C. San José Iturbide - El Arenal	46.83	1	1	19891	0.4	44.8	4.3	7.5	2.7	30.3	2.3	7.3	0.4	45.2	4.3	50.5	0.064	0.509	20.969428	-100.429409
X. C. San José Iturbide - El Arenal	46.83	1	2	20597	0.3	44.1	4.4	8.1	2.9	30.4	2.4	7.1	0.3	44.4	4.4	51.2	0.077	0.509	20.969340	-100.429579
X. C. Ent. San Miguel de Allende - Dr. Mora	61.93	1	1	14266	0.4	43.8	4.4	8.1	2.9	30.6	2.3	7.0	0.5	44.2	4.4	51.4	0.088	0.509	21.076591	-100.511963
X. C. Ent. San Miguel de Allende - Dr. Mora	61.93	1	2	14772	0.3	44.3	4.5	8.6	3.3	29.2	2.6	6.9	0.3	44.6	4.5	50.9	0.088	0.509	21.076491	-100.512129
X. C. San Luis de La Paz - Guanajuato	86.68	1	1	14197	0.4	49.0	4.3	7.1	2.9	27.8	2.5	5.6	0.4	49.4	4.3	46.3	0.068	0.511	21.273687	-100.590088
X. C. San Luis de La Paz - Guanajuato	86.68	1	2	14814	0.3	47.2	4.7	7.9	3.2	27.8	2.7	5.8	0.4	47.5	4.7	47.8	0.068	0.511	21.273808	-100.590321
T. Izq. San Diego de La Unión	119.07	3	1	12001	0.2	52.7	4.6	7.1	3.0	24.1	1.8	6.3	0.2	52.9	4.6	42.5	0.059	0.507	21.539328	-100.746309
T. Izq. San Diego de La Unión	119.07	3	2	12326	0.3	48.2	5.0	8.5	3.3	25.8	2.0	6.7	0.2	48.5	5.0	46.5	0.062	0.507	21.539046	-100.746391
Lim. Edos. Term. Gto. Ppia. S. L. P.	124.74																			
T. Izq. Santa María del Río	155.88	3	1	12228	0.9	56.1	4.6	8.2	2.2	19.7	3.2	4.3	0.8	57.0	4.6	38.4	0.067	0.512	21.819455	-100.727988
T. Izq. Santa María del Río	155.88	3	2	12854	1.2	53.5	5.2	9.0	2.3	19.6	3.9	4.5	0.8	54.7	5.2	40.1	0.082	0.512	21.820740	-100.729531
T. Izq. Villa de Reyes	176.35	1	1	14889	0.7	38.5	6.0	9.0	3.3	34.3	3.4	4.6	0.2	39.2	6.0	54.8	0.067	0.509	21.958797	-100.810345
T. Izq. Villa de Reyes	176.35	1	2	15425	1.1	31.2	6.5	9.7	3.9	38.7	3.7	5.0	0.2	32.3	6.5	61.2	0.058	0.509	21.958757	-100.810544
T. Izq. Villa de Reyes	176.35	3	1	21048	0.4	36.9	3.8	8.6	4.2	37.8	3.5	4.5	0.3	37.3	3.8	58.9	0.073	0.506	21.978285	-100.820812
T. Izq. Villa de Reyes	176.35	3	2	21585	0.4	30.0	4.1	9.8	4.6	41.7	4.0	5.1	0.3	30.4	4.1	65.5	0.071	0.506	21.978193	-100.821075
X. C. Libramiento de San Luis Potosí	184.80	1	1	25509	0.7	66.5	2.6	7.7	2.9	14.2	2.2	2.7	0.5	67.2	2.6	30.2	0.110	0.503	22.026028	-100.846808
X. C. Libramiento de San Luis Potosí	184.80	1	2	25196	0.9	62.5	2.8	8.8	3.1	15.8	2.5	3.2	0.4	63.4	2.8	33.8	0.113	0.503	22.025987	-100.846971
X. Periférico de San Luis Potosí (Central)	197.50	1	1	32767	0.6	86.4	0.4	1.6	1.8	3.1	4.4	1.0	0.7	87.0	0.4	12.6	0.078	0.521	22.121873	-100.912836
X. Periférico de San Luis Potosí (Lateral)	197.50	1	1	14538	4.5	70.5	2.2	10.0	3.0	4.7	3.1	1.0	1.0	75.0	2.2	22.8	0.114	0.509	22.121986	-100.912760
X. Periférico de San Luis Potosí (Central)	197.50	1	2	35596	0.7	85.6	0.4	1.7	2.1	3.4	4.4	1.0	0.7	86.3	0.4	13.3	0.076	0.521	22.121731	-100.912941
X. Periférico de San Luis Potosí (Lateral)	197.50	1	2	14049	4.4	67.6	2.4	11.7	3.3	5.0	3.3	1.2	1.1	72.0	2.4	25.6	0.124	0.509	22.121468	-100.913181
San Luis Potosí	201.66																			

QUERETARO

7 CARR: San Juan del Río - Xilitla

CLAVE: 00183

RUTA: MEX-120

AÑO: 2017

LUGAR	ESTACION				CLASIFICACION VEHICULAR EN PORCIENTO												COORDENADAS			
	KM	TE	SC	TDPA	M	A	B	C2	C3	T3S2	T3S3	T3S2R4	OTROS	A	B	C	K'	D	LATITUD	LONGITUD
San Juan del Río	0.00																			
T. Der. Libramiento de San Juan del Río	5.20	3	1	13676	1.4	86.7	1.0	5.4	1.1	2.4	1.2	0.3	0.5	88.1	1.0	10.9	0.087	0.517	20.428944	-99.973137
T. Der. Libramiento de San Juan del Río	5.20	3	2	12801	1.5	86.1	1.0	5.6	1.2	2.5	1.3	0.3	0.5	87.6	1.0	11.4	0.084	0.517	20.428872	-99.973013
T. Der. Tequisquiapan	19.80	1	1	10245	1.5	86.0	1.8	7.5	1.2	1.1	0.6	0.1	0.2	87.5	1.8	10.7	0.086	0.501	20.513161	-99.905776
T. Der. Tequisquiapan	19.80	1	2	10195	1.5	85.9	1.5	7.4	1.0	1.2	0.9	0.2	0.4	87.4	1.5	11.1	0.085	0.501	20.513266	-99.905834
T. Der. Tequisquiapan	19.80	3	1	9296	1.3	83.9	1.5	7.4	1.9	1.9	1.4	0.3	0.4	85.2	1.5	13.3	0.084	0.504	20.540871	-99.901518
T. Der. Tequisquiapan	19.80	3	2	9429	1.1	85.6	1.4	7.6	1.6	1.5	0.8	0.2	0.2	86.7	1.4	11.9	0.082	0.504	20.540868	-99.901634
Ezequiel Montes	36.50	1	1	7409	1.5	81.8	2.3	8.0	2.6	2.2	1.0	0.3	0.3	83.3	2.3	14.4	0.084	0.502	20.644793	-99.905633
Ezequiel Montes	36.50	1	2	7362	1.9	82.2	2.0	7.3	2.5	2.2	1.2	0.3	0.4	84.1	2.0	13.9	0.087	0.502	20.644799	-99.905747
Ezequiel Montes	36.50	3	1	6497	2.2	86.8	1.0	7.1	1.2	0.9	0.6	0.0	0.2	89.0	1.0	10.0	0.084	0.503	20.677711	-99.890736
Ezequiel Montes	36.50	3	2	6409	2.5	86.3	1.1	7.6	1.2	0.7	0.5	0.0	0.1	88.8	1.1	10.1	0.087	0.503	20.677688	-99.890750
Cadereyta	47.90	3	0	9376	0.9	79.2	1.1	10.2	2.4	3.8	1.5	0.3	0.6	80.1	1.1	18.8	0.089	0.502	20.702121	-99.804310
Vizarrón de Montes	73.50	3	0	3654	0.8	72.7	0.9	12.6	5.4	1.7	4.9	0.3	0.7	73.5	0.9	25.6	0.068	0.508	20.854863	-99.711786
T. Der. San Joaquín	79.50	3	0	1403	1.7	80.4	1.2	12.1	2.1	1.3	1.0	0.0	0.2	82.1	1.2	16.7	0.088	0.520	20.885276	-99.707415
T. Izq. Higuierillas	89.10	3	0	1633	2.3	76.8	2.2	14.6	1.8	1.2	1.0	0.0	0.1	79.1	2.2	18.7	0.112	0.501	20.951543	-99.748967
T. Izq. Peñamiller	103.00	3	0	1491	0.5	81.3	2.6	11.0	2.0	2.0	0.4	0.0	0.2	81.8	2.6	15.6	0.083	0.511	21.039793	-99.739608
Pinal de Amoles	140.00	3	0	1940	1.2	85.4	1.0	8.5	1.2	1.5	0.8	0.0	0.4	86.6	1.0	12.4	0.094	0.501	21.138643	-99.620154
Jalpan de Serra	179.30	3	0	6300	1.5	85.3	0.2	7.8	0.6	3.6	0.4	0.1	0.5	86.8	0.2	13.0	0.082	0.501	21.207893	-99.453170
Landa de Matamoros	201.60	3	0	2950	1.0	86.1	0.9	9.3	0.7	1.4	0.4	0.0	0.2	87.1	0.9	12.0	0.079	0.505	21.187017	-99.311408
El Lobo	236.40	3	0	870	2.0	83.4	2.4	6.2	2.3	2.1	0.7	0.0	0.9	85.4	2.4	12.2	0.092	0.518	21.291809	-99.115211
Lim. Edos. Term. Qro. Ppia. S. L. P.	238.33																			
Xilitla	266.40	1	0	1898	6.7	80.4	0.7	8.9	1.0	1.5	0.4	0.1	0.3	87.1	0.7	12.2	0.097	0.504	21.379067	-98.999019
T. C. Portezuelo - Cd. Valles	276.98	1	0	2921	5.7	81.4	1.3	7.9	1.2	1.9	0.4	0.0	0.2	87.1	1.3	11.6	0.110	0.500	21.442375	-98.929989

8 CARR: Libramiento Nororiente de Querétaro (Cuota)

CLAVE: 22266

RUTA: MEX-057D

AÑO: 2017

LUGAR	ESTACION				CLASIFICACION VEHICULAR EN PORCIENTO												COORDENADAS			
	KM	TE	SC	TDPA	M	A	B	C2	C3	T3S2	T3S3	T3S2R4	OTROS	A	B	C	K'	D	LATITUD	LONGITUD
T. C. México - Querétaro	0.00	3	1	9068	1.1	50.2	5.1	7.1	3.0	22.9	4.9	5.1	0.6	51.3	5.1	43.6	0.064	0.506	20.587276	-100.243821
T. C. México - Querétaro	0.00	3	2	9279	1.4	46.1	5.6	7.6	3.6	24.7	4.6	5.7	0.7	47.5	5.6	46.9	0.068	0.506	20.587253	-100.244075
Caseta de Cobro Chichimequillas	20.32	2	1	8880	0.2	41.6	4.2	4.2	6.3	29.7	3.3	6.6	3.9	41.8	4.2	54.0	0.066	0.500	20.705576	-100.343910
Caseta de Cobro Chichimequillas	20.32	2	2	8880	0.2	41.6	4.2	4.2	6.3	29.7	3.3	6.6	3.9	41.8	4.2	54.0	0.066	0.500	20.705576	-100.343910
T. C. Querétaro - San Luis Potosí	37.50	1	1	8666	0.8	52.6	4.3	6.4	2.9	23.4	4.3	4.7	0.6	53.4	4.3	42.3	0.060	0.501	20.810047	-100.438759
T. C. Querétaro - San Luis Potosí	37.50	1	2	8647	1.0	45.7	5.0	6.7	3.1	27.4	4.9	5.4	0.8	46.7	5.0	48.3	0.064	0.501	20.809865	-100.438746

QUERETARO

9 CARR: Querétaro - Irapuato (Cuota)

CLAVE: 00423

RUTA: MEX-045D

AÑO: 2017

LUGAR	ESTACION				CLASIFICACION VEHICULAR EN PORCIENTO										COORDENADAS					
	KM	TE	SC	TDPA	M	A	B	C2	C3	T3S2	T3S3	T3S2R4	OTROS	A	B	C	K'	D	LATITUD	LONGITUD
Querétaro	0.00	3	1	19557	0.8	65.3	7.0	7.8	4.9	7.0	2.7	3.9	0.6	66.1	7.0	26.9	0.072	0.513	20.576627	-100.420422
Querétaro	0.00	3	2	18556	0.5	63.7	7.2	7.7	6.7	7.3	2.5	3.8	0.6	64.2	7.2	28.6	0.077	0.513	20.576526	-100.420524
Caseta de Cobro Querétaro	7.00	2	1	10089	0.2	62.4	6.1	2.8	6.3	14.9	1.6	5.0	0.7	62.6	6.1	31.3	0.079	0.500	20.572187	-100.472977
Caseta de Cobro Querétaro	7.00	2	2	10089	0.2	62.4	6.1	2.8	6.3	14.9	1.6	5.0	0.7	62.6	6.1	31.3	0.079	0.500	20.572187	-100.472977
Lim. Edos. Term. Qro. Ppia. Gto.	8.97																			
X. C. Celaya - Dolores Hidalgo	44.10	1	1	17921	0.7	70.0	4.9	7.3	3.1	7.3	1.7	4.4	0.6	70.7	4.9	24.4	0.068	0.503	20.556904	-100.811262
X. C. Celaya - Dolores Hidalgo	44.10	1	2	17730	0.8	66.3	5.5	8.3	3.2	8.5	1.9	4.9	0.6	67.1	5.5	27.4	0.069	0.503	20.556744	-100.811311
T. Izq. Salamanca	81.54	1	1	7935	0.7	72.2	5.3	6.8	3.0	6.8	0.9	4.1	0.2	72.9	5.3	21.8	0.079	0.509	20.592748	-101.151704
T. Izq. Salamanca	81.54	1	2	8227	0.8	67.2	6.1	7.6	3.7	8.0	1.3	4.8	0.5	68.0	6.1	25.9	0.072	0.509	20.592570	-101.151763
T. Izq. Salamanca	81.54	3	1	8648	0.7	66.9	5.1	7.7	3.4	9.6	1.6	4.4	0.6	67.6	5.1	27.3	0.067	0.518	20.600522	-101.191084
T. Izq. Salamanca	81.54	3	2	9308	0.6	63.5	6.0	8.8	3.5	10.3	1.9	4.7	0.7	64.1	6.0	29.9	0.096	0.518	20.600391	-101.191187
Caseta de Cobro Salamanca	83.25	2	1	5729	0.2	60.1	5.5	4.3	6.5	15.1	1.7	6.0	0.6	60.3	5.5	34.2	0.079	0.500	20.598618	-101.180923
Caseta de Cobro Salamanca	83.25	2	2	5729	0.2	60.1	5.5	4.3	6.5	15.1	1.7	6.0	0.6	60.3	5.5	34.2	0.079	0.500	20.598618	-101.180923
T. Der. Libramiento de Irapuato	96.30	1	1	9073	0.6	66.2	5.4	7.8	3.7	9.0	2.1	4.4	0.8	66.8	5.4	27.8	0.063	0.518	20.644836	-101.272897
T. Der. Libramiento de Irapuato	96.30	1	2	9749	0.6	63.4	5.7	8.5	3.9	9.9	2.3	4.9	0.8	64.0	5.7	30.3	0.091	0.518	20.644699	-101.272990
T. Der. Libramiento de Irapuato	96.30	3	1	19910	0.7	67.8	3.7	10.3	4.2	8.2	2.3	2.1	0.7	68.5	3.7	27.8	0.064	0.537	20.654740	-101.293056
T. Der. Libramiento de Irapuato	96.30	3	2	17186	1.1	70.1	3.4	8.1	3.5	7.7	2.5	2.6	1.0	71.2	3.4	25.4	0.071	0.537	20.654591	-101.293057
T. C. Irapuato - Zapotlanejo	104.70																			

10 CARR: México - Querétaro (Cuota)

CLAVE: 00411

RUTA: MEX-057-MEX-057D

AÑO: 2017

LUGAR	ESTACION				CLASIFICACION VEHICULAR EN PORCIENTO										COORDENADAS					
	KM	TE	SC	TDPA	M	A	B	C2	C3	T3S2	T3S3	T3S2R4	OTROS	A	B	C	K'	D	LATITUD	LONGITUD
México	0.00																			
Lim. Edos. Term. D. F. Ppia. Mex.	11.30																			
Caseta de Cobro Tepetzotlán	43.01	2	1	27859	0.4	70.5	5.3	3.3	6.6	10.4	0.7	2.3	0.5	70.9	5.3	23.8	0.077	0.500	19.715359	-99.207588
Caseta de Cobro Tepetzotlán	43.01	2	2	27859	0.4	70.5	5.3	3.3	6.6	10.4	0.7	2.3	0.5	70.9	5.3	23.8	0.077	0.500	19.715359	-99.207588
Ent. Jorobas	56.18	1	1	31862	1.4	68.3	6.0	4.1	4.6	11.9	0.9	2.2	0.6	69.7	6.0	24.3	0.058	0.505	19.811451	-99.238510
Ent. Jorobas	56.18	1	2	32482	1.9	65.7	6.2	4.4	5.2	12.6	1.0	2.4	0.6	67.6	6.2	26.2	0.070	0.505	19.808409	-99.237356
Ent. Jorobas	56.18	3	1	32669	1.2	66.1	5.9	4.4	6.1	12.4	0.7	2.4	0.8	67.3	5.9	26.8	0.058	0.506	19.829245	-99.257725
Ent. Jorobas	56.18	3	2	31857	1.1	63.2	6.3	4.6	6.7	13.8	0.7	2.6	1.0	64.3	6.3	29.4	0.064	0.506	19.828235	-99.255903
Lim. Edos. Term. Mex. Ppia. Hgo.	59.85																			
T. Der. Tepeji del Río	69.36	1	1	30630	1.2	69.4	4.5	3.7	5.0	12.1	0.9	2.5	0.7	70.6	4.5	24.9	0.068	0.506	19.863076	-99.313899
T. Der. Tepeji del Río	69.36	1	2	29870	1.2	67.5	5.1	3.9	5.1	13.0	0.9	2.6	0.7	68.7	5.1	26.2	0.073	0.506	19.872693	-99.339344
T. Der. Tepeji del Río	69.36	3	1	27104	1.0	73.9	3.3	3.2	4.5	10.8	0.5	2.1	0.7	74.9	3.3	21.8	0.074	0.516	19.920829	-99.370331

QUERETARO

10 CARR: México - Querétaro (Cuota)

CLAVE: 00411

RUTA: MEX-057-MEX-057D

AÑO: 2017

LUGAR	ESTACION				CLASIFICACION VEHICULAR EN PORCIENTO										COORDENADAS					
	KM	TE	SC	TDPA	M	A	B	C2	C3	T3S2	T3S3	T3S2R4	OTROS	A	B	C	K'	D	LATITUD	LONGITUD
T. Der. Tepeji del Río	69.36	3	2	28942	0.9	70.9	3.7	3.5	5.1	12.1	0.7	2.2	0.9	71.8	3.7	24.5	0.079	0.516	19.921000	-99.370696
T. Izq. Jilotepec	83.75	1	1	29947	1.3	68.1	4.6	3.5	5.4	13.1	0.9	2.4	0.7	69.4	4.6	26.0	0.071	0.504	19.977225	-99.436130
T. Izq. Jilotepec	83.75	1	2	29505	2.3	63.9	5.3	4.0	6.1	13.8	0.9	2.8	0.9	66.2	5.3	28.5	0.067	0.504	19.977833	-99.438043
T. Izq. Jilotepec	83.75	3	1	24963	2.6	66.8	5.3	3.5	4.2	13.3	1.0	2.6	0.7	69.4	5.3	25.3	0.078	0.506	19.988064	-99.452542
T. Izq. Jilotepec	83.75	3	2	24389	2.2	63.2	6.3	3.9	4.8	14.9	1.1	2.9	0.7	65.4	6.3	28.3	0.073	0.506	19.987988	-99.453296
Lim. Edos. Term. Hgo. Ppia. Mex.	86.00																			
X. C. Jilotepec - Maravillas	107.00	1	1	30544	1.3	64.0	4.4	3.2	4.9	16.4	1.9	3.3	0.6	65.3	4.4	30.3	0.065	0.508	20.080711	-99.619563
X. C. Jilotepec - Maravillas	107.00	1	2	29618	0.9	62.1	4.6	3.6	5.7	16.4	2.0	4.0	0.7	63.0	4.6	32.4	0.066	0.508	20.082280	-99.624224
X. C. Jilotepec - Maravillas	107.00	3	1	29550	1.3	67.2	3.7	5.5	5.0	8.0	3.0	5.4	0.9	68.5	3.7	27.8	0.069	0.508	20.082427	-99.635737
X. C. Jilotepec - Maravillas	107.00	3	2	28659	1.0	63.8	4.0	6.2	6.0	9.2	3.3	5.6	0.9	64.8	4.0	31.2	0.068	0.508	20.082510	-99.633565
T. Izq. Aculco	125.00	1	1	31103	1.3	64.8	4.0	3.1	5.1	15.4	1.7	3.8	0.8	66.1	4.0	29.9	0.065	0.508	20.097515	-99.692899
T. Izq. Aculco	125.00	1	2	30154	0.9	60.3	4.8	3.5	5.8	18.0	1.8	4.1	0.8	61.2	4.8	34.0	0.066	0.508	20.091918	-99.687328
T. Izq. Aculco	125.00	3	1	26622	1.3	65.2	4.2	3.2	4.9	15.1	1.7	3.7	0.7	66.5	4.2	29.3	0.078	0.508	20.109988	-99.707177
T. Izq. Aculco	125.00	3	2	25810	1.0	62.2	4.7	3.4	5.8	16.4	2.0	3.7	0.8	63.2	4.7	32.1	0.079	0.508	20.108570	-99.704284
Lim. Edos. Term. Mex. Ppia. Qro.	145.50																			
Caseta de Cobro Palmillas	145.80	2	1	26222	0.3	57.7	5.4	4.5	6.5	18.3	1.8	4.7	0.8	58.0	5.4	36.6	0.077	0.500	20.296103	-99.928993
Caseta de Cobro Palmillas	145.80	2	2	26222	0.3	57.7	5.4	4.5	6.5	18.3	1.8	4.7	0.8	58.0	5.4	36.6	0.077	0.500	20.296103	-99.928993
T. Izq. Toluca	148.50	1	1	27152	0.9	57.4	4.3	4.8	6.9	18.8	1.7	4.6	0.6	58.3	4.3	37.4	0.068	0.502	20.286479	-99.911785
T. Izq. Toluca	148.50	1	2	27417	1.2	52.1	4.7	5.3	7.8	21.3	1.9	5.0	0.7	53.3	4.7	42.0	0.063	0.502	20.286174	-99.912019
T. Izq. Toluca	148.50	3	1	32779	1.3	55.8	4.1	5.4	7.4	19.2	1.8	4.3	0.7	57.1	4.1	38.8	0.067	0.501	20.307417	-99.934267
T. Izq. Toluca	148.50	3	2	32689	0.8	53.3	4.4	6.0	7.6	20.6	1.9	4.6	0.8	54.1	4.4	41.5	0.073	0.501	20.307434	-99.934917
T. Der. Poniente San Juan del Río	164.10	3	1	29633	0.9	68.8	3.7	4.3	4.0	13.1	1.9	2.4	0.9	69.7	3.7	26.6	0.107	0.504	20.373833	-99.994331
T. Der. Poniente San Juan del Río	164.10	3	2	29156	0.8	67.0	3.4	3.9	5.9	13.7	1.7	2.7	0.9	67.8	3.4	28.8	0.103	0.504	20.373021	-99.993049
T. Izq. Acámbaro	170.45	3	1	40865	0.9	73.0	3.4	3.5	5.0	9.9	1.9	1.7	0.7	73.9	3.4	22.7	0.094	0.503	20.452020	-100.084549
T. Izq. Acámbaro	170.45	3	2	41279	0.9	72.4	4.2	3.2	5.3	9.7	1.7	1.8	0.8	73.3	4.2	22.5	0.087	0.503	20.452420	-100.085483
T. Der. Libramiento de Querétaro a San Luis Potosí	207.00	1	1	57330	0.7	79.4	3.6	3.0	4.9	5.3	1.8	0.7	0.6	80.1	3.6	16.3	0.085	0.501	20.573096	-100.323004
T. Der. Libramiento de Querétaro a San Luis Potosí	207.00	1	2	57608	0.5	79.2	3.8	2.9	4.9	5.5	1.7	0.8	0.7	79.7	3.8	16.5	0.090	0.501	20.573139	-100.325246
T. Der. Libramiento de Querétaro a San Luis Potosí	207.00	3	1	60257	0.7	84.7	2.1	1.9	3.8	4.2	1.5	0.4	0.7	85.4	2.1	12.5	0.107	0.503	20.578086	-100.381351
T. Der. Libramiento de Querétaro a San Luis Potosí	207.00	3	2	59435	0.8	83.3	2.3	2.2	4.2	4.3	1.8	0.4	0.7	84.1	2.3	13.6	0.112	0.503	20.577951	-100.381309
Querétaro	211.60																			

QUERETARO

11 CARR: Ajuchitlán - Colón

CLAVE: 22010

RUTA: QRO-005

AÑO: 2017

LUGAR	ESTACION				CLASIFICACION VEHICULAR EN PORCIENTO													COORDENADAS		
	KM	TE	SC	TDPA	M	A	B	C2	C3	T3S2	T3S3	T3S2R4	OTROS	A	B	C	K'	D	LATITUD	LONGITUD
T. C. El Colorado - Higuerrillas	0.00	3	1	4034	0.7	84.0	0.4	8.4	0.5	4.4	0.7	0.2	0.7	84.7	0.4	14.9	0.083	0.516	20.692279	-100.015292
T. C. El Colorado - Higuerrillas	0.00	3	2	4300	1.3	84.0	0.4	9.0	0.7	2.9	0.8	0.3	0.6	85.3	0.4	14.3	0.096	0.516	20.692294	-100.015321
Colón	14.00	1	1	3972	0.8	84.7	0.4	7.7	0.5	4.3	0.8	0.2	0.6	85.5	0.4	14.1	0.081	0.500	20.764394	-100.046431
Colón	14.00	1	2	3979	1.3	84.2	0.4	8.5	0.8	2.9	0.9	0.3	0.7	85.5	0.4	14.1	0.109	0.500	20.764339	-100.046441

12 CARR: Ajuchitlán - Ezequiel Montes

CLAVE: 22005

RUTA: QRO-005

AÑO: 2017

LUGAR	ESTACION				CLASIFICACION VEHICULAR EN PORCIENTO													COORDENADAS		
	KM	TE	SC	TDPA	M	A	B	C2	C3	T3S2	T3S3	T3S2R4	OTROS	A	B	C	K'	D	LATITUD	LONGITUD
T. C. El Colorado - Higuerrillas	0.00	3	1	7180	0.8	83.0	0.7	9.0	1.9	2.5	1.2	0.3	0.6	83.8	0.7	15.5	0.098	0.501	20.704104	-99.979302
T. C. El Colorado - Higuerrillas	0.00	3	2	7148	0.8	83.4	0.7	8.6	2.0	1.7	2.1	0.4	0.3	84.2	0.7	15.1	0.088	0.501	20.704196	-99.979295
Ezequiel Montes	10.60	1	0	10972	1.5	81.3	0.3	8.9	0.9	5.5	0.6	0.2	0.8	82.8	0.3	16.9	0.086	0.503	20.669769	-99.909025

13 CARR: El Colorado - Higuerrillas

CLAVE: 22004

RUTA: QRO-004

AÑO: 2017

LUGAR	ESTACION				CLASIFICACION VEHICULAR EN PORCIENTO													COORDENADAS		
	KM	TE	SC	TDPA	M	A	B	C2	C3	T3S2	T3S3	T3S2R4	OTROS	A	B	C	K'	D	LATITUD	LONGITUD
T. C. México - Querétaro (Cuota)	0.00	3	1	20719	0.0	79.2	1.1	9.4	3.6	3.7	1.2	1.2	0.6	79.2	1.1	19.7	0.100	0.520	20.573536	-100.207561
T. C. México - Querétaro (Cuota)	0.00	3	2	19090	1.3	76.2	1.3	10.6	3.8	3.9	1.1	1.3	0.5	77.5	1.3	21.2	0.075	0.520	20.573472	-100.207452
T. Izq. Chichimequillas	3.80	3	1	14828	0.3	84.3	1.1	6.6	1.8	2.5	2.0	0.9	0.5	84.6	1.1	14.3	0.100	0.505	20.605831	-100.166089
T. Izq. Chichimequillas	3.80	3	2	14542	0.3	82.8	1.3	7.2	2.1	2.8	2.0	1.0	0.5	83.1	1.3	15.6	0.098	0.505	20.605888	-100.166165
X. C. Querétaro - Tequisquiapan	9.10	3	1	7134	0.0	83.5	1.0	8.4	1.8	2.4	1.8	0.6	0.5	83.5	1.0	15.5	0.147	0.501	20.617365	-100.140112
X. C. Querétaro - Tequisquiapan	9.10	3	2	7101	0.7	81.5	1.1	9.2	2.0	2.5	1.9	0.6	0.5	82.2	1.1	16.7	0.134	0.501	20.617448	-100.140166
T. Der. Ezequiel Montes	31.90	1	1	7313	0.8	82.4	0.8	9.0	1.8	2.8	1.4	0.3	0.7	83.2	0.8	16.0	0.121	0.500	20.703886	-99.989837
T. Der. Ezequiel Montes	31.90	1	2	7307	0.8	81.8	0.9	9.5	1.9	1.7	2.7	0.4	0.3	82.6	0.9	16.5	0.122	0.500	20.704012	-99.989895
T. Der. Ezequiel Montes	31.90	3	1	3902	1.3	84.3	1.5	7.5	1.8	1.3	1.4	0.5	0.4	85.6	1.5	12.9	0.096	0.532	20.710093	-99.978610
T. Der. Ezequiel Montes	31.90	3	2	4443	1.3	85.2	1.1	7.8	1.4	0.9	1.8	0.4	0.1	86.5	1.1	12.4	0.139	0.532	20.710203	-99.978670
T. Izq. San Pablo Tolimán	57.00	3	0	1313	2.4	87.0	1.0	6.6	1.5	1.0	0.4	0.0	0.1	89.4	1.0	9.6	0.128	0.521	20.856374	-99.884679
T. C. San Juan del Río - Xilitla	81.90	1	0	1330	1.8	86.1	1.1	8.2	2.0	0.5	0.2	0.0	0.1	87.9	1.1	11.0	0.122	0.520	20.937655	-99.750555

14 CARR: Hacienda Paraíso - Chichimequillas

CLAVE: 22001

RUTA: QRO-001

AÑO: 2017

LUGAR	ESTACION				CLASIFICACION VEHICULAR EN PORCIENTO													COORDENADAS		
	KM	TE	SC	TDPA	M	A	B	C2	C3	T3S2	T3S3	T3S2R4	OTROS	A	B	C	K'	D	LATITUD	LONGITUD
Hacienda Paraíso	0.00	3	1	4988	1.1	74.4	1.7	9.9	3.7	6.1	1.5	1.0	0.6	75.5	1.7	22.8	0.083	0.502	20.587010	-100.204080

QUERETARO

14 CARR: Hacienda Paraíso - Chichimequillas

CLAVE: 22001

RUTA: QRO-001

AÑO: 2017

LUGAR	ESTACION				CLASIFICACION VEHICULAR EN PORCIENTO													COORDENADAS		
	KM	TE	SC	TDPA	M	A	B	C2	C3	T3S2	T3S3	T3S2R4	OTROS	A	B	C	K'	D	LATITUD	LONGITUD
Hacienda Paraíso	0.00	3	2	5037	1.0	72.8	1.8	10.1	4.2	6.7	1.7	1.1	0.6	73.8	1.8	24.4	0.094	0.502	20.587043	-100.204031
T. Der. Navajas	7.90	3	0	12421	1.0	75.6	1.6	10.0	2.4	6.3	1.4	0.5	1.2	76.6	1.6	21.8	0.078	0.503	20.646204	-100.232552
La Griega	10.35	3	0	8163	1.2	75.7	2.7	11.9	2.2	4.0	1.2	0.4	0.7	76.9	2.7	20.4	0.082	0.501	20.681782	-100.239842
Amazcala	15.45	3	0	7396	1.4	76.3	1.4	11.8	2.3	3.7	1.6	0.6	0.9	77.7	1.4	20.9	0.082	0.500	20.716170	-100.274761
Chichimequillas	26.61																			

15 CARR: La Culata - San Joaquín

CLAVE: 22021

RUTA: QRO-021

AÑO: 2017

LUGAR	ESTACION				CLASIFICACION VEHICULAR EN PORCIENTO													COORDENADAS		
	KM	TE	SC	TDPA	M	A	B	C2	C3	T3S2	T3S3	T3S2R4	OTROS	A	B	C	K'	D	LATITUD	LONGITUD
La Culata	0.00	3	0	1369	1.1	75.9	0.5	8.6	1.6	1.5	9.7	0.9	0.2	77.0	0.5	22.5	0.102	0.501	20.886853	-99.702233
San Joaquín	31.80	1	0	1884	3.5	86.0	0.4	8.4	0.3	0.9	0.3	0.0	0.2	89.5	0.4	10.1	0.076	0.506	20.895036	-99.577227

16 CARR: Libramiento de San Juan del Río

CLAVE: 22266

RUTA: QRO

AÑO: 2017

LUGAR	ESTACION				CLASIFICACION VEHICULAR EN PORCIENTO													COORDENADAS		
	KM	TE	SC	TDPA	M	A	B	C2	C3	T3S2	T3S3	T3S2R4	OTROS	A	B	C	K'	D	LATITUD	LONGITUD
T. C. México - Querétaro (Después del F.F.C.C.)	0.00	3	1	17950	1.4	84.1	0.9	5.3	1.1	2.9	2.4	0.9	1.0	85.5	0.9	13.6	0.076	0.506	20.378895	-99.985846
T. C. México - Querétaro (Después del F.F.C.C.)	0.00	3	2	17494	1.2	83.1	1.0	5.3	1.2	3.4	2.7	1.1	1.0	84.3	1.0	14.7	0.073	0.506	20.378890	-99.985711
T. C. San Juan del Río - Xilitla	5.05	1	1	15507	1.4	84.2	0.7	5.3	1.1	2.8	2.4	1.0	1.1	85.6	0.7	13.7	0.078	0.504	20.412838	-99.981438
T. C. San Juan del Río - Xilitla	5.05	1	2	15254	1.2	82.3	0.9	6.0	1.3	3.4	2.7	1.1	1.1	83.5	0.9	15.6	0.081	0.504	20.412788	-99.981301

17 CARR: Libramiento Norte de Querétaro

CLAVE: 22500

RUTA: QRO

AÑO: 2017

LUGAR	ESTACION				CLASIFICACION VEHICULAR EN PORCIENTO													COORDENADAS		
	KM	TE	SC	TDPA	M	A	B	C2	C3	T3S2	T3S3	T3S2R4	OTROS	A	B	C	K'	D	LATITUD	LONGITUD
T. C. Querétaro - San Luis Potosí	0.00	3	1	67477	0.8	98.7	0.5	0.0	0.0	0.0	0.0	0.0	0.0	99.5	0.5	0.0	0.071	0.527	20.620517	-100.414150
T. C. Querétaro - San Luis Potosí	0.00	3	2	75175	0.9	98.6	0.5	0.0	0.0	0.0	0.0	0.0	0.0	99.5	0.5	0.0	0.074	0.527	20.620628	-100.414089
T. C. México - Querétaro	8.00	1	1	44307	0.4	99.0	0.6	0.0	0.0	0.0	0.0	0.0	0.0	99.4	0.6	0.0	0.070	0.511	20.584615	-100.362408
T. C. México - Querétaro	8.00	1	2	46213	0.4	99.0	0.6	0.0	0.0	0.0	0.0	0.0	0.0	99.4	0.6	0.0	0.076	0.511	20.584994	-100.362328
T. C. México - Querétaro	8.00	3	1	18761	0.7	90.7	0.3	6.1	0.6	0.6	0.9	0.0	0.1	91.4	0.3	8.3	0.131	0.503	20.566957	-100.357448
T. C. México - Querétaro	8.00	3	2	18561	0.6	90.7	0.2	6.1	0.6	0.6	0.9	0.1	0.2	91.3	0.2	8.5	0.122	0.503	20.569548	-100.358098
T.C. Libramiento Surponiente de Querétaro	12.00																			

QUERETARO

18 CARR: Libramiento Surponiente de Querétaro

CLAVE: 22501

RUTA: QRO

AÑO: 2017

LUGAR	ESTACION				CLASIFICACION VEHICULAR EN PORCIENTO													COORDENADAS		
	KM	TE	SC	TDPA	M	A	B	C2	C3	T3S2	T3S3	T3S2R4	OTROS	A	B	C	K'	D	LATITUD	LONGITUD
X. C. Querétaro - Ent. San Martín	0.00	3	1	23796	0.5	92.8	0.1	2.9	0.6	1.1	1.6	0.1	0.3	93.3	0.1	6.6	0.099	0.508	20.551254	-100.372157
X. C. Querétaro - Ent. San Martín	0.00	3	2	23081	0.6	92.9	0.1	2.9	0.6	1.0	1.5	0.1	0.3	93.5	0.1	6.4	0.109	0.508	20.551076	-100.372195
T. Der. a Candiles	4.20	1	1	23865	0.8	93.0	0.1	2.8	0.6	0.8	1.6	0.1	0.2	93.8	0.1	6.1	0.097	0.514	20.537420	-100.394381
T. Der. a Candiles	4.20	1	2	22604	0.6	92.7	0.1	3.1	0.6	0.8	1.8	0.1	0.2	93.3	0.1	6.6	0.116	0.514	20.537289	-100.394373
T. Izq. a Santa Barbara (1° acceso)	5.00	1	1	14768	0.9	91.2	0.2	4.4	0.8	0.9	1.3	0.1	0.2	92.1	0.2	7.7	0.133	0.534	20.534314	-100.398350
T. Izq. a Santa Barbara (1° acceso)	5.00	1	2	12895	0.8	91.1	0.1	3.7	0.7	1.2	1.9	0.1	0.4	91.9	0.1	8.0	0.145	0.534	20.534255	-100.398228
T. Izq. a Santa Barbara (2° acceso)	7.30	3	1	11980	0.9	91.2	0.2	4.7	1.1	0.9	0.7	0.1	0.2	92.1	0.2	7.7	0.119	0.533	20.525919	-100.423158
T. Izq. a Santa Barbara (2° acceso)	7.30	3	2	10512	1.0	91.6	0.2	3.6	1.2	1.1	0.9	0.1	0.3	92.6	0.2	7.2	0.127	0.533	20.526036	-100.423187
T. C. Villa del Pueblito - Huimilpan	9.40	3	1	9001	2.0	87.8	1.1	4.8	1.5	1.6	0.8	0.1	0.3	89.8	1.1	9.1	0.121	0.528	20.529920	-100.446153
T. C. Villa del Pueblito - Huimilpan	9.40	3	2	8051	1.5	87.2	1.3	5.4	1.6	1.7	0.9	0.1	0.3	88.7	1.3	10.0	0.153	0.528	20.529777	-100.446162
T. Izq. a La Negreta	10.10	3	1	9545	1.8	88.3	1.5	4.1	1.3	1.4	1.1	0.1	0.4	90.1	1.5	8.4	0.095	0.521	20.527690	-100.457937
T. Izq. a La Negreta	10.10	3	2	8780	1.9	87.9	1.5	4.2	1.4	1.4	1.2	0.1	0.4	89.8	1.5	8.7	0.116	0.521	20.527596	-100.457910
Querétaro - Irapuato	15.00	1	1	4577	2.3	86.0	1.3	5.9	1.7	1.6	0.8	0.1	0.3	88.3	1.3	10.4	0.149	0.525	20.534824	-100.479650
Querétaro - Irapuato	15.00	1	2	5065	2.0	85.2	1.5	6.5	1.7	1.8	0.9	0.1	0.3	87.2	1.5	11.3	0.161	0.525	20.532282	-100.480013
T. C. Querétaro - Irapuato (Cuota)	18.60	1	1	13661	0.7	87.6	1.3	5.4	1.6	2.1	1.0	0.1	0.2	88.3	1.3	10.4	0.112	0.511	20.561027	-100.482716
T. C. Querétaro - Irapuato (Cuota)	18.60	1	2	14269	0.6	86.3	1.4	6.1	1.8	2.3	1.2	0.1	0.2	86.9	1.4	11.7	0.121	0.511	20.561069	-100.482881
T. C- Querétaro - Irapuato (Cuota)	18.60	3	1	12555	0.6	84.7	1.1	6.0	1.6	3.1	2.3	0.4	0.2	85.3	1.1	13.6	0.091	0.506	20.577613	-100.483003
T. C- Querétaro - Irapuato (Cuota)	18.60	3	2	12862	0.6	83.5	1.2	6.2	1.7	3.7	2.5	0.4	0.2	84.1	1.2	14.7	0.134	0.506	20.577646	-100.483139
T. Der. a Las Adjuntas	21.00	3	1	13308	0.4	87.3	0.8	4.5	1.5	2.8	1.7	0.7	0.3	87.7	0.8	11.5	0.134	0.503	20.599301	-100.490459
T. Der. a Las Adjuntas	21.00	3	2	13464	0.5	85.9	1.0	4.5	1.8	3.2	2.0	0.8	0.3	86.4	1.0	12.6	0.158	0.503	20.599202	-100.490611
T. Der. a Tlacote el Bajo	27.70	1	1	18195	0.4	88.3	0.9	3.3	1.8	2.6	1.3	1.1	0.3	88.7	0.9	10.4	0.088	0.503	20.641714	-100.500658
T. Der. a Tlacote el Bajo	27.70	1	2	18011	0.4	88.4	0.9	3.2	1.8	2.3	1.5	1.2	0.3	88.8	0.9	10.3	0.093	0.503	20.641704	-100.500772
T. Der. a Tlacote el Bajo	27.70	3	1	7723	0.8	80.6	1.1	6.1	2.8	4.6	1.6	1.9	0.5	81.4	1.1	17.5	0.146	0.513	20.653833	-100.512371
T. Der. a Tlacote el Bajo	27.70	3	2	7329	0.7	78.6	1.3	6.4	3.3	5.3	1.7	2.2	0.5	79.3	1.3	19.4	0.168	0.513	20.653678	-100.512223
Obrajuelos (El Zapote)	29.70	3	1	6100	0.8	78.4	1.1	6.8	2.3	6.1	1.5	2.2	0.8	79.2	1.1	19.7	0.181	0.520	20.661991	-100.515376
Obrajuelos (El Zapote)	29.70	3	2	5634	0.7	78.1	0.9	6.4	2.4	6.4	1.9	2.3	0.9	78.8	0.9	20.3	0.182	0.520	20.662069	-100.515459
Santo Niño de Praga	31.20	3	1	6162	0.8	80.8	0.6	5.9	1.9	5.7	1.6	2.2	0.5	81.6	0.6	17.8	0.186	0.509	20.670478	-100.508453
Santo Niño de Praga	31.20	3	2	5935	0.7	79.5	0.7	6.6	2.1	5.7	1.7	2.5	0.5	80.2	0.7	19.1	0.175	0.509	20.670510	-100.508574
X. C. juriquilla - Mompani	34.00	3	1	4619	1.1	74.9	1.2	8.2	2.0	6.1	2.6	2.9	1.0	76.0	1.2	22.8	0.204	0.519	20.692078	-100.493808
X. C. juriquilla - Mompani	34.00	3	2	4273	0.9	74.4	0.9	7.9	2.3	7.2	2.4	3.1	0.9	75.3	0.9	23.8	0.194	0.519	20.692185	-100.493912
T. Der. a El Nabo	36.30	3	1	5708	0.9	76.1	1.0	7.3	2.7	6.8	1.7	2.8	0.7	77.0	1.0	22.0	0.199	0.539	20.702996	-100.479228
T. Der. a El Nabo	36.30	3	2	4878	1.0	74.5	1.0	8.1	2.8	7.1	1.8	3.2	0.5	75.5	1.0	23.5	0.147	0.539	20.703047	-100.479348
Pie de Gallo	44.10	1	1	6191	0.9	78.7	1.1	7.2	2.2	5.7	1.5	2.2	0.5	79.6	1.1	19.3	0.129	0.521	20.746867	-100.458490
Pie de Gallo	44.10	1	2	5688	0.8	76.5	1.3	7.6	2.6	6.6	1.5	2.6	0.5	77.3	1.3	21.4	0.122	0.521	20.746923	-100.458591
Pie de Gallo	44.10	3	1	7218	0.5	79.2	2.3	4.3	2.8	6.3	1.5	2.5	0.6	79.7	2.3	18.0	0.127	0.581	20.756036	-100.449015

QUERETARO

18 CARR: Libramiento Surponiente de Querétaro

CLAVE: 22501

RUTA: QRO

AÑO: 2017

LUGAR	ESTACION				CLASIFICACION VEHICULAR EN PORCIENTO														COORDENADAS	
	KM	TE	SC	TDPA	M	A	B	C2	C3	T3S2	T3S3	T3S2R4	OTROS	A	B	C	K'	D	LATITUD	LONGITUD
Pie de Gallo	44.10	3	2	5197	0.7	76.1	2.7	4.9	3.0	7.0	1.8	3.1	0.7	76.8	2.7	20.5	0.108	0.581	20.756114	-100.449035
T. C. Querétaro - San Luis Potosí	45.70																			

19 CARR: Peña Colorada - El Rodeo

CLAVE: 22002

RUTA: QRO

AÑO: 2017

LUGAR	ESTACION				CLASIFICACION VEHICULAR EN PORCIENTO														COORDENADAS	
	KM	TE	SC	TDPA	M	A	B	C2	C3	T3S2	T3S3	T3S2R4	OTROS	A	B	C	K'	D	LATITUD	LONGITUD
T. C. México - Querétaro	0.00	3	0	11709	1.2	79.7	0.4	8.2	1.8	5.6	1.9	0.4	0.8	80.9	0.4	18.7	0.102	0.505	20.586017	-100.250113
X. C. Querétaro - Tequisquiapan	9.00	1	0	13203	1.4	75.8	0.7	10.2	1.8	7.6	1.2	0.4	0.9	77.2	0.7	22.1	0.068	0.501	20.634324	-100.260221
El Rodeo	11.00	1	0	1743	4.7	82.5	0.8	9.5	0.8	1.2	0.3	0.0	0.2	87.2	0.8	12.0	0.078	0.506	20.660345	-100.258818

20 CARR: Querétaro - Ent. San Martín

CLAVE: 22067

RUTA: QRO

AÑO: 2017

LUGAR	ESTACION				CLASIFICACION VEHICULAR EN PORCIENTO														COORDENADAS	
	KM	TE	SC	TDPA	M	A	B	C2	C3	T3S2	T3S3	T3S2R4	OTROS	A	B	C	K'	D	LATITUD	LONGITUD
T. C. México - Querétaro	0.00	3	1	8478	0.5	94.9	0.3	3.8	0.5	0.0	0.0	0.0	0.0	95.4	0.3	4.3	0.122	0.507	20.559515	-100.369652
T. C. México - Querétaro	0.00	3	2	8257	0.7	94.4	0.3	4.1	0.5	0.0	0.0	0.0	0.0	95.1	0.3	4.6	0.130	0.507	20.559116	-100.369734
Lagunillas	18.70	1	0	4183	0.8	87.3	0.3	8.4	1.1	1.7	0.3	0.0	0.1	88.1	0.3	11.6	0.085	0.507	20.468495	-100.296979
T. Der. Huimilpan	32.70	1	0	3867	1.0	90.7	1.0	4.4	0.7	1.9	0.2	0.0	0.1	91.7	1.0	7.3	0.095	0.504	20.394040	-100.268992
Ent. San Martín	53.00	1	0	1594	0.9	86.7	0.3	9.7	0.7	1.0	0.6	0.0	0.1	87.6	0.3	12.1	0.103	0.509	20.278211	-100.158094

21 CARR: Querétaro - Estación Chichimequillas

CLAVE: 22270

RUTA: QRO

AÑO: 2017

LUGAR	ESTACION				CLASIFICACION VEHICULAR EN PORCIENTO														COORDENADAS	
	KM	TE	SC	TDPA	M	A	B	C2	C3	T3S2	T3S3	T3S2R4	OTROS	A	B	C	K'	D	LATITUD	LONGITUD
T. C. Libramiento de Querétaro	0.00	3	1	13828	1.9	88.3	0.5	7.6	0.3	0.3	0.9	0.1	0.1	90.2	0.5	9.3	0.077	0.518	20.625660	-100.387108
T. C. Libramiento de Querétaro	0.00	3	2	12887	1.8	87.4	0.5	8.5	0.3	0.3	1.0	0.1	0.1	89.2	0.5	10.3	0.077	0.518	20.625720	-100.387127
X. C. Hacienda Paraíso - Chichimequillas	18.00	1	0	6928	1.2	82.0	1.0	8.4	1.2	4.5	0.6	0.4	0.7	83.2	1.0	15.8	0.096	0.510	20.750728	-100.322430
Estación Chichimequillas	19.20																			

22 CARR: Querétaro - Tequisquiapan

CLAVE: 22502

RUTA: QRO

AÑO: 2017

LUGAR	ESTACION				CLASIFICACION VEHICULAR EN PORCIENTO														COORDENADAS	
	KM	TE	SC	TDPA	M	A	B	C2	C3	T3S2	T3S3	T3S2R4	OTROS	A	B	C	K'	D	LATITUD	LONGITUD
Querétaro	0.00	3	1	8008	0.8	88.1	0.5	4.2	1.6	3.6	0.6	0.2	0.4	88.9	0.5	10.6	0.107	0.510	20.600112	-100.361530

QUERETARO

22 CARR: Querétaro - Tequisquiapan

CLAVE: 22502

RUTA: QRO

AÑO: 2017

LUGAR	ESTACION				CLASIFICACION VEHICULAR EN PORCIENTO														COORDENADAS	
	KM	TE	SC	TDPA	M	A	B	C2	C3	T3S2	T3S3	T3S2R4	OTROS	A	B	C	K'	D	LATITUD	LONGITUD
Querétaro	0.00	3	2	7706	0.8	83.5	0.9	8.3	1.3	3.8	0.9	0.2	0.3	84.3	0.9	14.8	0.141	0.510	20.600187	-100.361525
X. C. Peña Colorada - El Rodeo	14.00	1	0	12764	1.7	79.8	0.3	9.1	1.4	5.8	0.9	0.2	0.8	81.5	0.3	18.2	0.069	0.513	20.635778	-100.262116
T. Izq. La Griega	16.60	3	0	7697	1.3	82.4	0.6	7.1	1.6	4.9	0.9	0.3	0.9	83.7	0.6	15.7	0.130	0.515	20.643210	-100.227039
X. C. El Colorado - Higuierillas	25.70	1	1	6386	0.7	87.2	0.5	7.2	1.5	1.7	0.6	0.2	0.4	87.9	0.5	11.6	0.139	0.519	20.615832	-100.161654
X. C. El Colorado - Higuierillas	25.70	1	2	5918	0.8	86.0	0.9	8.3	1.3	1.3	0.9	0.2	0.3	86.8	0.9	12.3	0.184	0.519	20.615925	-100.161581
X. C. San Juan del Río - Xilitla	56.90	1	0	9226	1.8	80.3	0.9	10.5	1.0	4.0	0.7	0.2	0.6	82.1	0.9	17.0	0.083	0.506	20.528790	-99.907898
Tequisquiapan	57.40	1	0	10310	2.7	83.0	0.4	5.3	0.6	6.2	0.7	0.2	0.9	85.7	0.4	13.9	0.071	0.508	20.533854	-99.897633

23 CARR: Querétaro - Tlacote El Bajo

CLAVE: 22069

RUTA: QRO

AÑO: 2017

LUGAR	ESTACION				CLASIFICACION VEHICULAR EN PORCIENTO														COORDENADAS	
	KM	TE	SC	TDPA	M	A	B	C2	C3	T3S2	T3S3	T3S2R4	OTROS	A	B	C	K'	D	LATITUD	LONGITUD
Querétaro	0.00	3	1	12326	1.7	89.1	1.4	4.4	0.5	1.0	1.4	0.2	0.3	90.8	1.4	7.8	0.102	0.529	20.589996	-100.433506
Querétaro	0.00	3	2	10993	1.5	88.5	1.6	4.8	0.5	1.2	1.4	0.2	0.3	90.0	1.6	8.4	0.127	0.529	20.589893	-100.433469
Tlacote El Bajo	18.00																			

24 CARR: Ramal a La Estancia

CLAVE: 22504

RUTA: QRO

AÑO: 2017

LUGAR	ESTACION				CLASIFICACION VEHICULAR EN PORCIENTO														COORDENADAS	
	KM	TE	SC	TDPA	M	A	B	C2	C3	T3S2	T3S3	T3S2R4	OTROS	A	B	C	K'	D	LATITUD	LONGITUD
T. C. México - Querétaro (Cuota)	0.00	3	0	5244	2.8	85.4	0.1	6.2	0.4	4.1	0.3	0.1	0.6	88.2	0.1	11.7	0.112	0.501	20.424878	-100.063003
La Estancia	3.00																			

25 CARR: Ramal a Tolimán

CLAVE: 22265

RUTA: QRO

AÑO: 2017

LUGAR	ESTACION				CLASIFICACION VEHICULAR EN PORCIENTO														COORDENADAS	
	KM	TE	SC	TDPA	M	A	B	C2	C3	T3S2	T3S3	T3S2R4	OTROS	A	B	C	K'	D	LATITUD	LONGITUD
T. C. El Colorado - Higuierillas	0.00	3	0	3563	4.1	83.5	0.4	8.0	0.7	2.4	0.4	0.2	0.3	87.6	0.4	12.0	0.079	0.512	20.859389	-99.895153
Tolimán	7.00	1	0	3814	4.1	83.6	0.2	9.1	0.4	2.3	0.1	0.0	0.2	87.7	0.2	12.1	0.070	0.502	20.893185	-99.917084

26 CARR: Rayón - Arroyo Seco

CLAVE: 24008

RUTA: SLP-011

AÑO: 2017

LUGAR	ESTACION				CLASIFICACION VEHICULAR EN PORCIENTO														COORDENADAS	
	KM	TE	SC	TDPA	M	A	B	C2	C3	T3S2	T3S3	T3S2R4	OTROS	A	B	C	K'	D	LATITUD	LONGITUD
Rayón	0.00	3	0	1084	5.7	72.9	0.4	17.2	1.2	1.8	0.6	0.0	0.2	78.6	0.4	21.0	0.110	0.516	21.848141	-99.626908

QUERETARO

26 CARR: Rayón - Arroyo Seco

CLAVE: 24008

RUTA: SLP-011

AÑO: 2017

LUGAR	ESTACION				CLASIFICACION VEHICULAR EN PORCIENTO														COORDENADAS	
	KM	TE	SC	TDPA	M	A	B	C2	C3	T3S2	T3S3	T3S2R4	OTROS	A	B	C	K'	D	LATITUD	LONGITUD
Lagunillas	36.00	1	0	328	4.7	74.9	0.0	18.3	1.3	0.4	0.4	0.0	0.0	79.6	0.0	20.4	0.128	0.505	21.594608	-99.564983
Lim. De Edos. Term. S.L.P. Ppia Qro.	51.00																			
Arroyo Seco	57.00	1	0	587	6.5	72.7	0.1	19.3	1.2	0.2	0.0	0.0	0.0	79.2	0.1	20.7	0.114	0.509	21.552953	-99.682402

27 CARR: San Juan del Río - Amealco

CLAVE: 22011

RUTA: QRO

AÑO: 2017

LUGAR	ESTACION				CLASIFICACION VEHICULAR EN PORCIENTO														COORDENADAS	
	KM	TE	SC	TDPA	M	A	B	C2	C3	T3S2	T3S3	T3S2R4	OTROS	A	B	C	K'	D	LATITUD	LONGITUD
T. C. México - Querétaro	0.00	3	0	10671	1.8	82.7	0.7	8.9	0.5	4.3	0.4	0.1	0.6	84.5	0.7	14.8	0.084	0.509	20.373773	-100.017220
Amealco	28.00	1	0	4423	0.9	88.3	0.8	7.1	0.4	1.7	0.4	0.2	0.2	89.2	0.8	10.0	0.090	0.502	20.196575	-100.137925

28 CARR: T. C. (Villa del Pueblito - Huimilpan) - Coroneo

CLAVE: 00155

RUTA: QRO-GTO

AÑO: 2017

LUGAR	ESTACION				CLASIFICACION VEHICULAR EN PORCIENTO														COORDENADAS	
	KM	TE	SC	TDPA	M	A	B	C2	C3	T3S2	T3S3	T3S2R4	OTROS	A	B	C	K'	D	LATITUD	LONGITUD
T. C. Villa del Pueblito - Huimilpan	0.00	3	0	6978	1.0	79.9	2.3	8.3	1.8	4.2	1.4	0.4	0.7	80.9	2.3	16.8	0.093	0.516	20.515748	-100.428153
Lim. Edos. Term. Qro. Ppia. Gto.	20.00																			
Coroneo	45.20	1	0	3310	1.7	86.9	0.2	8.5	0.3	2.0	0.2	0.0	0.2	88.6	0.2	11.2	0.137	0.501	20.214081	-100.366654

29 CARR: Villa del Pueblito - Huimilpan

CLAVE: 22503

RUTA: QRO

AÑO: 2017

LUGAR	ESTACION				CLASIFICACION VEHICULAR EN PORCIENTO														COORDENADAS	
	KM	TE	SC	TDPA	M	A	B	C2	C3	T3S2	T3S3	T3S2R4	OTROS	A	B	C	K'	D	LATITUD	LONGITUD
T. C. Querétaro - Irapuato (Libre)	0.00	3	1	18462	1.5	89.2	0.3	5.9	0.8	0.9	1.1	0.1	0.2	90.7	0.3	9.0	0.070	0.518	20.530028	-100.441473
T. C. Querétaro - Irapuato (Libre)	0.00	3	2	17177	1.6	88.1	0.7	6.2	0.8	1.0	1.3	0.1	0.2	89.7	0.7	9.6	0.079	0.518	20.530052	-100.441300
Huimilpan	27.00	1	0	1803	1.5	85.5	0.2	10.6	0.5	1.3	0.3	0.0	0.1	87.0	0.2	12.8	0.123	0.500	20.380567	-100.279704

30 CARR: Toluca - Palmillas

CLAVE: 00496

RUTA: EM(D)-MEX-055

AÑO: 2017

LUGAR	ESTACION				CLASIFICACION VEHICULAR EN PORCIENTO														COORDENADAS	
	KM	TE	SC	TDPA	M	A	B	C2	C3	T3S2	T3S3	T3S2R4	OTROS	A	B	C	K'	D	LATITUD	LONGITUD
Toluca	0.00																			
T. Izq. Calixtlahuaca de Rayón (Baja)	7.21	3	1	12316	1.5	74.8	3.4	10.1	3.1	3.2	1.7	1.6	0.6	76.3	3.4	20.3	0.063	0.520	19.340258	-99.669953
T. Izq. Calixtlahuaca de Rayón (Alta)	7.21	3	1	22079	0.4	94.8	0.5	3.2	0.3	0.3	0.3	0.1	0.1	95.2	0.5	4.3	0.078	0.500	19.339506	-99.670193
T. Izq. Calixtlahuaca de Rayón (Baja)	7.21	3	2	13346	1.5	72.2	3.7	10.8	3.5	3.8	2.1	1.7	0.7	73.7	3.7	22.6	0.064	0.520	19.339330	-99.670642

QUERETARO

30 CARR: Toluca - Palmillas

CLAVE: 00496

RUTA: EM(D)-MEX-055

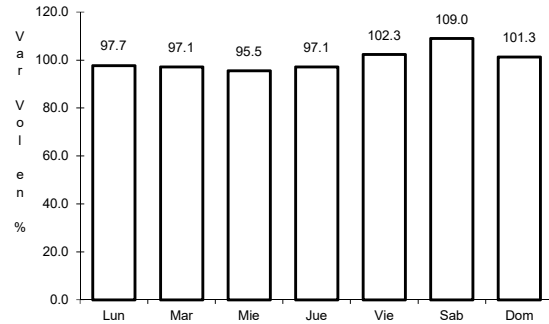
AÑO: 2017

LUGAR	ESTACION				CLASIFICACION VEHICULAR EN PORCIENTO														COORDENADAS	
	KM	TE	SC	TDPA	M	A	B	C2	C3	T3S2	T3S3	T3S2R4	OTROS	A	B	C	K'	D	LATITUD	LONGITUD
T. Izq. Calixtlahuaca de Rayón (Alta)	7.21	3	2	22077	0.3	94.4	0.5	3.7	0.3	0.3	0.3	0.1	0.1	94.7	0.5	4.8	0.089	0.500	19.339405	-99.670498
X. C. Lib. Nororienta de Toluca (Cuota)	14.21	1	1	24976	0.4	81.5	3.7	7.2	1.1	3.5	1.8	0.8	0.0	81.9	3.7	14.4	0.067	0.507	19.382512	-99.705027
X. C. Lib. Nororienta de Toluca (Cuota)	14.21	1	2	25686	0.5	79.5	3.6	8.1	1.2	3.9	2.2	1.0	0.0	80.0	3.6	16.4	0.067	0.507	19.378572	-99.702668
El Dorado	16.00	1	1	29111	0.7	82.5	4.2	5.2	2.0	3.5	1.0	0.7	0.2	83.2	4.2	12.6	0.082	0.501	19.402761	-99.713662
El Dorado	16.00	1	2	29248	0.4	80.9	4.9	5.6	2.3	3.9	1.1	0.8	0.1	81.3	4.9	13.8	0.080	0.501	19.402724	-99.713970
Ixtlahuaca de Rayón	35.58	1	1	20918	0.8	81.3	2.8	5.7	1.4	4.2	2.2	0.8	0.8	82.1	2.8	15.1	0.082	0.500	19.556043	-99.758831
Ixtlahuaca de Rayón	35.58	1	2	20881	0.4	79.4	3.2	6.6	1.6	4.4	2.5	0.9	1.0	79.8	3.2	17.0	0.077	0.500	19.554393	-99.758308
Ixtlahuaca de Rayón	35.58	3	1	21622	0.5	81.7	2.0	5.3	1.2	5.0	2.0	1.0	1.3	82.2	2.0	15.8	0.080	0.517	19.586610	-99.766033
Ixtlahuaca de Rayón	35.58	3	2	20235	0.7	79.4	2.2	6.2	1.3	5.7	2.1	1.1	1.3	80.1	2.2	17.7	0.078	0.517	19.584992	-99.769562
Pastejé	45.20	1	1	17201	0.6	81.3	2.2	4.7	1.3	5.5	1.9	1.1	1.4	81.9	2.2	15.9	0.091	0.501	19.647041	-99.785719
Pastejé	45.20	1	2	17265	0.6	79.2	2.3	5.6	1.4	6.1	2.2	1.2	1.4	79.8	2.3	17.9	0.085	0.501	19.644694	-99.784614
Atlacomulco	65.00	1	1	17337	1.0	81.5	2.3	4.5	1.1	5.1	2.5	1.0	1.0	82.5	2.3	15.2	0.077	0.509	19.778840	-99.863149
Atlacomulco	65.00	1	2	16737	0.9	79.2	2.4	5.3	1.2	6.1	2.7	1.2	1.0	80.1	2.4	17.5	0.084	0.509	19.778795	-99.863282
Atlacomulco	65.00	3	1	14653	0.9	80.3	2.2	4.7	1.0	5.5	2.6	1.0	1.8	81.2	2.2	16.6	0.075	0.505	19.813108	-99.871565
Atlacomulco	65.00	3	2	14967	1.0	78.6	2.2	5.0	1.1	6.0	2.9	1.2	2.0	79.6	2.2	18.2	0.080	0.505	19.812937	-99.871678
Acambay	85.64	3	0	9999	0.1	82.7	2.4	7.4	2.3	3.2	1.3	0.6	0.0	82.8	2.4	14.8	0.074	0.507	19.962824	-99.850753
T. Der. Aculco De Espinoza	104.43	3	1	4349	0.1	83.4	2.2	7.0	2.0	3.0	1.3	0.6	0.4	83.5	2.2	14.3	0.072	0.502	20.092284	-99.862247
T. Der. Aculco De Espinoza	104.43	3	2	4308	0.2	81.1	2.5	7.9	2.3	3.5	1.5	0.6	0.4	81.3	2.5	16.2	0.064	0.502	19.353187	-98.989361
T. Der. Polotitlán	122.73	1	1	4753	0.5	69.5	4.2	10.2	3.2	9.4	1.7	0.9	0.4	70.0	4.2	25.8	0.101	0.509	20.225571	-99.899082
T. Der. Polotitlán	122.73	1	2	4923	0.6	66.7	4.7	11.3	3.7	9.9	1.8	0.9	0.4	67.3	4.7	28.0	0.086	0.509	20.225493	-99.899162
Lim. Edos. Term. Mex. Ppia. Qro.	128.10																			
T. C. México - Querétaro	131.52	1	1	6487	0.4	73.7	3.8	7.3	2.1	9.3	1.7	0.9	0.8	74.1	3.8	22.1	0.070	0.511	20.282616	-99.931375
T. C. México - Querétaro	131.52	1	2	6220	0.5	70.8	4.3	7.7	2.3	10.4	1.9	1.1	1.0	71.3	4.3	24.4	0.067	0.511	20.282613	-99.931470

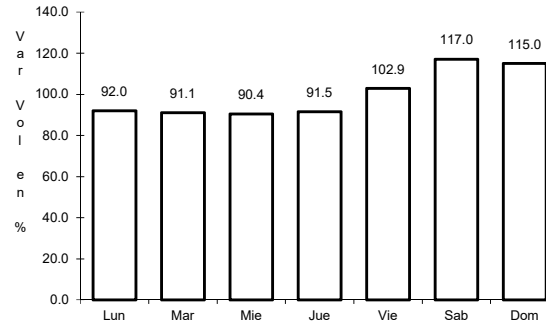
1 CARR: Ent. Buenavista - San Miguel de Allende

CLAVE: 00111

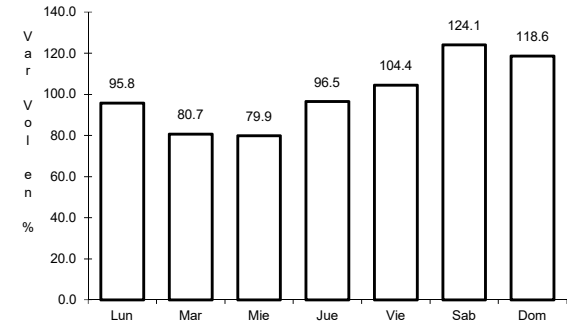
RUTA: MEX-057



Km: 0.00 Tipo: 3 Sent: 0



Km: 12.00 Tipo: 1 Sent: 0

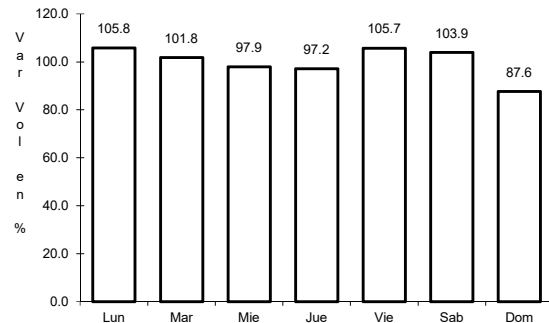


Km: 35.11 Tipo: 1 Sent: 0

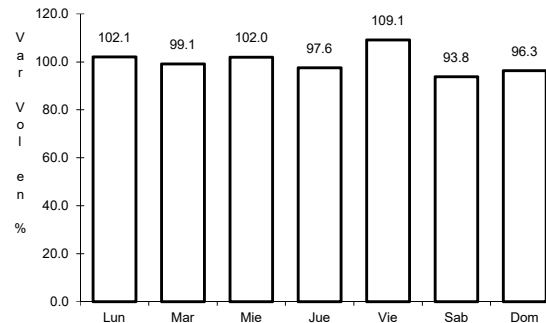
2 CARR: Jalpan de Serra - Rioverde

CLAVE: 00265

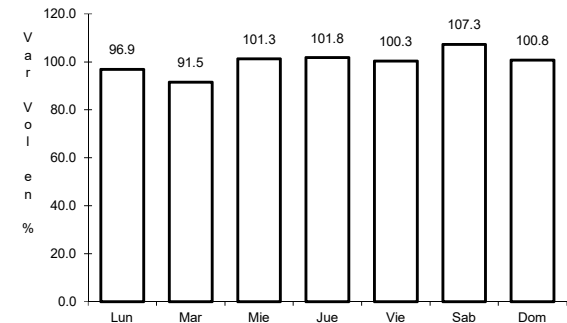
RUTA: MEX-069



Km: 0.00 Tipo: 3 Sent: 0



Km: 48.60 Tipo: 1 Sent: 0

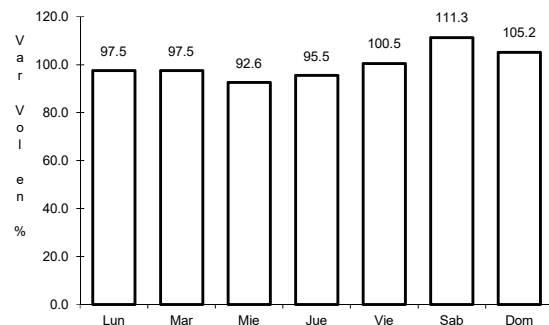


Km: 105.43 Tipo: 1 Sent: 0

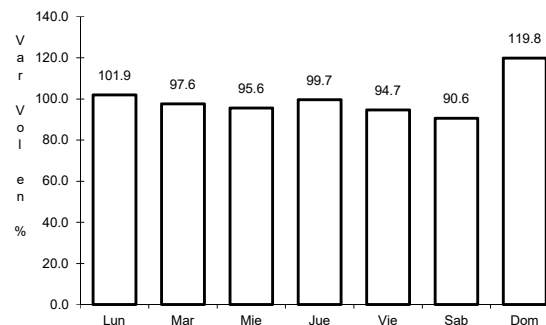
3 CARR: La Noria - Acámbaro

CLAVE: 00131

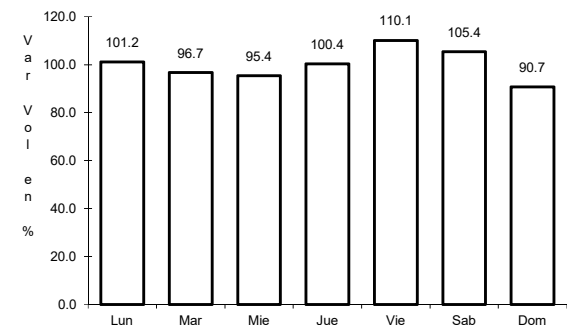
RUTA: MEX-120



Km: 0.00 Tipo: 3 Sent: 0



Km: 59.35 Tipo: 3 Sent: 0

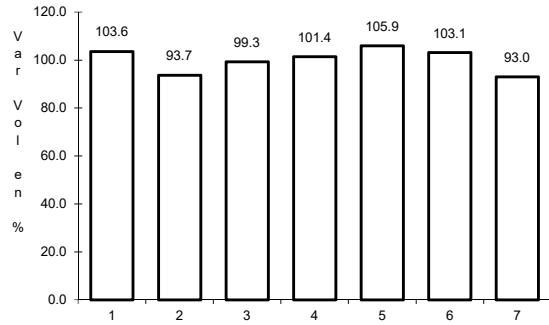


Km: 111.12 Tipo: 1 Sent: 0

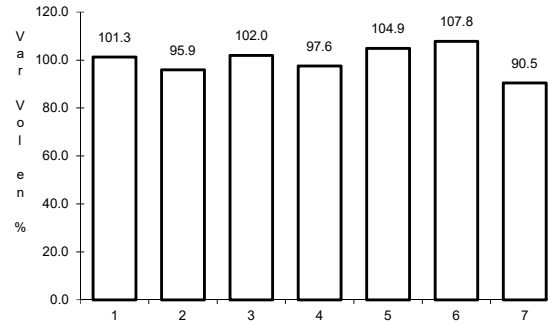
4 CARR: Portezuelo - Palmillas

CLAVE: 00194

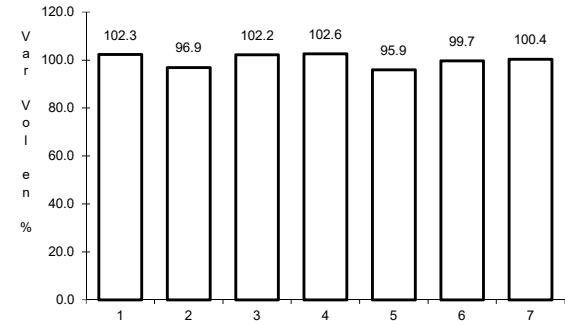
RUTA: MEX-045



Km: 0.00 Tipo: 3 Sent: 1



Km: 0.00 Tipo: 3 Sent: 2

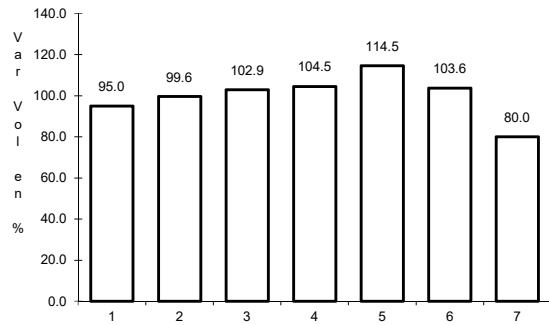


Km: 80.00 Tipo: 1 Sent: 0

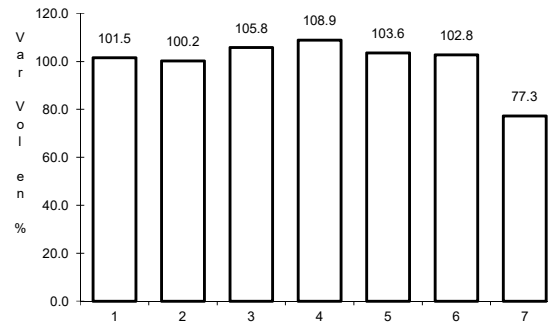
5 CARR: Querétaro - Irapuato (Libre)

CLAVE: 00154

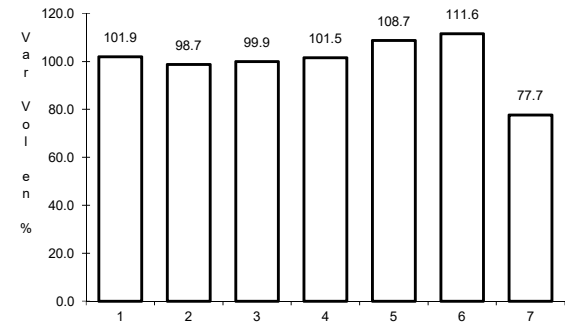
RUTA: MEX-045



Km: 0.00 Tipo: 3 Sent: 1



Km: 0.00 Tipo: 3 Sent: 2

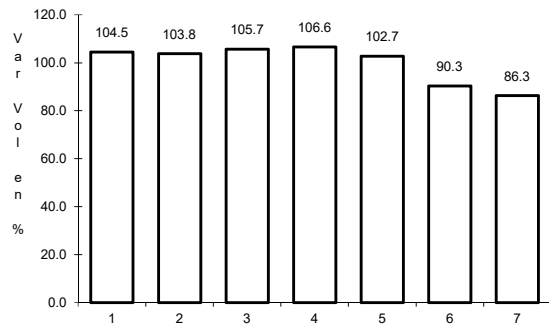


Km: 113.70 Tipo: 1 Sent: 1

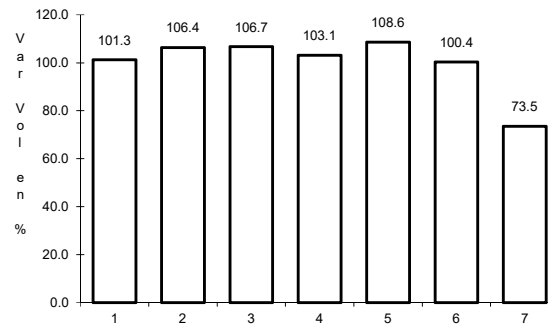
6 CARR: Querétaro - San Luis Potosí

CLAVE: 00165

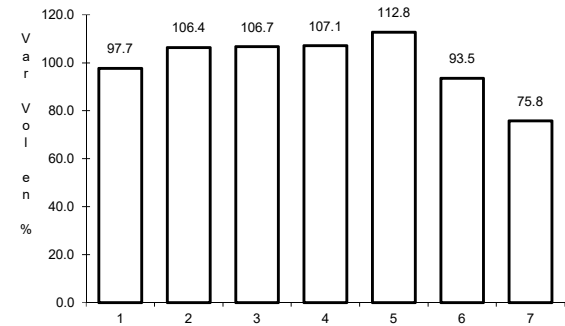
RUTA: MEX-057



Km: 6.28 Tipo: 3 Sent: 1



Km: 6.28 Tipo: 3 Sent: 2

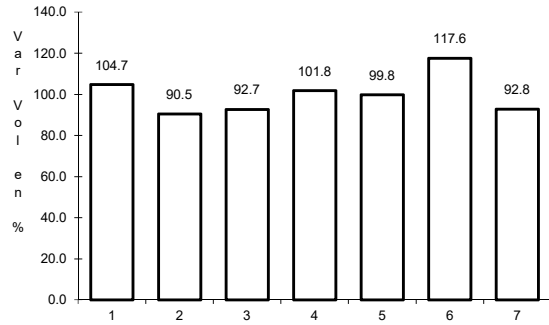


Km: 184.80 Tipo: 1 Sent: 1

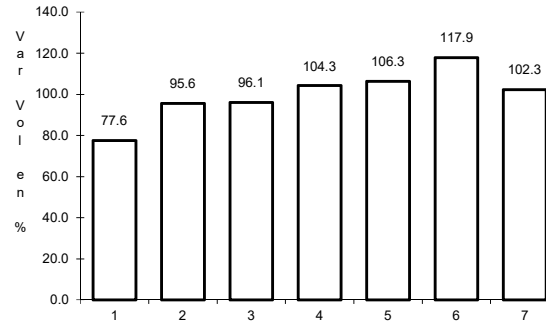
7 CARR: San Juan del Río - Xilitla

CLAVE: 00183

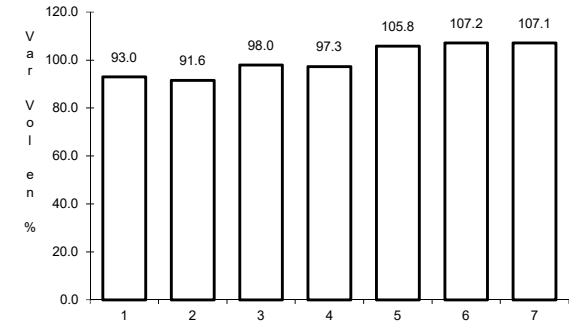
RUTA: MEX-120



Km: 5.20 Tipo: 3 Sent: 1



Km: 5.20 Tipo: 3 Sent: 2

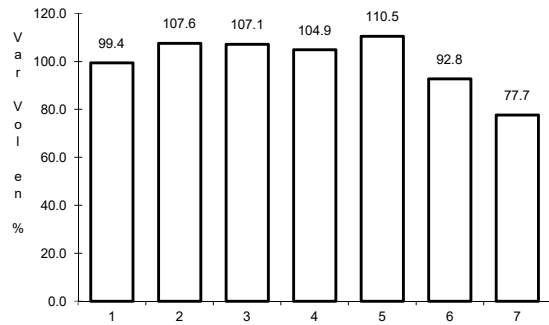


Km: 276.98 Tipo: 1 Sent: 0

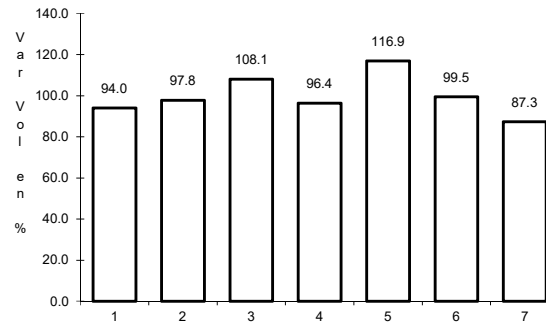
8 CARR: Libramiento Nororiente de Querétaro (Cuota)

CLAVE: 22266

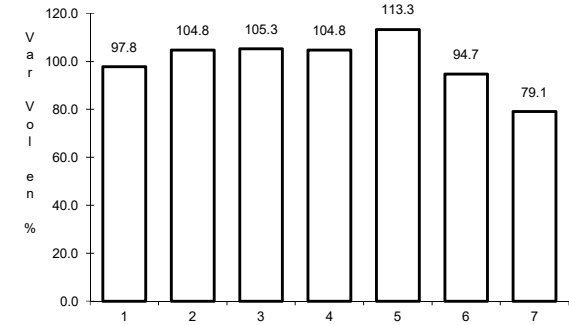
RUTA: MEX-057D



Km: 0.00 Tipo: 3 Sent: 1



Km: 0.00 Tipo: 3 Sent: 2

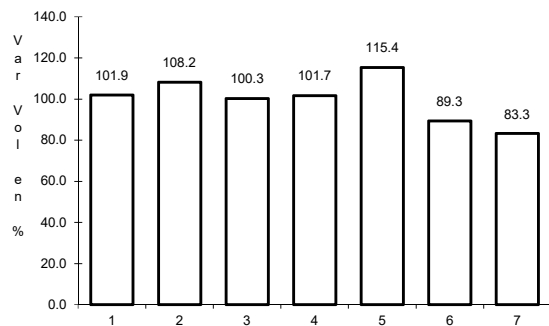


Km: 37.50 Tipo: 1 Sent: 1

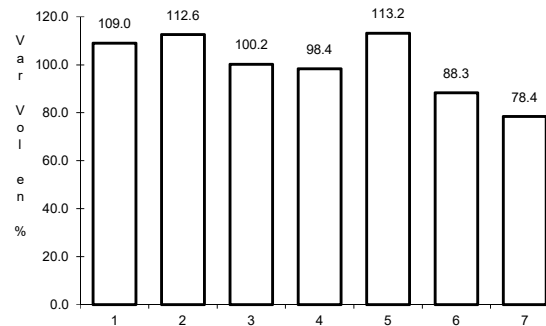
9 CARR: Querétaro - Irapuato (Cuota)

CLAVE: 00423

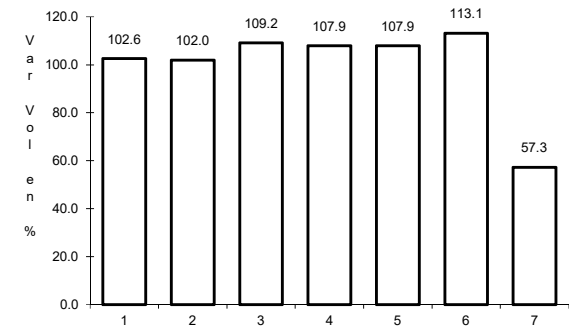
RUTA: MEX-045D



Km: 0.00 Tipo: 3 Sent: 1



Km: 0.00 Tipo: 3 Sent: 2

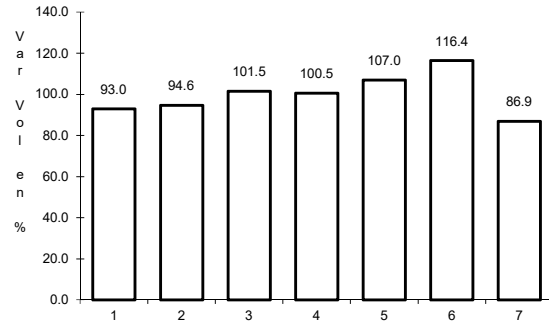


Km: 96.30 Tipo: 3 Sent: 1

10 CARR: México - Querétaro (Cuota)

CLAVE: 00411

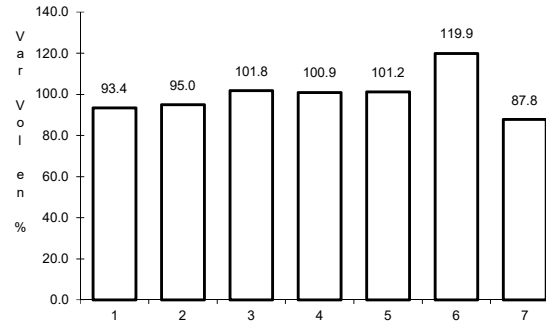
RUTA: MEX-057-MEX-057D



Km: 56.18

Tipo: 1

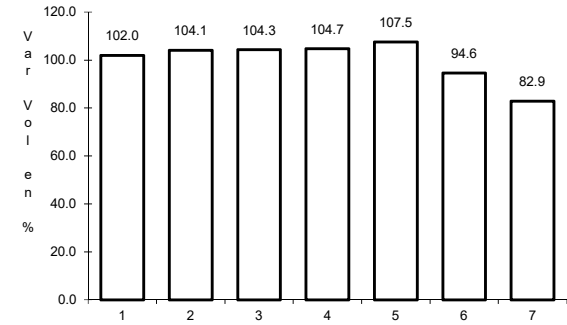
Sent: 1



Km: 56.18

Tipo: 1

Sent: 2



Km: 207.00

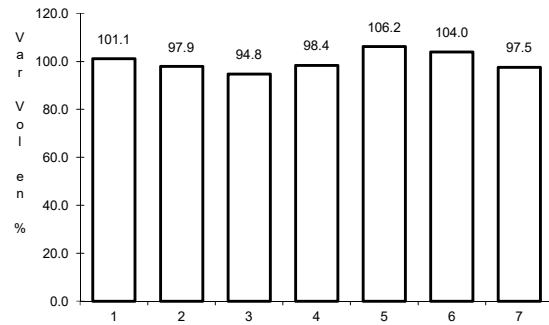
Tipo: 3

Sent: 1

11 CARR: Ajuchitlán - Colón

CLAVE: 22010

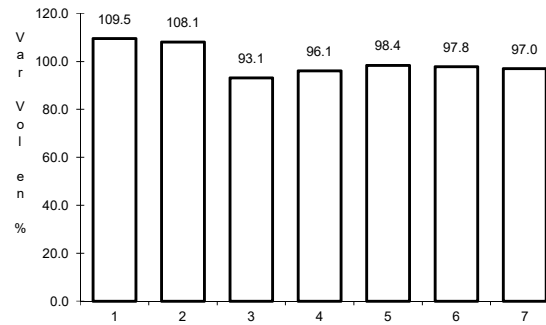
RUTA: QRO-005



Km: 0.00

Tipo: 3

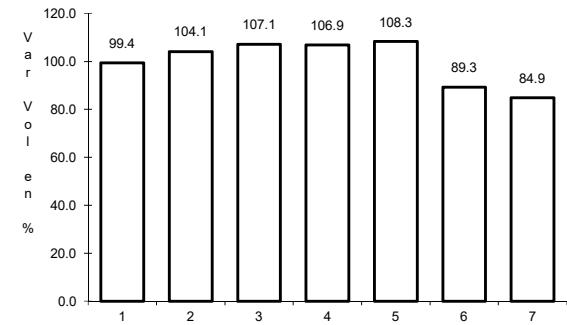
Sent: 1



Km: 14.00

Tipo: 1

Sent: 1



Km: 14.00

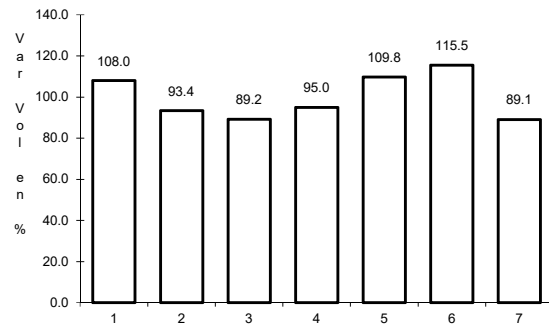
Tipo: 1

Sent: 2

12 CARR: Ajuchitlán - Ezequiel Montes

CLAVE: 22005

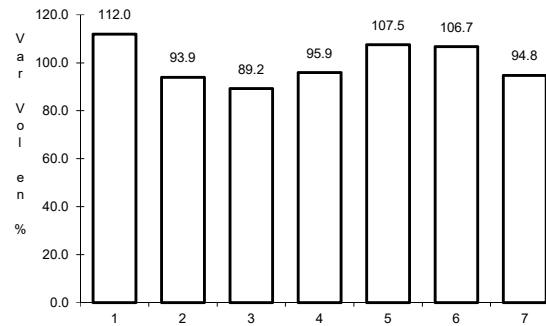
RUTA: QRO-005



Km: 0.00

Tipo: 3

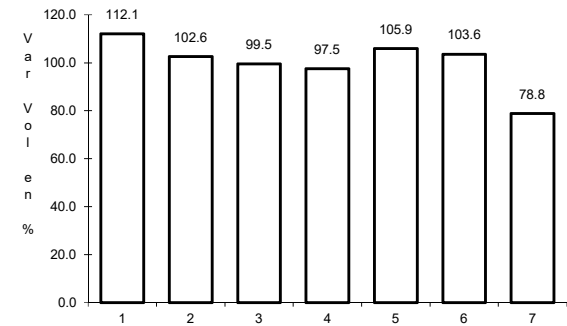
Sent: 1



Km: 0.00

Tipo: 3

Sent: 2



Km: 10.60

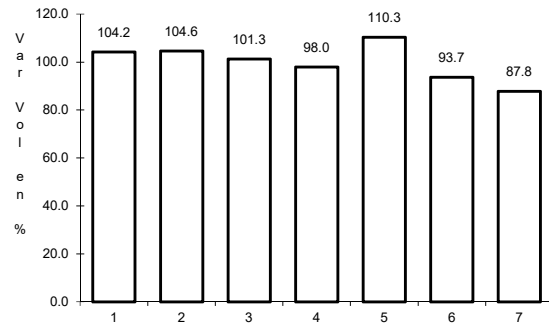
Tipo: 1

Sent: 0

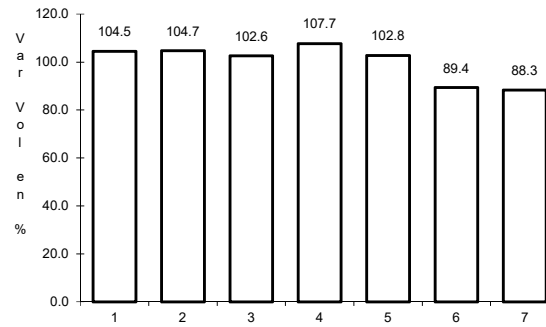
13 CARR: El Colorado - Higuerrillas

CLAVE: 22004

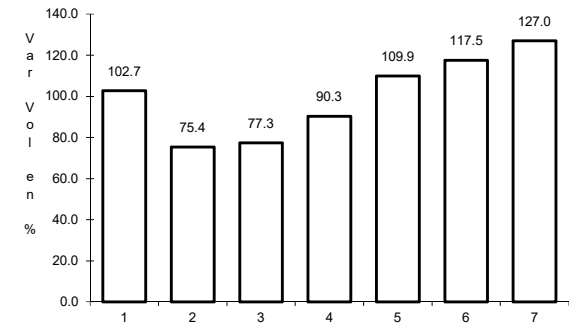
RUTA: QRO-004



Km: 0.00 Tipo: 3 Sent: 1



Km: 0.00 Tipo: 3 Sent: 2

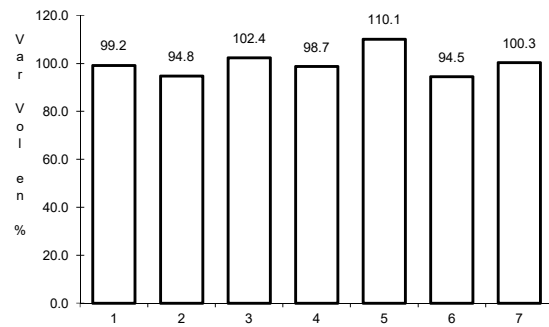


Km: 81.90 Tipo: 1 Sent: 0

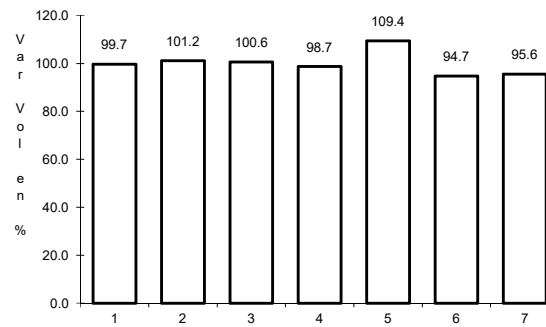
14 CARR: Hacienda Paraíso - Chichimequillas

CLAVE: 22001

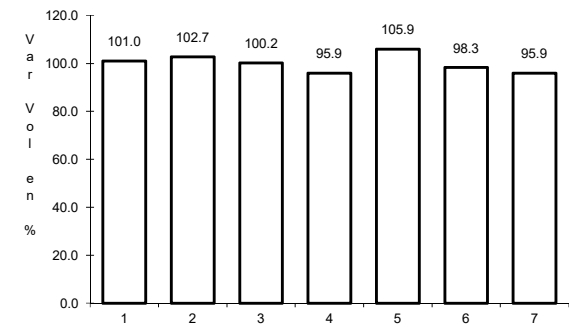
RUTA: QRO-001



Km: 0.00 Tipo: 3 Sent: 1



Km: 0.00 Tipo: 3 Sent: 2

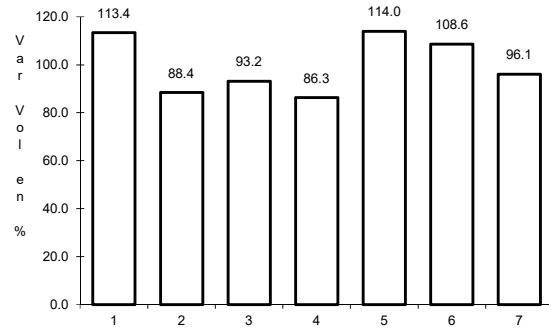


Km: 15.45 Tipo: 3 Sent: 0

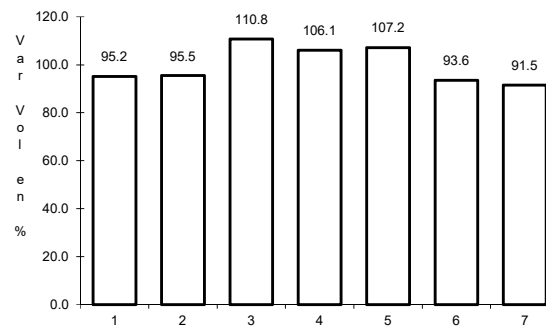
15 CARR: La Culata - San Joaquín

CLAVE: 22021

RUTA: QRO-021



Km: 0.00 Tipo: 3 Sent: 0

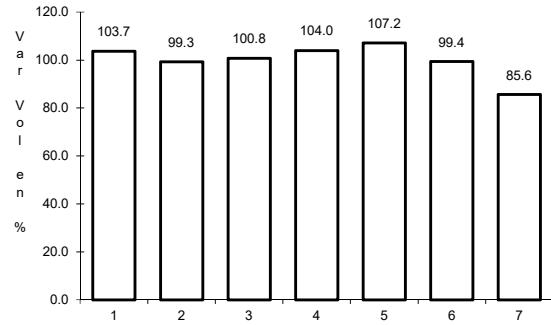


Km: 31.80 Tipo: 1 Sent: 0

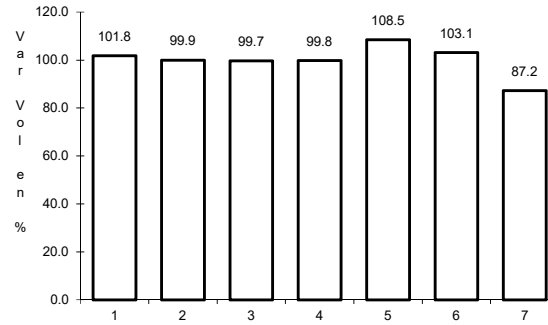
16 CARR: Libramiento de San Juan del Río

CLAVE: 22266

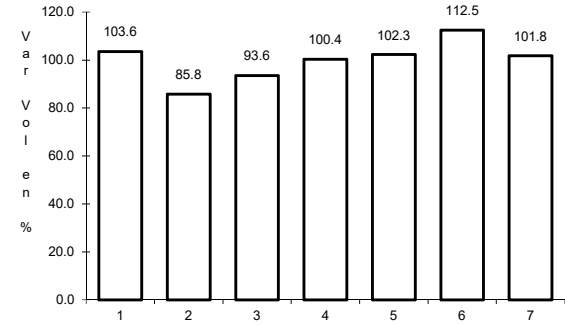
RUTA: QRO



Km: 0.00 Tipo: 3 Sent: 1



Km: 0.00 Tipo: 3 Sent: 2

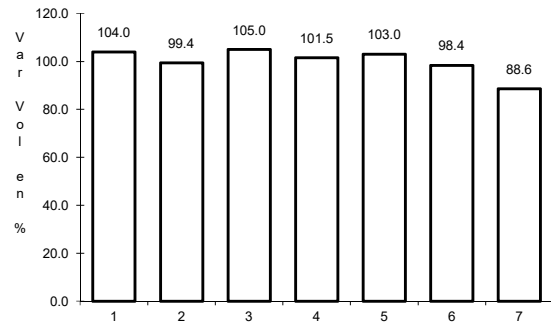


Km: 5.05 Tipo: 1 Sent: 1

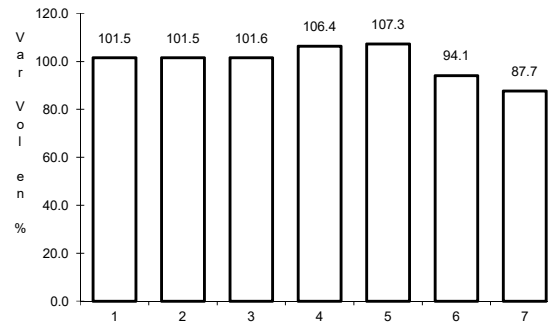
17 CARR: Libramiento Norte de Querétaro

CLAVE: 22500

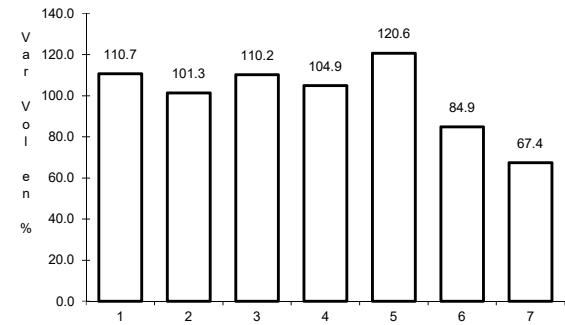
RUTA: QRO



Km: 0.00 Tipo: 3 Sent: 1



Km: 0.00 Tipo: 3 Sent: 2

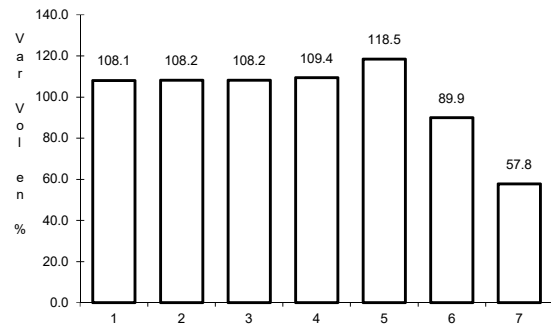


Km: 8.00 Tipo: 3 Sent: 1

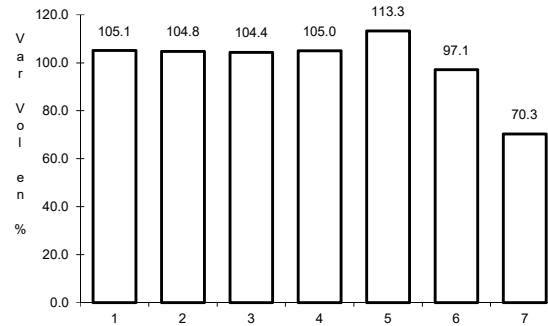
18 CARR: Libramiento Surponiente de Querétaro

CLAVE: 22501

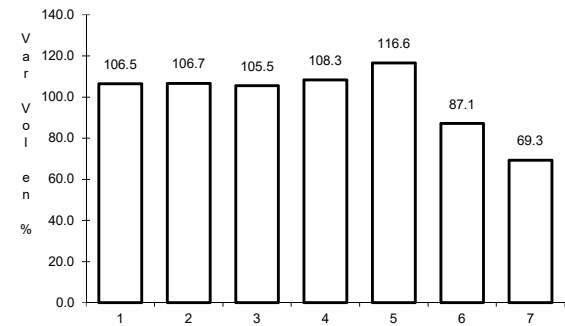
RUTA: QRO



Km: 0.00 Tipo: 3 Sent: 1



Km: 0.00 Tipo: 3 Sent: 2

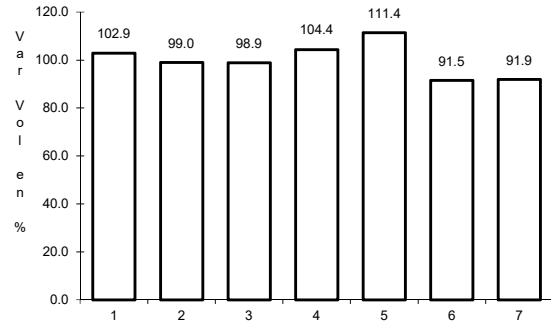


Km: 44.10 Tipo: 3 Sent: 1

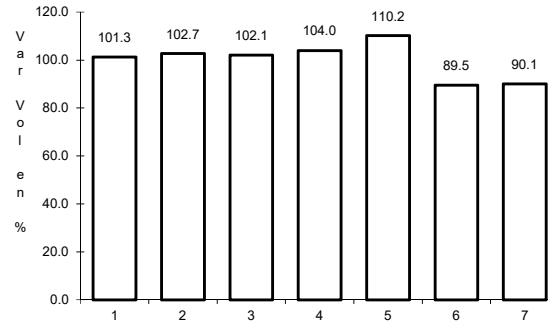
19 CARR: Peña Colorada - El Rodeo

CLAVE: 22002

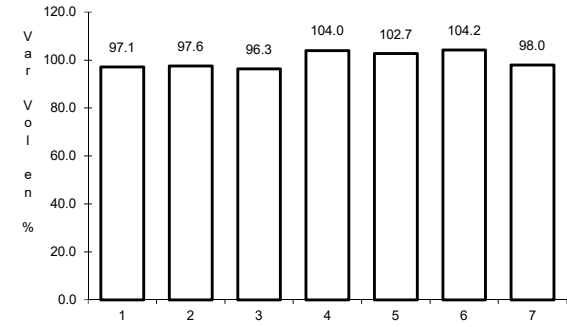
RUTA: QRO



Km: 0.00 Tipo: 3 Sent: 0



Km: 9.00 Tipo: 1 Sent: 0

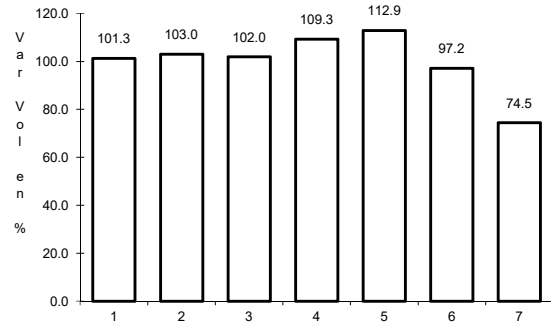


Km: 11.00 Tipo: 1 Sent: 0

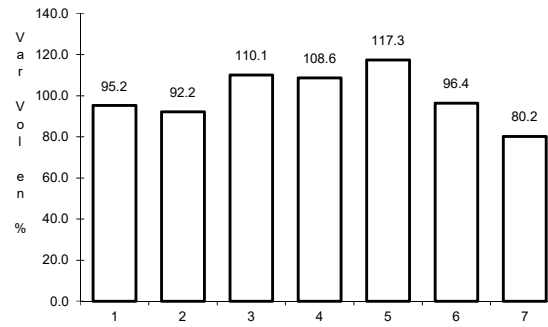
20 CARR: Querétaro - Ent. San Martín

CLAVE: 22067

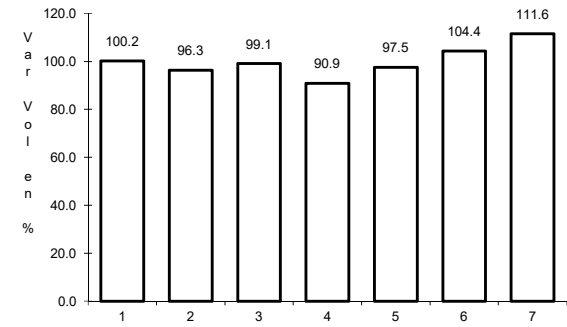
RUTA: QRO



Km: 0.00 Tipo: 3 Sent: 1



Km: 0.00 Tipo: 3 Sent: 2

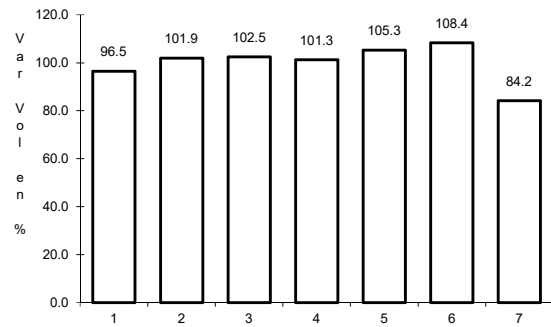


Km: 53.00 Tipo: 1 Sent: 0

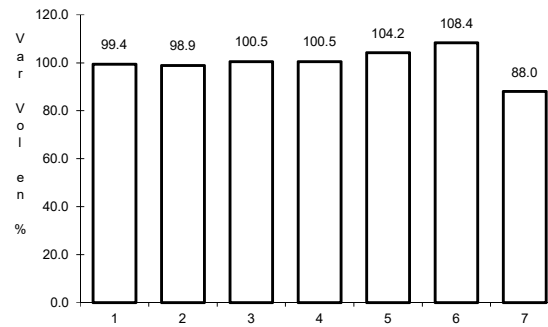
21 CARR: Querétaro - Estación Chichimequillas

CLAVE: 22270

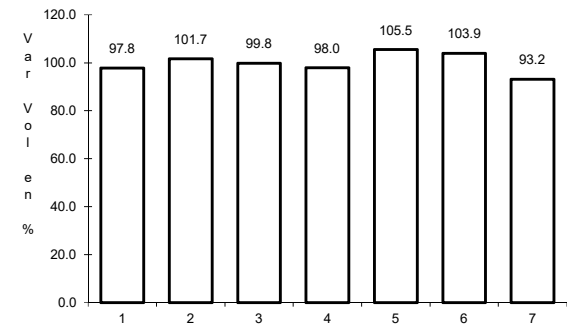
RUTA: QRO



Km: 0.00 Tipo: 3 Sent: 1



Km: 0.00 Tipo: 3 Sent: 2

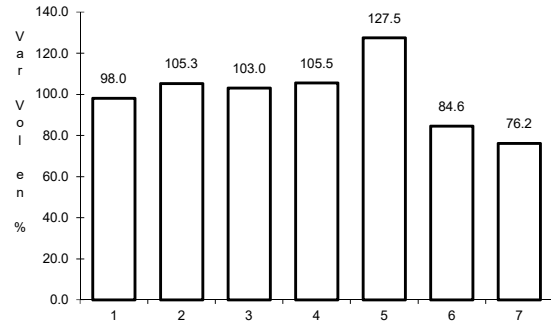


Km: 18.00 Tipo: 1 Sent: 0

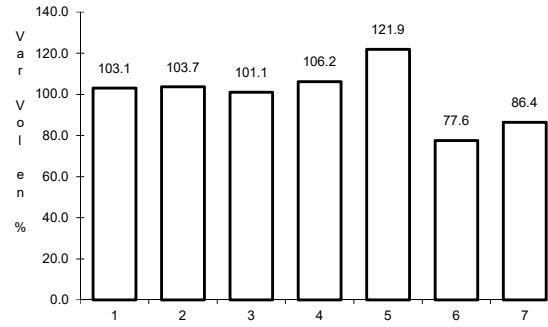
22 CARR: Querétaro - Tequisquiapan

CLAVE: 22502

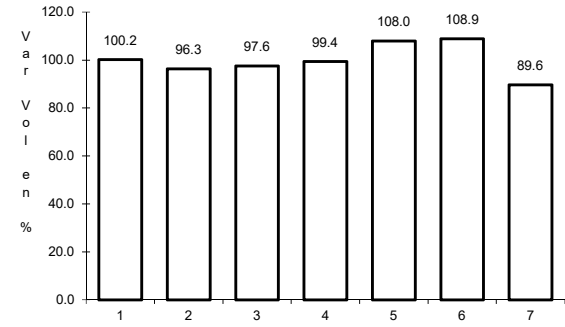
RUTA: QRO



Km: 0.00 Tipo: 3 Sent: 1



Km: 0.00 Tipo: 3 Sent: 2

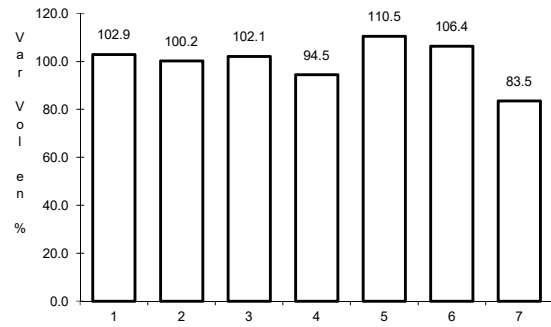


Km: 57.40 Tipo: 1 Sent: 0

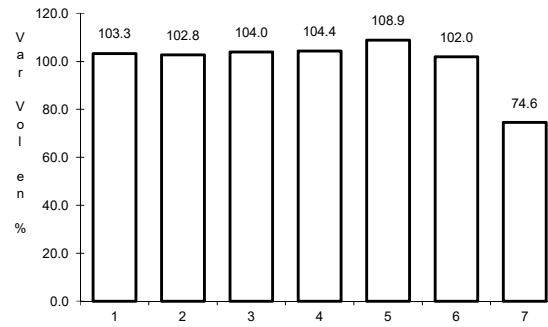
23 CARR: Querétaro - Tlacote El Bajo

CLAVE: 22069

RUTA: QRO



Km: 0.00 Tipo: 3 Sent: 1

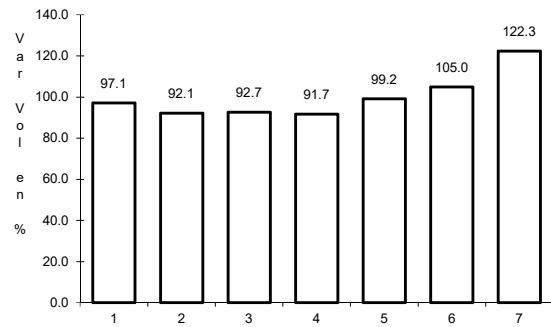


Km: 0.00 Tipo: 3 Sent: 2

24 CARR: Ramal a La Estancia

CLAVE: 22504

RUTA: QRO

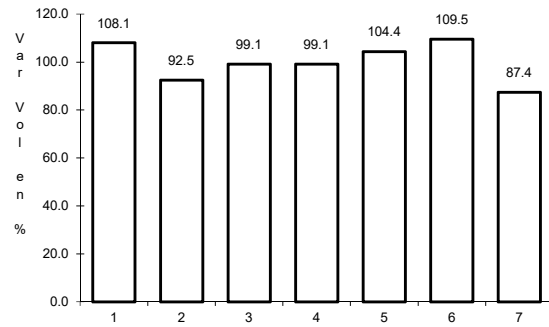


Km: 0.00 Tipo: 3 Sent: 0

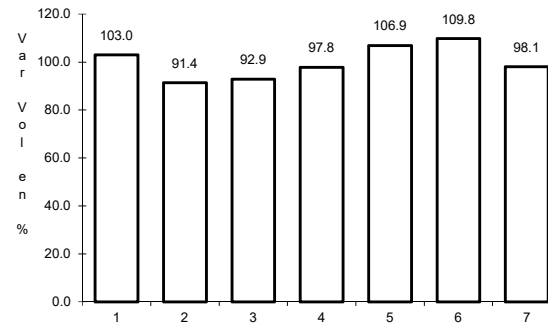
25 CARR: Ramal a Tolimán

CLAVE: 22265

RUTA: QRO



Km: 0.00 Tipo: 3 Sent: 0

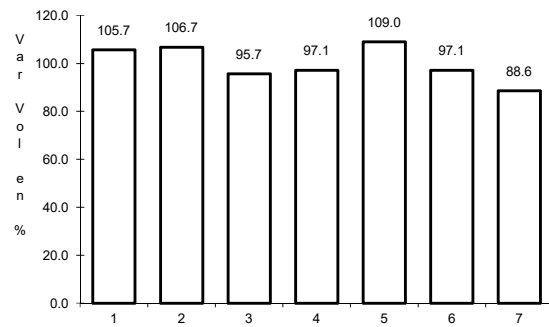


Km: 7.00 Tipo: 1 Sent: 0

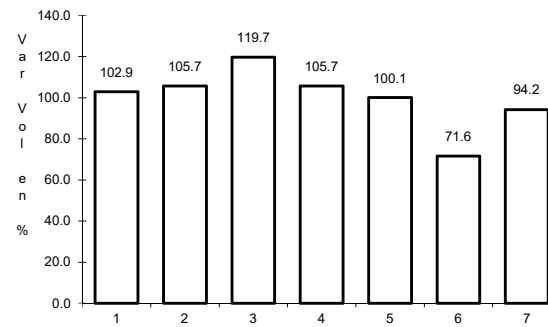
26 CARR: Rayón - Arroyo Seco

CLAVE: 24008

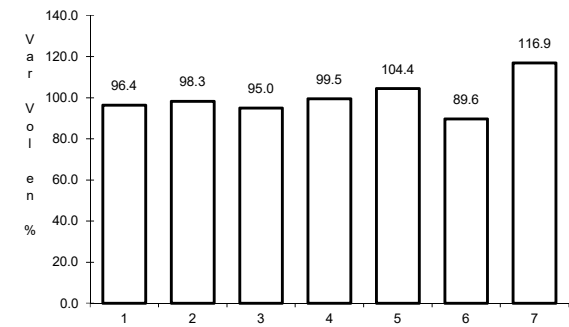
RUTA: SLP-011



Km: 0.00 Tipo: 3 Sent: 0



Km: 36.00 Tipo: 1 Sent: 0

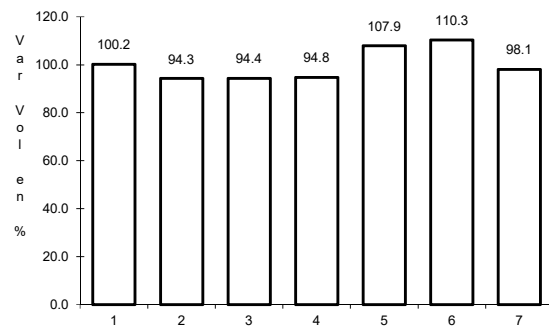


Km: 57.00 Tipo: 1 Sent: 0

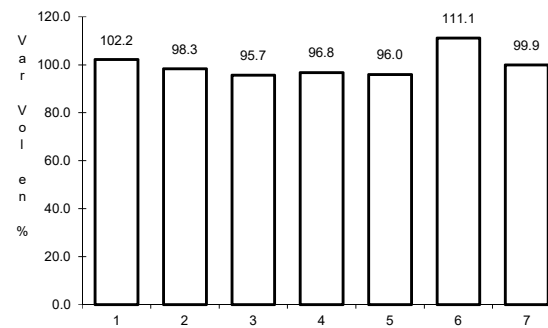
27 CARR: San Juan del Río - Amealco

CLAVE: 22011

RUTA: QRO



Km: 0.00 Tipo: 3 Sent: 0

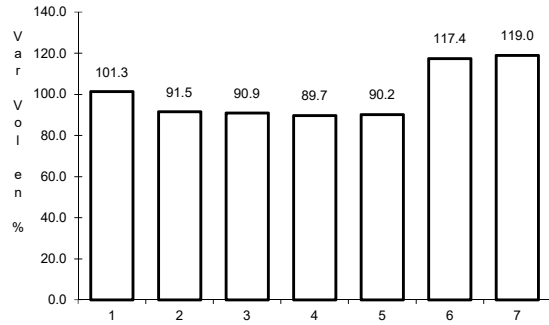


Km: 28.00 Tipo: 1 Sent: 0

28 CARR: T. C. (Villa del Pueblito - Huimilpan) - Coroneo

CLAVE: 00155

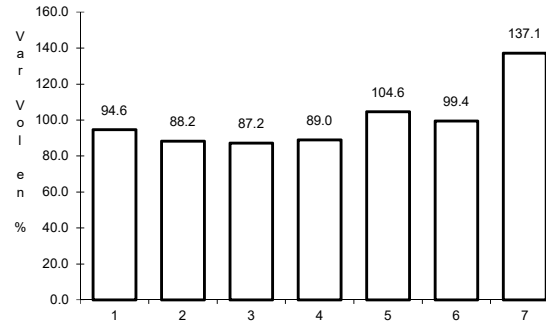
RUTA: QRO-GTO



Km: 0.00

Tipo: 3

Sent: 0



Km: 45.20

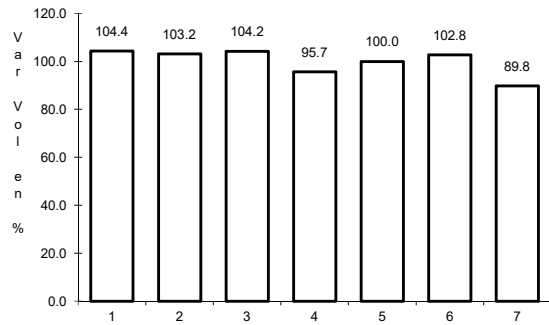
Tipo: 1

Sent: 0

29 CARR: Villa del Pueblito - Huimilpan

CLAVE: 22503

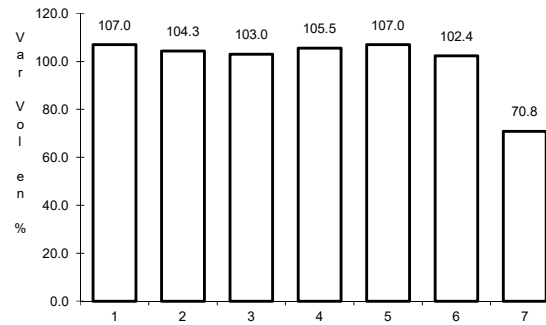
RUTA: QRO



Km: 0.00

Tipo: 3

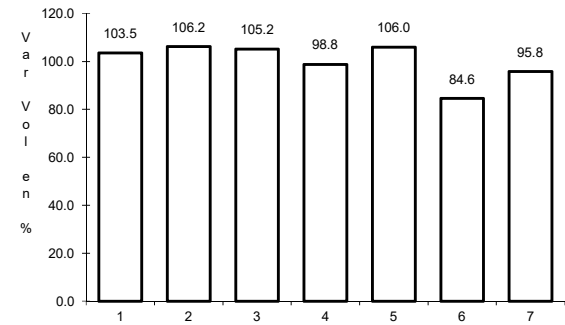
Sent: 1



Km: 0.00

Tipo: 3

Sent: 2



Km: 27.00

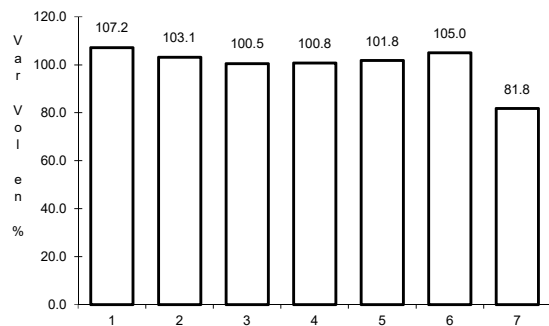
Tipo: 1

Sent: 0

30 CARR: Toluca - Palmillas

CLAVE: 00496

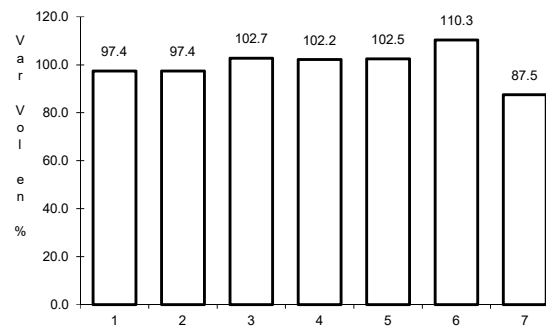
RUTA: EM(D)-MEX-055



Km: 14.21

Tipo: 1

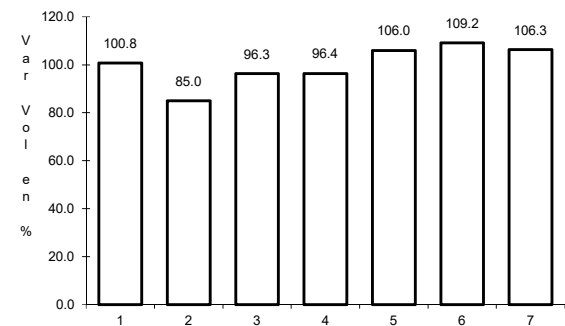
Sent: 1



Km: 14.21

Tipo: 1

Sent: 2



Km: 85.64

Tipo: 3

Sent: 0