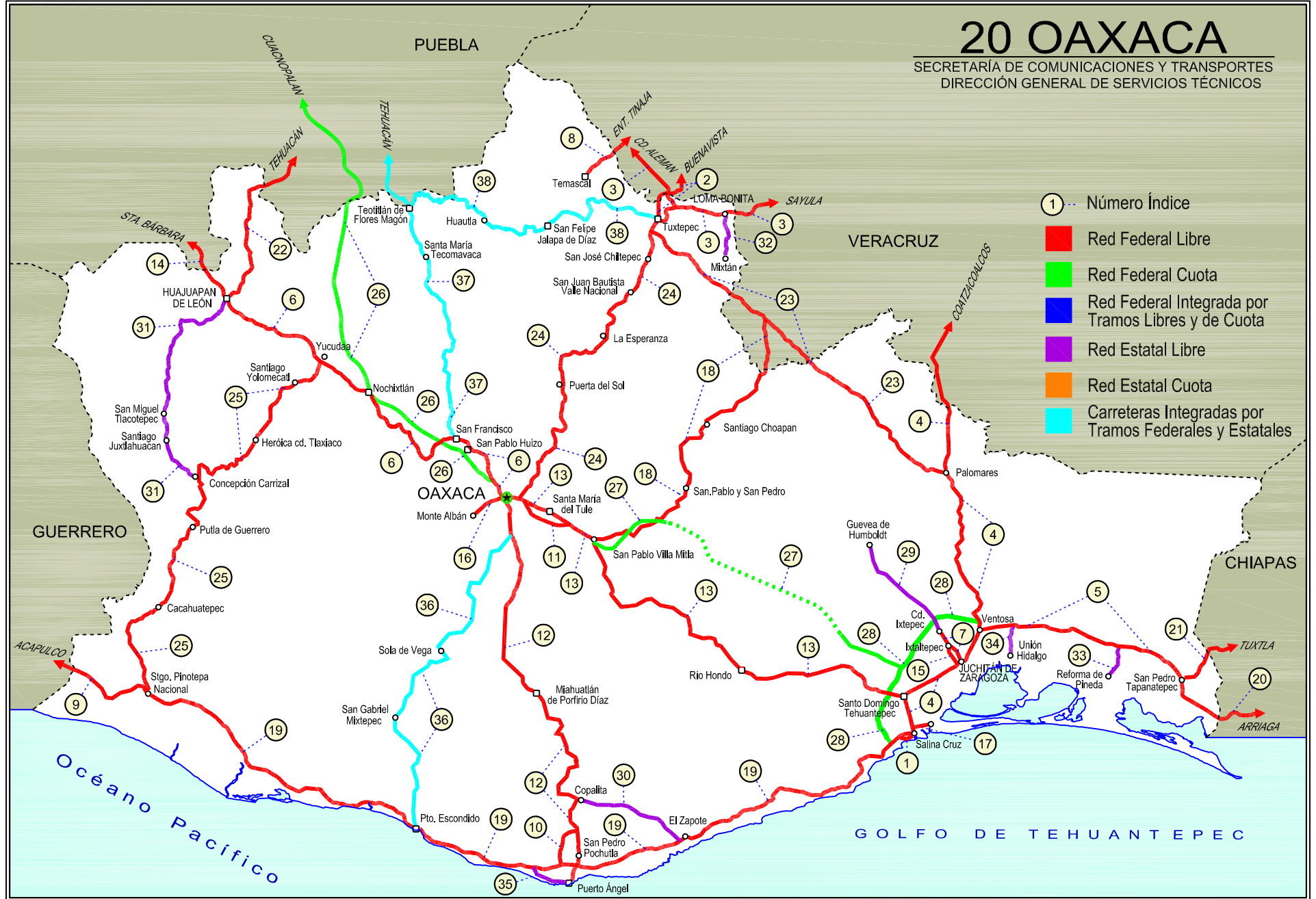


20 OAXACA

SECRETARÍA DE COMUNICACIONES Y TRANSPORTES
DIRECCIÓN GENERAL DE SERVICIOS TÉCNICOS

- ① - Número Índice
- Red Federal Libre
- Red Federal Cuota
- Red Federal Integrada por Tramos Libres y de Cuota
- Red Estatal Libre
- Red Estatal Cuota
- Carreteras Integradas por Tramos Federales y Estatales





OAXACA

---RED FEDERAL LIBRE---

1 Acceso al Puerto Salina Cruz	MEX-090
2 Buenavista - Tuxtepec	MEX-175
3 Cd. Alemán - Sayula	MEX-145
4 Coatzacoalcos - Salina Cruz	MEX-185
5 Ent. La Ventosa - San Pedro Tapanatepec	MEX-190
6 Huajuapán de León - Oaxaca	MEX-190
7 Juchitán - Ixtepec	MEX-185
8 La Granja - Temascal	MEX-145
9 Las Cruces - Pinotepa Nacional	MEX-200
10 Libramiento de Pochutla	MEX-200
11 Libramiento de Santa María del Tule	MEX-190
12 Oaxaca - Puerto Ángel	MEX-175
13 Oaxaca - Tehuantepec	MEX-190
14 Puebla - Huajuapán de León	MEX-190
15 Ramal a Asunción Ixtaltepec	MEX-185
16 Ramal a Monte Albán	MEX
17 Ramal a Refinería Pemex (Refinería del Pacífico)	MEX
18 San Pablo Villa de Mitla - T. C. (Tuxtepec - Palomares)	MEX-179
19 Santiago Pinotepa Nacional - Salina Cruz	MEX-200
20 Tapanatepec - Talismán	MEX-200
21 Tapanatepec - Tuxtla Gutiérrez	MEX-190
22 Tehuacán - Huajuapán de León	MEX-125
23 Tuxtepec - Ent. Palomares	MEX-147
24 Tuxtepec - T. C. (Oaxaca - Tehuantepec)	MEX-175
25 Yucudaa - Santiago Pinotepa Nacional	MEX-125

---RED FEDERAL DE CUOTA---

26 Cuacnopalan - Oaxaca (Cuota)	MEX-135D
27 Mitla - Tehuantepec (Cuota)	MEX-190D
28 Salina Cruz - La Ventosa (Cuota)	MEX-185D

---RED ESTATAL LIBRE---

29 Cd. Ixtepec - Guevea de Humboldt	OAX
30 El Zapote - Copalita	OAX
31 Huajuapán de León - El Carrizal	OAX
32 Loma Bonita - Mixtán	OAX
33 Ramal a Reforma de Pineda	OAX
34 Ramal a Unión Hidalgo	OAX
35 San Antonio - Puerto Ángel	OAX

---CARRETERAS INTEGRADAS POR TRAMOS FEDERALES Y ESTATALES---

36 T. C. (Oaxaca - Puerto Ángel) - Puerto Escondido	MEX-OAX-161
37 Tehuacán - Huitzo	PUE-MEX-135
38 Teotitlán de Flores Magón - Tuxtepec	OAX-PUE-MEX-182

OAXACA

1 CARR: Acceso al Puerto Salina Cruz

CLAVE:

RUTA: MEX-090

AÑO: 2017

LUGAR	ESTACION				CLASIFICACION VEHICULAR EN PORCIENTO														COORDENADAS	
	KM	TE	SC	TDPA	M	A	B	C2	C3	T3S2	T3S3	T3S2R4	OTROS	A	B	C	K'	D	LATITUD	LONGITUD
T. C. Santiago Pinotepa Nacional - Salina Cruz	0.00	3	0	2020	3.6	88.1	1.8	4.7	0.3	1.1	0.1	0.2	0.1	91.7	1.8	6.5	0.088	0.508	16.179966	-95.222647
Salina Cruz	3.80																			

2 CARR: Buenavista - Tuxtepec

CLAVE: 00624

RUTA: MEX-175

AÑO: 2017

LUGAR	ESTACION				CLASIFICACION VEHICULAR EN PORCIENTO														COORDENADAS	
	KM	TE	SC	TDPA	M	A	B	C2	C3	T3S2	T3S3	T3S2R4	OTROS	A	B	C	K'	D	LATITUD	LONGITUD
T. C. Paso del Toro - Acayucan	0.00	3	0	1377	6.1	74.9	1.1	11.9	3.1	2.1	0.6	0.2	0.0	81.0	1.1	17.9	0.072	0.502	18.713379	-95.637932
Puente Tlacotalpan	1.55	2	0	1388	6.6	79.6	6.1	3.5	2.8	1.1	0.2	0.1	0.0	86.2	6.1	7.7	0.085	0.500	18.704596	-95.641296
Tlacotalpan	18.00	1	0	1684	13.1	70.0	1.1	9.7	3.2	2.1	0.6	0.1	0.1	83.1	1.1	15.8	0.078	0.503	18.614770	-95.645061
Tlacotalpan	18.00	3	0	2094	14.9	69.5	1.1	12.0	0.9	1.2	0.2	0.1	0.1	84.4	1.1	14.5	0.075	0.504	18.616379	-95.680957
Carlos A. Carrillo	56.00	1	0	4351	17.5	63.6	0.7	7.1	3.8	2.8	2.0	1.7	0.8	81.1	0.7	18.2	0.072	0.510	18.380068	-95.742323
Cosamaloapan	60.00	1	0	12073	18.0	67.7	0.3	5.5	0.8	5.4	1.4	0.7	0.2	85.7	0.3	14.0	0.073	0.513	18.365642	-95.776307
Cosamaloapan	60.00	3	0	8095	9.9	73.1	2.2	6.3	1.6	4.3	1.1	0.8	0.7	83.0	2.2	14.8	0.063	0.516	18.354195	-95.805216
T. C. La Tinaja - Santa Cruz	107.00	1	0	3556	7.5	75.3	1.7	8.6	1.9	2.7	0.7	1.2	0.4	82.8	1.7	15.5	0.071	0.501	18.168682	-96.087984
T. C. Cd. Alemán - Sayula	108.92	1	0	3699	6.3	75.4	1.4	10.9	0.9	3.6	0.4	0.6	0.5	81.7	1.4	16.9	0.070	0.522	18.168205	-96.093849
T. C. Cd. Alemán - Sayula	108.92	3	0	6881	4.7	68.6	3.5	11.2	2.0	4.2	0.9	4.3	0.6	73.3	3.5	23.2	0.071	0.509	18.168785	-96.101468
Lim. Edos. Term. Ver. Ppia. Oax.	115.00																			
Puente Caracol	117.20	2	0	6426	5.5	70.7	9.1	4.3	3.0	2.0	0.4	4.9	0.1	76.2	9.1	14.7	0.085	0.500	18.133059	-96.136688
Tuxtepec	121.25	1	1	5215	8.5	72.8	8.5	2.8	1.7	1.9	0.6	2.8	0.4	81.3	8.5	10.2	0.077	0.519	18.113260	-96.134446
Tuxtepec	121.25	1	2	4841	9.7	69.2	9.8	3.3	1.9	2.0	0.6	3.1	0.4	78.9	9.8	11.3	0.070	0.519	18.113748	-96.134400

3 CARR: Cd. Alemán - Sayula

CLAVE: 00301

RUTA: MEX-145

AÑO: 2017

LUGAR	ESTACION				CLASIFICACION VEHICULAR EN PORCIENTO														COORDENADAS	
	KM	TE	SC	TDPA	M	A	B	C2	C3	T3S2	T3S3	T3S2R4	OTROS	A	B	C	K'	D	LATITUD	LONGITUD
Cd. Alemán	0.00	3	0	7152	3.0	65.2	4.5	7.1	4.1	9.4	1.7	4.1	0.9	68.2	4.5	27.3	0.066	0.507	18.183855	-96.093489
Lim. Edos. Term. Ver. Ppia. Oax.	2.80																			
Puente Papaloapan	3.50	2	0	2522	5.4	54.7	4.5	9.6	9.2	13.3	0.9	1.9	0.5	60.1	4.5	35.4	0.076	0.500	18.159460	-96.096588
T. Izq. Loma Bonita	30.00	1	0	5204	8.3	62.6	2.7	10.0	3.1	8.3	1.8	2.3	0.9	70.9	2.7	26.4	0.058	0.512	18.094000	-95.882361
Lim. Edos. Term. Oax. Ppia. Ver.	34.40																			
T. Der. Villa Azueta	41.50	1	0	4413	4.4	57.2	3.7	11.0	4.6	12.9	2.5	2.8	0.9	61.6	3.7	34.7	0.065	0.541	18.090384	-95.783170
T. Izq. Tesechoacán	56.70	1	0	3722	2.2	50.4	5.3	12.9	6.3	16.6	1.9	4.0	0.4	52.6	5.3	42.1	0.057	0.546	18.127764	-95.655331
X. C. Santiago Tuxtla - Playa Vicente	71.40	1	0	4716	4.1	60.1	3.6	11.6	4.1	11.5	1.7	2.8	0.5	64.2	3.6	32.2	0.065	0.526	18.068763	-95.534530
San Juan Evangelista	118.35	1	0	4873	2.1	57.2	4.2	9.2	5.1	15.7	2.6	3.2	0.7	59.3	4.2	36.5	0.062	0.525	17.910204	-95.129254

OAXACA

3 CARR: Cd. Alemán - Sayula

CLAVE: 00301

RUTA: MEX-145

AÑO: 2017

LUGAR	ESTACION				CLASIFICACION VEHICULAR EN PORCIENTO														COORDENADAS	
	KM	TE	SC	TDPA	M	A	B	C2	C3	T3S2	T3S3	T3S2R4	OTROS	A	B	C	K'	D	LATITUD	LONGITUD
Sayula de Alemán	136.40	1	0	6585	2.4	66.8	2.8	7.0	3.5	12.2	2.4	2.5	0.4	69.2	2.8	28.0	0.065	0.525	17.886919	-94.962509

4 CARR: Coatzacoalcos - Salina Cruz

CLAVE: 00147

RUTA: MEX-185

AÑO: 2017

LUGAR	ESTACION				CLASIFICACION VEHICULAR EN PORCIENTO														COORDENADAS	
	KM	TE	SC	TDPA	M	A	B	C2	C3	T3S2	T3S3	T3S2R4	OTROS	A	B	C	K'	D	LATITUD	LONGITUD
Coatzacoalcos	0.00	3	1	11297	1.4	83.4	3.2	7.2	1.2	1.5	1.1	0.7	0.3	84.8	3.2	12.0	0.070	0.508	18.096167	-94.460194
Coatzacoalcos	0.00	3	2	11578	1.7	82.0	3.7	7.4	1.3	1.6	1.3	0.7	0.3	83.7	3.7	12.6	0.076	0.508	18.096169	-94.460194
T. C. Nuevo Teapa - Cosoleacaque	21.00	1	1	12234	2.1	83.9	2.4	7.0	0.8	1.6	1.3	0.5	0.4	86.0	2.4	11.6	0.069	0.504	18.021882	-94.542385
T. C. Nuevo Teapa - Cosoleacaque	21.00	1	2	12838	1.7	82.6	2.6	8.3	0.9	1.7	1.3	0.5	0.4	84.3	2.6	13.1	0.074	0.504	18.021925	-94.542431
Minatitlán	21.60	3	1	16256	2.9	83.7	1.1	5.5	0.9	1.6	3.1	0.8	0.4	86.6	1.1	12.3	0.059	0.503	17.998605	-94.588639
Minatitlán	21.60	3	2	15939	2.0	83.3	1.3	6.0	0.9	1.8	3.4	0.9	0.4	85.3	1.3	13.4	0.064	0.503	17.998611	-94.588647
Cosoleacaque	31.50	1	0	27214	3.7	81.5	2.0	9.3	0.9	1.2	1.0	0.3	0.1	85.2	2.0	12.8	0.059	0.540	18.006883	-94.627729
Jáltipan de Morelos	38.60	3	0	10687	3.6	74.0	3.0	7.0	1.5	6.6	1.5	1.6	1.2	77.6	3.0	19.4	0.065	0.508	17.959484	-94.716511
Acayucan	59.60	1	0	10538	3.2	73.1	3.3	8.1	3.2	5.3	1.3	1.8	0.7	76.3	3.3	20.4	0.064	0.515	17.953359	-94.878975
Sayula de Alemán	71.00	1	1	8761	3.2	79.6	1.9	5.0	1.3	4.7	2.2	1.9	0.2	82.8	1.9	15.3	0.065	0.509	17.888707	-94.956038
Sayula de Alemán	71.00	1	2	8441	3.4	77.9	2.1	5.3	1.5	4.9	2.5	2.2	0.2	81.3	2.1	16.6	0.066	0.509	17.888697	-94.956024
Sayula de Alemán	71.00	3	0	8974	3.4	73.2	2.8	4.6	2.1	8.0	2.4	3.2	0.3	76.6	2.8	20.6	0.070	0.513	17.875949	-94.966008
Campo Nuevo	94.50	3	0	6874	2.4	67.8	5.5	6.0	2.3	7.8	2.3	5.0	0.9	70.2	5.5	24.3	0.068	0.534	17.699991	-95.073334
T. Izq. Jesús Carranza	126.80	1	0	4858	2.3	69.9	3.6	5.3	1.9	8.6	3.1	4.7	0.6	72.2	3.6	24.2	0.071	0.546	17.436845	-95.077620
T. Izq. Jesús Carranza	126.80	3	0	5049	3.0	68.7	5.2	4.9	2.5	8.1	2.7	4.8	0.1	71.7	5.2	23.1	0.081	0.541	17.433028	-95.076763
Lim. Edos. Term. Ver. Ppia. Oax.	139.90																			
T. Der. Tuxtepec	166.20	1	0	4584	6.2	59.3	5.6	6.5	2.7	9.1	3.3	6.7	0.6	65.5	5.6	28.9	0.072	0.509	17.146515	-95.064186
T. Der. Tuxtepec	166.20	3	0	5407	4.8	63.5	4.8	5.5	2.7	9.4	2.4	6.2	0.7	68.3	4.8	26.9	0.067	0.507	17.131556	-95.059750
T. Der. Estación Mogojé	182.15	1	0	5610	3.6	68.0	4.1	4.9	1.9	8.7	2.4	5.5	0.9	71.6	4.1	24.3	0.065	0.527	17.012333	-95.010250
T. Der. Matías Romero	196.00	1	0	9409	7.9	70.4	2.7	4.1	1.3	7.4	1.7	3.5	1.0	78.3	2.7	19.0	0.071	0.507	16.883517	-95.020249
T. Der. Barrio de La Soledad	203.05	1	0	7701	3.5	69.7	3.5	6.6	1.9	7.6	2.1	4.2	0.9	73.2	3.5	23.3	0.066	0.507	16.817861	-95.033556
T. Der. Barrio de La Soledad	203.05	3	0	5818	3.3	63.0	5.0	6.3	2.2	9.3	4.3	5.8	0.8	66.3	5.0	28.7	0.059	0.516	16.812574	-95.032597
T. C. La Ventosa - Salina Cruz (Cuota)	236.00	1	0	5972	1.3	64.9	5.1	6.3	2.2	9.3	4.5	5.6	0.8	66.2	5.1	28.7	0.070	0.522	16.597722	-94.945806
T. C. La Ventosa - Salina Cruz (Cuota)	236.00	3	0	3489	1.7	76.6	8.0	9.7	1.6	15.0	6.0	7.6	0.3	78.3	5.7	16.0	0.074	0.506	16.576389	-94.945056
T. Izq. San Pedro Tapanatepec (2º Acceso)	241.70	1	0	3678	2.3	82.9	8.0	8.7	2.2	15.0	6.0	7.5	0.1	85.2	0.3	14.5	0.073	0.526	16.558306	-94.948306
T. Izq. San Pedro Tapanatepec (2º Acceso)	241.70	3	0	7721	2.4	81.7	3.7	6.5	0.7	3.6	0.7	3.3	0.5	84.1	3.7	12.2	0.073	0.500	16.545347	-94.951926
Juchitán de Zaragoza	255.55	1	0	8727	3.6	79.5	2.8	6.7	0.8	4.0	1.0	2.7	0.6	83.1	3.4	13.5	0.072	0.505	16.454117	-95.002157
Juchitán de Zaragoza	255.55	3	1	8220	7.8	81.1	1.6	5.3	0.7	2.2	0.9	1.4	0.5	88.9	1.6	9.5	0.073	0.515	16.437365	-95.032302
Juchitán de Zaragoza	255.55	3	2	8737	6.8	83.6	1.5	5.3	0.7	2.2	1.0	1.4	0.2	90.4	1.0	8.6	0.073	0.515	16.437380	-95.032286

OAXACA

4 CARR: Coatzacoalcos - Salina Cruz

CLAVE: 00147

RUTA: MEX-185

AÑO: 2017

LUGAR	ESTACION				CLASIFICACION VEHICULAR EN PORCIENTO													COORDENADAS		
	KM	TE	SC	TDPA	M	A	B	C2	C3	T3S2	T3S3	T3S2R4	OTROS	A	B	C	K'	D	LATITUD	LONGITUD
Santo Domingo Tehuantepec	283.95	1	1	4784	3.0	82.2	3.0	10.9	1.2	3.0	0.6	2.1	0.1	85.2	0.8	14.0	0.070	0.528	16.347833	-95.208611
Santo Domingo Tehuantepec	283.95	1	2	4276	3.2	81.9	3.3	10.4	1.2	3.0	0.7	2.1	0.0	85.1	1.6	13.3	0.071	0.528	16.347833	-95.208361
Santo Domingo Tehuantepec	283.95	3	1	11274	2.7	87.9	1.2	4.2	0.5	1.1	1.4	0.7	0.3	90.6	1.2	8.2	0.072	0.509	16.313984	-95.237228
Santo Domingo Tehuantepec	283.95	3	2	11704	3.2	86.8	1.1	4.5	0.5	1.4	1.4	0.7	0.4	90.0	1.1	8.9	0.070	0.509	16.313988	-95.237221
Salina Cruz	302.35	1	1	12710	2.8	86.0	1.0	5.4	0.8	1.1	1.4	0.9	0.5	88.8	1.0	10.2	0.069	0.509	16.237481	-95.213410
Salina Cruz	302.35	1	2	12241	2.6	86.0	1.1	5.7	0.7	1.0	1.6	0.9	0.4	88.6	1.1	10.3	0.070	0.509	16.237455	-95.213403

5 CARR: Ent. La Ventosa - San Pedro Tapanatepec

CLAVE: 20059

RUTA: MEX-190

AÑO: 2017

LUGAR	ESTACION				CLASIFICACION VEHICULAR EN PORCIENTO													COORDENADAS		
	KM	TE	SC	TDPA	M	A	B	C2	C3	T3S2	T3S3	T3S2R4	OTROS	A	B	C	K'	D	LATITUD	LONGITUD
La Ventosa	0.00	3	0	3831	2.5	81.9	3.4	8.1	0.8	2.7	0.3	0.1	0.2	84.4	3.4	12.2	0.066	0.509	16.550722	-94.943000
T. C. La Ventosa - Salina Cruz (Cuota)	7.20	3	0	5603	1.2	68.4	2.2	6.6	3.2	8.3	3.4	5.5	1.2	69.6	2.2	28.2	0.061	0.504	16.571472	-94.885278
T. Izq. Niltotec	38.01	3	0	4007	1.2	60.4	4.9	6.2	3.3	11.9	3.8	7.8	0.5	61.6	4.9	33.5	0.057	0.511	16.554472	-94.604500
Santo Domingo Zanatepec	68.25	3	0	3896	2.2	60.2	4.6	7.1	2.8	11.1	3.9	7.3	0.8	62.4	4.6	33.0	0.059	0.524	16.476356	-94.343907
San Pedro Tapanatepec	91.80	1	0	2101	7.9	73.6	4.4	10.5	0.7	1.9	0.5	0.3	0.2	81.5	4.4	14.1	0.071	0.504	16.384250	-94.200917

6 CARR: Huajuapán de León - Oaxaca

CLAVE: 20056

RUTA: MEX-190

AÑO: 2017

LUGAR	ESTACION				CLASIFICACION VEHICULAR EN PORCIENTO													COORDENADAS		
	KM	TE	SC	TDPA	M	A	B	C2	C3	T3S2	T3S3	T3S2R4	OTROS	A	B	C	K'	D	LATITUD	LONGITUD
Hujuapán de León	0.00																			
T. Izq. Tehuacán	1.35	1	0	17260	4.0	80.8	0.3	3.7	0.3	8.6	1.0	0.5	0.8	84.8	0.3	14.9	0.053	0.521	17.813278	-97.765972
T. Izq. Tehuacán	1.35	3	0	10629	6.4	80.1	0.3	5.7	0.4	5.8	0.4	0.1	0.8	86.5	0.3	13.2	0.074	0.518	17.809778	-97.759861
Tamazulapán	38.61	1	0	3015	2.3	80.7	1.0	11.6	1.2	1.9	0.8	0.3	0.2	83.0	1.0	16.0	0.065	0.501	17.686067	-97.585068
Tamazulapán	38.61	3	0	3426	3.2	81.3	1.3	10.2	1.0	2.2	0.5	0.1	0.2	84.5	1.3	14.2	0.087	0.501	17.671472	-97.562389
T. Izq. Santiago Tejuapán	49.62	3	0	2995	1.6	79.7	2.2	12.0	1.5	2.0	0.7	0.1	0.2	81.3	2.2	16.5	0.074	0.510	17.654639	-97.470333
T. Der. Tlaxiaco	61.43	3	0	3392	1.7	77.5	1.1	15.9	1.1	1.9	0.5	0.1	0.2	79.2	1.1	19.7	0.071	0.507	17.575408	-97.421209
Asunción Nochixtlán	90.40	1	0	6640	2.3	84.2	0.5	9.5	0.7	2.2	0.3	0.1	0.2	86.5	0.5	13.0	0.062	0.512	17.465417	-97.261083
T. Izq. Tehuacán	161.73	1	0	818	6.6	84.3	0.4	6.1	1.5	0.7	0.3	0.0	0.1	90.9	0.4	8.7	0.082	0.519	17.285472	-96.910667
T. Izq. Tehuacán	161.73	3	0	6363	5.5	86.9	0.4	3.4	0.5	2.5	0.4	0.1	0.3	92.4	0.4	7.2	0.072	0.503	17.284944	-96.900167
T. Der. Tlaltinango	170.29	1	0	7888	4.3	88.6	0.4	3.6	0.4	2.4	0.2	0.0	0.1	92.9	0.4	6.7	0.086	0.528	17.245944	-96.848028
T. Der. Tlaltinango	170.29	3	0	8535	4.5	88.3	0.3	3.9	0.4	1.9	0.3	0.1	0.3	92.8	0.3	6.9	0.062	0.501	17.244495	-96.844693
T. Der. Nazareno Etla	179.23	3	1	15060	2.5	93.4	0.2	2.8	0.6	0.2	0.2	0.1	0.0	95.9	0.2	3.9	0.061	0.533	17.168024	-96.788166
T. Der. Nazareno Etla	179.23	3	2	17191	3.6	91.9	0.2	3.2	0.6	0.2	0.2	0.1	0.0	95.5	0.2	4.3	0.065	0.533	17.168028	-96.788222

OAXACA

6 CARR: Huajuapán de León - Oaxaca

CLAVE: 20056

RUTA: MEX-190

AÑO: 2017

LUGAR	ESTACION				CLASIFICACION VEHICULAR EN PORCIENTO													COORDENADAS		
	KM	TE	SC	TDPA	M	A	B	C2	C3	T3S2	T3S3	T3S2R4	OTROS	A	B	C	K'	D	LATITUD	LONGITUD
T. Aut. Cuacnopalan - Oaxaca	181.80	3	1	27147	4.2	87.5	1.1	5.1	0.7	0.6	0.4	0.3	0.1	91.7	1.1	7.2	0.079	0.501	17.142667	-96.777583
T. Aut. Cuacnopalan - Oaxaca	181.80	3	2	27014	3.9	87.0	1.1	5.7	0.8	0.7	0.4	0.3	0.1	90.9	1.1	8.0	0.068	0.501	17.142583	-96.777750
Oaxaca	190.60	1	1	33938	4.5	86.9	0.7	6.0	0.2	0.4	1.0	0.1	0.2	91.4	0.7	7.9	0.065	0.507	17.096333	-96.749500
Oaxaca	190.60	1	2	34906	4.0	87.1	0.8	6.4	0.2	0.5	0.7	0.1	0.2	91.1	0.8	8.1	0.074	0.507	17.096250	-96.749639

7 CARR: Juchitán - Ixtepec

CLAVE: 20359

RUTA: MEX-185

AÑO: 2017

LUGAR	ESTACION				CLASIFICACION VEHICULAR EN PORCIENTO													COORDENADAS		
	KM	TE	SC	TDPA	M	A	B	C2	C3	T3S2	T3S3	T3S2R4	OTROS	A	B	C	K'	D	LATITUD	LONGITUD
Juchitán de Zaragoza	0.00																			
X. C. Coatzacoalcos - Salina Cruz	0.15	3	1	8295	5.3	88.2	2.4	2.2	0.1	0.7	0.8	0.1	0.2	93.5	2.4	4.1	0.069	0.505	16.453127	-95.027426
X. C. Coatzacoalcos - Salina Cruz	0.15	3	2	8468	6.1	86.8	2.7	2.2	0.1	0.8	1.0	0.1	0.2	92.9	2.7	4.4	0.065	0.505	16.453016	-95.027380
Asunción Ixtaltepec	7.40	1	1	3655	7.0	84.5	3.9	3.3	0.2	0.7	0.4	0.0	0.0	91.5	3.9	4.6	0.071	0.501	16.510833	-95.066100
Asunción Ixtaltepec	7.40	1	2	3636	6.3	84.7	4.3	3.5	0.2	0.7	0.3	0.0	0.0	91.0	4.3	4.7	0.074	0.501	16.510879	-95.066126
Asunción Ixtaltepec	7.40	3	1	4740	7.1	87.2	0.3	4.0	0.1	0.9	0.3	0.0	0.1	94.3	0.3	5.4	0.078	0.504	16.503724	-95.052762
Asunción Ixtaltepec	7.40	3	2	4822	5.5	89.2	0.3	3.0	0.1	1.0	0.8	0.0	0.1	94.7	0.3	5.0	0.079	0.504	16.501775	-95.055600
Ixtepec	16.00	1	1	4550	7.4	84.0	3.0	3.9	0.2	0.6	0.7	0.1	0.1	91.4	3.0	5.6	0.064	0.502	16.536171	-95.079721
Ixtepec	16.00	1	2	4506	8.4	82.6	2.9	4.6	0.1	0.5	0.7	0.1	0.1	91.0	2.9	6.1	0.070	0.502	16.536226	-95.079613

8 CARR: La Granja - Temascal

CLAVE: 00275

RUTA: MEX-145

AÑO: 2017

LUGAR	ESTACION				CLASIFICACION VEHICULAR EN PORCIENTO													COORDENADAS		
	KM	TE	SC	TDPA	M	A	B	C2	C3	T3S2	T3S3	T3S2R4	OTROS	A	B	C	K'	D	LATITUD	LONGITUD
T. C. La Tinaja - Santa Cruz	0.00	3	0	3695	20.6	63.4	0.8	8.5	2.6	2.8	0.9	0.1	0.3	84.0	0.8	15.2	0.076	0.503	18.352964	-96.261678
Lim. Edos. Term. Ver. Ppia. Oax.	5.00																			
Temascal	23.00	1	0	3601	25.5	62.5	0.7	8.1	0.8	1.3	0.5	0.2	0.4	88.0	0.7	11.3	0.079	0.500	18.253278	-96.394694

9 CARR: Las Cruces - Pinotepa Nacional

CLAVE: 00073

RUTA: MEX-200

AÑO: 2017

LUGAR	ESTACION				CLASIFICACION VEHICULAR EN PORCIENTO													COORDENADAS		
	KM	TE	SC	TDPA	M	A	B	C2	C3	T3S2	T3S3	T3S2R4	OTROS	A	B	C	K'	D	LATITUD	LONGITUD
T. C. Chilpancingo - Acapulco	0.00	3	1	17316	2.5	86.7	0.5	3.1	0.4	2.5	2.7	0.6	1.0	89.2	0.5	10.3	0.060	0.524	16.885778	-99.834083
T. C. Chilpancingo - Acapulco	0.00	3	2	15755	2.4	85.5	0.7	3.5	0.4	2.6	3.2	0.7	1.0	87.9	0.7	11.4	0.059	0.524	16.885664	-99.833958
T. Der. Puerto Marqués	4.62	1	1	17734	4.4	88.3	0.4	4.4	0.6	0.8	0.8	0.1	0.2	92.7	0.4	6.9	0.081	0.515	16.867806	-99.811139
T. Der. Puerto Marqués	4.62	1	2	16716	3.0	88.9	0.7	3.3	0.5	1.4	1.8	0.2	0.2	91.9	0.7	7.4	0.074	0.515	16.867818	-99.811068

OAXACA

9 CARR: Las Cruces - Pinotepa Nacional

CLAVE: 00073

RUTA: MEX-200

AÑO: 2017

LUGAR	ESTACION				CLASIFICACION VEHICULAR EN PORCIENTO													COORDENADAS		
	KM	TE	SC	TDPA	M	A	B	C2	C3	T3S2	T3S3	T3S2R4	OTROS	A	B	C	K'	D	LATITUD	LONGITUD
T. Der. Puerto Marqués	4.62	3	0	17916	4.3	87.1	0.7	3.5	1.5	1.6	1.0	0.2	0.1	91.4	0.7	7.9	0.059	0.526	16.852312	-99.798610
X. C. Puerto Marqués - La Venta (Cuota)	11.70	1	1	4100	4.5	85.9	0.9	4.9	1.5	0.9	1.1	0.2	0.1	90.4	0.9	8.7	0.090	0.511	16.831083	-99.770583
X. C. Puerto Marqués - La Venta (Cuota)	11.70	1	2	3916	4.3	84.9	0.9	5.2	1.8	1.2	1.3	0.2	0.2	89.2	0.9	9.9	0.079	0.511	16.831083	-99.770583
X. C. Puerto Marqués - La Venta (Cuota)	11.70	3	1	5459	3.7	88.0	0.5	3.6	1.7	1.3	0.9	0.1	0.2	91.7	0.5	7.8	0.074	0.512	16.830333	-99.755056
X. C. Puerto Marqués - La Venta (Cuota)	11.70	3	2	5203	3.9	86.3	0.8	4.1	1.9	1.5	1.1	0.1	0.3	90.2	0.8	9.0	0.064	0.512	16.830306	-99.755056
San Marcos	58.90	1	0	7853	2.0	83.4	1.4	6.3	1.8	3.4	1.2	0.1	0.4	85.4	1.4	13.2	0.061	0.508	16.779750	-99.411194
Nexpa	84.96	3	0	5940	2.0	82.8	1.4	6.5	1.8	3.5	1.4	0.1	0.5	84.8	1.4	13.8	0.062	0.511	16.781038	-99.200718
T. Izq. Copala (1° Acceso)	117.50	1	0	5928	1.8	81.1	2.6	7.1	2.0	3.6	1.2	0.2	0.4	82.9	2.6	14.5	0.077	0.524	16.611639	-98.995111
T. Izq. Copala (1° Acceso)	117.50	3	0	6581	2.1	82.4	2.0	6.0	2.2	3.8	1.0	0.1	0.4	84.5	2.0	13.5	0.077	0.504	16.603167	-98.965417
T. Izq. Ometepepec	175.88	1	0	5265	1.8	82.1	2.2	6.4	1.9	3.5	1.2	0.5	0.4	83.9	2.2	13.9	0.084	0.542	16.655361	-98.503194
Cuajinicuilapa	200.60	3	0	3251	4.2	76.6	2.1	8.4	3.0	3.3	1.7	0.2	0.5	80.8	2.1	17.1	0.058	0.514	16.462278	-98.393833
Lim. Edos. Term. Gro. Ppia. Oax.	207.80																			
T. Izq. San Pedro Orizaba	215.00	3	0	2191	3.3	78.6	2.5	7.6	2.9	3.3	1.5	0.2	0.1	81.9	2.5	15.6	0.071	0.511	16.443436	-98.344477
T. Izq. Tlaxiaco	245.47	1	0	3603	5.6	77.7	2.3	8.2	1.8	3.0	0.9	0.1	0.4	83.3	2.3	14.4	0.071	0.509	16.379167	-98.094000
T. Izq. Tlaxiaco	245.47	3	0	6625	5.6	77.6	2.1	6.6	1.7	3.7	1.8	0.4	0.5	83.2	2.1	14.7	0.071	0.509	16.376639	-98.092056
Pinotepa Nacional	252.50																			

10 CARR: Libramiento de Pochutla

CLAVE:

RUTA: MEX-200

AÑO: 2017

LUGAR	ESTACION				CLASIFICACION VEHICULAR EN PORCIENTO													COORDENADAS		
	KM	TE	SC	TDPA	M	A	B	C2	C3	T3S2	T3S3	T3S2R4	OTROS	A	B	C	K'	D	LATITUD	LONGITUD
T. C. Santiago Pinotepa Nacional - Salina Cruz	0.00	3	0	955	16.2	62.8	2.4	7.4	5.3	2.5	1.4	1.6	0.4	79.0	2.4	18.6	0.092	0.508	15.735237	-96.480843
Pio Macaya	2.40	1	0	976	21.7	64.3	2.0	5.7	1.9	2.0	1.1	1.2	0.1	86.0	2.0	12.0	0.068	0.543	15.748171	-96.477363
Pio Macaya	2.40	3	0	738	20.8	72.5	0.5	5.3	0.4	0.2	0.2	0.0	0.1	93.3	0.5	6.2	0.080	0.510	15.755336	-96.476418
T. C. Oaxaca - Puerto Angel	5.20	1	0	746	15.9	71.9	1.1	6.8	2.3	1.2	0.6	0.2	0.0	87.8	1.1	11.1	0.090	0.546	15.762250	-96.466028

11 CARR: Libramiento de Santa María del Tule

CLAVE:

RUTA: MEX-190

AÑO: 2017

LUGAR	ESTACION				CLASIFICACION VEHICULAR EN PORCIENTO													COORDENADAS		
	KM	TE	SC	TDPA	M	A	B	C2	C3	T3S2	T3S3	T3S2R4	OTROS	A	B	C	K'	D	LATITUD	LONGITUD
T. C. Oaxaca - Tehuantepec	0.00	3	0	16766	2.0	86.2	1.1	6.5	1.0	1.4	0.6	0.5	0.7	88.2	1.1	10.7	0.065	0.574	17.052284	-96.657858
T. C. Oaxaca - Tehuantepec	5.80	1	0	16811	1.8	84.7	0.8	5.1	1.0	4.3	0.9	0.4	1.0	86.5	0.8	12.7	0.079	0.509	17.036787	-96.624873

OAXACA

12 CARR: Oaxaca - Puerto Ángel

CLAVE: 20091

RUTA: MEX-175

AÑO: 2017

LUGAR	ESTACION				CLASIFICACION VEHICULAR EN PORCIENTO										COORDENADAS					
	KM	TE	SC	TDPA	M	A	B	C2	C3	T3S2	T3S3	T3S2R4	OTROS	A	B	C	K'	D	LATITUD	LONGITUD
Oaxaca	0.00	3	1	28368	5.1	87.4	0.3	4.4	0.3	1.2	1.1	0.1	0.1	92.5	0.3	7.2	0.060	0.530	17.031821	-96.712773
Oaxaca	0.00	3	2	32006	5.0	86.6	0.3	4.9	0.3	1.4	1.3	0.1	0.1	91.6	0.3	8.1	0.061	0.530	17.031917	-96.712712
T. Der. Aeropuerto	10.46	1	1	26704	4.7	88.4	0.3	5.3	0.5	0.3	0.4	0.1	0.0	93.1	0.3	6.6	0.070	0.517	17.007972	-96.712861
T. Der. Aeropuerto	10.46	1	2	28580	4.5	88.0	0.3	5.9	0.5	0.3	0.4	0.1	0.0	92.5	0.3	7.2	0.070	0.517	17.007977	-96.712808
T. Der. Puerto Escondido	19.07	1	1	15997	4.1	86.1	0.3	5.6	0.6	1.2	1.6	0.1	0.4	90.2	0.3	9.5	0.081	0.504	16.933199	-96.704217
T. Der. Puerto Escondido	19.07	1	2	16231	4.1	85.2	0.4	6.5	0.6	1.3	1.4	0.1	0.4	89.3	0.4	10.3	0.070	0.504	16.933207	-96.704214
T. Der. Puerto Escondido	19.07	3	0	14961	4.5	77.1	0.6	7.2	0.9	7.5	1.2	0.6	0.4	81.6	0.6	17.8	0.065	0.510	16.926977	-96.702407
Ocotlán	35.67	3	0	7445	4.4	90.4	0.1	1.9	0.2	2.7	0.1	0.0	0.2	94.8	0.1	5.1	0.070	0.529	16.762586	-96.678085
Ejutla de Crespo	64.04	1	0	5833	2.7	80.8	0.8	9.7	1.4	3.2	0.7	0.1	0.6	83.5	0.8	15.7	0.070	0.509	16.605056	-96.738139
Ejutla de Crespo	64.04	3	0	3991	2.3	79.2	0.9	15.1	1.4	0.6	0.3	0.1	0.1	81.5	0.9	17.6	0.084	0.540	16.516551	-96.736512
Miahuatlán de Porfirio Díaz	100.64	3	0	4315	5.4	82.5	0.6	7.8	1.3	1.9	0.2	0.1	0.2	87.9	0.6	11.5	0.070	0.509	16.285444	-96.584056
San Miguel Suchixtepec	144.00	1	0	1499	3.2	80.8	1.0	12.0	1.2	1.4	0.2	0.0	0.2	84.0	1.0	15.0	0.090	0.540	16.103340	-96.471774
Candelaria Loxicha	195.00	1	0	1559	13.8	74.2	1.0	8.5	0.8	1.3	0.3	0.0	0.1	88.0	1.0	11.0	0.076	0.520	15.930986	-96.483198
San Pedro Pochutla	238.00	1	0	4671	14.4	80.2	0.1	1.4	0.5	2.0	0.6	0.7	0.1	94.6	0.1	5.3	0.066	0.505	15.762794	-96.463819
Puerto Ángel	245.40	1	0	3251	17.5	79.8	0.0	2.5	0.1	0.0	0.1	0.0	0.0	97.3	0.0	2.7	0.069	0.502	15.676134	-96.481833

13 CARR: Oaxaca - Tehuantepec

CLAVE: 20057

RUTA: MEX-190

AÑO: 2017

LUGAR	ESTACION				CLASIFICACION VEHICULAR EN PORCIENTO										COORDENADAS					
	KM	TE	SC	TDPA	M	A	B	C2	C3	T3S2	T3S3	T3S2R4	OTROS	A	B	C	K'	D	LATITUD	LONGITUD
Oaxaca	0.00	3	1	23462	4.6	89.2	0.4	5.1	0.2	0.2	0.3	0.0	0.0	93.8	0.4	5.8	0.061	0.512	17.067566	-96.686900
Oaxaca	0.00	3	2	24664	4.5	89.0	0.4	5.7	0.2	0.1	0.1	0.0	0.0	93.5	0.4	6.1	0.077	0.512	17.067566	-96.686891
T. Izq. Guelatao	8.69	3	1	18685	4.8	89.3	0.5	4.8	0.3	0.1	0.2	0.0	0.0	94.1	0.5	5.4	0.073	0.516	17.064025	-96.675303
T. Izq. Guelatao	8.69	3	2	19894	4.4	88.6	0.5	5.9	0.3	0.1	0.2	0.0	0.0	93.0	0.5	6.5	0.088	0.516	17.064065	-96.674919
Libramiento Santa María el Tule	12.00	1	1	17514	3.9	90.8	0.5	3.6	0.4	0.3	0.5	0.0	0.0	94.7	0.5	4.8	0.073	0.510	17.062190	-96.669053
Libramiento Santa María el Tule	12.00	1	2	18205	3.1	90.9	0.5	4.3	0.4	0.3	0.5	0.0	0.0	94.0	0.5	5.5	0.086	0.510	17.062243	-96.669023
Santa María El Tule	13.90	1	1	7872	5.9	89.4	0.2	2.9	0.1	0.9	0.5	0.0	0.1	95.3	0.2	4.5	0.076	0.516	17.048941	-96.642130
Santa María El Tule	13.90	1	2	7371	4.9	90.0	0.2	3.2	0.1	1.0	0.5	0.0	0.1	94.9	0.2	4.9	0.093	0.516	17.048957	-96.642120
Santa María El Tule	13.90	3	0	4545	4.2	88.9	0.2	3.8	0.3	2.1	0.2	0.0	0.3	93.1	0.2	6.7	0.079	0.509	17.043278	-96.629425
T. Izq. Teotitlán del Valle	26.50	1	0	14894	2.4	89.0	1.0	5.8	0.8	0.4	0.3	0.2	0.1	91.4	1.0	7.6	0.075	0.504	16.998402	-96.531141
T. Izq. Teotitlán del Valle	26.50	3	0	16288	2.7	87.8	0.9	7.0	0.8	0.3	0.2	0.2	0.1	90.5	0.9	8.6	0.070	0.514	16.992990	-96.522888
T. Der. Tlacolula	33.64	1	0	14827	2.0	84.9	1.1	6.4	0.7	4.1	0.6	0.1	0.1	86.9	1.1	12.0	0.068	0.502	16.970470	-96.489153
T. Der. Tlacolula	33.64	3	1	5288	1.7	86.0	1.7	8.3	1.0	0.6	0.5	0.1	0.1	87.7	1.7	10.6	0.070	0.503	16.948304	-96.460202
T. Der. Tlacolula	33.64	3	2	5234	1.8	83.8	2.1	9.9	1.1	0.6	0.5	0.1	0.1	85.6	2.1	12.3	0.067	0.503	16.948174	-96.459979
T. Izq. Villa de Mitla	42.66	1	0	8620	1.3	85.5	1.8	8.0	1.0	1.8	0.4	0.1	0.1	86.8	1.8	11.4	0.079	0.509	16.921399	-96.405956

OAXACA

13 CARR: Oaxaca - Tehuantepec

CLAVE: 20057

RUTA: MEX-190

AÑO: 2017

LUGAR	ESTACION				CLASIFICACION VEHICULAR EN PORCIENTO										COORDENADAS					
	KM	TE	SC	TDPA	M	A	B	C2	C3	T3S2	T3S3	T3S2R4	OTROS	A	B	C	K'	D	LATITUD	LONGITUD
T. Izq. Villa de Mitla	42.66	3	0	4914	1.3	83.2	2.6	7.4	1.4	2.7	0.9	0.3	0.2	84.5	2.6	12.9	0.079	0.515	16.912403	-96.397700
San Pedro Totolapan	81.00	1	0	3114	3.5	75.3	4.7	9.1	2.3	2.9	1.2	0.5	0.5	78.8	4.7	16.5	0.059	0.513	16.672369	-96.306793
T. Izq. Nejapa de Madero	127.00	1	0	2181	4.2	74.4	5.3	9.7	1.7	2.2	1.4	0.8	0.3	78.6	5.3	16.1	0.077	0.500	16.622101	-96.038576
La Reforma	184.62	1	0	2027	1.5	72.0	7.6	10.2	2.2	2.3	1.6	2.3	0.3	73.5	7.6	18.9	0.063	0.509	16.399479	-95.767475
La Reforma	184.62	3	0	1937	1.1	72.0	6.2	10.3	2.5	3.3	1.8	2.4	0.4	73.1	6.2	20.7	0.064	0.510	16.398434	-95.760975
T. Der. Magdalena Tequisistlán	206.66	1	0	2790	5.5	77.4	4.3	7.5	1.3	1.7	1.0	1.0	0.3	82.9	4.3	12.8	0.063	0.506	16.414019	-95.596117
T. Izq. Jalapa de Márquez	224.60	3	0	3665	1.6	77.2	4.1	11.9	1.3	2.0	1.1	0.4	0.4	78.8	4.1	17.1	0.066	0.500	16.426976	-95.425289
X. C. La Ventosa - Salina Cruz (Cuota)	246.18	1	0	3715	2.1	77.2	4.2	11.0	1.4	2.3	1.0	0.6	0.2	79.3	4.2	16.5	0.064	0.501	16.334056	-95.283314
X. C. La Ventosa - Salina Cruz (Cuota)	246.18	3	0	5621	2.9	78.8	2.0	7.8	1.0	2.9	1.1	3.2	0.3	81.7	2.0	16.3	0.064	0.505	16.331314	-95.272062
Tehuantepec	250.60	1	0	6582	3.1	80.8	1.9	6.2	1.0	3.1	1.1	2.1	0.7	83.9	1.9	14.2	0.069	0.517	16.328581	-95.260834

14 CARR: Puebla - Huajuapán de León

CLAVE: 00049

RUTA: MEX-190

AÑO: 2017

LUGAR	ESTACION				CLASIFICACION VEHICULAR EN PORCIENTO										COORDENADAS					
	KM	TE	SC	TDPA	M	A	B	C2	C3	T3S2	T3S3	T3S2R4	OTROS	A	B	C	K'	D	LATITUD	LONGITUD
Puebla	0.00	3	1	24679	1.4	93.1	0.3	3.5	1.1	0.2	0.4	0.0	0.0	94.5	0.3	5.2	0.077	0.514	19.032983	-98.265544
Puebla	0.00	3	2	23175	2.1	91.7	0.3	4.2	1.1	0.2	0.4	0.0	0.0	93.8	0.3	5.9	0.072	0.514	19.032721	-98.265585
Atlixco	29.88	1	0	25682	3.8	84.0	0.4	7.6	1.4	1.0	0.9	0.8	0.1	87.8	0.4	11.8	0.064	0.510	18.930705	-98.407148
Atlixco	29.88	3	1	8186	2.8	82.6	1.2	7.6	1.3	1.8	1.1	1.1	0.5	85.4	1.2	13.4	0.090	0.510	18.869931	-98.439729
Atlixco	29.88	3	2	7997	2.5	81.3	1.3	8.7	1.4	2.0	1.2	1.1	0.5	83.8	1.3	14.9	0.100	0.510	18.869872	-98.439628
Tepeojuma	51.90	1	1	5401	1.8	79.9	1.7	9.4	1.7	2.2	1.2	1.7	0.4	81.7	1.7	16.6	0.079	0.508	18.726820	-98.449566
Tepeojuma	51.90	1	2	5247	2.0	78.6	2.0	9.6	1.8	2.4	1.4	1.8	0.4	80.6	2.0	17.4	0.105	0.508	18.726620	-98.449553
Izucar De Matamoros	67.00	1	0	12121	3.9	77.4	1.4	8.3	1.6	3.9	1.3	1.4	0.8	81.3	1.4	17.3	0.070	0.502	18.631778	-98.469132
T. Der. Cuautla	70.00	3	0	9350	6.0	78.2	2.0	6.8	1.2	4.0	0.9	0.4	0.5	84.2	2.0	13.8	0.068	0.505	18.581552	-98.451271
Tehuiztingo	113.30	1	0	5782	3.0	79.2	2.9	7.2	1.6	4.1	1.0	0.4	0.6	82.2	2.9	14.9	0.092	0.504	18.338151	-98.282706
Acatlan De Osorio	154.20	1	0	8519	4.2	83.6	1.1	5.3	0.4	4.0	0.5	0.2	0.7	87.8	1.1	11.1	0.080	0.504	18.188932	-98.054673
Chila	192.30	3	0	2316	2.0	81.1	3.8	7.8	1.9	1.6	0.7	0.7	0.4	83.1	3.8	13.1	0.073	0.505	17.966475	-97.864111
Lim. Edos. Term. Pue. Ppia. Oax.	200.30																			
T. Izq. Las Palmas	202.10	1	0	2221	2.4	83.7	2.3	5.3	2.7	2.2	0.6	0.6	0.2	86.1	2.3	11.6	0.074	0.505	17.882278	-97.836667
Huajuapán De León	219.30	1	0	3867	4.5	83.4	2.5	5.5	1.0	2.4	0.4	0.1	0.2	87.9	2.5	9.6	0.072	0.505	17.836482	-97.790858

OAXACA

15 CARR: Ramal a Asunción Ixtaltepec

CLAVE: 20624

RUTA: MEX-185

AÑO: 2017

LUGAR	ESTACION				CLASIFICACION VEHICULAR EN PORCIENTO										COORDENADAS					
	KM	TE	SC	TDPA	M	A	B	C2	C3	T3S2	T3S3	T3S2R4	OTROS	A	B	C	K'	D	LATITUD	LONGITUD
T. C. Coatzacoalcos - Salina Cruz	0.00	3	0	3272	14.2	77.6	0.2	5.1	0.1	2.5	0.0	0.0	0.3	91.8	0.2	8.0	0.088	0.521	16.443130	-95.034357
Asunción Ixtaltepec	9.70	1	0	3611	8.1	83.8	0.7	2.5	0.2	3.3	0.8	0.0	0.6	91.9	0.7	7.4	0.077	0.511	16.500386	-95.064597

16 CARR: Ramal a Monte Albán

CLAVE:

RUTA: MEX

AÑO: 2017

LUGAR	ESTACION				CLASIFICACION VEHICULAR EN PORCIENTO										COORDENADAS					
	KM	TE	SC	TDPA	M	A	B	C2	C3	T3S2	T3S3	T3S2R4	OTROS	A	B	C	K'	D	LATITUD	LONGITUD
T. C. Oaxaca - Tehuantepec	0.00																			
Chimalpopoca	1.80	3	0	15288	9.2	76.5	0.1	5.1	0.1	7.0	0.8	0.2	1.0	85.7	0.1	14.2	0.071	0.501	17.073333	-96.760778
T. Der. San Pedro Ixtlahuaca	2.75	3	0	1790	15.3	81.3	0.4	2.0	0.4	0.2	0.1	0.1	0.2	96.6	0.4	3.0	0.093	0.508	17.071638	-96.765655
Monte Albán	8.00																			

17 CARR: Ramal a Refinería Pemex (Refinería del Pacifico)

CLAVE:

RUTA: MEX

AÑO: 2017

LUGAR	ESTACION				CLASIFICACION VEHICULAR EN PORCIENTO										COORDENADAS					
	KM	TE	SC	TDPA	M	A	B	C2	C3	T3S2	T3S3	T3S2R4	OTROS	A	B	C	K'	D	LATITUD	LONGITUD
T. C. Coatzacoalcos - Salina Cruz	0.00	3	1	5054	2.8	74.4	3.4	14.6	0.5	1.5	0.8	1.8	0.2	77.2	3.4	19.4	0.089	0.518	16.221028	-95.202833
T. C. Coatzacoalcos - Salina Cruz	0.00	3	2	5429	3.0	80.7	3.0	7.1	1.1	2.0	1.1	1.6	0.4	83.7	3.0	13.3	0.117	0.518	16.221111	-95.202917
Refinería de Pemex	3.00																			

18 CARR: San Pablo Villa de Mitla - T. C. (Tuxtepec - Palomares)

CLAVE: 00106

RUTA: MEX-179

AÑO: 2017

LUGAR	ESTACION				CLASIFICACION VEHICULAR EN PORCIENTO										COORDENADAS					
	KM	TE	SC	TDPA	M	A	B	C2	C3	T3S2	T3S3	T3S2R4	OTROS	A	B	C	K'	D	LATITUD	LONGITUD
T. C. Oaxaca - Tehuantepec	0.00	3	0	4183	2.2	85.2	0.8	9.2	0.4	1.8	0.2	0.0	0.2	87.4	0.8	11.8	0.099	0.502	16.918030	-96.391405
San Pedro y San Pablo Ayutla	55.00	1	0	1691	2.2	89.4	0.3	5.2	0.8	1.6	0.3	0.0	0.2	91.6	0.3	8.1	0.089	0.508	17.017084	-96.082153
T. Der. Zacatepec	90.00	1	0	562	1.9	88.1	0.2	9.7	0.1	0.0	0.0	0.0	0.0	90.0	0.2	9.8	0.091	0.526	17.147894	-96.033805
Lim. Edos. Term. Oax. Ppia. Ver.	217.70																			
T. C. Tuxtepec - Ent. Palomares	238.70	1	0	1183	11.0	78.5	0.6	8.2	0.6	1.0	0.1	0.0	0.0	89.5	0.6	9.9	0.107	0.511	17.701400	-95.734771

19 CARR: Santiago Pinotepa Nacional - Salina Cruz

CLAVE: 20074

RUTA: MEX-200

AÑO: 2017

LUGAR	ESTACION				CLASIFICACION VEHICULAR EN PORCIENTO										COORDENADAS					
	KM	TE	SC	TDPA	M	A	B	C2	C3	T3S2	T3S3	T3S2R4	OTROS	A	B	C	K'	D	LATITUD	LONGITUD
Santiago Pinotepa Nacional	0.00	3	0	4794	7.7	79.0	1.6	6.6	1.1	2.2	0.9	0.3	0.6	86.7	1.6	11.7	0.074	0.501	16.329000	-98.022417

OAXACA

19 CARR: Santiago Pinotepa Nacional - Salina Cruz

CLAVE: 20074

RUTA: MEX-200

AÑO: 2017

LUGAR	ESTACION				CLASIFICACION VEHICULAR EN PORCIENTO										COORDENADAS					
	KM	TE	SC	TDPA	M	A	B	C2	C3	T3S2	T3S3	T3S2R4	OTROS	A	B	C	K'	D	LATITUD	LONGITUD
San Andrés Huaxpaltepec	18.07	3	0	3832	10.5	79.0	1.0	4.1	2.1	1.4	0.9	0.7	0.3	89.5	1.0	9.5	0.069	0.504	16.325092	-97.907994
San José del Progreso	59.51	1	0	4784	8.3	81.7	1.1	3.5	1.8	1.7	1.4	0.4	0.1	90.0	1.1	8.9	0.071	0.515	16.110127	-97.709203
T. Izq. Tututepec	65.85	3	0	5556	6.3	81.1	1.4	5.9	1.1	2.8	0.9	0.2	0.3	87.4	1.4	11.2	0.069	0.504	16.077241	-97.630077
T. Izq. Bajos de Chila	131.94	1	0	4005	10.6	78.0	1.5	5.3	0.9	2.5	0.7	0.2	0.3	88.6	1.5	9.9	0.080	0.508	15.919159	-97.130423
T. Izq. Aeropuerto	137.40	1	0	7080	10.0	77.9	1.0	5.8	0.7	2.9	1.0	0.1	0.6	87.9	1.0	11.1	0.077	0.501	15.874797	-97.097750
Puerto Escondido	141.54	1	1	6289	10.4	82.1	0.6	4.9	0.4	1.0	0.5	0.0	0.1	92.5	0.6	6.9	0.080	0.504	15.868827	-97.083544
Puerto Escondido	141.54	1	2	6395	10.3	81.6	0.7	5.3	0.4	1.1	0.5	0.0	0.1	91.9	0.7	7.4	0.069	0.504	15.868874	-97.083616
Puerto Escondido	141.54	3	1	9819	13.8	79.4	0.4	3.5	0.3	1.6	0.8	0.1	0.1	93.2	0.4	6.4	0.066	0.511	15.853819	-97.053654
Puerto Escondido	141.54	3	2	10275	13.7	79.2	0.4	3.9	0.3	1.5	0.8	0.1	0.1	92.9	0.4	6.7	0.065	0.511	15.853650	-97.053490
T. Der. Mazunte	198.87	1	0	4533	6.4	75.7	2.9	9.0	0.9	3.6	1.0	0.1	0.4	82.1	2.9	15.0	0.073	0.504	15.716333	-96.583917
T. Der. Mazunte	198.87	3	0	5413	7.5	76.8	1.7	8.5	0.5	3.6	0.7	0.2	0.5	84.3	1.7	14.0	0.068	0.505	15.716500	-96.582167
T. Izq. Sta. María Tonameca	202.93	3	0	5248	6.2	77.0	1.6	6.8	0.6	6.2	1.0	0.2	0.4	83.2	1.6	15.2	0.079	0.503	15.730312	-96.536652
T. Libramiento de Pochutla	209.15	1	0	5619	7.2	78.5	1.7	7.2	0.6	3.2	1.0	0.2	0.4	85.7	1.7	12.6	0.075	0.507	15.731631	-96.482321
X. C. Oaxaca - Puerto Ángel	209.95	1	0	6169	7.6	77.9	1.9	7.0	0.5	3.4	0.9	0.2	0.6	85.5	1.9	12.6	0.077	0.508	15.730755	-96.476561
X. C. Oaxaca - Puerto Ángel	209.95	3	0	4809	10.7	72.4	2.1	7.9	0.8	3.7	1.4	0.4	0.6	83.1	2.1	14.8	0.066	0.506	15.729056	-96.471250
T. Der. Cuatunualco	226.00	1	0	3101	6.1	72.5	2.8	12.6	0.9	3.1	1.4	0.1	0.5	78.6	2.8	18.6	0.077	0.502	15.733266	-96.350651
T. Der. Cuatunualco	226.00	3	0	3078	6.8	77.7	2.8	6.3	0.9	3.1	1.5	0.3	0.6	84.5	2.8	12.7	0.071	0.504	15.735167	-96.339944
T. C. El Zapote - Copalita	236.00	1	0	4732	7.6	77.1	2.3	7.6	0.7	3.0	1.2	0.1	0.4	84.7	2.3	13.0	0.068	0.500	15.761286	-96.274364
T. C. El Zapote - Copalita	236.00	3	0	7541	4.8	82.1	1.7	6.9	0.5	2.8	0.8	0.1	0.3	86.9	1.7	11.4	0.071	0.504	15.763402	-96.270816
T. Izq. Aeropuerto	237.68	3	0	6857	6.2	80.4	1.2	7.4	0.7	2.7	0.9	0.2	0.3	86.6	1.2	12.2	0.069	0.520	15.770347	-96.252109
T. Der. Santa Cruz Huatulco	250.00	1	0	8376	6.8	78.5	2.4	6.6	0.4	3.7	0.8	0.2	0.6	85.3	2.4	12.3	0.069	0.522	15.781278	-96.162694
T. Der. Santa Cruz Huatulco	250.00	3	0	2551	8.0	72.9	2.8	8.6	1.1	3.9	2.2	0.3	0.2	80.9	2.8	16.3	0.087	0.530	15.782985	-96.156087
T. Der. Tangolunda	263.00	1	0	1673	5.7	68.6	4.0	9.8	1.9	5.2	3.3	0.9	0.6	74.3	4.0	21.7	0.087	0.511	15.818387	-96.068775
T. C. La Ventosa - Salina Cruz (Cuota)	380.00	1	0	2866	2.6	80.0	3.3	6.8	1.2	3.5	2.0	0.3	0.3	82.6	3.3	14.1	0.075	0.512	16.145444	-95.290722
T. C. La Ventosa - Salina Cruz (Cuota)	380.00	3	0	2618	2.8	83.6	2.1	6.8	0.9	2.2	1.2	0.3	0.1	86.4	2.1	11.5	0.075	0.511	16.158389	-95.275000
Salina Cruz	394.00																			

20 CARR: Tapanatepec - Talismán

CLAVE: 00075

RUTA: MEX-200

AÑO: 2017

LUGAR	ESTACION				CLASIFICACION VEHICULAR EN PORCIENTO										COORDENADAS					
	KM	TE	SC	TDPA	M	A	B	C2	C3	T3S2	T3S3	T3S2R4	OTROS	A	B	C	K'	D	LATITUD	LONGITUD
Tapanatepec	0.00	3	0	5843	4.3	70.0	2.8	8.6	2.2	4.8	1.9	4.8	0.6	74.3	2.8	22.9	0.064	0.547	16.344000	-94.190497
Lim. Edos. Term. Oax. Ppia. Chis.	25.90																			
T. Der. Emiliano Zapata	26.20	1	0	3545	3.1	61.6	4.1	7.3	2.5	10.8	2.5	7.7	0.4	64.7	4.1	31.2	0.065	0.508	16.216917	-94.051417
T. Der. Emiliano Zapata	26.20	3	0	4195	2.7	64.5	3.6	7.5	2.3	9.9	2.4	6.5	0.6	67.2	3.6	29.2	0.069	0.531	16.214611	-94.038611

OAXACA

20 CARR: Tapanatepec - Talismán

CLAVE: 00075

RUTA: MEX-200

AÑO: 2017

LUGAR	ESTACION				CLASIFICACION VEHICULAR EN PORCIENTO														COORDENADAS	
	KM	TE	SC	TDPA	M	A	B	C2	C3	T3S2	T3S3	T3S2R4	OTROS	A	B	C	K'	D	LATITUD	LONGITUD
Arriaga	45.00	1	0	5965	6.2	68.3	2.7	6.2	1.8	7.9	1.6	4.8	0.5	74.5	2.7	22.8	0.064	0.503	16.221900	-93.935889
Arriaga	45.00	3	1	4000	9.4	77.8	2.5	7.8	0.5	1.1	0.5	0.3	0.1	87.2	2.5	10.3	0.068	0.520	16.237696	-93.883027
Arriaga	45.00	3	2	3694	7.8	78.2	2.7	8.6	0.6	1.3	0.5	0.2	0.1	86.0	2.7	11.3	0.075	0.520	16.237556	-93.883056
X. C. Arriaga- Ocozocoautla (Cuota)	47.00	3	1	4812	5.4	78.1	2.3	7.2	1.3	2.7	0.9	1.9	0.2	83.5	2.3	14.2	0.097	0.501	16.233263	-93.877225
X. C. Arriaga- Ocozocoautla (Cuota)	47.00	3	2	4785	5.5	77.4	2.6	7.6	1.3	2.9	0.6	1.8	0.3	82.9	2.6	14.5	0.070	0.501	16.233270	-93.877256
T. Der. Libramiento de Arriaga	49.50	1	1	3828	4.6	76.1	1.8	8.3	2.1	3.1	1.0	2.4	0.6	80.7	1.8	17.5	0.094	0.512	16.222282	-93.866956
T. Der. Libramiento de Arriaga	49.50	1	2	4021	4.5	75.8	3.1	8.6	1.6	3.4	0.6	2.2	0.2	80.3	3.1	16.6	0.072	0.512	16.222222	-93.867028
T. Der. Libramiento de Arriaga	49.50	3	1	4503	3.5	73.0	3.0	7.8	1.9	6.2	1.3	3.0	0.3	76.5	3.0	20.5	0.071	0.506	16.208639	-93.855667
T. Der. Libramiento de Arriaga	49.50	3	2	4612	3.4	72.4	3.2	7.8	2.1	6.1	1.4	3.2	0.4	75.8	3.2	21.0	0.077	0.506	16.208556	-93.855722
Tonalá	68.80	1	1	5689	5.1	71.2	2.7	9.3	2.0	5.7	1.0	2.7	0.3	76.3	2.7	21.0	0.064	0.516	16.117139	-93.790194
Tonalá	68.80	1	2	5332	5.2	69.2	2.8	10.3	2.1	6.1	1.2	2.8	0.3	74.4	2.8	22.8	0.083	0.516	16.117222	-93.790333
T. Der. Puerto Arista	73.00	1	1	2809	3.7	65.7	3.0	6.6	4.5	9.7	1.6	4.9	0.3	69.4	3.0	27.6	0.072	0.507	16.059754	-93.741375
T. Der. Puerto Arista	73.00	1	2	2891	4.0	61.2	4.7	9.8	4.0	9.9	1.4	4.7	0.3	65.2	4.7	30.1	0.114	0.507	16.059694	-93.741417
T. Der. Puerto Arista	73.00	3	1	3042	3.6	65.7	4.1	11.2	2.5	7.1	1.8	3.4	0.6	69.3	4.1	26.6	0.071	0.507	16.056222	-93.735167
T. Der. Puerto Arista	73.00	3	2	3124	3.9	64.2	3.9	11.2	2.5	7.7	2.1	3.8	0.7	68.1	3.9	28.0	0.079	0.507	16.056250	-93.735167
T. Der. Tres Picos	100.40	1	1	2798	3.6	66.3	4.5	8.0	2.5	8.7	1.6	4.3	0.5	69.9	4.5	25.6	0.069	0.521	15.917227	-93.546302
T. Der. Tres Picos	100.40	1	2	2577	3.6	63.9	4.8	8.5	2.6	9.6	1.7	4.9	0.4	67.5	4.8	27.7	0.105	0.521	15.917570	-93.546238
T. Der. Tres Picos	100.40	3	1	2765	2.9	65.9	4.8	8.5	2.3	8.3	2.2	4.6	0.5	68.8	4.8	26.4	0.063	0.524	15.906353	-93.523285
T. Der. Tres Picos	100.40	3	2	2509	3.6	63.7	5.3	8.8	2.7	8.5	2.1	4.8	0.5	67.3	5.3	27.4	0.068	0.524	15.906273	-93.523193
T. Der. Los Patos	114.75	1	1	2609	3.9	62.3	4.7	8.7	3.1	10.0	1.9	4.8	0.6	66.2	4.7	29.1	0.065	0.513	15.840798	-93.437564
T. Der. Los Patos	114.75	1	2	2482	3.9	59.4	5.4	9.1	3.5	10.7	2.3	5.2	0.5	63.3	5.4	31.3	0.097	0.513	15.841007	-93.437176
T. Der. Los Patos	114.75	3	1	2524	2.4	61.5	4.6	10.4	2.9	11.4	2.0	4.3	0.5	63.9	4.6	31.5	0.069	0.530	15.815639	-93.416194
T. Der. Los Patos	114.75	3	2	2241	2.7	57.5	4.4	11.3	3.2	13.0	2.9	4.1	0.9	60.2	4.4	35.4	0.086	0.530	15.816028	-93.415972
T. Der. San Isidro	125.00	1	1	2701	4.4	60.5	4.4	10.1	2.3	11.5	1.6	4.8	0.4	64.9	4.4	30.7	0.064	0.510	15.779528	-93.364528
T. Der. San Isidro	125.00	1	2	2593	3.5	60.0	4.9	10.2	3.1	10.9	1.9	5.0	0.5	63.5	4.9	31.6	0.079	0.510	15.781556	-93.364694
T. Der. San Isidro	125.00	3	1	2918	3.8	65.9	4.4	7.5	2.8	9.4	1.6	4.2	0.4	69.7	4.4	25.9	0.070	0.529	15.777865	-93.358507
T. Der. San Isidro	125.00	3	2	2602	4.1	62.7	4.6	7.5	3.4	10.8	1.5	5.1	0.3	66.8	4.6	28.6	0.086	0.529	15.778177	-93.358392
Pijijiapan	144.45	1	1	5142	18.1	61.3	2.4	7.4	1.5	5.6	1.2	2.1	0.4	79.4	2.4	18.2	0.069	0.511	15.698472	-93.212278
Pijijiapan	144.45	1	2	4924	20.6	55.9	2.8	9.3	1.5	6.2	0.9	2.5	0.3	76.5	2.8	20.7	0.075	0.511	15.699500	-93.212389
T. Der. Mapastepec	188.85	3	1	4001	12.1	67.8	2.3	8.1	1.3	3.5	1.6	2.7	0.6	79.9	2.3	17.8	0.076	0.510	15.454246	-92.880082
T. Der. Mapastepec	188.85	3	2	3841	12.8	64.3	3.3	7.8	2.0	4.7	1.0	3.7	0.4	77.1	3.3	19.6	0.076	0.510	15.454944	-92.880056
T. Der. Estación Soconusco	213.30	1	1	3924	8.1	67.7	3.1	6.2	2.3	7.5	1.3	3.4	0.4	75.8	3.1	21.1	0.076	0.516	15.338056	-92.711361
T. Der. Estación Soconusco	213.30	1	2	3686	8.9	66.6	2.7	5.4	2.4	8.8	1.1	3.6	0.5	75.5	2.7	21.8	0.078	0.516	15.355222	-92.707639
T. Der. Estación Soconusco	213.30	3	1	4138	8.4	71.5	2.1	4.7	2.1	6.4	1.3	3.0	0.5	79.9	2.1	18.0	0.073	0.509	15.336083	-92.708972
T. Der. Estación Soconusco	213.30	3	2	4297	11.9	69.3	1.9	4.1	2.1	6.3	1.0	3.1	0.3	81.2	1.9	16.9	0.071	0.509	15.349528	-92.691944

OAXACA

20 CARR: Tapanatepec - Talismán

CLAVE: 00075

RUTA: MEX-200

AÑO: 2017

LUGAR	ESTACION				CLASIFICACION VEHICULAR EN PORCIENTO														COORDENADAS	
	KM	TE	SC	TDPA	M	A	B	C2	C3	T3S2	T3S3	T3S2R4	OTROS	A	B	C	K'	D	LATITUD	LONGITUD
Huixtla	250.50	1	1	4609	5.4	73.6	2.1	6.9	1.7	6.3	1.1	2.5	0.4	79.0	2.1	18.9	0.079	0.507	15.159256	-92.511276
Huixtla	250.50	1	2	4490	5.3	73.3	2.4	6.5	1.7	6.7	1.1	2.5	0.5	78.6	2.4	19.0	0.080	0.507	15.159376	-92.511225
Huixtla	250.50	3	1	7839	11.4	76.3	1.4	3.3	1.4	3.1	1.0	1.7	0.4	87.7	1.4	10.9	0.073	0.514	15.133917	-92.445806
Huixtla	250.50	3	2	8294	10.5	75.3	1.6	5.0	1.3	3.4	0.9	1.6	0.4	85.8	1.6	12.6	0.075	0.514	15.133944	-92.445722
T. Izq. Hamburgo	262.70	3	1	6054	5.4	77.3	1.5	6.8	1.6	3.9	1.0	1.9	0.6	82.7	1.5	15.8	0.072	0.525	15.105852	-92.431302
T. Izq. Hamburgo	262.70	3	2	6688	6.7	75.7	1.8	6.0	1.9	4.1	1.1	2.1	0.6	82.4	1.8	15.8	0.078	0.525	15.105861	-92.431222
T. Izq. Huehuetán	273.70	1	1	7051	8.0	76.1	1.8	5.8	1.3	4.0	1.0	1.6	0.4	84.1	1.8	14.1	0.078	0.517	15.015167	-92.402611
T. Izq. Huehuetán	273.70	1	2	6578	7.6	75.7	1.9	6.6	1.3	3.8	1.1	1.6	0.4	83.3	1.9	14.8	0.076	0.517	15.015175	-92.402567
T. Izq. Huehuetán	273.70	3	1	7235	4.7	81.2	1.5	5.0	1.3	3.4	0.8	1.7	0.4	85.9	1.5	12.6	0.074	0.505	14.993805	-92.402619
T. Izq. Huehuetán	273.70	3	2	7372	3.9	80.5	1.8	6.4	1.3	3.5	0.8	1.5	0.3	84.4	1.8	13.8	0.078	0.505	14.993804	-92.402512
Tapachula	292.25	1	1	10336	3.0	83.3	1.3	5.1	1.2	3.0	1.1	1.3	0.7	86.3	1.3	12.4	0.069	0.517	14.911333	-92.335833
Tapachula	292.25	1	2	9665	2.9	81.8	1.4	5.9	1.4	3.4	1.1	1.3	0.8	84.7	1.4	13.9	0.074	0.517	14.911333	-92.335833
T. Der. Cd. Hidalgo	302.75	1	1	10602	2.5	89.4	0.4	3.0	0.5	2.4	0.8	0.5	0.5	91.9	0.4	7.7	0.070	0.507	14.912991	-92.195835
T. Der. Cd. Hidalgo	302.75	1	2	10329	2.1	89.7	0.4	3.1	0.5	2.4	0.8	0.5	0.5	91.8	0.4	7.8	0.071	0.507	14.913055	-92.195924
Tuxtla Chico	307.00	1	0	11105	4.9	83.3	0.2	4.2	0.1	5.5	0.7	0.1	1.0	88.2	0.2	11.6	0.076	0.507	14.930440	-92.165495
Talismán	310.77	1	0	2165	20.2	73.0	0.6	3.0	0.2	2.1	0.3	0.3	0.3	93.2	0.6	6.2	0.084	0.541	14.960679	-92.151035

21 CARR: Tapanatepec - Tuxtla Gutiérrez

CLAVE: 00060

RUTA: MEX-190

AÑO: 2017

LUGAR	ESTACION				CLASIFICACION VEHICULAR EN PORCIENTO														COORDENADAS		
	KM	TE	SC	TDPA	M	A	B	C2	C3	T3S2	T3S3	T3S2R4	OTROS	A	B	C	K'	D	LATITUD	LONGITUD	
Tapanatepec	0.00	3	0	2302	7.1	82.6	2.1	3.7	1.0	2.1	0.6	0.3	0.5	89.7	2.1	8.2	0.070	0.543	16.371106	-94.184497	
Lim. Edos. Term. Oax. Ppia. Chis.	17.90																				
Rizo de Oro	26.60	1	0	816	3.6	70.6	2.6	9.4	3.0	4.2	6.2	0.1	0.3	74.2	2.6	23.2	0.081	0.513	16.475824	-94.087843	
T. Der. Arriaga	56.80	1	0	2078	5.2	77.6	1.4	8.4	2.1	2.5	2.5	0.1	0.2	82.8	1.4	15.8	0.086	0.503	16.570075	-93.848063	
T. Der. Arriaga	56.80	3	0	3670	4.1	79.1	1.7	8.7	2.2	2.2	1.7	0.1	0.2	83.2	1.7	15.1	0.069	0.505	16.574211	-93.841294	
T. Der. Jiquipilas	82.00	1	0	7844	5.3	80.1	1.3	7.6	1.2	3.0	1.0	0.1	0.4	85.4	1.3	13.3	0.064	0.502	16.688042	-93.666744	
T. Der. Jiquipilas	82.00	3	0	5838	3.6	81.7	1.5	8.6	1.5	1.7	1.1	0.1	0.2	85.3	1.5	13.2	0.088	0.511	16.687996	-93.660658	
Ocozocoautla	123.29	1	0	4415	4.5	79.9	0.9	8.1	2.6	2.5	1.0	0.3	0.2	84.4	0.9	14.7	0.079	0.522	16.772273	-93.391564	
Ocozocoautla	123.29	3	0	5303	6.1	78.6	0.4	12.3	0.2	1.7	0.3	0.1	0.3	84.7	0.4	14.9	0.061	0.534	16.757900	-93.362225	
T. Izq. Aeropuerto	132.70	1	0	5237	5.9	77.3	0.7	12.0	0.2	2.8	0.4	0.1	0.6	83.2	0.7	16.1	0.061	0.519	16.753215	-93.349877	
T. Izq. Berriozábal (1º Acceso)	136.40	1	1	9848	1.2	77.3	2.7	10.0	1.9	3.6	1.3	1.7	0.3	78.5	2.7	18.8	0.086	0.501	16.767938	-93.292928	
T. Izq. Berriozábal (1º Acceso)	136.40	1	2	9878	1.2	78.1	2.6	9.6	1.8	3.5	1.0	1.8	0.4	79.3	2.6	18.1	0.078	0.501	16.767938	-93.292928	
T. Izq. Berriozábal (1º Acceso)	136.40	3	1	11309	1.4	78.4	3.7	8.9	1.4	3.2	1.2	1.4	0.4	79.8	3.7	16.5	0.076	0.504	16.768922	-93.279577	
T. Izq. Berriozábal (1º Acceso)	136.40	3	2	11148	1.6	79.4	3.4	8.2	1.3	3.3	1.0	1.4	0.4	81.0	3.4	15.6	0.079	0.504	16.769003	-93.279518	

OAXACA

21 CARR: Tapanatepec - Tuxtla Gutiérrez

CLAVE: 00060

RUTA: MEX-190

AÑO: 2017

LUGAR	ESTACION				CLASIFICACION VEHICULAR EN PORCIENTO												COORDENADAS			
	KM	TE	SC	TDPA	M	A	B	C2	C3	T3S2	T3S3	T3S2R4	OTROS	A	B	C	K'	D	LATITUD	LONGITUD
T. Izq. San Fernando	151.70	1	1	15333	2.1	83.8	1.2	6.2	1.0	2.2	2.1	0.7	0.7	85.9	1.2	12.9	0.070	0.511	16.770759	-93.197616
T. Izq. San Fernando	151.70	1	2	16016	2.0	83.3	1.3	6.9	1.1	2.0	1.9	0.8	0.7	85.3	1.3	13.4	0.080	0.511	16.770775	-93.197534
Tuxtla Gutiérrez	159.00	1	1	13980	3.0	84.9	0.8	8.0	1.3	0.9	0.5	0.4	0.2	87.9	0.8	11.3	0.071	0.543	16.767694	-93.192945
Tuxtla Gutiérrez	159.00	1	2	11764	2.3	85.4	0.9	8.0	1.3	1.0	0.5	0.4	0.2	87.7	0.9	11.4	0.070	0.543	16.767664	-93.192905

22 CARR: Tehuacán - Huajuapán de León

CLAVE: 00211

RUTA: MEX-125

AÑO: 2017

LUGAR	ESTACION				CLASIFICACION VEHICULAR EN PORCIENTO												COORDENADAS			
	KM	TE	SC	TDPA	M	A	B	C2	C3	T3S2	T3S3	T3S2R4	OTROS	A	B	C	K'	D	LATITUD	LONGITUD
Tehuacán	0.00	3	1	7779	9.1	77.6	0.8	7.4	1.3	1.6	1.6	0.2	0.4	86.7	0.8	12.5	0.083	0.540	18.436684	-97.401710
Tehuacán	0.00	3	2	6627	7.5	77.9	0.8	8.1	1.5	1.8	1.8	0.2	0.4	85.4	0.8	13.8	0.087	0.540	18.436564	-97.401614
Zapotitlán Salinas	28.00	1	0	2447	4.7	74.9	1.3	11.4	2.2	3.0	1.3	0.7	0.5	79.6	1.3	19.1	0.102	0.500	18.334080	-97.461066
Lim. Edos. Term. Pue. Ppia. Oax.	55.80																			
Santiago Chazumba	63.02	1	0	1953	3.9	74.5	1.5	10.1	2.2	4.1	2.7	0.6	0.4	78.4	1.5	20.1	0.105	0.507	18.201056	-97.674111
Santiago Chazumba	63.02	3	0	2013	4.3	75.9	1.4	9.1	2.2	3.9	2.1	0.7	0.4	80.2	1.4	18.4	0.104	0.510	18.181389	-97.681250
T. Izq. Santa María Camotlán	103.13	1	0	1914	3.0	77.0	1.6	9.7	2.2	3.8	1.8	0.5	0.4	80.0	1.6	18.4	0.106	0.531	17.907704	-97.687519
T. C. Huajuapán de León - Oaxaca	119.40	1	0	10585	5.8	82.2	0.4	4.5	0.6	4.6	0.8	0.3	0.8	88.0	0.4	11.6	0.063	0.503	17.821556	-97.758972

23 CARR: Tuxtepec - Ent. Palomares

CLAVE: 00180

RUTA: MEX-147

AÑO: 2017

LUGAR	ESTACION				CLASIFICACION VEHICULAR EN PORCIENTO												COORDENADAS			
	KM	TE	SC	TDPA	M	A	B	C2	C3	T3S2	T3S3	T3S2R4	OTROS	A	B	C	K'	D	LATITUD	LONGITUD
T. C. Tuxtepec - Oaxaca	0.00	3	0	4744	8.4	75.1	1.9	8.1	2.5	2.4	1.0	0.3	0.3	83.5	1.9	14.6	0.073	0.510	18.038083	-96.161306
X. C. El Rodeo - Reforma	15.20	3	0	2540	9.0	73.7	1.9	8.6	3.0	2.8	0.6	0.1	0.3	82.7	1.9	15.4	0.089	0.510	17.950278	-96.070250
Lim. Edos. Term. Oax. Ppia. Ver.	40.00																			
X. C. Playa Vicente - El Tomate	48.16	1	0	2233	5.1	76.8	2.5	10.0	2.2	2.3	0.6	0.3	0.2	81.9	2.5	15.6	0.088	0.512	17.783710	-95.833004
X. C. Playa Vicente - El Tomate	48.16	3	0	2677	4.5	82.3	0.9	8.4	0.8	2.2	0.5	0.1	0.3	86.8	0.9	12.3	0.087	0.517	17.783211	-95.830418
T. Der. Xochiapa	65.00	3	0	1611	6.7	80.8	1.4	7.5	1.3	1.4	0.6	0.2	0.1	87.5	1.4	11.1	0.088	0.520	17.703030	-95.733475
T. Izq. San Juan Evangelista	81.20	1	0	1573	10.0	76.2	1.4	7.0	1.7	2.5	0.7	0.2	0.3	86.2	1.4	12.4	0.092	0.515	17.615222	-95.635507
Lim. Edos. Term. Ver. Ppia. Oax.	87.00																			
María Lombardo de Caso	110.50	1	0	3147	10.8	77.6	0.3	6.8	0.7	2.9	0.4	0.2	0.3	88.4	0.3	11.3	0.085	0.503	17.452222	-95.432722
T. C. Coatzacoalcos - Salina Cruz	175.00	1	0	2332	12.7	77.8	0.5	5.7	0.4	1.7	0.6	0.3	0.3	90.5	0.5	9.0	0.074	0.508	17.138369	-95.070545

OAXACA

24 CARR: Tuxtepec - T. C. (Oaxaca - Tehuantepec)

CLAVE: 20090

RUTA: MEX-175

AÑO: 2017

LUGAR	ESTACION				CLASIFICACION VEHICULAR EN PORCIENTO													COORDENADAS		
	KM	TE	SC	TDPA	M	A	B	C2	C3	T3S2	T3S3	T3S2R4	OTROS	A	B	C	K'	D	LATITUD	LONGITUD
Tuxtepec	0.00	3	1	8117	14.3	73.0	0.8	9.1	1.0	1.1	0.3	0.3	0.1	87.3	0.8	11.9	0.067	0.521	18.052333	-96.154222
Tuxtepec	0.00	3	2	7460	15.4	70.5	0.8	10.2	1.2	1.2	0.3	0.3	0.1	85.9	0.8	13.3	0.068	0.521	18.052639	-96.154278
T. Izq. Palomares	5.75	3	0	5754	12.9	74.2	0.5	8.7	0.7	2.4	0.4	0.1	0.1	87.1	0.5	12.4	0.078	0.500	18.034417	-96.164778
San José Chiltepec	17.93	3	0	3883	16.6	75.5	0.8	4.4	0.5	1.9	0.1	0.1	0.1	92.1	0.8	7.1	0.074	0.502	17.943889	-96.173056
Valle Nacional	47.07	1	0	3671	13.3	78.4	0.8	5.6	0.4	1.1	0.2	0.1	0.1	91.7	0.8	7.5	0.065	0.511	17.779417	-96.292806
Valle Nacional	47.07	3	0	3025	22.9	69.6	0.7	5.0	0.4	1.1	0.2	0.0	0.1	92.5	0.7	6.8	0.063	0.510	17.767312	-96.310817
La Esperanza	79.85	3	0	579	1.1	82.7	3.3	10.9	1.5	0.4	0.1	0.0	0.0	83.8	3.3	12.9	0.060	0.513	17.626500	-96.367556
Puerta del Sol	125.00	3	0	631	1.5	79.6	2.6	13.8	2.0	0.4	0.1	0.0	0.0	81.1	2.6	16.3	0.078	0.510	17.529194	-96.511722
T. Der. Ixtepeji	181.39	3	0	1983	2.4	85.2	0.8	8.5	1.5	1.2	0.2	0.0	0.2	87.6	0.8	11.6	0.101	0.500	17.238619	-96.562783
T. Izq. Yuvila	193.67	1	0	2260	2.5	85.4	1.1	7.2	1.4	1.4	0.7	0.0	0.3	87.9	1.1	11.0	0.092	0.503	17.174956	-96.605018
T. C. Oaxaca - Tehuantepec	212.70	1	1	6761	7.0	86.4	0.1	4.9	0.4	0.7	0.5	0.0	0.0	93.4	0.1	6.5	0.082	0.511	17.067657	-96.676808
T. C. Oaxaca - Tehuantepec	212.70	1	2	6459	6.4	86.3	0.1	5.6	0.4	0.7	0.5	0.0	0.0	92.7	0.1	7.2	0.085	0.511	17.067730	-96.676859

25 CARR: Yucudaa - Santiago Pinotepa Nacional

CLAVE: 20030

RUTA: MEX-125

AÑO: 2017

LUGAR	ESTACION				CLASIFICACION VEHICULAR EN PORCIENTO													COORDENADAS		
	KM	TE	SC	TDPA	M	A	B	C2	C3	T3S2	T3S3	T3S2R4	OTROS	A	B	C	K'	D	LATITUD	LONGITUD
T. C. Huajuapán de León - Oaxaca	0.00	3	0	2912	1.5	73.5	2.6	16.8	1.6	2.3	1.4	0.1	0.2	75.0	2.6	22.4	0.073	0.502	17.564906	-97.426385
Yolomécatl	24.40	3	0	2754	2.3	76.5	2.4	12.6	1.8	2.7	1.3	0.1	0.3	78.8	2.4	18.8	0.065	0.506	17.463139	-97.573722
Tlaxiaco	57.00	3	0	3851	3.8	85.7	0.6	5.9	0.7	2.4	0.5	0.1	0.3	89.5	0.6	9.9	0.083	0.501	17.236667	-97.699306
T. Der. Santiago Juxcatlán	104.00	1	0	881	2.7	77.3	2.0	11.7	2.8	2.4	0.8	0.0	0.3	80.0	2.0	18.0	0.084	0.524	17.152106	-97.890004
Putla de Guerrero	145.00	1	0	2986	5.8	82.1	0.9	7.1	1.2	2.1	0.5	0.0	0.3	87.9	0.9	11.2	0.090	0.537	17.037806	-97.915778
Cacahuatpec	229.00	1	0	1701	6.0	84.1	0.8	5.6	1.1	1.8	0.5	0.0	0.1	90.1	0.8	9.1	0.089	0.503	16.623417	-98.147806
T. C. Las Cruces - Pinotepa Nacional	268.00	1	0	3999	8.5	84.0	0.6	3.9	0.6	1.7	0.3	0.1	0.3	92.5	0.6	6.9	0.080	0.504	16.378716	-98.091771

26 CARR: Cuacnopalan - Oaxaca (Cuota)

CLAVE: 00109

RUTA: MEX-135D

AÑO: 2017

LUGAR	ESTACION				CLASIFICACION VEHICULAR EN PORCIENTO													COORDENADAS		
	KM	TE	SC	TDPA	M	A	B	C2	C3	T3S2	T3S3	T3S2R4	OTROS	A	B	C	K'	D	LATITUD	LONGITUD
T. C. Puebla - Córdoba (Cuota)	0.00	3	0	10665	0.5	71.5	5.3	9.6	2.6	6.0	1.6	2.1	0.8	72.0	5.3	22.7	0.080	0.500	18.818413	-97.491139
T. Der. Cuacnopalan	1.80	3	0	9220	0.5	70.4	6.5	8.8	2.7	6.2	1.6	2.4	0.9	70.9	6.5	22.6	0.080	0.502	18.810358	-97.490581
Caseta de Cobro Tehuacán	40.00	2	0	10220	0.4	73.5	7.3	4.0	5.1	5.3	1.0	2.8	0.6	73.9	7.3	18.8	0.083	0.500	18.487160	-97.456032
T. C. Puebla - Tehuacán	40.00	3	0	5548	0.7	65.6	7.9	10.4	3.7	5.9	1.9	3.1	0.8	66.3	7.9	25.8	0.069	0.504	18.483618	-97.456554
X. C. Tehuacán - Huajuapán de León	48.00	3	0	5694	1.0	68.7	7.6	8.9	3.4	5.6	1.6	2.7	0.5	69.7	7.6	22.7	0.066	0.517	18.423354	-97.413061
T. Izq. San Gabriel Chilac	61.00	3	0	4777	0.7	65.0	8.6	9.1	5.0	5.7	1.6	3.6	0.7	65.7	8.6	25.7	0.073	0.527	18.332480	-97.368843

OAXACA

26 CARR: Cuacnopalan - Oaxaca (Cuota)

CLAVE: 00109

RUTA: MEX-135D

AÑO: 2017

LUGAR	ESTACION				CLASIFICACION VEHICULAR EN PORCIENTO										COORDENADAS					
	KM	TE	SC	TDPA	M	A	B	C2	C3	T3S2	T3S3	T3S2R4	OTROS	A	B	C	K'	D	LATITUD	LONGITUD
Caseta de Cobro Miahuatlán	71.42	2	0	4976	0.6	68.8	8.9	4.4	6.4	5.3	1.2	3.7	0.7	69.4	8.9	21.7	0.083	0.500	18.264654	-97.315567
Lim. Edos. Term. Pue. Ppia. Oax.	83.50																			
Caseta de Cobro Coixtlahuaca	141.30	2	0	4240	0.5	68.4	9.1	4.1	6.4	5.5	1.1	4.2	0.7	68.9	9.1	22.0	0.083	0.500	17.726011	-97.353765
T. Izq. Asunción Nochistlán	174.90	1	0	4874	0.7	62.7	10.1	10.2	3.8	6.4	1.3	3.9	0.9	63.4	10.1	26.5	0.068	0.504	17.466972	-97.249722
T. Izq. Asunción Nochistlán	175.50	3	0	6424	0.8	68.7	6.0	11.4	3.5	5.2	1.5	2.0	0.9	69.5	6.0	24.5	0.067	0.516	17.457214	-97.242674
Caseta de Cobro Huitzo	220.00	2	0	6241	0.6	78.8	5.8	3.5	4.2	3.5	0.6	2.6	0.4	79.4	5.8	14.8	0.083	0.500	17.275036	-96.915258
T. C. Huajuapán de León - Oaxaca	242.70	1	1	3835	2.7	76.7	2.5	8.9	3.3	2.4	1.1	1.9	0.5	79.4	2.5	18.1	0.066	0.504	17.147361	-96.784833
T. C. Huajuapán de León - Oaxaca	242.70	1	2	3891	2.4	70.7	5.5	11.8	2.5	3.7	0.7	2.4	0.3	73.1	5.5	21.4	0.076	0.504	17.147389	-96.784806

27 CARR: Mitla - Tehuantepec (Cuota)

CLAVE:

RUTA: MEX-190D

AÑO: 2017

LUGAR	ESTACION				CLASIFICACION VEHICULAR EN PORCIENTO										COORDENADAS					
	KM	TE	SC	TDPA	M	A	B	C2	C3	T3S2	T3S3	T3S2R4	OTROS	A	B	C	K'	D	LATITUD	LONGITUD
Ent. C. Oaxaca - Tehuantepec	43.00	3	0	1338	1.3	87.8	0.7	7.9	1.5	0.5	0.3	0.0	0.0	89.1	0.7	10.2	0.073	0.529	16.913754	-96.394247
Ent. Mitla	50.90	1	0	1357	1.2	89.0	0.5	7.3	1.2	0.6	0.2	0.0	0.0	90.2	0.5	9.3	0.100	0.527	16.918957	-96.332724
Ent. Mitla	50.90	3	0	1650	3.1	87.6	0.5	7.0	1.0	0.5	0.3	0.0	0.0	90.7	0.5	8.8	0.079	0.516	16.927062	-96.322760
Ent. Hierve el Agua	62.10	1	0	1579	1.1	87.5	0.5	8.9	0.9	0.7	0.3	0.0	0.1	88.6	0.5	10.9	0.092	0.528	16.926960	-96.259700
Ent. Hierve el Agua	62.10	3	0	1642	0.9	86.4	0.6	9.7	1.4	0.6	0.3	0.0	0.1	87.3	0.6	12.1	0.067	0.512	16.922782	-96.254251
Ent. Sta. María Albarradas	71.00	1	0	1452	0.9	88.4	0.4	8.1	1.3	0.7	0.2	0.0	0.0	89.3	0.4	10.3	0.088	0.507	16.960855	-96.193506

28 CARR: Salina Cruz - La Ventosa (Cuota)

CLAVE: 00275

RUTA: MEX-185D

AÑO: 2017

LUGAR	ESTACION				CLASIFICACION VEHICULAR EN PORCIENTO										COORDENADAS					
	KM	TE	SC	TDPA	M	A	B	C2	C3	T3S2	T3S3	T3S2R4	OTROS	A	B	C	K'	D	LATITUD	LONGITUD
T. C. Santiago Pinotepa Nacional - Salina Cruz	0.00																			
Caseta de Cobro Tehuantepec	1.89	2	0	872	2.0	78.7	3.9	2.8	4.2	5.0	2.2	0.9	0.3	80.7	3.9	15.4	0.082	0.500	16.162107	-95.289215
X. C. Oaxaca - Tehuantepec	23.19	1	0	1211	2.2	78.4	3.0	6.5	1.7	3.8	2.7	0.7	1.0	80.6	3.0	16.4	0.084	0.545	16.328443	-95.279644
X. C. Oaxaca - Tehuantepec	23.19	3	0	2855	3.4	72.2	2.0	6.2	2.0	4.0	2.5	7.1	0.6	75.6	2.0	22.4	0.085	0.545	16.339543	-95.275841
Caseta de Cobro Ixtepec	47.49	2	0	1292	0.6	60.3	3.5	3.8	5.3	7.0	3.7	14.3	1.5	60.9	3.5	35.6	0.082	0.500	16.561157	-95.135620
T. C. Coatzacoalcos - Salina Cruz	75.39	1	0	1930	0.9	61.9	3.1	6.6	3.4	6.0	4.3	13.2	0.6	62.8	3.1	34.1	0.062	0.506	16.586250	-94.952139

OAXACA

29 CARR: Cd. Ixtepec - Guevea de Humboldt

CLAVE: 00301

RUTA: OAX

AÑO: 2017

LUGAR	ESTACION				CLASIFICACION VEHICULAR EN PORCIENTO										COORDENADAS					
	KM	TE	SC	TDPA	M	A	B	C2	C3	T3S2	T3S3	T3S2R4	OTROS	A	B	C	K'	D	LATITUD	LONGITUD
Ciudad Ixtepec	0.00																			
T. C. La Ventosa - Salina Cruz (Cuota)	4.00	1	1	2195	7.7	86.4	0.3	4.6	0.3	0.4	0.2	0.0	0.1	94.1	0.3	5.6	0.082	0.502	16.560779	-95.127125
T. C. La Ventosa - Salina Cruz (Cuota)	4.00	1	2	2181	6.6	86.2	0.7	5.7	0.3	0.4	0.1	0.0	0.0	92.8	0.7	6.5	0.100	0.502	16.560784	-95.127122
T. C. La Ventosa - Salina Cruz (Cuota)	4.00	3	0	2177	7.8	82.7	0.4	5.6	0.3	1.5	0.7	0.9	0.1	90.5	0.4	9.1	0.084	0.500	16.564211	-95.141377
Guevea de Humboldt	57.05																			

30 CARR: El Zapote - Copalita

CLAVE: 00109

RUTA: OAX

AÑO: 2017

LUGAR	ESTACION				CLASIFICACION VEHICULAR EN PORCIENTO										COORDENADAS					
	KM	TE	SC	TDPA	M	A	B	C2	C3	T3S2	T3S3	T3S2R4	OTROS	A	B	C	K'	D	LATITUD	LONGITUD
T. C. Santiago Pinotepa Nacional - Salina Cruz	0.00	3	1	2076	9.3	81.4	0.3	8.1	0.7	0.1	0.1	0.0	0.0	90.7	0.3	9.0	0.099	0.528	15.766898	-96.272409
T. C. Santiago Pinotepa Nacional - Salina Cruz	0.00	3	2	2319	9.3	80.9	0.3	8.7	0.6	0.1	0.1	0.0	0.0	90.2	0.3	9.5	0.080	0.528	15.766891	-96.272424
Copalita	43.04																			

31 CARR: Huajuapán de León - El Carrizal

CLAVE: 00109

RUTA: OAX

AÑO: 2017

LUGAR	ESTACION				CLASIFICACION VEHICULAR EN PORCIENTO										COORDENADAS					
	KM	TE	SC	TDPA	M	A	B	C2	C3	T3S2	T3S3	T3S2R4	OTROS	A	B	C	K'	D	LATITUD	LONGITUD
Huajuapán de León	0.00	3	0	2672	3.5	83.6	1.3	6.8	0.9	2.3	1.0	0.4	0.2	87.1	1.3	11.6	0.062	0.503	17.777306	-97.789861
San Miguel Tlacotepec	83.60	1	0	1569	2.1	85.4	1.5	6.5	1.1	1.9	1.0	0.2	0.3	87.5	1.5	11.0	0.083	0.505	17.461306	-98.004861
Santiago Juxtlahuaca	100.00																			
Santiago Juxtlahuaca	100.00	1	0	6565	4.0	85.0	0.5	5.7	0.5	3.4	0.4	0.1	0.4	89.0	0.5	10.5	0.087	0.501	17.347308	-98.014977
Putla	130.00	1	0	775	2.3	84.7	0.9	8.7	1.5	1.6	0.3	0.0	0.0	87.0	0.9	12.1	0.086	0.515	17.154690	-97.893870
El Carrizal	131.30																			

32 CARR: Loma Bonita - Mixtán

CLAVE: 20043

RUTA: OAX

AÑO: 2017

LUGAR	ESTACION				CLASIFICACION VEHICULAR EN PORCIENTO										COORDENADAS					
	KM	TE	SC	TDPA	M	A	B	C2	C3	T3S2	T3S3	T3S2R4	OTROS	A	B	C	K'	D	LATITUD	LONGITUD
Loma Bonita	0.00																			
X. C. Cd. Alemán - Sayula	1.00	1	1	6186	15.8	72.2	1.2	7.0	0.5	1.3	1.6	0.1	0.3	88.0	1.2	10.8	0.065	0.527	18.098130	-95.877364
X. C. Cd. Alemán - Sayula	1.00	1	2	5563	19.2	66.7	1.6	8.6	0.9	1.3	1.3	0.1	0.3	85.9	1.6	12.5	0.060	0.527	18.098056	-95.877444
X. C. Cd. Alemán - Sayula	1.00	3	0	2508	25.1	60.6	0.8	11.6	0.7	0.3	0.5	0.1	0.3	85.7	0.8	13.5	0.073	0.518	18.094249	-95.876182
T. Izq. Aeropuerto	12.00	3	0	780	16.8	62.8	1.1	14.9	2.8	1.2	0.4	0.0	0.0	79.6	1.1	19.3	0.082	0.503	18.014750	-95.869111
Mixtán	27.00																			

OAXACA

33 CARR: Ramal a Reforma de Pineda

CLAVE: 20010

RUTA: OAX

AÑO: 2017

LUGAR	ESTACION				CLASIFICACION VEHICULAR EN PORCIENTO													COORDENADAS		
	KM	TE	SC	TDPA	M	A	B	C2	C3	T3S2	T3S3	T3S2R4	OTROS	A	B	C	K'	D	LATITUD	LONGITUD
T. C. La Ventosa - San Pedro Tapanatepec	0.00	3	0	1382	7.4	84.6	1.1	4.5	0.6	1.0	0.1	0.6	0.1	92.0	1.1	6.9	0.077	0.500	16.491556	-94.427639
Reforma de Pineda	12.00																			

34 CARR: Ramal a Unión Hidalgo

CLAVE: 20044

RUTA: OAX

AÑO: 2017

LUGAR	ESTACION				CLASIFICACION VEHICULAR EN PORCIENTO													COORDENADAS		
	KM	TE	SC	TDPA	M	A	B	C2	C3	T3S2	T3S3	T3S2R4	OTROS	A	B	C	K'	D	LATITUD	LONGITUD
T. C. La Ventosa - San Pedro Tapanatepec	0.00	3	1	1427	12.8	83.4	0.1	3.0	0.3	0.3	0.1	0.0	0.0	96.2	0.1	3.7	0.088	0.508	16.574146	-94.816358
T. C. La Ventosa - San Pedro Tapanatepec	0.00	3	2	1379	12.0	84.5	0.2	2.3	0.4	0.4	0.1	0.0	0.1	96.5	0.2	3.3	0.088	0.508	16.574088	-94.816366
Unión Hidalgo	12.00	1	0	1286	18.7	76.4	0.1	2.1	0.6	1.1	0.1	0.1	0.8	95.1	0.1	4.8	0.093	0.500	16.490167	-94.832444

35 CARR: San Antonio - Puerto Angel

CLAVE:

RUTA: OAX

AÑO: 2017

LUGAR	ESTACION				CLASIFICACION VEHICULAR EN PORCIENTO													COORDENADAS		
	KM	TE	SC	TDPA	M	A	B	C2	C3	T3S2	T3S3	T3S2R4	OTROS	A	B	C	K'	D	LATITUD	LONGITUD
T. C. Santiago Pinotepa Nacional - Salina Cruz	0.00	3	0	2097	12.9	81.8	0.2	3.5	0.0	1.3	0.2	0.0	0.1	94.7	0.2	5.1	0.077	0.501	15.710900	-96.580252
Mazunte	7.30	1	0	2092	15.7	77.2	0.4	4.2	0.1	1.7	0.4	0.1	0.2	92.9	0.4	6.7	0.102	0.501	15.670971	-96.558716
Mazunte	7.30	3	0	1477	27.6	65.6	0.1	5.1	0.1	1.3	0.1	0.0	0.1	93.2	0.1	6.7	0.079	0.504	15.666780	-96.540561
Puerto Angel	15.90																			

36 CARR: T. C. (Oaxaca - Puerto Ángel) - Puerto Escondido

CLAVE: 20009

RUTA: MEX-OAX-161

AÑO: 2017

LUGAR	ESTACION				CLASIFICACION VEHICULAR EN PORCIENTO													COORDENADAS		
	KM	TE	SC	TDPA	M	A	B	C2	C3	T3S2	T3S3	T3S2R4	OTROS	A	B	C	K'	D	LATITUD	LONGITUD
T. C. Oaxaca - Puerto Ángel	0.00	3	1	9072	4.3	87.5	0.4	5.8	0.7	0.7	0.4	0.1	0.1	91.8	0.4	7.8	0.119	0.507	16.926889	-96.705639
T. C. Oaxaca - Puerto Ángel	0.00	3	2	8824	3.9	87.2	0.4	6.4	0.7	0.8	0.4	0.1	0.1	91.1	0.4	8.5	0.090	0.507	16.926896	-96.705603
T. Izq. San Pablo Huixtepec	16.80	1	0	8612	6.1	80.1	0.5	7.4	1.5	3.6	0.4	0.1	0.3	86.2	0.5	13.3	0.068	0.505	16.838397	-96.788352
T. Izq. San Pablo Huixtepec	16.80	3	0	8610	6.3	79.2	0.5	7.6	1.7	3.8	0.4	0.2	0.3	85.5	0.5	14.0	0.066	0.506	16.828611	-96.788861
T. Der. El Trapiche	30.00	1	0	4581	4.4	79.6	0.7	8.7	2.9	2.5	0.7	0.1	0.4	84.0	0.7	15.3	0.065	0.507	16.761330	-96.856355
T. Der. El Trapiche	30.00	3	0	4516	4.1	82.0	0.7	7.1	2.2	2.4	0.9	0.2	0.4	86.1	0.7	13.2	0.078	0.503	16.759788	-96.859899
T. Der. Cofradía San Pedro	53.00	3	0	1860	3.3	76.2	2.4	11.8	2.1	2.5	1.2	0.2	0.3	79.5	2.4	18.1	0.073	0.506	16.598867	-96.890050
Sola de Vega	78.40	3	0	1739	5.9	75.3	3.7	10.4	2.2	1.7	0.6	0.0	0.2	81.2	3.7	15.1	0.068	0.504	16.509336	-96.983977
T. Der. Yalotepec	134.50	1	0	1319	2.1	75.1	3.3	11.4	3.9	2.2	1.3	0.3	0.4	77.2	3.3	19.5	0.064	0.536	16.257291	-97.153108
San Gabriel Mixtepec	208.00	1	0	1695	13.8	75.5	0.8	6.0	1.3	1.7	0.4	0.2	0.3	89.3	0.8	9.9	0.088	0.509	16.093524	-97.075330
Puerto Escondido	248.00	1	0	4474	14.4	76.4	0.3	5.4	0.3	2.4	0.4	0.1	0.3	90.8	0.3	8.9	0.073	0.500	15.893901	-97.076905

OAXACA

37 CARR: Tehuacán - Huitzo

CLAVE: 00211

RUTA: PUE-MEX-135

AÑO: 2017

LUGAR	ESTACION				CLASIFICACION VEHICULAR EN PORCIENTO														COORDENADAS	
	KM	TE	SC	TDPA	M	A	B	C2	C3	T3S2	T3S3	T3S2R4	OTROS	A	B	C	K'	D	LATITUD	LONGITUD
Tehuacán	0.00	3	0	8261	6.5	82.4	0.1	3.8	0.8	4.7	0.6	0.2	0.9	88.9	0.1	11.0	0.080	0.533	18.450800	-97.370738
T. Der. San Gabriel Chilac	14.40	1	0	8167	8.4	78.6	0.1	4.8	0.6	5.0	1.1	0.3	1.1	87.0	0.1	12.9	0.068	0.518	18.404312	-97.329809
San Sebastián Zinacatepec	23.00	3	0	5833	5.4	77.5	1.3	9.9	2.0	2.9	0.6	0.1	0.3	82.9	1.3	15.8	0.070	0.531	18.326157	-97.230472
Lim. Edos. Term. Pue. Ppia. Oax.	60.90																			
Teotitlán del Camino	63.15	3	0	2917	7.6	85.3	0.5	4.9	0.3	1.0	0.2	0.1	0.1	92.9	0.5	6.6	0.071	0.502	18.119750	-97.073583
Santa María Tecomavaca	88.34	1	0	1469	5.9	85.7	0.7	5.0	0.7	1.6	0.4	0.0	0.0	91.6	0.7	7.7	0.093	0.501	17.961417	-97.030806
Santa María Tecomavaca	88.34	3	0	1131	4.9	83.6	1.2	7.9	1.0	1.1	0.3	0.0	0.0	88.5	1.2	10.3	0.063	0.516	17.948639	-97.021556
T. Izq. Cuicatlán	118.80	1	0	1456	7.2	84.6	0.6	6.1	0.5	0.8	0.2	0.0	0.0	91.8	0.6	7.6	0.087	0.519	17.794028	-96.960056
T. Izq. Nacaltepec	169.84	1	0	776	2.3	86.7	0.9	9.3	0.6	0.2	0.0	0.0	0.0	89.0	0.9	10.1	0.084	0.528	17.505489	-96.933243
T. C. Huajuapán de León - Oaxaca	202.70	1	0	6856	5.8	88.8	0.2	3.2	0.5	0.4	0.7	0.4	0.0	94.6	0.2	5.2	0.072	0.511	17.286702	-96.903357

38 CARR: Teotitlán de Flores Magón - Tuxtepec

CLAVE: 00108

RUTA: OAX-PUE-MEX-182

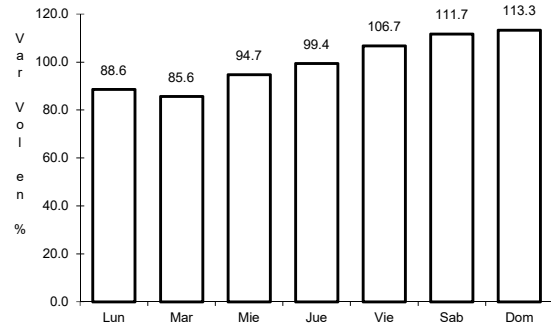
AÑO: 2017

LUGAR	ESTACION				CLASIFICACION VEHICULAR EN PORCIENTO														COORDENADAS	
	KM	TE	SC	TDPA	M	A	B	C2	C3	T3S2	T3S3	T3S2R4	OTROS	A	B	C	K'	D	LATITUD	LONGITUD
Teotitlán del Camino	0.00	3	0	1040	1.7	78.6	2.0	16.7	0.7	0.3	0.0	0.0	0.0	80.3	2.0	17.7	0.077	0.525	18.130778	-97.064167
Lim. Edos. Term. Oax. Ppia. Pue.	2.00																			
Lim. Edos. Term. Pue. Ppia. Oax.	10.00																			
Huautla	65.00	1	0	1639	4.1	86.0	1.1	6.5	0.7	0.9	0.5	0.2	0.0	90.1	1.1	8.8	0.062	0.509	18.125526	-96.846097
San Felipe Jalapa de Díaz	140.00	3	0	4077	9.2	84.5	0.6	4.6	0.5	0.2	0.2	0.2	0.0	93.7	0.6	5.7	0.072	0.508	18.081944	-96.522222
Tuxtepec	185.00	1	0	6392	15.0	73.8	0.6	9.1	0.4	0.6	0.3	0.1	0.1	88.8	0.6	10.6	0.059	0.506	18.089474	-96.170489

1 CARR: Acceso al Puerto Salina Cruz

CLAVE:

RUTA: MEX-090

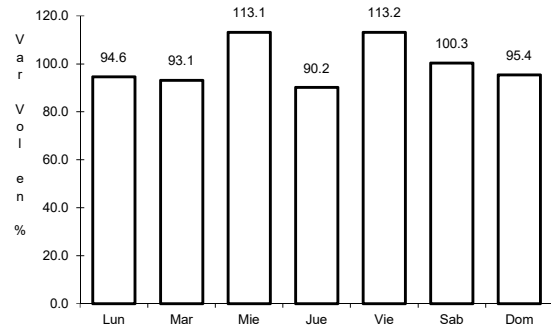


Km: 0.00 Tipo: 3 Sent: 0

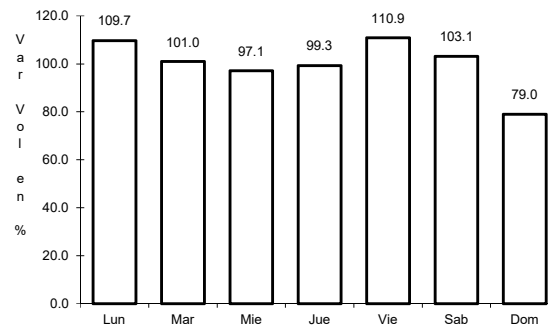
2 CARR: Buenavista - Tuxtepec

CLAVE: 00624

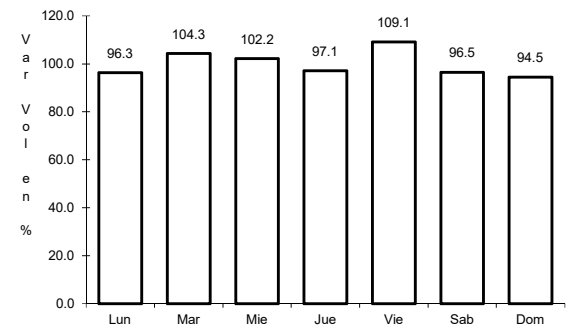
RUTA: MEX-175



Km: 0.00 Tipo: 3 Sent: 0



Km: 121.25 Tipo: 1 Sent: 1

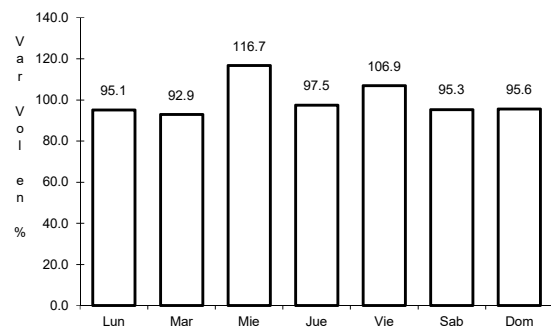


Km: 121.25 Tipo: 1 Sent: 2

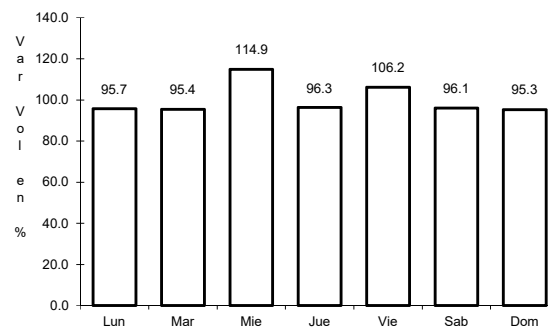
3 CARR: Cd. Alemán - Sayula

CLAVE: 00301

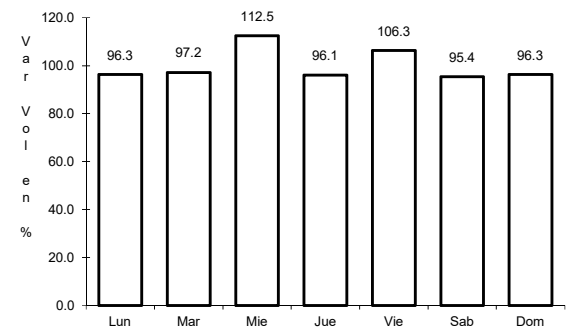
RUTA: MEX-145



Km: 0.00 Tipo: 3 Sent: 0



Km: 71.40 Tipo: 1 Sent: 0

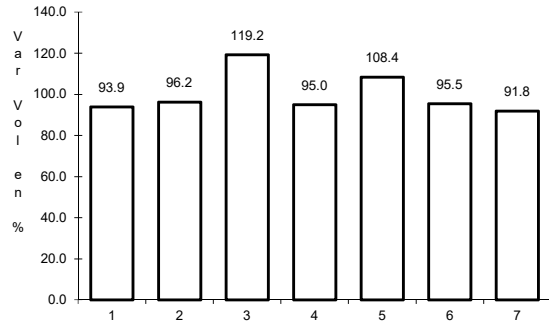


Km: 136.40 Tipo: 1 Sent: 0

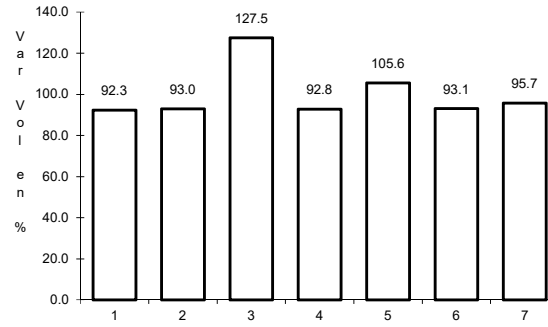
4 CARR: Coatzacoalcos - Salina Cruz

CLAVE: 00147

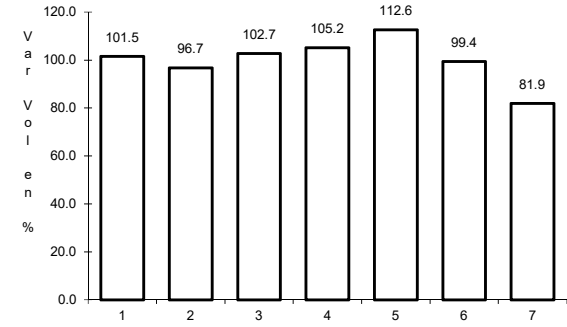
RUTA: MEX-185



Km: 0.00 Tipo: 3 Sent: 1



Km: 0.00 Tipo: 3 Sent: 2

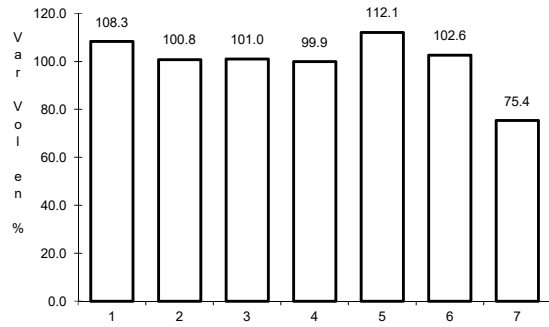


Km: 241.70 Tipo: 1 Sent: 0

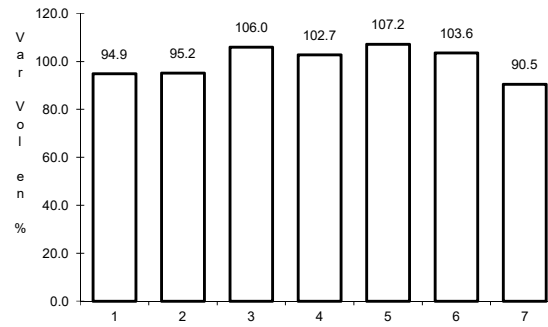
5 CARR: Ent. La Ventosa - San Pedro Tapanatepec

CLAVE: 20059

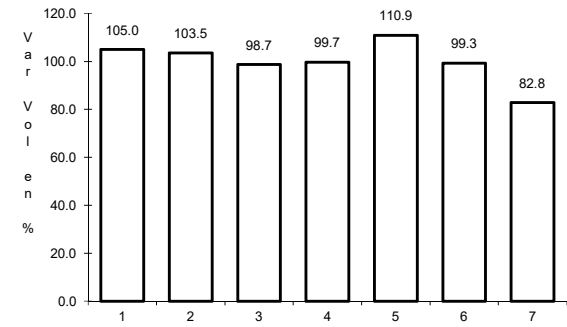
RUTA: MEX-190



Km: 0.00 Tipo: 3 Sent: 0



Km: 38.01 Tipo: 3 Sent: 0

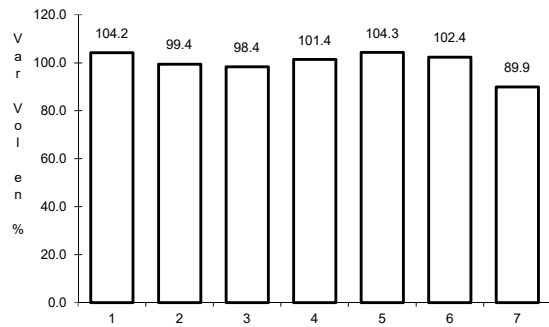


Km: 91.80 Tipo: 1 Sent: 0

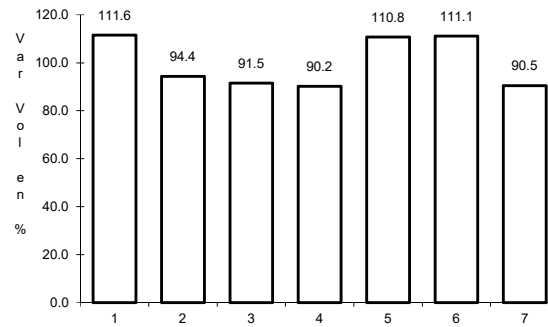
6 CARR: Huajuapán de León - Oaxaca

CLAVE: 20056

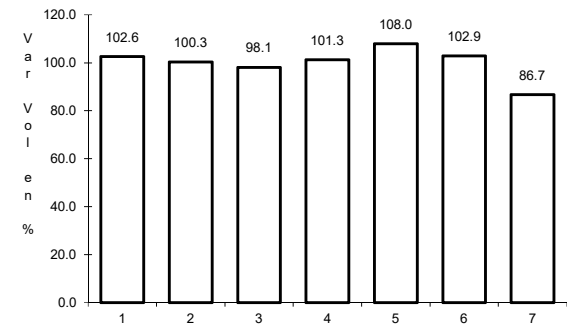
RUTA: MEX-190



Km: 1.35 Tipo: 1 Sent: 0



Km: 190.60 Tipo: 1 Sent: 1

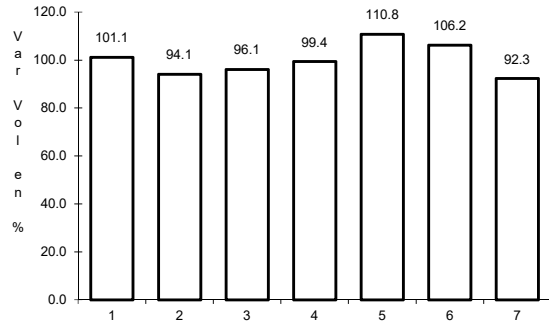


Km: 190.60 Tipo: 1 Sent: 2

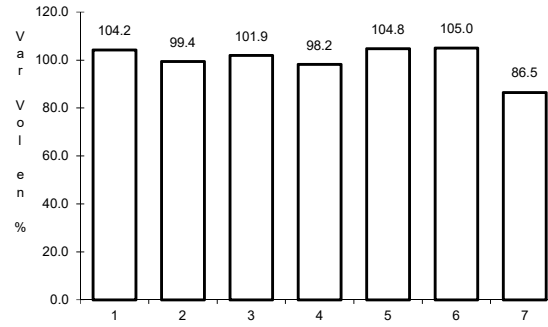
7 CARR: Juchitán - Ixtepec

CLAVE: 20359

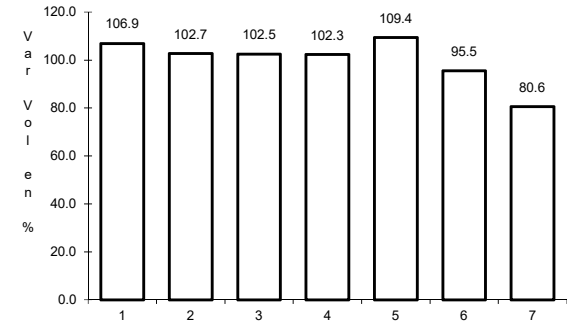
ruta: MEX-185



Km: 0.15 Tipo: 3 Sent: 1



Km: 0.15 Tipo: 3 Sent: 2

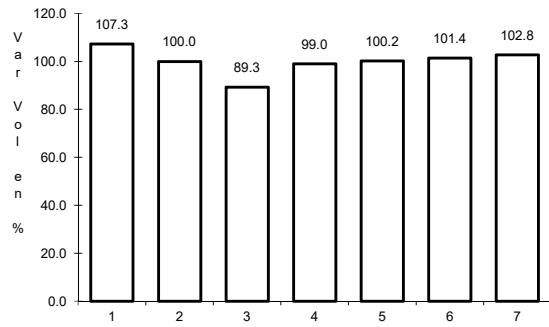


Km: 16.00 Tipo: 1 Sent: 1

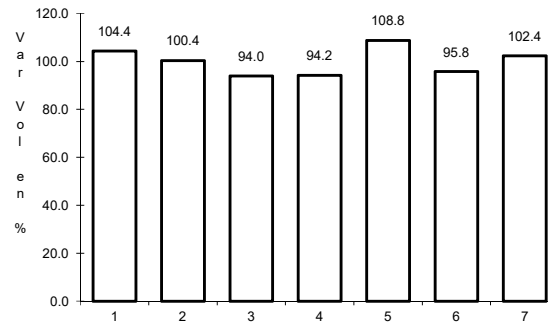
8 CARR: La Granja - Temascal

CLAVE: 00275

ruta: MEX-145



Km: 0.00 Tipo: 3 Sent: 0

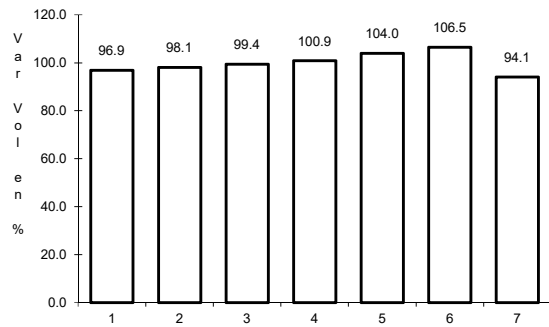


Km: 23.00 Tipo: 1 Sent: 0

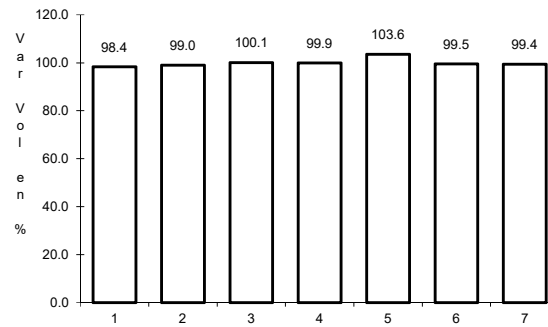
9 CARR: Las Cruces - Pinotepa Nacional

CLAVE: 00073

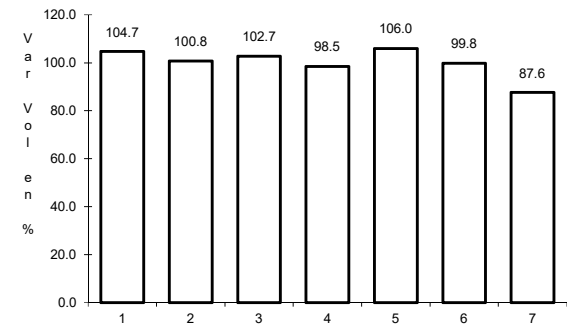
ruta: MEX-200



Km: 0.00 Tipo: 3 Sent: 1



Km: 0.00 Tipo: 3 Sent: 2

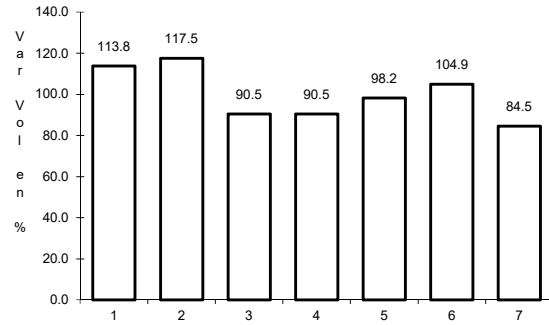


Km: 245.47 Tipo: 3 Sent: 0

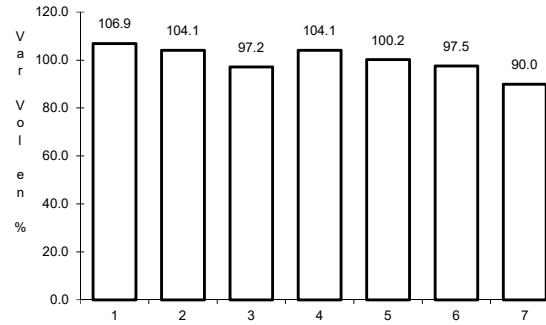
10 CARR: Libramiento de Pochutla

CLAVE:

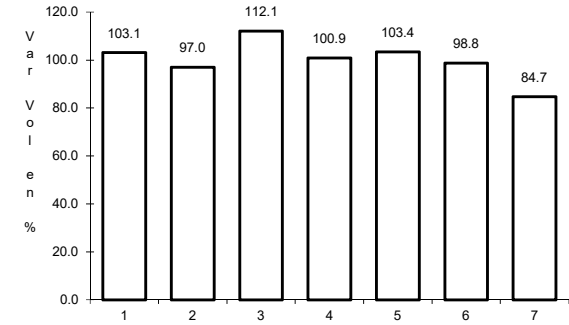
ruta: MEX-200



Km: 0.00 Tipo: 3 Sent: 0



Km: 2.40 Tipo: 1 Sent: 0

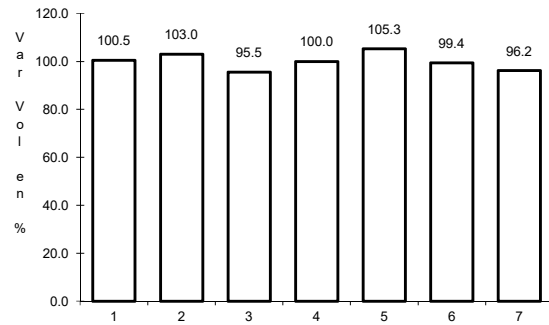


Km: 5.20 Tipo: 1 Sent: 0

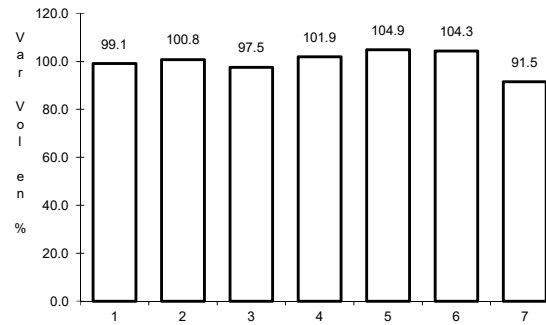
11 CARR: Libramiento de Santa María del Tule

CLAVE:

ruta: MEX-190



Km: 0.00 Tipo: 3 Sent: 0

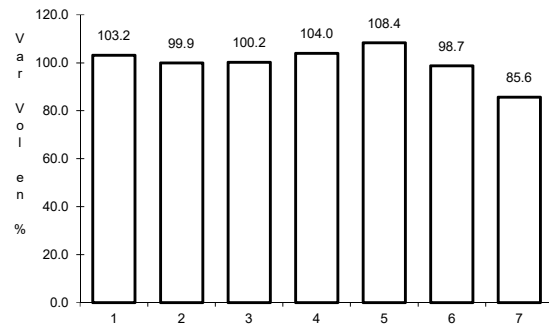


Km: 5.80 Tipo: 1 Sent: 0

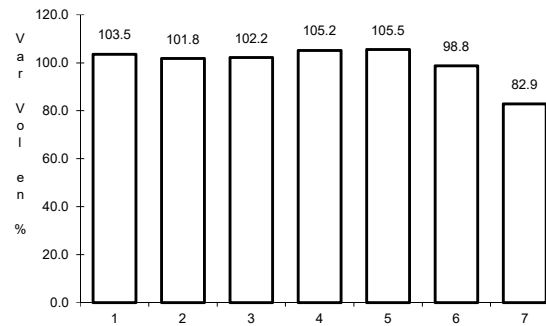
12 CARR: Oaxaca - Puerto Ángel

CLAVE: 20091

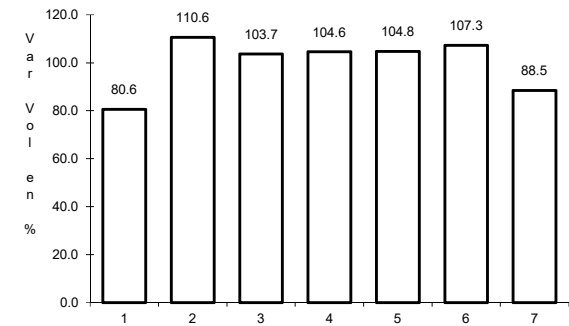
ruta: MEX-175



Km: 0.00 Tipo: 3 Sent: 1



Km: 0.00 Tipo: 3 Sent: 2

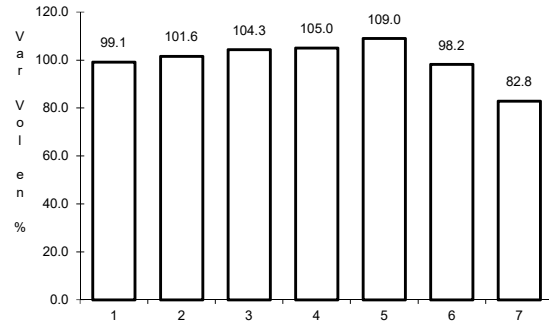


Km: 245.40 Tipo: 1 Sent: 0

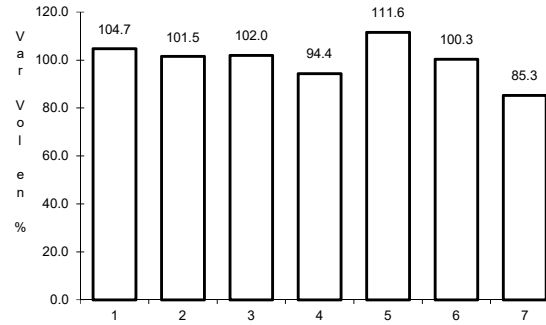
13 CARR: Oaxaca - Tehuantepec

CLAVE: 20057

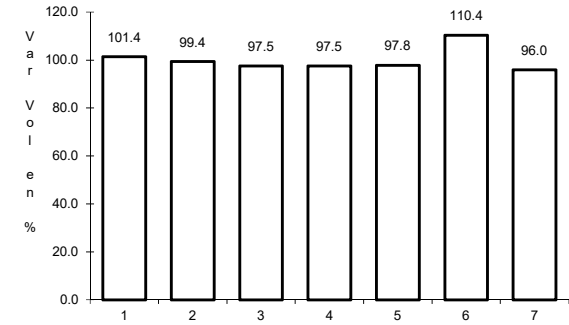
ruta: MEX-190



Km: 0.00 Tipo: 3 Sent: 1



Km: 0.00 Tipo: 3 Sent: 2

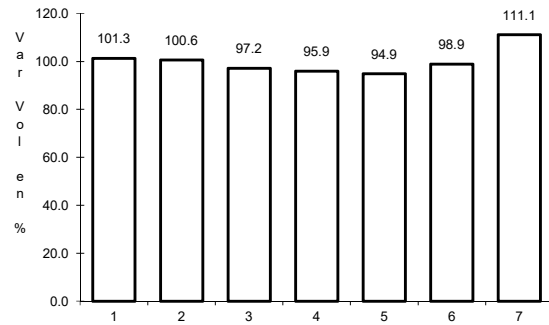


Km: 250.60 Tipo: 1 Sent: 0

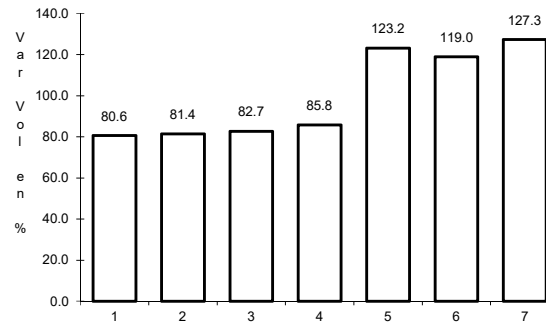
14 CARR: Puebla - Huajuapán de León

CLAVE: 00049

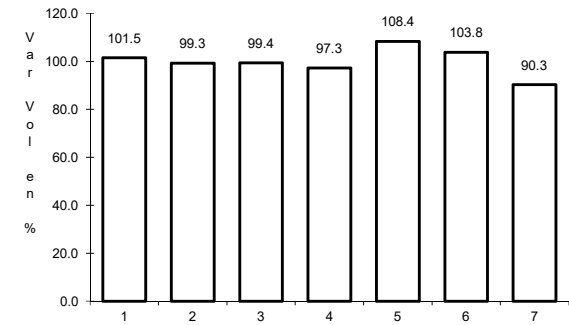
ruta: MEX-190



Km: 0.00 Tipo: 3 Sent: 1



Km: 0.00 Tipo: 3 Sent: 2

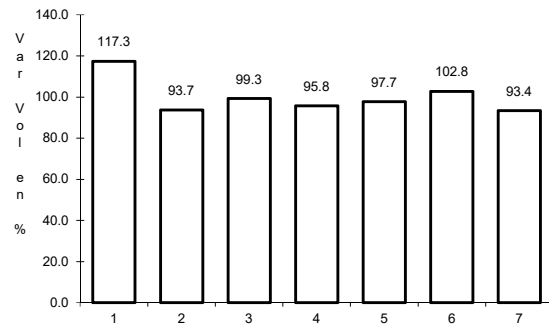


Km: 219.30 Tipo: 1 Sent: 0

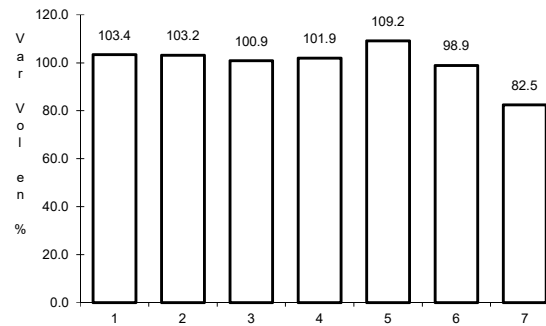
15 CARR: Ramal a Asunción Ixtaltepec

CLAVE: 20624

ruta: MEX-185



Km: 0.00 Tipo: 3 Sent: 0

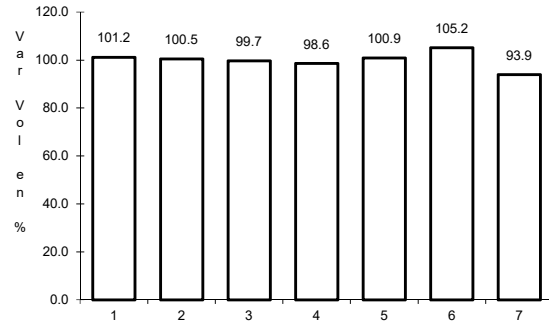


Km: 9.70 Tipo: 1 Sent: 0

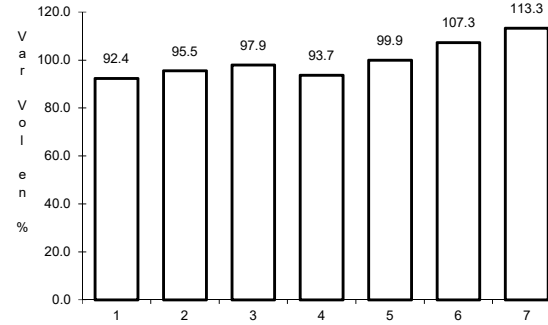
16 CARR: Ramal a Monte Albán

CLAVE:

ruta: MEX



Km: 1.80 Tipo: 3 Sent: 0

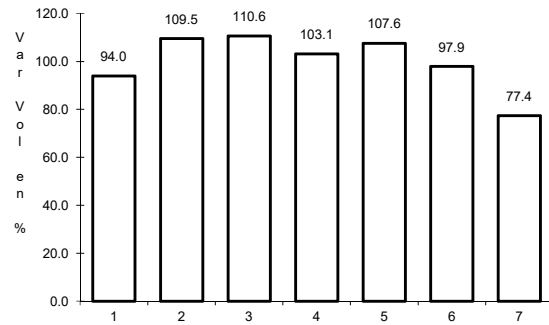


Km: 2.75 Tipo: 3 Sent: 0

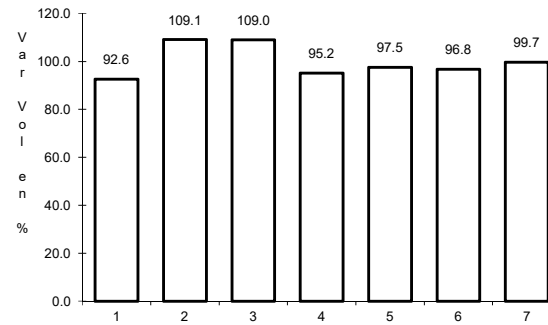
17 CARR: Ramal a Refinería Pemex (Refinería del Pacifico)

CLAVE:

ruta: MEX



Km: 0.00 Tipo: 3 Sent: 1

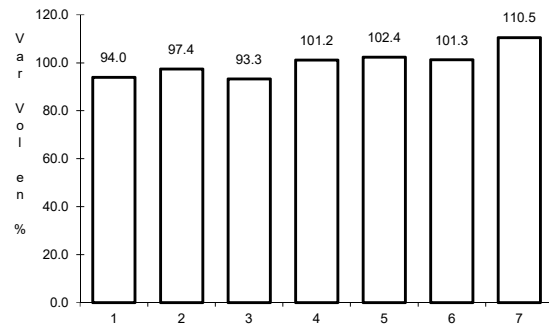


Km: 0.00 Tipo: 3 Sent: 2

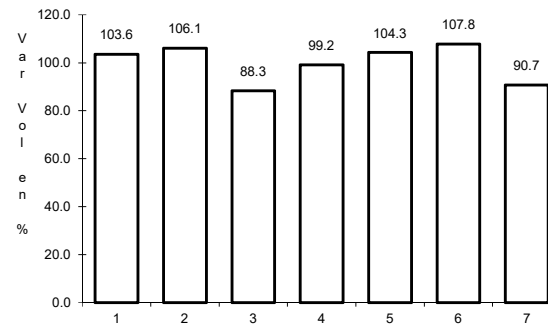
18 CARR: San Pablo Villa de Mitla - T. C. (Tuxtepec - Palomares)

CLAVE: 00106

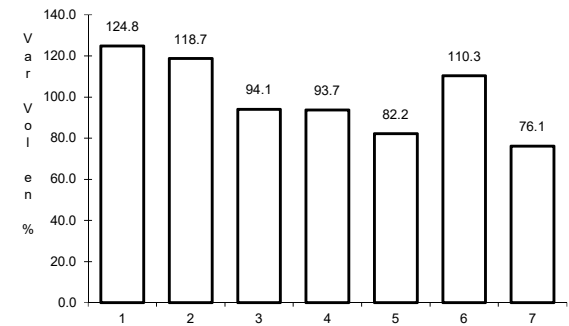
ruta: MEX-179



Km: 0.00 Tipo: 3 Sent: 0



Km: 90.00 Tipo: 1 Sent: 0

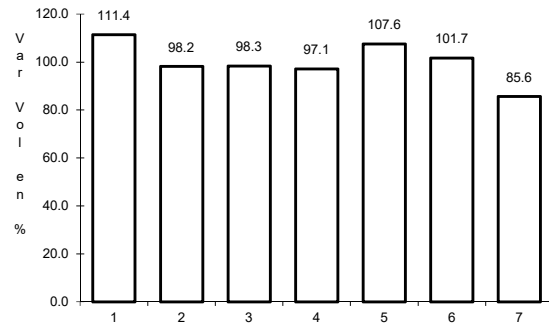


Km: 238.70 Tipo: 1 Sent: 0

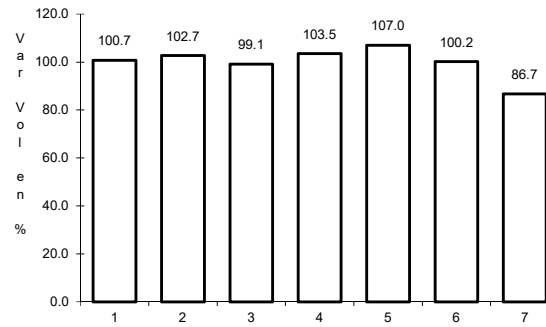
19 CARR: Santiago Pinotepa Nacional - Salina Cruz

CLAVE: 20074

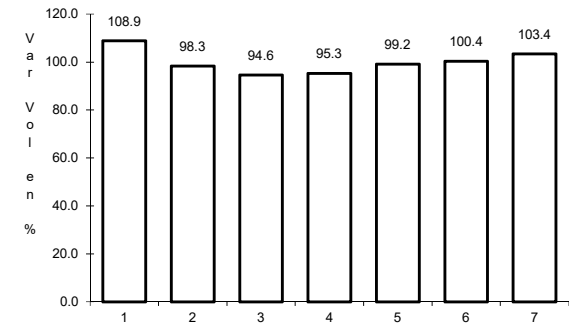
RUTA: MEX-200



Km: 0.00 Tipo: 3 Sent: 0



Km: 209.95 Tipo: 1 Sent: 0

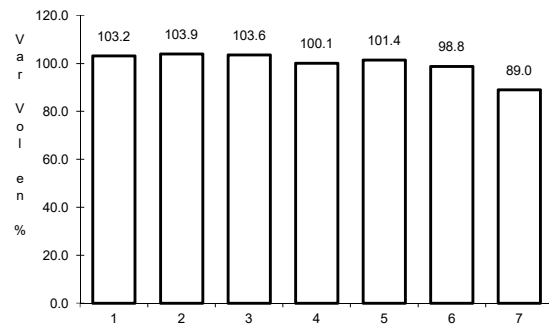


Km: 380.00 Tipo: 3 Sent: 0

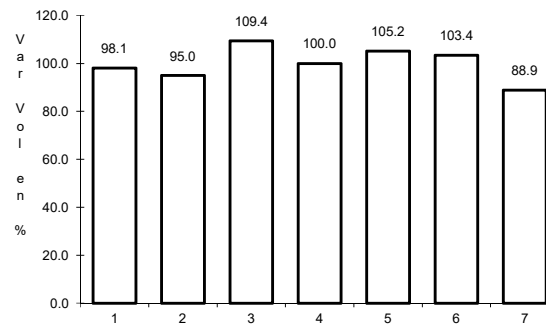
20 CARR: Tapanatepec - Talismán

CLAVE: 00075

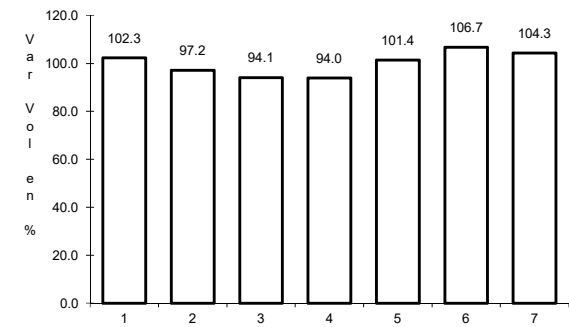
RUTA: MEX-200



Km: 0.00 Tipo: 3 Sent: 0



Km: 45.00 Tipo: 1 Sent: 0

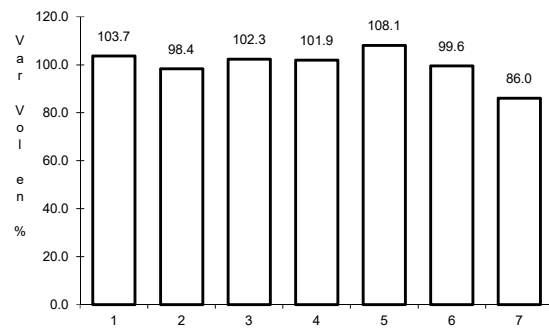


Km: 310.77 Tipo: 1 Sent: 0

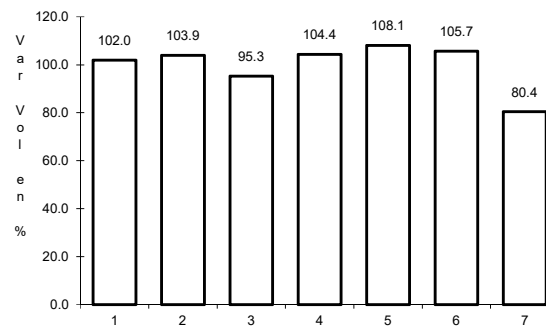
21 CARR: Tapanatepec - Tuxtla Gutiérrez

CLAVE: 00060

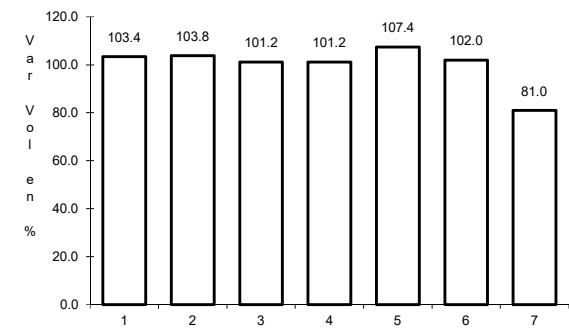
RUTA: MEX-190



Km: 0.00 Tipo: 3 Sent: 0



Km: 159.00 Tipo: 1 Sent: 1

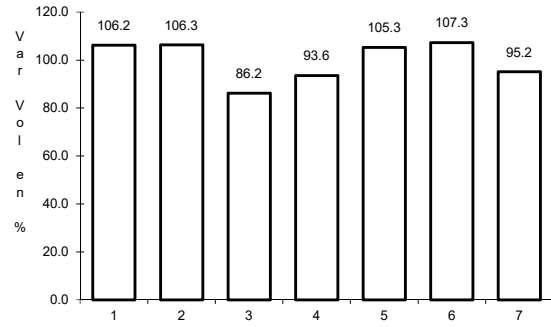


Km: 159.00 Tipo: 1 Sent: 2

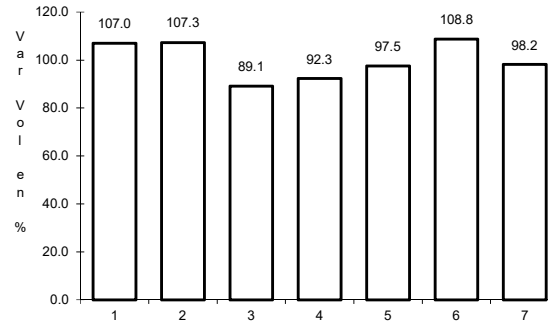
22 CARR: Tehuacán - Huajuapán de León

CLAVE: 00211

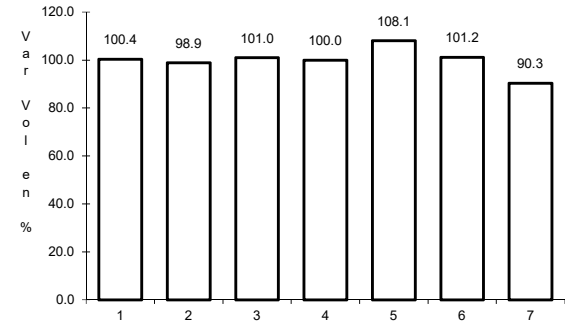
RUTA: MEX-125



Km: 0.00 Tipo: 3 Sent: 1



Km: 0.00 Tipo: 3 Sent: 2

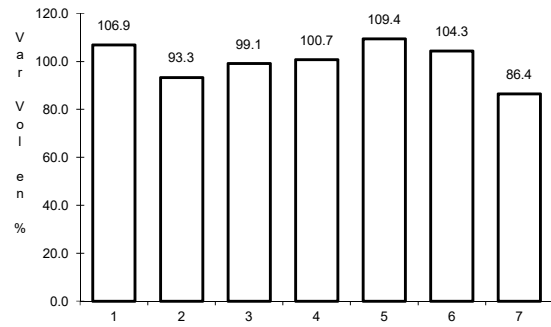


Km: 119.40 Tipo: 1 Sent: 0

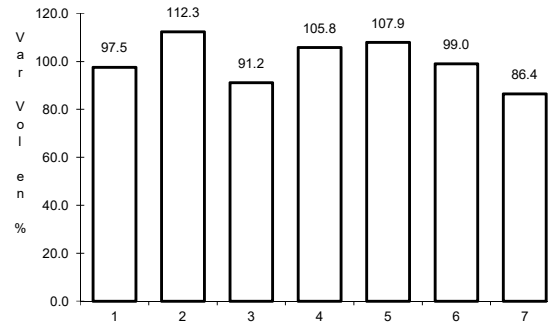
23 CARR: Tuxtepec - Ent. Palomares

CLAVE: 00180

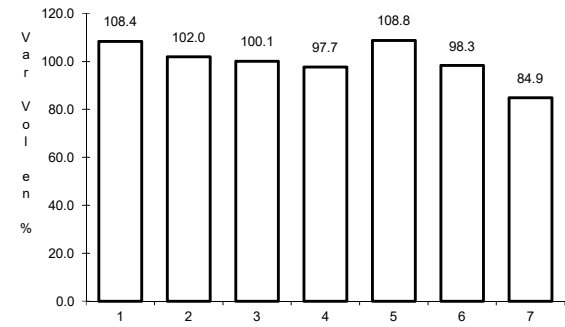
RUTA: MEX-147



Km: 0.00 Tipo: 3 Sent: 0



Km: 81.20 Tipo: 1 Sent: 0

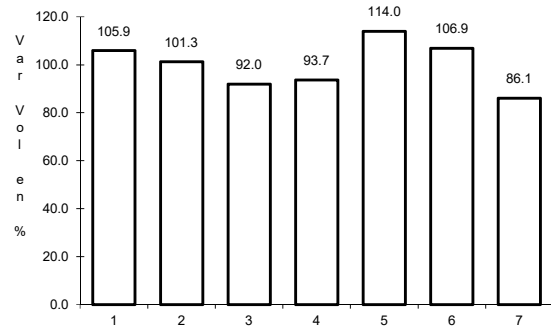


Km: 175.00 Tipo: 1 Sent: 0

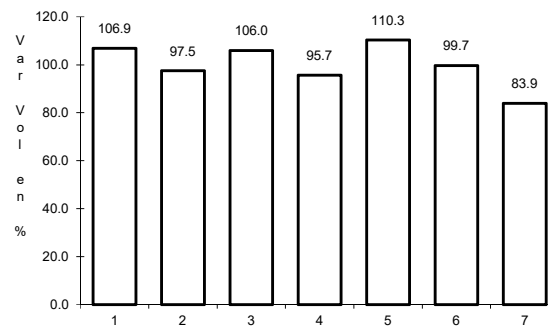
24 CARR: Tuxtepec - T. C. (Oaxaca - Tehuantepec)

CLAVE: 20090

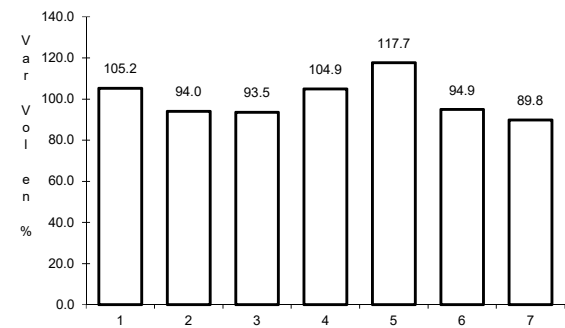
RUTA: MEX-175



Km: 0.00 Tipo: 3 Sent: 1



Km: 0.00 Tipo: 3 Sent: 2

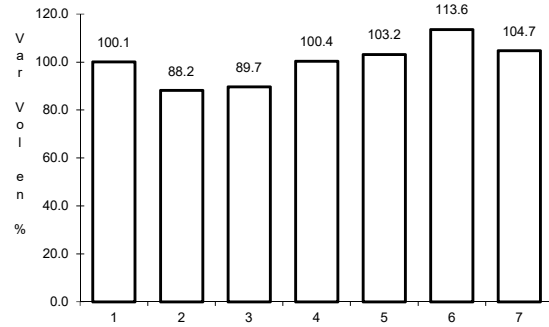


Km: 125.00 Tipo: 3 Sent: 0

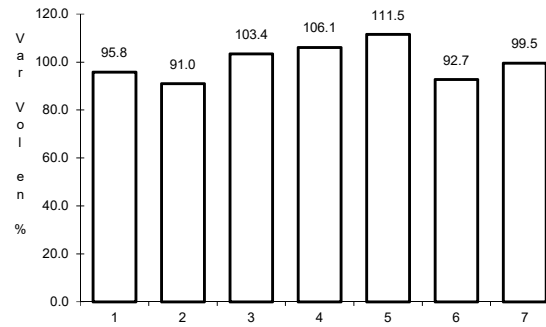
25 CARR: Yucudaa - Santiago Pinotepa Nacional

CLAVE: 20030

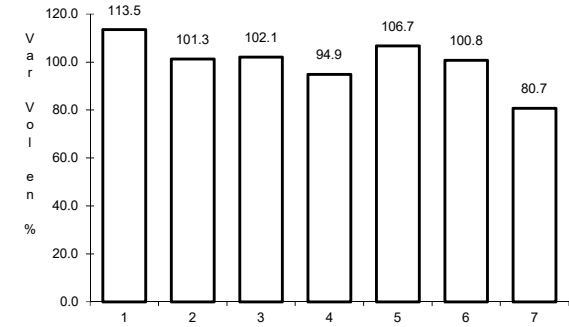
ruta: MEX-125



Km: 0.00 Tipo: 3 Sent: 0



Km: 104.00 Tipo: 1 Sent: 0

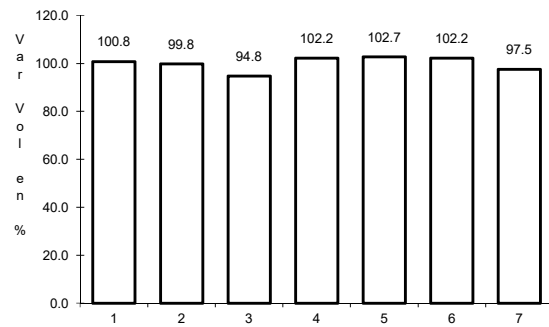


Km: 268.00 Tipo: 1 Sent: 0

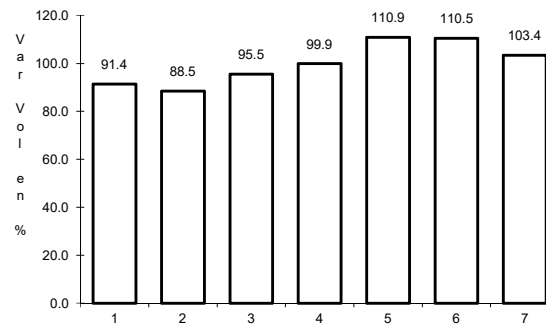
26 CARR: Cuacnopalan - Oaxaca (Cuota)

CLAVE: 00109

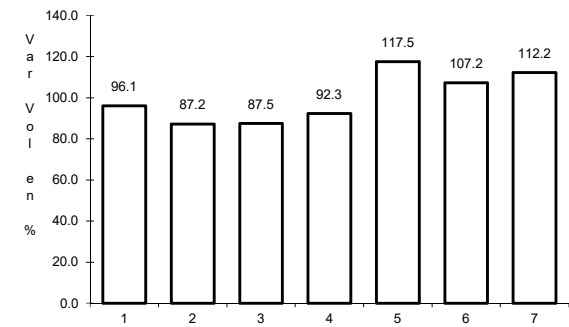
ruta: MEX-135D



Km: 0.00 Tipo: 3 Sent: 0



Km: 242.70 Tipo: 1 Sent: 1

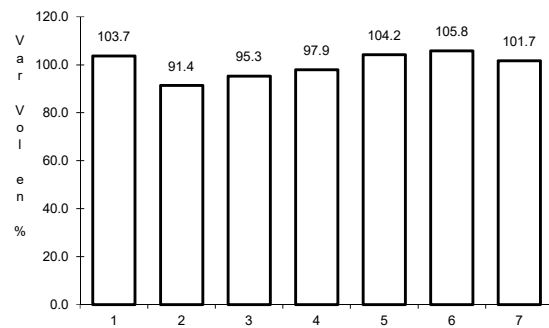


Km: 242.70 Tipo: 1 Sent: 2

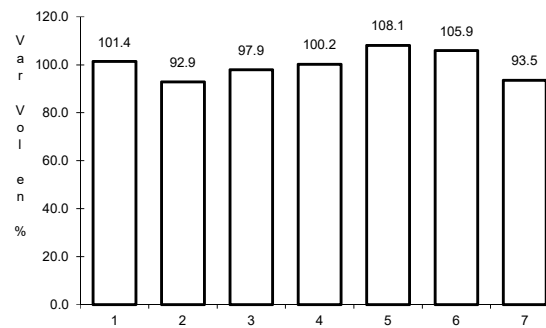
27 CARR: Mitla - Tehuantepec (Cuota)

CLAVE:

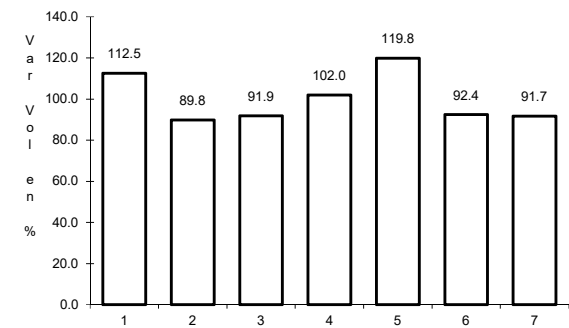
ruta: MEX-190D



Km: 43.00 Tipo: 3 Sent: 0



Km: 50.90 Tipo: 3 Sent: 0

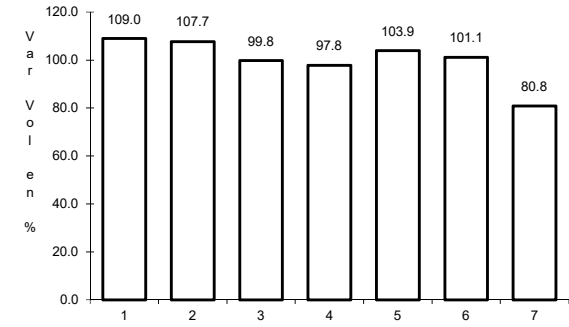
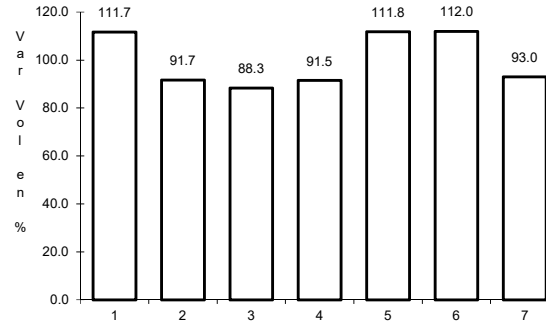
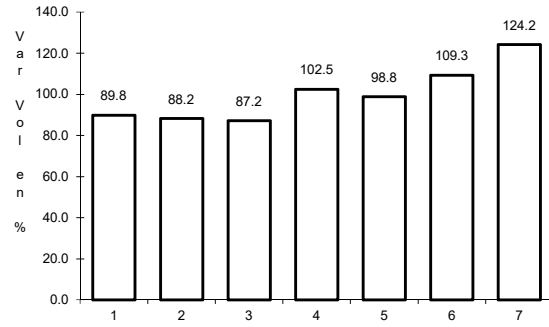


Km: 71.00 Tipo: 1 Sent: 0

28 CARR: Salina Cruz - La Ventosa (Cuota)

CLAVE: 00275

ruta: MEX-185D



Km: 23.19 Tipo: 1 Sent: 0

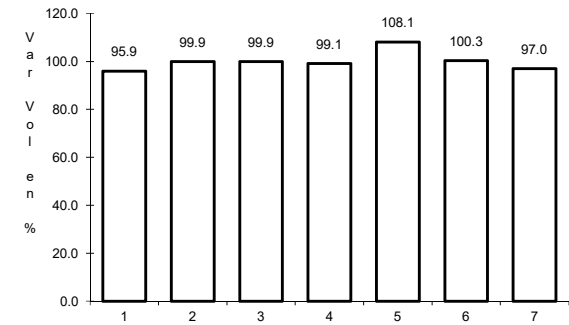
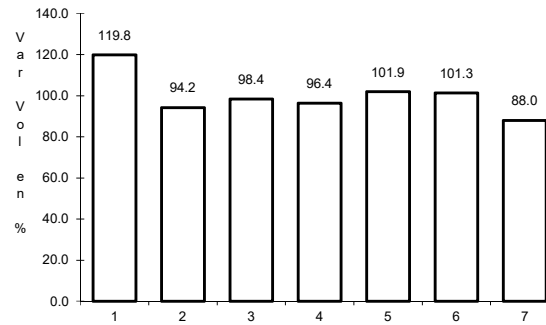
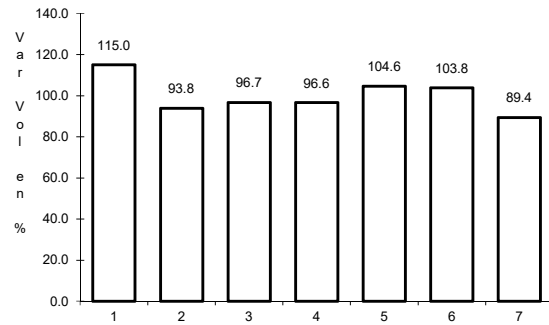
Km: 23.19 Tipo: 3 Sent: 0

Km: 75.39 Tipo: 1 Sent: 0

29 CARR: Cd. Ixtepec - Guevea de Humboldt

CLAVE: 00301

ruta: OAX



Km: 4.00 Tipo: 1 Sent: 1

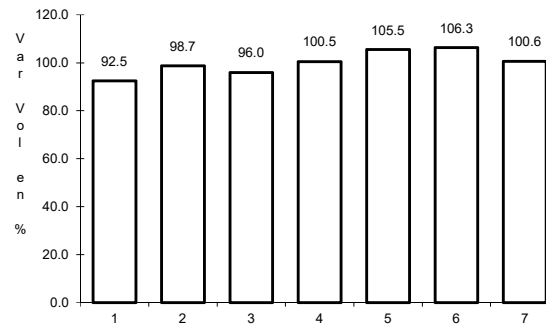
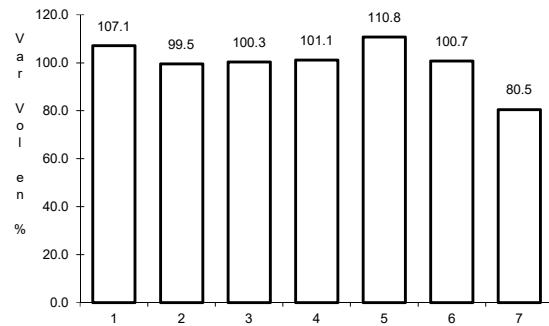
Km: 4.00 Tipo: 1 Sent: 2

Km: 4.00 Tipo: 3 Sent: 0

30 CARR: El Zapote - Copalita

CLAVE: 00109

ruta: OAX



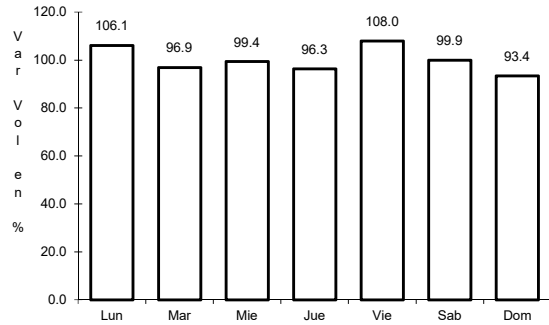
Km: 0.00 Tipo: 3 Sent: 1

Km: 0.00 Tipo: 3 Sent: 2

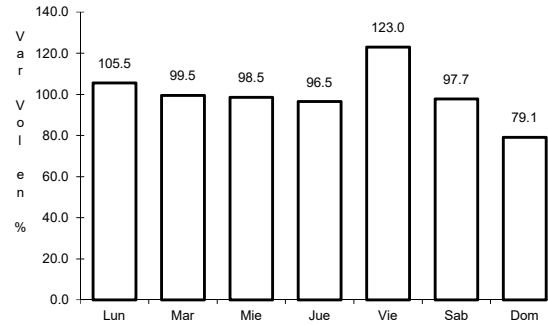
31 CARR: Huajuapán de León - El Carrizal

CLAVE: 00109

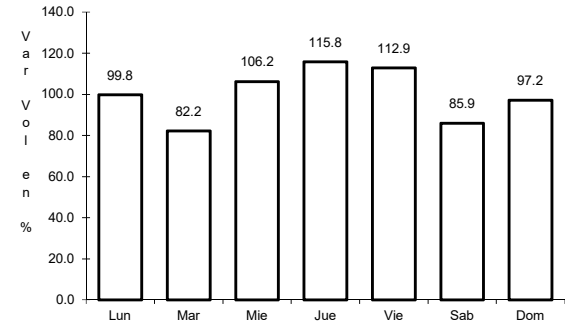
RUTA: OAX



Km: 0.00 Tipo: 3 Sent: 0



Km: 83.60 Tipo: 1 Sent: 0

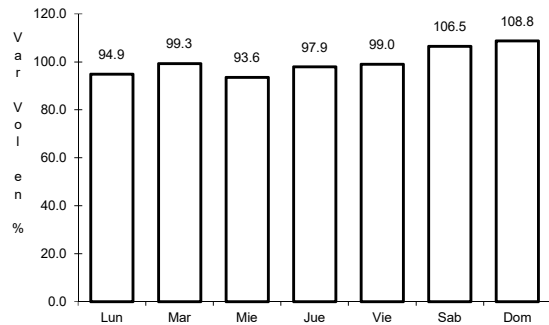


Km: 130.00 Tipo: 1 Sent: 0

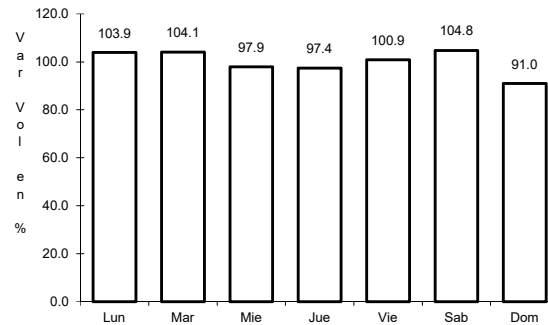
32 CARR: Loma Bonita - Mixtán

CLAVE: 20043

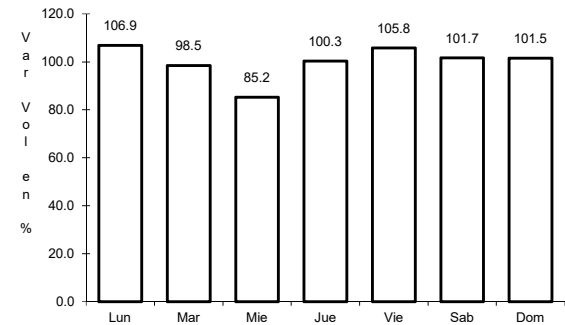
RUTA: OAX



Km: 1.00 Tipo: 1 Sent: 1



Km: 1.00 Tipo: 1 Sent: 2

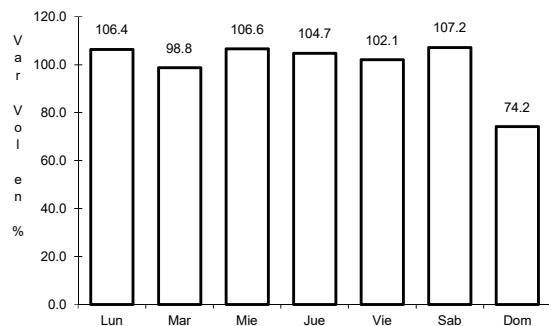


Km: 12.00 Tipo: 3 Sent: 0

33 CARR: Ramal a Reforma de Pineda

CLAVE: 20010

RUTA: OAX

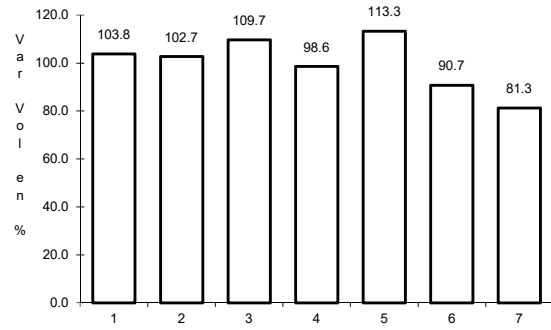


Km: 0.00 Tipo: 3 Sent: 0

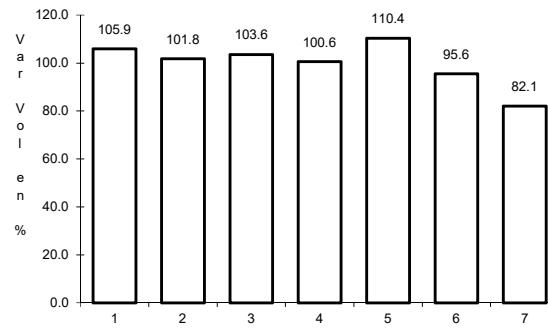
34 CARR: Ramal a Unión Hidalgo

CLAVE: 20044

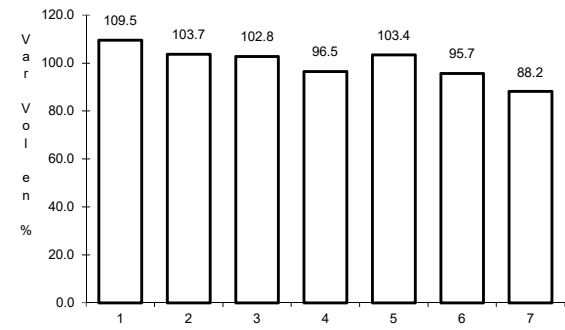
RUTA: OAX



Km: 0.00 Tipo: 3 Sent: 1



Km: 0.00 Tipo: 3 Sent: 2

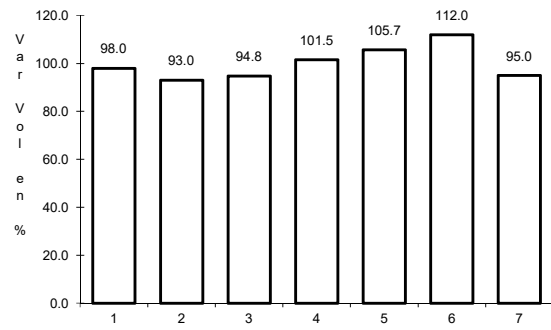


Km: 12.00 Tipo: 1 Sent: 0

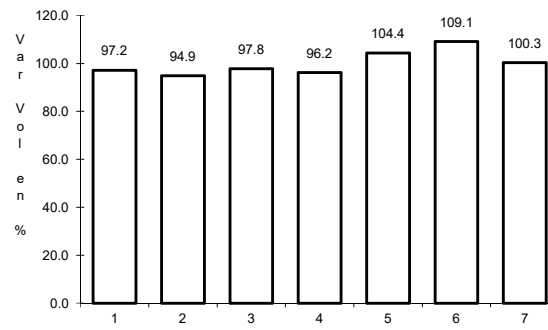
35 CARR: San Antonio - Puerto Angel

CLAVE:

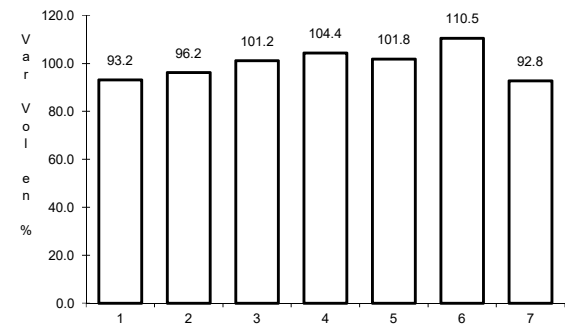
RUTA: OAX



Km: 0.00 Tipo: 3 Sent: 0



Km: 7.30 Tipo: 1 Sent: 0

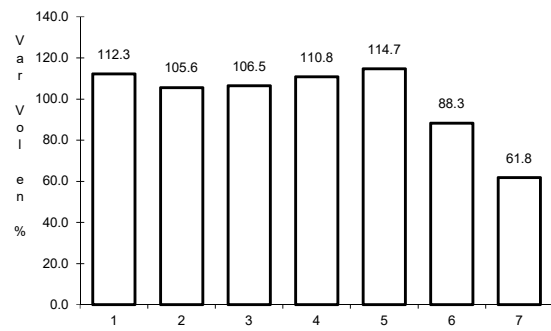


Km: 7.30 Tipo: 3 Sent: 0

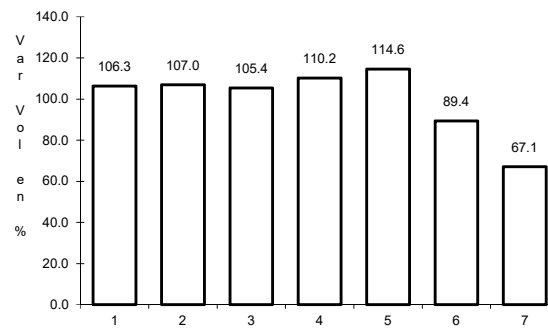
36 CARR: T. C. (Oaxaca - Puerto Ángel) - Puerto Escondido

CLAVE: 20009

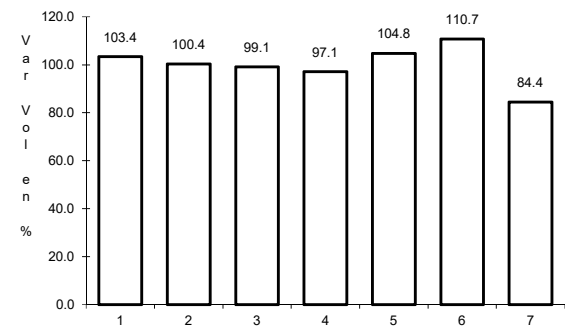
RUTA: MEX-OAX-161



Km: 0.00 Tipo: 3 Sent: 1



Km: 0.00 Tipo: 3 Sent: 2

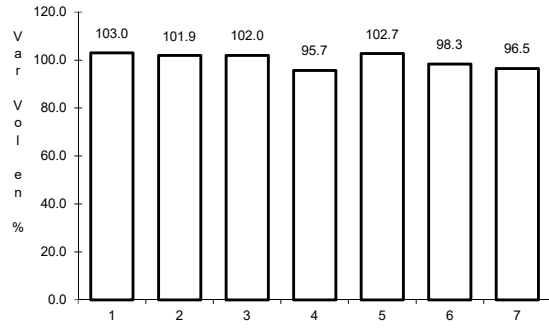


Km: 248.00 Tipo: 1 Sent: 0

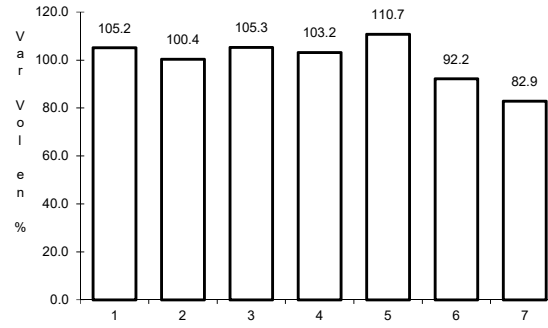
37 CARR: Tehuacán - Huitzo

CLAVE: 00211

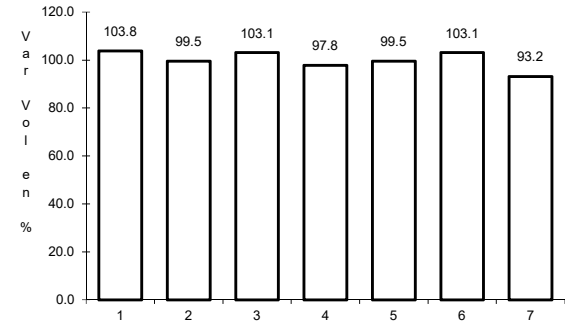
RUTA: PUE-MEX-135



Km: 0.00 Tipo: 3 Sent: 0



Km: 118.80 Tipo: 1 Sent: 0

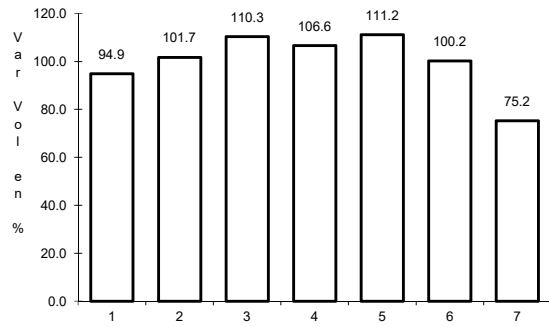


Km: 202.70 Tipo: 1 Sent: 0

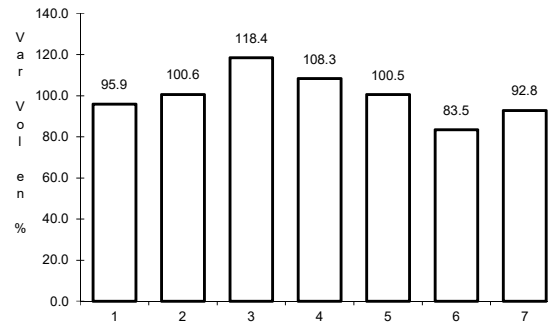
38 CARR: Teotitlán de Flores Magón - Tuxtepec

CLAVE: 00108

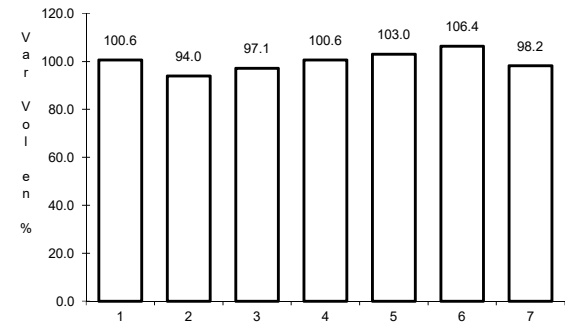
RUTA: OAX-PUE-MEX-182



Km: 0.00 Tipo: 3 Sent: 0



Km: 65.00 Tipo: 1 Sent: 0



Km: 185.00 Tipo: 1 Sent: 0

