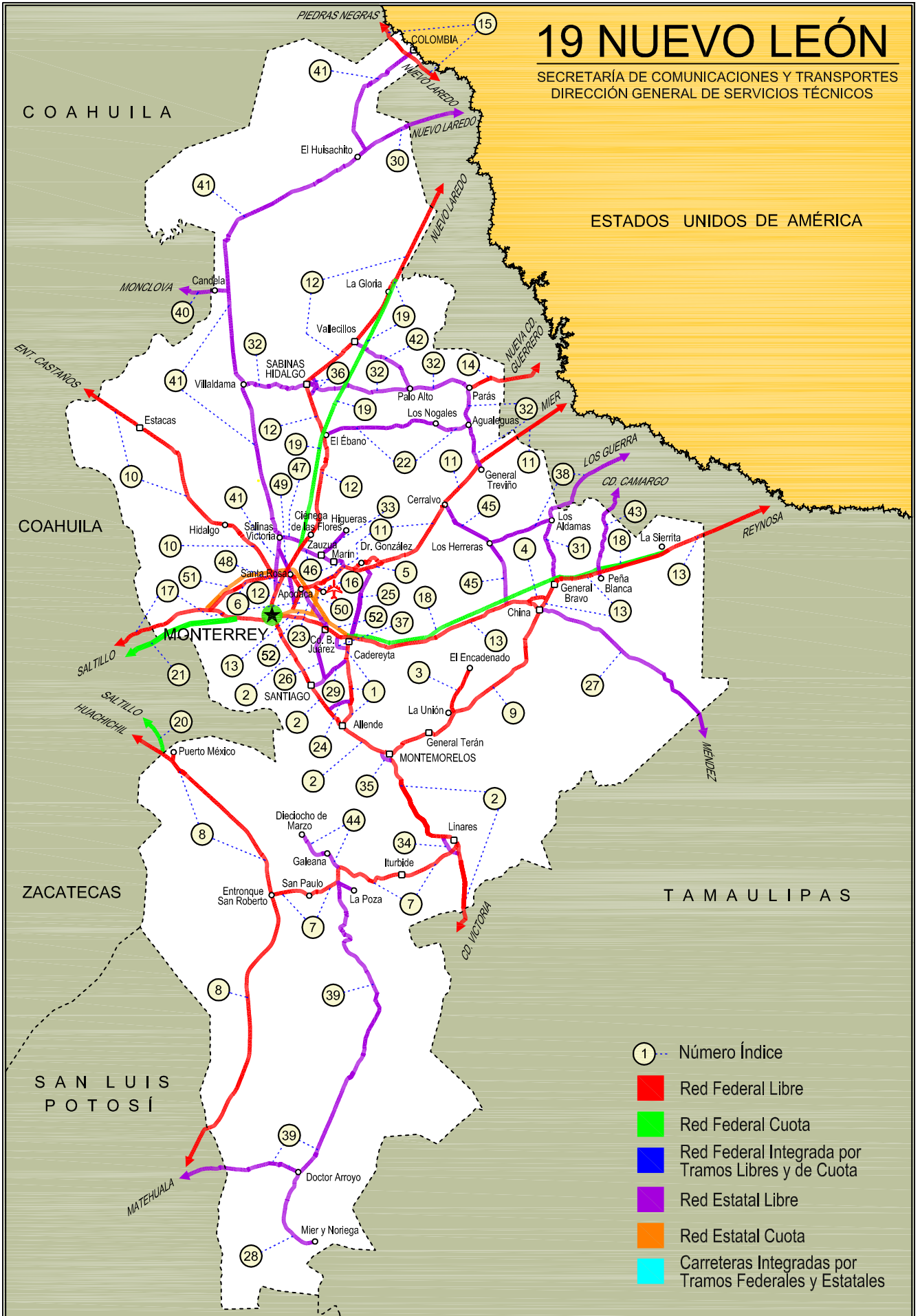


19 NUEVO LEÓN

SECRETARÍA DE COMUNICACIONES Y TRANSPORTES
DIRECCIÓN GENERAL DE SERVICIOS TÉCNICOS



- ① --- Número Índice
- Red Federal Libre
- Red Federal Cuota
- Red Federal Integrada por Tramos Libres y de Cuota
- Red Estatal Libre
- Red Estatal Cuota
- Carreteras Integradas por Tramos Federales y Estatales



NUEVO LEON

NO. INDICE CARRETERA	RUTA
---RED FEDERAL LIBRE---	
1 Cadereyta de Jiménez - Allende	MEX-009
2 Ciudad Victoria - Monterrey	MEX-085
3 La Unión - El Encadenado	MEX
4 Libramiento de China	MEX-040
5 Libramiento de Dr. González	MEX-054
6 Libramiento Noroeste de Monterrey	MEX-040
7 Linares - Ent. San Roberto	MEX-058
8 Matehuala - Ent. Puerto México	MEX-057
9 Montemorelos - China	MEX-035
10 Monterrey - Castaños	MEX-053
11 Monterrey - Mier	MEX-054
12 Monterrey - Nuevo Laredo (Libre)	MEX-085
13 Monterrey - Reynosa (Libre)	MEX-040
14 Paras - Nueva Ciudad Guerrero	MEX-030
15 Piedras Negras - Nuevo Laredo	MEX-002
16 Ramal a Aeropuerto Mariano Escobedo	MEX-054
17 Saltillo - Monterrey	MEX-040
---RED FEDERAL DE CUOTA---	
18 Cadereyta - Reynosa (Cuota)	MEX-040D
19 Monterrey - Nuevo Laredo (Cuota)	MEX-085D
20 Puerto México - La Carbonera (Cuota)	MEX-057D
21 Saltillo - Monterrey (Cuota)	MEX-040D
---RED ESTATAL LIBRE---	
22 Agualeguas - El Ébano	NL-023
23 Apodaca - Villa Juárez	NL
24 Atongo - Lazarillos	NL
25 Cadereyta de Jiménez - Doctor González	NL
26 Cd. Benito Juárez - Villa de Santiago	NL
27 China - Méndez	NL-TAM
28 Doctor Arroyo - Mier y Noriega	NL-088
29 Ent. Hacienda del Cielo - T. Der. Cadereyta	NL
30 Ent. Huisachito - Nuevo Laredo	NL-001-TAM
31 Gral. Bravo - Los Aldamas	NL-030
32 Gral. Treviño - Villaldama	NL-003
33 Hacienda Guadalupe - Higuera	NL-006
34 Libramiento de Linares	NL
35 Libramiento de Montemorelos	NL
36 Libramiento de Sabinas Hidalgo	NL
37 Libramiento Poniente de Cadereyta	NL
38 Los Guerra - Los Herreras	TAM-NL
39 Matehuala - La Poza	SLP-029-NL-061
40 Monclova - Estación Candela	COA-030-NL
41 Monterrey - Colombia	NL-001
42 Palo Alto - Vallecillos	NL
43 Peña Blanca - Cd. Camargo	NL-TAM
44 Ramal a 18 de Marzo	NL
45 Ramal a Cerralvo	NL-013
46 Ramal a Marín	NL
47 Salinas Victoria - Ciénega de Flores	NL
48 Santa Rosa - Mezquital	NL
49 Santa Rosa - Salinas Victoria	NL
---RED ESTATAL DE CUOTA---	
50 Aeropuerto de Monterrey (Cuota)	NL-D
51 Anillo Periférico de Monterrey (Cuota)	NL-D
52 Monterrey - Cadereyta (Cuota)	NL-D

NUEVO LEON

1 CARR: Cadereyta de Jiménez - Allende

CLAVE: 19009

RUTA: MEX-009

AÑO: 2017

LUGAR	ESTACION				CLASIFICACION VEHICULAR EN PORCIENTO													COORDENADAS		
	KM	TE	SC	TDPA	M	A	B	C2	C3	T3S2	T3S3	T3S2R4	OTROS	A	B	C	K'	D	LATITUD	LONGITUD
Cadereyta de Jiménez	0.00	3	1	5165	1.9	80.0	0.6	8.9	1.7	3.0	1.2	2.2	0.5	81.9	0.6	17.5	0.177	0.502	25.557778	-100.005919
Cadereyta de Jiménez	0.00	3	2	5643	1.9	78.5	0.6	9.8	1.8	3.2	1.4	2.3	0.5	80.4	0.6	19.0	0.225	0.502	25.557766	-100.005916
T. der. Huajuquito	7.30	3	0	8898	1.1	76.7	0.5	7.6	2.1	6.0	2.0	3.1	0.9	77.8	0.5	21.7	0.112	0.503	25.517632	-100.006938
T. Izq. Atongo	26.80	1	0	6524	1.2	72.8	0.6	8.5	3.3	6.4	2.3	4.0	0.9	74.0	0.6	25.4	0.083	0.511	25.368742	-99.986579
Allende	37.00	1	1	7656	2.3	78.5	0.6	7.7	3.4	3.3	1.4	2.2	0.6	80.8	0.6	18.6	0.091	0.507	25.292543	-100.013007
Allende	37.00	1	2	7962	2.2	77.0	0.6	8.4	3.5	3.9	1.4	2.4	0.6	79.2	0.6	20.2	0.087	0.507	25.292535	-100.013007

2 CARR: Ciudad Victoria - Monterrey

CLAVE: 00462

RUTA: MEX-085

AÑO: 2017

LUGAR	ESTACION				CLASIFICACION VEHICULAR EN PORCIENTO													COORDENADAS		
	KM	TE	SC	TDPA	M	A	B	C2	C3	T3S2	T3S3	T3S2R4	OTROS	A	B	C	K'	D	LATITUD	LONGITUD
Cd. Victoria (Central)	0.00	3	1	5827	2.8	86.8	1.0	6.2	0.8	1.1	0.7	0.3	0.3	89.6	1.0	9.4	0.089	0.528	23.778312	-99.136621
Cd. Victoria (Lateral)	0.00	3	1	933	8.4	70.8	0.9	18.7	0.5	0.4	0.2	0.0	0.1	79.2	0.9	19.9	0.086	0.532	23.778220	-99.136532
Cd. Victoria (Central)	0.00	3	2	6525	2.8	85.5	1.2	7.1	0.8	1.2	0.8	0.3	0.3	88.3	1.2	10.5	0.086	0.528	23.778308	-99.136620
Cd. Victoria (Lateral)	0.00	3	2	823	6.2	69.6	1.5	20.5	1.4	0.4	0.2	0.1	0.1	75.8	1.5	22.7	0.139	0.532	23.778232	-99.136531
T. Der. Güemez	19.60	3	0	5366	1.0	79.2	4.3	8.5	1.8	3.3	0.7	0.8	0.4	80.2	4.3	15.5	0.081	0.505	23.915461	-99.112398
T. Izq. Santa Engracia	27.35	3	0	6884	0.7	65.8	4.3	7.5	2.2	8.2	2.7	7.6	1.0	66.5	4.3	29.2	0.082	0.518	23.988832	-99.111364
Barretal	39.00	3	0	5721	0.8	58.2	5.9	7.9	2.2	10.0	3.4	10.5	1.1	59.0	5.9	35.1	0.075	0.525	24.093347	-99.144029
T. Izq. Hidalgo y La Mesa	77.50	1	0	5643	0.5	54.8	6.5	8.3	2.4	11.4	3.6	11.3	1.2	55.3	6.5	38.2	0.076	0.514	24.196308	-99.367006
Villagrán	106.00	1	0	4996	0.5	54.9	7.0	8.6	2.3	10.6	3.7	11.2	1.2	55.4	7.0	37.6	0.087	0.501	24.463537	-99.496503
T. Izq. Villa Mainero	118.00	3	1	2595	0.7	54.2	6.4	10.2	2.6	10.4	3.7	10.6	1.2	54.9	6.4	38.7	0.082	0.518	24.581250	-99.541947
T. Izq. Villa Mainero	118.00	3	2	2790	0.8	49.6	6.8	11.7	2.9	11.5	4.1	11.4	1.2	50.4	6.8	42.8	0.085	0.518	24.581239	-99.541942
Lim. Edos. Term. Tamps. Ppia. N. L.	126.20																			
Linares	154.00	1	0	7342	1.3	59.4	4.7	10.8	2.5	9.1	3.0	8.1	1.1	60.7	4.7	34.6	0.072	0.501	24.838465	-99.560376
La Laja	171.00	3	1	5374	0.7	67.8	4.8	9.6	1.7	6.5	2.3	5.9	0.7	68.5	4.8	26.7	0.098	0.507	24.916714	-99.686338
La Laja	171.00	3	2	5529	0.9	65.4	5.1	10.1	1.8	7.1	2.4	6.5	0.7	66.3	5.1	28.6	0.084	0.507	24.916730	-99.686352
Montemorelos	205.00	3	1	9972	0.7	78.3	2.3	9.5	1.2	3.4	1.4	2.6	0.6	79.0	2.3	18.7	0.105	0.509	25.203569	-99.909576
Montemorelos	205.00	3	2	10354	0.9	75.6	2.6	10.7	1.4	3.9	1.5	2.8	0.6	76.5	2.6	20.9	0.095	0.509	25.203573	-99.909575
Allende	227.45	3	1	14629	0.9	82.8	2.2	7.3	1.4	2.6	0.9	1.6	0.3	83.7	2.2	14.1	0.119	0.506	25.291247	-100.046159
Allende	227.45	3	2	14214	0.9	80.5	2.5	8.3	1.6	3.0	1.1	1.8	0.3	81.4	2.5	16.1	0.112	0.506	25.291228	-100.046158
El Cercado	249.00	1	1	22962	0.9	85.0	1.5	7.2	1.3	2.0	0.8	1.1	0.2	85.9	1.5	12.6	0.080	0.513	25.354528	-100.091642
El Cercado	249.00	1	2	24367	1.0	83.3	1.7	7.9	1.5	2.3	0.8	1.3	0.2	84.3	1.7	14.0	0.081	0.513	25.354406	-100.091855
T. Der. Las Huertas	257.00	3	1	27332	0.7	88.1	0.8	6.0	0.9	1.7	0.8	0.7	0.3	88.8	0.8	10.4	0.135	0.503	25.466913	-100.173688
T. Der. Las Huertas	257.00	3	2	28345	0.7	87.2	0.9	6.5	0.9	1.8	0.9	0.8	0.3	87.9	0.9	11.2	0.116	0.503	25.466904	-100.173683
T. Izq. el Barro	266.00	3	1	32446	0.5	89.4	1.0	5.2	0.7	1.4	0.7	0.8	0.3	89.9	1.0	9.1	0.115	0.529	25.531196	-100.213348

NUEVO LEON

2 CARR: Ciudad Victoria - Monterrey

CLAVE: 00462

RUTA: MEX-085

AÑO: 2017

LUGAR	ESTACION				CLASIFICACION VEHICULAR EN PORCIENTO										COORDENADAS					
	KM	TE	SC	TDPA	M	A	B	C2	C3	T3S2	T3S3	T3S2R4	OTROS	A	B	C	K'	D	LATITUD	LONGITUD
T. Izq. el Barro	266.00	3	2	37612	0.6	88.2	1.1	5.7	0.9	1.6	0.8	0.8	0.3	88.8	1.1	10.1	0.109	0.529	25.530264	-100.212924
La Estanzuela	274.82	3	1	60432	0.3	88.1	0.5	6.3	0.5	1.4	1.8	0.5	0.6	88.4	0.5	11.1	0.083	0.513	25.589224	-100.259351
La Estanzuela	274.82	3	2	61555	0.4	87.6	0.5	6.4	0.6	1.5	1.9	0.5	0.6	88.0	0.5	11.5	0.069	0.513	25.589224	-100.259353
Monterrey (Alta)	287.00	1	1	49819	0.4	91.5	0.3	3.0	0.5	1.7	1.7	0.6	0.3	91.9	0.3	7.8	0.066	0.527	25.602428	-100.266432
Monterrey (Baja)	287.00	1	1	19663	0.9	88.2	0.4	4.4	0.1	1.9	3.4	0.3	0.4	89.1	0.4	10.5	0.081	0.506	25.602333	-100.266300
Monterrey (Baja)	287.00	1	2	19233	0.7	87.4	0.4	4.9	0.1	2.2	3.6	0.3	0.4	88.1	0.4	11.5	0.076	0.506	25.601470	-100.266214
Monterrey (Alta)	287.00	1	2	51643	0.3	93.0	0.4	2.1	0.5	1.1	1.8	0.5	0.3	93.3	0.4	6.3	0.084	0.527	25.601625	-100.266230

3 CARR: La Unión - El Encadenado

CLAVE:

RUTA: MEX

AÑO: 2017

LUGAR	ESTACION				CLASIFICACION VEHICULAR EN PORCIENTO										COORDENADAS					
	KM	TE	SC	TDPA	M	A	B	C2	C3	T3S2	T3S3	T3S2R4	OTROS	A	B	C	K'	D	LATITUD	LONGITUD
La Unión	0.00	3	0	681	21.8	66.7	0.2	10.1	0.3	0.8	0.1	0.0	0.0	88.5	0.2	11.3	0.137	0.506	25.338710	-99.580923
El Encadenado	10.00	1	0	224	11.3	69.9	0.1	18.5	0.2	0.0	0.0	0.0	0.0	81.2	0.1	18.7	0.206	0.506	25.403856	-99.538865

4 CARR: Libramiento de China

CLAVE:

RUTA: MEX-040

AÑO: 2017

LUGAR	ESTACION				CLASIFICACION VEHICULAR EN PORCIENTO										COORDENADAS					
	KM	TE	SC	TDPA	M	A	B	C2	C3	T3S2	T3S3	T3S2R4	OTROS	A	B	C	K'	D	LATITUD	LONGITUD
T. C. Monterrey - Reynosa (Poniente)	0.00	3	0	3103	0.3	61.1	2.2	15.9	1.9	13.1	3.4	1.6	0.5	61.4	2.2	36.4	0.076	0.519	25.710567	-99.246071
T. C. Monterrey - Reynosa (Oriente)	2.41	1	0	2830	0.5	63.4	2.9	14.6	2.3	9.8	4.1	1.9	0.5	63.9	2.9	33.2	0.066	0.520	25.710499	-99.231508

5 CARR: Libramiento de Dr. González

CLAVE: 00127

RUTA: MEX-054

AÑO: 2017

LUGAR	ESTACION				CLASIFICACION VEHICULAR EN PORCIENTO										COORDENADAS					
	KM	TE	SC	TDPA	M	A	B	C2	C3	T3S2	T3S3	T3S2R4	OTROS	A	B	C	K'	D	LATITUD	LONGITUD
T. C. Monterrey - Mier Oeste	0.00	3	0	2134	0.5	68.0	1.2	12.4	1.9	5.9	1.7	7.5	0.9	68.5	1.2	30.3	0.077	0.536	25.848519	-99.967439
T. C. Monterrey - Mier Este	10.90	1	0	2269	0.5	67.4	0.6	12.8	1.3	4.3	0.9	12.0	0.2	67.9	0.6	31.5	0.104	0.500	25.869982	-99.875267

6 CARR: Libramiento Noroeste de Monterrey

CLAVE: 19085

RUTA: MEX-040

AÑO: 2017

LUGAR	ESTACION				CLASIFICACION VEHICULAR EN PORCIENTO										COORDENADAS					
	KM	TE	SC	TDPA	M	A	B	C2	C3	T3S2	T3S3	T3S2R4	OTROS	A	B	C	K'	D	LATITUD	LONGITUD
T. C. Saltillo - Monterrey	0.00	3	1	12127	1.2	42.8	1.2	7.9	3.2	32.9	4.3	3.9	2.6	44.0	1.2	54.8	0.066	0.508	25.704839	-100.554047
T. C. Saltillo - Monterrey	0.00	3	2	12264	1.2	38.3	1.4	8.6	3.3	35.3	4.5	4.6	2.8	39.5	1.4	59.1	0.059	0.508	25.704839	-100.554047

NUEVO LEON

6 CARR: Libramiento Noroeste de Monterrey

CLAVE: 19085

RUTA: MEX-040

AÑO: 2017

LUGAR	ESTACION				CLASIFICACION VEHICULAR EN PORCIENTO													COORDENADAS		
	KM	TE	SC	TDPA	M	A	B	C2	C3	T3S2	T3S3	T3S2R4	OTROS	A	B	C	K'	D	LATITUD	LONGITUD
X. C. Monterrey - Castaños	31.00	1	1	31759	1.0	68.5	0.9	6.9	3.7	12.3	4.0	2.1	0.6	69.5	0.9	29.6	0.087	0.510	25.824266	-100.305520
X. C. Monterrey - Castaños	31.00	1	2	30248	0.9	65.5	1.0	8.2	4.1	13.0	4.2	2.5	0.6	66.4	1.0	32.6	0.081	0.510	25.824265	-100.305524
Apodaca	41.50	1	1	20419	0.7	81.6	0.3	8.6	1.7	2.5	3.2	0.5	0.9	82.3	0.3	17.4	0.067	0.523	25.791699	-100.197068
Apodaca	41.50	1	2	16939	0.6	80.3	0.3	9.1	1.9	2.8	3.5	0.5	1.0	80.9	0.3	18.8	0.087	0.523	25.791287	-100.196759
T. C. Monterrey - Reynosa	48.00	1	1	31395	1.0	89.3	0.7	5.5	0.9	1.1	1.0	0.2	0.3	90.3	0.7	9.0	0.066	0.532	25.669345	-100.171599
T. C. Monterrey - Reynosa	48.00	1	2	37780	1.1	88.8	0.8	5.8	0.9	1.1	1.0	0.2	0.3	89.9	0.8	9.3	0.068	0.532	25.669257	-100.171497

7 CARR: Linares - Ent. San Roberto

CLAVE: 19031

RUTA: MEX-058

AÑO: 2017

LUGAR	ESTACION				CLASIFICACION VEHICULAR EN PORCIENTO													COORDENADAS		
	KM	TE	SC	TDPA	M	A	B	C2	C3	T3S2	T3S3	T3S2R4	OTROS	A	B	C	K'	D	LATITUD	LONGITUD
Linares	0.00	3	0	6865	7.1	74.9	0.8	10.0	1.0	4.5	0.8	0.4	0.5	82.0	0.8	17.2	0.063	0.502	24.840350	-99.574806
Iturbide	44.00	1	0	1409	1.4	72.6	3.7	10.8	4.0	4.9	1.7	0.6	0.3	74.0	3.7	22.3	0.080	0.508	24.724360	-99.893385
T. Izq. Doctor Arroyo	66.00	1	0	2935	1.1	74.8	2.0	15.6	1.8	3.2	1.0	0.4	0.1	75.9	2.0	22.1	0.075	0.504	24.727306	-100.038917
T. C. Matehuala - Ent. Huachichil	98.00	1	0	1207	1.3	68.6	3.3	17.1	2.6	4.7	1.3	1.0	0.1	69.9	3.3	26.8	0.098	0.517	24.675910	-100.295208

8 CARR: Matehuala - Ent. Puerto México

CLAVE: 00405

RUTA: MEX-057

AÑO: 2017

LUGAR	ESTACION				CLASIFICACION VEHICULAR EN PORCIENTO													COORDENADAS		
	KM	TE	SC	TDPA	M	A	B	C2	C3	T3S2	T3S3	T3S2R4	OTROS	A	B	C	K'	D	LATITUD	LONGITUD
Matehuala	0.00	3	1	6910	5.1	67.8	2.0	10.5	1.4	9.0	2.4	1.2	0.6	72.9	2.0	25.1	0.079	0.509	23.670917	-100.630972
Matehuala	0.00	3	2	6666	5.1	66.1	2.2	10.6	1.5	10.0	2.5	1.3	0.7	71.2	2.2	26.6	0.070	0.509	23.671043	-100.631194
T. Izq. Cedral	8.47	1	1	4470	3.1	59.9	3.5	12.8	1.9	14.3	2.3	1.4	0.8	63.0	3.5	33.5	0.069	0.506	23.692389	-100.620722
T. Izq. Cedral	8.47	1	2	4574	2.5	55.8	3.8	14.5	2.1	16.2	2.6	1.6	0.9	58.3	3.8	37.9	0.063	0.506	23.692309	-100.620442
T. Izq. Cedral	8.47	3	1	2386	1.9	48.8	5.2	13.8	1.7	21.7	3.9	2.3	0.7	50.7	5.2	44.1	0.081	0.501	23.700460	-100.616347
T. Izq. Cedral	8.47	3	2	2381	1.2	42.1	5.3	16.4	2.0	25.1	4.6	2.5	0.8	43.3	5.3	51.4	0.070	0.501	23.700624	-100.616632
Lim. Edos. Term. S. L. P. Ppia. N. L.	24.64																			
Santa Ana	59.65	1	1	6899	0.9	36.8	4.7	8.2	2.4	34.5	4.7	6.2	1.6	37.7	4.7	57.6	0.068	0.507	24.070288	-100.390481
Santa Ana	59.65	1	2	6430	1.1	27.5	5.4	8.8	2.4	41.2	5.1	6.7	1.8	28.6	5.4	66.0	0.068	0.507	24.070280	-100.390480
T. Der. Linares	128.99	3	1	7515	1.9	36.5	5.3	8.8	2.5	33.1	4.7	5.6	1.6	38.4	5.3	56.3	0.066	0.503	24.681000	-100.300722
T. Der. Linares	128.99	3	2	7032	2.3	28.3	6.0	10.2	2.7	37.3	5.0	6.4	1.8	30.6	6.0	63.4	0.069	0.503	24.681169	-100.300332
San Rafael	177.18	1	1	7070	1.4	42.8	5.2	8.1	2.5	28.9	4.8	5.4	0.9	44.2	5.2	50.6	0.064	0.500	25.017333	-100.538111
San Rafael	177.18	1	2	6878	1.2	35.9	5.8	8.8	2.6	33.6	5.0	6.0	1.1	37.1	5.8	57.1	0.078	0.500	25.017361	-100.537944
Ent. Puerto México	205.97																			

NUEVO LEON

9 CARR: Montemorelos - China

CLAVE: 19280

RUTA: MEX-035

AÑO: 2017

LUGAR	ESTACION				CLASIFICACION VEHICULAR EN PORCIENTO													COORDENADAS		
	KM	TE	SC	TDPA	M	A	B	C2	C3	T3S2	T3S3	T3S2R4	OTROS	A	B	C	K'	D	LATITUD	LONGITUD
Montemorelos	0.00	3	0	9838	3.8	79.2	0.6	8.9	0.8	5.0	0.8	0.3	0.6	83.0	0.6	16.4	0.082	0.518	25.193886	-99.812930
Gral. Terán	17.60	3	0	2402	3.4	77.0	1.3	11.4	1.0	3.8	1.1	0.8	0.2	80.4	1.3	18.3	0.078	0.503	25.250743	-99.654800
China	93.00	1	0	1461	1.1	69.1	1.8	20.0	2.1	3.8	1.3	0.6	0.2	70.2	1.8	28.0	0.119	0.500	25.688909	-99.243690

10 CARR: Monterrey - Castaños

CLAVE: 00128

RUTA: MEX-053

AÑO: 2017

LUGAR	ESTACION				CLASIFICACION VEHICULAR EN PORCIENTO													COORDENADAS		
	KM	TE	SC	TDPA	M	A	B	C2	C3	T3S2	T3S3	T3S2R4	OTROS	A	B	C	K'	D	LATITUD	LONGITUD
T. C. Monterrey - Nuevo Laredo	0.00	3	0	19077	1.0	72.4	1.0	13.1	1.6	6.6	2.7	0.7	0.9	73.4	1.0	25.6	0.072	0.544	25.805566	-100.279110
X. C. Libramiento Noroeste de Monterrey	3.46	3	1	13175	1.2	72.8	1.7	10.7	3.1	6.0	2.5	1.1	0.9	74.0	1.7	24.3	0.092	0.522	25.832322	-100.308187
X. C. Libramiento Noroeste de Monterrey	3.46	3	2	14807	1.1	70.7	1.8	11.6	3.4	6.4	2.8	1.3	0.9	71.8	1.8	26.4	0.081	0.522	25.832322	-100.308186
T. Der. Villa del Carmen	13.80	1	1	8355	0.4	74.6	1.0	10.5	2.8	5.2	3.2	1.7	0.6	75.0	1.0	24.0	0.081	0.518	25.896280	-100.351743
T. Der. Villa del Carmen	13.80	1	2	9148	0.5	71.8	1.0	11.2	3.1	6.1	3.7	1.9	0.7	72.3	1.0	26.7	0.096	0.518	25.896279	-100.351725
T. Izq. Hidalgo	24.78	1	0	12751	0.7	69.2	1.3	15.4	2.0	5.2	4.0	1.6	0.6	69.9	1.3	28.8	0.085	0.508	25.955725	-100.424106
T. Izq. Hidalgo	24.78	3	0	6778	0.5	65.1	2.1	11.1	2.0	8.8	5.5	3.9	1.0	65.6	2.1	32.3	0.084	0.504	25.991181	-100.457811
T. Izq. Mina	34.75	1	0	9009	0.4	66.3	2.3	9.9	1.7	9.0	5.3	4.0	1.1	66.7	2.3	31.0	0.069	0.500	26.000732	-100.515663
T. Izq. Espinazo	91.90	1	0	3868	0.8	56.8	2.2	9.0	2.7	12.6	8.7	6.1	1.1	57.6	2.2	40.2	0.095	0.504	26.362900	-100.879121
T. Izq. Espinazo	91.90	3	0	3532	0.2	65.2	2.5	8.2	2.7	11.3	2.4	6.4	1.1	65.4	2.5	32.1	0.102	0.503	26.365050	-100.882878
Lim. Edos. Term. N. L. Ppia. Coah.	115.90																			
T. C. Saltillo - Monclova	155.90	1	1	2335	0.3	63.1	2.6	10.0	1.8	8.9	7.4	5.1	0.8	63.4	2.6	34.0	0.107	0.514	26.692259	-101.382951
T. C. Saltillo - Monclova	155.90	1	2	2118	0.2	59.5	2.9	11.0	1.9	9.4	8.2	5.8	1.1	59.7	2.9	37.4	0.110	0.514	26.692258	-101.382951

11 CARR: Monterrey - Mier

CLAVE: 00127

RUTA: MEX-054

AÑO: 2017

LUGAR	ESTACION				CLASIFICACION VEHICULAR EN PORCIENTO													COORDENADAS		
	KM	TE	SC	TDPA	M	A	B	C2	C3	T3S2	T3S3	T3S2R4	OTROS	A	B	C	K'	D	LATITUD	LONGITUD
Monterrey	0.00																			
Apodaca	19.12	1	1	82723	0.7	85.7	0.7	5.2	1.0	2.2	2.8	0.6	1.1	86.4	0.7	12.9	0.063	0.519	25.751085	-100.199896
Apodaca	19.12	1	2	74639	0.8	84.8	0.7	5.5	1.0	2.4	2.9	0.7	1.2	85.6	0.7	13.7	0.061	0.519	25.751062	-100.199725
X. C. Libramiento Noroeste de Monterrey	21.30	3	1	55388	0.5	85.3	0.6	7.0	1.6	2.7	1.4	0.6	0.3	85.8	0.6	13.6	0.076	0.545	25.784764	-100.159196
X. C. Libramiento Noroeste de Monterrey	21.30	3	2	44429	0.7	83.9	0.7	7.2	1.7	3.2	1.6	0.7	0.3	84.6	0.7	14.7	0.077	0.545	25.784763	-100.159193
X. C. Zacatecas - Pesquería	28.15	1	1	16175	1.3	78.2	1.6	11.2	1.6	2.3	2.3	0.8	0.7	79.5	1.6	18.9	0.074	0.501	25.799711	-100.101310
X. C. Zacatecas - Pesquería	28.15	1	2	16076	1.1	78.9	1.8	10.0	1.5	2.4	2.5	0.9	0.9	80.0	1.8	18.2	0.089	0.501	25.799701	-100.101307
X. C. Zacatecas - Pesquería	28.15	3	0	10898	0.9	74.9	0.8	12.0	3.1	5.0	1.2	1.5	0.6	75.8	0.8	23.4	0.080	0.501	25.806779	-100.092946
X. C. Hacienda Guadalupe - Higuera	38.10	1	0	6471	0.8	77.4	0.9	10.9	1.5	3.9	1.5	2.1	1.0	78.2	0.9	20.9	0.091	0.501	25.854053	-100.025729

NUEVO LEON

11 CARR: Monterrey - Mier

CLAVE: 00127

RUTA: MEX-054

AÑO: 2017

LUGAR	ESTACION				CLASIFICACION VEHICULAR EN PORCIENTO										COORDENADAS					
	KM	TE	SC	TDPA	M	A	B	C2	C3	T3S2	T3S3	T3S2R4	OTROS	A	B	C	K'	D	LATITUD	LONGITUD
X. C. Hacienda Guadalupe - Higueras	38.10	3	0	4290	0.9	73.9	1.0	12.9	1.4	3.6	0.8	5.1	0.4	74.8	1.0	24.2	0.087	0.511	25.854672	-100.017344
Dr. González	47.60	1	0	1497	1.4	81.6	1.1	10.7	1.9	1.9	0.3	0.9	0.2	83.0	1.1	15.9	0.082	0.509	25.850764	-99.968042
Dr. González	47.60	3	0	381	6.6	65.9	6.5	18.4	1.2	0.7	0.1	0.6	0.0	72.5	6.5	21.0	0.095	0.542	25.867121	-99.933281
T. Der. Empalme Los Ramones	74.10	1	0	2073	0.4	64.4	1.7	13.7	1.6	4.5	1.0	12.5	0.2	64.8	1.7	33.5	0.097	0.502	25.922563	-99.722164
Cerralvo	95.95	1	0	3626	0.4	64.9	1.1	13.0	1.2	3.8	1.3	14.1	0.2	65.3	1.1	33.6	0.074	0.510	26.068576	-99.626254
Gral. Treviño	115.80	3	0	1453	1.6	57.1	2.6	10.4	1.1	5.5	2.4	19.0	0.3	58.7	2.6	38.7	0.096	0.518	26.232402	-99.470124
Lim. Edos. Term. N. L. Ppia. Tamps.	131.80																			
Mier	156.21	1	0	1461	0.3	53.7	2.0	13.3	1.3	6.0	2.3	20.8	0.3	54.0	2.0	44.0	0.092	0.504	26.426183	-99.164899

12 CARR: Monterrey - Nuevo Laredo (Libre)

CLAVE: 00463

RUTA: MEX-085

AÑO: 2017

LUGAR	ESTACION				CLASIFICACION VEHICULAR EN PORCIENTO										COORDENADAS					
	KM	TE	SC	TDPA	M	A	B	C2	C3	T3S2	T3S3	T3S2R4	OTROS	A	B	C	K'	D	LATITUD	LONGITUD
Monterrey	0.00																			
T. Izq. Gral. Escobedo (Lateral)	12.10	3	1	9556	1.6	78.4	0.5	15.4	1.3	1.5	0.8	0.2	0.3	80.0	0.5	19.5	0.090	0.564	25.795905	-100.279123
T. Izq. Gral. Escobedo (Central)	12.10	3	1	32458	1.0	85.7	0.6	3.9	0.8	3.1	3.3	0.7	0.9	86.7	0.6	12.7	0.055	0.515	25.795905	-100.279123
T. Izq. Gral. Escobedo (Lateral)	12.10	3	2	10985	1.5	71.7	0.5	21.9	1.7	1.6	0.7	0.2	0.2	73.2	0.5	26.3	0.084	0.564	25.795906	-100.279124
T. Izq. Gral. Escobedo (Central)	12.10	3	2	36014	0.5	85.4	0.7	4.3	0.8	3.2	3.5	0.7	0.9	85.9	0.7	13.4	0.055	0.515	25.795906	-100.279124
X. C. Libramiento Noroeste de Monterrey (Lateral)	16.00	1	1	7174	1.5	70.7	1.4	22.2	1.3	2.1	0.5	0.1	0.2	72.2	1.4	26.4	0.063	0.545	25.824106	-100.262396
X. C. Libramiento Noroeste de Monterrey (Central)	16.00	1	1	31149	0.6	84.9	0.7	3.3	0.7	3.2	5.0	0.9	0.7	85.5	0.7	13.8	0.064	0.501	25.823919	-100.262587
X. C. Libramiento Noroeste de Monterrey (Lateral)	16.00	1	2	5907	1.3	62.7	0.5	26.9	2.1	4.6	1.1	0.5	0.3	64.0	0.5	35.5	0.072	0.545	25.824172	-100.262670
X. C. Libramiento Noroeste de Monterrey (Central)	16.00	1	2	30448	0.3	83.4	0.8	3.9	0.8	3.4	5.7	1.0	0.7	83.7	0.8	15.5	0.065	0.501	25.824039	-100.262670
X. C. Libramiento Noroeste de Monterrey	16.00	3	1	41428	2.4	68.3	2.2	7.6	3.3	10.4	3.0	1.9	0.9	70.7	2.2	27.1	0.067	0.507	25.834741	-100.255082
X. C. Libramiento Noroeste de Monterrey	16.00	3	2	37075	2.1	65.4	2.3	7.9	3.8	11.9	3.4	2.2	1.0	67.5	2.3	30.2	0.074	0.507	25.834871	-100.255087
X. C. Santa Rosa - Salinas Victoria	20.19	3	1	31892	0.2	73.9	1.7	7.6	2.8	9.1	2.2	1.7	0.8	74.1	1.7	24.2	0.082	0.507	25.863351	-100.234980
X. C. Santa Rosa - Salinas Victoria	20.19	3	2	33006	0.3	71.0	2.0	8.3	3.1	10.3	2.4	1.8	0.8	71.3	2.0	26.7	0.070	0.507	25.863544	-100.235036
Ciénega de Flores	32.00	1	0	19610	1.8	73.0	0.9	13.2	1.6	7.8	0.9	0.3	0.5	74.8	0.9	24.3	0.078	0.503	25.943821	-100.176936
T. Der. Agualeguas	78.23	3	0	7188	0.7	46.9	2.3	14.0	2.4	30.0	1.2	1.5	1.0	47.6	2.3	50.1	0.059	0.526	26.331629	-100.110198
Sabinas Hidalgo	98.90	3	0	5449	0.8	41.6	2.5	14.4	2.6	34.6	1.0	1.7	0.8	42.4	2.5	55.1	0.064	0.511	26.533831	-100.149264
Vallecillos	124.40	3	0	4962	1.6	38.9	2.7	14.4	3.0	34.8	1.4	2.0	1.2	40.5	2.7	56.8	0.061	0.528	26.662445	-99.981452
T. Izq. Anáhuac	156.80	1	0	3609	3.4	33.1	4.0	14.1	4.9	36.6	1.7	1.6	0.6	36.5	4.0	59.5	0.075	0.518	26.874892	-99.832484
T. Izq. Anáhuac	156.80	3	1	7543	1.2	39.9	3.9	7.8	2.5	40.7	1.6	1.5	0.9	41.1	3.9	55.0	0.088	0.501	26.894626	-99.814409
T. Izq. Anáhuac	156.80	3	2	7464	1.2	31.9	4.1	8.9	2.8	46.8	1.8	1.6	0.9	33.1	4.1	62.8	0.083	0.501	26.894583	-99.815277
Lim. Edos. Term. N. L. Ppia. Tamps.	184.56																			
T. Der. Mier	205.90	1	1	8444	0.9	40.8	3.7	10.4	3.3	37.1	1.1	1.8	0.9	41.7	3.7	54.6	0.073	0.502	27.289315	-99.604764

NUEVO LEON

12 CARR: Monterrey - Nuevo Laredo (Libre)

CLAVE: 00463

RUTA: MEX-085

AÑO: 2017

LUGAR	ESTACION				CLASIFICACION VEHICULAR EN PORCIENTO													COORDENADAS		
	KM	TE	SC	TDPA	M	A	B	C2	C3	T3S2	T3S3	T3S2R4	OTROS	A	B	C	K'	D	LATITUD	LONGITUD
T. Der. Mier	205.90	1	2	8505	0.8	38.7	3.7	12.0	3.0	38.3	1.1	1.6	0.8	39.5	3.7	56.8	0.070	0.502	27.288955	-99.605266
T. Der. Mier	205.90	3	1	7776	0.3	51.2	2.4	8.2	4.8	29.8	1.2	0.9	1.2	51.5	2.4	46.1	0.081	0.518	27.308246	-99.594529
T. Der. Mier	205.90	3	2	7353	0.7	46.7	2.6	9.4	5.3	31.7	1.3	1.0	1.3	47.4	2.6	50.0	0.075	0.518	27.308055	-99.594774
Nuevo Laredo	228.00	1	1	11717	0.9	69.6	2.1	8.1	2.6	12.7	1.6	0.6	1.8	70.5	2.1	27.4	0.076	0.513	27.386265	-99.552874
Nuevo Laredo	228.00	1	2	10944	0.7	66.1	2.4	9.5	2.9	14.1	1.6	0.8	1.9	66.8	2.4	30.8	0.079	0.513	27.386426	-99.552934

13 CARR: Monterrey - Reynosa (Libre)

CLAVE: 00088

RUTA: MEX-040

AÑO: 2017

LUGAR	ESTACION				CLASIFICACION VEHICULAR EN PORCIENTO													COORDENADAS		
	KM	TE	SC	TDPA	M	A	B	C2	C3	T3S2	T3S3	T3S2R4	OTROS	A	B	C	K'	D	LATITUD	LONGITUD
T. C. Monterrey - Mier	0.00																			
Villa Juárez	19.10	1	1	27764	1.5	88.9	0.3	4.1	0.5	1.3	2.4	0.4	0.6	90.4	0.3	9.3	0.065	0.522	25.651935	-100.108164
Villa Juárez	19.10	1	2	25425	1.3	88.0	0.3	4.7	0.5	1.5	2.5	0.4	0.8	89.3	0.3	10.4	0.058	0.522	25.652098	-100.108234
Villa Juárez	19.10	3	1	13860	1.5	85.7	0.4	8.3	1.2	1.2	1.2	0.2	0.3	87.2	0.4	12.4	0.077	0.503	25.631151	-100.075897
Villa Juárez	19.10	3	2	13763	1.5	84.9	0.4	8.8	1.2	1.4	1.3	0.2	0.3	86.4	0.4	13.2	0.086	0.503	25.631375	-100.076025
Puente Cadereyta	30.50	2	1	2235	1.0	70.2	0.4	6.1	3.5	11.0	2.2	4.9	0.7	71.2	0.4	28.4	0.091	0.500	25.601076	-100.005753
Puente Cadereyta	30.50	2	2	2235	1.0	70.2	0.4	6.1	3.5	11.0	2.2	4.9	0.7	71.2	0.4	28.4	0.091	0.500	25.601076	-100.005753
Refinería de Cadereyta	33.00	3	0	5872	0.7	69.9	1.4	15.1	2.3	7.2	1.8	1.0	0.6	70.6	1.4	28.0	0.081	0.522	25.593673	-99.919058
T. Izq. Los Ramones	68.78	3	0	2926	0.3	64.1	2.1	16.3	2.1	11.2	3.1	0.6	0.2	64.4	2.1	33.5	0.083	0.523	25.620653	-99.625737
Gral. Bravo	125.00	1	0	4633	0.5	68.1	2.1	16.8	1.3	7.5	2.0	1.0	0.7	68.6	2.1	29.3	0.075	0.500	25.776277	-99.189359
Lim. Edos. Term. N. L. Ppia. Tamps.	192.00																			
T. Izq. Díaz Ordáz	192.55	1	1	4416	0.2	64.3	3.3	8.7	1.8	14.3	3.2	2.9	1.3	64.5	3.3	32.2	0.105	0.507	25.970740	-98.585633
T. Izq. Díaz Ordáz	192.55	1	2	4543	0.5	61.8	3.5	8.7	2.1	15.6	3.3	3.1	1.4	62.3	3.5	34.2	0.096	0.507	25.971105	-98.585959
Reynosa	225.00	1	1	21876	0.6	85.4	1.3	6.5	1.3	3.1	0.7	0.9	0.2	86.0	1.3	12.7	0.079	0.545	26.042179	-98.401894
Reynosa	225.00	1	2	18578	0.4	83.1	1.7	7.7	1.4	3.8	0.8	0.9	0.2	83.5	1.7	14.8	0.076	0.545	26.042680	-98.402007

14 CARR: Paras - Nueva Ciudad Guerrero

CLAVE: 00476

RUTA: MEX-030

AÑO: 2017

LUGAR	ESTACION				CLASIFICACION VEHICULAR EN PORCIENTO													COORDENADAS		
	KM	TE	SC	TDPA	M	A	B	C2	C3	T3S2	T3S3	T3S2R4	OTROS	A	B	C	K'	D	LATITUD	LONGITUD
Paras	0.00	3	0	379	0.1	78.9	0.5	13.7	0.2	0.7	0.5	5.4	0.0	79.0	0.5	20.5	0.136	0.512	26.501973	-99.516200
Lim. Edos. Term. N. L. Ppia. Tamps.	13.10																			
T. C. Reynosa - (T. C. Monterrey - Nuevo Laredo)	32.00	1	0	278	0.0	64.3	0.7	31.5	0.3	0.4	0.7	2.1	0.0	64.3	0.7	35.0	0.156	0.503	26.554883	-99.244318

NUEVO LEON

15 CARR: Piedras Negras - Nuevo Laredo

CLAVE: 00503

RUTA: MEX-002

AÑO: 2017

LUGAR	ESTACION				CLASIFICACION VEHICULAR EN PORCIENTO													COORDENADAS		
	KM	TE	SC	TDPA	M	A	B	C2	C3	T3S2	T3S3	T3S2R4	OTROS	A	B	C	K'	D	LATITUD	LONGITUD
T. C. Monclova - Piedras Negras	0.00	3	1	4592	1.3	68.7	1.0	15.8	2.9	7.8	1.1	0.7	0.7	70.0	1.0	29.0	0.080	0.503	28.635405	-100.549146
T. C. Monclova - Piedras Negras	0.00	3	2	4561	1.5	64.7	1.1	17.7	3.2	9.1	1.1	0.8	0.8	66.2	1.1	32.7	0.082	0.503	28.635220	-100.549280
El Saucito	16.90	3	0	1491	1.8	57.4	2.9	20.9	3.4	8.8	0.6	3.8	0.4	59.2	2.9	37.9	0.099	0.512	28.501788	-100.467206
T. Der. Villa Unión	37.00	1	0	1132	1.6	65.6	3.4	10.1	3.7	10.3	0.8	4.0	0.5	67.2	3.4	29.4	0.092	0.563	28.341206	-100.391028
T. Der. Villa Unión	37.00	3	0	1126	0.5	60.6	3.2	15.7	2.9	11.9	0.8	4.3	0.1	61.1	3.2	35.7	0.094	0.513	28.336337	-100.389559
Guerrero	42.00	3	0	906	0.2	54.2	3.7	18.3	3.2	14.2	0.8	5.2	0.2	54.4	3.7	41.9	0.113	0.511	28.307889	-100.366439
Lim. Edos. Term. Coah. Ppia. N. L.	124.40																			
T. C. Monclova - Colombia	134.00	3	0	2692	1.4	60.7	1.5	15.1	3.4	14.3	0.9	2.2	0.5	62.1	1.5	36.4	0.078	0.501	27.687591	-99.776517
Lim. Edos. Term. N. L. Ppia. Tamps.	138.20																			
T. Der. Libramiento de Nuevo Laredo	157.70	1	1	4930	1.1	46.9	1.1	7.5	11.6	28.6	1.2	1.0	1.0	48.0	1.1	50.9	0.099	0.505	27.571774	-99.597179
T. Der. Libramiento de Nuevo Laredo	157.70	1	2	4733	0.7	43.6	1.2	8.3	12.6	30.0	1.4	1.1	1.1	44.3	1.2	54.5	0.090	0.505	27.571910	-99.597042
Nuevo Laredo	175.00	1	1	9340	1.0	53.7	1.6	12.2	8.8	19.6	1.8	0.6	0.7	54.7	1.6	43.7	0.098	0.537	27.543682	-99.576331
Nuevo Laredo	175.00	1	2	7365	0.8	49.4	1.8	14.5	9.1	20.8	2.0	0.7	0.9	50.2	1.8	48.0	0.113	0.537	27.543578	-99.576064

16 CARR: Ramal a Aeropuerto Mariano Escobedo

CLAVE: 19510

RUTA: MEX-054

AÑO: 2017

LUGAR	ESTACION				CLASIFICACION VEHICULAR EN PORCIENTO													COORDENADAS		
	KM	TE	SC	TDPA	M	A	B	C2	C3	T3S2	T3S3	T3S2R4	OTROS	A	B	C	K'	D	LATITUD	LONGITUD
T. C. Monterrey - Cd. Mier	0.00	3	1	21427	0.3	90.0	0.6	4.6	1.1	2.4	0.3	0.6	0.1	90.3	0.6	9.1	0.080	0.503	25.787179	-100.136558
T. C. Monterrey - Cd. Mier	0.00	3	2	21868	0.4	89.2	0.6	5.2	1.2	2.4	0.3	0.6	0.1	89.6	0.6	9.8	0.068	0.503	25.787268	-100.136403
Aeropuerto	2.40																			

17 CARR: Saltillo - Monterrey

CLAVE: 00087

RUTA: MEX-040

AÑO: 2017

LUGAR	ESTACION				CLASIFICACION VEHICULAR EN PORCIENTO													COORDENADAS		
	KM	TE	SC	TDPA	M	A	B	C2	C3	T3S2	T3S3	T3S2R4	OTROS	A	B	C	K'	D	LATITUD	LONGITUD
T. C. Saltillo - Arteaga	0.00																			
T. Izq. Zinacamex	4.25	3	1	48086	0.5	86.8	0.8	5.7	0.8	1.7	2.9	0.5	0.3	87.3	0.8	11.9	0.067	0.509	25.482534	-100.972235
T. Izq. Zinacamex	4.25	3	2	46384	0.4	85.4	0.9	6.2	0.9	2.0	3.4	0.5	0.3	85.8	0.9	13.3	0.080	0.509	25.482236	-100.972618
Ramos Arizpe	11.30	1	1	44081	0.5	86.6	0.8	6.4	0.9	1.6	2.8	0.1	0.3	87.1	0.8	12.1	0.078	0.505	25.515964	-100.957461
Ramos Arizpe	11.30	1	2	45288	0.5	84.7	0.9	7.5	1.1	1.9	3.0	0.1	0.3	85.2	0.9	13.9	0.094	0.505	25.516383	-100.957464
T. Der. Aeropuerto	13.00	3	1	26553	0.5	86.0	0.8	6.7	0.9	1.7	2.4	0.5	0.5	86.5	0.8	12.7	0.090	0.504	25.554883	-100.926975
T. Der. Aeropuerto	13.00	3	2	27009	0.5	84.3	0.8	7.7	1.0	1.9	2.8	0.5	0.5	84.8	0.8	14.4	0.104	0.504	25.554982	-100.927194
T. Der. Libramiento J.L.P.	16.00	3	1	26465	0.5	85.1	0.8	7.3	1.0	1.8	2.5	0.5	0.5	85.6	0.8	13.6	0.080	0.505	25.565972	-100.914167
T. Der. Libramiento J.L.P.	16.00	3	2	26302	0.5	84.0	0.8	7.8	1.0	2.0	2.9	0.5	0.5	84.5	0.8	14.7	0.092	0.505	25.566583	-100.914028

NUEVO LEON

17 CARR: Saltillo - Monterrey

CLAVE: 00087

RUTA: MEX-040

AÑO: 2017

LUGAR	ESTACION				CLASIFICACION VEHICULAR EN PORCIENTO													COORDENADAS		
	KM	TE	SC	TDPA	M	A	B	C2	C3	T3S2	T3S3	T3S2R4	OTROS	A	B	C	K'	D	LATITUD	LONGITUD
Ojo Caliente	26.30	1	1	20683	1.0	59.7	3.0	8.6	2.3	20.6	2.2	2.4	0.2	60.7	3.0	36.3	0.097	0.503	25.610620	-100.844254
Ojo Caliente	26.30	1	2	20647	0.7	56.3	3.3	10.1	2.6	21.9	2.4	2.5	0.2	57.0	3.3	39.7	0.090	0.503	25.612849	-100.847049
Lim. Edos. Term. Coah. Ppia. N. L.	33.00																			
T. Izq. Libramiento Noroeste de Monterrey	54.00	1	1	20476	0.8	54.2	3.3	8.4	2.6	23.4	2.8	3.4	1.1	55.0	3.3	41.7	0.081	0.504	25.698240	-100.563396
T. Izq. Libramiento Noroeste de Monterrey	54.00	1	2	20901	0.5	48.8	4.0	9.1	2.8	26.6	3.2	3.8	1.2	49.3	4.0	46.7	0.067	0.504	25.698730	-100.563065
T. Der. Santa Catarina (1° Acceso)	62.46	1	1	34956	0.9	81.1	1.7	8.6	1.6	3.1	1.8	0.8	0.4	82.0	1.7	16.3	0.081	0.519	25.686907	-100.494218
T. Der. Santa Catarina (1° Acceso)	62.46	1	2	39009	1.1	79.4	1.9	9.2	1.7	3.4	2.1	0.8	0.4	80.5	1.9	17.6	0.087	0.519	25.687140	-100.494092
Ppia. Monterrey	79.20	1	1	67313	0.8	84.1	0.8	4.8	1.3	2.9	3.4	0.7	1.2	84.9	0.8	14.3	0.067	0.515	25.674371	-100.426837
Ppia. Monterrey	79.20	1	2	72753	0.8	82.7	0.9	5.2	1.4	3.2	3.6	0.9	1.3	83.5	0.9	15.6	0.060	0.515	25.674510	-100.426361

18 CARR: Cadereyta - Reynosa (Cuota)

CLAVE: 19002

RUTA: MEX-040D

AÑO: 2017

LUGAR	ESTACION				CLASIFICACION VEHICULAR EN PORCIENTO													COORDENADAS		
	KM	TE	SC	TDPA	M	A	B	C2	C3	T3S2	T3S3	T3S2R4	OTROS	A	B	C	K'	D	LATITUD	LONGITUD
Cadereyta de Jiménez	34.99																			
Caseta de Cobro General Bravo	120.00	2	1	2338	0.1	60.3	5.9	4.7	0.8	18.1	1.7	7.4	1.0	60.4	5.9	33.7	0.096	0.500	25.813604	-99.169590
Caseta de Cobro General Bravo	120.00	2	2	2338	0.1	60.3	5.9	4.7	0.8	18.1	1.7	7.4	1.0	60.4	5.9	33.7	0.096	0.500	25.813604	-99.169590
T. C. Monterrey - Reynosa (Libre)	167.00																			

19 CARR: Monterrey - Nuevo Laredo (Cuota)

CLAVE: 19086

RUTA: MEX-085D

AÑO: 2017

LUGAR	ESTACION				CLASIFICACION VEHICULAR EN PORCIENTO													COORDENADAS		
	KM	TE	SC	TDPA	M	A	B	C2	C3	T3S2	T3S3	T3S2R4	OTROS	A	B	C	K'	D	LATITUD	LONGITUD
T. C. Monterrey - Nuevo Laredo	0.00	3	1	14885	0.8	60.6	2.3	8.5	2.9	20.6	2.4	1.5	0.4	61.4	2.3	36.3	0.099	0.524	25.890392	-100.221538
T. C. Monterrey - Nuevo Laredo	0.00	3	2	12687	0.7	57.3	2.0	7.8	3.8	23.6	2.5	1.9	0.4	58.0	2.0	40.0	0.084	0.524	25.890864	-100.222015
Caseta de Cobro Sabinas	74.00	2	1	6309	0.1	42.5	3.2	3.6	0.7	46.7	1.1	1.5	0.6	42.6	3.2	54.2	0.091	0.500	26.512100	-100.007195
Caseta de Cobro Sabinas	74.00	2	2	6309	0.1	42.5	3.2	3.6	0.7	46.7	1.1	1.5	0.6	42.6	3.2	54.2	0.091	0.500	26.512100	-100.007195
T. C. Monterrey - Nuevo Laredo (Libre)	120.50	1	1	5989	1.4	50.1	3.6	5.6	1.7	33.7	1.9	1.5	0.5	51.5	3.6	44.9	0.107	0.507	26.879131	-99.822580
T. C. Monterrey - Nuevo Laredo (Libre)	120.50	1	2	6251	1.1	38.1	3.9	6.5	2.1	43.7	2.2	1.7	0.7	39.2	3.9	56.9	0.083	0.507	26.879864	-99.822540

20 CARR: Puerto México - La Carbonera (Cuota)

CLAVE: 00115

RUTA: MEX-057D

AÑO: 2017

LUGAR	ESTACION				CLASIFICACION VEHICULAR EN PORCIENTO													COORDENADAS	
	KM	TE	SC	TDPA	M	A	B	C2	C3	T3S2	T3S3	T3S2R4	OTROS	A	B	C	K'	D	LATITUD

Ent. Puerto México

202.00

NUEVO LEON

20 CARR: Puerto México - La Carbonera (Cuota)

CLAVE: 00115

RUTA: MEX-057D

AÑO: 2017

LUGAR	ESTACION				CLASIFICACION VEHICULAR EN PORCIENTO										COORDENADAS					
	KM	TE	SC	TDPA	M	A	B	C2	C3	T3S2	T3S3	T3S2R4	OTROS	A	B	C	K'	D	LATITUD	LONGITUD
Caseta de Cobro Los Chorros	203.64	2	1	6855	0.1	36.0	4.5	4.5	2.1	38.4	5.1	7.0	2.3	36.1	4.5	59.4	0.076	0.500	25.186794	-100.732079
Caseta de Cobro Los Chorros	203.64	2	2	6855	0.1	36.0	4.5	4.5	2.1	38.4	5.1	7.0	2.3	36.1	4.5	59.4	0.076	0.500	25.186794	-100.732079
Lim. Edos. Term. N. L. Ppia. Coah.	204.07																			
Lim. Edos. Term. Coah. Ppia. N. L.	204.50																			
Lim. Edos. Term. N. L. Ppia. Coah.	205.76																			
T. Der. San Antonio de Las Alazanas	224.94	1	1	7477	2.0	42.1	4.2	8.3	2.1	29.9	4.3	5.5	1.6	44.1	4.2	51.7	0.066	0.513	25.344677	-100.794520
T. Der. San Antonio de Las Alazanas	224.94	1	2	7982	1.4	38.8	4.8	9.8	2.3	30.3	4.7	6.1	1.8	40.2	4.8	55.0	0.075	0.513	25.344909	-100.794613
T. Der. San Antonio de Las Alazanas	224.94	3	1	7976	2.0	49.5	3.7	8.1	2.0	23.9	4.1	4.9	1.8	51.5	3.7	44.8	0.085	0.511	25.351733	-100.794329
T. Der. San Antonio de Las Alazanas	224.94	3	2	7270	1.7	45.1	4.1	8.7	2.2	26.6	4.6	4.9	2.1	46.8	4.1	49.1	0.079	0.511	25.351714	-100.794430
Los Lirios	228.30	3	1	10823	1.7	50.0	3.9	10.0	2.0	23.9	4.0	3.6	0.9	51.7	3.9	44.4	0.113	0.517	25.393624	-100.796484
Los Lirios	228.30	3	2	9676	1.4	43.2	4.5	10.4	2.3	28.3	4.6	4.3	1.0	44.6	4.5	50.9	0.096	0.517	25.393704	-100.796605
Ent. La Carbonera	235.60																			

21 CARR: Saltillo - Monterrey (Cuota)

CLAVE: 00087

RUTA: MEX-040D

AÑO: 2017

LUGAR	ESTACION				CLASIFICACION VEHICULAR EN PORCIENTO										COORDENADAS					
	KM	TE	SC	TDPA	M	A	B	C2	C3	T3S2	T3S3	T3S2R4	OTROS	A	B	C	K'	D	LATITUD	LONGITUD
Ojo Caliente	46.21	3	1	3230	1.1	53.4	4.4	6.9	3.6	19.1	4.3	6.3	0.9	54.5	4.4	41.1	0.077	0.525	25.617892	-100.905459
Ojo Caliente	46.21	3	2	3576	2.4	47.5	4.8	7.7	3.9	20.5	5.1	7.2	0.9	49.9	4.8	45.3	0.070	0.525	25.618020	-100.905517
Lim. Edos. Term. Coah. Ppia. N. L.	61.08																			
T. Izq. Anillo Periférico de Monterrey (Cuota)	82.00	1	1	8659	1.4	74.2	5.1	6.5	1.5	6.1	1.8	2.5	0.9	75.6	5.1	19.3	0.075	0.523	25.698167	-100.602351
T. Izq. Anillo Periférico de Monterrey (Cuota)	82.00	1	2	8157	1.4	70.3	5.5	7.3	1.7	7.9	2.0	2.9	1.0	71.7	5.5	22.8	0.081	0.523	25.698254	-100.602185
T. Izq. Anillo Periférico de Monterrey (Cuota)	82.00	3	1	4184	0.4	92.2	1.9	5.0	0.2	0.2	0.1	0.0	0.0	92.6	1.9	5.5	0.147	0.542	25.690881	-100.558908
T. Izq. Anillo Periférico de Monterrey (Cuota)	82.00	3	2	3518	0.8	91.1	2.2	5.3	0.3	0.2	0.1	0.0	0.0	91.9	2.2	5.9	0.119	0.542	25.690901	-100.558713
Morones Prieto	96.10																			

22 CARR: Agualeguas - El Ébano

CLAVE: 19004

RUTA: NL-023

AÑO: 2017

LUGAR	ESTACION				CLASIFICACION VEHICULAR EN PORCIENTO										COORDENADAS					
	KM	TE	SC	TDPA	M	A	B	C2	C3	T3S2	T3S3	T3S2R4	OTROS	A	B	C	K'	D	LATITUD	LONGITUD
Agualeguas	0.00	3	0	479	1.6	83.5	0.3	12.5	0.3	0.7	0.1	0.9	0.1	85.1	0.3	14.6	0.095	0.507	26.308129	-99.549715
T. C. Monterrey - Nuevo Laredo	54.00	1	0	696	2.3	61.6	2.4	15.4	3.4	11.5	1.5	1.6	0.3	63.9	2.4	33.7	0.133	0.528	26.330094	-100.108575

NUEVO LEON

23 CARR: Apodaca - Villa Juárez

CLAVE: 00087

RUTA: NL

AÑO: 2017

LUGAR	ESTACION				CLASIFICACION VEHICULAR EN PORCIENTO													COORDENADAS		
	KM	TE	SC	TDPA	M	A	B	C2	C3	T3S2	T3S3	T3S2R4	OTROS	A	B	C	K'	D	LATITUD	LONGITUD
T. C. Monterrey - Cd. Mier	0.00	3	0	18989	1.0	78.2	0.3	16.1	1.7	1.6	0.7	0.2	0.2	79.2	0.3	20.5	0.063	0.528	25.774728	-100.181783
T. Der. Santa Mónica	5.00	1	1	14202	1.0	83.6	0.3	8.6	0.9	1.8	2.8	0.3	0.7	84.6	0.3	15.1	0.069	0.553	25.743954	-100.160355
T. Der. Santa Mónica	5.00	1	2	19156	0.8	83.2	0.3	9.0	1.1	1.8	2.8	0.3	0.7	84.0	0.3	15.7	0.071	0.553	25.743927	-100.160346
T. Der. Santa Mónica	5.00	3	1	13227	1.0	84.6	0.3	7.1	1.4	2.0	2.7	0.3	0.6	85.6	0.3	14.1	0.069	0.510	25.739422	-100.157103
T. Der. Santa Mónica	5.00	3	2	14255	1.1	83.8	0.3	7.3	1.6	2.1	2.8	0.3	0.7	84.9	0.3	14.8	0.067	0.510	25.739399	-100.157112
T. Izq. Aeropuerto	8.60	1	1	9251	1.5	79.9	0.6	12.9	1.4	2.0	1.2	0.3	0.2	81.4	0.6	18.0	0.074	0.518	25.725704	-100.142933
T. Izq. Aeropuerto	8.60	1	2	8625	1.4	78.2	0.5	14.5	1.6	2.1	1.2	0.3	0.2	79.6	0.5	19.9	0.072	0.518	25.725704	-100.142933
T. Izq. Aeropuerto	8.60	3	0	12466	0.9	68.4	1.4	21.1	2.7	3.6	1.1	0.5	0.3	69.3	1.4	29.3	0.063	0.543	25.712139	-100.135762
T. Der. Dulces Nombres	10.40	1	0	14858	1.1	76.6	1.2	15.6	1.8	2.2	0.9	0.3	0.3	77.7	1.2	21.1	0.063	0.522	25.707865	-100.134503
T. Der. Dulces Nombres	10.40	3	0	19636	1.2	74.1	0.6	9.9	3.6	6.7	1.9	1.3	0.7	75.3	0.6	24.1	0.073	0.515	25.699302	-100.129766
Villa Juárez	16.00	1	1	12869	1.9	78.1	0.8	11.6	1.7	3.0	1.6	0.6	0.7	80.0	0.8	19.2	0.075	0.534	25.656088	-100.080085
Villa Juárez	16.00	1	2	11018	1.7	76.7	1.0	12.3	1.8	3.4	1.8	0.6	0.7	78.4	1.0	20.6	0.064	0.534	25.656083	-100.080087

24 CARR: Atongo - Lazarillos

CLAVE:

RUTA: NL

AÑO: 2017

LUGAR	ESTACION				CLASIFICACION VEHICULAR EN PORCIENTO													COORDENADAS		
	KM	TE	SC	TDPA	M	A	B	C2	C3	T3S2	T3S3	T3S2R4	OTROS	A	B	C	K'	D	LATITUD	LONGITUD
Atongo	0.00	3	0	544	3.5	84.5	0.2	8.4	1.7	1.0	0.5	0.1	0.1	88.0	0.2	11.8	0.102	0.523	25.347280	-100.001381
Lazarillos	7.78	1	0	2220	3.3	85.7	0.1	7.4	0.7	2.2	0.3	0.1	0.2	89.0	0.1	10.9	0.102	0.501	25.311485	-100.042364

25 CARR: Cadereyta de Jiménez - Doctor González

CLAVE: 19473

RUTA: NL

AÑO: 2017

LUGAR	ESTACION				CLASIFICACION VEHICULAR EN PORCIENTO													COORDENADAS		
	KM	TE	SC	TDPA	M	A	B	C2	C3	T3S2	T3S3	T3S2R4	OTROS	A	B	C	K'	D	LATITUD	LONGITUD
T. C. Monterrey - Reynosa	0.00	3	0	718	2.8	51.1	2.1	16.4	4.4	9.9	6.1	6.8	0.4	53.9	2.1	44.0	0.096	0.528	25.597094	-99.938852
X. C. Pesquería - Santa María Floreña	18.00	3	0	457	0.9	34.6	0.4	8.1	6.7	7.9	1.2	40.2	0.0	35.5	0.4	64.1	0.092	0.520	25.749225	-99.913791
Doctor González	30.00	1	0	396	7.5	77.7	0.1	13.3	0.5	0.7	0.2	0.0	0.0	85.2	0.1	14.7	0.089	0.504	25.856703	-99.936275

26 CARR: Cd. Benito Juárez - Villa de Santiago

CLAVE: 00087

RUTA: NL

AÑO: 2017

LUGAR	ESTACION				CLASIFICACION VEHICULAR EN PORCIENTO													COORDENADAS		
	KM	TE	SC	TDPA	M	A	B	C2	C3	T3S2	T3S3	T3S2R4	OTROS	A	B	C	K'	D	LATITUD	LONGITUD
Cd. Benito Juárez	0.00	3	0	20842	1.5	88.3	0.3	7.3	0.9	0.6	0.9	0.1	0.1	89.8	0.3	9.9	0.080	0.501	25.619981	-100.105822
Arboledas de San Roque	4.70	3	0	4713	1.3	85.4	0.2	8.8	1.0	2.4	0.5	0.1	0.3	86.7	0.2	13.1	0.143	0.521	25.595325	-100.119813
T. Izq. Cadereyta de Jiménez	23.00	3	0	3536	3.1	82.6	0.1	9.8	1.2	2.5	0.4	0.0	0.3	85.7	0.1	14.2	0.151	0.502	25.466386	-100.095827

NUEVO LEON

26 CARR : Cd. Benito Juárez - Villa de Santiago

CLAVE: 00087

RUTA: NL

AÑO : 2017

LUGAR	ESTACION				CLASIFICACION VEHICULAR EN PORCIENTO														COORDENADAS	
	KM	TE	SC	TDPA	M	A	B	C2	C3	T3S2	T3S3	T3S2R4	OTROS	A	B	C	K'	D	LATITUD	LONGITUD
T. C. Cd. Victoria - Monterrey	39.00	1	0	5855	3.2	83.0	0.2	6.4	2.3	2.7	1.3	0.3	0.6	86.2	0.2	13.6	0.138	0.502	25.451954	-100.161097

27 CARR : China - Méndez

CLAVE: 00191

RUTA: NL-TAM

AÑO : 2017

LUGAR	ESTACION				CLASIFICACION VEHICULAR EN PORCIENTO														COORDENADAS	
	KM	TE	SC	TDPA	M	A	B	C2	C3	T3S2	T3S3	T3S2R4	OTROS	A	B	C	K'	D	LATITUD	LONGITUD
China	0.00	3	0	1507	0.6	72.0	2.0	19.5	1.2	1.8	1.6	1.3	0.0	72.6	2.0	25.4	0.072	0.507	25.700010	-99.225505
Lim. Edos. Term. N. L. Ppia. Tamps.	75.00																			
Méndez	100.00																			

28 CARR : Doctor Arroyo - Mier y Noriega

CLAVE: 19088

RUTA: NL-088

AÑO : 2017

LUGAR	ESTACION				CLASIFICACION VEHICULAR EN PORCIENTO														COORDENADAS	
	KM	TE	SC	TDPA	M	A	B	C2	C3	T3S2	T3S3	T3S2R4	OTROS	A	B	C	K'	D	LATITUD	LONGITUD
Doctor Arroyo	0.00	3	0	1806	9.2	70.7	0.3	17.6	0.8	1.1	0.2	0.0	0.1	79.9	0.3	19.8	0.095	0.501	23.654339	-100.188135
Mier y Noriega	31.00																			

29 CARR : Ent. Hacienda del Cielo - T. Der. Cadereyta

CLAVE:

RUTA: NL

AÑO : 2017

LUGAR	ESTACION				CLASIFICACION VEHICULAR EN PORCIENTO														COORDENADAS	
	KM	TE	SC	TDPA	M	A	B	C2	C3	T3S2	T3S3	T3S2R4	OTROS	A	B	C	K'	D	LATITUD	LONGITUD
Hacienda del Cielo	0.00	3	0	1770	6.4	79.6	0.3	9.0	1.3	2.4	0.8	0.0	0.2	86.0	0.3	13.7	0.143	0.513	25.522456	-100.012574
T. Der. Benito Juárez	11.50	1	0	1812	2.1	92.5	0.0	2.7	0.4	1.2	0.5	0.2	0.4	94.6	0.0	5.4	0.150	0.507	25.468894	-100.091383

30 CARR : Ent. Huisachito - Nuevo Laredo

CLAVE: 00074

RUTA: NL-001-TAM

AÑO : 2017

LUGAR	ESTACION				CLASIFICACION VEHICULAR EN PORCIENTO														COORDENADAS	
	KM	TE	SC	TDPA	M	A	B	C2	C3	T3S2	T3S3	T3S2R4	OTROS	A	B	C	K'	D	LATITUD	LONGITUD
T. C. Monterrey - Colombia	0.00	3	0	1252	0.6	67.3	2.7	14.1	1.9	6.4	4.3	2.3	0.4	67.9	2.7	29.4	0.152	0.508	27.355122	-99.948461
Lim. Edos. Term. N. L. Ppia. Tamps.	19.00																			
X. C. Libramiento de Nuevo Laredo	47.00	1	0	1949	0.4	77.1	1.4	12.8	2.2	3.6	1.5	0.8	0.2	77.5	1.4	21.1	0.102	0.522	27.478252	-99.634264
Nuevo Laredo	51.00	1	0	12474	0.9	80.1	2.1	7.7	1.1	5.7	1.1	0.3	1.0	81.0	2.1	16.9	0.082	0.501	27.484903	-99.580968

NUEVO LEON

31 CARR: Gral. Bravo - Los Aldamas

CLAVE: 19030

RUTA: NL-030

AÑO: 2017

LUGAR	ESTACION				CLASIFICACION VEHICULAR EN PORCIENTO														COORDENADAS	
	KM	TE	SC	TDPA	M	A	B	C2	C3	T3S2	T3S3	T3S2R4	OTROS	A	B	C	K'	D	LATITUD	LONGITUD
Gral. Bravo	0.00	3	0	1085	0.6	79.7	0.6	16.8	0.9	1.0	0.4	0.0	0.0	80.3	0.6	19.1	0.091	0.511	25.816882	-99.171998
Los Aldamas	31.00																			

32 CARR: Gral. Treviño - Villaldama

CLAVE: 19003

RUTA: NL-003

AÑO: 2017

LUGAR	ESTACION				CLASIFICACION VEHICULAR EN PORCIENTO														COORDENADAS	
	KM	TE	SC	TDPA	M	A	B	C2	C3	T3S2	T3S3	T3S2R4	OTROS	A	B	C	K'	D	LATITUD	LONGITUD
Gral. Treviño	0.00	3	0	866	0.9	80.7	0.6	14.1	0.8	1.0	0.1	1.6	0.2	81.6	0.6	17.8	0.103	0.507	26.238533	-99.490649
Agualeguas	13.00	3	0	694	1.1	78.9	0.7	17.1	0.5	0.5	0.0	1.2	0.0	80.0	0.7	19.3	0.092	0.505	26.321594	-99.537377
Paras	34.00	3	0	276	0.9	70.9	0.3	22.2	0.8	0.8	0.6	3.5	0.0	71.8	0.3	27.9	0.118	0.503	26.505614	-99.532685
El Álamo	62.00	1	0	542	4.0	72.3	1.2	18.0	0.6	0.8	0.7	2.4	0.0	76.3	1.2	22.5	0.095	0.508	26.490734	-99.770366
Villaldama	134.00	1	0	1614	1.4	81.3	1.1	13.5	0.5	1.2	0.3	0.6	0.1	82.7	1.1	16.2	0.140	0.505	26.504135	-100.413290

33 CARR: Hacienda Guadalupe - Higuera

CLAVE: 19006

RUTA: NL-006

AÑO: 2017

LUGAR	ESTACION				CLASIFICACION VEHICULAR EN PORCIENTO														COORDENADAS	
	KM	TE	SC	TDPA	M	A	B	C2	C3	T3S2	T3S3	T3S2R4	OTROS	A	B	C	K'	D	LATITUD	LONGITUD
Hacienda Guadalupe	0.00																			
Marin	3.00	1	1	3438	3.5	80.7	0.6	8.8	2.0	2.4	0.5	1.2	0.3	84.2	0.6	15.2	0.086	0.509	25.859614	-100.023912
Marin	3.00	1	2	3112	2.7	79.2	0.8	10.0	2.4	2.8	0.5	1.3	0.3	81.9	0.8	17.3	0.104	0.509	25.859613	-100.023912
Higuera	15.00																			

34 CARR: Libramiento de Linares

CLAVE: 19506

RUTA: NL

AÑO: 2017

LUGAR	ESTACION				CLASIFICACION VEHICULAR EN PORCIENTO														COORDENADAS	
	KM	TE	SC	TDPA	M	A	B	C2	C3	T3S2	T3S3	T3S2R4	OTROS	A	B	C	K'	D	LATITUD	LONGITUD
T. C. Cd. Victoria - Monterrey (1° Acceso)	0.00	3	0	11412	3.5	66.6	2.9	8.0	1.9	7.9	2.4	5.7	1.1	70.1	2.9	27.0	0.063	0.511	24.846423	-99.567818
T. C. Linares - Ent. San Roberto	2.00	3	0	10207	2.9	66.0	3.1	8.4	2.3	8.3	2.4	5.6	1.0	68.9	3.1	28.0	0.070	0.501	24.854046	-99.577621
T. C. Cd. Victoria - Monterrey (2° Acceso)	6.50																			

35 CARR: Libramiento de Montemorelos

CLAVE: 19492

RUTA: NL

AÑO: 2017

LUGAR	ESTACION				CLASIFICACION VEHICULAR EN PORCIENTO														COORDENADAS	
	KM	TE	SC	TDPA	M	A	B	C2	C3	T3S2	T3S3	T3S2R4	OTROS	A	B	C	K'	D	LATITUD	LONGITUD
T. C. Cd. Victoria - Monterrey (1° Acceso)	0.00	3	1	4705	1.0	67.2	3.5	8.6	2.2	7.6	2.4	6.7	0.8	68.2	3.5	28.3	0.083	0.519	25.129555	-99.813066

NUEVO LEON

35 CARR: Libramiento de Montemorelos

CLAVE: 19492

RUTA: NL

AÑO: 2017

LUGAR	ESTACION				CLASIFICACION VEHICULAR EN PORCIENTO														COORDENADAS	
	KM	TE	SC	TDPA	M	A	B	C2	C3	T3S2	T3S3	T3S2R4	OTROS	A	B	C	K'	D	LATITUD	LONGITUD
T. C. Cd. Victoria - Monterrey (1° Acceso)	0.00	3	2	5195	0.5	63.8	4.0	9.6	2.4	8.0	2.8	8.0	0.9	64.3	4.0	31.7	0.089	0.519	25.129555	-99.813069
T. C. Cd. Victoria - Monterrey (2° Acceso)	3.70																			

36 CARR: Libramiento de Sabinas Hidalgo

CLAVE: 19492

RUTA: NL

AÑO: 2017

LUGAR	ESTACION				CLASIFICACION VEHICULAR EN PORCIENTO														COORDENADAS	
	KM	TE	SC	TDPA	M	A	B	C2	C3	T3S2	T3S3	T3S2R4	OTROS	A	B	C	K'	D	LATITUD	LONGITUD
T. C. Monterrey - Nuevo Laredo	0.00	3	0	4210	1.0	34.4	2.2	13.4	4.1	36.6	5.9	1.6	0.8	35.4	2.2	62.4	0.067	0.535	26.464466	-100.162299
T. C. Monterrey - Nuevo Laredo	9.20	1	0	3030	0.6	25.9	2.4	13.6	3.5	48.9	2.1	2.1	0.9	26.5	2.4	71.1	0.070	0.507	26.524844	-100.151520

37 CARR: Libramiento Poniente de Cadereyta

CLAVE: 19085

RUTA: NL

AÑO: 2017

LUGAR	ESTACION				CLASIFICACION VEHICULAR EN PORCIENTO														COORDENADAS	
	KM	TE	SC	TDPA	M	A	B	C2	C3	T3S2	T3S3	T3S2R4	OTROS	A	B	C	K'	D	LATITUD	LONGITUD
T. C. Monterrey - Reynosa (Libre)	0.00	3	0	15475	2.7	80.1	0.6	6.1	1.1	5.5	1.6	1.0	1.3	82.8	0.6	16.6	0.073	0.532	25.591758	-100.027974
T. C. Cadereyta - Allende	6.00																			

38 CARR: Los Guerra - Los Herreras

CLAVE: 19031

RUTA: TAM-NL

AÑO: 2017

LUGAR	ESTACION				CLASIFICACION VEHICULAR EN PORCIENTO														COORDENADAS	
	KM	TE	SC	TDPA	M	A	B	C2	C3	T3S2	T3S3	T3S2R4	OTROS	A	B	C	K'	D	LATITUD	LONGITUD
Los Herreras	73.00	1	0	542	6.6	71.1	0.3	19.5	0.4	1.4	0.2	0.4	0.1	77.7	0.3	22.0	0.096	0.513	25.902595	-99.393735

39 CARR: Matehuala - La Poza

CLAVE: 00086

RUTA: SLP-029-NL-061

AÑO: 2017

LUGAR	ESTACION				CLASIFICACION VEHICULAR EN PORCIENTO														COORDENADAS	
	KM	TE	SC	TDPA	M	A	B	C2	C3	T3S2	T3S3	T3S2R4	OTROS	A	B	C	K'	D	LATITUD	LONGITUD
Matehuala	0.00	3	0	4285	9.4	70.6	1.2	12.6	3.0	2.0	0.5	0.4	0.3	80.0	1.2	18.8	0.064	0.509	23.667171	-100.598733
Lim. Edos. Term. S. L. P. Ppia. N. L.	19.70																			
Lim. Edos. Term. N. L. Ppia. S. L. P.	19.90																			
Lim. Edos. Term. S. L. P. Ppia. N. L.	21.53																			
Doctor Arroyo	49.00	1	0	4151	3.9	76.1	1.1	13.5	2.7	1.9	0.3	0.4	0.1	80.0	1.1	18.9	0.085	0.501	23.686806	-100.211917
La Ascención	131.00	1	0	762	3.0	74.8	3.7	15.9	1.0	1.4	0.1	0.0	0.1	77.8	3.7	18.5	0.095	0.518	24.320806	-99.905556

NUEVO LEON

40 CARR: Monclova - Estación Candela

CLAVE: 00501

RUTA: COA-030-NL

AÑO: 2017

LUGAR	ESTACION				CLASIFICACION VEHICULAR EN PORCIENTO										COORDENADAS					
	KM	TE	SC	TDPA	M	A	B	C2	C3	T3S2	T3S3	T3S2R4	OTROS	A	B	C	K'	D	LATITUD	LONGITUD
T. C. Monclova - Piedras Negras	0.00																			
T. Izq. Libramiento de Monclova	5.10	1	1	2015	2.1	80.5	0.9	13.3	1.1	1.3	0.3	0.2	0.3	82.6	0.9	16.5	0.095	0.511	26.930863	-101.387421
T. Izq. Libramiento de Monclova	5.10	1	2	2312	4.1	76.9	0.9	14.3	1.3	1.5	0.4	0.3	0.3	81.0	0.9	18.1	0.101	0.511	26.930895	-101.387361
Lim. Edos. Term. Coah. Ppia. N. L.	118.00																			
T. C. Monterrey - Colombia	125.50	1	0	452	0.1	69.1	2.7	17.6	1.1	8.3	0.3	0.7	0.1	69.2	2.7	28.1	0.223	0.501	26.838167	-100.495077

41 CARR: Monterrey - Colombia

CLAVE: 19001

RUTA: NL-001

AÑO: 2017

LUGAR	ESTACION				CLASIFICACION VEHICULAR EN PORCIENTO										COORDENADAS					
	KM	TE	SC	TDPA	M	A	B	C2	C3	T3S2	T3S3	T3S2R4	OTROS	A	B	C	K'	D	LATITUD	LONGITUD
T. C. Monterrey - Nuevo Laredo	0.00	3	1	29958	0.8	86.2	0.3	6.7	1.4	2.1	1.7	0.4	0.4	87.0	0.3	12.7	0.068	0.585	25.775279	-100.291875
T. C. Monterrey - Nuevo Laredo	0.00	3	2	19243	0.8	84.1	0.3	8.1	1.6	2.3	2.0	0.4	0.4	84.9	0.3	14.8	0.076	0.585	25.776106	-100.292311
X. C. Libramiento Noroeste de Monterrey	7.30	3	1	11249	1.3	69.5	1.0	13.0	5.1	6.0	2.0	1.5	0.6	70.8	1.0	28.2	0.103	0.511	25.835269	-100.295290
X. C. Libramiento Noroeste de Monterrey	7.30	3	2	11521	1.5	66.1	1.1	14.7	5.8	6.4	2.2	1.6	0.6	67.6	1.1	31.3	0.108	0.511	25.835267	-100.295284
T. Izq. Salinas Victoria (1º Acceso)	20.50	3	0	8748	1.5	71.6	1.4	13.2	2.1	6.2	1.2	2.1	0.7	73.1	1.4	25.5	0.077	0.533	25.956353	-100.279589
Villa Aldama	86.50	3	0	2392	1.0	70.8	1.9	13.8	1.2	3.5	2.2	4.8	0.8	71.8	1.9	26.3	0.082	0.512	26.511010	-100.432118
T. Izq. Bustamante	92.25	3	0	1447	0.3	62.4	1.5	17.6	2.2	3.6	4.5	7.1	0.8	62.7	1.5	35.8	0.111	0.515	26.549494	-100.459450
T. Izq. Candela	124.04	1	0	1208	0.1	60.4	1.3	21.7	1.2	2.5	4.0	8.5	0.3	60.5	1.3	38.2	0.129	0.501	26.835832	-100.492804
Lampazos de Naranjo	164.00	1	0	1870	0.3	61.5	1.3	21.4	1.1	4.5	2.9	6.6	0.4	61.8	1.3	36.9	0.093	0.508	27.009692	-100.510410
Anáhuac	195.00	1	0	1842	0.4	58.0	1.6	26.0	1.0	4.5	1.9	6.4	0.2	58.4	1.6	40.0	0.145	0.513	27.222571	-100.157094
Huizache	212.70	3	0	1696	0.0	62.8	1.3	17.6	0.8	6.3	4.7	6.1	0.4	62.8	1.3	35.9	0.136	0.507	27.351404	-99.953404
Colombia	263.00	1	1	413	1.3	40.7	1.5	15.3	3.9	25.9	2.0	8.9	0.5	42.0	1.5	56.5	0.116	0.501	27.688518	-99.781409
Colombia	263.00	1	2	413	1.3	40.7	1.5	15.3	3.9	25.9	2.0	8.9	0.5	42.0	1.5	56.5	0.116	0.501	27.688518	-99.781409

42 CARR: Palo Alto - Vallecillos

CLAVE: 19036

RUTA: NL

AÑO: 2017

LUGAR	ESTACION				CLASIFICACION VEHICULAR EN PORCIENTO										COORDENADAS					
	KM	TE	SC	TDPA	M	A	B	C2	C3	T3S2	T3S3	T3S2R4	OTROS	A	B	C	K'	D	LATITUD	LONGITUD
T. C. Gral. Treviño - Villa Aldama	0.00	3	0	166	4.7	58.2	1.1	19.0	0.5	0.4	0.0	16.0	0.1	62.9	1.1	36.0	0.195	0.513	26.497121	-99.760929
Vallecillos	43.00	1	0	171	8.8	65.4	0.3	19.6	0.3	0.9	0.1	4.6	0.0	74.2	0.3	25.5	0.185	0.513	26.658787	-99.982308

NUEVO LEON

43 CARR: Peña Blanca - Cd. Camargo

CLAVE: 00102

RUTA: NL-TAM

AÑO: 2017

LUGAR	ESTACION				CLASIFICACION VEHICULAR EN PORCIENTO														COORDENADAS	
	KM	TE	SC	TDPA	M	A	B	C2	C3	T3S2	T3S3	T3S2R4	OTROS	A	B	C	K'	D	LATITUD	LONGITUD
T. C. Monterrey - Reynosa	0.00	3	0	822	0.1	70.8	1.4	17.9	1.7	2.9	2.9	1.2	1.1	70.9	1.4	27.7	0.097	0.509	25.836803	-99.008509
Lim. Edos. Term. N. L. Ppia. Tamps.	30.00																			
Cd. Camargo	65.00	1	0	2158	0.8	74.9	0.6	20.6	1.1	1.7	0.2	0.0	0.1	75.7	0.6	23.7	0.085	0.505	26.303321	-98.834751

44 CARR: Ramal a 18 de Marzo

CLAVE: 19475

RUTA: NL

AÑO: 2017

LUGAR	ESTACION				CLASIFICACION VEHICULAR EN PORCIENTO														COORDENADAS	
	KM	TE	SC	TDPA	M	A	B	C2	C3	T3S2	T3S3	T3S2R4	OTROS	A	B	C	K'	D	LATITUD	LONGITUD
T. C. Linares - Ent. San Roberto	0.00	3	0	2829	1.4	84.1	1.9	8.7	1.1	1.6	0.5	0.3	0.4	85.5	1.9	12.6	0.078	0.502	24.777313	-100.041711
18 de Marzo	14.00																			

45 CARR: Ramal a Cerralvo

CLAVE: 19013

RUTA: NL-013

AÑO: 2017

LUGAR	ESTACION				CLASIFICACION VEHICULAR EN PORCIENTO														COORDENADAS	
	KM	TE	SC	TDPA	M	A	B	C2	C3	T3S2	T3S3	T3S2R4	OTROS	A	B	C	K'	D	LATITUD	LONGITUD
T. C. Monterrey - Reynosa	0.00	3	0	576	0.3	65.6	1.1	19.1	1.8	2.9	2.3	6.6	0.3	65.9	1.1	33.0	0.147	0.531	25.735569	-99.371937
Los Herrera	21.00	3	0	521	0.8	69.8	0.9	13.9	1.3	2.4	2.6	8.3	0.0	70.6	0.9	28.5	0.093	0.514	25.920868	-99.421160
Cerralvo	58.00	1	0	1793	1.1	81.0	0.2	12.7	0.6	1.5	0.6	2.2	0.1	82.1	0.2	17.7	0.099	0.521	26.081082	-99.605011

46 CARR: Ramal a Marín

CLAVE: 19007

RUTA: NL

AÑO: 2017

LUGAR	ESTACION				CLASIFICACION VEHICULAR EN PORCIENTO														COORDENADAS	
	KM	TE	SC	TDPA	M	A	B	C2	C3	T3S2	T3S3	T3S2R4	OTROS	A	B	C	K'	D	LATITUD	LONGITUD
T. C. Monterrey - Nuevo Laredo	0.00	3	0	26127	1.5	80.1	0.7	11.4	2.0	1.7	1.2	0.7	0.7	81.6	0.7	17.7	0.079	0.517	25.916593	-100.195535
Marín	10.00																			

47 CARR: Salinas Victoria - Ciénega de Flores

CLAVE: 19007

RUTA: NL

AÑO: 2017

LUGAR	ESTACION				CLASIFICACION VEHICULAR EN PORCIENTO														COORDENADAS	
	KM	TE	SC	TDPA	M	A	B	C2	C3	T3S2	T3S3	T3S2R4	OTROS	A	B	C	K'	D	LATITUD	LONGITUD
Salinas Victoria	0.00	3	0	4948	1.8	58.5	4.6	12.1	5.4	12.8	2.1	1.7	1.0	60.3	4.6	35.1	0.125	0.503	25.952791	-100.273545
T. C. Monterrey - Nuevo Laredo (Cuota)	6.00	1	0	5542	1.2	66.5	2.4	9.7	5.9	9.9	2.1	1.4	0.9	67.7	2.4	29.9	0.114	0.517	25.942557	-100.230191
Ciénega de Flores	10.00																			

NUEVO LEON

48 CARR: Santa Rosa - Mezquital

CLAVE: 00087

RUTA: NL

AÑO: 2017

LUGAR	ESTACION				CLASIFICACION VEHICULAR EN PORCIENTO														COORDENADAS	
	KM	TE	SC	TDPA	M	A	B	C2	C3	T3S2	T3S3	T3S2R4	OTROS	A	B	C	K'	D	LATITUD	LONGITUD
X. C. Libramiento Noroeste de Monterrey	0.00	3	1	11063	0.9	75.4	0.8	4.3	3.1	9.2	3.7	1.8	0.8	76.3	0.8	22.9	0.060	0.503	25.813954	-100.222638
X. C. Libramiento Noroeste de Monterrey Mezquital	0.00 9.00	3	2	11391	1.4	72.6	0.8	4.9	3.3	9.9	4.2	2.1	0.8	74.0	0.8	25.2	0.081	0.503	25.813486	-100.222518

49 CARR: Santa Rosa - Salinas Victoria

CLAVE: 19037

RUTA: NL

AÑO: 2017

LUGAR	ESTACION				CLASIFICACION VEHICULAR EN PORCIENTO														COORDENADAS	
	KM	TE	SC	TDPA	M	A	B	C2	C3	T3S2	T3S3	T3S2R4	OTROS	A	B	C	K'	D	LATITUD	LONGITUD
Ent. Salinas Victoria	0.00	3	0	21569	1.7	74.5	1.4	8.0	3.4	6.1	2.6	1.3	1.0	76.2	1.4	22.4	0.066	0.506	25.875339	-100.252317
Salinas Victoria	13.85	1	1	4529	2.3	83.1	0.9	11.8	1.0	0.6	0.2	0.0	0.1	85.4	0.9	13.7	0.096	0.508	25.953773	-100.290285
Salinas Victoria	13.85	1	2	4633	2.1	82.3	0.9	12.8	1.0	0.6	0.2	0.0	0.1	84.4	0.9	14.7	0.089	0.508	25.953659	-100.290316

50 CARR: Aeropuerto de Monterrey (Cuota)

CLAVE:

RUTA: NL-D

AÑO: 2017

LUGAR	ESTACION				CLASIFICACION VEHICULAR EN PORCIENTO														COORDENADAS	
	KM	TE	SC	TDPA	M	A	B	C2	C3	T3S2	T3S3	T3S2R4	OTROS	A	B	C	K'	D	LATITUD	LONGITUD
T. C. Monterrey - Cadereyta (Cuota)	0.00																			
T. C. Apodaca - Villa Juarez	3.10	3	1	11565	0.8	85.7	0.3	3.5	1.9	4.7	1.2	1.1	0.8	86.5	0.3	13.2	0.123	0.507	25.717860	-100.136203
T. C. Apodaca - Villa Juarez	3.10	3	2	10597	1.1	83.6	0.3	4.2	2.0	5.4	1.4	1.2	0.8	84.7	0.3	15.0	0.133	0.507	25.717848	-100.136207
Aeropuerto Mariano Escobedo	10.50																			

51 CARR: Anillo Periférico de Monterrey (Cuota)

CLAVE: 19004

RUTA: NL-D

AÑO: 2017

LUGAR	ESTACION				CLASIFICACION VEHICULAR EN PORCIENTO														COORDENADAS	
	KM	TE	SC	TDPA	M	A	B	C2	C3	T3S2	T3S3	T3S2R4	OTROS	A	B	C	K'	D	LATITUD	LONGITUD
T. C. Saltillo - Monterrey	0.00	3	1	3421	0.4	63.7	3.2	8.4	2.2	15.7	1.8	3.7	0.9	64.1	3.2	32.7	0.119	0.549	25.711166	-100.557062
T. C. Saltillo - Monterrey	0.00	3	2	4317	0.6	60.8	3.7	9.5	2.3	16.4	2.1	3.7	0.9	61.4	3.7	34.9	0.115	0.549	25.711168	-100.557067
X. C. Monterrey - Nuevo Laredo (Libre)	37.70	1	1	4127	1.4	63.7	2.1	8.9	6.0	11.5	2.6	2.9	0.9	65.1	2.1	32.8	0.104	0.531	25.840479	-100.258341
X. C. Monterrey - Nuevo Laredo (Libre)	37.70	1	2	5078	1.3	60.2	2.3	9.9	6.4	13.2	2.8	2.9	1.0	61.5	2.3	36.2	0.096	0.531	25.840480	-100.258322
X. C. Monterrey - Mier	49.30	1	1	5501	0.0	55.1	2.8	7.1	4.3	19.1	4.1	5.7	1.8	55.1	2.8	42.1	0.097	0.506	25.792604	-100.172512
X. C. Monterrey - Mier	49.30	1	2	5265	1.5	49.0	3.3	7.4	4.6	21.6	4.6	6.2	1.8	50.5	3.3	46.2	0.106	0.506	25.792596	-100.172506
T. C. Monterrey - Cadereyta	66.80																			

NUEVO LEON

52 CARR: Monterrey - Cadereyta (Cuota)

CLAVE: 19281

RUTA: NL-D

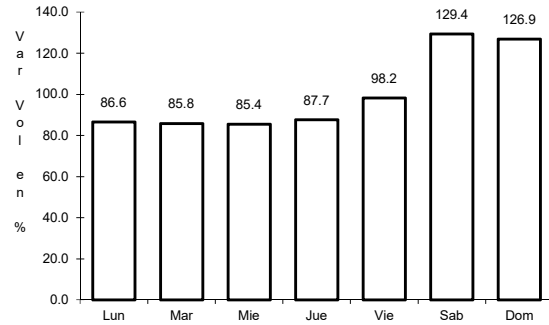
AÑO: 2017

L U G A R	E S T A C I O N				C L A S I F I C A C I O N V E H I C U L A R E N P O R C I E N T O													C O O R D E N A D A S			
	KM	TE	SC	TDPA	M	A	B	C2	C3	T3S2	T3S3	T3S2R4	OTROS	A	B	C	K'	D	LATITUD	LONGITUD	
T. Av. Bonifacio Salinas	3.05																				
T. Izq. Apodaca (Aeropuerto)	12.50	1	1	10776	0.3	90.3	1.3	5.7	0.6	1.0	0.5	0.2	0.1	90.6	1.3	8.1	0.121	0.519	25.692190	-100.161665	
T. Izq. Apodaca (Aeropuerto)	12.50	1	2	9537	0.5	88.8	1.5	6.6	0.6	1.2	0.5	0.2	0.1	89.3	1.5	9.2	0.101	0.519	25.692186	-100.161668	
T. Der. Cadereyta	33.10																				

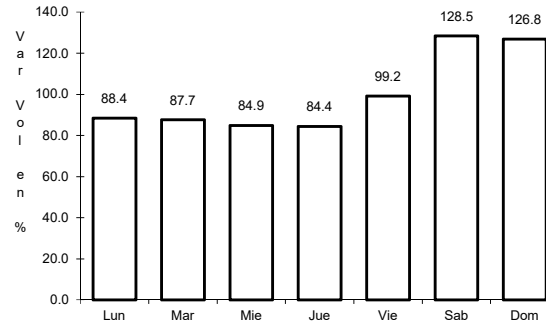
1 CARR: Cadereyta de Jiménez - Allende

CLAVE: 19009

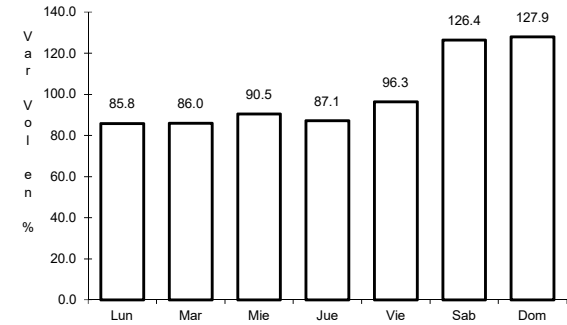
RUTA: MEX-009



Km: 0.00 Tipo: 3 Sent: 1



Km: 0.00 Tipo: 3 Sent: 2

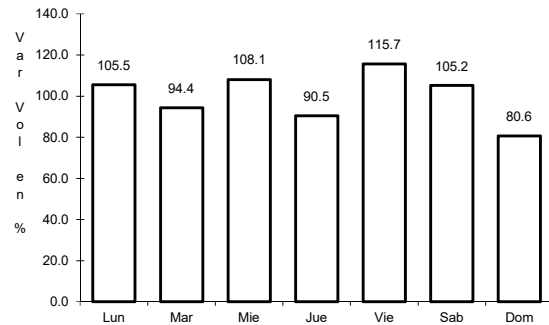


Km: 26.80 Tipo: 1 Sent: 0

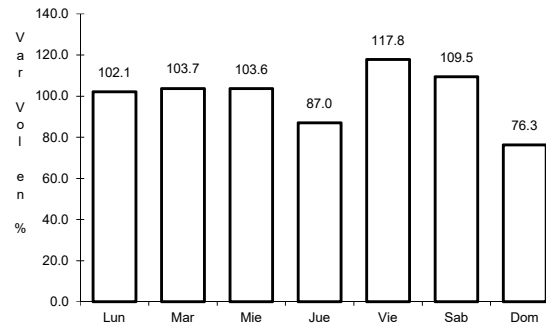
2 CARR: Ciudad Victoria - Monterrey

CLAVE: 00462

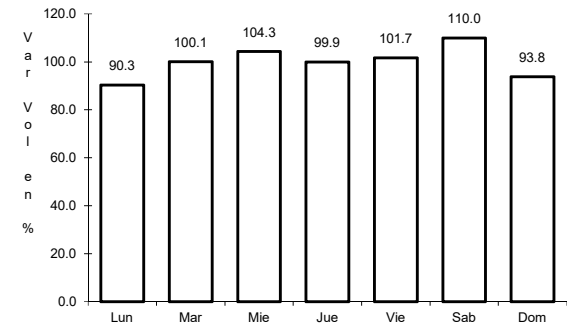
RUTA: MEX-085



Km: 0.00 Tipo: 3 Sent: 1



Km: 0.00 Tipo: 3 Sent: 2

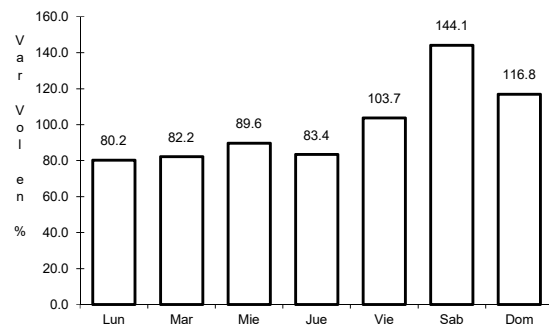


Km: 154.00 Tipo: 1 Sent: 0

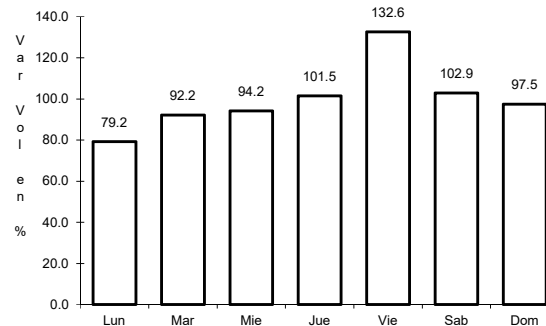
3 CARR: La Unión - El Encadenado

CLAVE:

RUTA: MEX



Km: 0.00 Tipo: 3 Sent: 0

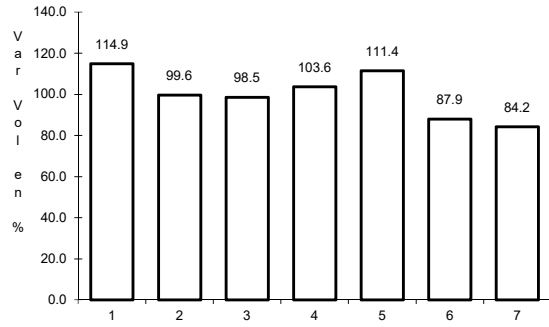


Km: 10.00 Tipo: 1 Sent: 0

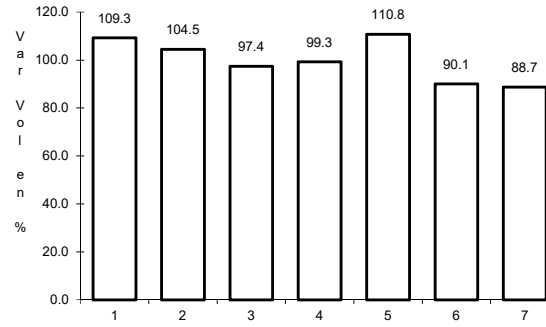
4 CARR: Libramiento de China

CLAVE:

RUTA: MEX-040



Km: 0.00 Tipo: 3 Sent: 0

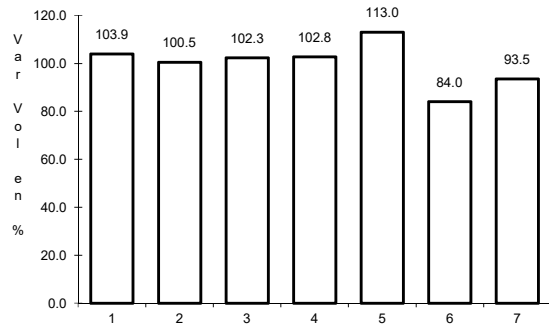


Km: 2.41 Tipo: 1 Sent: 0

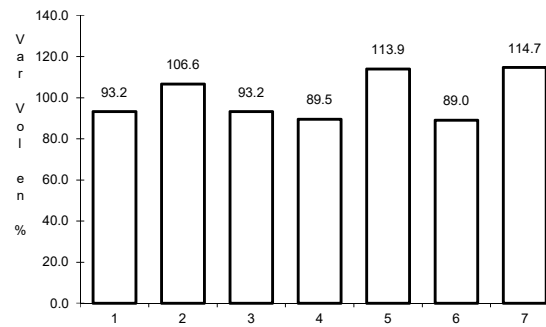
5 CARR: Libramiento de Dr. González

CLAVE: 00127

RUTA: MEX-054



Km: 0.00 Tipo: 3 Sent: 0

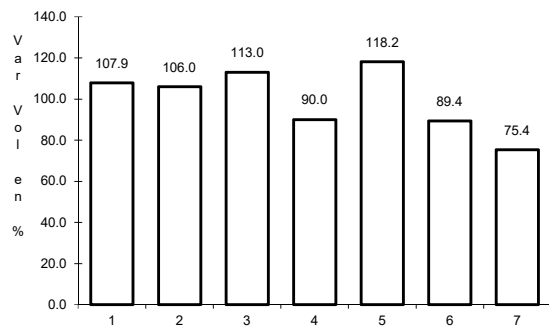


Km: 10.90 Tipo: 1 Sent: 0

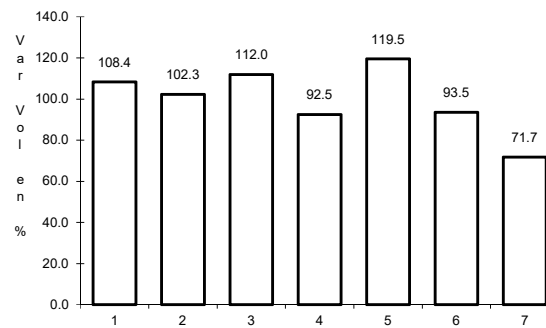
6 CARR: Libramiento Noroeste de Monterrey

CLAVE: 19085

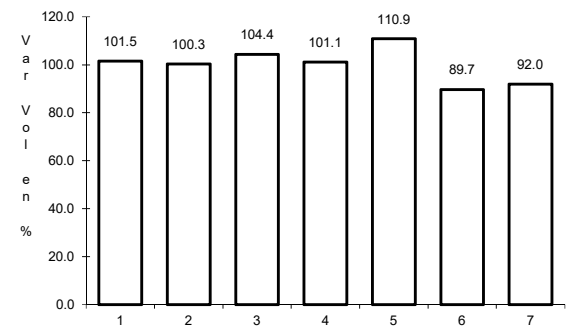
RUTA: MEX-040



Km: 0.00 Tipo: 3 Sent: 1



Km: 0.00 Tipo: 3 Sent: 2

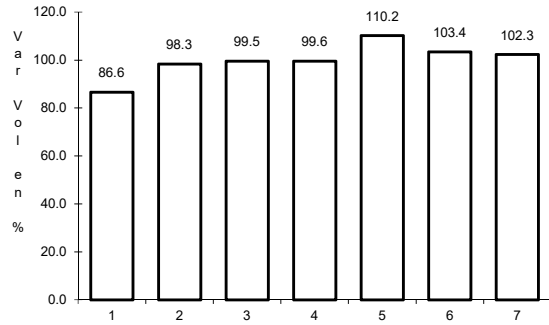


Km: 48.00 Tipo: 1 Sent: 1

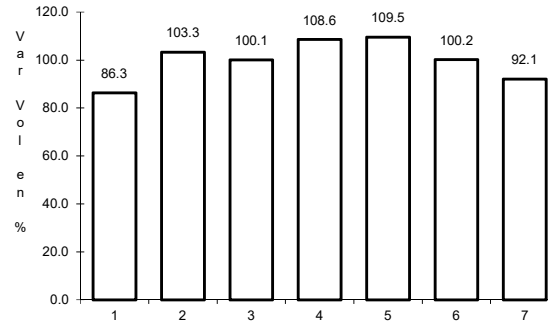
7 CARR: Linares - Ent. San Roberto

CLAVE: 19031

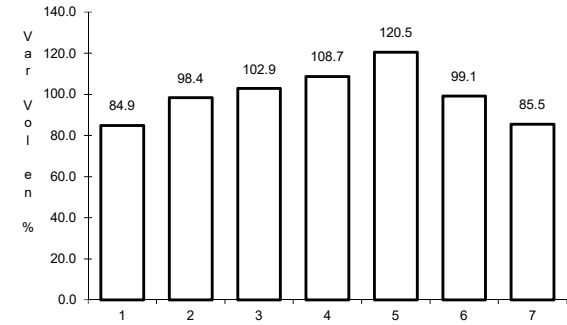
ruta: MEX-058



Km: 0.00 Tipo: 3 Sent: 0



Km: 66.00 Tipo: 1 Sent: 0

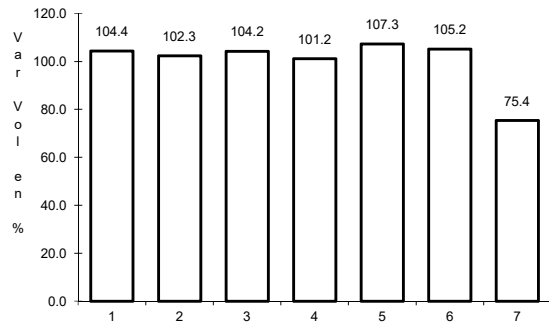


Km: 98.00 Tipo: 1 Sent: 0

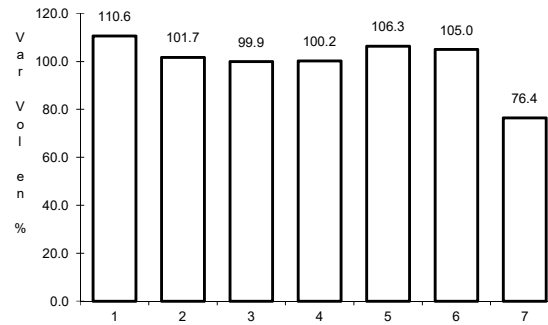
8 CARR: Matehuala - Ent. Puerto México

CLAVE: 00405

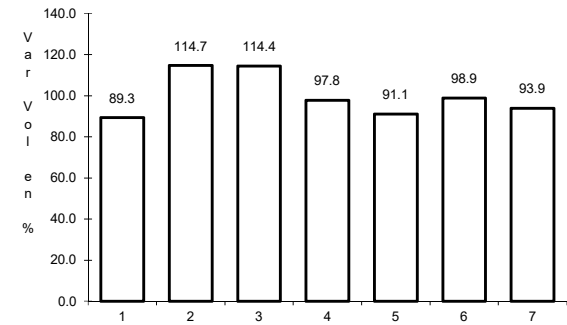
ruta: MEX-057



Km: 0.00 Tipo: 3 Sent: 1



Km: 0.00 Tipo: 3 Sent: 2

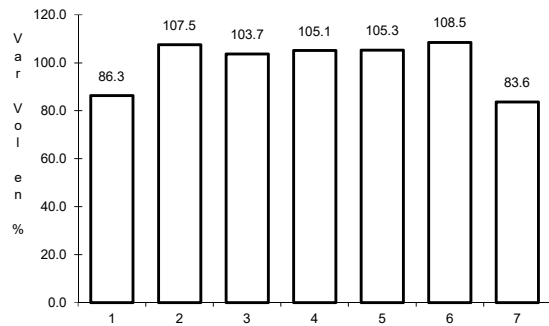


Km: 177.18 Tipo: 1 Sent: 1

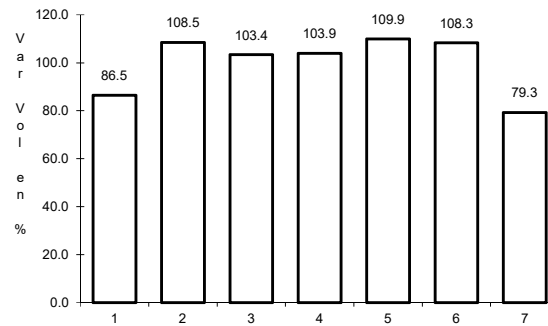
9 CARR: Montemorelos - China

CLAVE: 19280

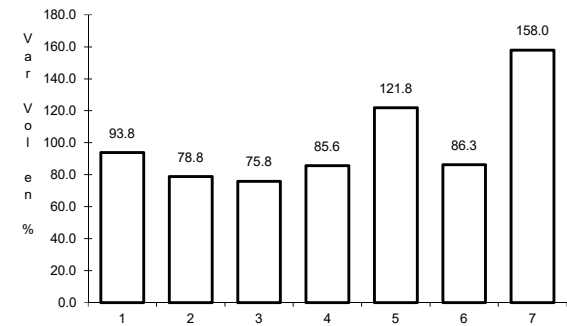
ruta: MEX-035



Km: 0.00 Tipo: 3 Sent: 0



Km: 17.60 Tipo: 3 Sent: 0

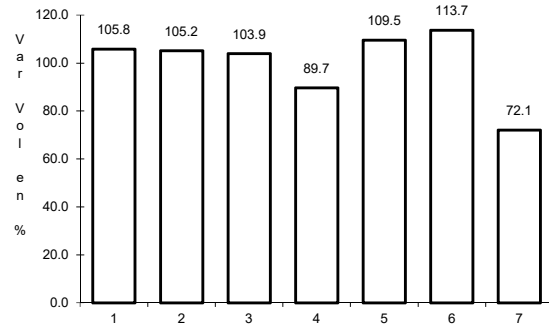


Km: 93.00 Tipo: 1 Sent: 0

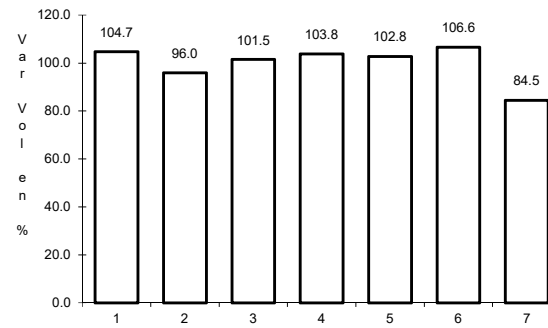
10 CARR: Monterrey - Castaños

CLAVE: 00128

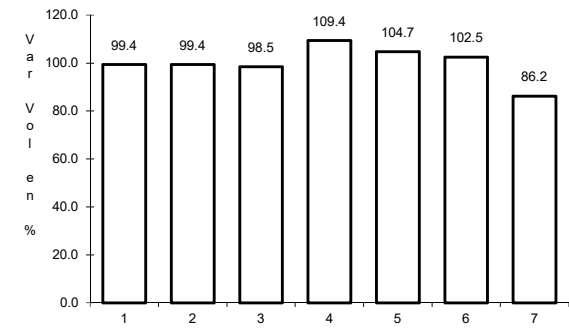
RUTA: MEX-053



Km: 0.00 Tipo: 3 Sent: 0



Km: 155.90 Tipo: 1 Sent: 1

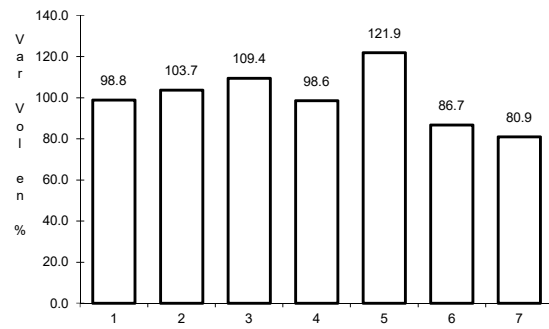


Km: 155.90 Tipo: 1 Sent: 2

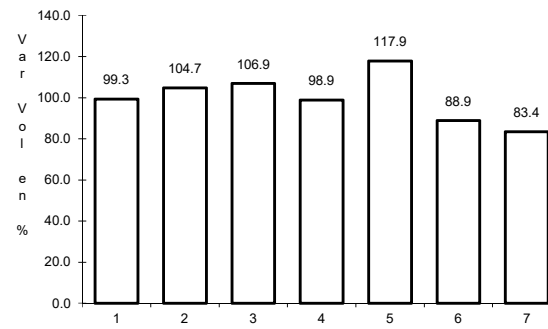
11 CARR: Monterrey - Mier

CLAVE: 00127

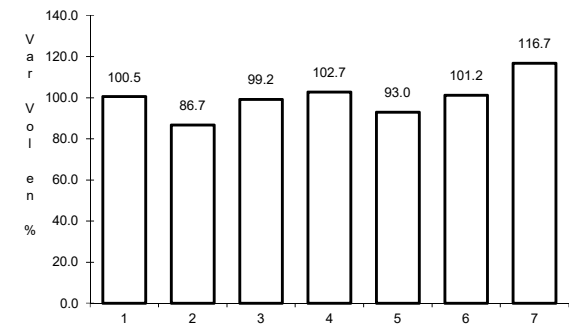
RUTA: MEX-054



Km: 19.12 Tipo: 1 Sent: 1



Km: 19.12 Tipo: 1 Sent: 2

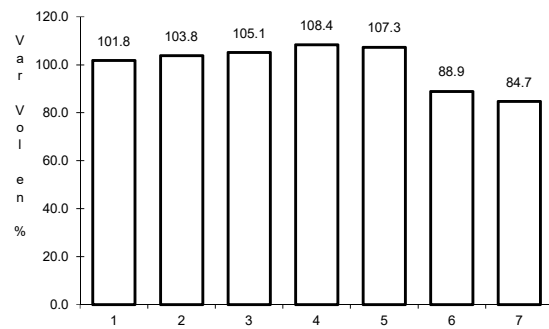


Km: 156.21 Tipo: 1 Sent: 0

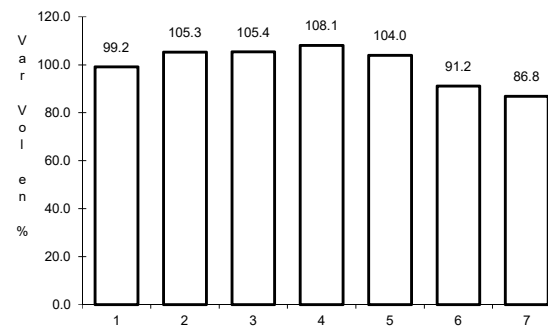
12 CARR: Monterrey - Nuevo Laredo (Libre)

CLAVE: 00463

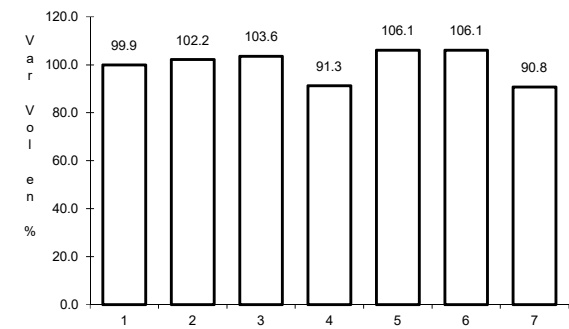
RUTA: MEX-085



Km: 12.10 Tipo: 3 Sent: 1



Km: 12.10 Tipo: 3 Sent: 2

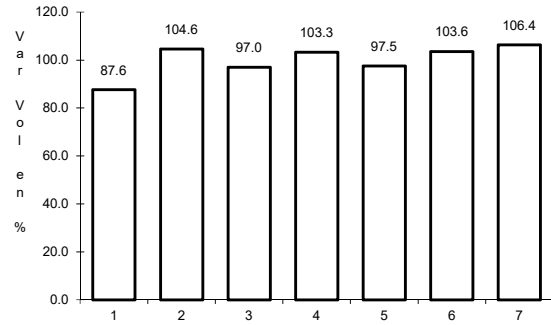


Km: 124.40 Tipo: 3 Sent: 0

13 CARR: Monterrey - Reynosa (Libre)

CLAVE: 00088

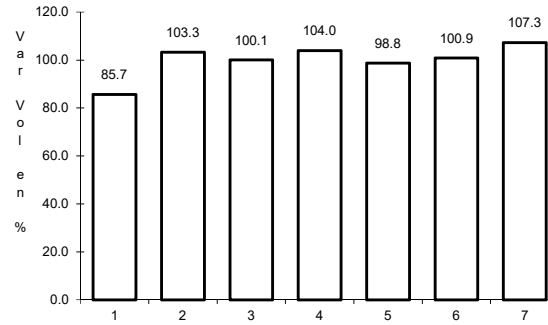
RUTA: MEX-040



Km: 19.10

Tipo: 1

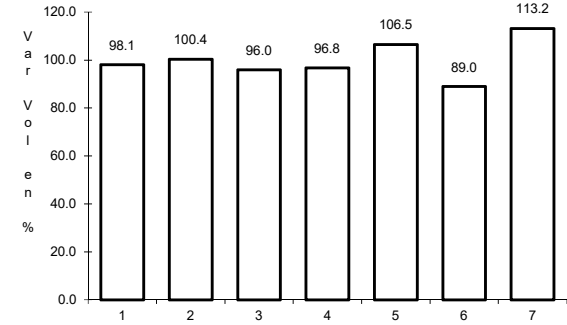
Sent: 1



Km: 19.10

Tipo: 1

Sent: 2



Km: 125.00

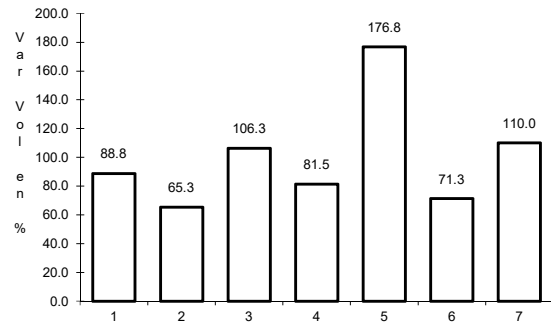
Tipo: 1

Sent: 0

14 CARR: Paras - Nueva Ciudad Guerrero

CLAVE: 00476

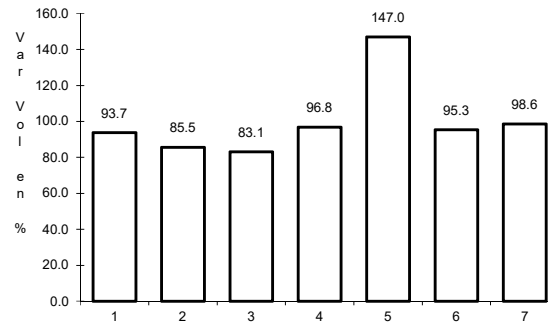
RUTA: MEX-030



Km: 0.00

Tipo: 3

Sent: 0



Km: 32.00

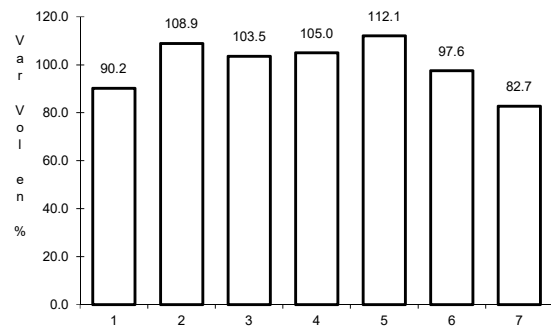
Tipo: 1

Sent: 0

15 CARR: Piedras Negras - Nuevo Laredo

CLAVE: 00503

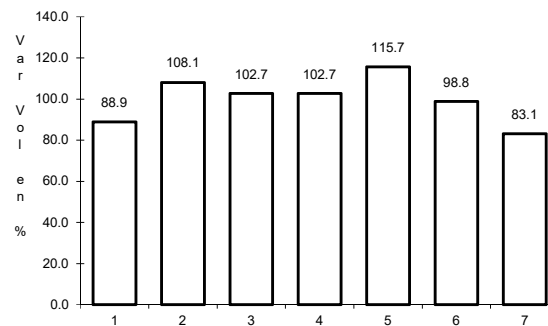
RUTA: MEX-002



Km: 0.00

Tipo: 3

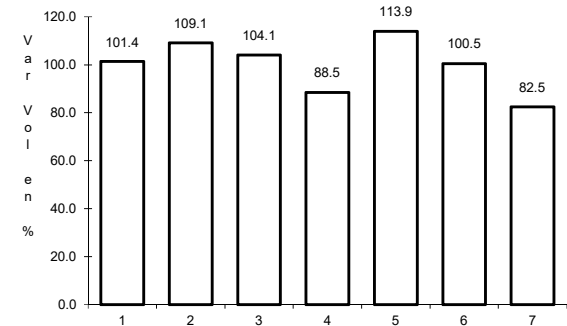
Sent: 1



Km: 0.00

Tipo: 3

Sent: 2



Km: 134.00

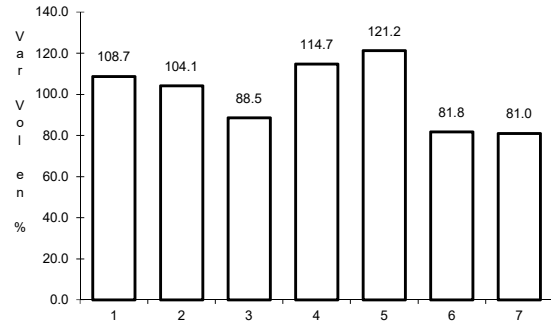
Tipo: 3

Sent: 0

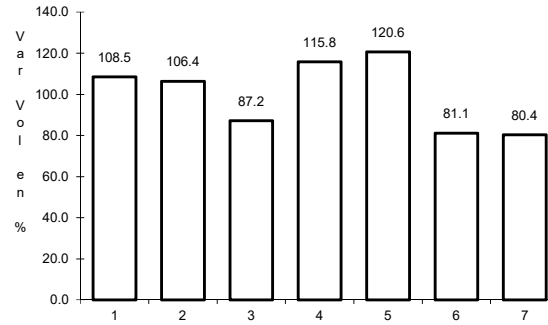
16 CARR: Ramal a Aeropuerto Mariano Escobedo

CLAVE: 19510

ruta: MEX-054



Km: 0.00 Tipo: 3 Sent: 1

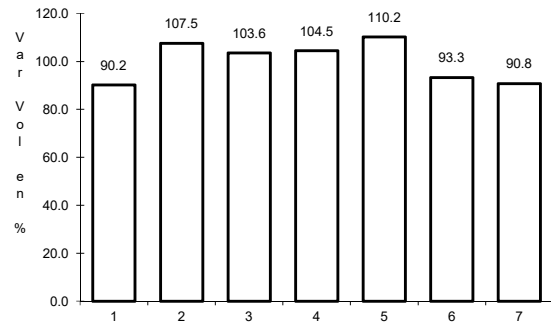


Km: 0.00 Tipo: 3 Sent: 2

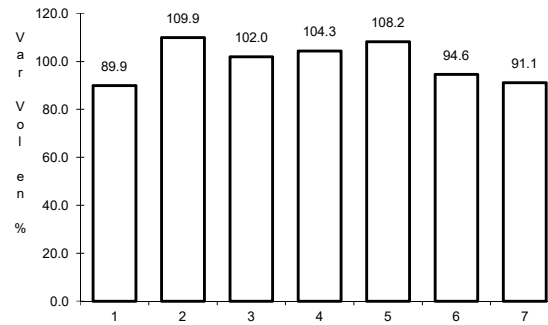
17 CARR: Saltillo - Monterrey

CLAVE: 00087

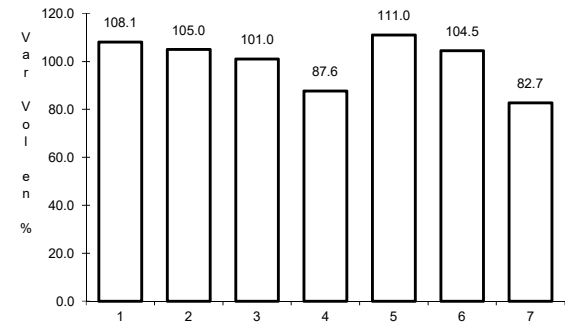
ruta: MEX-040



Km: 4.25 Tipo: 3 Sent: 1



Km: 4.25 Tipo: 3 Sent: 2

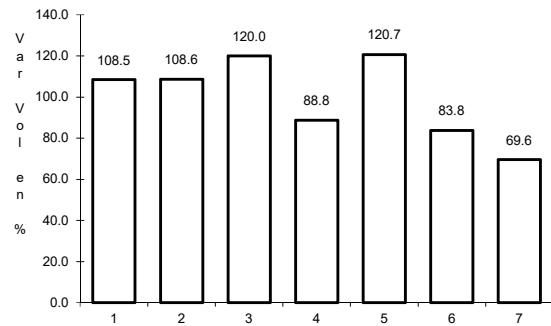


Km: 79.20 Tipo: 1 Sent: 1

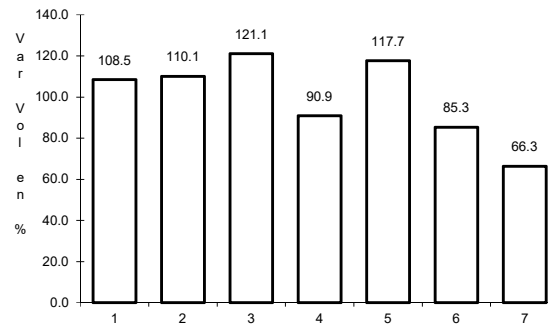
19 CARR: Monterrey - Nuevo Laredo (Cuota)

CLAVE: 19086

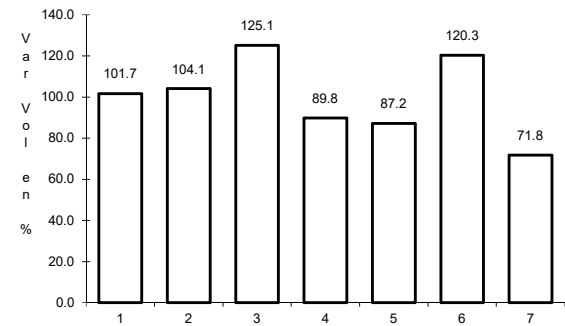
ruta: MEX-085D



Km: 0.00 Tipo: 3 Sent: 1



Km: 0.00 Tipo: 3 Sent: 2

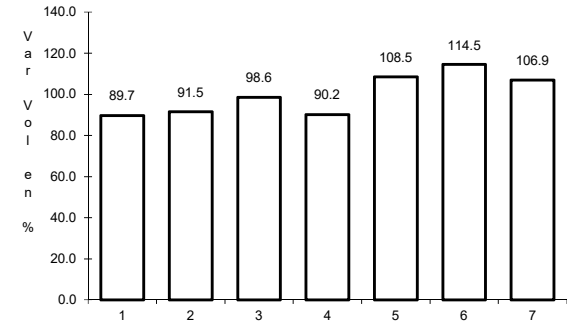
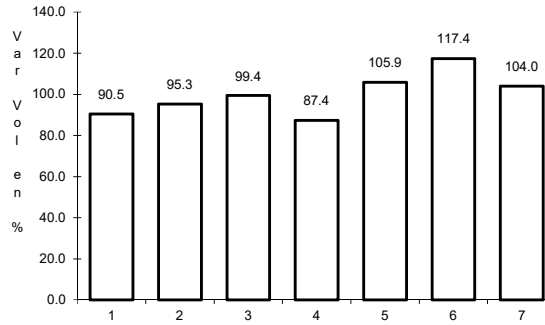
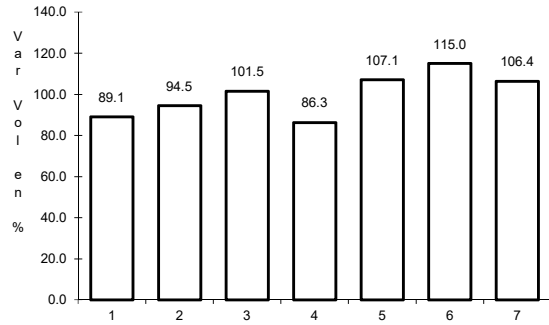


Km: 120.50 Tipo: 1 Sent: 1

20 CARR: Puerto México - La Carbonera (Cuota)

CLAVE: 00115

RUTA: MEX-057D



Km: 224.94 Tipo: 1 Sent: 1

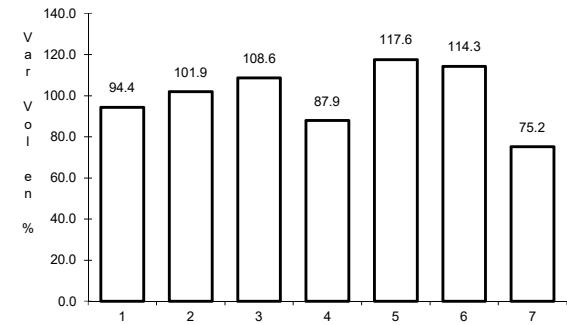
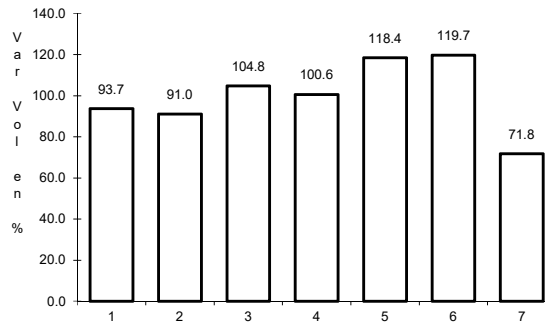
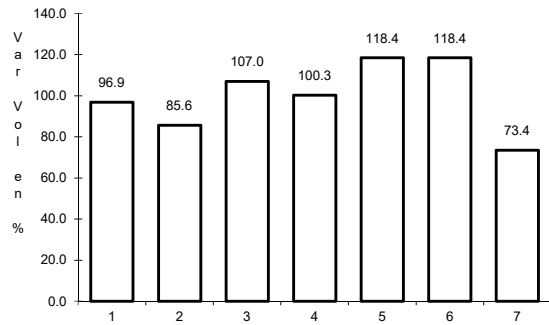
Km: 224.94 Tipo: 1 Sent: 2

Km: 228.30 Tipo: 3 Sent: 1

21 CARR: Saltillo - Monterrey (Cuota)

CLAVE: 00087

RUTA: MEX-040D



Km: 46.21 Tipo: 3 Sent: 1

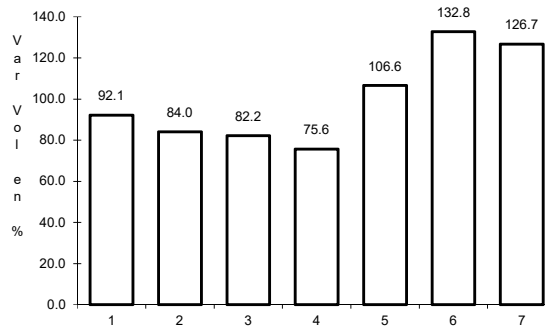
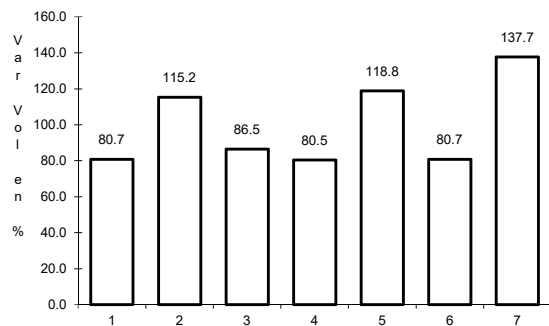
Km: 46.21 Tipo: 3 Sent: 2

Km: 82.00 Tipo: 3 Sent: 1

22 CARR: Agualeguas - El Ébano

CLAVE: 19004

RUTA: NL-023



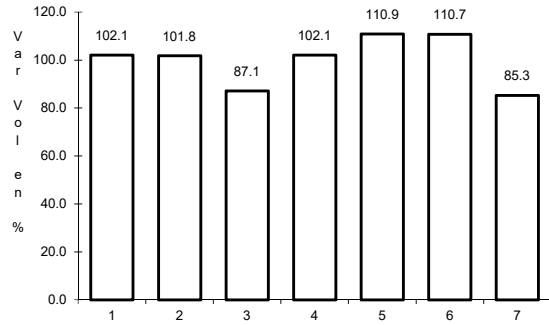
Km: 0.00 Tipo: 3 Sent: 0

Km: 54.00 Tipo: 1 Sent: 0

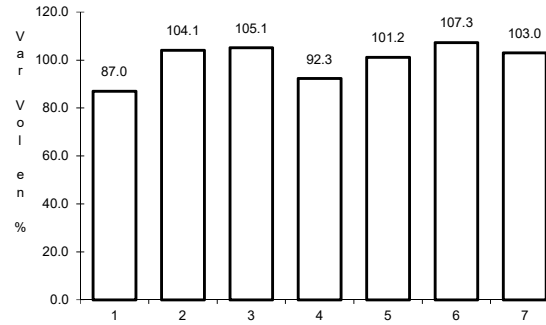
23 CARR: Apodaca - Villa Juárez

CLAVE: 00087

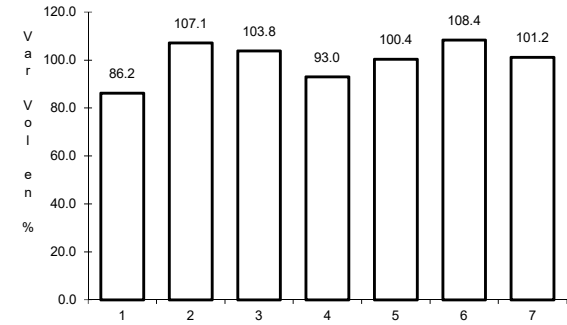
RUTA: NL



Km: 0.00 Tipo: 3 Sent: 0



Km: 16.00 Tipo: 1 Sent: 1

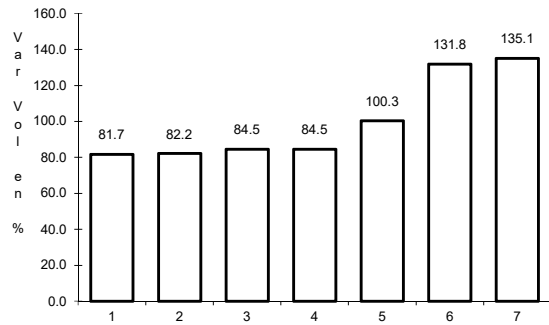


Km: 16.00 Tipo: 1 Sent: 2

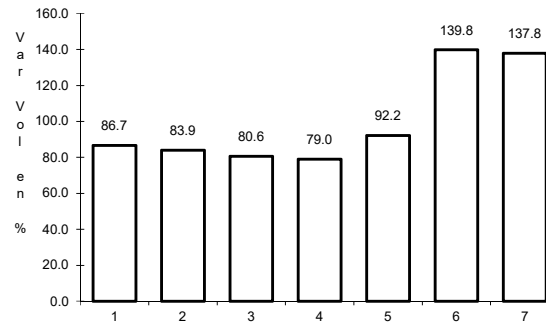
24 CARR: Atongo - Lazarillos

CLAVE:

RUTA: NL



Km: 0.00 Tipo: 3 Sent: 0

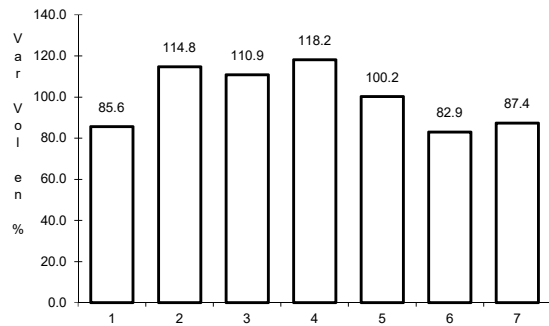


Km: 7.78 Tipo: 1 Sent: 0

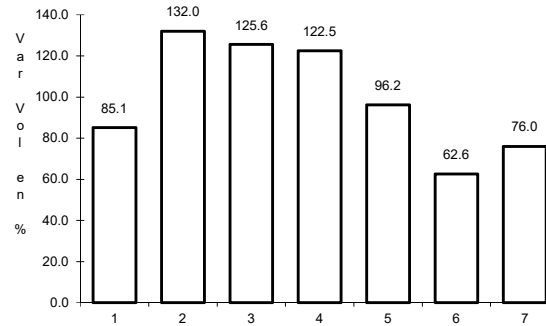
25 CARR: Cadereyta de Jiménez - Doctor González

CLAVE: 19473

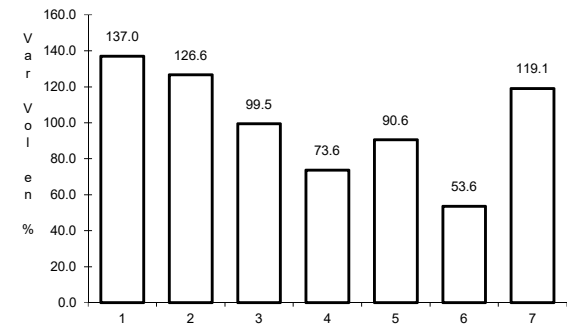
RUTA: NL



Km: 0.00 Tipo: 3 Sent: 0



Km: 18.00 Tipo: 3 Sent: 0

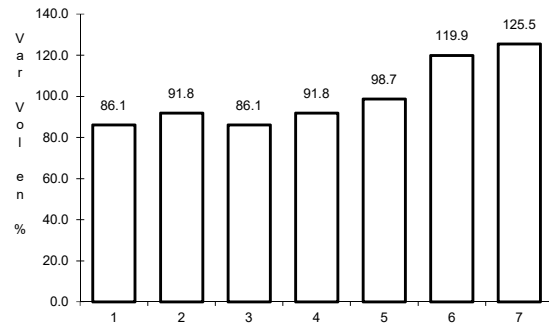


Km: 30.00 Tipo: 1 Sent: 0

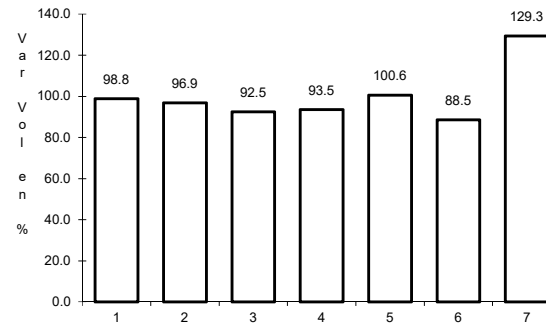
26 CARR: Cd. Benito Juárez - Villa de Santiago

CLAVE: 00087

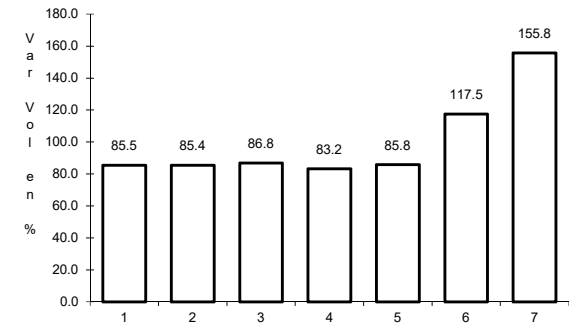
RUTA: NL



Km: 0.00 Tipo: 3 Sent: 0



Km: 23.00 Tipo: 3 Sent: 0

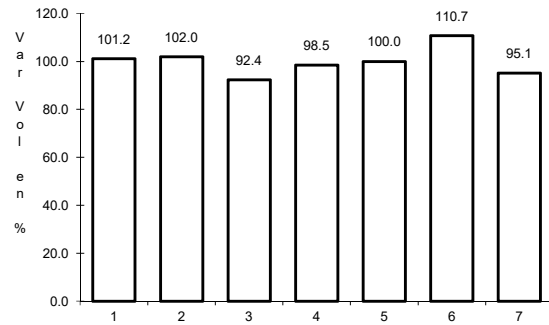


Km: 39.00 Tipo: 1 Sent: 0

27 CARR: China - Méndez

CLAVE: 00191

RUTA: NL-TAM

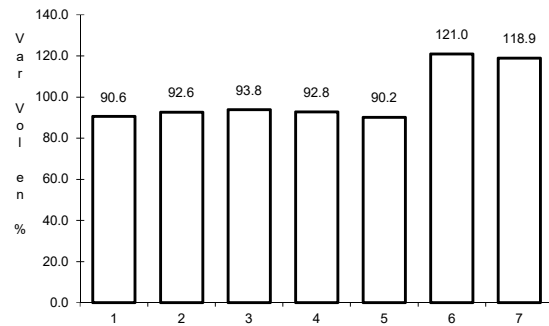


Km: 0.00 Tipo: 3 Sent: 0

28 CARR: Doctor Arroyo - Mier y Noriega

CLAVE: 19088

RUTA: NL-088

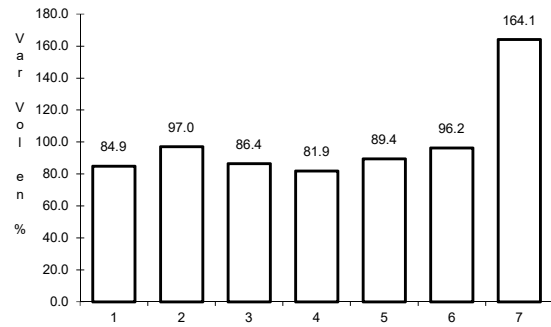


Km: 0.00 Tipo: 3 Sent: 0

29 CARR: Ent. Hacienda del Cielo - T. Der. Cadereyta

CLAVE:

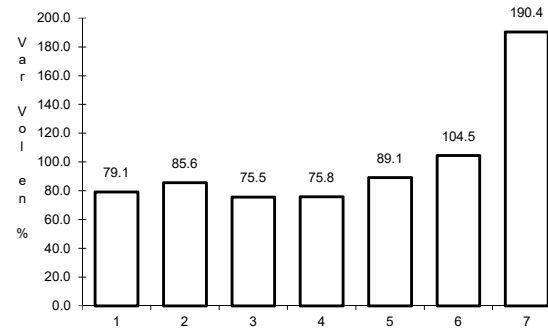
RUTA: NL



Km: 0.00

Tipo: 3

Sent: 0



Km: 11.50

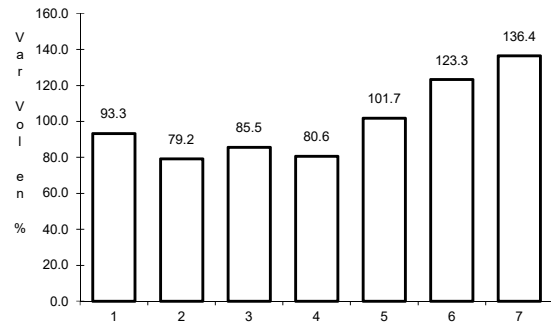
Tipo: 1

Sent: 0

30 CARR: Ent. Huisachito - Nuevo Laredo

CLAVE: 00074

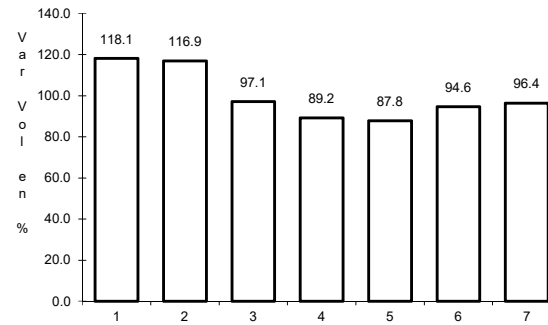
RUTA: NL-001-TAM



Km: 0.00

Tipo: 3

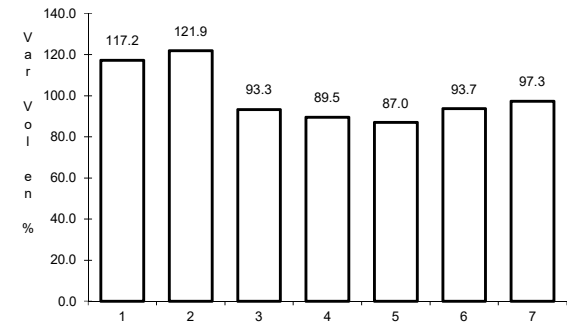
Sent: 0



Km: 47.00

Tipo: 1

Sent: 0



Km: 51.00

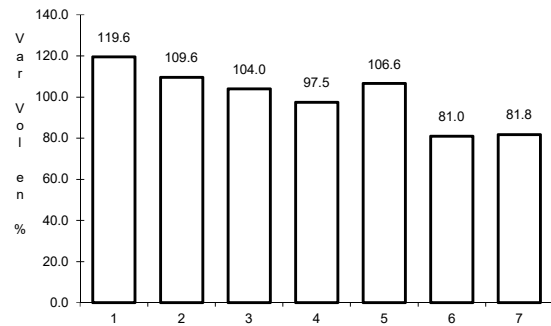
Tipo: 1

Sent: 0

31 CARR: Gral. Bravo - Los Aldamas

CLAVE: 19030

RUTA: NL-030



Km: 0.00

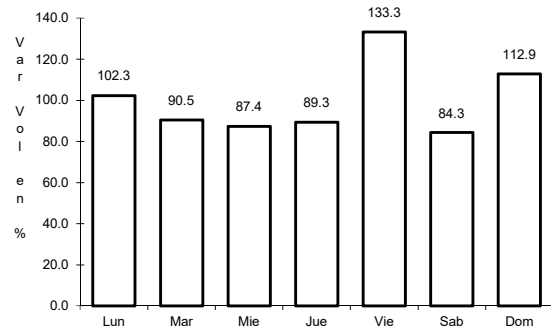
Tipo: 3

Sent: 0

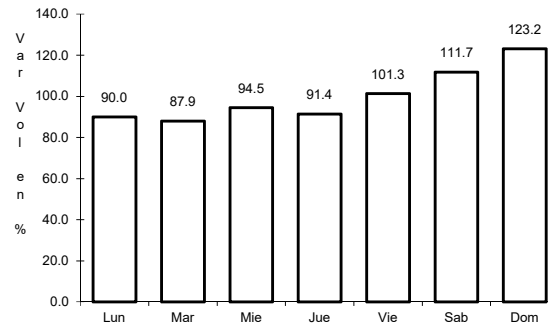
32 CARR: Gral. Treviño - Villaldama

CLAVE: 19003

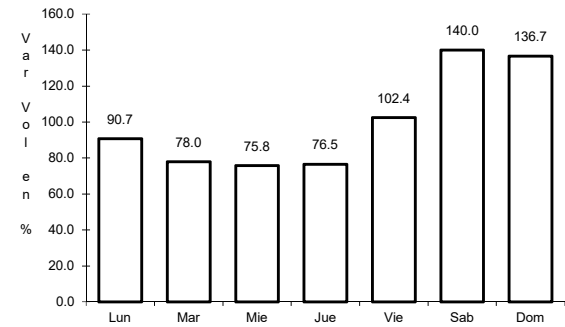
RUTA: NL-003



Km: 0.00 Tipo: 3 Sent: 0



Km: 62.00 Tipo: 1 Sent: 0

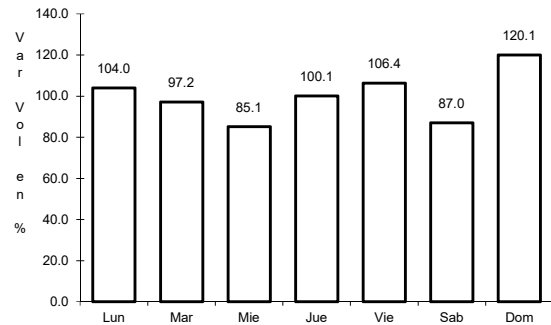


Km: 134.00 Tipo: 1 Sent: 0

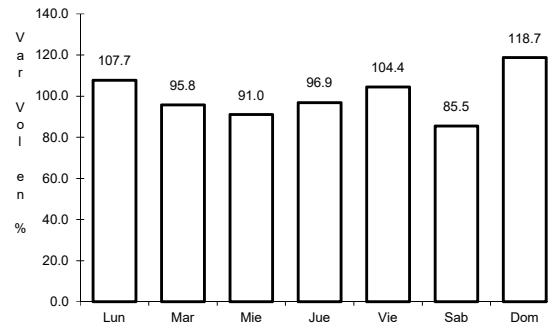
33 CARR: Hacienda Guadalupe - Higuera

CLAVE: 19006

RUTA: NL-006



Km: 3.00 Tipo: 1 Sent: 1

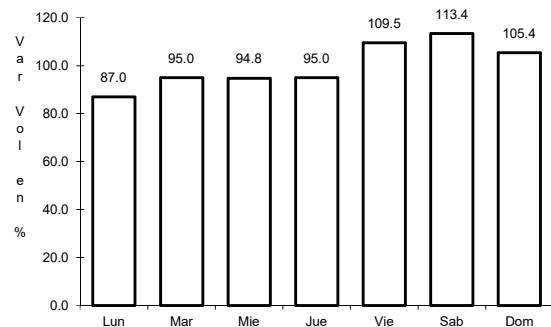


Km: 3.00 Tipo: 1 Sent: 2

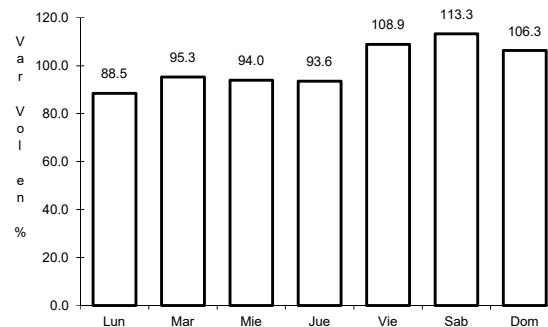
34 CARR: Libramiento de Linares

CLAVE: 19506

RUTA: NL



Km: 0.00 Tipo: 3 Sent: 0

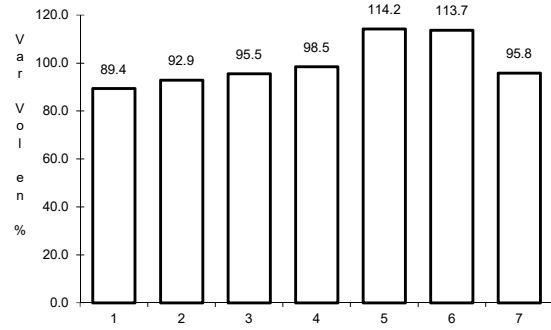


Km: 2.00 Tipo: 3 Sent: 0

35 CARR: Libramiento de Montemorelos

CLAVE: 19492

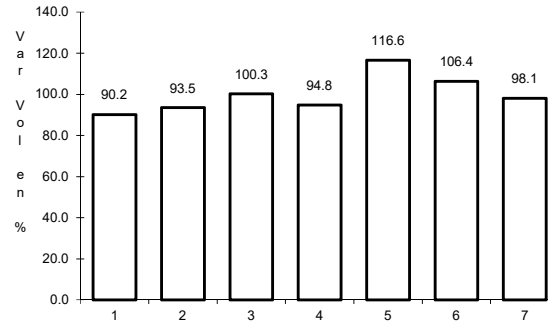
RUTA: NL



Km: 0.00

Tipo: 3

Sent: 1



Km: 0.00

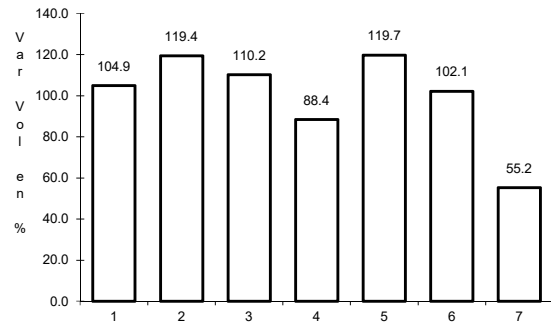
Tipo: 3

Sent: 2

36 CARR: Libramiento de Sabinas Hidalgo

CLAVE: 19492

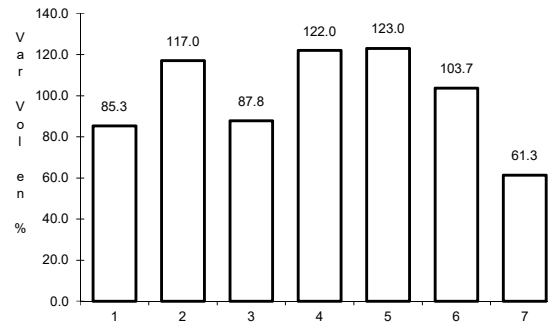
RUTA: NL



Km: 0.00

Tipo: 3

Sent: 0



Km: 9.20

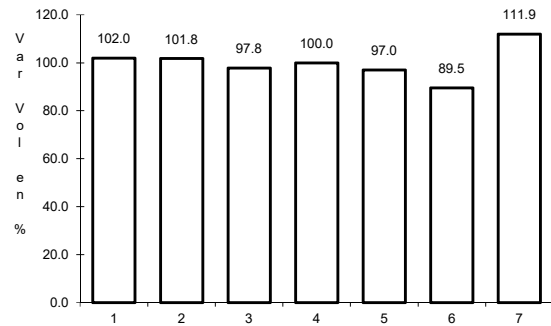
Tipo: 1

Sent: 0

37 CARR: Libramiento Poniente de Cadereyta

CLAVE: 19085

RUTA: NL



Km: 0.00

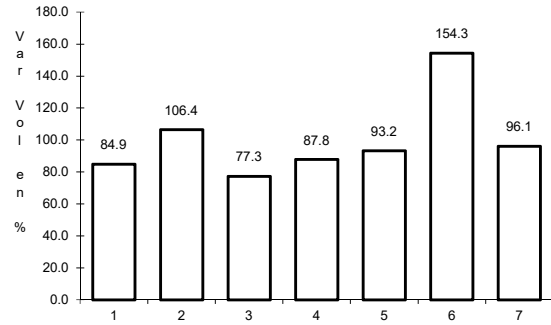
Tipo: 3

Sent: 0

38 CARR: Los Guerra - Los Herreras

CLAVE: 19031

RUTA: TAM-NL



Km: 73.00

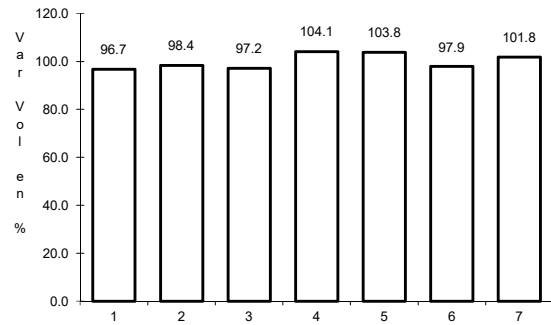
Tipo: 1

Sent: 0

39 CARR: Matchuala - La Poza

CLAVE: 00086

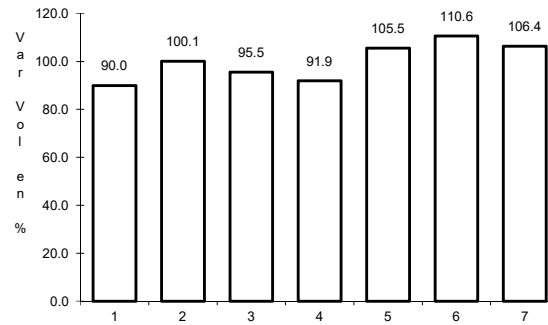
RUTA: SLP-029-NL-061



Km: 0.00

Tipo: 3

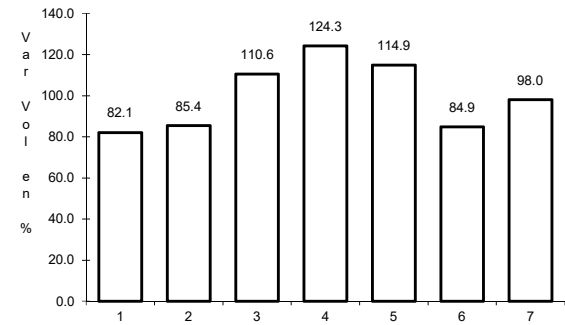
Sent: 0



Km: 49.00

Tipo: 1

Sent: 0



Km: 131.00

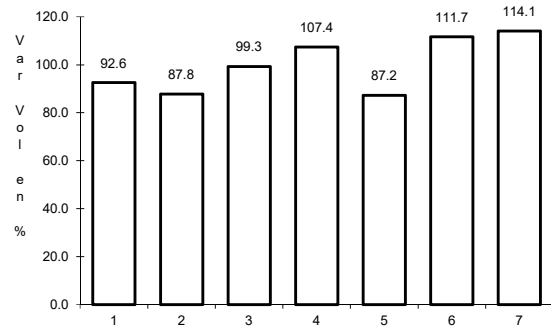
Tipo: 1

Sent: 0

40 CARR: Monclova - Estación Candela

CLAVE: 00501

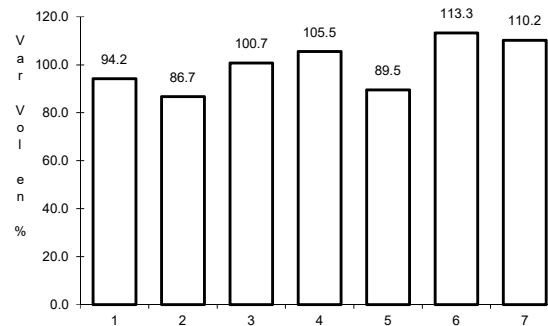
RUTA: COA-030-NL



Km: 5.10

Tipo: 1

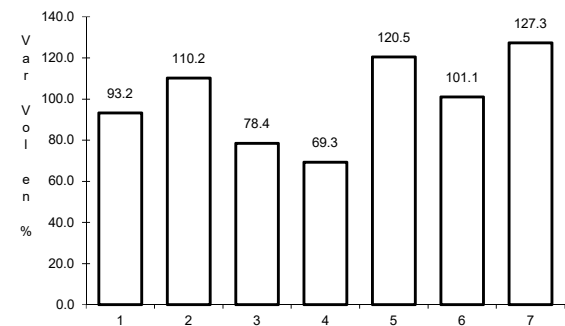
Sent: 1



Km: 5.10

Tipo: 1

Sent: 2



Km: 125.50

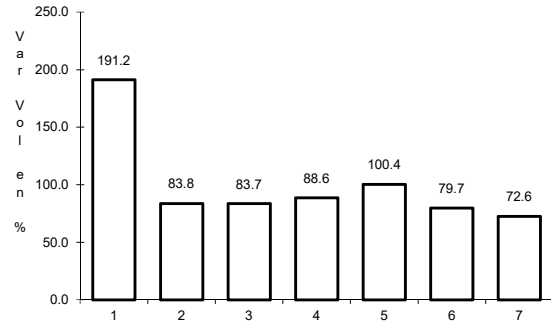
Tipo: 1

Sent: 0

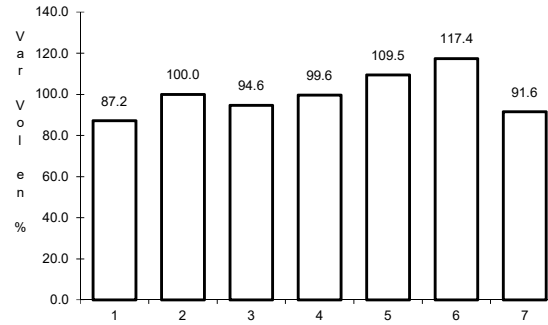
41 CARR: Monterrey - Colombia

CLAVE: 19001

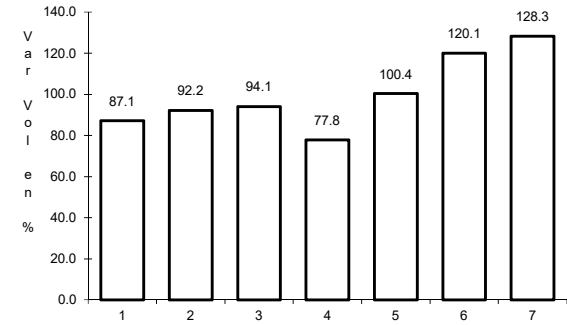
RUTA: NL-001



Km: 0.00 Tipo: 3 Sent: 1



Km: 0.00 Tipo: 3 Sent: 2

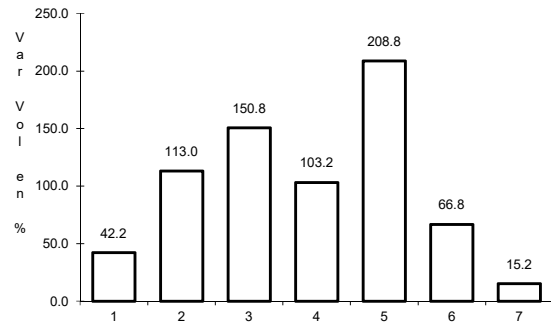


Km: 124.04 Tipo: 1 Sent: 0

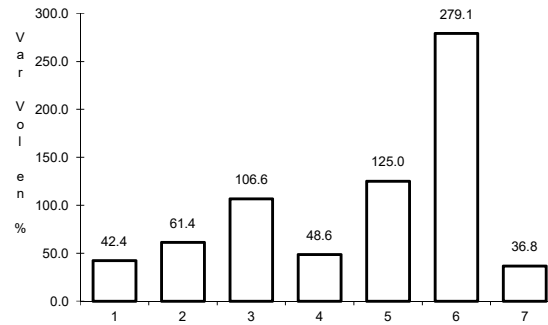
42 CARR: Palo Alto - Vallecillos

CLAVE: 19036

RUTA: NL



Km: 0.00 Tipo: 3 Sent: 0

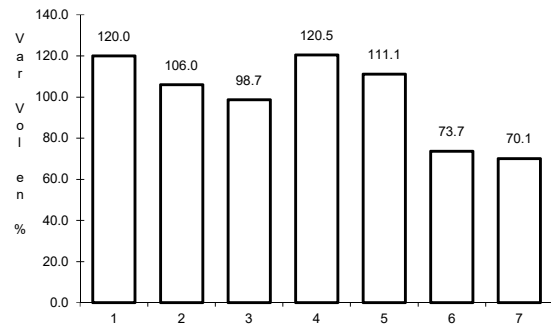


Km: 43.00 Tipo: 1 Sent: 0

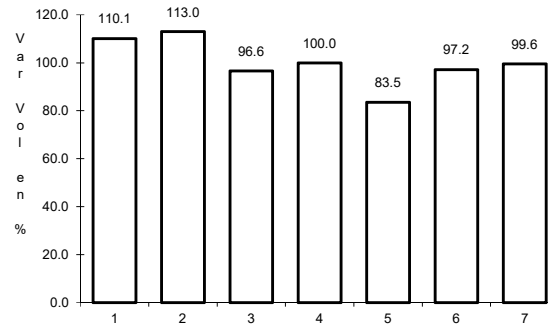
43 CARR: Peña Blanca - Cd. Camargo

CLAVE: 00102

RUTA: NL-TAM



Km: 0.00 Tipo: 3 Sent: 0

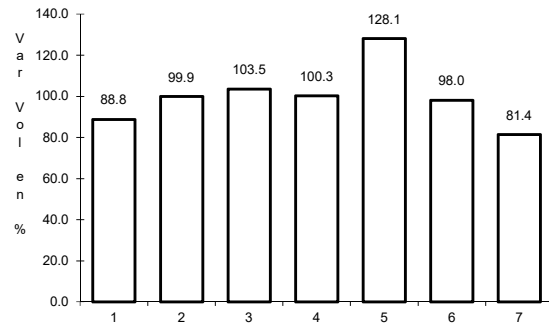


Km: 65.00 Tipo: 1 Sent: 0

44 CARR: Ramal a 18 de Marzo

CLAVE: 19475

RUTA: NL



Km: 0.00

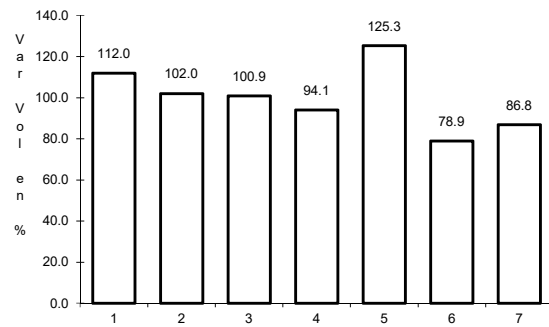
Tipo: 3

Sent: 0

45 CARR: Ramal a Cerralvo

CLAVE: 19013

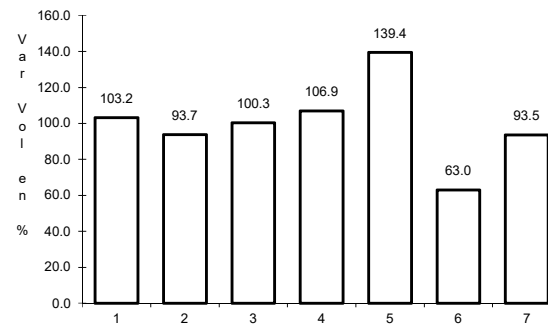
RUTA: NL-013



Km: 0.00

Tipo: 3

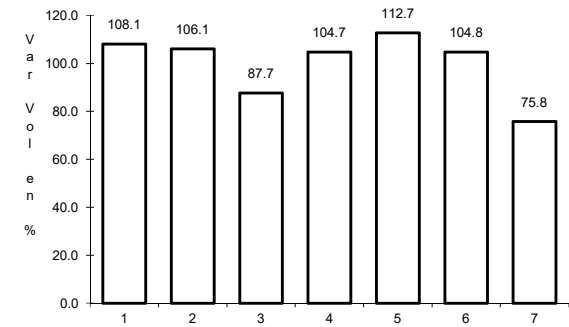
Sent: 0



Km: 21.00

Tipo: 3

Sent: 0



Km: 58.00

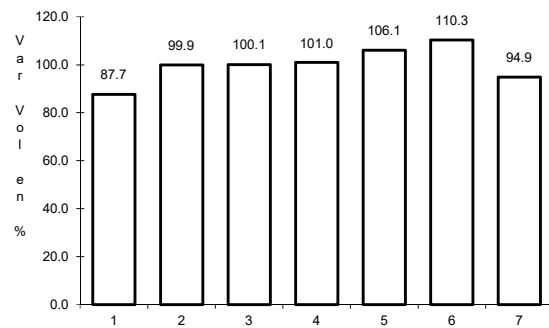
Tipo: 1

Sent: 0

46 CARR: Ramal a Marín

CLAVE: 19007

RUTA: NL



Km: 0.00

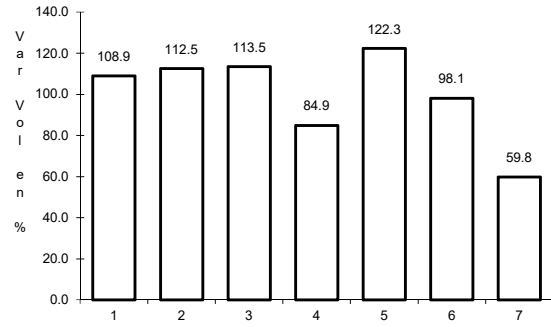
Tipo: 3

Sent: 0

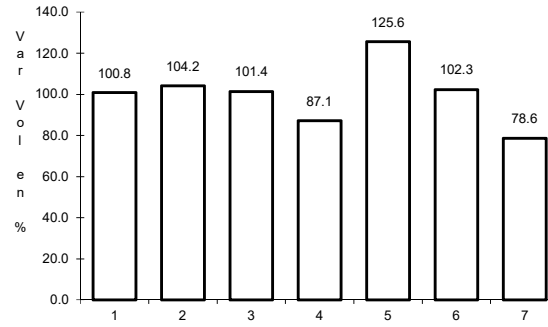
47 CARR: Salinas Victoria - Ciénega de Flores

CLAVE: 19007

RUTA: NL



Km: 0.00 Tipo: 3 Sent: 0

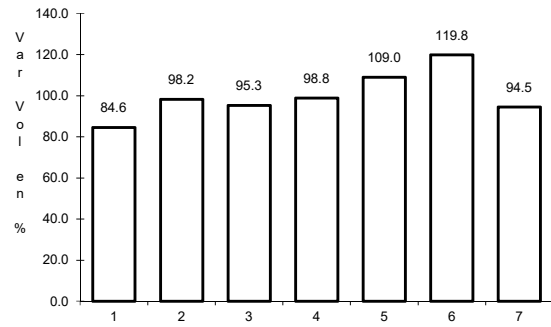


Km: 6.00 Tipo: 1 Sent: 0

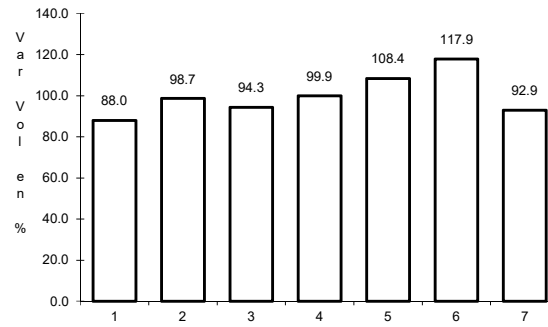
48 CARR: Santa Rosa - Mezquitil

CLAVE: 00087

RUTA: NL



Km: 0.00 Tipo: 3 Sent: 1

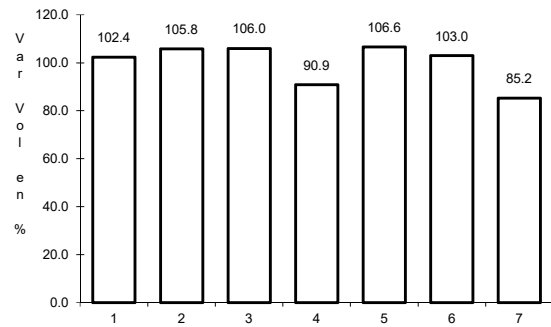


Km: 0.00 Tipo: 3 Sent: 2

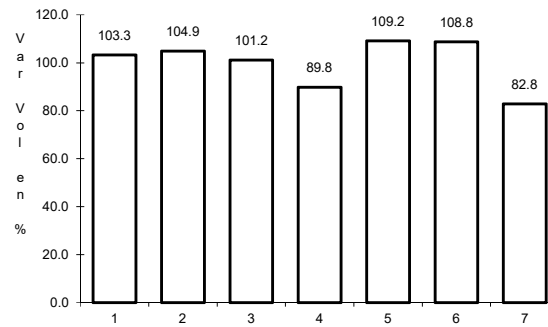
49 CARR: Santa Rosa - Salinas Victoria

CLAVE: 19037

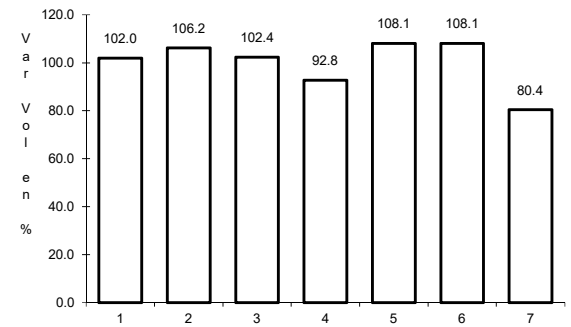
RUTA: NL



Km: 0.00 Tipo: 3 Sent: 0



Km: 13.85 Tipo: 1 Sent: 1

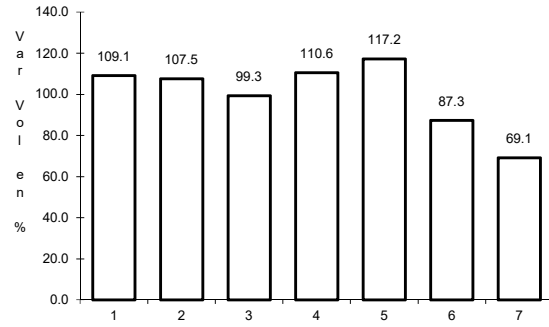


Km: 13.85 Tipo: 1 Sent: 2

50 CARR: Aeropuerto de Monterrey (Cuota)

CLAVE:

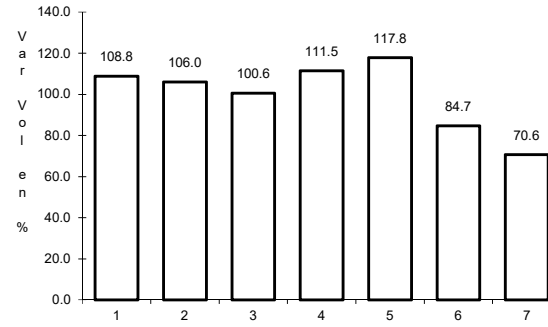
RUTA: NL-D



Km: 3.10

Tipo: 3

Sent: 1



Km: 3.10

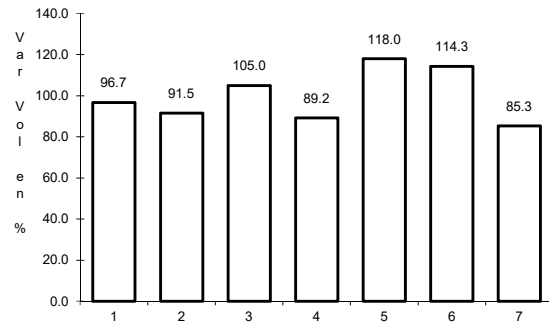
Tipo: 3

Sent: 2

51 CARR: Anillo Periférico de Monterrey (Cuota)

CLAVE: 19004

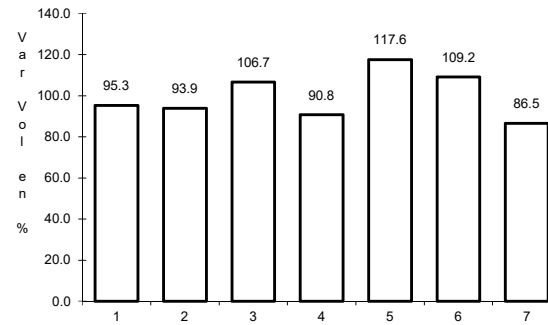
RUTA: NL-D



Km: 0.00

Tipo: 3

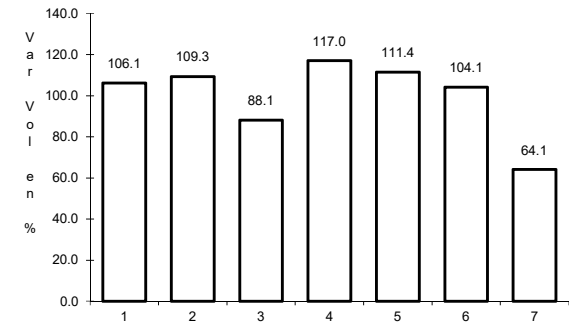
Sent: 1



Km: 0.00

Tipo: 3

Sent: 2



Km: 49.30

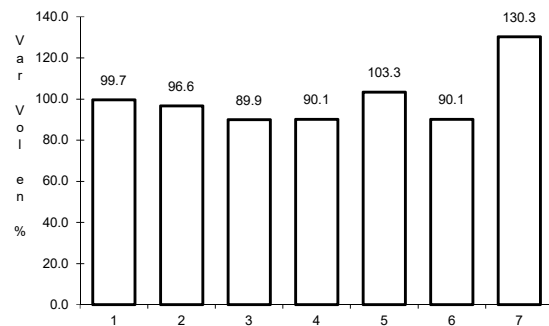
Tipo: 1

Sent: 1

52 CARR: Monterrey - Cadereyta (Cuota)

CLAVE: 19281

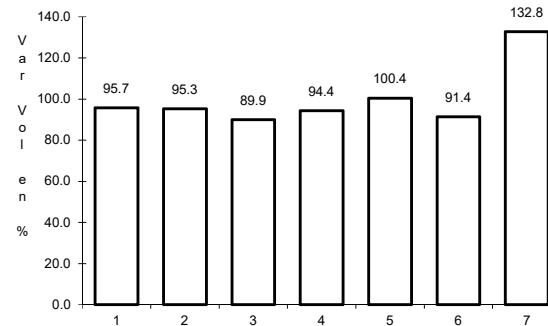
RUTA: NL-D



Km: 12.50

Tipo: 1

Sent: 1



Km: 12.50

Tipo: 1

Sent: 2

