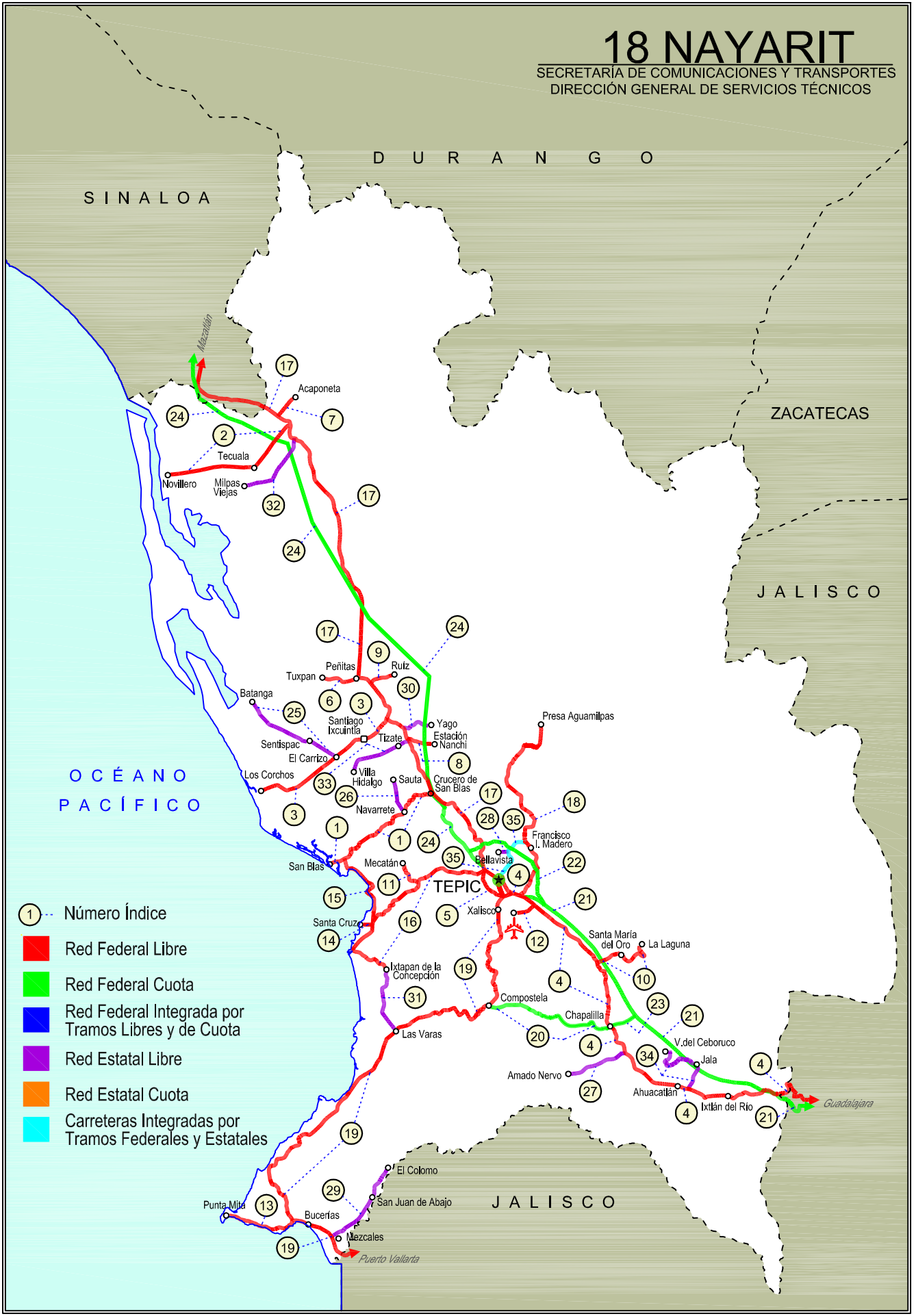


18 NAYARIT

SECRETARÍA DE COMUNICACIONES Y TRANSPORTES
DIRECCIÓN GENERAL DE SERVICIOS TÉCNICOS



- ① Número Índice
- Red Federal Libre
- Red Federal Cuota
- Red Federal Integrada por Tramos Libres y de Cuota
- Red Estatal Libre
- Red Estatal Cuota
- Carreteras Integradas por Tramos Federales y Estatales



NAYARIT

NO. INDICE CARRETERA	RUTA
---RED FEDERAL LIBRE---	
1 Crucero de San Blas - San Blas	MEX-015
2 Ent. Acaponeta - El Novillero	MEX-015
3 Ent. Santiago Ixcuintla - Playa Los Corchos	MEX-015
4 Guadalajara - Tepic	MEX-015
5 Libramiento de Tepic	MEX-015
6 Peñitas - Tuxpan	MEX-015
7 Ramal a Acaponeta	MEX-015
8 Ramal a Estación Nanchi	MEX-015
9 Ramal a Estación Ruiz	MEX-015
10 Ramal a La Laguna de Santa María	MEX-015
11 Ramal a Mecatán	MEX-015
12 Ramal a Nuevo Aeropuerto de Tepic	MEX-015
13 Ramal a Punta Mita	MEX-200
14 Ramal a Santa Cruz	MEX-015
15 Santa Cruz - San Blas	MEX-015
16 Tepic - Ixtapan de La Concepción	MEX-015
17 Tepic - Mazatlán	MEX-015
18 Tepic - Presa Aguamilpa	MEX-015
19 Tepic - Puerto Vallarta	MEX-200
---RED FEDERAL DE CUOTA---	
20 Chapalilla - Compostela (Cuota)	MEX-068D
21 Guadalajara - Tepic (Cuota)	MEX-015D
22 Libramiento de Tepic (Cuota)	MEX-015D
23 Ramal a Tequepexpan	MEX-015D
24 Tepic - Villa Unión (cuota)	MEX-015D
---RED ESTATAL LIBRE---	
25 El Carrizo - La Batanga	NAY-078
26 Navarrete - Sauta	NAY-013
27 Ramal a Amado Nervo	NAY
28 Ramal a Bellavista	NAY-059
29 Ramal a El Colomo	NAY
30 Ramal a Estación Yago	NAY
31 Ramal a Ixtapan de La Concepción	NAY
32 Ramal a Milpas Viejas	NAY
33 Ramal a Villa Hidalgo	NAY
34 Ramal a Volcán del Ceboruco	NAY
---CARRETERAS INTEGRADAS POR TRAMOS FEDERALES Y ESTATALES---	
35 Tepic - Francisco I. Madero	NAY-MEX

NAYARIT

1 CARR: Crucero de San Blas - San Blas

CLAVE: 18229

RUTA: MEX-015

AÑO: 2017

LUGAR	ESTACION				CLASIFICACION VEHICULAR EN PORCIENTO												COORDENADAS			
	KM	TE	SC	TDPA	M	A	B	C2	C3	T3S2	T3S3	T3S2R4	OTROS	A	B	C	K'	D	LATITUD	LONGITUD
T. C. Tepic - Mazatlán	0.00	3	0	3059	9.9	79.1	1.4	6.5	2.6	0.3	0.2	0.0	0.0	89.0	1.4	9.6	0.076	0.501	21.691667	-105.054300
Navarrete	11.00	3	0	3425	15.6	72.3	1.4	7.6	2.7	0.3	0.1	0.0	0.0	87.9	1.4	10.7	0.092	0.507	21.646442	-105.124841
San Blas	36.00	1	0	4685	13.4	77.3	0.4	7.2	0.8	0.4	0.3	0.1	0.1	90.7	0.4	8.9	0.146	0.511	21.544509	-105.271406

2 CARR: Ent. Acaponeta - El Novillero

CLAVE: 18023

RUTA: MEX-015

AÑO: 2017

LUGAR	ESTACION				CLASIFICACION VEHICULAR EN PORCIENTO												COORDENADAS			
	KM	TE	SC	TDPA	M	A	B	C2	C3	T3S2	T3S3	T3S2R4	OTROS	A	B	C	K'	D	LATITUD	LONGITUD
T. C. Tepic - Mazatlán	0.00	3	0	4834	18.3	62.5	2.5	14.5	0.7	0.9	0.3	0.2	0.1	80.8	2.5	16.7	0.082	0.505	22.486237	-105.385233
Tecuala	13.00	1	0	6001	8.9	73.3	1.6	14.4	1.3	0.3	0.1	0.1	0.0	82.2	1.6	16.2	0.059	0.517	22.419500	-105.444067
Tecuala	13.00	3	0	5267	24.8	64.4	0.2	9.8	0.6	0.1	0.1	0.0	0.0	89.2	0.2	10.6	0.064	0.508	22.399439	-105.486835
El Novillero	36.00	1	0	1887	6.4	75.8	0.6	16.7	0.5	0.0	0.0	0.0	0.0	82.2	0.6	17.2	0.090	0.598	22.382765	-105.657689

3 CARR: Ent. Santiago Ixcuintla - Playa Los Corchos

CLAVE: 18016

RUTA: MEX-015

AÑO: 2017

LUGAR	ESTACION				CLASIFICACION VEHICULAR EN PORCIENTO												COORDENADAS			
	KM	TE	SC	TDPA	M	A	B	C2	C3	T3S2	T3S3	T3S2R4	OTROS	A	B	C	K'	D	LATITUD	LONGITUD
T. C. Tepic - Mazatlán	0.00	3	1	2951	6.5	81.4	1.1	7.2	2.7	0.8	0.2	0.1	0.0	87.9	1.1	11.0	0.078	0.501	21.847702	-105.158186
T. C. Tepic - Mazatlán	0.00	3	2	2959	6.5	82.4	1.0	6.5	2.5	0.7	0.3	0.1	0.0	88.9	1.0	10.1	0.079	0.501	21.847707	-105.158190
Santiago Ixcuintla	8.00	1	1	4693	14.3	73.9	0.8	9.1	1.3	0.5	0.1	0.0	0.0	88.2	0.8	11.0	0.061	0.505	21.820965	-105.186040
Santiago Ixcuintla	8.00	1	2	4793	14.9	75.3	0.7	7.3	1.1	0.5	0.2	0.0	0.0	90.2	0.7	9.1	0.058	0.505	21.820965	-105.186040
Santiago Ixcuintla	8.00	3	0	8881	16.1	75.8	0.3	6.6	0.7	0.2	0.2	0.0	0.1	91.9	0.3	7.8	0.089	0.512	21.809038	-105.222829
T. Der. Mexcaltitán	17.00	1	0	6839	15.7	75.2	0.3	7.3	0.8	0.2	0.4	0.0	0.1	90.9	0.3	8.8	0.090	0.503	21.773920	-105.270419
T. Der. Mexcaltitán	17.00	3	0	4097	14.9	75.9	0.3	7.8	0.9	0.1	0.1	0.0	0.0	90.8	0.3	8.9	0.102	0.506	21.770745	-105.274782
Playa Los Corchos	39.00	1	0	1224	19.0	74.0	0.1	6.6	0.3	0.0	0.0	0.0	0.0	93.0	0.1	6.9	0.212	0.506	21.697645	-105.448767

4 CARR: Guadalajara - Tepic

CLAVE: 00031

RUTA: MEX-015

AÑO: 2017

LUGAR	ESTACION				CLASIFICACION VEHICULAR EN PORCIENTO												COORDENADAS			
	KM	TE	SC	TDPA	M	A	B	C2	C3	T3S2	T3S3	T3S2R4	OTROS	A	B	C	K'	D	LATITUD	LONGITUD
Guadalajara	0.00																			
T. Der. Base Aérea No. 2	8.30	3	1	35482	1.3	80.3	2.5	7.6	1.8	4.1	1.2	0.9	0.3	81.6	2.5	15.9	0.089	0.502	20.712833	-103.469633
T. Der. Base Aérea No. 2	8.30	3	2	35228	1.3	79.0	2.5	8.1	2.0	4.3	1.5	1.0	0.3	80.3	2.5	17.2	0.081	0.502	20.712730	-103.469776
T. Izq. La Primavera	20.50	1	1	23875	1.5	80.2	2.7	7.1	1.8	3.9	1.5	1.0	0.3	81.7	2.7	15.6	0.086	0.533	20.728175	-103.552063
T. Izq. La Primavera	20.50	1	2	20918	1.2	74.9	3.4	10.3	2.3	4.9	1.6	1.2	0.2	76.1	3.4	20.5	0.077	0.533	20.728049	-103.552096

NAYARIT

4 CARR: Guadalajara - Tepic

CLAVE: 00031

RUTA: MEX-015

AÑO: 2017

LUGAR	ESTACION				CLASIFICACION VEHICULAR EN PORCIENTO										COORDENADAS					
	KM	TE	SC	TDPA	M	A	B	C2	C3	T3S2	T3S3	T3S2R4	OTROS	A	B	C	K'	D	LATITUD	LONGITUD
El Arenal	36.20	1	1	7461	2.4	80.5	1.3	9.1	2.5	3.0	1.2	0.0	0.0	82.9	1.3	15.8	0.086	0.530	20.770131	-103.682340
El Arenal	36.20	1	2	6609	2.6	76.2	1.6	11.4	3.4	3.5	1.3	0.0	0.0	78.8	1.6	19.6	0.071	0.530	20.770065	-103.682403
Tequila	57.50	3	0	7763	4.4	71.7	2.5	10.7	2.2	6.5	1.2	0.2	0.6	76.1	2.5	21.4	0.069	0.535	20.901595	-103.835427
Magdalena	76.80	3	0	5368	3.2	76.5	1.1	11.4	2.1	4.3	0.9	0.2	0.3	79.7	1.1	19.2	0.073	0.501	20.922298	-103.996394
Lim. Edos. Term. Jal. Ppia. Nay.	123.09																			
Ixtlán del Río	138.84	1	0	3110	6.7	76.6	1.2	11.9	1.5	1.7	0.4	0.0	0.0	83.3	1.2	15.5	0.066	0.555	21.033534	-104.348341
Ixtlán del Río	138.84	3	0	9832	6.2	79.3	1.3	10.8	0.9	0.8	0.6	0.0	0.1	85.5	1.3	13.2	0.075	0.526	21.037187	-104.392773
Ahuacatlán	152.00	1	0	8875	2.8	67.9	6.0	14.4	2.5	4.8	1.4	0.1	0.1	70.7	6.0	23.3	0.069	0.519	21.052478	-104.472884
Ahuacatlán	152.00	3	0	6782	2.9	69.4	2.5	11.0	4.6	7.2	2.1	0.1	0.2	72.3	2.5	25.2	0.067	0.518	21.059174	-104.497679
T. Izq. Amado Nervo	167.32	1	0	6184	1.4	63.8	3.5	9.9	5.3	11.0	3.8	0.5	0.8	65.2	3.5	31.3	0.060	0.518	21.129098	-104.601660
T. Izq. Compostela	175.50	1	0	8990	1.2	69.0	5.2	8.6	4.0	7.8	2.9	0.5	0.8	70.2	5.2	24.6	0.077	0.517	21.189868	-104.637639
T. Izq. Compostela	175.50	3	0	5569	2.3	62.3	3.5	10.6	7.0	10.8	3.0	0.1	0.4	64.6	3.5	31.9	0.050	0.524	21.196271	-104.645097
T. Der. Santa María del Oro	196.00	1	0	4738	2.6	65.6	3.1	10.3	6.6	8.7	2.4	0.1	0.6	68.2	3.1	28.7	0.068	0.524	21.324465	-104.669738
T. Der. Santa María del Oro	196.00	3	0	5942	2.0	64.7	3.1	7.9	8.2	10.2	2.8	0.5	0.6	66.7	3.1	30.2	0.079	0.511	21.331236	-104.674815
T. Izq. Aeropuerto de Tepic	215.68	1	0	12120	2.5	70.2	2.0	7.9	7.9	5.5	2.3	0.7	1.0	72.7	2.0	25.3	0.063	0.524	21.446255	-104.810885
San Cayetano	215.90	3	1	8185	2.9	72.6	1.0	6.7	4.9	8.4	2.0	0.5	1.0	75.5	1.0	23.5	0.070	0.508	21.454665	-104.821075
San Cayetano	215.90	3	2	8459	3.2	69.7	1.1	7.6	5.2	9.5	2.1	0.5	1.1	72.9	1.1	26.0	0.068	0.508	21.454665	-104.821075
T. Izq. Libramiento de Tepic (Central)	219.10	1	1	19003	2.7	76.0	3.2	7.5	3.0	4.5	1.6	0.7	0.8	78.7	3.2	18.1	0.051	0.540	21.467804	-104.840659
T. Izq. Libramiento de Tepic (Lateral)	219.10	1	1	1589	2.4	77.6	1.3	9.8	4.2	2.1	1.4	0.3	0.9	80.0	1.3	18.7	0.098	0.725	21.467688	-104.840680
T. Izq. Libramiento de Tepic (Central)	219.10	1	2	16162	3.0	78.1	2.2	3.6	4.2	5.1	2.0	0.8	1.0	81.1	2.2	16.7	0.053	0.540	21.467787	-104.840663
T. Izq. Libramiento de Tepic (Lateral)	219.10	1	2	4196	4.6	74.8	1.6	11.1	3.2	2.5	1.0	0.8	0.4	79.4	1.6	19.0	0.084	0.725	21.467662	-104.840696
T. Izq. Libramiento de Tepic	219.10	3	1	20142	3.4	79.6	1.8	7.7	3.7	1.6	1.4	0.5	0.3	83.0	1.8	15.2	0.062	0.521	21.470283	-104.848002
T. Izq. Libramiento de Tepic	219.10	3	2	21907	3.5	80.9	1.7	5.9	3.5	1.7	1.8	0.6	0.4	84.4	1.7	13.9	0.064	0.521	21.470282	-104.848000
Tepic	224.80	1	1	21531	5.1	77.1	2.0	7.6	2.2	2.4	2.2	1.3	0.1	82.2	2.0	15.8	0.059	0.521	21.472232	-104.853408
Tepic	224.80	1	2	19825	4.2	76.2	2.3	8.5	2.4	2.6	2.4	1.3	0.1	80.4	2.3	17.3	0.056	0.521	21.472161	-104.853426

5 CARR: Libramiento de Tepic

CLAVE: 18232

RUTA: MEX-015

AÑO: 2017

LUGAR	ESTACION				CLASIFICACION VEHICULAR EN PORCIENTO										COORDENADAS					
	KM	TE	SC	TDPA	M	A	B	C2	C3	T3S2	T3S3	T3S2R4	OTROS	A	B	C	K'	D	LATITUD	LONGITUD
T. C. Guadalajara - Tepic	0.00																			
X. C. Tepic - Puerto Vallarta	5.00	1	1	30665	4.2	83.7	1.1	5.2	2.1	2.1	0.8	0.5	0.3	87.9	1.1	11.0	0.087	0.530	21.469446	-104.886518
X. C. Tepic - Puerto Vallarta	5.00	1	2	27240	2.6	81.8	1.2	8.7	2.2	2.3	0.7	0.4	0.1	84.4	1.2	14.4	0.073	0.530	21.469317	-104.886632
T. C. Tepic - Mazatlán	18.80	1	1	15364	3.5	82.2	1.5	5.3	2.6	3.4	0.7	0.6	0.2	85.7	1.5	12.8	0.073	0.527	21.515638	-104.924518
T. C. Tepic - Mazatlán	18.80	1	2	17126	3.6	81.7	1.8	5.7	2.3	3.1	0.9	0.6	0.3	85.3	1.8	12.9	0.087	0.527	21.516028	-104.925013

NAYARIT

6 CARR: Peñitas - Tuxpan

CLAVE: 18019

RUTA: MEX-015

AÑO: 2017

LUGAR	ESTACION				CLASIFICACION VEHICULAR EN PORCIENTO													COORDENADAS		
	KM	TE	SC	TDPA	M	A	B	C2	C3	T3S2	T3S3	T3S2R4	OTROS	A	B	C	K'	D	LATITUD	LONGITUD
Peñitas	0.00	3	0	7331	6.2	79.1	4.0	5.2	1.1	3.3	0.5	0.1	0.5	85.3	4.0	10.7	0.083	0.502	21.941550	-105.228867
Tuxpan	9.00	1	0	7466	16.5	74.4	0.6	7.9	0.3	0.1	0.2	0.0	0.0	90.9	0.6	8.5	0.088	0.523	21.942515	-105.278654

7 CARR: Ramal a Acaponeta

CLAVE: 18038

RUTA: MEX-015

AÑO: 2017

LUGAR	ESTACION				CLASIFICACION VEHICULAR EN PORCIENTO													COORDENADAS		
	KM	TE	SC	TDPA	M	A	B	C2	C3	T3S2	T3S3	T3S2R4	OTROS	A	B	C	K'	D	LATITUD	LONGITUD
T. C. Tepic - Mazatlán	0.00	3	1	6149	14.4	76.4	0.5	7.5	0.7	0.3	0.1	0.1	0.0	90.8	0.5	8.7	0.081	0.500	22.489661	-105.381048
T. C. Tepic - Mazatlán	0.00	3	2	6157	14.2	72.9	0.7	11.0	0.6	0.3	0.2	0.1	0.0	87.1	0.7	12.2	0.086	0.500	22.489669	-105.381036
Acaponeta	3.00																			

8 CARR: Ramal a Estación Nanchi

CLAVE: 18068

RUTA: MEX-015

AÑO: 2017

LUGAR	ESTACION				CLASIFICACION VEHICULAR EN PORCIENTO													COORDENADAS		
	KM	TE	SC	TDPA	M	A	B	C2	C3	T3S2	T3S3	T3S2R4	OTROS	A	B	C	K'	D	LATITUD	LONGITUD
T. C. Tepic - Mazatlán	0.00	3	0	986	21.4	65.2	0.7	10.9	1.3	0.4	0.1	0.0	0.0	86.6	0.7	12.7	0.088	0.580	21.810458	-105.098359
Estación Nanchi	5.00																			

9 CARR: Ramal a Estación Ruíz

CLAVE: 18026

RUTA: MEX-015

AÑO: 2017

LUGAR	ESTACION				CLASIFICACION VEHICULAR EN PORCIENTO													COORDENADAS		
	KM	TE	SC	TDPA	M	A	B	C2	C3	T3S2	T3S3	T3S2R4	OTROS	A	B	C	K'	D	LATITUD	LONGITUD
T. C. Tepic - Mazatlán	0.00	3	0	4940	7.3	81.8	0.4	9.1	1.1	0.2	0.1	0.0	0.0	89.1	0.4	10.5	0.081	0.505	21.934913	-105.190103
Estación Ruíz	5.50	1	0	5988	14.4	76.1	0.2	5.9	0.5	2.5	0.2	0.0	0.2	90.5	0.2	9.3	0.078	0.503	21.943188	-105.167053

10 CARR: Ramal a La Laguna de Santa María

CLAVE: 18005

RUTA: MEX-015

AÑO: 2017

LUGAR	ESTACION				CLASIFICACION VEHICULAR EN PORCIENTO													COORDENADAS		
	KM	TE	SC	TDPA	M	A	B	C2	C3	T3S2	T3S3	T3S2R4	OTROS	A	B	C	K'	D	LATITUD	LONGITUD
T. C. Guadalajara - Tepic	0.00	3	0	3571	3.3	77.0	1.5	8.8	6.7	1.9	0.8	0.0	0.0	80.3	1.5	18.2	0.080	0.503	21.326689	-104.669285
Santa María del Oro	11.50	1	1	2173	8.8	81.0	0.3	8.8	1.0	0.1	0.0	0.0	0.0	89.8	0.3	9.9	0.121	0.503	21.326143	-104.595258
Santa María del Oro	11.50	1	2	2151	8.2	83.3	0.1	7.3	1.0	0.1	0.0	0.0	0.0	91.5	0.1	8.4	0.111	0.503	21.326144	-104.595260
Laguna de Santa María	20.00	1	0	880	9.4	83.4	0.2	6.3	0.3	0.3	0.1	0.0	0.0	92.8	0.2	7.0	0.242	0.508	21.360439	-104.570511

NAYARIT

11 CARR: Ramal a Mecatán

CLAVE: 18010

RUTA: MEX-015

AÑO: 2017

LUGAR	ESTACION				CLASIFICACION VEHICULAR EN PORCIENTO														COORDENADAS	
	KM	TE	SC	TDPA	M	A	B	C2	C3	T3S2	T3S3	T3S2R4	OTROS	A	B	C	K'	D	LATITUD	LONGITUD
T. C. (Tepic - Mazatlán) - Ixtapan de La Concepción	0.00	3	0	1007	7.5	81.2	0.1	9.7	0.8	0.6	0.1	0.0	0.0	88.7	0.1	11.2	0.066	0.505	21.500232	-105.084604
Mecatán	9.00																			

12 CARR: Ramal a Nuevo Aeropuerto de Tepic

CLAVE: 18012

RUTA: MEX-015

AÑO: 2017

LUGAR	ESTACION				CLASIFICACION VEHICULAR EN PORCIENTO														COORDENADAS	
	KM	TE	SC	TDPA	M	A	B	C2	C3	T3S2	T3S3	T3S2R4	OTROS	A	B	C	K'	D	LATITUD	LONGITUD
T. C. Guadalajara - Tepic	0.00	3	0	4664	5.5	83.6	0.4	8.2	2.1	0.2	0.0	0.0	0.0	89.1	0.4	10.5	0.089	0.564	21.446109	-104.818473
Aeropuerto de Tepic	5.00																			

13 CARR: Ramal a Punta Mita

CLAVE: 18020

RUTA: MEX-200

AÑO: 2017

LUGAR	ESTACION				CLASIFICACION VEHICULAR EN PORCIENTO														COORDENADAS	
	KM	TE	SC	TDPA	M	A	B	C2	C3	T3S2	T3S3	T3S2R4	OTROS	A	B	C	K'	D	LATITUD	LONGITUD
T. C. Tepic - Puerto Vallarta	0.00	3	0	15686	5.6	85.3	0.6	7.9	0.4	0.1	0.1	0.0	0.0	90.9	0.6	8.5	0.069	0.516	20.758420	-105.375434
San Ignacio	9.00	3	0	6616	5.8	79.7	1.2	12.7	0.6	0.0	0.0	0.0	0.0	85.5	1.2	13.3	0.078	0.514	20.759518	-105.472320
Punta Mita	18.00																			

14 CARR: Ramal a Santa Cruz

CLAVE: 18030

RUTA: MEX-015

AÑO: 2017

LUGAR	ESTACION				CLASIFICACION VEHICULAR EN PORCIENTO														COORDENADAS	
	KM	TE	SC	TDPA	M	A	B	C2	C3	T3S2	T3S3	T3S2R4	OTROS	A	B	C	K'	D	LATITUD	LONGITUD
T. C. Tepic - Ixtapan de La Concepción	0.00																			
Santa Cruz	1.30	1	0	2768	20.7	72.6	0.1	6.1	0.1	0.1	0.1	0.1	0.1	93.3	0.1	6.6	0.066	0.509	21.433803	-105.195034

15 CARR: Santa Cruz - San Blas

CLAVE: 18230

RUTA: MEX-015

AÑO: 2017

LUGAR	ESTACION				CLASIFICACION VEHICULAR EN PORCIENTO														COORDENADAS	
	KM	TE	SC	TDPA	M	A	B	C2	C3	T3S2	T3S3	T3S2R4	OTROS	A	B	C	K'	D	LATITUD	LONGITUD
Santa Cruz	0.00	3	0	3545	8.5	78.6	0.4	11.9	0.4	0.2	0.0	0.0	0.0	87.1	0.4	12.5	0.105	0.563	21.435914	-105.186750
Playa Los Cocos	3.90	1	0	2895	14.4	77.1	0.5	7.1	0.5	0.3	0.1	0.0	0.0	91.5	0.5	8.0	0.128	0.504	21.461890	-105.187667
Aticama	5.00	3	0	3634	19.4	72.6	0.4	6.2	0.8	0.4	0.2	0.0	0.0	92.0	0.4	7.6	0.129	0.511	21.489142	-105.189706
T. C. Crucero San Blas - San Blas	17.00	1	0	4412	16.1	73.9	0.4	7.8	1.1	0.4	0.3	0.0	0.0	90.0	0.4	9.6	0.133	0.510	21.547448	-105.253330

NAYARIT

16 CARR: Tepic - Ixtapan de La Concepción

CLAVE: 18028

RUTA: MEX-015

AÑO: 2017

LUGAR	ESTACION				CLASIFICACION VEHICULAR EN PORCIENTO										COORDENADAS					
	KM	TE	SC	TDPA	M	A	B	C2	C3	T3S2	T3S3	T3S2R4	OTROS	A	B	C	K'	D	LATITUD	LONGITUD
T. C. Tepic - Mazatlán	0.00	3	0	11530	6.9	84.3	0.1	7.6	0.6	0.3	0.2	0.0	0.0	91.2	0.1	8.7	0.080	0.527	21.521525	-104.932153
T. Der. Mecatán	19.00	1	0	1813	4.8	84.6	0.3	7.9	1.6	0.5	0.2	0.0	0.1	89.4	0.3	10.3	0.060	0.504	21.500875	-105.081747
T. Der. Mecatán	19.00	3	0	2403	7.4	80.1	0.3	10.6	1.2	0.3	0.1	0.0	0.0	87.5	0.3	12.2	0.058	0.500	21.496945	-105.083003
Jalcocotán	27.00	1	0	2743	7.6	81.5	0.2	8.6	0.9	0.9	0.2	0.0	0.1	89.1	0.2	10.7	0.059	0.515	21.483649	-105.090618
T. Der. Santa Cruz	50.00	3	0	2908	16.2	74.1	0.3	8.5	0.3	0.5	0.1	0.0	0.0	90.3	0.3	9.4	0.091	0.513	21.423496	-105.183770
Ixtapan de La Concepción	77.42	1	0	1597	12.6	77.9	0.7	7.3	0.6	0.6	0.2	0.0	0.1	90.5	0.7	8.8	0.136	0.506	21.313022	-105.155252

17 CARR: Tepic - Mazatlán

CLAVE: 00499

RUTA: MEX-015

AÑO: 2017

LUGAR	ESTACION				CLASIFICACION VEHICULAR EN PORCIENTO										COORDENADAS					
	KM	TE	SC	TDPA	M	A	B	C2	C3	T3S2	T3S3	T3S2R4	OTROS	A	B	C	K'	D	LATITUD	LONGITUD
Tepic (Alta)	0.00	3	1	12212	2.8	89.7	0.0	0.9	0.0	1.3	3.9	0.5	0.9	92.5	0.0	7.5	0.055	0.523	21.511937	-104.906035
Tepic (Baja)	0.00	3	1	9427	8.2	82.2	0.1	7.4	0.1	0.5	1.2	0.1	0.2	90.4	0.1	9.5	0.061	0.518	21.511922	-104.906035
Tepic (Alta)	0.00	3	2	11146	3.1	88.3	0.0	1.0	0.0	1.4	4.7	0.5	1.0	91.4	0.0	8.6	0.057	0.523	21.512079	-104.906022
Tepic (Baja)	0.00	3	2	8785	6.9	83.4	0.5	5.3	0.1	0.8	2.4	0.2	0.4	90.3	0.5	9.2	0.062	0.518	21.512122	-104.906005
T. Izq. Libramiento de Tepic (Alta)	2.56	1	1	8467	8.2	88.7	0.1	2.3	0.0	0.1	0.5	0.0	0.1	96.9	0.1	3.0	0.077	0.526	21.520963	-104.921479
T. Izq. Libramiento de Tepic (Baja)	2.56	1	1	9825	7.1	81.3	0.5	9.9	0.7	0.3	0.2	0.0	0.0	88.4	0.5	11.1	0.071	0.533	21.520981	-104.921485
T. Izq. Libramiento de Tepic (Baja)	2.56	1	2	11221	7.5	81.6	0.6	9.1	0.6	0.3	0.2	0.0	0.1	89.1	0.6	10.3	0.055	0.533	21.520866	-104.921563
T. Izq. Libramiento de Tepic (Alta)	2.56	1	2	7631	4.1	93.7	0.0	1.8	0.0	0.1	0.3	0.0	0.0	97.8	0.0	2.2	0.093	0.526	21.520894	-104.921560
T. Izq. Aut. Tepic - Ent. San Blas (Cuota)	3.70	3	0	7990	4.5	74.4	1.8	7.3	4.1	5.0	2.1	0.1	0.7	78.9	1.8	19.3	0.067	0.535	21.538766	-104.934233
Los Oates	19.80	3	0	4725	3.2	67.6	3.5	8.2	6.4	7.9	2.6	0.1	0.5	70.8	3.5	25.7	0.060	0.545	21.640000	-104.972633
T. Izq. Jumatán	28.52	1	0	4909	3.5	67.8	3.5	7.4	6.2	8.3	2.9	0.1	0.3	71.3	3.5	25.2	0.064	0.548	21.669618	-105.022026
T. Izq. Jumatán	28.52	3	1	8222	1.8	61.3	5.9	9.3	4.3	11.6	2.4	2.7	0.7	63.1	5.9	31.0	0.083	0.504	21.667978	-105.029595
T. Izq. Jumatán	28.52	3	2	8368	2.0	61.4	6.2	9.8	3.7	11.2	2.0	2.8	0.9	63.4	6.2	30.4	0.063	0.504	21.667970	-105.029595
T. Izq. San Blas	33.54	1	1	6932	1.8	61.3	5.8	8.9	4.4	11.6	2.7	2.7	0.8	63.1	5.8	31.1	0.099	0.506	21.679401	-105.042631
T. Izq. San Blas	33.54	1	2	7099	2.2	59.7	6.4	11.0	4.0	11.0	2.3	2.7	0.7	61.9	6.4	31.7	0.070	0.506	21.679277	-105.042689
T. Izq. San Blas	33.54	3	1	8371	2.0	60.5	6.1	9.9	3.8	12.1	2.1	3.0	0.5	62.5	6.1	31.4	0.055	0.502	21.700063	-105.053279
T. Izq. San Blas	33.54	3	2	8317	2.0	62.6	5.3	7.9	4.4	11.8	2.5	2.8	0.7	64.6	5.3	30.1	0.072	0.502	21.700166	-105.053326
T. Izq. Villa Hidalgo	48.12	1	0	7902	2.2	76.7	2.3	6.8	3.0	5.6	2.3	0.5	0.6	78.9	2.3	18.8	0.063	0.504	21.806756	-105.102600
T. Izq. Villa Hidalgo	48.12	3	0	7707	7.5	65.3	3.3	9.6	4.5	7.4	2.1	0.1	0.2	72.8	3.3	23.9	0.069	0.508	21.808789	-105.103416
T. Izq. Santiago Ixcuintla	56.42	1	0	7302	2.5	70.0	3.6	8.6	5.0	7.9	2.0	0.1	0.3	72.5	3.6	23.9	0.060	0.585	21.854211	-105.152600
T. Izq. Santiago Ixcuintla	56.42	3	0	7384	2.1	66.3	4.1	11.6	3.3	9.2	2.8	0.3	0.3	68.4	4.1	27.5	0.073	0.509	21.859764	-105.155786
T. Izq. Tuxpan	70.60	1	0	8927	5.1	68.9	3.5	10.6	2.7	6.6	2.0	0.1	0.5	74.0	3.5	22.5	0.065	0.506	21.944197	-105.216031
T. Izq. Tuxpan	70.60	3	0	9110	10.7	60.4	4.3	11.6	4.0	6.9	1.8	0.1	0.2	71.1	4.3	24.6	0.061	0.509	21.954529	-105.221315
T. Der. Rosamorada	90.70	3	0	5085	5.1	60.8	4.4	11.3	4.3	11.3	2.6	0.1	0.1	65.9	4.4	29.7	0.067	0.504	22.124706	-105.219615

NAYARIT

17 CARR: Tepic - Mazatlán

CLAVE: 00499

RUTA: MEX-015

AÑO: 2017

LUGAR	ESTACION				CLASIFICACION VEHICULAR EN PORCIENTO										COORDENADAS					
	KM	TE	SC	TDPA	M	A	B	C2	C3	T3S2	T3S3	T3S2R4	OTROS	A	B	C	K'	D	LATITUD	LONGITUD
Tierra Generosa	110.40	1	0	3599	2.6	49.8	6.4	11.4	6.3	18.8	4.4	0.1	0.2	52.4	6.4	41.2	0.057	0.509	22.293716	-105.273037
T. Der. Acaponeta	136.52	1	0	7445	9.5	65.0	3.1	10.1	2.9	7.3	1.8	0.1	0.2	74.5	3.1	22.4	0.072	0.524	22.482925	-105.384485
T. Der. Acaponeta	136.52	3	0	5150	7.3	59.1	3.5	9.6	5.1	12.1	3.0	0.1	0.2	66.4	3.5	30.1	0.073	0.501	22.492616	-105.384010
Lim. Edos. Term. Nay. Ppia. Sin.	144.60																			
Escuinapa de Hidalgo	200.00	1	0	5067	10.9	62.8	2.2	7.1	7.3	7.2	2.1	0.1	0.3	73.7	2.2	24.1	0.069	0.527	22.832692	-105.760957
Escuinapa de Hidalgo	200.00	3	0	5347	4.5	67.4	4.8	9.2	4.4	7.6	1.8	0.1	0.2	71.9	4.8	23.3	0.070	0.513	22.850454	-105.792774
Rosario	221.71	1	0	8326	8.3	67.7	3.9	11.5	2.8	4.3	1.2	0.1	0.2	76.0	3.9	20.1	0.072	0.538	22.997071	-105.851525
Rosario	221.71	3	0	5801	3.0	72.4	2.8	9.5	3.2	7.0	1.8	0.1	0.2	75.4	2.8	21.8	0.072	0.517	23.003403	-105.869151
X. C. Durango - Mazatlán (Cuota)	265.20	1	0	5161	2.9	72.4	3.4	8.2	3.2	7.9	1.8	0.1	0.1	75.3	3.4	21.3	0.074	0.521	23.189982	-106.175762
T. Der. Durango	267.99	1	0	4801	5.3	73.4	2.5	11.2	2.3	3.7	1.1	0.2	0.3	78.7	2.5	18.8	0.105	0.554	23.189382	-106.206340
T. Der. Durango	267.99	3	1	7604	9.4	65.3	4.8	8.9	3.2	5.0	1.4	1.2	0.8	74.7	4.8	20.5	0.076	0.558	23.189284	-106.210238
T. Der. Durango	267.99	3	2	9613	8.0	78.2	1.1	3.5	1.8	3.3	2.4	0.6	1.1	86.2	1.1	12.7	0.074	0.558	23.189283	-106.210359
Villa Unión	269.52	3	1	10398	5.2	75.4	2.9	8.4	1.8	3.9	0.9	1.2	0.3	80.6	2.9	16.5	0.078	0.518	23.190267	-106.222300
Villa Unión	269.52	3	2	11183	6.5	73.2	3.9	8.1	2.8	3.1	1.1	0.7	0.6	79.7	3.9	16.4	0.073	0.518	23.190483	-106.222367
T. Der. Libramiento de Mazatlán	288.87	1	1	17183	4.8	82.1	0.9	7.4	1.6	1.8	0.7	0.6	0.1	86.9	0.9	12.2	0.093	0.513	23.226148	-106.384119
T. Der. Libramiento de Mazatlán	288.87	1	2	16328	3.7	78.2	2.7	10.0	1.6	2.3	0.5	0.7	0.3	81.9	2.7	15.4	0.093	0.513	23.226147	-106.384116
Mazatlán	292.00																			

18 CARR: Tepic - Presa Aguamilpa

CLAVE: 18029

RUTA: MEX-015

AÑO: 2017

LUGAR	ESTACION				CLASIFICACION VEHICULAR EN PORCIENTO										COORDENADAS					
	KM	TE	SC	TDPA	M	A	B	C2	C3	T3S2	T3S3	T3S2R4	OTROS	A	B	C	K'	D	LATITUD	LONGITUD
T. C. Guadalajara - Tepic	0.00	3	1	12276	7.8	81.1	0.3	7.5	2.0	0.5	0.5	0.2	0.1	88.9	0.3	10.8	0.095	0.531	21.473604	-104.848399
T. C. Guadalajara - Tepic	0.00	3	2	10858	7.3	79.1	0.4	7.8	2.4	1.2	1.1	0.3	0.4	86.4	0.4	13.2	0.120	0.531	21.473580	-104.848306
X. C. Tepic - Fco. I. Madero	17.50	3	0	1938	6.5	64.3	4.0	8.0	13.5	1.9	1.3	0.2	0.3	70.8	4.0	25.2	0.098	0.515	21.588119	-104.847332
Presa Aguamilpa	54.00	1	0	458	5.5	88.2	1.1	4.5	0.7	0.0	0.0	0.0	0.0	93.7	1.1	5.2	0.090	0.517	21.819244	-104.830725

19 CARR: Tepic - Puerto Vallarta

CLAVE: 00068

RUTA: MEX-200

AÑO: 2017

LUGAR	ESTACION				CLASIFICACION VEHICULAR EN PORCIENTO										COORDENADAS					
	KM	TE	SC	TDPA	M	A	B	C2	C3	T3S2	T3S3	T3S2R4	OTROS	A	B	C	K'	D	LATITUD	LONGITUD
Tepic	0.00	3	1	19720	3.7	84.1	0.2	4.9	0.7	1.8	3.3	0.5	0.8	87.8	0.2	12.0	0.048	0.574	21.490166	-104.895119
Tepic	0.00	3	2	26607	4.9	83.3	0.2	7.0	0.3	1.0	2.6	0.3	0.4	88.2	0.2	11.6	0.054	0.574	21.490159	-104.895112
Limite de Zona Urbana Tepic	1.80	3	1	18583	5.4	84.2	0.7	6.0	0.6	0.9	1.7	0.1	0.4	89.6	0.7	9.7	0.082	0.506	21.473944	-104.889964
Limite de Zona Urbana Tepic	1.80	3	2	19047	4.7	86.9	0.6	5.4	0.3	0.8	1.0	0.1	0.2	91.6	0.6	7.8	0.091	0.506	21.473963	-104.889858

NAYARIT

19 CARR: Tepic - Puerto Vallarta

CLAVE: 00068

RUTA: MEX-200

AÑO: 2017

LUGAR	ESTACION				CLASIFICACION VEHICULAR EN PORCIENTO										COORDENADAS					
	KM	TE	SC	TDPA	M	A	B	C2	C3	T3S2	T3S3	T3S2R4	OTROS	A	B	C	K'	D	LATITUD	LONGITUD
X. C. Libramiento De Tepic (Alta)	3.90	3	1	19218	0.5	94.3	0.0	1.7	0.0	0.7	2.5	0.1	0.2	94.8	0.0	5.2	0.069	0.520	21.465731	-104.888952
X. C. Libramiento De Tepic (Baja)	3.90	3	1	6283	22.5	52.4	1.1	16.3	4.3	1.5	1.5	0.1	0.3	74.9	1.1	24.0	0.079	0.563	21.465625	-104.888766
X. C. Libramiento De Tepic (Baja)	3.90	3	2	8083	19.4	62.3	0.8	11.7	2.6	1.5	1.3	0.1	0.3	81.7	0.8	17.5	0.115	0.563	21.465630	-104.888771
X. C. Libramiento De Tepic (Alta)	3.90	3	2	17762	0.4	94.0	0.0	2.6	0.0	0.4	2.3	0.1	0.2	94.4	0.0	5.6	0.084	0.520	21.465705	-104.888915
Jalisco	7.15	3	0	14921	1.3	85.0	1.1	9.5	2.1	0.6	0.4	0.0	0.0	86.3	1.1	12.6	0.078	0.505	21.433899	-104.899704
T. Izq. Emiliano Zapata	18.40	3	0	7003	1.6	81.2	1.7	11.0	2.1	1.0	1.1	0.0	0.3	82.8	1.7	15.5	0.066	0.505	21.361045	-104.918664
T. Izq. Compostela (1° Acceso)	35.80	1	0	6255	1.9	82.3	1.8	10.6	1.9	0.9	0.5	0.0	0.1	84.2	1.8	14.0	0.075	0.500	21.263501	-104.902287
T. Izq. Compostela (1° Acceso)	35.80	3	0	4979	3.5	79.4	1.6	10.1	3.0	1.4	0.9	0.0	0.1	82.9	1.6	15.5	0.070	0.532	21.248362	-104.903164
Las Varas	71.30	1	0	11679	3.2	79.1	4.1	7.4	1.9	3.1	0.9	0.1	0.2	82.3	4.1	13.6	0.086	0.504	21.187116	-105.123809
Las Varas	71.30	3	0	12604	2.7	81.4	2.7	7.9	1.2	2.3	1.0	0.3	0.5	84.1	2.7	13.2	0.081	0.512	21.174192	-105.145136
T. Der. Rincón de Guayabitos	94.50	1	1	10407	6.8	80.5	2.1	7.1	0.8	1.6	0.8	0.1	0.2	87.3	2.1	10.6	0.069	0.546	21.032016	-105.254010
T. Der. Rincón de Guayabitos	94.50	1	2	12528	6.4	79.6	2.3	7.8	0.9	1.7	1.0	0.1	0.2	86.0	2.3	11.7	0.068	0.546	21.032005	-105.254028
T. Der. Rincón de Guayabitos	94.50	3	0	14072	2.3	84.7	3.9	4.6	1.0	2.3	1.0	0.1	0.1	87.0	3.9	9.1	0.070	0.512	21.018437	-105.269314
T. Der. Sayulita	122.91	1	0	11814	3.2	79.1	4.2	8.5	1.2	2.6	0.9	0.1	0.2	82.3	4.2	13.5	0.076	0.503	20.866667	-105.426483
T. Der. Sayulita	122.91	3	0	13611	4.5	78.3	3.5	9.1	1.1	2.2	0.9	0.1	0.3	82.8	3.5	13.7	0.072	0.514	20.853333	-105.424617
T. Der. Cruz de Juanacaxtle	137.30	3	1	9959	1.5	89.9	1.8	4.5	0.4	1.6	0.2	0.0	0.1	91.4	1.8	6.8	0.070	0.505	20.764547	-105.366670
T. Der. Cruz de Juanacaxtle	137.30	3	2	9779	1.4	88.0	2.1	5.5	0.7	1.6	0.5	0.1	0.1	89.4	2.1	8.5	0.081	0.505	20.764564	-105.366688
Bucerías	140.81	3	1	14751	5.6	85.3	1.2	4.4	0.8	1.3	1.0	0.1	0.3	90.9	1.2	7.9	0.070	0.501	20.748120	-105.315321
Bucerías	140.81	3	2	14817	5.5	84.4	1.3	4.7	0.9	1.7	1.1	0.1	0.3	89.9	1.3	8.8	0.072	0.501	20.748087	-105.315281
Lim. Edos. Term. Nay. Ppia. Jal.	152.60																			
T. Der. Aeropuerto Díaz Ordáz	158.37	1	1	21871	2.3	91.9	2.2	3.5	0.0	0.0	0.0	0.0	0.1	94.2	2.2	3.6	0.068	0.549	20.682385	-105.242496
T. Der. Aeropuerto Díaz Ordáz	158.37	1	2	26581	2.1	92.7	2.1	3.1	0.0	0.0	0.0	0.0	0.0	94.8	2.1	3.1	0.064	0.549	20.682222	-105.242412
T. Der. Aeropuerto Díaz Ordáz (Baja)	158.37	3	1	14184	1.9	85.0	6.6	3.8	1.9	0.2	0.3	0.1	0.2	86.9	6.6	6.5	0.072	0.564	20.670559	-105.249510
T. Der. Aeropuerto Díaz Ordáz (Alta)	158.37	3	1	14616	2.6	97.0	0.1	0.1	0.2	0.0	0.0	0.0	0.0	99.6	0.1	0.3	0.078	0.530	20.670607	-105.249434
T. Der. Aeropuerto Díaz Ordáz (Baja)	158.37	3	2	10975	3.1	82.3	7.2	4.5	2.1	0.2	0.3	0.1	0.2	85.4	7.2	7.4	0.077	0.564	20.670681	-105.249269
T. Der. Aeropuerto Díaz Ordáz (Alta)	158.37	3	2	12957	3.1	96.5	0.1	0.1	0.2	0.0	0.0	0.0	0.0	99.6	0.1	0.3	0.087	0.530	20.670651	-105.249367
Puerto Vallarta	166.88																			

20 CARR: Chapalilla - Compostela (Cuota)

CLAVE: 18004

RUTA: MEX-068D

AÑO: 2017

LUGAR	ESTACION				CLASIFICACION VEHICULAR EN PORCIENTO										COORDENADAS					
	KM	TE	SC	TDPA	M	A	B	C2	C3	T3S2	T3S3	T3S2R4	OTROS	A	B	C	K'	D	LATITUD	LONGITUD
T. C. Guadalajara - Tepic	0.00	3	0	6404	1.3	73.4	7.2	9.7	2.3	4.2	1.3	0.4	0.2	74.7	7.2	18.1	0.081	0.503	21.190289	-104.643191
Caseta de Cobro Compostela	31.50	2	0	5597	0.9	80.4	8.5	3.2	2.4	2.6	0.6	1.1	0.3	81.3	8.5	10.2	0.114	0.500	21.229441	-104.887436
T. Der. Compostela	36.50	1	0	6251	2.1	73.1	6.6	9.2	2.4	4.7	1.3	0.4	0.2	75.2	6.6	18.2	0.069	0.512	21.228171	-104.899375

NAYARIT

20 CARR: Chapalilla - Compostela (Cuota)

CLAVE: 18004

RUTA: MEX-068D

AÑO: 2017

LUGAR	ESTACION				CLASIFICACION VEHICULAR EN PORCIENTO														COORDENADAS	
	KM	TE	SC	TDPA	M	A	B	C2	C3	T3S2	T3S3	T3S2R4	OTROS	A	B	C	K'	D	LATITUD	LONGITUD
T. C. Tepic - Puerto Vallarta	38.00	1	0	7223	1.9	74.6	5.5	8.6	4.4	3.6	1.1	0.2	0.1	76.5	5.5	18.0	0.069	0.510	21.230962	-104.918540

21 CARR: Guadalajara - Tepic (Cuota)

CLAVE: 00033

RUTA: MEX-015D

AÑO: 2017

LUGAR	ESTACION				CLASIFICACION VEHICULAR EN PORCIENTO														COORDENADAS	
	KM	TE	SC	TDPA	M	A	B	C2	C3	T3S2	T3S3	T3S2R4	OTROS	A	B	C	K'	D	LATITUD	LONGITUD
T. C. Guadalajara - Tepic (Libre)	0.00	3	1	6906	0.7	69.2	8.8	6.5	2.5	8.0	1.4	2.3	0.6	69.9	8.8	21.3	0.088	0.523	20.738919	-103.582737
T. C. Guadalajara - Tepic (Libre)	0.00	3	2	7560	0.8	70.7	8.2	6.6	2.1	7.6	1.5	1.9	0.6	71.5	8.2	20.3	0.118	0.523	20.738888	-103.582817
Caseta de Cobro Arenal	10.96	2	1	5914	0.5	62.7	8.7	3.4	4.8	13.2	1.9	3.8	1.0	63.2	8.7	28.1	0.092	0.500	20.778732	-103.662437
Caseta de Cobro Arenal	10.96	2	2	5914	0.5	62.7	8.7	3.4	4.8	13.2	1.9	3.8	1.0	63.2	8.7	28.1	0.092	0.500	20.778732	-103.662437
T. Der. Magdalena	45.00	1	1	5393	0.8	58.0	10.2	7.8	2.7	13.6	2.4	3.7	0.8	58.8	10.2	31.0	0.093	0.501	20.900995	-103.959057
T. Der. Magdalena	45.00	1	2	5364	0.7	57.5	11.1	8.1	2.6	12.7	2.7	3.8	0.8	58.2	11.1	30.7	0.126	0.501	20.900922	-103.959117
T. Der. Magdalena	45.00	3	1	5878	0.7	59.6	9.2	7.2	3.2	13.2	2.9	3.1	0.9	60.3	9.2	30.5	0.092	0.517	20.902901	-103.989312
T. Der. Magdalena	45.00	3	2	5483	0.8	59.4	9.6	6.7	3.5	12.8	2.8	3.5	0.9	60.2	9.6	30.2	0.131	0.517	20.902834	-103.989492
Caseta de Cobro Plan de Barrancas	69.34	2	1	5981	0.5	61.6	10.9	2.8	3.9	13.4	2.1	3.8	1.0	62.1	10.9	27.0	0.092	0.500	21.005394	-104.144089
Caseta de Cobro Plan de Barrancas	69.34	2	2	5981	0.5	61.6	10.9	2.8	3.9	13.4	2.1	3.8	1.0	62.1	10.9	27.0	0.092	0.500	21.005394	-104.144089
Lim. Edos. Term. Jal. Ppia. Nay.	84.60																			
Caseta de Cobro Santa Ma. del Oro	145.32	2	1	2579	0.3	43.9	11.0	4.6	5.7	22.4	2.3	8.2	1.6	44.2	11.0	44.8	0.092	0.500	21.328308	-104.664330
Caseta de Cobro Santa Ma. del Oro	145.32	2	2	2579	0.3	43.9	11.0	4.6	5.7	22.4	2.3	8.2	1.6	44.2	11.0	44.8	0.092	0.500	21.328308	-104.664330
Caseta de Cobro Santa Ma. del Oro	145.32	3	1	5048	1.2	55.0	9.0	8.7	3.7	14.6	2.3	4.6	0.9	56.2	9.0	34.8	0.063	0.536	21.334562	-104.668988
Caseta de Cobro Santa Ma. del Oro	145.32	3	2	4367	1.0	51.1	10.9	7.9	3.5	16.5	2.4	6.0	0.7	52.1	10.9	37.0	0.066	0.536	21.334560	-104.668989
T. C. Guadalajara - Tepic (Libre)	168.62																			

22 CARR: Libramiento de Tepic (Cuota)

CLAVE:

RUTA: MEX-015D

AÑO: 2017

LUGAR	ESTACION				CLASIFICACION VEHICULAR EN PORCIENTO														COORDENADAS	
	KM	TE	SC	TDPA	M	A	B	C2	C3	T3S2	T3S3	T3S2R4	OTROS	A	B	C	K'	D	LATITUD	LONGITUD
T. C. Guadalajara - Tepic	0.00																			
Caseta de Cobro La Cantera	7.70	2	0	2332	0.5	40.8	4.3	3.7	5.9	29.4	2.9	10.5	2.0	41.3	4.3	54.4	0.090	0.500	21.498467	-104.813427
T. C. Tepic - Villa Unión (Cuota)	30.00																			

NAYARIT

23 CARR: Ramal a Tequepexpan

CLAVE: 00068

RUTA: MEX-015D

AÑO: 2017

LUGAR	ESTACION				CLASIFICACION VEHICULAR EN PORCIENTO														COORDENADAS	
	KM	TE	SC	TDPA	M	A	B	C2	C3	T3S2	T3S3	T3S2R4	OTROS	A	B	C	K'	D	LATITUD	LONGITUD
Chapalilla	0.00	3	0	2344	0.9	71.4	5.1	10.8	3.0	6.1	1.4	0.7	0.6	72.3	5.1	22.6	0.085	0.518	21.180619	-104.627603
T. C. Guadalajara - Tepic (Cuota)	9.40	1	0	2688	1.2	69.7	9.3	9.2	2.3	5.5	1.3	1.0	0.5	70.9	9.3	19.8	0.084	0.513	21.205535	-104.594097

24 CARR: Tepic - Villa Unión (cuota)

CLAVE: 00500

RUTA: MEX-015D

AÑO: 2017

LUGAR	ESTACION				CLASIFICACION VEHICULAR EN PORCIENTO														COORDENADAS	
	KM	TE	SC	TDPA	M	A	B	C2	C3	T3S2	T3S3	T3S2R4	OTROS	A	B	C	K'	D	LATITUD	LONGITUD
Tepic	0.00																			
Caseta de Cobro El Pichón	4.70	1	1	6425	2.4	79.6	2.6	7.2	1.8	4.3	0.6	1.3	0.2	82.0	2.6	15.4	0.154	0.511	21.555049	-104.960004
Caseta de Cobro El Pichón	4.70	1	2	6727	2.3	76.2	3.1	9.0	2.0	4.8	1.0	1.3	0.3	78.5	3.1	18.4	0.200	0.511	21.555052	-104.960007
Caseta de Cobro El Pichón	4.70	2	1	5022	0.8	64.8	7.3	3.7	4.1	12.5	1.6	4.4	0.8	65.6	7.3	27.1	0.098	0.500	21.571682	-104.987526
Caseta de Cobro El Pichón	4.70	2	2	5022	0.8	64.8	7.3	3.7	4.1	12.5	1.6	4.4	0.8	65.6	7.3	27.1	0.098	0.500	21.571682	-104.987526
T. C. Tepic - Mazatlán	21.00	1	1	5990	1.6	63.1	5.3	9.0	3.0	11.8	1.8	3.6	0.8	64.7	5.3	30.0	0.068	0.514	21.662840	-105.027816
T. C. Tepic - Mazatlán	21.00	1	2	6330	2.1	61.2	5.6	11.1	3.5	10.3	2.3	2.9	1.0	63.3	5.6	31.1	0.084	0.514	21.662794	-105.027816
T. C. Tepic - Mazatlán (Crucero De San Blas)	24.50	3	0	5713	2.2	66.4	4.8	10.4	2.8	7.6	2.8	2.3	0.7	68.6	4.8	26.6	0.071	0.556	21.715621	-105.061063
Est. Ruíz	54.90	1	0	5433	2.2	45.2	5.9	11.4	6.2	16.9	3.4	8.0	0.8	47.4	5.9	46.7	0.072	0.507	21.946002	-105.111120
Est. Ruíz	54.90	3	0	3802	2.1	44.5	8.1	12.1	5.0	15.2	3.4	8.9	0.7	46.6	8.1	45.3	0.073	0.536	21.961199	-105.122846
Rosamorada	73.50	1	0	4265	2.1	45.6	9.6	9.5	4.0	17.7	2.6	7.9	1.0	47.7	9.6	42.7	0.080	0.507	22.085161	-105.211473
Rosamorada	73.50	3	0	3813	1.5	46.3	10.1	7.6	3.8	17.8	3.0	9.1	0.8	47.8	10.1	42.1	0.065	0.500	22.091450	-105.219383
Acaponeta	120.20	1	0	4476	2.4	40.8	10.5	8.0	3.8	21.6	2.5	9.4	1.0	43.2	10.5	46.3	0.061	0.517	22.450108	-105.420498
Caseta de Cobro Acaponeta	120.20	2	0	3701	0.5	40.2	8.6	3.6	5.5	25.5	2.9	11.6	1.6	40.7	8.6	50.7	0.081	0.500	22.453809	-105.424718
Acaponeta	120.20	3	0	3736	1.1	54.6	8.8	8.6	3.7	13.1	2.2	7.0	0.9	55.7	8.8	35.5	0.064	0.512	22.458487	-105.430562
Lim. Edos. Term. Nay. Ppia. Sin.	132.80																			
Escuinapa de Hidalgo	208.60	1	1	2352	6.6	46.6	8.5	8.7	3.2	14.8	3.3	7.4	0.9	53.2	8.5	38.3	0.079	0.521	22.844473	-105.741374
Escuinapa de Hidalgo	208.60	1	2	2162	2.6	44.1	9.8	9.1	3.7	17.5	3.8	8.4	1.0	46.7	9.8	43.5	0.085	0.521	22.844445	-105.741387
Escuinapa de Hidalgo	208.60	3	0	3866	1.6	39.5	9.4	6.1	4.1	25.4	3.7	9.2	1.0	41.1	9.4	49.5	0.066	0.518	22.859778	-105.755165
Rosario	220.68	1	0	3819	3.0	35.3	8.2	7.4	3.0	22.6	3.2	8.1	9.2	38.3	8.2	53.5	0.087	0.524	22.977370	-105.869167
Caseta de Cobro Rosario	220.68	2	0	4483	0.5	40.3	7.9	3.6	5.1	27.7	3.2	10.0	1.7	40.8	7.9	51.3	0.081	0.500	22.984690	-105.877930
Rosario	220.68	3	1	2854	2.7	48.3	9.3	6.6	2.4	19.9	3.4	6.6	0.8	51.0	9.3	39.7	0.096	0.501	22.993069	-105.887548
Rosario	220.68	3	2	2862	2.0	42.8	10.4	7.4	2.6	22.4	4.1	7.3	1.0	44.8	10.4	44.8	0.088	0.501	22.993018	-105.887513
X. C. Durango - Villa Unión (Cuota)	240.90	1	0	4851	3.9	70.3	5.4	6.5	4.2	7.1	1.4	0.6	0.6	74.2	5.4	20.4	0.088	0.503	23.185860	-106.174050
X. C. Durango - Villa Unión (Cuota)	240.90	3	1	4463	1.4	53.9	6.5	5.5	3.1	18.0	3.1	7.5	1.0	55.3	6.5	38.2	0.094	0.533	23.195803	-106.193448
X. C. Durango - Villa Unión (Cuota)	240.90	3	2	3917	2.0	47.0	8.9	6.9	3.4	19.7	3.4	7.9	0.8	49.0	8.9	42.1	0.064	0.533	23.195620	-106.193575

NAYARIT

25 CARR: El Carrizo - La Batanga

CLAVE: 18107

RUTA: NAY-078

AÑO: 2017

LUGAR	ESTACION				CLASIFICACION VEHICULAR EN PORCIENTO										COORDENADAS					
	KM	TE	SC	TDPA	M	A	B	C2	C3	T3S2	T3S3	T3S2R4	OTROS	A	B	C	K'	D	LATITUD	LONGITUD
T. C. Ent. Santiago Ixcuintla - Playa Los Corchos	0.00	3	0	2663	17.3	73.6	0.2	7.4	0.9	0.4	0.1	0.0	0.1	90.9	0.2	8.9	0.084	0.513	21.774838	-105.277486
Sentispac	9.00	1	0	2218	22.3	69.2	0.2	6.5	0.9	0.7	0.1	0.0	0.1	91.5	0.2	8.3	0.081	0.510	21.808850	-105.341460
La Batanga	25.00	1	0	175	3.9	90.8	0.4	3.8	0.2	0.0	0.0	0.0	0.9	94.7	0.4	4.9	0.137	0.505	21.883867	-105.459898

26 CARR: Navarrete - Sauta

CLAVE: 18013

RUTA: NAY-013

AÑO: 2017

LUGAR	ESTACION				CLASIFICACION VEHICULAR EN PORCIENTO										COORDENADAS					
	KM	TE	SC	TDPA	M	A	B	C2	C3	T3S2	T3S3	T3S2R4	OTROS	A	B	C	K'	D	LATITUD	LONGITUD
T. C. Crucero San Blas - San Blas	0.00	3	0	1362	24.2	69.1	0.1	5.5	0.9	0.1	0.1	0.0	0.0	93.3	0.1	6.6	0.076	0.509	21.655970	-105.119983
Sauta	7.00	1	0	2707	44.0	48.2	0.6	6.4	0.6	0.1	0.1	0.0	0.0	92.2	0.6	7.2	0.064	0.521	21.710072	-105.136859

27 CARR: Ramal a Amado Nervo

CLAVE: 18011

RUTA: NAY

AÑO: 2017

LUGAR	ESTACION				CLASIFICACION VEHICULAR EN PORCIENTO										COORDENADAS					
	KM	TE	SC	TDPA	M	A	B	C2	C3	T3S2	T3S3	T3S2R4	OTROS	A	B	C	K'	D	LATITUD	LONGITUD
T. C. Guadalajara - Tepic	0.00	3	0	1289	5.2	76.2	0.4	12.9	3.7	1.2	0.3	0.0	0.1	81.4	0.4	18.2	0.080	0.514	21.129196	-104.602740
Amado Nervo	15.00																			

28 CARR: Ramal a Bellavista

CLAVE: 18059

RUTA: NAY-059

AÑO: 2017

LUGAR	ESTACION				CLASIFICACION VEHICULAR EN PORCIENTO										COORDENADAS					
	KM	TE	SC	TDPA	M	A	B	C2	C3	T3S2	T3S3	T3S2R4	OTROS	A	B	C	K'	D	LATITUD	LONGITUD
T. C. Tepic - Francisco I. Madero	0.00	3	0	2406	7.4	82.6	0.3	8.7	1.0	0.0	0.0	0.0	0.0	90.0	0.3	9.7	0.080	0.507	21.565114	-104.878080
Bellavista	1.30																			

29 CARR: Ramal a El Colomo

CLAVE: 18014

RUTA: NAY

AÑO: 2017

LUGAR	ESTACION				CLASIFICACION VEHICULAR EN PORCIENTO										COORDENADAS					
	KM	TE	SC	TDPA	M	A	B	C2	C3	T3S2	T3S3	T3S2R4	OTROS	A	B	C	K'	D	LATITUD	LONGITUD
T. C. Tepic - Puerto Vallarta	0.00																			
San Vicente	3.00	1	1	16203	4.0	87.1	0.3	7.2	0.5	0.4	0.4	0.0	0.1	91.1	0.3	8.6	0.074	0.502	20.740842	-105.263761
San Vicente	3.00	1	2	16066	4.6	85.8	0.4	7.7	0.5	0.4	0.5	0.0	0.1	90.4	0.4	9.2	0.081	0.502	20.740844	-105.263755
El Colomo	21.00																			

NAYARIT

30 CARR: Ramal a Estación Yago

CLAVE: 18224

RUTA: NAY

AÑO: 2017

LUGAR	ESTACION				CLASIFICACION VEHICULAR EN PORCIENTO														COORDENADAS	
	KM	TE	SC	TDPA	M	A	B	C2	C3	T3S2	T3S3	T3S2R4	OTROS	A	B	C	K'	D	LATITUD	LONGITUD
T. C. Tepic - Mazatlán	0.00	3	0	2220	10.4	77.2	1.4	7.0	2.7	0.9	0.1	0.1	0.2	87.6	1.4	11.0	0.077	0.515	21.834142	-105.112995
Estacion Yago	7.00																			

31 CARR: Ramal a Ixtapan de La Concepción

CLAVE: 18233

RUTA: NAY

AÑO: 2017

LUGAR	ESTACION				CLASIFICACION VEHICULAR EN PORCIENTO														COORDENADAS	
	KM	TE	SC	TDPA	M	A	B	C2	C3	T3S2	T3S3	T3S2R4	OTROS	A	B	C	K'	D	LATITUD	LONGITUD
T. C. Tepic - Puerto Vallarta (Las Varas)	0.00	3	0	4640	10.3	77.1	0.6	9.4	1.8	0.6	0.2	0.0	0.0	87.4	0.6	12.0	0.106	0.501	21.191808	-105.147766
Ixtapan de La Concepción	20.00	1	0	1937	6.4	76.7	0.7	15.2	0.5	0.4	0.1	0.0	0.0	83.1	0.7	16.2	0.152	0.527	21.301368	-105.157254

32 CARR: Ramal a Milpas Viejas

CLAVE: 18007

RUTA: NAY

AÑO: 2017

LUGAR	ESTACION				CLASIFICACION VEHICULAR EN PORCIENTO														COORDENADAS	
	KM	TE	SC	TDPA	M	A	B	C2	C3	T3S2	T3S3	T3S2R4	OTROS	A	B	C	K'	D	LATITUD	LONGITUD
T. Carr. Tepic - Mazatlán	0.00	3	0	1877	10.1	77.2	0.3	7.2	1.9	1.6	1.3	0.2	0.2	87.3	0.3	12.4	0.082	0.503	22.454042	-105.360919
Milpas Viejas	17.00																			

33 CARR: Ramal a Villa Hidalgo

CLAVE: 18031

RUTA: NAY

AÑO: 2017

LUGAR	ESTACION				CLASIFICACION VEHICULAR EN PORCIENTO														COORDENADAS	
	KM	TE	SC	TDPA	M	A	B	C2	C3	T3S2	T3S3	T3S2R4	OTROS	A	B	C	K'	D	LATITUD	LONGITUD
T. C. Tepic - Mazatlán	0.00	3	0	3228	15.0	68.4	1.3	10.7	2.5	1.2	0.7	0.1	0.1	83.4	1.3	15.3	0.077	0.501	21.807749	-105.104002
Villa Hidalgo	16.00	1	0	4875	18.0	70.8	0.7	8.8	1.0	0.5	0.2	0.0	0.0	88.8	0.7	10.5	0.087	0.506	21.754216	-105.227872

34 CARR: Ramal a Volcán del Ceboruco

CLAVE: 18003

RUTA: NAY

AÑO: 2017

LUGAR	ESTACION				CLASIFICACION VEHICULAR EN PORCIENTO														COORDENADAS	
	KM	TE	SC	TDPA	M	A	B	C2	C3	T3S2	T3S3	T3S2R4	OTROS	A	B	C	K'	D	LATITUD	LONGITUD
T. C. Guadalajara - Tepic	0.00	3	0	5651	2.6	64.5	4.6	12.2	4.7	8.6	2.2	0.2	0.4	67.1	4.6	28.3	0.061	0.506	21.051219	-104.459937
Volcán Ceboruco	25.00																			

NAYARIT

35 CARR: Tepic - Francisco I. Madero

CLAVE: 18009

RUTA: NAY-MEX

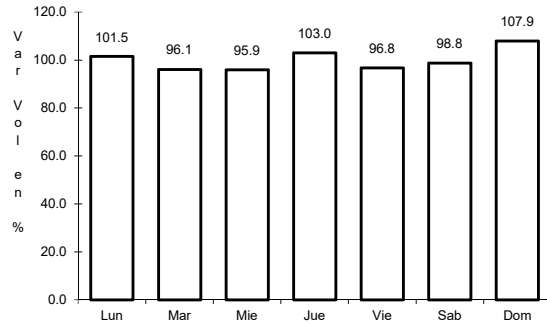
AÑO: 2017

L U G A R	E S T A C I O N				C L A S I F I C A C I O N V E H I C U L A R E N P O R C I E N T O										C O O R D E N A D A S					
	KM	TE	SC	TDPA	M	A	B	C2	C3	T3S2	T3S3	T3S2R4	OTROS	A	B	C	K'	D	LATITUD	LONGITUD
Tepic	0.00	3	0	7056	8.0	85.9	0.2	5.5	0.2	0.1	0.1	0.0	0.0	93.9	0.2	5.9	0.084	0.501	21.543210	-104.864931
Bellavista	9.00	3	0	4723	7.4	82.2	0.3	8.5	1.3	0.1	0.1	0.1	0.0	89.6	0.3	10.1	0.072	0.501	21.570562	-104.870352
Francisco I. Madero	16.00																			

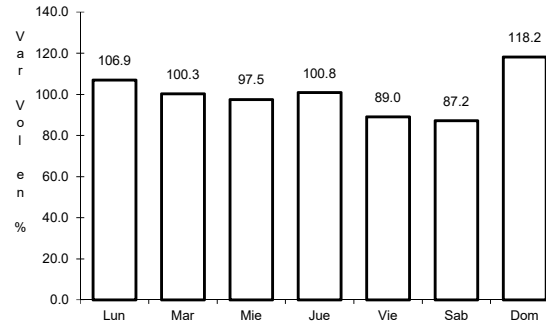
1 CARR: Crucero de San Blas - San Blas

CLAVE: 18229

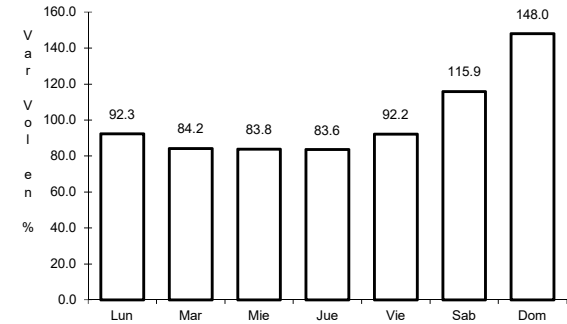
RUTA: MEX-015



Km: 0.00 Tipo: 3 Sent: 0



Km: 11.00 Tipo: 3 Sent: 0

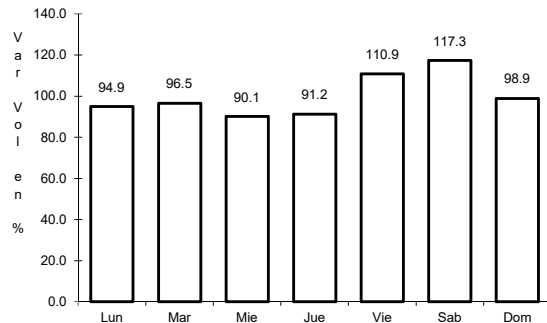


Km: 36.00 Tipo: 1 Sent: 0

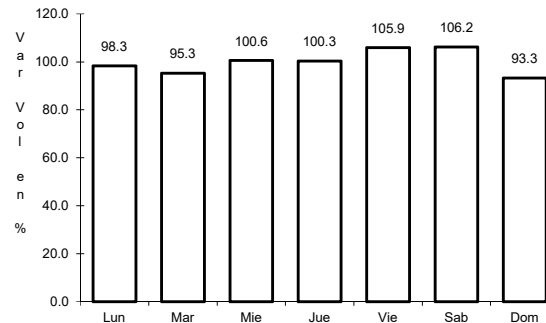
2 CARR: Ent. Acaponeta - El Novillero

CLAVE: 18023

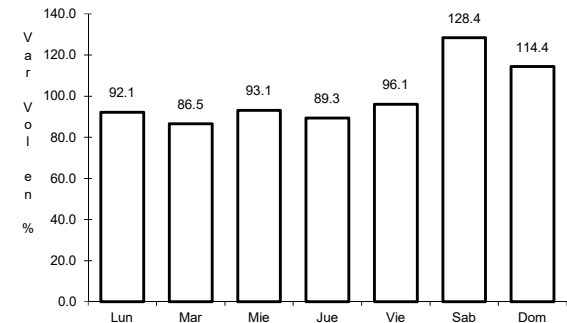
RUTA: MEX-015



Km: 0.00 Tipo: 3 Sent: 0



Km: 13.00 Tipo: 1 Sent: 0

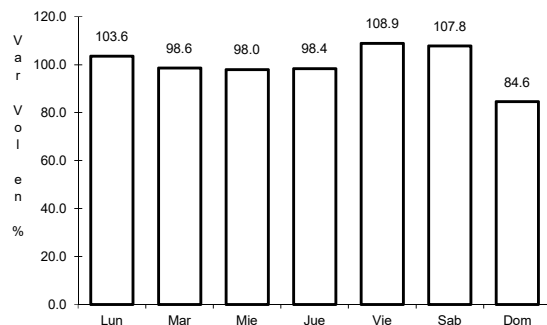


Km: 36.00 Tipo: 1 Sent: 0

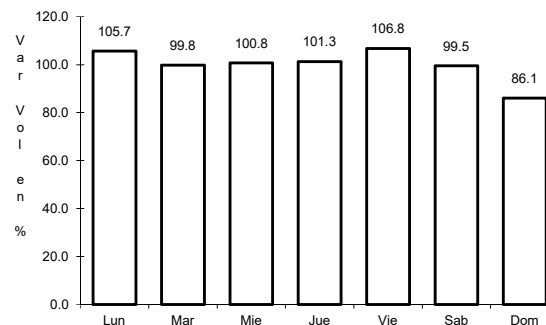
3 CARR: Ent. Santiago Ixcuintla - Playa Los Corchos

CLAVE: 18016

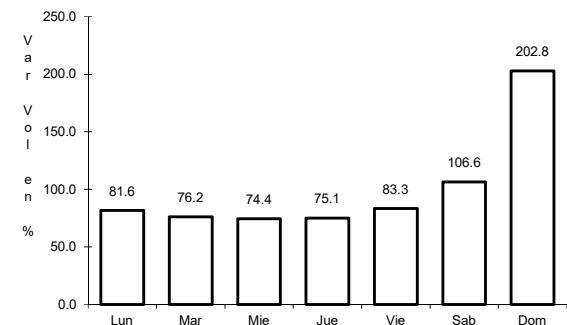
RUTA: MEX-015



Km: 0.00 Tipo: 3 Sent: 1



Km: 0.00 Tipo: 3 Sent: 2

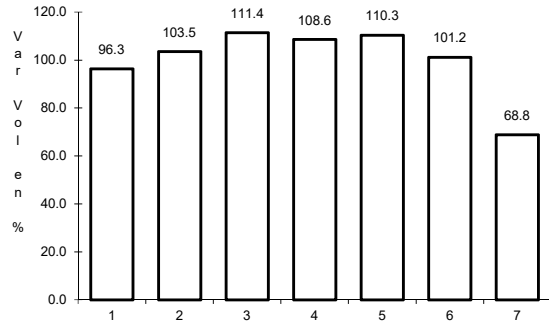


Km: 39.00 Tipo: 1 Sent: 0

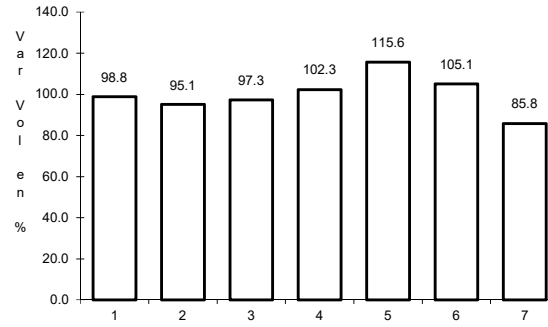
4 CARR: Guadalajara - Tepic

CLAVE: 00031

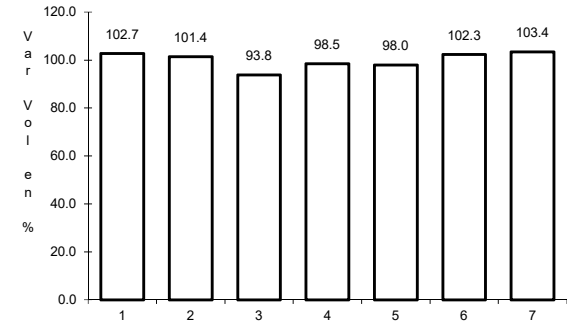
ruta: MEX-015



Km: 8.30 Tipo: 3 Sent: 1



Km: 8.30 Tipo: 3 Sent: 2

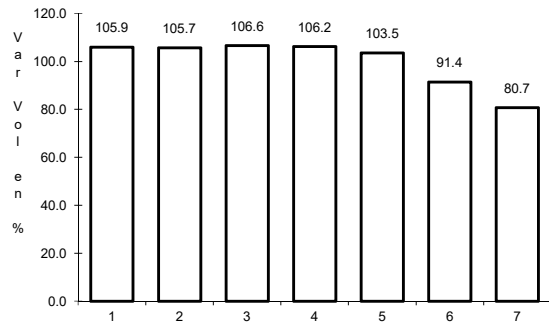


Km: 138.84 Tipo: 1 Sent: 0

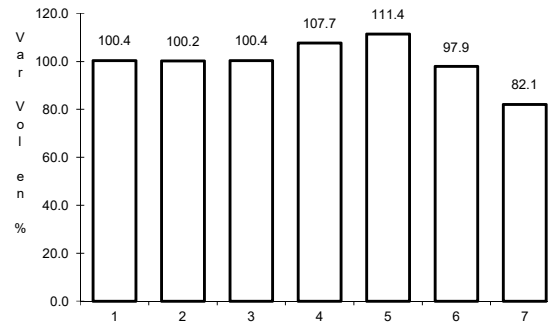
5 CARR: Libramiento de Tepic

CLAVE: 18232

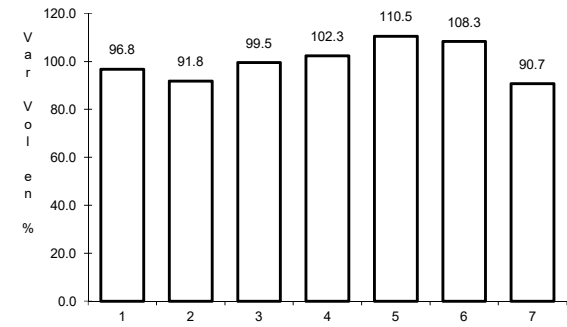
ruta: MEX-015



Km: 5.00 Tipo: 1 Sent: 1



Km: 5.00 Tipo: 1 Sent: 2

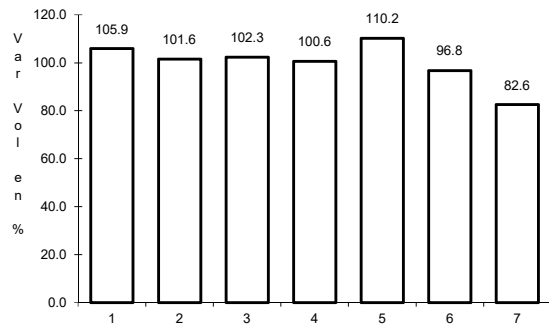


Km: 18.80 Tipo: 1 Sent: 1

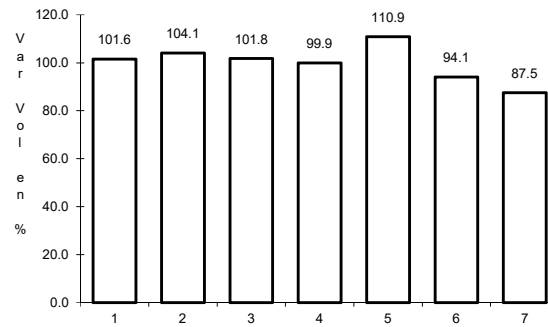
6 CARR: Peñitas - Tuxpan

CLAVE: 18019

ruta: MEX-015



Km: 0.00 Tipo: 3 Sent: 0

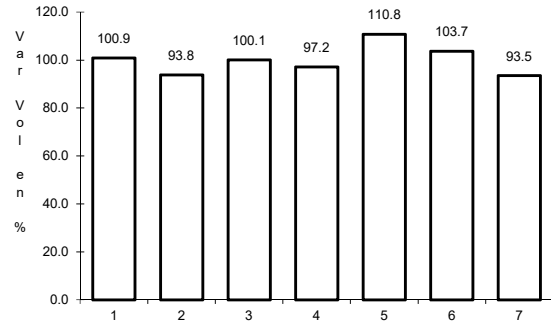


Km: 9.00 Tipo: 1 Sent: 0

7 CARR: Ramal a Acaponeta

CLAVE: 18038

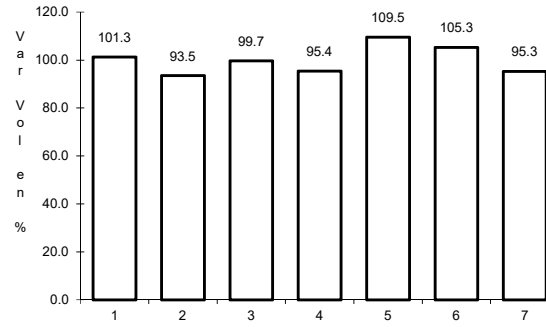
RUTA: MEX-015



Km: 0.00

Tipo: 3

Sent: 1



Km: 0.00

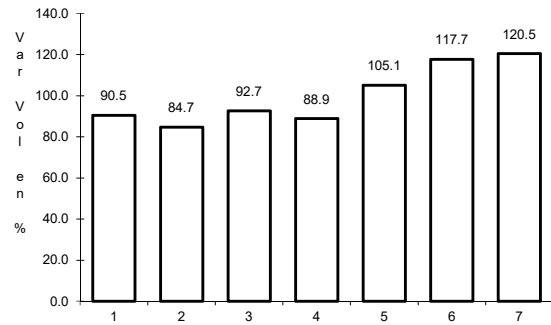
Tipo: 3

Sent: 2

8 CARR: Ramal a Estación Nanchi

CLAVE: 18068

RUTA: MEX-015



Km: 0.00

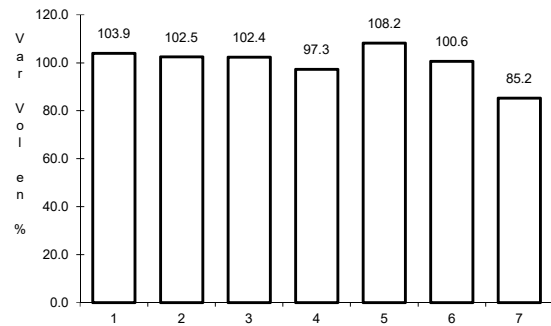
Tipo: 3

Sent: 0

9 CARR: Ramal a Estación Ruíz

CLAVE: 18026

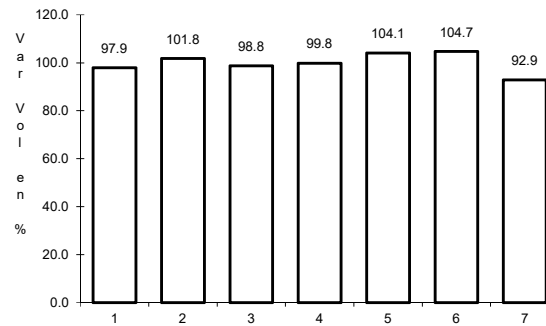
RUTA: MEX-015



Km: 0.00

Tipo: 3

Sent: 0



Km: 5.50

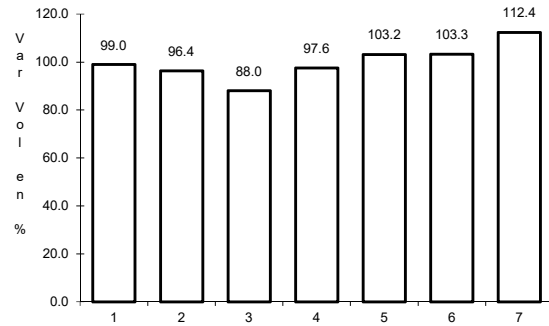
Tipo: 1

Sent: 0

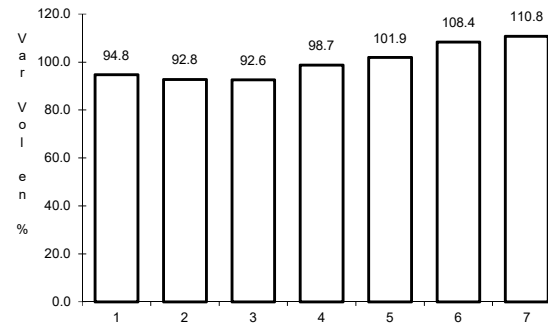
10 CARR: Ramal a La Laguna de Santa María

CLAVE: 18005

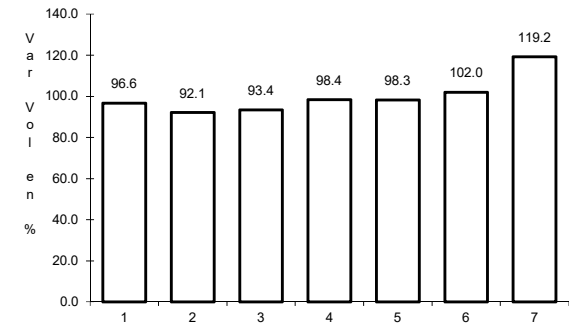
RUTA: MEX-015



Km: 0.00 Tipo: 3 Sent: 0



Km: 11.50 Tipo: 1 Sent: 1

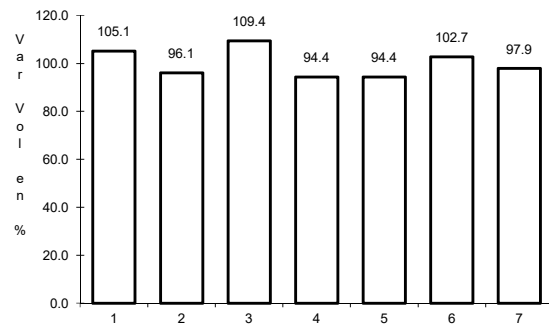


Km: 11.50 Tipo: 1 Sent: 2

11 CARR: Ramal a Mecatán

CLAVE: 18010

RUTA: MEX-015

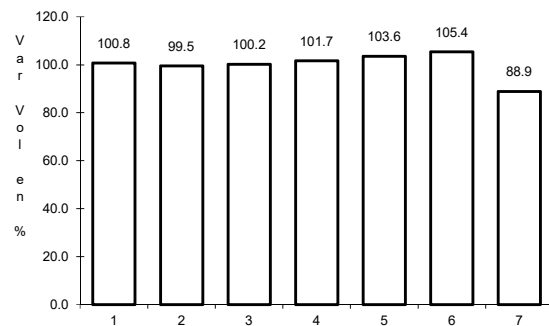


Km: 0.00 Tipo: 3 Sent: 0

12 CARR: Ramal a Nuevo Aeropuerto de Tepic

CLAVE: 18012

RUTA: MEX-015

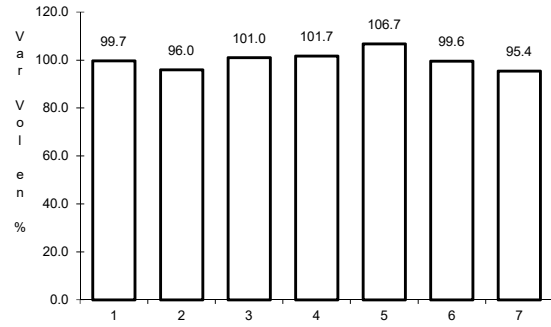


Km: 0.00 Tipo: 3 Sent: 0

13 CARR: Ramal a Punta Mita

CLAVE: 18020

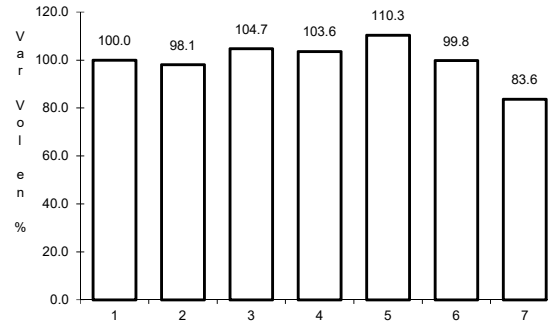
RUTA: MEX-200



Km: 0.00

Tipo: 3

Sent: 0



Km: 9.00

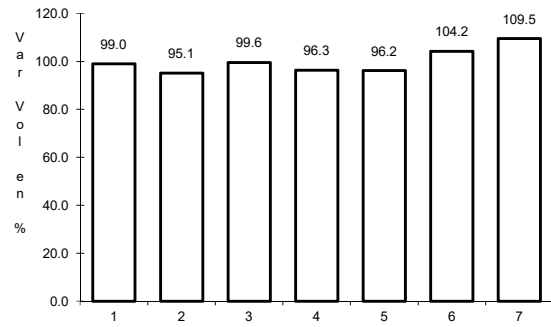
Tipo: 3

Sent: 0

14 CARR: Ramal a Santa Cruz

CLAVE: 18030

RUTA: MEX-015



Km: 1.30

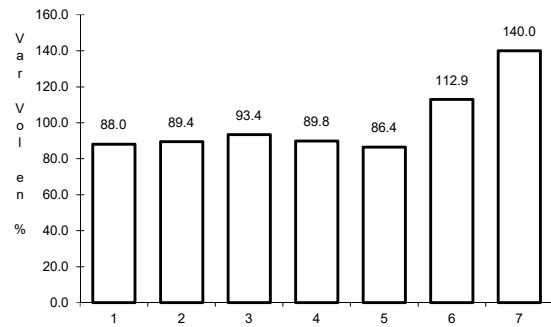
Tipo: 1

Sent: 0

15 CARR: Santa Cruz - San Blas

CLAVE: 18230

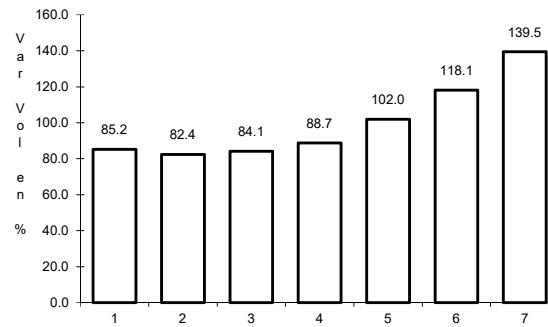
RUTA: MEX-015



Km: 0.00

Tipo: 3

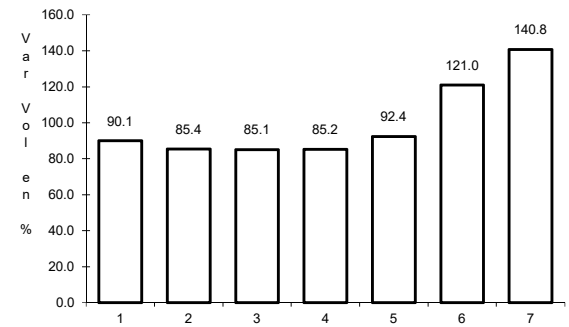
Sent: 0



Km: 5.00

Tipo: 3

Sent: 0



Km: 17.00

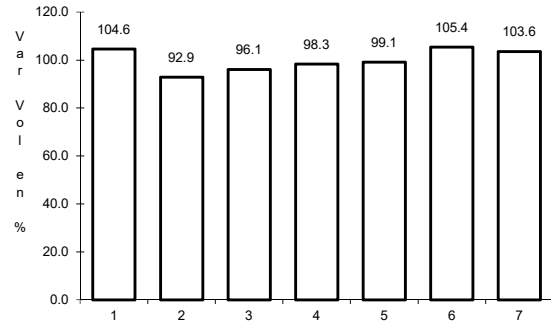
Tipo: 1

Sent: 0

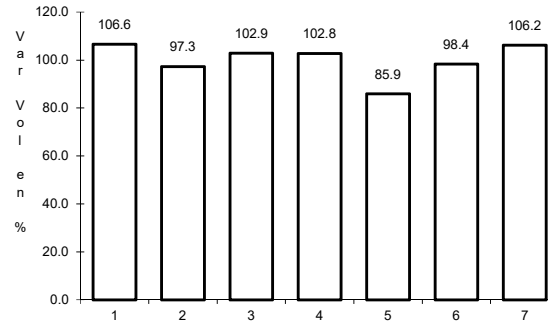
16 CARR: Tepic - Ixtapan de La Concepción

CLAVE: 18028

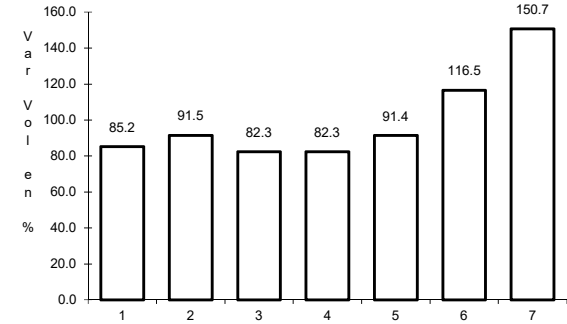
RUTA: MEX-015



Km: 0.00 Tipo: 3 Sent: 0



Km: 27.00 Tipo: 1 Sent: 0

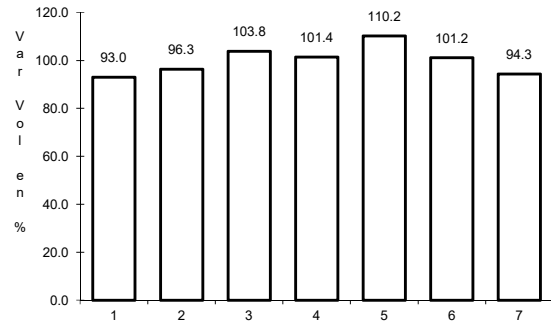


Km: 77.42 Tipo: 1 Sent: 0

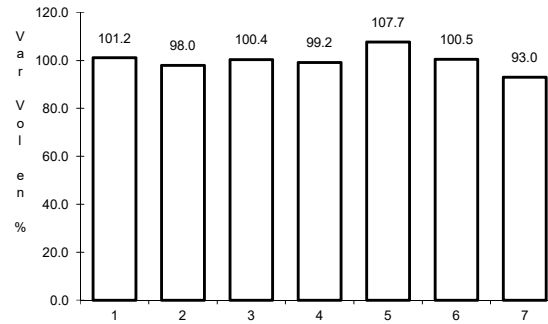
17 CARR: Tepic - Mazatlán

CLAVE: 00499

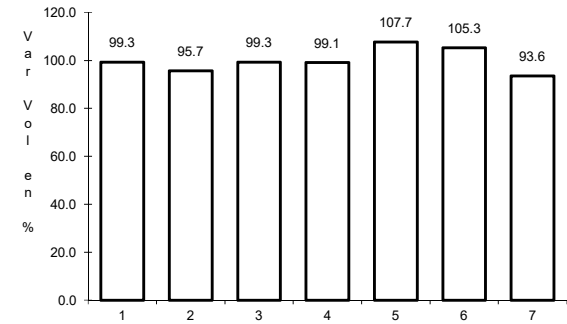
RUTA: MEX-015



Km: 136.52 Tipo: 1 Sent: 0



Km: 288.87 Tipo: 1 Sent: 1

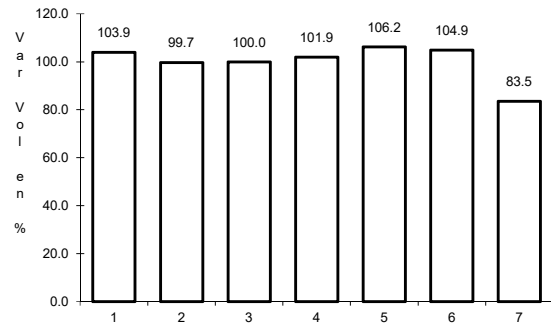


Km: 288.87 Tipo: 1 Sent: 2

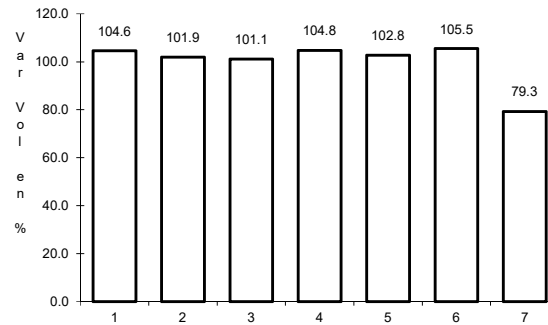
18 CARR: Tepic - Presa Aguamilpa

CLAVE: 18029

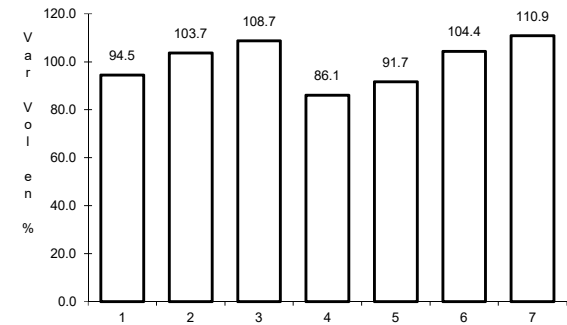
RUTA: MEX-015



Km: 0.00 Tipo: 3 Sent: 1



Km: 0.00 Tipo: 3 Sent: 2

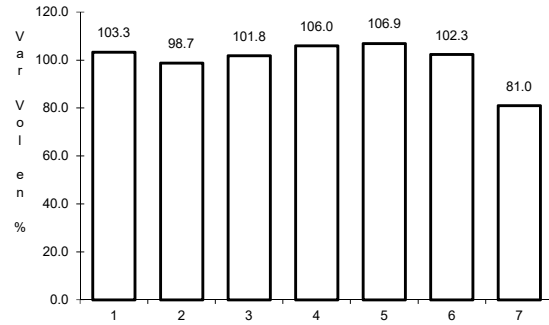


Km: 54.00 Tipo: 1 Sent: 0

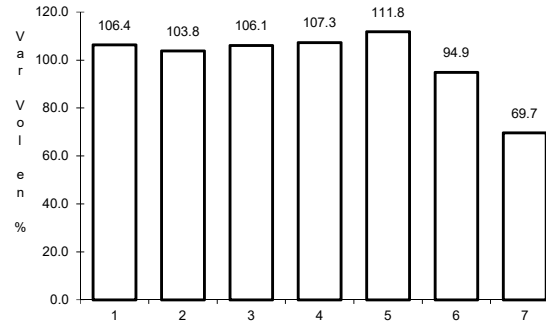
19 CARR: Tepic - Puerto Vallarta

CLAVE: 00068

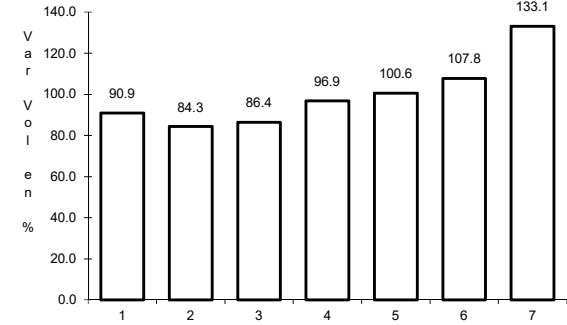
ruta: MEX-200



Km: 0.00 Tipo: 3 Sent: 1



Km: 0.00 Tipo: 3 Sent: 2

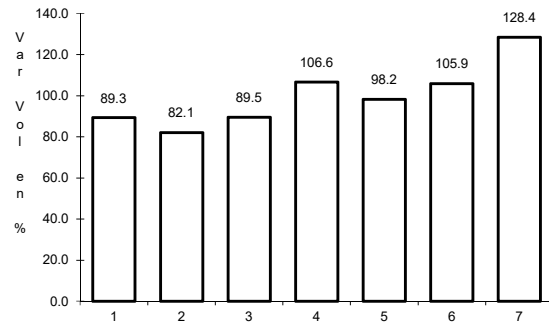


Km: 71.30 Tipo: 1 Sent: 0

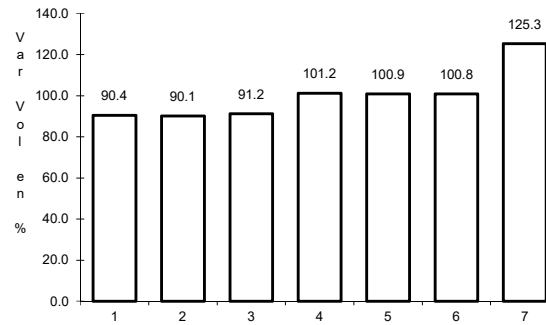
20 CARR: Chapalilla - Compostela (Cuota)

CLAVE: 18004

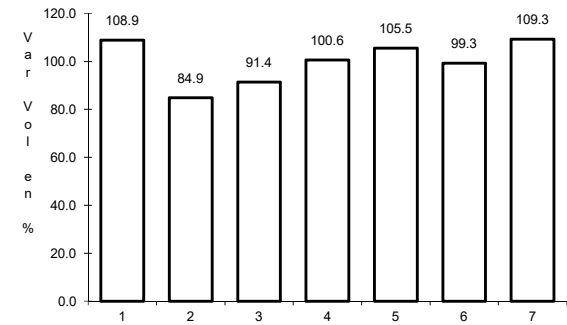
ruta: MEX-068D



Km: 0.00 Tipo: 3 Sent: 0



Km: 36.50 Tipo: 1 Sent: 0

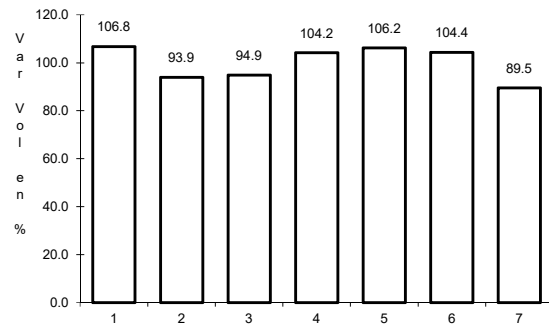


Km: 38.00 Tipo: 1 Sent: 0

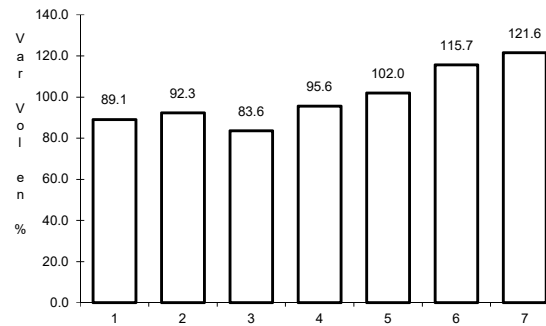
21 CARR: Guadalajara - Tepic (Cuota)

CLAVE: 00033

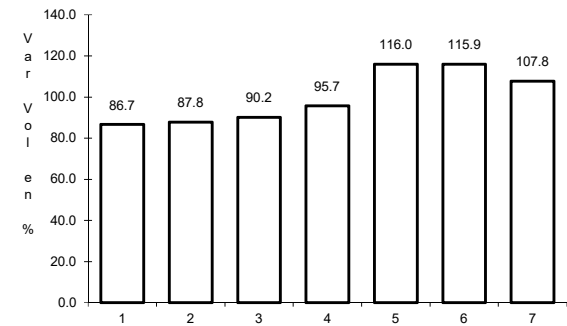
ruta: MEX-015D



Km: 0.00 Tipo: 3 Sent: 1



Km: 0.00 Tipo: 3 Sent: 2

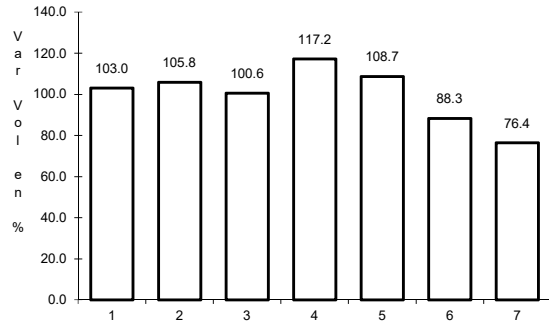


Km: 145.32 Tipo: 3 Sent: 1

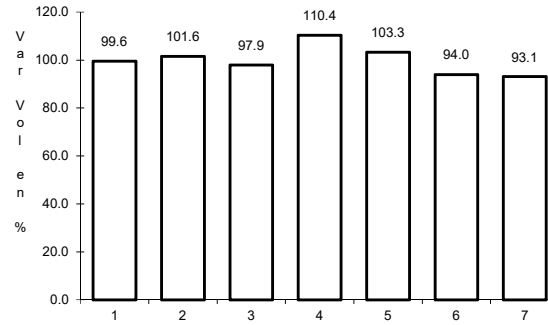
23 CARR: Ramal a Tequexpan

CLAVE: 00068

ruta: MEX-015D



Km: 0.00 Tipo: 3 Sent: 0

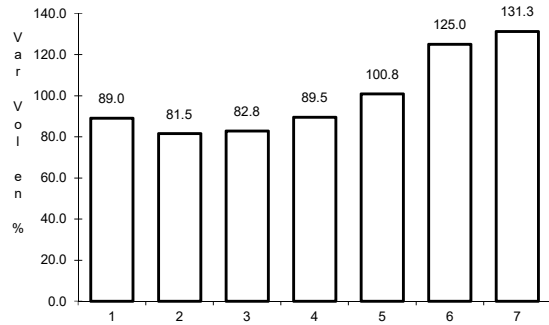


Km: 9.40 Tipo: 1 Sent: 0

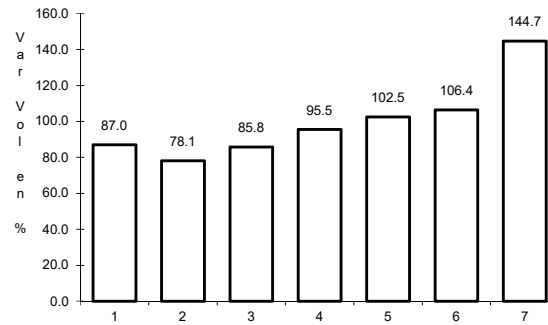
24 CARR: Tepic - Villa Unión (cuota)

CLAVE: 00500

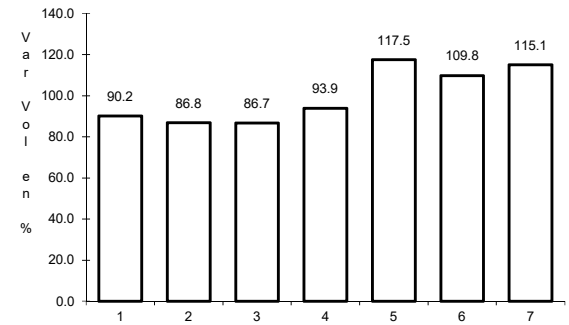
ruta: MEX-015D



Km: 4.70 Tipo: 1 Sent: 1



Km: 4.70 Tipo: 1 Sent: 2

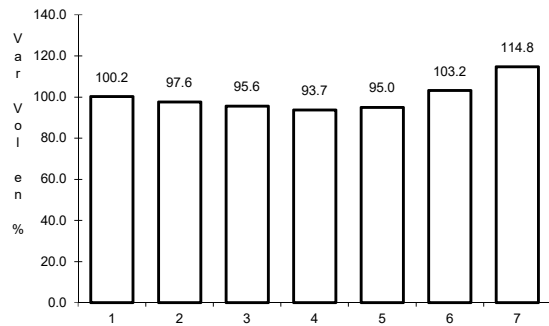


Km: 240.90 Tipo: 1 Sent: 0

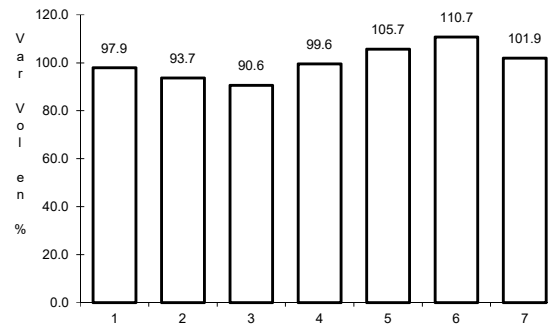
25 CARR: El Carrizo - La Batanga

CLAVE: 18107

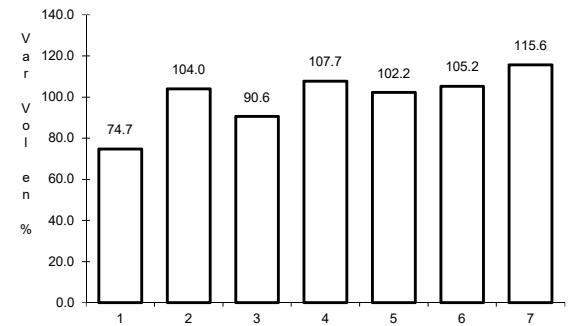
ruta: NAY-078



Km: 0.00 Tipo: 3 Sent: 0



Km: 9.00 Tipo: 1 Sent: 0

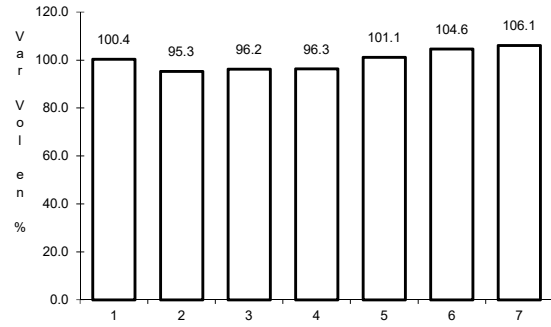


Km: 25.00 Tipo: 1 Sent: 0

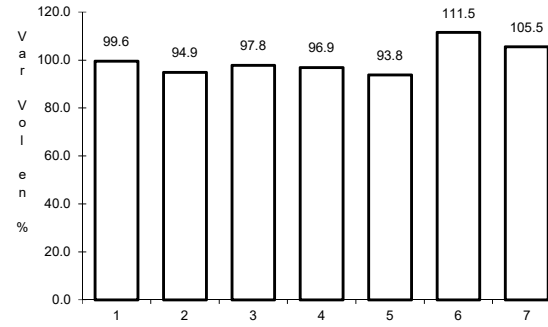
26 CARR: Navarrete - Sauta

CLAVE: 18013

RUTA: NAY-013



Km: 0.00 Tipo: 3 Sent: 0

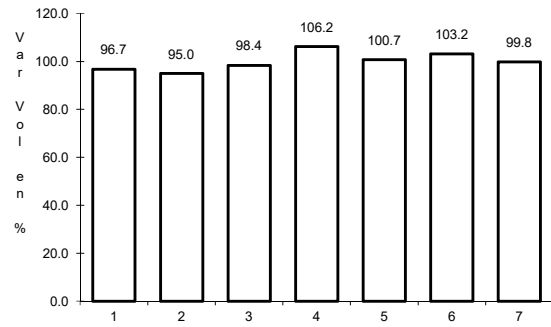


Km: 7.00 Tipo: 1 Sent: 0

27 CARR: Ramal a Amado Nervo

CLAVE: 18011

RUTA: NAY

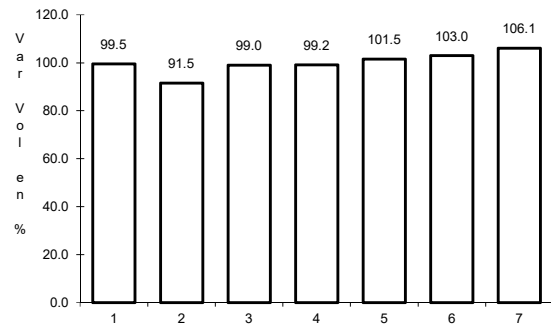


Km: 0.00 Tipo: 3 Sent: 0

28 CARR: Ramal a Bellavista

CLAVE: 18059

RUTA: NAY-059

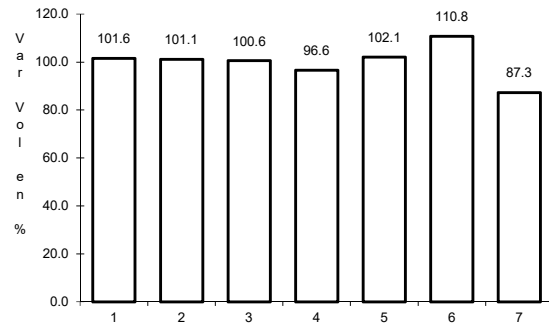


Km: 0.00 Tipo: 3 Sent: 0

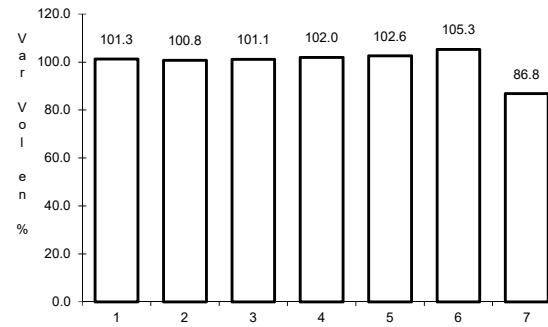
29 CARR: Ramal a El Colomo

CLAVE: 18014

RUTA: NAY



Km: 3.00 Tipo: 1 Sent: 1

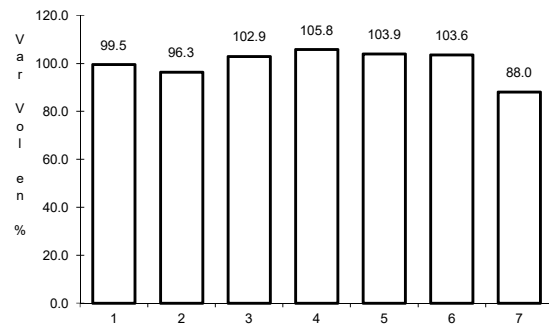


Km: 3.00 Tipo: 1 Sent: 2

30 CARR: Ramal a Estación Yago

CLAVE: 18224

RUTA: NAY

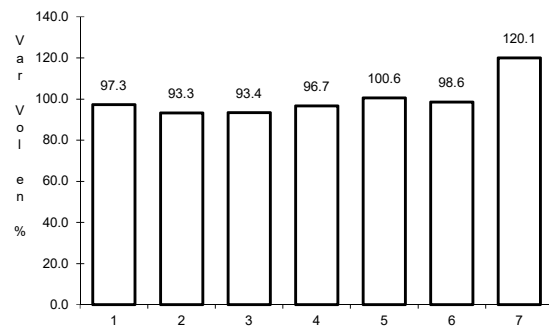


Km: 0.00 Tipo: 3 Sent: 0

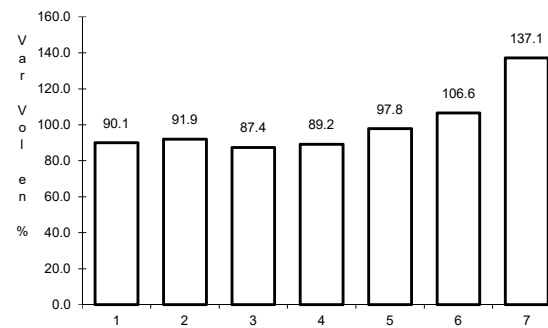
31 CARR: Ramal a Ixtapan de La Concepción

CLAVE: 18233

RUTA: NAY



Km: 0.00 Tipo: 3 Sent: 0

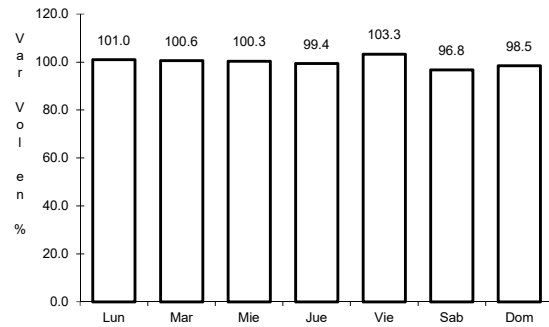


Km: 20.00 Tipo: 1 Sent: 0

32 CARR: Ramal a Milpas Viejas

CLAVE: 18007

RUTA: NAY



Km: 0.00

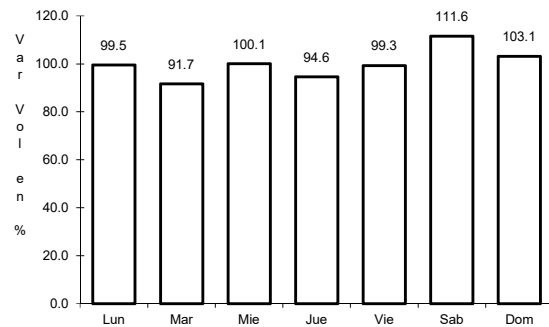
Tipo: 3

Sent: 0

33 CARR: Ramal a Villa Hidalgo

CLAVE: 18031

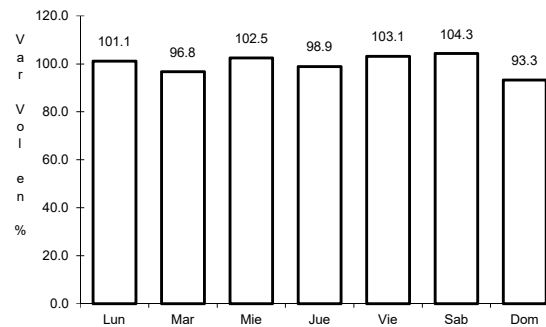
RUTA: NAY



Km: 0.00

Tipo: 3

Sent: 0



Km: 16.00

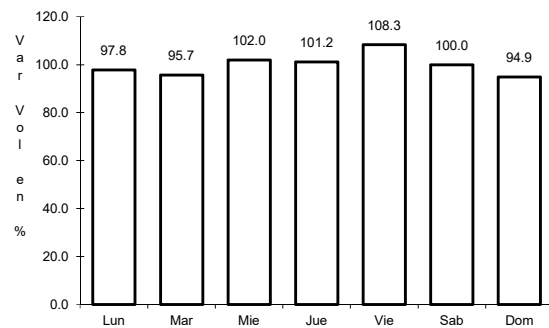
Tipo: 1

Sent: 0

34 CARR: Ramal a Volcán del Ceboruco

CLAVE: 18003

RUTA: NAY



Km: 0.00

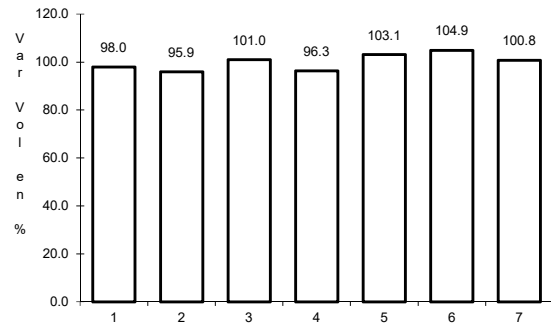
Tipo: 3

Sent: 0

35 CARR: Tepic - Francisco I. Madero

CLAVE: 18009

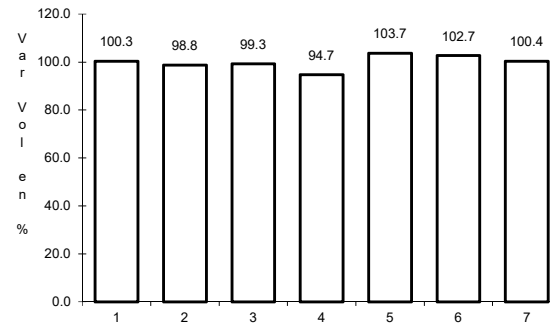
RUTA: NAY-MEX



Km: 0.00

Tipo: 3

Sent: 0



Km: 9.00

Tipo: 3

Sent: 0