

GUERRERO

---RED FEDERAL LIBRE---

1 Acapulco - Zihuatanejo	MEX-200
2 Cd. Altamirano - T. C. (Zihuatanejo - La Mira)	MEX-134
3 Chilpancingo - Acapulco	MEX-095
4 Chilpancingo - Chichihualco	MEX-095
5 Chilpancingo - Jilotepec	MEX-093
6 Cuernavaca - Chilpancingo	MEX-095
7 Ent. Alpuyeca - Grutas de Cacahuamilpa	MEX-166
8 Iguala - Cd. Altamirano	MEX-051
9 La Sabana - Puerto Marqués	MEX-200
10 Las Cruces - Pinotepa Nacional	MEX-200
11 Libramiento Norte de Acapulco	MEX-095
12 Milpillas - T. C. (Acapulco - Zihuatanejo)	MEX-196
13 Ramal a Aeropuerto Zihuatanejo	MEX-200
14 Ramal a La Unión	MEX-200
15 San Juan de Los Llanos - Ometepec	MEX-200
16 Tierra Colorada - Cruz Grande	MEX-198
17 Toluca - Cd. Altamirano	MEX-134
18 Zihuatanejo - La Mira	MEX-200

---RED FEDERAL DE CUOTA---

19 Cuernavaca - Acapulco (Cuota)	MEX-095D
20 Libramiento de Tépam (Cuota)	MEX-200D
21 Nueva Italia - Lázaro Cárdenas (Cuota)	MEX-037D
22 Puente de Ixtla - Iguala (Cuota)	MEX-091D
23 Rancho Viejo - Taxco (Cuota)	MEX-092D
24 Zacapalco - Rancho Viejo (Cuota)	MEX-092D

---RED ESTATAL LIBRE---

25 Acapulco - Aeropuerto Acapulco	GRO
26 Ent. Potrero - Lomas de Chapultepec	GRO
27 Las Petaquillas - Quechultenango	GRO
28 Pie de La Cuesta - Barra de Coyoaca	GRO
29 Ramal a Cocula	GRO
30 T. C. (Iguala - Chilpancingo) - Atenango del Río	GRO-001
31 Taxco - Ixcateopan	GRO
32 Teloloapan - Apaxtla de Castrejón	GRO
33 Tlapa de Comonfort - Marquelia	GRO

---RED ESTATAL DE CUOTA---

34 Puerto Marqués - La Venta (Cuota)	GRO-D
--------------------------------------	-------

---CARRETERAS INTEGRADAS POR TRAMOS FEDERALES Y ESTATALES---

35 Toluca - Axixintla	EM-MEX-055
-----------------------	------------

GUERRERO

1 CARR: Acapulco - Zihuatanejo

CLAVE: 12072

RUTA: MEX-200

AÑO: 2017

LUGAR	ESTACION				CLASIFICACION VEHICULAR EN PORCIENTO													COORDENADAS			
	KM	TE	SC	TDPA	M	A	B	C2	C3	T3S2	T3S3	T3S2R4	OTROS	A	B	C	K'	D	LATITUD	LONGITUD	
Acapulco	0.00																				
T. Izq. Pie de La Cuesta	10.37	1	0	19605	5.2	83.5	2.0	6.5	0.4	1.0	1.1	0.1	0.2	88.7	2.0	9.3	0.080	0.506	16.893917	-99.957861	
T. Izq. Pie de La Cuesta	10.37	3	0	15169	5.9	85.6	1.1	6.2	0.3	0.4	0.3	0.1	0.1	91.5	1.1	7.4	0.080	0.522	16.909336	-99.962225	
T. Der. Libramiento de Acapulco	21.37	3	0	11127	2.3	82.1	2.7	6.4	1.4	3.4	1.0	0.1	0.6	84.4	2.7	12.9	0.057	0.515	16.961049	-99.982045	
Coyuca de Benítez	33.60	3	0	7726	4.8	79.3	2.1	6.7	1.5	4.0	0.9	0.2	0.5	84.1	2.1	13.8	0.074	0.501	17.010642	-100.100447	
T. Der. Atoyac de Álvarez	77.85	3	0	12842	10.2	75.9	1.9	4.6	1.2	4.4	1.1	0.2	0.5	86.1	1.9	12.0	0.049	0.532	17.155323	-100.442790	
T. C. Libramiento de Técpan (Cuota)	102.00	1	0	9729	5.8	77.8	2.6	7.7	1.4	2.9	1.1	0.2	0.5	83.6	2.6	13.8	0.049	0.510	17.191333	-100.616528	
Técpan de Galeana	103.60	1	0	5269	8.5	80.8	1.6	4.8	0.6	2.9	0.4	0.1	0.3	89.3	1.6	9.1	0.079	0.507	17.201000	-100.626667	
Técpan de Galeana	103.60	3	0	10573	9.8	77.0	0.7	4.1	0.6	5.7	0.7	0.3	1.1	86.8	0.7	12.5	0.070	0.503	17.233333	-100.633222	
T. C. Libramiento de Técpan (Cuota)	110.20	3	0	6747	6.7	74.1	2.4	11.8	1.7	2.1	0.7	0.2	0.3	80.8	2.4	16.8	0.085	0.501	17.205417	-100.660167	
Papanao	162.25	1	0	3606	3.9	73.5	4.0	10.7	2.1	3.5	1.6	0.4	0.3	77.4	4.0	18.6	0.073	0.503	17.318917	-101.044833	
Petatán	206.30	1	0	4784	6.8	76.9	2.9	6.9	1.7	3.2	1.0	0.3	0.3	83.7	2.9	13.4	0.087	0.506	17.527611	-101.260944	
Zihuatanejo	242.90	1	1	9341	2.8	87.7	1.0	5.9	0.6	1.0	0.7	0.1	0.2	90.5	1.0	8.5	0.074	0.505	17.646614	-101.516428	
Zihuatanejo	242.90	1	2	9142	3.2	85.7	1.2	6.9	0.6	1.2	0.9	0.1	0.2	88.9	1.2	9.9	0.076	0.505	17.646605	-101.516425	

2 CARR: Cd. Altamirano - T. C. (Zihuatanejo - La Mira)

CLAVE: 12422

RUTA: MEX-134

AÑO: 2017

LUGAR	ESTACION				CLASIFICACION VEHICULAR EN PORCIENTO													COORDENADAS		
	KM	TE	SC	TDPA	M	A	B	C2	C3	T3S2	T3S3	T3S2R4	OTROS	A	B	C	K'	D	LATITUD	LONGITUD
Cd. Altamirano	0.00	3	1	10251	6.9	88.6	0.2	2.1	0.1	1.2	0.6	0.1	0.2	95.5	0.2	4.3	0.059	0.509	18.333167	-100.689111
Cd. Altamirano	0.00	3	2	10618	7.0	88.1	0.2	2.3	0.1	1.3	0.7	0.1	0.2	95.1	0.2	4.7	0.057	0.509	18.333167	-100.689111
T. Der. Zirándaro	15.00	3	0	3026	2.9	90.0	0.2	4.8	0.2	1.6	0.2	0.0	0.1	92.9	0.2	6.9	0.061	0.503	18.318889	-100.785056
T. C. Zihuatanejo - La Mira	187.36	1	0	1252	4.3	79.0	0.6	11.7	1.9	1.5	1.0	0.0	0.0	83.3	0.6	16.1	0.073	0.515	17.735775	-101.593468

3 CARR: Chilpancingo - Acapulco

CLAVE: 12045

RUTA: MEX-095

AÑO: 2017

LUGAR	ESTACION				CLASIFICACION VEHICULAR EN PORCIENTO													COORDENADAS			
	KM	TE	SC	TDPA	M	A	B	C2	C3	T3S2	T3S3	T3S2R4	OTROS	A	B	C	K'	D	LATITUD	LONGITUD	
Chilpancingo	0.00																				
T. C. Cuernavaca - Acapulco (Cuota) Lateral	4.20	1	1	11264	5.3	90.6	0.5	2.0	0.2	0.4	0.8	0.1	0.1	95.9	0.5	3.6	0.072	0.516	17.521500	-99.485278	
T. C. Cuernavaca - Acapulco (Cuota) Central	4.20	1	1	18898	2.0	84.6	2.2	5.5	1.0	2.5	1.2	0.5	0.5	86.6	2.2	11.2	0.068	0.506	17.521500	-99.485278	
T. C. Cuernavaca - Acapulco (Cuota) Lateral	4.20	1	2	11991	3.4	91.4	0.5	3.0	0.3	0.5	0.8	0.1	0.0	94.8	0.5	4.7	0.069	0.516	17.521500	-99.485278	
T. C. Cuernavaca - Acapulco (Cuota) Central	4.20	1	2	18463	2.3	84.8	2.3	5.7	0.9	2.1	1.1	0.4	0.4	87.1	2.3	10.6	0.072	0.506	17.521500	-99.485278	
T. C. Cuernavaca - Acapulco (Cuota)	4.20	3	1	16020	3.0	87.7	0.4	4.0	1.0	1.4	1.7	0.3	0.5	90.7	0.4	8.9	0.072	0.506	17.509389	-99.476889	
T. C. Cuernavaca - Acapulco (Cuota)	4.20	3	2	15648	3.2	88.5	0.2	4.5	0.7	0.9	1.5	0.2	0.3	91.7	0.2	8.1	0.073	0.506	17.509389	-99.476889	

GUERRERO

3 CARR: Chilpancingo - Acapulco

CLAVE: 12045

RUTA: MEX-095

AÑO: 2017

LUGAR	ESTACION				CLASIFICACION VEHICULAR EN PORCIENTO													COORDENADAS		
	KM	TE	SC	TDPA	M	A	B	C2	C3	T3S2	T3S3	T3S2R4	OTROS	A	B	C	K'	D	LATITUD	LONGITUD
Petaquillas	12.01	1	1	10821	3.2	89.7	0.3	3.3	1.0	0.9	0.9	0.3	0.4	92.9	0.3	6.8	0.073	0.525	17.492111	-99.463389
Petaquillas	12.01	1	2	9785	3.3	89.5	0.3	3.4	1.0	0.9	0.9	0.3	0.4	92.8	0.3	6.9	0.078	0.525	17.492111	-99.463389
Petaquillas	12.01	3	0	8133	6.7	82.1	0.8	3.7	1.9	3.4	0.8	0.1	0.5	88.8	0.8	10.4	0.080	0.500	17.481861	-99.457111
El Ocotito	50.68	1	0	6611	6.7	82.1	0.8	3.9	1.7	3.4	0.8	0.1	0.5	88.8	0.8	10.4	0.080	0.500	17.253444	-99.507111
El Ocotito	50.68	3	0	5551	4.1	84.2	1.1	4.3	2.1	2.4	1.0	0.2	0.6	88.3	1.1	10.6	0.068	0.501	17.232194	-99.519750
T. Izq. Tierra Colorada Inicia	61.18	1	0	4807	4.1	82.4	1.4	5.3	2.6	2.3	1.2	0.2	0.5	86.5	1.4	12.1	0.068	0.505	17.175970	-99.519605
T. Izq. Tierra Colorada Termina	65.14	3	0	5130	3.9	82.7	1.3	5.3	2.5	2.4	1.3	0.2	0.4	86.6	1.3	12.1	0.069	0.505	17.171520	-99.543593
X. C. Cuernavaca - Acapulco (Cuota)	70.10	3	0	3445	3.3	82.6	1.9	6.9	2.2	1.6	1.1	0.1	0.3	85.9	1.9	12.2	0.079	0.503	17.177711	-99.562239
T. Der. Pablo Galeana	88.15	3	0	2851	3.8	85.3	1.4	4.4	2.4	1.7	0.9	0.0	0.1	89.1	1.4	9.5	0.079	0.508	17.117413	-99.699970
T. Der. Libramiento Norte de Acapulco	112.80	1	0	10142	2.0	88.8	0.5	2.5	0.7	3.6	1.0	0.2	0.7	90.8	0.5	8.7	0.067	0.509	16.984419	-99.810367
T. Der. Libramiento Norte de Acapulco	112.80	3	0	11692	1.7	75.8	1.2	10.9	3.2	4.2	1.6	0.4	1.0	77.5	1.2	21.3	0.063	0.507	16.970833	-99.810722
Acapulco	132.67																			

4 CARR: Chilpancingo - Chichihualco

CLAVE: 12426

RUTA: MEX-095

AÑO: 2017

LUGAR	ESTACION				CLASIFICACION VEHICULAR EN PORCIENTO													COORDENADAS		
	KM	TE	SC	TDPA	M	A	B	C2	C3	T3S2	T3S3	T3S2R4	OTROS	A	B	C	K'	D	LATITUD	LONGITUD
T. C. Cuernavaca - Chilpancingo	0.00	3	0	4354	4.9	74.3	0.1	12.4	2.8	3.1	1.4	0.3	0.7	79.2	0.1	20.7	0.074	0.505	17.590835	-99.518480
T. Der. El Palmar	15.10	1	0	1803	4.5	87.7	0.1	5.8	0.7	0.8	0.3	0.0	0.1	92.2	0.1	7.7	0.063	0.501	17.639306	-99.602639
Chichihualco	26.30	1	0	1352	9.3	84.9	0.0	3.5	0.5	1.4	0.2	0.0	0.2	94.2	0.0	5.8	0.076	0.503	17.646528	-99.667528

5 CARR: Chilpancingo - Jilotepec

CLAVE: 12002

RUTA: MEX-093

AÑO: 2017

LUGAR	ESTACION				CLASIFICACION VEHICULAR EN PORCIENTO													COORDENADAS		
	KM	TE	SC	TDPA	M	A	B	C2	C3	T3S2	T3S3	T3S2R4	OTROS	A	B	C	K'	D	LATITUD	LONGITUD
Chilpancingo	0.00	3	0	6988	4.9	87.4	0.1	2.6	0.2	3.8	0.3	0.1	0.6	92.3	0.1	7.6	0.055	0.501	17.540056	-99.477000
T. Der. Tixtla de Guerrero	16.30	3	0	7705	10.1	81.0	0.1	4.0	0.3	3.6	0.4	0.1	0.4	91.1	0.1	8.8	0.068	0.501	17.579361	-99.392056
T. Izq. Almolonga	28.20	3	0	4660	2.4	84.0	1.0	6.6	1.2	3.3	0.8	0.2	0.5	86.4	1.0	12.6	0.063	0.504	17.604139	-99.309750
Chilapa de Álvarez	53.62	3	0	7835	11.2	76.0	0.5	6.3	0.6	4.2	0.6	0.1	0.5	87.2	0.5	12.3	0.062	0.500	17.597042	-99.146696
Tlapa de Comonfort	178.50	1	0	5723	4.5	82.2	0.6	8.6	0.5	2.7	0.5	0.1	0.3	86.7	0.6	12.7	0.057	0.517	17.541694	-98.628611
Huamuxtitlán	200.63	1	0	4799	3.1	85.0	1.7	5.6	1.2	2.0	1.1	0.1	0.2	88.1	1.7	10.2	0.066	0.506	17.792000	-98.562278
Xochihuehuatlán	216.80	1	0	1977	3.0	75.4	3.5	8.7	2.7	4.0	1.7	0.3	0.7	78.4	3.5	18.1	0.084	0.510	17.900667	-98.497972
Jilotepec	235.00	1	0	2088	2.4	75.8	3.4	10.1	2.2	3.4	1.8	0.5	0.4	78.2	3.4	18.4	0.080	0.504	17.960145	-98.480540

GUERRERO

6 CARR: Cuernavaca - Chilpancingo

CLAVE: 00042

RUTA: MEX-095

AÑO: 2017

LUGAR	ESTACION				CLASIFICACION VEHICULAR EN PORCIENTO													COORDENADAS			
	KM	TE	SC	TDPA	M	A	B	C2	C3	T3S2	T3S3	T3S2R4	OTROS	A	B	C	K'	D	LATITUD	LONGITUD	
Cuernavaca	0.00																				
T. Izq. Chipitlán	4.85	1	1	19302	1.4	88.9	0.6	8.4	0.2	0.0	0.0	0.0	0.5	90.3	0.6	9.1	0.059	0.509	18.893767	-99.228567	
T. Izq. Chipitlán	4.85	1	2	18629	1.4	87.9	0.6	9.4	0.2	0.0	0.0	0.0	0.5	89.3	0.6	10.1	0.064	0.509	18.893767	-99.228567	
T. Izq. Chipitlán	4.85	3	1	9530	3.4	79.7	5.7	7.3	0.3	1.0	1.8	0.3	0.5	83.1	5.7	11.2	0.071	0.507	18.882117	-99.229767	
T. Izq. Chipitlán	4.85	3	2	9802	2.7	78.8	6.6	7.6	0.3	1.0	2.2	0.3	0.5	81.5	6.6	11.9	0.071	0.507	18.882117	-99.229767	
Temixco	9.80	1	1	10054	5.6	79.4	5.7	7.1	0.2	0.6	1.2	0.0	0.2	85.0	5.7	9.3	0.065	0.521	18.865350	-99.225700	
Temixco	9.80	1	2	10915	5.2	78.9	6.0	7.6	0.2	0.6	1.3	0.0	0.2	84.1	6.0	9.9	0.065	0.521	18.865350	-99.225700	
Temixco	9.80	3	1	15242	3.3	80.5	6.1	7.7	0.5	0.5	1.1	0.1	0.2	83.8	6.1	10.1	0.056	0.514	18.835268	-99.225874	
Temixco	9.80	3	2	16096	3.2	78.5	7.1	8.8	0.5	0.5	1.1	0.1	0.2	81.7	7.1	11.2	0.060	0.514	18.835270	-99.225875	
Acatlpa	12.43	1	1	13612	4.9	82.3	4.1	7.3	0.3	0.2	0.7	0.1	0.1	87.2	4.1	8.7	0.074	0.511	18.830217	-99.227167	
Acatlpa	12.43	1	2	13041	5.1	80.6	4.8	8.1	0.3	0.2	0.7	0.1	0.1	85.7	4.8	9.5	0.077	0.511	18.830217	-99.227167	
Acatlpa	12.43	3	1	12802	3.5	82.7	4.6	8.0	0.2	0.2	0.5	0.1	0.2	86.2	4.6	9.2	0.057	0.505	18.824778	-99.230066	
Acatlpa	12.43	3	2	12532	4.1	80.7	5.0	8.9	0.2	0.2	0.6	0.1	0.2	84.8	5.0	10.2	0.060	0.505	18.824713	-99.230052	
T. Izq. Emiliano Zapata	13.50	1	1	10709	5.5	81.8	3.3	6.3	0.2	0.8	0.8	0.4	0.9	87.3	3.3	9.4	0.068	0.520	18.822713	-99.231130	
T. Izq. Emiliano Zapata	13.50	1	2	11622	7.1	78.9	3.7	6.8	0.2	1.0	0.8	0.4	1.1	86.0	3.7	10.3	0.071	0.520	18.822868	-99.231114	
T. Izq. Emiliano Zapata	13.50	3	1	10577	3.9	87.4	3.0	4.1	0.5	0.4	0.5	0.1	0.1	91.3	3.0	5.7	0.087	0.517	18.816174	-99.233115	
T. Izq. Emiliano Zapata	13.50	3	2	9870	4.9	85.4	3.2	4.9	0.5	0.4	0.5	0.1	0.1	90.3	3.2	6.5	0.086	0.517	18.816181	-99.233030	
T. Izq. Xochitepec	16.05	1	1	7695	4.0	88.3	3.1	3.0	0.5	0.4	0.5	0.1	0.1	92.3	3.1	4.6	0.071	0.504	18.800944	-99.237234	
T. Izq. Xochitepec	16.05	1	2	7828	4.9	86.6	3.4	3.5	0.5	0.4	0.5	0.1	0.1	91.5	3.4	5.1	0.073	0.504	18.800951	-99.237202	
T. Izq. Xochitepec (Real del Puente)	16.05	3	1	5127	6.1	82.2	4.2	6.0	0.6	0.5	0.3	0.0	0.1	88.3	4.2	7.5	0.085	0.509	18.797381	-99.240501	
T. Izq. Xochitepec (Real del Puente)	16.05	3	2	5321	5.9	81.2	4.8	6.6	0.6	0.5	0.3	0.0	0.1	87.1	4.8	8.1	0.125	0.509	18.797309	-99.240518	
X. C. Alpuyec - Jojutla	24.15	1	1	9077	6.0	82.8	2.1	5.8	0.5	1.3	1.1	0.1	0.3	88.8	2.1	9.1	0.079	0.508	18.739228	-99.255265	
X. C. Alpuyec - Jojutla	24.15	1	2	8786	5.5	82.3	2.2	6.5	0.5	1.5	1.1	0.1	0.3	87.8	2.2	10.0	0.094	0.508	18.739239	-99.255265	
X. C. Alpuyec - Jojutla	24.15	3	0	9136	3.3	85.1	2.2	6.3	1.3	1.1	0.4	0.2	0.1	88.4	2.2	9.4	0.096	0.506	18.730229	-99.264665	
T. Der. Coatepec	28.00	3	0	5926	2.7	82.2	2.7	8.5	1.8	1.4	0.4	0.2	0.1	84.9	2.7	12.4	0.063	0.506	18.710233	-99.273750	
T. Der. Michapa	44.36	1	0	8561	2.5	83.7	2.3	4.8	1.3	3.7	1.0	0.1	0.6	86.2	2.3	11.5	0.064	0.511	18.611911	-99.355861	
T. Izq. Cuernavaca - Iguala (Cuota)	46.93	1	0	6111	4.6	83.8	1.9	4.1	0.8	3.2	1.1	0.1	0.4	88.4	1.9	9.7	0.078	0.504	18.604859	-99.376961	
T. Izq. Cuernavaca - Iguala (Cuota)	46.93	3	0	5628	3.9	88.9	3.0	0.8	0.2	2.1	0.5	0.1	0.5	92.8	3.0	4.2	0.060	0.508	18.603200	-99.381677	
Huajintla	52.00	3	0	3513	5.9	85.7	1.1	3.8	0.3	1.9	0.5	0.1	0.7	91.6	1.1	7.3	0.071	0.515	18.612791	-99.430493	
Lim. Edos. Term. Mor. Ppia. Gro.	57.10																				
T. Der. Ixtapan de La Sal (Axixintla)	63.47	1	0	2027	6.4	83.2	0.7	8.2	1.0	0.2	0.3	0.0	0.0	89.6	0.7	9.7	0.075	0.514	18.611079	-99.504986	
Taxco	89.90	3	0	6338	3.4	86.5	1.1	4.8	0.4	1.9	1.0	0.2	0.7	89.9	1.1	9.0	0.080	0.517	18.535017	-99.609335	
Iguala	119.63	1	0	6204	5.6	88.2	0.4	5.2	0.4	0.1	0.1	0.0	0.0	93.8	0.4	5.8	0.083	0.509	18.379639	-99.529222	
T. Izq. Puente de Ixtla	123.98	3	0	15798	2.7	85.1	1.3	6.6	1.4	1.4	1.2	0.1	0.2	87.8	1.3	10.9	0.219	0.516	18.319806	-99.499222	
T. Der. Sabana Grande	144.95	1	0	7202	2.5	81.4	2.3	5.9	3.2	2.8	1.4	0.1	0.4	83.9	2.3	13.8	0.072	0.505	18.174233	-99.551733	

GUERRERO

6 CARR: Cuernavaca - Chilpancingo

CLAVE: 00042

RUTA: MEX-095

AÑO: 2017

LUGAR	ESTACION				CLASIFICACION VEHICULAR EN PORCIENTO													COORDENADAS		
	KM	TE	SC	TDPA	M	A	B	C2	C3	T3S2	T3S3	T3S2R4	OTROS	A	B	C	K'	D	LATITUD	LONGITUD
T. Der. Tecucontitlán	146.78	1	0	6785	1.8	77.7	2.9	7.5	3.6	4.1	1.6	0.3	0.5	79.5	2.9	17.6	0.069	0.500	18.130309	-99.555715
T. Der. Mezcala	173.14	1	0	6182	1.8	77.5	3.1	7.5	3.6	4.3	1.6	0.2	0.4	79.3	3.1	17.6	0.069	0.512	17.934472	-99.589667
T. Der. Filo de Caballo	189.89	3	0	5250	1.9	77.1	3.2	7.3	3.7	4.3	1.8	0.2	0.5	79.0	3.2	17.8	0.071	0.516	17.794750	-99.566944
Chilpancingo	223.70	1	1	18542	2.4	85.6	2.2	6.1	1.3	1.2	0.6	0.5	0.1	88.0	2.2	9.8	0.078	0.502	17.581111	-99.514833
Chilpancingo	223.70	1	2	18710	2.0	84.7	2.4	7.0	1.4	1.3	0.6	0.5	0.1	86.7	2.4	10.9	0.073	0.502	17.581139	-99.514861

7 CARR: Ent. Alpuyecá - Grutas de Cacahuamilpa

CLAVE: 00421

RUTA: MEX-166

AÑO: 2017

LUGAR	ESTACION				CLASIFICACION VEHICULAR EN PORCIENTO													COORDENADAS		
	KM	TE	SC	TDPA	M	A	B	C2	C3	T3S2	T3S3	T3S2R4	OTROS	A	B	C	K'	D	LATITUD	LONGITUD
T. C. Cuernavaca - Chilpancingo	0.00	3	0	7379	4.8	82.6	0.9	7.4	0.8	2.5	0.5	0.1	0.4	87.4	0.9	11.7	0.071	0.500	18.748767	-99.257350
T. Der. Zona Arq. de Xochicalco	8.40	3	1	3563	5.4	86.3	1.0	5.1	1.0	0.5	0.5	0.1	0.1	91.7	1.0	7.3	0.074	0.506	18.777883	-99.304983
T. Der. Zona Arq. de Xochicalco	8.40	3	2	3475	5.0	86.0	1.1	5.4	1.2	0.6	0.5	0.1	0.1	91.0	1.1	7.9	0.074	0.506	18.777883	-99.304983
Miacatlán	14.95	3	1	7083	7.2	87.4	0.9	3.4	0.1	0.5	0.4	0.0	0.1	94.6	0.9	4.5	0.059	0.502	18.752533	-99.364733
Miacatlán	14.95	3	2	7141	7.4	86.8	1.0	3.7	0.1	0.5	0.4	0.0	0.1	94.2	1.0	4.8	0.060	0.502	18.752533	-99.364733
Mazatepec	18.28	3	0	9905	3.9	90.8	0.6	3.2	0.3	0.1	0.3	0.1	0.7	94.7	0.6	4.7	0.068	0.506	18.721196	-99.367040
Tetecala	25.05	3	0	8453	5.6	89.4	0.6	3.4	0.3	0.1	0.2	0.0	0.4	95.0	0.6	4.4	0.053	0.501	18.728767	-99.405167
Coatlán del Río	29.80	3	0	5338	4.3	90.3	1.1	2.4	0.4	0.9	0.3	0.0	0.3	94.6	1.1	4.3	0.061	0.501	18.748111	-99.444134
Michapa	41.26	1	0	3571	7.2	78.5	0.8	3.7	2.3	3.2	3.5	0.2	0.6	85.7	0.8	13.5	0.053	0.501	18.706459	-99.475588
Lim. Edos. Term. Mor. Ppia. Gro.	42.40																			
T. C. Toluca - Axixintla	48.65																			

8 CARR: Iguala - Cd. Altamirano

CLAVE: 12195

RUTA: MEX-051

AÑO: 2017

LUGAR	ESTACION				CLASIFICACION VEHICULAR EN PORCIENTO													COORDENADAS		
	KM	TE	SC	TDPA	M	A	B	C2	C3	T3S2	T3S3	T3S2R4	OTROS	A	B	C	K'	D	LATITUD	LONGITUD
Iguala	0.00																			
T. Izq. Cocula	9.40	1	0	6331	4.9	81.9	0.9	10.4	0.8	0.7	0.3	0.0	0.1	86.8	0.9	12.3	0.087	0.503	18.326250	-99.597444
T. Izq. Cocula	9.40	3	0	4821	1.7	83.2	2.3	7.6	1.1	2.6	0.9	0.1	0.5	84.9	2.3	12.8	0.058	0.502	18.322250	-99.608333
T. Izq. Teloloapan	63.99	1	0	3898	3.3	83.0	1.9	8.0	1.1	1.7	0.7	0.1	0.2	86.3	1.9	11.8	0.091	0.502	18.354076	-99.847437
T. Izq. Almoloya	116.60	1	0	1355	3.2	75.2	5.1	8.4	1.9	4.2	1.2	0.6	0.2	78.4	5.1	16.5	0.067	0.514	18.375444	-100.172778
T. Izq. Arcelia	131.98	3	0	5189	18.3	69.5	1.1	7.4	0.5	2.6	0.4	0.0	0.2	87.8	1.1	11.1	0.067	0.524	18.322613	-100.298217
Cd. Altamirano	184.55	1	1	8712	13.1	81.6	0.5	2.2	0.2	1.3	0.8	0.0	0.3	94.7	0.5	4.8	0.093	0.507	18.347750	-100.658667
Cd. Altamirano	184.55	1	2	8479	12.4	81.9	0.5	2.4	0.2	1.5	0.8	0.0	0.3	94.3	0.5	5.2	0.083	0.507	18.347750	-100.658667

GUERRERO

9 CARR: La Sabana - Puerto Marqués

CLAVE: 12291

RUTA: MEX-200

AÑO: 2017

LUGAR	ESTACION				CLASIFICACION VEHICULAR EN PORCIENTO										COORDENADAS					
	KM	TE	SC	TDPA	M	A	B	C2	C3	T3S2	T3S3	T3S2R4	OTROS	A	B	C	K'	D	LATITUD	LONGITUD
T. C. Las Cruces - Pinotepa Nacional	0.00	3	1	15461	3.2	88.3	2.7	1.4	0.8	1.4	1.6	0.2	0.4	91.5	2.7	5.8	0.069	0.507	16.854979	-99.811055
T. C. Las Cruces - Pinotepa Nacional	0.00	3	2	15906	3.1	89.0	2.1	1.4	0.7	1.4	1.7	0.2	0.4	92.1	2.1	5.8	0.061	0.507	16.854994	-99.811059
X. C. Acapulco - Aeropuerto Acapulco	7.20	1	1	16541	2.7	91.8	1.1	2.7	0.7	0.5	0.4	0.1	0.0	94.5	1.1	4.4	0.065	0.526	16.812250	-99.817556
X. C. Acapulco - Aeropuerto Acapulco	7.20	1	2	18571	2.5	91.4	1.2	3.1	0.8	0.5	0.4	0.1	0.0	93.9	1.2	4.9	0.064	0.526	16.812278	-99.817583
Puerto Marqués	8.70																			

10 CARR: Las Cruces - Pinotepa Nacional

CLAVE: 00073

RUTA: MEX-200

AÑO: 2017

LUGAR	ESTACION				CLASIFICACION VEHICULAR EN PORCIENTO										COORDENADAS					
	KM	TE	SC	TDPA	M	A	B	C2	C3	T3S2	T3S3	T3S2R4	OTROS	A	B	C	K'	D	LATITUD	LONGITUD
T. C. Chilpancingo - Acapulco	0.00	3	1	17316	2.5	86.7	0.5	3.1	0.4	2.5	2.7	0.6	1.0	89.2	0.5	10.3	0.060	0.524	16.885778	-99.834083
T. C. Chilpancingo - Acapulco	0.00	3	2	15755	2.4	85.5	0.7	3.5	0.4	2.6	3.2	0.7	1.0	87.9	0.7	11.4	0.059	0.524	16.885664	-99.833958
T. Der. Puerto Marqués	4.62	1	1	17734	4.4	88.3	0.4	4.4	0.6	0.8	0.8	0.1	0.2	92.7	0.4	6.9	0.081	0.515	16.867806	-99.811139
T. Der. Puerto Marqués	4.62	1	2	16716	3.0	88.9	0.7	3.3	0.5	1.4	1.8	0.2	0.2	91.9	0.7	7.4	0.074	0.515	16.867818	-99.811068
T. Der. Puerto Marqués	4.62	3	0	17916	4.3	87.1	0.7	3.5	1.5	1.6	1.0	0.2	0.1	91.4	0.7	7.9	0.059	0.526	16.852312	-99.798610
X. C. Puerto Marqués - La Venta (Cuota)	11.70	1	1	4100	4.5	85.9	0.9	4.9	1.5	0.9	1.1	0.2	0.1	90.4	0.9	8.7	0.090	0.511	16.831083	-99.770583
X. C. Puerto Marqués - La Venta (Cuota)	11.70	1	2	3916	4.3	84.9	0.9	5.2	1.8	1.2	1.3	0.2	0.2	89.2	0.9	9.9	0.079	0.511	16.831083	-99.770583
X. C. Puerto Marqués - La Venta (Cuota)	11.70	3	1	5459	3.7	88.0	0.5	3.6	1.7	1.3	0.9	0.1	0.2	91.7	0.5	7.8	0.074	0.512	16.830333	-99.755056
X. C. Puerto Marqués - La Venta (Cuota)	11.70	3	2	5203	3.9	86.3	0.8	4.1	1.9	1.5	1.1	0.1	0.3	90.2	0.8	9.0	0.064	0.512	16.830306	-99.755056
San Marcos	58.90	1	0	7853	2.0	83.4	1.4	6.3	1.8	3.4	1.2	0.1	0.4	85.4	1.4	13.2	0.061	0.508	16.779750	-99.411194
Nexpa	84.96	3	0	5940	2.0	82.8	1.4	6.5	1.8	3.5	1.4	0.1	0.5	84.8	1.4	13.8	0.062	0.511	16.781038	-99.200718
T. Izq. Copala (1º Acceso)	117.50	1	0	5928	1.8	81.1	2.6	7.1	2.0	3.6	1.2	0.2	0.4	82.9	2.6	14.5	0.077	0.524	16.611639	-98.995111
T. Izq. Copala (1º Acceso)	117.50	3	0	6581	2.1	82.4	2.0	6.0	2.2	3.8	1.0	0.1	0.4	84.5	2.0	13.5	0.077	0.504	16.603167	-98.965417
T. Izq. Ometepec	175.88	1	0	5265	1.8	82.1	2.2	6.4	1.9	3.5	1.2	0.5	0.4	83.9	2.2	13.9	0.084	0.542	16.655361	-98.503194
Cuajinicuilapa	200.60	3	0	3251	4.2	76.6	2.1	8.4	3.0	3.3	1.7	0.2	0.5	80.8	2.1	17.1	0.058	0.514	16.462278	-98.393833
Lim. Edos. Term. Gro. Ppia. Oax.	207.80																			
T. Izq. San Pedro Orizaba	215.00	3	0	2191	3.3	78.6	2.5	7.6	2.9	3.3	1.5	0.2	0.1	81.9	2.5	15.6	0.071	0.511	16.443436	-98.344477
T. Izq. Tlaxiaco	245.47	1	0	3603	5.6	77.7	2.3	8.2	1.8	3.0	0.9	0.1	0.4	83.3	2.3	14.4	0.071	0.509	16.379167	-98.094000
T. Izq. Tlaxiaco	245.47	3	0	6625	5.6	77.6	2.1	6.6	1.7	3.7	1.8	0.4	0.5	83.2	2.1	14.7	0.071	0.509	16.376639	-98.092056
Pinotepa Nacional	252.50																			

GUERRERO

11 CARR: Libramiento Norte de Acapulco

CLAVE: 12421

RUTA: MEX-095

AÑO: 2017

LUGAR	ESTACION				CLASIFICACION VEHICULAR EN PORCIENTO													COORDENADAS		
	KM	TE	SC	TDPA	M	A	B	C2	C3	T3S2	T3S3	T3S2R4	OTROS	A	B	C	K'	D	LATITUD	LONGITUD
T. C. Chilpancingo - Acapulco	0.00	3	0	5096	2.0	71.5	2.7	14.1	3.9	3.4	1.6	0.3	0.5	73.5	2.7	23.8	0.081	0.515	16.982083	-99.820306
T. Der. Pelillo	6.40	3	0	3761	1.9	73.6	3.6	9.0	5.1	3.9	1.9	0.3	0.7	75.5	3.6	20.9	0.075	0.545	16.976580	-99.868523
T. C. Acapulco - Zihuatanejo	21.10	1	0	5453	6.4	75.8	2.4	5.9	2.6	4.8	1.3	0.2	0.6	82.2	2.4	15.4	0.069	0.520	16.963944	-99.974333

12 CARR: Milpillas - T. C. (Acapulco - Zihuatanejo)

CLAVE: 12012

RUTA: MEX-196

AÑO: 2017

LUGAR	ESTACION				CLASIFICACION VEHICULAR EN PORCIENTO													COORDENADAS		
	KM	TE	SC	TDPA	M	A	B	C2	C3	T3S2	T3S3	T3S2R4	OTROS	A	B	C	K'	D	LATITUD	LONGITUD
T. C. Cuernavaca - Chilpancingo	0.00	3	0	1369	1.1	81.1	0.6	12.8	2.1	1.6	0.6	0.0	0.1	82.2	0.6	17.2	0.091	0.514	17.799192	-99.567008
Los Morros	45.07	1	0	1032	2.1	81.8	0.4	10.2	3.9	1.0	0.6	0.0	0.0	83.9	0.4	15.7	0.072	0.522	17.693917	-99.802694
Atoyac de Álvarez	233.50	1	0	1308	18.0	73.2	0.1	6.7	0.9	0.9	0.1	0.0	0.1	91.2	0.1	8.7	0.064	0.505	17.219639	-100.422500
T. C. Acapulco - Zihuatanejo	237.00	1	1	4953	14.2	80.7	0.2	3.4	0.4	0.7	0.3	0.0	0.1	94.9	0.2	4.9	0.078	0.500	17.166747	-100.434037
T. C. Acapulco - Zihuatanejo	237.00	1	2	4958	14.0	79.5	0.2	4.7	0.3	0.8	0.4	0.0	0.1	93.5	0.2	6.3	0.079	0.500	17.166741	-100.434031

13 CARR: Ramal a Aeropuerto Zihuatanejo

CLAVE: 12423

RUTA: MEX-200

AÑO: 2017

LUGAR	ESTACION				CLASIFICACION VEHICULAR EN PORCIENTO													COORDENADAS		
	KM	TE	SC	TDPA	M	A	B	C2	C3	T3S2	T3S3	T3S2R4	OTROS	A	B	C	K'	D	LATITUD	LONGITUD
T. C. Acapulco - Zihuatanejo	0.00	3	0	3892	4.7	88.3	0.2	3.8	0.1	2.4	0.3	0.0	0.2	93.0	0.2	6.8	0.069	0.523	17.618500	-101.462444
Aeropuerto	2.00																			

14 CARR: Ramal a La Unión

CLAVE:

RUTA: MEX-200

AÑO: 2017

LUGAR	ESTACION				CLASIFICACION VEHICULAR EN PORCIENTO													COORDENADAS		
	KM	TE	SC	TDPA	M	A	B	C2	C3	T3S2	T3S3	T3S2R4	OTROS	A	B	C	K'	D	LATITUD	LONGITUD
T. C. Zihuatanejo - La Mira	0.00	3	0	2445	3.1	84.4	0.4	10.5	0.8	0.7	0.1	0.0	0.0	87.5	0.4	12.1	0.083	0.503	17.950028	-101.820222
La Unión	6.10																			

15 CARR: San Juan de Los Llanos - Ometepec

CLAVE: 12011

RUTA: MEX-200

AÑO: 2017

LUGAR	ESTACION				CLASIFICACION VEHICULAR EN PORCIENTO													COORDENADAS		
	KM	TE	SC	TDPA	M	A	B	C2	C3	T3S2	T3S3	T3S2R4	OTROS	A	B	C	K'	D	LATITUD	LONGITUD
T. C. Las Cruces - Pinotepa Nacional	0.00	3	0	5539	3.0	86.1	0.7	5.2	0.8	2.9	0.8	0.2	0.3	89.1	0.7	10.2	0.084	0.511	16.663806	-98.496028
Ometepec	15.94	1	1	3622	5.9	85.8	0.5	5.5	0.6	1.0	0.4	0.2	0.1	91.7	0.5	7.8	0.080	0.501	16.687858	-98.436887
Ometepec	15.94	1	2	3603	6.1	84.2	0.8	6.8	0.9	0.7	0.3	0.1	0.1	90.3	0.8	8.9	0.087	0.501	16.687864	-98.436886

GUERRERO

16 CARR: Tierra Colorada - Cruz Grande

CLAVE: 12420

RUTA: MEX-198

AÑO: 2017

LUGAR	ESTACION				CLASIFICACION VEHICULAR EN PORCIENTO													COORDENADAS		
	KM	TE	SC	TDPA	M	A	B	C2	C3	T3S2	T3S3	T3S2R4	OTROS	A	B	C	K'	D	LATITUD	LONGITUD
Tierra Colorada	0.00	3	0	2639	4.2	80.4	1.6	7.5	2.9	2.1	1.0	0.1	0.2	84.6	1.6	13.8	0.072	0.503	17.151759	-99.530973
Tecoanapa	61.00	1	0	2840	3.4	84.1	1.4	6.3	1.7	2.0	0.6	0.1	0.4	87.5	1.4	11.1	0.081	0.510	16.985750	-99.265278
Ayutla de Los Libres	82.00	1	0	5233	4.1	85.8	0.5	3.3	1.0	4.2	0.4	0.1	0.6	89.9	0.5	9.6	0.081	0.502	16.977194	-99.107028
Ayutla de Los Libres	82.00	3	0	4553	4.7	84.0	0.7	5.4	1.2	3.2	0.4	0.1	0.3	88.7	0.7	10.6	0.082	0.523	16.952560	-99.102350
Cruz Grande	113.80	1	0	3585	3.5	86.7	1.1	5.2	2.0	1.2	0.2	0.0	0.1	90.2	1.1	8.7	0.068	0.502	16.740722	-99.131306
T. C. Las Cruces - Pinotepa Nacional	114.80																			

17 CARR: Toluca - Cd. Altamirano

CLAVE: 00020

RUTA: MEX-134

AÑO: 2017

LUGAR	ESTACION				CLASIFICACION VEHICULAR EN PORCIENTO													COORDENADAS		
	KM	TE	SC	TDPA	M	A	B	C2	C3	T3S2	T3S3	T3S2R4	OTROS	A	B	C	K'	D	LATITUD	LONGITUD
T. C. Toluca - Axixintla	0.00																			
T. Izq. Capultitán	1.78	3	1	19186	0.6	88.7	0.4	4.6	0.6	1.4	2.8	0.4	0.5	89.3	0.4	10.3	0.068	0.502	19.256601	-99.668758
T. Izq. Capultitán	1.78	3	2	19358	0.6	88.7	0.4	4.6	0.6	1.4	2.8	0.4	0.5	89.3	0.4	10.3	0.079	0.502	19.256383	-99.668713
T. Der. Zinacatepec	10.21	3	1	13564	0.8	88.4	1.9	5.3	0.7	0.9	1.7	0.1	0.2	89.2	1.9	8.9	0.082	0.509	19.251942	-99.747768
T. Der. Zinacatepec	10.21	3	2	14066	0.8	88.1	1.8	5.6	0.8	0.9	1.6	0.1	0.3	88.9	1.8	9.3	0.081	0.509	19.251835	-99.747723
T. Izq. Sultepec	18.72	3	0	6765	0.5	83.6	1.1	8.8	1.4	2.8	1.4	0.1	0.3	84.1	1.1	14.8	0.082	0.506	19.211536	-99.811861
T. Der. Valle de Bravo	52.00	3	0	5645	0.9	79.1	2.1	9.6	2.0	3.7	1.9	0.1	0.6	80.0	2.1	17.9	0.073	0.508	19.142825	-99.921958
Temascaltepec	68.76	1	0	5143	1.0	84.5	1.2	6.0	1.4	3.3	1.7	0.3	0.6	85.5	1.2	13.3	0.079	0.512	19.048395	-100.046622
Temascaltepec	68.76	3	0	5122	2.7	85.4	0.9	3.5	1.0	3.1	1.8	0.4	1.2	88.1	0.9	11.0	0.104	0.513	19.041231	-100.045630
T. Izq. San Diego Cuentla	84.34	3	0	5411	0.7	86.0	1.2	6.0	1.1	2.9	1.3	0.2	0.6	86.7	1.2	12.1	0.086	0.558	18.964799	-100.084017
Tejupilco de Hidalgo	100.76	1	0	6077	2.1	85.1	1.1	5.2	1.0	3.4	1.2	0.2	0.7	87.2	1.1	11.7	0.078	0.504	18.923484	-100.147249
Tejupilco de Hidalgo	100.76	3	0	5250	3.9	82.6	2.1	3.8	1.6	3.0	1.9	0.4	0.7	86.5	2.1	11.4	0.072	0.509	18.900659	-100.168930
Cuadrilla de López	113.20	3	0	2691	2.6	72.5	3.2	8.2	1.6	4.8	6.3	0.3	0.5	75.1	3.2	21.7	0.067	0.500	18.873968	-100.227915
T. Izq. Bejucos	147.57	1	0	1414	3.4	69.1	4.8	9.5	2.9	5.3	4.2	0.3	0.5	72.5	4.8	22.7	0.087	0.507	18.784809	-100.420946
Lim. Edos. Term. Mex. Ppia. Gro.	148.00																			
Cutzamala	196.00	1	0	3046	5.3	72.2	1.9	6.4	1.3	8.5	2.2	0.8	1.4	77.5	1.9	20.6	0.083	0.504	18.478806	-100.582278
Lim. Edos. Term. Gro. Ppia. Mich.	201.00																			
Lim. Edos. Term. Mich. Ppia. Gro.	210.30																			
Cd. Altamirano	216.00	1	0	4255	7.0	76.3	1.2	8.0	0.9	3.9	1.5	0.3	0.9	83.3	1.2	15.5	0.084	0.500	18.387750	-100.646194

GUERRERO

18 CARR: Zihuatanejo - La Mira

CLAVE: 00121

RUTA: MEX-200

AÑO: 2017

LUGAR	ESTACION				CLASIFICACION VEHICULAR EN PORCIENTO													COORDENADAS		
	KM	TE	SC	TDPA	M	A	B	C2	C3	T3S2	T3S3	T3S2R4	OTROS	A	B	C	K'	D	LATITUD	LONGITUD
Zihuatanejo	0.00	3	1	14964	4.3	82.5	1.6	9.8	0.7	0.6	0.4	0.1	0.0	86.8	1.6	11.6	0.079	0.503	17.658889	-101.559500
Zihuatanejo	0.00	3	2	15152	4.7	81.0	1.8	10.5	0.8	0.7	0.4	0.1	0.0	85.7	1.8	12.5	0.077	0.503	17.658889	-101.559500
T. Izq. Ixtapa Zihuatanejo	8.00	3	0	7617	6.6	77.2	0.2	11.0	1.2	3.1	0.4	0.0	0.3	83.8	0.2	16.0	0.071	0.512	17.679140	-101.602629
T. Der. Cd. Altamirano	16.30	1	0	3490	3.8	74.8	1.0	17.6	0.9	1.6	0.2	0.0	0.1	78.6	1.0	20.4	0.083	0.548	17.726346	-101.602885
T. Der. Cd. Altamirano	16.30	3	0	3457	3.5	78.0	0.4	15.3	0.8	1.4	0.5	0.0	0.1	81.5	0.4	18.1	0.077	0.506	17.733003	-101.614525
T. Der. La Unión	52.00	3	0	5059	1.9	82.4	0.3	10.1	1.4	2.2	1.1	0.2	0.4	84.3	0.3	15.4	0.077	0.531	17.942028	-101.836278
Zacatula	93.50	1	0	3736	5.7	87.1	0.4	4.5	1.0	1.1	0.2	0.0	0.0	92.8	0.4	6.8	0.063	0.516	18.005139	-102.175194
Lim. Edos. Term. Gro. Ppia. Mich.	102.30																			
La Villita	103.80	3	0	2197	8.9	84.5	0.5	3.8	0.6	1.6	0.1	0.0	0.0	93.4	0.5	6.1	0.066	0.502	18.044321	-102.188147
Guacamayas	107.00	1	0	3068	14.0	80.2	0.3	3.3	0.4	1.6	0.1	0.0	0.1	94.2	0.3	5.5	0.059	0.503	18.030028	-102.200222
T. Izq. Lazáro Cárdenas	110.85	1	1	19529	7.0	89.6	0.3	2.1	0.7	0.2	0.1	0.0	0.0	96.6	0.3	3.1	0.055	0.504	17.999010	-102.222461
T. Izq. Lazáro Cárdenas	110.85	1	2	19234	7.2	89.6	0.2	2.0	0.6	0.3	0.1	0.0	0.0	96.8	0.2	3.0	0.051	0.504	17.998909	-102.222303
La Mira	123.60	1	0	13545	2.2	90.1	0.9	4.5	1.5	0.4	0.4	0.0	0.0	92.3	0.9	6.8	0.051	0.505	18.031058	-102.319504

19 CARR: Cuernavaca - Acapulco (Cuota)

CLAVE: 00045

RUTA: MEX-095D

AÑO: 2017

LUGAR	ESTACION				CLASIFICACION VEHICULAR EN PORCIENTO													COORDENADAS		
	KM	TE	SC	TDPA	M	A	B	C2	C3	T3S2	T3S3	T3S2R4	OTROS	A	B	C	K'	D	LATITUD	LONGITUD
Cuernavaca	0.00	3	1	44977	1.5	88.2	2.0	4.8	1.1	1.4	0.4	0.5	0.1	89.7	2.0	8.3	0.062	0.500	18.881298	-99.229352
Cuernavaca	0.00	3	2	44935	1.8	87.0	2.4	5.3	1.1	1.4	0.4	0.5	0.1	88.8	2.4	8.8	0.061	0.500	18.881293	-99.229436
T. Izq. Burgos	3.35	1	1	29087	1.6	88.5	1.8	4.7	1.1	1.3	0.4	0.5	0.1	90.1	1.8	8.1	0.091	0.502	18.862767	-99.220967
T. Izq. Burgos	3.35	1	2	28851	1.8	87.8	2.2	4.8	1.1	1.3	0.4	0.5	0.1	89.6	2.2	8.2	0.090	0.502	18.862767	-99.220967
T. Izq. Burgos	3.35	3	1	31595	1.5	87.9	2.1	5.1	1.1	1.2	0.5	0.5	0.1	89.4	2.1	8.5	0.087	0.510	18.855867	-99.220800
T. Izq. Burgos	3.35	3	2	30356	1.8	86.9	2.1	5.6	1.2	1.3	0.5	0.5	0.1	88.7	2.1	9.2	0.084	0.510	18.855867	-99.220800
T. Der. Acatlipa	4.70	1	1	35807	1.5	88.1	2.2	4.8	1.0	1.3	0.5	0.5	0.1	89.6	2.2	8.2	0.077	0.510	18.849950	-99.219914
T. Der. Acatlipa	4.70	1	2	34386	1.8	86.8	2.3	5.5	1.1	1.4	0.5	0.5	0.1	88.6	2.3	9.1	0.073	0.510	18.849887	-99.219831
T. Der. Acatlipa	4.70	3	1	28318	1.3	88.6	2.0	4.4	1.2	1.3	0.5	0.6	0.1	89.9	2.0	8.1	0.093	0.502	18.845283	-99.218450
T. Der. Acatlipa	4.70	3	2	28082	1.5	87.0	2.3	5.2	1.4	1.4	0.5	0.6	0.1	88.5	2.3	9.2	0.076	0.502	18.845236	-99.218452
T. Izq. Miguel Hidalgo	5.85	3	1	25533	1.5	87.0	2.2	5.3	1.1	1.7	0.6	0.5	0.1	88.5	2.2	9.3	0.071	0.506	18.830797	-99.217802
T. Izq. Miguel Hidalgo	5.85	3	2	26191	1.3	85.9	2.6	5.9	1.3	1.8	0.6	0.5	0.1	87.2	2.6	10.2	0.067	0.506	18.830821	-99.217662
T. Der. Aeropuerto Cuernavaca	9.83	1	1	27554	2.6	85.5	2.7	5.2	1.3	1.2	0.7	0.6	0.2	88.1	2.7	9.2	0.076	0.510	18.815678	-99.219194
T. Der. Aeropuerto Cuernavaca	9.83	1	2	26510	2.5	83.9	3.0	6.0	1.5	1.4	0.8	0.7	0.2	86.4	3.0	10.6	0.069	0.510	18.815687	-99.219109
T. Der. Aeropuerto Cuernavaca	9.83	3	1	16650	2.1	80.8	5.7	6.4	1.6	1.6	0.9	0.8	0.1	82.9	5.7	11.4	0.096	0.509	18.796138	-99.220980
T. Der. Aeropuerto Cuernavaca	9.83	3	2	16076	2.4	80.3	5.2	6.7	1.9	2.0	0.6	0.8	0.1	82.7	5.2	12.1	0.128	0.509	18.796138	-99.220898
T. Izq. Club de Golf Santa Fe	17.48	1	1	16444	1.8	80.6	4.8	6.5	2.0	2.0	1.1	1.0	0.2	82.4	4.8	12.8	0.088	0.523	18.748223	-99.245406

GUERRERO

19 CARR: Cuernavaca - Acapulco (Cuota)

CLAVE: 00045

RUTA: MEX-095D

AÑO: 2017

LUGAR	ESTACION				CLASIFICACION VEHICULAR EN PORCIENTO										COORDENADAS					
	KM	TE	SC	TDPA	M	A	B	C2	C3	T3S2	T3S3	T3S2R4	OTROS	A	B	C	K'	D	LATITUD	LONGITUD
T. Izq. Club de Golf Santa Fe	17.48	1	2	14986	2.0	80.1	5.7	6.6	1.6	2.2	0.7	1.0	0.1	82.1	5.7	12.2	0.077	0.523	18.748186	-99.245332
Caseta de Cobro Alpuyeca	19.80	1	1	13296	0.5	83.0	4.4	6.6	1.5	2.1	0.8	0.9	0.2	83.5	4.4	12.1	0.073	0.516	18.724596	-99.258302
Caseta de Cobro Alpuyeca	19.80	1	2	12478	0.5	81.2	4.9	7.2	1.7	2.4	0.9	1.0	0.2	81.7	4.9	13.4	0.080	0.516	18.724540	-99.258185
Caseta de Cobro Alpuyeca	19.80	3	1	10181	1.0	78.6	4.6	6.9	2.3	3.6	1.5	1.1	0.4	79.6	4.6	15.8	0.074	0.513	18.694944	-99.280377
Caseta de Cobro Alpuyeca	19.80	3	2	10719	0.7	81.2	5.1	6.0	1.9	2.9	0.8	1.1	0.3	81.9	5.1	13.0	0.079	0.513	18.694867	-99.280245
Caseta de Cobro Ing. Francisco Velasco Durán	23.10	2	1	8523	1.0	83.0	6.1	2.4	3.0	2.3	0.8	1.0	0.4	84.0	6.1	9.9	0.111	0.500	18.698553	-99.278046
Caseta de Cobro Ing. Francisco Velasco Durán	23.10	2	2	8523	1.0	83.0	6.1	2.4	3.0	2.3	0.8	1.0	0.4	84.0	6.1	9.9	0.111	0.500	18.698553	-99.278046
Lim. Edos. Term. Mor. Ppia. Gro.	53.30																			
Caseta de Cobro Paso Morelos	82.94	1	1	3689	1.9	75.1	8.2	7.5	1.4	2.9	1.2	1.4	0.4	77.0	8.2	14.8	0.121	0.501	18.243667	-99.213361
Caseta de Cobro Paso Morelos	82.94	1	2	3708	2.2	73.6	8.7	7.6	1.5	3.1	1.3	1.6	0.4	75.8	8.7	15.5	0.184	0.501	18.243667	-99.213361
Caseta de Cobro Paso Morelos	82.94	2	1	4373	0.8	82.4	6.1	2.3	2.8	3.0	0.7	1.3	0.6	83.2	6.1	10.7	0.111	0.500	18.231463	-99.215449
Caseta de Cobro Paso Morelos	82.94	2	2	4373	0.8	82.4	6.1	2.3	2.8	3.0	0.7	1.3	0.6	83.2	6.1	10.7	0.111	0.500	18.231463	-99.215449
Caseta de Cobro Palo Blanco	193.90	1	1	5784	0.8	80.6	5.4	6.0	1.4	3.0	1.3	1.0	0.5	81.4	5.4	13.2	0.085	0.513	17.426556	-99.470083
Caseta de Cobro Palo Blanco	193.90	1	2	6095	0.6	79.0	6.0	6.4	1.5	3.4	1.5	1.1	0.5	79.6	6.0	14.4	0.107	0.513	17.426583	-99.470056
Caseta de Cobro Palo Blanco	193.90	2	1	5678	0.8	82.9	6.3	2.5	2.6	2.8	0.9	0.9	0.3	83.7	6.3	10.0	0.097	0.500	17.423985	-99.466843
Caseta de Cobro Palo Blanco	193.90	2	2	5678	0.8	82.9	6.3	2.5	2.6	2.8	0.9	0.9	0.3	83.7	6.3	10.0	0.097	0.500	17.423985	-99.466843
X. C. Chilpancingo - Acapulco (Tierra Colorada)	226.20	1	1	5795	0.8	79.6	5.6	5.9	2.3	3.0	1.3	1.0	0.5	80.4	5.6	14.0	0.081	0.520	17.182611	-99.551639
X. C. Chilpancingo - Acapulco (Tierra Colorada)	226.20	1	2	6289	0.5	77.2	6.8	6.6	2.6	3.4	1.4	1.1	0.4	77.7	6.8	15.5	0.114	0.520	17.182611	-99.551639
Caseta de Cobro La Venta	269.95	1	1	5532	0.7	80.3	6.0	5.6	1.6	3.1	1.3	0.9	0.5	81.0	6.0	13.0	0.089	0.502	16.929333	-99.795806
Caseta de Cobro La Venta	269.95	1	2	5484	1.4	76.8	7.0	6.4	1.9	3.6	1.4	1.1	0.4	78.2	7.0	14.8	0.082	0.502	16.929333	-99.795806
Caseta de Cobro La Venta	269.95	2	1	5326	0.8	82.3	6.6	2.4	2.6	3.1	0.8	1.0	0.4	83.1	6.6	10.3	0.097	0.500	16.928320	-99.802032
Caseta de Cobro La Venta	269.95	2	2	5326	0.8	82.3	6.6	2.4	2.6	3.1	0.8	1.0	0.4	83.1	6.6	10.3	0.097	0.500	16.928320	-99.802032
T. C. Chilpancingo - Acapulco (Ent. La Venta)	271.50	1	1	5886	1.4	79.6	5.9	5.6	1.7	3.3	1.3	0.8	0.4	81.0	5.9	13.1	0.073	0.508	16.923872	-99.810332
T. C. Chilpancingo - Acapulco (Ent. La Venta)	271.50	1	2	5697	1.4	79.7	6.1	5.0	1.9	3.4	1.1	1.0	0.4	81.1	6.1	12.8	0.084	0.508	16.923840	-99.810248

20 CARR: Libramiento de Tépcan (Cuota)

CLAVE: 00073

RUTA: MEX-200D

AÑO: 2017

LUGAR	ESTACION				CLASIFICACION VEHICULAR EN PORCIENTO										COORDENADAS					
	KM	TE	SC	TDPA	M	A	B	C2	C3	T3S2	T3S3	T3S2R4	OTROS	A	B	C	K'	D	LATITUD	LONGITUD
T. C. Acapulco - Zihuatanejo (Oriente)	0.00	3	0	1894	4.4	74.6	4.4	5.2	4.2	3.8	2.3	0.9	0.2	79.0	4.4	16.6	0.078	0.514	17.203028	-100.644528
Caseta de Cobro Tépcan	2.60	2	0	1693	1.7	80.2	2.6	4.4	5.2	3.2	2.1	0.2	0.4	81.9	2.6	15.5	0.102	0.500	17.197023	-100.626732
T. C. Acapulco - Zihuatanejo (Poniente)	4.40																			

GUERRERO

21 CARR: Nueva Italia - Lázaro Cárdenas (Cuota)

CLAVE: 00032

RUTA: MEX-037D

AÑO: 2017

LUGAR	ESTACION				CLASIFICACION VEHICULAR EN PORCIENTO													COORDENADAS		
	KM	TE	SC	TDPA	M	A	B	C2	C3	T3S2	T3S3	T3S2R4	OTROS	A	B	C	K'	D	LATITUD	LONGITUD
T. Der. Apatzingán	153.90	3	0	5043	1.0	65.9	4.8	7.9	2.4	5.9	3.1	8.0	1.0	66.9	4.8	28.3	0.082	0.519	18.983222	-102.088611
Caseta de Cobro Las Cañas	211.40	2	0	4284	0.3	65.1	4.7	3.1	3.4	6.2	3.1	12.0	2.1	65.4	4.7	29.9	0.078	0.500	18.554190	-101.970337
Lim. Edos. Term. Mich. Ppia. Gro.	252.25																			
Caseta de Cobro Feliciano	282.00	2	0	2902	0.6	83.0	4.8	3.1	3.6	2.8	1.3	0.5	0.3	83.6	4.8	11.6	0.078	0.500	18.004677	-101.963804
X. C. Zihuatanejo - La Mira	282.37	1	0	3993	0.9	60.7	6.1	7.5	3.7	6.6	3.5	10.1	0.9	61.6	6.1	32.3	0.095	0.508	18.013583	-101.958611
X. C. Zihuatanejo - La Mira	282.37	3	0	4048	1.1	63.4	5.3	7.8	3.1	5.7	2.4	10.0	1.2	64.5	5.3	30.2	0.073	0.503	17.996778	-101.967056
Lim. Edos. Term. Gro. Ppia. Mich.	307.00																			
Lázaro Cárdenas	311.30																			

22 CARR: Puente de Ixtla - Iguala (Cuota)

CLAVE: 00043

RUTA: MEX-091D

AÑO: 2017

LUGAR	ESTACION				CLASIFICACION VEHICULAR EN PORCIENTO													COORDENADAS		
	KM	TE	SC	TDPA	M	A	B	C2	C3	T3S2	T3S3	T3S2R4	OTROS	A	B	C	K'	D	LATITUD	LONGITUD
T. C. Cuernavaca - Acapulco (Cuota)	0.00																			
T. Izq. Puente de Ixtla	2.00	3	0	10007	1.7	79.1	4.3	4.5	2.9	4.4	1.6	0.9	0.6	80.8	4.3	14.9	0.065	0.512	18.623395	-99.330998
T. Der. Amacuzac	9.63	3	0	10358	2.8	75.6	4.5	5.8	3.0	4.8	1.8	0.8	0.9	78.4	4.5	17.1	0.065	0.501	18.597091	-99.376360
Lim. Edos. Term. Mor. Ppia. Gro.	18.20																			
T. Izq. Buenavista	33.58	3	0	6238	0.9	68.3	6.8	9.2	5.1	4.5	3.0	1.6	0.6	69.2	6.8	24.0	0.065	0.515	18.457381	-99.434702
Caseta de Cobro Iguala	59.14	2	0	4436	0.6	72.0	7.5	4.1	7.2	3.8	2.5	1.4	0.9	72.6	7.5	19.9	0.076	0.500	18.336197	-99.508362
T. Der. Iguala	59.50	1	0	4476	0.9	68.6	6.6	9.1	5.0	4.6	3.0	1.5	0.7	69.5	6.6	23.9	0.070	0.501	18.344139	-99.511784
T. C. Cuernavaca - Chilpancingo	62.80																			

23 CARR: Rancho Viejo - Taxco (Cuota)

CLAVE: 12010

RUTA: MEX-092D

AÑO: 2017

LUGAR	ESTACION				CLASIFICACION VEHICULAR EN PORCIENTO													COORDENADAS		
	KM	TE	SC	TDPA	M	A	B	C2	C3	T3S2	T3S3	T3S2R4	OTROS	A	B	C	K'	D	LATITUD	LONGITUD
X. C. Cuernavaca - Chilpancingo	0.00																			
Caseta de Cobro Taxco	0.62	2	0	3371	1.6	93.3	2.8	1.4	0.6	0.2	0.1	0.0	0.0	94.9	2.8	2.3	0.111	0.500	18.588648	-99.560005
T. C. Cuernavaca - Chilpancingo	8.10	1	0	3166	3.3	86.5	4.3	4.1	0.4	0.8	0.3	0.0	0.3	89.8	4.3	5.9	0.099	0.528	18.565222	-99.596417

24 CARR: Zacapalco - Rancho Viejo (Cuota)

CLAVE: 12010

RUTA: MEX-092D

AÑO: 2017

LUGAR	ESTACION				CLASIFICACION VEHICULAR EN PORCIENTO													COORDENADAS		
	KM	TE	SC	TDPA	M	A	B	C2	C3	T3S2	T3S3	T3S2R4	OTROS	A	B	C	K'	D	LATITUD	LONGITUD
T. C. Puente de Ixtla - Iguala (Cuota)	0.00																			

GUERRERO

24 CARR: Zacapalco - Rancho Viejo (Cuota)

CLAVE: 12010

RUTA: MEX-092D

AÑO: 2017

LUGAR	ESTACION				CLASIFICACION VEHICULAR EN PORCIENTO										COORDENADAS					
	KM	TE	SC	TDPA	M	A	B	C2	C3	T3S2	T3S3	T3S2R4	OTROS	A	B	C	K'	D	LATITUD	LONGITUD
Caseta de Cobro Zacapalco	0.50	2	0	1667	2.2	88.7	4.5	2.1	1.6	0.5	0.2	0.0	0.2	90.9	4.5	4.6	0.131	0.500	18.537920	-99.447571
X. C. Cuernavaca - Chilpancingo	17.20	1	0	1821	1.7	77.7	6.2	10.6	1.4	0.9	0.3	0.9	0.3	79.4	6.2	14.4	0.113	0.527	18.585361	-99.547250

25 CARR: Acapulco - Aeropuerto Acapulco

CLAVE: 12292

RUTA: GRO

AÑO: 2017

LUGAR	ESTACION				CLASIFICACION VEHICULAR EN PORCIENTO										COORDENADAS					
	KM	TE	SC	TDPA	M	A	B	C2	C3	T3S2	T3S3	T3S2R4	OTROS	A	B	C	K'	D	LATITUD	LONGITUD
Acapulco	0.00																			
Puerto Marqués	8.70	1	1	18110	1.5	91.8	0.7	5.2	0.3	0.2	0.3	0.0	0.0	93.3	0.7	6.0	0.086	0.508	16.806439	-99.827795
Puerto Marqués	8.70	1	2	17542	0.9	91.5	0.9	5.9	0.3	0.2	0.3	0.0	0.0	92.4	0.9	6.7	0.075	0.508	16.806441	-99.827784
Puerto Marqués	8.70	3	1	27118	2.0	93.3	0.5	2.9	0.5	0.4	0.4	0.0	0.0	95.3	0.5	4.2	0.072	0.541	16.800583	-99.819250
Puerto Marqués	8.70	3	2	23008	2.4	93.2	0.4	2.4	0.5	0.4	0.7	0.0	0.0	95.6	0.4	4.0	0.075	0.541	16.800577	-99.819250
T. Der. Los Amates	14.90	3	1	3356	3.4	91.5	0.2	4.4	0.3	0.2	0.0	0.0	0.0	94.9	0.2	4.9	0.090	0.502	16.767472	-99.766972
T. Der. Los Amates	14.90	3	2	3323	3.2	91.3	0.2	4.8	0.3	0.2	0.0	0.0	0.0	94.5	0.2	5.3	0.084	0.502	16.767472	-99.766972
Aeropuerto	16.20																			

26 CARR: Ent. Potrero - Lomas de Chapultepec

CLAVE: 12293

RUTA: GRO

AÑO: 2017

LUGAR	ESTACION				CLASIFICACION VEHICULAR EN PORCIENTO										COORDENADAS					
	KM	TE	SC	TDPA	M	A	B	C2	C3	T3S2	T3S3	T3S2R4	OTROS	A	B	C	K'	D	LATITUD	LONGITUD
T. C. Acapulco - Aeropuerto Acapulco	0.00	3	1	7216	3.6	90.1	0.4	2.1	1.4	0.9	0.9	0.3	0.3	93.7	0.4	5.9	0.149	0.525	16.766889	-99.776472
T. C. Acapulco - Aeropuerto Acapulco	0.00	3	2	6523	3.7	89.5	0.4	2.3	1.6	1.0	0.9	0.3	0.3	93.2	0.4	6.4	0.134	0.525	16.766889	-99.776472
T. C. Las Cruces - Pinotepa Nacional	29.00																			

27 CARR: Las Petaquillas - Quechultenango

CLAVE:

RUTA: GRO

AÑO: 2017

LUGAR	ESTACION				CLASIFICACION VEHICULAR EN PORCIENTO										COORDENADAS					
	KM	TE	SC	TDPA	M	A	B	C2	C3	T3S2	T3S3	T3S2R4	OTROS	A	B	C	K'	D	LATITUD	LONGITUD
Las Petaquillas	0.00	3	0	3549	4.3	88.4	0.1	6.2	0.6	0.2	0.2	0.0	0.0	92.7	0.1	7.2	0.080	0.503	17.482750	-99.442667
Quechultenango	26.60																			

GUERRERO

28 CARR: Pie de La Cuesta - Barra de Coyuca

CLAVE: 12427

RUTA: GRO

AÑO: 2017

LUGAR	ESTACION				CLASIFICACION VEHICULAR EN PORCIENTO													COORDENADAS		
	KM	TE	SC	TDPA	M	A	B	C2	C3	T3S2	T3S3	T3S2R4	OTROS	A	B	C	K'	D	LATITUD	LONGITUD
T. C. Acapulco - Zihuatanejo	0.00	3	0	6505	9.0	80.8	0.5	4.8	0.1	3.7	0.5	0.1	0.5	89.8	0.5	9.7	0.070	0.501	16.901930	-99.972449
Barra de Coyuca	16.50	1	0	1153	10.7	86.1	0.3	1.7	0.0	1.1	0.0	0.0	0.1	96.8	0.3	2.9	0.088	0.500	16.945314	-100.089783

29 CARR: Ramal a Cocula

CLAVE: 12082

RUTA: GRO

AÑO: 2017

LUGAR	ESTACION				CLASIFICACION VEHICULAR EN PORCIENTO													COORDENADAS		
	KM	TE	SC	TDPA	M	A	B	C2	C3	T3S2	T3S3	T3S2R4	OTROS	A	B	C	K'	D	LATITUD	LONGITUD
T. C. Iguala - Ciudad Altamirano	0.00	3	0	4036	7.4	80.6	0.2	7.3	0.5	3.1	0.4	0.1	0.4	88.0	0.2	11.8	0.075	0.507	18.316667	-99.606194
Cocula	13.00																			

30 CARR: T. C. (Iguala - Chilpancingo) - Atenango del Río

CLAVE: 12001

RUTA: GRO-001

AÑO: 2017

LUGAR	ESTACION				CLASIFICACION VEHICULAR EN PORCIENTO													COORDENADAS		
	KM	TE	SC	TDPA	M	A	B	C2	C3	T3S2	T3S3	T3S2R4	OTROS	A	B	C	K'	D	LATITUD	LONGITUD
T. C. Cuernavaca - Chilpancingo	0.00	3	0	6653	5.8	85.4	1.0	5.3	0.7	1.6	0.2	0.0	0.0	91.2	1.0	7.8	0.074	0.508	18.291972	-99.507333
T. Der. Pololcingo	11.20	1	0	3640	4.9	84.4	0.1	7.2	0.4	2.1	0.4	0.1	0.4	89.3	0.1	10.6	0.088	0.501	18.304417	-99.425278
T. Der. Pololcingo	11.20	3	0	3231	4.8	83.4	0.4	4.4	0.8	1.7	0.3	2.3	1.9	88.2	0.4	11.4	0.087	0.505	18.306583	-99.420583
Huitzuco	22.00	3	0	2801	6.5	76.5	2.2	12.0	0.6	1.5	0.4	0.0	0.3	83.0	2.2	14.8	0.064	0.502	18.295833	-99.315806
Atenango del Río	62.00	1	0	1493	6.9	82.3	0.4	9.8	0.3	0.1	0.2	0.0	0.0	89.2	0.4	10.4	0.114	0.508	18.117779	-99.114423

31 CARR: Taxco - Ixcateopan

CLAVE: 12083

RUTA: GRO

AÑO: 2017

LUGAR	ESTACION				CLASIFICACION VEHICULAR EN PORCIENTO													COORDENADAS		
	KM	TE	SC	TDPA	M	A	B	C2	C3	T3S2	T3S3	T3S2R4	OTROS	A	B	C	K'	D	LATITUD	LONGITUD
Taxco	0.00	3	0	4591	11.5	83.3	0.0	2.0	0.0	2.4	0.3	0.1	0.4	94.8	0.0	5.2	0.055	0.510	18.553172	-99.618777
Ixcateopan	36.00	1	0	326	4.2	90.3	0.1	4.2	0.8	0.3	0.0	0.0	0.1	94.5	0.1	5.4	0.098	0.503	18.504825	-99.782123

32 CARR: Teloloapan - Apaxtla de Castrejón

CLAVE: 12081

RUTA: GRO

AÑO: 2017

LUGAR	ESTACION				CLASIFICACION VEHICULAR EN PORCIENTO													COORDENADAS		
	KM	TE	SC	TDPA	M	A	B	C2	C3	T3S2	T3S3	T3S2R4	OTROS	A	B	C	K'	D	LATITUD	LONGITUD
T. C. Iguala - Ciudad Altamirano	0.00	3	0	4508	8.1	82.6	0.3	8.4	0.3	0.2	0.1	0.0	0.0	90.7	0.3	9.0	0.089	0.544	18.349056	-99.860889
Apaxtla de Castrejón	34.00																			

GUERRERO

33 CARR: Tlapa de Comonfort - Marquelia

CLAVE:

RUTA: GRO

AÑO: 2017

LUGAR	ESTACION				CLASIFICACION VEHICULAR EN PORCIENTO													COORDENADAS		
	KM	TE	SC	TDPA	M	A	B	C2	C3	T3S2	T3S3	T3S2R4	OTROS	A	B	C	K'	D	LATITUD	LONGITUD
Tlapa de Comonfort	0.00	3	0	2913	4.8	82.8	0.2	8.0	0.7	2.4	0.6	0.1	0.4	87.6	0.2	12.2	0.079	0.531	17.528472	-98.601056
Marquelia	163.00	1	0	2953	6.5	85.4	0.8	3.9	0.8	1.8	0.4	0.1	0.3	91.9	0.8	7.3	0.084	0.512	16.590389	-98.817167

34 CARR: Puerto Marqués - La Venta (Cuota)

CLAVE: 00043

RUTA: GRO-D

AÑO: 2017

LUGAR	ESTACION				CLASIFICACION VEHICULAR EN PORCIENTO													COORDENADAS		
	KM	TE	SC	TDPA	M	A	B	C2	C3	T3S2	T3S3	T3S2R4	OTROS	A	B	C	K'	D	LATITUD	LONGITUD
Puerto Marqués	0.00																			
X. C. Las Cruces - Pinotepa Nacional	6.33	1	1	2353	2.7	88.9	0.5	4.4	1.6	0.8	0.3	0.6	0.2	91.6	0.5	7.9	0.122	0.506	16.824389	-99.763389
X. C. Las Cruces - Pinotepa Nacional	6.33	1	2	2409	2.7	87.2	1.2	5.8	1.1	1.0	0.4	0.3	0.3	89.9	1.2	8.9	0.098	0.506	16.824417	-99.763389
X. C. Las Cruces - Pinotepa Nacional	6.33	3	1	2658	1.2	84.2	2.3	6.7	0.7	2.3	0.9	1.6	0.1	85.4	2.3	12.3	0.103	0.503	16.833111	-99.759222
X. C. Las Cruces - Pinotepa Nacional	6.33	3	2	2630	1.0	81.7	2.8	8.5	0.8	2.0	1.3	1.8	0.1	82.7	2.8	14.5	0.074	0.503	16.833111	-99.759194
La Venta	20.80																			

35 CARR: Toluca - Axixintla

CLAVE: 00122

RUTA: EM-MEX-055

AÑO: 2017

LUGAR	ESTACION				CLASIFICACION VEHICULAR EN PORCIENTO													COORDENADAS		
	KM	TE	SC	TDPA	M	A	B	C2	C3	T3S2	T3S3	T3S2R4	OTROS	A	B	C	K'	D	LATITUD	LONGITUD
Toluca	0.00																			
T. Izq. Metepec	4.74	1	1	41492	0.6	91.4	0.3	3.6	1.0	1.5	1.3	0.1	0.2	92.0	0.3	7.7	0.084	0.501	19.249790	-99.612649
T. Izq. Metepec	4.74	1	2	41296	0.6	90.7	0.3	4.0	1.1	1.7	1.3	0.1	0.2	91.3	0.3	8.4	0.095	0.501	19.250035	-99.612354
Mexicalcingo	8.80	1	1	40095	0.9	91.0	0.8	3.7	1.1	1.3	0.8	0.2	0.2	91.9	0.8	7.3	0.085	0.507	19.223163	-99.593480
Mexicalcingo	8.80	1	2	38993	0.6	90.7	0.9	4.1	1.1	1.3	0.9	0.2	0.2	91.3	0.9	7.8	0.094	0.507	19.223259	-99.593324
Mexicalcingo	8.80	3	1	35957	0.7	89.8	0.5	4.6	1.3	1.5	1.2	0.1	0.3	90.5	0.5	9.0	0.083	0.507	19.200489	-99.584951
Mexicalcingo	8.80	3	2	35023	0.6	89.4	0.5	4.8	1.4	1.6	1.3	0.1	0.3	90.0	0.5	9.5	0.093	0.507	19.200359	-99.585131
T. Der. Calimaya	12.70	3	1	27706	0.6	90.0	0.5	4.6	1.2	1.5	1.2	0.1	0.3	90.6	0.5	8.9	0.083	0.518	19.180492	-99.577557
T. Der. Calimaya	12.70	3	2	29765	0.6	89.3	0.5	4.7	1.4	1.7	1.4	0.1	0.3	89.9	0.5	9.6	0.083	0.518	19.180469	-99.577700
Santa María Rayón	17.60	3	1	20329	0.5	88.2	0.9	5.6	1.0	1.6	1.4	0.2	0.6	88.7	0.9	10.4	0.081	0.511	19.146616	-99.585892
Santa María Rayón	17.60	3	2	21237	0.6	86.5	1.0	6.3	1.2	2.0	1.6	0.2	0.6	87.1	1.0	11.9	0.085	0.511	19.146733	-99.586037
Tenango de Arista	23.00	1	1	14660	1.2	88.4	1.1	5.0	1.0	1.7	1.0	0.4	0.2	89.6	1.1	9.3	0.092	0.515	19.117575	-99.590580
Tenango de Arista	23.00	1	2	13818	1.3	87.4	1.3	5.4	1.2	1.8	1.0	0.4	0.2	88.7	1.3	10.0	0.085	0.515	19.117682	-99.590298
San Bartolomé Atlatlahuaca	28.12	1	0	17098	1.2	80.0	1.2	7.2	1.4	5.8	1.2	1.2	0.8	81.2	1.2	17.6	0.087	0.532	19.077613	-99.598664
San Bartolomé Atlatlahuaca	28.12	3	0	15105	1.2	80.5	1.3	7.1	1.4	5.6	1.1	1.2	0.6	81.7	1.3	17.0	0.089	0.537	19.057867	-99.602505
T. Izq. Joquicingo de León Guzmán	35.70	1	0	13559	1.2	83.4	1.1	5.7	1.0	5.0	1.2	0.6	0.8	84.6	1.1	14.3	0.086	0.507	19.030418	-99.565943
T. Izq. Joquicingo de León Guzmán	35.70	3	0	13804	0.9	87.4	1.4	7.7	0.5	1.0	0.8	0.0	0.3	88.3	1.4	10.3	0.084	0.514	19.022401	-99.560832

GUERRERO

35 CARR: Toluca - Axixintla

CLAVE: 00122

RUTA: EM-MEX-055

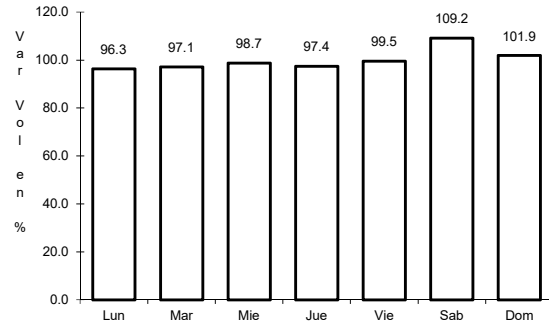
AÑO: 2017

L U G A R	E S T A C I O N				C L A S I F I C A C I O N V E H I C U L A R E N P O R C I E N T O										C O O R D E N A D A S					
	KM	TE	SC	TDPA	M	A	B	C2	C3	T3S2	T3S3	T3S2R4	OTROS	A	B	C	K'	D	LATITUD	LONGITUD
Tenancingo	44.80	3	0	14987	2.6	82.4	0.7	6.3	0.1	5.6	0.7	0.3	1.3	85.0	0.7	14.3	0.065	0.504	18.965671	-99.605243
T. Izq. Villa Guerrero	56.84	3	0	7521	1.5	86.2	0.3	7.3	0.4	3.2	0.3	0.2	0.6	87.7	0.3	12.0	0.080	0.535	18.951282	-99.645816
Ixtapan de La Sal	80.00	1	1	2716	2.6	88.1	1.3	6.2	0.5	0.7	0.4	0.1	0.1	90.7	1.3	8.0	0.142	0.518	18.853810	-99.672423
Ixtapan de La Sal	80.00	1	2	2921	2.9	87.4	2.0	5.8	0.7	0.6	0.4	0.1	0.1	90.3	2.0	7.7	0.178	0.518	18.853806	-99.672412
Ixtapan de La Sal	80.00	3	1	9683	2.9	91.8	1.3	2.0	0.2	0.6	1.0	0.1	0.1	94.7	1.3	4.0	0.115	0.501	18.831439	-99.668002
Ixtapan de La Sal	80.00	3	2	9660	2.5	91.7	1.4	2.2	0.2	0.6	1.2	0.1	0.1	94.2	1.4	4.4	0.105	0.501	18.831436	-99.667918
Tonatico	86.20	3	0	5933	2.2	87.7	1.4	5.4	0.4	1.7	0.7	0.2	0.3	89.9	1.4	8.7	0.105	0.519	18.801288	-99.658898
Lim. Edos. Term. Mex. Ppia. Gro.	98.50																			
Cacahuamilpa	120.30	1	0	2440	2.6	84.9	2.9	6.0	0.9	1.4	0.9	0.1	0.3	87.5	2.9	9.6	0.118	0.503	18.685034	-99.515135
T. C. Cuernavaca - Chilpancingo	125.30	1	0	1467	3.5	83.8	3.7	6.0	0.9	1.3	0.7	0.0	0.1	87.3	3.7	9.0	0.123	0.523	18.616639	-99.507194

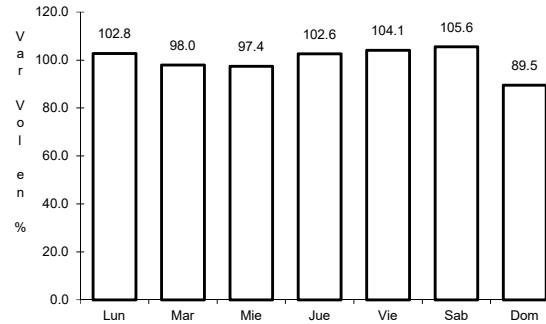
1 CARR: Acapulco - Zihuatanejo

CLAVE: 12072

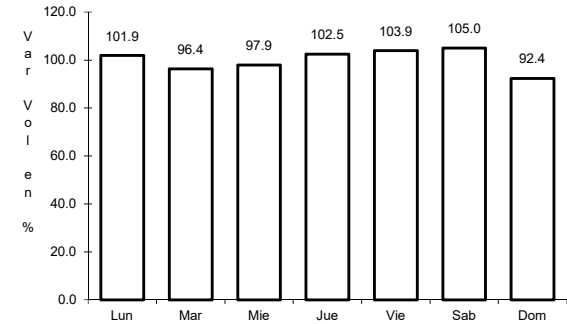
RUTA: MEX-200



Km: 10.37 Tipo: 1 Sent: 0



Km: 242.90 Tipo: 1 Sent: 1

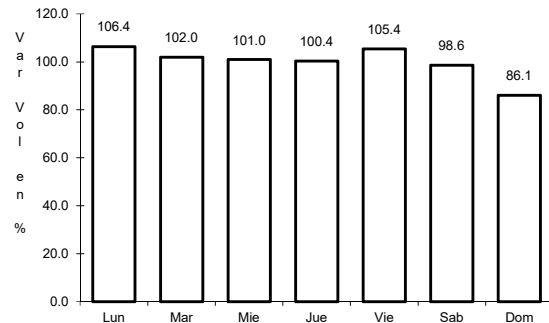


Km: 242.90 Tipo: 1 Sent: 2

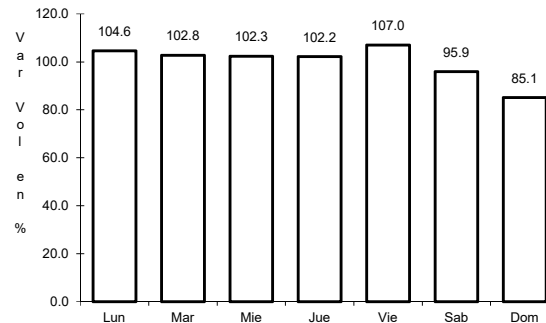
2 CARR: Cd. Altamirano - T. C. (Zihuatanejo - La Mira)

CLAVE: 12422

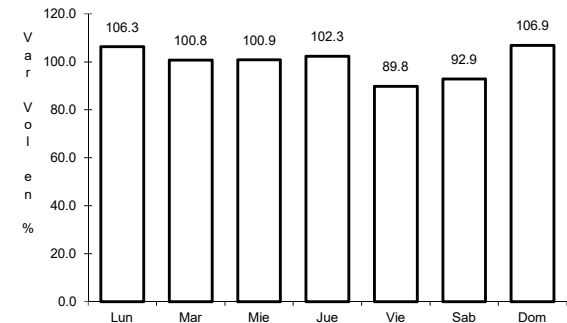
RUTA: MEX-134



Km: 0.00 Tipo: 3 Sent: 1



Km: 0.00 Tipo: 3 Sent: 2

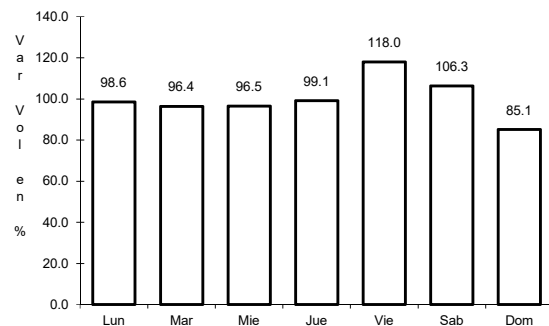


Km: 187.36 Tipo: 1 Sent: 0

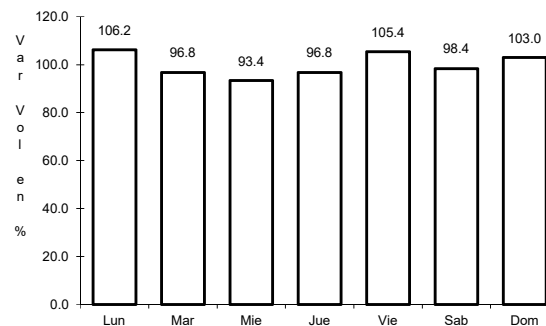
3 CARR: Chilpancingo - Acapulco

CLAVE: 12045

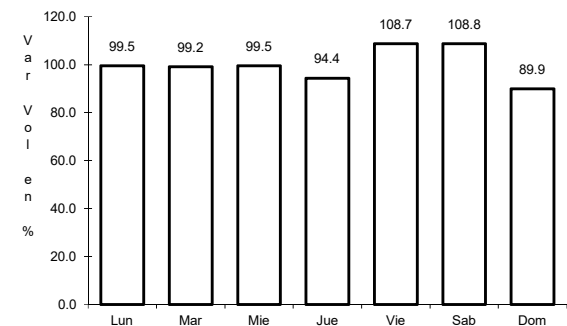
RUTA: MEX-095



Km: 4.20 Tipo: 1 Sent: 1



Km: 4.20 Tipo: 1 Sent: 2

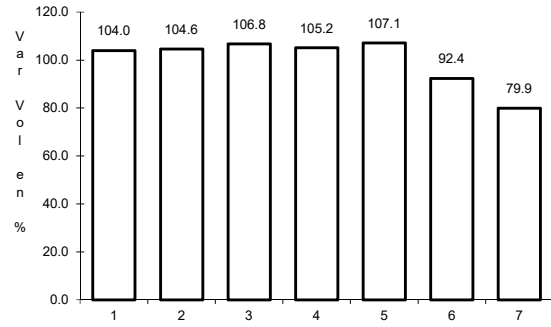


Km: 112.80 Tipo: 3 Sent: 0

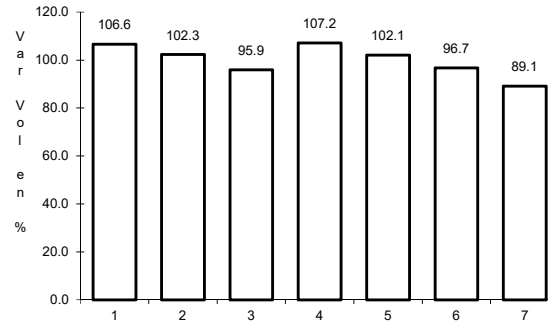
4 CARR: Chilpancingo - Chichihualco

CLAVE: 12426

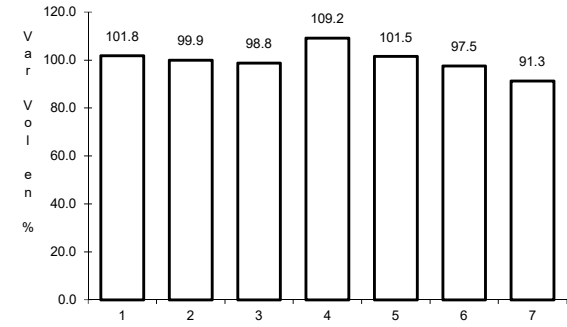
RUTA: MEX-095



Km: 0.00 Tipo: 3 Sent: 0



Km: 15.10 Tipo: 1 Sent: 0

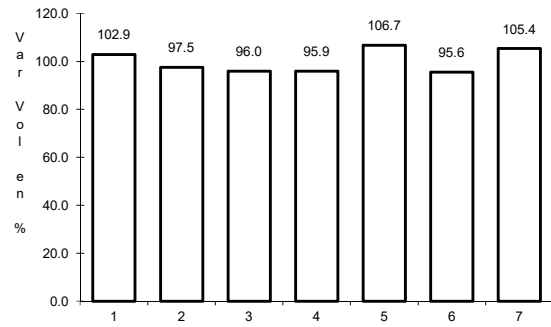


Km: 26.30 Tipo: 1 Sent: 0

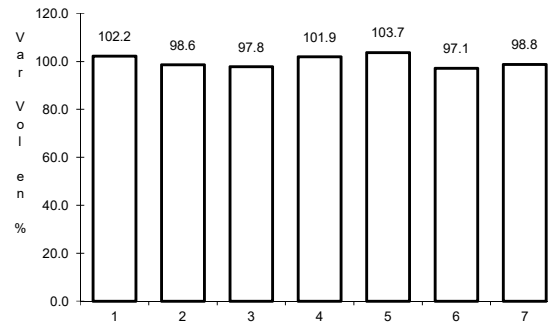
5 CARR: Chilpancingo - Jilotepec

CLAVE: 12002

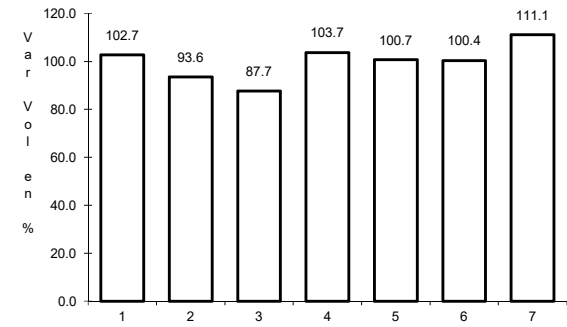
RUTA: MEX-093



Km: 0.00 Tipo: 3 Sent: 0



Km: 53.62 Tipo: 3 Sent: 0

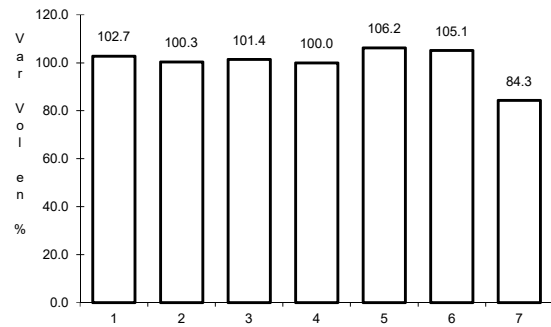


Km: 235.00 Tipo: 1 Sent: 0

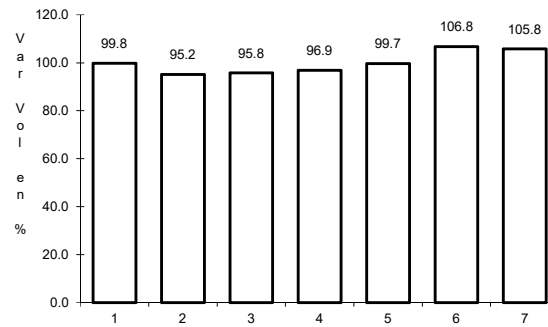
6 CARR: Cuernavaca - Chilpancingo

CLAVE: 00042

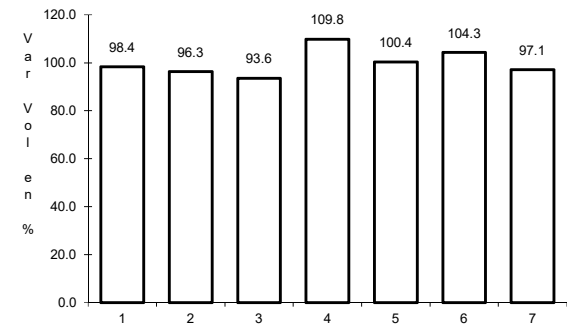
RUTA: MEX-095



Km: 9.80 Tipo: 1 Sent: 1



Km: 9.80 Tipo: 1 Sent: 2

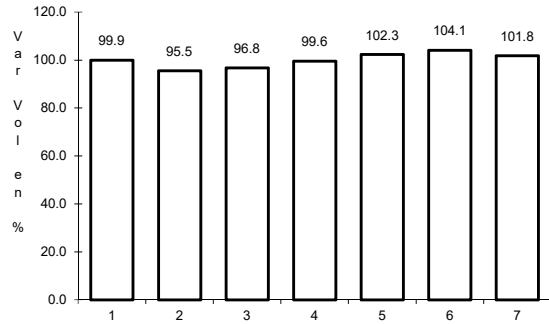


Km: 119.63 Tipo: 1 Sent: 0

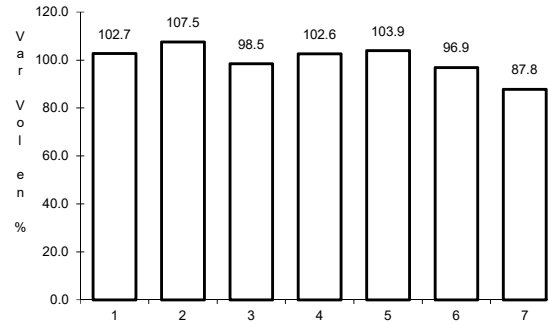
7 CARR: Ent. Alpuyecá - Grutas de Cacahuamilpa

CLAVE: 00421

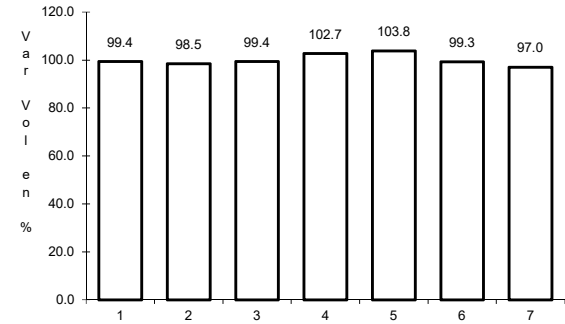
RUTA: MEX-166



Km: 0.00 Tipo: 3 Sent: 0



Km: 18.28 Tipo: 3 Sent: 0

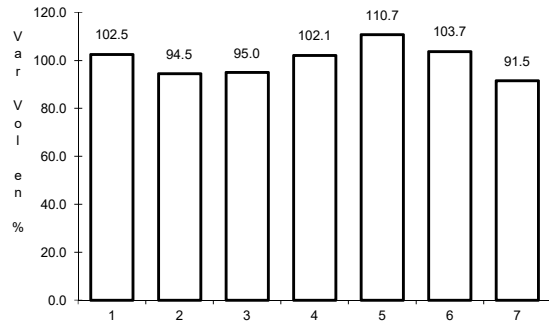


Km: 41.26 Tipo: 1 Sent: 0

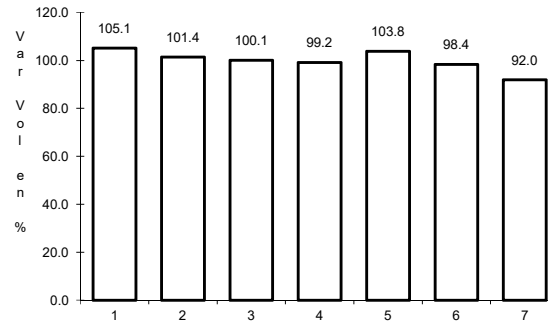
8 CARR: Iguala - Cd. Altamirano

CLAVE: 12195

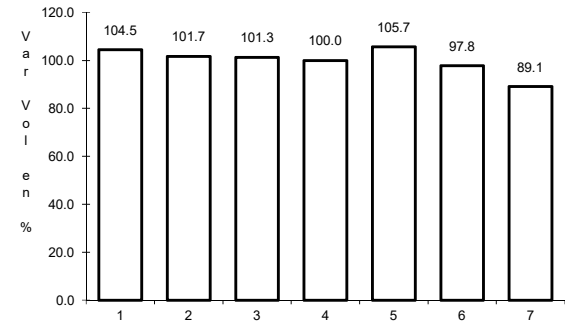
RUTA: MEX-051



Km: 9.40 Tipo: 1 Sent: 0



Km: 184.55 Tipo: 1 Sent: 1

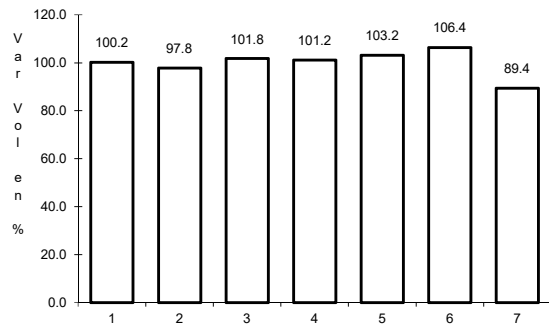


Km: 184.55 Tipo: 1 Sent: 2

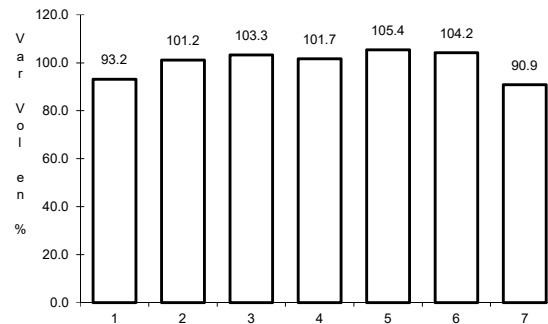
9 CARR: La Sabana - Puerto Marqués

CLAVE: 12291

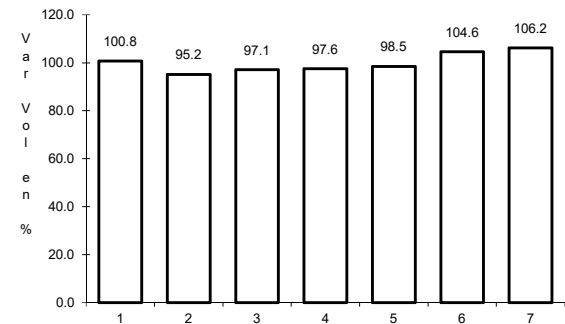
RUTA: MEX-200



Km: 0.00 Tipo: 3 Sent: 1



Km: 0.00 Tipo: 3 Sent: 2

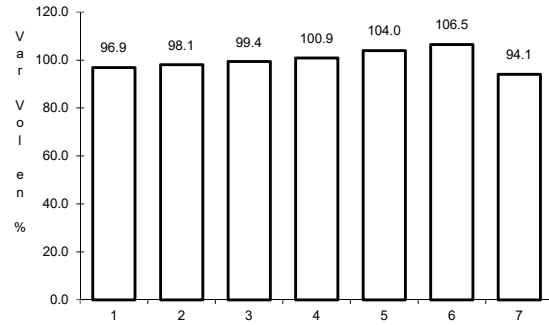


Km: 7.20 Tipo: 1 Sent: 1

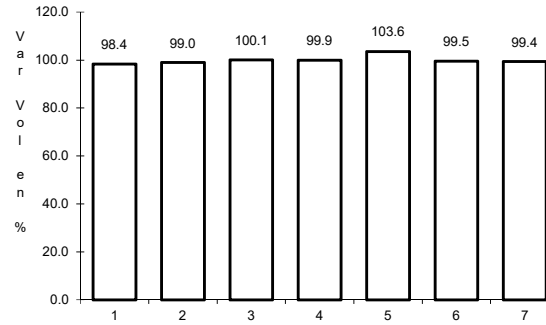
10 CARR: Las Cruces - Pinotepa Nacional

CLAVE: 00073

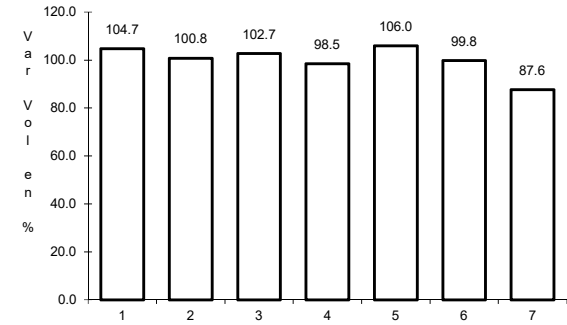
ruta: MEX-200



Km: 0.00 Tipo: 3 Sent: 1



Km: 0.00 Tipo: 3 Sent: 2

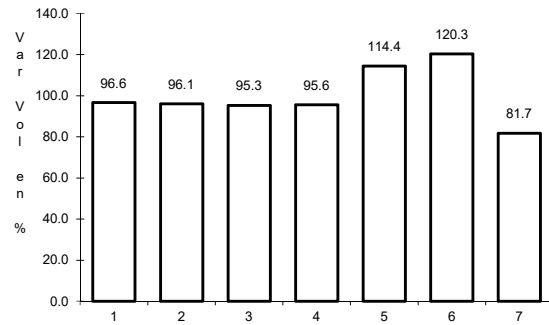


Km: 245.47 Tipo: 3 Sent: 0

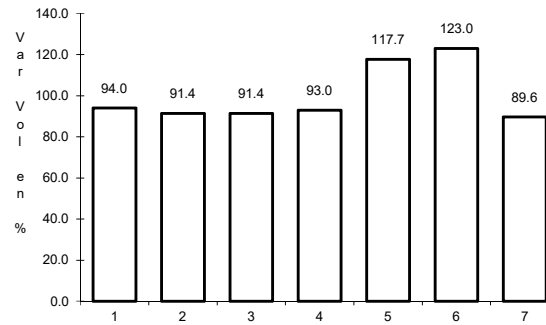
11 CARR: Libramiento Norte de Acapulco

CLAVE: 12421

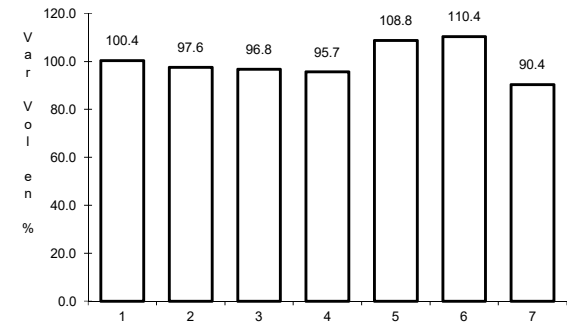
ruta: MEX-095



Km: 0.00 Tipo: 3 Sent: 0



Km: 6.40 Tipo: 3 Sent: 0

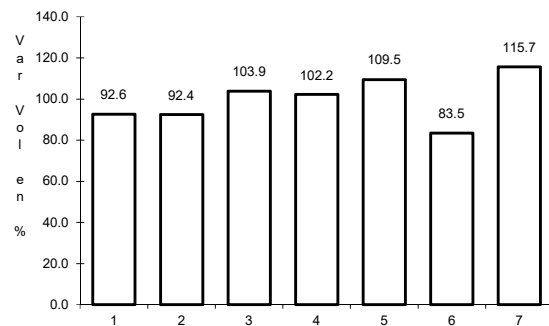


Km: 21.10 Tipo: 1 Sent: 0

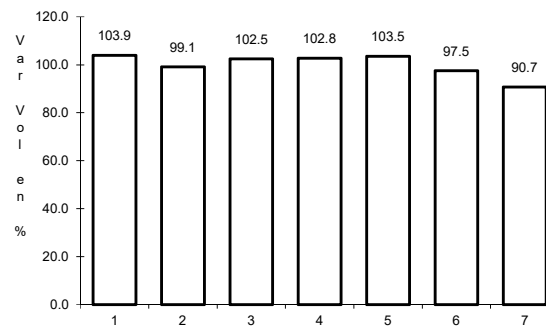
12 CARR: Milpillas - T. C. (Acapulco - Zihuatanejo)

CLAVE: 12012

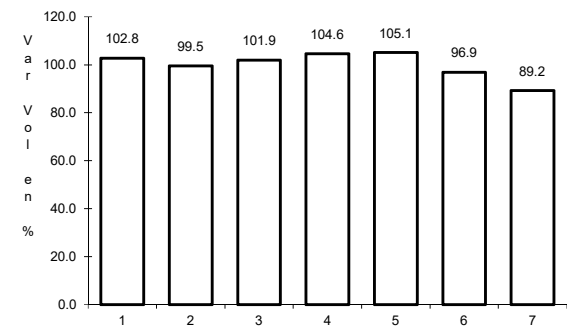
ruta: MEX-196



Km: 0.00 Tipo: 3 Sent: 0



Km: 237.00 Tipo: 1 Sent: 1

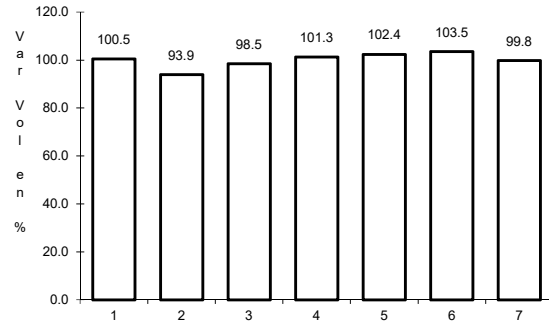


Km: 237.00 Tipo: 1 Sent: 2

13 CARR: Ramal a Aeropuerto Zihuatanejo

CLAVE: 12423

RUTA: MEX-200



Km: 0.00

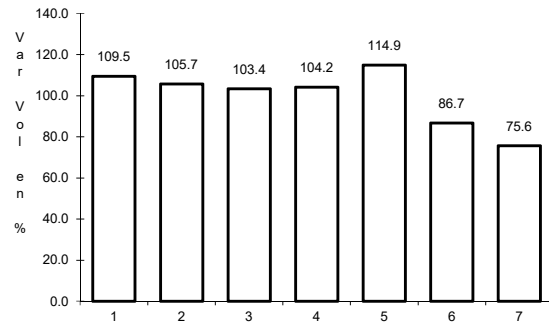
Tipo: 3

Sent: 0

14 CARR: Ramal a La Unión

CLAVE:

RUTA: MEX-200



Km: 0.00

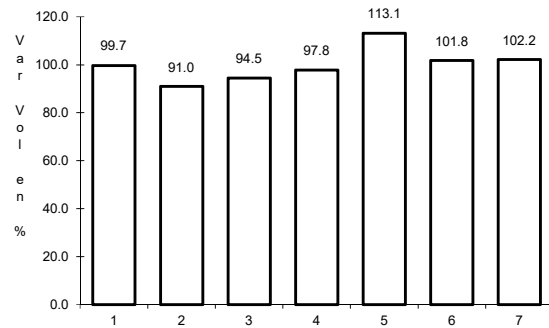
Tipo: 3

Sent: 0

15 CARR: San Juan de Los Llanos - Ometepec

CLAVE: 12011

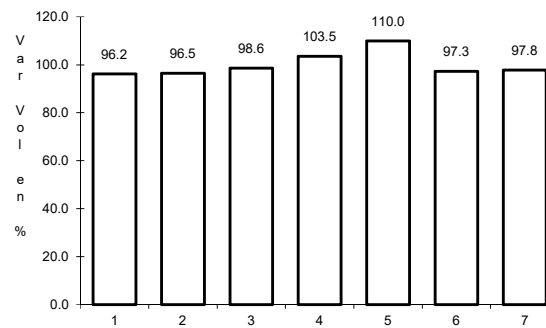
RUTA: MEX-200



Km: 0.00

Tipo: 3

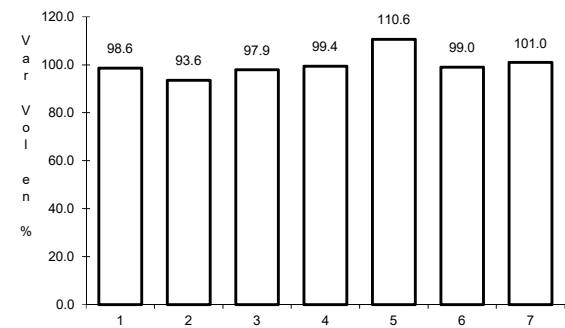
Sent: 0



Km: 15.94

Tipo: 1

Sent: 1



Km: 15.94

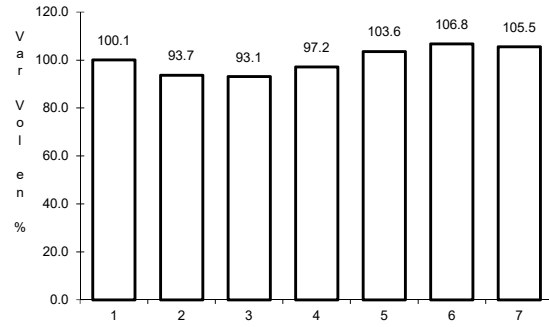
Tipo: 1

Sent: 2

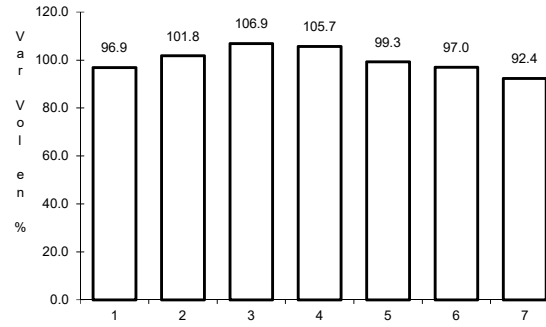
16 CARR: Tierra Colorada - Cruz Grande

CLAVE: 12420

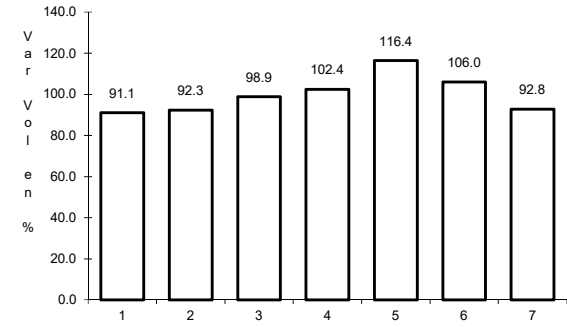
RUTA: MEX-198



Km: 0.00 Tipo: 3 Sent: 0



Km: 61.00 Tipo: 1 Sent: 0

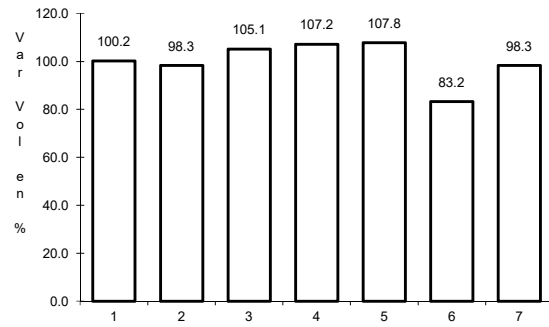


Km: 113.80 Tipo: 1 Sent: 0

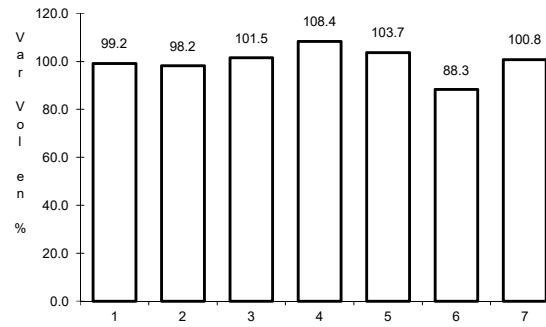
17 CARR: Toluca - Cd. Altamirano

CLAVE: 00020

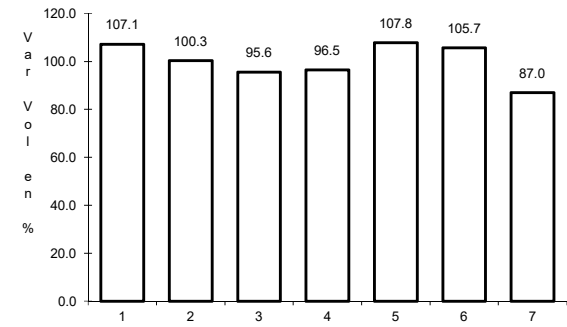
RUTA: MEX-134



Km: 1.78 Tipo: 3 Sent: 1



Km: 1.78 Tipo: 3 Sent: 2

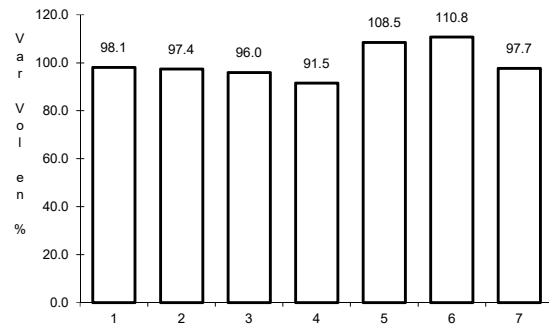


Km: 216.00 Tipo: 1 Sent: 0

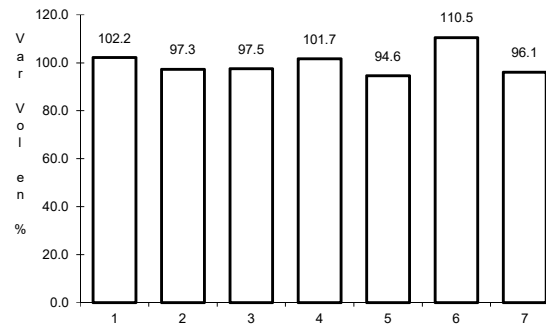
18 CARR: Zihuatanejo - La Mira

CLAVE: 00121

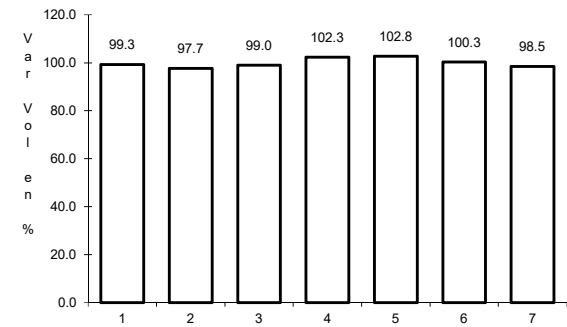
RUTA: MEX-200



Km: 0.00 Tipo: 3 Sent: 1



Km: 0.00 Tipo: 3 Sent: 2

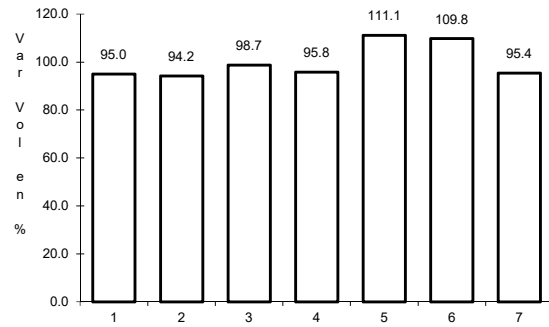


Km: 123.60 Tipo: 1 Sent: 0

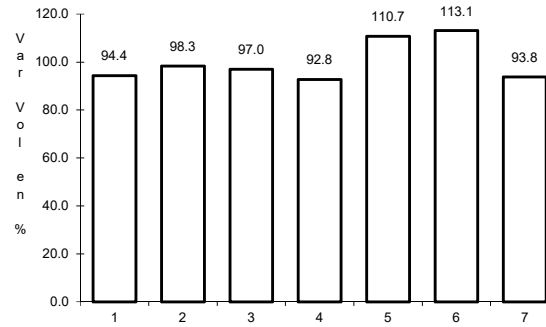
19 CARR: Cuernavaca - Acapulco (Cuota)

CLAVE: 00045

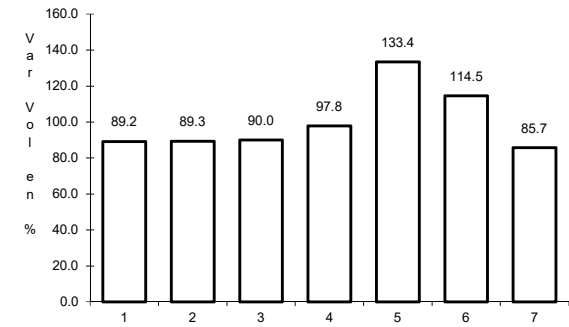
ruta: MEX-095D



Km: 0.00 Tipo: 3 Sent: 1



Km: 0.00 Tipo: 3 Sent: 2

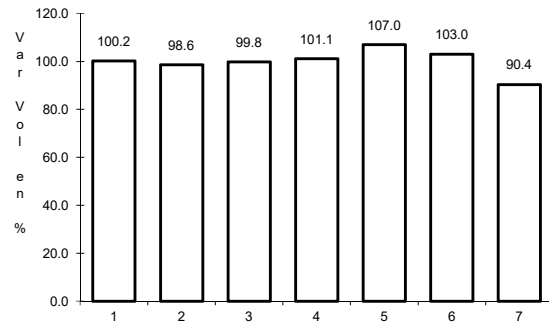


Km: 271.50 Tipo: 1 Sent: 1

20 CARR: Libramiento de Tépica (Cuota)

CLAVE: 00073

ruta: MEX-200D

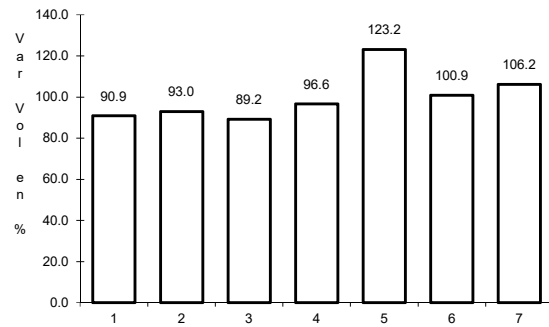


Km: 0.00 Tipo: 3 Sent: 0

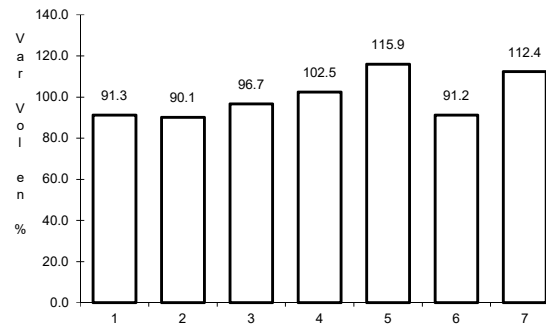
21 CARR: Nueva Italia - Lázaro Cárdenas (Cuota)

CLAVE: 00032

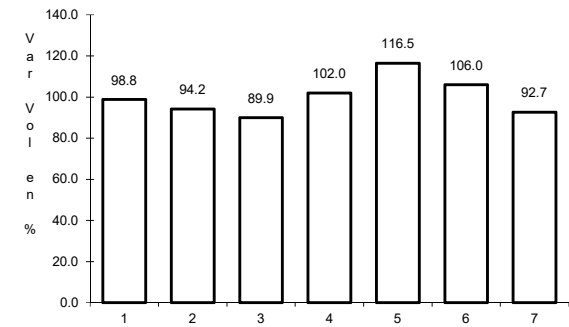
ruta: MEX-037D



Km: 153.90 Tipo: 3 Sent: 0



Km: 282.37 Tipo: 1 Sent: 0

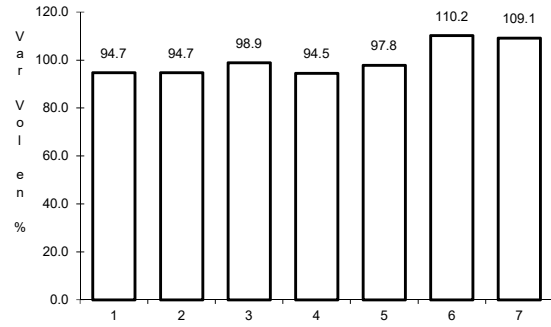


Km: 282.37 Tipo: 3 Sent: 0

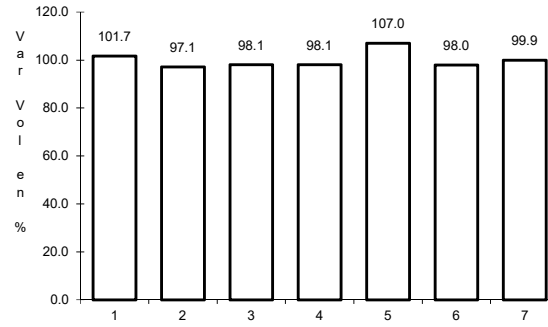
22 CARR: Puente de Ixtla - Iguala (Cuota)

CLAVE: 00043

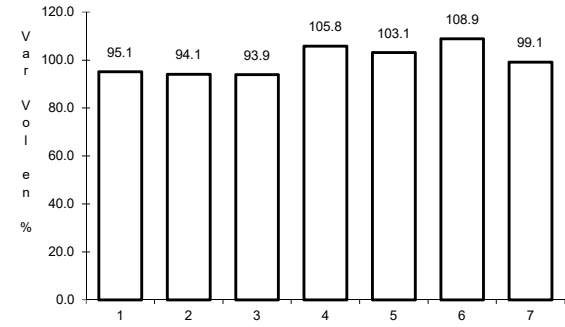
RUTA: MEX-091D



Km: 2.00 Tipo: 3 Sent: 0



Km: 33.58 Tipo: 3 Sent: 0

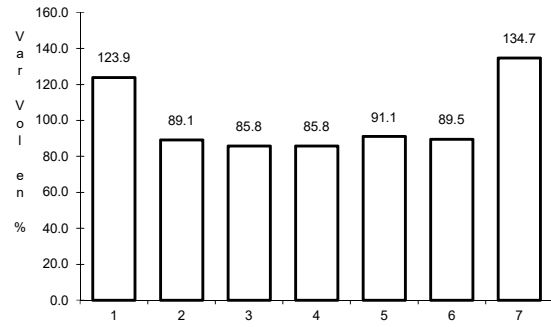


Km: 59.50 Tipo: 1 Sent: 0

23 CARR: Rancho Viejo - Taxco (Cuota)

CLAVE: 12010

RUTA: MEX-092D

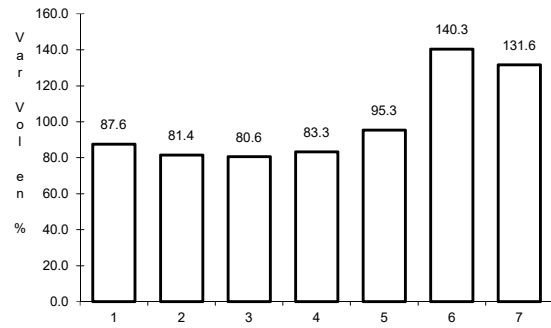


Km: 8.10 Tipo: 1 Sent: 0

24 CARR: Zacapalco - Rancho Viejo (Cuota)

CLAVE: 12010

RUTA: MEX-092D

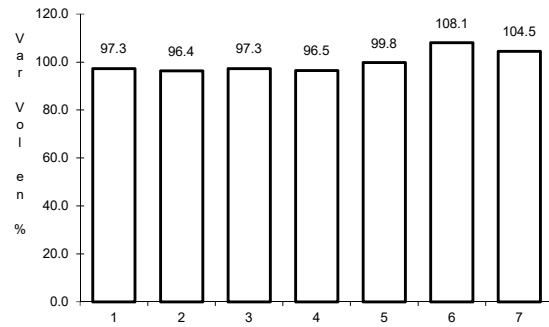


Km: 17.20 Tipo: 1 Sent: 0

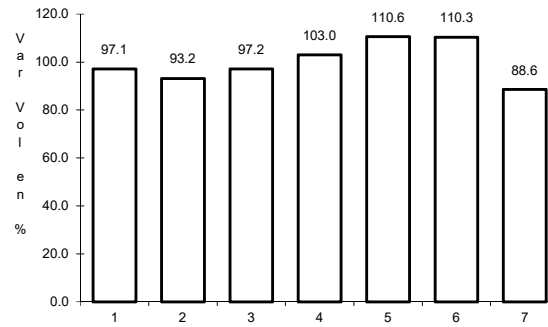
25 CARR: Acapulco - Aeropuerto Acapulco

CLAVE: 12292

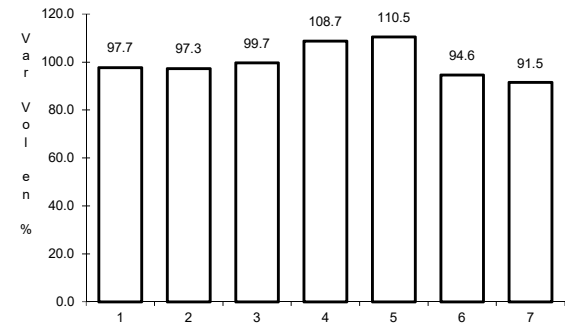
RUTA: GRO



Km: 8.70 Tipo: 1 Sent: 1



Km: 8.70 Tipo: 1 Sent: 2

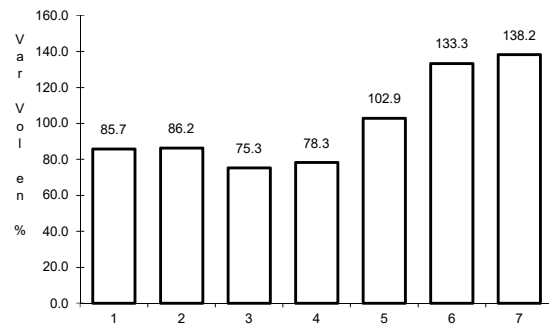


Km: 14.90 Tipo: 3 Sent: 1

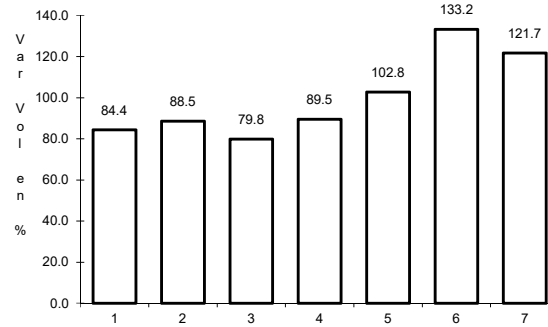
26 CARR: Ent. Potrero - Lomas de Chapultepec

CLAVE: 12293

RUTA: GRO



Km: 0.00 Tipo: 3 Sent: 1

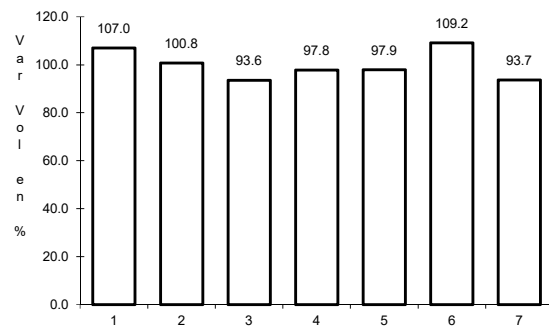


Km: 0.00 Tipo: 3 Sent: 2

27 CARR: Las Petaquillas - Quechultenango

CLAVE:

RUTA: GRO

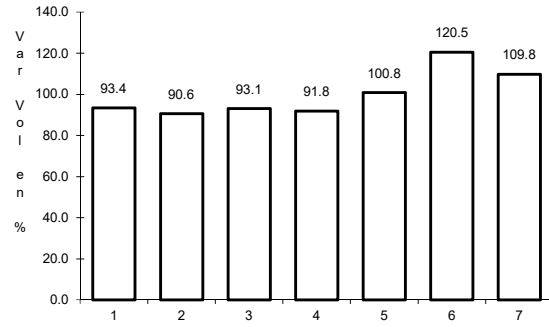


Km: 0.00 Tipo: 3 Sent: 0

28 CARR: Pie de La Cuesta - Barra de Coyuca

CLAVE: 12427

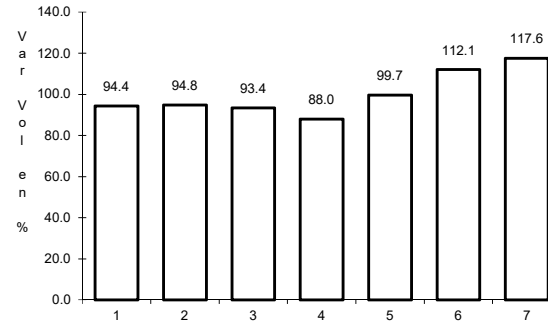
RUTA: GRO



Km: 0.00

Tipo: 3

Sent: 0



Km: 16.50

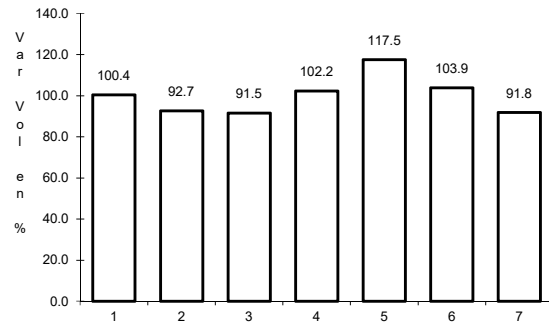
Tipo: 1

Sent: 0

29 CARR: Ramal a Cocula

CLAVE: 12082

RUTA: GRO



Km: 0.00

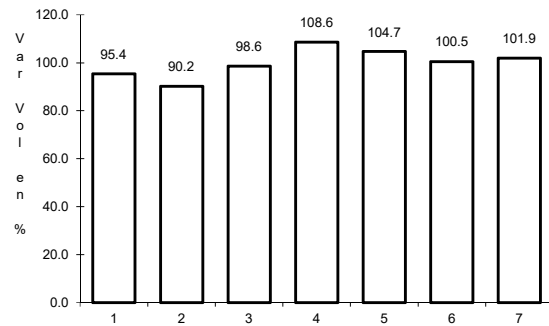
Tipo: 3

Sent: 0

30 CARR: T. C. (Iguala - Chilpancingo) - Atenango del Río

CLAVE: 12001

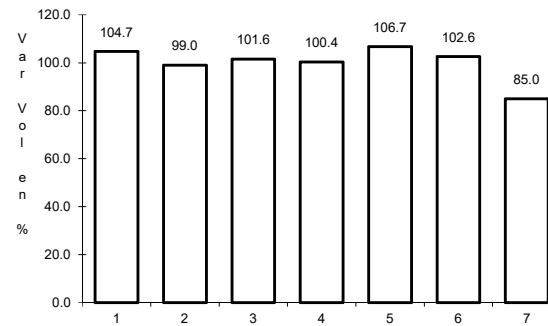
RUTA: GRO-001



Km: 0.00

Tipo: 3

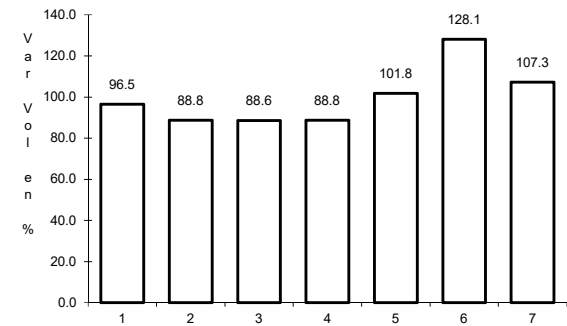
Sent: 0



Km: 22.00

Tipo: 3

Sent: 0



Km: 62.00

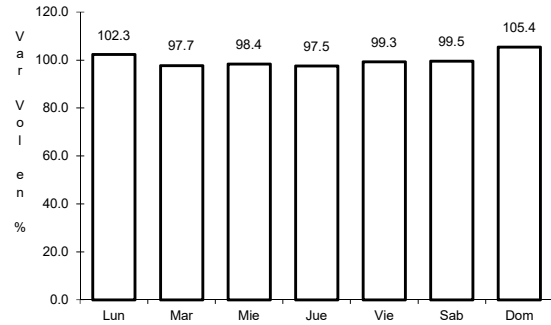
Tipo: 1

Sent: 0

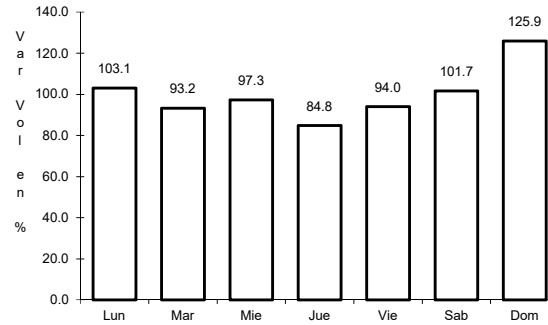
31 CARR: Taxco - Ixcateopan

CLAVE: 12083

RUTA: GRO



Km: 0.00 Tipo: 3 Sent: 0

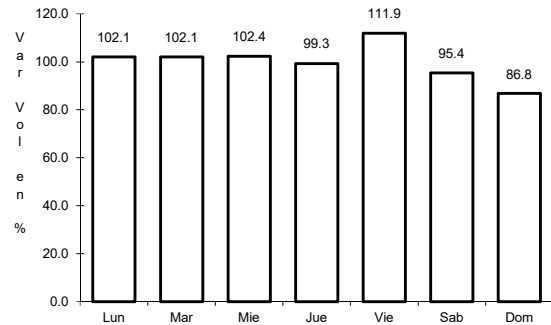


Km: 36.00 Tipo: 1 Sent: 0

32 CARR: Teloloapan - Apaxtla de Castrejón

CLAVE: 12081

RUTA: GRO

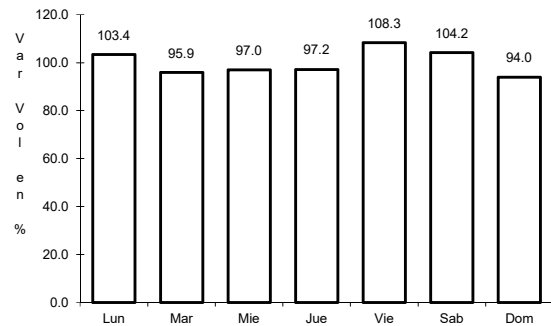


Km: 0.00 Tipo: 3 Sent: 0

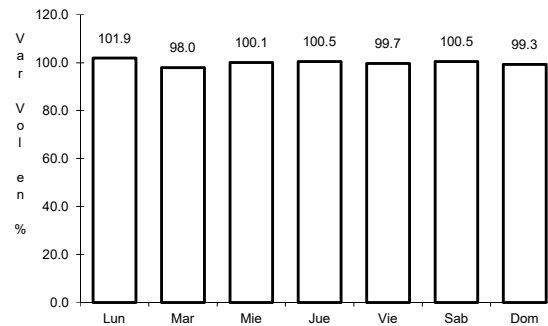
33 CARR: Tlapa de Comonfort - Marquelia

CLAVE:

RUTA: GRO



Km: 0.00 Tipo: 3 Sent: 0

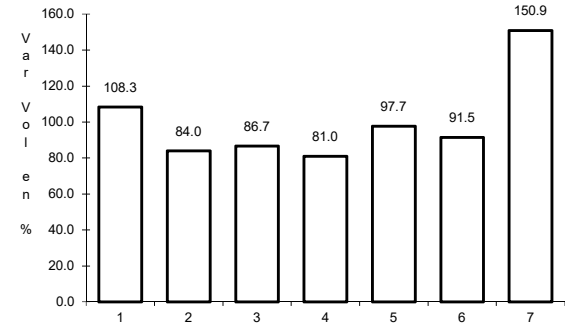
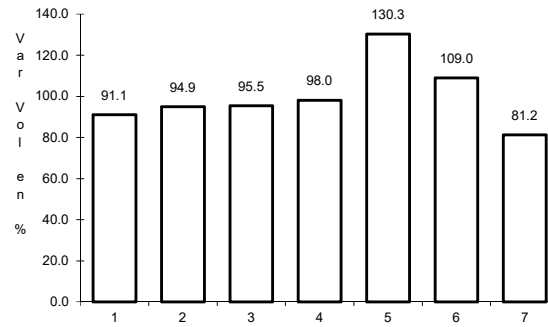
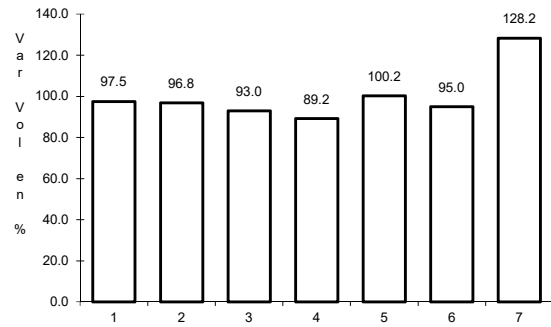


Km: 163.00 Tipo: 1 Sent: 0

34 CARR: Puerto Marqués - La Venta (Cuota)

CLAVE: 00043

RUTA: GRO-D



Km: 6.33

Tipo: 1

Sent: 1

Km: 6.33

Tipo: 1

Sent: 2

Km: 6.33

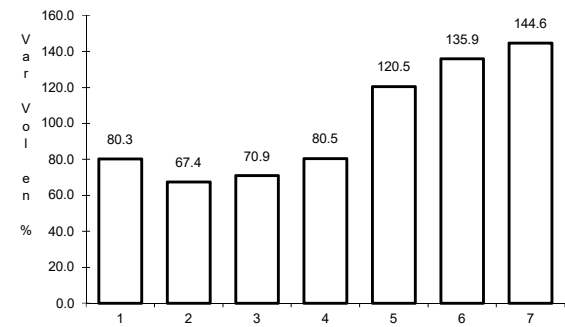
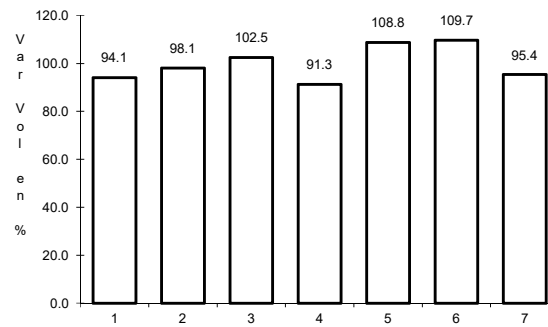
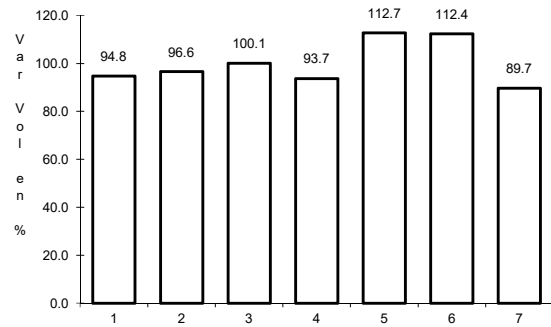
Tipo: 3

Sent: 1

35 CARR: Toluca - Axixintla

CLAVE: 00122

RUTA: EM-MEX-055



Km: 4.74

Tipo: 1

Sent: 1

Km: 4.74

Tipo: 1

Sent: 2

Km: 125.30

Tipo: 1

Sent: 0