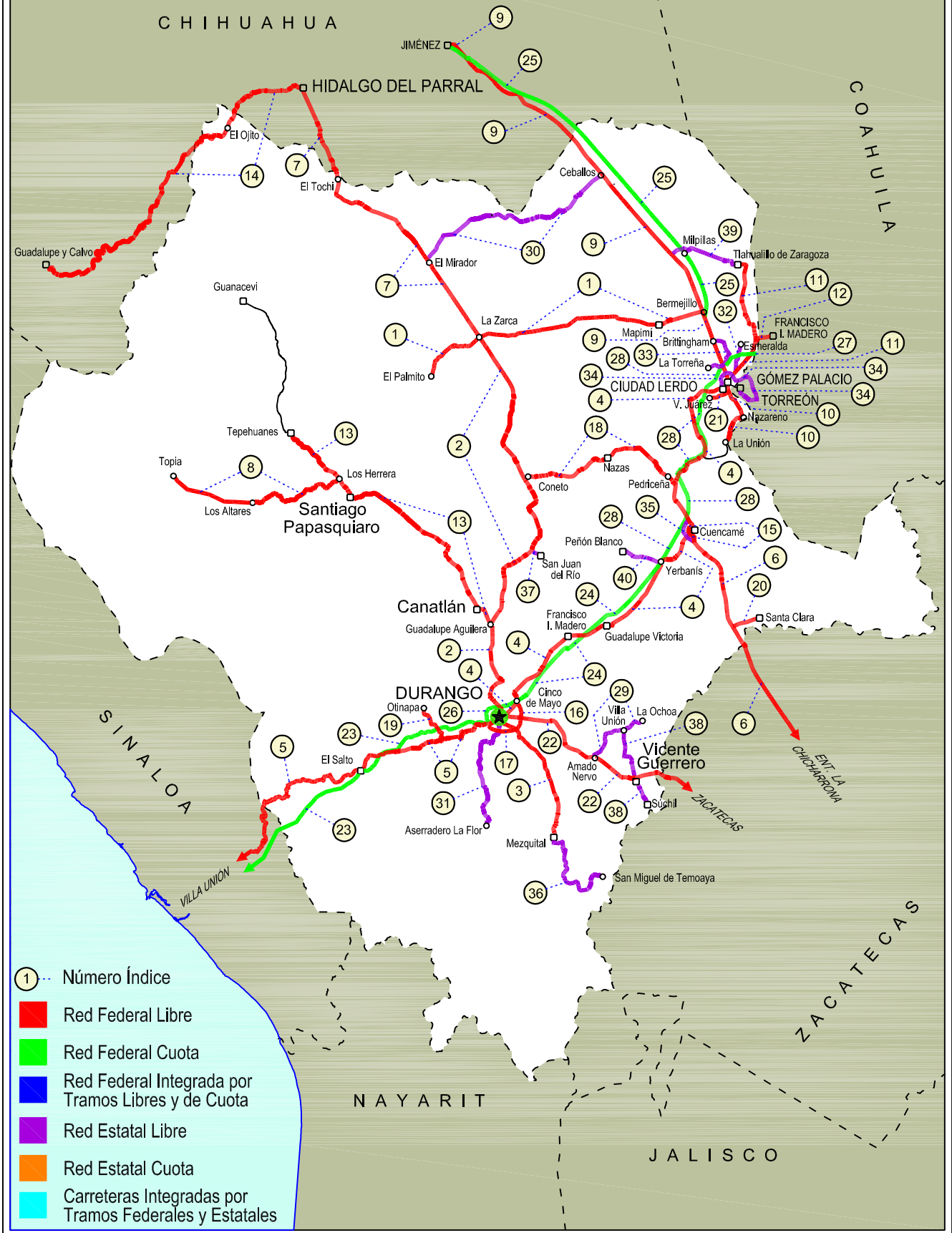


10 DURANGO

SECRETARÍA DE COMUNICACIONES Y TRANSPORTES
DIRECCIÓN GENERAL DE SERVICIOS TÉCNICOS



- ① Número Índice
- Red Federal Libre
- Red Federal Cuota
- Red Federal Integrada por Tramos Libres y de Cuota
- Red Estatal Libre
- Red Estatal Cuota
- Carreteras Integradas por Tramos Federales y Estatales



DURANGO

---RED FEDERAL LIBRE---

1 Bermejillo - El Palmito	MEX-030
2 Durango - Ent. La Zarca	MEX-045
3 Durango - Mezquital	MEX-023
4 Durango - Torreón	MEX-040
5 Durango - Villa Unión	MEX-040
6 Ent. La Chicharrona - Cuencamé	MEX-049
7 Ent. La Zarca - Hidalgo del Parral	MEX-045
8 Ent. Los Herrera - Topia	MEX-036
9 Gómez Palacio - Jiménez	MEX-049
10 Gómez Palacio - La Unión	MEX-040
11 Gómez Palacio - Tlahualillo	MEX-040
12 Gregorio García - Francisco I. Madero	MEX-040
13 Guadalupe Aguilera - Tepehuanes	MEX-023
14 Hidalgo del Parral - Guadalupe y Calvo	MEX-024
15 Libramiento Cuencamé	MEX
16 Libramiento Oriente de Durango	MEX-045
17 Libramiento Sur de Durango	MEX-045
18 Pedriceña - Ent. Rodeo	MEX-034
19 Ramal a Otinapa	MEX
20 Ramal a Santa Clara	MEX-049
21 Ramal a Villa Juárez	MEX-040
22 Zacatecas - Durango	MEX-045

---RED FEDERAL DE CUOTA---

23 Durango - Mazatlán (Cuota)	MEX-040D
24 Durango - Yerbanis (Cuota)	MEX-040D
25 Gómez Palacio - Corralitos (Cuota)	MEX-049D
26 Libramiento de Durango (Cuota)	MEX-040D
27 Libramiento Norte de Torreón (Cuota)	MEX-040D
28 Yerbanis - Gómez Palicio (Cuota)	MEX-040D

---RED ESTATAL LIBRE---

29 Amado Nervo - La Ochoa	DGO-542
30 Ceballos - El Mirador	DGO-044
31 Durango - Aserradero La Flor	DGO-115
32 Jabonoso - Esmeralda	DGO-363
33 La Torreña - Brittingham	DGO-325
34 Libramiento de Torreón	COA
35 Libramiento Exterior Cuencamé	DGO
36 Mezquital - San Miguel de Temoaya	DGO
37 Ramal a San Juan del Río	DGO-290
38 Súchil - Villa Unión	DGO-241
39 Tlahualillo de Zaragoza - T.C. Gómez Palacio - Jiménez	DGO
40 Yerbanis - Peñón Blanco	DGO-316

DURANGO

1 CARR: Bermejillo - El Palmito

CLAVE: 10105

RUTA: MEX-030

AÑO: 2017

LUGAR	ESTACION				CLASIFICACION VEHICULAR EN PORCIENTO										COORDENADAS					
	KM	TE	SC	TDPA	M	A	B	C2	C3	T3S2	T3S3	T3S2R4	OTROS	A	B	C	K'	D	LATITUD	LONGITUD
Bermejillo	0.00	3	0	2004	1.3	72.7	1.2	16.4	3.6	3.3	1.0	0.4	0.1	74.0	1.2	24.8	0.083	0.500	25.892198	-103.632032
Santo Domingo	86.00	1	0	446	0.9	74.9	1.8	15.3	3.3	1.8	1.4	0.5	0.1	75.8	1.8	22.4	0.143	0.510	25.814563	-104.440038
Santo Domingo	86.00	3	0	360	0.5	77.6	1.5	12.5	3.3	2.1	1.6	0.6	0.3	78.1	1.5	20.4	0.158	0.511	25.813475	-104.448303
Ent. La Zarca	120.00	1	0	573	1.0	73.4	1.3	18.5	2.7	1.6	1.2	0.2	0.1	74.4	1.3	24.3	0.113	0.511	25.783617	-104.760930
Ent. La Zarca	120.00	3	0	248	0.9	70.8	1.0	24.3	2.5	0.3	0.0	0.2	0.0	71.7	1.0	27.3	0.177	0.502	25.781600	-104.765662
El Palmito	160.00	1	0	303	1.1	67.6	0.8	28.7	1.7	0.1	0.0	0.0	0.0	68.7	0.8	30.5	0.277	0.504	25.619245	-104.999940

2 CARR: Durango - Ent. La Zarca

CLAVE: 10016

RUTA: MEX-045

AÑO: 2017

LUGAR	ESTACION				CLASIFICACION VEHICULAR EN PORCIENTO										COORDENADAS					
	KM	TE	SC	TDPA	M	A	B	C2	C3	T3S2	T3S3	T3S2R4	OTROS	A	B	C	K'	D	LATITUD	LONGITUD
Durango	0.00	3	1	14438	2.1	88.0	0.8	4.9	0.8	1.8	1.2	0.1	0.3	90.1	0.8	9.1	0.068	0.565	24.040209	-104.657850
Durango	0.00	3	2	18785	2.2	88.8	0.5	4.5	0.7	1.7	1.1	0.1	0.4	91.0	0.5	8.5	0.065	0.565	24.040202	-104.658016
Caseta Fiscal Zona Industrial	5.30	1	1	9120	1.8	85.8	1.0	7.5	2.0	1.1	0.6	0.1	0.1	87.6	1.0	11.4	0.088	0.515	24.049283	-104.657900
Caseta Fiscal Zona Industrial	5.30	1	2	8596	0.9	81.9	1.4	10.9	2.5	1.2	0.7	0.2	0.3	82.8	1.4	15.8	0.082	0.515	24.049325	-104.658156
Caseta Fiscal Zona Industrial	5.30	3	1	8071	1.5	85.7	1.4	8.4	1.3	1.0	0.5	0.1	0.1	87.2	1.4	11.4	0.075	0.501	24.059417	-104.656175
Caseta Fiscal Zona Industrial	5.30	3	2	8035	1.8	83.4	1.5	10.3	1.4	1.0	0.4	0.1	0.1	85.2	1.5	13.3	0.091	0.501	24.059452	-104.656365
X. Periférico de Durango	6.20	3	1	6331	1.6	83.5	1.1	10.6	1.3	1.1	0.6	0.1	0.1	85.1	1.1	13.8	0.089	0.502	24.073747	-104.660145
X. Periférico de Durango	6.20	3	2	6281	1.1	82.1	1.6	11.8	1.4	1.1	0.7	0.1	0.1	83.2	1.6	15.2	0.086	0.502	24.073684	-104.660280
T. Der. San José del Molino	28.00	1	0	515	4.5	79.2	4.1	11.4	0.5	0.2	0.1	0.0	0.0	83.7	4.1	12.2	0.186	0.512	24.205916	-104.660051
T. Izq. Canatlán	55.25	1	0	5508	1.1	81.3	1.9	12.9	1.1	1.0	0.5	0.1	0.1	82.4	1.9	15.7	0.099	0.506	24.433668	-104.698894
T. Izq. Canatlán	55.25	3	0	2634	1.2	83.2	1.7	12.5	0.7	0.5	0.2	0.0	0.0	84.4	1.7	13.9	0.103	0.506	24.445627	-104.699169
T. Der. San Juan del Río	105.81	1	0	2267	0.7	79.6	2.4	15.4	0.9	0.7	0.2	0.0	0.1	80.3	2.4	17.3	0.104	0.530	24.791189	-104.505709
T. Der. San Juan del Río	105.81	3	0	2093	0.5	77.1	1.7	18.5	0.9	0.8	0.3	0.2	0.0	77.6	1.7	20.7	0.130	0.502	24.804088	-104.497566
T. Der. Nazas	155.50	3	0	2573	1.1	78.4	1.8	17.1	0.7	0.6	0.3	0.0	0.0	79.5	1.8	18.7	0.106	0.505	25.131299	-104.540849
T. Der. Rodeo	160.70	1	0	3726	1.4	79.0	1.2	17.3	0.5	0.4	0.2	0.0	0.0	80.4	1.2	18.4	0.108	0.511	25.163202	-104.552325
T. Izq. Abasolo	178.00	3	0	1249	1.2	78.2	2.9	15.6	0.8	1.0	0.3	0.0	0.0	79.4	2.9	17.7	0.139	0.504	25.309945	-104.639936
Ent. La Zarca	239.50	1	0	935	0.7	78.8	3.8	13.2	1.6	1.4	0.5	0.0	0.0	79.5	3.8	16.7	0.154	0.539	25.763283	-104.749123

3 CARR: Durango - Mezquital

CLAVE: 10423

RUTA: MEX-023

AÑO: 2017

LUGAR	ESTACION				CLASIFICACION VEHICULAR EN PORCIENTO										COORDENADAS					
	KM	TE	SC	TDPA	M	A	B	C2	C3	T3S2	T3S3	T3S2R4	OTROS	A	B	C	K'	D	LATITUD	LONGITUD
Durango	0.00	3	1	7209	3.2	85.2	0.9	8.0	1.5	0.6	0.5	0.0	0.1	88.4	0.9	10.7	0.092	0.512	23.994502	-104.632897
Durango	0.00	3	2	7551	3.0	84.8	0.9	8.4	1.7	0.6	0.5	0.0	0.1	87.8	0.9	11.3	0.101	0.512	23.994512	-104.632857

DURANGO

3 CARR: Durango - Mezquital

CLAVE: 10423

RUTA: MEX-023

AÑO: 2017

LUGAR	ESTACION				CLASIFICACION VEHICULAR EN PORCIENTO										COORDENADAS					
	KM	TE	SC	TDPA	M	A	B	C2	C3	T3S2	T3S3	T3S2R4	OTROS	A	B	C	K'	D	LATITUD	LONGITUD
Gabino Santillán	8.00	3	1	3043	0.3	79.4	0.7	16.0	2.1	0.8	0.5	0.1	0.1	79.7	0.7	19.6	0.086	0.551	23.980119	-104.590540
Gabino Santillán	8.00	3	2	3738	3.2	87.0	0.4	6.2	1.8	0.6	0.7	0.1	0.0	90.2	0.4	9.4	0.098	0.551	23.980147	-104.590552
T. Izq. Monte Morelos	13.00	3	0	4007	6.2	71.5	0.6	16.6	3.4	1.3	0.3	0.0	0.1	77.7	0.6	21.7	0.098	0.502	23.949424	-104.562354
Pino Suarez	24.20	3	0	2248	4.2	73.0	1.9	19.3	1.2	0.3	0.1	0.0	0.0	77.2	1.9	20.9	0.098	0.526	23.871917	-104.481067
Mezquital	82.00	1	1	1153	6.2	83.7	0.2	9.2	0.6	0.1	0.0	0.0	0.0	89.9	0.2	9.9	0.088	0.505	23.485450	-104.385783
Mezquital	82.00	1	2	1174	6.2	80.6	0.2	12.0	0.6	0.2	0.1	0.0	0.1	86.8	0.2	13.0	0.095	0.505	23.485517	-104.385717

4 CARR: Durango - Torreón

CLAVE: 10085

RUTA: MEX-040

AÑO: 2017

LUGAR	ESTACION				CLASIFICACION VEHICULAR EN PORCIENTO										COORDENADAS					
	KM	TE	SC	TDPA	M	A	B	C2	C3	T3S2	T3S3	T3S2R4	OTROS	A	B	C	K'	D	LATITUD	LONGITUD
Durango	0.00	3	1	9960	2.1	84.9	1.9	8.2	0.9	1.3	0.5	0.1	0.1	87.0	1.9	11.1	0.076	0.508	24.076317	-104.591283
Durango	0.00	3	2	9629	2.3	83.8	1.6	9.0	1.1	1.3	0.6	0.2	0.1	86.1	1.6	12.3	0.087	0.508	24.076440	-104.591420
T. Der. Cd. de Los Niños	7.70	3	1	7714	2.0	82.9	2.1	9.4	1.0	1.7	0.6	0.2	0.1	84.9	2.1	13.0	0.081	0.504	24.082360	-104.586137
T. Der. Cd. de Los Niños	7.70	3	2	7835	2.0	81.8	2.8	10.1	1.1	1.4	0.5	0.2	0.1	83.8	2.8	13.4	0.082	0.504	24.082447	-104.586261
X. Periférico de Durango	9.00	1	1	8001	1.8	81.0	2.3	10.7	1.0	1.9	0.8	0.4	0.1	82.8	2.3	14.9	0.072	0.513	24.088453	-104.580925
X. Periférico de Durango	9.00	1	2	8437	2.0	83.0	2.2	8.7	1.0	1.9	0.7	0.3	0.2	85.0	2.2	12.8	0.075	0.513	24.088560	-104.581035
T. Der. Aeropuerto	9.42	1	1	8153	1.9	80.5	2.1	10.7	1.3	2.1	0.8	0.4	0.2	82.4	2.1	15.5	0.083	0.547	24.092492	-104.577456
T. Der. Aeropuerto	9.42	1	2	6745	3.5	78.4	2.8	9.5	2.2	1.8	1.1	0.3	0.4	81.9	2.8	15.3	0.079	0.547	24.092594	-104.577600
T. Der. Aeropuerto	9.42	3	1	4624	2.5	82.0	1.7	9.0	1.7	1.9	0.8	0.1	0.3	84.5	1.7	13.8	0.075	0.504	24.099643	-104.575763
T. Der. Aeropuerto	9.42	3	2	4559	3.6	79.2	1.9	10.0	2.0	1.9	1.0	0.1	0.3	82.8	1.9	15.3	0.072	0.504	24.099601	-104.575671
La Calera	10.85	3	0	5671	2.1	72.0	3.1	14.1	1.8	4.5	1.8	0.4	0.2	74.1	3.1	22.8	0.070	0.503	24.110867	-104.571833
Abraham González	27.10	3	0	4392	1.5	71.1	3.1	13.8	1.8	5.4	2.5	0.5	0.3	72.6	3.1	24.3	0.075	0.511	24.206450	-104.514917
Francisco I. Madero	56.30	1	0	4258	1.2	71.6	2.8	12.5	2.2	5.9	2.8	0.7	0.3	72.8	2.8	24.4	0.072	0.501	24.392967	-104.329933
Francisco I. Madero	56.30	3	0	4359	0.7	69.2	2.8	15.0	2.0	6.3	2.9	0.7	0.4	69.9	2.8	27.3	0.073	0.514	24.405198	-104.305440
Guadalupe Victoria	77.50	1	0	5232	1.5	71.1	2.9	13.1	1.9	6.1	2.4	0.7	0.3	72.6	2.9	24.5	0.074	0.510	24.446776	-104.139453
Guadalupe Victoria	77.50	3	0	6806	1.5	77.3	2.0	12.1	1.6	3.4	1.5	0.4	0.2	78.8	2.0	19.2	0.074	0.504	24.461987	-104.087778
T. Der. Ignacio Allende	90.13	1	0	4570	1.1	71.5	2.7	13.5	2.0	5.8	2.4	0.6	0.4	72.6	2.7	24.7	0.074	0.513	24.495315	-104.027628
T. Der. Ignacio Allende	90.13	3	0	3240	1.3	64.2	3.8	15.1	3.3	7.9	3.0	0.8	0.6	65.5	3.8	30.7	0.066	0.507	24.503142	-104.015348
T. Izq. Peñón Blanco	120.90	1	0	2279	2.4	53.4	5.1	14.7	6.1	11.4	5.1	1.3	0.5	55.8	5.1	39.1	0.088	0.519	24.732190	-103.843899
T. Izq. Peñón Blanco	120.90	3	0	2087	2.0	50.3	5.4	12.8	6.6	14.8	6.0	1.6	0.5	52.3	5.4	42.3	0.084	0.515	24.742865	-103.837688
Cuencamé	144.30	1	0	2112	2.1	50.6	5.3	12.4	6.6	14.6	6.0	1.9	0.5	52.7	5.3	42.0	0.075	0.510	24.861040	-103.701773
Cuencamé	144.30	3	0	8064	3.4	51.2	5.5	12.5	4.3	14.4	3.9	4.3	0.5	54.6	5.5	39.9	0.061	0.502	24.907462	-103.704349
T. Izq. Nazas	171.61	1	0	4483	1.3	61.6	2.9	11.5	3.0	13.8	3.3	1.9	0.7	62.9	2.9	34.2	0.071	0.502	25.085911	-103.771292
T. Izq. Nazas	171.61	3	0	6108	1.4	66.6	2.2	12.3	2.4	10.3	2.7	1.5	0.6	68.0	2.2	29.8	0.073	0.513	25.091938	-103.769766

DURANGO

4 CARR: Durango - Torreón

CLAVE: 10085

RUTA: MEX-040

AÑO: 2017

LUGAR	ESTACION				CLASIFICACION VEHICULAR EN PORCIENTO										COORDENADAS					
	KM	TE	SC	TDPA	M	A	B	C2	C3	T3S2	T3S3	T3S2R4	OTROS	A	B	C	K'	D	LATITUD	LONGITUD
T. Der. Villa Juárez	194.40	3	0	4406	1.9	63.5	2.4	8.2	3.3	14.0	3.7	2.1	0.9	65.4	2.4	32.2	0.090	0.514	25.225456	-103.629398
León Guzmán	229.58	3	0	8064	2.1	76.3	1.5	11.9	1.7	4.5	1.0	0.6	0.4	78.4	1.5	20.1	0.112	0.503	25.513420	-103.646115
Cd. Lerdo	244.80	1	1	6848	1.2	77.7	1.7	10.1	1.5	4.2	1.3	2.0	0.3	78.9	1.7	19.4	0.193	0.502	25.511789	-103.538513
Cd. Lerdo	244.80	1	2	6900	1.7	75.5	1.9	10.7	1.7	4.8	1.3	2.1	0.3	77.2	1.9	20.9	0.146	0.502	25.511945	-103.538481
T. Izq. Gómez Palacio	248.90	3	1	8534	2.2	89.2	1.7	4.9	0.1	0.2	1.3	0.3	0.1	91.4	1.7	6.9	0.089	0.501	25.553934	-103.481406
T. Izq. Gómez Palacio	248.90	3	2	8505	2.1	88.4	1.8	5.5	0.1	0.2	1.5	0.3	0.1	90.5	1.8	7.7	0.090	0.501	25.553980	-103.481532
Lim. Edos. Term. Dgo. Ppia. Coah.	251.00																			
Torreón	255.80	1	1	19981	2.4	89.0	0.7	4.7	0.1	0.7	2.1	0.0	0.3	91.4	0.7	7.9	0.062	0.519	25.547371	-103.470979
Torreón	255.80	1	2	21836	2.2	88.3	1.0	4.9	0.1	0.8	2.4	0.0	0.3	90.5	1.0	8.5	0.072	0.519	25.546450	-103.469497

5 CARR: Durango - Villa Unión

CLAVE: 0083

RUTA: MEX-040

AÑO: 2017

LUGAR	ESTACION				CLASIFICACION VEHICULAR EN PORCIENTO										COORDENADAS					
	KM	TE	SC	TDPA	M	A	B	C2	C3	T3S2	T3S3	T3S2R4	OTROS	A	B	C	K'	D	LATITUD	LONGITUD
Durango	0.00	3	0	4186	3.0	72.0	2.1	14.5	4.6	2.2	1.0	0.3	0.3	75.0	2.1	22.9	0.073	0.521	23.994120	-104.717900
T. Der. Pino	22.86	3	0	2380	2.0	66.8	3.6	15.1	4.3	5.5	2.4	0.0	0.3	68.8	3.6	27.6	0.116	0.516	23.967270	-104.820431
T. Izq. Estación Navíos	58.42	3	0	2115	6.2	66.4	3.0	14.9	3.7	4.0	1.5	0.1	0.2	72.6	3.0	24.4	0.106	0.502	23.895092	-105.054296
Llano Grande	77.23	1	0	2308	2.1	66.9	3.3	15.4	4.3	5.3	2.5	0.0	0.2	69.0	3.3	27.7	0.095	0.502	23.867003	-105.197873
El Salto	99.76	3	0	1972	3.4	76.5	1.4	16.3	0.9	0.9	0.5	0.0	0.1	79.9	1.4	18.7	0.100	0.506	23.784345	-105.376136
La Ciudad	145.50	1	0	806	5.9	72.3	2.5	14.6	1.5	2.4	0.8	0.0	0.0	78.2	2.5	19.3	0.091	0.517	23.731361	-105.678283
La Ciudad	145.50	3	0	404	11.8	62.9	2.4	17.2	1.9	2.6	1.2	0.0	0.0	74.7	2.4	22.9	0.126	0.522	23.726953	-105.692327
Lim. Edos. Term. Dgo. Ppia. Sin.	198.50																			
T. C. Tepic - Mazatlán	294.40	1	0	3629	4.5	70.7	5.8	10.9	3.0	3.7	1.3	0.0	0.1	75.2	5.8	19.0	0.088	0.510	23.204593	-106.198185

6 CARR: Ent. La Chicharrona - Cuencamé

CLAVE: 00152

RUTA: MEX-049

AÑO: 2017

LUGAR	ESTACION				CLASIFICACION VEHICULAR EN PORCIENTO										COORDENADAS					
	KM	TE	SC	TDPA	M	A	B	C2	C3	T3S2	T3S3	T3S2R4	OTROS	A	B	C	K'	D	LATITUD	LONGITUD
Ent. La Chicharrona	0.00	3	1	4606	0.6	61.1	4.8	10.7	2.1	11.8	3.3	4.3	1.3	61.7	4.8	33.5	0.075	0.509	23.305546	-102.958696
Ent. La Chicharrona	0.00	3	2	4771	0.7	60.3	4.7	8.5	2.3	13.6	4.0	4.9	1.0	61.0	4.7	34.3	0.078	0.509	23.305533	-102.958891
T. Der. Cañitas de Felipe Pescador	25.86	1	1	3793	0.5	59.6	4.9	8.1	2.2	12.8	5.5	4.1	2.3	60.1	4.9	35.0	0.077	0.506	23.524197	-102.959712
T. Der. Cañitas de Felipe Pescador	25.86	1	2	3881	0.4	52.5	6.3	10.5	2.4	16.3	4.6	6.0	1.0	52.9	6.3	40.8	0.070	0.506	23.524189	-102.959525
Río Grande	60.00	1	0	6559	0.8	54.9	5.3	10.3	2.8	15.1	4.3	5.6	0.9	55.7	5.3	39.0	0.084	0.500	23.774703	-103.011216
Río Grande	60.00	3	0	6793	0.5	52.5	5.4	12.2	2.2	15.6	5.2	5.6	0.8	53.0	5.4	41.6	0.065	0.512	23.880827	-103.097198
T. Der. Nieves	78.00	3	0	5622	0.6	44.6	6.7	10.4	2.7	20.3	5.8	7.6	1.3	45.2	6.7	48.1	0.061	0.508	23.925379	-103.161128

DURANGO

6 CARR: Ent. La Chicharrona - Cuencamé

CLAVE: 00152

RUTA: MEX-049

AÑO: 2017

LUGAR	ESTACION				CLASIFICACION VEHICULAR EN PORCIENTO														COORDENADAS	
	KM	TE	SC	TDPA	M	A	B	C2	C3	T3S2	T3S3	T3S2R4	OTROS	A	B	C	K'	D	LATITUD	LONGITUD
X. C. Juan Aldama - Miguel Auza	124.50	1	0	6517	0.8	48.8	6.3	9.0	3.2	19.9	4.5	6.7	0.8	49.6	6.3	44.1	0.060	0.500	24.269683	-103.399138
X. C. Juan Aldama - Miguel Auza	124.50	3	0	5806	0.8	42.2	6.9	8.9	3.8	23.5	5.6	7.6	0.7	43.0	6.9	50.1	0.061	0.501	24.296527	-103.410254
Lim. Edos. Term. Zac. Ppia. Dgo.	134.30																			
T. Der. Santa Clara	144.00	1	0	4752	0.9	39.5	6.7	8.5	4.9	23.8	5.0	9.4	1.3	40.4	6.7	52.9	0.065	0.505	24.436150	-103.486517
T. Der. Santa Clara	144.00	3	0	4974	2.2	39.6	7.1	10.3	3.5	22.3	4.8	9.1	1.1	41.8	7.1	51.1	0.059	0.514	24.444883	-103.492183
Cuencamé	199.10	1	0	1141	4.3	73.3	2.8	13.6	1.6	2.6	0.8	0.7	0.3	77.6	2.8	19.6	0.076	0.507	24.853233	-103.693650

7 CARR: Ent. La Zarca - Hidalgo del Parral

CLAVE: 00488

RUTA: MEX-045

AÑO: 2017

LUGAR	ESTACION				CLASIFICACION VEHICULAR EN PORCIENTO														COORDENADAS	
	KM	TE	SC	TDPA	M	A	B	C2	C3	T3S2	T3S3	T3S2R4	OTROS	A	B	C	K'	D	LATITUD	LONGITUD
Ent. La Zarca	0.00	3	0	1049	0.9	77.7	3.9	13.4	1.5	1.7	0.7	0.1	0.1	78.6	3.9	17.5	0.145	0.504	25.861817	-104.821960
T. Der. Ceballos	47.85	1	0	794	2.1	69.3	5.7	14.1	2.9	3.2	2.2	0.3	0.2	71.4	5.7	22.9	0.087	0.501	26.139941	-105.028786
T. Der. Ceballos	47.85	3	0	1190	1.2	71.9	4.9	15.0	2.4	2.7	1.4	0.2	0.3	73.1	4.9	22.0	0.074	0.501	26.144819	-105.032451
T. Izq. Canutillo	92.35	3	0	1093	1.5	72.6	4.4	14.8	2.0	2.7	1.6	0.2	0.2	74.1	4.4	21.5	0.082	0.501	26.389383	-105.355000
Las Nieves	97.60	3	0	1778	1.3	71.4	3.8	16.5	2.2	2.8	1.5	0.3	0.2	72.7	3.8	23.5	0.071	0.502	26.400051	-105.405884
T. Izq. Ocampo	109.22	3	0	1256	1.1	71.6	4.7	15.8	2.3	2.6	1.4	0.2	0.3	72.7	4.7	22.6	0.071	0.504	26.447454	-105.495134
Lim. Edos. Term. Dgo. Ppia. Chih.	122.89																			
Matamoros	148.00	1	0	1282	1.3	71.0	4.1	17.8	2.0	2.3	1.2	0.1	0.2	72.3	4.1	23.6	0.083	0.509	26.751083	-105.581007
Hidalgo del Parral	171.00	1	0	3319	1.7	74.3	2.6	17.2	2.3	1.0	0.8	0.0	0.1	76.0	2.6	21.4	0.079	0.508	26.917809	-105.640371

8 CARR: Ent. Los Herrera - Topia

CLAVE: 10090

RUTA: MEX-036

AÑO: 2017

LUGAR	ESTACION				CLASIFICACION VEHICULAR EN PORCIENTO														COORDENADAS	
	KM	TE	SC	TDPA	M	A	B	C2	C3	T3S2	T3S3	T3S2R4	OTROS	A	B	C	K'	D	LATITUD	LONGITUD
T. C. Guadalupe Aguilera - Tepehuanes	0.00	3	0	560	2.3	63.9	1.5	26.0	1.8	2.2	1.9	0.1	0.3	66.2	1.5	32.3	0.093	0.521	25.121816	-105.481413
Los Altares	80.00	1	0	398	2.1	55.6	1.1	34.4	1.9	2.6	2.3	0.0	0.0	57.7	1.1	41.2	0.101	0.524	25.016272	-105.898873
Topia	229.00																			

9 CARR: Gómez Palacio - Jiménez

CLAVE: 00006

RUTA: MEX-049

AÑO: 2017

LUGAR	ESTACION				CLASIFICACION VEHICULAR EN PORCIENTO														COORDENADAS	
	KM	TE	SC	TDPA	M	A	B	C2	C3	T3S2	T3S3	T3S2R4	OTROS	A	B	C	K'	D	LATITUD	LONGITUD
Gómez Palacio	0.00	3	1	14842	2.8	69.6	3.4	9.2	3.3	7.2	2.2	1.7	0.6	72.4	3.4	24.2	0.075	0.505	25.615922	-103.513989
Gómez Palacio	0.00	3	2	14520	3.5	67.1	3.6	9.6	3.8	7.5	2.4	1.8	0.7	70.6	3.6	25.8	0.065	0.505	25.615922	-103.514237

DURANGO

9 CARR: Gómez Palacio - Jiménez

CLAVE: 00006

RUTA: MEX-049

AÑO: 2017

LUGAR	ESTACION				CLASIFICACION VEHICULAR EN PORCIENTO													COORDENADAS		
	KM	TE	SC	TDPA	M	A	B	C2	C3	T3S2	T3S3	T3S2R4	OTROS	A	B	C	K'	D	LATITUD	LONGITUD
X. C. La Torreña - Brittingham	10.96	1	1	10116	2.8	67.9	2.3	8.8	2.8	9.8	2.7	2.3	0.6	70.7	2.3	27.0	0.080	0.504	25.639551	-103.523433
X. C. La Torreña - Brittingham	10.96	1	2	9937	3.0	69.3	2.7	8.1	2.3	8.3	3.2	1.9	1.2	72.3	2.7	25.0	0.078	0.504	25.639527	-103.523639
T. Izq. Dinamita	26.27	1	1	6186	1.1	60.0	4.6	11.1	2.6	13.5	3.5	2.9	0.7	61.1	4.6	34.3	0.079	0.508	25.753521	-103.568939
T. Izq. Dinamita	26.27	1	2	5997	1.4	59.5	4.6	10.6	2.3	14.7	3.3	3.0	0.6	60.9	4.6	34.5	0.077	0.508	25.753456	-103.569069
Bermejillo	39.30	1	0	7618	2.5	65.8	2.1	11.5	3.0	11.1	2.8	0.8	0.4	68.3	2.1	29.6	0.060	0.516	25.874602	-103.616460
T. Izq. Ent. La Zarca	40.89	3	0	3474	2.1	46.4	3.2	11.9	4.5	23.6	5.9	1.9	0.5	48.5	3.2	48.3	0.055	0.513	25.903910	-103.628603
Yermo	107.95	1	0	2694	2.0	38.0	3.7	12.0	3.9	29.9	7.2	2.4	0.9	40.0	3.7	56.3	0.057	0.526	26.378079	-103.993808
Yermo	107.95	3	0	2786	2.1	40.1	3.8	11.9	3.9	27.5	7.6	2.3	0.8	42.2	3.8	54.0	0.054	0.506	26.396153	-104.010606
Ceballos	127.20	1	0	2714	1.4	38.0	3.3	12.3	3.7	30.6	7.7	2.3	0.7	39.4	3.3	57.3	0.055	0.516	26.518191	-104.121556
Ceballos	127.20	3	0	2976	6.4	48.3	3.1	14.6	3.5	17.1	4.9	1.0	1.1	54.7	3.1	42.2	0.072	0.528	26.536625	-104.138924
Lim. Edos. Term. Dgo. Ppia. Chih.	146.15																			
Estación Escalón	160.89	3	0	2383	2.1	31.2	4.0	11.7	4.0	34.3	9.1	2.9	0.7	33.3	4.0	62.7	0.048	0.509	26.756512	-104.341646
Jiménez	223.00	1	1	3579	2.2	62.2	4.3	7.8	1.5	7.7	5.1	5.5	3.7	64.4	4.3	31.3	0.087	0.519	27.117578	-104.890818
Jiménez	223.00	1	2	3318	2.1	50.9	6.2	9.0	1.8	15.6	7.1	3.5	3.8	53.0	6.2	40.8	0.072	0.519	27.117483	-104.890903

10 CARR: Gómez Palacio - La Unión

CLAVE: 10009

RUTA: MEX-040

AÑO: 2017

LUGAR	ESTACION				CLASIFICACION VEHICULAR EN PORCIENTO													COORDENADAS		
	KM	TE	SC	TDPA	M	A	B	C2	C3	T3S2	T3S3	T3S2R4	OTROS	A	B	C	K'	D	LATITUD	LONGITUD
Gómez Palacio	0.00	3	0	5716	5.8	83.4	0.5	8.7	1.1	0.3	0.2	0.0	0.0	89.2	0.5	10.3	0.072	0.539	25.533002	-103.496466
X. C. Torreón - Villa Juárez	4.30	3	0	5064	8.7	77.2	0.7	10.6	1.7	0.5	0.3	0.2	0.1	85.9	0.7	13.4	0.081	0.500	25.517485	-103.487140
Nazareno	20.90	1	0	2378	3.8	78.2	0.3	14.4	2.3	0.5	0.2	0.2	0.1	82.0	0.3	17.7	0.082	0.505	25.421295	-103.428636
Nazareno	20.90	3	0	2036	5.3	70.2	0.7	21.0	1.9	0.4	0.3	0.2	0.0	75.5	0.7	23.8	0.088	0.530	25.395831	-103.435717
La Unión	42.20	1	0	478	10.4	65.5	0.8	19.1	2.2	0.6	0.4	0.8	0.2	75.9	0.8	23.3	0.109	0.510	25.292455	-103.511153

11 CARR: Gómez Palacio - Tlahualillo

CLAVE: 10005

RUTA: MEX-040

AÑO: 2017

LUGAR	ESTACION				CLASIFICACION VEHICULAR EN PORCIENTO													COORDENADAS		
	KM	TE	SC	TDPA	M	A	B	C2	C3	T3S2	T3S3	T3S2R4	OTROS	A	B	C	K'	D	LATITUD	LONGITUD
T. C. Gómez Palacio - Jiménez	0.00																			
T. Izq. Esmeralda	5.60	1	0	12967	6.5	76.4	0.8	10.5	2.5	1.8	0.6	0.7	0.2	82.9	0.8	16.3	0.073	0.566	25.608591	-103.463554
T. Izq. Esmeralda	5.60	3	0	10229	5.6	77.2	1.1	10.5	2.4	1.7	0.7	0.6	0.2	82.8	1.1	16.1	0.083	0.520	25.614160	-103.457621
Gregorio García	26.00	3	0	5751	3.9	74.9	0.6	13.9	2.3	1.6	0.9	1.6	0.3	78.8	0.6	20.6	0.087	0.504	25.751342	-103.350041
T. Izq. Esmeralda	31.44	1	0	6730	4.7	77.9	0.8	11.2	1.4	1.6	0.9	1.0	0.5	82.6	0.8	16.6	0.080	0.520	25.757610	-103.352428
San Francisco	48.90	1	0	2593	7.8	70.7	0.9	12.9	4.8	2.0	0.4	0.4	0.1	78.5	0.9	20.6	0.074	0.508	25.929044	-103.416717

DURANGO

11 CARR: Gómez Palacio - Tlahualillo

CLAVE: 10005

RUTA: MEX-040

AÑO: 2017

LUGAR	ESTACION				CLASIFICACION VEHICULAR EN PORCIENTO										COORDENADAS					
	KM	TE	SC	TDPA	M	A	B	C2	C3	T3S2	T3S3	T3S2R4	OTROS	A	B	C	K'	D	LATITUD	LONGITUD
San Francisco	48.90	3	0	1714	8.0	63.3	1.9	17.6	5.9	2.2	0.4	0.6	0.1	71.3	1.9	26.8	0.078	0.509	25.945709	-103.421653
Tlahualillo	72.90	1	0	2341	5.7	74.4	0.7	15.9	1.3	1.3	0.2	0.4	0.1	80.1	0.7	19.2	0.070	0.504	26.109566	-103.423663

12 CARR: Gregorio García - Francisco I. Madero

CLAVE: 00110

RUTA: MEX-040

AÑO: 2017

LUGAR	ESTACION				CLASIFICACION VEHICULAR EN PORCIENTO										COORDENADAS					
	KM	TE	SC	TDPA	M	A	B	C2	C3	T3S2	T3S3	T3S2R4	OTROS	A	B	C	K'	D	LATITUD	LONGITUD
T. C. Gómez Palacio - Tlahualillo	0.00																			
Lim. Edos. Term. Dgo. Ppia. Coah.	3.60																			
Francisco I. Madero	9.60	1	0	6637	3.3	78.6	2.2	8.0	1.8	3.8	1.1	0.5	0.7	81.9	2.2	15.9	0.079	0.541	25.772784	-103.287669

13 CARR: Guadalupe Aguilera - Tepehuanes

CLAVE: 10220

RUTA: MEX-023

AÑO: 2017

LUGAR	ESTACION				CLASIFICACION VEHICULAR EN PORCIENTO										COORDENADAS					
	KM	TE	SC	TDPA	M	A	B	C2	C3	T3S2	T3S3	T3S2R4	OTROS	A	B	C	K'	D	LATITUD	LONGITUD
Guadalupe Aguilera	0.00	3	1	3046	2.0	84.8	1.1	9.9	0.6	0.9	0.5	0.1	0.1	86.8	1.1	12.1	0.089	0.500	24.464351	-104.713331
Guadalupe Aguilera	0.00	3	2	3042	1.9	82.2	1.1	12.3	0.7	1.0	0.6	0.1	0.1	84.1	1.1	14.8	0.096	0.500	24.464337	-104.713396
Canatlán	14.00	3	0	3254	1.3	82.2	1.8	10.8	1.3	1.3	1.1	0.1	0.1	83.5	1.8	14.7	0.085	0.500	24.539155	-104.776397
La Soledad	45.80	3	0	2867	1.0	77.0	2.4	14.9	1.7	1.5	1.2	0.2	0.1	78.0	2.4	19.6	0.088	0.505	24.771201	-104.932126
T. Der. Coneto de Comonfort	51.60	1	0	2867	1.2	76.8	2.3	15.0	1.7	1.5	1.2	0.2	0.1	78.0	2.3	19.7	0.089	0.501	24.802123	-104.924743
José María Morelos	90.20	1	0	2507	1.5	77.5	2.2	16.6	1.0	0.7	0.4	0.0	0.1	79.0	2.2	18.8	0.122	0.564	25.007330	-105.201627
Santiago Papasquiaro	117.00	3	0	3744	2.0	74.1	1.1	20.0	1.4	0.7	0.6	0.0	0.1	76.1	1.1	22.8	0.108	0.503	25.078070	-105.431189
Las Herreras	133.00	3	0	1260	1.5	75.8	2.5	17.8	1.5	0.6	0.3	0.0	0.0	77.3	2.5	20.2	0.103	0.509	25.159328	-105.509009
Tepehuanes	169.00	1	0	1324	1.6	72.6	2.3	21.2	1.4	0.6	0.3	0.0	0.0	74.2	2.3	23.5	0.094	0.508	25.321767	-105.714068

14 CARR: Hidalgo del Parral - Guadalupe y Calvo

CLAVE: 00802

RUTA: MEX-024

AÑO: 2017

LUGAR	ESTACION				CLASIFICACION VEHICULAR EN PORCIENTO										COORDENADAS					
	KM	TE	SC	TDPA	M	A	B	C2	C3	T3S2	T3S3	T3S2R4	OTROS	A	B	C	K'	D	LATITUD	LONGITUD
T. C. Hidalgo del Parral - Santa Bárbara	0.00	3	0	2961	1.6	71.0	1.2	17.5	4.2	2.3	1.7	0.0	0.5	72.6	1.2	26.2	0.073	0.505	26.915818	-105.766535
T. Der. Guacho chic	35.00	1	0	835	1.3	57.3	2.0	22.6	8.8	4.3	2.0	0.0	1.7	58.6	2.0	39.4	0.098	0.506	26.816348	-106.015505
T. Der. Guacho chic	35.00	3	0	928	1.7	55.3	2.1	27.6	7.3	3.2	1.3	0.0	1.5	57.0	2.1	40.9	0.091	0.502	26.807722	-106.016828
Lim. Edos. Term. Chih. Ppia. Dgo	38.00																			
Lim. Edos. Term. Dgo. Ppia. Chih.	57.00																			
El Vergel	110.00	1	0	985	0.7	58.9	1.8	25.7	6.6	3.3	1.6	0.0	1.4	59.6	1.8	38.6	0.087	0.510	26.505900	-106.361069

DURANGO

14 CARR: Hidalgo del Parral - Guadalupe y Calvo

CLAVE: 00802

RUTA: MEX-024

AÑO: 2017

LUGAR	ESTACION				CLASIFICACION VEHICULAR EN PORCIENTO														COORDENADAS	
	KM	TE	SC	TDPA	M	A	B	C2	C3	T3S2	T3S3	T3S2R4	OTROS	A	B	C	K'	D	LATITUD	LONGITUD
Puerto Sabinal	212.00	1	0	630	1.3	57.3	2.0	22.6	8.8	4.3	2.0	0.0	1.7	58.6	2.0	39.4	0.132	0.506	26.068634	-106.779139
Guadalupe y Calvo	234.00																			

15 CARR: Libramiento Cuencamé

CLAVE: 10006

RUTA: MEX

AÑO: 2017

LUGAR	ESTACION				CLASIFICACION VEHICULAR EN PORCIENTO														COORDENADAS	
	KM	TE	SC	TDPA	M	A	B	C2	C3	T3S2	T3S3	T3S2R4	OTROS	A	B	C	K'	D	LATITUD	LONGITUD
T. C. La Chicharrona - Cuencamé	0.00	3	1	1151	3.2	71.9	1.7	12.0	3.1	4.1	3.1	0.5	0.4	75.1	1.7	23.2	0.064	0.550	24.863863	-103.699680
T. C. La Chicharrona - Cuencamé	0.00	3	2	1405	3.3	77.7	1.6	11.5	2.6	1.9	0.7	0.4	0.3	81.0	1.6	17.4	0.067	0.550	24.863781	-103.699835
T. C. Durango - Torreón	2.60	1	1	980	2.2	62.2	3.3	19.7	6.6	3.2	1.8	0.9	0.1	64.4	3.3	32.3	0.070	0.541	24.879964	-103.701093
T. C. Durango - Torreón	2.60	1	2	831	2.5	64.3	3.5	13.9	4.7	6.1	3.8	0.9	0.3	66.8	3.5	29.7	0.067	0.541	24.879958	-103.701205

16 CARR: Libramiento Oriente de Durango

CLAVE:

RUTA: MEX-045

AÑO: 2017

LUGAR	ESTACION				CLASIFICACION VEHICULAR EN PORCIENTO														COORDENADAS	
	KM	TE	SC	TDPA	M	A	B	C2	C3	T3S2	T3S3	T3S2R4	OTROS	A	B	C	K'	D	LATITUD	LONGITUD
T. C. Zacatecas - Durango	0.00	3	1	2280	3.0	75.7	1.2	10.4	2.0	3.4	2.4	1.0	0.9	78.7	1.2	20.1	0.075	0.511	24.024083	-104.519083
T. C. Zacatecas - Durango	0.00	3	2	2382	2.1	72.8	1.7	11.5	2.4	4.3	2.9	1.4	0.9	74.9	1.7	23.4	0.074	0.511	24.024083	-104.519100
T. C. Durango - Ent. La Zarca	10.50	1	1	2845	2.6	65.9	2.4	19.2	2.0	3.5	2.3	1.7	0.4	68.5	2.4	29.1	0.091	0.553	24.091468	-104.570474
T. C. Durango - Ent. La Zarca	10.50	1	2	2297	0.3	73.4	1.7	14.5	2.7	3.8	1.6	1.4	0.6	73.7	1.7	24.6	0.085	0.553	24.091389	-104.570535

17 CARR: Libramiento Sur de Durango

CLAVE:

RUTA: MEX-045

AÑO: 2017

LUGAR	ESTACION				CLASIFICACION VEHICULAR EN PORCIENTO														COORDENADAS	
	KM	TE	SC	TDPA	M	A	B	C2	C3	T3S2	T3S3	T3S2R4	OTROS	A	B	C	K'	D	LATITUD	LONGITUD
T. C. Zacatecas - Durango	0.00	3	0	2730	3.4	72.4	1.6	13.6	2.9	3.8	1.4	0.7	0.2	75.8	1.6	22.6	0.090	0.506	24.007767	-104.529067
T. C. Durango - Mezquital	8.45	1	0	2666	1.7	71.1	1.6	14.7	4.3	4.2	1.4	0.8	0.2	72.8	1.6	25.6	0.090	0.507	23.970650	-104.569683
T. C. Durango - Mezquital	8.45	3	0	1293	6.4	67.4	2.6	13.1	4.6	2.8	1.4	1.6	0.1	73.8	2.6	23.6	0.087	0.534	23.966517	-104.577783
T. C. Durango - Aserradero La Flor	19.50	1	0	838	4.7	60.7	3.5	18.0	5.6	3.4	2.3	1.6	0.2	65.4	3.5	31.1	0.110	0.504	23.952717	-104.661633
T. C. Durango - Aserradero La Flor	19.50	3	0	1273	2.9	67.0	3.0	16.2	4.7	3.2	1.5	1.3	0.2	69.9	3.0	27.1	0.085	0.561	23.952817	-104.671150
T. C. Durango - Villa Unión	27.70	1	0	1640	2.3	77.4	1.4	7.4	5.1	3.4	1.3	1.5	0.2	79.7	1.4	18.9	0.134	0.504	23.990784	-104.719663

DURANGO

18 CARR: Pedriceña - Ent. Rodeo

CLAVE: 10002

RUTA: MEX-034

AÑO: 2017

LUGAR	ESTACION				CLASIFICACION VEHICULAR EN PORCIENTO										COORDENADAS					
	KM	TE	SC	TDPA	M	A	B	C2	C3	T3S2	T3S3	T3S2R4	OTROS	A	B	C	K'	D	LATITUD	LONGITUD
T. C. Cuencamé - Torreón	0.00	3	0	2790	1.3	79.9	0.6	15.2	1.5	1.0	0.4	0.0	0.1	81.2	0.6	18.2	0.092	0.503	25.091236	-103.772966
Nazas	45.00	1	0	2246	2.6	77.7	0.4	17.7	0.9	0.4	0.2	0.0	0.1	80.3	0.4	19.3	0.084	0.518	25.236012	-104.099466
Nazas	45.00	3	0	922	4.0	76.3	0.4	17.5	1.2	0.3	0.3	0.0	0.0	80.3	0.4	19.3	0.101	0.503	25.217429	-104.125780
T. C. (Durango - Ent. La Zarca)-Ent. Rodeo	98.00	1	0	680	1.9	78.7	0.4	17.4	1.2	0.2	0.2	0.0	0.0	80.6	0.4	19.0	0.113	0.510	25.129512	-104.536599

19 CARR: Ramal a Otinapa

CLAVE: 10002

RUTA: MEX

AÑO: 2017

LUGAR	ESTACION				CLASIFICACION VEHICULAR EN PORCIENTO										COORDENADAS						
	KM	TE	SC	TDPA	M	A	B	C2	C3	T3S2	T3S3	T3S2R4	OTROS	A	B	C	K'	D	LATITUD	LONGITUD	
T. C. Durango - Villa Unión	0.00	3	0	253	1.3	75.1	1.5	16.1	3.8	1.8	0.4	0.0	0.0	76.4	1.5	22.1	0.150	0.551	23.927730	-104.940952	
Otinapa	19.65																				

20 CARR: Ramal a Santa Clara

CLAVE: 10287

RUTA: MEX-049

AÑO: 2017

LUGAR	ESTACION				CLASIFICACION VEHICULAR EN PORCIENTO										COORDENADAS						
	KM	TE	SC	TDPA	M	A	B	C2	C3	T3S2	T3S3	T3S2R4	OTROS	A	B	C	K'	D	LATITUD	LONGITUD	
T. C. Ent. La Chicharrona - Cuencamé	0.00	3	0	879	2.8	68.8	2.0	24.7	1.2	0.1	0.2	0.1	0.1	71.6	2.0	26.4	0.097	0.506	24.440283	-103.486433	
Santa Clara	14.00																				

21 CARR: Ramal a Villa Juárez

CLAVE: 10287

RUTA: MEX-040

AÑO: 2017

LUGAR	ESTACION				CLASIFICACION VEHICULAR EN PORCIENTO										COORDENADAS						
	KM	TE	SC	TDPA	M	A	B	C2	C3	T3S2	T3S3	T3S2R4	OTROS	A	B	C	K'	D	LATITUD	LONGITUD	
T. C. Gómez Palacio - La Unión	0.00	3	1	2326	0.3	91.1	0.2	7.5	0.7	0.2	0.0	0.0	0.0	91.4	0.2	8.4	0.116	0.611	25.517781	-103.494455	
T. C. Gómez Palacio - La Unión	0.00	3	2	2430	0.2	90.2	0.3	8.1	1.0	0.1	0.1	0.0	0.0	90.4	0.3	9.3	0.136	0.611	25.517643	-103.494379	
Villa Juárez	13.00																				

22 CARR: Zacatecas - Durango

CLAVE: 00544

RUTA: MEX-045

AÑO: 2017

LUGAR	ESTACION				CLASIFICACION VEHICULAR EN PORCIENTO										COORDENADAS						
	KM	TE	SC	TDPA	M	A	B	C2	C3	T3S2	T3S3	T3S2R4	OTROS	A	B	C	K'	D	LATITUD	LONGITUD	
Zacatecas	0.00																				
T. Izq. Guadalajara	6.40	3	1	13548	0.6	81.6	2.4	6.7	1.4	3.5	1.6	1.3	0.9	82.2	2.4	15.4	0.091	0.508	22.782991	-102.627152	
T. Izq. Guadalajara	6.40	3	2	14009	0.6	82.9	2.6	6.2	0.9	3.3	1.7	1.1	0.7	83.5	2.6	13.9	0.084	0.508	22.782970	-102.627069	
T. Der. Saltillo (T. Morelos)	15.00	3	1	12433	0.6	76.5	2.5	6.5	2.1	5.9	2.0	2.9	1.0	77.1	2.5	20.4	0.088	0.503	22.870797	-102.632949	

DURANGO

22 CARR: Zacatecas - Durango

CLAVE: 00544

RUTA: MEX-045

AÑO: 2017

LUGAR	ESTACION				CLASIFICACION VEHICULAR EN PORCIENTO												COORDENADAS			
	KM	TE	SC	TDPA	M	A	B	C2	C3	T3S2	T3S3	T3S2R4	OTROS	A	B	C	K'	D	LATITUD	LONGITUD
T. Der. Saltillo (T. Morelos)	15.00	3	2	12264	0.5	76.5	2.5	6.4	2.0	5.9	2.3	2.8	1.1	77.0	2.5	20.5	0.096	0.503	22.869553	-102.651531
Víctor Rosales	28.00	1	1	12251	0.8	76.3	2.4	6.5	2.3	6.1	1.9	3.1	0.6	77.1	2.4	20.5	0.080	0.503	22.928998	-102.684571
Víctor Rosales	28.00	1	2	12082	0.6	77.7	2.2	5.8	2.0	5.9	2.6	2.7	0.5	78.3	2.2	19.5	0.094	0.503	22.928832	-102.684868
T. Der. Facultad de Veterinaria	32.30	1	1	7799	0.6	70.1	4.8	7.9	2.4	8.1	2.3	2.9	0.9	70.7	4.8	24.5	0.078	0.516	22.970269	-102.718758
T. Der. Facultad de Veterinaria	32.30	1	2	7315	0.4	70.3	3.9	6.2	2.9	9.2	3.1	2.9	1.1	70.7	3.9	25.4	0.093	0.516	22.970223	-102.718826
Gral. Enrique Estrada	34.60	3	1	9419	0.8	78.4	3.0	6.5	1.8	5.0	1.8	1.6	1.1	79.2	3.0	17.8	0.080	0.506	23.014649	-102.752986
Gral. Enrique Estrada	34.60	3	2	9183	0.8	76.1	2.8	6.0	2.2	6.6	2.6	2.1	0.8	76.9	2.8	20.3	0.091	0.506	23.014529	-102.753260
Fresnillo	58.50	1	1	7860	1.8	80.7	2.4	8.4	2.0	2.6	1.2	0.4	0.5	82.5	2.4	15.1	0.083	0.503	23.159562	-102.851874
Fresnillo	58.50	1	2	7756	1.9	80.1	2.3	8.7	1.8	2.6	1.6	0.5	0.5	82.0	2.3	15.7	0.086	0.503	23.159534	-102.851972
Ent. La Chicharrona	74.30	1	1	7620	0.7	62.9	5.3	12.0	2.2	9.7	2.8	3.5	0.9	63.6	5.3	31.1	0.075	0.501	23.292739	-102.954360
Ent. La Chicharrona	74.30	1	2	7575	0.9	61.5	5.7	12.4	2.1	9.4	3.5	3.5	1.0	62.4	5.7	31.9	0.073	0.501	23.292626	-102.954652
Ent. La Chicharrona	74.30	3	0	6740	0.6	70.1	4.4	13.2	2.6	4.8	2.4	1.4	0.5	70.7	4.4	24.9	0.077	0.504	23.307622	-102.964578
T. Der. Sain Alto	121.00	3	0	4387	1.7	71.0	5.0	10.4	1.6	5.0	2.7	1.6	1.0	72.7	5.0	22.3	0.065	0.513	23.581769	-103.274392
T. Izq. Sombrerete (2º Acceso)	161.50	3	0	5517	1.6	71.2	2.9	13.5	2.0	4.9	1.9	1.1	0.9	72.8	2.9	24.3	0.064	0.514	23.647243	-103.651654
Lim. Edos. Term. Zac. Ppia. Dgo.	190.08																			
X. C. Súchil - Villa Unión	206.98	1	0	3522	2.0	65.4	6.9	16.7	2.1	3.7	1.8	1.0	0.4	67.4	6.9	25.7	0.067	0.500	23.750881	-103.960635
X. C. Súchil - Villa Unión	206.98	3	0	5594	3.4	72.4	4.6	13.4	1.5	2.5	1.3	0.7	0.2	75.8	4.6	19.6	0.076	0.503	23.744177	-104.000548
T. Izq. Graceros	210.00	1	0	5358	0.9	73.9	4.3	10.5	1.5	4.6	2.3	1.4	0.6	74.8	4.3	20.9	0.072	0.504	23.747300	-104.023933
Amado Nervo	231.51	1	0	4454	0.9	71.4	5.8	10.5	1.8	4.9	2.4	1.7	0.6	72.3	5.8	21.9	0.074	0.505	23.839462	-104.180802
Amado Nervo	231.51	3	0	5857	1.8	76.2	4.3	11.4	1.7	2.4	1.2	0.6	0.4	78.0	4.3	17.7	0.078	0.503	23.844300	-104.196933
Nombre de Dios	236.80	1	0	2832	3.8	77.0	4.6	13.5	0.8	0.2	0.1	0.0	0.0	80.8	4.6	14.6	0.076	0.551	23.843780	-104.223782
Nombre de Dios	236.80	3	0	3700	3.7	79.7	3.4	12.2	0.7	0.2	0.1	0.0	0.0	83.4	3.4	13.2	0.091	0.502	23.853785	-104.251293
T. Der. Constancia	240.60	3	0	5858	1.3	75.3	4.3	11.6	1.9	2.9	1.5	0.8	0.4	76.6	4.3	19.1	0.075	0.507	23.872117	-104.269083
T. Der. Tuitán	250.80	3	0	4898	0.9	74.7	4.6	12.7	1.7	2.9	1.4	0.8	0.3	75.6	4.6	19.8	0.094	0.515	23.922900	-104.337167
T. Der. Independencia y Libertad	261.70	1	0	6104	0.7	76.5	4.0	10.1	1.9	3.6	1.7	1.0	0.5	77.2	4.0	18.8	0.091	0.506	23.994133	-104.374517
T. Der. Independencia y Libertad	261.70	3	1	3560	0.6	78.7	4.0	8.9	1.7	3.2	1.6	1.0	0.3	79.3	4.0	16.7	0.122	0.501	24.012200	-104.399650
T. Der. Independencia y Libertad	261.70	3	2	3544	0.6	75.6	4.2	11.5	1.5	3.1	2.1	1.2	0.2	76.2	4.2	19.6	0.085	0.501	24.012183	-104.399667
T. Izq. Parras de La Fuente	276.60	1	1	4238	0.8	80.1	3.0	9.2	1.6	2.7	1.5	0.9	0.2	80.9	3.0	16.1	0.090	0.503	24.019150	-104.508033
T. Izq. Parras de La Fuente	276.60	1	2	4281	0.6	81.7	2.8	7.2	2.2	2.9	1.3	0.9	0.4	82.3	2.8	14.9	0.113	0.503	24.019133	-104.508067
T. Izq. Parras de La Fuente	276.60	3	1	4157	1.5	77.3	3.2	13.9	1.3	1.8	0.5	0.4	0.1	78.8	3.2	18.0	0.101	0.508	24.021417	-104.527083
T. Izq. Parras de La Fuente	276.60	3	2	4018	0.3	84.4	2.3	8.9	1.3	1.8	0.4	0.4	0.2	84.7	2.3	13.0	0.084	0.508	24.021400	-104.527117
Durango	287.30	1	1	5264	1.7	78.8	3.3	13.1	1.0	1.2	0.4	0.4	0.1	80.5	3.3	16.2	0.098	0.520	24.026291	-104.574234
Durango	287.30	1	2	4849	1.9	77.6	3.7	13.6	1.0	1.3	0.5	0.3	0.1	79.5	3.7	16.8	0.096	0.520	24.026301	-104.574224

DURANGO

23 CARR: Durango - Mazatlán (Cuota)

CLAVE: 00084

RUTA: MEX-040D

AÑO: 2017

LUGAR	ESTACION				CLASIFICACION VEHICULAR EN PORCIENTO										COORDENADAS					
	KM	TE	SC	TDPA	M	A	B	C2	C3	T3S2	T3S3	T3S2R4	OTROS	A	B	C	K'	D	LATITUD	LONGITUD
Libramiento de Durango	20.50	3	0	2851	1.9	63.9	4.4	12.8	2.1	7.8	1.8	4.6	0.7	65.8	4.4	29.8	0.098	0.568	24.006367	-104.730600
Caseta de Cobro Durango	22.20	2	0	2793	0.9	72.1	4.1	2.4	2.4	9.6	1.3	6.4	0.8	73.0	4.1	22.9	0.108	0.500	24.005150	-104.734489
Ent. Otinapa	44.50	1	0	2479	3.2	65.4	4.3	10.1	2.4	8.0	2.6	3.2	0.8	68.6	4.3	27.1	0.104	0.520	23.982267	-104.940517
Caseta de Cobro Llano Grande	78.10	2	0	2533	1.0	65.8	6.0	2.7	3.7	11.0	1.5	7.3	1.0	66.8	6.0	27.2	0.108	0.500	23.868855	-105.205734
Lim. Edos. Term. Dgo. Ppia. Sin.	157.40																			
Concordia	188.35	3	0	2338	2.1	62.6	5.4	8.2	2.5	10.2	2.0	6.2	0.8	64.7	5.4	29.9	0.122	0.517	23.251962	-106.058066
Villa Unión	208.35	1	0	2223	3.1	60.4	5.2	8.4	2.3	11.1	2.0	6.7	0.8	63.5	5.2	31.3	0.117	0.515	23.197999	-106.170981

24 CARR: Durango - Yerbanís (Cuota)

CLAVE: 10003

RUTA: MEX-040D

AÑO: 2017

LUGAR	ESTACION				CLASIFICACION VEHICULAR EN PORCIENTO										COORDENADAS					
	KM	TE	SC	TDPA	M	A	B	C2	C3	T3S2	T3S3	T3S2R4	OTROS	A	B	C	K'	D	LATITUD	LONGITUD
T. C. Durango - Torreón	0.00																			
T. Der. Aeropuerto	5.30	1	1	4238	0.8	74.7	3.5	10.9	1.1	4.5	1.5	2.6	0.4	75.5	3.5	21.0	0.079	0.501	24.124217	-104.540250
T. Der. Aeropuerto	5.30	1	2	4253	0.9	76.4	3.2	10.1	1.2	4.0	1.2	2.6	0.4	77.3	3.2	19.5	0.080	0.501	24.124336	-104.540464
Caseta de Cobro Durango	5.50	2	1	1502	0.5	69.7	5.8	3.9	2.1	9.4	1.8	5.9	0.9	70.2	5.8	24.0	0.117	0.500	24.131744	-104.534065
Caseta de Cobro Durango	5.50	2	2	1502	0.5	69.7	5.8	3.9	2.1	9.4	1.8	5.9	0.9	70.2	5.8	24.0	0.117	0.500	24.131744	-104.534065
Caseta de Cobro Yerbanís	112.19	2	1	1230	0.6	65.6	6.6	4.0	2.4	10.8	2.0	7.1	0.9	66.2	6.6	27.2	0.117	0.500	24.730280	-103.862549
Caseta de Cobro Yerbanís	112.19	2	2	1230	0.6	65.6	6.6	4.0	2.4	10.8	2.0	7.1	0.9	66.2	6.6	27.2	0.117	0.500	24.730280	-103.862549
Ent. Yerbanís	118.00																			

25 CARR: Gómez Palacio - Corralitos (Cuota)

CLAVE: 00016

RUTA: MEX-049D

AÑO: 2017

LUGAR	ESTACION				CLASIFICACION VEHICULAR EN PORCIENTO										COORDENADAS					
	KM	TE	SC	TDPA	M	A	B	C2	C3	T3S2	T3S3	T3S2R4	OTROS	A	B	C	K'	D	LATITUD	LONGITUD
T. C. Gómez Palacio - Jiménez (Libre)	38.00																			
T. Izq. Bermejillo	40.10	1	1	1665	0.9	55.0	8.5	6.7	2.2	17.5	4.0	3.3	1.9	55.9	8.5	35.6	0.080	0.533	25.883407	-103.610746
T. Izq. Bermejillo	40.10	1	2	1902	0.9	42.0	8.5	7.5	2.0	24.8	5.6	7.4	1.3	42.9	8.5	48.6	0.070	0.533	25.883484	-103.610930
T. Izq. Bermejillo	40.10	3	1	1961	1.9	40.4	9.2	9.8	2.1	22.9	4.5	7.8	1.4	42.3	9.2	48.5	0.079	0.517	25.895539	-103.611291
T. Izq. Bermejillo	40.10	3	2	1832	0.9	39.6	9.7	7.9	1.8	25.0	6.0	7.6	1.5	40.5	9.7	49.8	0.074	0.517	25.895406	-103.611618
Caseta de Cobro Bermejillo	44.16	2	1	1792	0.2	40.4	7.4	6.9	1.8	26.4	5.6	9.5	1.8	40.6	7.4	52.0	0.079	0.500	25.923655	-103.622040
Caseta de Cobro Bermejillo	44.16	2	2	1792	0.2	40.4	7.4	6.9	1.8	26.4	5.6	9.5	1.8	40.6	7.4	52.0	0.079	0.500	25.923655	-103.622040
Caseta de Cobro Ceballos	128.80	2	1	1766	0.2	39.3	7.6	7.1	1.6	27.0	5.7	9.7	1.8	39.5	7.6	52.9	0.079	0.500	26.586790	-104.057602
Caseta de Cobro Ceballos	128.80	2	2	1766	0.2	39.3	7.6	7.1	1.6	27.0	5.7	9.7	1.8	39.5	7.6	52.9	0.079	0.500	26.586790	-104.057602
Lim. Edos. Term. Dgo. Ppia. Chih.	158.00																			

DURANGO

25 CARR: Gómez Palacio - Corralitos (Cuota)

CLAVE: 00016

RUTA: MEX-049D

AÑO: 2017

LUGAR	ESTACION				CLASIFICACION VEHICULAR EN PORCIENTO										COORDENADAS					
	KM	TE	SC	TDPA	M	A	B	C2	C3	T3S2	T3S3	T3S2R4	OTROS	A	B	C	K'	D	LATITUD	LONGITUD
T. C. Gómez Palacio - Jiménez (Libre)	226.50	1	1	1682	2.0	41.8	8.9	9.7	2.2	22.5	4.4	7.2	1.3	43.8	8.9	47.3	0.096	0.523	27.088468	-104.849113
T. C. Gómez Palacio - Jiménez (Libre)	226.50	1	2	1537	0.8	41.2	8.8	6.7	1.7	26.2	5.4	7.9	1.3	42.0	8.8	49.2	0.096	0.523	27.087673	-104.849600

26 CARR: Libramiento de Durango (Cuota)

CLAVE: 10006

RUTA: MEX-040D

AÑO: 2017

LUGAR	ESTACION				CLASIFICACION VEHICULAR EN PORCIENTO										COORDENADAS					
	KM	TE	SC	TDPA	M	A	B	C2	C3	T3S2	T3S3	T3S2R4	OTROS	A	B	C	K'	D	LATITUD	LONGITUD
T. C. Durango - Torreón	0.00	3	0	4426	1.4	64.3	2.7	15.1	3.1	7.6	2.6	2.7	0.5	65.7	2.7	31.6	0.071	0.520	24.093150	-104.585250
T. C. Durango - Villa Unión (Cuota)	21.60	1	0	3411	2.6	58.4	3.6	7.5	5.6	13.2	3.3	5.3	0.5	61.0	3.6	35.4	0.080	0.540	24.018683	-104.726983

27 CARR: Libramiento Norte de Torreón (Cuota)

CLAVE:

RUTA: MEX-040D

AÑO: 2017

LUGAR	ESTACION				CLASIFICACION VEHICULAR EN PORCIENTO										COORDENADAS					
	KM	TE	SC	TDPA	M	A	B	C2	C3	T3S2	T3S3	T3S2R4	OTROS	A	B	C	K'	D	LATITUD	LONGITUD
X. C. Gomez Palacio - Jimenez	0.00	3	0	3119	1.1	58.4	2.9	6.4	2.4	15.8	4.4	7.4	1.2	59.5	2.9	37.6	0.100	0.542	25.632886	-103.506115
Lim. Edos. Term. Dgo. Ppia. Coah.	15.60																			
X. C. La Cuchilla - Torreón	17.36	1	0	2468	0.8	49.3	3.2	8.0	2.4	19.5	5.1	10.2	1.5	50.1	3.2	46.7	0.089	0.503	25.655556	-103.381926
X. C. La Cuchilla - Torreón	17.36	3	0	2540	0.8	51.7	3.3	7.9	2.1	18.6	4.9	9.5	1.2	52.5	3.3	44.2	0.101	0.522	25.647807	-103.354529
X. C. Torreón - Saltillo	40.70	1	0	2455	3.1	50.3	3.3	8.1	2.9	16.6	5.2	8.9	1.6	53.4	3.3	43.3	0.092	0.509	25.547587	-103.227192

28 CARR: Yerbanis - Gómez Palicio (Cuota)

CLAVE: 10003

RUTA: MEX-040D

AÑO: 2017

LUGAR	ESTACION				CLASIFICACION VEHICULAR EN PORCIENTO										COORDENADAS					
	KM	TE	SC	TDPA	M	A	B	C2	C3	T3S2	T3S3	T3S2R4	OTROS	A	B	C	K'	D	LATITUD	LONGITUD
Ent. Yerbanis	118.00																			
Caseta de Cobro Cuencamé	143.22	2	1	1203	0.6	65.4	7.4	4.0	2.4	10.4	2.1	6.8	0.9	66.0	7.4	26.6	0.089	0.500	24.980929	-103.736739
Caseta de Cobro Cuencamé	143.22	2	2	1203	0.6	65.4	7.4	4.0	2.4	10.4	2.1	6.8	0.9	66.0	7.4	26.6	0.089	0.500	24.980929	-103.736739
X. C. Cuencamé - Torreón	180.00	1	1	2483	0.4	65.8	7.0	7.5	1.3	8.4	1.9	7.3	0.4	66.2	7.0	26.8	0.263	0.505	25.129926	-103.753483
X. C. Cuencamé - Torreón	180.00	1	2	2431	1.2	64.1	6.4	9.7	1.3	8.1	1.8	6.8	0.6	65.3	6.4	28.3	0.182	0.505	25.129973	-103.753395
X. C. Cuencamé - Torreón	180.00	3	1	2741	0.4	67.7	6.4	7.3	1.3	7.9	2.2	6.4	0.4	68.1	6.4	25.5	0.260	0.516	25.146198	-103.752989
X. C. Cuencamé - Torreón	180.00	3	2	2570	1.2	69.0	6.1	7.0	1.1	7.3	1.9	5.7	0.7	70.2	6.1	23.7	0.182	0.516	25.146260	-103.753024
Caseta de Cobro León Guzmán	212.71	1	1	2749	0.7	65.5	6.3	9.9	1.5	7.5	2.1	6.1	0.4	66.2	6.3	27.5	0.270	0.501	25.504120	-103.639814
Caseta de Cobro León Guzmán	212.71	1	2	2756	1.1	68.5	6.2	7.8	1.2	7.4	1.6	5.7	0.5	69.6	6.2	24.2	0.179	0.501	25.504129	-103.639913
Caseta de Cobro León Guzmán	212.71	2	1	1638	0.3	41.3	11.3	4.5	3.8	22.3	4.6	10.1	1.8	41.6	11.3	47.1	0.089	0.500	25.520615	-103.639506
Caseta de Cobro León Guzmán	212.71	2	2	1638	0.3	41.3	11.3	4.5	3.8	22.3	4.6	10.1	1.8	41.6	11.3	47.1	0.089	0.500	25.520615	-103.639506

DURANGO

28 CARR: Yerbanis - Gómez Palicio (Cuota)

CLAVE: 10003

RUTA: MEX-040D

AÑO: 2017

LUGAR	ESTACION				CLASIFICACION VEHICULAR EN PORCIENTO										COORDENADAS					
	KM	TE	SC	TDPA	M	A	B	C2	C3	T3S2	T3S3	T3S2R4	OTROS	A	B	C	K'	D	LATITUD	LONGITUD
Caseta de Cobro León Guzmán	212.71	3	1	2216	0.9	59.4	8.8	8.7	1.9	12.1	2.3	5.1	0.8	60.3	8.8	30.9	0.237	0.567	25.538087	-103.638388
Caseta de Cobro León Guzmán	212.71	3	2	1695	1.3	58.4	9.3	8.6	1.8	12.4	2.2	5.3	0.7	59.7	9.3	31.0	0.172	0.567	25.538088	-103.638671
T. C. Gómez Palacio - Jiménez	220.00																			

29 CARR: Amado Nervo - La Ochoa

CLAVE: 10012

RUTA: DGO-542

AÑO: 2017

LUGAR	ESTACION				CLASIFICACION VEHICULAR EN PORCIENTO										COORDENADAS					
	KM	TE	SC	TDPA	M	A	B	C2	C3	T3S2	T3S3	T3S2R4	OTROS	A	B	C	K'	D	LATITUD	LONGITUD
Amado Nervo	0.00	3	0	1972	2.3	77.1	3.0	16.6	0.7	0.2	0.1	0.0	0.0	79.4	3.0	17.6	0.079	0.552	23.853583	-104.172600
Villa Unión	25.00	1	0	3784	8.2	81.3	0.9	8.6	0.5	0.2	0.3	0.0	0.0	89.5	0.9	9.6	0.093	0.507	23.960517	-104.052567
La Ochoa	42.00	1	0	481	8.6	71.3	0.9	18.2	1.0	0.0	0.0	0.0	0.0	79.9	0.9	19.2	0.106	0.504	24.019762	-103.927248

30 CARR: Ceballos - El Mirador

CLAVE: 10417

RUTA: DGO-044

AÑO: 2017

LUGAR	ESTACION				CLASIFICACION VEHICULAR EN PORCIENTO										COORDENADAS					
	KM	TE	SC	TDPA	M	A	B	C2	C3	T3S2	T3S3	T3S2R4	OTROS	A	B	C	K'	D	LATITUD	LONGITUD
Ceballos	0.00	3	0	700	3.5	70.8	0.7	20.7	2.1	1.2	0.3	0.4	0.3	74.3	0.7	25.0	0.081	0.552	26.528118	-104.136697
T. C. Ent. La Zarca - Hidalgo del Parral	113.50	1	0	247	0.6	76.9	0.1	18.8	3.3	0.3	0.0	0.0	0.0	77.5	0.1	22.4	0.085	0.507	26.143933	-105.025617

31 CARR: Durango - Aserradero La Flor

CLAVE: 10422

RUTA: DGO-115

AÑO: 2017

LUGAR	ESTACION				CLASIFICACION VEHICULAR EN PORCIENTO										COORDENADAS					
	KM	TE	SC	TDPA	M	A	B	C2	C3	T3S2	T3S3	T3S2R4	OTROS	A	B	C	K'	D	LATITUD	LONGITUD
Durango	0.00	3	1	10460	4.8	86.7	0.2	6.3	0.5	0.7	0.6	0.0	0.2	91.5	0.2	8.3	0.105	0.524	23.984785	-104.664489
Durango	0.00	3	2	9515	5.6	85.5	0.2	6.6	0.5	0.8	0.6	0.0	0.2	91.1	0.2	8.7	0.102	0.524	23.984768	-104.664487
T. Der. Presa Guadalupe Victoria	4.00	3	1	6490	8.5	81.3	0.3	9.0	0.6	0.2	0.1	0.0	0.0	89.8	0.3	9.9	0.092	0.508	23.976158	-104.664515
T. Der. Presa Guadalupe Victoria	4.00	3	2	6289	5.6	84.1	0.3	9.1	0.6	0.2	0.1	0.0	0.0	89.7	0.3	10.0	0.080	0.508	23.976178	-104.664506
Periférico Sur de Durango	8.00	3	0	498	7.6	62.0	1.2	23.0	3.6	2.3	0.1	0.0	0.2	69.6	1.2	29.2	0.122	0.531	23.947717	-104.673800
La Casita	39.00	1	0	146	5.7	47.5	0.9	33.7	8.1	3.4	0.4	0.0	0.3	53.2	0.9	45.9	0.130	0.519	23.754367	-104.757050
Aserradero La Flor	72.00																			

DURANGO

32 CARR: Jabonoso - Esmeralda

CLAVE: 10004

RUTA: DGO-363

AÑO: 2017

LUGAR	ESTACION				CLASIFICACION VEHICULAR EN PORCIENTO													COORDENADAS		
	KM	TE	SC	TDPA	M	A	B	C2	C3	T3S2	T3S3	T3S2R4	OTROS	A	B	C	K'	D	LATITUD	LONGITUD
Jabonoso	0.00	3	0	3735	12.1	69.7	0.7	9.2	4.1	1.8	0.9	1.1	0.4	81.8	0.7	17.5	0.073	0.503	25.644686	-103.457079
T. Izq. Chimal	10.00	3	0	4720	20.4	64.4	0.4	8.3	4.5	1.0	0.5	0.4	0.1	84.8	0.4	14.8	0.082	0.504	25.692761	-103.443001
Esmeralda	16.30	1	0	2760	23.6	61.2	1.5	8.5	3.8	0.7	0.3	0.4	0.0	84.8	1.5	13.7	0.078	0.507	25.734439	-103.432710

33 CARR: La Torreña - Brittingham

CLAVE: 10010

RUTA: DGO-325

AÑO: 2017

LUGAR	ESTACION				CLASIFICACION VEHICULAR EN PORCIENTO													COORDENADAS		
	KM	TE	SC	TDPA	M	A	B	C2	C3	T3S2	T3S3	T3S2R4	OTROS	A	B	C	K'	D	LATITUD	LONGITUD
La Torreña	0.00	3	0	2188	8.1	66.3	0.5	8.6	6.8	5.4	2.5	1.5	0.3	74.4	0.5	25.1	0.078	0.566	25.639155	-103.579969
X. C. Gómez Palacio - Jiménez	7.00	1	0	3892	10.1	65.6	5.5	9.7	2.7	3.6	1.4	0.9	0.5	75.7	5.5	18.8	0.074	0.534	25.638888	-103.534434
X. C. Gómez Palacio - Jiménez	7.00	3	0	2434	9.8	76.1	1.1	8.5	1.9	1.3	0.5	0.6	0.2	85.9	1.1	13.0	0.089	0.558	25.641272	-103.520180
Chimal	16.00	1	0	2308	10.8	68.1	1.6	7.9	5.7	3.0	1.4	1.3	0.2	78.9	1.6	19.5	0.109	0.505	25.690476	-103.491290
Chimal	16.00	3	0	1456	20.7	52.2	1.9	8.6	9.7	3.9	1.7	1.1	0.2	72.9	1.9	25.2	0.088	0.504	25.695169	-103.489248
Brittingham	33.00	1	0	1296	6.5	70.4	2.1	15.6	2.2	2.3	0.3	0.2	0.4	76.9	2.1	21.0	0.081	0.571	25.773259	-103.574766

34 CARR: Libramiento de Torreón

CLAVE: 05516

RUTA: COA

AÑO: 2017

LUGAR	ESTACION				CLASIFICACION VEHICULAR EN PORCIENTO													COORDENADAS		
	KM	TE	SC	TDPA	M	A	B	C2	C3	T3S2	T3S3	T3S2R4	OTROS	A	B	C	K'	D	LATITUD	LONGITUD
X. C. Saltillo - Torreón	0.00	3	1	40895	2.7	82.9	1.6	5.1	1.9	2.3	2.5	0.6	0.4	85.6	1.6	12.8	0.064	0.502	25.539918	-103.370964
X. C. Saltillo - Torreón	0.00	3	2	40202	1.9	82.4	1.8	5.7	2.2	2.4	2.6	0.6	0.4	84.3	1.8	13.9	0.076	0.502	25.539854	-103.370502
T. C. La Cuchilla - Torreón (Baja)	7.30	1	1	20315	1.8	85.1	0.7	2.8	0.6	3.4	3.2	1.5	0.9	86.9	0.7	12.4	0.119	0.504	25.582445	-103.402500
T. C. La Cuchilla - Torreón (Alta)	7.30	1	1	15824	2.0	82.5	0.6	5.7	2.0	3.9	2.1	0.6	0.6	84.5	0.6	14.9	0.085	0.506	25.582343	-103.402591
T. C. La Cuchilla - Torreón (Alta)	7.30	1	2	15854	2.3	81.1	0.6	6.1	2.1	4.3	2.3	0.6	0.6	83.4	0.6	16.0	0.100	0.506	25.582212	-103.402644
T. C. La Cuchilla - Torreón (Baja)	7.30	1	2	20610	1.1	84.3	0.7	3.3	0.7	4.1	3.2	1.7	0.9	85.4	0.7	13.9	0.091	0.504	25.582025	-103.402714
Lim. Edos. Term. Coah. Ppia. Dgo.	11.80																			
T. C. Durango - Torreón	28.60																			

35 CARR: Libramiento Exterior Cuencamé

CLAVE: 10006

RUTA: DGO

AÑO: 2017

LUGAR	ESTACION				CLASIFICACION VEHICULAR EN PORCIENTO													COORDENADAS		
	KM	TE	SC	TDPA	M	A	B	C2	C3	T3S2	T3S3	T3S2R4	OTROS	A	B	C	K'	D	LATITUD	LONGITUD
Ent. La Chicharrona - Cuencamé	0.00	3	0	4537	2.8	47.8	6.2	9.9	3.2	18.3	4.1	6.7	1.0	50.6	6.2	43.2	0.068	0.544	24.842681	-103.694366
T. C. Durango - Torreón	8.40																			

DURANGO

36 CARR: Mezquital - San Miguel de Temoaya

CLAVE: 10006

RUTA: DGO

AÑO: 2017

LUGAR	ESTACION				CLASIFICACION VEHICULAR EN PORCIENTO										COORDENADAS					
	KM	TE	SC	TDPA	M	A	B	C2	C3	T3S2	T3S3	T3S2R4	OTROS	A	B	C	K'	D	LATITUD	LONGITUD
T. C. Durango - Mezquital	0.00	3	0	355	3.8	63.4	0.3	30.3	1.4	0.5	0.3	0.0	0.0	67.2	0.3	32.5	0.101	0.501	23.497533	-104.390550
San Miguel de Temoaya	48.00	1	0	233	4.7	55.0	0.6	37.2	1.3	0.8	0.4	0.0	0.0	59.7	0.6	39.7	0.120	0.510	23.304218	-104.507816

37 CARR: Ramal a San Juan del Río

CLAVE: 10001

RUTA: DGO-290

AÑO: 2017

LUGAR	ESTACION				CLASIFICACION VEHICULAR EN PORCIENTO										COORDENADAS					
	KM	TE	SC	TDPA	M	A	B	C2	C3	T3S2	T3S3	T3S2R4	OTROS	A	B	C	K'	D	LATITUD	LONGITUD
T. C. Durango - Ent. La Zarca	0.00	3	0	3038	0.9	79.9	0.9	17.4	0.6	0.2	0.0	0.1	0.0	80.8	0.9	18.3	0.092	0.505	24.796032	-104.495372
San Juan del Río	5.00	1	1	1900	1.8	77.6	0.5	19.7	0.3	0.1	0.0	0.0	0.0	79.4	0.5	20.1	0.095	0.509	24.787820	-104.477545
San Juan del Río	5.00	1	2	1829	1.5	79.4	0.6	18.1	0.3	0.1	0.0	0.0	0.0	80.9	0.6	18.5	0.104	0.509	24.787923	-104.477492

38 CARR: Súchil - Villa Unión

CLAVE: 10419

RUTA: DGO-241

AÑO: 2017

LUGAR	ESTACION				CLASIFICACION VEHICULAR EN PORCIENTO										COORDENADAS					
	KM	TE	SC	TDPA	M	A	B	C2	C3	T3S2	T3S3	T3S2R4	OTROS	A	B	C	K'	D	LATITUD	LONGITUD
Súchil	0.00	3	1	1438	2.2	78.5	1.5	16.9	0.4	0.3	0.2	0.0	0.0	80.7	1.5	17.8	0.097	0.519	23.629983	-103.924417
Súchil	0.00	3	2	1330	1.5	80.8	1.5	15.4	0.6	0.1	0.1	0.0	0.0	82.3	1.5	16.2	0.087	0.519	23.630106	-103.924241
Vicente Guerrero	13.40	1	0	2164	2.7	79.6	1.6	15.0	0.8	0.2	0.1	0.0	0.0	82.3	1.6	16.1	0.085	0.504	23.711659	-103.970236
X. C. Zacatecas - Durango	14.50	1	1	5008	3.2	84.3	1.4	10.1	0.5	0.2	0.2	0.0	0.1	87.5	1.4	11.1	0.086	0.509	23.740824	-103.984556
X. C. Zacatecas - Durango	14.50	1	2	5196	3.5	81.9	1.6	11.9	0.7	0.2	0.1	0.0	0.1	85.4	1.6	13.0	0.075	0.509	23.740847	-103.984459
X. C. Zacatecas - Durango	14.50	3	0	2867	4.2	82.7	1.0	10.8	1.0	0.2	0.1	0.0	0.0	86.9	1.0	12.1	0.087	0.504	23.748733	-103.988017
Villa Unión	41.40	1	0	2303	4.5	84.3	0.7	9.5	0.7	0.2	0.1	0.0	0.0	88.8	0.7	10.5	0.107	0.526	23.959000	-104.049517

39 CARR: Tlahualillo de Zaragoza - T.C. Gómez Palacio - Jiménez

CLAVE: 10419

RUTA: DGO

AÑO: 2017

LUGAR	ESTACION				CLASIFICACION VEHICULAR EN PORCIENTO										COORDENADAS					
	KM	TE	SC	TDPA	M	A	B	C2	C3	T3S2	T3S3	T3S2R4	OTROS	A	B	C	K'	D	LATITUD	LONGITUD
Tlahualillo de Zaragoza	0.00	3	0	796	11.4	68.9	0.9	13.3	1.0	3.0	0.5	0.9	0.1	80.3	0.9	18.8	0.124	0.510	26.119855	-103.448994
T. C. Gómez Palacio - Jiménez	37.00	1	0	125	3.7	49.2	5.3	12.1	7.7	14.0	2.4	4.3	1.3	52.9	5.3	41.8	0.136	0.555	26.156452	-103.775781

40 CARR: Yerbanis - Peñón Blanco

CLAVE: 10032

RUTA: DGO-316

AÑO: 2017

LUGAR	ESTACION				CLASIFICACION VEHICULAR EN PORCIENTO										COORDENADAS					
	KM	TE	SC	TDPA	M	A	B	C2	C3	T3S2	T3S3	T3S2R4	OTROS	A	B	C	K'	D	LATITUD	LONGITUD
Yerbanis	0.00	3	0	1171	2.0	66.4	3.7	18.2	5.9	2.2	1.1	0.4	0.1	68.4	3.7	27.9	0.086	0.511	24.735713	-103.848125

DURANGO

40 CARR: Yerbanís - Peñón Blanco

CLAVE: 10032

RUTA: DGO-316

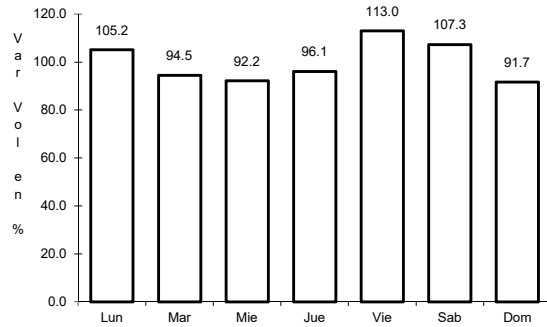
AÑO: 2017

L U G A R	E S T A C I O N				C L A S I F I C A C I O N V E H I C U L A R E N P O R C I E N T O														C O O R D E N A D A S	
	KM	TE	SC	TDPA	M	A	B	C2	C3	T3S2	T3S3	T3S2R4	OTROS	A	B	C	K'	D	LATITUD	LONGITUD
Peñón Blanco	22.00	1	0	1014	1.2	71.6	1.6	23.0	2.4	0.1	0.1	0.0	0.0	72.8	1.6	25.6	0.078	0.519	24.781850	-104.010717

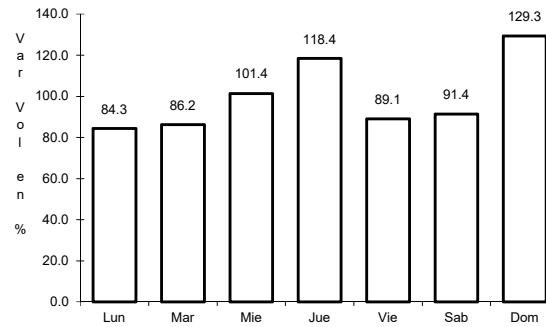
1 CARR: Bermejillo - El Palmito

CLAVE: 10105

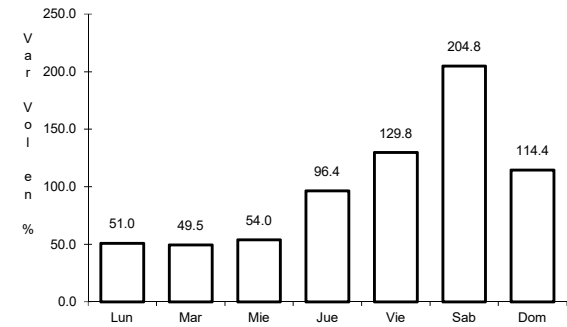
RUTA: MEX-030



Km: 0.00 Tipo: 3 Sent: 0



Km: 86.00 Tipo: 1 Sent: 0

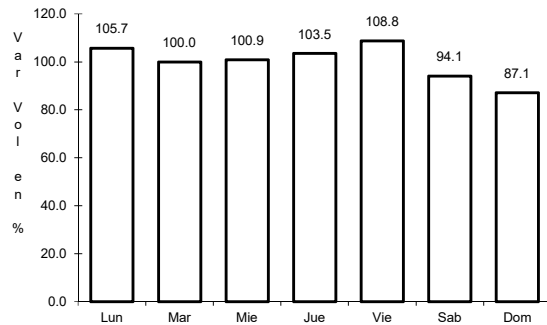


Km: 160.00 Tipo: 1 Sent: 0

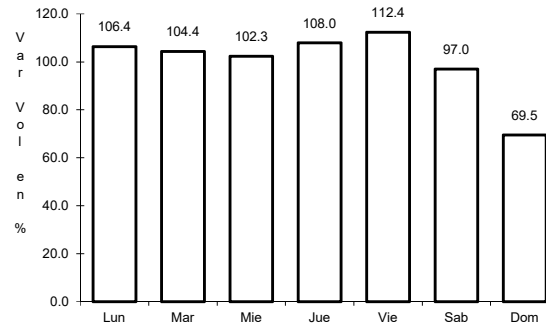
2 CARR: Durango - Ent. La Zarca

CLAVE: 10016

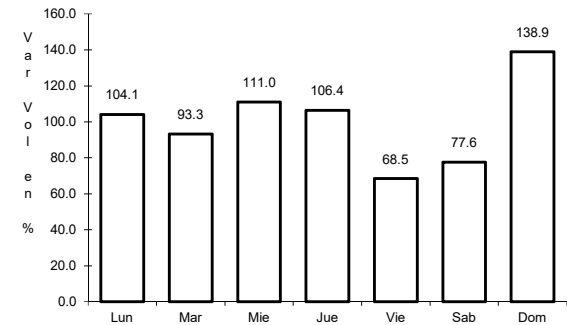
RUTA: MEX-045



Km: 0.00 Tipo: 3 Sent: 1



Km: 0.00 Tipo: 3 Sent: 2

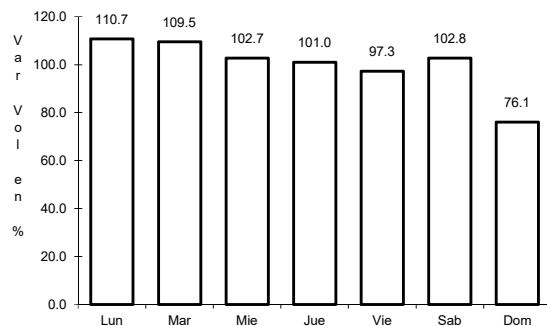


Km: 239.50 Tipo: 1 Sent: 0

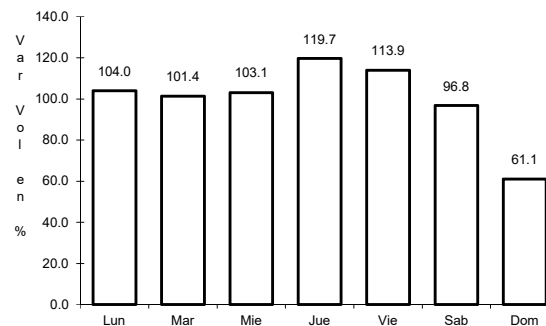
3 CARR: Durango - Mezquital

CLAVE: 10423

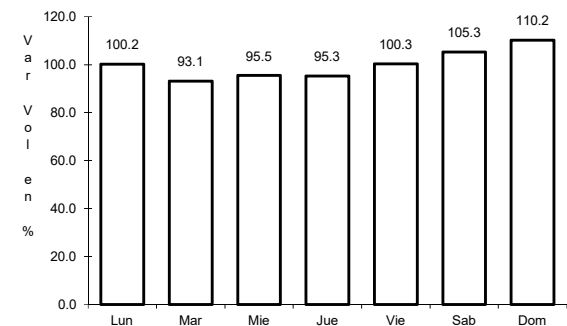
RUTA: MEX-023



Km: 0.00 Tipo: 3 Sent: 1



Km: 0.00 Tipo: 3 Sent: 2

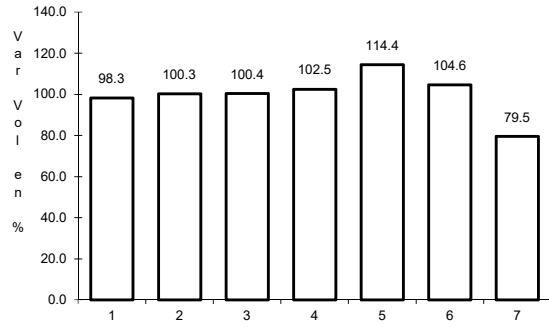


Km: 13.00 Tipo: 3 Sent: 0

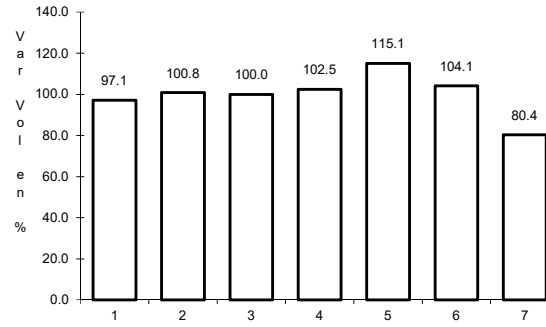
4 CARR: Durango - Torreón

CLAVE: 10085

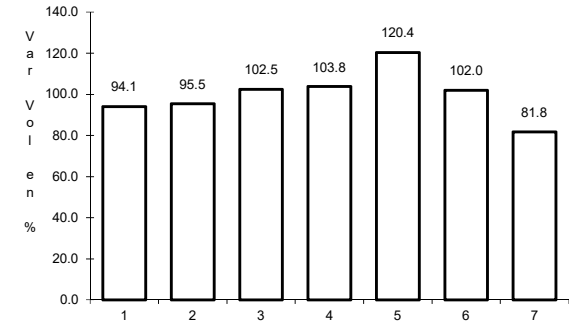
RUTA: MEX-040



Km: 0.00 Tipo: 3 Sent: 1



Km: 0.00 Tipo: 3 Sent: 2

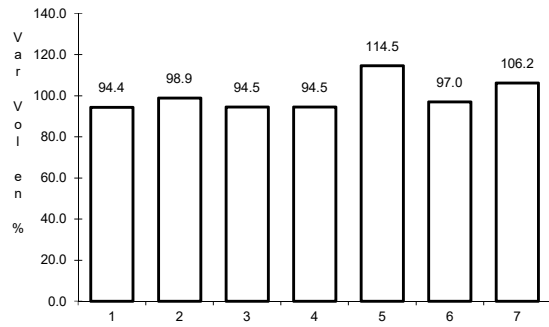


Km: 120.90 Tipo: 1 Sent: 0

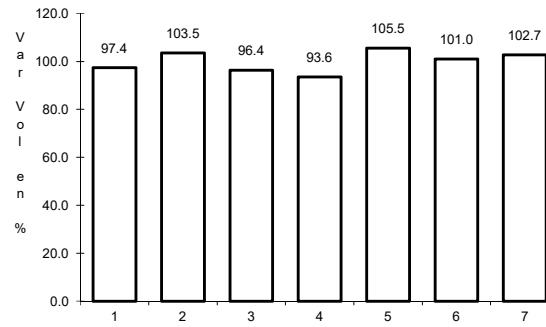
5 CARR: Durango - Villa Unión

CLAVE: 0083

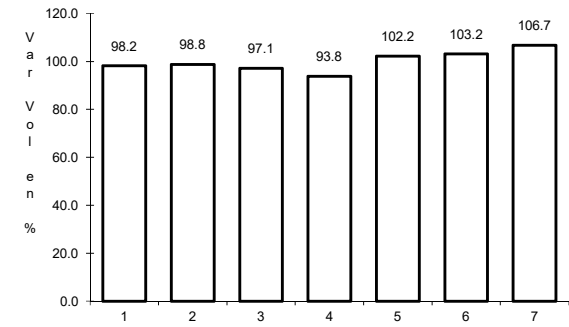
RUTA: MEX-040



Km: 0.00 Tipo: 3 Sent: 0



Km: 145.50 Tipo: 1 Sent: 0

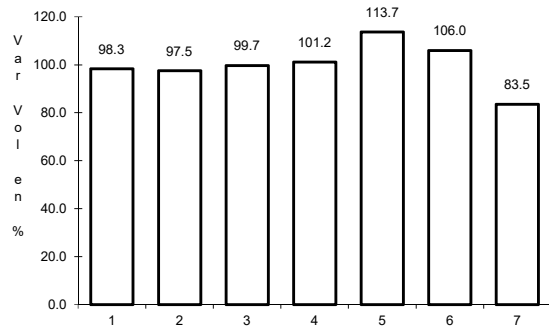


Km: 294.40 Tipo: 1 Sent: 0

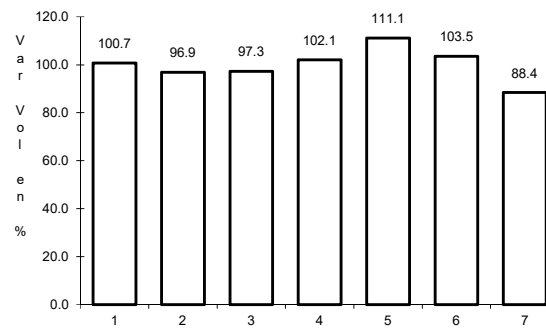
6 CARR: Ent. La Chicharrona - Cuencamé

CLAVE: 00152

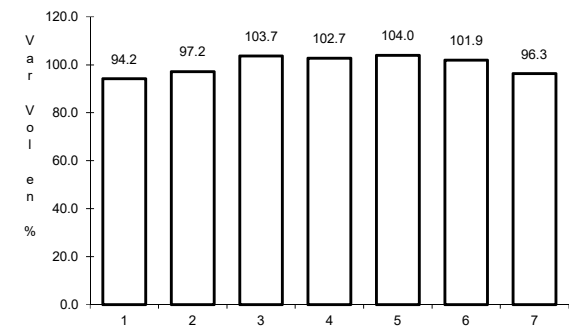
RUTA: MEX-049



Km: 0.00 Tipo: 3 Sent: 1



Km: 0.00 Tipo: 3 Sent: 2

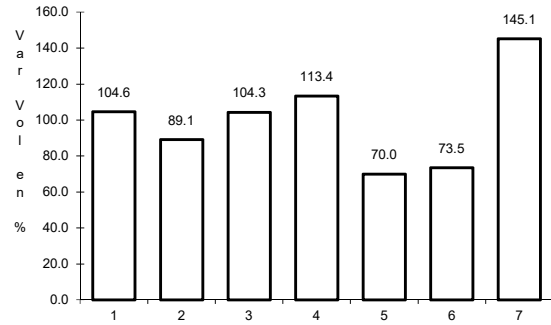


Km: 124.50 Tipo: 1 Sent: 0

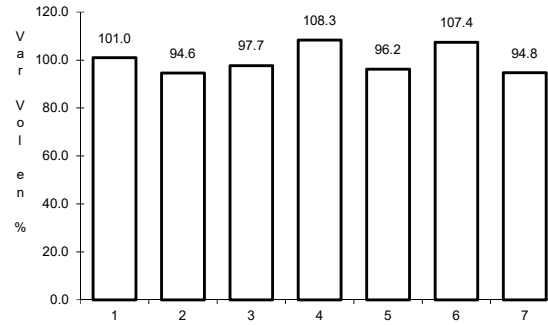
7 CARR: Ent. La Zarca - Hidalgo del Parral

CLAVE: 00488

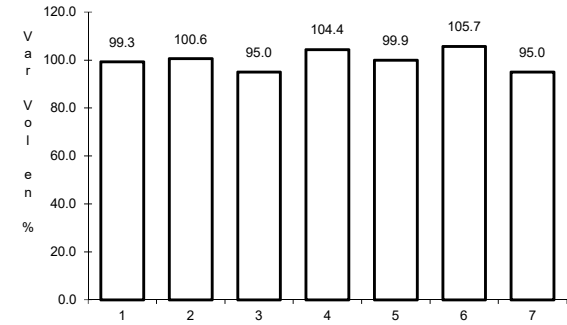
ruta: MEX-045



Km: 0.00 Tipo: 3 Sent: 0



Km: 92.35 Tipo: 3 Sent: 0

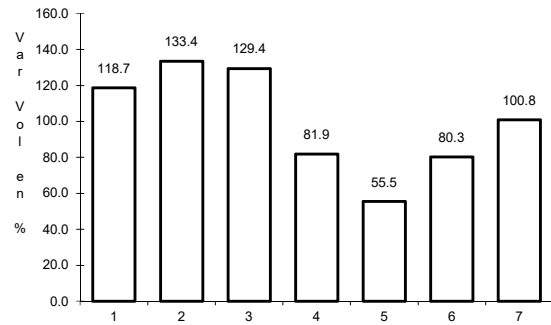


Km: 171.00 Tipo: 1 Sent: 0

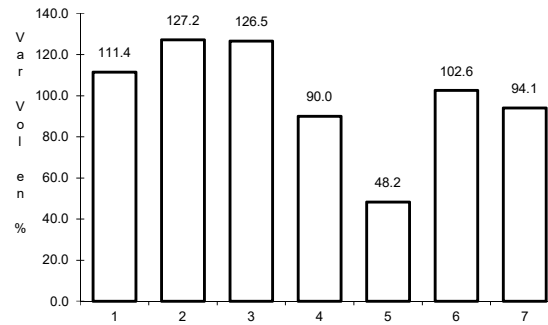
8 CARR: Ent. Los Herrera - Topia

CLAVE: 10090

ruta: MEX-036



Km: 0.00 Tipo: 3 Sent: 0

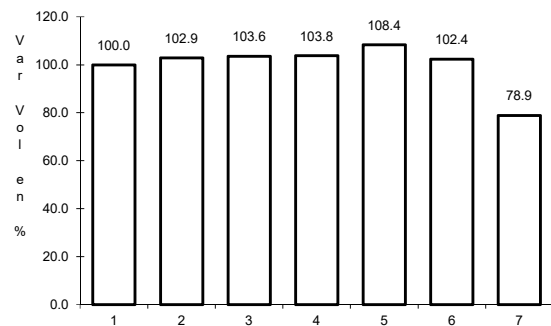


Km: 80.00 Tipo: 1 Sent: 0

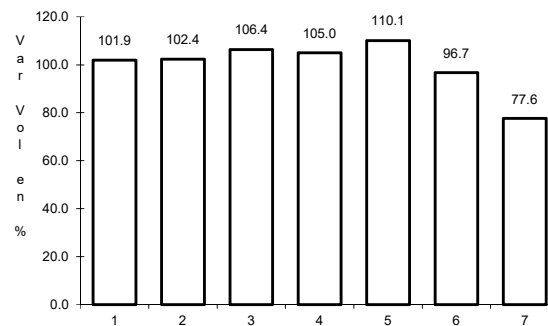
9 CARR: Gómez Palacio - Jiménez

CLAVE: 00006

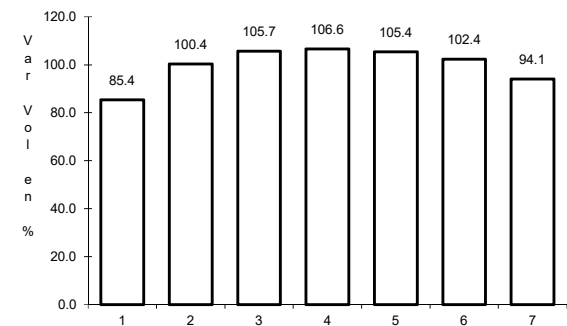
ruta: MEX-049



Km: 0.00 Tipo: 3 Sent: 1



Km: 0.00 Tipo: 3 Sent: 2

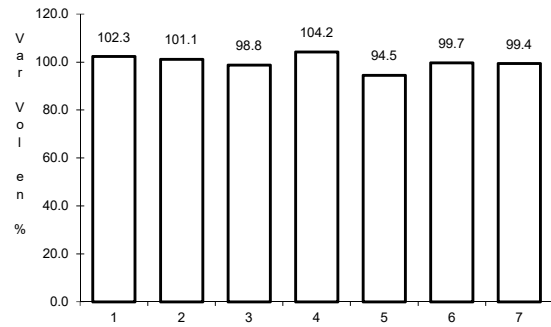


Km: 107.95 Tipo: 1 Sent: 0

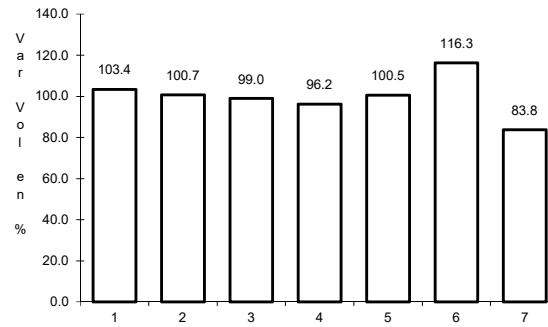
10 CARR: Gómez Palacio - La Unión

CLAVE: 10009

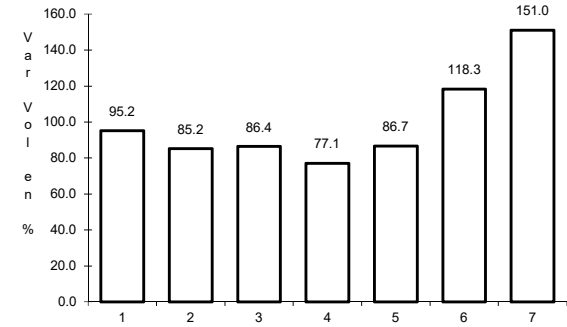
RUTA: MEX-040



Km: 0.00 Tipo: 3 Sent: 0



Km: 20.90 Tipo: 1 Sent: 0

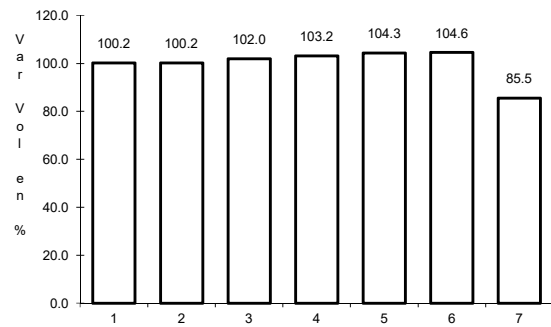


Km: 42.20 Tipo: 1 Sent: 0

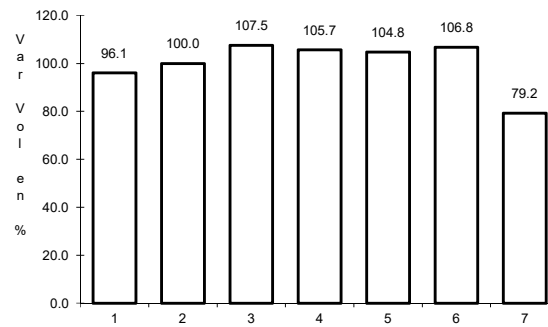
11 CARR: Gómez Palacio - Tlahualillo

CLAVE: 10005

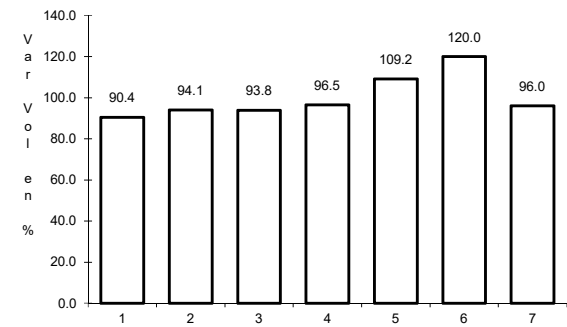
RUTA: MEX-040



Km: 5.60 Tipo: 1 Sent: 0



Km: 31.44 Tipo: 1 Sent: 0

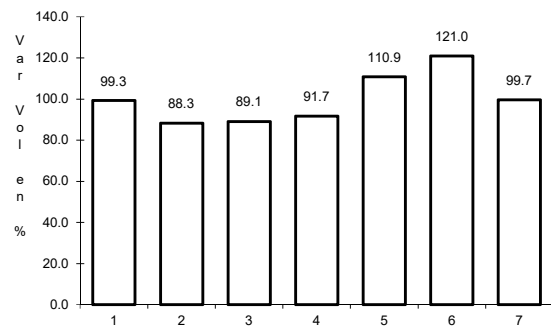


Km: 72.90 Tipo: 1 Sent: 0

12 CARR: Gregorio García - Francisco I. Madero

CLAVE: 00110

RUTA: MEX-040

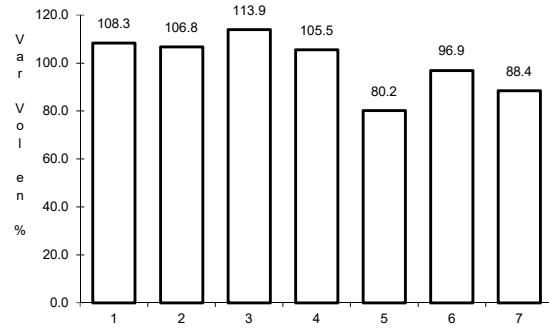


Km: 9.60 Tipo: 1 Sent: 0

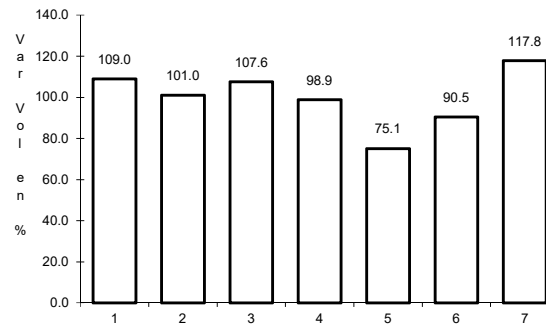
13 CARR: Guadalupe Aguilera - Tepehuanes

CLAVE: 10220

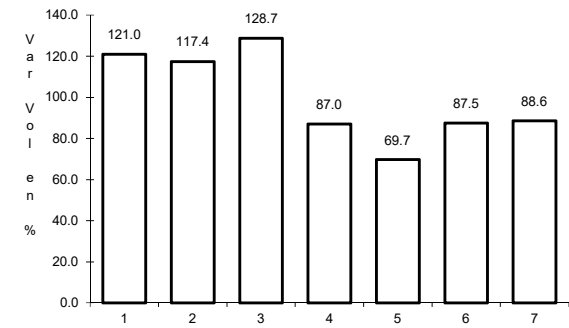
ruta: MEX-023



Km: 0.00 Tipo: 3 Sent: 1



Km: 0.00 Tipo: 3 Sent: 2

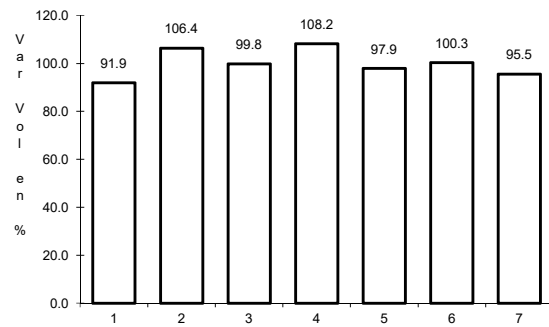


Km: 169.00 Tipo: 1 Sent: 0

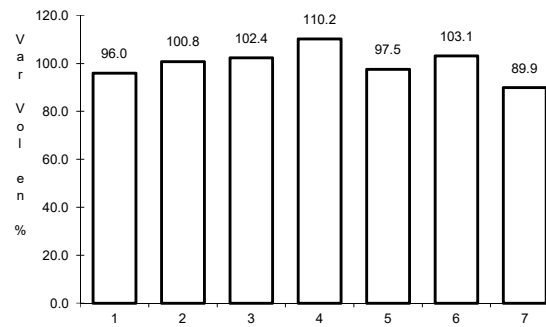
14 CARR: Hidalgo del Parral - Guadalupe y Calvo

CLAVE: 00802

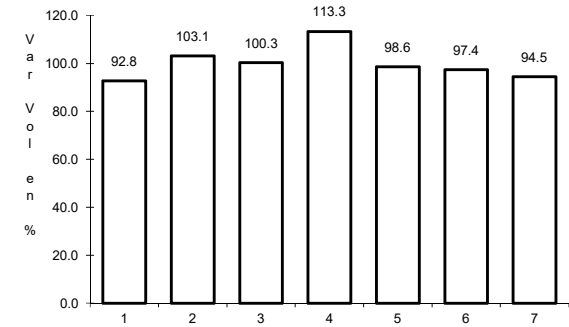
ruta: MEX-024



Km: 0.00 Tipo: 3 Sent: 0



Km: 110.00 Tipo: 1 Sent: 0

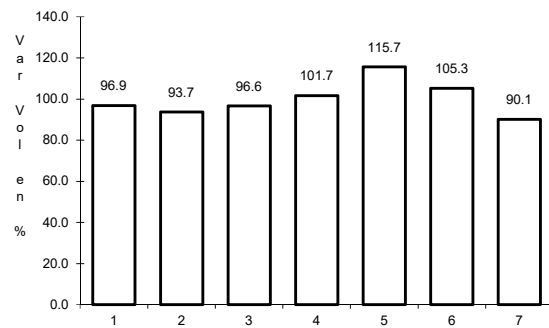


Km: 212.00 Tipo: 1 Sent: 0

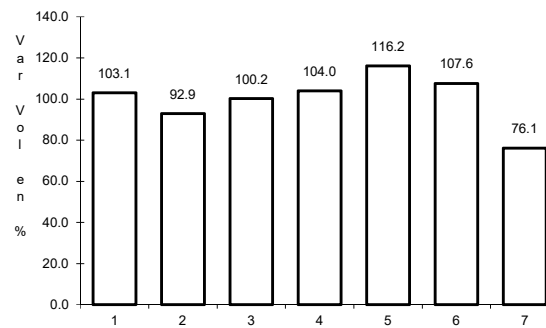
15 CARR: Libramiento Cuencamé

CLAVE: 10006

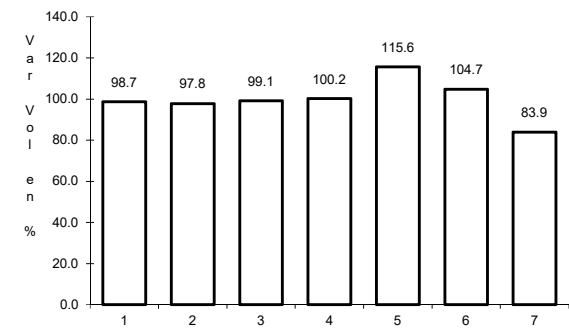
ruta: MEX



Km: 0.00 Tipo: 3 Sent: 1



Km: 0.00 Tipo: 3 Sent: 2

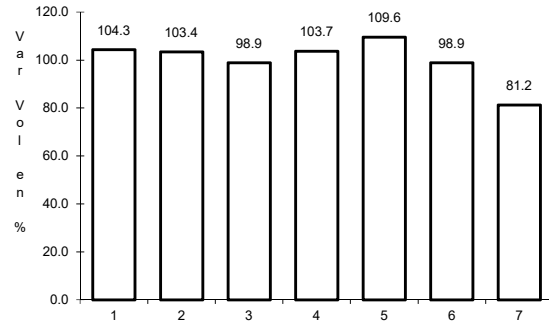


Km: 2.60 Tipo: 1 Sent: 1

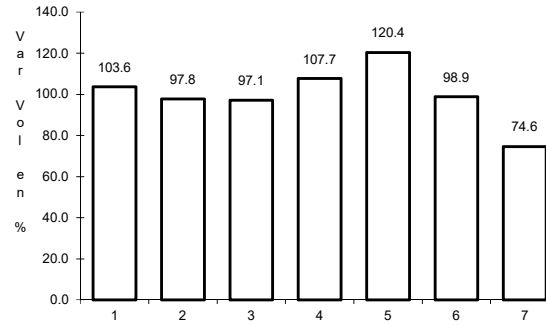
16 CARR: Libramiento Oriente de Durango

CLAVE:

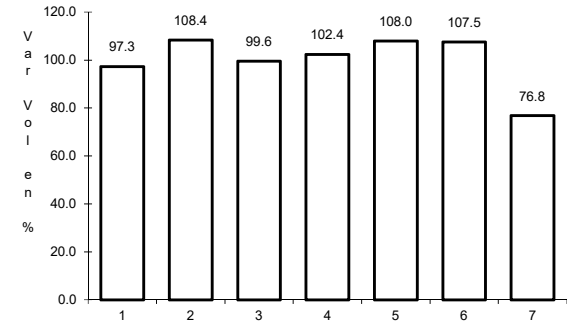
RUTA: MEX-045



Km: 0.00 Tipo: 3 Sent: 1



Km: 0.00 Tipo: 3 Sent: 2

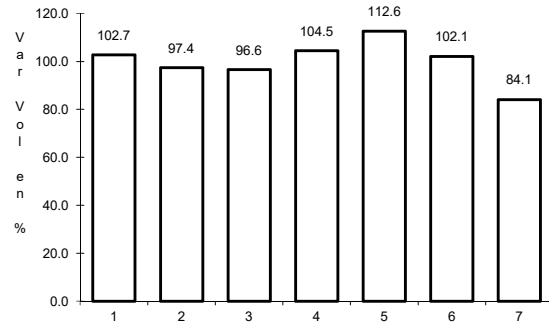


Km: 10.50 Tipo: 1 Sent: 1

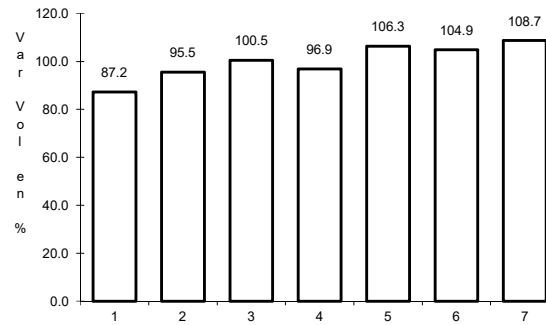
17 CARR: Libramiento Sur de Durango

CLAVE:

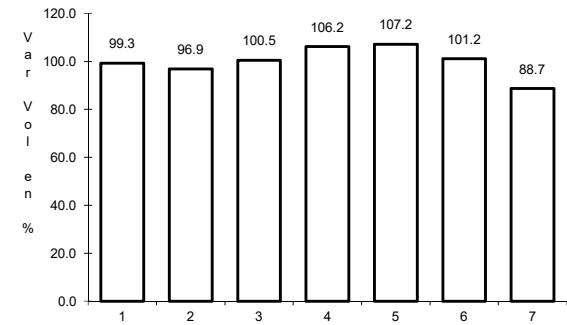
RUTA: MEX-045



Km: 0.00 Tipo: 3 Sent: 0



Km: 19.50 Tipo: 1 Sent: 0

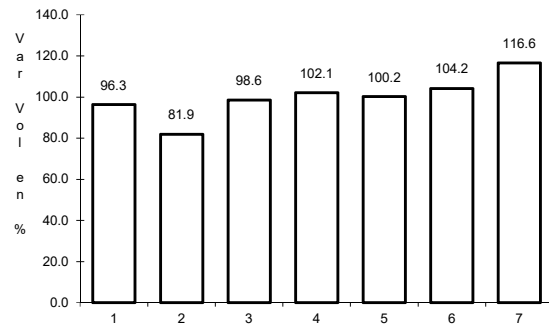


Km: 27.70 Tipo: 1 Sent: 0

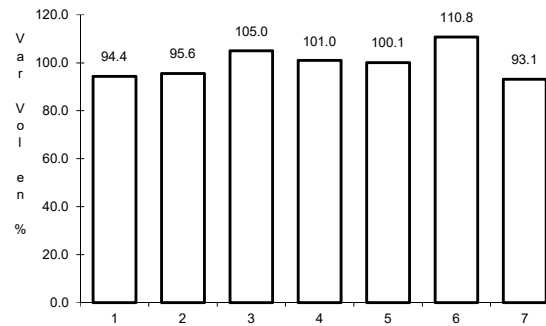
18 CARR: Pedriceña - Ent. Rodeo

CLAVE: 10002

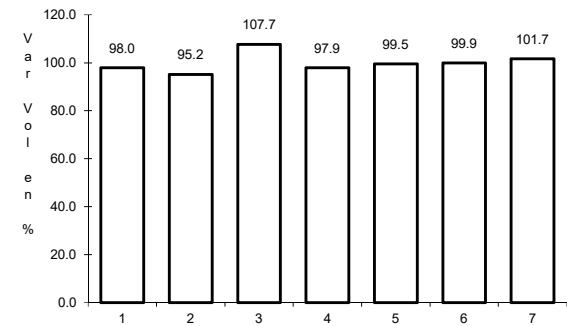
RUTA: MEX-034



Km: 0.00 Tipo: 3 Sent: 0



Km: 45.00 Tipo: 1 Sent: 0

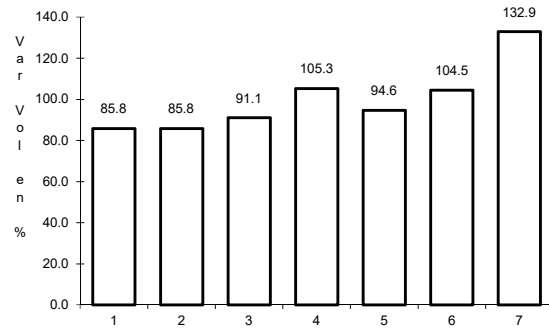


Km: 98.00 Tipo: 1 Sent: 0

19 CARR: Ramal a Otinapa

CLAVE: 10002

RUTA: MEX



Km: 0.00

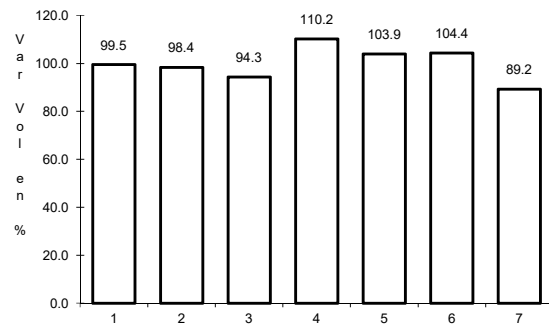
Tipo: 3

Sent: 0

20 CARR: Ramal a Santa Clara

CLAVE: 10287

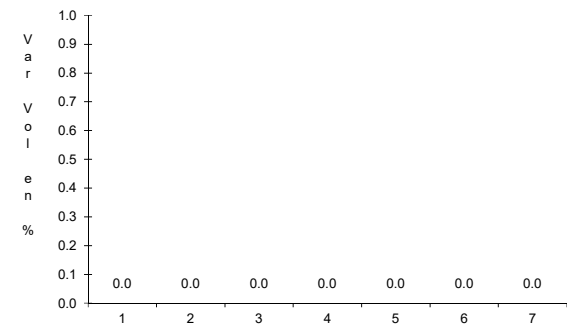
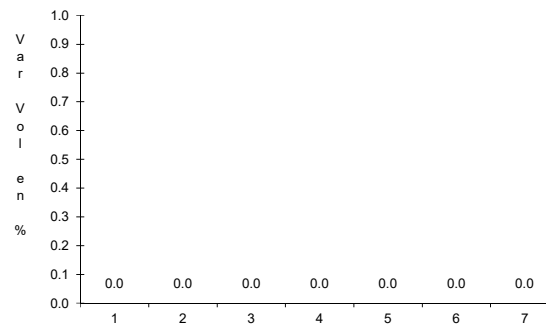
RUTA: MEX-049



Km: 0.00

Tipo: 3

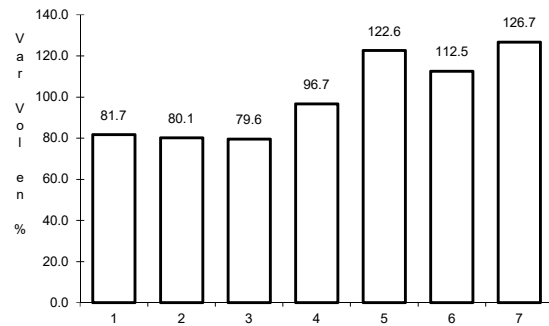
Sent: 0



21 CARR: Ramal a Villa Juárez

CLAVE: 10287

RUTA: MEX-040



Km: 0.00

Tipo: 3

Sent: 1

Km: 0.00

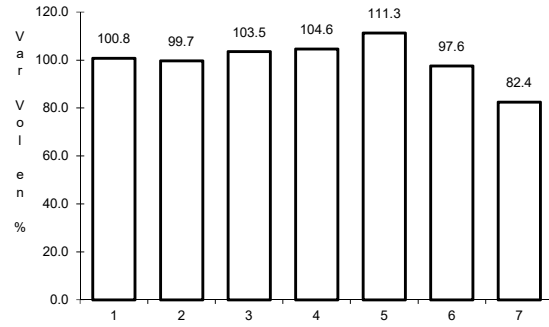
Tipo: 3

Sent: 2

22 CARR: Zacatecas - Durango

CLAVE: 00544

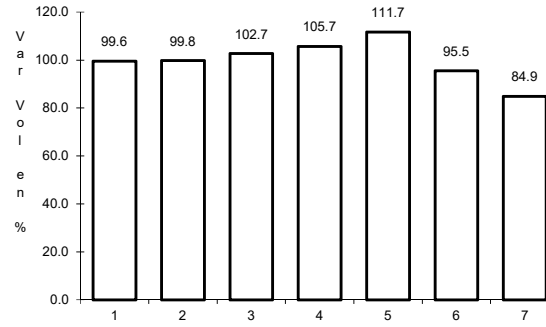
ruta: MEX-045



Km: 6.40

Tipo: 3

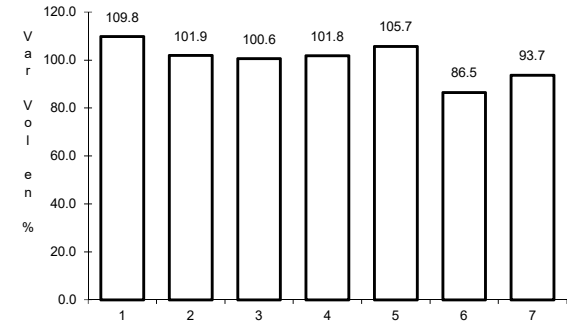
Sent: 1



Km: 6.40

Tipo: 3

Sent: 2



Km: 121.00

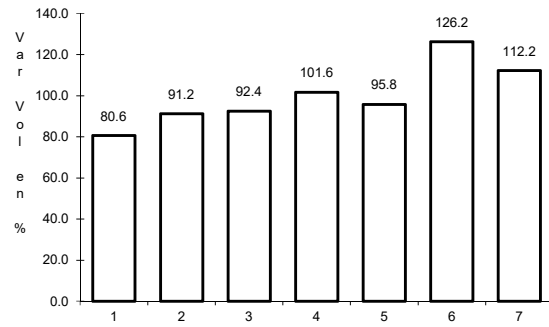
Tipo: 3

Sent: 0

23 CARR: Durango - Mazatlán (Cuota)

CLAVE: 00084

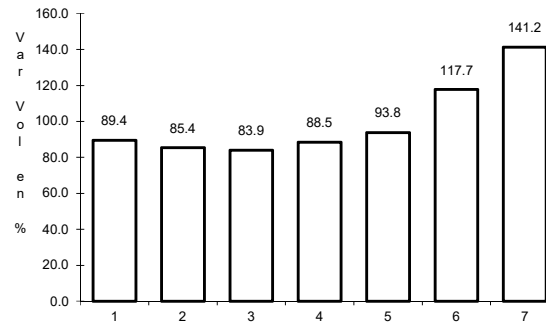
ruta: MEX-040D



Km: 20.50

Tipo: 3

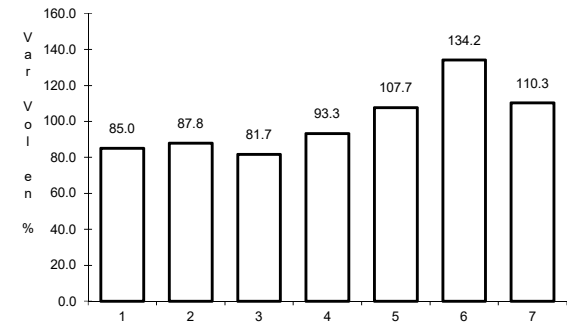
Sent: 0



Km: 44.50

Tipo: 1

Sent: 0



Km: 208.35

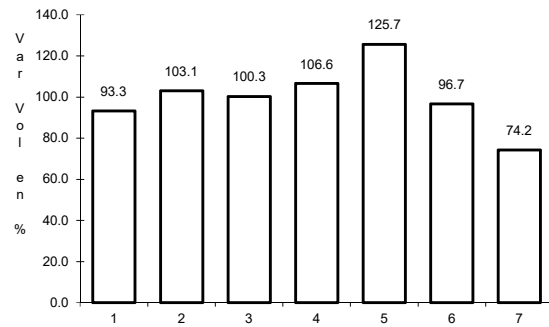
Tipo: 1

Sent: 0

24 CARR: Durango - Yerbanís (Cuota)

CLAVE: 10003

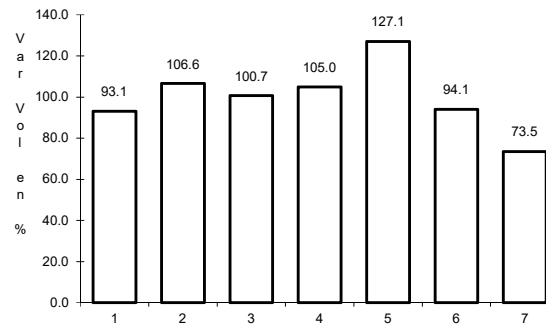
ruta: MEX-040D



Km: 5.30

Tipo: 1

Sent: 1



Km: 5.30

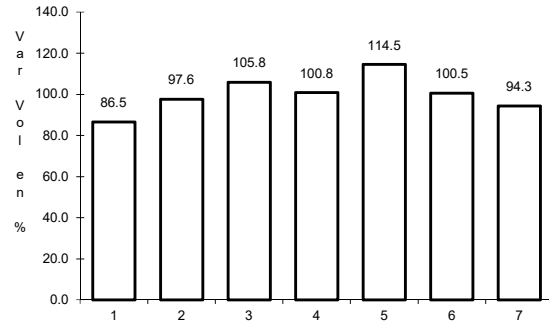
Tipo: 1

Sent: 2

25 CARR: Gómez Palacio - Corralitos (Cuota)

CLAVE: 00016

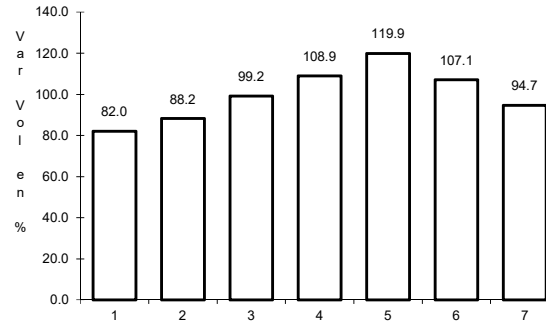
ruta: MEX-049D



Km: 40.10

Tipo: 1

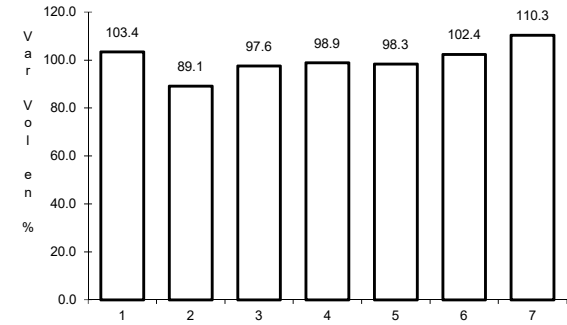
Sent: 1



Km: 40.10

Tipo: 1

Sent: 2



Km: 226.50

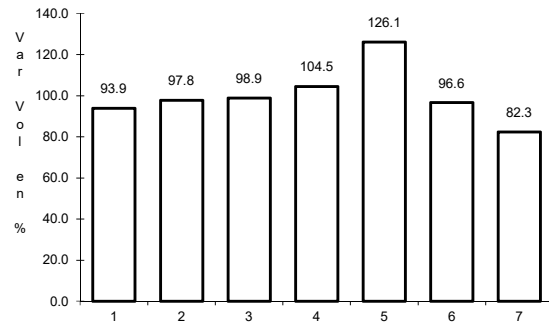
Tipo: 1

Sent: 1

26 CARR: Libramiento de Durango (Cuota)

CLAVE: 10006

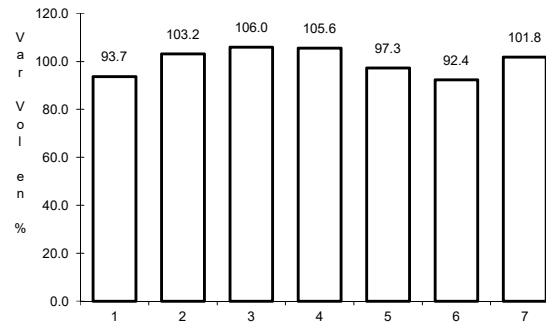
ruta: MEX-040D



Km: 0.00

Tipo: 3

Sent: 0



Km: 21.60

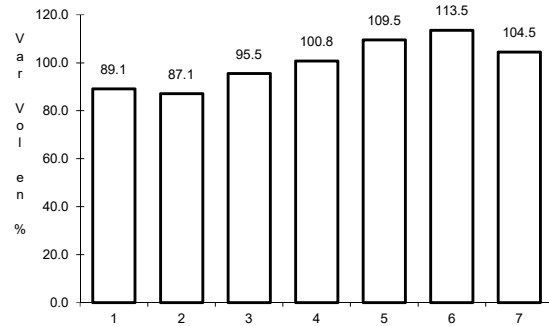
Tipo: 1

Sent: 0

27 CARR: Libramiento Norte de Torreón (Cuota)

CLAVE:

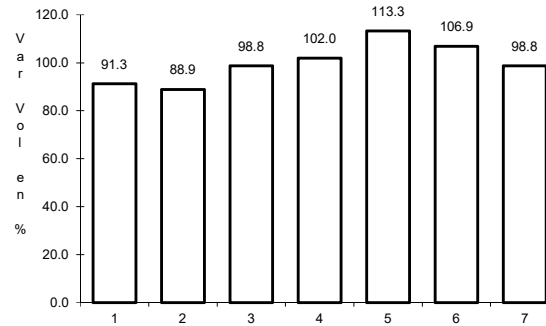
ruta: MEX-040D



Km: 0.00

Tipo: 3

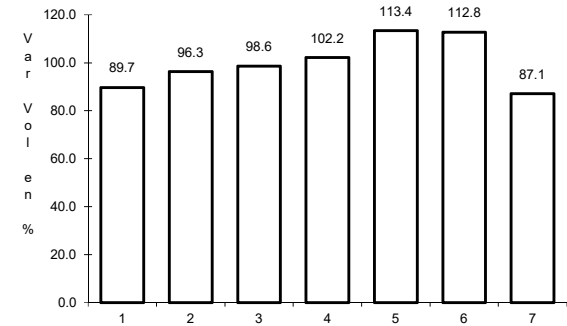
Sent: 0



Km: 17.36

Tipo: 1

Sent: 0



Km: 40.70

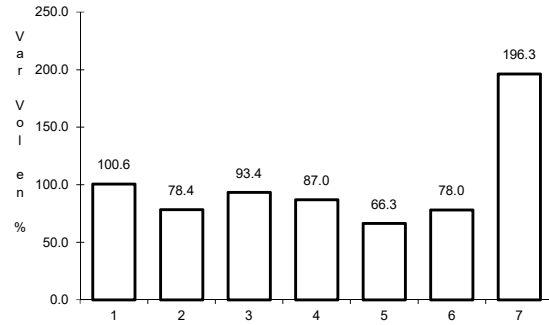
Tipo: 1

Sent: 0

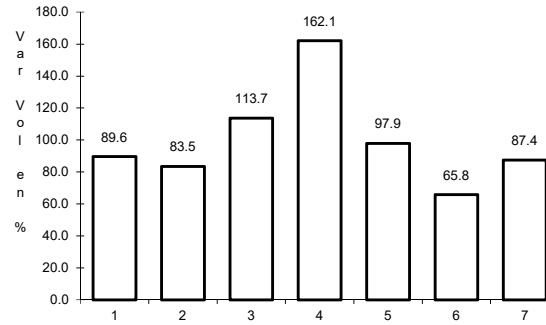
28 CARR: Yerbanís - Gómez Palicio (Cuota)

CLAVE: 10003

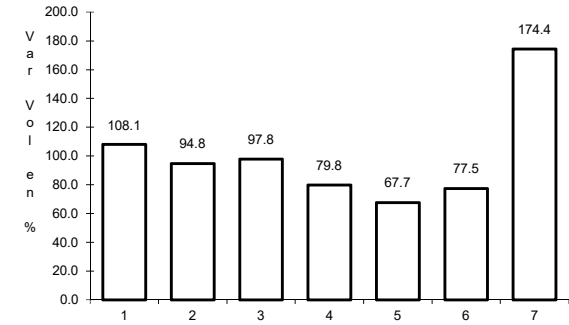
RUTA: MEX-040D



Km: 180.00 Tipo: 1 Sent: 1



Km: 180.00 Tipo: 1 Sent: 2

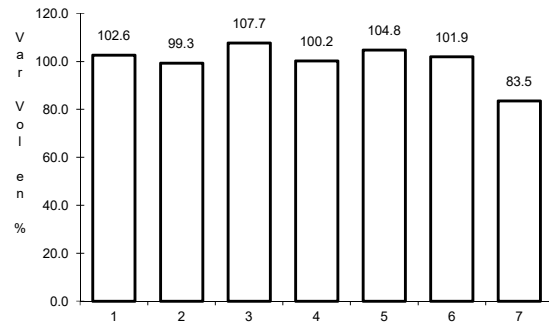


Km: 212.71 Tipo: 3 Sent: 1

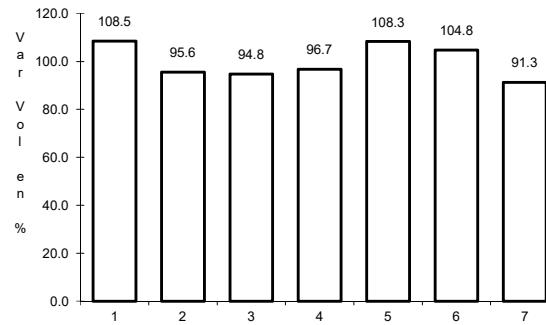
29 CARR: Amado Nervo - La Ochoa

CLAVE: 10012

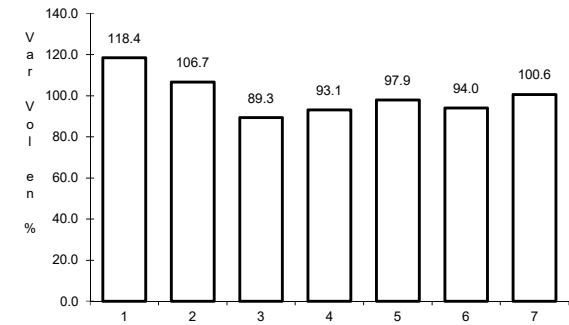
RUTA: DGO-542



Km: 0.00 Tipo: 3 Sent: 0



Km: 25.00 Tipo: 1 Sent: 0

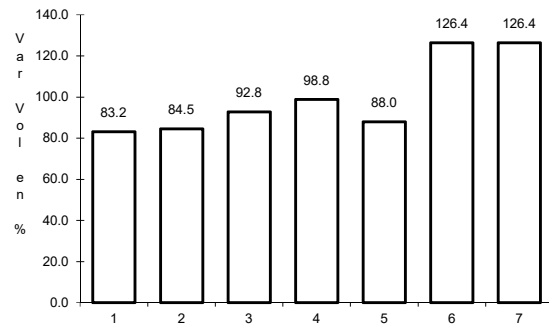


Km: 42.00 Tipo: 1 Sent: 0

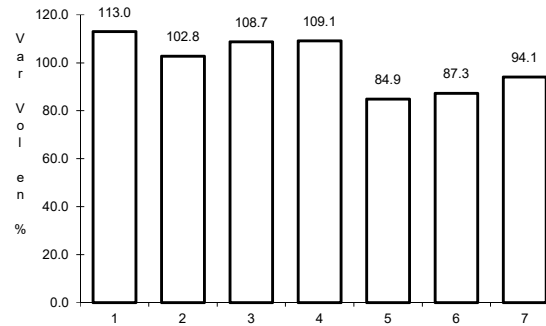
30 CARR: Ceballos - El Mirador

CLAVE: 10417

RUTA: DGO-044



Km: 0.00 Tipo: 3 Sent: 0

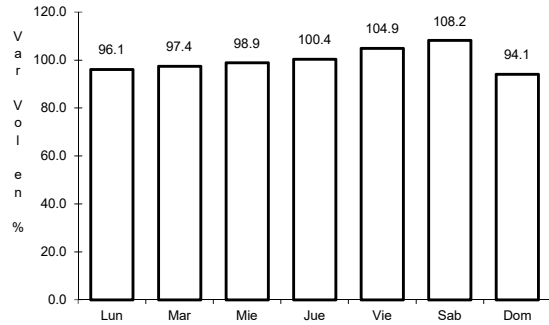


Km: 113.50 Tipo: 1 Sent: 0

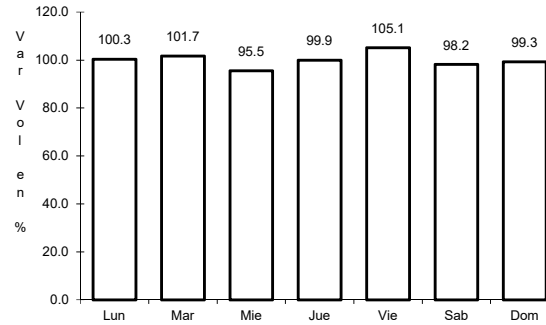
31 CARR: Durango - Aserradero La Flor

CLAVE: 10422

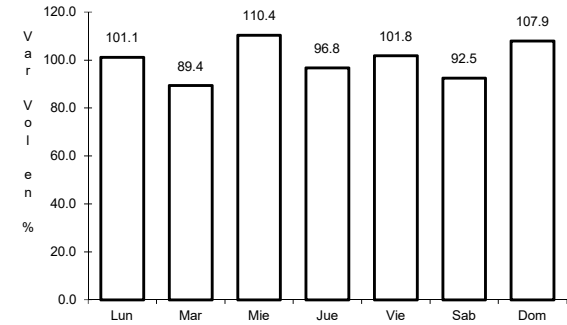
RUTA: DGO-115



Km: 0.00 Tipo: 3 Sent: 1



Km: 0.00 Tipo: 3 Sent: 2

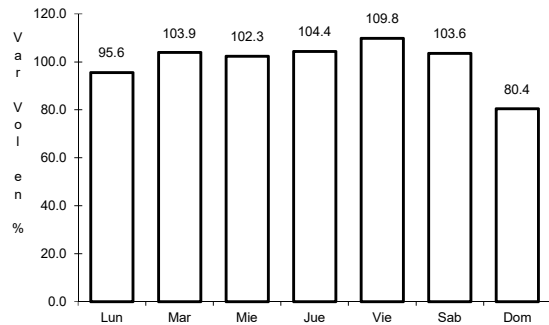


Km: 39.00 Tipo: 1 Sent: 0

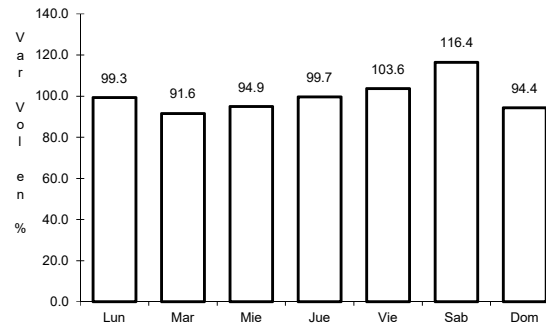
32 CARR: Jabonoso - Esmeralda

CLAVE: 10004

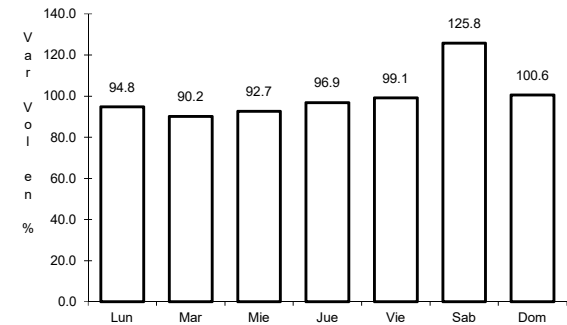
RUTA: DGO-363



Km: 0.00 Tipo: 3 Sent: 0



Km: 10.00 Tipo: 3 Sent: 0

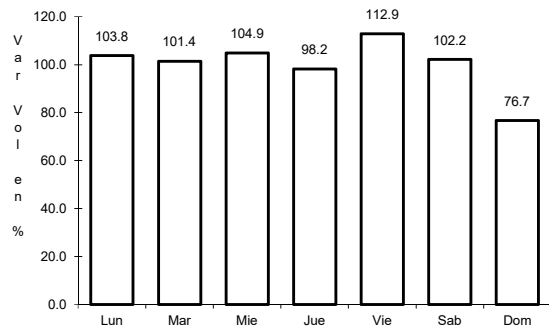


Km: 16.30 Tipo: 1 Sent: 0

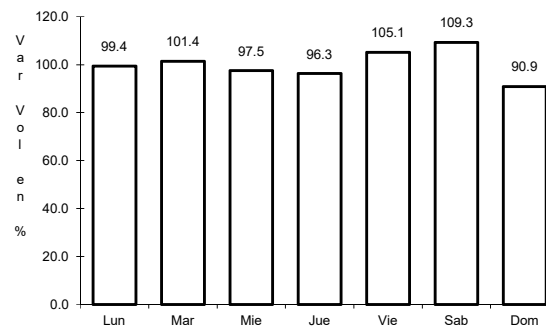
33 CARR: La Torreña - Brittingham

CLAVE: 10010

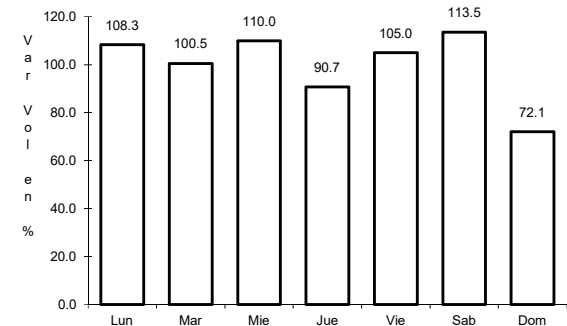
RUTA: DGO-325



Km: 0.00 Tipo: 3 Sent: 0



Km: 16.00 Tipo: 1 Sent: 0

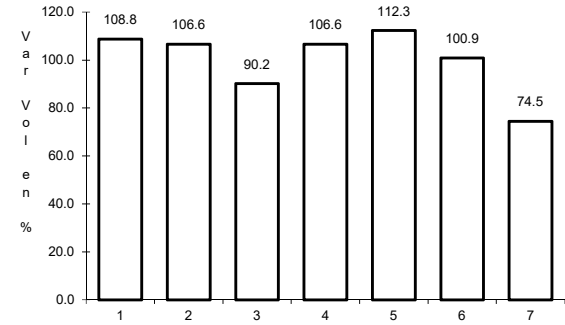
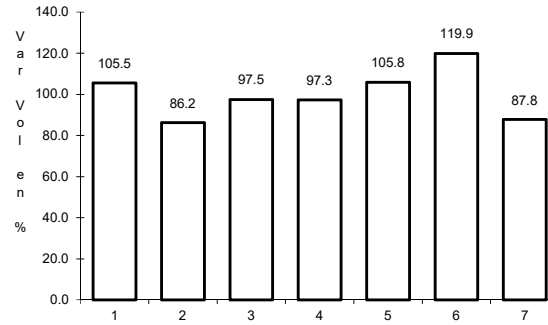
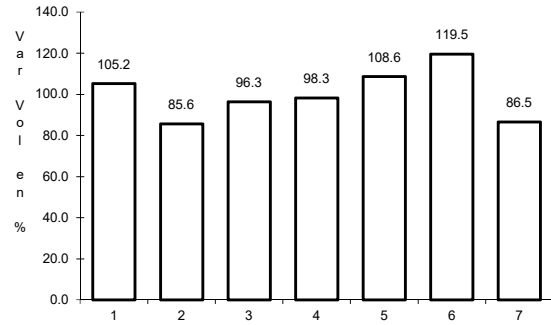


Km: 33.00 Tipo: 1 Sent: 0

34 CARR: Libramiento de Torreón

CLAVE: 05516

RUTA: COA



Km: 0.00 Tipo: 3 Sent: 1

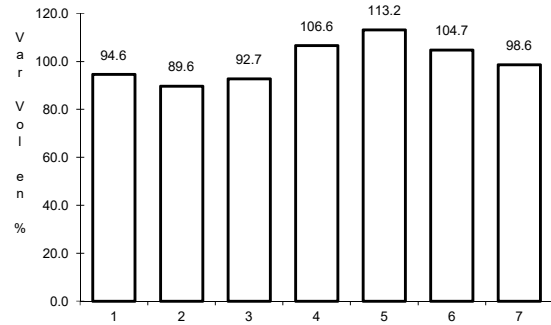
Km: 0.00 Tipo: 3 Sent: 2

Km: 7.30 Tipo: 1 Sent: 1

35 CARR: Libramiento Exterior Cuencamé

CLAVE: 10006

RUTA: DGO

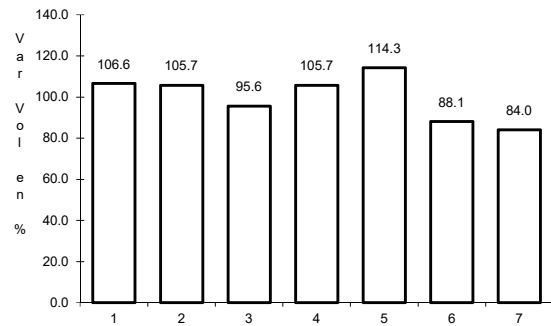


Km: 0.00 Tipo: 3 Sent: 0

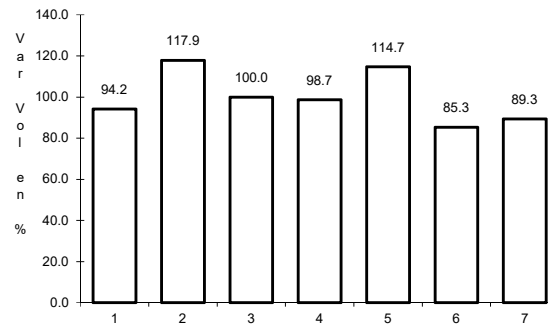
36 CARR: Mezquital - San Miguel de Temoaya

CLAVE: 10006

RUTA: DGO



Km: 0.00 Tipo: 3 Sent: 0

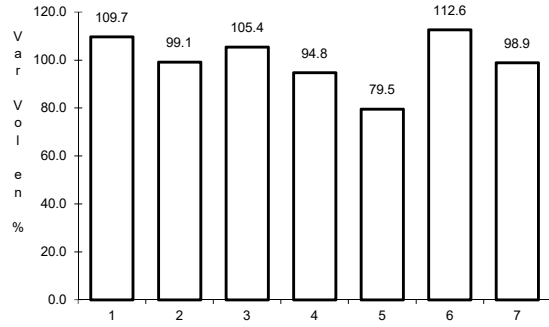


Km: 48.00 Tipo: 1 Sent: 0

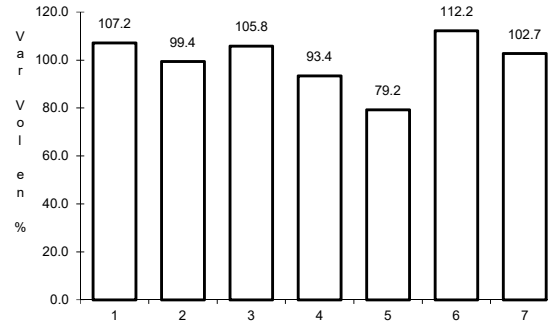
37 CARR: Ramal a San Juan del Río

CLAVE: 10001

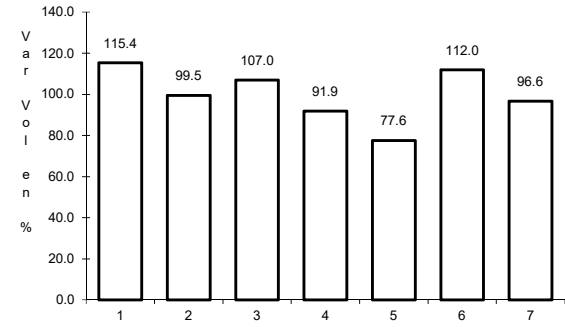
RUTA: DGO-290



Km: 0.00 Tipo: 3 Sent: 0



Km: 5.00 Tipo: 1 Sent: 1

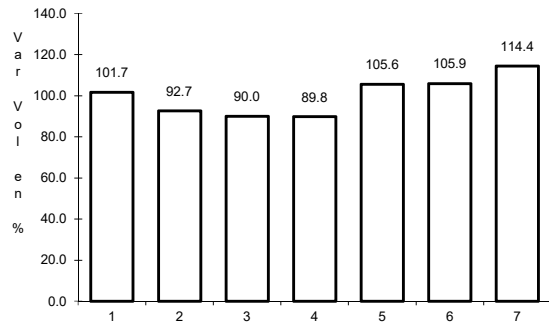


Km: 5.00 Tipo: 1 Sent: 2

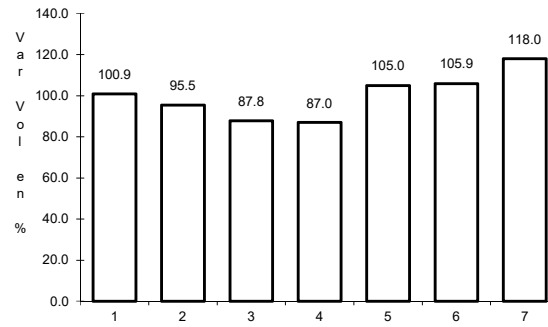
38 CARR: Súchil - Villa Unión

CLAVE: 10419

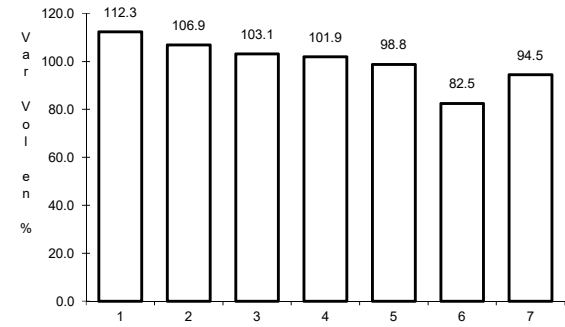
RUTA: DGO-241



Km: 0.00 Tipo: 3 Sent: 1



Km: 0.00 Tipo: 3 Sent: 2

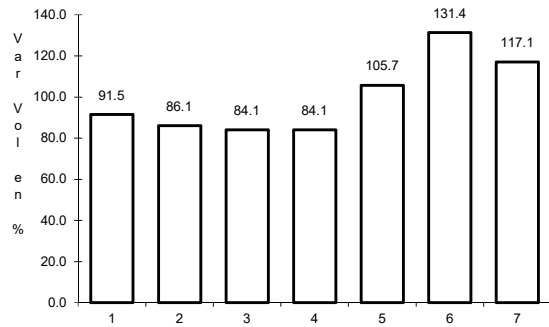


Km: 41.40 Tipo: 1 Sent: 0

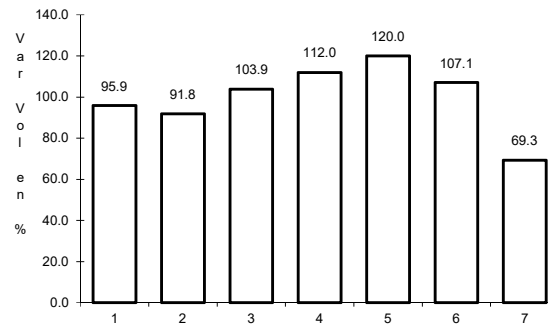
39 CARR: Tlahualillo de Zaragoza - T.C. Gómez Palacio - Jiménez

CLAVE: 10419

RUTA: DGO



Km: 0.00 Tipo: 3 Sent: 0

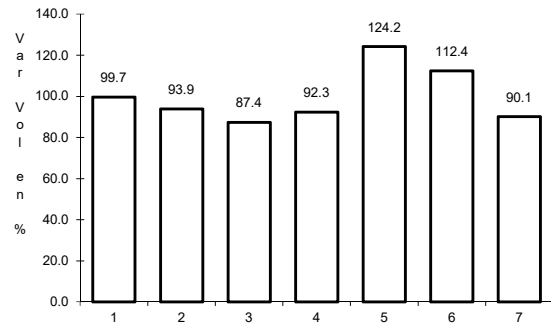


Km: 37.00 Tipo: 1 Sent: 0

40 CARR: Yerbanís - Peñón Blanco

CLAVE: 10032

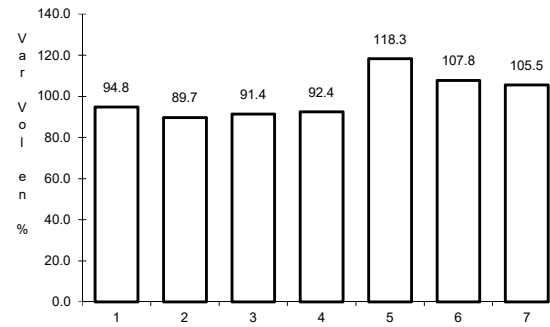
RUTA: DGO-316



Km: 0.00

Tipo: 3

Sent: 0



Km: 22.00

Tipo: 1

Sent: 0