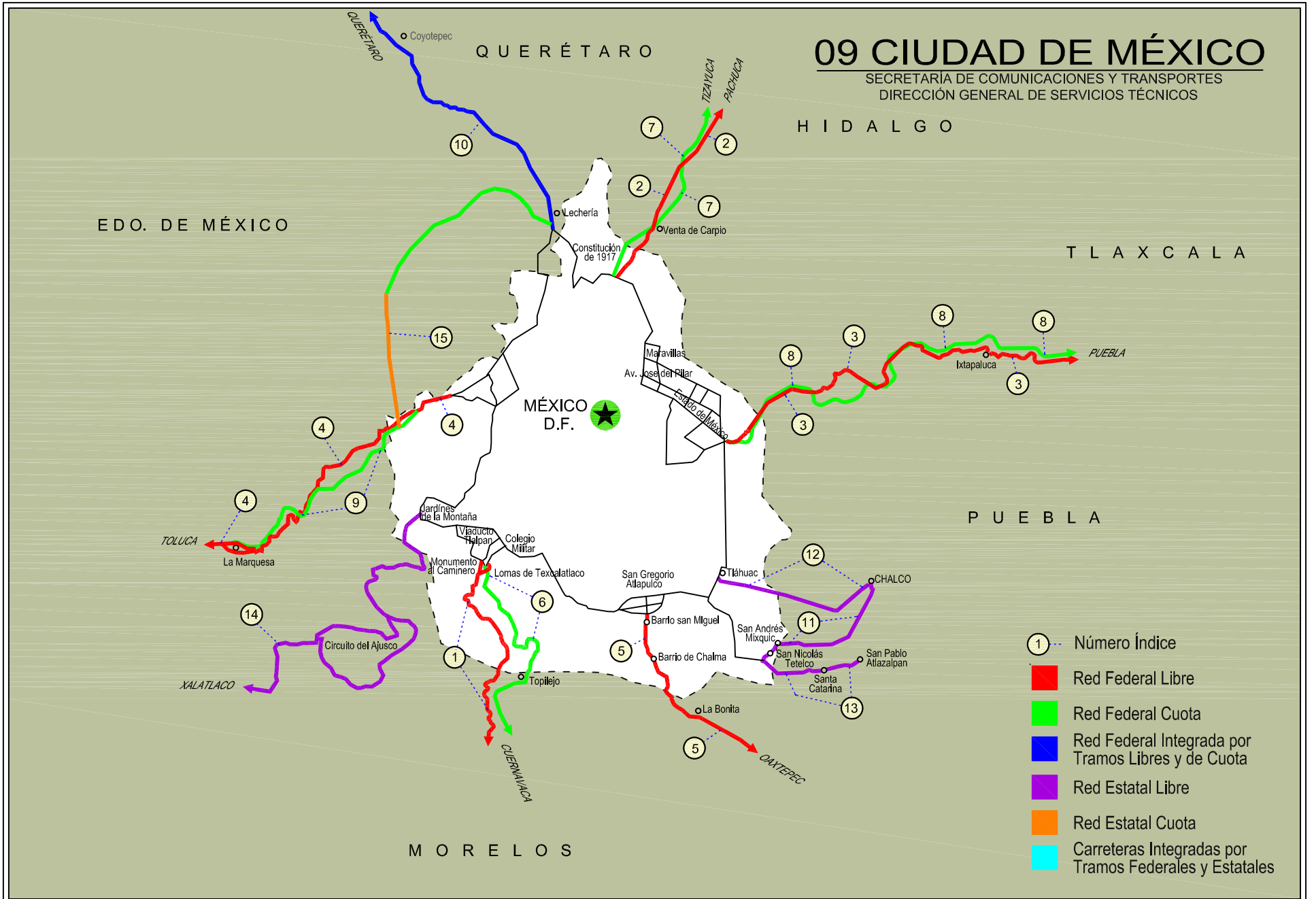
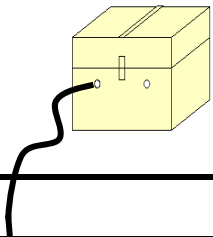


09 CIUDAD DE MÉXICO

SECRETARÍA DE COMUNICACIONES Y TRANSPORTES
DIRECCIÓN GENERAL DE SERVICIOS TÉCNICOS





CIUDAD DE MEXICO

NO. INDICE CARRETERA		RUTA
	---RED FEDERAL LIBRE---	
1	México - Cuernavaca (Libre)	MEX-095
2	México - Pachuca (Libre)	MEX-085
3	México - Puebla (Libre)	MEX-150
4	México - Toluca	MEX-015
5	San Gregorio - Oaxtepec	MEX-113
	---RED FEDERAL DE CUOTA---	
6	México - Cuernavaca (Cuota)	MEX-095D
7	México - Pachuca (Cuota)	MEX-085D
8	México - Puebla (Cuota)	MEX-150D
9	México - Toluca (Cuota)	MEX-015D
	---RED FEDERAL INTEGRADA POR TRAMOS LIBRES Y DE CUOTA---	
10	México - Querétaro (Cuota)	MEX-057-MEX-057D
	---RED ESTATAL LIBRE---	
11	Chalco - Mixquic	EM-DF
12	Chalco - Tláhuac	EM-DF
13	T. C. (México - Mixquic) - San Pablo Atlazalpan	EM-106-DF
14	Xalatlaco - El Ajusco	EM-DF
	---RED ESTATAL DE CUOTA---	
15	La Venta - Chamapa (Cuota)	EM-D

CIUDAD DE MEXICO

1 CARR: México - Cuernavaca (Libre)

CLAVE: 00040

RUTA: MEX-095

AÑO: 2017

LUGAR	ESTACION				CLASIFICACION VEHICULAR EN PORCIENTO										COORDENADAS					
	KM	TE	SC	TDPA	M	A	B	C2	C3	T3S2	T3S3	T3S2R4	OTROS	A	B	C	K'	D	LATITUD	LONGITUD
México	0.00																			
T., Izq. San Miguel Xicalco	25.50	1	0	34662	2.0	82.6	5.2	4.9	1.6	1.7	1.8	0.0	0.2	84.6	5.2	10.2	0.047	0.505	19.236393	-99.158830
T., Izq. San Miguel Xicalco	25.50	3	0	22516	1.4	84.9	4.5	7.4	1.0	0.3	0.5	0.0	0.0	86.3	4.5	9.2	0.071	0.501	19.233002	-99.156110
T. Izq. San Miguel Topilejo	28.78	1	1	10731	1.8	88.0	2.8	4.7	1.0	0.5	0.7	0.2	0.3	89.8	2.8	7.4	0.080	0.517	19.213809	-99.151644
T. Izq. San Miguel Topilejo	28.78	1	2	10033	1.7	86.9	3.0	5.5	1.0	0.6	0.8	0.2	0.3	88.6	3.0	8.4	0.094	0.517	19.213809	-99.151647
T. Izq. San Miguel Topilejo	28.78	3	0	17158	3.1	85.7	2.1	7.4	1.1	0.5	0.0	0.0	0.1	88.8	2.1	9.1	0.067	0.528	19.204269	-99.156906
Parres El Guarda	39.50	1	0	9870	2.8	84.8	3.3	5.3	1.3	1.3	0.7	0.1	0.4	87.6	3.3	9.1	0.119	0.506	19.140675	-99.169476
Parres El Guarda	39.50	3	0	9948	4.6	85.2	1.1	8.3	0.5	0.2	0.1	0.0	0.0	89.8	1.1	9.1	0.082	0.510	19.127550	-99.181537
Lim. Edos. Term. D. F. Ppia. Mor.	45.44																			
T. Der. Zempoala	51.40	1	0	9624	3.5	83.3	4.4	5.6	0.8	1.3	0.8	0.1	0.2	86.8	4.4	8.8	0.095	0.502	19.057440	-99.242142
T. Der. Zempoala	51.40	3	0	7726	2.9	84.6	3.7	7.2	1.0	0.3	0.2	0.0	0.1	87.5	3.7	8.8	0.079	0.501	19.044613	-99.235644
T. Izq. Coajomulco	57.12	3	0	6318	3.4	85.7	0.4	8.8	0.7	0.4	0.5	0.0	0.1	89.1	0.4	10.5	0.069	0.504	19.026967	-99.208301
T. Der. Huitzilac	64.20	1	0	7810	2.9	88.1	0.7	6.7	0.5	0.3	0.7	0.0	0.1	91.0	0.7	8.3	0.078	0.510	19.002699	-99.257448
T. Der. Huitzilac	64.20	3	0	13431	2.0	89.4	0.7	5.2	0.6	0.7	1.2	0.0	0.2	91.4	0.7	7.9	0.077	0.512	18.995280	-99.260896
T. Izq. Tepoztlán	71.36	1	0	26526	2.1	87.5	3.0	5.1	0.5	0.4	0.7	0.0	0.7	89.6	3.0	7.4	0.061	0.515	18.970959	-99.249957
T. Izq. Tepoztlán	71.36	3	1	20320	2.5	92.5	1.1	3.5	0.4	0.0	0.0	0.0	0.0	95.0	1.1	3.9	0.072	0.511	18.962596	-99.246506
T. Izq. Tepoztlán	71.36	3	2	19439	2.7	91.6	1.3	4.0	0.4	0.0	0.0	0.0	0.0	94.3	1.3	4.4	0.071	0.511	18.962595	-99.246505
Cuernavaca	75.42																			

2 CARR: México - Pachuca (Libre)

CLAVE: 00431

RUTA: MEX-085

AÑO: 2017

LUGAR	ESTACION				CLASIFICACION VEHICULAR EN PORCIENTO										COORDENADAS					
	KM	TE	SC	TDPA	M	A	B	C2	C3	T3S2	T3S3	T3S2R4	OTROS	A	B	C	K'	D	LATITUD	LONGITUD
México	0.00																			
Lim. Edos. Term. D. F. Ppia. Mex.	9.89																			
T. Der. Pirámides	26.93	1	1	15665	3.2	82.3	1.1	4.4	0.9	5.8	1.2	0.6	0.5	85.5	1.1	13.4	0.049	0.500	19.617583	-99.010516
T. Der. Pirámides	26.93	1	2	15646	3.1	81.1	1.3	5.0	1.0	6.2	1.2	0.6	0.5	84.2	1.3	14.5	0.049	0.500	19.617475	-99.010433
Venta de Carpio	27.00	3	1	24536	3.3	87.7	0.3	4.8	0.9	1.5	1.2	0.0	0.3	91.0	0.3	8.7	0.059	0.509	19.625728	-99.002972
Venta de Carpio	27.00	3	2	23663	3.3	86.7	0.3	5.3	1.0	1.7	1.4	0.0	0.3	90.0	0.3	9.7	0.057	0.509	19.625818	-99.003150
T. Der. Autopista México - Tecámac (Cuota)	37.52	1	1	29587	1.5	92.9	0.3	3.9	0.6	0.5	0.3	0.0	0.0	94.4	0.3	5.3	0.074	0.505	19.703689	-98.978632
T. Der. Autopista México - Tecámac (Cuota)	37.52	1	2	30131	1.7	92.3	0.3	4.3	0.6	0.5	0.3	0.0	0.0	94.0	0.3	5.7	0.072	0.505	19.703729	-98.978760
T. Izq. Zumpango	44.68	1	1	18228	3.2	84.4	0.9	7.9	1.0	1.0	1.2	0.1	0.3	87.6	0.9	11.5	0.059	0.505	19.760665	-98.973564
T. Izq. Zumpango	44.68	1	2	18591	3.1	82.5	1.1	9.2	1.2	1.2	1.3	0.1	0.3	85.6	1.1	13.3	0.060	0.505	19.760776	-98.973650
T. Izq. Zumpango	44.68	3	1	11215	2.0	83.6	1.3	9.0	1.8	1.4	0.7	0.1	0.1	85.6	1.3	13.1	0.071	0.517	19.770508	-98.973241
T. Izq. Zumpango	44.68	3	2	10488	2.6	80.6	1.5	10.8	2.0	1.4	0.9	0.1	0.1	83.2	1.5	15.3	0.073	0.517	19.770503	-98.973177

CIUDAD DE MEXICO

2 CARR: México - Pachuca (Libre)

CLAVE: 00431

RUTA: MEX-085

AÑO: 2017

LUGAR	ESTACION				CLASIFICACION VEHICULAR EN PORCIENTO										COORDENADAS					
	KM	TE	SC	TDPA	M	A	B	C2	C3	T3S2	T3S3	T3S2R4	OTROS	A	B	C	K'	D	LATITUD	LONGITUD
Lim. Edos. Term. Mex. Ppia. Hgo.	49.30																			
Tizayuca	52.50	3	1	13233	2.8	84.8	2.0	5.7	1.5	1.0	1.6	0.2	0.4	87.6	2.0	10.4	0.085	0.516	19.862288	-98.964422
Tizayuca	52.50	3	2	14086	3.2	82.8	2.2	6.5	1.6	1.2	1.9	0.2	0.4	86.0	2.2	11.8	0.083	0.516	19.862290	-98.964413
T. C. México - Tizayuca (Cuota)	61.00	3	1	26563	1.0	87.0	3.3	4.7	1.5	1.1	0.8	0.4	0.2	88.0	3.3	8.7	0.061	0.506	19.895733	-98.930746
T. C. México - Tizayuca (Cuota)	61.00	3	2	25980	1.1	86.0	3.4	5.2	1.6	1.3	0.8	0.4	0.2	87.1	3.4	9.5	0.062	0.506	19.895828	-98.930884
X. C. Arco Norte de La Ciudad de México	64.20	1	1	24172	0.9	86.3	3.1	5.5	1.3	1.7	0.6	0.4	0.2	87.2	3.1	9.7	0.060	0.510	19.923071	-98.900680
X. C. Arco Norte de La Ciudad de México	64.20	1	2	25168	1.0	84.8	3.7	6.0	1.4	1.9	0.6	0.4	0.2	85.8	3.7	10.5	0.063	0.510	19.923342	-98.900820
X. C. Arco Norte de La Ciudad de México	64.20	3	1	27157	0.8	87.0	3.6	5.2	0.9	1.4	0.6	0.3	0.2	87.8	3.6	8.6	0.062	0.507	19.929263	-98.893593
X. C. Arco Norte de La Ciudad de México	64.20	3	2	26387	0.9	85.3	4.3	5.8	0.9	1.6	0.7	0.3	0.2	86.2	4.3	9.5	0.065	0.507	19.929211	-98.893174
Ent. Colonia	83.97	1	1	36715	0.9	88.4	3.2	4.9	0.5	1.4	0.4	0.1	0.2	89.3	3.2	7.5	0.078	0.508	20.044829	-98.792298
Ent. Colonia	83.97	1	2	37983	0.9	87.3	3.6	5.5	0.5	1.5	0.4	0.1	0.2	88.2	3.6	8.2	0.082	0.508	20.044987	-98.792532
X. C. Libramiento de Pachuca	86.50	1	1	38475	0.9	88.7	3.0	4.2	0.6	1.2	0.9	0.3	0.2	89.6	3.0	7.4	0.051	0.504	20.096549	-98.767510
X. C. Libramiento de Pachuca	86.50	1	2	37799	0.9	88.1	3.3	4.3	0.6	1.3	1.0	0.3	0.2	89.0	3.3	7.7	0.051	0.504	20.096689	-98.767619
Pachuca	94.00																			

3 CARR: México - Puebla (Libre)

CLAVE: 00449

RUTA: MEX-150

AÑO: 2017

LUGAR	ESTACION				CLASIFICACION VEHICULAR EN PORCIENTO										COORDENADAS					
	KM	TE	SC	TDPA	M	A	B	C2	C3	T3S2	T3S3	T3S2R4	OTROS	A	B	C	K'	D	LATITUD	LONGITUD
México	0.00																			
Lim. Edos. Term. D. F. Ppia. Mex.	18.66																			
T. Der. Chalco	28.85	1	1	35288	4.1	90.7	0.3	3.7	0.3	0.4	0.3	0.1	0.1	94.8	0.3	4.9	0.050	0.501	19.310936	-98.904622
T. Der. Chalco	28.85	1	2	35400	4.9	89.7	0.3	3.9	0.3	0.4	0.3	0.1	0.1	94.6	0.3	5.1	0.046	0.501	19.311107	-98.904628
T. Der. Chalco (Lateral)	28.85	3	1	6327	2.2	93.8	0.1	2.0	0.5	0.7	0.6	0.0	0.1	96.0	0.1	3.9	0.093	0.567	19.312582	-98.894356
T. Der. Chalco (Central)	28.85	3	1	15256	4.1	90.9	0.3	3.2	0.4	0.4	0.6	0.0	0.1	95.0	0.3	4.7	0.092	0.502	19.312647	-98.894373
T. Der. Chalco (Lateral)	28.85	3	2	8281	4.1	91.7	0.1	2.1	0.5	0.8	0.6	0.0	0.1	95.8	0.1	4.1	0.085	0.567	19.312798	-98.894425
T. Der. Chalco (Central)	28.85	3	2	15133	4.9	89.9	0.3	3.4	0.4	0.4	0.6	0.0	0.1	94.8	0.3	4.9	0.094	0.502	19.312718	-98.894429
Ixtapaluca	31.06	3	1	20263	4.1	91.3	0.3	3.3	0.3	0.3	0.3	0.0	0.1	95.4	0.3	4.3	0.059	0.505	19.315839	-98.874441
Ixtapaluca	31.06	3	2	20660	4.3	90.8	0.3	3.6	0.3	0.3	0.3	0.0	0.1	95.1	0.3	4.6	0.057	0.505	19.315971	-98.874452
T. Der. C. México - Puebla (Cuota) (Río Frío)	62.06	1	0	3343	1.2	68.9	2.6	11.5	5.2	8.4	1.3	0.3	0.6	70.1	2.6	27.3	0.058	0.506	19.350038	-98.670381
T. Der. C. México - Puebla (Cuota) (Río Frío)	62.06	3	0	1461	2.3	82.3	0.9	6.7	2.4	4.3	0.6	0.3	0.2	84.6	0.9	14.5	0.086	0.516	19.352665	-98.662362
Lim. Edos. Term. Mex. Ppia. Pue.	62.98																			
San Martín Texmelucan	70.00	1	0	13403	10.5	74.4	0.4	12.4	0.6	0.6	0.9	0.1	0.1	84.9	0.4	14.7	0.074	0.502	19.301698	-98.452841
X. C. México - Puebla (Cuota)	74.10	3	1	9178	6.7	77.7	0.9	9.7	1.0	2.2	1.1	0.3	0.4	84.4	0.9	14.7	0.083	0.501	19.255047	-98.428677
X. C. México - Puebla (Cuota)	74.10	3	2	9854	6.4	76.3	1.0	11.0	1.1	2.3	1.2	0.3	0.4	82.7	1.0	16.3	0.084	0.501	19.255101	-98.428469

CIUDAD DE MEXICO

3 CARR: México - Puebla (Libre)

CLAVE: 00449

RUTA: MEX-150

AÑO: 2017

LUGAR	ESTACION				CLASIFICACION VEHICULAR EN PORCIENTO										COORDENADAS					
	KM	TE	SC	TDPA	M	A	B	C2	C3	T3S2	T3S3	T3S2R4	OTROS	A	B	C	K'	D	LATITUD	LONGITUD
Huejotzingo	88.00	1	1	6433	5.6	79.6	1.1	10.5	1.1	1.3	0.5	0.1	0.2	85.2	1.1	13.7	0.083	0.504	19.174798	-98.414079
Huejotzingo	88.00	1	2	6312	4.2	79.4	1.3	11.5	1.3	1.5	0.5	0.1	0.2	83.6	1.3	15.1	0.077	0.504	19.174770	-98.414169
Huejotzingo	88.00	3	1	5979	2.7	82.4	2.0	8.9	1.6	1.6	0.5	0.1	0.2	85.1	2.0	12.9	0.078	0.501	19.147590	-98.393279
Huejotzingo	88.00	3	2	5946	2.0	81.7	2.2	9.8	1.8	1.7	0.5	0.1	0.2	83.7	2.2	14.1	0.083	0.501	19.147682	-98.393240
T. Izq. Aeropuerto	92.80	1	1	5932	2.7	82.8	1.0	9.1	1.8	1.8	0.5	0.1	0.2	85.5	1.0	13.5	0.082	0.502	19.136277	-98.377227
T. Izq. Aeropuerto	92.80	1	2	6001	1.4	82.7	1.1	10.3	1.8	1.9	0.5	0.1	0.2	84.1	1.1	14.8	0.079	0.502	19.136366	-98.377151
T. Der. Cholula	101.00	1	1	14051	1.8	87.5	0.4	4.7	1.1	1.8	1.9	0.2	0.6	89.3	0.4	10.3	0.078	0.516	19.076581	-98.322470
T. Der. Cholula	101.00	1	2	12707	1.8	86.4	0.4	5.4	1.2	2.0	2.0	0.2	0.6	88.2	0.4	11.4	0.074	0.516	19.076694	-98.322406
T. Der. Cholula	101.00	3	1	20145	2.2	89.3	0.4	4.5	1.0	1.4	0.8	0.1	0.3	91.5	0.4	8.1	0.082	0.512	19.070333	-98.312994
T. Der. Cholula	101.00	3	2	18671	1.9	89.1	0.4	4.6	1.1	1.6	0.9	0.1	0.3	91.0	0.4	8.6	0.072	0.512	19.070437	-98.312844
Puebla	131.00																			

4 CARR: México - Toluca

CLAVE: 00447

RUTA: MEX-015

AÑO: 2017

LUGAR	ESTACION				CLASIFICACION VEHICULAR EN PORCIENTO										COORDENADAS					
	KM	TE	SC	TDPA	M	A	B	C2	C3	T3S2	T3S3	T3S2R4	OTROS	A	B	C	K'	D	LATITUD	LONGITUD
México	0.00																			
Ent. Constituyentes y Reforma	12.84	3	1	39399	1.1	89.8	1.3	4.8	0.7	1.3	0.8	0.1	0.1	90.9	1.3	7.8	0.070	0.501	19.385930	-99.247818
Ent. Constituyentes y Reforma	12.84	3	2	39495	1.1	90.3	1.8	4.4	0.6	1.2	0.4	0.1	0.1	91.4	1.8	6.8	0.095	0.501	19.385818	-99.247638
T. Der. Cuajimalpa (1° Acceso)	20.56	1	1	39753	1.1	90.5	1.6	4.2	0.6	1.2	0.6	0.1	0.1	91.6	1.6	6.8	0.063	0.502	19.364051	-99.279653
T. Der. Cuajimalpa (1° Acceso)	20.56	1	2	40146	1.1	89.5	1.6	4.9	0.6	1.4	0.7	0.1	0.1	90.6	1.6	7.8	0.086	0.502	19.363945	-99.279629
T. Izq. Desierto de Los Leones	23.96	1	1	33989	0.7	87.3	1.7	7.6	0.9	1.2	0.4	0.1	0.1	88.0	1.7	10.3	0.078	0.504	19.338954	-99.311278
T. Izq. Desierto de Los Leones	23.96	1	2	33437	0.7	86.0	1.7	8.7	1.1	1.2	0.4	0.1	0.1	86.7	1.7	11.6	0.096	0.504	19.338943	-99.311181
Lim. Edos. Term. D. F. Ppia. Mex.	33.44																			
T. Der. Huixquilucan	33.98	1	1	26197	0.7	87.0	1.7	7.8	1.0	1.2	0.4	0.1	0.1	87.7	1.7	10.6	0.079	0.512	19.297140	-99.362037
T. Der. Huixquilucan	33.98	1	2	27506	0.7	85.9	1.9	8.5	1.1	1.3	0.4	0.1	0.1	86.6	1.9	11.5	0.094	0.512	19.297099	-99.362126
X. C. Amomolulco - Stgo. Tianguistenco	47.26	1	1	45902	0.6	87.9	1.7	7.3	1.0	1.1	0.2	0.1	0.1	88.5	1.7	9.8	0.065	0.518	19.283465	-99.469352
X. C. Amomolulco - Stgo. Tianguistenco	47.26	1	2	49314	0.7	86.7	1.8	7.9	1.2	1.3	0.2	0.1	0.1	87.4	1.8	10.8	0.097	0.518	19.283346	-99.467966
T. Der. Lerma - Izq. San Pedro Tultepec	51.71	1	1	65499	0.5	85.7	1.3	6.3	0.9	2.1	2.2	0.5	0.5	86.2	1.3	12.5	0.069	0.508	19.284076	-99.501817
T. Der. Lerma - Izq. San Pedro Tultepec	51.71	1	2	63485	1.1	83.7	1.4	7.0	1.0	2.2	2.4	0.5	0.7	84.8	1.4	13.8	0.079	0.508	19.280325	-99.502713
T. Izq. San Mateo Atenco (Baja)	52.00	3	1	20616	1.3	73.0	4.5	11.9	2.5	4.3	0.8	1.3	0.4	74.3	4.5	21.2	0.085	0.505	19.286329	-99.535506
T. Izq. San Mateo Atenco (Alta)	52.00	3	1	58368	0.0	100.0	0.0	0.0	0.0	0.0	0.0	0.0	0.0	100.0	0.0	0.0	0.068	0.508	19.285898	-99.535514
T. Izq. San Mateo Atenco (Baja)	52.00	3	2	20247	1.1	70.9	4.9	12.8	2.7	5.0	0.8	1.4	0.4	72.0	4.9	23.1	0.069	0.505	19.285289	-99.532784
T. Izq. San Mateo Atenco (Alta)	52.00	3	2	57995	0.0	100.0	0.0	0.0	0.0	0.0	0.0	0.0	0.0	100.0	0.0	0.0	0.077	0.508	19.285467	-99.532747
X. C. Libramiento de Toluca (Alta)	62.20	1	1	68243	0.1	99.9	0.0	0.0	0.0	0.0	0.0	0.0	0.0	100.0	0.0	0.0	0.061	0.527	19.288078	-99.620099

CIUDAD DE MEXICO

4 CARR: México - Toluca

CLAVE: 00447

RUTA: MEX-015

AÑO: 2017

LUGAR	ESTACION				CLASIFICACION VEHICULAR EN PORCIENTO														COORDENADAS	
	KM	TE	SC	TDPA	M	A	B	C2	C3	T3S2	T3S3	T3S2R4	OTROS	A	B	C	K'	D	LATITUD	LONGITUD
X. C. Libramiento de Toluca (Baja)	62.20	1	1	22168	0.4	81.1	3.3	4.9	2.2	3.3	3.4	1.2	0.2	81.5	3.3	15.2	0.062	0.508	19.288457	-99.620028
X. C. Libramiento de Toluca (Alta)	62.20	1	2	64320	0.1	99.9	0.0	0.0	0.0	0.0	0.0	0.0	0.0	100.0	0.0	0.0	0.073	0.527	19.287734	-99.620780
X. C. Libramiento de Toluca (Baja)	62.20	1	2	22909	0.9	78.3	3.7	5.5	2.5	3.6	3.9	1.4	0.2	79.2	3.7	17.1	0.062	0.508	19.287474	-99.620335
Toluca	66.00																			

5 CARR: San Gregorio - Oaxtepec

CLAVE: 00901

RUTA: MEX-113

AÑO: 2017

LUGAR	ESTACION				CLASIFICACION VEHICULAR EN PORCIENTO														COORDENADAS	
	KM	TE	SC	TDPA	M	A	B	C2	C3	T3S2	T3S3	T3S2R4	OTROS	A	B	C	K'	D	LATITUD	LONGITUD
San Gregorio	0.00	3	0	19408	3.6	87.7	0.4	6.8	0.2	0.3	0.9	0.0	0.1	91.3	0.4	8.3	0.059	0.502	19.236925	-99.054234
X. C. Milpa Alta - San Lorenzo Tlacoyucan	9.00	3	0	9624	3.3	90.9	0.5	4.8	0.3	0.1	0.1	0.0	0.0	94.2	0.5	5.3	0.090	0.599	19.180785	-99.029618
Lim. Edos. Term. D. F. Ppia. Mex.	18.80																			
Lim. Edos. Term. Mex. Ppia. Mor.	28.50																			
T. Der. San Felipe Neri	33.80	1	0	5315	1.6	81.4	1.6	7.6	1.5	2.4	1.6	0.8	1.5	83.0	1.6	15.4	0.070	0.504	19.046367	-98.936200
T. Der. Tlalnepantla	40.50	3	0	5513	1.8	90.0	0.3	5.0	0.3	1.7	0.4	0.1	0.4	91.8	0.3	7.9	0.096	0.525	19.003867	-98.990033
Tlayacapan	48.50	3	0	12872	4.9	83.7	0.3	4.3	0.3	4.8	0.6	0.2	0.9	88.6	0.3	11.1	0.068	0.507	18.939883	-98.974433
T. Der. Yautepec	53.00	1	0	10606	6.1	79.4	0.2	4.4	0.3	6.6	1.0	0.4	1.6	85.5	0.2	14.3	0.082	0.503	18.922071	-98.968972
T. Der. Yautepec	53.00	3	0	15012	6.2	86.9	1.1	3.7	0.3	0.4	0.9	0.3	0.2	93.1	1.1	5.8	0.073	0.523	18.916133	-98.970117
Oaxtepec	56.00																			

6 CARR: México - Cuernavaca (Cuota)

CLAVE: 00041

RUTA: MEX-095D

AÑO: 2017

LUGAR	ESTACION				CLASIFICACION VEHICULAR EN PORCIENTO														COORDENADAS	
	KM	TE	SC	TDPA	M	A	B	C2	C3	T3S2	T3S3	T3S2R4	OTROS	A	B	C	K'	D	LATITUD	LONGITUD
México	0.00																			
T. C. México - Cuernavaca (Libre)	18.65	3	1	34988	1.0	87.6	2.8	4.6	0.8	1.7	0.8	0.5	0.2	88.6	2.8	8.6	0.068	0.548	19.265957	-99.165205
T. C. México - Cuernavaca (Libre)	18.65	3	2	28854	0.9	86.3	3.1	5.3	1.0	1.9	0.8	0.5	0.2	87.2	3.1	9.7	0.098	0.548	19.267490	-99.164488
Caseta de Cobro Tlalpan	23.36	2	1	14518	1.4	83.6	5.5	2.5	2.6	2.5	0.6	1.0	0.3	85.0	5.5	9.5	0.145	0.500	19.241966	-99.148262
Caseta de Cobro Tlalpan	23.36	2	2	14518	1.4	83.6	5.5	2.5	2.6	2.5	0.6	1.0	0.3	85.0	5.5	9.5	0.145	0.500	19.241966	-99.148262
Lim. Edos. Term. D. F. Ppia. Mor.	47.09																			
Tres Marías	53.00	1	1	21914	0.7	84.5	5.0	5.0	1.0	1.9	0.6	1.0	0.3	85.2	5.0	9.8	0.145	0.501	19.074395	-99.234657
Tres Marías	53.00	1	2	21786	0.8	83.4	5.7	5.1	1.1	2.0	0.6	1.0	0.3	84.2	5.7	10.1	0.140	0.501	19.079091	-99.232791
Tres Marías	53.00	3	1	21914	0.7	84.7	5.2	4.5	1.1	1.9	0.6	1.0	0.3	85.4	5.2	9.4	0.145	0.502	19.043063	-99.233379
Tres Marías	53.00	3	2	21783	0.8	82.7	5.8	5.5	1.1	2.2	0.6	1.0	0.3	83.5	5.8	10.7	0.140	0.502	19.048474	-99.238961
T. Izq. Cuautla	70.50	1	1	22096	0.7	83.8	5.5	4.9	1.1	2.2	0.6	0.9	0.3	84.5	5.5	10.0	0.142	0.502	19.013777	-99.160884

CIUDAD DE MEXICO

6 CARR: México - Cuernavaca (Cuota)

CLAVE: 00041

RUTA: MEX-095D

AÑO: 2017

LUGAR	ESTACION				CLASIFICACION VEHICULAR EN PORCIENTO												COORDENADAS			
	KM	TE	SC	TDPA	M	A	B	C2	C3	T3S2	T3S3	T3S2R4	OTROS	A	B	C	K'	D	LATITUD	LONGITUD
T. Izq. Cuautla	70.50	1	2	21894	0.8	83.9	5.3	5.0	1.2	2.0	0.6	0.9	0.3	84.7	5.3	10.0	0.138	0.502	19.014094	-99.157897
T. Izq. A Glorieta La Paloma	79.26	1	1	22778	0.6	85.9	3.4	4.5	1.2	2.2	0.7	1.1	0.4	86.5	3.4	10.1	0.120	0.546	18.982204	-99.218263
T. Izq. A Glorieta La Paloma	79.26	1	2	18975	0.9	84.5	3.8	4.9	1.2	2.4	0.8	1.1	0.4	85.4	3.8	10.8	0.070	0.546	18.982206	-99.218263
Libramiento de Cuernavaca	79.30	1	1	19950	1.1	85.5	2.8	5.1	1.0	2.5	0.8	0.9	0.3	86.6	2.8	10.6	0.087	0.688	18.969650	-99.238778
Libramiento de Cuernavaca	79.30	1	2	44023	1.4	84.1	3.1	5.6	1.0	2.6	0.9	1.0	0.3	85.5	3.1	11.4	0.073	0.688	18.969594	-99.238802
T. C. México - Cuernavaca (Libre)	80.26																			

7 CARR: México - Pachuca (Cuota)

CLAVE: 00432

RUTA: MEX-085D

AÑO: 2017

LUGAR	ESTACION				CLASIFICACION VEHICULAR EN PORCIENTO												COORDENADAS			
	KM	TE	SC	TDPA	M	A	B	C2	C3	T3S2	T3S3	T3S2R4	OTROS	A	B	C	K'	D	LATITUD	LONGITUD
T. C. México - Pachuca (Libre)	0.00																			
Lim. Edos. Term. D. F. Ppia. Mex.	9.86																			
Caseta de Cobro Ojo de Agua	25.00	2	1	31327	1.0	86.4	5.3	1.5	3.9	1.3	0.2	0.3	0.1	87.4	5.3	7.3	0.081	0.500	19.618818	-99.029465
Caseta de Cobro Ojo de Agua	25.00	2	2	31327	1.0	86.4	5.3	1.5	3.9	1.3	0.2	0.3	0.1	87.4	5.3	7.3	0.081	0.500	19.618818	-99.029465
Caseta de Cobro Ojo de Agua	25.00	3	1	29719	1.3	84.7	2.3	7.9	1.3	1.7	0.3	0.4	0.1	86.0	2.3	11.7	0.089	0.520	19.628156	-99.024663
Caseta de Cobro Ojo de Agua	25.00	3	2	27384	1.5	83.1	2.4	8.7	1.5	2.0	0.3	0.4	0.1	84.6	2.4	13.0	0.098	0.520	19.628057	-99.024503
T. Izq. Tecámac	35.62	3	1	27763	1.4	85.2	2.3	6.8	1.5	2.1	0.2	0.4	0.1	86.6	2.3	11.1	0.077	0.514	19.724877	-98.955384
T. Izq. Tecámac	35.62	3	2	26249	1.8	84.4	2.4	6.8	1.6	2.3	0.2	0.4	0.1	86.2	2.4	11.4	0.082	0.514	19.724945	-98.955452
Lim. Edos. Term. Mex. Ppia. Hgo.	49.60																			
X. C. Otumba - Tizayuca	53.45	1	1	23419	1.3	85.2	2.1	6.8	1.6	2.0	0.4	0.5	0.1	86.5	2.1	11.4	0.085	0.523	19.829330	-98.950275
X. C. Otumba - Tizayuca	53.45	1	2	21397	1.8	83.6	2.5	7.2	1.7	2.2	0.4	0.5	0.1	85.4	2.5	12.1	0.100	0.523	19.829383	-98.950197
T. C. México - Pachuca (Libre)	60.50	1	1	21101	1.0	85.7	2.3	6.6	1.4	2.0	0.4	0.5	0.1	86.7	2.3	11.0	0.078	0.511	19.882951	-98.937650
T. C. México - Pachuca (Libre)	60.50	1	2	20194	1.8	83.0	2.4	7.9	1.6	2.3	0.4	0.5	0.1	84.8	2.4	12.8	0.086	0.511	19.882851	-98.937591

8 CARR: México - Puebla (Cuota)

CLAVE: 00450

RUTA: MEX-150D

AÑO: 2017

LUGAR	ESTACION				CLASIFICACION VEHICULAR EN PORCIENTO												COORDENADAS			
	KM	TE	SC	TDPA	M	A	B	C2	C3	T3S2	T3S3	T3S2R4	OTROS	A	B	C	K'	D	LATITUD	LONGITUD
México	0.00																			
Ent Concordía (T. Izq. Los Reyes) Central	17.00	3	1	65809	0.9	88.7	1.7	5.8	0.8	1.1	0.7	0.1	0.2	89.6	1.7	8.7	0.075	0.509	19.353291	-98.989238
Ent Concordía (T. Izq. Los Reyes) Lateral	17.00	3	1	9964	3.4	75.9	2.6	13.6	1.2	2.0	0.8	0.2	0.3	79.3	2.6	18.1	0.078	0.697	19.353498	-98.989034
Ent Concordía (T. Izq. Los Reyes) Lateral	17.00	3	2	22899	2.9	75.0	2.9	14.0	1.5	2.0	1.0	0.3	0.4	77.9	2.9	19.2	0.062	0.697	19.353498	-98.989034
Ent Concordía (T. Izq. Los Reyes) Central	17.00	3	2	63495	1.5	87.3	2.0	6.0	0.9	1.2	0.8	0.1	0.2	88.8	2.0	9.2	0.068	0.509	19.353381	-98.989136
Lim. Edos. Term. D. F. Ppia. Mex.	17.51																			

CIUDAD DE MEXICO

8 CARR: México - Puebla (Cuota)

CLAVE: 00450

RUTA: MEX-150D

AÑO: 2017

LUGAR	ESTACION				CLASIFICACION VEHICULAR EN PORCIENTO												COORDENADAS			
	KM	TE	SC	TDPA	M	A	B	C2	C3	T3S2	T3S3	T3S2R4	OTROS	A	B	C	K'	D	LATITUD	LONGITUD
Av. Las Torres (Eje 6) Lateral	19.27	1	1	20665	1.5	85.4	1.4	9.1	0.8	1.0	0.4	0.2	0.2	86.9	1.4	11.7	0.068	0.515	19.346675	-98.982519
Av. Las Torres (Eje 6) Central	19.27	1	1	64967	0.9	88.8	1.9	5.7	0.6	1.2	0.6	0.1	0.2	89.7	1.9	8.4	0.067	0.507	19.346755	-98.982451
Av. Las Torres (Eje 6) Lateral	19.27	1	2	21986	3.4	81.9	1.5	10.5	0.8	1.0	0.5	0.2	0.2	85.3	1.5	13.2	0.073	0.515	19.346709	-98.982125
Av. Las Torres (Eje 6) Central	19.27	1	2	63073	1.5	87.6	2.0	6.0	0.7	1.3	0.6	0.1	0.2	89.1	2.0	8.9	0.063	0.507	19.346630	-98.982222
Av. Las Torres (Eje 6) Lateral	19.27	3	1	25705	3.7	82.8	1.3	8.7	0.8	1.5	0.8	0.1	0.3	86.5	1.3	12.2	0.074	0.552	19.339508	-98.976362
Av. Las Torres (Eje 6) Central	19.27	3	1	68301	2.1	87.3	2.2	5.7	0.7	1.1	0.6	0.1	0.2	89.4	2.2	8.4	0.061	0.501	19.339590	-98.976294
Av. Las Torres (Eje 6) Lateral	19.27	3	2	20835	3.2	66.0	4.7	20.1	1.8	2.7	0.9	0.3	0.3	69.2	4.7	26.1	0.064	0.552	19.339735	-98.976050
Av. Las Torres (Eje 6) Central	19.27	3	2	68025	1.5	86.9	2.3	6.3	0.7	1.3	0.7	0.1	0.2	88.4	2.3	9.3	0.057	0.501	19.339653	-98.976176
Eje 10 Sur (Lateral)	22.80	1	1	22498	3.8	82.3	0.5	11.7	0.7	0.4	0.4	0.1	0.1	86.1	0.5	13.4	0.072	0.544	19.329612	-98.965659
Eje 10 Sur (Central)	22.80	1	1	69170	2.1	87.5	2.0	5.5	0.7	1.2	0.7	0.1	0.2	89.6	2.0	8.4	0.061	0.504	19.329659	-98.965602
Eje 10 Sur (Central)	22.80	1	2	70220	1.5	87.1	2.3	6.1	0.8	1.2	0.7	0.1	0.2	88.6	2.3	9.1	0.062	0.504	19.329728	-98.965539
Eje 10 Sur (Lateral)	22.80	1	2	18871	3.5	73.8	3.0	14.9	1.4	2.1	0.8	0.2	0.3	77.3	3.0	19.7	0.066	0.544	19.329766	-98.965453
Eje 10 Sur (Lateral)	22.80	3	1	19844	3.3	82.7	2.3	9.6	0.7	0.8	0.4	0.1	0.1	86.0	2.3	11.7	0.076	0.615	19.313787	-98.947065
Eje 10 Sur (Central)	22.80	3	1	37256	1.8	86.4	2.9	5.6	0.9	1.4	0.6	0.2	0.2	88.2	2.9	8.9	0.070	0.511	19.313852	-98.946977
Eje 10 Sur (Central)	22.80	3	2	38916	1.4	85.5	3.2	6.4	1.0	1.5	0.6	0.2	0.2	86.9	3.2	9.9	0.078	0.511	19.314011	-98.946788
Eje 10 Sur (Lateral)	22.80	3	2	31691	3.6	85.6	0.9	7.6	0.5	0.7	0.8	0.1	0.2	89.2	0.9	9.9	0.073	0.615	19.314106	-98.946680
X. C. Santa Bárbara - Izúcar de Matamoros (Central)	32.14	1	1	41779	1.8	85.8	2.8	6.1	1.0	1.5	0.6	0.2	0.2	87.6	2.8	9.6	0.060	0.517	19.292451	-98.889204
X. C. Santa Bárbara - Izúcar de Matamoros (Lateral)	32.14	1	1	9646	1.5	80.9	1.3	12.7	1.1	1.8	0.3	0.3	0.1	82.4	1.3	16.3	0.068	0.692	19.292316	-98.889187
X. C. Santa Bárbara - Izúcar de Matamoros (Lateral)	32.14	1	2	21628	3.5	84.4	1.4	8.5	0.6	0.7	0.6	0.1	0.2	87.9	1.4	10.7	0.072	0.692	19.292788	-98.889108
X. C. Santa Bárbara - Izúcar de Matamoros (Central)	32.14	1	2	44647	1.4	85.0	3.2	6.7	1.0	1.7	0.6	0.2	0.2	86.4	3.2	10.4	0.064	0.517	19.292634	-98.889153
X. C. Santa Bárbara - Izúcar de Matamoros (Lateral)	32.14	3	1	10081	1.0	72.4	12.6	7.0	0.9	4.3	0.6	0.9	0.3	73.4	12.6	14.0	0.098	0.848	19.294621	-98.876147
X. C. Santa Bárbara - Izúcar de Matamoros (Central)	32.14	3	1	14471	0.9	78.4	9.3	5.9	0.7	3.6	0.4	0.5	0.3	79.3	9.3	11.4	0.101	0.504	19.294749	-98.876195
X. C. Santa Bárbara - Izúcar de Matamoros (Central)	32.14	3	2	14262	0.7	75.8	11.3	6.5	0.7	3.8	0.4	0.5	0.3	76.5	11.3	12.2	0.131	0.504	19.294924	-98.876227
X. C. Santa Bárbara - Izúcar de Matamoros (Lateral)	32.14	3	2	1801	0.8	61.4	17.5	10.6	1.5	6.2	0.7	1.0	0.3	62.2	17.5	20.3	0.102	0.848	19.295062	-98.876264
Caseta de Cobro San Marcos	33.30	2	1	17095	0.4	74.5	7.0	3.5	5.5	6.1	0.5	2.2	0.3	74.9	7.0	18.1	0.068	0.500	19.296362	-98.870728
Caseta de Cobro San Marcos	33.30	2	2	17095	0.4	74.5	7.0	3.5	5.5	6.1	0.5	2.2	0.3	74.9	7.0	18.1	0.068	0.500	19.296362	-98.870728
T. Izq. Río Frio	63.79	3	1	17060	0.9	78.8	9.6	5.5	0.7	3.3	0.4	0.5	0.3	79.7	9.6	10.7	0.099	0.506	19.351889	-98.663071
T. Izq. Río Frio	63.79	3	2	16686	0.6	77.1	10.3	6.5	0.7	3.6	0.4	0.5	0.3	77.7	10.3	12.0	0.124	0.506	19.351801	-98.660479
Lim. Edos. Term. Mex. Ppia. Pue.	65.46																			
T. Izq. Tlaxcala	90.61	1	1	18275	1.2	73.6	7.9	8.0	2.4	4.4	0.5	1.6	0.4	74.8	7.9	17.3	0.079	0.504	19.273278	-98.434400
T. Izq. Tlaxcala	90.61	1	2	18687	1.3	70.8	8.9	8.7	2.6	5.0	0.5	1.8	0.4	72.1	8.9	19.0	0.083	0.504	19.273369	-98.434351
T. Izq. Tlaxcala	90.61	3	1	23123	0.7	69.1	5.8	8.5	2.7	8.0	1.5	3.3	0.4	69.8	5.8	24.4	0.072	0.528	19.261795	-98.417522
T. Izq. Tlaxcala	90.61	3	2	20533	1.0	66.3	6.4	8.9	2.9	8.8	1.6	3.7	0.4	67.3	6.4	26.3	0.077	0.528	19.261734	-98.417036
Caseta de Cobro San Martín Texmelucan	91.17	2	1	24551	0.5	70.0	7.1	3.6	4.7	8.9	1.1	3.7	0.4	70.5	7.1	22.4	0.068	0.500	19.241098	-98.385681
Caseta de Cobro San Martín Texmelucan	91.17	2	2	24551	0.5	70.0	7.1	3.6	4.7	8.9	1.1	3.7	0.4	70.5	7.1	22.4	0.068	0.500	19.241098	-98.385681

CIUDAD DE MEXICO

8 CARR: México - Puebla (Cuota)

CLAVE: 00450

RUTA: MEX-150D

AÑO: 2017

LUGAR	ESTACION				CLASIFICACION VEHICULAR EN PORCIENTO										COORDENADAS					
	KM	TE	SC	TDPA	M	A	B	C2	C3	T3S2	T3S3	T3S2R4	OTROS	A	B	C	K'	D	LATITUD	LONGITUD
Lim. Edos. Term. Pue. Ppia. Tlax.	99.11																			
T. Der. Aeropuerto Internacional De Puebla	101.10	3	1	27458	0.8	74.6	5.3	5.5	2.7	6.1	1.4	2.6	1.0	75.4	5.3	19.3	0.067	0.504	19.208132	-98.348055
T. Der. Aeropuerto Internacional De Puebla	101.10	3	2	27847	0.9	71.9	5.5	6.5	3.0	6.8	1.5	2.8	1.1	72.8	5.5	21.7	0.073	0.504	19.208074	-98.348160
X. C. Xoxtla - Huactzinco	107.98	1	1	29255	1.1	73.0	5.4	6.2	2.9	6.4	1.5	2.6	0.9	74.1	5.4	20.5	0.068	0.506	19.179761	-98.313770
X. C. Xoxtla - Huactzinco	107.98	1	2	28363	0.7	70.7	6.1	6.8	3.0	7.1	1.7	2.9	1.0	71.4	6.1	22.5	0.070	0.506	19.179873	-98.313655
X. C. Xoxtla - Huactzinco	107.98	3	1	32887	1.2	74.5	4.1	8.1	2.1	5.4	1.6	2.1	0.9	75.7	4.1	20.2	0.069	0.508	19.170745	-98.302845
X. C. Xoxtla - Huactzinco	107.98	3	2	31566	1.2	71.5	4.5	9.7	2.3	5.7	1.8	2.3	1.0	72.7	4.5	22.8	0.070	0.508	19.170760	-98.302465
Lim. Edos. Term. Tlax. Ppia. Pue.	108.00																			
Anillo Periferico Poniente De Puebla (Lateral)	114.00	3	1	26094	0.6	83.5	3.2	6.1	2.9	1.6	0.5	0.8	0.8	84.1	3.2	12.7	0.102	0.523	19.127117	-98.263420
Anillo Periferico Poniente De Puebla (Central)	114.00	3	1	22701	0.8	74.2	5.9	4.8	3.3	7.0	0.7	2.7	0.6	75.0	5.9	19.1	0.061	0.522	19.126756	-98.263698
Anillo Periferico Poniente De Puebla (Lateral)	114.00	3	2	29991	0.4	82.3	3.4	7.0	3.1	1.7	0.5	0.8	0.8	82.7	3.4	13.9	0.106	0.523	19.126797	-98.263627
Anillo Periferico Poniente De Puebla (Central)	114.00	3	2	20814	0.9	71.3	6.3	5.4	3.8	7.7	0.8	3.2	0.6	72.2	6.3	21.5	0.072	0.522	19.126890	-98.263419
Boulevard Hermanos Serdán	120.46	3	1	53437	0.7	79.6	5.0	5.9	3.4	3.2	0.5	1.5	0.2	80.3	5.0	14.7	0.065	0.503	19.094829	-98.226449
Boulevard Hermanos Serdán	120.46	3	2	52004	0.7	77.2	5.7	6.9	3.8	3.4	0.5	1.6	0.2	77.9	5.7	16.4	0.068	0.503	19.094829	-98.226449
X. C. Puebla - Tlaxcala (Central)	123.00	3	1	31353	0.7	76.6	3.9	7.4	3.4	4.5	0.9	2.3	0.3	77.3	3.9	18.8	0.071	0.529	19.086118	-98.200375
X. C. Puebla - Tlaxcala (Lateral)	123.00	3	1	29064	0.7	85.1	7.2	3.5	1.7	1.0	0.5	0.1	0.2	85.8	7.2	7.0	0.072	0.549	19.085248	-98.196039
X. C. Puebla - Tlaxcala (Central)	123.00	3	2	43795	0.6	75.4	4.1	7.6	3.7	5.0	1.0	2.3	0.3	76.0	4.1	19.9	0.073	0.529	19.086118	-98.200375
X. C. Puebla - Tlaxcala (Lateral)	123.00	3	2	23754	0.8	83.8	8.0	3.7	1.8	1.1	0.5	0.1	0.2	84.6	8.0	7.4	0.091	0.549	19.085373	-98.196001
T. C. Puebla - Tlaxcala	124.90																			

9 CARR: México - Toluca (Cuota)

CLAVE: 00446

RUTA: MEX-015D

AÑO: 2017

LUGAR	ESTACION				CLASIFICACION VEHICULAR EN PORCIENTO										COORDENADAS					
	KM	TE	SC	TDPA	M	A	B	C2	C3	T3S2	T3S3	T3S2R4	OTROS	A	B	C	K'	D	LATITUD	LONGITUD
T. C. México - Toluca (Libre) (Puente Conafrut)	0.00	3	1	29898	0.4	86.8	3.8	5.1	0.5	1.3	1.0	0.6	0.5	87.2	3.8	9.0	0.063	0.519	19.380259	-99.251621
T. C. México - Toluca (Libre) (Puente Conafrut)	0.00	3	2	27691	0.6	85.7	4.1	5.5	0.5	1.5	1.0	0.6	0.5	86.3	4.1	9.6	0.104	0.519	19.381141	-99.250190
Caseta de Cobro Santa Fe	3.50	1	1	27031	0.4	87.7	3.2	4.8	0.4	1.5	1.3	0.3	0.4	88.1	3.2	8.7	0.095	0.509	19.370260	-99.265976
Caseta de Cobro Santa Fe	3.50	1	2	28059	0.6	86.5	3.3	5.4	0.4	1.6	1.5	0.3	0.4	87.1	3.3	9.6	0.115	0.509	19.370171	-99.265818
Caseta de Cobro Santa Fe	3.50	3	1	21970	0.4	87.5	3.4	4.8	0.4	1.5	1.3	0.3	0.4	87.9	3.4	8.7	0.094	0.533	19.351521	-99.280163
Caseta de Cobro Santa Fe	3.50	3	2	25059	0.6	86.2	3.7	5.2	0.4	1.7	1.5	0.3	0.4	86.8	3.7	9.5	0.130	0.533	19.351492	-99.279912
Caseta de Cobro La Venta	10.00	1	1	22390	0.4	87.7	3.1	4.7	0.4	1.7	1.3	0.3	0.4	88.1	3.1	8.8	0.090	0.533	19.336042	-99.300566
Caseta de Cobro La Venta	10.00	1	2	25537	0.6	86.1	3.6	5.4	0.4	1.7	1.5	0.3	0.4	86.7	3.6	9.7	0.125	0.533	19.335888	-99.300524
Caseta de Cobro La Venta	10.00	2	1	22734	0.6	88.4	6.8	1.9	0.7	0.9	0.1	0.5	0.1	89.0	6.8	4.2	0.089	0.500	19.332766	-99.314290
Caseta de Cobro La Venta	10.00	2	2	22734	0.6	88.4	6.8	1.9	0.7	0.9	0.1	0.5	0.1	89.0	6.8	4.2	0.089	0.500	19.332766	-99.314290
Caseta de Cobro La Venta	10.00	3	1	32718	0.6	87.4	3.8	3.3	0.7	2.2	0.8	0.7	0.5	88.0	3.8	8.2	0.091	0.507	19.322201	-99.319489

CIUDAD DE MEXICO

9 CARR: México - Toluca (Cuota)

CLAVE: 00446

RUTA: MEX-015D

AÑO: 2017

LUGAR	ESTACION				CLASIFICACION VEHICULAR EN PORCIENTO														COORDENADAS	
	KM	TE	SC	TDPA	M	A	B	C2	C3	T3S2	T3S3	T3S2R4	OTROS	A	B	C	K'	D	LATITUD	LONGITUD
Caseta de Cobro La Venta	10.00	3	2	31795	0.7	87.9	3.4	3.3	0.8	2.3	0.6	0.7	0.3	88.6	3.4	8.0	0.100	0.507	19.323075	-99.318978
Lim. Edos. Term. D. F. Ppia. Mex.	18.66																			
T. C. México - Toluca (Libre) (La Marquesa)	19.20	1	1	32144	0.6	88.6	3.4	3.1	0.7	1.9	0.7	0.6	0.4	89.2	3.4	7.4	0.093	0.507	19.298058	-99.356591
T. C. México - Toluca (Libre) (La Marquesa)	19.20	1	2	31243	0.7	87.1	4.0	3.5	0.7	2.2	0.7	0.7	0.4	87.8	4.0	8.2	0.101	0.507	19.297854	-99.356758

10 CARR: México - Querétaro (Cuota)

CLAVE: 00411

RUTA: MEX-057-MEX-057D

AÑO: 2017

LUGAR	ESTACION				CLASIFICACION VEHICULAR EN PORCIENTO														COORDENADAS	
	KM	TE	SC	TDPA	M	A	B	C2	C3	T3S2	T3S3	T3S2R4	OTROS	A	B	C	K'	D	LATITUD	LONGITUD
México	0.00																			
Lim. Edos. Term. D. F. Ppia. Mex.	11.30																			
Caseta de Cobro Tepotzotlán	43.01	2	1	27859	0.4	70.5	5.3	3.3	6.6	10.4	0.7	2.3	0.5	70.9	5.3	23.8	0.077	0.500	19.715359	-99.207588
Caseta de Cobro Tepotzotlán	43.01	2	2	27859	0.4	70.5	5.3	3.3	6.6	10.4	0.7	2.3	0.5	70.9	5.3	23.8	0.077	0.500	19.715359	-99.207588
Ent. Jorobas	56.18	1	1	31862	1.4	68.3	6.0	4.1	4.6	11.9	0.9	2.2	0.6	69.7	6.0	24.3	0.058	0.505	19.811451	-99.238510
Ent. Jorobas	56.18	1	2	32482	1.9	65.7	6.2	4.4	5.2	12.6	1.0	2.4	0.6	67.6	6.2	26.2	0.070	0.505	19.808409	-99.237356
Ent. Jorobas	56.18	3	1	32669	1.2	66.1	5.9	4.4	6.1	12.4	0.7	2.4	0.8	67.3	5.9	26.8	0.058	0.506	19.829245	-99.257725
Ent. Jorobas	56.18	3	2	31857	1.1	63.2	6.3	4.6	6.7	13.8	0.7	2.6	1.0	64.3	6.3	29.4	0.064	0.506	19.828235	-99.255903
Lim. Edos. Term. Mex. Ppia. Hgo.	59.85																			
T. Der. Tepeji del Río	69.36	1	1	30630	1.2	69.4	4.5	3.7	5.0	12.1	0.9	2.5	0.7	70.6	4.5	24.9	0.068	0.506	19.863076	-99.313899
T. Der. Tepeji del Río	69.36	1	2	29870	1.2	67.5	5.1	3.9	5.1	13.0	0.9	2.6	0.7	68.7	5.1	26.2	0.073	0.506	19.872693	-99.339344
T. Der. Tepeji del Río	69.36	3	1	27104	1.0	73.9	3.3	3.2	4.5	10.8	0.5	2.1	0.7	74.9	3.3	21.8	0.074	0.516	19.920829	-99.370331
T. Der. Tepeji del Río	69.36	3	2	28942	0.9	70.9	3.7	3.5	5.1	12.1	0.7	2.2	0.9	71.8	3.7	24.5	0.079	0.516	19.921000	-99.370696
T. Izq. Jilotepec	83.75	1	1	29947	1.3	68.1	4.6	3.5	5.4	13.1	0.9	2.4	0.7	69.4	4.6	26.0	0.071	0.504	19.977225	-99.436130
T. Izq. Jilotepec	83.75	1	2	29505	2.3	63.9	5.3	4.0	6.1	13.8	0.9	2.8	0.9	66.2	5.3	28.5	0.067	0.504	19.977833	-99.438043
T. Izq. Jilotepec	83.75	3	1	24963	2.6	66.8	5.3	3.5	4.2	13.3	1.0	2.6	0.7	69.4	5.3	25.3	0.078	0.506	19.988064	-99.452542
T. Izq. Jilotepec	83.75	3	2	24389	2.2	63.2	6.3	3.9	4.8	14.9	1.1	2.9	0.7	65.4	6.3	28.3	0.073	0.506	19.987988	-99.453296
Lim. Edos. Term. Hgo. Ppia. Mex.	86.00																			
X. C. Jilotepec - Maravillas	107.00	1	1	30544	1.3	64.0	4.4	3.2	4.9	16.4	1.9	3.3	0.6	65.3	4.4	30.3	0.065	0.508	20.080711	-99.619563
X. C. Jilotepec - Maravillas	107.00	1	2	29618	0.9	62.1	4.6	3.6	5.7	16.4	2.0	4.0	0.7	63.0	4.6	32.4	0.066	0.508	20.082280	-99.624224
X. C. Jilotepec - Maravillas	107.00	3	1	29550	1.3	67.2	3.7	5.5	5.0	8.0	3.0	5.4	0.9	68.5	3.7	27.8	0.069	0.508	20.082427	-99.635737
X. C. Jilotepec - Maravillas	107.00	3	2	28659	1.0	63.8	4.0	6.2	6.0	9.2	3.3	5.6	0.9	64.8	4.0	31.2	0.068	0.508	20.082510	-99.633565
T. Izq. Aculco	125.00	1	1	31103	1.3	64.8	4.0	3.1	5.1	15.4	1.7	3.8	0.8	66.1	4.0	29.9	0.065	0.508	20.097515	-99.692899
T. Izq. Aculco	125.00	1	2	30154	0.9	60.3	4.8	3.5	5.8	18.0	1.8	4.1	0.8	61.2	4.8	34.0	0.066	0.508	20.091918	-99.687328
T. Izq. Aculco	125.00	3	1	26622	1.3	65.2	4.2	3.2	4.9	15.1	1.7	3.7	0.7	66.5	4.2	29.3	0.078	0.508	20.109988	-99.707177
T. Izq. Aculco	125.00	3	2	25810	1.0	62.2	4.7	3.4	5.8	16.4	2.0	3.7	0.8	63.2	4.7	32.1	0.079	0.508	20.108570	-99.704284

CIUDAD DE MEXICO

10 CARR: México - Querétaro (Cuota)

CLAVE: 00411

RUTA: MEX-057-MEX-057D

AÑO: 2017

LUGAR	ESTACION				CLASIFICACION VEHICULAR EN PORCIENTO										COORDENADAS					
	KM	TE	SC	TDPA	M	A	B	C2	C3	T3S2	T3S3	T3S2R4	OTROS	A	B	C	K'	D	LATITUD	LONGITUD
Lim. Edos. Term. Mex. Ppia. Qro.	145.50																			
Caseta de Cobro Palmillas	145.80	2	1	26222	0.3	57.7	5.4	4.5	6.5	18.3	1.8	4.7	0.8	58.0	5.4	36.6	0.077	0.500	20.296103	-99.928993
Caseta de Cobro Palmillas	145.80	2	2	26222	0.3	57.7	5.4	4.5	6.5	18.3	1.8	4.7	0.8	58.0	5.4	36.6	0.077	0.500	20.296103	-99.928993
T. Izq. Toluca	148.50	1	1	27152	0.9	57.4	4.3	4.8	6.9	18.8	1.7	4.6	0.6	58.3	4.3	37.4	0.068	0.502	20.286479	-99.911785
T. Izq. Toluca	148.50	1	2	27417	1.2	52.1	4.7	5.3	7.8	21.3	1.9	5.0	0.7	53.3	4.7	42.0	0.063	0.502	20.286174	-99.912019
T. Izq. Toluca	148.50	3	1	32779	1.3	55.8	4.1	5.4	7.4	19.2	1.8	4.3	0.7	57.1	4.1	38.8	0.067	0.501	20.307417	-99.934267
T. Izq. Toluca	148.50	3	2	32689	0.8	53.3	4.4	6.0	7.6	20.6	1.9	4.6	0.8	54.1	4.4	41.5	0.073	0.501	20.307434	-99.934917
T. Der. Poniente San Juan del Río	164.10	3	1	29633	0.9	68.8	3.7	4.3	4.0	13.1	1.9	2.4	0.9	69.7	3.7	26.6	0.107	0.504	20.373833	-99.994331
T. Der. Poniente San Juan del Río	164.10	3	2	29156	0.8	67.0	3.4	3.9	5.9	13.7	1.7	2.7	0.9	67.8	3.4	28.8	0.103	0.504	20.373021	-99.993049
T. Izq. Acámbaro	170.45	3	1	40865	0.9	73.0	3.4	3.5	5.0	9.9	1.9	1.7	0.7	73.9	3.4	22.7	0.094	0.503	20.452020	-100.084549
T. Izq. Acámbaro	170.45	3	2	41279	0.9	72.4	4.2	3.2	5.3	9.7	1.7	1.8	0.8	73.3	4.2	22.5	0.087	0.503	20.452420	-100.085483
T. Der. Libramiento de Querétaro a San Luis Potosí	207.00	1	1	57330	0.7	79.4	3.6	3.0	4.9	5.3	1.8	0.7	0.6	80.1	3.6	16.3	0.085	0.501	20.573096	-100.323004
T. Der. Libramiento de Querétaro a San Luis Potosí	207.00	1	2	57608	0.5	79.2	3.8	2.9	4.9	5.5	1.7	0.8	0.7	79.7	3.8	16.5	0.090	0.501	20.573139	-100.325246
T. Der. Libramiento de Querétaro a San Luis Potosí	207.00	3	1	60257	0.7	84.7	2.1	1.9	3.8	4.2	1.5	0.4	0.7	85.4	2.1	12.5	0.107	0.503	20.578086	-100.381351
T. Der. Libramiento de Querétaro a San Luis Potosí	207.00	3	2	59435	0.8	83.3	2.3	2.2	4.2	4.3	1.8	0.4	0.7	84.1	2.3	13.6	0.112	0.503	20.577951	-100.381309
Querétaro	211.60																			

11 CARR: Chalco - Mixquic

CLAVE: 00171

RUTA: EM-DF

AÑO: 2017

LUGAR	ESTACION				CLASIFICACION VEHICULAR EN PORCIENTO										COORDENADAS					
	KM	TE	SC	TDPA	M	A	B	C2	C3	T3S2	T3S3	T3S2R4	OTROS	A	B	C	K'	D	LATITUD	LONGITUD
Chalco	0.00	3	1	13296	5.9	89.6	0.2	3.1	0.4	0.4	0.3	0.0	0.1	95.5	0.2	4.3	0.063	0.524	19.239958	-98.909442
Chalco	0.00	3	2	14616	7.7	87.4	0.2	3.5	0.4	0.4	0.3	0.0	0.1	95.1	0.2	4.7	0.061	0.524	19.239935	-98.909379
Lim. Edos. Term. Mex. Ppia. D. F.	8.00																			
Mixquic	10.00	1	0	7425	9.1	80.9	0.5	5.4	0.5	2.2	0.6	0.2	0.6	90.0	0.5	9.5	0.075	0.508	19.225064	-98.946795

12 CARR: Chalco - Tláhuac

CLAVE: 00170

RUTA: EM-DF

AÑO: 2017

LUGAR	ESTACION				CLASIFICACION VEHICULAR EN PORCIENTO										COORDENADAS					
	KM	TE	SC	TDPA	M	A	B	C2	C3	T3S2	T3S3	T3S2R4	OTROS	A	B	C	K'	D	LATITUD	LONGITUD
Chalco	0.00	3	1	11198	3.6	89.0	0.5	5.3	0.5	0.6	0.4	0.0	0.1	92.6	0.5	6.9	0.074	0.502	19.250647	-98.918636
Chalco	0.00	3	2	11097	4.3	87.5	0.5	6.0	0.5	0.7	0.4	0.0	0.1	91.8	0.5	7.7	0.061	0.502	19.250568	-98.918542
Lim. Edos. Term. Mex. Ppia. D. F.	7.50																			
Tláhuac	12.00	1	1	10543	3.7	88.7	0.2	4.3	1.3	1.1	0.6	0.0	0.1	92.4	0.2	7.4	0.076	0.507	19.264324	-98.992468
Tláhuac	12.00	1	2	10363	3.5	87.8	0.2	5.1	1.4	1.2	0.7	0.0	0.1	91.3	0.2	8.5	0.068	0.507	19.264225	-98.992378

CIUDAD DE MEXICO

13 CARR: T. C. (México - Mixquic) - San Pablo Atlazalpan

CLAVE: 00044

RUTA: EM-106-DF

AÑO: 2017

LUGAR	ESTACION				CLASIFICACION VEHICULAR EN PORCIENTO													COORDENADAS		
	KM	TE	SC	TDPA	M	A	B	C2	C3	T3S2	T3S3	T3S2R4	OTROS	A	B	C	K'	D	LATITUD	LONGITUD
T. C. México - Mixquic	0.00	3	0	9256	11.3	82.2	0.4	5.8	0.1	0.1	0.1	0.0	0.0	93.5	0.4	6.1	0.056	0.515	19.212862	-98.972461
Lim. Edos. Term. D. F. Ppia. Mex.	2.00																			
San Pablo Atlazalpan	7.00																			

14 CARR: Xalatlaco - El Ajusco

CLAVE: 00017

RUTA: EM-DF

AÑO: 2017

LUGAR	ESTACION				CLASIFICACION VEHICULAR EN PORCIENTO													COORDENADAS		
	KM	TE	SC	TDPA	M	A	B	C2	C3	T3S2	T3S3	T3S2R4	OTROS	A	B	C	K'	D	LATITUD	LONGITUD
T. C. Ent. Cruz de La Misión - San Nicolás Coatepec	0.00	3	0	1767	2.4	86.2	0.3	9.7	0.5	0.5	0.3	0.0	0.1	88.6	0.3	11.1	0.111	0.518	19.158525	-99.402885
Lim. Edos. Term. Mex. Ppia. D. F.	17.70																			
T. C. Circuito del Ajusco	27.60	1	0	774	2.2	86.0	0.5	9.8	0.8	0.4	0.2	0.0	0.1	88.2	0.5	11.3	0.101	0.507	19.207407	-99.276285

15 CARR: La Venta - Chamapa (Cuota)

CLAVE: 15014

RUTA: EM-D

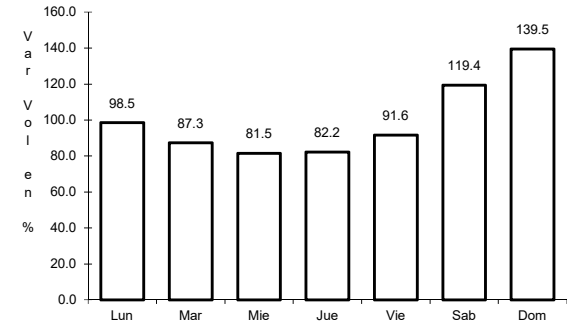
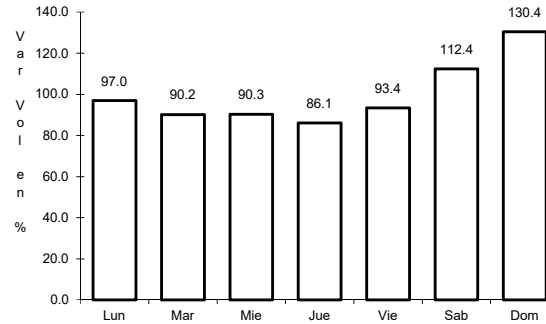
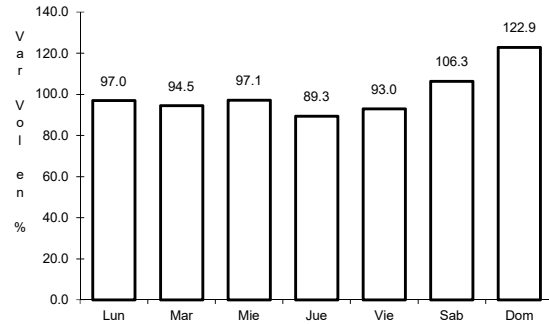
AÑO: 2017

LUGAR	ESTACION				CLASIFICACION VEHICULAR EN PORCIENTO													COORDENADAS		
	KM	TE	SC	TDPA	M	A	B	C2	C3	T3S2	T3S3	T3S2R4	OTROS	A	B	C	K'	D	LATITUD	LONGITUD
T. C. México - Toluca	0.00																			
Plaza de Cobro La Venta	0.10	2	1	13848	0.5	88.6	0.8	3.6	1.9	3.5	0.3	0.6	0.2	89.1	0.8	10.1	0.090	0.500	19.348944	-99.306625
Plaza de Cobro La Venta	0.10	2	2	13848	0.5	88.6	0.8	3.6	1.9	3.5	0.3	0.6	0.2	89.1	0.8	10.1	0.090	0.500	19.348944	-99.306625
Plaza de Cobro La Venta	0.10	3	1	17719	0.9	83.6	1.5	6.7	1.1	3.7	1.0	0.8	0.7	84.5	1.5	14.0	0.103	0.528	19.355126	-99.304654
Plaza de Cobro La Venta	0.10	3	2	15842	0.6	82.3	1.5	7.4	1.2	4.2	1.1	0.9	0.8	82.9	1.5	15.6	0.093	0.528	19.353194	-99.305534
Lim. Edos. Term. CDMX Tab. Ppia. Méx.	2.70																			
T. Der. Interlomas	5.60	3	1	27536	1.0	86.6	0.7	3.5	1.1	3.1	2.3	0.7	1.0	87.6	0.7	11.7	0.086	0.540	19.399286	-99.296905
T. Der. Interlomas	5.60	3	2	23484	0.8	84.6	0.9	4.3	1.3	3.5	2.6	0.8	1.2	85.4	0.9	13.7	0.080	0.540	19.397778	-99.296527
X. C. Naucalpan - Toluca	11.10	1	1	26584	0.9	86.3	0.9	4.2	1.1	2.8	2.1	0.7	1.0	87.2	0.9	11.9	0.099	0.548	19.423085	-99.297267
X. C. Naucalpan - Toluca	11.10	1	2	21966	0.8	85.5	1.0	4.3	1.2	3.1	2.3	0.8	1.0	86.3	1.0	12.7	0.080	0.548	19.423270	-99.297251

1 CARR: México - Cuernavaca (Libre)

CLAVE: 00040

RUTA: MEX-095



Km: 28.78

Tipo: 1

Sent: 1

Km: 28.78

Tipo: 1

Sent: 2

Km: 51.40

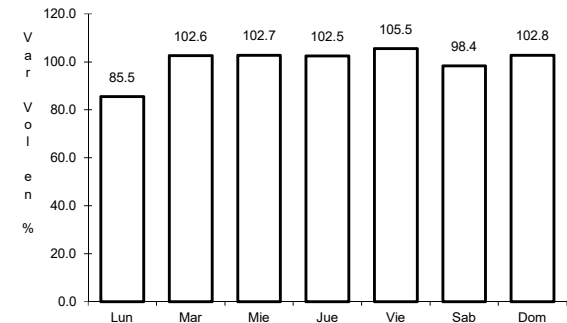
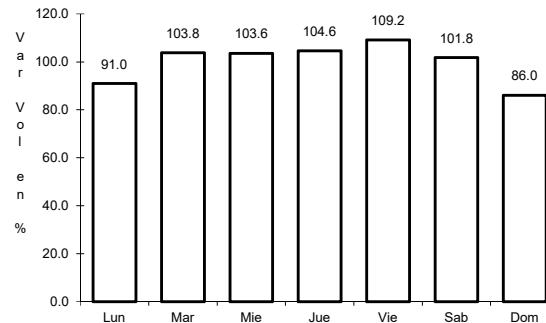
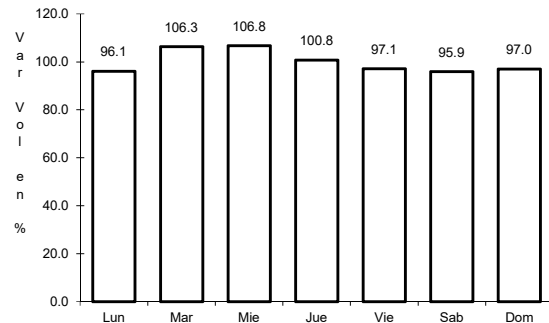
Tipo: 3

Sent: 0

2 CARR: México - Pachuca (Libre)

CLAVE: 00431

RUTA: MEX-085



Km: 26.93

Tipo: 1

Sent: 1

Km: 86.50

Tipo: 1

Sent: 1

Km: 86.50

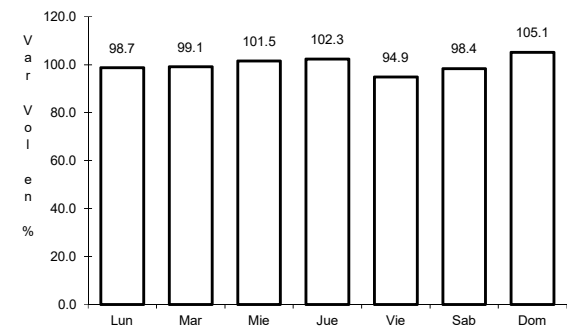
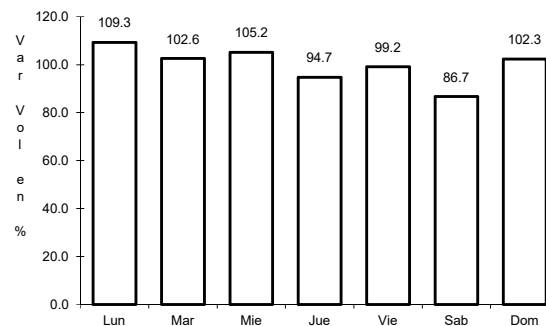
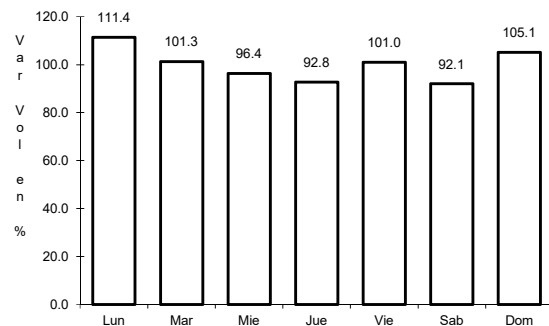
Tipo: 1

Sent: 2

3 CARR: México - Puebla (Libre)

CLAVE: 00449

RUTA: MEX-150



Km: 28.85

Tipo: 1

Sent: 1

Km: 28.85

Tipo: 1

Sent: 2

Km: 62.06

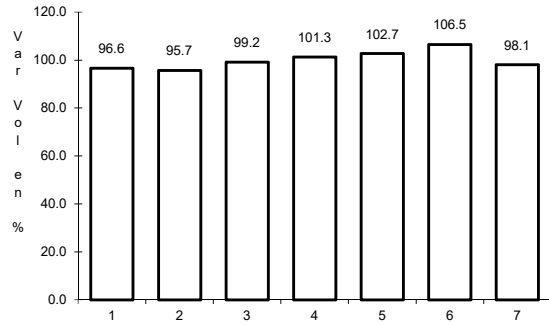
Tipo: 1

Sent: 0

4 CARR: México - Toluca

CLAVE: 00447

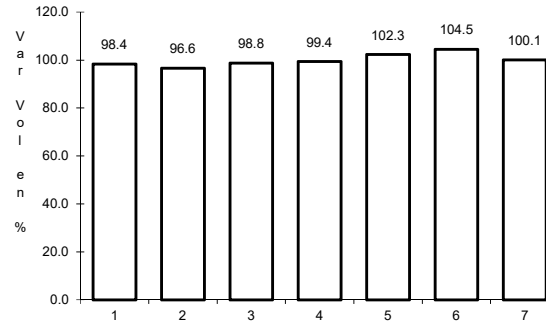
RUTA: MEX-015



Km: 12.84

Tipo: 3

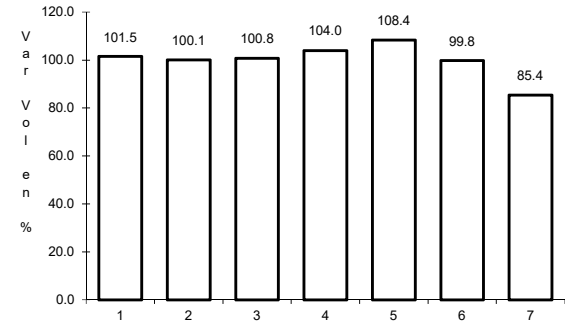
Sent: 1



Km: 12.84

Tipo: 3

Sent: 2



Km: 51.71

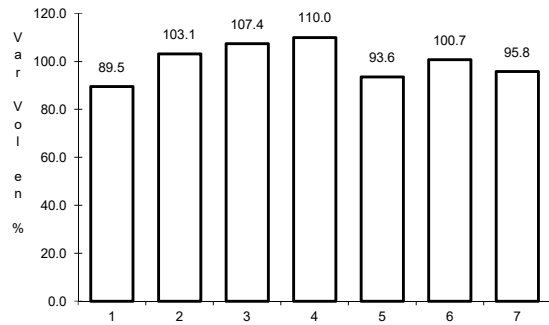
Tipo: 1

Sent: 1

5 CARR: San Gregorio - Oaxtepec

CLAVE: 00901

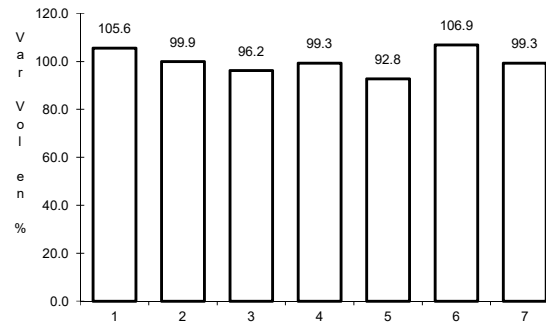
RUTA: MEX-113



Km: 0.00

Tipo: 3

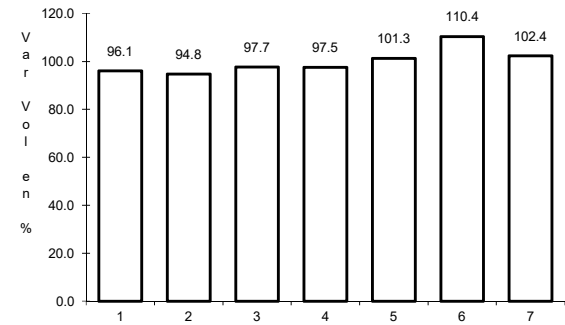
Sent: 0



Km: 33.80

Tipo: 1

Sent: 0



Km: 53.00

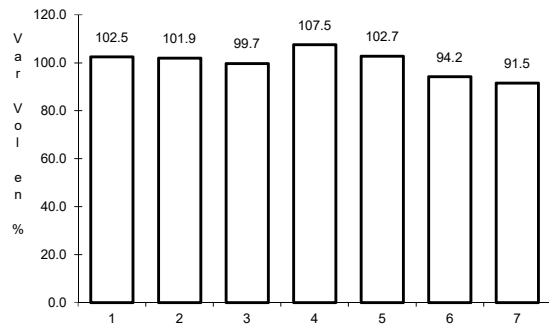
Tipo: 3

Sent: 0

6 CARR: México - Cuernavaca (Cuota)

CLAVE: 00041

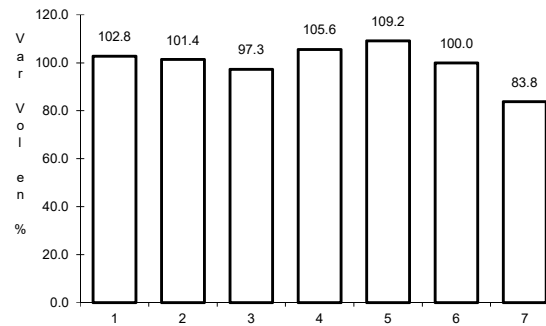
RUTA: MEX-095D



Km: 18.65

Tipo: 3

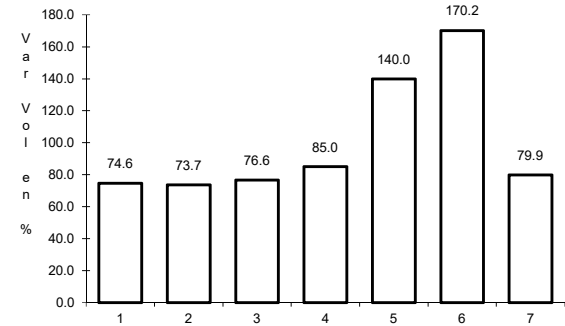
Sent: 1



Km: 18.65

Tipo: 3

Sent: 2



Km: 70.50

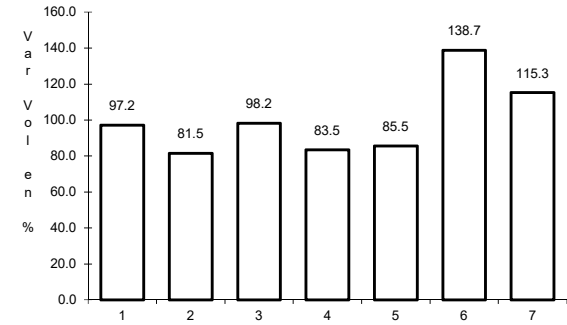
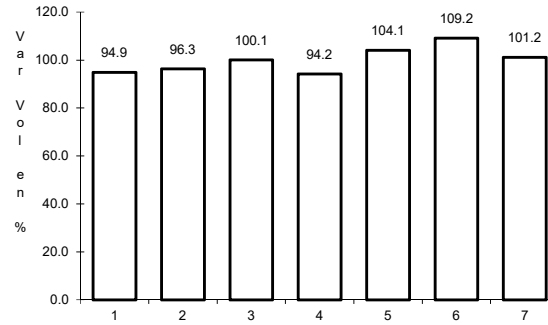
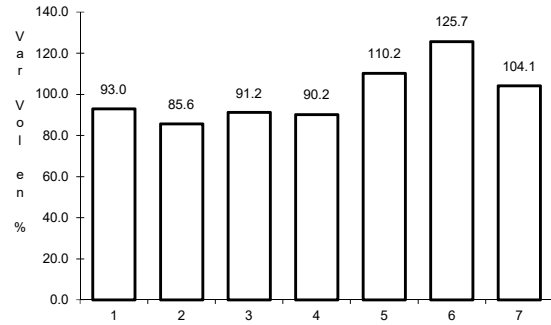
Tipo: 1

Sent: 1

7 CARR: México - Pachuca (Cuota)

CLAVE: 00432

RUTA: MEX-085D



Km: 25.00

Tipo: 3

Sent: 1

Km: 25.00

Tipo: 3

Sent: 2

Km: 60.50

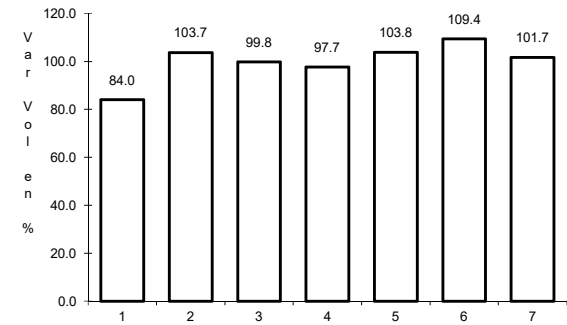
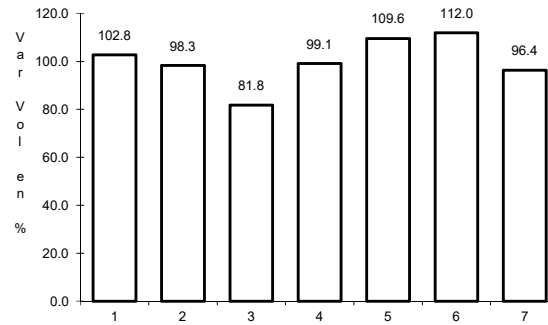
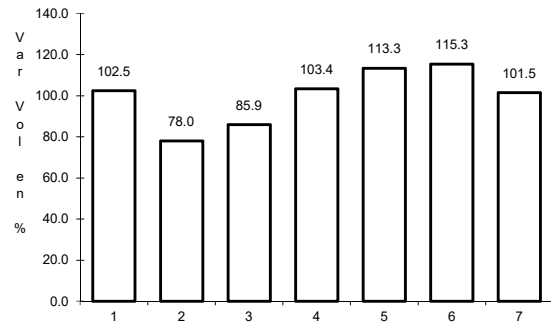
Tipo: 1

Sent: 1

8 CARR: México - Puebla (Cuota)

CLAVE: 00450

RUTA: MEX-150D



Km: 17.00

Tipo: 3

Sent: 1

Km: 17.00

Tipo: 3

Sent: 2

Km: 120.46

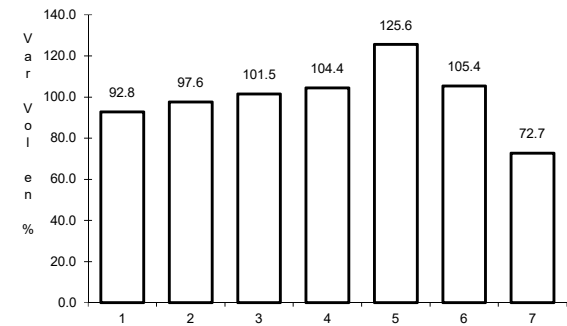
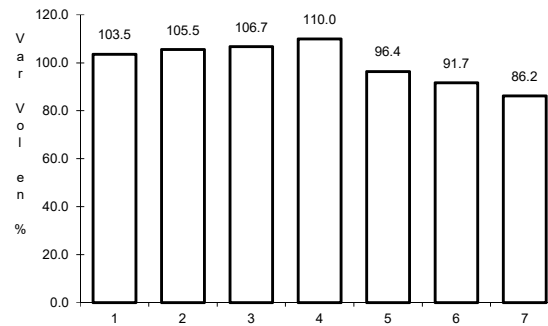
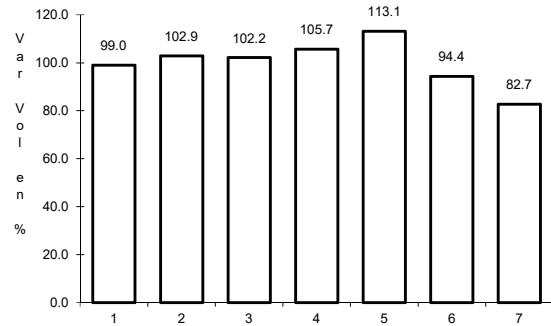
Tipo: 3

Sent: 1

9 CARR: México - Toluca (Cuota)

CLAVE: 00446

RUTA: MEX-015D



Km: 0.00

Tipo: 3

Sent: 1

Km: 0.00

Tipo: 3

Sent: 2

Km: 19.20

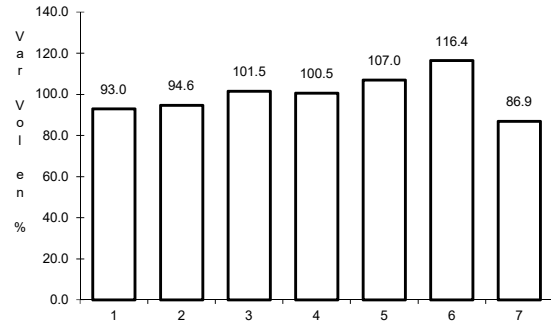
Tipo: 1

Sent: 1

10 CARR: México - Querétaro (Cuota)

CLAVE: 00411

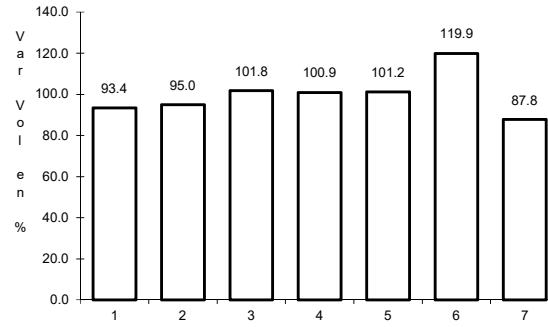
RUTA: MEX-057-MEX-057D



Km: 56.18

Tipo: 1

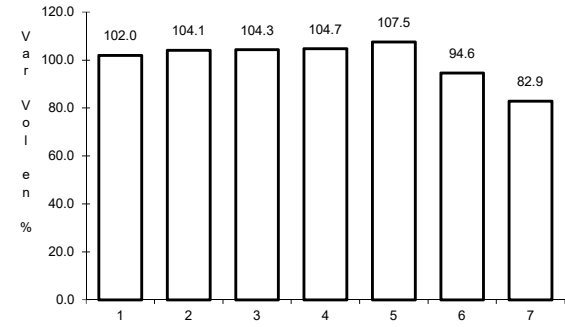
Sent: 1



Km: 56.18

Tipo: 1

Sent: 2



Km: 207.00

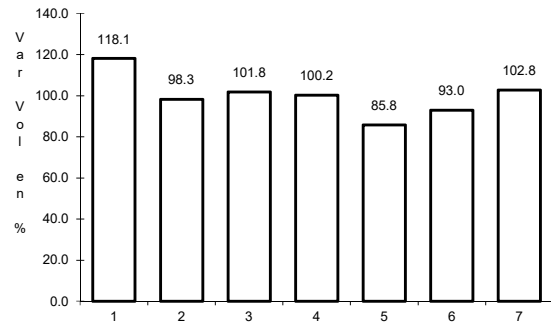
Tipo: 3

Sent: 1

11 CARR: Chalco - Mixquic

CLAVE: 00171

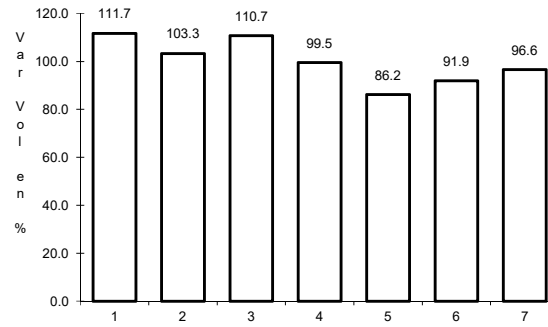
RUTA: EM-DF



Km: 0.00

Tipo: 3

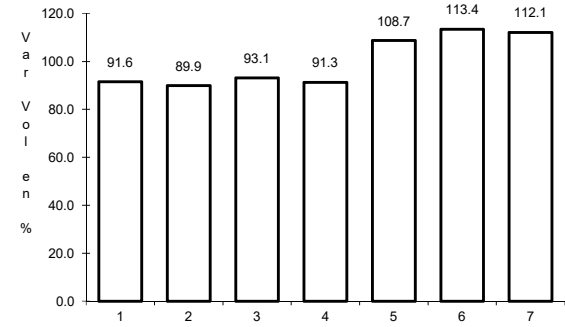
Sent: 1



Km: 0.00

Tipo: 3

Sent: 2



Km: 10.00

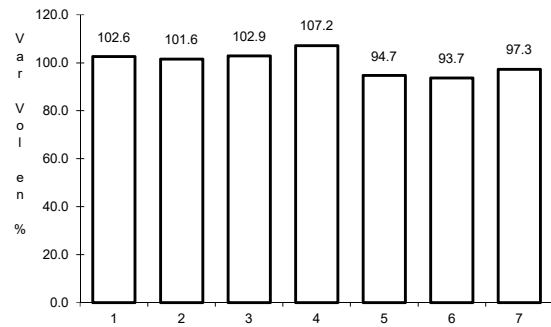
Tipo: 1

Sent: 0

12 CARR: Chalco - Tláhuac

CLAVE: 00170

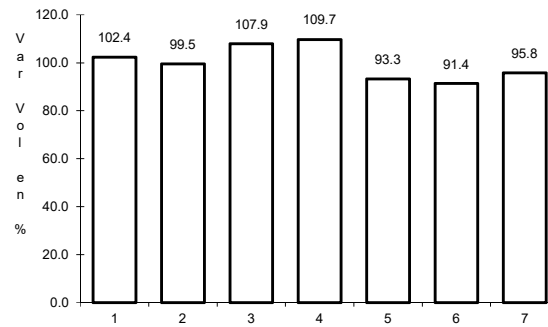
RUTA: EM-DF



Km: 0.00

Tipo: 3

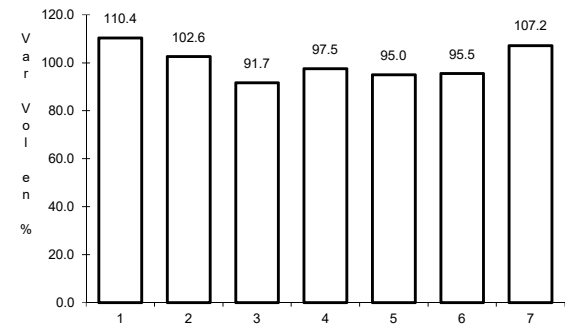
Sent: 1



Km: 0.00

Tipo: 3

Sent: 2



Km: 12.00

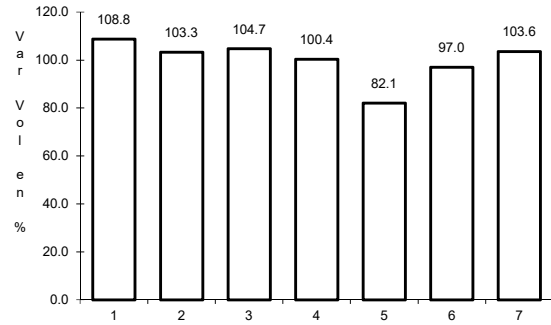
Tipo: 1

Sent: 1

13 CARR: T. C. (México - Mixquic) - San Pablo Atlazalpan

CLAVE: 00044

ruta: EM-106-DF

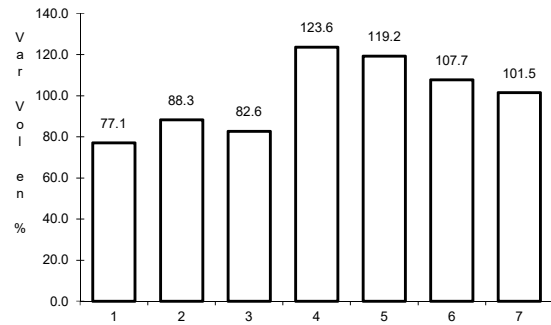


Km: 0.00 Tipo: 3 Sent: 0

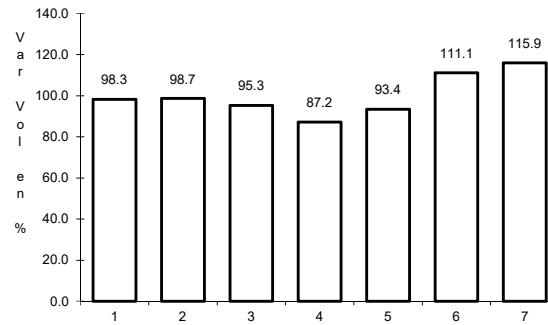
14 CARR: Xalatlaco - El Ajusco

CLAVE: 00017

ruta: EM-DF



Km: 0.00 Tipo: 3 Sent: 0

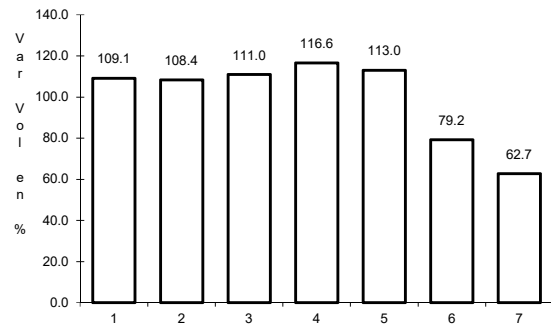


Km: 27.60 Tipo: 1 Sent: 0

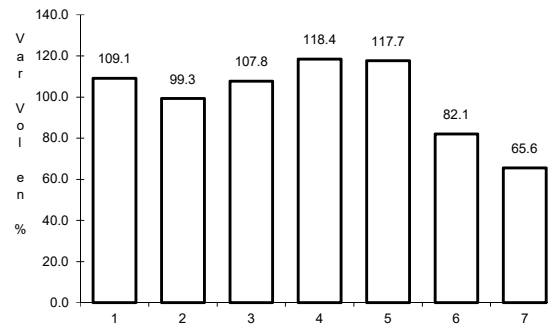
15 CARR: La Venta - Chamapa (Cuota)

CLAVE: 15014

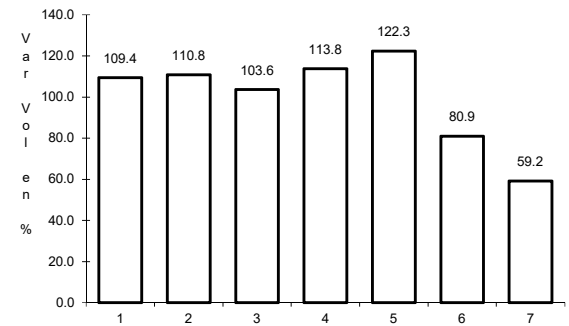
ruta: EM-D



Km: 0.10 Tipo: 3 Sent: 1



Km: 0.10 Tipo: 3 Sent: 2



Km: 11.10 Tipo: 1 Sent: 1

