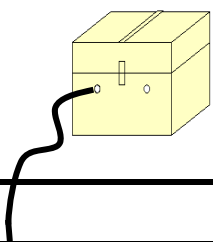


06 COLIMA

SECRETARÍA DE COMUNICACIONES Y TRANSPORTES
DIRECCIÓN GENERAL DE SERVICIOS TÉCNICOS





COLIMA

NO. INDICE CARRETERA	RUTA
---RED FEDERAL LIBRE---	
1 Cd. Guzmán - Colima	MEX-054
2 Colima - Ent. Tecomán	MEX-110
3 Ent. Playa Azul - Manzanillo	MEX-200
4 Jiquilpan - Colima	MEX-110
5 Libramiento de Colima	MEX-054
6 Libramiento de Manzanillo (Libre)	MEX-200
7 Libramiento de Manzanillo Norte	MEX-200
8 Manzanillo - Puerto Vallarta	MEX-200
9 Minatitlán - Ent. Pez Vela	MEX-098
10 Paso por La Salada	MEX-110
11 Paso por Los Asmoles	MEX-110
12 Ramal a Cerro de Los Juanes	MEX-098
13 Ramal a Cerro de Ortega	MEX-200
14 Ramal a Cuyutlán	MEX-200
15 Tecomán - Boca de Pascuales	MEX-200
---RED FEDERAL DE CUOTA---	
16 Armería - Manzanillo (Cuota)	MEX-200D
17 Guadalajara - Colima (Cuota)	MEX-054D
---RED ESTATAL LIBRE---	
18 Armería - Playa El Paraíso	COL
19 Colima - Comala	COL-016
20 Colima - Coquimatlán	COL-034
21 Comala - San Antonio	COL-016
22 Coquimatlán - Pueblo Juárez	COL-034
23 Costera Laguna de Cuyutlán	COL
24 Cuauhtémoc - Colima	COL-019
25 Libramiento de Tecomán	COL
26 Libramiento Poniente Arco Sur de Tecomán	COL
27 Libramiento Poniente de Colima	COL
28 Los Limones - Loma de Juárez	COL
29 Puerta de Caleras - Madrid	COL-014
30 Quesería - El Naranjal	COL-001
31 Ramal a Aeropuerto de Colima	COL
32 Ramal a Aeropuerto Manzanillo	COL
33 Ramal a Camotlán de Miraflores	COL
34 Ramal a Ixtlahuacán	COL-005
35 Ramal a Las Brisas	COL
36 Ramal a Los Tepames	COL-004
37 Ramal a Rancho Valle Nuevo	COL
38 Ramal a Rincón de López	COL
39 Ramal a Tecuanillo	COL-009
40 Tecomán - La Mascota	COL
41 Trapichillos - Estación Alzada	COL-003
42 Villa de Álvarez - Minatitlán	COL

COLIMA

1 CARR: Cd. Guzmán - Colima

CLAVE: 00117

RUTA: MEX-054

AÑO: 2017

LUGAR	ESTACION				CLASIFICACION VEHICULAR EN PORCIENTO										COORDENADAS					
	KM	TE	SC	TDPA	M	A	B	C2	C3	T3S2	T3S3	T3S2R4	OTROS	A	B	C	K'	D	LATITUD	LONGITUD
Cd. Guzmán	0.00	3	1	10598	3.0	83.4	0.6	6.9	1.3	1.8	2.2	0.3	0.5	86.4	0.6	13.0	0.064	0.506	19.677829	-103.475050
Cd. Guzmán	0.00	3	2	10873	3.6	82.8	0.7	8.9	1.2	1.1	1.3	0.1	0.3	86.4	0.7	12.9	0.073	0.506	19.677809	-103.474985
T. Izq. Zapotiltic	4.35	3	0	4859	2.2	81.8	1.2	8.1	2.7	2.3	1.1	0.2	0.4	84.0	1.2	14.8	0.075	0.500	19.645873	-103.471598
T. Der. Tepozal y Nevado de Colima	15.50	1	0	4857	1.4	81.9	0.9	6.8	4.3	2.8	1.1	0.3	0.5	83.3	0.9	15.8	0.076	0.548	19.578958	-103.447656
Atenquique	31.90	1	0	3235	2.1	70.2	2.0	7.7	9.0	5.4	2.2	0.4	1.0	72.3	2.0	25.7	0.074	0.502	19.529894	-103.434560
Atenquique	31.90	3	0	2319	2.0	78.7	2.2	7.1	4.4	4.2	0.8	0.1	0.5	80.7	2.2	17.1	0.072	0.501	19.526984	-103.438893
Lim. Edos. Term. Jal. Ppia. Col.	56.50																			
T. Der. Quesería	58.35	1	0	3311	4.2	73.9	1.0	11.0	5.0	3.0	1.3	0.3	0.3	78.1	1.0	20.9	0.061	0.504	19.392930	-103.563239
Cuahtémoc	66.25	1	0	4369	3.7	80.3	1.6	8.6	2.6	2.0	0.8	0.1	0.3	84.0	1.6	14.4	0.071	0.508	19.333485	-103.590970
Cuahtémoc	66.25	3	0	4824	4.4	81.2	2.4	8.0	1.5	1.9	0.5	0.0	0.1	85.6	2.4	12.0	0.060	0.542	19.324176	-103.609864
El Trapiche	76.55	3	1	13505	1.4	74.7	2.4	6.0	2.4	5.0	2.3	5.3	0.5	76.1	2.4	21.5	0.062	0.518	19.282549	-103.662220
El Trapiche	76.55	3	2	14485	1.4	75.2	2.3	6.2	2.2	4.5	2.2	5.4	0.6	76.6	2.3	21.1	0.087	0.518	19.282416	-103.662094
T. Izq. Libramiento de Colima	78.05	1	1	14713	1.9	78.5	0.9	5.1	2.3	4.0	2.0	4.6	0.7	80.4	0.9	18.7	0.074	0.505	19.268139	-103.677007
T. Izq. Libramiento de Colima	78.05	1	2	14989	2.3	76.6	1.0	5.5	2.4	4.1	2.3	5.1	0.7	78.9	1.0	20.1	0.101	0.505	19.267901	-103.676868
T. C. Cuahtémoc - Colima	83.40																			

2 CARR: Colima - Ent. Tecomán

CLAVE: 06119

RUTA: MEX-110

AÑO: 2017

LUGAR	ESTACION				CLASIFICACION VEHICULAR EN PORCIENTO										COORDENADAS					
	KM	TE	SC	TDPA	M	A	B	C2	C3	T3S2	T3S3	T3S2R4	OTROS	A	B	C	K'	D	LATITUD	LONGITUD
T. C. Jiquilpan - Colima	0.00	3	1	14789	2.9	77.7	1.6	6.6	1.5	3.8	2.2	2.7	1.0	80.6	1.6	17.8	0.075	0.507	19.215069	-103.734267
T. C. Jiquilpan - Colima	0.00	3	2	15225	2.7	78.7	1.8	5.8	1.2	3.5	2.2	3.1	1.0	81.4	1.8	16.8	0.078	0.507	19.214936	-103.734328
T. Izq. Los Asmoles	13.00	3	1	10296	0.9	76.3	2.4	7.6	1.7	4.5	2.1	3.8	0.7	77.2	2.4	20.4	0.087	0.510	19.111161	-103.775879
T. Izq. Los Asmoles	13.00	3	2	9902	0.7	73.8	2.6	8.4	2.0	5.2	2.2	4.4	0.7	74.5	2.6	22.9	0.094	0.510	19.111166	-103.775736
T. Der. Caleras	34.55	1	1	11826	1.3	83.6	1.5	5.1	1.0	2.8	1.7	2.2	0.8	84.9	1.5	13.6	0.125	0.528	18.981652	-103.853228
T. Der. Caleras	34.55	1	2	10578	1.0	85.2	1.3	4.4	0.9	2.6	1.8	1.8	1.0	86.2	1.3	12.5	0.146	0.528	18.981632	-103.853156
T. C. Ent. Playa Azul - Manzanillo	40.10	1	1	12474	1.4	85.0	1.5	4.3	1.0	2.6	1.6	1.9	0.7	86.4	1.5	12.1	0.139	0.501	18.957679	-103.882149
T. C. Ent. Playa Azul - Manzanillo	40.10	1	2	12448	1.6	82.9	1.5	5.5	1.0	2.9	1.6	2.2	0.8	84.5	1.5	14.0	0.160	0.501	18.957580	-103.882074

3 CARR: Ent. Playa Azul - Manzanillo

CLAVE: 00495

RUTA: MEX-200

AÑO: 2017

LUGAR	ESTACION				CLASIFICACION VEHICULAR EN PORCIENTO										COORDENADAS					
	KM	TE	SC	TDPA	M	A	B	C2	C3	T3S2	T3S3	T3S2R4	OTROS	A	B	C	K'	D	LATITUD	LONGITUD
T. C. Carapan - Playa Azul	0.00	3	0	3509	2.4	83.6	1.0	7.4	2.5	2.2	0.6	0.1	0.2	86.0	1.0	13.0	0.076	0.501	18.022667	-102.346889
Caleta de Campos	50.24	1	0	2466	5.8	80.8	0.6	9.2	1.2	1.6	0.5	0.1	0.2	86.6	0.6	12.8	0.180	0.528	18.077278	-102.745667

COLIMA

3 CARR: Ent. Playa Azul - Manzanillo

CLAVE: 00495

RUTA: MEX-200

AÑO: 2017

LUGAR	ESTACION				CLASIFICACION VEHICULAR EN PORCIENTO										COORDENADAS					
	KM	TE	SC	TDPA	M	A	B	C2	C3	T3S2	T3S3	T3S2R4	OTROS	A	B	C	K'	D	LATITUD	LONGITUD
Tizupan	106.60	1	0	556	9.3	75.1	2.5	6.5	1.2	2.0	3.1	0.2	0.1	84.4	2.5	13.1	0.192	0.525	18.217279	-103.123411
Maruata	149.75	1	0	628	7.8	77.1	3.5	7.7	0.9	1.7	0.9	0.2	0.2	84.9	3.5	11.6	0.177	0.514	18.270972	-103.331361
Maruata	149.75	3	0	1118	7.9	79.0	1.6	7.5	0.6	1.6	1.6	0.1	0.1	86.9	1.6	11.5	0.137	0.514	18.281056	-103.356472
T. Der. Aquila	190.10	3	0	2520	3.9	83.7	0.9	6.8	1.4	2.3	0.6	0.2	0.2	87.6	0.9	11.5	0.153	0.505	18.566364	-103.623170
Lim. Edos. Term. Mich. Ppia. Col.	229.60																			
Cerro de Ortega	233.20	1	0	6089	13.5	65.7	1.2	9.8	1.4	2.6	5.4	0.2	0.2	79.2	1.2	19.6	0.109	0.506	18.737556	-103.723833
El Balcón	242.95	1	0	5483	2.3	82.6	1.5	8.0	1.5	3.0	0.7	0.1	0.3	84.9	1.5	13.6	0.101	0.514	18.783513	-103.772498
El Balcón	242.95	3	0	5961	2.1	83.4	1.3	7.8	1.5	2.9	0.6	0.1	0.3	85.5	1.3	13.2	0.095	0.503	18.786694	-103.781389
Cofradía de Morelos	252.45	1	0	8659	7.6	76.5	1.5	10.0	1.4	1.8	0.7	0.1	0.4	84.1	1.5	14.4	0.085	0.537	18.859306	-103.834417
Cofradía de Morelos	252.45	3	1	4505	9.5	75.1	1.0	10.4	1.8	1.4	0.5	0.1	0.2	84.6	1.0	14.4	0.091	0.537	18.873211	-103.843344
Cofradía de Morelos	252.45	3	2	5224	8.5	73.8	1.0	12.3	2.0	1.6	0.5	0.1	0.2	82.3	1.0	16.7	0.093	0.537	18.873171	-103.843424
T. C. Colima - Ent. Tecomán	263.75	1	1	6114	8.1	82.8	0.6	5.1	1.2	1.4	0.6	0.0	0.2	90.9	0.6	8.5	0.102	0.506	18.892250	-103.855667
T. C. Colima - Ent. Tecomán	263.75	1	2	6263	8.7	79.8	0.8	7.2	1.2	1.5	0.5	0.1	0.2	88.5	0.8	10.7	0.094	0.506	18.892167	-103.855783
T. Der. Rincón de López	269.25	1	0	5758	6.8	72.1	1.2	8.7	2.2	6.5	2.1	0.1	0.3	78.9	1.2	19.9	0.077	0.509	18.952194	-103.940000
Armería	272.50	1	0	5474	10.7	68.8	0.9	7.6	2.3	7.0	2.4	0.1	0.2	79.5	0.9	19.6	0.074	0.523	18.941944	-103.947472
T. Izq. Cuyutlán	278.17	1	0	6756	3.8	77.2	1.4	8.8	1.6	5.1	1.6	0.1	0.4	81.0	1.4	17.6	0.084	0.524	18.934957	-104.013146
Santa Rita	292.50	1	0	5638	4.4	75.7	1.2	8.2	1.9	6.2	2.0	0.1	0.3	80.1	1.2	18.7	0.087	0.508	18.990667	-104.067111
Santa Rita	292.50	3	0	6057	7.6	73.1	1.1	7.8	1.7	6.4	1.9	0.1	0.3	80.7	1.1	18.2	0.084	0.516	19.013417	-104.094556
Las Nuevas Juntas	310.65	1	0	5926	7.5	73.3	1.2	7.7	1.7	6.2	1.9	0.2	0.3	80.8	1.2	18.0	0.082	0.526	19.042931	-104.218754
T. Der. Libramiento de Manzanillo (Libre)	312.65	1	0	10018	7.4	70.8	0.5	8.4	2.1	6.6	2.0	1.5	0.7	78.2	0.5	21.3	0.073	0.535	19.055522	-104.235637
T. Der. Libramiento de Manzanillo (Libre)	312.65	3	0	4967	7.3	70.1	0.5	8.5	2.3	6.8	2.1	1.6	0.8	77.4	0.5	22.1	0.075	0.513	19.055645	-104.243275
Manzanillo	321.12	1	0	6942	12.4	70.7	0.3	11.0	0.3	3.8	0.5	0.3	0.7	83.1	0.3	16.6	0.082	0.515	19.049377	-104.292072

4 CARR: Jiquilpan - Colima

CLAVE: 00156

RUTA: MEX-110

AÑO: 2017

LUGAR	ESTACION				CLASIFICACION VEHICULAR EN PORCIENTO										COORDENADAS					
	KM	TE	SC	TDPA	M	A	B	C2	C3	T3S2	T3S3	T3S2R4	OTROS	A	B	C	K'	D	LATITUD	LONGITUD
Jiquilpan	0.00	3	0	5206	2.0	79.8	1.0	8.0	2.5	4.6	1.1	0.5	0.5	81.8	1.0	17.2	0.069	0.526	19.995909	-102.745351
San José de Gracia	37.93	1	0	3899	3.7	84.3	0.7	6.3	1.0	2.9	0.6	0.1	0.4	88.0	0.7	11.3	0.120	0.525	20.000666	-103.014567
Lim. Edos. Term. Mich. Ppia. Jal.	41.00																			
Mazamitla	48.65	1	0	3925	2.4	85.6	0.5	7.3	1.1	2.4	0.3	0.1	0.3	88.0	0.5	11.5	0.112	0.509	19.940514	-103.008708
Mazamitla	48.65	3	0	4440	2.4	82.4	0.6	5.6	1.5	5.1	1.1	0.3	1.0	84.8	0.6	14.6	0.108	0.509	19.923605	-103.048783
T. Izq. Tamazula de Gordiano (2º Acceso)	96.70	3	0	8201	5.4	73.9	0.8	7.5	4.0	5.0	2.0	0.4	1.0	79.3	0.8	19.9	0.080	0.508	19.682933	-103.262538
T. Der. Cd. Guzmán	108.50	3	0	3874	1.5	77.8	1.2	7.8	4.7	4.4	1.9	0.3	0.4	79.3	1.2	19.5	0.136	0.508	19.644646	-103.335431
Tecalitlán	132.00	3	0	2746	4.7	84.0	1.4	5.9	2.1	1.4	0.3	0.1	0.1	88.7	1.4	9.9	0.078	0.527	19.462354	-103.318856

COLIMA

4 CARR: Jiquilpan - Colima

CLAVE: 00156

RUTA: MEX-110

AÑO: 2017

LUGAR	ESTACION				CLASIFICACION VEHICULAR EN PORCIENTO										COORDENADAS					
	KM	TE	SC	TDPA	M	A	B	C2	C3	T3S2	T3S3	T3S2R4	OTROS	A	B	C	K'	D	LATITUD	LONGITUD
T. Der. Atenquique	137.67	3	0	1423	3.3	81.6	0.6	9.6	2.6	1.1	1.0	0.0	0.2	84.9	0.6	14.5	0.094	0.510	19.455749	-103.349775
Pihuamo	168.19	3	0	2599	2.2	79.9	1.0	10.2	3.8	2.2	0.5	0.0	0.2	82.1	1.0	16.9	0.088	0.515	19.251747	-103.392084
Lim. Edos. Term. Jal. Ppia. Col.	189.60																			
T. Der. Estación Alzada	198.60	3	0	1625	2.0	79.6	0.6	10.3	1.2	3.7	2.2	0.0	0.4	81.6	0.6	17.8	0.087	0.510	19.160840	-103.528889
T. Izq. Los Tepames	214.20	1	0	1924	2.1	82.8	0.8	8.5	1.0	2.3	1.6	0.4	0.5	84.9	0.8	14.3	0.077	0.503	19.175575	-103.655889
X. C. Libramiento de Colima	220.00	1	0	7961	4.4	80.5	0.6	7.8	0.6	4.5	0.7	0.2	0.7	84.9	0.6	14.5	0.082	0.541	19.210529	-103.721259
Colima	222.00	1	1	9578	5.2	88.9	0.2	3.6	0.4	0.8	0.6	0.1	0.2	94.1	0.2	5.7	0.082	0.503	19.218134	-103.721935
Colima	222.00	1	2	9479	5.3	86.6	0.5	5.2	0.4	1.1	0.6	0.1	0.2	91.9	0.5	7.6	0.080	0.503	19.218111	-103.722169

5 CARR: Libramiento de Colima

CLAVE: 06573

RUTA: MEX-054

AÑO: 2017

LUGAR	ESTACION				CLASIFICACION VEHICULAR EN PORCIENTO										COORDENADAS					
	KM	TE	SC	TDPA	M	A	B	C2	C3	T3S2	T3S3	T3S2R4	OTROS	A	B	C	K'	D	LATITUD	LONGITUD
T. C. Cd. Guzmán - Colima	0.00	3	1	7924	2.2	72.8	2.6	4.5	2.3	6.0	3.0	5.6	1.0	75.0	2.6	22.4	0.105	0.544	19.262751	-103.682415
T. C. Cd. Guzmán - Colima	0.00	3	2	6638	2.5	70.1	2.7	4.8	2.6	6.3	3.4	6.5	1.1	72.6	2.7	24.7	0.080	0.544	19.262792	-103.681728
T. C. Colima - Ent. Tecomán	9.00	1	1	16949	3.3	79.9	1.4	5.1	1.4	3.6	2.0	2.8	0.5	83.2	1.4	15.4	0.067	0.505	19.215316	-103.717964
T. C. Colima - Ent. Tecomán	9.00	1	2	17266	3.2	78.0	1.5	5.9	1.6	4.1	2.2	2.9	0.6	81.2	1.5	17.3	0.073	0.505	19.215216	-103.717785

6 CARR: Libramiento de Manzanillo (Libre)

CLAVE: 06574

RUTA: MEX-200

AÑO: 2017

LUGAR	ESTACION				CLASIFICACION VEHICULAR EN PORCIENTO										COORDENADAS					
	KM	TE	SC	TDPA	M	A	B	C2	C3	T3S2	T3S3	T3S2R4	OTROS	A	B	C	K'	D	LATITUD	LONGITUD
T. C. Ent. Playa Azul - Manzanillo	0.00	3	0	9523	7.0	69.5	0.8	5.9	2.9	7.8	2.5	3.1	0.5	76.5	0.8	22.7	0.070	0.504	19.057571	-104.244442
T. C. Manzanillo - Puerto Vallarta	6.30	1	1	8058	4.1	78.2	2.1	5.2	1.5	3.3	2.5	2.6	0.5	82.3	2.1	15.6	0.072	0.510	19.072372	-104.279550
T. C. Manzanillo - Puerto Vallarta	6.30	1	2	7741	5.0	78.4	1.2	4.9	1.2	3.1	3.1	2.5	0.6	83.4	1.2	15.4	0.088	0.510	19.072302	-104.279612

7 CARR: Libramiento de Manzanillo Norte

CLAVE: 06122

RUTA: MEX-200

AÑO: 2017

LUGAR	ESTACION				CLASIFICACION VEHICULAR EN PORCIENTO										COORDENADAS					
	KM	TE	SC	TDPA	M	A	B	C2	C3	T3S2	T3S3	T3S2R4	OTROS	A	B	C	K'	D	LATITUD	LONGITUD
T. C. Libramiento de Manzanillo (Libre)	0.00																			
T. C. Minatitlán - Ent. Pez Vela	3.00	3	0	16812	5.8	80.5	0.7	5.0	1.3	4.5	1.3	0.6	0.3	86.3	0.7	13.0	0.082	0.549	19.095530	-104.276875
T. C. Manzanillo - Puerto Vallarta	19.00	1	0	4638	3.6	79.7	2.3	7.5	2.2	3.0	1.1	0.2	0.4	83.3	2.3	14.4	0.101	0.538	19.128697	-104.393023

COLIMA

8 CARR: Manzanillo - Puerto Vallarta

CLAVE: 00070

RUTA: MEX-200

AÑO: 2017

LUGAR	ESTACION				CLASIFICACION VEHICULAR EN PORCIENTO										COORDENADAS					
	KM	TE	SC	TDPA	M	A	B	C2	C3	T3S2	T3S3	T3S2R4	OTROS	A	B	C	K'	D	LATITUD	LONGITUD
Manzanillo	0.00	3	1	17129	6.1	82.6	1.8	8.5	0.2	0.2	0.3	0.0	0.3	88.7	1.8	9.5	0.069	0.508	19.055286	-104.299493
Manzanillo	0.00	3	2	16601	11.1	77.2	1.8	8.9	0.2	0.2	0.3	0.0	0.3	88.3	1.8	9.9	0.066	0.508	19.055414	-104.299495
T. Der. Minatitlán	3.14	1	1	20006	14.0	78.0	0.9	5.9	0.1	0.4	0.7	0.0	0.0	92.0	0.9	7.1	0.068	0.538	19.065781	-104.288359
T. Der. Minatitlán	3.14	1	2	17190	12.2	79.9	1.0	5.0	0.1	0.5	1.3	0.0	0.0	92.1	1.0	6.9	0.065	0.538	19.065907	-104.288453
Santiago	13.24	1	1	11266	6.1	84.1	0.9	6.8	0.1	0.9	0.9	0.0	0.2	90.2	0.9	8.9	0.074	0.535	19.115650	-104.349525
Santiago	13.24	1	2	12947	5.9	83.6	1.0	7.2	0.1	1.0	1.0	0.0	0.2	89.5	1.0	9.5	0.066	0.535	19.115569	-104.349548
Santiago	13.24	3	1	6875	7.8	83.7	0.9	6.4	0.1	0.6	0.5	0.0	0.0	91.5	0.9	7.6	0.104	0.503	19.120512	-104.378428
Santiago	13.24	3	2	6959	7.3	83.1	1.0	7.4	0.1	0.6	0.5	0.0	0.0	90.4	1.0	8.6	0.090	0.503	19.120378	-104.378430
San Juan de Cuatro Vientos	39.04	3	0	6524	5.9	78.8	2.4	6.5	1.9	2.9	1.0	0.2	0.4	84.7	2.4	12.9	0.078	0.517	19.192895	-104.538965
T. Izq. Aeropuerto Manzanillo	40.55	3	0	6628	7.8	77.2	2.6	7.3	1.9	1.6	0.9	0.3	0.4	85.0	2.6	12.4	0.080	0.515	19.195540	-104.551701
Lim. Edos. Term. Col. Ppia. Jal.	43.50																			
Cihuatlán	47.92	1	0	8245	13.0	76.3	1.8	5.5	1.4	1.2	0.6	0.1	0.1	89.3	1.8	8.9	0.077	0.516	19.233888	-104.549793
Cihuatlán	47.92	3	0	8346	9.0	77.6	1.6	8.7	1.6	1.0	0.4	0.1	0.0	86.6	1.6	11.8	0.080	0.508	19.228460	-104.584486
T. Izq. San Francisco	50.18	3	0	6920	8.2	77.2	2.2	7.9	1.4	1.9	0.9	0.2	0.1	85.4	2.2	12.4	0.087	0.515	19.216807	-104.624156
Melaque	61.64	1	0	11804	13.6	76.1	0.7	6.4	0.7	1.4	0.8	0.1	0.2	89.7	0.7	9.6	0.073	0.531	19.228815	-104.690644
Melaque	61.64	3	0	6863	16.4	70.5	0.9	8.6	1.0	1.6	0.7	0.2	0.1	86.9	0.9	12.2	0.078	0.508	19.240102	-104.712612
T. Izq. Tenacatita	90.44	3	0	2422	6.1	78.6	1.9	7.9	2.0	2.1	0.9	0.3	0.2	84.7	1.9	13.4	0.085	0.509	19.349737	-104.883636
T. Der. Tomatlán	177.64	1	0	2257	4.7	73.1	1.9	12.9	3.1	2.7	1.1	0.3	0.2	77.8	1.9	20.3	0.078	0.517	19.869104	-105.329099
T. Der. Tomatlán	177.64	3	0	2551	8.2	72.9	1.5	10.7	2.7	2.5	1.0	0.3	0.2	81.1	1.5	17.4	0.078	0.503	19.876590	-105.335971
T. Izq. El Tuito	230.64	3	0	2734	6.3	79.8	1.0	6.9	1.2	3.6	0.9	0.1	0.2	86.1	1.0	12.9	0.099	0.506	20.332364	-105.315359
Puerto Vallarta	273.64	1	0	8945	2.7	88.9	0.9	4.5	0.5	1.2	1.0	0.0	0.3	91.6	0.9	7.5	0.086	0.506	20.581640	-105.243880

9 CARR: Minatitlán - Ent. Pez Vela

CLAVE: 06015

RUTA: MEX-098

AÑO: 2017

LUGAR	ESTACION				CLASIFICACION VEHICULAR EN PORCIENTO										COORDENADAS					
	KM	TE	SC	TDPA	M	A	B	C2	C3	T3S2	T3S3	T3S2R4	OTROS	A	B	C	K'	D	LATITUD	LONGITUD
Minatitlán	0.00																			
T. Der. Jalipa	49.50	1	0	2240	9.0	78.2	0.5	7.6	1.8	1.6	0.3	0.9	0.1	87.2	0.5	12.3	0.072	0.508	19.132740	-104.264414
T. Der. Jalipa	49.50	3	0	7239	11.0	55.6	0.5	6.7	4.3	7.6	2.7	11.2	0.4	66.6	0.5	32.9	0.086	0.540	19.113651	-104.260826
T. C. Manzanillo - Puerto Vallarta	58.50	1	1	9944	6.8	66.3	0.5	4.4	2.8	7.0	2.7	8.5	1.0	73.1	0.5	26.4	0.097	0.509	19.086584	-104.281285
T. C. Manzanillo - Puerto Vallarta	58.50	1	2	9586	6.6	65.4	0.7	4.2	3.1	7.3	3.4	8.3	1.0	72.0	0.7	27.3	0.082	0.509	19.086495	-104.281104

COLIMA

10 CARR: Paso por La Salada

CLAVE: 06121

RUTA: MEX-110

AÑO: 2017

LUGAR	ESTACION				CLASIFICACION VEHICULAR EN PORCIENTO													COORDENADAS		
	KM	TE	SC	TDPA	M	A	B	C2	C3	T3S2	T3S3	T3S2R4	OTROS	A	B	C	K'	D	LATITUD	LONGITUD
La Salada	0.00	3	0	39	10.5	78.6	1.2	8.9	0.4	0.4	0.0	0.0	0.0	89.1	1.2	9.7	0.231	0.605	19.053407	-103.785754
T. C. Ramal a Ixtlahuacán	6.00																			

11 CARR: Paso por Los Asmoles

CLAVE: 06120

RUTA: MEX-110

AÑO: 2017

LUGAR	ESTACION				CLASIFICACION VEHICULAR EN PORCIENTO													COORDENADAS		
	KM	TE	SC	TDPA	M	A	B	C2	C3	T3S2	T3S3	T3S2R4	OTROS	A	B	C	K'	D	LATITUD	LONGITUD
T. C. Colima - Ent. Tecomán	0.00																			
Los Asmoles	1.80	3	0	1706	4.2	85.2	0.3	8.7	0.7	0.8	0.1	0.0	0.0	89.4	0.3	10.3	0.087	0.549	19.125342	-103.773102
T. C. Colima - Ent. Tecomán	2.90																			

12 CARR: Ramal a Cerro de Los Juanes

CLAVE: 06009

RUTA: MEX-098

AÑO: 2017

LUGAR	ESTACION				CLASIFICACION VEHICULAR EN PORCIENTO													COORDENADAS		
	KM	TE	SC	TDPA	M	A	B	C2	C3	T3S2	T3S3	T3S2R4	OTROS	A	B	C	K'	D	LATITUD	LONGITUD
T. C. Minatitlán - Ent. Pez Vela	0.00	3	0	914	1.0	74.7	5.3	16.1	2.0	0.6	0.2	0.0	0.1	75.7	5.3	19.0	0.121	0.506	19.377714	-104.092383
Cerro de Los Juanes	3.30																			

13 CARR: Ramal a Cerro de Ortega

CLAVE: 06009

RUTA: MEX-200

AÑO: 2017

LUGAR	ESTACION				CLASIFICACION VEHICULAR EN PORCIENTO													COORDENADAS		
	KM	TE	SC	TDPA	M	A	B	C2	C3	T3S2	T3S3	T3S2R4	OTROS	A	B	C	K'	D	LATITUD	LONGITUD
T. C. Ent. Playa Azul - Manzanillo	0.00	3	0	2530	46.1	47.0	1.1	5.7	0.1	0.0	0.0	0.0	0.0	93.1	1.1	5.8	0.074	0.544	18.752806	-103.721000
Cerro de Ortega	1.00																			

14 CARR: Ramal a Cuyutlán

CLAVE: 06225

RUTA: MEX-200

AÑO: 2017

LUGAR	ESTACION				CLASIFICACION VEHICULAR EN PORCIENTO													COORDENADAS		
	KM	TE	SC	TDPA	M	A	B	C2	C3	T3S2	T3S3	T3S2R4	OTROS	A	B	C	K'	D	LATITUD	LONGITUD
T. C. Ent. Playa Azul - Manzanillo	0.00	3	0	857	6.4	83.7	0.2	8.4	0.9	0.3	0.1	0.0	0.0	90.1	0.2	9.7	0.232	0.501	18.926500	-104.021250
Cuyutlán	7.00	1	0	1289	7.6	85.3	0.2	5.5	0.2	1.1	0.1	0.0	0.0	92.9	0.2	6.9	0.189	0.514	18.911722	-104.055194

COLIMA

15 CARR: Tecomán - Boca de Pascuales

CLAVE: 06226

RUTA: MEX-200

AÑO: 2017

LUGAR	ESTACION				CLASIFICACION VEHICULAR EN PORCIENTO														COORDENADAS	
	KM	TE	SC	TDPA	M	A	B	C2	C3	T3S2	T3S3	T3S2R4	OTROS	A	B	C	K'	D	LATITUD	LONGITUD
Tecomán	0.00	3	0	3360	8.9	84.9	0.2	4.4	0.8	0.1	0.1	0.1	0.5	93.8	0.2	6.0	0.205	0.583	18.902444	-103.908639
Boca de Pascuales	12.00																			

16 CARR: Armería - Manzanillo (Cuota)

CLAVE: 06585

RUTA: MEX-200D

AÑO: 2017

LUGAR	ESTACION				CLASIFICACION VEHICULAR EN PORCIENTO														COORDENADAS	
	KM	TE	SC	TDPA	M	A	B	C2	C3	T3S2	T3S3	T3S2R4	OTROS	A	B	C	K'	D	LATITUD	LONGITUD
T. C. Ent. Playa Azul - Manzanillo	0.00																			
T. Izq. Playa Paraiso	3.50	3	1	4773	1.1	81.6	2.3	4.8	0.8	2.3	1.6	4.9	0.6	82.7	2.3	15.0	0.216	0.501	18.928153	-103.968826
T. Izq. Playa Paraiso	3.50	3	2	4752	1.8	79.3	2.6	5.0	1.1	2.8	1.7	4.8	0.9	81.1	2.6	16.3	0.142	0.501	18.928250	-103.968858
T. Izq. Cuyutlán	17.58	3	1	3606	0.7	78.6	2.9	4.7	0.9	2.9	2.0	6.4	0.9	79.3	2.9	17.8	0.225	0.505	18.930750	-104.086694
T. Izq. Cuyutlán	17.58	3	2	3673	0.5	81.1	2.7	3.2	1.1	3.7	1.4	5.7	0.6	81.6	2.7	15.7	0.288	0.505	18.930650	-104.086815
Caseta de Cobro Cuyutlán	18.00	2	1	3608	0.5	62.4	3.7	2.5	2.6	7.0	3.0	16.2	2.1	62.9	3.7	33.4	0.096	0.500	18.927734	-104.081627
Caseta de Cobro Cuyutlán	18.00	2	2	3608	0.5	62.4	3.7	2.5	2.6	7.0	3.0	16.2	2.1	62.9	3.7	33.4	0.096	0.500	18.927734	-104.081627
T. C. Ent. Playa Azul - Manzanillo	44.00	3	1	5011	2.9	78.2	2.5	5.4	1.1	2.8	2.1	4.1	0.9	81.1	2.5	16.4	0.176	0.544	19.053174	-104.268675
T. C. Ent. Playa Azul - Manzanillo	44.00	3	2	4205	2.7	75.1	2.9	4.9	1.1	3.5	1.6	7.5	0.7	77.8	2.9	19.3	0.239	0.544	19.053145	-104.268602
T. C. Libramiento de Manzanillo (Libre)	46.00																			

17 CARR: Guadalajara - Colima (Cuota)

CLAVE: 00118

RUTA: MEX-054D

AÑO: 2017

LUGAR	ESTACION				CLASIFICACION VEHICULAR EN PORCIENTO														COORDENADAS	
	KM	TE	SC	TDPA	M	A	B	C2	C3	T3S2	T3S3	T3S2R4	OTROS	A	B	C	K'	D	LATITUD	LONGITUD
T. C. Ent. Santa Cruz - Melaque	0.00																			
Caseta de Cobro Acatlán	0.20	2	1	6013	0.3	68.3	3.8	3.8	3.7	6.3	2.6	9.8	1.4	68.6	3.8	27.6	0.084	0.500	20.415920	-103.557053
Caseta de Cobro Acatlán	0.20	2	2	6013	0.3	68.3	3.8	3.8	3.7	6.3	2.6	9.8	1.4	68.6	3.8	27.6	0.084	0.500	20.415920	-103.557053
Caseta de Cobro Acatlán	0.20	3	1	6243	0.4	80.3	3.0	5.0	1.4	3.7	1.8	3.6	0.8	80.7	3.0	16.3	0.160	0.526	20.418442	-103.556430
Caseta de Cobro Acatlán	0.20	3	2	5626	0.7	77.8	3.3	5.4	1.6	4.0	2.1	4.2	0.9	78.5	3.3	18.2	0.130	0.526	20.418432	-103.556335
T. Izq. San Marcos	10.80	1	1	5997	0.5	82.4	2.7	4.3	1.3	2.9	1.7	3.5	0.7	82.9	2.7	14.4	0.175	0.524	20.344074	-103.573033
T. Izq. San Marcos	10.80	1	2	6594	0.5	80.8	3.1	4.9	1.5	3.2	1.8	3.5	0.7	81.3	3.1	15.6	0.205	0.524	20.344001	-103.573268
T. Der. Usmajac	67.80	1	1	7173	0.4	79.1	3.2	5.4	1.6	3.8	1.9	3.9	0.7	79.5	3.2	17.3	0.138	0.509	19.892178	-103.520318
T. Der. Usmajac	67.80	1	2	7441	0.4	77.6	3.0	5.0	1.8	4.7	1.9	4.7	0.9	78.0	3.0	19.0	0.156	0.509	19.892013	-103.520495
T. Izq. Cd. Guzmán	86.70	1	1	7035	0.6	77.1	3.1	6.2	2.4	4.1	1.8	4.2	0.5	77.7	3.1	19.2	0.161	0.501	19.708484	-103.501033
T. Izq. Cd. Guzmán	86.70	1	2	7069	0.7	75.8	3.4	7.4	2.0	4.2	1.6	4.1	0.8	76.5	3.4	20.1	0.182	0.501	19.708496	-103.500952
Caseta de Cobro San Marcos	122.50	2	1	5354	0.4	58.7	3.5	4.3	5.2	9.2	4.1	11.9	2.7	59.1	3.5	37.4	0.084	0.500	19.433636	-103.494843
Caseta de Cobro San Marcos	122.50	2	2	5354	0.4	58.7	3.5	4.3	5.2	9.2	4.1	11.9	2.7	59.1	3.5	37.4	0.084	0.500	19.433636	-103.494843

COLIMA

17 CARR: Guadalajara - Colima (Cuota)

CLAVE: 00118

RUTA: MEX-054D

AÑO: 2017

LUGAR	ESTACION				CLASIFICACION VEHICULAR EN PORCIENTO													COORDENADAS		
	KM	TE	SC	TDPA	M	A	B	C2	C3	T3S2	T3S3	T3S2R4	OTROS	A	B	C	K'	D	LATITUD	LONGITUD
Lim. Edos. Term. Jal. Ppia. Col.	129.50																			
T. C. Cd. Guzmán - Colima	148.00																			

18 CARR: Armería - Playa El Paraíso

CLAVE: 06580

RUTA: COL

AÑO: 2017

LUGAR	ESTACION				CLASIFICACION VEHICULAR EN PORCIENTO													COORDENADAS		
	KM	TE	SC	TDPA	M	A	B	C2	C3	T3S2	T3S3	T3S2R4	OTROS	A	B	C	K'	D	LATITUD	LONGITUD
T. C. Ent. Playa Azul - Manzanillo	0.00	3	0	3433	9.8	80.0	0.3	6.8	0.3	2.3	0.2	0.0	0.3	89.8	0.3	9.9	0.168	0.503	18.923944	-103.963972
Playa Paraíso	7.50	1	0	1376	9.3	80.5	0.3	6.7	0.3	2.3	0.3	0.0	0.3	89.8	0.3	9.9	0.262	0.505	18.878417	-103.989500

19 CARR: Colima - Comala

CLAVE: 06016

RUTA: COL-016

AÑO: 2017

LUGAR	ESTACION				CLASIFICACION VEHICULAR EN PORCIENTO													COORDENADAS		
	KM	TE	SC	TDPA	M	A	B	C2	C3	T3S2	T3S3	T3S2R4	OTROS	A	B	C	K'	D	LATITUD	LONGITUD
Colima	0.00																			
Villa Álvarez	3.00	3	1	12766	5.2	86.4	1.0	4.8	0.2	0.8	1.3	0.1	0.2	91.6	1.0	7.4	0.076	0.512	19.287454	-103.746207
Villa Álvarez	3.00	3	2	12180	6.1	85.6	1.1	4.8	0.3	1.0	0.9	0.0	0.2	91.7	1.1	7.2	0.076	0.512	19.287389	-103.746342
Comala	10.00																			

20 CARR: Colima - Coquimatlán

CLAVE: 06034

RUTA: COL-034

AÑO: 2017

LUGAR	ESTACION				CLASIFICACION VEHICULAR EN PORCIENTO													COORDENADAS		
	KM	TE	SC	TDPA	M	A	B	C2	C3	T3S2	T3S3	T3S2R4	OTROS	A	B	C	K'	D	LATITUD	LONGITUD
Colima	0.00																			
T. Der. Villa Álvarez	3.00	3	1	14861	6.9	86.3	0.5	5.3	0.4	0.2	0.3	0.1	0.0	93.2	0.5	6.3	0.067	0.507	19.242465	-103.753083
T. Der. Villa Álvarez	3.00	3	2	14456	9.1	85.2	0.5	4.3	0.3	0.2	0.3	0.0	0.1	94.3	0.5	5.2	0.068	0.507	19.242286	-103.753006
Coquimatlán	11.00	1	1	6502	7.9	84.9	0.6	4.6	0.4	1.1	0.4	0.0	0.1	92.8	0.6	6.6	0.088	0.506	19.217658	-103.802245
Coquimatlán	11.00	1	2	6350	7.5	86.4	0.3	4.3	0.4	0.5	0.5	0.0	0.1	93.9	0.3	5.8	0.084	0.506	19.217558	-103.802093

21 CARR: Comala - San Antonio

CLAVE: 06030

RUTA: COL-016

AÑO: 2017

LUGAR	ESTACION				CLASIFICACION VEHICULAR EN PORCIENTO													COORDENADAS		
	KM	TE	SC	TDPA	M	A	B	C2	C3	T3S2	T3S3	T3S2R4	OTROS	A	B	C	K'	D	LATITUD	LONGITUD
Comala	0.00	3	1	2234	3.2	90.8	0.6	4.8	0.6	0.0	0.0	0.0	0.0	94.0	0.6	5.4	0.115	0.541	19.336407	-103.746302
Comala	0.00	3	2	1898	4.9	87.8	0.9	5.8	0.6	0.0	0.0	0.0	0.0	92.7	0.9	6.4	0.099	0.541	19.336373	-103.746193

COLIMA

21 CARR: Comala - San Antonio

CLAVE: 06030

RUTA: COL-016

AÑO: 2017

LUGAR	ESTACION				CLASIFICACION VEHICULAR EN PORCIENTO														COORDENADAS	
	KM	TE	SC	TDPA	M	A	B	C2	C3	T3S2	T3S3	T3S2R4	OTROS	A	B	C	K'	D	LATITUD	LONGITUD
Suchitlán	10.00	1	0	4256	5.7	85.3	0.4	5.8	0.6	1.5	0.4	0.0	0.3	91.0	0.4	8.6	0.103	0.506	19.369127	-103.722312
San Antonio	20.50																			

22 CARR: Coquimatlán - Pueblo Juárez

CLAVE: 06029

RUTA: COL-034

AÑO: 2017

LUGAR	ESTACION				CLASIFICACION VEHICULAR EN PORCIENTO														COORDENADAS	
	KM	TE	SC	TDPA	M	A	B	C2	C3	T3S2	T3S3	T3S2R4	OTROS	A	B	C	K'	D	LATITUD	LONGITUD
Coquimatlán	0.00	3	0	2798	7.0	80.3	1.6	7.5	1.2	1.4	0.4	0.2	0.4	87.3	1.6	11.1	0.070	0.505	19.198241	-103.817613
Pueblo Juárez	16.00																			

23 CARR: Costera Laguna de Cuyutlán

CLAVE: 06010

RUTA: COL

AÑO: 2017

LUGAR	ESTACION				CLASIFICACION VEHICULAR EN PORCIENTO														COORDENADAS	
	KM	TE	SC	TDPA	M	A	B	C2	C3	T3S2	T3S3	T3S2R4	OTROS	A	B	C	K'	D	LATITUD	LONGITUD
T. C. Armería - Manzanillo (Cuota)	0.00	3	0	745	12.0	72.0	0.1	6.1	0.2	6.3	0.3	2.9	0.1	84.0	0.1	15.9	0.085	0.500	19.019867	-104.306958
Manzanillo	13.00	1	0	2453	15.0	75.4	0.5	7.5	0.1	1.3	0.1	0.0	0.1	90.4	0.5	9.1	0.065	0.507	19.034480	-104.330036

24 CARR: Cuauhtémoc - Colima

CLAVE: 06019

RUTA: COL-019

AÑO: 2017

LUGAR	ESTACION				CLASIFICACION VEHICULAR EN PORCIENTO														COORDENADAS	
	KM	TE	SC	TDPA	M	A	B	C2	C3	T3S2	T3S3	T3S2R4	OTROS	A	B	C	K'	D	LATITUD	LONGITUD
Cuauhtémoc	0.00	3	0	5340	2.2	87.2	0.7	5.7	0.9	2.4	0.4	0.2	0.3	89.4	0.7	9.9	0.066	0.539	19.316143	-103.603681
X. C. Libramiento de Colima	19.50	1	1	14190	7.5	85.7	0.2	5.2	0.1	0.6	0.5	0.1	0.1	93.2	0.2	6.6	0.075	0.517	19.236320	-103.701067
X. C. Libramiento de Colima	19.50	1	2	13266	6.2	86.4	0.2	5.8	0.1	0.6	0.5	0.1	0.1	92.6	0.2	7.2	0.067	0.517	19.236103	-103.701046
Colima	22.40																			

25 CARR: Libramiento de Tecomán

CLAVE: 06122

RUTA: COL

AÑO: 2017

LUGAR	ESTACION				CLASIFICACION VEHICULAR EN PORCIENTO														COORDENADAS	
	KM	TE	SC	TDPA	M	A	B	C2	C3	T3S2	T3S3	T3S2R4	OTROS	A	B	C	K'	D	LATITUD	LONGITUD
T. C. Ent. Playa Azul - Manzanillo	0.00	3	1	2010	8.1	74.1	0.9	9.1	2.5	3.2	1.2	0.4	0.5	82.2	0.9	16.9	0.084	0.504	18.899177	-103.858576
T. C. Ent. Playa Azul - Manzanillo	0.00	3	2	1976	8.4	72.2	1.1	9.8	2.7	3.8	1.3	0.4	0.3	80.6	1.1	18.3	0.072	0.504	18.899222	-103.858676
T. C. Ent. Playa Azul - Manzanillo	7.90	1	1	3721	10.2	79.4	0.5	4.7	2.2	1.9	0.7	0.1	0.3	89.6	0.5	9.9	0.067	0.500	18.942135	-103.890511
T. C. Ent. Playa Azul - Manzanillo	7.90	1	2	3720	10.4	75.4	0.4	7.2	2.2	3.1	0.8	0.2	0.3	85.8	0.4	13.8	0.074	0.500	18.942178	-103.890584

COLIMA

26 CARR: Libramiento Poniente Arco Sur de Tecmán

CLAVE:

RUTA: COL

AÑO: 2017

LUGAR	ESTACION				CLASIFICACION VEHICULAR EN PORCIENTO													COORDENADAS		
	KM	TE	SC	TDPA	M	A	B	C2	C3	T3S2	T3S3	T3S2R4	OTROS	A	B	C	K'	D	LATITUD	LONGITUD
Ent. C. Playa Azul - Manzanillo	0.00	3	0	2624	5.3	76.8	1.4	8.1	2.9	4.0	1.0	0.2	0.3	82.1	1.4	16.5	0.193	0.593	18.939639	-103.897667
X. C. Tecmán - Boca de Pascuales	4.60	3	0	2715	3.6	76.6	2.0	8.3	2.8	4.2	1.6	0.4	0.5	80.2	2.0	17.8	0.130	0.532	18.898556	-103.904472
X. C. Tecmán - La Mascota	6.90	3	0	2066	5.0	71.9	2.6	7.5	4.9	5.2	2.0	0.5	0.4	76.9	2.6	20.5	0.140	0.519	18.887861	-103.886528
Ent. C. Playa Azul - Manzanillo	11.17																			

27 CARR: Libramiento Poniente de Colima

CLAVE: 06122

RUTA: COL

AÑO: 2017

LUGAR	ESTACION				CLASIFICACION VEHICULAR EN PORCIENTO													COORDENADAS		
	KM	TE	SC	TDPA	M	A	B	C2	C3	T3S2	T3S3	T3S2R4	OTROS	A	B	C	K'	D	LATITUD	LONGITUD
T. C. Colima - Ent. Tecmán	0.00	3	1	9107	4.6	84.2	0.7	5.2	1.4	1.4	1.4	0.6	0.5	88.8	0.7	10.5	0.082	0.507	19.216672	-103.744673
T. C. Colima - Ent. Tecmán	0.00	3	2	9377	4.7	82.8	0.8	5.9	1.6	1.6	1.5	0.6	0.5	87.5	0.8	11.7	0.111	0.507	19.216562	-103.744807
T. C. Colima - Coquimatlán	6.00																			

28 CARR: Los Limones - Loma de Juárez

CLAVE: 06122

RUTA: COL

AÑO: 2017

LUGAR	ESTACION				CLASIFICACION VEHICULAR EN PORCIENTO													COORDENADAS		
	KM	TE	SC	TDPA	M	A	B	C2	C3	T3S2	T3S3	T3S2R4	OTROS	A	B	C	K'	D	LATITUD	LONGITUD
Los Limones	0.00																			
T. C. Colima - Ent. Tecmán	5.77	1	0	1701	7.3	80.8	0.8	8.2	1.1	0.6	0.8	0.3	0.1	88.1	0.8	11.1	0.092	0.526	19.199260	-103.758385

29 CARR: Puerta de Caleras - Madrid

CLAVE: 06014

RUTA: COL-014

AÑO: 2017

LUGAR	ESTACION				CLASIFICACION VEHICULAR EN PORCIENTO													COORDENADAS		
	KM	TE	SC	TDPA	M	A	B	C2	C3	T3S2	T3S3	T3S2R4	OTROS	A	B	C	K'	D	LATITUD	LONGITUD
T. C. Colima - Ent. Tecmán	0.00	3	0	3295	11.1	68.9	2.0	9.9	3.1	2.3	2.2	0.3	0.2	80.0	2.0	18.0	0.069	0.500	18.979361	-103.862306
Madrid	14.00																			

30 CARR: Quesería - El Naranjal

CLAVE: 06001

RUTA: COL-001

AÑO: 2017

LUGAR	ESTACION				CLASIFICACION VEHICULAR EN PORCIENTO													COORDENADAS		
	KM	TE	SC	TDPA	M	A	B	C2	C3	T3S2	T3S3	T3S2R4	OTROS	A	B	C	K'	D	LATITUD	LONGITUD
Quesería	0.00	3	0	1296	4.4	66.8	2.4	11.5	13.7	0.8	0.4	0.0	0.0	71.2	2.4	26.4	0.094	0.504	19.391595	-103.589227
El Naranjal	10.00	1	0	636	6.6	54.9	3.6	11.0	22.3	1.1	0.5	0.0	0.0	61.5	3.6	34.9	0.101	0.511	19.411986	-103.651944

COLIMA

31 CARR: Ramal a Aeropuerto de Colima

CLAVE: 06224

RUTA: COL

AÑO: 2017

LUGAR	ESTACION				CLASIFICACION VEHICULAR EN PORCIENTO													COORDENADAS		
	KM	TE	SC	TDPA	M	A	B	C2	C3	T3S2	T3S3	T3S2R4	OTROS	A	B	C	K'	D	LATITUD	LONGITUD
T. C. Cuauhtémoc - Colima	0.00	3	0	1231	1.7	88.7	0.5	8.5	0.4	0.0	0.0	0.2	0.0	90.4	0.5	9.1	0.097	0.548	19.287509	-103.591426
Aeropuerto de Colima	1.00																			

32 CARR: Ramal a Aeropuerto Manzanillo

CLAVE: 06582

RUTA: COL

AÑO: 2017

LUGAR	ESTACION				CLASIFICACION VEHICULAR EN PORCIENTO													COORDENADAS		
	KM	TE	SC	TDPA	M	A	B	C2	C3	T3S2	T3S3	T3S2R4	OTROS	A	B	C	K'	D	LATITUD	LONGITUD
T. C. Manzanillo - Puerto Vallarta	0.00	3	0	1091	9.3	80.8	0.1	9.1	0.2	0.5	0.0	0.0	0.0	90.1	0.1	9.8	0.132	0.518	19.192219	-104.550354
Aeropuerto Manzanillo	5.50	1	0	1029	4.3	89.8	0.0	5.2	0.4	0.2	0.0	0.1	0.0	94.1	0.0	5.9	0.147	0.516	19.153683	-104.559571

33 CARR: Ramal a Camotlán de Miraflores

CLAVE: 06009

RUTA: COL

AÑO: 2017

LUGAR	ESTACION				CLASIFICACION VEHICULAR EN PORCIENTO													COORDENADAS		
	KM	TE	SC	TDPA	M	A	B	C2	C3	T3S2	T3S3	T3S2R4	OTROS	A	B	C	K'	D	LATITUD	LONGITUD
T. C. Minatitlán - Ent. Pez Vela	0.00	3	0	1957	15.5	73.4	0.5	7.3	0.2	2.2	0.5	0.1	0.3	88.9	0.5	10.6	0.089	0.517	19.217927	-104.233530
Camotlán de Miraflores	1.00																			

34 CARR: Ramal a Ixtlahuacán

CLAVE: 06577

RUTA: COL-005

AÑO: 2017

LUGAR	ESTACION				CLASIFICACION VEHICULAR EN PORCIENTO													COORDENADAS		
	KM	TE	SC	TDPA	M	A	B	C2	C3	T3S2	T3S3	T3S2R4	OTROS	A	B	C	K'	D	LATITUD	LONGITUD
T. C. Colima - Ent. Tecomán	0.00	3	0	662	5.0	80.3	1.3	8.2	2.6	0.6	1.8	0.0	0.2	85.3	1.3	13.4	0.107	0.518	19.026164	-103.789862
Ixtlahuacán	8.50																			

35 CARR: Ramal a Las Brisas

CLAVE: 06571

RUTA: COL

AÑO: 2017

LUGAR	ESTACION				CLASIFICACION VEHICULAR EN PORCIENTO													COORDENADAS		
	KM	TE	SC	TDPA	M	A	B	C2	C3	T3S2	T3S3	T3S2R4	OTROS	A	B	C	K'	D	LATITUD	LONGITUD
T. C. Manzanillo - Puerto Vallarta (Central)	0.00	3	0	6326	8.8	83.6	0.1	3.8	0.1	2.9	0.3	0.1	0.3	92.4	0.1	7.5	0.070	0.618	19.082320	-104.307159
T. C. Manzanillo - Puerto Vallarta (Lateral)	0.00	3	1	5502	7.5	87.4	4.3	0.2	0.2	0.2	0.2	0.0	0.0	94.9	4.3	0.8	0.085	0.510	19.082353	-104.307076
T. C. Manzanillo - Puerto Vallarta (Lateral)	0.00	3	2	5289	7.6	86.8	4.8	0.2	0.2	0.2	0.2	0.0	0.0	94.4	4.8	0.8	0.086	0.510	19.082293	-104.307212
Las Brisas	2.30																			

COLIMA

36 CARR: Ramal a Los Tepames

CLAVE: 06004

RUTA: COL-004

AÑO: 2017

LUGAR	ESTACION				CLASIFICACION VEHICULAR EN PORCIENTO														COORDENADAS	
	KM	TE	SC	TDPA	M	A	B	C2	C3	T3S2	T3S3	T3S2R4	OTROS	A	B	C	K'	D	LATITUD	LONGITUD
T. C. Jiquilpan - Colima	0.00	3	0	1539	3.7	84.5	0.8	8.6	0.8	1.2	0.4	0.0	0.0	88.2	0.8	11.0	0.073	0.507	19.171911	-103.659247
Los Tepames	9.50																			

37 CARR: Ramal a Rancho Valle Nuevo

CLAVE: 06583

RUTA: COL

AÑO: 2017

LUGAR	ESTACION				CLASIFICACION VEHICULAR EN PORCIENTO														COORDENADAS	
	KM	TE	SC	TDPA	M	A	B	C2	C3	T3S2	T3S3	T3S2R4	OTROS	A	B	C	K'	D	LATITUD	LONGITUD
T. C. Ent. Playa Azul - Manzanillo	0.00	3	0	600	28.3	60.2	0.4	8.3	1.7	0.7	0.2	0.1	0.1	88.5	0.4	11.1	0.132	0.504	18.816973	-103.809104
Rancho Valle Nuevo	4.00																			

38 CARR: Ramal a Rincón de López

CLAVE: 06578

RUTA: COL

AÑO: 2017

LUGAR	ESTACION				CLASIFICACION VEHICULAR EN PORCIENTO														COORDENADAS	
	KM	TE	SC	TDPA	M	A	B	C2	C3	T3S2	T3S3	T3S2R4	OTROS	A	B	C	K'	D	LATITUD	LONGITUD
T. C. Ent. Playa Azul - Manzanillo	0.00	3	0	3999	14.5	73.1	0.5	7.4	0.7	2.5	0.7	0.2	0.4	87.6	0.5	11.9	0.086	0.512	18.951972	-103.947417
Rincón de López	14.00																			

39 CARR: Ramal a Tecuanillo

CLAVE: 06009

RUTA: COL-009

AÑO: 2017

LUGAR	ESTACION				CLASIFICACION VEHICULAR EN PORCIENTO														COORDENADAS	
	KM	TE	SC	TDPA	M	A	B	C2	C3	T3S2	T3S3	T3S2R4	OTROS	A	B	C	K'	D	LATITUD	LONGITUD
T. C. Ent. Playa Azul - Manzanillo	0.00	3	0	1765	11.9	73.0	1.0	11.6	0.6	1.7	0.1	0.0	0.1	84.9	1.0	14.1	0.111	0.521	18.889658	-103.855732
Tecuanillo	10.00																			

40 CARR: Tecomán - La Mascota

CLAVE: 06572

RUTA: COL

AÑO: 2017

LUGAR	ESTACION				CLASIFICACION VEHICULAR EN PORCIENTO														COORDENADAS	
	KM	TE	SC	TDPA	M	A	B	C2	C3	T3S2	T3S3	T3S2R4	OTROS	A	B	C	K'	D	LATITUD	LONGITUD
Tecomán	0.00	3	0	2686	8.1	77.7	0.6	11.7	0.7	0.8	0.2	0.1	0.1	85.8	0.6	13.6	0.203	0.518	18.893194	-103.889722
X. Libramiento Poniente Arco Sur de Tecomán	2.70	3	0	2164	7.3	82.3	0.4	7.6	0.5	1.5	0.2	0.1	0.1	89.6	0.4	10.0	0.271	0.528	18.885897	-103.894657
La Mascota	11.00																			

COLIMA

41 CARR: Trapichillos - Estación Alzada

CLAVE: 06003

RUTA: COL-003

AÑO: 2017

LUGAR	ESTACION				CLASIFICACION VEHICULAR EN PORCIENTO													COORDENADAS		
	KM	TE	SC	TDPA	M	A	B	C2	C3	T3S2	T3S3	T3S2R4	OTROS	A	B	C	K'	D	LATITUD	LONGITUD
T. C. Jiquilpan - Colima	0.00	3	0	442	3.6	63.4	0.8	6.1	7.7	12.8	2.1	0.1	3.4	67.0	0.8	32.2	0.115	0.512	19.163559	-103.525019
Estación Alzada	12.50	1	0	440	5.1	64.3	1.8	13.0	10.5	2.9	1.7	0.5	0.2	69.4	1.8	28.8	0.100	0.503	19.250752	-103.531728

42 CARR: Villa de Álvarez - Minatitlán

CLAVE: 06040

RUTA: COL

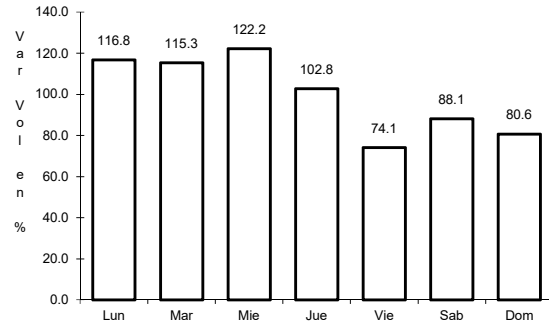
AÑO: 2017

LUGAR	ESTACION				CLASIFICACION VEHICULAR EN PORCIENTO													COORDENADAS		
	KM	TE	SC	TDPA	M	A	B	C2	C3	T3S2	T3S3	T3S2R4	OTROS	A	B	C	K'	D	LATITUD	LONGITUD
T. C. Colima - Comala	0.00	3	0	11689	5.3	78.2	0.4	6.9	1.1	5.8	1.0	0.3	1.0	83.5	0.4	16.1	0.073	0.506	19.290222	-103.795500
T. C. Minatitlán - Ent. Pez Vela	55.00																			

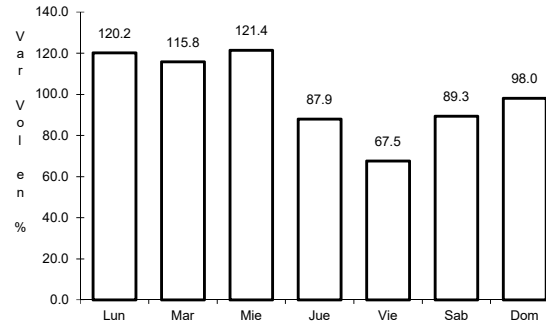
1 CARR: Cd. Guzmán - Colima

CLAVE: 00117

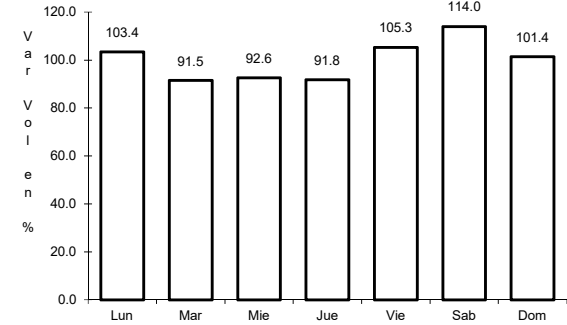
RUTA: MEX-054



Km: 0.00 Tipo: 3 Sent: 1



Km: 0.00 Tipo: 3 Sent: 2

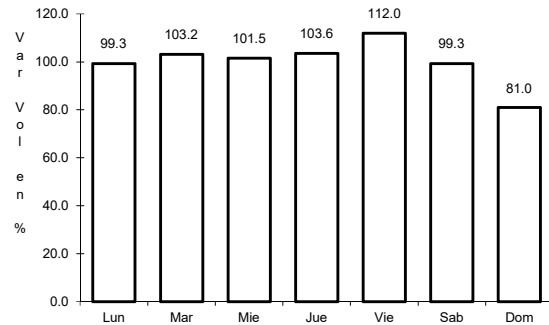


Km: 58.35 Tipo: 1 Sent: 0

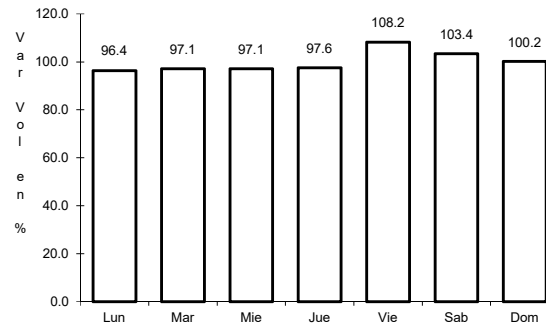
2 CARR: Colima - Ent. Tecomán

CLAVE: 06119

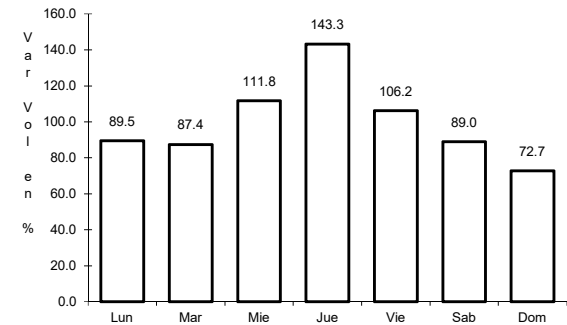
RUTA: MEX-110



Km: 0.00 Tipo: 3 Sent: 1



Km: 0.00 Tipo: 3 Sent: 2

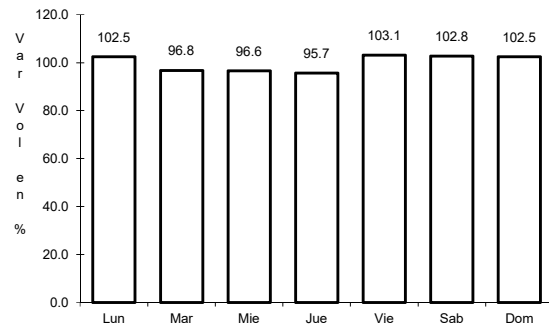


Km: 40.10 Tipo: 1 Sent: 1

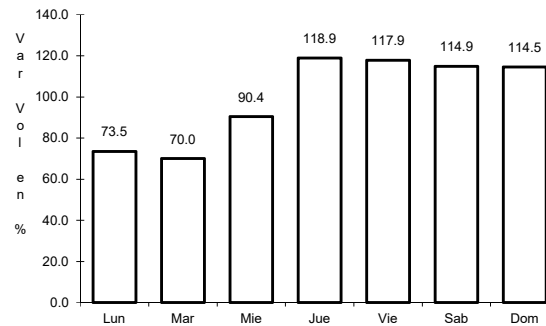
3 CARR: Ent. Playa Azul - Manzanillo

CLAVE: 00495

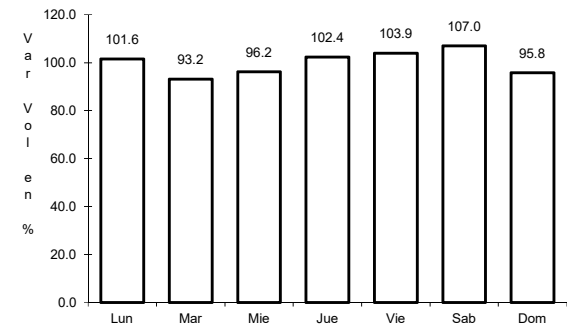
RUTA: MEX-200



Km: 0.00 Tipo: 3 Sent: 0



Km: 190.10 Tipo: 3 Sent: 0

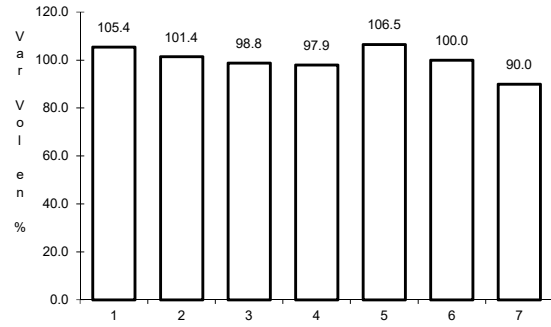


Km: 321.12 Tipo: 1 Sent: 0

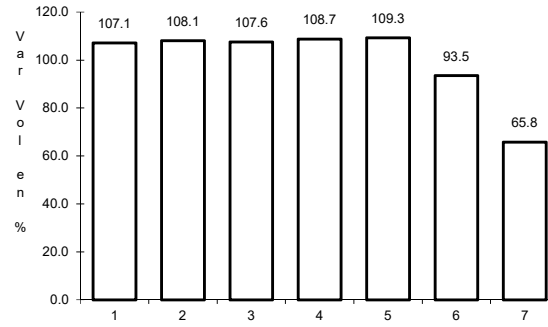
4 CARR: Jiquilpan - Colima

CLAVE: 00156

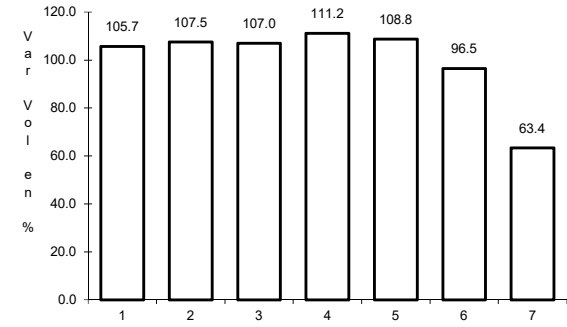
RUTA: MEX-110



Km: 0.00 Tipo: 3 Sent: 0



Km: 222.00 Tipo: 1 Sent: 1

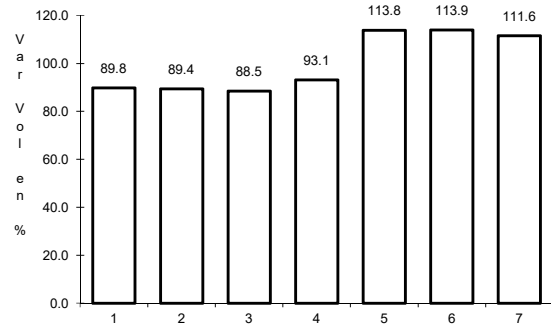


Km: 222.00 Tipo: 1 Sent: 2

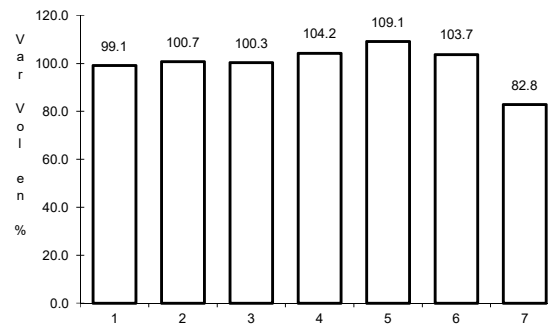
5 CARR: Libramiento de Colima

CLAVE: 06573

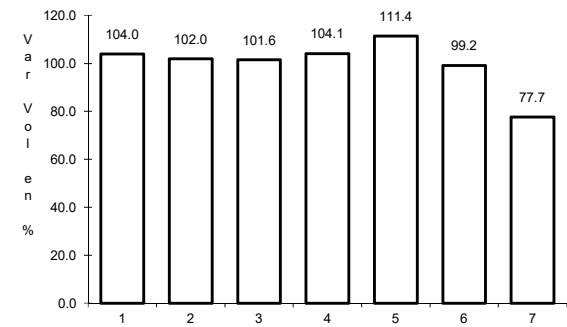
RUTA: MEX-054



Km: 0.00 Tipo: 3 Sent: 1



Km: 0.00 Tipo: 3 Sent: 2

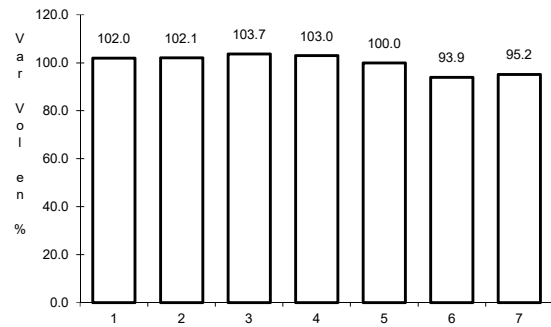


Km: 9.00 Tipo: 1 Sent: 1

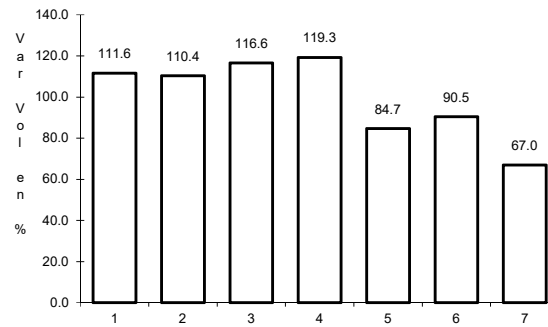
6 CARR: Libramiento de Manzanillo (Libre)

CLAVE: 06574

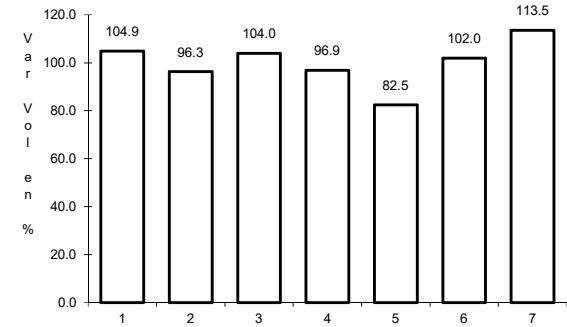
RUTA: MEX-200



Km: 0.00 Tipo: 3 Sent: 0



Km: 6.30 Tipo: 1 Sent: 1

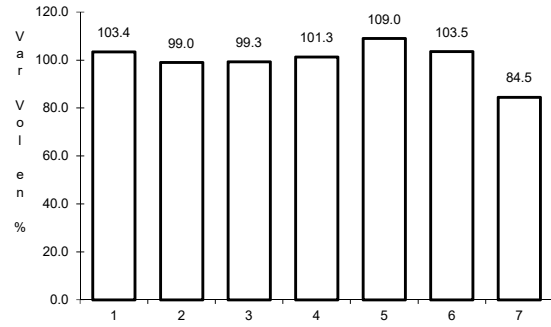


Km: 6.30 Tipo: 1 Sent: 2

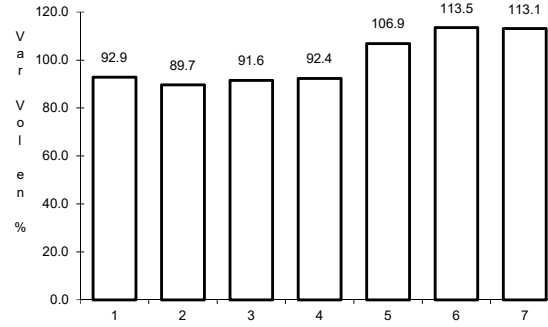
7 CARR: Libramiento de Manzanillo Norte

CLAVE: 06122

ruta: MEX-200



Km: 3.00 Tipo: 3 Sent: 0

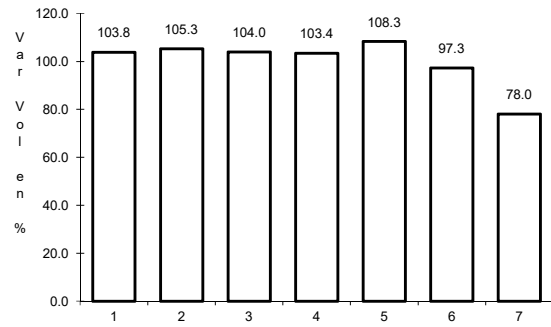


Km: 19.00 Tipo: 1 Sent: 0

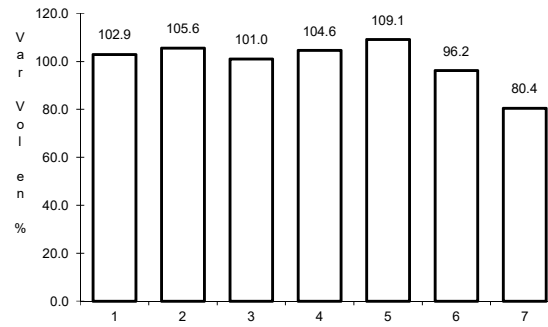
8 CARR: Manzanillo - Puerto Vallarta

CLAVE: 00070

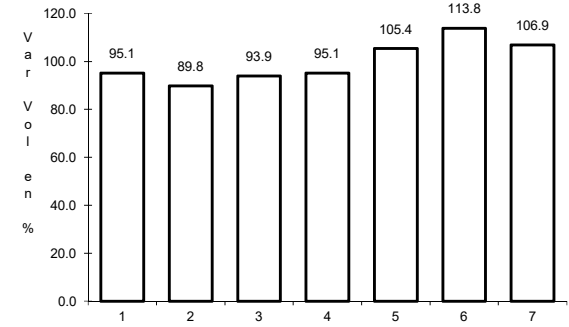
ruta: MEX-200



Km: 0.00 Tipo: 3 Sent: 1



Km: 0.00 Tipo: 3 Sent: 2

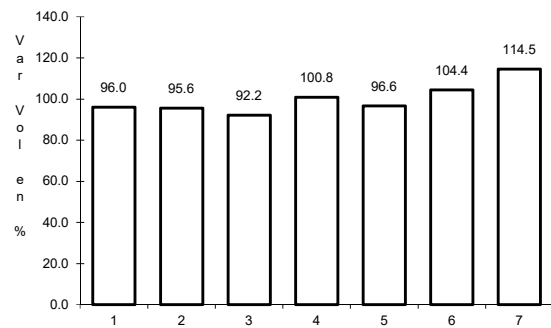


Km: 273.64 Tipo: 1 Sent: 0

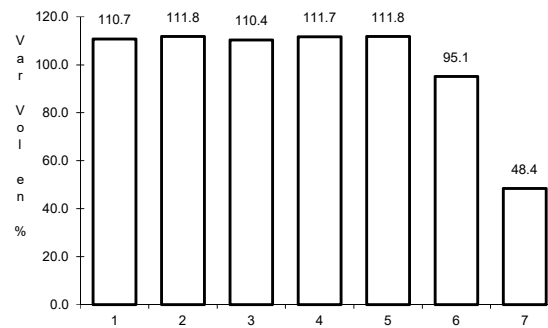
9 CARR: Minatitlán - Ent. Pez Vela

CLAVE: 06015

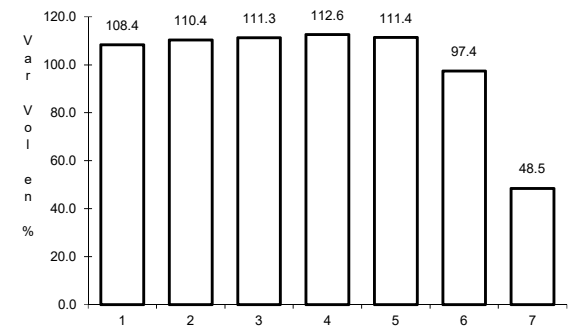
ruta: MEX-098



Km: 49.50 Tipo: 1 Sent: 0



Km: 58.50 Tipo: 1 Sent: 1

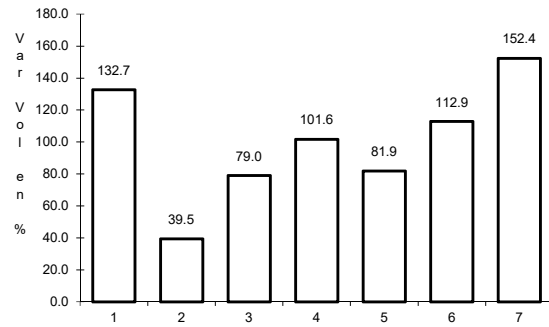


Km: 58.50 Tipo: 1 Sent: 2

10 CARR: Paso por La Salada

CLAVE: 06121

RUTA: MEX-110



Km: 0.00

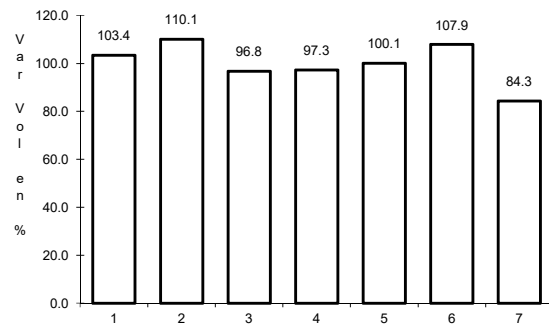
Tipo: 3

Sent: 0

11 CARR: Paso por Los Asmoles

CLAVE: 06120

RUTA: MEX-110



Km: 1.80

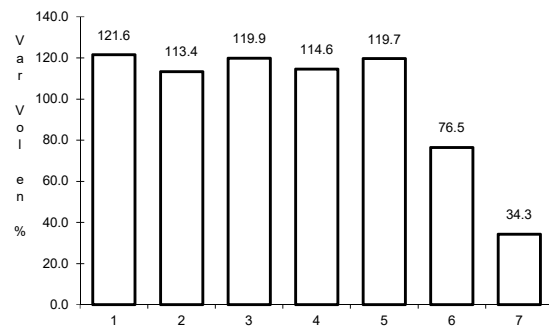
Tipo: 3

Sent: 0

12 CARR: Ramal a Cerro de Los Juanes

CLAVE: 06009

RUTA: MEX-098



Km: 0.00

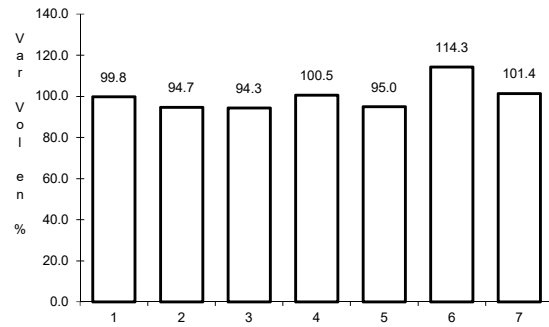
Tipo: 3

Sent: 0

13 CARR: Ramal a Cerro de Ortega

CLAVE: 06009

RUTA: MEX-200



Km: 0.00

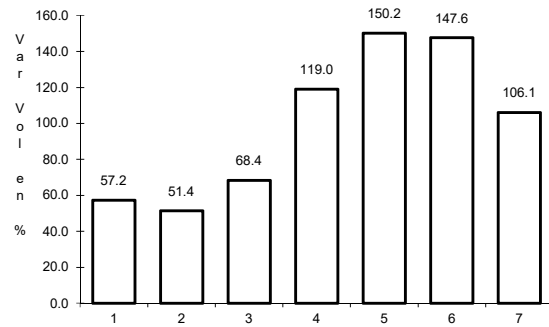
Tipo: 3

Sent: 0

14 CARR: Ramal a Cuyutlán

CLAVE: 06225

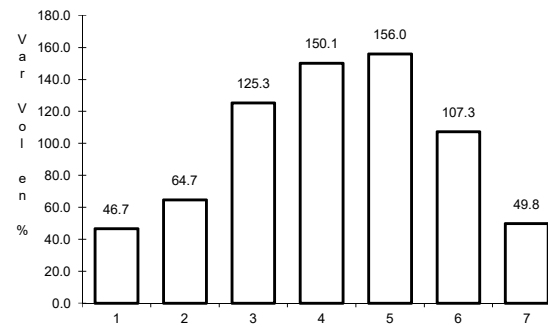
RUTA: MEX-200



Km: 0.00

Tipo: 3

Sent: 0



Km: 7.00

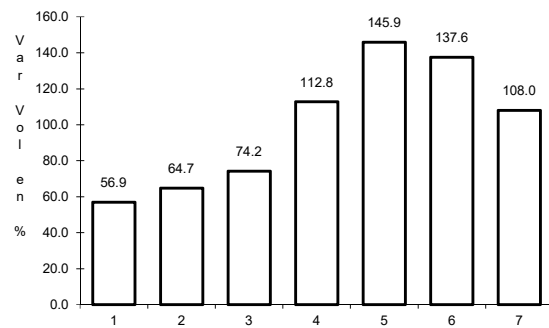
Tipo: 1

Sent: 0

15 CARR: Tecomán - Boca de Pascuales

CLAVE: 06226

RUTA: MEX-200



Km: 0.00

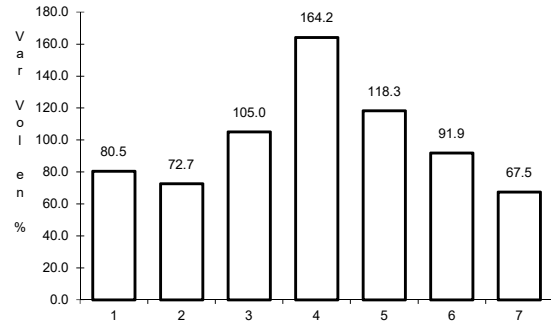
Tipo: 3

Sent: 0

16 CARR: Armería - Manzanillo (Cuota)

CLAVE: 06585

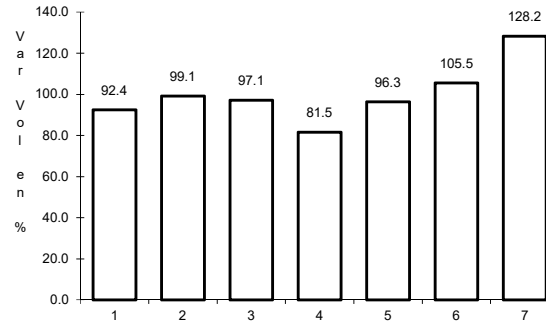
RUTA: MEX-200D



Km: 3.50

Tipo: 3

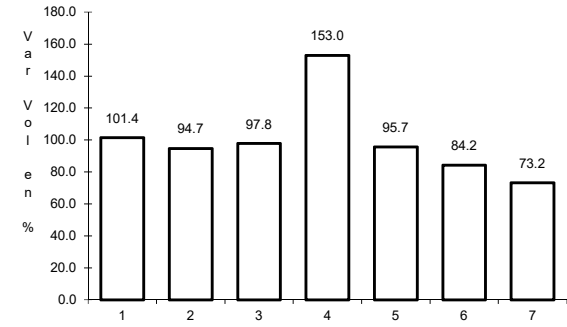
Sent: 1



Km: 3.50

Tipo: 3

Sent: 2



Km: 44.00

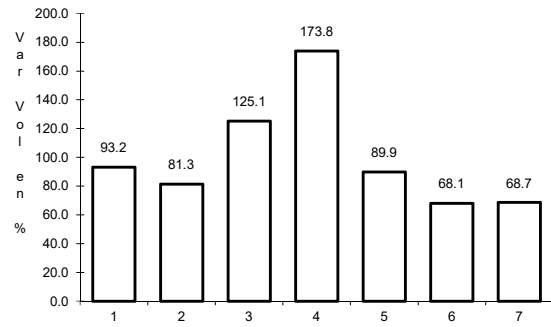
Tipo: 3

Sent: 1

17 CARR: Guadalajara - Colima (Cuota)

CLAVE: 00118

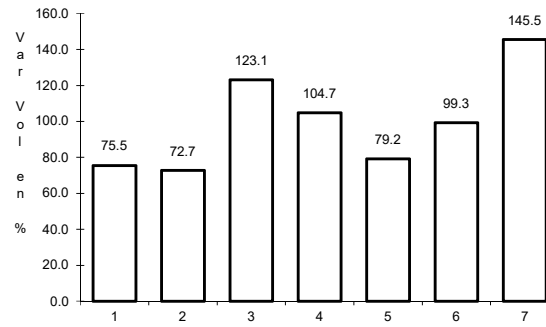
RUTA: MEX-054D



Km: 0.20

Tipo: 3

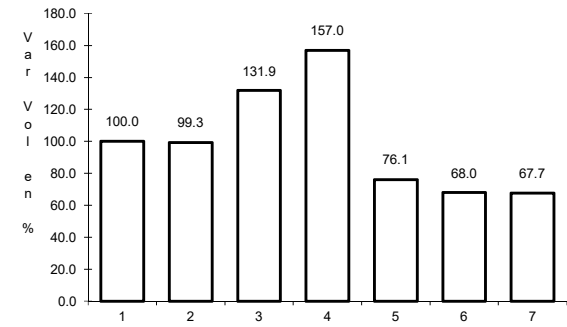
Sent: 1



Km: 0.20

Tipo: 3

Sent: 2



Km: 86.70

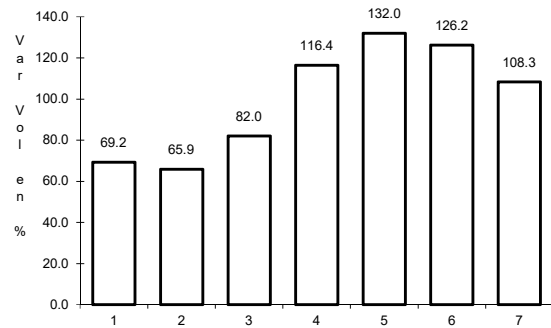
Tipo: 1

Sent: 1

18 CARR: Armería - Playa El Paraíso

CLAVE: 06580

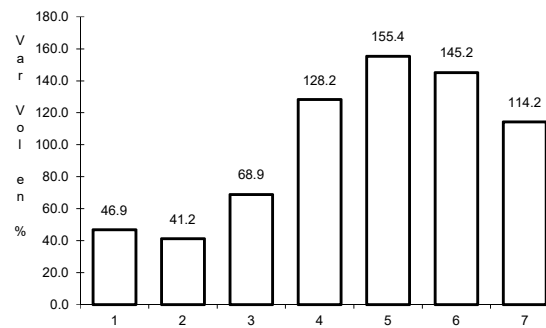
RUTA: COL



Km: 0.00

Tipo: 3

Sent: 0



Km: 7.50

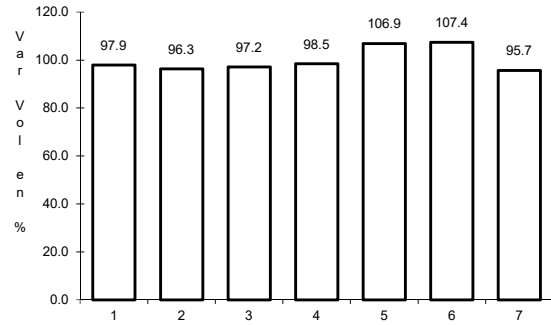
Tipo: 1

Sent: 0

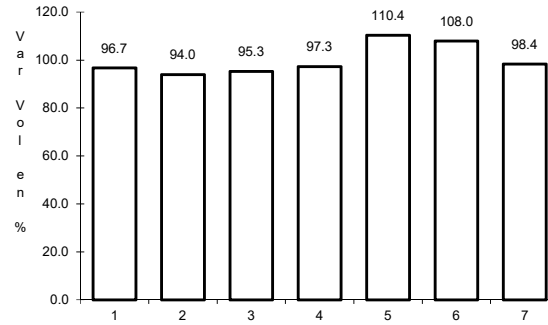
19 CARR: Colima - Comala

CLAVE: 06016

RUTA: COL-016



Km: 3.00 Tipo: 3 Sent: 1

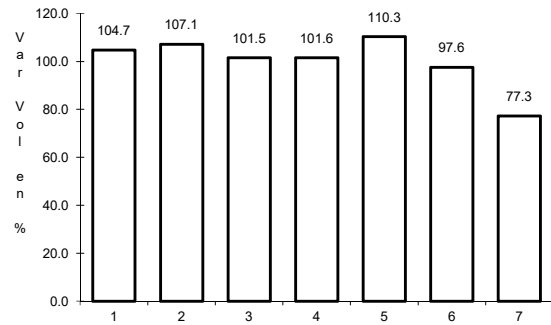


Km: 3.00 Tipo: 3 Sent: 2

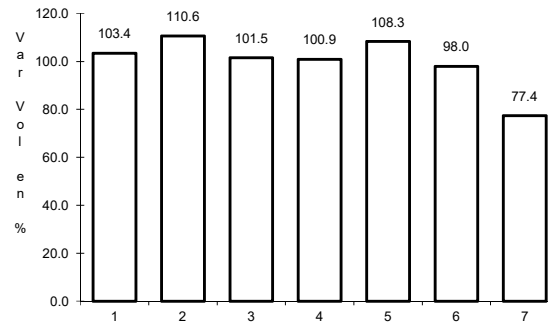
20 CARR: Colima - Coquimatlán

CLAVE: 06034

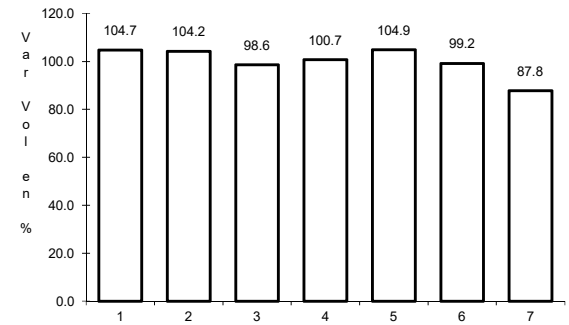
RUTA: COL-034



Km: 3.00 Tipo: 3 Sent: 1



Km: 3.00 Tipo: 3 Sent: 2

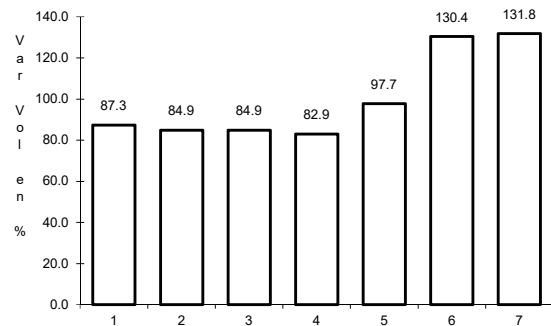


Km: 11.00 Tipo: 1 Sent: 1

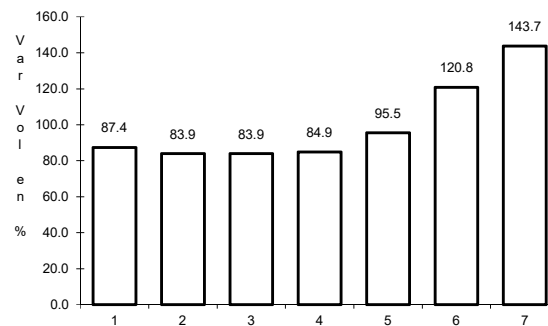
21 CARR: Comala - San Antonio

CLAVE: 06030

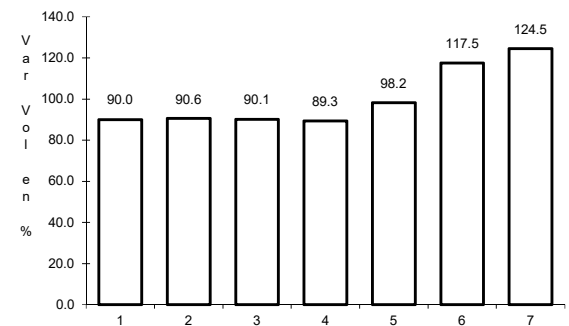
RUTA: COL-016



Km: 0.00 Tipo: 3 Sent: 1



Km: 0.00 Tipo: 3 Sent: 2

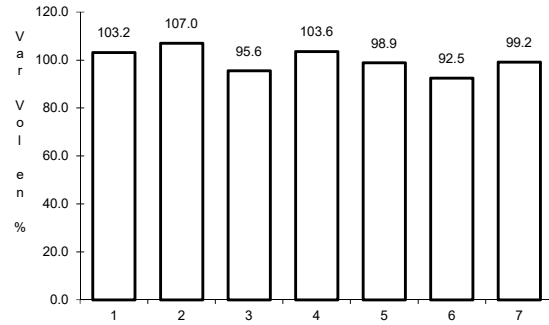


Km: 10.00 Tipo: 1 Sent: 0

22 CARR: Coquimatlán - Pueblo Juárez

CLAVE: 06029

RUTA: COL-034



Km: 0.00

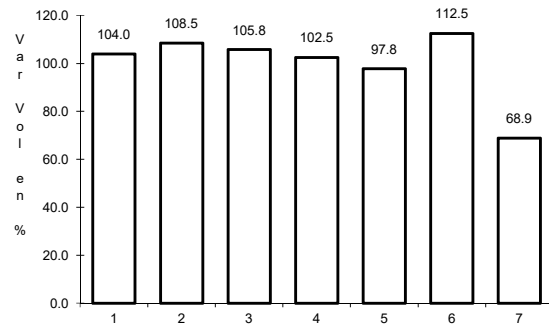
Tipo: 3

Sent: 0

23 CARR: Costera Laguna de Cuyutlán

CLAVE: 06010

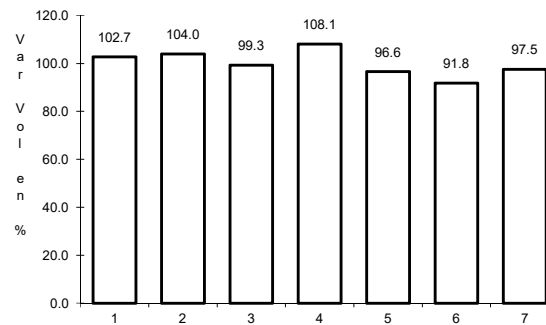
RUTA: COL



Km: 0.00

Tipo: 3

Sent: 0



Km: 13.00

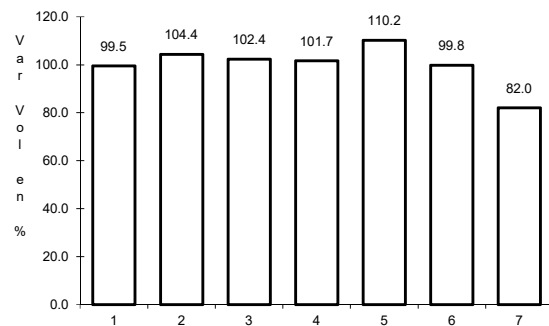
Tipo: 1

Sent: 0

24 CARR: Cuauhtémoc - Colima

CLAVE: 06019

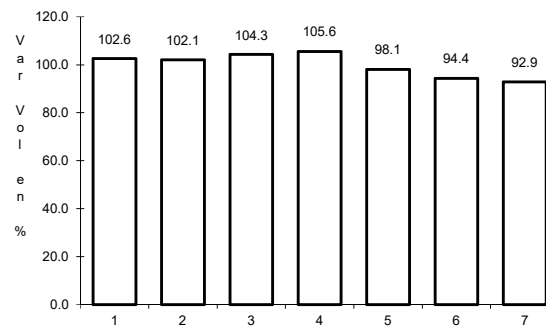
RUTA: COL-019



Km: 0.00

Tipo: 3

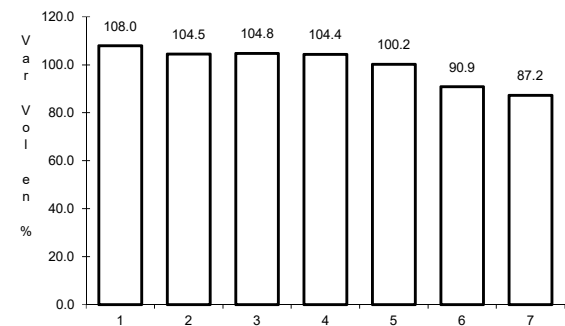
Sent: 0



Km: 19.50

Tipo: 1

Sent: 1



Km: 19.50

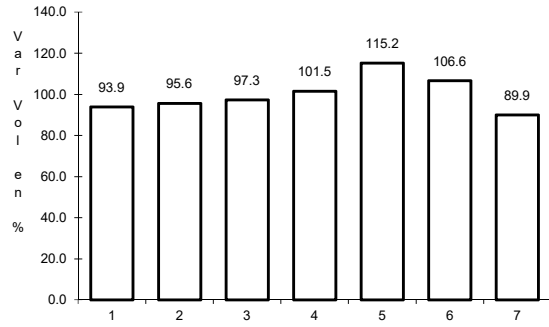
Tipo: 1

Sent: 2

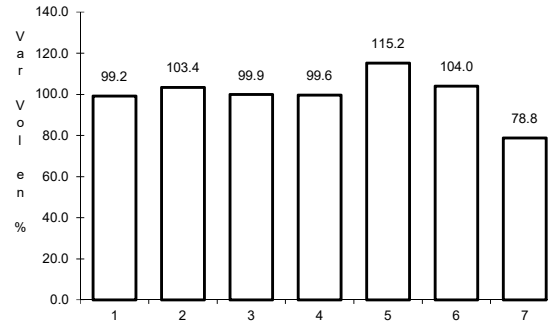
25 CARR: Libramiento de Tecomán

CLAVE: 06122

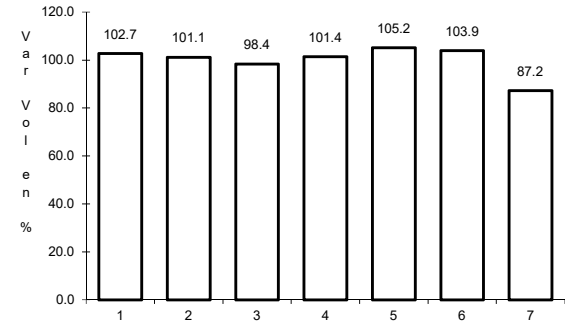
RUTA: COL



Km: 0.00 Tipo: 3 Sent: 1



Km: 0.00 Tipo: 3 Sent: 2

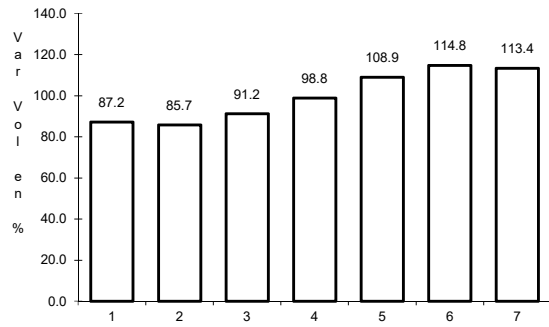


Km: 7.90 Tipo: 1 Sent: 1

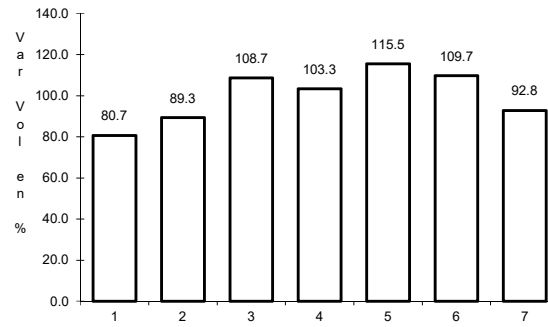
26 CARR: Libramiento Poniente Arco Sur de Tecomán

CLAVE:

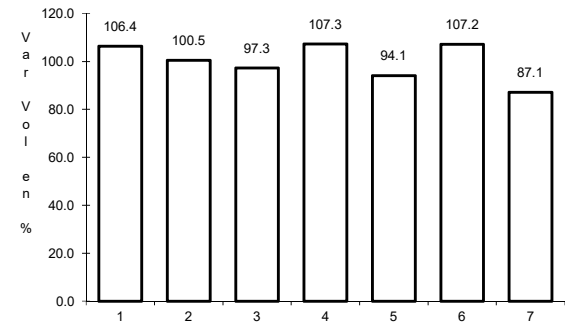
RUTA: COL



Km: 0.00 Tipo: 3 Sent: 0



Km: 4.60 Tipo: 3 Sent: 0

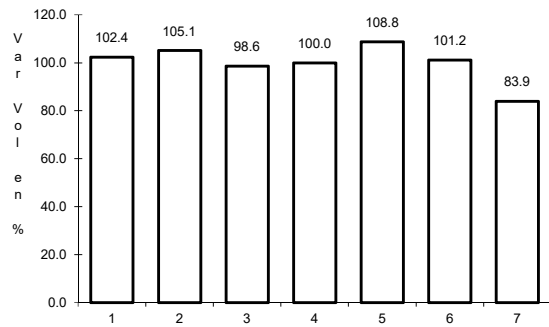


Km: 6.90 Tipo: 3 Sent: 0

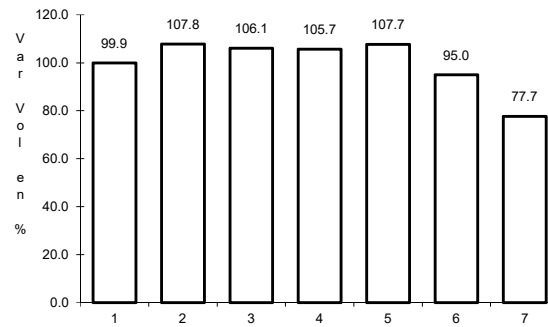
27 CARR: Libramiento Poniente de Colima

CLAVE: 06122

RUTA: COL



Km: 0.00 Tipo: 3 Sent: 1

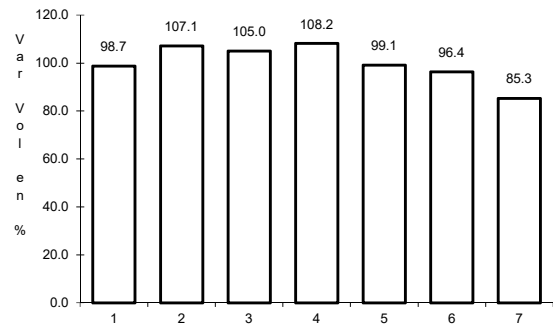


Km: 0.00 Tipo: 3 Sent: 2

28 CARR: Los Limones - Loma de Juárez

CLAVE: 06122

RUTA: COL



Km: 5.77

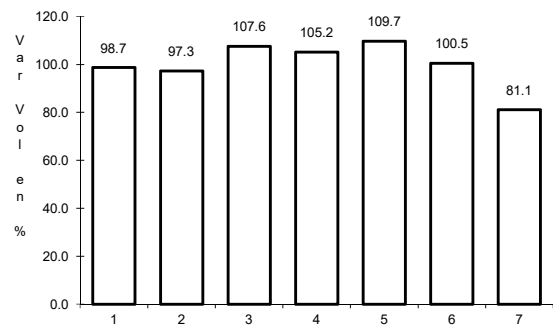
Tipo: 1

Sent: 0

29 CARR: Puerta de Caleras - Madrid

CLAVE: 06014

RUTA: COL-014



Km: 0.00

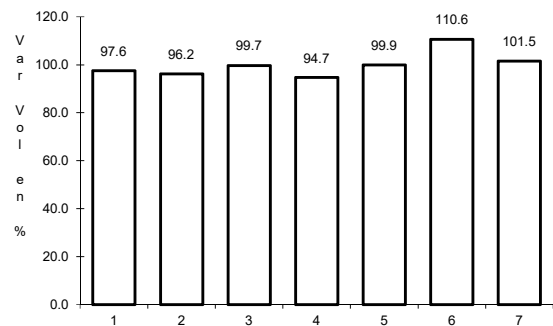
Tipo: 3

Sent: 0

30 CARR: Queseria - El Naranjal

CLAVE: 06001

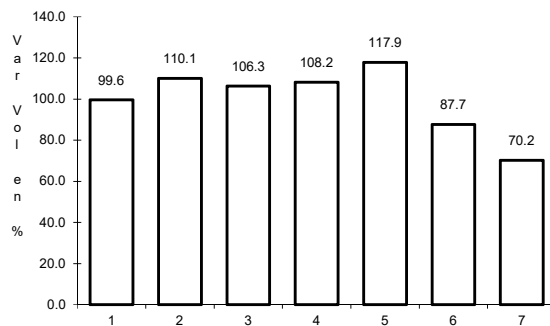
RUTA: COL-001



Km: 0.00

Tipo: 3

Sent: 0



Km: 10.00

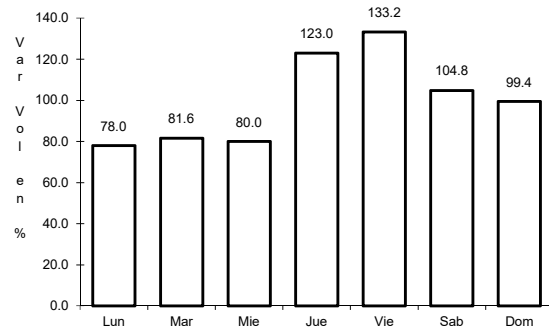
Tipo: 1

Sent: 0

31 CARR: Ramal a Aeropuerto de Colima

CLAVE: 06224

RUTA: COL



Km: 0.00

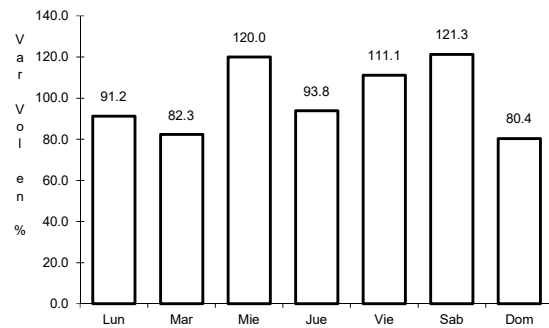
Tipo: 3

Sent: 0

32 CARR: Ramal a Aeropuerto Manzanillo

CLAVE: 06582

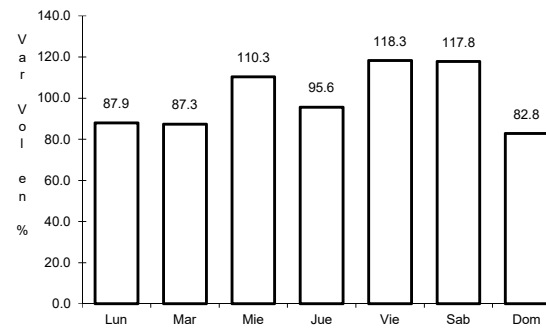
RUTA: COL



Km: 0.00

Tipo: 3

Sent: 0



Km: 5.50

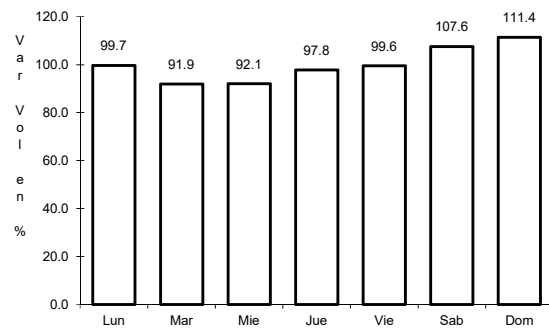
Tipo: 1

Sent: 0

33 CARR: Ramal a Camotlán de Miraflores

CLAVE: 06009

RUTA: COL



Km: 0.00

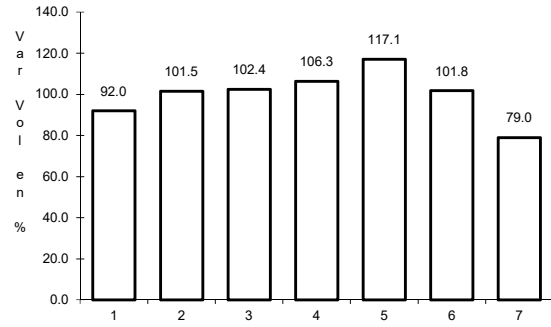
Tipo: 3

Sent: 0

34 CARR: Ramal a Ixtlahuacán

CLAVE: 06577

RUTA: COL-005



Km: 0.00

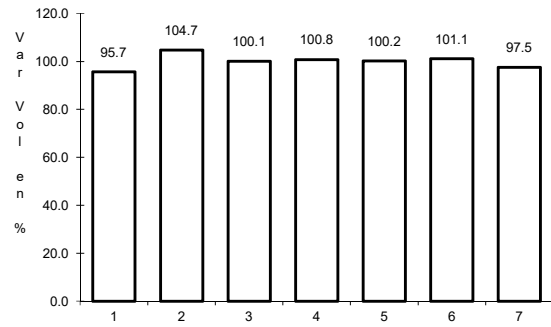
Tipo: 3

Sent: 0

35 CARR: Ramal a Las Brisas

CLAVE: 06571

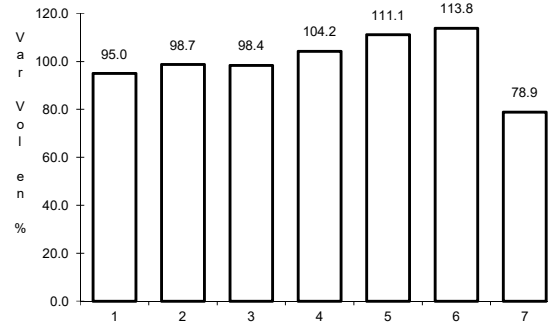
RUTA: COL



Km: 0.00

Tipo: 3

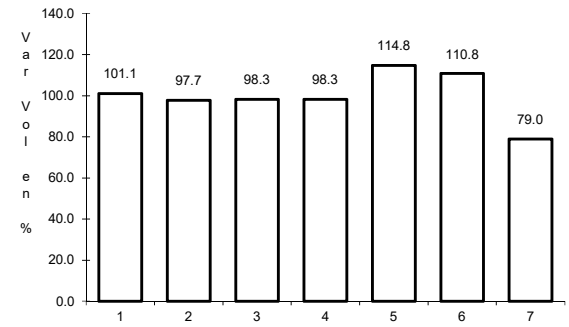
Sent: 0



Km: 0.00

Tipo: 3

Sent: 1



Km: 0.00

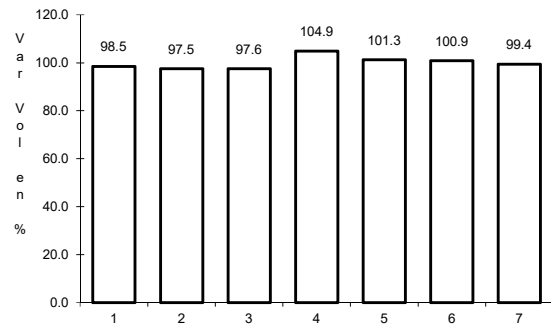
Tipo: 3

Sent: 2

36 CARR: Ramal a Los Tepames

CLAVE: 06004

RUTA: COL-004



Km: 0.00

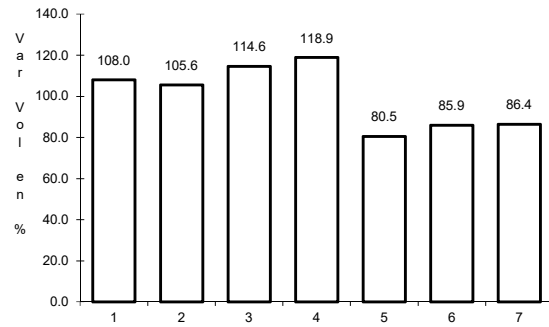
Tipo: 3

Sent: 0

37 CARR: Ramal a Rancho Valle Nuevo

CLAVE: 06583

RUTA: COL



Km: 0.00

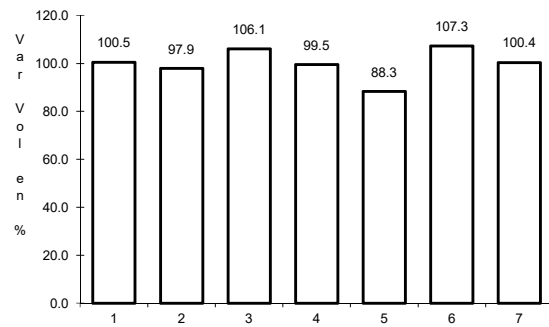
Tipo: 3

Sent: 0

38 CARR: Ramal a Rincón de López

CLAVE: 06578

RUTA: COL



Km: 0.00

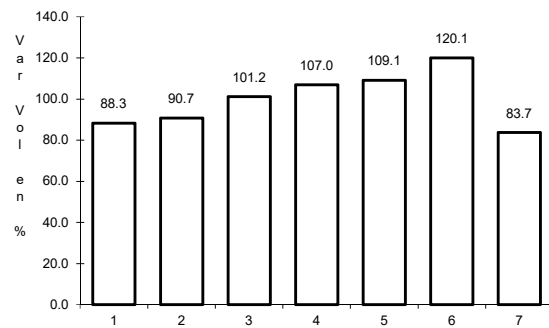
Tipo: 3

Sent: 0

39 CARR: Ramal a Tecuanillo

CLAVE: 06009

RUTA: COL-009



Km: 0.00

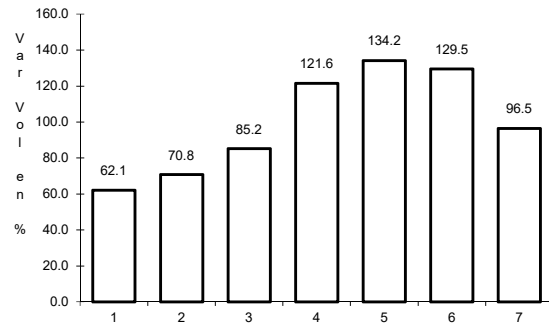
Tipo: 3

Sent: 0

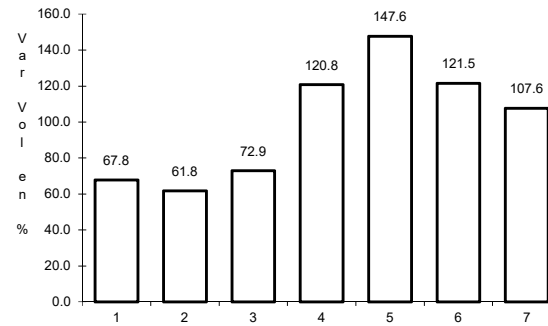
40 CARR: Tecomán - La Mascota

CLAVE: 06572

RUTA: COL



Km: 0.00 Tipo: 3 Sent: 0

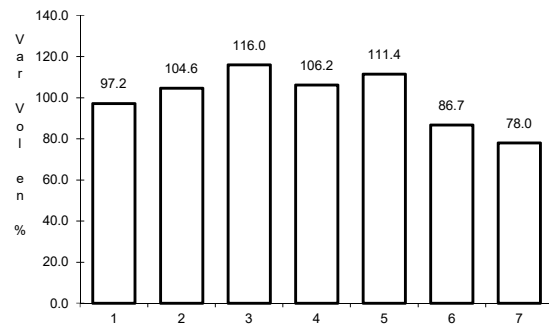


Km: 2.70 Tipo: 3 Sent: 0

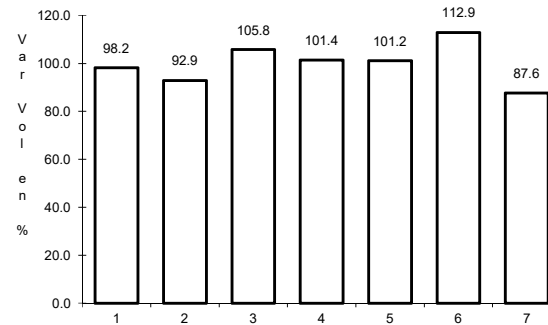
41 CARR: Trapichillos - Estación Alzada

CLAVE: 06003

RUTA: COL-003



Km: 0.00 Tipo: 3 Sent: 0

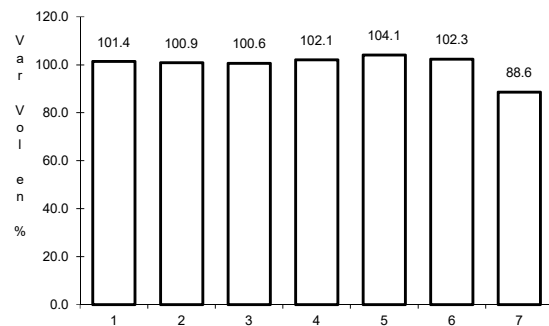


Km: 12.50 Tipo: 1 Sent: 0

42 CARR: Villa de Álvarez - Minatitlán

CLAVE: 06040

RUTA: COL



Km: 0.00 Tipo: 3 Sent: 0