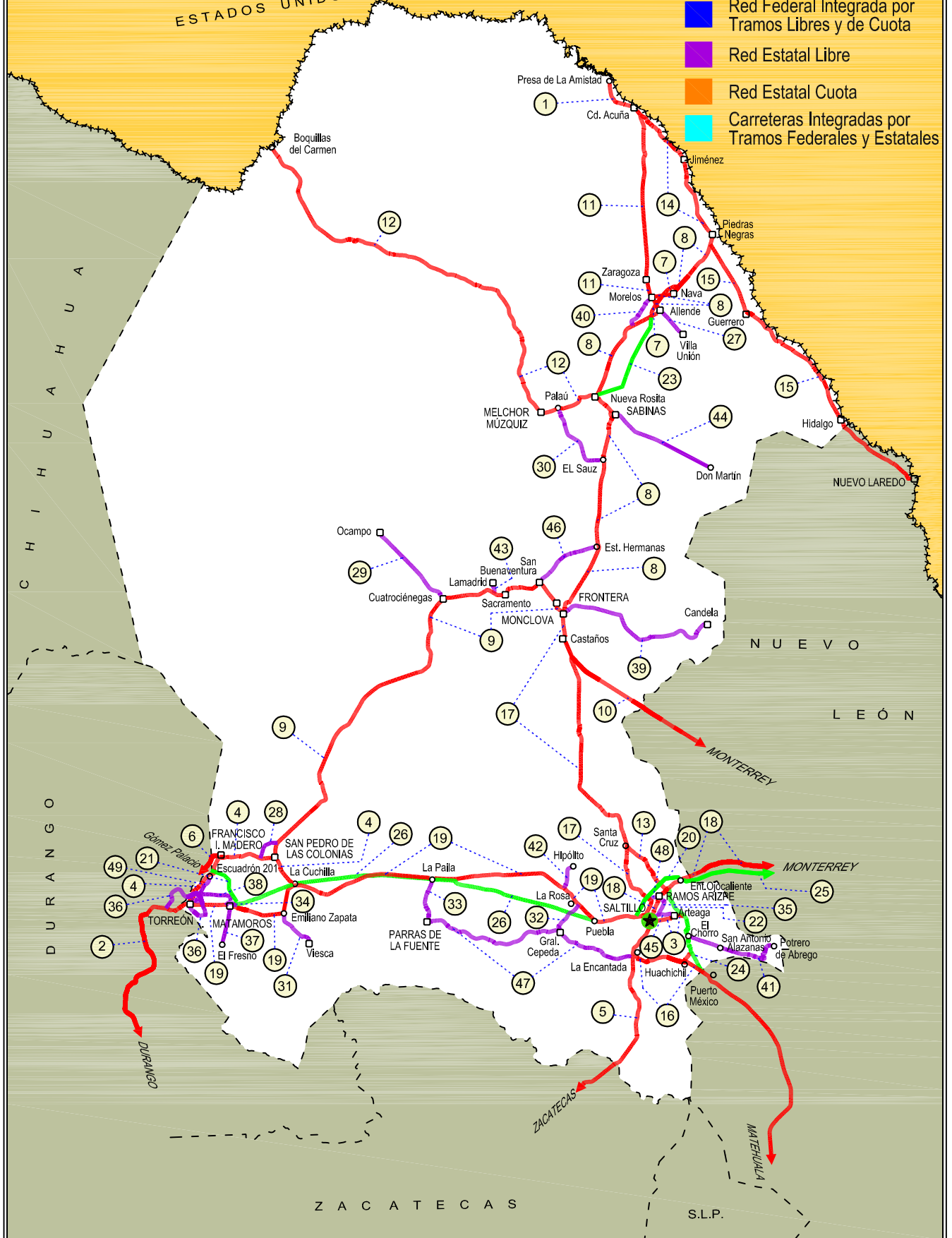


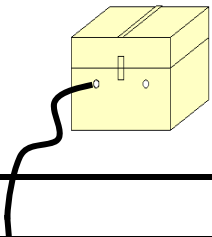
05 COAHUILA

SECRETARÍA DE COMUNICACIONES Y TRANSPORTES
DIRECCIÓN GENERAL DE SERVICIOS TÉCNICOS

ESTADOS UNIDOS DE AMÉRICA

- ① --- Número Índice
- Red Federal Libre
- Red Federal Cuota
- Red Federal Integrada por Tramos Libres y de Cuota
- Red Estatal Libre
- Red Estatal Cuota
- Carreteras Integradas por Tramos Federales y Estatales





COAHUILA

---RED FEDERAL LIBRE---

1 Cd. Acuña - Presa de La Amistad	MEX-002
2 Durango - Torreón	MEX-040
3 Ent. Bella Unión - Saltillo	MEX-057
4 Ent. La Cuchilla - Torreón	MEX-030
5 Ent. Morelos - Saltillo	MEX-054
6 Gregorio García - Francisco I. Madero	MEX-040
7 Libramiento Allende - Nava	MEX-057
8 Monclova - Piedras Negras	MEX-057
9 Monclova - San Pedro de Las Colonias	MEX-030
10 Monterrey - Castaños	MEX-053
11 Morelos - Cd. Acuña	MEX-029
12 Nueva Rosita - Boquillas del Carmen	MEX-053
13 Ojo Caliente - Santa Cruz	MEX-057
14 Piedras Negras - Cd. Acuña	MEX-002
15 Piedras Negras - Nuevo Laredo	MEX-002
16 Puerto México - La Encantada	MEX-057
17 Saltillo - Monclova	MEX-057
18 Saltillo - Monterrey	MEX-040
19 Saltillo - Torreón	MEX-040

---RED FEDERAL DE CUOTA---

20 Libramiento Norponiente de Saltillo (Cuota)	MEX-S30
21 Libramiento Norte de Torreón (Cuota)	MEX-040D
22 Libramiento Oriente de Saltillo (Cuota)	MEX-057D
23 Nueva Rosita - Ent. Allende (Cuota)	MEX-057D
24 Puerto México - La Carbonera (Cuota)	MEX-057D
25 Saltillo - Monterrey (Cuota)	MEX-040D
26 Torreón - Saltillo (Cuota)	MEX-040D

---RED ESTATAL LIBRE---

27 Allende - Villa Unión	COA-015
28 Corredor Libramiento de San Pedro	COA-087
29 Cuatro Ciénegas - Ocampo	COA-048
30 El Sauz - Palau	COA-022
31 Emiliano Zapata - Viesca	COA-082
32 Ent. La Rosa - General Cepeda	COA-034
33 Ent. Paila - Parras de La Fuente	COA-102
34 Libramiento de Matamoros	COA
35 Libramiento de Saltillo J.L.P.	COA
36 Libramiento de Torreón	COA
37 Matamoros - El Fresno	COA-078
38 Matamoros - La Unión	COA-070
39 Monclova - Estación Candela	COA-030-NL
40 Morelos - Ent. Las Corrientes	COA-010
41 Puerto de Flores - El Hondable	COA-112
42 Ramal a Hipólito	COA-114
43 Ramal a Lamadrid	COA-042
44 Sabinas - Don Martín	COA-025
45 Saltillo - Arteaga	COA-106
46 San Buenaventura - Estación Hermanas	COA-034
47 T. C. (Ent. Morelos - Saltillo) - Parras de La Fuente	COA-105
48 T. C. (Saltillo - Monclova) - Ramos Arizpe	COA
49 Torreón - Escuadrón 201	COA-011

COAHUILA

1 CARR: Cd. Acuña - Presa de La Amistad

CLAVE: 05085

RUTA: MEX-002

AÑO: 2017

LUGAR	ESTACION				CLASIFICACION VEHICULAR EN PORCIENTO										COORDENADAS					
	KM	TE	SC	TDPA	M	A	B	C2	C3	T3S2	T3S3	T3S2R4	OTROS	A	B	C	K'	D	LATITUD	LONGITUD
Cd. Acuña	0.00	3	1	11756	0.6	86.7	1.3	7.4	0.7	1.5	1.2	0.2	0.4	87.3	1.3	11.4	0.070	0.512	29.334030	-100.965299
Cd. Acuña	0.00	3	2	11285	1.4	85.1	1.2	8.0	0.7	1.7	1.3	0.2	0.4	86.5	1.2	12.3	0.090	0.512	29.334044	-100.965296
T. Izq. Santa Eulalia	10.60	1	1	3425	1.6	80.1	3.3	10.2	1.8	2.1	0.5	0.2	0.2	81.7	3.3	15.0	0.131	0.514	29.342452	-101.000987
T. Izq. Santa Eulalia	10.60	1	2	3850	1.2	80.1	3.0	10.8	2.0	2.2	0.4	0.1	0.2	81.3	3.0	15.7	0.131	0.514	29.342457	-101.000984
Presa de La Amistad	23.00	1	0	511	1.3	79.7	0.1	15.6	2.2	0.7	0.3	0.0	0.1	81.0	0.1	18.9	0.353	0.537	29.442809	-101.074293

2 CARR: Durango - Torreón

CLAVE: 10085

RUTA: MEX-040

AÑO: 2017

LUGAR	ESTACION				CLASIFICACION VEHICULAR EN PORCIENTO										COORDENADAS					
	KM	TE	SC	TDPA	M	A	B	C2	C3	T3S2	T3S3	T3S2R4	OTROS	A	B	C	K'	D	LATITUD	LONGITUD
Durango	0.00	3	1	9960	2.1	84.9	1.9	8.2	0.9	1.3	0.5	0.1	0.1	87.0	1.9	11.1	0.076	0.508	24.076317	-104.591283
Durango	0.00	3	2	9629	2.3	83.8	1.6	9.0	1.1	1.3	0.6	0.2	0.1	86.1	1.6	12.3	0.087	0.508	24.076440	-104.591420
T. Der. Cd. de Los Niños	7.70	3	1	7714	2.0	82.9	2.1	9.4	1.0	1.7	0.6	0.2	0.1	84.9	2.1	13.0	0.081	0.504	24.082360	-104.586137
T. Der. Cd. de Los Niños	7.70	3	2	7835	2.0	81.8	2.8	10.1	1.1	1.4	0.5	0.2	0.1	83.8	2.8	13.4	0.082	0.504	24.082447	-104.586261
X. Periférico de Durango	9.00	1	1	8001	1.8	81.0	2.3	10.7	1.0	1.9	0.8	0.4	0.1	82.8	2.3	14.9	0.072	0.513	24.088453	-104.580925
X. Periférico de Durango	9.00	1	2	8437	2.0	83.0	2.2	8.7	1.0	1.9	0.7	0.3	0.2	85.0	2.2	12.8	0.075	0.513	24.088560	-104.581035
T. Der. Aeropuerto	9.42	1	1	8153	1.9	80.5	2.1	10.7	1.3	2.1	0.8	0.4	0.2	82.4	2.1	15.5	0.083	0.547	24.092492	-104.577456
T. Der. Aeropuerto	9.42	1	2	6745	3.5	78.4	2.8	9.5	2.2	1.8	1.1	0.3	0.4	81.9	2.8	15.3	0.079	0.547	24.092594	-104.577600
T. Der. Aeropuerto	9.42	3	1	4624	2.5	82.0	1.7	9.0	1.7	1.9	0.8	0.1	0.3	84.5	1.7	13.8	0.075	0.504	24.099643	-104.575763
T. Der. Aeropuerto	9.42	3	2	4559	3.6	79.2	1.9	10.0	2.0	1.9	1.0	0.1	0.3	82.8	1.9	15.3	0.072	0.504	24.099601	-104.575671
La Calera	10.85	3	0	5671	2.1	72.0	3.1	14.1	1.8	4.5	1.8	0.4	0.2	74.1	3.1	22.8	0.070	0.503	24.110867	-104.571833
Abraham González	27.10	3	0	4392	1.5	71.1	3.1	13.8	1.8	5.4	2.5	0.5	0.3	72.6	3.1	24.3	0.075	0.511	24.206450	-104.514917
Francisco I. Madero	56.30	1	0	4258	1.2	71.6	2.8	12.5	2.2	5.9	2.8	0.7	0.3	72.8	2.8	24.4	0.072	0.501	24.392967	-104.329933
Francisco I. Madero	56.30	3	0	4359	0.7	69.2	2.8	15.0	2.0	6.3	2.9	0.7	0.4	69.9	2.8	27.3	0.073	0.514	24.405198	-104.305440
Guadalupe Victoria	77.50	1	0	5232	1.5	71.1	2.9	13.1	1.9	6.1	2.4	0.7	0.3	72.6	2.9	24.5	0.074	0.510	24.446776	-104.139453
Guadalupe Victoria	77.50	3	0	6806	1.5	77.3	2.0	12.1	1.6	3.4	1.5	0.4	0.2	78.8	2.0	19.2	0.074	0.504	24.461987	-104.087778
T. Der. Ignacio Allende	90.13	1	0	4570	1.1	71.5	2.7	13.5	2.0	5.8	2.4	0.6	0.4	72.6	2.7	24.7	0.074	0.513	24.495315	-104.027628
T. Der. Ignacio Allende	90.13	3	0	3240	1.3	64.2	3.8	15.1	3.3	7.9	3.0	0.8	0.6	65.5	3.8	30.7	0.066	0.507	24.503142	-104.015348
T. Izq. Peñón Blanco	120.90	1	0	2279	2.4	53.4	5.1	14.7	6.1	11.4	5.1	1.3	0.5	55.8	5.1	39.1	0.088	0.519	24.732190	-103.843899
T. Izq. Peñón Blanco	120.90	3	0	2087	2.0	50.3	5.4	12.8	6.6	14.8	6.0	1.6	0.5	52.3	5.4	42.3	0.084	0.515	24.742865	-103.837688
Cuencamé	144.30	1	0	2112	2.1	50.6	5.3	12.4	6.6	14.6	6.0	1.9	0.5	52.7	5.3	42.0	0.075	0.510	24.861040	-103.701773
Cuencamé	144.30	3	0	8064	3.4	51.2	5.5	12.5	4.3	14.4	3.9	4.3	0.5	54.6	5.5	39.9	0.061	0.502	24.907462	-103.704349
T. Izq. Nazas	171.61	1	0	4483	1.3	61.6	2.9	11.5	3.0	13.8	3.3	1.9	0.7	62.9	2.9	34.2	0.071	0.502	25.085911	-103.771292
T. Izq. Nazas	171.61	3	0	6108	1.4	66.6	2.2	12.3	2.4	10.3	2.7	1.5	0.6	68.0	2.2	29.8	0.073	0.513	25.091938	-103.769766
T. Der. Villa Juárez	194.40	3	0	4406	1.9	63.5	2.4	8.2	3.3	14.0	3.7	2.1	0.9	65.4	2.4	32.2	0.090	0.514	25.225456	-103.629398

COAHUILA

2 CARR: Durango - Torreón

CLAVE: 10085

RUTA: MEX-040

AÑO: 2017

LUGAR	ESTACION				CLASIFICACION VEHICULAR EN PORCIENTO													COORDENADAS		
	KM	TE	SC	TDPA	M	A	B	C2	C3	T3S2	T3S3	T3S2R4	OTROS	A	B	C	K'	D	LATITUD	LONGITUD
León Guzmán	229.58	3	0	8064	2.1	76.3	1.5	11.9	1.7	4.5	1.0	0.6	0.4	78.4	1.5	20.1	0.112	0.503	25.513420	-103.646115
Cd. Lerdo	244.80	1	1	6848	1.2	77.7	1.7	10.1	1.5	4.2	1.3	2.0	0.3	78.9	1.7	19.4	0.193	0.502	25.511789	-103.538513
Cd. Lerdo	244.80	1	2	6900	1.7	75.5	1.9	10.7	1.7	4.8	1.3	2.1	0.3	77.2	1.9	20.9	0.146	0.502	25.511945	-103.538481
T. Izq. Gómez Palacio	248.90	3	1	8534	2.2	89.2	1.7	4.9	0.1	0.2	1.3	0.3	0.1	91.4	1.7	6.9	0.089	0.501	25.553934	-103.481406
T. Izq. Gómez Palacio	248.90	3	2	8505	2.1	88.4	1.8	5.5	0.1	0.2	1.5	0.3	0.1	90.5	1.8	7.7	0.090	0.501	25.553980	-103.481532
Lim. Edos. Term. Dgo. Ppia. Coah.	251.00																			
Torreón	255.80	1	1	19981	2.4	89.0	0.7	4.7	0.1	0.7	2.1	0.0	0.3	91.4	0.7	7.9	0.062	0.519	25.547371	-103.470979
Torreón	255.80	1	2	21836	2.2	88.3	1.0	4.9	0.1	0.8	2.4	0.0	0.3	90.5	1.0	8.5	0.072	0.519	25.546450	-103.469497

3 CARR: Ent. Bella Unión - Saltillo

CLAVE: 05003

RUTA: MEX-057

AÑO: 2017

LUGAR	ESTACION				CLASIFICACION VEHICULAR EN PORCIENTO													COORDENADAS		
	KM	TE	SC	TDPA	M	A	B	C2	C3	T3S2	T3S3	T3S2R4	OTROS	A	B	C	K'	D	LATITUD	LONGITUD
T. C. Ent. Puerto México - Ent. Ojo Caliente (Cuota)	0.00																			
T. Der. Arteaga	4.61	1	1	4542	0.9	80.5	0.7	10.5	1.2	4.2	1.0	0.4	0.6	81.4	0.7	17.9	0.168	0.518	25.444056	-100.834500
T. Der. Arteaga	4.61	1	2	4824	0.7	75.4	1.1	15.4	1.2	4.9	0.7	0.3	0.3	76.1	1.1	22.8	0.150	0.518	25.443944	-100.834500
Saltillo	17.00	1	1	19350	0.8	82.2	0.4	8.3	1.9	4.1	1.5	0.5	0.3	83.0	0.4	16.6	0.098	0.509	25.436521	-100.907021
Saltillo	17.00	1	2	20324	0.9	81.8	0.4	8.8	1.7	3.7	1.9	0.5	0.3	82.7	0.4	16.9	0.086	0.509	25.436530	-100.907025

4 CARR: Ent. La Cuchilla - Torreón

CLAVE: 05021

RUTA: MEX-030

AÑO: 2017

LUGAR	ESTACION				CLASIFICACION VEHICULAR EN PORCIENTO													COORDENADAS		
	KM	TE	SC	TDPA	M	A	B	C2	C3	T3S2	T3S3	T3S2R4	OTROS	A	B	C	K'	D	LATITUD	LONGITUD
La Cuchilla	0.00	3	0	1061	1.7	65.0	4.5	15.2	3.4	5.9	1.4	2.5	0.4	66.7	4.5	28.8	0.094	0.518	25.626555	-102.882967
T. Der. Mayran	3.30	3	0	1232	4.2	67.2	4.1	13.0	3.1	5.2	0.9	2.1	0.2	71.4	4.1	24.5	0.116	0.502	25.646718	-102.905086
T. Izq. San Patricio	9.07	3	0	1761	7.1	67.0	3.6	12.7	2.5	4.6	0.8	1.4	0.3	74.1	3.6	22.3	0.101	0.503	25.680130	-102.935724
San Pedro de Las Colonias	18.70	1	1	2442	6.6	72.0	2.3	15.1	1.1	1.5	0.6	0.6	0.2	78.6	2.3	19.1	0.119	0.538	25.746419	-102.969197
San Pedro de Las Colonias	18.70	1	2	1971	8.3	67.1	2.6	18.0	1.1	1.6	0.5	0.6	0.2	75.4	2.6	22.0	0.106	0.538	25.746372	-102.969323
San Pedro de Las Colonias	18.70	3	1	4874	2.5	82.8	1.1	8.8	0.9	2.1	0.9	0.6	0.3	85.3	1.1	13.6	0.090	0.507	25.757545	-103.004269
San Pedro de Las Colonias	18.70	3	2	4976	3.1	80.4	1.2	9.9	1.0	2.3	1.0	0.8	0.3	83.5	1.2	15.3	0.091	0.507	25.757420	-103.004307
Urquizo	33.00	1	1	4648	3.1	76.4	2.8	11.8	1.2	2.7	0.8	0.8	0.4	79.5	2.8	17.7	0.080	0.503	25.764301	-103.081592
Urquizo	33.00	1	2	4761	3.4	73.5	3.2	13.2	1.3	3.0	1.0	1.0	0.4	76.9	3.2	19.9	0.074	0.503	25.764237	-103.081687
Urquizo	33.00	3	1	4821	3.1	79.7	2.1	7.8	2.4	2.8	0.9	0.9	0.3	82.8	2.1	15.1	0.081	0.502	25.769920	-103.141797
Urquizo	33.00	3	2	4799	2.8	77.7	2.4	9.3	2.6	3.0	1.0	0.9	0.3	80.5	2.4	17.1	0.076	0.502	25.769855	-103.141755
T. Izq. San Lorenzo	37.30	3	1	4224	2.3	77.6	2.2	9.6	2.7	3.3	1.0	1.0	0.3	79.9	2.2	17.9	0.087	0.506	25.761868	-103.162129

COAHUILA

4 CARR: Ent. La Cuchilla - Torreón

CLAVE: 05021

RUTA: MEX-030

AÑO: 2017

LUGAR	ESTACION				CLASIFICACION VEHICULAR EN PORCIENTO													COORDENADAS		
	KM	TE	SC	TDPA	M	A	B	C2	C3	T3S2	T3S3	T3S2R4	OTROS	A	B	C	K'	D	LATITUD	LONGITUD
T. Izq. San Lorenzo	37.30	3	2	4084	2.3	76.3	2.2	10.1	2.9	3.8	1.1	1.0	0.3	78.6	2.2	19.2	0.093	0.506	25.761861	-103.162127
T. Der. Colón	41.00	3	1	5239	1.9	78.7	3.3	10.0	1.1	2.8	1.0	0.7	0.5	80.6	3.3	16.1	0.074	0.526	25.759381	-103.204082
T. Der. Colón	41.00	3	2	6117	2.8	75.6	3.6	11.2	1.3	3.2	1.1	0.7	0.5	78.4	3.6	18.0	0.075	0.526	25.759445	-103.204073
T. Izq. Guadalupe Victoria	41.78	3	1	4828	2.0	77.7	2.2	10.7	2.0	3.1	1.2	0.6	0.5	79.7	2.2	18.1	0.075	0.502	25.762020	-103.227971
T. Izq. Guadalupe Victoria	41.78	3	2	4872	1.3	76.9	2.4	11.2	2.2	3.7	1.3	0.6	0.4	78.2	2.4	19.4	0.075	0.502	25.762081	-103.227934
T. Der. Fco. I. Madero	43.80	1	1	7288	2.6	82.2	1.1	7.2	1.5	2.9	1.4	0.6	0.5	84.8	1.1	14.1	0.082	0.502	25.763493	-103.239207
T. Der. Fco. I. Madero	43.80	1	2	7272	2.9	80.1	1.2	8.4	1.5	3.4	1.4	0.6	0.5	83.0	1.2	15.8	0.080	0.502	25.763369	-103.239280
T. Der. Fco. I. Madero	43.80	3	1	6954	2.6	82.4	1.1	7.9	1.8	2.4	0.9	0.5	0.4	85.0	1.1	13.9	0.097	0.507	25.753847	-103.291557
T. Der. Fco. I. Madero	43.80	3	2	6779	2.4	80.8	1.1	9.0	2.0	2.8	1.0	0.5	0.4	83.2	1.1	15.7	0.094	0.507	25.753847	-103.291566
T. Izq. Escuadrón 201	62.40	3	1	8253	2.1	83.1	1.0	8.2	1.3	2.3	1.2	0.4	0.4	85.2	1.0	13.8	0.098	0.505	25.670566	-103.351747
T. Izq. Escuadrón 201	62.40	3	2	7960	1.9	81.7	1.0	9.6	1.5	2.3	1.2	0.4	0.4	83.6	1.0	15.4	0.098	0.505	25.670555	-103.351750
Torreón	84.00	1	1	22525	1.2	94.2	0.3	3.7	0.1	0.2	0.3	0.0	0.0	95.4	0.3	4.3	0.085	0.536	25.579695	-103.413449
Torreón	84.00	1	2	25978	1.4	93.4	0.3	4.3	0.1	0.2	0.3	0.0	0.0	94.8	0.3	4.9	0.083	0.536	25.579694	-103.413448

5 CARR: Ent. Morelos - Saltillo

CLAVE: 00149

RUTA: MEX-054

AÑO: 2017

LUGAR	ESTACION				CLASIFICACION VEHICULAR EN PORCIENTO													COORDENADAS		
	KM	TE	SC	TDPA	M	A	B	C2	C3	T3S2	T3S3	T3S2R4	OTROS	A	B	C	K'	D	LATITUD	LONGITUD
T. C. Zacatecas - Durango	0.00	3	1	3688	0.9	73.1	4.3	11.0	1.5	5.2	1.2	2.2	0.6	74.0	4.3	21.7	0.075	0.502	22.868950	-102.619606
T. C. Zacatecas - Durango	0.00	3	2	3710	0.7	69.2	4.6	13.7	1.6	5.4	1.9	2.6	0.3	69.9	4.6	25.5	0.089	0.502	22.868985	-102.619676
T. Der. Sta. Mónica	11.00	1	1	3733	0.6	66.4	3.9	10.5	1.7	11.0	2.0	3.4	0.5	67.0	3.9	29.1	0.075	0.501	22.937295	-102.570298
T. Der. Sta. Mónica	11.00	1	2	3741	0.7	65.3	4.4	10.1	2.2	10.2	3.4	3.2	0.5	66.0	4.4	29.6	0.076	0.501	22.937320	-102.570371
T. Der. Sta. Mónica	11.00	3	1	2852	0.5	60.5	4.5	10.5	2.3	14.4	2.0	4.7	0.6	61.0	4.5	34.5	0.082	0.516	22.950345	-102.559215
T. Der. Sta. Mónica	11.00	3	2	3045	0.7	61.6	4.1	10.2	2.1	12.5	4.2	4.0	0.6	62.3	4.1	33.6	0.100	0.516	22.950425	-102.559320
T. Izq. Villa de Cos	53.90	1	1	3131	0.6	60.4	4.5	9.5	2.6	14.4	2.0	4.9	1.1	61.0	4.5	34.5	0.076	0.527	23.264490	-102.333595
T. Izq. Villa de Cos	53.90	1	2	3486	0.8	60.3	4.4	11.4	2.2	12.6	3.0	4.5	0.8	61.1	4.4	34.5	0.089	0.527	23.264536	-102.333685
T. Izq. Villa de Cos	53.90	3	1	2808	0.9	56.8	5.5	13.3	2.6	14.6	1.7	3.4	1.2	57.7	5.5	36.8	0.086	0.519	23.279273	-102.322918
T. Izq. Villa de Cos	53.90	3	2	2601	0.6	61.5	5.1	7.1	2.6	15.8	2.8	4.0	0.5	62.1	5.1	32.8	0.077	0.519	23.279344	-102.323084
Sierra Vieja	85.50	3	1	2200	0.5	50.8	7.0	12.7	2.9	18.7	2.0	4.6	0.8	51.3	7.0	41.7	0.092	0.516	23.528775	-102.094751
Sierra Vieja	85.50	3	2	2065	0.6	47.7	7.2	11.7	2.8	19.8	4.3	5.3	0.6	48.3	7.2	44.5	0.076	0.516	23.528672	-102.094602
T. Der. Majoma	144.50	3	1	1963	0.4	49.3	7.4	11.9	2.9	20.3	2.4	5.0	0.4	49.7	7.4	42.9	0.093	0.529	23.878256	-101.735404
T. Der. Majoma	144.50	3	2	1746	0.5	45.8	8.7	11.2	2.6	22.1	2.7	6.0	0.4	46.3	8.7	45.0	0.081	0.529	23.878370	-101.735533
T. Der. San Tiburcio	185.25	1	1	2081	1.1	53.6	6.2	9.1	2.8	17.9	2.7	5.3	1.3	54.7	6.2	39.1	0.117	0.503	24.156912	-101.496171
T. Der. San Tiburcio	185.25	1	2	2056	1.2	48.0	7.2	10.1	3.1	19.9	3.2	6.0	1.3	49.2	7.2	43.6	0.088	0.503	24.156940	-101.496327
T. Der. San Tiburcio	185.25	3	1	2604	1.0	55.6	6.3	13.1	2.3	14.1	2.3	4.7	0.6	56.6	6.3	37.1	0.101	0.503	24.162396	-101.492206

COAHUILA

5 CARR: Ent. Morelos - Saltillo

CLAVE: 00149

RUTA: MEX-054

AÑO: 2017

LUGAR	ESTACION				CLASIFICACION VEHICULAR EN PORCIENTO										COORDENADAS					
	KM	TE	SC	TDPA	M	A	B	C2	C3	T3S2	T3S3	T3S2R4	OTROS	A	B	C	K'	D	LATITUD	LONGITUD
T. Der. San Tiburcio	185.25	3	2	2636	1.7	52.7	6.7	13.6	2.5	14.7	2.3	4.9	0.9	54.4	6.7	38.9	0.090	0.503	24.162480	-101.492334
T. Izq. Concepción del Oro	240.00	1	1	3182	1.4	59.1	4.9	12.6	1.6	13.5	2.0	4.2	0.7	60.5	4.9	34.6	0.100	0.502	24.611504	-101.368898
T. Izq. Concepción del Oro	240.00	1	2	3210	1.8	58.0	5.0	13.7	1.8	12.9	2.2	3.8	0.8	59.8	5.0	35.2	0.082	0.502	24.611548	-101.368769
T. Izq. Concepción del Oro	240.00	3	1	3465	0.7	62.0	4.9	13.9	1.8	11.8	1.1	3.3	0.5	62.7	4.9	32.4	0.097	0.510	24.625945	-101.381880
T. Izq. Concepción del Oro	240.00	3	2	3324	1.2	62.9	4.9	12.1	1.6	11.6	1.7	3.3	0.7	64.1	4.9	31.0	0.078	0.510	24.625866	-101.381833
Lim. Edos. Term. Zac. Ppia. Coah.	266.50																			
Agua Nueva	322.00	1	0	6343	0.5	58.1	5.1	13.1	2.5	13.6	2.4	3.8	0.9	58.6	5.1	36.3	0.079	0.510	25.181425	-101.094197
T. Der. La Trinidad	333.00	3	0	13207	0.5	75.0	2.8	12.5	1.5	5.4	1.1	0.3	0.9	75.5	2.8	21.7	0.104	0.502	25.290285	-101.084980
X. C. Libramiento de Saltillo	348.00	1	1	16387	1.3	82.3	1.7	9.5	1.4	2.3	1.0	0.3	0.2	83.6	1.7	14.7	0.098	0.504	25.368357	-101.015228
X. C. Libramiento de Saltillo	348.00	1	2	17031	1.9	80.2	2.0	10.3	1.5	2.5	1.1	0.3	0.2	82.1	2.0	15.9	0.073	0.504	25.368368	-101.015228
Saltillo	354.00	1	1	14135	1.4	89.8	0.9	6.6	0.4	0.6	0.2	0.0	0.1	91.2	0.9	7.9	0.078	0.508	25.387934	-101.006223
Saltillo	354.00	1	2	13835	1.2	89.7	1.0	6.8	0.4	0.6	0.2	0.0	0.1	90.9	1.0	8.1	0.079	0.508	25.387945	-101.006224

6 CARR: Gregorio García - Francisco I. Madero

CLAVE: 00110

RUTA: MEX-040

AÑO: 2017

LUGAR	ESTACION				CLASIFICACION VEHICULAR EN PORCIENTO										COORDENADAS					
	KM	TE	SC	TDPA	M	A	B	C2	C3	T3S2	T3S3	T3S2R4	OTROS	A	B	C	K'	D	LATITUD	LONGITUD
T. C. Gómez Palacio - Tlahualillo	0.00																			
Lim. Edos. Term. Dgo. Ppia. Coah.	3.60																			
Francisco I. Madero	9.60	1	0	6637	3.3	78.6	2.2	8.0	1.8	3.8	1.1	0.5	0.7	81.9	2.2	15.9	0.079	0.541	25.772784	-103.287669

7 CARR: Libramiento Allende - Nava

CLAVE: 05518

RUTA: MEX-057

AÑO: 2017

LUGAR	ESTACION				CLASIFICACION VEHICULAR EN PORCIENTO										COORDENADAS					
	KM	TE	SC	TDPA	M	A	B	C2	C3	T3S2	T3S3	T3S2R4	OTROS	A	B	C	K'	D	LATITUD	LONGITUD
T. C. Monclova - Piedras Negras	0.00	3	1	4266	0.3	60.0	1.1	13.1	2.1	13.6	5.2	3.3	1.3	60.3	1.1	38.6	0.088	0.512	28.326075	-100.886458
T. C. Monclova - Piedras Negras	0.00	3	2	4269	0.4	61.6	1.0	12.8	2.0	12.7	5.0	3.2	1.3	62.0	1.0	37.0	0.074	0.512	28.326069	-100.886457
X. Der. Allende - Izq. Morelos	6.06	3	1	5278	0.7	70.3	1.9	12.4	1.1	6.5	3.5	2.7	0.9	71.0	1.9	27.1	0.081	0.532	28.377166	-100.858967
X. Der. Allende - Izq. Morelos	6.06	3	2	6203	0.6	66.5	2.3	13.9	1.2	7.4	4.0	3.1	1.0	67.1	2.3	30.6	0.084	0.532	28.377165	-100.858968
T. C. Monclova - Piedras Negras	18.55	1	1	4884	0.8	69.5	2.5	10.6	1.6	7.6	4.1	2.7	0.6	70.3	2.5	27.2	0.083	0.546	28.431923	-100.778644
T. C. Monclova - Piedras Negras	18.55	1	2	6130	0.3	67.0	2.8	10.9	1.9	8.6	4.6	3.3	0.6	67.3	2.8	29.9	0.089	0.546	28.431928	-100.778645

COAHUILA

8 CARR: Monclova - Piedras Negras

CLAVE: 05407

RUTA: MEX-057

AÑO: 2017

LUGAR	ESTACION				CLASIFICACION VEHICULAR EN PORCIENTO										COORDENADAS					
	KM	TE	SC	TDPA	M	A	B	C2	C3	T3S2	T3S3	T3S2R4	OTROS	A	B	C	K'	D	LATITUD	LONGITUD
Monclova	0.00	3	1	9421	1.2	85.1	1.5	9.0	0.5	1.2	1.1	0.1	0.3	86.3	1.5	12.2	0.076	0.502	26.954979	-101.411427
Monclova	0.00	3	2	9330	1.2	83.7	1.5	10.0	0.6	1.4	1.2	0.1	0.3	84.9	1.5	13.6	0.077	0.502	26.954989	-101.411434
T. Der. Libramiento de Monclova	10.80	3	1	4377	0.6	71.7	1.9	13.6	1.4	6.1	1.2	2.9	0.6	72.3	1.9	25.8	0.085	0.510	26.978099	-101.375694
T. Der. Libramiento de Monclova	10.80	3	2	4660	1.1	67.5	2.3	15.0	1.5	7.3	1.4	3.3	0.6	68.6	2.3	29.1	0.080	0.510	26.978387	-101.375850
T. Der. Progreso	61.50	1	1	3024	0.2	74.6	2.0	6.0	2.1	8.3	1.7	4.4	0.7	74.8	2.0	23.2	0.099	0.515	27.379363	-101.215739
T. Der. Progreso	61.50	1	2	2808	0.4	72.7	2.1	6.2	2.2	9.2	1.9	4.6	0.7	73.1	2.1	24.8	0.101	0.515	27.379360	-101.215741
T. Izq. Palau	88.50	1	1	2785	0.5	70.6	2.6	7.8	2.1	9.3	1.8	4.5	0.8	71.1	2.6	26.3	0.093	0.505	27.634659	-101.181844
T. Izq. Palau	88.50	1	2	2692	0.6	68.0	2.9	8.6	2.2	10.2	1.9	4.8	0.8	68.6	2.9	28.5	0.109	0.505	27.634658	-101.181844
T. Izq. Palau	88.50	3	1	3267	0.4	72.5	3.8	8.8	2.1	4.7	3.0	3.9	0.8	72.9	3.8	23.3	0.103	0.514	27.642185	-101.184096
T. Izq. Palau	88.50	3	2	3575	0.4	69.8	4.7	9.8	2.1	5.1	3.1	4.2	0.8	70.2	4.7	25.1	0.098	0.514	27.642136	-101.184255
T. Der. Sabinas (2º Acceso)	115.00	1	1	5024	0.8	71.1	1.6	11.9	1.9	5.7	3.1	2.9	1.0	71.9	1.6	26.5	0.072	0.519	27.862845	-101.135832
T. Der. Sabinas (2º Acceso)	115.00	1	2	5415	1.0	79.3	1.1	5.9	2.0	6.3	1.1	2.4	0.9	80.3	1.1	18.6	0.072	0.519	27.862925	-101.136071
Agujita	118.85	1	1	10965	1.5	80.0	1.8	8.3	1.1	2.7	2.4	1.2	1.0	81.5	1.8	16.7	0.072	0.529	27.882976	-101.145010
Agujita	118.85	1	2	9818	0.8	79.1	1.9	9.1	1.1	3.0	2.7	1.2	1.1	79.9	1.9	18.2	0.068	0.529	27.882882	-101.145138
T. Izq. Nueva Rosita (1º Acceso)	126.30	3	0	5525	0.4	58.5	1.1	14.0	2.3	13.5	6.5	3.1	0.6	58.9	1.1	40.0	0.076	0.503	27.957405	-101.200207
T. Izq. Libramiento de Allende	182.00	1	0	5894	0.5	64.5	1.6	12.3	1.3	11.5	4.3	2.7	1.3	65.0	1.6	33.4	0.073	0.503	28.312254	-100.910821
Allende	187.20	3	1	4835	1.1	84.6	2.0	10.8	0.5	0.5	0.4	0.0	0.1	85.7	2.0	12.3	0.078	0.523	28.361586	-100.858547
Allende	187.20	3	2	5752	1.1	83.1	2.0	12.3	0.5	0.5	0.4	0.0	0.1	84.2	2.0	13.8	0.076	0.523	28.361586	-100.858547
Nava	206.85	1	1	2219	1.6	76.8	4.4	15.7	0.8	0.5	0.1	0.0	0.1	78.4	4.4	17.2	0.087	0.516	28.421349	-100.789446
Nava	206.85	1	2	2490	1.3	74.3	4.9	17.9	0.9	0.5	0.1	0.0	0.1	75.6	4.9	19.5	0.081	0.516	28.421349	-100.789447
Nava	206.85	3	1	7570	0.9	69.7	2.8	14.5	1.4	5.6	2.8	1.6	0.7	70.6	2.8	26.6	0.093	0.533	28.443359	-100.754980
Nava	206.85	3	2	6400	0.6	65.9	3.1	16.7	1.6	6.2	3.3	1.8	0.8	66.5	3.1	30.4	0.091	0.533	28.443341	-100.754991
T. Der. Guerrero	240.28	1	1	9253	1.2	79.1	1.7	10.8	1.5	3.4	1.1	0.5	0.7	80.3	1.7	18.0	0.108	0.508	28.640118	-100.559451
T. Der. Guerrero	240.28	1	2	8961	1.1	76.9	1.9	12.3	1.6	3.8	1.2	0.5	0.7	78.0	1.9	20.1	0.119	0.508	28.640117	-100.559455
Piedras Negras	248.00																			

9 CARR: Monclova - San Pedro de Las Colonias

CLAVE: 05062

RUTA: MEX-030

AÑO: 2017

LUGAR	ESTACION				CLASIFICACION VEHICULAR EN PORCIENTO										COORDENADAS					
	KM	TE	SC	TDPA	M	A	B	C2	C3	T3S2	T3S3	T3S2R4	OTROS	A	B	C	K'	D	LATITUD	LONGITUD
Monclova	0.00																			
Frontera	2.00	3	1	9449	1.5	84.8	1.3	8.4	0.9	1.5	0.8	0.4	0.4	86.3	1.3	12.4	0.089	0.501	26.960118	-101.462359
Frontera	2.00	3	2	9423	1.7	83.3	1.4	9.1	1.1	1.6	1.0	0.4	0.4	85.0	1.4	13.6	0.073	0.501	26.960101	-101.462353
8 de Enero	11.00	3	1	8102	1.5	79.6	1.6	11.7	1.2	2.0	1.1	0.9	0.4	81.1	1.6	17.3	0.087	0.500	27.005455	-101.498346
8 de Enero	11.00	3	2	8109	1.5	78.1	1.7	12.8	1.4	2.0	1.2	0.9	0.4	79.6	1.7	18.7	0.092	0.500	27.005443	-101.498343

COAHUILA

9 CARR: Monclova - San Pedro de Las Colonias

CLAVE: 05062

RUTA: MEX-030

AÑO: 2017

LUGAR	ESTACION				CLASIFICACION VEHICULAR EN PORCIENTO												COORDENADAS			
	KM	TE	SC	TDPA	M	A	B	C2	C3	T3S2	T3S3	T3S2R4	OTROS	A	B	C	K'	D	LATITUD	LONGITUD
Nadadores	27.00	3	1	2555	0.8	79.3	1.9	10.4	1.1	3.1	1.3	1.7	0.4	80.1	1.9	18.0	0.105	0.528	27.033273	-101.612678
Nadadores	27.00	3	2	2135	1.1	76.5	2.2	11.9	1.3	3.3	1.5	1.9	0.3	77.6	2.2	20.2	0.072	0.528	27.033248	-101.612689
Sacramento	45.27	1	1	1817	0.9	76.8	2.6	9.8	1.7	3.7	1.6	2.0	0.9	77.7	2.6	19.7	0.082	0.547	27.010960	-101.719481
Sacramento	45.27	1	2	2263	0.9	75.5	2.8	10.3	1.7	4.1	1.9	1.9	0.9	76.4	2.8	20.8	0.101	0.547	27.010963	-101.719476
T. Der. La Madrid	51.00	3	1	1359	0.7	78.0	2.5	6.8	1.7	5.4	1.9	2.5	0.5	78.7	2.5	18.8	0.106	0.521	27.019298	-101.800147
T. Der. La Madrid	51.00	3	2	1192	0.6	75.3	2.8	7.5	1.9	6.4	2.1	2.8	0.6	75.9	2.8	21.3	0.085	0.521	27.019298	-101.800147
Cuatro Ciénegas	80.15	3	0	1061	0.4	69.7	3.3	9.3	3.3	7.4	2.9	3.0	0.7	70.1	3.3	26.6	0.139	0.535	26.975016	-102.073767
San Pedro de Las Colonias	267.00	1	1	935	4.6	65.0	2.9	10.6	3.6	7.3	2.3	2.7	1.0	69.6	2.9	27.5	0.125	0.515	25.781022	-102.978971
San Pedro de Las Colonias	267.00	1	2	829	7.1	59.2	3.3	11.0	4.1	8.2	2.5	3.2	1.4	66.3	3.3	30.4	0.088	0.515	25.781019	-102.978971

10 CARR: Monterrey - Castaños

CLAVE: 00128

RUTA: MEX-053

AÑO: 2017

LUGAR	ESTACION				CLASIFICACION VEHICULAR EN PORCIENTO												COORDENADAS			
	KM	TE	SC	TDPA	M	A	B	C2	C3	T3S2	T3S3	T3S2R4	OTROS	A	B	C	K'	D	LATITUD	LONGITUD
T. C. Monterrey - Nuevo Laredo	0.00	3	0	19077	1.0	72.4	1.0	13.1	1.6	6.6	2.7	0.7	0.9	73.4	1.0	25.6	0.072	0.544	25.805566	-100.279110
X. C. Libramiento Noroeste de Monterrey	3.46	3	1	13175	1.2	72.8	1.7	10.7	3.1	6.0	2.5	1.1	0.9	74.0	1.7	24.3	0.092	0.522	25.832322	-100.308187
X. C. Libramiento Noroeste de Monterrey	3.46	3	2	14807	1.1	70.7	1.8	11.6	3.4	6.4	2.8	1.3	0.9	71.8	1.8	26.4	0.081	0.522	25.832322	-100.308186
T. Der. Villa del Carmen	13.80	1	1	8355	0.4	74.6	1.0	10.5	2.8	5.2	3.2	1.7	0.6	75.0	1.0	24.0	0.081	0.518	25.896280	-100.351743
T. Der. Villa del Carmen	13.80	1	2	9148	0.5	71.8	1.0	11.2	3.1	6.1	3.7	1.9	0.7	72.3	1.0	26.7	0.096	0.518	25.896279	-100.351725
T. Izq. Hidalgo	24.78	1	0	12751	0.7	69.2	1.3	15.4	2.0	5.2	4.0	1.6	0.6	69.9	1.3	28.8	0.085	0.508	25.955725	-100.424106
T. Izq. Hidalgo	24.78	3	0	6778	0.5	65.1	2.1	11.1	2.0	8.8	5.5	3.9	1.0	65.6	2.1	32.3	0.084	0.504	25.991181	-100.457811
T. Izq. Mina	34.75	1	0	9009	0.4	66.3	2.3	9.9	1.7	9.0	5.3	4.0	1.1	66.7	2.3	31.0	0.069	0.500	26.000732	-100.515663
T. Izq. Espinazo	91.90	1	0	3868	0.8	56.8	2.2	9.0	2.7	12.6	8.7	6.1	1.1	57.6	2.2	40.2	0.095	0.504	26.362900	-100.879121
T. Izq. Espinazo	91.90	3	0	3532	0.2	65.2	2.5	8.2	2.7	11.3	2.4	6.4	1.1	65.4	2.5	32.1	0.102	0.503	26.365050	-100.882878
Lim. Edos. Term. N. L. Ppia. Coah.	115.90																			
T. C. Saltillo - Monclova	155.90	1	1	2335	0.3	63.1	2.6	10.0	1.8	8.9	7.4	5.1	0.8	63.4	2.6	34.0	0.107	0.514	26.692259	-101.382951
T. C. Saltillo - Monclova	155.90	1	2	2118	0.2	59.5	2.9	11.0	1.9	9.4	8.2	5.8	1.1	59.7	2.9	37.4	0.110	0.514	26.692258	-101.382951

11 CARR: Morelos - Cd. Acuña

CLAVE: 05029

RUTA: MEX-029

AÑO: 2017

LUGAR	ESTACION				CLASIFICACION VEHICULAR EN PORCIENTO												COORDENADAS			
	KM	TE	SC	TDPA	M	A	B	C2	C3	T3S2	T3S3	T3S2R4	OTROS	A	B	C	K'	D	LATITUD	LONGITUD
Morelos	0.00	3	1	3299	1.0	76.3	1.7	17.3	0.6	2.2	0.4	0.2	0.3	77.3	1.7	21.0	0.084	0.501	28.418075	-100.890525
Morelos	0.00	3	2	3282	0.8	72.7	1.9	20.5	0.7	2.4	0.5	0.3	0.2	73.5	1.9	24.6	0.081	0.501	28.418183	-100.890692
T. Izq. El Remolino	40.10	1	0	1556	0.8	70.0	1.9	15.0	1.8	8.5	1.0	0.9	0.1	70.8	1.9	27.3	0.130	0.545	28.720207	-100.912039

COAHUILA

11 CARR: Morelos - Cd. Acuña

CLAVE: 05029

RUTA: MEX-029

AÑO: 2017

LUGAR	ESTACION				CLASIFICACION VEHICULAR EN PORCIENTO										COORDENADAS					
	KM	TE	SC	TDPA	M	A	B	C2	C3	T3S2	T3S3	T3S2R4	OTROS	A	B	C	K'	D	LATITUD	LONGITUD
T. Izq. El Remolino	40.10	3	0	1340	0.2	70.1	2.1	14.4	2.1	8.7	1.0	1.1	0.3	70.3	2.1	27.6	0.096	0.547	28.725533	-100.912286
San Carlos	73.84	1	0	1818	0.3	68.5	1.7	19.7	1.6	6.1	0.8	1.0	0.3	68.8	1.7	29.5	0.084	0.507	29.011055	-100.905634
T. Der. Piedras Negras	104.50	3	1	5776	1.0	74.7	3.0	16.9	1.0	1.8	1.0	0.2	0.4	75.7	3.0	21.3	0.092	0.505	29.300540	-100.918246
T. Der. Piedras Negras	104.50	3	2	5959	1.0	71.8	3.3	18.9	1.2	2.1	1.1	0.2	0.4	72.8	3.3	23.9	0.088	0.505	29.300376	-100.918240
Cd. Acuña	109.10	1	1	6842	1.2	84.0	1.5	11.2	0.5	0.8	0.5	0.1	0.2	85.2	1.5	13.3	0.073	0.519	29.304138	-100.922881
Cd. Acuña	109.10	1	2	7398	1.4	82.6	1.6	12.2	0.5	0.9	0.5	0.1	0.2	84.0	1.6	14.4	0.076	0.519	29.303984	-100.922954

12 CARR: Nueva Rosita - Boquillas del Carmen

CLAVE: 05028

RUTA: MEX-053

AÑO: 2017

LUGAR	ESTACION				CLASIFICACION VEHICULAR EN PORCIENTO										COORDENADAS					
	KM	TE	SC	TDPA	M	A	B	C2	C3	T3S2	T3S3	T3S2R4	OTROS	A	B	C	K'	D	LATITUD	LONGITUD
Nueva Rosita	0.00	3	1	4745	1.2	75.3	2.3	15.8	1.2	1.9	1.5	0.4	0.4	76.5	2.3	21.2	0.081	0.522	27.947707	-101.244692
Nueva Rosita	0.00	3	2	4403	1.1	73.9	2.4	16.7	1.4	2.0	1.6	0.5	0.4	75.0	2.4	22.6	0.088	0.522	27.947606	-101.244145
T. Der. Santa María	14.00	3	1	3076	1.2	73.8	1.9	14.5	1.8	2.9	2.7	0.4	0.8	75.0	1.9	23.1	0.073	0.508	27.911029	-101.325430
T. Der. Santa María	14.00	3	2	3223	1.1	70.9	2.1	16.4	1.9	3.2	3.2	0.4	0.8	72.0	2.1	25.9	0.082	0.508	27.912197	-101.322690
Palau	25.00	1	1	4063	1.3	78.2	0.4	12.6	2.5	2.6	1.6	0.2	0.6	79.5	0.4	20.1	0.076	0.501	27.887577	-101.412582
Palau	25.00	1	2	4038	1.3	76.2	0.4	14.0	2.7	2.9	1.7	0.2	0.6	77.5	0.4	22.1	0.073	0.501	27.887494	-101.412680
Palau	25.00	3	1	4406	1.6	77.0	1.0	13.8	2.8	2.0	1.0	0.3	0.5	78.6	1.0	20.4	0.076	0.506	27.887121	-101.432175
Palau	25.00	3	2	4461	1.4	74.8	1.1	15.3	3.2	2.1	1.1	0.3	0.7	76.2	1.1	22.7	0.088	0.506	27.887128	-101.431936
Melchor Múzquiz	35.00	3	0	3044	1.8	77.6	0.1	15.6	1.8	2.0	0.6	0.2	0.3	79.4	0.1	20.5	0.089	0.507	27.895613	-101.531984
Boquillas del Carmen	250.00																			

13 CARR: Ojo Caliente - Santa Cruz

CLAVE: 05007

RUTA: MEX-057

AÑO: 2017

LUGAR	ESTACION				CLASIFICACION VEHICULAR EN PORCIENTO										COORDENADAS					
	KM	TE	SC	TDPA	M	A	B	C2	C3	T3S2	T3S3	T3S2R4	OTROS	A	B	C	K'	D	LATITUD	LONGITUD
T. C. Saltillo - Monterrey	0.00	3	0	6038	0.6	62.2	2.8	10.7	2.5	11.8	4.4	4.0	1.0	62.8	2.8	34.4	0.079	0.518	25.597472	-100.893139
T. C. Saltillo - Monclova	34.00	1	0	3718	0.4	69.7	2.8	9.8	1.1	7.7	2.9	4.9	0.7	70.1	2.8	27.1	0.116	0.504	25.786004	-101.106214

14 CARR: Piedras Negras - Cd. Acuña

CLAVE: 05061

RUTA: MEX-002

AÑO: 2017

LUGAR	ESTACION				CLASIFICACION VEHICULAR EN PORCIENTO										COORDENADAS					
	KM	TE	SC	TDPA	M	A	B	C2	C3	T3S2	T3S3	T3S2R4	OTROS	A	B	C	K'	D	LATITUD	LONGITUD
Piedras Negras	0.00	3	1	2849	1.8	69.7	3.2	18.1	2.7	2.4	1.6	0.3	0.2	71.5	3.2	25.3	0.090	0.502	28.731018	-100.575275
Piedras Negras	0.00	3	2	2809	1.7	71.5	2.9	16.7	3.0	2.0	1.8	0.2	0.2	73.2	2.9	23.9	0.082	0.502	28.730975	-100.575413

COAHUILA

14 CARR: Piedras Negras - Cd. Acuña

CLAVE: 05061

RUTA: MEX-002

AÑO: 2017

LUGAR	ESTACION				CLASIFICACION VEHICULAR EN PORCIENTO														COORDENADAS	
	KM	TE	SC	TDPA	M	A	B	C2	C3	T3S2	T3S3	T3S2R4	OTROS	A	B	C	K'	D	LATITUD	LONGITUD
T. C. Morelos - Cd. Acuña	83.30	1	0	3252	1.0	67.8	4.5	19.5	1.9	3.1	1.1	0.7	0.4	68.8	4.5	26.7	0.080	0.501	29.291747	-100.911087

15 CARR: Piedras Negras - Nuevo Laredo

CLAVE: 00503

RUTA: MEX-002

AÑO: 2017

LUGAR	ESTACION				CLASIFICACION VEHICULAR EN PORCIENTO														COORDENADAS	
	KM	TE	SC	TDPA	M	A	B	C2	C3	T3S2	T3S3	T3S2R4	OTROS	A	B	C	K'	D	LATITUD	LONGITUD
T. C. Monclova - Piedras Negras	0.00	3	1	4592	1.3	68.7	1.0	15.8	2.9	7.8	1.1	0.7	0.7	70.0	1.0	29.0	0.080	0.503	28.635405	-100.549146
T. C. Monclova - Piedras Negras	0.00	3	2	4561	1.5	64.7	1.1	17.7	3.2	9.1	1.1	0.8	0.8	66.2	1.1	32.7	0.082	0.503	28.635220	-100.549280
El Saucito	16.90	3	0	1491	1.8	57.4	2.9	20.9	3.4	8.8	0.6	3.8	0.4	59.2	2.9	37.9	0.099	0.512	28.501788	-100.467206
T. Der. Villa Unión	37.00	1	0	1132	1.6	65.6	3.4	10.1	3.7	10.3	0.8	4.0	0.5	67.2	3.4	29.4	0.092	0.563	28.341206	-100.391028
T. Der. Villa Unión	37.00	3	0	1126	0.5	60.6	3.2	15.7	2.9	11.9	0.8	4.3	0.1	61.1	3.2	35.7	0.094	0.513	28.336337	-100.389559
Guerrero	42.00	3	0	906	0.2	54.2	3.7	18.3	3.2	14.2	0.8	5.2	0.2	54.4	3.7	41.9	0.113	0.511	28.307889	-100.366439
Lim. Edos. Term. Coah. Ppia. N. L.	124.40																			
T. C. Monclova - Colombia	134.00	3	0	2692	1.4	60.7	1.5	15.1	3.4	14.3	0.9	2.2	0.5	62.1	1.5	36.4	0.078	0.501	27.687591	-99.776517
Lim. Edos. Term. N. L. Ppia. Tamps.	138.20																			
T. Der. Libramiento de Nuevo Laredo	157.70	1	1	4930	1.1	46.9	1.1	7.5	11.6	28.6	1.2	1.0	1.0	48.0	1.1	50.9	0.099	0.505	27.571774	-99.597179
T. Der. Libramiento de Nuevo Laredo	157.70	1	2	4733	0.7	43.6	1.2	8.3	12.6	30.0	1.4	1.1	1.1	44.3	1.2	54.5	0.090	0.505	27.571910	-99.597042
Nuevo Laredo	175.00	1	1	9340	1.0	53.7	1.6	12.2	8.8	19.6	1.8	0.6	0.7	54.7	1.6	43.7	0.098	0.537	27.543682	-99.576331
Nuevo Laredo	175.00	1	2	7365	0.8	49.4	1.8	14.5	9.1	20.8	2.0	0.7	0.9	50.2	1.8	48.0	0.113	0.537	27.543578	-99.576064

16 CARR: Puerto México - La Encantada

CLAVE: 05002

RUTA: MEX-057

AÑO: 2017

LUGAR	ESTACION				CLASIFICACION VEHICULAR EN PORCIENTO														COORDENADAS	
	KM	TE	SC	TDPA	M	A	B	C2	C3	T3S2	T3S3	T3S2R4	OTROS	A	B	C	K'	D	LATITUD	LONGITUD
T. C. Aut. Puerto México - Ojo Caliente	0.00	3	0	1455	1.4	49.8	8.1	14.2	3.0	18.5	1.9	2.5	0.6	51.2	8.1	40.7	0.071	0.512	25.230361	-100.825333
Lim. Edos. Term. N. L. Ppia. Coah.	3.50																			
T. C. Ent. Morelos - Saltillo	41.00	1	0	1675	1.2	50.6	7.2	17.3	2.7	16.7	1.5	2.5	0.3	51.8	7.2	41.0	0.085	0.517	25.260386	-101.085199

17 CARR: Saltillo - Monclova

CLAVE: 05406

RUTA: MEX-057

AÑO: 2017

LUGAR	ESTACION				CLASIFICACION VEHICULAR EN PORCIENTO														COORDENADAS	
	KM	TE	SC	TDPA	M	A	B	C2	C3	T3S2	T3S3	T3S2R4	OTROS	A	B	C	K'	D	LATITUD	LONGITUD
Saltillo	0.00																			
T. Der. Ramos Arizpe	13.00	1	0	2594	1.4	60.0	0.9	12.9	3.3	16.7	2.4	1.5	0.9	61.4	0.9	37.7	0.083	0.508	25.527250	-101.002417
T. Der. Ramos Arizpe	13.00	3	0	2425	1.4	55.5	1.0	14.6	3.9	18.1	2.9	1.6	1.0	56.9	1.0	42.1	0.090	0.508	25.530194	-101.007806

COAHUILA

17 CARR: Saltillo - Monclova

CLAVE: 05406

RUTA: MEX-057

AÑO: 2017

LUGAR	ESTACION				CLASIFICACION VEHICULAR EN PORCIENTO													COORDENADAS		
	KM	TE	SC	TDPA	M	A	B	C2	C3	T3S2	T3S3	T3S2R4	OTROS	A	B	C	K'	D	LATITUD	LONGITUD
T. C. Ojo Caliente - Santa Cruz	49.60	1	0	499	1.1	69.2	1.9	16.0	2.8	5.8	2.3	0.6	0.3	70.3	1.9	27.8	0.136	0.513	25.781603	-101.111937
T. C. Ojo Caliente - Santa Cruz	49.60	3	0	3796	0.5	71.3	2.6	9.4	1.1	7.3	2.7	4.5	0.6	71.8	2.6	25.6	0.120	0.504	25.795471	-101.115435
T. Der. Paredón	64.00	1	0	3822	0.3	69.4	3.0	10.4	1.1	7.6	2.7	5.0	0.5	69.7	3.0	27.3	0.125	0.502	25.909691	-101.150894
T. Der. Paredón	64.00	3	0	4377	0.3	68.9	3.0	10.1	1.3	7.7	3.4	4.5	0.8	69.2	3.0	27.8	0.102	0.519	25.920257	-101.157658
T. Izq. Hipólito	78.00	1	0	3651	0.8	67.3	3.3	10.1	1.2	8.0	3.2	5.3	0.8	68.1	3.3	28.6	0.161	0.536	25.972564	-101.262076
T. Izq. Hipólito	78.00	3	0	3533	0.4	68.8	3.2	10.8	1.1	7.4	2.8	5.0	0.5	69.2	3.2	27.6	0.133	0.505	25.974829	-101.264581
T. Der. Monterrey	165.50	1	0	3752	0.3	68.6	2.8	10.4	1.1	7.7	2.8	5.2	1.1	68.9	2.8	28.3	0.132	0.501	26.682291	-101.386205
T. Der. Monterrey	165.50	3	1	5275	0.2	62.2	2.3	9.1	2.0	10.7	6.8	5.7	1.0	62.4	2.3	35.3	0.084	0.517	26.711171	-101.393418
T. Der. Monterrey	165.50	3	2	4798	0.5	58.9	2.6	9.6	2.1	11.7	7.5	6.0	1.1	59.4	2.6	38.0	0.071	0.517	26.710940	-101.393601
T. Der. Libramiento de Castaños (1º Acceso)	175.20	1	1	5894	0.8	75.4	1.9	8.9	1.9	4.6	3.2	2.3	1.0	76.2	1.9	21.9	0.129	0.502	26.777120	-101.415635
T. Der. Libramiento de Castaños (1º Acceso)	175.20	1	2	5952	0.8	72.8	2.0	10.5	2.0	5.0	3.4	2.5	1.0	73.6	2.0	24.4	0.114	0.502	26.776630	-101.415594
T. Der. Libramiento de Castaños (2º Acceso)	177.10	3	1	10770	1.1	76.6	2.1	8.6	2.1	4.1	2.9	2.1	0.4	77.7	2.1	20.2	0.076	0.516	26.807259	-101.420149
T. Der. Libramiento de Castaños (2º Acceso)	177.10	3	2	11528	1.0	75.0	2.1	9.8	2.4	4.3	2.9	2.1	0.4	76.0	2.1	21.9	0.081	0.516	26.807101	-101.420406
T. Izq. Libramiento Lic. Carlos Salinas De Gortari	184.10	1	1	12759	0.7	50.0	6.5	9.0	6.9	18.3	4.6	2.8	1.2	50.7	6.5	42.8	0.070	0.508	26.828768	-101.421841
T. Izq. Libramiento Lic. Carlos Salinas De Gortari	184.10	1	2	12335	0.6	43.5	7.3	10.1	7.9	21.1	5.1	3.0	1.4	44.1	7.3	48.6	0.065	0.508	26.829120	-101.422036
T. Izq. Libramiento Lic. Carlos Salinas De Gortari	184.10	3	1	23396	1.5	85.5	0.9	5.8	1.8	1.8	1.9	0.4	0.4	87.0	0.9	12.1	0.069	0.510	26.864292	-101.427185
T. Izq. Libramiento Lic. Carlos Salinas De Gortari	184.10	3	2	24286	1.3	84.4	1.0	6.6	2.1	1.9	1.9	0.4	0.4	85.7	1.0	13.3	0.072	0.510	26.864779	-101.427359
Monclova	192.00	1	1	30554	1.4	87.6	0.6	7.0	0.7	1.2	1.2	0.1	0.2	89.0	0.6	10.4	0.067	0.508	26.875344	-101.426658
Monclova	192.00	1	2	31516	1.2	86.7	0.7	7.5	0.9	1.3	1.4	0.1	0.2	87.9	0.7	11.4	0.065	0.508	26.876231	-101.426783

18 CARR: Saltillo - Monterrey

CLAVE: 00087

RUTA: MEX-040

AÑO: 2017

LUGAR	ESTACION				CLASIFICACION VEHICULAR EN PORCIENTO													COORDENADAS			
	KM	TE	SC	TDPA	M	A	B	C2	C3	T3S2	T3S3	T3S2R4	OTROS	A	B	C	K'	D	LATITUD	LONGITUD	
T. C. Saltillo - Arteaga	0.00																				
T. Izq. Zinacamex	4.25	3	1	48086	0.5	86.8	0.8	5.7	0.8	1.7	2.9	0.5	0.3	87.3	0.8	11.9	0.067	0.509	25.482534	-100.972235	
T. Izq. Zinacamex	4.25	3	2	46384	0.4	85.4	0.9	6.2	0.9	2.0	3.4	0.5	0.3	85.8	0.9	13.3	0.080	0.509	25.482236	-100.972618	
Ramos Arizpe	11.30	1	1	44081	0.5	86.6	0.8	6.4	0.9	1.6	2.8	0.1	0.3	87.1	0.8	12.1	0.078	0.505	25.515964	-100.957461	
Ramos Arizpe	11.30	1	2	45288	0.5	84.7	0.9	7.5	1.1	1.9	3.0	0.1	0.3	85.2	0.9	13.9	0.094	0.505	25.516383	-100.957464	
T. Der. Aeropuerto	13.00	3	1	26553	0.5	86.0	0.8	6.7	0.9	1.7	2.4	0.5	0.5	86.5	0.8	12.7	0.090	0.504	25.554883	-100.926975	
T. Der. Aeropuerto	13.00	3	2	27009	0.5	84.3	0.8	7.7	1.0	1.9	2.8	0.5	0.5	84.8	0.8	14.4	0.104	0.504	25.554982	-100.927194	
T. Der. Libramiento J.L.P.	16.00	3	1	26465	0.5	85.1	0.8	7.3	1.0	1.8	2.5	0.5	0.5	85.6	0.8	13.6	0.080	0.505	25.565972	-100.914167	
T. Der. Libramiento J.L.P.	16.00	3	2	26302	0.5	84.0	0.8	7.8	1.0	2.0	2.9	0.5	0.5	84.5	0.8	14.7	0.092	0.505	25.566583	-100.914028	
Ojo Caliente	26.30	1	1	20683	1.0	59.7	3.0	8.6	2.3	20.6	2.2	2.4	0.2	60.7	3.0	36.3	0.097	0.503	25.610620	-100.844254	
Ojo Caliente	26.30	1	2	20647	0.7	56.3	3.3	10.1	2.6	21.9	2.4	2.5	0.2	57.0	3.3	39.7	0.090	0.503	25.612849	-100.847049	

COAHUILA

18 CARR: Saltillo - Monterrey

CLAVE: 00087

RUTA: MEX-040

AÑO: 2017

LUGAR	ESTACION				CLASIFICACION VEHICULAR EN PORCIENTO										COORDENADAS						
	KM	TE	SC	TDPA	M	A	B	C2	C3	T3S2	T3S3	T3S2R4	OTROS	A	B	C	K'	D	LATITUD	LONGITUD	
Lim. Edos. Term. Coah. Ppia. N. L.	33.00																				
T. Izq. Libramiento Noroeste de Monterrey	54.00	1	1	20476	0.8	54.2	3.3	8.4	2.6	23.4	2.8	3.4	1.1	55.0	3.3	41.7	0.081	0.504	25.698240	-100.563396	
T. Izq. Libramiento Noroeste de Monterrey	54.00	1	2	20901	0.5	48.8	4.0	9.1	2.8	26.6	3.2	3.8	1.2	49.3	4.0	46.7	0.067	0.504	25.698730	-100.563065	
T. Der. Santa Catarina (1º Acceso)	62.46	1	1	34956	0.9	81.1	1.7	8.6	1.6	3.1	1.8	0.8	0.4	82.0	1.7	16.3	0.081	0.519	25.686907	-100.494218	
T. Der. Santa Catarina (1º Acceso)	62.46	1	2	39009	1.1	79.4	1.9	9.2	1.7	3.4	2.1	0.8	0.4	80.5	1.9	17.6	0.087	0.519	25.687140	-100.494092	
Ppia. Monterrey	79.20	1	1	67313	0.8	84.1	0.8	4.8	1.3	2.9	3.4	0.7	1.2	84.9	0.8	14.3	0.067	0.515	25.674371	-100.426837	
Ppia. Monterrey	79.20	1	2	72753	0.8	82.7	0.9	5.2	1.4	3.2	3.6	0.9	1.3	83.5	0.9	15.6	0.060	0.515	25.674510	-100.426361	

19 CARR: Saltillo - Torreón

CLAVE: 05086

RUTA: MEX-040

AÑO: 2017

LUGAR	ESTACION				CLASIFICACION VEHICULAR EN PORCIENTO										COORDENADAS						
	KM	TE	SC	TDPA	M	A	B	C2	C3	T3S2	T3S3	T3S2R4	OTROS	A	B	C	K'	D	LATITUD	LONGITUD	
Saltillo	0.00																				
T. Der. Monclova	6.10	3	1	5943	0.8	64.1	3.5	8.3	2.4	12.2	3.2	4.0	1.5	64.9	3.5	31.6	0.083	0.536	25.453625	-101.071309	
T. Der. Monclova	6.10	3	2	4992	0.6	58.3	3.9	10.0	2.7	14.4	3.9	4.5	1.7	58.9	3.9	37.2	0.121	0.536	25.453696	-101.071347	
T. Izq. General Cepeda	44.14	1	0	4261	0.7	55.9	3.1	13.9	2.8	16.4	3.6	2.6	1.0	56.6	3.1	40.3	0.098	0.515	25.505528	-101.375675	
T. Izq. General Cepeda	44.14	3	0	3189	0.3	51.1	4.9	13.4	3.1	17.5	5.2	3.5	1.0	51.4	4.9	43.7	0.084	0.514	25.511850	-101.381763	
T. Der. Estación Marte	91.20	1	0	2204	0.4	39.1	4.9	13.6	3.7	27.9	6.0	3.6	0.8	39.5	4.9	55.6	0.077	0.510	25.658867	-101.763185	
Ent. Paila	127.90	1	1	4050	0.6	60.9	3.9	7.8	1.9	14.5	3.6	5.8	1.0	61.5	3.9	34.6	0.099	0.528	25.649286	-102.136679	
Ent. Paila	127.90	1	2	4675	1.1	57.8	4.3	8.3	2.0	15.4	4.1	6.1	0.9	58.9	4.3	36.8	0.109	0.528	25.649392	-102.135969	
T. Der. San Pedro de Las Colonias (La Cuchilla)	204.58	1	1	3764	0.5	50.0	4.9	8.7	2.3	19.5	5.2	7.6	1.3	50.5	4.9	44.6	0.090	0.510	25.625250	-102.865250	
T. Der. San Pedro de Las Colonias (La Cuchilla)	204.58	1	2	3610	1.4	45.4	5.6	9.4	2.3	21.2	5.4	8.0	1.3	46.8	5.6	47.6	0.091	0.510	25.632611	-102.866278	
Emiliano Zapata	221.68	1	0	1513	2.1	35.9	1.1	11.5	6.5	27.3	8.3	5.3	2.0	38.0	1.1	60.9	0.057	0.501	25.495667	-102.943250	
Emiliano Zapata	221.68	3	0	2307	1.1	53.4	2.1	10.5	4.1	19.1	5.0	2.9	1.8	54.5	2.1	43.4	0.072	0.502	25.489065	-102.955092	
T. Der. Libramiento de Matamoros (1º Acceso)	246.80	1	0	6138	2.8	64.0	1.7	15.4	3.2	8.9	2.0	1.1	0.9	66.8	1.7	31.5	0.083	0.512	25.526778	-103.214361	
T. Der. Libramiento de Matamoros (1º Acceso)	246.80	3	1	4282	5.1	78.9	0.9	10.1	1.6	1.3	0.8	0.6	0.7	84.0	0.9	15.1	0.087	0.502	25.527754	-103.218564	
T. Der. Libramiento de Matamoros (1º Acceso)	246.80	3	2	4454	5.3	76.7	1.1	11.5	1.7	1.5	1.0	0.6	0.6	82.0	1.1	16.9	0.082	0.502	25.527889	-103.218389	
Matamoros	252.80	3	1	8807	5.5	86.1	0.4	6.5	0.1	0.6	0.6	0.0	0.2	91.6	0.4	8.0	0.071	0.515	25.534806	-103.247500	
Matamoros	252.80	3	2	9522	4.2	86.4	0.4	7.3	0.1	0.8	0.6	0.0	0.2	90.6	0.4	9.0	0.079	0.515	25.534806	-103.247500	
T. Der. Libramiento de Matamoros (2º Acceso)	253.12	3	1	11796	4.2	77.0	2.2	7.9	1.2	4.1	1.6	1.1	0.7	81.2	2.2	16.6	0.076	0.502	25.535284	-103.259782	
T. Der. Libramiento de Matamoros (2º Acceso)	253.12	3	2	11570	5.2	73.2	2.4	9.5	1.4	4.6	1.8	1.2	0.7	78.4	2.4	19.2	0.075	0.502	25.535166	-103.259474	
T. Der. Libramiento de Torreón	264.50	3	1	41031	1.7	89.6	0.9	4.0	0.2	1.0	2.1	0.3	0.2	91.3	0.9	7.8	0.076	0.520	25.535026	-103.388824	
T. Der. Libramiento de Torreón	264.50	3	2	38971	1.9	88.2	1.1	4.6	0.2	1.1	2.4	0.3	0.2	90.1	1.1	8.8	0.078	0.520	25.535264	-103.388375	
Torreón	291.00																				

COAHUILA

20 CARR: Libramiento Norponiente de Saltillo (Cuota)

CLAVE: 05022

RUTA: MEX-S30

AÑO: 2017

LUGAR	ESTACION				CLASIFICACION VEHICULAR EN PORCIENTO												COORDENADAS			
	KM	TE	SC	TDPA	M	A	B	C2	C3	T3S2	T3S3	T3S2R4	OTROS	A	B	C	K'	D	LATITUD	LONGITUD
T. C. Ent. Morelos - Saltillo	0.00	3	0	3806	1.7	42.8	4.1	6.7	4.2	30.0	3.6	5.3	1.6	44.5	4.1	51.4	0.096	0.531	25.289083	-101.091194
X. C. Saltillo - Torreón	22.44	1	0	4699	2.3	38.8	4.8	7.3	5.1	30.1	3.8	6.4	1.4	41.1	4.8	54.1	0.073	0.500	25.445764	-101.067666
X. C. Saltillo - Torreón	22.44	3	0	7340	1.0	38.7	4.9	6.9	3.4	29.0	6.0	8.6	1.5	39.7	4.9	55.4	0.079	0.523	25.459194	-101.059667
X. C. Saltillo - Monclova	32.44	1	0	7903	1.8	40.8	5.3	7.7	3.9	25.2	4.8	8.7	1.8	42.6	5.3	52.1	0.070	0.502	25.516629	-101.001126
X. C. Saltillo - Monclova	32.44	3	0	7810	1.1	45.3	4.8	7.0	3.2	24.4	4.6	8.7	0.9	46.4	4.8	48.8	0.076	0.522	25.527430	-100.985489
Ojo Caliente	46.21	1	0	8172	0.7	42.4	5.0	8.9	3.0	25.7	3.8	9.3	1.2	43.1	5.0	51.9	0.081	0.511	25.609889	-100.916889

21 CARR: Libramiento Norte de Torreón (Cuota)

CLAVE:

RUTA: MEX-040D

AÑO: 2017

LUGAR	ESTACION				CLASIFICACION VEHICULAR EN PORCIENTO												COORDENADAS			
	KM	TE	SC	TDPA	M	A	B	C2	C3	T3S2	T3S3	T3S2R4	OTROS	A	B	C	K'	D	LATITUD	LONGITUD
X. C. Gomez Palacio - Jimenez	0.00	3	0	3119	1.1	58.4	2.9	6.4	2.4	15.8	4.4	7.4	1.2	59.5	2.9	37.6	0.100	0.542	25.632886	-103.506115
Lim. Edos. Term. Dgo. Ppia. Coah.	15.60																			
X. C. La Cuchilla - Torreón	17.36	1	0	2468	0.8	49.3	3.2	8.0	2.4	19.5	5.1	10.2	1.5	50.1	3.2	46.7	0.089	0.503	25.655556	-103.381926
X. C. La Cuchilla - Torreón	17.36	3	0	2540	0.8	51.7	3.3	7.9	2.1	18.6	4.9	9.5	1.2	52.5	3.3	44.2	0.101	0.522	25.647807	-103.354529
X. C. Torreón - Saltillo	40.70	1	0	2455	3.1	50.3	3.3	8.1	2.9	16.6	5.2	8.9	1.6	53.4	3.3	43.3	0.092	0.509	25.547587	-103.227192

22 CARR: Libramiento Oriente de Saltillo (Cuota)

CLAVE: 00115

RUTA: MEX-057D

AÑO: 2017

LUGAR	ESTACION				CLASIFICACION VEHICULAR EN PORCIENTO												COORDENADAS			
	KM	TE	SC	TDPA	M	A	B	C2	C3	T3S2	T3S3	T3S2R4	OTROS	A	B	C	K'	D	LATITUD	LONGITUD
Ent. La Carbonera	0.00																			
Caseta de Cobro Carbonera	12.30	2	1	7010	0.2	35.2	4.0	5.6	2.6	38.0	3.7	6.2	4.5	35.4	4.0	60.6	0.072	0.500	25.510979	-100.868378
Caseta de Cobro Carbonera	12.30	2	2	7010	0.2	35.2	4.0	5.6	2.6	38.0	3.7	6.2	4.5	35.4	4.0	60.6	0.072	0.500	25.510979	-100.868378
Caseta de Cobro Carbonera	12.30	3	1	7237	1.3	42.1	4.5	7.6	2.4	31.4	4.4	5.4	0.9	43.4	4.5	52.1	0.075	0.538	25.520472	-100.865250
Caseta de Cobro Carbonera	12.30	3	2	8728	1.1	36.9	5.0	8.4	2.4	34.5	4.9	5.9	0.9	38.0	5.0	57.0	0.067	0.538	25.521639	-100.865278
T. C. Saltillo - Monterrey	21.00																			

23 CARR: Nueva Rosita - Ent. Allende (Cuota)

CLAVE: 05502

RUTA: MEX-057D

AÑO: 2017

LUGAR	ESTACION				CLASIFICACION VEHICULAR EN PORCIENTO												COORDENADAS			
	KM	TE	SC	TDPA	M	A	B	C2	C3	T3S2	T3S3	T3S2R4	OTROS	A	B	C	K'	D	LATITUD	LONGITUD
T. C. Monclova - Piedras Negras	0.00	3	1	1592	0.2	66.5	4.3	16.4	1.6	5.6	0.7	4.5	0.2	66.7	4.3	29.0	0.135	0.504	27.939853	-101.192098
T. C. Monclova - Piedras Negras	0.00	3	2	1642	0.3	69.1	3.8	16.9	1.4	4.3	0.5	3.4	0.3	69.4	3.8	26.8	0.140	0.504	27.940018	-101.192129
Allende	52.20																			

COAHUILA

23 CARR: Nueva Rosita - Ent. Allende (Cuota)

CLAVE: 05502

RUTA: MEX-057D

AÑO: 2017

LUGAR	ESTACION				CLASIFICACION VEHICULAR EN PORCIENTO														COORDENADAS	
	KM	TE	SC	TDPA	M	A	B	C2	C3	T3S2	T3S3	T3S2R4	OTROS	A	B	C	K'	D	LATITUD	LONGITUD
T. C. Monclova - Piedras Negras	54.00	1	0	2987	0.2	70.0	3.3	17.0	1.1	4.1	0.7	3.2	0.4	70.2	3.3	26.5	0.114	0.506	28.307008	-100.907594

24 CARR: Puerto México - La Carbonera (Cuota)

CLAVE: 00115

RUTA: MEX-057D

AÑO: 2017

LUGAR	ESTACION				CLASIFICACION VEHICULAR EN PORCIENTO														COORDENADAS	
	KM	TE	SC	TDPA	M	A	B	C2	C3	T3S2	T3S3	T3S2R4	OTROS	A	B	C	K'	D	LATITUD	LONGITUD
Ent. Puerto México	202.00																			
Caseta de Cobro Los Chorros	203.64	2	1	6855	0.1	36.0	4.5	4.5	2.1	38.4	5.1	7.0	2.3	36.1	4.5	59.4	0.076	0.500	25.186794	-100.732079
Caseta de Cobro Los Chorros	203.64	2	2	6855	0.1	36.0	4.5	4.5	2.1	38.4	5.1	7.0	2.3	36.1	4.5	59.4	0.076	0.500	25.186794	-100.732079
Lim. Edos. Term. N. L. Ppia. Coah.	204.07																			
Lim. Edos. Term. Coah. Ppia. N. L.	204.50																			
Lim. Edos. Term. N. L. Ppia. Coah.	205.76																			
T. Der. San Antonio de Las Alazanas	224.94	1	1	7477	2.0	42.1	4.2	8.3	2.1	29.9	4.3	5.5	1.6	44.1	4.2	51.7	0.066	0.513	25.344677	-100.794520
T. Der. San Antonio de Las Alazanas	224.94	1	2	7982	1.4	38.8	4.8	9.8	2.3	30.3	4.7	6.1	1.8	40.2	4.8	55.0	0.075	0.513	25.344909	-100.794613
T. Der. San Antonio de Las Alazanas	224.94	3	1	7976	2.0	49.5	3.7	8.1	2.0	23.9	4.1	4.9	1.8	51.5	3.7	44.8	0.085	0.511	25.351733	-100.794329
T. Der. San Antonio de Las Alazanas	224.94	3	2	7270	1.7	45.1	4.1	8.7	2.2	26.6	4.6	4.9	2.1	46.8	4.1	49.1	0.079	0.511	25.351714	-100.794430
Los Lirios	228.30	3	1	10823	1.7	50.0	3.9	10.0	2.0	23.9	4.0	3.6	0.9	51.7	3.9	44.4	0.113	0.517	25.393624	-100.796484
Los Lirios	228.30	3	2	9676	1.4	43.2	4.5	10.4	2.3	28.3	4.6	4.3	1.0	44.6	4.5	50.9	0.096	0.517	25.393704	-100.796605
Ent. La Carbonera	235.60																			

25 CARR: Saltillo - Monterrey (Cuota)

CLAVE: 00087

RUTA: MEX-040D

AÑO: 2017

LUGAR	ESTACION				CLASIFICACION VEHICULAR EN PORCIENTO														COORDENADAS	
	KM	TE	SC	TDPA	M	A	B	C2	C3	T3S2	T3S3	T3S2R4	OTROS	A	B	C	K'	D	LATITUD	LONGITUD
Ojo Caliente	46.21	3	1	3230	1.1	53.4	4.4	6.9	3.6	19.1	4.3	6.3	0.9	54.5	4.4	41.1	0.077	0.525	25.617892	-100.905459
Ojo Caliente	46.21	3	2	3576	2.4	47.5	4.8	7.7	3.9	20.5	5.1	7.2	0.9	49.9	4.8	45.3	0.070	0.525	25.618020	-100.905517
Lim. Edos. Term. Coah. Ppia. N. L.	61.08																			
T. Izq. Anillo Periférico de Monterrey (Cuota)	82.00	1	1	8659	1.4	74.2	5.1	6.5	1.5	6.1	1.8	2.5	0.9	75.6	5.1	19.3	0.075	0.523	25.698167	-100.602351
T. Izq. Anillo Periférico de Monterrey (Cuota)	82.00	1	2	8157	1.4	70.3	5.5	7.3	1.7	7.9	2.0	2.9	1.0	71.7	5.5	22.8	0.081	0.523	25.698254	-100.602185
T. Izq. Anillo Periférico de Monterrey (Cuota)	82.00	3	1	4184	0.4	92.2	1.9	5.0	0.2	0.2	0.1	0.0	0.0	92.6	1.9	5.5	0.147	0.542	25.690881	-100.558908
T. Izq. Anillo Periférico de Monterrey (Cuota)	82.00	3	2	3518	0.8	91.1	2.2	5.3	0.3	0.2	0.1	0.0	0.0	91.9	2.2	5.9	0.119	0.542	25.690901	-100.558713
Morones Prieto	96.10																			

COAHUILA

26 CARR: Torreón - Saltillo (Cuota)

CLAVE:

RUTA: MEX-040D

AÑO: 2017

LUGAR	ESTACION				CLASIFICACION VEHICULAR EN PORCIENTO														COORDENADAS		
	KM	TE	SC	TDPA	M	A	B	C2	C3	T3S2	T3S3	T3S2R4	OTROS	A	B	C	K'	D	LATITUD	LONGITUD	
Matamoros	0.00																				
Caseta de Cobro La Cuchilla	37.00	2	1	2925	0.3	48.4	4.9	5.2	1.6	23.3	4.9	10.1	1.3	48.7	4.9	46.4	0.091	0.500	25.626987	-102.878212	
Caseta de Cobro La Cuchilla	37.00	2	2	2925	0.3	48.4	4.9	5.2	1.6	23.3	4.9	10.1	1.3	48.7	4.9	46.4	0.091	0.500	25.626987	-102.878212	
Caseta de Cobro Plan de Ayala	205.00	2	1	3091	0.3	52.2	6.2	4.5	1.2	20.3	4.3	9.7	1.3	52.5	6.2	41.3	0.091	0.500	25.444124	-101.303940	
Caseta de Cobro Plan de Ayala	205.00	2	2	3091	0.3	52.2	6.2	4.5	1.2	20.3	4.3	9.7	1.3	52.5	6.2	41.3	0.091	0.500	25.444124	-101.303940	
T. C. Saltillo - Torreón (Libre)	206.80																				

27 CARR: Allende - Villa Unión

CLAVE: 05001

RUTA: COA-015

AÑO: 2017

LUGAR	ESTACION				CLASIFICACION VEHICULAR EN PORCIENTO														COORDENADAS	
	KM	TE	SC	TDPA	M	A	B	C2	C3	T3S2	T3S3	T3S2R4	OTROS	A	B	C	K'	D	LATITUD	LONGITUD
Allende	0.00	3	0	2162	1.4	70.8	2.8	23.4	0.2	1.2	0.2	0.0	0.0	72.2	2.8	25.0	0.103	0.507	28.335641	-100.838224
Villa Unión	19.00																			

28 CARR: Corredor Libramiento de San Pedro

CLAVE: 05023

RUTA: COA-087

AÑO: 2017

LUGAR	ESTACION				CLASIFICACION VEHICULAR EN PORCIENTO														COORDENADAS	
	KM	TE	SC	TDPA	M	A	B	C2	C3	T3S2	T3S3	T3S2R4	OTROS	A	B	C	K'	D	LATITUD	LONGITUD
T. C. Monclova - San Pedro de las Colonias	0.00	3	0	2746	5.8	67.3	1.6	10.3	2.1	7.6	1.7	3.0	0.6	73.1	1.6	25.3	0.093	0.515	25.774516	-102.982849
T. C. La Cuchilla - Torreón	3.60	1	0	3687	8.4	69.0	1.5	9.0	1.5	6.0	1.8	2.1	0.7	77.4	1.5	21.1	0.117	0.506	25.758974	-103.000257

29 CARR: Cuatro Ciénegas - Ocampo

CLAVE: 05026

RUTA: COA-048

AÑO: 2017

LUGAR	ESTACION				CLASIFICACION VEHICULAR EN PORCIENTO														COORDENADAS	
	KM	TE	SC	TDPA	M	A	B	C2	C3	T3S2	T3S3	T3S2R4	OTROS	A	B	C	K'	D	LATITUD	LONGITUD
Cuatro Ciénegas	0.00	3	0	1229	2.7	74.2	0.4	20.4	0.3	1.4	0.2	0.2	0.2	76.9	0.4	22.7	0.074	0.508	27.000186	-102.072616
Ocampo	50.00																			

30 CARR: El Sauz - Palau

CLAVE: 05060

RUTA: COA-022

AÑO: 2017

LUGAR	ESTACION				CLASIFICACION VEHICULAR EN PORCIENTO														COORDENADAS	
	KM	TE	SC	TDPA	M	A	B	C2	C3	T3S2	T3S3	T3S2R4	OTROS	A	B	C	K'	D	LATITUD	LONGITUD
El Sauz	0.00	3	1	1333	0.4	71.9	2.3	14.7	2.2	3.4	3.2	1.3	0.6	72.3	2.3	25.4	0.096	0.508	27.640695	-101.186395
El Sauz	0.00	3	2	1259	0.4	68.3	2.5	17.3	2.4	3.8	3.5	1.3	0.5	68.7	2.5	28.8	0.080	0.508	27.640696	-101.186396
Minas de Barroterán	31.00	3	1	1221	1.7	68.2	4.0	13.8	2.4	5.5	2.7	0.9	0.8	69.9	4.0	26.1	0.093	0.506	27.662488	-101.288849

COAHUILA

30 CARR: El Sauz - Palau

CLAVE: 05060

RUTA: COA-022

AÑO: 2017

LUGAR	ESTACION				CLASIFICACION VEHICULAR EN PORCIENTO														COORDENADAS	
	KM	TE	SC	TDPA	M	A	B	C2	C3	T3S2	T3S3	T3S2R4	OTROS	A	B	C	K'	D	LATITUD	LONGITUD
Minas de Barroterán	31.00	3	2	1256	1.5	65.9	4.2	15.8	2.7	5.6	2.8	1.0	0.5	67.4	4.2	28.4	0.089	0.506	27.662490	-101.288849
Palau	42.50	1	1	1126	1.8	67.4	0.7	16.2	2.8	5.6	4.0	1.0	0.5	69.2	0.7	30.1	0.093	0.524	27.874763	-101.415445
Palau	42.50	1	2	1268	1.7	65.5	0.7	17.5	2.8	5.9	4.5	1.0	0.4	67.2	0.7	32.1	0.110	0.524	27.874753	-101.415428

31 CARR: Emiliano Zapata - Viesca

CLAVE: 05521

RUTA: COA-082

AÑO: 2017

LUGAR	ESTACION				CLASIFICACION VEHICULAR EN PORCIENTO														COORDENADAS	
	KM	TE	SC	TDPA	M	A	B	C2	C3	T3S2	T3S3	T3S2R4	OTROS	A	B	C	K'	D	LATITUD	LONGITUD
Emiliano Zapata	0.00	3	0	840	2.5	78.6	1.1	15.3	1.4	0.8	0.2	0.0	0.1	81.1	1.1	17.8	0.103	0.502	25.486075	-102.943281
Viesca	24.00																			

32 CARR: Ent. La Rosa - General Cepeda

CLAVE: 05034

RUTA: COA-034

AÑO: 2017

LUGAR	ESTACION				CLASIFICACION VEHICULAR EN PORCIENTO														COORDENADAS	
	KM	TE	SC	TDPA	M	A	B	C2	C3	T3S2	T3S3	T3S2R4	OTROS	A	B	C	K'	D	LATITUD	LONGITUD
T. C. Saltillo - Torreón	0.00	3	0	1265	0.3	80.0	0.3	17.2	0.8	1.1	0.2	0.0	0.1	80.3	0.3	19.4	0.115	0.502	25.506837	-101.379221
Gral. Cepeda	21.00	1	0	1236	0.8	72.3	0.5	24.2	0.8	1.1	0.2	0.0	0.1	73.1	0.5	26.4	0.111	0.503	25.390848	-101.478129

33 CARR: Ent. Paila - Parras de La Fuente

CLAVE: 05014

RUTA: COA-102

AÑO: 2017

LUGAR	ESTACION				CLASIFICACION VEHICULAR EN PORCIENTO														COORDENADAS	
	KM	TE	SC	TDPA	M	A	B	C2	C3	T3S2	T3S3	T3S2R4	OTROS	A	B	C	K'	D	LATITUD	LONGITUD
Ent. Paila	0.00	3	0	2265	1.6	78.1	2.6	11.1	1.8	2.9	0.7	0.7	0.5	79.7	2.6	17.7	0.079	0.506	25.644040	-102.148600
Parras de La Fuente	20.05	1	1	2158	6.7	80.6	1.0	8.9	0.7	1.3	0.4	0.2	0.2	87.3	1.0	11.7	0.132	0.502	25.468750	-102.173889
Parras de La Fuente	20.05	1	2	2102	5.7	79.9	1.1	10.1	0.8	1.6	0.4	0.3	0.1	85.6	1.1	13.3	0.095	0.502	25.468750	-102.173889

34 CARR: Libramiento de Matamoros

CLAVE: 05032

RUTA: COA

AÑO: 2017

LUGAR	ESTACION				CLASIFICACION VEHICULAR EN PORCIENTO														COORDENADAS	
	KM	TE	SC	TDPA	M	A	B	C2	C3	T3S2	T3S3	T3S2R4	OTROS	A	B	C	K'	D	LATITUD	LONGITUD
T. C. Saltillo - Torreón	0.00	3	0	7727	2.2	71.4	1.6	11.5	2.7	6.9	2.1	0.9	0.7	73.6	1.6	24.8	0.062	0.504	25.533062	-103.219763
X. C. Matamoros - La Unión	3.70	3	1	7673	2.4	67.9	3.7	11.0	2.5	7.3	2.3	2.1	0.8	70.3	3.7	26.0	0.075	0.519	25.538677	-103.226446
X. C. Matamoros - La Unión	3.70	3	2	6988	3.7	64.4	3.7	11.3	2.8	8.2	2.5	2.4	1.0	68.1	3.7	28.2	0.072	0.519	25.538684	-103.226445
T. C. Saltillo - Torreón	5.32	1	1	8166	2.6	71.0	2.8	8.9	2.2	7.1	2.0	2.5	0.9	73.6	2.8	23.6	0.069	0.514	25.536361	-103.246583
T. C. Saltillo - Torreón	5.32	1	2	7597	2.7	69.2	3.1	9.0	2.4	7.7	2.2	2.8	0.9	71.9	3.1	25.0	0.068	0.514	25.536361	-103.246583

COAHUILA

35 CARR: Libramiento de Saltillo J.L.P.

CLAVE: 05031

RUTA: COA

AÑO: 2017

LUGAR	ESTACION				CLASIFICACION VEHICULAR EN PORCIENTO										COORDENADAS					
	KM	TE	SC	TDPA	M	A	B	C2	C3	T3S2	T3S3	T3S2R4	OTROS	A	B	C	K'	D	LATITUD	LONGITUD
T. C. Ent. Bella Unión - Saltillo	0.00																			
X. C. Saltillo - Arteaga	2.50	3	1	10135	0.8	73.3	1.1	8.5	4.9	7.9	1.9	0.7	0.9	74.1	1.1	24.8	0.119	0.523	25.449111	-100.892333
X. C. Saltillo - Arteaga	2.50	3	2	11338	0.8	70.2	1.2	9.8	5.6	8.4	2.1	0.8	1.1	71.0	1.2	27.8	0.109	0.523	25.449111	-100.892333
T. C. Saltillo - Monterrey	18.00	1	1	8157	1.2	71.2	1.2	9.6	4.3	9.2	1.5	0.9	0.9	72.4	1.2	26.4	0.149	0.514	25.554028	-100.921611
T. C. Saltillo - Monterrey	18.00	1	2	7797	1.0	67.0	1.4	11.0	4.8	11.1	1.8	0.9	1.0	68.0	1.4	30.6	0.119	0.514	25.554028	-100.921722

36 CARR: Libramiento de Torreón

CLAVE: 05516

RUTA: COA

AÑO: 2017

LUGAR	ESTACION				CLASIFICACION VEHICULAR EN PORCIENTO										COORDENADAS					
	KM	TE	SC	TDPA	M	A	B	C2	C3	T3S2	T3S3	T3S2R4	OTROS	A	B	C	K'	D	LATITUD	LONGITUD
X. C. Saltillo - Torreón	0.00	3	1	40895	2.7	82.9	1.6	5.1	1.9	2.3	2.5	0.6	0.4	85.6	1.6	12.8	0.064	0.502	25.539918	-103.370964
X. C. Saltillo - Torreón	0.00	3	2	40202	1.9	82.4	1.8	5.7	2.2	2.4	2.6	0.6	0.4	84.3	1.8	13.9	0.076	0.502	25.539854	-103.370502
T. C. La Cuchilla - Torreón (Baja)	7.30	1	1	20315	1.8	85.1	0.7	2.8	0.6	3.4	3.2	1.5	0.9	86.9	0.7	12.4	0.119	0.504	25.582445	-103.402500
T. C. La Cuchilla - Torreón (Alta)	7.30	1	1	15824	2.0	82.5	0.6	5.7	2.0	3.9	2.1	0.6	0.6	84.5	0.6	14.9	0.085	0.506	25.582343	-103.402591
T. C. La Cuchilla - Torreón (Baja)	7.30	1	2	20610	1.1	84.3	0.7	3.3	0.7	4.1	3.2	1.7	0.9	85.4	0.7	13.9	0.091	0.504	25.582025	-103.402714
T. C. La Cuchilla - Torreón (Alta)	7.30	1	2	15854	2.3	81.1	0.6	6.1	2.1	4.3	2.3	0.6	0.6	83.4	0.6	16.0	0.100	0.506	25.582212	-103.402644
Lim. Edos. Term. Coah. Ppia. Dgo.	11.80																			
T. C. Durango - Torreón	28.60																			

37 CARR: Matamoros - El Fresno

CLAVE: 05023

RUTA: COA-078

AÑO: 2017

LUGAR	ESTACION				CLASIFICACION VEHICULAR EN PORCIENTO										COORDENADAS					
	KM	TE	SC	TDPA	M	A	B	C2	C3	T3S2	T3S3	T3S2R4	OTROS	A	B	C	K'	D	LATITUD	LONGITUD
Matamoros	0.00	3	0	3273	11.0	63.5	0.9	17.8	2.3	2.7	1.1	0.4	0.3	74.5	0.9	24.6	0.095	0.505	25.501273	-103.224395
El Fresno	12.60	1	0	1160	12.3	58.8	5.9	15.0	3.9	3.6	0.5	0.0	0.0	71.1	5.9	23.0	0.086	0.522	25.427691	-103.229721

38 CARR: Matamoros - La Unión

CLAVE: 05023

RUTA: COA-070

AÑO: 2017

LUGAR	ESTACION				CLASIFICACION VEHICULAR EN PORCIENTO										COORDENADAS					
	KM	TE	SC	TDPA	M	A	B	C2	C3	T3S2	T3S3	T3S2R4	OTROS	A	B	C	K'	D	LATITUD	LONGITUD
X. C. Libramiento de Matamoros	1.00	3	1	1676	3.9	73.5	2.0	13.1	2.6	2.3	1.0	0.9	0.7	77.4	2.0	20.6	0.093	0.521	25.543845	-103.222446
X. C. Libramiento de Matamoros	1.00	3	2	1496	2.8	71.4	2.2	15.0	3.0	2.7	1.3	0.9	0.7	74.2	2.2	23.6	0.097	0.521	25.543845	-103.222445
La Partida	14.09	1	0	3027	8.1	68.7	0.9	11.5	4.7	4.0	1.4	0.4	0.3	76.8	0.9	22.3	0.096	0.505	25.586498	-103.297981
La Partida	14.09	3	0	5747	4.5	74.4	1.9	9.7	2.9	3.9	1.4	0.7	0.6	78.9	1.9	19.2	0.076	0.519	25.594559	-103.314979
X. C. Antigua Carretera a San Pedro	22.00	1	1	7120	4.4	84.6	0.4	5.8	2.0	1.3	1.0	0.2	0.3	89.0	0.4	10.6	0.077	0.515	25.598146	-103.374886

COAHUILA

38 CARR: Matamoros - La Unión

CLAVE: 05023

RUTA: COA-070

AÑO: 2017

LUGAR	ESTACION				CLASIFICACION VEHICULAR EN PORCIENTO														COORDENADAS	
	KM	TE	SC	TDPA	M	A	B	C2	C3	T3S2	T3S3	T3S2R4	OTROS	A	B	C	K'	D	LATITUD	LONGITUD
X. C. Antigua Carretera a San Pedro	22.00	1	2	6558	4.8	83.0	0.4	6.6	2.3	1.3	1.1	0.2	0.3	87.8	0.4	11.8	0.075	0.515	25.598305	-103.374857
La Unión	25.00	1	1	9927	4.1	83.8	0.5	5.6	1.4	2.0	1.6	0.5	0.5	87.9	0.5	11.6	0.105	0.517	25.597419	-103.397654
La Unión	25.00	1	2	9129	4.5	82.7	0.6	5.9	1.5	2.1	1.7	0.5	0.5	87.2	0.6	12.2	0.099	0.517	25.597277	-103.397694

39 CARR: Monclova - Estación Candela

CLAVE: 00501

RUTA: COA-030-NL

AÑO: 2017

LUGAR	ESTACION				CLASIFICACION VEHICULAR EN PORCIENTO														COORDENADAS	
	KM	TE	SC	TDPA	M	A	B	C2	C3	T3S2	T3S3	T3S2R4	OTROS	A	B	C	K'	D	LATITUD	LONGITUD
T. C. Monclova - Piedras Negras	0.00																			
T. Izq. Libramiento de Monclova	5.10	1	1	2015	2.1	80.5	0.9	13.3	1.1	1.3	0.3	0.2	0.3	82.6	0.9	16.5	0.095	0.511	26.930863	-101.387421
T. Izq. Libramiento de Monclova	5.10	1	2	2312	4.1	76.9	0.9	14.3	1.3	1.5	0.4	0.3	0.3	81.0	0.9	18.1	0.101	0.511	26.930895	-101.387361
Lim. Edos. Term. Coah. Ppia. N. L.	118.00																			
T. C. Monterrey - Colombia	125.50	1	0	452	0.1	69.1	2.7	17.6	1.1	8.3	0.3	0.7	0.1	69.2	2.7	28.1	0.223	0.501	26.838167	-100.495077

40 CARR: Morelos - Ent. Las Corrientes

CLAVE: 05500

RUTA: COA-010

AÑO: 2017

LUGAR	ESTACION				CLASIFICACION VEHICULAR EN PORCIENTO														COORDENADAS	
	KM	TE	SC	TDPA	M	A	B	C2	C3	T3S2	T3S3	T3S2R4	OTROS	A	B	C	K'	D	LATITUD	LONGITUD
T. C. Morelos - Cd. Acuña	0.00	3	0	1480	1.9	76.2	0.4	19.6	0.4	1.3	0.1	0.0	0.1	78.1	0.4	21.5	0.134	0.511	28.401790	-100.895146
Los Álamos	9.20	1	0	970	3.2	66.4	0.9	28.3	0.3	0.8	0.1	0.0	0.0	69.6	0.9	29.5	0.102	0.501	28.355428	-100.942717
T. C. Monclova - Piedras Negras	20.00																			

41 CARR: Puerto de Flores - El Hondable

CLAVE: 05512

RUTA: COA-112

AÑO: 2017

LUGAR	ESTACION				CLASIFICACION VEHICULAR EN PORCIENTO														COORDENADAS	
	KM	TE	SC	TDPA	M	A	B	C2	C3	T3S2	T3S3	T3S2R4	OTROS	A	B	C	K'	D	LATITUD	LONGITUD
T. C. Aut. Puerto México - Ojo Caliente	0.00	3	0	2234	0.6	77.4	0.7	18.3	0.9	1.3	0.4	0.2	0.2	78.0	0.7	21.3	0.187	0.509	25.341833	-100.780056
San Antonio de Las Alazanas	24.00	1	0	1905	1.7	80.5	1.0	14.7	0.5	1.1	0.2	0.1	0.2	82.2	1.0	16.8	0.172	0.519	25.277361	-100.597611
El Hondable	50.50																			

42 CARR: Ramal a Hipólito

CLAVE: 05509

RUTA: COA-114

AÑO: 2017

LUGAR	ESTACION				CLASIFICACION VEHICULAR EN PORCIENTO														COORDENADAS	
	KM	TE	SC	TDPA	M	A	B	C2	C3	T3S2	T3S3	T3S2R4	OTROS	A	B	C	K'	D	LATITUD	LONGITUD
T. C. Saltillo - Torreón	0.00	3	0	1171	0.3	70.7	0.3	15.8	1.9	4.9	3.5	2.1	0.5	71.0	0.3	28.7	0.092	0.520	25.594397	-101.452380

COAHUILA

42 CARR: Ramal a Hipólito

CLAVE: 05509

RUTA: COA-114

AÑO: 2017

LUGAR	ESTACION	CLASIFICACION VEHICULAR EN PORCIENTO												COORDENADAS								
		KM	TE	SC	TDPA	M	A	B	C2	C3	T3S2	T3S3	T3S2R4	OTROS	A	B	C	K'	D	LATITUD	LONGITUD	
Hipólito	13.00																					

43 CARR: Ramal a Lamadrid

CLAVE: 05522

RUTA: COA-042

AÑO: 2017

LUGAR	ESTACION	CLASIFICACION VEHICULAR EN PORCIENTO												COORDENADAS								
		KM	TE	SC	TDPA	M	A	B	C2	C3	T3S2	T3S3	T3S2R4	OTROS	A	B	C	K'	D	LATITUD	LONGITUD	
T. C. Monclova - San Pedro de Las Colonias	0.00	3	0	1028	0.4	76.5	3.8	17.5	0.8	0.9	0.1	0.0	0.0	76.9	3.8	19.3	0.111	0.502	27.016647	-101.791869		
Lamadrid	4.00																					

44 CARR: Sabinas - Don Martín

CLAVE: 05501

RUTA: COA-025

AÑO: 2017

LUGAR	ESTACION	CLASIFICACION VEHICULAR EN PORCIENTO												COORDENADAS						
		KM	TE	SC	TDPA	M	A	B	C2	C3	T3S2	T3S3	T3S2R4	OTROS	A	B	C	K'	D	LATITUD
Sabinas	0.00	3	0	1996	4.1	69.0	0.2	22.0	1.5	1.7	0.7	0.6	0.2	73.1	0.2	26.7	0.095	0.511	27.849416	-101.096832
T. Izq. La Mezquitosa	3.00	3	0	901	1.8	70.5	0.2	21.2	2.1	2.1	1.0	1.0	0.1	72.3	0.2	27.5	0.126	0.506	27.834069	-101.074048
Juárez	53.00	3	0	394	0.7	69.2	0.5	25.5	2.8	1.0	0.1	0.2	0.0	69.9	0.5	29.6	0.164	0.502	27.619259	-100.704644
Don Martín	66.00	1	0	376	0.6	79.9	0.4	15.4	2.7	0.7	0.1	0.2	0.0	80.5	0.4	19.1	0.172	0.504	27.540036	-100.625352

45 CARR: Saltillo - Arteaga

CLAVE: 05008

RUTA: COA-106

AÑO: 2017

LUGAR	ESTACION	CLASIFICACION VEHICULAR EN PORCIENTO												COORDENADAS								
		KM	TE	SC	TDPA	M	A	B	C2	C3	T3S2	T3S3	T3S2R4	OTROS	A	B	C	K'	D	LATITUD	LONGITUD	
Saltillo	0.00	3	1	8010	1.2	86.8	0.3	9.8	0.9	0.6	0.4	0.0	0.0	88.0	0.3	11.7	0.092	0.500	25.442963	-100.948091		
Saltillo	0.00	3	2	7869	1.0	86.6	0.3	10.0	1.0	0.7	0.4	0.0	0.0	87.6	0.3	12.1	0.084	0.500	25.443111	-100.948083		
X. C. Libramiento de Matehuala - Monterrey	9.00	1	1	5113	1.9	81.8	4.3	6.3	1.3	2.1	1.3	0.3	0.7	83.7	4.3	12.0	0.080	0.509	25.444730	-100.896265		
X. C. Libramiento de Matehuala - Monterrey	9.00	1	2	5095	1.9	79.8	4.8	7.5	1.5	2.4	1.1	0.3	0.7	81.7	4.8	13.5	0.073	0.509	25.444601	-100.896595		
X. C. Libramiento de Matehuala - Monterrey	9.00	3	1	2872	1.7	78.3	0.6	15.1	2.2	1.3	0.5	0.3	0.0	80.0	0.6	19.4	0.074	0.504	25.447403	-100.888151		
X. C. Libramiento de Matehuala - Monterrey	9.00	3	2	2929	1.5	75.7	0.8	17.3	2.3	1.5	0.6	0.3	0.0	77.2	0.8	22.0	0.070	0.504	25.447569	-100.888039		
Arteaga	12.00	1	1	2869	2.4	80.6	0.6	13.1	1.4	1.0	0.3	0.1	0.5	83.0	0.6	16.4	0.112	0.502	25.448810	-100.869609		
Arteaga	12.00	1	2	2929	2.3	79.6	0.7	14.0	1.4	1.1	0.3	0.1	0.5	81.9	0.7	17.4	0.105	0.502	25.448713	-100.869582		
T. C. Ent. Bella Unión - Saltillo	18.00																					

COAHUILA

46 CARR: San Buenaventura - Estación Hermanas

CLAVE: 05004

RUTA: COA-034

AÑO: 2017

LUGAR	ESTACION				CLASIFICACION VEHICULAR EN PORCIENTO													COORDENADAS		
	KM	TE	SC	TDPA	M	A	B	C2	C3	T3S2	T3S3	T3S2R4	OTROS	A	B	C	K'	D	LATITUD	LONGITUD
San Buenaventura	0.00	3	0	1998	2.3	79.7	0.6	13.6	1.3	1.6	0.5	0.2	0.2	82.0	0.6	17.4	0.090	0.512	27.078449	-101.532167
T. Izq. Santa Gertrudis	2.48	1	0	1509	1.2	80.4	1.0	13.6	1.4	1.4	0.5	0.2	0.3	81.6	1.0	17.4	0.083	0.503	27.089530	-101.513473
Abasolo	15.71	1	0	774	1.2	79.7	0.8	14.2	1.8	1.3	0.6	0.3	0.1	80.9	0.8	18.3	0.107	0.512	27.173514	-101.432156
Los Rodríguez	31.00	3	0	366	1.0	78.1	1.0	15.2	1.9	1.2	1.1	0.5	0.0	79.1	1.0	19.9	0.142	0.506	27.199022	-101.353741
Estación Hermanas	50.00	1	0	510	0.9	73.3	0.7	21.1	2.2	1.1	0.0	0.5	0.2	74.2	0.7	25.1	0.100	0.508	27.221159	-101.240730

47 CARR: T. C. (Ent. Morelos - Saltillo) - Parras de La Fuente

CLAVE: 05510

RUTA: COA-105

AÑO: 2017

LUGAR	ESTACION				CLASIFICACION VEHICULAR EN PORCIENTO													COORDENADAS		
	KM	TE	SC	TDPA	M	A	B	C2	C3	T3S2	T3S3	T3S2R4	OTROS	A	B	C	K'	D	LATITUD	LONGITUD
T. C. Morelos - Saltillo	0.00	3	1	5336	1.7	68.8	1.3	12.4	3.0	10.5	1.0	0.4	0.9	70.5	1.3	28.2	0.131	0.526	25.261306	-101.101028
T. C. Morelos - Saltillo	0.00	3	2	6151	1.2	66.3	1.5	13.7	3.1	11.6	1.2	0.4	1.0	67.5	1.5	31.0	0.137	0.526	25.261306	-101.101028
Gral. Cepeda	40.00	1	0	1222	1.6	68.5	1.5	26.3	0.3	1.5	0.2	0.0	0.1	70.1	1.5	28.4	0.128	0.502	25.365540	-101.480676
Gral. Cepeda	40.00	3	0	756	1.5	68.3	0.6	28.1	0.3	1.2	0.0	0.0	0.0	69.8	0.6	29.6	0.110	0.501	25.382361	-101.490556
Parras de La Fuente	102.00	1	0	2138	18.0	65.5	0.7	13.1	0.4	2.0	0.1	0.1	0.1	83.5	0.7	15.8	0.085	0.501	25.443689	-102.157315

48 CARR: T. C. (Saltillo - Monclova) - Ramos Arizpe

CLAVE: 05508

RUTA: COA

AÑO: 2017

LUGAR	ESTACION				CLASIFICACION VEHICULAR EN PORCIENTO													COORDENADAS		
	KM	TE	SC	TDPA	M	A	B	C2	C3	T3S2	T3S3	T3S2R4	OTROS	A	B	C	K'	D	LATITUD	LONGITUD
T. C. Saltillo - Monclova	0.00	3	0	5333	1.7	59.1	1.7	12.4	3.1	17.3	2.1	1.7	0.9	60.8	1.7	37.5	0.084	0.524	25.529111	-101.003000
Ramos Arizpe	12.00																			

49 CARR: Torreón - Escuadrón 201

CLAVE: 05022

RUTA: COA-011

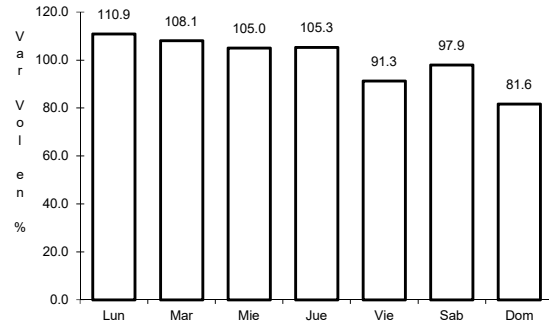
AÑO: 2017

LUGAR	ESTACION				CLASIFICACION VEHICULAR EN PORCIENTO													COORDENADAS		
	KM	TE	SC	TDPA	M	A	B	C2	C3	T3S2	T3S3	T3S2R4	OTROS	A	B	C	K'	D	LATITUD	LONGITUD
Torreón	0.00	3	1	18051	4.2	85.1	0.3	4.8	1.0	1.8	2.0	0.3	0.5	89.3	0.3	10.4	0.079	0.509	25.581451	-103.389122
Torreón	0.00	3	2	17384	3.4	84.8	0.3	5.2	1.1	2.1	2.3	0.3	0.5	88.2	0.3	11.5	0.077	0.509	25.583752	-103.388382
El Aguila	11.35	1	0	3296	9.8	76.0	0.5	9.9	1.8	1.6	0.3	0.0	0.1	85.8	0.5	13.7	0.067	0.507	25.631939	-103.359119
Escuadrón 201	17.06	1	0	1000	7.6	69.8	0.3	17.9	1.2	1.8	0.6	0.2	0.6	77.4	0.3	22.3	0.100	0.514	25.669669	-103.347946

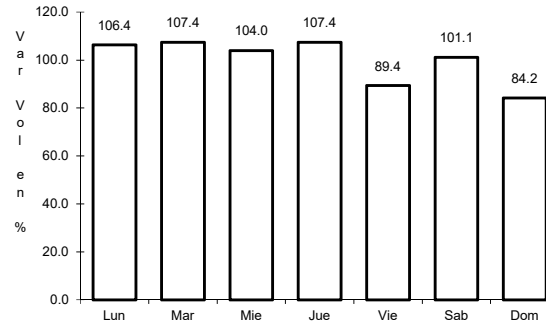
1 CARR: Cd. Acuña - Presa de La Amistad

CLAVE: 05085

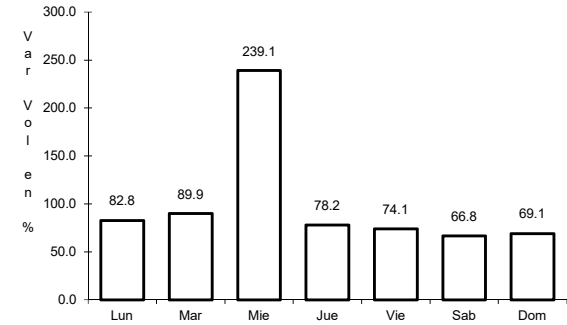
RUTA: MEX-002



Km: 0.00 Tipo: 3 Sent: 1



Km: 0.00 Tipo: 3 Sent: 2

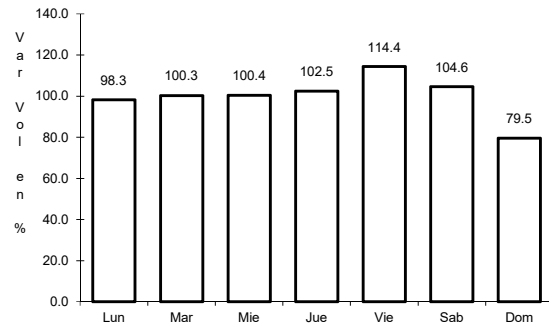


Km: 23.00 Tipo: 1 Sent: 0

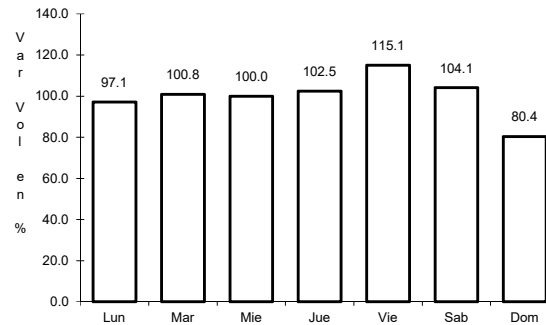
2 CARR: Durango - Torreón

CLAVE: 10085

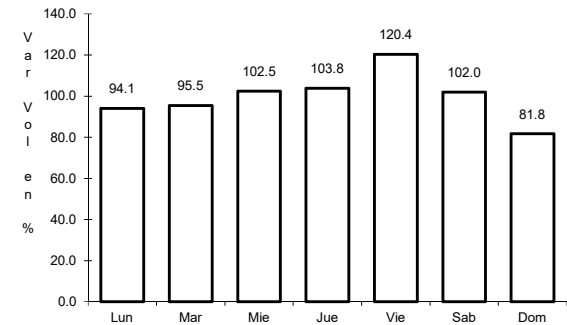
RUTA: MEX-040



Km: 0.00 Tipo: 3 Sent: 1



Km: 0.00 Tipo: 3 Sent: 2

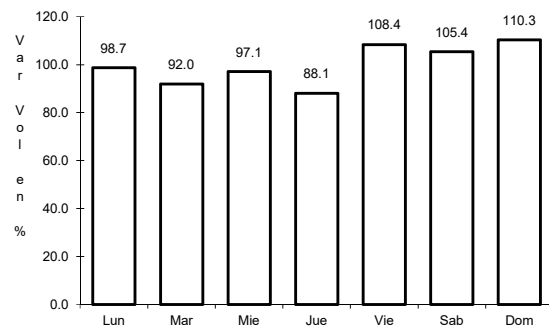


Km: 120.90 Tipo: 1 Sent: 0

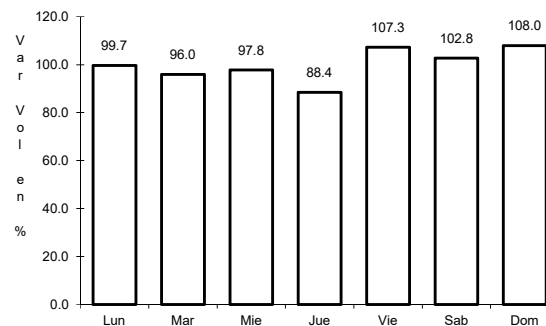
3 CARR: Ent. Bella Unión - Saltillo

CLAVE: 05003

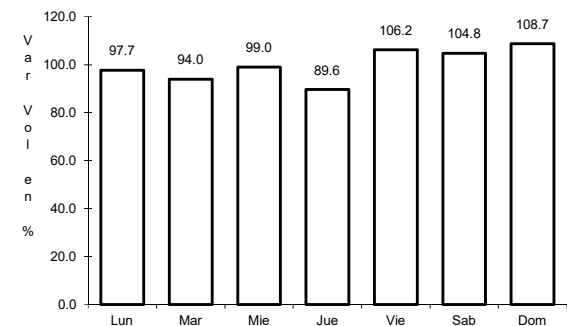
RUTA: MEX-057



Km: 4.61 Tipo: 1 Sent: 1



Km: 4.61 Tipo: 1 Sent: 2

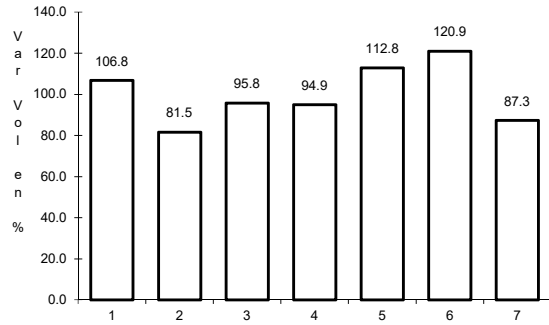


Km: 17.00 Tipo: 1 Sent: 1

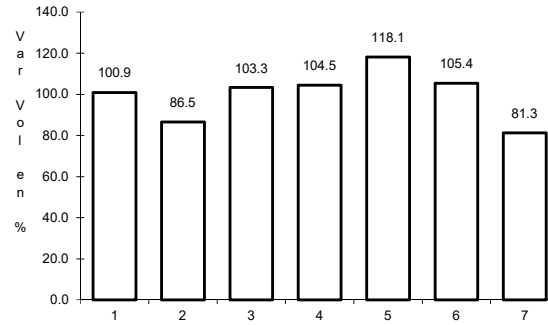
4 CARR: Ent. La Cuchilla - Torreón

CLAVE: 05021

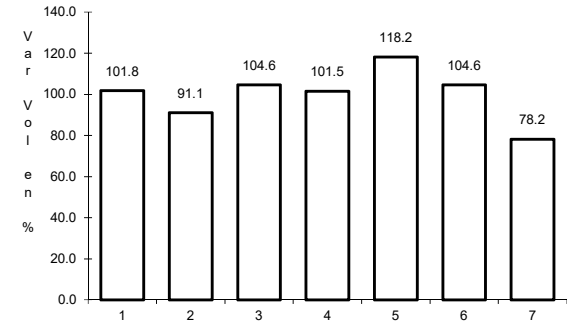
ruta: MEX-030



Km: 0.00 Tipo: 3 Sent: 0



Km: 84.00 Tipo: 1 Sent: 1

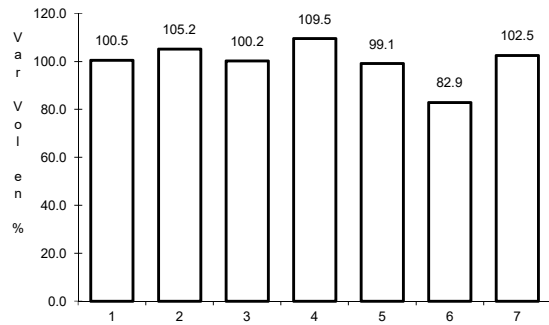


Km: 84.00 Tipo: 1 Sent: 2

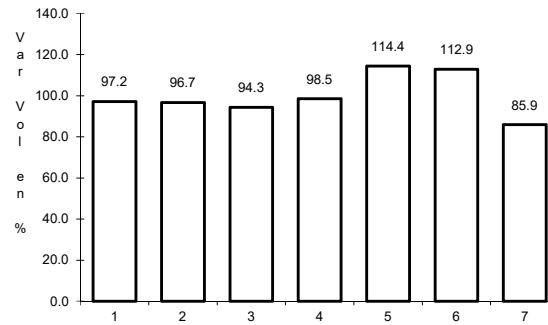
5 CARR: Ent. Morelos - Saltillo

CLAVE: 00149

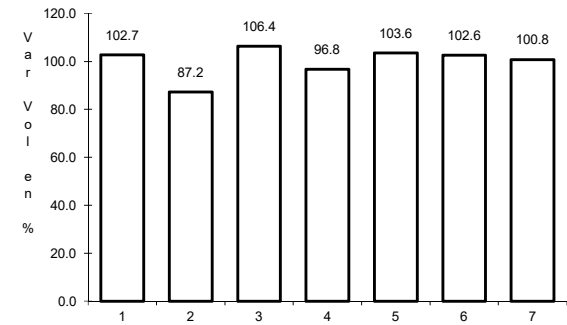
ruta: MEX-054



Km: 0.00 Tipo: 3 Sent: 1



Km: 0.00 Tipo: 3 Sent: 2

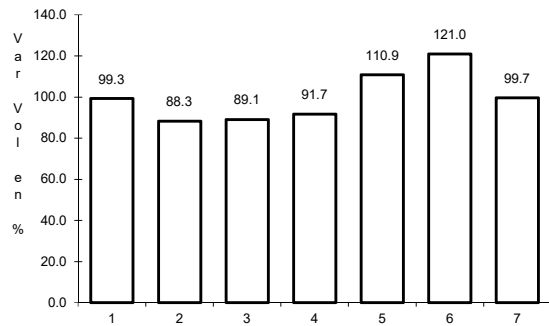


Km: 333.00 Tipo: 3 Sent: 0

6 CARR: Gregorio García - Francisco I. Madero

CLAVE: 00110

ruta: MEX-040

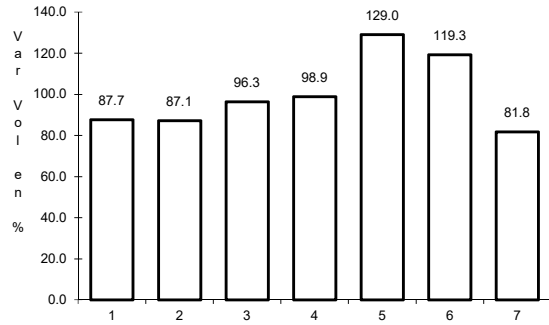


Km: 9.60 Tipo: 1 Sent: 0

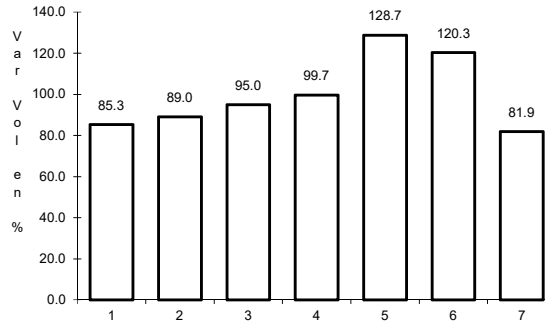
7 CARR: Libramiento Allende - Nava

CLAVE: 05518

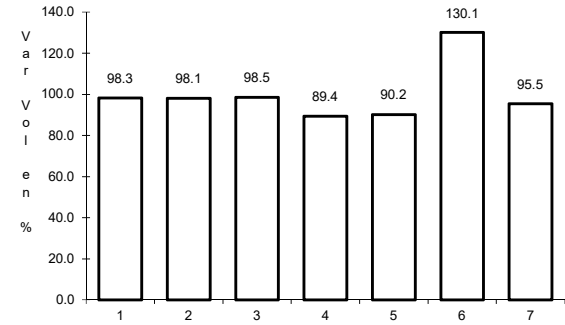
ruta: MEX-057



Km: 0.00 Tipo: 3 Sent: 1



Km: 0.00 Tipo: 3 Sent: 2

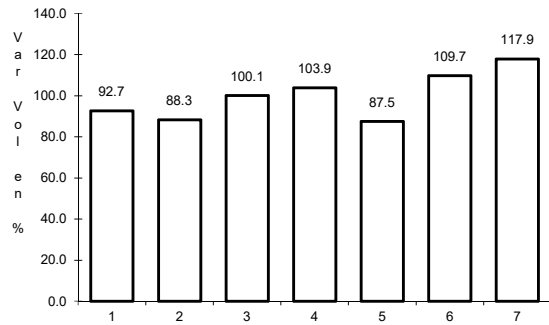


Km: 18.55 Tipo: 1 Sent: 1

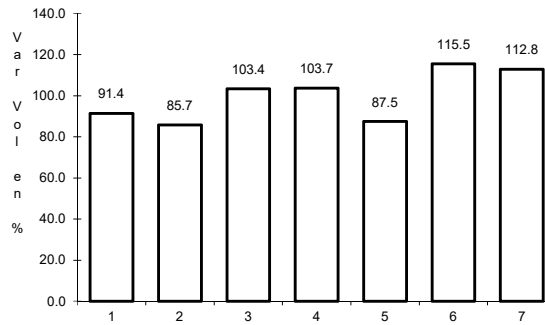
8 CARR: Monclova - Piedras Negras

CLAVE: 05407

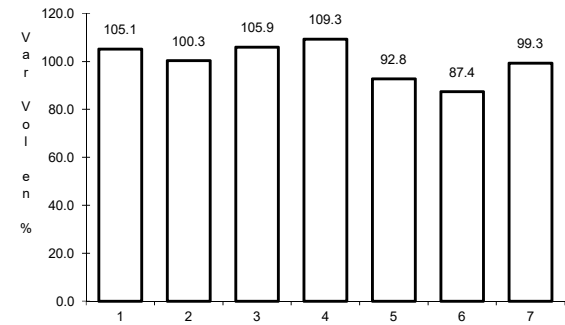
ruta: MEX-057



Km: 0.00 Tipo: 3 Sent: 1



Km: 0.00 Tipo: 3 Sent: 2

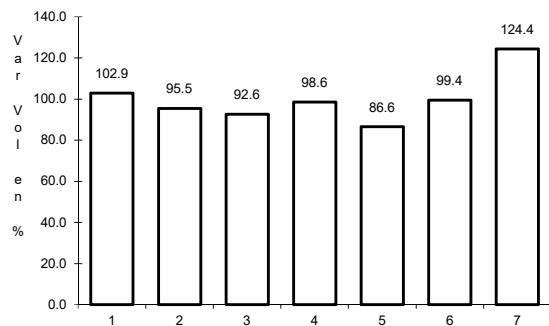


Km: 126.30 Tipo: 3 Sent: 0

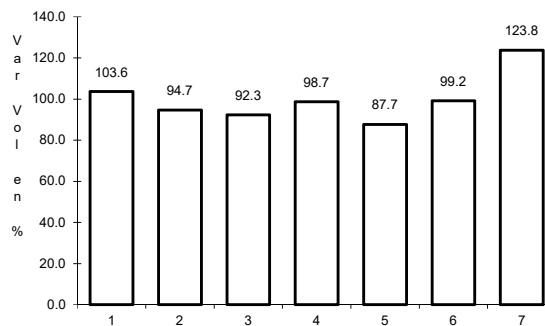
9 CARR: Monclova - San Pedro de Las Colonias

CLAVE: 05062

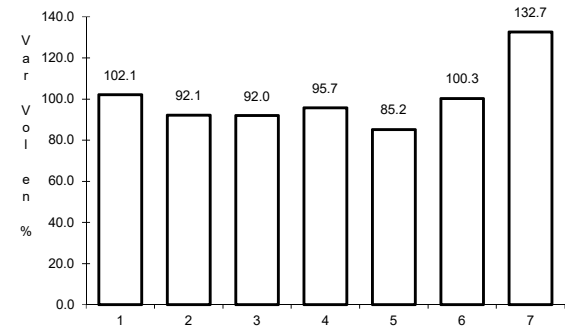
ruta: MEX-030



Km: 2.00 Tipo: 3 Sent: 1



Km: 2.00 Tipo: 3 Sent: 2

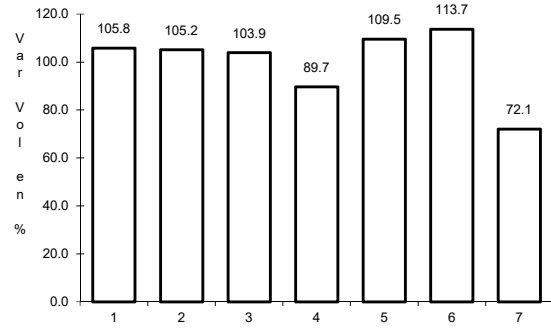


Km: 80.15 Tipo: 3 Sent: 0

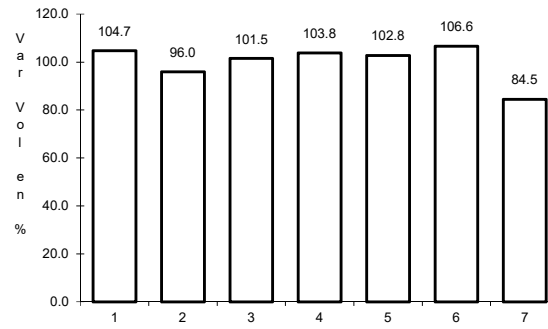
10 CARR: Monterrey - Castaños

CLAVE: 00128

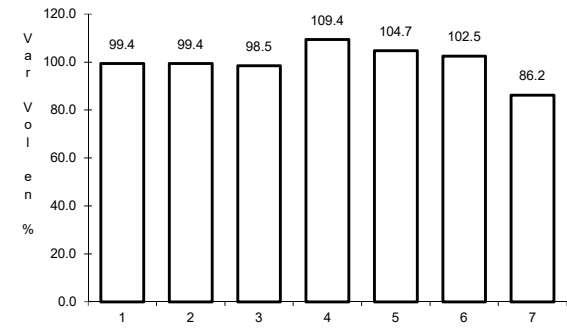
RUTA: MEX-053



Km: 0.00 Tipo: 3 Sent: 0



Km: 155.90 Tipo: 1 Sent: 1

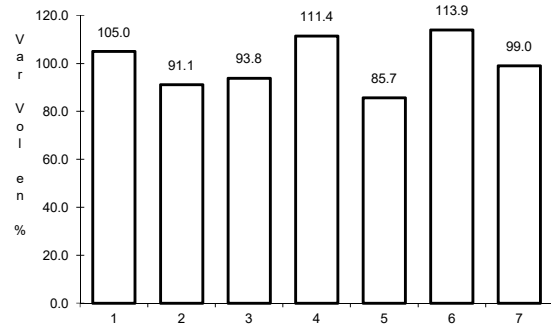


Km: 155.90 Tipo: 1 Sent: 2

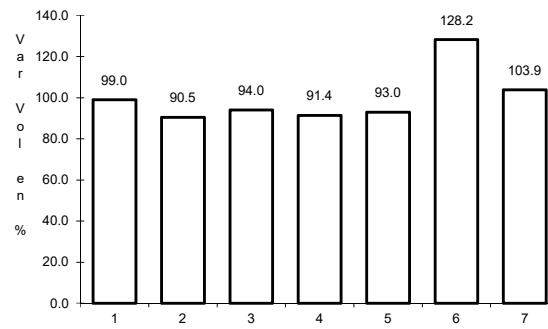
11 CARR: Morelos - Cd. Acuña

CLAVE: 05029

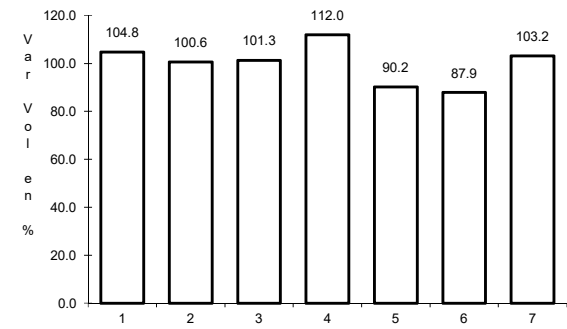
RUTA: MEX-029



Km: 0.00 Tipo: 3 Sent: 1



Km: 0.00 Tipo: 3 Sent: 2

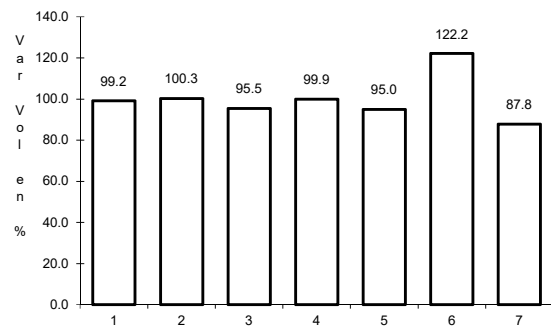


Km: 73.84 Tipo: 1 Sent: 0

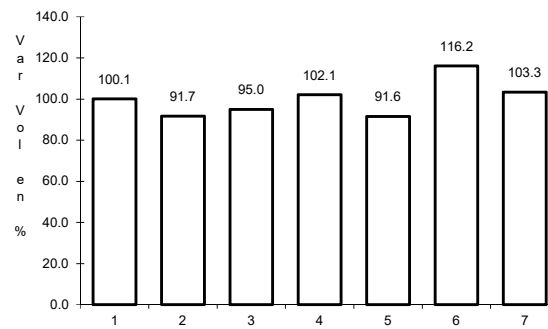
12 CARR: Nueva Rosita - Boquillas del Carmen

CLAVE: 05028

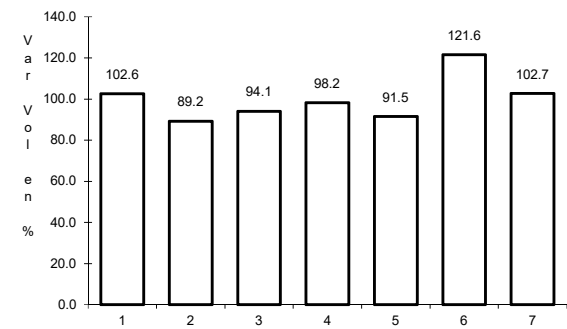
RUTA: MEX-053



Km: 0.00 Tipo: 3 Sent: 1



Km: 0.00 Tipo: 3 Sent: 2

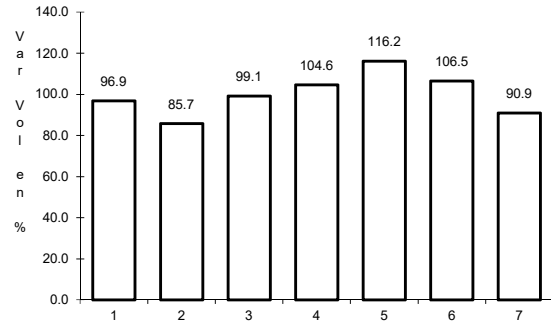


Km: 35.00 Tipo: 3 Sent: 0

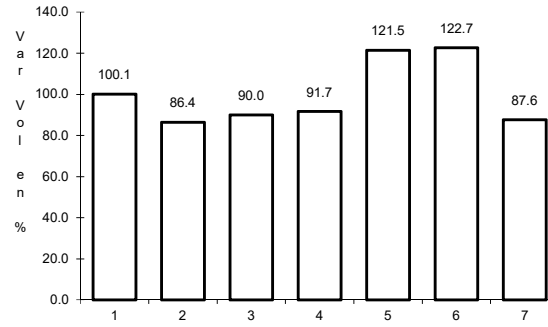
13 CARR: Ojo Caliente - Santa Cruz

CLAVE: 05007

RUTA: MEX-057



Km: 0.00 Tipo: 3 Sent: 0

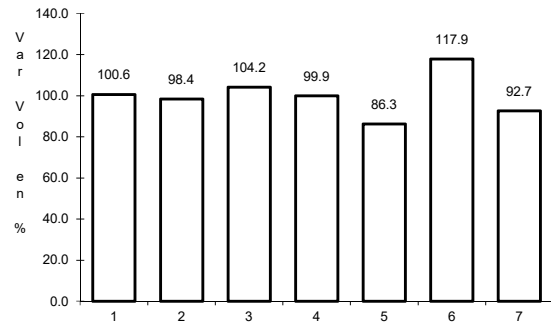


Km: 34.00 Tipo: 1 Sent: 0

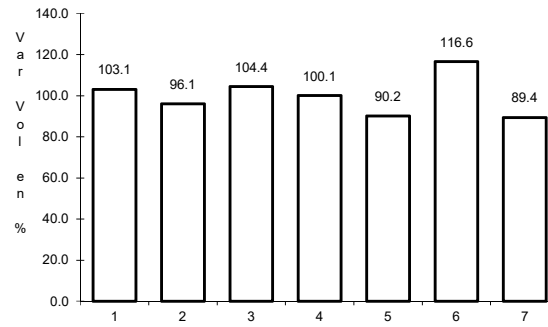
14 CARR: Piedras Negras - Cd. Acuña

CLAVE: 05061

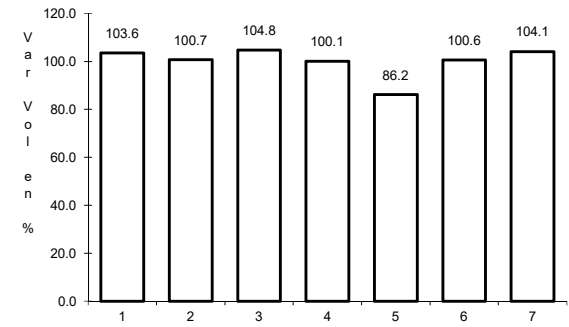
RUTA: MEX-002



Km: 0.00 Tipo: 3 Sent: 1



Km: 0.00 Tipo: 3 Sent: 2

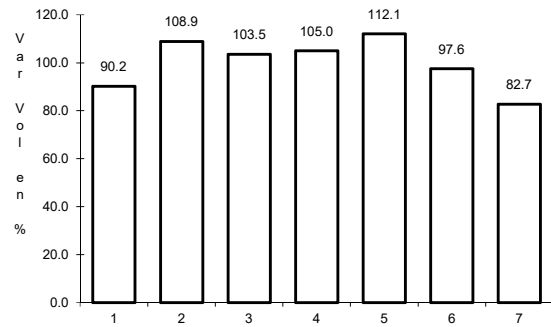


Km: 83.30 Tipo: 1 Sent: 0

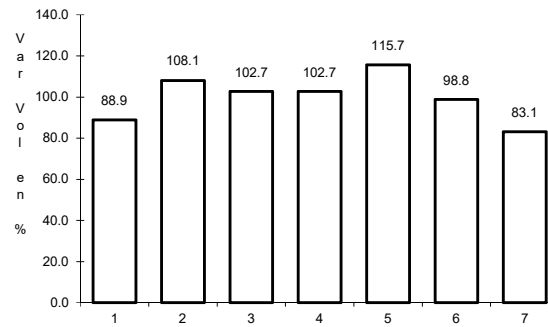
15 CARR: Piedras Negras - Nuevo Laredo

CLAVE: 00503

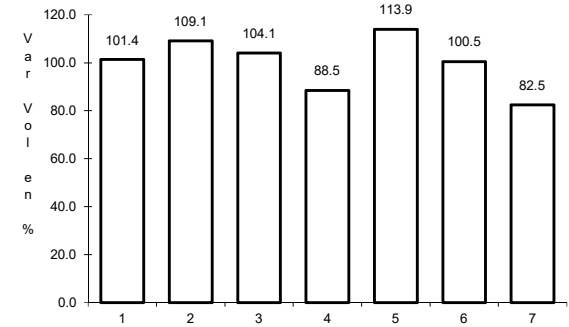
RUTA: MEX-002



Km: 0.00 Tipo: 3 Sent: 1



Km: 0.00 Tipo: 3 Sent: 2

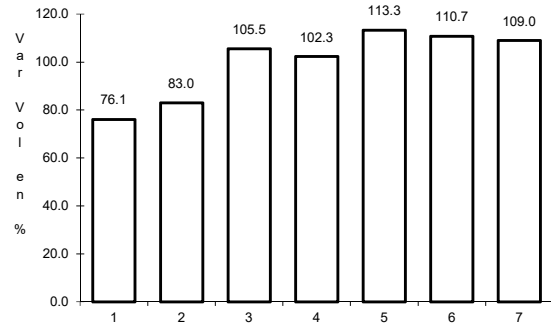


Km: 134.00 Tipo: 3 Sent: 0

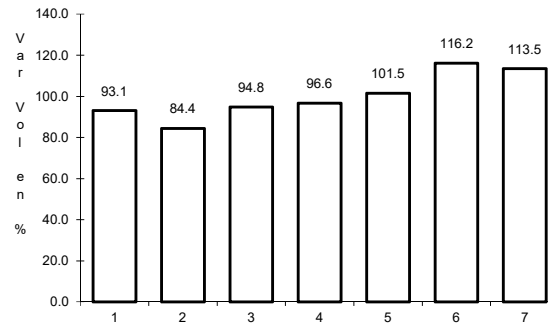
16 CARR: Puerto México - La Encantada

CLAVE: 05002

RUTA: MEX-057



Km: 0.00 Tipo: 3 Sent: 0

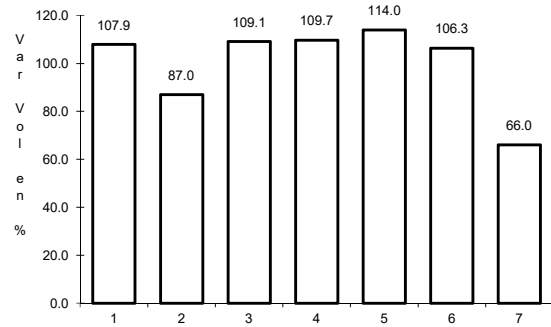


Km: 41.00 Tipo: 1 Sent: 0

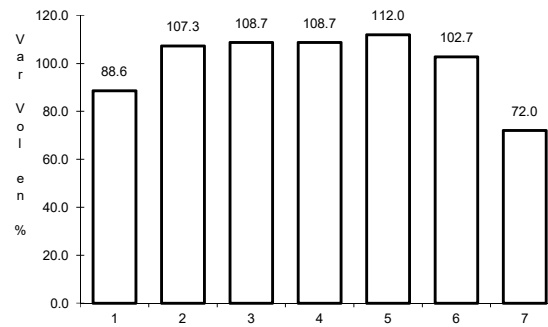
17 CARR: Saltillo - Monclova

CLAVE: 05406

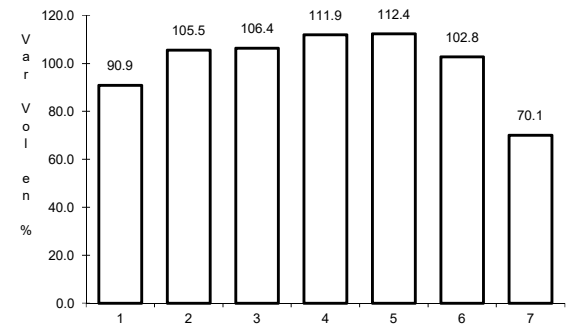
RUTA: MEX-057



Km: 13.00 Tipo: 1 Sent: 0



Km: 192.00 Tipo: 1 Sent: 1

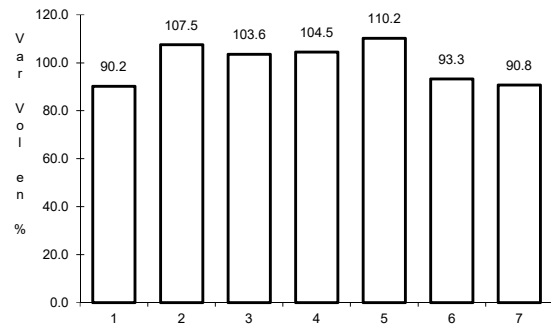


Km: 192.00 Tipo: 1 Sent: 2

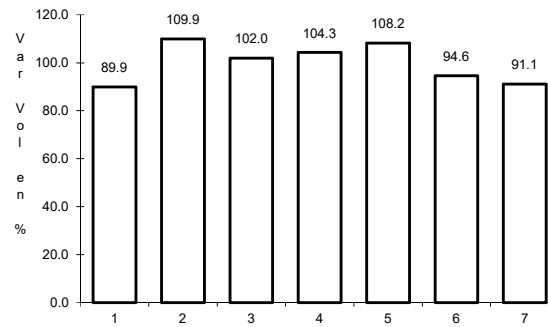
18 CARR: Saltillo - Monterrey

CLAVE: 00087

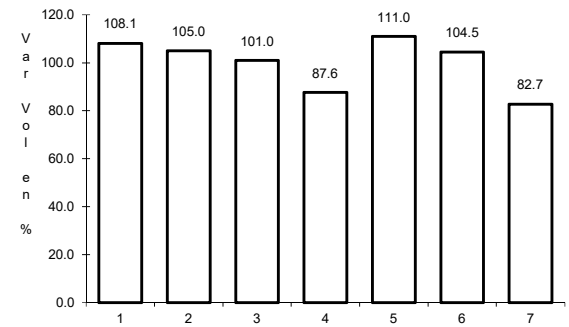
RUTA: MEX-040



Km: 4.25 Tipo: 3 Sent: 1



Km: 4.25 Tipo: 3 Sent: 2

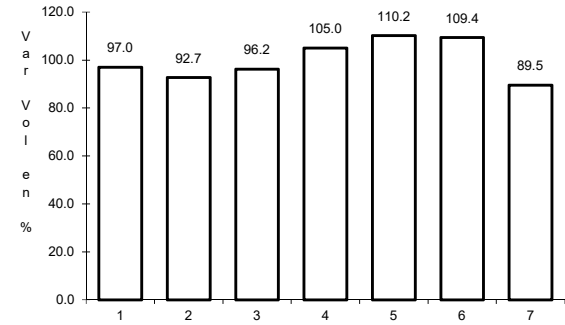
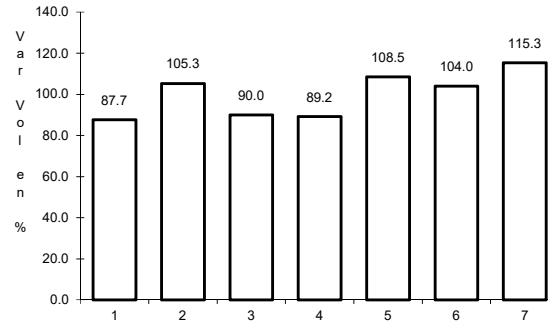
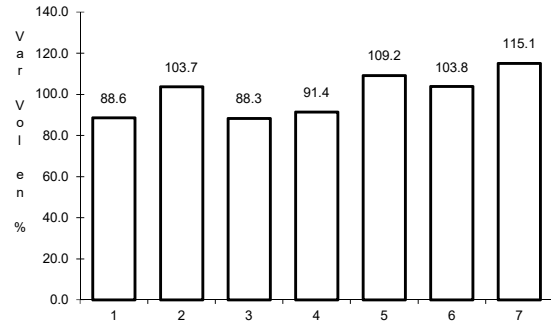


Km: 79.20 Tipo: 1 Sent: 1

19 CARR: Saltillo - Torreón

CLAVE: 05086

RUTA: MEX-040



Km: 6.10 Tipo: 3 Sent: 1

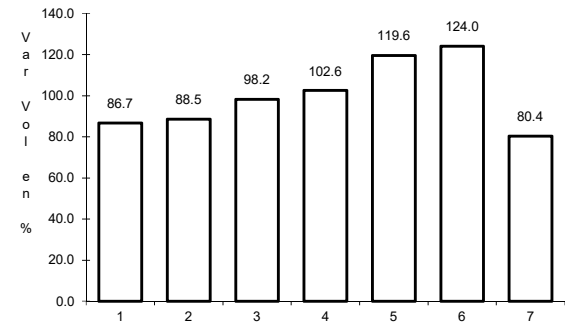
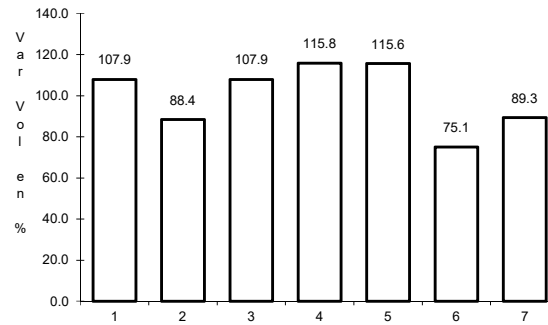
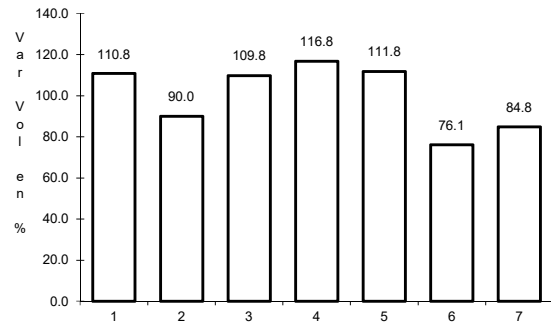
Km: 6.10 Tipo: 3 Sent: 2

Km: 91.20 Tipo: 1 Sent: 0

20 CARR: Libramiento Norponiente de Saltillo (Cuota)

CLAVE: 05022

RUTA: MEX-S30



Km: 0.00 Tipo: 3 Sent: 0

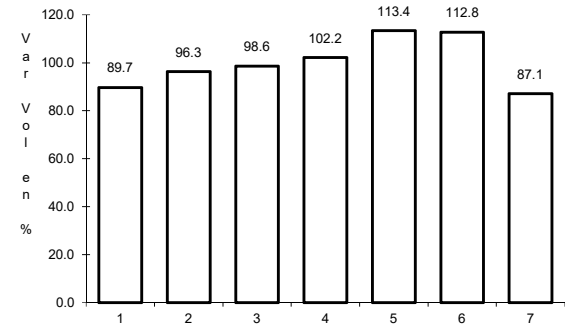
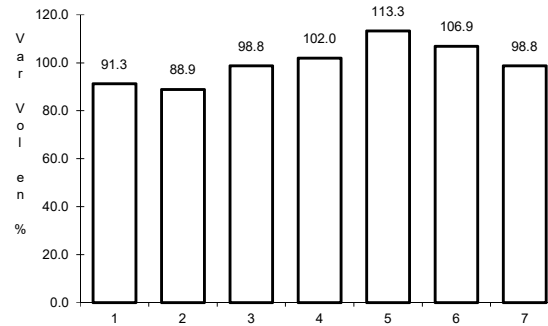
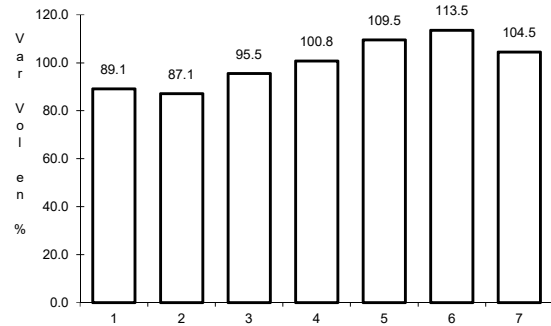
Km: 22.44 Tipo: 3 Sent: 0

Km: 46.21 Tipo: 1 Sent: 0

21 CARR: Libramiento Norte de Torreón (Cuota)

CLAVE:

RUTA: MEX-040D



Km: 0.00 Tipo: 3 Sent: 0

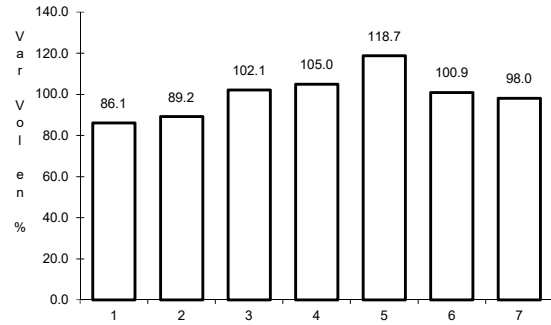
Km: 17.36 Tipo: 1 Sent: 0

Km: 40.70 Tipo: 1 Sent: 0

22 CARR: Libramiento Oriente de Saltillo (Cuota)

CLAVE: 00115

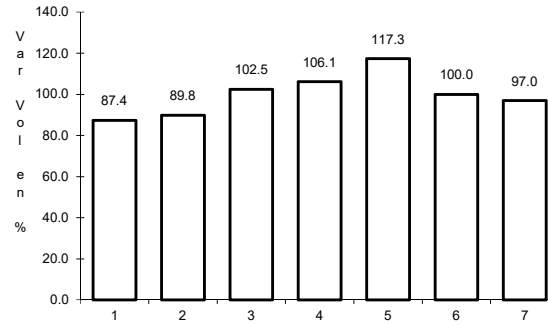
ruta: MEX-057D



Km: 12.30

Tipo: 3

Sent: 1



Km: 12.30

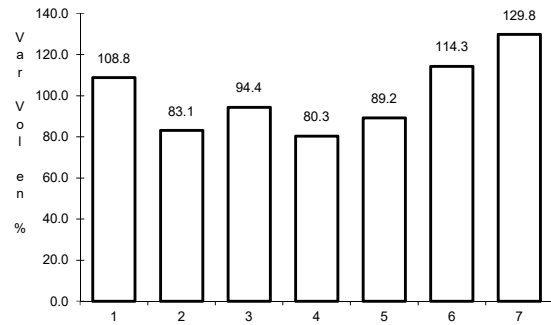
Tipo: 3

Sent: 2

23 CARR: Nueva Rosita - Ent. Allende (Cuota)

CLAVE: 05502

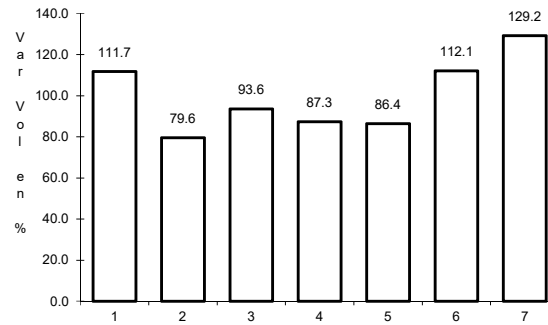
ruta: MEX-057D



Km: 0.00

Tipo: 3

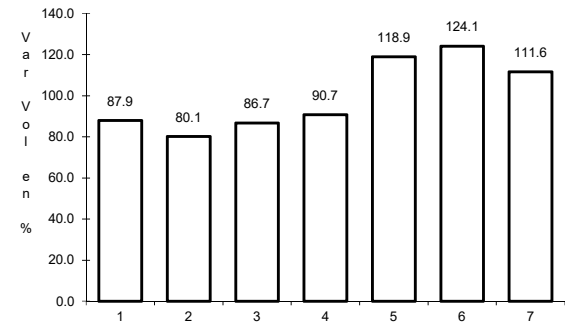
Sent: 1



Km: 0.00

Tipo: 3

Sent: 2



Km: 54.00

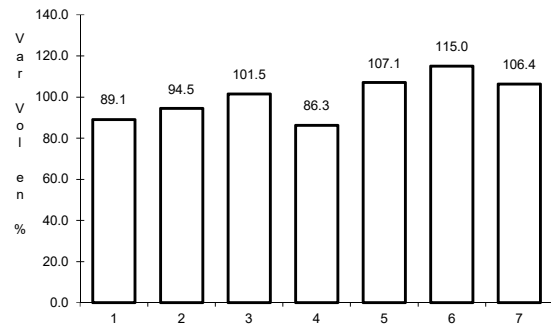
Tipo: 1

Sent: 0

24 CARR: Puerto México - La Carbonera (Cuota)

CLAVE: 00115

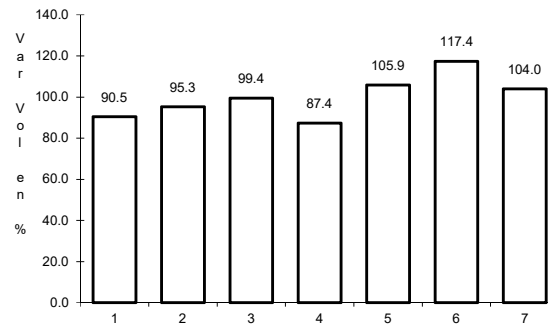
ruta: MEX-057D



Km: 224.94

Tipo: 1

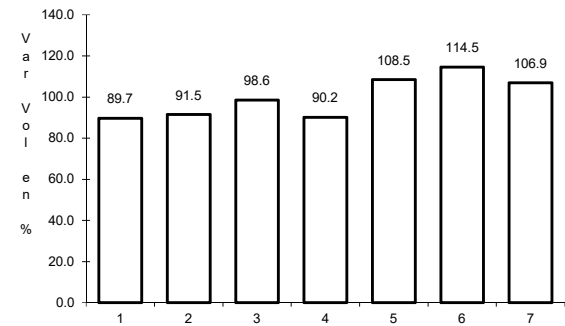
Sent: 1



Km: 224.94

Tipo: 1

Sent: 2



Km: 228.30

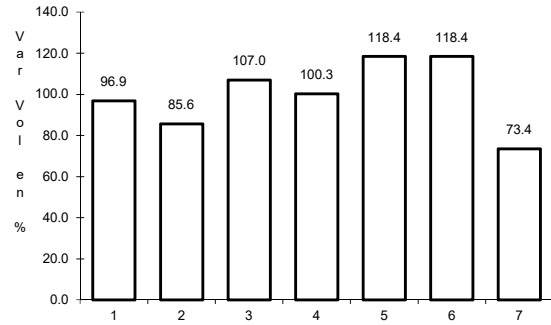
Tipo: 3

Sent: 1

25 CARR: Saltillo - Monterrey (Cuota)

CLAVE: 00087

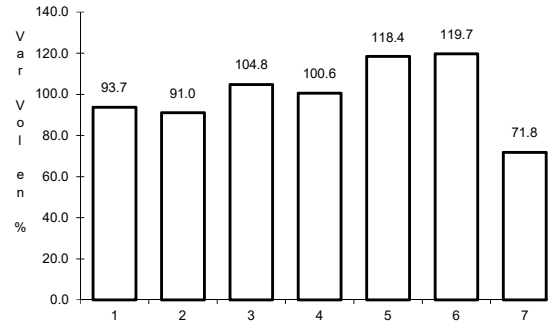
RUTA: MEX-040D



Km: 46.21

Tipo: 3

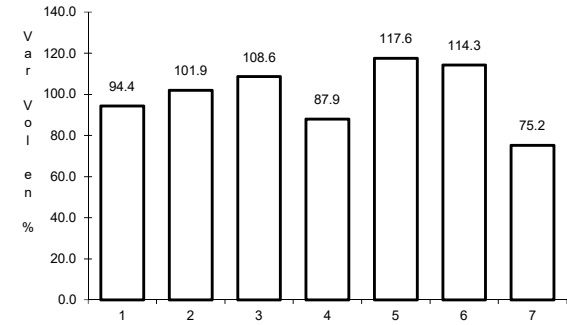
Sent: 1



Km: 46.21

Tipo: 3

Sent: 2



Km: 82.00

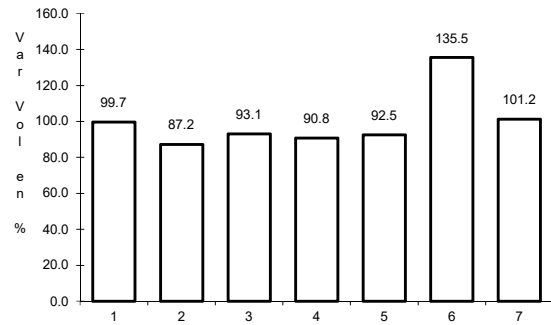
Tipo: 3

Sent: 1

27 CARR: Allende - Villa Unión

CLAVE: 05001

RUTA: COA-015



Km: 0.00

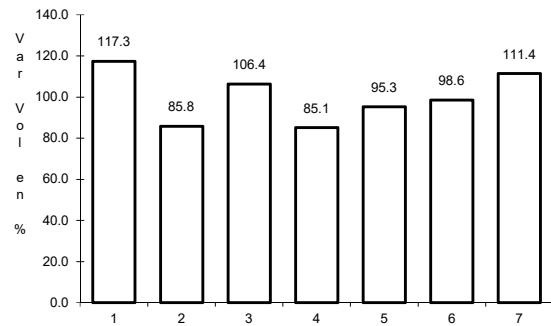
Tipo: 3

Sent: 0

28 CARR: Corredor Libramiento de San Pedro

CLAVE: 05023

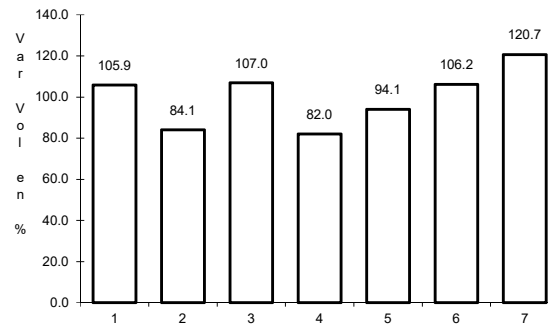
RUTA: COA-087



Km: 0.00

Tipo: 3

Sent: 0



Km: 3.60

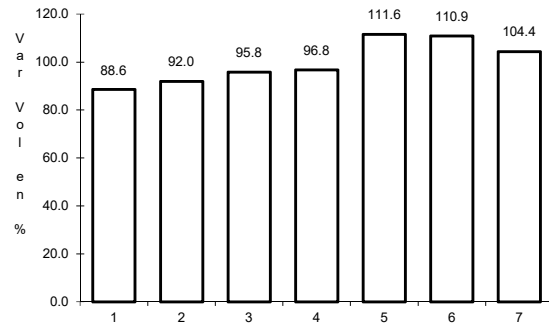
Tipo: 1

Sent: 0

29 CARR: Cuatro Ciéneas - Ocampo

CLAVE: 05026

RUTA: COA-048



Km: 0.00

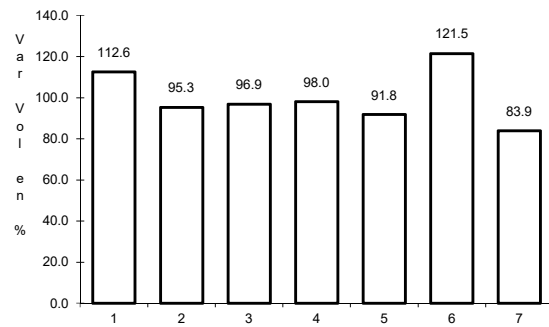
Tipo: 3

Sent: 0

30 CARR: El Sauz - Palau

CLAVE: 05060

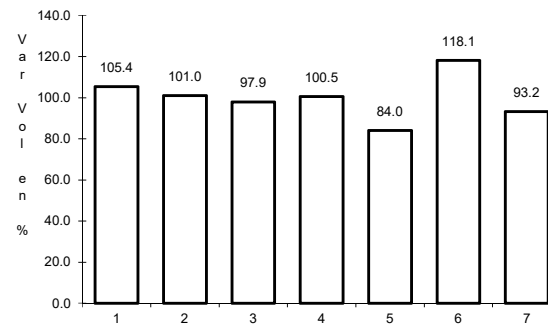
RUTA: COA-022



Km: 0.00

Tipo: 3

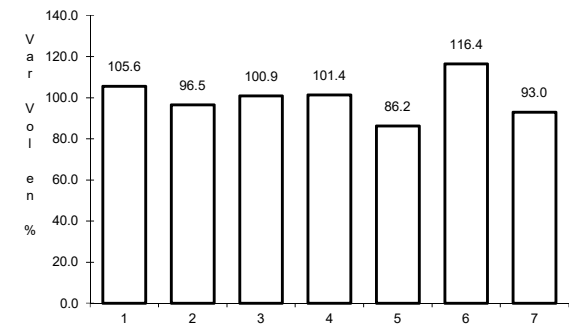
Sent: 1



Km: 0.00

Tipo: 3

Sent: 2



Km: 42.50

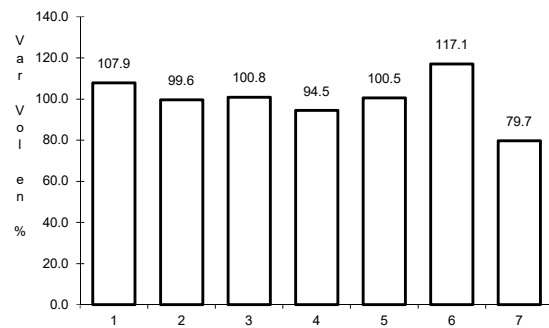
Tipo: 1

Sent: 1

31 CARR: Emiliano Zapata - Viesca

CLAVE: 05521

RUTA: COA-082



Km: 0.00

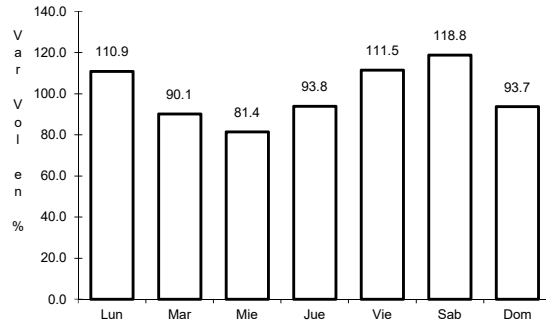
Tipo: 3

Sent: 0

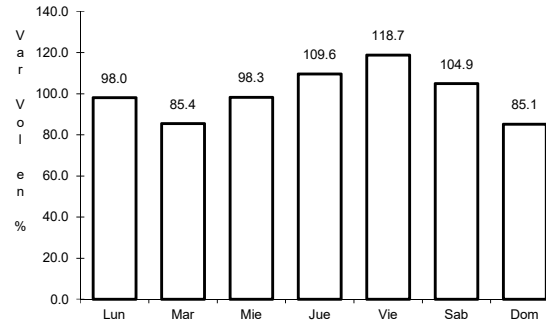
32 CARR: Ent. La Rosa - General Cepeda

CLAVE: 05034

ruta: COA-034



Km: 0.00 Tipo: 3 Sent: 0

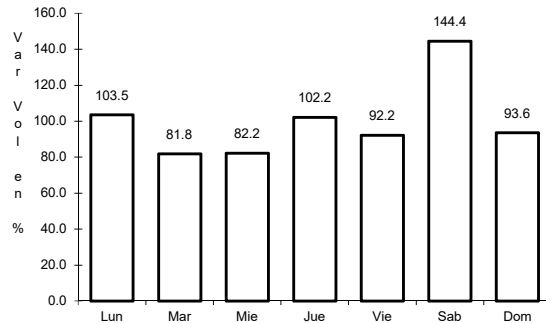


Km: 21.00 Tipo: 1 Sent: 0

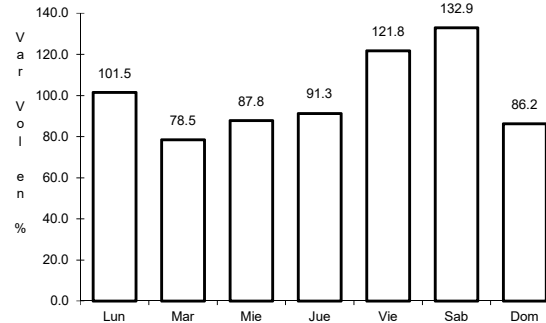
33 CARR: Ent. Paila - Parras de La Fuente

CLAVE: 05014

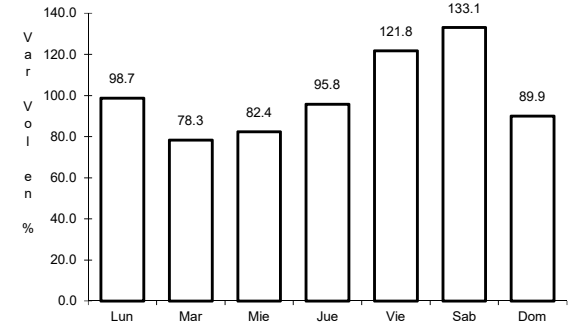
ruta: COA-102



Km: 0.00 Tipo: 3 Sent: 0



Km: 20.05 Tipo: 1 Sent: 1

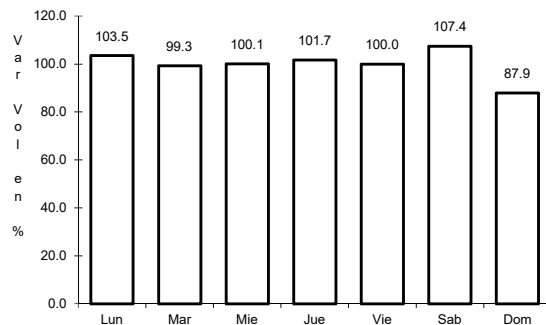


Km: 20.05 Tipo: 1 Sent: 2

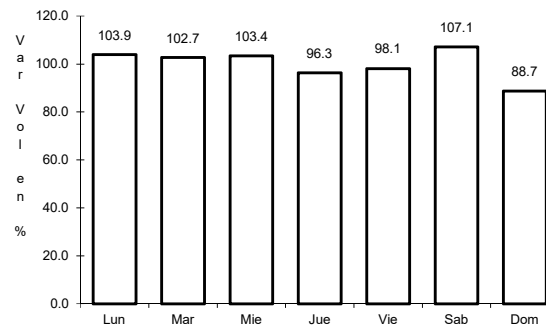
34 CARR: Libramiento de Matamoros

CLAVE: 05032

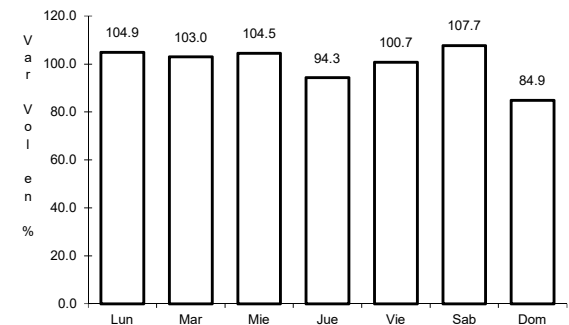
ruta: COA



Km: 0.00 Tipo: 3 Sent: 0



Km: 5.32 Tipo: 1 Sent: 1

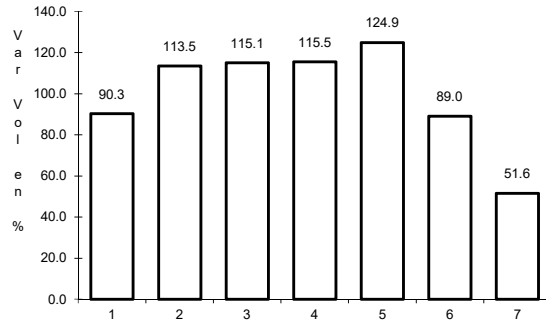


Km: 5.32 Tipo: 1 Sent: 2

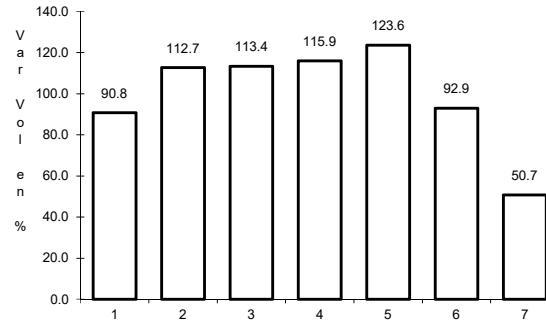
35 CARR: Libramiento de Saltillo J.L.P.

CLAVE: 05031

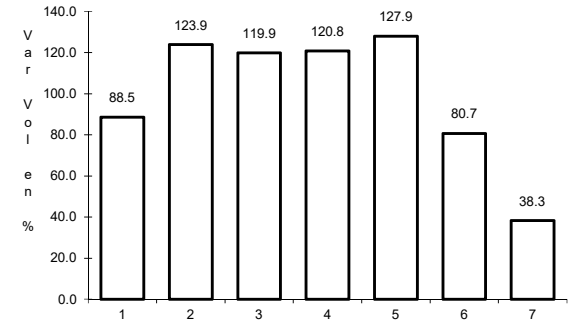
RUTA: COA



Km: 2.50 Tipo: 3 Sent: 1



Km: 2.50 Tipo: 3 Sent: 2

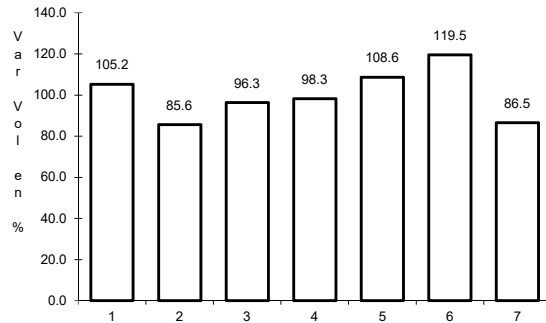


Km: 18.00 Tipo: 1 Sent: 1

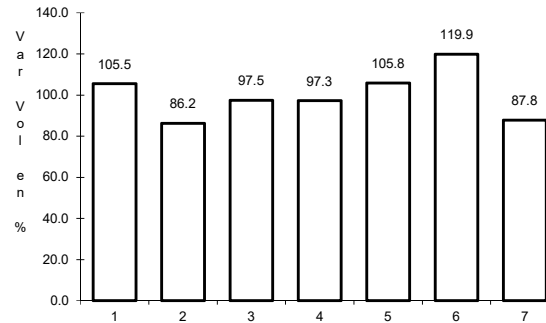
36 CARR: Libramiento de Torreón

CLAVE: 05516

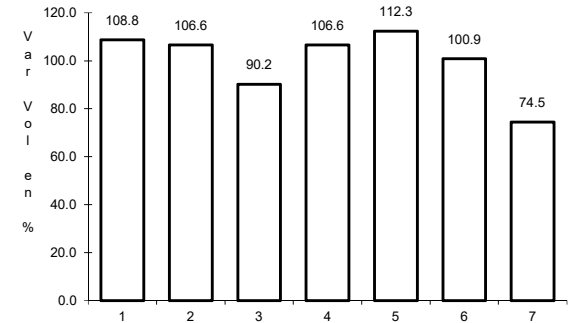
RUTA: COA



Km: 0.00 Tipo: 3 Sent: 1



Km: 0.00 Tipo: 3 Sent: 2

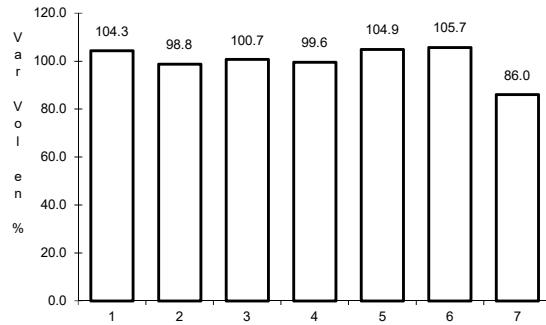


Km: 7.30 Tipo: 1 Sent: 1

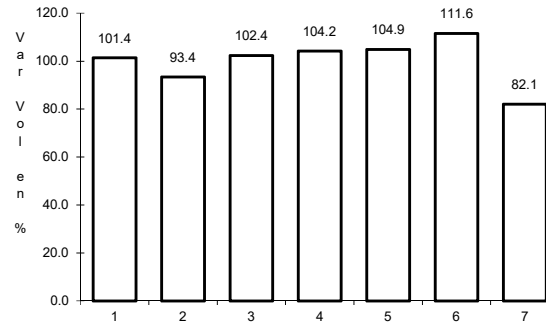
37 CARR: Matamoros - El Fresno

CLAVE: 05023

RUTA: COA-078



Km: 0.00 Tipo: 3 Sent: 0

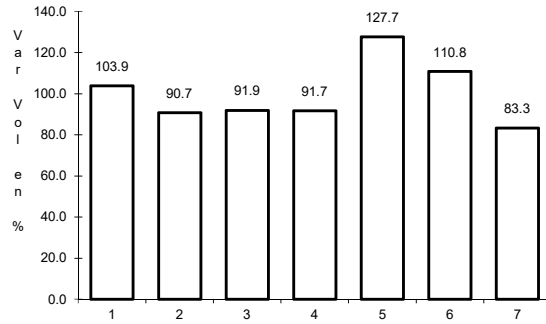


Km: 12.60 Tipo: 1 Sent: 0

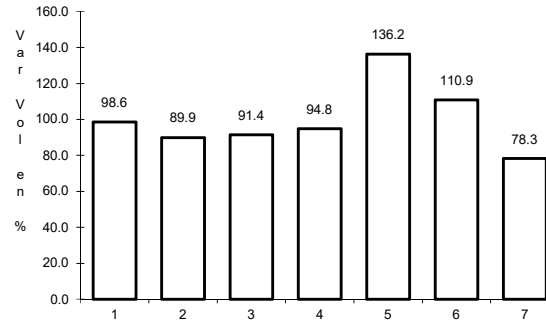
38 CARR: Matamoros - La Unión

CLAVE: 05023

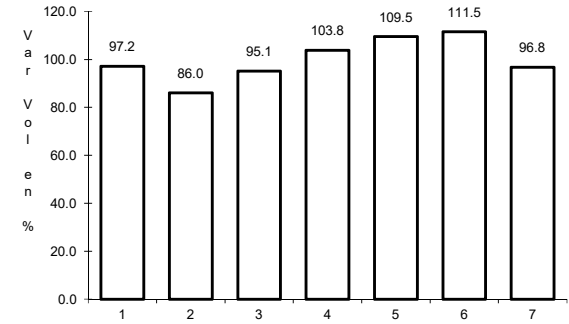
ruta: COA-070



Km: 1.00 Tipo: 3 Sent: 1



Km: 1.00 Tipo: 3 Sent: 2

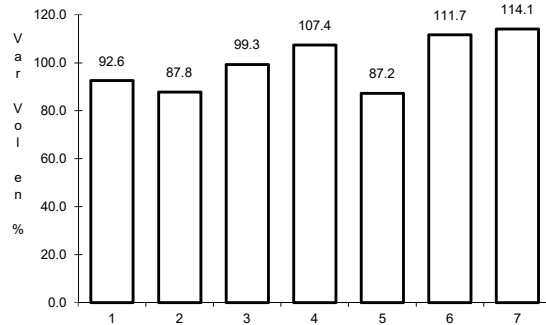


Km: 14.09 Tipo: 1 Sent: 0

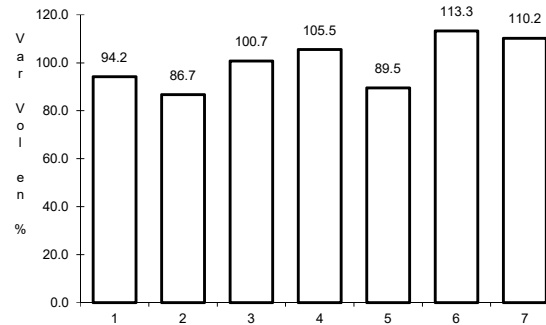
39 CARR: Monclova - Estación Candela

CLAVE: 00501

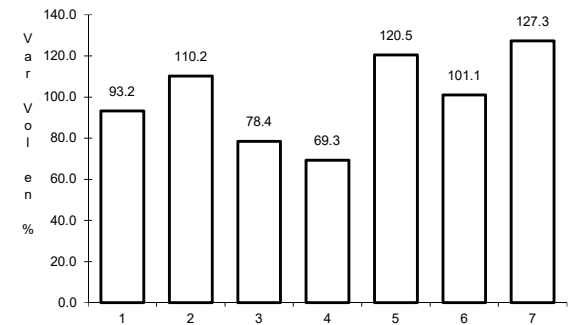
ruta: COA-030-NL



Km: 5.10 Tipo: 1 Sent: 1



Km: 5.10 Tipo: 1 Sent: 2

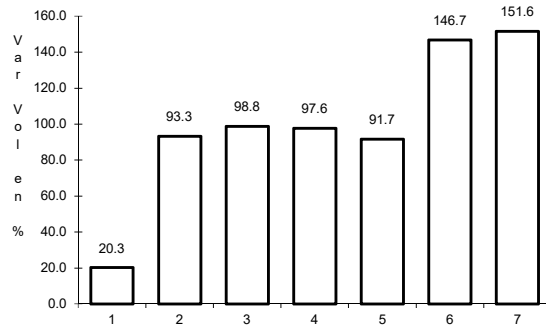


Km: 125.50 Tipo: 1 Sent: 0

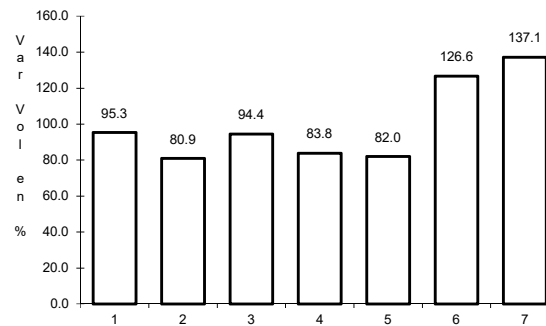
40 CARR: Morelos - Ent. Las Corrientes

CLAVE: 05500

ruta: COA-010



Km: 0.00 Tipo: 3 Sent: 0

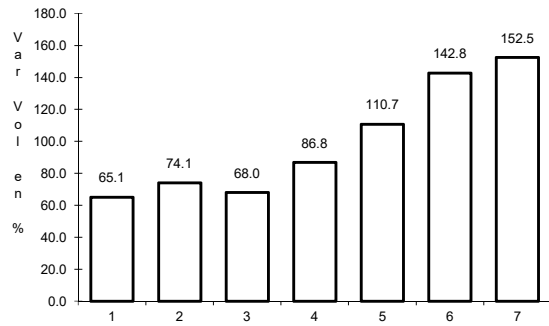


Km: 9.20 Tipo: 1 Sent: 0

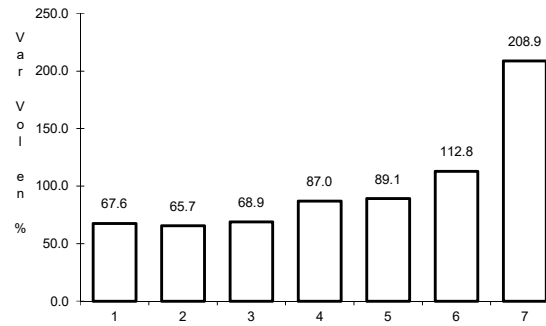
41 CARR: Puerto de Flores - El Hondable

CLAVE: 05512

RUTA: COA-112



Km: 0.00 Tipo: 3 Sent: 0

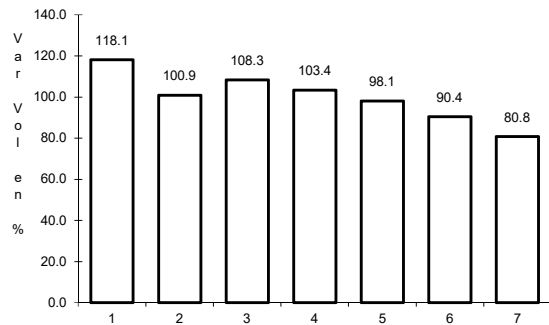


Km: 24.00 Tipo: 1 Sent: 0

42 CARR: Ramal a Hipólito

CLAVE: 05509

RUTA: COA-114

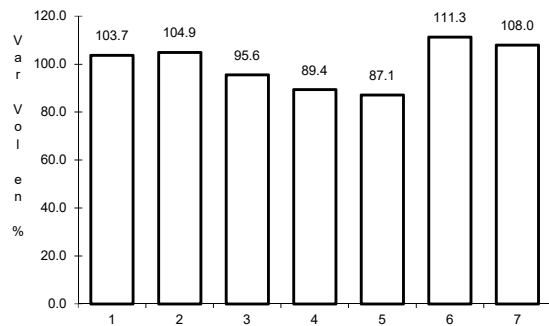


Km: 0.00 Tipo: 3 Sent: 0

43 CARR: Ramal a Lamadrid

CLAVE: 05522

RUTA: COA-042

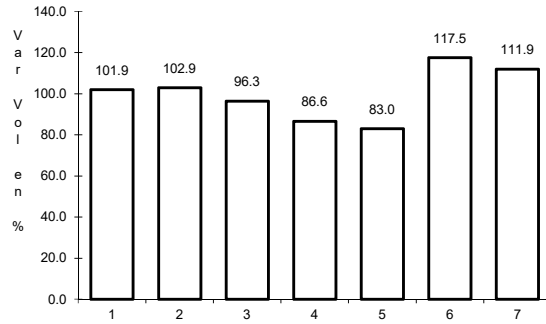


Km: 0.00 Tipo: 3 Sent: 0

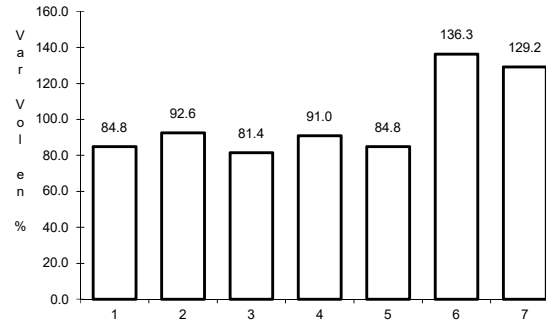
44 CARR: Sabinas - Don Martín

CLAVE: 05501

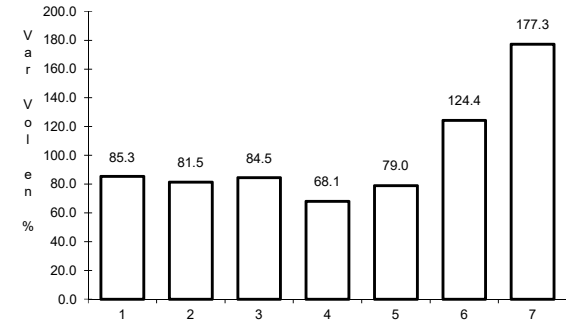
RUTA: COA-025



Km: 0.00 Tipo: 3 Sent: 0



Km: 53.00 Tipo: 3 Sent: 0

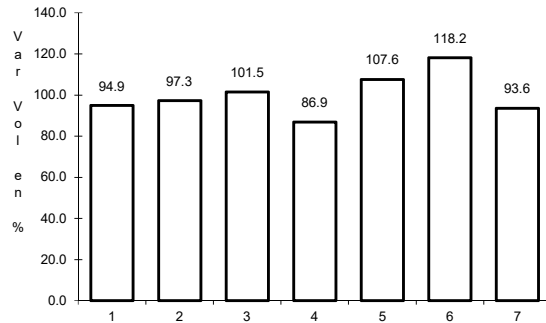


Km: 66.00 Tipo: 1 Sent: 0

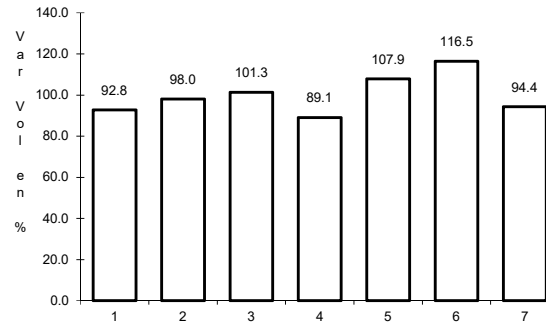
45 CARR: Saltillo - Arteaga

CLAVE: 05008

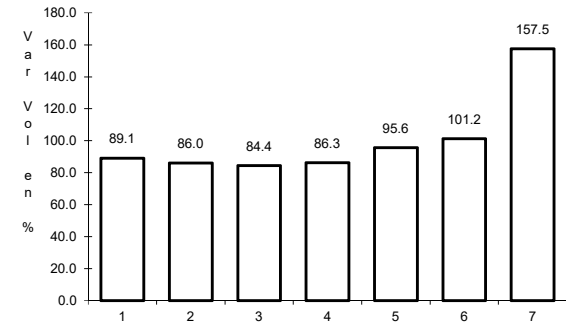
RUTA: COA-106



Km: 0.00 Tipo: 3 Sent: 1



Km: 0.00 Tipo: 3 Sent: 2

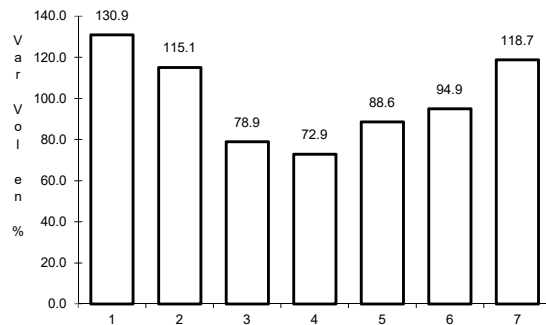


Km: 12.00 Tipo: 1 Sent: 1

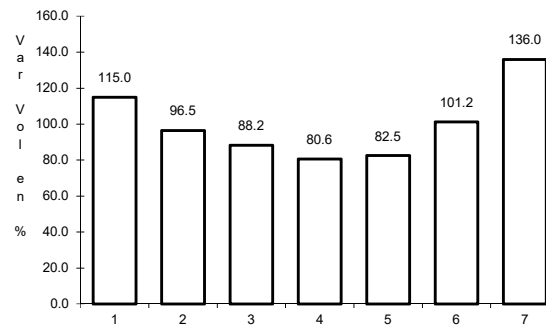
46 CARR: San Buenaventura - Estación Hermanas

CLAVE: 05004

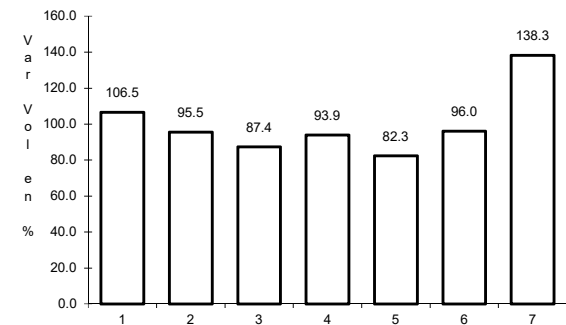
RUTA: COA-034



Km: 0.00 Tipo: 3 Sent: 0



Km: 15.71 Tipo: 1 Sent: 0

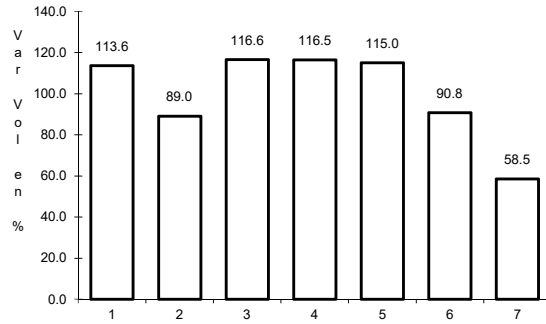


Km: 50.00 Tipo: 1 Sent: 0

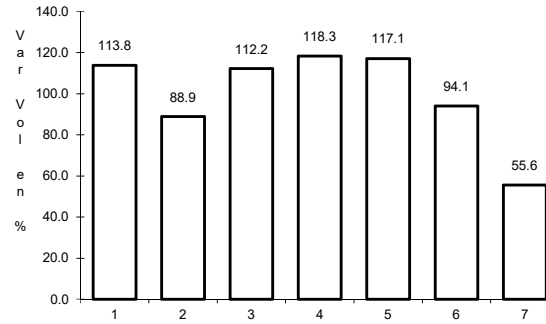
47 CARR: T. C. (Ent. Morelos - Saltillo) - Parras de La Fuente

CLAVE: 05510

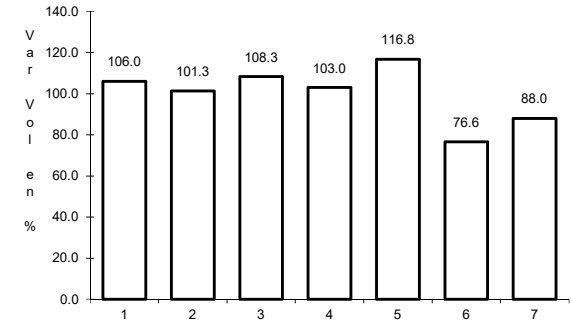
RUTA: COA-105



Km: 0.00 Tipo: 3 Sent: 1



Km: 0.00 Tipo: 3 Sent: 2

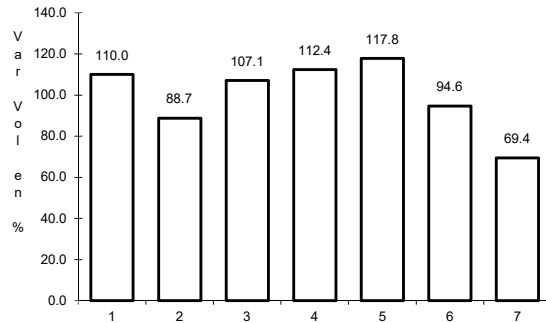


Km: 102.00 Tipo: 1 Sent: 0

48 CARR: T. C. (Saltillo - Monclova) - Ramos Arizpe

CLAVE: 05508

RUTA: COA

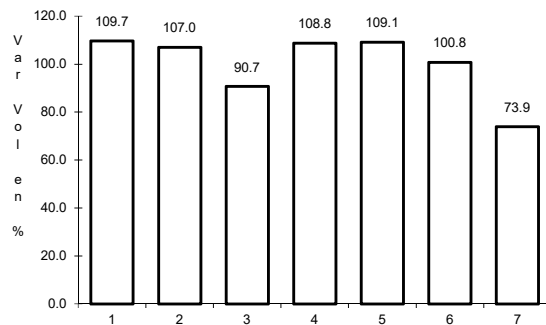


Km: 0.00 Tipo: 3 Sent: 0

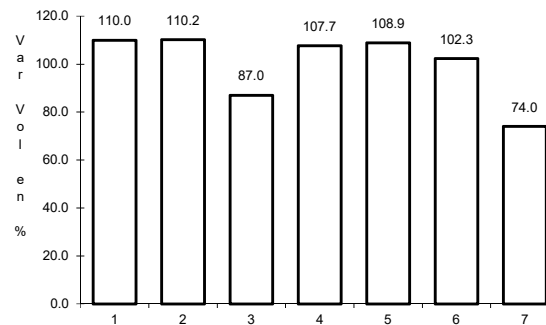
49 CARR: Torreón - Escuadrón 201

CLAVE: 05022

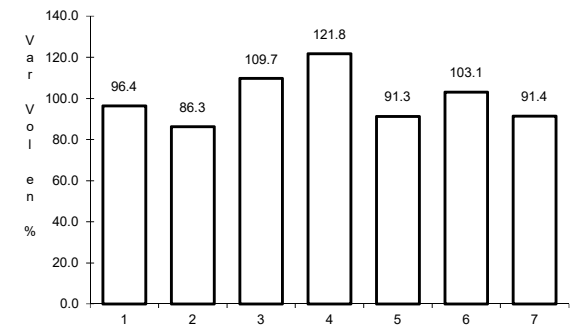
RUTA: COA-011



Km: 0.00 Tipo: 3 Sent: 1



Km: 0.00 Tipo: 3 Sent: 2



Km: 17.06 Tipo: 1 Sent: 0