

CAMPECHE

## ---RED FEDERAL LIBRE---

1 Campeche - Mérida	MEX-180
2 Campeche - Tixmucuy	MEX-180
3 Campeche - Umán	MEX-261
4 Cd. del Carmen - Campeche	MEX-180
5 Chencoyi - Tenabo	MEX-180
6 Dzitbalché - Ent. San Bernardo	MEX-180
7 Francisco Escárcega - Champotón	MEX-201
8 Francisco Escárcega - Chetumal	MEX-186
9 Haultunchén - San Antonio Cayal	MEX-180
10 Periférico Pablo García y Montilla (Libramiento de Campeche)	MEX-202
11 Presidente Díaz Ordaz - Sabancuy	MEX-186
12 Ramal a Nuevo Coahuila	MEX-186
13 Ramal a Ruíz Cortines	MEX-180
14 San Marcos - Palizada	MEX-186
15 Villahermosa - Cd. del Carmen	MEX-180
16 Villahermosa - Francisco Escárcega	MEX-186

## ---RED FEDERAL DE CUOTA---

17 Champotón - Campeche (Cuota)	MEX-180D
---------------------------------	----------

## ---RED ESTATAL LIBRE---

18 Hopelchén - Dzibalchén	CAM-261
19 Libramiento de Becal	CAM
20 Libramiento de Pomuch	CAM
21 T. C. (Francisco Escárcega - Champotón) - Yohaltún	CAM

CAMPECHE

1 CARR: Campeche - Mérida

CLAVE: 00066

RUTA: MEX-180

AÑO: 2017

LUGAR	ESTACION				CLASIFICACION VEHICULAR EN PORCIENTO										COORDENADAS					
	KM	TE	SC	TDPA	M	A	B	C2	C3	T3S2	T3S3	T3S2R4	OTROS	A	B	C	K'	D	LATITUD	LONGITUD
Campeche	0.00	3	1	7206	5.4	89.4	0.2	3.3	0.2	0.7	0.7	0.0	0.1	94.8	0.2	5.0	0.109	0.537	19.873539	-90.493758
Campeche	0.00	3	2	6208	6.3	88.4	0.2	3.4	0.2	0.7	0.7	0.0	0.1	94.7	0.2	5.1	0.088	0.537	19.873621	-90.493838
T. Der. Periférico Pablo García y Montilla (Libramiento De Campeche)	7.00	3	1	6172	4.5	75.4	2.6	6.7	1.3	4.9	1.0	3.3	0.3	79.9	2.6	17.5	0.098	0.501	19.895915	-90.456423
T. Der. Periférico Pablo García y Montilla (Libramiento De Campeche)	7.00	3	2	6141	4.3	76.9	2.3	5.3	1.5	5.2	0.7	3.5	0.3	81.2	2.3	16.5	0.079	0.501	19.896184	-90.456551
Tenabo	40.00	1	1	5548	1.6	77.2	2.9	4.8	1.8	5.9	1.2	4.2	0.4	78.8	2.9	18.3	0.094	0.509	20.028087	-90.241962
Tenabo	40.00	1	2	5356	1.8	74.3	3.0	7.0	1.6	6.4	0.9	4.6	0.4	76.1	3.0	20.9	0.071	0.509	20.028255	-90.242009
T. Der. Libramiento de Pomuch (2° Acceso)	50.00	3	1	5122	2.1	71.4	4.0	8.8	1.6	6.1	1.2	4.3	0.5	73.5	4.0	22.5	0.068	0.501	20.149675	-90.163018
T. Der. Libramiento de Pomuch (2° Acceso)	50.00	3	2	5136	1.7	73.8	3.9	6.9	1.8	6.1	1.0	4.4	0.4	75.5	3.9	20.6	0.067	0.501	20.149720	-90.163180
Lim. Edos. Term. Camp. Ppia. Yuc.	96.96																			
Kopomá	124.29	3	1	4991	1.8	70.0	4.8	9.1	2.3	5.6	1.1	5.0	0.3	71.8	4.8	23.4	0.075	0.501	20.663199	-89.890200
Kopomá	124.29	3	2	5021	1.8	69.2	4.8	10.2	2.4	5.6	1.2	4.5	0.3	71.0	4.8	24.2	0.065	0.501	20.663375	-89.890255
T. Der. Libramiento de Chocholá (1° Acceso)	137.89	1	1	5227	1.4	71.5	4.3	7.9	2.3	6.0	1.4	4.9	0.3	72.9	4.3	22.8	0.078	0.523	20.725536	-89.843559
T. Der. Libramiento de Chocholá (1° Acceso)	137.89	1	2	4770	1.5	69.8	4.6	8.1	2.5	6.6	1.6	5.0	0.3	71.3	4.6	24.1	0.067	0.523	20.725513	-89.843420
T. Izq. Umán	146.99	3	1	4620	1.1	70.7	4.4	7.7	1.8	7.5	1.4	5.0	0.4	71.8	4.4	23.8	0.088	0.502	20.801468	-89.805685
T. Izq. Umán	146.99	3	2	4654	1.0	70.0	4.4	8.1	2.1	7.4	1.5	5.1	0.4	71.0	4.4	24.6	0.089	0.502	20.801719	-89.805740
X. C. Campeche - Umán	160.49	1	1	4861	2.2	66.0	4.9	9.1	4.2	6.9	1.4	4.7	0.6	68.2	4.9	26.9	0.073	0.516	20.836086	-89.755114
X. C. Campeche - Umán	160.49	1	2	5181	1.6	65.6	4.7	9.9	4.6	6.9	1.6	4.4	0.7	67.2	4.7	28.1	0.086	0.516	20.836506	-89.754539
T. C. Periférico de Mérida	171.21																			

2 CARR: Campeche - Tixmucuy

CLAVE: 04575

RUTA: MEX-180

AÑO: 2017

LUGAR	ESTACION				CLASIFICACION VEHICULAR EN PORCIENTO										COORDENADAS					
	KM	TE	SC	TDPA	M	A	B	C2	C3	T3S2	T3S3	T3S2R4	OTROS	A	B	C	K'	D	LATITUD	LONGITUD
Campeche	0.00	3	1	6531	12.8	76.3	0.7	7.7	1.0	0.8	0.4	0.2	0.1	89.1	0.7	10.2	0.081	0.503	19.810316	-90.505896
Campeche	0.00	3	2	6618	13.1	76.5	0.5	7.4	0.9	0.9	0.4	0.2	0.1	89.6	0.5	9.9	0.095	0.503	19.810298	-90.506067
T. Der. Periférico Pablo García y Montilla (Libramiento De Campeche)	4.00	3	1	3044	16.8	77.3	0.1	4.9	0.4	0.4	0.1	0.0	0.0	94.1	0.1	5.8	0.093	0.501	19.788309	-90.500399
T. Der. Periférico Pablo García y Montilla (Libramiento De Campeche)	4.00	3	2	3052	21.4	72.5	0.1	4.7	0.4	0.6	0.2	0.0	0.1	93.9	0.1	6.0	0.084	0.501	19.788350	-90.500146
X. C. Haltunchén - Cayal	39.00	1	0	1428	8.5	74.9	0.6	10.3	3.3	1.3	0.7	0.3	0.1	83.4	0.6	16.0	0.079	0.509	19.604922	-90.319458
Tixmucuy	42.00	1	0	468	23.1	65.7	1.0	9.2	0.7	0.3	0.0	0.0	0.0	88.8	1.0	10.2	0.096	0.501	19.586033	-90.317775

3 CARR: Campeche - Umán

CLAVE: 00164

RUTA: MEX-261

AÑO: 2017

LUGAR	ESTACION				CLASIFICACION VEHICULAR EN PORCIENTO										COORDENADAS					
	KM	TE	SC	TDPA	M	A	B	C2	C3	T3S2	T3S3	T3S2R4	OTROS	A	B	C	K'	D	LATITUD	LONGITUD
Campeche	0.00																			

CAMPECHE

3 CARR: Campeche - Umán

CLAVE: 00164

RUTA: MEX-261

AÑO: 2017

LUGAR	ESTACION				CLASIFICACION VEHICULAR EN PORCIENTO														COORDENADAS	
	KM	TE	SC	TDPA	M	A	B	C2	C3	T3S2	T3S3	T3S2R4	OTROS	A	B	C	K'	D	LATITUD	LONGITUD
T. Der. Periferico Pablo García y Montilla (Libramiento De Campeche)	7.00	1	0	5247	10.6	77.1	0.6	7.0	1.0	2.8	0.4	0.1	0.4	87.7	0.6	11.7	0.087	0.515	19.849215	-90.473578
T. Der. Periferico Pablo García y Montilla (Libramiento De Campeche)	7.00	3	0	2542	6.3	80.4	0.6	7.5	1.7	2.2	0.9	0.2	0.2	86.7	0.6	12.7	0.079	0.525	19.848024	-90.453440
T. Izq. Tenabo	30.88	1	0	1567	8.9	77.2	0.7	10.5	1.1	1.1	0.4	0.1	0.0	86.1	0.7	13.2	0.087	0.501	19.804860	-90.279528
T. Izq. Tenabo	30.88	3	0	1563	7.0	80.2	0.8	8.9	1.1	1.3	0.4	0.3	0.0	87.2	0.8	12.0	0.079	0.503	19.804333	-90.270076
T. Der. Edzna	44.51	1	0	1506	12.3	73.6	0.8	9.9	1.1	1.6	0.3	0.3	0.1	85.9	0.8	13.3	0.088	0.505	19.743661	-90.177913
T. Der. Edzna	44.51	3	0	1532	15.0	68.4	0.8	11.7	1.2	1.7	0.3	0.9	0.0	83.4	0.8	15.8	0.090	0.501	19.745718	-90.169922
Hopelchén	84.88	1	0	1945	4.8	76.8	0.7	14.6	0.7	1.5	0.3	0.5	0.1	81.6	0.7	17.7	0.087	0.518	19.753918	-89.854647
Bolonchén de Rejón	117.88	3	0	965	18.6	66.3	1.3	8.8	1.7	1.4	0.9	0.9	0.1	84.9	1.3	13.8	0.085	0.502	20.012954	-89.734015
Lim. Edos. Term. Camp. Ppia. Yuc.	126.88																			
T. Der. Sayil	140.88	1	0	497	7.2	70.9	2.3	13.6	2.0	1.4	0.5	2.0	0.1	78.1	2.3	19.6	0.095	0.501	20.207558	-89.672213
Santa Elena	158.88	1	0	931	32.6	53.4	1.5	8.3	1.2	1.4	0.3	1.2	0.1	86.0	1.5	12.5	0.085	0.502	20.318885	-89.643284
T. Izq. Ruinas de Uxmal	172.48	1	0	713	19.8	64.1	1.0	8.2	1.4	1.9	0.5	3.1	0.0	83.9	1.0	15.1	0.086	0.503	20.361916	-89.763702
Muna	187.43	1	0	1340	15.9	72.3	0.8	7.2	0.9	1.3	0.3	1.2	0.1	88.2	0.8	11.0	0.079	0.559	20.460935	-89.725038
Muna	187.43	3	0	3761	4.8	76.8	0.8	12.5	1.6	2.0	0.6	0.8	0.1	81.6	0.8	17.6	0.083	0.519	20.511038	-89.709229
Xtepén	225.38	1	0	4520	1.9	77.1	0.9	10.3	2.8	2.3	3.5	1.0	0.2	79.0	0.9	20.1	0.080	0.506	20.803556	-89.734152
Umán	230.83	1	0	3603	13.3	65.2	1.2	10.0	3.6	5.3	0.9	0.3	0.2	78.5	1.2	20.3	0.072	0.501	20.866614	-89.746068

4 CARR: Cd. del Carmen - Campeche

CLAVE: 04065

RUTA: MEX-180

AÑO: 2017

LUGAR	ESTACION				CLASIFICACION VEHICULAR EN PORCIENTO														COORDENADAS	
	KM	TE	SC	TDPA	M	A	B	C2	C3	T3S2	T3S3	T3S2R4	OTROS	A	B	C	K'	D	LATITUD	LONGITUD
Cd. del Carmen	0.00	3	1	12897	3.7	84.5	1.3	5.2	0.7	2.2	1.5	0.3	0.6	88.2	1.3	10.5	0.087	0.511	18.659157	-91.774487
Cd. del Carmen	0.00	3	2	12366	4.6	84.0	1.2	5.3	0.7	2.1	1.3	0.3	0.5	88.6	1.2	10.2	0.073	0.511	18.659263	-91.774451
La Palma	26.70	1	0	4957	2.7	71.0	4.8	8.6	2.0	5.4	1.5	3.5	0.5	73.7	4.8	21.5	0.105	0.502	18.729952	-91.642501
Isla Aguada	37.75	3	0	4214	2.3	70.3	5.6	8.8	2.2	7.4	1.4	1.1	0.9	72.6	5.6	21.8	0.073	0.503	18.797607	-91.482896
T. Der. Sabancuy	78.05	3	0	3662	2.9	67.1	6.0	9.1	2.5	6.3	1.2	4.1	0.8	70.0	6.0	24.0	0.092	0.513	18.991710	-91.187870
Chamotón	141.80	1	0	5300	10.6	67.6	4.6	7.2	1.5	6.0	0.9	1.0	0.6	78.2	4.6	17.2	0.080	0.518	19.325362	-90.743576
Chamotón	141.80	3	1	5462	7.4	68.3	3.2	8.4	1.6	6.5	1.3	2.7	0.6	75.7	3.2	21.1	0.067	0.517	19.372159	-90.721475
Chamotón	141.80	3	2	5840	8.2	66.2	3.6	9.2	1.8	6.5	1.5	2.4	0.6	74.4	3.6	22.0	0.061	0.517	19.372140	-90.721621
T. Der. Libramiento de Seybaplaya (1º Acceso)	175.71	1	0	3117	11.4	75.8	0.6	8.8	1.2	1.7	0.3	0.1	0.1	87.2	0.6	12.2	0.093	0.515	19.622188	-90.685474
T. Der. Libramiento de Seybaplaya (1º Acceso)	175.71	3	1	658	19.6	73.3	0.4	6.1	0.1	0.4	0.1	0.0	0.0	92.9	0.4	6.7	0.102	0.522	19.625925	-90.685175
T. Der. Libramiento de Seybaplaya (1º Acceso)	175.71	3	2	603	21.9	67.6	0.4	9.9	0.1	0.1	0.0	0.0	0.0	89.5	0.4	10.1	0.085	0.522	19.625898	-90.685249
T. Der. Periferico Pablo García y Montilla (Libramiento De Campeche)	195.70	1	0	2646	7.0	81.0	0.6	7.2	1.3	1.7	0.7	0.1	0.4	88.0	0.6	11.4	0.084	0.504	19.786624	-90.625362
Lerma	199.51	1	1	1364	17.1	76.4	0.2	5.3	0.3	0.2	0.5	0.0	0.0	93.5	0.2	6.3	0.087	0.501	19.792050	-90.619008
Lerma	199.51	1	2	1357	17.8	75.5	0.2	5.6	0.2	0.2	0.5	0.0	0.0	93.3	0.2	6.5	0.120	0.501	19.792116	-90.619068

CAMPECHE

4 CARR: Cd. del Carmen - Campeche

CLAVE: 04065

RUTA: MEX-180

AÑO: 2017

LUGAR	ESTACION	CLASIFICACION VEHICULAR EN PORCIENTO														COORDENADAS						
		KM	TE	SC	TDPA	M	A	B	C2	C3	T3S2	T3S3	T3S2R4	OTROS	A	B	C	K'	D	LATITUD	LONGITUD	
Campeche	203.18																					

5 CARR: Chencoyi - Tenabo

CLAVE: 04576

RUTA: MEX-180

AÑO: 2017

LUGAR	ESTACION	CLASIFICACION VEHICULAR EN PORCIENTO														COORDENADAS						
		KM	TE	SC	TDPA	M	A	B	C2	C3	T3S2	T3S3	T3S2R4	OTROS	A	B	C	K'	D	LATITUD	LONGITUD	
T. C. Campeche - Umán	0.00																					
Tenabo	28.00	1	0	853	13.6	76.5	0.6	6.0	0.7	1.6	0.3	0.7	0.0	90.1	0.6	9.3	0.090	0.505	20.027442	-90.226659		

6 CARR: Dzitbalché - Ent. San Bernardo

CLAVE: 00162

RUTA: MEX-180

AÑO: 2017

LUGAR	ESTACION	CLASIFICACION VEHICULAR EN PORCIENTO														COORDENADAS						
		KM	TE	SC	TDPA	M	A	B	C2	C3	T3S2	T3S3	T3S2R4	OTROS	A	B	C	K'	D	LATITUD	LONGITUD	
T. C. Campeche - Mérida	0.00																					
T. Izq. Libramiento de Becal (1º Acceso)	12.33	1	0	3347	24.2	67.4	1.1	4.7	0.3	2.0	0.1	0.1	0.1	91.6	1.1	7.3	0.069	0.508	20.418901	-90.033871		
T. Izq. Libramiento de Becal (2º Acceso)	15.41	3	0	1649	15.9	73.0	1.6	7.1	0.8	1.5	0.0	0.0	0.1	88.9	1.6	9.5	0.083	0.519	20.450884	-90.040616		
Lim. Edos. Term. Camp. Ppia. Yuc.	15.80																					
Halachó	21.08	1	0	1984	20.2	69.2	1.0	7.3	0.6	1.6	0.1	0.0	0.0	89.4	1.0	9.6	0.072	0.503	20.469447	-90.066741		
T. Izq. Libramiento de Maxcanú (1º Acceso)	35.60	1	0	2482	26.6	61.3	0.9	8.0	1.0	1.7	0.3	0.1	0.1	87.9	0.9	11.2	0.077	0.508	20.577200	-90.035797		
T. Der. Muna	40.36	3	0	3321	11.3	68.4	1.4	16.1	0.8	1.6	0.2	0.1	0.1	79.7	1.4	18.9	0.072	0.502	20.601798	-89.975442		
Ent. San Bernardo	41.53																					

7 CARR: Francisco Escárcega - Champotón

CLAVE: 04103

RUTA: MEX-201

AÑO: 2017

LUGAR	ESTACION	CLASIFICACION VEHICULAR EN PORCIENTO														COORDENADAS				
		KM	TE	SC	TDPA	M	A	B	C2	C3	T3S2	T3S3	T3S2R4	OTROS	A	B	C	K'	D	LATITUD
Francisco Escárcega	0.00	3	0	5096	10.3	60.7	1.9	7.3	1.6	8.9	1.9	6.8	0.6	71.0	1.9	27.1	0.069	0.535	18.626424	-90.741732
T. Izq. Ley Federal de La Reforma Agraria	51.40	1	0	3611	2.3	58.7	3.0	8.3	2.1	12.2	2.1	10.8	0.5	61.0	3.0	36.0	0.066	0.515	19.064274	-90.725206
T. Der. Ulumal y Patzajol	77.00	1	0	4591	3.7	63.2	2.8	7.9	2.0	10.6	2.0	7.1	0.7	66.9	2.8	30.3	0.076	0.514	19.294023	-90.732303
Champotón	81.40	1	0	5881	4.8	67.1	2.0	8.1	1.3	8.4	1.6	6.0	0.7	71.9	2.0	26.1	0.076	0.525	19.317531	-90.729091

CAMPECHE

8 CARR: Francisco Escárcega - Chetumal

CLAVE: 00093

RUTA: MEX-186

AÑO: 2017

LUGAR	ESTACION				CLASIFICACION VEHICULAR EN PORCIENTO														COORDENADAS	
	KM	TE	SC	TDPA	M	A	B	C2	C3	T3S2	T3S3	T3S2R4	OTROS	A	B	C	K'	D	LATITUD	LONGITUD
Francisco Escárcega	0.00	3	0	3525	8.5	67.2	3.8	5.8	1.2	6.7	1.5	4.8	0.5	75.7	3.8	20.5	0.064	0.539	18.603929	-90.716795
Adolfo López Mateos	41.50	1	0	2590	5.1	68.4	4.1	6.0	2.1	6.4	1.3	5.6	1.0	73.5	4.1	22.4	0.078	0.544	18.639622	-90.306457
T. Der. Silvituc	55.70	1	0	2417	5.8	72.3	2.3	7.0	2.1	4.1	2.0	3.8	0.6	78.1	2.3	19.6	0.077	0.513	18.651186	-90.278708
T. Der. Silvituc	55.70	3	0	2062	5.1	59.1	6.3	8.9	2.3	7.5	2.5	7.3	1.0	64.2	6.3	29.5	0.068	0.510	18.648185	-90.253425
Conhuás	100.00	1	0	2181	8.0	64.6	6.9	8.2	1.6	5.1	1.9	2.9	0.8	72.6	6.9	20.5	0.088	0.520	18.539911	-89.910475
Xpujil	155.73	1	0	2840	3.8	67.6	3.1	8.4	2.6	6.4	1.7	5.5	0.9	71.4	3.1	25.5	0.070	0.541	18.509258	-89.408979
Lim. Edos. Term. Camp. Ppia. Qroo.	179.90																			
Nicolás Bravo	206.01	1	0	2903	6.7	68.9	3.9	7.0	1.0	6.0	1.6	4.4	0.5	75.6	3.9	20.5	0.087	0.523	18.458437	-88.940790
Nicolás Bravo	206.01	3	0	3269	9.6	63.4	3.9	7.0	1.3	7.4	1.5	5.4	0.5	73.0	3.9	23.1	0.070	0.526	18.459069	-88.920520
T. Izq. Morocoy	214.90	1	0	3199	3.4	66.9	5.0	7.2	1.5	7.8	1.4	6.4	0.4	70.3	5.0	24.7	0.061	0.516	18.478733	-88.818352
T. Izq. Morocoy	214.90	3	0	2915	2.9	66.8	4.9	8.2	1.5	7.7	1.4	6.1	0.5	69.7	4.9	25.4	0.066	0.510	18.478821	-88.815516
T. Der. Unión	247.50	1	0	5074	6.9	69.5	2.9	8.7	1.7	5.6	1.3	2.7	0.7	76.4	2.9	20.7	0.074	0.507	18.504380	-88.531286
T. Der. Unión	247.50	3	0	6803	4.3	77.4	2.3	5.3	0.9	6.1	1.1	1.8	0.8	81.7	2.3	16.0	0.072	0.504	18.508194	-88.509456
T. Izq. Fpe. Carrillo Puerto	255.15	1	0	7140	4.4	78.0	2.0	5.2	1.7	5.0	0.9	2.3	0.5	82.4	2.0	15.6	0.075	0.512	18.523765	-88.473485
T. Der. Subteniente López	268.57	1	1	8694	3.6	87.2	1.0	5.5	0.7	0.9	0.6	0.3	0.2	90.8	1.0	8.2	0.100	0.503	18.516985	-88.379538
T. Der. Subteniente López	268.57	1	2	8590	4.2	89.1	0.7	2.9	0.7	1.0	0.7	0.4	0.3	93.3	0.7	6.0	0.090	0.503	18.517066	-88.379391
T. Izq. Av. Insurgentes	270.00	1	1	11570	4.3	88.7	0.7	3.9	0.5	0.9	0.6	0.2	0.2	93.0	0.7	6.3	0.094	0.503	18.513731	-88.364921
T. Izq. Av. Insurgentes	270.00	1	2	11451	4.2	90.3	0.5	2.3	0.5	1.1	0.7	0.2	0.2	94.5	0.5	5.0	0.086	0.503	18.513854	-88.364882
T. Izq. Av. Insurgentes	270.00	3	1	5212	4.0	88.2	0.4	6.2	0.4	0.5	0.2	0.1	0.0	92.2	0.4	7.4	0.080	0.521	18.510372	-88.353653
T. Izq. Av. Insurgentes	270.00	3	2	5664	3.6	88.4	0.5	6.0	0.5	0.5	0.2	0.2	0.1	92.0	0.5	7.5	0.078	0.521	18.510472	-88.353603
Chetumal	277.36	1	1	8061	5.7	88.2	0.2	4.2	0.2	0.9	0.4	0.1	0.1	93.9	0.2	5.9	0.085	0.531	18.501670	-88.321018
Chetumal	277.36	1	2	7110	5.3	88.2	0.3	4.7	0.3	0.5	0.5	0.1	0.1	93.5	0.3	6.2	0.086	0.531	18.501800	-88.321014

9 CARR: Haltunchén - San Antonio Cayal

CLAVE: 04009

RUTA: MEX-180

AÑO: 2017

LUGAR	ESTACION				CLASIFICACION VEHICULAR EN PORCIENTO														COORDENADAS	
	KM	TE	SC	TDPA	M	A	B	C2	C3	T3S2	T3S3	T3S2R4	OTROS	A	B	C	K'	D	LATITUD	LONGITUD
T. C. Cd. del Carmen - Campeche	0.00	3	0	1284	18.8	71.4	0.8	5.6	0.6	1.4	0.2	1.1	0.1	90.2	0.8	9.0	0.080	0.502	19.499195	-90.700087
Sihochac	14.00	3	0	1179	26.3	63.5	0.8	5.3	0.8	1.6	0.2	1.5	0.0	89.8	0.8	9.4	0.073	0.501	19.502419	-90.570429
X. C. China - Tixmucuy	47.10	1	0	585	8.8	74.6	1.0	8.3	2.4	2.5	0.6	1.7	0.1	83.4	1.0	15.6	0.091	0.507	19.603445	-90.320972
Edzna	59.00	1	0	1169	7.8	72.7	1.0	10.7	3.8	1.6	0.8	1.4	0.2	80.5	1.0	18.5	0.086	0.504	19.604278	-90.226711
T. Der. Pichucalco	60.00	3	0	651	18.1	65.3	0.7	9.8	2.1	1.9	0.4	1.7	0.0	83.4	0.7	15.9	0.094	0.505	19.609051	-90.220337
San Antonio Cayal	79.00	1	0	480	21.2	61.8	1.5	8.8	1.6	2.2	0.5	2.3	0.1	83.0	1.5	15.5	0.102	0.526	19.740202	-90.174049



CAMPECHE

10 CARR: Periférico Pablo García y Montilla (Libramiento de Campeche)

CLAVE: 04573

RUTA: MEX-202

AÑO: 2017

LUGAR	ESTACION				CLASIFICACION VEHICULAR EN PORCIENTO													COORDENADAS		
	KM	TE	SC	TDPA	M	A	B	C2	C3	T3S2	T3S3	T3S2R4	OTROS	A	B	C	K'	D	LATITUD	LONGITUD
Ent. Lerma	0.00	3	1	2129	8.0	82.9	0.4	5.8	1.3	0.9	0.5	0.2	0.0	90.9	0.4	8.7	0.113	0.500	19.793084	-90.608113
Ent. Lerma	0.00	3	2	2129	8.7	80.6	0.6	6.8	1.2	1.1	0.6	0.4	0.0	89.3	0.6	10.1	0.138	0.500	19.792965	-90.608086
X. C. Campeche - Umán	21.00	1	1	4843	2.8	58.2	5.6	9.9	4.0	12.8	2.4	3.4	0.9	61.0	5.6	33.4	0.068	0.502	19.845164	-90.470357
X. C. Campeche - Umán	21.00	1	2	4873	2.9	54.4	5.7	11.0	4.1	14.9	2.7	3.2	1.1	57.3	5.7	37.0	0.067	0.502	19.845096	-90.470225
T. C. Campeche - Mérida	26.00	1	1	4708	2.9	70.5	3.5	7.0	2.0	7.5	1.5	4.7	0.4	73.4	3.5	23.1	0.084	0.508	19.881279	-90.461991
T. C. Campeche - Mérida	26.00	1	2	4855	2.9	70.9	3.7	7.5	1.8	7.3	1.1	4.3	0.5	73.8	3.7	22.5	0.068	0.508	19.881226	-90.462103

11 CARR: Presidente Díaz Ordaz - Sabancuy

CLAVE: 04570

RUTA: MEX-186

AÑO: 2017

LUGAR	ESTACION				CLASIFICACION VEHICULAR EN PORCIENTO													COORDENADAS		
	KM	TE	SC	TDPA	M	A	B	C2	C3	T3S2	T3S3	T3S2R4	OTROS	A	B	C	K'	D	LATITUD	LONGITUD
T. C. Villahermosa - Francisco Escárcega	0.00	3	0	1410	10.8	75.5	0.9	9.0	1.2	1.6	0.4	0.5	0.1	86.3	0.9	12.8	0.073	0.507	18.631497	-90.982759
Chicbul	18.00	1	0	1528	20.2	67.0	0.8	8.6	1.1	1.4	0.4	0.5	0.0	87.2	0.8	12.0	0.080	0.506	18.771344	-90.930141
T. C. Cd. del Carmen - Campeche	57.00	1	0	1670	5.9	74.9	3.3	11.7	0.8	1.9	0.8	0.7	0.0	80.8	3.3	15.9	0.089	0.509	18.988018	-91.189156

12 CARR: Ramal a Nuevo Coahuila

CLAVE: 04015

RUTA: MEX-186

AÑO: 2017

LUGAR	ESTACION				CLASIFICACION VEHICULAR EN PORCIENTO													COORDENADAS		
	KM	TE	SC	TDPA	M	A	B	C2	C3	T3S2	T3S3	T3S2R4	OTROS	A	B	C	K'	D	LATITUD	LONGITUD
T. C. Villahermosa - Francisco Escárcega	0.00	3	0	932	8.8	75.8	1.1	10.4	1.0	1.7	0.6	0.6	0.0	84.6	1.1	14.3	0.082	0.505	18.376282	-91.194188
Candelaria	28.00	3	0	2619	4.1	88.4	0.5	4.2	0.5	1.4	0.5	0.2	0.2	92.5	0.5	7.0	0.069	0.531	18.174401	-91.053547
Reforma	44.50	3	0	1241	13.8	75.8	0.3	7.3	0.7	1.6	0.3	0.2	0.0	89.6	0.3	10.1	0.073	0.528	18.071964	-91.023683
T. Izq. Pedro Baranda	54.80	1	0	782	10.2	79.0	0.4	8.1	0.7	0.7	0.5	0.4	0.0	89.2	0.4	10.4	0.074	0.504	17.971643	-90.909195
T. Izq. Pedro Baranda	54.80	3	0	672	11.4	81.0	0.3	5.9	0.2	1.0	0.2	0.0	0.0	92.4	0.3	7.3	0.095	0.501	17.960570	-90.897458
Nuevo Coahuila	70.00	1	0	708	15.1	77.6	0.2	5.9	0.3	0.7	0.2	0.0	0.0	92.7	0.2	7.1	0.088	0.503	17.894709	-90.790354

13 CARR: Ramal a Ruíz Cortines

CLAVE: 04101

RUTA: MEX-180

AÑO: 2017

LUGAR	ESTACION				CLASIFICACION VEHICULAR EN PORCIENTO													COORDENADAS		
	KM	TE	SC	TDPA	M	A	B	C2	C3	T3S2	T3S3	T3S2R4	OTROS	A	B	C	K'	D	LATITUD	LONGITUD
Hool	0.00																			
T. Der. Hool	1.00	3	0	321	34.7	57.5	0.4	6.4	0.6	0.4	0.0	0.0	0.0	92.2	0.4	7.4	0.118	0.500	19.512124	-90.440117
Ruiz Cortines	12.00																			

CAMPECHE

14 CARR: San Marcos - Palizada

CLAVE: 00490

RUTA: MEX-186

AÑO: 2017

LUGAR	ESTACION				CLASIFICACION VEHICULAR EN PORCIENTO										COORDENADAS					
	KM	TE	SC	TDPA	M	A	B	C2	C3	T3S2	T3S3	T3S2R4	OTROS	A	B	C	K'	D	LATITUD	LONGITUD
T. C. Villahermosa - Francisco Escárcega	0.00	3	0	840	10.2	75.3	1.2	8.4	1.7	1.8	0.6	0.7	0.1	85.5	1.2	13.3	0.095	0.510	17.942377	-91.735130
T. Izq. Jonuta	46.20	1	0	725	7.1	83.4	0.4	7.1	0.9	0.7	0.3	0.0	0.1	90.5	0.4	9.1	0.076	0.508	18.122677	-92.102090
T. Izq. Jonuta	46.20	3	0	856	11.2	78.3	0.4	9.0	0.6	0.4	0.0	0.0	0.1	89.5	0.4	10.1	0.091	0.509	18.134080	-92.113970
Palizada	68.00																			

15 CARR: Villahermosa - Cd. del Carmen

CLAVE: 00064

RUTA: MEX-180

AÑO: 2017

LUGAR	ESTACION				CLASIFICACION VEHICULAR EN PORCIENTO										COORDENADAS					
	KM	TE	SC	TDPA	M	A	B	C2	C3	T3S2	T3S3	T3S2R4	OTROS	A	B	C	K'	D	LATITUD	LONGITUD
Villahermosa	0.00																			
T. Izq. Cd. Industrial	4.30	3	1	34846	2.2	89.7	0.8	4.2	0.8	1.3	0.5	0.5	0.0	91.9	0.8	7.3	0.065	0.501	18.037695	-92.901391
T. Izq. Cd. Industrial	4.30	3	2	35020	2.6	89.0	1.0	4.4	0.8	1.3	0.5	0.4	0.0	91.6	1.0	7.4	0.073	0.501	18.037427	-92.901591
Macultepec	18.60	1	1	11917	4.9	84.4	2.1	3.1	0.6	3.0	1.0	0.3	0.6	89.3	2.1	8.6	0.070	0.511	18.139859	-92.865028
Macultepec	18.60	1	2	11399	4.7	83.9	2.1	3.4	0.6	3.2	1.2	0.3	0.6	88.6	2.1	9.3	0.077	0.511	18.140038	-92.865118
Macultepec	18.60	3	1	6586	0.4	82.8	3.4	6.2	1.6	2.9	1.1	1.2	0.4	83.2	3.4	13.4	0.063	0.533	18.168738	-92.858125
Macultepec	18.60	3	2	5768	1.2	80.0	3.5	7.4	1.9	3.1	1.2	1.3	0.4	81.2	3.5	15.3	0.081	0.533	18.168855	-92.858133
El Espino	33.20	1	0	8862	0.9	78.9	4.8	6.7	1.6	4.8	1.0	0.8	0.5	79.8	4.8	15.4	0.064	0.500	18.240023	-92.830251
El Espino	33.20	3	0	8681	1.2	79.8	3.4	6.1	1.6	4.7	1.1	1.5	0.6	81.0	3.4	15.6	0.064	0.508	18.256247	-92.831797
T. Izq. El Bellote	49.67	3	0	9818	1.6	72.7	5.1	9.0	1.3	6.0	1.3	2.3	0.7	74.3	5.1	20.6	0.061	0.505	18.397491	-92.798701
Frontera	74.59	1	0	10189	1.9	78.9	3.2	7.5	1.1	5.1	1.0	0.8	0.5	80.8	3.2	16.0	0.067	0.523	18.513303	-92.659497
Frontera	74.59	3	0	6104	2.3	73.3	6.6	8.0	1.8	4.4	1.0	2.2	0.4	75.6	6.6	17.8	0.081	0.516	18.542357	-92.631785
T. Izq. Escolleras	78.00	3	0	6588	2.9	70.1	7.5	10.3	1.4	4.6	1.1	1.6	0.5	73.0	7.5	19.5	0.067	0.502	18.561338	-92.602988
Puente San Pedro	96.50	3	0	4826	3.2	67.4	10.9	8.4	1.6	4.9	1.7	1.3	0.6	70.6	10.9	18.5	0.062	0.512	18.641444	-92.462980
Lim. Edos. Term. Tab. Ppia. Camp.	99.75																			
Nuevo Campechito	100.00	3	0	4729	3.2	63.0	11.9	10.8	1.7	5.8	1.6	1.4	0.6	66.2	11.9	21.9	0.063	0.511	18.643028	-92.454758
Nuevo Progreso	116.57	1	0	5065	3.3	65.0	9.9	9.4	1.9	5.5	1.4	3.3	0.3	68.3	9.9	21.8	0.063	0.509	18.626598	-92.326684
Zacatal	162.41	1	0	5290	3.2	66.3	9.2	10.6	1.8	4.8	1.4	2.4	0.3	69.5	9.2	21.3	0.071	0.501	18.614961	-91.868887
Puente Zacatal	162.41	2	0	4718	1.3	73.1	8.2	4.6	4.0	6.1	1.0	1.4	0.3	74.4	8.2	17.4	0.077	0.500	18.641876	-92.460304
Cd. del Carmen	167.50																			

16 CARR: Villahermosa - Francisco Escárcega

CLAVE: 00092

RUTA: MEX-186

AÑO: 2017

LUGAR	ESTACION				CLASIFICACION VEHICULAR EN PORCIENTO										COORDENADAS					
	KM	TE	SC	TDPA	M	A	B	C2	C3	T3S2	T3S3	T3S2R4	OTROS	A	B	C	K'	D	LATITUD	LONGITUD
Villahermosa	0.00	3	1	17152	2.2	85.3	1.5	5.3	0.8	2.3	0.6	1.9	0.1	87.5	1.5	11.0	0.071	0.510	18.001009	-92.890734

CAMPECHE

16 CARR: Villahermosa - Francisco Escárcega

CLAVE: 00092

RUTA: MEX-186

AÑO: 2017

LUGAR	ESTACION				CLASIFICACION VEHICULAR EN PORCIENTO														COORDENADAS	
	KM	TE	SC	TDPA	M	A	B	C2	C3	T3S2	T3S3	T3S2R4	OTROS	A	B	C	K'	D	LATITUD	LONGITUD
Villahermosa	0.00	3	2	17832	2.3	84.1	1.6	6.0	0.9	2.6	0.6	1.8	0.1	86.4	1.6	12.0	0.076	0.510	18.001098	-92.890626
T. Izq. Aeropuerto (Alta)	12.00	1	1	15980	2.2	81.0	1.8	6.7	1.0	3.2	1.4	2.0	0.7	83.2	1.8	15.0	0.070	0.513	17.983768	-92.827789
T. Izq. Aeropuerto (Baja)	12.00	1	1	1460	15.8	72.0	1.0	5.7	1.5	2.7	0.5	0.6	0.2	87.8	1.0	11.2	0.075	0.543	17.983709	-92.827833
T. Izq. Aeropuerto (Alta)	12.00	1	2	14507	2.3	79.9	1.8	7.5	1.1	3.1	1.5	2.0	0.8	82.2	1.8	16.0	0.066	0.513	17.983626	-92.827317
T. Izq. Aeropuerto (Baja)	12.00	1	2	1230	13.2	72.8	1.2	6.4	1.8	3.0	0.6	0.7	0.3	86.0	1.2	12.8	0.083	0.543	17.983718	-92.827281
Puente Grijalva	17.60	2	1	7643	1.6	78.4	4.9	3.5	2.4	4.7	1.2	3.0	0.3	80.0	4.9	15.1	0.079	0.500	17.947556	-92.785240
Puente Grijalva	17.60	2	2	7643	1.6	78.4	4.9	3.5	2.4	4.7	1.2	3.0	0.3	80.0	4.9	15.1	0.079	0.500	17.947556	-92.785240
X. C. Cacaos - La Granja	32.46	1	1	8756	1.7	79.6	1.6	4.4	1.7	5.3	1.6	3.7	0.4	81.3	1.6	17.1	0.072	0.510	17.828802	-92.717432
X. C. Cacaos - La Granja	32.46	1	2	9132	1.4	78.0	1.8	5.1	1.9	5.9	1.6	3.9	0.4	79.4	1.8	18.8	0.090	0.510	17.828952	-92.717056
X. C. Cacaos - La Granja	32.46	3	1	6655	1.1	76.4	2.7	7.3	2.1	5.6	2.0	2.3	0.5	77.5	2.7	19.8	0.063	0.505	17.816174	-92.710210
X. C. Cacaos - La Granja	32.46	3	2	6521	2.2	73.5	3.2	7.8	2.1	6.3	2.0	2.4	0.5	75.7	3.2	21.1	0.098	0.505	17.816286	-92.710164
X. C. Jalapa - Jonuta	40.00	3	1	6782	1.0	76.8	2.5	8.0	2.3	5.0	1.6	2.2	0.6	77.8	2.5	19.7	0.071	0.503	17.774614	-92.673321
X. C. Jalapa - Jonuta	40.00	3	2	6875	2.3	73.0	2.9	8.8	2.6	5.6	1.7	2.5	0.6	75.3	2.9	21.8	0.077	0.503	17.774542	-92.673032
T. Izq. Macuspana	46.20	1	1	7319	1.7	73.1	3.1	7.7	3.1	5.6	1.7	3.6	0.4	74.8	3.1	22.1	0.065	0.503	17.743270	-92.633072
T. Izq. Macuspana	46.20	1	2	7416	2.2	70.5	3.3	8.5	3.2	6.4	1.9	3.6	0.4	72.7	3.3	24.0	0.065	0.503	17.743393	-92.632951
T. Izq. Macuspana	46.20	3	1	6707	4.0	69.6	2.3	8.2	3.0	6.0	2.1	4.1	0.7	73.6	2.3	24.1	0.060	0.508	17.735930	-92.623625
T. Izq. Macuspana	46.20	3	2	6919	3.6	67.3	2.4	9.8	3.4	6.6	2.2	4.0	0.7	70.9	2.4	26.7	0.086	0.508	17.736023	-92.623579
X. C. Estación Macuspana - Vernet	54.30	1	0	10106	3.1	68.4	2.8	12.0	2.4	6.9	1.9	2.1	0.4	71.5	2.8	25.7	0.079	0.523	17.711424	-92.578799
T. Der. Chivalito (Est. Pino Suárez)	70.00	1	0	9560	5.4	62.6	3.9	7.5	2.6	8.5	1.9	7.3	0.3	68.0	3.9	28.1	0.081	0.520	17.669138	-92.442090
T. Der. Chivalito (Est. Pino Suárez)	70.00	3	1	3734	3.4	60.9	5.1	9.0	2.2	8.6	1.6	8.6	0.6	64.3	5.1	30.6	0.074	0.522	17.665837	-92.431388
T. Der. Chivalito (Est. Pino Suárez)	70.00	3	2	4078	3.0	60.7	5.6	9.5	2.3	9.0	1.8	7.5	0.6	63.7	5.6	30.7	0.081	0.522	17.665941	-92.431359
T. Der. Estación Zopo	71.00	1	0	8020	3.1	63.1	4.2	7.9	2.5	9.0	1.8	8.1	0.3	66.2	4.2	29.6	0.073	0.512	17.669473	-92.419573
T. Der. Estación Zopo	71.00	3	1	4079	2.4	66.7	4.8	7.5	2.5	7.7	1.7	6.3	0.4	69.1	4.8	26.1	0.071	0.502	17.680200	-92.403088
T. Der. Estación Zopo	71.00	3	2	4039	2.2	63.0	5.4	8.7	2.7	8.7	1.8	7.1	0.4	65.2	5.4	29.4	0.086	0.502	17.680038	-92.403206
Lim. Edos. Term. Tab. Ppia. Chis.	76.90																			
T. Izq. Bonanza	88.00	1	0	8250	3.1	61.9	3.7	10.6	2.3	10.0	2.3	5.2	0.9	65.0	3.7	31.3	0.056	0.514	17.698271	-92.268315
T. Izq. Jonuta	101.00	1	0	6364	1.5	64.1	3.6	8.5	2.0	10.2	2.0	7.4	0.7	65.6	3.6	30.8	0.082	0.515	17.697958	-92.135429
T. Izq. Jonuta	101.00	3	0	6836	1.7	71.6	1.4	4.9	3.8	9.3	2.1	4.6	0.6	73.3	1.4	25.3	0.070	0.501	17.697656	-92.122779
X. C. Catazajá - Palenque	114.00	1	0	7283	2.0	62.6	3.9	7.1	2.2	10.4	2.2	8.5	1.1	64.6	3.9	31.5	0.070	0.519	17.708456	-92.022592
X. C. Catazajá - Palenque	114.00	3	0	6348	2.0	65.5	3.4	6.5	2.5	9.6	1.7	8.5	0.3	67.5	3.4	29.1	0.084	0.504	17.715211	-92.001359
T. Der. Emiliano Zapata	134.70	1	0	6687	1.4	62.1	4.7	7.6	1.9	11.1	1.5	8.9	0.8	63.5	4.7	31.8	0.080	0.519	17.771192	-91.836063
T. Der. Emiliano Zapata	134.70	3	0	4998	1.9	60.1	1.2	4.1	4.2	12.2	2.4	11.1	2.8	62.0	1.2	36.8	0.055	0.510	17.785498	-91.822121
Lim. Edos. Term. Chis. Ppia. Tab.	140.70																			
Puente Usumacinta	145.20	2	0	4395	2.4	56.4	4.6	4.8	4.5	13.8	2.0	10.5	1.0	58.8	4.6	36.6	0.079	0.500	17.859877	-91.783607
T. Izq. Palizada	154.05	1	0	3685	2.5	51.8	5.8	7.3	2.3	14.0	3.1	12.0	1.2	54.3	5.8	39.9	0.068	0.508	17.937840	-91.737279

CAMPECHE

16 CARR: Villahermosa - Francisco Escárcega

CLAVE: 00092

RUTA: MEX-186

AÑO: 2017

LUGAR	ESTACION				CLASIFICACION VEHICULAR EN PORCIENTO										COORDENADAS					
	KM	TE	SC	TDPA	M	A	B	C2	C3	T3S2	T3S3	T3S2R4	OTROS	A	B	C	K'	D	LATITUD	LONGITUD
T. Izq. Palizada	154.05	3	0	3459	1.4	54.5	6.6	7.4	3.1	12.9	3.5	9.6	1.0	55.9	6.6	37.5	0.064	0.508	17.946496	-91.729908
Lim. Edos. Term. Tab. Ppia. Camp.	154.60																			
T. Der. Candelaria	233.40	1	0	3963	2.8	47.8	5.2	7.6	2.9	15.9	3.0	14.2	0.6	50.6	5.2	44.2	0.067	0.503	18.373256	-91.201817
T. Der. Felipe Ángeles	253.00	1	0	4031	3.0	50.0	5.6	7.8	2.1	14.8	3.0	13.0	0.7	53.0	5.6	41.4	0.060	0.526	18.504038	-91.106433
T. Izq. Sabancuy	274.10	1	0	4645	4.0	60.1	4.4	7.7	2.3	12.2	2.7	5.7	0.9	64.1	4.4	31.5	0.070	0.501	18.629606	-90.987804
Francisco Escárcega	297.04	1	0	7372	2.2	63.1	3.8	9.1	1.7	10.7	2.3	6.2	0.9	65.3	3.8	30.9	0.066	0.512	18.610134	-90.776838

17 CARR: Champotón - Campeche (Cuota)

CLAVE: 04014

RUTA: MEX-180D

AÑO: 2017

LUGAR	ESTACION				CLASIFICACION VEHICULAR EN PORCIENTO										COORDENADAS					
	KM	TE	SC	TDPA	M	A	B	C2	C3	T3S2	T3S3	T3S2R4	OTROS	A	B	C	K'	D	LATITUD	LONGITUD
Caseta de Cobro Seybaplaya	14.50	2	1	3032	0.8	67.2	4.9	3.6	4.0	10.1	1.6	7.0	0.8	68.0	4.9	27.1	0.088	0.500	19.636271	-90.671555
Caseta de Cobro Seybaplaya	14.50	2	2	3032	0.8	67.2	4.9	3.6	4.0	10.1	1.6	7.0	0.8	68.0	4.9	27.1	0.088	0.500	19.636271	-90.671555
T. C. Cd. del Carmen - Campeche	161.50	3	1	3106	0.6	67.8	4.0	7.2	2.6	8.7	1.9	6.6	0.6	68.4	4.0	27.6	0.100	0.512	19.511535	-90.700355
T. C. Cd. del Carmen - Campeche	161.50	3	2	2953	0.9	66.3	4.5	10.0	1.6	8.0	2.8	4.9	1.0	67.2	4.5	28.3	0.076	0.512	19.513104	-90.699317
T. Der. Periférico Pablo García y Montilla (Libramiento De Campeche)	199.00	1	1	3766	1.4	69.3	3.2	8.2	1.9	8.3	1.7	5.4	0.6	70.7	3.2	26.1	0.100	0.517	19.787206	-90.538748
T. Der. Periférico Pablo García y Montilla (Libramiento De Campeche)	199.00	1	2	3520	1.3	66.9	3.5	8.5	2.2	9.5	1.7	5.8	0.6	68.2	3.5	28.3	0.073	0.517	19.787225	-90.538828

18 CARR: Hopelchén - Dzibalchén

CLAVE: 04572

RUTA: CAM-261

AÑO: 2017

LUGAR	ESTACION				CLASIFICACION VEHICULAR EN PORCIENTO										COORDENADAS					
	KM	TE	SC	TDPA	M	A	B	C2	C3	T3S2	T3S3	T3S2R4	OTROS	A	B	C	K'	D	LATITUD	LONGITUD
Hopelchén	0.00	3	0	1382	15.8	68.2	0.5	13.0	0.9	0.9	0.2	0.5	0.0	84.0	0.5	15.5	0.091	0.502	19.729937	-89.835517
Dzibalchén	41.00																			

19 CARR: Libramiento de Becal

CLAVE: 04010

RUTA: CAM

AÑO: 2017

LUGAR	ESTACION				CLASIFICACION VEHICULAR EN PORCIENTO										COORDENADAS					
	KM	TE	SC	TDPA	M	A	B	C2	C3	T3S2	T3S3	T3S2R4	OTROS	A	B	C	K'	D	LATITUD	LONGITUD
T. C. Dzitalché - Ent. San Bernardo (1º Acceso)	0.00																			
T. C. Campeche - Mérida (2º Acceso)	2.30	1	0	1596	17.7	75.3	1.0	3.3	0.9	1.6	0.2	0.0	0.0	93.0	1.0	6.0	0.077	0.523	20.440814	-90.034288

CAMPECHE

20 CARR: Libramiento de Pomuch

CLAVE: 04579

RUTA: CAM

AÑO: 2017

LUGAR	ESTACION				CLASIFICACION VEHICULAR EN PORCIENTO														COORDENADAS	
	KM	TE	SC	TDPA	M	A	B	C2	C3	T3S2	T3S3	T3S2R4	OTROS	A	B	C	K'	D	LATITUD	LONGITUD
T. C. Campeche - Mérida (1° Acceso)	0.00	3	1	4132	1.3	73.2	4.0	6.6	1.8	6.4	1.2	4.9	0.6	74.5	4.0	21.5	0.111	0.502	20.122201	-90.177260
T. C. Campeche - Mérida (1° Acceso)	0.00	3	2	4160	1.7	70.6	4.5	7.4	2.1	6.2	1.4	5.5	0.6	72.3	4.5	23.2	0.088	0.502	20.122353	-90.177272
T. C. Campeche - Mérida (2° Acceso)	4.10																			

21 CARR: T. C. (Francisco Escárcega - Champotón) - Yohaltún

CLAVE: 04581

RUTA: CAM

AÑO: 2017

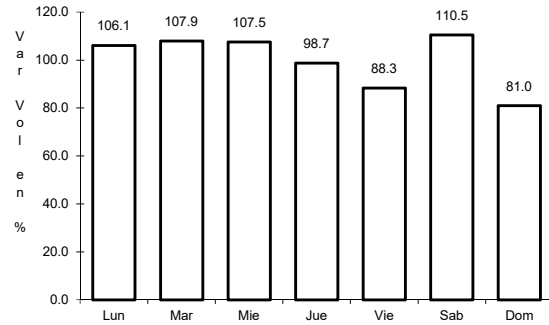
LUGAR	ESTACION				CLASIFICACION VEHICULAR EN PORCIENTO														COORDENADAS	
	KM	TE	SC	TDPA	M	A	B	C2	C3	T3S2	T3S3	T3S2R4	OTROS	A	B	C	K'	D	LATITUD	LONGITUD
T. C. Francisco Escárcega - Champotón	0.00	3	0	1504	19.7	66.7	0.7	9.7	1.2	1.3	0.3	0.4	0.0	86.4	0.7	12.9	0.078	0.512	19.295295	-90.713966
Felipe Carrillo Puerto	36.50	1	0	791	27.2	62.9	0.4	6.9	0.6	0.8	0.3	0.9	0.0	90.1	0.4	9.5	0.113	0.509	19.112994	-90.516250
Felipe Carrillo Puerto	36.50	3	0	754	36.3	57.2	0.7	2.6	1.4	0.9	0.9	0.0	0.0	93.5	0.7	5.8	0.084	0.508	19.092039	-90.517854
Yohaltún	70.60																			



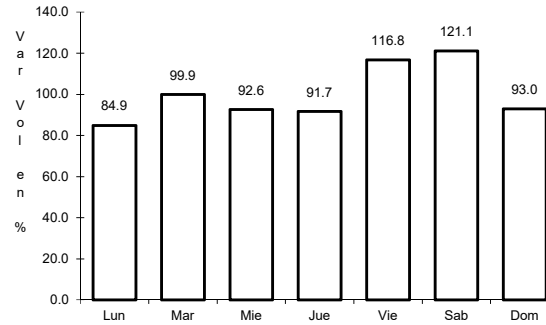
1 CARR: Campeche - Mérida

CLAVE: 00066

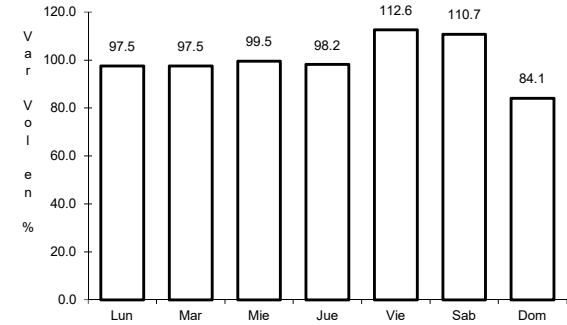
RUTA: MEX-180



Km: 0.00      Tipo: 3      Sent: 1



Km: 0.00      Tipo: 3      Sent: 2

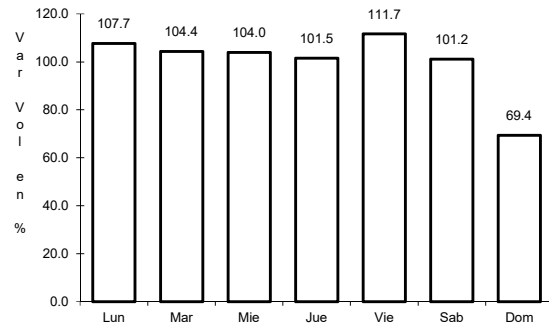


Km: 160.49      Tipo: 1      Sent: 1

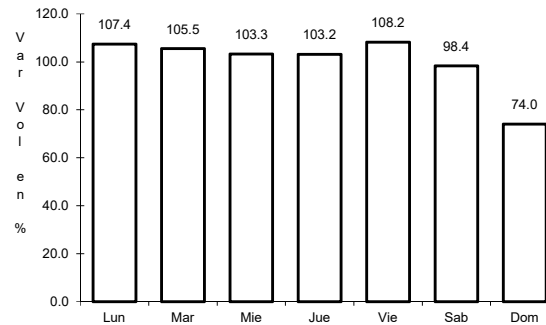
2 CARR: Campeche - Tixmucuy

CLAVE: 04575

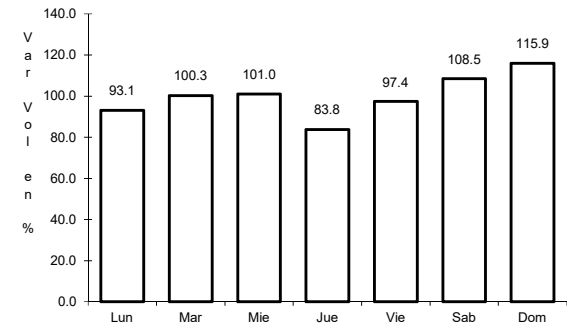
RUTA: MEX-180



Km: 0.00      Tipo: 3      Sent: 1



Km: 0.00      Tipo: 3      Sent: 2

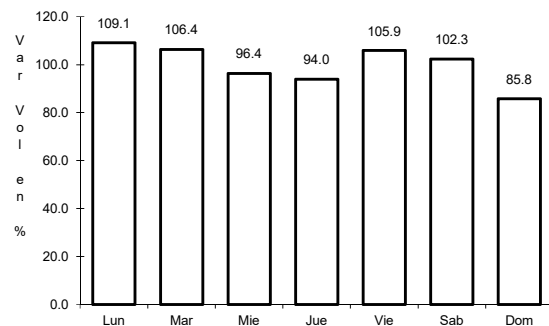


Km: 42.00      Tipo: 1      Sent: 0

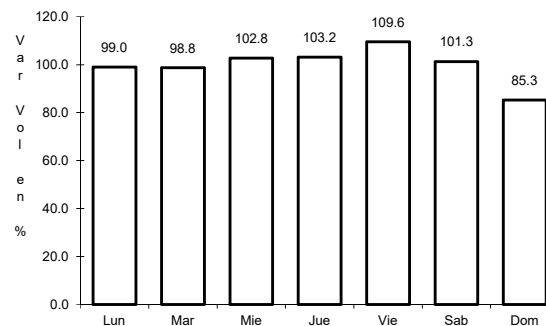
3 CARR: Campeche - Umán

CLAVE: 00164

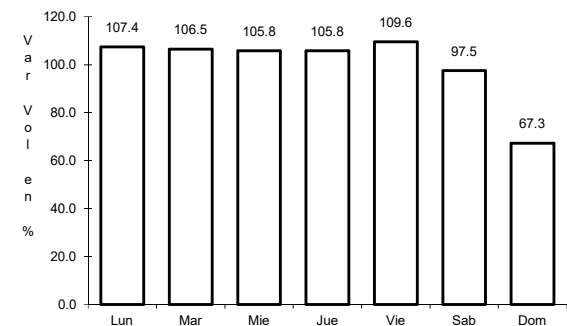
RUTA: MEX-261



Km: 7.00      Tipo: 1      Sent: 0



Km: 117.88      Tipo: 3      Sent: 0

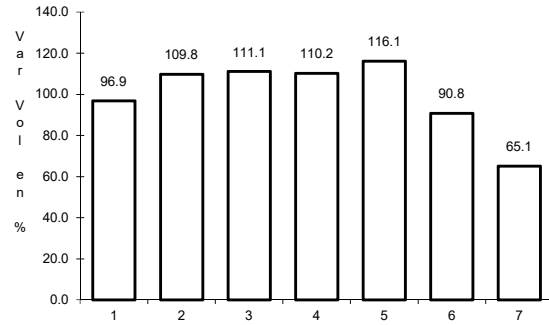


Km: 230.83      Tipo: 1      Sent: 0

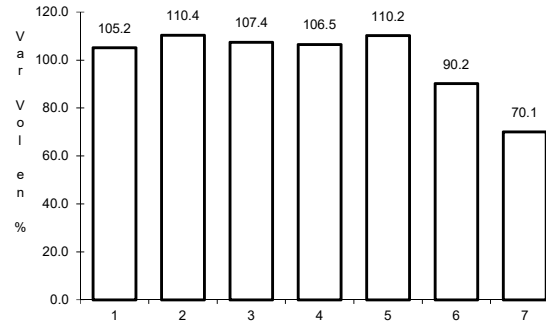
4 CARR: Cd. del Carmen - Campeche

CLAVE: 04065

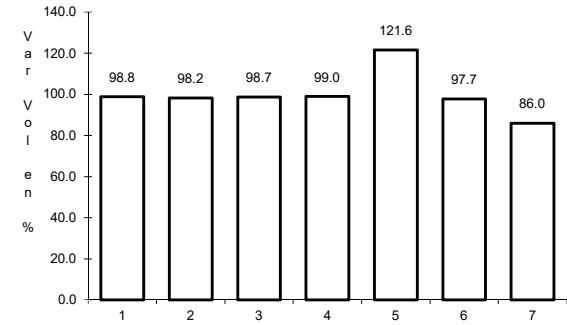
RUTA: MEX-180



Km: 0.00                      Tipo: 3                      Sent: 1



Km: 0.00                      Tipo: 3                      Sent: 2

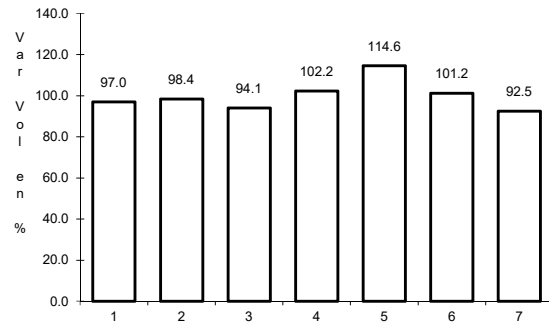


Km: 141.80                      Tipo: 1                      Sent: 0

5 CARR: Chencoyi - Tenabo

CLAVE: 04576

RUTA: MEX-180

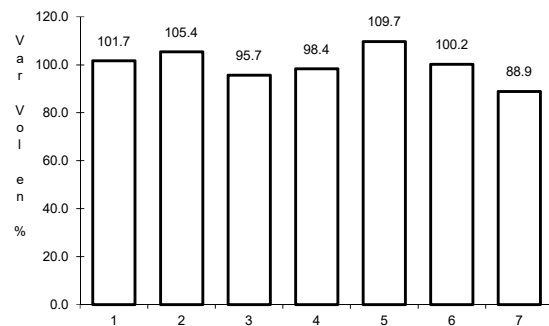


Km: 28.00                      Tipo: 1                      Sent: 0

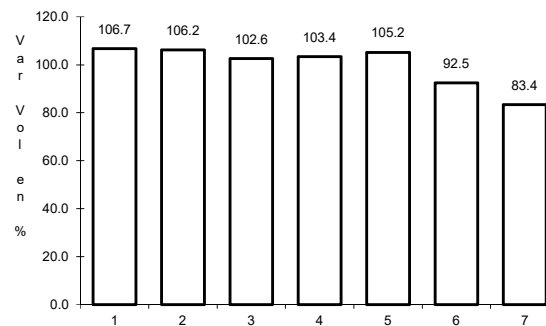
6 CARR: Dzitbalché - Ent. San Bernardo

CLAVE: 00162

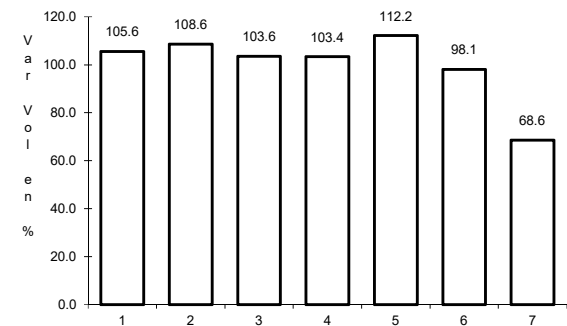
RUTA: MEX-180



Km: 12.33                      Tipo: 1                      Sent: 0



Km: 21.08                      Tipo: 1                      Sent: 0



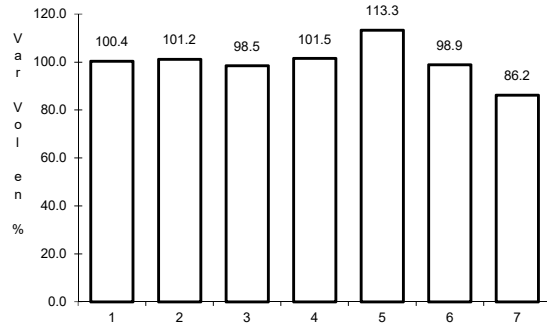
Km: 40.36                      Tipo: 3                      Sent: 0



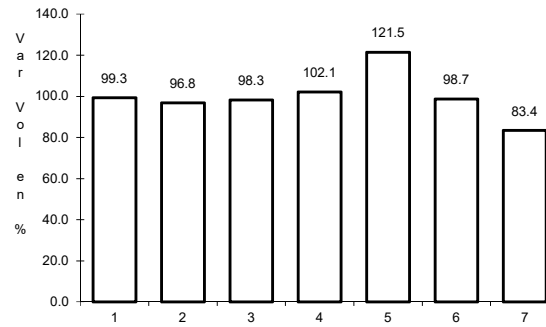
7 CARR: Francisco Escárcega - Champotón

CLAVE: 04103

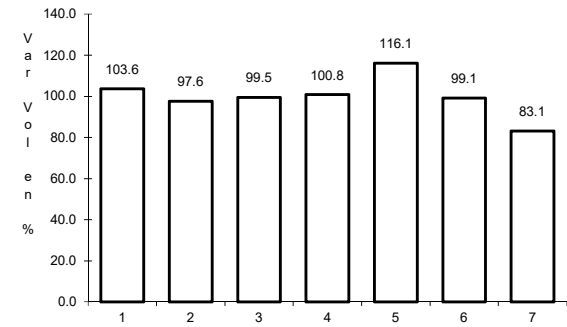
ruta: MEX-201



Km: 0.00                      Tipo: 3                      Sent: 0



Km: 51.40                      Tipo: 1                      Sent: 0

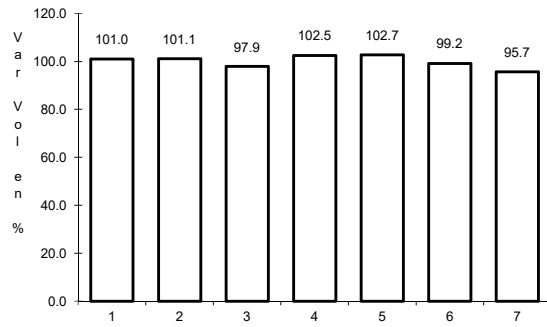


Km: 81.40                      Tipo: 1                      Sent: 0

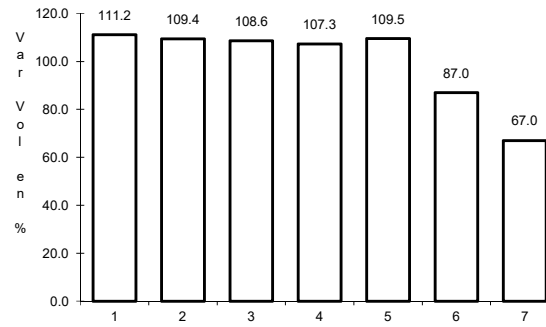
8 CARR: Francisco Escárcega - Chetumal

CLAVE: 00093

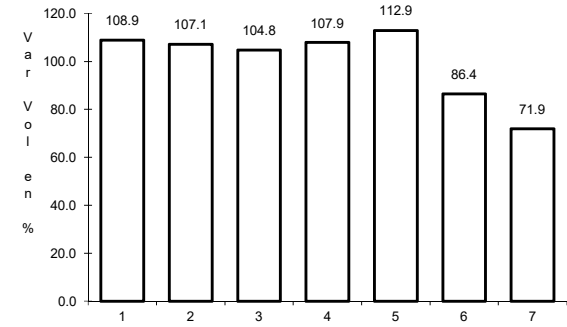
ruta: MEX-186



Km: 0.00                      Tipo: 3                      Sent: 0



Km: 277.36                      Tipo: 1                      Sent: 1

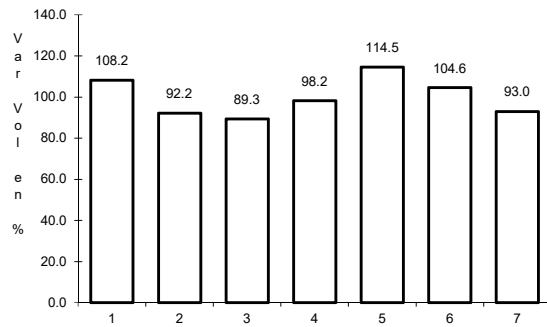


Km: 277.36                      Tipo: 1                      Sent: 2

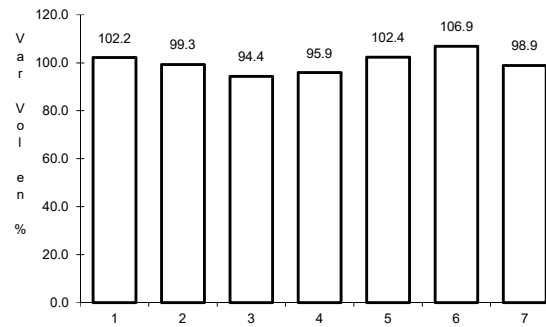
9 CARR: Haltunchén - San Antonio Cayal

CLAVE: 04009

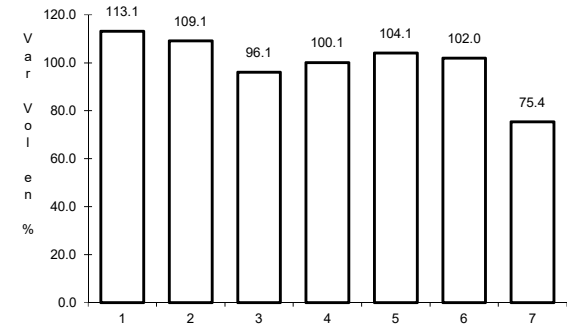
ruta: MEX-180



Km: 0.00                      Tipo: 3                      Sent: 0



Km: 47.10                      Tipo: 1                      Sent: 0

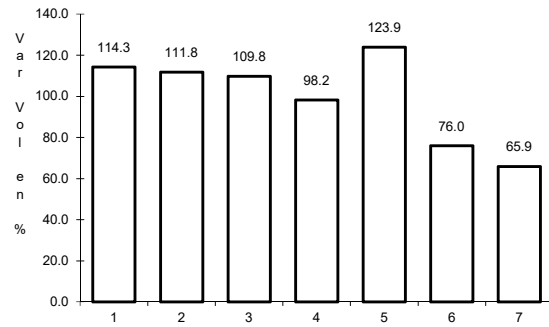


Km: 79.00                      Tipo: 1                      Sent: 0

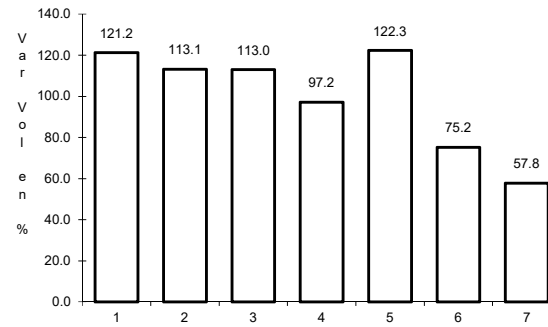
10 CARR: Periférico Pablo García y Montilla (Libramiento de Campeche)

CLAVE: 04573

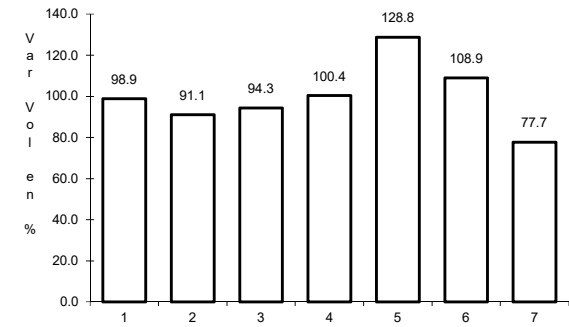
RUTA: MEX-202



Km: 0.00                      Tipo: 3                      Sent: 1



Km: 0.00                      Tipo: 3                      Sent: 2

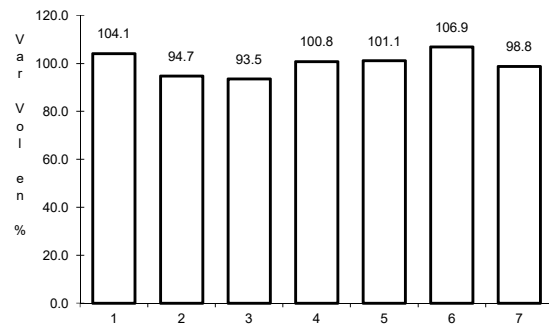


Km: 26.00                      Tipo: 1                      Sent: 1

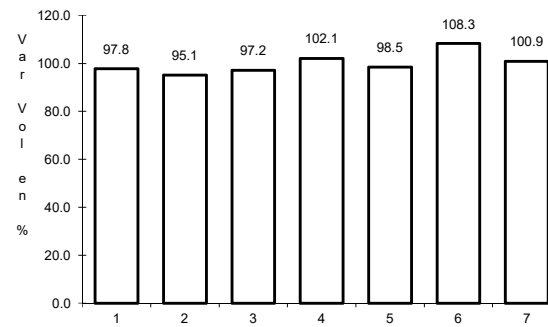
11 CARR: Presidente Díaz Ordaz - Sabancuy

CLAVE: 04570

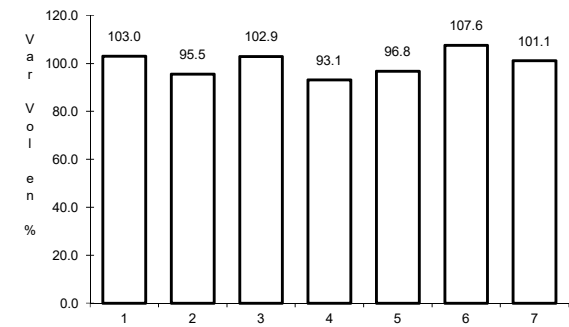
RUTA: MEX-186



Km: 0.00                      Tipo: 3                      Sent: 0



Km: 18.00                      Tipo: 1                      Sent: 0

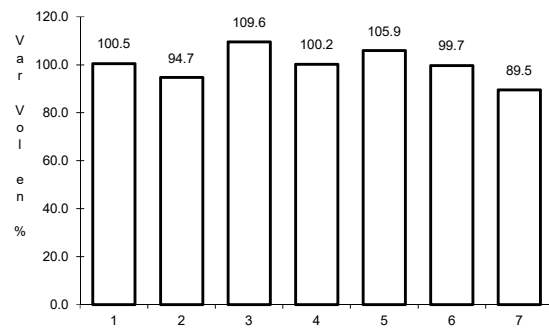


Km: 57.00                      Tipo: 1                      Sent: 0

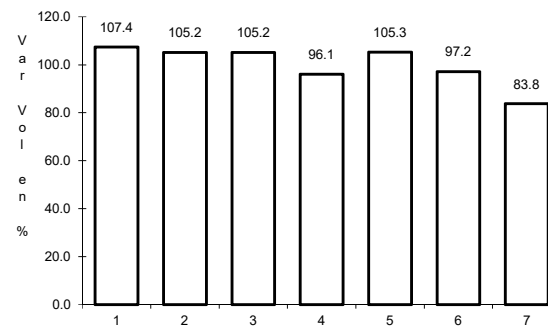
12 CARR: Ramal a Nuevo Coahuila

CLAVE: 04015

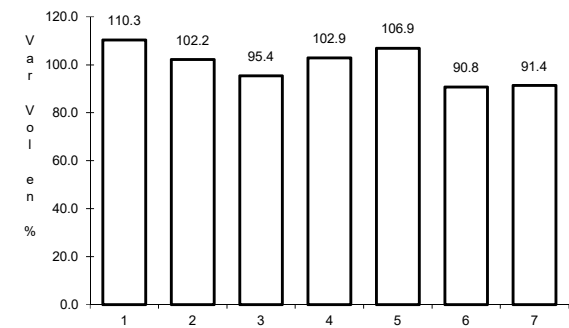
RUTA: MEX-186



Km: 0.00                      Tipo: 3                      Sent: 0



Km: 44.50                      Tipo: 3                      Sent: 0

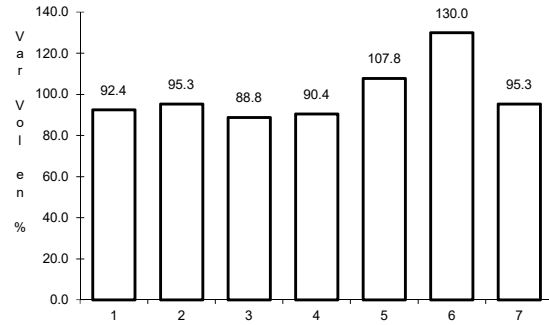


Km: 70.00                      Tipo: 1                      Sent: 0

13 CARR: Ramal a Ruíz Cortines

CLAVE: 04101

RUTA: MEX-180

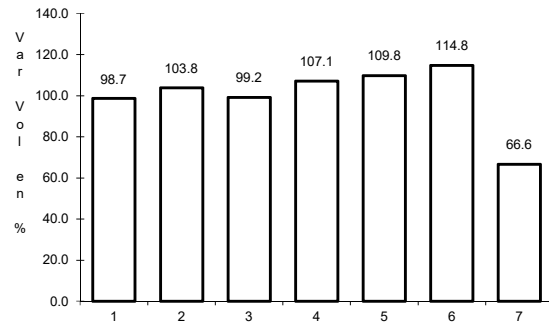


Km: 1.00                      Tipo: 3                      Sent: 0

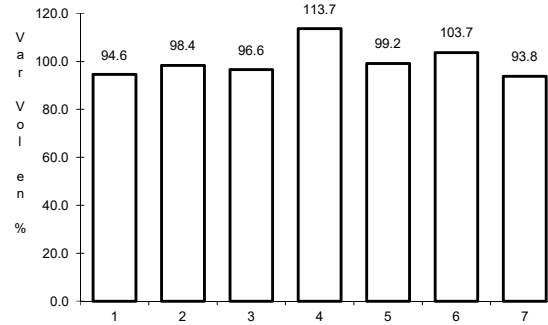
14 CARR: San Marcos - Palizada

CLAVE: 00490

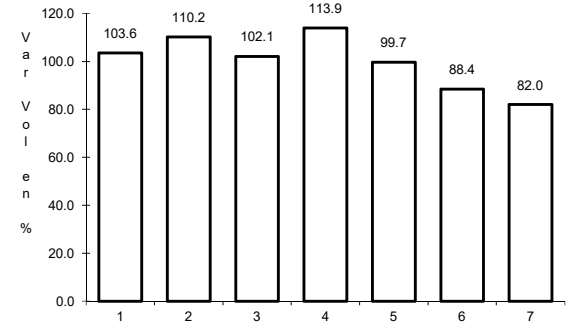
RUTA: MEX-186



Km: 0.00                      Tipo: 3                      Sent: 0



Km: 46.20                      Tipo: 1                      Sent: 0

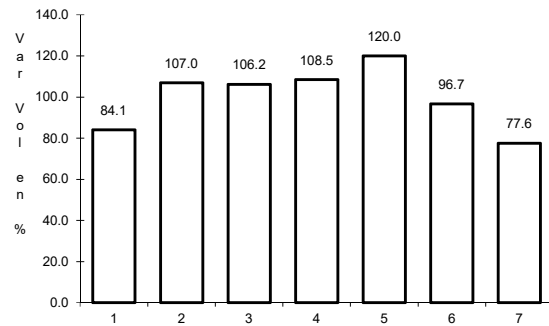


Km: 46.20                      Tipo: 3                      Sent: 0

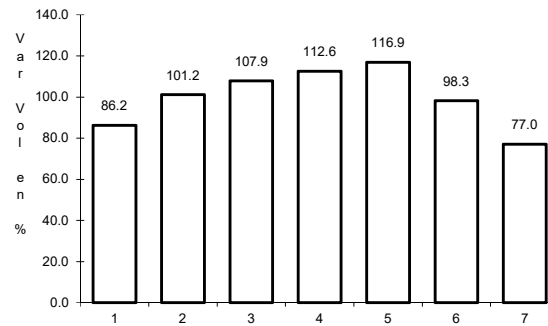
15 CARR: Villahermosa - Cd. del Carmen

CLAVE: 00064

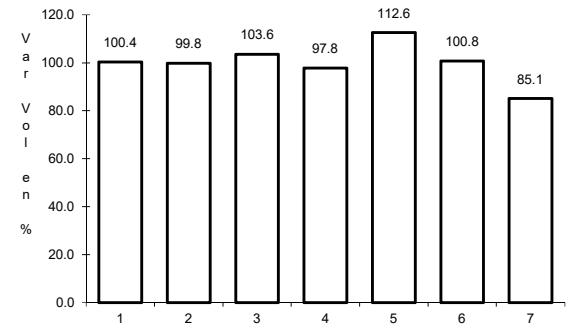
RUTA: MEX-180



Km: 4.30                      Tipo: 3                      Sent: 1



Km: 4.30                      Tipo: 3                      Sent: 2

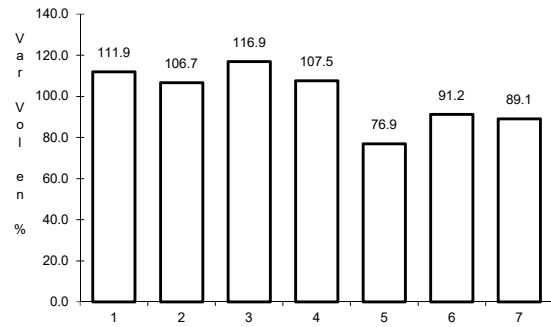


Km: 162.41                      Tipo: 1                      Sent: 0

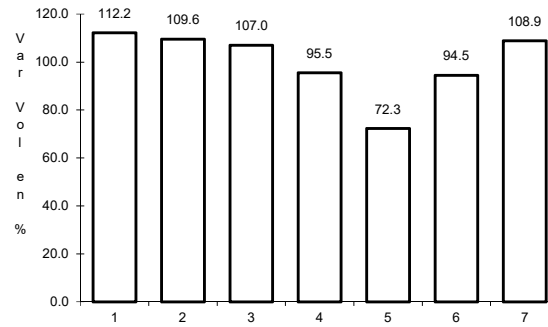
16 CARR: Villahermosa - Francisco Escárcega

CLAVE: 00092

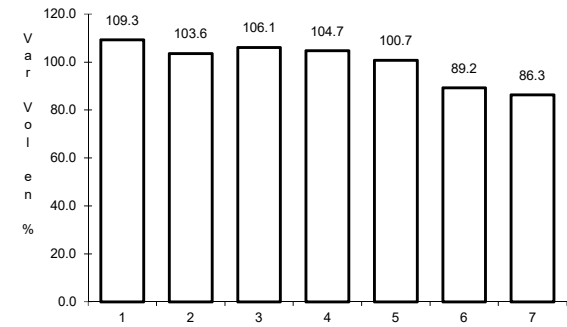
RUTA: MEX-186



Km: 0.00                      Tipo: 3                      Sent: 1



Km: 0.00                      Tipo: 3                      Sent: 2

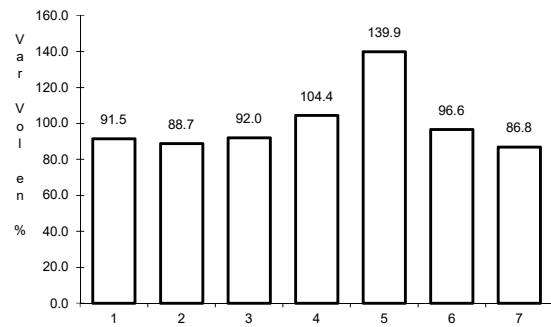


Km: 297.04                      Tipo: 1                      Sent: 0

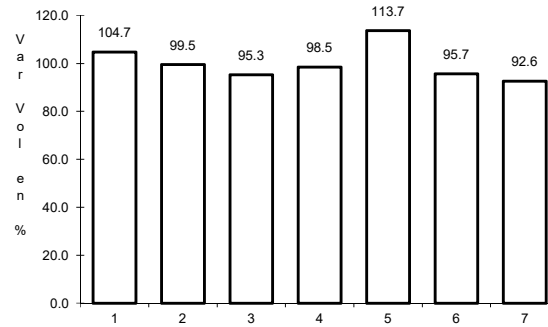
17 CARR: Champotón - Campeche (Cuota)

CLAVE: 04014

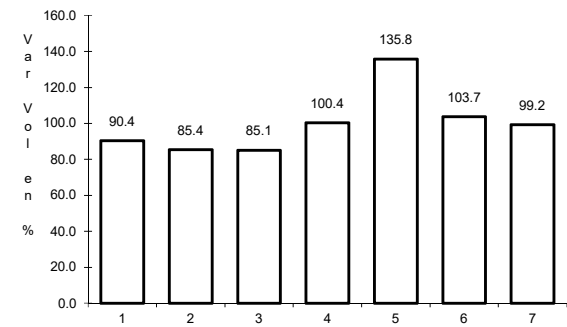
RUTA: MEX-180D



Km: 161.50                      Tipo: 3                      Sent: 1



Km: 161.50                      Tipo: 3                      Sent: 2

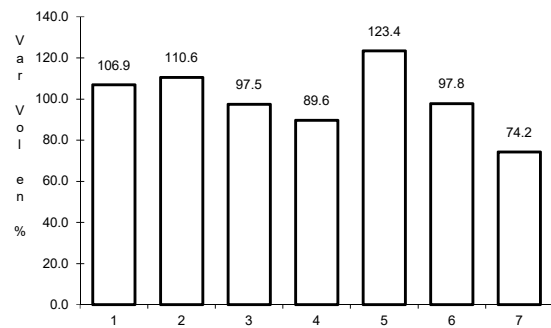


Km: 199.00                      Tipo: 1                      Sent: 1

18 CARR: Hopolchén - Dzibalchén

CLAVE: 04572

RUTA: CAM-261

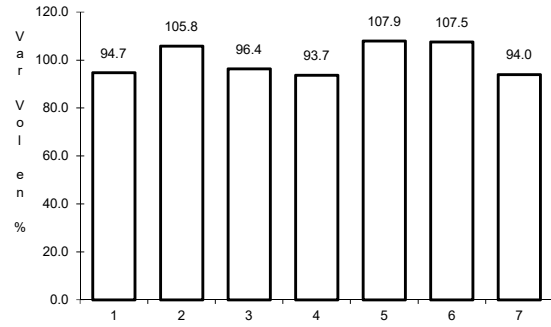


Km: 0.00                      Tipo: 3                      Sent: 0

19 CARR: Libramiento de Becal

CLAVE: 04010

ruta: CAM



Km: 2.30

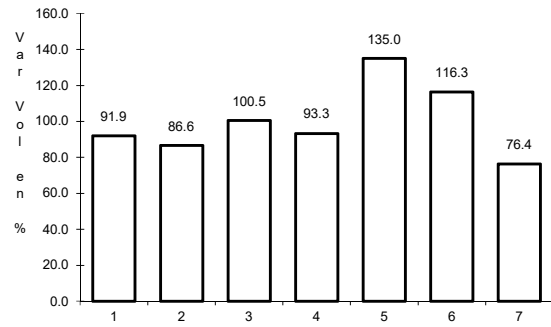
Tipo: 1

Sent: 0

20 CARR: Libramiento de Pomuch

CLAVE: 04579

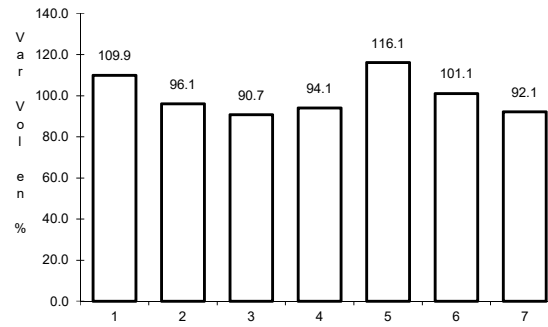
ruta: CAM



Km: 0.00

Tipo: 3

Sent: 1



Km: 0.00

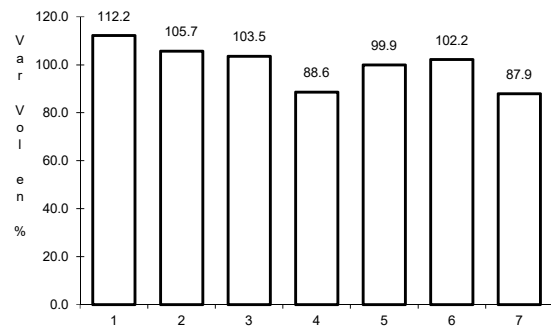
Tipo: 3

Sent: 2

21 CARR: T. C. (Francisco Escárcega - Champotón) - Yohaltún

CLAVE: 04581

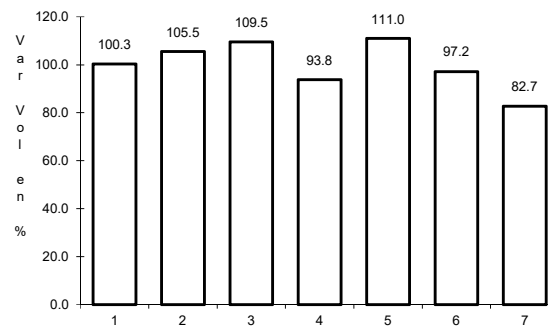
ruta: CAM



Km: 0.00

Tipo: 3

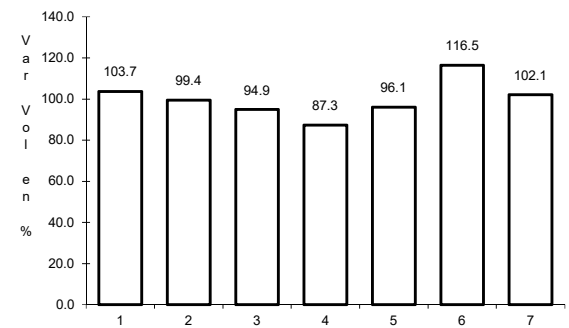
Sent: 0



Km: 36.50

Tipo: 1

Sent: 0



Km: 36.50

Tipo: 3

Sent: 0

