

03 BAJA CALIFORNIA SUR

SECRETARÍA DE COMUNICACIONES Y TRANSPORTES
DIRECCIÓN GENERAL DE SERVICIOS TÉCNICOS



- ① - Número Índice
- Red Federal Libre
- Red Federal Cuota
- Red Federal Integrada por Tramos Libres y de Cuota
- Red Estatal Libre
- Red Estatal Cuota
- Carreteras Integradas por Tramos Federales y Estatales



BAJA CALIFORNIA SUR

---RED FEDERAL LIBRE---

1 Cabo San Lucas - La Paz	MEX-001
2 Cd. Constitución - Puerto San Carlos	MEX-001
3 Cd. Insurgentes - Loreto	MEX-001
4 Ent. Punta Prieta - Guerrero Negro	MEX-001
5 La Paz - Cd. Insurgentes	MEX-001
6 La Paz - Pichilingue	MEX-011
7 Libramiento de Cabo San Lucas	MEX-001
8 Loreto - Santa Rosalía	MEX-001
9 Ramal a Aeropuerto de La Paz	MEX-001
10 Ramal a Aeropuerto de Los Cabos	MEX-001
11 Ramal a Los Paredones	MEX-001
12 Ramal a Miraflores	MEX-001
13 Ramal a Puerto Escondido	MEX-001
14 Ramal a San Ignacio	MEX-001
15 Ramal a Santiago	MEX-001
16 Ramal Aeropista San Ignacio	MEX-001
17 San Pedro - Cabo San Lucas	MEX-019
18 Santa Rosalía - Guerrero Negro	MEX-001

---RED FEDERAL DE CUOTA---

19 Libramiento Cabo San Lucas - San José del Cabo (Cuota)	MEX-D
20 Libramiento San José del Cabo - Aeropuerto Los Cabos (Cuota)	MEX-001D

---RED ESTATAL LIBRE---

21 Cd. Insurgentes - La Purísima	BCS-001
22 Cd. Insurgentes - Pto. Adolfo López Mateos	BCS
23 Ent. Campo Fisher - Punta Abreojos	BCS
24 La Paz - Ensenada de Muertos	BCS-246
25 Libramiento de La Paz	BCS
26 Libramiento Norte de La Paz	BCS
27 Ramal a Benito Juárez	BCS
28 Ramal a Ejido Ley Federal de Aguas Número Cuatro	BCS
29 Ramal a El Carrizal	BCS
30 Ramal a Guerrero Negro	BCS
31 Ramal a La Ribera	BCS
32 Ramal a Melitón Albáñez	BCS
33 Ramal a Santa Catarina	BCS

---CARRETERAS INTEGRADAS POR TRAMOS FEDERALES Y ESTATALES---

34 Ramal a Bahía de Tortugas	MEX-001-BCS
35 Ramal a Ejido Ley Federal de Aguas Número Dos	BCS-MEX-001
36 Ramal a Ley Federal de Aguas Número Cinco	BCS-MEX-001
37 Ramal a San Juan de La Costa	BCS-163-MEX-001

BAJA CALIFORNIA SUR

1 CARR: Cabo San Lucas - La Paz

CLAVE: 03102

RUTA: MEX-001

AÑO: 2017

LUGAR	ESTACION				CLASIFICACION VEHICULAR EN PORCIENTO														COORDENADAS	
	KM	TE	SC	TDPA	M	A	B	C2	C3	T3S2	T3S3	T3S2R4	OTROS	A	B	C	K'	D	LATITUD	LONGITUD
Cabo San Lucas	0.00	3	1	25207	0.6	84.3	0.6	12.4	1.3	0.3	0.1	0.1	0.3	84.9	0.6	14.5	0.086	0.522	22.901943	-109.895376
Cabo San Lucas	0.00	3	2	27536	1.0	82.2	0.6	14.0	1.4	0.3	0.1	0.1	0.3	83.2	0.6	16.2	0.082	0.522	22.901850	-109.895315
El Tule	13.00	3	1	14741	0.8	83.4	0.9	12.9	1.2	0.3	0.1	0.1	0.3	84.2	0.9	14.9	0.090	0.526	22.978806	-109.773354
El Tule	13.00	3	2	16386	1.0	82.0	1.1	13.7	1.4	0.3	0.1	0.1	0.3	83.0	1.1	15.9	0.079	0.526	22.978923	-109.773376
San José del Cabo	33.00	1	1	19978	1.0	85.7	0.8	10.8	1.0	0.2	0.1	0.1	0.3	86.7	0.8	12.5	0.088	0.503	23.030223	-109.715626
San José del Cabo	33.00	1	2	20226	1.0	85.0	0.8	11.3	1.2	0.2	0.1	0.1	0.3	86.0	0.8	13.2	0.097	0.503	23.030211	-109.715544
San José del Cabo	33.00	3	1	22729	0.9	88.5	1.1	7.9	0.8	0.2	0.2	0.1	0.3	89.4	1.1	9.5	0.062	0.503	23.116067	-109.712138
San José del Cabo	33.00	3	2	22463	1.7	86.2	1.1	9.3	0.9	0.2	0.2	0.1	0.3	87.9	1.1	11.0	0.061	0.503	23.116070	-109.712268
T. Der. Santa Catarina	41.00	1	1	15018	1.6	88.3	0.9	7.5	0.8	0.3	0.2	0.1	0.3	89.9	0.9	9.2	0.069	0.537	23.128103	-109.711088
T. Der. Santa Catarina	41.00	1	2	17441	1.4	87.2	1.0	8.5	1.0	0.3	0.2	0.1	0.3	88.6	1.0	10.4	0.061	0.537	23.128127	-109.710959
T. Izq. Aeropuerto	43.46	1	1	11772	1.2	87.3	0.8	8.8	1.0	0.3	0.2	0.1	0.3	88.5	0.8	10.7	0.066	0.510	23.149653	-109.708980
T. Izq. Aeropuerto	43.46	1	2	11317	0.5	87.0	1.0	9.5	1.1	0.3	0.2	0.1	0.3	87.5	1.0	11.5	0.070	0.510	23.149624	-109.708857
Santa Anita	46.00	1	0	7443	1.3	82.2	1.2	12.5	1.4	0.4	0.4	0.2	0.4	83.5	1.2	15.3	0.075	0.506	23.171772	-109.704422
Santa Anita	46.00	3	0	4563	1.3	84.4	1.1	10.3	1.5	0.4	0.5	0.2	0.3	85.7	1.1	13.2	0.092	0.512	23.187732	-109.707758
T. Izq. Miraflores	71.50	3	0	2319	1.0	85.0	1.0	10.2	1.4	0.6	0.4	0.2	0.2	86.0	1.0	13.0	0.092	0.504	23.370982	-109.752108
T. Izq. Santiago	84.00	3	0	2329	0.7	85.3	0.9	10.4	1.5	0.4	0.4	0.2	0.2	86.0	0.9	13.1	0.098	0.500	23.476754	-109.694411
La Cueva	95.20	3	0	2280	1.0	85.0	1.0	10.1	1.5	0.5	0.5	0.2	0.2	86.0	1.0	13.0	0.085	0.509	23.557459	-109.676144
T. Der. Bahía de Las Palmas	110.00	3	0	2703	0.7	85.4	1.0	10.0	1.5	0.6	0.4	0.2	0.2	86.1	1.0	12.9	0.059	0.510	23.684630	-109.725394
San Bartolo	128.50	1	0	1720	1.9	83.6	1.0	10.5	1.4	0.6	0.6	0.2	0.2	85.5	1.0	13.5	0.077	0.506	23.739235	-109.837289
San Antonio	156.00	3	0	1486	1.5	83.5	1.0	11.0	1.4	0.7	0.5	0.2	0.2	85.0	1.0	14.0	0.091	0.503	23.809250	-110.060474
El Triunfo	162.80	1	0	1320	1.5	82.7	0.9	11.1	1.4	1.1	0.7	0.4	0.2	84.2	0.9	14.9	0.089	0.502	23.806238	-110.102474
El Triunfo	162.80	3	0	1334	1.6	83.1	0.8	10.7	1.2	1.2	0.6	0.6	0.2	84.7	0.8	14.5	0.098	0.502	23.796381	-110.111346
T. Izq. Todos Santos	184.40	1	0	1519	1.2	82.4	1.2	11.0	1.3	1.1	0.8	0.8	0.2	83.6	1.2	15.2	0.093	0.561	23.882151	-110.244965
T. Izq. Todos Santos	184.40	3	1	3764	0.5	81.5	1.4	10.3	1.5	3.0	0.7	1.0	0.1	82.0	1.4	16.6	0.110	0.502	23.896021	-110.258120
T. Izq. Todos Santos	184.40	3	2	3796	0.4	84.0	1.1	8.2	1.5	2.8	0.8	1.1	0.1	84.4	1.1	14.5	0.092	0.502	23.896050	-110.257965
San Pedro	191.00	1	1	3914	0.5	82.8	1.0	9.8	1.5	2.6	0.8	0.9	0.1	83.3	1.0	15.7	0.106	0.515	23.917215	-110.261230
San Pedro	191.00	1	2	3685	0.5	82.8	1.0	9.7	1.6	2.8	0.8	0.7	0.1	83.3	1.0	15.7	0.080	0.515	23.917218	-110.261397
San Pedro	191.00	3	1	4563	0.5	84.5	1.0	8.3	1.6	2.5	0.6	0.9	0.1	85.0	1.0	14.0	0.128	0.502	23.945379	-110.278787
San Pedro	191.00	3	2	4534	0.4	83.0	1.2	9.6	1.6	2.5	0.7	0.9	0.1	83.4	1.2	15.4	0.111	0.502	23.945437	-110.278656
Limite Zona Urbana de La Paz	211.00	1	1	6830	1.5	84.0	2.1	9.0	1.1	1.3	0.5	0.4	0.1	85.5	2.1	12.4	0.097	0.504	24.031010	-110.297457
Limite Zona Urbana de La Paz	211.00	1	2	6725	2.1	82.1	2.3	10.2	1.1	1.2	0.4	0.5	0.1	84.2	2.3	13.5	0.091	0.504	24.031010	-110.297511
La Paz	213.00																			

BAJA CALIFORNIA SUR

2 CARR: Cd. Constitución - Puerto San Carlos

CLAVE: 03231

RUTA: MEX-001

AÑO: 2017

LUGAR	ESTACION				CLASIFICACION VEHICULAR EN PORCIENTO										COORDENADAS					
	KM	TE	SC	TDPA	M	A	B	C2	C3	T3S2	T3S3	T3S2R4	OTROS	A	B	C	K'	D	LATITUD	LONGITUD
Cd. Constitución	0.00	3	0	2633	1.0	86.1	0.7	9.4	1.5	1.1	0.2	0.0	0.0	87.1	0.7	12.2	0.083	0.505	25.039752	-111.690748
T. Der. Benito Juárez	10.00	1	0	1958	0.6	84.6	0.8	10.8	1.9	1.0	0.3	0.0	0.0	85.2	0.8	14.0	0.092	0.503	25.040416	-111.758349
T. Der. Benito Juárez	10.00	3	0	1360	0.8	80.2	1.0	14.4	2.0	1.2	0.3	0.0	0.1	81.0	1.0	18.0	0.080	0.502	25.031970	-111.777710
Puerto San Carlos	57.70																			

3 CARR: Cd. Insurgentes - Loreto

CLAVE: 03092

RUTA: MEX-001

AÑO: 2017

LUGAR	ESTACION				CLASIFICACION VEHICULAR EN PORCIENTO										COORDENADAS					
	KM	TE	SC	TDPA	M	A	B	C2	C3	T3S2	T3S3	T3S2R4	OTROS	A	B	C	K'	D	LATITUD	LONGITUD
Cd. Insurgentes	0.00	3	0	3075	1.0	78.8	1.4	10.7	1.8	5.2	0.6	0.5	0.0	79.8	1.4	18.8	0.074	0.500	25.260550	-111.764440
T. Izq. Ley Federal de Aguas Número Uno	7.00	3	0	1470	1.2	72.4	2.4	11.1	2.2	8.4	1.2	0.9	0.2	73.6	2.4	24.0	0.069	0.513	25.334490	-111.632128
T. Der. Ley Federal de Aguas Número Dos	17.00	3	0	1793	1.1	72.8	2.7	12.0	2.0	7.5	1.1	0.7	0.1	73.9	2.7	23.4	0.069	0.509	25.317275	-111.658137
T. Der. Puerto Agua Verde	65.00	1	0	1449	0.7	73.1	2.5	11.0	2.0	8.4	1.4	0.7	0.2	73.8	2.5	23.7	0.072	0.509	25.606479	-111.319087
T. Der. Puerto Agua Verde	65.00	3	0	1406	0.9	71.9	2.6	10.3	2.4	9.4	1.3	1.0	0.2	72.8	2.6	24.6	0.072	0.529	25.610709	-111.311855
El Ligüi	84.50	1	0	1965	0.8	71.8	1.8	12.6	1.8	9.5	0.9	0.7	0.1	72.6	1.8	25.6	0.091	0.516	25.725739	-111.265310
T. Der. Puerto Escondido	95.40	1	0	1821	0.6	73.6	2.9	11.6	2.1	7.3	1.0	0.8	0.1	74.2	2.9	22.9	0.074	0.524	25.799978	-111.327217
T. Der. Puerto Escondido	95.40	3	0	1777	0.8	70.6	2.9	15.3	2.2	6.1	1.3	0.7	0.1	71.4	2.9	25.7	0.077	0.508	25.804262	-111.328775
Nopoló	109.50	1	0	2237	1.1	73.0	2.5	14.8	2.0	5.0	0.8	0.7	0.1	74.1	2.5	23.4	0.078	0.507	25.935341	-111.368851
T. Der. Aeropuerto de Loreto	117.30	1	0	3381	0.7	78.9	1.5	12.5	1.4	3.9	0.6	0.4	0.1	79.6	1.5	18.9	0.080	0.514	25.984491	-111.367082
T. Der. Loreto	120.00	1	0	3850	1.1	80.4	1.2	11.9	1.7	3.0	0.4	0.3	0.0	81.5	1.2	17.3	0.084	0.532	26.002336	-111.366445

4 CARR: Ent. Punta Prieta - Guerrero Negro

CLAVE: 00321

RUTA: MEX-001

AÑO: 2017

LUGAR	ESTACION				CLASIFICACION VEHICULAR EN PORCIENTO										COORDENADAS					
	KM	TE	SC	TDPA	M	A	B	C2	C3	T3S2	T3S3	T3S2R4	OTROS	A	B	C	K'	D	LATITUD	LONGITUD
Parador Punta Prieta	0.00	3	0	705	1.7	56.3	2.4	14.1	2.6	19.8	2.4	0.6	0.1	58.0	2.4	39.6	0.101	0.526	29.042928	-114.152402
Rosarito	50.60	3	0	975	1.1	56.8	2.6	14.7	1.9	20.3	2.1	0.4	0.1	57.9	2.6	39.5	0.078	0.532	28.624484	-114.031691
Tanatán	70.10	3	0	929	1.3	59.2	2.7	13.2	2.1	17.9	2.9	0.5	0.2	60.5	2.7	36.8	0.078	0.530	28.494071	-114.015219
Tampico	105.00	1	0	1127	2.1	65.3	2.2	13.0	2.2	12.7	2.2	0.2	0.1	67.4	2.2	30.4	0.082	0.505	28.219591	-113.999924
Lim. Edos. Term. B.C. Ppia. B.C.S. (Paralelo 28)	128.56																			
Ent. Guerrero Negro	130.00	1	0	1843	1.3	75.4	1.5	9.0	1.3	10.3	0.9	0.2	0.1	76.7	1.5	21.8	0.073	0.516	27.971853	-114.013692

BAJA CALIFORNIA SUR

5 CARR: La Paz - Cd. Insurgentes

CLAVE: 03101

RUTA: MEX-001

AÑO: 2017

LUGAR	ESTACION				CLASIFICACION VEHICULAR EN PORCIENTO													COORDENADAS		
	KM	TE	SC	TDPA	M	A	B	C2	C3	T3S2	T3S3	T3S2R4	OTROS	A	B	C	K'	D	LATITUD	LONGITUD
La Paz	0.00	3	1	14426	1.4	87.5	0.5	7.6	0.6	0.8	1.3	0.1	0.2	88.9	0.5	10.6	0.083	0.532	24.120819	-110.337630
La Paz	0.00	3	2	12669	1.5	88.9	0.4	5.8	0.4	1.0	1.5	0.1	0.4	90.4	0.4	9.2	0.085	0.532	24.120723	-110.337463
T. Izq. Aeropuerto	8.90	1	1	11571	1.8	85.1	1.0	9.3	1.2	1.1	0.4	0.1	0.0	86.9	1.0	12.1	0.078	0.505	24.108946	-110.358759
T. Izq. Aeropuerto	8.90	1	2	11795	1.8	86.2	0.8	7.2	1.1	1.0	1.5	0.1	0.3	88.0	0.8	11.2	0.074	0.505	24.109088	-110.358832
T. Izq. Aeropuerto	8.90	3	1	9020	1.9	85.6	0.9	7.8	1.8	1.4	0.5	0.1	0.0	87.5	0.9	11.6	0.076	0.516	24.104520	-110.369129
T. Izq. Aeropuerto	8.90	3	2	9598	1.8	88.8	0.6	5.9	1.3	1.2	0.3	0.1	0.0	90.6	0.6	8.8	0.069	0.516	24.104610	-110.369180
El Centenario	13.50	3	1	3758	1.3	83.1	0.9	9.1	2.0	2.6	0.6	0.3	0.1	84.4	0.9	14.7	0.094	0.521	24.112117	-110.422413
El Centenario	13.50	3	2	4092	1.3	84.3	0.8	8.3	2.0	2.4	0.6	0.3	0.0	85.6	0.8	13.6	0.090	0.521	24.112120	-110.422288
T. Der. San Juan de La Costa	17.00	1	0	5752	1.4	80.4	1.2	11.4	2.3	2.5	0.5	0.2	0.1	81.8	1.2	17.0	0.078	0.506	24.118060	-110.432099
T. Der. San Juan de La Costa	17.00	3	0	2532	0.5	70.6	2.0	13.1	4.6	6.9	1.3	0.9	0.1	71.1	2.0	26.9	0.090	0.503	24.120183	-110.447298
T. Der. Alfredo V. Bonfil	24.00	3	0	2872	0.5	70.7	2.0	12.5	5.1	6.7	1.3	1.1	0.1	71.2	2.0	26.8	0.079	0.502	24.087966	-110.523509
T. Izq. El Conejo	79.60	1	0	2445	0.6	70.7	2.5	12.8	2.2	8.4	1.7	1.0	0.1	71.3	2.5	26.2	0.077	0.506	24.178982	-110.940574
T. Izq. El Conejo	79.60	3	0	2076	0.5	70.8	2.6	12.7	2.2	8.5	1.5	1.0	0.2	71.3	2.6	26.1	0.090	0.513	24.194197	-110.945801
El Ciento Veintiocho	118.20	1	0	2263	0.5	72.5	2.3	11.2	2.3	8.3	1.7	1.0	0.2	73.0	2.3	24.7	0.074	0.512	24.457848	-111.189824
Santa Rita	156.70	1	0	2423	1.1	76.3	1.9	8.9	2.3	7.2	1.3	0.8	0.2	77.4	1.9	20.7	0.078	0.528	24.588780	-111.466307
Santa Rita	156.70	3	0	2298	0.5	72.0	2.3	12.8	2.2	7.4	1.8	0.9	0.1	72.5	2.3	25.2	0.081	0.513	24.596338	-111.472546
Cd. Constitución	213.00	1	0	4274	0.8	79.7	1.2	11.0	1.7	4.2	0.8	0.5	0.1	80.5	1.2	18.3	0.094	0.511	25.006786	-111.661310
Cd. Constitución	213.00	3	1	4219	1.0	85.2	0.6	9.1	1.3	2.3	0.4	0.1	0.0	86.2	0.6	13.2	0.102	0.509	25.046490	-111.679735
Cd. Constitución	213.00	3	2	4369	1.0	83.5	0.6	10.9	1.4	2.1	0.4	0.1	0.0	84.5	0.6	14.9	0.095	0.509	25.046479	-111.679776
T. Der. Ley Federal de Aguas Número Cuatro	229.00	1	1	2776	0.5	81.7	0.9	10.9	1.2	3.9	0.6	0.3	0.0	82.2	0.9	16.9	0.073	0.514	25.195029	-111.748474
T. Der. Ley Federal de Aguas Número Cuatro	229.00	1	2	2627	0.4	82.2	1.1	10.9	1.1	3.2	0.7	0.3	0.1	82.6	1.1	16.3	0.076	0.514	25.195008	-111.748374
Cd. Insurgentes	236.50	1	1	2572	0.5	81.2	0.9	11.8	1.1	3.6	0.5	0.3	0.1	81.7	0.9	17.4	0.081	0.506	25.235300	-111.767001
Cd. Insurgentes	236.50	1	2	2638	0.5	85.2	0.9	8.0	1.1	3.5	0.5	0.3	0.0	85.7	0.9	13.4	0.076	0.506	25.235247	-111.767078

6 CARR: La Paz - Pichilingue

CLAVE: 03230

RUTA: MEX-011

AÑO: 2017

LUGAR	ESTACION				CLASIFICACION VEHICULAR EN PORCIENTO													COORDENADAS		
	KM	TE	SC	TDPA	M	A	B	C2	C3	T3S2	T3S3	T3S2R4	OTROS	A	B	C	K'	D	LATITUD	LONGITUD
La Paz	0.00	3	1	6846	2.2	91.3	0.1	5.7	0.3	0.1	0.3	0.0	0.0	93.5	0.1	6.4	0.095	0.509	24.172666	-110.306357
La Paz	0.00	3	2	7095	2.4	91.1	0.1	5.4	0.2	0.3	0.4	0.0	0.1	93.5	0.1	6.4	0.119	0.509	24.172668	-110.306435
Escuela Técnica Pesquera	9.30	3	0	1956	2.2	79.1	0.4	6.6	5.1	2.5	2.6	1.4	0.1	81.3	0.4	18.3	0.178	0.523	24.231748	-110.306933
Pichilingue	17.00	1	0	2814	2.1	80.3	0.8	4.3	3.2	6.7	1.2	1.2	0.2	82.4	0.8	16.8	0.221	0.525	24.270563	-110.319870

BAJA CALIFORNIA SUR

7 CARR: Libramiento de Cabo San Lucas

CLAVE: 03100

RUTA: MEX-001

AÑO: 2017

LUGAR	ESTACION				CLASIFICACION VEHICULAR EN PORCIENTO										COORDENADAS					
	KM	TE	SC	TDPA	M	A	B	C2	C3	T3S2	T3S3	T3S2R4	OTROS	A	B	C	K'	D	LATITUD	LONGITUD
T. C. San Pedro - Cabo San Lucas	0.00	3	1	16457	2.4	86.6	0.5	7.6	1.9	0.5	0.4	0.0	0.1	89.0	0.5	10.5	0.072	0.572	22.899800	-109.922726
T. C. San Pedro - Cabo San Lucas	0.00	3	2	22000	2.2	88.0	0.5	6.6	1.6	0.4	0.6	0.0	0.1	90.2	0.5	9.3	0.082	0.572	22.899903	-109.922807
T. C. Cabo San Lucas - La Paz	3.00	1	1	20544	1.8	87.0	0.6	7.7	1.9	0.4	0.5	0.0	0.1	88.8	0.6	10.6	0.081	0.517	22.900047	-109.909373
T. C. Cabo San Lucas - La Paz	3.00	1	2	22024	2.0	85.9	0.8	8.5	1.8	0.4	0.5	0.0	0.1	87.9	0.8	11.3	0.090	0.517	22.899949	-109.909411

8 CARR: Loreto - Santa Rosalía

CLAVE: 03393

RUTA: MEX-001

AÑO: 2017

LUGAR	ESTACION				CLASIFICACION VEHICULAR EN PORCIENTO										COORDENADAS					
	KM	TE	SC	TDPA	M	A	B	C2	C3	T3S2	T3S3	T3S2R4	OTROS	A	B	C	K'	D	LATITUD	LONGITUD
Loreto	0.00	3	0	1565	1.0	70.8	1.8	13.3	2.6	8.6	1.0	0.8	0.1	71.8	1.8	26.4	0.075	0.517	26.038679	-111.364354
Rosarito	63.00	1	0	1027	2.6	68.8	3.7	11.4	2.5	9.1	0.8	0.8	0.3	71.4	3.7	24.9	0.070	0.509	26.448955	-111.644421
Rosarito	63.00	3	0	1119	1.7	68.6	4.1	12.3	1.4	9.8	0.7	0.7	0.7	70.3	4.1	25.6	0.067	0.506	26.460948	-111.655823
Mulegé	135.00	1	0	2757	1.2	78.3	2.0	11.2	1.3	4.9	0.5	0.5	0.1	79.5	2.0	18.5	0.057	0.584	26.890457	-111.978578
Mulegé	135.00	3	0	1768	1.2	73.2	2.4	13.3	1.5	7.0	0.7	0.7	0.0	74.4	2.4	23.2	0.066	0.504	26.890643	-111.995151
T. Izq. Santa Águeda	189.00	1	0	2423	0.8	77.6	1.9	13.2	1.1	4.6	0.5	0.2	0.1	78.4	1.9	19.7	0.076	0.546	27.265792	-112.241920
T. Izq. Santa Águeda	189.00	3	0	2347	0.9	78.7	1.7	11.3	1.6	4.6	0.7	0.4	0.1	79.6	1.7	18.7	0.078	0.522	27.278484	-112.244496
Santa Rosalía	197.00	1	0	3643	1.2	79.0	1.2	14.6	0.9	2.5	0.3	0.2	0.1	80.2	1.2	18.6	0.074	0.578	27.317483	-112.244262

9 CARR: Ramal a Aeropuerto de La Paz

CLAVE: 03396

RUTA: MEX-001

AÑO: 2017

LUGAR	ESTACION				CLASIFICACION VEHICULAR EN PORCIENTO										COORDENADAS					
	KM	TE	SC	TDPA	M	A	B	C2	C3	T3S2	T3S3	T3S2R4	OTROS	A	B	C	K'	D	LATITUD	LONGITUD
T. C. La Paz - Cd. Insurgentes	0.00	3	1	2831	3.8	87.2	0.4	7.6	0.4	0.3	0.1	0.1	0.1	91.0	0.4	8.6	0.135	0.502	24.094068	-110.367709
T. C. La Paz - Cd. Insurgentes	0.00	3	2	2811	3.4	87.8	0.4	7.4	0.4	0.3	0.1	0.1	0.1	91.2	0.4	8.4	0.121	0.502	24.094053	-110.367596
Aeropuerto	3.44																			

10 CARR: Ramal a Aeropuerto de Los Cabos

CLAVE: 03394

RUTA: MEX-001

AÑO: 2017

LUGAR	ESTACION				CLASIFICACION VEHICULAR EN PORCIENTO										COORDENADAS					
	KM	TE	SC	TDPA	M	A	B	C2	C3	T3S2	T3S3	T3S2R4	OTROS	A	B	C	K'	D	LATITUD	LONGITUD
T. C. Cabo San Lucas - La Paz	0.00	3	0	9553	0.9	84.9	0.5	13.4	0.1	0.1	0.0	0.1	0.0	85.8	0.5	13.7	0.112	0.507	23.159219	-109.711595
Aeropuerto Los Cabos	1.00																			

BAJA CALIFORNIA SUR

11 CARR: Ramal a Los Paredones

CLAVE: 03407

RUTA: MEX-001

AÑO: 2017

LUGAR	ESTACION				CLASIFICACION VEHICULAR EN PORCIENTO														COORDENADAS	
	KM	TE	SC	TDPA	M	A	B	C2	C3	T3S2	T3S3	T3S2R4	OTROS	A	B	C	K'	D	LATITUD	LONGITUD
T. C. Cd. Santa Rosalía - Guerrero Negro	0.00	3	0	980	3.4	86.2	0.6	9.5	0.2	0.1	0.0	0.0	0.0	89.6	0.6	9.8	0.083	0.508	27.300487	-112.900537
Paredones	1.40																			

12 CARR: Ramal a Miraflores

CLAVE: 03407

RUTA: MEX-001

AÑO: 2017

LUGAR	ESTACION				CLASIFICACION VEHICULAR EN PORCIENTO														COORDENADAS	
	KM	TE	SC	TDPA	M	A	B	C2	C3	T3S2	T3S3	T3S2R4	OTROS	A	B	C	K'	D	LATITUD	LONGITUD
T. C. Cabo San Lucas - La Paz	0.00	3	1	1056	0.4	89.7	0.2	9.3	0.3	0.0	0.1	0.0	0.0	90.1	0.2	9.7	0.079	0.515	23.370722	-109.753935
T. C. Cabo San Lucas - La Paz	0.00	3	2	1120	0.3	94.3	0.1	5.1	0.2	0.0	0.0	0.0	0.0	94.6	0.1	5.3	0.081	0.515	23.370790	-109.753919
Miraflores	2.20																			

13 CARR: Ramal a Puerto Escondido

CLAVE: 03407

RUTA: MEX-001

AÑO: 2017

LUGAR	ESTACION				CLASIFICACION VEHICULAR EN PORCIENTO														COORDENADAS	
	KM	TE	SC	TDPA	M	A	B	C2	C3	T3S2	T3S3	T3S2R4	OTROS	A	B	C	K'	D	LATITUD	LONGITUD
T. C. Cd. Insurgentes - Loreto	0.00	3	0	286	3.9	70.0	0.3	24.5	1.2	0.0	0.1	0.0	0.0	73.9	0.3	25.8	0.101	0.502	25.803328	-111.325832
Puerto Escondido	2.50																			

14 CARR: Ramal a San Ignacio

CLAVE: 03413

RUTA: MEX-001

AÑO: 2017

LUGAR	ESTACION				CLASIFICACION VEHICULAR EN PORCIENTO														COORDENADAS	
	KM	TE	SC	TDPA	M	A	B	C2	C3	T3S2	T3S3	T3S2R4	OTROS	A	B	C	K'	D	LATITUD	LONGITUD
T. C. Santa Rosalía - Guerrero Negro	0.00	3	0	2051	2.3	88.7	0.4	7.9	0.5	0.1	0.1	0.0	0.0	91.0	0.4	8.6	0.071	0.506	27.300343	-112.893902
San Ignacio	2.70																			

15 CARR: Ramal a Santiago

CLAVE: 03051

RUTA: MEX-001

AÑO: 2017

LUGAR	ESTACION				CLASIFICACION VEHICULAR EN PORCIENTO														COORDENADAS	
	KM	TE	SC	TDPA	M	A	B	C2	C3	T3S2	T3S3	T3S2R4	OTROS	A	B	C	K'	D	LATITUD	LONGITUD
T. C. Cabo San Lucas - La Paz	0.00	3	1	639	0.5	89.9	0.4	8.8	0.4	0.0	0.0	0.0	0.0	90.4	0.4	9.2	0.105	0.503	23.474314	-109.695776
T. C. Cabo San Lucas - La Paz	0.00	3	2	632	0.4	91.1	0.4	7.5	0.6	0.0	0.0	0.0	0.0	91.5	0.4	8.1	0.092	0.503	23.474242	-109.695817
Santiago	2.30																			

BAJA CALIFORNIA SUR

16 CARR: Ramal Aeropista San Ignacio

CLAVE: 03053

RUTA: MEX-001

AÑO: 2017

LUGAR	ESTACION				CLASIFICACION VEHICULAR EN PORCIENTO													COORDENADAS		
	KM	TE	SC	TDPA	M	A	B	C2	C3	T3S2	T3S3	T3S2R4	OTROS	A	B	C	K'	D	LATITUD	LONGITUD
T.C. Cd. Santa Rosalia - Guerrero Negro	0.00	3	0	2	0.0	100.0	0.0	0.0	0.0	0.0	0.0	0.0	0.0	100.0	0.0	0.0	0.200	0.500	27.293691	-112.937849
Aeropista San Ignacio	1.00																			

17 CARR: San Pedro - Cabo San Lucas

CLAVE: 03003

RUTA: MEX-019

AÑO: 2017

LUGAR	ESTACION				CLASIFICACION VEHICULAR EN PORCIENTO													COORDENADAS		
	KM	TE	SC	TDPA	M	A	B	C2	C3	T3S2	T3S3	T3S2R4	OTROS	A	B	C	K'	D	LATITUD	LONGITUD
T. C. Cabo San Lucas - La Paz	0.00	3	1	3091	0.5	84.4	0.9	6.7	2.1	3.1	0.9	1.3	0.1	84.9	0.9	14.2	0.102	0.504	23.879078	-110.254157
T. C. Cabo San Lucas - La Paz	0.00	3	2	3042	0.4	83.1	1.2	8.1	2.0	2.9	0.9	1.2	0.2	83.5	1.2	15.3	0.102	0.504	23.879036	-110.254058
T. Der. Melitón Albáñez	16.00	1	1	2861	0.4	85.4	0.9	6.3	1.7	3.0	0.9	1.3	0.1	85.8	0.9	13.3	0.101	0.516	23.660204	-110.223186
T. Der. Melitón Albáñez	16.00	1	2	2685	0.3	80.7	1.6	9.5	1.7	3.8	0.9	1.4	0.1	81.0	1.6	17.4	0.118	0.516	23.660231	-110.223315
T. Der. Melitón Albáñez	16.00	3	1	2752	0.4	79.8	1.6	10.9	1.6	3.0	1.2	1.3	0.2	80.2	1.6	18.2	0.114	0.514	23.643128	-110.226653
T. Der. Melitón Albáñez	16.00	3	2	2906	0.4	81.4	1.6	9.4	1.7	3.2	0.8	1.3	0.2	81.8	1.6	16.6	0.111	0.514	23.643145	-110.226793
Todos Santos	52.00	1	0	3606	0.9	87.0	0.8	9.7	1.1	0.3	0.2	0.0	0.0	87.9	0.8	11.3	0.073	0.507	23.468755	-110.216443
Todos Santos	52.00	3	0	5074	0.6	90.2	0.7	7.9	0.5	0.1	0.0	0.0	0.0	90.8	0.7	8.5	0.073	0.501	23.442068	-110.220711
El Pescadero	62.00	1	1	3552	0.6	86.1	0.5	8.3	0.9	1.4	0.9	0.7	0.6	86.7	0.5	12.8	0.096	0.502	23.379752	-110.181731
El Pescadero	62.00	1	2	3522	0.6	84.0	1.0	9.1	1.2	2.4	0.6	1.0	0.1	84.6	1.0	14.4	0.113	0.502	23.379816	-110.181612
El Pescadero	62.00	3	1	2915	0.4	83.3	1.2	8.9	1.4	2.7	0.8	1.2	0.1	83.7	1.2	15.1	0.114	0.505	23.349004	-110.162011
El Pescadero	62.00	3	2	2862	0.5	83.3	1.3	8.9	1.2	2.5	0.9	1.1	0.3	83.8	1.3	14.9	0.122	0.505	23.349045	-110.161897
Migriño	102.50	1	1	2123	0.3	80.9	1.6	8.9	2.4	3.2	1.1	1.5	0.1	81.2	1.6	17.2	0.154	0.507	23.064814	-110.097714
Migriño	102.50	1	2	2187	0.3	81.3	1.5	8.8	2.3	3.4	0.9	1.4	0.1	81.6	1.5	16.9	0.142	0.507	23.064791	-110.097819
Cabo San Lucas	131.00	1	1	8778	0.9	89.6	0.5	6.8	1.0	0.6	0.4	0.1	0.1	90.5	0.5	9.0	0.087	0.505	22.921692	-109.974996
Cabo San Lucas	131.00	1	2	8957	1.1	89.3	0.4	7.2	1.0	0.6	0.3	0.0	0.1	90.4	0.4	9.2	0.060	0.505	22.921788	-109.974953

18 CARR: Santa Rosalía - Guerrero Negro

CLAVE: 03095

RUTA: MEX-001

AÑO: 2017

LUGAR	ESTACION				CLASIFICACION VEHICULAR EN PORCIENTO													COORDENADAS		
	KM	TE	SC	TDPA	M	A	B	C2	C3	T3S2	T3S3	T3S2R4	OTROS	A	B	C	K'	D	LATITUD	LONGITUD
Santa Rosalía	0.00	3	0	3792	2.2	73.4	2.6	15.7	2.4	2.9	0.5	0.2	0.1	75.6	2.6	21.8	0.076	0.517	27.361095	-112.280042
Cuesta Infernillo	12.00	1	0	1140	0.8	66.7	2.0	13.9	2.3	12.0	1.5	0.6	0.2	67.5	2.0	30.5	0.089	0.517	27.391678	-112.338247
Cuesta Infernillo	12.00	3	0	1235	1.9	69.9	2.0	12.9	2.6	9.0	1.1	0.3	0.3	71.8	2.0	26.2	0.075	0.520	27.387689	-112.362305
T. Izq. San Ignacio	73.60	1	0	2726	2.0	77.9	1.0	12.6	1.1	4.7	0.4	0.2	0.1	79.9	1.0	19.1	0.071	0.560	27.301699	-112.887535
T. Izq. San Ignacio	73.60	3	0	1773	1.6	77.6	1.6	12.7	1.6	4.4	0.2	0.1	0.2	79.2	1.6	19.2	0.085	0.632	27.302074	-112.895747
T. Izq. Punta Abreojos	95.70	1	0	1199	1.2	68.5	2.2	12.2	2.2	11.5	1.4	0.6	0.2	69.7	2.2	28.1	0.068	0.527	27.328140	-113.116091
T. Izq. Punta Abreojos	95.70	3	0	1216	0.9	66.4	2.2	13.4	3.1	12.2	1.0	0.6	0.2	67.3	2.2	30.5	0.067	0.530	27.330384	-113.117133

BAJA CALIFORNIA SUR

18 CARR: Santa Rosalía - Guerrero Negro

CLAVE: 03095

RUTA: MEX-001

AÑO: 2017

LUGAR	ESTACION				CLASIFICACION VEHICULAR EN PORCIENTO										COORDENADAS					
	KM	TE	SC	TDPA	M	A	B	C2	C3	T3S2	T3S3	T3S2R4	OTROS	A	B	C	K'	D	LATITUD	LONGITUD
Los Ángeles	117.90	1	0	1546	1.1	71.0	2.6	11.7	2.7	9.5	0.9	0.4	0.1	72.1	2.6	25.3	0.067	0.512	27.438869	-113.270058
Los Ángeles	117.90	3	0	1619	1.0	69.2	2.5	13.5	2.9	9.4	1.1	0.3	0.1	70.2	2.5	27.3	0.074	0.514	27.492583	-113.300417
T. Izq. Vizcaino	144.00	1	0	2740	1.4	75.5	2.7	11.0	2.4	6.2	0.5	0.2	0.1	76.9	2.7	20.4	0.081	0.510	27.632369	-113.377587
T. Izq. Vizcaino	144.00	3	0	1782	1.6	62.2	2.8	15.5	3.3	12.6	1.5	0.4	0.1	63.8	2.8	33.4	0.073	0.507	27.661327	-113.391555
T. Der. El Arco	189.00	1	0	1348	1.8	70.7	1.9	10.9	2.6	10.2	1.5	0.2	0.2	72.5	1.9	25.6	0.079	0.523	27.851941	-113.765087
T. Der. El Arco	189.00	3	0	1395	1.9	67.4	2.2	11.0	2.3	13.3	1.4	0.4	0.1	69.3	2.2	28.5	0.074	0.506	27.857240	-113.778829
Ent. Guerrero Negro	216.85	1	0	1597	0.9	71.1	1.7	12.6	1.9	10.6	0.9	0.2	0.1	72.0	1.7	26.3	0.085	0.520	27.965126	-114.010281

19 CARR: Libramiento Cabo San Lucas - San José del Cabo (Cuota)

CLAVE:

RUTA: MEX-D

AÑO: 2017

LUGAR	ESTACION				CLASIFICACION VEHICULAR EN PORCIENTO										COORDENADAS					
	KM	TE	SC	TDPA	M	A	B	C2	C3	T3S2	T3S3	T3S2R4	OTROS	A	B	C	K'	D	LATITUD	LONGITUD
T. C. San Pedro - Cabo San Lucas	0.00	3	0	900	0.7	86.4	0.5	8.3	0.9	1.3	0.6	1.1	0.2	87.1	0.5	12.4	0.114	0.536	22.949750	-109.982167
T. C. Libramiento San José Del Cabo	30.88	1	0	2228	0.5	88.4	0.3	9.2	0.4	0.6	0.2	0.4	0.0	88.9	0.3	10.8	0.129	0.551	23.061917	-109.753583

20 CARR: Libramiento San José del Cabo - Aeropuerto Los Cabos (Cuota)

CLAVE: 03392

RUTA: MEX-001D

AÑO: 2017

LUGAR	ESTACION				CLASIFICACION VEHICULAR EN PORCIENTO										COORDENADAS					
	KM	TE	SC	TDPA	M	A	B	C2	C3	T3S2	T3S3	T3S2R4	OTROS	A	B	C	K'	D	LATITUD	LONGITUD
Aeropuerto de Los Cabos	100.00																			
Caseta de Cobro Aeropuerto los Cabos	105.10	2	0	6580	0.2	97.4	1.3	0.4	0.1	0.2	0.1	0.3	0.0	97.6	1.3	1.1	0.102	0.500	23.150492	-109.740668
Caseta de Cobro Los Cabos	118.20	2	0	5455	0.3	97.6	1.5	0.4	0.1	0.1	0.0	0.0	0.0	97.9	1.5	0.6	0.102	0.500	23.049953	-109.719559
T. C. Cabo San Lucas - La Paz	120.20	3	0	10647	1.2	93.5	0.2	4.7	0.2	0.1	0.1	0.0	0.0	94.7	0.2	5.1	0.122	0.505	23.049053	-109.714497

21 CARR: Cd. Insurgentes - La Purísima

CLAVE: 03005

RUTA: BCS-001

AÑO: 2017

LUGAR	ESTACION				CLASIFICACION VEHICULAR EN PORCIENTO										COORDENADAS					
	KM	TE	SC	TDPA	M	A	B	C2	C3	T3S2	T3S3	T3S2R4	OTROS	A	B	C	K'	D	LATITUD	LONGITUD
Cd. Insurgentes	0.00	3	0	2686	0.7	80.3	0.8	13.7	1.9	2.4	0.1	0.1	0.0	81.0	0.8	18.2	0.069	0.536	25.272158	-111.784145
Ignacio Zaragoza	18.00	1	0	1448	0.5	79.6	0.7	15.0	2.0	2.0	0.1	0.1	0.0	80.1	0.7	19.2	0.071	0.551	25.390325	-111.838853
Ignacio Zaragoza	18.00	3	1	889	1.5	84.0	0.5	10.5	1.1	2.0	0.2	0.1	0.1	85.5	0.5	14.0	0.089	0.533	25.401959	-111.844142
Ignacio Zaragoza	18.00	3	2	780	3.2	81.4	0.5	11.9	2.5	0.4	0.1	0.0	0.0	84.6	0.5	14.9	0.097	0.533	25.401873	-111.844275
T. Izq. Santo Domingo	28.70	1	0	803	0.8	89.1	0.8	6.7	2.0	0.3	0.2	0.0	0.1	89.9	0.8	9.3	0.080	0.509	25.499715	-111.889572
Francisco Villa	64.00	3	0	316	0.9	88.5	1.2	7.1	1.6	0.4	0.2	0.0	0.1	89.4	1.2	9.4	0.095	0.512	25.803688	-112.030521
La Purísima	107.00	1	0	295	1.0	84.7	0.8	10.9	2.4	0.1	0.1	0.0	0.0	85.7	0.8	13.5	0.122	0.509	26.177353	-112.085278

BAJA CALIFORNIA SUR

22 CARR: Cd. Insurgentes - Pto. Adolfo López Mateos

CLAVE: 03404

RUTA: BCS

AÑO: 2017

LUGAR	ESTACION				CLASIFICACION VEHICULAR EN PORCIENTO										COORDENADAS					
	KM	TE	SC	TDPA	M	A	B	C2	C3	T3S2	T3S3	T3S2R4	OTROS	A	B	C	K'	D	LATITUD	LONGITUD
T. C. Cd. Insurgentes - La Purísima	0.00	3	0	776	1.2	80.3	1.6	13.1	2.1	1.6	0.1	0.0	0.0	81.5	1.6	16.9	0.080	0.502	25.274300	-111.788201
Puerto Adolfo López Mateos	35.50	1	0	616	1.3	82.8	1.1	11.2	2.3	1.2	0.1	0.0	0.0	84.1	1.1	14.8	0.088	0.502	25.193173	-112.098115

23 CARR: Ent. Campo Fisher - Punta Abrejos

CLAVE: 03411

RUTA: BCS

AÑO: 2017

LUGAR	ESTACION				CLASIFICACION VEHICULAR EN PORCIENTO										COORDENADAS					
	KM	TE	SC	TDPA	M	A	B	C2	C3	T3S2	T3S3	T3S2R4	OTROS	A	B	C	K'	D	LATITUD	LONGITUD
T. C. Santa Rosalía - Paralelo 28	0.00	3	0	225	0.7	76.8	0.7	13.4	6.7	1.5	0.1	0.0	0.1	77.5	0.7	21.8	0.129	0.518	27.326673	-113.117872
Punta Abrejos	88.00																			

24 CARR: La Paz - Ensenada de Muertos

CLAVE: 03103

RUTA: BCS-246

AÑO: 2017

LUGAR	ESTACION				CLASIFICACION VEHICULAR EN PORCIENTO										COORDENADAS					
	KM	TE	SC	TDPA	M	A	B	C2	C3	T3S2	T3S3	T3S2R4	OTROS	A	B	C	K'	D	LATITUD	LONGITUD
La Paz	0.00	3	0	3403	0.8	85.1	0.3	12.9	0.6	0.2	0.1	0.0	0.0	85.9	0.3	13.8	0.072	0.530	24.114149	-110.293273
T. Izq. El Sargento	45.00	1	0	1290	0.8	85.2	0.3	12.5	1.0	0.1	0.1	0.0	0.0	86.0	0.3	13.7	0.134	0.513	23.982728	-109.994968
T. Izq. El Sargento	45.00	3	0	1495	1.2	85.3	0.3	12.0	0.9	0.2	0.1	0.0	0.0	86.5	0.3	13.2	0.090	0.504	23.981653	-109.991770
Ensenada de Muertos	57.50	1	0	357	3.2	86.2	0.4	9.2	0.4	0.2	0.4	0.0	0.0	89.4	0.4	10.2	0.193	0.501	24.007634	-109.853878

25 CARR: Libramiento de La Paz

CLAVE: 03004

RUTA: BCS

AÑO: 2017

LUGAR	ESTACION				CLASIFICACION VEHICULAR EN PORCIENTO										COORDENADAS					
	KM	TE	SC	TDPA	M	A	B	C2	C3	T3S2	T3S3	T3S2R4	OTROS	A	B	C	K'	D	LATITUD	LONGITUD
T. C. Cabo San Lucas - La Paz	0.00	3	0	12051	1.8	85.6	0.7	5.6	1.8	2.9	0.8	0.5	0.3	87.4	0.7	11.9	0.054	0.501	24.107534	-110.316269
T. C. La Paz - Cd. Insurgentes	10.00																			

26 CARR: Libramiento Norte de La Paz

CLAVE: 03006

RUTA: BCS

AÑO: 2017

LUGAR	ESTACION				CLASIFICACION VEHICULAR EN PORCIENTO										COORDENADAS					
	KM	TE	SC	TDPA	M	A	B	C2	C3	T3S2	T3S3	T3S2R4	OTROS	A	B	C	K'	D	LATITUD	LONGITUD
T. C. La Paz - Pichilingue	0.00	3	0	2714	1.8	70.6	1.1	8.3	6.6	7.0	2.1	2.0	0.5	72.4	1.1	26.5	0.167	0.542	24.230955	-110.297983
T. C. La Paz - Ensenada de Muertos	18.80	1	0	4394	2.4	67.3	1.1	9.9	8.1	6.9	2.0	2.0	0.3	69.7	1.1	29.2	0.078	0.506	24.123213	-110.291522
T. C. La Paz - Ensenada de Muertos	18.80	3	0	5939	1.8	77.9	0.7	7.9	5.1	4.1	1.2	1.0	0.3	79.7	0.7	19.6	0.104	0.512	24.120284	-110.297060
T. C. Cabo San Lucas - La Paz	20.70	1	0	8986	3.3	76.7	0.7	8.0	4.7	4.1	1.2	1.1	0.2	80.0	0.7	19.3	0.070	0.511	24.114750	-110.307489

BAJA CALIFORNIA SUR

27 CARR: Ramal a Benito Juárez

CLAVE: 03405

RUTA: BCS

AÑO: 2017

LUGAR	ESTACION				CLASIFICACION VEHICULAR EN PORCIENTO										COORDENADAS					
	KM	TE	SC	TDPA	M	A	B	C2	C3	T3S2	T3S3	T3S2R4	OTROS	A	B	C	K'	D	LATITUD	LONGITUD
T. C. Cd. Constitución - Puerto San Carlos	0.00	3	0	751	1.3	85.7	0.7	9.8	2.0	0.4	0.1	0.0	0.0	87.0	0.7	12.3	0.089	0.506	25.036913	-111.769361
Benito Juárez	11.50	1	0	758	1.6	85.2	0.8	9.7	2.2	0.5	0.0	0.0	0.0	86.8	0.8	12.4	0.086	0.509	25.108562	-111.821249

28 CARR: Ramal a Ejido Ley Federal de Aguas Número Cuatro

CLAVE: 03007

RUTA: BCS

AÑO: 2017

LUGAR	ESTACION				CLASIFICACION VEHICULAR EN PORCIENTO										COORDENADAS					
	KM	TE	SC	TDPA	M	A	B	C2	C3	T3S2	T3S3	T3S2R4	OTROS	A	B	C	K'	D	LATITUD	LONGITUD
T. C. La Paz - Cd. Insurgentes	0.00	3	0	701	1.4	76.6	2.3	16.2	2.3	1.1	0.1	0.0	0.0	78.0	2.3	19.7	0.083	0.501	25.198605	-111.749031
Ejido Ley Federal de Aguas Número Cuatro	19.20																			

29 CARR: Ramal a El Carrizal

CLAVE: 03050

RUTA: BCS

AÑO: 2017

LUGAR	ESTACION				CLASIFICACION VEHICULAR EN PORCIENTO										COORDENADAS					
	KM	TE	SC	TDPA	M	A	B	C2	C3	T3S2	T3S3	T3S2R4	OTROS	A	B	C	K'	D	LATITUD	LONGITUD
T. C. San Pedro - Cabo San Lucas	0.00	3	0	490	1.0	94.1	0.3	3.3	0.8	0.5	0.0	0.0	0.0	95.1	0.3	4.6	0.090	0.513	23.830360	-110.255505
Carrizal	10.00																			

30 CARR: Ramal a Guerrero Negro

CLAVE: 03395

RUTA: BCS

AÑO: 2017

LUGAR	ESTACION				CLASIFICACION VEHICULAR EN PORCIENTO										COORDENADAS					
	KM	TE	SC	TDPA	M	A	B	C2	C3	T3S2	T3S3	T3S2R4	OTROS	A	B	C	K'	D	LATITUD	LONGITUD
T. C. Santa Rosalía - Guerrero Negro	0.00	3	0	2804	0.9	82.3	1.7	12.8	0.9	1.0	0.3	0.1	0.0	83.2	1.7	15.1	0.084	0.507	27.967509	-114.019814
Guerrero Negro	4.50																			

31 CARR: Ramal a La Ribera

CLAVE: 03406

RUTA: BCS

AÑO: 2017

LUGAR	ESTACION				CLASIFICACION VEHICULAR EN PORCIENTO										COORDENADAS					
	KM	TE	SC	TDPA	M	A	B	C2	C3	T3S2	T3S3	T3S2R4	OTROS	A	B	C	K'	D	LATITUD	LONGITUD
T. C. Cabo San Lucas - La Paz	0.00	3	0	1350	0.7	92.8	0.5	4.1	1.5	0.1	0.3	0.0	0.0	93.5	0.5	6.0	0.108	0.504	23.539417	-109.669285
La Ribera	12.00																			

BAJA CALIFORNIA SUR

32 CARR: Ramal a Melitón Albáñez

CLAVE: 03407

RUTA: BCS

AÑO: 2017

LUGAR	ESTACION				CLASIFICACION VEHICULAR EN PORCIENTO														COORDENADAS	
	KM	TE	SC	TDPA	M	A	B	C2	C3	T3S2	T3S3	T3S2R4	OTROS	A	B	C	K'	D	LATITUD	LONGITUD
T. C. San Pedro - Cabo San Lucas	0.00	3	0	523	1.4	84.2	2.0	9.2	1.4	1.8	0.0	0.0	0.0	85.6	2.0	12.4	0.098	0.503	23.653252	-110.225956
Melitón Albáñez	23.50																			

33 CARR: Ramal a Santa Catarina

CLAVE: 03052

RUTA: BCS

AÑO: 2017

LUGAR	ESTACION				CLASIFICACION VEHICULAR EN PORCIENTO														COORDENADAS	
	KM	TE	SC	TDPA	M	A	B	C2	C3	T3S2	T3S3	T3S2R4	OTROS	A	B	C	K'	D	LATITUD	LONGITUD
T. C. Cabo San Lucas - La Paz	0.00	3	0	2053	2.4	81.1	0.6	11.5	4.2	0.2	0.0	0.0	0.0	83.5	0.6	15.9	0.062	0.502	23.137331	-109.701845
Santa Catarina	1.00																			

34 CARR: Ramal a Bahía de Tortugas

CLAVE: 03397

RUTA: MEX-001-BCS

AÑO: 2017

LUGAR	ESTACION				CLASIFICACION VEHICULAR EN PORCIENTO														COORDENADAS	
	KM	TE	SC	TDPA	M	A	B	C2	C3	T3S2	T3S3	T3S2R4	OTROS	A	B	C	K'	D	LATITUD	LONGITUD
T. C. Santa Rosalía - Guerrero Negro	0.00	3	0	8266	0.7	84.6	1.9	10.2	0.6	1.9	0.1	0.0	0.0	85.3	1.9	12.8	0.069	0.520	27.645187	-113.390367
Vizcaíno	6.00	3	0	1493	0.9	70.0	9.2	16.7	1.1	1.8	0.3	0.0	0.0	70.9	9.2	19.9	0.083	0.508	27.642465	-113.453981
Bahía de Tortugas	198.00																			

35 CARR: Ramal a Ejido Ley Federal de Aguas Número Dos

CLAVE: 03050

RUTA: BCS-MEX-001

AÑO: 2017

LUGAR	ESTACION				CLASIFICACION VEHICULAR EN PORCIENTO														COORDENADAS	
	KM	TE	SC	TDPA	M	A	B	C2	C3	T3S2	T3S3	T3S2R4	OTROS	A	B	C	K'	D	LATITUD	LONGITUD
T. C. Cd. Insurgentes - Loreto	0.00	3	0	151	2.1	86.8	0.9	7.7	1.5	0.9	0.1	0.0	0.0	88.9	0.9	10.2	0.139	0.526	25.315049	-111.659746
Ejido Ley Federal de Aguas Número Dos	10.00																			

36 CARR: Ramal a Ley Federal de Aguas Número Cinco

CLAVE: 03407

RUTA: BCS-MEX-001

AÑO: 2017

LUGAR	ESTACION				CLASIFICACION VEHICULAR EN PORCIENTO														COORDENADAS	
	KM	TE	SC	TDPA	M	A	B	C2	C3	T3S2	T3S3	T3S2R4	OTROS	A	B	C	K'	D	LATITUD	LONGITUD
Cd. Constitución	0.00	3	1	1096	1.4	81.3	0.5	13.7	2.5	0.4	0.1	0.1	0.0	82.7	0.5	16.8	0.096	0.501	25.035573	-111.629510
Cd. Constitución	0.00	3	2	1100	1.4	84.5	0.2	10.7	2.6	0.4	0.1	0.1	0.0	85.9	0.2	13.9	0.093	0.501	25.035544	-111.629502
Ley Federal de Aguas Número Cinco	17.50																			

BAJA CALIFORNIA SUR

37 CARR: Ramal a San Juan de La Costa

CLAVE: 03403

RUTA: BCS-163-MEX-001

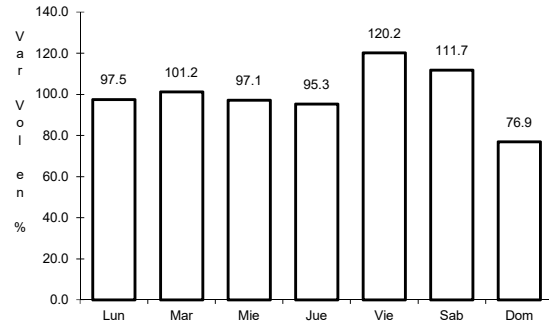
AÑO: 2017

L U G A R	E S T A C I O N				C L A S I F I C A C I O N V E H I C U L A R E N P O R C I E N T O										C O O R D E N A D A S					
	KM	TE	SC	TDPA	M	A	B	C2	C3	T3S2	T3S3	T3S2R4	OTROS	A	B	C	K'	D	LATITUD	LONGITUD
T. C. La Paz - Cd. Insurgentes	0.00	3	0	916	1.0	77.3	1.2	18.2	1.6	0.6	0.1	0.0	0.0	78.3	1.2	20.5	0.104	0.515	24.123781	-110.442379
Puerto Cajete	23.00	3	0	552	0.3	67.9	1.9	26.6	2.3	0.9	0.1	0.0	0.0	68.2	1.9	29.9	0.101	0.502	24.254275	-110.611610
San Juan de La Costa	40.70	1	0	543	0.3	65.1	2.1	27.7	3.1	1.1	0.4	0.0	0.2	65.4	2.1	32.5	0.092	0.518	24.364163	-110.685726

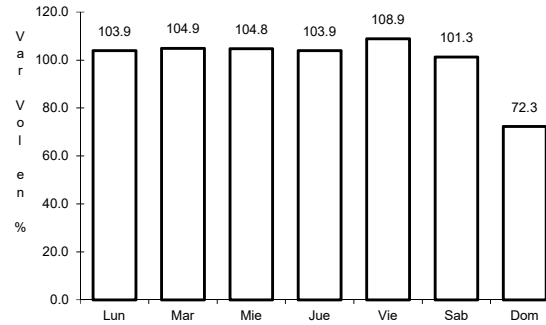
1 CARR: Cabo San Lucas - La Paz

CLAVE: 03102

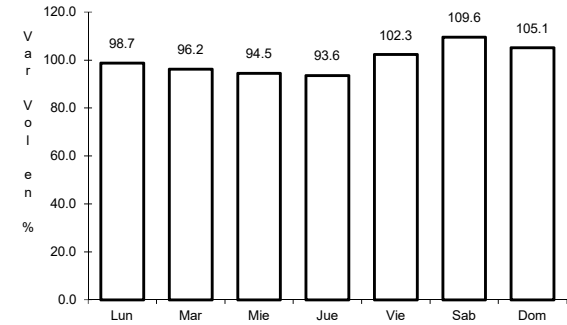
RUTA: MEX-001



Km: 0.00 Tipo: 3 Sent: 1



Km: 0.00 Tipo: 3 Sent: 2

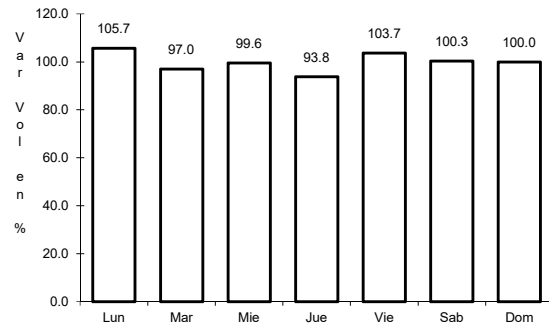


Km: 110.00 Tipo: 3 Sent: 0

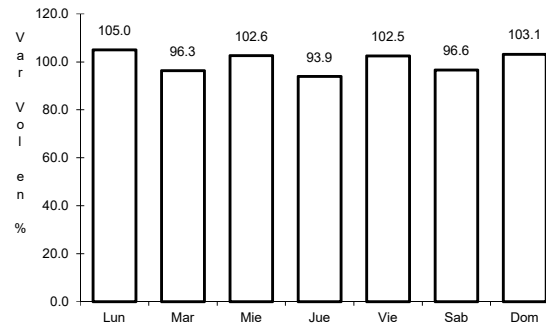
2 CARR: Cd. Constitución - Puerto San Carlos

CLAVE: 03231

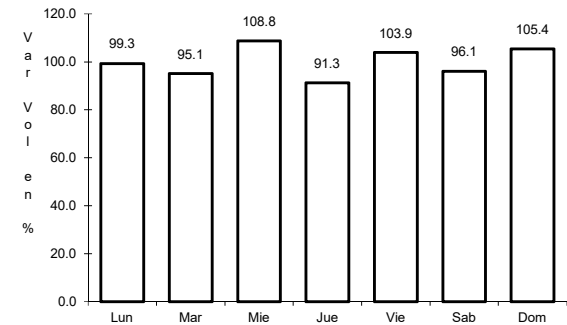
RUTA: MEX-001



Km: 0.00 Tipo: 3 Sent: 0



Km: 10.00 Tipo: 1 Sent: 0

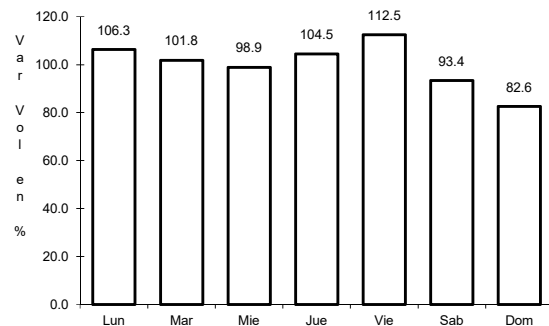


Km: 10.00 Tipo: 3 Sent: 0

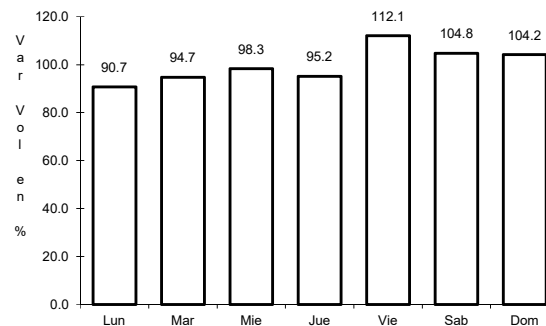
3 CARR: Cd. Insurgentes - Loreto

CLAVE: 03092

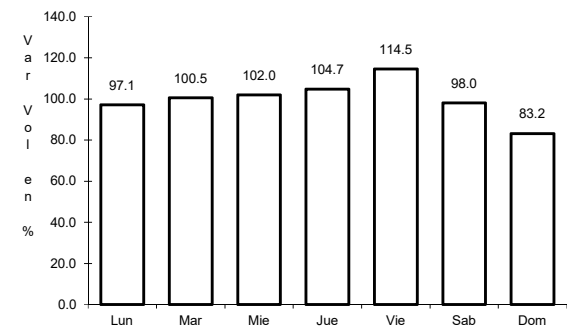
RUTA: MEX-001



Km: 0.00 Tipo: 3 Sent: 0



Km: 65.00 Tipo: 1 Sent: 0

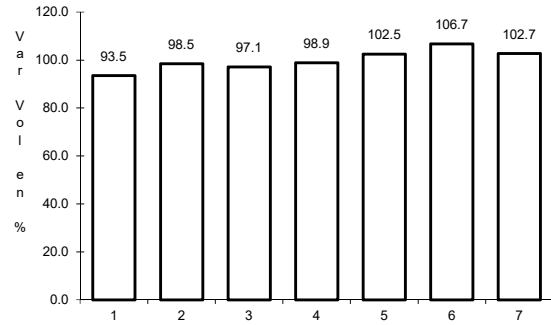


Km: 117.30 Tipo: 1 Sent: 0

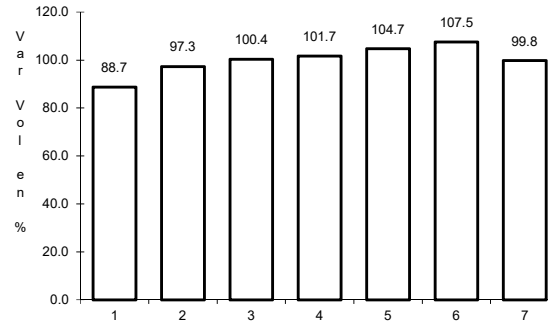
4 CARR: Ent. Punta Prieta - Guerrero Negro

CLAVE: 00321

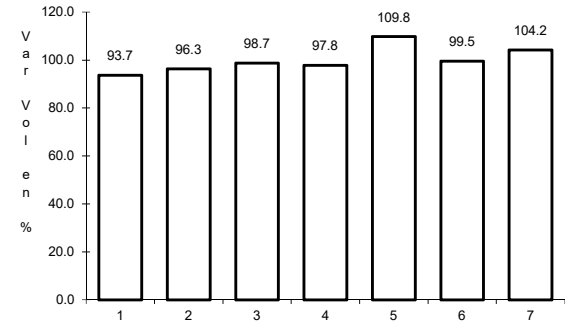
RUTA: MEX-001



Km: 0.00 Tipo: 3 Sent: 0



Km: 70.10 Tipo: 3 Sent: 0

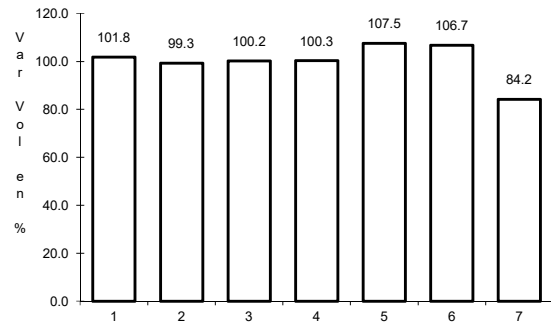


Km: 130.00 Tipo: 1 Sent: 0

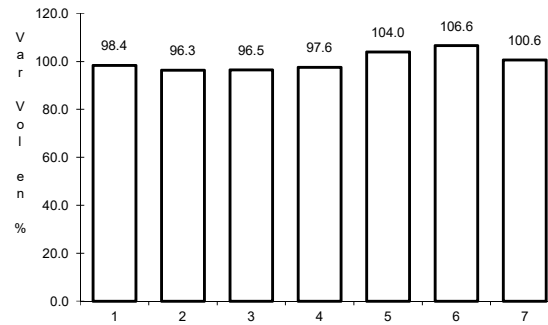
5 CARR: La Paz - Cd. Insurgentes

CLAVE: 03101

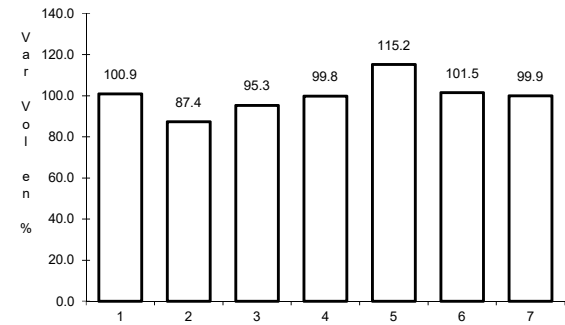
RUTA: MEX-001



Km: 0.00 Tipo: 3 Sent: 1



Km: 0.00 Tipo: 3 Sent: 2

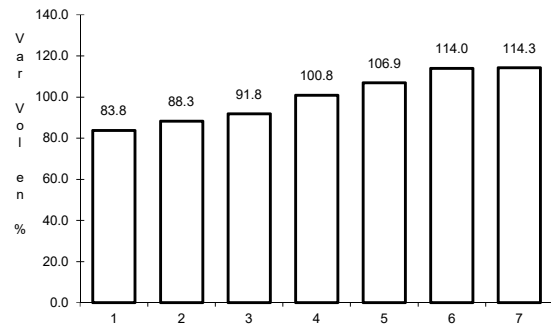


Km: 118.20 Tipo: 1 Sent: 0

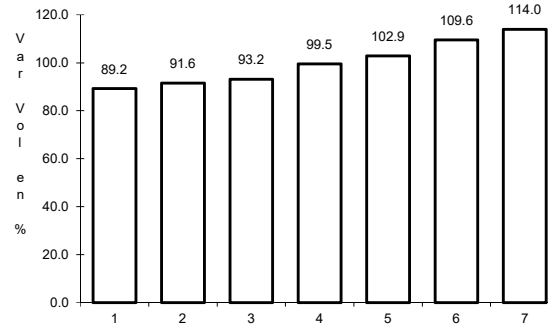
6 CARR: La Paz - Pichilingue

CLAVE: 03230

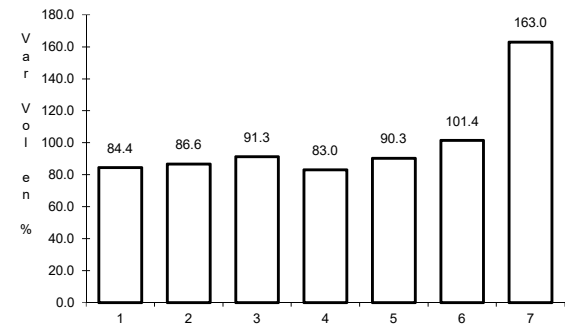
RUTA: MEX-011



Km: 0.00 Tipo: 3 Sent: 1



Km: 0.00 Tipo: 3 Sent: 2

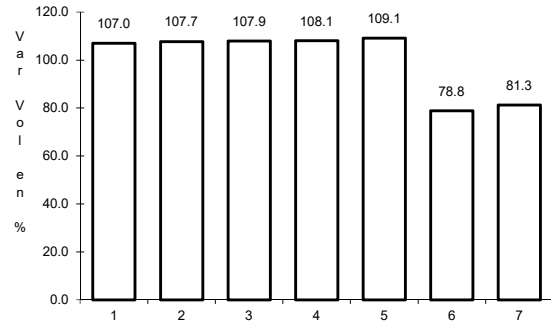


Km: 17.00 Tipo: 1 Sent: 0

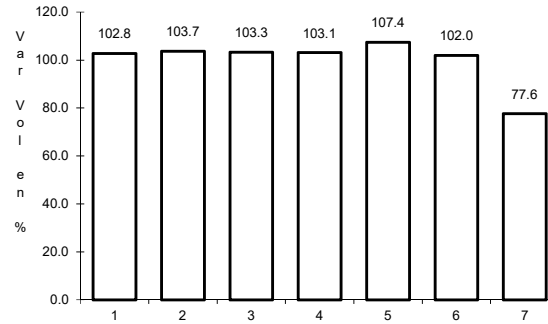
7 CARR: Libramiento de Cabo San Lucas

CLAVE: 03100

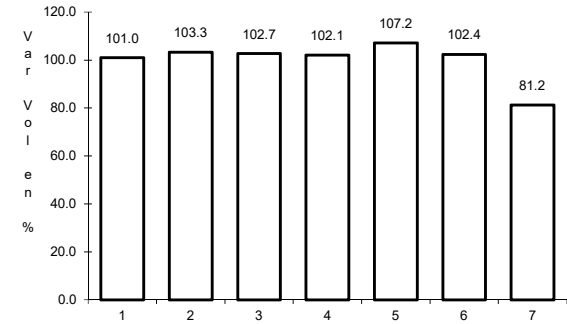
RUTA: MEX-001



Km: 0.00 Tipo: 3 Sent: 1



Km: 0.00 Tipo: 3 Sent: 2

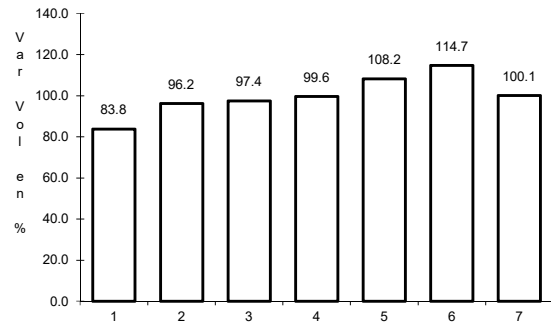


Km: 3.00 Tipo: 1 Sent: 1

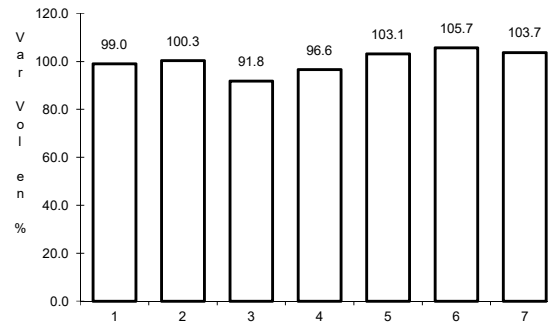
8 CARR: Loreto - Santa Rosalía

CLAVE: 03393

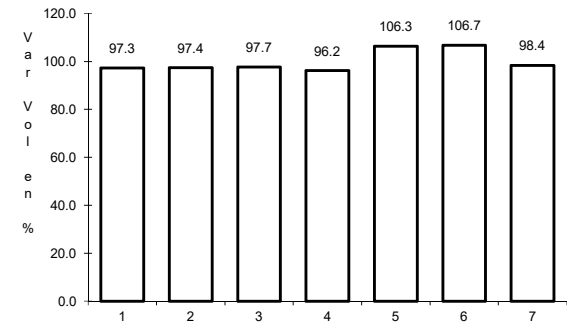
RUTA: MEX-001



Km: 0.00 Tipo: 3 Sent: 0



Km: 135.00 Tipo: 1 Sent: 0

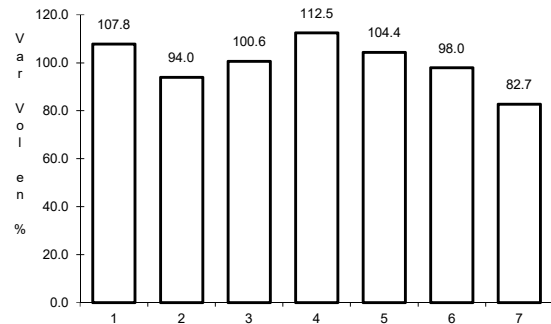


Km: 197.00 Tipo: 1 Sent: 0

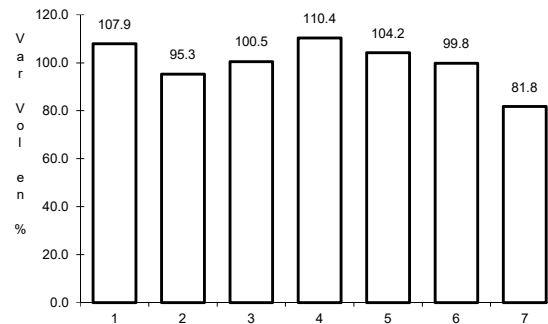
9 CARR: Ramal a Aeropuerto de La Paz

CLAVE: 03396

RUTA: MEX-001



Km: 0.00 Tipo: 3 Sent: 1

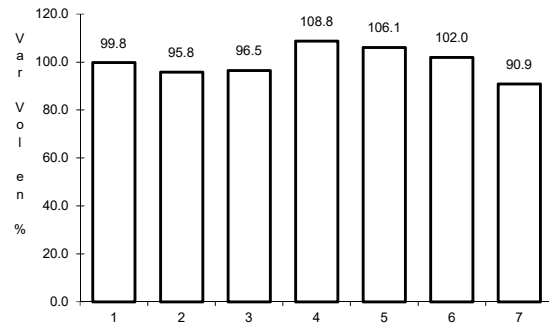


Km: 0.00 Tipo: 3 Sent: 2

10 CARR: Ramal a Aeropuerto de Los Cabos

CLAVE: 03394

RUTA: MEX-001



Km: 0.00

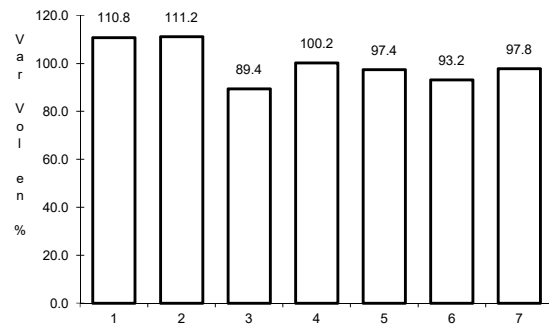
Tipo: 3

Sent: 0

11 CARR: Ramal a Los Paredones

CLAVE: 03407

RUTA: MEX-001



Km: 0.00

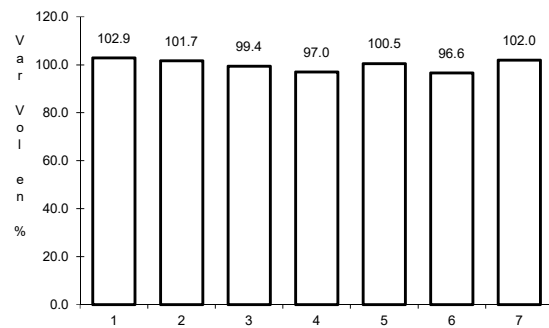
Tipo: 3

Sent: 0

12 CARR: Ramal a Miraflores

CLAVE: 03407

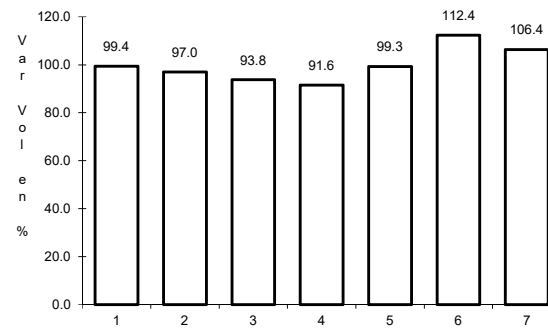
RUTA: MEX-001



Km: 0.00

Tipo: 3

Sent: 1



Km: 0.00

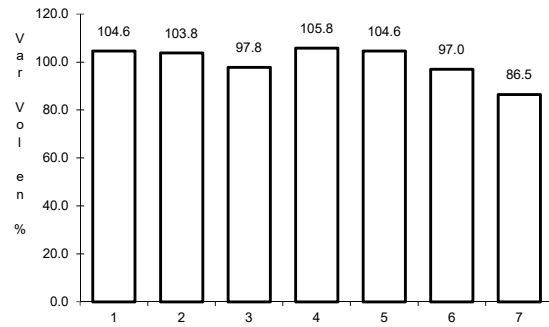
Tipo: 3

Sent: 2

13 CARR: Ramal a Puerto Escondido

CLAVE: 03407

RUTA: MEX-001



Km: 0.00

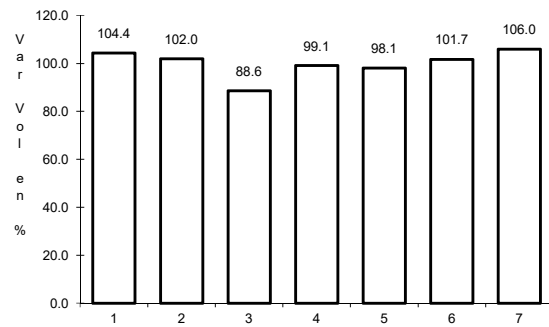
Tipo: 3

Sent: 0

14 CARR: Ramal a San Ignacio

CLAVE: 03413

RUTA: MEX-001



Km: 0.00

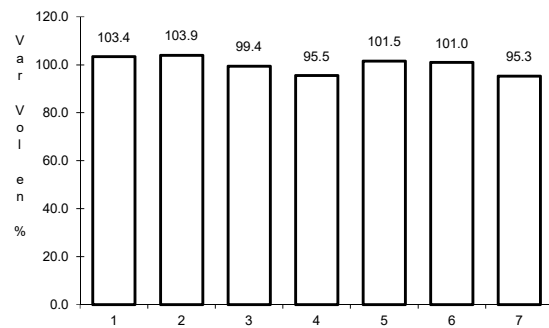
Tipo: 3

Sent: 0

15 CARR: Ramal a Santiago

CLAVE: 03051

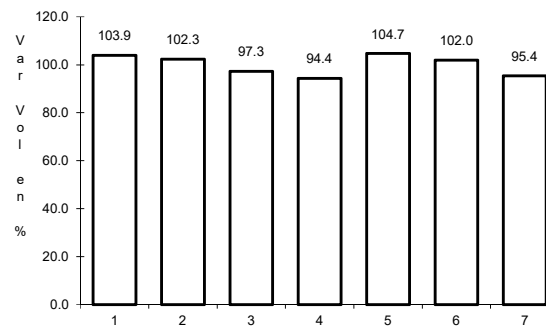
RUTA: MEX-001



Km: 0.00

Tipo: 3

Sent: 1



Km: 0.00

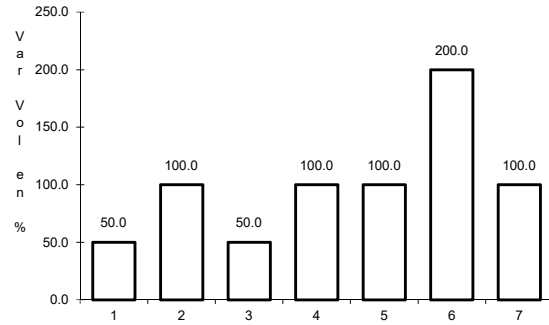
Tipo: 3

Sent: 2

16 CARR: Ramal Aeropista San Ignacio

CLAVE: 03053

ruta: MEX-001



Km: 0.00

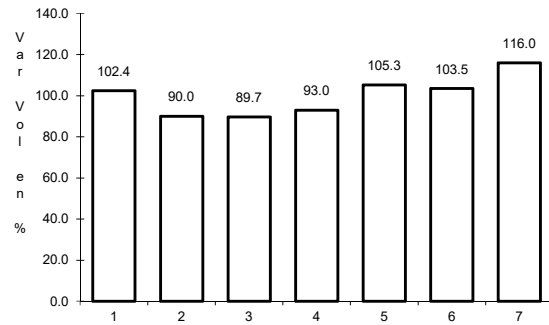
Tipo: 3

Sent: 0

17 CARR: San Pedro - Cabo San Lucas

CLAVE: 03003

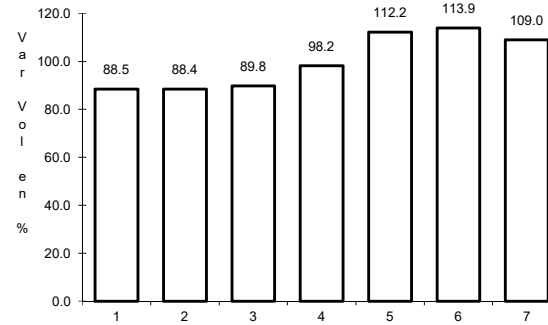
ruta: MEX-019



Km: 0.00

Tipo: 3

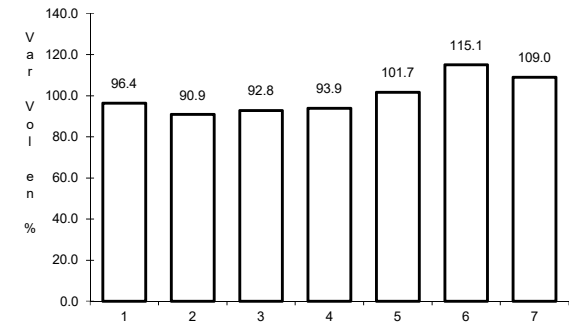
Sent: 1



Km: 0.00

Tipo: 3

Sent: 2



Km: 52.00

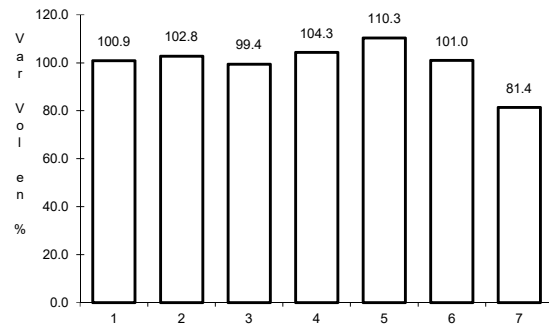
Tipo: 1

Sent: 0

18 CARR: Santa Rosalía - Guerrero Negro

CLAVE: 03095

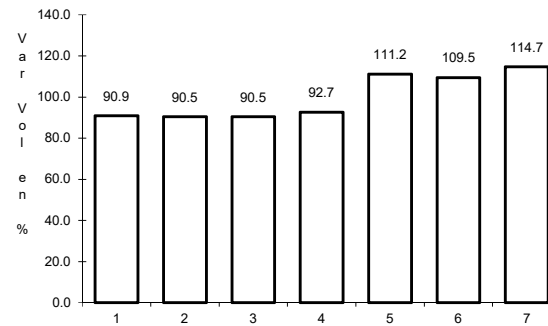
ruta: MEX-001



Km: 0.00

Tipo: 3

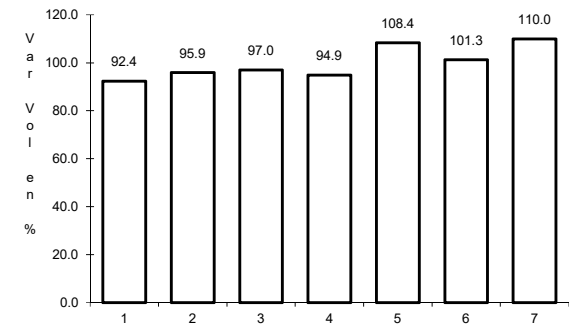
Sent: 0



Km: 117.90

Tipo: 1

Sent: 0



Km: 216.85

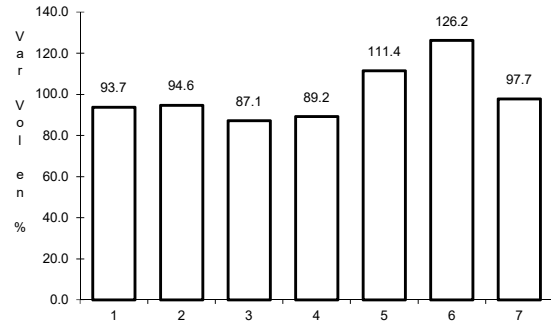
Tipo: 1

Sent: 0

19 CARR: Libramiento Cabo San Lucas - San José del Cabo (Cuota)

CLAVE:

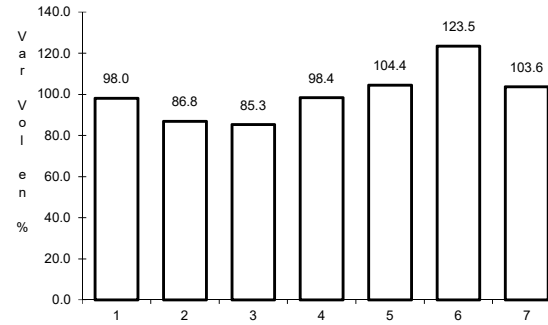
RUTA: MEX-D



Km: 0.00

Tipo: 3

Sent: 0



Km: 30.88

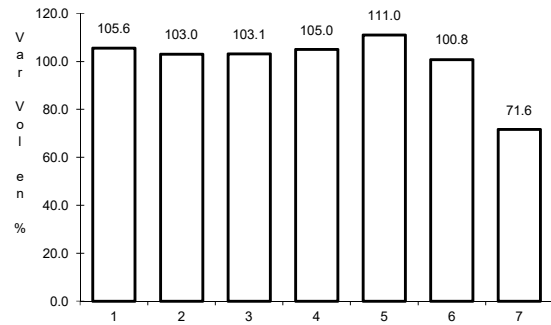
Tipo: 1

Sent: 0

20 CARR: Libramiento San José del Cabo - Aeropuerto Los Cabos (Cuota)

CLAVE: 03392

RUTA: MEX-001D



Km: 120.20

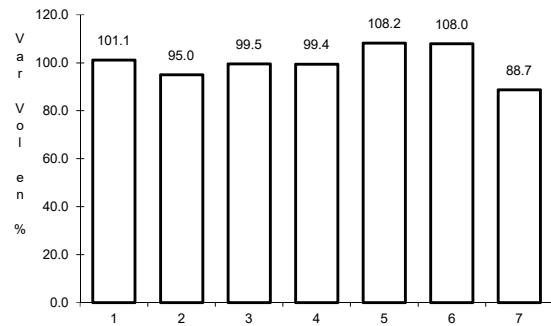
Tipo: 3

Sent: 0

21 CARR: Cd. Insurgentes - La Purísima

CLAVE: 03005

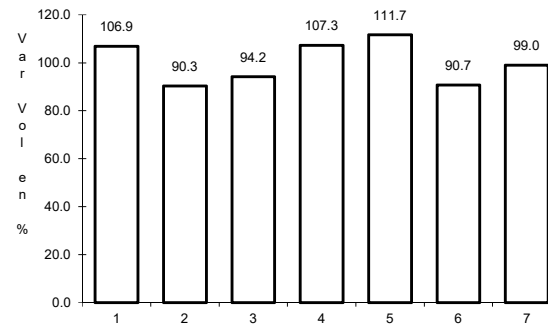
RUTA: BCS-001



Km: 0.00

Tipo: 3

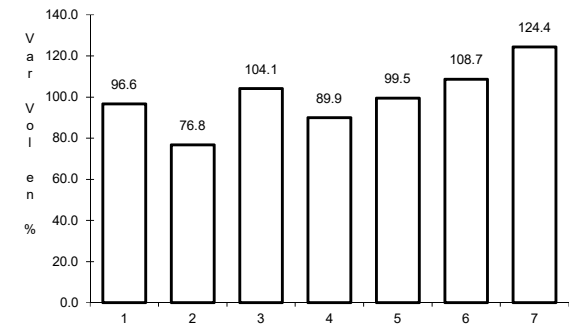
Sent: 0



Km: 64.00

Tipo: 3

Sent: 0



Km: 107.00

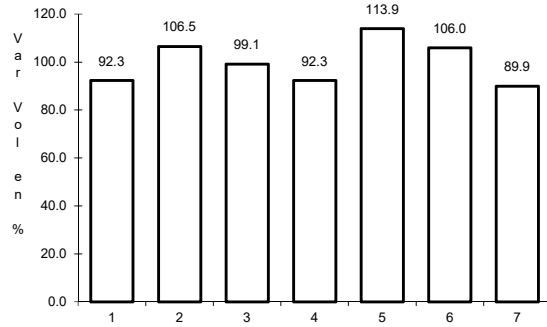
Tipo: 1

Sent: 0

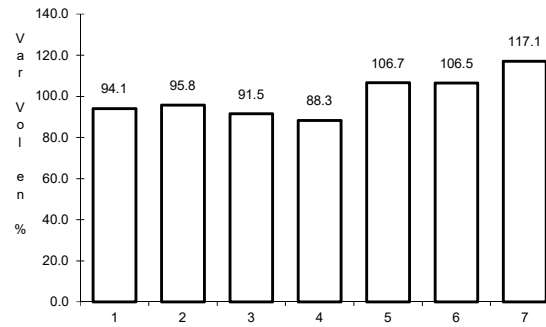
22 CARR: Cd. Insurgentes - Pto. Adolfo López Mateos

CLAVE: 03404

RUTA: BCS



Km: 0.00 Tipo: 3 Sent: 0

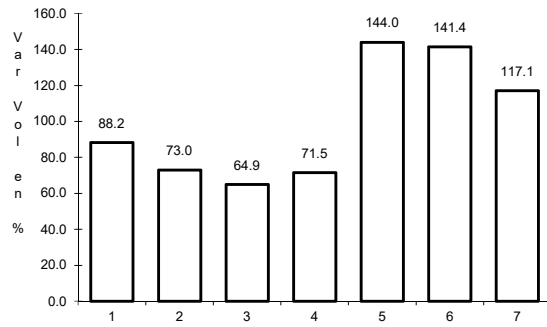


Km: 35.50 Tipo: 1 Sent: 0

23 CARR: Ent. Campo Fisher - Punta Abreojos

CLAVE: 03411

RUTA: BCS

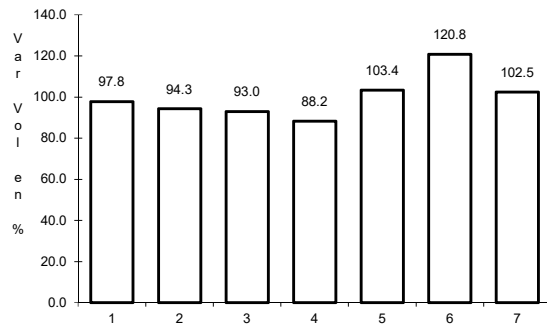


Km: 0.00 Tipo: 3 Sent: 0

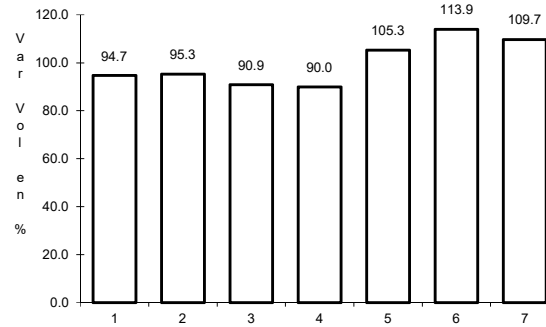
24 CARR: La Paz - Ensenada de Muertos

CLAVE: 03103

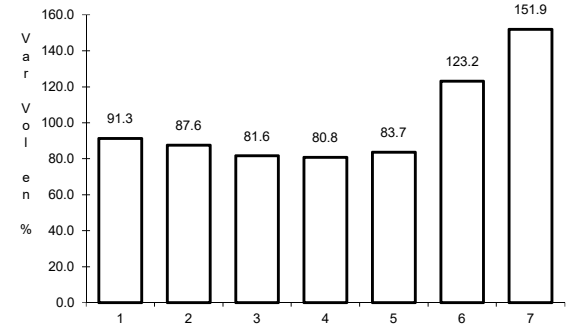
RUTA: BCS-246



Km: 0.00 Tipo: 3 Sent: 0



Km: 45.00 Tipo: 1 Sent: 0

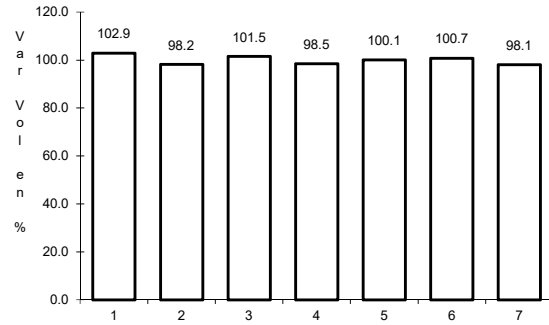


Km: 57.50 Tipo: 1 Sent: 0

25 CARR: Libramiento de La Paz

CLAVE: 03004

RUTA: BCS



Km: 0.00

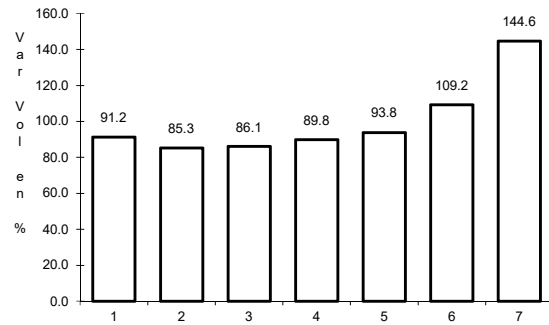
Tipo: 3

Sent: 0

26 CARR: Libramiento Norte de La Paz

CLAVE: 03006

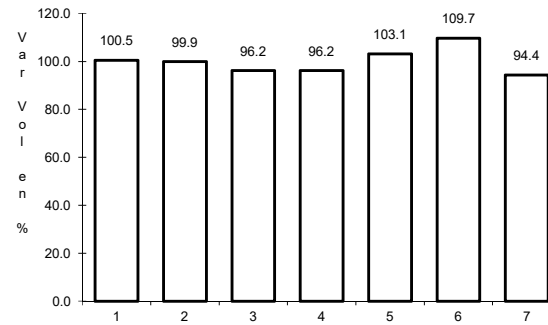
RUTA: BCS



Km: 0.00

Tipo: 3

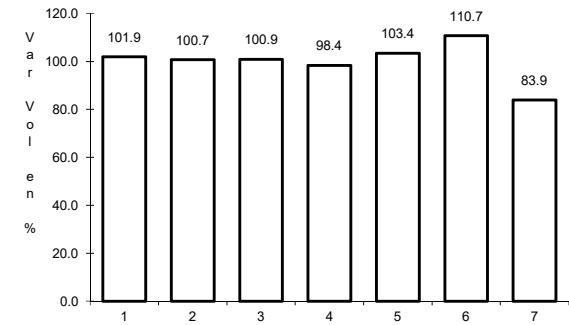
Sent: 0



Km: 18.80

Tipo: 1

Sent: 0



Km: 20.70

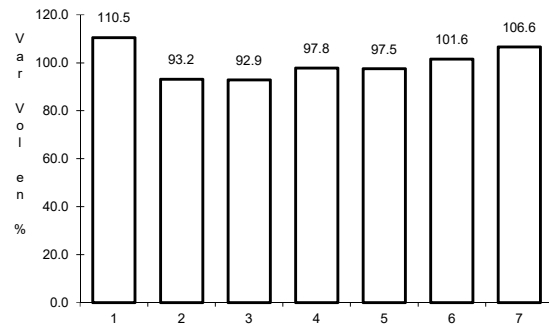
Tipo: 1

Sent: 0

27 CARR: Ramal a Benito Juárez

CLAVE: 03405

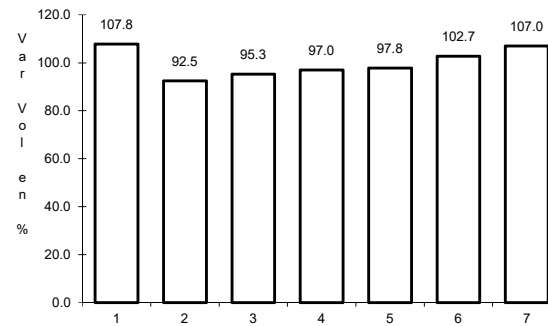
RUTA: BCS



Km: 0.00

Tipo: 3

Sent: 0



Km: 11.50

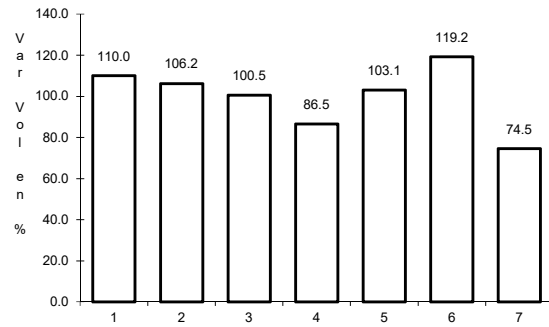
Tipo: 1

Sent: 0

28 CARR: Ramal a Ejido Ley Federal de Aguas Número Cuatro

CLAVE: 03007

RUTA: BCS



Km: 0.00

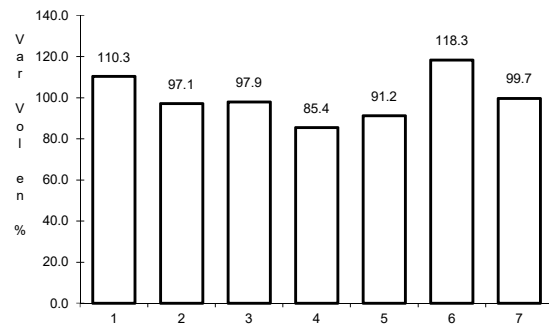
Tipo: 3

Sent: 0

29 CARR: Ramal a El Carrizal

CLAVE: 03050

RUTA: BCS



Km: 0.00

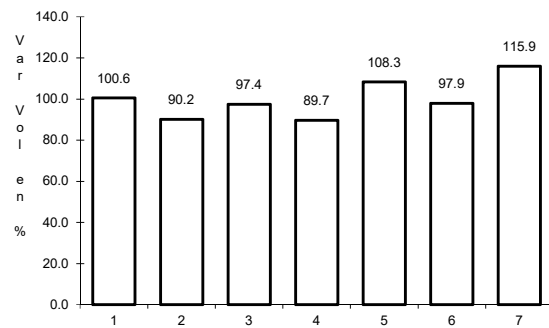
Tipo: 3

Sent: 0

30 CARR: Ramal a Guerrero Negro

CLAVE: 03395

RUTA: BCS



Km: 0.00

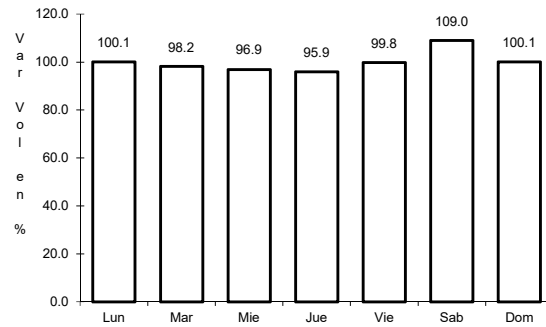
Tipo: 3

Sent: 0

31 CARR: Ramal a La Ribera

CLAVE: 03406

RUTA: BCS



Km: 0.00

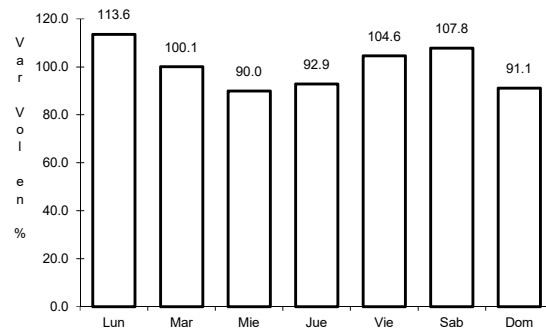
Tipo: 3

Sent: 0

32 CARR: Ramal a Melitón Albáñez

CLAVE: 03407

RUTA: BCS



Km: 0.00

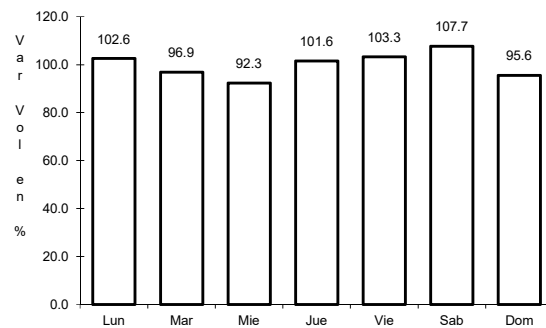
Tipo: 3

Sent: 0

33 CARR: Ramal a Santa Catarina

CLAVE: 03052

RUTA: BCS



Km: 0.00

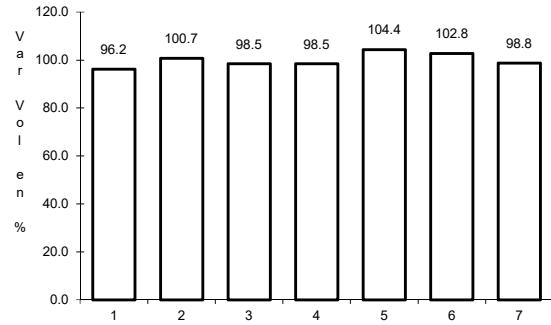
Tipo: 3

Sent: 0

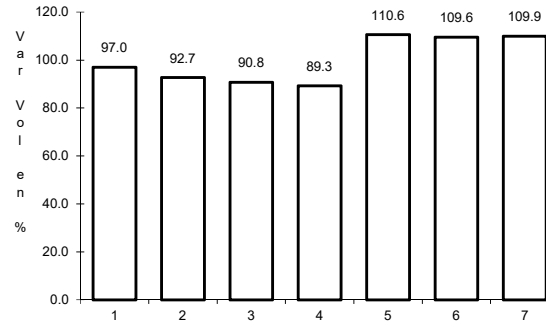
34 CARR: Ramal a Bahía de Tortugas

CLAVE: 03397

RUTA: MEX-001-BCS



Km: 0.00 Tipo: 3 Sent: 0

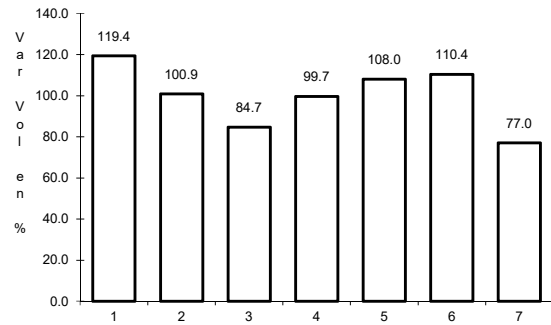


Km: 6.00 Tipo: 3 Sent: 0

35 CARR: Ramal a Ejido Ley Federal de Aguas Número Dos

CLAVE: 03050

RUTA: BCS-MEX-001

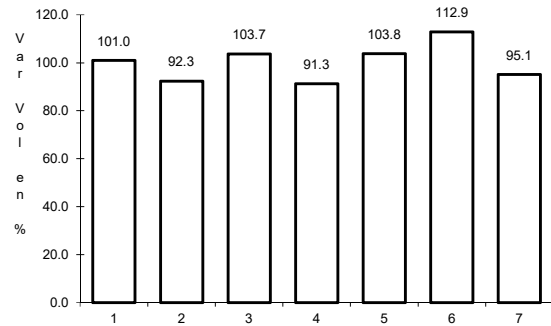


Km: 0.00 Tipo: 3 Sent: 0

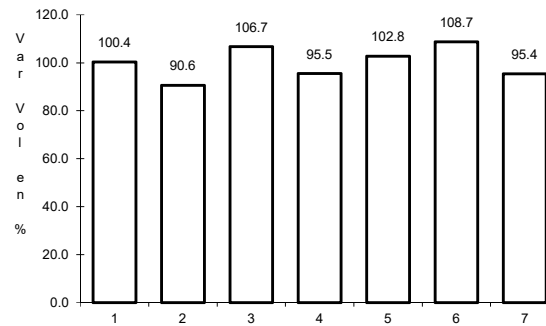
36 CARR: Ramal a Ley Federal de Aguas Número Cinco

CLAVE: 03407

RUTA: BCS-MEX-001

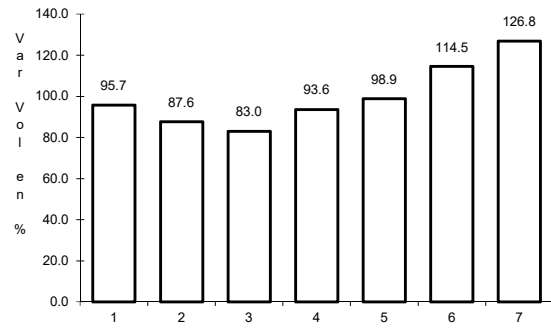


Km: 0.00 Tipo: 3 Sent: 1



Km: 0.00 Tipo: 3 Sent: 2

37 CARR: Ramal a San Juan de La Costa

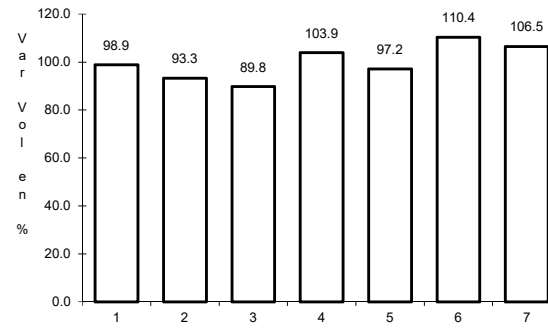


Km: 0.00

Tipo: 3

Sent: 0

CLAVE: 03403

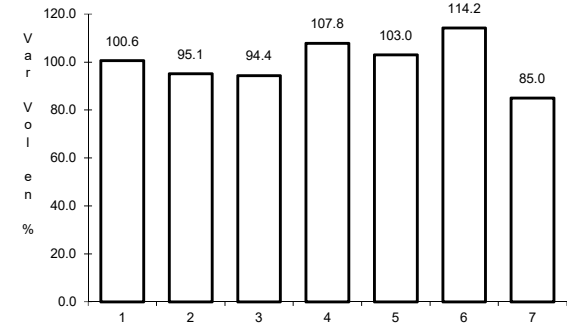


Km: 23.00

Tipo: 3

Sent: 0

RUTA: BCS-163-MEX-001



Km: 40.70

Tipo: 1

Sent: 0

