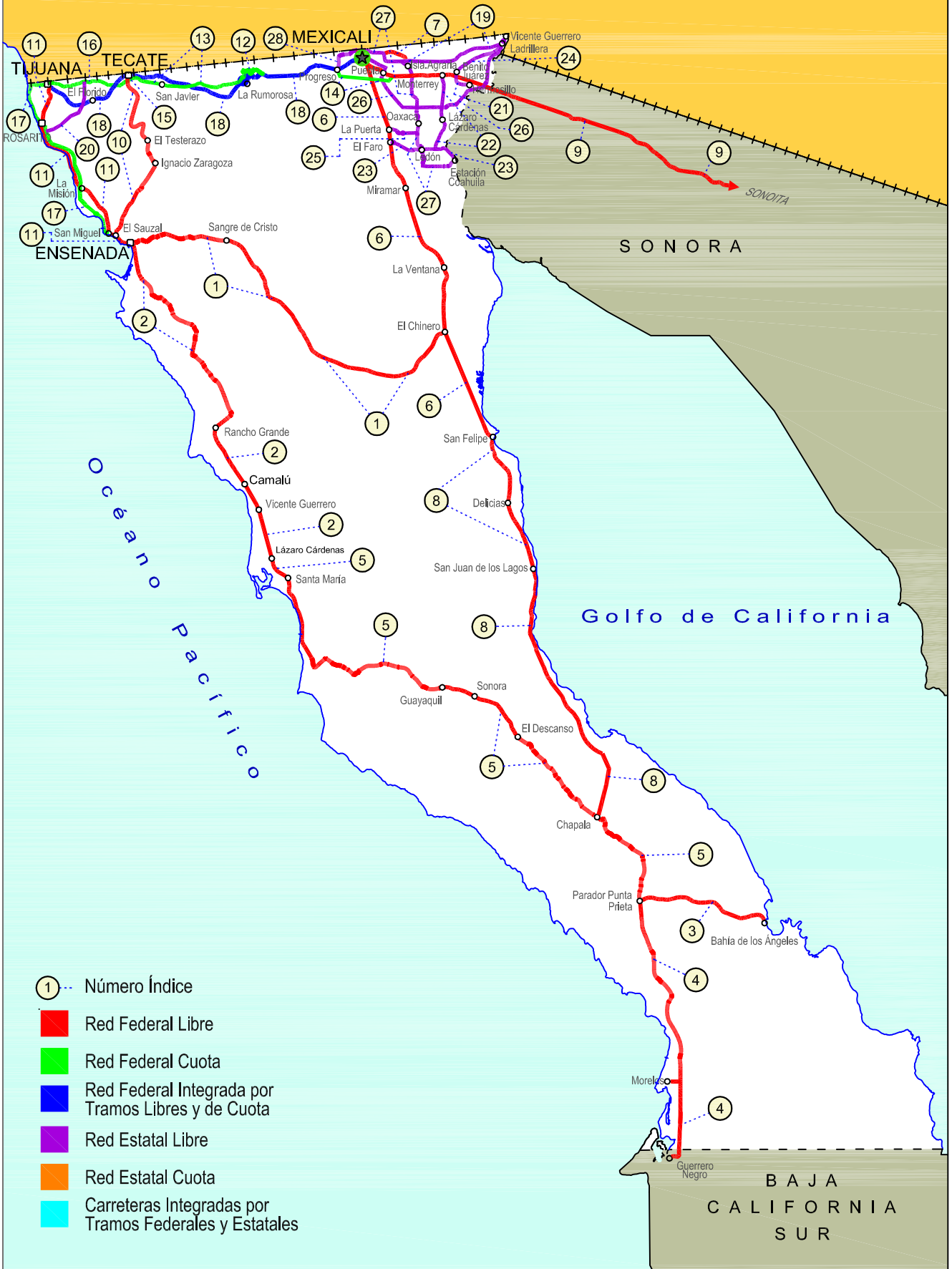


02 BAJA CALIFORNIA

SECRETARÍA DE COMUNICACIONES Y TRANSPORTES
DIRECCIÓN GENERAL DE SERVICIOS TÉCNICOS

ESTADOS UNIDOS DE NORTE AMÉRICA





BAJA CALIFORNIA

NO. INDICE CARRETERA	RUTA
---RED FEDERAL LIBRE---	
1 Ensenada - El Chinero	MEX-003
2 Ensenada - Lázaro Cárdenas	MEX-001
3 Ent. Punta Prieta - Bahía de Los Ángeles	MEX-001
4 Ent. Punta Prieta - Guerrero Negro	MEX-001
5 Lázaro Cárdenas - Ent. Punta Prieta	MEX-001
6 Mexicali - San Felipe	MEX-005
7 Ramal a Aeropuerto de Mexicali	MEX-002
8 San Felipe - Chapala	MEX-005
9 Sonoita - Mexicali	MEX-002
10 Tecate - El Sauzal	MEX-003
11 Tijuana - Ensenada (Libre)	MEX-001
---RED FEDERAL DE CUOTA---	
12 El Centinela - La Rumorosa (Cuota)	MEX-002D
13 La Rumorosa - Tecate (Cuota)	MEX-002D
14 Libramiento de Mexicali (Cuota)	MEX-002D
15 Libramiento de Tecate (Cuota)	MEX-002D
16 Tecate - Tijuana (Cuota)	MEX-002D
17 Tijuana - Ensenada (Cuota)	MEX-001D
---RED FEDERAL INTEGRADA POR TRAMOS LIBRES Y DE CUOTA---	
18 Mexicali - Tijuana	MEX-002D-MEX
---RED ESTATAL LIBRE---	
19 Algodones - Ent. Islas Agrarias Grupo B	BC-008
20 Corredor Tijuana 2000	BC
21 Ejido Benito Juárez - Ejido Chiapas	BC-061
22 Ejido Monterrey - Mazón	BC-003
23 El Faro - Estación Coahuila	BC-004
24 Ent. Santa Rosa - Ent. Pachuca	BC-006
25 La Puerta - T. C. (Mexicali - Estación Coahuila)	BC-010
26 Mexicali - Algodones	BC-002
27 Mexicali - Estación Coahuila	BC-001
28 Mexicali - Progreso	BC-005

BAJA CALIFORNIA

1 CARR: Ensenada - El Chinero

CLAVE: 02009

RUTA: MEX-003

AÑO: 2017

LUGAR	ESTACION				CLASIFICACION VEHICULAR EN PORCIENTO												COORDENADAS			
	KM	TE	SC	TDPA	M	A	B	C2	C3	T3S2	T3S3	T3S2R4	OTROS	A	B	C	K'	D	LATITUD	LONGITUD
Ensenada	0.00	3	0	7851	1.9	80.2	0.8	14.2	0.9	1.1	0.7	0.0	0.2	82.1	0.8	17.1	0.081	0.509	31.871857	-116.551465
El Tule	12.40	1	0	2838	1.1	77.3	1.1	14.5	1.3	2.8	1.7	0.0	0.2	78.4	1.1	20.5	0.075	0.503	31.887215	-116.505258
El Tule	12.40	3	0	2574	1.2	76.5	1.2	14.4	1.4	3.4	1.7	0.0	0.2	77.7	1.2	21.1	0.078	0.502	31.888685	-116.496244
Ojos Negros	38.50	1	0	2120	1.5	73.2	1.7	12.2	1.9	6.3	2.8	0.2	0.2	74.7	1.7	23.6	0.070	0.512	31.888912	-116.280519
San Salvador	60.50	1	0	934	1.4	74.8	1.7	12.8	1.9	4.5	2.3	0.2	0.4	76.2	1.7	22.1	0.075	0.522	31.842359	-116.070622
Héroes de La Independencia	93.00	3	0	1001	0.7	78.3	1.6	11.4	1.5	5.2	0.8	0.2	0.3	79.0	1.6	19.4	0.061	0.511	31.601598	-115.874417
Leyes de Reforma	103.00	3	0	995	0.8	75.0	1.8	15.1	1.5	4.5	1.0	0.1	0.2	75.8	1.8	22.4	0.070	0.506	31.526639	-115.812376
Lazáro Cárdenas	122.00	3	0	1004	1.1	76.8	2.1	11.5	1.2	5.9	0.9	0.1	0.4	77.9	2.1	20.0	0.083	0.505	31.379445	-115.686255
Francisco R. Serrano	137.50	3	0	688	1.9	72.5	2.4	13.0	1.4	7.1	1.0	0.3	0.4	74.4	2.4	23.2	0.103	0.517	31.337055	-115.571279
El Chinero	196.00	1	0	526	0.8	68.7	2.9	13.7	1.7	9.6	1.8	0.3	0.5	69.5	2.9	27.6	0.101	0.511	31.428395	-115.057815

2 CARR: Ensenada - Lazáro Cárdenas

CLAVE: 02098

RUTA: MEX-001

AÑO: 2017

LUGAR	ESTACION				CLASIFICACION VEHICULAR EN PORCIENTO												COORDENADAS			
	KM	TE	SC	TDPA	M	A	B	C2	C3	T3S2	T3S3	T3S2R4	OTROS	A	B	C	K'	D	LATITUD	LONGITUD
Ensenada	0.00	3	1	38127	1.1	86.3	0.7	8.4	0.5	1.2	1.3	0.1	0.4	87.4	0.7	11.9	0.069	0.502	31.822458	-116.598988
Ensenada	0.00	3	2	37761	1.2	85.7	0.7	8.5	0.5	1.4	1.5	0.1	0.4	86.9	0.7	12.4	0.071	0.502	31.822434	-116.599198
T. Der. Aeropuerto	13.50	3	1	19521	1.0	86.7	0.4	8.4	0.3	1.8	1.0	0.2	0.2	87.7	0.4	11.9	0.092	0.506	31.789140	-116.592636
T. Der. Aeropuerto	13.50	3	2	19022	0.9	85.2	0.3	10.1	0.3	1.8	1.0	0.2	0.2	86.1	0.3	13.6	0.097	0.506	31.789174	-116.592415
T. Der. La Bufadora	21.16	1	1	14038	1.1	83.0	0.7	11.0	0.6	2.4	0.5	0.5	0.2	84.1	0.7	15.2	0.072	0.526	31.732290	-116.580690
T. Der. La Bufadora	21.16	1	2	15570	1.1	84.4	0.7	9.7	0.6	2.4	0.5	0.4	0.2	85.5	0.7	13.8	0.063	0.526	31.732200	-116.580829
T. Der. La Bufadora	21.16	3	0	19206	0.9	79.9	0.9	13.1	1.0	2.8	0.8	0.2	0.4	80.8	0.9	18.3	0.074	0.558	31.712857	-116.570819
Cañón Buenavista	30.40	1	0	10862	1.0	77.7	1.2	15.7	1.4	2.0	0.5	0.2	0.3	78.7	1.2	20.1	0.082	0.527	31.677949	-116.524648
Cañón Buenavista	30.40	3	0	5550	0.8	73.6	1.5	15.2	1.5	6.2	0.5	0.4	0.3	74.4	1.5	24.1	0.066	0.515	31.659372	-116.517828
Santo Tomás	52.00	1	0	5392	0.6	72.6	2.0	15.2	1.6	6.8	0.7	0.3	0.2	73.2	2.0	24.8	0.064	0.517	31.585066	-116.420569
Misión San Vicente	90.00	1	0	4734	0.8	65.1	2.6	18.5	1.3	10.7	0.6	0.2	0.2	65.9	2.6	31.5	0.074	0.501	31.330691	-116.251779
El Salado	104.50	1	0	4157	0.5	71.4	1.5	14.6	1.4	9.6	0.6	0.2	0.2	71.9	1.5	26.6	0.066	0.514	31.231710	-116.168482
Punta Colonet	128.00	1	0	5808	1.6	69.6	3.3	13.2	2.0	9.4	0.6	0.1	0.2	71.2	3.3	25.5	0.070	0.513	31.080318	-116.204411
Punta Colonet	128.00	3	0	5268	0.6	69.9	3.4	13.7	1.5	9.9	0.6	0.2	0.2	70.5	3.4	26.1	0.070	0.501	31.052613	-116.207941
Camalú	159.00	1	0	6772	1.0	75.3	3.2	12.5	1.2	5.9	0.4	0.1	0.4	76.3	3.2	20.5	0.073	0.501	30.845981	-116.065450
Colonia Vicente Guerrero (Lazáro Cárdenas)	172.40	3	0	12368	0.6	82.8	2.9	9.9	0.8	2.4	0.2	0.2	0.2	83.4	2.9	13.7	0.084	0.509	30.706968	-115.986246
San Quintín	193.00	1	0	12630	0.6	81.7	3.1	9.7	0.6	3.1	0.3	0.3	0.6	82.3	3.1	14.6	0.067	0.542	30.592066	-115.951713
San Quintín	193.00	3	1	10603	0.3	84.9	2.6	9.6	0.3	1.1	0.9	0.1	0.2	85.2	2.6	12.2	0.072	0.502	30.554180	-115.939934
San Quintín	193.00	3	2	10530	0.4	88.3	2.7	6.3	0.3	1.0	0.7	0.1	0.2	88.7	2.7	8.6	0.075	0.502	30.554099	-115.939809
Lazáro Cárdenas	196.00																			

BAJA CALIFORNIA

3 CARR: Ent. Punta Prieta - Bahía de Los Ángeles

CLAVE: 02322

RUTA: MEX-001

AÑO: 2017

LUGAR	ESTACION				CLASIFICACION VEHICULAR EN PORCIENTO										COORDENADAS					
	KM	TE	SC	TDPA	M	A	B	C2	C3	T3S2	T3S3	T3S2R4	OTROS	A	B	C	K'	D	LATITUD	LONGITUD
Parador Punta Prieta	0.00	3	0	169	3.4	50.1	1.6	39.1	4.9	0.8	0.0	0.0	0.1	53.5	1.6	44.9	0.148	0.504	29.045541	-114.149290
Bahía de Los Ángeles	68.00	1	0	206	3.1	64.8	0.7	28.1	2.7	0.4	0.1	0.0	0.1	67.9	0.7	31.4	0.136	0.510	28.961257	-113.564676

4 CARR: Ent. Punta Prieta - Guerrero Negro

CLAVE: 00321

RUTA: MEX-001

AÑO: 2017

LUGAR	ESTACION				CLASIFICACION VEHICULAR EN PORCIENTO										COORDENADAS					
	KM	TE	SC	TDPA	M	A	B	C2	C3	T3S2	T3S3	T3S2R4	OTROS	A	B	C	K'	D	LATITUD	LONGITUD
Parador Punta Prieta	0.00	3	0	705	1.7	56.3	2.4	14.1	2.6	19.8	2.4	0.6	0.1	58.0	2.4	39.6	0.101	0.526	29.042928	-114.152402
Rosarito	50.60	3	0	975	1.1	56.8	2.6	14.7	1.9	20.3	2.1	0.4	0.1	57.9	2.6	39.5	0.078	0.532	28.624484	-114.031691
Tanatán	70.10	3	0	929	1.3	59.2	2.7	13.2	2.1	17.9	2.9	0.5	0.2	60.5	2.7	36.8	0.078	0.530	28.494071	-114.015219
Tampico	105.00	1	0	1127	2.1	65.3	2.2	13.0	2.2	12.7	2.2	0.2	0.1	67.4	2.2	30.4	0.082	0.505	28.219591	-113.999924
Lim. Edos. Term. B.C. Ppia. B.C.S. (Paralelo 28)	128.56																			
Ent. Guerrero Negro	130.00	1	0	1843	1.3	75.4	1.5	9.0	1.3	10.3	0.9	0.2	0.1	76.7	1.5	21.8	0.073	0.516	27.971853	-114.013692

5 CARR: Lázaro Cárdenas - Ent. Punta Prieta

CLAVE: 02319

RUTA: MEX-001

AÑO: 2017

LUGAR	ESTACION				CLASIFICACION VEHICULAR EN PORCIENTO										COORDENADAS					
	KM	TE	SC	TDPA	M	A	B	C2	C3	T3S2	T3S3	T3S2R4	OTROS	A	B	C	K'	D	LATITUD	LONGITUD
Lázaro Cárdenas	0.00	3	0	10102	0.6	82.3	2.2	10.5	0.5	3.5	0.2	0.1	0.1	82.9	2.2	14.9	0.069	0.513	30.505381	-115.924761
T. Izq. Ramal a Venustiano Carranza	14.50	1	0	2430	0.6	69.6	5.6	12.5	1.6	9.0	0.8	0.2	0.1	70.2	5.6	24.2	0.074	0.511	30.396832	-115.871870
Rosario de Arriba	53.70	1	0	1482	1.1	60.1	4.5	15.0	2.2	15.4	1.3	0.3	0.1	61.2	4.5	34.3	0.076	0.513	30.067091	-115.731638
Rosario de Arriba	53.70	3	0	2058	1.8	70.6	1.4	13.5	1.5	10.2	0.7	0.2	0.1	72.4	1.4	26.2	0.073	0.538	30.077151	-115.699204
T. Der. Emiliano Zapata	80.00	3	0	944	1.9	65.2	2.6	16.2	2.6	9.7	1.2	0.3	0.3	67.1	2.6	30.3	0.068	0.511	30.032845	-115.524877
San Agustín	140.00	1	0	948	1.5	56.7	2.9	13.6	2.7	20.0	2.0	0.5	0.1	58.2	2.9	38.9	0.069	0.525	29.921986	-114.980229
San Agustín	140.00	3	0	767	1.0	53.3	2.8	12.9	2.4	24.6	2.2	0.7	0.1	54.3	2.8	42.9	0.087	0.531	29.919999	-114.959152
San Luis	173.00	1	0	836	1.1	53.7	2.6	12.4	2.6	24.9	2.0	0.6	0.1	54.8	2.6	42.6	0.069	0.525	29.743708	-114.736904
Rancho Chapala	222.80	1	0	736	0.9	49.7	3.0	14.5	2.5	26.5	2.2	0.6	0.1	50.6	3.0	46.4	0.082	0.535	29.395311	-114.392160
Parador Punta Prieta	275.66	1	0	758	1.3	54.8	2.1	12.2	2.5	24.3	2.0	0.6	0.2	56.1	2.1	41.8	0.104	0.535	29.050596	-114.153501

6 CARR: Mexicali - San Felipe

CLAVE: 02096

RUTA: MEX-005

AÑO: 2017

LUGAR	ESTACION				CLASIFICACION VEHICULAR EN PORCIENTO										COORDENADAS					
	KM	TE	SC	TDPA	M	A	B	C2	C3	T3S2	T3S3	T3S2R4	OTROS	A	B	C	K'	D	LATITUD	LONGITUD
Mexicali	0.00	3	1	11427	0.9	81.3	1.4	9.3	2.6	3.1	1.1	0.2	0.1	82.2	1.4	16.4	0.080	0.501	32.556617	-115.418045
Mexicali	0.00	3	2	11359	0.8	80.1	1.2	11.3	2.4	3.0	1.0	0.1	0.1	80.9	1.2	17.9	0.087	0.501	32.556548	-115.418206

BAJA CALIFORNIA

6 CARR: Mexicali - San Felipe

CLAVE: 02096

RUTA: MEX-005

AÑO: 2017

LUGAR	ESTACION				CLASIFICACION VEHICULAR EN PORCIENTO										COORDENADAS					
	KM	TE	SC	TDPA	M	A	B	C2	C3	T3S2	T3S3	T3S2R4	OTROS	A	B	C	K'	D	LATITUD	LONGITUD
La Puerta	32.00	1	1	3899	0.4	80.4	1.4	11.9	1.9	2.5	1.0	0.1	0.4	80.8	1.4	17.8	0.099	0.503	32.348732	-115.333539
La Puerta	32.00	1	2	3941	0.5	82.4	1.2	9.7	1.9	2.4	1.4	0.2	0.3	82.9	1.2	15.9	0.105	0.503	32.348766	-115.333468
T. Izq. Estación Coahuila	39.00	1	1	2704	0.4	82.3	1.1	10.0	1.8	2.7	1.2	0.1	0.4	82.7	1.1	16.2	0.133	0.503	32.282929	-115.322768
T. Izq. Estación Coahuila	39.00	1	2	2742	0.5	88.6	0.6	3.8	1.2	2.8	1.9	0.2	0.4	89.1	0.6	10.3	0.138	0.503	32.282929	-115.322768
T. Izq. Estación Coahuila	39.00	3	0	2791	1.3	73.6	0.7	15.8	2.0	4.3	2.0	0.2	0.1	74.9	0.7	24.4	0.119	0.509	32.267003	-115.321452
El Chinero	141.00	1	0	1892	0.5	74.8	1.7	15.9	1.7	4.3	0.8	0.2	0.1	75.3	1.7	23.0	0.139	0.500	31.440097	-115.053067
El Chinero	141.00	3	0	1838	0.6	76.1	1.3	17.2	1.7	2.4	0.6	0.1	0.0	76.7	1.3	22.0	0.139	0.506	31.421392	-115.044243
San Felipe	189.60	1	1	3164	0.8	85.5	0.4	11.7	0.7	0.8	0.1	0.0	0.0	86.3	0.4	13.3	0.096	0.506	31.037986	-114.865313
San Felipe	189.60	1	2	3084	1.1	85.3	0.4	11.8	0.7	0.6	0.1	0.0	0.0	86.4	0.4	13.2	0.098	0.506	31.037761	-114.865406

7 CARR: Ramal a Aeropuerto de Mexicali

CLAVE: 02321

RUTA: MEX-002

AÑO: 2017

LUGAR	ESTACION				CLASIFICACION VEHICULAR EN PORCIENTO										COORDENADAS					
	KM	TE	SC	TDPA	M	A	B	C2	C3	T3S2	T3S3	T3S2R4	OTROS	A	B	C	K'	D	LATITUD	LONGITUD
T. C. Mexicali - Estación Coahuila	0.00	3	0	11731	0.8	82.4	1.2	9.5	2.7	3.0	0.3	0.0	0.1	83.2	1.2	15.6	0.062	0.537	32.650605	-115.340719
Aeropuerto	10.00	1	0	5215	0.9	86.4	1.3	9.0	0.7	1.6	0.1	0.0	0.0	87.3	1.3	11.4	0.088	0.506	32.629232	-115.254614
T. C. Algodones - Islas Agrarias Grupo B	12.10																			

8 CARR: San Felipe - Chapala

CLAVE: 02503

RUTA: MEX-005

AÑO: 2017

LUGAR	ESTACION				CLASIFICACION VEHICULAR EN PORCIENTO										COORDENADAS					
	KM	TE	SC	TDPA	M	A	B	C2	C3	T3S2	T3S3	T3S2R4	OTROS	A	B	C	K'	D	LATITUD	LONGITUD
San Felipe	0.00	3	1	1715	0.8	83.2	0.1	13.1	1.7	0.7	0.3	0.0	0.1	84.0	0.1	15.9	0.101	0.507	30.999663	-114.836797
San Felipe	0.00	3	2	1666	0.6	82.3	0.3	14.2	1.6	0.6	0.2	0.1	0.1	82.9	0.3	16.8	0.097	0.507	30.999644	-114.836842
Playa Curbina	75.46	3	0	262	1.7	68.3	0.5	22.8	3.6	1.8	1.3	0.0	0.0	70.0	0.5	29.5	0.145	0.522	30.354325	-114.643857
T. C. Lazaro Cárdenas - Parador Punta Prieta	213.00																			

9 CARR: Sonoita - Mexicali

CLAVE: 00081

RUTA: MEX-002

AÑO: 2017

LUGAR	ESTACION				CLASIFICACION VEHICULAR EN PORCIENTO										COORDENADAS					
	KM	TE	SC	TDPA	M	A	B	C2	C3	T3S2	T3S3	T3S2R4	OTROS	A	B	C	K'	D	LATITUD	LONGITUD
Sonoita	0.00	3	0	4318	1.9	45.4	6.3	8.3	2.1	24.1	3.1	8.1	0.7	47.3	6.3	46.4	0.058	0.546	31.885249	-112.857503
Los Vidrios	58.75	3	0	3461	2.3	38.6	6.6	7.2	2.5	27.8	5.4	8.6	1.0	40.9	6.6	52.5	0.061	0.538	32.027432	-113.423699
San Luis Río Colorado	191.80	1	0	4263	3.2	48.8	6.7	9.0	2.1	20.6	2.5	6.2	0.9	52.0	6.7	41.3	0.056	0.505	32.451770	-114.677541
San Luis Río Colorado	191.80	3	1	10092	0.6	80.5	1.8	8.6	0.5	5.2	0.9	1.7	0.2	81.1	1.8	17.1	0.074	0.501	32.488429	-114.798166

BAJA CALIFORNIA

9 CARR: Sonoita - Mexicali

CLAVE: 00081

RUTA: MEX-002

AÑO: 2017

LUGAR	ESTACION				CLASIFICACION VEHICULAR EN PORCIENTO														COORDENADAS	
	KM	TE	SC	TDPA	M	A	B	C2	C3	T3S2	T3S3	T3S2R4	OTROS	A	B	C	K'	D	LATITUD	LONGITUD
San Luis Río Colorado	191.80	3	2	10120	0.5	80.2	1.9	8.6	0.5	5.4	1.0	1.7	0.2	80.7	1.9	17.4	0.078	0.501	32.488572	-114.798112
Lim. Edos. Term. Son. Ppia. B.C.	203.69																			
X. C. Mexicali - Algodones	206.78	1	1	10760	0.5	79.2	1.7	10.0	0.6	5.2	0.9	1.7	0.2	79.7	1.7	18.6	0.071	0.502	32.498500	-114.831550
X. C. Mexicali - Algodones	206.78	1	2	10664	0.5	78.8	1.7	10.0	0.8	5.6	0.7	1.7	0.2	79.3	1.7	19.0	0.077	0.502	32.498563	-114.831524
X. C. Mexicali - Algodones	206.78	3	1	8850	0.5	78.6	1.9	8.6	0.7	6.3	1.1	2.1	0.2	79.1	1.9	19.0	0.075	0.506	32.507571	-114.861438
X. C. Mexicali - Algodones	206.78	3	2	9051	0.5	78.3	1.9	8.9	0.8	6.6	0.8	2.0	0.2	78.8	1.9	19.3	0.074	0.506	32.507572	-114.861438
T. Izq. Ejido Hermosillo	214.80	3	1	7526	0.6	77.1	2.2	8.8	0.9	6.3	1.6	1.9	0.6	77.7	2.2	20.1	0.072	0.508	32.527626	-114.928973
T. Izq. Ejido Hermosillo	214.80	3	2	7768	0.4	75.2	2.4	9.5	1.0	7.0	1.8	2.1	0.6	75.6	2.4	22.0	0.080	0.508	32.527502	-114.929001
Ejido Monterrey	228.63	3	1	10989	0.3	78.8	2.0	8.6	0.8	6.4	1.0	1.8	0.3	79.1	2.0	18.9	0.067	0.503	32.552060	-115.087606
Ejido Monterrey	228.63	3	2	11110	0.3	80.3	1.8	7.3	0.9	6.5	0.8	1.7	0.4	80.6	1.8	17.6	0.070	0.503	32.552060	-115.087606
X. C. Mexicali - Algodones	256.47	1	1	14291	0.6	83.0	1.6	10.0	0.8	2.8	0.4	0.7	0.1	83.6	1.6	14.8	0.071	0.502	32.565227	-115.326374
X. C. Mexicali - Algodones	256.47	1	2	14415	0.5	84.4	1.3	8.6	0.9	3.0	0.5	0.7	0.1	84.9	1.3	13.8	0.072	0.502	32.565217	-115.326378
T. C. Mexicali - San Felipe	265.12																			

10 CARR: Tecate - El Sauzal

CLAVE: 02097

RUTA: MEX-003

AÑO: 2017

LUGAR	ESTACION				CLASIFICACION VEHICULAR EN PORCIENTO														COORDENADAS	
	KM	TE	SC	TDPA	M	A	B	C2	C3	T3S2	T3S3	T3S2R4	OTROS	A	B	C	K'	D	LATITUD	LONGITUD
Tecate	0.00	3	0	10321	1.1	85.0	0.8	9.3	0.6	2.0	0.5	0.5	0.2	86.1	0.8	13.1	0.088	0.514	32.539454	-116.627223
T. Der. Valle de Las Palmas	27.80	1	0	4628	1.4	79.9	1.0	11.4	1.0	3.4	0.9	0.7	0.3	81.3	1.0	17.7	0.111	0.512	32.382728	-116.613973
El Tezterazo	48.80	3	0	3060	1.1	81.0	1.0	10.5	1.2	3.3	0.7	0.9	0.3	82.1	1.0	16.9	0.147	0.533	32.264693	-116.533348
T. Izq. San Marcos	63.50	1	0	3553	1.9	78.5	1.1	12.8	0.9	3.2	0.6	0.8	0.2	80.4	1.1	18.5	0.120	0.504	32.196304	-116.488847
El Porvenir Guadalupe	74.80	3	0	5482	0.9	82.0	1.0	11.9	0.8	2.3	0.4	0.6	0.1	82.9	1.0	16.1	0.121	0.516	32.091076	-116.563096
Las Palmas	85.00	1	0	5531	1.0	79.8	1.0	13.5	0.9	2.3	0.6	0.7	0.2	80.8	1.0	18.2	0.126	0.524	32.043209	-116.600408
San Antonio de Las Minas	93.90	1	1	4124	0.7	81.7	0.6	14.0	0.7	1.4	0.4	0.4	0.1	82.4	0.6	17.0	0.142	0.517	31.985737	-116.646005
San Antonio de Las Minas	93.90	1	2	4418	0.8	82.2	0.6	13.0	0.7	1.8	0.3	0.5	0.1	83.0	0.6	16.4	0.161	0.517	31.985675	-116.645894
El Sauzal	104.53	1	1	4831	0.8	85.9	0.7	9.2	0.8	1.6	0.4	0.5	0.1	86.7	0.7	12.6	0.126	0.514	31.910457	-116.694157
El Sauzal	104.53	1	2	5107	0.8	85.1	0.7	9.3	0.8	2.1	0.5	0.5	0.2	85.9	0.7	13.4	0.132	0.514	31.910365	-116.694035

11 CARR: Tijuana - Ensenada (Libre)

CLAVE: 02099

RUTA: MEX-001

AÑO: 2017

LUGAR	ESTACION				CLASIFICACION VEHICULAR EN PORCIENTO														COORDENADAS	
	KM	TE	SC	TDPA	M	A	B	C2	C3	T3S2	T3S3	T3S2R4	OTROS	A	B	C	K'	D	LATITUD	LONGITUD
Tijuana	0.00																			
X. C. Tijuana - San Miguel (Cuota)	22.00	1	1	26386	0.8	89.6	0.5	6.5	0.7	1.2	0.6	0.0	0.1	90.4	0.5	9.1	0.092	0.520	32.378581	-117.057258

BAJA CALIFORNIA

11 CARR: Tijuana - Ensenada (Libre)

CLAVE: 02099

RUTA: MEX-001

AÑO: 2017

LUGAR	ESTACION				CLASIFICACION VEHICULAR EN PORCIENTO										COORDENADAS					
	KM	TE	SC	TDPA	M	A	B	C2	C3	T3S2	T3S3	T3S2R4	OTROS	A	B	C	K'	D	LATITUD	LONGITUD
X. C. Tijuana - San Miguel (Cuota)	22.00	1	2	28621	1.0	89.5	0.7	6.9	0.7	1.0	0.2	0.0	0.0	90.5	0.7	8.8	0.081	0.520	32.378598	-117.057152
Rosarito	25.94	1	1	14893	1.7	92.1	0.2	5.4	0.3	0.2	0.1	0.0	0.0	93.8	0.2	6.0	0.115	0.574	32.367347	-117.060173
Rosarito	25.94	1	2	14879	1.1	91.7	0.1	6.0	0.3	0.3	0.4	0.0	0.1	92.8	0.1	7.1	0.112	0.574	32.367320	-117.060328
Rosarito	25.94	3	1	10478	0.9	93.5	0.1	5.0	0.2	0.1	0.2	0.0	0.0	94.4	0.1	5.5	0.096	0.601	32.334568	-117.052993
Rosarito	25.94	3	2	9045	1.0	89.7	0.2	8.0	0.3	0.3	0.4	0.0	0.1	90.7	0.2	9.1	0.098	0.601	32.334507	-117.053053
T. Izq. Autopista	46.12	1	1	5150	1.0	87.4	0.6	8.1	0.6	1.7	0.5	0.0	0.1	88.4	0.6	11.0	0.100	0.607	32.230924	-116.922096
T. Izq. Autopista	46.12	1	2	4767	1.4	86.7	0.3	10.8	0.4	0.3	0.1	0.0	0.0	88.1	0.3	11.6	0.103	0.607	32.230915	-116.922032
Población Plaza Santa María	56.98	1	0	1834	1.9	87.3	0.2	10.0	0.4	0.1	0.1	0.0	0.0	89.2	0.2	10.6	0.142	0.501	32.144690	-116.892261
La Misión	64.98	1	0	3174	1.4	83.8	0.3	13.6	0.5	0.3	0.1	0.0	0.0	85.2	0.3	14.5	0.142	0.555	32.093041	-116.859189
T. Izq. Colonia Guadalupe	82.90	1	0	2168	0.8	82.1	0.6	15.5	0.7	0.2	0.1	0.0	0.0	82.9	0.6	16.5	0.128	0.632	31.989836	-116.746615
Ent. San Miguel	95.80	1	0	1971	1.8	85.8	0.4	8.8	0.9	1.9	0.3	0.0	0.1	87.6	0.4	12.0	0.107	0.503	31.909103	-116.730816
El Sauzal	102.00	3	1	24038	0.8	83.9	0.9	9.9	0.7	3.1	0.3	0.3	0.1	84.7	0.9	14.4	0.087	0.505	31.868912	-116.674686
El Sauzal	102.00	3	2	24493	0.9	86.6	0.8	7.0	0.7	3.2	0.3	0.4	0.1	87.5	0.8	11.7	0.092	0.505	31.869031	-116.674607
Ensenada	110.00																			

12 CARR: El Centinela - La Rumorosa (Cuota)

CLAVE: 02011

RUTA: MEX-002D

AÑO: 2017

LUGAR	ESTACION				CLASIFICACION VEHICULAR EN PORCIENTO										COORDENADAS					
	KM	TE	SC	TDPA	M	A	B	C2	C3	T3S2	T3S3	T3S2R4	OTROS	A	B	C	K'	D	LATITUD	LONGITUD
Ent. El Centinela	20.30																			
Laguna Salada	25.00	1	1	5641	0.8	72.1	3.0	5.8	1.3	10.7	2.4	3.0	0.9	72.9	3.0	24.1	0.099	0.508	32.576913	-115.740243
Laguna Salada	25.00	1	2	5471	0.5	67.3	3.8	11.9	1.0	8.9	3.5	2.1	1.0	67.8	3.8	28.4	0.137	0.508	32.576913	-115.740242
La Rumorosa	67.60	1	1	2641	0.8	73.7	0.7	11.2	1.1	9.2	2.2	0.5	0.6	74.5	0.7	24.8	0.124	0.508	32.550945	-116.043466
La Rumorosa	67.60	1	2	2562	0.8	73.1	0.9	9.6	1.6	11.4	1.6	0.7	0.3	73.9	0.9	25.2	0.152	0.508	32.550913	-116.043457

13 CARR: La Rumorosa - Tecate (Cuota)

CLAVE: 02011

RUTA: MEX-002D

AÑO: 2017

LUGAR	ESTACION				CLASIFICACION VEHICULAR EN PORCIENTO										COORDENADAS					
	KM	TE	SC	TDPA	M	A	B	C2	C3	T3S2	T3S3	T3S2R4	OTROS	A	B	C	K'	D	LATITUD	LONGITUD
La Rumorosa	0.00	3	1	4212	0.4	66.3	4.6	10.0	0.9	12.0	1.2	3.7	0.9	66.7	4.6	28.7	0.078	0.551	32.552712	-116.061586
La Rumorosa	0.00	3	2	3434	0.8	60.9	5.1	13.8	1.2	12.5	0.6	4.2	0.9	61.7	5.1	33.2	0.103	0.551	32.552802	-116.061626
Caseta de Cobro El Hongo	30.56	1	1	4105	0.4	64.5	4.7	10.5	0.9	11.4	2.7	3.9	1.0	64.9	4.7	30.4	0.073	0.508	32.518591	-116.302150
Caseta de Cobro El Hongo	30.56	1	2	4242	0.5	67.7	4.3	9.8	0.8	10.1	2.1	3.8	0.9	68.2	4.3	27.5	0.112	0.508	32.518685	-116.302119
Caseta de Cobro El Hongo	30.56	2	1	3586	0.3	72.0	4.9	2.6	2.0	12.5	0.6	4.2	0.9	72.3	4.9	22.8	0.087	0.500	32.521838	-116.319986
Caseta de Cobro El Hongo	30.56	2	2	3586	0.3	72.0	4.9	2.6	2.0	12.5	0.6	4.2	0.9	72.3	4.9	22.8	0.087	0.500	32.521838	-116.319986

BAJA CALIFORNIA

13 CARR: La Rumorosa - Tecate (Cuota)

CLAVE: 02011

RUTA: MEX-002D

AÑO: 2017

LUGAR	ESTACION				CLASIFICACION VEHICULAR EN PORCIENTO													COORDENADAS		
	KM	TE	SC	TDPA	M	A	B	C2	C3	T3S2	T3S3	T3S2R4	OTROS	A	B	C	K'	D	LATITUD	LONGITUD
Caseta de Cobro El Hongo	30.56	3	1	4534	0.4	67.5	4.2	9.8	0.8	10.4	2.1	3.8	1.0	67.9	4.2	27.9	0.074	0.501	32.524231	-116.333748
Caseta de Cobro El Hongo	30.56	3	2	4547	0.5	67.4	4.4	11.0	1.0	8.7	2.5	3.0	1.5	67.9	4.4	27.7	0.105	0.501	32.524304	-116.333707
T. C. Mexicali -Tijuana (Libre)	55.50																			

14 CARR: Libramiento de Mexicali (Cuota)

CLAVE: 02319

RUTA: MEX-002D

AÑO: 2017

LUGAR	ESTACION				CLASIFICACION VEHICULAR EN PORCIENTO													COORDENADAS		
	KM	TE	SC	TDPA	M	A	B	C2	C3	T3S2	T3S3	T3S2R4	OTROS	A	B	C	K'	D	LATITUD	LONGITUD
T. C. Sonoita - Mexicali	0.00	3	0	3704	2.0	58.4	2.8	7.3	3.3	17.2	3.3	4.7	1.0	60.4	2.8	36.8	0.078	0.515	32.551039	-115.306659
T. C. Mexicali - Tijuana	40.60	1	0	2573	1.0	45.0	2.3	10.1	3.8	26.1	3.3	7.7	0.7	46.0	2.3	51.7	0.082	0.516	32.591452	-115.676724

15 CARR: Libramiento de Tecate (Cuota)

CLAVE: 02082

RUTA: MEX-002D

AÑO: 2017

LUGAR	ESTACION				CLASIFICACION VEHICULAR EN PORCIENTO													COORDENADAS		
	KM	TE	SC	TDPA	M	A	B	C2	C3	T3S2	T3S3	T3S2R4	OTROS	A	B	C	K'	D	LATITUD	LONGITUD
X. C. Celaya - Dolores Hidalgo	8.60																			
Caseta de Cobro Tecate	130.50	2	1	2358	0.3	80.3	1.1	3.0	1.2	10.9	0.7	1.7	0.8	80.6	1.1	18.3	0.091	0.500	32.545760	-116.852122
Caseta de Cobro Tecate	130.50	2	2	2358	0.3	80.3	1.1	3.0	1.2	10.9	0.7	1.7	0.8	80.6	1.1	18.3	0.091	0.500	32.545760	-116.852122
T. C. Mexicali -Tijuana (Libre) Poniente	130.60																			

16 CARR: Tecate - Tijuana (Cuota)

CLAVE: 02011

RUTA: MEX-002D

AÑO: 2017

LUGAR	ESTACION				CLASIFICACION VEHICULAR EN PORCIENTO													COORDENADAS		
	KM	TE	SC	TDPA	M	A	B	C2	C3	T3S2	T3S3	T3S2R4	OTROS	A	B	C	K'	D	LATITUD	LONGITUD
T. C. Mexicali -Tijuana (Libre)	130.60																			
Caseta de Cobro Tijuana	147.60	1	1	4224	0.5	66.1	4.3	9.9	1.0	13.4	1.6	2.6	0.6	66.6	4.3	29.1	0.082	0.530	32.557582	-116.810779
Caseta de Cobro Tijuana	147.60	1	2	3746	0.6	65.0	4.9	11.5	0.9	13.7	0.5	2.6	0.3	65.6	4.9	29.5	0.083	0.530	32.557501	-116.810904
Caseta de Cobro Tijuana	147.60	2	1	3236	0.3	73.3	2.1	5.7	2.0	12.0	0.6	3.2	0.8	73.6	2.1	24.3	0.091	0.500	32.545760	-116.852122
Caseta de Cobro Tijuana	147.60	2	2	3236	0.3	73.3	2.1	5.7	2.0	12.0	0.6	3.2	0.8	73.6	2.1	24.3	0.091	0.500	32.545760	-116.852122
Caseta de Cobro Tijuana	147.60	3	1	15200	0.9	76.3	2.4	14.1	1.2	4.1	0.5	0.2	0.3	77.2	2.4	20.4	0.139	0.529	32.542353	-116.858186
Caseta de Cobro Tijuana	147.60	3	2	17045	0.7	82.2	2.2	7.9	1.4	3.6	1.0	0.3	0.7	82.9	2.2	14.9	0.142	0.529	32.542260	-116.858187
Termina Autopista Principia Tijuana	148.15																			

BAJA CALIFORNIA

17 CARR: Tijuana - Ensenada (Cuota)

CLAVE: 02100

RUTA: MEX-001D

AÑO: 2017

LUGAR	ESTACION				CLASIFICACION VEHICULAR EN PORCIENTO										COORDENADAS					
	KM	TE	SC	TDPA	M	A	B	C2	C3	T3S2	T3S3	T3S2R4	OTROS	A	B	C	K'	D	LATITUD	LONGITUD
Tijuana	0.00																			
T. Der. Playas de Tijuana	7.50	3	1	8913	0.7	89.6	0.3	8.6	0.4	0.3	0.1	0.0	0.0	90.3	0.3	9.4	0.111	0.530	32.528955	-117.108310
T. Der. Playas de Tijuana	7.50	3	2	7910	0.5	85.3	0.3	13.3	0.3	0.3	0.0	0.0	0.0	85.8	0.3	13.9	0.115	0.530	32.528946	-117.108235
Caseta de Cobro Playas de Tijuana	9.70	2	1	7632	0.9	97.5	0.8	0.3	0.2	0.3	0.0	0.0	0.0	98.4	0.8	0.8	0.100	0.500	32.514030	-117.109512
Caseta de Cobro Playas de Tijuana	9.70	2	2	7632	0.9	97.5	0.8	0.3	0.2	0.3	0.0	0.0	0.0	98.4	0.8	0.8	0.100	0.500	32.514030	-117.109512
X. C. Tijuana - Ensenada	29.50	1	1	9619	0.8	89.0	0.3	9.3	0.4	0.1	0.1	0.0	0.0	89.8	0.3	9.9	0.118	0.511	32.381032	-117.057726
X. C. Tijuana - Ensenada	29.50	1	2	9221	0.8	90.1	0.3	8.4	0.3	0.1	0.0	0.0	0.0	90.9	0.3	8.8	0.117	0.511	32.381046	-117.057816
X. C. Tijuana - Ensenada	29.50	3	1	20374	0.6	84.9	1.1	8.9	1.0	1.8	0.7	0.5	0.5	85.5	1.1	13.4	0.070	0.505	32.369470	-117.057490
X. C. Tijuana - Ensenada	29.50	3	2	19931	0.9	78.8	1.6	13.2	1.2	2.6	0.7	0.5	0.5	79.7	1.6	18.7	0.062	0.505	32.369445	-117.057581
Caseta de Cobro Rosarito	35.43	2	1	5625	0.5	89.9	1.8	1.3	0.8	4.7	0.2	0.6	0.2	90.4	1.8	7.8	0.100	0.500	32.311054	-117.044312
Caseta de Cobro Rosarito	35.43	2	2	5625	0.5	89.9	1.8	1.3	0.8	4.7	0.2	0.6	0.2	90.4	1.8	7.8	0.100	0.500	32.311054	-117.044312
T. Der. La Misión	66.44	3	1	8357	0.4	79.2	1.4	10.5	0.6	5.6	1.2	0.7	0.4	79.6	1.4	19.0	0.101	0.502	32.117087	-116.884047
T. Der. La Misión	66.44	3	2	8295	0.3	82.8	1.5	6.8	0.6	6.6	0.5	0.7	0.2	83.1	1.5	15.4	0.110	0.502	32.117164	-116.884222
Caseta de Cobro Ensenada	98.60	2	1	6947	0.4	86.4	1.9	1.9	1.4	6.3	0.4	0.9	0.4	86.8	1.9	11.3	0.100	0.500	31.903093	-116.732719
Caseta de Cobro Ensenada	98.60	2	2	6947	0.4	86.4	1.9	1.9	1.4	6.3	0.4	0.9	0.4	86.8	1.9	11.3	0.100	0.500	31.903093	-116.732719
T. C. Tijuana - Ensenada (Libre)	98.80																			

18 CARR: Mexicali - Tijuana

CLAVE: 02082

RUTA: MEX-002D-MEX

AÑO: 2017

LUGAR	ESTACION				CLASIFICACION VEHICULAR EN PORCIENTO										COORDENADAS					
	KM	TE	SC	TDPA	M	A	B	C2	C3	T3S2	T3S3	T3S2R4	OTROS	A	B	C	K'	D	LATITUD	LONGITUD
Mexicali	0.00																			
Colonia Progreso	7.80	3	1	6208	1.2	74.6	3.6	11.5	1.6	5.0	0.9	1.2	0.4	75.8	3.6	20.6	0.080	0.505	32.584527	-115.593219
Colonia Progreso	7.80	3	2	6336	0.5	75.3	2.7	9.9	2.9	6.0	1.3	1.1	0.3	75.8	2.7	21.5	0.114	0.505	32.584370	-115.593249
T. Der. Estación de Microondas	69.62	3	0	2965	1.5	72.7	1.5	12.3	1.8	8.4	1.3	0.1	0.4	74.2	1.5	24.3	0.090	0.539	32.509997	-116.090920
Agua Hechicera	87.00	1	0	2896	1.5	71.4	1.5	9.7	2.0	11.1	2.3	0.1	0.4	72.9	1.5	25.6	0.090	0.510	32.494778	-116.219946
El Encinal	112.15	1	0	4886	1.0	76.4	1.2	11.1	1.0	7.6	1.4	0.1	0.2	77.4	1.2	21.4	0.086	0.514	32.557236	-116.438760
Tecate	132.00	1	1	6719	0.9	81.5	1.4	9.3	0.7	4.3	0.9	0.5	0.5	82.4	1.4	16.2	0.077	0.516	32.563918	-116.580438
Tecate	132.00	1	2	6302	0.6	87.2	1.0	5.0	0.8	4.0	0.8	0.4	0.2	87.8	1.0	11.2	0.076	0.516	32.564003	-116.580371
Tecate	132.00	3	1	11000	0.8	84.8	1.4	8.0	1.0	2.9	0.6	0.2	0.3	85.6	1.4	13.0	0.072	0.510	32.546943	-116.673763
Tecate	132.00	3	2	10568	0.7	85.7	1.3	8.6	0.9	2.0	0.5	0.1	0.2	86.4	1.3	12.3	0.083	0.510	32.546852	-116.673727
Presa Abelardo L. Rodríguez	165.00	3	0	6757	1.2	91.8	0.5	5.3	0.4	0.4	0.3	0.0	0.1	93.0	0.5	6.5	0.104	0.524	32.455171	-116.914659
Tijuana	182.60																			

BAJA CALIFORNIA

19 CARR: Algodones - Ent. Islas Agrarias Grupo B

CLAVE: 02006

RUTA: BC-008

AÑO: 2017

LUGAR	ESTACION				CLASIFICACION VEHICULAR EN PORCIENTO										COORDENADAS					
	KM	TE	SC	TDPA	M	A	B	C2	C3	T3S2	T3S3	T3S2R4	OTROS	A	B	C	K'	D	LATITUD	LONGITUD
Algodones	0.00	3	0	4096	0.4	89.5	0.4	9.4	0.3	0.0	0.0	0.0	0.0	89.9	0.4	9.7	0.088	0.513	32.703582	-114.741745
T. Izq. Cd. Morelos	14.00	1	0	3905	0.3	89.7	0.3	8.8	0.7	0.1	0.1	0.0	0.0	90.0	0.3	9.7	0.078	0.515	32.665973	-114.848067
Mérida	20.30	3	0	1939	0.3	85.7	0.9	11.5	0.6	0.8	0.2	0.0	0.0	86.0	0.9	13.1	0.086	0.501	32.664565	-114.924955
T. Izq. Ejido Lazáro Cárdenas	31.50	1	0	2843	0.5	87.0	0.7	10.6	0.4	0.5	0.2	0.0	0.1	87.5	0.7	11.8	0.072	0.535	32.614518	-115.016066
Islas Agrarias Grupo B	55.50	1	0	4151	1.6	83.8	2.0	9.8	0.6	1.9	0.3	0.0	0.0	85.4	2.0	12.6	0.071	0.517	32.615852	-115.262312

20 CARR: Corredor Tijuana 2000

CLAVE: 02006

RUTA: BC

AÑO: 2017

LUGAR	ESTACION				CLASIFICACION VEHICULAR EN PORCIENTO										COORDENADAS					
	KM	TE	SC	TDPA	M	A	B	C2	C3	T3S2	T3S3	T3S2R4	OTROS	A	B	C	K'	D	LATITUD	LONGITUD
T. C. Mexicali - Tijuana (Cuota)	0.00	3	1	18734	0.8	84.9	1.9	6.2	1.2	3.3	1.0	0.4	0.3	85.7	1.9	12.4	0.126	0.536	32.532572	-116.856822
T. C. Mexicali - Tijuana (Cuota)	0.00	3	2	16204	0.6	84.5	2.1	7.6	1.0	3.4	0.4	0.3	0.1	85.1	2.1	12.8	0.142	0.536	32.532656	-116.856484
T. C. Mexicali - Tijuana	11.00	1	1	23116	0.9	86.7	1.3	5.9	1.6	2.7	0.4	0.3	0.2	87.6	1.3	11.1	0.077	0.503	32.458680	-116.837141
T. C. Mexicali - Tijuana	11.00	1	2	22816	0.7	84.6	2.0	7.2	1.5	3.2	0.4	0.2	0.2	85.3	2.0	12.7	0.079	0.503	32.459021	-116.837043
T. C. Tijuana - San Miguel (Cuota)	40.00	1	1	4686	0.6	79.5	1.5	9.2	1.9	5.2	1.2	0.7	0.2	80.1	1.5	18.4	0.115	0.508	32.288764	-117.022108
T. C. Tijuana - San Miguel (Cuota)	40.00	1	2	4541	0.5	79.3	1.5	8.7	1.9	6.1	0.8	0.8	0.4	79.8	1.5	18.7	0.188	0.508	32.288632	-117.021988

21 CARR: Ejido Benito Juárez - Ejido Chiapas

CLAVE: 02501

RUTA: BC-061

AÑO: 2017

LUGAR	ESTACION				CLASIFICACION VEHICULAR EN PORCIENTO										COORDENADAS					
	KM	TE	SC	TDPA	M	A	B	C2	C3	T3S2	T3S3	T3S2R4	OTROS	A	B	C	K'	D	LATITUD	LONGITUD
Ejido Benito Juárez	0.00	3	0	3748	1.0	88.1	0.3	9.9	0.3	0.3	0.1	0.0	0.0	89.1	0.3	10.6	0.107	0.509	32.559213	-114.993025
Ejido México	7.00	1	0	1207	1.4	87.0	0.5	10.1	0.5	0.4	0.1	0.0	0.0	88.4	0.5	11.1	0.123	0.508	32.519925	-114.981606
Ejido Chiapas	10.56	1	0	1240	1.2	83.2	0.8	14.1	0.5	0.2	0.0	0.0	0.0	84.4	0.8	14.8	0.087	0.505	32.499803	-114.964843

22 CARR: Ejido Monterrey - Mazón

CLAVE: 02004

RUTA: BC-003

AÑO: 2017

LUGAR	ESTACION				CLASIFICACION VEHICULAR EN PORCIENTO										COORDENADAS					
	KM	TE	SC	TDPA	M	A	B	C2	C3	T3S2	T3S3	T3S2R4	OTROS	A	B	C	K'	D	LATITUD	LONGITUD
T. C. Sonoita - Mexicali	0.00	3	0	5682	0.6	80.9	0.8	13.4	0.7	2.7	0.5	0.1	0.3	81.5	0.8	17.7	0.080	0.511	32.543625	-115.076177
X. C. Mexicali - Algodones	15.16	1	0	5246	1.2	81.3	1.1	12.1	0.9	2.5	0.6	0.1	0.2	82.5	1.1	16.4	0.093	0.501	32.421546	-115.067370
X. C. Mexicali - Algodones	15.16	3	0	7183	0.9	79.3	1.3	14.4	0.9	2.3	0.7	0.0	0.2	80.2	1.3	18.5	0.094	0.504	32.416763	-115.067163
Guadalupe Victoria	30.47	1	0	10662	0.6	88.5	0.6	7.9	0.5	1.3	0.4	0.0	0.2	89.1	0.6	10.3	0.112	0.512	32.294999	-115.089037
Mazón	35.00	1	0	7850	0.7	85.2	0.8	11.0	0.7	1.3	0.2	0.0	0.1	85.9	0.8	13.3	0.081	0.502	32.244443	-115.111040

BAJA CALIFORNIA

23 CARR: El Faro - Estación Coahuila

CLAVE: 02013

RUTA: BC-004

AÑO: 2017

LUGAR	ESTACION				CLASIFICACION VEHICULAR EN PORCIENTO													COORDENADAS		
	KM	TE	SC	TDPA	M	A	B	C2	C3	T3S2	T3S3	T3S2R4	OTROS	A	B	C	K'	D	LATITUD	LONGITUD
T. C. Mexicali - San Felipe	0.00	3	0	2702	0.8	79.8	1.6	11.9	1.3	3.2	1.1	0.0	0.3	80.6	1.6	17.8	0.097	0.501	32.273380	-115.316302
X. C. Mexicali - Estación Coahuila	16.30	1	0	3469	0.7	78.7	1.6	12.1	1.8	3.9	0.9	0.0	0.3	79.4	1.6	19.0	0.102	0.502	32.239545	-115.179546
X. C. Mexicali - Estación Coahuila	16.30	3	0	7438	1.0	82.9	1.1	10.9	1.0	2.2	0.7	0.0	0.2	83.9	1.1	15.0	0.094	0.513	32.239414	-115.157546
T. Izq. Carr. Ejido Monterrey - Mazón	26.70	3	0	5062	0.7	83.2	1.2	10.0	1.5	2.4	0.8	0.0	0.2	83.9	1.2	14.9	0.082	0.502	32.239503	-115.108032
Francisco Murguía	30.00	3	0	3991	0.8	82.9	1.2	10.3	1.5	2.4	0.8	0.0	0.1	83.7	1.2	15.1	0.073	0.506	32.239744	-115.061302
Estación Coahuila	34.50	1	0	5180	1.5	81.5	1.4	13.5	0.6	1.0	0.4	0.0	0.1	83.0	1.4	15.6	0.088	0.507	32.198886	-115.000948

24 CARR: Ent. Santa Rosa - Ent. Pachuca

CLAVE: 02015

RUTA: BC-006

AÑO: 2017

LUGAR	ESTACION				CLASIFICACION VEHICULAR EN PORCIENTO													COORDENADAS		
	KM	TE	SC	TDPA	M	A	B	C2	C3	T3S2	T3S3	T3S2R4	OTROS	A	B	C	K'	D	LATITUD	LONGITUD
T. C. Sonoyta - Mexicali	0.00	3	0	7374	0.6	87.3	0.6	9.7	0.6	0.8	0.2	0.1	0.1	87.9	0.6	11.5	0.071	0.510	32.558754	-115.020172
Paredones	10.90	3	0	6524	0.7	85.2	1.4	11.1	0.6	0.8	0.2	0.0	0.0	85.9	1.4	12.7	0.074	0.505	32.612310	-114.918107
Cd. Morelos	18.00	3	0	3321	1.0	85.5	0.4	9.6	0.3	2.8	0.2	0.0	0.2	86.5	0.4	13.1	0.075	0.514	32.638559	-114.836593
T. C. Mexicali - Algodones	23.22																			

25 CARR: La Puerta - T. C. (Mexicali - Estación Coahuila)

CLAVE: 02502

RUTA: BC-010

AÑO: 2017

LUGAR	ESTACION				CLASIFICACION VEHICULAR EN PORCIENTO													COORDENADAS		
	KM	TE	SC	TDPA	M	A	B	C2	C3	T3S2	T3S3	T3S2R4	OTROS	A	B	C	K'	D	LATITUD	LONGITUD
T. C. Mexicali - San Felipe	0.00																			
Zakamoto	4.60	1	0	2454	0.6	87.0	1.4	8.7	0.7	0.9	0.4	0.1	0.2	87.6	1.4	11.0	0.078	0.514	32.325597	-115.294804
Nayarit	9.00	3	0	3287	0.4	93.2	0.2	4.8	0.3	0.7	0.2	0.1	0.1	93.6	0.2	6.2	0.094	0.510	32.313215	-115.227395
T. C. Mexicali - Estación Coahuila	15.00																			

26 CARR: Mexicali - Algodones

CLAVE: 02012

RUTA: BC-002

AÑO: 2017

LUGAR	ESTACION				CLASIFICACION VEHICULAR EN PORCIENTO													COORDENADAS		
	KM	TE	SC	TDPA	M	A	B	C2	C3	T3S2	T3S3	T3S2R4	OTROS	A	B	C	K'	D	LATITUD	LONGITUD
T. C. Mexicali - San Felipe	0.00																			
Ejido Puebla	12.00	3	0	7939	1.5	81.1	0.9	9.6	2.6	2.9	0.7	0.5	0.2	82.6	0.9	16.5	0.079	0.508	32.554726	-115.361013
T. C. Geotérmica - Estación Delta	31.50	1	0	4910	0.7	84.2	1.2	11.7	0.7	0.9	0.5	0.0	0.1	84.9	1.2	13.9	0.089	0.501	32.425360	-115.262817
X. C. Mexicali - Estación Coahuila	37.70	1	0	4098	0.5	86.6	1.7	9.0	0.6	1.0	0.6	0.0	0.0	87.1	1.7	11.2	0.072	0.515	32.419120	-115.199908
X. C. Mexicali - Estación Coahuila	37.70	3	0	5383	0.6	82.9	1.4	12.6	0.6	1.1	0.4	0.1	0.3	83.5	1.4	15.1	0.085	0.510	32.418985	-115.172124
X. C. Ejido Monterrey - Mazón	49.65	1	0	4548	0.5	81.6	1.4	13.5	0.8	1.5	0.5	0.1	0.1	82.1	1.4	16.5	0.091	0.503	32.418489	-115.071349

BAJA CALIFORNIA

26 CARR: Mexicali - Algodones

CLAVE: 02012

RUTA: BC-002

AÑO: 2017

LUGAR	ESTACION				CLASIFICACION VEHICULAR EN PORCIENTO													COORDENADAS		
	KM	TE	SC	TDPA	M	A	B	C2	C3	T3S2	T3S3	T3S2R4	OTROS	A	B	C	K'	D	LATITUD	LONGITUD
X. C. Ejido Monterrey - Mazón	49.65	3	0	2105	1.2	76.2	0.5	17.7	1.0	1.8	1.1	0.2	0.3	77.4	0.5	22.1	0.079	0.503	32.418468	-115.063547
T. Izq. Tres de Marzo	60.50	1	0	1072	0.9	80.5	0.8	15.6	0.7	1.0	0.5	0.0	0.0	81.4	0.8	17.8	0.092	0.523	32.464233	-114.948247
X. C. Sonoita - Mexicali	72.00	1	0	1469	1.3	84.5	0.7	11.1	0.8	1.1	0.4	0.0	0.1	85.8	0.7	13.5	0.185	0.506	32.504127	-114.848989
X. C. Sonoita - Mexicali	72.00	3	0	4277	0.5	87.4	0.2	10.7	0.8	0.3	0.1	0.0	0.0	87.9	0.2	11.9	0.075	0.512	32.513360	-114.841730
Pachuca	83.00	1	0	3703	0.5	88.9	0.4	9.4	0.5	0.2	0.1	0.0	0.0	89.4	0.4	10.2	0.083	0.502	32.599185	-114.829954
Algodones	94.46	1	0	3270	0.7	89.2	0.7	9.1	0.3	0.0	0.0	0.0	0.0	89.9	0.7	9.4	0.100	0.520	32.697652	-114.733868

27 CARR: Mexicali - Estación Coahuila

CLAVE: 02016

RUTA: BC-001

AÑO: 2017

LUGAR	ESTACION				CLASIFICACION VEHICULAR EN PORCIENTO													COORDENADAS		
	KM	TE	SC	TDPA	M	A	B	C2	C3	T3S2	T3S3	T3S2R4	OTROS	A	B	C	K'	D	LATITUD	LONGITUD
Mexicali	0.00	3	1	15882	0.7	92.7	0.2	5.5	0.4	0.3	0.1	0.0	0.1	93.4	0.2	6.4	0.082	0.526	32.652971	-115.390275
Mexicali	0.00	3	2	17601	1.0	92.8	0.2	5.3	0.4	0.2	0.1	0.0	0.0	93.8	0.2	6.0	0.087	0.526	32.653119	-115.390380
T. Izq. Aeropuerto	11.30	1	1	11442	0.3	87.7	0.7	4.6	1.9	4.4	0.3	0.0	0.1	88.0	0.7	11.3	0.084	0.509	32.652939	-115.360690
T. Izq. Aeropuerto	11.30	1	2	11871	1.3	82.6	1.1	8.2	2.1	4.3	0.3	0.0	0.1	83.9	1.1	15.0	0.089	0.509	32.652906	-115.360705
Islas Agrarias Grupo a	14.10	1	0	11267	1.2	88.1	0.9	8.3	0.7	0.6	0.2	0.0	0.0	89.3	0.9	9.8	0.061	0.505	32.614076	-115.336823
X. C. Sonoita - Mexicali	30.79	1	0	3250	0.5	77.2	1.5	16.4	0.8	3.2	0.3	0.0	0.1	77.7	1.5	20.8	0.068	0.505	32.556843	-115.214984
X. C. Sonoita - Mexicali	30.79	3	0	5900	0.6	84.2	0.9	11.2	0.6	1.7	0.4	0.1	0.3	84.8	0.9	14.3	0.075	0.502	32.549600	-115.214910
Ejido Nuevo León	46.83	1	0	5987	0.6	84.4	0.8	11.7	0.6	1.3	0.3	0.1	0.2	85.0	0.8	14.2	0.074	0.505	32.421086	-115.192538
Ejido Nuevo León	46.83	3	0	6786	0.5	88.4	0.7	9.0	0.5	0.6	0.2	0.0	0.1	88.9	0.7	10.4	0.076	0.513	32.405036	-115.194795
T. Der. La Puerta	60.26	1	0	2904	0.8	87.4	0.9	9.5	0.5	0.7	0.1	0.0	0.1	88.2	0.9	10.9	0.100	0.543	32.315924	-115.189530
X. C. El Faro - Estación Coahuila	71.30	1	0	2291	2.7	83.8	1.1	10.9	0.4	0.6	0.3	0.1	0.1	86.5	1.1	12.4	0.116	0.515	32.240736	-115.167493
T. Der. Leona Vicario	80.50	1	0	470	0.7	80.7	0.2	14.3	2.2	1.5	0.1	0.0	0.3	81.4	0.2	18.4	0.094	0.511	32.176778	-115.167423
Estación Coahuila	96.65	1	0	1187	0.6	84.2	0.2	12.9	0.5	1.4	0.2	0.0	0.0	84.8	0.2	15.0	0.089	0.507	32.184987	-115.013489

28 CARR: Mexicali - Progreso

CLAVE: 02507

RUTA: BC-005

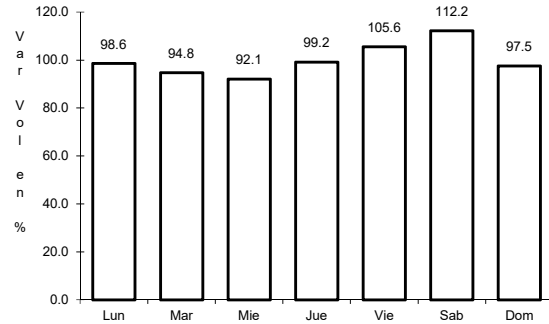
AÑO: 2017

LUGAR	ESTACION				CLASIFICACION VEHICULAR EN PORCIENTO													COORDENADAS		
	KM	TE	SC	TDPA	M	A	B	C2	C3	T3S2	T3S3	T3S2R4	OTROS	A	B	C	K'	D	LATITUD	LONGITUD
T. C. Mexicali - Tijuana	0.00																			
Progreso	15.30	1	0	5938	2.5	81.7	1.5	13.1	0.5	0.5	0.1	0.1	0.0	84.2	1.5	14.3	0.076	0.506	32.602033	-115.573709

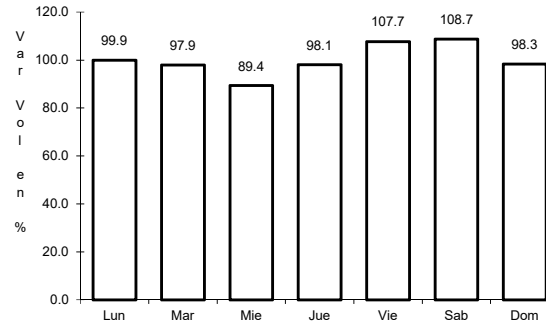
1 CARR: Ensenada - El Chirero

CLAVE: 02009

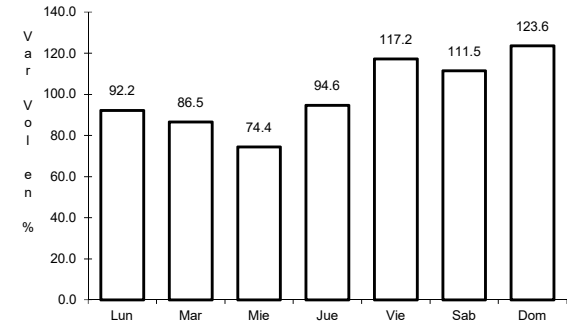
ruta: MEX-003



Km: 0.00 Tipo: 3 Sent: 0



Km: 93.00 Tipo: 3 Sent: 0

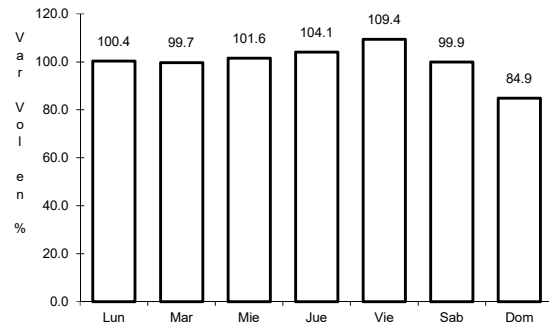


Km: 196.00 Tipo: 1 Sent: 0

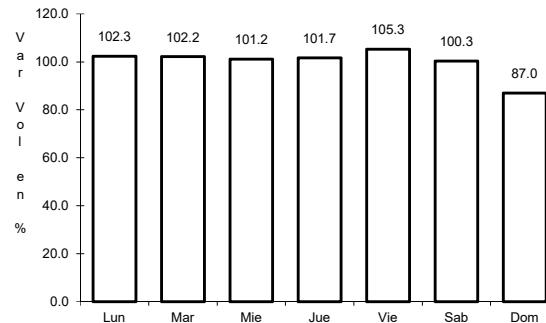
2 CARR: Ensenada - Lázaro Cárdenas

CLAVE: 02098

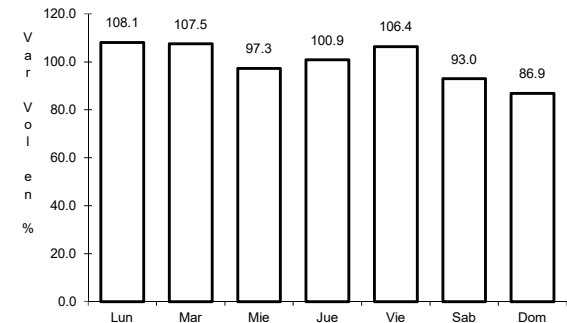
ruta: MEX-001



Km: 0.00 Tipo: 3 Sent: 1



Km: 0.00 Tipo: 3 Sent: 2

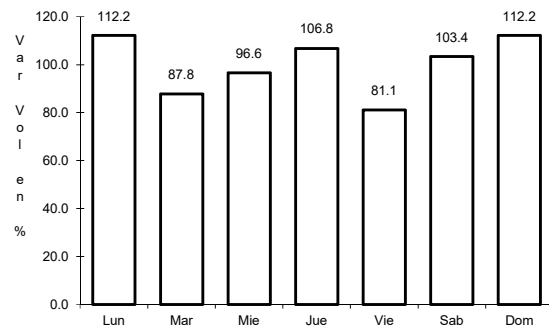


Km: 193.00 Tipo: 1 Sent: 0

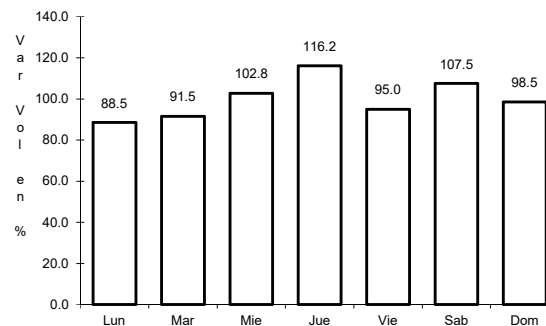
3 CARR: Ent. Punta Prieta - Bahía de Los Ángeles

CLAVE: 02322

ruta: MEX-001



Km: 0.00 Tipo: 3 Sent: 0

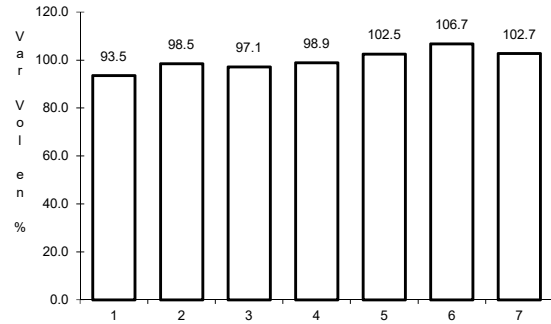


Km: 68.00 Tipo: 1 Sent: 0

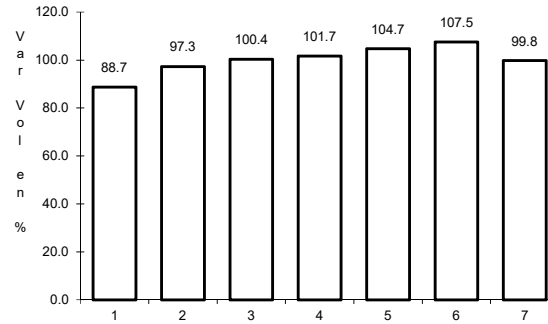
4 CARR: Ent. Punta Prieta - Guerrero Negro

CLAVE: 00321

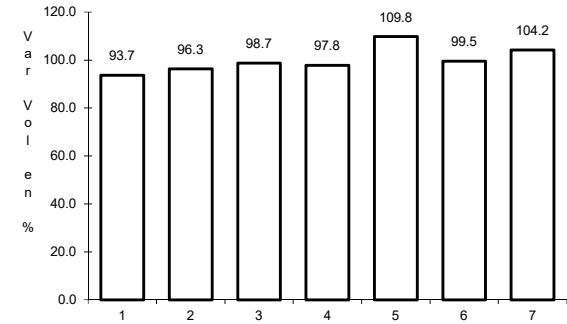
ruta: MEX-001



Km: 0.00 Tipo: 3 Sent: 0



Km: 70.10 Tipo: 3 Sent: 0

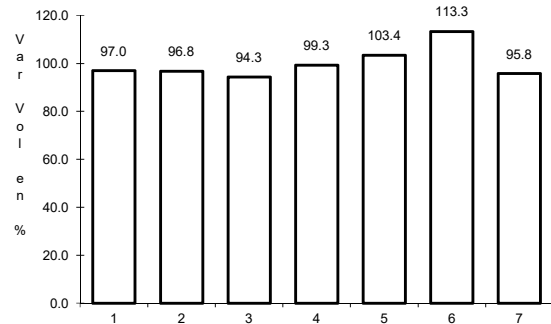


Km: 130.00 Tipo: 1 Sent: 0

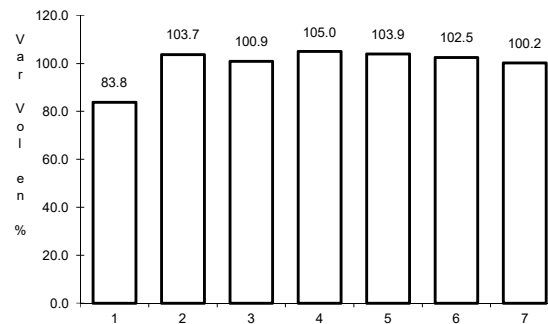
5 CARR: Lázaro Cárdenas - Ent. Punta Prieta

CLAVE: 02319

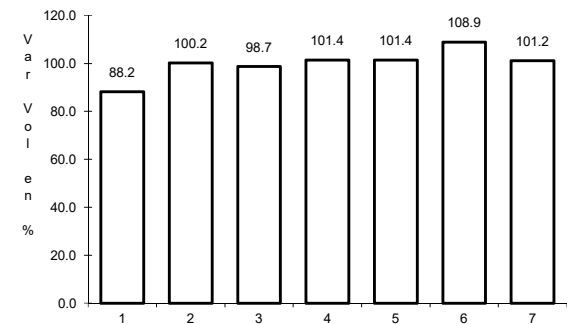
ruta: MEX-001



Km: 0.00 Tipo: 3 Sent: 0



Km: 140.00 Tipo: 1 Sent: 0

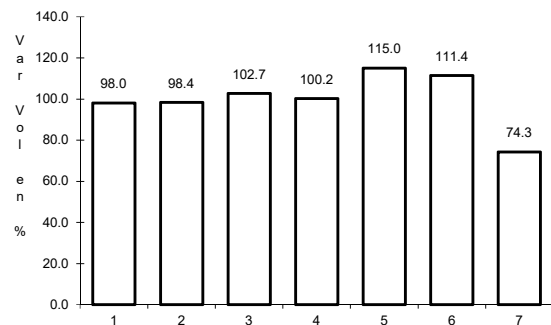


Km: 275.66 Tipo: 1 Sent: 0

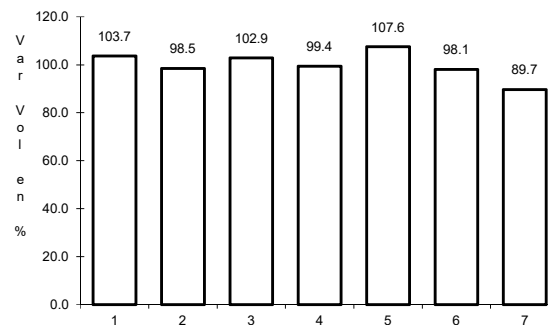
6 CARR: Mexicali - San Felipe

CLAVE: 02096

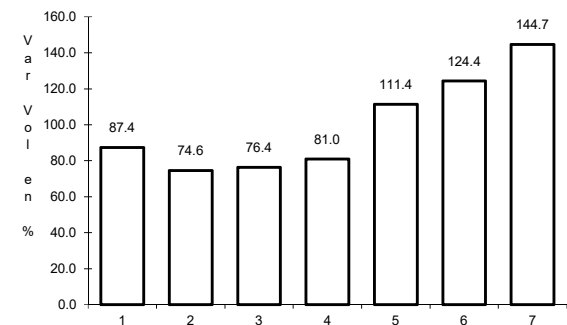
ruta: MEX-005



Km: 0.00 Tipo: 3 Sent: 1



Km: 0.00 Tipo: 3 Sent: 2

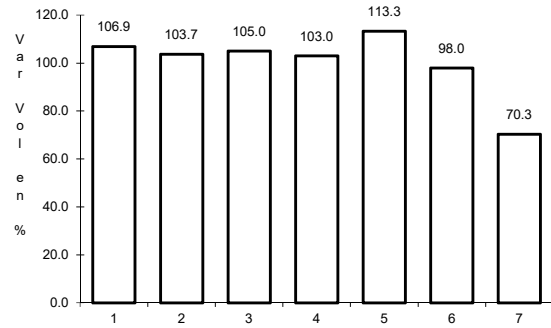


Km: 141.00 Tipo: 1 Sent: 0

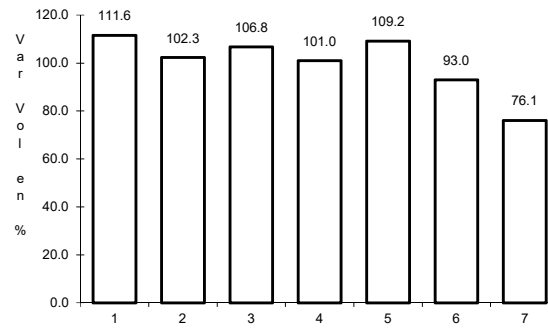
7 CARR: Ramal a Aeropuerto de Mexicali

CLAVE: 02321

ruta: MEX-002



Km: 0.00 Tipo: 3 Sent: 0

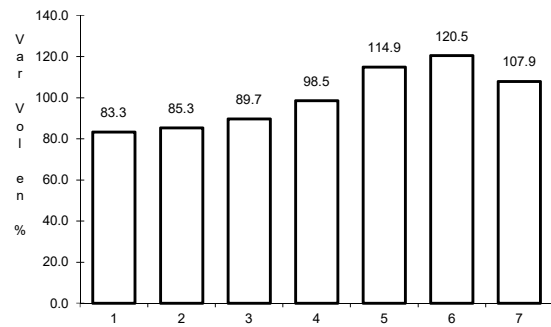


Km: 10.00 Tipo: 1 Sent: 0

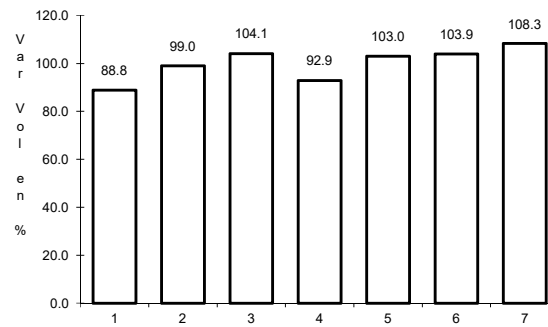
8 CARR: San Felipe - Chapala

CLAVE: 02503

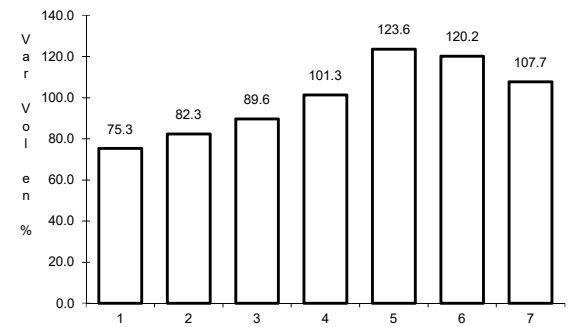
ruta: MEX-005



Km: 0.00 Tipo: 3 Sent: 1



Km: 0.00 Tipo: 3 Sent: 2

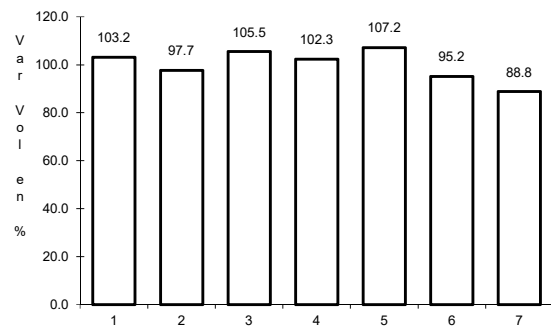


Km: 75.46 Tipo: 3 Sent: 0

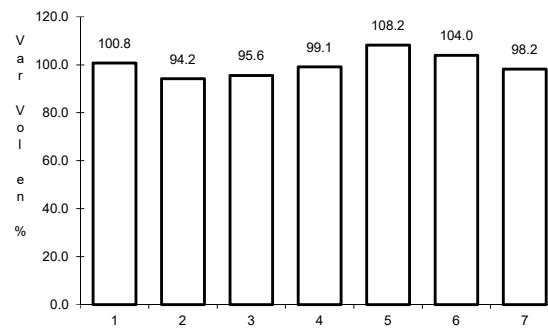
9 CARR: Sonoma - Mexicali

CLAVE: 00081

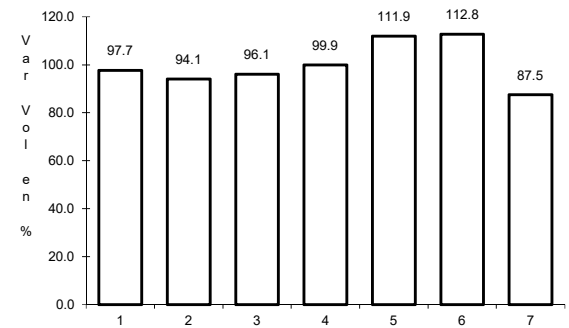
ruta: MEX-002



Km: 0.00 Tipo: 3 Sent: 0



Km: 256.47 Tipo: 1 Sent: 1

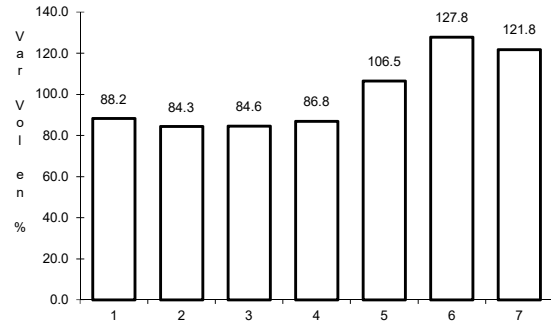


Km: 256.47 Tipo: 1 Sent: 2

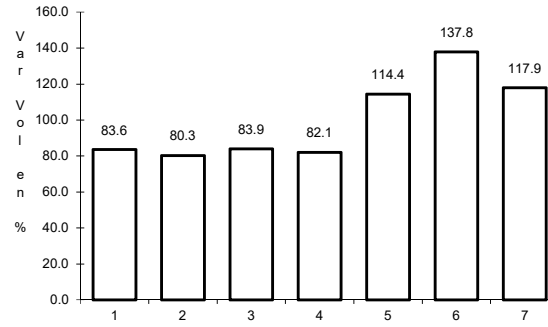
10 CARR: Tecate - El Sauzal

CLAVE: 02097

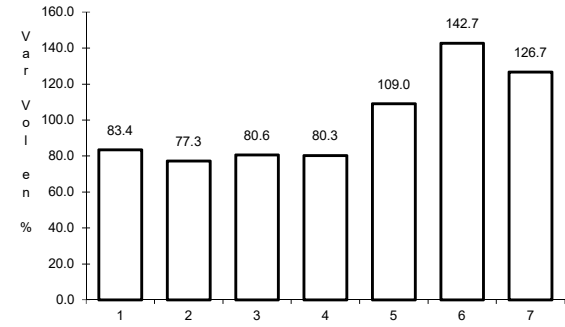
ruta: MEX-003



Km: 0.00 Tipo: 3 Sent: 0



Km: 104.53 Tipo: 1 Sent: 1

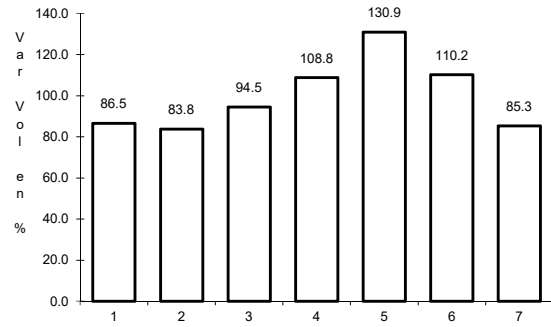


Km: 104.53 Tipo: 1 Sent: 2

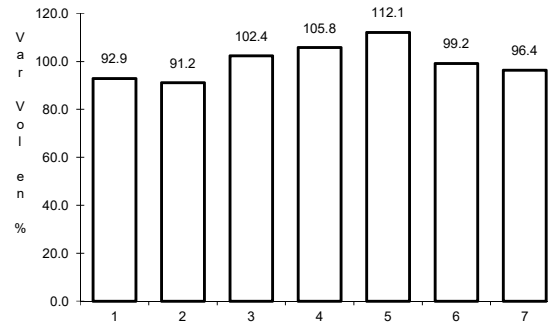
11 CARR: Tijuana - Ensenada (Libre)

CLAVE: 02099

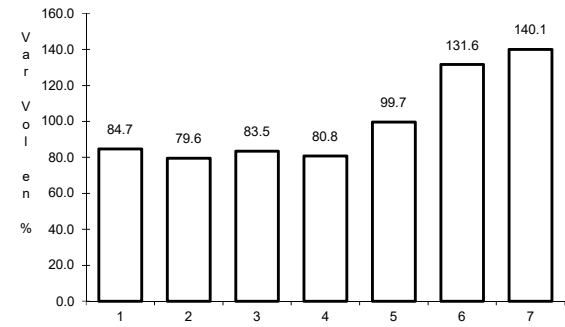
ruta: MEX-001



Km: 22.00 Tipo: 1 Sent: 1



Km: 22.00 Tipo: 1 Sent: 2

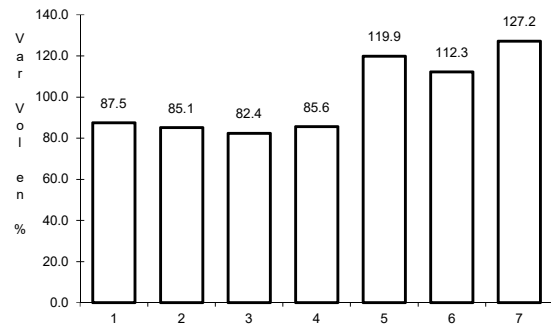


Km: 56.98 Tipo: 1 Sent: 0

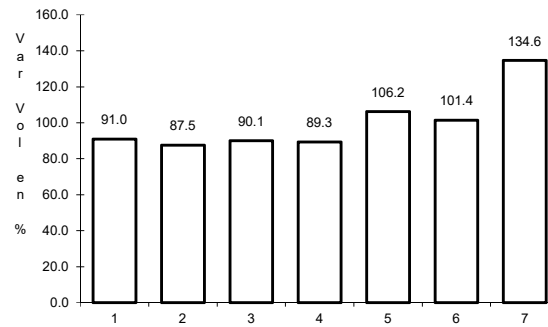
12 CARR: El Centinela - La Rumorosa (Cuota)

CLAVE: 02011

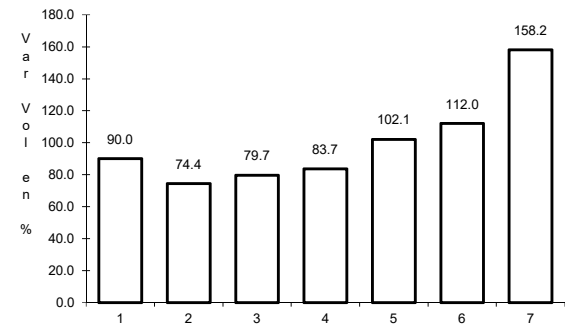
ruta: MEX-002D



Km: 25.00 Tipo: 1 Sent: 1



Km: 25.00 Tipo: 1 Sent: 2

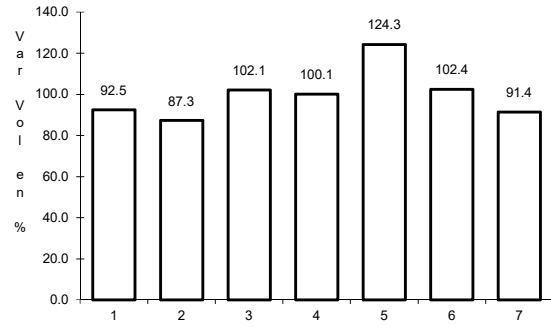


Km: 67.60 Tipo: 1 Sent: 1

13 CARR: La Rumorosa - Tecate (Cuota)

CLAVE: 02011

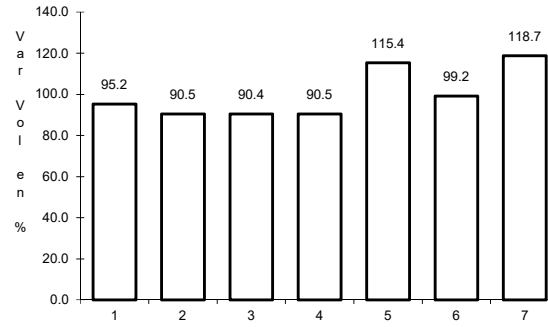
ruta: MEX-002D



Km: 0.00

Tipo: 3

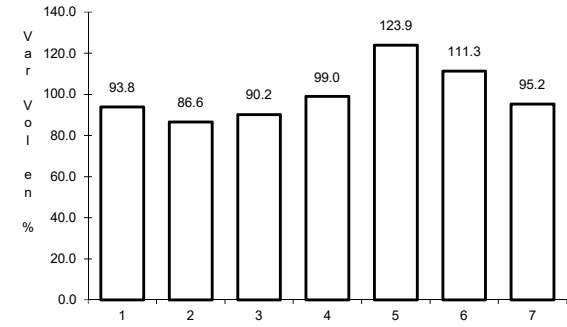
Sent: 1



Km: 0.00

Tipo: 3

Sent: 2



Km: 30.56

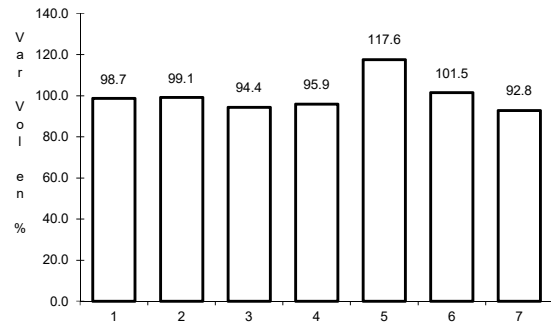
Tipo: 3

Sent: 1

14 CARR: Libramiento de Mexicali (Cuota)

CLAVE: 02319

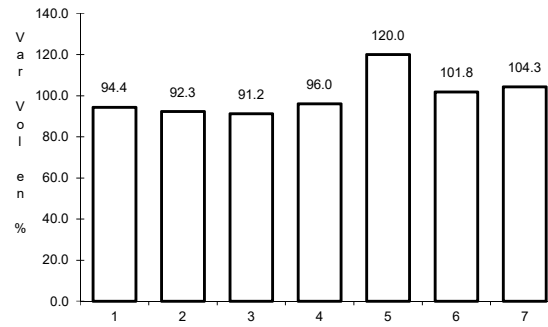
ruta: MEX-002D



Km: 0.00

Tipo: 3

Sent: 0



Km: 40.60

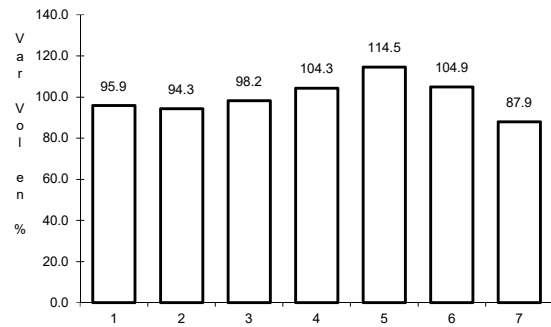
Tipo: 1

Sent: 0

16 CARR: Tecate - Tijuana (Cuota)

CLAVE: 02011

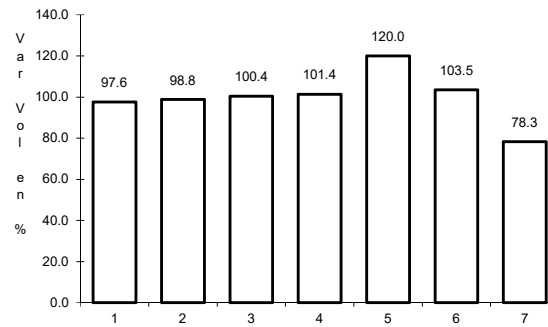
ruta: MEX-002D



Km: 147.60

Tipo: 1

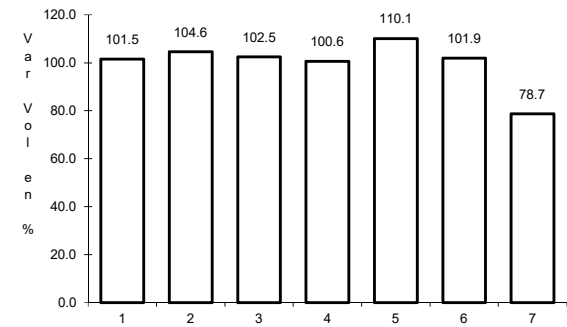
Sent: 1



Km: 147.60

Tipo: 1

Sent: 2



Km: 147.60

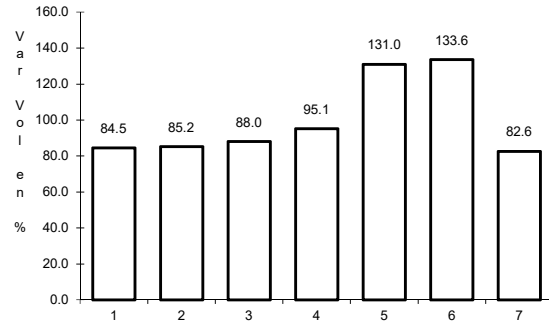
Tipo: 3

Sent: 1

17 CARR: Tijuana - Ensenada (Cuota)

CLAVE: 02100

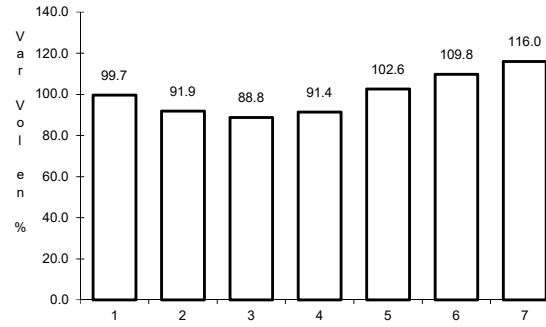
ruta: MEX-001D



Km: 7.50

Tipo: 3

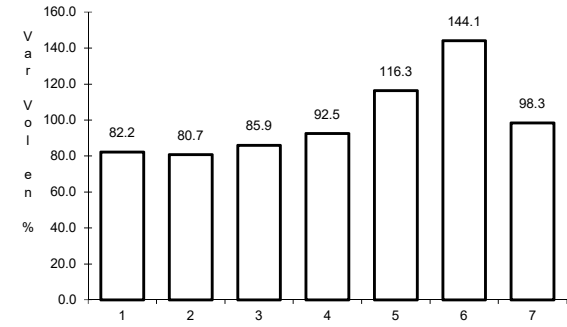
Sent: 1



Km: 7.50

Tipo: 3

Sent: 2



Km: 66.44

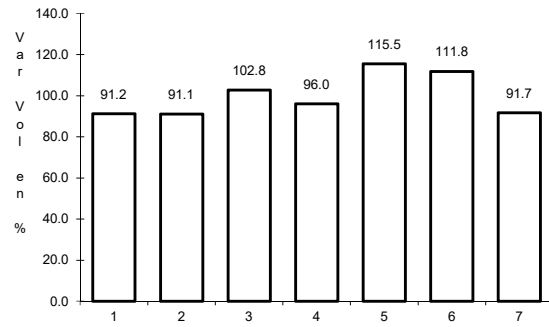
Tipo: 3

Sent: 1

18 CARR: Mexicali - Tijuana

CLAVE: 02082

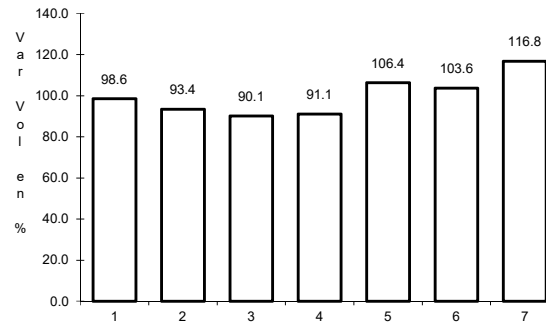
ruta: MEX-002D-MEX



Km: 7.80

Tipo: 3

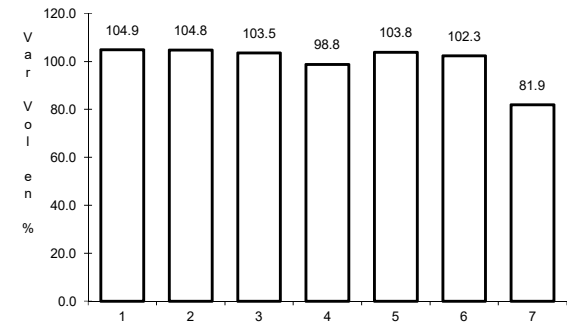
Sent: 1



Km: 7.80

Tipo: 3

Sent: 2



Km: 165.00

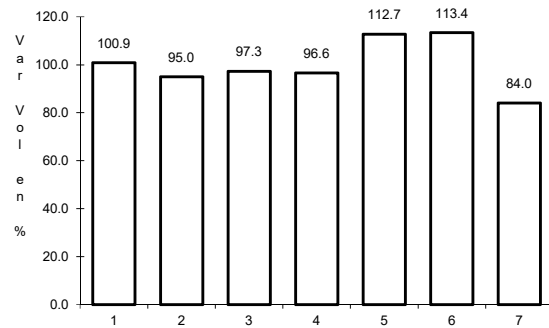
Tipo: 3

Sent: 0

19 CARR: Algodones - Ent. Islas Agrarias Grupo B

CLAVE: 02006

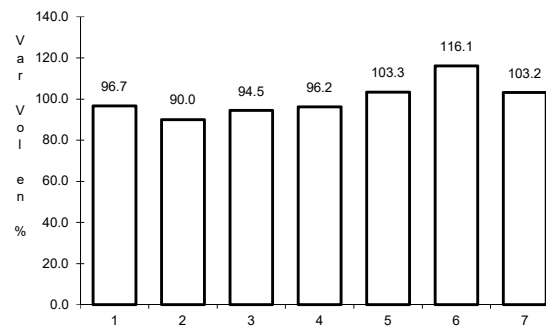
ruta: BC-008



Km: 0.00

Tipo: 3

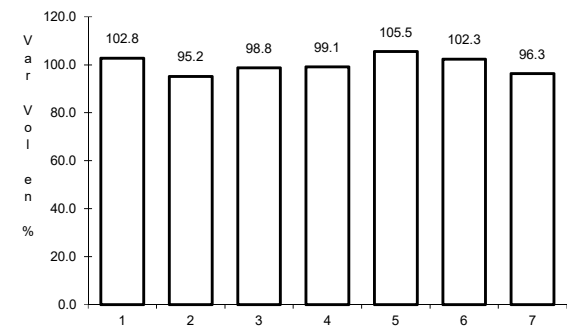
Sent: 0



Km: 31.50

Tipo: 1

Sent: 0



Km: 55.50

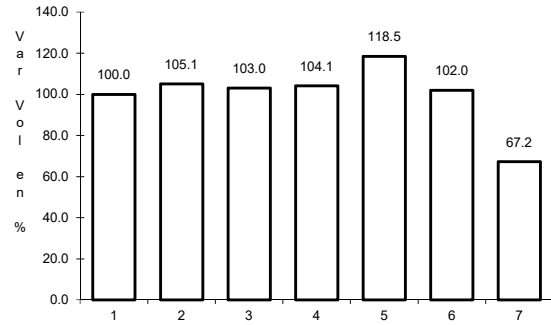
Tipo: 1

Sent: 0

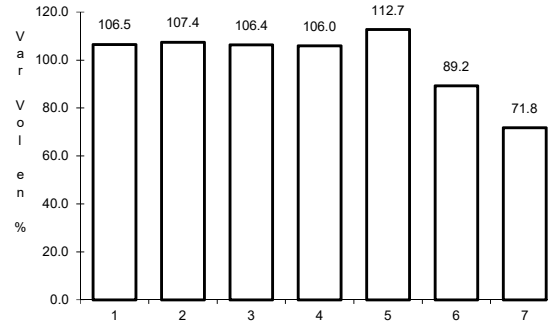
20 CARR: Corredor Tijuana 2000

CLAVE: 02006

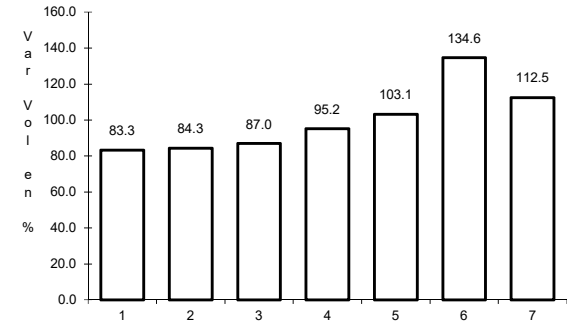
ruta: BC



Km: 0.00 Tipo: 3 Sent: 1



Km: 0.00 Tipo: 3 Sent: 2

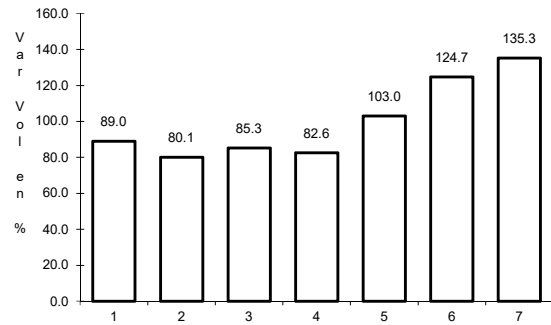


Km: 40.00 Tipo: 1 Sent: 1

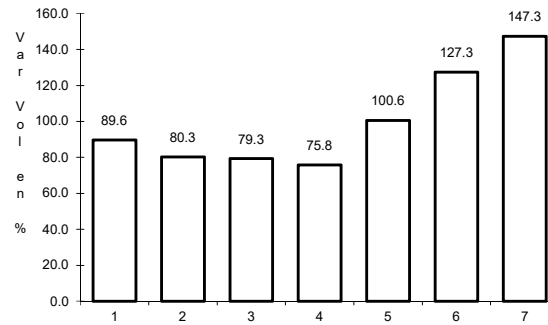
21 CARR: Ejido Benito Juárez - Ejido Chiapas

CLAVE: 02501

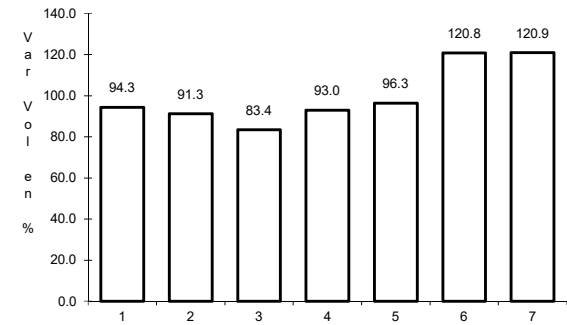
ruta: BC-061



Km: 0.00 Tipo: 3 Sent: 0



Km: 7.00 Tipo: 1 Sent: 0

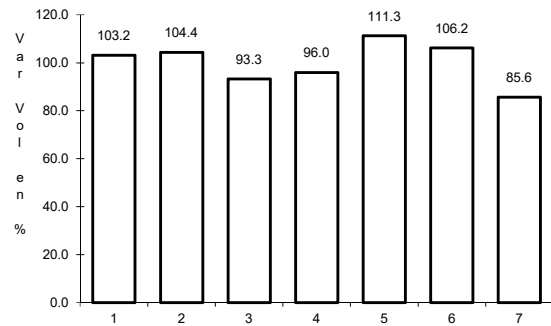


Km: 10.56 Tipo: 1 Sent: 0

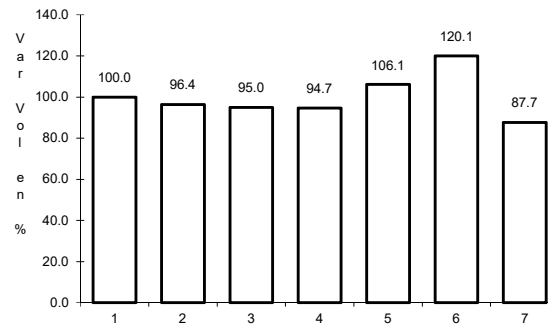
22 CARR: Ejido Monterrey - Mazón

CLAVE: 02004

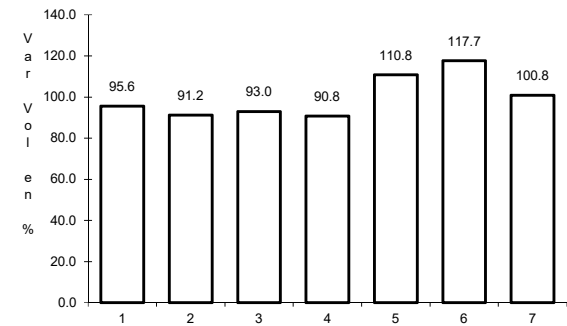
ruta: BC-003



Km: 0.00 Tipo: 3 Sent: 0



Km: 15.16 Tipo: 3 Sent: 0

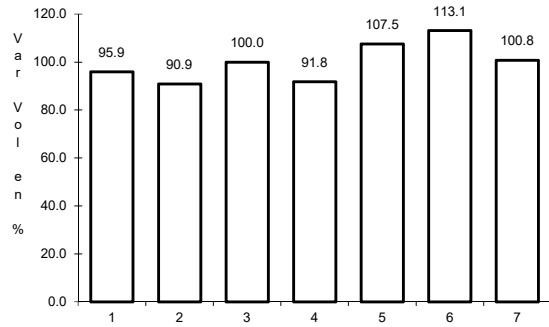


Km: 35.00 Tipo: 1 Sent: 0

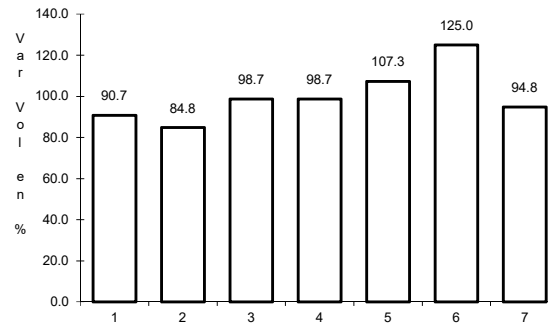
23 CARR: El Faro - Estación Coahuila

CLAVE: 02013

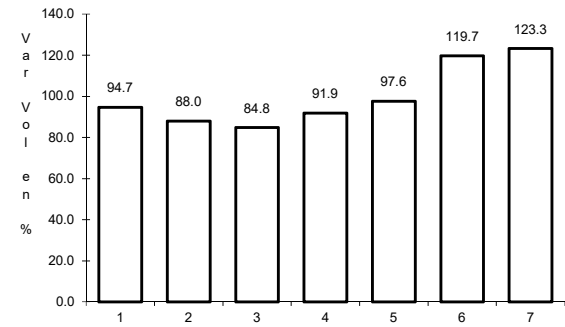
ruta: BC-004



Km: 0.00 Tipo: 3 Sent: 0



Km: 16.30 Tipo: 1 Sent: 0

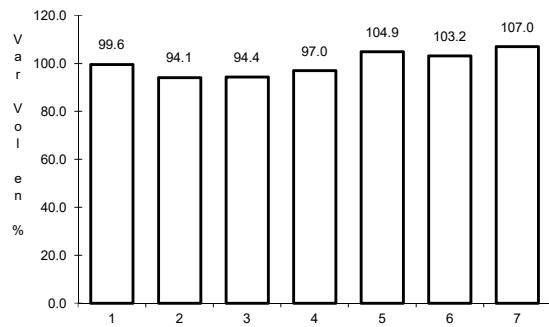


Km: 34.50 Tipo: 1 Sent: 0

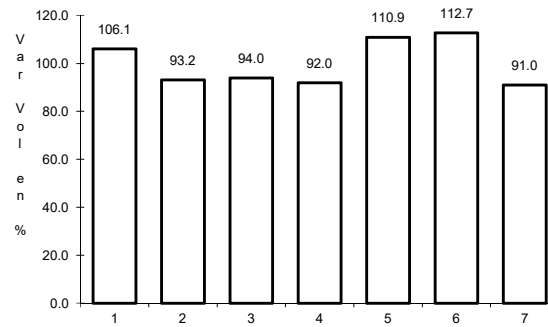
24 CARR: Ent. Santa Rosa - Ent. Pachuca

CLAVE: 02015

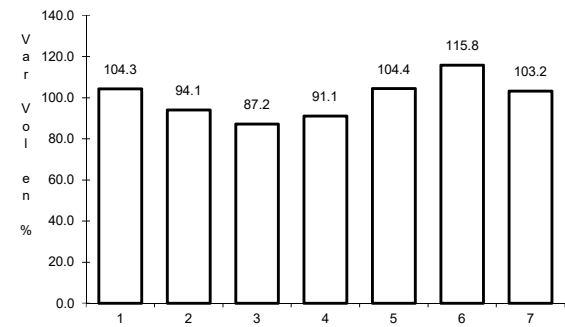
ruta: BC-006



Km: 0.00 Tipo: 3 Sent: 0



Km: 10.90 Tipo: 3 Sent: 0

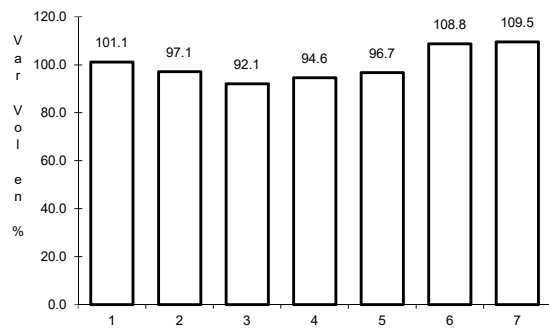


Km: 18.00 Tipo: 3 Sent: 0

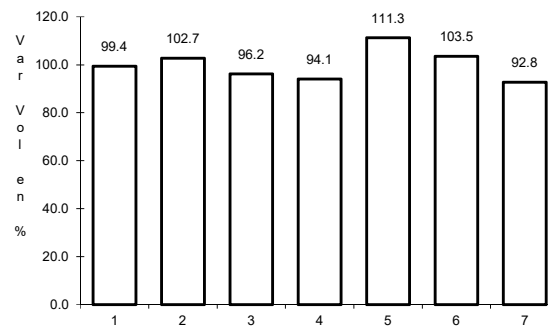
25 CARR: La Puerta - T. C. (Mexicali - Estación Coahuila)

CLAVE: 02502

ruta: BC-010



Km: 4.60 Tipo: 1 Sent: 0

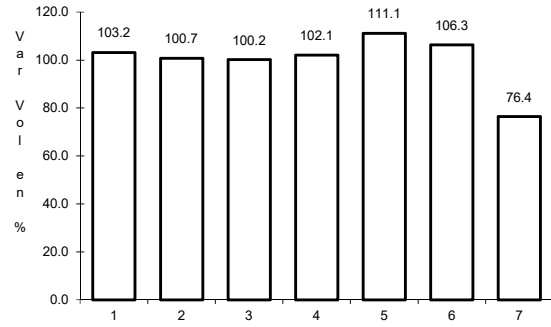


Km: 9.00 Tipo: 3 Sent: 0

26 CARR: Mexicali - Algodones

CLAVE: 02012

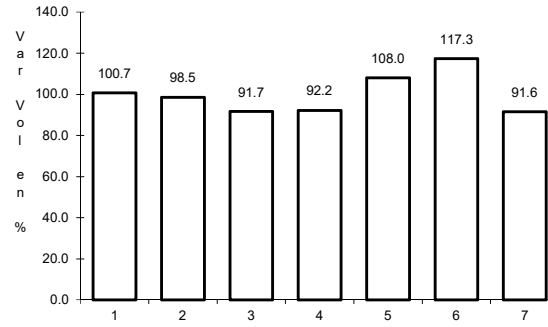
RUTA: BC-002



Km: 12.00

Tipo: 3

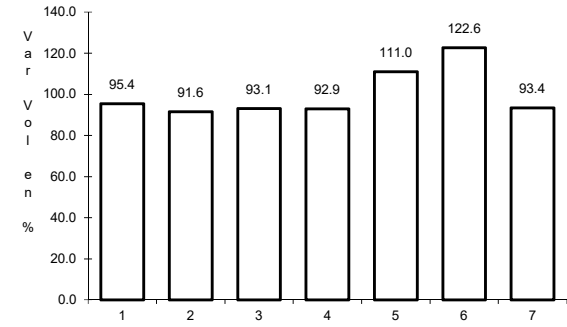
Sent: 0



Km: 49.65

Tipo: 1

Sent: 0



Km: 94.46

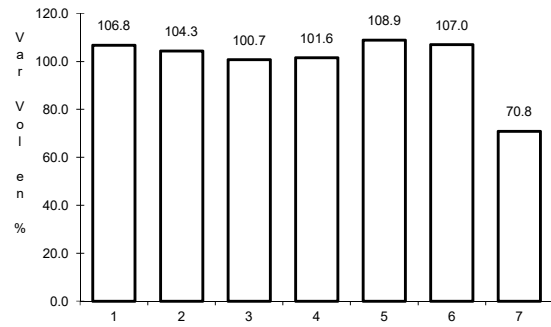
Tipo: 1

Sent: 0

27 CARR: Mexicali - Estación Coahuila

CLAVE: 02016

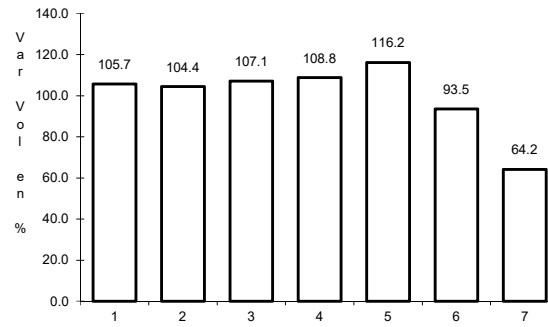
RUTA: BC-001



Km: 0.00

Tipo: 3

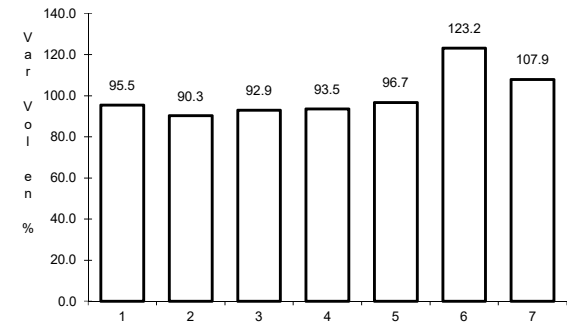
Sent: 1



Km: 0.00

Tipo: 3

Sent: 2



Km: 96.65

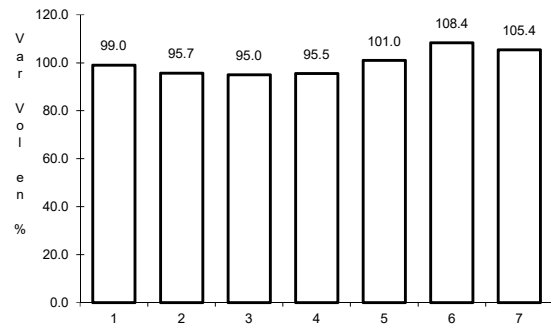
Tipo: 1

Sent: 0

28 CARR: Mexicali - Progreso

CLAVE: 02507

RUTA: BC-005



Km: 15.30

Tipo: 1

Sent: 0

