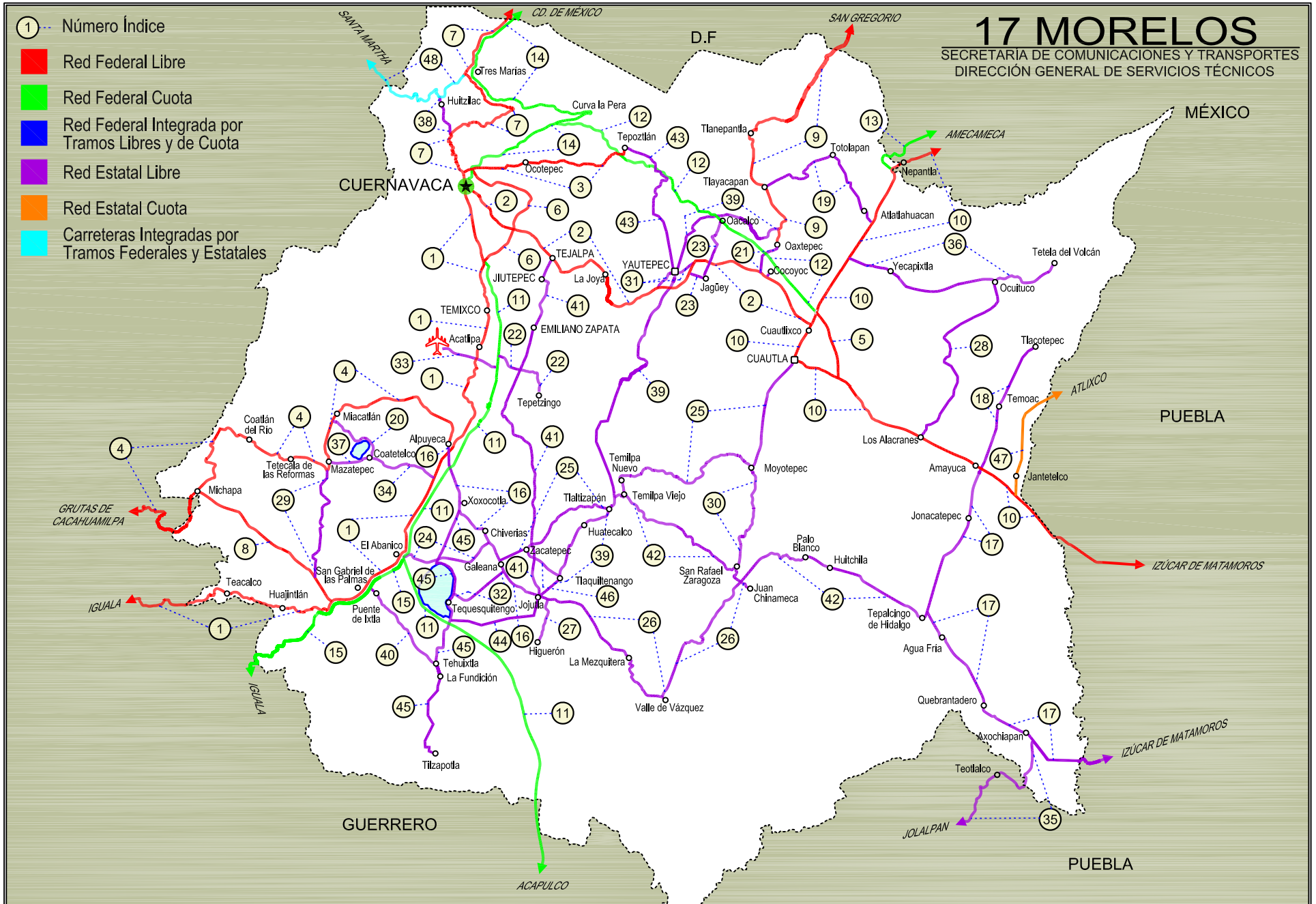
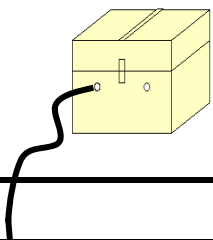


- ① --- Número Índice
- Red Federal Libre
- Red Federal Cuota
- Red Federal Integrada por Tramos Libres y de Cuota
- Red Estatal Libre
- Red Estatal Cuota
- Carreteras Integradas por Tramos Federales y Estatales

# 17 MORELOS

SECRETARÍA DE COMUNICACIONES Y TRANSPORTES  
DIRECCIÓN GENERAL DE SERVICIOS TÉCNICOS





MORELOS

## ---RED FEDERAL LIBRE---

1 Cuernavaca - Chilpancingo	MEX-095
2 Cuernavaca - Cuautlixco	MEX-138
3 Cuernavaca - Tepoztlán	MEX-162
4 Ent. Alpuyeca - Grutas de Cacahuamilpa	MEX-166
5 Libramiento de Cuautla	MEX-160
6 Libramiento de Cuernavaca	MEX-095
7 México - Cuernavaca (Libre)	MEX-095
8 Ramal a Michapa	MEX-166
9 San Gregorio - Oaxtepec	MEX-113
10 Santa Bárbara - Izúcar de Matamoros	MEX-115-160

## ---RED FEDERAL DE CUOTA---

11 Cuernavaca - Acapulco (Cuota)	MEX-095D
12 La Pera - Cuautla (Cuota)	MEX-160D
13 Libramiento Amecameca - Nepantla (Cuota)	MEX-115D
14 México - Cuernavaca (Cuota)	MEX-095D
15 Puente de Ixtla - Iguala (Cuota)	MEX-091D

## ---RED ESTATAL LIBRE---

16 Alpuyeca - Jojutla	MOR-021
17 Amayuca - Izúcar de Matamoros	MOR-031-PUE
18 Amayuca - Tlacotepec	MOR-017
19 Atlatlahucan - Tlayacapan	MOR-002
20 Coatepec - Miacatlán	MOR
21 Cocoyoc - Oaxtepec	MOR
22 Ent. C. (Cuernavaca - Acapulco Cuota) - Tepetzingo	MOR
23 Ent. C. (Cuernavaca - Cuautlixco) - Oacalco	MOR
24 Ent. Chiverías - Ent. El Abanico	MOR
25 Galeana - Cuautla	MOR-004
26 Jojutla - Chinameca	MOR
27 Jojutla - El Higuerón	MOR-039
28 Los Alacranes - Ocuilco	MOR
29 Mazatepec - T. C. Ramal a Michapa	MOR
30 Moyotepec - San Rafael	MOR
31 Paso por Yautepec	MOR
32 Pilares - T. C. (Xoxocotla - Tilzapotla)	MOR-008
33 Ramal a Aeropuerto de Cuernavaca	MOR
34 Ramal a Coatepec	MOR
35 Ramal a Jolalpan	MOR-PUE
36 Ramal a Tetela del Volcán	MOR-010
37 T. C. (Coatepec - Miacatlán) - Mazatepec	MOR
38 T. C. (México - Cuernavaca (Libre)) - Huitzilac	MOR
39 T. C. (San Gregorio - Oaxtepec) - Jojutla	MOR-002
40 Tehuixtla - Puente de Ixtla	MOR
41 Tejalpa - Jojutla	MOR-014
42 Temilpa - Tepalcingo	MOR-009
43 Tepoztlán - Yautepec	MOR-013
44 Tequesquitengo - Jojutla	MOR
45 Xoxocotla - Tilzapotla	MOR-006
46 Zacatepec - Tlaquiltenango	MOR

## ---RED ESTATAL DE CUOTA---

47 Atlixco - Jantetelco (Cuota)	PUE-D
---------------------------------	-------

## ---CARRETERAS INTEGRADAS POR TRAMOS FEDERALES Y ESTATALES---

48 Tres Marias - Santa Martha	MEX-106-EM
-------------------------------	------------

MORELOS

1 CARR: Cuernavaca - Chilpancingo

CLAVE: 00042

RUTA: MEX-095

AÑO: 2016

LUGAR	ESTACION				CLASIFICACION VEHICULAR EN PORCIENTO										COORDENADAS						
	KM	TE	SC	TDPA	M	A	B	C2	C3	T3S2	T3S3	T3S2R4	OTROS	A	B	C	K'	D	LATITUD	LONGITUD	
Cuernavaca	0.00																				
T. Izq. Chipitlán	4.85	1	1	16542	1.2	84.1	11.7	2.1	0.9	0.0	0.0	0.0	0.0	85.3	11.7	3.0	0.060	0.525	18.895693	-99.229364	
T. Izq. Chipitlán	4.85	1	2	17747	1.2	81.6	13.8	2.4	1.0	0.0	0.0	0.0	0.0	82.8	13.8	3.4	0.065	0.525	18.895693	-99.229364	
T. Izq. Chipitlán	4.85	3	1	10175	2.3	84.5	4.3	6.1	0.4	0.6	1.3	0.2	0.3	86.8	4.3	8.9	0.086	0.511	18.881464	-99.229913	
T. Izq. Chipitlán	4.85	3	2	9651	2.2	82.8	4.9	7.1	0.4	0.6	1.5	0.2	0.3	85.0	4.9	10.1	0.077	0.511	18.881464	-99.229913	
Temixco	9.80	1	1	12414	2.2	84.2	4.7	7.3	0.4	0.4	0.7	0.0	0.1	86.4	4.7	8.9	0.065	0.514	18.865633	-99.225953	
Temixco	9.80	1	2	13277	1.6	82.8	5.3	8.5	0.4	0.4	0.9	0.0	0.1	84.4	5.3	10.3	0.071	0.514	18.865633	-99.225953	
Temixco	9.80	3	1	14844	3.3	80.7	5.2	8.5	0.5	0.5	1.0	0.1	0.2	84.0	5.2	10.8	0.062	0.532	18.850236	-99.223684	
Temixco	9.80	3	2	15822	3.0	80.2	5.4	9.0	0.5	0.5	1.1	0.1	0.2	83.2	5.4	11.4	0.058	0.532	18.850274	-99.223607	
Acatlpa	12.43	1	1	12787	4.4	85.4	4.3	4.8	0.4	0.3	0.3	0.0	0.1	89.8	4.3	5.9	0.062	0.513	18.829706	-99.227447	
Acatlpa	12.43	1	2	13614	4.6	83.9	4.9	5.5	0.4	0.3	0.3	0.0	0.1	88.5	4.9	6.6	0.057	0.513	18.829742	-99.227525	
Acatlpa	12.43	3	1	10414	3.6	84.2	4.6	6.6	0.3	0.2	0.3	0.0	0.2	87.8	4.6	7.6	0.068	0.531	18.824659	-99.230214	
Acatlpa	12.43	3	2	10535	4.2	82.7	4.6	7.5	0.3	0.2	0.3	0.0	0.2	86.9	4.6	8.5	0.062	0.531	18.824635	-99.230122	
T. Izq. Emiliano Zapata	13.50	1	1	9499	4.2	83.5	4.3	5.0	0.3	1.2	1.1	0.1	0.3	87.7	4.3	8.0	0.074	0.516	18.820425	-99.232333	
T. Izq. Emiliano Zapata	13.50	1	2	9480	4.0	82.5	4.5	5.8	0.3	1.4	1.1	0.1	0.3	86.5	4.5	9.0	0.073	0.516	18.820448	-99.232404	
T. Izq. Emiliano Zapata	13.50	3	1	8517	4.3	85.0	4.2	4.7	1.0	0.5	0.2	0.0	0.1	89.3	4.2	6.5	0.078	0.506	18.815461	-99.233067	
T. Izq. Emiliano Zapata	13.50	3	2	8255	3.9	84.8	4.3	5.2	1.0	0.5	0.2	0.0	0.1	88.7	4.3	7.0	0.081	0.506	18.815456	-99.233146	
T. Izq. Xochitepec	16.05	1	1	7989	3.8	87.9	0.4	6.8	0.8	0.2	0.1	0.0	0.0	91.7	0.4	7.9	0.082	0.504	18.801408	-99.237316	
T. Izq. Xochitepec	16.05	1	2	7433	3.8	86.7	0.4	7.9	0.9	0.2	0.1	0.0	0.0	90.5	0.4	9.1	0.088	0.504	18.801408	-99.237316	
T. Izq. Xochitepec (Real del Puente)	16.05	3	1	5114	2.8	88.0	0.6	7.5	0.8	0.2	0.1	0.0	0.0	90.8	0.6	8.6	0.071	0.515	18.797431	-99.240322	
T. Izq. Xochitepec (Real del Puente)	16.05	3	2	5303	3.2	86.3	0.7	8.7	0.8	0.2	0.1	0.0	0.0	89.5	0.7	9.8	0.087	0.515	18.797431	-99.240322	
X. C. Alpuyeca - Jojutla	24.15	1	1	8824	3.6	88.2	0.4	6.5	0.7	0.2	0.2	0.0	0.2	91.8	0.4	7.8	0.072	0.501	18.737981	-99.255794	
X. C. Alpuyeca - Jojutla	24.15	1	2	8837	4.2	86.7	0.4	7.3	0.8	0.2	0.2	0.0	0.2	90.9	0.4	8.7	0.078	0.501	18.737981	-99.255794	
X. C. Alpuyeca - Jojutla	24.15	3	0	9299	2.7	86.2	0.5	7.9	1.3	0.9	0.2	0.2	0.1	88.9	0.5	10.6	0.073	0.515	18.727544	-99.265725	
T. Der. Coatetelco	28.00	3	0	7463	2.8	84.9	0.9	7.7	1.5	1.3	0.5	0.2	0.2	87.7	0.9	11.4	0.068	0.506	18.710519	-99.273447	
T. Der. Michapa	44.36	1	0	8203	2.6	84.0	1.1	5.9	1.2	3.5	0.9	0.1	0.7	86.6	1.1	12.3	0.074	0.511	18.611686	-99.359550	
T. Izq. Cuernavaca - Iguala (Cuota)	46.93	1	0	6068	3.9	83.3	1.1	5.4	1.0	3.8	1.0	0.1	0.4	87.2	1.1	11.7	0.077	0.503	18.604601	-99.377379	
T. Izq. Cuernavaca - Iguala (Cuota)	46.93	3	0	6243	2.1	87.6	4.1	1.7	0.5	2.8	0.4	0.3	0.5	89.7	4.1	6.2	0.072	0.510	18.603147	-99.381472	
Huajintla	52.00	3	0	3611	3.3	88.7	1.0	4.0	0.3	1.7	0.6	0.0	0.4	92.0	1.0	7.0	0.085	0.509	18.612620	-99.433360	
Lim. Edos. Term. Mor. Ppia. Gro.	57.10																				
T. Der. Ixtapan de La Sal (Axixintla)	63.47	1	0	2090	6.5	82.8	0.7	8.5	1.0	0.2	0.3	0.0	0.0	89.3	0.7	10.0	0.072	0.513	18.611146	-99.506249	
Taxco	89.90	3	0	6039	4.5	89.0	0.6	4.3	0.3	0.2	1.0	0.0	0.1	93.5	0.6	5.9	0.067	0.508	18.536083	-99.608806	
Iguala	119.63	1	0	6357	5.7	88.0	0.4	5.3	0.4	0.1	0.1	0.0	0.0	93.7	0.4	5.9	0.081	0.506	18.379370	-99.529213	
T. Izq. Puente de Ixtla	123.98	3	0	15835	3.3	83.9	1.5	7.0	1.9	1.3	0.8	0.1	0.2	87.2	1.5	11.3	0.071	0.506	18.321204	-99.498582	

MORELOS

1 CARR: Cuernavaca - Chilpancingo

CLAVE: 00042

RUTA: MEX-095

AÑO: 2016

LUGAR	ESTACION				CLASIFICACION VEHICULAR EN PORCIENTO										COORDENADAS					
	KM	TE	SC	TDPA	M	A	B	C2	C3	T3S2	T3S3	T3S2R4	OTROS	A	B	C	K'	D	LATITUD	LONGITUD
T. Der. Sabana Grande	144.95	1	0	6966	2.8	80.7	2.3	6.6	3.5	2.6	1.2	0.1	0.2	83.5	2.3	14.2	0.073	0.508	18.164386	-99.552291
T. Der. Tecuescontitlán	146.78	1	0	6723	2.5	77.7	3.2	8.2	3.9	2.7	1.4	0.2	0.2	80.2	3.2	16.6	0.069	0.510	18.131335	-99.555630
T. Der. Mezcala	173.14	1	0	5977	2.8	76.5	2.4	8.6	4.5	3.1	1.6	0.2	0.3	79.3	2.4	18.3	0.070	0.503	17.934794	-99.589375
T. Der. Filo de Caballo	189.89	3	0	5267	1.9	74.0	4.6	9.2	4.9	3.3	1.7	0.2	0.2	75.9	4.6	19.5	0.078	0.508	17.794979	-99.566680
Chilpancingo	223.70	1	1	19090	2.7	84.1	2.6	6.3	1.6	1.3	0.7	0.5	0.2	86.8	2.6	10.6	0.071	0.511	17.581229	-99.514985
Chilpancingo	223.70	1	2	19966	3.5	82.1	2.8	7.0	1.7	1.4	0.8	0.5	0.2	85.6	2.8	11.6	0.073	0.511	17.581228	-99.514971

2 CARR: Cuernavaca - Cuautlilco

CLAVE: 17199

RUTA: MEX-138

AÑO: 2016

LUGAR	ESTACION				CLASIFICACION VEHICULAR EN PORCIENTO										COORDENADAS					
	KM	TE	SC	TDPA	M	A	B	C2	C3	T3S2	T3S3	T3S2R4	OTROS	A	B	C	K'	D	LATITUD	LONGITUD
Cuernavaca	0.00																			
T. Izq. Civac Poniente	7.78	1	1	40421	1.9	86.2	2.4	3.3	0.5	1.5	3.0	0.6	0.6	88.1	2.4	9.5	0.059	0.509	18.913541	-99.183384
T. Izq. Civac Poniente	7.78	1	2	41977	2.2	84.6	2.7	3.6	0.5	1.7	3.4	0.6	0.7	86.8	2.7	10.5	0.062	0.509	18.913541	-99.183384
T. Izq. Civac Poniente	7.78	3	1	29895	2.3	85.1	3.0	2.7	0.5	1.8	2.8	1.3	0.5	87.4	3.0	9.6	0.077	0.512	18.901822	-99.173544
T. Izq. Civac Poniente	7.78	3	2	31595	1.6	84.6	3.3	3.0	0.5	2.2	3.0	1.3	0.5	86.2	3.3	10.5	0.067	0.512	18.901822	-99.173544
X. C. Tejalpa - Jojutla	9.70	3	1	23969	3.2	88.0	2.3	4.2	0.7	0.5	0.6	0.3	0.2	91.2	2.3	6.5	0.058	0.532	18.885266	-99.158011
X. C. Tejalpa - Jojutla	9.70	3	2	23249	3.0	87.6	2.6	4.6	0.7	0.5	0.5	0.3	0.2	90.6	2.6	6.8	0.059	0.532	18.885391	-99.158006
La Joya	16.50	1	1	20280	2.5	88.2	2.3	4.9	0.9	0.7	0.4	0.1	0.0	90.7	2.3	7.0	0.071	0.508	18.893853	-99.131825
La Joya	16.50	1	2	20023	2.1	87.6	2.5	5.6	0.9	0.8	0.4	0.1	0.0	89.7	2.5	7.8	0.075	0.508	18.893853	-99.131825
La Joya	16.50	3	1	16325	1.0	89.2	2.1	5.0	1.0	0.9	0.5	0.2	0.1	90.2	2.1	7.7	0.083	0.508	18.881872	-99.121453
La Joya	16.50	3	2	16360	1.8	88.0	2.3	5.1	1.1	0.9	0.5	0.2	0.1	89.8	2.3	7.9	0.089	0.508	18.881872	-99.121453
T. Izq. Yautepec (1° Acceso)	24.75	1	1	11346	2.0	86.6	2.3	6.4	0.9	1.0	0.5	0.2	0.1	88.6	2.3	9.1	0.072	0.512	18.867447	-99.085650
T. Izq. Yautepec (1° Acceso)	24.75	1	2	11183	2.0	85.9	2.5	6.6	1.1	1.1	0.5	0.2	0.1	87.9	2.5	9.6	0.069	0.512	18.867447	-99.085650
X. C. (San Gregorio - Oaxtepec) - Jojutla	27.10	1	1	12946	1.9	88.6	2.0	5.2	0.8	0.7	0.5	0.2	0.1	90.5	2.0	7.5	0.070	0.531	18.870819	-99.070361
X. C. (San Gregorio - Oaxtepec) - Jojutla	27.10	1	2	13057	2.2	88.1	2.0	5.2	0.9	0.8	0.5	0.2	0.1	90.3	2.0	7.7	0.066	0.531	18.870819	-99.070361
X. C. (San Gregorio - Oaxtepec) - Jojutla	27.10	3	1	12187	2.3	87.8	1.6	5.9	1.0	0.7	0.4	0.2	0.1	90.1	1.6	8.3	0.068	0.507	18.870008	-99.064750
X. C. (San Gregorio - Oaxtepec) - Jojutla	27.10	3	2	11768	2.2	86.9	1.9	6.3	1.1	0.9	0.4	0.2	0.1	89.1	1.9	9.0	0.071	0.507	18.870008	-99.064750
Tabachines	31.50	1	1	11076	1.8	87.3	2.4	5.5	1.1	1.0	0.6	0.2	0.1	89.1	2.4	8.5	0.066	0.508	18.893008	-99.041394
Tabachines	31.50	1	2	11041	2.3	85.7	2.5	6.3	1.3	0.9	0.7	0.2	0.1	88.0	2.5	9.5	0.070	0.508	18.892938	-99.041262
Tabachines	31.50	3	1	13156	2.6	87.3	2.4	4.5	1.3	0.9	0.7	0.2	0.1	89.9	2.4	7.7	0.061	0.522	18.894811	-99.033615
Tabachines	31.50	3	2	13301	2.7	86.3	2.6	5.0	1.5	0.9	0.7	0.2	0.1	89.0	2.6	8.4	0.060	0.522	18.894764	-99.033645
T. Izq. Oaxtepec	36.11	3	1	8357	4.6	87.1	2.5	4.4	0.4	0.4	0.5	0.0	0.1	91.7	2.5	5.8	0.079	0.511	18.884697	-98.985186
T. Izq. Oaxtepec	36.11	3	2	8132	4.6	86.6	2.7	4.7	0.4	0.4	0.5	0.0	0.1	91.2	2.7	6.1	0.072	0.511	18.884697	-98.985186

MORELOS

2 CARR: Cuernavaca - Cuautlilco

CLAVE: 17199

RUTA: MEX-138

AÑO: 2016

LUGAR	ESTACION				CLASIFICACION VEHICULAR EN PORCIENTO										COORDENADAS					
	KM	TE	SC	TDPA	M	A	B	C2	C3	T3S2	T3S3	T3S2R4	OTROS	A	B	C	K'	D	LATITUD	LONGITUD
T. C. Santa Bárbara - Izúcar de Matamoros	43.15	1	1	9089	5.6	85.9	1.7	5.0	0.3	0.9	0.4	0.0	0.2	91.5	1.7	6.8	0.066	0.515	18.841914	-98.943694
T. C. Santa Bárbara - Izúcar de Matamoros	43.15	1	2	10562	4.1	86.8	1.9	5.3	0.3	1.0	0.4	0.0	0.2	90.9	1.9	7.2	0.071	0.515	18.841914	-98.943694

3 CARR: Cuernavaca - Tepoztlán

CLAVE: 17198

RUTA: MEX-162

AÑO: 2016

LUGAR	ESTACION				CLASIFICACION VEHICULAR EN PORCIENTO										COORDENADAS					
	KM	TE	SC	TDPA	M	A	B	C2	C3	T3S2	T3S3	T3S2R4	OTROS	A	B	C	K'	D	LATITUD	LONGITUD
T. C. México - Cuernavaca (Libre)	0.00																			
Ocotepc	2.83	1	1	10261	3.0	89.5	1.6	3.7	0.1	0.9	0.9	0.1	0.2	92.5	1.6	5.9	0.065	0.535	18.966881	-99.233042
Ocotepc	2.83	1	2	10662	3.0	88.9	1.7	4.2	0.1	0.9	0.9	0.1	0.2	91.9	1.7	6.4	0.068	0.535	18.966881	-99.233042
Ahuatepec	4.16	3	0	21051	2.9	87.3	3.3	5.2	0.2	0.1	0.9	0.1	0.0	90.2	3.3	6.5	0.069	0.502	18.975761	-99.169833
X. C. La Pera - Cuautla	16.34	1	0	8230	2.9	85.8	2.1	2.4	0.3	4.8	0.5	0.1	1.1	88.7	2.1	9.2	0.076	0.504	18.981469	-99.112653
Tepoztlán	18.20	1	0	11497	3.0	83.2	2.7	3.1	0.3	5.3	0.8	0.6	1.0	86.2	2.7	11.1	0.084	0.511	18.981736	-99.105594

4 CARR: Ent. Alpuyecá - Grutas de Cacahuamilpa

CLAVE: 00421

RUTA: MEX-166

AÑO: 2016

LUGAR	ESTACION				CLASIFICACION VEHICULAR EN PORCIENTO										COORDENADAS					
	KM	TE	SC	TDPA	M	A	B	C2	C3	T3S2	T3S3	T3S2R4	OTROS	A	B	C	K'	D	LATITUD	LONGITUD
T. C. Cuernavaca - Chilpancingo	0.00	3	0	7706	2.4	88.0	1.2	7.5	0.7	0.1	0.1	0.0	0.0	90.4	1.2	8.4	0.071	0.510	18.746953	-99.258181
T. Der. Zona Arq. de Xochicalco	8.40	3	1	3305	2.9	88.3	1.1	6.5	0.8	0.2	0.2	0.0	0.0	91.2	1.1	7.7	0.070	0.506	18.777676	-99.304624
T. Der. Zona Arq. de Xochicalco	8.40	3	2	3396	2.8	87.3	1.2	7.2	1.0	0.2	0.3	0.0	0.0	90.1	1.2	8.7	0.069	0.506	18.777681	-99.304628
Miacatlán	14.95	3	1	6147	4.8	91.0	0.6	3.2	0.2	0.1	0.1	0.0	0.0	95.8	0.6	3.6	0.068	0.501	18.752881	-99.364736
Miacatlán	14.95	3	2	6119	4.9	90.3	0.6	3.8	0.2	0.1	0.1	0.0	0.0	95.2	0.6	4.2	0.065	0.501	18.752881	-99.364736
Mazatepec	18.28	3	0	9833	2.8	92.6	0.3	3.8	0.3	0.1	0.1	0.0	0.0	95.4	0.3	4.3	0.077	0.510	18.721106	-99.366964
Tetecala	25.05	3	0	7230	2.8	88.8	1.9	4.8	0.2	1.4	0.1	0.0	0.0	91.6	1.9	6.5	0.082	0.502	18.727647	-99.403733
Coatlán del Río	29.80	3	0	4384	4.5	91.0	1.2	2.7	0.2	0.2	0.2	0.0	0.0	95.5	1.2	3.3	0.089	0.506	18.747625	-99.439178
Michapa	41.26	1	0	3186	5.1	85.9	1.2	5.5	0.6	0.9	0.5	0.0	0.3	91.0	1.2	7.8	0.069	0.511	18.707919	-99.474150
Lim. Edos. Term. Mor. Ppia. Gro.	42.40																			
T. C. Toluca - Axixintla	48.65																			

MORELOS

5 CARR: Libramiento de Cuautla

CLAVE: 17309

RUTA: MEX-160

AÑO: 2016

LUGAR	ESTACION				CLASIFICACION VEHICULAR EN PORCIENTO										COORDENADAS					
	KM	TE	SC	TDPA	M	A	B	C2	C3	T3S2	T3S3	T3S2R4	OTROS	A	B	C	K'	D	LATITUD	LONGITUD
T. C. Santa Bárbara - Izúcar de Matamoros	0.00	3	1	19252	2.4	82.0	1.8	7.5	2.1	1.8	1.4	0.9	0.1	84.4	1.8	13.8	0.070	0.513	18.847275	-98.931928
T. C. Santa Bárbara - Izúcar de Matamoros	0.00	3	2	19920	2.4	80.8	1.9	7.8	2.5	2.0	1.4	1.1	0.1	83.2	1.9	14.9	0.071	0.513	18.847275	-98.931928
T. C. Santa Bárbara - Izúcar de Matamoros	4.00																			

6 CARR: Libramiento de Cuernavaca

CLAVE: 17400

RUTA: MEX-095

AÑO: 2016

LUGAR	ESTACION				CLASIFICACION VEHICULAR EN PORCIENTO										COORDENADAS					
	KM	TE	SC	TDPA	M	A	B	C2	C3	T3S2	T3S3	T3S2R4	OTROS	A	B	C	K'	D	LATITUD	LONGITUD
T. C. México - Cuernavaca (Cuota)	0.00																			
T. Izq. Xicapan	1.30	1	1	41072	1.4	89.0	2.4	3.5	0.7	1.9	0.5	0.4	0.2	90.4	2.4	7.2	0.091	0.501	18.962389	-99.232480
T. Izq. Xicapan	1.30	1	2	44021	1.5	87.9	2.5	4.0	0.9	2.1	0.5	0.4	0.2	89.4	2.5	8.1	0.091	0.501	18.962389	-99.232470
T. Izq. Xicapan	1.30	3	1	40795	1.5	88.6	2.1	3.7	0.8	1.9	0.6	0.6	0.2	90.1	2.1	7.8	0.059	0.502	18.958730	-99.225820
T. Izq. Xicapan	1.30	3	2	37720	1.5	87.5	2.5	4.0	0.9	2.1	0.6	0.7	0.2	89.0	2.5	8.5	0.060	0.502	18.958730	-99.225820
T. Izq. Villas del Lago	8.40	1	1	44119	1.2	90.2	2.2	3.1	0.9	1.1	0.6	0.5	0.2	91.4	2.2	6.4	0.071	0.503	18.938050	-99.191169
T. Izq. Villas del Lago	8.40	1	2	46864	1.5	89.2	2.3	3.6	1.0	1.1	0.6	0.5	0.2	90.7	2.3	7.0	0.070	0.503	18.937998	-99.191150
T. Izq. Villas del Lago	8.40	3	1	46342	1.2	90.6	1.9	3.1	1.1	0.9	0.6	0.4	0.2	91.8	1.9	6.3	0.061	0.505	18.934383	-99.197897
T. Izq. Villas del Lago	8.40	3	2	49996	1.8	88.7	2.2	3.6	1.3	1.1	0.7	0.4	0.2	90.5	2.2	7.3	0.063	0.505	18.934383	-99.197897
X. C. Cuernavaca - Cuautlixco	10.54	1	1	49766	1.2	90.3	2.1	3.4	1.1	0.7	0.7	0.3	0.2	91.5	2.1	6.4	0.061	0.506	18.924077	-99.202550
X. C. Cuernavaca - Cuautlixco	10.54	1	2	52791	1.8	88.9	2.2	3.7	1.3	0.9	0.7	0.3	0.2	90.7	2.2	7.1	0.061	0.506	18.924068	-99.202550
X. C. Cuernavaca - Cuautlixco	10.54	3	1	52001	1.4	88.8	1.7	5.0	0.7	0.8	1.0	0.5	0.1	90.2	1.7	8.1	0.055	0.505	18.917864	-99.204419
X. C. Cuernavaca - Cuautlixco	10.54	3	2	53749	1.1	88.4	1.9	5.1	0.8	0.9	1.2	0.5	0.1	89.5	1.9	8.6	0.056	0.505	18.917864	-99.204419
T. Der. Av. Morelos	14.70	1	1	50287	1.5	88.6	1.8	5.1	0.7	0.8	0.9	0.5	0.1	90.1	1.8	8.1	0.051	0.500	18.896506	-99.226661
T. Der. Av. Morelos	14.70	1	2	47212	1.1	87.5	2.2	5.7	0.8	1.0	1.1	0.5	0.1	88.6	2.2	9.2	0.055	0.500	18.896506	-99.226661

7 CARR: México - Cuernavaca (Libre)

CLAVE: 00040

RUTA: MEX-095

AÑO: 2016

LUGAR	ESTACION				CLASIFICACION VEHICULAR EN PORCIENTO										COORDENADAS					
	KM	TE	SC	TDPA	M	A	B	C2	C3	T3S2	T3S3	T3S2R4	OTROS	A	B	C	K'	D	LATITUD	LONGITUD
México	0.00																			
T., Izq. San Miguel Xicalco	25.50	1	0	24993	1.9	83.4	5.0	4.0	1.7	1.8	2.0	0.0	0.2	85.3	5.0	9.7	0.075	0.511	19.236314	-99.158741
T., Izq. San Miguel Xicalco	25.50	3	0	23369	1.0	86.2	4.7	6.2	1.0	0.3	0.6	0.0	0.0	87.2	4.7	8.1	0.059	0.513	19.233270	-99.156146
T. Izq. San Miguel Topilejo	28.78	1	1	9983	1.9	87.6	2.9	4.6	0.9	0.7	0.9	0.2	0.3	89.5	2.9	7.6	0.083	0.517	19.215128	-99.150174
T. Izq. San Miguel Topilejo	28.78	1	2	10301	1.8	86.7	3.0	5.3	1.1	0.7	0.9	0.2	0.3	88.5	3.0	8.5	0.088	0.517	19.215112	-99.150176
T. Izq. San Miguel Topilejo	28.78	3	0	15572	2.0	87.9	1.5	5.2	1.3	0.5	1.5	0.0	0.1	89.9	1.5	8.6	0.073	0.510	19.205144	-99.156587

MORELOS

7 CARR: México - Cuernavaca (Libre)

CLAVE: 00040

RUTA: MEX-095

AÑO: 2016

LUGAR	ESTACION				CLASIFICACION VEHICULAR EN PORCIENTO										COORDENADAS					
	KM	TE	SC	TDPA	M	A	B	C2	C3	T3S2	T3S3	T3S2R4	OTROS	A	B	C	K'	D	LATITUD	LONGITUD
Parres El Guarda	39.50	1	0	8886	1.7	84.5	3.4	4.5	2.1	2.4	0.7	0.1	0.6	86.2	3.4	10.4	0.088	0.529	19.141232	-99.169195
Parres El Guarda	39.50	3	0	8951	1.2	83.4	1.7	5.1	1.9	3.3	1.1	0.9	1.4	84.6	1.7	13.7	0.081	0.505	19.128856	-99.180739
Lim. Edos. Term. D. F. Ppia. Mor.	45.44																			
T. Der. Zempoala	51.40	1	0	8969	1.6	87.3	2.6	4.2	1.1	1.8	0.7	0.2	0.5	88.9	2.6	8.5	0.089	0.503	19.057990	-99.241440
T. Der. Zempoala	51.40	3	0	7297	2.8	85.9	3.6	5.4	1.5	0.4	0.3	0.0	0.1	88.7	3.6	7.7	0.091	0.508	19.042614	-99.233628
T. Izq. Coajomulco	57.12	3	0	6065	2.8	82.4	2.7	8.4	1.3	0.8	1.0	0.0	0.6	85.2	2.7	12.1	0.086	0.521	19.026983	-99.207994
T. Der. Huitzilac	64.20	1	0	8132	2.3	85.0	5.3	3.6	1.2	1.3	1.0	0.0	0.3	87.3	5.3	7.4	0.085	0.513	19.002607	-99.257476
T. Der. Huitzilac	64.20	3	0	13623	1.8	87.9	5.1	2.5	0.7	0.5	1.3	0.0	0.2	89.7	5.1	5.2	0.075	0.515	19.000669	-99.257616
T. Izq. Tepoztlán	71.36	1	0	23915	2.0	87.3	4.6	4.5	0.4	0.4	0.7	0.0	0.1	89.3	4.6	6.1	0.067	0.509	18.969746	-99.248614
T. Izq. Tepoztlán	71.36	3	1	18967	1.9	92.7	1.3	3.5	0.6	0.0	0.0	0.0	0.0	94.6	1.3	4.1	0.078	0.500	18.961179	-99.246228
T. Izq. Tepoztlán	71.36	3	2	20379	2.0	92.3	1.5	3.6	0.6	0.0	0.0	0.0	0.0	94.3	1.5	4.2	0.077	0.500	18.961179	-99.246228
Cuernavaca	75.42																			

8 CARR: Ramal a Michapa

CLAVE: 17303

RUTA: MEX-166

AÑO: 2016

LUGAR	ESTACION				CLASIFICACION VEHICULAR EN PORCIENTO										COORDENADAS					
	KM	TE	SC	TDPA	M	A	B	C2	C3	T3S2	T3S3	T3S2R4	OTROS	A	B	C	K'	D	LATITUD	LONGITUD
T. C. Cuernavaca - Chilpancingo	0.00	3	0	4867	1.4	83.9	1.3	7.2	1.2	3.0	1.5	0.1	0.4	85.3	1.3	13.4	0.081	0.509	18.610442	-99.362506
Michapa	16.22	1	0	3944	3.7	82.2	1.5	5.8	1.3	3.3	1.8	0.1	0.3	85.9	1.5	12.6	0.075	0.504	18.700655	-99.475230

9 CARR: San Gregorio - Oaxtepec

CLAVE: 00901

RUTA: MEX-113

AÑO: 2016

LUGAR	ESTACION				CLASIFICACION VEHICULAR EN PORCIENTO										COORDENADAS					
	KM	TE	SC	TDPA	M	A	B	C2	C3	T3S2	T3S3	T3S2R4	OTROS	A	B	C	K'	D	LATITUD	LONGITUD
San Gregorio	0.00	3	0	18647	1.7	84.0	3.1	7.5	0.8	1.0	0.6	0.8	0.5	85.7	3.1	11.2	0.064	0.524	19.245040	-99.054782
X. C. Milpa Alta - San Lorenzo Tlacoyucan	9.00	3	0	8487	1.5	85.0	1.1	8.7	0.5	2.5	0.2	0.1	0.4	86.5	1.1	12.4	0.063	0.502	19.180210	-99.029225
Lim. Edos. Term. D. F. Ppia. Mex.	18.80																			
Lim. Edos. Term. Mex. Ppia. Mor.	28.50																			
T. Der. San Felipe Neri	33.80	1	0	5154	1.3	80.3	4.0	7.1	1.7	2.1	1.8	0.7	1.0	81.6	4.0	14.4	0.080	0.512	19.051983	-98.934489
T. Der. Tlalnepantla	40.50	3	0	5173	2.2	85.0	1.6	6.1	0.9	1.9	0.8	0.5	1.0	87.2	1.6	11.2	0.093	0.527	19.002494	-98.989278
Tlayacapan	48.50	3	0	11728	3.8	83.9	1.6	4.7	0.3	3.9	0.6	0.3	0.9	87.7	1.6	10.7	0.091	0.501	18.941916	-98.975939
T. Der. Yautepec	53.00	1	0	9232	4.4	81.5	1.9	4.5	0.9	3.9	1.1	0.8	1.0	85.9	1.9	12.2	0.106	0.501	18.921754	-98.969368
T. Der. Yautepec	53.00	3	0	14718	4.6	86.1	1.5	4.0	0.3	1.6	1.2	0.3	0.4	90.7	1.5	7.8	0.069	0.536	18.920331	-98.970773
Oaxtepec	56.00																			



MORELOS

10 CARR: Santa Bárbara - Izúcar de Matamoros

CLAVE: 00451

RUTA: MEX-115-160

AÑO: 2016

LUGAR	ESTACION				CLASIFICACION VEHICULAR EN PORCIENTO										COORDENADAS					
	KM	TE	SC	TDPA	M	A	B	C2	C3	T3S2	T3S3	T3S2R4	OTROS	A	B	C	K'	D	LATITUD	LONGITUD
T. C. México - Puebla (Libre)	0.00	3	1	20712	2.4	89.1	0.8	4.3	1.1	1.2	0.7	0.3	0.1	91.5	0.8	7.7	0.059	0.501	19.310962	-98.896553
T. C. México - Puebla (Libre)	0.00	3	2	21597	2.6	87.9	0.8	5.0	1.3	1.3	0.7	0.3	0.1	90.5	0.8	8.7	0.060	0.501	19.311031	-98.896562
X. C. México - Puebla (Cuota)	3.61	1	1	22136	1.9	90.8	1.3	3.7	0.9	0.8	0.3	0.2	0.1	92.7	1.3	6.0	0.060	0.540	19.302465	-98.885555
X. C. México - Puebla (Cuota)	3.61	1	2	22205	1.8	90.2	1.4	4.2	0.9	0.9	0.3	0.2	0.1	92.0	1.4	6.6	0.060	0.540	19.302498	-98.885486
X. C. México - Puebla (Cuota)	3.61	3	1	33553	1.9	84.6	0.9	7.0	0.9	1.7	1.3	0.8	0.9	86.5	0.9	12.6	0.056	0.504	19.285179	-98.880407
X. C. México - Puebla (Cuota)	3.61	3	2	34160	1.1	84.4	1.1	7.2	1.1	1.8	1.4	0.8	1.1	85.5	1.1	13.4	0.060	0.504	19.285177	-98.880368
Chalco	8.00	3	1	30099	1.8	87.6	0.9	3.8	1.5	2.0	1.4	0.5	0.5	89.4	0.9	9.7	0.063	0.507	19.249910	-98.875096
Chalco	8.00	3	2	31005	2.1	86.2	1.1	4.3	1.6	2.2	1.5	0.5	0.5	88.3	1.1	10.6	0.063	0.507	19.250022	-98.874969
T. Der. Juchitepec	12.46	3	1	18202	1.7	79.3	3.2	8.4	1.7	3.1	1.4	0.6	0.6	81.0	3.2	15.8	0.076	0.532	19.232094	-98.844869
T. Der. Juchitepec	12.46	3	2	18520	1.6	77.6	3.5	9.2	1.7	3.3	1.6	0.7	0.8	79.2	3.5	17.3	0.101	0.532	19.232133	-98.844842
Tlalmanalco	20.51	3	0	8396	2.6	89.6	0.6	4.9	0.7	0.5	0.4	0.4	0.3	92.2	0.6	7.2	0.076	0.508	19.198400	-98.799679
Amecameca De Juarez	28.00	1	1	6782	2.6	88.2	1.0	5.7	0.6	1.0	0.6	0.1	0.2	90.8	1.0	8.2	0.079	0.505	19.144080	-98.774372
Amecameca De Juarez	28.00	1	2	7211	2.5	87.3	1.2	6.4	0.6	1.1	0.6	0.1	0.2	89.8	1.2	9.0	0.082	0.505	19.144080	-98.774372
Amecameca de Juárez	28.00	3	1	9079	1.8	82.9	2.0	8.3	1.3	1.8	0.8	0.6	0.5	84.7	2.0	13.3	0.065	0.506	19.109194	-98.777424
Amecameca de Juárez	28.00	3	2	8910	2.1	80.5	2.2	9.8	1.5	1.9	0.9	0.6	0.5	82.6	2.2	15.2	0.066	0.506	19.109175	-98.777364
T. Izq. Ozumba (1º Acceso)	38.81	1	0	18409	1.5	80.9	1.9	8.1	1.4	4.4	0.9	0.4	0.5	82.4	1.9	15.7	0.069	0.517	19.056799	-98.787327
T. Izq. Ozumba (1º Acceso)	38.81	3	0	14386	1.7	76.1	1.9	7.8	1.3	7.7	1.3	1.2	1.0	77.8	1.9	20.3	0.075	0.508	19.049169	-98.792348
Tepetitlaxpa	42.29	3	0	13236	2.7	74.0	2.9	7.8	3.4	3.6	2.3	2.0	1.3	76.7	2.9	20.4	0.063	0.509	19.019379	-98.824487
Lim. Edos. Term. Mex. Ppia. Mor.	51.70																			
T. Der. Atlatlahucan	58.95	1	1	6443	1.4	81.6	1.5	7.0	2.5	3.3	1.3	1.0	0.4	83.0	1.5	15.5	0.082	0.500	18.929433	-98.887063
T. Der. Atlatlahucan	58.95	1	2	7341	1.3	80.0	1.7	7.7	2.7	3.6	1.5	1.1	0.4	81.3	1.7	17.0	0.118	0.500	18.929433	-98.887061
T. Izq. Tetela del Volcán	62.99	1	1	8409	2.5	86.2	1.2	4.3	1.4	2.5	1.0	0.4	0.5	88.7	1.2	10.1	0.072	0.503	18.900098	-98.906799
T. Izq. Tetela del Volcán	62.99	1	2	8769	5.0	82.3	1.4	4.9	1.5	2.9	1.1	0.4	0.5	87.3	1.4	11.3	0.098	0.503	18.900104	-98.906800
T. Izq. Tetela del Volcán	62.99	3	1	11732	2.8	85.8	1.6	5.2	0.9	1.8	1.1	0.4	0.4	88.6	1.6	9.8	0.079	0.502	18.896110	-98.909522
T. Izq. Tetela del Volcán	62.99	3	2	12007	2.6	85.0	1.7	5.7	1.1	1.9	1.2	0.4	0.4	87.6	1.7	10.7	0.079	0.502	18.896067	-98.909536
T. Izq. Libramiento de Cuautla (1º Acceso)	67.00	1	1	15144	4.2	82.7	2.0	6.2	1.4	1.5	0.8	0.7	0.5	86.9	2.0	11.1	0.073	0.500	18.878908	-98.921056
T. Izq. Libramiento de Cuautla (1º Acceso)	67.00	1	2	15783	3.4	82.3	2.1	6.7	1.6	1.5	1.0	0.9	0.5	85.7	2.1	12.2	0.072	0.500	18.878908	-98.921056
T. Der. La Pera	68.90	1	1	24159	3.2	85.5	1.4	5.6	1.0	1.1	1.3	0.5	0.4	88.7	1.4	9.9	0.058	0.519	18.856603	-98.935606
T. Der. La Pera	68.90	1	2	23705	2.5	85.0	1.6	6.2	1.0	1.3	1.4	0.6	0.4	87.5	1.6	10.9	0.055	0.519	18.856603	-98.935606
T. Izq. Libramiento de Cuautla (2º Acceso)	77.05	3	1	17813	1.8	84.9	2.0	5.3	1.6	1.7	1.4	1.1	0.2	86.7	2.0	11.3	0.063	0.510	18.793511	-98.912017
T. Izq. Libramiento de Cuautla (2º Acceso)	77.05	3	2	17720	1.9	83.2	2.4	6.0	1.6	1.9	1.6	1.2	0.2	85.1	2.4	12.5	0.065	0.510	18.793511	-98.912017
T. Der. Tlayecac	85.06	1	1	15838	1.5	81.8	4.7	4.8	2.5	1.9	1.4	0.8	0.6	83.3	4.7	12.0	0.079	0.515	18.770205	-98.892935
T. Der. Tlayecac	85.06	1	2	13546	1.7	80.3	5.2	5.0	2.5	2.2	1.6	0.9	0.6	82.0	5.2	12.8	0.078	0.515	18.770198	-98.892926
T. Der. Tlayecac	85.06	3	1	12444	0.8	83.2	3.3	4.3	2.0	3.0	2.2	0.8	0.4	84.0	3.3	12.7	0.067	0.520	18.760316	-98.880612

MORELOS

10 CARR: Santa Bárbara - Izúcar de Matamoros

CLAVE: 00451

RUTA: MEX-115-160

AÑO: 2016

LUGAR	ESTACION				CLASIFICACION VEHICULAR EN PORCIENTO										COORDENADAS					
	KM	TE	SC	TDPA	M	A	B	C2	C3	T3S2	T3S3	T3S2R4	OTROS	A	B	C	K'	D	LATITUD	LONGITUD
T. Der. Tlayecac	85.06	3	2	12323	1.0	81.5	3.5	4.9	2.1	3.3	2.4	0.9	0.4	82.5	3.5	14.0	0.068	0.520	18.760316	-98.880612
T. Izq. Amayuca	91.36	1	1	11755	1.6	82.3	5.0	5.0	1.8	1.8	1.2	0.8	0.5	83.9	5.0	11.1	0.068	0.523	18.734600	-98.819055
T. Izq. Amayuca	91.36	1	2	11664	1.5	81.1	5.0	5.4	2.1	2.1	1.3	1.0	0.5	82.6	5.0	12.4	0.069	0.523	18.734586	-98.819059
T. Izq. Amayuca	91.36	3	1	6695	0.9	78.5	3.8	4.3	3.0	3.9	3.1	1.8	0.7	79.4	3.8	16.8	0.069	0.519	18.715536	-98.789825
T. Izq. Amayuca	91.36	3	2	6722	0.8	76.4	4.3	4.8	3.3	4.2	3.5	2.0	0.7	77.2	4.3	18.5	0.064	0.519	18.715536	-98.789825
T. C. Atlixco - Jantetelco (Cuota)	94.70	3	1	2922	0.7	79.3	3.7	5.6	2.9	2.8	2.3	2.0	0.7	80.0	3.7	16.3	0.071	0.520	18.700554	-98.765707
T. C. Atlixco - Jantetelco (Cuota)	94.70	3	2	2819	1.1	76.7	4.1	6.4	3.0	3.1	2.7	2.2	0.7	77.8	4.1	18.1	0.081	0.520	18.700554	-98.765703
T. Der. Tenango	102.96	1	1	2732	1.7	80.2	3.5	4.2	3.3	2.7	2.3	1.8	0.3	81.9	3.5	14.6	0.072	0.520	18.669038	-98.733342
T. Der. Tenango	102.96	1	2	2629	1.7	77.3	3.9	4.8	3.9	3.3	2.8	2.0	0.3	79.0	3.9	17.1	0.076	0.520	18.669038	-98.733342
T. Der. Tenango	102.96	3	1	2133	1.9	76.0	4.0	4.0	3.9	3.8	2.9	2.7	0.8	77.9	4.0	18.1	0.068	0.508	18.664383	-98.728029
T. Der. Tenango	102.96	3	2	1940	1.9	74.3	4.4	4.3	4.2	4.3	3.0	2.8	0.8	76.2	4.4	19.4	0.084	0.508	18.664383	-98.728029
Lim. Edos. Term. Mor. Ppia. Pue.	103.23																			
X. C. Amayuca - Izúcar de Matamoros	134.99	1	1	4956	12.8	71.7	2.3	6.9	1.3	2.7	1.0	1.0	0.3	84.5	2.3	13.2	0.081	0.500	18.604732	-98.484735
X. C. Amayuca - Izúcar de Matamoros	134.99	1	2	4952	13.6	69.1	2.6	7.6	1.5	2.9	1.2	1.2	0.3	82.7	2.6	14.7	0.080	0.500	18.604839	-98.484636
X. C. Amayuca - Izúcar de Matamoros	134.99	3	1	6978	15.4	74.2	1.1	5.1	1.3	1.6	0.8	0.3	0.2	89.6	1.1	9.3	0.086	0.535	18.595170	-98.477170
X. C. Amayuca - Izúcar de Matamoros	134.99	3	2	8034	14.8	73.5	1.3	5.9	1.5	1.6	0.9	0.3	0.2	88.3	1.3	10.4	0.082	0.535	18.595285	-98.477022
T. C. Puebla - Huajuapán de León	138.14																			

11 CARR: Cuernavaca - Acapulco (Cuota)

CLAVE: 00045

RUTA: MEX-095D

AÑO: 2016

LUGAR	ESTACION				CLASIFICACION VEHICULAR EN PORCIENTO										COORDENADAS					
	KM	TE	SC	TDPA	M	A	B	C2	C3	T3S2	T3S3	T3S2R4	OTROS	A	B	C	K'	D	LATITUD	LONGITUD
Cuernavaca	0.00	3	1	44471	1.6	89.2	2.0	4.1	0.9	1.1	0.5	0.5	0.1	90.8	2.0	7.2	0.056	0.500	18.881078	-99.229497
Cuernavaca	0.00	3	2	38208	1.8	88.1	2.3	4.3	1.1	1.3	0.5	0.5	0.1	89.9	2.3	7.8	0.061	0.500	18.881078	-99.229497
T. Izq. Burgos	3.35	1	1	27434	1.6	88.9	1.8	4.6	0.9	1.2	0.4	0.5	0.1	90.5	1.8	7.7	0.062	0.502	18.861792	-99.220994
T. Izq. Burgos	3.35	1	2	23960	1.8	87.7	2.2	4.8	1.1	1.4	0.4	0.5	0.1	89.5	2.2	8.3	0.061	0.502	18.861792	-99.220994
T. Izq. Burgos	3.35	3	1	30071	1.5	88.2	2.0	5.0	1.0	1.3	0.4	0.5	0.1	89.7	2.0	8.3	0.059	0.510	18.857014	-99.220861
T. Izq. Burgos	3.35	3	2	25957	1.9	87.0	2.3	5.2	1.2	1.4	0.4	0.5	0.1	88.9	2.3	8.8	0.061	0.510	18.857014	-99.220861
T. Der. Acatlipa	4.70	1	1	31543	1.4	86.5	2.2	6.1	1.2	1.5	0.5	0.5	0.1	87.9	2.2	9.9	0.057	0.503	18.849936	-99.219958
T. Der. Acatlipa	4.70	1	2	28810	1.3	85.7	2.4	6.3	1.3	1.8	0.6	0.5	0.1	87.0	2.4	10.6	0.065	0.503	18.849936	-99.219958
T. Der. Acatlipa	4.70	3	1	26651	1.5	88.2	2.2	4.7	0.9	1.3	0.6	0.5	0.1	89.7	2.2	8.1	0.073	0.503	18.845342	-99.218503
T. Der. Acatlipa	4.70	3	2	26681	1.3	87.1	2.4	5.5	1.1	1.4	0.6	0.5	0.1	88.4	2.4	9.2	0.070	0.503	18.845342	-99.218503
T. Izq. Miguel Hidalgo	5.85	3	1	23121	1.5	87.4	2.1	5.5	1.1	1.3	0.5	0.5	0.1	88.9	2.1	9.0	0.064	0.506	18.814150	-99.219311
T. Izq. Miguel Hidalgo	5.85	3	2	21369	1.3	86.1	2.5	6.1	1.3	1.5	0.6	0.5	0.1	87.4	2.5	10.1	0.068	0.506	18.814150	-99.219311

MORELOS

11 CARR: Cuernavaca - Acapulco (Cuota)

CLAVE: 00045

RUTA: MEX-095D

AÑO: 2016

LUGAR	ESTACION				CLASIFICACION VEHICULAR EN PORCIENTO										COORDENADAS					
	KM	TE	SC	TDPA	M	A	B	C2	C3	T3S2	T3S3	T3S2R4	OTROS	A	B	C	K'	D	LATITUD	LONGITUD
T. Der. Aeropuerto Cuernavaca	9.83	1	1	23960	0.2	86.6	2.3	5.6	1.7	1.9	0.8	0.8	0.1	86.8	2.3	10.9	0.068	0.507	18.807278	-99.219994
T. Der. Aeropuerto Cuernavaca	9.83	1	2	22606	0.2	85.3	2.5	6.4	1.8	2.0	0.9	0.8	0.1	85.5	2.5	12.0	0.073	0.507	18.807278	-99.219994
T. Der. Aeropuerto Cuernavaca	9.83	3	1	16128	0.5	83.8	3.9	6.2	1.8	2.1	0.6	0.9	0.2	84.3	3.9	11.8	0.070	0.505	18.798165	-99.220796
T. Der. Aeropuerto Cuernavaca	9.83	3	2	15661	0.5	82.4	4.2	6.6	2.0	2.2	0.8	1.1	0.2	82.9	4.2	12.9	0.087	0.505	18.798144	-99.220689
T. Izq. Club de Golf Santa Fe	17.48	1	1	14587	0.5	84.1	3.6	6.1	1.9	1.9	0.7	1.0	0.2	84.6	3.6	11.8	0.077	0.532	18.744397	-99.247330
T. Izq. Club de Golf Santa Fe	17.48	1	2	13678	0.5	81.6	4.1	7.4	2.2	2.2	0.7	1.1	0.2	82.1	4.1	13.8	0.093	0.532	18.744397	-99.247330
Caseta de Cobro Alpuyeca	19.80	1	1	11551	0.5	82.4	4.4	6.9	1.6	2.2	0.8	1.0	0.2	82.9	4.4	12.7	0.081	0.506	18.727997	-99.255428
Caseta de Cobro Alpuyeca	19.80	1	2	10977	0.5	80.9	4.9	7.5	1.7	2.3	0.9	1.1	0.2	81.4	4.9	13.7	0.109	0.506	18.727997	-99.255428
Caseta de Cobro Alpuyeca	19.80	3	1	9520	0.5	83.2	4.0	6.7	1.8	2.0	0.7	0.9	0.2	83.7	4.0	12.3	0.070	0.506	18.694311	-99.280811
Caseta de Cobro Alpuyeca	19.80	3	2	9028	0.5	81.7	4.5	7.0	2.0	2.3	0.8	1.0	0.2	82.2	4.5	13.3	0.097	0.506	18.694311	-99.280811
Caseta de Cobro Ing. Francisco Velasco Durán	23.10	2	1	8687	0.9	82.5	5.5	2.6	3.6	2.5	0.9	1.1	0.4	83.4	5.5	11.1	0.111	0.500	18.698553	-99.278046
Caseta de Cobro Ing. Francisco Velasco Durán	23.10	2	2	8687	0.9	82.5	5.5	2.6	3.6	2.5	0.9	1.1	0.4	83.4	5.5	11.1	0.111	0.500	18.698553	-99.278046
Lim. Edos. Term. Mor. Ppia. Gro.	53.30																			
Caseta de Cobro Paso Morelos	82.94	1	1	3607	1.9	75.1	8.1	7.5	1.3	2.8	1.3	1.6	0.4	77.0	8.1	14.9	0.123	0.502	18.232917	-99.215139
Caseta de Cobro Paso Morelos	82.94	1	2	3631	2.2	72.8	9.1	7.9	1.5	3.1	1.3	1.7	0.4	75.0	9.1	15.9	0.187	0.502	18.232917	-99.215139
Caseta de Cobro Paso Morelos	82.94	2	1	4205	0.7	81.9	5.4	2.5	3.7	3.0	0.8	1.3	0.7	82.6	5.4	12.0	0.111	0.500	18.231463	-99.215449
Caseta de Cobro Paso Morelos	82.94	2	2	4205	0.7	81.9	5.4	2.5	3.7	3.0	0.8	1.3	0.7	82.6	5.4	12.0	0.111	0.500	18.231463	-99.215449
Caseta de Cobro Palo Blanco	193.90	1	1	5721	1.0	76.4	7.6	7.5	2.0	3.3	1.1	0.9	0.2	77.4	7.6	15.0	0.103	0.501	17.426637	-99.470335
Caseta de Cobro Palo Blanco	193.90	1	2	5750	0.6	74.7	8.5	8.1	2.0	3.6	1.2	1.0	0.3	75.3	8.5	16.2	0.111	0.501	17.426644	-99.470328
Caseta de Cobro Palo Blanco	193.90	2	1	5545	0.7	83.0	5.4	2.5	3.5	2.8	0.9	0.9	0.3	83.7	5.4	10.9	0.097	0.500	17.423985	-99.466843
Caseta de Cobro Palo Blanco	193.90	2	2	5545	0.7	83.0	5.4	2.5	3.5	2.8	0.9	0.9	0.3	83.7	5.4	10.9	0.097	0.500	17.423985	-99.466843
X. C. Chilpancingo - Acapulco (Tierra Colorada)	226.20	1	1	5185	0.5	76.8	6.2	9.3	1.4	2.9	1.1	1.2	0.6	77.3	6.2	16.5	0.062	0.510	17.180778	-99.551994
X. C. Chilpancingo - Acapulco (Tierra Colorada)	226.20	1	2	5392	0.8	74.5	6.6	10.1	1.5	3.4	1.2	1.3	0.6	75.3	6.6	18.1	0.065	0.510	17.180756	-99.551991
Caseta de Cobro La Venta	269.95	1	1	5048	1.1	76.3	7.2	6.1	2.0	2.8	1.6	2.0	0.9	77.4	7.2	15.4	0.076	0.502	16.927690	-99.803421
Caseta de Cobro La Venta	269.95	1	2	5006	2.2	72.8	7.8	6.9	2.1	3.3	1.9	2.2	0.8	75.0	7.8	17.2	0.069	0.502	16.927745	-99.803439
Caseta de Cobro La Venta	269.95	2	1	5192	0.7	82.2	5.8	2.5	3.6	3.0	0.9	1.0	0.3	82.9	5.8	11.3	0.097	0.500	16.928320	-99.802032
Caseta de Cobro La Venta	269.95	2	2	5192	0.7	82.2	5.8	2.5	3.6	3.0	0.9	1.0	0.3	82.9	5.8	11.3	0.097	0.500	16.928320	-99.802032
T. C. Chilpancingo - Acapulco (Ent. La Venta)	271.50	1	1	5803	1.1	78.0	4.6	7.3	2.2	3.7	1.4	1.1	0.6	79.1	4.6	16.3	0.066	0.503	16.922931	-99.811773
T. C. Chilpancingo - Acapulco (Ent. La Venta)	271.50	1	2	5732	1.2	76.0	5.4	7.8	2.3	4.1	1.4	1.2	0.6	77.2	5.4	17.4	0.074	0.503	16.923149	-99.811302

MORELOS

12 CARR: La Pera - Cuautla (Cuota)

CLAVE: 17161

RUTA: MEX-160D

AÑO: 2016

LUGAR	ESTACION				CLASIFICACION VEHICULAR EN PORCIENTO										COORDENADAS					
	KM	TE	SC	TDPA	M	A	B	C2	C3	T3S2	T3S3	T3S2R4	OTROS	A	B	C	K'	D	LATITUD	LONGITUD
La Pera	0.00	3	0	11109	1.1	82.5	2.9	4.7	1.6	3.3	1.4	1.5	1.0	83.6	2.9	13.5	0.086	0.511	19.008900	-99.161164
Tepoztlán	7.96	1	0	11078	1.2	84.8	1.3	5.5	1.5	2.3	1.6	1.5	0.3	86.0	1.3	12.7	0.083	0.523	18.988725	-99.115969
Caseta de Cobro Tepoztlán	7.96	2	0	12623	1.2	85.6	4.4	1.8	1.7	2.6	0.8	1.5	0.4	86.8	4.4	8.8	0.085	0.500	18.986830	-99.112396
Tepoztlán	7.96	3	0	11438	0.8	81.7	3.9	5.3	1.2	4.4	1.3	0.5	0.9	82.5	3.9	13.6	0.092	0.506	18.982206	-99.106261
T. Der. Amatlán	13.40	1	0	11290	0.7	81.0	4.1	5.4	1.3	4.1	1.3	1.1	1.0	81.7	4.1	14.2	0.091	0.506	18.972842	-99.078536
T. Der. Amatlán	13.40	3	0	11541	0.7	80.4	4.0	5.7	1.5	4.0	1.3	1.2	1.2	81.1	4.0	14.9	0.086	0.513	18.966631	-99.070464
Oacalco	21.21	1	0	10994	1.6	80.5	3.9	5.9	1.5	3.5	1.4	0.5	1.2	82.1	3.9	14.0	0.089	0.503	18.937166	-99.035889
Caseta de Cobro Oacalco	21.21	2	0	12107	1.1	84.9	4.1	2.5	1.9	2.7	0.8	1.5	0.5	86.0	4.1	9.9	0.085	0.500	18.931091	-99.025566
Oacalco	21.21	3	0	10610	1.3	82.2	4.1	5.0	1.5	3.2	1.3	0.6	0.8	83.5	4.1	12.4	0.079	0.501	18.927331	-99.021586
X. C. Cocoyoc - Oaxtepec	27.00	3	1	17134	0.7	85.5	2.3	5.6	1.8	1.7	1.2	0.9	0.3	86.2	2.3	11.5	0.070	0.508	18.893344	-98.975339
X. C. Cocoyoc - Oaxtepec	27.00	3	2	17651	0.7	84.3	2.5	6.0	2.0	1.9	1.4	0.9	0.3	85.0	2.5	12.5	0.065	0.508	18.893344	-98.975339
T. C. Santa Bárbara - Izúcar de Matamoros	34.16	1	1	21522	1.4	88.2	1.6	4.1	1.6	1.7	0.7	0.4	0.3	89.6	1.6	8.8	0.063	0.503	18.855922	-98.941494
T. C. Santa Bárbara - Izúcar de Matamoros	34.16	1	2	22141	1.4	87.4	1.7	4.3	1.7	1.8	0.9	0.5	0.3	88.8	1.7	9.5	0.066	0.503	18.855922	-98.941494

13 CARR: Libramiento Amecameca - Nepantla (Cuota)

CLAVE:

RUTA: MEX-115D

AÑO: 2016

LUGAR	ESTACION				CLASIFICACION VEHICULAR EN PORCIENTO										COORDENADAS					
	KM	TE	SC	TDPA	M	A	B	C2	C3	T3S2	T3S3	T3S2R4	OTROS	A	B	C	K'	D	LATITUD	LONGITUD
T. C. Santa Bárbara - Izúcar de Matamoros (Norte)	28.60																			
Caseta de Cobro Tepetlilpa	38.60	2	1	3612	0.7	82.7	2.4	2.9	3.3	5.1	0.9	1.2	0.8	83.4	2.4	14.2	0.101	0.500	19.046078	-98.828354
Caseta de Cobro Tepetlilpa	38.60	2	2	3612	0.7	82.7	2.4	2.9	3.3	5.1	0.9	1.2	0.8	83.4	2.4	14.2	0.101	0.500	19.046078	-98.828354
Lim. Edos. Term. Méx. Ppia. Mor.	48.10																			
T. C. Santa Bárbara - Izúcar de Matamoros (Sur)	51.80																			

14 CARR: México - Cuernavaca (Cuota)

CLAVE: 00041

RUTA: MEX-095D

AÑO: 2016

LUGAR	ESTACION				CLASIFICACION VEHICULAR EN PORCIENTO										COORDENADAS					
	KM	TE	SC	TDPA	M	A	B	C2	C3	T3S2	T3S3	T3S2R4	OTROS	A	B	C	K'	D	LATITUD	LONGITUD
México	0.00																			
T. C. México - Cuernavaca (Libre)	18.65	3	1	26516	1.0	87.5	2.7	4.8	0.9	1.7	0.7	0.5	0.2	88.5	2.7	8.8	0.072	0.549	19.267022	-99.164768
T. C. México - Cuernavaca (Libre)	18.65	3	2	26491	0.9	86.0	3.4	5.3	1.0	1.9	0.7	0.6	0.2	86.9	3.4	9.7	0.085	0.549	19.267022	-99.164768
Caseta de Cobro Tlalpan	23.36	2	1	16023	1.1	86.4	3.7	2.1	2.9	2.1	0.5	1.0	0.2	87.5	3.7	8.8	0.145	0.500	19.241966	-99.148262
Caseta de Cobro Tlalpan	23.36	2	2	16023	1.1	86.4	3.7	2.1	2.9	2.1	0.5	1.0	0.2	87.5	3.7	8.8	0.145	0.500	19.241966	-99.148262
Lim. Edos. Term. D. F. Ppia. Mor.	47.09																			

MORELOS

14 CARR: México - Cuernavaca (Cuota)

CLAVE: 00041

RUTA: MEX-095D

AÑO: 2016

LUGAR	ESTACION				CLASIFICACION VEHICULAR EN PORCIENTO												COORDENADAS			
	KM	TE	SC	TDPA	M	A	B	C2	C3	T3S2	T3S3	T3S2R4	OTROS	A	B	C	K'	D	LATITUD	LONGITUD
Tres Marías	53.00	1	1	17685	0.5	84.1	4.7	4.0	1.4	2.6	0.9	1.4	0.4	84.6	4.7	10.7	0.102	0.501	19.074565	-99.234577
Tres Marías	53.00	1	2	17752	1.5	81.2	5.4	4.6	1.6	2.7	1.0	1.6	0.4	82.7	5.4	11.9	0.105	0.501	19.074565	-99.234577
Tres Marías	53.00	3	1	18181	0.4	84.4	4.2	4.5	1.3	2.7	0.8	1.3	0.4	84.8	4.2	11.0	0.102	0.519	19.043128	-99.233318
Tres Marías	53.00	3	2	18219	1.4	81.7	4.9	5.0	1.4	2.9	0.9	1.4	0.4	83.1	4.9	12.0	0.102	0.519	19.043128	-99.233318
T. Izq. Cuautla	70.50	1	1	20691	0.4	85.2	3.5	4.2	1.4	2.8	0.7	1.4	0.4	85.6	3.5	10.9	0.081	0.519	19.013169	-99.163470
T. Izq. Cuautla	70.50	1	2	19772	1.4	82.7	4.1	4.5	1.6	2.9	0.9	1.5	0.4	84.1	4.1	11.8	0.082	0.519	19.013169	-99.163470
Libramiento de Cuernavaca	79.26	1	1	19848	0.9	84.7	2.9	3.7	1.5	2.9	1.5	1.4	0.5	85.6	2.9	11.5	0.073	0.522	18.969016	-99.237751
T. Izq. A Glorieta La Paloma	79.26	1	1	19785	0.6	85.6	3.6	4.6	1.2	2.2	0.8	1.0	0.4	86.2	3.6	10.2	0.075	0.546	18.974056	-99.237289
Libramiento de Cuernavaca	79.26	1	2	19565	0.7	83.8	3.2	4.1	1.5	3.2	1.5	1.5	0.5	84.5	3.2	12.3	0.077	0.522	18.969016	-99.237751
T. Izq. A Glorieta La Paloma	79.26	1	2	20861	0.9	84.1	4.0	4.9	1.3	2.5	0.8	1.1	0.4	85.0	4.0	11.0	0.086	0.546	18.974056	-99.237289
T. C. México - Cuernavaca (Libre)	80.26																			

15 CARR: Puente de Ixtla - Iguala (Cuota)

CLAVE: 00043

RUTA: MEX-091D

AÑO: 2016

LUGAR	ESTACION				CLASIFICACION VEHICULAR EN PORCIENTO												COORDENADAS			
	KM	TE	SC	TDPA	M	A	B	C2	C3	T3S2	T3S3	T3S2R4	OTROS	A	B	C	K'	D	LATITUD	LONGITUD
T. C. Cuernavaca - Acapulco (Cuota)	0.00																			
T. Izq. Puente de Ixtla	2.00	3	0	8428	1.0	79.5	4.2	5.2	2.5	4.7	1.3	0.9	0.7	80.5	4.2	15.3	0.082	0.501	18.623344	-99.330981
T. Der. Amacuzac	9.63	3	0	8733	1.1	77.2	4.2	6.6	2.5	4.7	1.7	1.2	0.8	78.3	4.2	17.5	0.079	0.503	18.600292	-99.376947
Lim. Edos. Term. Mor. Ppia. Gro.	18.20																			
T. Izq. Buenavista	33.58	3	0	5672	2.4	71.1	5.0	9.4	4.2	3.9	2.2	1.4	0.4	73.5	5.0	21.5	0.054	0.514	18.462094	-99.425976
Caseta de Cobro Iguala	59.14	2	0	4420	0.6	71.6	7.4	4.2	7.3	3.9	2.7	1.4	0.9	72.2	7.4	20.4	0.076	0.500	18.336197	-99.508362
T. Der. Iguala	59.50	1	0	4696	1.5	65.5	6.8	9.3	5.1	5.4	3.8	1.8	0.8	67.0	6.8	26.2	0.080	0.502	18.343447	-99.511465
T. C. Cuernavaca - Chilpancingo	62.80																			

16 CARR: Alpuyeca - Jojutla

CLAVE: 17021

RUTA: MOR-021

AÑO: 2016

LUGAR	ESTACION				CLASIFICACION VEHICULAR EN PORCIENTO												COORDENADAS			
	KM	TE	SC	TDPA	M	A	B	C2	C3	T3S2	T3S3	T3S2R4	OTROS	A	B	C	K'	D	LATITUD	LONGITUD
T. C. Cuernavaca - Chilpancingo	0.00																			
X. C. Cuernavaca - Iguala (Cuota)	2.20	1	0	11705	2.0	78.0	3.0	9.4	1.8	3.0	1.3	0.4	1.1	80.0	3.0	17.0	0.068	0.506	18.731142	-99.261925
Xoxocotla	7.70	1	1	6828	6.1	86.1	1.6	4.7	0.7	0.4	0.3	0.0	0.1	92.2	1.6	6.2	0.078	0.518	18.704892	-99.251083
Xoxocotla	7.70	1	2	6996	9.1	82.5	1.9	5.0	0.7	0.4	0.3	0.0	0.1	91.6	1.9	6.5	0.098	0.518	18.704877	-99.251082
T. Izq. Zacatepec	11.94	1	1	8709	3.8	87.6	1.0	4.3	1.3	1.1	0.6	0.1	0.2	91.4	1.0	7.6	0.074	0.504	18.648725	-99.216659

MORELOS

16 CARR: Alpuyecá - Jojutla

CLAVE: 17021

RUTA: MOR-021

AÑO: 2016

LUGAR	ESTACION				CLASIFICACION VEHICULAR EN PORCIENTO													COORDENADAS		
	KM	TE	SC	TDPA	M	A	B	C2	C3	T3S2	T3S3	T3S2R4	OTROS	A	B	C	K'	D	LATITUD	LONGITUD
T. Izq. Zacatepec	11.94	1	2	8976	3.9	87.1	1.0	4.4	1.5	1.2	0.6	0.1	0.2	91.0	1.0	8.0	0.070	0.504	18.648729	-99.216654
Jojutla	17.15	1	1	10675	4.5	90.5	0.5	3.1	0.3	0.5	0.5	0.0	0.1	95.0	0.5	4.5	0.073	0.506	18.620331	-99.193461
Jojutla	17.15	1	2	10961	4.3	90.2	0.5	3.6	0.3	0.5	0.5	0.0	0.1	94.5	0.5	5.0	0.075	0.506	18.620331	-99.193461

17 CARR: Amayuca - Izúcar de Matamoros

CLAVE: 00030

RUTA: MOR-031-PUE

AÑO: 2016

LUGAR	ESTACION				CLASIFICACION VEHICULAR EN PORCIENTO													COORDENADAS		
	KM	TE	SC	TDPA	M	A	B	C2	C3	T3S2	T3S3	T3S2R4	OTROS	A	B	C	K'	D	LATITUD	LONGITUD
Amayuca	0.00																			
X. C. Santa Bárbara - Izúcar de Matamoros	0.66	3	1	7360	4.8	85.3	1.4	5.9	0.6	1.0	0.5	0.3	0.2	90.1	1.4	8.5	0.072	0.514	18.713939	-98.796725
X. C. Santa Bárbara - Izúcar de Matamoros	0.66	3	2	7079	4.6	84.8	1.6	6.3	0.6	1.0	0.6	0.3	0.2	89.4	1.6	9.0	0.069	0.514	18.713939	-98.796725
Jonacatepec	3.84	3	1	3928	3.6	83.5	2.4	7.3	1.1	1.1	0.6	0.3	0.1	87.1	2.4	10.5	0.080	0.505	18.671242	-98.805631
Jonacatepec	3.84	3	2	4006	3.2	83.2	2.7	7.7	1.2	1.1	0.5	0.3	0.1	86.4	2.7	10.9	0.084	0.505	18.671242	-98.805631
T. Der. Tepalcingo	14.50	3	1	2650	4.6	80.3	2.1	7.2	2.1	1.0	0.9	1.5	0.3	84.9	2.1	13.0	0.082	0.512	18.589106	-98.833378
T. Der. Tepalcingo	14.50	3	2	2401	4.6	79.4	2.3	7.5	2.3	1.0	1.0	1.6	0.3	84.0	2.3	13.7	0.085	0.512	18.589106	-98.833378
Axochiapan	29.50	1	0	5997	7.8	75.2	1.8	9.7	1.1	2.1	0.9	0.8	0.6	83.0	1.8	15.2	0.074	0.522	18.512144	-98.777369
Axochiapan	29.50	3	1	3818	12.9	78.0	2.0	4.3	0.5	1.2	0.7	0.2	0.2	90.9	2.0	7.1	0.056	0.505	18.489869	-98.744869
Axochiapan	29.50	3	2	4189	13.6	77.1	2.0	4.5	0.4	1.3	0.7	0.2	0.2	90.7	2.0	7.3	0.065	0.505	18.490045	-98.745045
Lim. Edos. Term. Mor. Ppia. Pue.	36.85																			
Barranca del Muerto	38.40	3	0	3029	8.6	70.6	0.7	9.4	5.1	1.9	0.7	2.8	0.2	79.2	0.7	20.1	0.066	0.501	18.476280	-98.691422
T. Der. Chietla	53.00	1	0	4678	13.1	71.9	0.7	7.5	0.6	3.8	1.2	0.3	0.9	85.0	0.7	14.3	0.059	0.504	18.525726	-98.590225
X. C. Santa Bárbara - Izúcar de Matamoros	67.50	1	0	8641	9.0	75.8	0.6	7.1	2.0	3.5	0.6	0.9	0.5	84.8	0.6	14.6	0.067	0.502	18.593552	-98.495680
X. C. Santa Bárbara - Izúcar de Matamoros	67.50	3	1	10254	11.7	77.7	0.6	3.5	0.8	1.9	2.4	0.8	0.6	89.4	0.6	10.0	0.070	0.519	18.601100	-98.473731
X. C. Santa Bárbara - Izúcar de Matamoros	67.50	3	2	11073	11.1	77.6	0.6	3.8	0.8	2.1	2.5	0.9	0.6	88.7	0.6	10.7	0.070	0.519	18.601161	-98.473658
Izúcar de Matamoros	69.00																			

18 CARR: Amayuca - Tlacotepec

CLAVE: 17020

RUTA: MOR-017

AÑO: 2016

LUGAR	ESTACION				CLASIFICACION VEHICULAR EN PORCIENTO													COORDENADAS		
	KM	TE	SC	TDPA	M	A	B	C2	C3	T3S2	T3S3	T3S2R4	OTROS	A	B	C	K'	D	LATITUD	LONGITUD
Amayuca	0.00	3	0	7912	1.2	86.8	1.1	4.0	1.3	3.9	0.6	0.5	0.6	88.0	1.1	10.9	0.077	0.508	18.729706	-98.789486
Temoac	5.50	3	0	4911	3.0	85.7	0.6	3.4	1.4	3.2	1.1	0.8	0.8	88.7	0.6	10.7	0.093	0.501	18.776977	-98.775663
Zacualpan de Amilpas	7.50	1	0	6515	6.2	85.7	0.5	2.6	0.5	3.4	0.3	0.1	0.7	91.9	0.5	7.6	0.075	0.516	18.786909	-98.770310
Tlacotepec	12.00	1	0	3884	6.9	85.9	0.2	3.0	0.7	2.2	0.6	0.0	0.5	92.8	0.2	7.0	0.080	0.504	18.807186	-98.759731

MORELOS

19 CARR: Atlatlahucan - Tlayacapan

CLAVE: 17301

RUTA: MOR-002

AÑO: 2016

LUGAR	ESTACION				CLASIFICACION VEHICULAR EN PORCIENTO													COORDENADAS		
	KM	TE	SC	TDPA	M	A	B	C2	C3	T3S2	T3S3	T3S2R4	OTROS	A	B	C	K'	D	LATITUD	LONGITUD
T. C. Santa Bárbara - Izúcar de Matamoros	0.00																			
Atlatlahucan	1.50	1	1	4118	5.1	87.8	0.4	5.4	0.5	0.5	0.2	0.0	0.1	92.9	0.4	6.7	0.073	0.509	18.928819	-98.888292
Atlatlahucan	1.50	1	2	3712	5.8	86.5	0.4	6.0	0.5	0.5	0.2	0.0	0.1	92.3	0.4	7.3	0.070	0.509	18.928819	-98.888292
Totolapan	7.00	1	0	2931	3.5	88.3	0.2	4.4	0.8	2.1	0.3	0.1	0.3	91.8	0.2	8.0	0.077	0.503	18.977350	-98.914550
Tlayacapan	15.50	1	0	4533	5.1	87.9	0.1	3.5	0.4	2.3	0.4	0.0	0.3	93.0	0.1	6.9	0.069	0.501	18.962319	-98.972175

20 CARR: Coatetelco - Miacatlán

CLAVE:

RUTA: MOR

AÑO: 2016

LUGAR	ESTACION				CLASIFICACION VEHICULAR EN PORCIENTO													COORDENADAS		
	KM	TE	SC	TDPA	M	A	B	C2	C3	T3S2	T3S3	T3S2R4	OTROS	A	B	C	K'	D	LATITUD	LONGITUD
Coatetelco	0.00	3	0	2365	8.9	85.3	0.3	5.5	0.0	0.0	0.0	0.0	0.0	94.2	0.3	5.5	0.093	0.512	18.735606	-99.326989
Miacatlán	6.00																			

21 CARR: Cocoyoc - Oaxtepec

CLAVE: 17001

RUTA: MOR

AÑO: 2016

LUGAR	ESTACION				CLASIFICACION VEHICULAR EN PORCIENTO													COORDENADAS		
	KM	TE	SC	TDPA	M	A	B	C2	C3	T3S2	T3S3	T3S2R4	OTROS	A	B	C	K'	D	LATITUD	LONGITUD
Cocoyoc	0.00	3	1	12089	2.7	89.6	0.9	2.0	0.7	1.9	1.4	0.3	0.5	92.3	0.9	6.8	0.064	0.509	18.887313	-98.985240
Cocoyoc	0.00	3	2	11909	2.4	89.1	1.1	2.1	0.9	2.0	1.6	0.3	0.5	91.5	1.1	7.4	0.071	0.509	18.889638	-98.988930
X. C. La Pera - Cuautla (Cuota)	2.50	1	1	11115	2.0	90.4	0.5	2.0	0.6	1.7	1.8	0.4	0.6	92.4	0.5	7.1	0.065	0.501	18.898599	-98.983145
X. C. La Pera - Cuautla (Cuota)	2.50	1	2	11015	2.0	89.3	0.7	2.2	0.8	1.8	2.0	0.4	0.8	91.3	0.7	8.0	0.072	0.501	18.899797	-98.984407
Oaxtepec	3.92	1	0	20159	2.6	92.4	0.3	3.2	0.3	0.2	0.9	0.0	0.1	95.0	0.3	4.7	0.068	0.513	18.903644	-98.974075

22 CARR: Ent. C. (Cuernavaca - Acapulco Cuota) - Tepetzingo

CLAVE: 00421

RUTA: MOR

AÑO: 2016

LUGAR	ESTACION				CLASIFICACION VEHICULAR EN PORCIENTO													COORDENADAS		
	KM	TE	SC	TDPA	M	A	B	C2	C3	T3S2	T3S3	T3S2R4	OTROS	A	B	C	K'	D	LATITUD	LONGITUD
T. C. (Cuernavaca - Acapulco Cuota)	0.00	3	0	3874	7.2	77.2	2.0	8.4	0.3	3.4	0.5	0.2	0.8	84.4	2.0	13.6	0.081	0.504	18.813515	-99.217518
Tepetzingo	5.50	1	0	2737	8.3	78.1	1.2	7.5	0.7	2.4	0.8	0.3	0.7	86.4	1.2	12.4	0.071	0.500	18.786336	-99.180077

MORELOS

23 CARR: Ent. C. (Cuernavaca - Cuautlixco) - Oacalco

CLAVE: 00421

RUTA: MOR

AÑO: 2016

LUGAR	ESTACION				CLASIFICACION VEHICULAR EN PORCIENTO											COORDENADAS				
	KM	TE	SC	TDPA	M	A	B	C2	C3	T3S2	T3S3	T3S2R4	OTROS	A	B	C	K'	D	LATITUD	LONGITUD
T. C. (Cuernavaca - Cuautlixco)	0.00	3	0	1124	16.5	69.9	2.2	6.3	2.9	0.9	0.9	0.1	0.3	86.4	2.2	11.4	0.089	0.530	18.875936	-99.051556
Oacalco	10.00	1	0	3370	6.7	86.5	1.8	2.9	0.7	1.1	0.2	0.1	0.0	93.2	1.8	5.0	0.085	0.504	18.915303	-99.031164

24 CARR: Ent. Chiverías - Ent. El Abanico

CLAVE: 17302

RUTA: MOR

AÑO: 2016

LUGAR	ESTACION				CLASIFICACION VEHICULAR EN PORCIENTO											COORDENADAS				
	KM	TE	SC	TDPA	M	A	B	C2	C3	T3S2	T3S3	T3S2R4	OTROS	A	B	C	K'	D	LATITUD	LONGITUD
T. C. Alpuyecá - Jojutla	0.00	3	0	3754	3.7	84.8	2.1	3.9	1.9	2.2	0.8	0.1	0.5	88.5	2.1	9.4	0.073	0.503	18.658973	-99.225662
X. C. Xoxocotla - Tizapotla	5.56	3	0	4613	3.3	83.1	2.3	4.7	1.4	3.2	1.0	0.3	0.7	86.4	2.3	11.3	0.084	0.503	18.644631	-99.271439
T. C. Cuernavaca - Acapulco (Cuota)	14.50	1	0	4795	3.2	85.8	0.8	4.5	2.0	2.6	0.6	0.1	0.4	89.0	0.8	10.2	0.071	0.508	18.649117	-99.291461

25 CARR: Galeana - Cuautla

CLAVE: 17004

RUTA: MOR-004

AÑO: 2016

LUGAR	ESTACION				CLASIFICACION VEHICULAR EN PORCIENTO											COORDENADAS				
	KM	TE	SC	TDPA	M	A	B	C2	C3	T3S2	T3S3	T3S2R4	OTROS	A	B	C	K'	D	LATITUD	LONGITUD
Galeana	0.00	3	1	10691	3.4	88.4	0.7	3.0	2.9	0.8	0.5	0.1	0.2	91.8	0.7	7.5	0.064	0.503	18.647178	-99.203289
Galeana	0.00	3	2	11105	3.4	87.6	0.7	3.4	3.1	1.0	0.5	0.1	0.2	91.0	0.7	8.3	0.067	0.503	18.647178	-99.203289
Zacatepec	4.00	3	0	5204	4.1	80.4	1.1	4.8	6.4	2.1	0.5	0.1	0.5	84.5	1.1	14.4	0.070	0.502	18.658748	-99.181382
Tlaltizapán	13.10	3	0	3810	3.0	83.6	1.6	4.2	3.9	2.3	1.0	0.0	0.4	86.6	1.6	11.8	0.080	0.500	18.698807	-99.108464
T. Der. Chinameca	16.06	3	0	1092	5.2	79.2	2.4	5.0	6.1	1.7	0.2	0.0	0.2	84.4	2.4	13.2	0.074	0.501	18.708589	-99.107214
Moyotepec	34.00	1	0	2276	2.1	87.1	1.5	3.7	2.6	1.6	0.5	0.5	0.4	89.2	1.5	9.3	0.077	0.503	18.734543	-99.007516
Villa de Ayala	38.62	1	0	9231	4.5	88.0	1.5	2.4	1.0	1.5	0.4	0.1	0.6	92.5	1.5	6.0	0.068	0.515	18.748836	-98.985619
T. Izq. Anenecuilco	40.50	1	0	10880	4.5	87.1	1.5	2.5	0.7	0.9	1.2	0.5	1.1	91.6	1.5	6.9	0.066	0.504	18.785706	-98.979373
Cuautla	46.00	1	1	8244	4.0	90.1	0.3	2.6	0.8	0.9	1.0	0.1	0.2	94.1	0.3	5.6	0.072	0.512	18.798844	-98.968497
Cuautla	46.00	1	2	8401	7.2	86.4	0.3	3.0	0.8	0.9	1.1	0.1	0.2	93.6	0.3	6.1	0.066	0.512	18.798844	-98.968497

26 CARR: Jojutla - Chinameca

CLAVE: 17310

RUTA: MOR

AÑO: 2016

LUGAR	ESTACION				CLASIFICACION VEHICULAR EN PORCIENTO											COORDENADAS				
	KM	TE	SC	TDPA	M	A	B	C2	C3	T3S2	T3S3	T3S2R4	OTROS	A	B	C	K'	D	LATITUD	LONGITUD
Jojutla	0.00	3	0	2695	3.4	87.9	2.3	3.9	1.7	0.2	0.2	0.1	0.3	91.3	2.3	6.4	0.071	0.506	18.610486	-99.164353
T. C. Temilpa - Tepalcingo	32.00	1	0	1393	4.5	84.1	3.5	5.1	1.6	0.9	0.2	0.0	0.1	88.6	3.5	7.9	0.085	0.502	18.622785	-99.008065
Chinameca	34.00																			



MORELOS

27 CARR: Jojutla - El Higuérón

CLAVE: 17039

RUTA: MOR-039

AÑO: 2016

LUGAR	ESTACION				CLASIFICACION VEHICULAR EN PORCIENTO													COORDENADAS		
	KM	TE	SC	TDPA	M	A	B	C2	C3	T3S2	T3S3	T3S2R4	OTROS	A	B	C	K'	D	LATITUD	LONGITUD
Jojutla	0.00	3	0	10318	7.8	86.4	1.5	1.4	0.3	0.9	0.8	0.2	0.7	94.2	1.5	4.3	0.065	0.538	18.606966	-99.174416
El Higuérón	4.50	1	0	5562	7.6	85.7	2.2	1.8	0.4	1.6	0.3	0.1	0.3	93.3	2.2	4.5	0.065	0.504	18.582222	-99.177744

28 CARR: Los Alacranes - Ocuituco

CLAVE:

RUTA: MOR

AÑO: 2016

LUGAR	ESTACION				CLASIFICACION VEHICULAR EN PORCIENTO													COORDENADAS		
	KM	TE	SC	TDPA	M	A	B	C2	C3	T3S2	T3S3	T3S2R4	OTROS	A	B	C	K'	D	LATITUD	LONGITUD
Los Alacranes	0.00	3	0	1113	6.3	86.6	0.5	5.7	0.9	0.0	0.0	0.0	0.0	92.9	0.5	6.6	0.100	0.507	18.746516	-98.839387
Ocuituco	19.00	1	0	1449	4.0	88.5	0.0	4.8	0.2	2.0	0.2	0.0	0.3	92.5	0.0	7.5	0.132	0.507	18.864988	-98.781117

29 CARR: Mazatepec - T. C. Ramal a Michapa

CLAVE:

RUTA: MOR

AÑO: 2016

LUGAR	ESTACION				CLASIFICACION VEHICULAR EN PORCIENTO													COORDENADAS		
	KM	TE	SC	TDPA	M	A	B	C2	C3	T3S2	T3S3	T3S2R4	OTROS	A	B	C	K'	D	LATITUD	LONGITUD
Mazatepec	0.00	3	0	916	3.7	90.0	0.0	6.1	0.1	0.1	0.0	0.0	0.0	93.7	0.0	6.3	0.077	0.537	18.723614	-99.370494
T. C. Ramal a Michapa	12.00	1	0	1196	3.4	89.7	0.2	5.4	0.4	0.7	0.2	0.0	0.0	93.1	0.2	6.7	0.080	0.500	18.634903	-99.378419

30 CARR: Moyotepec - San Rafael

CLAVE: 17306

RUTA: MOR

AÑO: 2016

LUGAR	ESTACION				CLASIFICACION VEHICULAR EN PORCIENTO													COORDENADAS		
	KM	TE	SC	TDPA	M	A	B	C2	C3	T3S2	T3S3	T3S2R4	OTROS	A	B	C	K'	D	LATITUD	LONGITUD
T. C. Galeana - Cuautla	0.00	3	0	2758	5.4	82.0	3.6	4.9	1.5	2.0	0.4	0.0	0.2	87.4	3.6	9.0	0.089	0.501	18.712489	-98.990850
T. C. Temilpa - Tepalcingo	7.50	1	0	2498	5.4	80.5	2.9	5.2	1.6	2.3	1.4	0.2	0.5	85.9	2.9	11.2	0.075	0.504	18.647661	-99.004303

31 CARR: Paso por Yautepec

CLAVE: 17025

RUTA: MOR

AÑO: 2016

LUGAR	ESTACION				CLASIFICACION VEHICULAR EN PORCIENTO													COORDENADAS		
	KM	TE	SC	TDPA	M	A	B	C2	C3	T3S2	T3S3	T3S2R4	OTROS	A	B	C	K'	D	LATITUD	LONGITUD
T. C. Cuernavaca - Cuautlixco	0.00	3	1	7321	5.5	88.3	1.5	3.5	0.4	0.4	0.3	0.0	0.1	93.8	1.5	4.7	0.066	0.519	18.871661	-99.078478
T. C. Cuernavaca - Cuautlixco	0.00	3	2	7433	5.3	87.9	1.6	4.0	0.4	0.4	0.3	0.0	0.1	93.2	1.6	5.2	0.072	0.519	18.871661	-99.078478
T. C. Cuernavaca - Cuautlixco	5.50	1	0	10339	5.6	82.5	2.0	4.6	0.5	2.0	1.0	0.5	1.3	88.1	2.0	9.9	0.071	0.508	18.896886	-99.038936

MORELOS

32 CARR: Pilares - T. C. (Xoxocotla - Tilzapotla)

CLAVE: 17008

RUTA: MOR-008

AÑO: 2016

LUGAR	ESTACION				CLASIFICACION VEHICULAR EN PORCIENTO													COORDENADAS		
	KM	TE	SC	TDPA	M	A	B	C2	C3	T3S2	T3S3	T3S2R4	OTROS	A	B	C	K'	D	LATITUD	LONGITUD
Pilares	0.00	3	0	9481	4.0	85.0	1.5	3.6	1.4	2.3	0.8	0.2	1.2	89.0	1.5	9.5	0.074	0.501	18.631839	-99.215329
T. C. Xoxocotla - Tilzapotla	6.50	1	0	3650	4.4	88.0	1.0	3.4	0.7	1.9	0.3	0.0	0.3	92.4	1.0	6.6	0.067	0.513	18.614212	-99.257046

33 CARR: Ramal a Aeropuerto de Cuernavaca

CLAVE: 17250

RUTA: MOR

AÑO: 2016

LUGAR	ESTACION				CLASIFICACION VEHICULAR EN PORCIENTO													COORDENADAS		
	KM	TE	SC	TDPA	M	A	B	C2	C3	T3S2	T3S3	T3S2R4	OTROS	A	B	C	K'	D	LATITUD	LONGITUD
T. C. Cuernavaca - Chilpancingo	0.00	3	0	4130	9.3	83.5	0.1	6.5	0.4	0.1	0.1	0.0	0.0	92.8	0.1	7.1	0.074	0.519	18.804147	-99.226008
Aeropuerto de Cuernavaca	5.64																			

34 CARR: Ramal a Coatetelco

CLAVE: 17304

RUTA: MOR

AÑO: 2016

LUGAR	ESTACION				CLASIFICACION VEHICULAR EN PORCIENTO													COORDENADAS		
	KM	TE	SC	TDPA	M	A	B	C2	C3	T3S2	T3S3	T3S2R4	OTROS	A	B	C	K'	D	LATITUD	LONGITUD
T. C. Cuernavaca - Chilpancingo	0.00	3	0	4137	3.2	89.9	0.3	6.4	0.2	0.0	0.0	0.0	0.0	93.1	0.3	6.6	0.070	0.518	18.713929	-99.273339
Coatetelco	7.00																			

35 CARR: Ramal a Jolalpan

CLAVE: 00143

RUTA: MOR-PUE

AÑO: 2016

LUGAR	ESTACION				CLASIFICACION VEHICULAR EN PORCIENTO													COORDENADAS		
	KM	TE	SC	TDPA	M	A	B	C2	C3	T3S2	T3S3	T3S2R4	OTROS	A	B	C	K'	D	LATITUD	LONGITUD
Axochiapan	0.00	3	0	2551	14.0	71.8	1.9	5.1	1.6	2.5	1.1	1.6	0.4	85.8	1.9	12.3	0.079	0.503	18.482419	-98.748328
Lim. Edos. Term. Mor. Ppia. Pue.	4.00																			
Jolalpan	24.00																			

36 CARR: Ramal a Tetela del Volcán

CLAVE: 17010

RUTA: MOR-010

AÑO: 2016

LUGAR	ESTACION				CLASIFICACION VEHICULAR EN PORCIENTO													COORDENADAS		
	KM	TE	SC	TDPA	M	A	B	C2	C3	T3S2	T3S3	T3S2R4	OTROS	A	B	C	K'	D	LATITUD	LONGITUD
T. C. Santa Bárbara - Izúcar de Matamoros	0.00	3	1	7005	3.7	89.2	1.5	4.1	0.3	0.7	0.4	0.0	0.1	92.9	1.5	5.6	0.070	0.510	18.895869	-98.904881
T. C. Santa Bárbara - Izúcar de Matamoros	0.00	3	2	6843	3.7	88.8	1.6	4.4	0.3	0.7	0.4	0.0	0.1	92.5	1.6	5.9	0.067	0.510	18.895869	-98.904881
Yecapixtla	5.50	3	0	6405	2.6	85.6	0.8	5.6	0.8	2.3	0.7	0.6	1.0	88.2	0.8	11.0	0.077	0.522	18.872249	-98.855226
Ocuituco	15.00	1	0	6042	2.6	86.8	2.0	4.8	0.3	2.3	0.6	0.1	0.5	89.4	2.0	8.6	0.079	0.506	18.879178	-98.778714
Tetela del Volcán	22.00	1	0	4830	4.0	82.6	1.3	5.8	0.9	3.3	0.8	0.6	0.7	86.6	1.3	12.1	0.084	0.519	18.880549	-98.742251

MORELOS

37 CARR: T. C. (Coatetelco - Miacatlán) - Mazatepec

CLAVE:

RUTA: MOR

AÑO: 2016

LUGAR	ESTACION				CLASIFICACION VEHICULAR EN PORCIENTO										COORDENADAS						
	KM	TE	SC	TDPA	M	A	B	C2	C3	T3S2	T3S3	T3S2R4	OTROS	A	B	C	K'	D	LATITUD	LONGITUD	
T. C. Coatetelco - Miacatlán	0.00																				
Mazatepec	4.14	1	0	4412	3.7	89.7	0.2	4.2	0.2	2.0	0.0	0.0	0.0	93.4	0.2	6.4	0.083	0.506	18.725658	-99.352597	

38 CARR: T. C. (México - Cuernavaca (Libre)) - Huitzilac

CLAVE: 00451

RUTA: MOR

AÑO: 2016

LUGAR	ESTACION				CLASIFICACION VEHICULAR EN PORCIENTO										COORDENADAS					
	KM	TE	SC	TDPA	M	A	B	C2	C3	T3S2	T3S3	T3S2R4	OTROS	A	B	C	K'	D	LATITUD	LONGITUD
T. C. México - Cuernavaca (Libre)	0.00	3	0	6380	1.2	80.3	4.1	8.2	0.5	2.7	1.1	0.7	1.2	81.5	4.1	14.4	0.088	0.502	19.001902	-99.259114
Huitzilac	4.00	1	0	6154	1.2	86.3	2.4	5.3	0.8	2.6	0.8	0.0	0.6	87.5	2.4	10.1	0.092	0.512	19.020996	-99.265358

39 CARR: T. C. (San Gregorio - Oaxtepec) - Jojutla

CLAVE: 17002

RUTA: MOR-002

AÑO: 2016

LUGAR	ESTACION				CLASIFICACION VEHICULAR EN PORCIENTO										COORDENADAS					
	KM	TE	SC	TDPA	M	A	B	C2	C3	T3S2	T3S3	T3S2R4	OTROS	A	B	C	K'	D	LATITUD	LONGITUD
T. C. San Gregorio - Oaxtepec	0.00	3	0	5681	6.1	83.4	2.4	3.9	0.4	2.6	0.5	0.1	0.6	89.5	2.4	8.1	0.081	0.500	18.921753	-98.973197
X. C. La Pera - Cuautla	7.50	3	0	6728	6.6	80.8	2.0	5.2	0.7	2.9	0.8	0.5	0.5	87.4	2.0	10.6	0.094	0.507	18.927714	-99.026585
Yautepec	14.00	1	0	6706	6.9	86.4	2.0	2.5	0.2	1.6	0.4	0.0	0.0	93.3	2.0	4.7	0.085	0.520	18.903720	-99.051640
Yautepec	14.00	3	0	7763	5.0	86.9	1.3	3.1	0.9	1.4	0.9	0.2	0.3	91.9	1.3	6.8	0.067	0.511	18.869162	-99.068641
Tucumán	32.30	1	0	2914	6.9	89.2	0.3	2.9	0.4	0.0	0.2	0.0	0.1	96.1	0.3	3.6	0.080	0.536	18.766476	-99.117489
X. C. Galeana - Cuautla	40.50	3	0	6400	5.8	82.9	1.0	4.5	0.5	4.0	0.4	0.2	0.7	88.7	1.0	10.3	0.072	0.507	18.678514	-99.130478
Tlaquiltenango	50.50	1	0	7664	5.4	83.4	2.1	3.5	0.6	3.3	0.6	0.5	0.6	88.8	2.1	9.1	0.087	0.500	18.648200	-99.155969
Jojutla	53.50	1	0	14422	5.2	81.7	1.0	3.0	0.2	5.1	1.2	0.6	2.0	86.9	1.0	12.1	0.063	0.504	18.621966	-99.170280

40 CARR: Tehuixtla - Puente de Ixtla

CLAVE: 17307

RUTA: MOR

AÑO: 2016

LUGAR	ESTACION				CLASIFICACION VEHICULAR EN PORCIENTO										COORDENADAS					
	KM	TE	SC	TDPA	M	A	B	C2	C3	T3S2	T3S3	T3S2R4	OTROS	A	B	C	K'	D	LATITUD	LONGITUD
Tehuixtla	0.00	3	0	2320	9.3	82.8	0.1	5.8	0.1	1.5	0.2	0.0	0.2	92.1	0.1	7.8	0.074	0.502	18.565793	-99.279252
Puente de Ixtla	9.60	1	0	4070	7.1	82.5	0.2	2.6	3.1	3.0	0.6	0.2	0.7	89.6	0.2	10.2	0.083	0.501	18.606961	-99.316534
T. C. Cuernavaca - Chilpancingo	10.60																			

MORELOS

41 CARR: Tejalpa - Jojutla

CLAVE: 17014

RUTA: MOR-014

AÑO: 2016

LUGAR	ESTACION				CLASIFICACION VEHICULAR EN PORCIENTO										COORDENADAS					
	KM	TE	SC	TDPA	M	A	B	C2	C3	T3S2	T3S3	T3S2R4	OTROS	A	B	C	K'	D	LATITUD	LONGITUD
T. C. Cuernavaca - Cuautlixco	0.00																			
Jiutepec	1.97	3	0	9357	4.9	78.0	2.7	9.3	0.1	2.9	0.7	0.2	1.2	82.9	2.7	14.4	0.077	0.528	18.871906	-99.172872
Emiliano Zapata	7.00	3	1	7127	4.1	87.9	0.9	4.3	0.9	0.7	0.8	0.1	0.3	92.0	0.9	7.1	0.069	0.504	18.818838	-99.190869
Emiliano Zapata	7.00	3	2	7380	4.0	87.3	1.0	4.7	0.9	0.8	0.9	0.1	0.3	91.3	1.0	7.7	0.072	0.504	18.818838	-99.190869
T. Izq. Chiconcuac	14.50	1	1	9472	3.7	86.6	1.2	4.7	1.2	1.0	0.9	0.3	0.4	90.3	1.2	8.5	0.072	0.509	18.784780	-99.205651
T. Izq. Chiconcuac	14.50	1	2	9782	3.9	85.2	1.4	5.4	1.2	1.1	1.1	0.3	0.4	89.1	1.4	9.5	0.071	0.509	18.784799	-99.205782
T. Izq. Chiconcuac	14.50	3	1	7856	3.5	87.8	1.1	3.8	1.0	1.1	1.0	0.3	0.4	91.3	1.1	7.6	0.074	0.518	18.780464	-99.207757
T. Izq. Chiconcuac	14.50	3	2	8314	4.0	86.5	1.3	4.1	1.1	1.2	1.1	0.3	0.4	90.5	1.3	8.2	0.076	0.518	18.780467	-99.207732
X. C. Zacatepec - Tlaquilttenango	32.90	1	0	9312	5.4	80.0	0.9	4.8	2.6	3.9	1.0	0.5	0.9	85.4	0.9	13.7	0.069	0.514	18.649803	-99.184344
Jojutla	35.00	1	0	10615	4.8	80.0	1.5	5.7	1.9	3.5	1.0	0.5	1.1	84.8	1.5	13.7	0.079	0.540	18.627522	-99.184472

42 CARR: Temilpa - Tepalcingo

CLAVE: 17009

RUTA: MOR-009

AÑO: 2016

LUGAR	ESTACION				CLASIFICACION VEHICULAR EN PORCIENTO										COORDENADAS					
	KM	TE	SC	TDPA	M	A	B	C2	C3	T3S2	T3S3	T3S2R4	OTROS	A	B	C	K'	D	LATITUD	LONGITUD
T. C. Galeana - Cuautla	0.00	3	0	2100	4.3	74.0	1.9	7.8	6.6	2.9	2.1	0.1	0.3	78.3	1.9	19.8	0.104	0.502	18.694679	-99.101255
Tepalcingo	40.50	1	0	3555	7.0	80.6	0.9	3.6	3.1	2.6	1.5	0.3	0.4	87.6	0.9	11.5	0.082	0.501	18.602947	-98.851375

43 CARR: Tepoztlán - Yautepec

CLAVE: 17013

RUTA: MOR-013

AÑO: 2016

LUGAR	ESTACION				CLASIFICACION VEHICULAR EN PORCIENTO										COORDENADAS					
	KM	TE	SC	TDPA	M	A	B	C2	C3	T3S2	T3S3	T3S2R4	OTROS	A	B	C	K'	D	LATITUD	LONGITUD
Tepoztlán	0.00	3	0	8984	4.6	85.3	0.1	3.5	0.2	4.6	0.6	0.2	0.9	89.9	0.1	10.0	0.077	0.508	18.980681	-99.086072
Yautepec	14.82	1	0	5442	10.3	77.5	2.8	8.6	0.5	0.1	0.2	0.0	0.0	87.8	2.8	9.4	0.071	0.513	18.904353	-99.064503

44 CARR: Tequesquitengo - Jojutla

CLAVE: 17013

RUTA: MOR

AÑO: 2016

LUGAR	ESTACION				CLASIFICACION VEHICULAR EN PORCIENTO										COORDENADAS					
	KM	TE	SC	TDPA	M	A	B	C2	C3	T3S2	T3S3	T3S2R4	OTROS	A	B	C	K'	D	LATITUD	LONGITUD
T. C. Xoxocotla - Tilzapotla	0.00	3	1	2833	4.1	84.2	0.3	9.8	0.5	0.7	0.2	0.1	0.1	88.3	0.3	11.4	0.088	0.515	18.595444	-99.250411
T. C. Xoxocotla - Tilzapotla	0.00	3	2	2728	4.4	83.3	0.3	10.3	0.5	0.8	0.2	0.1	0.1	87.7	0.3	12.0	0.083	0.515	18.595444	-99.250411
Jojutla	9.50																			

MORELOS

45 CARR: Xoxocotla - Tilzapotla

CLAVE: 17005

RUTA: MOR-006

AÑO: 2016

LUGAR	ESTACION				CLASIFICACION VEHICULAR EN PORCIENTO														COORDENADAS	
	KM	TE	SC	TDPA	M	A	B	C2	C3	T3S2	T3S3	T3S2R4	OTROS	A	B	C	K'	D	LATITUD	LONGITUD
Xoxocotla	0.00	3	1	4152	7.0	83.1	1.4	3.9	1.2	2.0	0.9	0.3	0.2	90.1	1.4	8.5	0.095	0.511	18.677608	-99.253313
Xoxocotla	0.00	3	2	4095	6.8	82.5	1.6	4.1	1.3	2.2	1.0	0.3	0.2	89.3	1.6	9.1	0.085	0.511	18.677608	-99.253316
Tehuixtla	19.50	1	0	5716	6.7	80.4	1.4	4.5	1.3	3.8	0.9	0.2	0.8	87.1	1.4	11.5	0.082	0.503	18.568332	-99.269061
Tehuixtla	19.50	3	0	4972	9.8	80.2	2.1	3.3	1.1	2.5	0.5	0.2	0.3	90.0	2.1	7.9	0.076	0.503	18.549809	-99.267111
Tilzapotla	29.50	1	0	2936	10.5	79.6	0.3	5.1	2.2	1.6	0.6	0.0	0.1	90.1	0.3	9.6	0.075	0.527	18.494679	-99.278112

46 CARR: Zacatepec - Tlaquiltenango

CLAVE: 17300

RUTA: MOR

AÑO: 2016

LUGAR	ESTACION				CLASIFICACION VEHICULAR EN PORCIENTO														COORDENADAS	
	KM	TE	SC	TDPA	M	A	B	C2	C3	T3S2	T3S3	T3S2R4	OTROS	A	B	C	K'	D	LATITUD	LONGITUD
Zacatepec	0.00	3	0	8071	8.1	76.7	2.5	5.4	1.5	3.8	0.9	0.3	0.8	84.8	2.5	12.7	0.081	0.501	18.647369	-99.186674
Tlaquiltenango	4.08	1	0	5903	8.3	78.1	1.4	4.7	1.8	3.8	0.5	0.5	0.9	86.4	1.4	12.2	0.071	0.506	18.637223	-99.171642

47 CARR: Atlixco - Jantetelco (Cuota)

CLAVE: 00430

RUTA: PUE-D

AÑO: 2016

LUGAR	ESTACION				CLASIFICACION VEHICULAR EN PORCIENTO														COORDENADAS	
	KM	TE	SC	TDPA	M	A	B	C2	C3	T3S2	T3S3	T3S2R4	OTROS	A	B	C	K'	D	LATITUD	LONGITUD
T. C. Puebla - Izúcar de Matamoros	0.00	3	0	6114	0.8	80.7	2.8	6.8	2.5	3.0	1.2	1.6	0.6	81.5	2.8	15.7	0.084	0.501	18.942321	-98.398867
Lim. Edos. Term. Pue. Ppia. Mor.	48.60																			
T. C. Santa Bárbara - Izúcar de Matamoros	54.90	1	0	6246	1.5	75.5	3.1	8.8	3.6	3.3	1.4	2.0	0.8	77.0	3.1	19.9	0.077	0.510	18.710407	-98.768435

48 CARR: Tres Marías - Santa Martha

CLAVE: 00172

RUTA: MEX-106-EM

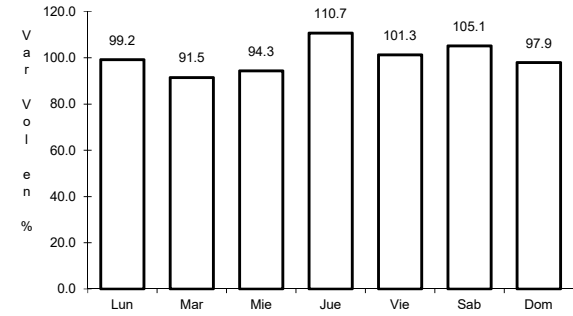
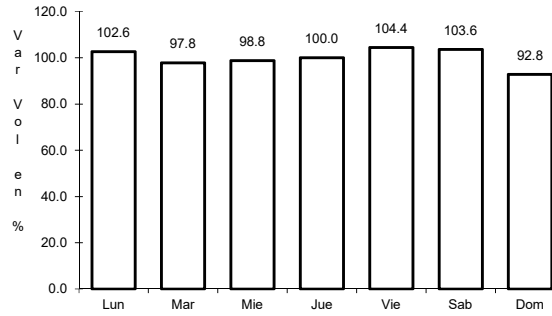
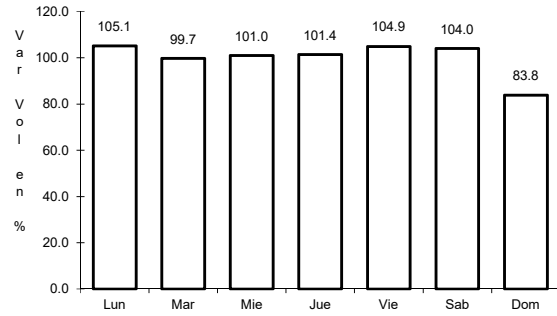
AÑO: 2016

LUGAR	ESTACION				CLASIFICACION VEHICULAR EN PORCIENTO														COORDENADAS	
	KM	TE	SC	TDPA	M	A	B	C2	C3	T3S2	T3S3	T3S2R4	OTROS	A	B	C	K'	D	LATITUD	LONGITUD
Tres Marías	0.00	3	0	6465	1.6	86.5	2.3	5.1	0.8	2.5	0.6	0.2	0.4	88.1	2.3	9.6	0.071	0.510	19.049042	-99.248545
Laguna de Zempoala	14.00																			
Lim. Edos. Term. Mor. Ppia. Mex.	14.50																			
Santa Martha	28.35	1	0	2562	1.6	80.1	3.9	9.6	2.0	1.8	0.6	0.1	0.3	81.7	3.9	14.4	0.109	0.552	19.063109	-99.379602

1 CARR: Cuernavaca - Chilpancingo

CLAVE: 00042

RUTA: MEX-095



Km: 9.80 Tipo: 1 Sent: 1

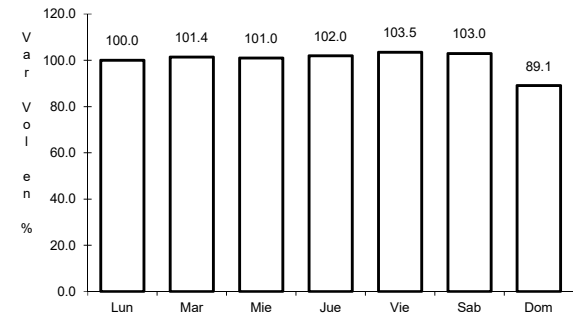
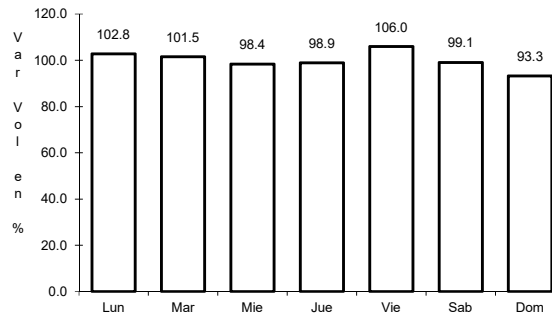
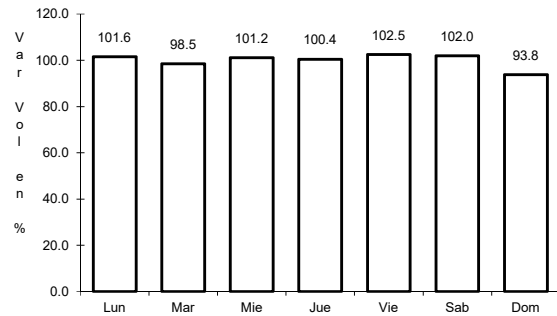
Km: 9.80 Tipo: 1 Sent: 2

Km: 119.63 Tipo: 1 Sent: 0

2 CARR: Cuernavaca - Cuautlixco

CLAVE: 17199

RUTA: MEX-138



Km: 7.78 Tipo: 1 Sent: 1

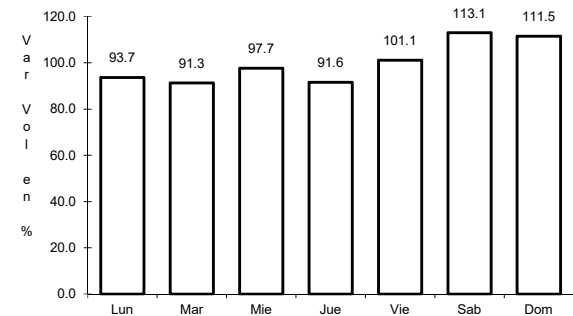
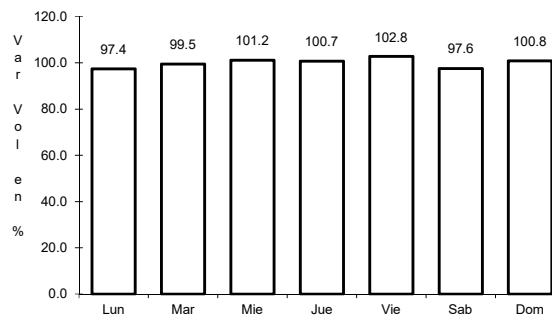
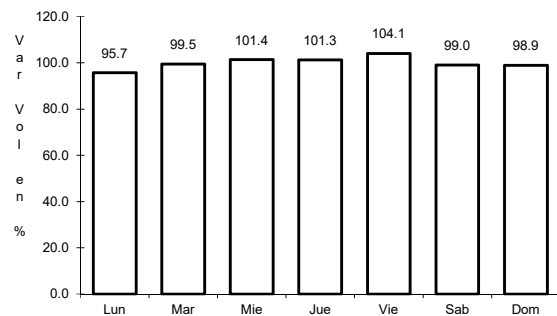
Km: 7.78 Tipo: 1 Sent: 2

Km: 43.15 Tipo: 1 Sent: 1

3 CARR: Cuernavaca - Tepoztlán

CLAVE: 17198

RUTA: MEX-162



Km: 2.83 Tipo: 1 Sent: 1

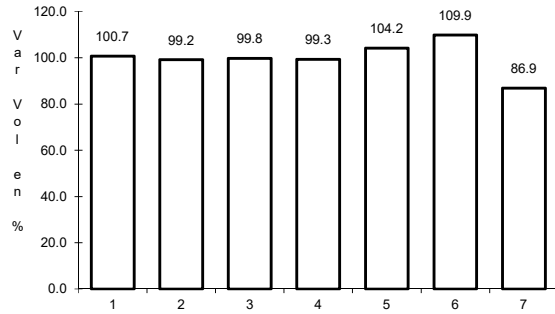
Km: 2.83 Tipo: 1 Sent: 2

Km: 18.20 Tipo: 1 Sent: 0

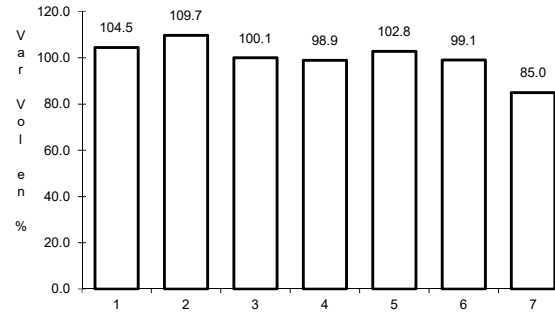
4 CARR: Ent. Alpuyecá - Grutas de Cacahuamilpa

CLAVE: 00421

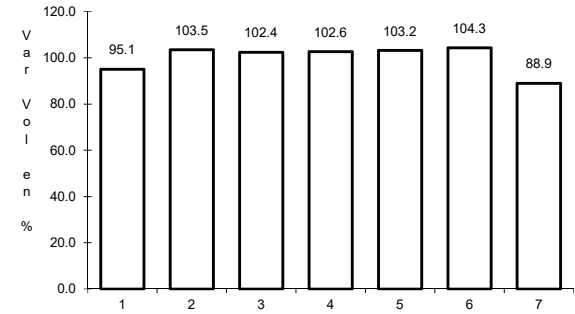
RUTA: MEX-166



Km: 0.00                      Tipo: 3                      Sent: 0



Km: 18.28                      Tipo: 3                      Sent: 0

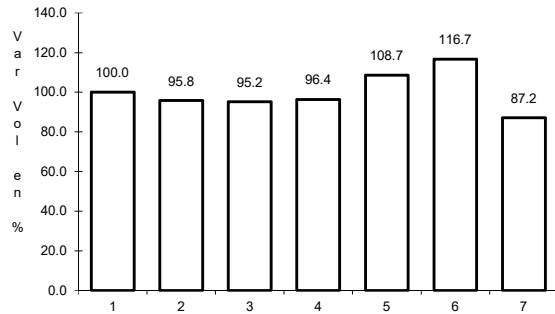


Km: 41.26                      Tipo: 1                      Sent: 0

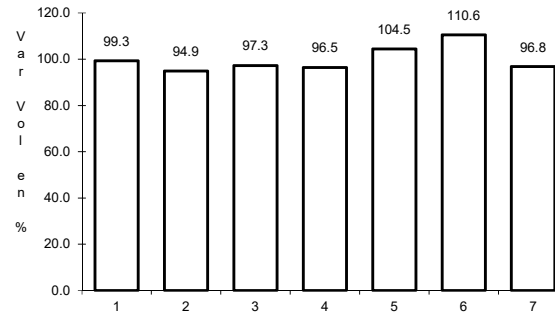
5 CARR: Libramiento de Cuautla

CLAVE: 17309

RUTA: MEX-160



Km: 0.00                      Tipo: 3                      Sent: 1

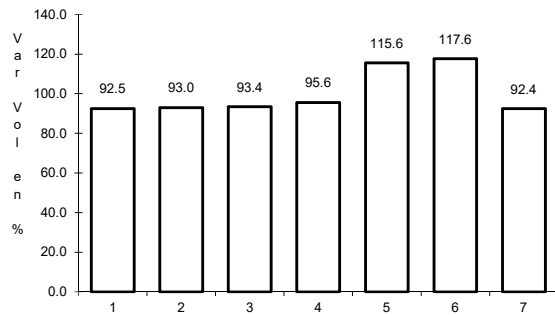


Km: 0.00                      Tipo: 3                      Sent: 2

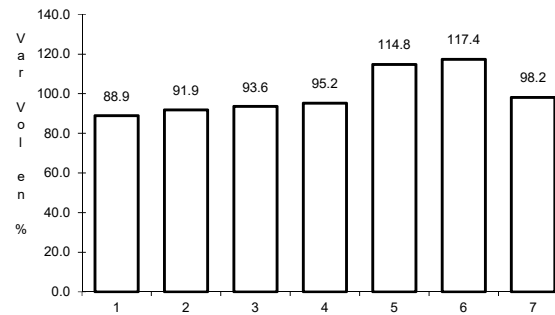
6 CARR: Libramiento de Cuernavaca

CLAVE: 17400

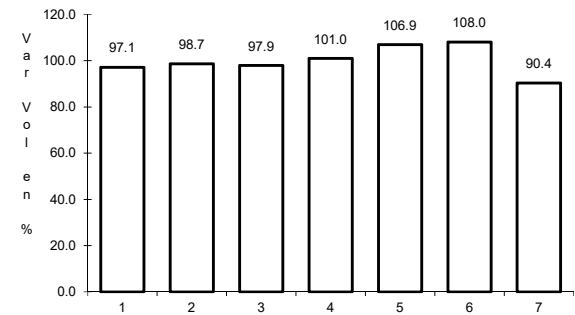
RUTA: MEX-095



Km: 1.30                      Tipo: 1                      Sent: 1



Km: 1.30                      Tipo: 1                      Sent: 2

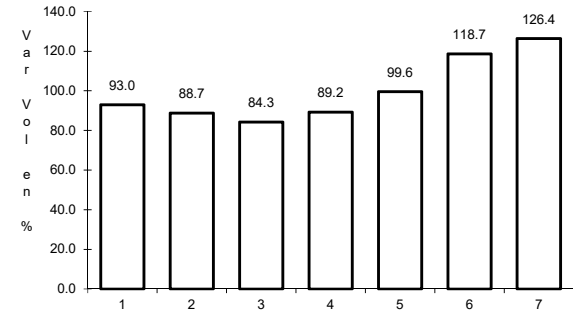
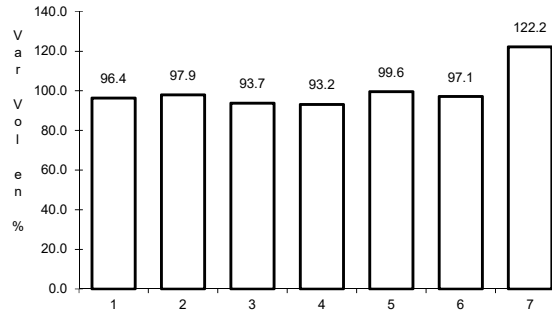
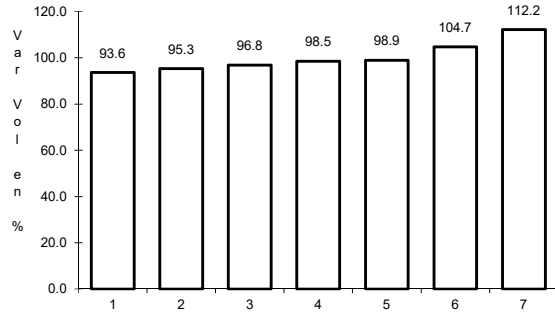


Km: 14.70                      Tipo: 1                      Sent: 1

7 CARR: México - Cuernavaca (Libre)

CLAVE: 00040

RUTA: MEX-095



Km: 28.78

Tipo: 1

Sent: 1

Km: 28.78

Tipo: 1

Sent: 2

Km: 51.40

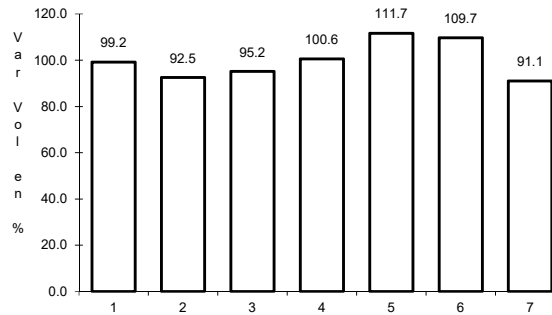
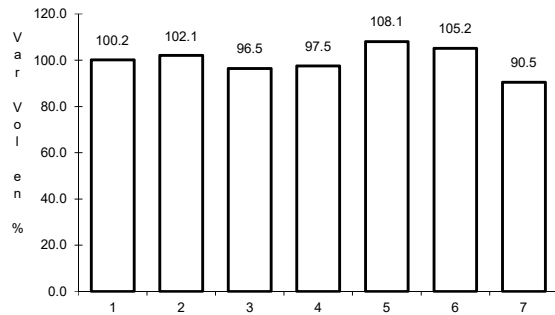
Tipo: 3

Sent: 0

8 CARR: Ramal a Michapa

CLAVE: 17303

RUTA: MEX-166



Km: 0.00

Tipo: 3

Sent: 0

Km: 16.22

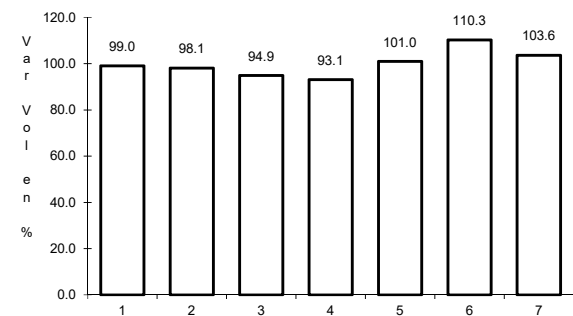
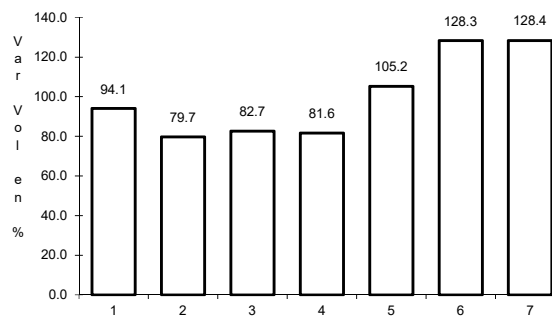
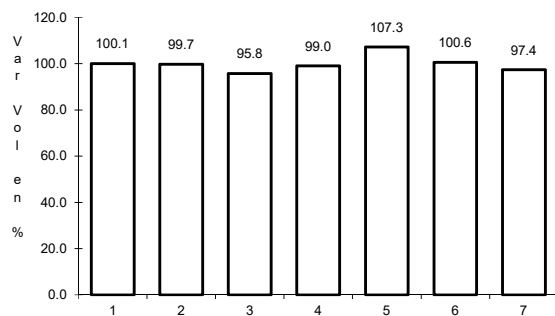
Tipo: 1

Sent: 0

9 CARR: San Gregorio - Oaxtepec

CLAVE: 00901

RUTA: MEX-113



Km: 0.00

Tipo: 3

Sent: 0

Km: 33.80

Tipo: 1

Sent: 0

Km: 53.00

Tipo: 3

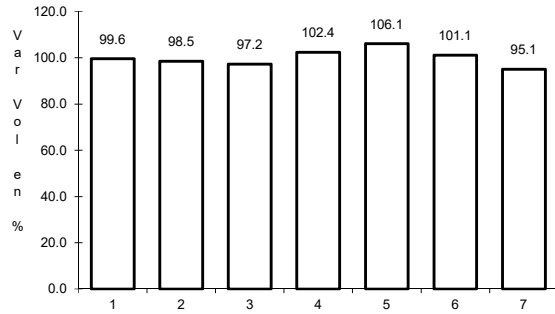
Sent: 0



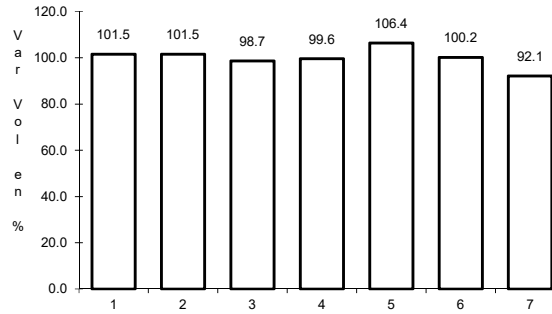
10 CARR: Santa Bárbara - Izúcar de Matamoros

CLAVE: 00451

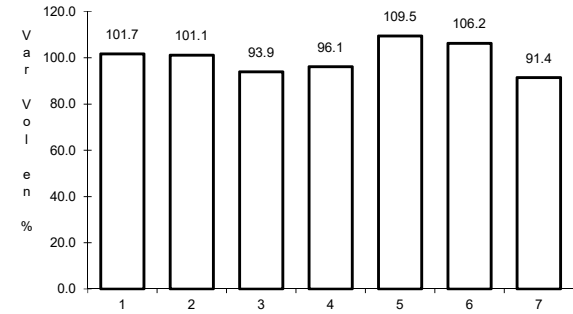
RUTA: MEX-115-160



Km: 0.00                      Tipo: 3                      Sent: 1



Km: 0.00                      Tipo: 3                      Sent: 2

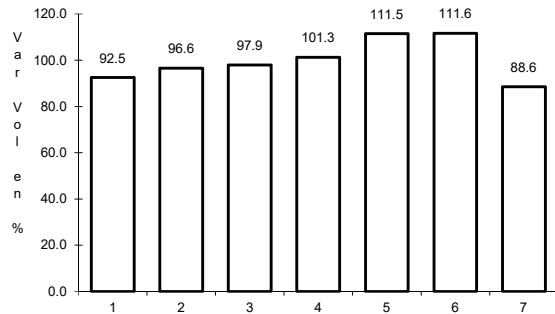


Km: 38.81                      Tipo: 3                      Sent: 0

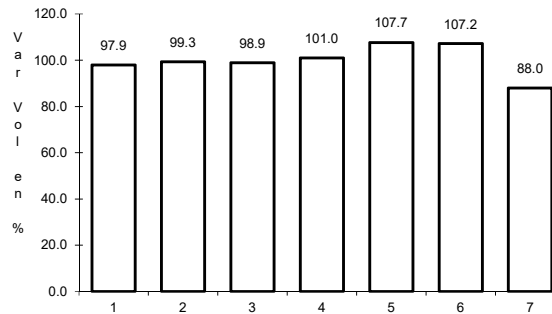
11 CARR: Cuernavaca - Acapulco (Cuota)

CLAVE: 00045

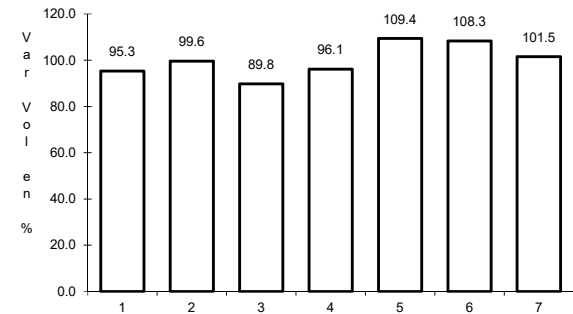
RUTA: MEX-095D



Km: 0.00                      Tipo: 3                      Sent: 1



Km: 0.00                      Tipo: 3                      Sent: 2

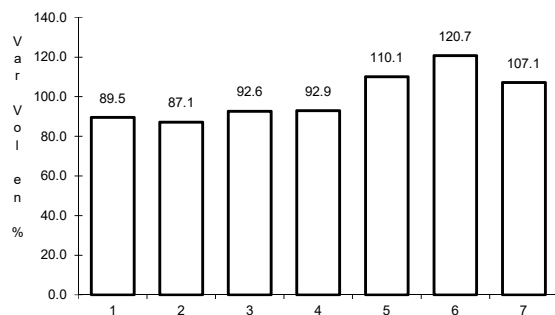


Km: 271.50                      Tipo: 1                      Sent: 1

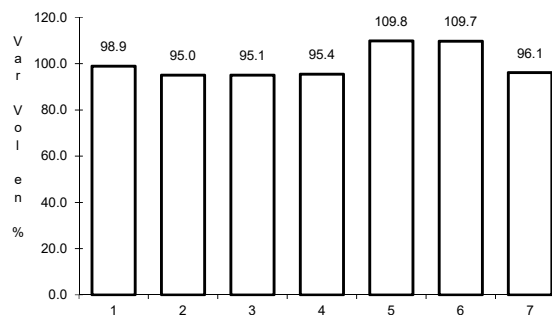
12 CARR: La Pera - Cuautla (Cuota)

CLAVE: 17161

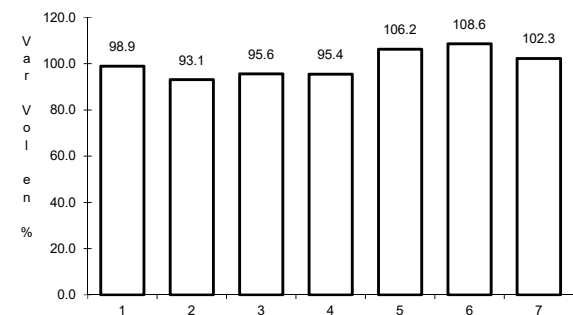
RUTA: MEX-160D



Km: 0.00                      Tipo: 3                      Sent: 0



Km: 34.16                      Tipo: 1                      Sent: 1

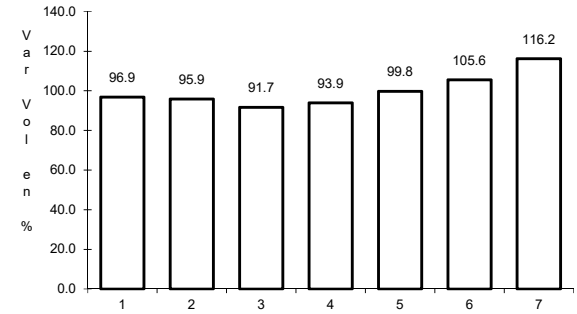
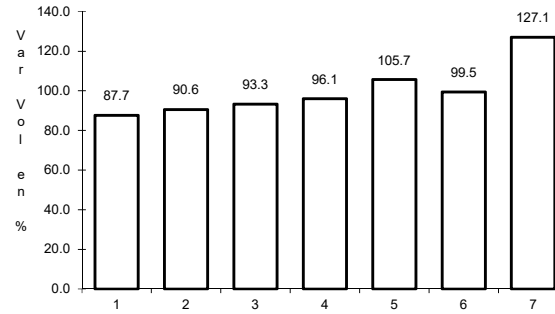
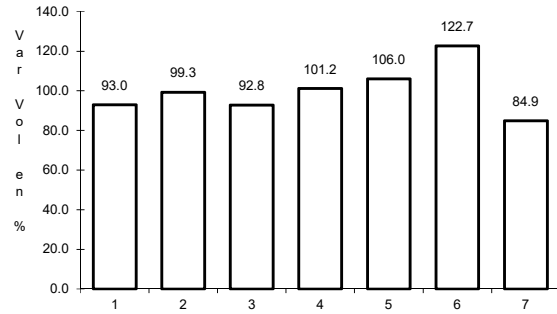


Km: 34.16                      Tipo: 1                      Sent: 2

14 CARR: México - Cuernavaca (Cuota)

CLAVE: 00041

RUTA: MEX-095D



Km: 18.65 Tipo: 3 Sent: 1

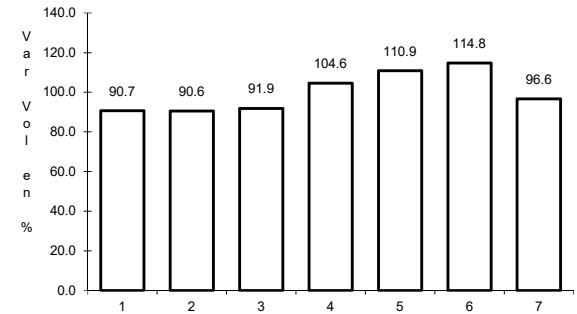
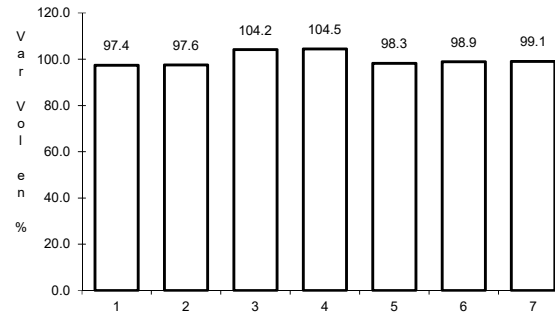
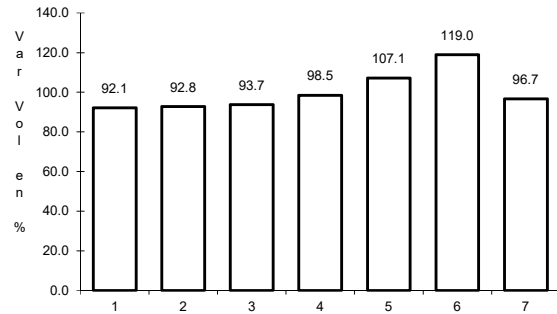
Km: 18.65 Tipo: 3 Sent: 2

Km: 70.50 Tipo: 1 Sent: 1

15 CARR: Puente de Ixtla - Iguala (Cuota)

CLAVE: 00043

RUTA: MEX-091D



Km: 2.00 Tipo: 3 Sent: 0

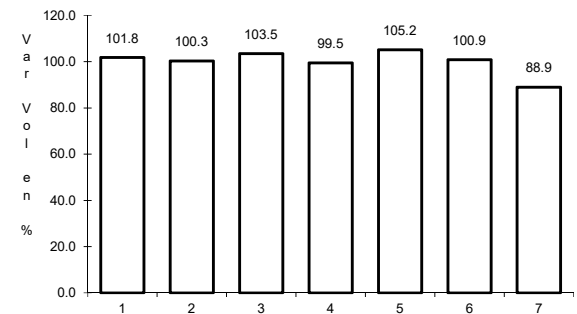
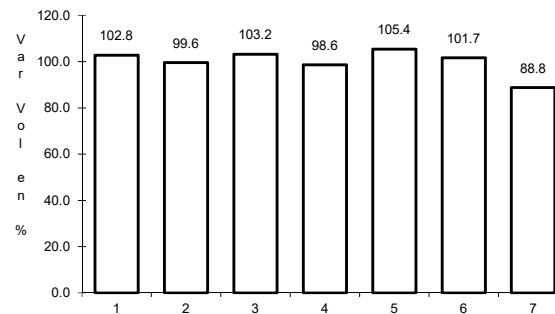
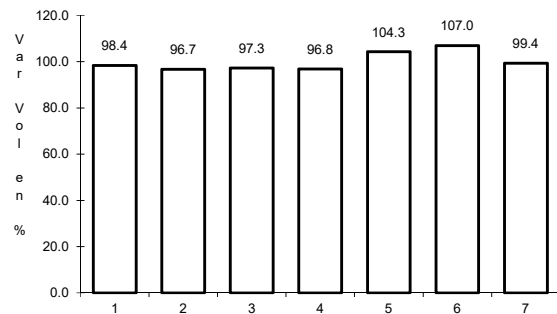
Km: 33.58 Tipo: 3 Sent: 0

Km: 59.50 Tipo: 1 Sent: 0

16 CARR: Alpuyeca - Jojutla

CLAVE: 17021

RUTA: MOR-021



Km: 2.20 Tipo: 1 Sent: 0

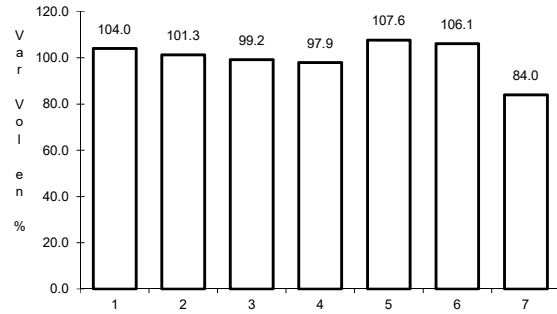
Km: 17.15 Tipo: 1 Sent: 1

Km: 17.15 Tipo: 1 Sent: 2

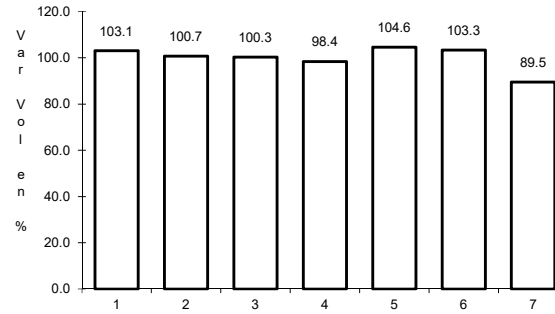
17 CARR: Amayuca - Izúcar de Matamoros

CLAVE: 00030

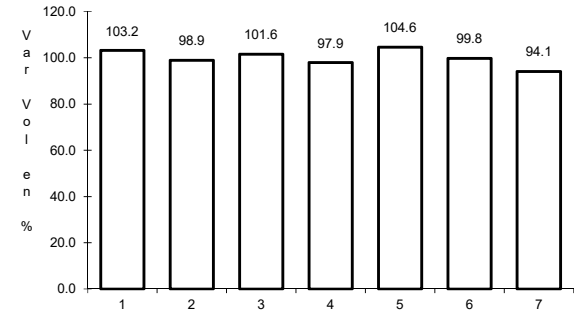
RUTA: MOR-031-PUE



Km: 0.66                      Tipo: 3                      Sent: 1



Km: 0.66                      Tipo: 3                      Sent: 2

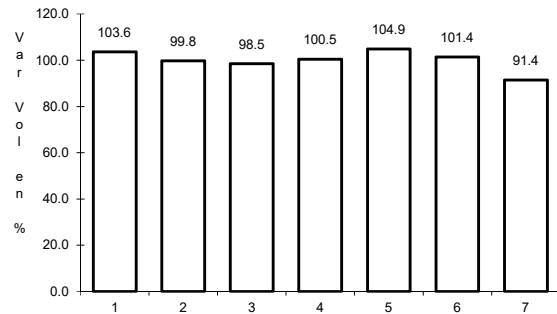


Km: 38.40                      Tipo: 3                      Sent: 0

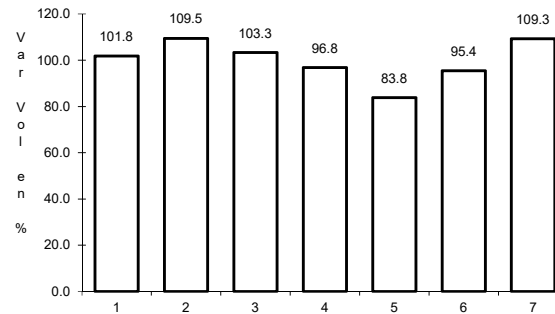
18 CARR: Amayuca - Tlaxotepec

CLAVE: 17020

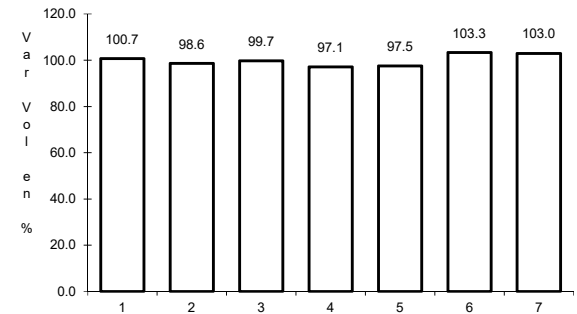
RUTA: MOR-017



Km: 0.00                      Tipo: 3                      Sent: 0



Km: 5.50                      Tipo: 3                      Sent: 0

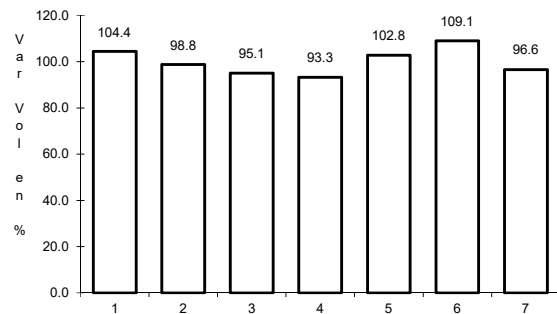


Km: 12.00                      Tipo: 1                      Sent: 0

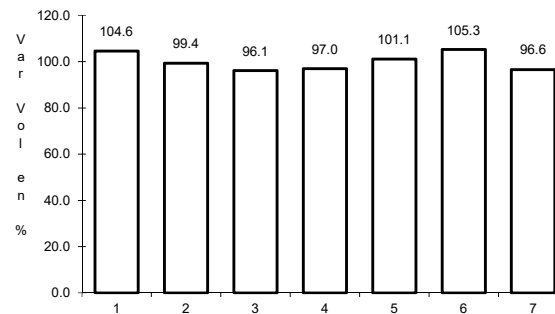
19 CARR: Atlatlahucan - Tlayacapan

CLAVE: 17301

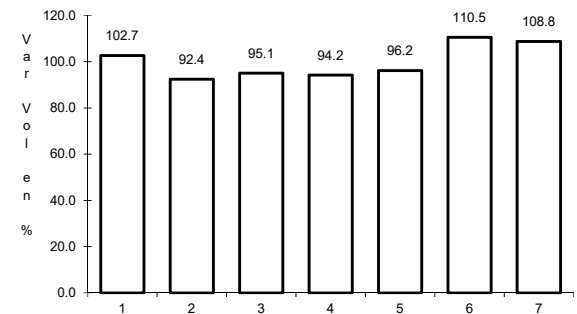
RUTA: MOR-002



Km: 1.50                      Tipo: 1                      Sent: 1



Km: 1.50                      Tipo: 1                      Sent: 2

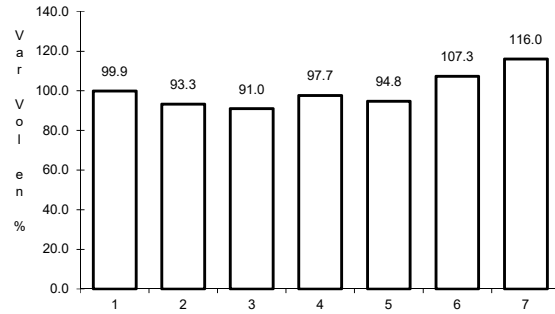


Km: 15.50                      Tipo: 1                      Sent: 0

20 CARR: Coatetelco - Miacatlán

CLAVE:

RUTA: MOR



Km: 0.00

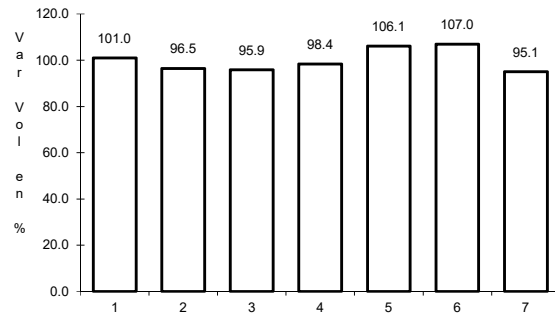
Tipo: 3

Sent: 0

21 CARR: Cocoyoc - Oaxtepec

CLAVE: 17001

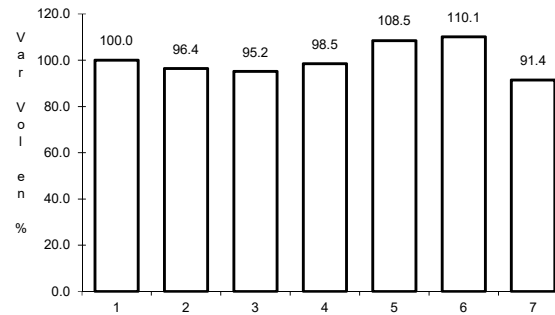
RUTA: MOR



Km: 0.00

Tipo: 3

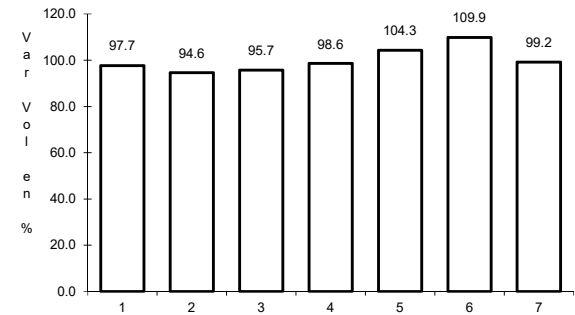
Sent: 1



Km: 0.00

Tipo: 3

Sent: 2



Km: 3.92

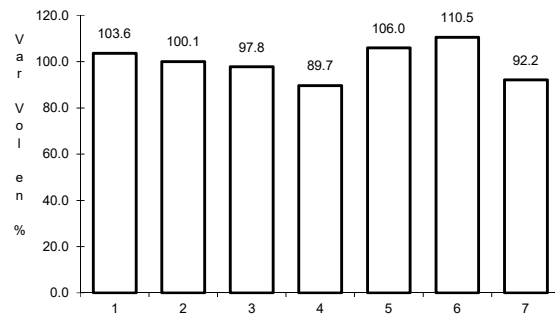
Tipo: 1

Sent: 0

22 CARR: Ent. C. (Cuernavaca - Acapulco Cuota) - Tepetzingo

CLAVE: 00421

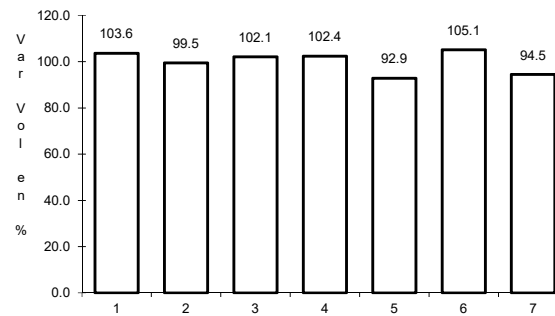
RUTA: MOR



Km: 0.00

Tipo: 3

Sent: 0



Km: 5.50

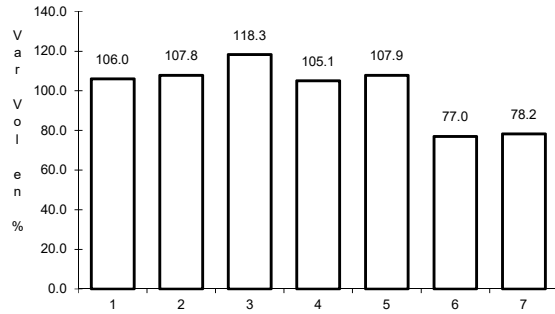
Tipo: 1

Sent: 0

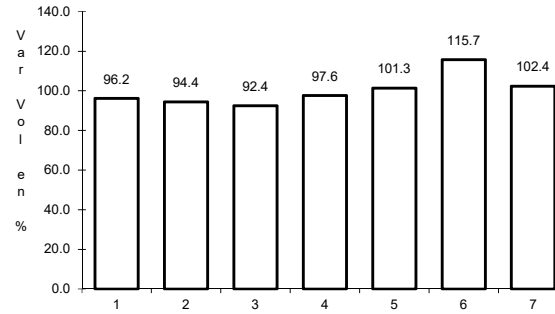
23 CARR: Ent. C. (Cuernavaca - Cuautlixco) - Oacalco

CLAVE: 00421

RUTA: MOR



Km: 0.00                      Tipo: 3                      Sent: 0

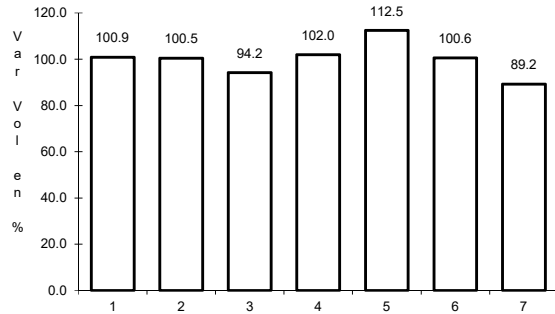


Km: 10.00                      Tipo: 1                      Sent: 0

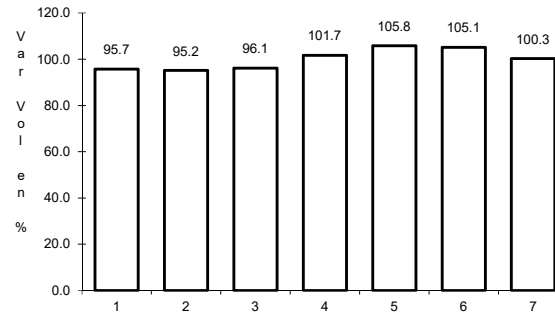
24 CARR: Ent. Chiverías - Ent. El Abanico

CLAVE: 17302

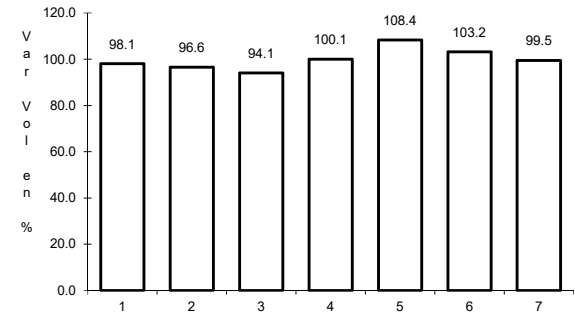
RUTA: MOR



Km: 0.00                      Tipo: 3                      Sent: 0



Km: 5.56                      Tipo: 3                      Sent: 0

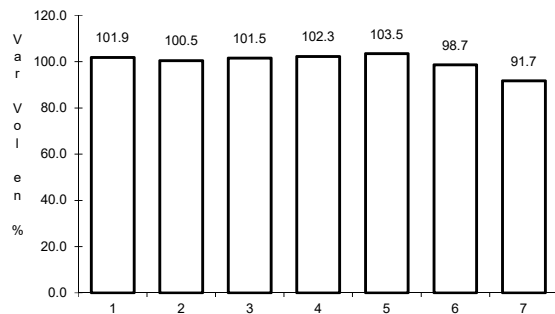


Km: 14.50                      Tipo: 1                      Sent: 0

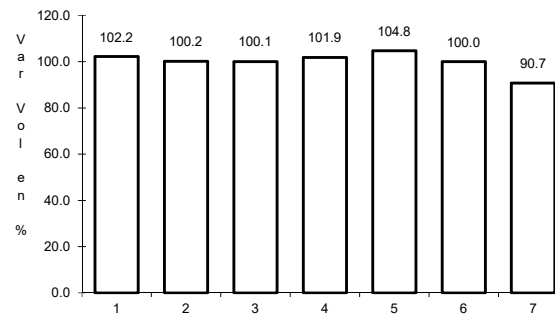
25 CARR: Galeana - Cuautla

CLAVE: 17004

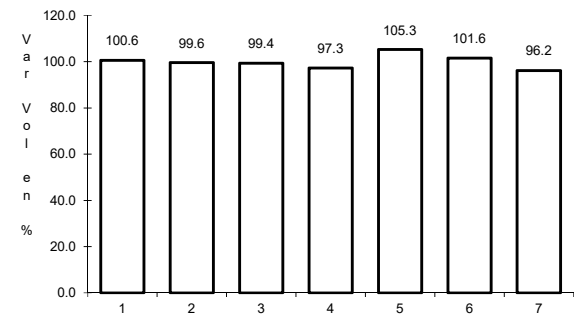
RUTA: MOR-004



Km: 0.00                      Tipo: 3                      Sent: 1



Km: 0.00                      Tipo: 3                      Sent: 2

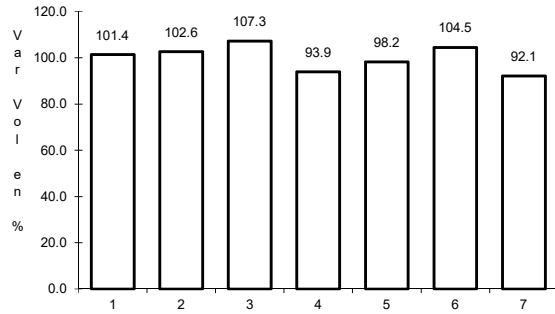


Km: 40.50                      Tipo: 1                      Sent: 0

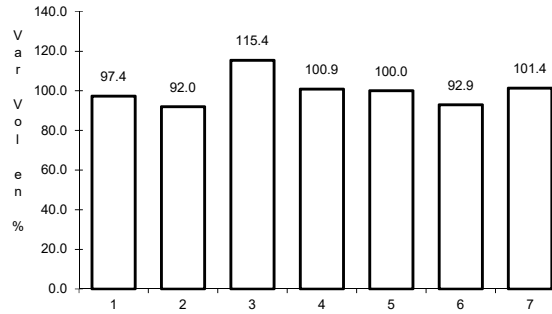
26 CARR: Jojutla - Chinameca

CLAVE: 17310

RUTA: MOR



Km: 0.00                      Tipo: 3                      Sent: 0

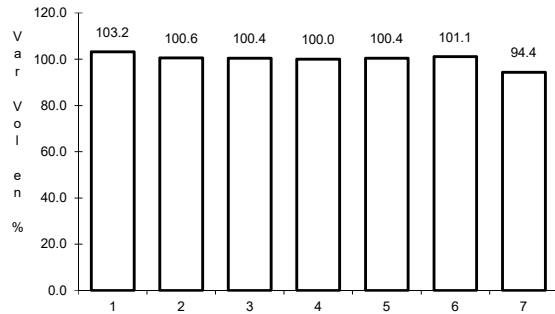


Km: 32.00                      Tipo: 1                      Sent: 0

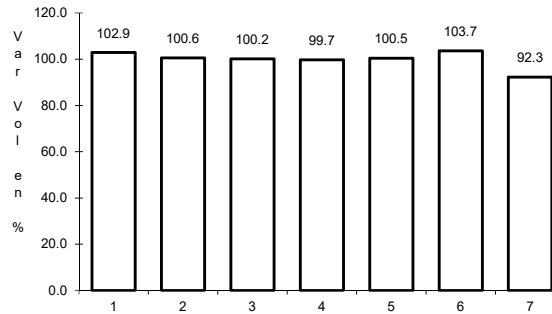
27 CARR: Jojutla - El Higuérón

CLAVE: 17039

RUTA: MOR-039



Km: 0.00                      Tipo: 3                      Sent: 0

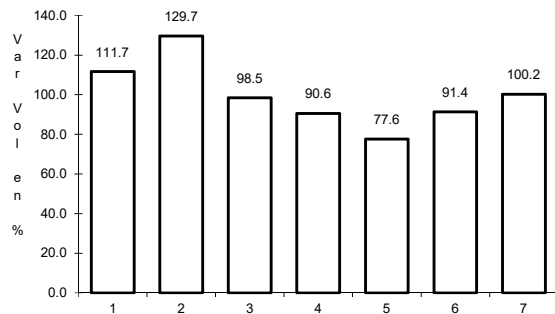


Km: 4.50                      Tipo: 1                      Sent: 0

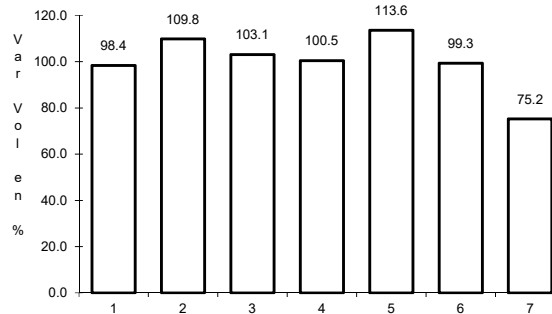
28 CARR: Los Alacranes - Ocuituco

CLAVE:

RUTA: MOR



Km: 0.00                      Tipo: 3                      Sent: 0

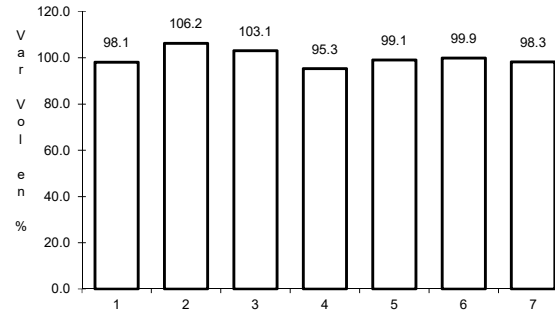
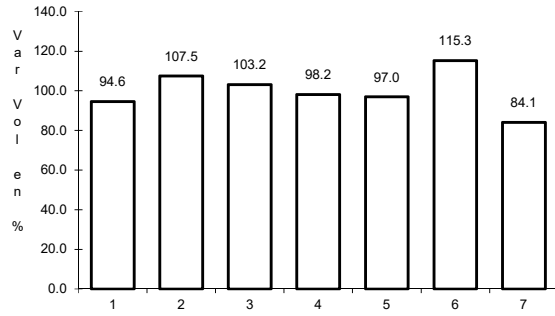


Km: 19.00                      Tipo: 1                      Sent: 0

29 CARR: Mazatepec - T. C. Ramal a Michapa

CLAVE:

RUTA: MOR



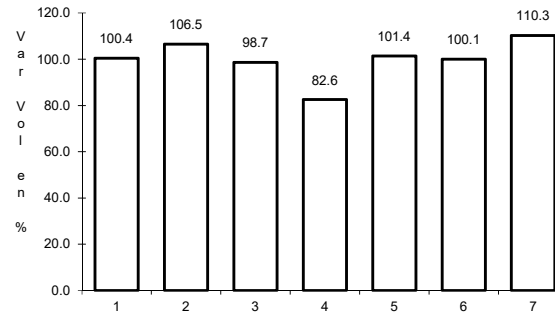
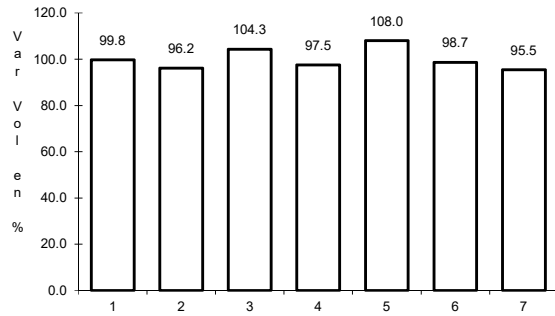
Km: 0.00                      Tipo: 3                      Sent: 0

Km: 12.00                      Tipo: 1                      Sent: 0

30 CARR: Moyotepec - San Rafael

CLAVE: 17306

RUTA: MOR



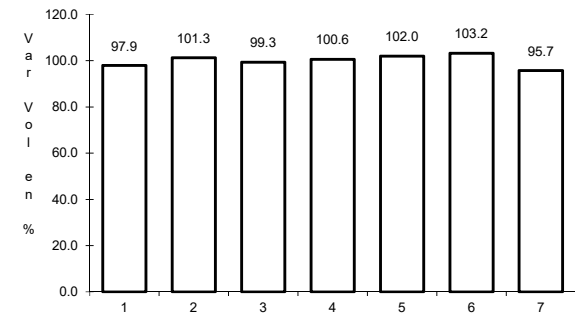
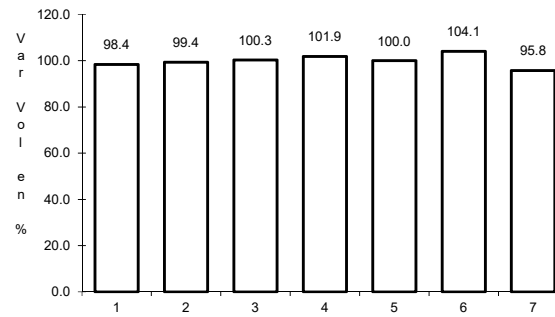
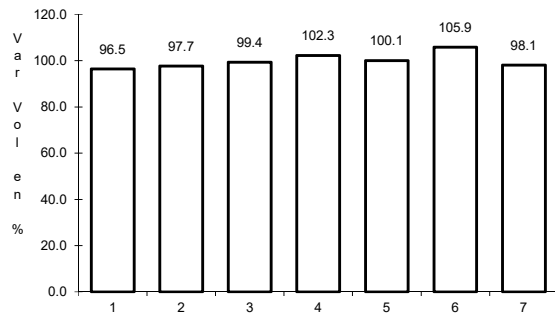
Km: 0.00                      Tipo: 3                      Sent: 0

Km: 7.50                      Tipo: 1                      Sent: 0

31 CARR: Paso por Yautepec

CLAVE: 17025

RUTA: MOR



Km: 0.00                      Tipo: 3                      Sent: 1

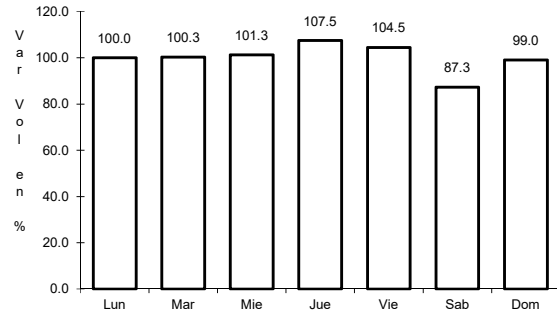
Km: 0.00                      Tipo: 3                      Sent: 2

Km: 5.50                      Tipo: 1                      Sent: 0

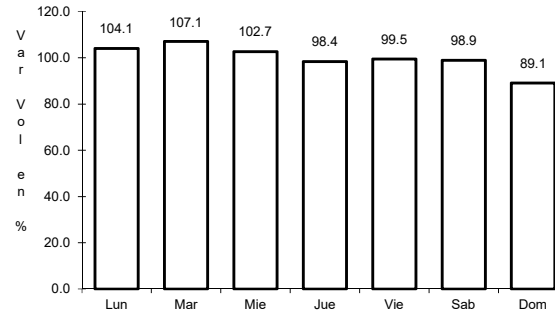
32 CARR: Pilares - T. C. (Xoxocotla - Tilzapotla)

CLAVE: 17008

RUTA: MOR-008



Km: 0.00                      Tipo: 3                      Sent: 0

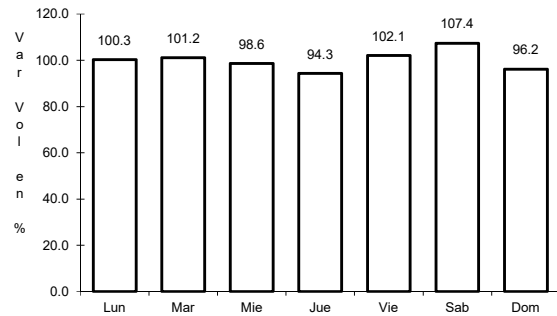


Km: 6.50                      Tipo: 1                      Sent: 0

33 CARR: Ramal a Aeropuerto de Cuernavaca

CLAVE: 17250

RUTA: MOR

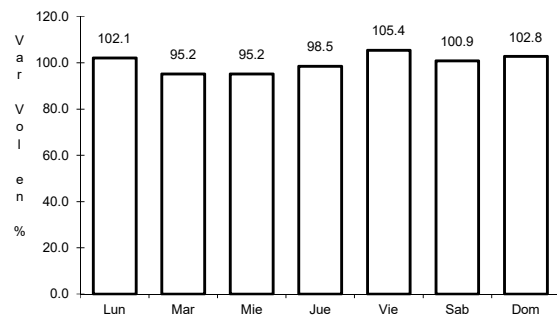


Km: 0.00                      Tipo: 3                      Sent: 0

34 CARR: Ramal a Coatetelco

CLAVE: 17304

RUTA: MOR



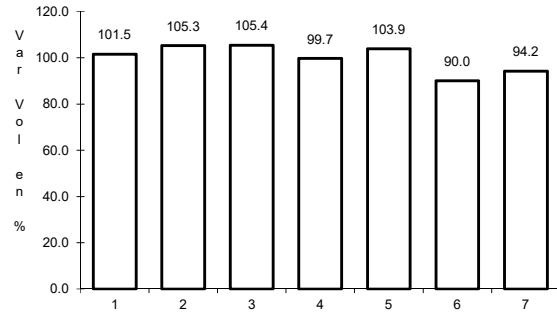
Km: 0.00                      Tipo: 3                      Sent: 0



35 CARR: Ramal a Jolalpan

CLAVE: 00143

RUTA: MOR-PUE



Km: 0.00

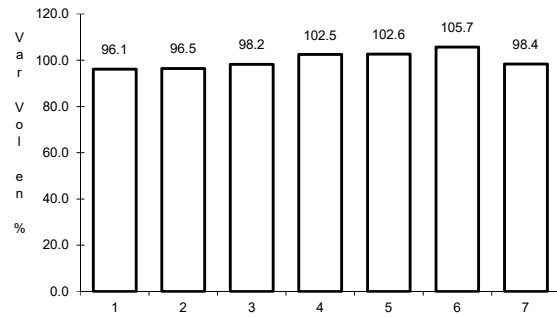
Tipo: 3

Sent: 0

36 CARR: Ramal a Tetela del Volcán

CLAVE: 17010

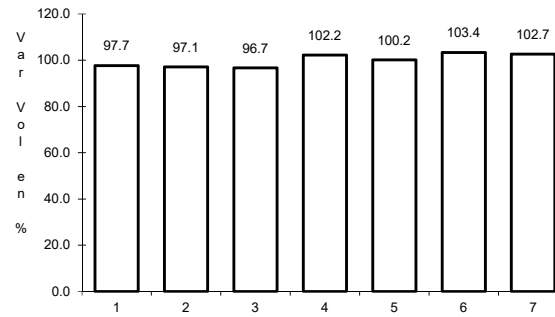
RUTA: MOR-010



Km: 0.00

Tipo: 3

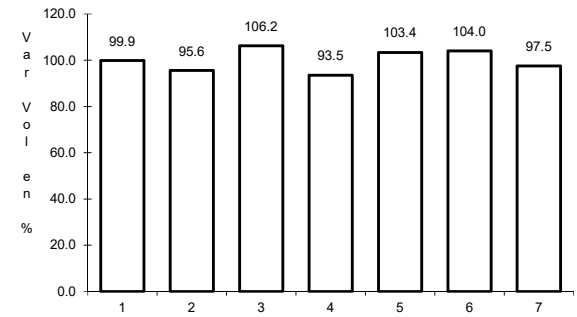
Sent: 1



Km: 0.00

Tipo: 3

Sent: 2



Km: 22.00

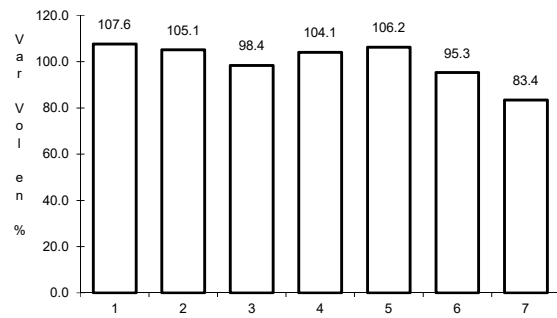
Tipo: 1

Sent: 0

37 CARR: T. C. (Coatetelco - Miacatlán) - Mazatepec

CLAVE:

RUTA: MOR



Km: 4.14

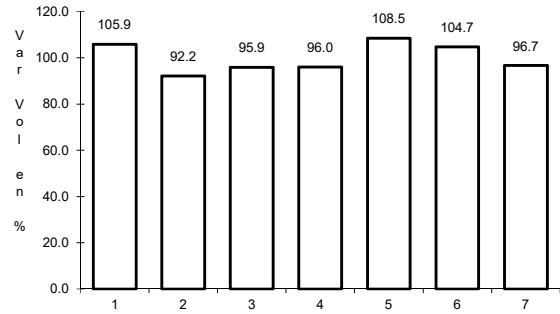
Tipo: 1

Sent: 0

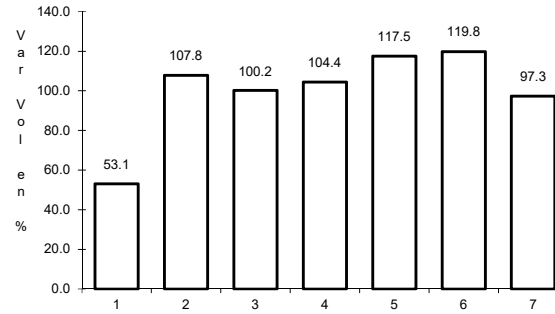
38 CARR: T. C. (México - Cuernavaca (Libre)) - Huitzilac

CLAVE: 00451

RUTA: MOR



Km: 0.00                      Tipo: 3                      Sent: 0

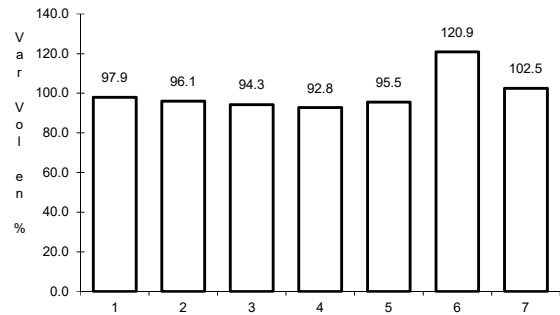


Km: 4.00                      Tipo: 1                      Sent: 0

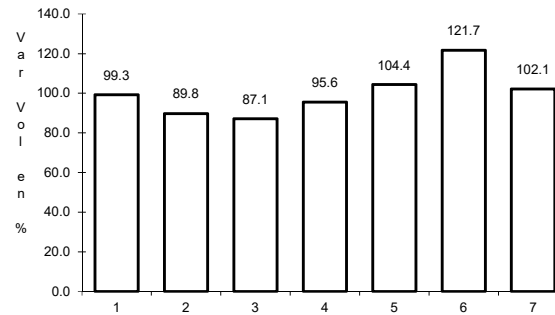
39 CARR: T. C. (San Gregorio - Oaxtepec) - Jojutla

CLAVE: 17002

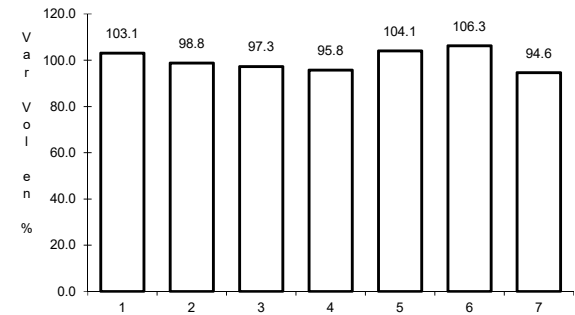
RUTA: MOR-002



Km: 0.00                      Tipo: 3                      Sent: 0



Km: 32.30                      Tipo: 1                      Sent: 0

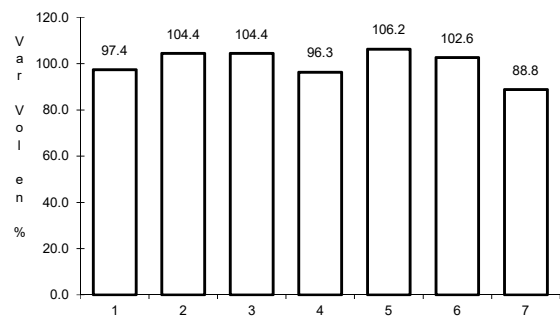


Km: 53.50                      Tipo: 1                      Sent: 0

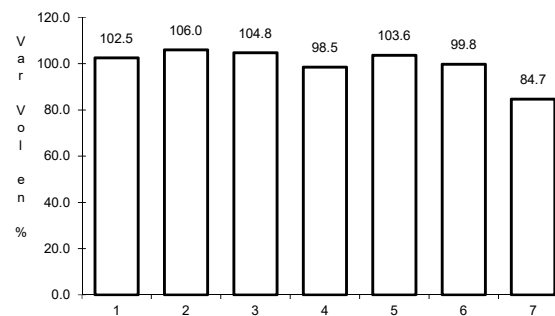
40 CARR: Tehuixtla - Puente de Ixtla

CLAVE: 17307

RUTA: MOR



Km: 0.00                      Tipo: 3                      Sent: 0

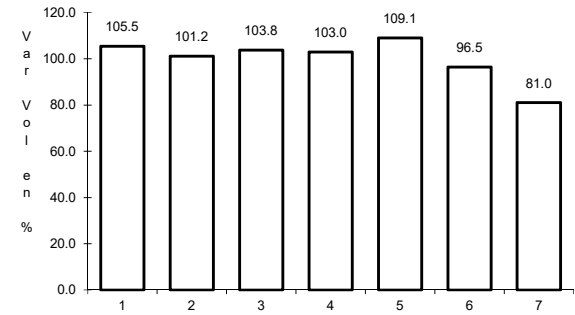
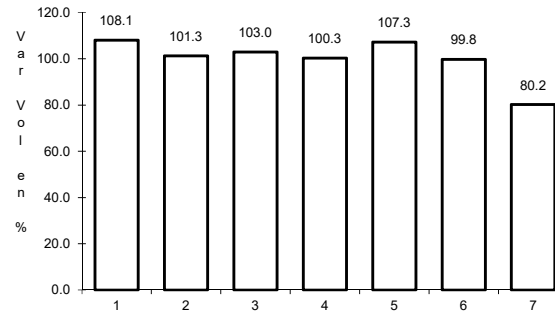
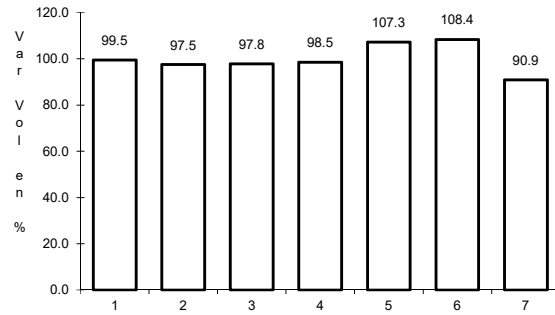


Km: 9.60                      Tipo: 1                      Sent: 0

41 CARR: Tejalpa - Jojutla

CLAVE: 17014

RUTA: MOR-014



Km: 1.97

Tipo: 3

Sent: 0

Km: 32.90

Tipo: 1

Sent: 0

Km: 35.00

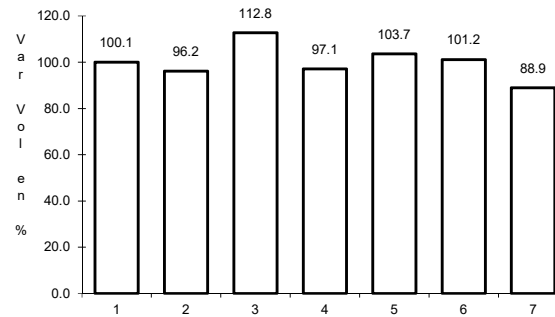
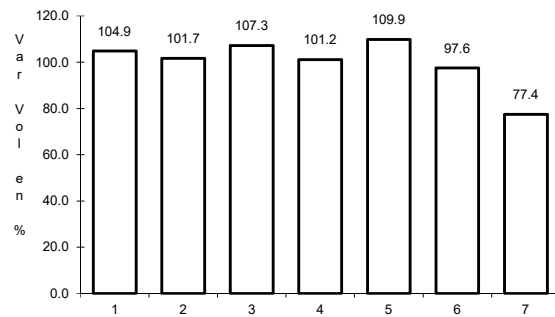
Tipo: 1

Sent: 0

42 CARR: Temilpa - Tepalcingo

CLAVE: 17009

RUTA: MOR-009



Km: 0.00

Tipo: 3

Sent: 0

Km: 40.50

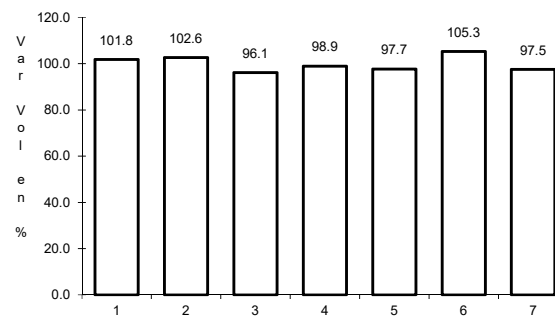
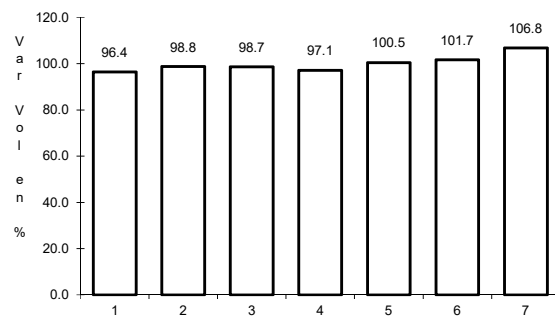
Tipo: 1

Sent: 0

43 CARR: Tepoztlán - Yauhtepec

CLAVE: 17013

RUTA: MOR-013



Km: 0.00

Tipo: 3

Sent: 0

Km: 14.82

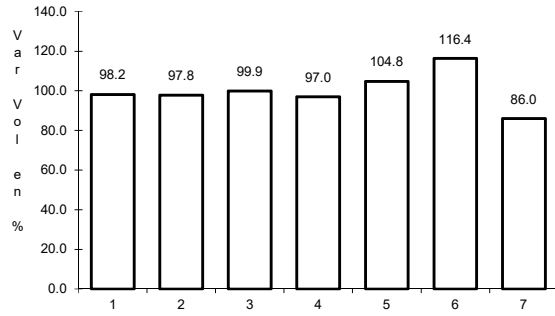
Tipo: 1

Sent: 0

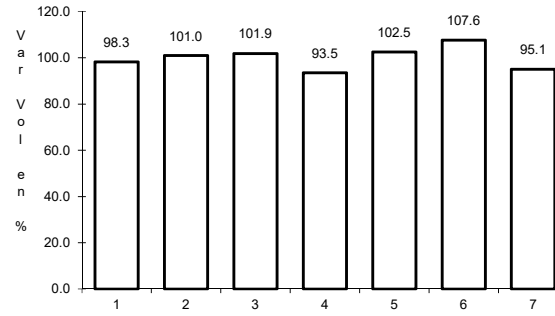
44 CARR: Tequesquitengo - Jojutla

CLAVE: 17013

RUTA: MOR



Km: 0.00                      Tipo: 3                      Sent: 1

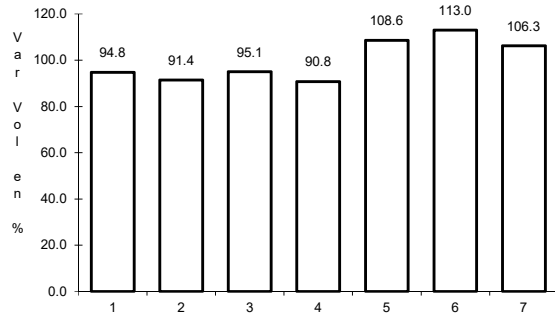


Km: 0.00                      Tipo: 3                      Sent: 2

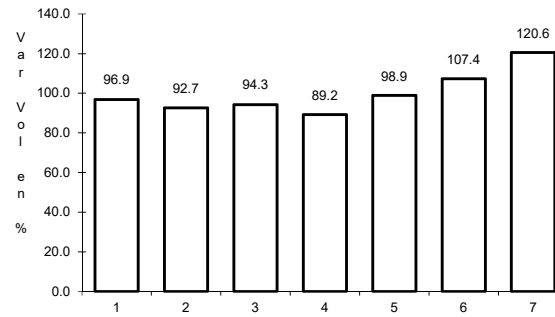
45 CARR: Xoxocotla - Tilzapotla

CLAVE: 17005

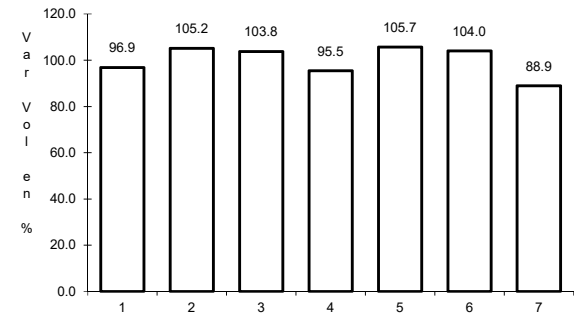
RUTA: MOR-006



Km: 0.00                      Tipo: 3                      Sent: 1



Km: 0.00                      Tipo: 3                      Sent: 2

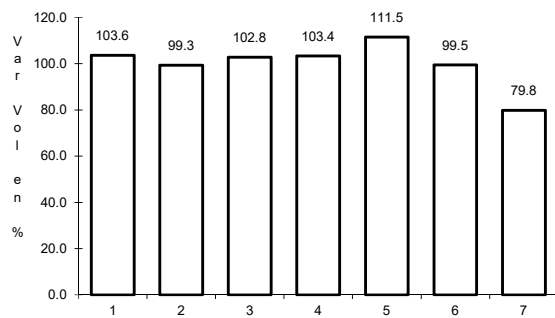


Km: 29.50                      Tipo: 1                      Sent: 0

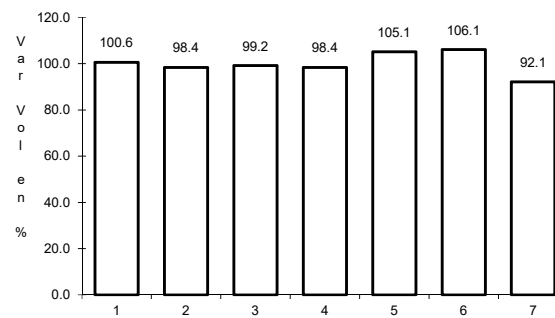
46 CARR: Zacatepec - Tlaquiltenango

CLAVE: 17300

RUTA: MOR



Km: 0.00                      Tipo: 3                      Sent: 0

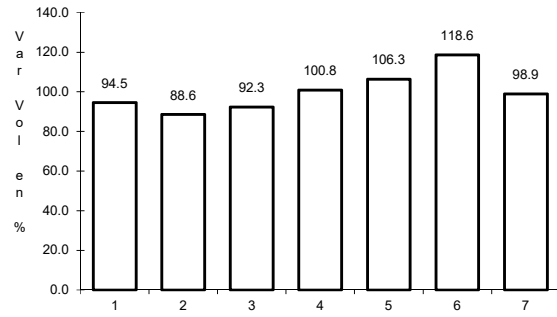


Km: 4.08                      Tipo: 1                      Sent: 0

47 CARR: Atlixco - Jantetelco (Cuota)

CLAVE: 00430

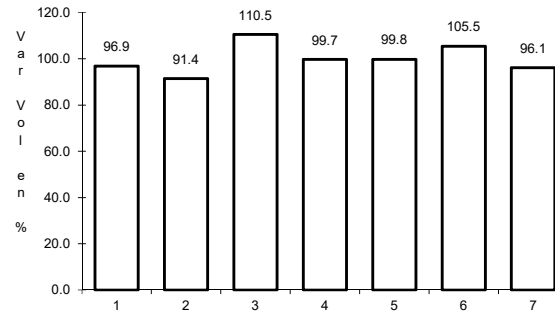
RUTA: PUE-D



Km: 0.00

Tipo: 3

Sent: 0



Km: 54.90

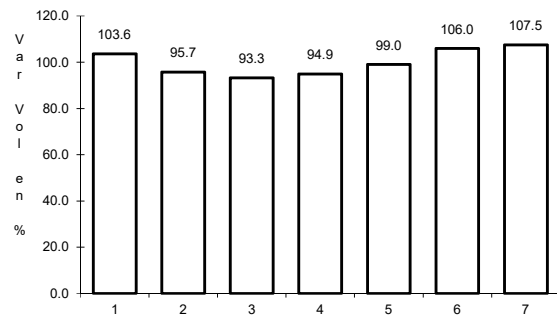
Tipo: 1

Sent: 0

48 CARR: Tres Marías - Santa Martha

CLAVE: 00172

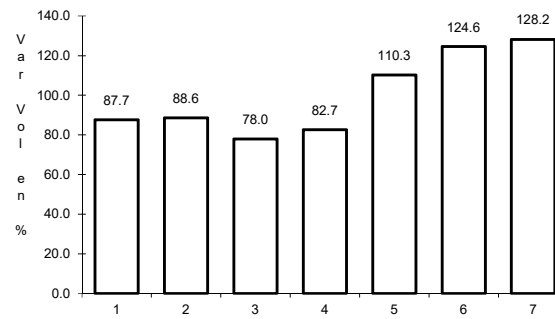
RUTA: MEX-106-EM



Km: 0.00

Tipo: 3

Sent: 0



Km: 28.35

Tipo: 1

Sent: 0