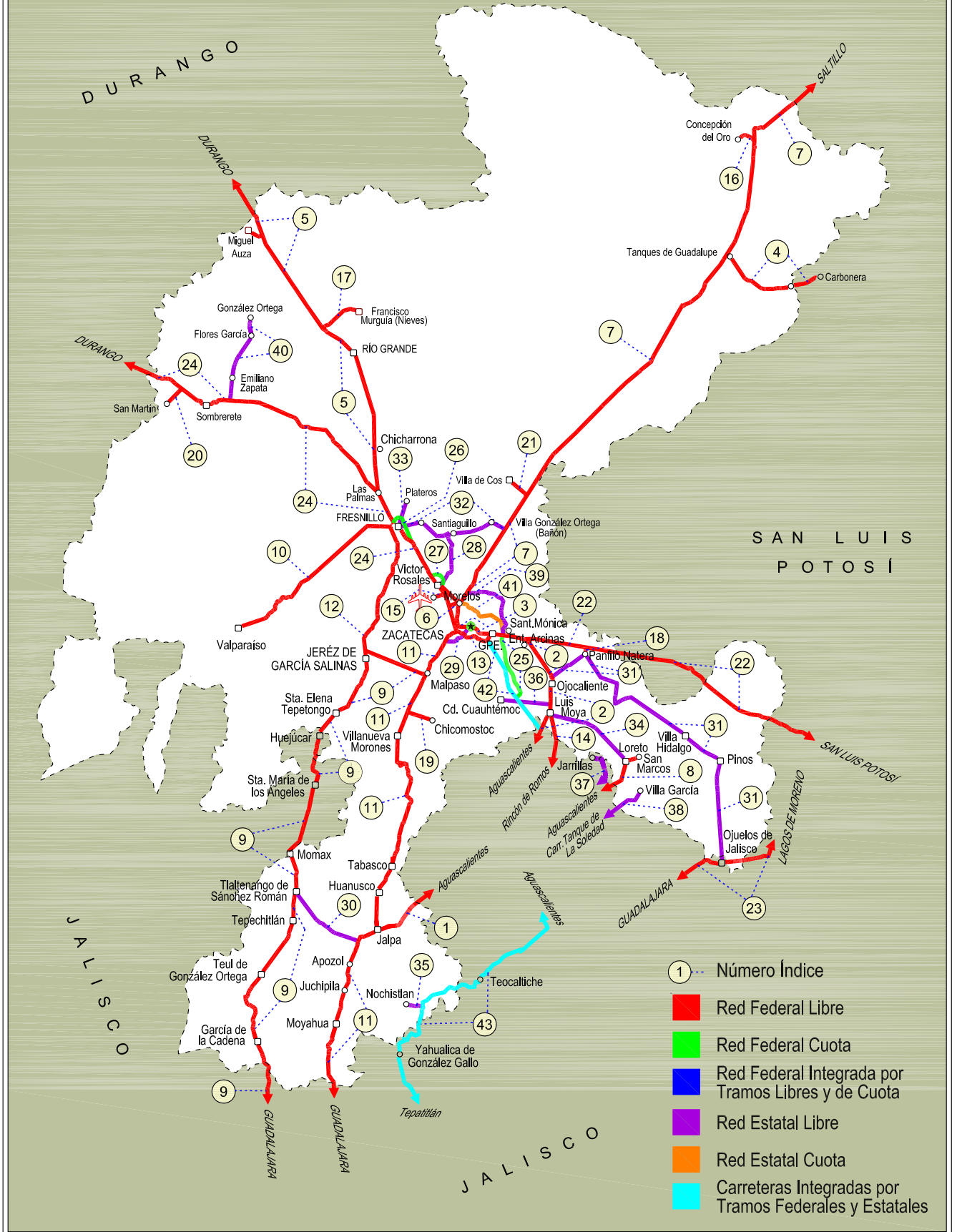
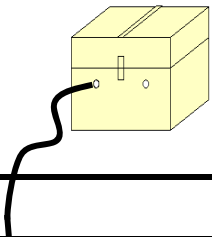


32 ZACATECAS

SECRETARÍA DE COMUNICACIONES Y TRANSPORTES
DIRECCIÓN GENERAL DE SERVICIOS TÉCNICOS

COAHUILA





ZACATECAS

---RED FEDERAL LIBRE---

1	Aguascalientes - Jalpa	MEX-070
2	Aguascalientes - Zacatecas	MEX-045
3	Bld. Guadalupe - Zacatecas - La Escondida	MEX-045
4	Carbonera - T. C. (Ent. Morelos - Saltillo)	MEX-062
5	Ent. La Chicharrona - Cuencamé	MEX-049
6	Ent. Morelos - Ent. Noria de Gringos	MEX-045
7	Ent. Morelos - Saltillo	MEX-054
8	Ent. Rivier - San Marcos	MEX-066
9	Ent. Tesistán - Ent. Malpaso	MEX-023
10	Fresnillo - Valparaíso	MEX-044
11	Guadalajara - Zacatecas	MEX-054
12	Jerez - Fresnillo	MEX-023
13	Libramiento de Guadalupe - Zacatecas	MEX-045
14	Providencia - Luis Moya	MEX-071
15	Ramal a Aeropuerto Zacatecas	MEX-045
16	Ramal a Concepción del Oro	MEX-054
17	Ramal a Francisco Murguía (Nieves)	MEX-049
18	Ramal a Gral. Pánfilo Natera	MEX-049
19	Ramal a Ruinas de Chicomostoc	MEX-045
20	Ramal a San Martín	MEX-045
21	Ramal a Villa de Cos	MEX-054
22	San Luis Potosí - Ent. Arcinas	MEX-049
23	San Luis Potosí - Lagos de Moreno	MEX-070-080
24	Zacatecas - Durango	MEX-045

---RED FEDERAL DE CUOTA---

25	Cuauhtémoc - Osiris (Cuota)	MEX-045D
26	Libramiento de Fresnillo (Cuota)	MEX-045D
27	Libramiento de Víctor Rosales (Cuota)	MEX-045D

---RED ESTATAL LIBRE---

28	Calera de Víctor Rosales - Santiagoullo	ZAC-016
29	Cieneguillas - Zacatecas	ZAC
30	Corral de Piedras - Tlaltenango	ZAC
31	Ent. Ojo Caliente - Ent. Ojuelos de Jalisco	ZAC
32	Fresnillo - Ent. Bañón	ZAC
33	Fresnillo - Plateros	ZAC-022
34	Ramal a Loreto	ZAC
35	Ramal a Nochistlán	ZAC
36	Ramal a San Pedro Piedra Gorda	ZAC-AGS
37	San Gil - Jarillas	AGS-012-ZAC
38	San Rafael - Villa García	AGS-ZAC
39	Santa Mónica - Pozo de Gamboa	ZAC
40	Sombrete - González Ortega	ZAC

---RED ESTATAL DE CUOTA---

41	Libramiento Noreste de Zacatecas (Cuota)	ZAC-D
----	--	-------

---CARRETERAS INTEGRADAS POR TRAMOS FEDERALES Y ESTATALES---

42	Guadalupe - Cosío	MEX-ZAC
43	Tepatitlán - Jaralillo	MEX-JAL-ZAC

ZACATECAS

1 CARR: Aguascalientes - Jalpa

CLAVE: 00095

RUTA: MEX-070

AÑO: 2015

LUGAR	ESTACION				CLASIFICACION VEHICULAR EN PORCIENTO													COORDENADAS		
	KM	TE	SC	TDPA	M	A	B	C2	C3	T3S2	T3S3	T3S2R4	OTROS	A	B	C	K'	D	LATITUD	LONGITUD
Aguascalientes	0.00	3	1	9337	1.0	87.6	0.3	7.3	1.1	1.3	0.6	0.7	0.1	88.6	0.3	11.1	0.103	0.502	21.874500	-102.336139
Aguascalientes	0.00	3	2	9255	1.6	85.8	0.3	8.0	1.3	1.5	0.6	0.8	0.1	87.4	0.3	12.3	0.079	0.502	21.874500	-102.336139
T. Der. Jesús María	7.30	1	1	8680	1.0	83.6	1.7	9.1	1.2	1.3	1.0	0.8	0.3	84.6	1.7	13.7	0.097	0.521	21.881556	-102.363000
T. Der. Jesús María	7.30	1	2	7988	1.9	81.2	1.8	9.9	1.2	1.5	1.2	1.0	0.3	83.1	1.8	15.1	0.085	0.521	21.881556	-102.363000
T. Izq. Villa Hidalgo	7.80	3	1	5715	0.4	90.4	0.4	6.5	0.7	0.8	0.6	0.1	0.1	90.8	0.4	8.8	0.119	0.504	21.884056	-102.372083
T. Izq. Villa Hidalgo	7.80	3	2	5810	0.4	89.0	0.4	7.7	0.8	0.8	0.7	0.1	0.1	89.4	0.4	10.2	0.122	0.504	21.884056	-102.372083
Libramiento Poniente de Aguascalientes	11.00	1	1	5346	0.7	85.7	0.8	10.8	0.8	0.8	0.2	0.1	0.1	86.4	0.8	12.8	0.132	0.502	21.889639	-102.392083
Libramiento Poniente de Aguascalientes	11.00	1	2	5301	0.4	85.0	0.8	11.8	0.8	0.8	0.2	0.1	0.1	85.4	0.8	13.8	0.128	0.502	21.889639	-102.392083
Libramiento Poniente de Aguascalientes	11.00	3	1	5628	0.8	89.5	1.3	5.7	0.7	1.0	0.6	0.1	0.3	90.3	1.3	8.4	0.130	0.507	21.892556	-102.403889
Libramiento Poniente de Aguascalientes	11.00	3	2	5482	1.5	87.5	1.5	6.5	0.8	1.2	0.6	0.1	0.3	89.0	1.5	9.5	0.127	0.507	21.892556	-102.403889
T. Der. Gracias a Dios	20.00	3	0	8265	0.5	87.1	1.1	6.1	1.2	2.6	0.6	0.3	0.5	87.6	1.1	11.3	0.087	0.533	21.886944	-102.466000
T. Izq. Malpaso	45.10	1	0	7065	0.4	83.1	2.3	9.6	1.2	2.5	0.5	0.1	0.3	83.5	2.3	14.2	0.084	0.523	21.882000	-102.659028
T. Der. Presa La Codorniz	49.30	3	1	9148	1.2	90.3	0.3	6.0	0.6	1.0	0.5	0.0	0.1	91.5	0.3	8.2	0.078	0.501	21.864116	-102.692234
T. Der. Presa La Codorniz	49.30	3	2	9106	1.3	89.7	0.3	6.4	0.6	1.1	0.5	0.0	0.1	91.0	0.3	8.7	0.076	0.501	21.864113	-102.692218
Calvillo	52.30	3	1	4746	0.4	90.1	0.5	7.1	0.9	0.6	0.3	0.0	0.1	90.5	0.5	9.0	0.083	0.502	21.837049	-102.743157
Calvillo	52.30	3	2	4711	1.2	88.0	0.5	8.2	1.0	0.7	0.3	0.0	0.1	89.2	0.5	10.3	0.076	0.502	21.837029	-102.743160
T. Der. Jaltiche de Abajo	63.80	3	0	2649	0.9	81.0	1.4	11.8	2.0	2.0	0.6	0.0	0.3	81.9	1.4	16.7	0.077	0.501	21.769713	-102.804733
Lim. Edos. Term. Ags. Ppia. Zac.	65.66																			
T. C. Guadalajara - Zacatecas	91.10	1	0	4739	2.8	81.3	1.0	10.6	1.3	2.4	0.5	0.0	0.1	84.1	1.0	14.9	0.071	0.507	21.652423	-102.964026

2 CARR: Aguascalientes - Zacatecas

CLAVE: 00524

RUTA: MEX-045

AÑO: 2015

LUGAR	ESTACION				CLASIFICACION VEHICULAR EN PORCIENTO													COORDENADAS		
	KM	TE	SC	TDPA	M	A	B	C2	C3	T3S2	T3S3	T3S2R4	OTROS	A	B	C	K'	D	LATITUD	LONGITUD
Aguascalientes	0.00																			
T. Izq. Pocitos	6.00	1	1	19571	1.7	91.1	1.2	4.3	0.2	0.5	0.7	0.1	0.2	92.8	1.2	6.0	0.081	0.509	21.903577	-102.292366
T. Izq. Pocitos	6.00	1	2	20308	2.1	89.9	1.4	4.7	0.2	0.5	0.9	0.1	0.2	92.0	1.4	6.6	0.078	0.509	21.903467	-102.292546
T. Der. Loreto	9.83	3	1	22896	1.2	82.4	1.4	5.6	1.4	3.8	1.9	1.4	0.9	83.6	1.4	15.0	0.088	0.507	21.970976	-102.289346
T. Der. Loreto	9.83	3	2	23580	1.1	80.4	1.5	6.7	1.6	4.2	2.0	1.5	1.0	81.5	1.5	17.0	0.083	0.507	21.970957	-102.289533
Santa Fé	16.00	1	1	23529	1.0	79.2	2.0	7.6	2.2	4.2	1.4	2.0	0.4	80.2	2.0	17.8	0.084	0.502	22.016226	-102.285937
Santa Fé	16.00	1	2	23740	1.0	77.3	2.1	8.1	2.3	4.9	1.6	2.3	0.4	78.3	2.1	19.6	0.094	0.502	22.016250	-102.286199
Santa Fé	16.00	3	1	23509	0.4	79.2	2.0	8.4	2.2	4.2	1.3	2.0	0.3	79.6	2.0	18.4	0.096	0.518	22.026231	-102.283405
Santa Fé	16.00	3	2	25295	0.6	77.2	2.2	9.2	2.4	4.7	1.4	2.0	0.3	77.8	2.2	20.0	0.077	0.518	22.026205	-102.283550
La Concepción	18.00	3	1	20759	0.8	79.6	1.9	7.4	1.9	4.4	1.5	2.0	0.5	80.4	1.9	17.7	0.079	0.515	22.035045	-102.281347
La Concepción	18.00	3	2	22054	0.6	78.1	2.1	7.9	2.3	4.7	1.6	2.2	0.5	78.7	2.1	19.2	0.086	0.515	22.035063	-102.281466

ZACATECAS

2 CARR: Aguascalientes - Zacatecas

CLAVE: 00524

RUTA: MEX-045

AÑO: 2015

LUGAR	ESTACION				CLASIFICACION VEHICULAR EN PORCIENTO														COORDENADAS	
	KM	TE	SC	TDPA	M	A	B	C2	C3	T3S2	T3S3	T3S2R4	OTROS	A	B	C	K'	D	LATITUD	LONGITUD
San Francisco de Los Romo	22.73	1	1	6023	3.0	88.3	0.6	6.1	0.4	1.0	0.4	0.0	0.2	91.3	0.6	8.1	0.094	0.529	22.072475	-102.273859
San Francisco de Los Romo	22.73	1	2	5361	2.2	88.0	0.6	7.1	0.4	1.1	0.4	0.0	0.2	90.2	0.6	9.2	0.092	0.529	22.072609	-102.274131
T. Der. Estación Pabellón	31.00	1	1	13405	0.6	81.6	1.9	5.5	1.9	5.0	0.9	2.3	0.3	82.2	1.9	15.9	0.066	0.516	22.134008	-102.287252
T. Der. Estación Pabellón	31.00	1	2	14316	0.8	79.2	2.2	5.9	2.1	5.8	1.1	2.6	0.3	80.0	2.2	17.8	0.078	0.516	22.134016	-102.287412
T. Der. Estación Pabellón	31.00	3	1	12051	0.8	77.3	3.1	8.0	2.3	4.7	1.2	2.3	0.3	78.1	3.1	18.8	0.086	0.501	22.152139	-102.295056
T. Der. Estación Pabellón	31.00	3	2	12086	1.0	73.8	3.6	9.1	2.7	5.5	1.4	2.6	0.3	74.8	3.6	21.6	0.081	0.501	22.152111	-102.295167
Rincón de Romos	40.90	3	0	5685	3.6	84.6	0.5	7.9	0.3	2.6	0.2	0.0	0.3	88.2	0.5	11.3	0.100	0.519	22.236778	-102.317806
La Punta	51.00	1	1	6907	0.4	70.9	4.5	8.3	2.6	7.1	2.0	3.4	0.8	71.3	4.5	24.2	0.091	0.505	22.314278	-102.296629
La Punta	51.00	1	2	7060	0.6	68.1	4.7	8.6	2.7	8.3	2.3	3.9	0.8	68.7	4.7	26.6	0.090	0.505	22.314281	-102.296727
Cosío	56.00	3	1	7103	0.6	65.0	5.8	8.2	3.0	9.1	2.3	5.4	0.6	65.6	5.8	28.6	0.071	0.574	22.376972	-102.299028
Cosío	56.00	3	2	5268	0.5	60.6	6.6	9.4	3.2	10.8	2.4	5.8	0.7	61.1	6.6	32.3	0.075	0.574	22.377056	-102.299722
Lim. Edos. Term. Ags. Ppia. Zac.	62.67																			
Luis Moya	65.80	1	0	3805	1.9	78.3	2.0	10.2	2.4	3.1	1.5	0.5	0.1	80.2	2.0	17.8	0.075	0.500	22.424861	-102.255500
Luis Moya	65.80	3	0	5619	1.3	79.7	1.5	9.9	2.1	3.0	1.4	0.7	0.4	81.0	1.5	17.5	0.081	0.509	22.451583	-102.255972
T. Der. San Luis Potosí	100.00	1	0	5432	0.7	80.0	1.5	10.4	2.1	3.1	1.4	0.7	0.1	80.7	1.5	17.8	0.084	0.508	22.714694	-102.327139
T. Der. San Luis Potosí	100.00	3	1	5843	0.9	68.8	4.0	8.0	3.2	8.1	2.6	3.6	0.8	69.7	4.0	26.3	0.073	0.512	22.728750	-102.337278
T. Der. San Luis Potosí	100.00	3	2	5579	0.9	65.3	4.3	9.1	3.6	9.5	2.6	3.9	0.8	66.2	4.3	29.5	0.079	0.512	22.729306	-102.337722
T. Izq. Aguascalientes (Cuota)	113.50	1	1	10293	0.8	73.1	2.5	11.2	2.9	5.3	1.5	2.5	0.2	73.9	2.5	23.6	0.079	0.506	22.751333	-102.432111
T. Izq. Aguascalientes (Cuota)	113.50	1	2	10030	0.8	70.6	2.9	12.2	3.2	5.8	1.6	2.7	0.2	71.4	2.9	25.7	0.085	0.506	22.751139	-102.432111
T. Izq. Libramiento de Guadalupe y Zacatecas	118.20	1	1	18380	1.0	82.1	1.9	7.7	2.0	2.9	1.0	1.2	0.2	83.1	1.9	15.0	0.079	0.510	22.750750	-102.492500
T. Izq. Libramiento de Guadalupe y Zacatecas Zacatecas	118.20 126.84	1	2	17688	1.0	80.8	2.2	8.4	2.1	3.0	1.0	1.3	0.2	81.8	2.2	16.0	0.086	0.510	22.750667	-102.492528

3 CARR: Blvd. Guadalupe - Zacatecas - La Escondida

CLAVE: 00544

RUTA: MEX-045

AÑO: 2015

LUGAR	ESTACION				CLASIFICACION VEHICULAR EN PORCIENTO														COORDENADAS	
	KM	TE	SC	TDPA	M	A	B	C2	C3	T3S2	T3S3	T3S2R4	OTROS	A	B	C	K'	D	LATITUD	LONGITUD
T. Izq. Lib. Guadalupe - Zacatecas (Baja)	0.00	3	1	1253	1.9	88.5	0.5	7.5	0.3	0.7	0.4	0.1	0.1	90.4	0.5	9.1	0.079	0.521	22.753972	-102.504000
T. Izq. Lib. Guadalupe - Zacatecas (Alta)	0.00	3	1	21517	1.5	91.0	0.5	5.0	0.5	0.8	0.6	0.0	0.1	92.5	0.5	7.0	0.081	0.557	22.753833	-102.504000
T. Izq. Lib. Guadalupe - Zacatecas (Alta)	0.00	3	2	22571	1.1	90.6	0.5	5.7	0.5	0.9	0.6	0.0	0.1	91.7	0.5	7.8	0.080	0.557	22.753583	-102.503833
T. Izq. Lib. Guadalupe - Zacatecas (Baja)	0.00	3	2	1151	2.0	87.4	0.5	8.5	0.3	0.7	0.4	0.1	0.1	89.4	0.5	10.1	0.084	0.521	22.753444	-102.503750
X. Av. Universidad	7.70	1	1	41269	0.9	95.2	3.0	0.8	0.1	0.0	0.0	0.0	0.0	96.1	3.0	0.9	0.083	0.522	22.765417	-102.560000
X. Av. Universidad	7.70	1	2	45045	1.1	94.5	3.5	0.8	0.1	0.0	0.0	0.0	0.0	95.6	3.5	0.9	0.081	0.522	22.765306	-102.559833
T. C. Zacatecas - Durango (Alta)	14.50	1	1	17553	1.7	89.6	1.3	5.3	0.4	0.6	0.9	0.0	0.2	91.3	1.3	7.4	0.086	0.569	22.776036	-102.619424
T. C. Zacatecas - Durango (Baja)	14.50	1	1	5346	1.9	90.3	1.0	5.8	0.1	0.3	0.5	0.0	0.1	92.2	1.0	6.8	0.149	0.515	22.776036	-102.619424

ZACATECAS

3 CARR: Blvd. Guadalupe - Zacatecas - La Escondida

CLAVE: 00544

RUTA: MEX-045

AÑO: 2015

LUGAR	ESTACION				CLASIFICACION VEHICULAR EN PORCIENTO													COORDENADAS		
	KM	TE	SC	TDPA	M	A	B	C2	C3	T3S2	T3S3	T3S2R4	OTROS	A	B	C	K'	D	LATITUD	LONGITUD
T. C. Zacatecas - Durango (Baja)	14.50	1	2	5031	1.6	89.2	1.1	7.0	0.1	0.3	0.6	0.0	0.1	90.8	1.1	8.1	0.126	0.515	22.775780	-102.619178
T. C. Zacatecas - Durango (Alta)	14.50	1	2	17270	2.0	88.5	1.4	6.0	0.4	0.6	0.9	0.0	0.2	90.5	1.4	8.1	0.059	0.569	22.775780	-102.619178

4 CARR: Carbonera - T. C. (Ent. Morelos - Saltillo)

CLAVE: 00218

RUTA: MEX-062

AÑO: 2015

LUGAR	ESTACION				CLASIFICACION VEHICULAR EN PORCIENTO													COORDENADAS		
	KM	TE	SC	TDPA	M	A	B	C2	C3	T3S2	T3S3	T3S2R4	OTROS	A	B	C	K'	D	LATITUD	LONGITUD
Carbonera	0.00	3	0	2427	11.1	76.9	1.0	5.2	2.1	2.5	0.5	0.5	0.2	88.0	1.0	11.0	0.089	0.551	23.703415	-100.627233
Cedral	18.00	1	0	2972	9.9	78.9	0.5	5.5	1.7	2.2	0.6	0.3	0.4	88.8	0.5	10.7	0.090	0.536	23.829323	-100.738660
Cedral	18.00	3	0	3481	9.0	71.0	0.7	13.9	1.4	2.7	0.4	0.6	0.3	80.0	0.7	19.3	0.088	0.504	23.805248	-100.707199
Lim. Edos. Term. S. L. P. Ppia. Zac.	79.20																			
T. C. Ent. Morelos - Saltillo	112.00	1	0	1339	4.4	72.4	1.5	16.7	2.4	1.8	0.3	0.2	0.3	76.8	1.5	21.7	0.101	0.510	24.156383	-101.492122

5 CARR: Ent. La Chicharrona - Cuencamé

CLAVE: 00152

RUTA: MEX-049

AÑO: 2015

LUGAR	ESTACION				CLASIFICACION VEHICULAR EN PORCIENTO													COORDENADAS		
	KM	TE	SC	TDPA	M	A	B	C2	C3	T3S2	T3S3	T3S2R4	OTROS	A	B	C	K'	D	LATITUD	LONGITUD
Ent. La Chicharrona	0.00	3	1	4586	0.3	58.8	5.0	9.2	3.4	14.2	3.4	4.6	1.1	59.1	5.0	35.9	0.070	0.507	23.305578	-102.958641
Ent. La Chicharrona	0.00	3	2	4711	0.4	55.4	5.6	9.8	3.6	15.1	3.6	5.3	1.2	55.8	5.6	38.6	0.086	0.507	23.304798	-102.958925
T. Der. Cañitas de Felipe Pescador	25.86	1	1	3843	0.3	59.0	5.0	4.7	3.6	17.2	3.8	5.5	0.9	59.3	5.0	35.7	0.073	0.505	23.524146	-102.959618
T. Der. Cañitas de Felipe Pescador	25.86	1	2	3922	0.3	55.0	5.2	5.3	3.8	19.1	4.1	6.2	1.0	55.3	5.2	39.5	0.080	0.505	23.524140	-102.959810
Río Grande	60.00	1	0	5608	0.7	56.3	5.5	10.1	2.6	15.4	3.5	5.1	0.8	57.0	5.5	37.5	0.096	0.514	23.793212	-103.016702
Río Grande	60.00	3	0	6717	0.7	50.8	6.1	10.7	2.9	17.6	4.3	5.9	1.0	51.5	6.1	42.4	0.068	0.501	23.880015	-103.095886
T. Der. Nieves	78.00	3	0	5859	0.8	44.2	7.6	8.6	3.8	21.2	5.1	7.8	0.9	45.0	7.6	47.4	0.067	0.506	23.925478	-103.161129
X. C. Juan Aldama - Miguel Auza	124.50	1	0	6506	0.8	48.8	6.4	8.7	3.4	19.4	4.8	6.8	0.9	49.6	6.4	44.0	0.061	0.502	24.272384	-103.400154
X. C. Juan Aldama - Miguel Auza	124.50	3	0	5491	0.8	42.1	7.1	8.9	3.6	23.5	5.4	7.8	0.8	42.9	7.1	50.0	0.063	0.501	24.296534	-103.410204
Lim. Edos. Term. Zac. Ppia. Dgo.	134.30																			
T. Der. Santa Clara	144.00	1	0	5068	1.4	40.8	8.7	7.2	4.7	22.8	4.7	8.6	1.1	42.2	8.7	49.1	0.055	0.503	24.436028	-103.486234
T. Der. Santa Clara	144.00	3	0	4111	1.7	34.5	10.1	6.7	5.5	25.3	5.3	9.8	1.1	36.2	10.1	53.7	0.064	0.520	24.443084	-103.491010
Cuencamé	199.10	1	0	4975	1.4	52.6	2.5	4.1	5.6	18.6	5.1	7.4	2.7	54.0	2.5	43.5	0.066	0.502	24.852808	-103.693146

ZACATECAS

6 CARR: Ent. Morelos - Ent. Noria de Gringos

CLAVE: 00544

RUTA: MEX-045

AÑO: 2015

LUGAR	ESTACION				CLASIFICACION VEHICULAR EN PORCIENTO													COORDENADAS		
	KM	TE	SC	TDPA	M	A	B	C2	C3	T3S2	T3S3	T3S2R4	OTROS	A	B	C	K'	D	LATITUD	LONGITUD
Ent. Morelos	0.00																			
T. Der. Lib. Noreste de Zacatecas	0.50	1	1	3536	2.4	77.8	2.4	6.7	1.4	4.3	2.5	1.8	0.7	80.2	2.4	17.4	0.103	0.510	22.861472	-102.627561
T. Der. Lib. Noreste de Zacatecas	0.50	1	2	3398	1.9	74.5	2.9	8.3	1.5	5.0	2.9	2.1	0.9	76.4	2.9	20.7	0.051	0.510	22.862599	-102.626900
T. Der. Lib. Noreste de Zacatecas	0.50	3	0	6388	1.7	71.4	3.8	7.9	3.0	6.2	2.3	3.1	0.6	73.1	3.8	23.1	0.098	0.543	22.858606	-102.635932
Ent. Noria de Gringos	2.20																			

7 CARR: Ent. Morelos - Saltillo

CLAVE: 00149

RUTA: MEX-054

AÑO: 2015

LUGAR	ESTACION				CLASIFICACION VEHICULAR EN PORCIENTO													COORDENADAS		
	KM	TE	SC	TDPA	M	A	B	C2	C3	T3S2	T3S3	T3S2R4	OTROS	A	B	C	K'	D	LATITUD	LONGITUD
T. C. Zacatecas - Durango	0.00	3	1	3609	2.2	70.1	3.7	9.8	2.3	6.6	1.9	2.4	1.0	72.3	3.7	24.0	0.103	0.508	22.868986	-102.619520
T. C. Zacatecas - Durango	0.00	3	2	3490	2.2	67.8	4.1	9.9	2.6	7.3	2.3	2.7	1.1	70.0	4.1	25.9	0.087	0.508	22.869033	-102.619590
T. Der. Sta. Mónica	11.00	1	1	3612	2.3	66.3	4.3	9.2	2.3	9.5	2.3	2.8	1.0	68.6	4.3	27.1	0.106	0.503	22.937537	-102.570182
T. Der. Sta. Mónica	11.00	1	2	3573	2.3	63.8	4.5	9.8	2.7	10.1	2.6	3.1	1.1	66.1	4.5	29.4	0.092	0.503	22.937584	-102.570285
T. Der. Sta. Mónica	11.00	3	1	2515	2.6	61.9	4.4	8.9	3.0	11.3	3.1	3.5	1.3	64.5	4.4	31.1	0.131	0.506	22.950479	-102.559132
T. Der. Sta. Mónica	11.00	3	2	2455	2.7	57.9	5.1	9.7	3.2	12.8	3.3	4.0	1.3	60.6	5.1	34.3	0.110	0.506	22.950533	-102.559190
T. Izq. Villa de Cos	53.90	1	1	3302	0.4	66.7	4.1	7.4	2.7	12.5	2.1	3.2	0.9	67.1	4.1	28.8	0.074	0.515	23.265343	-102.333013
T. Izq. Villa de Cos	53.90	1	2	3115	0.7	61.8	4.8	8.6	2.9	14.5	2.4	3.3	1.0	62.5	4.8	32.7	0.081	0.515	23.265392	-102.333095
T. Izq. Villa de Cos	53.90	3	1	2855	0.9	60.7	5.0	9.5	2.7	14.2	2.4	3.7	0.9	61.6	5.0	33.4	0.082	0.518	23.279310	-102.322858
T. Izq. Villa de Cos	53.90	3	2	2660	0.6	57.2	5.4	10.7	2.9	15.5	2.6	4.2	0.9	57.8	5.4	36.8	0.073	0.518	23.279446	-102.323064
Sierra Vieja	85.50	3	1	1936	0.5	51.5	7.1	11.6	2.9	17.5	3.1	5.0	0.8	52.0	7.1	40.9	0.113	0.519	23.522763	-102.101668
Sierra Vieja	85.50	3	2	1796	0.6	46.6	8.0	13.0	3.1	19.1	3.4	5.2	1.0	47.2	8.0	44.8	0.087	0.519	23.522890	-102.101777
T. Der. Majoma	144.50	3	1	1729	0.6	48.3	7.2	11.4	2.8	20.0	3.2	5.4	1.1	48.9	7.2	43.9	0.116	0.525	23.878088	-101.735509
T. Der. Majoma	144.50	3	2	1563	0.5	44.4	8.2	12.4	2.9	21.2	3.6	5.4	1.4	44.9	8.2	46.9	0.092	0.525	23.878069	-101.735496
T. Der. San Tiburcio	185.25	1	1	1777	3.5	53.0	6.3	10.9	2.4	15.1	2.8	5.3	0.7	56.5	6.3	37.2	0.154	0.510	24.157108	-101.496251
T. Der. San Tiburcio	185.25	1	2	1709	3.5	50.5	7.0	11.7	2.7	15.2	2.9	5.7	0.8	54.0	7.0	39.0	0.126	0.510	24.157112	-101.496253
T. Der. San Tiburcio	185.25	3	1	2017	3.6	53.7	6.2	11.9	2.3	14.4	2.3	4.5	1.1	57.3	6.2	36.5	0.159	0.501	24.160601	-101.493766
T. Der. San Tiburcio	185.25	3	2	2011	2.9	50.2	6.8	13.9	2.4	15.1	2.5	5.1	1.1	53.1	6.8	40.1	0.122	0.501	24.160595	-101.493772
T. Izq. Concepción del Oro	240.00	1	1	2955	2.5	63.4	4.5	11.1	1.7	10.9	1.6	3.6	0.7	65.9	4.5	29.6	0.124	0.506	24.611349	-101.368599
T. Izq. Concepción del Oro	240.00	1	2	2886	2.8	59.4	5.3	12.7	1.7	12.1	1.6	3.7	0.7	62.2	5.3	32.5	0.098	0.506	24.611340	-101.368576
T. Izq. Concepción del Oro	240.00	3	1	3057	2.1	64.2	4.7	11.6	1.6	10.7	1.3	3.2	0.6	66.3	4.7	29.0	0.128	0.509	24.626356	-101.381157
T. Izq. Concepción del Oro	240.00	3	2	2946	2.3	59.6	5.3	13.3	1.9	11.9	1.5	3.5	0.7	61.9	5.3	32.8	0.092	0.509	24.626357	-101.381161
Lim. Edos. Term. Zac. Ppia. Coah.	266.50																			
Agua Nueva	322.00	1	0	5774	0.5	61.3	4.3	12.2	2.0	13.7	2.2	3.1	0.7	61.8	4.3	33.9	0.135	0.504	25.182828	-101.094011
T. Der. La Trinidad	333.00	3	0	12848	0.5	74.6	3.3	12.2	1.6	5.4	1.1	0.4	0.9	75.1	3.3	21.6	0.094	0.510	25.283628	-101.086896

ZACATECAS

7 CARR: Ent. Morelos - Saltillo

CLAVE: 00149

RUTA: MEX-054

AÑO: 2015

LUGAR	ESTACION				CLASIFICACION VEHICULAR EN PORCIENTO										COORDENADAS					
	KM	TE	SC	TDPA	M	A	B	C2	C3	T3S2	T3S3	T3S2R4	OTROS	A	B	C	K'	D	LATITUD	LONGITUD
X. C. Libramiento de Saltillo	348.00	1	1	14874	1.7	82.1	1.7	10.7	0.9	2.2	0.4	0.1	0.2	83.8	1.7	14.5	0.082	0.512	25.367962	-101.015225
X. C. Libramiento de Saltillo	348.00	1	2	14202	1.2	80.2	2.0	12.7	1.0	2.2	0.4	0.1	0.2	81.4	2.0	16.6	0.078	0.512	25.367995	-101.015249
Saltillo	354.00	1	1	13442	1.1	90.9	0.8	5.9	0.3	0.6	0.3	0.0	0.1	92.0	0.8	7.2	0.084	0.520	25.387739	-101.006259
Saltillo	354.00	1	2	12397	0.9	90.1	1.0	6.6	0.3	0.7	0.3	0.0	0.1	91.0	1.0	8.0	0.089	0.520	25.387748	-101.006277

8 CARR: Ent. Rivier - San Marcos

CLAVE: 00285

RUTA: MEX-066

AÑO: 2015

LUGAR	ESTACION				CLASIFICACION VEHICULAR EN PORCIENTO										COORDENADAS					
	KM	TE	SC	TDPA	M	A	B	C2	C3	T3S2	T3S3	T3S2R4	OTROS	A	B	C	K'	D	LATITUD	LONGITUD
T. C. Aguascalientes - Zacatecas	0.00	3	1	7323	1.4	85.4	0.5	7.7	1.9	1.3	1.1	0.3	0.4	86.8	0.5	12.7	0.095	0.539	21.962332	-102.287769
T. C. Aguascalientes - Zacatecas	0.00	3	2	6251	1.4	83.7	0.5	8.8	2.2	1.5	1.2	0.3	0.4	85.1	0.5	14.4	0.091	0.539	21.962548	-102.287746
T. Izq. El Tepetate	10.50	3	0	8910	0.7	81.0	2.0	10.6	1.6	2.8	0.5	0.4	0.4	81.7	2.0	16.3	0.077	0.504	21.999562	-102.193162
T. Der. Jilotepec	23.60	3	0	7012	1.0	80.7	2.1	11.1	1.8	2.5	0.4	0.1	0.3	81.7	2.1	16.2	0.080	0.504	22.055513	-102.098691
Villa Juárez	30.00	3	0	9102	1.7	79.2	1.4	10.5	1.9	3.8	0.8	0.1	0.6	80.9	1.4	17.7	0.067	0.502	22.107691	-102.059180
Ciénega Grande	41.50	1	0	7819	2.4	77.5	2.0	12.4	2.0	2.9	0.4	0.1	0.3	79.9	2.0	18.1	0.069	0.502	22.187047	-102.020514
Ciénega Grande	41.50	3	0	5706	1.8	79.9	1.4	10.1	2.0	3.5	0.6	0.2	0.5	81.7	1.4	16.9	0.078	0.508	22.200579	-102.015054
Lim. Edos. Term. Ags. Ppia. Zac.	45.75																			
San Marcos	56.00	1	0	7919	5.7	77.6	2.5	6.1	1.2	5.1	0.7	0.2	0.9	83.3	2.5	14.2	0.088	0.503	22.276130	-101.957379

9 CARR: Ent. Tesislán - Ent. Malpaso

CLAVE: 00584

RUTA: MEX-023

AÑO: 2015

LUGAR	ESTACION				CLASIFICACION VEHICULAR EN PORCIENTO										COORDENADAS					
	KM	TE	SC	TDPA	M	A	B	C2	C3	T3S2	T3S3	T3S2R4	OTROS	A	B	C	K'	D	LATITUD	LONGITUD
T. C. Guadalajara - Tesislán	0.00	3	1	11199	1.8	79.2	0.4	7.1	1.4	7.4	1.4	0.5	0.8	81.0	0.4	18.6	0.074	0.509	20.786565	-103.461549
T. C. Guadalajara - Tesislán	0.00	3	2	10812	1.6	78.4	0.4	7.1	1.5	8.1	1.6	0.5	0.8	80.0	0.4	19.6	0.095	0.509	20.786565	-103.461549
Lim. Edos. Term. Jal. Ppia. Zac.	42.00																			
García de La Cadena	54.00	1	0	1575	1.0	80.0	2.1	10.9	2.2	2.2	1.2	0.1	0.3	81.0	2.1	16.9	0.082	0.502	21.193353	-103.464738
Tlaltenango de Sánchez Román	147.50	3	0	5231	4.2	81.1	1.2	9.3	0.9	2.4	0.5	0.1	0.3	85.3	1.2	13.5	0.071	0.503	21.802061	-103.298633
Momax	165.00	3	0	3259	2.4	82.2	1.9	8.8	1.3	2.2	0.7	0.1	0.4	84.6	1.9	13.5	0.083	0.502	21.936036	-103.307433
Lim. Edos. Term. Zac. Ppia. Jal.	171.80																			
Colotlán	175.00	1	0	3407	1.3	84.7	1.8	8.5	1.0	2.0	0.4	0.1	0.2	86.0	1.8	12.2	0.081	0.500	22.096166	-103.269295
Lim. Edos. Term. Jal. Ppia. Zac.	209.90																			
Lim. Edos. Term. Zac. Ppia. Jal.	214.80																			
Lim. Edos. Term. Jal. Ppia. Zac.	223.95																			
Tepetongo	235.00	3	0	3243	1.4	80.5	1.8	11.5	1.3	2.4	0.7	0.1	0.3	81.9	1.8	16.3	0.084	0.502	22.467074	-103.141271

ZACATECAS

9 CARR: Ent. Tesistán - Ent. Malpaso

CLAVE: 00584

RUTA: MEX-023

AÑO: 2015

LUGAR	ESTACION				CLASIFICACION VEHICULAR EN PORCIENTO														COORDENADAS	
	KM	TE	SC	TDPA	M	A	B	C2	C3	T3S2	T3S3	T3S2R4	OTROS	A	B	C	K'	D	LATITUD	LONGITUD
Jerez de García Salinas	249.00	1	1	3049	3.5	84.9	1.0	7.4	1.3	0.9	0.7	0.0	0.3	88.4	1.0	10.6	0.096	0.501	22.600574	-103.017669
Jerez de García Salinas	249.00	1	2	3067	3.1	84.0	1.0	8.5	1.3	1.0	0.8	0.0	0.3	87.1	1.0	11.9	0.088	0.501	22.600581	-103.017668
T. C. Guadalajara - Zacatecas	275.00	1	1	3123	0.6	87.9	1.8	6.5	1.2	1.1	0.7	0.1	0.1	88.5	1.8	9.7	0.108	0.503	22.616721	-102.782607
T. C. Guadalajara - Zacatecas	275.00	1	2	3161	0.5	87.2	2.0	6.9	1.4	1.2	0.6	0.1	0.1	87.7	2.0	10.3	0.101	0.503	22.616740	-102.782587

10 CARR: Fresnillo - Valparaíso

CLAVE: 32547

RUTA: MEX-044

AÑO: 2015

LUGAR	ESTACION				CLASIFICACION VEHICULAR EN PORCIENTO														COORDENADAS	
	KM	TE	SC	TDPA	M	A	B	C2	C3	T3S2	T3S3	T3S2R4	OTROS	A	B	C	K'	D	LATITUD	LONGITUD
Fresnillo	0.00	3	0	6520	2.3	79.1	0.7	10.7	2.5	3.1	1.0	0.2	0.4	81.4	0.7	17.9	0.091	0.518	23.173958	-102.919402
T. Izq. Guanajuato	24.50	1	0	2151	0.5	85.1	0.6	10.3	1.3	1.6	0.5	0.1	0.0	85.6	0.6	13.8	0.082	0.503	23.105852	-103.080993
T. Izq. Sombretillo	45.00	3	0	1492	0.8	79.8	1.4	14.0	1.4	1.7	0.7	0.1	0.1	80.6	1.4	18.0	0.086	0.509	22.998567	-103.211932
T. Izq. San José de Llanetes	55.00	3	0	1363	0.6	80.8	1.2	13.2	1.4	1.8	0.6	0.2	0.2	81.4	1.2	17.4	0.101	0.502	22.926431	-103.293833
T. Izq. Lobatos	71.00	3	0	1934	1.3	81.7	1.0	12.5	1.1	1.6	0.6	0.1	0.1	83.0	1.0	16.0	0.094	0.505	22.834121	-103.415498
Valparaíso	90.00	1	0	2080	1.7	81.0	0.6	13.1	1.0	1.8	0.5	0.1	0.2	82.7	0.6	16.7	0.100	0.501	22.797509	-103.542542

11 CARR: Guadalajara - Zacatecas

CLAVE: 00150

RUTA: MEX-054

AÑO: 2015

LUGAR	ESTACION				CLASIFICACION VEHICULAR EN PORCIENTO														COORDENADAS	
	KM	TE	SC	TDPA	M	A	B	C2	C3	T3S2	T3S3	T3S2R4	OTROS	A	B	C	K'	D	LATITUD	LONGITUD
Guadalajara	0.00																			
X. Periférico de Guadalajara	6.19	3	1	14569	6.8	78.6	1.0	10.8	0.9	1.0	0.8	0.1	0.0	85.4	1.0	13.6	0.090	0.512	20.754730	-103.342888
X. Periférico de Guadalajara	6.19	3	2	15273	6.3	77.8	1.0	12.1	0.9	1.0	0.8	0.1	0.0	84.1	1.0	14.9	0.090	0.512	20.754716	-103.342886
T. Der. Ixtlahuacán del Río	49.46	3	0	4807	2.0	77.6	1.3	12.0	1.9	3.3	1.0	0.2	0.7	79.6	1.3	19.1	0.069	0.507	20.871100	-103.236818
Lim. Edos. Term. Jal. Ppia. Zac.	76.49																			
T. Izq. Moyahua	106.43	1	0	1638	1.2	73.5	2.7	11.6	3.4	5.4	1.8	0.1	0.3	74.7	2.7	22.6	0.069	0.510	21.251172	-103.161841
Apozol	129.28	1	0	4896	2.1	83.0	1.3	7.5	1.2	3.5	0.8	0.1	0.5	85.1	1.3	13.6	0.074	0.504	21.441314	-103.099727
Jalpa	159.39	1	0	3843	1.3	79.7	2.0	10.1	2.1	3.2	1.1	0.1	0.4	81.0	2.0	17.0	0.079	0.502	21.617616	-103.004751
Tabasco	189.40	1	0	2949	0.9	79.0	2.5	9.8	2.7	3.7	1.1	0.0	0.3	79.9	2.5	17.6	0.074	0.507	21.843194	-102.933763
Tabasco	189.40	3	0	3689	0.9	79.7	2.9	10.9	2.1	2.4	0.7	0.0	0.4	80.6	2.9	16.5	0.068	0.505	21.883698	-102.908396
Villanueva	255.70	3	0	4261	1.0	81.3	2.0	9.3	2.0	3.1	1.0	0.1	0.2	82.3	2.0	15.7	0.080	0.503	22.378083	-102.880534
T. Izq. Jerez de García Salinas	289.13	1	1	2007	0.7	81.2	2.9	10.4	2.0	2.0	0.7	0.0	0.1	81.9	2.9	15.2	0.090	0.503	22.606376	-102.761530
T. Izq. Jerez de García Salinas	289.13	1	2	1984	0.5	79.2	3.4	11.5	2.1	2.3	0.8	0.0	0.2	79.7	3.4	16.9	0.087	0.503	22.606380	-102.761540
T. Izq. Jerez de García Salinas	289.13	3	1	4586	0.6	86.1	2.0	7.4	1.4	1.6	0.7	0.1	0.1	86.7	2.0	11.3	0.106	0.503	22.626957	-102.750269
T. Izq. Jerez de García Salinas	289.13	3	2	4632	0.6	84.8	2.1	8.1	1.5	1.8	0.9	0.1	0.1	85.4	2.1	12.5	0.089	0.503	22.626956	-102.750276

ZACATECAS

11 CARR: Guadalajara - Zacatecas

CLAVE: 00150

RUTA: MEX-054

AÑO: 2015

LUGAR	ESTACION				CLASIFICACION VEHICULAR EN PORCIENTO										COORDENADAS					
	KM	TE	SC	TDPA	M	A	B	C2	C3	T3S2	T3S3	T3S2R4	OTROS	A	B	C	K'	D	LATITUD	LONGITUD
T. C. Zacatecas - Durango	311.83	1	1	9373	1.4	86.9	0.9	7.1	1.0	1.3	0.8	0.2	0.4	88.3	0.9	10.8	0.094	0.500	22.771340	-102.631413
T. C. Zacatecas - Durango	311.83	1	2	9384	1.3	86.2	1.0	7.3	1.2	1.4	1.0	0.2	0.4	87.5	1.0	11.5	0.094	0.500	22.771465	-102.631426

12 CARR: Jerez - Fresnillo

CLAVE: 32542

RUTA: MEX-023

AÑO: 2015

LUGAR	ESTACION				CLASIFICACION VEHICULAR EN PORCIENTO										COORDENADAS					
	KM	TE	SC	TDPA	M	A	B	C2	C3	T3S2	T3S3	T3S2R4	OTROS	A	B	C	K'	D	LATITUD	LONGITUD
Jerez	0.00	3	0	2236	2.4	83.1	1.1	8.9	1.6	2.0	0.7	0.1	0.1	85.5	1.1	13.4	0.075	0.502	22.683581	-103.015738
T. C. Ent. Fresnillo - Valparaiso	60.00	1	0	3457	3.5	79.2	0.8	8.8	3.9	2.4	0.8	0.3	0.3	82.7	0.8	16.5	0.095	0.514	23.157503	-102.882348

13 CARR: Libramiento de Guadalupe - Zacatecas

CLAVE: 32582

RUTA: MEX-045

AÑO: 2015

LUGAR	ESTACION				CLASIFICACION VEHICULAR EN PORCIENTO										COORDENADAS					
	KM	TE	SC	TDPA	M	A	B	C2	C3	T3S2	T3S3	T3S2R4	OTROS	A	B	C	K'	D	LATITUD	LONGITUD
T. C. Aguascalientes - Zacatecas (Baja)	0.00	3	1	5130	2.4	86.7	0.3	7.7	0.7	1.2	0.6	0.1	0.3	89.1	0.3	10.6	0.099	0.520	22.741444	-102.502917
T. C. Aguascalientes - Zacatecas (Alta)	0.00	3	1	9659	0.9	78.4	3.0	7.1	2.3	4.5	1.4	2.1	0.3	79.3	3.0	17.7	0.091	0.556	22.741333	-102.502889
T. C. Aguascalientes - Zacatecas (Alta)	0.00	3	2	7717	1.5	75.4	3.6	7.7	2.5	5.1	1.6	2.3	0.3	76.9	3.6	19.5	0.087	0.556	22.741222	-102.502667
T. C. Aguascalientes - Zacatecas (Baja)	0.00	3	2	5558	2.4	85.8	0.3	8.4	0.8	1.3	0.6	0.1	0.3	88.2	0.3	11.5	0.096	0.520	22.741111	-102.502639
X. C. Cieneguillas - Zacatecas (Baja)	13.00	3	1	3621	1.2	91.4	0.1	5.0	0.2	0.7	0.9	0.2	0.3	92.6	0.1	7.3	0.081	0.533	22.756578	-102.594799
X. C. Cieneguillas - Zacatecas (Alta)	13.00	3	1	6264	0.8	77.1	3.1	5.7	2.7	5.6	2.1	2.0	0.9	77.9	3.1	19.0	0.093	0.527	22.756578	-102.594799
X. C. Cieneguillas - Zacatecas (Alta)	13.00	3	2	6980	0.8	74.7	3.3	6.4	3.0	6.0	2.4	2.4	1.0	75.5	3.3	21.2	0.107	0.527	22.756578	-102.594799
X. C. Cieneguillas - Zacatecas (Baja)	13.00	3	2	3178	0.6	91.0	0.1	5.8	0.2	0.8	1.0	0.2	0.3	91.6	0.1	8.3	0.096	0.533	22.756578	-102.594799
T. C. Zacatecas - Durango	17.50	1	1	9830	0.9	77.0	3.3	7.1	2.9	4.8	1.4	2.2	0.4	77.9	3.3	18.8	0.089	0.512	22.773131	-102.618319
T. C. Zacatecas - Durango	17.50	1	2	10302	0.9	75.7	3.4	7.6	2.9	5.3	1.6	2.2	0.4	76.6	3.4	20.0	0.141	0.512	22.773142	-102.618580

14 CARR: Providencia - Luis Moya

CLAVE: 00112

RUTA: MEX-071

AÑO: 2015

LUGAR	ESTACION				CLASIFICACION VEHICULAR EN PORCIENTO										COORDENADAS					
	KM	TE	SC	TDPA	M	A	B	C2	C3	T3S2	T3S3	T3S2R4	OTROS	A	B	C	K'	D	LATITUD	LONGITUD
T. C. Aguascalientes - Zacatecas	0.00	3	0	5252	1.2	79.0	2.5	5.7	2.1	3.5	2.5	3.0	0.5	80.2	2.5	17.3	0.076	0.513	22.060700	-102.273843
T. Izq. Pabellón de Arteaga	12.10	1	0	4981	1.5	76.6	2.0	8.8	1.8	2.8	2.1	3.9	0.5	78.1	2.0	19.9	0.085	0.519	22.144614	-102.251639
T. Der. Villa Juárez	14.90	3	0	5174	2.0	78.5	0.3	9.3	1.6	3.1	1.9	2.9	0.4	80.5	0.3	19.2	0.088	0.510	22.176944	-102.245373
X. C. Rincón de Romos - Ciénega Grande	21.22	3	0	4951	3.2	76.3	2.4	10.0	2.1	3.1	1.2	1.1	0.6	79.5	2.4	18.1	0.071	0.509	22.230912	-102.241408
X. C. La Punta - Mesillas	30.35	3	0	3206	2.9	78.7	0.7	10.2	2.1	2.7	1.3	1.0	0.4	81.6	0.7	17.7	0.082	0.511	22.317944	-102.233750
San Jacinto	34.25	3	0	2411	5.1	74.9	0.7	10.5	1.8	3.7	1.5	1.3	0.5	80.0	0.7	19.3	0.078	0.506	22.353306	-102.232556

ZACATECAS

14 CARR: Providencia - Luis Moya

CLAVE: 00112

RUTA: MEX-071

AÑO: 2015

LUGAR	ESTACION				CLASIFICACION VEHICULAR EN PORCIENTO														COORDENADAS		
	KM	TE	SC	TDPA	M	A	B	C2	C3	T3S2	T3S3	T3S2R4	OTROS	A	B	C	K'	D	LATITUD	LONGITUD	
Lim. Edos. Term. Ags. Ppia. Zac.	37.50																				
Luis Moya	43.50	1	0	3687	2.1	77.9	0.8	11.3	1.6	3.7	1.2	1.0	0.4	80.0	0.8	19.2	0.081	0.506	22.425389	-102.246500	

15 CARR: Ramal a Aeropuerto Zacatecas

CLAVE: 32546

RUTA: MEX-045

AÑO: 2015

LUGAR	ESTACION				CLASIFICACION VEHICULAR EN PORCIENTO														COORDENADAS		
	KM	TE	SC	TDPA	M	A	B	C2	C3	T3S2	T3S3	T3S2R4	OTROS	A	B	C	K'	D	LATITUD	LONGITUD	
T. C. Zacatecas - Durango	0.00	3	1	1382	1.6	84.2	0.4	11.2	1.3	0.8	0.3	0.1	0.1	85.8	0.4	13.8	0.153	0.505	22.910389	-102.673792	
T. C. Zacatecas - Durango	0.00	3	2	1354	1.8	83.0	0.4	12.3	1.4	0.7	0.2	0.1	0.1	84.8	0.4	14.8	0.193	0.505	22.910321	-102.673651	
Aeropuerto	1.95																				

16 CARR: Ramal a Concepción del Oro

CLAVE: 32565

RUTA: MEX-054

AÑO: 2015

LUGAR	ESTACION				CLASIFICACION VEHICULAR EN PORCIENTO														COORDENADAS		
	KM	TE	SC	TDPA	M	A	B	C2	C3	T3S2	T3S3	T3S2R4	OTROS	A	B	C	K'	D	LATITUD	LONGITUD	
T. C. Ent. Morelos - Saltillo	0.00	3	0	4700	1.2	82.3	0.7	12.0	0.1	3.2	0.1	0.0	0.4	83.5	0.7	15.8	0.091	0.505	24.621541	-101.398804	
Concepción del Oro	3.20																				

17 CARR: Ramal a Francisco Murguía (Nieves)

CLAVE: 32541

RUTA: MEX-049

AÑO: 2015

LUGAR	ESTACION				CLASIFICACION VEHICULAR EN PORCIENTO														COORDENADAS		
	KM	TE	SC	TDPA	M	A	B	C2	C3	T3S2	T3S3	T3S2R4	OTROS	A	B	C	K'	D	LATITUD	LONGITUD	
T. C. Ent. La Chicharrona - Cuencamé	0.00	3	0	1485	0.1	77.0	0.5	18.8	1.8	1.4	0.4	0.0	0.0	77.1	0.5	22.4	0.105	0.502	23.925384	-103.155524	
Francisco Murguía (Nieves)	17.40																				

18 CARR: Ramal a Gral. Pánfilo Natera

CLAVE: 32559

RUTA: MEX-049

AÑO: 2015

LUGAR	ESTACION				CLASIFICACION VEHICULAR EN PORCIENTO														COORDENADAS		
	KM	TE	SC	TDPA	M	A	B	C2	C3	T3S2	T3S3	T3S2R4	OTROS	A	B	C	K'	D	LATITUD	LONGITUD	
T. C. San Luis Potosí - Ent. Arcinas	0.00	3	1	2062	5.1	83.0	0.3	10.1	0.6	0.5	0.3	0.0	0.1	88.1	0.3	11.6	0.118	0.500	22.677306	-102.106944	
T. C. San Luis Potosí - Ent. Arcinas	0.00	3	2	2059	5.5	81.3	0.3	11.5	0.5	0.5	0.3	0.0	0.1	86.8	0.3	12.9	0.116	0.500	22.677361	-102.107083	
Gral. Pánfilo Natera	1.50																				

ZACATECAS

19 CARR: Ramal a Ruinas de Chicomostoc

CLAVE: 00544

RUTA: MEX-045

AÑO: 2015

LUGAR	ESTACION				CLASIFICACION VEHICULAR EN PORCIENTO													COORDENADAS			
	KM	TE	SC	TDPA	M	A	B	C2	C3	T3S2	T3S3	T3S2R4	OTROS	A	B	C	K'	D	LATITUD	LONGITUD	
T. C. Guadalajara - Zacatecas	0.00	3	0	93	5.6	89.2	0.0	4.8	0.4	0.0	0.0	0.0	0.0	94.8	0.0	5.2	0.161	0.511	22.462856	-102.838335	
Ruinas de Chicomostoc	2.20																				

20 CARR: Ramal a San Martín

CLAVE: 00544

RUTA: MEX-045

AÑO: 2015

LUGAR	ESTACION				CLASIFICACION VEHICULAR EN PORCIENTO													COORDENADAS			
	KM	TE	SC	TDPA	M	A	B	C2	C3	T3S2	T3S3	T3S2R4	OTROS	A	B	C	K'	D	LATITUD	LONGITUD	
T. C. Zacatecas - Durango	0.00	3	0	1247	1.2	83.0	0.0	12.0	1.7	1.4	0.6	0.0	0.1	84.2	0.0	15.8	0.130	0.505	23.691677	-103.718638	
San Martín	4.00																				

21 CARR: Ramal a Villa de Cos

CLAVE: 32564

RUTA: MEX-054

AÑO: 2015

LUGAR	ESTACION				CLASIFICACION VEHICULAR EN PORCIENTO													COORDENADAS		
	KM	TE	SC	TDPA	M	A	B	C2	C3	T3S2	T3S3	T3S2R4	OTROS	A	B	C	K'	D	LATITUD	LONGITUD
T. C. Ent. Morelos - Saltillo	0.00	3	1	1942	1.8	84.0	0.6	11.2	0.9	0.7	0.4	0.0	0.4	85.8	0.6	13.6	0.116	0.519	23.272579	-102.332037
T. C. Ent. Morelos - Saltillo	0.00	3	2	1797	1.9	81.8	0.7	12.8	1.1	0.8	0.5	0.0	0.4	83.7	0.7	15.6	0.127	0.519	23.272480	-102.332168
Villa de Cos	3.30	1	1	2907	2.7	86.2	0.3	9.3	0.3	0.7	0.4	0.0	0.1	88.9	0.3	10.8	0.104	0.504	23.288465	-102.342795
Villa de Cos	3.30	1	2	2949	3.0	84.2	0.3	10.9	0.3	0.8	0.4	0.0	0.1	87.2	0.3	12.5	0.110	0.504	23.288449	-102.342949

22 CARR: San Luis Potosí - Ent. Arcinas

CLAVE: 00134

RUTA: MEX-049

AÑO: 2015

LUGAR	ESTACION				CLASIFICACION VEHICULAR EN PORCIENTO													COORDENADAS			
	KM	TE	SC	TDPA	M	A	B	C2	C3	T3S2	T3S3	T3S2R4	OTROS	A	B	C	K'	D	LATITUD	LONGITUD	
T. C. San Luis Potosí - Matehuala	0.00																				
T. Izq. Periférico de San Luis Potosí	9.35	3	1	9952	7.2	73.3	1.8	7.9	1.3	4.8	1.6	1.4	0.7	80.5	1.8	17.7	0.105	0.506	22.203391	-101.026355	
T. Izq. Periférico de San Luis Potosí	9.35	3	2	9721	4.9	74.3	1.8	8.5	1.4	5.0	1.7	1.6	0.8	79.2	1.8	19.0	0.094	0.506	22.203389	-101.026349	
Mexquitic	22.50	1	1	5858	3.9	69.6	2.6	9.0	2.4	7.0	2.0	2.8	0.7	73.5	2.6	23.9	0.115	0.507	22.249686	-101.105779	
Mexquitic	22.50	1	2	6021	4.2	65.5	3.2	10.2	2.7	7.9	2.3	3.2	0.8	69.7	3.2	27.1	0.123	0.507	22.249692	-101.105769	
T. Der. Charcas	30.90	1	1	5341	2.5	67.4	3.2	8.9	3.2	8.1	2.5	3.4	0.8	69.9	3.2	26.9	0.107	0.501	22.310018	-101.158136	
T. Der. Charcas	30.90	1	2	5326	2.5	63.3	3.8	10.1	3.5	9.3	2.5	4.1	0.9	65.8	3.8	30.4	0.103	0.501	22.310032	-101.158156	
Lim. Edos. Term. S. L. P. Ppia. Zac.	55.13																				
Lim. Edos. Term. Zac. Ppia. S. L. P.	89.30																				
T. Der. Salinas	99.00	1	1	3347	0.8	54.7	6.5	8.6	4.7	13.9	3.8	6.4	0.6	55.5	6.5	38.0	0.077	0.513	22.602472	-101.704917	
T. Der. Salinas	99.00	1	2	3179	0.9	50.7	7.0	9.8	5.2	14.6	4.2	6.9	0.7	51.6	7.0	41.4	0.081	0.513	22.602389	-101.704972	
T. Der. Salinas	99.00	3	1	3671	1.9	56.6	5.3	9.6	4.1	13.0	3.4	5.5	0.6	58.5	5.3	36.2	0.084	0.500	22.619583	-101.739833	

ZACATECAS

22 CARR : San Luis Potosí - Ent. Arcinas

CLAVE: 00134

RUTA: MEX-049

AÑO : 2015

LUGAR	ESTACION				CLASIFICACION VEHICULAR EN PORCIENTO														COORDENADAS	
	KM	TE	SC	TDPA	M	A	B	C2	C3	T3S2	T3S3	T3S2R4	OTROS	A	B	C	K'	D	LATITUD	LONGITUD
T. Der. Salinas	99.00	3	2	3672	2.3	51.6	6.4	10.3	4.2	14.2	3.7	6.6	0.7	53.9	6.4	39.7	0.074	0.500	22.619194	-101.739000
Lim. Edos. Term. S. L. P. Ppia. Zac.	122.47																			
T. Izq. Pánfilo Natera	139.00	1	1	3387	0.8	56.6	5.9	8.3	4.4	13.6	3.4	6.3	0.7	57.4	5.9	36.7	0.070	0.503	22.678806	-102.096667
T. Izq. Pánfilo Natera	139.00	1	2	3349	0.6	52.8	6.2	9.5	4.9	14.5	3.8	7.1	0.6	53.4	6.2	40.4	0.079	0.503	22.678778	-102.097639
Ent. Arcinas	162.98	1	1	3617	0.5	58.3	5.6	8.9	4.2	12.4	3.5	5.9	0.7	58.8	5.6	35.6	0.070	0.508	22.719500	-102.322750
Ent. Arcinas	162.98	1	2	3509	0.5	54.9	5.7	9.8	4.4	13.6	3.8	6.6	0.7	55.4	5.7	38.9	0.086	0.508	22.719194	-102.322583

23 CARR : San Luis Potosí - Lagos de Moreno

CLAVE: 00133

RUTA: MEX-070-080

AÑO : 2015

LUGAR	ESTACION				CLASIFICACION VEHICULAR EN PORCIENTO														COORDENADAS	
	KM	TE	SC	TDPA	M	A	B	C2	C3	T3S2	T3S3	T3S2R4	OTROS	A	B	C	K'	D	LATITUD	LONGITUD
San Luis Potosí	0.00	3	1	19518	2.1	92.2	0.3	2.9	0.4	0.7	0.9	0.2	0.3	94.3	0.3	5.4	0.073	0.518	22.133752	-101.031227
San Luis Potosí	0.00	3	2	20966	1.3	92.5	0.3	3.3	0.4	0.7	1.0	0.2	0.3	93.8	0.3	5.9	0.072	0.518	22.133787	-101.031211
X. Periférico de San Luis Potosí	8.41	3	0	10581	2.2	75.8	2.3	6.2	2.9	7.2	1.9	0.5	1.0	78.0	2.3	19.7	0.079	0.504	22.130615	-101.036150
El Tepetate	41.90	1	0	4388	0.8	68.7	3.3	11.1	4.0	7.9	2.7	0.9	0.6	69.5	3.3	27.2	0.077	0.508	22.022742	-101.228492
El Tepetate	41.90	3	0	4721	1.3	67.8	3.2	11.3	4.1	7.8	3.2	0.7	0.6	69.1	3.2	27.7	0.070	0.505	22.006838	-101.250655
Villa de Arriaga	61.90	3	0	3519	1.3	60.3	3.0	11.4	4.6	10.5	4.7	3.2	1.0	61.6	3.0	35.4	0.068	0.509	21.896202	-101.414657
Lim. Edos. Term. S. L. P. Ppia. Zac.	70.23																			
Lim. Edos. Term. Zac. Ppia. Jal.	82.94																			
Ojuelos de Jalisco	83.20	1	0	9024	1.6	60.0	3.5	10.6	3.6	13.9	3.5	2.4	0.9	61.6	3.5	34.9	0.064	0.506	21.875562	-101.572201
Ojuelos de Jalisco	83.20	3	0	5137	3.1	57.4	3.2	8.1	4.1	13.3	4.4	5.5	0.9	60.5	3.2	36.3	0.056	0.511	21.854400	-101.593905
X. C. León - Aguascalientes	146.90	1	1	4573	2.9	59.6	3.9	8.2	4.4	11.1	3.5	5.5	0.9	62.5	3.9	33.6	0.065	0.504	21.375556	-101.894389
X. C. León - Aguascalientes	146.90	1	2	4642	4.3	53.3	4.2	9.8	4.6	13.0	3.9	5.9	1.0	57.6	4.2	38.2	0.063	0.504	21.375556	-101.894389
Lagos de Moreno	150.00																			

24 CARR : Zacatecas - Durango

CLAVE: 00544

RUTA: MEX-045

AÑO : 2015

LUGAR	ESTACION				CLASIFICACION VEHICULAR EN PORCIENTO														COORDENADAS	
	KM	TE	SC	TDPA	M	A	B	C2	C3	T3S2	T3S3	T3S2R4	OTROS	A	B	C	K'	D	LATITUD	LONGITUD
Zacatecas	0.00																			
T. Izq. Guadalajara	6.40	3	1	12357	1.2	79.4	2.3	6.8	2.0	4.2	1.9	1.3	0.9	80.6	2.3	17.1	0.078	0.501	22.783479	-102.626940
T. Izq. Guadalajara	6.40	3	2	12304	1.5	77.4	2.5	7.4	2.2	4.5	2.0	1.5	1.0	78.9	2.5	18.6	0.082	0.501	22.783511	-102.627125
T. Der. Saltillo (T. Morelos)	15.00	3	1	11826	0.9	73.2	3.5	7.1	2.4	6.7	2.2	3.1	0.9	74.1	3.5	22.4	0.075	0.502	22.867654	-102.630072
T. Der. Saltillo (T. Morelos)	15.00	3	2	11931	0.9	70.2	4.0	7.9	2.8	7.3	2.5	3.3	1.1	71.1	4.0	24.9	0.087	0.502	22.864368	-102.649304
Víctor Rosales	28.00	1	1	11433	1.5	73.9	3.1	6.6	2.6	6.1	2.1	3.2	0.9	75.4	3.1	21.5	0.081	0.501	22.929987	-102.685387

ZACATECAS

24 CARR: Zacatecas - Durango

CLAVE: 00544

RUTA: MEX-045

AÑO: 2015

LUGAR	ESTACION				CLASIFICACION VEHICULAR EN PORCIENTO														COORDENADAS	
	KM	TE	SC	TDPA	M	A	B	C2	C3	T3S2	T3S3	T3S2R4	OTROS	A	B	C	K'	D	LATITUD	LONGITUD
Víctor Rosales	28.00	1	2	11499	1.3	71.7	3.2	7.3	2.8	6.8	2.4	3.5	1.0	73.0	3.2	23.8	0.083	0.501	22.929982	-102.685861
T. Der. Facultad de Veterinaria	32.30	1	1	6643	0.9	68.2	5.2	7.6	3.1	8.5	2.7	2.8	1.0	69.1	5.2	25.7	0.090	0.512	22.971213	-102.719395
T. Der. Facultad de Veterinaria	32.30	1	2	6333	0.7	65.8	5.3	8.1	3.4	9.5	2.9	3.2	1.1	66.5	5.3	28.2	0.094	0.512	22.971153	-102.719475
Gral. Enrique Estrada	34.60	3	1	8577	1.4	71.2	5.0	7.6	2.4	6.7	2.3	2.5	0.9	72.6	5.0	22.4	0.080	0.514	23.012464	-102.751762
Gral. Enrique Estrada	34.60	3	2	9078	1.5	68.0	5.3	8.4	2.7	7.9	2.5	2.7	1.0	69.5	5.3	25.2	0.083	0.514	23.012444	-102.752080
Fresnillo	58.50	1	1	7664	1.3	81.0	2.9	7.9	2.0	2.6	1.3	0.5	0.5	82.3	2.9	14.8	0.092	0.505	23.158561	-102.851368
Fresnillo	58.50	1	2	7518	1.4	79.6	3.2	8.5	2.1	2.8	1.4	0.5	0.5	81.0	3.2	15.8	0.086	0.505	23.158469	-102.851466
Ent. La Chicharrona	74.30	1	1	7427	0.5	64.0	5.1	11.1	2.7	9.6	2.9	3.1	1.0	64.5	5.1	30.4	0.073	0.502	23.292872	-102.954563
Ent. La Chicharrona	74.30	1	2	7372	0.6	59.5	5.6	12.2	3.2	10.9	3.3	3.5	1.2	60.1	5.6	34.3	0.077	0.502	23.292320	-102.954496
Ent. La Chicharrona	74.30	3	0	6231	0.6	68.7	5.4	13.9	2.7	4.5	2.5	1.1	0.6	69.3	5.4	25.3	0.073	0.504	23.309736	-102.966124
T. Der. Sain Alto	121.00	3	0	3956	0.7	70.0	4.7	12.4	2.4	5.5	2.2	1.3	0.8	70.7	4.7	24.6	0.075	0.516	23.581788	-103.274314
T. Izq. Sombrerete (2º Acceso)	161.50	3	0	5041	1.7	72.0	3.2	12.4	1.8	5.2	1.8	1.1	0.8	73.7	3.2	23.1	0.086	0.501	23.644936	-103.648551
Lim. Edos. Term. Zac. Ppia. Dgo.	190.08																			
X. C. Súchil - Villa Unión	206.98	1	0	3089	1.1	62.6	7.4	15.3	3.0	5.5	3.6	1.5	0.0	63.7	7.4	28.9	0.062	0.502	23.744902	-103.979532
X. C. Súchil - Villa Unión	206.98	3	0	5485	1.9	74.3	9.1	4.1	2.5	3.0	1.8	1.7	1.6	76.2	9.1	14.7	0.084	0.508	23.743761	-103.994618
T. Izq. Graceros	210.00	1	0	4861	2.1	83.0	2.5	5.6	1.8	1.9	0.9	0.8	1.4	85.1	2.5	12.4	0.069	0.509	23.747350	-104.025686
Amado Nervo	231.51	1	0	4028	1.8	66.6	4.8	14.4	3.0	3.2	2.0	2.0	2.2	68.4	4.8	26.8	0.070	0.501	23.838287	-104.178113
Amado Nervo	231.51	3	0	5118	8.6	66.9	6.5	12.2	2.0	2.0	0.7	0.5	0.6	75.5	6.5	18.0	0.075	0.533	23.850646	-104.177297
Nombre de Dios	236.80	1	0	5143	1.7	74.5	3.8	14.2	1.3	2.6	0.8	0.7	0.4	76.2	3.8	20.0	0.062	0.505	23.844171	-104.221714
Nombre de Dios	236.80	3	0	5641	1.7	90.0	0.3	5.4	0.7	0.6	0.2	0.1	1.0	91.7	0.3	8.0	0.073	0.525	23.855127	-104.252693
T. Der. Constancia	240.60	3	0	5015	1.0	79.4	6.6	6.8	1.9	2.3	1.0	0.7	0.3	80.4	6.6	13.0	0.082	0.516	23.871646	-104.267156
T. Der. Tuitán	250.80	3	0	4849	0.6	85.0	1.5	4.2	2.0	2.6	1.8	1.2	1.1	85.6	1.5	12.9	0.077	0.509	23.923353	-104.337282
T. Der. Independencia y Libertad	261.70	1	0	6077	0.8	71.8	3.4	10.0	3.2	4.4	3.0	1.8	1.6	72.6	3.4	24.0	0.069	0.505	23.995468	-104.375433
T. Der. Independencia y Libertad	261.70	3	1	2928	0.3	81.1	5.4	5.7	2.0	3.2	1.1	0.9	0.3	81.4	5.4	13.2	0.106	0.503	24.012795	-104.395703
T. Der. Independencia y Libertad	261.70	3	2	2898	0.5	81.1	5.2	5.8	1.7	2.8	1.6	1.0	0.3	81.6	5.2	13.2	0.109	0.503	24.012795	-104.395703
T. Izq. Parras de La Fuente	276.60	1	1	4050	0.4	82.9	4.4	5.3	1.6	3.0	1.1	0.9	0.4	83.3	4.4	12.3	0.094	0.503	24.020016	-104.514044
T. Izq. Parras de La Fuente	276.60	1	2	4101	1.9	79.0	6.5	8.1	2.3	0.9	0.5	0.2	0.6	80.9	6.5	12.6	0.085	0.503	24.020016	-104.514044
T. Izq. Parras de La Fuente	276.60	3	1	3796	0.3	85.8	3.9	5.0	1.9	2.1	0.4	0.4	0.2	86.1	3.9	10.0	0.087	0.507	24.021161	-104.525642
T. Izq. Parras de La Fuente	276.60	3	2	3689	0.5	86.0	4.4	4.9	1.7	1.7	0.3	0.3	0.2	86.5	4.4	9.1	0.091	0.507	24.021161	-104.525642
Durango	287.30	1	1	4627	0.4	86.8	1.5	7.8	1.8	1.0	0.2	0.1	0.4	87.2	1.5	11.3	0.094	0.507	24.026507	-104.574964
Durango	287.30	1	2	4767	1.7	85.3	2.7	7.8	1.4	0.6	0.1	0.1	0.3	87.0	2.7	10.3	0.090	0.507	24.026507	-104.574964

ZACATECAS

25 CARR: Cuauhtémoc - Osiris (Cuota)

CLAVE: 32558

RUTA: MEX-045D

AÑO: 2015

LUGAR	ESTACION				CLASIFICACION VEHICULAR EN PORCIENTO														COORDENADAS	
	KM	TE	SC	TDPA	M	A	B	C2	C3	T3S2	T3S3	T3S2R4	OTROS	A	B	C	K'	D	LATITUD	LONGITUD
T. C. Cosío - Guadalupe	0.00	3	0	7010	0.5	59.2	7.2	7.3	3.0	12.1	3.6	6.1	1.0	59.7	7.2	33.1	0.084	0.509	22.491389	-102.360667
Caseta de Cobro Zacatecas	27.70	2	0	7691	0.2	54.5	6.7	4.9	5.1	15.9	3.4	8.2	1.1	54.7	6.7	38.6	0.067	0.500	22.703546	-102.449278
T. C. Aguascalientes - Zacatecas	32.00	1	0	7979	0.4	60.0	6.4	5.6	5.1	12.3	3.0	6.3	0.9	60.4	6.4	33.2	0.073	0.509	22.745944	-102.453667

26 CARR: Libramiento de Fresnillo (Cuota)

CLAVE: 32581

RUTA: MEX-045D

AÑO: 2015

LUGAR	ESTACION				CLASIFICACION VEHICULAR EN PORCIENTO														COORDENADAS	
	KM	TE	SC	TDPA	M	A	B	C2	C3	T3S2	T3S3	T3S2R4	OTROS	A	B	C	K'	D	LATITUD	LONGITUD
T. C. Zacatecas - Durango	49.80	3	1	2625	0.8	55.4	6.2	8.3	2.8	16.1	3.0	6.3	1.1	56.2	6.2	37.6	0.091	0.519	23.122187	-102.807869
T. C. Zacatecas - Durango	49.80	3	2	2835	0.7	49.7	7.0	9.5	3.0	18.1	3.4	7.4	1.2	50.4	7.0	42.6	0.110	0.519	23.121775	-102.808046
Caseta de Cobro Morfín Chávez	57.05	2	1	2795	0.3	55.1	4.1	4.3	4.2	18.8	3.5	8.3	1.4	55.4	4.1	40.5	0.088	0.500	23.177939	-102.828511
Caseta de Cobro Morfín Chávez	57.05	2	2	2795	0.3	55.1	4.1	4.3	4.2	18.8	3.5	8.3	1.4	55.4	4.1	40.5	0.088	0.500	23.177939	-102.828511
T. Der. Plateros	61.70	1	1	2577	1.2	52.6	5.5	10.6	2.8	15.9	3.6	6.8	1.0	53.8	5.5	40.7	0.091	0.527	23.199413	-102.837258
T. Der. Plateros	61.70	1	2	2872	0.3	48.1	6.4	11.5	3.4	18.5	3.8	7.0	1.0	48.4	6.4	45.2	0.119	0.527	23.199637	-102.837675
T. Der. Plateros	61.70	3	1	2639	0.5	52.1	6.0	10.3	2.7	17.7	3.4	6.4	0.9	52.6	6.0	41.4	0.126	0.517	23.211240	-102.855469
T. Der. Plateros	61.70	3	2	2464	0.5	48.4	6.4	10.8	3.2	18.5	3.8	7.3	1.1	48.9	6.4	44.7	0.090	0.517	23.210895	-102.855650
T. C. Zacatecas - Durango	69.85	1	1	2530	0.4	57.3	4.5	6.3	3.1	16.1	4.2	6.8	1.3	57.7	4.5	37.8	0.093	0.520	23.238023	-102.913559
T. C. Zacatecas - Durango	69.85	1	2	2746	0.4	52.2	5.3	7.0	3.2	18.3	4.8	7.4	1.4	52.6	5.3	42.1	0.110	0.520	23.237873	-102.913808

27 CARR: Libramiento de Víctor Rosales (Cuota)

CLAVE: 32015

RUTA: MEX-045D

AÑO: 2015

LUGAR	ESTACION				CLASIFICACION VEHICULAR EN PORCIENTO														COORDENADAS	
	KM	TE	SC	TDPA	M	A	B	C2	C3	T3S2	T3S3	T3S2R4	OTROS	A	B	C	K'	D	LATITUD	LONGITUD
T. C. Zacatecas - Durango	0.00	3	1	6434	1.0	66.4	5.3	6.5	3.0	9.7	2.7	4.1	1.3	67.4	5.3	27.3	0.073	0.514	22.936330	-102.688650
T. C. Zacatecas - Durango	0.00	3	2	6812	1.1	62.6	5.8	7.8	3.3	10.4	3.1	4.4	1.5	63.7	5.8	30.5	0.085	0.514	22.936322	-102.688886
Caseta de Cobro Calera Víctor Rosales	0.50	2	1	6987	0.2	69.9	4.8	3.4	3.8	9.9	2.4	4.8	0.8	70.1	4.8	25.1	0.085	0.500	22.941820	-102.689936
Caseta de Cobro Calera Víctor Rosales	0.50	2	2	6987	0.2	69.9	4.8	3.4	3.8	9.9	2.4	4.8	0.8	70.1	4.8	25.1	0.085	0.500	22.941820	-102.689936
T. C. Calera de Víctor Rosales - Santiagoullo	2.50	3	1	6518	1.0	71.8	4.0	5.5	2.3	7.9	2.3	4.3	0.9	72.8	4.0	23.2	0.079	0.510	22.955557	-102.692583
T. C. Calera de Víctor Rosales - Santiagoullo	2.50	3	2	6263	1.2	68.6	4.1	6.2	2.6	9.2	2.6	4.4	1.1	69.8	4.1	26.1	0.097	0.510	22.955554	-102.692771
T. C. Zacatecas - Durango	12.20	1	1	6599	0.9	67.7	5.7	7.8	3.0	8.6	2.5	2.8	1.0	68.6	5.7	25.7	0.090	0.509	23.006276	-102.746001
T. C. Zacatecas - Durango	12.20	1	2	6364	1.0	65.1	6.0	8.1	3.3	9.6	2.6	3.1	1.2	66.1	6.0	27.9	0.096	0.509	23.005438	-102.743877

ZACATECAS

28 CARR : Calera de Víctor Rosales - Santiagoullo

CLAVE: 32016

RUTA: ZAC-016

AÑO: 2015

LUGAR	ESTACION				CLASIFICACION VEHICULAR EN PORCIENTO														COORDENADAS	
	KM	TE	SC	TDPA	M	A	B	C2	C3	T3S2	T3S3	T3S2R4	OTROS	A	B	C	K'	D	LATITUD	LONGITUD
Calera de Víctor Rosales	0.00	3	0	2865	7.7	70.6	2.4	14.1	1.6	2.3	0.9	0.1	0.3	78.3	2.4	19.3	0.096	0.507	22.958264	-102.684391
T. C. Fresnillo - Ent. Bañón	23.60																			

29 CARR : Cieneguillas - Zacatecas

CLAVE: 32579

RUTA: ZAC

AÑO: 2015

LUGAR	ESTACION				CLASIFICACION VEHICULAR EN PORCIENTO														COORDENADAS	
	KM	TE	SC	TDPA	M	A	B	C2	C3	T3S2	T3S3	T3S2R4	OTROS	A	B	C	K'	D	LATITUD	LONGITUD
T. C. Guadalajara - Zacatecas	0.00	3	0	2602	2.3	75.0	0.3	18.0	2.0	1.5	0.5	0.0	0.4	77.3	0.3	22.4	0.073	0.537	22.759556	-102.653333
X. C. Libramiento de Guadalupe - Zacatecas	7.70	3	1	10684	2.3	91.3	0.1	3.7	0.1	0.7	1.5	0.1	0.2	93.6	0.1	6.3	0.067	0.523	22.756889	-102.589944
X. C. Libramiento de Guadalupe - Zacatecas	7.70	3	2	11693	2.3	90.7	0.1	4.1	0.1	0.8	1.6	0.1	0.2	93.0	0.1	6.9	0.064	0.523	22.756833	-102.590028
Zacatecas	9.33																			

30 CARR : Corral de Piedras - Tlaltenango

CLAVE: 32579

RUTA: ZAC

AÑO: 2015

LUGAR	ESTACION				CLASIFICACION VEHICULAR EN PORCIENTO														COORDENADAS	
	KM	TE	SC	TDPA	M	A	B	C2	C3	T3S2	T3S3	T3S2R4	OTROS	A	B	C	K'	D	LATITUD	LONGITUD
T. C. Guadalajara - Zacatecas	0.00	3	0	545	1.6	83.2	1.1	11.0	1.3	1.3	0.4	0.0	0.1	84.8	1.1	14.1	0.114	0.501	21.621083	-103.048719
Tlaltenango	57.10	1	0	1272	13.0	77.9	0.7	6.2	0.6	1.3	0.2	0.0	0.1	90.9	0.7	8.4	0.099	0.504	21.768077	-103.281648

31 CARR : Ent. Ojo Caliente - Ent. Ojuelos de Jalisco

CLAVE: 00126

RUTA: ZAC

AÑO: 2015

LUGAR	ESTACION				CLASIFICACION VEHICULAR EN PORCIENTO														COORDENADAS	
	KM	TE	SC	TDPA	M	A	B	C2	C3	T3S2	T3S3	T3S2R4	OTROS	A	B	C	K'	D	LATITUD	LONGITUD
T. C. Aguascalientes - Zacatecas	0.00	3	0	2760	2.2	79.5	2.0	13.0	0.6	2.1	0.5	0.0	0.1	81.7	2.0	16.3	0.094	0.500	22.601583	-102.246083
Gral. Pánfilo Natera	16.00	3	0	1736	4.0	82.8	0.3	10.7	0.8	1.3	0.1	0.0	0.0	86.8	0.3	12.9	0.092	0.503	22.656861	-102.106028
Lim. Edos. Term. Zac. Ppia. Jal.	134.00																			
T. C. San Luis Potosí - Lagos de Moreno	137.00																			

32 CARR : Fresnillo - Ent. Bañón

CLAVE: 32070

RUTA: ZAC

AÑO: 2015

LUGAR	ESTACION				CLASIFICACION VEHICULAR EN PORCIENTO														COORDENADAS	
	KM	TE	SC	TDPA	M	A	B	C2	C3	T3S2	T3S3	T3S2R4	OTROS	A	B	C	K'	D	LATITUD	LONGITUD
T. C. Zacatecas - Durango	0.00																			
X. Lib. Fresnillo (Cuota)	2.40	3	1	4151	4.1	83.4	0.5	9.6	1.3	0.6	0.3	0.1	0.1	87.5	0.5	12.0	0.091	0.501	23.178410	-102.821491
X. Lib. Fresnillo (Cuota)	2.40	3	2	4167	4.6	81.3	0.6	11.0	1.4	0.6	0.3	0.1	0.1	85.9	0.6	13.5	0.082	0.501	23.178614	-102.821571

ZACATECAS

32 CARR: Fresnillo - Ent. Bañón

CLAVE: 32070

RUTA: ZAC

AÑO: 2015

LUGAR	ESTACION				CLASIFICACION VEHICULAR EN PORCIENTO														COORDENADAS	
	KM	TE	SC	TDPA	M	A	B	C2	C3	T3S2	T3S3	T3S2R4	OTROS	A	B	C	K'	D	LATITUD	LONGITUD
T. Der. Víctor Rosales	23.80	1	0	1853	4.4	70.5	1.8	13.8	4.9	3.1	1.1	0.2	0.2	74.9	1.8	23.3	0.094	0.502	23.143873	-102.655981
T. Der. Víctor Rosales	23.80	3	0	1514	4.1	67.0	2.2	17.3	5.0	2.6	1.1	0.4	0.3	71.1	2.2	26.7	0.086	0.501	23.144295	-102.643472
González Ortega Bañón	45.80	1	0	1540	4.7	67.0	2.1	16.9	5.1	2.7	1.1	0.3	0.1	71.7	2.1	26.2	0.088	0.511	23.176627	-102.481276
T. C. Ent. Morelos - Saltillo	49.00	1	0	1986	5.0	72.0	2.4	11.8	4.8	2.6	1.0	0.2	0.2	77.0	2.4	20.6	0.094	0.500	23.159599	-102.430309

33 CARR: Fresnillo - Plateros

CLAVE: 32022

RUTA: ZAC-022

AÑO: 2015

LUGAR	ESTACION				CLASIFICACION VEHICULAR EN PORCIENTO														COORDENADAS	
	KM	TE	SC	TDPA	M	A	B	C2	C3	T3S2	T3S3	T3S2R4	OTROS	A	B	C	K'	D	LATITUD	LONGITUD
Fresnillo (Central)	0.00	3	1	4298	5.4	84.7	2.8	5.5	0.6	0.5	0.4	0.0	0.1	90.1	2.8	7.1	0.073	0.510	23.203178	-102.855351
Fresnillo (Lateral)	0.00	3	1	89	34.2	57.6	0.4	6.0	0.2	0.4	0.6	0.2	0.4	91.8	0.4	7.8	0.169	0.539	23.203173	-102.855383
Fresnillo (Lateral)	0.00	3	2	104	39.6	53.9	0.2	4.9	0.2	0.2	0.5	0.0	0.5	93.5	0.2	6.3	0.183	0.539	23.203173	-102.855383
Fresnillo (Central)	0.00	3	2	4478	6.1	83.3	3.1	5.8	0.6	0.6	0.4	0.0	0.1	89.4	3.1	7.5	0.077	0.510	23.203263	-102.855638
Plateros	4.90																			

34 CARR: Ramal a Loreto

CLAVE: 32067

RUTA: ZAC

AÑO: 2015

LUGAR	ESTACION				CLASIFICACION VEHICULAR EN PORCIENTO														COORDENADAS	
	KM	TE	SC	TDPA	M	A	B	C2	C3	T3S2	T3S3	T3S2R4	OTROS	A	B	C	K'	D	LATITUD	LONGITUD
T. C. Providencia - Luis Moya	0.00	3	0	1752	1.8	78.8	1.3	12.1	1.8	2.8	1.0	0.3	0.1	80.6	1.3	18.1	0.098	0.504	22.390778	-102.238833
Loreto	32.30																			

35 CARR: Ramal a Nochistlán

CLAVE: 32545

RUTA: ZAC

AÑO: 2015

LUGAR	ESTACION				CLASIFICACION VEHICULAR EN PORCIENTO														COORDENADAS	
	KM	TE	SC	TDPA	M	A	B	C2	C3	T3S2	T3S3	T3S2R4	OTROS	A	B	C	K'	D	LATITUD	LONGITUD
T. C. Tepatitlán de Morelos - Jaralillo	0.00	3	1	2336	3.2	85.4	1.8	7.5	1.0	0.7	0.3	0.0	0.1	88.6	1.8	9.6	0.083	0.504	21.355028	-102.792500
T. C. Tepatitlán de Morelos - Jaralillo	0.00	3	2	2295	3.6	84.0	2.1	7.8	1.2	0.9	0.3	0.0	0.1	87.6	2.1	10.3	0.092	0.504	21.355028	-102.792500
Nochistlán	5.70	1	1	2957	4.7	84.5	1.4	7.2	1.0	0.8	0.3	0.0	0.1	89.2	1.4	9.4	0.071	0.503	21.356278	-102.820694
Nochistlán	5.70	1	2	2988	4.2	83.4	1.5	8.7	1.0	0.8	0.3	0.0	0.1	87.6	1.5	10.9	0.068	0.503	21.356278	-102.820694

ZACATECAS

36 CARR: Ramal a San Pedro Piedra Gorda

CLAVE: 00553

RUTA: ZAC-AGS

AÑO: 2015

LUGAR	ESTACION				CLASIFICACION VEHICULAR EN PORCIENTO													COORDENADAS		
	KM	TE	SC	TDPA	M	A	B	C2	C3	T3S2	T3S3	T3S2R4	OTROS	A	B	C	K'	D	LATITUD	LONGITUD
T. C. Aguascalientes - Zacatecas	0.00	3	0	1390	2.9	80.5	0.5	13.9	0.7	1.2	0.3	0.0	0.0	83.4	0.5	16.1	0.099	0.507	22.465222	-102.263972
Lim. Edos. Term. Zac. Ppia. Ags.	5.00																			
Lim. Edos. Term. Ags. Ppia. Zac.	8.00																			
San Pedro Piedra Gorda	9.00	1	0	1907	5.8	80.9	1.0	8.9	0.6	2.1	0.5	0.1	0.1	86.7	1.0	12.3	0.090	0.505	22.452917	-102.335389

37 CARR: San Gil - Jarillas

CLAVE: 00527

RUTA: AGS-012-ZAC

AÑO: 2015

LUGAR	ESTACION				CLASIFICACION VEHICULAR EN PORCIENTO													COORDENADAS		
	KM	TE	SC	TDPA	M	A	B	C2	C3	T3S2	T3S3	T3S2R4	OTROS	A	B	C	K'	D	LATITUD	LONGITUD
T. C. Rincón de Romos - Ciénega Grande	0.00	3	0	2031	8.8	71.5	1.2	14.9	1.9	1.3	0.3	0.0	0.1	80.3	1.2	18.5	0.120	0.508	22.215790	-102.022371
Guadalupe de Atlas	5.40	1	0	2173	13.6	68.5	0.9	13.7	1.5	1.4	0.3	0.0	0.1	82.1	0.9	17.0	0.108	0.505	22.264315	-102.027918
Lim. Edos. Term. Ags. Ppia. Zac.	10.00																			
Lim. Edos. Term. Zac. Ppia. Ags.	11.30																			
Jarillas	12.00																			

38 CARR: San Rafael - Villa García

CLAVE: 00525

RUTA: AGS-ZAC

AÑO: 2015

LUGAR	ESTACION				CLASIFICACION VEHICULAR EN PORCIENTO													COORDENADAS		
	KM	TE	SC	TDPA	M	A	B	C2	C3	T3S2	T3S3	T3S2R4	OTROS	A	B	C	K'	D	LATITUD	LONGITUD
T. C. Ent. La Calavera - Ent. San Pedro	0.00	3	0	2315	7.2	80.3	0.6	10.0	0.6	1.2	0.1	0.0	0.0	87.5	0.6	11.9	0.079	0.501	22.116986	-102.010517
Lim. Edos. Term. Ags. Ppia. Zac.	3.00																			
Villa García	10.00	1	0	3634	10.5	78.5	0.7	7.9	0.1	2.0	0.2	0.0	0.1	89.0	0.7	10.3	0.070	0.507	22.144446	-101.960391

39 CARR: Santa Mónica - Pozo de Gamboa

CLAVE: 32568

RUTA: ZAC

AÑO: 2015

LUGAR	ESTACION				CLASIFICACION VEHICULAR EN PORCIENTO													COORDENADAS		
	KM	TE	SC	TDPA	M	A	B	C2	C3	T3S2	T3S3	T3S2R4	OTROS	A	B	C	K'	D	LATITUD	LONGITUD
T. C. Aguascalientes - Zacatecas	0.00	3	0	5996	1.2	80.3	0.8	10.2	2.0	4.1	0.8	0.2	0.4	81.5	0.8	17.7	0.072	0.504	22.759889	-102.422444
Tacoaleche	7.60	3	0	3152	3.9	73.7	1.7	13.1	3.3	3.1	0.8	0.3	0.1	77.6	1.7	20.7	0.081	0.507	22.830472	-102.398472
Pozo de Gamboa	34.50																			

ZACATECAS

40 CARR: Sombrerete - González Ortega

CLAVE: 32568

RUTA: ZAC

AÑO: 2015

LUGAR	ESTACION				CLASIFICACION VEHICULAR EN PORCIENTO													COORDENADAS		
	KM	TE	SC	TDPA	M	A	B	C2	C3	T3S2	T3S3	T3S2R4	OTROS	A	B	C	K'	D	LATITUD	LONGITUD
T. C. Zacatecas - Durango	0.00	3	0	882	1.9	74.2	1.0	19.6	1.0	0.9	1.0	0.3	0.1	76.1	1.0	22.9	0.098	0.522	23.659471	-103.543547
González Ortega	38.70	1	0	824	3.6	75.0	1.1	16.7	1.6	1.1	0.7	0.1	0.1	78.6	1.1	20.3	0.107	0.505	23.941351	-103.461401

41 CARR: Libramiento Noreste de Zacatecas (Cuota)

CLAVE: 32582

RUTA: ZAC-D

AÑO: 2015

LUGAR	ESTACION				CLASIFICACION VEHICULAR EN PORCIENTO													COORDENADAS		
	KM	TE	SC	TDPA	M	A	B	C2	C3	T3S2	T3S3	T3S2R4	OTROS	A	B	C	K'	D	LATITUD	LONGITUD
T. C. Aguascalientes - Zacatecas	0.00	3	0	5154	0.5	47.1	7.1	7.5	4.1	19.0	4.6	8.7	1.4	47.6	7.1	45.3	0.082	0.509	22.756083	-102.458722
T. C. Ent. Morelos - Saltillo	21.00	1	0	4721	0.5	50.1	7.0	5.9	4.2	17.1	3.0	10.6	1.6	50.6	7.0	42.4	0.084	0.502	22.852916	-102.618718

42 CARR: Guadalupe - Cosío

CLAVE: 00579

RUTA: MEX-ZAC

AÑO: 2015

LUGAR	ESTACION				CLASIFICACION VEHICULAR EN PORCIENTO													COORDENADAS		
	KM	TE	SC	TDPA	M	A	B	C2	C3	T3S2	T3S3	T3S2R4	OTROS	A	B	C	K'	D	LATITUD	LONGITUD
T. C. Aguascalientes - Zacatecas	0.00	3	0	9049	0.5	77.8	6.6	7.1	2.2	2.9	1.3	0.7	0.9	78.3	6.6	15.1	0.086	0.514	22.393000	-102.305972
Lim. Edos. Term. Ags. Ppia. Zac.	6.79																			
T. C. Ent. Cuauhtémoc - Ent. Osiris Cuota	12.96	3	0	1086	0.6	87.6	1.5	8.6	0.6	0.9	0.2	0.0	0.0	88.2	1.5	10.3	0.128	0.504	22.485389	-102.360833
T. C. Libramiento de Guadalupe - Zacatecas (Baja)	58.93	1	1	1708	3.4	81.9	4.8	8.1	1.0	0.5	0.2	0.0	0.1	85.3	4.8	9.9	0.105	0.516	22.735139	-102.495750
T. C. Libramiento de Guadalupe - Zacatecas (Alta)	58.93	1	1	4957	1.8	90.0	0.1	5.4	0.6	1.0	0.8	0.1	0.2	91.8	0.1	8.1	0.106	0.512	22.735083	-102.495889
T. C. Libramiento de Guadalupe - Zacatecas (Alta)	58.93	1	2	5203	1.8	89.6	0.1	5.7	0.6	1.1	0.8	0.1	0.2	91.4	0.1	8.5	0.102	0.512	22.734833	-102.495889
T. C. Libramiento de Guadalupe - Zacatecas (Baja)	58.93	1	2	1599	3.9	80.7	4.8	8.6	1.1	0.5	0.3	0.0	0.1	84.6	4.8	10.6	0.141	0.516	22.734806	-102.496028

43 CARR: Tepatitlán - Jaralillo

CLAVE: 00146

RUTA: MEX-JAL-ZAC

AÑO: 2015

LUGAR	ESTACION				CLASIFICACION VEHICULAR EN PORCIENTO													COORDENADAS		
	KM	TE	SC	TDPA	M	A	B	C2	C3	T3S2	T3S3	T3S2R4	OTROS	A	B	C	K'	D	LATITUD	LONGITUD
T. C. Lagos de Moreno - Zapotlanejo	0.00	3	0	8126	2.5	75.5	2.0	9.0	3.2	4.3	1.8	0.9	0.8	78.0	2.0	20.0	0.077	0.515	20.795278	-102.791750
T. Izq. Mezcala	22.40	3	0	1342	0.9	81.4	2.0	11.2	2.2	1.4	0.7	0.0	0.2	82.3	2.0	15.7	0.092	0.503	20.962917	-102.816528
Yahualica de González Gallo	57.40	3	1	1590	10.6	82.8	0.9	4.0	0.7	0.6	0.3	0.0	0.1	93.4	0.9	5.7	0.081	0.512	21.196194	-102.884750
Yahualica de González Gallo	57.40	3	2	1514	8.7	84.3	1.0	4.1	0.8	0.7	0.3	0.0	0.1	93.0	1.0	6.0	0.081	0.512	21.196194	-102.884750
T. Der. Mexicacán	72.45	3	0	1206	1.2	83.3	0.5	10.3	1.8	1.8	0.7	0.0	0.4	84.5	0.5	15.0	0.083	0.511	21.254667	-102.802667
Lim. Edos. Term. Jal. Ppia. Zac.	83.50																			
Lim. Edos. Term. Zac. Ppia. Jal.	106.00																			
Teocaltiche	111.00	1	0	3571	1.6	84.1	2.1	8.0	1.2	2.1	0.7	0.0	0.2	85.7	2.1	12.2	0.073	0.503	21.425778	-102.590167
Teocaltiche	111.00	3	0	3498	1.9	85.9	0.6	7.3	1.6	1.1	1.2	0.1	0.3	87.8	0.6	11.6	0.076	0.538	21.455111	-102.555833

ZACATECAS

43 CARR: Tepatlán - Jaralillo

CLAVE: 00146

RUTA: MEX-JAL-ZAC

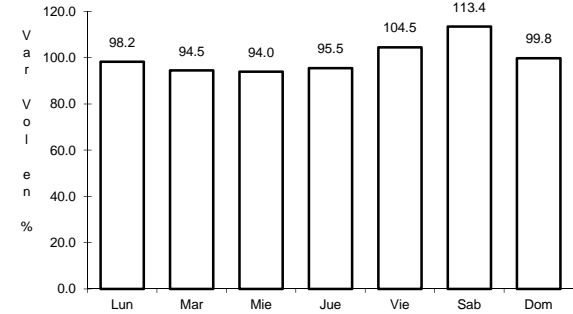
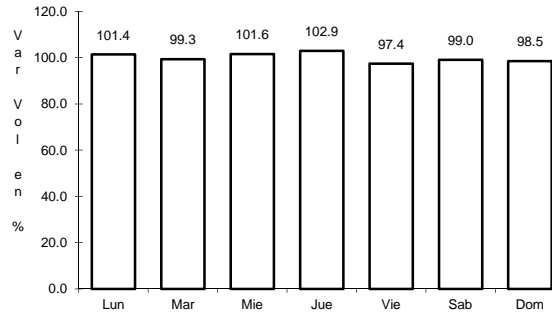
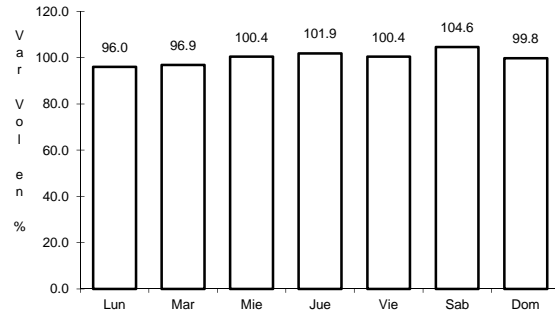
AÑO: 2015

L U G A R	E S T A C I O N				C L A S I F I C A C I O N V E H I C U L A R E N P O R C I E N T O														C O O R D E N A D A S	
	KM	TE	SC	TDPA	M	A	B	C2	C3	T3S2	T3S3	T3S2R4	OTROS	A	B	C	K'	D	LATITUD	LONGITUD
T. C. León - Aguascalientes	157.00	1	0	2947	2.0	80.2	2.0	8.0	2.5	3.0	1.4	0.1	0.8	82.2	2.0	15.8	0.075	0.513	21.643333	-102.278417

1 CARR: Aguascalientes - Jalpa

CLAVE: 00095

RUTA: MEX-070



Km: 0.00 Tipo: 3 Sent: 1

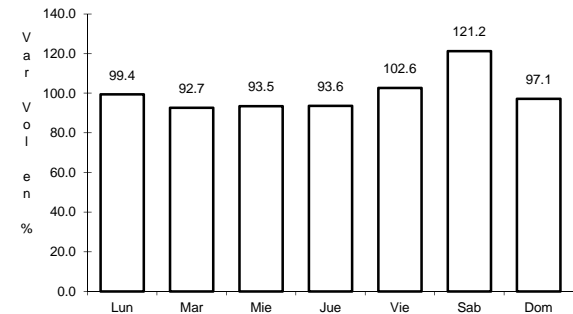
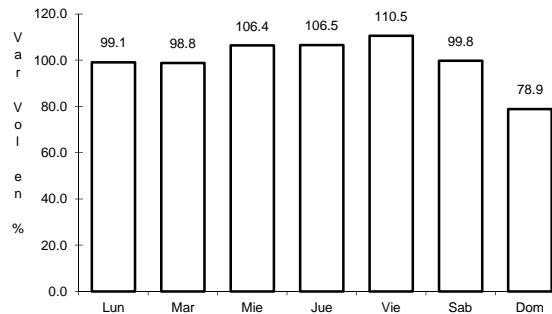
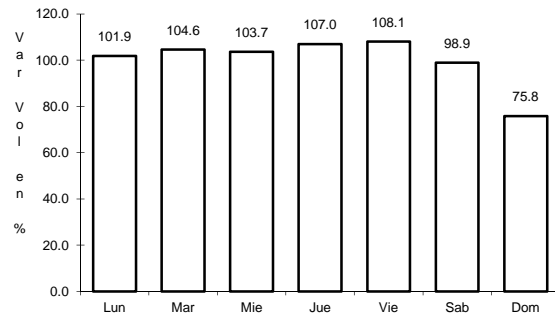
Km: 0.00 Tipo: 3 Sent: 2

Km: 91.10 Tipo: 1 Sent: 0

2 CARR: Aguascalientes - Zacatecas

CLAVE: 00524

RUTA: MEX-045



Km: 6.00 Tipo: 1 Sent: 1

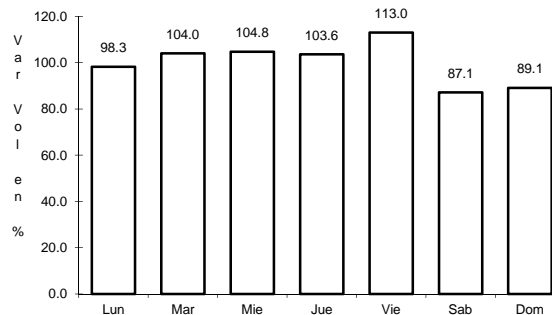
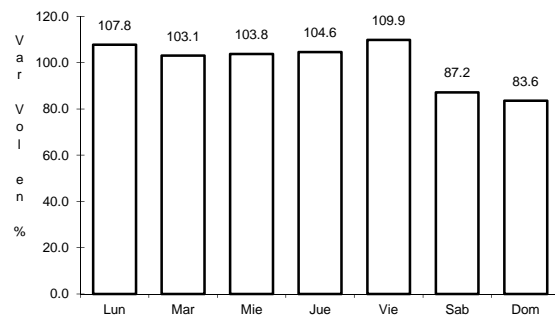
Km: 6.00 Tipo: 1 Sent: 2

Km: 40.90 Tipo: 3 Sent: 0

3 CARR: Blvd. Guadalupe - Zacatecas - La Escondida

CLAVE: 00544

RUTA: MEX-045



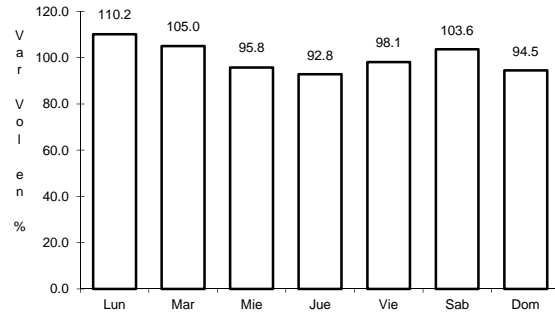
Km: 14.50 Tipo: 1 Sent: 1

Km: 14.50 Tipo: 1 Sent: 2

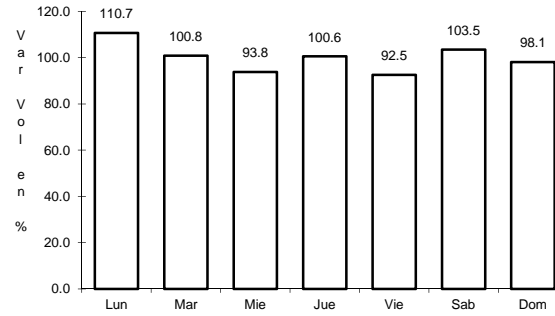
4 CARR: Carbonera - T. C. (Ent. Morelos - Saltillo)

CLAVE: 00218

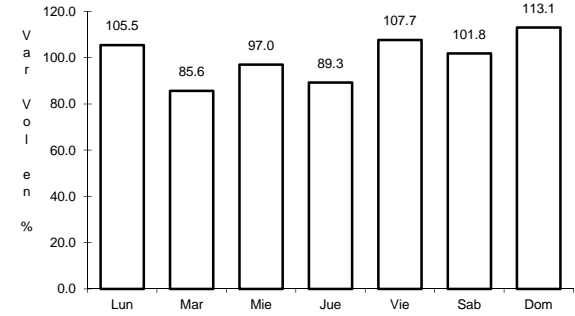
RUTA: MEX-062



Km: 0.00 Tipo: 3 Sent: 0



Km: 18.00 Tipo: 1 Sent: 0

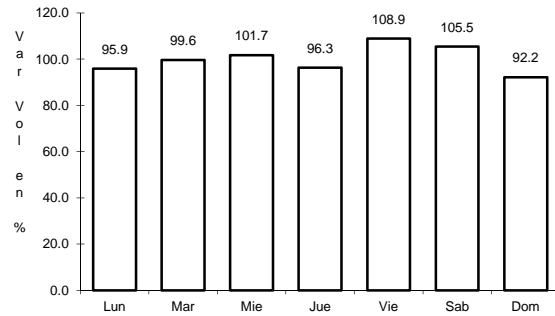


Km: 112.00 Tipo: 1 Sent: 0

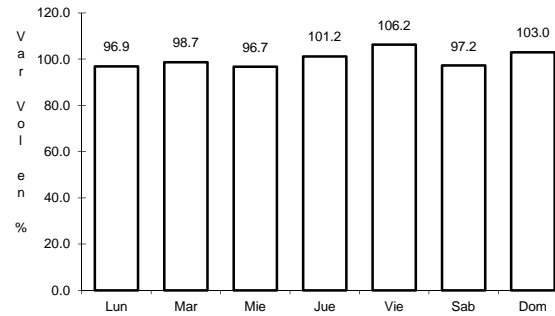
5 CARR: Ent. La Chicharrona - Cuencamé

CLAVE: 00152

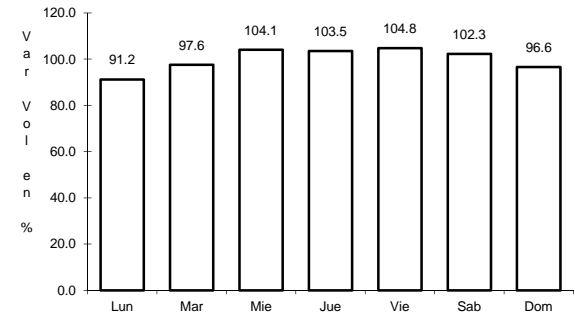
RUTA: MEX-049



Km: 0.00 Tipo: 3 Sent: 1



Km: 0.00 Tipo: 3 Sent: 2

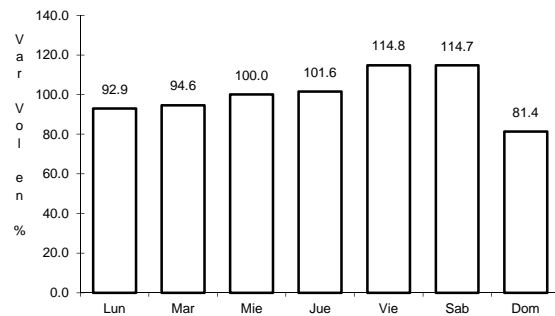


Km: 124.50 Tipo: 1 Sent: 0

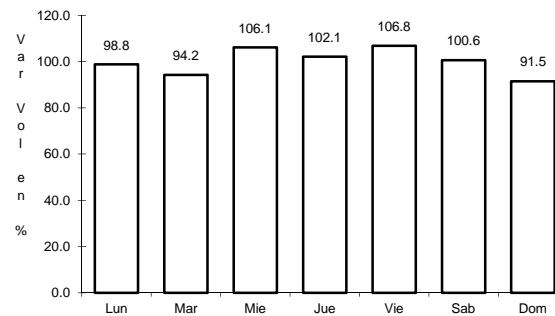
6 CARR: Ent. Morelos - Ent. Noria de Gringos

CLAVE: 00544

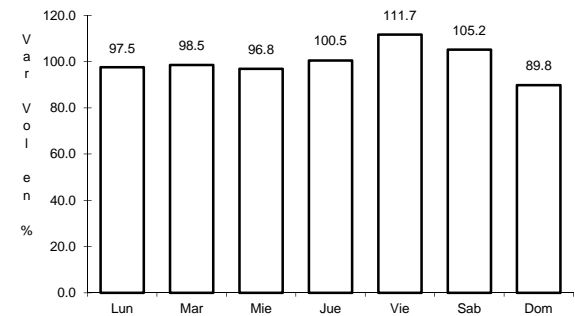
RUTA: MEX-045



Km: 0.50 Tipo: 1 Sent: 1



Km: 0.50 Tipo: 1 Sent: 2

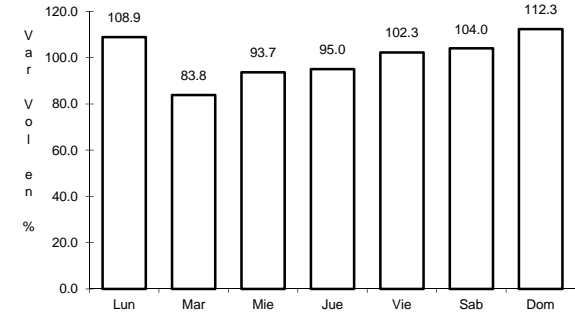
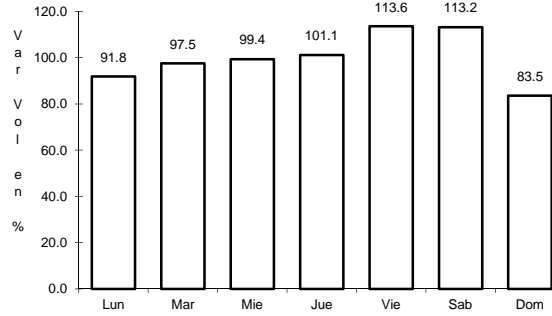
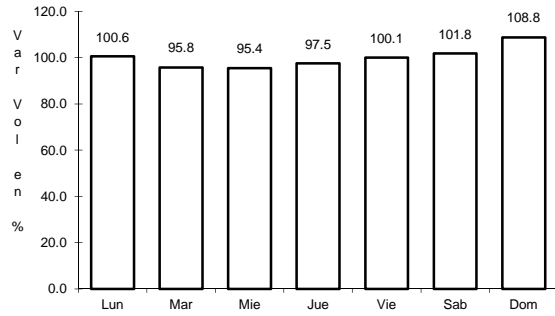


Km: 0.50 Tipo: 3 Sent: 0

7 CARR: Ent. Morelos - Saltillo

CLAVE: 00149

RUTA: MEX-054



Km: 0.00 Tipo: 3 Sent: 1

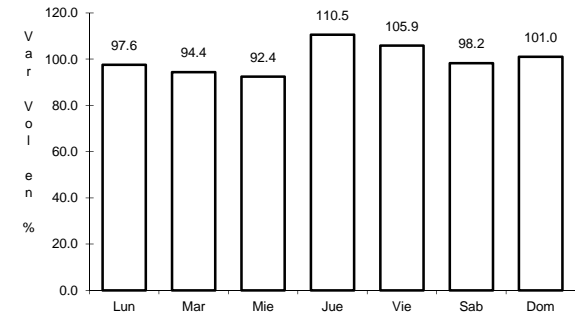
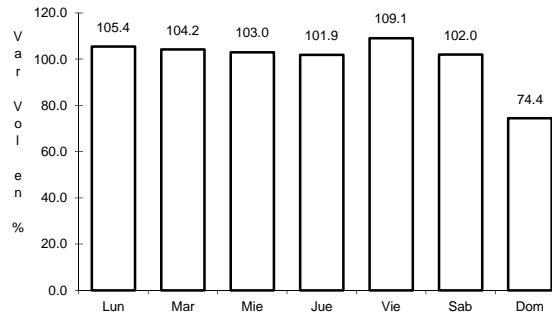
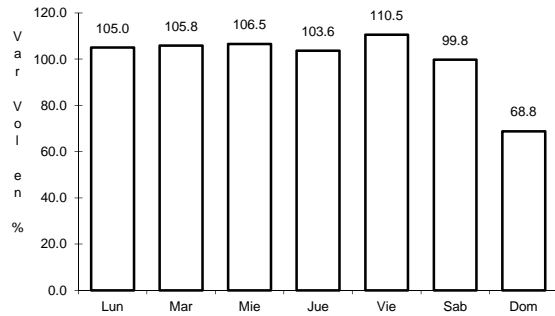
Km: 0.00 Tipo: 3 Sent: 2

Km: 333.00 Tipo: 3 Sent: 0

8 CARR: Ent. Rivier - San Marcos

CLAVE: 00285

RUTA: MEX-066



Km: 0.00 Tipo: 3 Sent: 1

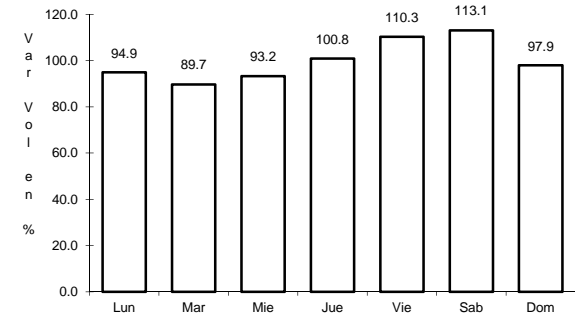
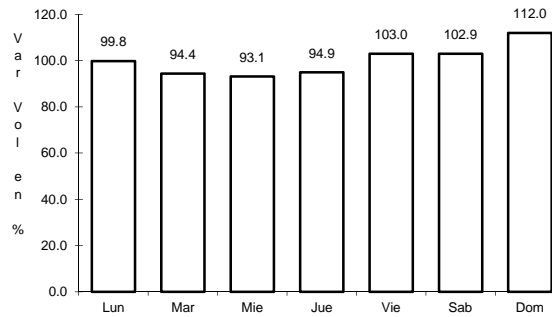
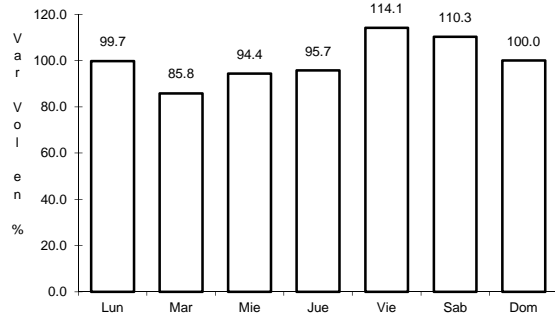
Km: 0.00 Tipo: 3 Sent: 2

Km: 56.00 Tipo: 1 Sent: 0

9 CARR: Ent. Tesistán - Ent. Malpaso

CLAVE: 00584

RUTA: MEX-023



Km: 54.00 Tipo: 1 Sent: 0

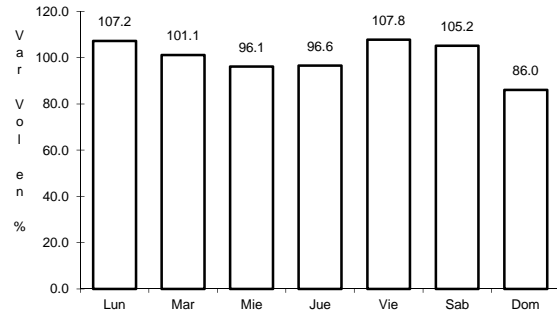
Km: 275.00 Tipo: 1 Sent: 1

Km: 275.00 Tipo: 1 Sent: 2

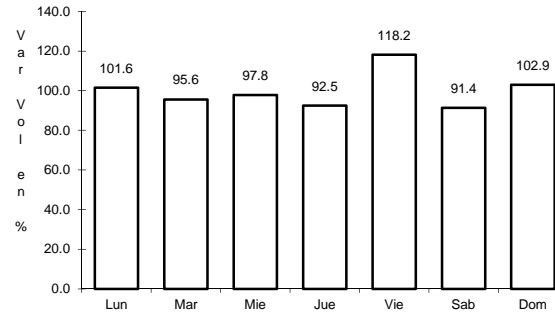
10 CARR: Fresnillo - Valparaíso

CLAVE: 32547

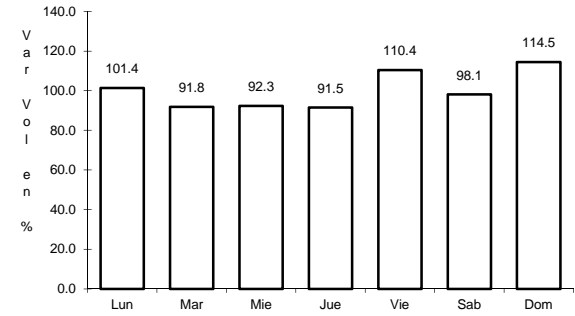
RUTA: MEX-044



Km: 0.00 Tipo: 3 Sent: 0



Km: 45.00 Tipo: 3 Sent: 0

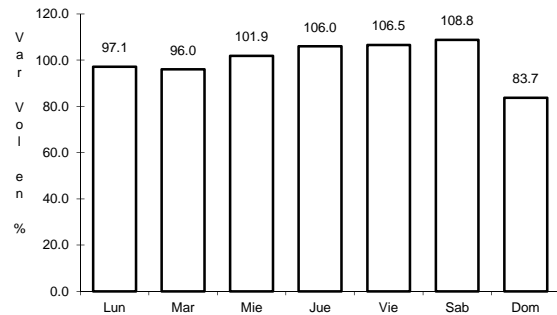


Km: 90.00 Tipo: 1 Sent: 0

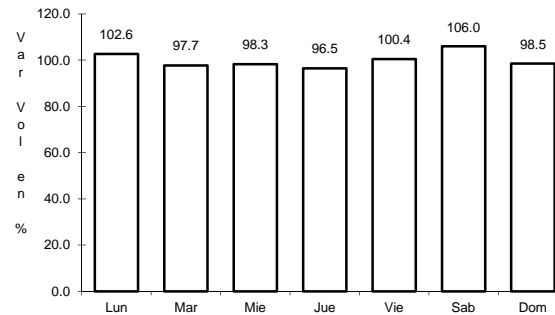
11 CARR: Guadalajara - Zacatecas

CLAVE: 00150

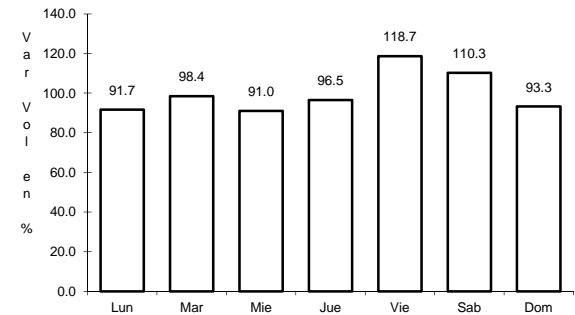
RUTA: MEX-054



Km: 6.19 Tipo: 3 Sent: 1



Km: 6.19 Tipo: 3 Sent: 2

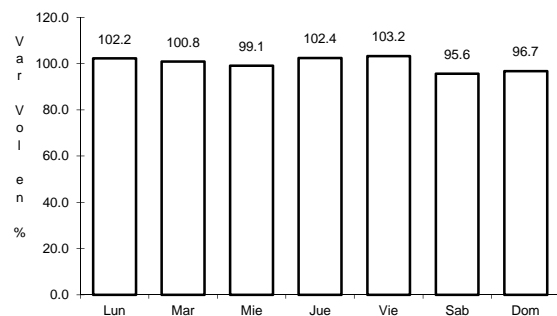


Km: 159.39 Tipo: 1 Sent: 0

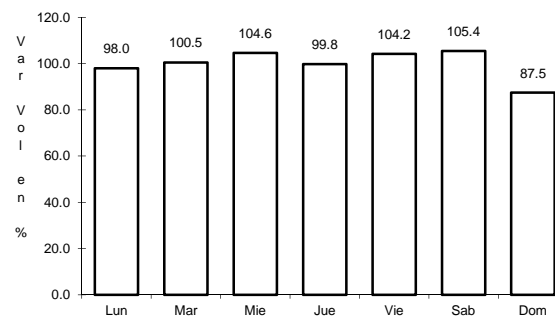
12 CARR: Jerez - Fresnillo

CLAVE: 32542

RUTA: MEX-023



Km: 0.00 Tipo: 3 Sent: 0

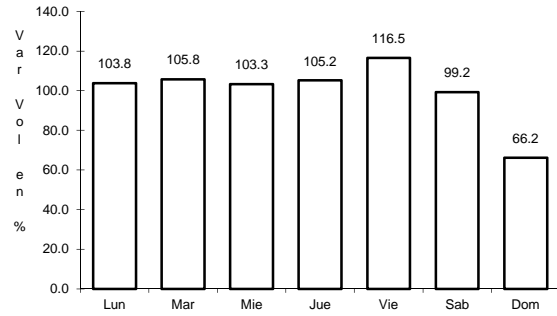


Km: 60.00 Tipo: 1 Sent: 0

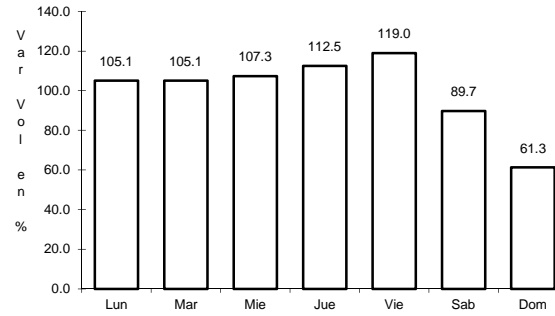
13 CARR: Libramiento de Guadalupe - Zacatecas

CLAVE: 32582

RUTA: MEX-045



Km: 17.50 Tipo: 1 Sent: 1

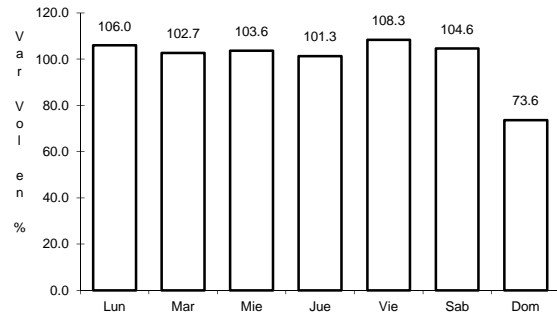


Km: 17.50 Tipo: 1 Sent: 2

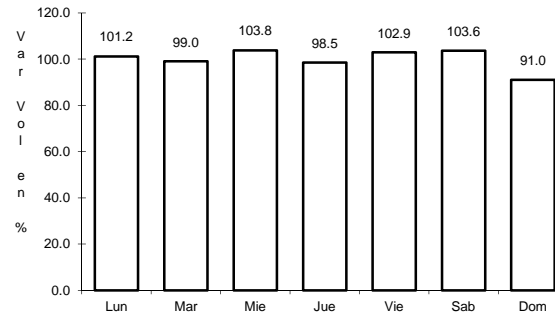
14 CARR: Providencia - Luis Moya

CLAVE: 00112

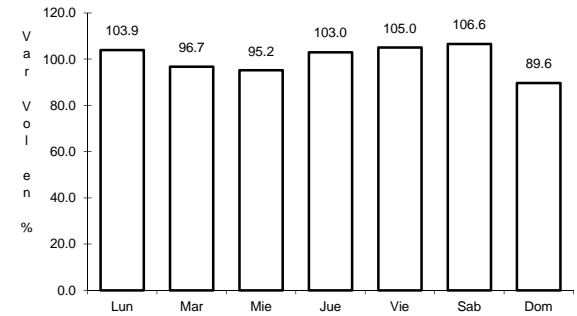
RUTA: MEX-071



Km: 0.00 Tipo: 3 Sent: 0



Km: 21.22 Tipo: 3 Sent: 0

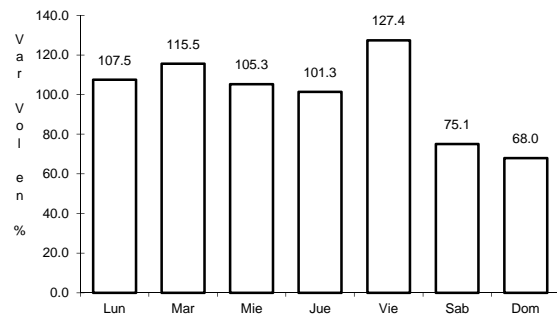


Km: 43.50 Tipo: 1 Sent: 0

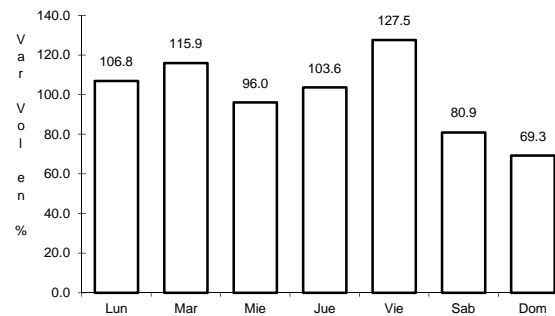
15 CARR: Ramal a Aeropuerto Zacatecas

CLAVE: 32546

RUTA: MEX-045



Km: 0.00 Tipo: 3 Sent: 1

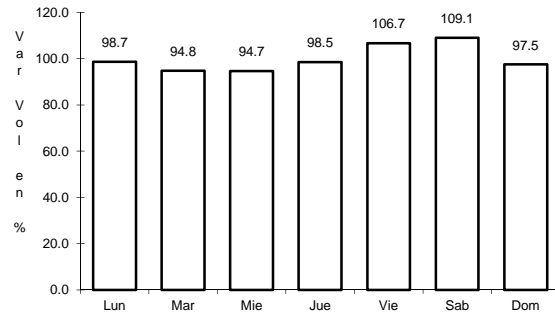


Km: 0.00 Tipo: 3 Sent: 2

16 CARR: Ramal a Concepción del Oro

CLAVE: 32565

RUTA: MEX-054



Km: 0.00

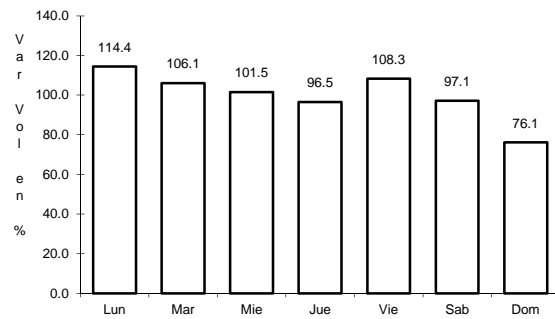
Tipo: 3

Sent: 0

17 CARR: Ramal a Francisco Murguía (Nieves)

CLAVE: 32541

RUTA: MEX-049



Km: 0.00

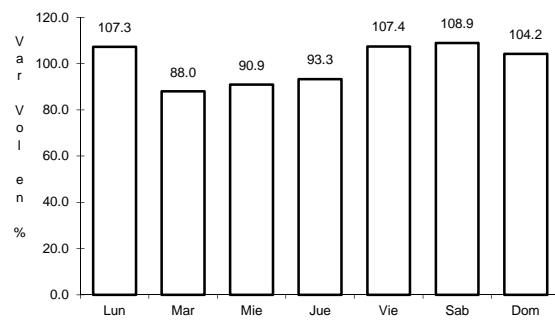
Tipo: 3

Sent: 0

18 CARR: Ramal a Gral. Pánfilo Natera

CLAVE: 32559

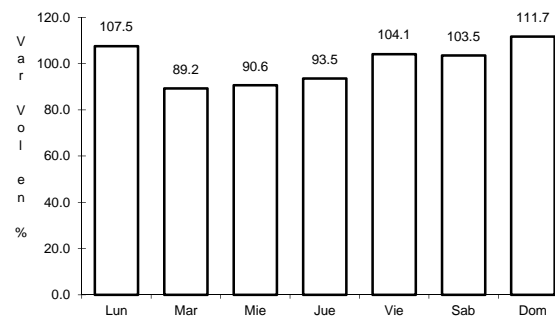
RUTA: MEX-049



Km: 0.00

Tipo: 3

Sent: 1



Km: 0.00

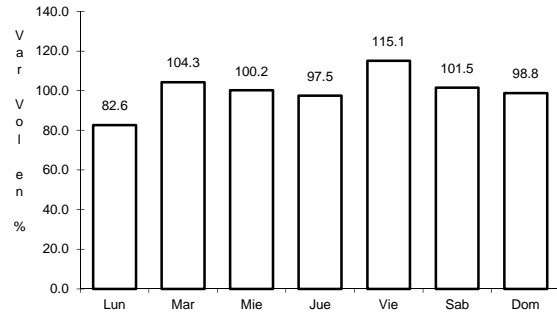
Tipo: 3

Sent: 2

19 CARR: Ramal a Ruinas de Chicomostoc

CLAVE: 00544

RUTA: MEX-045

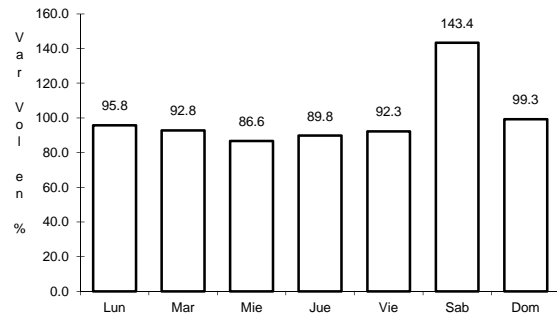


Km: 0.00 Tipo: 3 Sent: 0

20 CARR: Ramal a San Martín

CLAVE: 00544

RUTA: MEX-045

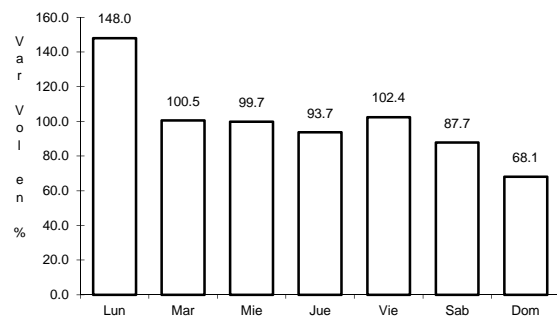


Km: 0.00 Tipo: 3 Sent: 0

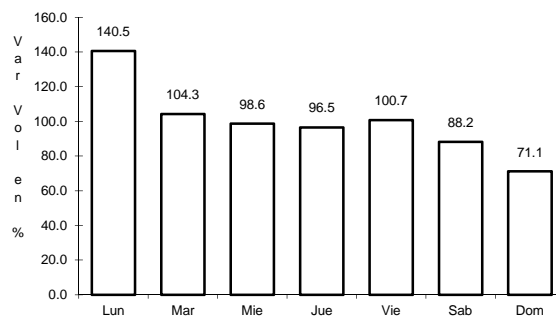
21 CARR: Ramal a Villa de Cos

CLAVE: 32564

RUTA: MEX-054



Km: 0.00 Tipo: 3 Sent: 1

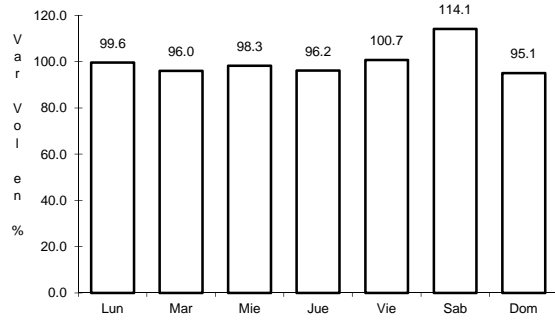


Km: 0.00 Tipo: 3 Sent: 2

22 CARR: San Luis Potosí - Ent. Arcinas

CLAVE: 00134

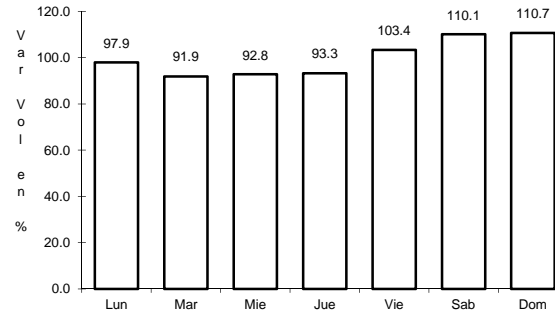
ruta: MEX-049



Km: 9.35

Tipo: 3

Sent: 1



Km: 9.35

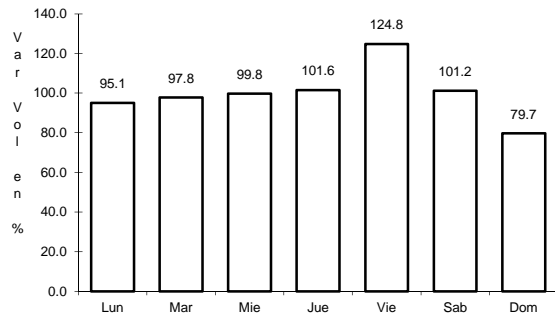
Tipo: 3

Sent: 2

23 CARR: San Luis Potosí - Lagos de Moreno

CLAVE: 00133

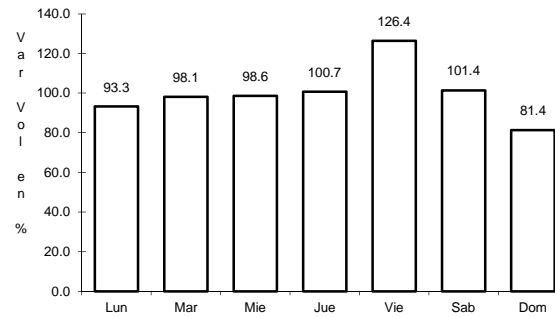
ruta: MEX-070-080



Km: 0.00

Tipo: 3

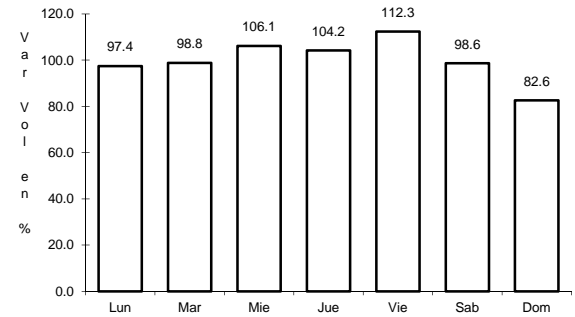
Sent: 1



Km: 0.00

Tipo: 3

Sent: 2



Km: 61.90

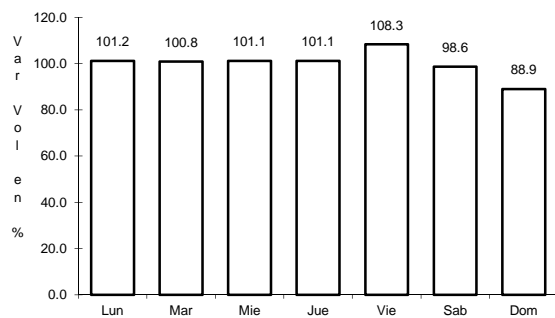
Tipo: 3

Sent: 0

24 CARR: Zacatecas - Durango

CLAVE: 00544

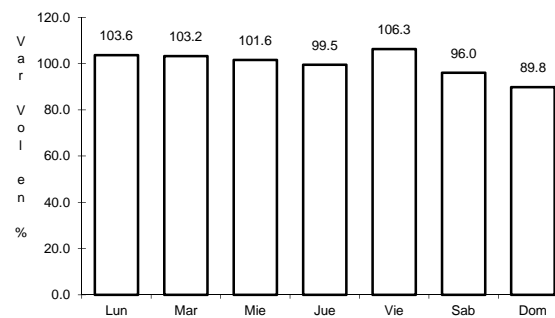
ruta: MEX-045



Km: 6.40

Tipo: 3

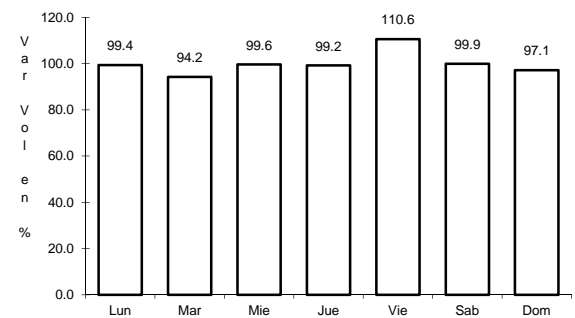
Sent: 1



Km: 6.40

Tipo: 3

Sent: 2



Km: 121.00

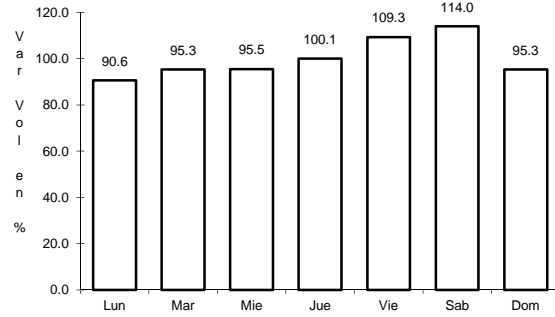
Tipo: 3

Sent: 0

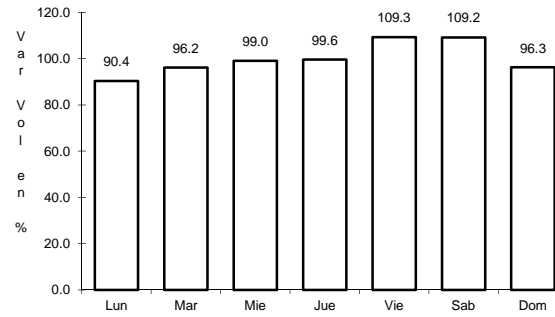
25 CARR: Cuauhtémoc - Osiris (Cuota)

CLAVE: 32558

RUTA: MEX-045D



Km: 0.00 Tipo: 3 Sent: 0

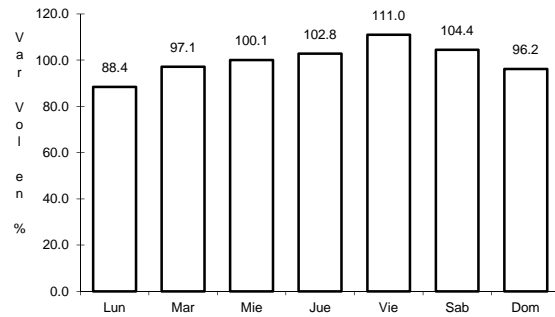


Km: 32.00 Tipo: 1 Sent: 0

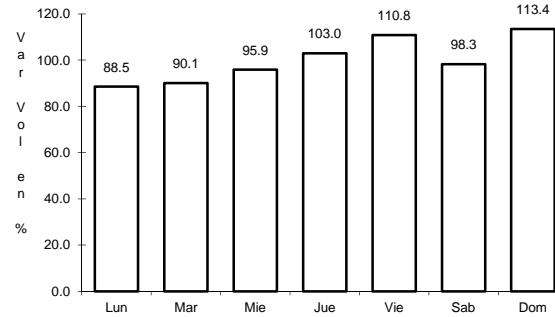
26 CARR: Libramiento de Fresnillo (Cuota)

CLAVE: 32581

RUTA: MEX-045D



Km: 49.80 Tipo: 3 Sent: 1

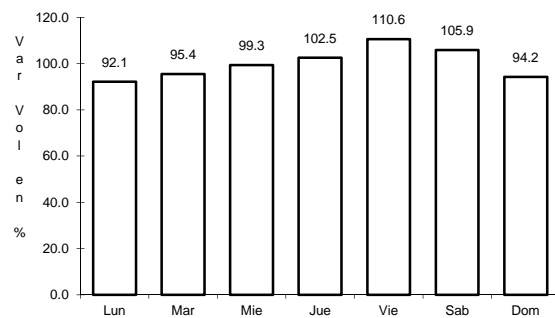


Km: 49.80 Tipo: 3 Sent: 2

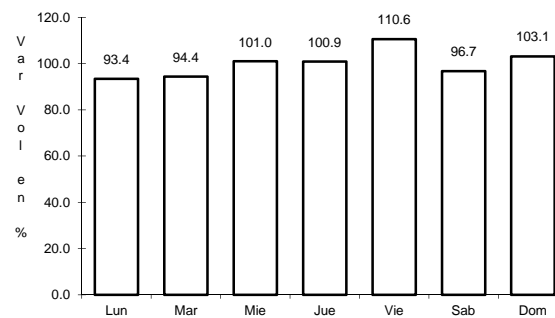
27 CARR: Libramiento de Víctor Rosales (Cuota)

CLAVE: 32015

RUTA: MEX-045D



Km: 12.20 Tipo: 1 Sent: 1

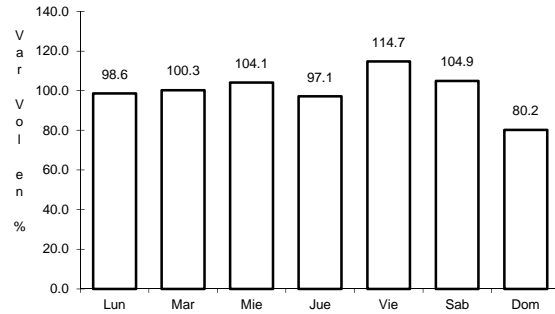


Km: 12.20 Tipo: 1 Sent: 2

28 CARR: Calera de Víctor Rosales - Santiaguillo

CLAVE: 32016

RUTA: ZAC-016

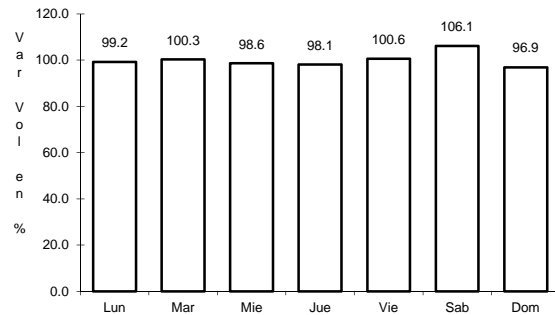


Km: 0.00 Tipo: 3 Sent: 0

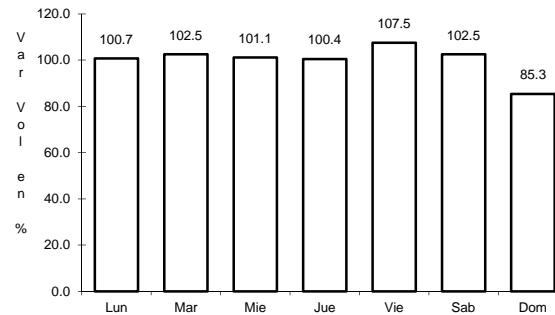
29 CARR: Cieneguillas - Zacatecas

CLAVE: 32579

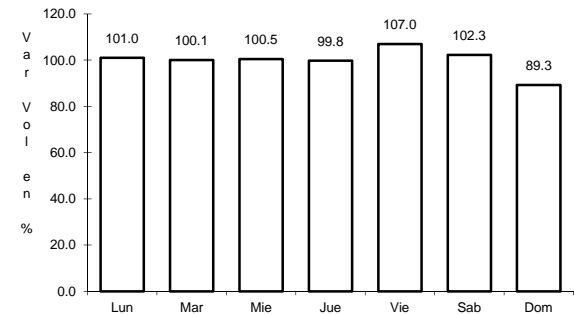
RUTA: ZAC



Km: 0.00 Tipo: 3 Sent: 0



Km: 7.70 Tipo: 3 Sent: 1

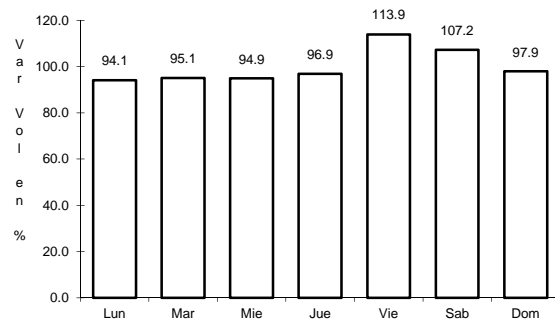


Km: 7.70 Tipo: 3 Sent: 2

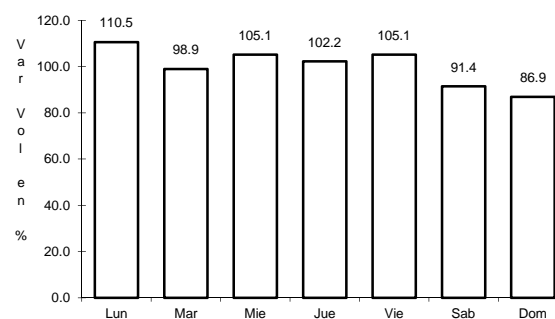
30 CARR: Corral de Piedras - Tlaltenango

CLAVE: 32579

RUTA: ZAC



Km: 0.00 Tipo: 3 Sent: 0

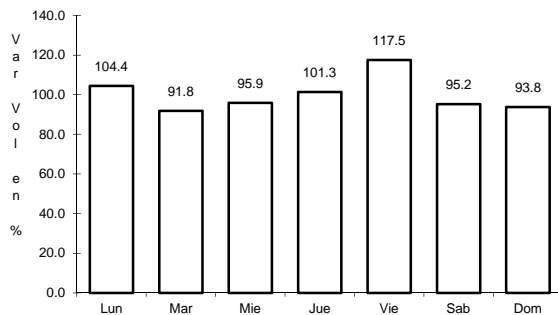
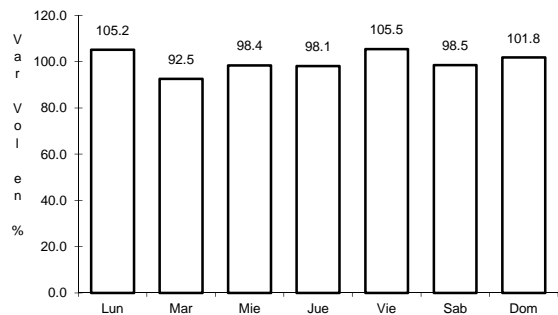


Km: 57.10 Tipo: 1 Sent: 0

Ent. Ojo Caliente - Ent. Ojos de Jalisco

CLAVE: 00126

RUTA: ZAC



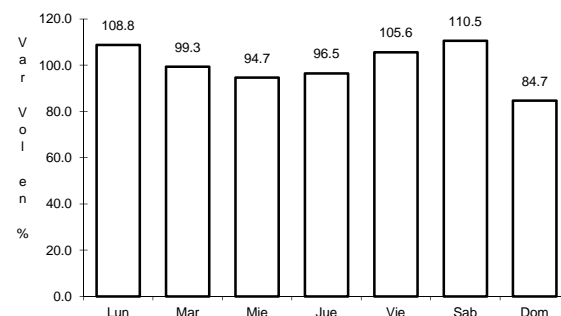
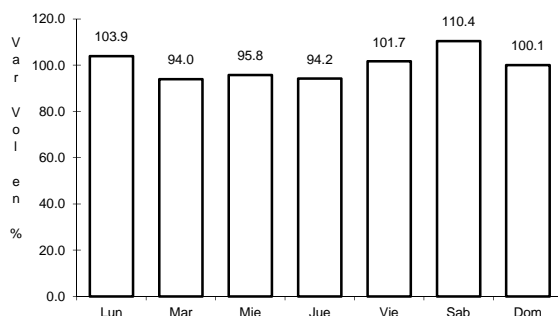
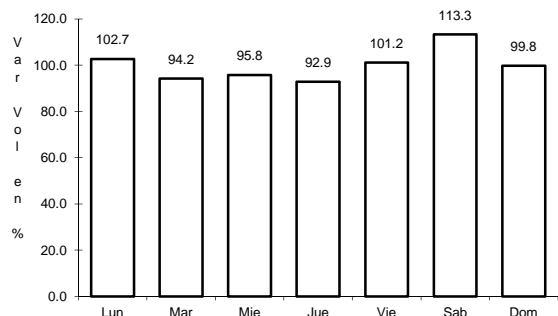
Km: 0.00 Tipo: 3 Sent: 0

Km: 16.00 Tipo: 3 Sent: 0

32 CARR: Fresnillo - Ent. Bañón

CLAVE: 32070

RUTA: ZAC



Km: 2.40 Tipo: 3 Sent: 1

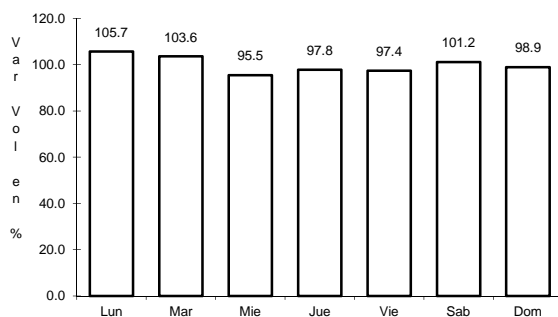
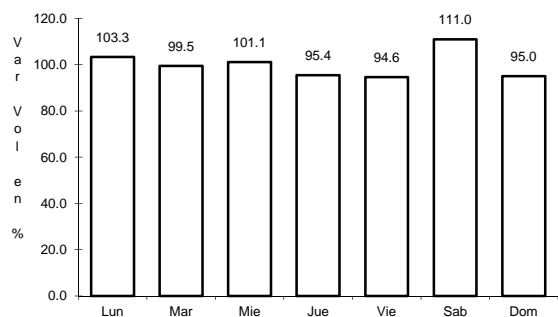
Km: 2.40 Tipo: 3 Sent: 2

Km: 49.00 Tipo: 1 Sent: 0

33 CARR: Fresnillo - Plateros

CLAVE: 32022

RUTA: ZAC-022



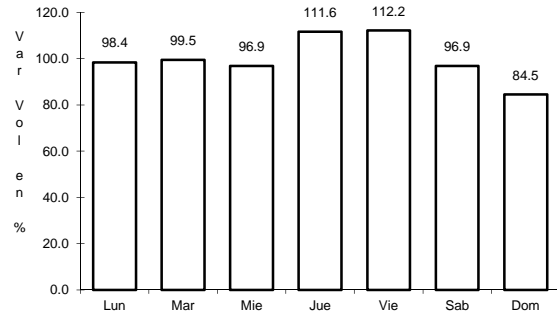
Km: 0.00 Tipo: 3 Sent: 1

Km: 0.00 Tipo: 3 Sent: 2

34 CARR: Ramal a Loreto

CLAVE: 32067

RUTA: ZAC



Km: 0.00

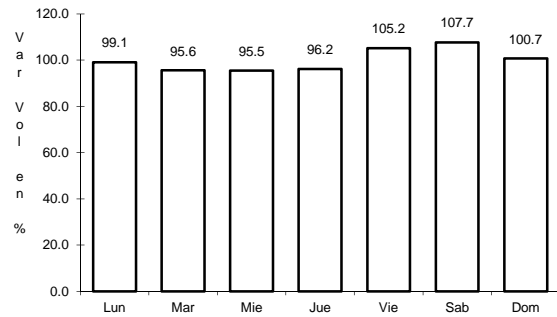
Tipo: 3

Sent: 0

35 CARR: Ramal a Nochistlán

CLAVE: 32545

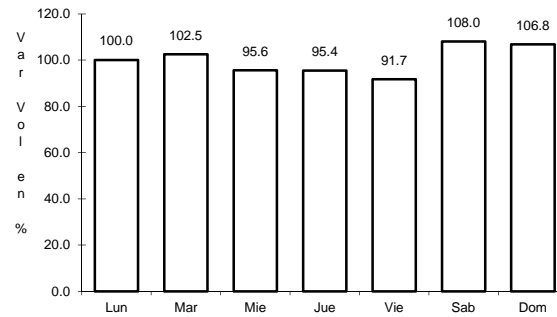
RUTA: ZAC



Km: 0.00

Tipo: 3

Sent: 1



Km: 0.00

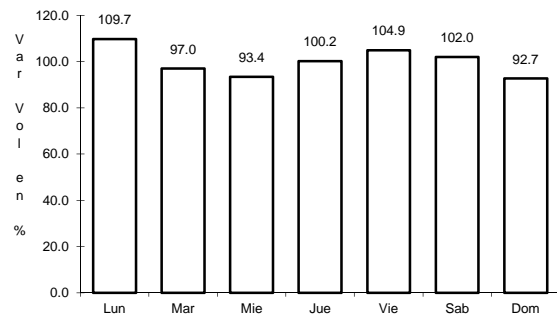
Tipo: 3

Sent: 2

36 CARR: Ramal a San Pedro Piedra Gorda

CLAVE: 00553

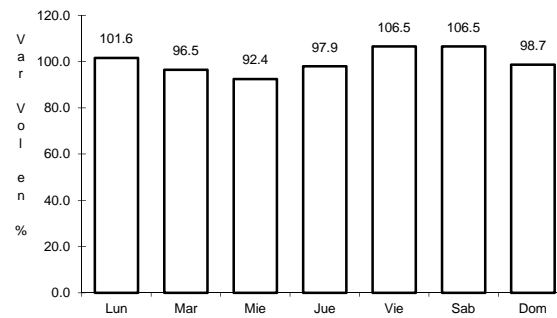
RUTA: ZAC-AGS



Km: 0.00

Tipo: 3

Sent: 0



Km: 9.00

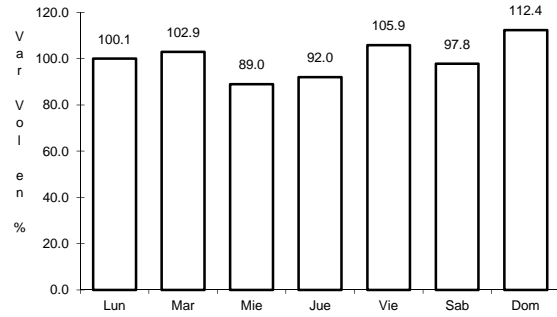
Tipo: 1

Sent: 0

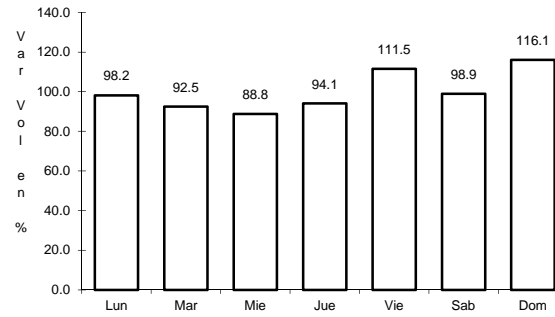
37 CARR: San Gil - Jarillas

CLAVE: 00527

RUTA: AGS-012-ZAC



Km: 0.00 Tipo: 3 Sent: 0

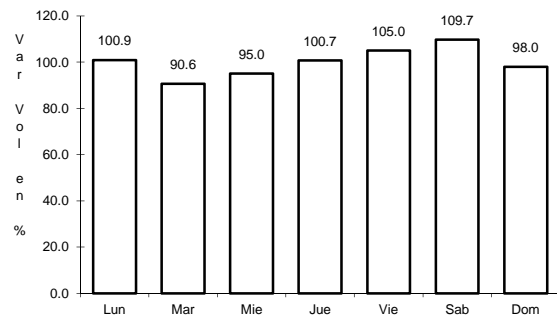


Km: 5.40 Tipo: 1 Sent: 0

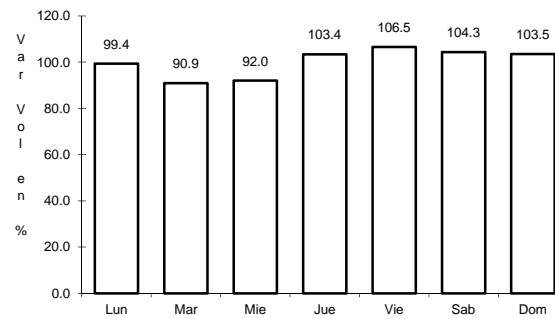
38 CARR: San Rafael - Villa García

CLAVE: 00525

RUTA: AGS-ZAC



Km: 0.00 Tipo: 3 Sent: 0

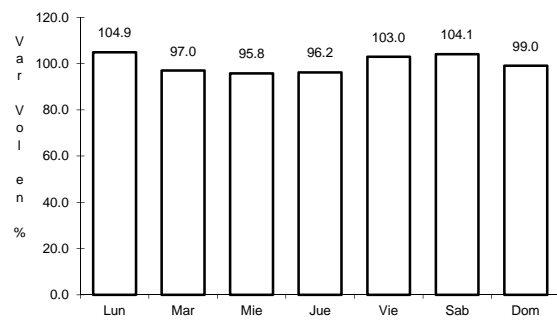


Km: 10.00 Tipo: 1 Sent: 0

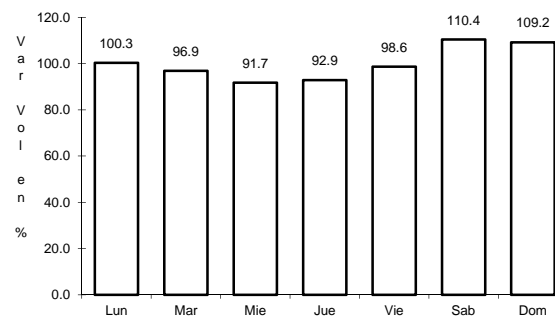
39 CARR: Santa Mónica - Pozo de Gamboa

CLAVE: 32568

RUTA: ZAC



Km: 0.00 Tipo: 3 Sent: 0

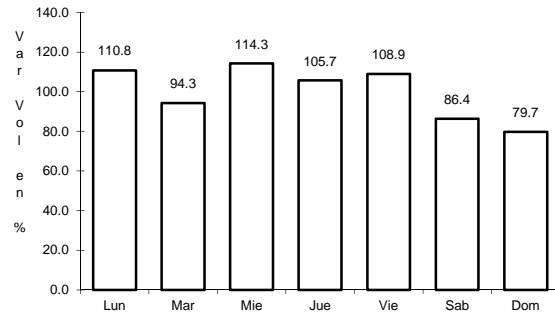


Km: 7.60 Tipo: 3 Sent: 0

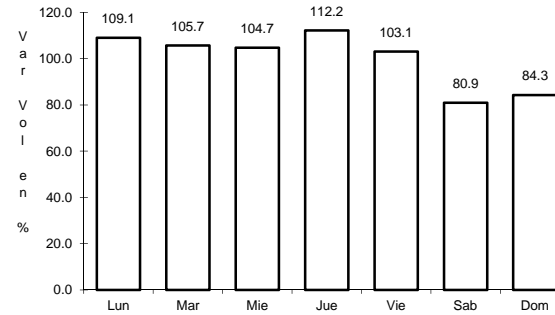
40 CARR: Sombrerete - González Ortega

CLAVE: 32568

RUTA: ZAC



Km: 0.00 Tipo: 3 Sent: 0

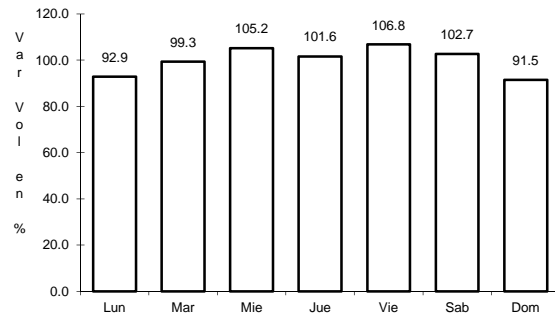


Km: 38.70 Tipo: 1 Sent: 0

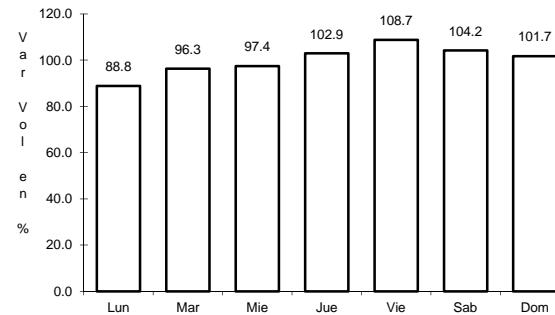
41 CARR: Libramiento Noreste de Zacatecas (Cuota)

CLAVE: 32582

RUTA: ZAC-D



Km: 0.00 Tipo: 3 Sent: 0

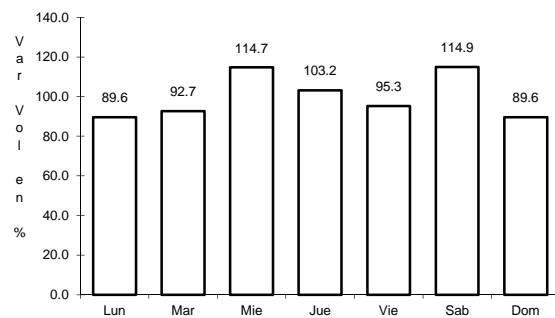


Km: 21.00 Tipo: 1 Sent: 0

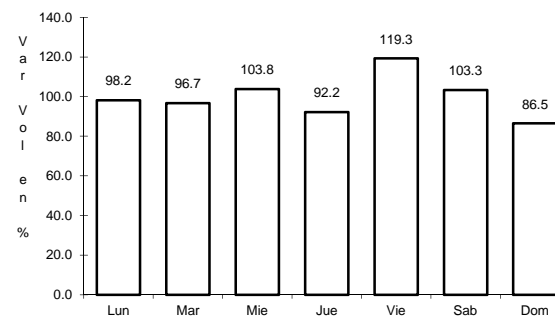
42 CARR: Guadalupe - Cosío

CLAVE: 00579

RUTA: MEX-ZAC

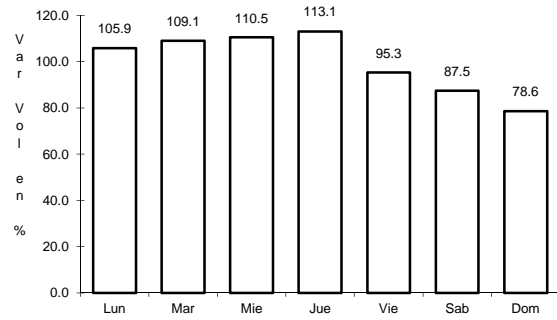


Km: 0.00 Tipo: 3 Sent: 0



Km: 12.96 Tipo: 3 Sent: 0

43 CARR: Tepatlán - Jaralillo

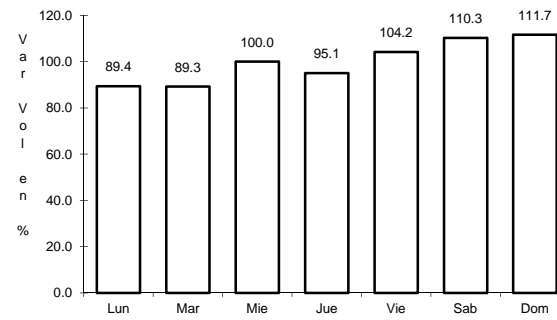


Km: 0.00

Tipo: 3

Sent: 0

CLAVE: 00146

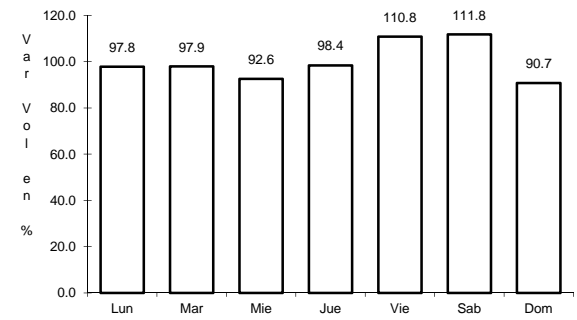


Km: 72.45

Tipo: 3

Sent: 0

RUTA: MEX-JAL-ZAC



Km: 157.00

Tipo: 1

Sent: 0