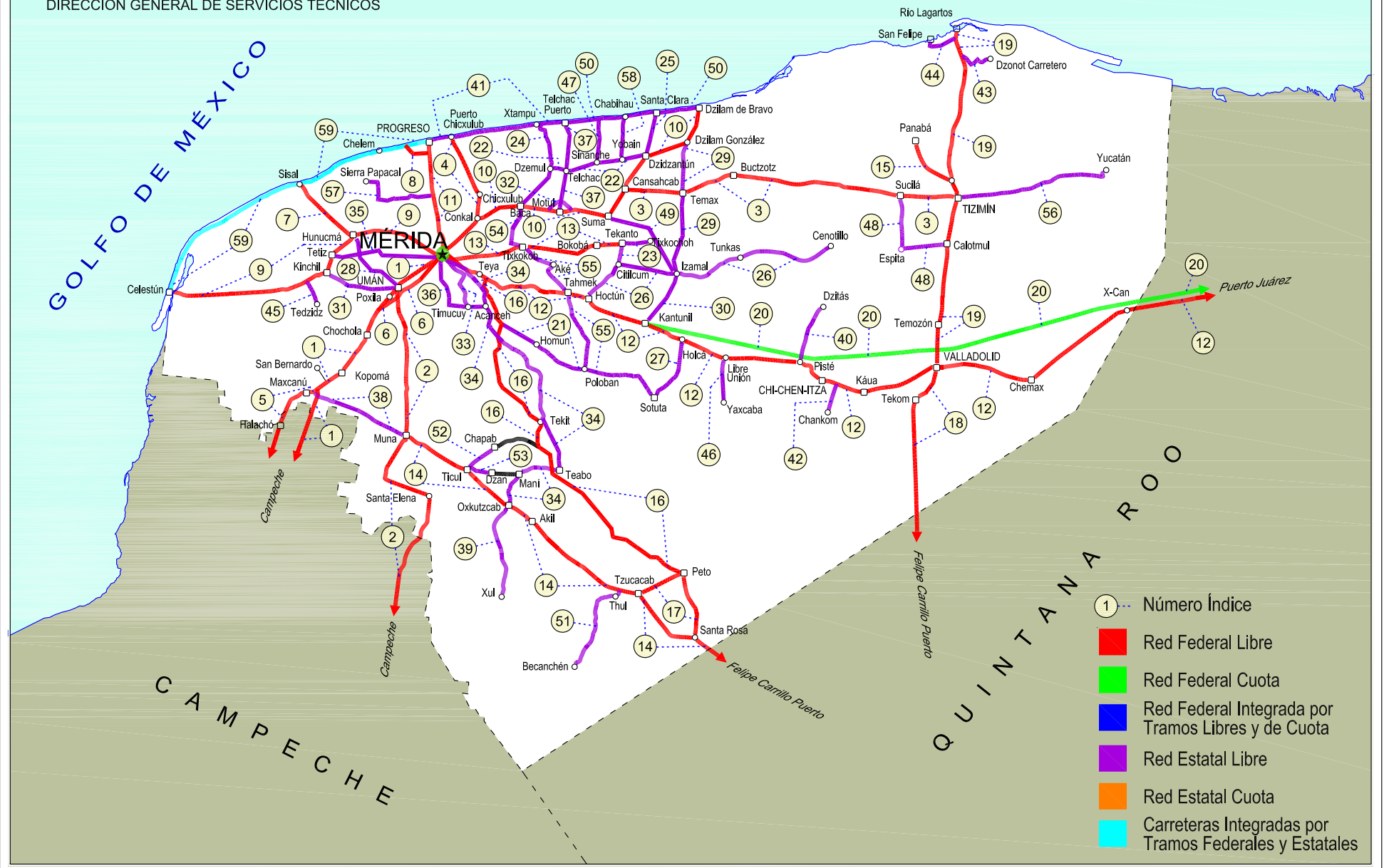
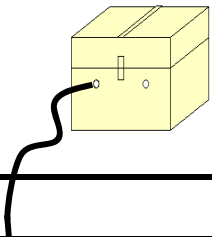


# 31 YUCATÁN

SECRETARÍA DE COMUNICACIONES Y TRANSPORTES  
DIRECCIÓN GENERAL DE SERVICIOS TÉCNICOS







YUCATAN

NO. INDICE	CARRETERA	RUTA
---RED FEDERAL LIBRE---		
1	Campeche - Mérida	MEX-180
2	Campeche - Umán	MEX-261
3	Cansahcab - Tizimín	MEX-176
4	Conkal - Puerto Chicxulub	MEX-176
5	Dzitbalché - Ent. San Bernardo	MEX-180
6	Ent. Poxilá - Mérida	MEX-180
7	Hunucmá - Sisal	MEX-281
8	Libramiento de Progreso	MEX-261
9	Mérida - Celestún	MEX-281
10	Mérida - Dzilam de Bravo	MEX-176
11	Mérida - Progreso	MEX-261
12	Mérida - Puerto Juárez	MEX-180
13	Mérida - Tekanto	MEX-180
14	Muna - Felipe Carrillo Puerto	MEX-184
15	Ramal a Panabá	MEX-295
16	Teya -Peto	MEX-184
17	Tzucacab - Santa Rosa	MEX
18	Valladolid - Felipe Carrillo Puerto	MEX-295
19	Valladolid - Río Lagartos	MEX-295
---RED FEDERAL DE CUOTA---		
20	Mérida - Cancún (Cuota)	MEX-180D
---RED ESTATAL LIBRE---		
21	Acanceh - Estación Polabán	YUC
22	Baca - Dzidzantún	YUC
23	Citilcum - Tixkochoh	YUC
24	Dzemul - Xtampú	YUC
25	Dzidzantún - Santa Clara	YUC
26	Hoctún - Cenotillo	YUC-011
27	Holcá - Sotuta	YUC
28	Hunucmá - Umán	YUC
29	Izamal - Dzilam González	YUC
30	Kantunil - Izamal	YUC
31	Kinchil - Umán	YUC
32	Libramiento Norte de Motul	YUC
33	Mérida - Acanceh	YUC
34	Mérida - Oxkutzcab	YUC-018
35	Mérida - Tetiz	YUC
36	Mérida - Timucuy	YUC
37	Motul - Puerto Telchac	YUC-172
38	Muna - Maxcanú	YUC
39	Oxkutzcab - Xul	YUC-031
40	Piste - Dzitás	YUC-013
41	Progreso - Telchac Puerto	YUC-027
42	Ramal a Chankom	YUC
43	Ramal a Dzonot Carretero	YUC
44	Ramal a San Felipe	YUC
45	Ramal a Tedzidz	YUC
46	Ramal a Yaxcabá	YUC-289
47	Sinanché - Xitibcanul	YUC
48	Sucilá - Calotmul	YUC
49	Suma - Izamal	YUC-081
50	Telchac Puerto - Dzilam de Bravo	YUC
51	Thul - Becanchén	YUC-281
52	Ticul - Chapab	YUC
53	Ticul - Dzan	YUC
54	Tixkokob - Baca	YUC
55	Tixkokob - Sotuta	YUC
56	Tizimín - Yucatán	YUC
57	Yaxché - Sierra Papacal	YUC
58	Yobaín - Chabihau	YUC
---CARRETERAS INTEGRADAS POR TRAMOS FEDERALES Y ESTATALES---		
59	Progreso - Celestún	MEX-YUC

YUCATAN

1 CARR: Campeche - Mérida

CLAVE: 00066

RUTA: MEX-180

AÑO: 2015

LUGAR	ESTACION				CLASIFICACION VEHICULAR EN PORCIENTO														COORDENADAS	
	KM	TE	SC	TDPA	M	A	B	C2	C3	T3S2	T3S3	T3S2R4	OTROS	A	B	C	K'	D	LATITUD	LONGITUD
Campeche	0.00	3	1	5643	5.2	86.8	0.4	6.2	0.5	0.5	0.3	0.0	0.1	92.0	0.4	7.6	0.091	0.523	19.874793	-90.492101
Campeche	0.00	3	2	5139	2.6	88.6	0.4	6.9	0.5	0.6	0.3	0.0	0.1	91.2	0.4	8.4	0.078	0.523	19.874774	-90.492076
T. Der. Periférico Pablo García y Montilla (Libramiento De Campeche)	7.00	3	1	5709	3.0	77.8	2.6	5.5	1.8	4.5	1.1	3.1	0.6	80.8	2.6	16.6	0.102	0.503	19.895812	-90.456514
T. Der. Periférico Pablo García y Montilla (Libramiento De Campeche)	7.00	3	2	5770	3.2	75.8	3.0	6.2	1.8	4.9	1.2	3.2	0.7	79.0	3.0	18.0	0.073	0.503	19.895832	-90.456572
Tenabo	40.00	1	1	5014	1.5	77.4	3.3	4.4	1.6	5.2	1.2	4.8	0.6	78.9	3.3	17.8	0.111	0.505	20.027456	-90.242917
Tenabo	40.00	1	2	4921	1.1	75.9	3.6	5.0	1.8	5.9	1.2	5.0	0.5	77.0	3.6	19.4	0.074	0.505	20.027457	-90.242920
T. Der. Libramiento de Pomuch (2º Acceso)	50.00	3	1	4905	1.5	79.5	2.2	3.9	2.1	4.9	0.9	4.5	0.5	81.0	2.2	16.8	0.106	0.501	20.149063	-90.163476
T. Der. Libramiento de Pomuch (2º Acceso)	50.00	3	2	4920	2.1	76.9	2.2	4.2	2.5	5.9	1.0	4.7	0.5	79.0	2.2	18.8	0.075	0.501	20.149063	-90.163476
Lim. Edos. Term. Camp. Ppia. Yuc.	96.96																			
Kopomá	124.29	3	1	4370	4.7	73.1	3.6	7.7	1.9	4.6	1.1	2.7	0.6	77.8	3.6	18.6	0.061	0.520	20.663190	-89.890127
Kopomá	124.29	3	2	4740	1.3	74.1	4.1	8.6	1.9	5.1	1.2	3.2	0.5	75.4	4.1	20.5	0.078	0.520	20.663200	-89.890139
T. Der. Libramiento de Chocholá (1º Acceso)	137.89	1	1	5024	2.0	72.4	3.9	8.3	2.9	4.5	1.7	3.7	0.6	74.4	3.9	21.7	0.070	0.506	20.731853	-89.840205
T. Der. Libramiento de Chocholá (1º Acceso)	137.89	1	2	5142	1.5	69.9	4.4	9.2	3.3	5.1	2.0	4.0	0.6	71.4	4.4	24.2	0.073	0.506	20.731848	-89.840231
T. Izq. Umán	146.99	3	1	4213	1.7	78.6	3.0	4.8	2.4	4.0	1.9	2.8	0.8	80.3	3.0	16.7	0.062	0.522	20.805274	-89.801690
T. Izq. Umán	146.99	3	2	4605	1.8	76.8	3.2	5.1	3.0	4.3	1.9	3.1	0.8	78.6	3.2	18.2	0.070	0.522	20.805259	-89.801672
X. C. Campeche - Umán	160.49	1	1	4821	1.8	70.8	3.0	9.4	3.3	5.4	1.3	4.5	0.5	72.6	3.0	24.4	0.087	0.502	20.836126	-89.755063
X. C. Campeche - Umán	160.49	1	2	4785	1.7	68.2	3.4	10.2	3.6	6.1	1.5	4.8	0.5	69.9	3.4	26.7	0.101	0.502	20.836115	-89.755066
T. C. Periférico de Mérida	171.21																			

2 CARR: Campeche - Umán

CLAVE: 00164

RUTA: MEX-261

AÑO: 2015

LUGAR	ESTACION				CLASIFICACION VEHICULAR EN PORCIENTO														COORDENADAS	
	KM	TE	SC	TDPA	M	A	B	C2	C3	T3S2	T3S3	T3S2R4	OTROS	A	B	C	K'	D	LATITUD	LONGITUD
Campeche	0.00																			
T. Der. Periférico Pablo García y Montilla (Libramiento De Campeche)	7.00	1	0	4755	9.3	78.8	0.8	6.2	1.0	2.8	0.5	0.2	0.4	88.1	0.8	11.1	0.082	0.515	19.849833	-90.470638
T. Der. Periférico Pablo García y Montilla (Libramiento De Campeche)	7.00	3	0	2322	7.6	80.1	3.3	5.3	1.2	1.6	0.4	0.2	0.3	87.7	3.3	9.0	0.090	0.503	19.849205	-90.465492
T. Izq. Tenabo	30.88	1	0	1349	7.8	78.5	0.9	10.0	0.9	1.0	0.4	0.3	0.2	86.3	0.9	12.8	0.093	0.504	19.804836	-90.277324
T. Izq. Tenabo	30.88	3	0	1403	8.7	79.0	1.0	8.1	1.2	1.4	0.4	0.2	0.0	87.7	1.0	11.3	0.084	0.501	19.804496	-90.270823
T. Der. Edzna	44.51	1	0	1342	13.6	73.2	1.1	8.7	1.1	1.5	0.5	0.2	0.1	86.8	1.1	12.1	0.085	0.509	19.743711	-90.177979
T. Der. Edzna	44.51	3	0	1276	8.6	78.9	2.7	6.2	1.1	1.2	0.5	0.3	0.5	87.5	2.7	9.8	0.082	0.515	19.745822	-90.169893
Hopelchén	84.88	1	0	1725	7.3	76.3	1.2	11.8	0.8	2.0	0.6	0.0	0.0	83.6	1.2	15.2	0.093	0.503	19.752431	-89.854479
Bolonchén de Rejón	117.88	3	0	969	16.3	68.5	1.2	7.3	2.1	2.0	1.1	1.4	0.1	84.8	1.2	14.0	0.084	0.503	20.011201	-89.734199
Lim. Edos. Term. Camp. Ppia. Yuc.	126.88																			
T. Der. Sayil	140.88	1	0	539	5.7	76.2	1.1	8.4	2.8	2.4	1.7	1.7	0.0	81.9	1.1	17.0	0.087	0.510	20.207628	-89.672114
Santa Elena	158.88	1	0	899	30.1	52.4	1.5	8.7	2.2	2.0	0.9	2.1	0.1	82.5	1.5	16.0	0.110	0.521	20.318610	-89.643335

YUCATAN

2 CARR: Campeche - Umán

CLAVE: 00164

RUTA: MEX-261

AÑO: 2015

LUGAR	ESTACION				CLASIFICACION VEHICULAR EN PORCIENTO														COORDENADAS	
	KM	TE	SC	TDPA	M	A	B	C2	C3	T3S2	T3S3	T3S2R4	OTROS	A	B	C	K'	D	LATITUD	LONGITUD
T. Izq. Ruinas de Uxmal	172.48	1	0	614	20.3	60.7	1.0	10.3	2.6	2.2	1.1	1.7	0.1	81.0	1.0	18.0	0.093	0.503	20.362468	-89.765561
Muna	187.43	1	0	1154	16.6	69.5	1.0	7.6	1.5	1.6	0.9	1.1	0.2	86.1	1.0	12.9	0.104	0.535	20.460987	-89.725098
Muna	187.43	3	0	3546	5.3	78.0	0.7	10.4	1.8	2.3	0.7	0.6	0.2	83.3	0.7	16.0	0.089	0.519	20.511060	-89.709290
Xtepén	225.38	1	0	4434	1.5	80.0	1.0	8.2	1.9	2.0	4.6	0.6	0.2	81.5	1.0	17.5	0.085	0.506	20.803619	-89.734231
Umán	230.83	1	0	3169	14.6	67.7	1.0	6.8	2.5	6.0	0.6	0.4	0.4	82.3	1.0	16.7	0.085	0.515	20.869380	-89.746466

3 CARR: Cansahcab - Tizimin

CLAVE: 31014

RUTA: MEX-176

AÑO: 2015

LUGAR	ESTACION				CLASIFICACION VEHICULAR EN PORCIENTO														COORDENADAS	
	KM	TE	SC	TDPA	M	A	B	C2	C3	T3S2	T3S3	T3S2R4	OTROS	A	B	C	K'	D	LATITUD	LONGITUD
Cansahcab	0.00	3	0	3113	5.8	79.0	0.3	6.0	2.3	3.6	0.9	1.8	0.3	84.8	0.3	14.9	0.083	0.500	21.156889	-89.079350
Temax	16.73	3	0	2534	5.6	77.8	1.7	5.3	2.2	3.8	1.1	2.2	0.3	83.4	1.7	14.9	0.091	0.527	21.154569	-88.917768
Buctzotz	32.92	3	0	2867	8.9	76.0	0.8	5.9	2.3	3.4	1.0	1.5	0.2	84.9	0.8	14.3	0.100	0.536	21.199964	-88.777230
Tizimin	99.14	1	0	3393	7.8	78.0	0.5	4.3	2.4	3.8	1.0	1.8	0.4	85.8	0.5	13.7	0.072	0.525	21.150288	-88.186794

4 CARR: Conkal - Puerto Chicxulub

CLAVE: 31004

RUTA: MEX-176

AÑO: 2015

LUGAR	ESTACION				CLASIFICACION VEHICULAR EN PORCIENTO														COORDENADAS	
	KM	TE	SC	TDPA	M	A	B	C2	C3	T3S2	T3S3	T3S2R4	OTROS	A	B	C	K'	D	LATITUD	LONGITUD
Conkal	0.00	3	0	2520	29.0	60.5	0.3	7.1	0.7	1.9	0.3	0.1	0.1	89.5	0.3	10.2	0.068	0.500	21.083369	-89.520030
Puerto Chicxulub	27.00	1	0	1995	6.1	84.0	1.0	5.8	1.4	0.9	0.5	0.1	0.2	90.1	1.0	8.9	0.124	0.501	21.285282	-89.600457

5 CARR: Dzitbalché - Ent. San Bernardo

CLAVE: 00162

RUTA: MEX-180

AÑO: 2015

LUGAR	ESTACION				CLASIFICACION VEHICULAR EN PORCIENTO														COORDENADAS	
	KM	TE	SC	TDPA	M	A	B	C2	C3	T3S2	T3S3	T3S2R4	OTROS	A	B	C	K'	D	LATITUD	LONGITUD
T. C. Campeche - Mérida	0.00																			
T. Izq. Libramiento de Becal (1º Acceso)	12.33	1	0	3021	16.1	75.1	1.1	4.9	0.3	2.1	0.1	0.2	0.1	91.2	1.1	7.7	0.079	0.507	20.418320	-90.034095
T. Izq. Libramiento de Becal (2º Acceso)	15.41	3	0	1630	16.7	71.8	1.2	7.9	0.8	1.5	0.1	0.0	0.0	88.5	1.2	10.3	0.078	0.509	20.451455	-90.041333
Lim. Edos. Term. Camp. Ppia. Yuc.	15.80																			
Halachó	21.08	1	0	1757	19.5	70.7	1.3	6.1	0.8	1.4	0.1	0.0	0.1	90.2	1.3	8.5	0.082	0.501	20.469444	-90.066639
T. Izq. Libramiento de Maxcanú (1º Acceso)	35.60	1	0	2442	24.4	62.5	1.1	9.0	1.0	1.6	0.2	0.2	0.0	86.9	1.1	12.0	0.072	0.505	20.577269	-90.035333
T. Der. Muna	40.36	3	0	3000	6.8	69.8	1.6	17.2	1.4	2.1	0.4	0.4	0.3	76.6	1.6	21.8	0.090	0.501	20.601644	-89.975549
Ent. San Bernardo	41.53																			

YUCATAN

6 CARR: Ent. Poxilá - Mérida

CLAVE: 31003

RUTA: MEX-180

AÑO: 2015

LUGAR	ESTACION				CLASIFICACION VEHICULAR EN PORCIENTO													COORDENADAS		
	KM	TE	SC	TDPA	M	A	B	C2	C3	T3S2	T3S3	T3S2R4	OTROS	A	B	C	K'	D	LATITUD	LONGITUD
T. C. Campeche - Mérida	0.00																			
Umán	9.46	1	0	2651	9.7	75.3	1.1	5.7	3.4	4.1	0.3	0.1	0.3	85.0	1.1	13.9	0.078	0.518	20.866634	-89.757797
X. Periférico de Mérida	16.37	1	1	14412	5.8	81.4	0.5	4.8	2.1	2.4	1.5	0.9	0.6	87.2	0.5	12.3	0.083	0.504	20.922036	-89.693559
X. Periférico de Mérida	16.37	1	2	14628	6.9	79.3	0.5	5.4	2.2	2.5	1.6	0.9	0.7	86.2	0.5	13.3	0.081	0.504	20.922051	-89.693564
Mérida	25.70	1	1	19007	5.1	77.8	1.6	8.8	2.2	1.6	1.3	1.0	0.6	82.9	1.6	15.5	0.092	0.509	20.926767	-89.684206
Mérida	25.70	1	2	18363	4.9	77.0	2.0	9.0	2.3	1.7	1.4	1.1	0.6	81.9	2.0	16.1	0.071	0.509	20.926714	-89.684177

7 CARR: Hunucmá - Sisal

CLAVE: 31021

RUTA: MEX-281

AÑO: 2015

LUGAR	ESTACION				CLASIFICACION VEHICULAR EN PORCIENTO													COORDENADAS		
	KM	TE	SC	TDPA	M	A	B	C2	C3	T3S2	T3S3	T3S2R4	OTROS	A	B	C	K'	D	LATITUD	LONGITUD
Hunucmá	0.00	3	0	1579	13.1	75.0	0.6	8.0	1.1	1.6	0.2	0.2	0.2	88.1	0.6	11.3	0.106	0.506	21.029980	-89.896095
Sisal	23.20	1	0	1231	7.7	82.9	0.5	7.5	0.4	0.8	0.2	0.0	0.0	90.6	0.5	8.9	0.128	0.501	21.160957	-90.029665

8 CARR: Libramiento de Progreso

CLAVE: 31631

RUTA: MEX-261

AÑO: 2015

LUGAR	ESTACION				CLASIFICACION VEHICULAR EN PORCIENTO													COORDENADAS		
	KM	TE	SC	TDPA	M	A	B	C2	C3	T3S2	T3S3	T3S2R4	OTROS	A	B	C	K'	D	LATITUD	LONGITUD
T. C. Mérida - Progreso	0.00	3	0	3835	2.6	92.0	0.1	3.1	0.4	1.6	0.1	0.0	0.1	94.6	0.1	5.3	0.176	0.502	21.258083	-89.665201
Yucalpetén	6.50	1	0	3035	2.3	92.2	0.1	3.0	0.2	1.7	0.2	0.0	0.3	94.5	0.1	5.4	0.174	0.503	21.271307	-89.712234

9 CARR: Mérida - Celestún

CLAVE: 31025

RUTA: MEX-281

AÑO: 2015

LUGAR	ESTACION				CLASIFICACION VEHICULAR EN PORCIENTO													COORDENADAS		
	KM	TE	SC	TDPA	M	A	B	C2	C3	T3S2	T3S3	T3S2R4	OTROS	A	B	C	K'	D	LATITUD	LONGITUD
Mérida	0.00	3	1	19298	5.4	87.0	2.2	2.6	0.4	0.8	1.1	0.3	0.2	92.4	2.2	5.4	0.071	0.520	20.987185	-89.659570
Mérida	0.00	3	2	17786	4.9	86.8	2.5	2.8	0.4	0.9	1.2	0.3	0.2	91.7	2.5	5.8	0.079	0.520	20.987191	-89.659589
X. Periférico de Mérida	5.10	1	1	27345	4.4	88.5	2.3	2.3	0.4	0.8	1.0	0.1	0.2	92.9	2.3	4.8	0.074	0.523	20.993682	-89.670424
X. Periférico de Mérida	5.10	1	2	24949	4.8	87.4	2.6	2.5	0.4	0.9	1.1	0.1	0.2	92.2	2.6	5.2	0.082	0.523	20.993696	-89.670424
X. Periférico de Mérida	5.10	3	1	20272	4.5	87.7	0.2	3.8	0.2	1.2	1.9	0.1	0.4	92.2	0.2	7.6	0.071	0.507	20.998870	-89.678353
X. Periférico de Mérida	5.10	3	2	19750	5.0	86.2	0.2	4.3	0.2	1.4	2.2	0.1	0.4	91.2	0.2	8.6	0.075	0.507	20.998852	-89.678349
Ucú	14.80	1	0	4125	13.3	72.8	0.6	10.3	0.8	1.7	0.2	0.1	0.2	86.1	0.6	13.3	0.081	0.506	21.027286	-89.734076
Hunucmá	26.00	1	0	3349	16.5	65.7	1.1	12.8	0.7	2.1	0.6	0.2	0.3	82.2	1.1	16.7	0.095	0.534	21.028519	-89.847168
Hunucmá	26.00	3	0	2170	23.9	60.5	1.4	9.9	0.8	2.6	0.5	0.1	0.3	84.4	1.4	14.2	0.099	0.520	21.003256	-89.885064
Kinchil	40.00	3	0	1696	22.9	60.8	1.0	8.0	2.2	3.3	0.9	0.5	0.4	83.7	1.0	15.3	0.100	0.502	20.912125	-89.961075

YUCATAN

9 CARR: Mérida - Celestún

CLAVE: 31025

RUTA: MEX-281

AÑO: 2015

LUGAR	ESTACION				CLASIFICACION VEHICULAR EN PORCIENTO													COORDENADAS		
	KM	TE	SC	TDPA	M	A	B	C2	C3	T3S2	T3S3	T3S2R4	OTROS	A	B	C	K'	D	LATITUD	LONGITUD
T. Izq. San Mateo	67.00	1	0	1010	2.2	83.0	1.5	9.8	1.9	1.3	0.2	0.1	0.0	85.2	1.5	13.3	0.081	0.501	20.859872	-90.186918
Celestún	89.00	1	0	1103	12.2	73.1	1.2	10.5	1.6	0.9	0.3	0.0	0.2	85.3	1.2	13.5	0.087	0.503	20.856874	-90.375876

10 CARR: Mérida - Dzilam de Bravo

CLAVE: 31001

RUTA: MEX-176

AÑO: 2015

LUGAR	ESTACION				CLASIFICACION VEHICULAR EN PORCIENTO													COORDENADAS		
	KM	TE	SC	TDPA	M	A	B	C2	C3	T3S2	T3S3	T3S2R4	OTROS	A	B	C	K'	D	LATITUD	LONGITUD
Mérida	0.00																			
X. Periférico de Mérida	5.90	1	1	10137	3.2	90.1	0.8	2.4	0.5	0.9	1.7	0.1	0.3	93.3	0.8	5.9	0.064	0.512	21.019956	-89.568110
X. Periférico de Mérida	5.90	1	2	9654	3.9	88.8	0.9	2.6	0.5	1.0	1.9	0.1	0.3	92.7	0.9	6.4	0.075	0.512	21.019955	-89.568071
X. Periférico de Mérida	5.90	3	1	13016	4.2	87.2	0.3	4.6	0.8	1.5	0.8	0.3	0.3	91.4	0.3	8.3	0.108	0.504	21.036482	-89.552029
X. Periférico de Mérida	5.90	3	2	12808	4.3	86.6	0.3	4.8	0.9	1.6	0.9	0.3	0.3	90.9	0.3	8.8	0.100	0.504	21.036462	-89.552020
Conkal	18.00	1	1	9233	5.8	84.2	1.0	4.7	1.1	1.7	0.7	0.5	0.3	90.0	1.0	9.0	0.110	0.509	21.050678	-89.538206
Conkal	18.00	1	2	8922	6.4	82.7	1.0	5.3	1.2	1.8	0.8	0.5	0.3	89.1	1.0	9.9	0.101	0.509	21.050675	-89.538201
Baca	34.40	1	0	1709	37.9	51.0	0.3	7.9	0.8	1.2	0.3	0.4	0.2	88.9	0.3	10.8	0.080	0.500	21.108905	-89.409632
Motul	44.00	1	1	4115	9.1	78.9	0.7	7.4	1.3	1.5	0.4	0.6	0.1	88.0	0.7	11.3	0.128	0.507	21.097854	-89.313359
Motul	44.00	1	2	4091	9.6	76.6	0.7	8.8	1.5	1.6	0.4	0.6	0.2	86.2	0.7	13.1	0.150	0.507	21.097835	-89.313399
Motul	44.00	3	0	4835	3.0	78.8	1.0	8.9	2.3	3.3	0.9	1.5	0.3	81.8	1.0	17.2	0.067	0.525	21.115481	-89.272445
Cansahcab	68.00	3	0	1709	16.1	73.9	0.5	6.6	1.3	1.3	0.1	0.1	0.1	90.0	0.5	9.5	0.081	0.503	21.164923	-89.100878
Dzidzantún	80.00	1	0	1614	16.8	75.8	0.3	4.7	1.4	1.0	0.0	0.0	0.0	92.6	0.3	7.1	0.094	0.506	21.235591	-89.051608
Dzilam de Bravo	105.00	1	0	1826	43.8	48.1	0.2	5.4	0.3	1.7	0.2	0.0	0.3	91.9	0.2	7.9	0.100	0.502	21.389987	-88.891994

11 CARR: Mérida - Progreso

CLAVE: 31091

RUTA: MEX-261

AÑO: 2015

LUGAR	ESTACION				CLASIFICACION VEHICULAR EN PORCIENTO													COORDENADAS		
	KM	TE	SC	TDPA	M	A	B	C2	C3	T3S2	T3S3	T3S2R4	OTROS	A	B	C	K'	D	LATITUD	LONGITUD
T. C. Mérida - Dzilam de Bravo	0.00																			
Periférico Mérida	5.40	1	1	19718	2.1	92.1	0.2	2.8	0.3	0.8	1.2	0.2	0.3	94.2	0.2	5.6	0.078	0.507	21.043821	-89.629298
Periférico Mérida	5.40	1	2	20303	2.0	91.6	0.2	3.2	0.3	1.0	1.2	0.2	0.3	93.6	0.2	6.2	0.070	0.507	21.043787	-89.629325
T. Izq. Dzityá	10.40	1	1	25712	2.2	89.6	2.2	2.7	0.4	1.2	1.1	0.3	0.3	91.8	2.2	6.0	0.077	0.501	21.051328	-89.630445
T. Izq. Dzityá	10.40	1	2	25857	2.1	89.1	2.4	2.9	0.4	1.3	1.2	0.3	0.3	91.2	2.4	6.4	0.074	0.501	21.051310	-89.630447
T. Izq. Dzityá	10.40	3	1	19105	1.7	89.0	2.3	3.8	1.0	1.0	0.7	0.3	0.2	90.7	2.3	7.0	0.094	0.500	21.064647	-89.632630
T. Izq. Dzityá	10.40	3	2	19086	2.3	87.3	2.7	4.2	1.1	1.1	0.8	0.3	0.2	89.6	2.7	7.7	0.077	0.500	21.064622	-89.632642
Progreso	35.04	1	1	9066	3.9	87.7	0.9	4.2	0.5	1.3	0.7	0.5	0.3	91.6	0.9	7.5	0.138	0.511	21.269801	-89.661580
Progreso	35.04	1	2	8672	4.4	86.5	1.1	4.4	0.6	1.4	0.8	0.5	0.3	90.9	1.1	8.0	0.149	0.511	21.269809	-89.661564



YUCATAN

12 CARR: Mérida - Puerto Juárez

CLAVE: 00067

RUTA: MEX-180

AÑO: 2015

LUGAR	ESTACION				CLASIFICACION VEHICULAR EN PORCIENTO													COORDENADAS		
	KM	TE	SC	TDPA	M	A	B	C2	C3	T3S2	T3S3	T3S2R4	OTROS	A	B	C	K'	D	LATITUD	LONGITUD
Mérida	0.00																			
X. Periférico de Mérida	5.60	1	1	11091	9.5	83.0	0.7	3.9	0.3	1.4	0.8	0.1	0.3	92.5	0.7	6.8	0.075	0.500	20.957493	-89.572220
X. Periférico de Mérida	5.60	1	2	11109	9.5	82.7	0.7	4.0	0.3	1.5	0.9	0.1	0.3	92.2	0.7	7.1	0.076	0.500	20.957499	-89.572228
X. Periférico de Mérida	5.60	3	1	12459	4.6	82.7	1.3	5.2	1.3	1.9	1.5	0.9	0.6	87.3	1.3	11.4	0.083	0.504	20.955080	-89.566513
X. Periférico de Mérida	5.60	3	2	12660	5.6	80.0	1.3	6.0	1.5	2.1	1.7	1.1	0.7	85.6	1.3	13.1	0.083	0.504	20.955046	-89.566538
Teya	13.00	1	1	9814	3.9	83.9	1.4	4.9	1.4	2.0	0.9	1.0	0.6	87.8	1.4	10.8	0.085	0.509	20.936565	-89.532385
Teya	13.00	1	2	9452	3.9	82.3	1.6	5.6	1.5	2.3	1.0	1.2	0.6	86.2	1.6	12.2	0.078	0.509	20.936560	-89.532392
T. Der. Seyé	28.79	1	1	4996	1.2	86.0	1.1	6.1	1.6	2.1	0.9	0.8	0.2	87.2	1.1	11.7	0.091	0.500	20.892638	-89.385357
T. Der. Seyé	28.79	1	2	4988	0.9	84.3	1.2	7.2	1.8	2.4	1.1	0.9	0.2	85.2	1.2	13.6	0.092	0.500	20.892666	-89.385340
T. Der. Seyé	28.79	3	1	4595	0.7	84.6	2.3	5.9	2.1	2.4	0.7	0.9	0.4	85.3	2.3	12.4	0.092	0.504	20.891911	-89.371383
T. Der. Seyé	28.79	3	2	4514	0.9	83.2	2.5	6.2	2.3	2.6	0.8	1.1	0.4	84.1	2.5	13.4	0.082	0.504	20.891897	-89.371439
Tahmek	42.00	1	1	4673	0.6	86.4	2.1	4.3	1.4	1.8	0.6	2.6	0.2	87.0	2.1	10.9	0.092	0.505	20.875605	-89.271324
Tahmek	42.00	1	2	4776	0.6	85.2	2.4	4.8	1.5	1.9	0.6	2.7	0.3	85.8	2.4	11.8	0.118	0.505	20.875604	-89.271321
T. Izq. Hochtún (1º Acceso)	46.65	1	0	2226	9.4	71.1	3.5	11.3	1.9	1.6	0.7	0.4	0.1	80.5	3.5	16.0	0.079	0.511	20.867579	-89.214076
T. Izq. Hochtún (2º Acceso)	48.62	1	0	1089	7.8	73.4	1.7	10.6	2.9	2.0	0.9	0.4	0.3	81.2	1.7	17.1	0.085	0.512	20.858971	-89.203805
T. Izq. Hochtún (2º Acceso)	48.62	3	0	1990	13.2	68.9	2.7	10.6	1.5	2.1	0.6	0.4	0.0	82.1	2.7	15.2	0.069	0.510	20.854449	-89.195891
Kantunil	67.28	3	0	2824	1.9	77.7	4.6	9.1	3.3	2.0	0.8	0.5	0.1	79.6	4.6	15.8	0.092	0.513	20.791361	-89.019278
Libre Unión	92.91	1	0	2598	3.7	79.0	3.2	7.1	2.9	2.6	0.9	0.3	0.3	82.7	3.2	14.1	0.097	0.520	20.708365	-88.815606
Libre Unión	92.91	3	0	2930	1.7	81.4	3.9	6.4	3.0	2.1	0.6	0.4	0.5	83.1	3.9	13.0	0.086	0.504	20.706922	-88.800381
Piste	116.30	3	0	6260	10.7	74.9	2.5	4.8	1.3	4.0	0.9	0.3	0.6	85.6	2.5	11.9	0.115	0.527	20.690783	-88.579495
1er. Acceso a Zona Arqueológica de Chichen-Itzá	117.90	3	0	4652	7.0	76.9	3.8	6.7	1.6	2.8	0.6	0.3	0.3	83.9	3.8	12.3	0.112	0.504	20.688367	-88.571979
2do. Acceso a Zona Arqueológica de Chichen-Itzá	121.10	3	0	4488	7.0	77.5	3.4	5.9	2.0	2.8	0.7	0.2	0.5	84.5	3.4	12.1	0.106	0.503	20.669453	-88.557631
T. Der. Chankom	127.00	1	0	3834	2.8	80.5	4.1	7.3	2.0	2.1	0.7	0.4	0.1	83.3	4.1	12.6	0.100	0.514	20.643857	-88.494298
T. Der. Chankom	127.00	3	0	3970	2.7	82.0	3.5	6.7	1.4	2.2	0.8	0.3	0.4	84.7	3.5	11.8	0.101	0.506	20.640307	-88.482947
Valladolid	160.68	1	0	5845	11.3	78.0	2.0	4.3	0.4	3.2	0.3	0.1	0.4	89.3	2.0	8.7	0.083	0.532	20.685553	-88.229171
Valladolid	160.68	3	0	6067	11.2	77.7	1.5	5.1	0.9	2.5	0.6	0.3	0.2	88.9	1.5	9.6	0.071	0.541	20.694103	-88.168725
T. Der. Coba	187.80	1	0	5262	2.0	83.1	2.8	5.7	1.4	3.1	0.5	1.0	0.4	85.1	2.8	12.1	0.105	0.506	20.659424	-87.960147
T. Der. Chemax	189.79	1	0	3577	4.1	85.4	1.1	4.6	1.6	2.3	0.4	0.4	0.1	89.5	1.1	9.4	0.110	0.512	20.657837	-87.951537
T. Der. Chemax	189.79	3	0	3045	4.0	83.6	2.6	5.1	1.8	1.9	0.4	0.5	0.1	87.6	2.6	9.8	0.104	0.502	20.663887	-87.926058
X-Can	225.00	3	0	2512	1.9	84.8	2.5	6.1	1.9	1.7	0.5	0.5	0.1	86.7	2.5	10.8	0.131	0.502	20.860690	-87.655871
Lim. Edos. Term. Yuc. Ppia. Q. R.	230.40																			
Nuevo X-Can	231.90	3	0	3184	1.8	84.4	2.0	7.1	2.2	1.7	0.4	0.3	0.1	86.2	2.0	11.8	0.105	0.507	20.871693	-87.591082
Zaragoza	239.00	1	0	4200	2.8	85.4	1.8	4.9	1.2	2.7	0.5	0.3	0.4	88.2	1.8	10.0	0.084	0.505	20.881368	-87.533487
Vicente Guerrero	261.00	1	0	3264	1.4	82.1	2.9	8.4	2.1	2.1	0.6	0.2	0.2	83.5	2.9	13.6	0.095	0.503	20.940868	-87.331944
Leona Vicario	275.50	1	0	5155	2.1	84.8	1.7	6.1	1.5	2.6	0.6	0.4	0.2	86.9	1.7	11.4	0.088	0.508	20.980404	-87.224933

YUCATAN

12 CARR: Mérida - Puerto Juárez

CLAVE: 00067

RUTA: MEX-180

AÑO: 2015

LUGAR	ESTACION				CLASIFICACION VEHICULAR EN PORCIENTO														COORDENADAS	
	KM	TE	SC	TDPA	M	A	B	C2	C3	T3S2	T3S3	T3S2R4	OTROS	A	B	C	K'	D	LATITUD	LONGITUD
Leona Vicario	275.50	3	0	5252	5.0	83.2	1.4	5.5	0.8	2.8	0.6	0.3	0.4	88.2	1.4	10.4	0.099	0.505	20.993320	-87.188903
T. Der. Aeropuerto	302.50	1	0	6343	1.7	80.3	1.1	8.7	3.3	3.1	1.3	0.3	0.2	82.0	1.1	16.9	0.097	0.508	21.096225	-86.983452
T. Der. Aeropuerto	302.50	3	1	4164	2.6	81.6	2.1	7.9	2.3	1.4	0.7	1.1	0.3	84.2	2.1	13.7	0.079	0.514	21.102457	-86.970694
T. Der. Aeropuerto	302.50	3	2	4398	2.5	80.6	2.1	8.4	2.7	1.6	0.7	1.2	0.2	83.1	2.1	14.8	0.120	0.514	21.102473	-86.970714
T. Der. Alfredo V. Bonfil	310.00	1	1	19347	5.0	83.3	0.3	2.8	0.5	2.3	4.1	0.6	1.1	88.3	0.3	11.4	0.067	0.532	21.138095	-86.899038
T. Der. Alfredo V. Bonfil	310.00	1	2	21982	5.0	82.5	0.3	2.9	0.5	2.5	4.5	0.6	1.2	87.5	0.3	12.2	0.064	0.532	21.138121	-86.899058
Puerto Juárez	321.41																			

13 CARR: Mérida - Tekanto

CLAVE: 31587

RUTA: MEX-180

AÑO: 2015

LUGAR	ESTACION				CLASIFICACION VEHICULAR EN PORCIENTO														COORDENADAS	
	KM	TE	SC	TDPA	M	A	B	C2	C3	T3S2	T3S3	T3S2R4	OTROS	A	B	C	K'	D	LATITUD	LONGITUD
T. C. Mérida - Puerto Juárez	0.00																			
X. Periférico de Mérida	5.70	1	0	11776	13.4	75.9	0.3	5.1	0.3	4.0	0.5	0.2	0.3	89.3	0.3	10.4	0.076	0.512	20.961463	-89.569356
T. Der. Tixpéhual	13.25	1	0	6250	9.8	78.7	0.6	6.7	1.6	2.0	0.3	0.1	0.2	88.5	0.6	10.9	0.069	0.520	20.976379	-89.463438
T. Der. Tixpéhual	13.25	3	0	3898	7.5	81.7	0.5	6.8	1.5	1.6	0.2	0.1	0.1	89.2	0.5	10.3	0.078	0.538	20.981704	-89.454865
Tixkokob	21.00	1	0	4135	7.5	78.3	0.8	9.8	1.3	1.5	0.4	0.3	0.1	85.8	0.8	13.4	0.074	0.516	21.003958	-89.420263
Tixkokob	21.00	3	0	3188	32.3	56.7	0.3	8.0	0.8	1.5	0.2	0.1	0.1	89.0	0.3	10.7	0.075	0.513	21.000720	-89.378360
Cacalchén	38.00	1	0	1726	23.3	62.4	0.5	11.2	1.5	1.0	0.1	0.0	0.0	85.7	0.5	13.8	0.079	0.501	20.985153	-89.242148
Tekanto	51.00	1	0	1046	39.3	46.7	0.3	12.3	0.3	0.8	0.3	0.0	0.0	86.0	0.3	13.7	0.085	0.503	21.010383	-89.118840

14 CARR: Muna - Felipe Carrillo Puerto

CLAVE: 00148

RUTA: MEX-184

AÑO: 2015

LUGAR	ESTACION				CLASIFICACION VEHICULAR EN PORCIENTO														COORDENADAS	
	KM	TE	SC	TDPA	M	A	B	C2	C3	T3S2	T3S3	T3S2R4	OTROS	A	B	C	K'	D	LATITUD	LONGITUD
Muna	0.00	3	0	3628	10.5	74.0	1.1	9.0	1.4	2.4	0.8	0.4	0.4	84.5	1.1	14.4	0.068	0.515	20.478022	-89.698253
Ticul	19.10	1	0	3776	7.0	80.4	1.0	8.0	1.1	1.7	0.4	0.3	0.1	87.4	1.0	11.6	0.073	0.507	20.404153	-89.569146
Ticul	19.10	3	0	5614	32.7	56.1	0.9	5.5	0.6	3.1	0.5	0.2	0.4	88.8	0.9	10.3	0.077	0.503	20.373934	-89.518093
Oxkutzcab	40.50	3	0	5597	24.2	67.9	0.7	3.4	0.8	2.1	0.4	0.3	0.2	92.1	0.7	7.2	0.075	0.502	20.283559	-89.378271
Tekax	53.90	3	0	3292	25.9	64.9	0.3	6.0	0.7	2.0	0.1	0.0	0.1	90.8	0.3	8.9	0.076	0.505	20.188183	-89.267821
Tzucacab	86.60	1	0	1633	18.2	68.3	0.9	9.8	1.1	1.2	0.3	0.1	0.1	86.5	0.9	12.6	0.078	0.501	20.079106	-89.063139
Tzucacab	86.60	3	0	1441	29.5	63.0	0.3	5.2	0.9	0.9	0.2	0.0	0.0	92.5	0.3	7.2	0.078	0.508	20.065358	-89.038459
Santa Rosa	109.60	3	0	2566	3.5	76.7	2.6	9.5	2.2	2.2	0.9	2.3	0.1	80.2	2.6	17.2	0.082	0.507	19.944903	-88.876625
Lim. Edos. Term. Yuc. Ppia. Q. R.	117.00																			
Dziuche	118.00	1	0	2316	2.7	76.2	2.6	10.9	2.1	2.4	0.8	2.2	0.1	78.9	2.6	18.5	0.091	0.507	19.905544	-88.819733

YUCATAN

14 CARR: Muna - Felipe Carrillo Puerto

CLAVE: 00148

RUTA: MEX-184

AÑO: 2015

LUGAR	ESTACION				CLASIFICACION VEHICULAR EN PORCIENTO													COORDENADAS		
	KM	TE	SC	TDPA	M	A	B	C2	C3	T3S2	T3S3	T3S2R4	OTROS	A	B	C	K'	D	LATITUD	LONGITUD
Dziuche	118.00	3	0	2768	3.8	81.2	1.6	5.6	2.1	2.4	0.9	2.0	0.4	85.0	1.6	13.4	0.070	0.518	19.890663	-88.804742
José María Morelos	138.60	1	0	3939	5.4	81.4	1.6	6.3	1.3	2.0	0.6	1.3	0.1	86.8	1.6	11.6	0.070	0.510	19.763697	-88.724421
José María Morelos	138.60	3	0	2830	6.5	77.0	2.3	6.8	1.5	2.5	0.9	1.9	0.6	83.5	2.3	14.2	0.075	0.501	19.741343	-88.698128
Polyuc	161.94	1	0	2599	2.0	79.2	2.5	9.2	2.3	2.2	0.7	1.8	0.1	81.2	2.5	16.3	0.077	0.501	19.611933	-88.571916
Polyuc	161.94	3	0	1292	5.9	76.7	2.2	10.4	1.9	2.0	0.2	0.5	0.2	82.6	2.2	15.2	0.071	0.540	19.609550	-88.555269
T. Der. Dzulá	178.11	3	0	1355	4.5	82.5	1.0	8.2	1.3	1.6	0.3	0.6	0.0	87.0	1.0	12.0	0.076	0.508	19.643687	-88.411231
Felipe Carrillo Puerto	216.97	1	0	5732	18.6	71.0	0.7	4.1	0.5	3.9	0.5	0.2	0.5	89.6	0.7	9.7	0.066	0.508	19.583838	-88.055496

15 CARR: Ramal a Panabá

CLAVE: 31609

RUTA: MEX-295

AÑO: 2015

LUGAR	ESTACION				CLASIFICACION VEHICULAR EN PORCIENTO													COORDENADAS		
	KM	TE	SC	TDPA	M	A	B	C2	C3	T3S2	T3S3	T3S2R4	OTROS	A	B	C	K'	D	LATITUD	LONGITUD
T. C. Valladolid - Río Lagartos	0.00	3	0	1349	22.4	69.2	0.6	6.3	0.6	0.8	0.1	0.0	0.0	91.6	0.6	7.8	0.083	0.501	21.194184	-88.170066
Panabá	18.00	1	0	1264	24.9	68.5	0.3	4.3	0.7	0.9	0.2	0.0	0.2	93.4	0.3	6.3	0.086	0.504	21.286052	-88.269371

16 CARR: Teya -Peto

CLAVE: 31042

RUTA: MEX-184

AÑO: 2015

LUGAR	ESTACION				CLASIFICACION VEHICULAR EN PORCIENTO													COORDENADAS		
	KM	TE	SC	TDPA	M	A	B	C2	C3	T3S2	T3S3	T3S2R4	OTROS	A	B	C	K'	D	LATITUD	LONGITUD
T. C. Mérida - Puerto Juárez	0.00																			
San Antonio Tehuizt	3.80	3	1	3896	5.3	77.4	1.2	9.8	2.0	2.4	0.6	1.0	0.3	82.7	1.2	16.1	0.108	0.501	20.886646	-89.506608
San Antonio Tehuizt	3.80	3	2	3886	4.9	76.3	1.2	10.4	2.4	2.6	0.7	1.2	0.3	81.2	1.2	17.6	0.108	0.501	20.886646	-89.506608
T. Izq. Acanceh	13.70	1	1	3024	3.4	80.0	1.6	8.2	2.3	2.1	0.8	1.2	0.4	83.4	1.6	15.0	0.104	0.523	20.814542	-89.472356
T. Izq. Acanceh	13.70	1	2	2759	3.4	79.1	1.7	8.7	2.5	2.2	0.8	1.3	0.3	82.5	1.7	15.8	0.094	0.523	20.814542	-89.472356
Tecoh	22.00	1	0	5811	5.8	77.1	1.2	7.7	2.9	2.9	0.9	1.1	0.4	82.9	1.2	15.9	0.079	0.504	20.765625	-89.467774
T. Der. Zona Arq. de Mayapan	37.65	1	0	3749	1.8	77.8	1.8	9.6	2.9	2.9	1.1	1.9	0.2	79.6	1.8	18.6	0.090	0.500	20.635789	-89.460378
T. Izq. Teabo	69.05	1	1	1752	3.5	78.2	1.9	9.1	2.7	2.0	0.8	1.6	0.2	81.7	1.9	16.4	0.092	0.503	20.405944	-89.306728
T. Izq. Teabo	69.05	1	2	1774	3.4	76.5	2.2	9.7	3.2	1.9	1.0	1.8	0.3	79.9	2.2	17.9	0.100	0.503	20.405981	-89.306715
T. Izq. Tixmehuac	97.10	1	0	1946	2.3	76.1	2.4	8.4	3.9	2.6	1.6	2.2	0.5	78.4	2.4	19.2	0.087	0.506	20.231140	-89.129478
Peto	120.70	1	0	2522	5.0	78.6	2.1	6.3	2.5	2.2	1.1	2.1	0.1	83.6	2.1	14.3	0.081	0.502	20.124516	-88.950648

YUCATAN

17 CARR: Tzucacab - Santa Rosa

CLAVE: 31017

RUTA: MEX

AÑO: 2015

LUGAR	ESTACION				CLASIFICACION VEHICULAR EN PORCIENTO													COORDENADAS		
	KM	TE	SC	TDPA	M	A	B	C2	C3	T3S2	T3S3	T3S2R4	OTROS	A	B	C	K'	D	LATITUD	LONGITUD
Tzucacab	0.00	3	0	1524	18.3	70.1	0.5	9.2	0.8	0.9	0.1	0.0	0.1	88.4	0.5	11.1	0.085	0.510	20.073136	-89.036784
Peto	16.00	3	0	2267	8.2	72.1	2.8	9.3	2.0	2.3	0.8	2.4	0.1	80.3	2.8	16.9	0.080	0.533	20.084423	-88.912158
Santa Rosa	34.50	1	0	1785	5.0	72.8	3.3	10.0	2.4	2.5	1.0	2.8	0.2	77.8	3.3	18.9	0.091	0.512	19.962192	-88.881195

18 CARR: Valladolid - Felipe Carrillo Puerto

CLAVE: 00010

RUTA: MEX-295

AÑO: 2015

LUGAR	ESTACION				CLASIFICACION VEHICULAR EN PORCIENTO													COORDENADAS		
	KM	TE	SC	TDPA	M	A	B	C2	C3	T3S2	T3S3	T3S2R4	OTROS	A	B	C	K'	D	LATITUD	LONGITUD
Valladolid	0.00	3	0	4349	15.1	79.5	0.3	2.7	0.2	1.9	0.1	0.1	0.1	94.6	0.3	5.1	0.069	0.513	20.674618	-88.204005
Chichimilá	6.90	3	0	2073	10.0	84.6	0.3	3.2	0.3	1.4	0.1	0.0	0.1	94.6	0.3	5.1	0.074	0.502	20.624418	-88.229614
Tekom	12.05	3	0	1371	8.6	82.9	0.6	6.5	0.7	0.6	0.1	0.0	0.0	91.5	0.6	7.9	0.086	0.506	20.590705	-88.265409
Tixcacalcupul	19.80	3	0	976	14.4	76.4	0.8	6.5	0.4	1.2	0.2	0.1	0.0	90.8	0.8	8.4	0.097	0.513	20.529485	-88.271498
Lim. Edos. Term. Yuc. Ppia. Q. R.	46.00																			
Tepich	51.40	1	0	683	12.7	74.4	0.6	9.8	0.8	0.9	0.6	0.1	0.1	87.1	0.6	12.3	0.092	0.509	20.250573	-88.254991
Tihosuco	65.00	1	0	733	10.0	78.1	1.0	8.9	0.6	0.9	0.4	0.1	0.0	88.1	1.0	10.9	0.102	0.520	20.193109	-88.358923
Tihosuco	65.00	3	0	795	12.7	78.0	0.7	6.8	0.5	0.9	0.3	0.1	0.0	90.7	0.7	8.6	0.103	0.515	20.190777	-88.386732
T. Izq. San Felipe Berriozábal	99.00	1	0	630	8.0	81.2	1.1	8.5	0.4	0.6	0.1	0.1	0.0	89.2	1.1	9.7	0.084	0.504	19.963535	-88.242700
T. Izq. San Felipe Berriozábal	99.00	3	0	661	7.0	82.2	1.7	8.0	0.4	0.5	0.1	0.1	0.0	89.2	1.7	9.1	0.089	0.513	19.961462	-88.240579
Señor	116.50	1	0	981	14.1	75.0	1.8	7.5	0.4	1.0	0.1	0.1	0.0	89.1	1.8	9.1	0.129	0.502	19.852990	-88.145036
Señor	116.50	3	0	1232	7.7	79.2	1.4	10.7	0.3	0.7	0.0	0.0	0.0	86.9	1.4	11.7	0.083	0.501	19.831107	-88.130903
Felipe Carrillo Puerto	147.70	1	0	1230	0.7	89.9	1.0	6.7	0.4	1.1	0.1	0.0	0.1	90.6	1.0	8.4	0.067	0.518	19.612165	-88.056451

19 CARR: Valladolid - Río Lagartos

CLAVE: 31035

RUTA: MEX-295

AÑO: 2015

LUGAR	ESTACION				CLASIFICACION VEHICULAR EN PORCIENTO													COORDENADAS		
	KM	TE	SC	TDPA	M	A	B	C2	C3	T3S2	T3S3	T3S2R4	OTROS	A	B	C	K'	D	LATITUD	LONGITUD
Valladolid	0.00	3	1	3796	10.8	78.5	1.8	4.9	0.9	1.5	0.4	1.0	0.2	89.3	1.8	8.9	0.082	0.505	20.729851	-88.202850
Valladolid	0.00	3	2	3866	9.7	79.3	1.9	5.0	0.9	1.5	0.4	1.1	0.2	89.0	1.9	9.1	0.082	0.505	20.729841	-88.202858
Temozón	12.70	3	0	2994	10.2	77.7	0.7	5.8	0.4	3.3	0.5	0.8	0.6	87.9	0.7	11.4	0.092	0.534	20.815782	-88.196482
Tizimín	51.80	1	0	2661	9.8	79.2	1.0	4.6	0.7	2.7	0.5	1.2	0.3	89.0	1.0	10.0	0.081	0.516	21.095762	-88.161201
Tizimín	51.80	3	0	2746	21.4	67.1	0.6	6.1	0.8	2.4	0.5	0.5	0.6	88.5	0.6	10.9	0.098	0.501	21.188377	-88.166614
T. Der. Dzonot Carretero	79.90	1	0	1243	14.1	72.3	0.7	6.6	1.0	2.3	0.9	1.2	0.9	86.4	0.7	12.9	0.134	0.501	21.379339	-88.142775
Río Lagartos	103.90																			

YUCATAN

20 CARR : Mérida - Cancún (Cuota)

CLAVE: 00071

RUTA: MEX-180D

AÑO: 2015

LUGAR	ESTACION				CLASIFICACION VEHICULAR EN PORCIENTO												COORDENADAS			
	KM	TE	SC	TDPA	M	A	B	C2	C3	T3S2	T3S3	T3S2R4	OTROS	A	B	C	K'	D	LATITUD	LONGITUD
T. C. Mérida - Puerto Juárez	0.00																			
Caseta de Cobro Piste	51.00	1	1	1943	0.2	75.0	3.7	9.3	1.2	2.7	0.9	6.6	0.4	75.2	3.7	21.1	0.093	0.540	20.730645	-88.590275
Caseta de Cobro Piste	51.00	1	2	1658	0.2	71.9	4.2	10.4	1.2	3.1	1.0	7.7	0.3	72.1	4.2	23.7	0.117	0.540	20.730666	-88.590202
Caseta de Cobro X-Can	155.00	1	1	1011	0.3	76.7	6.9	4.9	0.6	2.6	0.8	7.0	0.2	77.0	6.9	16.1	0.128	0.528	20.877344	-87.631186
Caseta de Cobro X-Can	155.00	1	2	1133	0.6	73.9	7.8	5.3	0.7	2.9	0.9	7.6	0.3	74.5	7.8	17.7	0.112	0.528	20.877344	-87.631186
Lim. Edos. Term. Yuc. Ppia. Q. R.	160.00																			
T. C. Mérida - Puerto Juárez	292.00	1	1	1421	2.9	80.1	4.8	6.0	0.4	1.6	0.7	3.0	0.5	83.0	4.8	12.2	0.128	0.513	21.096120	-86.979420
T. C. Mérida - Puerto Juárez	292.00	1	2	1347	3.4	77.0	5.4	6.6	0.5	1.8	0.9	3.6	0.8	80.4	5.4	14.2	0.134	0.513	21.095992	-86.979415
T. C. Reforma Agraria - Puerto Juárez	308.10	1	0	9319	3.0	72.8	2.0	15.4	2.1	1.8	0.8	1.6	0.5	75.8	2.0	22.2	0.096	0.520	21.020394	-86.858785

21 CARR : Acanceh - Estación Polabán

CLAVE: 31615

RUTA: YUC

AÑO: 2015

LUGAR	ESTACION				CLASIFICACION VEHICULAR EN PORCIENTO												COORDENADAS			
	KM	TE	SC	TDPA	M	A	B	C2	C3	T3S2	T3S3	T3S2R4	OTROS	A	B	C	K'	D	LATITUD	LONGITUD
Acanceh	0.00	3	0	1859	23.0	63.9	0.4	8.5	1.0	2.5	0.2	0.4	0.1	86.9	0.4	12.7	0.084	0.501	20.808929	-89.440293
Homún	20.00	3	0	739	44.6	47.4	0.4	6.5	0.2	0.8	0.1	0.0	0.0	92.0	0.4	7.6	0.149	0.504	20.735178	-89.268913
Estación Polabán	24.40	1	0	525	33.9	56.8	0.3	8.3	0.6	0.1	0.0	0.0	0.0	90.7	0.3	9.0	0.112	0.502	20.726817	-89.224274

22 CARR : Baca - Dzidzantún

CLAVE: 31591

RUTA: YUC

AÑO: 2015

LUGAR	ESTACION				CLASIFICACION VEHICULAR EN PORCIENTO												COORDENADAS			
	KM	TE	SC	TDPA	M	A	B	C2	C3	T3S2	T3S3	T3S2R4	OTROS	A	B	C	K'	D	LATITUD	LONGITUD
Baca	0.00	3	0	2068	40.3	51.4	0.5	5.6	0.7	1.1	0.2	0.1	0.1	91.7	0.5	7.8	0.073	0.517	21.122518	-89.394029
Dzemul	15.00	1	0	340	41.5	53.2	0.7	3.4	1.1	0.0	0.1	0.0	0.0	94.7	0.7	4.6	0.076	0.526	21.206496	-89.320256
Dzemul	15.00	3	0	1532	51.0	42.0	0.2	5.1	0.3	1.3	0.1	0.0	0.0	93.0	0.2	6.8	0.108	0.502	21.208781	-89.296063
Pueblo Telchac	19.10	1	0	1785	45.4	44.7	2.4	5.9	0.1	0.9	0.3	0.1	0.2	90.1	2.4	7.5	0.095	0.500	21.205462	-89.280807
Sinanché	29.10	3	0	732	36.0	55.8	0.4	5.9	1.3	0.5	0.1	0.0	0.0	91.8	0.4	7.8	0.115	0.503	21.225949	-89.174921
Dzidzantún	43.00	1	0	933	39.5	53.7	0.1	4.8	0.8	1.1	0.0	0.0	0.0	93.2	0.1	6.7	0.104	0.519	21.245240	-89.053339

23 CARR : Citilcum - Tixkochoh

CLAVE: 31064

RUTA: YUC

AÑO: 2015

LUGAR	ESTACION				CLASIFICACION VEHICULAR EN PORCIENTO												COORDENADAS			
	KM	TE	SC	TDPA	M	A	B	C2	C3	T3S2	T3S3	T3S2R4	OTROS	A	B	C	K'	D	LATITUD	LONGITUD
Citilcum	0.00	3	0	946	44.8	47.8	0.5	5.0	0.3	1.2	0.2	0.0	0.2	92.6	0.5	6.9	0.152	0.505	20.957449	-89.115921
Tekanto	7.00	1	0	634	33.4	58.1	0.8	5.6	0.5	1.3	0.3	0.0	0.0	91.5	0.8	7.7	0.084	0.507	21.001368	-89.105149

YUCATAN

23 CARR : Citilcum - Tixkochoh

CLAVE: 31064

RUTA: YUC

AÑO: 2015

LUGAR	ESTACION				CLASIFICACION VEHICULAR EN PORCIENTO														COORDENADAS	
	KM	TE	SC	TDPA	M	A	B	C2	C3	T3S2	T3S3	T3S2R4	OTROS	A	B	C	K'	D	LATITUD	LONGITUD
Tixkochoh	10.00	1	0	499	53.8	42.6	0.3	2.1	0.1	1.1	0.0	0.0	0.0	96.4	0.3	3.3	0.128	0.545	21.013683	-89.089628

24 CARR : Dzemul - Xtampú

CLAVE: 31608

RUTA: YUC

AÑO: 2015

LUGAR	ESTACION				CLASIFICACION VEHICULAR EN PORCIENTO														COORDENADAS	
	KM	TE	SC	TDPA	M	A	B	C2	C3	T3S2	T3S3	T3S2R4	OTROS	A	B	C	K'	D	LATITUD	LONGITUD
Dzemul	0.00	3	0	495	26.6	62.6	0.8	8.2	0.8	0.8	0.2	0.0	0.0	89.2	0.8	10.0	0.099	0.503	21.211070	-89.321190
Xtampú	10.00	1	0	463	21.4	70.6	1.4	5.3	0.7	0.5	0.1	0.0	0.0	92.0	1.4	6.6	0.160	0.514	21.331577	-89.348581

25 CARR : Dzidzantún - Santa Clara

CLAVE: 31592

RUTA: YUC

AÑO: 2015

LUGAR	ESTACION				CLASIFICACION VEHICULAR EN PORCIENTO														COORDENADAS	
	KM	TE	SC	TDPA	M	A	B	C2	C3	T3S2	T3S3	T3S2R4	OTROS	A	B	C	K'	D	LATITUD	LONGITUD
Dzidzantún	0.00	3	0	988	44.5	50.7	0.3	3.6	0.0	0.7	0.2	0.0	0.0	95.2	0.3	4.5	0.107	0.522	21.260064	-89.041124
Santa Clara	14.00	1	0	558	30.6	63.9	0.3	4.2	0.0	0.7	0.3	0.0	0.0	94.5	0.3	5.2	0.158	0.516	21.371367	-89.014382

26 CARR : Hoctún - Cenotillo

CLAVE: 31011

RUTA: YUC-011

AÑO: 2015

LUGAR	ESTACION				CLASIFICACION VEHICULAR EN PORCIENTO														COORDENADAS	
	KM	TE	SC	TDPA	M	A	B	C2	C3	T3S2	T3S3	T3S2R4	OTROS	A	B	C	K'	D	LATITUD	LONGITUD
Hoctún	0.00	3	0	2374	4.7	83.0	2.2	6.3	0.8	1.8	0.4	0.7	0.1	87.7	2.2	10.1	0.089	0.504	20.878472	-89.190925
Citilcum	13.20	3	0	1567	26.4	66.1	0.5	4.9	0.8	1.2	0.1	0.0	0.0	92.5	0.5	7.0	0.093	0.517	20.950699	-89.110188
Izamal	24.00	3	0	2273	31.8	57.2	1.0	6.7	1.5	1.4	0.1	0.2	0.1	89.0	1.0	10.0	0.071	0.508	20.933823	-89.001236
Tunkás	55.20	3	0	545	36.0	54.3	1.0	6.2	1.9	0.3	0.3	0.0	0.0	90.3	1.0	8.7	0.094	0.504	20.916743	-88.734336
Cenotillo	70.90	1	0	551	32.8	55.1	1.8	6.8	2.3	1.0	0.1	0.0	0.1	87.9	1.8	10.3	0.107	0.502	20.964333	-88.620828

27 CARR : Holcá - Sotuta

CLAVE: 31626

RUTA: YUC

AÑO: 2015

LUGAR	ESTACION				CLASIFICACION VEHICULAR EN PORCIENTO														COORDENADAS	
	KM	TE	SC	TDPA	M	A	B	C2	C3	T3S2	T3S3	T3S2R4	OTROS	A	B	C	K'	D	LATITUD	LONGITUD
T. C. Mérida - Puerto Juárez	0.00	3	0	633	11.9	75.1	1.1	8.5	1.7	1.0	0.3	0.4	0.0	87.0	1.1	11.9	0.101	0.502	20.751348	-88.930334
Tibolón	10.00	3	0	678	8.3	77.9	1.5	8.9	1.8	0.7	0.4	0.4	0.1	86.2	1.5	12.3	0.094	0.502	20.659806	-88.949870
Sotuta	20.00	1	0	658	14.5	72.5	1.3	8.5	1.8	1.2	0.1	0.1	0.0	87.0	1.3	11.7	0.111	0.506	20.606880	-89.002582

YUCATAN

28 CARR: Hunucmá - Umán

CLAVE: 31610

RUTA: YUC

AÑO: 2015

LUGAR	ESTACION				CLASIFICACION VEHICULAR EN PORCIENTO														COORDENADAS	
	KM	TE	SC	TDPA	M	A	B	C2	C3	T3S2	T3S3	T3S2R4	OTROS	A	B	C	K'	D	LATITUD	LONGITUD
Hunucmá	0.00	3	0	3332	16.3	72.1	0.8	6.1	0.8	2.3	0.6	0.4	0.6	88.4	0.8	10.8	0.087	0.501	21.002289	-89.862452
X. C. Mérida - Tetiz	4.87	1	0	3443	9.0	85.2	0.2	3.3	0.7	1.3	0.1	0.1	0.1	94.2	0.2	5.6	0.079	0.516	20.982791	-89.854759
X. C. Mérida - Tetiz	4.87	3	0	1015	32.3	56.2	0.7	8.4	0.6	1.5	0.3	0.0	0.0	88.5	0.7	10.8	0.113	0.510	20.974827	-89.851890
Hacienda Dzibikak	16.16	1	0	1130	33.0	55.1	0.7	8.2	1.1	1.4	0.3	0.0	0.2	88.1	0.7	11.2	0.097	0.503	20.905715	-89.798211
Hacienda Dzibikak	16.16	3	0	1669	35.8	54.0	0.6	5.6	1.4	1.6	0.4	0.4	0.2	89.8	0.6	9.6	0.108	0.521	20.902134	-89.786605
Umán	22.00	1	0	2997	43.3	45.3	0.9	4.1	0.9	3.3	1.1	0.4	0.7	88.6	0.9	10.5	0.142	0.510	20.894583	-89.764332

29 CARR: Izamal - Dzilam González

CLAVE: 31605

RUTA: YUC

AÑO: 2015

LUGAR	ESTACION				CLASIFICACION VEHICULAR EN PORCIENTO														COORDENADAS	
	KM	TE	SC	TDPA	M	A	B	C2	C3	T3S2	T3S3	T3S2R4	OTROS	A	B	C	K'	D	LATITUD	LONGITUD
Izamal	0.00	3	0	1589	41.6	51.0	0.9	4.9	0.4	1.0	0.2	0.0	0.0	92.6	0.9	6.5	0.075	0.502	20.943823	-89.007388
Temax	30.00	1	0	756	30.5	57.6	2.1	7.4	1.3	0.7	0.3	0.0	0.1	88.1	2.1	9.8	0.079	0.503	21.132839	-88.938817
Dzilam González	43.00	1	0	750	48.5	44.6	0.7	4.9	0.5	0.7	0.1	0.0	0.0	93.1	0.7	6.2	0.097	0.501	21.266795	-88.932389

30 CARR: Kantunil - Izamal

CLAVE: 31012

RUTA: YUC

AÑO: 2015

LUGAR	ESTACION				CLASIFICACION VEHICULAR EN PORCIENTO														COORDENADAS	
	KM	TE	SC	TDPA	M	A	B	C2	C3	T3S2	T3S3	T3S2R4	OTROS	A	B	C	K'	D	LATITUD	LONGITUD
Kantunil	0.00	3	0	856	18.0	73.3	1.1	5.2	0.6	1.4	0.2	0.0	0.2	91.3	1.1	7.6	0.118	0.503	20.808300	-89.028287
Izamal	17.80	1	0	2055	27.0	68.0	0.7	2.8	0.3	1.1	0.1	0.0	0.0	95.0	0.7	4.3	0.094	0.506	20.919767	-89.013005

31 CARR: Kinchil - Umán

CLAVE: 31009

RUTA: YUC

AÑO: 2015

LUGAR	ESTACION				CLASIFICACION VEHICULAR EN PORCIENTO														COORDENADAS	
	KM	TE	SC	TDPA	M	A	B	C2	C3	T3S2	T3S3	T3S2R4	OTROS	A	B	C	K'	D	LATITUD	LONGITUD
Kinchil	0.00	3	0	1484	25.1	59.6	1.5	8.4	2.1	2.1	0.6	0.4	0.2	84.7	1.5	13.8	0.077	0.508	20.911020	-89.936947
Umán	26.00																			

32 CARR: Libramiento Norte de Motul

CLAVE: 31610

RUTA: YUC

AÑO: 2015

LUGAR	ESTACION				CLASIFICACION VEHICULAR EN PORCIENTO														COORDENADAS	
	KM	TE	SC	TDPA	M	A	B	C2	C3	T3S2	T3S3	T3S2R4	OTROS	A	B	C	K'	D	LATITUD	LONGITUD
T. C. Mérida - Dzilam de Bravo Poniente	0.00	3	0	6556	4.4	83.8	0.4	4.2	1.9	3.5	0.6	0.9	0.3	88.2	0.4	11.4	0.079	0.537	21.101598	-89.301203
X. C. Motul - Puerto Telchac	3.16	1	0	5683	4.2	80.1	0.9	7.4	1.7	3.2	1.0	1.0	0.5	84.3	0.9	14.8	0.092	0.514	21.114467	-89.284328

YUCATAN

32 CARR: Libramiento Norte de Motul

CLAVE: 31610

RUTA: YUC

AÑO: 2015

LUGAR	ESTACION				CLASIFICACION VEHICULAR EN PORCIENTO													COORDENADAS		
	KM	TE	SC	TDPA	M	A	B	C2	C3	T3S2	T3S3	T3S2R4	OTROS	A	B	C	K'	D	LATITUD	LONGITUD
X. C. Motul - Puerto Telchac	3.16	3	0	5044	12.6	71.3	0.7	7.9	1.8	3.8	0.6	0.9	0.4	83.9	0.7	15.4	0.086	0.506	21.114468	-89.279013
X. C. Libramiento Suma de Hidalgo	3.70	3	0	1236	30.5	59.9	0.6	6.2	1.3	1.4	0.1	0.0	0.0	90.4	0.6	9.0	0.074	0.516	21.112537	-89.274247
T. C. Mérida - Dzilam de Bravo Oriente	6.53	1	0	740	18.2	71.0	1.0	7.4	1.2	1.2	0.0	0.0	0.0	89.2	1.0	9.8	0.097	0.531	21.096724	-89.261153

33 CARR: Mérida - Acanceh

CLAVE: 31023

RUTA: YUC

AÑO: 2015

LUGAR	ESTACION				CLASIFICACION VEHICULAR EN PORCIENTO													COORDENADAS		
	KM	TE	SC	TDPA	M	A	B	C2	C3	T3S2	T3S3	T3S2R4	OTROS	A	B	C	K'	D	LATITUD	LONGITUD
Mérida	0.00	3	0	8156	21.8	60.3	0.5	7.3	2.5	5.1	1.0	0.7	0.8	82.1	0.5	17.4	0.068	0.504	20.934990	-89.579643
T. Der. Uxec Tamán	11.00	1	0	535	31.2	63.9	0.6	3.0	0.6	0.6	0.0	0.1	0.0	95.1	0.6	4.3	0.099	0.515	20.875623	-89.528494
T. Der. Uxec Tamán	11.00	3	0	398	43.4	50.8	0.5	4.8	0.0	0.5	0.0	0.0	0.0	94.2	0.5	5.3	0.085	0.514	20.862946	-89.532207
Timucuy	20.00	3	0	985	34.9	56.7	0.5	5.3	1.1	1.0	0.2	0.0	0.3	91.6	0.5	7.9	0.098	0.509	20.812324	-89.506075
Acanceh	26.00	1	0	1012	35.5	53.3	0.9	7.0	0.9	2.0	0.3	0.0	0.1	88.8	0.9	10.3	0.095	0.511	20.812561	-89.473726

34 CARR: Mérida - Oxkutzcab

CLAVE: 31018

RUTA: YUC-018

AÑO: 2015

LUGAR	ESTACION				CLASIFICACION VEHICULAR EN PORCIENTO													COORDENADAS		
	KM	TE	SC	TDPA	M	A	B	C2	C3	T3S2	T3S3	T3S2R4	OTROS	A	B	C	K'	D	LATITUD	LONGITUD
Mérida	0.00	3	1	8768	12.7	74.9	0.3	8.8	0.2	1.0	1.6	0.1	0.4	87.6	0.3	12.1	0.075	0.503	20.944947	-89.582552
Mérida	0.00	3	2	8668	11.9	74.8	0.3	9.3	0.2	1.2	1.8	0.1	0.4	86.7	0.3	13.0	0.072	0.503	20.944970	-89.582537
Kanasín	5.97	1	1	9290	21.1	70.3	0.1	5.3	0.3	1.6	0.8	0.1	0.4	91.4	0.1	8.5	0.066	0.502	20.940871	-89.571633
Kanasín	5.97	1	2	9367	21.6	68.9	0.1	6.1	0.3	1.7	0.8	0.1	0.4	90.5	0.1	9.4	0.078	0.502	20.940878	-89.571602
Acanceh	20.39	1	0	4754	33.3	53.8	0.4	6.1	0.7	3.9	0.8	0.4	0.6	87.1	0.4	12.5	0.095	0.502	20.823501	-89.466460
Acanceh	20.39	3	0	5906	5.7	75.3	1.3	9.5	2.9	2.9	1.1	0.9	0.4	81.0	1.3	17.7	0.080	0.503	20.789449	-89.460573
Tecoh	29.30	1	0	5729	6.5	78.0	1.2	9.0	1.9	1.3	0.7	1.1	0.3	84.5	1.2	14.3	0.100	0.505	20.767388	-89.467097
Tekit	61.70	1	0	343	47.4	46.1	0.5	4.6	0.5	0.6	0.2	0.0	0.1	93.5	0.5	6.0	0.105	0.511	20.544355	-89.338414
Maní	98.20	1	0	2324	12.9	72.0	1.0	8.6	1.7	2.0	0.7	0.7	0.4	84.9	1.0	14.1	0.086	0.505	20.399299	-89.361142
Maní	98.20	3	0	1636	27.2	64.7	0.5	7.1	0.2	0.2	0.1	0.0	0.0	91.9	0.5	7.6	0.090	0.500	20.372408	-89.398122
Oxkutzcab	109.30	1	0	1659	27.4	65.6	1.1	5.1	0.5	0.2	0.1	0.0	0.0	93.0	1.1	5.9	0.084	0.518	20.327359	-89.416105

35 CARR: Mérida - Tetiz

CLAVE: 31610

RUTA: YUC

AÑO: 2015

LUGAR	ESTACION				CLASIFICACION VEHICULAR EN PORCIENTO													COORDENADAS		
	KM	TE	SC	TDPA	M	A	B	C2	C3	T3S2	T3S3	T3S2R4	OTROS	A	B	C	K'	D	LATITUD	LONGITUD
Anillo Periferico Lic. Manuel Berzunza	0.00	3	0	10331	5.9	83.3	0.6	4.1	1.1	3.9	0.4	0.2	0.5	89.2	0.6	10.2	0.094	0.518	20.983710	-89.700284



YUCATAN

35 CARR: Mérida - Tetiz

CLAVE: 31610

RUTA: YUC

AÑO: 2015

LUGAR	ESTACION				CLASIFICACION VEHICULAR EN PORCIENTO														COORDENADAS	
	KM	TE	SC	TDPA	M	A	B	C2	C3	T3S2	T3S3	T3S2R4	OTROS	A	B	C	K'	D	LATITUD	LONGITUD
X. C. Hunucmá - Umán	17.98	1	0	3388	4.9	81.0	1.0	8.8	1.7	2.1	0.3	0.1	0.1	85.9	1.0	13.1	0.084	0.535	20.982043	-89.842006
X. C. Hunucmá - Umán	17.98	3	0	3010	6.3	79.7	1.0	7.1	2.3	2.6	0.5	0.3	0.2	86.0	1.0	13.0	0.078	0.531	20.979246	-89.861033
X. C. Mérida - Celestún	24.40	1	0	3079	5.8	79.8	1.3	7.6	1.9	2.6	0.4	0.3	0.3	85.6	1.3	13.1	0.081	0.561	20.979949	-89.908779

36 CARR: Mérida - Timucuy

CLAVE: 31024

RUTA: YUC

AÑO: 2015

LUGAR	ESTACION				CLASIFICACION VEHICULAR EN PORCIENTO														COORDENADAS	
	KM	TE	SC	TDPA	M	A	B	C2	C3	T3S2	T3S3	T3S2R4	OTROS	A	B	C	K'	D	LATITUD	LONGITUD
Mérida	0.00	3	0	4633	15.1	70.3	0.3	11.0	0.6	2.0	0.5	0.0	0.2	85.4	0.3	14.3	0.076	0.514	20.899279	-89.599475
Tekik de Regil	15.10	1	0	1367	13.4	71.4	0.5	12.2	1.1	0.9	0.2	0.1	0.2	84.8	0.5	14.7	0.087	0.538	20.822778	-89.559539
Tekik de Regil	15.10	3	0	1088	19.4	65.6	0.8	12.3	0.8	0.9	0.1	0.0	0.1	85.0	0.8	14.2	0.075	0.509	20.815713	-89.553702
Timucuy	18.65	1	0	1147	21.3	64.3	0.7	12.3	0.9	0.4	0.1	0.0	0.0	85.6	0.7	13.7	0.079	0.501	20.812672	-89.525784

37 CARR: Motul - Puerto Telchac

CLAVE: 31006

RUTA: YUC-172

AÑO: 2015

LUGAR	ESTACION				CLASIFICACION VEHICULAR EN PORCIENTO														COORDENADAS	
	KM	TE	SC	TDPA	M	A	B	C2	C3	T3S2	T3S3	T3S2R4	OTROS	A	B	C	K'	D	LATITUD	LONGITUD
Motul	0.00	3	0	3792	22.6	69.1	0.4	4.5	0.5	2.0	0.5	0.2	0.2	91.7	0.4	7.9	0.095	0.511	21.118564	-89.280913
Pueblo Telchac	12.00	3	0	1625	26.1	66.1	0.2	5.0	0.9	1.2	0.3	0.1	0.1	92.2	0.2	7.6	0.122	0.504	21.215335	-89.271368
Puerto Telchac	28.00																			

38 CARR: Muna - Maxcanú

CLAVE: 31053

RUTA: YUC

AÑO: 2015

LUGAR	ESTACION				CLASIFICACION VEHICULAR EN PORCIENTO														COORDENADAS	
	KM	TE	SC	TDPA	M	A	B	C2	C3	T3S2	T3S3	T3S2R4	OTROS	A	B	C	K'	D	LATITUD	LONGITUD
Muna	0.00	3	0	1109	17.9	69.5	1.1	6.9	1.1	2.6	0.5	0.2	0.2	87.4	1.1	11.5	0.094	0.508	20.490524	-89.734818
Opichén	17.00	3	0	1268	24.5	63.0	1.2	7.6	1.2	1.6	0.5	0.4	0.0	87.5	1.2	11.3	0.091	0.507	20.554824	-89.869296
T. C. Campeche - Mérida	31.00	1	0	1117	21.9	64.7	1.4	7.7	1.3	2.1	0.4	0.5	0.0	86.6	1.4	12.0	0.087	0.503	20.583030	-89.969917

39 CARR: Oxkutzcab - Xul

CLAVE: 31051

RUTA: YUC-031

AÑO: 2015

LUGAR	ESTACION				CLASIFICACION VEHICULAR EN PORCIENTO														COORDENADAS	
	KM	TE	SC	TDPA	M	A	B	C2	C3	T3S2	T3S3	T3S2R4	OTROS	A	B	C	K'	D	LATITUD	LONGITUD
Oxkutzcab	0.00	3	0	2311	31.3	58.1	0.1	8.0	0.2	1.6	0.4	0.1	0.2	89.4	0.1	10.5	0.100	0.500	20.286826	-89.424584
Emiliano Zapata	10.00	3	0	1010	51.2	39.4	0.2	8.1	0.4	0.4	0.3	0.0	0.0	90.6	0.2	9.2	0.110	0.501	20.220406	-89.464066

YUCATAN

39 CARR: Oxkutzcab - Xul

CLAVE: 31051

RUTA: YUC-031

AÑO: 2015

LUGAR	ESTACION				CLASIFICACION VEHICULAR EN PORCIENTO														COORDENADAS	
	KM	TE	SC	TDPA	M	A	B	C2	C3	T3S2	T3S3	T3S2R4	OTROS	A	B	C	K'	D	LATITUD	LONGITUD
Xul	25.00	1	0	599	38.0	53.7	0.3	6.3	0.7	0.5	0.5	0.0	0.0	91.7	0.3	8.0	0.090	0.501	20.110771	-89.456601

40 CARR: Piste - Dzitás

CLAVE: 31013

RUTA: YUC-013

AÑO: 2015

LUGAR	ESTACION				CLASIFICACION VEHICULAR EN PORCIENTO														COORDENADAS	
	KM	TE	SC	TDPA	M	A	B	C2	C3	T3S2	T3S3	T3S2R4	OTROS	A	B	C	K'	D	LATITUD	LONGITUD
Piste	0.00	3	0	1525	11.3	76.8	3.5	4.9	0.5	1.6	0.8	0.4	0.2	88.1	3.5	8.4	0.103	0.501	20.710585	-88.585654
Dzitás	18.00	1	0	479	26.7	65.8	0.8	5.9	0.3	0.5	0.0	0.0	0.0	92.5	0.8	6.7	0.092	0.520	20.831004	-88.539688

41 CARR: Progreso - Telchac Puerto

CLAVE: 31616

RUTA: YUC-027

AÑO: 2015

LUGAR	ESTACION				CLASIFICACION VEHICULAR EN PORCIENTO														COORDENADAS	
	KM	TE	SC	TDPA	M	A	B	C2	C3	T3S2	T3S3	T3S2R4	OTROS	A	B	C	K'	D	LATITUD	LONGITUD
Progreso	0.00	3	1	4804	5.4	88.0	0.7	2.5	1.0	1.0	0.9	0.2	0.3	93.4	0.7	5.9	0.131	0.534	21.276420	-89.655313
Progreso	0.00	3	2	4816	4.7	88.3	0.8	2.7	1.1	1.0	0.9	0.2	0.3	93.0	0.8	6.2	0.119	0.534	21.276423	-89.655294
Chicxulub Puerto	6.00	1	1	3589	3.3	92.2	0.9	2.5	0.6	0.3	0.2	0.0	0.0	95.5	0.9	3.6	0.144	0.500	21.288259	-89.608624
Chicxulub Puerto	6.00	1	2	3595	4.1	90.7	0.9	3.0	0.7	0.4	0.2	0.0	0.0	94.8	0.9	4.3	0.148	0.500	21.288273	-89.608668
Chicxulub Puerto	6.00	3	0	7985	2.1	88.4	1.0	4.6	0.8	2.4	0.2	0.1	0.4	90.5	1.0	8.5	0.119	0.503	21.296732	-89.575725
Xtampú	20.00	1	0	1348	9.7	81.9	0.4	5.8	0.6	1.2	0.3	0.0	0.1	91.6	0.4	8.0	0.168	0.509	21.332559	-89.352690
Xtampú	20.00	3	0	1278	8.6	85.3	0.5	3.7	0.7	0.9	0.2	0.0	0.1	93.9	0.5	5.6	0.174	0.504	21.333954	-89.343174
Telchac Puerto	33.00	1	0	1903	22.6	70.7	0.2	4.2	0.4	1.7	0.1	0.0	0.1	93.3	0.2	6.5	0.156	0.502	21.340357	-89.288104

42 CARR: Ramal a Chankom

CLAVE: 31049

RUTA: YUC

AÑO: 2015

LUGAR	ESTACION				CLASIFICACION VEHICULAR EN PORCIENTO														COORDENADAS	
	KM	TE	SC	TDPA	M	A	B	C2	C3	T3S2	T3S3	T3S2R4	OTROS	A	B	C	K'	D	LATITUD	LONGITUD
T. C. Mérida - Puerto Juárez	0.00	3	0	388	14.8	78.7	0.5	5.2	0.6	0.2	0.0	0.0	0.0	93.5	0.5	6.0	0.111	0.504	20.640683	-88.489051
Chankom	9.00	1	0	401	17.3	76.7	0.5	4.6	0.6	0.3	0.0	0.0	0.0	94.0	0.5	5.5	0.112	0.500	20.582253	-88.508120

43 CARR: Ramal a Dzonot Carretero

CLAVE: 31614

RUTA: YUC

AÑO: 2015

LUGAR	ESTACION				CLASIFICACION VEHICULAR EN PORCIENTO														COORDENADAS	
	KM	TE	SC	TDPA	M	A	B	C2	C3	T3S2	T3S3	T3S2R4	OTROS	A	B	C	K'	D	LATITUD	LONGITUD
T. C. Valladolid - Río Lagartos	0.00	3	0	555	40.3	50.4	0.7	6.9	0.9	0.4	0.3	0.1	0.0	90.7	0.7	8.6	0.086	0.503	21.379817	-88.139730
Dzonot Carretero	35.00																			

YUCATAN

44 CARR: Ramal a San Felipe

CLAVE: 31628

RUTA: YUC

AÑO: 2015

LUGAR	ESTACION				CLASIFICACION VEHICULAR EN PORCIENTO													COORDENADAS		
	KM	TE	SC	TDPA	M	A	B	C2	C3	T3S2	T3S3	T3S2R4	OTROS	A	B	C	K'	D	LATITUD	LONGITUD
T. C. Valladolid - Río Lagartos	0.00	3	0	612	17.9	72.7	0.4	7.2	0.4	1.2	0.1	0.0	0.1	90.6	0.4	9.0	0.132	0.525	21.572339	-88.160393
San Felipe	7.20	1	0	503	23.5	66.0	0.6	8.7	0.5	0.6	0.1	0.0	0.0	89.5	0.6	9.9	0.133	0.525	21.552652	-88.230078

45 CARR: Ramal a Tedzidz

CLAVE: 31600

RUTA: YUC

AÑO: 2015

LUGAR	ESTACION				CLASIFICACION VEHICULAR EN PORCIENTO													COORDENADAS			
	KM	TE	SC	TDPA	M	A	B	C2	C3	T3S2	T3S3	T3S2R4	OTROS	A	B	C	K'	D	LATITUD	LONGITUD	
T. C. Mérida - Celestún	0.00																				
Tedzidz	6.00	1	0	148	47.8	48.0	0.7	3.0	0.2	0.3	0.0	0.0	0.0	95.8	0.7	3.5	0.115	0.513	20.843474	-89.975078	

46 CARR: Ramal a Yaxcabá

CLAVE: 31111

RUTA: YUC-289

AÑO: 2015

LUGAR	ESTACION				CLASIFICACION VEHICULAR EN PORCIENTO													COORDENADAS		
	KM	TE	SC	TDPA	M	A	B	C2	C3	T3S2	T3S3	T3S2R4	OTROS	A	B	C	K'	D	LATITUD	LONGITUD
T. C. Mérida - Puerto Juárez	0.00	3	0	520	19.1	70.9	1.2	4.5	1.6	1.0	0.7	1.0	0.0	90.0	1.2	8.8	0.142	0.506	20.696854	-88.811533
Yaxcabá	18.00	1	0	634	11.7	77.4	1.2	6.7	1.8	0.7	0.5	0.0	0.0	89.1	1.2	9.7	0.101	0.502	20.562506	-88.824646

47 CARR: Sinanché - Xitibcanul

CLAVE: 31619

RUTA: YUC

AÑO: 2015

LUGAR	ESTACION				CLASIFICACION VEHICULAR EN PORCIENTO													COORDENADAS		
	KM	TE	SC	TDPA	M	A	B	C2	C3	T3S2	T3S3	T3S2R4	OTROS	A	B	C	K'	D	LATITUD	LONGITUD
Sinanché	0.00	3	0	575	46.5	49.1	0.3	3.2	0.0	0.5	0.3	0.0	0.1	95.6	0.3	4.1	0.097	0.502	21.233290	-89.184550
Xitibcanul	7.00	1	0	415	39.5	54.7	0.1	2.5	2.9	0.2	0.1	0.0	0.0	94.2	0.1	5.7	0.128	0.507	21.350852	-89.172134

48 CARR: Sucilá - Calotmul

CLAVE: 31617

RUTA: YUC

AÑO: 2015

LUGAR	ESTACION				CLASIFICACION VEHICULAR EN PORCIENTO													COORDENADAS			
	KM	TE	SC	TDPA	M	A	B	C2	C3	T3S2	T3S3	T3S2R4	OTROS	A	B	C	K'	D	LATITUD	LONGITUD	
Sucilá	0.00																				
X. C. Cansahcab - Tizimin	2.00	3	0	937	24.5	66.4	0.8	6.2	1.1	0.8	0.1	0.0	0.1	90.9	0.8	8.3	0.107	0.504	21.149274	-88.316388	
Calotmul	30.20	1	0	798	12.9	78.8	0.3	7.1	0.3	0.5	0.1	0.0	0.0	91.7	0.3	8.0	0.080	0.518	21.017797	-88.186094	

YUCATAN

49 CARR: Suma - Izamal

CLAVE: 31081

RUTA: YUC-081

AÑO: 2015

LUGAR	ESTACION				CLASIFICACION VEHICULAR EN PORCIENTO													COORDENADAS		
	KM	TE	SC	TDPA	M	A	B	C2	C3	T3S2	T3S3	T3S2R4	OTROS	A	B	C	K'	D	LATITUD	LONGITUD
Suma	0.00	3	0	630	27.7	63.1	0.7	7.0	0.3	0.6	0.5	0.0	0.1	90.8	0.7	8.5	0.081	0.506	21.082304	-89.138223
Izamal	22.00	1	0	792	35.3	55.0	0.5	7.8	0.4	0.9	0.1	0.0	0.0	90.3	0.5	9.2	0.110	0.501	20.948964	-89.020445

50 CARR: Telchac Puerto - Dzilam de Bravo

CLAVE: 31042

RUTA: YUC

AÑO: 2015

LUGAR	ESTACION				CLASIFICACION VEHICULAR EN PORCIENTO													COORDENADAS		
	KM	TE	SC	TDPA	M	A	B	C2	C3	T3S2	T3S3	T3S2R4	OTROS	A	B	C	K'	D	LATITUD	LONGITUD
Telchac Puerto	0.00	3	0	1123	21.1	71.7	0.2	5.5	0.4	1.0	0.1	0.0	0.0	92.8	0.2	7.0	0.195	0.501	21.343498	-89.248148
T. Der. Sinanché	8.00	1	0	792	18.8	74.0	0.4	5.3	0.3	1.0	0.2	0.0	0.0	92.8	0.4	6.8	0.163	0.511	21.352556	-89.179158
T. Der. Sinanché	8.00	3	0	629	20.1	73.5	0.4	4.9	0.4	0.7	0.0	0.0	0.0	93.6	0.4	6.0	0.161	0.516	21.352043	-89.162314
Chabihau	15.00	1	0	455	14.9	76.2	0.6	7.0	0.4	0.9	0.0	0.0	0.0	91.1	0.6	8.3	0.196	0.541	21.355305	-89.128637
Chabihau	15.00	3	0	293	12.9	76.1	0.5	9.3	0.5	0.6	0.1	0.0	0.0	89.0	0.5	10.5	0.198	0.515	21.358326	-89.104502
Santa Clara	26.00	1	0	356	23.3	68.5	0.7	6.7	0.1	0.6	0.0	0.0	0.1	91.8	0.7	7.5	0.171	0.509	21.372415	-89.019218
Santa Clara	26.00	3	0	271	19.9	68.5	1.5	9.9	0.1	0.1	0.0	0.0	0.0	88.4	1.5	10.1	0.171	0.504	21.374401	-89.002367
Dzilam de Bravo	39.00	1	0	311	20.4	67.6	0.4	10.9	0.4	0.3	0.0	0.0	0.0	88.0	0.4	11.6	0.183	0.501	21.388058	-88.910191

51 CARR: Thul - Becanchén

CLAVE: 31104

RUTA: YUC-281

AÑO: 2015

LUGAR	ESTACION				CLASIFICACION VEHICULAR EN PORCIENTO													COORDENADAS			
	KM	TE	SC	TDPA	M	A	B	C2	C3	T3S2	T3S3	T3S2R4	OTROS	A	B	C	K'	D	LATITUD	LONGITUD	
T. C. Muna - Felipe Carrillo Puerto	0.00	3	0	175	27.8	55.5	2.8	10.7	1.6	1.2	0.4	0.0	0.0	83.3	2.8	13.9	0.183	0.536	20.084755	-89.099857	
Becanchén	32.00																				

52 CARR: Ticul - Chapab

CLAVE: 31623

RUTA: YUC

AÑO: 2015

LUGAR	ESTACION				CLASIFICACION VEHICULAR EN PORCIENTO													COORDENADAS		
	KM	TE	SC	TDPA	M	A	B	C2	C3	T3S2	T3S3	T3S2R4	OTROS	A	B	C	K'	D	LATITUD	LONGITUD
Ticul	0.00	3	0	1612	37.8	56.5	0.5	2.9	0.6	1.4	0.2	0.0	0.1	94.3	0.5	5.2	0.089	0.501	20.409805	-89.524739
Chapab	8.00	1	0	1560	37.9	55.0	0.7	4.5	0.4	1.3	0.1	0.0	0.1	92.9	0.7	6.4	0.085	0.502	20.454952	-89.461801

53 CARR: Ticul - Dzan

CLAVE: 31621

RUTA: YUC

AÑO: 2015

LUGAR	ESTACION				CLASIFICACION VEHICULAR EN PORCIENTO													COORDENADAS			
	KM	TE	SC	TDPA	M	A	B	C2	C3	T3S2	T3S3	T3S2R4	OTROS	A	B	C	K'	D	LATITUD	LONGITUD	
Ticul	0.00																				

Ticul

0.00

YUCATAN

53 CARR: Ticul - Dzan

CLAVE: 31621

RUTA: YUC

AÑO: 2015

LUGAR	ESTACION				CLASIFICACION VEHICULAR EN PORCIENTO														COORDENADAS	
	KM	TE	SC	TDPA	M	A	B	C2	C3	T3S2	T3S3	T3S2R4	OTROS	A	B	C	K'	D	LATITUD	LONGITUD
T. Izq. Libramiento de Ticul	2.50	3	0	2884	45.1	49.8	0.2	2.3	0.3	2.0	0.2	0.0	0.1	94.9	0.2	4.9	0.090	0.501	20.395072	-89.514533
Dzan	7.00	1	0	2497	18.1	76.1	0.3	1.5	0.7	1.5	1.0	0.1	0.7	94.2	0.3	5.5	0.066	0.514	20.390199	-89.479052

54 CARR: Tixkokob - Baca

CLAVE: 31010

RUTA: YUC

AÑO: 2015

LUGAR	ESTACION				CLASIFICACION VEHICULAR EN PORCIENTO														COORDENADAS	
	KM	TE	SC	TDPA	M	A	B	C2	C3	T3S2	T3S3	T3S2R4	OTROS	A	B	C	K'	D	LATITUD	LONGITUD
Tixkokob	0.00	3	0	3142	54.4	39.3	0.2	2.1	0.4	2.8	0.5	0.1	0.2	93.7	0.2	6.1	0.090	0.509	21.007285	-89.416469
Baca	15.00	1	0	2183	56.5	37.2	0.2	2.8	0.8	1.7	0.5	0.1	0.2	93.7	0.2	6.1	0.074	0.516	21.098001	-89.397964

55 CARR: Tixkokob - Sotuta

CLAVE: 31106

RUTA: YUC

AÑO: 2015

LUGAR	ESTACION				CLASIFICACION VEHICULAR EN PORCIENTO														COORDENADAS	
	KM	TE	SC	TDPA	M	A	B	C2	C3	T3S2	T3S3	T3S2R4	OTROS	A	B	C	K'	D	LATITUD	LONGITUD
Tixkokob	0.00	3	0	2042	55.3	40.1	0.3	1.6	0.4	1.9	0.3	0.0	0.1	95.4	0.3	4.3	0.098	0.502	20.998157	-89.380550
Tahmek	24.00	3	0	1372	26.4	60.8	2.4	8.2	0.6	1.3	0.1	0.0	0.2	87.2	2.4	10.4	0.088	0.510	20.863303	-89.255499
Hocabá	31.00	3	0	482	28.8	58.8	1.8	9.7	0.5	0.4	0.0	0.0	0.0	87.6	1.8	10.6	0.114	0.517	20.809577	-89.239614
Huhí	43.00	1	0	501	34.0	52.4	2.9	9.7	0.6	0.3	0.1	0.0	0.0	86.4	2.9	10.7	0.116	0.503	20.724364	-89.175177
Sotuta	65.00	1	0	206	41.0	48.7	0.5	8.4	0.9	0.5	0.0	0.0	0.0	89.7	0.5	9.8	0.107	0.547	20.603087	-89.020961

56 CARR: Tizimin - Yucatán

CLAVE: 31588

RUTA: YUC

AÑO: 2015

LUGAR	ESTACION				CLASIFICACION VEHICULAR EN PORCIENTO														COORDENADAS	
	KM	TE	SC	TDPA	M	A	B	C2	C3	T3S2	T3S3	T3S2R4	OTROS	A	B	C	K'	D	LATITUD	LONGITUD
Tizimin	0.00	3	0	3599	15.7	71.7	0.5	7.2	1.2	2.5	0.4	0.4	0.4	87.4	0.5	12.1	0.074	0.502	21.149254	-88.112901
T. Der. Buenaventura	30.00	3	0	2002	10.7	74.4	0.9	8.7	2.1	1.9	0.5	0.7	0.1	85.1	0.9	14.0	0.089	0.508	21.179666	-87.923690
Yucatán	46.50	1	0	2021	13.9	69.8	1.2	9.4	2.1	2.0	0.6	0.8	0.2	83.7	1.2	15.1	0.081	0.507	21.202822	-87.730620

57 CARR: Yaxché - Sierra Papacal

CLAVE: 31620

RUTA: YUC

AÑO: 2015

LUGAR	ESTACION				CLASIFICACION VEHICULAR EN PORCIENTO														COORDENADAS	
	KM	TE	SC	TDPA	M	A	B	C2	C3	T3S2	T3S3	T3S2R4	OTROS	A	B	C	K'	D	LATITUD	LONGITUD
T. C. Mérida - Progreso	0.00	3	0	3765	20.0	67.4	1.0	7.3	1.0	2.4	0.6	0.1	0.2	87.4	1.0	11.6	0.076	0.502	21.105340	-89.641761
Sierra Papacal	12.00	1	0	880	17.4	74.0	0.3	7.1	0.3	0.8	0.1	0.0	0.0	91.4	0.3	8.3	0.142	0.502	21.122349	-89.722777

YUCATAN

58 CARR: Yobaín - Chabihau

CLAVE: 31610

RUTA: YUC

AÑO: 2015

LUGAR	ESTACION				CLASIFICACION VEHICULAR EN PORCIENTO													COORDENADAS		
	KM	TE	SC	TDPA	M	A	B	C2	C3	T3S2	T3S3	T3S2R4	OTROS	A	B	C	K'	D	LATITUD	LONGITUD
T. C. Baca - Dzidzantún	0.00	3	0	606	43.1	53.5	0.1	2.6	0.3	0.4	0.0	0.0	0.0	96.6	0.1	3.3	0.089	0.512	21.240727	-89.116692
Chabihau	12.00	1	0	380	37.5	57.5	0.2	3.5	0.6	0.7	0.0	0.0	0.0	95.0	0.2	4.8	0.118	0.503	21.355375	-89.117192

59 CARR: Progreso - Celestún

CLAVE: 31040

RUTA: MEX-YUC

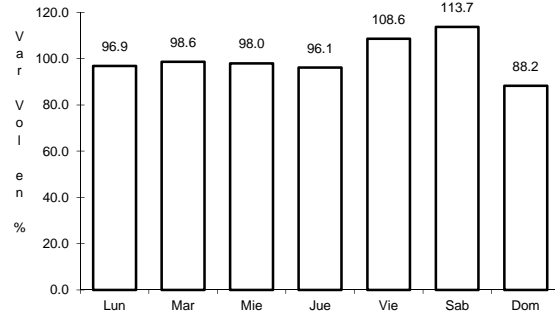
AÑO: 2015

LUGAR	ESTACION				CLASIFICACION VEHICULAR EN PORCIENTO													COORDENADAS		
	KM	TE	SC	TDPA	M	A	B	C2	C3	T3S2	T3S3	T3S2R4	OTROS	A	B	C	K'	D	LATITUD	LONGITUD
T. C. Mérida - Progreso	0.00	3	1	3436	17.5	74.7	0.2	6.2	0.3	0.7	0.3	0.0	0.1	92.2	0.2	7.6	0.129	0.504	21.274237	-89.692562
T. C. Mérida - Progreso	0.00	3	2	3381	17.8	73.6	0.2	7.0	0.3	0.7	0.3	0.0	0.1	91.4	0.2	8.4	0.143	0.504	21.274213	-89.692580
Yucalpetén	6.00	3	0	5470	4.2	88.0	0.6	2.0	0.3	3.7	0.7	0.1	0.4	92.2	0.6	7.2	0.145	0.504	21.275155	-89.722416
Celestún	80.00																			

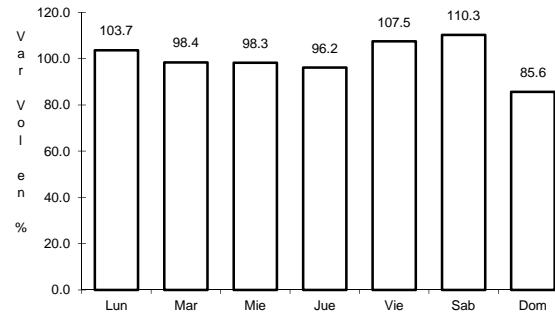
1 CARR: Campeche - Mérida

CLAVE: 00066

RUTA: MEX-180



Km: 0.00                      Tipo: 3                      Sent: 1

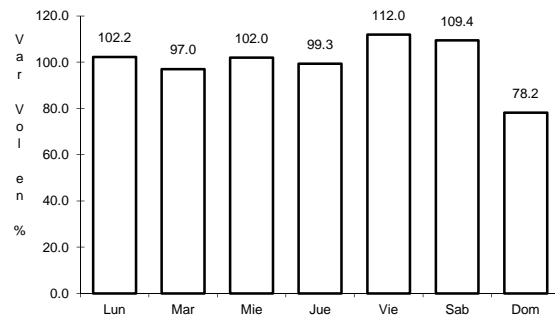


Km: 0.00                      Tipo: 3                      Sent: 2

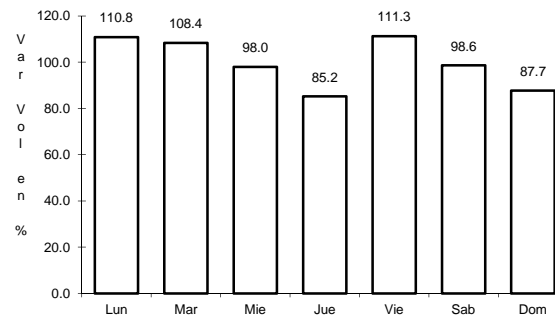
2 CARR: Campeche - Umán

CLAVE: 00164

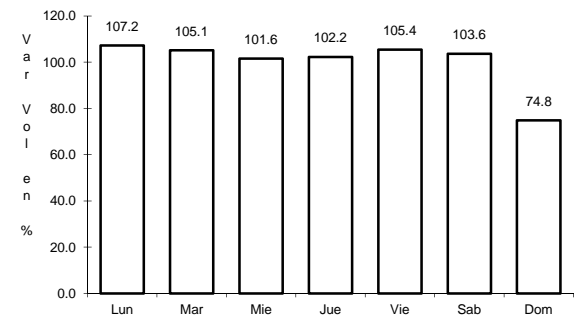
RUTA: MEX-261



Km: 7.00                      Tipo: 1                      Sent: 0



Km: 117.88                      Tipo: 3                      Sent: 0

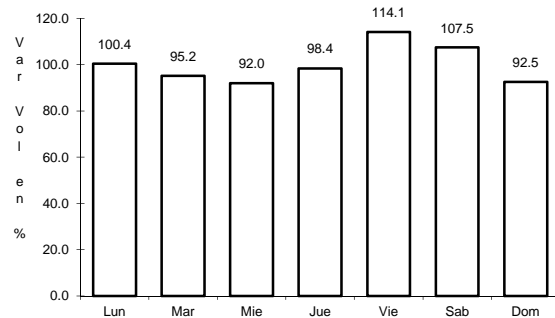


Km: 230.83                      Tipo: 1                      Sent: 0

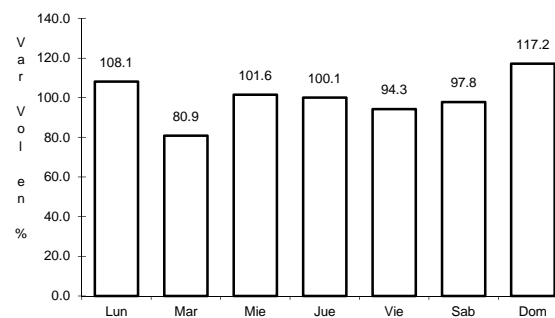
3 CARR: Cansahcab - Tizimín

CLAVE: 31014

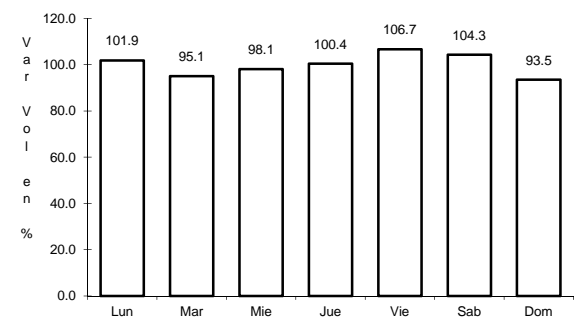
RUTA: MEX-176



Km: 0.00                      Tipo: 3                      Sent: 0



Km: 32.92                      Tipo: 3                      Sent: 0

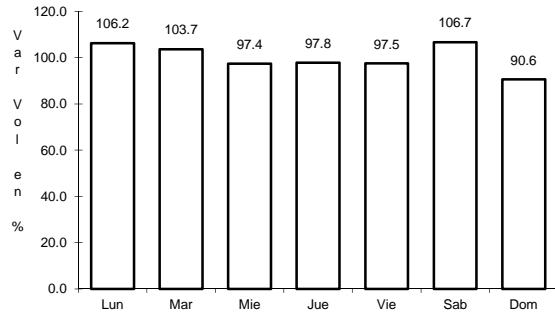


Km: 99.14                      Tipo: 1                      Sent: 0

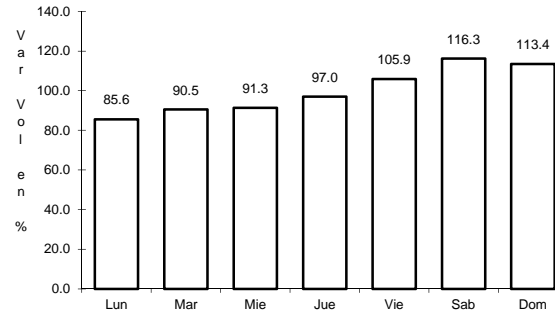
4 CARR: Conkal - Puerto Chicxulub

CLAVE: 31004

RUTA: MEX-176



Km: 0.00                      Tipo: 3                      Sent: 0

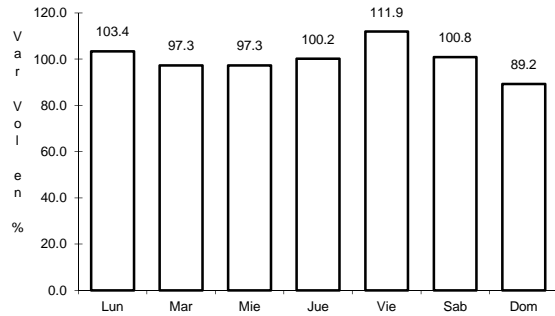


Km: 27.00                      Tipo: 1                      Sent: 0

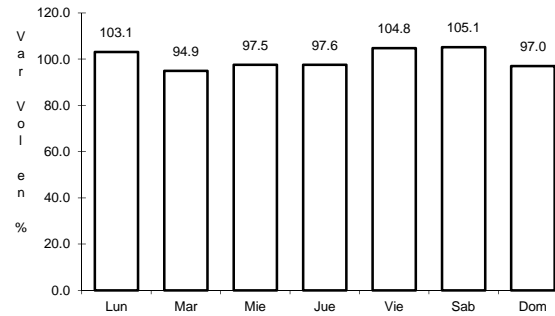
5 CARR: Dzitbalché - Ent. San Bernardo

CLAVE: 00162

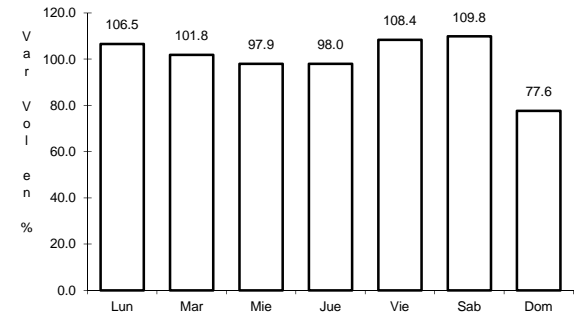
RUTA: MEX-180



Km: 12.33                      Tipo: 1                      Sent: 0



Km: 21.08                      Tipo: 1                      Sent: 0

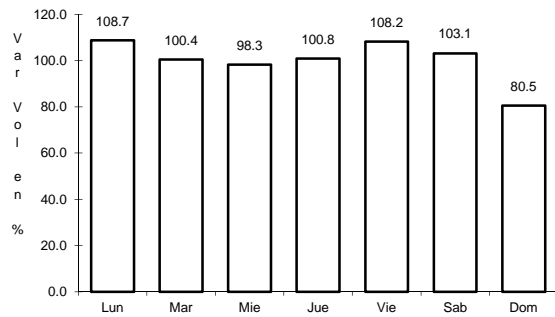


Km: 40.36                      Tipo: 3                      Sent: 0

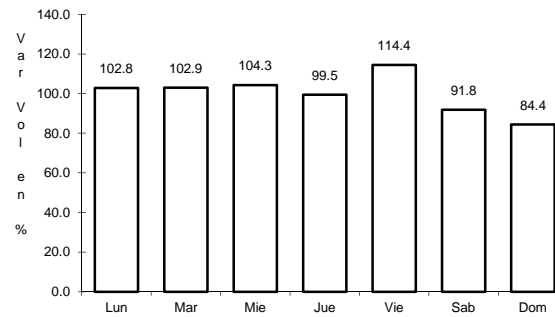
6 CARR: Ent. Poxilá - Mérida

CLAVE: 31003

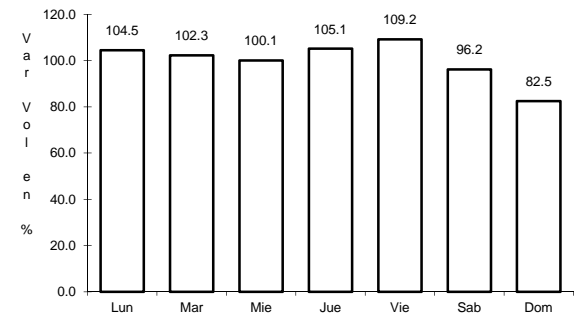
RUTA: MEX-180



Km: 9.46                      Tipo: 1                      Sent: 0



Km: 25.70                      Tipo: 1                      Sent: 1



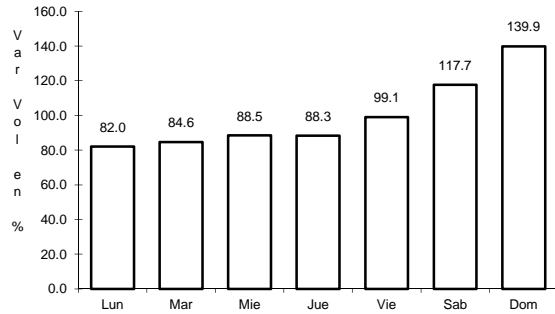
Km: 25.70                      Tipo: 1                      Sent: 2



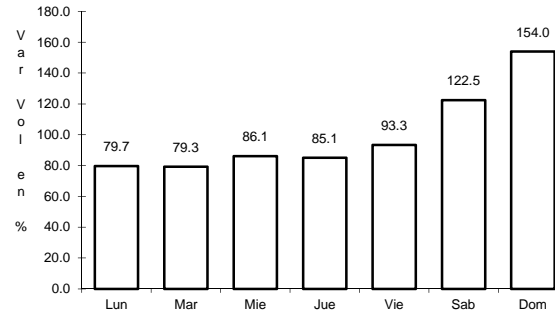
7 CARR: Hunucmá - Sisal

CLAVE: 31021

RUTA: MEX-281



Km: 0.00      Tipo: 3      Sent: 0

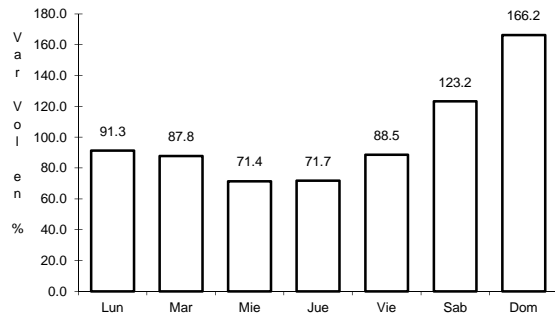


Km: 23.20      Tipo: 1      Sent: 0

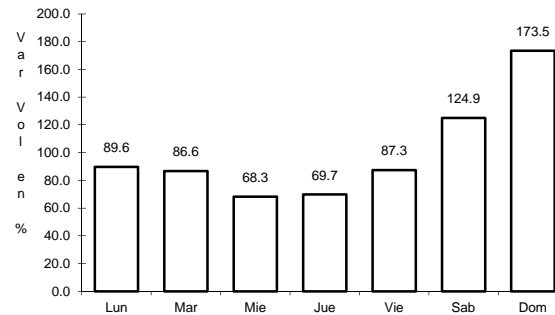
8 CARR: Libramiento de Progreso

CLAVE: 31631

RUTA: MEX-261



Km: 0.00      Tipo: 3      Sent: 0

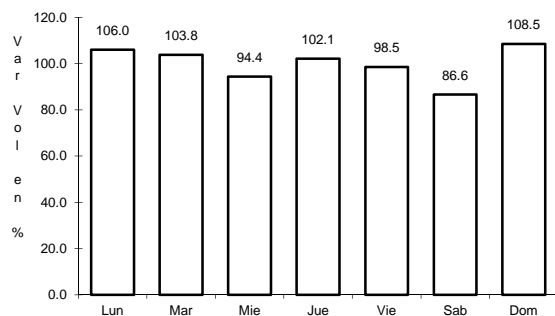


Km: 6.50      Tipo: 1      Sent: 0

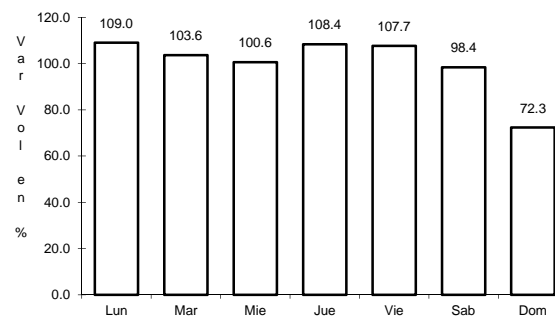
9 CARR: Mérida - Celestún

CLAVE: 31025

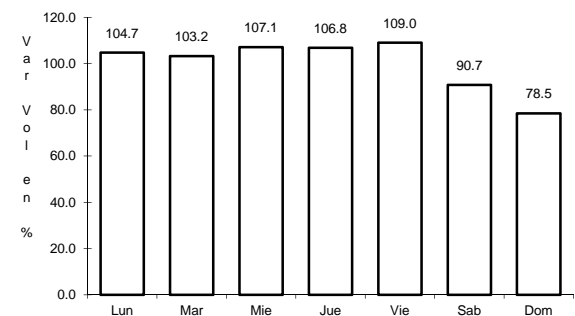
RUTA: MEX-281



Km: 0.00      Tipo: 3      Sent: 1



Km: 0.00      Tipo: 3      Sent: 2

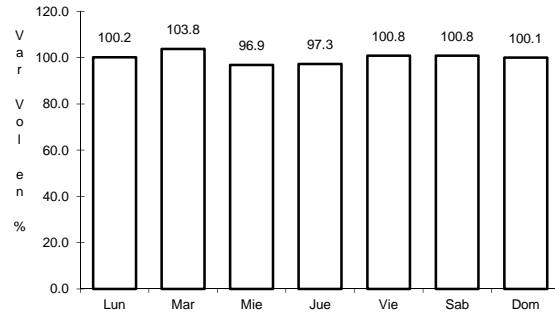


Km: 40.00      Tipo: 3      Sent: 0

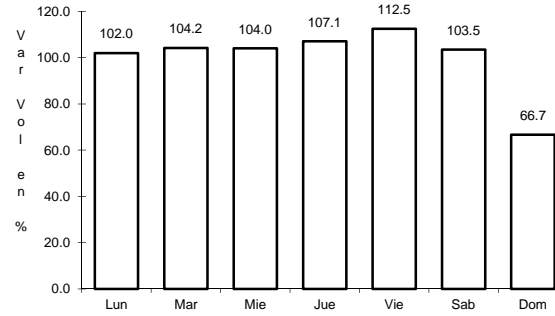
10 CARR: Mérida - Dzilam de Bravo

CLAVE: 31001

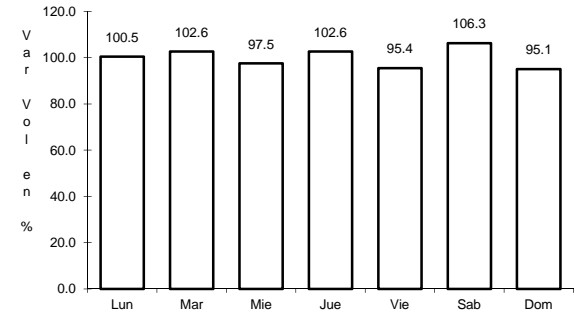
RUTA: MEX-176



Km: 5.90      Tipo: 1      Sent: 1



Km: 5.90      Tipo: 1      Sent: 2

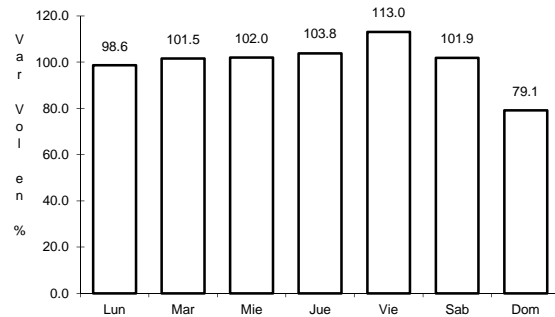


Km: 105.00      Tipo: 1      Sent: 0

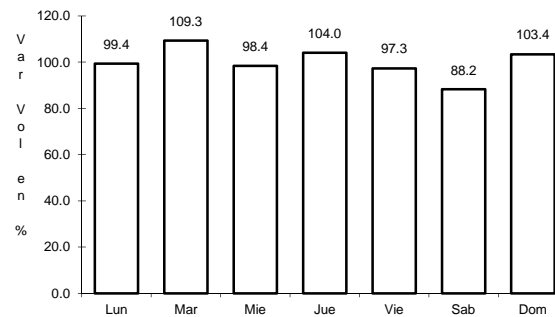
11 CARR: Mérida - Progreso

CLAVE: 31091

RUTA: MEX-261



Km: 5.40      Tipo: 1      Sent: 1

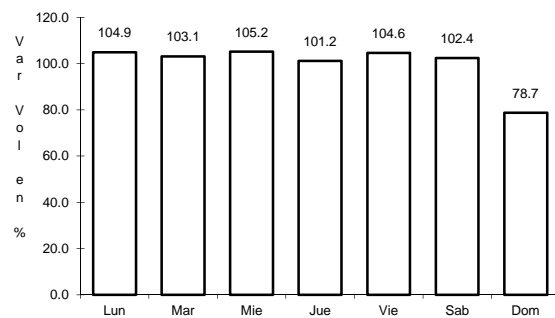


Km: 5.40      Tipo: 1      Sent: 2

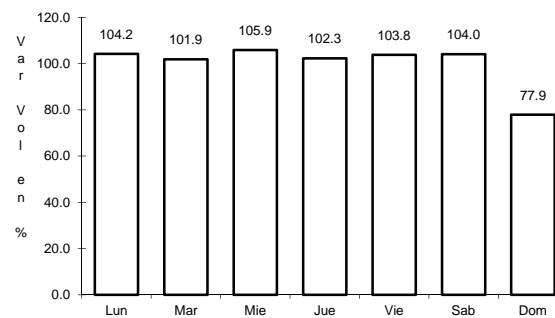
12 CARR: Mérida - Puerto Juárez

CLAVE: 00067

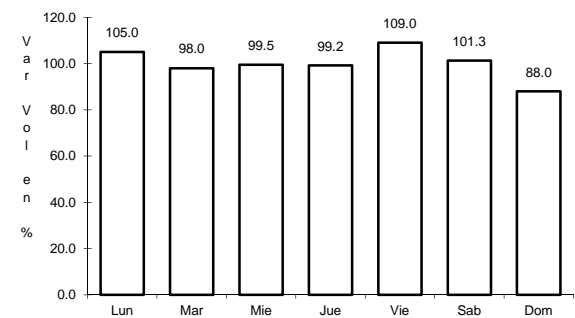
RUTA: MEX-180



Km: 5.60      Tipo: 1      Sent: 1



Km: 5.60      Tipo: 1      Sent: 2

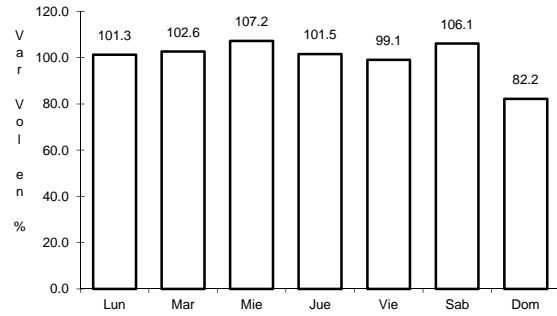


Km: 160.68      Tipo: 1      Sent: 0

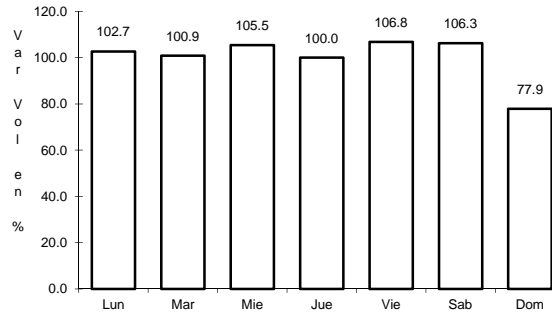
13 CARR: Mérida - Tekanto

CLAVE: 31587

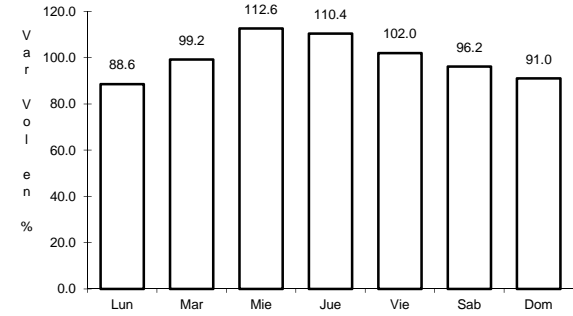
RUTA: MEX-180



Km: 5.70                      Tipo: 1                      Sent: 0



Km: 21.00                      Tipo: 1                      Sent: 0

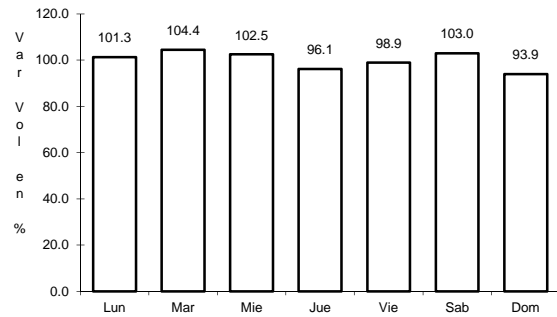


Km: 51.00                      Tipo: 1                      Sent: 0

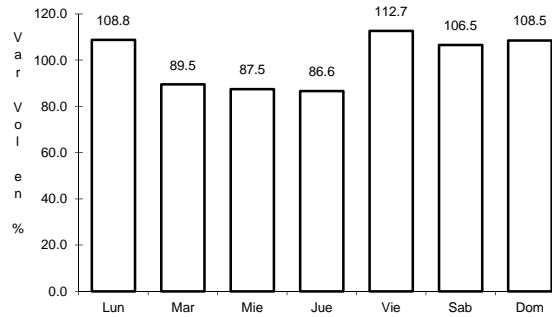
14 CARR: Muna - Felipe Carrillo Puerto

CLAVE: 00148

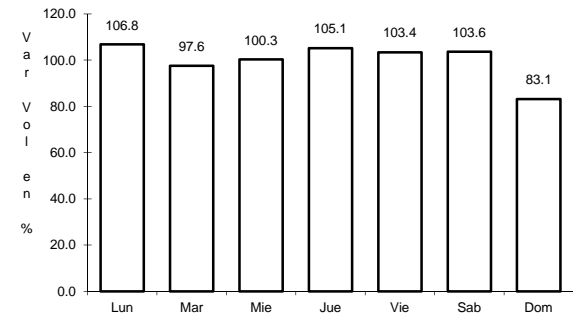
RUTA: MEX-184



Km: 0.00                      Tipo: 3                      Sent: 0



Km: 109.60                      Tipo: 3                      Sent: 0

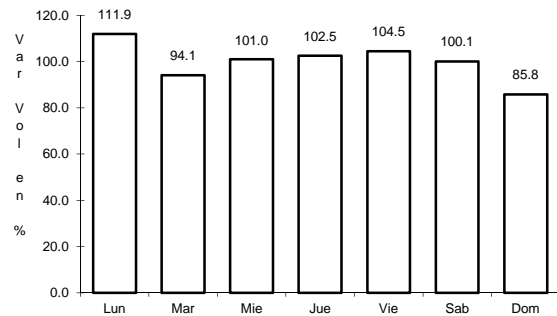


Km: 216.97                      Tipo: 1                      Sent: 0

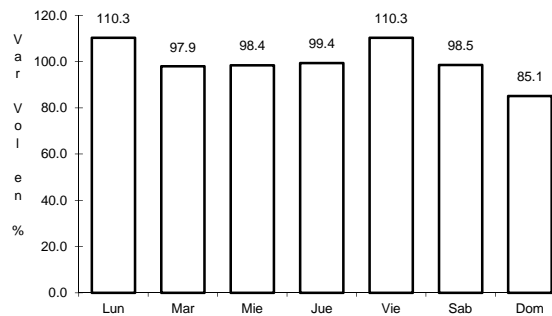
15 CARR: Ramal a Panabá

CLAVE: 31609

RUTA: MEX-295



Km: 0.00                      Tipo: 3                      Sent: 0

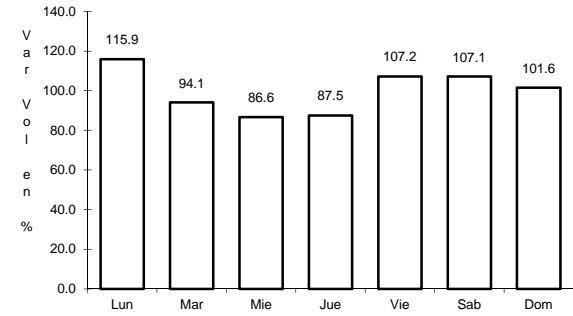
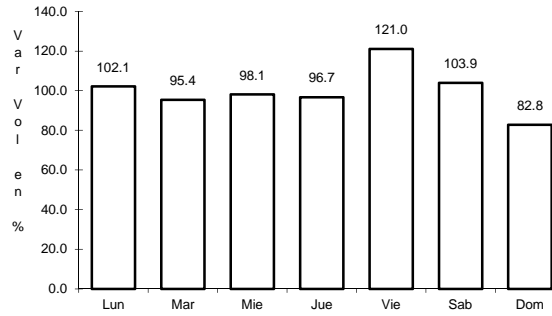
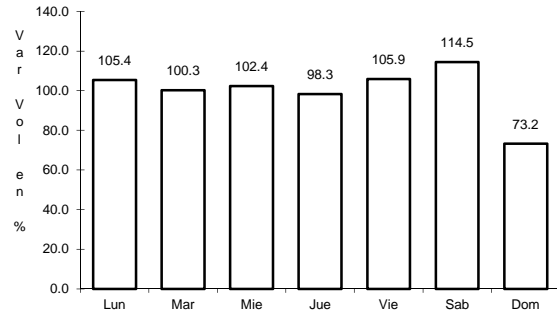


Km: 18.00                      Tipo: 1                      Sent: 0

16 CARR: Teya -Peto

CLAVE: 31042

RUTA: MEX-184



Km: 3.80

Tipo: 3

Sent: 1

Km: 97.10

Tipo: 1

Sent: 0

Km: 120.70

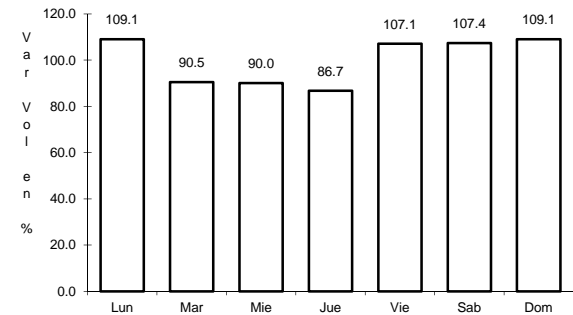
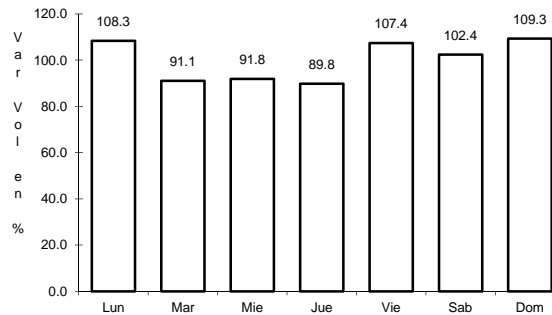
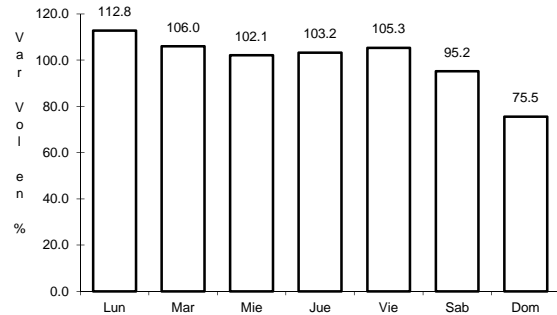
Tipo: 1

Sent: 0

17 CARR: Tzacab - Santa Rosa

CLAVE: 31017

RUTA: MEX



Km: 0.00

Tipo: 3

Sent: 0

Km: 16.00

Tipo: 3

Sent: 0

Km: 34.50

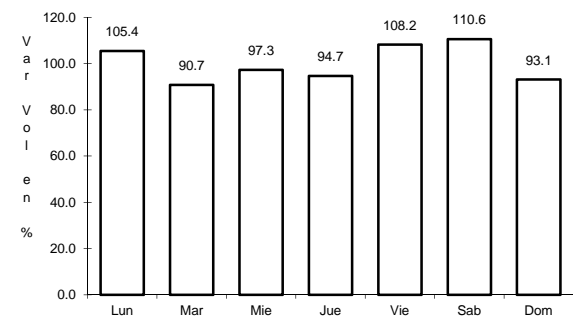
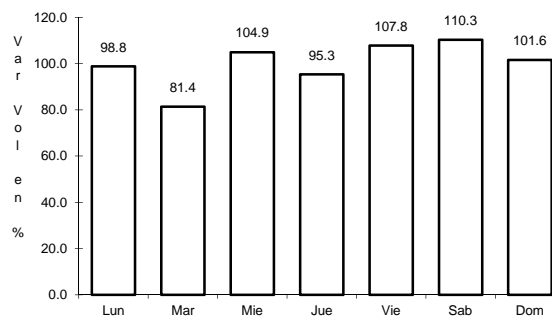
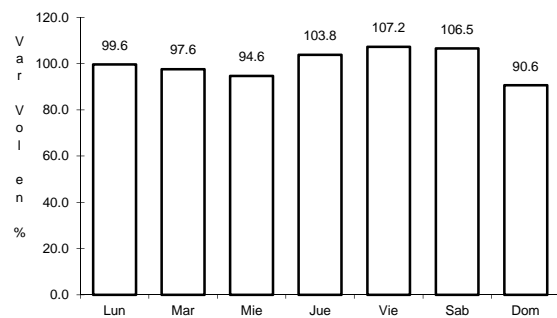
Tipo: 1

Sent: 0

18 CARR: Valladolid - Felipe Carrillo Puerto

CLAVE: 00010

RUTA: MEX-295



Km: 0.00

Tipo: 3

Sent: 0

Km: 99.00

Tipo: 1

Sent: 0

Km: 147.70

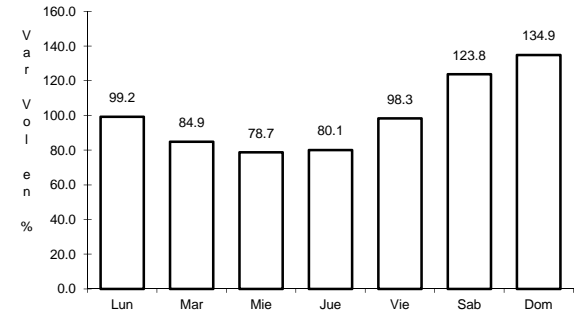
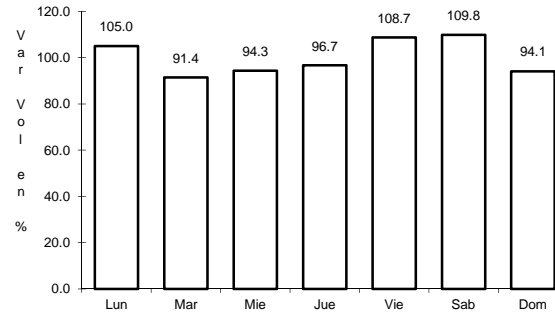
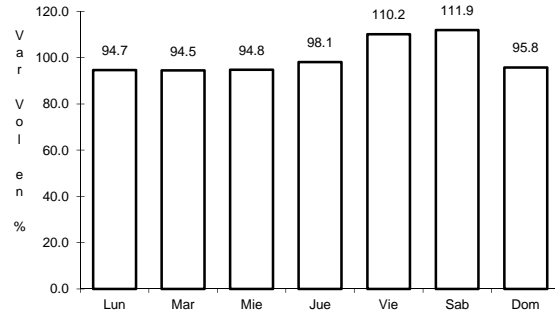
Tipo: 1

Sent: 0

19 CARR: Valladolid - Río Lagartos

CLAVE: 31035

ruta: MEX-295



Km: 0.00 Tipo: 3 Sent: 1

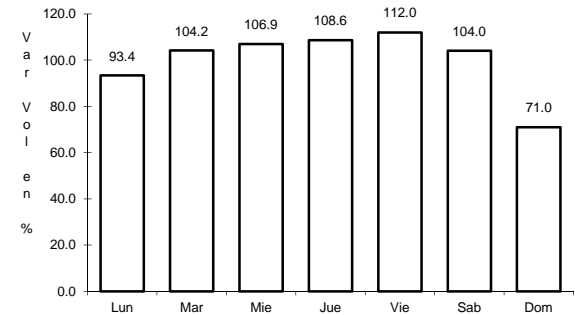
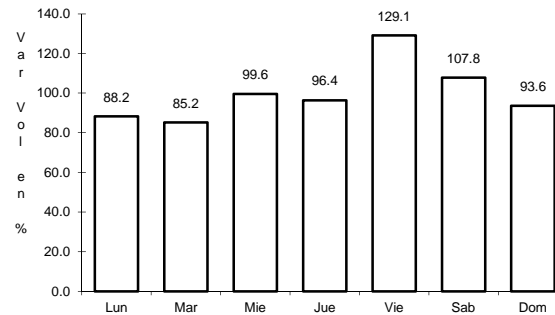
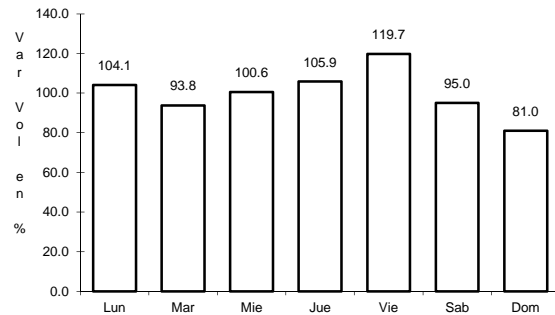
Km: 0.00 Tipo: 3 Sent: 2

Km: 79.90 Tipo: 1 Sent: 0

20 CARR: Mérida - Cancún (Cuota)

CLAVE: 00071

ruta: MEX-180D



Km: 51.00 Tipo: 1 Sent: 1

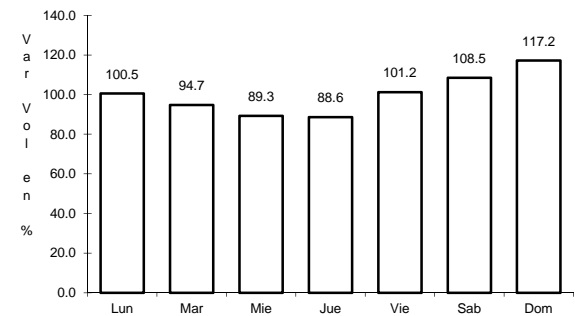
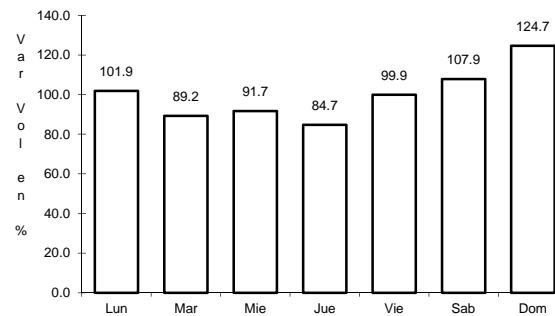
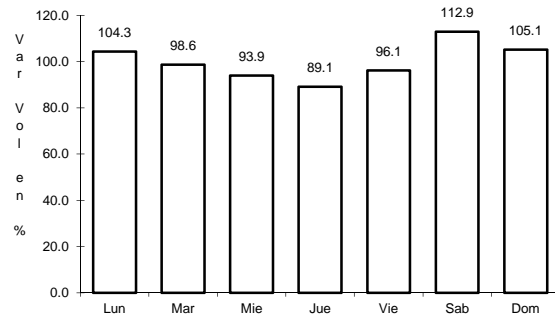
Km: 51.00 Tipo: 1 Sent: 2

Km: 308.10 Tipo: 1 Sent: 0

21 CARR: Acanceh - Estación Polabán

CLAVE: 31615

ruta: YUC



Km: 0.00 Tipo: 3 Sent: 0

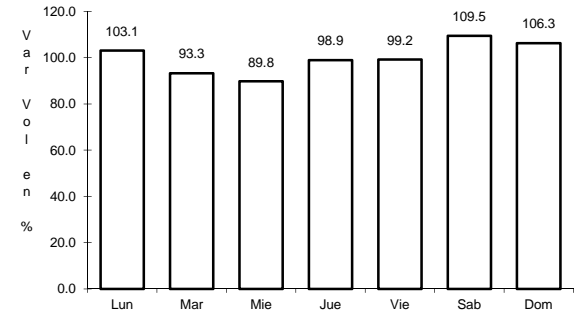
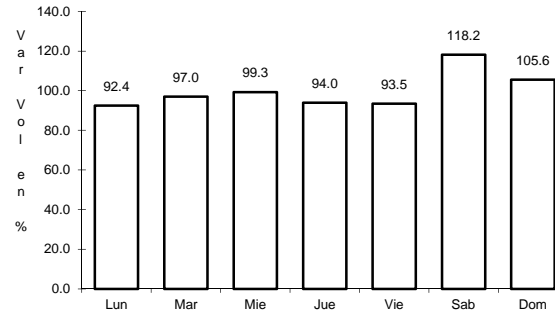
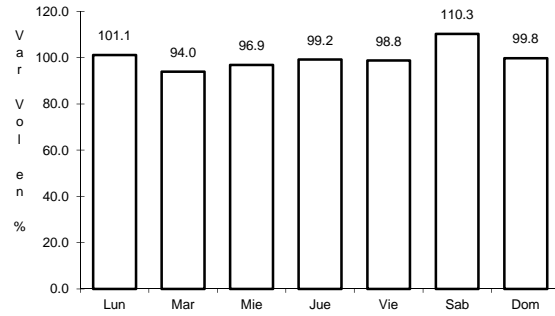
Km: 20.00 Tipo: 3 Sent: 0

Km: 24.40 Tipo: 1 Sent: 0

22 CARR: Baca - Dzidzantún

CLAVE: 31591

RUTA: YUC



Km: 0.00      Tipo: 3      Sent: 0

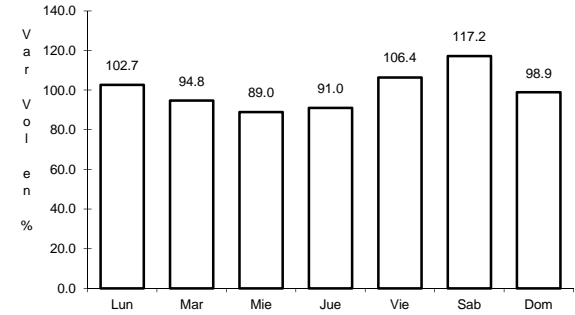
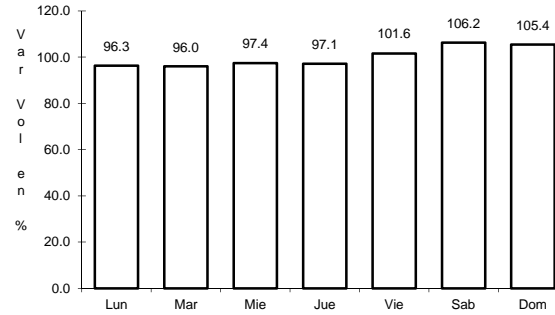
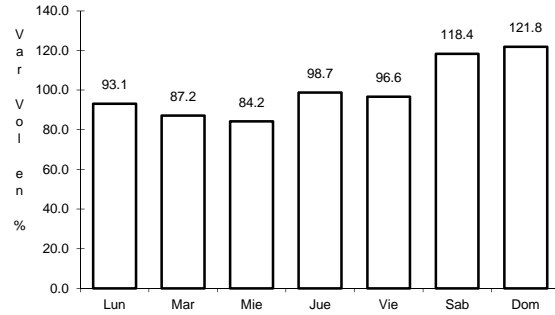
Km: 19.10      Tipo: 1      Sent: 0

Km: 43.00      Tipo: 1      Sent: 0

23 CARR: Citilcum - Tixkochoh

CLAVE: 31064

RUTA: YUC



Km: 0.00      Tipo: 3      Sent: 0

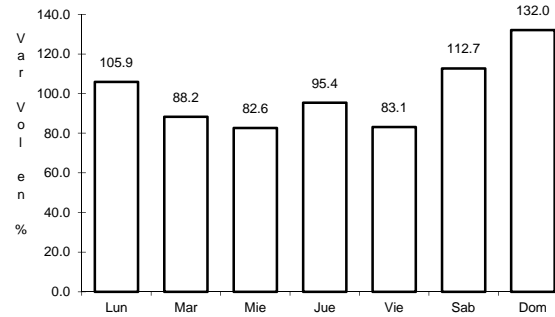
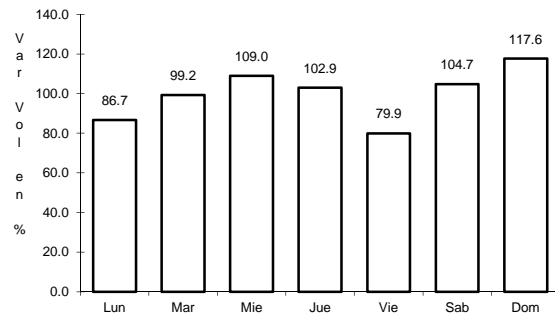
Km: 7.00      Tipo: 1      Sent: 0

Km: 10.00      Tipo: 1      Sent: 0

24 CARR: Dzemul - Xtampú

CLAVE: 31608

RUTA: YUC



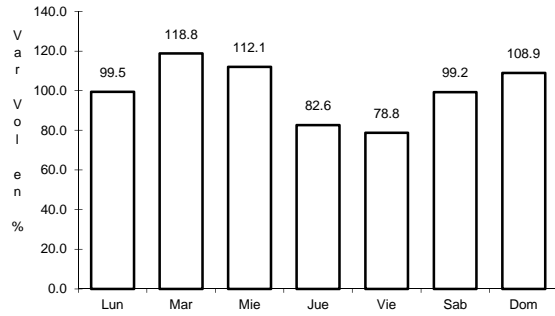
Km: 0.00      Tipo: 3      Sent: 0

Km: 10.00      Tipo: 1      Sent: 0

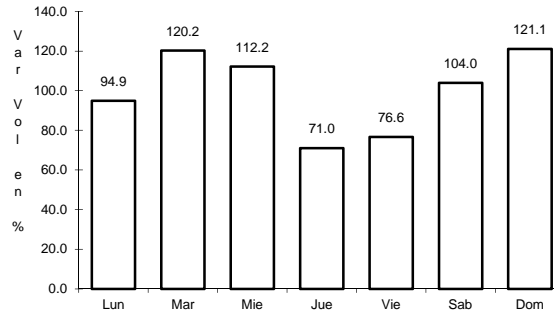
25 CARR: Dzidzantún - Santa Clara

CLAVE: 31592

RUTA: YUC



Km: 0.00                      Tipo: 3                      Sent: 0

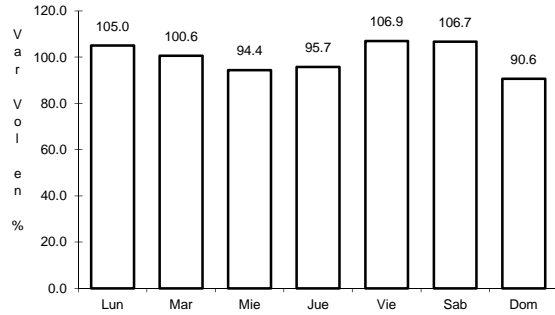


Km: 14.00                      Tipo: 1                      Sent: 0

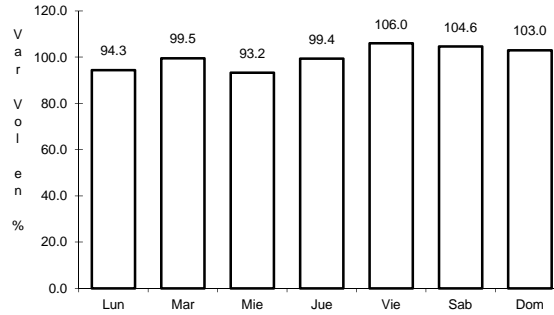
26 CARR: Hochtún - Cenotillo

CLAVE: 31011

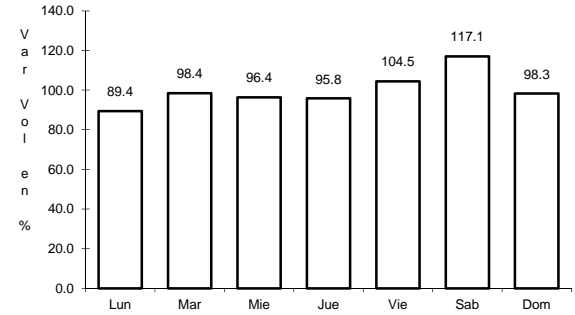
RUTA: YUC-011



Km: 0.00                      Tipo: 3                      Sent: 0



Km: 24.00                      Tipo: 3                      Sent: 0

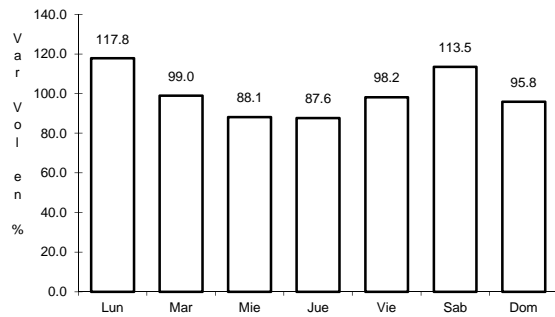


Km: 70.90                      Tipo: 1                      Sent: 0

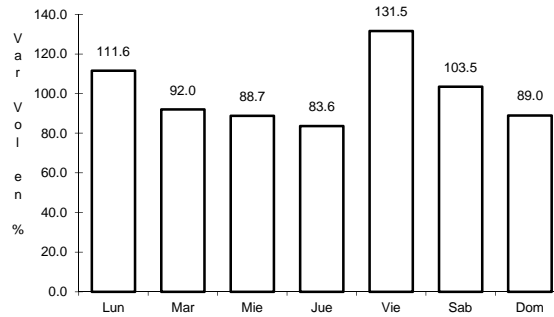
27 CARR: Holcá - Sotuta

CLAVE: 31626

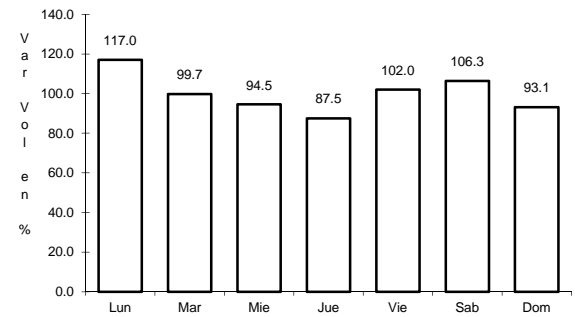
RUTA: YUC



Km: 0.00                      Tipo: 3                      Sent: 0



Km: 10.00                      Tipo: 3                      Sent: 0

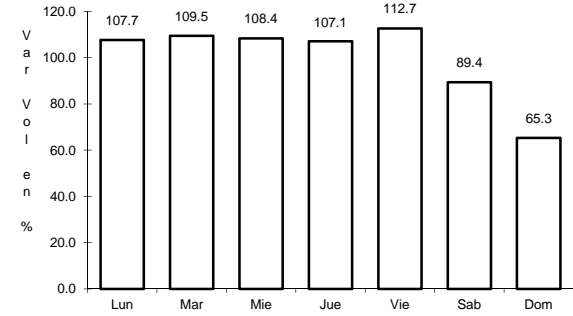
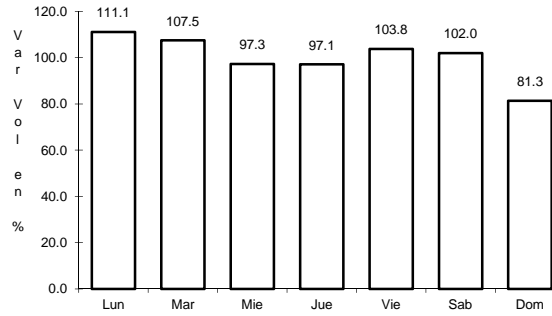
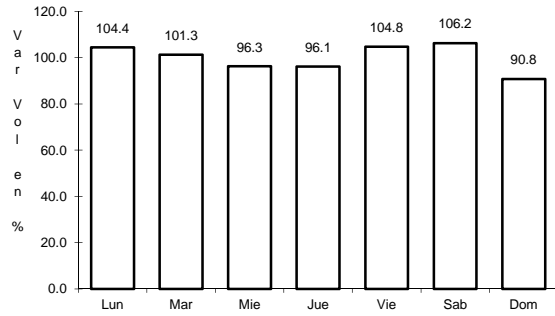


Km: 20.00                      Tipo: 1                      Sent: 0

28 CARR: Hunucmá - Umán

CLAVE: 31610

RUTA: YUC



Km: 0.00      Tipo: 3      Sent: 0

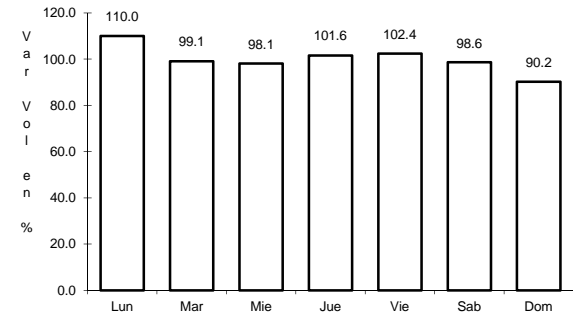
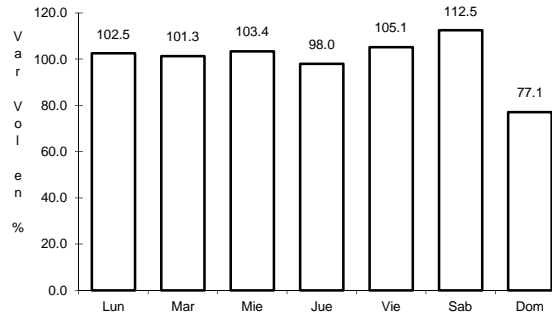
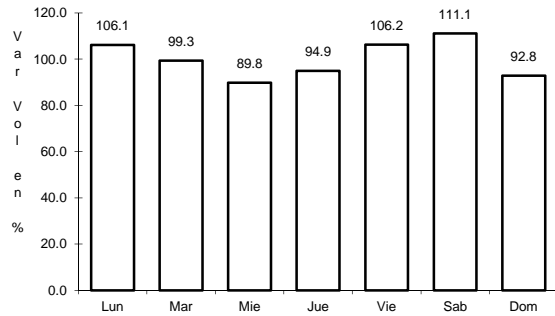
Km: 16.16      Tipo: 1      Sent: 0

Km: 22.00      Tipo: 1      Sent: 0

29 CARR: Izamal - Dzilam González

CLAVE: 31605

RUTA: YUC



Km: 0.00      Tipo: 3      Sent: 0

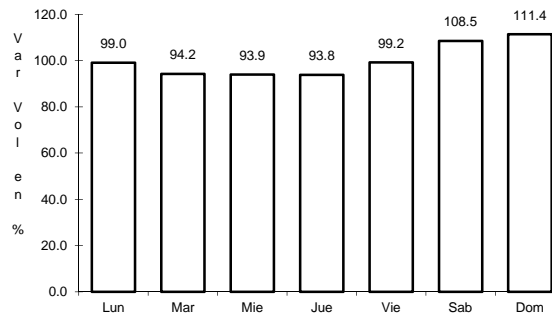
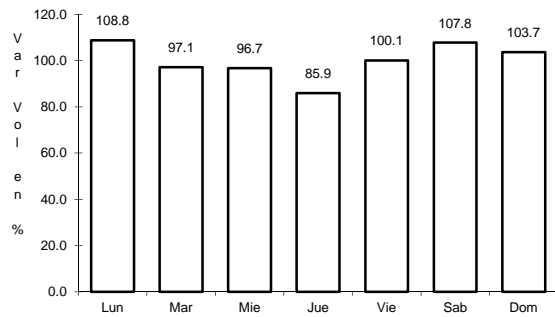
Km: 30.00      Tipo: 1      Sent: 0

Km: 43.00      Tipo: 1      Sent: 0

30 CARR: Kantunil - Izamal

CLAVE: 31012

RUTA: YUC



Km: 0.00      Tipo: 3      Sent: 0

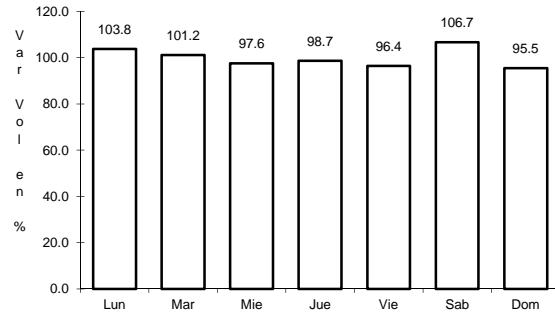
Km: 17.80      Tipo: 1      Sent: 0



31 CARR: Kinchil - Umán

CLAVE: 31009

RUTA: YUC



Km: 0.00

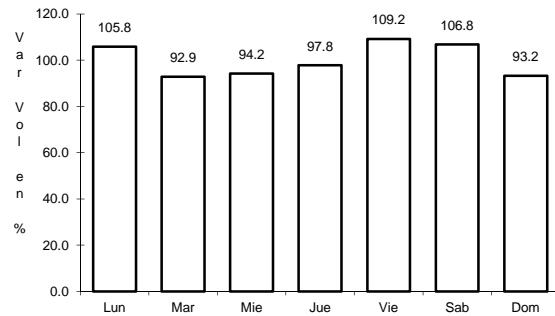
Tipo: 3

Sent: 0

32 CARR: Libramiento Norte de Motul

CLAVE: 31610

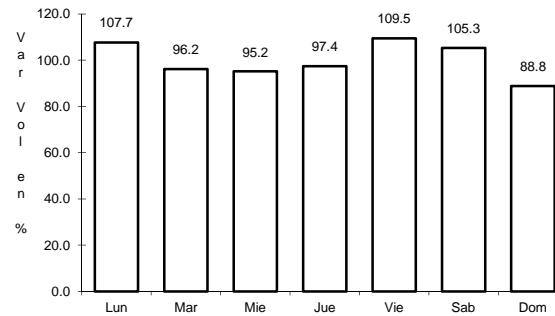
RUTA: YUC



Km: 0.00

Tipo: 3

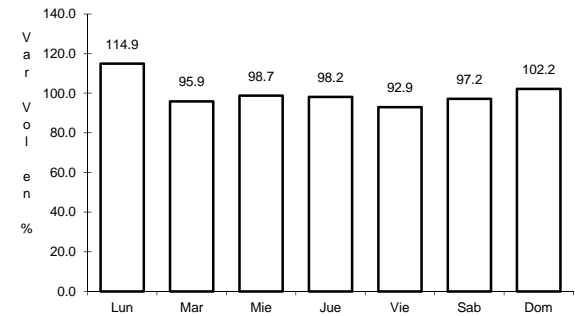
Sent: 0



Km: 3.16

Tipo: 3

Sent: 0



Km: 6.53

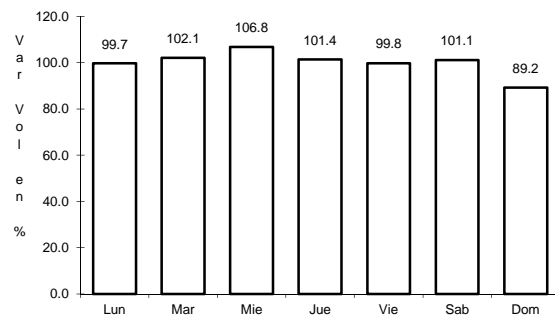
Tipo: 1

Sent: 0

33 CARR: Mérida - Acanceh

CLAVE: 31023

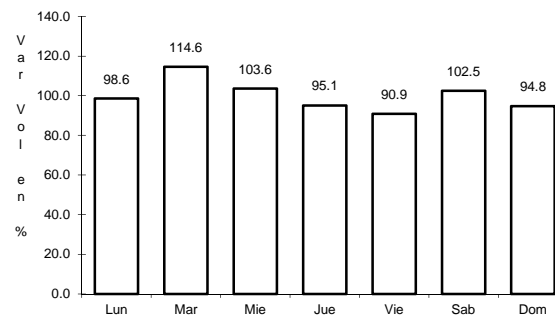
RUTA: YUC



Km: 0.00

Tipo: 3

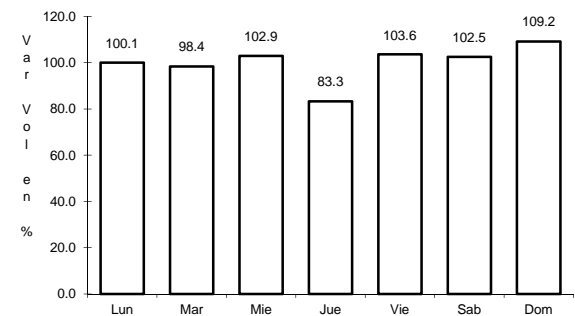
Sent: 0



Km: 11.00

Tipo: 3

Sent: 0



Km: 26.00

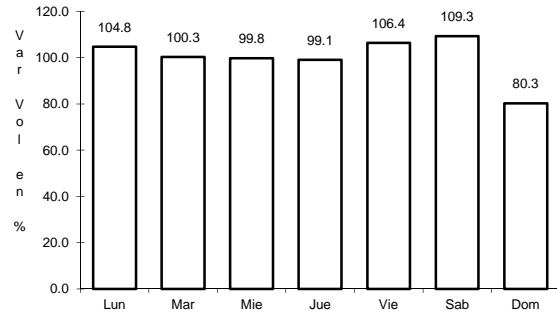
Tipo: 1

Sent: 0

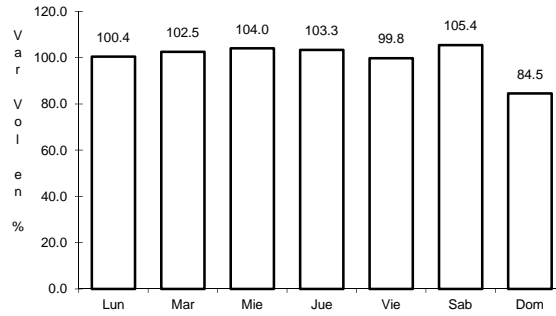
34 CARR: Mérida - Oxkutzcab

CLAVE: 31018

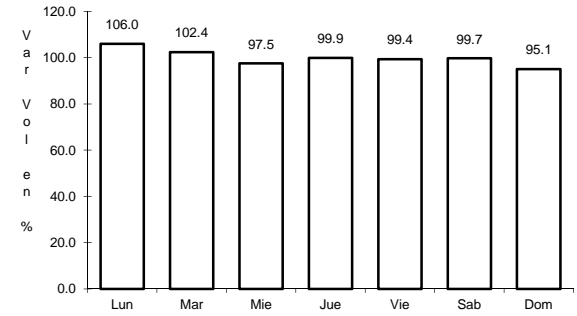
RUTA: YUC-018



Km: 0.00                      Tipo: 3                      Sent: 1



Km: 0.00                      Tipo: 3                      Sent: 2

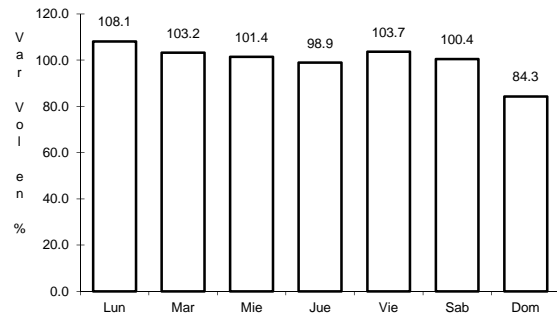


Km: 109.30                      Tipo: 1                      Sent: 0

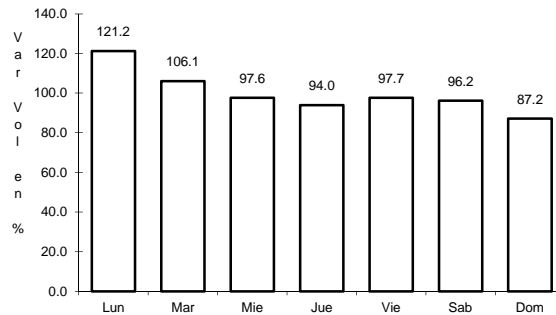
35 CARR: Mérida - Tetiz

CLAVE: 31610

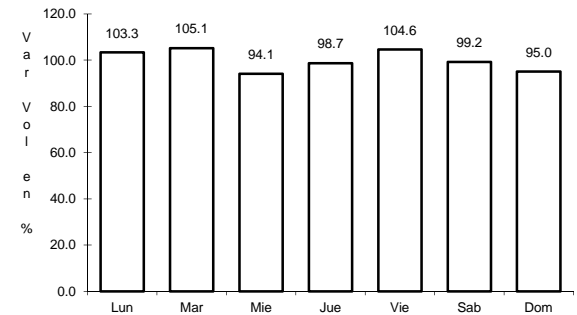
RUTA: YUC



Km: 0.00                      Tipo: 3                      Sent: 0



Km: 17.98                      Tipo: 1                      Sent: 0

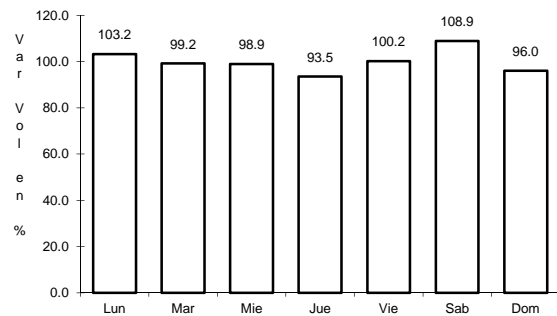


Km: 24.40                      Tipo: 1                      Sent: 0

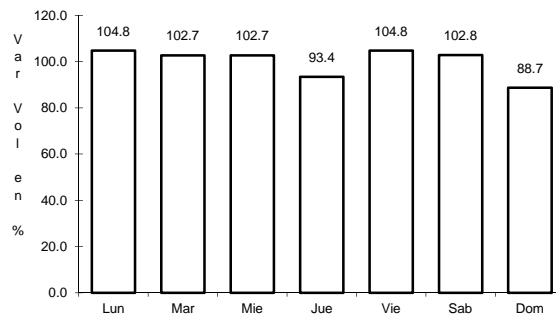
36 CARR: Mérida - Timucuy

CLAVE: 31024

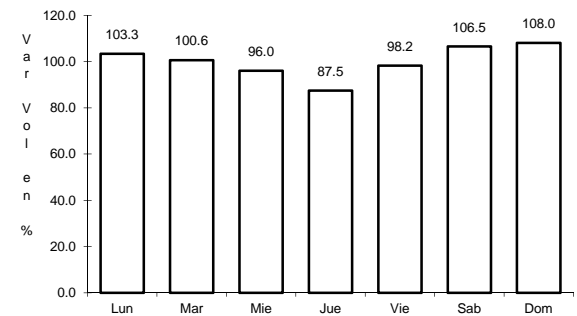
RUTA: YUC



Km: 0.00                      Tipo: 3                      Sent: 0



Km: 15.10                      Tipo: 1                      Sent: 0

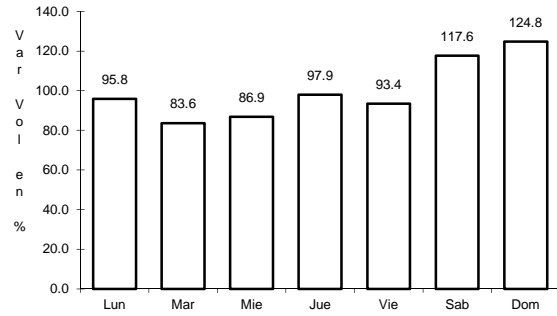


Km: 18.65                      Tipo: 1                      Sent: 0

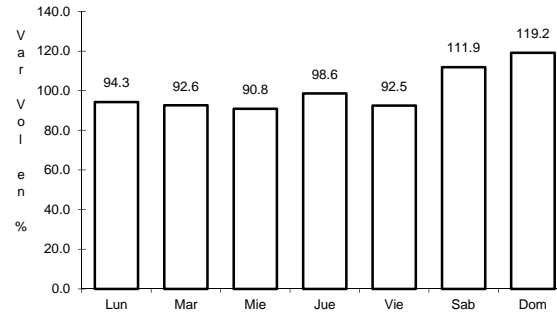
37 CARR: Motul - Puerto Telchac

CLAVE: 31006

RUTA: YUC-172



Km: 0.00      Tipo: 3      Sent: 0

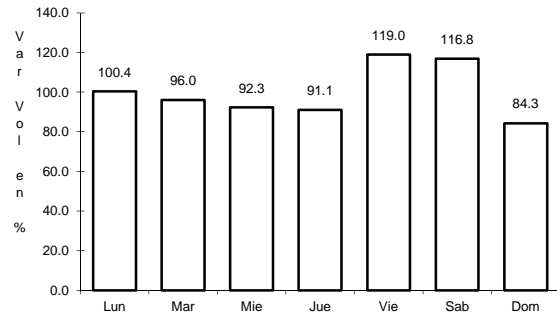


Km: 12.00      Tipo: 3      Sent: 0

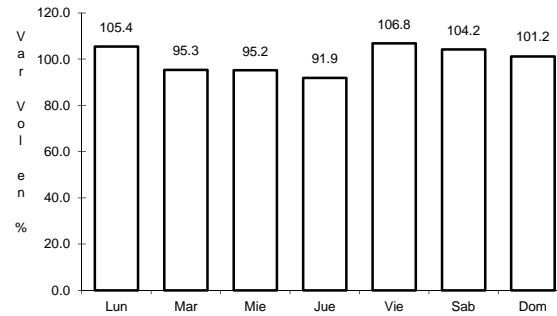
38 CARR: Muna - Maxcanú

CLAVE: 31053

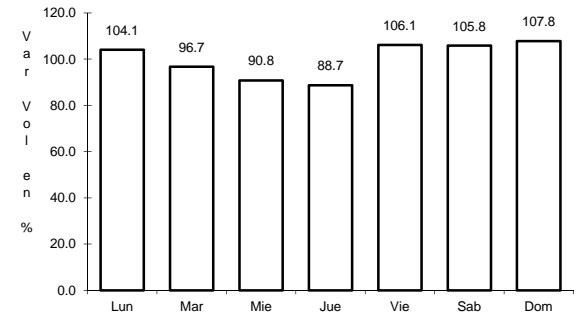
RUTA: YUC



Km: 0.00      Tipo: 3      Sent: 0



Km: 17.00      Tipo: 3      Sent: 0

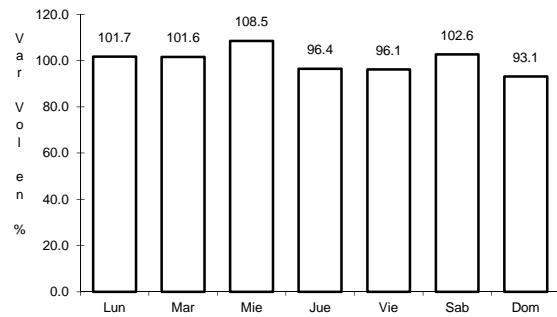


Km: 31.00      Tipo: 1      Sent: 0

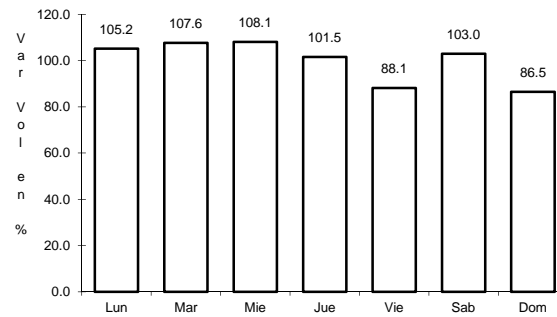
39 CARR: Oxkutzcab - Xul

CLAVE: 31051

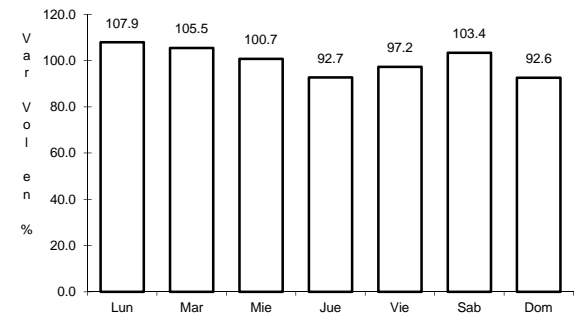
RUTA: YUC-031



Km: 0.00      Tipo: 3      Sent: 0



Km: 10.00      Tipo: 3      Sent: 0

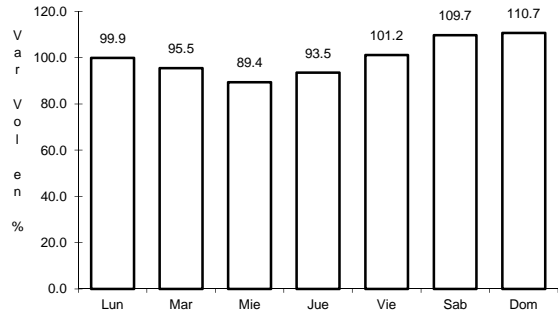


Km: 25.00      Tipo: 1      Sent: 0

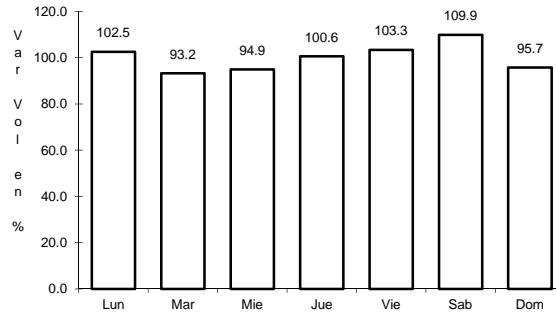
40 CARR: Piste - Dzitás

CLAVE: 31013

RUTA: YUC-013



Km: 0.00      Tipo: 3      Sent: 0

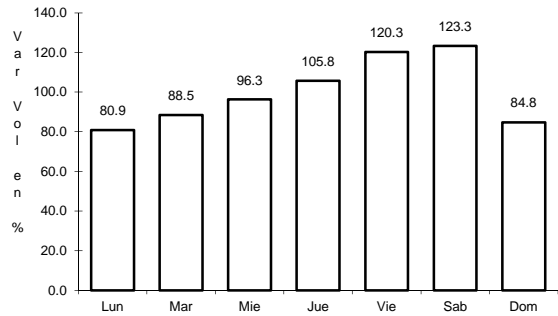


Km: 18.00      Tipo: 1      Sent: 0

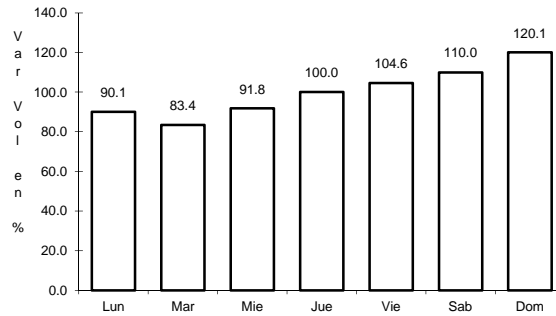
41 CARR: Progreso - Telchac Puerto

CLAVE: 31616

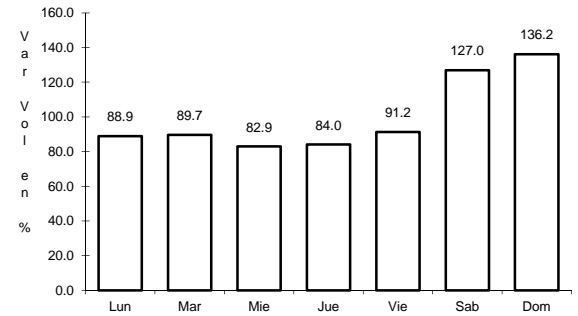
RUTA: YUC-027



Km: 0.00      Tipo: 3      Sent: 1



Km: 0.00      Tipo: 3      Sent: 2

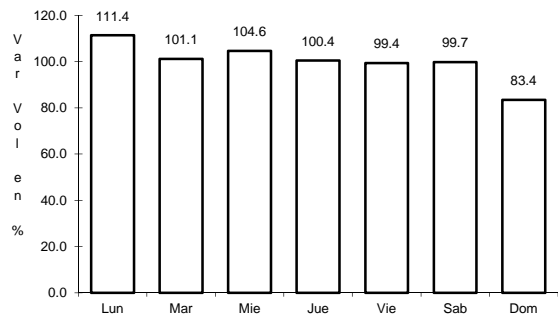


Km: 33.00      Tipo: 1      Sent: 0

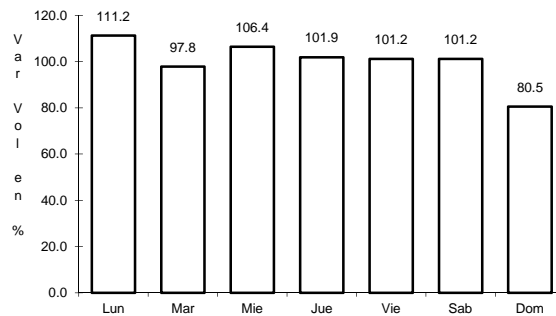
42 CARR: Ramal a Chankom

CLAVE: 31049

RUTA: YUC



Km: 0.00      Tipo: 3      Sent: 0

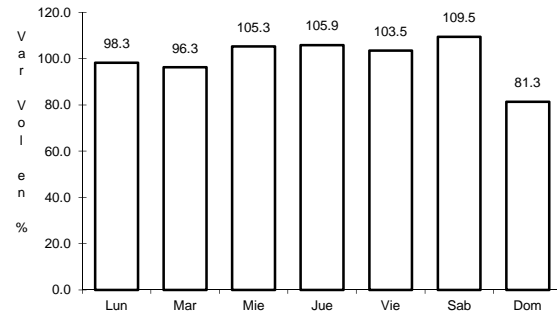


Km: 9.00      Tipo: 1      Sent: 0

43 CARR: Ramal a Dzonot Carretero

CLAVE: 31614

RUTA: YUC



Km: 0.00

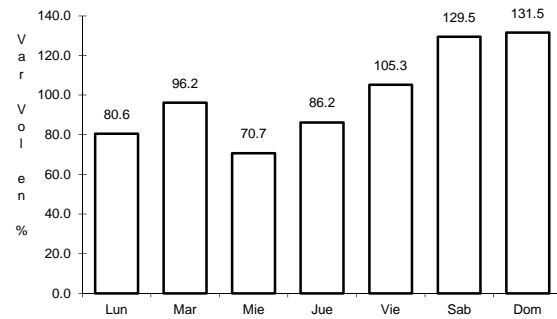
Tipo: 3

Sent: 0

44 CARR: Ramal a San Felipe

CLAVE: 31628

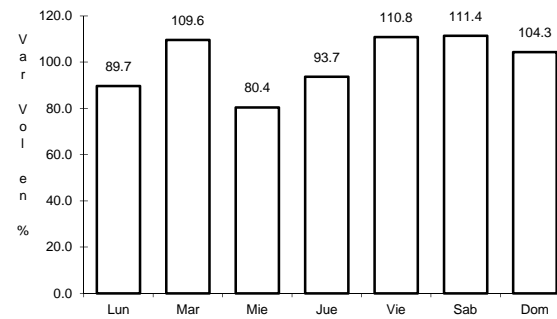
RUTA: YUC



Km: 0.00

Tipo: 3

Sent: 0



Km: 7.20

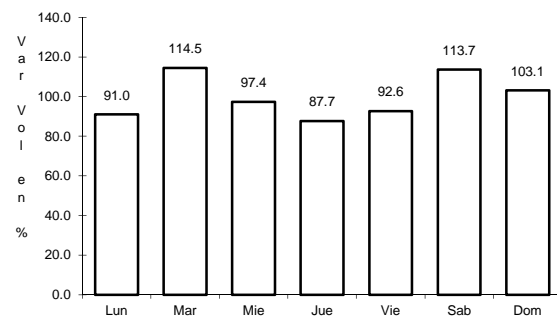
Tipo: 1

Sent: 0

45 CARR: Ramal a Tedzidz

CLAVE: 31600

RUTA: YUC



Km: 6.00

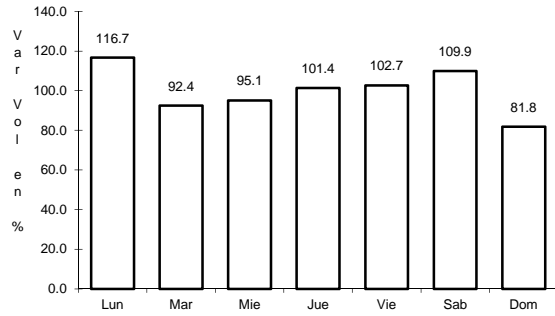
Tipo: 1

Sent: 0

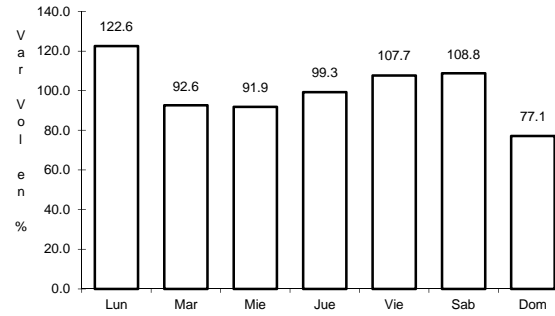
46 CARR: Ramal a Yaxcabá

CLAVE: 31111

RUTA: YUC-289



Km: 0.00                      Tipo: 3                      Sent: 0

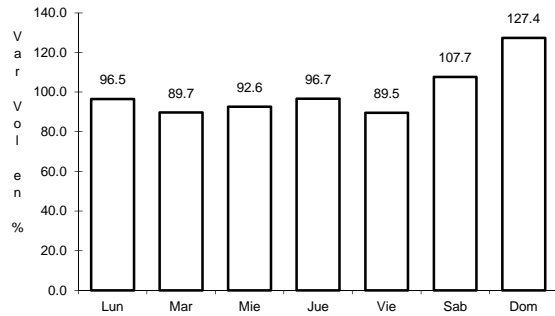


Km: 18.00                      Tipo: 1                      Sent: 0

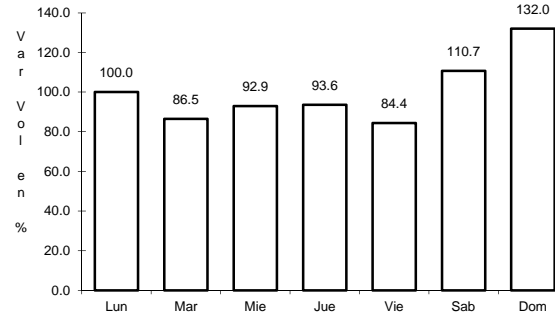
47 CARR: Sinanché - Xitibcanul

CLAVE: 31619

RUTA: YUC



Km: 0.00                      Tipo: 3                      Sent: 0

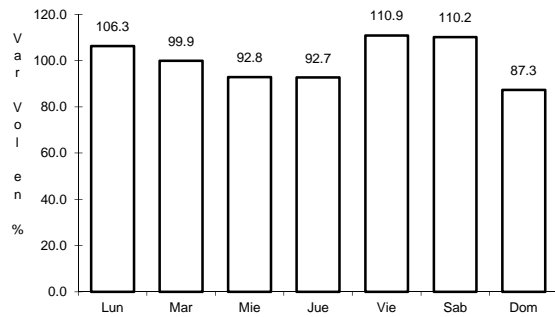


Km: 7.00                      Tipo: 1                      Sent: 0

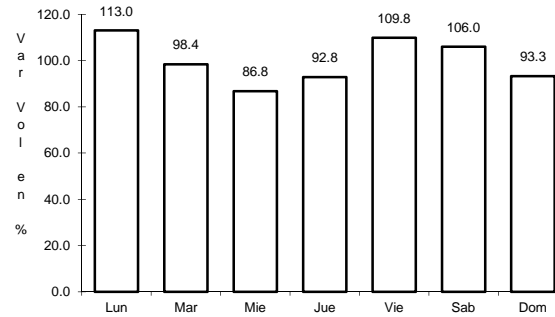
48 CARR: Sucilá - Calotmul

CLAVE: 31617

RUTA: YUC



Km: 2.00                      Tipo: 3                      Sent: 0

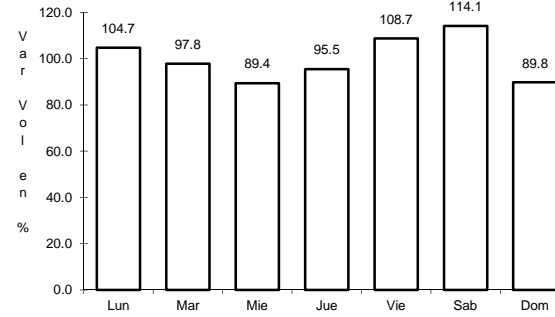
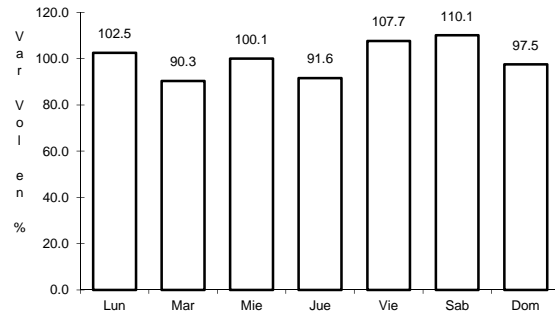


Km: 30.20                      Tipo: 1                      Sent: 0

49 CARR: Suma - Izamal

CLAVE: 31081

ruta: YUC-081



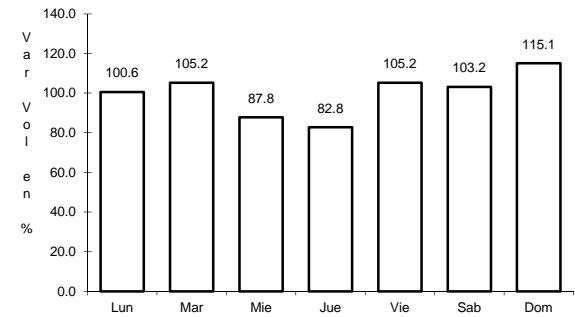
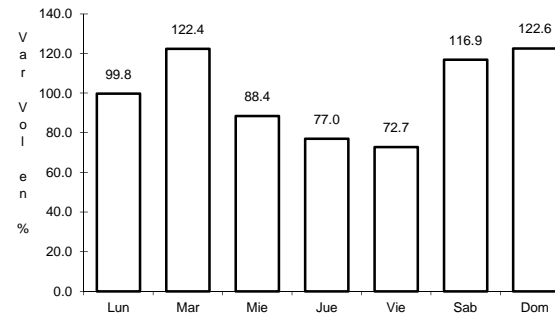
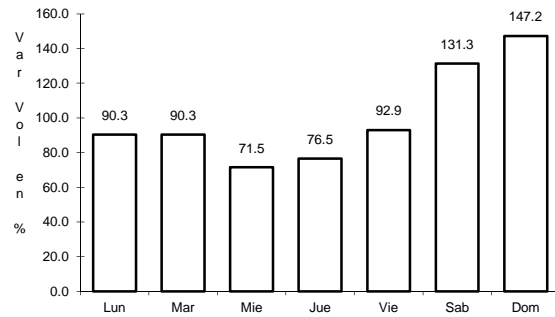
Km: 0.00      Tipo: 3      Sent: 0

Km: 22.00      Tipo: 1      Sent: 0

50 CARR: Telchac Puerto - Dzilam de Bravo

CLAVE: 31042

ruta: YUC



Km: 0.00      Tipo: 3      Sent: 0

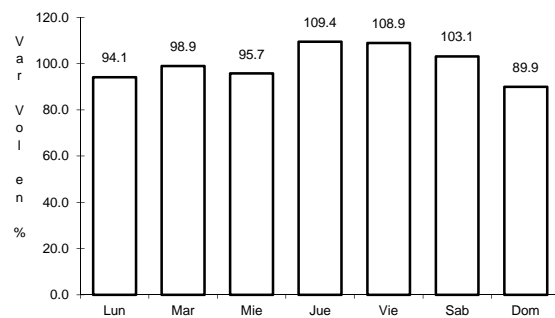
Km: 26.00      Tipo: 1      Sent: 0

Km: 39.00      Tipo: 1      Sent: 0

51 CARR: Thul - Becanchén

CLAVE: 31104

ruta: YUC-281

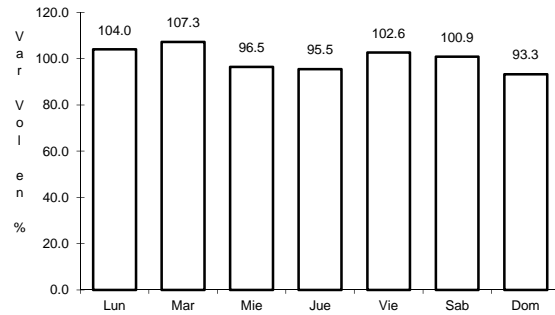


Km: 0.00      Tipo: 3      Sent: 0

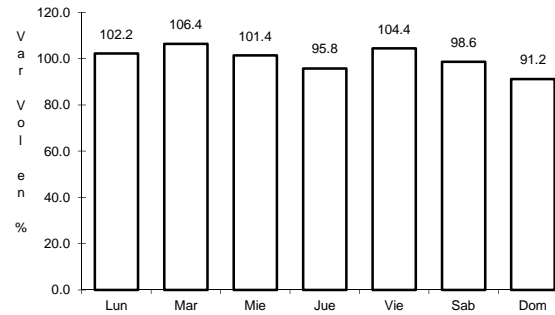
52 CARR: Ticul - Chapab

CLAVE: 31623

RUTA: YUC



Km: 0.00                      Tipo: 3                      Sent: 0

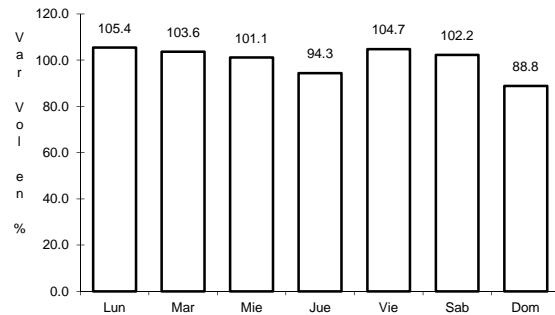


Km: 8.00                      Tipo: 1                      Sent: 0

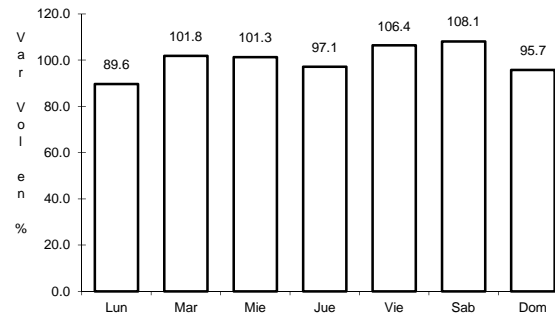
53 CARR: Ticul - Dzan

CLAVE: 31621

RUTA: YUC



Km: 2.50                      Tipo: 3                      Sent: 0

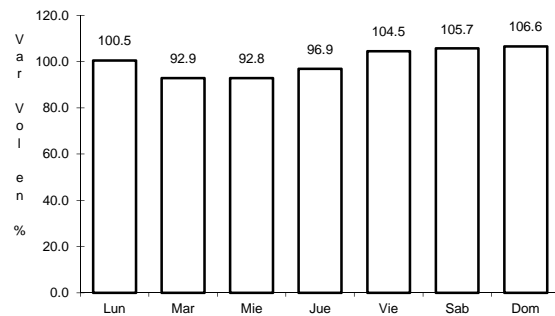


Km: 7.00                      Tipo: 1                      Sent: 0

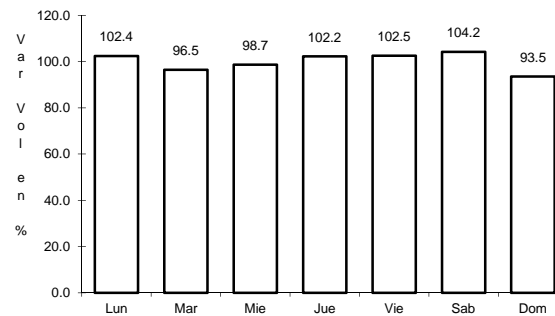
54 CARR: Tixkokob - Baca

CLAVE: 31010

RUTA: YUC



Km: 0.00                      Tipo: 3                      Sent: 0



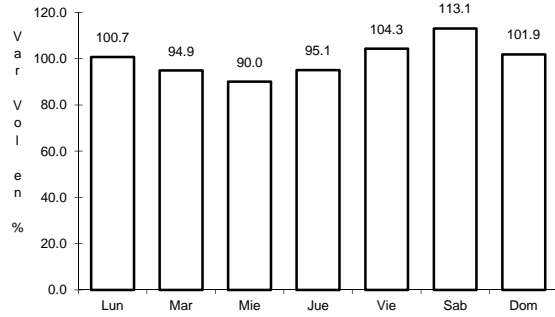
Km: 15.00                      Tipo: 1                      Sent: 0



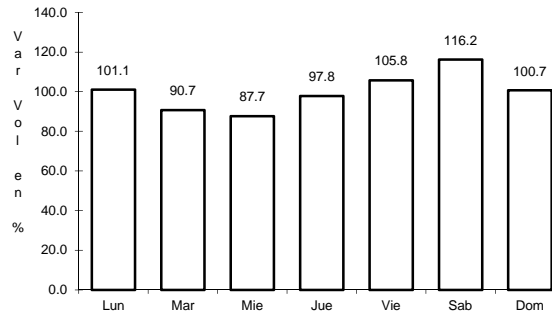
55 CARR: Tixkokob - Sotuta

CLAVE: 31106

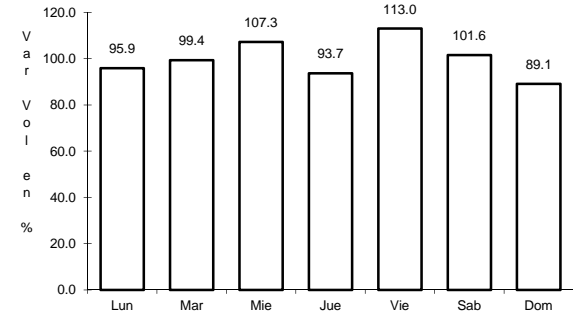
RUTA: YUC



Km: 0.00      Tipo: 3      Sent: 0



Km: 31.00      Tipo: 3      Sent: 0

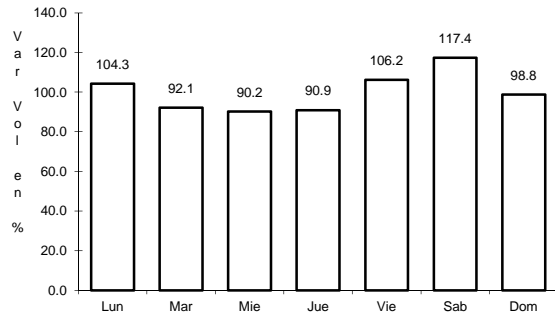


Km: 65.00      Tipo: 1      Sent: 0

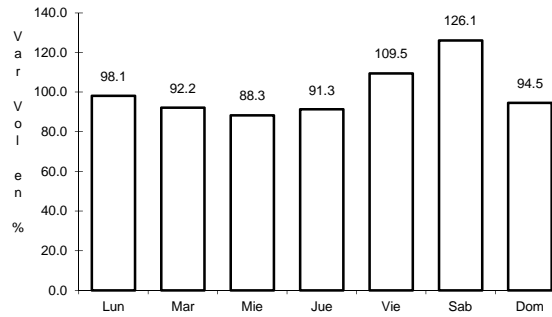
56 CARR: Tizimín - Yucatán

CLAVE: 31588

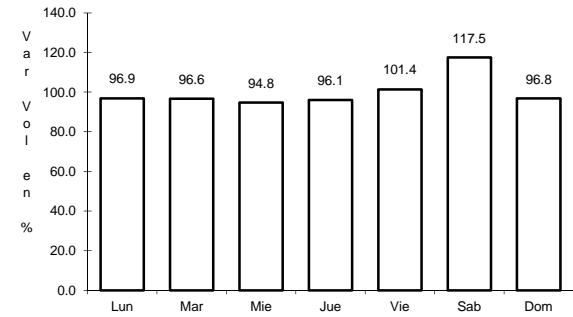
RUTA: YUC



Km: 0.00      Tipo: 3      Sent: 0



Km: 30.00      Tipo: 3      Sent: 0

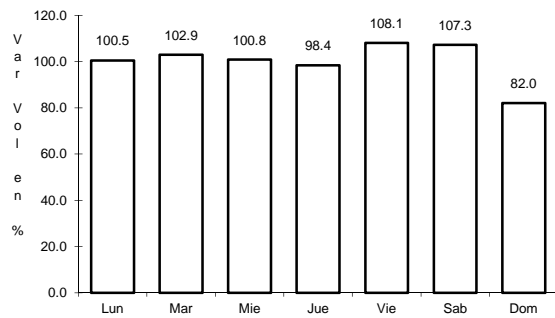


Km: 46.50      Tipo: 1      Sent: 0

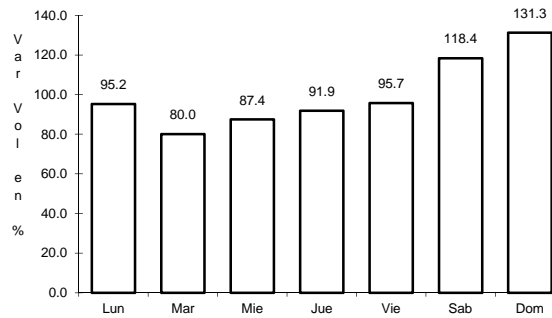
57 CARR: Yaxché - Sierra Papacal

CLAVE: 31620

RUTA: YUC



Km: 0.00      Tipo: 3      Sent: 0

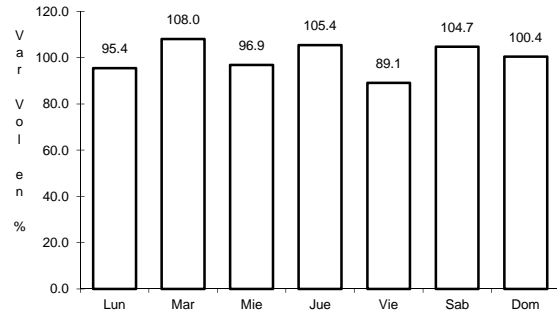


Km: 12.00      Tipo: 1      Sent: 0

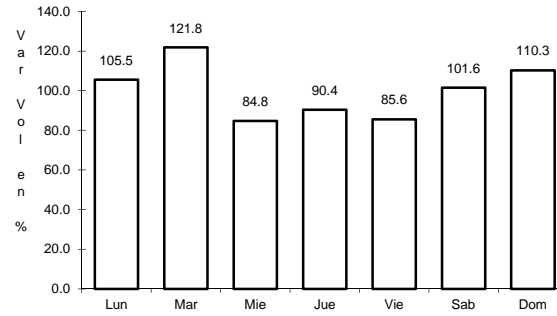
58 CARR: Yobaín - Chabihau

CLAVE: 31610

RUTA: YUC



Km: 0.00                      Tipo: 3                      Sent: 0

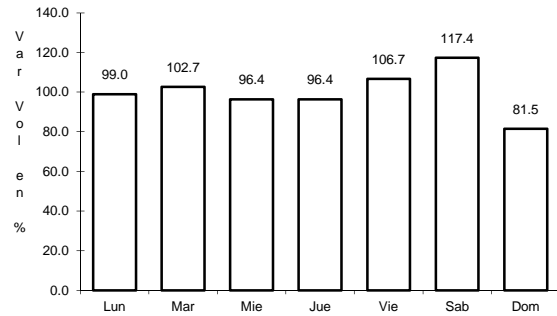


Km: 12.00                      Tipo: 1                      Sent: 0

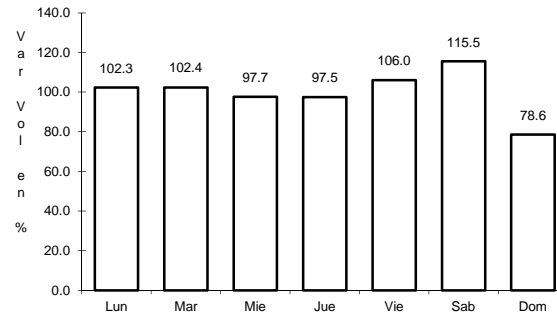
59 CARR: Progreso - Celestún

CLAVE: 31040

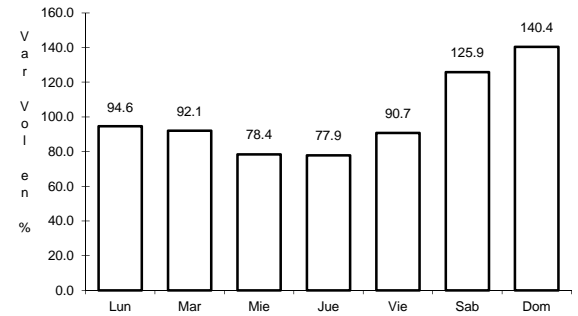
RUTA: MEX-YUC



Km: 0.00                      Tipo: 3                      Sent: 1



Km: 0.00                      Tipo: 3                      Sent: 2



Km: 6.00                      Tipo: 3                      Sent: 0