

TLAXCALA

NO. INDICE	CARRETERA	RUTA
---RED FEDERAL LIBRE---		
1	Amozoc - Teziutlán	MEX-129
2	Apizaco - San Pablo Apetatitlán	MEX-119
3	Apizaco - Tejocotal	MEX-119
4	Huamantla - La Venta	MEX-136
5	Huamantla - Terrenate	MEX-136
6	Libramiento de Apizaco	MEX-136
7	Libramiento Huamantla	MEX-136
8	Libramiento Hueyotlipan	MEX-136
9	Los Reyes - Zacatepec	MEX-136
10	Puebla - Belem	MEX-121
11	Puebla - Tlaxcala	MEX-119
12	Ramal a San Felipe de Hidalgo	MEX-136
13	San Martín Texmelucan - Tlaxcala	MEX-117
14	Tetlatlahuca - Santa Ana Chiautempan	MEX-119
15	Tlaxcala - Belem	MEX-119
16	Villa Alta - T. C. (Puebla - Tlaxcala)	MEX-119
--RED FEDERAL DE CUOTA--		
17	Amozoc - Perote (Cuota)	MEX-140D
18	Libramiento Norte de la Ciudad de México (Cuota)	MEX-M40D
19	México - Puebla (Cuota)	MEX-150D
20	San Martín Texmelucan - Tlaxcala - El Molinito (Cuota)	MEX-117D
---RED ESTATAL LIBRE---		
21	Libramiento de Ocotlán	TLAX
22	Ramal a Alzayanca de Hidalgo	TLAX
23	Ramal a San Pedro Ecatepec	TLAX
24	Ramal a Xalostoc	TLAX
25	Xalostoc - Terrenate	TLAX
---CARRETERAS INTEGRADAS POR TRAMOS FEDERALES Y ESTATALES---		
26	Acocotla - Vicente Guerrero	MEX-TLAX
27	Apizaco - Emiliano Zapata	TLAX-MEX-136
28	Calpulalpan - El Ocote	MEX-HGO
29	Calpulalpan - Nanacamilpa	TLAX-MEX-136

TLAXCALA

1 CARR: Amozoc - Teziutlán

CLAVE: 00210

RUTA: MEX-129

AÑO: 2015

LUGAR	ESTACION				CLASIFICACION VEHICULAR EN PORCIENTO										COORDENADAS					
	KM	TE	SC	TDPA	M	A	B	C2	C3	T3S2	T3S3	T3S2R4	OTROS	A	B	C	K'	D	LATITUD	LONGITUD
Amozoc	0.00																			
X. C. Puebla - Córdoba (Cuota)	1.40	3	0	10373	0.7	70.3	3.4	13.4	3.0	5.1	2.6	0.7	0.8	71.0	3.4	25.6	0.082	0.511	19.052427	-98.026017
Acajete	12.00	3	0	8045	1.2	72.0	1.4	11.2	3.0	5.8	2.9	1.1	1.4	73.2	1.4	25.4	0.072	0.506	19.115749	-97.945634
Rafael Lara Grajales	35.50	1	0	5377	1.8	71.9	2.9	8.3	5.4	4.4	3.1	1.2	1.0	73.7	2.9	23.4	0.071	0.516	19.235756	-97.806910
Rafael Lara Grajales	35.50	3	0	6932	1.9	79.1	2.0	5.9	3.4	4.4	1.9	0.6	0.8	81.0	2.0	17.0	0.088	0.505	19.235978	-97.778331
Lim. Edos. Term. Pue. Ppia. Tlax.	50.54																			
X. C. Los Reyes - Zacatepec	56.31	1	0	3491	1.3	72.5	3.4	6.8	7.0	4.7	3.2	0.8	0.3	73.8	3.4	22.8	0.070	0.501	19.313713	-97.656018
Lim. Edos. Term. Tlax. Ppia. Pue.	60.22																			
Oriental	62.62	1	0	4827	1.7	83.4	1.9	5.1	1.1	3.1	2.1	0.6	1.0	85.1	1.9	13.0	0.087	0.536	19.363497	-97.630743
Oriental	62.62	3	0	6463	2.2	81.7	2.3	6.8	1.8	3.5	1.2	0.2	0.3	83.9	2.3	13.8	0.077	0.520	19.383231	-97.619079
X. C. Amozoc - Perote (Cuota)	69.00	1	1	3616	2.2	84.6	2.2	7.0	1.5	1.1	1.1	0.1	0.2	86.8	2.2	11.0	0.086	0.510	19.416096	-97.639241
X. C. Amozoc - Perote (Cuota)	69.00	1	2	3472	2.1	83.8	2.5	7.1	1.7	1.3	1.2	0.1	0.2	85.9	2.5	11.6	0.079	0.510	19.416093	-97.639247
X. C. Amozoc - Perote (Cuota)	69.00	3	0	8049	1.5	81.5	2.4	7.4	1.8	3.2	1.4	0.2	0.6	83.0	2.4	14.6	0.080	0.502	19.420492	-97.644471
Libres	76.35	3	0	7898	1.2	82.6	2.3	7.1	1.8	3.2	1.1	0.1	0.6	83.8	2.3	13.9	0.076	0.505	19.485847	-97.670720
San Miguel Tenexatiloyán	106.70	1	0	3732	1.2	80.9	2.9	7.5	2.3	2.6	1.8	0.2	0.6	82.1	2.9	15.0	0.076	0.509	19.705366	-97.597669
T. Izq. Zacapoaxtla	114.80	1	0	6911	1.9	84.4	2.0	5.1	1.2	3.5	0.9	0.2	0.8	86.3	2.0	11.7	0.069	0.504	19.760217	-97.567686
T. Izq. Zacapoaxtla	114.80	3	0	9542	1.8	84.2	1.7	4.9	0.6	5.1	0.6	0.2	0.9	86.0	1.7	12.3	0.066	0.503	19.764678	-97.563991
Zaragoza	116.80	3	0	7620	1.8	85.5	2.4	5.8	0.6	3.0	0.4	0.1	0.4	87.3	2.4	10.3	0.065	0.500	19.782468	-97.544545
Teziutlán	157.80	1	0	11575	2.3	80.7	1.2	8.4	0.5	5.3	0.5	0.2	0.9	83.0	1.2	15.8	0.067	0.514	19.817485	-97.379775

2 CARR: Apizaco - San Pablo Apetatitlán

CLAVE: 29035

RUTA: MEX-119

AÑO: 2015

LUGAR	ESTACION				CLASIFICACION VEHICULAR EN PORCIENTO										COORDENADAS					
	KM	TE	SC	TDPA	M	A	B	C2	C3	T3S2	T3S3	T3S2R4	OTROS	A	B	C	K'	D	LATITUD	LONGITUD
T. C. Los Reyes - Zacatepec	0.00	3	0	6932	5.0	86.9	0.1	3.7	0.2	3.6	0.2	0.0	0.3	91.9	0.1	8.0	0.074	0.513	19.411138	-98.118946
T. Der. Tecnológico	0.55	3	0	8263	4.2	86.3	0.1	2.9	0.2	4.9	0.4	0.1	0.9	90.5	0.1	9.4	0.070	0.537	19.404975	-98.117358
Cuaxomulco	9.10	3	0	2663	8.0	83.2	0.4	5.6	0.3	2.0	0.2	0.2	0.1	91.2	0.4	8.4	0.094	0.517	19.355710	-98.106384
Santa Cruz Tlaxcala	14.50	3	0	5722	5.9	88.1	0.2	2.9	0.1	2.4	0.1	0.0	0.3	94.0	0.2	5.8	0.067	0.508	19.353413	-98.157961
T. Izq. Contla	18.90	1	0	8932	5.0	84.0	0.1	2.8	0.0	5.6	1.1	0.3	1.1	89.0	0.1	10.9	0.060	0.510	19.339550	-98.184638
San Pablo Apetatitlán	20.00	1	0	13900	4.4	83.4	0.1	2.1	0.1	7.7	0.8	0.4	1.0	87.8	0.1	12.1	0.055	0.519	19.335840	-98.190381

TLAXCALA

3 CARR: Apizaco - Tejocotal

CLAVE: 00430

RUTA: MEX-119

AÑO: 2015

LUGAR	ESTACION				CLASIFICACION VEHICULAR EN PORCIENTO													COORDENADAS		
	KM	TE	SC	TDPA	M	A	B	C2	C3	T3S2	T3S3	T3S2R4	OTROS	A	B	C	K'	D	LATITUD	LONGITUD
Apizaco	0.00	3	1	9599	1.0	83.3	1.9	8.8	0.9	2.0	1.2	0.4	0.5	84.3	1.9	13.8	0.083	0.515	19.428158	-98.136120
Apizaco	0.00	3	2	10213	1.4	81.0	2.1	10.1	1.0	2.3	1.2	0.4	0.5	82.4	2.1	15.5	0.084	0.515	19.428150	-98.136122
T. Der. Tetla	6.60	3	0	16095	0.7	83.7	1.9	7.9	1.3	2.6	1.1	0.5	0.3	84.4	1.9	13.7	0.076	0.508	19.469050	-98.111827
T. Izq. Atlangatepec	12.15	1	0	12335	0.8	78.5	2.1	9.5	1.5	4.7	1.6	0.5	0.8	79.3	2.1	18.6	0.066	0.509	19.511267	-98.117853
Tlaxco	23.91	1	0	8505	1.9	82.4	0.7	9.0	0.6	4.3	0.4	0.1	0.6	84.3	0.7	15.0	0.063	0.509	19.605490	-98.122530
Tlaxco	23.91	3	0	5523	1.4	77.0	1.4	11.5	1.4	4.4	2.0	0.2	0.7	78.4	1.4	20.2	0.070	0.511	19.624722	-98.125649
Lim. Edos. Term. Tlax. Ppia. Pue.	34.45																			
T. Der. Tetela de Ocampo	52.20	1	0	6976	2.0	80.9	0.6	8.5	1.3	4.3	1.5	0.3	0.6	82.9	0.6	16.5	0.075	0.509	19.802057	-98.025816
Zacatlán	71.25	1	0	11207	2.8	82.0	1.0	5.9	0.6	4.7	1.5	0.5	1.0	84.8	1.0	14.2	0.066	0.502	19.914966	-97.958513
Lim. Edos. Term. Pue. Ppia. Hgo.	110.45																			
T. C. Pachuca - Tuxpam	113.15	1	0	6956	0.2	82.6	3.4	6.0	2.7	2.9	1.7	0.4	0.1	82.8	3.4	13.8	0.115	0.501	20.124410	-98.128427

4 CARR: Huamantla - La Venta

CLAVE: 29564

RUTA: MEX-136

AÑO: 2015

LUGAR	ESTACION				CLASIFICACION VEHICULAR EN PORCIENTO													COORDENADAS		
	KM	TE	SC	TDPA	M	A	B	C2	C3	T3S2	T3S3	T3S2R4	OTROS	A	B	C	K'	D	LATITUD	LONGITUD
Huamantla	0.00	3	1	5446	2.7	86.5	0.3	8.4	0.4	0.8	0.6	0.1	0.2	89.2	0.3	10.5	0.069	0.509	19.301997	-97.921570
Huamantla	0.00	3	2	5654	2.9	85.3	0.3	9.2	0.4	1.0	0.6	0.1	0.2	88.2	0.3	11.5	0.073	0.509	19.302004	-97.921567
Ignacio Zaragoza	2.30	3	0	6104	1.3	82.9	0.5	10.4	0.7	2.9	0.9	0.1	0.3	84.2	0.5	15.3	0.067	0.500	19.283991	-97.920738
Ixtenco	8.00	1	0	5826	1.4	84.3	0.6	9.8	0.7	2.5	0.4	0.0	0.3	85.7	0.6	13.7	0.073	0.506	19.261092	-97.899794
Ixtenco	8.00	3	0	4162	1.0	81.2	0.6	13.0	1.0	2.4	0.5	0.1	0.2	82.2	0.6	17.2	0.075	0.505	19.244092	-97.895641
X. C. Amozoc - Perote (Cuota)	11.40	1	0	4443	1.1	82.6	0.7	10.4	1.1	2.3	0.9	0.4	0.5	83.7	0.7	15.6	0.099	0.519	19.226829	-97.902471
Zitlaltepec	13.60	1	0	3683	1.2	81.9	0.8	11.2	0.9	2.4	1.0	0.3	0.3	83.1	0.8	16.1	0.075	0.506	19.215726	-97.907776
Zitlaltepec	13.60	3	0	3204	1.8	77.7	1.0	14.2	1.7	2.1	1.0	0.2	0.3	79.5	1.0	19.5	0.090	0.516	19.196575	-97.916680
T. C. Amozoc - Teziutlán	17.60	1	0	3245	0.7	78.1	1.1	14.3	1.3	2.7	1.1	0.4	0.3	78.8	1.1	20.1	0.085	0.518	19.176541	-97.909424

5 CARR: Huamantla - Terrenate

CLAVE: 29036

RUTA: MEX-136

AÑO: 2015

LUGAR	ESTACION				CLASIFICACION VEHICULAR EN PORCIENTO													COORDENADAS		
	KM	TE	SC	TDPA	M	A	B	C2	C3	T3S2	T3S3	T3S2R4	OTROS	A	B	C	K'	D	LATITUD	LONGITUD
Huamantla	0.00	3	0	2191	3.7	80.6	0.7	7.8	1.8	2.3	2.1	0.6	0.4	84.3	0.7	15.0	0.078	0.511	19.331806	-97.931305
T. Izq. Xicoténcatl	12.50	1	0	922	3.1	84.6	0.3	6.8	1.8	1.7	1.2	0.4	0.1	87.7	0.3	12.0	0.087	0.507	19.414523	-97.968936
Terrenate	21.00	1	0	1063	3.3	89.3	0.1	4.8	0.5	1.6	0.4	0.0	0.0	92.6	0.1	7.3	0.079	0.506	19.464691	-97.929229

TLAXCALA

6 CARR : Libramiento de Apizaco

CLAVE: 29567

RUTA: MEX-136

AÑO : 2015

LUGAR	ESTACION				CLASIFICACION VEHICULAR EN PORCIENTO														COORDENADAS		
	KM	TE	SC	TDPA	M	A	B	C2	C3	T3S2	T3S3	T3S2R4	OTROS	A	B	C	K'	D	LATITUD	LONGITUD	
T. C. Los Reyes - Zacatepec	0.00																				
T. Der. Amaxac de Guerrero	6.00	1	1	10140	0.8	78.8	2.3	4.6	2.3	5.8	2.7	1.8	0.9	79.6	2.3	18.1	0.097	0.527	19.382044	-98.131672	
T. Der. Amaxac de Guerrero	6.00	1	2	11305	0.7	76.3	2.5	5.4	2.7	6.7	3.0	1.8	0.9	77.0	2.5	20.5	0.074	0.527	19.382042	-98.131673	
T. Der. Amaxac de Guerrero	6.00	3	1	10446	0.9	75.7	3.2	5.4	2.9	6.1	2.8	2.1	0.9	76.6	3.2	20.2	0.087	0.525	19.386161	-98.125290	
T. Der. Amaxac de Guerrero	6.00	3	2	9457	0.9	74.3	3.5	5.6	2.9	6.6	3.1	2.2	0.9	75.2	3.5	21.3	0.076	0.525	19.386173	-98.125292	
T. C. Los Reyes - Zacatepec	10.40																				

7 CARR : Libramiento Huamantla

CLAVE: 29567

RUTA: MEX-136

AÑO : 2015

LUGAR	ESTACION				CLASIFICACION VEHICULAR EN PORCIENTO														COORDENADAS	
	KM	TE	SC	TDPA	M	A	B	C2	C3	T3S2	T3S3	T3S2R4	OTROS	A	B	C	K'	D	LATITUD	LONGITUD
T. C. Los Reyes - Zacatepec	0.00	3	1	6604	0.7	71.5	3.3	5.8	3.4	8.2	3.7	2.8	0.6	72.2	3.3	24.5	0.098	0.525	19.324297	-97.931993
T. C. Los Reyes - Zacatepec	0.00	3	2	7300	0.6	69.0	3.8	6.0	3.6	9.5	3.8	3.1	0.6	69.6	3.8	26.6	0.102	0.525	19.324300	-97.931982
T. C. Los Reyes - Zacatepec	4.60	1	1	6890	0.9	66.6	4.3	7.8	2.9	9.4	4.2	3.0	0.9	67.5	4.3	28.2	0.084	0.510	19.320195	-97.911078
T. C. Los Reyes - Zacatepec	4.60	1	2	6628	1.0	63.4	4.7	8.8	3.3	10.4	4.4	3.0	1.0	64.4	4.7	30.9	0.079	0.510	19.320191	-97.911085

8 CARR : Libramiento Hueyotlipan

CLAVE: 29567

RUTA: MEX-136

AÑO : 2015

LUGAR	ESTACION				CLASIFICACION VEHICULAR EN PORCIENTO														COORDENADAS	
	KM	TE	SC	TDPA	M	A	B	C2	C3	T3S2	T3S3	T3S2R4	OTROS	A	B	C	K'	D	LATITUD	LONGITUD
T. C. Los Reyes - Zacatepec	0.00	3	1	6873	0.5	64.1	3.8	7.4	3.7	12.8	3.6	3.1	1.0	64.6	3.8	31.6	0.069	0.511	19.476069	-98.354055
T. C. Los Reyes - Zacatepec	0.00	3	2	7172	0.5	60.4	4.1	8.2	4.2	14.1	3.9	3.6	1.0	60.9	4.1	35.0	0.092	0.511	19.476069	-98.354055
T. C. Los Reyes - Zacatepec	2.70	1	1	5926	1.0	63.3	3.5	6.5	4.2	13.2	4.0	3.3	1.0	64.3	3.5	32.2	0.085	0.500	19.472410	-98.338750
T. C. Los Reyes - Zacatepec	2.70	1	2	5926	0.5	59.9	3.7	7.5	4.6	14.8	4.2	3.8	1.0	60.4	3.7	35.9	0.108	0.500	19.472423	-98.338749

9 CARR : Los Reyes - Zacatepec

CLAVE: 00052

RUTA: MEX-136

AÑO : 2015

LUGAR	ESTACION				CLASIFICACION VEHICULAR EN PORCIENTO														COORDENADAS	
	KM	TE	SC	TDPA	M	A	B	C2	C3	T3S2	T3S3	T3S2R4	OTROS	A	B	C	K'	D	LATITUD	LONGITUD
T. C. México - Puebla (Libre)	0.00																			
T. Izq. La Magdalena	3.35	3	1	46183	1.3	87.4	0.4	4.8	1.2	1.8	2.0	0.5	0.6	88.7	0.4	10.9	0.053	0.534	19.371610	-98.945990
T. Izq. La Magdalena	3.35	3	2	52926	1.6	86.5	0.4	5.1	1.2	1.9	2.2	0.5	0.6	88.1	0.4	11.5	0.057	0.534	19.371610	-98.945990
T. Izq. Chimalhuacán	8.45	1	1	35352	2.5	83.6	0.9	4.1	1.4	2.7	2.9	0.9	1.0	86.1	0.9	13.0	0.058	0.504	19.411830	-98.921300
T. Izq. Chimalhuacán	8.45	1	2	34550	2.4	82.7	1.0	4.3	1.5	2.8	3.3	1.0	1.0	85.1	1.0	13.9	0.054	0.504	19.411830	-98.921300
T. C. San Bernardino - Tepexpan	17.00	3	1	12159	0.1	84.5	1.9	7.2	2.4	1.6	1.1	1.0	0.2	84.6	1.9	13.5	0.064	0.530	19.478830	-98.890000

TLAXCALA

9 CARR : Los Reyes - Zacatepec

CLAVE: 00052

RUTA: MEX-136

AÑO : 2015

LUGAR	ESTACION				CLASIFICACION VEHICULAR EN PORCIENTO														COORDENADAS	
	KM	TE	SC	TDPA	M	A	B	C2	C3	T3S2	T3S3	T3S2R4	OTROS	A	B	C	K'	D	LATITUD	LONGITUD
T. C. San Bernardino - Tepexpan	17.00	3	2	13699	0.1	86.2	1.4	7.3	1.6	1.8	1.0	0.4	0.2	86.3	1.4	12.3	0.066	0.530	19.478830	-98.890000
Texcoco	23.02	3	1	18332	0.0	83.6	2.7	5.3	2.1	4.2	1.1	0.8	0.2	83.6	2.7	13.7	0.068	0.504	19.525390	-98.861370
Texcoco	23.02	3	2	18619	0.0	81.6	3.1	6.1	2.6	4.0	1.3	1.1	0.2	81.6	3.1	15.3	0.062	0.504	19.525390	-98.861370
T. Izq. Tepetlaoxtoc	30.03	1	1	14102	0.1	83.2	2.8	4.7	2.0	4.5	1.5	1.1	0.1	83.3	2.8	13.9	0.070	0.508	19.545890	-98.826160
T. Izq. Tepetlaoxtoc	30.03	1	2	14568	0.1	82.1	3.4	4.8	2.3	4.6	1.6	0.9	0.2	82.2	3.4	14.4	0.070	0.508	19.545890	-98.826160
T. Der. Totolapan	42.00	3	1	6448	0.1	79.4	2.5	5.7	2.5	5.6	2.6	1.4	0.2	79.5	2.5	18.0	0.078	0.507	19.557020	-98.730670
T. Der. Totolapan	42.00	3	2	6627	0.1	79.7	3.4	6.8	2.5	4.8	1.7	0.8	0.2	79.8	3.4	16.8	0.109	0.507	19.557020	-98.730670
Lim. Edos. Term. Mex. Ppia. Tlax.	43.15																			
Calpulalpan	59.58	3	0	18159	0.8	72.5	3.1	8.8	2.2	8.4	2.2	1.6	0.4	73.3	3.1	23.6	0.068	0.509	19.588258	-98.550954
T. Der. Nanacamilpa	71.76	3	0	13327	0.9	60.4	4.0	8.9	4.5	14.1	3.1	3.0	1.1	61.3	4.0	34.7	0.070	0.510	19.526433	-98.480078
X. C. Arco Norte de La Ciudad de México	73.80	3	1	7087	0.8	66.9	3.3	6.2	3.8	11.7	3.9	2.8	0.6	67.7	3.3	29.0	0.068	0.516	19.513737	-98.457289
X. C. Arco Norte de La Ciudad de México	73.80	3	2	7560	0.6	62.3	3.9	7.5	4.2	13.4	4.4	3.0	0.7	62.9	3.9	33.2	0.092	0.516	19.513732	-98.457304
Hueyotlipan	88.21	3	1	7373	0.9	65.6	3.2	7.9	3.5	11.6	3.4	2.9	1.0	66.5	3.2	30.3	0.079	0.506	19.467876	-98.328784
Hueyotlipan	88.21	3	2	7563	0.6	62.7	3.7	8.4	3.9	12.6	3.8	3.2	1.1	63.3	3.7	33.0	0.094	0.506	19.467877	-98.328786
Xaltocan	108.10	1	1	8617	0.7	65.8	3.2	9.2	3.1	11.2	3.1	2.8	0.9	66.5	3.2	30.3	0.073	0.502	19.428164	-98.224148
Xaltocan	108.10	1	2	8566	0.5	62.4	3.9	10.2	3.4	12.3	3.4	3.0	0.9	62.9	3.9	33.2	0.071	0.502	19.428161	-98.224152
Apizaco	117.74	1	1	22737	0.9	86.9	0.6	5.9	0.6	1.8	2.4	0.4	0.5	87.8	0.6	11.6	0.064	0.525	19.413224	-98.163413
Apizaco	117.74	1	2	20598	0.9	86.1	0.7	6.1	0.6	2.1	2.6	0.4	0.5	87.0	0.7	12.3	0.060	0.525	19.413223	-98.163417
Apizaco	117.74	3	0	21874	1.8	86.5	0.9	7.4	0.8	0.8	1.0	0.5	0.3	88.3	0.9	10.8	0.057	0.517	19.412784	-98.133650
T. Der. Cuaxomulco	119.85	3	1	10757	2.0	88.4	0.7	4.8	0.6	1.4	1.2	0.5	0.4	90.4	0.7	8.9	0.063	0.515	19.410530	-98.109268
T. Der. Cuaxomulco	119.85	3	2	11433	2.3	87.1	0.7	5.3	0.7	1.6	1.3	0.6	0.4	89.4	0.7	9.9	0.064	0.515	19.410523	-98.109261
T. Izq. Xalostoc	126.67	3	1	10756	0.6	73.1	3.3	9.2	2.5	5.9	2.7	2.0	0.7	73.7	3.3	23.0	0.084	0.511	19.390005	-98.053339
T. Izq. Xalostoc	126.67	3	2	10302	0.6	70.2	3.7	10.1	2.7	6.6	3.0	2.2	0.9	70.8	3.7	25.5	0.079	0.511	19.390021	-98.053380
T. Izq. Libramiento de Huamantla	141.70	1	1	10429	0.6	74.7	3.1	8.0	2.3	6.2	2.6	1.7	0.8	75.3	3.1	21.6	0.078	0.504	19.320394	-97.945789
T. Izq. Libramiento de Huamantla	141.70	1	2	10271	0.8	71.2	3.6	9.3	2.7	6.5	2.9	2.0	1.0	72.0	3.6	24.4	0.082	0.504	19.320395	-97.945780
Huamantla	143.02	3	1	7590	0.8	68.0	4.3	10.0	2.3	8.1	3.4	2.2	0.9	68.8	4.3	26.9	0.090	0.502	19.315424	-97.884473
Huamantla	143.02	3	2	7660	0.9	63.9	5.1	11.3	2.5	9.2	3.6	2.6	0.9	64.8	5.1	30.1	0.088	0.502	19.315423	-97.884472
X. C. Amozoc - Perote (Cuota)	156.76	1	1	7460	1.0	68.4	4.0	9.1	2.6	8.0	3.4	2.5	1.0	69.4	4.0	26.6	0.081	0.508	19.308498	-97.810141
X. C. Amozoc - Perote (Cuota)	156.76	1	2	7224	1.0	64.4	4.3	10.2	2.8	9.5	4.0	2.8	1.0	65.4	4.3	30.3	0.087	0.508	19.308498	-97.810138
T. Der. Cuapiaxtla	159.40	1	0	10666	1.0	55.0	4.1	12.4	4.3	13.3	5.4	3.8	0.7	56.0	4.1	39.9	0.063	0.514	19.303401	-97.779740
X. C. Amozoc - Teziutlán	173.47	1	0	10324	1.3	61.2	2.7	8.8	4.1	12.6	4.5	3.8	1.0	62.5	2.7	34.8	0.070	0.515	19.327043	-97.652958
X. C. Amozoc - Teziutlán	173.47	3	0	6891	0.9	46.5	4.3	6.4	8.0	19.8	7.7	5.5	0.9	47.4	4.3	48.3	0.060	0.518	19.316080	-97.632832
Lim. Edos. Term. Tlax. Ppia. Pue.	177.57																			
Zacatepec	187.67	1	0	6985	0.3	42.2	4.8	9.7	7.9	21.2	7.4	5.8	0.7	42.5	4.8	52.7	0.058	0.516	19.268505	-97.535445

TLAXCALA

10 CARR: Puebla - Belem

CLAVE: 00055

RUTA: MEX-121

AÑO: 2015

LUGAR	ESTACION				CLASIFICACION VEHICULAR EN PORCIENTO										COORDENADAS					
	KM	TE	SC	TDPA	M	A	B	C2	C3	T3S2	T3S3	T3S2R4	OTROS	A	B	C	K'	D	LATITUD	LONGITUD
T. C. Puebla - Tlaxcala	0.00																			
X. C. Puebla - Córdoba (Cuota)	4.00	3	1	31902	0.9	86.5	0.5	6.9	0.8	1.6	2.0	0.4	0.4	87.4	0.5	12.1	0.066	0.519	19.088922	-98.185250
X. C. Puebla - Córdoba (Cuota)	4.00	3	2	29529	1.0	84.9	0.5	7.9	0.8	1.8	2.3	0.4	0.4	85.9	0.5	13.6	0.089	0.519	19.088921	-98.185213
Lim. Edos. Term. Pue. Ppia. Tlax.	6.60																			
Lim. Edos. Term. Tlax. Ppia. Pue.	8.40																			
Lim. Edos. Term. Pue. Ppia. Tlax.	9.50																			
T. Izq. Zacatelco	16.70	1	1	17216	1.3	83.4	0.8	9.9	1.2	2.3	0.6	0.4	0.1	84.7	0.8	14.5	0.062	0.504	19.206743	-98.196290
T. Izq. Zacatelco	16.70	1	2	17491	1.2	82.4	1.0	10.7	1.2	2.4	0.6	0.4	0.1	83.6	1.0	15.4	0.065	0.504	19.206742	-98.196286
X. C. Tlaxcala - Belem	28.80	1	1	21661	2.8	87.0	0.8	4.2	0.7	2.1	1.5	0.4	0.5	89.8	0.8	9.4	0.072	0.512	19.315854	-98.204433
X. C. Tlaxcala - Belem	28.80	1	2	20661	1.4	87.4	0.8	4.7	0.7	2.4	1.6	0.4	0.6	88.8	0.8	10.4	0.073	0.512	19.315861	-98.204418
T. C. San Martín Texmelucan - Ocotoxco (Cuota)	34.90																			

11 CARR: Puebla - Tlaxcala

CLAVE: 00475

RUTA: MEX-119

AÑO: 2015

LUGAR	ESTACION				CLASIFICACION VEHICULAR EN PORCIENTO										COORDENADAS					
	KM	TE	SC	TDPA	M	A	B	C2	C3	T3S2	T3S3	T3S2R4	OTROS	A	B	C	K'	D	LATITUD	LONGITUD
Puebla	0.00																			
X. C. Puebla - Córdoba (Cuota) Central	5.41	3	1	11670	1.4	87.3	0.4	3.9	1.1	2.0	2.6	0.5	0.8	88.7	0.4	10.9	0.080	0.510	19.092485	-98.206575
X. C. Puebla - Córdoba (Cuota) Lateral	5.41	3	1	3963	3.7	75.7	0.7	17.0	0.9	1.1	0.6	0.1	0.2	79.4	0.7	19.9	0.085	0.507	19.092485	-98.206575
X. C. Puebla - Córdoba (Cuota) Lateral	5.41	3	2	4078	1.4	75.1	0.7	19.7	1.0	1.1	0.7	0.1	0.2	76.5	0.7	22.8	0.094	0.507	19.092491	-98.206570
X. C. Puebla - Córdoba (Cuota) Central	5.41	3	2	11195	1.5	86.0	0.4	4.5	1.1	2.3	2.8	0.5	0.9	87.5	0.4	12.1	0.067	0.510	19.092491	-98.206570
Lim. Edos. Term. Pue. Ppia. Tlax.	11.83																			
Panzacola	13.14	3	1	11322	1.7	87.0	0.6	5.9	0.4	1.9	1.5	0.3	0.7	88.7	0.6	10.7	0.063	0.501	19.151955	-98.223604
Panzacola	13.14	3	2	11270	2.0	86.0	0.6	6.4	0.4	2.0	1.6	0.3	0.7	88.0	0.6	11.4	0.075	0.501	19.151932	-98.223604
San Toribio Xicohtzinco	16.10	3	1	8824	3.5	86.6	0.2	6.9	0.3	0.9	1.0	0.2	0.4	90.1	0.2	9.7	0.069	0.508	19.187292	-98.237712
San Toribio Xicohtzinco	16.10	3	2	9122	3.5	85.8	0.2	7.5	0.3	0.9	1.2	0.2	0.4	89.3	0.2	10.5	0.069	0.508	19.187292	-98.237755
Zacatelco	20.78	1	1	10751	3.1	87.1	0.3	6.9	0.2	1.0	1.0	0.0	0.4	90.2	0.3	9.5	0.068	0.512	19.207887	-98.240725
Zacatelco	20.78	1	2	10257	3.3	86.3	0.3	7.2	0.2	1.2	1.1	0.0	0.4	89.6	0.3	10.1	0.065	0.512	19.207889	-98.240723
T. Izq. San Martín Texmelucan	22.99	1	1	11112	1.9	90.9	0.1	5.3	0.1	0.7	0.8	0.0	0.2	92.8	0.1	7.1	0.067	0.501	19.234189	-98.243018
T. Izq. San Martín Texmelucan	22.99	1	2	11152	2.0	90.4	0.1	5.5	0.1	0.8	0.9	0.0	0.2	92.4	0.1	7.5	0.079	0.501	19.234188	-98.243022
T. Der. Tepeyanco (2º Acceso)	24.97	3	1	9707	1.6	92.5	0.1	4.5	0.1	0.5	0.6	0.0	0.1	94.1	0.1	5.8	0.069	0.506	19.250089	-98.235530
T. Der. Tepeyanco (2º Acceso)	24.97	3	2	9493	1.8	91.7	0.1	5.1	0.1	0.5	0.6	0.0	0.1	93.5	0.1	6.4	0.083	0.506	19.250074	-98.235534
T. Der. Ocotlán (Baja)	32.45	1	1	5115	2.0	93.6	0.1	3.3	0.0	0.3	0.5	0.1	0.1	95.6	0.1	4.3	0.082	0.505	19.303223	-98.240948
T. Der. Ocotlán (Alta)	32.45	1	1	9197	1.3	93.1	0.1	1.9	0.0	0.8	2.2	0.2	0.4	94.4	0.1	5.5	0.062	0.505	19.303202	-98.240943
T. Der. Ocotlán (Alta)	32.45	1	2	9032	0.8	92.9	0.1	2.1	0.0	0.9	2.6	0.2	0.4	93.7	0.1	6.2	0.076	0.505	19.303177	-98.240915

TLAXCALA

11 CARR: Puebla - Tlaxcala

CLAVE: 00475

RUTA: MEX-119

AÑO: 2015

LUGAR	ESTACION				CLASIFICACION VEHICULAR EN PORCIENTO													COORDENADAS		
	KM	TE	SC	TDPA	M	A	B	C2	C3	T3S2	T3S3	T3S2R4	OTROS	A	B	C	K'	D	LATITUD	LONGITUD
T. Der. Ocotlán (Baja)	32.45	1	2	4990	1.5	93.9	0.1	3.4	0.0	0.3	0.6	0.1	0.1	95.4	0.1	4.5	0.073	0.505	19.303217	-98.240947
Tlaxcala	33.22	1	1	10987	2.2	95.0	0.9	0.8	0.1	0.1	0.7	0.1	0.1	97.2	0.9	1.9	0.071	0.517	19.311386	-98.240023
Tlaxcala	33.22	1	2	10261	1.3	95.8	0.9	0.9	0.1	0.1	0.7	0.1	0.1	97.1	0.9	2.0	0.066	0.517	19.311404	-98.240035

12 CARR: Ramal a San Felipe de Hidalgo

CLAVE: 29565

RUTA: MEX-136

AÑO: 2015

LUGAR	ESTACION				CLASIFICACION VEHICULAR EN PORCIENTO													COORDENADAS		
	KM	TE	SC	TDPA	M	A	B	C2	C3	T3S2	T3S3	T3S2R4	OTROS	A	B	C	K'	D	LATITUD	LONGITUD
T. C. Los Reyes - Zacatepec	0.00	3	0	3333	1.2	84.4	1.0	9.7	1.1	2.0	0.4	0.0	0.2	85.6	1.0	13.4	0.116	0.514	19.526995	-98.482640
San Felipe de Hidalgo	10.50	1	0	1906	3.9	89.8	0.4	4.1	0.2	1.3	0.2	0.0	0.1	93.7	0.4	5.9	0.174	0.522	19.472858	-98.553331

13 CARR: San Martín Texmelucan - Tlaxcala

CLAVE: 00158

RUTA: MEX-117

AÑO: 2015

LUGAR	ESTACION				CLASIFICACION VEHICULAR EN PORCIENTO													COORDENADAS		
	KM	TE	SC	TDPA	M	A	B	C2	C3	T3S2	T3S3	T3S2R4	OTROS	A	B	C	K'	D	LATITUD	LONGITUD
San Martín Texmelucan	0.00	3	1	10816	5.1	85.4	0.3	4.4	0.3	1.6	2.0	0.2	0.7	90.5	0.3	9.2	0.071	0.570	19.287962	-98.422690
San Martín Texmelucan	0.00	3	2	8172	5.9	84.2	0.3	4.6	0.3	1.7	2.0	0.2	0.8	90.1	0.3	9.6	0.067	0.570	19.287968	-98.422673
X. C. San Martín Texmelucan - Ocotoxco (Cuota)	1.65	1	0	20799	5.9	84.3	1.0	6.5	0.4	0.6	1.1	0.1	0.1	90.2	1.0	8.8	0.065	0.502	19.291553	-98.412225
Lim. Edos. Term. Pue. Ppia. Tlax.	2.84																			
T. Der. Tepetitla	3.45	3	1	7069	5.2	86.9	0.3	5.0	0.4	0.9	1.0	0.1	0.2	92.1	0.3	7.6	0.075	0.501	19.293934	-98.404630
T. Der. Tepetitla	3.45	3	2	7042	5.5	86.0	0.3	5.2	0.4	1.1	1.2	0.1	0.2	91.5	0.3	8.2	0.077	0.501	19.293940	-98.404612
San Diego Xocoyucan	7.21	3	0	6610	6.3	84.5	0.2	2.7	0.3	4.5	0.6	0.2	0.7	90.8	0.2	9.0	0.071	0.508	19.307938	-98.369570
T. Der. Panotla	19.72	1	0	7869	2.2	86.7	0.4	3.6	0.4	4.6	0.9	0.3	0.9	88.9	0.4	10.7	0.074	0.547	19.319610	-98.277051
T. Der. Panotla	19.72	3	0	8978	3.6	86.1	0.1	3.2	0.3	5.4	0.5	0.1	0.7	89.7	0.1	10.2	0.064	0.534	19.319614	-98.269830
Totolac	21.38	1	0	9229	3.2	85.3	0.1	2.8	0.2	5.9	0.8	0.3	1.4	88.5	0.1	11.4	0.066	0.542	19.322667	-98.260377
Totolac	21.38	3	0	10531	2.1	83.5	0.1	2.5	0.2	7.6	1.2	0.5	2.3	85.6	0.1	14.3	0.072	0.549	19.329971	-98.250314
Tlaxcala	24.81	1	0	15048	2.4	93.2	0.1	3.1	0.1	0.3	0.7	0.0	0.1	95.6	0.1	4.3	0.073	0.525	19.327087	-98.245339

14 CARR: Tetlatlahuca - Santa Ana Chiautempan

CLAVE: 00158

RUTA: MEX-119

AÑO: 2015

LUGAR	ESTACION				CLASIFICACION VEHICULAR EN PORCIENTO													COORDENADAS		
	KM	TE	SC	TDPA	M	A	B	C2	C3	T3S2	T3S3	T3S2R4	OTROS	A	B	C	K'	D	LATITUD	LONGITUD
Tetlatlahuca	0.00																			
San Bartolomé Tenango	2.39	1	0	4736	3.7	86.6	0.1	5.8	0.3	2.4	0.6	0.1	0.4	90.3	0.1	9.6	0.070	0.504	19.246525	-98.296882
San Damián Texoloc	5.50	1	0	4738	3.3	88.5	0.1	4.1	0.4	2.9	0.3	0.1	0.3	91.8	0.1	8.1	0.070	0.510	19.273276	-98.284573

TLAXCALA

14 CARR: Tetlatlahuca - Santa Ana Chiautempan

CLAVE: 00158

RUTA: MEX-119

AÑO: 2015

LUGAR	ESTACION				CLASIFICACION VEHICULAR EN PORCIENTO										COORDENADAS					
	KM	TE	SC	TDPA	M	A	B	C2	C3	T3S2	T3S3	T3S2R4	OTROS	A	B	C	K'	D	LATITUD	LONGITUD
San Damián Texoloc	5.50	3	0	6314	2.6	89.8	0.2	3.4	0.5	2.7	0.3	0.0	0.5	92.4	0.2	7.4	0.069	0.501	19.277517	-98.276419
T. Izq. Cuauhtulpan	9.63	1	0	9828	2.0	87.5	0.1	3.0	0.3	5.3	0.6	0.2	1.0	89.5	0.1	10.4	0.071	0.505	19.288706	-98.251231
T. Izq. Cuauhtulpan	9.63	3	0	13594	1.3	83.8	0.1	2.0	0.1	6.7	2.2	1.1	2.7	85.1	0.1	14.8	0.065	0.511	19.292014	-98.249524
T. Der. Puebla	9.94	1	0	13455	1.1	86.7	0.0	2.8	0.1	7.4	0.7	0.3	0.9	87.8	0.0	12.2	0.065	0.513	19.300678	-98.245615
Santa Ana Chiautempan	16.00																			

15 CARR: Tlaxcala - Belem

CLAVE: 29389

RUTA: MEX-119

AÑO: 2015

LUGAR	ESTACION				CLASIFICACION VEHICULAR EN PORCIENTO										COORDENADAS					
	KM	TE	SC	TDPA	M	A	B	C2	C3	T3S2	T3S3	T3S2R4	OTROS	A	B	C	K'	D	LATITUD	LONGITUD
Tlaxcala	0.00																			
T. Der. Ocotlán	3.91	1	1	17917	2.4	93.5	0.1	1.9	0.3	0.4	0.9	0.2	0.3	95.9	0.1	4.0	0.065	0.504	19.321761	-98.210133
T. Der. Ocotlán	3.91	1	2	17617	2.7	92.8	0.1	2.2	0.3	0.4	1.0	0.2	0.3	95.5	0.1	4.4	0.065	0.504	19.321766	-98.210129
X. C. Puebla - Belem	4.55	1	1	23394	2.3	93.0	0.1	1.8	0.3	0.5	1.4	0.3	0.3	95.3	0.1	4.6	0.074	0.504	19.319248	-98.206396
X. C. Puebla - Belem	4.55	1	2	23054	2.3	92.6	0.1	2.0	0.3	0.5	1.6	0.3	0.3	94.9	0.1	5.0	0.066	0.504	19.319252	-98.206392
Santa Ana Chiautempan	5.82	1	1	11555	3.6	91.4	0.0	1.3	0.1	0.7	1.7	0.7	0.5	95.0	0.0	5.0	0.056	0.520	19.316094	-98.200812
Santa Ana Chiautempan	5.82	1	2	10658	4.6	90.0	0.0	1.4	0.1	0.7	1.9	0.7	0.6	94.6	0.0	5.4	0.053	0.520	19.316122	-98.200804
T. Der. Ixcotla	7.19	3	1	10717	3.7	91.6	0.2	1.5	0.1	1.0	1.5	0.1	0.3	95.3	0.2	4.5	0.064	0.517	19.328299	-98.193882
T. Der. Ixcotla	7.19	3	2	10015	4.0	90.8	0.2	1.7	0.1	1.1	1.7	0.1	0.3	94.8	0.2	5.0	0.062	0.517	19.328295	-98.193878
Belem	10.06	1	0	6694	4.2	88.5	0.2	2.2	0.2	3.8	0.3	0.1	0.5	92.7	0.2	7.1	0.081	0.517	19.337583	-98.193390

16 CARR: Villa Alta - T. C. (Puebla - Tlaxcala)

CLAVE: 29566

RUTA: MEX-119

AÑO: 2015

LUGAR	ESTACION				CLASIFICACION VEHICULAR EN PORCIENTO										COORDENADAS					
	KM	TE	SC	TDPA	M	A	B	C2	C3	T3S2	T3S3	T3S2R4	OTROS	A	B	C	K'	D	LATITUD	LONGITUD
T. C. San Martín Texmelucan - Tlaxcala	0.00	3	0	7281	11.9	74.1	0.4	8.6	0.2	3.6	0.5	0.1	0.6	86.0	0.4	13.6	0.077	0.510	19.287571	-98.401924
Nativitas	10.50	3	0	8450	5.1	79.7	0.4	7.0	0.4	4.9	1.1	0.4	1.0	84.8	0.4	14.8	0.070	0.502	19.238972	-98.307505
T. C. Puebla - Tlaxcala	22.05	1	0	8047	2.5	81.5	0.4	8.4	0.4	4.7	0.8	0.5	0.8	84.0	0.4	15.6	0.072	0.513	19.234968	-98.244096

17 CARR: Amozoc - Perote (Cuota)

CLAVE: 00030

RUTA: MEX-140D

AÑO: 2015

LUGAR	ESTACION				CLASIFICACION VEHICULAR EN PORCIENTO										COORDENADAS					
	KM	TE	SC	TDPA	M	A	B	C2	C3	T3S2	T3S3	T3S2R4	OTROS	A	B	C	K'	D	LATITUD	LONGITUD
T. C. Puebla - Córdoba (Cuota)	0.00	3	0	9081	0.6	81.7	3.0	6.0	1.3	4.0	1.1	1.3	1.0	82.3	3.0	14.7	0.087	0.507	19.070823	-98.063646
Caseta de Cobro Amozoc	0.68	2	0	9872	0.3	84.0	4.9	3.3	2.3	2.4	0.8	1.2	0.8	84.3	4.9	10.8	0.085	0.500	19.063599	-98.069029

TLAXCALA

17 CARR: Amozoc - Perote (Cuota)

CLAVE: 00030

RUTA: MEX-140D

AÑO: 2015

LUGAR	ESTACION				CLASIFICACION VEHICULAR EN PORCIENTO													COORDENADAS			
	KM	TE	SC	TDPA	M	A	B	C2	C3	T3S2	T3S3	T3S2R4	OTROS	A	B	C	K'	D	LATITUD	LONGITUD	
Lim. Edos. Term. Pue. Ppia. Tlax.	20.08																				
X. C. Huamantla - La Venta	25.80	3	0	7060	0.9	79.6	4.3	5.9	1.7	3.7	1.0	1.5	1.4	80.5	4.3	15.2	0.095	0.518	19.228057	-97.897168	
Lim. Edos. Term. Tlax. Ppia. Pue.	30.50																				
Lim. Edos. Term. Pue. Ppia. Tlax.	31.26																				
Lim. Edos. Term. Tlax. Ppia. Pue.	31.67																				
Lim. Edos. Term. Pue. Ppia. Tlax.	38.93																				
Caseta de Cobro Cuapiaxtla	40.34	2	0	5877	0.4	84.7	4.9	3.0	1.9	2.3	0.5	1.1	1.2	85.1	4.9	10.0	0.085	0.500	19.304158	-97.805312	
Lim. Edos. Term. Tlax. Ppia. Pue.	54.50																				
T. Der. Oriental	61.45	1	0	9539	0.8	76.9	6.2	6.7	1.8	4.0	1.2	1.3	1.1	77.7	6.2	16.1	0.104	0.516	19.414103	-97.646395	
T. Der. Oriental	61.45	3	1	3628	2.0	76.1	7.0	6.0	2.2	2.6	1.5	1.8	0.8	78.1	7.0	14.9	0.067	0.536	19.421045	-97.637265	
T. Der. Oriental	61.45	3	2	3816	1.3	75.0	7.9	6.1	2.4	2.7	1.6	2.1	0.9	76.3	7.9	15.8	0.077	0.536	19.421058	-97.637234	
T. Izq. Teziutlán	62.70	3	0	5277	1.2	73.2	7.6	6.2	2.2	4.4	1.8	2.4	1.0	74.4	7.6	18.0	0.076	0.516	19.427779	-97.628170	
Lim. Edos. Term. Pue. Ppia. Ver.	90.36																				
T. C. Lib. de Perote	105.00																				

18 CARR: Libramiento Norte de la Ciudad de México (Cuota)

CLAVE: 0902

RUTA: MEX-M40D

AÑO: 2015

LUGAR	ESTACION				CLASIFICACION VEHICULAR EN PORCIENTO													COORDENADAS			
	KM	TE	SC	TDPA	M	A	B	C2	C3	T3S2	T3S3	T3S2R4	OTROS	A	B	C	K'	D	LATITUD	LONGITUD	
T. C. Toluca - Palmillas	0.00																				
X. C. Toluca - Palmillas	12.90	1	1	2681	0.3	65.1	2.5	7.2	2.4	16.5	4.2	1.4	0.4	65.4	2.5	32.1	0.082	0.505	19.916200	-99.851100	
X. C. Toluca - Palmillas	12.90	1	2	2733	0.4	64.5	3.7	5.3	3.9	16.1	4.5	1.3	0.3	64.9	3.7	31.4	0.075	0.505	19.916200	-99.851100	
X. C. Toluca - Palmillas	12.90	3	1	2590	0.3	61.9	3.8	7.9	3.6	16.7	3.5	1.6	0.7	62.2	3.8	34.0	0.084	0.507	19.923080	-99.838190	
X. C. Toluca - Palmillas	12.90	3	2	2660	0.3	60.8	4.1	7.6	3.7	17.9	2.9	2.5	0.2	61.1	4.1	34.8	0.077	0.507	19.923080	-99.838190	
C. P. Jilotepec	48.70	1	1	3274	0.2	65.5	3.4	6.2	2.3	15.8	3.6	2.3	0.7	65.7	3.4	30.9	0.096	0.508	19.970160	-99.537290	
C. P. Jilotepec	48.70	1	2	3166	0.2	65.9	2.5	6.2	2.4	15.9	3.8	2.5	0.6	66.1	2.5	31.4	0.075	0.508	19.970160	-99.537290	
C. P. Jilotepec	48.70	3	1	3680	0.1	65.0	3.6	6.4	2.2	16.3	3.9	2.2	0.3	65.1	3.6	31.3	0.089	0.514	19.978470	-99.526040	
C. P. Jilotepec	48.70	3	2	3894	0.1	68.2	3.2	6.4	1.8	14.7	2.7	2.6	0.3	68.3	3.2	28.5	0.071	0.514	19.978470	-99.526040	
X. C. México - Querétaro (Cuota)	54.00																				
X. C. México - Querétaro	54.00	3	1	6170	0.1	64.7	4.0	7.0	2.4	14.4	3.6	3.1	0.7	64.8	4.0	31.2	0.084	0.501	20.002970	-99.483740	
X. C. México - Querétaro	54.00	3	2	6194	0.1	66.1	4.4	5.7	2.8	14.3	4.4	2.0	0.2	66.2	4.4	29.4	0.088	0.501	20.002970	-99.483740	
Caseta de Cobro Querétaro	55.00	3	1	6634	0.2	55.6	2.4	4.9	6.7	16.9	4.3	7.5	1.5	55.8	2.4	41.8	0.067	0.500	19.996131	-99.490435	
Caseta de Cobro Querétaro	55.00	3	2	6634	0.2	55.6	2.4	4.9	6.7	16.9	4.3	7.5	1.5	55.8	2.4	41.8	0.067	0.500	19.996131	-99.490435	
Lim. Edos. Term. Mex. Ppia. Hgo.	60.72																				
X. C. Ent. Tepeji del Río - Tlahuelilpan	79.00	1	1	5845	0.1	64.6	2.7	5.7	2.8	15.7	5.8	2.2	0.4	64.7	2.7	32.6	0.072	0.502	20.097570	-99.290090	

TLAXCALA

18 CARR : Libramiento Norte de la Ciudad de México (Cuota)

CLAVE: 0902

RUTA: MEX-M40D

AÑO : 2015

LUGAR	ESTACION				CLASIFICACION VEHICULAR EN PORCIENTO										COORDENADAS					
	KM	TE	SC	TDPA	M	A	B	C2	C3	T3S2	T3S3	T3S2R4	OTROS	A	B	C	K'	D	LATITUD	LONGITUD
X. C. Ent. Tepeji del Río - Tlahuelilpan	79.00	1	2	5806	0.2	63.5	2.0	6.0	3.0	17.4	5.3	2.2	0.4	63.7	2.0	34.3	0.078	0.502	20.097570	-99.290090
X. C. Ent. Tepeji del Río - Tlahuelilpan	79.00	3	1	7002	0.1	69.0	1.3	5.3	1.2	14.5	5.6	2.7	0.3	69.1	1.3	29.6	0.073	0.500	20.097300	-99.276950
X. C. Ent. Tepeji del Río - Tlahuelilpan	79.00	3	2	6991	0.1	69.4	2.3	5.0	1.2	15.5	5.0	1.2	0.3	69.5	2.3	28.2	0.075	0.500	20.097300	-99.276950
X. C. Los Reyes - El Tephé	86.40	1	1	6915	0.1	65.4	4.7	7.0	2.4	10.3	4.7	4.7	0.7	65.5	4.7	29.8	0.077	0.509	20.069186	-99.226512
X. C. Los Reyes - El Tephé	86.40	1	2	7166	0.1	65.7	4.5	7.4	3.6	11.4	4.8	2.2	0.3	65.8	4.5	29.7	0.074	0.509	20.069186	-99.226512
X. C. Los Reyes - El Tephé	86.40	3	1	7221	0.1	65.5	4.7	7.1	3.5	10.8	4.6	3.1	0.6	65.6	4.7	29.7	0.076	0.503	20.064270	-99.211927
X. C. Los Reyes - El Tephé	86.40	3	2	7297	0.1	65.0	5.4	7.0	3.8	11.2	4.1	2.8	0.6	65.1	5.4	29.5	0.089	0.503	20.064270	-99.211927
Lim. Edos. Term. Hgo. Ppia. Mex.	95.75																			
X. C. (Los Reyes - El Tephé) - Tianguistongo	108.60	1	1	7041	0.1	66.0	3.6	5.2	3.6	15.0	3.3	2.4	0.8	66.1	3.6	30.3	0.074	0.525	19.956533	-99.057248
X. C. (Los Reyes - El Tephé) - Tianguistongo	108.60	1	2	6867	0.1	61.3	3.4	8.3	3.7	16.6	3.8	2.5	0.3	61.4	3.4	35.2	0.076	0.525	19.956533	-99.057248
X. C. (Los Reyes - El Tephé) - Tianguistongo	108.60	3	1	7586	0.0	66.0	3.5	9.2	2.0	12.3	3.0	3.3	0.7	66.0	3.5	30.5	0.071	0.506	19.955190	-99.050301
X. C. (Los Reyes - El Tephé) - Tianguistongo	108.60	3	2	7391	0.1	69.2	3.9	8.0	2.3	10.7	3.4	2.2	0.2	69.3	3.9	26.8	0.073	0.506	19.955190	-99.050301
Lim. Edos. Term. Mex. Ppia. Hgo.	115.89																			
X. C. México - Pachuca	127.30	1	1	7187	0.1	66.2	3.8	6.6	4.0	12.3	3.6	2.8	0.6	66.3	3.8	29.9	0.072	0.510	19.931204	-98.897764
X. C. México - Pachuca	127.30	1	2	6911	0.1	62.9	4.3	8.1	3.8	12.9	4.8	2.7	0.4	63.0	4.3	32.7	0.072	0.510	19.931204	-98.897764
X. C. México - Pachuca	127.30	3	1	6115	0.1	65.8	3.4	8.2	2.5	14.0	3.9	1.7	0.4	65.9	3.4	30.7	0.066	0.549	19.927213	-98.880963
X. C. México - Pachuca	127.30	3	2	5973	0.2	64.3	4.1	6.9	4.3	12.0	5.3	2.3	0.6	64.5	4.1	31.4	0.073	0.549	19.927213	-98.880963
Lim. Edos. Term. Hgo. Ppia. Mex.	143.98																			
X. C. Venta De Carpio - T. C. (Pachuca - Tuxpan)	151.11	1	1	6699	0.1	64.2	3.3	8.4	2.8	12.4	4.4	3.8	0.6	64.3	3.3	32.4	0.074	0.511	19.837933	-98.705450
X. C. Venta De Carpio - T. C. (Pachuca - Tuxpan)	151.11	1	2	6420	0.1	72.2	3.0	6.6	2.6	10.2	3.1	1.6	0.6	72.3	3.0	24.7	0.096	0.511	19.837933	-98.705450
X. C. Venta De Carpio - T. C. (Pachuca - Tuxpan)	151.11	3	1	6752	0.1	69.4	3.0	8.3	2.2	12.1	3.3	1.4	0.2	69.5	3.0	27.5	0.072	0.561	19.828983	-98.694367
X. C. Venta De Carpio - T. C. (Pachuca - Tuxpan)	151.11	3	2	6550	0.1	72.8	3.7	6.6	1.9	10.3	3.2	1.1	0.3	72.9	3.7	23.4	0.096	0.561	19.828983	-98.694367
X. C. Ent. Tolman - Cd. Sahagún	162.55	1	1	6431	0.1	67.6	2.1	4.9	2.0	16.2	5.1	1.7	0.3	67.7	2.1	30.2	0.072	0.508	19.760850	-98.631933
X. C. Ent. Tolman - Cd. Sahagún	162.55	1	2	6228	0.2	65.9	2.4	5.3	2.3	16.6	5.1	1.9	0.3	66.1	2.4	31.5	0.079	0.508	19.760850	-98.631933
X. C. Ent. Tolman - Cd. Sahagún	162.55	3	1	6432	0.1	64.2	2.5	5.5	2.2	16.7	5.7	2.5	0.6	64.3	2.5	33.2	0.074	0.560	19.752100	-98.627033
X. C. Ent. Tolman - Cd. Sahagún	162.55	3	2	6288	0.1	65.1	3.1	5.1	2.4	16.8	5.4	1.7	0.3	65.2	3.1	31.7	0.078	0.560	19.752100	-98.627033
Lim. Edos. Term. Mex. Ppia. Hgo.	166.53																			
X. C. Calpulalpan - El Ocote	180.39	1	1	7209	0.1	67.8	3.8	7.2	3.5	11.2	3.7	2.2	0.5	67.9	3.8	28.3	0.077	0.508	19.625850	-98.553383
X. C. Calpulalpan - El Ocote	180.39	1	2	7451	0.1	66.3	3.6	8.2	3.6	12.4	3.6	1.7	0.5	66.4	3.6	30.0	0.093	0.508	19.625850	-98.553383
X. C. Calpulalpan - El Ocote	180.39	3	1	7440	0.1	68.5	3.9	6.1	3.5	12.7	3.6	1.4	0.2	68.6	3.9	27.5	0.078	0.503	19.615800	-98.544800
X. C. Calpulalpan - El Ocote	180.39	3	2	7352	0.0	69.2	3.8	8.6	2.5	10.9	3.3	1.3	0.4	69.2	3.8	27.0	0.076	0.503	19.615800	-98.544800
Lim. Edos. Term. Hgo. Ppia. Tlax.	180.98																			
X. C. Los Reyes - Zacatepec	194.90	1	1	7383	1.1	63.5	3.7	6.6	2.9	11.4	3.4	6.0	1.4	64.6	3.7	31.7	0.073	0.504	19.520252	-98.472967
X. C. Los Reyes - Zacatepec	194.90	1	2	7276	0.7	60.3	4.1	7.6	3.0	12.2	3.5	7.0	1.6	61.0	4.1	34.9	0.074	0.504	19.520271	-98.472968
X. C. Los Reyes - Zacatepec	194.90	3	1	6354	1.0	60.3	4.6	6.6	3.2	13.7	3.3	5.9	1.4	61.3	4.6	34.1	0.076	0.516	19.507845	-98.466961

TLAXCALA

18 CARR : Libramiento Norte de la Ciudad de México (Cuota)

CLAVE: 0902

RUTA: MEX-M40D

AÑO : 2015

LUGAR	ESTACION				CLASIFICACION VEHICULAR EN PORCIENTO														COORDENADAS	
	KM	TE	SC	TDPA	M	A	B	C2	C3	T3S2	T3S3	T3S2R4	OTROS	A	B	C	K'	D	LATITUD	LONGITUD
X. C. Los Reyes - Zacatepec	194.90	3	2	5956	0.7	56.6	5.0	7.7	3.4	15.0	3.6	6.5	1.5	57.3	5.0	37.7	0.072	0.516	19.507828	-98.466963
X. C. San Martín Texmelucan - Tlaxcala - El Molinito	220.95	1	1	6390	0.8	54.5	5.3	7.8	3.7	16.8	3.1	6.5	1.5	55.3	5.3	39.4	0.078	0.501	19.299732	-98.409714
X. C. San Martín Texmelucan - Tlaxcala - El Molinito	220.95	1	2	6361	1.6	49.3	6.1	8.7	4.0	17.9	3.4	7.4	1.6	50.9	6.1	43.0	0.076	0.501	19.299723	-98.409723
X. C. San Martín Texmelucan - Tlaxcala - El Molinito	220.95	3	1	8064	0.6	60.0	6.6	8.5	2.7	12.0	2.9	5.3	1.4	60.6	6.6	32.8	0.078	0.514	19.293146	-98.410381
X. C. San Martín Texmelucan - Tlaxcala - El Molinito	220.95	3	2	7621	1.1	56.2	7.0	8.7	3.0	13.6	3.1	5.8	1.5	57.3	7.0	35.7	0.101	0.514	19.293148	-98.410381
Caseta de Cobro San Martín Texmelucan	222.00	1	1	6927	0.2	55.4	2.7	5.7	6.0	17.9	3.4	7.2	1.5	55.6	2.7	41.7	0.067	0.500	19.301905	-98.409628
Caseta de Cobro San Martín Texmelucan	222.00	1	2	6927	0.2	55.4	2.7	5.7	6.0	17.9	3.4	7.2	1.5	55.6	2.7	41.7	0.067	0.500	19.301905	-98.409628
T. C. San Martín Texmelucan - Ocotoxco (Cuota)	222.44																			

19 CARR : México - Puebla (Cuota)

CLAVE: 00450

RUTA: MEX-150D

AÑO : 2015

LUGAR	ESTACION				CLASIFICACION VEHICULAR EN PORCIENTO														COORDENADAS	
	KM	TE	SC	TDPA	M	A	B	C2	C3	T3S2	T3S3	T3S2R4	OTROS	A	B	C	K'	D	LATITUD	LONGITUD
México	0.00																			
Ent. Concordia	17.00	3	1	62425	1.2	84.9	3.5	4.1	0.9	2.4	2.3	0.5	0.2	86.1	3.5	10.4	0.058	0.513	19.354806	-98.990815
Ent. Concordia	17.00	3	2	59759	1.3	83.1	3.9	4.4	1.0	2.9	2.7	0.5	0.2	84.4	3.9	11.7	0.058	0.513	19.354806	-98.990815
Lim. Edos. Term. D. F. Ppia. Mex.	17.51																			
Av. Las Torres (Eje 6)	19.27	1	1	68180	1.8	86.8	1.7	2.8	1.0	1.9	2.0	1.0	1.0	88.6	1.7	9.7	0.055	0.507	19.347720	-98.983350
Av. Las Torres (Eje 6)	19.27	1	2	69913	1.8	85.4	2.0	3.0	1.1	2.1	2.2	1.2	1.2	87.2	2.0	10.8	0.057	0.507	19.347720	-98.983350
Av. Las Torres (Eje 6)	19.27	3	1	71413	1.4	87.7	2.0	4.0	1.0	1.3	1.4	0.6	0.6	89.1	2.0	8.9	0.067	0.510	19.340620	-98.976880
Av. Las Torres (Eje 6)	19.27	3	2	76431	1.4	86.3	2.2	4.7	1.2	1.4	1.5	0.7	0.6	87.7	2.2	10.1	0.054	0.510	19.340620	-98.976880
Eje 10 Sur	22.80	1	1	84788	0.1	71.8	4.2	8.0	3.5	5.4	3.3	1.7	2.0	71.9	4.2	23.9	0.052	0.503	19.327166	-98.962557
Eje 10 Sur	22.80	1	2	84262	0.1	68.8	4.5	9.0	4.0	6.0	3.5	1.9	2.2	68.9	4.5	26.6	0.052	0.503	19.327166	-98.962557
Eje 10 Sur	22.80	3	1	72850	0.0	74.8	5.2	11.0	3.4	2.9	1.3	1.2	0.2	74.8	5.2	20.0	0.051	0.508	19.320880	-98.955220
Eje 10 Sur	22.80	3	2	75347	0.0	80.7	3.8	8.2	2.4	2.4	1.2	1.0	0.3	80.7	3.8	15.5	0.053	0.508	19.320880	-98.955220
X. C. Santa Bárbara - Izúcar de Matamoros	32.14	1	1	51295	0.0	75.4	6.6	10.1	2.1	3.3	1.0	1.3	0.2	75.4	6.6	18.0	0.055	0.516	19.292420	-98.891850
X. C. Santa Bárbara - Izúcar de Matamoros	32.14	1	2	48092	0.0	82.4	4.0	5.3	2.4	3.2	1.0	1.5	0.2	82.4	4.0	13.6	0.056	0.516	19.292420	-98.891850
X. C. Santa Bárbara - Izúcar de Matamoros	32.14	3	1	12313	0.1	81.2	3.5	5.4	2.5	4.6	1.2	1.3	0.2	81.3	3.5	15.2	0.094	0.505	19.294248	-98.878428
X. C. Santa Bárbara - Izúcar de Matamoros	32.14	3	2	12551	0.1	80.8	2.7	6.4	3.4	4.1	1.2	1.1	0.2	80.9	2.7	16.4	0.106	0.505	19.294248	-98.878428
Caseta de Cobro San Marcos	33.30	2	1	15661	0.3	74.0	7.5	5.0	4.5	6.0	0.4	2.0	0.3	74.3	7.5	18.2	0.068	0.500	19.296361	-98.870726
Caseta de Cobro San Marcos	33.30	2	2	15661	0.3	74.0	7.5	5.0	4.5	6.0	0.4	2.0	0.3	74.3	7.5	18.2	0.068	0.500	19.296361	-98.870726
T. Izq. Río Frío	63.79	3	1	16772	0.1	81.9	3.5	5.5	2.3	3.9	1.7	0.9	0.2	82.0	3.5	14.5	0.077	0.517	19.350760	-98.658740
T. Izq. Río Frío	63.79	3	2	15690	0.1	81.1	3.5	6.3	2.3	3.9	1.3	1.3	0.2	81.2	3.5	15.3	0.097	0.517	19.350760	-98.658740
Lim. Edos. Term. Mex. Ppia. Pue.	65.46																			
T. Izq. Tlaxcala	90.61	1	1	16470	1.3	73.2	8.1	7.6	2.6	4.3	0.5	1.9	0.5	74.5	8.1	17.4	0.068	0.504	19.273806	-98.435995

TLAXCALA

19 CARR : México - Puebla (Cuota)

CLAVE: 00450

RUTA: MEX-150D

AÑO : 2015

LUGAR	ESTACION				CLASIFICACION VEHICULAR EN PORCIENTO										COORDENADAS					
	KM	TE	SC	TDPA	M	A	B	C2	C3	T3S2	T3S3	T3S2R4	OTROS	A	B	C	K'	D	LATITUD	LONGITUD
T. Izq. Tlaxcala	90.61	1	2	16734	1.2	70.1	8.9	9.1	2.8	4.8	0.5	2.1	0.5	71.3	8.9	19.8	0.078	0.504	19.273809	-98.435997
T. Izq. Tlaxcala	90.61	3	1	22072	0.5	72.4	5.4	6.9	2.6	7.0	1.4	2.9	0.9	72.9	5.4	21.7	0.062	0.511	19.260735	-98.416160
T. Izq. Tlaxcala	90.61	3	2	23029	0.7	69.1	5.6	7.5	3.0	8.2	1.6	3.3	1.0	69.8	5.6	24.6	0.072	0.511	19.261828	-98.417572
Caseta de Cobro San Martín Texmelucan	91.17	2	1	22440	0.3	70.3	7.3	4.6	4.4	8.3	1.0	3.4	0.4	70.6	7.3	22.1	0.068	0.500	19.241098	-98.385680
Caseta de Cobro San Martín Texmelucan	91.17	2	2	22440	0.3	70.3	7.3	4.6	4.4	8.3	1.0	3.4	0.4	70.6	7.3	22.1	0.068	0.500	19.241098	-98.385680
Lim. Edos. Term. Pue. Ppia. Tlax.	99.11																			
T. Der. Aeropuerto Internacional De Puebla	101.10	3	1	27985	0.8	74.4	6.2	4.7	3.2	5.8	1.3	2.7	0.9	75.2	6.2	18.6	0.063	0.502	19.208126	-98.348321
T. Der. Aeropuerto Internacional De Puebla	101.10	3	2	27772	0.7	71.9	6.7	5.2	3.8	6.4	1.3	2.9	1.1	72.6	6.7	20.7	0.070	0.502	19.208122	-98.348315
X. C. Xoxtla - Huactzinco	107.98	1	1	28400	0.8	73.1	6.2	4.8	3.5	6.7	1.3	2.7	0.9	73.9	6.2	19.9	0.062	0.506	19.178728	-98.312462
X. C. Xoxtla - Huactzinco	107.98	1	2	27772	0.7	70.5	6.8	5.3	4.0	7.0	1.4	3.2	1.1	71.2	6.8	22.0	0.070	0.506	19.178730	-98.312454
X. C. Xoxtla - Huactzinco	107.98	3	1	34171	1.4	72.6	5.1	7.4	2.5	6.1	1.6	2.6	0.7	74.0	5.1	20.9	0.064	0.507	19.171767	-98.304135
X. C. Xoxtla - Huactzinco	107.98	3	2	33291	1.2	70.4	5.6	8.3	2.8	6.3	1.7	3.0	0.7	71.6	5.6	22.8	0.069	0.507	19.171766	-98.304131
Lim. Edos. Term. Tlax. Ppia. Pue.	108.00																			
Anillo Periferico Poniente De Puebla (Lateral)	114.00	3	1	25922	0.6	83.8	3.1	6.3	2.8	1.5	0.5	0.7	0.7	84.4	3.1	12.5	0.098	0.523	19.128618	-98.265607
Anillo Periferico Poniente De Puebla (Central)	114.00	3	1	22258	0.8	74.3	5.3	4.8	3.5	6.9	0.9	2.8	0.7	75.1	5.3	19.6	0.062	0.522	19.130353	-98.267410
Anillo Periferico Poniente De Puebla (Lateral)	114.00	3	2	28477	0.5	82.1	3.6	7.0	3.1	1.6	0.5	0.8	0.8	82.6	3.6	13.8	0.105	0.523	19.128889	-98.265278
Anillo Periferico Poniente De Puebla (Central)	114.00	3	2	20401	0.9	72.3	6.1	5.1	3.8	7.1	0.9	3.0	0.8	73.2	6.1	20.7	0.071	0.522	19.128859	-98.265218
Boulevard Hermanos Serdán	120.46	3	1	51585	0.7	79.3	5.0	6.0	3.6	3.0	0.6	1.6	0.2	80.0	5.0	15.0	0.065	0.503	19.093415	-98.224389
Boulevard Hermanos Serdán	120.46	3	2	50876	0.7	76.6	6.0	6.8	3.8	3.6	0.6	1.7	0.2	77.3	6.0	16.7	0.068	0.503	19.093405	-98.224375
X. C. Puebla - Tlaxcala (Lateral)	123.00	3	1	28433	0.7	85.4	6.8	3.5	1.7	1.1	0.5	0.1	0.2	86.1	6.8	7.1	0.072	0.529	19.085501	-98.196185
X. C. Puebla - Tlaxcala (Central)	123.00	3	1	30688	0.7	76.6	3.9	7.4	3.4	4.5	0.9	2.3	0.3	77.3	3.9	18.8	0.071	0.529	19.085501	-98.196185
X. C. Puebla - Tlaxcala (Lateral)	123.00	3	2	23327	0.8	83.7	7.8	3.8	1.9	1.2	0.5	0.1	0.2	84.5	7.8	7.7	0.090	0.529	19.085513	-98.196186
X. C. Puebla - Tlaxcala (Central)	123.00	3	2	42957	0.6	75.4	4.1	7.6	3.7	5.0	1.0	2.3	0.3	76.0	4.1	19.9	0.073	0.529	19.085513	-98.196186
T. C. Puebla - Tlaxcala	124.90																			

20 CARR : San Martín Texmelucan - Tlaxcala - El Molinito (Cuota)

CLAVE: 00212

RUTA: MEX-117D

AÑO : 2015

LUGAR	ESTACION				CLASIFICACION VEHICULAR EN PORCIENTO										COORDENADAS					
	KM	TE	SC	TDPA	M	A	B	C2	C3	T3S2	T3S3	T3S2R4	OTROS	A	B	C	K'	D	LATITUD	LONGITUD
T. C. México - Puebla (Cuota)	0.00																			
X. C. San Martín Texmelucan - Tlaxcala	1.80	1	0	3832	3.7	80.9	2.2	8.7	1.4	1.8	0.9	0.3	0.1	84.6	2.2	13.2	0.124	0.539	19.290432	-98.418917
Lim. Edos. Term. Pue. Ppia. Tlax.	4.05																			
Caseta de Cobro San Martín Texmelucan	5.45	2	1	2936	0.4	78.7	8.9	3.8	1.7	3.5	1.2	1.4	0.4	79.1	8.9	12.0	0.088	0.500	19.301568	-98.404044
Caseta de Cobro San Martín Texmelucan	5.45	2	2	2936	0.4	78.7	8.9	3.8	1.7	3.5	1.2	1.4	0.4	79.1	8.9	12.0	0.088	0.500	19.301568	-98.404044
X. C. San Martín Texmelucan - Tlaxcala (Trébol)	24.75	1	1	15708	1.2	90.7	1.7	3.7	0.4	1.0	0.6	0.5	0.2	91.9	1.7	6.4	0.099	0.510	19.325336	-98.251065

TLAXCALA

20 CARR: San Martín Texmelucan - Tlaxcala - El Molinito (Cuota)

CLAVE: 00212

RUTA: MEX-117D

AÑO: 2015

LUGAR	ESTACION				CLASIFICACION VEHICULAR EN PORCIENTO										COORDENADAS					
	KM	TE	SC	TDPA	M	A	B	C2	C3	T3S2	T3S3	T3S2R4	OTROS	A	B	C	K'	D	LATITUD	LONGITUD
X. C. San Martín Texmelucan - Tlaxcala (Trébol)	24.75	1	2	15096	1.0	90.3	1.9	3.8	0.4	1.2	0.6	0.6	0.2	91.3	1.9	6.8	0.085	0.510	19.325338	-98.251065
X. C. San Martín Texmelucan - Tlaxcala (Trébol)	24.75	3	1	16260	1.6	87.7	2.1	6.1	0.5	0.8	0.5	0.6	0.1	89.3	2.1	8.6	0.090	0.509	19.331674	-98.239898
X. C. San Martín Texmelucan - Tlaxcala (Trébol)	24.75	3	2	15716	1.0	86.7	2.5	7.2	0.5	0.9	0.5	0.6	0.1	87.7	2.5	9.8	0.083	0.509	19.331661	-98.239915
T. Der. San Pablo Apetatitlán	29.00	3	1	33187	0.8	88.5	1.2	6.0	0.7	1.3	0.9	0.4	0.2	89.3	1.2	9.5	0.073	0.509	19.347118	-98.195029
T. Izq. Tizatlán	29.00	3	1	14267	0.7	85.9	2.1	9.0	0.6	0.8	0.4	0.4	0.1	86.6	2.1	11.3	0.092	0.503	19.337784	-98.214031
T. Izq. Tizatlán	29.00	3	2	15562	0.8	85.0	2.4	9.4	0.6	0.9	0.4	0.4	0.1	85.8	2.4	11.8	0.082	0.503	19.337786	-98.214026
T. Der. San Pablo Apetatitlán	29.00	3	2	34406	0.8	87.8	1.2	6.4	0.8	1.4	1.0	0.4	0.2	88.6	1.2	10.2	0.078	0.509	19.347130	-98.195027
Ocotoxco	35.20	1	1	27249	0.9	86.8	1.4	6.9	0.8	1.7	0.8	0.5	0.2	87.7	1.4	10.9	0.081	0.501	19.385478	-98.178297
Ocotoxco	35.20	1	2	27366	0.8	85.7	1.5	7.7	0.9	1.8	0.9	0.5	0.2	86.5	1.5	12.0	0.078	0.501	19.385475	-98.178294

21 CARR: Libramiento de Ocotlán

CLAVE: 29567

RUTA: TLAX

AÑO: 2015

LUGAR	ESTACION				CLASIFICACION VEHICULAR EN PORCIENTO										COORDENADAS					
	KM	TE	SC	TDPA	M	A	B	C2	C3	T3S2	T3S3	T3S2R4	OTROS	A	B	C	K'	D	LATITUD	LONGITUD
T. C. Tlaxcala - Belem	0.00	3	1	14138	1.6	92.0	0.1	0.8	0.1	1.1	3.5	0.3	0.5	93.6	0.1	6.3	0.070	0.515	19.319515	-98.209419
T. C. Tlaxcala - Belem	0.00	3	2	13291	1.8	91.4	0.1	0.8	0.1	1.2	3.7	0.3	0.6	93.2	0.1	6.7	0.065	0.515	19.319515	-98.209417
T. C. Tlaxcala - Belem	5.50																			

22 CARR: Ramal a Alzayanca de Hidalgo

CLAVE: 29562

RUTA: TLAX

AÑO: 2015

LUGAR	ESTACION				CLASIFICACION VEHICULAR EN PORCIENTO										COORDENADAS					
	KM	TE	SC	TDPA	M	A	B	C2	C3	T3S2	T3S3	T3S2R4	OTROS	A	B	C	K'	D	LATITUD	LONGITUD
T. C. Los Reyes - Zacatepec	0.00	3	0	2846	2.1	80.8	0.4	12.9	0.7	2.1	0.5	0.2	0.3	82.9	0.4	16.7	0.083	0.515	19.322823	-97.844870
Xicoténcatl	6.50	3	0	2261	2.1	84.2	0.3	10.9	0.4	1.8	0.2	0.0	0.1	86.3	0.3	13.4	0.093	0.519	19.356798	-97.831923
Alzayanca de Hidalgo	15.00	1	0	2079	7.8	80.1	1.2	9.3	0.2	1.2	0.1	0.0	0.1	87.9	1.2	10.9	0.074	0.502	19.422701	-97.804437

23 CARR: Ramal a San Pedro Ecatepec

CLAVE: 29561

RUTA: TLAX

AÑO: 2015

LUGAR	ESTACION				CLASIFICACION VEHICULAR EN PORCIENTO										COORDENADAS					
	KM	TE	SC	TDPA	M	A	B	C2	C3	T3S2	T3S3	T3S2R4	OTROS	A	B	C	K'	D	LATITUD	LONGITUD
T. C. Apizaco - Tejocotal	0.00	3	0	1869	2.1	83.4	1.4	10.3	0.7	1.3	0.6	0.0	0.2	85.5	1.4	13.1	0.077	0.510	19.514419	-98.119183
San Pedro Ecatepec	4.60	1	0	1676	2.7	82.3	2.5	10.3	0.4	1.4	0.2	0.0	0.2	85.0	2.5	12.5	0.088	0.538	19.516364	-98.145700

TLAXCALA

24 CARR: Ramal a Xalostoc

CLAVE: 29563

RUTA: TLAX

AÑO: 2015

LUGAR	ESTACION				CLASIFICACION VEHICULAR EN PORCIENTO													COORDENADAS		
	KM	TE	SC	TDPA	M	A	B	C2	C3	T3S2	T3S3	T3S2R4	OTROS	A	B	C	K'	D	LATITUD	LONGITUD
T. C. Los Reyes - Zacatepec	0.00	3	0	9884	2.3	85.4	0.1	4.8	0.4	5.2	0.6	0.2	1.0	87.7	0.1	12.2	0.063	0.504	19.395992	-98.056928
Xalostoc	2.50	1	0	10338	2.8	85.5	0.1	4.5	0.3	5.4	0.4	0.2	0.8	88.3	0.1	11.6	0.064	0.509	19.399972	-98.052312

25 CARR: Xalostoc - Terrenate

CLAVE: 29390

RUTA: TLAX

AÑO: 2015

LUGAR	ESTACION				CLASIFICACION VEHICULAR EN PORCIENTO													COORDENADAS		
	KM	TE	SC	TDPA	M	A	B	C2	C3	T3S2	T3S3	T3S2R4	OTROS	A	B	C	K'	D	LATITUD	LONGITUD
Xalostoc	0.00	3	0	3507	3.1	88.2	0.2	5.2	0.7	2.0	0.3	0.0	0.3	91.3	0.2	8.5	0.079	0.506	19.415746	-98.033855
San Francisco Teometitla	7.10	3	0	1703	3.1	88.5	0.3	6.4	0.4	1.0	0.2	0.0	0.1	91.6	0.3	8.1	0.086	0.507	19.450929	-97.988245
T. C. Huamantla - Terrenate	17.50	1	0	1576	2.7	90.3	0.2	5.2	0.4	1.0	0.2	0.0	0.0	93.0	0.2	6.8	0.082	0.507	19.466179	-97.929546

26 CARR: Acocotla - Vicente Guerrero

CLAVE: 29560

RUTA: MEX-TLAX

AÑO: 2015

LUGAR	ESTACION				CLASIFICACION VEHICULAR EN PORCIENTO													COORDENADAS		
	KM	TE	SC	TDPA	M	A	B	C2	C3	T3S2	T3S3	T3S2R4	OTROS	A	B	C	K'	D	LATITUD	LONGITUD
T. C. Los Reyes - Zacatepec	0.00	3	0	1829	3.0	87.9	0.3	6.0	0.9	1.4	0.4	0.0	0.1	90.9	0.3	8.8	0.078	0.519	19.371376	-98.028565
T. C. Puebla - Belem	37.70	1	0	10044	2.4	79.7	0.8	9.0	0.3	5.4	1.0	0.4	1.0	82.1	0.8	17.1	0.080	0.508	19.113185	-98.175845

27 CARR: Apizaco - Emiliano Zapata

CLAVE: 29033

RUTA: TLAX-MEX-136

AÑO: 2015

LUGAR	ESTACION				CLASIFICACION VEHICULAR EN PORCIENTO													COORDENADAS		
	KM	TE	SC	TDPA	M	A	B	C2	C3	T3S2	T3S3	T3S2R4	OTROS	A	B	C	K'	D	LATITUD	LONGITUD
Apizaco	0.00	3	0	8245	4.6	81.0	0.1	6.4	0.2	5.9	0.7	0.2	0.9	85.6	0.1	14.3	0.062	0.503	19.417735	-98.131940
Capula	16.00	1	0	3162	4.0	89.2	0.2	4.6	0.5	1.3	0.1	0.0	0.1	93.2	0.2	6.6	0.070	0.502	19.527871	-98.041804
Emiliano Zapata	37.00	1	0	1126	2.8	90.0	0.2	5.7	0.2	0.9	0.0	0.0	0.2	92.8	0.2	7.0	0.096	0.503	19.553526	-97.917160

28 CARR: Calpulalpan - El Ocote

CLAVE: 00054

RUTA: MEX-HGO

AÑO: 2015

LUGAR	ESTACION				CLASIFICACION VEHICULAR EN PORCIENTO													COORDENADAS		
	KM	TE	SC	TDPA	M	A	B	C2	C3	T3S2	T3S3	T3S2R4	OTROS	A	B	C	K'	D	LATITUD	LONGITUD
Calpulalpan	0.00	3	0	8421	1.5	75.1	1.8	7.1	2.1	8.3	2.0	1.2	0.9	76.6	1.8	21.6	0.073	0.534	19.594532	-98.573660
X. C. Arco Norte de La Ciudad de México	4.00	3	0	7443	0.2	87.2	1.2	3.7	1.3	3.8	1.5	0.8	0.3	87.4	1.2	11.4	0.101	0.509	19.626983	-98.541950
Lim. Edos. Term. Tlax. Ppia. Hgo.	5.00																			
Apan	19.58	3	1	4442	0.2	91.4	1.3	3.8	1.4	0.9	0.6	0.3	0.1	91.6	1.3	7.1	0.081	0.505	19.721850	-98.462400
Apan	19.58	3	2	4349	0.2	92.5	1.1	3.5	1.2	0.7	0.4	0.3	0.1	92.7	1.1	6.2	0.083	0.505	19.721850	-98.462400

TLAXCALA

28 CARR: Calpulalpan - El Ocote

CLAVE: 00054

RUTA: MEX-HGO

AÑO: 2015

LUGAR	ESTACION				CLASIFICACION VEHICULAR EN PORCIENTO													COORDENADAS		
	KM	TE	SC	TDPA	M	A	B	C2	C3	T3S2	T3S3	T3S2R4	OTROS	A	B	C	K'	D	LATITUD	LONGITUD
Tepeapulco	34.92	3	0	4384	0.2	93.7	1.2	3.1	0.7	0.7	0.2	0.1	0.1	93.9	1.2	4.9	0.103	0.515	19.803033	-98.563200
X. C. Venta de Carpio - Tulancingo	51.18	1	1	1600	0.1	87.5	1.3	7.3	2.1	0.8	0.6	0.1	0.2	87.6	1.3	11.1	0.087	0.512	19.919267	-98.577583
X. C. Venta de Carpio - Tulancingo	51.18	1	2	1522	0.5	88.3	1.1	6.2	2.5	0.8	0.2	0.3	0.1	88.8	1.1	10.1	0.080	0.512	19.919267	-98.577583
X. C. Venta de Carpio - Tulancingo	51.18	3	0	2059	0.5	91.3	1.2	4.7	1.5	0.5	0.2	0.1	0.0	91.8	1.2	7.0	0.100	0.515	19.927715	-98.582875
El Ocote	70.44	1	0	3019	0.3	93.3	0.9	4.0	1.0	0.3	0.2	0.0	0.0	93.6	0.9	5.5	0.098	0.513	20.047873	-98.617761

29 CARR: Calpulalpan - Nanacamilpa

CLAVE: 29034

RUTA: TLAX-MEX-136

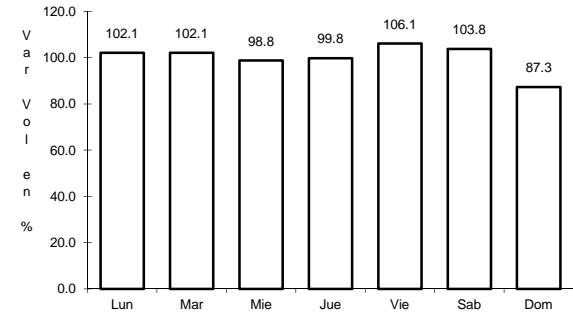
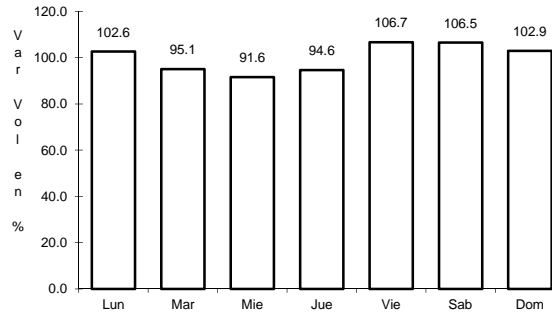
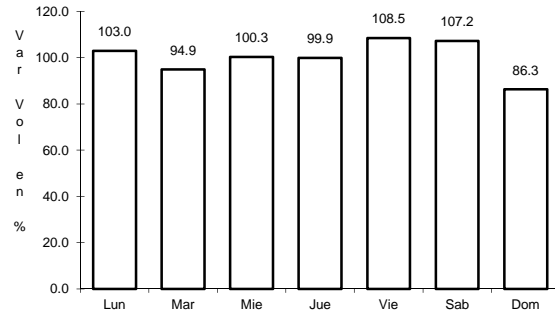
AÑO: 2015

LUGAR	ESTACION				CLASIFICACION VEHICULAR EN PORCIENTO													COORDENADAS		
	KM	TE	SC	TDPA	M	A	B	C2	C3	T3S2	T3S3	T3S2R4	OTROS	A	B	C	K'	D	LATITUD	LONGITUD
Calpulalpan	0.00	3	0	2217	4.1	86.7	0.1	7.3	0.3	1.3	0.1	0.0	0.1	90.8	0.1	9.1	0.089	0.530	19.568229	-98.568125
Nanacamilpa	15.50	1	0	1782	7.2	85.9	0.3	4.7	0.1	1.5	0.2	0.0	0.1	93.1	0.3	6.6	0.116	0.545	19.497009	-98.533217

1 CARR: Amozoc - Teziutlán

CLAVE: 00210

RUTA: MEX-129



Km: 1.40 Tipo: 3 Sent: 0

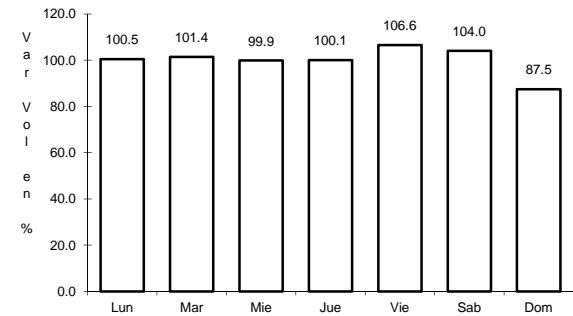
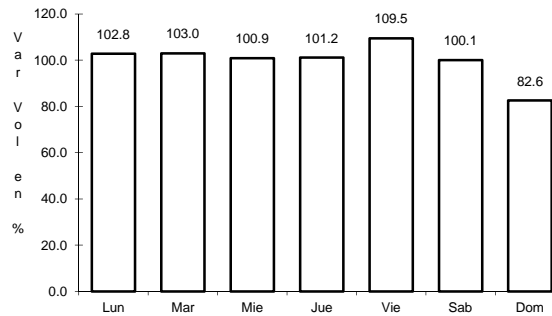
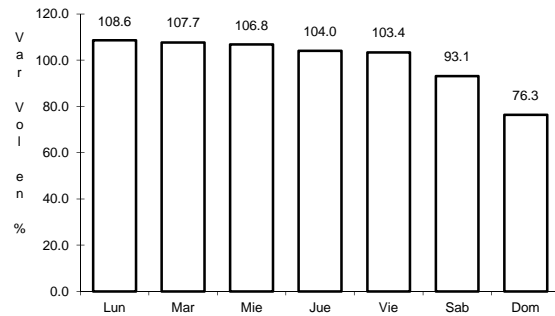
Km: 76.35 Tipo: 3 Sent: 0

Km: 157.80 Tipo: 1 Sent: 0

2 CARR: Apizaco - San Pablo Apetatitlán

CLAVE: 29035

RUTA: MEX-119



Km: 0.00 Tipo: 3 Sent: 0

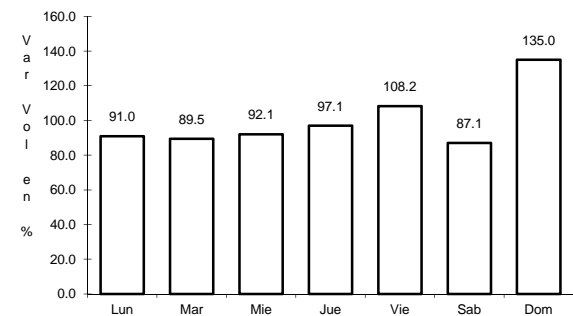
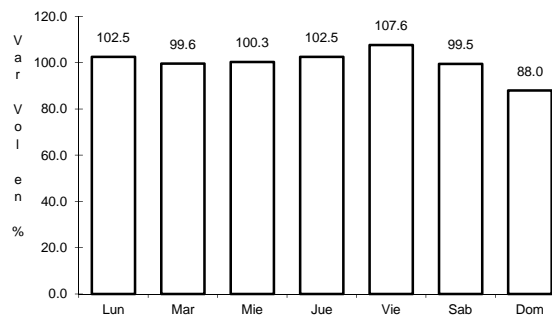
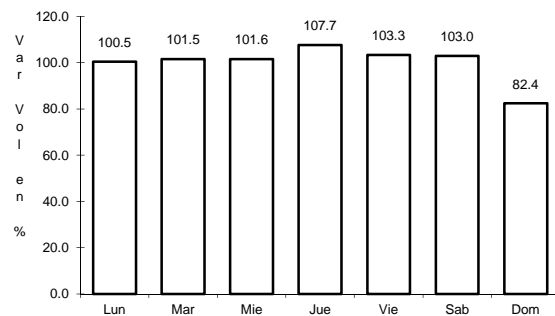
Km: 14.50 Tipo: 3 Sent: 0

Km: 20.00 Tipo: 1 Sent: 0

3 CARR: Apizaco - Tejocotal

CLAVE: 00430

RUTA: MEX-119



Km: 0.00 Tipo: 3 Sent: 1

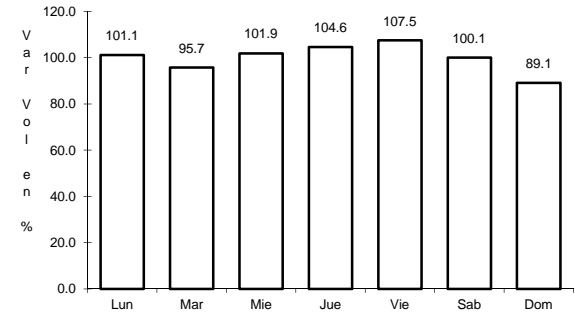
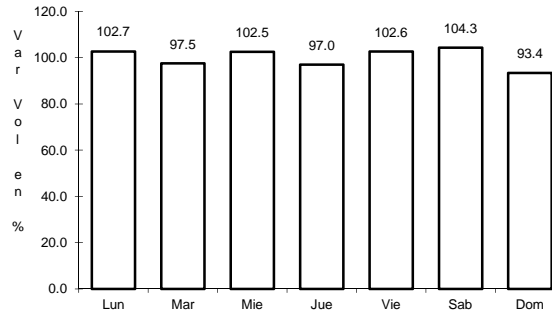
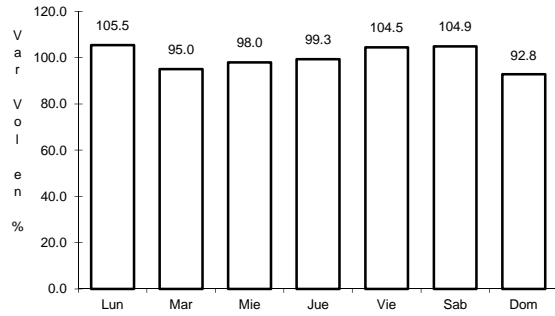
Km: 0.00 Tipo: 3 Sent: 2

Km: 113.15 Tipo: 1 Sent: 0

4 CARR: Huamantla - La Venta

CLAVE: 29564

RUTA: MEX-136



Km: 0.00

Tipo: 3

Sent: 1

Km: 0.00

Tipo: 3

Sent: 2

Km: 17.60

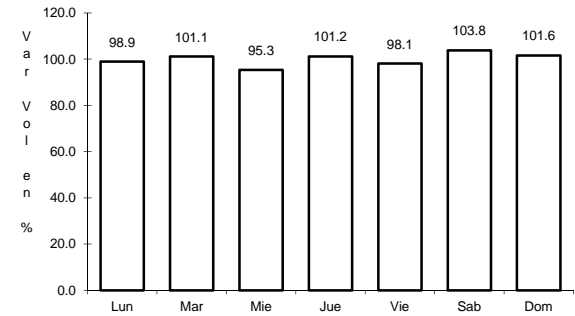
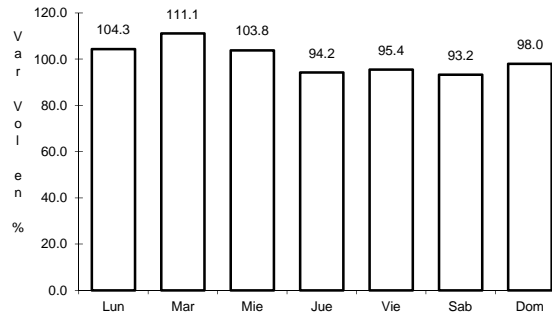
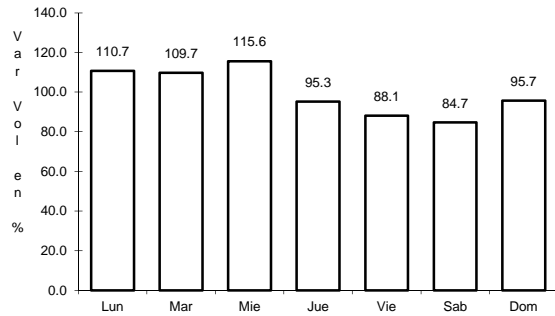
Tipo: 1

Sent: 0

5 CARR: Huamantla - Terrenate

CLAVE: 29036

RUTA: MEX-136



Km: 0.00

Tipo: 3

Sent: 0

Km: 12.50

Tipo: 1

Sent: 0

Km: 21.00

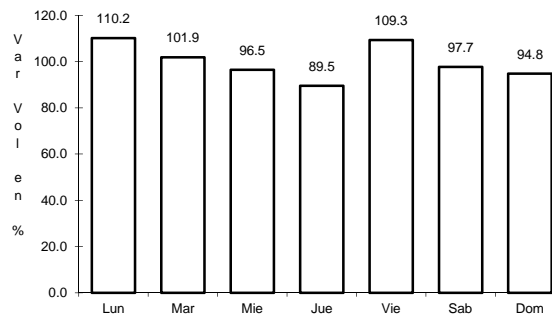
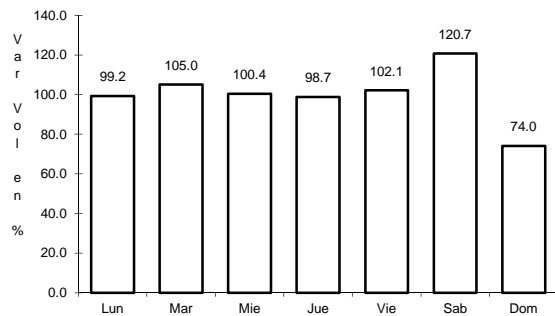
Tipo: 1

Sent: 0

6 CARR: Libramiento de Apizaco

CLAVE: 29567

RUTA: MEX-136



Km: 6.00

Tipo: 1

Sent: 1

Km: 6.00

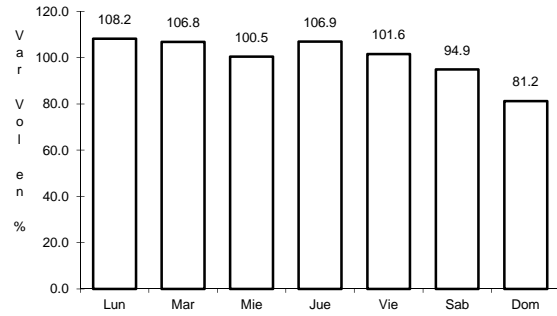
Tipo: 1

Sent: 2

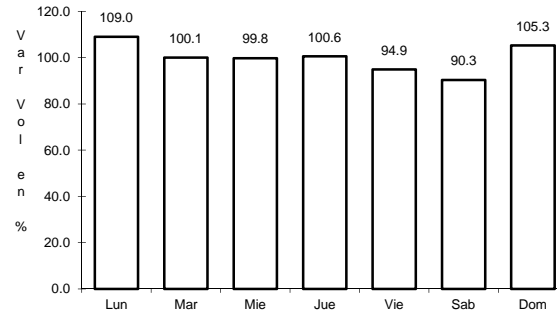
7 CARR: Libramiento Huamantla

CLAVE: 29567

RUTA: MEX-136



Km: 0.00 Tipo: 3 Sent: 1

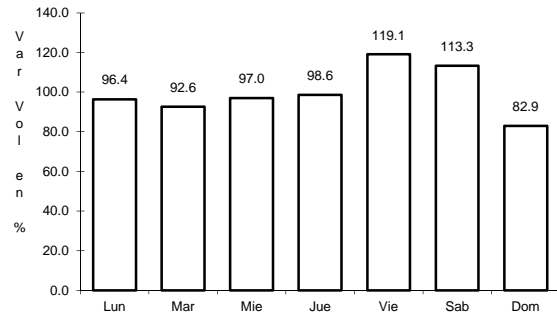


Km: 0.00 Tipo: 3 Sent: 2

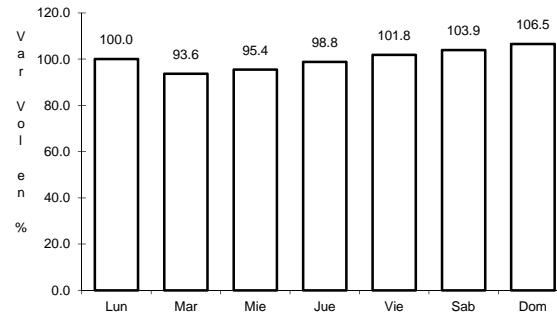
8 CARR: Libramiento Hueyotlipan

CLAVE: 29567

RUTA: MEX-136



Km: 0.00 Tipo: 3 Sent: 1

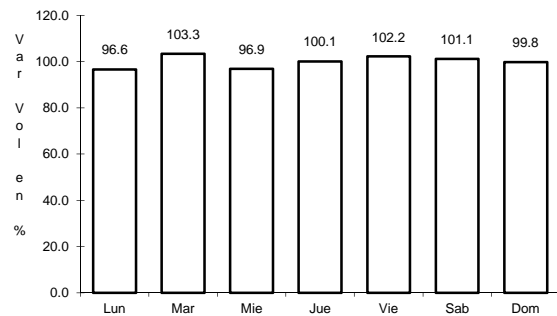


Km: 0.00 Tipo: 3 Sent: 2

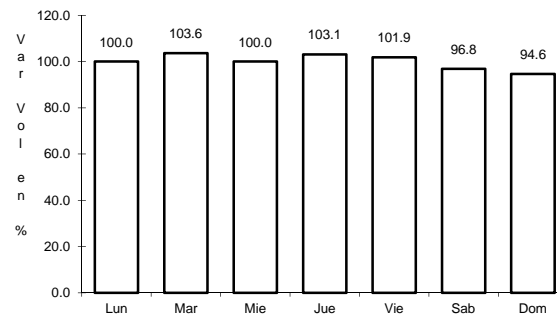
9 CARR: Los Reyes - Zacatepec

CLAVE: 00052

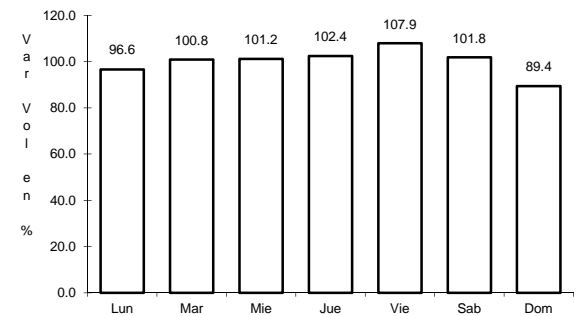
RUTA: MEX-136



Km: 3.35 Tipo: 3 Sent: 1



Km: 3.35 Tipo: 3 Sent: 2

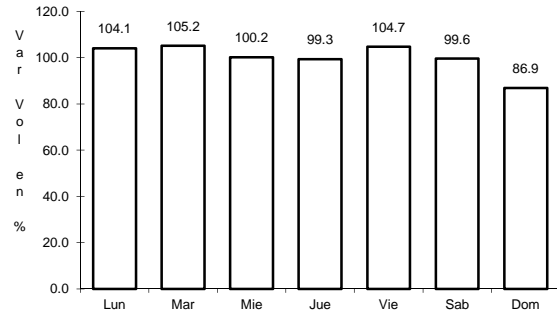


Km: 187.67 Tipo: 1 Sent: 0

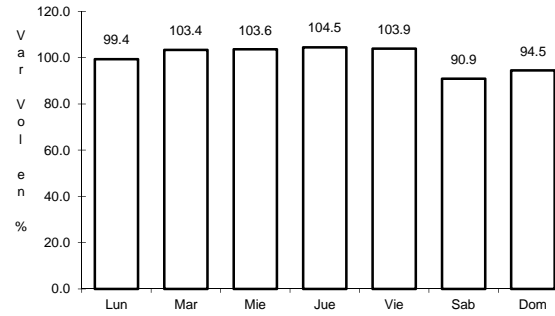
10 CARR: Puebla - Belem

CLAVE: 00055

RUTA: MEX-121



Km: 4.00 Tipo: 3 Sent: 1

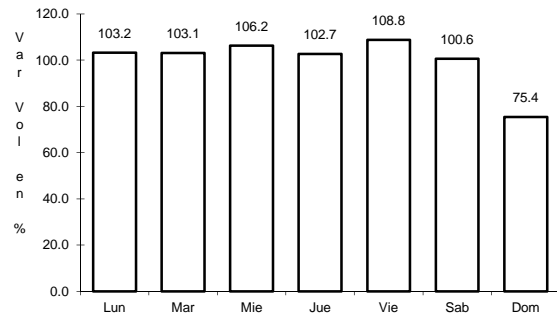


Km: 4.00 Tipo: 3 Sent: 2

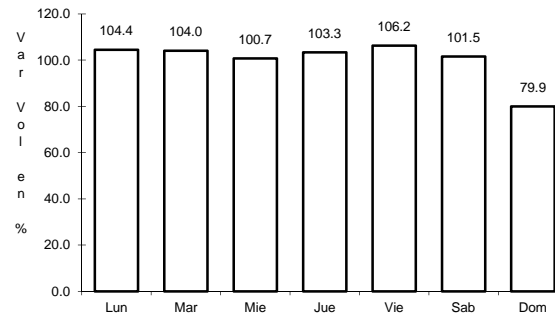
11 CARR: Puebla - Tlaxcala

CLAVE: 00475

RUTA: MEX-119



Km: 5.41 Tipo: 3 Sent: 1

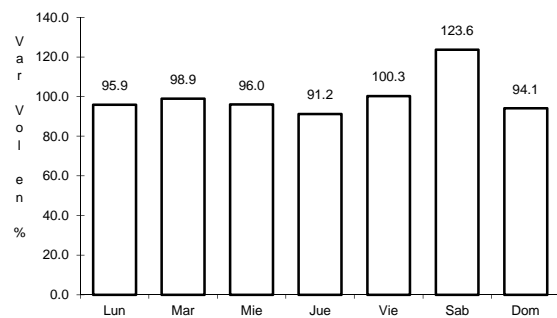


Km: 5.41 Tipo: 3 Sent: 2

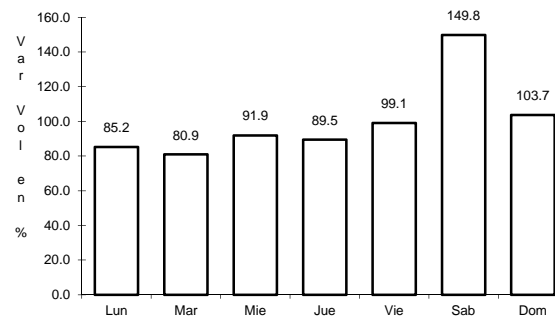
12 CARR: Ramal a San Felipe de Hidalgo

CLAVE: 29565

RUTA: MEX-136



Km: 0.00 Tipo: 3 Sent: 0

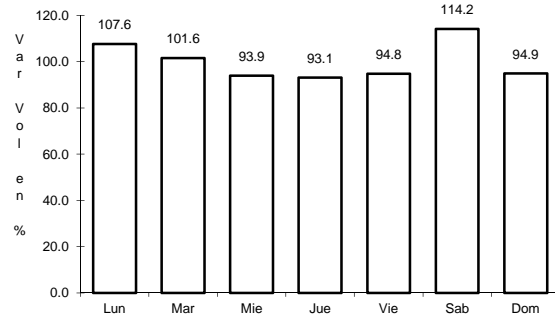


Km: 10.50 Tipo: 1 Sent: 0

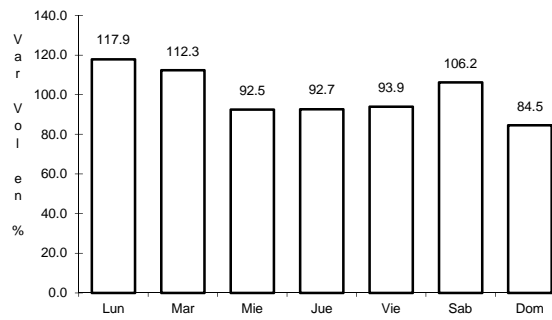
13 CARR: San Martín Texmelucan - Tlaxcala

CLAVE: 00158

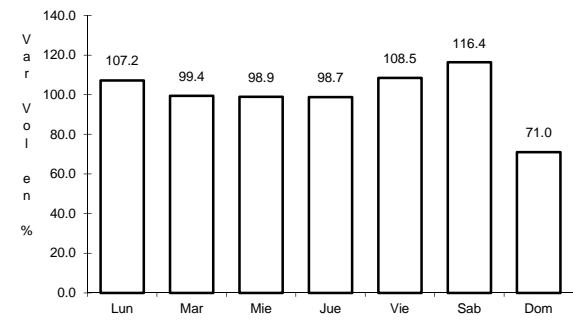
RUTA: MEX-117



Km: 0.00 Tipo: 3 Sent: 1



Km: 0.00 Tipo: 3 Sent: 2

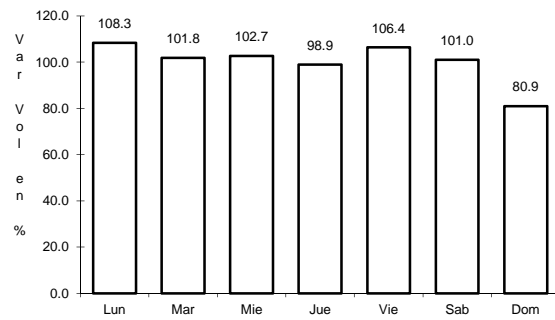


Km: 24.81 Tipo: 1 Sent: 0

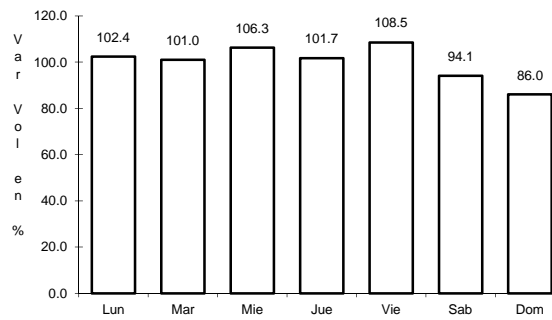
14 CARR: Tetlatlahuca - Santa Ana Chiautempan

CLAVE: 00158

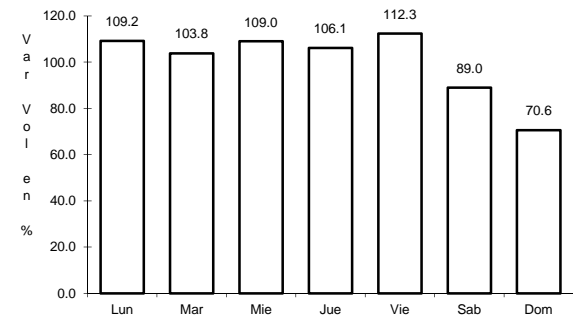
RUTA: MEX-119



Km: 2.39 Tipo: 1 Sent: 0



Km: 5.50 Tipo: 1 Sent: 0

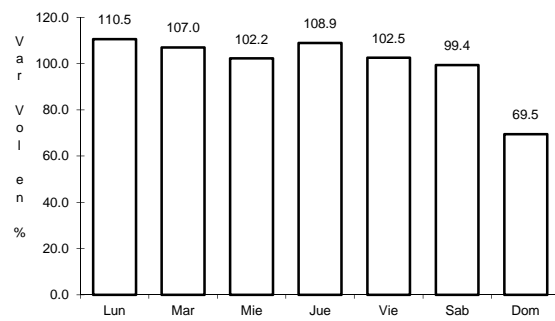


Km: 9.94 Tipo: 1 Sent: 0

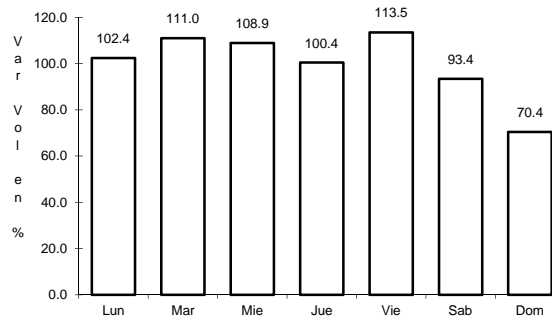
15 CARR: Tlaxcala - Belem

CLAVE: 29389

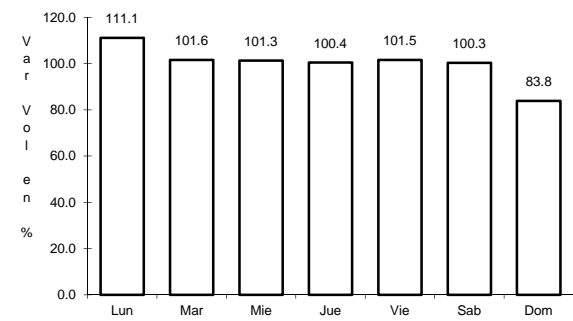
RUTA: MEX-119



Km: 3.91 Tipo: 1 Sent: 1



Km: 3.91 Tipo: 1 Sent: 2

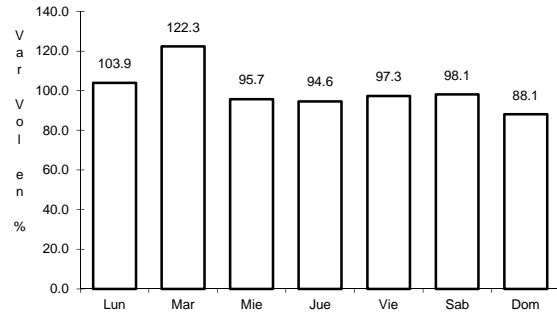


Km: 10.06 Tipo: 1 Sent: 0

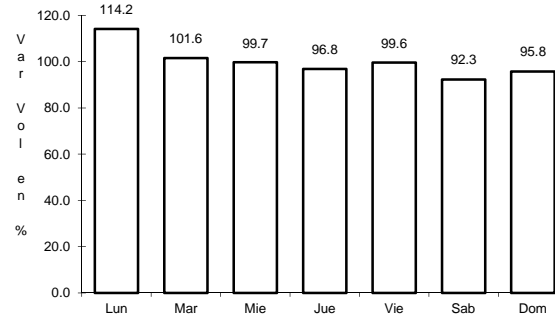
16 CARR: Villa Alta - T. C. (Puebla - Tlaxcala)

CLAVE: 29566

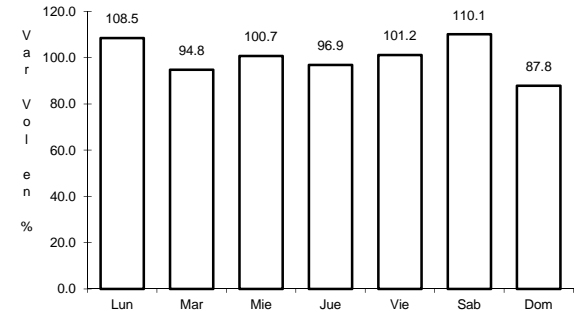
RUTA: MEX-119



Km: 0.00 Tipo: 3 Sent: 0



Km: 10.50 Tipo: 3 Sent: 0

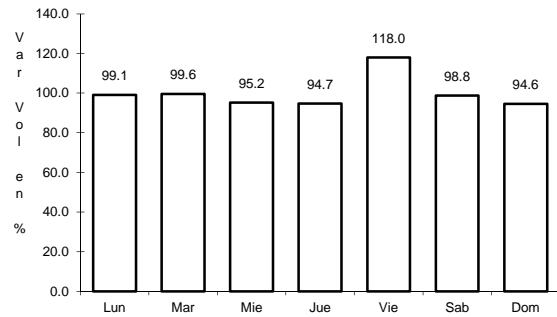


Km: 22.05 Tipo: 1 Sent: 0

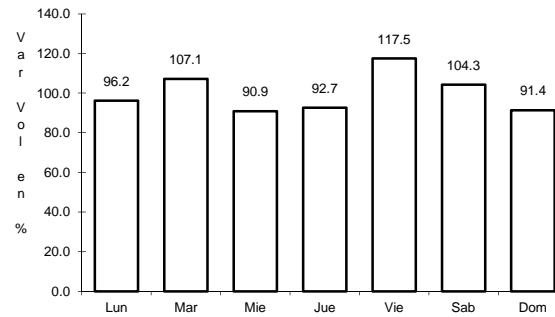
17 CARR: Amozoc - Perote (Cuota)

CLAVE: 00030

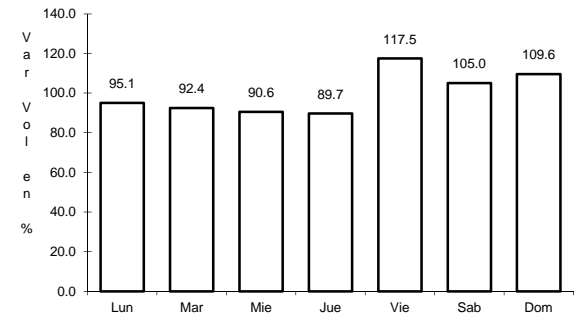
RUTA: MEX-140D



Km: 0.00 Tipo: 3 Sent: 0



Km: 25.80 Tipo: 3 Sent: 0

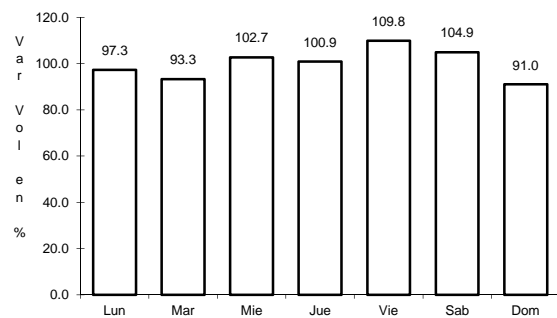


Km: 62.70 Tipo: 3 Sent: 0

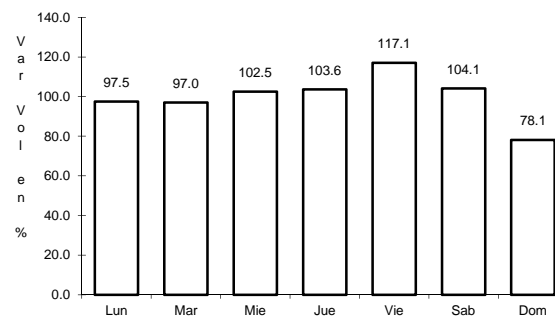
18 CARR: Libramiento Norte de la Ciudad de México (Cuota)

CLAVE: 0902

RUTA: MEX-M40D



Km: 12.90 Tipo: 1 Sent: 1

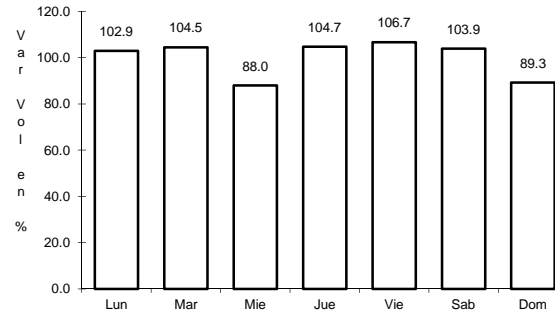
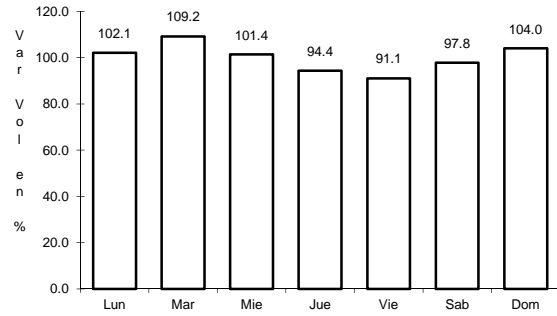


Km: 12.90 Tipo: 1 Sent: 2

19 CARR: México - Puebla (Cuota)

CLAVE: 00450

RUTA: MEX-150D



Km: 17.00

Tipo: 3

Sent: 1

Km: 17.00

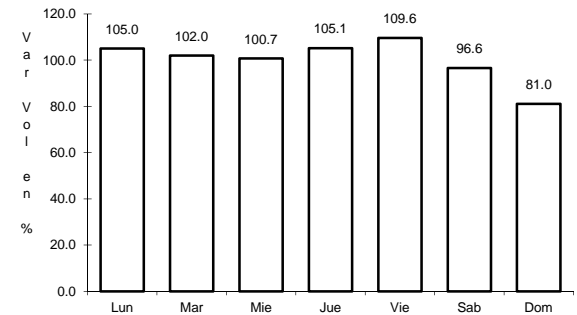
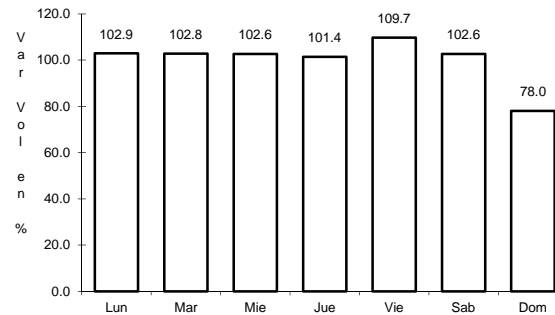
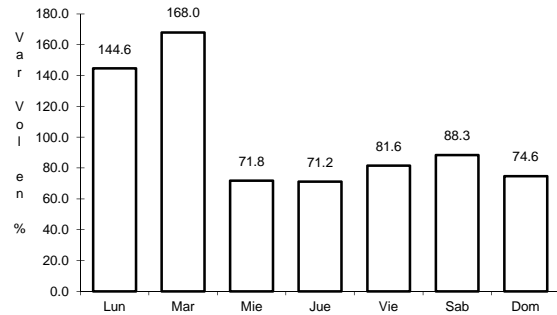
Tipo: 3

Sent: 2

20 CARR: San Martin Texmelucan - Tlaxcala - El Molinito (Cuota)

CLAVE: 00212

RUTA: MEX-117D



Km: 1.80

Tipo: 1

Sent: 0

Km: 35.20

Tipo: 1

Sent: 1

Km: 35.20

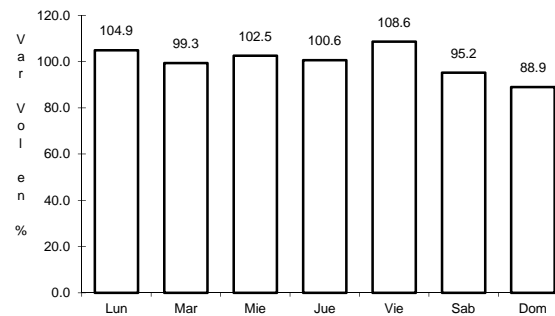
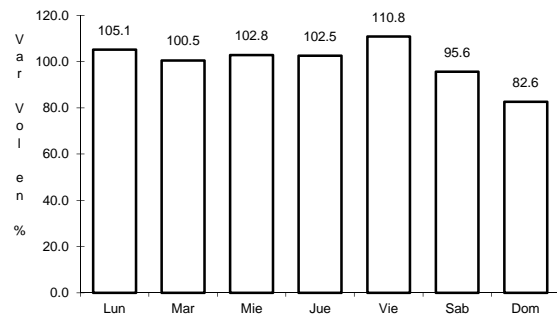
Tipo: 1

Sent: 2

21 CARR: Libramiento de Ocotlán

CLAVE: 29567

RUTA: TLAX



Km: 0.00

Tipo: 3

Sent: 1

Km: 0.00

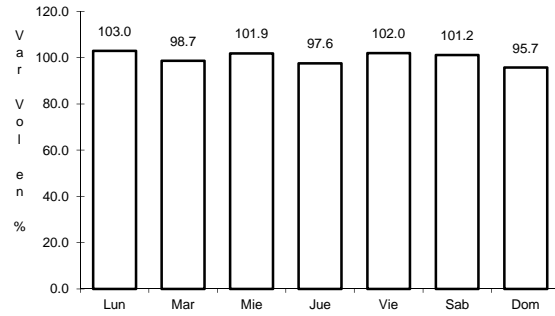
Tipo: 3

Sent: 2

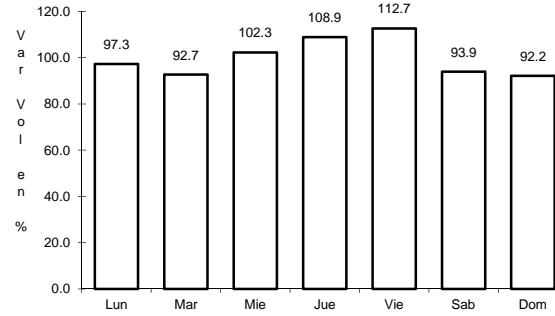
22 CARR: Ramal a Altzayanca de Hidalgo

CLAVE: 29562

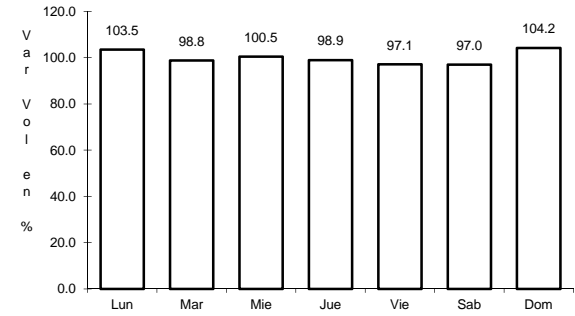
RUTA: TLAX



Km: 0.00 Tipo: 3 Sent: 0



Km: 6.50 Tipo: 3 Sent: 0

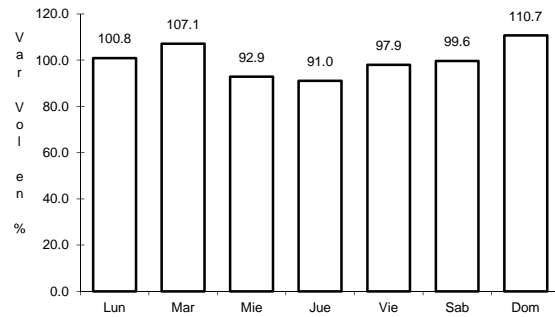


Km: 15.00 Tipo: 1 Sent: 0

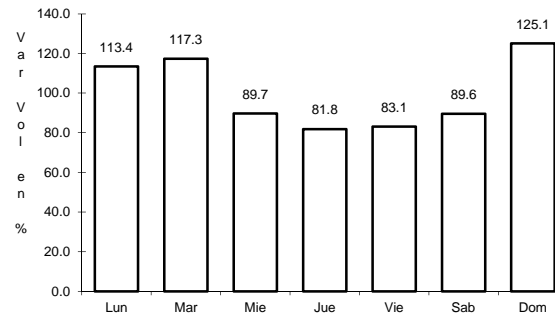
23 CARR: Ramal a San Pedro Ecatepec

CLAVE: 29561

RUTA: TLAX



Km: 0.00 Tipo: 3 Sent: 0

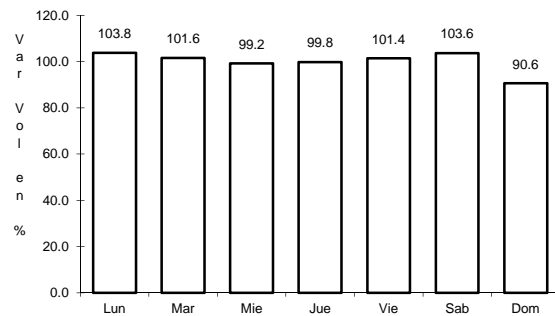


Km: 4.60 Tipo: 1 Sent: 0

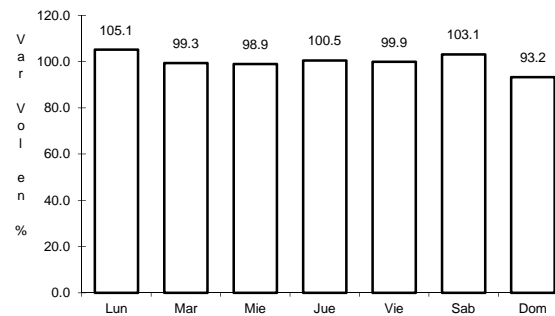
24 CARR: Ramal a Xalostoc

CLAVE: 29563

RUTA: TLAX



Km: 0.00 Tipo: 3 Sent: 0

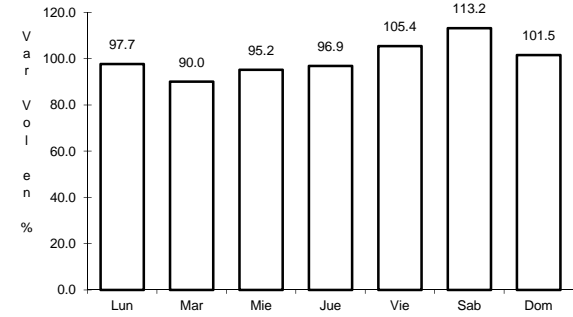
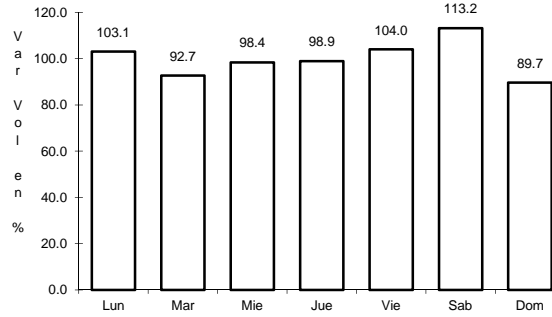
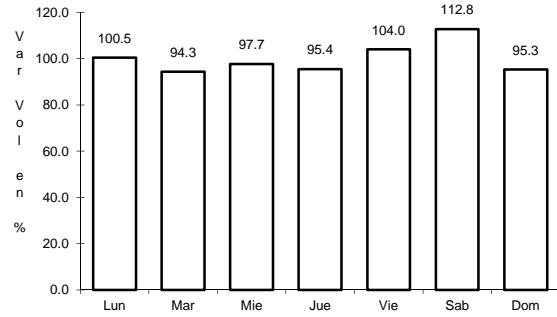


Km: 2.50 Tipo: 1 Sent: 0

25 CARR: Xalostoc - Terrenate

CLAVE: 29390

RUTA: TLAX



Km: 0.00 Tipo: 3 Sent: 0

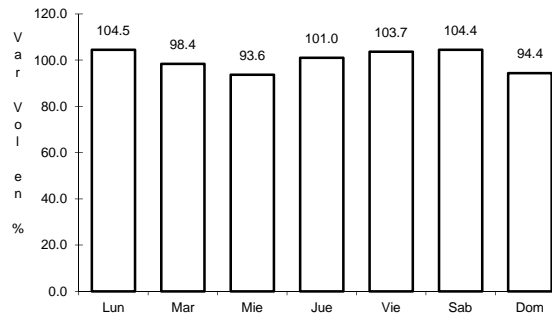
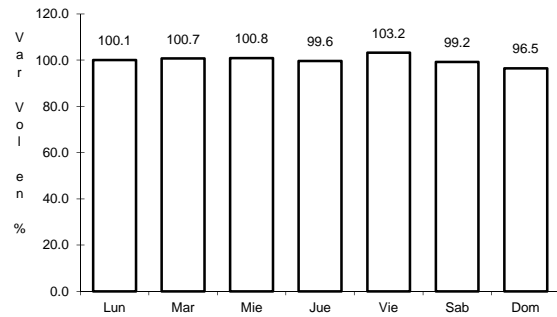
Km: 7.10 Tipo: 3 Sent: 0

Km: 17.50 Tipo: 1 Sent: 0

26 CARR: Acocotla - Vicente Guerrero

CLAVE: 29560

RUTA: MEX-TLAX



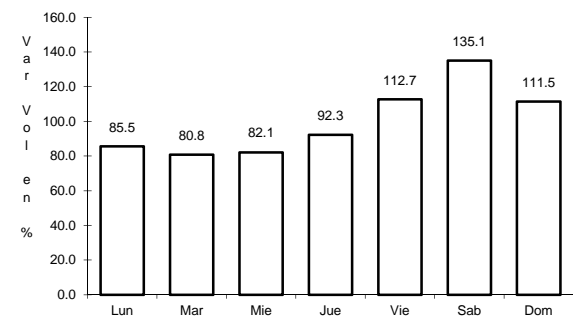
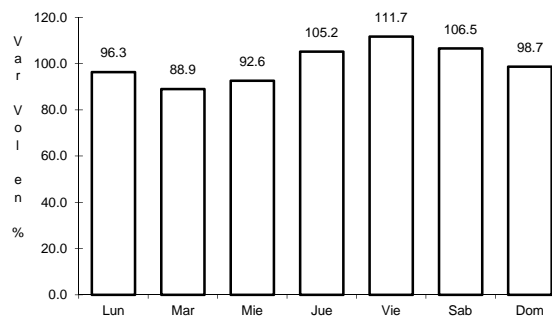
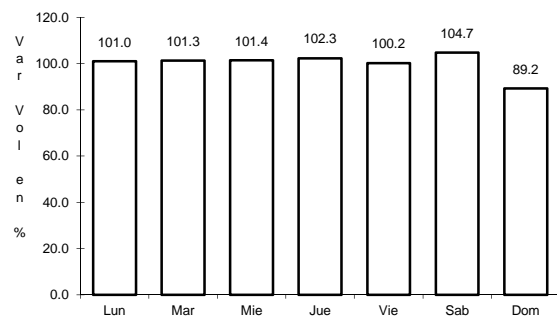
Km: 0.00 Tipo: 3 Sent: 0

Km: 37.70 Tipo: 1 Sent: 0

27 CARR: Apizaco - Emiliano Zapata

CLAVE: 29033

RUTA: TLAX-MEX-136



Km: 0.00 Tipo: 3 Sent: 0

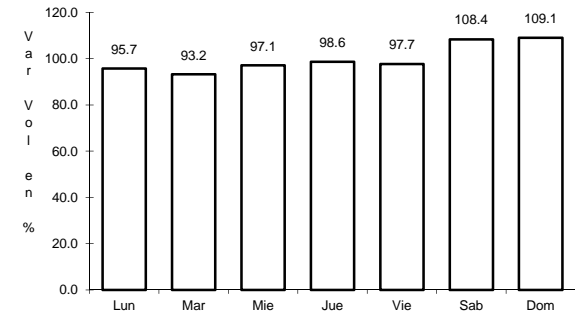
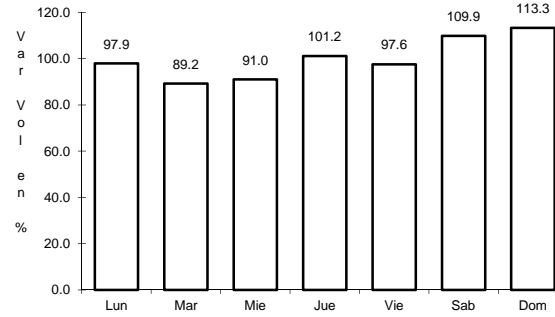
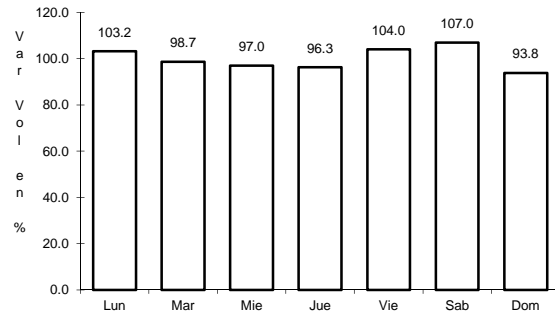
Km: 16.00 Tipo: 1 Sent: 0

Km: 37.00 Tipo: 1 Sent: 0

28 CARR: Calpulalpan - El Ocote

CLAVE: 00054

ruta: MEX-HGO



Km: 0.00 Tipo: 3 Sent: 0

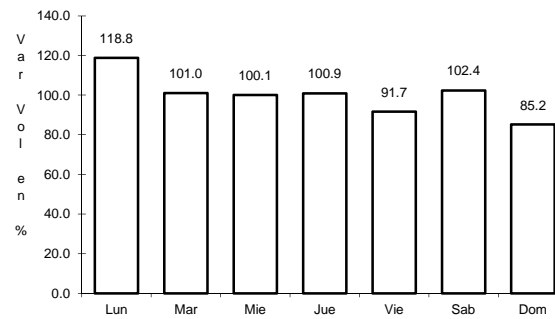
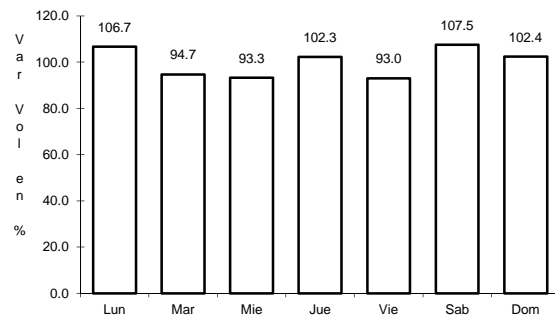
Km: 34.92 Tipo: 3 Sent: 0

Km: 70.44 Tipo: 1 Sent: 0

29 CARR: Calpulalpan - Nanacamilpa

CLAVE: 29034

ruta: TLAX-MEX-136



Km: 0.00 Tipo: 3 Sent: 0

Km: 15.50 Tipo: 1 Sent: 0