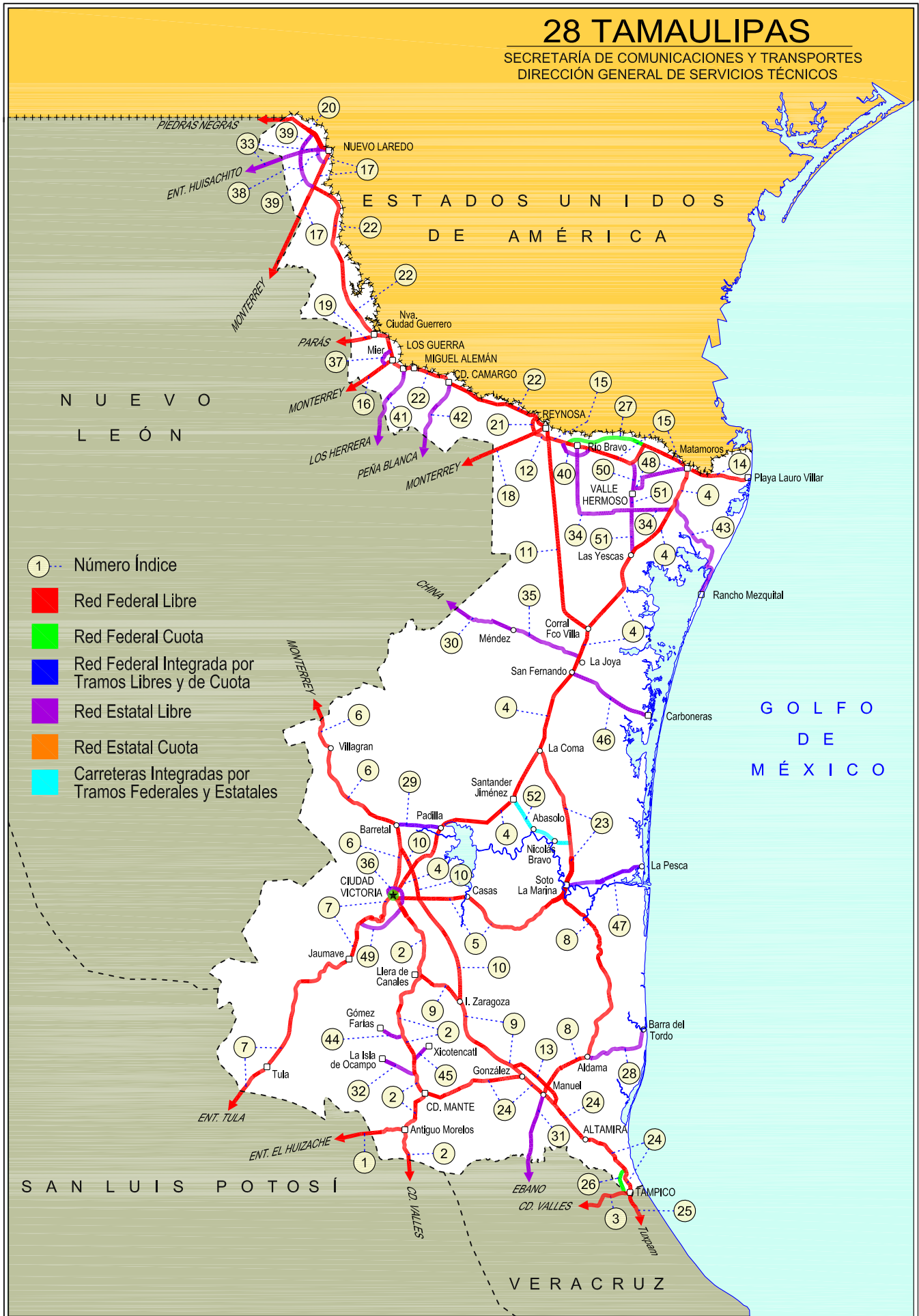
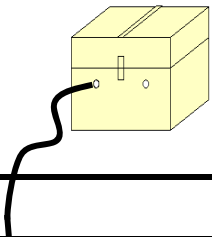


28 TAMAULIPAS

SECRETARÍA DE COMUNICACIONES Y TRANSPORTES
DIRECCIÓN GENERAL DE SERVICIOS TÉCNICOS





TAMAULIPAS

---RED FEDERAL LIBRE---

1	Antiguo Morelos - Ent. El Huizache	MEX-080
2	Cd. Valles - Cd. Victoria	MEX-085
3	Cd. Valles - Tampico	MEX-070
4	Cd. Victoria - Matamoros	MEX-101-180
5	Cd. Victoria - Soto La Marina	MEX-070
6	Ciudad Victoria - Monterrey	MEX-085
7	Ent. Tula - Cd. Victoria	MEX-101
8	Estación Manuel - T. C. (Cd. Victoria - Soto La Marina)	MEX-180
9	González - Llera de Canales	MEX-081
10	Ignacio Zaragoza - T. C. (Ciudad Victoria - Monterrey)	MEX-083
11	Las Urracas - T. C. (Matamoros - Reynosa)	MEX-097
12	Libramiento de Reynosa	MEX-040
13	Libramiento Estación Manuel - González	MEX-081
14	Matamoros - Playa Lauro Villar	MEX-002
15	Matamoros - Reynosa	MEX-002
16	Monterrey - Mier	MEX-054
17	Monterrey - Nuevo Laredo (Libre)	MEX-085
18	Monterrey - Reynosa (Libre)	MEX-040
19	Paras - Nueva Ciudad Guerrero	MEX-030
20	Piedras Negras - Nuevo Laredo	MEX-002
21	Ramal de Acceso a Puente Anzaldúas	MEX
22	Reynosa - Nuevo Laredo	MEX-002
23	Soto La Marina - La Coma	MEX-180
24	Tampico - Cd. Mante	MEX-080
25	Túxpam - Tampico	MEX-180

---RED FEDERAL DE CUOTA---

26	Libramiento Poniente de Tampico (Cuota)	MEX-070D
27	Matamoros - Reynosa (Cuota)	MEX-002D

---RED ESTATAL LIBRE---

28	Aldama - Barra El Tordo	TAM
29	Barretal - Nueva Villa de Padilla	TAM-001
30	China - Méndez	NL-TAM
31	Ébano - Estación Manuel	SLP-TAM
32	El Limón - Ocampo	TAM-019
33	Ent. Huisachito - Nuevo Laredo	NL-001-TAM
34	Ent. Las Blancas - Río Bravo	TAM-003
35	La Joya - Méndez	TAM
36	Libramiento de Cd. Victoria	TAM
37	Libramiento de Mier	TAMPS
38	Libramiento de Nuevo Laredo	TAM
39	Libramiento de Nuevo Laredo II	TAM
40	Libramiento de Río Bravo	TAM
41	Los Guerra - Los Herreras	TAM-NL
42	Peña Blanca - Cd. Camargo	NL-TAM
43	Potrero Nuevo - Rancho El Mezquital	TAM
44	Ramal a Gómez Farías	TAM-020
45	Ramal a Xicoténcatl	TAM
46	San Fernando - Carboneras	TAM
47	Soto La Marina - La Pesca	TAM-070
48	T. C. (Valle Hermoso - Empalme) - Matamoros	TAM-005
49	T. C. Libramiento Cd. Victoria - San Antonio	TAM-126
50	Valle Hermoso - Empalme	TAM-004
51	Valle Hermoso - Las Yescas	TAM

---CARRETERAS INTEGRADAS POR TRAMOS FEDERALES Y ESTATALES---

52	Santander Jiménez - Ent. El Ojito	MEX-107-TAM
----	-----------------------------------	-------------

TAMAULIPAS

1 CARR: Antigo Morelos - Ent. El Huizache

CLAVE: 00136

RUTA: MEX-080

AÑO: 2015

LUGAR	ESTACION				CLASIFICACION VEHICULAR EN PORCIENTO										COORDENADAS					
	KM	TE	SC	TDPA	M	A	B	C2	C3	T3S2	T3S3	T3S2R4	OTROS	A	B	C	K'	D	LATITUD	LONGITUD
Antigo Morelos	0.00	3	0	2306	5.8	77.3	1.3	9.4	2.0	2.6	1.2	0.2	0.2	83.1	1.3	15.6	0.092	0.504	22.554604	-99.094929
Nuevo Morelos	19.28	1	0	1072	3.8	72.3	2.5	10.6	3.4	4.1	1.8	0.9	0.6	76.1	2.5	21.4	0.092	0.510	22.540951	-99.212054
Lim. Edos. Term. Tamps. Ppia. S. L. P.	25.00																			
El Naranjo	32.00	1	0	3806	4.5	80.8	0.6	10.1	1.0	2.5	0.2	0.1	0.2	85.3	0.6	14.1	0.081	0.501	22.529513	-99.312590
El Naranjo	32.00	3	0	2197	10.5	78.2	0.7	7.0	0.9	2.2	0.3	0.1	0.1	88.7	0.7	10.6	0.079	0.501	22.517229	-99.333919
Cd. del Maiz	86.00	3	0	1497	2.3	71.4	2.1	18.7	2.6	2.1	0.6	0.1	0.1	73.7	2.1	24.2	0.089	0.503	22.412239	-99.619722
T. Der. Tula	141.21	3	0	2500	0.6	34.0	3.0	7.4	4.0	21.1	8.5	19.8	1.6	34.6	3.0	62.4	0.067	0.509	22.737427	-99.978842
T. C. San Luis Potosí - Matehuala (Ent. El Huizache)	198.83	1	0	2780	0.7	38.4	2.0	7.6	2.8	20.3	6.8	20.2	1.2	39.1	2.0	58.9	0.067	0.501	22.930929	-100.448254

2 CARR: Cd. Valles - Cd. Victoria

CLAVE: 00509

RUTA: MEX-085

AÑO: 2015

LUGAR	ESTACION				CLASIFICACION VEHICULAR EN PORCIENTO										COORDENADAS					
	KM	TE	SC	TDPA	M	A	B	C2	C3	T3S2	T3S3	T3S2R4	OTROS	A	B	C	K'	D	LATITUD	LONGITUD
Cd. Valles	0.00	3	0	9762	5.9	78.4	1.3	6.1	0.8	5.4	0.8	0.4	0.9	84.3	1.3	14.4	0.074	0.505	22.009093	-99.002884
Lim. Edos. Term. S. L. P. Ppia. Tamps.	50.40																			
Antigo Morelos	66.90	1	0	2025	5.5	69.8	6.1	6.0	2.6	4.1	1.8	3.8	0.3	75.3	6.1	18.6	0.073	0.508	22.547928	-99.078295
Antigo Morelos	66.90	3	0	3104	4.1	64.5	5.6	14.2	2.7	4.0	2.0	2.3	0.6	68.6	5.6	25.8	0.076	0.546	22.561650	-99.077836
Cd. Mante	98.00	1	0	5538	4.8	73.1	2.3	9.3	2.6	4.1	1.3	2.1	0.4	77.9	2.3	19.8	0.085	0.501	22.711894	-98.989119
T. Izq. Ocampo	110.00	3	0	3376	9.4	77.0	3.9	6.6	0.8	1.9	0.2	0.1	0.1	86.4	3.9	9.7	0.090	0.501	22.839227	-99.024507
T. Izq. Gómez Farías	132.84	3	0	1800	7.6	73.9	8.0	7.1	1.5	1.5	0.4	0.0	0.0	81.5	8.0	10.5	0.096	0.506	23.026061	-99.093662
T. Izq. Llera de Canales	170.00	3	0	3496	1.0	84.5	4.3	7.2	0.8	1.8	0.3	0.0	0.1	85.5	4.3	10.2	0.077	0.503	23.310107	-99.018313
T. Der. González	172.50	3	0	2141	1.0	82.3	6.8	6.9	1.1	1.3	0.4	0.1	0.1	83.3	6.8	9.9	0.107	0.511	23.322841	-98.998148
Cd. Victoria	232.00	1	0	2287	1.3	80.9	6.6	7.7	1.0	1.3	0.6	0.2	0.4	82.2	6.6	11.2	0.101	0.510	23.658776	-99.095800

3 CARR: Cd. Valles - Tampico

CLAVE: 00138

RUTA: MEX-070

AÑO: 2015

LUGAR	ESTACION				CLASIFICACION VEHICULAR EN PORCIENTO										COORDENADAS					
	KM	TE	SC	TDPA	M	A	B	C2	C3	T3S2	T3S3	T3S2R4	OTROS	A	B	C	K'	D	LATITUD	LONGITUD
Cd. Valles	0.00	3	0	8437	2.6	70.2	2.8	10.5	5.6	4.8	1.8	1.0	0.7	72.8	2.8	24.4	0.079	0.503	21.975960	-98.963419
T. Der. Santa Elena	15.25	3	0	6903	1.8	69.5	2.9	9.2	5.9	4.7	3.1	2.1	0.8	71.3	2.9	25.8	0.075	0.503	21.959549	-98.881101
Tamuín	29.60	1	0	6262	2.7	72.7	2.5	8.5	3.1	5.4	2.3	2.0	0.8	75.4	2.5	22.1	0.087	0.502	21.998345	-98.782192
Ébano	79.00	1	0	5604	9.1	57.6	3.9	10.5	3.7	7.2	3.7	3.4	0.9	66.7	3.9	29.4	0.082	0.510	22.214138	-98.392255
Ébano	79.00	3	0	5038	2.5	71.7	3.3	9.5	2.0	5.1	2.2	3.0	0.7	74.2	3.3	22.5	0.080	0.501	22.211597	-98.360269
Lim. Edos. Term. S. L. P. Ppia. Ver.	83.57																			
T. Der. Pánuco	103.00	1	0	5875	4.9	68.8	2.4	10.3	1.8	5.9	2.6	2.4	0.9	73.7	2.4	23.9	0.076	0.504	22.156416	-98.153925

TAMAULIPAS

3 CARR : Cd. Valles - Tampico

CLAVE: 00138

RUTA: MEX-070

AÑO : 2015

LUGAR	ESTACION				CLASIFICACION VEHICULAR EN PORCIENTO										COORDENADAS					
	KM	TE	SC	TDPA	M	A	B	C2	C3	T3S2	T3S3	T3S2R4	OTROS	A	B	C	K'	D	LATITUD	LONGITUD
T. Der. Pánuco	103.00	3	0	6763	1.4	64.3	2.6	11.9	7.2	6.6	2.6	2.7	0.7	65.7	2.6	31.7	0.080	0.501	22.158855	-98.149216
T. C. Anáhuac - El Prieto	128.40	1	1	4827	0.8	75.3	2.3	12.2	2.2	3.2	1.5	2.0	0.5	76.1	2.3	21.6	0.084	0.500	22.214855	-97.948149
T. C. Anáhuac - El Prieto	128.40	1	2	4832	1.1	72.4	2.8	13.6	2.4	3.4	1.8	2.0	0.5	73.5	2.8	23.7	0.082	0.500	22.214843	-97.948155
T. C. Anáhuac - El Prieto	128.40	3	1	6115	1.4	71.3	2.0	11.6	2.2	5.4	2.4	3.0	0.7	72.7	2.0	25.3	0.099	0.506	22.217358	-97.937610
T. C. Anáhuac - El Prieto	128.40	3	2	6262	1.4	69.2	2.1	12.6	2.6	5.6	2.6	3.1	0.8	70.6	2.1	27.3	0.105	0.506	22.217347	-97.937601
Lim. Edos. Term. Ver. Ppia. Tamps.	133.81																			
Tampico	138.00	1	1	8423	1.9	75.7	1.4	10.3	1.6	4.2	2.0	2.0	0.9	77.6	1.4	21.0	0.091	0.502	22.227010	-97.894292
Tampico	138.00	1	2	8370	2.0	72.6	1.5	12.3	1.7	4.4	2.4	2.2	0.9	74.6	1.5	23.9	0.086	0.502	22.227010	-97.894292

4 CARR : Cd. Victoria - Matamoros

CLAVE: 28139

RUTA: MEX-101-180

AÑO : 2015

LUGAR	ESTACION				CLASIFICACION VEHICULAR EN PORCIENTO										COORDENADAS					
	KM	TE	SC	TDPA	M	A	B	C2	C3	T3S2	T3S3	T3S2R4	OTROS	A	B	C	K'	D	LATITUD	LONGITUD
Cd. Victoria	0.00																			
X. C. Libramiento de Cd. Victoria	5.00	3	1	6654	3.2	83.6	2.7	6.7	0.9	1.4	0.9	0.3	0.3	86.8	2.7	10.5	0.093	0.514	23.767086	-99.112171
X. C. Libramiento de Cd. Victoria	5.00	3	2	7038	2.9	82.7	3.0	7.4	0.9	1.5	1.0	0.3	0.3	85.6	3.0	11.4	0.094	0.514	23.767076	-99.112166
T. Izq. Barretal	46.50	1	0	6154	0.4	60.8	4.6	7.3	2.0	13.2	3.5	7.1	1.1	61.2	4.6	34.2	0.082	0.502	24.038028	-98.904722
T. Der. Las Juntas	80.05	1	0	4134	0.2	56.0	5.0	6.9	2.1	14.9	4.7	9.1	1.1	56.2	5.0	38.8	0.105	0.512	24.111028	-98.607361
Santander Jiménez	97.00	3	0	3959	0.3	56.2	5.0	6.5	2.2	15.2	4.5	9.2	0.9	56.5	5.0	38.5	0.112	0.528	24.238611	-98.476167
T. Der. Soto La Marina	129.00	3	1	2074	0.2	58.3	5.7	6.6	2.0	13.6	4.0	8.8	0.8	58.5	5.7	35.8	0.113	0.528	24.470639	-98.340444
T. Der. Soto La Marina	129.00	3	2	2317	0.1	54.0	6.3	7.0	2.0	16.1	4.5	9.2	0.8	54.1	6.3	39.6	0.129	0.528	24.470639	-98.340444
San Fernando	175.00	3	0	4183	1.1	79.5	2.0	12.4	1.5	1.9	0.8	0.6	0.2	80.6	2.0	17.4	0.077	0.516	24.863092	-98.139660
T. Izq. Reynosa	202.00	1	0	7141	0.4	64.0	4.1	9.1	1.1	10.8	2.9	6.7	0.9	64.4	4.1	31.5	0.092	0.509	25.060415	-98.069984
T. Izq. Reynosa	202.00	3	0	3922	0.3	67.2	3.2	9.0	1.1	7.1	3.1	8.4	0.6	67.5	3.2	29.3	0.108	0.532	25.075960	-98.065116
T. Der. Los Vergeles	220.00	1	0	3779	0.2	65.7	3.5	9.4	1.0	7.4	3.2	8.9	0.7	65.9	3.5	30.6	0.101	0.531	25.177256	-97.961683
Santa Teresa	233.00	1	0	3633	0.1	67.7	3.5	8.2	1.0	7.2	3.2	8.3	0.8	67.8	3.5	28.7	0.099	0.529	25.274665	-97.862306
T. Izq. Valle Hermoso	254.50	1	0	4039	0.3	67.4	3.1	10.2	1.0	7.3	2.7	7.0	1.0	67.7	3.1	29.2	0.094	0.506	25.445570	-97.818867
T. Izq. Jarita	286.00	3	1	2323	0.4	75.8	2.2	12.8	0.7	3.8	0.7	3.4	0.2	76.2	2.2	21.6	0.116	0.520	25.668315	-97.599848
T. Izq. Jarita	286.00	3	2	2515	0.5	73.6	2.4	13.9	0.6	4.2	0.8	3.8	0.2	74.1	2.4	23.5	0.126	0.520	25.668316	-97.599856
Matamoros	312.00	1	1	7013	0.7	80.3	2.0	11.5	1.0	2.6	0.7	0.9	0.3	81.0	2.0	17.0	0.081	0.508	25.786795	-97.530741
Matamoros	312.00	1	2	7255	0.8	78.8	2.1	12.1	1.2	3.0	0.7	1.0	0.3	79.6	2.1	18.3	0.073	0.508	25.786807	-97.530729

TAMAULIPAS

5 CARR: Cd. Victoria - Soto La Marina

CLAVE: 28009

RUTA: MEX-070

AÑO: 2015

LUGAR	ESTACION				CLASIFICACION VEHICULAR EN PORCIENTO														COORDENADAS	
	KM	TE	SC	TDPA	M	A	B	C2	C3	T3S2	T3S3	T3S2R4	OTROS	A	B	C	K'	D	LATITUD	LONGITUD
Cd. Victoria	0.00	3	1	5772	3.4	78.9	2.0	11.2	1.4	1.3	0.8	0.7	0.3	82.3	2.0	15.7	0.121	0.505	23.719210	-99.090792
Cd. Victoria	0.00	3	2	5891	3.6	76.9	2.4	12.2	1.5	1.5	1.0	0.7	0.2	80.5	2.4	17.1	0.101	0.505	23.719214	-99.090790
Soto La Marina	116.80	1	0	3230	2.2	75.0	4.6	11.0	2.1	3.5	0.8	0.4	0.4	77.2	4.6	18.2	0.078	0.504	23.758444	-98.207361

6 CARR: Ciudad Victoria - Monterrey

CLAVE: 00462

RUTA: MEX-085

AÑO: 2015

LUGAR	ESTACION				CLASIFICACION VEHICULAR EN PORCIENTO														COORDENADAS	
	KM	TE	SC	TDPA	M	A	B	C2	C3	T3S2	T3S3	T3S2R4	OTROS	A	B	C	K'	D	LATITUD	LONGITUD
Cd. Victoria (Central)	0.00	3	1	6084	2.8	84.5	1.5	8.4	0.9	1.0	0.5	0.3	0.1	87.3	1.5	11.2	0.087	0.521	23.780425	-99.136362
Cd. Victoria (Lateral)	0.00	3	1	1072	5.8	76.9	0.5	15.2	0.7	0.5	0.2	0.0	0.2	82.7	0.5	16.8	0.088	0.522	23.780425	-99.136362
Cd. Victoria (Lateral)	0.00	3	2	1169	6.6	74.7	0.5	16.5	0.8	0.6	0.2	0.0	0.1	81.3	0.5	18.2	0.102	0.522	23.780393	-99.136358
Cd. Victoria (Central)	0.00	3	2	5584	2.9	83.3	1.5	9.4	0.9	1.1	0.5	0.3	0.1	86.2	1.5	12.3	0.092	0.521	23.780393	-99.136358
T. Der. Güemez	19.60	3	0	6842	0.9	80.5	3.4	9.0	1.4	3.2	0.6	0.7	0.3	81.4	3.4	15.2	0.072	0.512	23.916028	-99.112361
T. Izq. Santa Engracia	27.35	3	0	6805	0.4	64.8	5.0	7.5	2.2	8.9	2.8	7.5	0.9	65.2	5.0	29.8	0.084	0.512	23.988667	-99.111333
Barretal	39.00	3	0	6307	0.3	58.4	6.4	8.0	2.1	11.0	3.3	9.6	0.9	58.7	6.4	34.9	0.074	0.505	24.091028	-99.138167
T. Izq. Hidalgo y La Mesa	77.50	1	0	5691	0.3	58.7	6.6	8.5	2.2	10.5	3.8	8.5	0.9	59.0	6.6	34.4	0.075	0.501	24.245333	-99.426833
Villagrán	106.00	1	0	4976	0.4	55.9	6.8	9.0	2.7	11.4	3.9	9.0	0.9	56.3	6.8	36.9	0.090	0.502	24.467500	-99.494778
T. Izq. Villa Mainero	118.00	3	0	5715	1.0	50.0	6.9	10.8	3.4	11.7	4.3	11.0	0.9	51.0	6.9	42.1	0.081	0.517	24.568944	-99.546667
Lim. Edos. Term. Tamps. Ppia. N. L.	126.20																			
Linares	154.00	1	0	7175	1.1	57.0	5.3	11.3	3.4	10.1	3.3	7.7	0.8	58.1	5.3	36.6	0.079	0.508	24.834500	-99.558917
La Laja	171.00	3	1	5358	0.7	68.8	4.9	8.1	3.1	6.4	2.3	5.2	0.5	69.5	4.9	25.6	0.117	0.508	24.921973	-99.688213
La Laja	171.00	3	2	5528	0.8	67.4	5.1	8.1	3.4	6.9	2.4	5.4	0.5	68.2	5.1	26.7	0.090	0.508	24.921967	-99.688223
Montemorelos	205.00	3	1	9555	1.0	76.5	2.9	8.4	2.0	4.0	1.8	2.8	0.6	77.5	2.9	19.6	0.108	0.503	25.202419	-99.906496
Montemorelos	205.00	3	2	9442	1.0	73.5	3.1	9.4	2.4	4.8	2.0	3.2	0.6	74.5	3.1	22.4	0.080	0.503	25.202411	-99.906479
Allende	227.45	3	1	13838	0.9	81.5	2.2	7.6	1.8	3.0	1.1	1.6	0.3	82.4	2.2	15.4	0.128	0.504	25.296026	-100.048762
Allende	227.45	3	2	13606	0.9	80.0	2.5	8.4	1.9	3.1	1.2	1.7	0.3	80.9	2.5	16.6	0.102	0.504	25.296035	-100.048778
El Cercado	249.00	1	1	23532	1.2	86.2	1.4	6.1	1.1	2.0	0.7	1.1	0.2	87.4	1.4	11.2	0.100	0.502	25.397016	-100.125099
El Cercado	249.00	1	2	23701	1.3	85.0	1.6	6.4	1.3	2.1	0.8	1.3	0.2	86.3	1.6	12.1	0.087	0.502	25.397016	-100.125100
T. Der. Las Huertas	257.00	3	1	22132	0.9	86.1	1.1	7.5	0.9	1.7	0.8	0.8	0.2	87.0	1.1	11.9	0.094	0.543	25.466218	-100.173309
T. Der. Las Huertas	257.00	3	2	26260	0.7	84.8	1.3	8.4	1.0	1.9	0.8	0.9	0.2	85.5	1.3	13.2	0.127	0.543	25.466232	-100.173306
T. Izq. el Barro	266.00	3	1	28711	0.4	89.4	1.0	5.0	0.9	1.5	0.8	0.7	0.3	89.8	1.0	9.2	0.122	0.504	25.527326	-100.210031
T. Izq. el Barro	266.00	3	2	29194	0.4	88.2	1.1	5.6	1.0	1.7	0.9	0.8	0.3	88.6	1.1	10.3	0.125	0.504	25.527319	-100.210029
La Estanzuela	274.82	3	1	51477	0.3	88.5	0.5	5.6	0.6	1.4	2.0	0.5	0.6	88.8	0.5	10.7	0.091	0.514	25.590135	-100.259484
La Estanzuela	274.82	3	2	54370	0.4	87.4	0.5	6.4	0.6	1.6	2.0	0.5	0.6	87.8	0.5	11.7	0.075	0.514	25.590136	-100.259474
Monterrey (Baja)	287.00	1	1	12932	0.9	85.6	0.4	4.1	0.4	2.3	4.4	1.0	0.9	86.5	0.4	13.1	0.061	0.523	25.601803	-100.265676

TAMAULIPAS

6 CARR: Ciudad Victoria - Monterrey

CLAVE: 00462

RUTA: MEX-085

AÑO: 2015

LUGAR	ESTACION				CLASIFICACION VEHICULAR EN PORCIENTO										COORDENADAS					
	KM	TE	SC	TDPA	M	A	B	C2	C3	T3S2	T3S3	T3S2R4	OTROS	A	B	C	K'	D	LATITUD	LONGITUD
Monterrey (Alta)	287.00	1	1	48349	0.4	87.7	0.3	3.7	0.4	2.0	4.0	0.7	0.8	88.1	0.3	11.6	0.055	0.523	25.601806	-100.265639
Monterrey (Baja)	287.00	1	2	45243	0.5	85.4	0.4	4.2	0.4	2.5	4.7	1.0	0.9	85.9	0.4	13.7	0.055	0.523	25.601793	-100.265678
Monterrey (Alta)	287.00	1	2	21914	0.7	84.8	0.3	4.9	0.4	2.3	4.8	0.7	1.1	85.5	0.3	14.2	0.059	0.523	25.601811	-100.265674

7 CARR: Ent. Tula - Cd. Victoria

CLAVE: 00179

RUTA: MEX-101

AÑO: 2015

LUGAR	ESTACION				CLASIFICACION VEHICULAR EN PORCIENTO										COORDENADAS					
	KM	TE	SC	TDPA	M	A	B	C2	C3	T3S2	T3S3	T3S2R4	OTROS	A	B	C	K'	D	LATITUD	LONGITUD
T. C. Antiguo Morelos - El Huizache	0.00	3	0	3490	0.9	40.6	4.6	8.2	2.1	17.8	7.4	16.1	2.3	41.5	4.6	53.9	0.066	0.501	22.737990	-99.967956
Lim. Edos. Term. S. L. P. Ppia. Tamps.	2.40																			
T. Der. Tula (1° Acceso)	38.00	1	0	4236	1.3	47.6	3.1	9.6	3.2	16.3	4.5	13.4	1.0	48.9	3.1	48.0	0.070	0.501	22.983223	-99.736052
T. Der. Tula (2° Acceso)	41.95	3	0	3638	0.7	43.8	3.8	10.2	3.3	19.0	4.8	13.3	1.1	44.5	3.8	51.7	0.063	0.514	23.020279	-99.714552
Jaumave	112.68	1	0	4725	1.2	56.0	2.6	7.5	2.0	14.4	4.4	11.0	0.9	57.2	2.6	40.2	0.068	0.502	23.399449	-99.403782
Jaumave	112.68	3	0	4747	1.2	53.4	3.0	7.3	2.1	13.4	5.2	13.4	1.0	54.6	3.0	42.4	0.070	0.510	23.417968	-99.374091
Cd. Victoria	180.00	1	1	3436	13.6	77.8	0.1	7.1	0.4	0.6	0.3	0.0	0.1	91.4	0.1	8.5	0.121	0.517	23.710855	-99.176345
Cd. Victoria	180.00	1	2	3205	9.9	80.9	0.1	7.8	0.3	0.6	0.3	0.0	0.1	90.8	0.1	9.1	0.082	0.517	23.710846	-99.176336

8 CARR: Estación Manuel - T. C. (Cd. Victoria - Soto La Marina)

CLAVE: 28294

RUTA: MEX-180

AÑO: 2015

LUGAR	ESTACION				CLASIFICACION VEHICULAR EN PORCIENTO										COORDENADAS					
	KM	TE	SC	TDPA	M	A	B	C2	C3	T3S2	T3S3	T3S2R4	OTROS	A	B	C	K'	D	LATITUD	LONGITUD
Estación Manuel	0.00	3	0	2549	0.6	71.1	4.6	14.4	3.7	3.4	1.6	0.4	0.2	71.7	4.6	23.7	0.074	0.511	22.761028	-98.310083
T. Der. Aldama	36.00	3	0	3163	4.7	72.1	3.1	13.8	1.1	3.1	1.1	0.5	0.5	76.8	3.1	20.1	0.075	0.520	22.943833	-98.075222
Esperanza	69.00	3	0	1649	2.8	65.1	7.3	13.6	4.0	4.6	1.7	0.6	0.3	67.9	7.3	24.8	0.093	0.504	23.182306	-97.952722
San José de Las Rusias	116.25	3	0	1248	0.5	68.2	6.0	15.8	2.1	4.7	1.8	0.6	0.3	68.7	6.0	25.3	0.100	0.503	23.561722	-98.042194
Estación Manuel - T. C. (Cd. Victoria - S. La Marina)	145.00	1	0	1595	1.7	69.7	5.0	15.4	2.2	3.9	1.5	0.2	0.4	71.4	5.0	23.6	0.098	0.532	23.730778	-98.219278

9 CARR: González - Llera de Canales

CLAVE: 28578

RUTA: MEX-081

AÑO: 2015

LUGAR	ESTACION				CLASIFICACION VEHICULAR EN PORCIENTO										COORDENADAS					
	KM	TE	SC	TDPA	M	A	B	C2	C3	T3S2	T3S3	T3S2R4	OTROS	A	B	C	K'	D	LATITUD	LONGITUD
González	0.00	3	0	5110	0.9	42.8	3.9	7.6	3.4	15.8	6.1	18.4	1.1	43.7	3.9	52.4	0.075	0.515	22.845084	-98.450907
Estación Ignacio Zaragoza	58.50	1	0	5405	0.7	43.7	4.6	5.6	4.0	15.6	6.0	18.6	1.2	44.4	4.6	51.0	0.069	0.513	23.183680	-98.771771
T. C. Cd. Valles - Cd. Victoria	89.00	1	0	2018	1.0	90.2	0.7	5.9	0.7	1.4	0.1	0.0	0.0	91.2	0.7	8.1	0.087	0.502	23.316950	-98.996514

TAMAULIPAS

10 CARR: Ignacio Zaragoza - T. C. (Ciudad Victoria - Monterrey)

CLAVE: 28625

RUTA: MEX-083

AÑO: 2015

LUGAR	ESTACION				CLASIFICACION VEHICULAR EN PORCIENTO														COORDENADAS	
	KM	TE	SC	TDPA	M	A	B	C2	C3	T3S2	T3S3	T3S2R4	OTROS	A	B	C	K'	D	LATITUD	LONGITUD
T. C. González - Llera de Canales	0.00	3	0	4967	0.7	47.7	4.5	6.5	3.1	14.1	5.6	16.9	0.9	48.4	4.5	47.1	0.084	0.512	23.207752	-98.786935
T. C. Ciudad Victoria - Monterrey	94.30	1	0	3045	0.6	43.1	4.4	5.9	5.9	14.9	5.5	18.7	1.0	43.7	4.4	51.9	0.077	0.509	23.956306	-99.101500

11 CARR: Las Urracas - T. C. (Matamoros - Reynosa)

CLAVE: 28029

RUTA: MEX-097

AÑO: 2015

LUGAR	ESTACION				CLASIFICACION VEHICULAR EN PORCIENTO														COORDENADAS	
	KM	TE	SC	TDPA	M	A	B	C2	C3	T3S2	T3S3	T3S2R4	OTROS	A	B	C	K'	D	LATITUD	LONGITUD
T. C. Cd. Victoria - Matamoros	0.00	3	0	3440	0.3	62.9	4.8	9.4	1.4	13.4	2.1	4.8	0.9	63.2	4.8	32.0	0.093	0.500	25.076247	-98.074839
La Nutria	41.00	1	0	3499	0.3	55.7	5.4	11.2	2.1	16.0	3.2	5.1	1.0	56.0	5.4	38.6	0.087	0.502	25.389945	-98.219129
Santo Domingo	91.50	1	0	4066	0.2	65.2	4.0	10.8	1.3	11.9	2.1	3.7	0.8	65.4	4.0	30.6	0.085	0.512	25.827294	-98.259403
T. C. Matamoros - Reynosa	113.25	1	1	3848	1.9	80.8	2.7	10.1	0.8	1.9	0.9	0.6	0.3	82.7	2.7	14.6	0.097	0.503	25.977772	-98.273690
T. C. Matamoros - Reynosa	113.25	1	2	3806	1.4	80.1	3.0	10.5	0.8	2.3	1.0	0.6	0.3	81.5	3.0	15.5	0.122	0.503	19.476077	-98.354056

12 CARR: Libramiento de Reynosa

CLAVE: 28008

RUTA: MEX-040

AÑO: 2015

LUGAR	ESTACION				CLASIFICACION VEHICULAR EN PORCIENTO														COORDENADAS	
	KM	TE	SC	TDPA	M	A	B	C2	C3	T3S2	T3S3	T3S2R4	OTROS	A	B	C	K'	D	LATITUD	LONGITUD
T. C. Matamoros - Reynosa	0.00	3	1	31791	0.6	85.1	1.0	6.6	1.2	2.9	1.3	0.6	0.7	85.7	1.0	13.3	0.084	0.534	26.043492	-98.296080
T. C. Matamoros - Reynosa	0.00	3	2	27735	0.7	83.3	1.1	7.4	1.3	3.2	1.5	0.7	0.8	84.0	1.1	14.9	0.076	0.534	26.043157	-98.297175
T. C. Monterrey - Reynosa	10.00	1	1	29267	0.5	87.3	0.9	5.4	0.7	2.3	1.8	0.5	0.6	87.8	0.9	11.3	0.081	0.515	26.048612	-98.353043
T. C. Monterrey - Reynosa	10.00	1	2	31092	0.6	86.2	1.0	5.8	0.8	2.5	2.0	0.5	0.6	86.8	1.0	12.2	0.082	0.515	26.049099	-98.353474

13 CARR: Libramiento Estación Manuel - González

CLAVE: 28002

RUTA: MEX-081

AÑO: 2015

LUGAR	ESTACION				CLASIFICACION VEHICULAR EN PORCIENTO														COORDENADAS	
	KM	TE	SC	TDPA	M	A	B	C2	C3	T3S2	T3S3	T3S2R4	OTROS	A	B	C	K'	D	LATITUD	LONGITUD
T. C. Tampico - Cd. Mante	0.00	3	0	5022	0.5	54.7	3.7	6.2	2.8	12.7	6.1	12.4	0.9	55.2	3.7	41.1	0.087	0.522	22.713472	-98.288083
T. C. Tampico - Cd. Mante	24.80	1	0	4907	1.1	48.2	4.8	5.4	3.4	14.2	5.4	16.4	1.1	49.3	4.8	45.9	0.069	0.522	22.845214	-98.437692

14 CARR: Matamoros - Playa Lauro Villar

CLAVE: 28078

RUTA: MEX-002

AÑO: 2015

LUGAR	ESTACION				CLASIFICACION VEHICULAR EN PORCIENTO														COORDENADAS	
	KM	TE	SC	TDPA	M	A	B	C2	C3	T3S2	T3S3	T3S2R4	OTROS	A	B	C	K'	D	LATITUD	LONGITUD
Matamoros	0.00	3	1	12252	0.7	89.3	1.1	4.9	0.6	1.5	1.4	0.1	0.4	90.0	1.1	8.9	0.111	0.517	25.837549	-97.438112
Matamoros	0.00	3	2	11462	0.9	88.0	1.1	5.7	0.6	1.7	1.5	0.1	0.4	88.9	1.1	10.0	0.098	0.517	25.837544	-97.438111

TAMAULIPAS

14 CARR: Matamoros - Playa Lauro Villar

CLAVE: 28078

RUTA: MEX-002

AÑO: 2015

LUGAR	ESTACION				CLASIFICACION VEHICULAR EN PORCIENTO													COORDENADAS			
	KM	TE	SC	TDPA	M	A	B	C2	C3	T3S2	T3S3	T3S2R4	OTROS	A	B	C	K'	D	LATITUD	LONGITUD	
Playa Lauro Villar	37.00																				

15 CARR: Matamoros - Reynosa

CLAVE: 28077

RUTA: MEX-002

AÑO: 2015

LUGAR	ESTACION				CLASIFICACION VEHICULAR EN PORCIENTO													COORDENADAS		
	KM	TE	SC	TDPA	M	A	B	C2	C3	T3S2	T3S3	T3S2R4	OTROS	A	B	C	K'	D	LATITUD	LONGITUD
Matamoros	0.00	3	0	12037	0.6	82.9	1.7	6.7	1.4	4.0	1.1	1.1	0.5	83.5	1.7	14.8	0.097	0.505	25.922053	-97.583875
Empalme	38.00	1	0	4741	0.3	79.9	1.0	9.2	1.8	4.6	1.5	1.4	0.3	80.2	1.0	18.8	0.076	0.504	25.924124	-97.784498
T. Der. Nuevo Progreso	57.00	1	0	2525	0.3	69.6	1.8	12.9	2.9	7.4	2.2	2.6	0.3	69.9	1.8	28.3	0.099	0.532	25.947784	-97.963793
Río Bravo	67.00	1	0	6322	0.7	74.3	1.3	14.0	2.3	3.9	1.8	1.5	0.2	75.0	1.3	23.7	0.067	0.502	25.970205	-98.039381
Río Bravo	67.00	3	1	9546	0.6	84.3	1.7	7.5	1.3	2.4	1.1	0.6	0.5	84.9	1.7	13.4	0.093	0.514	25.997248	-98.134693
Río Bravo	67.00	3	2	10111	0.7	82.1	1.8	9.1	1.5	2.6	1.1	0.6	0.5	82.8	1.8	15.4	0.093	0.514	25.997251	-98.134701
T. Izq. Aeropuerto	85.65	3	1	31924	0.8	84.5	1.6	6.2	1.3	2.9	1.6	0.5	0.6	85.3	1.6	13.1	0.101	0.511	26.025685	-98.249747
T. Izq. Aeropuerto	85.65	3	2	30591	0.9	83.1	1.6	6.5	1.4	3.3	1.8	0.6	0.8	84.0	1.6	14.4	0.096	0.511	26.024760	-98.247587
Reynosa	98.00	1	1	31936	0.6	84.5	1.4	7.0	0.9	2.8	1.8	0.5	0.5	85.1	1.4	13.5	0.073	0.509	26.035714	-98.274016
Reynosa	98.00	1	2	33108	0.6	83.8	1.6	7.2	1.0	2.8	2.0	0.5	0.5	84.4	1.6	14.0	0.093	0.509	26.035673	-98.273019

16 CARR: Monterrey - Mier

CLAVE: 00127

RUTA: MEX-054

AÑO: 2015

LUGAR	ESTACION				CLASIFICACION VEHICULAR EN PORCIENTO													COORDENADAS			
	KM	TE	SC	TDPA	M	A	B	C2	C3	T3S2	T3S3	T3S2R4	OTROS	A	B	C	K'	D	LATITUD	LONGITUD	
Monterrey	0.00																				
Apodaca	19.12	1	1	62145	0.7	86.5	0.6	5.0	0.9	2.2	2.4	0.8	0.9	87.2	0.6	12.2	0.072	0.519	25.745746	-100.202877	
Apodaca	19.12	1	2	57490	0.8	85.3	0.7	5.3	1.1	2.4	2.6	0.8	1.0	86.1	0.7	13.2	0.070	0.519	25.745746	-100.202869	
X. C. Libramiento Noroeste de Monterrey	21.30	3	1	42507	0.5	85.2	0.6	7.1	1.6	2.8	1.3	0.6	0.3	85.7	0.6	13.7	0.081	0.522	25.784424	-100.160490	
X. C. Libramiento Noroeste de Monterrey	21.30	3	2	38956	0.5	83.5	0.6	7.8	2.0	3.2	1.4	0.7	0.3	84.0	0.6	15.4	0.093	0.522	25.784748	-100.160397	
X. C. Zacatecas - Pesquería	28.15	1	1	12009	1.0	76.6	1.0	12.6	2.4	2.6	2.6	0.7	0.5	77.6	1.0	21.4	0.092	0.508	25.799411	-100.101452	
X. C. Zacatecas - Pesquería	28.15	1	2	11608	0.9	74.2	1.0	14.3	2.6	2.9	2.6	0.9	0.6	75.1	1.0	23.9	0.099	0.508	25.799202	-100.101802	
X. C. Zacatecas - Pesquería	28.15	3	0	8179	0.9	74.4	0.8	12.4	3.2	5.0	1.3	1.5	0.5	75.3	0.8	23.9	0.085	0.500	25.806613	-100.093693	
X. C. Hacienda Guadalupe - Higuera	38.10	1	0	5291	0.8	78.2	1.6	8.5	1.9	5.1	1.0	2.4	0.5	79.0	1.6	19.4	0.091	0.542	25.854310	-100.025701	
X. C. Hacienda Guadalupe - Higuera	38.10	3	0	4062	2.1	70.7	1.1	15.0	1.5	4.1	0.9	4.2	0.4	72.8	1.1	26.1	0.087	0.515	25.854771	-100.017726	
Dr. González	47.60	1	0	2221	1.4	83.8	1.1	9.1	1.7	1.8	0.4	0.6	0.1	85.2	1.1	13.7	0.077	0.501	25.851040	-99.967077	
Dr. González	47.60	3	0	446	7.6	75.2	5.7	9.5	0.6	1.1	0.1	0.2	0.0	82.8	5.7	11.5	0.128	0.545	25.867212	-99.933303	
T. Der. Empalme Los Ramones	74.10	1	0	1726	0.3	65.6	1.9	12.1	2.2	5.3	1.3	11.0	0.3	65.9	1.9	32.2	0.110	0.506	25.923439	-99.721675	
Cerralvo	95.95	1	0	3027	0.4	69.6	1.1	9.2	1.2	3.8	1.3	13.0	0.4	70.0	1.1	28.9	0.087	0.503	26.068324	-99.626319	

TAMAULIPAS

16 CARR: Monterrey - Mier

CLAVE: 00127

RUTA: MEX-054

AÑO: 2015

LUGAR	ESTACION				CLASIFICACION VEHICULAR EN PORCIENTO														COORDENADAS	
	KM	TE	SC	TDPA	M	A	B	C2	C3	T3S2	T3S3	T3S2R4	OTROS	A	B	C	K'	D	LATITUD	LONGITUD
Gral. Treviño	115.80	3	0	1215	0.2	61.6	2.0	10.1	1.8	7.1	2.0	14.6	0.6	61.8	2.0	36.2	0.096	0.502	26.232016	-99.470809
Lim. Edos. Term. N. L. Ppia. Tamps.	131.80																			
Mier	156.21	1	0	1220	0.2	56.5	2.3	14.0	3.8	7.5	1.8	13.5	0.4	56.7	2.3	41.0	0.101	0.507	26.426167	-99.164919

17 CARR: Monterrey - Nuevo Laredo (Libre)

CLAVE: 00463

RUTA: MEX-085

AÑO: 2015

LUGAR	ESTACION				CLASIFICACION VEHICULAR EN PORCIENTO														COORDENADAS	
	KM	TE	SC	TDPA	M	A	B	C2	C3	T3S2	T3S3	T3S2R4	OTROS	A	B	C	K'	D	LATITUD	LONGITUD
Monterrey	0.00																			
T. Izq. Gral. Escobedo	12.10	3	1	33794	1.3	85.8	0.8	5.6	0.8	2.3	2.1	0.5	0.8	87.1	0.8	12.1	0.063	0.509	25.788081	-100.282597
T. Izq. Gral. Escobedo	12.10	3	2	32645	0.8	84.9	0.8	6.5	0.9	2.4	2.4	0.5	0.8	85.7	0.8	13.5	0.069	0.509	25.788585	-100.282832
X. C. Libramiento Noroeste de Monterrey	16.00	1	1	28098	0.9	82.6	1.3	7.6	1.6	2.9	1.9	0.5	0.7	83.5	1.3	15.2	0.087	0.517	25.827028	-100.260510
X. C. Libramiento Noroeste de Monterrey	16.00	1	2	30040	1.0	80.6	1.4	8.6	1.7	3.4	2.1	0.5	0.7	81.6	1.4	17.0	0.069	0.517	25.827377	-100.260468
X. C. Libramiento Noroeste de Monterrey	16.00	3	1	39809	2.4	68.5	1.8	7.7	3.2	10.6	3.0	1.9	0.9	70.9	1.8	27.3	0.062	0.506	25.835053	-100.254694
X. C. Libramiento Noroeste de Monterrey	16.00	3	2	40698	1.8	66.3	2.2	8.0	3.6	11.8	3.3	2.1	0.9	68.1	2.2	29.7	0.068	0.506	25.835048	-100.254710
X. C. Santa Rosa - Salinas Victoria	20.19	3	1	29239	2.0	72.2	1.8	7.3	2.7	9.4	2.2	1.6	0.8	74.2	1.8	24.0	0.080	0.509	25.854587	-100.241049
X. C. Santa Rosa - Salinas Victoria	20.19	3	2	30345	2.2	68.8	1.9	8.3	3.3	10.7	2.3	1.7	0.8	71.0	1.9	27.1	0.080	0.509	25.854658	-100.240993
Ciénega de Flores	32.00	1	0	18207	1.6	72.1	1.2	13.2	1.8	8.8	0.7	0.2	0.4	73.7	1.2	25.1	0.074	0.505	25.943949	-100.176915
T. Der. Agualeguas	78.23	3	0	5829	0.6	48.9	2.4	12.4	3.1	28.9	1.4	1.2	1.1	49.5	2.4	48.1	0.070	0.511	26.331963	-100.110373
Sabinas Hidalgo	98.90	3	0	4964	2.0	42.5	2.8	14.0	3.8	31.0	1.9	1.2	0.8	44.5	2.8	52.7	0.065	0.509	26.534348	-100.148738
Vallecillos	124.40	3	0	3944	1.0	33.0	2.7	14.5	3.5	40.9	2.0	1.5	0.9	34.0	2.7	63.3	0.066	0.535	26.663054	-99.980553
T. Izq. Anáhuac	156.80	1	0	3706	2.9	32.6	3.8	14.1	5.0	37.1	1.7	2.0	0.8	35.5	3.8	60.7	0.073	0.510	26.874366	-99.832675
T. Izq. Anáhuac	156.80	3	1	7514	2.1	37.2	3.6	7.5	2.9	41.5	2.0	1.7	1.5	39.3	3.6	57.1	0.083	0.501	26.897150	-99.813052
T. Izq. Anáhuac	156.80	3	2	7559	1.2	31.0	4.2	8.0	3.0	46.6	2.4	1.9	1.7	32.2	4.2	63.6	0.073	0.501	26.900695	-99.812091
Lim. Edos. Term. N. L. Ppia. Tamps.	184.56																			
T. Der. Mier	205.90	1	1	8090	0.6	48.6	3.2	10.3	2.5	32.2	0.9	1.1	0.6	49.2	3.2	47.6	0.095	0.509	27.288862	-99.604835
T. Der. Mier	205.90	1	2	8382	1.0	44.6	3.7	11.7	2.5	33.5	1.0	1.3	0.7	45.6	3.7	50.7	0.068	0.509	27.292600	-99.603019
T. Der. Mier	205.90	3	1	6799	1.4	52.0	3.8	9.0	4.1	26.3	1.2	0.9	1.3	53.4	3.8	42.8	0.075	0.509	27.314969	-99.591241
T. Der. Mier	205.90	3	2	7047	0.7	45.8	4.1	10.5	4.5	30.7	1.3	1.0	1.4	46.5	4.1	49.4	0.071	0.509	27.314977	-99.591235
Nuevo Laredo	228.00	1	1	11626	1.2	64.9	2.6	9.3	3.7	14.8	1.4	0.5	1.6	66.1	2.6	31.3	0.072	0.508	27.386911	-99.552684
Nuevo Laredo	228.00	1	2	11245	0.8	62.6	2.8	10.0	3.9	16.0	1.6	0.6	1.7	63.4	2.8	33.8	0.075	0.508	27.386928	-99.552674

TAMAULIPAS

18 CARR: Monterrey - Reynosa (Libre)

CLAVE: 00088

RUTA: MEX-040

AÑO: 2015

LUGAR	ESTACION				CLASIFICACION VEHICULAR EN PORCIENTO										COORDENADAS					
	KM	TE	SC	TDPA	M	A	B	C2	C3	T3S2	T3S3	T3S2R4	OTROS	A	B	C	K'	D	LATITUD	LONGITUD
T. C. Monterrey - Mier	0.00																			
Villa Juárez	19.10	1	1	22840	1.9	87.6	0.2	6.8	0.6	0.9	1.4	0.3	0.3	89.5	0.2	10.3	0.080	0.503	25.653783	-100.117718
Villa Juárez	19.10	1	2	23105	1.7	86.8	0.2	7.6	0.6	1.0	1.5	0.3	0.3	88.5	0.2	11.3	0.085	0.503	25.653783	-100.117704
Villa Juárez	19.10	3	1	13530	1.5	86.1	0.4	7.9	1.2	1.2	1.2	0.2	0.3	87.6	0.4	12.0	0.075	0.503	25.631437	-100.075958
Villa Juárez	19.10	3	2	13678	1.5	84.2	0.4	9.6	1.2	1.3	1.3	0.2	0.3	85.7	0.4	13.9	0.083	0.503	25.631441	-100.075956
Puente Cadereyta	30.50	2	1	2112	0.6	66.8	0.4	6.9	4.2	12.4	2.3	5.7	0.7	67.4	0.4	32.2	0.091	0.500	25.601076	-100.005752
Puente Cadereyta	30.50	2	2	2112	0.6	66.8	0.4	6.9	4.2	12.4	2.3	5.7	0.7	67.4	0.4	32.2	0.091	0.500	25.601076	-100.005752
Refinería de Cadereyta	33.00	3	0	5781	0.8	68.2	1.6	16.3	2.6	7.2	1.9	0.8	0.6	69.0	1.6	29.4	0.075	0.531	25.594445	-99.921904
T. Izq. Los Ramones	68.78	3	0	3000	0.3	63.9	2.1	16.4	2.1	11.3	3.0	0.6	0.3	64.2	2.1	33.7	0.079	0.522	25.620583	-99.625798
Gral. Bravo	125.00	1	0	4510	0.7	69.0	2.0	15.5	1.4	7.7	2.1	1.0	0.6	69.7	2.0	28.3	0.080	0.516	25.776116	-99.189423
Lim. Edos. Term. N. L. Ppia. Tamps.	192.00																			
T. Izq. Díaz Ordáz	192.55	1	1	4470	0.4	67.7	3.9	9.0	1.7	10.3	2.5	3.5	1.0	68.1	3.9	28.0	0.098	0.503	25.967437	-98.594097
T. Izq. Díaz Ordáz	192.55	1	2	4519	0.5	64.6	4.3	9.7	1.9	11.1	2.6	4.3	1.0	65.1	4.3	30.6	0.096	0.503	25.967946	-98.594202
Reynosa	225.00	1	1	19715	0.6	83.6	1.7	8.0	1.0	3.3	0.7	0.9	0.2	84.2	1.7	14.1	0.078	0.549	26.041890	-98.402525
Reynosa	225.00	1	2	16168	0.5	82.3	1.8	8.7	1.2	3.7	0.7	0.9	0.2	82.8	1.8	15.4	0.093	0.549	26.042699	-98.402192

19 CARR: Paras - Nueva Ciudad Guerrero

CLAVE: 00476

RUTA: MEX-030

AÑO: 2015

LUGAR	ESTACION				CLASIFICACION VEHICULAR EN PORCIENTO										COORDENADAS					
	KM	TE	SC	TDPA	M	A	B	C2	C3	T3S2	T3S3	T3S2R4	OTROS	A	B	C	K'	D	LATITUD	LONGITUD
Paras	0.00	3	0	275	1.8	70.3	0.8	21.4	1.4	1.2	1.4	1.6	0.1	72.1	0.8	27.1	0.142	0.545	26.502052	-99.516251
Lim. Edos. Term. N. L. Ppia. Tamps.	13.10																			
T. C. Reynosa - (T. C. Monterrey - Nuevo Laredo)	32.00	1	0	241	0.0	65.1	1.2	28.6	1.0	1.1	1.3	1.6	0.1	65.1	1.2	33.7	0.199	0.534	26.554915	-99.244331

20 CARR: Piedras Negras - Nuevo Laredo

CLAVE: 00503

RUTA: MEX-002

AÑO: 2015

LUGAR	ESTACION				CLASIFICACION VEHICULAR EN PORCIENTO										COORDENADAS					
	KM	TE	SC	TDPA	M	A	B	C2	C3	T3S2	T3S3	T3S2R4	OTROS	A	B	C	K'	D	LATITUD	LONGITUD
T. C. Monclova - Piedras Negras	0.00	3	1	3981	1.6	70.3	0.9	15.0	2.1	7.0	1.8	0.6	0.7	71.9	0.9	27.2	0.083	0.507	28.633369	-100.547776
T. C. Monclova - Piedras Negras	0.00	3	2	4102	1.5	68.0	0.9	16.4	2.4	7.4	1.9	0.7	0.8	69.5	0.9	29.6	0.082	0.507	28.633319	-100.547803
El Saucito	16.90	3	0	1279	2.8	56.2	2.9	25.0	2.3	7.1	0.6	2.9	0.2	59.0	2.9	38.1	0.088	0.509	28.501157	-100.466846
T. Der. Villa Unión	37.00	1	0	1106	0.9	64.0	3.1	15.3	3.1	9.4	0.7	3.3	0.2	64.9	3.1	32.0	0.091	0.504	28.340063	-100.390617
T. Der. Villa Unión	37.00	3	0	1080	2.2	65.0	2.9	12.6	2.8	9.5	1.2	3.6	0.2	67.2	2.9	29.9	0.085	0.502	28.335434	-100.389207
Guerrero	42.00	3	0	932	0.2	59.0	3.4	15.0	4.0	13.1	0.9	4.1	0.3	59.2	3.4	37.4	0.086	0.502	28.307452	-100.364347
Lim. Edos. Term. Coah. Ppia. N. L.	124.40																			

TAMAULIPAS

20 CARR: Piedras Negras - Nuevo Laredo

CLAVE: 00503

RUTA: MEX-002

AÑO: 2015

LUGAR	ESTACION				CLASIFICACION VEHICULAR EN PORCIENTO													COORDENADAS		
	KM	TE	SC	TDPA	M	A	B	C2	C3	T3S2	T3S3	T3S2R4	OTROS	A	B	C	K'	D	LATITUD	LONGITUD
T. C. Monclova - Colombia	134.00	3	0	2733	1.3	60.2	2.0	17.3	3.3	12.1	1.2	2.1	0.5	61.5	2.0	36.5	0.084	0.501	27.687505	-99.776242
Lim. Edos. Term. N. L. Ppia. Tamps.	138.20																			
T. Der. Libramiento de Nuevo Laredo	157.70	1	1	4157	9.8	40.8	1.1	7.4	12.2	25.4	1.3	1.0	1.0	50.6	1.1	48.3	0.114	0.511	27.571972	-99.597031
T. Der. Libramiento de Nuevo Laredo	157.70	1	2	4353	0.7	46.9	1.3	8.0	13.0	26.5	1.5	1.1	1.0	47.6	1.3	51.1	0.098	0.511	27.571993	-99.597015
Nuevo Laredo	175.00	1	1	7844	1.6	49.9	1.4	10.4	9.6	23.4	1.8	1.0	0.9	51.5	1.4	47.1	0.099	0.509	27.544778	-99.576938
Nuevo Laredo	175.00	1	2	8118	2.1	44.3	1.8	11.9	10.6	25.2	2.0	1.1	1.0	46.4	1.8	51.8	0.101	0.509	27.545146	-99.576787

21 CARR: Ramal de Acceso a Puente Anzaldúas

CLAVE: 28619

RUTA: MEX

AÑO: 2015

LUGAR	ESTACION				CLASIFICACION VEHICULAR EN PORCIENTO													COORDENADAS		
	KM	TE	SC	TDPA	M	A	B	C2	C3	T3S2	T3S3	T3S2R4	OTROS	A	B	C	K'	D	LATITUD	LONGITUD
T. C. Monterrey - Reynosa	0.00	3	1	6237	0.4	88.0	0.7	6.5	1.3	1.4	0.6	0.8	0.3	88.4	0.7	10.9	0.099	0.526	26.063090	-98.372560
T. C. Monterrey - Reynosa	0.00	3	2	5624	0.6	86.7	0.8	7.2	1.4	1.4	0.7	0.9	0.3	87.3	0.8	11.9	0.108	0.526	26.063078	-98.372561
Puente Anzaldúas	6.20																			

22 CARR: Reynosa - Nuevo Laredo

CLAVE: 28076

RUTA: MEX-002

AÑO: 2015

LUGAR	ESTACION				CLASIFICACION VEHICULAR EN PORCIENTO													COORDENADAS		
	KM	TE	SC	TDPA	M	A	B	C2	C3	T3S2	T3S3	T3S2R4	OTROS	A	B	C	K'	D	LATITUD	LONGITUD
Reynosa	0.00	3	1	3956	0.6	84.6	2.0	7.7	1.0	1.6	0.7	1.7	0.1	85.2	2.0	12.8	0.078	0.514	26.152102	-98.366666
Reynosa	0.00	3	2	3744	0.7	83.6	2.0	8.2	1.0	1.9	0.7	1.8	0.1	84.3	2.0	13.7	0.083	0.514	26.152091	-98.366700
X. C. Los Dos Estados - Gustavo Díaz Ordáz	35.68	3	0	5833	0.3	78.0	0.9	13.0	1.2	3.3	0.7	2.3	0.3	78.3	0.9	20.8	0.069	0.506	26.213003	-98.596837
Cd. Camargo	63.40	3	0	3825	0.2	76.6	1.1	11.8	1.1	3.9	0.9	4.0	0.4	76.8	1.1	22.1	0.086	0.504	26.333444	-98.850522
Los Guerra	92.77	3	0	2782	0.3	68.7	1.7	16.6	1.2	4.8	1.3	5.1	0.3	69.0	1.7	29.3	0.092	0.502	26.392611	-99.101661
Mier	102.35	3	0	638	0.3	62.7	2.8	17.5	3.0	7.1	2.4	4.1	0.1	63.0	2.8	34.2	0.149	0.508	26.451821	-99.152971
T. Der. Nueva Cd. Guerrero (2º Acceso)	122.67	3	0	628	0.1	56.7	1.6	26.0	2.4	7.0	1.7	4.4	0.1	56.8	1.6	41.6	0.134	0.502	26.558410	-99.245724
T. C. Monterrey - Nuevo Laredo	221.08	1	0	600	0.0	55.3	2.2	23.5	4.2	7.8	2.3	4.2	0.5	55.3	2.2	42.5	0.088	0.507	27.299647	-99.590812

23 CARR: Soto La Marina - La Coma

CLAVE: 28052

RUTA: MEX-180

AÑO: 2015

LUGAR	ESTACION				CLASIFICACION VEHICULAR EN PORCIENTO													COORDENADAS		
	KM	TE	SC	TDPA	M	A	B	C2	C3	T3S2	T3S3	T3S2R4	OTROS	A	B	C	K'	D	LATITUD	LONGITUD
Soto La Marina	0.00	3	0	2573	2.0	76.6	4.1	11.1	1.5	3.1	1.0	0.4	0.2	78.6	4.1	17.3	0.079	0.527	23.783194	-98.196778
La Coma	86.00	1	0	640	1.7	68.9	6.9	11.8	2.1	6.3	2.3	0.0	0.0	70.6	6.9	22.5	0.077	0.525	24.462222	-98.335472

TAMAULIPAS

24 CARR: Tampico - Cd. Mante

CLAVE: 28163

RUTA: MEX-080

AÑO: 2015

LUGAR	ESTACION				CLASIFICACION VEHICULAR EN PORCIENTO										COORDENADAS					
	KM	TE	SC	TDPA	M	A	B	C2	C3	T3S2	T3S3	T3S2R4	OTROS	A	B	C	K'	D	LATITUD	LONGITUD
Tampico	0.00																			
T. Der. Cyanaquim	14.79	1	1	31471	1.4	85.1	0.6	5.7	1.1	2.1	2.1	1.0	0.9	86.5	0.6	12.9	0.063	0.520	22.346556	-97.876972
T. Der. Cyanaquim	14.79	1	2	29015	1.2	83.5	0.8	6.7	1.2	2.1	2.4	1.1	1.0	84.7	0.8	14.5	0.070	0.520	22.346556	-97.876972
Altamira	24.00	1	1	24292	1.8	88.4	0.9	5.3	0.6	1.3	0.9	0.6	0.2	90.2	0.9	8.9	0.083	0.502	22.385583	-97.917722
Altamira	24.00	1	2	24489	1.8	87.2	1.0	6.1	0.6	1.5	1.0	0.6	0.2	89.0	1.0	10.0	0.078	0.502	22.385583	-97.917722
Altamira	24.00	3	1	9729	2.0	77.3	2.2	7.4	1.8	3.8	2.3	2.6	0.6	79.3	2.2	18.5	0.081	0.502	22.420667	-97.943889
Altamira	24.00	3	2	9827	1.5	75.3	2.5	8.1	2.1	4.2	2.7	2.9	0.7	76.8	2.5	20.7	0.085	0.502	22.420667	-97.943889
T. Der. Lomas del Real	33.00	3	1	6755	0.7	67.7	3.4	8.8	2.0	5.9	3.0	7.6	0.9	68.4	3.4	28.2	0.085	0.529	22.473111	-97.994889
T. Der. Lomas del Real	33.00	3	2	6006	1.2	64.0	4.2	9.5	2.3	6.6	3.3	7.9	1.0	65.2	4.2	30.6	0.088	0.529	22.473111	-97.994889
Cuahtémoc	55.80	3	1	3649	0.7	60.3	4.1	5.8	2.5	11.0	4.4	10.4	0.8	61.0	4.1	34.9	0.078	0.514	22.568083	-98.164194
Cuahtémoc	55.80	3	2	3860	0.6	56.3	4.3	6.8	2.8	11.3	5.0	12.0	0.9	56.9	4.3	38.8	0.091	0.514	22.568083	-98.164194
Estación Manuel	78.12	1	1	3398	0.4	57.6	5.2	7.6	2.5	9.7	4.5	11.6	0.9	58.0	5.2	36.8	0.079	0.509	22.695806	-98.276833
Estación Manuel	78.12	1	2	3517	0.7	51.6	5.5	8.6	2.7	11.6	5.0	13.3	1.0	52.3	5.5	42.2	0.098	0.509	22.695806	-98.276833
González	96.00	3	0	1961	1.4	68.6	2.7	11.5	2.7	3.6	2.6	6.1	0.8	70.0	2.7	27.3	0.087	0.500	22.821489	-98.452861
Magiscatzin	122.50	3	0	1361	1.6	61.7	3.6	10.7	4.1	5.0	3.9	8.6	0.8	63.3	3.6	33.1	0.091	0.501	22.806744	-98.704187
Faja de Oro	143.00	3	0	2055	3.5	66.5	2.4	12.2	4.0	3.4	2.1	5.4	0.5	70.0	2.4	27.6	0.089	0.514	22.723634	-98.871454
T. C. Cd. Valles - Cd. Victoria	155.00	1	0	2997	7.5	70.8	1.7	10.3	2.5	2.6	1.3	3.0	0.3	78.3	1.7	20.0	0.090	0.519	22.724611	-98.951555

25 CARR: Tuxpam - Tampico

CLAVE: 00529

RUTA: MEX-180

AÑO: 2015

LUGAR	ESTACION				CLASIFICACION VEHICULAR EN PORCIENTO										COORDENADAS					
	KM	TE	SC	TDPA	M	A	B	C2	C3	T3S2	T3S3	T3S2R4	OTROS	A	B	C	K'	D	LATITUD	LONGITUD
Tuxpam	0.00	3	0	5956	4.8	77.4	3.6	10.2	0.4	2.3	0.5	0.5	0.3	82.2	3.6	14.2	0.080	0.502	20.958010	-97.470761
T. Izq. La Lajuela	28.70	1	0	3171	1.1	79.4	4.3	10.9	0.7	1.8	0.8	0.8	0.2	80.5	4.3	15.2	0.086	0.508	21.045932	-97.618516
T. Izq. Tempoal de Sánchez	45.20	1	0	5289	4.1	79.6	2.3	8.9	0.5	3.3	0.5	0.4	0.4	83.7	2.3	14.0	0.083	0.503	21.090145	-97.730685
T. Izq. Tempoal de Sánchez	45.20	3	0	6640	1.7	69.3	4.9	7.9	1.6	7.5	2.8	3.5	0.8	71.0	4.9	24.1	0.085	0.510	21.096838	-97.731495
Cerro Azul	56.66	1	0	9432	2.1	71.5	3.8	7.4	1.3	7.2	2.7	3.0	1.0	73.6	3.8	22.6	0.070	0.505	21.175099	-97.752722
T. Der. Zacamixtle	64.50	1	0	6641	1.7	64.7	5.1	8.0	2.3	8.9	3.4	4.9	1.0	66.4	5.1	28.5	0.075	0.507	21.250223	-97.733304
T. Der. Zacamixtle	64.50	3	0	6168	1.5	63.6	5.6	9.2	2.3	8.3	3.5	5.1	0.9	65.1	5.6	29.3	0.078	0.506	21.252702	-97.734207
T. Izq. Naranjos	78.60	1	0	8208	1.8	65.9	4.5	8.3	2.3	8.6	3.0	4.6	1.0	67.7	4.5	27.8	0.064	0.507	21.334249	-97.696695
T. Izq. Naranjos	78.60	3	0	10089	5.5	69.6	3.1	6.2	1.4	7.6	2.4	3.0	1.2	75.1	3.1	21.8	0.073	0.502	21.368953	-97.685087
T. Der. El Añoño	81.50	3	0	2983	4.3	81.9	0.8	5.7	1.6	2.9	1.7	0.7	0.4	86.2	0.8	13.0	0.087	0.500	21.375716	-97.686119
T. Der. Campo Mamey	94.39	3	0	5149	2.1	58.5	6.3	9.4	3.0	9.4	4.1	6.0	1.2	60.6	6.3	33.1	0.075	0.502	21.457169	-97.763006
T. Der. Ozuluama	124.42	1	0	6176	2.2	60.4	4.7	10.4	3.1	9.1	3.6	5.6	0.9	62.6	4.7	32.7	0.077	0.505	21.671474	-97.859914
T. Der. Ozuluama	124.42	3	0	5414	1.4	58.8	6.5	8.8	3.1	9.5	4.3	6.6	1.0	60.2	6.5	33.3	0.071	0.501	21.686306	-97.851410

TAMAULIPAS

25 CARR : Túxпам - Tampico

CLAVE: 00529

RUTA: MEX-180

AÑO: 2015

LUGAR	ESTACION				CLASIFICACION VEHICULAR EN PORCIENTO														COORDENADAS	
	KM	TE	SC	TDPA	M	A	B	C2	C3	T3S2	T3S3	T3S2R4	OTROS	A	B	C	K'	D	LATITUD	LONGITUD
Tampico Alto	177.80	1	0	6815	1.6	64.4	5.5	7.3	2.7	9.4	3.3	4.4	1.4	66.0	5.5	28.5	0.082	0.509	22.105027	-97.803360
Tampico Alto	177.80	3	0	6615	1.2	65.8	4.8	8.0	2.2	8.6	3.6	4.9	0.9	67.0	4.8	28.2	0.077	0.513	22.117528	-97.804555
Villa Cuauhtémoc	186.85	1	0	7020	1.8	66.5	4.9	7.1	2.5	8.2	3.5	4.7	0.8	68.3	4.9	26.8	0.080	0.506	22.167545	-97.829606
Villa Cuauhtémoc	186.85	3	0	9875	8.6	74.5	0.5	2.4	0.9	7.8	2.1	1.9	1.3	83.1	0.5	16.4	0.065	0.512	22.200960	-97.841230
T. C. Cd. Valles - Tampico	201.84																			

26 CARR : Libramiento Poniente de Tampico (Cuota)

CLAVE: 28051

RUTA: MEX-070D

AÑO: 2015

LUGAR	ESTACION				CLASIFICACION VEHICULAR EN PORCIENTO														COORDENADAS	
	KM	TE	SC	TDPA	M	A	B	C2	C3	T3S2	T3S3	T3S2R4	OTROS	A	B	C	K'	D	LATITUD	LONGITUD
T. C. Tampico - Cd. Mante	0.00	3	0	16102	1.7	74.7	0.7	6.0	2.9	8.3	2.3	2.8	0.6	76.4	0.7	22.9	0.079	0.531	22.335394	-97.882349
Caseta de Cobro Tampico	5.10	2	0	4843	0.5	52.6	1.3	7.4	7.4	14.0	5.6	10.1	1.1	53.1	1.3	45.6	0.074	0.500	22.275285	-97.893448
T. C. Cd. Valles - Tampico	12.00	1	0	7695	1.0	66.0	1.4	7.9	3.3	9.9	4.1	5.5	0.9	67.0	1.4	31.6	0.074	0.508	22.236692	-97.891316

27 CARR : Matamoros - Reynosa (Cuota)

CLAVE: 28079

RUTA: MEX-002D

AÑO: 2015

LUGAR	ESTACION				CLASIFICACION VEHICULAR EN PORCIENTO														COORDENADAS	
	KM	TE	SC	TDPA	M	A	B	C2	C3	T3S2	T3S3	T3S2R4	OTROS	A	B	C	K'	D	LATITUD	LONGITUD
T. C. Matamoros - Reynosa	0.00	3	1	1933	0.2	68.6	4.8	9.6	3.2	8.6	1.3	3.2	0.5	68.8	4.8	26.4	0.082	0.500	26.000470	-97.760843
T. C. Matamoros - Reynosa	0.00	3	2	1932	0.2	65.8	4.9	10.8	3.6	9.1	1.5	3.5	0.6	66.0	4.9	29.1	0.096	0.500	26.000471	-97.760844
Caseta de Cobro Nuevo Progreso	29.39	2	1	1350	0.2	69.7	4.1	5.6	4.6	10.4	1.0	3.6	0.8	69.9	4.1	26.0	0.101	0.500	26.036288	-97.954444
Caseta de Cobro Nuevo Progreso	29.39	2	2	1350	0.2	69.7	4.1	5.6	4.6	10.4	1.0	3.6	0.8	69.9	4.1	26.0	0.101	0.500	26.036288	-97.954444
T. C. Matamoros - Reynosa	42.00																			
T. C. Matamoros - Reynosa	44.60	1	1	3190	0.8	79.8	1.7	6.7	2.7	5.1	0.8	2.0	0.4	80.6	1.7	17.7	0.104	0.529	26.007349	-98.160159
T. C. Matamoros - Reynosa	44.60	1	2	3584	0.8	78.5	1.7	7.0	2.9	5.3	0.9	2.4	0.5	79.3	1.7	19.0	0.109	0.529	26.007353	-98.160166

28 CARR : Aldama - Barra El Tordo

CLAVE: 28620

RUTA: TAM

AÑO: 2015

LUGAR	ESTACION				CLASIFICACION VEHICULAR EN PORCIENTO														COORDENADAS	
	KM	TE	SC	TDPA	M	A	B	C2	C3	T3S2	T3S3	T3S2R4	OTROS	A	B	C	K'	D	LATITUD	LONGITUD
Aldama	0.00	3	0	2399	5.4	81.9	0.3	7.9	1.4	2.9	0.1	0.0	0.1	87.3	0.3	12.4	0.068	0.503	22.914278	-98.060389
Barra El Tordo	20.00																			

TAMAULIPAS

29 CARR: Barretal - Nueva Villa de Padilla

CLAVE: 28001

RUTA: TAM-001

AÑO: 2015

LUGAR	ESTACION				CLASIFICACION VEHICULAR EN PORCIENTO														COORDENADAS	
	KM	TE	SC	TDPA	M	A	B	C2	C3	T3S2	T3S3	T3S2R4	OTROS	A	B	C	K'	D	LATITUD	LONGITUD
Barretal	0.00	3	0	3814	2.7	83.7	0.4	7.6	1.1	2.7	0.8	0.5	0.5	86.4	0.4	13.2	0.071	0.514	24.083694	-99.113139
Nueva Villa de Padilla	24.50	1	0	1927	2.7	85.3	0.2	7.3	1.5	2.2	0.5	0.2	0.1	88.0	0.2	11.8	0.072	0.509	24.052361	-98.910111

30 CARR: China - Méndez

CLAVE: 00191

RUTA: NL-TAM

AÑO: 2015

LUGAR	ESTACION				CLASIFICACION VEHICULAR EN PORCIENTO														COORDENADAS	
	KM	TE	SC	TDPA	M	A	B	C2	C3	T3S2	T3S3	T3S2R4	OTROS	A	B	C	K'	D	LATITUD	LONGITUD
China	0.00	3	0	1654	0.4	72.5	3.1	17.2	1.8	2.0	2.6	0.3	0.1	72.9	3.1	24.0	0.085	0.507	25.697442	-99.221034
Lim. Edos. Term. N. L. Ppia. Tamps.	75.00																			
Méndez	100.00																			

31 CARR: Ébano - Estación Manuel

CLAVE: 24624

RUTA: SLP-TAM

AÑO: 2015

LUGAR	ESTACION				CLASIFICACION VEHICULAR EN PORCIENTO														COORDENADAS	
	KM	TE	SC	TDPA	M	A	B	C2	C3	T3S2	T3S3	T3S2R4	OTROS	A	B	C	K'	D	LATITUD	LONGITUD
Ébano	0.00	3	0	1716	18.1	52.1	2.7	10.4	3.2	7.8	3.1	1.6	1.0	70.2	2.7	27.1	0.096	0.520	22.232859	-98.366524
Lim. de Edos. Term. S. L. P.. Ppia. Ver.	2.71																			
Lim. de Edos. Term. Ver. Ppia. S. L. P.	3.95																			
Lim. de Edos. Term. S. L. P. Ppia. Ver.	5.00																			
Lim. de Edos. Term. Ver. Ppia. Tamps.	25.00																			
Estación Manuel	65.60																			

32 CARR: El Limón - Ocampo

CLAVE: 28019

RUTA: TAM-019

AÑO: 2015

LUGAR	ESTACION				CLASIFICACION VEHICULAR EN PORCIENTO														COORDENADAS	
	KM	TE	SC	TDPA	M	A	B	C2	C3	T3S2	T3S3	T3S2R4	OTROS	A	B	C	K'	D	LATITUD	LONGITUD
T. C. Cd. Valles - Cd. Victoria	0.00	3	0	1805	10.1	73.6	0.8	9.0	1.7	1.9	0.5	2.3	0.1	83.7	0.8	15.5	0.089	0.514	22.837178	-99.024743
Ocampo	43.00	1	0	1406	9.6	74.5	0.7	8.6	1.8	2.0	2.2	0.5	0.1	84.1	0.7	15.2	0.102	0.504	22.829387	-99.319948

33 CARR: Ent. Huisachito - Nuevo Laredo

CLAVE: 00074

RUTA: NL-001-TAM

AÑO: 2015

LUGAR	ESTACION				CLASIFICACION VEHICULAR EN PORCIENTO														COORDENADAS	
	KM	TE	SC	TDPA	M	A	B	C2	C3	T3S2	T3S3	T3S2R4	OTROS	A	B	C	K'	D	LATITUD	LONGITUD
T. C. Monterrey - Colombia	0.00	3	0	1036	0.4	66.7	2.5	14.8	1.6	6.8	4.5	2.1	0.6	67.1	2.5	30.4	0.109	0.528	27.353930	-99.950084
Lim. Edos. Term. N. L. Ppia. Tamps.	19.00																			

TAMAULIPAS

33 CARR: Ent. Huisachito - Nuevo Laredo

CLAVE: 00074

RUTA: NL-001-TAM

AÑO: 2015

LUGAR	ESTACION				CLASIFICACION VEHICULAR EN PORCIENTO													COORDENADAS		
	KM	TE	SC	TDPA	M	A	B	C2	C3	T3S2	T3S3	T3S2R4	OTROS	A	B	C	K'	D	LATITUD	LONGITUD
X. C. Libramiento de Nuevo Laredo	47.00	1	0	1981	0.6	74.4	0.9	14.6	1.9	4.1	1.8	1.3	0.4	75.0	0.9	24.1	0.097	0.515	27.478219	-99.634257
Nuevo Laredo	51.00	1	0	11134	1.3	79.2	1.9	8.1	1.1	6.2	1.0	0.5	0.7	80.5	1.9	17.6	0.078	0.514	27.484834	-99.580797

34 CARR: Ent. Las Blancas - Río Bravo

CLAVE: 28003

RUTA: TAM-003

AÑO: 2015

LUGAR	ESTACION				CLASIFICACION VEHICULAR EN PORCIENTO													COORDENADAS		
	KM	TE	SC	TDPA	M	A	B	C2	C3	T3S2	T3S3	T3S2R4	OTROS	A	B	C	K'	D	LATITUD	LONGITUD
T. C. Cd. Victoria - Matamoros	0.00	3	0	3119	0.6	83.9	0.9	10.7	0.4	2.6	0.5	0.1	0.3	84.5	0.9	14.6	0.077	0.510	25.665918	-97.602447
Valle Hermoso	21.00	1	1	2330	0.8	84.6	0.6	12.2	0.3	1.0	0.4	0.0	0.1	85.4	0.6	14.0	0.092	0.507	25.666743	-97.769578
Valle Hermoso	21.00	1	2	2263	0.6	83.8	0.8	12.9	0.4	1.1	0.3	0.0	0.1	84.4	0.8	14.8	0.080	0.507	25.666752	-97.769571
Río Bravo	91.00	1	0	8434	1.6	78.8	0.9	9.3	0.6	6.0	1.3	0.5	1.0	80.4	0.9	18.7	0.069	0.501	25.981701	-98.118791

35 CARR: La Joya - Méndez

CLAVE: 28623

RUTA: TAM

AÑO: 2015

LUGAR	ESTACION				CLASIFICACION VEHICULAR EN PORCIENTO													COORDENADAS		
	KM	TE	SC	TDPA	M	A	B	C2	C3	T3S2	T3S3	T3S2R4	OTROS	A	B	C	K'	D	LATITUD	LONGITUD
T. C. Cd. Victoria - Matamoros	0.00	3	0	577	0.3	68.9	1.2	22.3	1.0	2.3	2.1	1.4	0.5	69.2	1.2	29.6	0.097	0.512	24.930497	-98.113609
Méndez	66.00																			

36 CARR: Libramiento de Cd. Victoria

CLAVE: 28282

RUTA: TAM

AÑO: 2015

LUGAR	ESTACION				CLASIFICACION VEHICULAR EN PORCIENTO													COORDENADAS		
	KM	TE	SC	TDPA	M	A	B	C2	C3	T3S2	T3S3	T3S2R4	OTROS	A	B	C	K'	D	LATITUD	LONGITUD
X. C. Ent. Tula - Cd. Victoria	0.00	3	1	6787	5.6	84.4	0.1	7.8	0.2	0.9	0.7	0.1	0.2	90.0	0.1	9.9	0.076	0.534	23.713747	-99.177445
X. C. Ent. Tula - Cd. Victoria	0.00	3	2	5934	5.9	83.4	0.1	8.5	0.2	0.9	0.7	0.1	0.2	89.3	0.1	10.6	0.085	0.534	23.713750	-99.177448
X. C. Cd. Victoria - Matamoros	13.40	1	1	10160	2.0	88.0	0.8	5.5	1.1	1.1	1.0	0.2	0.3	90.0	0.8	9.2	0.100	0.503	23.767932	-99.120100
X. C. Cd. Victoria - Matamoros	13.40	1	2	10023	2.5	86.6	1.0	6.0	1.1	1.2	1.1	0.2	0.3	89.1	1.0	9.9	0.099	0.503	23.767927	-99.120106
X. C. Cd. Victoria - Matamoros	13.40	3	1	9319	2.3	88.7	0.4	3.9	1.2	1.5	1.3	0.3	0.4	91.0	0.4	8.6	0.115	0.523	23.763327	-99.111220
X. C. Cd. Victoria - Matamoros	13.40	3	2	8484	2.2	87.9	0.4	4.2	1.4	1.7	1.5	0.3	0.4	90.1	0.4	9.5	0.103	0.523	23.763312	-99.111223
X. C. Cd. Victoria - Soto La Marina	19.70	1	1	4865	3.5	80.9	0.8	7.8	2.9	2.1	0.9	0.8	0.3	84.4	0.8	14.8	0.098	0.502	23.723251	-99.093639
X. C. Cd. Victoria - Soto La Marina	19.70	1	2	4817	3.4	79.9	0.9	8.3	3.3	2.2	1.0	0.7	0.3	83.3	0.9	15.8	0.084	0.502	23.723248	-99.093643
T. C. Cd. Valles - Cd. Victoria	25.90	1	1	997	2.5	64.3	4.3	12.9	5.7	4.9	2.7	2.4	0.3	66.8	4.3	28.9	0.111	0.544	23.676028	-99.098718
T. C. Cd. Valles - Cd. Victoria	25.90	1	2	837	2.5	61.1	4.5	14.3	6.2	5.5	2.9	2.7	0.3	63.6	4.5	31.9	0.106	0.544	23.675751	-99.098411

TAMAULIPAS

37 CARR : Libramiento de Mier

CLAVE: 28282

RUTA: TAMPS

AÑO : 2015

LUGAR	ESTACION				CLASIFICACION VEHICULAR EN PORCIENTO														COORDENADAS	
	KM	TE	SC	TDPA	M	A	B	C2	C3	T3S2	T3S3	T3S2R4	OTROS	A	B	C	K'	D	LATITUD	LONGITUD
T. C. Monterrey - Mier	0.00	3	0	508	0.1	57.5	2.8	14.6	4.3	9.6	5.4	5.5	0.2	57.6	2.8	39.6	0.146	0.500	26.429390	-99.163942
T. C. Reynosa - Nuevo Laredo	2.70																			

38 CARR : Libramiento de Nuevo Laredo

CLAVE: 28030

RUTA: TAM

AÑO : 2015

LUGAR	ESTACION				CLASIFICACION VEHICULAR EN PORCIENTO														COORDENADAS	
	KM	TE	SC	TDPA	M	A	B	C2	C3	T3S2	T3S3	T3S2R4	OTROS	A	B	C	K'	D	LATITUD	LONGITUD
T. C. Monterrey - Nuevo Laredo	0.00	3	1	15648	1.2	68.0	1.5	6.7	6.8	13.2	1.1	0.6	0.9	69.2	1.5	29.3	0.074	0.518	27.426003	-99.534103
T. C. Monterrey - Nuevo Laredo	0.00	3	2	16790	1.1	64.6	1.6	7.2	7.6	14.9	1.3	0.7	1.0	65.7	1.6	32.7	0.079	0.518	27.426044	-99.537097
T. C. Piedras Negras - Nuevo Laredo	18.00	1	1	3809	2.2	33.3	1.7	6.9	11.6	41.5	1.0	1.0	0.8	35.5	1.7	62.8	0.129	0.517	27.532619	-99.583054
T. C. Piedras Negras - Nuevo Laredo	18.00	1	2	3560	1.5	31.7	1.9	7.7	12.2	42.2	1.0	1.0	0.8	33.2	1.9	64.9	0.128	0.517	27.530830	-99.582792

39 CARR : Libramiento de Nuevo Laredo II

CLAVE: 28626

RUTA: TAM

AÑO : 2015

LUGAR	ESTACION				CLASIFICACION VEHICULAR EN PORCIENTO														COORDENADAS	
	KM	TE	SC	TDPA	M	A	B	C2	C3	T3S2	T3S3	T3S2R4	OTROS	A	B	C	K'	D	LATITUD	LONGITUD
T. C. Monterrey - Nuevo Laredo	0.00	3	0	5783	1.8	24.9	1.2	5.2	6.5	53.4	3.4	2.7	0.9	26.7	1.2	72.1	0.076	0.505	27.308912	-99.608310
T. C. Piedras Negras - Nuevo Laredo	32.20	1	1	3837	1.7	30.3	1.1	5.1	11.0	46.1	2.6	1.3	0.8	32.0	1.1	66.9	0.092	0.503	27.562892	-99.596886
T. C. Piedras Negras - Nuevo Laredo	32.20	1	2	3876	1.4	30.6	1.3	5.6	11.0	45.1	2.7	1.3	1.0	32.0	1.3	66.7	0.110	0.503	27.562873	-99.596848

40 CARR : Libramiento de Rio Bravo

CLAVE: 28002

RUTA: TAM

AÑO : 2015

LUGAR	ESTACION				CLASIFICACION VEHICULAR EN PORCIENTO														COORDENADAS	
	KM	TE	SC	TDPA	M	A	B	C2	C3	T3S2	T3S3	T3S2R4	OTROS	A	B	C	K'	D	LATITUD	LONGITUD
T. C. Matamoros - Reynosa (1° Acceso)	0.00	3	1	2494	0.6	71.0	1.7	11.4	4.0	6.9	2.0	1.9	0.5	71.6	1.7	26.7	0.079	0.529	25.971555	-98.051169
T. C. Matamoros - Reynosa (1° Acceso)	0.00	3	2	2802	0.5	67.8	1.8	13.0	4.4	7.6	2.3	2.2	0.4	68.3	1.8	29.9	0.090	0.529	25.971556	-98.051166
T. C. Matamoros - Reynosa (2° Acceso)	13.10	1	1	9922	0.4	82.8	1.4	8.9	1.5	2.7	1.1	0.7	0.5	83.2	1.4	15.4	0.063	0.513	25.994736	-98.130492
T. C. Matamoros - Reynosa (2° Acceso)	13.10	1	2	10456	0.5	81.3	1.5	9.8	1.6	2.8	1.2	0.8	0.5	81.8	1.5	16.7	0.090	0.513	25.994739	-98.130505

41 CARR : Los Guerra - Los Herreras

CLAVE: 19031

RUTA: TAM-NL

AÑO : 2015

LUGAR	ESTACION				CLASIFICACION VEHICULAR EN PORCIENTO														COORDENADAS	
	KM	TE	SC	TDPA	M	A	B	C2	C3	T3S2	T3S3	T3S2R4	OTROS	A	B	C	K'	D	LATITUD	LONGITUD
Los Herreras	73.00	1	0	529	1.4	81.5	0.3	14.0	0.4	1.5	0.4	0.5	0.0	82.9	0.3	16.8	0.095	0.512	25.902604	-99.393611

TAMAULIPAS

42 CARR: Peña Blanca - Cd. Camargo

CLAVE: 00102

RUTA: NL-TAM

AÑO: 2015

LUGAR	ESTACION				CLASIFICACION VEHICULAR EN PORCIENTO														COORDENADAS	
	KM	TE	SC	TDPA	M	A	B	C2	C3	T3S2	T3S3	T3S2R4	OTROS	A	B	C	K'	D	LATITUD	LONGITUD
T. C. Monterrey - Reynosa	0.00	3	0	1001	0.1	64.9	1.7	21.5	2.3	4.6	3.8	0.7	0.4	65.0	1.7	33.3	0.093	0.505	25.836622	-99.008496
Lim. Edos. Term. N. L. Ppia. Tamps.	30.00																			
Cd. Camargo	65.00	1	0	2108	0.9	74.1	0.8	21.2	1.1	1.6	0.2	0.0	0.1	75.0	0.8	24.2	0.081	0.503	26.303538	-98.834690

43 CARR: Potrero Nuevo - Rancho El Mezquital

CLAVE: 28615

RUTA: TAM

AÑO: 2015

LUGAR	ESTACION				CLASIFICACION VEHICULAR EN PORCIENTO														COORDENADAS	
	KM	TE	SC	TDPA	M	A	B	C2	C3	T3S2	T3S3	T3S2R4	OTROS	A	B	C	K'	D	LATITUD	LONGITUD
T. C. Cd. Victoria - Matamoros	0.00	3	0	1002	0.4	75.8	0.8	10.0	1.2	3.5	0.7	7.4	0.2	76.2	0.8	23.0	0.098	0.508	25.713188	-97.570868
Puerto El Mezquital	66.00																			

44 CARR: Ramal a Gómez Farías

CLAVE: 28020

RUTA: TAM-020

AÑO: 2015

LUGAR	ESTACION				CLASIFICACION VEHICULAR EN PORCIENTO														COORDENADAS	
	KM	TE	SC	TDPA	M	A	B	C2	C3	T3S2	T3S3	T3S2R4	OTROS	A	B	C	K'	D	LATITUD	LONGITUD
T. C. Cd. Valles - Cd. Victoria	0.00	3	0	979	18.9	70.0	1.1	8.3	0.6	0.8	0.2	0.0	0.1	88.9	1.1	10.0	0.108	0.513	23.022020	-99.099368
Gómez Farías	11.00	1	0	637	24.5	67.5	0.5	6.1	0.4	0.8	0.1	0.0	0.1	92.0	0.5	7.5	0.099	0.516	23.034013	-99.150128

45 CARR: Ramal a Xicoténcatl

CLAVE: 28619

RUTA: TAM

AÑO: 2015

LUGAR	ESTACION				CLASIFICACION VEHICULAR EN PORCIENTO														COORDENADAS	
	KM	TE	SC	TDPA	M	A	B	C2	C3	T3S2	T3S3	T3S2R4	OTROS	A	B	C	K'	D	LATITUD	LONGITUD
T. C. Cd. Valles - Cd. Victoria	0.00	3	0	1267	7.9	75.7	0.4	7.5	6.8	0.7	0.5	0.3	0.2	83.6	0.4	16.0	0.101	0.501	22.930828	-99.026008
Xicoténcatl	13.00	1	0	3570	11.3	73.8	0.6	5.5	2.3	3.2	0.9	2.0	0.4	85.1	0.6	14.3	0.091	0.520	22.985688	-98.948787

46 CARR: San Fernando - Carboneras

CLAVE: 28618

RUTA: TAM

AÑO: 2015

LUGAR	ESTACION				CLASIFICACION VEHICULAR EN PORCIENTO														COORDENADAS	
	KM	TE	SC	TDPA	M	A	B	C2	C3	T3S2	T3S3	T3S2R4	OTROS	A	B	C	K'	D	LATITUD	LONGITUD
San Fernando	0.00	3	0	2947	1.9	74.2	0.4	17.4	1.2	3.0	0.9	0.7	0.3	76.1	0.4	23.5	0.074	0.516	24.834562	-98.113570
Carboneras	57.00																			

TAMAULIPAS

47 CARR: Soto La Marina - La Pesca

CLAVE: 28049

RUTA: TAM-070

AÑO: 2015

LUGAR	ESTACION				CLASIFICACION VEHICULAR EN PORCIENTO														COORDENADAS	
	KM	TE	SC	TDPA	M	A	B	C2	C3	T3S2	T3S3	T3S2R4	OTROS	A	B	C	K'	D	LATITUD	LONGITUD
T. C. Soto La Marina - La Coma	0.00	3	0	1653	1.1	84.8	0.7	11.1	0.8	1.1	0.1	0.2	0.1	85.9	0.7	13.4	0.102	0.518	23.778806	-98.188611
La Pesca	50.00																			

48 CARR: T. C. (Valle Hermoso - Empalme) - Matamoros

CLAVE: 28005

RUTA: TAM-005

AÑO: 2015

LUGAR	ESTACION				CLASIFICACION VEHICULAR EN PORCIENTO														COORDENADAS	
	KM	TE	SC	TDPA	M	A	B	C2	C3	T3S2	T3S3	T3S2R4	OTROS	A	B	C	K'	D	LATITUD	LONGITUD
T. C. Valle Hermoso - Empalme	0.00	3	0	4033	0.9	84.3	0.3	9.1	1.2	3.0	0.8	0.2	0.2	85.2	0.3	14.5	0.068	0.505	25.775055	-97.792595
Anáhuac	2.00	3	0	1532	0.8	76.4	0.7	16.9	1.8	1.6	0.9	0.7	0.2	77.2	0.7	22.1	0.080	0.506	25.775050	-97.766329
Matamoros	33.90	1	1	9605	2.2	90.5	0.8	3.7	0.8	1.0	0.6	0.2	0.2	92.7	0.8	6.5	0.066	0.506	25.864811	-97.574362
Matamoros	33.90	1	2	9844	1.6	90.5	0.8	4.0	0.8	1.2	0.7	0.2	0.2	92.1	0.8	7.1	0.071	0.506	25.864812	-97.574358

49 CARR: T. C. Libramiento Cd. Victoria - San Antonio

CLAVE:

RUTA: TAM-126

AÑO: 2015

LUGAR	ESTACION				CLASIFICACION VEHICULAR EN PORCIENTO														COORDENADAS	
	KM	TE	SC	TDPA	M	A	B	C2	C3	T3S2	T3S3	T3S2R4	OTROS	A	B	C	K'	D	LATITUD	LONGITUD
T. C. Libramiento Cd. Victoria	0.00	3	0	4514	0.9	55.8	2.9	6.7	3.3	14.2	5.2	10.0	1.0	56.7	2.9	40.4	0.073	0.501	23.661560	-99.110977
San Antonio	37.50	1	0	4069	0.7	48.4	3.2	5.6	2.8	19.7	5.1	13.5	1.0	49.1	3.2	47.7	0.063	0.515	23.589037	-99.324083

50 CARR: Valle Hermoso - Empalme

CLAVE: 28004

RUTA: TAM-004

AÑO: 2015

LUGAR	ESTACION				CLASIFICACION VEHICULAR EN PORCIENTO														COORDENADAS	
	KM	TE	SC	TDPA	M	A	B	C2	C3	T3S2	T3S3	T3S2R4	OTROS	A	B	C	K'	D	LATITUD	LONGITUD
Valle Hermoso	0.00	3	0	5343	0.4	81.3	0.8	8.5	1.4	4.9	1.0	1.0	0.7	81.7	0.8	17.5	0.085	0.501	25.717544	-97.815953
Empalme	28.38	1	0	3064	0.2	76.4	1.5	12.9	2.3	4.5	1.0	0.8	0.4	76.6	1.5	21.9	0.086	0.503	25.877008	-97.795708

51 CARR: Valle Hermoso - Las Yescas

CLAVE: 28614

RUTA: TAM

AÑO: 2015

LUGAR	ESTACION				CLASIFICACION VEHICULAR EN PORCIENTO														COORDENADAS	
	KM	TE	SC	TDPA	M	A	B	C2	C3	T3S2	T3S3	T3S2R4	OTROS	A	B	C	K'	D	LATITUD	LONGITUD
Valle Hermoso	0.00	3	0	3851	0.4	83.1	0.9	5.8	1.1	4.1	1.8	2.1	0.7	83.5	0.9	15.6	0.179	0.512	25.614537	-97.816026
T. C. Cd. Victoria - Matamoros	26.00	1	0	1392	0.2	69.4	1.4	12.7	4.1	3.4	4.7	3.3	0.8	69.6	1.4	29.0	0.126	0.531	25.468008	-97.816290

TAMAULIPAS

52 CARR: Santander Jiménez - Ent. El Ojito

CLAVE: 28579

RUTA: MEX-107-TAM

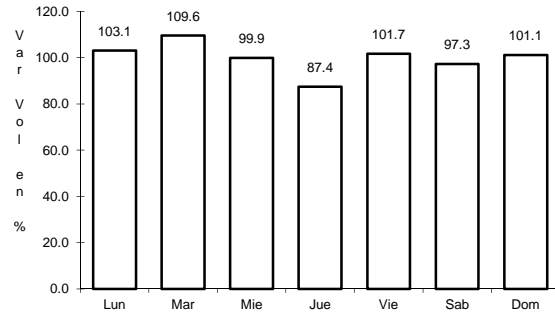
AÑO: 2015

L U G A R	E S T A C I O N				C L A S I F I C A C I O N V E H I C U L A R E N P O R C I E N T O														C O O R D E N A D A S	
	KM	TE	SC	TDPA	M	A	B	C2	C3	T3S2	T3S3	T3S2R4	OTROS	A	B	C	K'	D	LATITUD	LONGITUD
T. C. Cd. Victoria - Matamoros	0.00	3	0	1249	1.1	78.5	0.6	12.3	2.1	2.2	1.6	1.4	0.2	79.6	0.6	19.8	0.092	0.508	24.209194	-98.482972
Abasolo	20.00	1	0	1986	2.5	81.3	0.7	9.6	1.8	2.4	0.9	0.7	0.1	83.8	0.7	15.5	0.139	0.505	24.070583	-98.386778
T. C. Soto La Marina - La Coma	58.00	1	0	442	1.8	73.1	1.8	13.5	3.3	3.5	2.7	0.1	0.2	74.9	1.8	23.3	0.113	0.500	23.941750	-98.167139

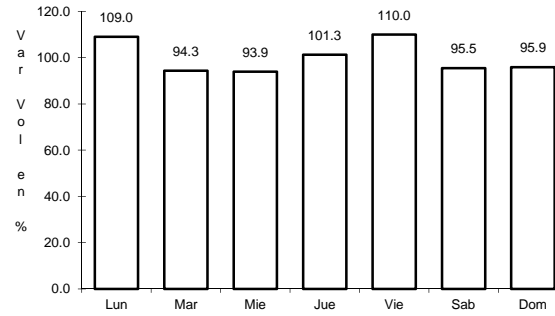
1 CARR: Antiguo Morelos - Ent. El Huizache

CLAVE: 00136

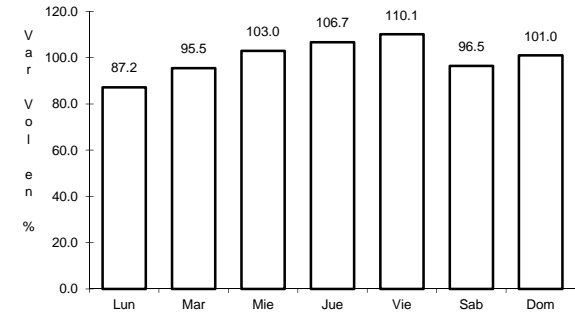
RUTA: MEX-080



Km: 0.00 Tipo: 3 Sent: 0



Km: 86.00 Tipo: 3 Sent: 0

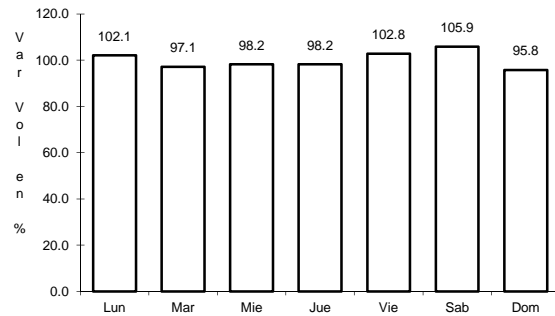


Km: 198.83 Tipo: 1 Sent: 0

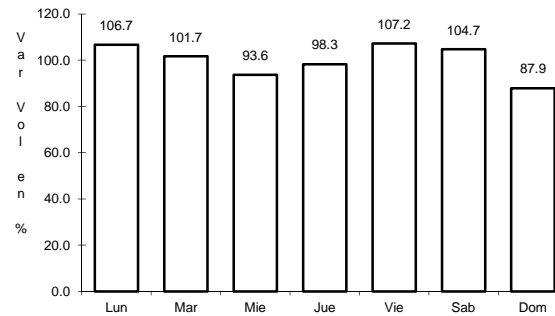
2 CARR: Cd. Valles - Cd. Victoria

CLAVE: 00509

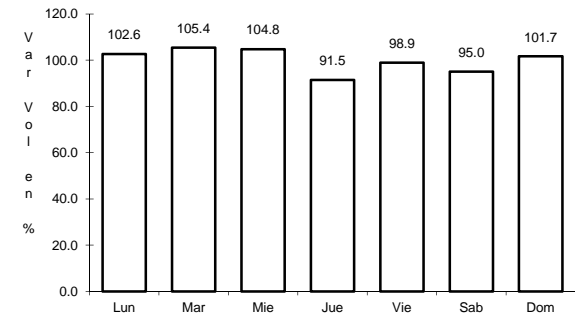
RUTA: MEX-085



Km: 0.00 Tipo: 3 Sent: 0



Km: 110.00 Tipo: 3 Sent: 0

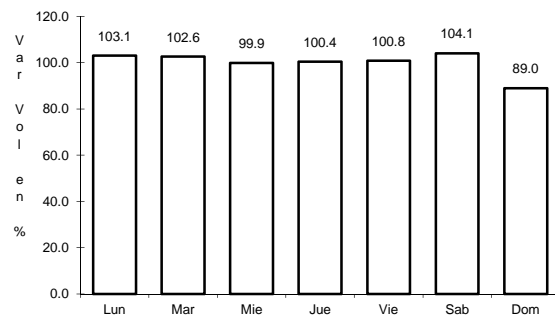


Km: 232.00 Tipo: 1 Sent: 0

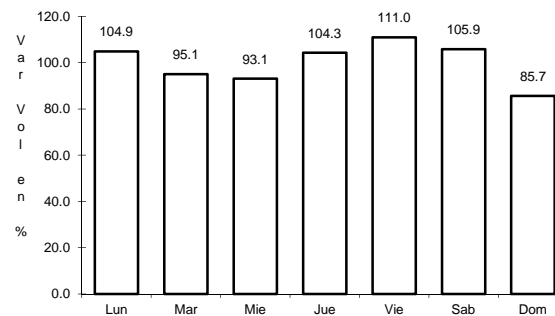
3 CARR: Cd. Valles - Tampico

CLAVE: 00138

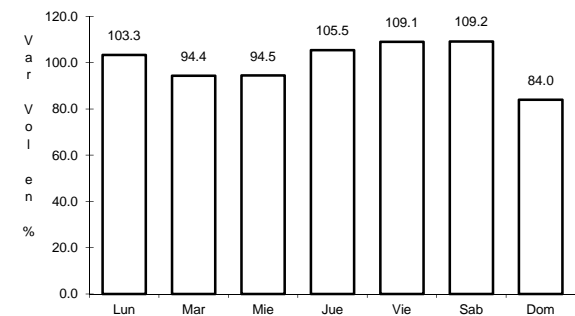
RUTA: MEX-070



Km: 0.00 Tipo: 3 Sent: 0



Km: 138.00 Tipo: 1 Sent: 1

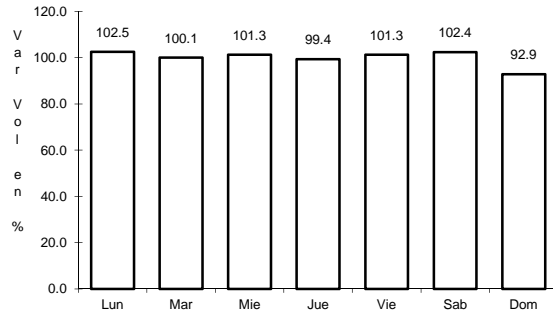


Km: 138.00 Tipo: 1 Sent: 2

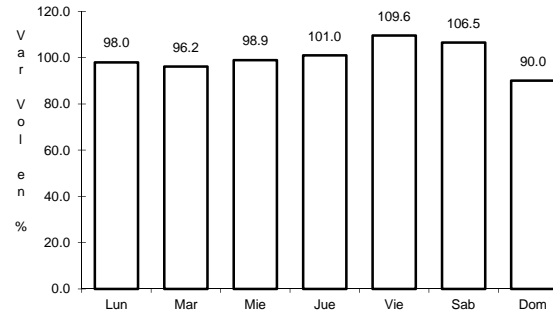
4 CARR: Cd. Victoria - Matamoros

CLAVE: 28139

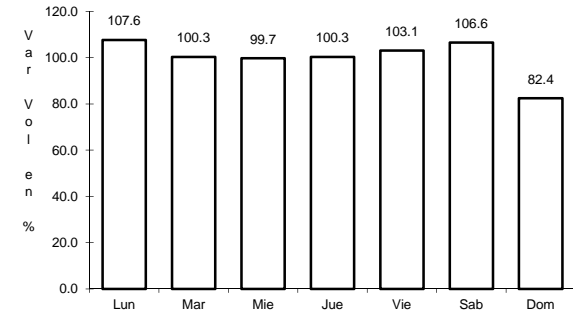
RUTA: MEX-101-180



Km: 5.00 Tipo: 3 Sent: 1



Km: 5.00 Tipo: 3 Sent: 2

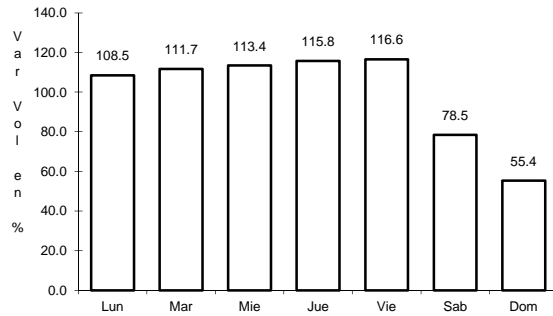


Km: 175.00 Tipo: 3 Sent: 0

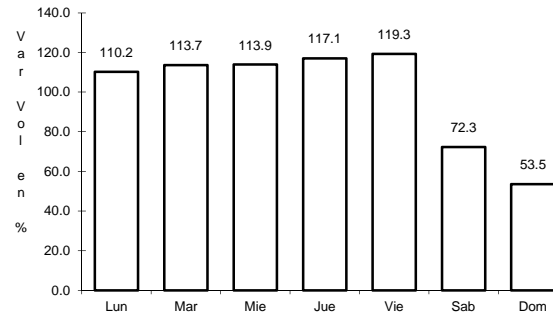
5 CARR: Cd. Victoria - Soto La Marina

CLAVE: 28009

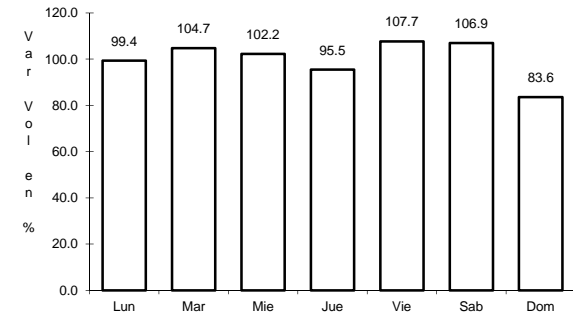
RUTA: MEX-070



Km: 0.00 Tipo: 3 Sent: 1



Km: 0.00 Tipo: 3 Sent: 2

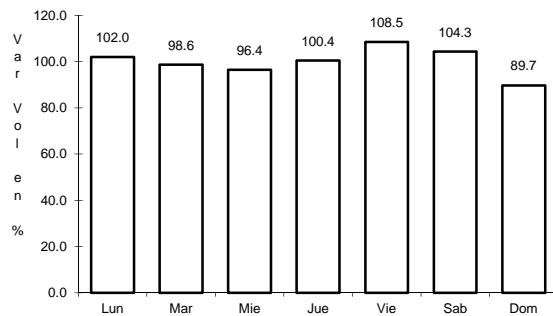


Km: 116.80 Tipo: 1 Sent: 0

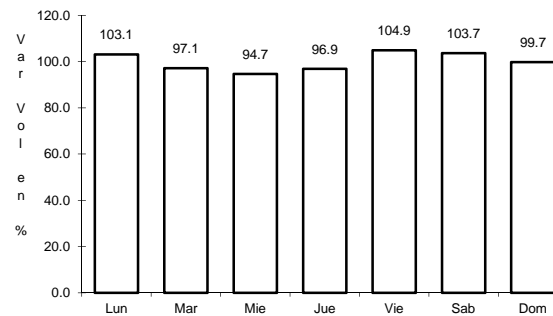
6 CARR: Ciudad Victoria - Monterrey

CLAVE: 00462

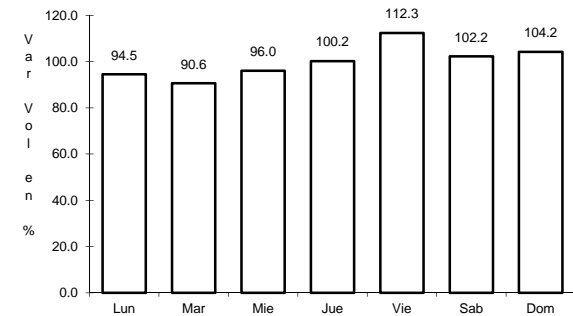
RUTA: MEX-085



Km: 0.00 Tipo: 3 Sent: 1



Km: 0.00 Tipo: 3 Sent: 2

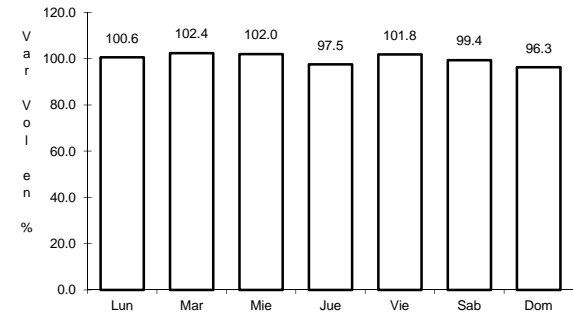
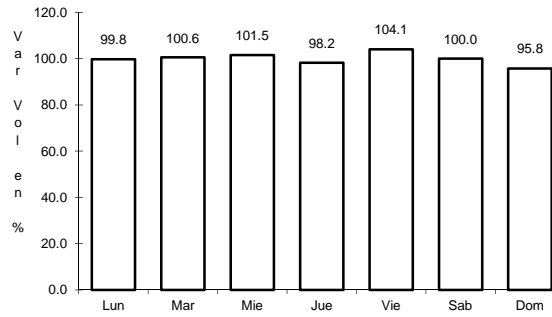
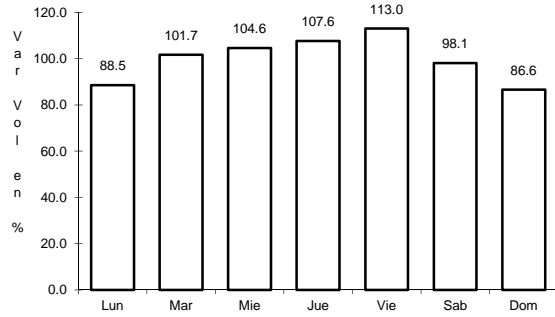


Km: 154.00 Tipo: 1 Sent: 0

7 CARR: Ent. Tula - Cd. Victoria

CLAVE: 00179

RUTA: MEX-101



Km: 0.00

Tipo: 3

Sent: 0

Km: 180.00

Tipo: 1

Sent: 1

Km: 180.00

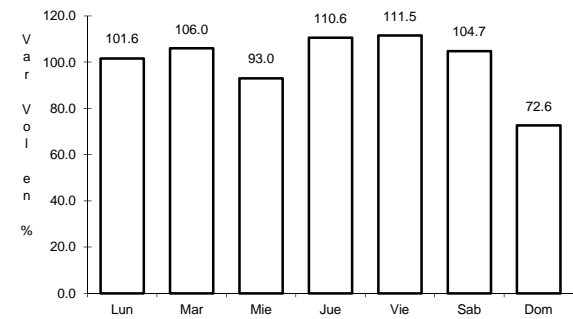
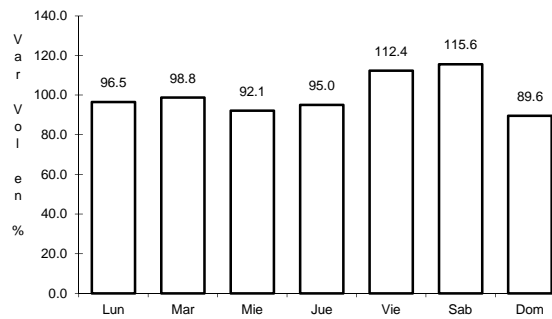
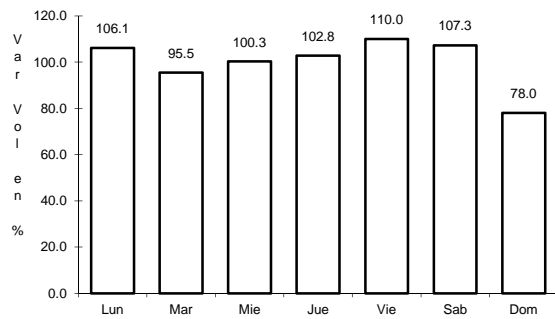
Tipo: 1

Sent: 2

8 CARR: Estación Manuel - T. C. (Cd. Victoria - Soto La Marina)

CLAVE: 28294

RUTA: MEX-180



Km: 0.00

Tipo: 3

Sent: 0

Km: 69.00

Tipo: 3

Sent: 0

Km: 145.00

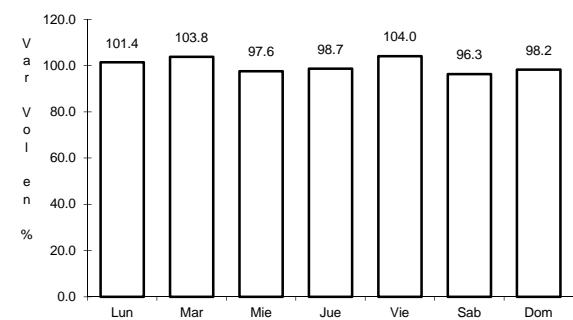
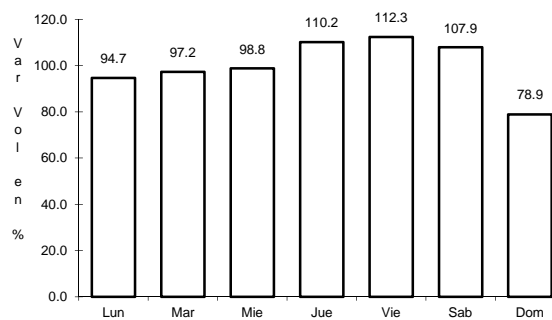
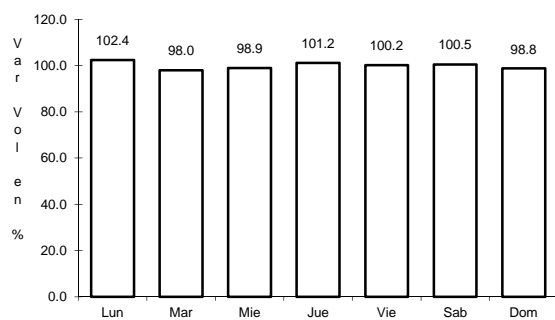
Tipo: 1

Sent: 0

9 CARR: González - Llera de Canales

CLAVE: 28578

RUTA: MEX-081



Km: 0.00

Tipo: 3

Sent: 0

Km: 58.50

Tipo: 1

Sent: 0

Km: 89.00

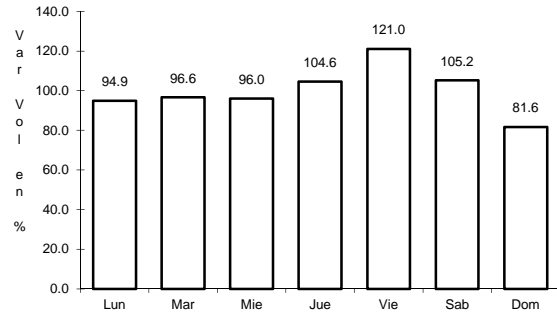
Tipo: 1

Sent: 0

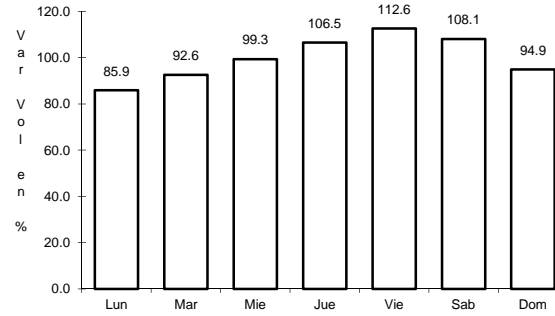
10 CARR: Ignacio Zaragoza - T. C. (Ciudad Victoria - Monterrey)

CLAVE: 28625

RUTA: MEX-083



Km: 0.00 Tipo: 3 Sent: 0

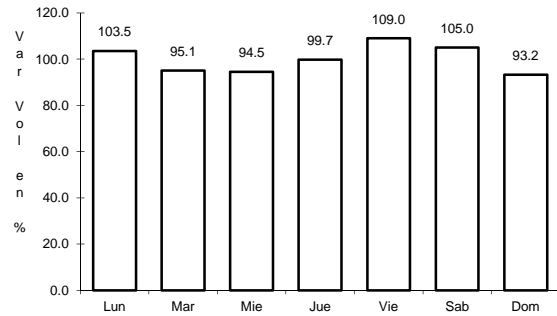


Km: 94.30 Tipo: 1 Sent: 0

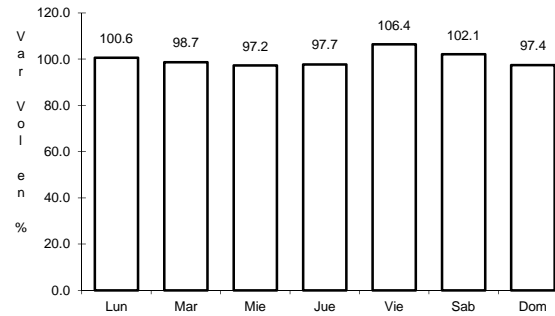
11 CARR: Las Urracas - T. C. (Matamoros - Reynosa)

CLAVE: 28029

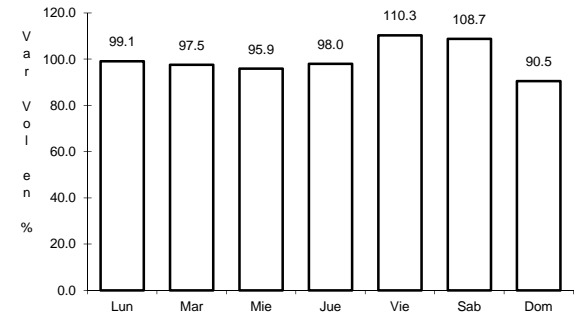
RUTA: MEX-097



Km: 0.00 Tipo: 3 Sent: 0



Km: 113.25 Tipo: 1 Sent: 1

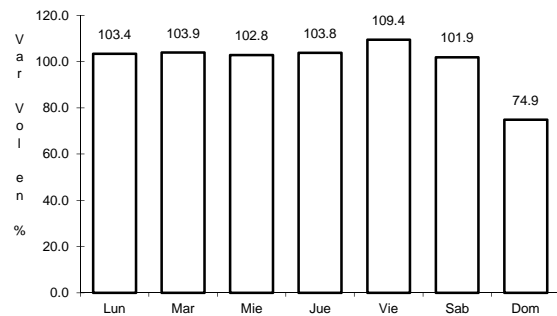


Km: 113.25 Tipo: 1 Sent: 2

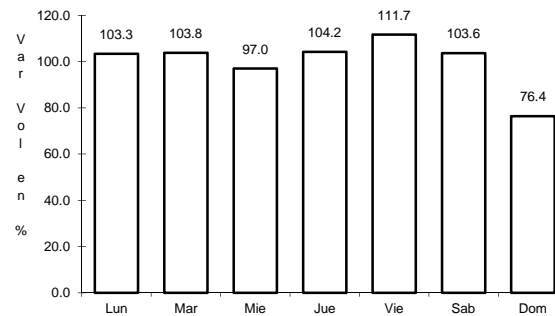
12 CARR: Libramiento de Reynosa

CLAVE: 28008

RUTA: MEX-040



Km: 0.00 Tipo: 3 Sent: 1

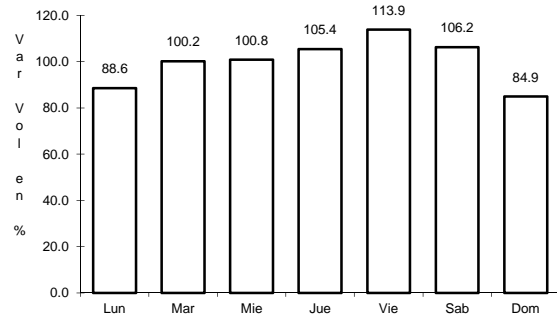


Km: 0.00 Tipo: 3 Sent: 2

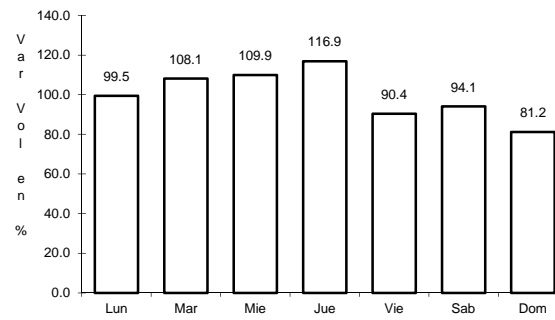
13 CARR: Libramiento Estación Manuel - González

CLAVE: 28002

RUTA: MEX-081



Km: 0.00 Tipo: 3 Sent: 0

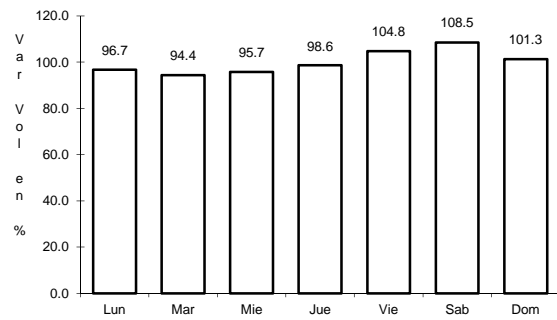


Km: 24.80 Tipo: 1 Sent: 0

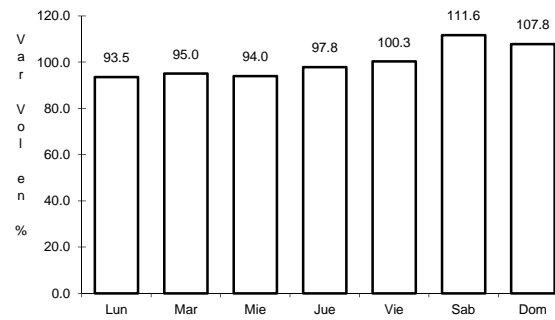
14 CARR: Matamoras - Playa Lauro Villar

CLAVE: 28078

RUTA: MEX-002



Km: 0.00 Tipo: 3 Sent: 1

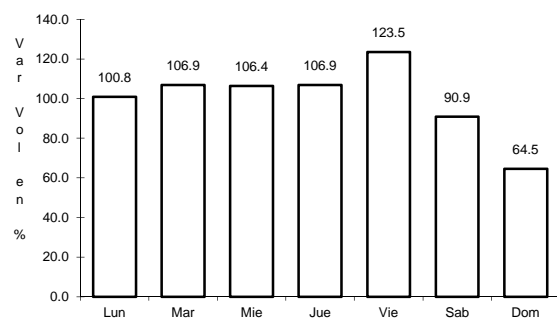


Km: 0.00 Tipo: 3 Sent: 2

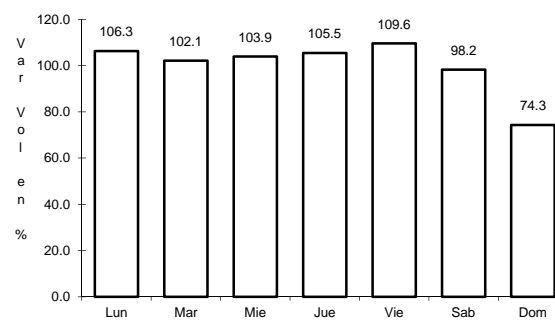
15 CARR: Matamoras - Reynosa

CLAVE: 28077

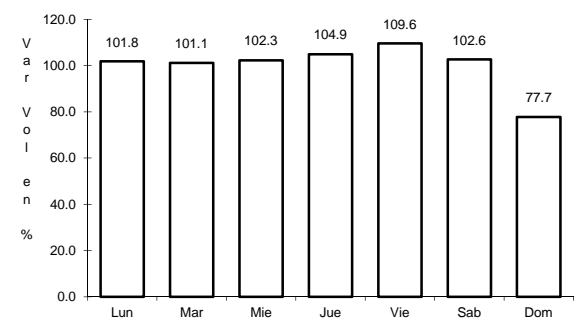
RUTA: MEX-002



Km: 0.00 Tipo: 3 Sent: 0



Km: 98.00 Tipo: 1 Sent: 1

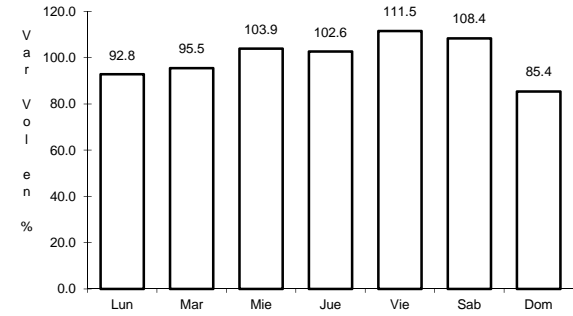
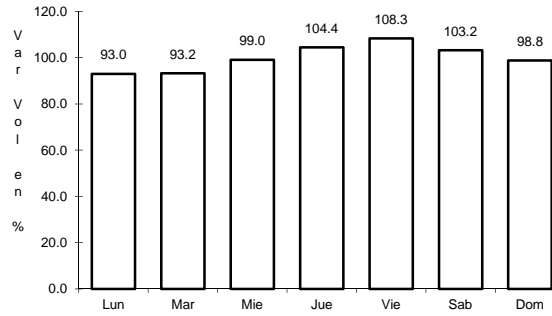
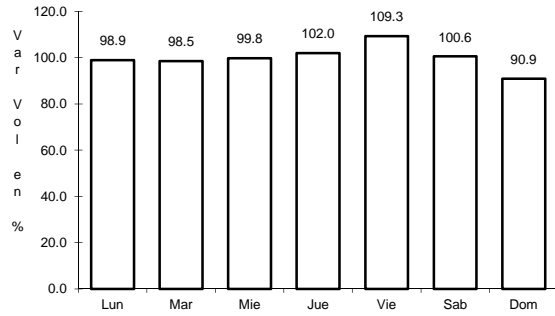


Km: 98.00 Tipo: 1 Sent: 2

16 CARR: Monterrey - Mier

CLAVE: 00127

RUTA: MEX-054



Km: 19.12 Tipo: 1 Sent: 1

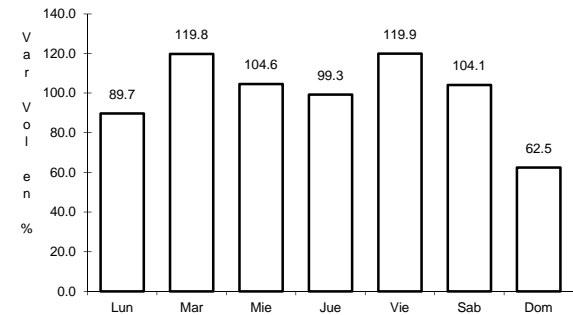
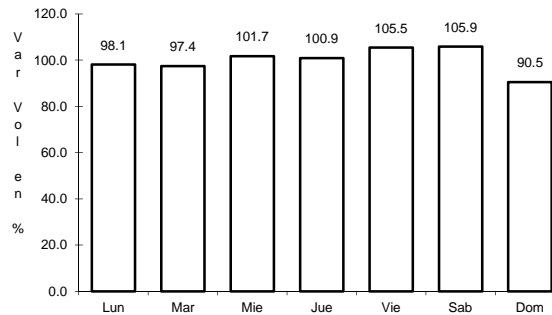
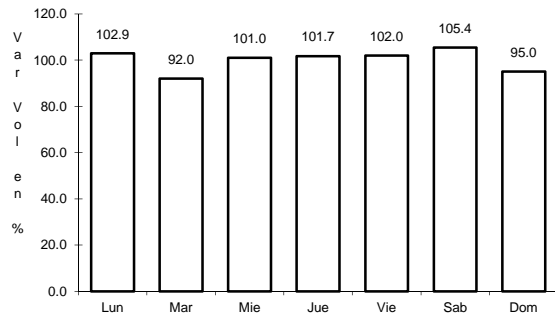
Km: 19.12 Tipo: 1 Sent: 2

Km: 156.21 Tipo: 1 Sent: 0

17 CARR: Monterrey - Nuevo Laredo (Libre)

CLAVE: 00463

RUTA: MEX-085



Km: 12.10 Tipo: 3 Sent: 1

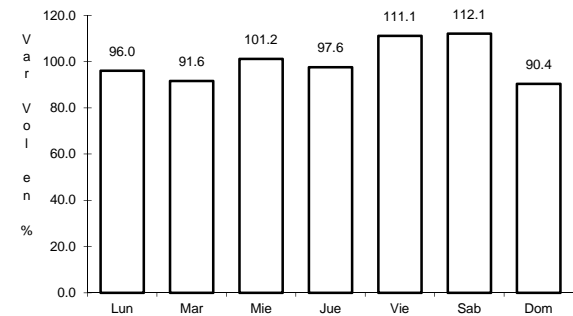
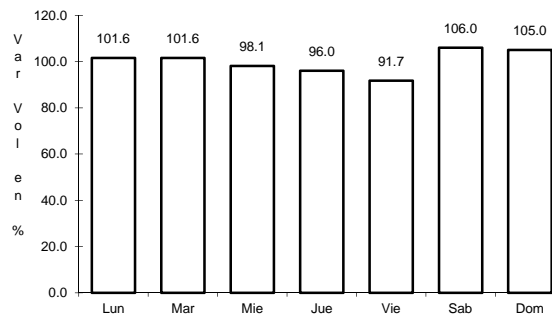
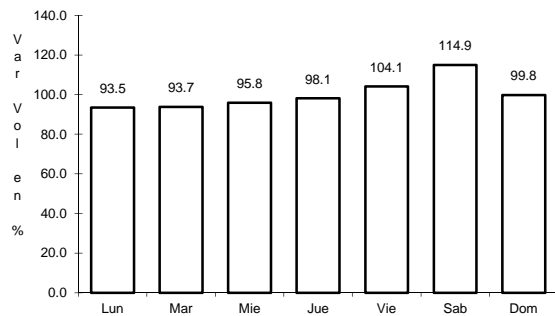
Km: 12.10 Tipo: 3 Sent: 2

Km: 124.40 Tipo: 3 Sent: 0

18 CARR: Monterrey - Reynosa (Libre)

CLAVE: 00088

RUTA: MEX-040



Km: 19.10 Tipo: 1 Sent: 1

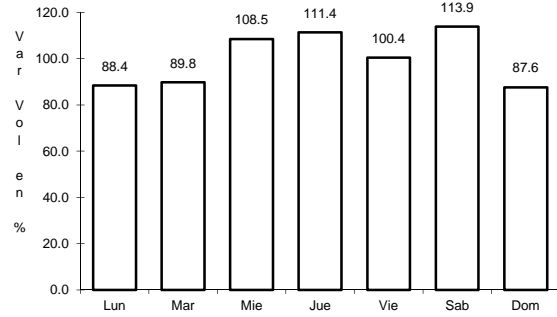
Km: 19.10 Tipo: 1 Sent: 2

Km: 125.00 Tipo: 1 Sent: 0

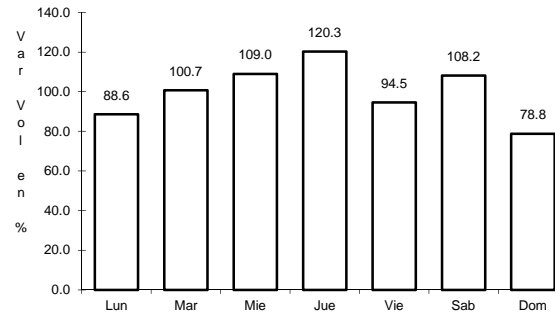
19 CARR: Paras - Nueva Ciudad Guerrero

CLAVE: 00476

ruta: MEX-030



Km: 0.00 Tipo: 3 Sent: 0

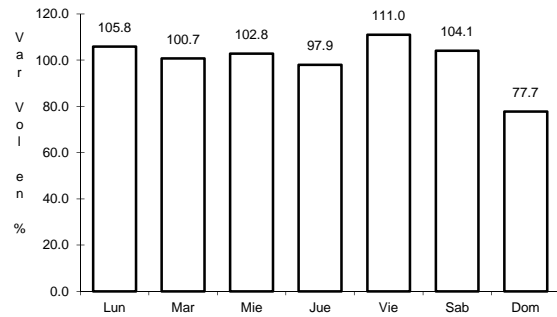


Km: 32.00 Tipo: 1 Sent: 0

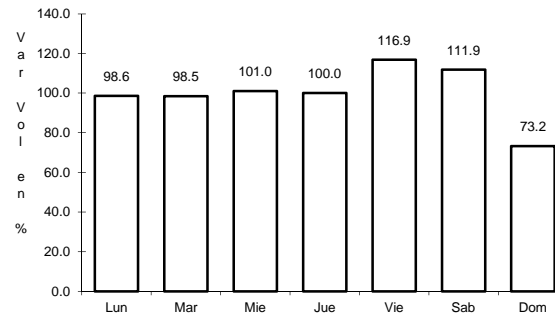
20 CARR: Piedras Negras - Nuevo Laredo

CLAVE: 00503

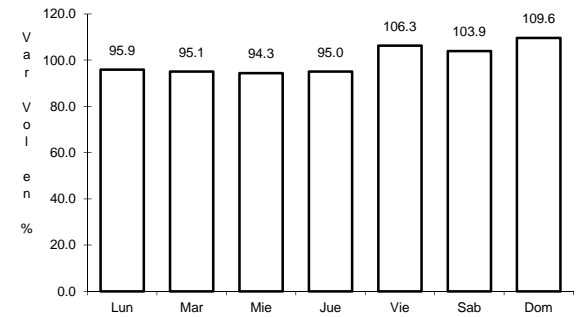
ruta: MEX-002



Km: 0.00 Tipo: 3 Sent: 1



Km: 0.00 Tipo: 3 Sent: 2

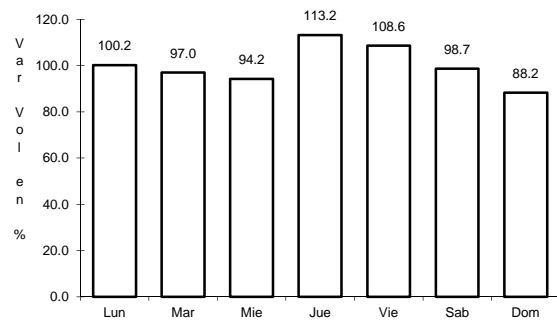


Km: 134.00 Tipo: 3 Sent: 0

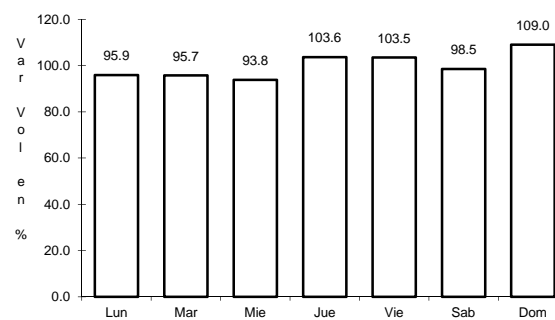
21 CARR: Ramal de Acceso a Puente Anzaldúas

CLAVE: 28619

ruta: MEX



Km: 0.00 Tipo: 3 Sent: 1

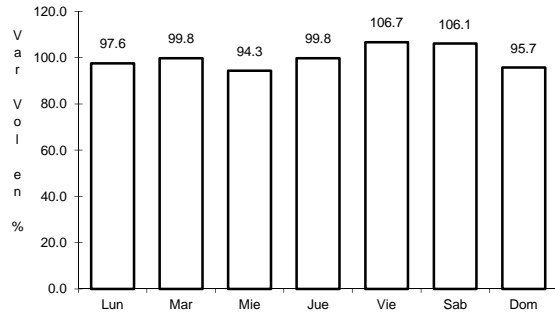


Km: 0.00 Tipo: 3 Sent: 2

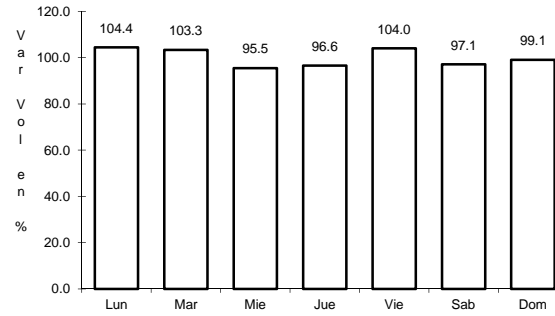
22 CARR: Reynosa - Nuevo Laredo

CLAVE: 28076

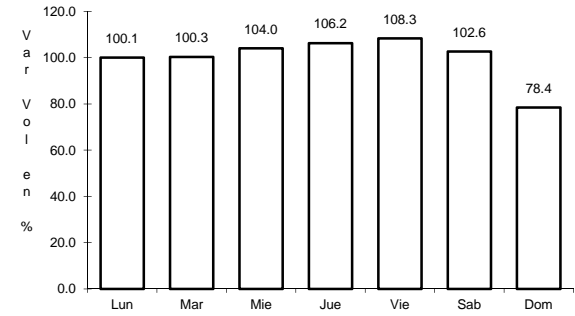
RUTA: MEX-002



Km: 0.00 Tipo: 3 Sent: 1



Km: 0.00 Tipo: 3 Sent: 2

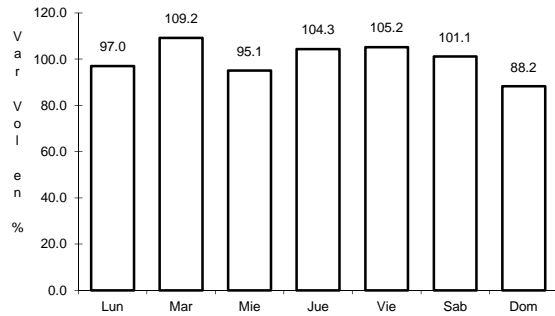


Km: 221.08 Tipo: 1 Sent: 0

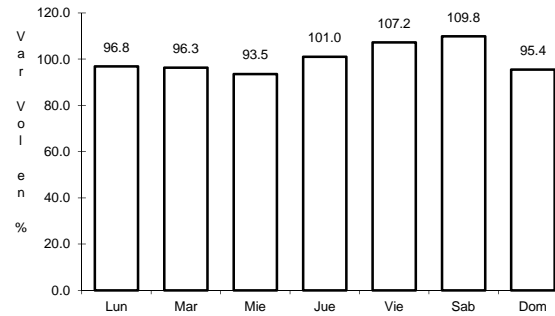
23 CARR: Soto La Marina - La Coma

CLAVE: 28052

RUTA: MEX-180



Km: 0.00 Tipo: 3 Sent: 0

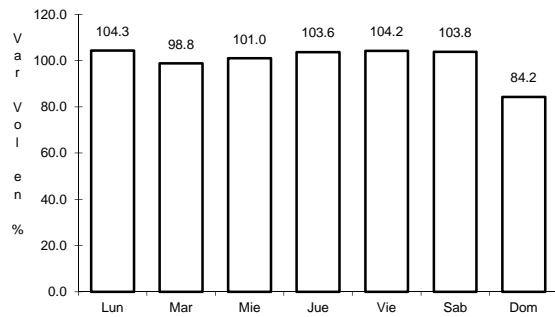


Km: 86.00 Tipo: 1 Sent: 0

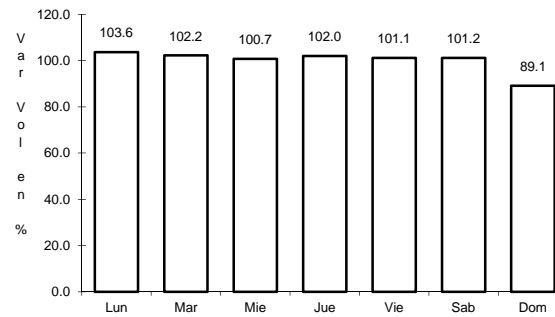
24 CARR: Tampico - Cd. Mante

CLAVE: 28163

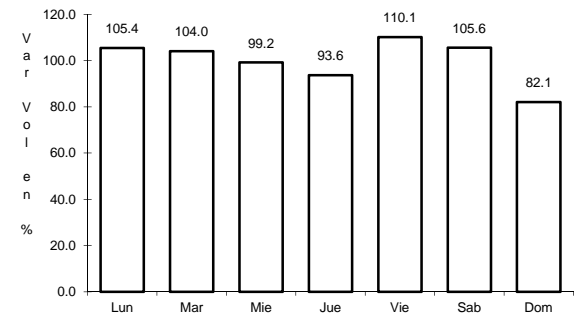
RUTA: MEX-080



Km: 14.79 Tipo: 1 Sent: 1



Km: 14.79 Tipo: 1 Sent: 2

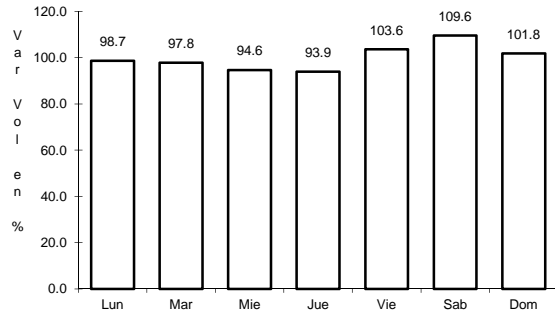


Km: 155.00 Tipo: 1 Sent: 0

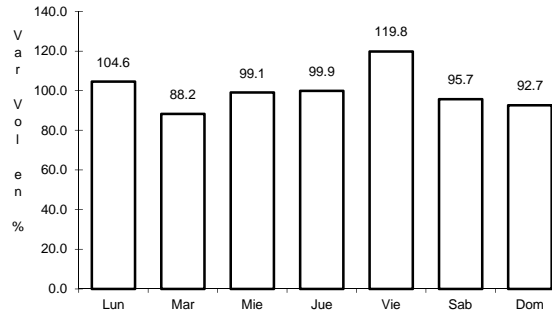
25 CARR: Túxpam - Tampico

CLAVE: 00529

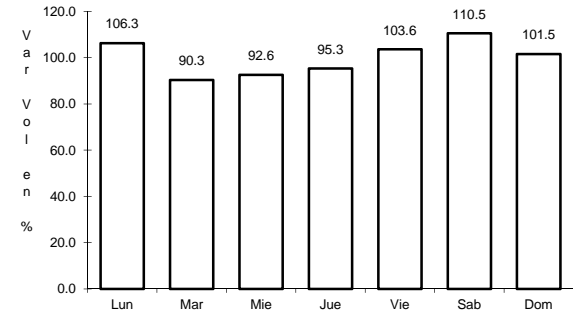
RUTA: MEX-180



Km: 0.00 Tipo: 3 Sent: 0



Km: 78.60 Tipo: 1 Sent: 0

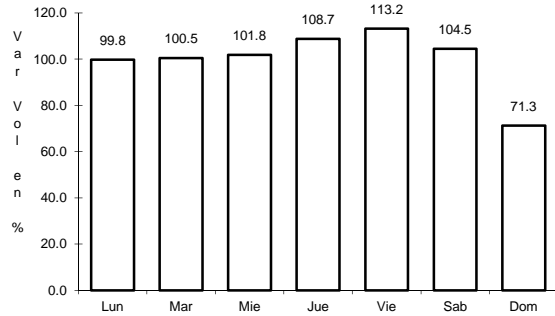


Km: 186.85 Tipo: 3 Sent: 0

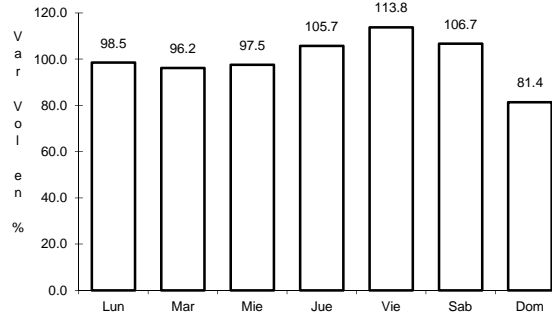
26 CARR: Libramiento Poniente de Tampico (Cuota)

CLAVE: 28051

RUTA: MEX-070D



Km: 0.00 Tipo: 3 Sent: 0

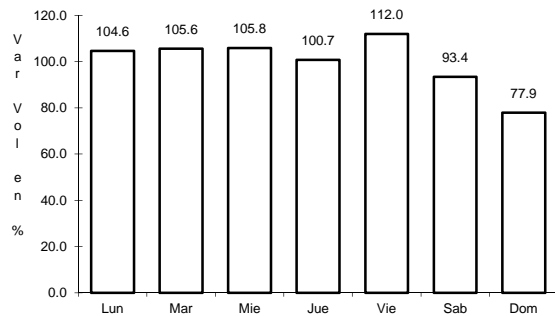


Km: 12.00 Tipo: 1 Sent: 0

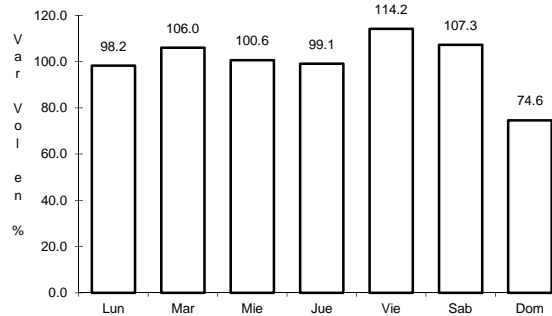
27 CARR: Matamoros - Reynosa (Cuota)

CLAVE: 28079

RUTA: MEX-002D



Km: 0.00 Tipo: 3 Sent: 1

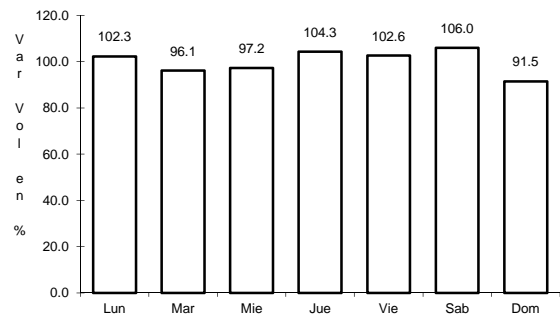


Km: 0.00 Tipo: 3 Sent: 2

28 CARR: Aldama - Barra El Tordo

CLAVE: 28620

RUTA: TAM



Km: 0.00

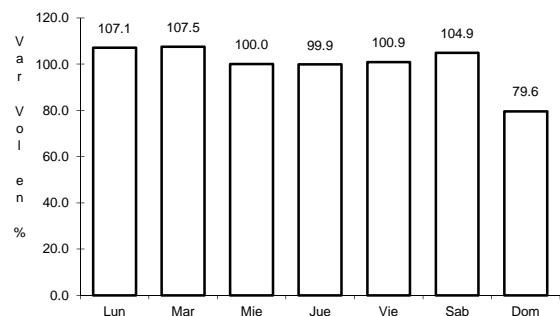
Tipo: 3

Sent: 0

29 CARR: Barretal - Nueva Villa de Padilla

CLAVE: 28001

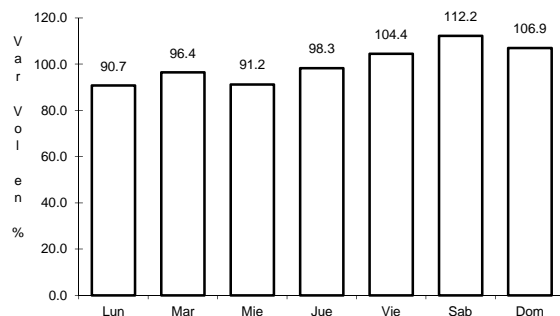
RUTA: TAM-001



Km: 0.00

Tipo: 3

Sent: 0



Km: 24.50

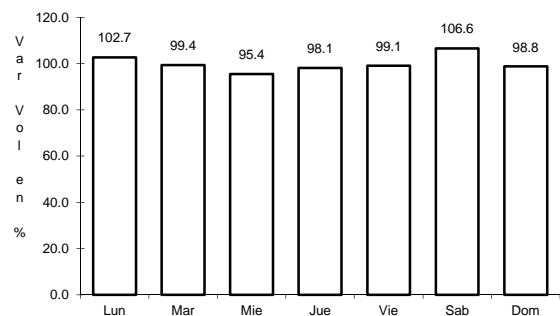
Tipo: 1

Sent: 0

30 CARR: China - Méndez

CLAVE: 00191

RUTA: NL-TAM



Km: 0.00

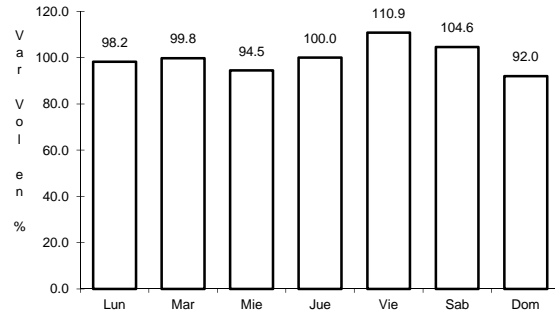
Tipo: 3

Sent: 0

31 CARR: Ébano - Estación Manuel

CLAVE: 24624

RUTA: SLP-TAM



Km: 0.00

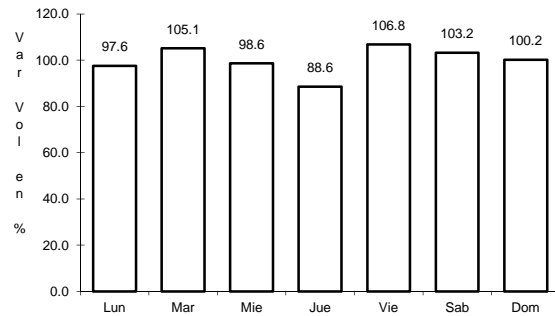
Tipo: 3

Sent: 0

32 CARR: El Limón - Ocampo

CLAVE: 28019

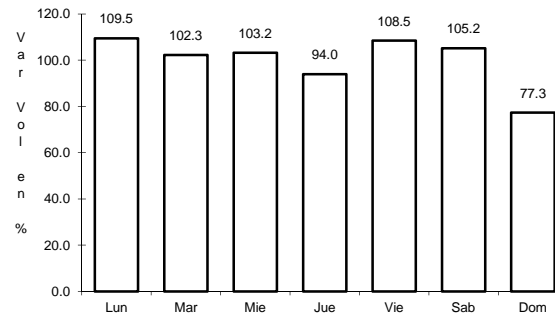
RUTA: TAM-019



Km: 0.00

Tipo: 3

Sent: 0



Km: 43.00

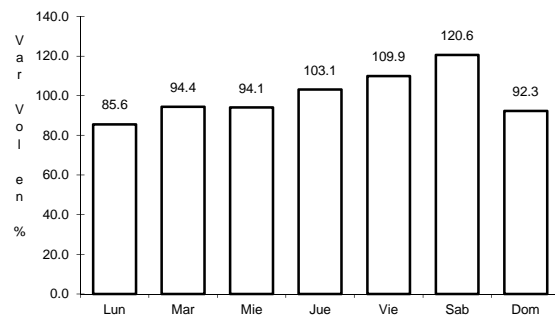
Tipo: 1

Sent: 0

33 CARR: Ent. Huisachito - Nuevo Laredo

CLAVE: 00074

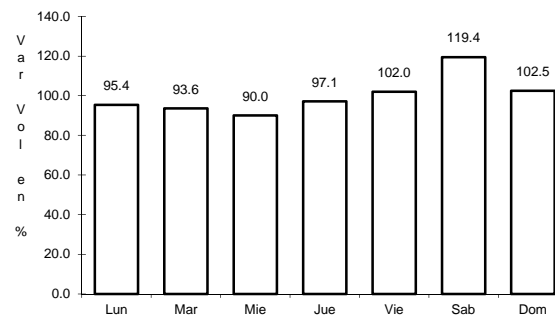
RUTA: NL-001-TAM



Km: 0.00

Tipo: 3

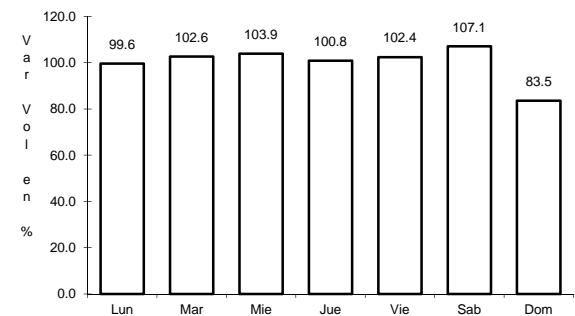
Sent: 0



Km: 47.00

Tipo: 1

Sent: 0



Km: 51.00

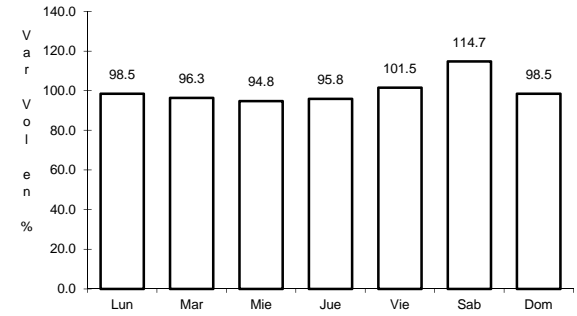
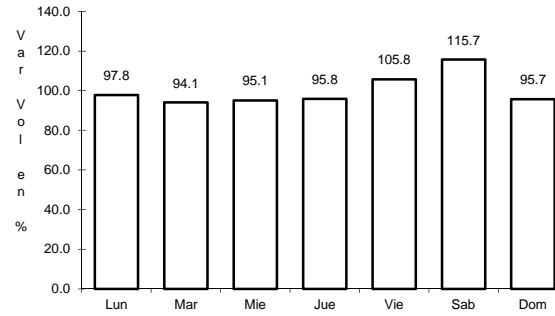
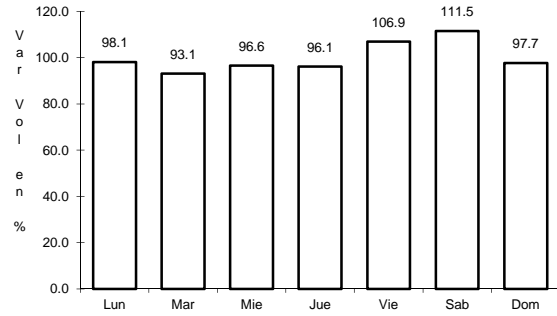
Tipo: 1

Sent: 0

34 CARR: Ent. Las Blancas - Río Bravo

CLAVE: 28003

RUTA: TAM-003



Km: 0.00 Tipo: 3 Sent: 0

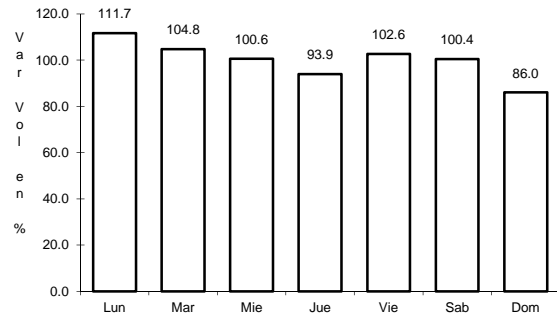
Km: 21.00 Tipo: 1 Sent: 1

Km: 21.00 Tipo: 1 Sent: 2

35 CARR: La Joya - Méndez

CLAVE: 28623

RUTA: TAM

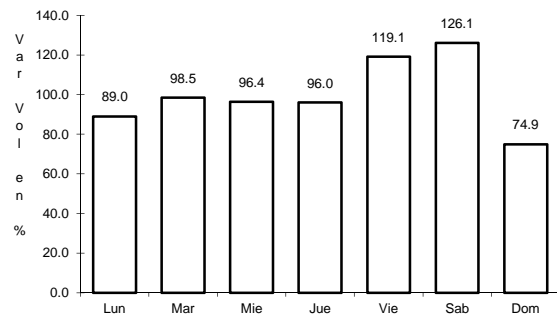


Km: 0.00 Tipo: 3 Sent: 0

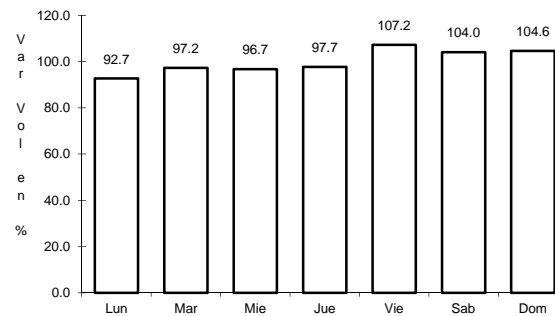
36 CARR: Libramiento de Cd. Victoria

CLAVE: 28282

RUTA: TAM



Km: 25.90 Tipo: 1 Sent: 1

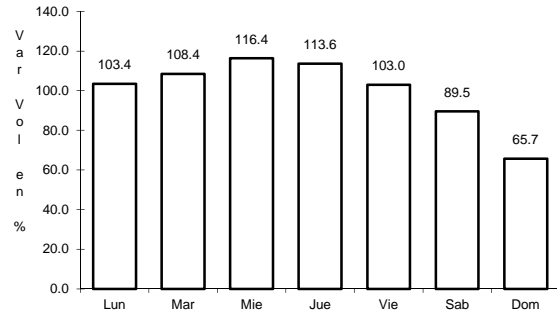


Km: 25.90 Tipo: 1 Sent: 2

37 CARR: Libramiento de Mier

CLAVE: 28282

RUTA: TAMPS



Km: 0.00

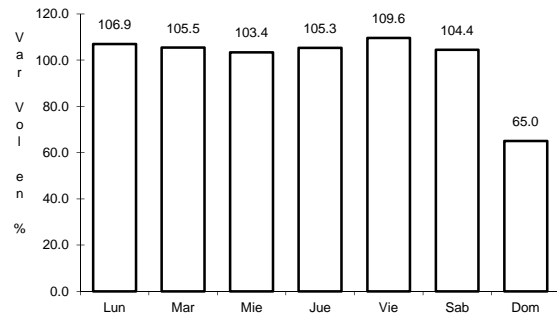
Tipo: 3

Sent: 0

38 CARR: Libramiento de Nuevo Laredo

CLAVE: 28030

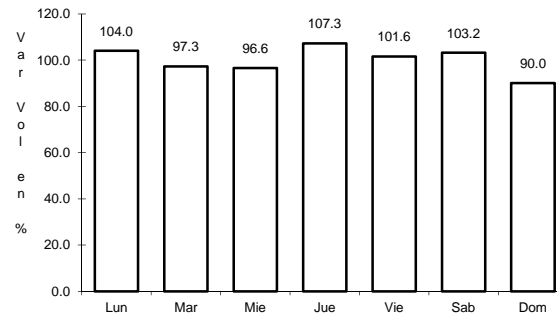
RUTA: TAM



Km: 0.00

Tipo: 3

Sent: 1



Km: 0.00

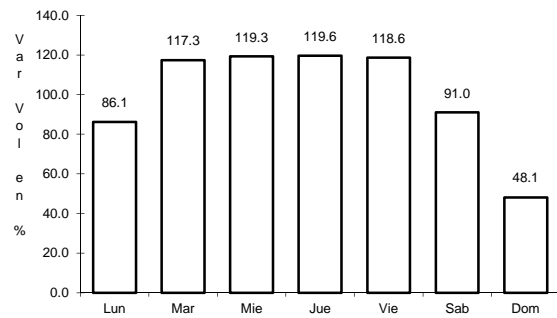
Tipo: 3

Sent: 2

39 CARR: Libramiento de Nuevo Laredo II

CLAVE: 28626

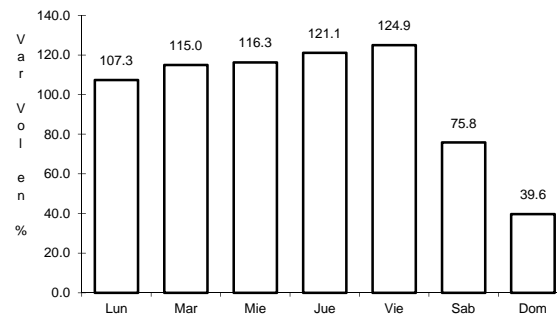
RUTA: TAM



Km: 0.00

Tipo: 3

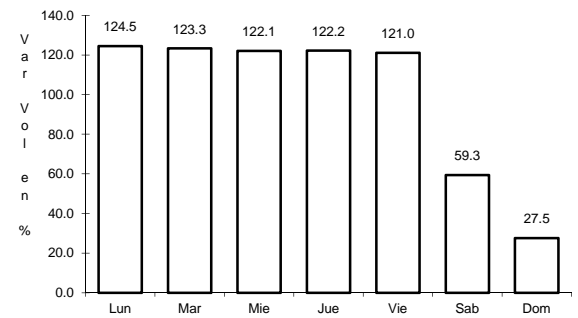
Sent: 0



Km: 32.20

Tipo: 1

Sent: 1



Km: 32.20

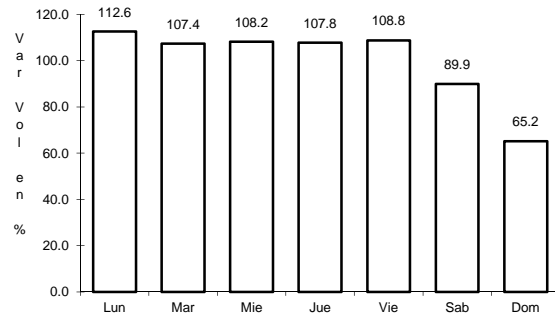
Tipo: 1

Sent: 2

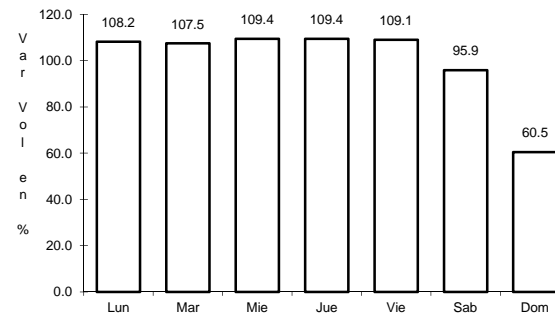
40 CARR: Libramiento de Río Bravo

CLAVE: 28002

RUTA: TAM



Km: 0.00 Tipo: 3 Sent: 1

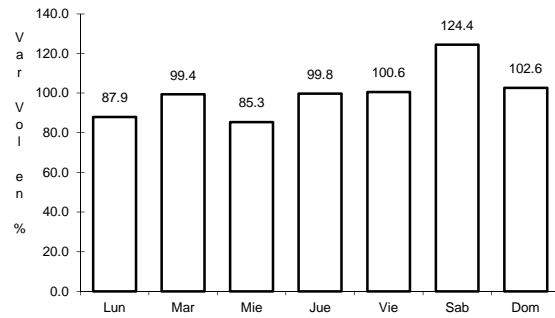


Km: 0.00 Tipo: 3 Sent: 2

41 CARR: Los Guerra - Los Herreras

CLAVE: 19031

RUTA: TAM-NL

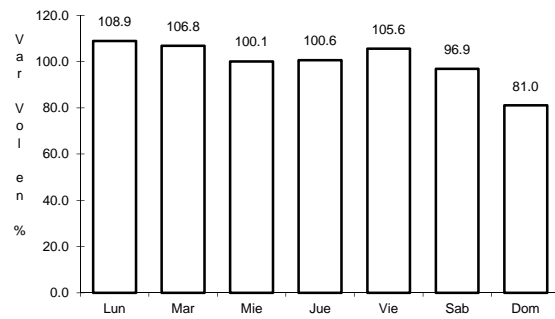


Km: 73.00 Tipo: 1 Sent: 0

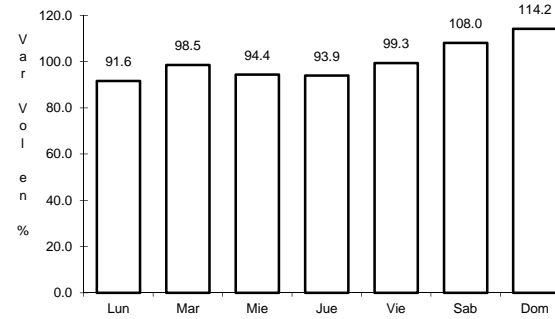
42 CARR: Peña Blanca - Cd. Camargo

CLAVE: 00102

RUTA: NL-TAM



Km: 0.00 Tipo: 3 Sent: 0

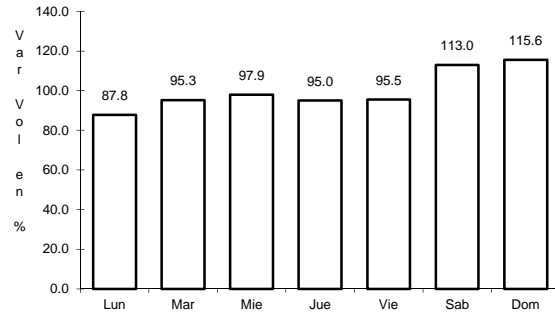


Km: 65.00 Tipo: 1 Sent: 0

43 CARR: Potrero Nuevo - Rancho El Mezquital

CLAVE: 28615

RUTA: TAM



Km: 0.00

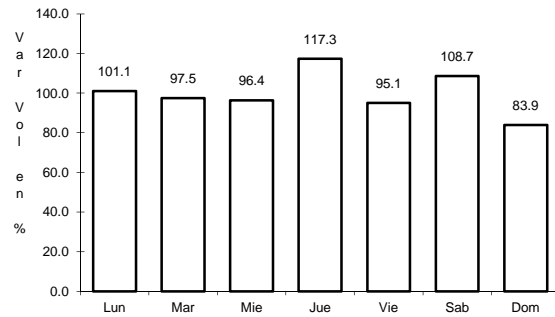
Tipo: 3

Sent: 0

44 CARR: Ramal a Gómez Farías

CLAVE: 28020

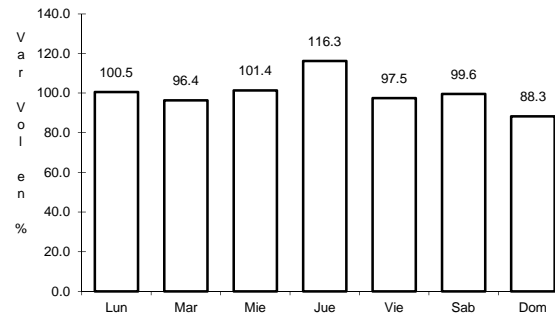
RUTA: TAM-020



Km: 0.00

Tipo: 3

Sent: 0



Km: 11.00

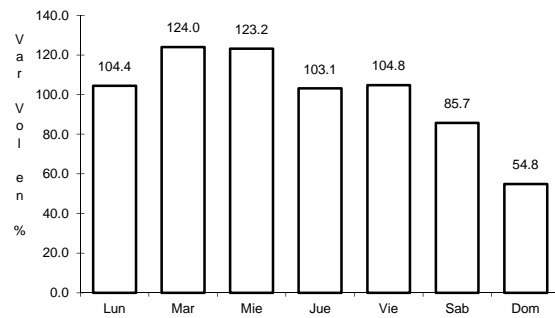
Tipo: 1

Sent: 0

45 CARR: Ramal a Xicoténcatl

CLAVE: 28619

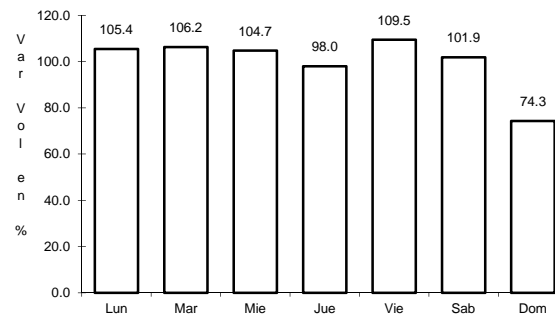
RUTA: TAM



Km: 0.00

Tipo: 3

Sent: 0



Km: 13.00

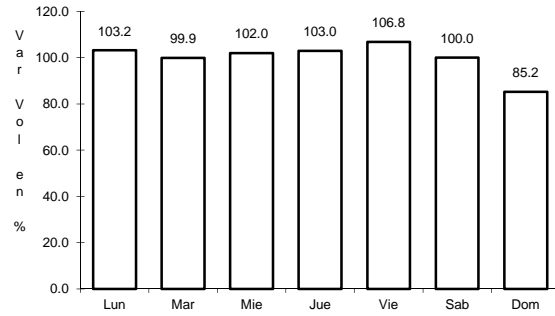
Tipo: 1

Sent: 0

46 CARR: San Fernando - Carboneras

CLAVE: 28618

RUTA: TAM

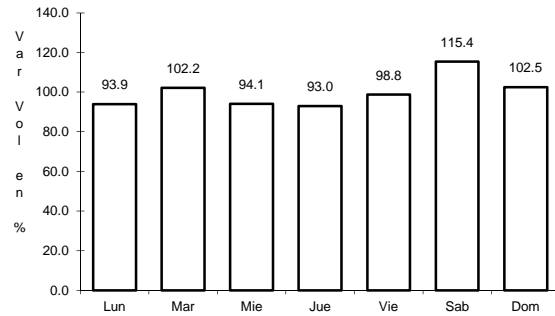


Km: 0.00 Tipo: 3 Sent: 0

47 CARR: Soto La Marina - La Pesca

CLAVE: 28049

RUTA: TAM-070

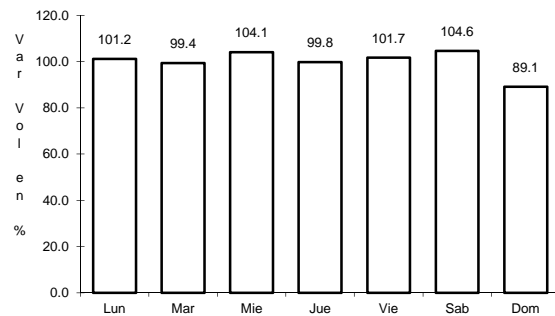


Km: 0.00 Tipo: 3 Sent: 0

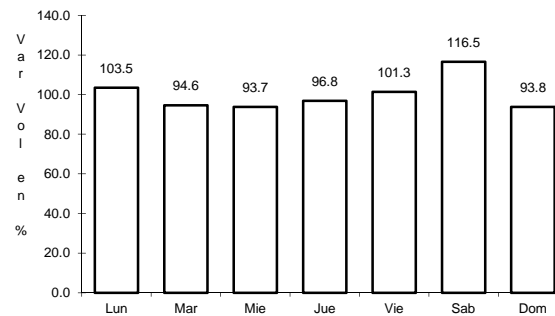
48 CARR: T. C. (Valle Hermoso - Empalme) - Matamoros

CLAVE: 28005

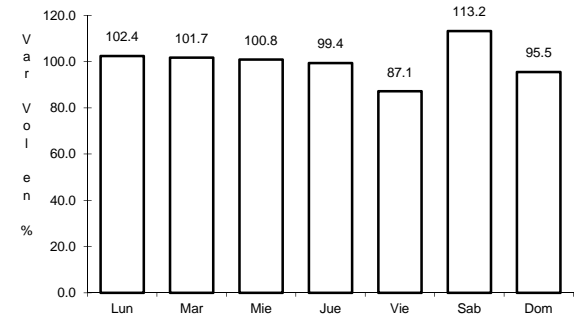
RUTA: TAM-005



Km: 0.00 Tipo: 3 Sent: 0



Km: 33.90 Tipo: 1 Sent: 1

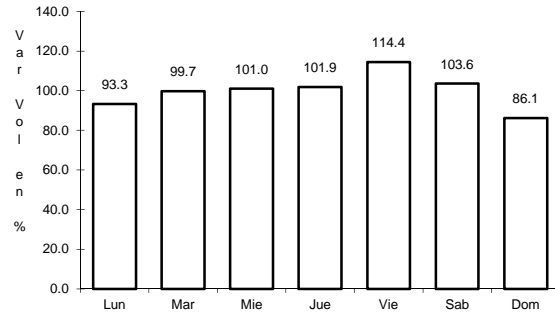


Km: 33.90 Tipo: 1 Sent: 2

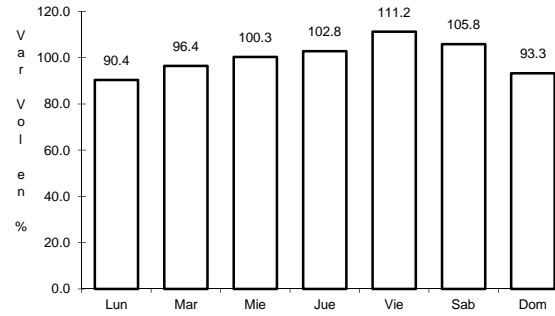
49 CARR: T. C. Libramiento Cd. Victoria - San Antonio

CLAVE:

RUTA: TAM-126



Km: 0.00 Tipo: 3 Sent: 0

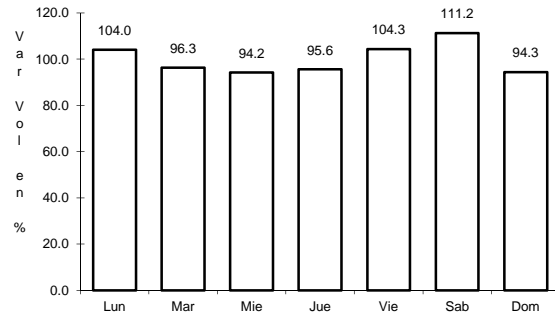


Km: 37.50 Tipo: 1 Sent: 0

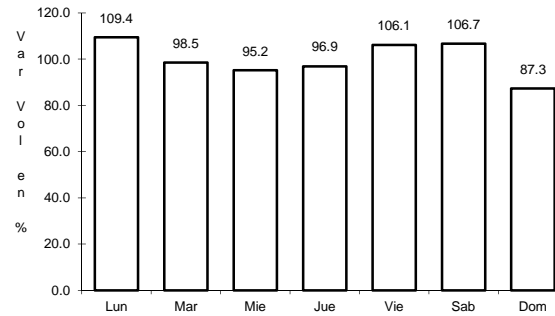
50 CARR: Valle Hermoso - Empalme

CLAVE: 28004

RUTA: TAM-004



Km: 0.00 Tipo: 3 Sent: 0

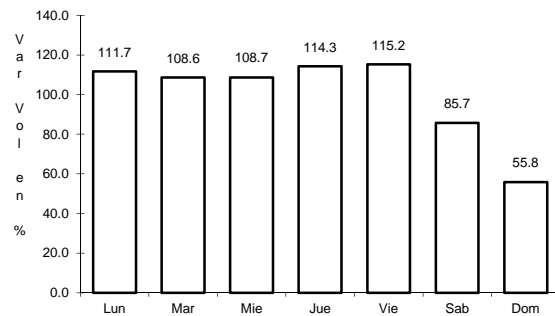


Km: 28.38 Tipo: 1 Sent: 0

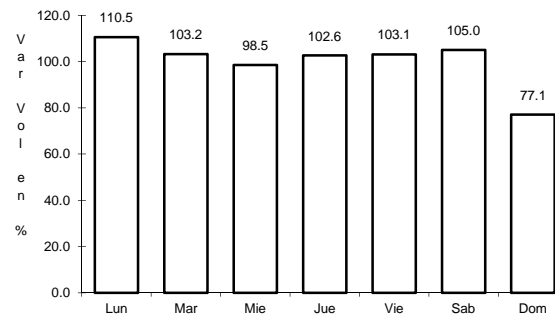
51 CARR: Valle Hermoso - Las Yescas

CLAVE: 28614

RUTA: TAM

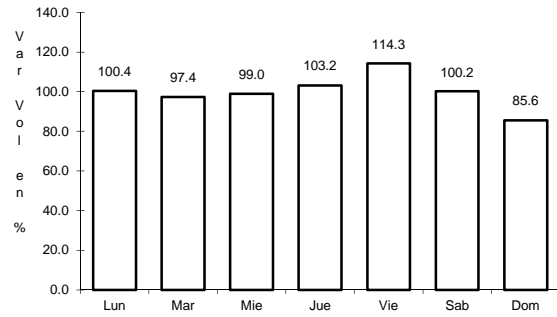


Km: 0.00 Tipo: 3 Sent: 0



Km: 26.00 Tipo: 1 Sent: 0

52 CARR: Santander Jiménez - Ent. El Ojito

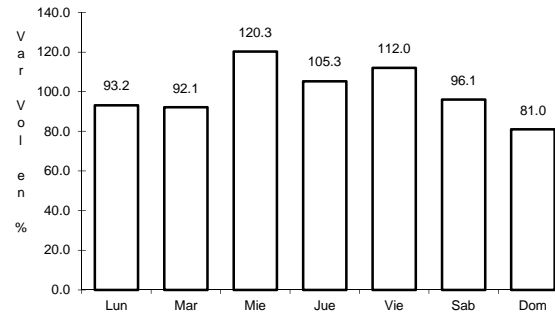


Km: 0.00

Tipo: 3

Sent: 0

CLAVE: 28579

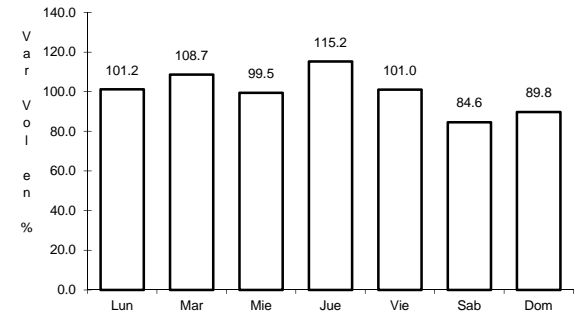


Km: 20.00

Tipo: 1

Sent: 0

RUTA: MEX-107-TAM



Km: 58.00

Tipo: 1

Sent: 0

