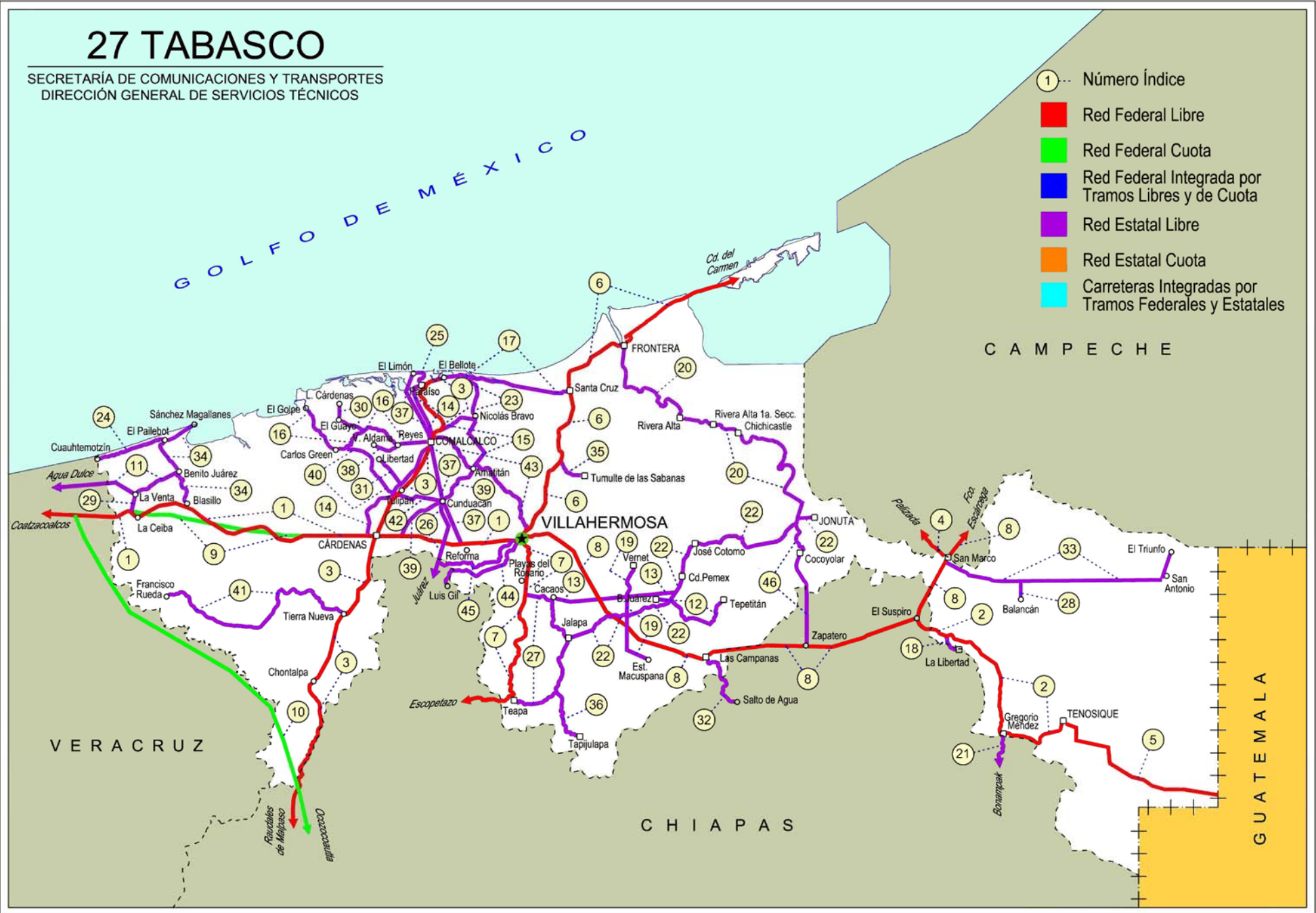
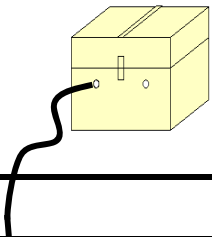


27 TABASCO

SECRETARÍA DE COMUNICACIONES Y TRANSPORTES
DIRECCIÓN GENERAL DE SERVICIOS TÉCNICOS

- ① --- Número Índice
- Red Federal Libre
- Red Federal Cuota
- Red Federal Integrada por Tramos Libres y de Cuota
- Red Estatal Libre
- Red Estatal Cuota
- Carreteras Integradas por Tramos Federales y Estatales





TABASCO

NO. INDICE	CARRETERA	RUTA
---RED FEDERAL LIBRE---		
1	Coatzacoalcos - Villahermosa	MEX-180
2	El Suspiro - Tenosique	MEX-203
3	Malpaso - El Bellote	MEX-187
4	San Marco - Palizada	MEX-186
5	Tenosique - El Ceibo	MEX-203
6	Villahermosa - Cd. del Carmen	MEX-180
7	Villahermosa - Escopetazo	MEX-195
8	Villahermosa - Francisco Escárcega	MEX-186
---RED FEDERAL DE CUOTA---		
9	Ent. Agua Dulce - Cárdenas (Cuota)	MEX-180D
10	Las Choapas - Ocozocoautla (Cuota)	MEX-187D
---RED ESTATAL LIBRE---		
11	Benito Juárez - Agua Dulce	TAB-VER
12	Benito Juárez - Tepetitán	TAB
13	Cacaos - La Granja	TAB
14	Cárdenas - Paraíso	TAB
15	Chichicapa - Ent. La Libertad	TAB
16	Comalcalco - El Golpe	TAB
17	El Bellote - Santa Cruz	TAB
18	Ent. Emiliano Zapata - La Libertad	CHIS-TAB
19	Estación Macuspana - Vernet	TAB-041
20	Frontera - T. C. (Jalapa - Jonuta)	TAB
21	Gregorio Méndez Magaña - Reforma de Ocampo	CHIS
22	Jalapa - Jonuta	TAB
23	Nicolás Bravo - T. C. (El Bellote - Santa Cruz)	TAB
24	Pailebot - Cuauhtemotzin	TAB
25	Paraíso - El Limón	TAB
26	Paso de Cunduacán - Estación Juárez	TAB-CHIS
27	Playas del Rosario - Teapa	TAB-001
28	Ramal a Balancan	TAB
29	Ramal a La Venta	TAB
30	Ramal a Lázaro Cárdenas	TAB
31	Ramal a Libertad	TAB
32	Ramal a Salto del Agua	TAB-CHIS
33	Ramal a San Antonio	TAB
34	Ramal a Sánchez Magallanes	TAB
35	Ramal a Tamulte de Las Sabanas	TAB
36	Ramal a Tapijulapa	TAB
37	Reforma - Dos Bocas	TAB
38	Reyes Hernández - Villa Aldama	TAB
39	Samaria - Amatitán	TAB
40	T. C. (Cárdenas - Paraíso) - Carlos Green	TAB
41	Tierra Nueva - Francisco Rueda	TAB
42	Tulipán - Cunduacán	TAB
43	Villahermosa - Comalcalco	TAB
44	Villahermosa - Luis Gil Pérez	TAB
45	Villahermosa - T. C. (P. de Cunduacán - Estación Juárez)	TAB
46	Zapatero - T. C. (Jalapa - Jonuta)	CHIS-TAB

TABASCO

1 CARR : Coatzacoalcos - Villahermosa

CLAVE: 00528

RUTA: MEX-180

AÑO: 2015

LUGAR	ESTACION				CLASIFICACION VEHICULAR EN PORCIENTO														COORDENADAS	
	KM	TE	SC	TDPA	M	A	B	C2	C3	T3S2	T3S3	T3S2R4	OTROS	A	B	C	K'	D	LATITUD	LONGITUD
Coatzacoalcos	0.00																			
Caseta de Cobro Pte. Coatzacoalcos	3.00	1	0	19808	1.2	84.3	2.9	8.8	1.7	0.2	0.7	0.1	0.1	85.5	2.9	11.6	0.088	0.503	18.116008	-94.412675
X. C. Pajaritos - Nanchital	6.53	1	0	19924	1.1	80.4	3.4	9.6	1.8	1.0	1.1	1.4	0.2	81.5	3.4	15.1	0.088	0.501	18.110785	-94.403274
X. C. Pajaritos - Nanchital	6.53	3	0	15763	2.1	77.7	3.6	8.8	2.9	1.4	1.4	2.0	0.1	79.8	3.6	16.6	0.095	0.511	18.098220	-94.386350
T. Der. Puente Antonio Dovalí Jaimes	14.60	1	0	11730	2.5	71.8	4.1	8.1	3.7	3.2	3.0	3.4	0.2	74.3	4.1	21.6	0.082	0.509	18.077412	-94.328523
T. Der. Puente Antonio Dovalí Jaimes	14.60	3	1	8476	1.8	69.7	4.2	5.8	2.7	8.1	2.7	4.2	0.8	71.5	4.2	24.3	0.077	0.511	18.071227	-94.312734
T. Der. Puente Antonio Dovalí Jaimes	14.60	3	2	8114	2.2	66.4	4.5	6.4	3.1	8.6	3.0	4.9	0.9	68.6	4.5	26.9	0.076	0.511	18.071235	-94.312736
T. Der. Las Choapas	36.00	3	1	8687	1.9	71.1	2.9	5.5	2.8	7.9	3.0	4.1	0.8	73.0	2.9	24.1	0.075	0.513	18.052174	-94.122893
T. Der. Las Choapas	36.00	3	2	9150	1.5	67.2	3.3	6.4	3.2	9.5	3.5	4.6	0.8	68.7	3.3	28.0	0.070	0.513	18.052594	-94.120636
Lim. Edos. Term. Ver. Ppia. Tab.	41.48																			
T. Izq. Villa La Venta	47.26	3	0	2033	7.3	59.2	6.3	9.5	3.6	10.0	2.9	0.8	0.4	66.5	6.3	27.2	0.080	0.506	18.058111	-94.032444
T. Izq. Campo Magallanes	65.20	1	0	3680	5.0	61.4	4.5	8.3	4.9	10.5	4.0	1.1	0.3	66.4	4.5	29.1	0.087	0.544	18.076139	-93.884861
T. Izq. Campo Magallanes	65.20	3	0	4635	4.3	61.6	3.4	9.0	4.3	12.6	3.5	1.1	0.2	65.9	3.4	30.7	0.070	0.548	18.069944	-93.868667
X. C. Agua Dulce - Cárdenas (Cuota)	78.80	1	0	4763	5.2	62.6	4.0	8.6	3.6	11.5	2.9	1.0	0.6	67.8	4.0	28.2	0.073	0.535	18.034056	-93.818111
X. C. Agua Dulce - Cárdenas (Cuota)	78.80	3	0	4336	9.8	56.2	5.8	9.5	3.8	10.8	2.8	0.9	0.4	66.0	5.8	28.2	0.071	0.516	18.022528	-93.785861
Pico de Oro	88.50	1	0	5081	6.0	61.1	5.1	9.8	3.6	10.2	3.1	0.8	0.3	67.1	5.1	27.8	0.080	0.510	18.017694	-93.689361
Pico de Oro	88.50	3	0	5335	5.7	63.9	4.0	10.4	3.3	9.1	2.5	0.7	0.4	69.6	4.0	26.4	0.077	0.521	18.017639	-93.659694
X. C. Agua Dulce - Cárdenas (Cuota)	104.00	1	0	7695	4.4	67.7	3.9	10.9	3.4	7.0	1.9	0.6	0.2	72.1	3.9	24.0	0.072	0.515	17.993972	-93.556972
X. C. Agua Dulce - Cárdenas (Cuota)	104.00	3	1	10414	2.4	66.4	4.6	8.1	2.6	9.5	2.3	3.6	0.5	68.8	4.6	26.6	0.078	0.504	17.998750	-93.537028
X. C. Agua Dulce - Cárdenas (Cuota)	104.00	3	2	10265	2.6	63.0	5.1	8.8	3.0	10.3	2.7	4.0	0.5	65.6	5.1	29.3	0.071	0.504	17.999056	-93.537917
Cárdenas	122.10	1	1	16072	3.0	71.3	2.2	7.2	2.6	7.6	2.1	3.5	0.5	74.3	2.2	23.5	0.075	0.508	17.999056	-93.399167
Cárdenas	122.10	1	2	15589	2.9	69.7	2.5	7.8	2.9	7.8	2.2	3.7	0.5	72.6	2.5	24.9	0.068	0.508	17.999361	-93.397167
Cárdenas	122.10	3	1	20972	2.0	74.0	3.6	7.7	2.2	5.6	1.8	2.8	0.3	76.0	3.6	20.4	0.076	0.516	17.999111	-93.360472
Cárdenas	122.10	3	2	19696	2.1	71.2	3.6	9.0	2.6	6.2	1.9	3.1	0.3	73.3	3.6	23.1	0.071	0.516	17.999194	-93.359583
T. Izq. Samaria	132.50	3	1	17683	1.3	73.2	3.7	7.9	2.6	6.2	1.9	3.0	0.2	74.5	3.7	21.8	0.074	0.504	17.994861	-93.272528
T. Izq. Samaria	132.50	3	2	17950	1.3	71.5	3.9	8.2	2.9	6.9	2.0	3.1	0.2	72.8	3.9	23.3	0.075	0.504	17.999444	-93.264500
Cucuyulapa	134.80	1	1	17035	1.4	73.1	3.5	8.2	2.9	6.4	1.5	2.8	0.2	74.5	3.5	22.0	0.096	0.506	17.999056	-93.260028
Cucuyulapa	134.80	1	2	17455	1.4	69.9	4.2	8.9	3.1	7.1	1.8	3.4	0.2	71.3	4.2	24.5	0.078	0.506	17.999139	-93.260444
Cucuyulapa	134.80	3	1	15720	1.1	74.4	2.7	7.5	3.0	6.2	1.8	3.0	0.3	75.5	2.7	21.8	0.065	0.509	17.999056	-93.250528
Cucuyulapa	134.80	3	2	16275	1.3	71.9	3.0	8.2	3.2	6.8	2.0	3.3	0.3	73.2	3.0	23.8	0.071	0.509	17.999139	-93.250667
T. Der. La Reforma	148.80	1	1	23029	0.9	78.6	2.4	7.0	2.6	4.8	1.4	2.1	0.2	79.5	2.4	18.1	0.097	0.510	17.977469	-93.148333
T. Der. La Reforma	148.80	1	2	23923	1.1	75.7	2.6	8.2	3.0	5.3	1.6	2.3	0.2	76.8	2.6	20.6	0.072	0.510	17.977778	-93.148944
T. Der. La Reforma	148.80	3	1	27715	1.2	79.8	2.1	7.9	1.8	3.6	1.6	1.7	0.3	81.0	2.1	16.9	0.068	0.517	17.973833	-93.122194
T. Der. La Reforma	148.80	3	2	29634	1.2	78.2	2.1	8.5	2.1	4.1	1.7	1.8	0.3	79.4	2.1	18.5	0.070	0.517	17.973944	-93.122250
Villahermosa	171.15	1	1	31318	1.3	81.7	1.8	7.2	2.2	2.7	1.4	1.4	0.3	83.0	1.8	15.2	0.069	0.528	17.983056	-93.014889

TABASCO

1 CARR: Coatzacoalcos - Villahermosa

CLAVE: 00528

RUTA: MEX-180

AÑO: 2015

LUGAR	ESTACION				CLASIFICACION VEHICULAR EN PORCIENTO														COORDENADAS	
	KM	TE	SC	TDPA	M	A	B	C2	C3	T3S2	T3S3	T3S2R4	OTROS	A	B	C	K'	D	LATITUD	LONGITUD
Villahermosa	171.15	1	2	35079	1.4	79.6	2.0	8.1	2.3	3.2	1.5	1.6	0.3	81.0	2.0	17.0	0.070	0.528	17.983778	-93.011222

2 CARR: El Suspiro - Tenosique

CLAVE: 00276

RUTA: MEX-203

AÑO: 2015

LUGAR	ESTACION				CLASIFICACION VEHICULAR EN PORCIENTO														COORDENADAS	
	KM	TE	SC	TDPA	M	A	B	C2	C3	T3S2	T3S3	T3S2R4	OTROS	A	B	C	K'	D	LATITUD	LONGITUD
Ent. El Suspiro	0.00	3	0	4981	1.6	79.9	2.4	10.6	1.5	3.0	0.5	0.3	0.2	81.5	2.4	16.1	0.077	0.504	17.765500	-91.824611
Lim. Edos. Term. Chis. Ppia. Tab.	8.00																			
Emiliano Zapata	8.61	3	0	5815	5.1	77.7	1.0	11.8	0.8	2.6	0.5	0.2	0.3	82.8	1.0	16.2	0.073	0.502	17.727611	-91.757417
T. Der. La Libertad	12.10	3	0	3726	3.5	81.7	1.5	8.3	1.3	2.4	0.6	0.3	0.4	85.2	1.5	13.3	0.083	0.502	17.724361	-91.738000
T. Izq. Balancán	32.60	1	0	3168	2.4	80.5	2.0	9.8	1.9	2.3	0.8	0.1	0.2	82.9	2.0	15.1	0.080	0.503	17.636472	-91.603139
T. Izq. Balancán	32.60	3	0	2527	2.9	78.4	2.5	9.1	2.4	2.6	1.2	0.6	0.3	81.3	2.5	16.2	0.069	0.520	17.621694	-91.597361
Estación Zapata	53.00	1	0	2363	2.9	79.7	2.3	9.4	2.1	2.2	0.8	0.3	0.3	82.6	2.3	15.1	0.082	0.501	17.458861	-91.597917
Estación Zapata	53.00	3	0	3267	6.1	78.7	2.0	8.2	1.1	2.7	0.6	0.3	0.3	84.8	2.0	13.2	0.075	0.504	17.456444	-91.594333
Tenosique	75.30																			

3 CARR: Malpaso - El Bellote

CLAVE: 00137

RUTA: MEX-187

AÑO: 2015

LUGAR	ESTACION				CLASIFICACION VEHICULAR EN PORCIENTO														COORDENADAS	
	KM	TE	SC	TDPA	M	A	B	C2	C3	T3S2	T3S3	T3S2R4	OTROS	A	B	C	K'	D	LATITUD	LONGITUD
Presa Malpaso	0.00																			
Lim. Edos. Term. Chis. Ppia. Tab.	43.99																			
Lim. Edos. Term. Tab. Ppia. Chis.	44.59																			
Lim. Edos. Term. Chis. Ppia. Tab.	45.26																			
Lim. Edos. Term. Tab. Ppia. Chis.	45.63																			
Lim. Edos. Term. Chis. Ppia. Tab.	55.04																			
Macabil (La Estrella)	70.12	1	0	3579	7.8	74.9	2.5	10.6	1.4	2.0	0.5	0.1	0.2	82.7	2.5	14.8	0.097	0.504	17.615778	-93.507333
Estación Chontalpa	75.69	1	0	4841	11.2	72.7	1.6	9.0	1.1	3.2	0.6	0.2	0.4	83.9	1.6	14.5	0.084	0.503	17.659806	-93.482389
Estación Chontalpa	75.69	3	0	5730	9.7	75.1	1.3	8.7	1.4	2.6	0.6	0.4	0.2	84.8	1.3	13.9	0.073	0.511	17.683944	-93.474056
T. Izq. Francisco Rueda	90.49	1	0	5829	9.9	72.3	1.3	9.9	1.8	3.2	1.0	0.3	0.3	82.2	1.3	16.5	0.076	0.514	17.787000	-93.439583
T. Izq. Francisco Rueda	90.49	3	0	8205	11.1	73.4	0.8	8.6	1.2	3.3	0.8	0.3	0.5	84.5	0.8	14.7	0.069	0.507	17.793000	-93.430750
Huimanguillo	98.03	1	1	5823	17.6	70.0	0.9	8.3	0.9	1.3	0.6	0.2	0.2	87.6	0.9	11.5	0.076	0.500	17.820194	-93.400778
Huimanguillo	98.03	1	2	5813	17.0	70.1	1.0	8.5	1.0	1.3	0.7	0.2	0.2	87.1	1.0	11.9	0.076	0.500	17.820306	-93.400917
Huimanguillo	98.03	3	1	6531	13.4	74.8	0.8	7.1	1.3	1.7	0.5	0.2	0.2	88.2	0.8	11.0	0.072	0.512	17.845583	-93.397556
Huimanguillo	98.03	3	2	6853	13.8	73.2	0.8	8.0	1.4	1.9	0.5	0.2	0.2	87.0	0.8	12.2	0.069	0.512	17.845889	-93.397361

TABASCO

3 CARR: Malpaso - El Bellote

CLAVE: 00137

RUTA: MEX-187

AÑO: 2015

LUGAR	ESTACION				CLASIFICACION VEHICULAR EN PORCIENTO													COORDENADAS		
	KM	TE	SC	TDPA	M	A	B	C2	C3	T3S2	T3S3	T3S2R4	OTROS	A	B	C	K'	D	LATITUD	LONGITUD
Cárdenas	117.56	1	0	15567	7.5	80.9	0.8	7.3	1.2	1.4	0.5	0.2	0.2	88.4	0.8	10.8	0.070	0.509	17.940250	-93.363611
Cárdenas	117.56	3	0	19551	6.6	82.9	0.7	5.9	0.7	1.4	1.2	0.2	0.4	89.5	0.7	9.8	0.069	0.504	18.006500	-93.370861
Tulipán	134.70	3	0	9103	6.4	76.6	1.5	8.7	1.3	3.7	1.0	0.2	0.6	83.0	1.5	15.5	0.070	0.516	18.126528	-93.291000
T. Der. Cunduacán	141.70	1	0	7400	5.8	77.1	1.5	8.3	1.5	3.6	1.1	0.5	0.6	82.9	1.5	15.6	0.073	0.504	18.139833	-93.271611
T. Der. Cunduacán	141.70	3	0	6994	5.6	76.3	2.0	9.3	1.4	3.6	1.1	0.2	0.5	81.9	2.0	16.1	0.071	0.505	18.143722	-93.268889
T. Der. Jalpa	153.50	1	0	12458	8.4	76.8	1.4	9.8	1.1	1.5	0.7	0.1	0.2	85.2	1.4	13.4	0.074	0.501	18.243167	-93.211056
T. Der. Jalpa	153.50	3	1	12015	6.9	84.1	0.8	5.1	0.5	1.2	0.9	0.1	0.4	91.0	0.8	8.2	0.070	0.503	18.248139	-93.213167
T. Der. Jalpa	153.50	3	2	11871	7.8	82.0	0.9	5.9	0.5	1.4	1.0	0.1	0.4	89.8	0.9	9.3	0.066	0.503	18.248111	-93.213306
Paraíso	176.85	1	1	10577	4.7	85.4	0.8	5.2	0.5	1.5	1.2	0.2	0.5	90.1	0.8	9.1	0.099	0.520	18.373139	-93.220028
Paraíso	176.85	1	2	11474	5.3	83.7	0.9	5.8	0.6	1.7	1.3	0.2	0.5	89.0	0.9	10.1	0.078	0.520	18.373139	-93.220028
Paraíso	176.85	3	1	8648	3.9	88.8	1.9	2.9	0.5	0.9	0.7	0.1	0.3	92.7	1.9	5.4	0.088	0.509	18.407806	-93.198917
Paraíso	176.85	3	2	8335	4.7	87.2	2.1	3.2	0.5	1.0	0.9	0.1	0.3	91.9	2.1	6.0	0.086	0.509	18.407806	-93.198917
Ceiba	182.00	3	0	8710	7.5	79.5	0.4	6.0	0.7	4.1	0.9	0.2	0.7	87.0	0.4	12.6	0.095	0.502	18.419056	-93.170694
El Bellote	185.47																			

4 CARR: San Marco - Palizada

CLAVE: 00490

RUTA: MEX-186

AÑO: 2015

LUGAR	ESTACION				CLASIFICACION VEHICULAR EN PORCIENTO													COORDENADAS		
	KM	TE	SC	TDPA	M	A	B	C2	C3	T3S2	T3S3	T3S2R4	OTROS	A	B	C	K'	D	LATITUD	LONGITUD
T. C. Villahermosa - Francisco Escárcega	0.00	3	0	795	6.3	79.9	0.6	8.9	2.9	0.8	0.5	0.1	0.0	86.2	0.6	13.2	0.091	0.503	17.943278	-91.736306
Lim. Edos. Term. Tab. Ppia. Camp.	1.50																			
T. Izq. Jonuta	46.20	1	0	778	5.7	83.8	0.5	6.4	2.7	0.8	0.1	0.0	0.0	89.5	0.5	10.0	0.085	0.505	18.125917	-92.106250
T. Izq. Jonuta	46.20	3	0	881	7.7	81.0	0.4	8.8	1.4	0.7	0.0	0.0	0.0	88.7	0.4	10.9	0.082	0.500	18.131417	-92.113528
Palizada	68.00																			

5 CARR: Tenosique - El Ceibo

CLAVE:

RUTA: MEX-203

AÑO: 2015

LUGAR	ESTACION				CLASIFICACION VEHICULAR EN PORCIENTO													COORDENADAS		
	KM	TE	SC	TDPA	M	A	B	C2	C3	T3S2	T3S3	T3S2R4	OTROS	A	B	C	K'	D	LATITUD	LONGITUD
Tenosique	0.00	3	0	1421	12.2	73.8	0.4	10.5	0.9	1.7	0.3	0.1	0.1	86.0	0.4	13.6	0.084	0.502	17.453667	-91.397417
El Ceibo	58.00	1	0	672	27.5	60.6	0.6	8.8	0.3	1.3	0.1	0.4	0.4	88.1	0.6	11.3	0.107	0.505	17.263250	-90.997861

TABASCO

6 CARR: Villahermosa - Cd. del Carmen

CLAVE: 00064

RUTA: MEX-180

AÑO: 2015

LUGAR	ESTACION				CLASIFICACION VEHICULAR EN PORCIENTO													COORDENADAS		
	KM	TE	SC	TDPA	M	A	B	C2	C3	T3S2	T3S3	T3S2R4	OTROS	A	B	C	K'	D	LATITUD	LONGITUD
Villahermosa	0.00																			
T. Izq. Cd. Industrial	4.30	3	1	29382	2.2	88.3	1.1	4.8	0.8	1.3	0.6	0.7	0.2	90.5	1.1	8.4	0.086	0.512	18.037889	-92.901278
T. Izq. Cd. Industrial	4.30	3	2	30832	2.3	87.3	1.1	5.3	0.9	1.5	0.7	0.7	0.2	89.6	1.1	9.3	0.072	0.512	18.037889	-92.901278
Macultepec	18.60	1	1	10853	1.6	86.7	1.5	3.6	1.5	2.7	0.8	1.1	0.5	88.3	1.5	10.2	0.073	0.501	18.142889	-92.864278
Macultepec	18.60	1	2	10817	1.3	85.7	1.6	4.1	1.7	2.8	1.0	1.3	0.5	87.0	1.6	11.4	0.072	0.501	18.142889	-92.864278
Macultepec	18.60	3	1	6405	1.2	81.5	3.2	6.3	2.6	2.6	1.0	1.3	0.3	82.7	3.2	14.1	0.080	0.500	18.168667	-92.858139
Macultepec	18.60	3	2	6411	1.0	79.4	3.3	7.1	3.2	3.1	1.0	1.5	0.4	80.4	3.3	16.3	0.087	0.500	18.168667	-92.858139
El Espino	33.20	1	0	8897	0.6	76.3	4.1	6.4	2.3	4.9	1.5	3.1	0.8	76.9	4.1	19.0	0.074	0.500	18.240139	-92.830250
El Espino	33.20	3	0	8743	0.6	74.8	4.3	7.7	2.3	5.2	1.5	2.8	0.8	75.4	4.3	20.3	0.073	0.507	18.254694	-92.832000
T. Izq. El Bellote	49.67	3	0	8782	1.7	72.5	4.7	8.6	1.4	5.6	1.5	3.2	0.8	74.2	4.7	21.1	0.071	0.504	18.397583	-92.798611
Frontera	74.59	1	0	9901	3.2	74.6	3.8	6.9	1.4	5.4	1.5	2.3	0.9	77.8	3.8	18.4	0.070	0.503	18.513417	-92.661056
Frontera	74.59	3	0	6523	4.2	71.9	4.8	5.9	1.6	5.6	1.5	3.8	0.7	76.1	4.8	19.1	0.076	0.522	18.542361	-92.631694
T. Izq. Escolleras	78.00	3	0	6253	3.3	70.2	4.6	10.3	1.7	5.5	1.4	2.3	0.7	73.5	4.6	21.9	0.079	0.501	18.561361	-92.602917
Puente San Pedro	96.50	3	0	5008	1.1	68.0	7.3	8.1	2.0	6.8	1.9	3.9	0.9	69.1	7.3	23.6	0.084	0.507	18.641667	-92.462278
Lim. Edos. Term. Tab. Ppia. Camp.	99.75																			
Nuevo Campechito	100.00	3	0	5248	1.0	64.7	5.1	13.1	2.1	6.7	1.9	4.4	1.0	65.7	5.1	29.2	0.082	0.508	18.642778	-92.455833
Nuevo Progreso	116.57	1	0	5327	2.4	64.4	7.2	11.1	1.6	6.1	1.8	4.7	0.7	66.8	7.2	26.0	0.084	0.506	18.626528	-92.326389
Puente Zacatal	162.41	2	0	5471	0.9	71.7	7.4	5.0	3.3	5.3	1.2	4.8	0.4	72.6	7.4	20.0	0.077	0.500	18.641877	-92.460302
Zacatal	163.17	1	0	6306	1.6	66.9	6.2	10.5	1.8	6.4	1.7	4.1	0.8	68.5	6.2	25.3	0.088	0.509	18.614917	-91.868944
Cd. del Carmen	167.50																			

7 CARR: Villahermosa - Escopetazo

CLAVE: 00104

RUTA: MEX-195

AÑO: 2015

LUGAR	ESTACION				CLASIFICACION VEHICULAR EN PORCIENTO													COORDENADAS		
	KM	TE	SC	TDPA	M	A	B	C2	C3	T3S2	T3S3	T3S2R4	OTROS	A	B	C	K'	D	LATITUD	LONGITUD
Villahermosa	0.00	3	1	23365	2.3	91.3	0.3	4.3	0.5	0.6	0.6	0.1	0.0	93.6	0.3	6.1	0.088	0.500	17.949194	-92.915444
Villahermosa	0.00	3	2	23393	2.6	90.9	0.3	4.4	0.5	0.6	0.6	0.1	0.0	93.5	0.3	6.2	0.137	0.500	17.949111	-92.915278
Parrilla	10.00	1	1	18910	2.5	91.0	0.3	4.0	0.7	0.8	0.5	0.2	0.0	93.5	0.3	6.2	0.085	0.507	17.913306	-92.923472
Parrilla	10.00	1	2	18386	2.5	90.4	0.3	4.4	0.8	0.9	0.5	0.2	0.0	92.9	0.3	6.8	0.127	0.507	17.913833	-92.923139
Parrilla	10.00	3	1	19960	2.8	90.3	0.3	5.0	0.5	0.7	0.3	0.1	0.0	93.1	0.3	6.6	0.081	0.505	17.889528	-92.923000
Parrilla	10.00	3	2	19560	2.9	89.3	0.3	5.8	0.5	0.8	0.3	0.1	0.0	92.2	0.3	7.5	0.109	0.505	17.889556	-92.922833
T. Izq. Subte. Garcia	20.00	3	0	12190	4.3	77.5	1.4	8.1	1.0	5.3	1.1	0.5	0.8	81.8	1.4	16.8	0.076	0.501	17.823861	-92.929333
La Arena	44.00	1	0	5743	3.1	78.1	0.8	9.4	1.8	4.1	1.3	0.7	0.7	81.2	0.8	18.0	0.118	0.503	17.652778	-92.961361
T. Izq. Teapa	54.80	1	0	11547	6.8	74.4	1.0	8.1	1.6	5.5	1.1	0.4	1.1	81.2	1.0	17.8	0.086	0.505	17.573333	-92.957639
T. Izq. Teapa	54.80	3	0	6631	7.2	78.8	0.9	8.0	0.7	3.3	0.5	0.1	0.5	86.0	0.9	13.1	0.097	0.501	17.568389	-92.959917

TABASCO

7 CARR: Villahermosa - Escopetazo

CLAVE: 00104

RUTA: MEX-195

AÑO: 2015

LUGAR	ESTACION				CLASIFICACION VEHICULAR EN PORCIENTO										COORDENADAS					
	KM	TE	SC	TDPA	M	A	B	C2	C3	T3S2	T3S3	T3S2R4	OTROS	A	B	C	K'	D	LATITUD	LONGITUD
Lim. Edos. Term. Tab. Ppia. Chis.	61.42																			
Pichucalco	76.00	1	0	3500	5.9	79.6	1.0	9.9	1.0	1.8	0.3	0.0	0.5	85.5	1.0	13.5	0.072	0.505	17.520194	-93.101389
Pichucalco	76.00	3	0	3446	8.0	82.2	0.3	6.2	0.6	2.0	0.4	0.0	0.3	90.2	0.3	9.5	0.089	0.500	17.499361	-93.104417
Solusuchiapa	112.00	1	0	1705	5.6	85.5	0.5	5.0	1.2	1.5	0.5	0.0	0.2	91.1	0.5	8.4	0.080	0.508	17.428361	-93.038028
Solusuchiapa	112.00	3	0	1500	3.5	86.6	0.6	6.0	1.3	1.2	0.5	0.0	0.3	90.1	0.6	9.3	0.075	0.504	17.416250	-93.031056
Rayón	146.00	1	0	2178	2.2	90.0	0.2	4.5	0.4	1.8	0.5	0.0	0.4	92.2	0.2	7.6	0.073	0.505	17.204750	-93.012361
Jitotol	197.79	1	0	1991	1.8	90.6	0.2	4.8	0.6	1.4	0.4	0.0	0.2	92.4	0.2	7.4	0.107	0.506	17.073944	-92.864917
Bochil	211.00	1	0	4147	1.7	88.8	0.3	5.3	0.7	2.2	0.5	0.1	0.4	90.5	0.3	9.2	0.080	0.511	16.989278	-92.880139
Ixtapa	247.00	1	0	3630	1.5	87.4	0.6	5.1	1.2	2.2	1.3	0.1	0.6	88.9	0.6	10.5	0.082	0.506	16.809222	-92.909472
Escopetazo	259.00	1	0	3454	1.0	87.1	0.7	6.2	1.3	2.3	0.7	0.2	0.5	88.1	0.7	11.2	0.081	0.504	16.759583	-92.943806

8 CARR: Villahermosa - Francisco Escárcega

CLAVE: 00092

RUTA: MEX-186

AÑO: 2015

LUGAR	ESTACION				CLASIFICACION VEHICULAR EN PORCIENTO										COORDENADAS					
	KM	TE	SC	TDPA	M	A	B	C2	C3	T3S2	T3S3	T3S2R4	OTROS	A	B	C	K'	D	LATITUD	LONGITUD
Villahermosa	0.00	3	1	16685	1.9	83.3	1.1	7.4	1.4	2.9	0.8	1.1	0.1	85.2	1.1	13.7	0.074	0.501	18.000972	-92.890694
Villahermosa	0.00	3	2	16592	1.8	81.0	1.2	9.0	1.5	3.3	0.9	1.2	0.1	82.8	1.2	16.0	0.075	0.501	18.001194	-92.890639
T. Izq. Aeropuerto (Alta)	12.00	1	1	15117	1.3	83.0	1.3	6.8	1.3	3.3	1.2	1.2	0.6	84.3	1.3	14.4	0.069	0.516	17.983833	-92.827806
T. Izq. Aeropuerto (Baja)	12.00	1	1	1417	17.4	70.1	1.0	6.3	1.4	2.3	0.6	0.6	0.3	87.5	1.0	11.5	0.084	0.527	17.983861	-92.828056
T. Izq. Aeropuerto (Baja)	12.00	1	2	1270	12.9	72.5	1.3	7.6	1.5	2.6	0.6	0.7	0.3	85.4	1.3	13.3	0.078	0.527	17.983722	-92.827250
T. Izq. Aeropuerto (Alta)	12.00	1	2	14191	1.4	81.9	1.5	7.1	1.4	3.5	1.3	1.3	0.6	83.3	1.5	15.2	0.073	0.516	17.983556	-92.827333
Puente Grijalva	17.60	2	1	8102	1.2	79.3	4.3	3.7	2.6	4.8	1.3	2.5	0.3	80.5	4.3	15.2	0.079	0.500	17.947556	-92.785240
Puente Grijalva	17.60	2	2	8102	1.2	79.3	4.3	3.7	2.6	4.8	1.3	2.5	0.3	80.5	4.3	15.2	0.079	0.500	17.947556	-92.785240
X. C. Cacaos - La Granja	32.46	1	1	8933	1.3	77.9	1.3	7.3	3.0	5.0	1.6	2.0	0.6	79.2	1.3	19.5	0.074	0.502	17.828750	-92.717361
X. C. Cacaos - La Granja	32.46	1	2	8846	1.4	75.2	1.5	8.0	3.4	5.7	1.7	2.3	0.8	76.6	1.5	21.9	0.072	0.502	17.829278	-92.717222
X. C. Cacaos - La Granja	32.46	3	1	6412	0.8	75.7	2.1	8.0	2.6	5.7	1.8	2.8	0.5	76.5	2.1	21.4	0.089	0.501	17.820917	-92.712833
X. C. Cacaos - La Granja	32.46	3	2	6447	0.8	73.8	2.3	8.3	2.8	6.4	2.0	2.9	0.7	74.6	2.3	23.1	0.068	0.501	17.820972	-92.712722
X. C. Jalapa - Jonuta	40.00	3	1	7246	0.8	75.4	2.7	8.2	2.2	5.7	1.5	2.9	0.6	76.2	2.7	21.1	0.071	0.503	17.773861	-92.672361
X. C. Jalapa - Jonuta	40.00	3	2	7151	0.8	73.2	3.0	8.8	2.5	6.2	1.7	3.1	0.7	74.0	3.0	23.0	0.079	0.503	17.773972	-92.672278
T. Izq. Macuspana	46.20	1	1	7425	0.5	75.6	2.0	8.2	2.4	5.9	1.7	2.9	0.8	76.1	2.0	21.9	0.072	0.504	17.745611	-92.636083
T. Izq. Macuspana	46.20	1	2	7542	1.4	73.3	2.2	8.5	2.5	6.3	1.8	3.2	0.8	74.7	2.2	23.1	0.073	0.504	17.745722	-92.636000
T. Izq. Macuspana	46.20	3	1	6339	1.8	71.8	2.7	8.8	2.4	6.6	1.9	3.2	0.8	73.6	2.7	23.7	0.072	0.503	17.735917	-92.623667
T. Izq. Macuspana	46.20	3	2	6267	3.1	67.9	3.0	9.5	2.5	7.4	2.1	3.6	0.9	71.0	3.0	26.0	0.083	0.503	17.736056	-92.623528
X. C. Estación Macuspana - Vernet	54.30	1	0	8829	2.0	67.8	3.7	9.3	3.6	7.5	2.3	3.1	0.7	69.8	3.7	26.5	0.073	0.503	17.711194	-92.578389
T. Der. Chivalito (Est. Pino Suárez)	70.00	1	0	8409	3.9	65.4	3.9	9.1	2.4	8.1	2.2	4.4	0.6	69.3	3.9	26.8	0.076	0.505	17.670833	-92.447667

TABASCO

8 CARR: Villahermosa - Francisco Escárcega

CLAVE: 00092

RUTA: MEX-186

AÑO: 2015

LUGAR	ESTACION				CLASIFICACION VEHICULAR EN PORCIENTO										COORDENADAS					
	KM	TE	SC	TDPA	M	A	B	C2	C3	T3S2	T3S3	T3S2R4	OTROS	A	B	C	K'	D	LATITUD	LONGITUD
T. Der. Chivalito (Est. Pino Suárez)	70.00	3	1	3599	1.7	74.2	2.7	7.1	2.8	6.1	2.0	2.5	0.9	75.9	2.7	21.4	0.092	0.502	17.666083	-92.432194
T. Der. Chivalito (Est. Pino Suárez)	70.00	3	2	3565	2.6	71.3	2.9	8.1	3.0	6.4	2.1	2.7	0.9	73.9	2.9	23.2	0.107	0.502	17.666194	-92.432222
T. Der. Estación Zopo	71.00	1	0	6964	1.9	69.2	2.4	8.5	2.6	7.9	2.3	4.2	1.0	71.1	2.4	26.5	0.081	0.502	17.670139	-92.418472
T. Der. Estación Zopo	71.00	3	1	3455	1.5	72.9	2.5	8.4	2.4	6.0	2.0	3.5	0.8	74.4	2.5	23.1	0.083	0.506	17.680028	-92.403250
T. Der. Estación Zopo	71.00	3	2	3378	2.0	69.7	2.9	8.8	2.5	6.7	2.3	4.2	0.9	71.7	2.9	25.4	0.096	0.506	17.680111	-92.403306
Lim. Edos. Term. Tab. Ppia. Chis.	76.90																			
T. Izq. Bonanza	88.00	1	0	6989	3.7	61.1	4.2	12.3	2.9	8.6	2.3	4.0	0.9	64.8	4.2	31.0	0.062	0.500	17.697917	-92.270250
T. Izq. Jonuta	101.00	1	0	6323	1.4	64.5	4.0	9.9	2.5	10.3	2.3	4.1	1.0	65.9	4.0	30.1	0.080	0.502	17.697944	-92.139417
T. Izq. Jonuta	101.00	3	0	6186	1.8	66.9	4.0	9.0	2.8	9.4	1.8	3.4	0.9	68.7	4.0	27.3	0.072	0.506	17.697417	-92.119389
X. C. Catazajá - Palenque	114.00	1	0	6052	1.9	65.0	3.0	9.1	2.6	10.5	1.8	5.1	1.0	66.9	3.0	30.1	0.076	0.502	17.708333	-92.022528
X. C. Catazajá - Palenque	114.00	3	0	6302	2.3	64.4	4.8	10.2	2.4	8.6	1.5	5.3	0.5	66.7	4.8	28.5	0.077	0.501	17.715139	-92.001222
T. Der. Emiliano Zapata	134.70	1	0	6288	1.1	66.7	3.6	8.9	2.6	9.5	2.0	4.7	0.9	67.8	3.6	28.6	0.067	0.501	17.770278	-91.838750
T. Der. Emiliano Zapata	134.70	3	0	4324	1.7	60.8	3.7	10.0	2.7	10.9	2.3	6.9	1.0	62.5	3.7	33.8	0.073	0.509	17.778500	-91.823861
Lim. Edos. Term. Chis. Ppia. Tab.	140.70																			
Puente Usumacinta	145.20	2	0	4184	1.3	60.8	4.1	5.7	4.9	12.8	1.7	7.7	1.0	62.1	4.1	33.8	0.079	0.500	17.859876	-91.783607
T. Izq. Palizada	154.05	1	0	3588	2.8	59.3	5.0	9.0	3.2	11.3	2.6	5.8	1.0	62.1	5.0	32.9	0.078	0.502	17.924000	-91.746833
T. Izq. Palizada	154.05	3	0	3207	1.2	51.5	6.4	8.0	3.0	14.6	4.1	10.2	1.0	52.7	6.4	40.9	0.089	0.507	17.945221	-91.731078
Lim. Edos. Term. Tab. Ppia. Camp.	154.60																			
T. Der. Candelaria	233.40	1	0	3386	3.0	51.3	6.1	9.3	2.6	14.4	2.9	9.4	1.0	54.3	6.1	39.6	0.074	0.501	18.373250	-91.201750
T. Der. Felipe Ángeles	253.00	1	0	3507	3.8	52.6	5.6	10.4	3.3	12.8	2.7	7.7	1.1	56.4	5.6	38.0	0.071	0.508	18.503889	-91.106500
T. Izq. Sabancuy	274.10	1	0	3802	5.4	57.0	4.6	8.7	2.6	11.2	2.8	6.8	0.9	62.4	4.6	33.0	0.085	0.509	18.629639	-90.988528
Francisco Escárcega	297.04	1	0	7654	8.2	63.6	2.6	8.3	1.6	8.8	1.6	4.3	1.0	71.8	2.6	25.6	0.071	0.503	18.608881	-90.764338

9 CARR: Ent. Agua Dulce - Cárdenas (Cuota)

CLAVE: 00010

RUTA: MEX-180D

AÑO: 2015

LUGAR	ESTACION				CLASIFICACION VEHICULAR EN PORCIENTO										COORDENADAS					
	KM	TE	SC	TDPA	M	A	B	C2	C3	T3S2	T3S3	T3S2R4	OTROS	A	B	C	K'	D	LATITUD	LONGITUD
Ent. La Ceiba	45.00																			
T. C. Coatzacoalcos - Villahermosa	69.50	1	1	4857	1.0	55.4	5.6	5.7	4.1	14.1	3.4	9.7	1.0	56.4	5.6	38.0	0.076	0.531	18.031833	-93.819278
T. C. Coatzacoalcos - Villahermosa	69.50	1	2	4286	1.1	51.3	6.3	6.6	4.4	15.1	3.5	10.8	0.9	52.4	6.3	41.3	0.071	0.531	18.031833	-93.819278
Caseta de Cobro La Venta	69.50	2	1	4423	0.2	54.7	5.6	4.4	5.7	14.6	3.0	10.9	0.9	54.9	5.6	39.5	0.081	0.500	18.029934	-93.813103
Caseta de Cobro La Venta	69.50	2	2	4423	0.2	54.7	5.6	4.4	5.7	14.6	3.0	10.9	0.9	54.9	5.6	39.5	0.081	0.500	18.029934	-93.813103
T. C. Coatzacoalcos - Villahermosa	69.50	3	1	4039	0.9	54.8	6.5	7.6	3.4	12.8	3.4	9.8	0.8	55.7	6.5	37.8	0.100	0.506	18.029556	-93.807722
T. C. Coatzacoalcos - Villahermosa	69.50	3	2	3939	0.8	50.4	7.2	8.2	3.9	14.7	3.9	9.8	1.1	51.2	7.2	41.6	0.088	0.506	18.029611	-93.806889
Ent. Chontalpa	99.11																			

TABASCO

10 CARR: Las Choapas - Ocozocoautla (Cuota)

CLAVE: 00077

RUTA: MEX-187D

AÑO: 2015

LUGAR	ESTACION				CLASIFICACION VEHICULAR EN PORCIENTO													COORDENADAS		
	KM	TE	SC	TDPA	M	A	B	C2	C3	T3S2	T3S3	T3S2R4	OTROS	A	B	C	K'	D	LATITUD	LONGITUD
T. C. Coatzacoalcos - Villahermosa	0.00	3	0	4535	1.1	54.6	6.1	8.0	4.6	10.8	2.9	10.9	1.0	55.7	6.1	38.2	0.061	0.525	18.064365	-94.247346
Caseta de Cobro Las Choapas	16.80	1	0	3991	0.9	65.1	6.1	6.9	3.2	8.7	2.4	5.7	1.0	66.0	6.1	27.9	0.077	0.554	17.950139	-94.175056
Caseta de Cobro Las Choapas	16.80	3	0	2757	0.6	54.1	8.6	7.2	4.4	12.6	2.8	8.6	1.1	54.7	8.6	36.7	0.089	0.551	17.932056	-94.165944
Lim. Edos. Term. Ver. Ppia. Tab.	96.68																			
Caseta de Cobro Malpasito	112.70	1	0	2919	0.5	51.9	9.1	6.8	4.2	13.5	2.6	10.6	0.8	52.4	9.1	38.5	0.081	0.544	17.351750	-93.587611
Caseta de Cobro Malpasito	112.70	2	0	2387	0.4	39.5	9.1	4.9	8.9	17.6	3.1	15.1	1.4	39.9	9.1	51.0	0.072	0.500	17.349102	-93.586412
Lim. Edos. Term. Tab. Ppia. Chis.	113.70																			
T. Izq. Malpaso	123.79	1	0	4625	0.5	61.5	7.1	9.0	3.5	9.3	1.6	6.6	0.9	62.0	7.1	30.9	0.086	0.562	17.259722	-93.568722
Caseta de Cobro "Ocozocoautla"	182.50	1	0	4391	1.3	66.0	4.8	7.5	3.1	8.0	2.1	6.1	1.1	67.3	4.8	27.9	0.072	0.504	16.860139	-93.399917
Caseta de Cobro "Ocozocoautla"	182.50	2	0	4448	0.3	60.4	6.1	5.5	6.9	10.0	1.9	8.1	0.8	60.7	6.1	33.2	0.072	0.500	16.863216	-93.407000
T. C. Tapanatepec - Tuxtla Gutiérrez	197.50	1	0	4764	1.0	64.6	6.1	8.4	3.0	8.4	2.1	5.8	0.6	65.6	6.1	28.3	0.076	0.514	16.772500	-93.318722

11 CARR: Benito Juárez - Agua Dulce

CLAVE: 00202

RUTA: TAB-VER

AÑO: 2015

LUGAR	ESTACION				CLASIFICACION VEHICULAR EN PORCIENTO													COORDENADAS		
	KM	TE	SC	TDPA	M	A	B	C2	C3	T3S2	T3S3	T3S2R4	OTROS	A	B	C	K'	D	LATITUD	LONGITUD
Benito Juárez	0.00	3	0	1471	6.5	83.6	0.7	7.2	0.8	1.0	0.2	0.0	0.0	90.1	0.7	9.2	0.077	0.525	18.166917	-93.919111
La Venta	16.80	1	0	1925	13.4	77.7	0.7	6.0	0.5	1.2	0.3	0.1	0.1	91.1	0.7	8.2	0.076	0.506	18.111611	-94.038667
Lim. Edos. Term. Tab. Ppia. Ver.	23.78																			
Agua Dulce	33.00																			

12 CARR: Benito Juárez - Tepetitán

CLAVE: 27204

RUTA: TAB

AÑO: 2015

LUGAR	ESTACION				CLASIFICACION VEHICULAR EN PORCIENTO													COORDENADAS		
	KM	TE	SC	TDPA	M	A	B	C2	C3	T3S2	T3S3	T3S2R4	OTROS	A	B	C	K'	D	LATITUD	LONGITUD
Benito Juárez	0.00																			
X. C. Jalapa - Jonuta	1.50	3	0	4133	12.4	78.5	0.3	5.1	0.5	2.6	0.3	0.0	0.3	90.9	0.3	8.8	0.074	0.501	17.825028	-92.514361
Límbano Blandín	18.50	1	0	1232	17.9	74.8	0.5	5.1	0.3	1.1	0.2	0.0	0.1	92.7	0.5	6.8	0.128	0.506	17.755500	-92.416528
Límbano Blandín	18.50	3	0	1091	16.6	74.1	1.1	6.6	0.5	0.8	0.3	0.0	0.0	90.7	1.1	8.2	0.136	0.503	17.760444	-92.405806
Tepetitán	20.00	1	0	1440	22.1	70.1	0.1	6.2	0.4	0.9	0.2	0.0	0.0	92.2	0.1	7.7	0.115	0.507	17.814139	-92.377056

TABASCO

13 CARR: Cacaos - La Granja

CLAVE: 27002

RUTA: TAB

AÑO: 2015

LUGAR	ESTACION				CLASIFICACION VEHICULAR EN PORCIENTO													COORDENADAS		
	KM	TE	SC	TDPA	M	A	B	C2	C3	T3S2	T3S3	T3S2R4	OTROS	A	B	C	K'	D	LATITUD	LONGITUD
Cacaos	0.00	3	0	2428	11.4	75.4	1.4	7.7	1.6	1.8	0.5	0.0	0.2	86.8	1.4	11.8	0.074	0.500	17.830500	-92.852694
X. C. Villahermosa - Francisco Escárcega	16.00	3	0	5007	3.9	82.0	2.3	6.4	0.6	3.3	0.9	0.1	0.5	85.9	2.3	11.8	0.085	0.502	17.828083	-92.714833
T. C. Jalapa - Jonuta	39.00	1	0	8136	3.3	86.6	0.1	5.4	0.4	3.0	0.6	0.1	0.5	89.9	0.1	10.0	0.077	0.508	17.845917	-92.504056

14 CARR: Cárdenas - Paraíso

CLAVE: 27117

RUTA: TAB

AÑO: 2015

LUGAR	ESTACION				CLASIFICACION VEHICULAR EN PORCIENTO													COORDENADAS		
	KM	TE	SC	TDPA	M	A	B	C2	C3	T3S2	T3S3	T3S2R4	OTROS	A	B	C	K'	D	LATITUD	LONGITUD
T. C. Coatzacoalcos - Villahermosa	0.00	3	0	6995	16.4	73.0	0.3	4.5	0.4	4.1	0.6	0.1	0.6	89.4	0.3	10.3	0.064	0.502	18.010361	-93.380806
T. Izq. El Golpe	22.00	1	0	1592	21.0	64.4	0.6	7.4	2.0	3.2	0.9	0.1	0.4	85.4	0.6	14.0	0.072	0.527	18.111500	-93.309000
T. Izq. El Golpe	22.00	3	0	2096	18.4	71.2	0.1	4.8	1.7	2.3	0.9	0.1	0.5	89.6	0.1	10.3	0.067	0.509	18.116806	-93.303500
Comalcalco	37.00	3	0	4757	20.3	67.9	4.3	3.4	0.1	3.1	0.3	0.1	0.5	88.2	4.3	7.5	0.092	0.504	18.292639	-93.214806
Paraíso	52.00	1	0	6177	17.2	61.1	1.0	9.7	1.8	5.6	2.1	0.6	0.9	78.3	1.0	20.7	0.105	0.518	18.376083	-93.232139

15 CARR: Chichicapa - Ent. La Libertad

CLAVE: 27100

RUTA: TAB

AÑO: 2015

LUGAR	ESTACION				CLASIFICACION VEHICULAR EN PORCIENTO													COORDENADAS		
	KM	TE	SC	TDPA	M	A	B	C2	C3	T3S2	T3S3	T3S2R4	OTROS	A	B	C	K'	D	LATITUD	LONGITUD
Chichicapa	0.00	3	0	3252	23.0	65.8	0.2	7.8	0.4	2.2	0.4	0.0	0.2	88.8	0.2	11.0	0.077	0.507	18.273111	-93.182722
Nicolás Bravo	10.00	3	0	4233	16.7	72.9	0.3	5.2	0.2	3.2	0.7	0.2	0.6	89.6	0.3	10.1	0.090	0.503	18.292306	-93.157972
Ent. La Libertad	18.00	1	0	4161	14.2	74.6	0.2	7.2	0.4	2.3	0.6	0.1	0.4	88.8	0.2	11.0	0.084	0.509	18.318083	-93.170750

16 CARR: Comalcalco - El Golpe

CLAVE: 27102

RUTA: TAB

AÑO: 2015

LUGAR	ESTACION				CLASIFICACION VEHICULAR EN PORCIENTO													COORDENADAS		
	KM	TE	SC	TDPA	M	A	B	C2	C3	T3S2	T3S3	T3S2R4	OTROS	A	B	C	K'	D	LATITUD	LONGITUD
Comalcalco	0.00	3	0	18857	25.3	65.3	0.5	6.2	0.1	1.0	1.2	0.1	0.3	90.6	0.5	8.9	0.065	0.504	18.253750	-93.233778
Libramiento de Comalcalco	2.60	3	0	8747	19.6	62.3	0.4	7.7	0.5	6.0	1.3	0.6	1.6	81.9	0.4	17.7	0.071	0.510	18.249306	-93.242583
T. Izq. Villa Aldama	9.40	1	0	6403	25.2	60.8	1.2	10.1	0.6	1.6	0.4	0.0	0.1	86.0	1.2	12.8	0.064	0.529	18.254028	-93.302861
T. Izq. Villa Aldama	9.40	3	0	7224	26.1	62.4	0.4	8.8	0.5	1.3	0.4	0.0	0.1	88.5	0.4	11.1	0.064	0.500	18.262111	-93.313278
Tecolutilla	15.00	1	0	4908	26.0	59.9	1.9	8.6	0.1	2.5	0.6	0.0	0.4	85.9	1.9	12.2	0.073	0.546	18.271778	-93.315167
Tecolutilla	15.00	3	0	6151	27.7	59.6	0.9	4.8	0.5	4.3	1.2	0.3	0.7	87.3	0.9	11.8	0.067	0.505	18.288361	-93.347611
T. Der. Lazáro Cárdenas	20.00	3	0	2628	34.8	55.2	0.3	6.3	0.5	2.1	0.5	0.0	0.3	90.0	0.3	9.7	0.080	0.504	18.281139	-93.382306
Carlos Green	33.00	3	0	3985	43.8	47.2	1.4	3.8	0.2	2.4	0.7	0.1	0.4	91.0	1.4	7.6	0.075	0.510	18.232306	-93.457056
El Golpe	51.60	1	0	698	48.0	43.8	1.0	5.4	0.1	1.1	0.5	0.0	0.1	91.8	1.0	7.2	0.087	0.517	18.333222	-93.535222

TABASCO

17 CARR: El Bellote - Santa Cruz

CLAVE: 27105

RUTA: TAB

AÑO: 2015

LUGAR	ESTACION				CLASIFICACION VEHICULAR EN PORCIENTO													COORDENADAS		
	KM	TE	SC	TDPA	M	A	B	C2	C3	T3S2	T3S3	T3S2R4	OTROS	A	B	C	K'	D	LATITUD	LONGITUD
Bellote	0.00	3	0	5941	6.5	81.5	2.5	3.5	1.0	3.5	0.8	0.2	0.5	88.0	2.5	9.5	0.089	0.512	18.426333	-93.122528
T. Der. Chichicapa	8.00	3	0	3489	9.4	77.1	2.1	5.9	0.8	3.6	0.7	0.2	0.2	86.5	2.1	11.4	0.088	0.502	18.424000	-93.072139
Ignacio Allende	35.00	1	0	4496	7.4	80.6	0.6	5.2	0.5	4.0	0.8	0.3	0.6	88.0	0.6	11.4	0.080	0.510	18.384385	-92.855380
Ignacio Allende	35.00	3	0	3671	4.7	82.5	1.3	7.0	0.9	2.6	0.6	0.2	0.2	87.2	1.3	11.5	0.083	0.501	18.382694	-92.832111
Santa Cruz	40.00	1	0	4276	6.5	80.6	0.8	6.2	0.6	3.6	0.8	0.4	0.5	87.1	0.8	12.1	0.098	0.519	18.387583	-92.803083

18 CARR: Ent. Emiliano Zapata - La Libertad

CLAVE: 00062

RUTA: CHIS-TAB

AÑO: 2015

LUGAR	ESTACION				CLASIFICACION VEHICULAR EN PORCIENTO													COORDENADAS		
	KM	TE	SC	TDPA	M	A	B	C2	C3	T3S2	T3S3	T3S2R4	OTROS	A	B	C	K'	D	LATITUD	LONGITUD
T. C. El Suspiro - Tenosique	0.00	3	0	1892	7.3	87.8	0.1	3.2	0.5	0.9	0.1	0.0	0.1	95.1	0.1	4.8	0.082	0.501	17.721250	-91.744500
Lim. Edos. Term. Tab. Ppia. Chis.	8.00																			
La Libertad	10.00	1	0	1761	6.7	85.5	2.1	4.1	0.4	0.9	0.0	0.1	0.2	92.2	2.1	5.7	0.074	0.502	17.689861	-91.726889

19 CARR: Estación Macuspana - Vernet

CLAVE: 27091

RUTA: TAB-041

AÑO: 2015

LUGAR	ESTACION				CLASIFICACION VEHICULAR EN PORCIENTO													COORDENADAS		
	KM	TE	SC	TDPA	M	A	B	C2	C3	T3S2	T3S3	T3S2R4	OTROS	A	B	C	K'	D	LATITUD	LONGITUD
Estación Macuspana	0.00																			
X. C. Villahermosa - Francisco Escárcega	11.00	1	0	2078	20.1	59.6	0.2	8.2	4.6	3.8	2.3	0.7	0.5	79.7	0.2	20.1	0.089	0.500	17.703306	-92.570361
X. C. Villahermosa - Francisco Escárcega	11.00	3	0	1436	24.0	65.9	0.3	6.1	1.5	1.6	0.3	0.0	0.3	89.9	0.3	9.8	0.081	0.547	17.710167	-92.568667
Belem	20.50	1	1	6249	11.9	80.7	0.5	5.4	0.2	0.7	0.4	0.0	0.2	92.6	0.5	6.9	0.078	0.500	17.776056	-92.607778
Belem	20.50	1	2	6251	11.7	80.1	0.5	6.0	0.2	0.9	0.4	0.0	0.2	91.8	0.5	7.7	0.078	0.500	17.776056	-92.607778
Belem	20.50	3	0	4451	6.7	84.0	0.2	5.4	0.4	2.7	0.3	0.0	0.3	90.7	0.2	9.1	0.072	0.514	17.795944	-92.606389
X. C. Cacaos - La Granja	25.50	3	0	1487	9.3	84.7	0.2	4.6	0.1	0.9	0.1	0.0	0.1	94.0	0.2	5.8	0.104	0.507	17.841083	-92.607306
Vernet	32.50	1	0	557	21.7	72.1	0.5	4.4	0.8	0.5	0.0	0.0	0.0	93.8	0.5	5.7	0.097	0.505	17.913750	-92.598194

20 CARR: Frontera - T. C. (Jalapa - Jonuta)

CLAVE: 27081

RUTA: TAB

AÑO: 2015

LUGAR	ESTACION				CLASIFICACION VEHICULAR EN PORCIENTO													COORDENADAS		
	KM	TE	SC	TDPA	M	A	B	C2	C3	T3S2	T3S3	T3S2R4	OTROS	A	B	C	K'	D	LATITUD	LONGITUD
Frontera	0.00																			
X. C. Villahermosa - Cd. del Carmen	1.00	3	0	1244	33.6	61.8	0.1	3.0	0.0	1.3	0.1	0.0	0.1	95.4	0.1	4.5	0.094	0.506	18.506278	-92.650528
T. C. Jalapa - Jonuta	123.00	1	0	547	5.9	86.2	0.1	5.4	0.8	1.5	0.1	0.0	0.0	92.1	0.1	7.8	0.093	0.501	18.101972	-92.170028

TABASCO

21 CARR: Gregorio Méndez Magaña - Reforma de Ocampo

CLAVE: 00103

RUTA: CHIS

AÑO: 2015

LUGAR	ESTACION				CLASIFICACION VEHICULAR EN PORCIENTO													COORDENADAS		
	KM	TE	SC	TDPA	M	A	B	C2	C3	T3S2	T3S3	T3S2R4	OTROS	A	B	C	K'	D	LATITUD	LONGITUD
Gregorio Méndez Magaña	0.00	3	0	873	16.2	66.5	0.1	10.3	4.4	1.5	1.0	0.0	0.0	82.7	0.1	17.2	0.077	0.504	17.445611	-91.595944
Lim. Edos. Term. Tab. Ppia. Chis.	3.00																			
T. C. Benemérito de Las Américas - Palenque	21.00	1	0	2364	13.5	77.8	1.2	3.3	1.6	2.1	0.3	0.1	0.1	91.3	1.2	7.5	0.091	0.502	17.325250	-91.691306
Reforma de Ocampo	22.00																			

22 CARR: Jalapa - Jonuta

CLAVE: 27107

RUTA: TAB

AÑO: 2015

LUGAR	ESTACION				CLASIFICACION VEHICULAR EN PORCIENTO													COORDENADAS		
	KM	TE	SC	TDPA	M	A	B	C2	C3	T3S2	T3S3	T3S2R4	OTROS	A	B	C	K'	D	LATITUD	LONGITUD
Jalapa	0.00	3	0	3135	17.7	72.2	0.3	5.9	0.6	2.1	0.6	0.1	0.5	89.9	0.3	9.8	0.075	0.507	17.722111	-92.805222
X. C. Villahermosa - Francisco Escárcega	15.00	1	0	2286	12.8	75.7	0.4	6.7	1.0	2.3	0.8	0.1	0.2	88.5	0.4	11.1	0.078	0.502	17.781833	-92.680194
X. C. Villahermosa - Francisco Escárcega	15.00	3	0	1085	17.8	74.3	0.3	5.8	0.4	1.0	0.4	0.0	0.0	92.1	0.3	7.6	0.079	0.508	17.780639	-92.685000
Belem	24.00	1	0	1185	26.1	71.3	0.5	0.3	0.3	1.0	0.3	0.0	0.2	97.4	0.5	2.1	0.073	0.501	17.781861	-92.619750
T. Izq. Cacaos	39.00	1	0	3892	8.2	82.8	0.1	5.1	0.6	2.6	0.3	0.0	0.3	91.0	0.1	8.9	0.067	0.514	17.844333	-92.501639
Cd. PEMEX	43.00	1	1	7254	2.7	90.4	0.2	3.7	0.2	1.1	1.0	0.2	0.5	93.1	0.2	6.7	0.109	0.511	17.879333	-92.484583
Cd. PEMEX	43.00	1	2	6949	3.0	89.9	0.2	3.8	0.2	1.2	1.0	0.2	0.5	92.9	0.2	6.9	0.084	0.511	17.879361	-92.484750
Cd. PEMEX	43.00	3	0	4237	7.2	82.7	0.3	6.1	0.5	2.7	0.3	0.0	0.2	89.9	0.3	9.8	0.101	0.501	17.896833	-92.482778
Jonuta	97.50	1	0	2377	7.0	86.0	0.1	4.8	0.5	1.4	0.1	0.0	0.1	93.0	0.1	6.9	0.075	0.501	18.101750	-92.161639

23 CARR: Nicolás Bravo - T. C. (El Bellote - Santa Cruz)

CLAVE: 27010

RUTA: TAB

AÑO: 2015

LUGAR	ESTACION				CLASIFICACION VEHICULAR EN PORCIENTO													COORDENADAS		
	KM	TE	SC	TDPA	M	A	B	C2	C3	T3S2	T3S3	T3S2R4	OTROS	A	B	C	K'	D	LATITUD	LONGITUD
Nicolás Bravo	0.00	3	0	2345	24.0	68.7	0.4	4.0	0.4	1.8	0.5	0.0	0.2	92.7	0.4	6.9	0.098	0.508	18.299389	-93.131917
T. C. Bellote - Santa Cruz	22.00	1	0	1223	19.7	73.8	0.1	4.2	0.3	1.6	0.2	0.0	0.1	93.5	0.1	6.4	0.096	0.512	18.425250	-93.076139

24 CARR: Pailebot - Cuauhtemotzin

CLAVE: 27112

RUTA: TAB

AÑO: 2015

LUGAR	ESTACION				CLASIFICACION VEHICULAR EN PORCIENTO													COORDENADAS		
	KM	TE	SC	TDPA	M	A	B	C2	C3	T3S2	T3S3	T3S2R4	OTROS	A	B	C	K'	D	LATITUD	LONGITUD
Pailebot	0.00	3	0	746	34.9	59.6	0.1	3.9	0.3	1.1	0.1	0.0	0.0	94.5	0.1	5.4	0.083	0.506	18.256917	-93.956167
Cuauhtemotzin	23.00	1	0	578	46.0	50.3	0.1	2.5	0.1	1.0	0.0	0.0	0.0	96.3	0.1	3.6	0.092	0.502	18.205861	-94.118111

TABASCO

25 CARR: Paraiso - El Limón

CLAVE: 27108

RUTA: TAB

AÑO: 2015

LUGAR	ESTACION				CLASIFICACION VEHICULAR EN PORCIENTO													COORDENADAS		
	KM	TE	SC	TDPA	M	A	B	C2	C3	T3S2	T3S3	T3S2R4	OTROS	A	B	C	K'	D	LATITUD	LONGITUD
Paraiso	0.00	3	0	8982	13.2	68.8	0.2	7.6	0.9	6.0	1.6	0.5	1.2	82.0	0.2	17.8	0.093	0.532	18.396361	-93.220333
Limón	6.00	1	0	10775	9.4	73.0	0.4	4.0	0.5	8.0	1.9	0.9	1.9	82.4	0.4	17.2	0.074	0.522	18.403222	-93.216333

26 CARR: Paso de Cunduacán - Estación Juárez

CLAVE: 00588

RUTA: TAB-CHIS

AÑO: 2015

LUGAR	ESTACION				CLASIFICACION VEHICULAR EN PORCIENTO													COORDENADAS		
	KM	TE	SC	TDPA	M	A	B	C2	C3	T3S2	T3S3	T3S2R4	OTROS	A	B	C	K'	D	LATITUD	LONGITUD
Paso de Cunduacán	0.00	3	0	12735	1.3	81.4	0.5	8.0	1.6	4.2	1.5	0.5	1.0	82.7	0.5	16.8	0.094	0.529	17.965778	-93.135528
Lim. Edos. Term. Tab. Ppia. Chis.	9.00																			
Santa Teresa 2° Secc.	18.00	3	0	2822	5.1	76.1	4.8	8.9	1.7	2.6	0.7	0.0	0.1	81.2	4.8	14.0	0.071	0.505	17.765806	-93.169028
Estación Juárez	57.80	1	0	3275	7.9	80.5	0.4	7.7	0.8	1.9	0.6	0.0	0.2	88.4	0.4	11.2	0.074	0.503	17.618167	-93.168611

27 CARR: Playas del Rosario - Teapa

CLAVE: 27203

RUTA: TAB-001

AÑO: 2015

LUGAR	ESTACION				CLASIFICACION VEHICULAR EN PORCIENTO													COORDENADAS		
	KM	TE	SC	TDPA	M	A	B	C2	C3	T3S2	T3S3	T3S2R4	OTROS	A	B	C	K'	D	LATITUD	LONGITUD
T. C. Villahermosa - Escopetazo	0.00	3	1	4621	4.2	87.6	0.2	5.9	0.8	0.6	0.6	0.0	0.1	91.8	0.2	8.0	0.080	0.502	17.839861	-92.924083
T. C. Villahermosa - Escopetazo	0.00	3	2	4587	4.0	87.1	0.2	6.3	0.8	0.7	0.8	0.0	0.1	91.1	0.2	8.7	0.087	0.502	17.839944	-92.924056
Revolución Mexicana	1.20	3	0	8066	3.6	85.5	0.2	5.6	0.9	2.7	0.9	0.1	0.5	89.1	0.2	10.7	0.078	0.504	17.837028	-92.912889
Cacaos	7.00	1	0	6309	4.7	86.9	0.2	3.6	0.6	2.5	0.9	0.1	0.5	91.6	0.2	8.2	0.077	0.504	17.826639	-92.861000
Cacaos	7.00	3	0	5023	4.5	85.1	0.3	5.6	0.7	2.5	0.9	0.1	0.3	89.6	0.3	10.1	0.081	0.503	17.825361	-92.854583
Jalapa	23.00	1	0	5437	6.2	84.8	0.3	4.3	0.5	2.5	1.0	0.1	0.3	91.0	0.3	8.7	0.082	0.503	17.731472	-92.816639
Jalapa	23.00	3	0	4545	11.7	77.3	0.3	5.5	0.9	2.8	1.0	0.1	0.4	89.0	0.3	10.7	0.079	0.505	17.709556	-92.807583
T. Izq. Tacotalpa	39.00	1	0	3982	11.8	76.5	0.3	6.1	0.7	3.1	1.0	0.1	0.4	88.3	0.3	11.4	0.082	0.503	17.595000	-92.833194
T. Izq. Tacotalpa	39.00	3	0	5619	9.4	81.4	0.1	4.2	0.4	3.3	0.7	0.1	0.4	90.8	0.1	9.1	0.083	0.516	17.591667	-92.835722
Teapa	54.00	1	0	2206	8.7	81.8	0.9	6.3	0.3	1.6	0.3	0.0	0.1	90.5	0.9	8.6	0.100	0.504	17.551222	-92.944361

28 CARR: Ramal a Balancán

CLAVE: 27078

RUTA: TAB

AÑO: 2015

LUGAR	ESTACION				CLASIFICACION VEHICULAR EN PORCIENTO													COORDENADAS		
	KM	TE	SC	TDPA	M	A	B	C2	C3	T3S2	T3S3	T3S2R4	OTROS	A	B	C	K'	D	LATITUD	LONGITUD
T. C. El Suspiro - Tenosique	0.00	3	0	1699	2.6	83.7	1.4	8.9	1.0	1.7	0.5	0.0	0.2	86.3	1.4	12.3	0.088	0.505	17.632972	-91.600417
Balancán	24.00	1	0	3355	9.0	80.1	0.5	6.9	0.3	2.5	0.3	0.1	0.3	89.1	0.5	10.4	0.077	0.502	17.830006	-91.531167

TABASCO

29 CARR: Ramal a La Venta

CLAVE: 27078

RUTA: TAB

AÑO: 2015

LUGAR	ESTACION				CLASIFICACION VEHICULAR EN PORCIENTO														COORDENADAS	
	KM	TE	SC	TDPA	M	A	B	C2	C3	T3S2	T3S3	T3S2R4	OTROS	A	B	C	K'	D	LATITUD	LONGITUD
T. C. Coatzacoalcos - Villahermosa	0.00	3	0	5366	11.4	75.4	2.8	6.4	0.7	2.3	0.5	0.1	0.4	86.8	2.8	10.4	0.067	0.509	18.067667	-94.043167
La Venta	4.25																			

30 CARR: Ramal a Lázaro Cárdenas

CLAVE: 27208

RUTA: TAB

AÑO: 2015

LUGAR	ESTACION				CLASIFICACION VEHICULAR EN PORCIENTO														COORDENADAS	
	KM	TE	SC	TDPA	M	A	B	C2	C3	T3S2	T3S3	T3S2R4	OTROS	A	B	C	K'	D	LATITUD	LONGITUD
T. C. Comalcalco - El Golpe	0.00	3	0	2158	35.3	56.4	0.4	4.7	0.4	1.8	0.6	0.0	0.4	91.7	0.4	7.9	0.095	0.507	18.287750	-93.386861
Lázaro Cárdenas	14.00	1	0	1779	49.7	43.6	0.4	3.6	0.4	1.4	0.6	0.0	0.3	93.3	0.4	6.3	0.079	0.515	18.318806	-93.435583

31 CARR: Ramal a Libertad

CLAVE: 27205

RUTA: TAB

AÑO: 2015

LUGAR	ESTACION				CLASIFICACION VEHICULAR EN PORCIENTO														COORDENADAS	
	KM	TE	SC	TDPA	M	A	B	C2	C3	T3S2	T3S3	T3S2R4	OTROS	A	B	C	K'	D	LATITUD	LONGITUD
T. C. Cárdenas - Paraiso	0.00	3	0	3877	15.9	74.5	0.4	4.9	1.2	2.3	0.5	0.1	0.2	90.4	0.4	9.2	0.074	0.524	18.116778	-93.309139
Libertad	10.00	1	0	3261	27.3	65.5	0.4	3.7	0.6	2.0	0.2	0.0	0.3	92.8	0.4	6.8	0.075	0.503	18.176111	-93.361472

32 CARR: Ramal a Salto del Agua

CLAVE: 00069

RUTA: TAB-CHIS

AÑO: 2015

LUGAR	ESTACION				CLASIFICACION VEHICULAR EN PORCIENTO														COORDENADAS	
	KM	TE	SC	TDPA	M	A	B	C2	C3	T3S2	T3S3	T3S2R4	OTROS	A	B	C	K'	D	LATITUD	LONGITUD
T. C. Villahermosa - Francisco Escárcega	0.00	3	0	1512	4.6	74.6	1.6	5.0	3.2	4.3	2.5	4.1	0.1	79.2	1.6	19.2	0.124	0.537	17.664806	-92.435972
Lim. Edos. Term. Tab. Ppia. Chis.	12.00																			
Salto del Agua	17.00	1	0	1495	9.8	80.2	1.0	6.1	1.3	1.1	0.4	0.0	0.1	90.0	1.0	9.0	0.110	0.525	17.559139	-92.353778

33 CARR: Ramal a San Antonio

CLAVE: 27003

RUTA: TAB

AÑO: 2015

LUGAR	ESTACION				CLASIFICACION VEHICULAR EN PORCIENTO														COORDENADAS	
	KM	TE	SC	TDPA	M	A	B	C2	C3	T3S2	T3S3	T3S2R4	OTROS	A	B	C	K'	D	LATITUD	LONGITUD
T. C. Villahermosa - Francisco Escárcega	0.00	3	0	796	8.2	73.5	1.7	9.4	2.1	3.2	1.0	0.8	0.1	81.7	1.7	16.6	0.082	0.501	17.928385	-91.742998
T. Der. Balancán	24.00	1	0	1217	6.2	78.4	1.1	8.8	0.8	3.4	0.8	0.3	0.2	84.6	1.1	14.3	0.100	0.504	17.871978	-91.533243
T. Der. Balancán	24.00	3	0	2092	5.9	81.2	0.8	9.2	0.7	1.7	0.3	0.1	0.1	87.1	0.8	12.1	0.080	0.507	17.871976	-91.523497
El Triunfo	72.00																			

TABASCO

34 CARR: Ramal a Sánchez Magallanes

CLAVE: 27016

RUTA: TAB

AÑO: 2015

LUGAR	ESTACION				CLASIFICACION VEHICULAR EN PORCIENTO										COORDENADAS					
	KM	TE	SC	TDPA	M	A	B	C2	C3	T3S2	T3S3	T3S2R4	OTROS	A	B	C	K'	D	LATITUD	LONGITUD
T. C. Coatzacoalcos - Villahermosa	0.00	3	0	1693	8.4	74.2	1.0	9.3	1.7	3.5	1.4	0.2	0.3	82.6	1.0	16.4	0.078	0.545	18.084944	-93.881028
Campo Magallanes	13.00	1	0	1627	15.8	65.0	1.9	10.8	2.0	2.8	0.9	0.4	0.4	80.8	1.9	17.3	0.070	0.507	18.162833	-93.906444
Campo Magallanes	13.00	3	0	3013	31.7	54.8	0.7	5.5	0.8	4.6	0.9	0.4	0.6	86.5	0.7	12.8	0.099	0.503	18.173361	-93.905000
Sánchez Magallanes	33.00	1	0	1705	12.7	73.3	1.1	9.6	1.6	1.5	0.1	0.0	0.1	86.0	1.1	12.9	0.086	0.529	18.277556	-93.890667

35 CARR: Ramal a Tamulte de Las Sabanas

CLAVE: 27080

RUTA: TAB

AÑO: 2015

LUGAR	ESTACION				CLASIFICACION VEHICULAR EN PORCIENTO										COORDENADAS					
	KM	TE	SC	TDPA	M	A	B	C2	C3	T3S2	T3S3	T3S2R4	OTROS	A	B	C	K'	D	LATITUD	LONGITUD
T. C. Villahermosa - Cd. del Carmen	0.00	3	0	2935	2.4	90.4	0.5	3.6	0.7	1.6	0.4	0.3	0.1	92.8	0.5	6.7	0.087	0.504	18.199917	-92.823889
Tamulte de Las Sabanas	7.00																			

36 CARR: Ramal a Tapijulapa

CLAVE: 27200

RUTA: TAB

AÑO: 2015

LUGAR	ESTACION				CLASIFICACION VEHICULAR EN PORCIENTO										COORDENADAS					
	KM	TE	SC	TDPA	M	A	B	C2	C3	T3S2	T3S3	T3S2R4	OTROS	A	B	C	K'	D	LATITUD	LONGITUD
T. C. Playas del Rosario - Teapa	0.00	3	0	3887	12.8	76.6	0.4	5.1	0.4	3.1	1.1	0.2	0.3	89.4	0.4	10.2	0.074	0.500	17.574028	-92.835306
Tapijulapa	20.00	1	0	2093	5.8	83.6	0.4	6.7	0.9	1.7	0.5	0.1	0.3	89.4	0.4	10.2	0.071	0.514	17.457722	-92.784417

37 CARR: Reforma - Dos Bocas

CLAVE: 27200

RUTA: TAB

AÑO: 2015

LUGAR	ESTACION				CLASIFICACION VEHICULAR EN PORCIENTO										COORDENADAS					
	KM	TE	SC	TDPA	M	A	B	C2	C3	T3S2	T3S3	T3S2R4	OTROS	A	B	C	K'	D	LATITUD	LONGITUD
Reforma	0.00	3	1	12571	2.0	82.5	2.5	5.9	1.8	2.5	1.8	0.4	0.6	84.5	2.5	13.0	0.074	0.503	17.977972	-93.128056
Reforma	0.00	3	2	12411	2.3	80.1	2.9	6.8	2.1	2.8	1.9	0.4	0.7	82.4	2.9	14.7	0.091	0.503	17.977944	-93.128111
Dos Bocas	53.00	1	1	5501	4.2	78.0	1.4	10.5	1.3	2.3	1.6	0.3	0.4	82.2	1.4	16.4	0.146	0.521	18.421694	-93.207417
Dos Bocas	53.00	1	2	5062	6.0	73.9	1.7	12.0	1.4	2.5	1.8	0.3	0.4	79.9	1.7	18.4	0.139	0.521	18.421694	-93.207417

38 CARR: Reyes Hernández - Villa Aldama

CLAVE: 27119

RUTA: TAB

AÑO: 2015

LUGAR	ESTACION				CLASIFICACION VEHICULAR EN PORCIENTO										COORDENADAS					
	KM	TE	SC	TDPA	M	A	B	C2	C3	T3S2	T3S3	T3S2R4	OTROS	A	B	C	K'	D	LATITUD	LONGITUD
Reyes Hernández	0.00	3	0	6780	17.7	73.1	0.5	3.0	0.5	2.4	1.0	0.3	1.5	90.8	0.5	8.7	0.062	0.505	18.238889	-93.342361
T. C. (Cárdenas - Paraiso) - Carlos Green	9.00	1	0	4825	20.7	66.9	0.3	8.5	0.3	2.5	0.4	0.1	0.3	87.6	0.3	12.1	0.087	0.504	18.240778	-93.280972

TABASCO

39 CARR: Samaria - Amatitán

CLAVE: 27114

RUTA: TAB

AÑO: 2015

LUGAR	ESTACION				CLASIFICACION VEHICULAR EN PORCIENTO													COORDENADAS		
	KM	TE	SC	TDPA	M	A	B	C2	C3	T3S2	T3S3	T3S2R4	OTROS	A	B	C	K'	D	LATITUD	LONGITUD
T. C. Coatzacoalcos - Villahermosa	0.00	3	0	2748	8.4	81.8	0.6	6.3	0.5	2.0	0.3	0.0	0.1	90.2	0.6	9.2	0.081	0.505	18.002361	-93.274194
Cunduacán	17.00	1	0	9207	14.4	76.1	0.3	2.8	0.5	4.2	0.7	0.2	0.8	90.5	0.3	9.2	0.081	0.501	18.054694	-93.190139
Cunduacán	17.00	3	0	2634	42.6	53.2	0.2	2.1	0.2	1.5	0.1	0.0	0.1	95.8	0.2	4.0	0.070	0.513	18.082139	-93.169139
Amatitán	31.40	1	0	6372	18.2	71.7	0.1	3.6	0.7	4.3	0.6	0.1	0.7	89.9	0.1	10.0	0.076	0.505	18.174722	-93.085889

40 CARR: T. C. (Cárdenas - Paraíso) - Carlos Green

CLAVE: 27111

RUTA: TAB

AÑO: 2015

LUGAR	ESTACION				CLASIFICACION VEHICULAR EN PORCIENTO													COORDENADAS		
	KM	TE	SC	TDPA	M	A	B	C2	C3	T3S2	T3S3	T3S2R4	OTROS	A	B	C	K'	D	LATITUD	LONGITUD
T. C. Cárdenas - Paraíso	0.00	3	0	732	20.8	71.6	0.5	4.9	0.7	1.2	0.2	0.0	0.1	92.4	0.5	7.1	0.071	0.509	18.110056	-93.322861
T. Der. Reyes Hernández	21.50	3	0	1351	55.0	39.0	0.5	3.1	0.9	1.1	0.3	0.0	0.1	94.0	0.5	5.5	0.115	0.524	18.179222	-93.386028
Carlos Green	30.70	1	0	1990	43.2	47.5	0.3	6.2	0.2	1.9	0.4	0.0	0.3	90.7	0.3	9.0	0.086	0.503	18.233222	-93.446778

41 CARR: Tierra Nueva - Francisco Rueda

CLAVE: 27110

RUTA: TAB

AÑO: 2015

LUGAR	ESTACION				CLASIFICACION VEHICULAR EN PORCIENTO													COORDENADAS		
	KM	TE	SC	TDPA	M	A	B	C2	C3	T3S2	T3S3	T3S2R4	OTROS	A	B	C	K'	D	LATITUD	LONGITUD
Tierra Nueva	0.00	3	0	2151	29.9	57.1	0.5	8.0	0.8	2.8	0.5	0.2	0.2	87.0	0.5	12.5	0.092	0.512	17.799056	-93.451778
Ocuapan	14.00	3	0	1106	24.7	63.5	0.2	8.1	1.5	1.2	0.2	0.4	0.2	88.2	0.2	11.6	0.094	0.512	17.830361	-93.506611
T. Izq. Encomendadero	31.00	1	0	1069	35.2	51.7	0.1	7.8	2.1	1.7	0.6	0.6	0.2	86.9	0.1	13.0	0.123	0.505	17.800222	-93.623750
T. Izq. Encomendadero	31.00	3	0	969	27.8	56.5	0.8	9.2	2.1	2.1	0.8	0.6	0.1	84.3	0.8	14.9	0.144	0.506	17.791389	-93.629778
Francisco Rueda	71.00	1	0	757	30.5	61.8	0.4	4.7	1.5	0.8	0.1	0.1	0.1	92.3	0.4	7.3	0.082	0.500	17.835753	-93.921642

42 CARR: Tulipán - Cunduacán

CLAVE: 27115

RUTA: TAB

AÑO: 2015

LUGAR	ESTACION				CLASIFICACION VEHICULAR EN PORCIENTO													COORDENADAS		
	KM	TE	SC	TDPA	M	A	B	C2	C3	T3S2	T3S3	T3S2R4	OTROS	A	B	C	K'	D	LATITUD	LONGITUD
T. C. Malpaso - Bellote	0.00	3	0	5821	19.0	72.4	0.2	2.6	0.2	3.6	1.0	0.2	0.8	91.4	0.2	8.4	0.081	0.505	18.112083	-93.288889
T. Der. Mote	14.00	1	0	3827	12.5	81.2	0.1	2.9	0.7	2.0	0.4	0.0	0.2	93.7	0.1	6.2	0.089	0.508	18.062333	-93.213583
Cunduacán	15.00	1	0	4957	16.7	75.8	0.1	2.7	0.7	2.9	0.5	0.1	0.5	92.5	0.1	7.4	0.094	0.507	18.057278	-93.200611

TABASCO

43 CARR: Villahermosa - Comalcalco

CLAVE: 27021

RUTA: TAB

AÑO: 2015

LUGAR	ESTACION				CLASIFICACION VEHICULAR EN PORCIENTO													COORDENADAS		
	KM	TE	SC	TDPA	M	A	B	C2	C3	T3S2	T3S3	T3S2R4	OTROS	A	B	C	K'	D	LATITUD	LONGITUD
T. C. Villahermosa - Cd. del Carmen	0.00	3	1	10732	2.6	88.1	0.6	3.0	1.0	1.0	2.2	0.7	0.8	90.7	0.6	8.7	0.067	0.502	18.032579	-92.927733
T. C. Villahermosa - Cd. del Carmen	0.00	3	2	10834	2.2	87.5	0.6	3.4	1.1	1.1	2.4	0.7	1.0	89.7	0.6	9.7	0.072	0.502	18.031681	-92.929329
Saloya	13.00	1	0	16558	5.1	88.3	0.2	2.9	1.5	0.8	0.9	0.1	0.2	93.4	0.2	6.4	0.075	0.521	18.096111	-92.942444
Saloya	13.00	3	0	13683	4.7	80.0	0.3	7.1	1.3	4.4	0.9	0.2	1.1	84.7	0.3	15.0	0.074	0.502	18.101056	-92.949972
Nacajuca	21.00	1	0	12224	8.1	81.5	0.2	2.8	0.3	5.1	0.7	0.2	1.1	89.6	0.2	10.2	0.068	0.504	18.153972	-93.011028
Nacajuca	21.00	3	1	7634	13.4	82.1	0.1	2.2	0.2	1.1	0.6	0.1	0.2	95.5	0.1	4.4	0.073	0.502	18.178139	-93.027806
Nacajuca	21.00	3	2	7706	13.7	81.3	0.1	2.5	0.2	1.3	0.6	0.1	0.2	95.0	0.1	4.9	0.073	0.502	18.178000	-93.027806
Jalpa de Méndez	27.00	3	0	7455	12.9	78.4	0.1	2.8	0.3	4.2	0.5	0.1	0.7	91.3	0.1	8.6	0.083	0.504	18.179417	-93.084778
Cupilco	40.00	1	0	5727	12.5	77.0	0.4	4.7	0.3	3.6	0.8	0.1	0.6	89.5	0.4	10.1	0.087	0.509	18.235972	-93.125194
Cupilco	40.00	3	0	6313	12.0	78.8	0.3	4.1	0.6	2.5	0.9	0.2	0.6	90.8	0.3	8.9	0.082	0.514	18.244000	-93.128972
Chichicapa	46.50	1	0	6207	12.0	74.7	1.0	5.5	1.1	2.9	1.1	0.6	1.1	86.7	1.0	12.3	0.074	0.508	18.262139	-93.176306
T. C. Malpaso - Bellote	50.70	1	0	13410	5.8	73.0	0.3	9.4	0.9	7.7	1.1	0.4	1.4	78.8	0.3	20.9	0.065	0.519	18.247972	-93.202833

44 CARR: Villahermosa - Luis Gil Pérez

CLAVE: 27206

RUTA: TAB

AÑO: 2015

LUGAR	ESTACION				CLASIFICACION VEHICULAR EN PORCIENTO													COORDENADAS		
	KM	TE	SC	TDPA	M	A	B	C2	C3	T3S2	T3S3	T3S2R4	OTROS	A	B	C	K'	D	LATITUD	LONGITUD
Villahermosa	0.00	3	0	10414	6.6	82.3	0.1	3.1	0.4	5.6	0.6	0.3	1.0	88.9	0.1	11.0	0.084	0.509	17.945056	-92.978694
Luis Gil Pérez	22.00	1	0	4915	17.6	72.7	0.2	4.2	0.1	2.7	1.6	0.2	0.7	90.3	0.2	9.5	0.078	0.504	17.888028	-93.068083

45 CARR: Villahermosa - T. C. (P. de Cunduacán - Estación Juárez)

CLAVE: 27106

RUTA: TAB

AÑO: 2015

LUGAR	ESTACION				CLASIFICACION VEHICULAR EN PORCIENTO													COORDENADAS		
	KM	TE	SC	TDPA	M	A	B	C2	C3	T3S2	T3S3	T3S2R4	OTROS	A	B	C	K'	D	LATITUD	LONGITUD
Villahermosa	0.00	3	0	17522	4.5	88.5	0.1	5.3	0.4	0.6	0.5	0.0	0.1	93.0	0.1	6.9	0.088	0.504	17.960421	-92.981046
San Joaquín	4.00	3	0	8061	4.6	88.4	0.1	5.8	0.4	0.4	0.3	0.0	0.0	93.0	0.1	6.9	0.098	0.513	17.931028	-92.984278
T. Izq. Luis Gil Pérez	19.00	3	0	5641	7.2	80.8	0.4	5.9	0.7	2.8	1.1	0.4	0.7	88.0	0.4	11.6	0.101	0.528	17.895139	-93.065222
T. C. Paso de Cunduacán - Estación Juárez	25.20	1	0	5866	7.7	81.1	0.2	5.2	0.5	3.5	1.0	0.2	0.6	88.8	0.2	11.0	0.124	0.526	17.908528	-93.126861

46 CARR: Zapatero - T. C. (Jalapa - Jonuta)

CLAVE: 00061

RUTA: CHIS-TAB

AÑO: 2015

LUGAR	ESTACION				CLASIFICACION VEHICULAR EN PORCIENTO													COORDENADAS		
	KM	TE	SC	TDPA	M	A	B	C2	C3	T3S2	T3S3	T3S2R4	OTROS	A	B	C	K'	D	LATITUD	LONGITUD
T. C. Villahermosa - Francisco Escárcega	0.00	3	0	1468	7.6	82.1	0.4	6.8	1.1	1.6	0.2	0.0	0.2	89.7	0.4	9.9	0.072	0.508	17.699083	-92.131861
Lim. Edos. Term. Chis. Ppia. Tab.	16.00																			

TABASCO

46 CARR: Zapatero - T. C. (Jalapa - Jonuta)

CLAVE: 00061

RUTA: CHIS-TAB

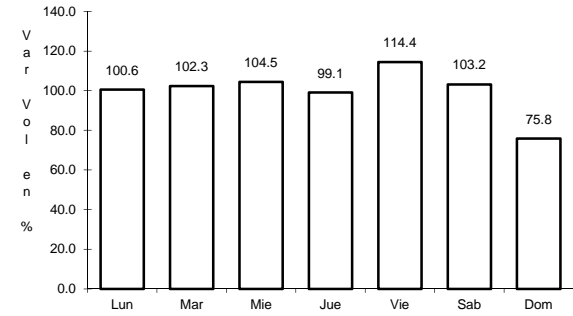
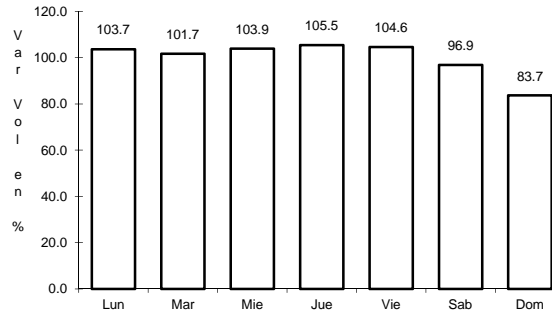
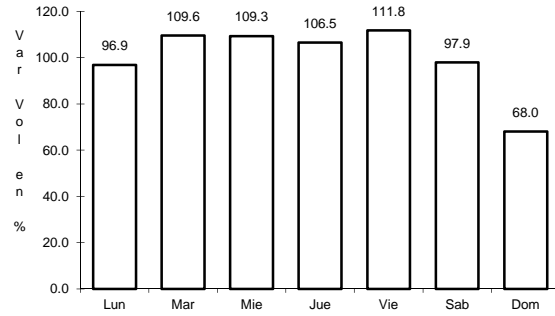
AÑO: 2015

L U G A R	E S T A C I O N				C L A S I F I C A C I O N V E H I C U L A R E N P O R C I E N T O														C O O R D E N A D A S	
	KM	TE	SC	TDPA	M	A	B	C2	C3	T3S2	T3S3	T3S2R4	OTROS	A	B	C	K'	D	LATITUD	LONGITUD
T. C. Jalapa - Jonuta	41.00	1	0	1360	6.1	85.4	0.4	4.7	1.0	1.6	0.5	0.1	0.2	91.5	0.4	8.1	0.089	0.506	18.028139	-92.157889

1 CARR: Coatzacoalcos - Villahermosa

CLAVE: 00528

RUTA: MEX-180



Km: 3.00 Tipo: 1 Sent: 0

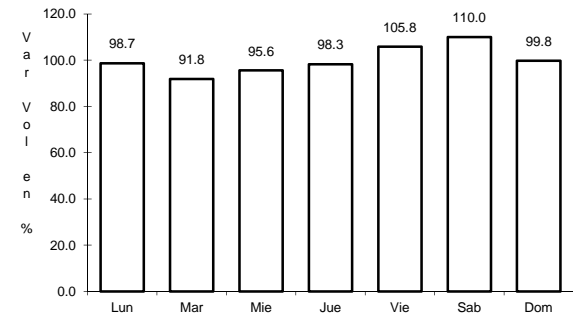
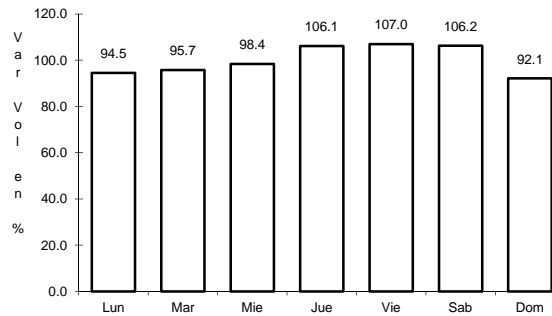
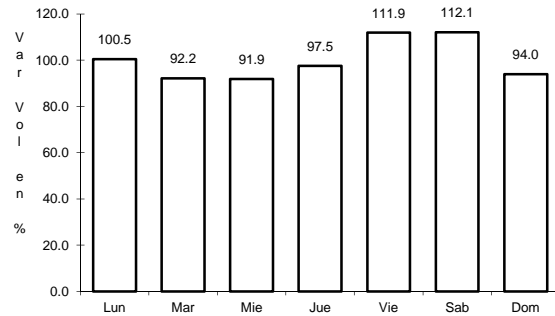
Km: 171.15 Tipo: 1 Sent: 1

Km: 171.15 Tipo: 1 Sent: 2

2 CARR: El Suspiro - Tenosique

CLAVE: 00276

RUTA: MEX-203



Km: 0.00 Tipo: 3 Sent: 0

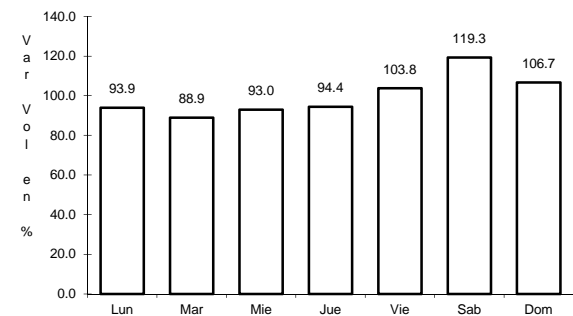
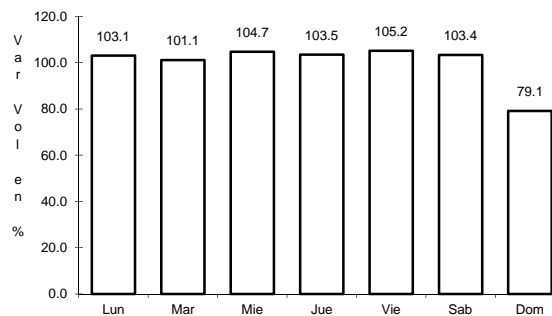
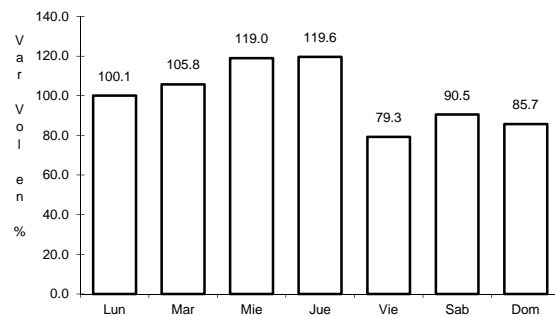
Km: 32.60 Tipo: 1 Sent: 0

Km: 53.00 Tipo: 3 Sent: 0

3 CARR: Malpaso - El Bellote

CLAVE: 00137

RUTA: MEX-187



Km: 70.12 Tipo: 1 Sent: 0

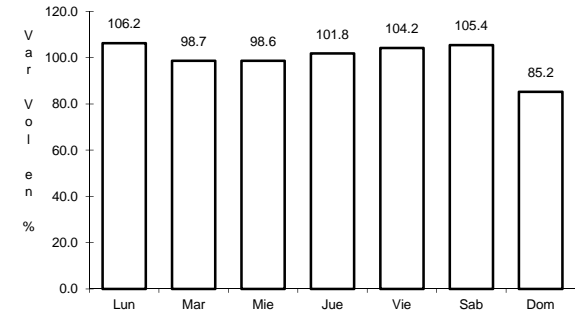
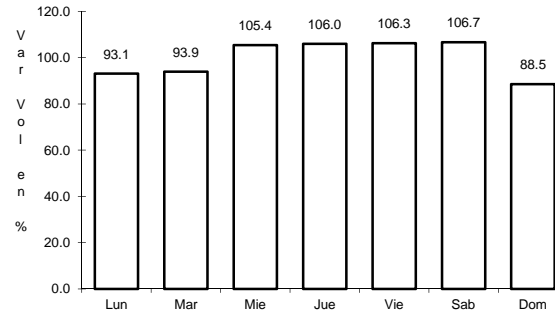
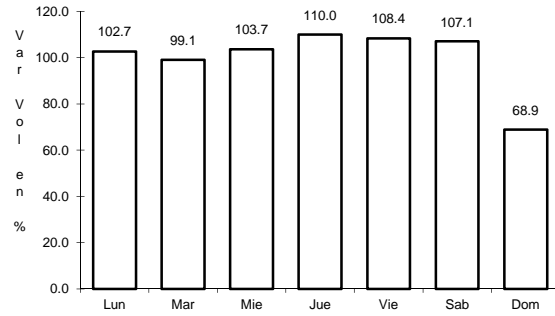
Km: 134.70 Tipo: 3 Sent: 0

Km: 182.00 Tipo: 3 Sent: 0

4 CARR: San Marco - Palizada

CLAVE: 00490

RUTA: MEX-186



Km: 0.00 Tipo: 3 Sent: 0

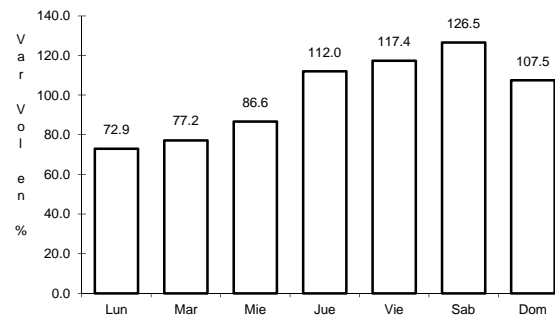
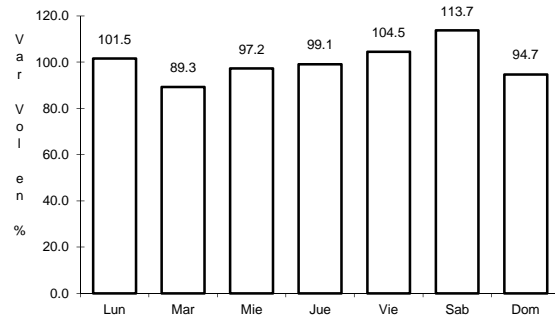
Km: 46.20 Tipo: 1 Sent: 0

Km: 46.20 Tipo: 3 Sent: 0

5 CARR: Tenosique - El Ceibo

CLAVE:

RUTA: MEX-203



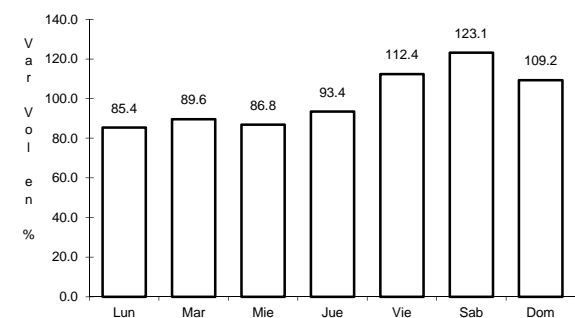
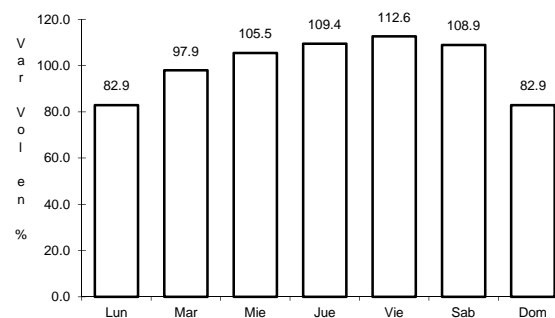
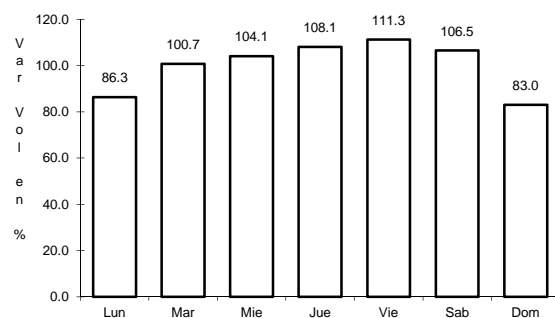
Km: 0.00 Tipo: 3 Sent: 0

Km: 58.00 Tipo: 1 Sent: 0

6 CARR: Villahermosa - Cd. del Carmen

CLAVE: 00064

RUTA: MEX-180



Km: 4.30 Tipo: 3 Sent: 1

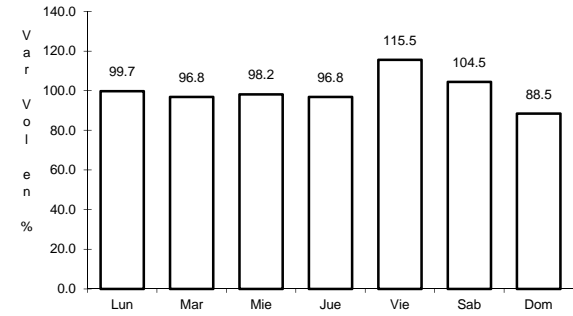
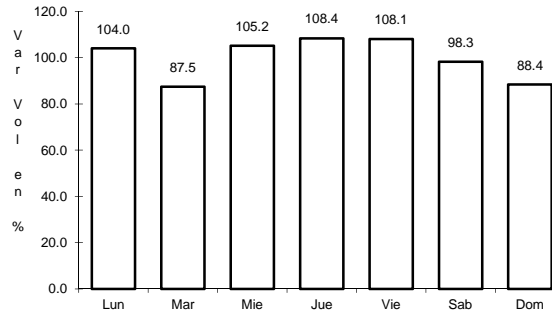
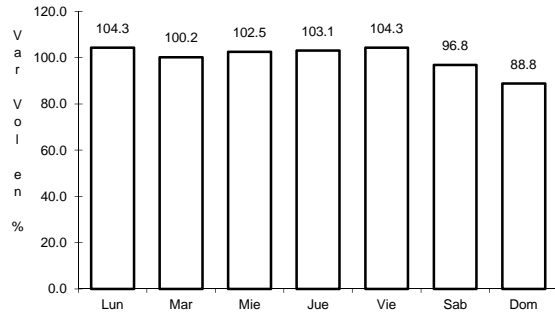
Km: 4.30 Tipo: 3 Sent: 2

Km: 163.17 Tipo: 1 Sent: 0

7 CARR: Villahermosa - Escopetazo

CLAVE: 00104

RUTA: MEX-195



Km: 0.00 Tipo: 3 Sent: 1

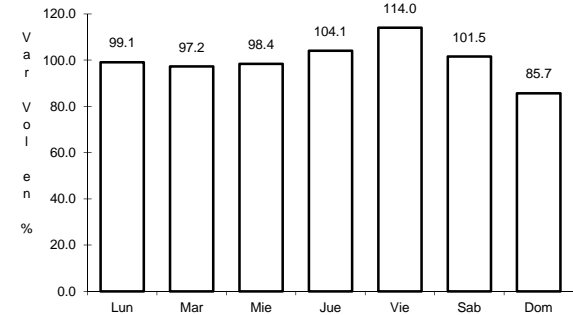
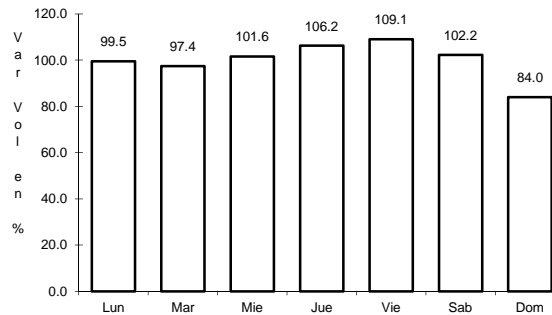
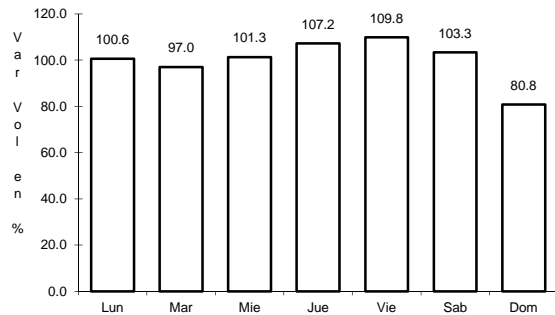
Km: 0.00 Tipo: 3 Sent: 2

Km: 259.00 Tipo: 1 Sent: 0

8 CARR: Villahermosa - Francisco Escárcega

CLAVE: 00092

RUTA: MEX-186



Km: 0.00 Tipo: 3 Sent: 1

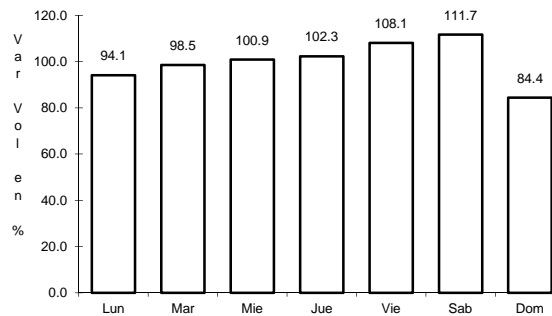
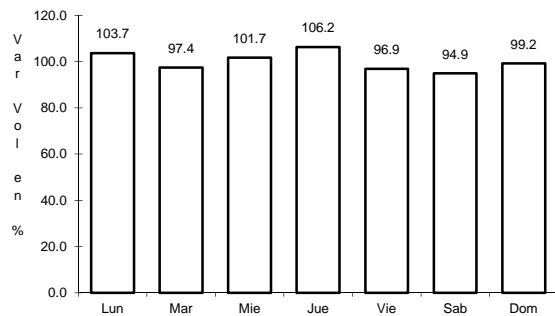
Km: 0.00 Tipo: 3 Sent: 2

Km: 297.04 Tipo: 1 Sent: 0

9 CARR: Ent. Agua Dulce - Cárdenas (Cuota)

CLAVE: 00010

RUTA: MEX-180D



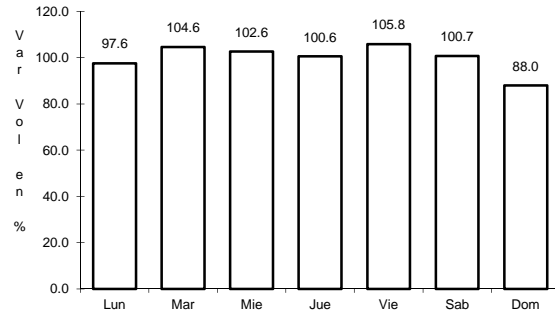
Km: 69.50 Tipo: 1 Sent: 1

Km: 69.50 Tipo: 1 Sent: 2

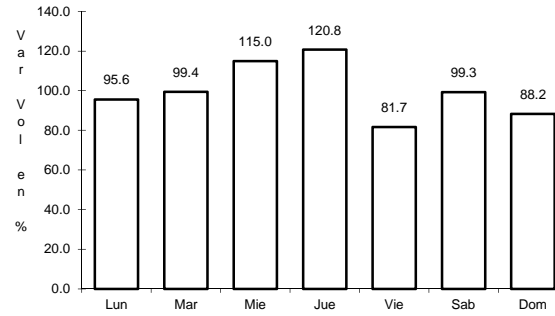
10 CARR: Las Choapas - Ocozocoautla (Cuota)

CLAVE: 00077

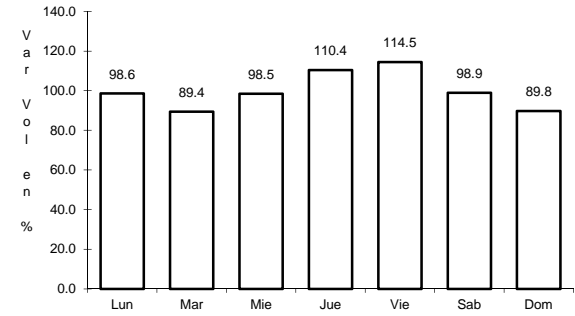
RUTA: MEX-187D



Km: 0.00 Tipo: 3 Sent: 0



Km: 123.79 Tipo: 1 Sent: 0

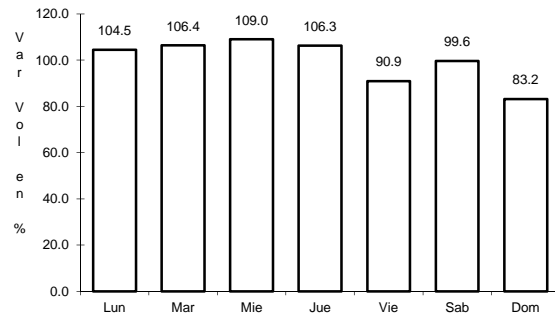


Km: 197.50 Tipo: 1 Sent: 0

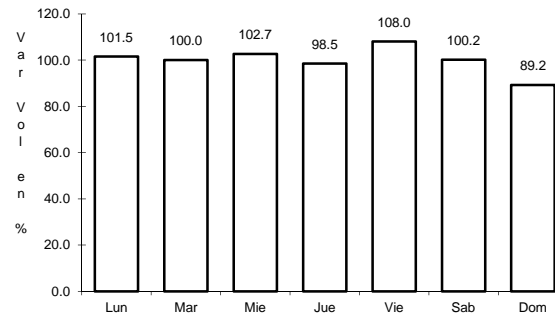
11 CARR: Benito Juárez - Agua Dulce

CLAVE: 00202

RUTA: TAB-VER



Km: 0.00 Tipo: 3 Sent: 0

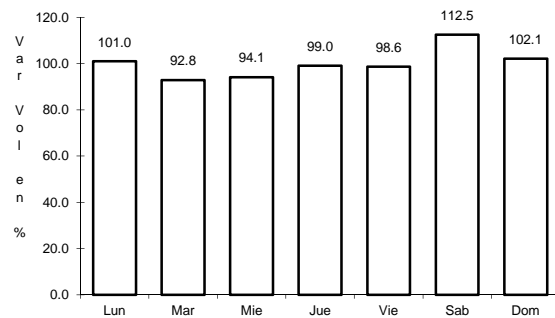


Km: 16.80 Tipo: 1 Sent: 0

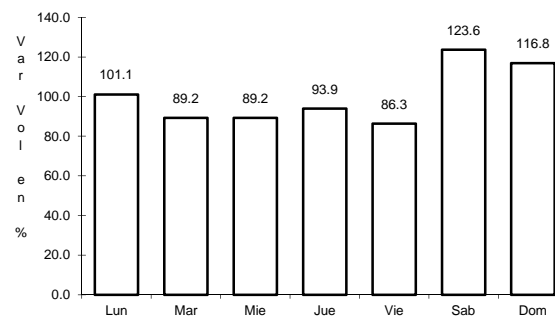
12 CARR: Benito Juárez - Tepetitán

CLAVE: 27204

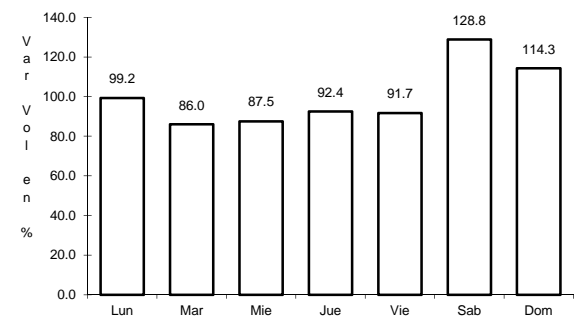
RUTA: TAB



Km: 1.50 Tipo: 3 Sent: 0



Km: 18.50 Tipo: 1 Sent: 0

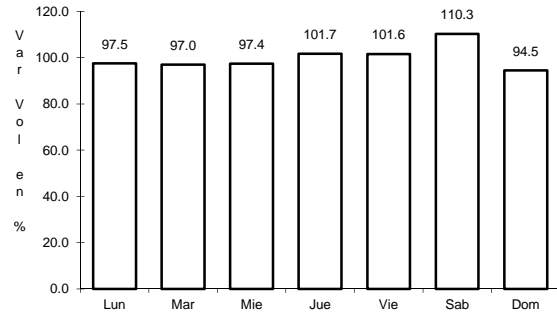


Km: 20.00 Tipo: 1 Sent: 0

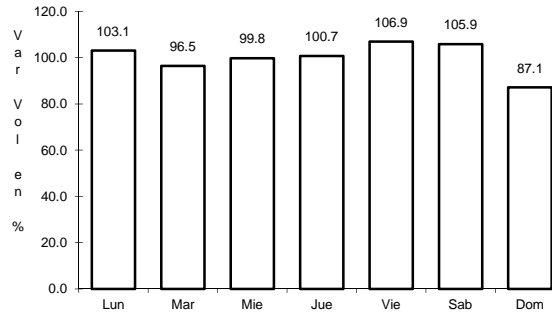
13 CARR: Cacaos - La Granja

CLAVE: 27002

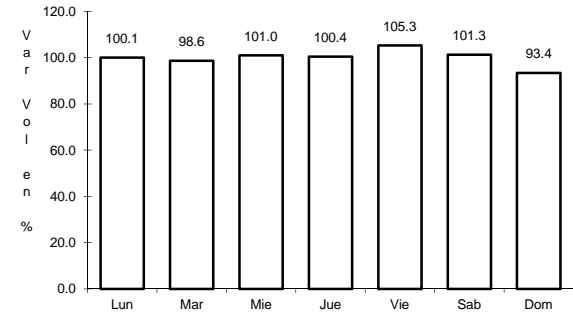
RUTA: TAB



Km: 0.00 Tipo: 3 Sent: 0



Km: 16.00 Tipo: 3 Sent: 0

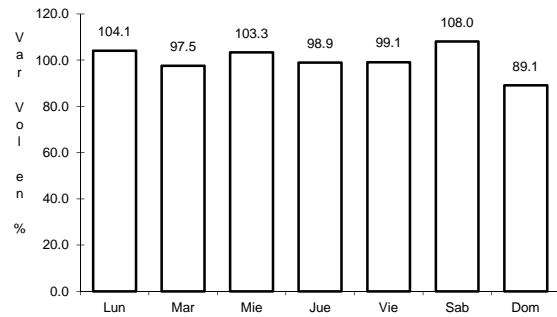


Km: 39.00 Tipo: 1 Sent: 0

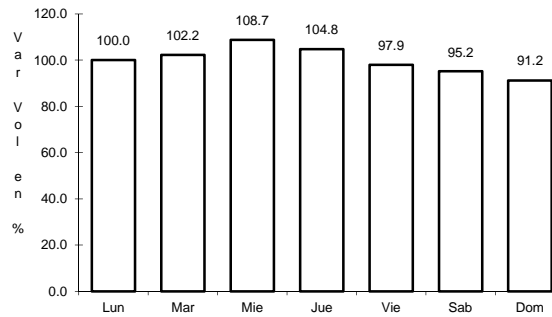
14 CARR: Cárdenas - Paraíso

CLAVE: 27117

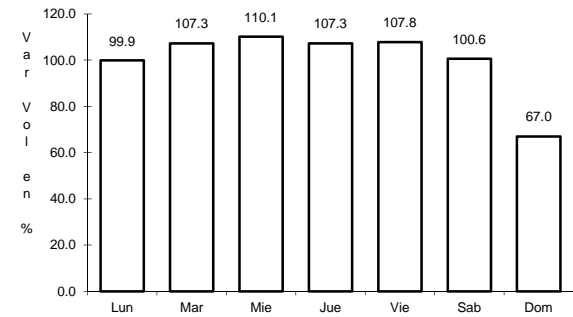
RUTA: TAB



Km: 0.00 Tipo: 3 Sent: 0



Km: 22.00 Tipo: 1 Sent: 0

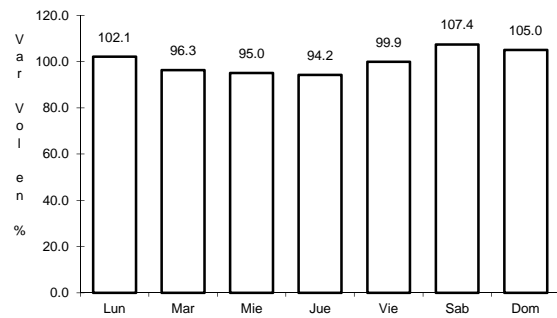


Km: 52.00 Tipo: 1 Sent: 0

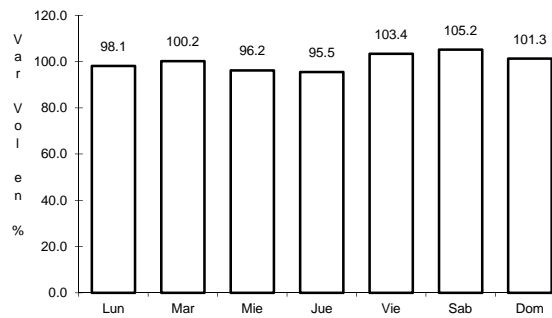
15 CARR: Chichicapa - Ent. La Libertad

CLAVE: 27100

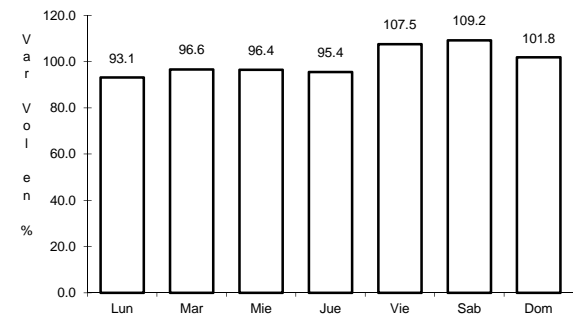
RUTA: TAB



Km: 0.00 Tipo: 3 Sent: 0



Km: 10.00 Tipo: 3 Sent: 0

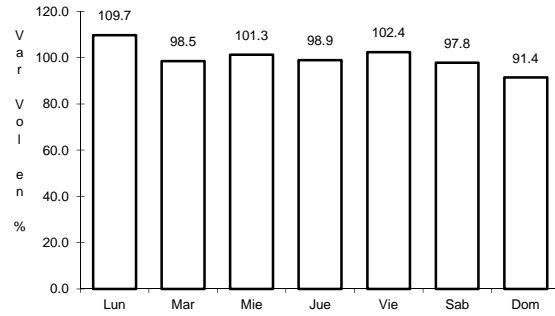


Km: 18.00 Tipo: 1 Sent: 0

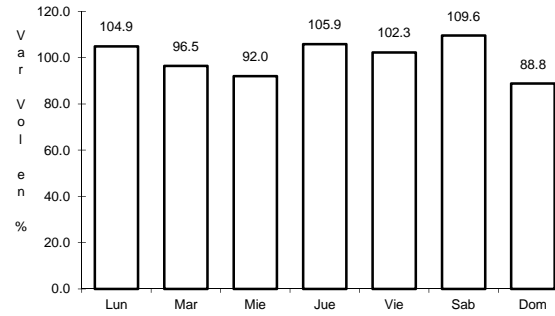
16 CARR: Comalcalco - El Golpe

CLAVE: 27102

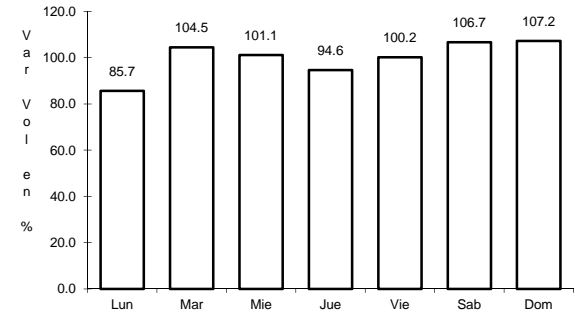
RUTA: TAB



Km: 0.00 Tipo: 3 Sent: 0



Km: 15.00 Tipo: 1 Sent: 0

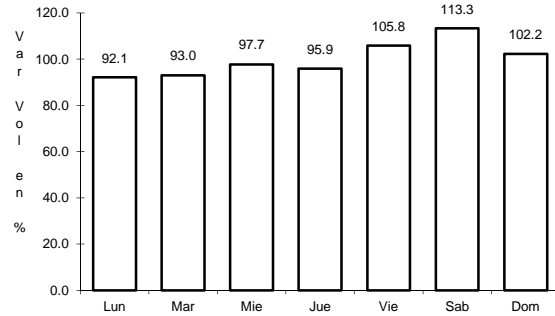


Km: 51.60 Tipo: 1 Sent: 0

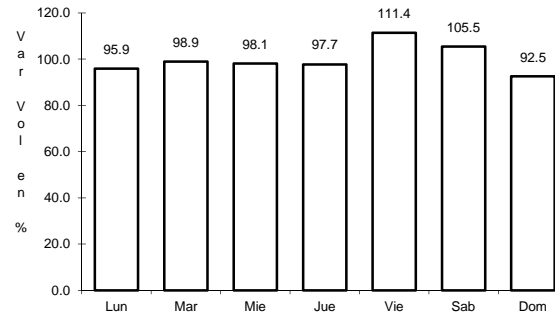
17 CARR: El Bellote - Santa Cruz

CLAVE: 27105

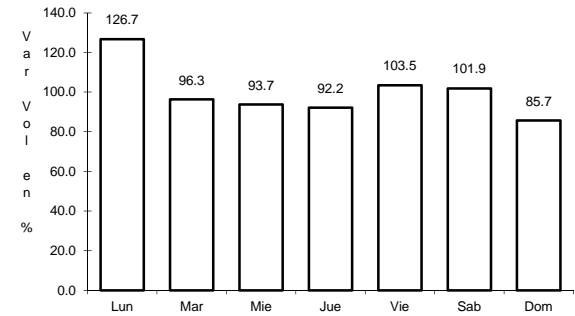
RUTA: TAB



Km: 0.00 Tipo: 3 Sent: 0



Km: 35.00 Tipo: 1 Sent: 0

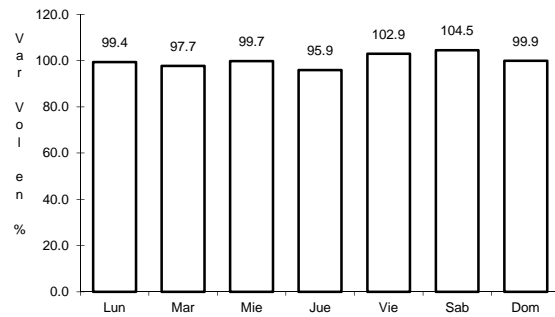


Km: 40.00 Tipo: 1 Sent: 0

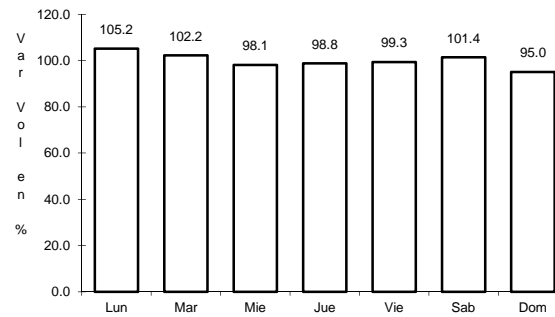
18 CARR: Ent. Emiliano Zapata - La Libertad

CLAVE: 00062

RUTA: CHIS-TAB



Km: 0.00 Tipo: 3 Sent: 0

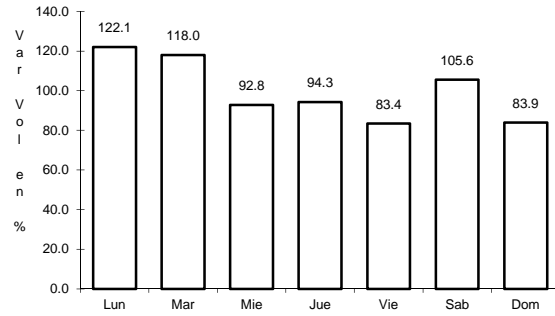


Km: 10.00 Tipo: 1 Sent: 0

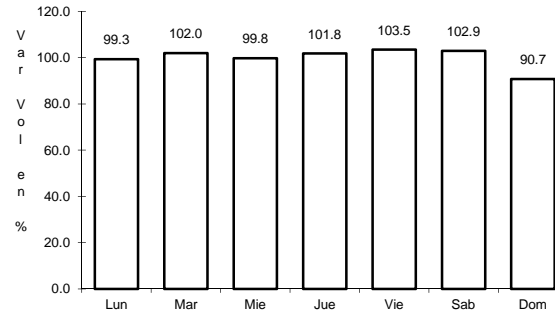
19 CARR: Estación Macuspana - Vernet

CLAVE: 27091

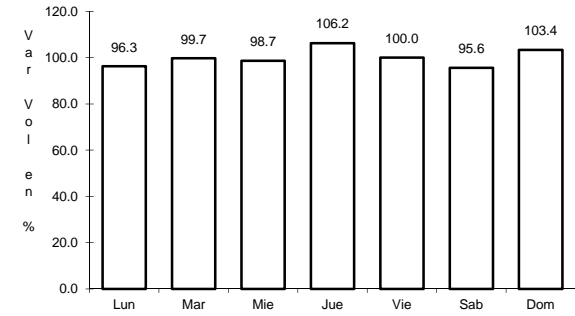
RUTA: TAB-041



Km: 11.00 Tipo: 1 Sent: 0



Km: 20.50 Tipo: 3 Sent: 0

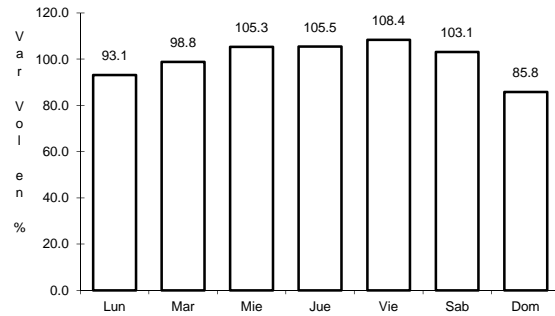


Km: 32.50 Tipo: 1 Sent: 0

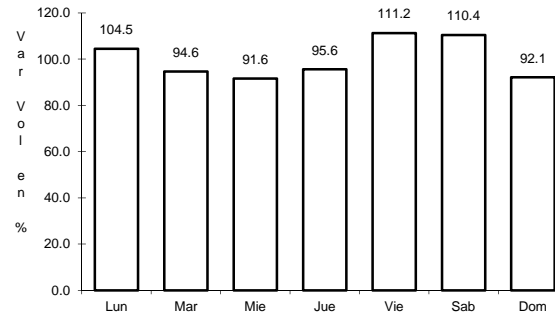
20 CARR: Frontera - T. C. (Jalapa - Jonuta)

CLAVE: 27081

RUTA: TAB



Km: 1.00 Tipo: 3 Sent: 0

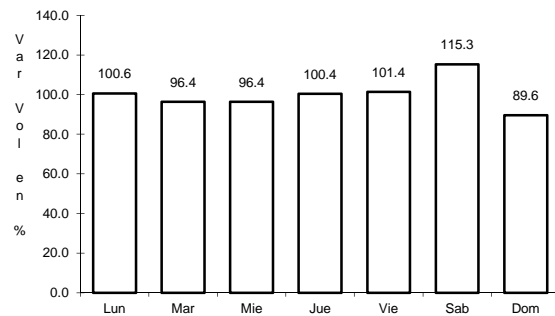


Km: 123.00 Tipo: 1 Sent: 0

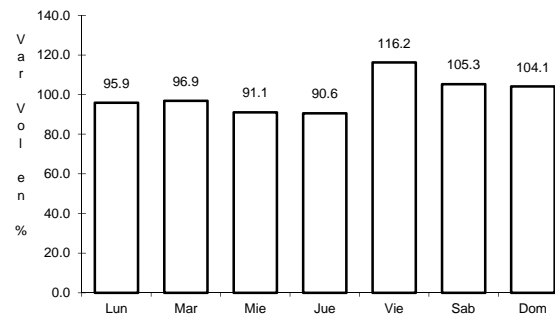
21 CARR: Gregorio Méndez Magaña - Reforma de Ocampo

CLAVE: 00103

RUTA: CHIS



Km: 0.00 Tipo: 3 Sent: 0

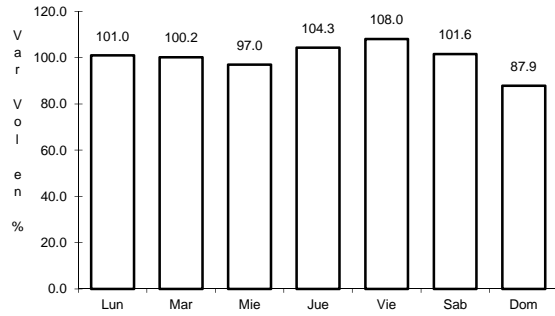


Km: 21.00 Tipo: 1 Sent: 0

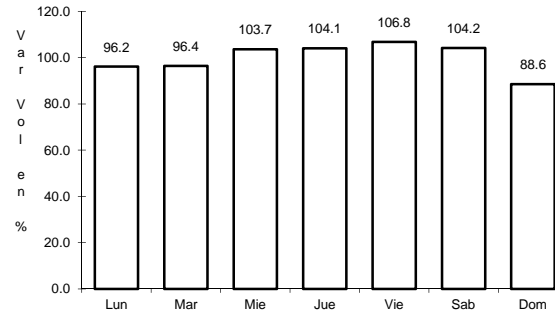
22 CARR: Jalapa - Jonuta

CLAVE: 27107

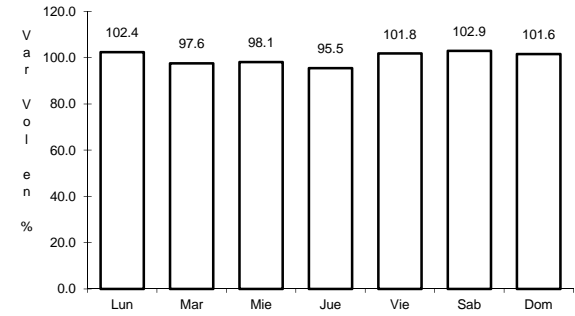
RUTA: TAB



Km: 0.00 Tipo: 3 Sent: 0



Km: 39.00 Tipo: 1 Sent: 0

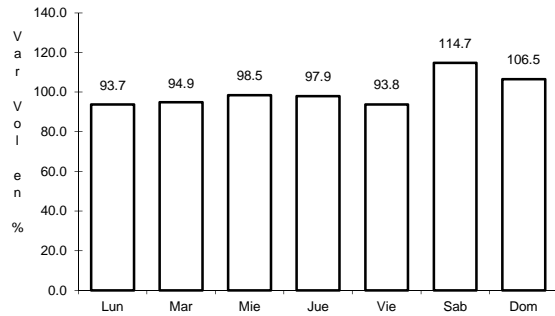


Km: 97.50 Tipo: 1 Sent: 0

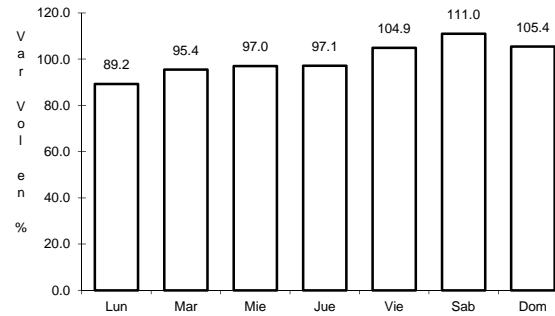
23 CARR: Nicolás Bravo - T. C. (El Bellote - Santa Cruz)

CLAVE: 27010

RUTA: TAB



Km: 0.00 Tipo: 3 Sent: 0

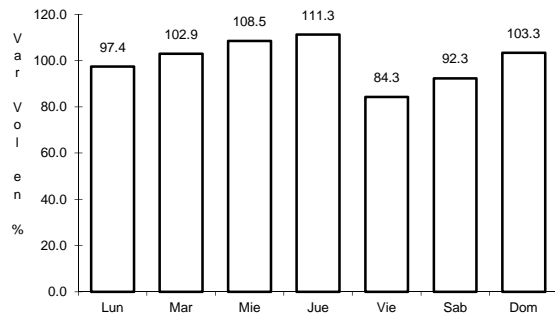


Km: 22.00 Tipo: 1 Sent: 0

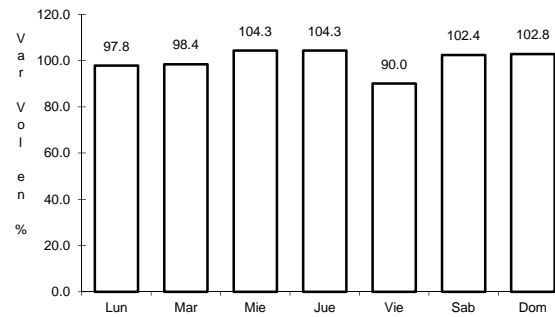
24 CARR: Pailebot - Cuauhtemotzin

CLAVE: 27112

RUTA: TAB



Km: 0.00 Tipo: 3 Sent: 0

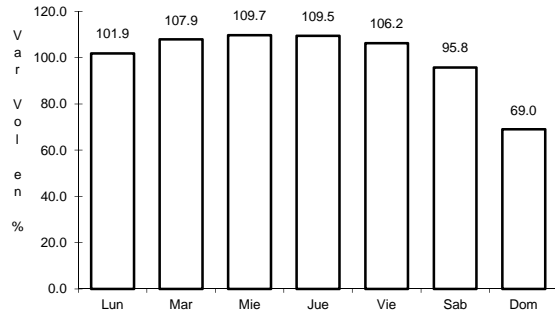


Km: 23.00 Tipo: 1 Sent: 0

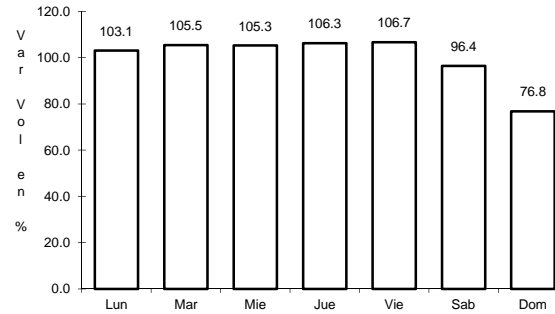
25 CARR: Paraíso - El Limón

CLAVE: 27108

RUTA: TAB



Km: 0.00 Tipo: 3 Sent: 0

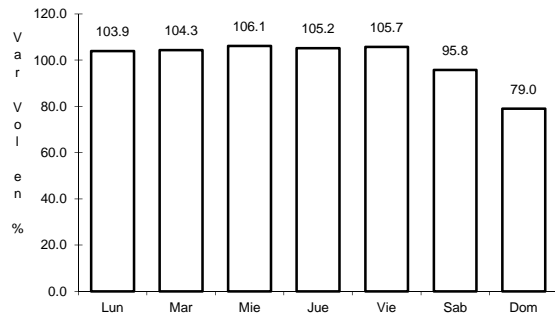


Km: 6.00 Tipo: 1 Sent: 0

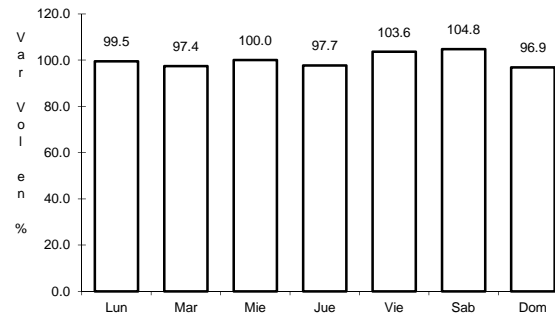
26 CARR: Paso de Cunduacán - Estación Juárez

CLAVE: 00588

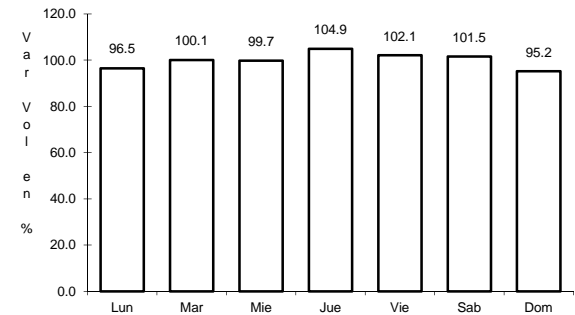
RUTA: TAB-CHIS



Km: 0.00 Tipo: 3 Sent: 0



Km: 18.00 Tipo: 3 Sent: 0

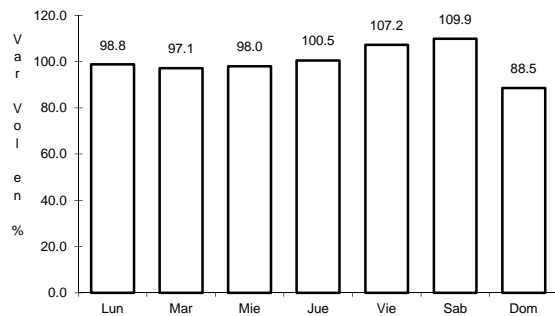


Km: 57.80 Tipo: 1 Sent: 0

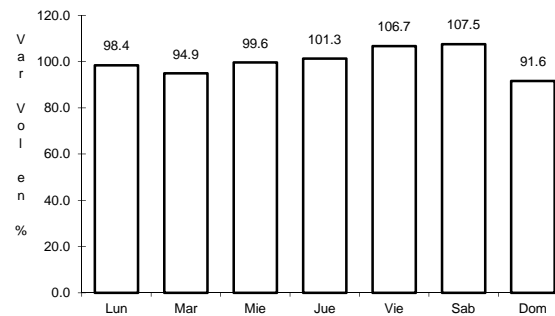
27 CARR: Playas del Rosario - Teapa

CLAVE: 27203

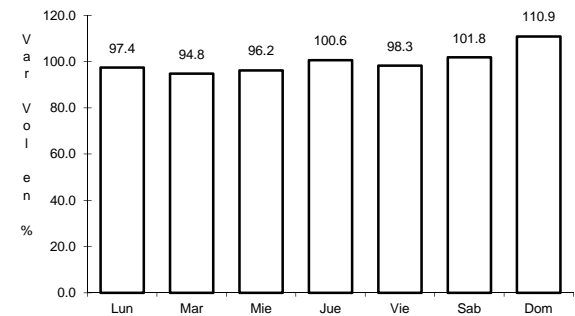
RUTA: TAB-001



Km: 0.00 Tipo: 3 Sent: 1



Km: 0.00 Tipo: 3 Sent: 2

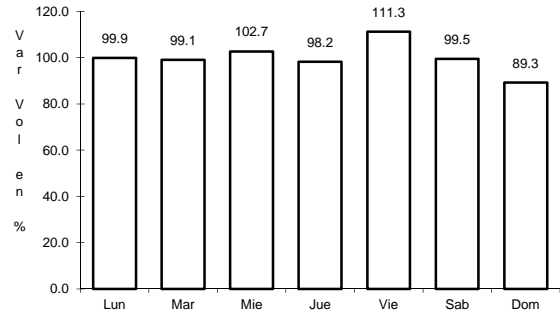


Km: 54.00 Tipo: 1 Sent: 0

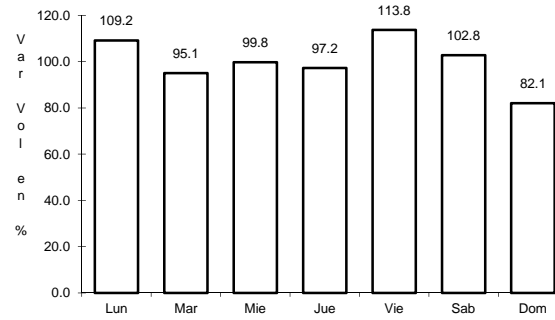
28 CARR: Ramal a Balancan

CLAVE: 27078

RUTA: TAB



Km: 0.00 Tipo: 3 Sent: 0

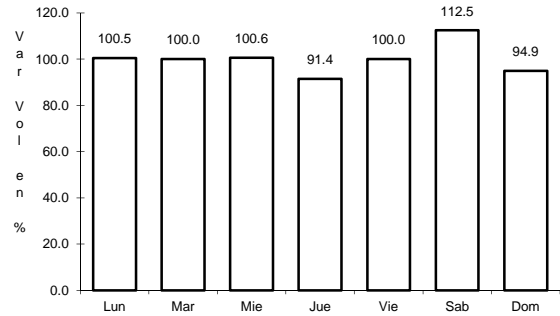


Km: 24.00 Tipo: 1 Sent: 0

29 CARR: Ramal a La Venta

CLAVE: 27078

RUTA: TAB

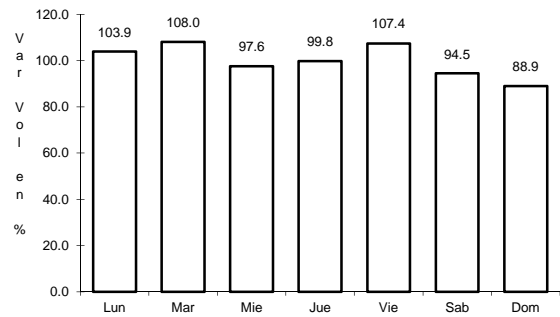


Km: 0.00 Tipo: 3 Sent: 0

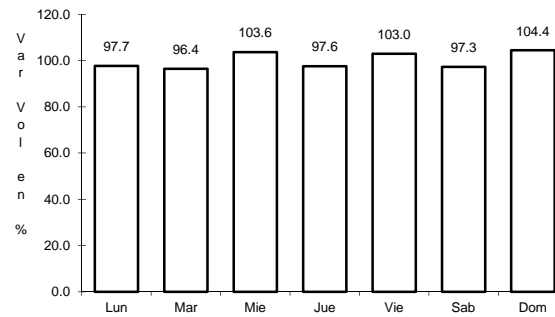
30 CARR: Ramal a Lázaro Cárdenas

CLAVE: 27208

RUTA: TAB



Km: 0.00 Tipo: 3 Sent: 0

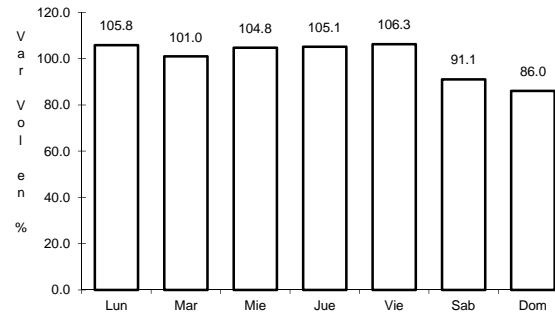
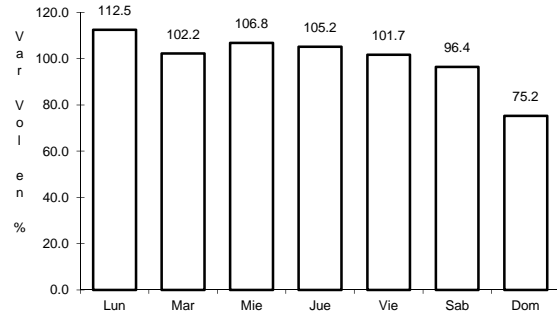


Km: 14.00 Tipo: 1 Sent: 0

31 CARR: Ramal a Libertad

CLAVE: 27205

RUTA: TAB



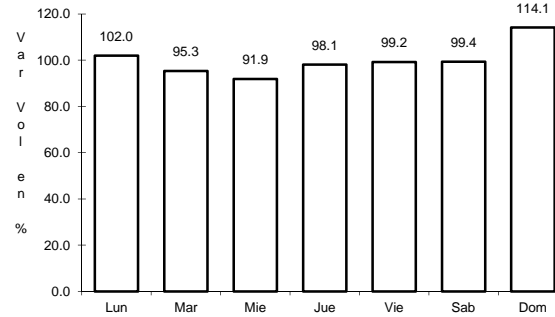
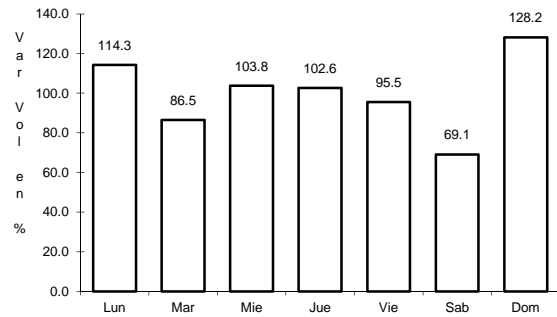
Km: 0.00 Tipo: 3 Sent: 0

Km: 10.00 Tipo: 1 Sent: 0

32 CARR: Ramal a Salto del Agua

CLAVE: 00069

RUTA: TAB-CHIS



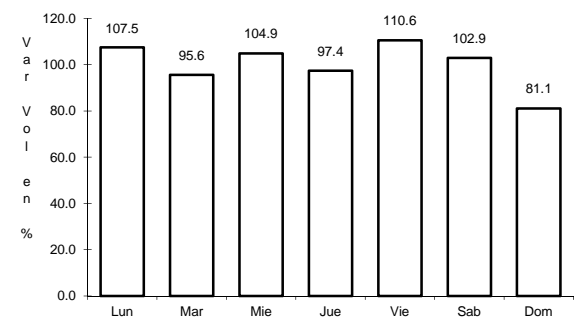
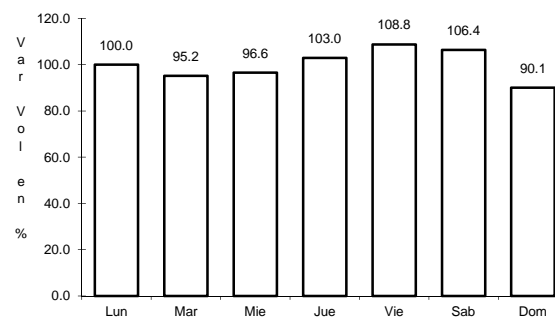
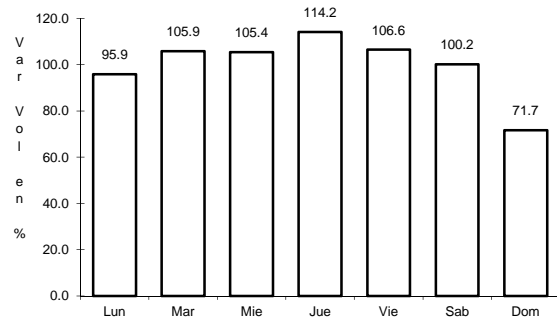
Km: 0.00 Tipo: 3 Sent: 0

Km: 17.00 Tipo: 1 Sent: 0

33 CARR: Ramal a San Antonio

CLAVE: 27003

RUTA: TAB



Km: 0.00 Tipo: 3 Sent: 0

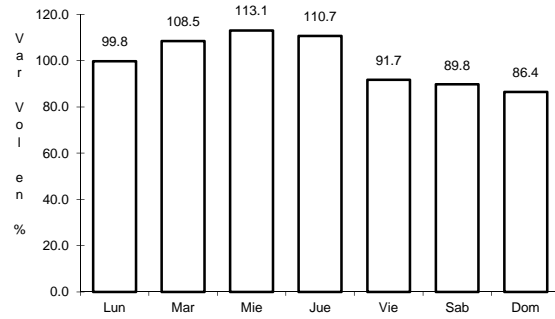
Km: 24.00 Tipo: 1 Sent: 0

Km: 24.00 Tipo: 3 Sent: 0

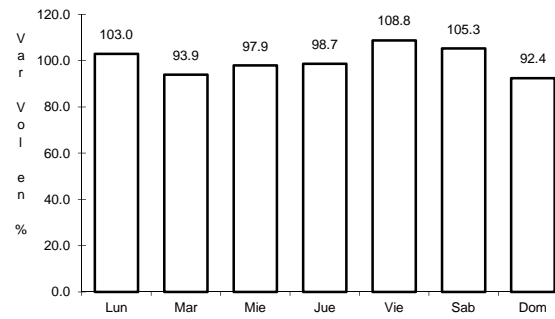
34 CARR: Ramal a Sánchez Magallanes

CLAVE: 27016

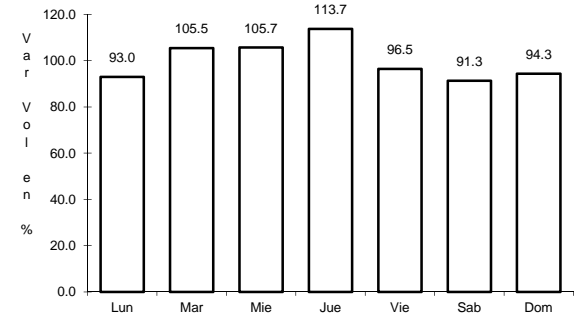
RUTA: TAB



Km: 0.00 Tipo: 3 Sent: 0



Km: 13.00 Tipo: 1 Sent: 0

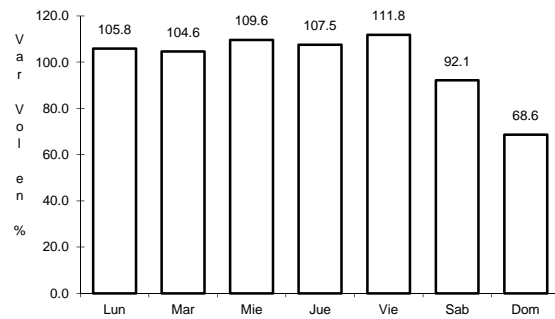


Km: 33.00 Tipo: 1 Sent: 0

35 CARR: Ramal a Tamulte de Las Sabanas

CLAVE: 27080

RUTA: TAB

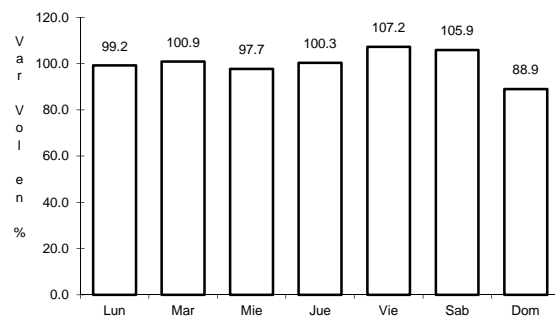


Km: 0.00 Tipo: 3 Sent: 0

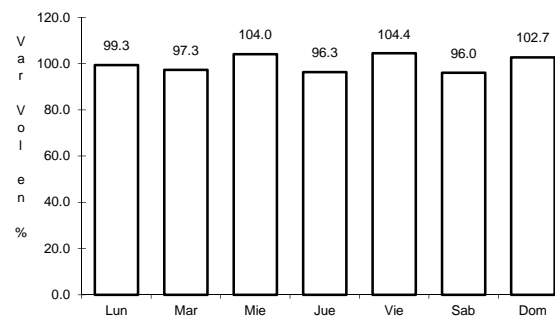
36 CARR: Ramal a Tapijulapa

CLAVE: 27200

RUTA: TAB



Km: 0.00 Tipo: 3 Sent: 0

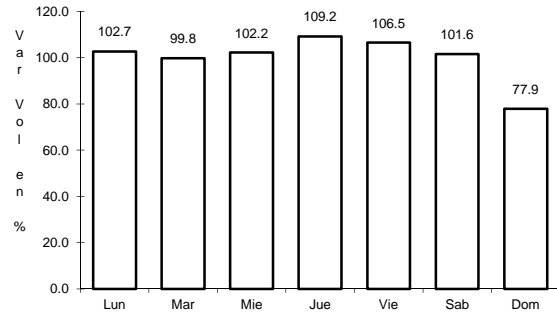


Km: 20.00 Tipo: 1 Sent: 0

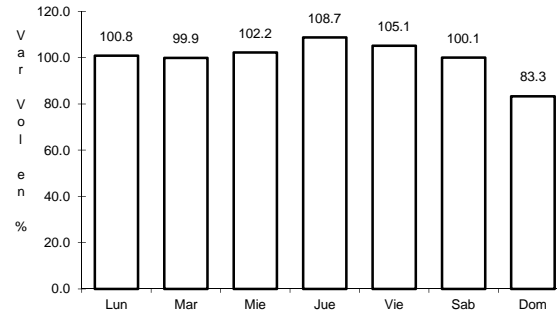
37 CARR: Reforma - Dos Bocas

CLAVE: 27200

RUTA: TAB



Km: 0.00 Tipo: 3 Sent: 1

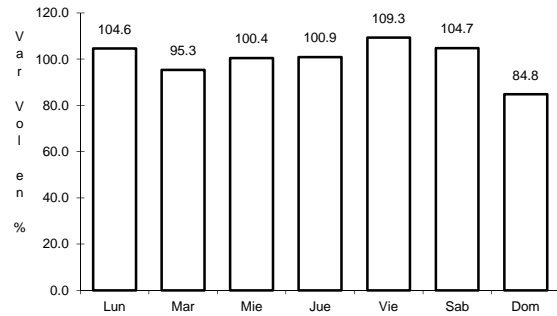


Km: 0.00 Tipo: 3 Sent: 2

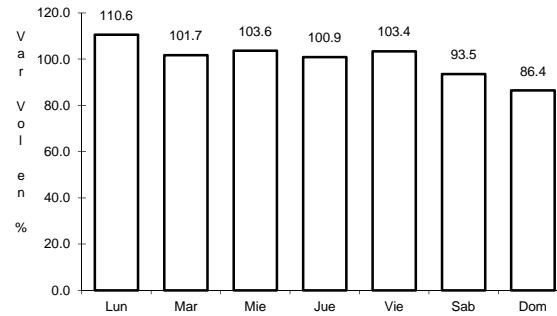
38 CARR: Reyes Hernández - Villa Aldama

CLAVE: 27119

RUTA: TAB



Km: 0.00 Tipo: 3 Sent: 0

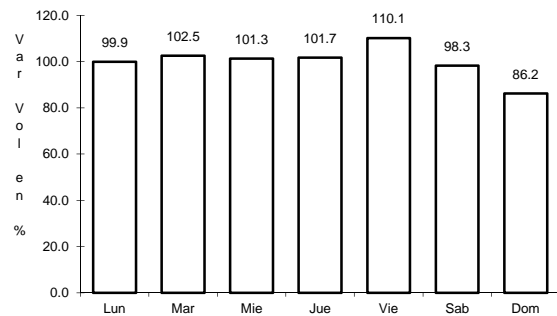


Km: 9.00 Tipo: 1 Sent: 0

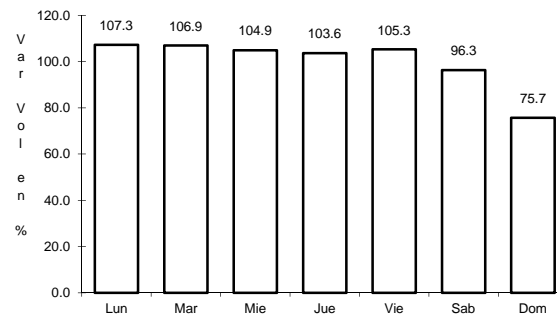
39 CARR: Samaria - Amatitán

CLAVE: 27114

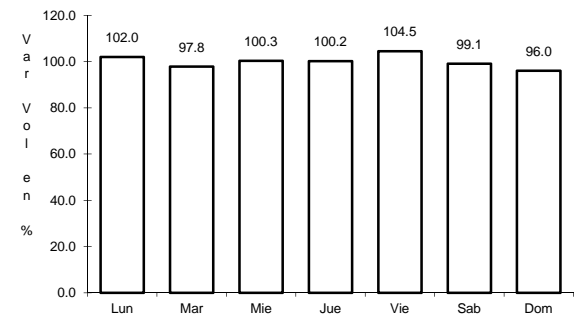
RUTA: TAB



Km: 0.00 Tipo: 3 Sent: 0



Km: 17.00 Tipo: 1 Sent: 0

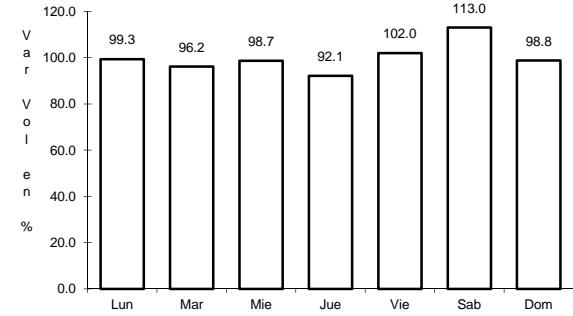
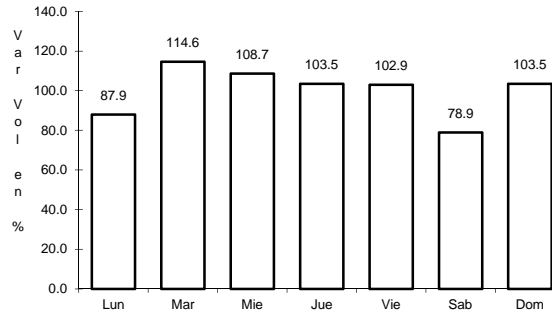
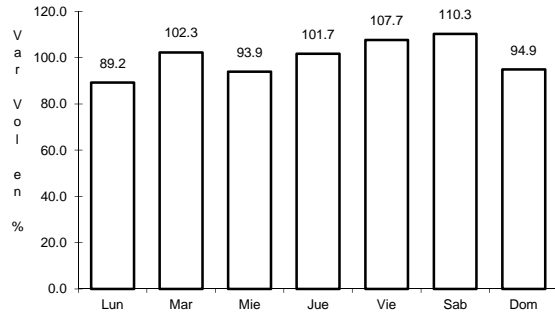


Km: 31.40 Tipo: 1 Sent: 0

40 CARR: T. C. (Cárdenas - Paraíso) - Carlos Green

CLAVE: 27111

RUTA: TAB



Km: 0.00 Tipo: 3 Sent: 0

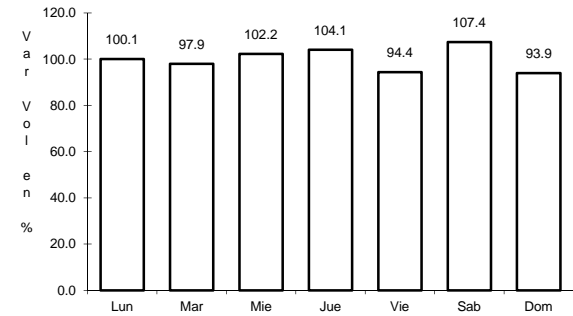
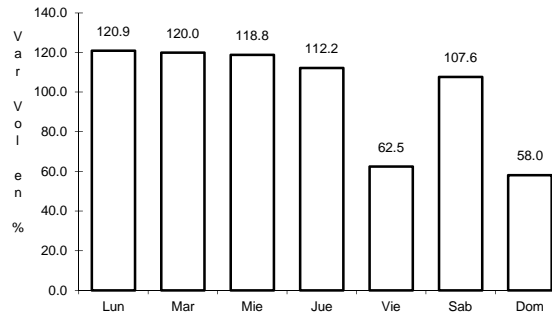
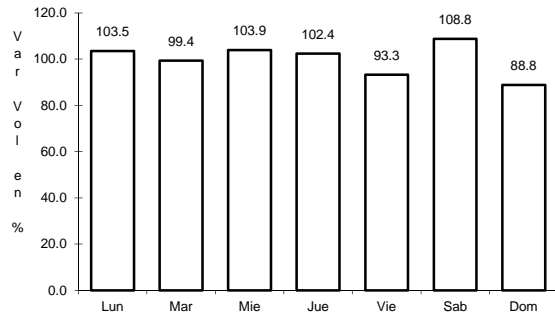
Km: 21.50 Tipo: 3 Sent: 0

Km: 30.70 Tipo: 1 Sent: 0

41 CARR: Tierra Nueva - Francisco Rueda

CLAVE: 27110

RUTA: TAB



Km: 0.00 Tipo: 3 Sent: 0

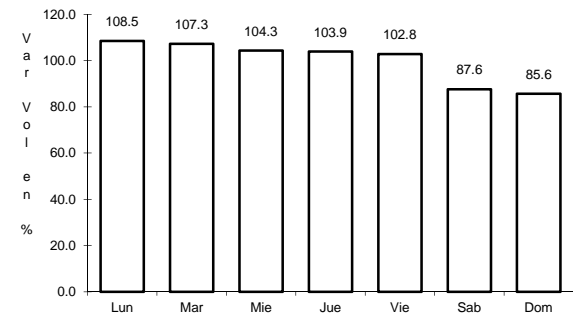
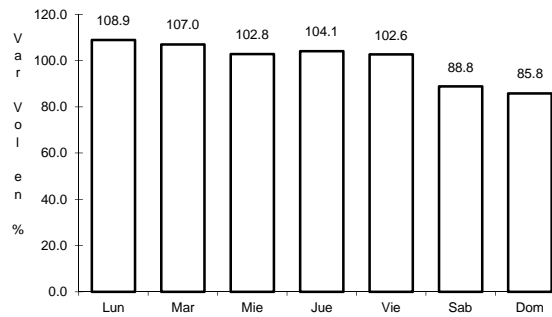
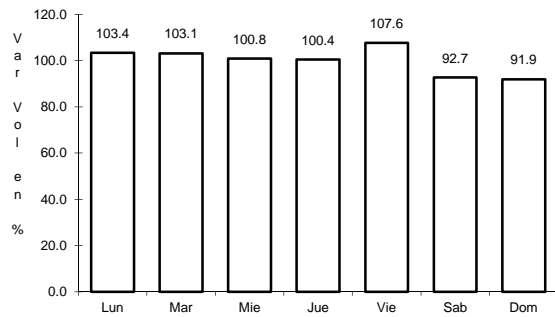
Km: 31.00 Tipo: 1 Sent: 0

Km: 71.00 Tipo: 1 Sent: 0

42 CARR: Tulipán - Cunduacán

CLAVE: 27115

RUTA: TAB



Km: 0.00 Tipo: 3 Sent: 0

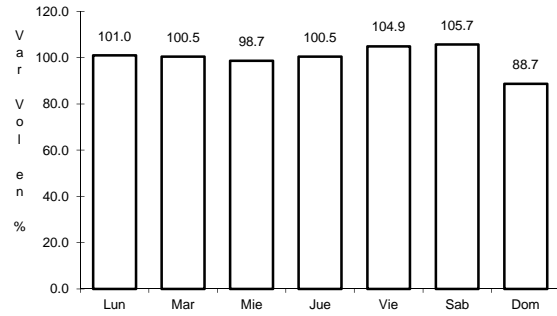
Km: 14.00 Tipo: 1 Sent: 0

Km: 15.00 Tipo: 1 Sent: 0

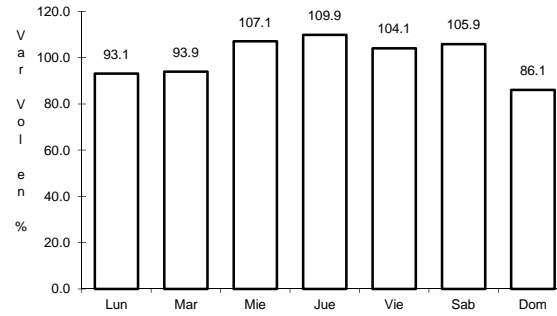
43 CARR: Villahermosa - Comalcalco

CLAVE: 27021

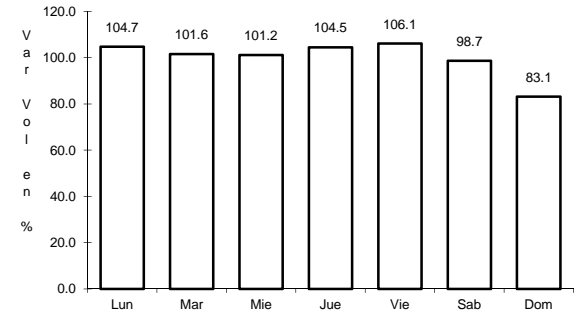
RUTA: TAB



Km: 0.00 Tipo: 3 Sent: 1



Km: 0.00 Tipo: 3 Sent: 2

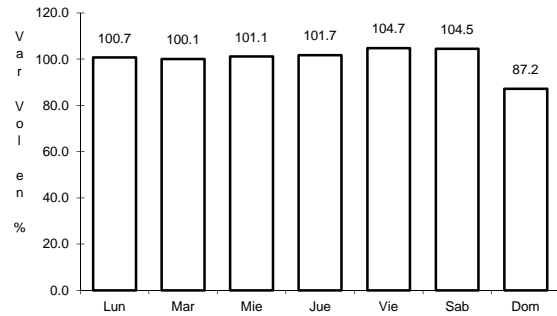


Km: 50.70 Tipo: 1 Sent: 0

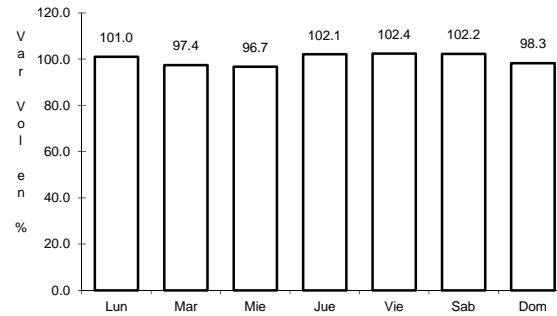
44 CARR: Villahermosa - Luis Gil Pérez

CLAVE: 27206

RUTA: TAB



Km: 0.00 Tipo: 3 Sent: 0

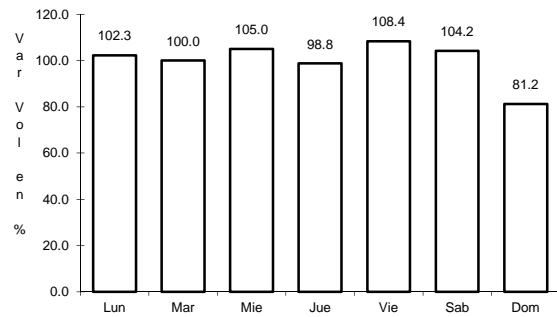


Km: 22.00 Tipo: 1 Sent: 0

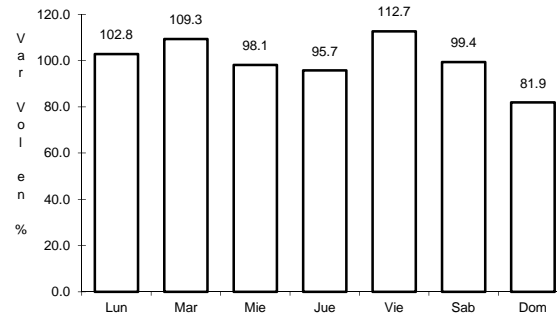
45 CARR: Villahermosa - T. C. (P. de Cunduacán - Estación Juárez)

CLAVE: 27106

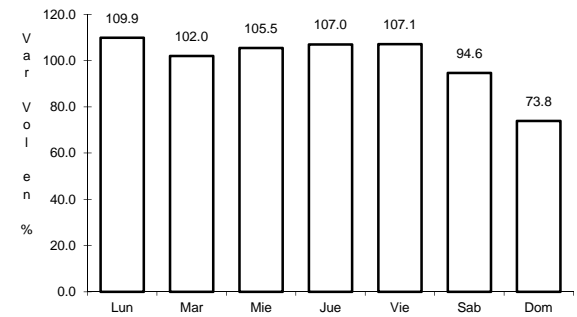
RUTA: TAB



Km: 0.00 Tipo: 3 Sent: 0



Km: 19.00 Tipo: 3 Sent: 0

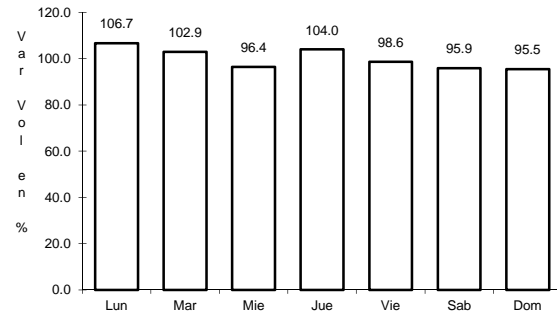


Km: 25.20 Tipo: 1 Sent: 0

46 CARR: Zapatero - T. C. (Jalapa - Jonuta)

CLAVE: 00061

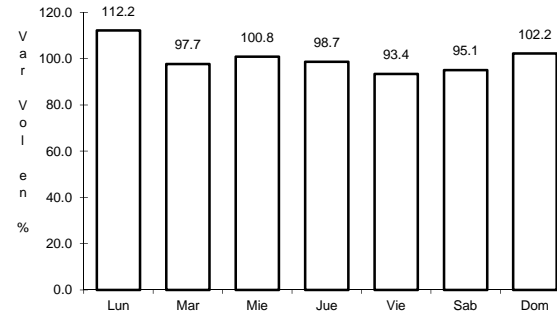
RUTA: CHIS-TAB



Km: 0.00

Tipo: 3

Sent: 0



Km: 41.00

Tipo: 1

Sent: 0