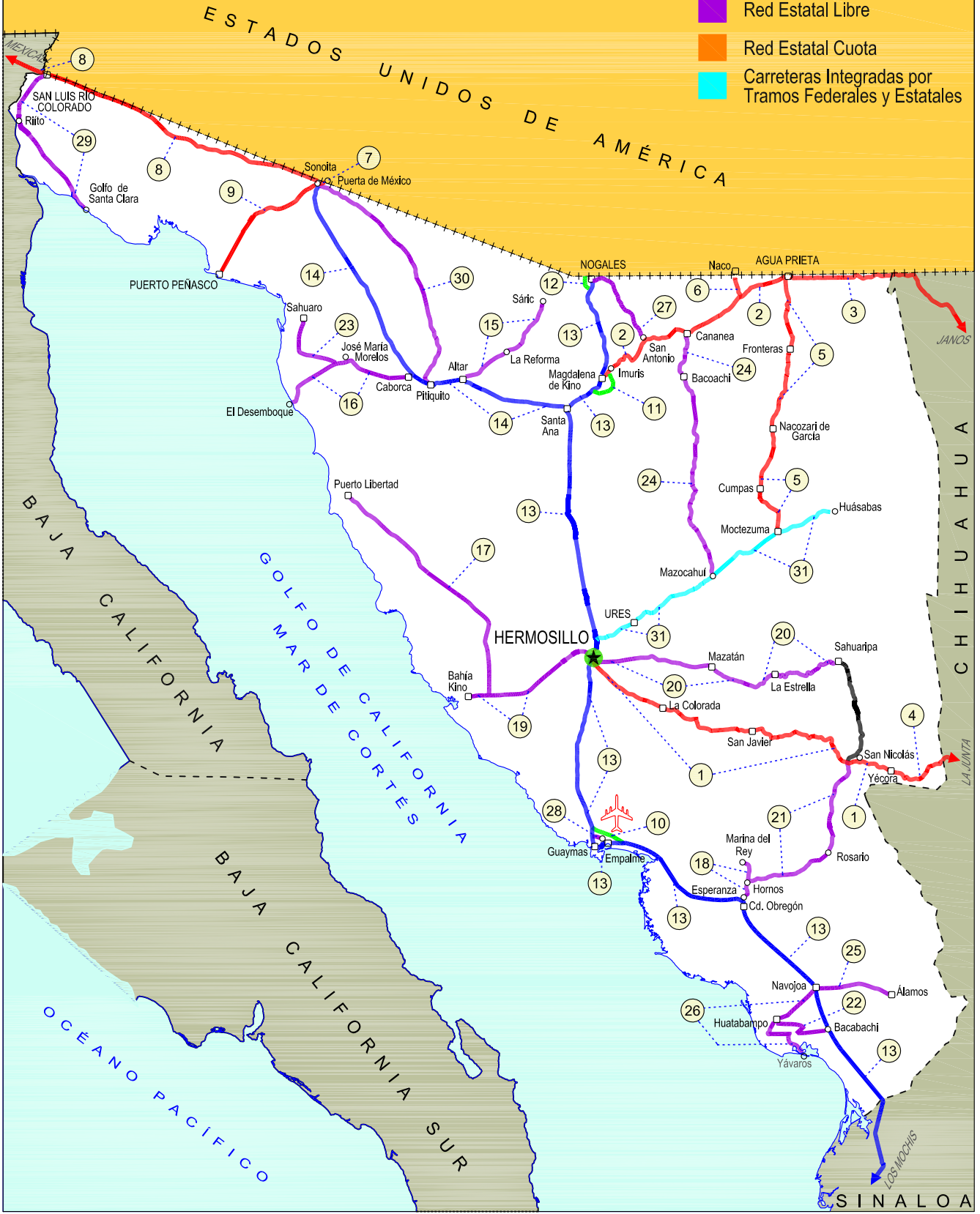
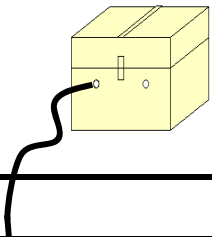


26 SONORA

SECRETARÍA DE COMUNICACIONES Y TRANSPORTES
DIRECCIÓN GENERAL DE SERVICIOS TÉCNICOS

- ① --- Número Índice
- Red Federal Libre
- Red Federal Cuota
- Red Federal Integrada por Tramos Libres y de Cuota
- Red Estatal Libre
- Red Estatal Cuota
- Carreteras Integradas por Tramos Federales y Estatales





SONORA

NO. INDICE	CARRETERA	RUTA
---RED FEDERAL LIBRE---		
1	Hermosillo - Yécora	MEX-016
2	Imuris - Agua Prieta	MEX-002
3	Janos - Agua Prieta	MEX-002
4	La Junta - Yécora	MEX-016
5	Moctezuma - Agua Prieta	MEX-017
6	Ramal a Naco	MEX-002
7	Ramal a Puerta de México	MEX-002
8	Sonoita - Mexicali	MEX-002
9	Sonoita - Puerto Peñasco	MEX-002
---RED FEDERAL DE CUOTA---		
10	Libramiento de Empalme (Cuota)	MEX-015D
11	Libramiento de Magdalena de Kino (Cuota)	MEX-015D
12	Libramiento de Nogales (Cuota)	MEX-15D
---RED FEDERAL INTEGRADA POR TRAMOS LIBRES Y DE CUOTA---		
13	Est. Don - Nogales (Cuota)	MEX-015D-015
14	Santa Ana - Sonoita	MEX-002D-MEX
---RED ESTATAL LIBRE---		
15	Altar - Sáric	SON-064
16	Caborca - El Desemboque	SON-037
17	Calle 36 Norte - Puerto de La Libertad	SON-029
18	Esperanza - Presa Álvaro Obregón	SON-117
19	Hermosillo - Bahía Kino	SON-100
20	Hermosillo - Sahuaripa	SON-020
21	Hornos - San Nicolás	SON-012
22	Huatabampo - Bacabachi	SON-176
23	La Alameda - El Sahuaro	SON-037
24	Mazocahui - Cananea	SON-118
25	Navojoa - Álamos	SON-013
26	Navojoa - Yavaros	SON-056
27	Nogales - San Antonio	SON
28	Ramal a Aeropuerto de Guaymas	SON
29	San Luis Río Colorado - Golfo de Santa Clara	SON-040
30	Sonoita - Pitiquito	SON
---CARRETERAS INTEGRADAS POR TRAMOS FEDERALES Y ESTATALES---		
31	T. C. (Hermosillo - Nogales) - Huásabas	MEX-014-SON

SONORA

1 CARR: Hermosillo - Yécora

CLAVE: 26251

RUTA: MEX-016

AÑO: 2015

LUGAR	ESTACION				CLASIFICACION VEHICULAR EN PORCIENTO										COORDENADAS					
	KM	TE	SC	TDPA	M	A	B	C2	C3	T3S2	T3S3	T3S2R4	OTROS	A	B	C	K'	D	LATITUD	LONGITUD
T. C. Cd. Obregón - Hermosillo	0.00																			
T. Izq. Sahuaripa	4.00	3	1	5477	1.1	76.8	2.1	8.2	3.2	4.4	2.3	0.8	1.1	77.9	2.1	20.0	0.076	0.503	28.996879	-110.903105
T. Izq. Sahuaripa	4.00	3	2	5536	1.4	75.3	2.4	8.8	3.5	4.0	2.3	0.9	1.4	76.7	2.4	20.9	0.072	0.503	28.996879	-110.903105
La Colorada	47.00	3	0	713	0.4	66.3	2.5	18.6	4.4	3.3	1.8	1.1	1.6	66.7	2.5	30.8	0.087	0.503	28.807234	-110.576614
Tecoripa	138.00	3	0	582	0.6	67.9	3.1	17.6	6.1	3.1	0.6	0.2	0.8	68.5	3.1	28.4	0.107	0.505	28.622066	-109.949694
Yécora	250.60																			

2 CARR: Imuris - Agua Prieta

CLAVE: 26079

RUTA: MEX-002

AÑO: 2015

LUGAR	ESTACION				CLASIFICACION VEHICULAR EN PORCIENTO										COORDENADAS					
	KM	TE	SC	TDPA	M	A	B	C2	C3	T3S2	T3S3	T3S2R4	OTROS	A	B	C	K'	D	LATITUD	LONGITUD
Imuris	0.00	3	0	3588	0.9	57.0	4.2	7.8	2.6	18.0	4.3	4.7	0.5	57.9	4.2	37.9	0.067	0.500	30.807379	-110.823283
T. Der. Cananea	80.93	1	0	5893	0.8	62.3	3.6	8.7	2.5	14.8	3.6	3.1	0.6	63.1	3.6	33.3	0.064	0.504	31.011513	-110.316971
T. Der. Cananea	80.93	3	1	3689	1.0	69.4	3.4	7.8	2.8	10.4	1.9	2.7	0.6	70.4	3.4	26.2	0.064	0.504	31.005875	-110.244298
T. Der. Cananea	80.93	3	2	3753	1.1	69.7	3.1	7.6	3.0	10.1	2.0	2.7	0.7	70.8	3.1	26.1	0.071	0.504	31.005875	-110.244298
Agua Prieta	164.67	1	1	2242	0.8	61.9	3.9	10.1	2.6	14.2	3.6	2.5	0.4	62.7	3.9	33.4	0.069	0.509	31.311782	-109.589104
Agua Prieta	164.67	1	2	2322	0.9	61.7	3.6	9.8	2.8	14.5	3.7	2.4	0.6	62.6	3.6	33.8	0.078	0.509	31.311782	-109.589104

3 CARR: Janos - Agua Prieta

CLAVE: 00220

RUTA: MEX-002

AÑO: 2015

LUGAR	ESTACION				CLASIFICACION VEHICULAR EN PORCIENTO										COORDENADAS					
	KM	TE	SC	TDPA	M	A	B	C2	C3	T3S2	T3S3	T3S2R4	OTROS	A	B	C	K'	D	LATITUD	LONGITUD
T. C. Cd. Juárez - Janos	0.00	3	0	3888	0.6	53.8	4.0	9.2	1.6	21.0	4.0	5.3	0.5	54.4	4.0	41.6	0.072	0.501	30.889688	-108.205295
Los Mimbres	56.00	3	0	2007	1.4	52.6	3.9	8.2	2.5	18.6	6.2	6.1	0.5	54.0	3.9	42.1	0.073	0.503	31.243700	-108.579811
Lim. Edos. Term. Chih. Ppia. Son.	78.00																			
Agua Prieta	160.00	1	0	2839	0.9	58.1	4.2	5.3	1.7	18.4	4.1	6.3	1.0	59.0	4.2	36.8	0.068	0.503	31.321384	-109.509791

4 CARR: La Junta - Yécora

CLAVE: 00065

RUTA: MEX-016

AÑO: 2015

LUGAR	ESTACION				CLASIFICACION VEHICULAR EN PORCIENTO										COORDENADAS					
	KM	TE	SC	TDPA	M	A	B	C2	C3	T3S2	T3S3	T3S2R4	OTROS	A	B	C	K'	D	LATITUD	LONGITUD
T. C. Chihuahua - Madera	0.00	3	0	4613	0.7	74.7	2.5	14.9	1.3	3.1	1.3	0.6	0.9	75.4	2.5	22.1	0.068	0.504	28.474873	-107.316748
T. Izq. San Juanito	16.00	1	0	2587	0.4	66.7	3.0	18.4	3.0	5.0	2.4	0.7	0.4	67.1	3.0	29.9	0.071	0.508	28.388557	-107.439390
T. Izq. San Juanito	16.00	3	0	1326	0.6	67.7	2.5	18.0	2.5	5.3	2.4	0.2	0.8	68.3	2.5	29.2	0.073	0.504	28.390950	-107.442177
Tomochi	70.00	3	0	1370	0.7	63.0	2.2	23.3	2.6	4.7	2.2	0.6	0.7	63.7	2.2	34.1	0.078	0.502	28.352689	-107.852142

SONORA

4 CARR: La Junta - Yécora

CLAVE: 00065

RUTA: MEX-016

AÑO: 2015

LUGAR	ESTACION				CLASIFICACION VEHICULAR EN PORCIENTO													COORDENADAS			
	KM	TE	SC	TDPA	M	A	B	C2	C3	T3S2	T3S3	T3S2R4	OTROS	A	B	C	K'	D	LATITUD	LONGITUD	
Lim. Edos. Term. Chih. Ppia. Son.	190.00																				
Yécora	253.00	1	0	322	1.0	61.1	4.0	20.0	4.4	6.4	2.2	0.1	0.8	62.1	4.0	33.9	0.096	0.526	28.368481	-108.917741	

5 CARR: Moctezuma - Agua Prieta

CLAVE: 26027

RUTA: MEX-017

AÑO: 2015

LUGAR	ESTACION				CLASIFICACION VEHICULAR EN PORCIENTO													COORDENADAS		
	KM	TE	SC	TDPA	M	A	B	C2	C3	T3S2	T3S3	T3S2R4	OTROS	A	B	C	K'	D	LATITUD	LONGITUD
Moctezuma	0.00	3	0	2543	0.7	90.0	1.7	1.9	1.3	1.9	1.0	1.2	0.3	90.7	1.7	7.6	0.067	0.504	29.821883	-109.676865
Nacozari de García	81.00	3	0	2329	0.4	82.9	3.6	2.9	1.3	2.9	4.2	1.2	0.6	83.3	3.6	13.1	0.071	0.508	30.388762	-109.693961
Turicachi	111.00	1	0	1985	0.1	77.1	2.3	9.8	1.5	3.4	2.5	2.3	1.0	77.2	2.3	20.5	0.076	0.501	30.651057	-109.596162
T. C. Imuris - Agua Prieta	197.60	1	0	4013	0.4	84.6	2.6	5.3	2.5	2.7	0.8	0.8	0.3	85.0	2.6	12.4	0.110	0.520	31.308662	-109.581809

6 CARR: Ramal a Naco

CLAVE: 26579

RUTA: MEX-002

AÑO: 2015

LUGAR	ESTACION				CLASIFICACION VEHICULAR EN PORCIENTO													COORDENADAS			
	KM	TE	SC	TDPA	M	A	B	C2	C3	T3S2	T3S3	T3S2R4	OTROS	A	B	C	K'	D	LATITUD	LONGITUD	
T. C. Imuris - Agua Prieta	0.00	3	0	1275	0.2	90.4	2.2	4.4	2.1	0.5	0.0	0.0	0.2	90.6	2.2	7.2	0.089	0.522	31.209719	-109.908756	
Naco	14.00																				

7 CARR: Ramal a Puerta de México

CLAVE: 26577

RUTA: MEX-002

AÑO: 2015

LUGAR	ESTACION				CLASIFICACION VEHICULAR EN PORCIENTO													COORDENADAS			
	KM	TE	SC	TDPA	M	A	B	C2	C3	T3S2	T3S3	T3S2R4	OTROS	A	B	C	K'	D	LATITUD	LONGITUD	
T. C. Sonoita - Mexicali	0.00	3	0	9144	0.2	94.9	0.3	4.4	0.1	0.0	0.0	0.0	0.1	95.1	0.3	4.6	0.078	0.519	31.867535	-112.834226	
Frontera E.U.A	3.30																				

8 CARR: Sonoita - Mexicali

CLAVE: 00081

RUTA: MEX-002

AÑO: 2015

LUGAR	ESTACION				CLASIFICACION VEHICULAR EN PORCIENTO													COORDENADAS		
	KM	TE	SC	TDPA	M	A	B	C2	C3	T3S2	T3S3	T3S2R4	OTROS	A	B	C	K'	D	LATITUD	LONGITUD
Sonoita	0.00	3	0	4080	2.3	51.9	11.5	6.4	2.8	17.8	1.7	5.0	0.6	54.2	11.5	34.3	0.056	0.556	31.884039	-112.856813
Los Vidrios	58.75	3	0	4093	1.7	48.9	7.9	7.9	4.0	18.9	3.8	5.5	1.4	50.6	7.9	41.5	0.066	0.507	32.027539	-113.423775
San Luis Río Colorado	191.80	1	0	4005	1.9	51.9	11.6	8.8	3.9	15.3	1.5	4.2	0.9	53.8	11.6	34.6	0.064	0.518	32.453356	-114.682816
San Luis Río Colorado	191.80	3	1	8375	0.7	83.6	3.6	3.3	0.8	5.5	0.6	1.7	0.2	84.3	3.6	12.1	0.061	0.527	32.488766	-114.798960
San Luis Río Colorado	191.80	3	2	9341	0.3	85.3	3.0	3.0	0.9	5.4	0.4	1.5	0.2	85.6	3.0	11.4	0.062	0.527	32.488766	-114.798960

SONORA

8 CARR : Sonoita - Mexicali

CLAVE: 00081

RUTA: MEX-002

AÑO: 2015

LUGAR	ESTACION				CLASIFICACION VEHICULAR EN PORCIENTO										COORDENADAS					
	KM	TE	SC	TDPA	M	A	B	C2	C3	T3S2	T3S3	T3S2R4	OTROS	A	B	C	K'	D	LATITUD	LONGITUD
Lim. Edos. Term. Son. Ppia. B.C.	203.69																			
X. C. Mexicali - Algodones	206.78	1	1	8352	0.4	84.6	3.1	3.3	1.0	5.4	0.6	1.4	0.2	85.0	3.1	11.9	0.067	0.532	32.498514	-114.831061
X. C. Mexicali - Algodones	206.78	1	2	9508	0.7	86.0	3.2	3.9	1.8	2.9	0.3	0.6	0.6	86.7	3.2	10.1	0.068	0.532	32.498514	-114.831061
X. C. Mexicali - Algodones	206.78	3	1	7728	0.2	85.8	2.7	1.0	0.8	5.5	0.8	1.8	1.4	86.0	2.7	11.3	0.079	0.509	32.506015	-114.853706
X. C. Mexicali - Algodones	206.78	3	2	7460	0.3	83.9	2.8	1.0	0.9	6.6	0.7	1.8	2.0	84.2	2.8	13.0	0.081	0.509	32.506015	-114.853706
T. Izq. Ejido Hermosillo	214.80	3	1	7474	0.2	85.9	2.7	1.0	0.8	5.5	0.7	1.8	1.4	86.1	2.7	11.2	0.072	0.507	32.527479	-114.928431
T. Izq. Ejido Hermosillo	214.80	3	2	7256	0.3	84.2	2.8	1.0	0.9	6.6	0.8	1.8	1.6	84.5	2.8	12.7	0.071	0.507	32.527479	-114.928431
Ejido Monterrey	228.63	3	1	10109	0.3	86.8	2.0	1.2	1.0	4.7	0.8	1.7	1.5	87.1	2.0	10.9	0.069	0.505	32.552077	-115.087516
Ejido Monterrey	228.63	3	2	9928	0.3	86.6	2.0	1.4	1.1	4.5	0.7	1.7	1.7	86.9	2.0	11.1	0.065	0.505	32.552077	-115.087516
X. C. Mexicali - Algodones	256.47	1	1	15861	0.8	83.3	1.9	7.3	1.1	3.2	0.4	0.6	1.4	84.1	1.9	14.0	0.079	0.505	32.565468	-115.326431
X. C. Mexicali - Algodones	256.47	1	2	16189	0.8	82.7	1.8	8.1	1.1	3.2	0.5	0.6	1.2	83.5	1.8	14.7	0.071	0.505	32.565468	-115.326431
T. C. Mexicali - San Felipe	265.12																			

9 CARR : Sonoita - Puerto Peñasco

CLAVE: 26232

RUTA: MEX-002

AÑO: 2015

LUGAR	ESTACION				CLASIFICACION VEHICULAR EN PORCIENTO										COORDENADAS					
	KM	TE	SC	TDPA	M	A	B	C2	C3	T3S2	T3S3	T3S2R4	OTROS	A	B	C	K'	D	LATITUD	LONGITUD
Sonoita	0.00	3	0	2115	0.2	91.2	0.8	5.9	0.3	1.1	0.2	0.2	0.1	91.4	0.8	7.8	0.167	0.537	31.862270	-112.876860
Puerto Peñasco	100.40																			

10 CARR : Libramiento de Empalme (Cuota)

CLAVE: 26256

RUTA: MEX-015D

AÑO: 2015

LUGAR	ESTACION				CLASIFICACION VEHICULAR EN PORCIENTO										COORDENADAS					
	KM	TE	SC	TDPA	M	A	B	C2	C3	T3S2	T3S3	T3S2R4	OTROS	A	B	C	K'	D	LATITUD	LONGITUD
T. C. Cd. Obregón - Hermosillo	0.00	3	1	3381	1.2	55.5	8.4	7.7	4.0	14.4	2.7	4.3	1.8	56.7	8.4	34.9	0.088	0.513	27.954574	-110.751079
T. C. Cd. Obregón - Hermosillo	0.00	3	2	3215	0.7	59.0	6.7	5.0	3.4	16.3	1.6	6.0	1.3	59.7	6.7	33.6	0.069	0.513	27.954574	-110.751079
T. C. Cd. Obregón - Hermosillo	21.50	1	1	3438	0.7	63.4	6.6	8.9	2.4	9.1	2.9	5.2	0.8	64.1	6.6	29.3	0.062	0.508	28.038283	-110.933338
T. C. Cd. Obregón - Hermosillo	21.50	1	2	3329	0.6	61.3	6.8	9.3	2.6	10.3	3.3	5.2	0.6	61.9	6.8	31.3	0.067	0.508	28.038283	-110.933338

11 CARR : Libramiento de Magdalena de Kino (Cuota)

CLAVE:

RUTA: MEX-015D

AÑO: 2015

LUGAR	ESTACION				CLASIFICACION VEHICULAR EN PORCIENTO										COORDENADAS					
	KM	TE	SC	TDPA	M	A	B	C2	C3	T3S2	T3S3	T3S2R4	OTROS	A	B	C	K'	D	LATITUD	LONGITUD
T. C. Hermosillo - Nogales	183.43	3	1	3747	2.2	54.1	5.1	11.2	2.5	15.3	2.8	4.7	2.1	56.3	5.1	38.6	0.073	0.502	30.612186	-110.973861
T. C. Hermosillo - Nogales	183.43	3	2	3783	2.3	55.1	4.8	10.8	2.7	15.0	2.5	4.6	2.2	57.4	4.8	37.8	0.068	0.502	30.612186	-110.973861

SONORA

11 CARR: Libramiento de Magdalena de Kino (Cuota)

CLAVE:

RUTA: MEX-015D

AÑO: 2015

LUGAR	ESTACION				CLASIFICACION VEHICULAR EN PORCIENTO													COORDENADAS		
	KM	TE	SC	TDPA	M	A	B	C2	C3	T3S2	T3S3	T3S2R4	OTROS	A	B	C	K'	D	LATITUD	LONGITUD
T. C. Hermosillo - Nogales	190.00	1	1	3588	1.9	56.5	3.7	8.8	2.2	18.5	2.8	4.9	0.7	58.4	3.7	37.9	0.064	0.504	30.665753	-110.917530
T. C. Hermosillo - Nogales	190.00	1	2	3533	1.1	57.9	4.0	8.6	2.0	18.1	3.0	4.8	0.5	59.0	4.0	37.0	0.073	0.504	30.665753	-110.917530

12 CARR: Libramiento de Nogales (Cuota)

CLAVE: 26100

RUTA: MEX-15D

AÑO: 2015

LUGAR	ESTACION				CLASIFICACION VEHICULAR EN PORCIENTO													COORDENADAS		
	KM	TE	SC	TDPA	M	A	B	C2	C3	T3S2	T3S3	T3S2R4	OTROS	A	B	C	K'	D	LATITUD	LONGITUD
T. C. Hermosillo - Nogales	0.00	3	1	3360	1.2	49.7	1.9	6.0	3.8	35.1	1.5	0.2	0.6	50.9	1.9	47.2	0.071	0.504	31.235703	-110.968732
T. C. Hermosillo - Nogales	0.00	3	2	3413	1.1	49.6	2.1	6.3	4.2	33.8	1.7	0.3	0.9	50.7	2.1	47.2	0.071	0.504	31.235703	-110.968732
Caseta de Cobro Nogales	4.50	2	1	1234	0.1	70.3	0.0	2.3	0.7	26.0	0.2	0.0	0.4	70.4	0.0	29.6	0.184	0.500	31.247637	-110.972542
Caseta de Cobro Nogales	4.50	2	2	1234	0.1	70.3	0.0	2.3	0.7	26.0	0.2	0.0	0.4	70.4	0.0	29.6	0.184	0.500	31.247637	-110.972542
Frontera E.U.A.	12.50	1	1	1571	0.8	34.4	2.6	9.7	3.8	41.7	2.4	2.7	1.9	35.2	2.6	62.2	0.071	0.512	31.329026	-110.967286
Frontera E.U.A.	12.50	1	2	1645	0.2	33.8	1.8	9.0	3.9	44.5	2.6	2.9	1.3	34.0	1.8	64.2	0.076	0.512	31.329026	-110.967286

13 CARR: Est. Don - Nogales (Cuota)

CLAVE: 26444

RUTA: MEX-015D-015

AÑO: 2015

LUGAR	ESTACION				CLASIFICACION VEHICULAR EN PORCIENTO													COORDENADAS		
	KM	TE	SC	TDPA	M	A	B	C2	C3	T3S2	T3S3	T3S2R4	OTROS	A	B	C	K'	D	LATITUD	LONGITUD
T. C. Topolobampo - Choix	0.00	3	1	7573	0.6	66.6	4.3	6.4	8.7	8.5	1.9	2.1	0.9	67.2	4.3	28.5	0.066	0.509	25.834593	-108.974067
T. C. Topolobampo - Choix	0.00	3	2	7860	0.7	67.3	4.9	5.5	9.4	8.0	1.7	1.9	0.6	68.0	4.9	27.1	0.069	0.509	25.834593	-108.974067
T. Izq. Ahome	17.13	3	1	7084	1.2	64.0	7.3	5.2	5.3	11.6	2.0	3.1	0.3	65.2	7.3	27.5	0.063	0.554	25.944318	-109.052952
T. Izq. Ahome	17.13	3	2	7324	1.7	69.6	6.4	5.2	4.8	8.7	1.2	2.0	0.4	71.3	6.4	22.3	0.064	0.554	25.944318	-109.052952
T. Izq. Coahuibampo	19.00	1	1	7830	9.3	64.8	4.9	5.6	3.9	2.5	1.0	3.2	4.8	74.1	4.9	21.0	0.066	0.522	25.958459	-109.053521
T. Izq. Coahuibampo	19.00	1	2	7164	5.3	69.3	4.2	2.3	3.8	6.8	2.2	3.2	2.9	74.6	4.2	21.2	0.070	0.522	25.958459	-109.053521
T. Izq. Coahuibampo	19.00	3	1	6391	1.5	71.0	4.8	4.8	3.1	8.6	2.0	3.6	0.6	72.5	4.8	22.7	0.060	0.501	25.965385	-109.049992
T. Izq. Coahuibampo	19.00	3	2	6368	1.4	68.9	5.6	5.3	3.2	9.0	2.4	3.6	0.6	70.3	5.6	24.1	0.065	0.501	25.965385	-109.049992
Poblado Chico	50.00	3	1	4685	3.7	70.1	4.8	4.3	1.8	8.5	2.4	3.4	1.0	73.8	4.8	21.4	0.080	0.500	26.235052	-109.052469
Poblado Chico	50.00	3	2	4692	2.8	64.3	5.1	8.8	2.2	9.5	2.9	3.4	1.0	67.1	5.1	27.8	0.078	0.500	26.235052	-109.052469
T. Der. El Fuerte	54.80	1	1	4844	1.8	66.3	7.7	1.2	3.7	6.4	3.7	6.7	2.5	68.1	7.7	24.2	0.063	0.508	26.262819	-109.044439
T. Der. El Fuerte	54.80	1	2	5009	1.3	64.5	7.7	1.1	1.8	12.2	2.3	6.7	2.4	65.8	7.7	26.5	0.062	0.508	26.262819	-109.044439
T. Der. El Fuerte	54.80	3	1	5667	2.1	69.0	5.3	4.2	2.5	9.4	2.5	4.1	0.9	71.1	5.3	23.6	0.074	0.500	26.275733	-109.040876
T. Der. El Fuerte	54.80	3	2	5674	1.4	67.6	5.8	4.8	2.9	10.0	2.5	4.1	0.9	69.0	5.8	25.2	0.065	0.500	26.275733	-109.040876
Lim. Edos. Term. Sin. Ppia. Son.	69.80																			
T. Izq. Huatabampo	128.50	1	1	3006	1.4	50.0	10.4	5.5	4.5	19.2	2.8	5.5	0.7	51.4	10.4	38.2	0.063	0.527	26.836543	-109.365842
T. Izq. Huatabampo	128.50	1	2	3352	2.5	43.2	12.4	10.0	4.6	18.8	1.9	6.1	0.5	45.7	12.4	41.9	0.065	0.527	26.836543	-109.365842

SONORA

13 CARR: Est. Don - Nogales (Cuota)

CLAVE: 26444

RUTA: MEX-015D-015

AÑO: 2015

LUGAR	ESTACION				CLASIFICACION VEHICULAR EN PORCIENTO														COORDENADAS	
	KM	TE	SC	TDPA	M	A	B	C2	C3	T3S2	T3S3	T3S2R4	OTROS	A	B	C	K'	D	LATITUD	LONGITUD
Caseta de Cobro Estacion Don (La Jaula)	129.90	2	1	2437	0.3	44.8	8.6	4.4	3.7	24.7	2.8	9.4	1.3	45.1	8.6	46.3	0.086	0.500	26.849800	-109.373287
Caseta de Cobro Estacion Don (La Jaula)	129.90	2	2	2437	0.3	44.8	8.6	4.4	3.7	24.7	2.8	9.4	1.3	45.1	8.6	46.3	0.086	0.500	26.849800	-109.373287
Navojoa	155.00	1	1	7035	2.0	72.8	4.2	4.6	1.8	7.8	2.7	3.2	0.9	74.8	4.2	21.0	0.064	0.500	27.038053	-109.436157
Navojoa	155.00	1	2	7025	1.9	71.2	4.6	5.3	2.0	8.3	2.8	3.2	0.7	73.1	4.6	22.3	0.066	0.500	27.038053	-109.436157
Navojoa	155.00	3	1	9038	3.8	75.2	4.5	4.6	1.4	5.6	2.0	2.4	0.5	79.0	4.5	16.5	0.069	0.502	27.105049	-109.447878
Navojoa	155.00	3	2	9111	3.2	73.5	5.1	5.1	1.4	6.7	2.3	2.4	0.3	76.7	5.1	18.2	0.069	0.502	27.105049	-109.447878
T. Izq. Villa Juárez	167.25	3	1	5323	1.2	64.1	8.1	4.9	3.6	11.6	2.1	4.1	0.3	65.3	8.1	26.6	0.066	0.504	27.156530	-109.508899
T. Izq. Villa Juárez	167.25	3	2	5417	1.2	65.4	7.7	4.1	4.1	11.6	1.5	3.9	0.5	66.6	7.7	25.7	0.079	0.504	27.156530	-109.508899
Caseta de Cobro Fundición	195.80	2	1	3166	0.3	53.5	7.5	4.3	3.2	20.0	2.4	7.7	1.1	53.8	7.5	38.7	0.086	0.500	27.320379	-109.719785
Caseta de Cobro Fundición	195.80	2	2	3166	0.3	53.5	7.5	4.3	3.2	20.0	2.4	7.7	1.1	53.8	7.5	38.7	0.086	0.500	27.320379	-109.719785
T. Der. Fundición	196.30	1	1	4674	0.6	61.8	7.6	4.2	3.0	15.1	2.5	4.6	0.6	62.4	7.6	30.0	0.068	0.502	27.322537	-109.722371
T. Der. Fundición	196.30	1	2	4639	0.5	62.0	7.7	3.9	3.7	15.1	1.8	4.8	0.5	62.5	7.7	29.8	0.072	0.502	27.322537	-109.722371
Cd. Obregón	222.70																			
Cd. Obregón	222.70	1	1	11610	2.7	70.3	6.8	4.7	3.6	7.8	1.5	1.9	0.7	73.0	6.8	20.2	0.067	0.503	27.460738	-109.901316
Cd. Obregón	222.70	1	2	11477	1.9	70.6	6.5	4.3	3.2	8.3	2.2	2.7	0.3	72.5	6.5	21.0	0.069	0.503	27.460738	-109.901316
Esperanza	230.66	1	1	9119	0.8	69.6	5.2	5.6	3.1	9.5	2.9	3.0	0.3	70.4	5.2	24.4	0.062	0.506	27.560195	-109.927072
Esperanza	230.66	1	2	8891	1.8	69.2	5.5	4.6	4.0	9.2	2.4	2.7	0.6	71.0	5.5	23.5	0.059	0.506	27.560195	-109.927072
Esperanza	230.66	3	1	4476	1.6	50.2	9.8	6.7	5.3	16.2	4.2	5.4	0.6	51.8	9.8	38.4	0.056	0.512	27.596468	-109.931564
Esperanza	230.66	3	2	4697	2.1	47.9	10.4	9.9	5.6	15.8	2.6	5.2	0.5	50.0	10.4	39.6	0.074	0.512	27.596468	-109.931564
Caseta de Cobro Esperanza	233.40	2	1	2589	0.2	47.9	8.5	4.5	3.3	23.2	2.4	8.8	1.2	48.1	8.5	43.4	0.086	0.500	27.603715	-109.939118
Caseta de Cobro Esperanza	233.40	2	2	2589	0.2	47.9	8.5	4.5	3.3	23.2	2.4	8.8	1.2	48.1	8.5	43.4	0.086	0.500	27.603715	-109.939118
T. Der. Estación Corral	236.50	1	1	3671	0.7	50.9	7.9	5.7	5.8	17.7	4.7	5.9	0.7	51.6	7.9	40.5	0.062	0.511	27.617834	-109.953505
T. Der. Estación Corral	236.50	1	2	3843	1.8	47.8	10.9	6.0	6.9	17.4	2.7	6.0	0.5	49.6	10.9	39.5	0.080	0.511	27.617834	-109.953505
T. Der. Estación Corral	236.50	3	1	3845	1.7	48.1	10.0	4.1	7.7	17.9	4.2	5.5	0.8	49.8	10.0	40.2	0.061	0.500	27.618100	-109.964823
T. Der. Estación Corral	236.50	3	2	3845	2.0	49.3	9.9	5.2	6.6	18.0	2.6	5.6	0.8	51.3	9.9	38.8	0.072	0.500	27.618100	-109.964823
T. Izq. BÁCUM	248.16	1	1	3788	1.3	47.7	9.5	7.1	6.4	17.5	4.0	5.3	1.2	49.0	9.5	41.5	0.057	0.501	27.598994	-110.076791
T. Izq. BÁCUM	248.16	1	2	3807	1.6	47.7	11.4	10.0	6.6	15.1	2.3	3.4	1.9	49.3	11.4	39.3	0.079	0.501	27.598994	-110.076791
T. Izq. BÁCUM	248.16	3	1	5395	1.2	66.1	5.4	5.7	2.2	10.7	3.6	4.7	0.4	67.3	5.4	27.3	0.071	0.534	27.597696	-110.084171
T. Izq. BÁCUM	248.16	3	2	6189	1.4	69.6	4.6	5.4	3.4	7.9	2.5	4.7	0.5	71.0	4.6	24.4	0.069	0.534	27.597696	-110.084171
VÍCAM	269.98	3	1	5628	1.9	66.1	6.0	7.4	2.0	9.5	2.6	3.7	0.8	68.0	6.0	26.0	0.067	0.508	27.642936	-110.299390
VÍCAM	269.98	3	2	5820	1.7	63.2	6.6	8.4	2.2	10.4	2.9	3.7	0.9	64.9	6.6	28.5	0.064	0.508	27.642936	-110.299390
T. Izq. PÓTAM	280.10	1	1	4939	1.4	57.5	8.1	7.8	4.7	12.2	2.5	3.5	2.3	58.9	8.1	33.0	0.065	0.511	27.683872	-110.355596
T. Izq. PÓTAM	280.10	1	2	5150	2.4	56.3	10.5	8.8	5.1	12.0	0.9	2.7	1.3	58.7	10.5	30.8	0.086	0.511	27.683872	-110.355596
T. Izq. PÓTAM	280.10	3	1	4610	1.2	63.6	7.0	8.8	2.7	9.3	2.7	3.8	0.9	64.8	7.0	28.2	0.082	0.526	27.703454	-110.370141
T. Izq. PÓTAM	280.10	3	2	5332	0.3	61.5	7.4	9.1	3.2	10.3	2.7	4.4	1.1	61.8	7.4	30.8	0.079	0.526	27.703454	-110.370141

SONORA

13 CARR: Est. Don - Nogales (Cuota)

CLAVE: 26444

RUTA: MEX-015D-015

AÑO: 2015

LUGAR	ESTACION				CLASIFICACION VEHICULAR EN PORCIENTO														COORDENADAS	
	KM	TE	SC	TDPA	M	A	B	C2	C3	T3S2	T3S3	T3S2R4	OTROS	A	B	C	K'	D	LATITUD	LONGITUD
T. Der. Libramiento de Guaymas	330.50	1	1	6238	1.1	66.3	5.1	8.9	2.2	8.6	2.9	4.2	0.7	67.4	5.1	27.5	0.064	0.505	27.951243	-110.736346
T. Der. Libramiento de Guaymas	330.50	1	2	6365	1.0	65.1	5.4	8.8	2.4	9.4	3.1	4.2	0.6	66.1	5.4	28.5	0.062	0.505	27.951243	-110.736346
T. Der. Libramiento de Guaymas	330.50	3	0	5504	1.1	78.1	7.1	5.6	1.7	4.5	1.0	0.6	0.3	79.2	7.1	13.7	0.081	0.505	27.952226	-110.763005
Empalme	337.72	1	0	6120	0.6	74.5	5.8	8.8	2.4	4.4	2.1	0.9	0.5	75.1	5.8	19.1	0.087	0.505	27.952474	-110.806913
Empalme	337.72	3	1	8870	2.2	80.6	4.7	9.5	1.2	0.8	0.6	0.1	0.3	82.8	4.7	12.5	0.085	0.503	27.955535	-110.831297
Empalme	337.72	3	2	8758	0.6	87.2	3.9	3.8	1.2	1.9	0.9	0.4	0.1	87.8	3.9	8.3	0.069	0.503	27.955535	-110.831297
T. Izq. San Carlos	355.70	1	1	7444	1.1	77.8	4.2	9.6	1.3	3.9	1.0	0.8	0.3	78.9	4.2	16.9	0.061	0.510	27.981542	-110.939438
T. Izq. San Carlos	355.70	1	2	7163	1.4	75.9	4.4	10.2	1.5	4.4	1.2	0.8	0.2	77.3	4.4	18.3	0.069	0.510	27.981542	-110.939438
T. Izq. San Carlos	355.70	3	1	3613	1.9	75.5	4.0	9.3	1.6	4.5	1.1	1.3	0.8	77.4	4.0	18.6	0.069	0.504	27.996139	-110.938789
T. Izq. San Carlos	355.70	3	2	3670	1.6	75.0	4.3	9.7	1.9	4.3	1.3	1.3	0.6	76.6	4.3	19.1	0.071	0.504	27.996139	-110.938789
T. Izq. Bahía Kino	394.00	1	1	5047	2.9	59.3	8.8	7.4	3.4	11.7	1.9	4.0	0.6	62.2	8.8	29.0	0.091	0.506	28.316203	-111.041842
T. Izq. Bahía Kino	394.00	1	2	5177	1.8	62.2	7.7	5.7	3.9	12.0	1.5	4.0	1.2	64.0	7.7	28.3	0.084	0.506	28.316203	-111.041842
T. Izq. Bahía Kino	394.00	3	1	5460	1.4	71.4	5.1	4.7	1.4	9.5	2.1	3.5	0.9	72.8	5.1	22.1	0.071	0.510	28.325717	-111.041900
T. Izq. Bahía Kino	394.00	3	2	5681	1.6	68.7	5.7	5.8	1.6	10.2	1.9	3.5	1.0	70.3	5.7	24.0	0.067	0.510	28.325717	-111.041900
Hermosillo	473.70	1	1	7171	1.4	70.3	4.9	4.5	2.3	11.0	2.2	2.8	0.6	71.7	4.9	23.4	0.062	0.503	29.004622	-110.966560
Hermosillo	473.70	1	2	7270	1.8	68.5	5.5	4.6	2.4	11.8	2.1	2.8	0.5	70.3	5.5	24.2	0.073	0.503	29.004622	-110.966560
Hermosillo	473.70	3	1	16003	1.2	75.8	4.2	8.8	1.4	6.2	1.1	0.9	0.4	77.0	4.2	18.8	0.081	0.503	29.115662	-110.912127
Hermosillo	473.70	3	2	16178	0.9	76.0	4.5	8.5	1.2	6.4	1.2	0.9	0.4	76.9	4.5	18.6	0.071	0.503	29.115662	-110.912127
T. Der. Ures	482.30	1	1	12415	1.0	72.9	4.8	9.1	1.8	7.5	1.5	0.9	0.5	73.9	4.8	21.3	0.074	0.507	29.151437	-110.909393
T. Der. Ures	482.30	1	2	12070	1.2	69.5	5.3	10.5	2.1	8.4	1.7	0.9	0.4	70.7	5.3	24.0	0.068	0.507	29.151437	-110.909393
T. Der. Ures	482.30	3	1	7682	1.0	81.7	4.2	3.4	3.1	1.1	2.5	1.9	1.1	82.7	4.2	13.1	0.065	0.506	29.174567	-110.917025
T. Der. Ures	482.30	3	2	7874	1.2	81.2	4.0	3.2	3.2	1.3	2.8	1.9	1.2	82.4	4.0	13.6	0.064	0.506	29.174567	-110.917025
Caseta de Cobro Hermosillo	488.90	2	1	4898	0.1	67.1	4.6	3.5	1.9	14.4	2.0	5.7	0.7	67.2	4.6	28.2	0.086	0.500	29.220739	-110.930200
Caseta de Cobro Hermosillo	488.90	2	2	4898	0.1	67.1	4.6	3.5	1.9	14.4	2.0	5.7	0.7	67.2	4.6	28.2	0.086	0.500	29.220739	-110.930200
T. Der. Pesqueira	506.09	3	1	5363	0.4	63.4	5.3	9.2	1.7	13.2	1.8	4.3	0.7	63.8	5.3	30.9	0.065	0.509	29.374754	-110.973012
T. Der. Pesqueira	506.09	3	2	5557	0.7	63.1	5.0	8.9	1.8	13.5	1.9	4.3	0.8	63.8	5.0	31.2	0.069	0.509	29.374754	-110.973012
T. Der. Carbó	542.60	1	1	5048	8.4	67.2	7.0	1.4	3.9	2.0	2.2	6.1	1.8	75.6	7.0	17.4	0.062	0.505	29.683617	-111.042321
T. Der. Carbó	542.60	1	2	5145	8.8	66.7	7.2	1.6	3.5	1.7	2.8	6.1	1.6	75.5	7.2	17.3	0.062	0.505	29.683617	-111.042321
T. Der. Carbó	542.60	3	1	5433	1.3	56.2	5.9	10.6	1.7	14.7	2.3	5.8	1.5	57.5	5.9	36.6	0.070	0.503	29.691783	-111.044030
T. Der. Carbó	542.60	3	2	5493	1.0	54.4	6.2	11.3	1.9	15.1	2.7	5.7	1.7	55.4	6.2	38.4	0.064	0.503	29.691783	-111.044030
T. Izq. Benjamín Hill	599.10	1	1	5679	1.0	56.3	6.3	12.9	1.3	16.5	2.0	2.6	1.1	57.3	6.3	36.4	0.076	0.509	30.162120	-111.097068
T. Izq. Benjamín Hill	599.10	1	2	5478	1.2	54.7	6.6	13.4	1.4	17.3	1.9	2.6	0.9	55.9	6.6	37.5	0.073	0.509	30.162120	-111.097068
T. Izq. Benjamín Hill	599.10	3	1	5683	1.2	62.9	5.4	9.9	1.2	14.6	1.5	2.9	0.4	64.1	5.4	30.5	0.064	0.518	30.179016	-111.097291
T. Izq. Benjamín Hill	599.10	3	2	5295	1.0	62.5	5.6	10.4	1.1	14.8	1.3	2.9	0.4	63.5	5.6	30.9	0.068	0.518	30.179016	-111.097291
Santa Ana	640.97	1	1	6501	0.7	76.3	5.0	4.3	1.6	7.9	1.3	2.6	0.3	77.0	5.0	18.0	0.074	0.502	30.534871	-111.116398

SONORA

13 CARR : Est. Don - Nogales (Cuota)

CLAVE: 26444

RUTA: MEX-015D-015

AÑO: 2015

LUGAR	ESTACION				CLASIFICACION VEHICULAR EN PORCIENTO														COORDENADAS	
	KM	TE	SC	TDPA	M	A	B	C2	C3	T3S2	T3S3	T3S2R4	OTROS	A	B	C	K'	D	LATITUD	LONGITUD
Santa Ana	640.97	1	2	6458	0.2	78.1	4.3	3.4	1.6	8.4	1.2	2.4	0.4	78.3	4.3	17.4	0.080	0.502	30.534871	-111.116398
Santa Ana	640.97	3	1	6020	0.9	69.5	2.7	7.0	1.3	10.9	3.2	4.2	0.3	70.4	2.7	26.9	0.063	0.503	30.554445	-111.102210
Santa Ana	640.97	3	2	6085	0.7	70.0	2.5	7.3	1.2	10.7	3.1	4.2	0.3	70.7	2.5	26.8	0.070	0.503	30.554445	-111.102210
Magdalena de Kino	656.40	1	1	5895	0.8	75.5	3.9	7.4	1.6	7.4	1.1	2.1	0.2	76.3	3.9	19.8	0.079	0.505	30.622084	-110.985044
Magdalena de Kino	656.40	1	2	5787	0.3	81.2	2.7	3.9	1.9	6.2	1.1	1.7	1.0	81.5	2.7	15.8	0.084	0.505	30.622084	-110.985044
Magdalena de Kino	656.40	3	1	3574	0.6	78.3	4.1	9.2	1.0	5.5	0.6	0.5	0.2	78.9	4.1	17.0	0.070	0.506	30.647681	-110.946236
Magdalena de Kino	656.40	3	2	3660	0.9	77.7	4.5	9.5	1.1	5.2	0.5	0.5	0.1	78.6	4.5	16.9	0.066	0.506	30.647681	-110.946236
Imuris	682.70	1	1	7120	1.8	68.9	4.0	9.1	1.6	8.7	3.0	2.4	0.5	70.7	4.0	25.3	0.068	0.506	30.774983	-110.857253
Imuris	682.70	1	2	7290	2.4	65.7	4.2	10.0	1.8	9.5	3.3	2.4	0.7	68.1	4.2	27.7	0.073	0.506	30.774983	-110.857253
T. Der. Agua Prieta	683.20	3	1	5809	2.0	73.0	4.5	6.6	1.9	6.6	2.5	1.9	1.0	75.0	4.5	20.5	0.081	0.501	30.794081	-110.850305
T. Der. Agua Prieta	683.20	3	2	5829	2.2	73.3	4.3	6.8	1.7	6.2	2.5	1.9	1.1	75.5	4.3	20.2	0.070	0.501	30.794081	-110.850305
T. Izq. Sáric	729.60	1	1	9444	0.8	80.5	3.8	5.9	2.3	4.1	1.2	0.9	0.5	81.3	3.8	14.9	0.064	0.504	31.176145	-110.967221
T. Izq. Sáric	729.60	1	2	9590	0.7	80.7	3.7	5.7	2.5	4.3	1.1	0.9	0.4	81.4	3.7	14.9	0.074	0.504	31.176145	-110.967221
T. Izq. Sáric	729.60	3	1	8738	0.9	76.0	3.3	10.0	2.4	5.7	0.5	0.5	0.7	76.9	3.3	19.8	0.069	0.514	31.191082	-110.972587
T. Izq. Sáric	729.60	3	2	9229	1.0	75.2	2.7	10.1	2.7	6.6	0.6	0.5	0.6	76.2	2.7	21.1	0.068	0.514	31.191082	-110.972587
T. Izq. Libramiento de Nogales (Cuota)	734.70	3	1	10964	1.2	79.9	3.3	6.3	2.9	4.5	0.8	0.6	0.5	81.1	3.3	15.6	0.078	0.504	31.244447	-110.959583
T. Izq. Libramiento de Nogales (Cuota)	734.70	3	2	11153	1.4	77.9	3.7	7.2	3.2	4.8	0.9	0.6	0.3	79.3	3.7	17.0	0.070	0.504	31.244447	-110.959583
T. Izq. Periférico Luis Donaldo Colosio	740.70	1	1	26095	0.8	84.7	2.2	4.7	1.0	2.2	2.5	1.0	0.9	85.5	2.2	12.3	0.074	0.502	31.276402	-110.941228
T. Izq. Periférico Luis Donaldo Colosio	740.70	1	2	26257	1.0	82.6	2.7	5.5	1.1	2.1	2.9	1.0	1.1	83.6	2.7	13.7	0.078	0.502	31.276402	-110.941228
Nogales	743.70	1	1	18390	0.7	84.5	3.3	6.9	1.0	1.3	1.1	1.0	0.2	85.2	3.3	11.5	0.074	0.508	31.280978	-110.939312
Nogales	743.70	1	2	18964	0.6	83.8	3.5	7.3	1.2	1.4	0.9	1.0	0.3	84.4	3.5	12.1	0.090	0.508	31.280978	-110.939312

14 CARR : Santa Ana - Sonoita

CLAVE: 26080

RUTA: MEX-002D-MEX

AÑO: 2015

LUGAR	ESTACION				CLASIFICACION VEHICULAR EN PORCIENTO														COORDENADAS	
	KM	TE	SC	TDPA	M	A	B	C2	C3	T3S2	T3S3	T3S2R4	OTROS	A	B	C	K'	D	LATITUD	LONGITUD
Santa Ana	0.00	3	0	8205	1.1	71.7	6.4	4.9	1.7	10.0	1.0	2.9	0.3	72.8	6.4	20.8	0.071	0.505	30.550735	-111.121235
El Ocuca	31.55	1	1	5450	4.8	54.9	4.3	19.9	1.5	5.5	4.1	3.0	2.0	59.7	4.3	36.0	0.058	0.511	30.585690	-111.424240
El Ocuca	31.55	1	2	4661	0.7	46.5	9.2	10.2	2.5	21.3	3.1	5.4	1.1	47.2	9.2	43.6	0.058	0.511	30.585690	-111.424240
El Ocuca	31.55	3	1	4207	0.5	52.1	6.8	7.3	2.8	19.4	4.6	4.9	1.6	52.6	6.8	40.6	0.059	0.518	30.585579	-111.440037
El Ocuca	31.55	3	2	4558	0.9	50.5	8.4	9.3	2.6	19.4	3.0	4.7	1.2	51.4	8.4	40.2	0.058	0.520	30.585579	-111.440037
Altar	72.80	1	0	10821	1.1	63.7	4.6	10.6	1.5	12.2	2.3	2.8	1.2	64.8	4.6	30.6	0.066	0.503	30.710516	-111.830208
Altar	72.80	3	1	3309	1.4	62.4	7.0	5.9	3.7	12.1	2.0	3.8	1.7	63.8	7.0	29.2	0.063	0.516	30.713443	-111.853280
Altar	72.80	3	2	3523	1.3	62.5	7.3	6.1	3.4	11.6	1.9	3.8	2.1	63.8	7.3	28.9	0.068	0.516	30.713443	-111.853280
T. Izq. Estación Pitiquito	94.28	1	0	8188	1.8	60.3	6.8	10.1	2.7	12.5	1.9	3.6	0.3	62.1	6.8	31.1	0.070	0.505	30.688590	-112.032369

SONORA

14 CARR: Santa Ana - Sonoita

CLAVE: 26080

RUTA: MEX-002D-MEX

AÑO: 2015

LUGAR	ESTACION				CLASIFICACION VEHICULAR EN PORCIENTO														COORDENADAS	
	KM	TE	SC	TDPA	M	A	B	C2	C3	T3S2	T3S3	T3S2R4	OTROS	A	B	C	K'	D	LATITUD	LONGITUD
Caborca	103.83	1	0	11123	0.8	72.0	4.0	8.9	1.4	9.6	1.0	1.8	0.5	72.8	4.0	23.2	0.063	0.502	30.710542	-112.127515
Cozón	180.30	1	0	2998	1.0	47.8	11.1	2.3	2.3	24.0	3.0	7.5	1.0	48.8	11.1	40.1	0.071	0.502	31.283822	-112.535082
Sonoita	253.70	1	0	3432	1.0	51.7	10.1	2.5	2.1	22.4	3.1	6.2	0.9	52.7	10.1	37.2	0.070	0.501	31.846826	-112.858826

15 CARR: Altar - Sáric

CLAVE: 26233

RUTA: SON-064

AÑO: 2015

LUGAR	ESTACION				CLASIFICACION VEHICULAR EN PORCIENTO														COORDENADAS	
	KM	TE	SC	TDPA	M	A	B	C2	C3	T3S2	T3S3	T3S2R4	OTROS	A	B	C	K'	D	LATITUD	LONGITUD
T. C. Santa Ana - Sonoita	0.00	3	0	1429	0.3	93.2	0.6	1.2	0.9	2.7	0.5	0.3	0.3	93.5	0.6	5.9	0.071	0.501	30.724026	-111.829269
Sáric	68.00	1	0	278	0.2	89.0	0.6	9.1	0.2	0.4	0.1	0.0	0.4	89.2	0.6	10.2	0.104	0.505	31.095807	-111.391218

16 CARR: Caborca - El Desemboque

CLAVE: 26225

RUTA: SON-037

AÑO: 2015

LUGAR	ESTACION				CLASIFICACION VEHICULAR EN PORCIENTO														COORDENADAS	
	KM	TE	SC	TDPA	M	A	B	C2	C3	T3S2	T3S3	T3S2R4	OTROS	A	B	C	K'	D	LATITUD	LONGITUD
Caborca	0.00	3	0	7916	1.0	80.6	1.5	9.3	1.2	4.2	1.4	0.4	0.4	81.6	1.5	16.9	0.069	0.502	30.708471	-112.182299
T. Der. Productora Nal. de Semillas	4.20	3	0	5952	0.6	87.6	2.5	2.8	2.0	3.1	0.6	0.5	0.3	88.2	2.5	9.3	0.067	0.504	30.703941	-112.206450
T. Izq. Ramal El Deseo	6.90	3	0	4411	0.7	75.8	3.5	13.2	1.5	3.8	0.6	0.6	0.3	76.5	3.5	20.0	0.073	0.503	30.703062	-112.210877
T. Der. El Sahuaro	61.20	3	0	1250	0.6	82.1	2.6	12.5	0.4	0.4	0.2	0.2	1.0	82.7	2.6	14.7	0.076	0.502	30.800945	-112.720193
El Desemboque	102.30																			

17 CARR: Calle 36 Norte - Puerto de La Libertad

CLAVE: 26117

RUTA: SON-029

AÑO: 2015

LUGAR	ESTACION				CLASIFICACION VEHICULAR EN PORCIENTO														COORDENADAS	
	KM	TE	SC	TDPA	M	A	B	C2	C3	T3S2	T3S3	T3S2R4	OTROS	A	B	C	K'	D	LATITUD	LONGITUD
T. C. Hermosillo - Bahía Kino	0.00	3	0	503	0.4	74.8	2.5	10.9	2.2	6.4	0.4	1.6	0.8	75.2	2.5	22.3	0.085	0.515	28.836210	-111.714230
Casas Grandes	45.00	3	0	371	1.2	77.7	3.6	10.6	1.8	3.2	0.5	1.0	0.4	78.9	3.6	17.5	0.100	0.506	29.182476	-111.713590
Puerto de La Libertad	156.00																			

18 CARR: Esperanza - Presa Álvaro Obregón

CLAVE: 26242

RUTA: SON-117

AÑO: 2015

LUGAR	ESTACION				CLASIFICACION VEHICULAR EN PORCIENTO														COORDENADAS	
	KM	TE	SC	TDPA	M	A	B	C2	C3	T3S2	T3S3	T3S2R4	OTROS	A	B	C	K'	D	LATITUD	LONGITUD
Esperanza	0.00	3	0	5595	1.4	78.4	2.7	5.3	2.0	4.5	4.8	0.3	0.6	79.8	2.7	17.5	0.073	0.505	27.585475	-109.916798
T. Der. Los Hornos	17.00	3	0	845	0.0	95.1	0.6	3.7	0.4	0.1	0.0	0.0	0.1	95.1	0.6	4.3	0.174	0.527	27.720830	-109.897529

SONORA

18 CARR: Esperanza - Presa Álvaro Obregón

CLAVE: 26242

RUTA: SON-117

AÑO: 2015

LUGAR	ESTACION				CLASIFICACION VEHICULAR EN PORCIENTO													COORDENADAS			
	KM	TE	SC	TDPA	M	A	B	C2	C3	T3S2	T3S3	T3S2R4	OTROS	A	B	C	K'	D	LATITUD	LONGITUD	
Presa Álvaro Obregón	32.00																				

19 CARR: Hermosillo - Bahía Kino

CLAVE: 26109

RUTA: SON-100

AÑO: 2015

LUGAR	ESTACION				CLASIFICACION VEHICULAR EN PORCIENTO													COORDENADAS		
	KM	TE	SC	TDPA	M	A	B	C2	C3	T3S2	T3S3	T3S2R4	OTROS	A	B	C	K'	D	LATITUD	LONGITUD
Hermosillo	0.00	3	1	13493	1.1	87.4	2.4	5.4	1.9	0.6	0.6	0.3	0.3	88.5	2.4	9.1	0.071	0.505	29.095015	-111.011692
Hermosillo	0.00	3	2	13763	1.3	85.9	2.9	5.8	2.1	0.5	0.8	0.3	0.4	87.2	2.9	9.9	0.071	0.505	29.095015	-111.011692
T. Der. Aeropuerto	11.00	1	1	10936	0.5	88.3	1.0	4.8	2.7	1.7	0.4	0.3	0.3	88.8	1.0	10.2	0.079	0.503	29.090122	-111.045926
T. Der. Aeropuerto	11.00	1	2	11063	0.4	90.2	1.0	4.3	2.0	1.4	0.3	0.2	0.2	90.6	1.0	8.4	0.085	0.503	29.090122	-111.045926
T. Der. Aeropuerto	11.00	3	1	7755	0.6	83.2	1.6	7.5	3.6	2.2	0.6	0.4	0.3	83.8	1.6	14.6	0.099	0.515	29.088198	-111.053501
T. Der. Aeropuerto	11.00	3	2	7303	0.5	83.0	1.7	7.6	3.7	2.2	0.7	0.3	0.3	83.5	1.7	14.8	0.098	0.515	29.088198	-111.053501
T. Izq. Calle 4 Sur	53.00	3	0	7868	1.0	75.8	3.0	10.3	2.4	5.1	1.2	0.9	0.3	76.8	3.0	20.2	0.064	0.504	28.839382	-111.396708
El Triunfo	55.50	1	0	7143	0.8	87.8	2.3	2.8	2.0	2.1	0.9	1.0	0.3	88.6	2.3	9.1	0.079	0.504	28.839665	-111.426750
T. Der. Calle 36	84.40	1	0	2369	0.3	89.6	1.7	6.3	0.9	0.8	0.1	0.1	0.2	89.9	1.7	8.4	0.177	0.524	28.831309	-111.711615
T. Der. Calle 36	84.40	3	0	2084	0.5	81.7	3.6	10.8	1.3	1.5	0.5	0.0	0.1	82.2	3.6	14.2	0.086	0.502	28.831204	-111.720499
Bahía Kino	106.50	1	0	2299	0.1	94.3	1.0	3.8	0.6	0.2	0.0	0.0	0.0	94.4	1.0	4.6	0.086	0.535	28.828537	-111.923007

20 CARR: Hermosillo - Sahuaripa

CLAVE: 26230

RUTA: SON-020

AÑO: 2015

LUGAR	ESTACION				CLASIFICACION VEHICULAR EN PORCIENTO													COORDENADAS		
	KM	TE	SC	TDPA	M	A	B	C2	C3	T3S2	T3S3	T3S2R4	OTROS	A	B	C	K'	D	LATITUD	LONGITUD
T. C. Libramiento de Hermosillo	0.00	3	1	1598	0.3	81.1	0.9	6.3	2.6	4.2	1.7	2.3	0.6	81.4	0.9	17.7	0.121	0.501	29.030316	-110.901150
T. C. Libramiento de Hermosillo	0.00	3	2	1592	0.4	81.3	1.0	5.8	2.4	3.6	2.5	2.5	0.5	81.7	1.0	17.3	0.104	0.501	29.030316	-110.901150
Mazatán	88.00	1	0	1058	0.2	86.7	1.0	7.2	1.0	1.1	1.0	1.4	0.4	86.9	1.0	12.1	0.135	0.519	29.005280	-110.149130
Mazatán	88.00	3	0	775	0.3	78.3	1.7	14.1	1.7	1.8	1.1	0.5	0.5	78.6	1.7	19.7	0.072	0.507	28.997546	-110.136360
Sahuaripa	199.00																			

21 CARR: Hornos - San Nicolás

CLAVE: 26243

RUTA: SON-012

AÑO: 2015

LUGAR	ESTACION				CLASIFICACION VEHICULAR EN PORCIENTO													COORDENADAS		
	KM	TE	SC	TDPA	M	A	B	C2	C3	T3S2	T3S3	T3S2R4	OTROS	A	B	C	K'	D	LATITUD	LONGITUD
Hornos	0.00	3	0	1396	1.9	60.0	2.6	5.6	2.5	9.4	13.4	3.9	0.7	61.9	2.6	35.5	0.071	0.503	27.719251	-109.895137
Rosario	58.00	1	0	1213	2.2	53.3	5.2	6.5	2.6	9.5	15.2	4.5	1.0	55.5	5.2	39.3	0.076	0.505	27.842138	-109.383816
San Nicolás	137.20																			

SONORA

22 CARR: Huatabampo - Bacabachi

CLAVE: 26237

RUTA: SON-176

AÑO: 2015

LUGAR	ESTACION				CLASIFICACION VEHICULAR EN PORCIENTO													COORDENADAS		
	KM	TE	SC	TDPA	M	A	B	C2	C3	T3S2	T3S3	T3S2R4	OTROS	A	B	C	K'	D	LATITUD	LONGITUD
Huatabampo	0.00	3	0	1366	5.9	75.9	3.6	6.1	4.2	3.5	0.4	0.2	0.2	81.8	3.6	14.6	0.080	0.523	26.825374	-109.600520
T. C. Los Mochis - Cd. Obregón (Cuota)	29.00	1	0	1038	1.6	72.6	3.4	6.9	5.3	8.0	1.6	0.3	0.3	74.2	3.4	22.4	0.079	0.525	26.838744	-109.369743

23 CARR: La Alameda - El Sahuaro

CLAVE: 26234

RUTA: SON-037

AÑO: 2015

LUGAR	ESTACION				CLASIFICACION VEHICULAR EN PORCIENTO													COORDENADAS		
	KM	TE	SC	TDPA	M	A	B	C2	C3	T3S2	T3S3	T3S2R4	OTROS	A	B	C	K'	D	LATITUD	LONGITUD
T. C. Caborca - El Desemboque	0.00	3	0	3216	0.4	83.8	3.5	9.3	1.0	1.2	0.3	0.3	0.2	84.2	3.5	12.3	0.084	0.505	30.812368	-112.727494
Estación El Sahuaro	47.00	1	0	1261	0.3	58.3	15.5	20.6	1.1	2.7	0.5	0.7	0.3	58.6	15.5	25.9	0.075	0.503	31.042500	-112.943111

24 CARR: Mazocahui - Cananea

CLAVE: 26118

RUTA: SON-118

AÑO: 2015

LUGAR	ESTACION				CLASIFICACION VEHICULAR EN PORCIENTO													COORDENADAS		
	KM	TE	SC	TDPA	M	A	B	C2	C3	T3S2	T3S3	T3S2R4	OTROS	A	B	C	K'	D	LATITUD	LONGITUD
T. C. Hermosillo - Moctezuma	0.00	3	0	1048	0.4	82.5	1.5	10.9	2.0	1.4	0.8	0.0	0.5	82.9	1.5	15.6	0.095	0.512	29.544244	-110.120516
Baviácora	15.20	3	0	1851	0.2	78.2	5.4	11.4	1.5	1.6	1.2	0.0	0.5	78.4	5.4	16.2	0.075	0.503	29.727636	-110.166737
Arizpe	98.00	1	0	353	0.4	76.4	2.9	17.0	0.9	1.0	0.7	0.0	0.7	76.8	2.9	20.3	0.099	0.505	30.331147	-110.177292
T. C. Imuris - Agua Prieta	204.00	1	0	1684	5.8	60.6	4.1	7.6	12.5	4.2	2.2	0.9	2.1	66.4	4.1	29.5	0.077	0.504	30.986472	-110.257288

25 CARR: Navojoa - Álamos

CLAVE: 26240

RUTA: SON-013

AÑO: 2015

LUGAR	ESTACION				CLASIFICACION VEHICULAR EN PORCIENTO													COORDENADAS		
	KM	TE	SC	TDPA	M	A	B	C2	C3	T3S2	T3S3	T3S2R4	OTROS	A	B	C	K'	D	LATITUD	LONGITUD
Navojoa	0.00	3	0	3132	0.5	78.3	2.5	11.7	3.4	1.7	0.6	0.6	0.7	78.8	2.5	18.7	0.079	0.515	27.074317	-109.402353
Álamos	52.80	1	0	3143	4.5	81.2	4.7	7.0	1.1	0.2	0.1	0.0	1.2	85.7	4.7	9.6	0.065	0.501	27.032050	-108.953190

26 CARR: Navojoa - Yavaros

CLAVE: 26229

RUTA: SON-056

AÑO: 2015

LUGAR	ESTACION				CLASIFICACION VEHICULAR EN PORCIENTO													COORDENADAS		
	KM	TE	SC	TDPA	M	A	B	C2	C3	T3S2	T3S3	T3S2R4	OTROS	A	B	C	K'	D	LATITUD	LONGITUD
Navojoa	0.00	3	1	4874	1.3	88.7	2.2	4.7	1.6	0.8	0.4	0.1	0.2	90.0	2.2	7.8	0.068	0.506	27.040574	-109.466534
Navojoa	0.00	3	2	4983	3.5	86.1	2.7	5.2	1.4	0.6	0.3	0.0	0.2	89.6	2.7	7.7	0.076	0.506	27.040574	-109.466534
Yavaros	55.00	1	0	2067	3.0	80.8	3.8	7.8	1.7	1.5	0.7	0.1	0.6	83.8	3.8	12.4	0.074	0.503	26.705567	-109.544155

SONORA

27 CARR: Nogales - San Antonio

CLAVE: 26110

RUTA: SON

AÑO: 2015

LUGAR	ESTACION				CLASIFICACION VEHICULAR EN PORCIENTO														COORDENADAS		
	KM	TE	SC	TDPA	M	A	B	C2	C3	T3S2	T3S3	T3S2R4	OTROS	A	B	C	K'	D	LATITUD	LONGITUD	
Nogales	0.00																				
San Antonio	58.00	1	0	318	0.2	89.8	1.1	8.4	0.1	0.2	0.0	0.0	0.2	90.0	1.1	8.9	0.132	0.508	31.137741	-110.718110	

28 CARR: Ramal a Aeropuerto de Guaymas

CLAVE: 26568

RUTA: SON

AÑO: 2015

LUGAR	ESTACION				CLASIFICACION VEHICULAR EN PORCIENTO														COORDENADAS	
	KM	TE	SC	TDPA	M	A	B	C2	C3	T3S2	T3S3	T3S2R4	OTROS	A	B	C	K'	D	LATITUD	LONGITUD
T. C. Cd. Obregón - Hermosillo	0.00	3	1	4342	0.8	78.5	3.8	10.8	2.3	2.5	0.4	0.6	0.3	79.3	3.8	16.9	0.077	0.546	27.952174	-110.930741
T. C. Cd. Obregón - Hermosillo	0.00	3	2	5226	1.7	85.9	1.5	4.8	2.2	2.2	0.7	0.6	0.4	87.6	1.5	10.9	0.079	0.546	27.952174	-110.930741
Aeropuerto de Guaymas	3.00	3	0	6494	3.0	83.1	3.2	2.5	2.8	3.0	0.6	1.1	0.7	86.1	3.2	10.7	0.070	0.508	27.972236	-110.919024

29 CARR: San Luis Río Colorado - Golfo de Santa Clara

CLAVE: 26226

RUTA: SON-040

AÑO: 2015

LUGAR	ESTACION				CLASIFICACION VEHICULAR EN PORCIENTO														COORDENADAS	
	KM	TE	SC	TDPA	M	A	B	C2	C3	T3S2	T3S3	T3S2R4	OTROS	A	B	C	K'	D	LATITUD	LONGITUD
San Luis Río Colorado	0.00	3	1	2136	0.4	92.0	1.2	3.8	0.6	1.7	0.2	0.1	0.0	92.4	1.2	6.4	0.070	0.504	32.447774	-114.838755
San Luis Río Colorado	0.00	3	2	2104	0.3	92.9	0.9	3.5	0.5	1.3	0.4	0.1	0.1	93.2	0.9	5.9	0.074	0.504	32.447774	-114.838755
T. Izq. Lagunitas	25.50	3	0	4432	0.7	91.1	1.1	4.1	1.0	1.5	0.2	0.1	0.2	91.8	1.1	7.1	0.082	0.512	32.318694	-114.950450
Golfo de Santa Clara	114.30	1	0	1852	0.3	87.7	1.4	6.6	0.5	2.6	0.3	0.3	0.3	88.0	1.4	10.6	0.114	0.505	31.706589	-114.523824

30 CARR: Sonoita - Pitiquito

CLAVE: 26022

RUTA: SON

AÑO: 2015

LUGAR	ESTACION				CLASIFICACION VEHICULAR EN PORCIENTO														COORDENADAS	
	KM	TE	SC	TDPA	M	A	B	C2	C3	T3S2	T3S3	T3S2R4	OTROS	A	B	C	K'	D	LATITUD	LONGITUD
Sonoita	0.00	3	0	1260	0.4	93.8	2.1	1.3	1.5	0.3	0.2	0.2	0.2	94.2	2.1	3.7	0.068	0.507	31.854258	-112.826204
Pitiquito	170.00	1	0	631	0.3	67.4	2.1	8.3	3.7	15.6	0.3	1.9	0.4	67.7	2.1	30.2	0.089	0.501	30.722610	-112.094714

31 CARR: T. C. (Hermosillo - Nogales) - Huásabas

CLAVE: 26231

RUTA: MEX-014-SON

AÑO: 2015

LUGAR	ESTACION				CLASIFICACION VEHICULAR EN PORCIENTO														COORDENADAS	
	KM	TE	SC	TDPA	M	A	B	C2	C3	T3S2	T3S3	T3S2R4	OTROS	A	B	C	K'	D	LATITUD	LONGITUD
T. C. Hermosillo - Nogales	0.00	3	1	6932	0.4	85.4	1.9	8.8	1.5	1.5	0.2	0.1	0.2	85.8	1.9	12.3	0.105	0.528	29.168242	-110.903549
T. C. Hermosillo - Nogales	0.00	3	2	7740	0.7	90.2	1.1	5.4	1.0	0.9	0.2	0.1	0.4	90.9	1.1	8.0	0.143	0.528	29.168242	-110.903549
Ures	62.00	3	0	2077	0.7	85.6	1.4	6.1	1.6	1.7	1.3	1.4	0.2	86.3	1.4	12.3	0.077	0.503	29.429166	-110.376315
Mazocahui	97.50	3	0	971	0.6	78.3	3.0	6.4	3.4	3.5	1.7	2.1	1.0	78.9	3.0	18.1	0.087	0.502	29.544352	-110.118706

SONORA

31 CARR: T.C. (Hermosillo - Nogales) - Huásabas

CLAVE: 26231

RUTA: MEX-014-SON

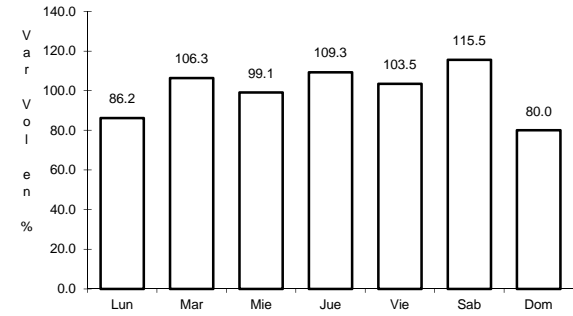
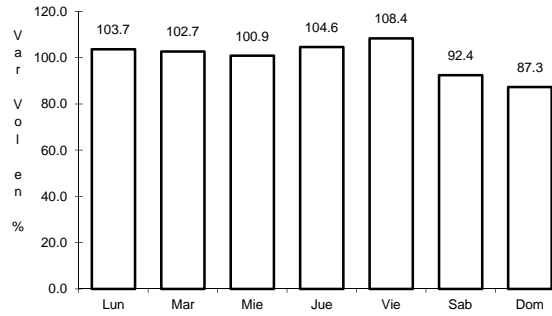
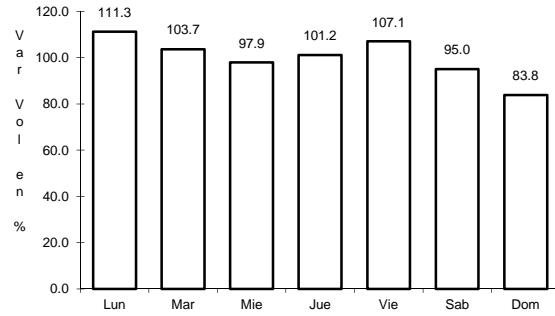
AÑO: 2015

L U G A R	E S T A C I O N				C L A S I F I C A C I O N V E H I C U L A R E N P O R C I E N T O														C O O R D E N A D A S	
	KM	TE	SC	TDPA	M	A	B	C2	C3	T3S2	T3S3	T3S2R4	OTROS	A	B	C	K'	D	LATITUD	LONGITUD
Moctezuma	165.00	1	0	1123	1.0	79.2	2.4	5.6	2.4	4.5	1.8	2.0	1.1	80.2	2.4	17.4	0.076	0.504	29.798715	-109.691738
Moctezuma	165.00	3	0	1275	0.4	92.4	1.0	4.4	0.6	0.7	0.3	0.0	0.2	92.8	1.0	6.2	0.085	0.502	29.800736	-109.666833
Huásabas	212.50	1	0	737	0.3	84.9	3.0	8.4	1.8	1.0	0.3	0.0	0.3	85.2	3.0	11.8	0.080	0.508	29.917947	-109.307766

1 CARR: Hermosillo - Yécora

CLAVE: 26251

RUTA: MEX-016



Km: 4.00 Tipo: 3 Sent: 1

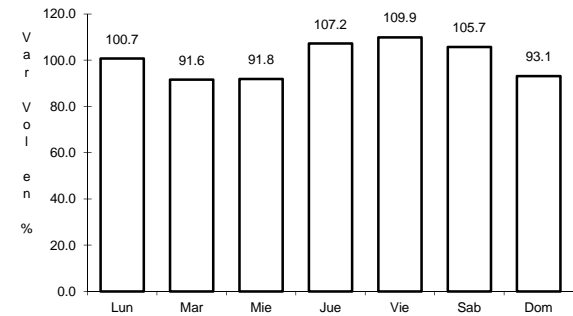
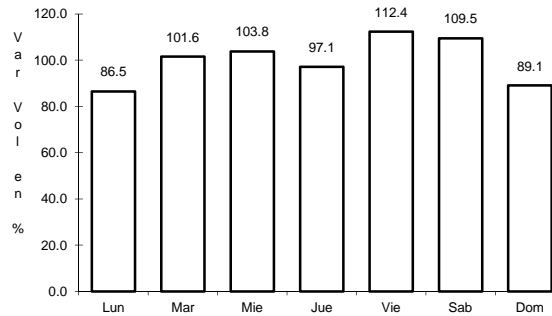
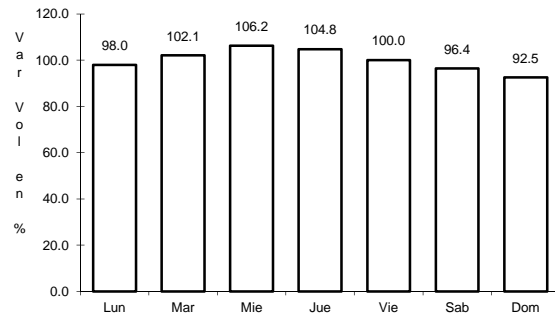
Km: 4.00 Tipo: 3 Sent: 2

Km: 138.00 Tipo: 3 Sent: 0

2 CARR: Imuris - Agua Prieta

CLAVE: 26079

RUTA: MEX-002



Km: 0.00 Tipo: 3 Sent: 0

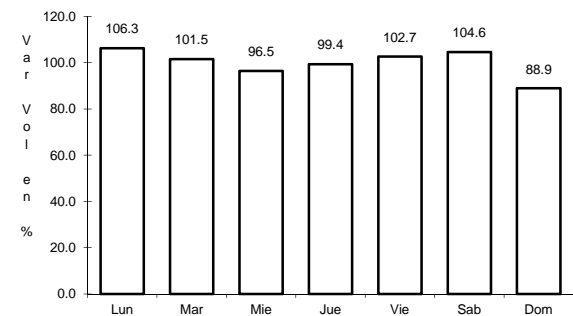
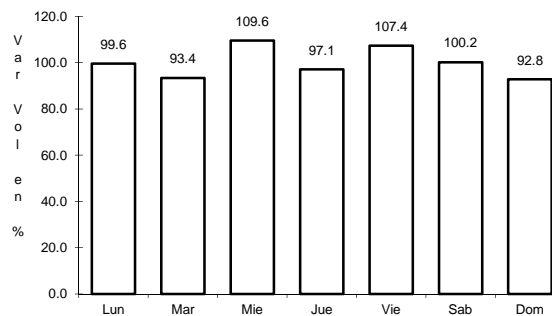
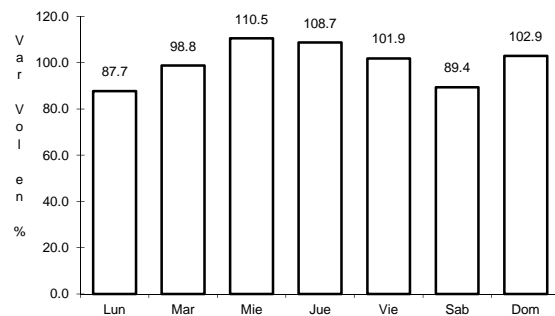
Km: 164.67 Tipo: 1 Sent: 1

Km: 164.67 Tipo: 1 Sent: 2

3 CARR: Janos - Agua Prieta

CLAVE: 00220

RUTA: MEX-002



Km: 0.00 Tipo: 3 Sent: 0

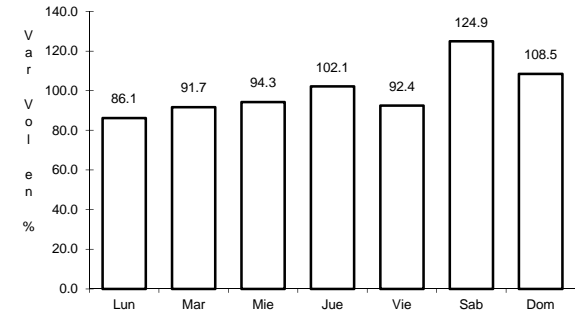
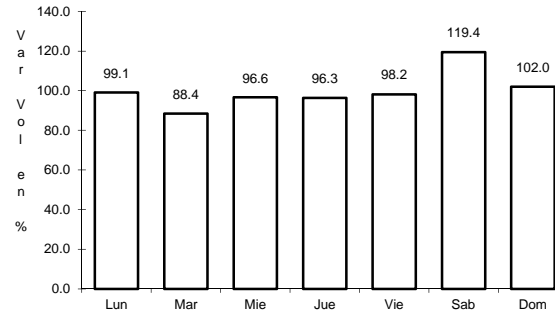
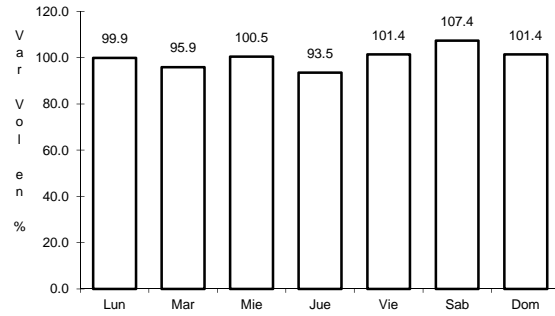
Km: 56.00 Tipo: 3 Sent: 0

Km: 160.00 Tipo: 1 Sent: 0

4 CARR: La Junta - Yécora

CLAVE: 00065

RUTA: MEX-016



Km: 0.00 Tipo: 3 Sent: 0

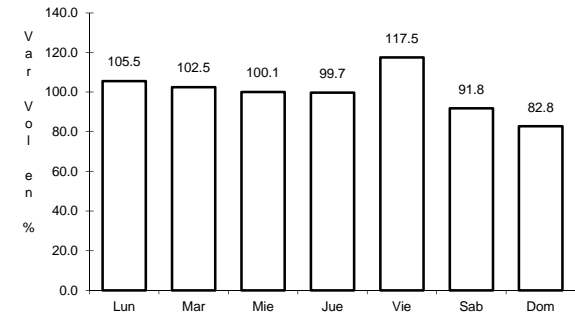
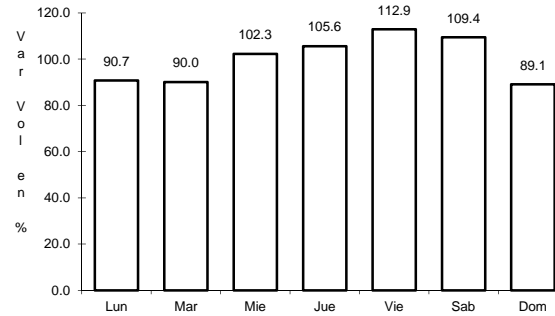
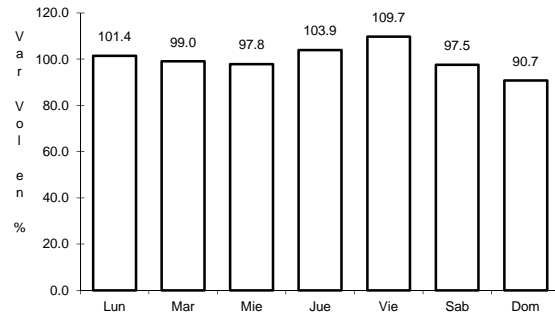
Km: 70.00 Tipo: 3 Sent: 0

Km: 253.00 Tipo: 1 Sent: 0

5 CARR: Moctezuma - Agua Prieta

CLAVE: 26027

RUTA: MEX-017



Km: 0.00 Tipo: 3 Sent: 0

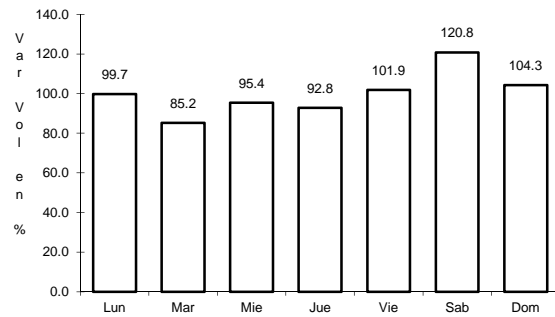
Km: 81.00 Tipo: 3 Sent: 0

Km: 197.60 Tipo: 1 Sent: 0

6 CARR: Ramal a Naco

CLAVE: 26579

RUTA: MEX-002

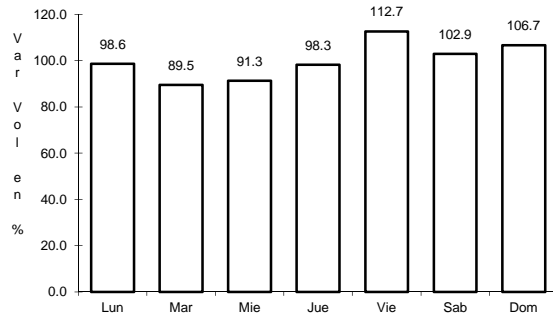


Km: 0.00 Tipo: 3 Sent: 0

7 CARR: Ramal a Puerta de México

CLAVE: 26577

RUTA: MEX-002

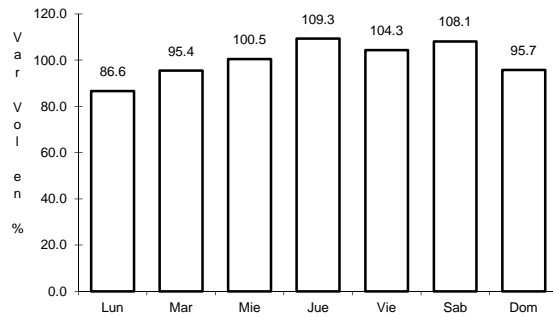


Km: 0.00 Tipo: 3 Sent: 0

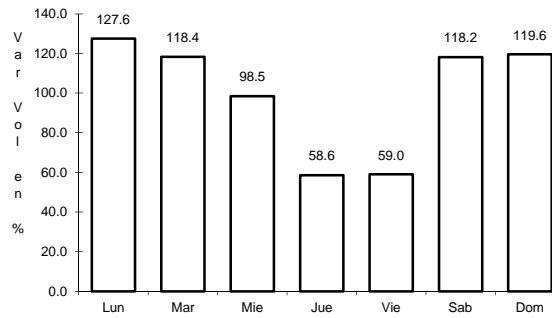
8 CARR: Sonoita - Mexicali

CLAVE: 00081

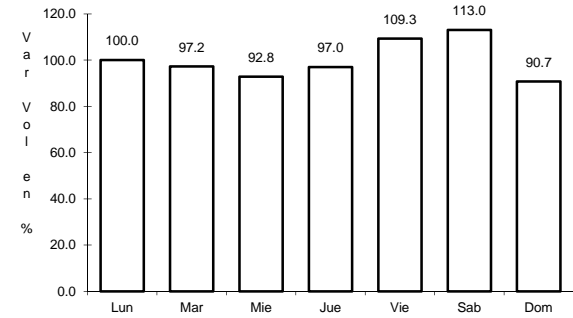
RUTA: MEX-002



Km: 0.00 Tipo: 3 Sent: 0



Km: 256.47 Tipo: 1 Sent: 1

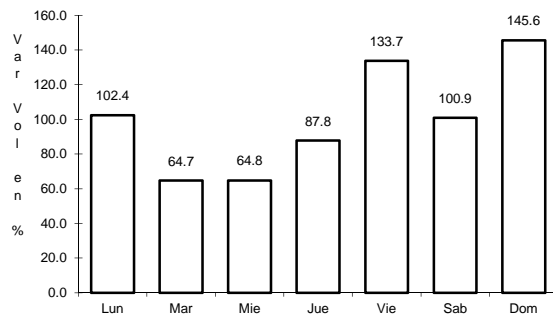


Km: 256.47 Tipo: 1 Sent: 2

9 CARR: Sonoita - Puerto Peñasco

CLAVE: 26232

RUTA: MEX-002

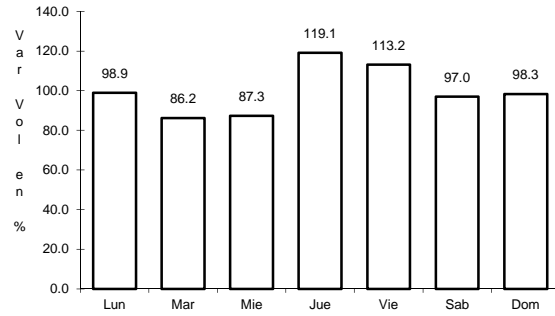


Km: 0.00 Tipo: 3 Sent: 0

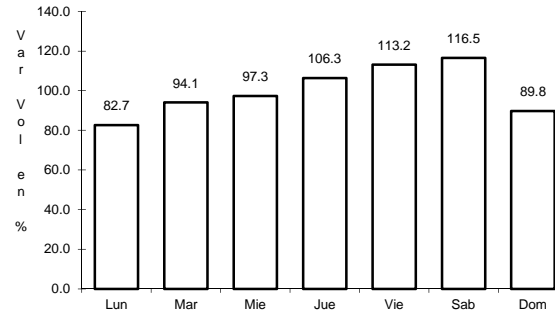
10 CARR: Libramiento de Empalme (Cuota)

CLAVE: 26256

RUTA: MEX-015D



Km: 0.00 Tipo: 3 Sent: 1

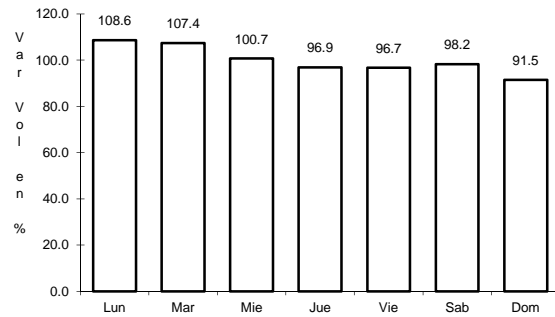


Km: 0.00 Tipo: 3 Sent: 2

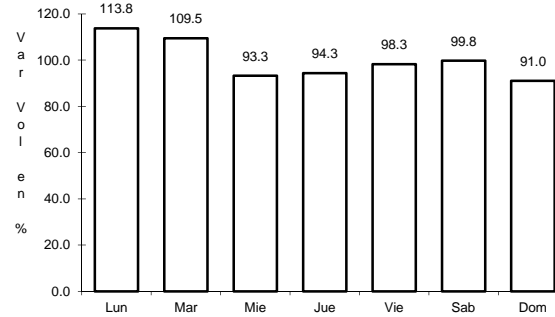
11 CARR: Libramiento de Magdalena de Kino (Cuota)

CLAVE:

RUTA: MEX-015D



Km: 183.43 Tipo: 3 Sent: 1

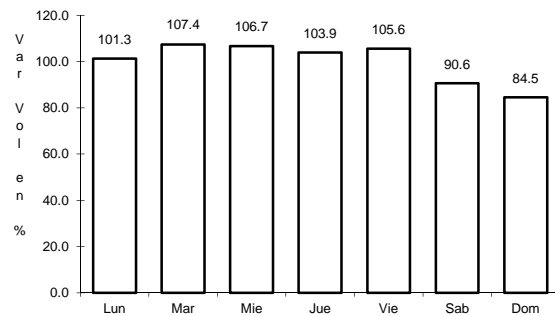


Km: 183.43 Tipo: 3 Sent: 2

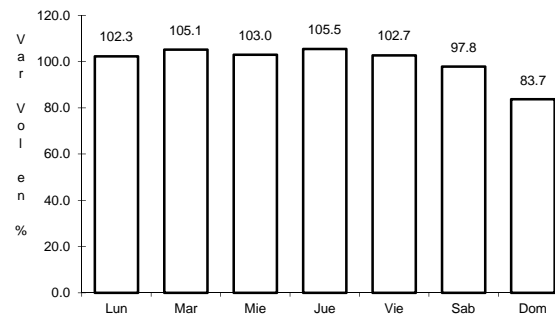
12 CARR: Libramiento de Nogales (Cuota)

CLAVE: 26100

RUTA: MEX-15D



Km: 0.00 Tipo: 3 Sent: 1

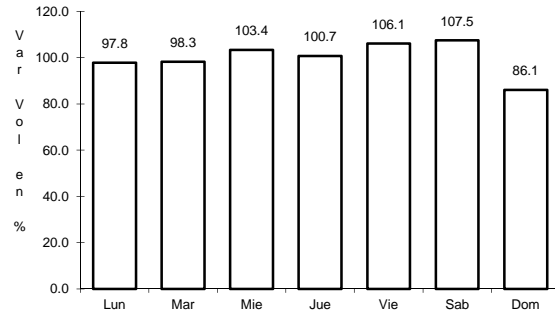


Km: 0.00 Tipo: 3 Sent: 2

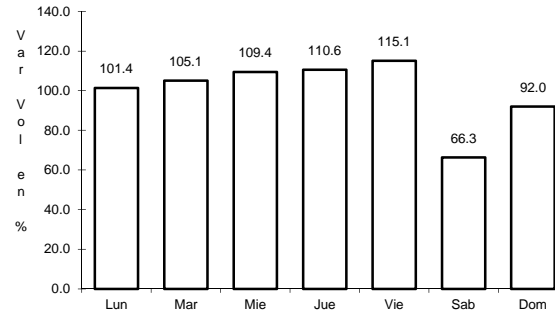
13 CARR: Est. Don - Nogales (Cuota)

CLAVE: 26444

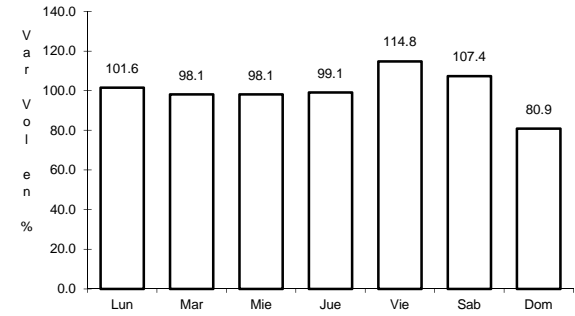
RUTA: MEX-015D-015



Km: 0.00 Tipo: 3 Sent: 1



Km: 0.00 Tipo: 3 Sent: 2

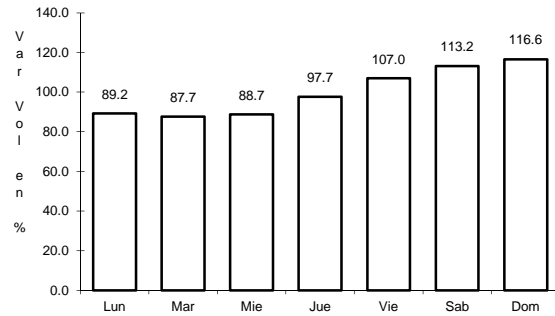


Km: 337.72 Tipo: 1 Sent: 0

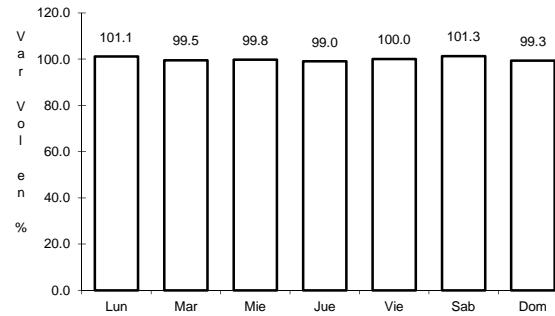
14 CARR: Santa Ana - Sonoita

CLAVE: 26080

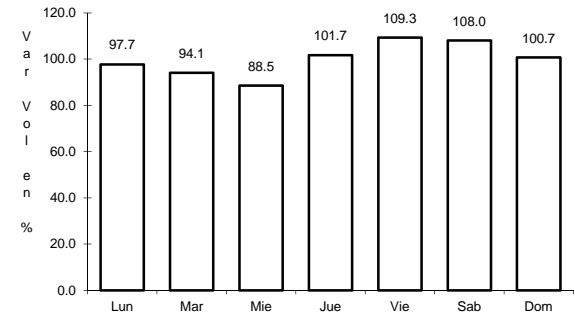
RUTA: MEX-002D-MEX



Km: 0.00 Tipo: 3 Sent: 0



Km: 103.83 Tipo: 1 Sent: 0

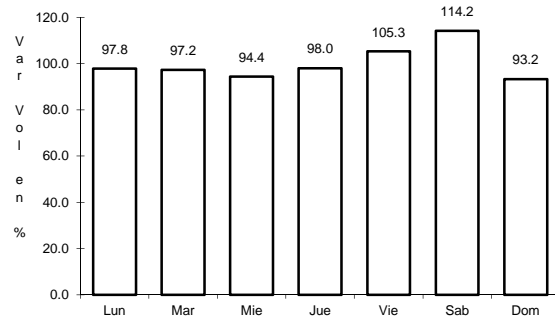


Km: 253.70 Tipo: 1 Sent: 0

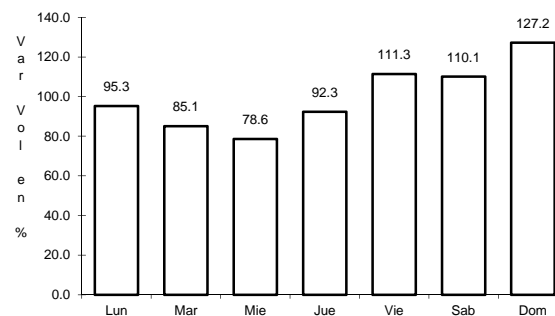
15 CARR: Altar - Sáric

CLAVE: 26233

RUTA: SON-064



Km: 0.00 Tipo: 3 Sent: 0

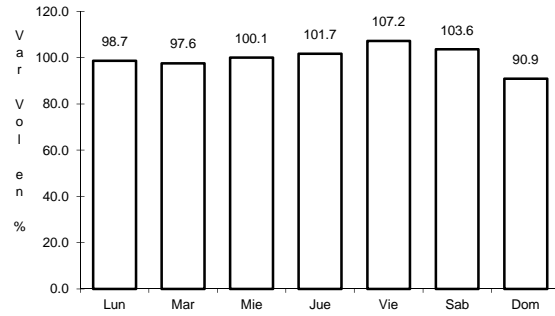


Km: 68.00 Tipo: 1 Sent: 0

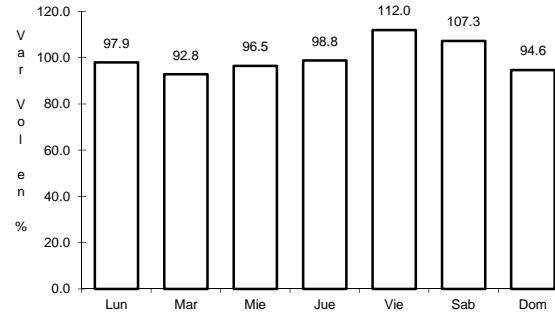
16 CARR: Caborca - El Desemboque

CLAVE: 26225

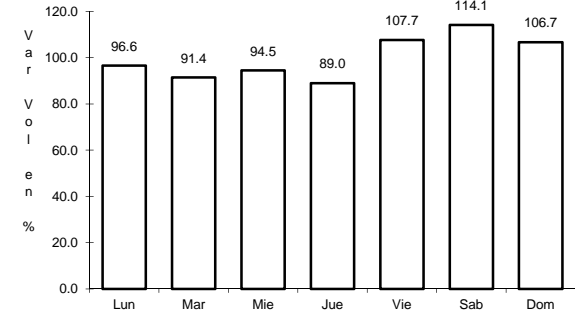
RUTA: SON-037



Km: 0.00 Tipo: 3 Sent: 0



Km: 6.90 Tipo: 3 Sent: 0

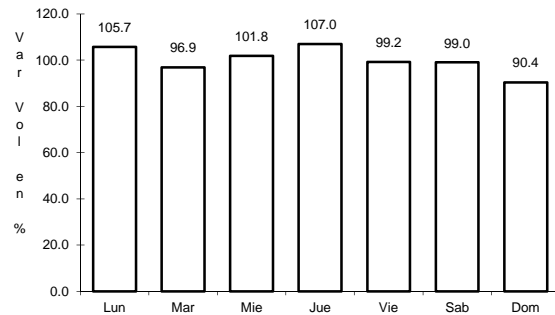


Km: 61.20 Tipo: 3 Sent: 0

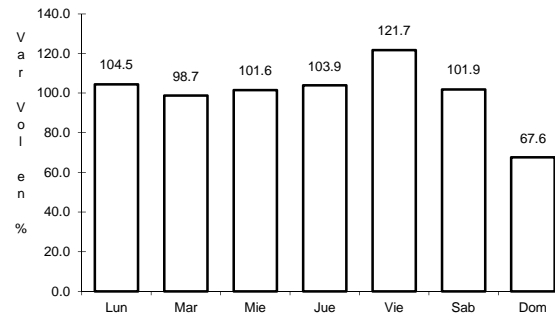
17 CARR: Calle 36 Norte - Puerto de La Libertad

CLAVE: 26117

RUTA: SON-029



Km: 0.00 Tipo: 3 Sent: 0

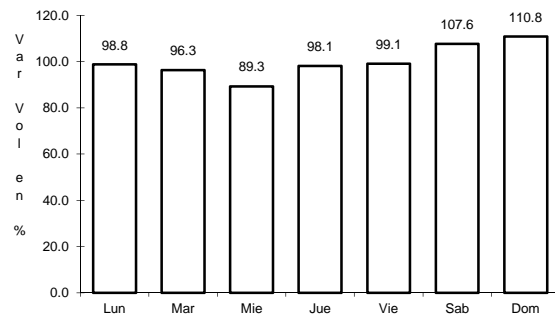


Km: 45.00 Tipo: 3 Sent: 0

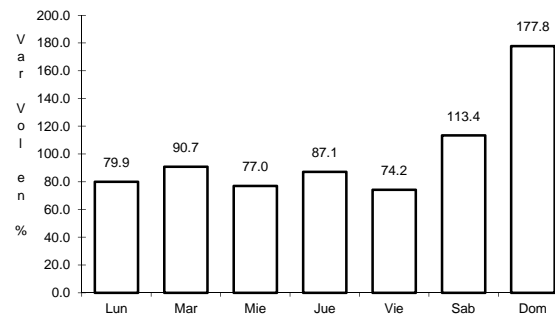
18 CARR: Esperanza - Presa Álvaro Obregón

CLAVE: 26242

RUTA: SON-117



Km: 0.00 Tipo: 3 Sent: 0

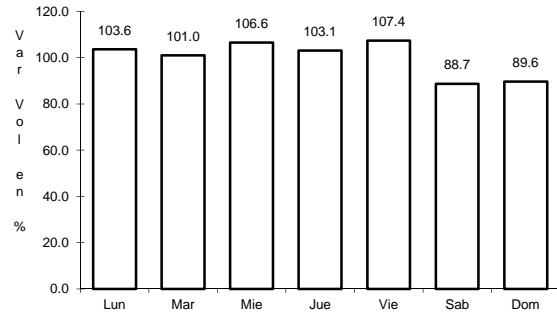


Km: 17.00 Tipo: 3 Sent: 0

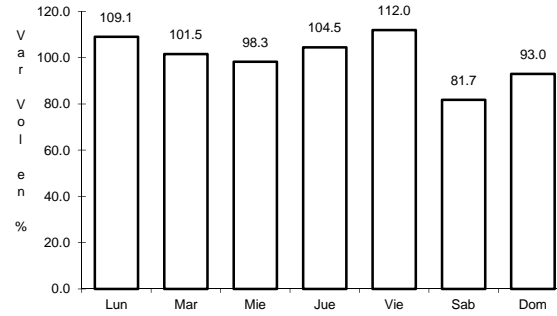
19 CARR: Hermosillo - Bahía Kino

CLAVE: 26109

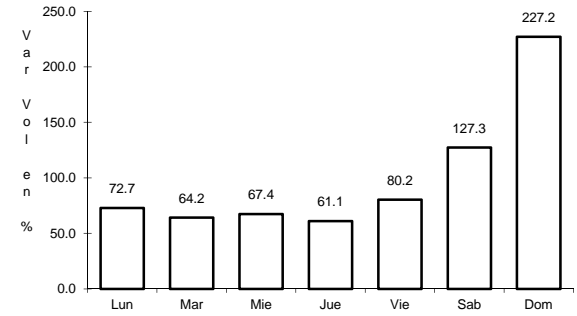
ruta: SON-100



Km: 0.00 Tipo: 3 Sent: 1



Km: 0.00 Tipo: 3 Sent: 2

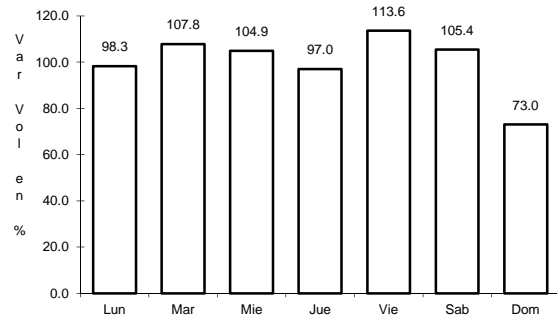


Km: 106.50 Tipo: 1 Sent: 0

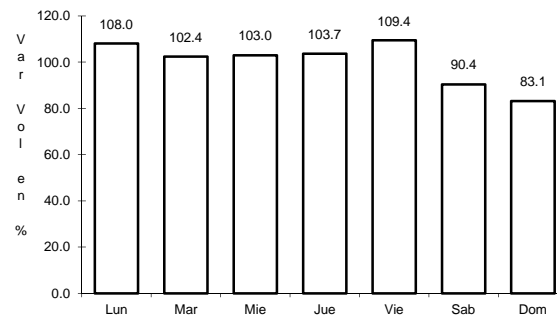
20 CARR: Hermosillo - Sahuaripa

CLAVE: 26230

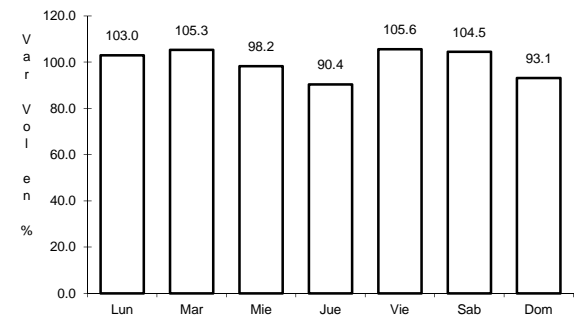
ruta: SON-020



Km: 0.00 Tipo: 3 Sent: 1



Km: 0.00 Tipo: 3 Sent: 2

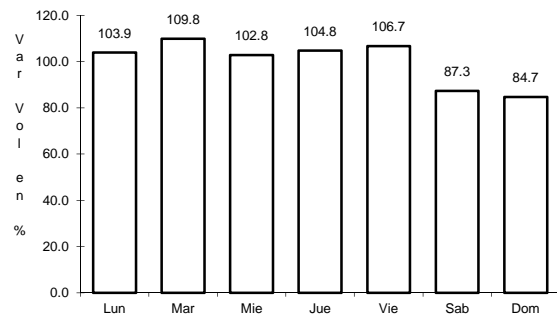


Km: 88.00 Tipo: 3 Sent: 0

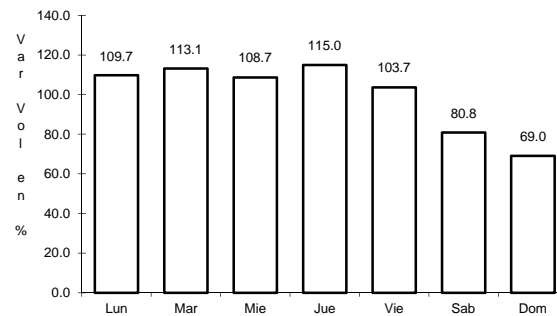
21 CARR: Hornos - San Nicolás

CLAVE: 26243

ruta: SON-012



Km: 0.00 Tipo: 3 Sent: 0

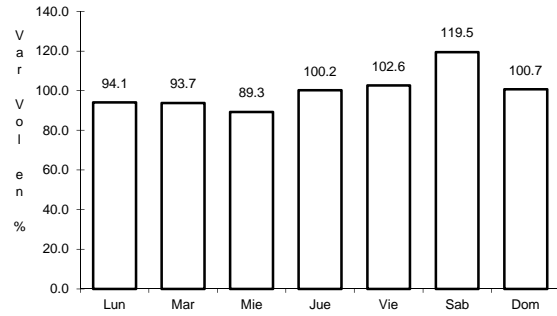


Km: 58.00 Tipo: 1 Sent: 0

22 CARR: Huatabampo - Bacabachi

CLAVE: 26237

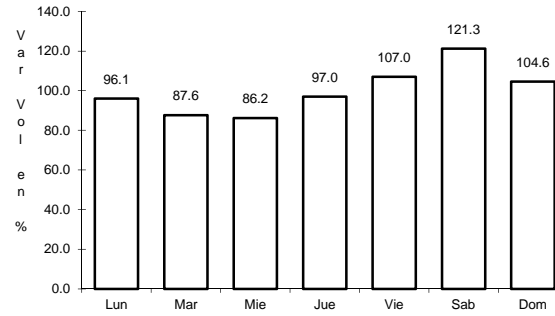
RUTA: SON-176



Km: 0.00

Tipo: 3

Sent: 0



Km: 29.00

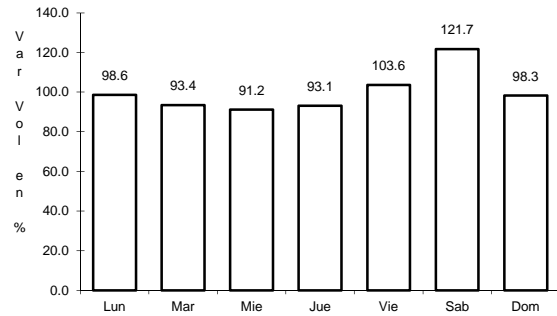
Tipo: 1

Sent: 0

23 CARR: La Alameda - El Sahuaro

CLAVE: 26234

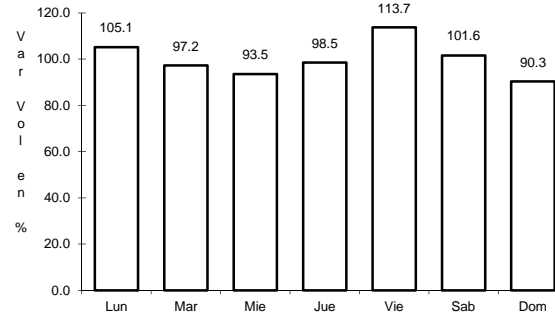
RUTA: SON-037



Km: 0.00

Tipo: 3

Sent: 0



Km: 47.00

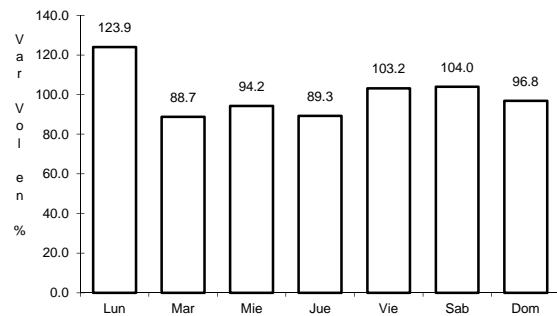
Tipo: 1

Sent: 0

24 CARR: Mazocahui - Cananea

CLAVE: 26118

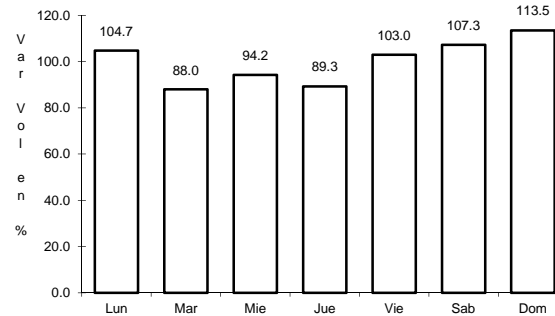
RUTA: SON-118



Km: 0.00

Tipo: 3

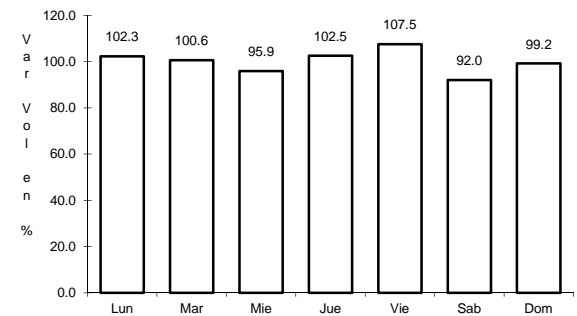
Sent: 0



Km: 98.00

Tipo: 1

Sent: 0



Km: 204.00

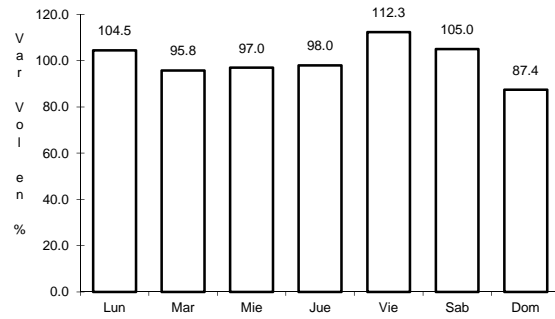
Tipo: 1

Sent: 0

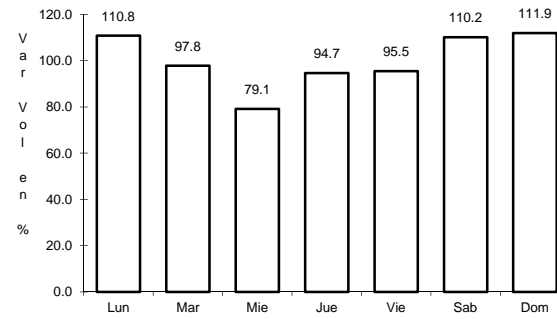
25 CARR: Navojoa - Álamos

CLAVE: 26240

RUTA: SON-013



Km: 0.00 Tipo: 3 Sent: 0

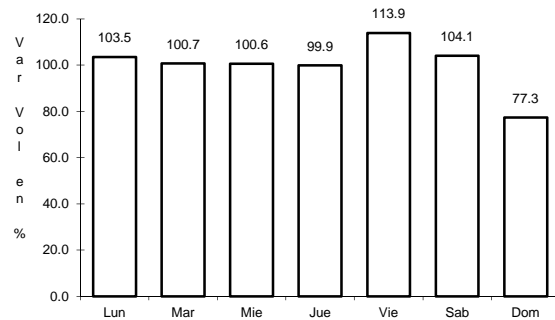


Km: 52.80 Tipo: 1 Sent: 0

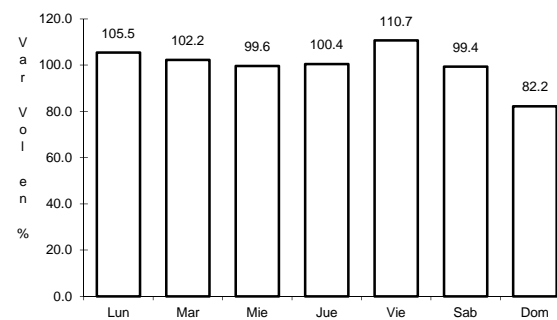
26 CARR: Navojoa - Yavaros

CLAVE: 26229

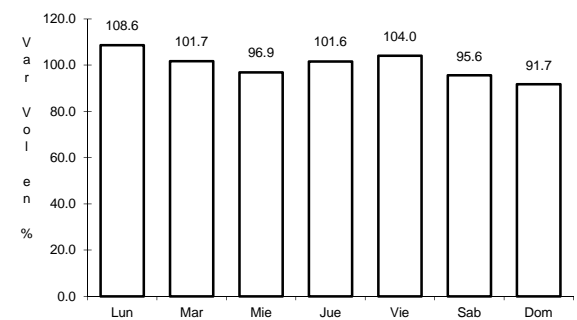
RUTA: SON-056



Km: 0.00 Tipo: 3 Sent: 1



Km: 0.00 Tipo: 3 Sent: 2

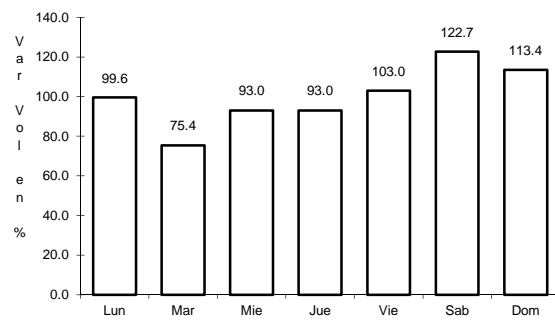


Km: 55.00 Tipo: 1 Sent: 0

27 CARR: Nogales - San Antonio

CLAVE: 26110

RUTA: SON

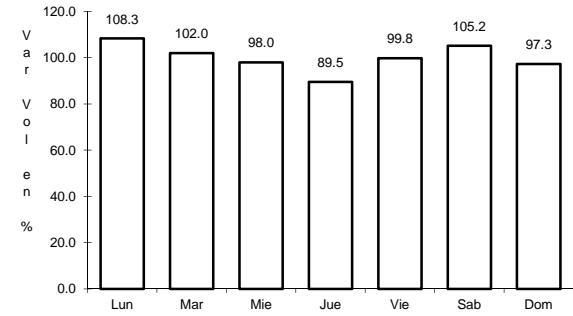
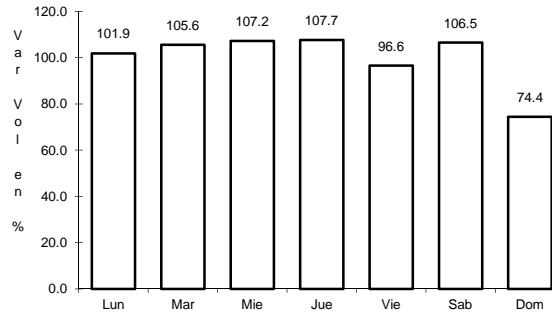
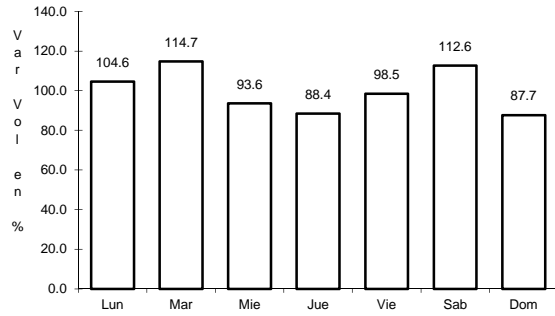


Km: 58.00 Tipo: 1 Sent: 0

28 CARR: Ramal a Aeropuerto de Guaymas

CLAVE: 26568

RUTA: SON



Km: 0.00 Tipo: 3 Sent: 1

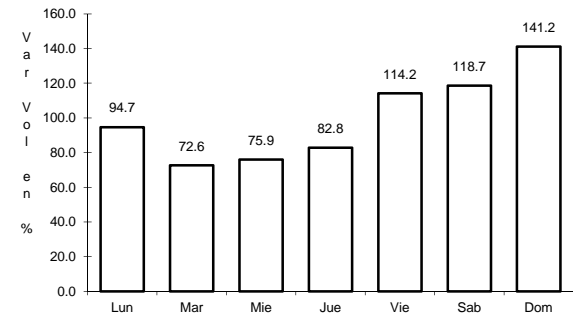
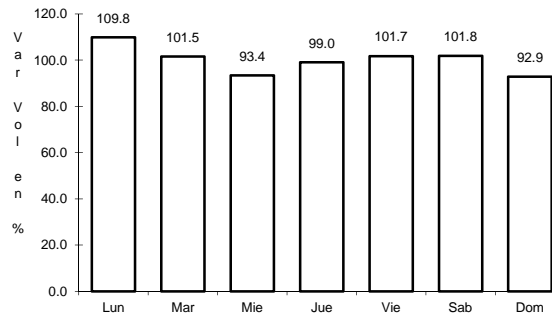
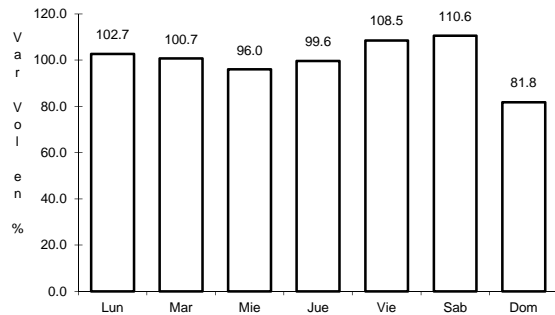
Km: 0.00 Tipo: 3 Sent: 2

Km: 3.00 Tipo: 3 Sent: 0

29 CARR: San Luis Río Colorado - Golfo de Santa Clara

CLAVE: 26226

RUTA: SON-040



Km: 0.00 Tipo: 3 Sent: 1

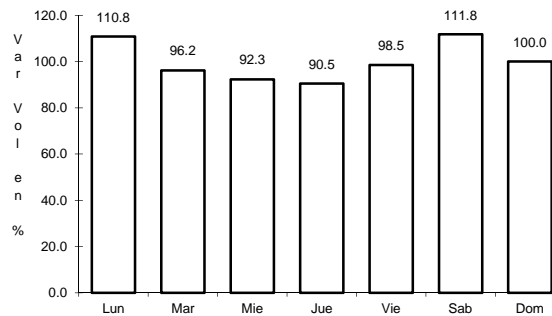
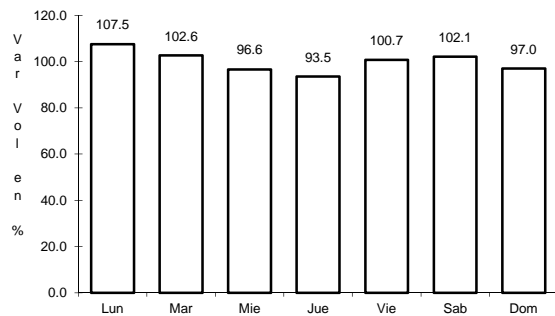
Km: 0.00 Tipo: 3 Sent: 2

Km: 114.30 Tipo: 1 Sent: 0

30 CARR: Sonoita - Pitiquito

CLAVE: 26022

RUTA: SON



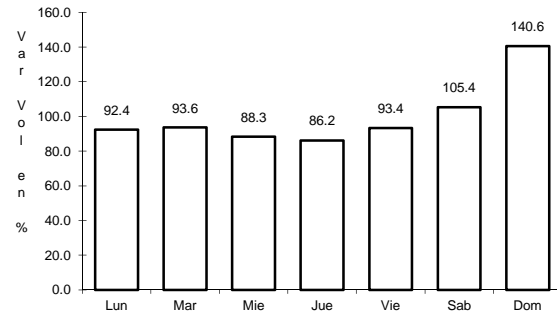
Km: 0.00 Tipo: 3 Sent: 0

Km: 170.00 Tipo: 1 Sent: 0

31 CARR: T. C. (Hermosillo - Nogales) - Huásabas

CLAVE: 26231

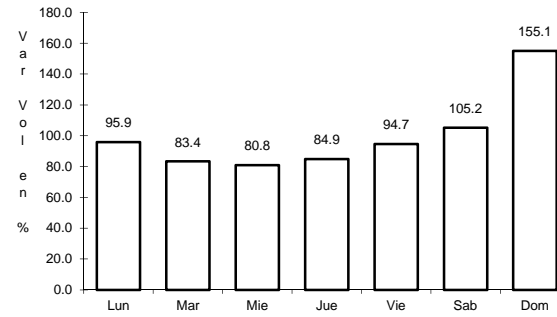
RUTA: MEX-014-SON



Km: 0.00

Tipo: 3

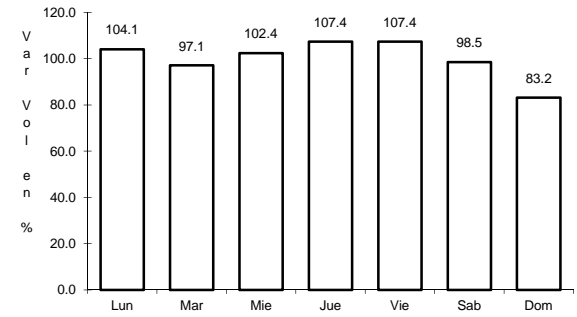
Sent: 1



Km: 0.00

Tipo: 3

Sent: 2



Km: 212.50

Tipo: 1

Sent: 0

