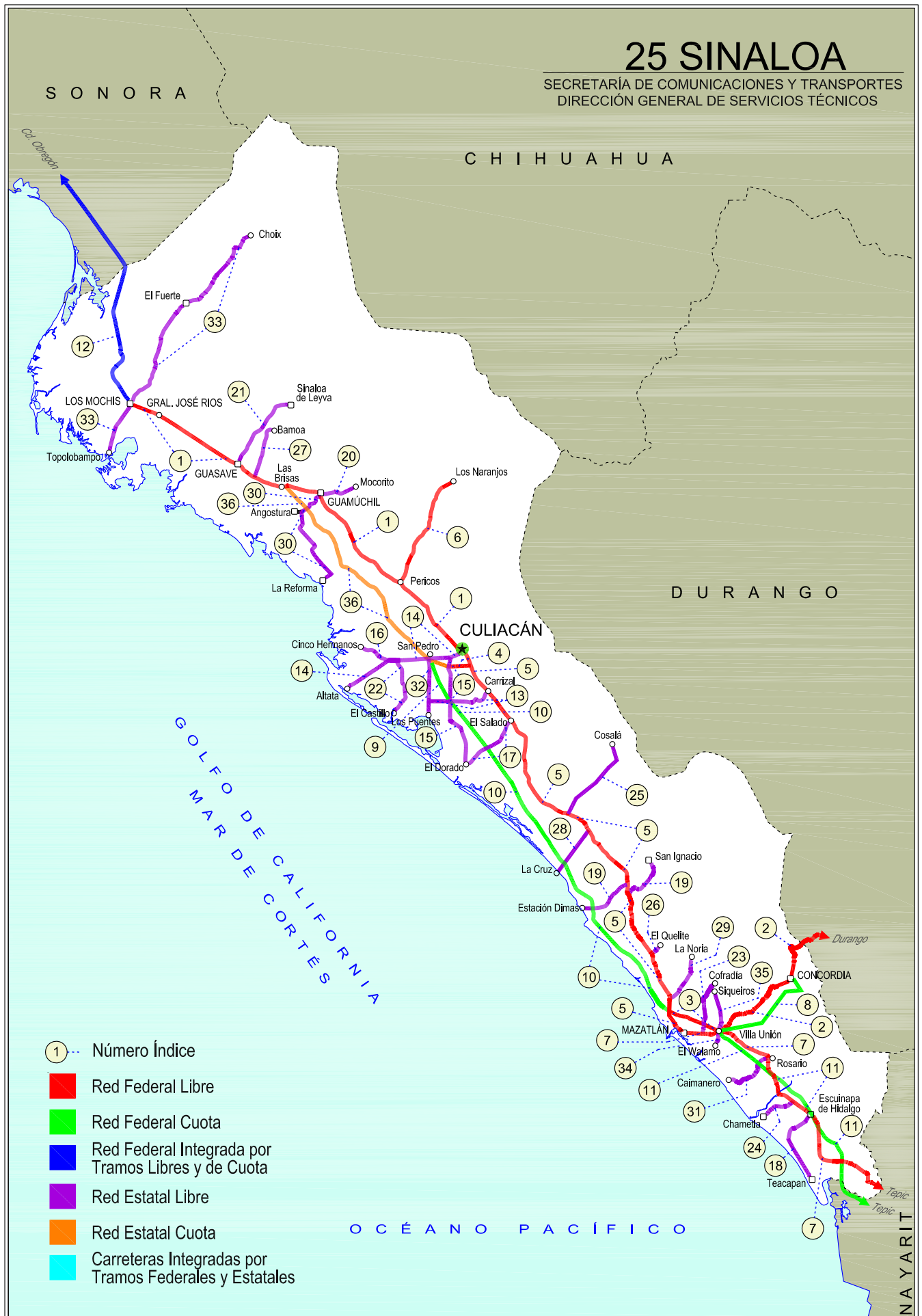
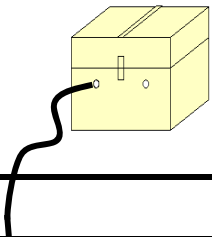


25 SINALOA

SECRETARÍA DE COMUNICACIONES Y TRANSPORTES
DIRECCIÓN GENERAL DE SERVICIOS TÉCNICOS





SINALOA

NO. INDICE	CARRETERA	RUTA
---RED FEDERAL LIBRE---		
1	Culiacán - Los Mochis	MEX-015
2	Durango - Villa Unión	MEX-040
3	Libramiento de Mazatlán	MEX
4	Libramiento Sur de Culiacán	MEX-015
5	Mazatlán - Culiacán	MEX-015
6	Pericos - Los Naranjos	MEX-024
7	Tepic - Mazatlán	MEX-015
---RED FEDERAL DE CUOTA---		
8	Durango - Mazatlán (Cuota)	MEX-040D
9	Libramiento de Culiacán (Cuota)	MEX-015D
10	Mazatlán - Culiacán (Cuota)	MEX-015D
11	Tepic - Villa Unión (cuota)	MEX-015D
---RED FEDERAL INTEGRADA POR TRAMOS LIBRES Y DE CUOTA---		
12	Est. Don - Nogales (Cuota)	MEX-015D-015
---RED ESTATAL LIBRE---		
13	Carrizal - Campo Anibal	SIN-019
14	Culiacán - Altata	SIN-030
15	Culiacán - El Dorado	SIN-005
16	El Limoncito - Cinco Hermanos	SIN-016
17	El Salado - El Dorado	SIN-010
18	Escuinapa de Hidalgo - Teacapan	SIN-001
19	Estación Dimas - San Ignacio	SIN-006
20	Guamuchil - Mocorito	SIN-021
21	Guasave - Sinaloa de Leyva	SIN-023
22	Navolato - El Castillo	SIN-004
23	Pozole - Cofradía	SIN-080
24	Ramal a Chametla	SIN-002
25	Ramal a Cosalá	SIN-008
26	Ramal a El Quelite	SIN-060
27	Ramal a Estación Bamoa	SIN-022
28	Ramal a La Cruz	SIN
29	Ramal a La Noria	SIN
30	Ramal a La Reforma	SIN-004
31	Rosario - Caimanero	SIN-003
32	San Pedro - Campo Anibal	SIN
33	Topolobampo - Choix	SIN-023
34	Villa Unión - El Walamo	SIN-081
35	Villa Unión - Siqueiros	SIN-063
---RED ESTATAL DE CUOTA---		
36	Culiacán - Las Brisas (Cuota)	SIN-001D

SINALOA

1 CARR : Culiacán - Los Mochis

CLAVE: 25502

RUTA: MEX-015

AÑO : 2015

LUGAR	ESTACION				CLASIFICACION VEHICULAR EN PORCIENTO										COORDENADAS					
	KM	TE	SC	TDPA	M	A	B	C2	C3	T3S2	T3S3	T3S2R4	OTROS	A	B	C	K'	D	LATITUD	LONGITUD
Culiacán	0.00																			
T. Der. Los Monzones	4.00	1	1	10402	2.3	83.2	2.3	6.7	1.7	1.6	0.5	0.2	1.5	85.5	2.3	12.2	0.086	0.508	24.831820	-107.430904
T. Der. Los Monzones	4.00	1	2	10200	2.3	83.1	2.0	7.0	1.9	1.7	0.5	0.2	1.3	85.4	2.0	12.6	0.069	0.508	24.831820	-107.430904
Caseta de Cobro Puente Culiacán	22.00	2	1	3601	0.6	83.3	4.5	4.1	2.0	4.4	0.8	0.1	0.2	83.9	4.5	11.6	0.084	0.500	24.811495	-107.410223
Caseta de Cobro Puente Culiacán	22.00	2	2	3601	0.6	83.3	4.5	4.1	2.0	4.4	0.8	0.1	0.2	83.9	4.5	11.6	0.084	0.500	24.811495	-107.410223
T. Der. Presa López Mateos	27.20	3	0	8246	0.5	76.6	3.4	7.3	2.0	8.0	0.9	1.3	0.0	77.1	3.4	19.5	0.067	0.505	24.993265	-107.568770
X. C. Pericos - Los Naranjos	43.60	3	0	5946	0.4	81.9	4.7	4.8	2.2	4.9	0.7	0.1	0.3	82.3	4.7	13.0	0.118	0.501	25.093778	-107.698399
Guamuchil	104.70	1	0	7285	1.6	83.6	3.8	4.6	2.0	3.6	0.5	0.1	0.2	85.2	3.8	11.0	0.122	0.512	25.427308	-108.057471
Guamuchil	104.70	3	1	8729	4.4	83.9	1.7	2.8	2.8	2.0	0.8	0.2	1.4	88.3	1.7	10.0	0.064	0.500	25.468652	-108.091445
Guamuchil	104.70	3	2	8729	4.4	83.9	1.7	2.8	2.8	2.0	0.8	0.2	1.4	88.3	1.7	10.0	0.064	0.500	25.468652	-108.091445
T. Izq. Aut. Culiacán - Las Brisas	121.20	1	0	6894	1.3	74.2	7.2	8.8	2.6	4.4	0.5	0.9	0.1	75.5	7.2	17.3	0.086	0.506	25.489929	-108.224366
T. Izq. Aut. Culiacán - Las Brisas	121.20	3	1	6646	1.4	62.8	8.4	7.7	3.1	11.8	1.2	3.3	0.3	64.2	8.4	27.4	0.086	0.513	25.487878	-108.242431
T. Izq. Aut. Culiacán - Las Brisas	121.20	3	2	7010	0.5	67.7	6.5	4.9	3.1	12.2	1.4	3.3	0.4	68.2	6.5	25.3	0.109	0.513	25.487878	-108.242431
T. Der. Estación Bamoa	133.17	3	1	6915	1.1	65.4	7.3	6.5	2.9	11.9	1.3	3.3	0.3	66.5	7.3	26.2	0.066	0.506	25.517702	-108.358455
T. Der. Estación Bamoa	133.17	3	2	7070	2.0	65.3	7.1	8.3	3.6	9.1	1.1	2.3	1.2	67.3	7.1	25.6	0.071	0.506	25.517702	-108.358455
Caseta de Cobro Puente Sinaloa	136.00	2	1	5223	0.3	62.8	6.6	4.8	4.0	14.4	1.7	4.6	0.8	63.1	6.6	30.3	0.084	0.500	25.577762	-108.455850
Caseta de Cobro Puente Sinaloa	136.00	2	2	5223	0.3	62.8	6.6	4.8	4.0	14.4	1.7	4.6	0.8	63.1	6.6	30.3	0.084	0.500	25.577762	-108.455850
Guasave	146.28	3	1	10687	0.8	76.5	5.0	5.2	3.9	6.0	0.6	1.5	0.5	77.3	5.0	17.7	0.076	0.524	25.590274	-108.493643
Guasave	146.28	3	2	11784	0.3	77.4	3.0	5.4	4.4	6.3	0.8	1.8	0.6	77.7	3.0	19.3	0.069	0.524	25.590274	-108.493643
T. Izq. Los Mochis (1º Acceso)	201.97	1	1	12101	0.9	70.4	5.2	5.9	9.5	5.1	1.4	1.3	0.3	71.3	5.2	23.5	0.081	0.503	25.807161	-108.956077
T. Izq. Los Mochis (1º Acceso)	201.97	1	2	12239	1.0	69.4	4.9	6.1	10.0	5.5	1.3	1.3	0.5	70.4	4.9	24.7	0.082	0.503	25.807161	-108.956077
T. Izq. Los Mochis (1º Acceso)	201.97	3	1	13302	1.1	72.8	3.5	5.7	7.2	6.4	1.4	1.4	0.5	73.9	3.5	22.6	0.063	0.502	25.820070	-108.963589
T. Izq. Los Mochis (1º Acceso)	201.97	3	2	13391	2.0	70.2	4.8	5.7	7.5	6.7	1.3	1.5	0.3	72.2	4.8	23.0	0.071	0.502	25.820070	-108.963589
T. C. Topolobampo - Choix	205.21																			

2 CARR : Durango - Villa Unión

CLAVE: 0083

RUTA: MEX-040

AÑO : 2015

LUGAR	ESTACION				CLASIFICACION VEHICULAR EN PORCIENTO										COORDENADAS					
	KM	TE	SC	TDPA	M	A	B	C2	C3	T3S2	T3S3	T3S2R4	OTROS	A	B	C	K'	D	LATITUD	LONGITUD
Durango	0.00	3	0	1985	2.6	71.6	2.1	5.1	2.7	6.5	2.5	0.3	6.6	74.2	2.1	23.7	0.069	0.501	23.994774	-104.719742
T. Der. Pino	22.86	3	0	1946	5.6	68.5	3.6	6.2	6.6	6.6	2.1	0.1	0.7	74.1	3.6	22.3	0.153	0.533	23.967380	-104.820119
T. Izq. Estación Navios	58.42	3	0	1729	6.3	65.4	4.6	6.7	7.2	6.6	2.4	0.1	0.7	71.7	4.6	23.7	0.156	0.538	23.897209	-105.050366
Llano Grande	77.23	1	0	1898	3.7	68.7	4.0	8.1	6.2	6.5	2.2	0.0	0.6	72.4	4.0	23.6	0.102	0.527	23.869423	-105.191779
El Salto	99.76	3	0	2381	0.0	92.7	0.0	4.3	0.9	1.3	0.7	0.1	0.0	92.7	0.0	7.3	0.073	0.516	23.781646	-105.381243
La Ciudad	145.50	1	0	704	2.1	71.2	4.4	8.1	3.6	7.8	2.3	0.0	0.5	73.3	4.4	22.3	0.082	0.514	23.731639	-105.667638

SINALOA

2 CARR: Durango - Villa Unión

CLAVE: 0083

RUTA: MEX-040

AÑO: 2015

LUGAR	ESTACION				CLASIFICACION VEHICULAR EN PORCIENTO														COORDENADAS	
	KM	TE	SC	TDPA	M	A	B	C2	C3	T3S2	T3S3	T3S2R4	OTROS	A	B	C	K'	D	LATITUD	LONGITUD
La Ciudad	145.50	3	0	482	4.6	64.4	4.7	8.2	5.8	9.0	2.6	0.0	0.7	69.0	4.7	26.3	0.102	0.502	23.727302	-105.691607
Lim. Edos. Term. Dgo. Ppia. Sin.	198.50																			
T. C. Tepic - Mazatlán	294.40	1	0	3633	2.4	78.6	5.8	6.9	2.5	2.6	0.8	0.0	0.4	81.0	5.8	13.2	0.072	0.545	23.204029	-106.199272

3 CARR: Libramiento de Mazatlán

CLAVE: 25604

RUTA: MEX

AÑO: 2015

LUGAR	ESTACION				CLASIFICACION VEHICULAR EN PORCIENTO														COORDENADAS	
	KM	TE	SC	TDPA	M	A	B	C2	C3	T3S2	T3S3	T3S2R4	OTROS	A	B	C	K'	D	LATITUD	LONGITUD
T. C. Tepic - Mazatlán	0.00	3	1	29133	6.0	77.1	1.2	5.9	2.4	2.0	1.0	1.3	3.1	83.1	1.2	15.7	0.073	0.526	23.235438	-106.389718
T. C. Tepic - Mazatlán	0.00	3	2	31238	5.8	81.8	1.2	3.6	1.8	1.3	0.7	0.9	2.9	87.6	1.2	11.2	0.073	0.526	23.235438	-106.389718
T. C. Mazatlán - Culiacán	5.40	1	1	23219	5.4	78.8	1.6	6.7	1.2	3.4	1.2	0.9	0.8	84.2	1.6	14.2	0.076	0.551	23.261218	-106.410874
T. C. Mazatlán - Culiacán	5.40	1	2	17922	4.8	77.2	2.1	7.2	1.6	4.1	1.3	0.9	0.8	82.0	2.1	15.9	0.070	0.551	23.261218	-106.410874

4 CARR: Libramiento Sur de Culiacán

CLAVE: 25500

RUTA: MEX-015

AÑO: 2015

LUGAR	ESTACION				CLASIFICACION VEHICULAR EN PORCIENTO														COORDENADAS	
	KM	TE	SC	TDPA	M	A	B	C2	C3	T3S2	T3S3	T3S2R4	OTROS	A	B	C	K'	D	LATITUD	LONGITUD
T. C. Mazatlán - Culiacán	0.00	3	1	11969	0.5	86.0	1.7	6.7	2.1	2.3	0.3	0.3	0.1	86.5	1.7	11.8	0.071	0.506	24.752966	-107.360143
T. C. Mazatlán - Culiacán	0.00	3	2	11707	1.1	86.0	1.6	5.0	2.4	3.0	0.4	0.4	0.1	87.1	1.6	11.3	0.073	0.506	24.752966	-107.360143
T. C. Culiacán - El Dorado	8.90	1	1	13592	2.7	82.1	2.4	2.6	2.6	4.3	1.8	0.7	0.8	84.8	2.4	12.8	0.071	0.501	24.741457	-107.438138
T. C. Culiacán - El Dorado	8.90	1	2	13668	2.6	80.2	2.8	3.0	3.0	5.0	1.9	0.7	0.8	82.8	2.8	14.4	0.071	0.501	24.741457	-107.438138

5 CARR: Mazatlán - Culiacán

CLAVE: 25501

RUTA: MEX-015

AÑO: 2015

LUGAR	ESTACION				CLASIFICACION VEHICULAR EN PORCIENTO														COORDENADAS	
	KM	TE	SC	TDPA	M	A	B	C2	C3	T3S2	T3S3	T3S2R4	OTROS	A	B	C	K'	D	LATITUD	LONGITUD
Mazatlán	0.00																			
T. Der. Libramiento de Mazatlán	6.40	1	1	17401	3.4	82.6	1.5	8.0	0.9	1.5	0.9	0.4	0.8	86.0	1.5	12.5	0.064	0.513	23.260150	-106.417777
T. Der. Libramiento de Mazatlán	6.40	1	2	18315	4.1	80.7	1.6	9.5	0.9	1.0	1.1	0.4	0.7	84.8	1.6	13.6	0.074	0.513	23.260150	-106.417777
T. Der. La Noria	10.92	1	0	5378	1.6	78.3	2.8	7.5	3.1	5.1	0.9	0.1	0.6	79.9	2.8	17.3	0.070	0.503	23.347893	-106.413767
T. Der. La Noria	10.92	3	0	4226	2.4	72.5	5.4	9.2	3.5	5.8	0.7	0.1	0.4	74.9	5.4	19.7	0.073	0.516	23.357313	-106.416477
T. Izq. Playa Los Cerritos	11.08	3	0	4028	1.6	75.6	3.7	7.8	3.5	6.3	0.8	0.2	0.5	77.2	3.7	19.1	0.079	0.503	23.360561	-106.418779
T. Der. El Quelite	33.00	1	0	3700	3.0	74.3	3.6	3.3	3.1	9.6	2.2	0.0	0.9	77.3	3.6	19.1	0.066	0.510	23.529912	-106.502534
T. Der. El Quelite	33.00	3	0	2933	1.7	68.3	6.2	7.2	4.8	10.2	1.2	0.0	0.4	70.0	6.2	23.8	0.080	0.507	23.532983	-106.505221
X. C. Estación Dimas - San Ignacio	66.77	1	0	2595	1.4	68.5	6.0	8.8	6.0	7.5	0.6	0.0	1.2	69.9	6.0	24.1	0.086	0.516	23.785514	-106.608393

SINALOA

5 CARR: Mazatlán - Culiacán

CLAVE: 25501

RUTA: MEX-015

AÑO: 2015

LUGAR	ESTACION				CLASIFICACION VEHICULAR EN PORCIENTO													COORDENADAS		
	KM	TE	SC	TDPA	M	A	B	C2	C3	T3S2	T3S3	T3S2R4	OTROS	A	B	C	K'	D	LATITUD	LONGITUD
X. C. Estación Dimas - San Ignacio	66.77	3	0	3205	1.1	70.7	4.5	6.3	5.6	9.9	1.3	0.0	0.6	71.8	4.5	23.7	0.076	0.509	23.795427	-106.612547
T. Izq. Estación Dimas	73.96	3	0	3276	1.8	69.5	5.3	6.6	5.8	9.4	1.0	0.0	0.6	71.3	5.3	23.4	0.074	0.503	23.841164	-106.614399
T. Der. Elota	91.92	3	0	2825	1.3	67.6	6.2	7.7	5.5	9.3	1.1	0.0	1.3	68.9	6.2	24.9	0.080	0.514	23.968120	-106.725464
T. Izq. La Cruz	105.21	3	0	3725	2.0	72.9	4.8	7.8	4.3	6.0	0.8	0.0	1.4	74.9	4.8	20.3	0.085	0.507	24.058888	-106.799585
El Salado	175.24	1	0	4746	0.5	80.4	2.7	5.6	3.0	6.6	1.0	0.0	0.2	80.9	2.7	16.4	0.109	0.528	24.495700	-107.150701
El Salado	175.24	3	0	6439	0.7	82.8	2.9	3.1	2.6	4.8	1.8	0.4	0.9	83.5	2.9	13.6	0.079	0.515	24.514342	-107.166426
T. Izq. Libramiento de Culiacán	210.40	1	1	7170	1.0	71.6	4.4	7.7	3.3	6.1	3.6	1.6	0.7	72.6	4.4	23.0	0.137	0.503	24.748846	-107.354586
T. Izq. Libramiento de Culiacán	210.40	1	2	7867	1.0	69.6	4.7	8.2	3.7	6.7	3.7	1.7	0.7	70.6	4.7	24.7	0.088	0.502	24.748846	-107.354586
Culiacán	215.30																			

6 CARR: Pericos - Los Naranjos

CLAVE: 25598

RUTA: MEX-024

AÑO: 2015

LUGAR	ESTACION				CLASIFICACION VEHICULAR EN PORCIENTO													COORDENADAS		
	KM	TE	SC	TDPA	M	A	B	C2	C3	T3S2	T3S3	T3S2R4	OTROS	A	B	C	K'	D	LATITUD	LONGITUD
Pericos	0.00	3	0	2995	1.4	89.7	1.3	5.5	1.4	0.4	0.1	0.0	0.2	91.1	1.3	7.6	0.115	0.507	25.096421	-107.683329
Badiraguato	37.50	1	0	2322	0.0	81.0	4.1	11.3	1.8	1.2	0.6	0.0	0.0	81.0	4.1	14.9	0.085	0.508	25.350130	-107.557946
Naranjos	66.00																			

7 CARR: Tepic - Mazatlán

CLAVE: 00499

RUTA: MEX-015

AÑO: 2015

LUGAR	ESTACION				CLASIFICACION VEHICULAR EN PORCIENTO													COORDENADAS		
	KM	TE	SC	TDPA	M	A	B	C2	C3	T3S2	T3S3	T3S2R4	OTROS	A	B	C	K'	D	LATITUD	LONGITUD
Tepic (Alta)	0.00	3	1	10098	1.5	94.3	1.1	2.3	0.3	0.2	0.0	0.2	0.1	95.8	1.1	3.1	0.053	0.525	21.512235	-104.906373
Tepic (Baja)	0.00	3	1	8914	6.0	84.4	1.3	7.5	0.4	0.0	0.0	0.0	0.4	90.4	1.3	8.3	0.056	0.512	21.512230	-104.906373
Tepic (Baja)	0.00	3	2	8497	5.6	84.4	2.1	6.6	0.7	0.1	0.0	0.0	0.5	90.0	2.1	7.9	0.058	0.512	21.512230	-104.906373
Tepic (Alta)	0.00	3	2	11168	1.6	92.0	2.0	3.1	0.6	0.3	0.0	0.2	0.2	93.6	2.0	4.4	0.059	0.525	21.512235	-104.906373
T. Izq. Libramiento de Tepic (Baja)	2.56	1	1																	
T. Izq. Libramiento de Tepic (Alta)	2.56	1	1																	
T. Izq. Libramiento de Tepic (Baja)	2.56	1	2																	
T. Izq. Libramiento de Tepic (Alta)	2.56	1	2																	
T. Izq. Aut. Tepic - Ent. San Blas (Cuota)	3.70	3	0	8332	2.0	71.3	2.9	6.8	5.5	8.0	2.5	0.5	0.5	73.3	2.9	23.8	0.060	0.502	21.533694	-104.931306
Los Oates	19.80	3	0	3810	2.2	69.3	6.4	7.7	5.7	6.8	1.1	0.1	0.7	71.5	6.4	22.1	0.069	0.540	21.635086	-104.969458
T. Izq. Jumatán	28.52	1	0	4168	1.0	78.8	3.1	6.2	4.0	5.0	1.5	0.3	0.1	79.8	3.1	17.1	0.066	0.503	21.669728	-105.023212
T. Izq. Jumatán	28.52	3	1	7132	2.7	69.1	3.1	7.1	4.6	8.6	2.6	1.4	0.8	71.8	3.1	25.1	0.086	0.501	21.668101	-105.029720
T. Izq. Jumatán	28.52	3	2	7152	2.5	66.7	3.3	8.2	4.7	9.5	2.9	1.4	0.8	69.2	3.3	27.5	0.069	0.501	21.668101	-105.029720

SINALOA

7 CARR : Tepic - Mazatlán

CLAVE: 00499

RUTA: MEX-015

AÑO: 2015

LUGAR	ESTACION				CLASIFICACION VEHICULAR EN PORCIENTO													COORDENADAS		
	KM	TE	SC	TDPA	M	A	B	C2	C3	T3S2	T3S3	T3S2R4	OTROS	A	B	C	K'	D	LATITUD	LONGITUD
T. Izq. San Blas	33.54	1	1	6257	1.9	67.9	7.7	6.6	4.1	8.4	1.1	1.6	0.7	69.8	7.7	22.5	0.120	0.518	21.686970	-105.047763
T. Izq. San Blas	33.54	1	2	6712	1.0	70.4	6.2	6.1	4.1	8.2	1.2	1.8	1.0	71.4	6.2	22.4	0.111	0.518	21.686970	-105.047763
T. Izq. San Blas	33.54	3	1	6904	0.7	71.3	5.1	6.5	5.0	7.6	0.9	1.6	1.3	72.0	5.1	22.9	0.080	0.536	21.698826	-105.052862
T. Izq. San Blas	33.54	3	2	6879	1.3	66.7	6.1	8.5	5.2	7.5	1.2	1.9	1.6	68.0	6.1	25.9	0.079	0.536	21.698826	-105.052862
T. Izq. Villa Hidalgo	48.12	1	0	7684	0.7	77.6	3.5	6.0	4.0	6.5	1.3	0.2	0.2	78.3	3.5	18.2	0.073	0.515	21.806013	-105.102399
T. Izq. Villa Hidalgo	48.12	3	0	7784	2.9	78.8	2.6	3.1	3.7	4.7	1.8	1.4	1.0	81.7	2.6	15.7	0.062	0.500	21.809487	-105.103659
T. Izq. Santiago Ixcuintla	56.42	1	0	8064	1.8	68.9	3.1	12.8	3.2	7.3	1.6	0.8	0.5	70.7	3.1	26.2	0.060	0.503	21.854446	-105.152952
T. Izq. Santiago Ixcuintla	56.42	3	0	7439	1.3	77.8	4.1	6.1	4.9	2.8	1.8	0.7	0.5	79.1	4.1	16.8	0.058	0.502	21.859201	-105.155937
T. Izq. Tuxpan	70.60	1	0	8632	2.1	78.3	4.6	7.1	2.6	4.3	0.6	0.1	0.3	80.4	4.6	15.0	0.076	0.520	21.944219	-105.215996
T. Izq. Tuxpan	70.60	3	0	9144	4.0	76.0	4.0	4.6	3.8	6.1	1.0	0.2	0.3	80.0	4.0	16.0	0.066	0.512	21.950604	-105.220925
T. Der. Rosa morada	90.70	3	0	5554	3.4	76.5	5.6	8.8	2.1	2.7	0.6	0.2	0.1	79.9	5.6	14.5	0.075	0.502	22.124560	-105.219597
Tierra Generosa	110.40	1	0	3813	1.6	63.7	10.5	13.2	4.4	5.0	0.5	0.0	1.1	65.3	10.5	24.2	0.074	0.508	22.293339	-105.272730
T. Der. Acaponeta	136.52	1	0	7623	1.9	70.8	3.3	13.2	2.7	5.0	2.1	0.6	0.4	72.7	3.3	24.0	0.065	0.500	22.492497	-105.384047
T. Der. Acaponeta	136.52	3	0	5744	2.1	75.9	4.1	4.4	3.5	8.4	1.2	0.1	0.3	78.0	4.1	17.9	0.079	0.503	22.492497	-105.384047
Lim. Edos. Term. Nay. Ppia. Sin.	144.60																			
Escuinapa de Hidalgo	200.00	1	0	8841	1.3	47.2	9.3	7.9	3.0	21.7	1.8	7.8	0.0	48.5	9.3	42.2	0.068	0.521	22.833579	-105.764104
Escuinapa de Hidalgo	200.00	3	0	7882	1.6	64.7	4.3	10.7	3.7	11.3	2.8	0.5	0.4	66.3	4.3	29.4	0.070	0.501	22.847017	-105.791936
Rosario	221.71	1	0	9546	3.4	68.3	3.2	8.4	3.2	9.9	2.4	0.4	0.8	71.7	3.2	25.1	0.071	0.507	22.997100	-105.851840
Rosario	221.71	3	0	5954	2.4	81.6	3.4	3.8	2.7	5.1	0.8	0.0	0.2	84.0	3.4	12.6	0.080	0.504	23.003273	-105.868415
X. C. Durango - Mazatlán (Cuota)	265.20	1	0	5256	3.3	74.0	5.1	5.8	3.5	6.8	1.0	0.0	0.5	77.3	5.1	17.6	0.079	0.508	23.190076	-106.173969
T. Der. Durango	267.99	1	0	4770	2.0	75.4	5.2	4.2	3.4	7.0	1.7	0.3	0.8	77.4	5.2	17.4	0.077	0.514	23.189505	-106.203826
T. Der. Durango	267.99	3	1	8044	2.7	78.4	4.8	4.7	2.1	5.1	0.8	1.1	0.3	81.1	4.8	14.1	0.072	0.514	23.189337	-106.211766
T. Der. Durango	267.99	3	2	8521	6.0	73.2	5.7	4.7	2.0	5.7	0.8	1.4	0.5	79.2	5.7	15.1	0.081	0.514	23.189337	-106.211766
Villa Unión	269.52	3	1	10605	2.6	72.2	4.4	7.7	2.0	6.5	2.1	1.3	1.2	74.8	4.4	20.8	0.080	0.503	23.190374	-106.222051
Villa Unión	269.52	3	2	10735	2.2	71.5	4.6	8.2	2.2	6.8	2.1	1.3	1.1	73.7	4.6	21.7	0.071	0.503	23.190374	-106.222051
T. Der. Libramiento de Mazatlán	288.87	1	1	12948	6.2	75.3	2.0	8.6	1.7	3.6	1.1	0.9	0.6	81.5	2.0	16.5	0.061	0.502	23.225079	-106.383145
T. Der. Libramiento de Mazatlán	288.87	1	2	13032	5.5	74.9	2.2	9.0	1.7	4.0	1.3	0.9	0.5	80.4	2.2	17.4	0.063	0.502	23.225079	-106.383145
Mazatlán	292.00																			

8 CARR : Durango - Mazatlán (Cuota)

CLAVE: 00084

RUTA: MEX-040D

AÑO: 2015

LUGAR	ESTACION				CLASIFICACION VEHICULAR EN PORCIENTO													COORDENADAS		
	KM	TE	SC	TDPA	M	A	B	C2	C3	T3S2	T3S3	T3S2R4	OTROS	A	B	C	K'	D	LATITUD	LONGITUD
Libramiento de Durango	20.50	3	0	2329	3.5	83.5	0.0	10.2	0.5	0.4	0.3	0.0	1.6	87.0	0.0	13.0	0.137	0.526	24.006332	-104.730705
Caseta de Cobro Durango	22.20	2	0	2561	0.8	74.9	4.0	2.6	2.9	8.7	1.0	4.7	0.4	75.7	4.0	20.3	0.108	0.500	24.005149	-104.734493

SINALOA

8 CARR : Durango - Mazatlán (Cuota)

CLAVE: 00084

RUTA: MEX-040D

AÑO : 2015

LUGAR	ESTACION				CLASIFICACION VEHICULAR EN PORCIENTO														COORDENADAS	
	KM	TE	SC	TDPA	M	A	B	C2	C3	T3S2	T3S3	T3S2R4	OTROS	A	B	C	K'	D	LATITUD	LONGITUD
Ent. Otinapa	44.50	1	0	2226	0.0	80.1	0.3	5.7	1.6	3.5	1.5	1.8	5.5	80.1	0.3	19.6	0.070	0.504	23.982127	-104.948282
Caseta de Cobro Llano Grande	78.10	2	0	2241	0.8	73.1	4.5	2.6	2.5	9.7	1.1	5.4	0.3	73.9	4.5	21.6	0.108	0.500	23.868855	-105.205733
Lim. Edos. Term. Dgo. Ppia. Sin.	157.40																			
Concordia	188.35	3	0	1782	1.0	76.2	5.8	1.4	1.3	8.7	1.8	3.8	0.0	77.2	5.8	17.0	0.075	0.502	23.251809	-106.058563
Villa Unión	208.35	1	0	1915	1.3	75.3	5.5	1.6	1.6	7.9	2.0	3.3	1.5	76.6	5.5	17.9	0.076	0.503	23.198480	-106.170009

9 CARR : Libramiento de Culiacán (Cuota)

CLAVE:

RUTA: MEX-015D

AÑO : 2015

LUGAR	ESTACION				CLASIFICACION VEHICULAR EN PORCIENTO														COORDENADAS	
	KM	TE	SC	TDPA	M	A	B	C2	C3	T3S2	T3S3	T3S2R4	OTROS	A	B	C	K'	D	LATITUD	LONGITUD
T. C. Mazatlán - Culiacán (Cuota)	0.00																			
Caseta de Cobro San Pedro	10.00	2	1	1125	0.3	40.0	2.4	3.6	5.0	31.9	4.7	10.2	1.9	40.3	2.4	57.3	0.101	0.500	24.748929	-107.568545
Caseta de Cobro San Pedro	10.00	2	2	1125	0.3	40.0	2.4	3.6	5.0	31.9	4.7	10.2	1.9	40.3	2.4	57.3	0.101	0.500	24.748929	-107.568545
T. C. Culiacán - Las Brisas	21.60																			

10 CARR : Mazatlán - Culiacán (Cuota)

CLAVE: 25045

RUTA: MEX-015D

AÑO : 2015

LUGAR	ESTACION				CLASIFICACION VEHICULAR EN PORCIENTO														COORDENADAS	
	KM	TE	SC	TDPA	M	A	B	C2	C3	T3S2	T3S3	T3S2R4	OTROS	A	B	C	K'	D	LATITUD	LONGITUD
Ent. Venadillo	0.00	3	1	3768	1.6	56.1	7.9	9.6	2.4	14.2	2.9	4.7	0.6	57.7	7.9	34.4	0.067	0.507	23.310373	-106.426949
Ent. Venadillo	0.00	3	2	3657	3.4	51.1	8.3	10.0	2.6	16.1	3.0	4.7	0.8	54.5	8.3	37.2	0.071	0.507	23.310373	-106.426949
Caseta de Cobro Mármol	25.15	3	1	3625	1.0	54.6	12.7	9.8	1.7	14.0	1.9	4.3	0.0	55.6	12.7	31.7	0.068	0.514	23.474598	-106.573408
Caseta de Cobro Mármol	25.15	3	2	3834	1.5	54.4	12.0	10.0	1.4	14.5	1.9	4.3	0.0	55.9	12.0	32.1	0.069	0.514	23.474598	-106.573408
Caseta de Cobro Costa Rica	187.80	3	1	3626	2.7	50.6	10.0	7.4	3.5	17.3	1.8	6.0	0.7	53.3	10.0	36.7	0.128	0.542	24.583254	-107.440471
Caseta de Cobro Costa Rica	187.80	3	2	3681	2.0	45.3	12.3	7.5	4.0	20.0	2.0	6.2	0.7	47.3	12.3	40.4	0.071	0.542	24.583254	-107.440471
T. C. Culiacán - El Dorado	190.26																			

11 CARR : Tepic - Villa Unión (cuota)

CLAVE: 00500

RUTA: MEX-015D

AÑO : 2015

LUGAR	ESTACION				CLASIFICACION VEHICULAR EN PORCIENTO														COORDENADAS	
	KM	TE	SC	TDPA	M	A	B	C2	C3	T3S2	T3S3	T3S2R4	OTROS	A	B	C	K'	D	LATITUD	LONGITUD
Tepic	0.00																			
Caseta de Cobro El Pichón	4.70	1	1	5623	1.0	73.4	6.0	4.8	1.4	7.6	1.7	2.8	1.3	74.4	6.0	19.6	0.079	0.505	21.566613	-104.980367
Caseta de Cobro El Pichón	4.70	1	2	5746	1.4	74.3	5.5	4.5	1.8	6.5	2.1	2.8	1.1	75.7	5.5	18.8	0.076	0.505	21.566613	-104.980367
Caseta de Cobro El Pichón	4.70	2	1	4801	0.6	68.1	7.6	3.8	3.9	10.0	1.3	4.1	0.6	68.7	7.6	23.7	0.098	0.500	21.571682	-104.987528

SINALOA

11 CARR : Tepic - Villa Unión (cuota)

CLAVE: 00500

RUTA: MEX-015D

AÑO : 2015

LUGAR	ESTACION				CLASIFICACION VEHICULAR EN PORCIENTO														COORDENADAS	
	KM	TE	SC	TDPA	M	A	B	C2	C3	T3S2	T3S3	T3S2R4	OTROS	A	B	C	K'	D	LATITUD	LONGITUD
Caseta de Cobro El Pichón	4.70	2	2	4801	0.6	68.1	7.6	3.8	3.9	10.0	1.3	4.1	0.6	68.7	7.6	23.7	0.098	0.500	21.571682	-104.987528
T. C. Tepic - Mazatlán	21.00	1	1	5165	0.5	75.2	4.9	5.3	2.2	8.3	1.7	1.2	0.7	75.7	4.9	19.4	0.097	0.508	21.662655	-105.027794
T. C. Tepic - Mazatlán	21.00	1	2	5342	0.6	72.5	7.1	8.2	1.4	7.1	1.4	1.1	0.6	73.1	7.1	19.8	0.066	0.508	21.662655	-105.027794
T. C. Tepic - Mazatlán	24.50	3	0	5364	2.5	71.1	8.0	9.5	3.9	2.7	1.1	0.7	0.5	73.6	8.0	18.4	0.072	0.504	21.714461	-105.060385
Est. Ruíz	54.90	1	0	4937	0.7	74.9	8.3	5.2	1.8	6.3	0.6	2.0	0.2	75.6	8.3	16.1	0.075	0.501	21.947399	-105.112100
Est. Ruíz	54.90	3	0	3901	0.8	64.4	10.8	2.4	1.6	10.1	1.6	7.5	0.8	65.2	10.8	24.0	0.096	0.505	21.956930	-105.120255
Rosa morada	73.50	1	0	4304	1.1	69.6	9.1	7.9	2.9	7.8	0.8	0.7	0.1	70.7	9.1	20.2	0.062	0.503	22.085417	-105.211756
Rosa morada	73.50	3	0	3966	0.7	70.8	11.2	8.6	4.5	3.3	0.6	0.2	0.1	71.5	11.2	17.3	0.065	0.501	22.091306	-105.219327
Acajoneta	120.20	1	0	4048	2.6	70.9	8.2	9.4	3.3	4.0	1.0	0.4	0.2	73.5	8.2	18.3	0.078	0.503	22.449684	-105.420079
Caseta de Cobro Acajoneta	120.20	2	0	199	0.1	54.6	14.2	5.5	7.3	11.9	1.8	4.4	0.2	54.7	14.2	31.1	0.081	0.500	22.454352	-105.419106
Acajoneta	120.20	3	0	3782	0.8	48.9	14.7	11.0	1.9	11.7	1.7	7.3	2.0	49.7	14.7	35.6	0.086	0.521	22.457527	-105.429478
Lim. Edos. Term. Nay. Ppia. Sin.	132.80																			
Escuinapa de Hidalgo	208.60	1	1	2159	1.9	59.0	10.8	3.8	3.3	13.6	1.2	5.8	0.6	60.9	10.8	28.3	0.120	0.501	22.853197	-105.748622
Escuinapa de Hidalgo	208.60	1	2	2153	1.8	56.9	11.5	4.8	3.7	13.9	0.8	6.0	0.6	58.7	11.5	29.8	0.112	0.501	22.853197	-105.748622
Escuinapa de Hidalgo	208.60	3	0	4202	0.8	43.2	10.0	7.0	4.5	20.9	3.3	9.5	0.8	44.0	10.0	46.0	0.083	0.501	22.863145	-105.758318
Rosario	220.68	1	0	3566	1.2	49.0	9.8	7.1	2.9	18.6	2.9	7.6	0.9	50.2	9.8	40.0	0.089	0.501	22.975592	-105.867083
Caseta de Cobro Rosario	220.68	2	0	3907	0.5	42.4	9.1	3.6	4.8	25.1	3.0	10.2	1.3	42.9	9.1	48.0	0.081	0.500	22.984689	-105.877932
Rosario	220.68	3	1	2084	3.0	50.4	12.7	9.0	3.1	14.4	1.5	5.5	0.4	53.4	12.7	33.9	0.095	0.544	22.990990	-105.885567
Rosario	220.68	3	2	2029	2.2	45.4	10.2	9.3	2.7	18.3	2.9	8.0	1.0	47.6	10.2	42.2	0.087	0.505	22.990990	-105.885567
X. C. Durango - Villa Unión (Cuota)	240.90	1	0	4265	3.0	45.3	12.6	10.8	5.8	13.4	1.8	5.5	1.8	48.3	12.6	39.1	0.070	0.528	23.185886	-106.174225
X. C. Durango - Villa Unión (Cuota)	240.90	3	1	3306	2.3	53.8	12.8	10.9	4.2	10.4	0.9	3.3	1.4	56.1	12.8	31.1	0.165	0.541	23.195145	-106.192131
X. C. Durango - Villa Unión (Cuota)	240.90	3	2	3894	6.1	53.5	9.6	4.7	3.4	14.7	1.5	5.9	0.6	59.6	9.6	30.8	0.169	0.541	23.195145	-106.192131

12 CARR : Est. Don - Nogales (Cuota)

CLAVE: 26444

RUTA: MEX-015D-015

AÑO : 2015

LUGAR	ESTACION				CLASIFICACION VEHICULAR EN PORCIENTO														COORDENADAS	
	KM	TE	SC	TDPA	M	A	B	C2	C3	T3S2	T3S3	T3S2R4	OTROS	A	B	C	K'	D	LATITUD	LONGITUD
T. C. Topolobampo - Choix	0.00	3	1	7573	0.6	66.6	4.3	6.4	8.7	8.5	1.9	2.1	0.9	67.2	4.3	28.5	0.066	0.509	25.834593	-108.974067
T. C. Topolobampo - Choix	0.00	3	2	7860	0.7	67.3	4.9	5.5	9.4	8.0	1.7	1.9	0.6	68.0	4.9	27.1	0.069	0.509	25.834593	-108.974067
T. Izq. Ahome	17.13	3	1	7084	1.2	64.0	7.3	5.2	5.3	11.6	2.0	3.1	0.3	65.2	7.3	27.5	0.063	0.554	25.944318	-109.052952
T. Izq. Ahome	17.13	3	2	7324	1.7	69.6	6.4	5.2	4.8	8.7	1.2	2.0	0.4	71.3	6.4	22.3	0.064	0.554	25.944318	-109.052952
T. Izq. Coahuilbampo	19.00	1	1	7830	9.3	64.8	4.9	5.6	3.9	2.5	1.0	3.2	4.8	74.1	4.9	21.0	0.066	0.522	25.958459	-109.053521
T. Izq. Coahuilbampo	19.00	1	2	7164	5.3	69.3	4.2	2.3	3.8	6.8	2.2	3.2	2.9	74.6	4.2	21.2	0.070	0.522	25.958459	-109.053521
T. Izq. Coahuilbampo	19.00	3	1	6391	1.5	71.0	4.8	4.8	3.1	8.6	2.0	3.6	0.6	72.5	4.8	22.7	0.060	0.501	25.965385	-109.049992
T. Izq. Coahuilbampo	19.00	3	2	6368	1.4	68.9	5.6	5.3	3.2	9.0	2.4	3.6	0.6	70.3	5.6	24.1	0.065	0.501	25.965385	-109.049992

SINALOA

12 CARR: Est. Don - Nogales (Cuota)

CLAVE: 26444

RUTA: MEX-015D-015

AÑO: 2015

LUGAR	ESTACION				CLASIFICACION VEHICULAR EN PORCIENTO														COORDENADAS	
	KM	TE	SC	TDPA	M	A	B	C2	C3	T3S2	T3S3	T3S2R4	OTROS	A	B	C	K'	D	LATITUD	LONGITUD
Poblado Chico	50.00	3	1	4685	3.7	70.1	4.8	4.3	1.8	8.5	2.4	3.4	1.0	73.8	4.8	21.4	0.080	0.500	26.235052	-109.052469
Poblado Chico	50.00	3	2	4692	2.8	64.3	5.1	8.8	2.2	9.5	2.9	3.4	1.0	67.1	5.1	27.8	0.078	0.500	26.235052	-109.052469
T. Der. El Fuerte	54.80	1	1	4844	1.8	66.3	7.7	1.2	3.7	6.4	3.7	6.7	2.5	68.1	7.7	24.2	0.063	0.508	26.262819	-109.044439
T. Der. El Fuerte	54.80	1	2	5009	1.3	64.5	7.7	1.1	1.8	12.2	2.3	6.7	2.4	65.8	7.7	26.5	0.062	0.508	26.262819	-109.044439
T. Der. El Fuerte	54.80	3	1	5667	2.1	69.0	5.3	4.2	2.5	9.4	2.5	4.1	0.9	71.1	5.3	23.6	0.074	0.500	26.275733	-109.040876
T. Der. El Fuerte	54.80	3	2	5674	1.4	67.6	5.8	4.8	2.9	10.0	2.5	4.1	0.9	69.0	5.8	25.2	0.065	0.500	26.275733	-109.040876
Lim. Edos. Term. Sin. Ppia. Son.	69.80																			
T. Izq. Huatabampo	128.50	1	1	3006	1.4	50.0	10.4	5.5	4.5	19.2	2.8	5.5	0.7	51.4	10.4	38.2	0.063	0.527	26.836543	-109.365842
T. Izq. Huatabampo	128.50	1	2	3352	2.5	43.2	12.4	10.0	4.6	18.8	1.9	6.1	0.5	45.7	12.4	41.9	0.065	0.527	26.836543	-109.365842
Caseta de Cobro Estacion Don (La Jaula)	129.90	2	1	2437	0.3	44.8	8.6	4.4	3.7	24.7	2.8	9.4	1.3	45.1	8.6	46.3	0.086	0.500	26.849800	-109.373287
Caseta de Cobro Estacion Don (La Jaula)	129.90	2	2	2437	0.3	44.8	8.6	4.4	3.7	24.7	2.8	9.4	1.3	45.1	8.6	46.3	0.086	0.500	26.849800	-109.373287
Navojoa	155.00	1	1	7035	2.0	72.8	4.2	4.6	1.8	7.8	2.7	3.2	0.9	74.8	4.2	21.0	0.064	0.500	27.038053	-109.436157
Navojoa	155.00	1	2	7025	1.9	71.2	4.6	5.3	2.0	8.3	2.8	3.2	0.7	73.1	4.6	22.3	0.066	0.500	27.038053	-109.436157
Navojoa	155.00	3	1	9038	3.8	75.2	4.5	4.6	1.4	5.6	2.0	2.4	0.5	79.0	4.5	16.5	0.069	0.502	27.105049	-109.447878
Navojoa	155.00	3	2	9111	3.2	73.5	5.1	5.1	1.4	6.7	2.3	2.4	0.3	76.7	5.1	18.2	0.069	0.502	27.105049	-109.447878
T. Izq. Villa Juárez	167.25	3	1	5323	1.2	64.1	8.1	4.9	3.6	11.6	2.1	4.1	0.3	65.3	8.1	26.6	0.066	0.504	27.156530	-109.508899
T. Izq. Villa Juárez	167.25	3	2	5417	1.2	65.4	7.7	4.1	4.1	11.6	1.5	3.9	0.5	66.6	7.7	25.7	0.079	0.504	27.156530	-109.508899
Caseta de Cobro Fundición	195.80	2	1	3166	0.3	53.5	7.5	4.3	3.2	20.0	2.4	7.7	1.1	53.8	7.5	38.7	0.086	0.500	27.320379	-109.719785
Caseta de Cobro Fundición	195.80	2	2	3166	0.3	53.5	7.5	4.3	3.2	20.0	2.4	7.7	1.1	53.8	7.5	38.7	0.086	0.500	27.320379	-109.719785
T. Der. Fundición	196.30	1	1	4674	0.6	61.8	7.6	4.2	3.0	15.1	2.5	4.6	0.6	62.4	7.6	30.0	0.068	0.502	27.322537	-109.722371
T. Der. Fundición	196.30	1	2	4639	0.5	62.0	7.7	3.9	3.7	15.1	1.8	4.8	0.5	62.5	7.7	29.8	0.072	0.502	27.322537	-109.722371
Cd. Obregón	222.70																			
Cd. Obregón	222.70	1	1	11610	2.7	70.3	6.8	4.7	3.6	7.8	1.5	1.9	0.7	73.0	6.8	20.2	0.067	0.503	27.460738	-109.901316
Cd. Obregón	222.70	1	2	11477	1.9	70.6	6.5	4.3	3.2	8.3	2.2	2.7	0.3	72.5	6.5	21.0	0.069	0.503	27.460738	-109.901316
Esperanza	230.66	1	1	9119	0.8	69.6	5.2	5.6	3.1	9.5	2.9	3.0	0.3	70.4	5.2	24.4	0.062	0.506	27.560195	-109.927072
Esperanza	230.66	1	2	8891	1.8	69.2	5.5	4.6	4.0	9.2	2.4	2.7	0.6	71.0	5.5	23.5	0.059	0.506	27.560195	-109.927072
Esperanza	230.66	3	1	4476	1.6	50.2	9.8	6.7	5.3	16.2	4.2	5.4	0.6	51.8	9.8	38.4	0.056	0.512	27.596468	-109.931564
Esperanza	230.66	3	2	4697	2.1	47.9	10.4	9.9	5.6	15.8	2.6	5.2	0.5	50.0	10.4	39.6	0.074	0.512	27.596468	-109.931564
Caseta de Cobro Esperanza	233.40	2	1	2589	0.2	47.9	8.5	4.5	3.3	23.2	2.4	8.8	1.2	48.1	8.5	43.4	0.086	0.500	27.603715	-109.939118
Caseta de Cobro Esperanza	233.40	2	2	2589	0.2	47.9	8.5	4.5	3.3	23.2	2.4	8.8	1.2	48.1	8.5	43.4	0.086	0.500	27.603715	-109.939118
T. Der. Estación Corral	236.50	1	1	3671	0.7	50.9	7.9	5.7	5.8	17.7	4.7	5.9	0.7	51.6	7.9	40.5	0.062	0.511	27.617834	-109.953505
T. Der. Estación Corral	236.50	1	2	3843	1.8	47.8	10.9	6.0	6.9	17.4	2.7	6.0	0.5	49.6	10.9	39.5	0.080	0.511	27.617834	-109.953505
T. Der. Estación Corral	236.50	3	1	3845	1.7	48.1	10.0	4.1	7.7	17.9	4.2	5.5	0.8	49.8	10.0	40.2	0.061	0.500	27.618100	-109.964823
T. Der. Estación Corral	236.50	3	2	3845	2.0	49.3	9.9	5.2	6.6	18.0	2.6	5.6	0.8	51.3	9.9	38.8	0.072	0.500	27.618100	-109.964823
T. Izq. BÁCUM	248.16	1	1	3788	1.3	47.7	9.5	7.1	6.4	17.5	4.0	5.3	1.2	49.0	9.5	41.5	0.057	0.501	27.598994	-110.076791

SINALOA

12 CARR: Est. Don - Nogales (Cuota)

CLAVE: 26444

RUTA: MEX-015D-015

AÑO: 2015

LUGAR	ESTACION				CLASIFICACION VEHICULAR EN PORCIENTO														COORDENADAS	
	KM	TE	SC	TDPA	M	A	B	C2	C3	T3S2	T3S3	T3S2R4	OTROS	A	B	C	K'	D	LATITUD	LONGITUD
T. Izq. Bäum	248.16	1	2	3807	1.6	47.7	11.4	10.0	6.6	15.1	2.3	3.4	1.9	49.3	11.4	39.3	0.079	0.501	27.598994	-110.076791
T. Izq. Bäum	248.16	3	1	5395	1.2	66.1	5.4	5.7	2.2	10.7	3.6	4.7	0.4	67.3	5.4	27.3	0.071	0.534	27.597696	-110.084171
T. Izq. Bäum	248.16	3	2	6189	1.4	69.6	4.6	5.4	3.4	7.9	2.5	4.7	0.5	71.0	4.6	24.4	0.069	0.534	27.597696	-110.084171
Vicam	269.98	3	1	5628	1.9	66.1	6.0	7.4	2.0	9.5	2.6	3.7	0.8	68.0	6.0	26.0	0.067	0.508	27.642936	-110.299390
Vicam	269.98	3	2	5820	1.7	63.2	6.6	8.4	2.2	10.4	2.9	3.7	0.9	64.9	6.6	28.5	0.064	0.508	27.642936	-110.299390
T. Izq. Pótam	280.10	1	1	4939	1.4	57.5	8.1	7.8	4.7	12.2	2.5	3.5	2.3	58.9	8.1	33.0	0.065	0.511	27.683872	-110.355596
T. Izq. Pótam	280.10	1	2	5150	2.4	56.3	10.5	8.8	5.1	12.0	0.9	2.7	1.3	58.7	10.5	30.8	0.086	0.511	27.683872	-110.355596
T. Izq. Pótam	280.10	3	1	4610	1.2	63.6	7.0	8.8	2.7	9.3	2.7	3.8	0.9	64.8	7.0	28.2	0.082	0.526	27.703454	-110.370141
T. Izq. Pótam	280.10	3	2	5332	0.3	61.5	7.4	9.1	3.2	10.3	2.7	4.4	1.1	61.8	7.4	30.8	0.079	0.526	27.703454	-110.370141
T. Der. Libramiento de Guaymas	330.50	1	1	6238	1.1	66.3	5.1	8.9	2.2	8.6	2.9	4.2	0.7	67.4	5.1	27.5	0.064	0.505	27.951243	-110.736346
T. Der. Libramiento de Guaymas	330.50	1	2	6365	1.0	65.1	5.4	8.8	2.4	9.4	3.1	4.2	0.6	66.1	5.4	28.5	0.062	0.505	27.951243	-110.736346
T. Der. Libramiento de Guaymas	330.50	3	0	5504	1.1	78.1	7.1	5.6	1.7	4.5	1.0	0.6	0.3	79.2	7.1	13.7	0.081	0.505	27.952226	-110.763005
Empalme	337.72	1	0	6120	0.6	74.5	5.8	8.8	2.4	4.4	2.1	0.9	0.5	75.1	5.8	19.1	0.087	0.505	27.952474	-110.806913
Empalme	337.72	3	1	8870	2.2	80.6	4.7	9.5	1.2	0.8	0.6	0.1	0.3	82.8	4.7	12.5	0.085	0.503	27.955535	-110.831297
Empalme	337.72	3	2	8758	0.6	87.2	3.9	3.8	1.2	1.9	0.9	0.4	0.1	87.8	3.9	8.3	0.069	0.503	27.955535	-110.831297
T. Izq. San Carlos	355.70	1	1	7444	1.1	77.8	4.2	9.6	1.3	3.9	1.0	0.8	0.3	78.9	4.2	16.9	0.061	0.510	27.981542	-110.939438
T. Izq. San Carlos	355.70	1	2	7163	1.4	75.9	4.4	10.2	1.5	4.4	1.2	0.8	0.2	77.3	4.4	18.3	0.069	0.510	27.981542	-110.939438
T. Izq. San Carlos	355.70	3	1	3613	1.9	75.5	4.0	9.3	1.6	4.5	1.1	1.3	0.8	77.4	4.0	18.6	0.069	0.504	27.996139	-110.938789
T. Izq. San Carlos	355.70	3	2	3670	1.6	75.0	4.3	9.7	1.9	4.3	1.3	1.3	0.6	76.6	4.3	19.1	0.071	0.504	27.996139	-110.938789
T. Izq. Bahía Kino	394.00	1	1	5047	2.9	59.3	8.8	7.4	3.4	11.7	1.9	4.0	0.6	62.2	8.8	29.0	0.091	0.506	28.316203	-111.041842
T. Izq. Bahía Kino	394.00	1	2	5177	1.8	62.2	7.7	5.7	3.9	12.0	1.5	4.0	1.2	64.0	7.7	28.3	0.084	0.506	28.316203	-111.041842
T. Izq. Bahía Kino	394.00	3	1	5460	1.4	71.4	5.1	4.7	1.4	9.5	2.1	3.5	0.9	72.8	5.1	22.1	0.071	0.510	28.325717	-111.041900
T. Izq. Bahía Kino	394.00	3	2	5681	1.6	68.7	5.7	5.8	1.6	10.2	1.9	3.5	1.0	70.3	5.7	24.0	0.067	0.510	28.325717	-111.041900
Hermosillo	473.70	1	1	7171	1.4	70.3	4.9	4.5	2.3	11.0	2.2	2.8	0.6	71.7	4.9	23.4	0.062	0.503	29.004622	-110.966560
Hermosillo	473.70	1	2	7270	1.8	68.5	5.5	4.6	2.4	11.8	2.1	2.8	0.5	70.3	5.5	24.2	0.073	0.503	29.004622	-110.966560
Hermosillo	473.70	3	1	16003	1.2	75.8	4.2	8.8	1.4	6.2	1.1	0.9	0.4	77.0	4.2	18.8	0.081	0.503	29.115662	-110.912127
Hermosillo	473.70	3	2	16178	0.9	76.0	4.5	8.5	1.2	6.4	1.2	0.9	0.4	76.9	4.5	18.6	0.071	0.503	29.115662	-110.912127
T. Der. Ures	482.30	1	1	12415	1.0	72.9	4.8	9.1	1.8	7.5	1.5	0.9	0.5	73.9	4.8	21.3	0.074	0.507	29.151437	-110.909393
T. Der. Ures	482.30	1	2	12070	1.2	69.5	5.3	10.5	2.1	8.4	1.7	0.9	0.4	70.7	5.3	24.0	0.068	0.507	29.151437	-110.909393
T. Der. Ures	482.30	3	1	7682	1.0	81.7	4.2	3.4	3.1	1.1	2.5	1.9	1.1	82.7	4.2	13.1	0.065	0.506	29.174567	-110.917025
T. Der. Ures	482.30	3	2	7874	1.2	81.2	4.0	3.2	3.2	1.3	2.8	1.9	1.2	82.4	4.0	13.6	0.064	0.506	29.174567	-110.917025
Caseta de Cobro Hermosillo	488.90	2	1	4898	0.1	67.1	4.6	3.5	1.9	14.4	2.0	5.7	0.7	67.2	4.6	28.2	0.086	0.500	29.220739	-110.930200
Caseta de Cobro Hermosillo	488.90	2	2	4898	0.1	67.1	4.6	3.5	1.9	14.4	2.0	5.7	0.7	67.2	4.6	28.2	0.086	0.500	29.220739	-110.930200
T. Der. Pesqueira	506.09	3	1	5363	0.4	63.4	5.3	9.2	1.7	13.2	1.8	4.3	0.7	63.8	5.3	30.9	0.065	0.509	29.374754	-110.973012
T. Der. Pesqueira	506.09	3	2	5557	0.7	63.1	5.0	8.9	1.8	13.5	1.9	4.3	0.8	63.8	5.0	31.2	0.069	0.509	29.374754	-110.973012

SINALOA

12 CARR: Est. Don - Nogales (Cuota)

CLAVE: 26444

RUTA: MEX-015D-015

AÑO: 2015

LUGAR	ESTACION				CLASIFICACION VEHICULAR EN PORCIENTO														COORDENADAS	
	KM	TE	SC	TDPA	M	A	B	C2	C3	T3S2	T3S3	T3S2R4	OTROS	A	B	C	K'	D	LATITUD	LONGITUD
T. Der. Carbó	542.60	1	1	5048	8.4	67.2	7.0	1.4	3.9	2.0	2.2	6.1	1.8	75.6	7.0	17.4	0.062	0.505	29.683617	-111.042321
T. Der. Carbó	542.60	1	2	5145	8.8	66.7	7.2	1.6	3.5	1.7	2.8	6.1	1.6	75.5	7.2	17.3	0.062	0.505	29.683617	-111.042321
T. Der. Carbó	542.60	3	1	5433	1.3	56.2	5.9	10.6	1.7	14.7	2.3	5.8	1.5	57.5	5.9	36.6	0.070	0.503	29.691783	-111.044030
T. Der. Carbó	542.60	3	2	5493	1.0	54.4	6.2	11.3	1.9	15.1	2.7	5.7	1.7	55.4	6.2	38.4	0.064	0.503	29.691783	-111.044030
T. Izq. Benjamín Hill	599.10	1	1	5679	1.0	56.3	6.3	12.9	1.3	16.5	2.0	2.6	1.1	57.3	6.3	36.4	0.076	0.509	30.162120	-111.097068
T. Izq. Benjamín Hill	599.10	1	2	5478	1.2	54.7	6.6	13.4	1.4	17.3	1.9	2.6	0.9	55.9	6.6	37.5	0.073	0.509	30.162120	-111.097068
T. Izq. Benjamín Hill	599.10	3	1	5683	1.2	62.9	5.4	9.9	1.2	14.6	1.5	2.9	0.4	64.1	5.4	30.5	0.064	0.518	30.179016	-111.097291
T. Izq. Benjamín Hill	599.10	3	2	5295	1.0	62.5	5.6	10.4	1.1	14.8	1.3	2.9	0.4	63.5	5.6	30.9	0.068	0.518	30.179016	-111.097291
Santa Ana	640.97	1	1	6501	0.7	76.3	5.0	4.3	1.6	7.9	1.3	2.6	0.3	77.0	5.0	18.0	0.074	0.502	30.534871	-111.116398
Santa Ana	640.97	1	2	6458	0.2	78.1	4.3	3.4	1.6	8.4	1.2	2.4	0.4	78.3	4.3	17.4	0.080	0.502	30.534871	-111.116398
Santa Ana	640.97	3	1	6020	0.9	69.5	2.7	7.0	1.3	10.9	3.2	4.2	0.3	70.4	2.7	26.9	0.063	0.503	30.554445	-111.102210
Santa Ana	640.97	3	2	6085	0.7	70.0	2.5	7.3	1.2	10.7	3.1	4.2	0.3	70.7	2.5	26.8	0.070	0.503	30.554445	-111.102210
Magdalena de Kino	656.40	1	1	5895	0.8	75.5	3.9	7.4	1.6	7.4	1.1	2.1	0.2	76.3	3.9	19.8	0.079	0.505	30.622084	-110.985044
Magdalena de Kino	656.40	1	2	5787	0.3	81.2	2.7	3.9	1.9	6.2	1.1	1.7	1.0	81.5	2.7	15.8	0.084	0.505	30.622084	-110.985044
Magdalena de Kino	656.40	3	1	3574	0.6	78.3	4.1	9.2	1.0	5.5	0.6	0.5	0.2	78.9	4.1	17.0	0.070	0.506	30.647681	-110.946236
Magdalena de Kino	656.40	3	2	3660	0.9	77.7	4.5	9.5	1.1	5.2	0.5	0.5	0.1	78.6	4.5	16.9	0.066	0.506	30.647681	-110.946236
Imuris	682.70	1	1	7120	1.8	68.9	4.0	9.1	1.6	8.7	3.0	2.4	0.5	70.7	4.0	25.3	0.068	0.506	30.774983	-110.857253
Imuris	682.70	1	2	7290	2.4	65.7	4.2	10.0	1.8	9.5	3.3	2.4	0.7	68.1	4.2	27.7	0.073	0.506	30.774983	-110.857253
T. Der. Agua Prieta	683.20	3	1	5809	2.0	73.0	4.5	6.6	1.9	6.6	2.5	1.9	1.0	75.0	4.5	20.5	0.081	0.501	30.794081	-110.850305
T. Der. Agua Prieta	683.20	3	2	5829	2.2	73.3	4.3	6.8	1.7	6.2	2.5	1.9	1.1	75.5	4.3	20.2	0.070	0.501	30.794081	-110.850305
T. Izq. Sáric	729.60	1	1	9444	0.8	80.5	3.8	5.9	2.3	4.1	1.2	0.9	0.5	81.3	3.8	14.9	0.064	0.504	31.176145	-110.967221
T. Izq. Sáric	729.60	1	2	9590	0.7	80.7	3.7	5.7	2.5	4.3	1.1	0.9	0.4	81.4	3.7	14.9	0.074	0.504	31.176145	-110.967221
T. Izq. Sáric	729.60	3	1	8738	0.9	76.0	3.3	10.0	2.4	5.7	0.5	0.5	0.7	76.9	3.3	19.8	0.069	0.514	31.191082	-110.972587
T. Izq. Sáric	729.60	3	2	9229	1.0	75.2	2.7	10.1	2.7	6.6	0.6	0.5	0.6	76.2	2.7	21.1	0.068	0.514	31.191082	-110.972587
T. Izq. Libramiento de Nogales (Cuota)	734.70	3	1	10964	1.2	79.9	3.3	6.3	2.9	4.5	0.8	0.6	0.5	81.1	3.3	15.6	0.078	0.504	31.244447	-110.959583
T. Izq. Libramiento de Nogales (Cuota)	734.70	3	2	11153	1.4	77.9	3.7	7.2	3.2	4.8	0.9	0.6	0.3	79.3	3.7	17.0	0.070	0.504	31.244447	-110.959583
T. Izq. Periférico Luis Donaldo Colosio	740.70	1	1	26095	0.8	84.7	2.2	4.7	1.0	2.2	2.5	1.0	0.9	85.5	2.2	12.3	0.074	0.502	31.276402	-110.941228
T. Izq. Periférico Luis Donaldo Colosio	740.70	1	2	26257	1.0	82.6	2.7	5.5	1.1	2.1	2.9	1.0	1.1	83.6	2.7	13.7	0.078	0.502	31.276402	-110.941228
Nogales	743.70	1	1	18390	0.7	84.5	3.3	6.9	1.0	1.3	1.1	1.0	0.2	85.2	3.3	11.5	0.074	0.508	31.280978	-110.939312
Nogales	743.70	1	2	18964	0.6	83.8	3.5	7.3	1.2	1.4	0.9	1.0	0.3	84.4	3.5	12.1	0.090	0.508	31.280978	-110.939312

SINALOA

13 CARR: Carrizal - Campo Anibal

CLAVE: 25585

RUTA: SIN-019

AÑO: 2015

LUGAR	ESTACION				CLASIFICACION VEHICULAR EN PORCIENTO										COORDENADAS					
	KM	TE	SC	TDPA	M	A	B	C2	C3	T3S2	T3S3	T3S2R4	OTROS	A	B	C	K'	D	LATITUD	LONGITUD
T. C. Mazatlán - Culiacán	0.00	3	0	1851	0.2	89.2	1.0	6.2	1.8	1.2	0.2	0.0	0.2	89.4	1.0	9.6	0.095	0.515	24.635470	-107.273741
X. C. Culiacán - El Dorado	29.20	1	0	10036	3.7	84.3	3.0	4.6	2.6	0.3	0.0	0.2	1.3	88.0	3.0	9.0	0.068	0.534	24.590404	-107.441391
X. C. Culiacán - El Dorado	29.20	3	0	1773	2.2	61.3	13.5	6.5	6.8	0.0	5.5	4.2	0.0	63.5	13.5	23.0	0.073	0.547	24.599365	-107.447758
T. C. San Pedro - Campo Anibal	32.00	1	0	1290	4.2	73.5	4.6	7.5	8.0	1.5	0.0	0.3	0.4	77.7	4.6	17.7	0.092	0.517	24.590355	-107.541723

14 CARR: Culiacán - Altata

CLAVE: 25013

RUTA: SIN-030

AÑO: 2015

LUGAR	ESTACION				CLASIFICACION VEHICULAR EN PORCIENTO										COORDENADAS					
	KM	TE	SC	TDPA	M	A	B	C2	C3	T3S2	T3S3	T3S2R4	OTROS	A	B	C	K'	D	LATITUD	LONGITUD
Culiacán	0.00																			
T. Izq. El Dorado	6.20	1	1	28265	0.8	88.8	2.2	4.1	0.4	1.2	1.9	0.2	0.4	89.6	2.2	8.2	0.060	0.502	24.778746	-107.440964
T. Izq. El Dorado	6.20	1	2	28034	0.3	90.2	2.0	3.7	0.3	1.1	1.9	0.2	0.3	90.5	2.0	7.5	0.059	0.502	24.778746	-107.440964
T. Izq. El Dorado	6.20	3	1	36469	1.9	86.9	1.2	5.5	1.2	1.4	1.2	0.3	0.4	88.8	1.2	10.0	0.069	0.501	24.775127	-107.451729
T. Izq. El Dorado	6.20	3	2	36278	1.1	86.3	1.4	6.3	1.3	1.6	1.3	0.3	0.4	87.4	1.4	11.2	0.067	0.501	24.775127	-107.451729
T. Izq. Aeropuerto	8.70	3	1	25889	0.6	89.2	0.9	5.7	1.9	1.2	0.2	0.2	0.1	89.8	0.9	9.3	0.088	0.513	24.775240	-107.469887
T. Izq. Aeropuerto	8.70	3	2	24590	0.7	89.9	1.3	5.0	1.7	1.0	0.1	0.2	0.1	90.6	1.3	8.1	0.106	0.513	24.775240	-107.469887
Navolato	32.40	1	1	8512	1.9	91.0	1.0	4.2	1.2	0.4	0.1	0.1	0.1	92.9	1.0	6.1	0.100	0.505	24.755749	-107.688311
Navolato	32.40	1	2	8332	1.0	91.4	1.3	4.5	1.1	0.4	0.1	0.1	0.1	92.4	1.3	6.3	0.113	0.505	24.755749	-107.688311
Navolato	32.40	3	1	6319	0.2	92.6	1.2	3.6	1.6	0.4	0.1	0.1	0.2	92.8	1.2	6.0	0.119	0.526	24.755702	-107.700308
Navolato	32.40	3	2	7016	1.6	91.6	0.9	3.8	1.4	0.4	0.1	0.1	0.1	93.2	0.9	5.9	0.141	0.526	24.755702	-107.700308
T. Der. 5 Hermanos	38.20	3	1	3398	1.7	91.7	1.3	3.5	1.3	0.2	0.0	0.1	0.2	93.4	1.3	5.3	0.182	0.502	24.752074	-107.742749
T. Der. 5 Hermanos	38.20	3	2	3370	0.5	92.7	1.4	3.7	1.3	0.2	0.0	0.1	0.1	93.2	1.4	5.4	0.093	0.502	24.752074	-107.742749
Altata	67.00	1	1	1952	3.1	89.5	1.8	4.7	0.9	0.0	0.0	0.0	0.0	92.6	1.8	5.6	0.064	0.507	24.643849	-107.925282
Altata	67.00	1	2	2007	3.0	88.6	2.0	5.4	1.0	0.0	0.0	0.0	0.0	91.6	2.0	6.4	0.072	0.507	24.643849	-107.925282

15 CARR: Culiacán - El Dorado

CLAVE: 25044

RUTA: SIN-005

AÑO: 2015

LUGAR	ESTACION				CLASIFICACION VEHICULAR EN PORCIENTO										COORDENADAS					
	KM	TE	SC	TDPA	M	A	B	C2	C3	T3S2	T3S3	T3S2R4	OTROS	A	B	C	K'	D	LATITUD	LONGITUD
T. C. Culiacán - Altata	0.00	3	1	20179	0.4	86.7	3.8	3.7	2.2	2.3	0.3	0.5	0.1	87.1	3.8	9.1	0.079	0.531	24.764747	-107.448219
T. C. Culiacán - Altata	0.00	3	2	22816	0.4	87.3	2.5	4.1	2.3	2.5	0.3	0.5	0.1	87.7	2.5	9.8	0.077	0.531	24.764747	-107.448219
T. C. Libramiento Sur de Culiacán	3.60	3	1	19405	1.5	82.1	3.4	4.7	1.6	3.4	1.5	1.1	0.7	83.6	3.4	13.0	0.069	0.511	24.740339	-107.454096
T. C. Libramiento Sur de Culiacán	3.60	3	2	18604	1.4	80.7	3.7	5.7	1.7	3.6	1.4	1.1	0.7	82.1	3.7	14.2	0.070	0.511	24.740339	-107.454096
X. C. Carrizal - Campo Anibal	21.35	1	1	7868	0.6	82.4	3.2	2.4	2.6	4.4	0.9	2.2	1.3	83.0	3.2	13.8	0.064	0.506	24.601143	-107.444625
X. C. Carrizal - Campo Anibal	21.35	1	2	8044	0.5	84.4	3.1	1.7	2.8	2.5	1.4	2.2	1.4	84.9	3.1	12.0	0.066	0.506	24.601143	-107.444625

SINALOA

15 CARR: Culiacán - El Dorado

CLAVE: 25044

RUTA: SIN-005

AÑO: 2015

LUGAR	ESTACION				CLASIFICACION VEHICULAR EN PORCIENTO										COORDENADAS					
	KM	TE	SC	TDPA	M	A	B	C2	C3	T3S2	T3S3	T3S2R4	OTROS	A	B	C	K'	D	LATITUD	LONGITUD
X. C. Carrizal - Campo Aníbal	21.35	3	0	6900	1.3	85.2	2.9	5.9	2.3	1.6	0.2	0.4	0.2	86.5	2.9	10.6	0.081	0.506	24.583028	-107.444503
El Dorado	55.00	1	1	4510	0.9	88.4	3.5	4.4	1.4	0.9	0.2	0.0	0.3	89.3	3.5	7.2	0.072	0.507	24.341959	-107.370693
El Dorado	55.00	1	2	4388	0.8	86.5	4.1	5.5	1.5	0.9	0.7	0.0	0.0	87.3	4.1	8.6	0.061	0.507	24.341959	-107.370693

16 CARR: El Limoncito - Cinco Hermanos

CLAVE: 25016

RUTA: SIN-016

AÑO: 2015

LUGAR	ESTACION				CLASIFICACION VEHICULAR EN PORCIENTO										COORDENADAS					
	KM	TE	SC	TDPA	M	A	B	C2	C3	T3S2	T3S3	T3S2R4	OTROS	A	B	C	K'	D	LATITUD	LONGITUD
T. C. Culiacán - Altata	0.00	3	0	2390	4.5	86.9	2.1	4.3	1.3	0.6	0.0	0.2	0.1	91.4	2.1	6.5	0.077	0.517	24.758857	-107.739082
Cinco Hermanos	16.00	1	0	940	9.6	80.5	1.3	3.5	2.2	0.1	0.0	0.0	2.8	90.1	1.3	8.6	0.127	0.515	24.808807	-107.856379

17 CARR: El Salado - El Dorado

CLAVE: 25010

RUTA: SIN-010

AÑO: 2015

LUGAR	ESTACION				CLASIFICACION VEHICULAR EN PORCIENTO										COORDENADAS					
	KM	TE	SC	TDPA	M	A	B	C2	C3	T3S2	T3S3	T3S2R4	OTROS	A	B	C	K'	D	LATITUD	LONGITUD
T. C. Mazatlán - Culiacán	0.00	3	0	2436	4.1	89.8	1.0	1.9	1.9	0.0	0.0	0.0	1.3	93.9	1.0	5.1	0.058	0.504	24.504702	-107.168286
El Dorado	31.00	1	0	3601	2.3	83.3	3.6	5.9	3.3	1.5	0.1	0.0	0.0	85.6	3.6	10.8	0.057	0.507	24.330108	-107.349658

18 CARR: Escuinapa de Hidalgo - Teacapan

CLAVE: 25001

RUTA: SIN-001

AÑO: 2015

LUGAR	ESTACION				CLASIFICACION VEHICULAR EN PORCIENTO										COORDENADAS					
	KM	TE	SC	TDPA	M	A	B	C2	C3	T3S2	T3S3	T3S2R4	OTROS	A	B	C	K'	D	LATITUD	LONGITUD
Escuinapa de Hidalgo	0.00	3	0	4321	0.9	88.3	3.6	3.8	2.4	0.7	0.2	0.1	0.0	89.2	3.6	7.2	0.104	0.503	22.818682	-105.791833
Teacapan	41.00	1	0	2308	4.3	86.7	0.6	5.9	0.7	1.4	0.3	0.0	0.1	91.0	0.6	8.4	0.067	0.511	22.547042	-105.741054

19 CARR: Estación Dimas - San Ignacio

CLAVE: 25007

RUTA: SIN-006

AÑO: 2015

LUGAR	ESTACION				CLASIFICACION VEHICULAR EN PORCIENTO										COORDENADAS					
	KM	TE	SC	TDPA	M	A	B	C2	C3	T3S2	T3S3	T3S2R4	OTROS	A	B	C	K'	D	LATITUD	LONGITUD
Dimas	0.00																			
X. C. Mazatlán - Culiacán	23.15	1	0	928	4.4	95.0	0.0	0.2	0.4	0.0	0.0	0.0	0.0	99.4	0.0	0.6	0.068	0.516	23.838778	-106.615874
X. C. Mazatlán - Culiacán	23.15	3	0	1810	2.5	92.5	0.0	3.2	1.8	0.0	0.0	0.0	0.0	95.0	0.0	5.0	0.065	0.518	23.790918	-106.608571
San Ignacio	56.00	1	0	1470	3.2	89.9	1.6	4.4	0.8	0.0	0.0	0.0	0.1	93.1	1.6	5.3	0.095	0.505	23.927150	-106.430144

SINALOA

20 CARR: Guamuchil - Mocorito

CLAVE: 25021

ruta: SIN-021

AÑO: 2015

LUGAR	ESTACION				CLASIFICACION VEHICULAR EN PORCIENTO										COORDENADAS					
	KM	TE	SC	TDPA	M	A	B	C2	C3	T3S2	T3S3	T3S2R4	OTROS	A	B	C	K'	D	LATITUD	LONGITUD
Guamuchil	0.00	3	0	6626	2.2	90.4	0.9	4.5	1.8	0.1	0.0	0.0	0.1	92.6	0.9	6.5	0.082	0.508	25.458432	-108.059103
Mocorito	17.00	1	0	6027	1.1	92.8	0.8	3.6	1.5	0.1	0.0	0.0	0.1	93.9	0.8	5.3	0.080	0.500	25.471573	-107.945218

21 CARR: Guasave - Sinaloa de Leyva

CLAVE: 25023

ruta: SIN-023

AÑO: 2015

LUGAR	ESTACION				CLASIFICACION VEHICULAR EN PORCIENTO										COORDENADAS					
	KM	TE	SC	TDPA	M	A	B	C2	C3	T3S2	T3S3	T3S2R4	OTROS	A	B	C	K'	D	LATITUD	LONGITUD
Guasave	0.00																			
X. C. Culiacán - Los Mochis	1.15	3	1	4325	2.6	77.1	1.7	9.8	3.0	4.9	0.1	0.1	0.7	79.7	1.7	18.6	0.071	0.507	25.593924	-108.456506
X. C. Culiacán - Los Mochis	1.15	3	2	4479	0.4	72.4	0.6	14.0	3.0	8.1	0.1	0.1	1.3	72.8	0.6	26.6	0.071	0.507	25.593924	-108.456506
Sinaloa de Leyva	74.50	1	1	1459	1.4	88.3	2.9	5.6	1.0	0.4	0.2	0.0	0.2	89.7	2.9	7.4	0.087	0.503	25.829715	-108.233743
Sinaloa de Leyva	74.50	1	2	1442	3.8	86.9	2.8	4.8	1.1	0.5	0.0	0.0	0.1	90.7	2.8	6.5	0.088	0.503	25.829715	-108.233743

22 CARR: Navolato - El Castillo

CLAVE: 25004

ruta: SIN-004

AÑO: 2015

LUGAR	ESTACION				CLASIFICACION VEHICULAR EN PORCIENTO										COORDENADAS					
	KM	TE	SC	TDPA	M	A	B	C2	C3	T3S2	T3S3	T3S2R4	OTROS	A	B	C	K'	D	LATITUD	LONGITUD
Navolato	0.00	3	0	5382	4.2	86.1	2.0	5.6	1.7	0.2	0.0	0.1	0.1	90.3	2.0	7.7	0.072	0.519	24.739213	-107.685432
El Castillo	29.00	1	0	1133	9.2	80.8	3.5	5.7	0.8	0.0	0.0	0.0	0.0	90.0	3.5	6.5	0.069	0.510	24.551715	-107.701820

23 CARR: Pozole - Cofradía

CLAVE: 25080

ruta: SIN-080

AÑO: 2015

LUGAR	ESTACION				CLASIFICACION VEHICULAR EN PORCIENTO										COORDENADAS					
	KM	TE	SC	TDPA	M	A	B	C2	C3	T3S2	T3S3	T3S2R4	OTROS	A	B	C	K'	D	LATITUD	LONGITUD
T. C. Tepic - Mazatlán	0.00	3	0	2626	3.1	81.5	2.0	4.3	5.0	0.7	2.1	0.0	1.3	84.6	2.0	13.4	0.078	0.509	23.198003	-106.260465
Cofradía	9.10	1	0	631	3.8	87.9	1.9	5.6	0.5	0.1	0.1	0.0	0.1	91.7	1.9	6.4	0.120	0.521	23.324276	-106.256045

24 CARR: Ramal a Chametla

CLAVE: 25002

ruta: SIN-002

AÑO: 2015

LUGAR	ESTACION				CLASIFICACION VEHICULAR EN PORCIENTO										COORDENADAS					
	KM	TE	SC	TDPA	M	A	B	C2	C3	T3S2	T3S3	T3S2R4	OTROS	A	B	C	K'	D	LATITUD	LONGITUD
T. C. Tepic - Mazatlán	0.00	3	0	2458	2.8	88.8	2.6	3.4	1.4	0.9	0.0	0.0	0.1	91.6	2.6	5.8	0.069	0.515	22.933554	-105.831926
Chametla	15.00	1	0	1031	12.4	80.4	2.2	4.1	0.8	0.0	0.0	0.0	0.1	92.8	2.2	5.0	0.136	0.539	22.882885	-105.952015

SINALOA

25 CARR: Ramal a Cosalá

CLAVE: 25008

RUTA: SIN-008

AÑO: 2015

LUGAR	ESTACION				CLASIFICACION VEHICULAR EN PORCIENTO										COORDENADAS					
	KM	TE	SC	TDPA	M	A	B	C2	C3	T3S2	T3S3	T3S2R4	OTROS	A	B	C	K'	D	LATITUD	LONGITUD
T. C. Mazatlán - Culiacán	0.00	3	0	1311	4.6	84.1	1.3	8.6	1.0	0.2	0.0	0.0	0.2	88.7	1.3	10.0	0.101	0.518	24.070200	-106.801390
Cosalá	53.00	1	0	1525	11.2	86.8	0.3	1.2	0.5	0.0	0.0	0.0	0.0	98.0	0.3	1.7	0.075	0.519	24.408566	-106.718762

26 CARR: Ramal a El Quelite

CLAVE: 25060

RUTA: SIN-060

AÑO: 2015

LUGAR	ESTACION				CLASIFICACION VEHICULAR EN PORCIENTO										COORDENADAS					
	KM	TE	SC	TDPA	M	A	B	C2	C3	T3S2	T3S3	T3S2R4	OTROS	A	B	C	K'	D	LATITUD	LONGITUD
T. C. Mazatlán - Culiacán	0.00	3	0	1224	3.1	89.2	0.8	6.5	0.4	0.0	0.0	0.0	0.0	92.3	0.8	6.9	0.132	0.508	23.532060	-106.497372
El Quelite	6.00	1	0	1073	0.4	95.7	0.5	3.1	0.3	0.0	0.0	0.0	0.0	96.1	0.5	3.4	0.136	0.507	23.548419	-106.474982

27 CARR: Ramal a Estación Bamoa

CLAVE: 25022

RUTA: SIN-022

AÑO: 2015

LUGAR	ESTACION				CLASIFICACION VEHICULAR EN PORCIENTO										COORDENADAS					
	KM	TE	SC	TDPA	M	A	B	C2	C3	T3S2	T3S3	T3S2R4	OTROS	A	B	C	K'	D	LATITUD	LONGITUD
T. C. Culiacán - Los Mochis	0.00	3	0	2802	0.2	89.8	1.1	4.2	3.7	0.6	0.3	0.0	0.1	90.0	1.1	8.9	0.073	0.508	25.518038	-108.356217
Estación Bamoa	22.50	1	0	1546	7.8	78.6	2.6	6.8	3.7	0.3	0.1	0.0	0.1	86.4	2.6	11.0	0.097	0.504	25.692986	-108.312001

28 CARR: Ramal a La Cruz

CLAVE: 25043

RUTA: SIN

AÑO: 2015

LUGAR	ESTACION				CLASIFICACION VEHICULAR EN PORCIENTO										COORDENADAS					
	KM	TE	SC	TDPA	M	A	B	C2	C3	T3S2	T3S3	T3S2R4	OTROS	A	B	C	K'	D	LATITUD	LONGITUD
T. C. Mazatlán - Culiacán	0.00	3	0	2411	2.7	87.2	1.1	4.5	2.7	1.4	0.1	0.0	0.3	89.9	1.1	9.0	0.096	0.516	24.051960	-106.798644
La Cruz	18.00	1	0	3404	1.5	87.0	1.6	4.6	3.8	1.2	0.2	0.0	0.1	88.5	1.6	9.9	0.077	0.507	23.937140	-106.875791

29 CARR: Ramal a La Noria

CLAVE: 25592

RUTA: SIN

AÑO: 2015

LUGAR	ESTACION				CLASIFICACION VEHICULAR EN PORCIENTO										COORDENADAS					
	KM	TE	SC	TDPA	M	A	B	C2	C3	T3S2	T3S3	T3S2R4	OTROS	A	B	C	K'	D	LATITUD	LONGITUD
T. C. Mazatlán - Culiacán	0.00	3	0	1489	10.0	85.5	0.0	2.5	0.0	0.0	0.0	0.0	2.0	95.5	0.0	4.5	0.066	0.508	23.349987	-106.410965
La Noria	25.50	1	0	438	18.2	78.3	0.3	2.2	0.0	0.8	0.0	0.0	0.2	96.5	0.3	3.2	0.071	0.503	23.500242	-106.322226

SINALOA

30 CARR: Ramal a La Reforma

CLAVE: 25041

RUTA: SIN-004

AÑO: 2015

LUGAR	ESTACION				CLASIFICACION VEHICULAR EN PORCIENTO													COORDENADAS		
	KM	TE	SC	TDPA	M	A	B	C2	C3	T3S2	T3S3	T3S2R4	OTROS	A	B	C	K'	D	LATITUD	LONGITUD
T. C. Culiacán - Los Mochis	0.00	3	0	9240	0.4	89.3	1.8	4.6	3.0	0.4	0.2	0.2	0.1	89.7	1.8	8.5	0.072	0.507	25.446255	-108.085132
T. Der. La Angostura	14.00	3	0	2588	0.5	80.8	0.9	5.3	11.3	0.4	0.6	0.0	0.2	81.3	0.9	17.8	0.075	0.524	25.366138	-108.142721
La Reforma	60.00	1	0	3664	3.6	92.2	0.6	3.0	0.4	0.1	0.0	0.0	0.1	95.8	0.6	3.6	0.091	0.516	25.087209	-108.047805

31 CARR: Rosario - Caimanero

CLAVE: 25003

RUTA: SIN-003

AÑO: 2015

LUGAR	ESTACION				CLASIFICACION VEHICULAR EN PORCIENTO													COORDENADAS		
	KM	TE	SC	TDPA	M	A	B	C2	C3	T3S2	T3S3	T3S2R4	OTROS	A	B	C	K'	D	LATITUD	LONGITUD
Rosario	0.00	3	0	3293	8.0	73.6	0.5	11.9	2.3	3.6	0.0	0.0	0.1	81.6	0.5	17.9	0.090	0.509	22.983787	-105.874535
Caimanero	30.00	1	0	918	3.7	78.2	3.3	12.2	0.8	1.2	0.0	0.0	0.6	81.9	3.3	14.8	0.080	0.501	22.880240	-106.068866

32 CARR: San Pedro - Campo Anibal

CLAVE: 25600

RUTA: SIN

AÑO: 2015

LUGAR	ESTACION				CLASIFICACION VEHICULAR EN PORCIENTO													COORDENADAS		
	KM	TE	SC	TDPA	M	A	B	C2	C3	T3S2	T3S3	T3S2R4	OTROS	A	B	C	K'	D	LATITUD	LONGITUD
T. C. Culiacán - Altata	0.00	3	0	4538	3.2	87.1	1.2	1.5	5.1	0.8	0.3	0.0	0.8	90.3	1.2	8.5	0.063	0.503	24.760911	-107.545272
Campo Anibal	24.50	1	0	2887	8.3	67.2	2.5	10.9	3.3	1.2	0.0	0.6	6.0	75.5	2.5	22.0	0.067	0.527	24.555995	-107.543372
Los Puentes	26.50																			

33 CARR: Topolobampo - Choix

CLAVE: 25032

RUTA: SIN-023

AÑO: 2015

LUGAR	ESTACION				CLASIFICACION VEHICULAR EN PORCIENTO													COORDENADAS		
	KM	TE	SC	TDPA	M	A	B	C2	C3	T3S2	T3S3	T3S2R4	OTROS	A	B	C	K'	D	LATITUD	LONGITUD
Topolobampo	0.00	3	1	3063	1.2	84.2	1.7	3.4	5.1	2.6	1.0	0.6	0.2	85.4	1.7	12.9	0.118	0.517	25.612109	-109.057584
Topolobampo	0.00	3	2	3285	1.0	83.5	2.9	3.9	4.9	2.4	0.8	0.5	0.1	84.5	2.9	12.6	0.115	0.517	25.612109	-109.057584
Los Mochis	24.00	1	1	9976	2.2	87.0	1.9	3.6	3.0	1.2	0.5	0.5	0.1	89.2	1.9	8.9	0.079	0.503	25.757884	-108.999509
Los Mochis	24.00	1	2	10099	2.9	85.4	2.0	4.0	3.3	1.3	0.4	0.5	0.2	88.3	2.0	9.7	0.073	0.503	25.757884	-108.999509
X. C. Los Mochis - Cd. Obregón (Cuota)	29.00	1	1	10553	2.3	85.4	5.2	1.8	2.2	0.5	0.2	0.1	2.3	87.7	5.2	7.1	0.085	0.516	25.824033	-108.971496
X. C. Los Mochis - Cd. Obregón (Cuota)	29.00	1	2	10177	2.9	85.0	5.2	2.2	1.7	0.4	0.2	0.2	2.2	87.9	5.2	6.9	0.077	0.516	25.824033	-108.971496
X. C. Los Mochis - Cd. Obregón (Cuota)	29.00	3	1	7882	2.8	83.3	2.3	5.6	2.1	1.7	1.1	0.3	0.8	86.1	2.3	11.6	0.077	0.502	25.836683	-108.966466
X. C. Los Mochis - Cd. Obregón (Cuota)	29.00	3	2	7809	2.0	82.9	2.5	6.0	2.4	1.9	1.2	0.3	0.8	84.9	2.5	12.6	0.080	0.502	25.836683	-108.966466
San Blas	65.00	1	1	2443	2.0	84.9	3.2	6.6	2.2	0.6	0.4	0.0	0.1	86.9	3.2	9.9	0.093	0.506	26.062906	-108.778671
San Blas	65.00	1	2	2382	0.4	87.3	1.2	7.9	2.2	0.5	0.3	0.0	0.2	87.7	1.2	11.1	0.093	0.506	26.062906	-108.778671
San Blas	65.00	3	1	1831	3.6	85.3	2.8	2.3	3.4	1.1	0.1	0.0	1.4	88.9	2.8	8.3	0.067	0.507	26.091514	-108.755715
San Blas	65.00	3	2	1783	3.0	84.8	2.4	3.1	4.0	0.9	0.9	0.0	0.9	87.8	2.4	9.8	0.072	0.507	26.091514	-108.755715

SINALOA

33 CARR: Topolobampo - Choix

CLAVE: 25032

RUTA: SIN-023

AÑO: 2015

LUGAR	ESTACION				CLASIFICACION VEHICULAR EN PORCIENTO										COORDENADAS					
	KM	TE	SC	TDPA	M	A	B	C2	C3	T3S2	T3S3	T3S2R4	OTROS	A	B	C	K'	D	LATITUD	LONGITUD
El Fuerte	107.70	1	1	2216	3.7	87.5	1.7	4.9	1.4	0.4	0.2	0.1	0.1	91.2	1.7	7.1	0.078	0.503	26.398295	-108.624076
El Fuerte	107.70	1	2	2189	1.1	90.6	1.1	4.9	1.3	0.4	0.3	0.1	0.2	91.7	1.1	7.2	0.076	0.503	26.398295	-108.624076
El Fuerte	107.70	3	0	2456	2.4	85.4	2.7	7.3	1.3	0.3	0.4	0.0	0.2	87.8	2.7	9.5	0.082	0.511	26.421524	-108.607136
Choix	159.00	1	0	2893	7.1	83.8	2.6	3.4	2.0	0.0	0.0	0.0	1.1	90.9	2.6	6.5	0.066	0.504	26.694918	-108.333466

34 CARR: Villa Unión - El Walamo

CLAVE: 25081

RUTA: SIN-081

AÑO: 2015

LUGAR	ESTACION				CLASIFICACION VEHICULAR EN PORCIENTO										COORDENADAS					
	KM	TE	SC	TDPA	M	A	B	C2	C3	T3S2	T3S3	T3S2R4	OTROS	A	B	C	K'	D	LATITUD	LONGITUD
Villa Unión	0.00	3	0	2785	11.6	69.4	1.1	13.5	1.8	2.2	0.3	0.0	0.1	81.0	1.1	17.9	0.070	0.502	23.183375	-106.219959
El Walamo	7.00	1	0	2662	19.9	75.0	1.3	1.3	0.6	0.0	0.0	0.0	1.9	94.9	1.3	3.8	0.075	0.504	23.143460	-106.238923

35 CARR: Villa Unión - Siqueiros

CLAVE: 25063

RUTA: SIN-063

AÑO: 2015

LUGAR	ESTACION				CLASIFICACION VEHICULAR EN PORCIENTO										COORDENADAS					
	KM	TE	SC	TDPA	M	A	B	C2	C3	T3S2	T3S3	T3S2R4	OTROS	A	B	C	K'	D	LATITUD	LONGITUD
Villa Unión	0.00	3	0	3111	6.8	85.9	0.9	3.8	0.5	1.2	0.7	0.1	0.1	92.7	0.9	6.4	0.084	0.503	23.196703	-106.212778
Siqueiros	11.00	1	0	764	11.6	82.7	1.6	3.3	0.7	0.0	0.0	0.0	0.1	94.3	1.6	4.1	0.127	0.502	23.333999	-106.238484

36 CARR: Culiacán - Las Brisas (Cuota)

CLAVE: 25503

RUTA: SIN-001D

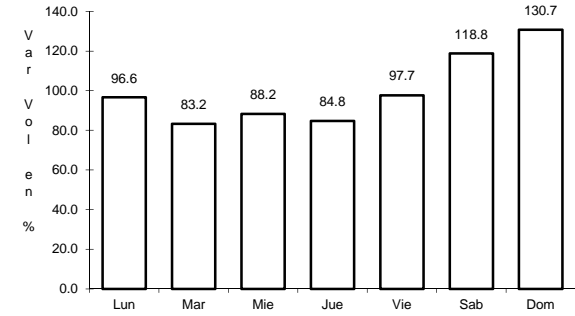
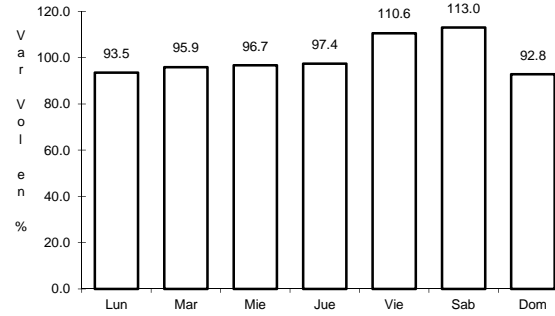
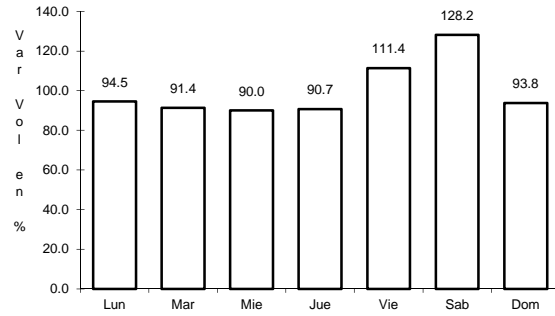
AÑO: 2015

LUGAR	ESTACION				CLASIFICACION VEHICULAR EN PORCIENTO										COORDENADAS					
	KM	TE	SC	TDPA	M	A	B	C2	C3	T3S2	T3S3	T3S2R4	OTROS	A	B	C	K'	D	LATITUD	LONGITUD
T. C. Culiacán - El Dorado	0.00																			
Caseta de Cobro Culiacán	1.50	3	1	2562	1.5	59.7	9.8	2.2	2.6	12.8	3.3	6.5	1.6	61.2	9.8	29.0	0.079	0.520	24.749758	-107.467541
Caseta de Cobro Culiacán	1.50	3	2	2363	1.3	62.5	9.5	2.6	2.7	10.8	2.4	6.5	1.7	63.8	9.5	26.7	0.071	0.520	24.749758	-107.467541
X. C. Culiacán - Altata	14.70	3	1	3597	0.5	63.3	6.5	1.6	3.0	9.9	5.1	8.0	2.1	63.8	6.5	29.7	0.069	0.510	24.772291	-107.582951
X. C. Culiacán - Altata	14.70	3	2	3741	0.7	65.6	5.6	1.8	2.2	9.7	4.2	8.0	2.2	66.3	5.6	28.1	0.067	0.510	24.772291	-107.582951
X. C. Ramal a La Reforma	110.00	1	1	3138	1.6	50.4	11.0	6.8	5.1	16.8	1.5	5.9	0.9	52.0	11.0	37.0	0.075	0.506	25.390737	-108.125464
X. C. Ramal a La Reforma	110.00	1	2	3219	1.1	52.8	9.5	4.3	3.2	18.8	2.2	7.7	0.4	53.9	9.5	36.6	0.073	0.506	25.390737	-108.125464
T. C. Culiacán - Los Mochis	125.70	1	1	3234	0.5	76.2	2.3	0.9	3.2	2.4	0.9	11.8	1.8	76.7	2.3	21.0	0.072	0.514	25.483402	-108.227332
T. C. Culiacán - Los Mochis	125.70	1	2	3417	0.5	68.2	4.5	1.0	1.8	6.0	4.0	11.8	2.2	68.7	4.5	26.8	0.074	0.514	25.483402	-108.227332

1 CARR: Culiacán - Los Mochis

CLAVE: 25502

RUTA: MEX-015



Km: 4.00

Tipo: 1

Sent: 1

Km: 4.00

Tipo: 1

Sent: 2

Km: 104.70

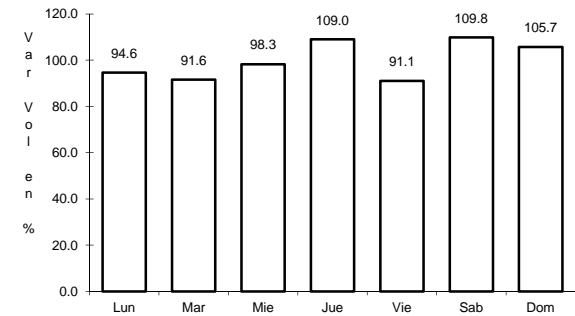
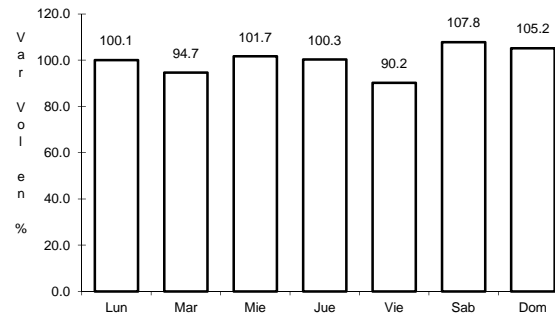
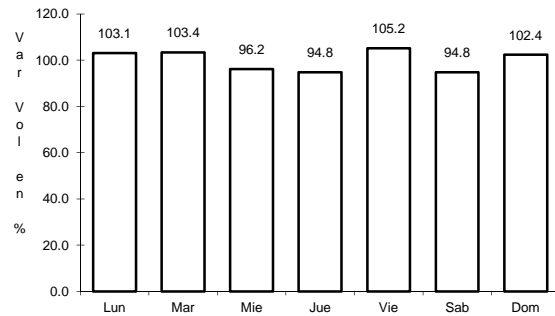
Tipo: 1

Sent: 0

2 CARR: Durango - Villa Unión

CLAVE: 0083

RUTA: MEX-040



Km: 0.00

Tipo: 3

Sent: 0

Km: 145.50

Tipo: 1

Sent: 0

Km: 294.40

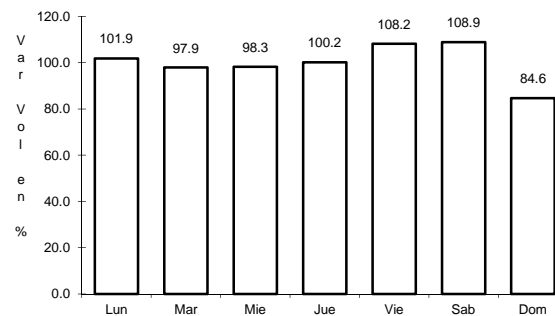
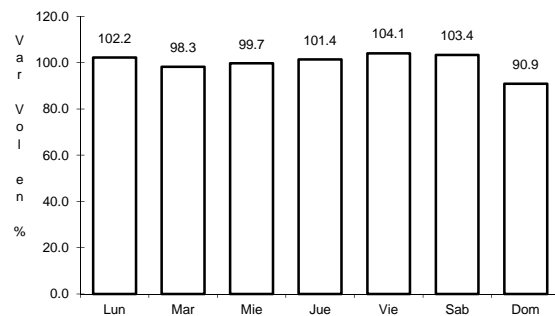
Tipo: 1

Sent: 0

3 CARR: Libramiento de Mazatlán

CLAVE: 25604

RUTA: MEX



Km: 0.00

Tipo: 3

Sent: 1

Km: 0.00

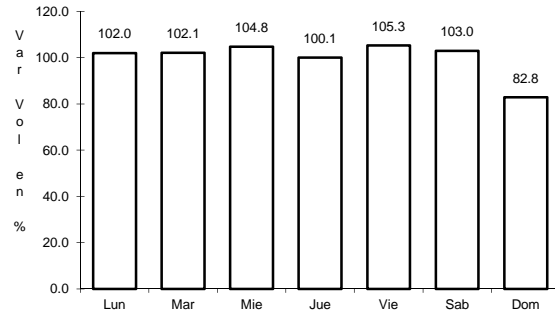
Tipo: 3

Sent: 2

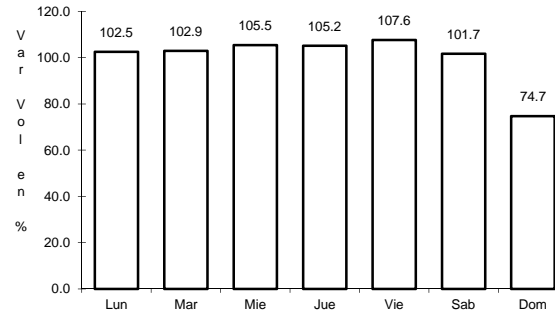
4 CARR: Libramiento Sur de Culiacán

CLAVE: 25500

ruta: MEX-015



Km: 0.00 Tipo: 3 Sent: 1

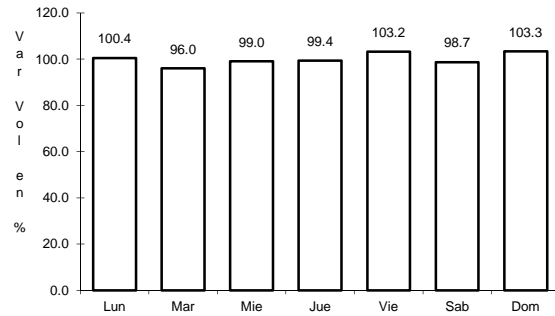


Km: 0.00 Tipo: 3 Sent: 2

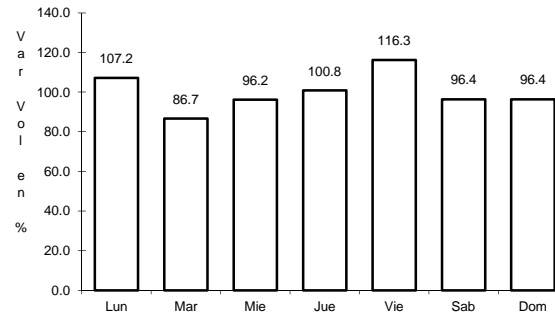
5 CARR: Mazatlán - Culiacán

CLAVE: 25501

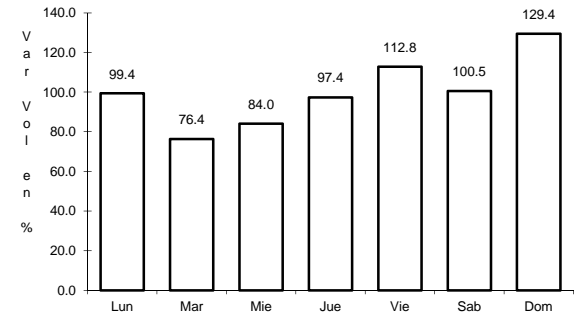
ruta: MEX-015



Km: 6.40 Tipo: 1 Sent: 1



Km: 6.40 Tipo: 1 Sent: 2

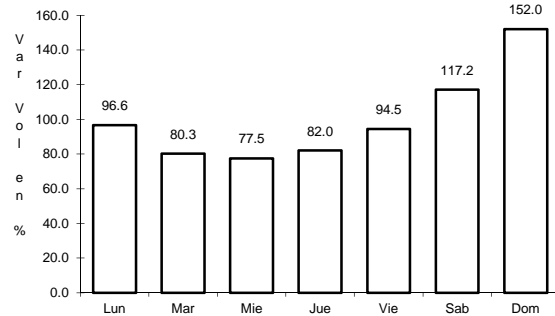


Km: 105.21 Tipo: 3 Sent: 0

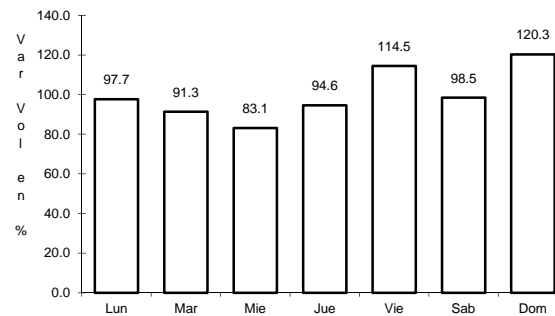
6 CARR: Pericos - Los Naranjos

CLAVE: 25598

ruta: MEX-024



Km: 0.00 Tipo: 3 Sent: 0

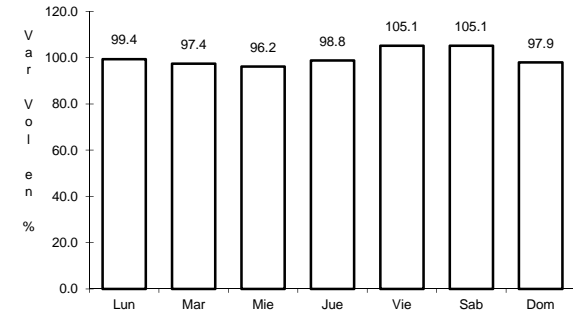
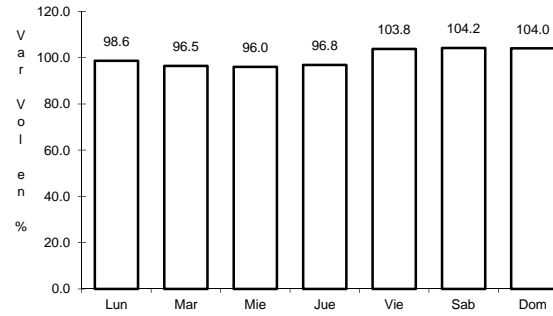
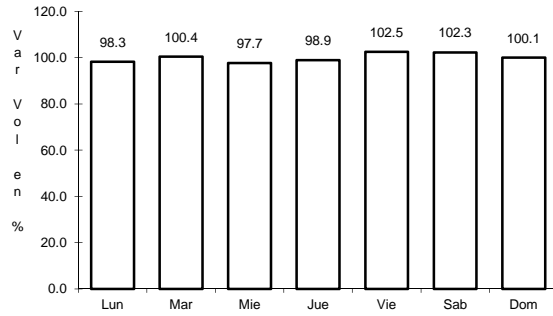


Km: 37.50 Tipo: 1 Sent: 0

7 CARR: Tepic - Mazatlán

CLAVE: 00499

RUTA: MEX-015



Km: 136.52

Tipo: 1

Sent: 0

Km: 288.87

Tipo: 1

Sent: 1

Km: 288.87

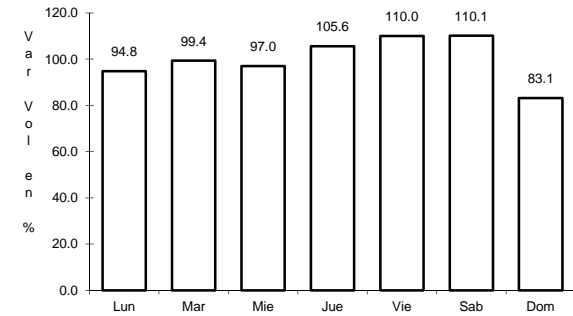
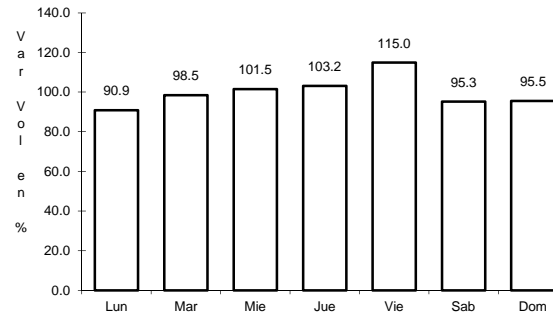
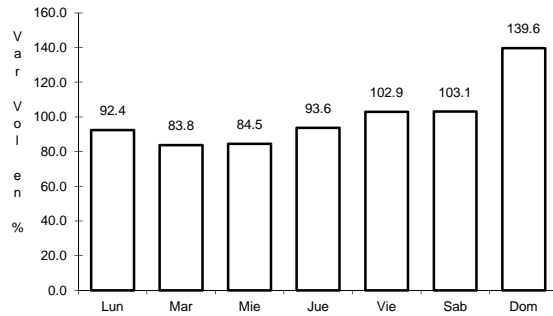
Tipo: 1

Sent: 2

8 CARR: Durango - Mazatlán (Cuota)

CLAVE: 00084

RUTA: MEX-040D



Km: 20.50

Tipo: 3

Sent: 0

Km: 44.50

Tipo: 1

Sent: 0

Km: 208.35

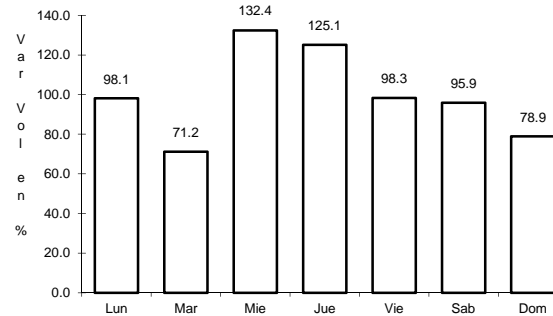
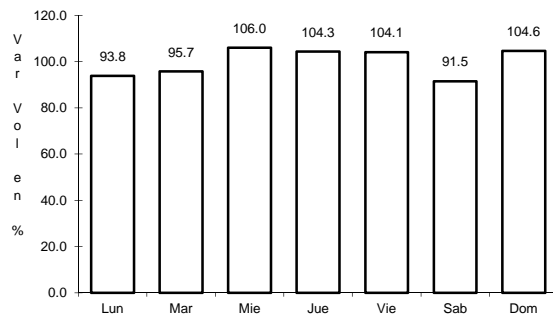
Tipo: 1

Sent: 0

10 CARR: Mazatlán - Culiacán (Cuota)

CLAVE: 25045

RUTA: MEX-015D



Km: 0.00

Tipo: 3

Sent: 1

Km: 0.00

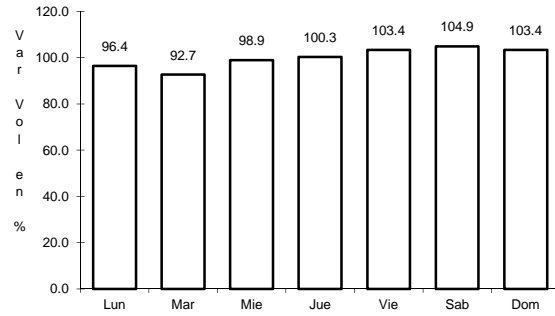
Tipo: 3

Sent: 2

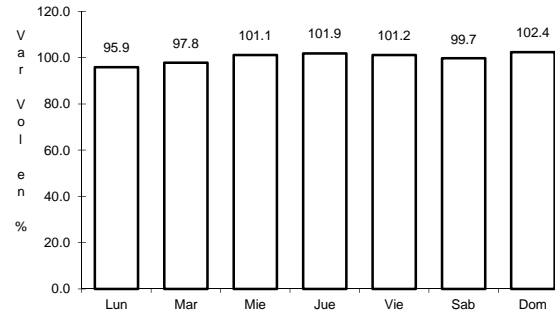
11 CARR: Tepic - Villa Unión (cuota)

CLAVE: 00500

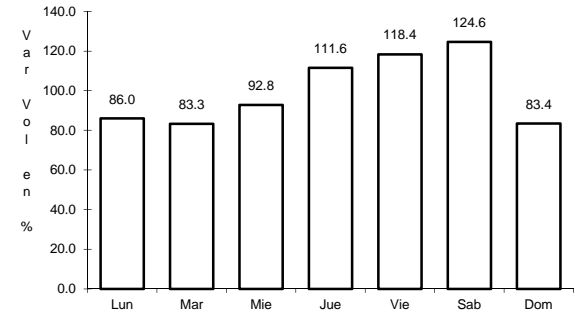
RUTA: MEX-015D



Km: 4.70 Tipo: 1 Sent: 1



Km: 4.70 Tipo: 1 Sent: 2

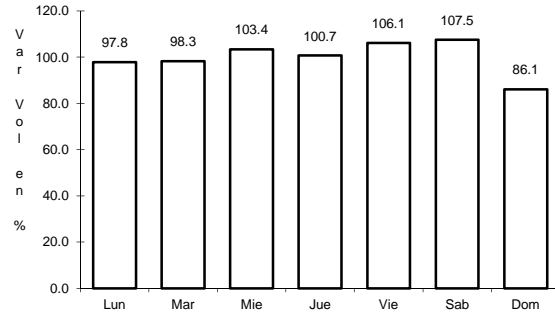


Km: 240.90 Tipo: 1 Sent: 0

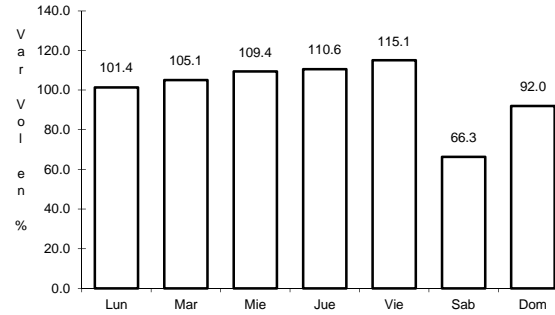
12 CARR: Est. Don - Nogales (Cuota)

CLAVE: 26444

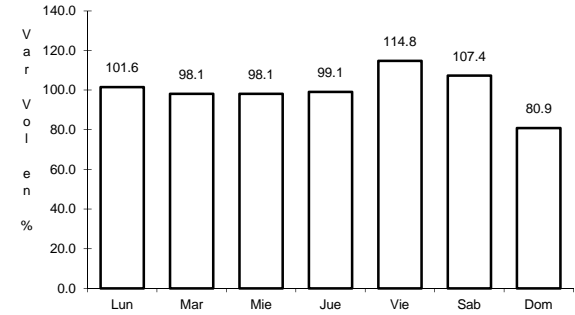
RUTA: MEX-015D-015



Km: 0.00 Tipo: 3 Sent: 1



Km: 0.00 Tipo: 3 Sent: 2

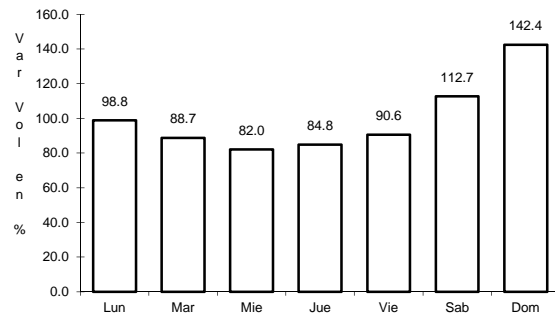


Km: 337.72 Tipo: 1 Sent: 0

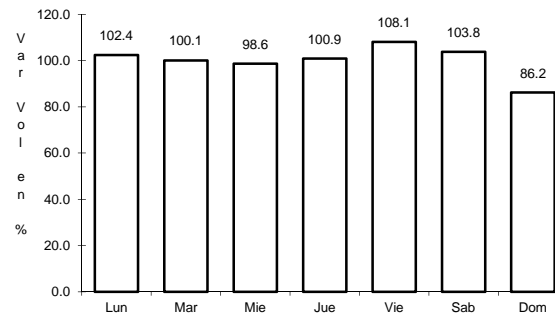
13 CARR: Carrizal - Campo Anfal

CLAVE: 25585

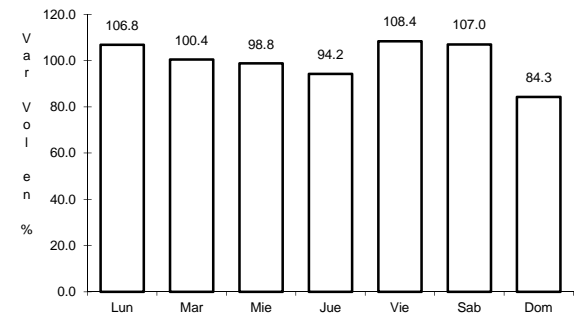
RUTA: SIN-019



Km: 0.00 Tipo: 3 Sent: 0



Km: 29.20 Tipo: 1 Sent: 0

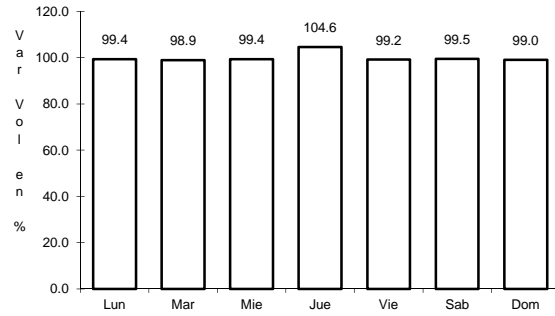


Km: 32.00 Tipo: 1 Sent: 0

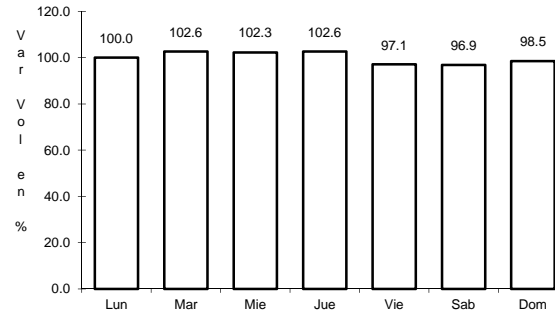
14 CARR: Culiacán - Altata

CLAVE: 25013

RUTA: SIN-030



Km: 6.20 Tipo: 1 Sent: 1

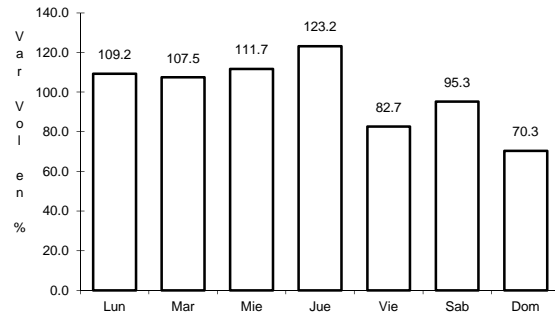


Km: 6.20 Tipo: 1 Sent: 2

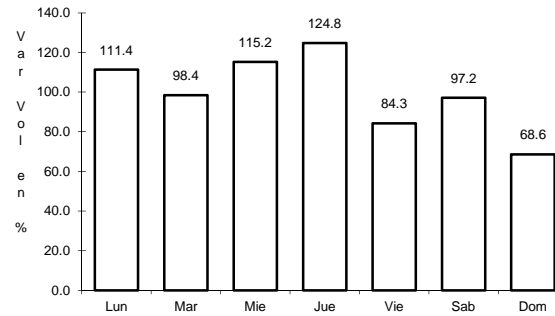
15 CARR: Culiacán - El Dorado

CLAVE: 25044

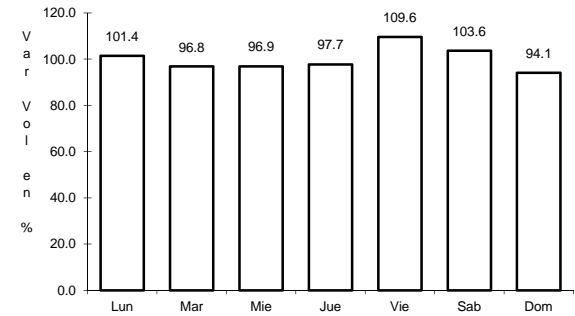
RUTA: SIN-005



Km: 0.00 Tipo: 3 Sent: 1



Km: 0.00 Tipo: 3 Sent: 2

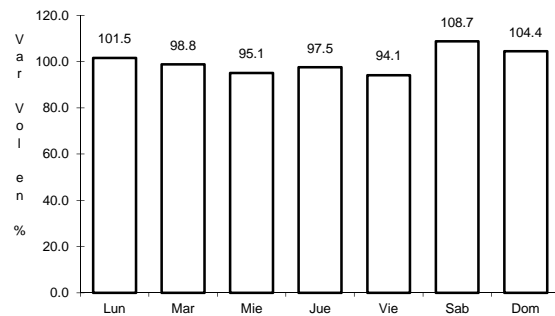


Km: 21.35 Tipo: 3 Sent: 0

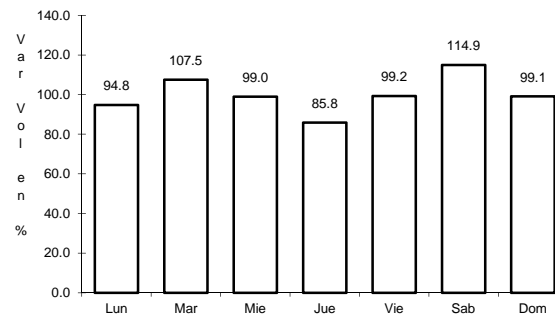
16 CARR: El Limoncito - Cinco Hermanos

CLAVE: 25016

RUTA: SIN-016



Km: 0.00 Tipo: 3 Sent: 0

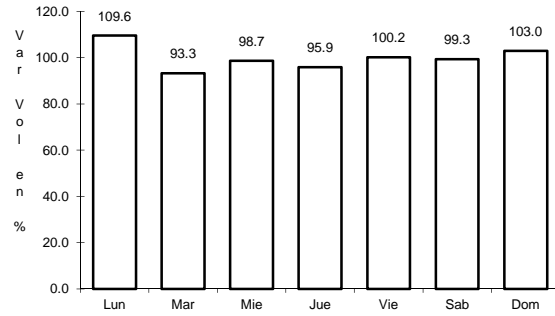


Km: 16.00 Tipo: 1 Sent: 0

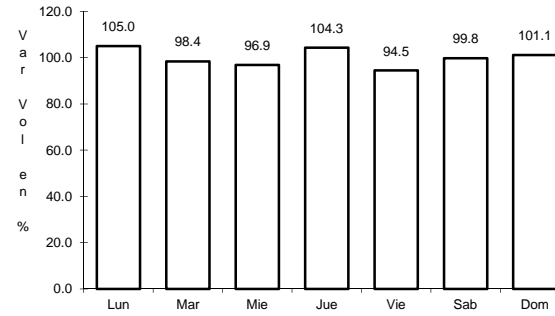
17 CARR: El Salado - El Dorado

CLAVE: 25010

RUTA: SIN-010



Km: 0.00 Tipo: 3 Sent: 0

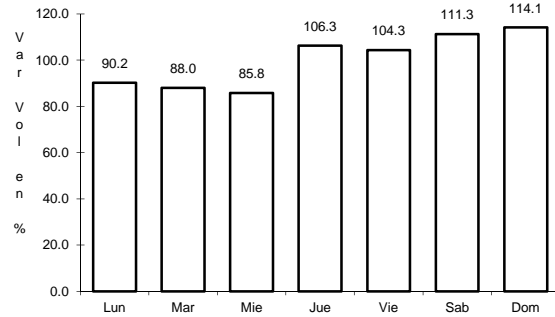


Km: 31.00 Tipo: 1 Sent: 0

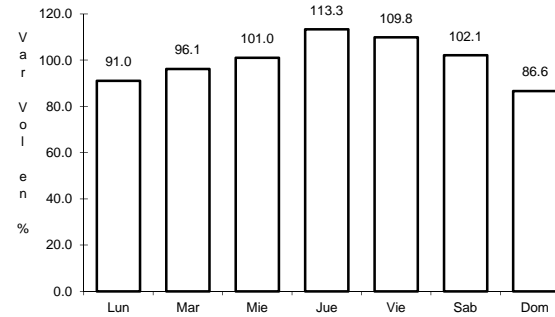
18 CARR: Escuinapa de Hidalgo - Teacapan

CLAVE: 25001

RUTA: SIN-001



Km: 0.00 Tipo: 3 Sent: 0

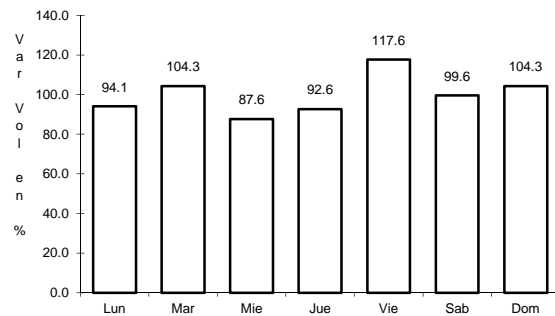


Km: 41.00 Tipo: 1 Sent: 0

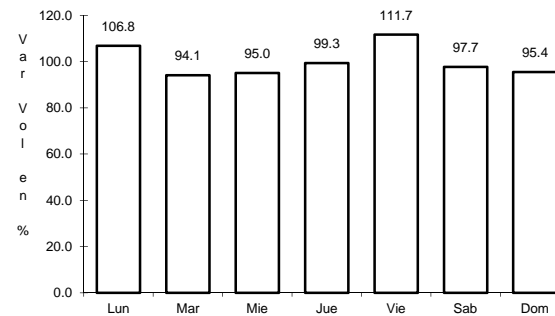
19 CARR: Estación Dimas - San Ignacio

CLAVE: 25007

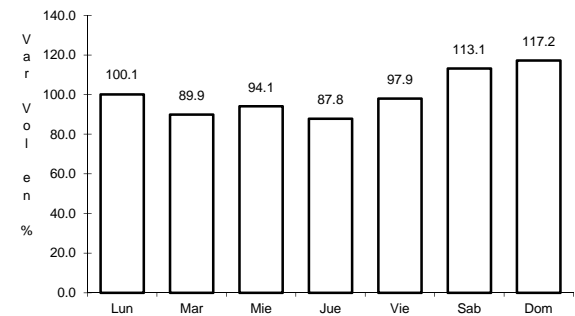
RUTA: SIN-006



Km: 23.15 Tipo: 1 Sent: 0



Km: 23.15 Tipo: 3 Sent: 0

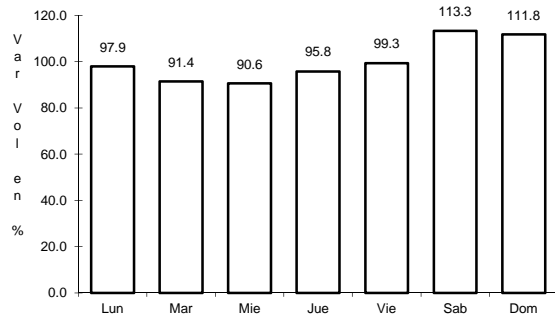


Km: 56.00 Tipo: 1 Sent: 0

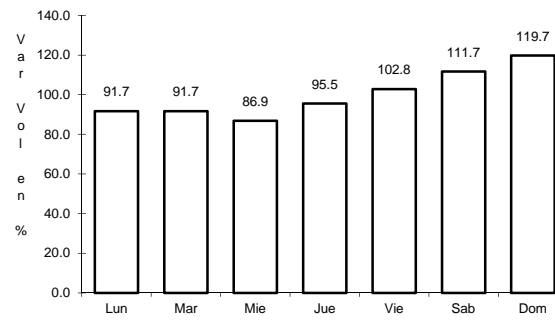
20 CARR: Guamuchil - Mocorito

CLAVE: 25021

RUTA: SIN-021



Km: 0.00 Tipo: 3 Sent: 0

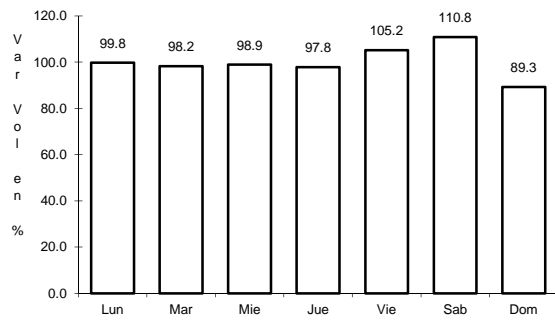


Km: 17.00 Tipo: 1 Sent: 0

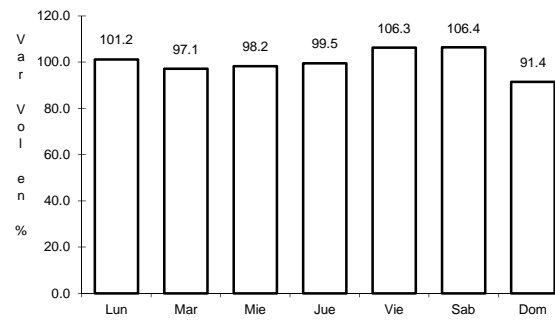
21 CARR: Guasave - Sinaloa de Leyva

CLAVE: 25023

RUTA: SIN-023



Km: 1.15 Tipo: 3 Sent: 1

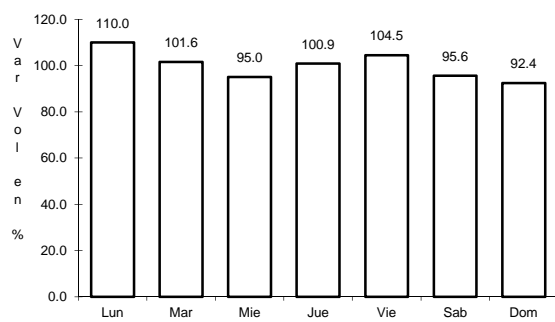


Km: 1.15 Tipo: 3 Sent: 2

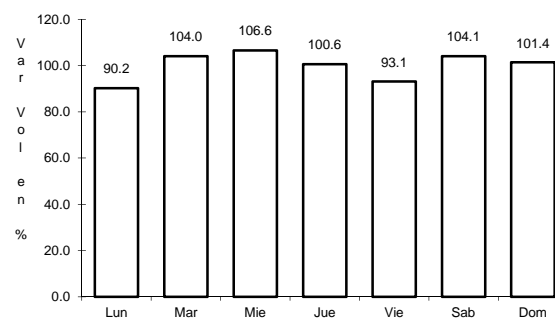
22 CARR: Navolato - El Castillo

CLAVE: 25004

RUTA: SIN-004



Km: 0.00 Tipo: 3 Sent: 0

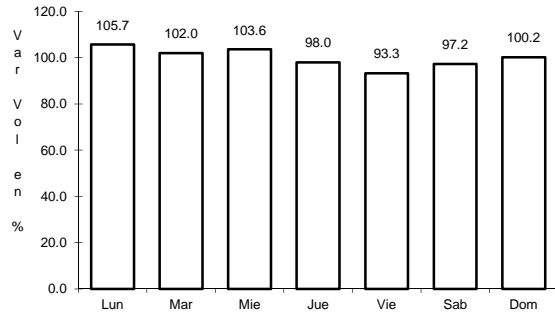


Km: 29.00 Tipo: 1 Sent: 0

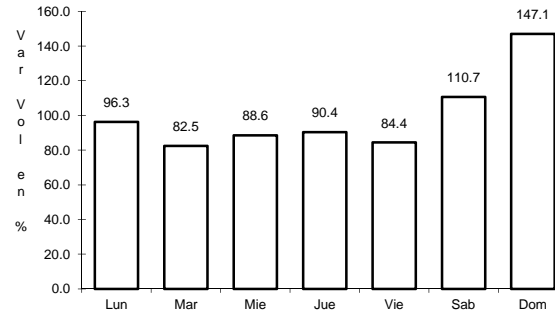
23 CARR: Pozole - Cofradía

CLAVE: 25080

ruta: SIN-080



Km: 0.00 Tipo: 3 Sent: 0

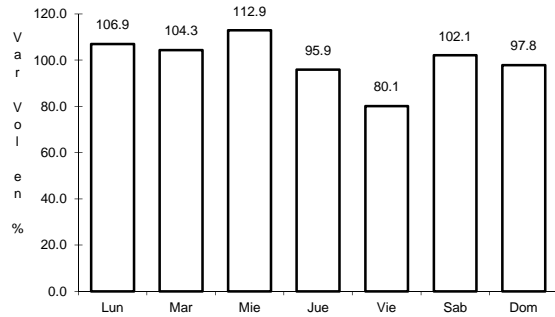


Km: 9.10 Tipo: 1 Sent: 0

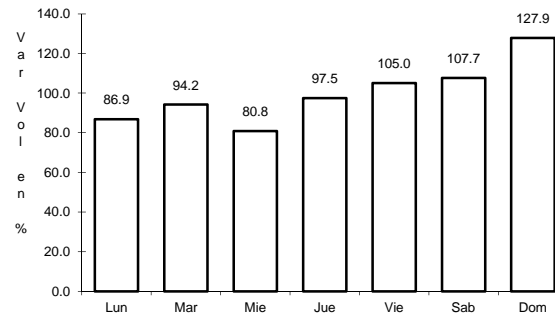
24 CARR: Ramal a Chametla

CLAVE: 25002

ruta: SIN-002



Km: 0.00 Tipo: 3 Sent: 0

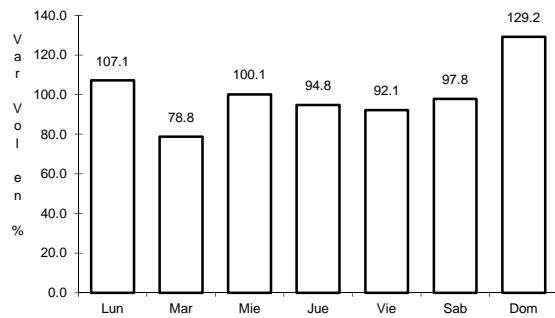


Km: 15.00 Tipo: 1 Sent: 0

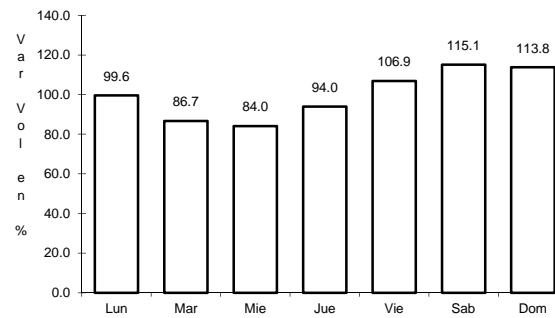
25 CARR: Ramal a Cosalá

CLAVE: 25008

ruta: SIN-008



Km: 0.00 Tipo: 3 Sent: 0

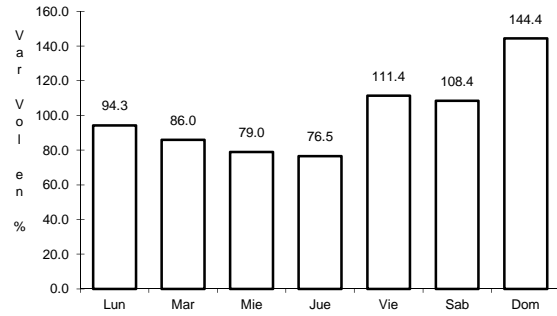


Km: 53.00 Tipo: 1 Sent: 0

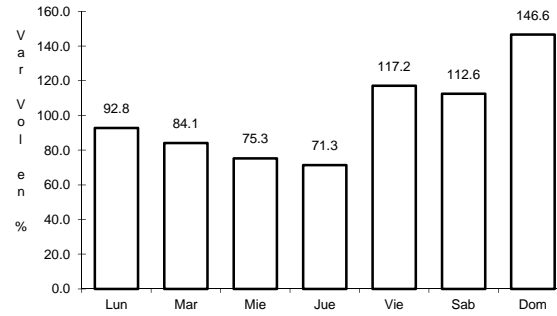
26 CARR: Ramal a El Quelite

CLAVE: 25060

RUTA: SIN-060



Km: 0.00 Tipo: 3 Sent: 0

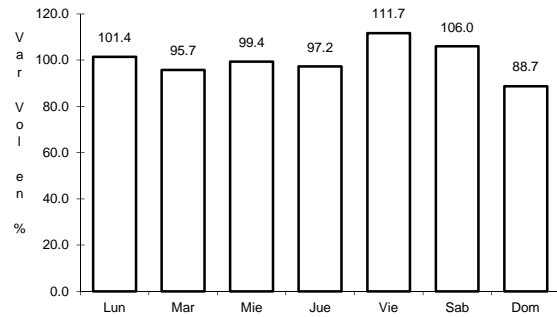


Km: 6.00 Tipo: 1 Sent: 0

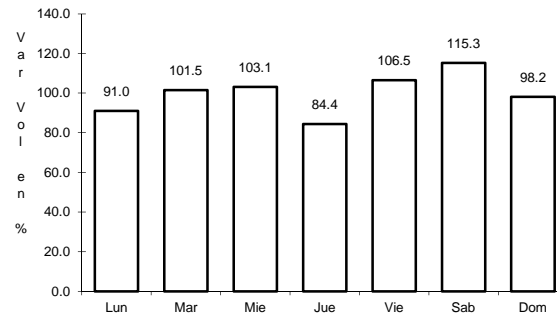
27 CARR: Ramal a Estación Bamoa

CLAVE: 25022

RUTA: SIN-022



Km: 0.00 Tipo: 3 Sent: 0

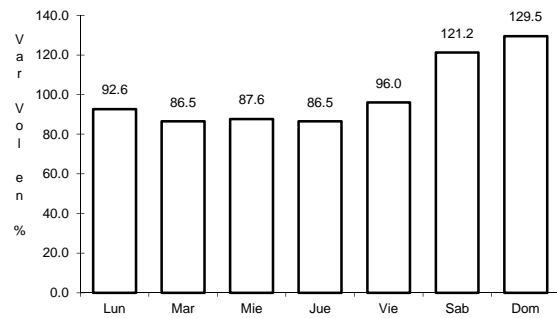


Km: 22.50 Tipo: 1 Sent: 0

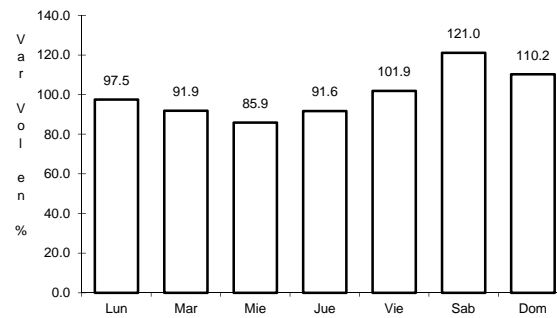
28 CARR: Ramal a La Cruz

CLAVE: 25043

RUTA: SIN



Km: 0.00 Tipo: 3 Sent: 0

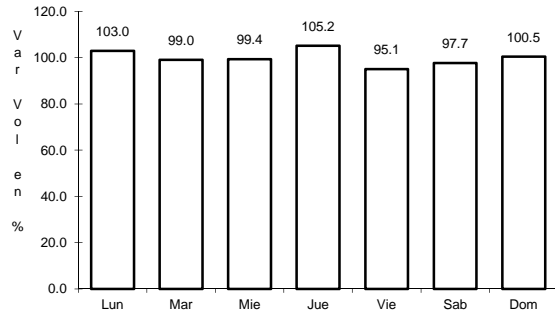


Km: 18.00 Tipo: 1 Sent: 0

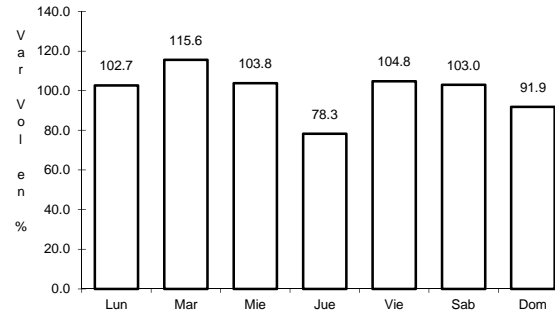
29 CARR: Ramal a La Noria

CLAVE: 25592

RUTA: SIN



Km: 0.00 Tipo: 3 Sent: 0

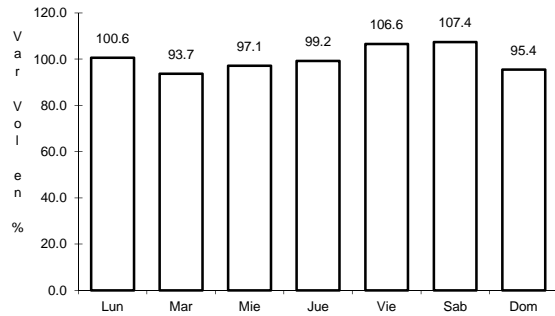


Km: 25.50 Tipo: 1 Sent: 0

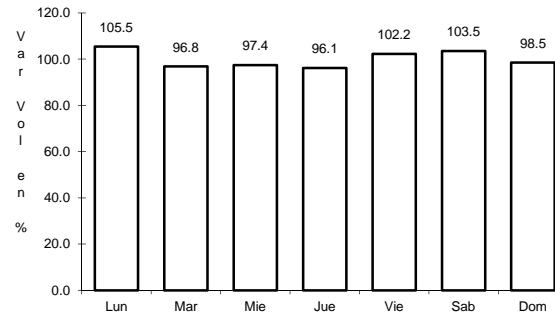
30 CARR: Ramal a La Reforma

CLAVE: 25041

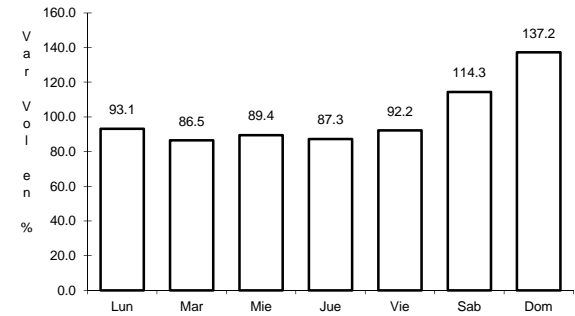
RUTA: SIN-004



Km: 0.00 Tipo: 3 Sent: 0



Km: 14.00 Tipo: 3 Sent: 0

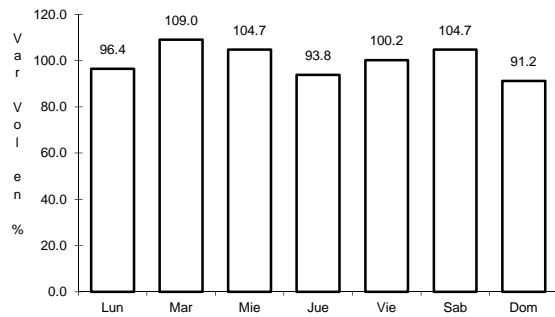


Km: 60.00 Tipo: 1 Sent: 0

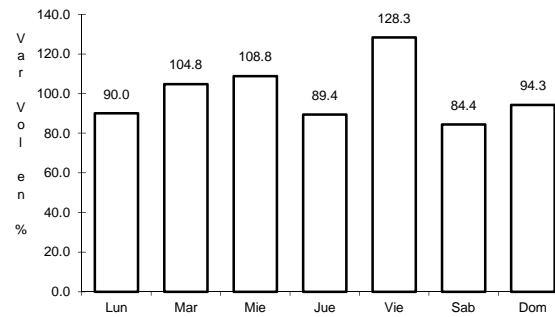
31 CARR: Rosario - Caimanero

CLAVE: 25003

RUTA: SIN-003



Km: 0.00 Tipo: 3 Sent: 0

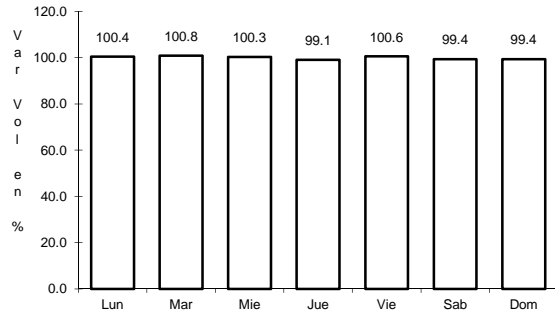


Km: 30.00 Tipo: 1 Sent: 0

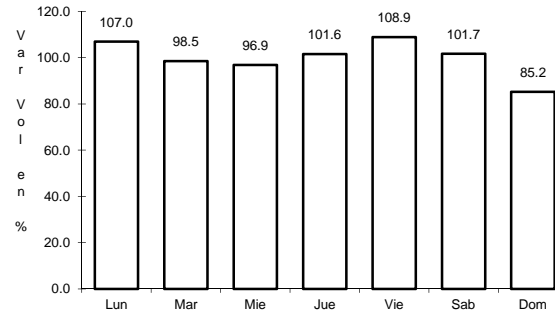
32 CARR: San Pedro - Campo Aníbal

CLAVE: 25600

RUTA: SIN



Km: 0.00 Tipo: 3 Sent: 0

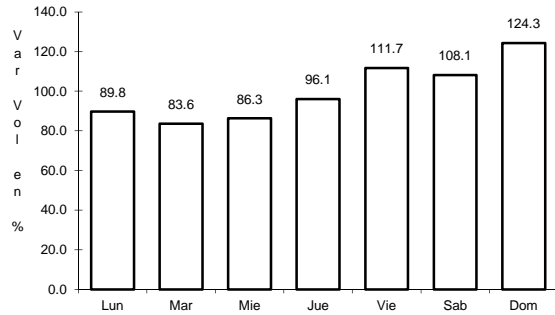


Km: 24.50 Tipo: 1 Sent: 0

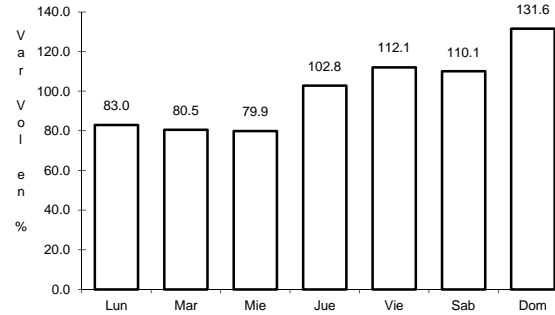
33 CARR: Topolobampo - Choix

CLAVE: 25032

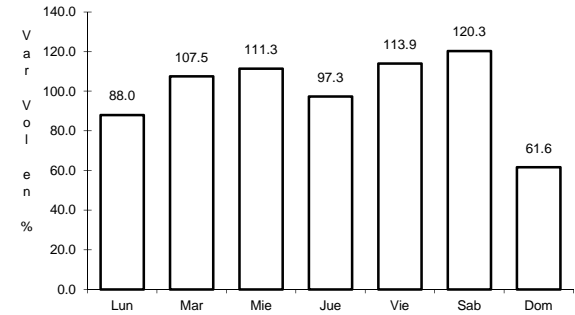
RUTA: SIN-023



Km: 0.00 Tipo: 3 Sent: 1



Km: 0.00 Tipo: 3 Sent: 2

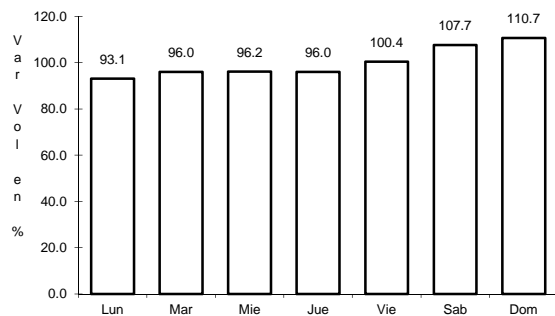


Km: 159.00 Tipo: 1 Sent: 0

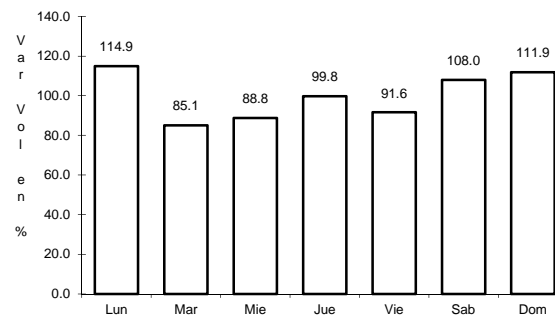
34 CARR: Villa Unión - El Walamo

CLAVE: 25081

RUTA: SIN-081



Km: 0.00 Tipo: 3 Sent: 0

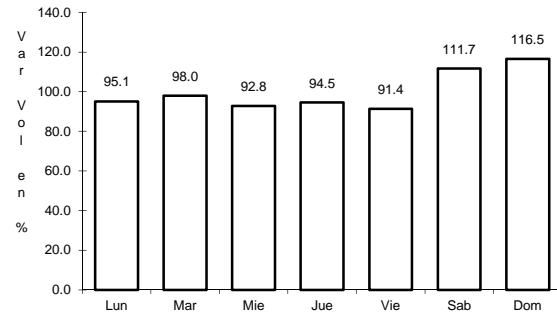


Km: 7.00 Tipo: 1 Sent: 0

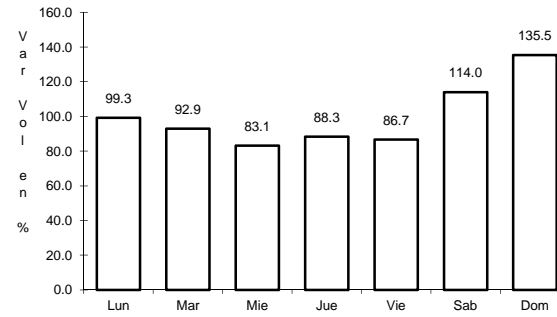
35 CARR: Villa Unión - Siqueiros

CLAVE: 25063

RUTA: SIN-063



Km: 0.00 Tipo: 3 Sent: 0

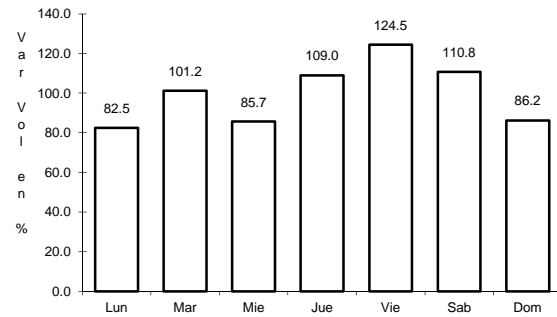


Km: 11.00 Tipo: 1 Sent: 0

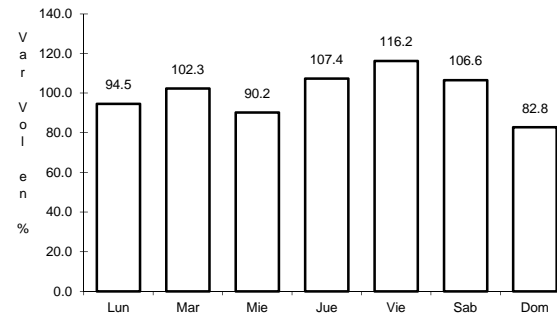
36 CARR: Culiacán - Las Brisas (Cuota)

CLAVE: 25503

RUTA: SIN-001D



Km: 1.50 Tipo: 3 Sent: 1



Km: 1.50 Tipo: 3 Sent: 2

