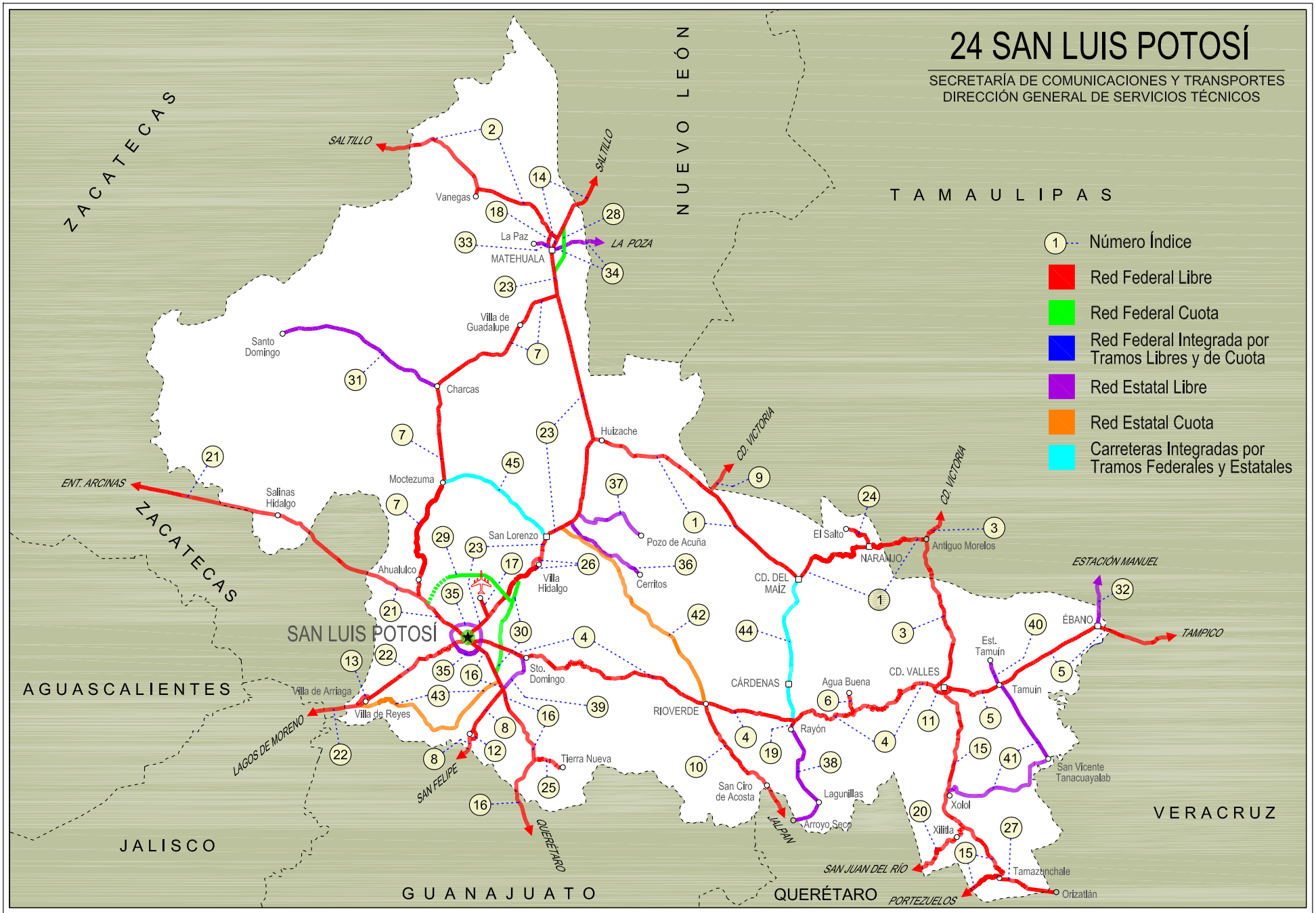
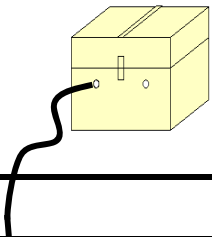


24 SAN LUIS POTOSÍ

SECRETARÍA DE COMUNICACIONES Y TRANSPORTES
DIRECCIÓN GENERAL DE SERVICIOS TÉCNICOS



- ① --- Número Índice
- Red Federal Libre
- Red Federal Cuota
- Red Federal Integrada por Tramos Libres y de Cuota
- Red Estatal Libre
- Red Estatal Cuota
- Carreteras Integradas por Tramos Federales y Estatales



SAN LUIS POTOSI

| NO. INDICE | CARRETERA | RUTA |
|--|--|-----------------|
| ---RED FEDERAL LIBRE--- | | |
| 1 | Antiguo Morelos - Ent. El Huizache | MEX-080 |
| 2 | Carbonera - T. C. (Ent. Morelos - Saltillo) | MEX-062 |
| 3 | Cd. Valles - Cd. Victoria | MEX-085 |
| 4 | Cd. Valles - San Luis Potosí | MEX-070 |
| 5 | Cd. Valles - Tampico | MEX-070 |
| 6 | El Clarín - Agua Buena | MEX-070 |
| 7 | Ent. Ahualulco - Ent. La Bonita | MEX-063 |
| 8 | Ent. de Zaragoza - San Felipe | MEX-037 |
| 9 | Ent. Tula - Cd. Victoria | MEX-101 |
| 10 | Jalpan de Serra - Rioverde | MEX-069 |
| 11 | Libramiento de Cd. Valles | MEX-070 |
| 12 | Libramiento de Villa de Reyes | MEX-037 |
| 13 | Libramiento Villa de Arriaga | MEX-080 |
| 14 | Matehuala - Ent. Puerto México | MEX-057 |
| 15 | Portezuelo - Cd. Valles | MEX-085 |
| 16 | Querétaro - San Luis Potosí | MEX-057 |
| 17 | Ramal a Aeropuerto de S. L. P. | MEX-057 |
| 18 | Ramal a Ojo de Agua | MEX-062 |
| 19 | Ramal a Rayón | MEX-070 |
| 20 | San Juan del Río - Xilitla | MEX-120 |
| 21 | San Luis Potosí - Ent. Arcinas | MEX-049 |
| 22 | San Luis Potosí - Lagos de Moreno | MEX-070-080 |
| 23 | San Luis Potosí - Matehuala | MEX-057 |
| 24 | T. C. (Ent. El Huizache- Ant. Morelos)-El Salto | MEX-080 |
| 25 | T. C. (Qro - S.L.P.) - Tierra Nueva | MEX-057 |
| 26 | T. C. (S.L.P. - Matehuala) - Villa Hidalgo | MEX-057 |
| 27 | Tamazunchale - San Felipe Orizatlán | MEX-085 |
| ---RED FEDERAL DE CUOTA--- | | |
| 28 | Libramiento de Matehuala (Cuota) | MEX-057D |
| 29 | Libramiento Norponiente de San Luis Potosí (Cuota) | MEX-057D |
| 30 | Libramiento Oriente de San Luis Potosí (Cuota) | MEX-057D |
| ---RED ESTATAL LIBRE--- | | |
| 31 | Charcas - Villa Santo Domingo | SLP-017 |
| 32 | Ébano - Estación Manuel | SLP-TAM |
| 33 | Matehuala - La Paz | SLP-020 |
| 34 | Matehuala - La Poza | SLP-029 |
| 35 | Periférico de San Luis Potosí | SLP-032 |
| 36 | Ramal a Cerritos | SLP-007 |
| 37 | Ramal a Pozo de Acuña | SLP-009 |
| 38 | Rayón - Arroyo Seco | SLP-011 |
| 39 | Santo Domingo - Cerro Gordo | SLP-022 |
| 40 | Tamuín - Estación F.F.C.C. Tamuín | SLP-040 |
| 41 | Tamuín - Xolol | SLP-014 |
| ---RED ESTATAL DE CUOTA--- | | |
| 42 | Cerritos - Rioverde (Cuota) | SLP-D |
| 43 | San Luis Potosí - Villa de Arriaga (Cuota) | SLP-D |
| ---CARRETERAS INTEGRADAS POR TRAMOS FEDERALES Y ESTATALES--- | | |
| 44 | Rayón - Cd. del Maíz | MEX-070-SLP-005 |
| 45 | San Lorenzo - Moctezuma | MEX-063-SLP-012 |

SAN LUIS POTOSI

1 CARR: Antigua Morelos - Ent. El Huizache

CLAVE: 00136

RUTA: MEX-080

AÑO: 2015

| LUGAR | ESTACION | | | | CLASIFICACION VEHICULAR EN PORCIENTO | | | | | | | | | | COORDENADAS | | | | | |
|--|----------|----|----|------|--------------------------------------|------|-----|------|-----|------|------|--------|-------|------|-------------|------|-------|-------|-----------|-------------|
| | KM | TE | SC | TDPA | M | A | B | C2 | C3 | T3S2 | T3S3 | T3S2R4 | OTROS | A | B | C | K' | D | LATITUD | LONGITUD |
| Antigua Morelos | 0.00 | 3 | 0 | 2306 | 5.8 | 77.3 | 1.3 | 9.4 | 2.0 | 2.6 | 1.2 | 0.2 | 0.2 | 83.1 | 1.3 | 15.6 | 0.092 | 0.504 | 22.554604 | -99.094929 |
| Nuevo Morelos | 19.28 | 1 | 0 | 1072 | 3.8 | 72.3 | 2.5 | 10.6 | 3.4 | 4.1 | 1.8 | 0.9 | 0.6 | 76.1 | 2.5 | 21.4 | 0.092 | 0.510 | 22.540951 | -99.212054 |
| Lim. Edos. Term. Tamps. Ppia. S. L. P. | 25.00 | | | | | | | | | | | | | | | | | | | |
| El Naranjo | 32.00 | 1 | 0 | 3806 | 4.5 | 80.8 | 0.6 | 10.1 | 1.0 | 2.5 | 0.2 | 0.1 | 0.2 | 85.3 | 0.6 | 14.1 | 0.081 | 0.501 | 22.529513 | -99.312590 |
| El Naranjo | 32.00 | 3 | 0 | 2197 | 10.5 | 78.2 | 0.7 | 7.0 | 0.9 | 2.2 | 0.3 | 0.1 | 0.1 | 88.7 | 0.7 | 10.6 | 0.079 | 0.501 | 22.517229 | -99.333919 |
| Cd. del Maiz | 86.00 | 3 | 0 | 1497 | 2.3 | 71.4 | 2.1 | 18.7 | 2.6 | 2.1 | 0.6 | 0.1 | 0.1 | 73.7 | 2.1 | 24.2 | 0.089 | 0.503 | 22.412239 | -99.619722 |
| T. Der. Tula | 141.21 | 3 | 0 | 2500 | 0.6 | 34.0 | 3.0 | 7.4 | 4.0 | 21.1 | 8.5 | 19.8 | 1.6 | 34.6 | 3.0 | 62.4 | 0.067 | 0.509 | 22.737427 | -99.978842 |
| T. C. San Luis Potosí - Matehuala (Ent. El Huizache) | 198.83 | 1 | 0 | 2780 | 0.7 | 38.4 | 2.0 | 7.6 | 2.8 | 20.3 | 6.8 | 20.2 | 1.2 | 39.1 | 2.0 | 58.9 | 0.067 | 0.501 | 22.930929 | -100.448254 |

2 CARR: Carbonera - T. C. (Ent. Morelos - Saltillo)

CLAVE: 00218

RUTA: MEX-062

AÑO: 2015

| LUGAR | ESTACION | | | | CLASIFICACION VEHICULAR EN PORCIENTO | | | | | | | | | | COORDENADAS | | | | | |
|--------------------------------------|----------|----|----|------|--------------------------------------|------|-----|------|-----|------|------|--------|-------|------|-------------|------|-------|-------|-----------|-------------|
| | KM | TE | SC | TDPA | M | A | B | C2 | C3 | T3S2 | T3S3 | T3S2R4 | OTROS | A | B | C | K' | D | LATITUD | LONGITUD |
| Carbonera | 0.00 | 3 | 0 | 2427 | 11.1 | 76.9 | 1.0 | 5.2 | 2.1 | 2.5 | 0.5 | 0.5 | 0.2 | 88.0 | 1.0 | 11.0 | 0.089 | 0.551 | 23.703415 | -100.627233 |
| Cedral | 18.00 | 1 | 0 | 2972 | 9.9 | 78.9 | 0.5 | 5.5 | 1.7 | 2.2 | 0.6 | 0.3 | 0.4 | 88.8 | 0.5 | 10.7 | 0.090 | 0.536 | 23.829323 | -100.738660 |
| Cedral | 18.00 | 3 | 0 | 3481 | 9.0 | 71.0 | 0.7 | 13.9 | 1.4 | 2.7 | 0.4 | 0.6 | 0.3 | 80.0 | 0.7 | 19.3 | 0.088 | 0.504 | 23.805248 | -100.707199 |
| Lim. Edos. Term. S. L. P. Ppia. Zac. | 79.20 | | | | | | | | | | | | | | | | | | | |
| T. C. Ent. Morelos - Saltillo | 112.00 | 1 | 0 | 1339 | 4.4 | 72.4 | 1.5 | 16.7 | 2.4 | 1.8 | 0.3 | 0.2 | 0.3 | 76.8 | 1.5 | 21.7 | 0.101 | 0.510 | 24.156383 | -101.492122 |

3 CARR: Cd. Valles - Cd. Victoria

CLAVE: 00509

RUTA: MEX-085

AÑO: 2015

| LUGAR | ESTACION | | | | CLASIFICACION VEHICULAR EN PORCIENTO | | | | | | | | | | COORDENADAS | | | | | |
|--|----------|----|----|------|--------------------------------------|------|-----|------|-----|------|------|--------|-------|------|-------------|------|-------|-------|-----------|------------|
| | KM | TE | SC | TDPA | M | A | B | C2 | C3 | T3S2 | T3S3 | T3S2R4 | OTROS | A | B | C | K' | D | LATITUD | LONGITUD |
| Cd. Valles | 0.00 | 3 | 0 | 9762 | 5.9 | 78.4 | 1.3 | 6.1 | 0.8 | 5.4 | 0.8 | 0.4 | 0.9 | 84.3 | 1.3 | 14.4 | 0.074 | 0.505 | 22.009093 | -99.002884 |
| Lim. Edos. Term. S. L. P. Ppia. Tamps. | 50.40 | | | | | | | | | | | | | | | | | | | |
| Antigua Morelos | 66.90 | 1 | 0 | 2025 | 5.5 | 69.8 | 6.1 | 6.0 | 2.6 | 4.1 | 1.8 | 3.8 | 0.3 | 75.3 | 6.1 | 18.6 | 0.073 | 0.508 | 22.547928 | -99.078295 |
| Antigua Morelos | 66.90 | 3 | 0 | 3104 | 4.1 | 64.5 | 5.6 | 14.2 | 2.7 | 4.0 | 2.0 | 2.3 | 0.6 | 68.6 | 5.6 | 25.8 | 0.076 | 0.546 | 22.561650 | -99.077836 |
| Cd. Mante | 98.00 | 1 | 0 | 5538 | 4.8 | 73.1 | 2.3 | 9.3 | 2.6 | 4.1 | 1.3 | 2.1 | 0.4 | 77.9 | 2.3 | 19.8 | 0.085 | 0.501 | 22.711894 | -98.989119 |
| T. Izq. Ocampo | 110.00 | 3 | 0 | 3376 | 9.4 | 77.0 | 3.9 | 6.6 | 0.8 | 1.9 | 0.2 | 0.1 | 0.1 | 86.4 | 3.9 | 9.7 | 0.090 | 0.501 | 22.839227 | -99.024507 |
| T. Izq. Gómez Farías | 132.84 | 3 | 0 | 1800 | 7.6 | 73.9 | 8.0 | 7.1 | 1.5 | 1.5 | 0.4 | 0.0 | 0.0 | 81.5 | 8.0 | 10.5 | 0.096 | 0.506 | 23.026061 | -99.093662 |
| T. Izq. Llera de Canales | 170.00 | 3 | 0 | 3496 | 1.0 | 84.5 | 4.3 | 7.2 | 0.8 | 1.8 | 0.3 | 0.0 | 0.1 | 85.5 | 4.3 | 10.2 | 0.077 | 0.503 | 23.310107 | -99.018313 |
| T. Der. González | 172.50 | 3 | 0 | 2141 | 1.0 | 82.3 | 6.8 | 6.9 | 1.1 | 1.3 | 0.4 | 0.1 | 0.1 | 83.3 | 6.8 | 9.9 | 0.107 | 0.511 | 23.322841 | -98.998148 |
| Cd. Victoria | 232.00 | 1 | 0 | 2287 | 1.3 | 80.9 | 6.6 | 7.7 | 1.0 | 1.3 | 0.6 | 0.2 | 0.4 | 82.2 | 6.6 | 11.2 | 0.101 | 0.510 | 23.658776 | -99.095800 |

SAN LUIS POTOSI

4 CARR : Cd. Valles - San Luis Potosi

CLAVE: 24135

RUTA: MEX-070

AÑO : 2015

| LUGAR | ESTACION | | | | CLASIFICACION VEHICULAR EN PORCIENTO | | | | | | | | | | | | | COORDENADAS | | |
|----------------------------------|----------|----|----|-------|--------------------------------------|------|-----|------|-----|------|------|--------|-------|------|-----|------|-------|-------------|-----------|-------------|
| | KM | TE | SC | TDPA | M | A | B | C2 | C3 | T3S2 | T3S3 | T3S2R4 | OTROS | A | B | C | K' | D | LATITUD | LONGITUD |
| Cd. Valles | 0.00 | 3 | 1 | 4352 | 3.3 | 75.6 | 2.3 | 8.0 | 4.1 | 3.2 | 2.0 | 1.0 | 0.5 | 78.9 | 2.3 | 18.8 | 0.114 | 0.501 | 21.990589 | -99.046343 |
| Cd. Valles | 0.00 | 3 | 2 | 4328 | 2.9 | 73.8 | 2.5 | 9.1 | 4.4 | 3.6 | 2.1 | 1.0 | 0.6 | 76.7 | 2.5 | 20.8 | 0.137 | 0.501 | 21.990589 | -99.046344 |
| T. Der. Damián Carmona | 31.25 | 3 | 0 | 1755 | 2.3 | 73.8 | 1.6 | 11.1 | 4.5 | 4.4 | 1.6 | 0.4 | 0.3 | 76.1 | 1.6 | 22.3 | 0.107 | 0.511 | 21.925434 | -99.227983 |
| T. Der. Canoas | 75.40 | 1 | 0 | 1768 | 1.6 | 75.5 | 1.4 | 10.5 | 4.0 | 4.5 | 1.5 | 0.4 | 0.6 | 77.1 | 1.4 | 21.5 | 0.084 | 0.500 | 21.878345 | -99.500855 |
| X. C. Cárdenas - Rayón | 93.00 | 1 | 0 | 2416 | 1.9 | 72.8 | 1.0 | 14.8 | 3.3 | 4.1 | 1.3 | 0.4 | 0.4 | 74.7 | 1.0 | 24.3 | 0.084 | 0.504 | 21.852556 | -99.625880 |
| X. C. Cárdenas - Rayón | 93.00 | 3 | 0 | 5524 | 1.4 | 74.2 | 4.1 | 9.5 | 2.4 | 4.7 | 1.7 | 1.0 | 1.0 | 75.6 | 4.1 | 20.3 | 0.091 | 0.505 | 21.859686 | -99.652168 |
| Río Verde | 133.76 | 1 | 1 | 8046 | 7.4 | 79.1 | 1.8 | 7.0 | 0.8 | 1.4 | 1.8 | 0.2 | 0.5 | 86.5 | 1.8 | 11.7 | 0.074 | 0.505 | 21.922440 | -99.982394 |
| Río Verde | 133.76 | 1 | 2 | 7899 | 7.9 | 77.0 | 2.1 | 8.0 | 0.8 | 1.5 | 2.0 | 0.2 | 0.5 | 84.9 | 2.1 | 13.0 | 0.077 | 0.505 | 21.922434 | -99.982387 |
| Río Verde | 133.76 | 3 | 1 | 9708 | 7.3 | 82.3 | 0.3 | 7.1 | 0.7 | 1.1 | 0.8 | 0.1 | 0.3 | 89.6 | 0.3 | 10.1 | 0.078 | 0.505 | 21.934553 | -100.024182 |
| Río Verde | 133.76 | 3 | 2 | 9510 | 6.5 | 82.6 | 0.3 | 7.1 | 0.8 | 1.4 | 0.9 | 0.1 | 0.3 | 89.1 | 0.3 | 10.6 | 0.074 | 0.505 | 21.934555 | -100.024186 |
| T. Der. Guaxcama | 161.04 | 3 | 0 | 2943 | 0.8 | 80.2 | 1.1 | 10.3 | 2.5 | 3.1 | 1.4 | 0.2 | 0.4 | 81.0 | 1.1 | 17.9 | 0.122 | 0.506 | 22.041516 | -100.274717 |
| T. Izq. Zaragoza | 239.50 | 1 | 0 | 4439 | 1.4 | 74.9 | 1.6 | 11.2 | 3.7 | 4.2 | 1.6 | 0.4 | 1.0 | 76.3 | 1.6 | 22.1 | 0.086 | 0.504 | 22.098539 | -100.742797 |
| T. Izq. Zaragoza | 239.50 | 3 | 0 | 6138 | 1.4 | 75.1 | 1.6 | 11.2 | 2.6 | 5.3 | 1.5 | 0.3 | 1.0 | 76.5 | 1.6 | 21.9 | 0.099 | 0.500 | 22.099670 | -100.746090 |
| X. Lib. Ote. de San Luis Potosí | 255.00 | 1 | 0 | 9952 | 3.1 | 71.6 | 1.5 | 11.6 | 2.6 | 6.7 | 1.7 | 0.3 | 0.9 | 74.7 | 1.5 | 23.8 | 0.086 | 0.509 | 22.126673 | -100.821536 |
| X. Periférico de San Luis Potosí | 257.44 | 1 | 1 | 20833 | 2.7 | 87.1 | 0.7 | 6.6 | 1.0 | 0.9 | 0.7 | 0.1 | 0.2 | 89.8 | 0.7 | 9.5 | 0.084 | 0.505 | 22.155009 | -100.902365 |
| X. Periférico de San Luis Potosí | 257.44 | 1 | 2 | 21226 | 3.2 | 85.4 | 0.9 | 7.3 | 1.1 | 1.1 | 0.7 | 0.1 | 0.2 | 88.6 | 0.9 | 10.5 | 0.081 | 0.505 | 22.155008 | -100.902360 |
| San Luis Potosí | 261.94 | | | | | | | | | | | | | | | | | | | |

5 CARR : Cd. Valles - Tampico

CLAVE: 00138

RUTA: MEX-070

AÑO : 2015

| LUGAR | ESTACION | | | | CLASIFICACION VEHICULAR EN PORCIENTO | | | | | | | | | | | | | COORDENADAS | | |
|--------------------------------------|----------|----|----|------|--------------------------------------|------|-----|------|-----|------|------|--------|-------|------|-----|------|-------|-------------|-----------|------------|
| | KM | TE | SC | TDPA | M | A | B | C2 | C3 | T3S2 | T3S3 | T3S2R4 | OTROS | A | B | C | K' | D | LATITUD | LONGITUD |
| Cd. Valles | 0.00 | 3 | 0 | 8437 | 2.6 | 70.2 | 2.8 | 10.5 | 5.6 | 4.8 | 1.8 | 1.0 | 0.7 | 72.8 | 2.8 | 24.4 | 0.079 | 0.503 | 21.975960 | -98.963419 |
| T. Der. Santa Elena | 15.25 | 3 | 0 | 6903 | 1.8 | 69.5 | 2.9 | 9.2 | 5.9 | 4.7 | 3.1 | 2.1 | 0.8 | 71.3 | 2.9 | 25.8 | 0.075 | 0.503 | 21.959549 | -98.881101 |
| Tamuín | 29.60 | 1 | 0 | 6262 | 2.7 | 72.7 | 2.5 | 8.5 | 3.1 | 5.4 | 2.3 | 2.0 | 0.8 | 75.4 | 2.5 | 22.1 | 0.087 | 0.502 | 21.998345 | -98.782192 |
| Ébano | 79.00 | 1 | 0 | 5604 | 9.1 | 57.6 | 3.9 | 10.5 | 3.7 | 7.2 | 3.7 | 3.4 | 0.9 | 66.7 | 3.9 | 29.4 | 0.082 | 0.510 | 22.214138 | -98.392255 |
| Ébano | 79.00 | 3 | 0 | 5038 | 2.5 | 71.7 | 3.3 | 9.5 | 2.0 | 5.1 | 2.2 | 3.0 | 0.7 | 74.2 | 3.3 | 22.5 | 0.080 | 0.501 | 22.211597 | -98.360269 |
| Lim. Edos. Term. S. L. P. Ppia. Ver. | 83.57 | | | | | | | | | | | | | | | | | | | |
| T. Der. Pánuco | 103.00 | 1 | 0 | 5875 | 4.9 | 68.8 | 2.4 | 10.3 | 1.8 | 5.9 | 2.6 | 2.4 | 0.9 | 73.7 | 2.4 | 23.9 | 0.076 | 0.504 | 22.156416 | -98.153925 |
| T. Der. Pánuco | 103.00 | 3 | 0 | 6763 | 1.4 | 64.3 | 2.6 | 11.9 | 7.2 | 6.6 | 2.6 | 2.7 | 0.7 | 65.7 | 2.6 | 31.7 | 0.080 | 0.501 | 22.158855 | -98.149216 |
| T. C. Anáhuac - El Prieto | 128.40 | 1 | 1 | 4827 | 0.8 | 75.3 | 2.3 | 12.2 | 2.2 | 3.2 | 1.5 | 2.0 | 0.5 | 76.1 | 2.3 | 21.6 | 0.084 | 0.500 | 22.214855 | -97.948149 |
| T. C. Anáhuac - El Prieto | 128.40 | 1 | 2 | 4832 | 1.1 | 72.4 | 2.8 | 13.6 | 2.4 | 3.4 | 1.8 | 2.0 | 0.5 | 73.5 | 2.8 | 23.7 | 0.082 | 0.500 | 22.214843 | -97.948155 |
| T. C. Anáhuac - El Prieto | 128.40 | 3 | 1 | 6115 | 1.4 | 71.3 | 2.0 | 11.6 | 2.2 | 5.4 | 2.4 | 3.0 | 0.7 | 72.7 | 2.0 | 25.3 | 0.099 | 0.506 | 22.217358 | -97.937610 |
| T. C. Anáhuac - El Prieto | 128.40 | 3 | 2 | 6262 | 1.4 | 69.2 | 2.1 | 12.6 | 2.6 | 5.6 | 2.6 | 3.1 | 0.8 | 70.6 | 2.1 | 27.3 | 0.105 | 0.506 | 22.217347 | -97.937601 |
| Lim. Edos. Term. Ver. Ppia. Tamps. | 133.81 | | | | | | | | | | | | | | | | | | | |

SAN LUIS POTOSI

5 CARR: Cd. Valles - Tampico

CLAVE: 00138

RUTA: MEX-070

AÑO: 2015

| LUGAR | ESTACION | | | | CLASIFICACION VEHICULAR EN PORCIENTO | | | | | | | | | | | | | COORDENADAS | | |
|---------|----------|----|----|------|--------------------------------------|------|-----|------|-----|------|------|--------|-------|------|-----|------|-------|-------------|-----------|------------|
| | KM | TE | SC | TDPA | M | A | B | C2 | C3 | T3S2 | T3S3 | T3S2R4 | OTROS | A | B | C | K' | D | LATITUD | LONGITUD |
| Tampico | 138.00 | 1 | 1 | 8423 | 1.9 | 75.7 | 1.4 | 10.3 | 1.6 | 4.2 | 2.0 | 2.0 | 0.9 | 77.6 | 1.4 | 21.0 | 0.091 | 0.502 | 22.227010 | -97.894292 |
| Tampico | 138.00 | 1 | 2 | 8370 | 2.0 | 72.6 | 1.5 | 12.3 | 1.7 | 4.4 | 2.4 | 2.2 | 0.9 | 74.6 | 1.5 | 23.9 | 0.086 | 0.502 | 22.227010 | -97.894292 |

6 CARR: El Clarín - Agua Buena

CLAVE: 24283

RUTA: MEX-070

AÑO: 2015

| LUGAR | ESTACION | | | | CLASIFICACION VEHICULAR EN PORCIENTO | | | | | | | | | | | | | COORDENADAS | | |
|------------------------------------|----------|----|----|------|--------------------------------------|------|-----|------|-----|------|------|--------|-------|------|-----|------|-------|-------------|-----------|------------|
| | KM | TE | SC | TDPA | M | A | B | C2 | C3 | T3S2 | T3S3 | T3S2R4 | OTROS | A | B | C | K' | D | LATITUD | LONGITUD |
| T. C. Cd. Valles - San Luis Potosí | 0.00 | 3 | 0 | 998 | 5.0 | 77.0 | 1.0 | 14.8 | 0.9 | 0.9 | 0.3 | 0.0 | 0.1 | 82.0 | 1.0 | 17.0 | 0.104 | 0.510 | 21.890112 | -99.383128 |
| Agua Buena | 11.23 | 1 | 0 | 3132 | 14.2 | 74.5 | 0.2 | 8.1 | 0.3 | 2.2 | 0.2 | 0.0 | 0.3 | 88.7 | 0.2 | 11.1 | 0.089 | 0.504 | 21.953539 | -99.390315 |

7 CARR: Ent. Ahualulco - Ent. La Bonita

CLAVE: 24258

RUTA: MEX-063

AÑO: 2015

| LUGAR | ESTACION | | | | CLASIFICACION VEHICULAR EN PORCIENTO | | | | | | | | | | | | | COORDENADAS | | |
|--------------------------------------|----------|----|----|------|--------------------------------------|------|-----|------|-----|------|------|--------|-------|------|-----|------|-------|-------------|-----------|-------------|
| | KM | TE | SC | TDPA | M | A | B | C2 | C3 | T3S2 | T3S3 | T3S2R4 | OTROS | A | B | C | K' | D | LATITUD | LONGITUD |
| T. C. San Luis Potosí - Ent. Arcinas | 0.00 | 3 | 0 | 3957 | 2.7 | 81.6 | 1.4 | 11.0 | 0.8 | 2.1 | 0.2 | 0.0 | 0.2 | 84.3 | 1.4 | 14.3 | 0.104 | 0.500 | 22.320624 | -101.165203 |
| Ahualulco | 11.00 | 3 | 0 | 3764 | 3.5 | 75.6 | 1.1 | 14.9 | 1.2 | 2.2 | 0.5 | 0.5 | 0.5 | 79.1 | 1.1 | 19.8 | 0.084 | 0.500 | 22.411937 | -101.159118 |
| Moctezuma | 59.00 | 1 | 0 | 2094 | 2.8 | 70.9 | 1.8 | 21.1 | 1.1 | 1.6 | 0.5 | 0.1 | 0.1 | 73.7 | 1.8 | 24.5 | 0.101 | 0.502 | 22.758501 | -101.064927 |
| Charcas | 100.00 | 1 | 0 | 2044 | 4.7 | 76.3 | 2.9 | 11.2 | 1.5 | 1.7 | 0.9 | 0.5 | 0.3 | 81.0 | 2.9 | 16.1 | 0.094 | 0.517 | 23.111987 | -101.103749 |
| Charcas | 100.00 | 3 | 0 | 1377 | 5.7 | 75.1 | 2.2 | 13.4 | 1.1 | 1.7 | 0.3 | 0.2 | 0.3 | 80.8 | 2.2 | 17.0 | 0.084 | 0.511 | 23.130550 | -101.100280 |
| T. C. San Luis Potosí - Matehuala | 169.90 | 1 | 0 | 1385 | 4.7 | 69.8 | 1.9 | 21.0 | 1.1 | 1.1 | 0.2 | 0.1 | 0.1 | 74.5 | 1.9 | 23.6 | 0.104 | 0.501 | 23.482101 | -100.619468 |

8 CARR: Ent. de Zaragoza - San Felipe

CLAVE: 00240

RUTA: MEX-037

AÑO: 2015

| LUGAR | ESTACION | | | | CLASIFICACION VEHICULAR EN PORCIENTO | | | | | | | | | | | | | COORDENADAS | | |
|--------------------------------------|----------|----|----|-------|--------------------------------------|------|-----|------|-----|------|------|--------|-------|------|-----|------|-------|-------------|-----------|-------------|
| | KM | TE | SC | TDPA | M | A | B | C2 | C3 | T3S2 | T3S3 | T3S2R4 | OTROS | A | B | C | K' | D | LATITUD | LONGITUD |
| T. C. Querétaro - San Luis Potosí | 0.00 | 3 | 0 | 10955 | 1.2 | 59.8 | 2.5 | 13.3 | 2.8 | 15.0 | 2.3 | 1.8 | 1.3 | 61.0 | 2.5 | 36.5 | 0.073 | 0.507 | 21.965686 | -100.819037 |
| Lim. Edos. Term. S. L. P. Ppia. Gto. | 32.00 | | | | | | | | | | | | | | | | | | | |
| San Felipe | 72.00 | 1 | 0 | 6949 | 0.2 | 70.2 | 2.8 | 8.0 | 2.1 | 12.5 | 3.2 | 0.6 | 0.4 | 70.4 | 2.8 | 26.8 | 0.070 | 0.509 | 21.481438 | -101.153340 |

9 CARR: Ent. Tula - Cd. Victoria

CLAVE: 00179

RUTA: MEX-101

AÑO: 2015

| LUGAR | ESTACION | | | | CLASIFICACION VEHICULAR EN PORCIENTO | | | | | | | | | | | | | COORDENADAS | | |
|--|----------|----|----|------|--------------------------------------|------|-----|-----|-----|------|------|--------|-------|------|-----|------|-------|-------------|-----------|------------|
| | KM | TE | SC | TDPA | M | A | B | C2 | C3 | T3S2 | T3S3 | T3S2R4 | OTROS | A | B | C | K' | D | LATITUD | LONGITUD |
| T. C. Antigua Morelos - El Huizache | 0.00 | 3 | 0 | 3490 | 0.9 | 40.6 | 4.6 | 8.2 | 2.1 | 17.8 | 7.4 | 16.1 | 2.3 | 41.5 | 4.6 | 53.9 | 0.066 | 0.501 | 22.737990 | -99.967956 |
| Lim. Edos. Term. S. L. P. Ppia. Tamps. | 2.40 | | | | | | | | | | | | | | | | | | | |

SAN LUIS POTOSI

9 CARR : Ent. Tula - Cd. Victoria

CLAVE: 00179

RUTA: MEX-101

AÑO : 2015

| LUGAR | ESTACION | | | | CLASIFICACION VEHICULAR EN PORCIENTO | | | | | | | | | | | | | | COORDENADAS | |
|--------------------------|----------|----|----|------|--------------------------------------|------|-----|------|-----|------|------|--------|-------|------|-----|------|-------|-------|-------------|------------|
| | KM | TE | SC | TDPA | M | A | B | C2 | C3 | T3S2 | T3S3 | T3S2R4 | OTROS | A | B | C | K' | D | LATITUD | LONGITUD |
| T. Der. Tula (1° Acceso) | 38.00 | 1 | 0 | 4236 | 1.3 | 47.6 | 3.1 | 9.6 | 3.2 | 16.3 | 4.5 | 13.4 | 1.0 | 48.9 | 3.1 | 48.0 | 0.070 | 0.501 | 22.983223 | -99.736052 |
| T. Der. Tula (2° Acceso) | 41.95 | 3 | 0 | 3638 | 0.7 | 43.8 | 3.8 | 10.2 | 3.3 | 19.0 | 4.8 | 13.3 | 1.1 | 44.5 | 3.8 | 51.7 | 0.063 | 0.514 | 23.020279 | -99.714552 |
| Jaumave | 112.68 | 1 | 0 | 4725 | 1.2 | 56.0 | 2.6 | 7.5 | 2.0 | 14.4 | 4.4 | 11.0 | 0.9 | 57.2 | 2.6 | 40.2 | 0.068 | 0.502 | 23.399449 | -99.403782 |
| Jaumave | 112.68 | 3 | 0 | 4747 | 1.2 | 53.4 | 3.0 | 7.3 | 2.1 | 13.4 | 5.2 | 13.4 | 1.0 | 54.6 | 3.0 | 42.4 | 0.070 | 0.510 | 23.417968 | -99.374091 |
| Cd. Victoria | 180.00 | 1 | 1 | 3436 | 13.6 | 77.8 | 0.1 | 7.1 | 0.4 | 0.6 | 0.3 | 0.0 | 0.1 | 91.4 | 0.1 | 8.5 | 0.121 | 0.517 | 23.710855 | -99.176345 |
| Cd. Victoria | 180.00 | 1 | 2 | 3205 | 9.9 | 80.9 | 0.1 | 7.8 | 0.3 | 0.6 | 0.3 | 0.0 | 0.1 | 90.8 | 0.1 | 9.1 | 0.082 | 0.517 | 23.710846 | -99.176336 |

10 CARR : Jalpan de Serra - Rioverde

CLAVE: 00265

RUTA: MEX-069

AÑO : 2015

| LUGAR | ESTACION | | | | CLASIFICACION VEHICULAR EN PORCIENTO | | | | | | | | | | | | | | COORDENADAS | |
|--------------------------------------|----------|----|----|------|--------------------------------------|------|-----|------|-----|------|------|--------|-------|------|-----|------|-------|-------|-------------|------------|
| | KM | TE | SC | TDPA | M | A | B | C2 | C3 | T3S2 | T3S3 | T3S2R4 | OTROS | A | B | C | K' | D | LATITUD | LONGITUD |
| Jalpan de Serra | 0.00 | 3 | 0 | 6288 | 0.2 | 89.2 | 2.4 | 4.8 | 1.4 | 0.9 | 0.5 | 0.4 | 0.2 | 89.4 | 2.4 | 8.2 | 0.076 | 0.507 | 21.231840 | -99.479450 |
| T. Izq. Conca | 35.01 | 1 | 0 | 2289 | 0.2 | 89.8 | 1.1 | 6.2 | 1.6 | 0.6 | 0.2 | 0.2 | 0.1 | 90.0 | 1.1 | 8.9 | 0.084 | 0.507 | 21.436560 | -99.619840 |
| Arroyo Seco | 48.60 | 1 | 0 | 1536 | 0.3 | 85.2 | 1.6 | 8.0 | 2.3 | 1.4 | 0.5 | 0.2 | 0.5 | 85.5 | 1.6 | 12.9 | 0.087 | 0.529 | 21.541570 | -99.687730 |
| Lim. Edos. Term. Qro. Ppia. S. L. P. | 52.27 | | | | | | | | | | | | | | | | | | | |
| San Ciro de Acosta | 69.42 | 1 | 0 | 1853 | 5.9 | 76.6 | 0.5 | 13.4 | 1.2 | 1.6 | 0.7 | 0.0 | 0.1 | 82.5 | 0.5 | 17.0 | 0.086 | 0.501 | 21.648028 | -99.808562 |
| San Ciro de Acosta | 69.42 | 3 | 0 | 2772 | 6.1 | 80.0 | 0.2 | 8.3 | 1.1 | 3.0 | 0.6 | 0.2 | 0.5 | 86.1 | 0.2 | 13.7 | 0.089 | 0.502 | 21.659038 | -99.825152 |
| Rioverde | 105.43 | 1 | 0 | 5909 | 6.6 | 76.7 | 0.4 | 11.6 | 0.7 | 2.9 | 0.6 | 0.2 | 0.3 | 83.3 | 0.4 | 16.3 | 0.091 | 0.504 | 21.883607 | -99.976348 |

11 CARR : Libramiento de Cd. Valles

CLAVE: 24205

RUTA: MEX-070

AÑO : 2015

| LUGAR | ESTACION | | | | CLASIFICACION VEHICULAR EN PORCIENTO | | | | | | | | | | | | | | COORDENADAS | |
|------------------------------------|----------|----|----|------|--------------------------------------|------|-----|------|------|------|------|--------|-------|------|-----|------|-------|-------|-------------|------------|
| | KM | TE | SC | TDPA | M | A | B | C2 | C3 | T3S2 | T3S3 | T3S2R4 | OTROS | A | B | C | K' | D | LATITUD | LONGITUD |
| T. C. Cd. Valles - San Luis Potosi | 0.00 | 3 | 0 | 8757 | 4.0 | 72.4 | 2.2 | 9.2 | 3.7 | 5.2 | 1.4 | 1.1 | 0.8 | 76.4 | 2.2 | 21.4 | 0.069 | 0.525 | 21.984384 | -99.035057 |
| T. C. Cd. Valles - Tampico | 11.54 | 1 | 0 | 3963 | 1.8 | 58.4 | 4.7 | 12.9 | 11.1 | 5.6 | 2.6 | 2.1 | 0.8 | 60.2 | 4.7 | 35.1 | 0.074 | 0.516 | 21.973078 | -98.966260 |

12 CARR : Libramiento de Villa de Reyes

CLAVE: 24010

RUTA: MEX-037

AÑO : 2015

| LUGAR | ESTACION | | | | CLASIFICACION VEHICULAR EN PORCIENTO | | | | | | | | | | | | | | COORDENADAS | |
|----------------------------------|----------|----|----|------|--------------------------------------|------|-----|------|-----|------|------|--------|-------|------|-----|------|-------|-------|-------------|-------------|
| | KM | TE | SC | TDPA | M | A | B | C2 | C3 | T3S2 | T3S3 | T3S2R4 | OTROS | A | B | C | K' | D | LATITUD | LONGITUD |
| T. C. Ent. Zaragoza - San Felipe | 0.00 | 3 | 0 | 6784 | 2.3 | 52.2 | 3.0 | 11.2 | 4.1 | 19.4 | 2.9 | 2.9 | 2.0 | 54.5 | 3.0 | 42.5 | 0.066 | 0.527 | 21.811520 | -100.929855 |
| T. C. Villa de Reyes - Bledos | 3.10 | | | | | | | | | | | | | | | | | | | |

SAN LUIS POTOSI

13 CARR: Libramiento Villa de Arriaga

CLAVE: 24009

RUTA: MEX-080

AÑO: 2015

| LUGAR | ESTACION | | | | CLASIFICACION VEHICULAR EN PORCIENTO | | | | | | | | | | | | | | COORDENADAS | |
|---|----------|----|----|------|--------------------------------------|------|-----|-----|-----|------|------|--------|-------|------|-----|------|-------|-------|-------------|-------------|
| | KM | TE | SC | TDPA | M | A | B | C2 | C3 | T3S2 | T3S3 | T3S2R4 | OTROS | A | B | C | K' | D | LATITUD | LONGITUD |
| T. C. San Luis Potosí - Lagos de Moreno | 0.00 | 3 | 0 | 3037 | 1.1 | 68.6 | 3.8 | 7.1 | 4.9 | 8.2 | 4.1 | 1.2 | 1.0 | 69.7 | 3.8 | 26.5 | 0.067 | 0.517 | 21.924125 | -101.371630 |
| T. C. San Luis Potosí - Lagos de Moreno | 5.00 | | | | | | | | | | | | | | | | | | | |

14 CARR: Matehuala - Ent. Puerto México

CLAVE: 00405

RUTA: MEX-057

AÑO: 2015

| LUGAR | ESTACION | | | | CLASIFICACION VEHICULAR EN PORCIENTO | | | | | | | | | | | | | | COORDENADAS | |
|---------------------------------------|----------|----|----|------|--------------------------------------|------|-----|------|-----|------|------|--------|-------|------|-----|------|-------|-------|-------------|-------------|
| | KM | TE | SC | TDPA | M | A | B | C2 | C3 | T3S2 | T3S3 | T3S2R4 | OTROS | A | B | C | K' | D | LATITUD | LONGITUD |
| Matehuala | 0.00 | 3 | 1 | 6945 | 11.3 | 63.3 | 1.8 | 8.6 | 1.7 | 8.8 | 2.7 | 1.3 | 0.5 | 74.6 | 1.8 | 23.6 | 0.076 | 0.513 | 23.669657 | -100.631952 |
| Matehuala | 0.00 | 3 | 2 | 7312 | 10.2 | 61.8 | 2.0 | 9.3 | 1.8 | 10.2 | 2.8 | 1.4 | 0.5 | 72.0 | 2.0 | 26.0 | 0.067 | 0.513 | 23.669652 | -100.631973 |
| T. Izq. Cedral | 8.47 | 1 | 1 | 4402 | 1.5 | 60.6 | 3.4 | 13.5 | 2.2 | 13.9 | 2.5 | 1.5 | 0.9 | 62.1 | 3.4 | 34.5 | 0.072 | 0.514 | 23.691996 | -100.620529 |
| T. Izq. Cedral | 8.47 | 1 | 2 | 4647 | 2.1 | 57.8 | 3.6 | 14.3 | 2.5 | 14.4 | 2.7 | 1.6 | 1.0 | 59.9 | 3.6 | 36.5 | 0.069 | 0.514 | 23.691992 | -100.620540 |
| T. Izq. Cedral | 8.47 | 3 | 1 | 2316 | 2.2 | 49.2 | 5.1 | 13.6 | 1.9 | 21.4 | 3.6 | 2.3 | 0.7 | 51.4 | 5.1 | 43.5 | 0.082 | 0.520 | 23.700192 | -100.616469 |
| T. Izq. Cedral | 8.47 | 3 | 2 | 2509 | 1.2 | 44.8 | 5.6 | 14.8 | 2.0 | 24.2 | 4.0 | 2.6 | 0.8 | 46.0 | 5.6 | 48.4 | 0.083 | 0.520 | 23.700199 | -100.616475 |
| Lim. Edos. Term. S. L. P. Ppia. N. L. | 24.64 | | | | | | | | | | | | | | | | | | | |
| Santa Ana | 59.65 | 1 | 1 | 6999 | 6.9 | 29.7 | 5.2 | 9.9 | 7.2 | 31.0 | 4.4 | 4.9 | 0.8 | 36.6 | 5.2 | 58.2 | 0.068 | 0.512 | 24.080024 | -100.386524 |
| Santa Ana | 59.65 | 1 | 2 | 7340 | 8.0 | 22.7 | 6.1 | 11.9 | 7.5 | 33.0 | 4.5 | 5.3 | 1.0 | 30.7 | 6.1 | 63.2 | 0.064 | 0.512 | 24.080048 | -100.386535 |
| T. Der. Linares | 128.99 | 3 | 1 | 7587 | 1.5 | 42.3 | 5.3 | 7.7 | 2.4 | 29.9 | 4.9 | 5.2 | 0.8 | 43.8 | 5.3 | 50.9 | 0.069 | 0.526 | 24.681101 | -100.300719 |
| T. Der. Linares | 128.99 | 3 | 2 | 8430 | 1.3 | 34.1 | 5.9 | 8.8 | 2.8 | 35.1 | 5.3 | 5.8 | 0.9 | 35.4 | 5.9 | 58.7 | 0.062 | 0.526 | 24.681162 | -100.300743 |
| San Rafael | 177.18 | 1 | 1 | 7636 | 1.3 | 44.6 | 3.2 | 6.3 | 2.8 | 33.0 | 3.8 | 4.2 | 0.8 | 45.9 | 3.2 | 50.9 | 0.062 | 0.512 | 25.019716 | -100.541804 |
| San Rafael | 177.18 | 1 | 2 | 8000 | 0.8 | 41.3 | 3.6 | 6.8 | 3.2 | 34.4 | 4.5 | 4.6 | 0.8 | 42.1 | 3.6 | 54.3 | 0.058 | 0.512 | 25.019710 | -100.541840 |
| Ent. Puerto México | 205.97 | | | | | | | | | | | | | | | | | | | |

15 CARR: Portezuelo - Cd. Valles

CLAVE: 00023

RUTA: MEX-085

AÑO: 2015

| LUGAR | ESTACION | | | | CLASIFICACION VEHICULAR EN PORCIENTO | | | | | | | | | | | | | | COORDENADAS | |
|-------------------------------|----------|----|----|------|--------------------------------------|------|-----|-----|-----|------|------|--------|-------|------|-----|------|-------|-------|-------------|------------|
| | KM | TE | SC | TDPA | M | A | B | C2 | C3 | T3S2 | T3S3 | T3S2R4 | OTROS | A | B | C | K' | D | LATITUD | LONGITUD |
| Portezuelo | 0.00 | 3 | 0 | 5610 | 0.2 | 91.8 | 1.1 | 3.2 | 1.1 | 1.6 | 0.5 | 0.3 | 0.2 | 92.0 | 1.1 | 6.9 | 0.080 | 0.507 | 20.488257 | -99.298489 |
| T. Der. Tasquillo (2° Acceso) | 10.50 | 1 | 0 | 4232 | 0.3 | 90.1 | 1.5 | 4.5 | 1.4 | 1.2 | 0.4 | 0.3 | 0.3 | 90.4 | 1.5 | 8.1 | 0.085 | 0.510 | 20.546220 | -99.320481 |
| T. Izq. Zimapán (1° Acceso) | 32.00 | 1 | 0 | 5212 | 0.1 | 91.7 | 1.7 | 3.2 | 1.3 | 1.0 | 0.5 | 0.2 | 0.3 | 91.8 | 1.7 | 6.5 | 0.077 | 0.503 | 20.702945 | -99.334330 |
| T. Izq. Zimapán (1° Acceso) | 32.00 | 3 | 0 | 2460 | 1.4 | 86.2 | 1.2 | 6.5 | 1.5 | 1.9 | 1.0 | 0.1 | 0.2 | 87.6 | 1.2 | 11.2 | 0.070 | 0.522 | 20.705761 | -99.336108 |
| La Estancia | 41.00 | 3 | 0 | 1719 | 0.5 | 88.3 | 1.8 | 5.5 | 2.2 | 0.9 | 0.3 | 0.3 | 0.2 | 88.8 | 1.8 | 9.4 | 0.091 | 0.513 | 20.777728 | -99.309665 |
| Trancas | 51.00 | 3 | 0 | 1493 | 0.4 | 88.1 | 2.0 | 5.6 | 2.1 | 1.0 | 0.4 | 0.2 | 0.2 | 88.5 | 2.0 | 9.5 | 0.084 | 0.505 | 20.799216 | -99.266012 |
| Jacala | 98.60 | 3 | 0 | 2235 | 0.4 | 92.3 | 1.4 | 3.8 | 1.1 | 0.7 | 0.2 | 0.1 | 0.0 | 92.7 | 1.4 | 5.9 | 0.076 | 0.503 | 21.003443 | -99.184922 |
| Zacate Grande | 143.10 | 1 | 0 | 1167 | 0.7 | 84.1 | 2.8 | 8.6 | 1.8 | 0.9 | 0.4 | 0.4 | 0.3 | 84.8 | 2.8 | 12.4 | 0.075 | 0.521 | 21.111098 | -99.001790 |
| T. Izq. Pisaflores | 154.00 | 3 | 0 | 1848 | 0.3 | 87.4 | 2.0 | 6.0 | 2.3 | 1.3 | 0.4 | 0.2 | 0.1 | 87.7 | 2.0 | 10.3 | 0.077 | 0.505 | 21.153637 | -98.945019 |

SAN LUIS POTOSI

15 CARR: Portezuelo - Cd. Valles

CLAVE: 00023

RUTA: MEX-085

AÑO: 2015

| LUGAR | ESTACION | | | | CLASIFICACION VEHICULAR EN PORCIENTO | | | | | | | | | | | | | COORDENADAS | | |
|--------------------------------------|----------|----|----|-------|--------------------------------------|------|-----|------|-----|------|------|--------|-------|------|-----|------|-------|-------------|-----------|------------|
| | KM | TE | SC | TDPA | M | A | B | C2 | C3 | T3S2 | T3S3 | T3S2R4 | OTROS | A | B | C | K' | D | LATITUD | LONGITUD |
| Lim. Edos. Term. Hgo. Ppia. S. L. P. | 168.63 | | | | | | | | | | | | | | | | | | | |
| Tamazunchale | 192.80 | 1 | 0 | 4713 | 13.3 | 68.5 | 1.9 | 10.8 | 0.9 | 3.2 | 0.7 | 0.1 | 0.6 | 81.8 | 1.9 | 16.3 | 0.084 | 0.504 | 21.262228 | -98.800440 |
| T. Izq. Xilitla | 228.75 | 1 | 0 | 5277 | 5.3 | 81.7 | 1.0 | 5.2 | 1.0 | 3.2 | 1.5 | 0.3 | 0.8 | 87.0 | 1.0 | 12.0 | 0.078 | 0.509 | 21.444614 | -98.926952 |
| T. Izq. Xilitla | 228.75 | 3 | 0 | 4900 | 3.7 | 77.3 | 2.3 | 9.9 | 1.7 | 3.3 | 0.8 | 0.3 | 0.7 | 81.0 | 2.3 | 16.7 | 0.083 | 0.511 | 21.445893 | -98.929316 |
| T. Izq. Aquismón | 252.50 | 1 | 0 | 6179 | 2.9 | 78.2 | 1.4 | 10.0 | 1.9 | 3.7 | 1.1 | 0.2 | 0.6 | 81.1 | 1.4 | 17.5 | 0.076 | 0.501 | 21.621533 | -98.987578 |
| Agua Hedionda | 265.00 | 1 | 0 | 5006 | 1.9 | 75.4 | 1.9 | 11.9 | 3.3 | 3.0 | 1.5 | 0.3 | 0.8 | 77.3 | 1.9 | 20.8 | 0.083 | 0.504 | 21.727354 | -98.963989 |
| Cd. Valles | 300.00 | 1 | 0 | 10962 | 2.8 | 77.0 | 0.9 | 11.0 | 1.3 | 5.1 | 0.8 | 0.2 | 0.9 | 79.8 | 0.9 | 19.3 | 0.073 | 0.508 | 21.959102 | -98.998735 |

16 CARR: Querétaro - San Luis Potosi

CLAVE: 00165

RUTA: MEX-057

AÑO: 2015

| LUGAR | ESTACION | | | | CLASIFICACION VEHICULAR EN PORCIENTO | | | | | | | | | | | | | COORDENADAS | | |
|---|----------|----|----|-------|--------------------------------------|------|-----|------|-----|------|------|--------|-------|------|-----|------|-------|-------------|-----------|-------------|
| | KM | TE | SC | TDPA | M | A | B | C2 | C3 | T3S2 | T3S3 | T3S2R4 | OTROS | A | B | C | K' | D | LATITUD | LONGITUD |
| Querétaro | 0.00 | | | | | | | | | | | | | | | | | | | |
| T. Der. Libramiento de Querétaro | 6.28 | 3 | 1 | 45143 | 0.0 | 88.6 | 1.3 | 4.8 | 1.7 | 1.5 | 0.6 | 0.6 | 0.9 | 88.6 | 1.3 | 10.1 | 0.065 | 0.513 | 20.634840 | -100.427620 |
| T. Der. Libramiento de Querétaro | 6.28 | 3 | 2 | 47505 | 0.0 | 89.5 | 1.3 | 4.5 | 1.4 | 1.7 | 0.8 | 0.6 | 0.2 | 89.5 | 1.3 | 9.2 | 0.064 | 0.513 | 20.634840 | -100.427620 |
| T. Izq. Juriquilla | 15.63 | 3 | 1 | 31486 | 0.6 | 82.5 | 1.9 | 10.0 | 1.5 | 2.4 | 0.7 | 0.3 | 0.1 | 83.1 | 1.9 | 15.0 | 0.097 | 0.513 | 20.697060 | -100.436520 |
| T. Izq. Juriquilla | 15.63 | 3 | 2 | 31944 | 0.4 | 86.1 | 0.2 | 3.1 | 1.0 | 4.0 | 3.0 | 0.6 | 1.6 | 86.5 | 0.2 | 13.3 | 0.071 | 0.513 | 20.697060 | -100.436520 |
| T. Izq. San Miguel de Allende | 28.53 | 1 | 1 | 22612 | 0.0 | 84.4 | 2.1 | 5.3 | 1.5 | 4.6 | 1.1 | 0.8 | 0.2 | 84.4 | 2.1 | 13.5 | 0.102 | 0.509 | 20.809430 | -100.448870 |
| T. Izq. San Miguel de Allende | 28.53 | 1 | 2 | 23437 | 0.0 | 83.7 | 1.7 | 5.8 | 2.1 | 4.2 | 1.3 | 1.0 | 0.2 | 83.7 | 1.7 | 14.6 | 0.084 | 0.509 | 20.809430 | -100.448870 |
| T. Izq. San Miguel de Allende | 28.53 | 3 | 1 | 17142 | 0.0 | 73.8 | 1.9 | 6.1 | 2.5 | 10.8 | 2.9 | 1.6 | 0.4 | 73.8 | 1.9 | 24.3 | 0.064 | 0.508 | 20.837070 | -100.439290 |
| T. Izq. San Miguel de Allende | 28.53 | 3 | 2 | 16572 | 0.0 | 70.7 | 2.1 | 5.7 | 2.9 | 11.8 | 4.5 | 1.9 | 0.4 | 70.7 | 2.1 | 27.2 | 0.075 | 0.508 | 20.836770 | -100.439510 |
| Lim. Edos. Term. Qro. Ppia. Gto. | 36.70 | | | | | | | | | | | | | | | | | | | |
| X. C. San José Iturbide - El Arenal | 46.83 | 1 | 1 | 16092 | 0.0 | 72.5 | 2.2 | 6.5 | 2.8 | 10.0 | 4.1 | 1.5 | 0.4 | 72.5 | 2.2 | 25.3 | 0.064 | 0.503 | 20.968290 | -100.429080 |
| X. C. San José Iturbide - El Arenal | 46.83 | 1 | 2 | 16263 | 0.0 | 71.2 | 2.0 | 6.3 | 1.4 | 13.2 | 4.4 | 1.1 | 0.4 | 71.2 | 2.0 | 26.8 | 0.075 | 0.503 | 20.968290 | -100.429080 |
| X. C. Ent. San Miguel de Allende - Dr. Mora | 61.93 | 1 | 1 | 13718 | 0.0 | 69.0 | 4.4 | 6.1 | 2.1 | 10.5 | 4.7 | 2.8 | 0.4 | 69.0 | 4.4 | 26.6 | 0.065 | 0.506 | 21.077270 | -100.512430 |
| X. C. Ent. San Miguel de Allende - Dr. Mora | 61.93 | 1 | 2 | 13410 | 0.0 | 65.9 | 4.9 | 7.6 | 2.9 | 10.8 | 4.6 | 3.0 | 0.3 | 65.9 | 4.9 | 29.2 | 0.059 | 0.506 | 21.077270 | -100.512430 |
| X. C. San Luis de La Paz - Guanajuato | 86.68 | 1 | 1 | 12957 | 0.0 | 75.3 | 3.1 | 5.8 | 2.1 | 9.5 | 3.4 | 0.1 | 0.7 | 75.3 | 3.1 | 21.6 | 0.061 | 0.506 | 21.281511 | -100.591650 |
| X. C. San Luis de La Paz - Guanajuato | 86.68 | 1 | 2 | 13255 | 0.0 | 73.4 | 3.5 | 5.0 | 2.9 | 11.2 | 3.2 | 0.1 | 0.7 | 73.4 | 3.5 | 23.1 | 0.075 | 0.506 | 21.281511 | -100.591650 |
| T. Izq. San Diego de La Unión | 119.07 | 3 | 1 | 9703 | 0.0 | 78.8 | 2.0 | 5.0 | 2.5 | 8.0 | 3.1 | 0.1 | 0.5 | 78.8 | 2.0 | 19.2 | 0.070 | 0.543 | 21.538815 | -100.746040 |
| T. Izq. San Diego de La Unión | 119.07 | 3 | 2 | 11517 | 0.0 | 78.7 | 2.1 | 4.7 | 2.6 | 8.4 | 3.0 | 0.1 | 0.4 | 78.7 | 2.1 | 19.2 | 0.061 | 0.543 | 21.538815 | -100.746040 |
| Lim. Edos. Term. Gto. Ppia. S. L. P. | 124.74 | | | | | | | | | | | | | | | | | | | |
| T. Izq. Santa María del Río | 155.88 | 3 | 1 | 10952 | 2.0 | 57.3 | 4.9 | 7.4 | 2.9 | 15.9 | 5.1 | 3.6 | 0.9 | 59.3 | 4.9 | 35.8 | 0.065 | 0.518 | 21.823296 | -100.728017 |
| T. Izq. Santa María del Río | 155.88 | 3 | 2 | 11783 | 1.3 | 53.2 | 5.3 | 8.1 | 3.2 | 17.7 | 5.9 | 4.3 | 1.0 | 54.5 | 5.3 | 40.2 | 0.067 | 0.518 | 21.820788 | -100.729582 |
| T. Izq. Villa de Reyes | 176.35 | 1 | 1 | 13101 | 1.1 | 47.4 | 5.8 | 9.9 | 3.2 | 24.3 | 3.1 | 4.7 | 0.5 | 48.5 | 5.8 | 45.7 | 0.063 | 0.505 | 21.958688 | -100.810222 |
| T. Izq. Villa de Reyes | 176.35 | 1 | 2 | 13351 | 0.6 | 41.2 | 6.5 | 11.5 | 3.4 | 27.4 | 3.6 | 5.3 | 0.5 | 41.8 | 6.5 | 51.7 | 0.066 | 0.505 | 21.960237 | -100.811376 |

SAN LUIS POTOSI

16 CARR: Querétaro - San Luis Potosi

CLAVE: 00165

RUTA: MEX-057

AÑO: 2015

| LUGAR | ESTACION | | | | CLASIFICACION VEHICULAR EN PORCIENTO | | | | | | | | | | | | | COORDENADAS | | |
|--|----------|----|----|-------|--------------------------------------|------|-----|------|-----|------|------|--------|-------|------|-----|------|-------|-------------|-----------|-------------|
| | KM | TE | SC | TDPA | M | A | B | C2 | C3 | T3S2 | T3S3 | T3S2R4 | OTROS | A | B | C | K' | D | LATITUD | LONGITUD |
| T. Izq. Villa de Reyes | 176.35 | 3 | 1 | 19005 | 1.0 | 53.5 | 4.0 | 10.9 | 3.1 | 20.9 | 2.6 | 3.4 | 0.6 | 54.5 | 4.0 | 41.5 | 0.069 | 0.504 | 21.973784 | -100.818405 |
| T. Izq. Villa de Reyes | 176.35 | 3 | 2 | 19332 | 0.7 | 49.8 | 4.3 | 11.7 | 3.6 | 22.8 | 2.9 | 3.6 | 0.6 | 50.5 | 4.3 | 45.2 | 0.076 | 0.504 | 21.973796 | -100.818412 |
| X. C. Libramiento de San Luis Potosi | 184.80 | 1 | 1 | 23095 | 1.8 | 65.2 | 3.0 | 9.4 | 3.3 | 11.7 | 2.2 | 2.6 | 0.8 | 67.0 | 3.0 | 30.0 | 0.086 | 0.528 | 22.030440 | -100.849469 |
| X. C. Libramiento de San Luis Potosi | 184.80 | 1 | 2 | 25855 | 1.0 | 62.8 | 3.1 | 10.4 | 3.5 | 12.8 | 2.6 | 3.0 | 0.8 | 63.8 | 3.1 | 33.1 | 0.088 | 0.528 | 22.030446 | -100.849466 |
| X. Periférico de San Luis Potosi (Central) | 197.50 | 1 | 1 | 33049 | 1.1 | 87.0 | 0.9 | 2.6 | 0.8 | 2.2 | 3.8 | 1.1 | 0.5 | 88.1 | 0.9 | 11.0 | 0.065 | 0.514 | 22.121194 | -100.912816 |
| X. Periférico de San Luis Potosi (Lateral) | 197.50 | 1 | 1 | 14512 | 4.5 | 68.0 | 2.2 | 12.0 | 3.3 | 4.9 | 2.5 | 1.3 | 1.3 | 72.5 | 2.2 | 25.3 | 0.110 | 0.516 | 22.121194 | -100.912816 |
| X. Periférico de San Luis Potosi (Central) | 197.50 | 1 | 2 | 34993 | 1.3 | 85.6 | 1.0 | 2.9 | 0.9 | 2.4 | 4.2 | 1.1 | 0.6 | 86.9 | 1.0 | 12.1 | 0.063 | 0.514 | 22.121190 | -100.912816 |
| X. Periférico de San Luis Potosi (Lateral) | 197.50 | 1 | 2 | 13592 | 5.6 | 64.0 | 2.5 | 13.7 | 3.3 | 5.2 | 2.7 | 1.5 | 1.5 | 69.6 | 2.5 | 27.9 | 0.093 | 0.516 | 22.121190 | -100.912816 |
| San Luis Potosi | 201.66 | | | | | | | | | | | | | | | | | | | |

17 CARR: Ramal a Aeropuerto de S. L. P.

CLAVE: 24206

RUTA: MEX-057

AÑO: 2015

| LUGAR | ESTACION | | | | CLASIFICACION VEHICULAR EN PORCIENTO | | | | | | | | | | | | | COORDENADAS | | |
|-----------------------------------|----------|----|----|------|--------------------------------------|------|-----|-----|-----|------|------|--------|-------|------|-----|------|-------|-------------|-----------|-------------|
| | KM | TE | SC | TDPA | M | A | B | C2 | C3 | T3S2 | T3S3 | T3S2R4 | OTROS | A | B | C | K' | D | LATITUD | LONGITUD |
| T. C. San Luis Potosi - Matehuala | 0.00 | 3 | 0 | 5190 | 4.6 | 81.6 | 0.3 | 8.3 | 1.5 | 2.2 | 0.4 | 0.8 | 0.3 | 86.2 | 0.3 | 13.5 | 0.084 | 0.514 | 22.223029 | -100.913413 |
| Aeropuerto de S. L. P. | 6.00 | | | | | | | | | | | | | | | | | | | |

18 CARR: Ramal a Ojo de Agua

CLAVE: 24023

RUTA: MEX-062

AÑO: 2015

| LUGAR | ESTACION | | | | CLASIFICACION VEHICULAR EN PORCIENTO | | | | | | | | | | | | | COORDENADAS | | |
|--|----------|----|----|------|--------------------------------------|------|-----|------|-----|------|------|--------|-------|------|-----|------|-------|-------------|-----------|-------------|
| | KM | TE | SC | TDPA | M | A | B | C2 | C3 | T3S2 | T3S3 | T3S2R4 | OTROS | A | B | C | K' | D | LATITUD | LONGITUD |
| T. C. Ent. Carbonera - Ent. San Tiburcio | 0.00 | 3 | 0 | 2848 | 7.1 | 77.4 | 0.4 | 12.8 | 0.3 | 1.6 | 0.3 | 0.0 | 0.1 | 84.5 | 0.4 | 15.1 | 0.096 | 0.540 | 23.718335 | -100.650844 |
| T. C. Ent. Carbonera - Ent. San Tiburcio | 6.23 | | | | | | | | | | | | | | | | | | | |

19 CARR: Ramal a Rayón

CLAVE: 24626

RUTA: MEX-070

AÑO: 2015

| LUGAR | ESTACION | | | | CLASIFICACION VEHICULAR EN PORCIENTO | | | | | | | | | | | | | COORDENADAS | | |
|--------------------------------------|----------|----|----|------|--------------------------------------|------|-----|------|-----|------|------|--------|-------|------|-----|------|-------|-------------|-----------|------------|
| | KM | TE | SC | TDPA | M | A | B | C2 | C3 | T3S2 | T3S3 | T3S2R4 | OTROS | A | B | C | K' | D | LATITUD | LONGITUD |
| T. C. (Cd. Valles - San Luis Potosi) | 0.00 | | | | | | | | | | | | | | | | | | | |
| Rayón | 1.50 | 1 | 0 | 4228 | 3.7 | 80.6 | 0.1 | 12.5 | 0.5 | 2.3 | 0.1 | 0.0 | 0.2 | 84.3 | 0.1 | 15.6 | 0.083 | 0.507 | 21.847903 | -99.629917 |

SAN LUIS POTOSI

20 CARR : San Juan del Río - Xilitla

CLAVE: 00183

RUTA: MEX-120

AÑO : 2015

| LUGAR | ESTACION | | | | CLASIFICACION VEHICULAR EN PORCIENTO | | | | | | | | | | COORDENADAS | | | | | | |
|---|----------|----|----|-------|--------------------------------------|------|-----|------|-----|------|------|--------|-------|------|-------------|------|-------|-------|-----------|------------|--|
| | KM | TE | SC | TDPA | M | A | B | C2 | C3 | T3S2 | T3S3 | T3S2R4 | OTROS | A | B | C | K' | D | LATITUD | LONGITUD | |
| San Juan del Río | 0.00 | | | | | | | | | | | | | | | | | | | | |
| T. Der. Libramiento de San Juan del Río | 5.20 | 3 | 1 | 10683 | 0.1 | 92.9 | 1.5 | 2.0 | 1.2 | 1.1 | 0.6 | 0.5 | 0.1 | 93.0 | 1.5 | 5.5 | 0.115 | 0.521 | 20.433310 | -99.969990 | |
| T. Der. Libramiento de San Juan del Río | 5.20 | 3 | 2 | 11619 | 0.1 | 92.2 | 1.8 | 2.3 | 1.2 | 1.2 | 0.5 | 0.6 | 0.1 | 92.3 | 1.8 | 5.9 | 0.107 | 0.521 | 20.433310 | -99.969990 | |
| T. Der. Tequisquiapan | 19.80 | 1 | 1 | 9018 | 0.0 | 89.9 | 1.6 | 3.8 | 1.6 | 1.4 | 0.8 | 0.6 | 0.3 | 89.9 | 1.6 | 8.5 | 0.120 | 0.508 | 20.515130 | -99.902950 | |
| T. Der. Tequisquiapan | 19.80 | 1 | 2 | 9320 | 0.1 | 89.4 | 2.0 | 3.1 | 2.0 | 1.7 | 0.6 | 0.8 | 0.3 | 89.5 | 2.0 | 8.5 | 0.107 | 0.508 | 20.515130 | -99.902950 | |
| T. Der. Tequisquiapan | 19.80 | 3 | 1 | 8549 | 0.1 | 89.5 | 1.1 | 5.3 | 1.6 | 1.3 | 0.5 | 0.4 | 0.2 | 89.6 | 1.1 | 9.3 | 0.104 | 0.509 | 20.536490 | -99.900790 | |
| T. Der. Tequisquiapan | 19.80 | 3 | 2 | 8879 | 0.1 | 88.6 | 1.7 | 6.0 | 1.1 | 1.5 | 0.6 | 0.3 | 0.1 | 88.7 | 1.7 | 9.6 | 0.113 | 0.509 | 20.536490 | -99.900790 | |
| Ezequiel Montes | 36.50 | 1 | 1 | 6878 | 0.2 | 91.3 | 1.2 | 4.3 | 1.0 | 0.9 | 0.5 | 0.4 | 0.2 | 91.5 | 1.2 | 7.3 | 0.095 | 0.505 | 20.640830 | -99.907010 | |
| Ezequiel Montes | 36.50 | 1 | 2 | 7018 | 0.2 | 89.8 | 2.0 | 4.4 | 1.0 | 1.4 | 0.6 | 0.4 | 0.2 | 90.0 | 2.0 | 8.0 | 0.094 | 0.505 | 20.640830 | -99.907010 | |
| Ezequiel Montes | 36.50 | 3 | 0 | 11187 | 0.1 | 84.5 | 2.7 | 7.8 | 2.2 | 1.7 | 0.6 | 0.3 | 0.1 | 84.6 | 2.7 | 12.7 | 0.081 | 0.500 | 20.674840 | -99.892760 | |
| Cadereyta | 47.90 | 3 | 0 | 9332 | 0.1 | 86.0 | 2.6 | 5.8 | 2.3 | 1.7 | 1.0 | 0.3 | 0.2 | 86.1 | 2.6 | 11.3 | 0.085 | 0.502 | 20.701790 | -99.806320 | |
| Vizarrón de Montes | 73.50 | 3 | 0 | 3736 | 0.3 | 79.4 | 3.6 | 8.0 | 2.4 | 3.3 | 1.7 | 1.1 | 0.2 | 79.7 | 3.6 | 16.7 | 0.080 | 0.509 | 20.839040 | -99.717030 | |
| T. Der. San Joaquín | 79.50 | 3 | 0 | 1284 | 0.4 | 84.5 | 2.0 | 8.7 | 2.1 | 1.2 | 0.6 | 0.3 | 0.2 | 84.9 | 2.0 | 13.1 | 0.097 | 0.524 | 20.884796 | -99.707043 | |
| T. Izq. Higuerrillas | 89.10 | 3 | 0 | 1440 | 0.9 | 77.5 | 2.2 | 14.5 | 2.6 | 1.6 | 0.5 | 0.0 | 0.2 | 78.4 | 2.2 | 19.4 | 0.124 | 0.502 | 20.950910 | -99.748940 | |
| T. Izq. Peñamiller | 103.00 | 3 | 0 | 1452 | 0.4 | 85.0 | 2.1 | 8.4 | 2.1 | 1.3 | 0.3 | 0.2 | 0.2 | 85.4 | 2.1 | 12.5 | 0.127 | 0.505 | 20.039493 | -99.737282 | |
| Pinal de Amoles | 140.00 | 3 | 0 | 1866 | 0.3 | 88.1 | 2.0 | 6.1 | 2.1 | 0.8 | 0.3 | 0.2 | 0.1 | 88.4 | 2.0 | 9.6 | 0.111 | 0.502 | 21.139030 | -99.620105 | |
| Jalpan de Serra | 179.30 | 3 | 0 | 6229 | 0.1 | 92.8 | 1.1 | 3.9 | 1.1 | 0.5 | 0.3 | 0.2 | 0.0 | 92.9 | 1.1 | 6.0 | 0.089 | 0.508 | 21.211940 | -99.456640 | |
| Landa de Matamoros | 201.60 | 3 | 0 | 2810 | 0.2 | 88.9 | 1.7 | 6.0 | 2.3 | 0.6 | 0.2 | 0.1 | 0.0 | 89.1 | 1.7 | 9.2 | 0.084 | 0.510 | 21.186160 | -99.314310 | |
| El Lobo | 236.40 | 3 | 0 | 918 | 0.3 | 86.9 | 2.0 | 7.6 | 2.2 | 0.6 | 0.2 | 0.1 | 0.1 | 87.2 | 2.0 | 10.8 | 0.094 | 0.503 | 21.291650 | -99.114640 | |
| Lim. Edos. Term. Qro. Ppia. S. L. P. | 238.33 | | | | | | | | | | | | | | | | | | | | |
| Xilitla | 266.40 | 1 | 0 | 1600 | 6.2 | 76.1 | 1.2 | 12.3 | 1.6 | 1.7 | 0.6 | 0.0 | 0.3 | 82.3 | 1.2 | 16.5 | 0.098 | 0.503 | 21.379062 | -98.999011 | |
| T. C. Portezuelo - Cd. Valles | 276.98 | 1 | 0 | 2735 | 6.1 | 80.3 | 0.4 | 9.0 | 1.6 | 1.9 | 0.5 | 0.0 | 0.2 | 86.4 | 0.4 | 13.2 | 0.086 | 0.500 | 21.443878 | -98.929014 | |

21 CARR : San Luis Potosí - Ent. Arcinas

CLAVE: 00134

RUTA: MEX-049

AÑO : 2015

| LUGAR | ESTACION | | | | CLASIFICACION VEHICULAR EN PORCIENTO | | | | | | | | | | COORDENADAS | | | | | | |
|---------------------------------------|----------|----|----|------|--------------------------------------|------|-----|------|-----|------|------|--------|-------|------|-------------|------|-------|-------|-----------|-------------|--|
| | KM | TE | SC | TDPA | M | A | B | C2 | C3 | T3S2 | T3S3 | T3S2R4 | OTROS | A | B | C | K' | D | LATITUD | LONGITUD | |
| T. C. San Luis Potosí - Matehuala | 0.00 | | | | | | | | | | | | | | | | | | | | |
| T. Izq. Periférico de San Luis Potosí | 9.35 | 3 | 1 | 9952 | 7.2 | 73.3 | 1.8 | 7.9 | 1.3 | 4.8 | 1.6 | 1.4 | 0.7 | 80.5 | 1.8 | 17.7 | 0.105 | 0.506 | 22.203391 | -101.026355 | |
| T. Izq. Periférico de San Luis Potosí | 9.35 | 3 | 2 | 9721 | 4.9 | 74.3 | 1.8 | 8.5 | 1.4 | 5.0 | 1.7 | 1.6 | 0.8 | 79.2 | 1.8 | 19.0 | 0.094 | 0.506 | 22.203389 | -101.026349 | |
| Mexquitic | 22.50 | 1 | 1 | 5858 | 3.9 | 69.6 | 2.6 | 9.0 | 2.4 | 7.0 | 2.0 | 2.8 | 0.7 | 73.5 | 2.6 | 23.9 | 0.115 | 0.507 | 22.249686 | -101.105779 | |
| Mexquitic | 22.50 | 1 | 2 | 6021 | 4.2 | 65.5 | 3.2 | 10.2 | 2.7 | 7.9 | 2.3 | 3.2 | 0.8 | 69.7 | 3.2 | 27.1 | 0.123 | 0.507 | 22.249692 | -101.105769 | |
| T. Der. Charcas | 30.90 | 1 | 1 | 5341 | 2.5 | 67.4 | 3.2 | 8.9 | 3.2 | 8.1 | 2.5 | 3.4 | 0.8 | 69.9 | 3.2 | 26.9 | 0.107 | 0.501 | 22.310018 | -101.158136 | |
| T. Der. Charcas | 30.90 | 1 | 2 | 5326 | 2.5 | 63.3 | 3.8 | 10.1 | 3.5 | 9.3 | 2.5 | 4.1 | 0.9 | 65.8 | 3.8 | 30.4 | 0.103 | 0.501 | 22.310032 | -101.158156 | |
| Lim. Edos. Term. S. L. P. Ppia. Zac. | 55.13 | | | | | | | | | | | | | | | | | | | | |

SAN LUIS POTOSI

21 CARR: San Luis Potosí - Ent. Arcinas

CLAVE: 00134

RUTA: MEX-049

AÑO: 2015

| LUGAR | ESTACION | | | | CLASIFICACION VEHICULAR EN PORCIENTO | | | | | | | | | | | | | COORDENADAS | | |
|--------------------------------------|----------|----|----|------|--------------------------------------|------|-----|------|-----|------|------|--------|-------|------|-----|------|-------|-------------|-----------|-------------|
| | KM | TE | SC | TDPA | M | A | B | C2 | C3 | T3S2 | T3S3 | T3S2R4 | OTROS | A | B | C | K' | D | LATITUD | LONGITUD |
| Lim. Edos. Term. Zac. Ppia. S. L. P. | 89.30 | | | | | | | | | | | | | | | | | | | |
| T. Der. Salinas | 99.00 | 1 | 1 | 3347 | 0.8 | 54.7 | 6.5 | 8.6 | 4.7 | 13.9 | 3.8 | 6.4 | 0.6 | 55.5 | 6.5 | 38.0 | 0.077 | 0.513 | 22.602472 | -101.704917 |
| T. Der. Salinas | 99.00 | 1 | 2 | 3179 | 0.9 | 50.7 | 7.0 | 9.8 | 5.2 | 14.6 | 4.2 | 6.9 | 0.7 | 51.6 | 7.0 | 41.4 | 0.081 | 0.513 | 22.602389 | -101.704972 |
| T. Der. Salinas | 99.00 | 3 | 1 | 3671 | 1.9 | 56.6 | 5.3 | 9.6 | 4.1 | 13.0 | 3.4 | 5.5 | 0.6 | 58.5 | 5.3 | 36.2 | 0.084 | 0.500 | 22.619583 | -101.739833 |
| T. Der. Salinas | 99.00 | 3 | 2 | 3672 | 2.3 | 51.6 | 6.4 | 10.3 | 4.2 | 14.2 | 3.7 | 6.6 | 0.7 | 53.9 | 6.4 | 39.7 | 0.074 | 0.500 | 22.619194 | -101.739000 |
| Lim. Edos. Term. S. L. P. Ppia. Zac. | 122.47 | | | | | | | | | | | | | | | | | | | |
| T. Izq. Pánfilo Natera | 139.00 | 1 | 1 | 3387 | 0.8 | 56.6 | 5.9 | 8.3 | 4.4 | 13.6 | 3.4 | 6.3 | 0.7 | 57.4 | 5.9 | 36.7 | 0.070 | 0.503 | 22.678806 | -102.096667 |
| T. Izq. Pánfilo Natera | 139.00 | 1 | 2 | 3349 | 0.6 | 52.8 | 6.2 | 9.5 | 4.9 | 14.5 | 3.8 | 7.1 | 0.6 | 53.4 | 6.2 | 40.4 | 0.079 | 0.503 | 22.678778 | -102.097639 |
| Ent. Arcinas | 162.98 | 1 | 1 | 3617 | 0.5 | 58.3 | 5.6 | 8.9 | 4.2 | 12.4 | 3.5 | 5.9 | 0.7 | 58.8 | 5.6 | 35.6 | 0.070 | 0.508 | 22.719500 | -102.322750 |
| Ent. Arcinas | 162.98 | 1 | 2 | 3509 | 0.5 | 54.9 | 5.7 | 9.8 | 4.4 | 13.6 | 3.8 | 6.6 | 0.7 | 55.4 | 5.7 | 38.9 | 0.086 | 0.508 | 22.719194 | -102.322583 |

22 CARR: San Luis Potosí - Lagos de Moreno

CLAVE: 00133

RUTA: MEX-070-080

AÑO: 2015

| LUGAR | ESTACION | | | | CLASIFICACION VEHICULAR EN PORCIENTO | | | | | | | | | | | | | COORDENADAS | | |
|--------------------------------------|----------|----|----|-------|--------------------------------------|------|-----|------|-----|------|------|--------|-------|------|-----|------|-------|-------------|-----------|-------------|
| | KM | TE | SC | TDPA | M | A | B | C2 | C3 | T3S2 | T3S3 | T3S2R4 | OTROS | A | B | C | K' | D | LATITUD | LONGITUD |
| San Luis Potosí | 0.00 | 3 | 1 | 19518 | 2.1 | 92.2 | 0.3 | 2.9 | 0.4 | 0.7 | 0.9 | 0.2 | 0.3 | 94.3 | 0.3 | 5.4 | 0.073 | 0.518 | 22.133752 | -101.031227 |
| San Luis Potosí | 0.00 | 3 | 2 | 20966 | 1.3 | 92.5 | 0.3 | 3.3 | 0.4 | 0.7 | 1.0 | 0.2 | 0.3 | 93.8 | 0.3 | 5.9 | 0.072 | 0.518 | 22.133787 | -101.031211 |
| X. Periférico de San Luis Potosí | 8.41 | 3 | 0 | 10581 | 2.2 | 75.8 | 2.3 | 6.2 | 2.9 | 7.2 | 1.9 | 0.5 | 1.0 | 78.0 | 2.3 | 19.7 | 0.079 | 0.504 | 22.130615 | -101.036150 |
| El Tepetate | 41.90 | 1 | 0 | 4388 | 0.8 | 68.7 | 3.3 | 11.1 | 4.0 | 7.9 | 2.7 | 0.9 | 0.6 | 69.5 | 3.3 | 27.2 | 0.077 | 0.508 | 22.022742 | -101.228492 |
| El Tepetate | 41.90 | 3 | 0 | 4721 | 1.3 | 67.8 | 3.2 | 11.3 | 4.1 | 7.8 | 3.2 | 0.7 | 0.6 | 69.1 | 3.2 | 27.7 | 0.070 | 0.505 | 22.006838 | -101.250655 |
| Villa de Arriaga | 61.90 | 3 | 0 | 3519 | 1.3 | 60.3 | 3.0 | 11.4 | 4.6 | 10.5 | 4.7 | 3.2 | 1.0 | 61.6 | 3.0 | 35.4 | 0.068 | 0.509 | 21.896202 | -101.414657 |
| Lim. Edos. Term. S. L. P. Ppia. Zac. | 70.23 | | | | | | | | | | | | | | | | | | | |
| Lim. Edos. Term. Zac. Ppia. Jal. | 82.94 | | | | | | | | | | | | | | | | | | | |
| Ojuelos de Jalisco | 83.20 | 1 | 0 | 9024 | 1.6 | 60.0 | 3.5 | 10.6 | 3.6 | 13.9 | 3.5 | 2.4 | 0.9 | 61.6 | 3.5 | 34.9 | 0.064 | 0.506 | 21.875562 | -101.572201 |
| Ojuelos de Jalisco | 83.20 | 3 | 0 | 5137 | 3.1 | 57.4 | 3.2 | 8.1 | 4.1 | 13.3 | 4.4 | 5.5 | 0.9 | 60.5 | 3.2 | 36.3 | 0.056 | 0.511 | 21.854400 | -101.593905 |
| X. C. León - Aguascalientes | 146.90 | 1 | 1 | 4573 | 2.9 | 59.6 | 3.9 | 8.2 | 4.4 | 11.1 | 3.5 | 5.5 | 0.9 | 62.5 | 3.9 | 33.6 | 0.065 | 0.504 | 21.375556 | -101.894389 |
| X. C. León - Aguascalientes | 146.90 | 1 | 2 | 4642 | 4.3 | 53.3 | 4.2 | 9.8 | 4.6 | 13.0 | 3.9 | 5.9 | 1.0 | 57.6 | 4.2 | 38.2 | 0.063 | 0.504 | 21.375556 | -101.894389 |
| Lagos de Moreno | 150.00 | | | | | | | | | | | | | | | | | | | |

23 CARR: San Luis Potosí - Matehuala

CLAVE: 24508

RUTA: MEX-057

AÑO: 2015

| LUGAR | ESTACION | | | | CLASIFICACION VEHICULAR EN PORCIENTO | | | | | | | | | | | | | COORDENADAS | | |
|----------------------------------|----------|----|----|-------|--------------------------------------|------|-----|-----|-----|------|------|--------|-------|------|-----|------|-------|-------------|-----------|-------------|
| | KM | TE | SC | TDPA | M | A | B | C2 | C3 | T3S2 | T3S3 | T3S2R4 | OTROS | A | B | C | K' | D | LATITUD | LONGITUD |
| San Luis Potosí | 0.00 | | | | | | | | | | | | | | | | | | | |
| X. Periférico de San Luis Potosí | 7.36 | 3 | 1 | 13465 | 2.1 | 79.4 | 2.3 | 7.6 | 1.9 | 3.2 | 1.8 | 1.0 | 0.7 | 81.5 | 2.3 | 16.2 | 0.073 | 0.502 | 22.207672 | -100.919434 |

SAN LUIS POTOSI

23 CARR: San Luis Potosí - Matehuala

CLAVE: 24508

RUTA: MEX-057

AÑO: 2015

| LUGAR | ESTACION | | | | CLASIFICACION VEHICULAR EN PORCIENTO | | | | | | | | | | | | | | COORDENADAS | |
|--|----------|----|----|-------|--------------------------------------|------|-----|-----|-----|------|------|--------|-------|------|-----|------|-------|-------|-------------|-------------|
| | KM | TE | SC | TDPA | M | A | B | C2 | C3 | T3S2 | T3S3 | T3S2R4 | OTROS | A | B | C | K' | D | LATITUD | LONGITUD |
| X. Periférico de San Luis Potosí | 7.36 | 3 | 2 | 13337 | 2.0 | 77.1 | 2.5 | 8.7 | 2.1 | 3.6 | 2.1 | 1.0 | 0.9 | 79.1 | 2.5 | 18.4 | 0.073 | 0.502 | 22.207672 | -100.919434 |
| Ventura (X. Nuevo Libramiento de Slp.) | 33.20 | 3 | 1 | 14188 | 0.4 | 48.7 | 4.1 | 7.4 | 2.8 | 25.5 | 5.0 | 5.5 | 0.6 | 49.1 | 4.1 | 46.8 | 0.058 | 0.508 | 22.337292 | -100.797805 |
| Ventura (X. Nuevo Libramiento de Slp.) | 33.20 | 3 | 2 | 14649 | 0.6 | 44.0 | 4.4 | 8.3 | 3.2 | 27.7 | 5.1 | 6.1 | 0.6 | 44.6 | 4.4 | 51.0 | 0.064 | 0.508 | 22.336366 | -100.798536 |
| T. Der. Villa Hidalgo | 45.94 | 1 | 1 | 12427 | 0.6 | 47.7 | 3.7 | 7.2 | 3.5 | 25.9 | 5.0 | 5.0 | 1.4 | 48.3 | 3.7 | 48.0 | 0.085 | 0.515 | 22.419835 | -100.717647 |
| T. Der. Villa Hidalgo | 45.94 | 1 | 2 | 11712 | 0.7 | 42.6 | 4.2 | 8.2 | 4.1 | 28.0 | 5.4 | 5.3 | 1.5 | 43.3 | 4.2 | 52.5 | 0.067 | 0.515 | 22.419837 | -100.717655 |
| T. Izq. Villa Arista | 61.35 | 1 | 1 | 12235 | 0.6 | 49.6 | 3.5 | 7.1 | 3.6 | 24.7 | 4.6 | 5.0 | 1.3 | 50.2 | 3.5 | 46.3 | 0.062 | 0.513 | 22.560041 | -100.646943 |
| T. Izq. Villa Arista | 61.35 | 1 | 2 | 11620 | 1.6 | 44.9 | 3.9 | 7.7 | 4.0 | 25.6 | 5.1 | 5.7 | 1.5 | 46.5 | 3.9 | 49.6 | 0.060 | 0.513 | 22.560045 | -100.646942 |
| T. Der. Guadalcázar | 75.70 | 1 | 1 | 9632 | 1.4 | 44.4 | 3.4 | 7.2 | 2.9 | 28.3 | 4.6 | 6.3 | 1.5 | 45.8 | 3.4 | 50.8 | 0.056 | 0.506 | 22.641041 | -100.518220 |
| T. Der. Guadalcázar | 75.70 | 1 | 2 | 9416 | 0.6 | 38.5 | 3.9 | 7.6 | 3.0 | 32.0 | 5.4 | 7.4 | 1.6 | 39.1 | 3.9 | 57.0 | 0.059 | 0.506 | 22.641038 | -100.518230 |
| T. Der. Guadalcázar | 75.70 | 3 | 1 | 9695 | 1.1 | 45.1 | 4.4 | 8.5 | 2.9 | 25.5 | 4.5 | 6.4 | 1.6 | 46.2 | 4.4 | 49.4 | 0.061 | 0.522 | 22.644425 | -100.516322 |
| T. Der. Guadalcázar | 75.70 | 3 | 2 | 8881 | 1.2 | 37.9 | 4.9 | 9.1 | 3.1 | 30.2 | 4.7 | 7.1 | 1.8 | 39.1 | 4.9 | 56.0 | 0.065 | 0.522 | 22.644429 | -100.516317 |
| T. Der. Cd. del Maiz | 109.62 | 3 | 1 | 8436 | 1.4 | 44.0 | 4.3 | 8.0 | 2.1 | 29.2 | 4.9 | 3.9 | 2.2 | 45.4 | 4.3 | 50.3 | 0.078 | 0.503 | 22.937142 | -100.460702 |
| T. Der. Cd. del Maiz | 109.62 | 3 | 2 | 8330 | 1.1 | 38.0 | 4.8 | 9.1 | 2.5 | 32.4 | 5.4 | 4.3 | 2.4 | 39.1 | 4.8 | 56.1 | 0.057 | 0.503 | 22.937131 | -100.460708 |
| La Bonita | 171.40 | 1 | 1 | 8493 | 0.9 | 46.0 | 3.9 | 7.1 | 2.2 | 29.8 | 4.0 | 4.3 | 1.8 | 46.9 | 3.9 | 49.2 | 0.076 | 0.505 | 23.473590 | -100.611999 |
| La Bonita | 171.40 | 1 | 2 | 8313 | 0.8 | 41.9 | 4.2 | 7.8 | 2.5 | 32.0 | 4.1 | 4.8 | 1.9 | 42.7 | 4.2 | 53.1 | 0.060 | 0.505 | 23.473591 | -100.611990 |
| Matehuala | 187.39 | 1 | 1 | 9617 | 1.2 | 50.3 | 3.6 | 7.4 | 2.1 | 26.8 | 3.3 | 3.7 | 1.6 | 51.5 | 3.6 | 44.9 | 0.069 | 0.500 | 23.580802 | -100.632604 |
| Matehuala | 187.39 | 1 | 2 | 9605 | 1.0 | 43.0 | 4.1 | 8.7 | 2.4 | 31.0 | 3.7 | 4.3 | 1.8 | 44.0 | 4.1 | 51.9 | 0.060 | 0.500 | 23.580811 | -100.632600 |

24 CARR: T. C. (Ent. El Huizache- Ant. Morelos)-El Salto

CLAVE: 24204

RUTA: MEX-080

AÑO: 2015

| LUGAR | ESTACION | | | | CLASIFICACION VEHICULAR EN PORCIENTO | | | | | | | | | | | | | | COORDENADAS | |
|----------------------------------|----------|----|----|------|--------------------------------------|------|-----|-----|-----|------|------|--------|-------|------|-----|------|-------|-------|-------------|------------|
| | KM | TE | SC | TDPA | M | A | B | C2 | C3 | T3S2 | T3S3 | T3S2R4 | OTROS | A | B | C | K' | D | LATITUD | LONGITUD |
| T. C. El Huizache - Ant. Morelos | 0.00 | 3 | 0 | 2516 | 4.7 | 82.8 | 0.1 | 8.9 | 1.0 | 1.7 | 0.3 | 0.4 | 0.1 | 87.5 | 0.1 | 12.4 | 0.091 | 0.502 | 22.542557 | -99.314593 |
| Salto del Agua | 12.00 | | | | | | | | | | | | | | | | | | | |

25 CARR: T. C. (Qro - S.L.P.) - Tierra Nueva

CLAVE: 24203

RUTA: MEX-057

AÑO: 2015

| LUGAR | ESTACION | | | | CLASIFICACION VEHICULAR EN PORCIENTO | | | | | | | | | | | | | | COORDENADAS | |
|-----------------------------------|----------|----|----|------|--------------------------------------|------|-----|------|-----|------|------|--------|-------|------|-----|------|-------|-------|-------------|-------------|
| | KM | TE | SC | TDPA | M | A | B | C2 | C3 | T3S2 | T3S3 | T3S2R4 | OTROS | A | B | C | K' | D | LATITUD | LONGITUD |
| T. C. Querétaro - San Luis Potosí | 0.00 | 3 | 0 | 1458 | 1.1 | 79.1 | 0.7 | 11.4 | 2.7 | 2.5 | 1.6 | 0.1 | 0.8 | 80.2 | 0.7 | 19.1 | 0.086 | 0.515 | 21.693682 | -100.684575 |
| Tierra Nueva | 13.10 | | | | | | | | | | | | | | | | | | | |

SAN LUIS POTOSI

26 CARR: T. C. (S.L.P. - Matehuala) - Villa Hidalgo

CLAVE: 24619

RUTA: MEX-057

AÑO: 2015

| LUGAR | ESTACION | | | | CLASIFICACION VEHICULAR EN PORCIENTO | | | | | | | | | | | | | | COORDENADAS | |
|------------------------|----------|----|----|------|--------------------------------------|------|-----|------|-----|------|------|--------|-------|------|-----|------|-------|-------|-------------|-------------|
| | KM | TE | SC | TDPA | M | A | B | C2 | C3 | T3S2 | T3S3 | T3S2R4 | OTROS | A | B | C | K' | D | LATITUD | LONGITUD |
| Paso por Villa Hidalgo | 0.00 | 3 | 0 | 1972 | 1.5 | 72.6 | 1.6 | 13.5 | 1.6 | 5.0 | 2.2 | 1.4 | 0.6 | 74.1 | 1.6 | 24.3 | 0.083 | 0.510 | 22.436740 | -100.693525 |
| Paso por Villa Hidalgo | 10.20 | 1 | 0 | 1833 | 2.1 | 71.9 | 1.5 | 15.9 | 1.5 | 3.8 | 1.6 | 1.2 | 0.5 | 74.0 | 1.5 | 24.5 | 0.131 | 0.514 | 22.497189 | -100.665869 |

27 CARR: Tamazunchale - San Felipe Orizatlán

CLAVE: 00609

RUTA: MEX-085

AÑO: 2015

| LUGAR | ESTACION | | | | CLASIFICACION VEHICULAR EN PORCIENTO | | | | | | | | | | | | | | COORDENADAS | |
|--------------------------------------|----------|----|----|------|--------------------------------------|------|-----|-----|-----|------|------|--------|-------|------|-----|------|-------|-------|-------------|------------|
| | KM | TE | SC | TDPA | M | A | B | C2 | C3 | T3S2 | T3S3 | T3S2R4 | OTROS | A | B | C | K' | D | LATITUD | LONGITUD |
| T. C. Portezuelo - Cd. Valles | 0.00 | 3 | 0 | 9768 | 17.2 | 65.2 | 0.4 | 8.1 | 0.5 | 5.9 | 1.2 | 0.5 | 1.0 | 82.4 | 0.4 | 17.2 | 0.078 | 0.506 | 21.250134 | -98.767185 |
| Lim. Edos. Term. S. L. P. Ppia. Hgo. | 18.50 | | | | | | | | | | | | | | | | | | | |
| San Felipe Orizatlán | 27.10 | 1 | 0 | 2043 | 0.4 | 90.6 | 1.7 | 4.2 | 1.0 | 1.4 | 0.4 | 0.2 | 0.1 | 91.0 | 1.7 | 7.3 | 0.086 | 0.502 | 21.170067 | -98.617450 |

28 CARR: Libramiento de Matehuala (Cuota)

CLAVE: 24205

RUTA: MEX-057D

AÑO: 2015

| LUGAR | ESTACION | | | | CLASIFICACION VEHICULAR EN PORCIENTO | | | | | | | | | | | | | | COORDENADAS | |
|--------------------------------------|----------|----|----|------|--------------------------------------|------|-----|-----|-----|------|------|--------|-------|------|-----|------|-------|-------|-------------|-------------|
| | KM | TE | SC | TDPA | M | A | B | C2 | C3 | T3S2 | T3S3 | T3S2R4 | OTROS | A | B | C | K' | D | LATITUD | LONGITUD |
| T. C. San Luis Potosí - Matehuala | 0.00 | 3 | 1 | 5115 | 1.9 | 38.0 | 4.6 | 8.1 | 2.6 | 35.0 | 3.5 | 4.9 | 1.4 | 39.9 | 4.6 | 55.5 | 0.090 | 0.504 | 23.596417 | -100.628526 |
| T. C. San Luis Potosí - Matehuala | 0.00 | 3 | 2 | 5033 | 1.8 | 33.7 | 5.5 | 9.1 | 2.8 | 36.4 | 3.8 | 5.4 | 1.5 | 35.5 | 5.5 | 59.0 | 0.072 | 0.504 | 23.596429 | -100.628526 |
| Caseta de Cobro Matehuala | 7.00 | 2 | 1 | 5161 | 0.1 | 29.8 | 2.8 | 6.0 | 3.9 | 45.9 | 3.7 | 6.8 | 1.0 | 29.9 | 2.8 | 67.3 | 0.073 | 0.500 | 23.664155 | -100.607286 |
| Caseta de Cobro Matehuala | 7.00 | 2 | 2 | 5161 | 0.1 | 29.8 | 2.8 | 6.0 | 3.9 | 45.9 | 3.7 | 6.8 | 1.0 | 29.9 | 2.8 | 67.3 | 0.073 | 0.500 | 23.664155 | -100.607286 |
| T. C. Matehuala - Ent. Puerto México | 14.20 | 1 | 1 | 5543 | 0.7 | 39.6 | 4.3 | 5.9 | 3.1 | 36.0 | 3.7 | 5.2 | 1.5 | 40.3 | 4.3 | 55.4 | 0.077 | 0.512 | 23.701260 | -100.612941 |
| T. C. Matehuala - Ent. Puerto México | 14.20 | 1 | 2 | 5282 | 1.0 | 34.6 | 4.7 | 6.5 | 3.7 | 38.2 | 3.8 | 5.8 | 1.7 | 35.6 | 4.7 | 59.7 | 0.066 | 0.512 | 23.701279 | -100.612946 |

29 CARR: Libramiento Norponiente de San Luis Potosí (Cuota)

CLAVE:

RUTA: MEX-057D

AÑO: 2015

| LUGAR | ESTACION | | | | CLASIFICACION VEHICULAR EN PORCIENTO | | | | | | | | | | | | | | COORDENADAS | |
|---|----------|----|----|------|--------------------------------------|------|-----|-----|-----|------|------|--------|-------|------|-----|------|-------|-------|-------------|-------------|
| | KM | TE | SC | TDPA | M | A | B | C2 | C3 | T3S2 | T3S3 | T3S2R4 | OTROS | A | B | C | K' | D | LATITUD | LONGITUD |
| T. Libramiento Oriente de San Luis Potosí (Cuota) | 0.00 | | | | | | | | | | | | | | | | | | | |
| Caseta de Cobro Peñasco | 13.00 | 2 | 0 | 1802 | 0.2 | 27.7 | 3.7 | 5.8 | 8.3 | 31.1 | 6.1 | 15.4 | 1.7 | 27.9 | 3.7 | 68.4 | 0.067 | 0.500 | 22.299833 | -100.971424 |
| T. C. San Luis Potosí - Ent. Arcinas | 31.50 | | | | | | | | | | | | | | | | | | | |

30 CARR: Libramiento Oriente de San Luis Potosí (Cuota)

CLAVE: 24009

RUTA: MEX-057D

AÑO: 2015

| LUGAR | ESTACION | | | | CLASIFICACION VEHICULAR EN PORCIENTO | | | | | | | | | | | | | | COORDENADAS | |
|-----------------------------------|----------|----|----|------|--------------------------------------|---|---|----|----|------|------|--------|-------|---|---|---|----|---|-------------|----------|
| | KM | TE | SC | TDPA | M | A | B | C2 | C3 | T3S2 | T3S3 | T3S2R4 | OTROS | A | B | C | K' | D | LATITUD | LONGITUD |
| T. C. Querétaro - San Luis Potosí | 0.00 | | | | | | | | | | | | | | | | | | | |

SAN LUIS POTOSI

30 CARR: Libramiento Oriente de San Luis Potosí (Cuota)

CLAVE: 24009

RUTA: MEX-057D

AÑO: 2015

| LUGAR | ESTACION | | | | CLASIFICACION VEHICULAR EN PORCIENTO | | | | | | | | | | | | | | COORDENADAS | |
|---|----------|----|----|------|--------------------------------------|------|-----|-----|-----|------|------|--------|-------|------|-----|------|-------|-------|-------------|-------------|
| | KM | TE | SC | TDPA | M | A | B | C2 | C3 | T3S2 | T3S3 | T3S2R4 | OTROS | A | B | C | K' | D | LATITUD | LONGITUD |
| X. C. Cd. Valles - San Luis Potosí | 11.20 | 1 | 1 | 7895 | 4.3 | 34.0 | 4.6 | 6.1 | 3.4 | 34.9 | 4.7 | 7.3 | 0.7 | 38.3 | 4.6 | 57.1 | 0.062 | 0.519 | 22.124673 | -100.824855 |
| X. C. Cd. Valles - San Luis Potosí | 11.20 | 1 | 2 | 7319 | 1.4 | 30.0 | 5.0 | 6.8 | 3.9 | 38.5 | 5.1 | 8.6 | 0.7 | 31.4 | 5.0 | 63.6 | 0.063 | 0.519 | 22.124673 | -100.824851 |
| Caseta de Cobro San Nicolás de Los Jassos | 11.22 | 2 | 1 | 7829 | 0.1 | 25.3 | 2.4 | 5.8 | 4.9 | 45.2 | 5.1 | 9.7 | 1.5 | 25.4 | 2.4 | 72.2 | 0.067 | 0.500 | 22.129766 | -100.825103 |
| Caseta de Cobro San Nicolás de Los Jassos | 11.22 | 2 | 2 | 7829 | 0.1 | 25.3 | 2.4 | 5.8 | 4.9 | 45.2 | 5.1 | 9.7 | 1.5 | 25.4 | 2.4 | 72.2 | 0.067 | 0.500 | 22.129766 | -100.825103 |
| T. C. San Luis Potosí - Matehuala | 33.76 | 1 | 1 | 6622 | 0.9 | 34.5 | 4.9 | 7.0 | 2.6 | 37.0 | 4.6 | 7.6 | 0.9 | 35.4 | 4.9 | 59.7 | 0.070 | 0.515 | 22.322565 | -100.802222 |
| T. C. San Luis Potosí - Matehuala | 33.76 | 1 | 2 | 6226 | 0.9 | 32.1 | 5.2 | 7.2 | 2.9 | 36.6 | 5.2 | 8.8 | 1.1 | 33.0 | 5.2 | 61.8 | 0.073 | 0.515 | 22.322570 | -100.802219 |

31 CARR: Charcas - Villa Santo Domingo

CLAVE: 24624

RUTA: SLP-017

AÑO: 2015

| LUGAR | ESTACION | | | | CLASIFICACION VEHICULAR EN PORCIENTO | | | | | | | | | | | | | | COORDENADAS | |
|---------------------|----------|----|----|------|--------------------------------------|------|-----|------|-----|------|------|--------|-------|------|-----|------|-------|-------|-------------|-------------|
| | KM | TE | SC | TDPA | M | A | B | C2 | C3 | T3S2 | T3S3 | T3S2R4 | OTROS | A | B | C | K' | D | LATITUD | LONGITUD |
| Charcas | 0.00 | 3 | 0 | 2018 | 25.3 | 60.3 | 0.8 | 10.5 | 0.9 | 1.5 | 0.6 | 0.0 | 0.1 | 85.6 | 0.8 | 13.6 | 0.087 | 0.510 | 23.137865 | -101.131088 |
| Villa Santo Domingo | 75.00 | | | | | | | | | | | | | | | | | | | |

32 CARR: Ébano - Estación Manuel

CLAVE: 24624

RUTA: SLP-TAM

AÑO: 2015

| LUGAR | ESTACION | | | | CLASIFICACION VEHICULAR EN PORCIENTO | | | | | | | | | | | | | | COORDENADAS | |
|--|----------|----|----|------|--------------------------------------|------|-----|------|-----|------|------|--------|-------|------|-----|------|-------|-------|-------------|------------|
| | KM | TE | SC | TDPA | M | A | B | C2 | C3 | T3S2 | T3S3 | T3S2R4 | OTROS | A | B | C | K' | D | LATITUD | LONGITUD |
| Ébano | 0.00 | 3 | 0 | 1716 | 18.1 | 52.1 | 2.7 | 10.4 | 3.2 | 7.8 | 3.1 | 1.6 | 1.0 | 70.2 | 2.7 | 27.1 | 0.096 | 0.520 | 22.232859 | -98.366524 |
| Lím. de Edos. Term. S. L. P.. Ppia. Ver. | 2.71 | | | | | | | | | | | | | | | | | | | |
| Lím. de Edos. Term. Ver. Ppia. S. L. P. | 3.95 | | | | | | | | | | | | | | | | | | | |
| Lím. de Edos. Term. S. L. P. Ppia. Ver. | 5.00 | | | | | | | | | | | | | | | | | | | |
| Lím. de Edos. Term. Ver. Ppia. Tamps. | 25.00 | | | | | | | | | | | | | | | | | | | |
| Estación Manuel | 65.60 | | | | | | | | | | | | | | | | | | | |

33 CARR: Matehuala - La Paz

CLAVE: 24621

RUTA: SLP-020

AÑO: 2015

| LUGAR | ESTACION | | | | CLASIFICACION VEHICULAR EN PORCIENTO | | | | | | | | | | | | | | COORDENADAS | |
|-----------|----------|----|----|------|--------------------------------------|------|-----|------|-----|------|------|--------|-------|------|-----|------|-------|-------|-------------|-------------|
| | KM | TE | SC | TDPA | M | A | B | C2 | C3 | T3S2 | T3S3 | T3S2R4 | OTROS | A | B | C | K' | D | LATITUD | LONGITUD |
| Matehuala | 0.00 | 3 | 1 | 2449 | 16.3 | 71.6 | 0.2 | 10.0 | 0.7 | 0.6 | 0.3 | 0.2 | 0.1 | 87.9 | 0.2 | 11.9 | 0.081 | 0.501 | 23.670050 | -100.654216 |
| Matehuala | 0.00 | 3 | 2 | 2444 | 17.2 | 70.3 | 0.2 | 10.6 | 0.6 | 0.6 | 0.2 | 0.2 | 0.1 | 87.5 | 0.2 | 12.3 | 0.080 | 0.501 | 23.670045 | -100.654210 |
| La Paz | 8.00 | 1 | 1 | 2073 | 23.0 | 67.2 | 1.9 | 7.0 | 0.4 | 0.4 | 0.1 | 0.0 | 0.0 | 90.2 | 1.9 | 7.9 | 0.090 | 0.507 | 23.679744 | -100.702827 |
| La Paz | 8.00 | 1 | 2 | 2128 | 23.2 | 66.1 | 2.1 | 7.5 | 0.5 | 0.5 | 0.1 | 0.0 | 0.0 | 89.3 | 2.1 | 8.6 | 0.078 | 0.507 | 23.679731 | -100.702827 |

SAN LUIS POTOSI

34 CARR : Matehuala - La Poza

CLAVE: 00086

RUTA: SLP-029

AÑO : 2015

| LUGAR | ESTACION | | | | CLASIFICACION VEHICULAR EN PORCIENTO | | | | | | | | | | COORDENADAS | | | | | |
|---------------------------------------|----------|----|----|------|--------------------------------------|------|-----|------|-----|------|------|--------|-------|------|-------------|------|-------|-------|-----------|-------------|
| | KM | TE | SC | TDPA | M | A | B | C2 | C3 | T3S2 | T3S3 | T3S2R4 | OTROS | A | B | C | K' | D | LATITUD | LONGITUD |
| Matehuala | 0.00 | 3 | 0 | 3551 | 8.1 | 73.0 | 1.5 | 10.1 | 3.5 | 2.2 | 0.6 | 0.6 | 0.4 | 81.1 | 1.5 | 17.4 | 0.080 | 0.535 | 23.665476 | -100.602960 |
| Lim. Edos. Term. S. L. P. Ppia. N. L. | 19.70 | | | | | | | | | | | | | | | | | | | |
| Doctor Arroyo | 49.00 | 1 | 0 | 3268 | 3.8 | 76.2 | 1.0 | 13.9 | 2.7 | 1.8 | 0.2 | 0.3 | 0.1 | 80.0 | 1.0 | 19.0 | 0.089 | 0.500 | 23.685569 | -100.208549 |
| La Ascención | 131.00 | 1 | 0 | 762 | 2.3 | 77.5 | 3.2 | 13.7 | 1.8 | 1.0 | 0.5 | 0.0 | 0.0 | 79.8 | 3.2 | 17.0 | 0.089 | 0.523 | 24.321183 | -99.905733 |

35 CARR : Periférico de San Luis Potosí

CLAVE: 24618

RUTA: SLP-032

AÑO : 2015

| LUGAR | ESTACION | | | | CLASIFICACION VEHICULAR EN PORCIENTO | | | | | | | | | | COORDENADAS | | | | | |
|---|----------|----|----|-------|--------------------------------------|------|-----|------|-----|------|------|--------|-------|------|-------------|------|-------|-------|-----------|-------------|
| | KM | TE | SC | TDPA | M | A | B | C2 | C3 | T3S2 | T3S3 | T3S2R4 | OTROS | A | B | C | K' | D | LATITUD | LONGITUD |
| T. C. San Luis Potosí - Ent. Arcinas | 0.00 | | | | | | | | | | | | | | | | | | | |
| X. C. Querétaro - San Luis Potosí (Central) | 22.00 | 3 | 1 | 15445 | 3.3 | 77.8 | 1.1 | 7.2 | 2.4 | 3.7 | 2.9 | 1.1 | 0.5 | 81.1 | 1.1 | 17.8 | 0.068 | 0.554 | 22.135340 | -100.916866 |
| X. C. Querétaro - San Luis Potosí (Lateral) | 22.00 | 3 | 1 | 6003 | 6.4 | 78.3 | 0.8 | 10.2 | 0.5 | 1.5 | 1.5 | 0.3 | 0.5 | 84.7 | 0.8 | 14.5 | 0.065 | 0.554 | 22.135340 | -100.916866 |
| X. C. Querétaro - San Luis Potosí (Central) | 22.00 | 3 | 2 | 17420 | 3.2 | 76.1 | 1.3 | 7.6 | 2.5 | 4.3 | 3.2 | 1.3 | 0.5 | 79.3 | 1.3 | 19.4 | 0.059 | 0.554 | 22.135362 | -100.916861 |
| X. C. Querétaro - San Luis Potosí (Lateral) | 22.00 | 3 | 2 | 9206 | 6.1 | 77.6 | 0.9 | 10.9 | 0.5 | 1.7 | 1.5 | 0.3 | 0.5 | 83.7 | 0.9 | 15.4 | 0.087 | 0.554 | 22.135362 | -100.916861 |
| X. C. San Luis Potosí - Cd. Valles | 25.00 | 3 | 1 | 10586 | 4.8 | 74.9 | 1.6 | 8.3 | 3.5 | 3.6 | 2.0 | 0.7 | 0.6 | 79.7 | 1.6 | 18.7 | 0.080 | 0.524 | 22.164714 | -100.914927 |
| X. C. San Luis Potosí - Cd. Valles | 25.00 | 3 | 2 | 9633 | 6.3 | 71.3 | 2.0 | 9.0 | 3.5 | 4.2 | 2.3 | 0.8 | 0.6 | 77.6 | 2.0 | 20.4 | 0.086 | 0.524 | 22.164723 | -100.914926 |
| X. C. San Luis Potosí - Matehuala | 30.70 | 1 | 1 | 10455 | 4.3 | 71.1 | 1.2 | 10.4 | 3.4 | 4.8 | 2.3 | 1.4 | 1.1 | 75.4 | 1.2 | 23.4 | 0.082 | 0.519 | 22.200805 | -100.921338 |
| X. C. San Luis Potosí - Matehuala | 30.70 | 1 | 2 | 11298 | 4.2 | 68.9 | 1.4 | 11.7 | 3.6 | 5.0 | 2.6 | 1.5 | 1.1 | 73.1 | 1.4 | 25.5 | 0.077 | 0.519 | 22.200821 | -100.921314 |
| T. C. San Luis Potosí - Ent. Arcinas | 44.80 | | | | | | | | | | | | | | | | | | | |

36 CARR : Ramal a Cerritos

CLAVE: 24615

RUTA: SLP-007

AÑO : 2015

| LUGAR | ESTACION | | | | CLASIFICACION VEHICULAR EN PORCIENTO | | | | | | | | | | COORDENADAS | | | | | |
|-----------------------------------|----------|----|----|------|--------------------------------------|------|-----|------|-----|------|------|--------|-------|------|-------------|------|-------|-------|-----------|-------------|
| | KM | TE | SC | TDPA | M | A | B | C2 | C3 | T3S2 | T3S3 | T3S2R4 | OTROS | A | B | C | K' | D | LATITUD | LONGITUD |
| T. C. San Luis Potosí - Matehuala | 0.00 | 3 | 0 | 491 | 1.8 | 61.3 | 0.6 | 17.1 | 1.8 | 7.0 | 9.2 | 0.1 | 1.1 | 63.1 | 0.6 | 36.3 | 0.094 | 0.519 | 22.612184 | -100.547006 |
| Cerritos | 37.00 | | | | | | | | | | | | | | | | | | | |

37 CARR : Ramal a Pozo de Acuña

CLAVE: 24626

RUTA: SLP-009

AÑO : 2015

| LUGAR | ESTACION | | | | CLASIFICACION VEHICULAR EN PORCIENTO | | | | | | | | | | COORDENADAS | | | | | |
|-----------------------------------|----------|----|----|------|--------------------------------------|------|-----|------|-----|------|------|--------|-------|------|-------------|------|-------|-------|-----------|-------------|
| | KM | TE | SC | TDPA | M | A | B | C2 | C3 | T3S2 | T3S3 | T3S2R4 | OTROS | A | B | C | K' | D | LATITUD | LONGITUD |
| T. C. San Luis Potosí - Matehuala | 0.00 | 3 | 0 | 472 | 1.6 | 83.7 | 0.9 | 12.4 | 0.5 | 0.6 | 0.2 | 0.0 | 0.1 | 85.3 | 0.9 | 13.8 | 0.110 | 0.508 | 22.641417 | -100.514446 |
| Pozo de Acuña | 37.90 | | | | | | | | | | | | | | | | | | | |

SAN LUIS POTOSI

38 CARR: Rayón - Arroyo Seco

CLAVE: 24008

RUTA: SLP-011

AÑO: 2015

| LUGAR | ESTACION | | | | CLASIFICACION VEHICULAR EN PORCIENTO | | | | | | | | | | COORDENADAS | | | | | |
|--------------------------------------|----------|----|----|------|--------------------------------------|------|-----|------|-----|------|------|--------|-------|------|-------------|------|-------|-------|-----------|------------|
| | KM | TE | SC | TDPA | M | A | B | C2 | C3 | T3S2 | T3S3 | T3S2R4 | OTROS | A | B | C | K' | D | LATITUD | LONGITUD |
| Rayón | 0.00 | 3 | 0 | 938 | 5.3 | 72.4 | 0.4 | 16.9 | 2.4 | 1.7 | 0.5 | 0.1 | 0.3 | 77.7 | 0.4 | 21.9 | 0.113 | 0.508 | 21.848112 | -99.626996 |
| Lagunillas | 36.00 | 1 | 0 | 300 | 5.0 | 77.0 | 0.1 | 16.3 | 1.4 | 0.2 | 0.0 | 0.0 | 0.0 | 82.0 | 0.1 | 17.9 | 0.110 | 0.504 | 21.595111 | -99.564754 |
| Lim. De Edos. Term. S.L.P. Ppia Qro. | 51.00 | | | | | | | | | | | | | | | | | | | |
| Arroyo Seco | 57.00 | 1 | 0 | 540 | 0.9 | 88.3 | 1.9 | 7.0 | 1.4 | 0.0 | 0.3 | 0.1 | 0.1 | 89.2 | 1.9 | 8.9 | 0.093 | 0.501 | 21.554400 | -99.680960 |

39 CARR: Santo Domingo - Cerro Gordo

CLAVE: 24614

RUTA: SLP-022

AÑO: 2015

| LUGAR | ESTACION | | | | CLASIFICACION VEHICULAR EN PORCIENTO | | | | | | | | | | COORDENADAS | | | | | |
|------------------------------------|----------|----|----|------|--------------------------------------|------|-----|------|-----|------|------|--------|-------|------|-------------|------|-------|-------|-----------|-------------|
| | KM | TE | SC | TDPA | M | A | B | C2 | C3 | T3S2 | T3S3 | T3S2R4 | OTROS | A | B | C | K' | D | LATITUD | LONGITUD |
| T. C. Cd. Valles - San Luis Potosí | 0.00 | 3 | 0 | 3325 | 1.8 | 73.5 | 0.8 | 12.9 | 1.6 | 6.0 | 2.0 | 0.4 | 1.0 | 75.3 | 0.8 | 23.9 | 0.094 | 0.516 | 22.093972 | -100.744767 |
| T. C. Querétaro - San Luis Potosí | 19.00 | 1 | 0 | 2927 | 1.3 | 71.9 | 1.1 | 14.9 | 2.1 | 3.8 | 3.1 | 1.0 | 0.8 | 73.2 | 1.1 | 25.7 | 0.091 | 0.501 | 21.976383 | -100.818333 |

40 CARR: Tamuín - Estación F.F.C.C. Tamuín

CLAVE: 24022

RUTA: SLP-040

AÑO: 2015

| LUGAR | ESTACION | | | | CLASIFICACION VEHICULAR EN PORCIENTO | | | | | | | | | | COORDENADAS | | | | | |
|--------------------------|----------|----|----|------|--------------------------------------|------|-----|-----|-----|------|------|--------|-------|------|-------------|------|-------|-------|-----------|------------|
| | KM | TE | SC | TDPA | M | A | B | C2 | C3 | T3S2 | T3S3 | T3S2R4 | OTROS | A | B | C | K' | D | LATITUD | LONGITUD |
| Tamuín | 0.00 | 3 | 0 | 6523 | 12.3 | 72.4 | 0.4 | 6.0 | 1.2 | 5.3 | 1.0 | 0.4 | 1.0 | 84.7 | 0.4 | 14.9 | 0.064 | 0.506 | 22.012097 | -98.783608 |
| Estación F.F.C.C. Tamuín | 10.00 | 1 | 0 | 1490 | 31.1 | 58.6 | 0.6 | 5.9 | 2.0 | 1.4 | 0.3 | 0.0 | 0.1 | 89.7 | 0.6 | 9.7 | 0.090 | 0.507 | 22.073250 | -98.809860 |

41 CARR: Tamuín - Xolol

CLAVE: 24027

RUTA: SLP-014

AÑO: 2015

| LUGAR | ESTACION | | | | CLASIFICACION VEHICULAR EN PORCIENTO | | | | | | | | | | COORDENADAS | | | | | |
|-------------------------|----------|----|----|------|--------------------------------------|------|-----|------|-----|------|------|--------|-------|------|-------------|------|-------|-------|-----------|------------|
| | KM | TE | SC | TDPA | M | A | B | C2 | C3 | T3S2 | T3S3 | T3S2R4 | OTROS | A | B | C | K' | D | LATITUD | LONGITUD |
| Tamuín | 0.00 | 3 | 0 | 3869 | 11.9 | 64.4 | 1.5 | 11.7 | 3.1 | 4.1 | 1.8 | 1.1 | 0.4 | 76.3 | 1.5 | 22.2 | 0.084 | 0.508 | 22.001191 | -98.761779 |
| San Vicente Tancuayalab | 37.62 | | | | | | | | | | | | | | | | | | | |
| Xolol | 97.00 | | | | | | | | | | | | | | | | | | | |

42 CARR: Cerritos - Rioverde (Cuota)

CLAVE: 00138

RUTA: SLP-D

AÑO: 2015

| LUGAR | ESTACION | | | | CLASIFICACION VEHICULAR EN PORCIENTO | | | | | | | | | | COORDENADAS | | | | | |
|--------------|----------|----|----|------|--------------------------------------|------|-----|------|-----|------|------|--------|-------|------|-------------|------|-------|-------|-----------|-------------|
| | KM | TE | SC | TDPA | M | A | B | C2 | C3 | T3S2 | T3S3 | T3S2R4 | OTROS | A | B | C | K' | D | LATITUD | LONGITUD |
| Cerritos | 0.00 | 3 | 0 | 4370 | 0.4 | 60.1 | 7.0 | 9.2 | 2.0 | 8.7 | 6.1 | 5.6 | 0.9 | 60.5 | 7.0 | 32.5 | 0.093 | 0.513 | 22.588020 | -100.585769 |
| Villa Juárez | 58.00 | 3 | 0 | 2552 | 0.4 | 65.5 | 8.2 | 12.8 | 1.9 | 6.3 | 2.3 | 2.1 | 0.5 | 65.9 | 8.2 | 25.9 | 0.131 | 0.521 | 22.319929 | -100.286174 |
| Río Verde | 103.00 | 1 | 0 | 3588 | 2.5 | 67.6 | 6.1 | 12.3 | 2.2 | 5.4 | 2.1 | 1.2 | 0.6 | 70.1 | 6.1 | 23.8 | 0.101 | 0.509 | 21.923992 | -99.959299 |

SAN LUIS POTOSI

43 CARR: San Luis Potosí - Villa de Arriaga (Cuota)

CLAVE: 24209

RUTA: SLP-D

AÑO: 2015

| LUGAR | ESTACION | | | | CLASIFICACION VEHICULAR EN PORCIENTO | | | | | | | | | | | | | | COORDENADAS | |
|-----------------------------------|----------|----|----|------|--------------------------------------|------|-----|------|-----|------|------|--------|-------|------|-----|------|-------|-------|-------------|-------------|
| | KM | TE | SC | TDPA | M | A | B | C2 | C3 | T3S2 | T3S3 | T3S2R4 | OTROS | A | B | C | K' | D | LATITUD | LONGITUD |
| T. C. Querétaro - San Luis Potosí | 0.00 | 3 | 0 | 9107 | 2.8 | 54.4 | 4.3 | 10.8 | 4.1 | 13.6 | 2.6 | 5.9 | 1.5 | 57.2 | 4.3 | 38.5 | 0.072 | 0.504 | 22.011786 | -100.844842 |
| Villa de Arriaga | 77.00 | 1 | 0 | 3199 | 1.6 | 36.1 | 5.4 | 6.2 | 3.8 | 27.1 | 5.0 | 12.5 | 2.3 | 37.7 | 5.4 | 56.9 | 0.054 | 0.508 | 21.895663 | -101.396006 |

44 CARR: Rayón - Cd. del Maíz

CLAVE: 24206

RUTA: MEX-070-SLP-005

AÑO: 2015

| LUGAR | ESTACION | | | | CLASIFICACION VEHICULAR EN PORCIENTO | | | | | | | | | | | | | | COORDENADAS | |
|--------------------------------------|----------|----|----|------|--------------------------------------|------|-----|------|-----|------|------|--------|-------|------|-----|------|-------|-------|-------------|------------|
| | KM | TE | SC | TDPA | M | A | B | C2 | C3 | T3S2 | T3S3 | T3S2R4 | OTROS | A | B | C | K' | D | LATITUD | LONGITUD |
| T. C. (Cd. Valles - San Luis Potosí) | 0.00 | | | | | | | | | | | | | | | | | | | |
| Cárdenas | 15.80 | 1 | 0 | 3141 | 2.2 | 79.6 | 0.8 | 14.1 | 1.0 | 1.6 | 0.5 | 0.1 | 0.1 | 81.8 | 0.8 | 17.4 | 0.083 | 0.500 | 21.983849 | -99.647611 |
| Cd. del Maíz | 55.70 | 1 | 0 | 763 | 3.3 | 75.7 | 1.0 | 17.7 | 1.0 | 1.0 | 0.2 | 0.0 | 0.1 | 79.0 | 1.0 | 20.0 | 0.094 | 0.505 | 22.393943 | -99.611838 |

45 CARR: San Lorenzo - Moctezuma

CLAVE: 24016

RUTA: MEX-063-SLP-012

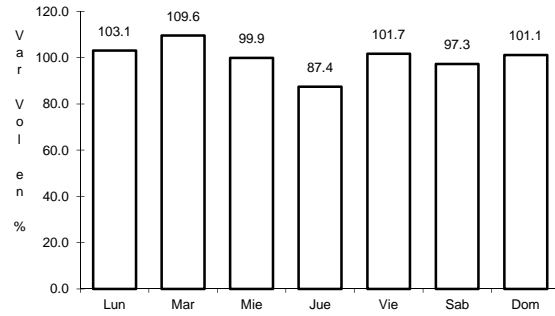
AÑO: 2015

| LUGAR | ESTACION | | | | CLASIFICACION VEHICULAR EN PORCIENTO | | | | | | | | | | | | | | COORDENADAS | |
|-----------------------------------|----------|----|----|------|--------------------------------------|------|-----|------|-----|------|------|--------|-------|------|-----|------|-------|-------|-------------|-------------|
| | KM | TE | SC | TDPA | M | A | B | C2 | C3 | T3S2 | T3S3 | T3S2R4 | OTROS | A | B | C | K' | D | LATITUD | LONGITUD |
| T. C. San Luis Potosí - Matehuala | 0.00 | 3 | 0 | 1151 | 1.2 | 68.7 | 2.0 | 17.3 | 3.0 | 4.7 | 1.7 | 1.0 | 0.4 | 69.9 | 2.0 | 28.1 | 0.098 | 0.523 | 22.568947 | -100.639726 |
| Moctezuma | 54.00 | 1 | 0 | 1676 | 7.3 | 70.2 | 0.4 | 18.4 | 1.2 | 1.3 | 0.6 | 0.4 | 0.2 | 77.5 | 0.4 | 22.1 | 0.088 | 0.504 | 22.733684 | -101.085752 |

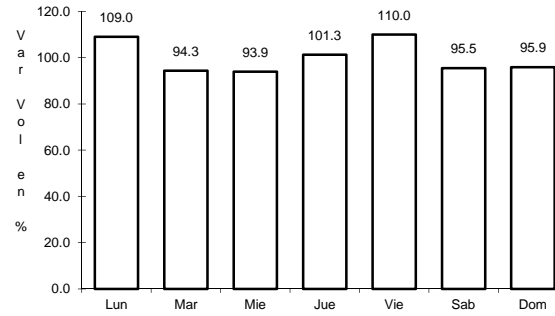
1 CARR: Antiguo Morelos - Ent. El Huizache

CLAVE: 00136

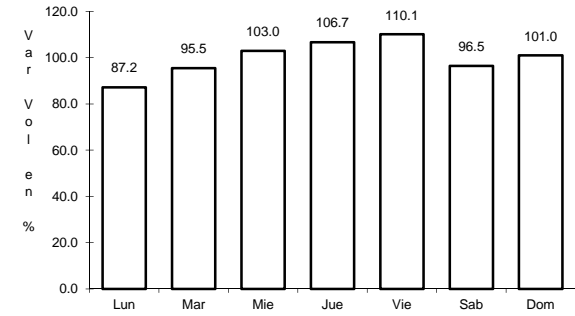
RUTA: MEX-080



Km: 0.00 Tipo: 3 Sent: 0



Km: 86.00 Tipo: 3 Sent: 0

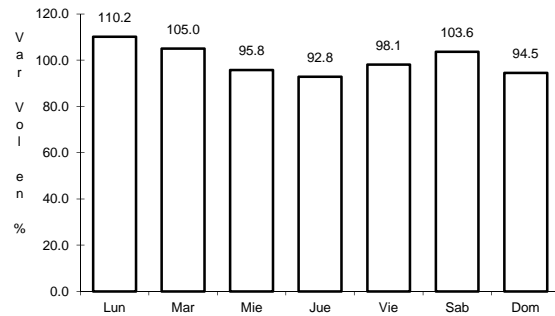


Km: 198.83 Tipo: 1 Sent: 0

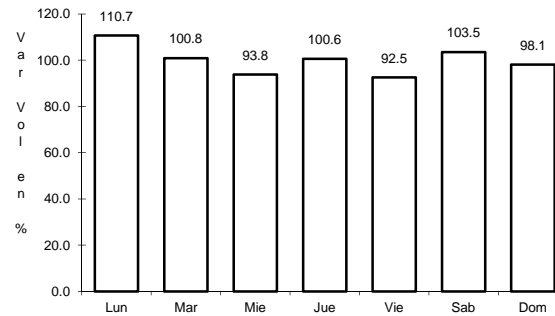
2 CARR: Carbonera - T. C. (Ent. Morelos - Saltillo)

CLAVE: 00218

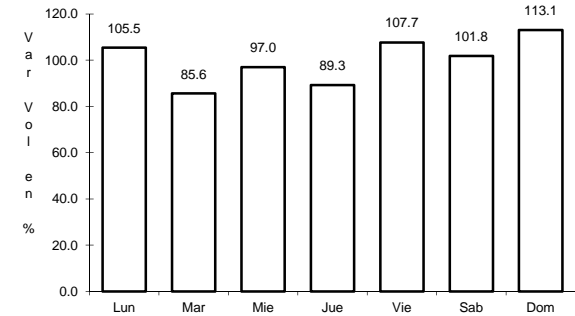
RUTA: MEX-062



Km: 0.00 Tipo: 3 Sent: 0



Km: 18.00 Tipo: 1 Sent: 0

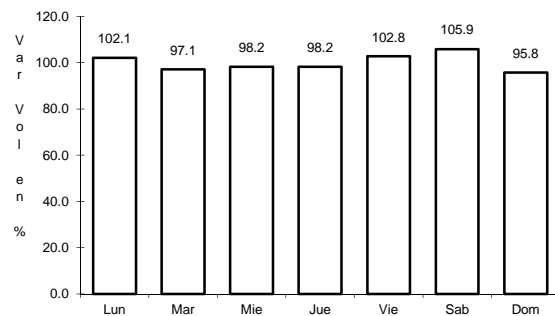


Km: 112.00 Tipo: 1 Sent: 0

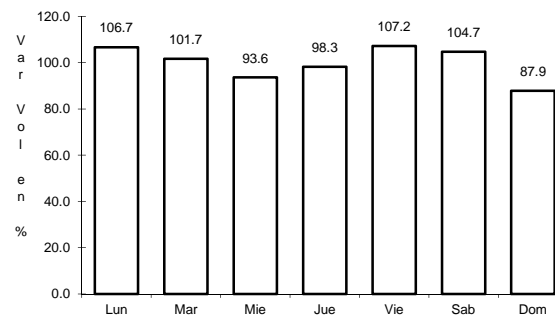
3 CARR: Cd. Valles - Cd. Victoria

CLAVE: 00509

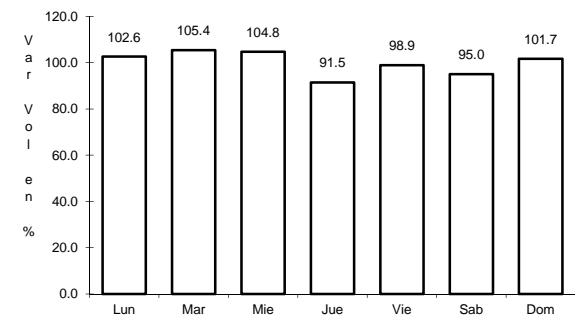
RUTA: MEX-085



Km: 0.00 Tipo: 3 Sent: 0



Km: 110.00 Tipo: 3 Sent: 0

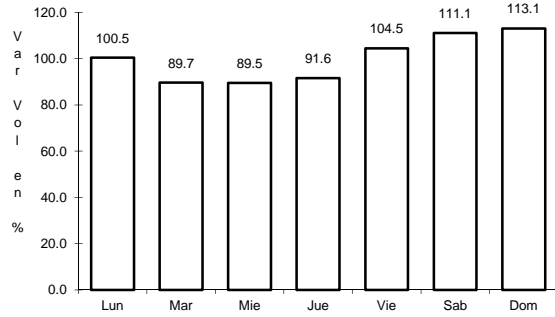


Km: 232.00 Tipo: 1 Sent: 0

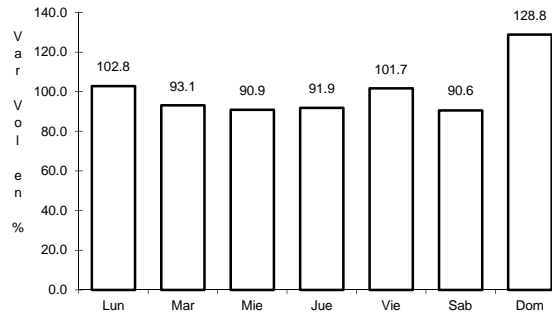
4 CARR: Cd. Valles - San Luis Potosí

CLAVE: 24135

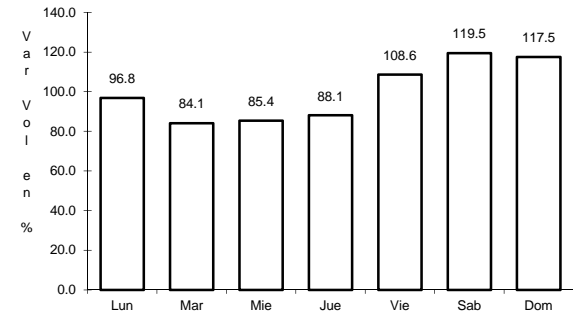
RUTA: MEX-070



Km: 0.00 Tipo: 3 Sent: 1



Km: 0.00 Tipo: 3 Sent: 2

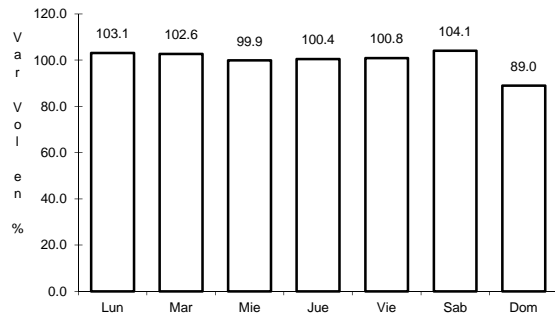


Km: 161.04 Tipo: 3 Sent: 0

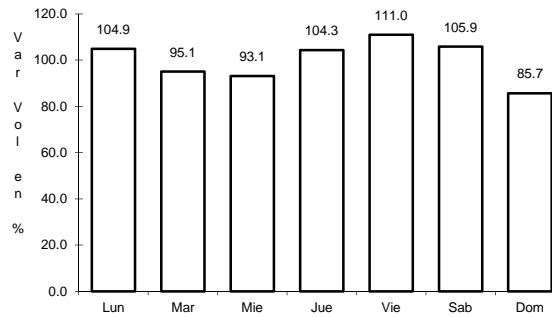
5 CARR: Cd. Valles - Tampico

CLAVE: 00138

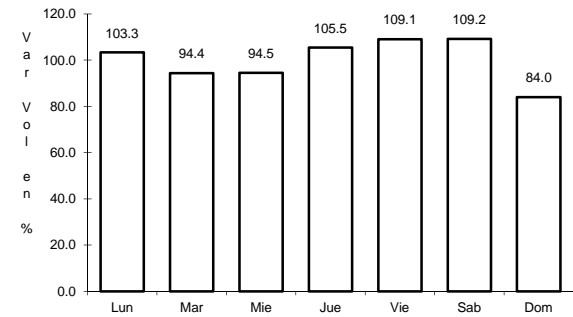
RUTA: MEX-070



Km: 0.00 Tipo: 3 Sent: 0



Km: 138.00 Tipo: 1 Sent: 1

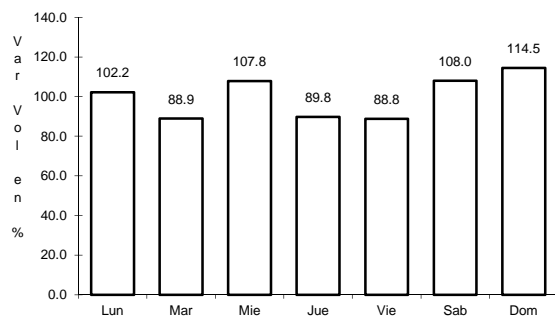


Km: 138.00 Tipo: 1 Sent: 2

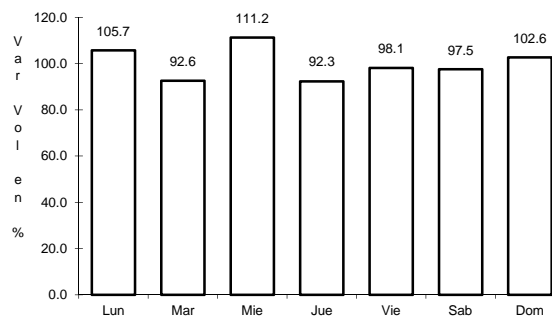
6 CARR: El Clarín - Agua Buena

CLAVE: 24283

RUTA: MEX-070



Km: 0.00 Tipo: 3 Sent: 0

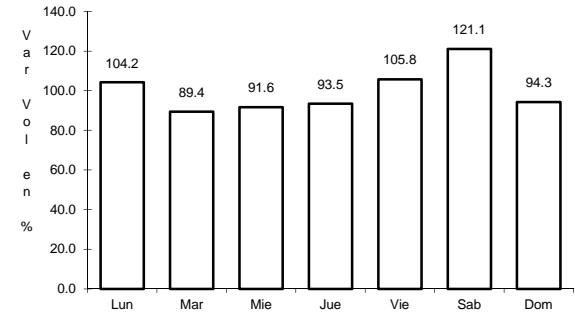
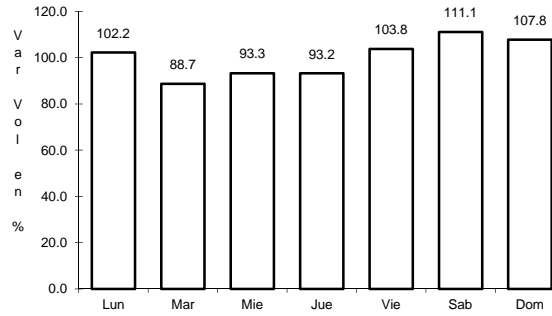
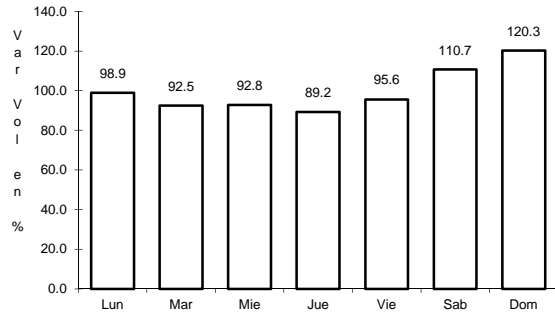


Km: 11.23 Tipo: 1 Sent: 0

7 CARR: Ent. Ahualulco - Ent. La Bonita

CLAVE: 24258

RUTA: MEX-063



Km: 0.00 Tipo: 3 Sent: 0

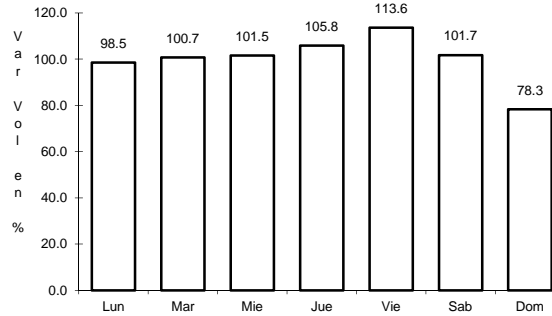
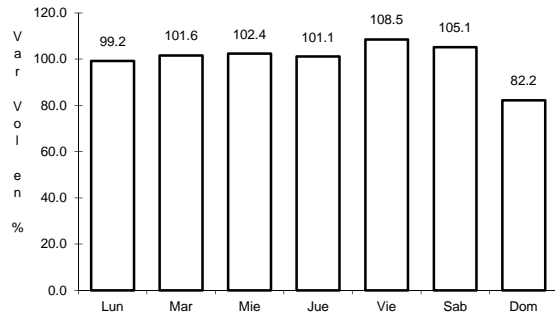
Km: 59.00 Tipo: 1 Sent: 0

Km: 169.90 Tipo: 1 Sent: 0

8 CARR: Ent. de Zaragoza - San Felipe

CLAVE: 00240

RUTA: MEX-037



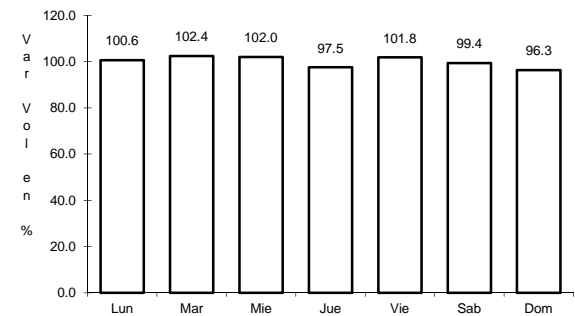
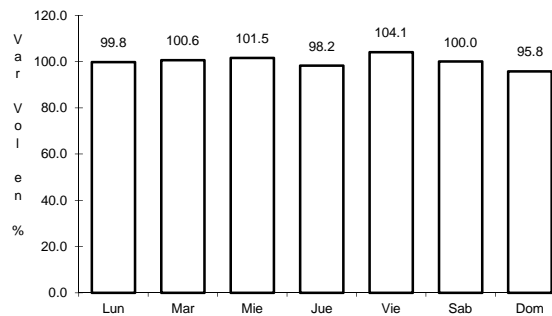
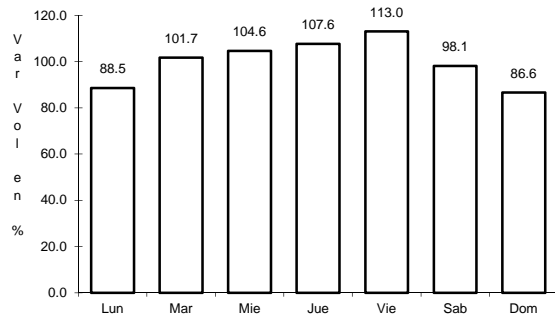
Km: 0.00 Tipo: 3 Sent: 0

Km: 72.00 Tipo: 1 Sent: 0

9 CARR: Ent. Tula - Cd. Victoria

CLAVE: 00179

RUTA: MEX-101



Km: 0.00 Tipo: 3 Sent: 0

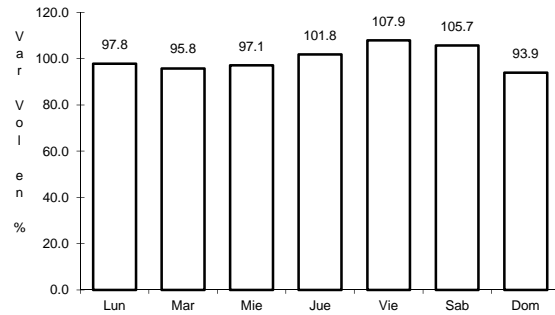
Km: 180.00 Tipo: 1 Sent: 1

Km: 180.00 Tipo: 1 Sent: 2

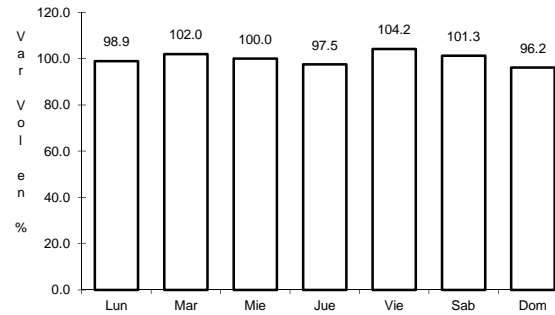
10 CARR: Jalpan de Serra - Rioverde

CLAVE: 00265

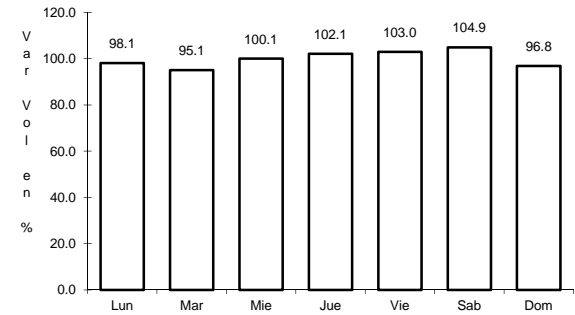
RUTA: MEX-069



Km: 0.00 Tipo: 3 Sent: 0



Km: 48.60 Tipo: 1 Sent: 0

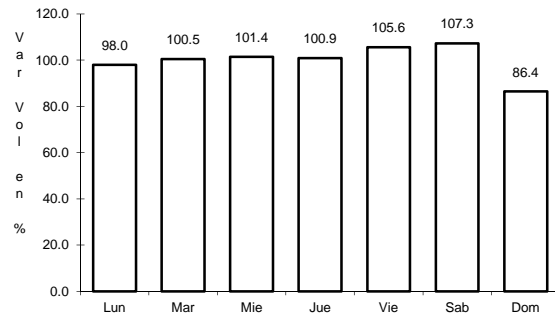


Km: 105.43 Tipo: 1 Sent: 0

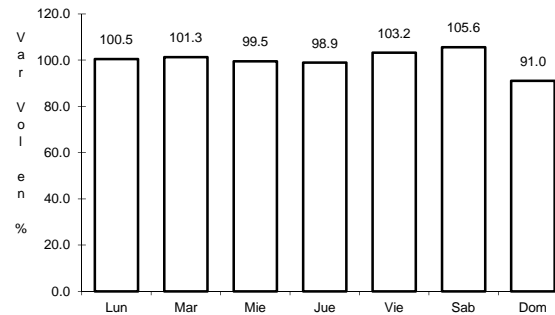
11 CARR: Libramiento de Cd. Valles

CLAVE: 24205

RUTA: MEX-070



Km: 0.00 Tipo: 3 Sent: 0

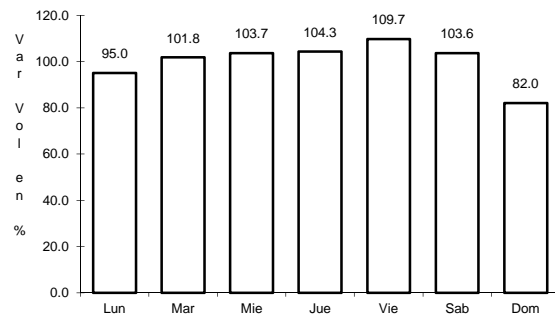


Km: 11.54 Tipo: 1 Sent: 0

12 CARR: Libramiento de Villa de Reyes

CLAVE: 24010

RUTA: MEX-037

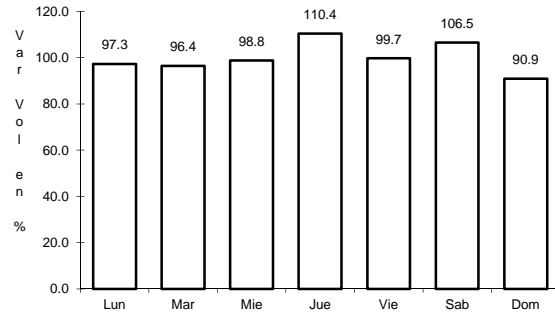


Km: 0.00 Tipo: 3 Sent: 0

13 CARR: Libramiento Villa de Arriaga

CLAVE: 24009

RUTA: MEX-080



Km: 0.00

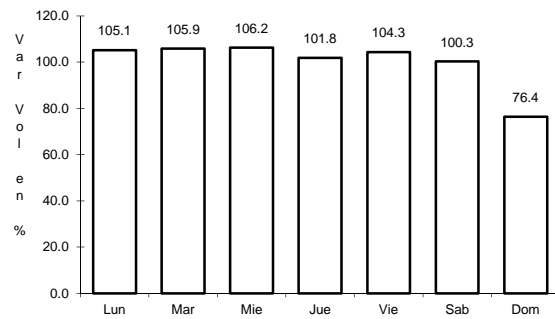
Tipo: 3

Sent: 0

14 CARR: Matehuala - Ent. Puerto México

CLAVE: 00405

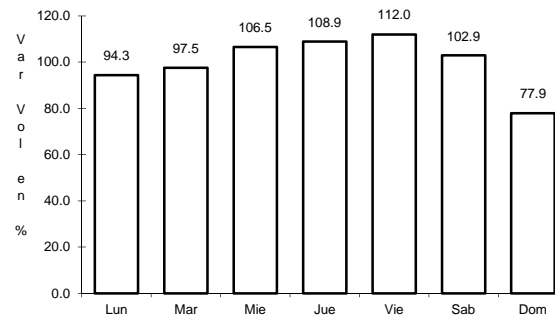
RUTA: MEX-057



Km: 0.00

Tipo: 3

Sent: 1



Km: 0.00

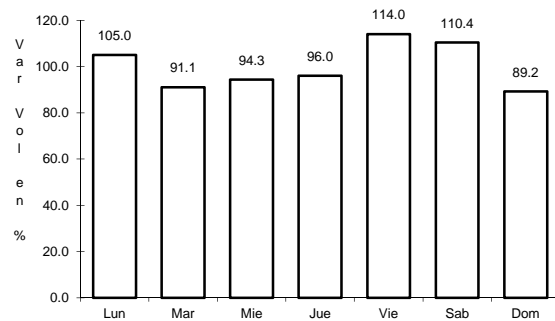
Tipo: 3

Sent: 2

15 CARR: Portezuelo - Cd. Valles

CLAVE: 00023

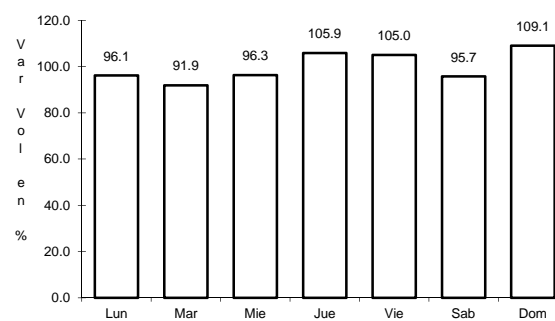
RUTA: MEX-085



Km: 0.00

Tipo: 3

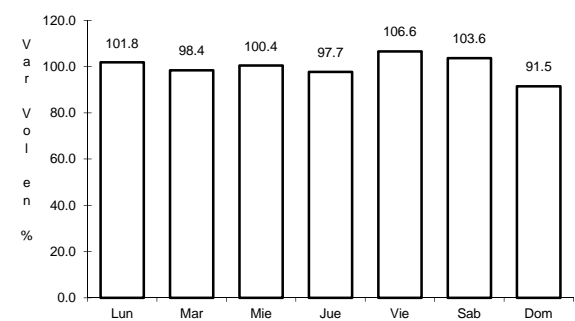
Sent: 0



Km: 154.00

Tipo: 3

Sent: 0



Km: 300.00

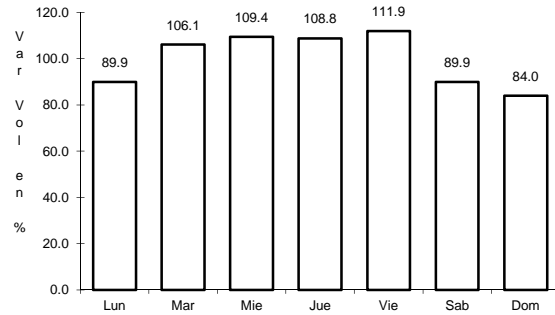
Tipo: 1

Sent: 0

16 CARR: Querétaro - San Luis Potosí

CLAVE: 00165

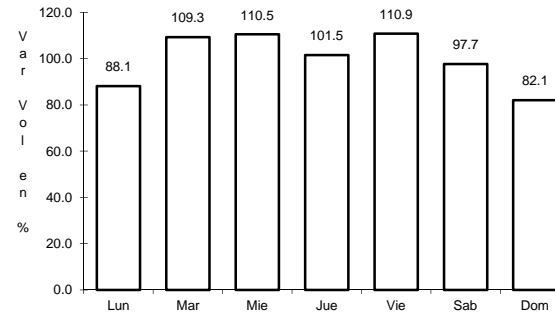
RUTA: MEX-057



Km: 6.28

Tipo: 3

Sent: 1



Km: 6.28

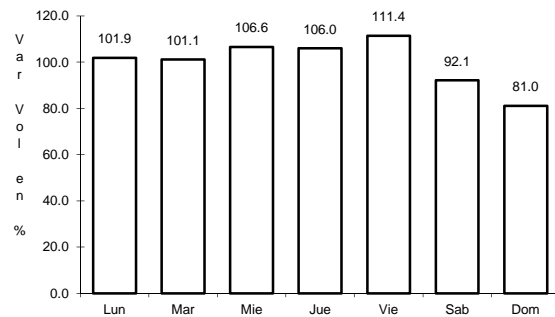
Tipo: 3

Sent: 2

17 CARR: Ramal a Aeropuerto de S. L. P.

CLAVE: 24206

RUTA: MEX-057



Km: 0.00

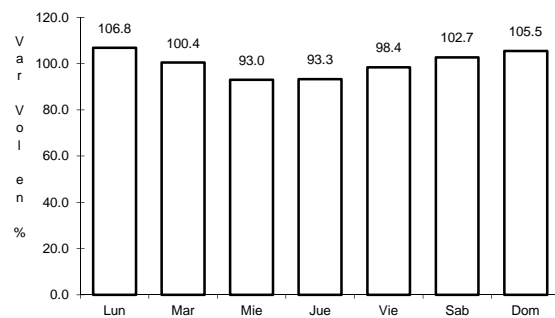
Tipo: 3

Sent: 0

18 CARR: Ramal a Ojo de Agua

CLAVE: 24023

RUTA: MEX-062



Km: 0.00

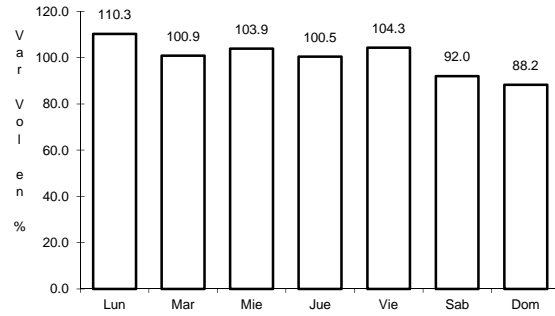
Tipo: 3

Sent: 0

19 CARR: Ramal a Rayón

CLAVE: 24626

ruta: MEX-070



Km: 1.50

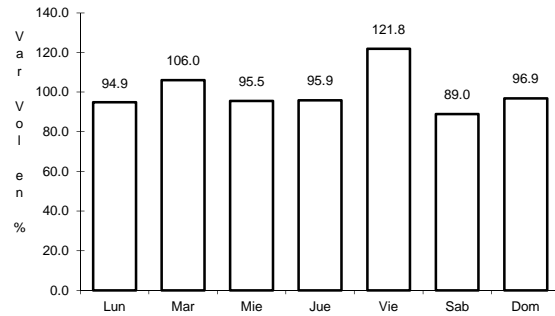
Tipo: 1

Sent: 0

20 CARR: San Juan del Río - Xilitla

CLAVE: 00183

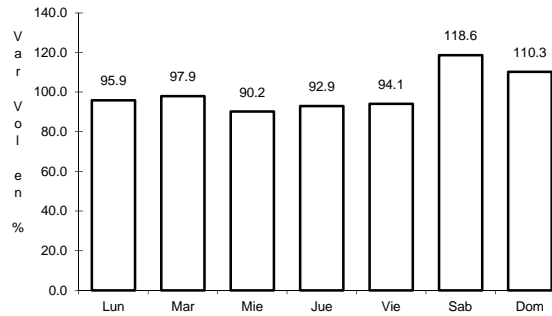
ruta: MEX-120



Km: 5.20

Tipo: 3

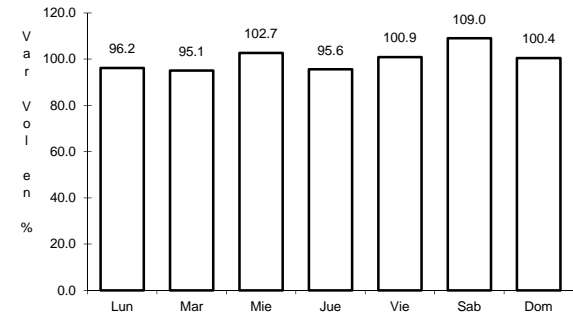
Sent: 1



Km: 5.20

Tipo: 3

Sent: 2



Km: 276.98

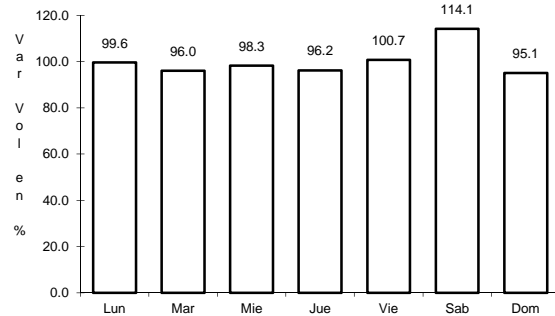
Tipo: 1

Sent: 0

21 CARR: San Luis Potosí - Ent. Arcinas

CLAVE: 00134

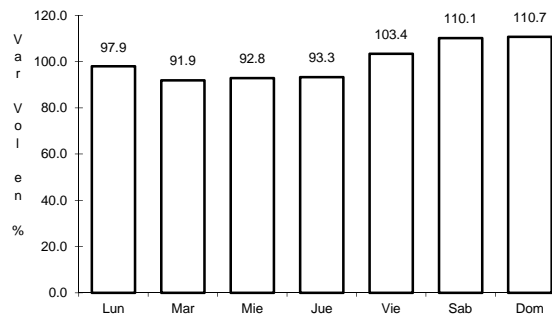
ruta: MEX-049



Km: 9.35

Tipo: 3

Sent: 1



Km: 9.35

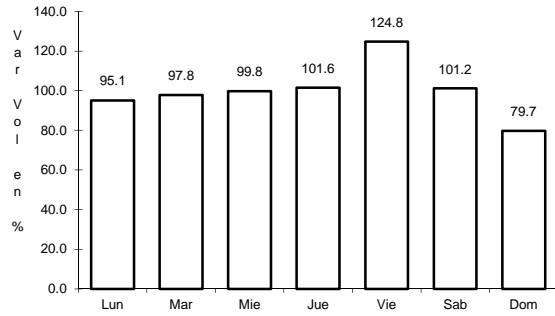
Tipo: 3

Sent: 2

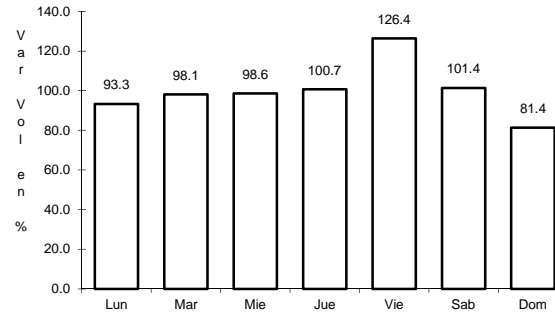
22 CARR: San Luis Potosí - Lagos de Moreno

CLAVE: 00133

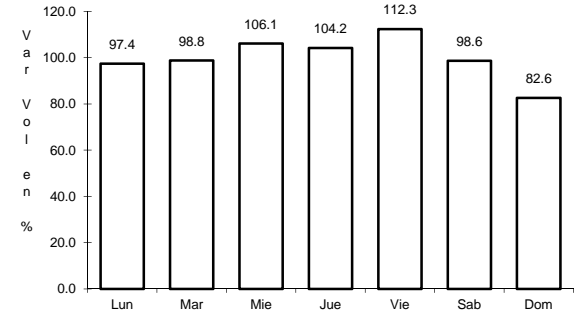
RUTA: MEX-070-080



Km: 0.00 Tipo: 3 Sent: 1



Km: 0.00 Tipo: 3 Sent: 2

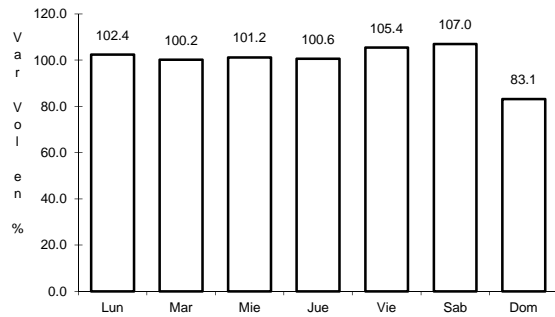


Km: 61.90 Tipo: 3 Sent: 0

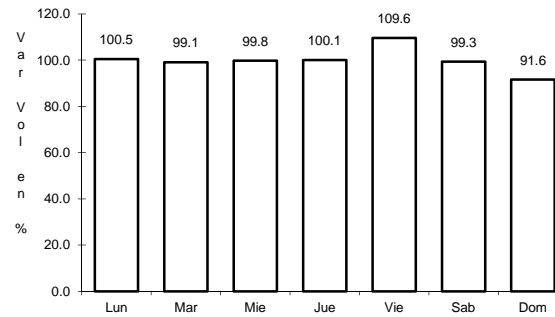
23 CARR: San Luis Potosí - Matehuala

CLAVE: 24508

RUTA: MEX-057



Km: 7.36 Tipo: 3 Sent: 1

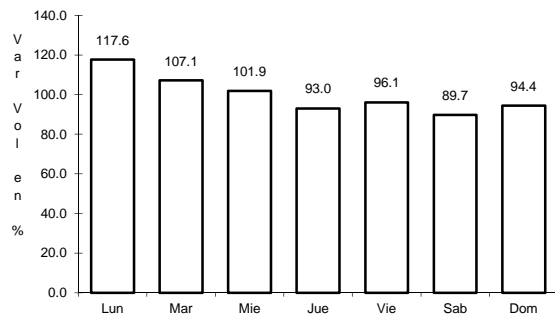


Km: 7.36 Tipo: 3 Sent: 2

24 CARR: T. C. (Ent. El Huizache- Ant. Morelos)-El Salto

CLAVE: 24204

RUTA: MEX-080

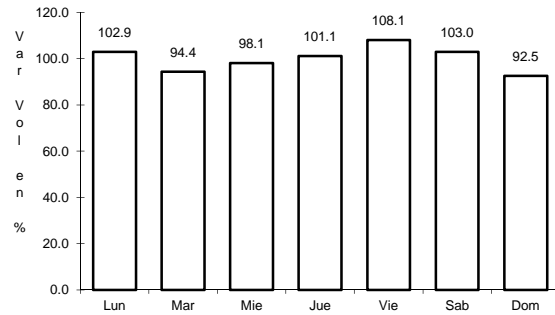


Km: 0.00 Tipo: 3 Sent: 0

25 CARR: T. C. (Qro - S.L.P.) - Tierra Nueva

CLAVE: 24203

RUTA: MEX-057



Km: 0.00

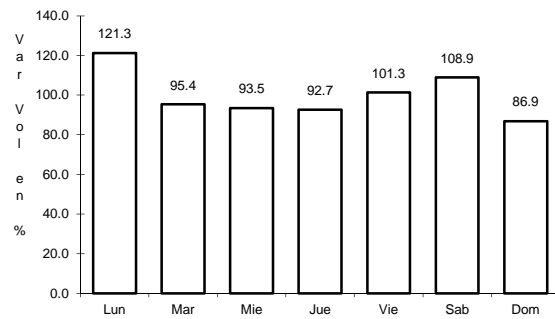
Tipo: 3

Sent: 0

26 CARR: T. C. (S.L.P. - Matehuala) - Villa Hidalgo

CLAVE: 24619

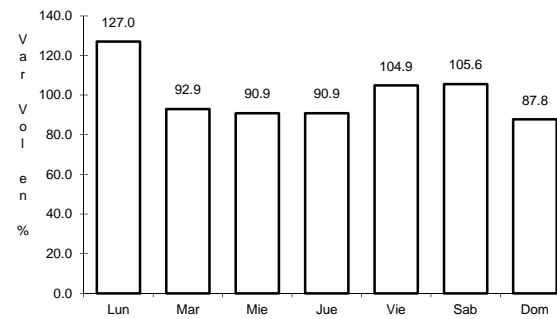
RUTA: MEX-057



Km: 0.00

Tipo: 3

Sent: 0



Km: 10.20

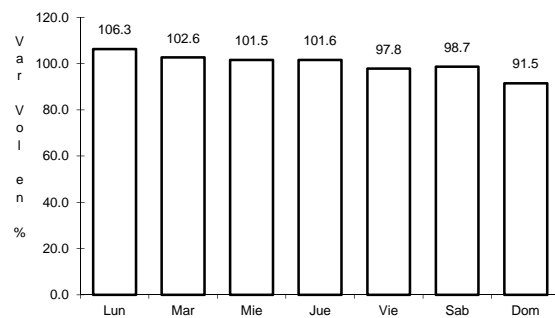
Tipo: 1

Sent: 0

27 CARR: Tamazunchale - San Felipe Orizatlán

CLAVE: 00609

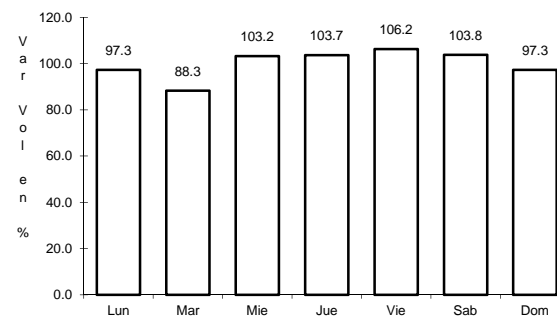
RUTA: MEX-085



Km: 0.00

Tipo: 3

Sent: 0



Km: 27.10

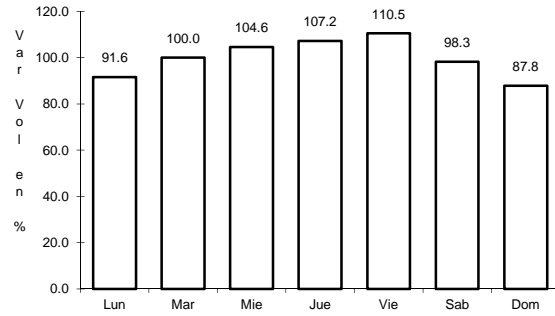
Tipo: 1

Sent: 0

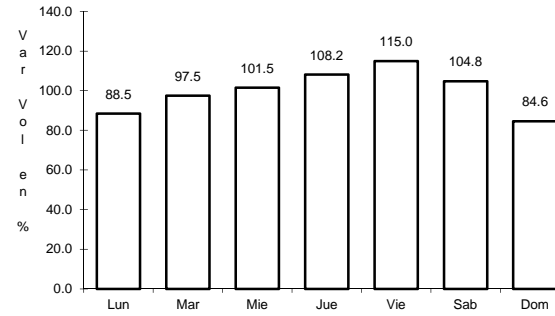
28 CARR: Libramiento de Matehuala (Cuota)

CLAVE: 24205

RUTA: MEX-057D



Km: 0.00 Tipo: 3 Sent: 1

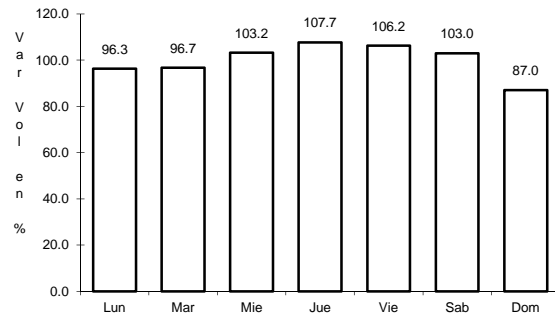


Km: 0.00 Tipo: 3 Sent: 2

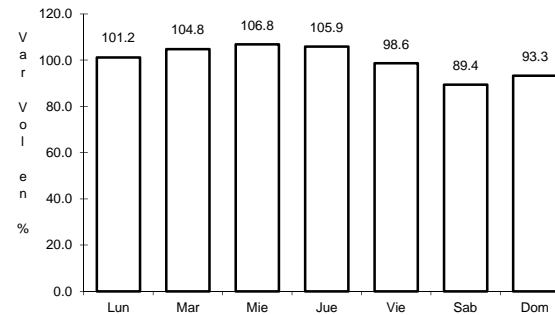
30 CARR: Libramiento Oriente de San Luis Potosí (Cuota)

CLAVE: 24009

RUTA: MEX-057D



Km: 11.20 Tipo: 1 Sent: 1

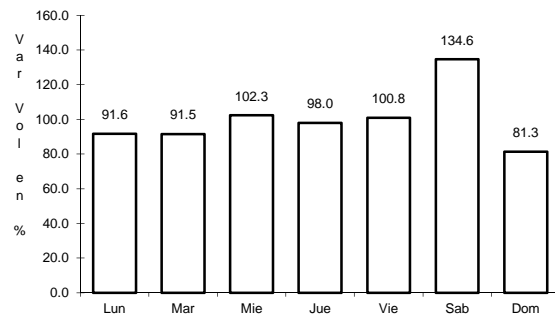


Km: 11.20 Tipo: 1 Sent: 2

31 CARR: Charcas - Villa Santo Domingo

CLAVE: 24624

RUTA: SLP-017

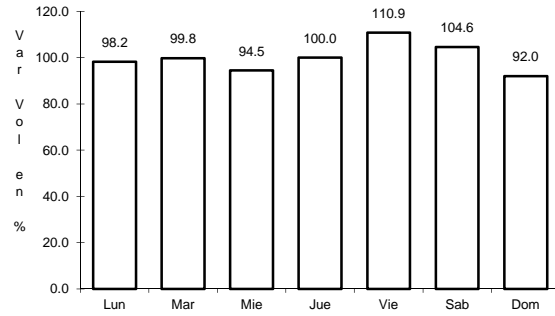


Km: 0.00 Tipo: 3 Sent: 0

32 CARR: Ébano - Estación Manuel

CLAVE: 24624

RUTA: SLP-TAM



Km: 0.00

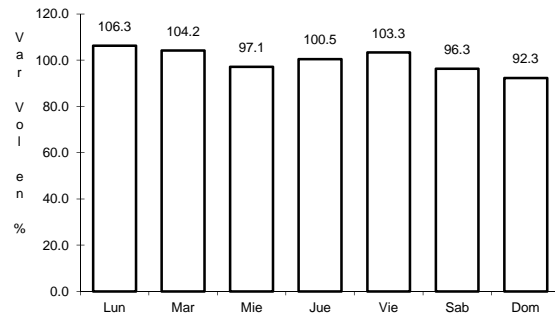
Tipo: 3

Sent: 0

33 CARR: Matchuala - La Paz

CLAVE: 24621

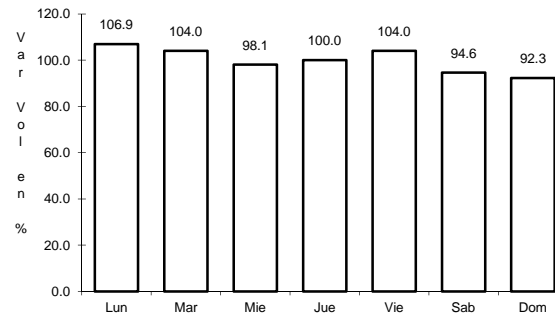
RUTA: SLP-020



Km: 0.00

Tipo: 3

Sent: 1



Km: 0.00

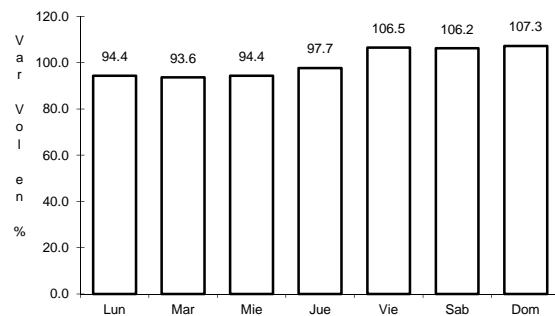
Tipo: 3

Sent: 2

34 CARR: Matchuala - La Poza

CLAVE: 00086

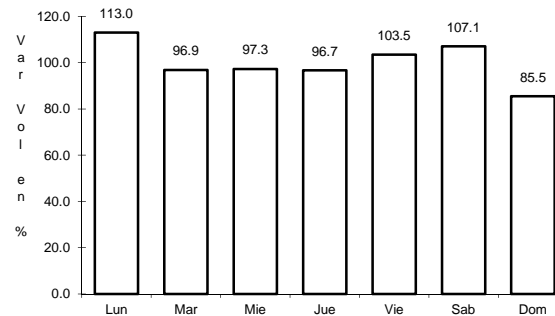
RUTA: SLP-029



Km: 0.00

Tipo: 3

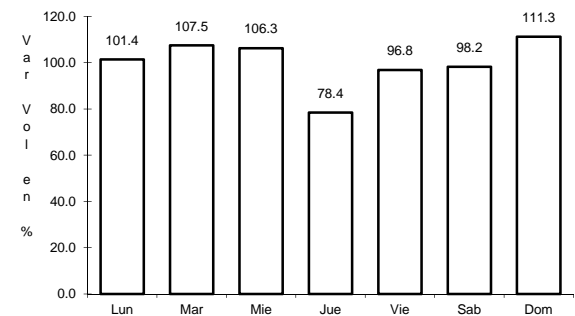
Sent: 0



Km: 49.00

Tipo: 1

Sent: 0



Km: 131.00

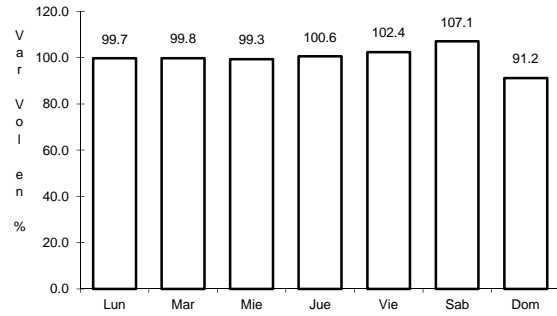
Tipo: 1

Sent: 0

35 CARR: Periférico de San Luis Potosí

CLAVE: 24618

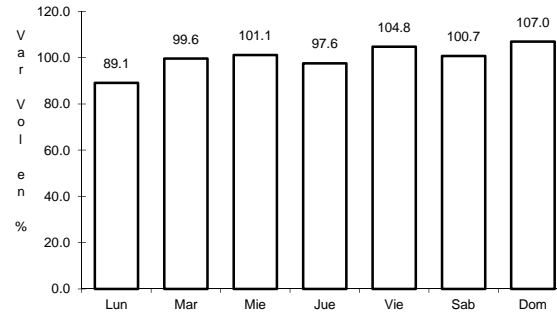
RUTA: SLP-032



Km: 22.00

Tipo: 3

Sent: 1



Km: 22.00

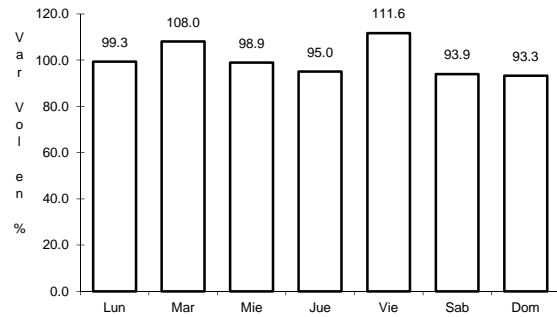
Tipo: 3

Sent: 2

36 CARR: Ramal a Cerritos

CLAVE: 24615

RUTA: SLP-007



Km: 0.00

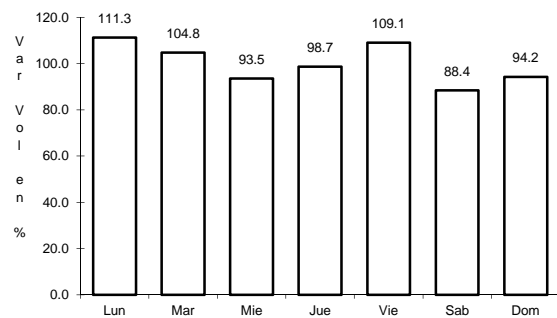
Tipo: 3

Sent: 0

37 CARR: Ramal a Pozo de Acuña

CLAVE: 24626

RUTA: SLP-009



Km: 0.00

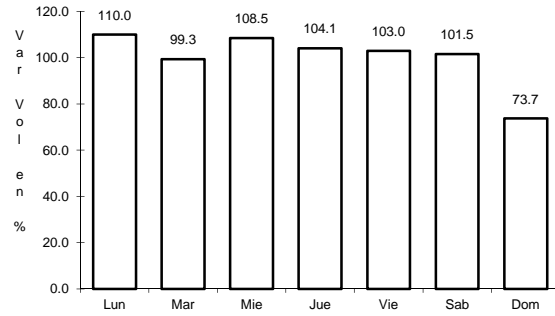
Tipo: 3

Sent: 0

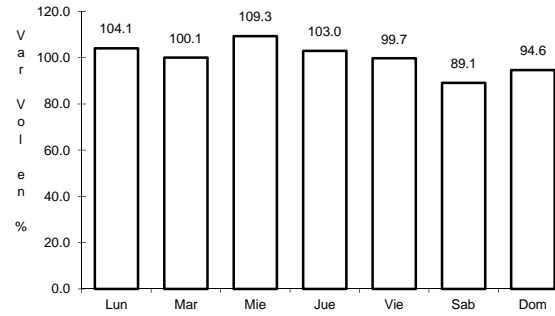
38 CARR: Rayón - Arroyo Seco

CLAVE: 24008

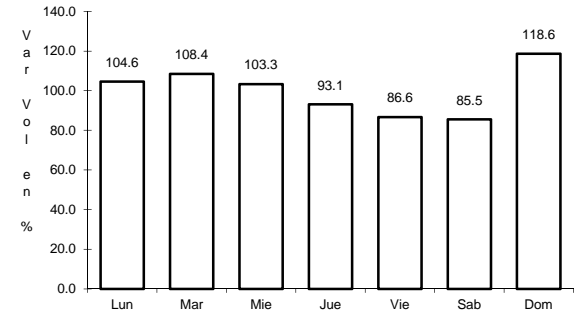
RUTA: SLP-011



Km: 0.00 Tipo: 3 Sent: 0



Km: 36.00 Tipo: 1 Sent: 0

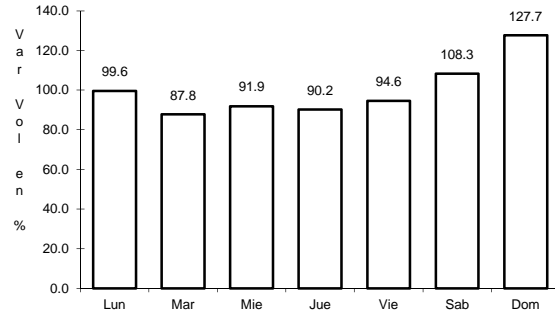


Km: 57.00 Tipo: 1 Sent: 0

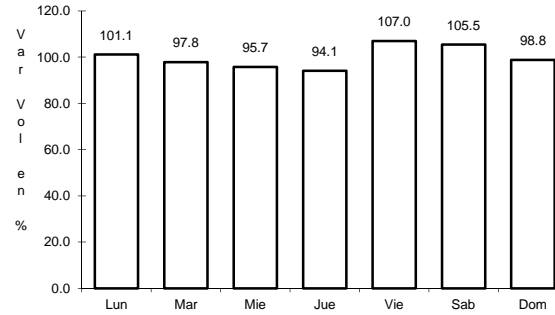
39 CARR: Santo Domingo - Cerro Gordo

CLAVE: 24614

RUTA: SLP-022



Km: 0.00 Tipo: 3 Sent: 0

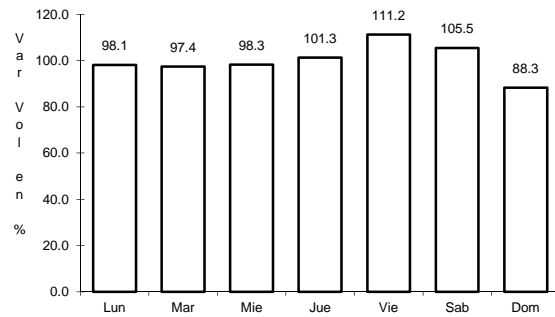


Km: 19.00 Tipo: 1 Sent: 0

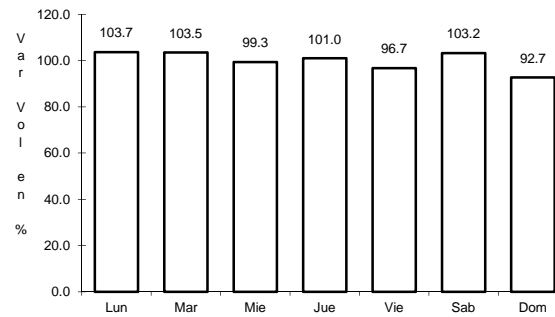
40 CARR: Tamuín - Estación F.F.C.C. Tamuín

CLAVE: 24022

RUTA: SLP-040



Km: 0.00 Tipo: 3 Sent: 0

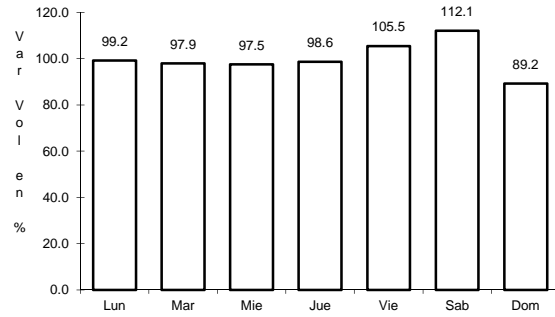


Km: 10.00 Tipo: 1 Sent: 0

41 CARR: Tamuín - Xolol

CLAVE: 24027

RUTA: SLP-014

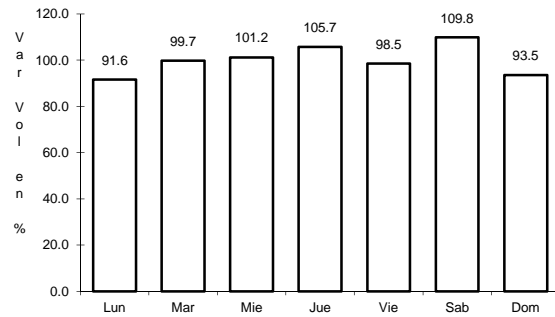


Km: 0.00 Tipo: 3 Sent: 0

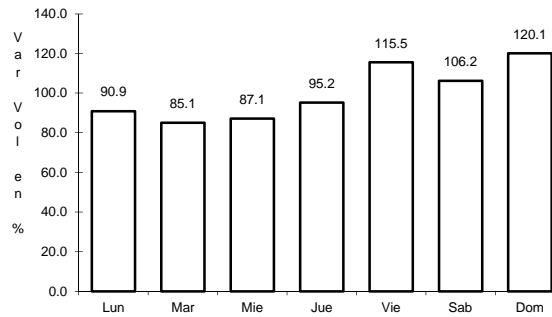
42 CARR: Cerritos - Rioverde (Cuota)

CLAVE: 00138

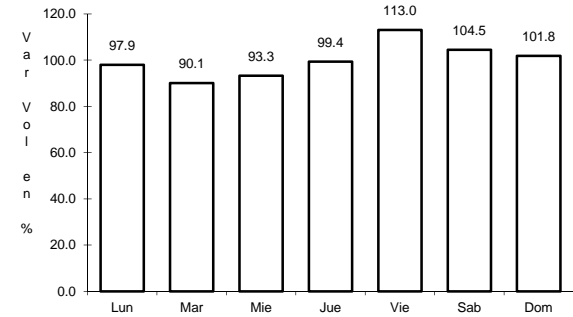
RUTA: SLP-D



Km: 0.00 Tipo: 3 Sent: 0



Km: 58.00 Tipo: 3 Sent: 0

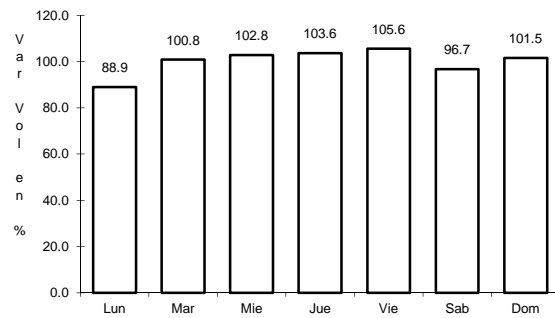


Km: 103.00 Tipo: 1 Sent: 0

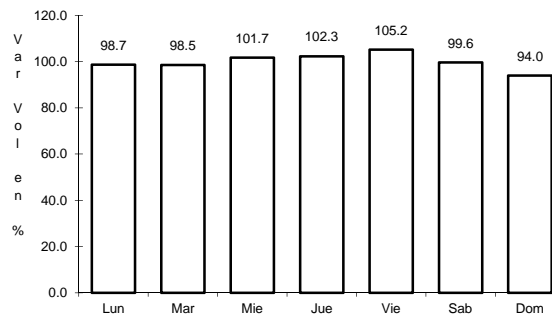
43 CARR: San Luis Potosí - Villa de Arriaga (Cuota)

CLAVE: 24209

RUTA: SLP-D



Km: 0.00 Tipo: 3 Sent: 0

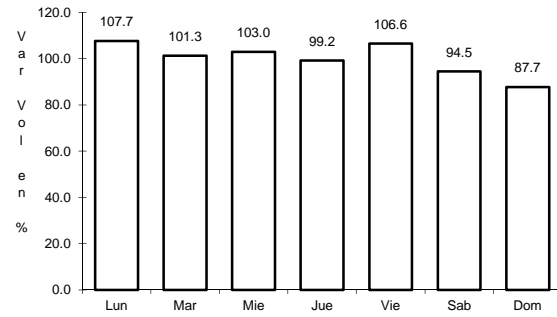


Km: 77.00 Tipo: 1 Sent: 0

44 CARR: Rayón - Cd. del Maíz

CLAVE: 24206

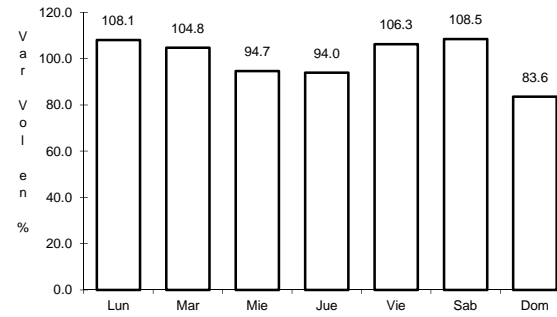
RUTA: MEX-070-SLP-005



Km: 15.80

Tipo: 1

Sent: 0



Km: 55.70

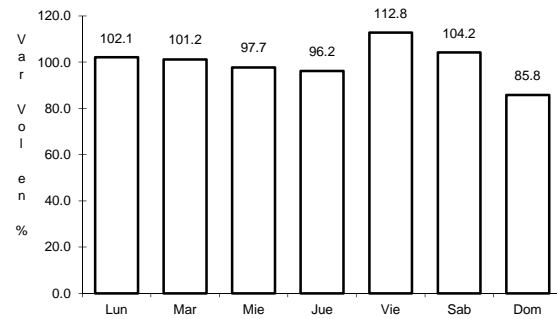
Tipo: 1

Sent: 0

45 CARR: San Lorenzo - Moctezuma

CLAVE: 24016

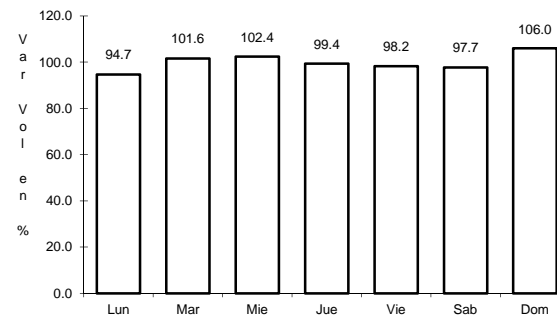
RUTA: MEX-063-SLP-012



Km: 0.00

Tipo: 3

Sent: 0



Km: 54.00

Tipo: 1

Sent: 0